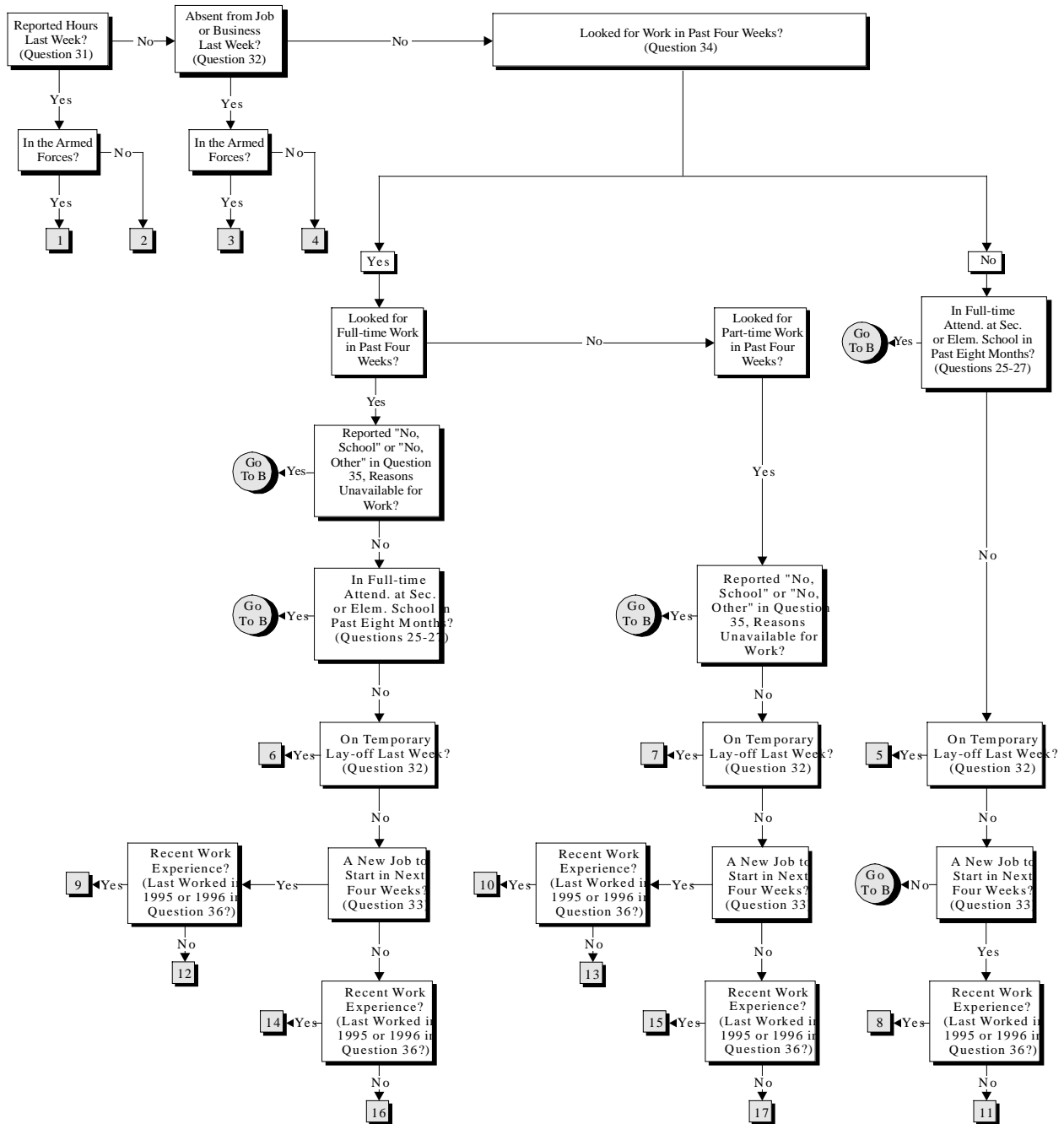
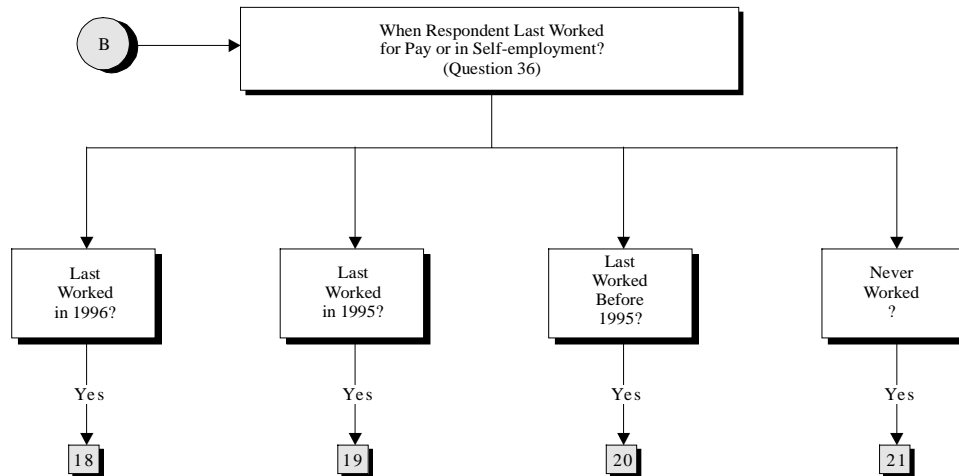


**Appendix F. Labour Force Activity Classification Chart – Page 1**

This chart demonstrates how responses to the labour force questions are used to classify persons 15 years and over (excluding institutional residents) according to their labour force activity status in the week prior to Census Day.



## Appendix F. Labour Force Activity Classification Chart – Page 2



In total, the population 15 years and over (excluding institutional residents) is divided into 21 categories, as outlined below:

### Employed

1. Worked in reference week – Armed Forces
2. Worked in reference week – Civilian
3. Absent from job in reference week – Armed Forces
4. Absent from job in reference week – Civilian

### Unemployed

5. Experienced – On temporary lay-off – Did not look for work
6. Experienced – On temporary lay-off – Looked for full-time work
7. Experienced – On temporary lay-off – Looked for part-time work
8. Experienced – New job to start – Did not look for work
9. Experienced – New job to start – Looked for full-time work
10. Experienced – New job to start – Looked for part-time work
11. Inexperienced – New job to start – Did not look for work
12. Inexperienced – New job to start – Looked for full-time work
13. Inexperienced – New job to start – Looked for part-time work
14. Experienced – Looked for work – Looked for full-time work
15. Experienced – Looked for work – Looked for part-time work
16. Inexperienced – Looked for work – Looked for full-time work
17. Inexperienced – Looked for work – Looked for part-time work

### Not in the labour force

18. Last worked in 1996
19. Last worked in 1995
20. Last worked before 1995
21. Never worked