

## Article

# Population growth: Canada, provinces and territories, 2010

by Jonathan Chagnon and Anne Milan

July, 2011



## How to obtain more information

For information about this product or the wide range of services and data available from Statistics Canada, visit our website at [www.statcan.gc.ca](http://www.statcan.gc.ca), e-mail us at [infostats@statcan.gc.ca](mailto:infostats@statcan.gc.ca), or telephone us, Monday to Friday from 8:30 a.m. to 4:30 p.m., at the following numbers:

### Statistics Canada's National Contact Centre

Toll-free telephone (Canada and United States):

Inquiries line	1-800-263-1136
National telecommunications device for the hearing impaired	1-800-363-7629
Fax line	1-877-287-4369

Local or international calls:

Inquiries line	1-613-951-8116
Fax line	1-613-951-0581

### Depository Services Program

Inquiries line	1-800-635-7943
Fax line	1-800-565-7757

## To access this product

This product, Catalogue no. 91-209-X, is available free in electronic format. To obtain a single issue, visit our website at [www.statcan.gc.ca](http://www.statcan.gc.ca) and browse by "Key resource" > "Publications."

## Standards of service to the public

Statistics Canada is committed to serving its clients in a prompt, reliable and courteous manner. To this end, Statistics Canada has developed standards of service that its employees observe. To obtain a copy of these service standards, please contact Statistics Canada toll-free at 1-800-263-1136. The service standards are also published on [www.statcan.gc.ca](http://www.statcan.gc.ca) under "About us" > "The agency" > "Providing services to Canadians."

## Report on the Demographic Situation in Canada

# Population growth: Canada, provinces and territories, 2010

Demographic Analysis and Projections Section

Published by authority of the Minister responsible for Statistics Canada

© Minister of Industry, 2011

All rights reserved. The content of this electronic publication may be reproduced, in whole or in part, and by any means, without further permission from Statistics Canada, subject to the following conditions: that it be done solely for the purposes of private study, research, criticism, review or newspaper summary, and/or for non-commercial purposes; and that Statistics Canada be fully acknowledged as follows: Source (or "Adapted from", if appropriate): Statistics Canada, year of publication, name of product, catalogue number, volume and issue numbers, reference period and page(s). Otherwise, no part of this publication may be reproduced, stored in a retrieval system or transmitted in any form, by any means—electronic, mechanical or photocopy—or for any purposes without prior written permission of Licensing Services, Information Management Division, Statistics Canada, Ottawa, Ontario, Canada K1A 0T6.

July 2011

Component of Statistics Canada Catalogue no. 91-209-X  
ISSN 1718-7788

Frequency: Irregular

Ottawa

La version française de cette publication est disponible sur demande.

---

### Note of appreciation

Canada owes the success of its statistical system to a long-standing partnership between Statistics Canada, the citizens of Canada, its businesses, governments and other institutions. Accurate and timely statistical information could not be produced without their continued cooperation and goodwill.

# Symbols

---

The following standard symbols are used in Statistics Canada publications:

- . not available for any reference period
- .. not available for a specific reference period
- ... not applicable
- 0 true zero or a value rounded to zero
- 0<sup>s</sup> value rounded to 0 (zero) where there is a meaningful distinction between true zero and the value that was rounded
- <sup>p</sup> preliminary
- <sup>r</sup> revised
- x suppressed to meet the confidentiality requirements of the *Statistics Act*
- E use with caution
- F too unreliable to be published

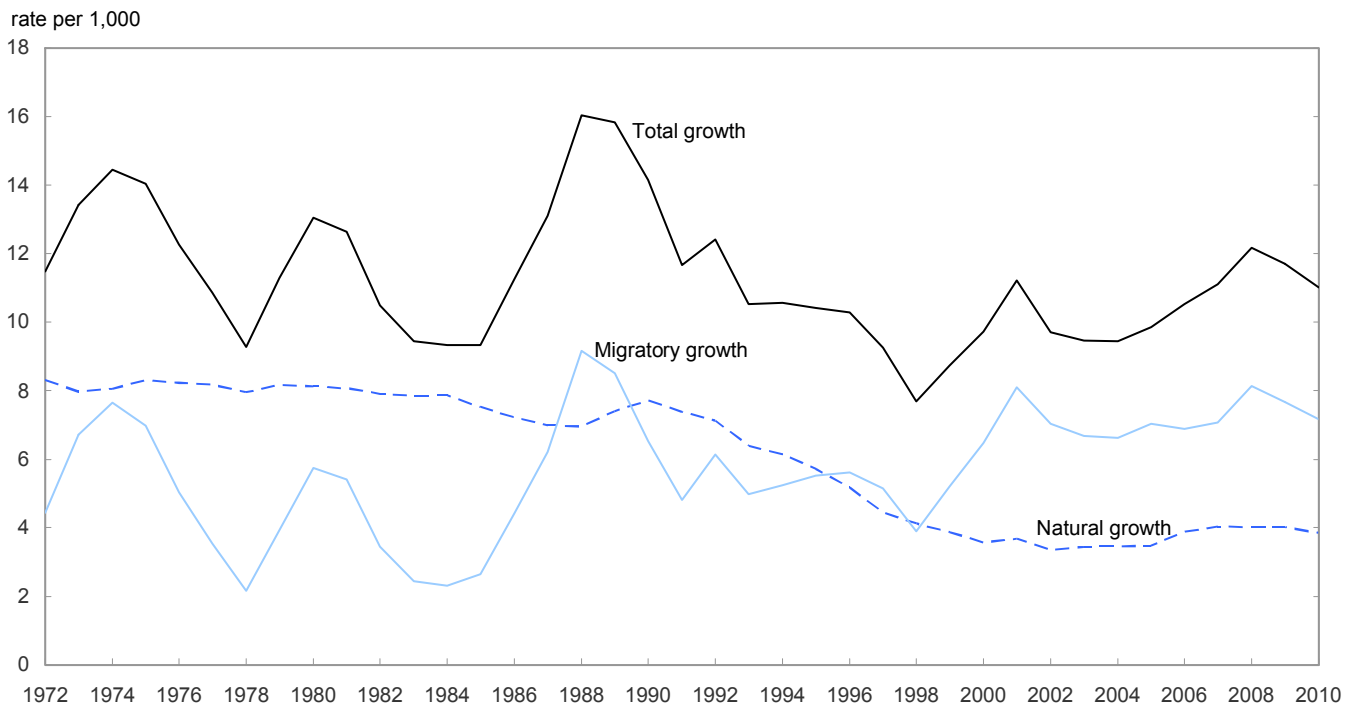
## Population growth: Canada, provinces and territories, 2010

This section examines the estimated population count and growth for Canada, the provinces and territories as of January 1, 2011 and analyzes the demographic components that account for the growth in 2010.<sup>1</sup>

As of January 1, 2011, Canada’s population was estimated at 34,278,400 inhabitants, up more than 375,600 people from the same date in 2010 (Table A1-1). This population increase represents a growth of 11.0 per 1,000 in 2010, down slightly from 11.7 per 1,000 the year before (Figure 1). The average annual growth rate for Canada during the period 2006 to 2010 was 11.4 per 1,000, higher than for the G8 countries during this period including the United States (8.4), Italy (5.3) and France (4.7). Several countries experienced negative population growth including Japan (-0.6), Russia (-1.4) and Germany (-1.4).<sup>2</sup>

At the national level, population growth is the result of two components—migratory increase and natural increase. First, the migratory increase, is comprised primarily of the difference between immigrants who entered Canada and emigrants who left the country. Canada received more than 280,700 immigrants in 2010, the highest level recorded since the 1950s. This was 28,500 more immigrants than in 2009. The increase in immigration in 2010

**Figure 1**  
**Total, natural and migratory population growth rates, Canada, 1972 to 2010**



**Notes:** Natural growth: Final data from 1972 to 2007, updated data from 2008 to 2009 and preliminary data for 2010.  
 Emigration, returning emigration, temporary emigration and non-permanent residents: Final data from 1972 to 2006, updated data from 2007 to 2009 and preliminary data for 2010.  
 Immigration: Final data from 1972 to 2009 and preliminary data for 2010.

**Source:** Statistics Canada, Demography Division.

1. The estimates presented in this chapter are subject to revision. Future modifications could affect the analysis of trends, particularly where the numbers are small or the net change is close to zero.
2. Data are based on population estimates program, Statistics Canada and national statistical agencies. Average annual growth rates for the United Kingdom and Germany are for the period 2006 to 2009. Growth rate for France is for metropolitan areas only.

was offset by a decline in the net inflow of non-permanent residents. Non-permanent residents (also called temporary residents) are people from another country who have a work or study permit, or who are refugee claimants, and family members living in Canada with them. In 2010, the net number of non-permanent residents was slightly less than 12,900 compared to a little more than 55,400 in 2009 and almost 71,400 in 2008. As a result, net international migration in 2010 was estimated at 244,400 persons, down from 258,900 persons the previous year.

The second component of population growth, natural increase, is the variation in population size over a given period as a result of the difference between the number of births and the number of deaths. In 2010, there was a natural increase of 131,200, resulting from an estimated 382,000 births and 250,800 deaths during this year. This was slightly lower than the natural increase of 135,600 recorded in 2009.

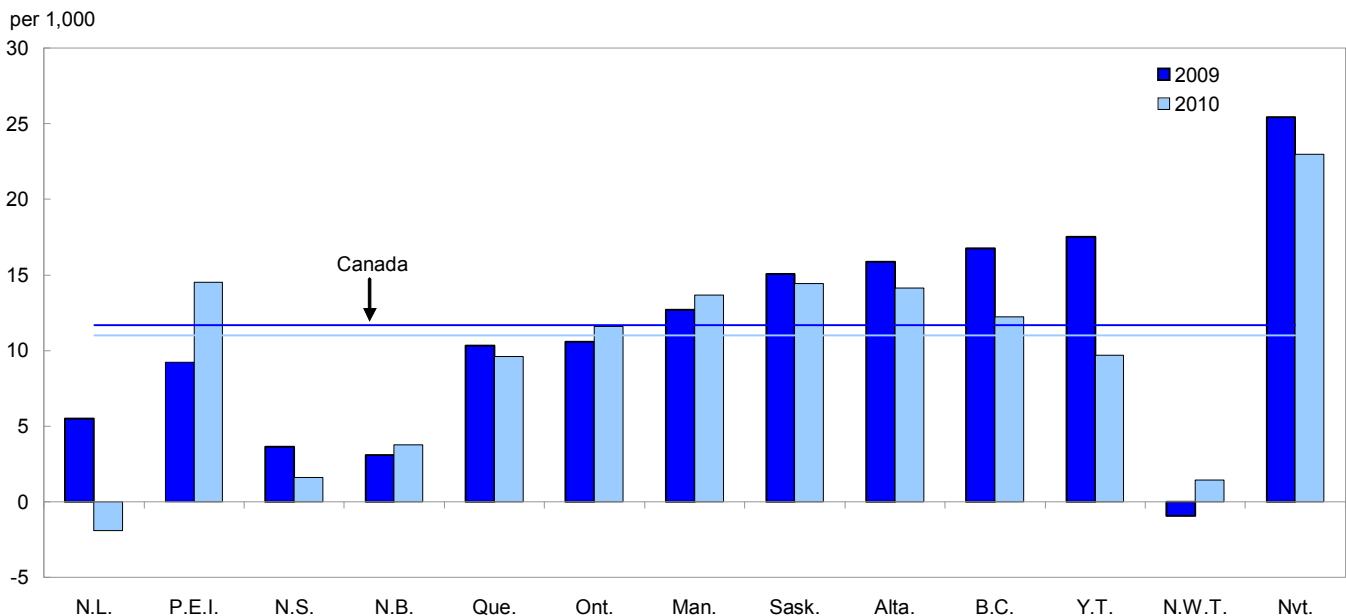
### Population growth in the provinces and territories

At the provincial and territorial level, population growth is affected not only by net international migration and natural increase but also by net interprovincial migration. Net interprovincial migration is the variation in population over a given period as a result of movements of population between the provinces and territories of the country that involve a change in the usual place of residence (Tables A1-2 to A1-14 and Figure 2).

In 2010, Newfoundland and Labrador’s population was down by almost 1,000. As of January 1, 2011, the population of Newfoundland and Labrador was estimated at 509,100. Newfoundland and Labrador was the only province to experience a population drop in 2010. The province posted net losses in its exchanges with the other provinces and territories, posting net interprovincial migration of -900 in 2010. By comparison, in 2009, net interprovincial migration for Newfoundland and Labrador was slightly more than 2,500. Moreover, the province posted negative natural growth (-400 in 2010) for the third year in a row.

Prince Edward Island’s population posted a growth slightly above 2,100 (14.5 per 1,000) in 2010. As of January 1, 2011, the population of Prince Edward Island was estimated at 143,500. Prince Edward Island was the only province

**Figure 2**  
Population growth rates, Canada, provinces and territories, 2009 and 2010



Note: Updated postcensal estimates.

Source: Statistics Canada, Demography Division.

east of Ontario with a 2010 growth rate higher than the national average. Moreover, it was the province with the highest growth rate in Canada. Immigration was the main factor for Prince Edward Island's growth, the province having welcomed almost 2,600 immigrants in 2010 – about 800 more than in the preceding year. This was the greatest number of immigrants received by the province since 1972.<sup>3</sup> Immigration was however partially offset by net outflows in interprovincial migration (-800).

Nova Scotia's population grew slightly by 1,500 (1.6 per 1,000) in 2010. On January 1, 2011, the population of Nova Scotia was estimated at 943,400. The province's net international migration (3,400) was partially offset by net outflows in interprovincial migration (-1,800).

New Brunswick's population increased by slightly more than 2,800 (3.8 per 1,000) in 2010. The province received slightly more than 2,100 immigrants, the highest number since 1975. New Brunswick also benefited in its exchanges with the other provinces and territories, reporting net interprovincial migration of close to 700, the highest level since 1990. The population of New Brunswick was estimated at 753,200 as of January 1, 2011.

In 2010, Quebec's population posted an increase of slightly more than 75,900 (9.6 per 1,000). Quebec's population reached 7,943,000 on January 1, 2011. Its growth rate was similar to the one observed in 2009, and thus remains among its highest since the late 1980s. Quebec received almost 54,000 immigrants in 2010, the highest level observed since 1972. In comparison, the province received 4,500 more immigrants in 2010 than in 2009 and 8,800 more than in 2008. In 2010, Quebec posted net inflows of non-permanent residents of more than 2,900, down compared to 2009 (10,800) and 2008 (9,900). The province also lost in its migratory exchanges with the other provinces and territories, experiencing net interprovincial migration of -3,700, about the same number as in 2009.

Ontario posted a population gain of 153,300 (11.6 per 1,000) in 2010, a growth rate higher than the national average (11.0 per 1,000). As of January 1, 2011, the population of Ontario was estimated at 13,282,400. The main factor of Ontario's population growth was net international migration, which was 111,600 in 2010, up compared to 100,400 recorded in 2009. However, Ontario lost in its exchanges with the other provinces and territories, posting net outflows in interprovincial migration (-4,500). This was however the lowest net loss since 2003.

In 2010, Manitoba, Saskatchewan, Alberta and British Columbia all experienced growth rates above the national level. Manitoba's population increased by more than 16,900 (13.7 per 1,000) in 2010. As of January 1, 2011, the population of Manitoba was estimated at 1,243,700. Net international migration (13,700) was the main factor of the province's growth. Manitoba received 15,800 immigrants in 2010, the highest count since 1972. On the other hand, Manitoba lost in its exchanges with the other provinces and territories, posting net interprovincial migration of close to -2,400, about the same number as in 2009. For the first time since 1998, net non-permanent resident flows were also slightly negative (-500) in 2010.

Saskatchewan's population grew by slightly less than 15,100 (14.4 per 1,000) in 2010. The population of Saskatchewan was estimated at 1,052,100 on January 1, 2011. Net international migration (7,500) was the main factor of the demographic growth of the province. During the year, the province received 7,600 immigrants, the highest level since 1972. The province also reported in 2010 a natural growth of 4,900, the highest level recorded since 1995, and net interprovincial migration of 2,700.

Alberta's population increase was estimated at 52,500 (14.1 per 1,000) in 2010. As of January 1, 2011, Alberta's population was estimated at 3,742,800. Natural increase (30,700) was the main factor in the province's population growth in 2010. Alberta's net international migration was slightly above 15,000. Immigration of 32,600, the highest level since 1972, was partially offset by a net outflow of non-permanent residents (-9,200). Although several provinces had lower net flows of non-permanent residents in 2010 than in 2009, only Manitoba and Alberta reported negative flows. The province also recorded net interprovincial migration of 6,800 in 2010. This was 5,700 more than in 2009. However, the 2010 level is 11,000 less than in 2008 and 39,400 fewer than the peak reached in 2006.

British Columbia's population grew by 55,300 (12.2 per 1,000) in 2010. On January 1, 2011, the population of British Columbia was estimated at 4,554,100. Net international migration (38,200) was the main factor in the province's population increase. British Columbia's net interprovincial migration was 4,600 in 2010, which was less than the 10,400 recorded in 2009.

3. Unless otherwise stated, historical comparisons in this chapter relate to the period between January 1, 1972, the first full coverage year of the current system of demographic accounts, and January 1, 2011.

Yukon posted an estimated population growth of 300 (9.7 per 1,000) in 2010. According to preliminary estimates, the population of Yukon was estimated at 34,300 as of January 1, 2011. While losing close to 200 in its population exchanges with other provinces and territories, Yukon recorded a net international migration close to 400 and a natural increase of almost 200. The population of the Northwest Territories did not change much in 2010. Its natural increase (600) was offset in large part by net outflows of interprovincial migration (-500). As of January 1, 2011, the population of the Northwest Territories was estimated at 43,600. Nunavut's population posted an increase of almost 800 (23.0 per 1,000) in 2010. This was the highest demographic growth rate in the country. Natural increase (700) was the territory's major factor of demographic growth. As of January 1, 2011, the population of Nunavut was estimated at 33,300.



Table A1-1

## Population as of January 1 and components of population growth, Canada, provinces and territories, 1981 to 2011 — Canada

Year	Population as of January 1	Growth			Births	Deaths	International migration				Interprovincial migration	Residual
		Total	Natural	Migratory			Net	Immigration	Emigration	Non-permanent residents		
numbers in thousands												
1981	24,665.4	313.9	200.3	134.5	371.3	171.0	134.5	128.8	24.6	30.3	367.4	20.9
1986	25,962.4	293.7	188.7	115.6	372.9	184.2	115.6	99.3	30.2	46.5	299.7	10.6
1991	27,854.9	326.6	207.0	134.7	402.5	195.6	134.7	232.8	43.4	-54.7	313.5	15.1
1992	28,181.5	352.1	202.1	174.2	398.6	196.5	174.2	254.9	48.7	-31.9	309.7	24.2
1993	28,533.6	302.2	183.5	142.8	388.4	204.9	142.8	256.8	50.7	-63.3	283.7	24.1
1994	28,835.8	306.1	178.0	152.2	385.1	207.1	152.2	224.4	55.7	-16.5	286.9	24.1
1995	29,141.9	305.0	167.3	161.8	378.0	210.7	161.8	212.9	51.3	0.2	286.7	24.1
1996	29,446.9	304.7	153.3	166.6	366.2	212.9	166.6	226.1	49.8	-9.7	284.5	15.2
1997	29,751.5	277.0	132.9	154.0	348.6	215.7	154.0	216.0	62.8	0.8	291.6	10.0
1998	30,028.5	231.6	124.3	117.3	342.4	218.1	117.3	174.2	57.8	0.9	298.2	10.0
1999	30,260.1	265.8	117.7	158.0	337.2	219.5	158.0	190.0	54.4	22.4	276.5	10.0
2000	30,525.9	298.6	109.8	198.8	327.9	218.1	198.8	227.4	57.1	28.4	290.5	10.0
2001	30,824.4	348.1	114.2	250.9	333.7	219.5	250.9	250.6	46.8	47.1	270.7	17.0
2002	31,172.5	304.2	105.2	220.1	328.8	223.6	220.1	229.0	37.9	28.9	284.1	21.0
2003	31,476.7	299.3	109.0	211.4	335.2	226.2	211.4	221.3	32.6	22.7	263.0	21.1
2004	31,776.1	301.3	110.5	211.9	337.1	226.6	211.9	235.8	38.0	14.1	269.9	21.1
2005	32,077.3	317.6	112.0	226.6	342.2	230.1	226.6	262.2	38.1	2.4	291.9	21.0
2006	32,394.9	342.8	126.5	224.1	354.6	228.1	224.1	251.6	37.9	10.3	310.4	7.8
2007	32,737.7	365.5	132.6	232.9	367.9	235.2	232.9	236.8	48.0	44.2	293.2	...
2008	33,103.2	405.1	134.1	271.0	374.8	240.7	271.0	247.2	47.6	71.4	289.0	...
2009	33,508.4	394.4	135.6	258.9	380.4	244.8	258.9	252.2	48.8	55.4	291.2	...
2010	33,902.8	375.6	131.2	244.4	382.0	250.8	244.4	280.7	49.1	12.9	333.5	...
2011	34,278.4	..	..	..	..	..	..	..	..	..	..	...
rate per 1,000												
1981	...	12.6	8.1	5.4	15.0	6.9	5.4	5.2	1.0	1.2	14.8	...
1986	...	11.2	7.2	4.4	14.3	7.1	4.4	3.8	1.2	1.8	11.5	...
1991	...	11.7	7.4	4.8	14.4	7.0	4.8	8.3	1.5	-2.0	11.2	...
1992	...	12.4	7.1	6.1	14.1	6.9	6.1	9.0	1.7	-1.1	10.9	...
1993	...	10.5	6.4	5.0	13.5	7.1	5.0	9.0	1.8	-2.2	9.9	...
1994	...	10.6	6.1	5.3	13.3	7.1	5.3	7.7	1.9	-0.6	9.9	...
1995	...	10.4	5.7	5.5	12.9	7.2	5.5	7.3	1.7	0.0	9.8	...
1996	...	10.3	5.2	5.6	12.4	7.2	5.6	7.6	1.7	-0.3	9.6	...
1997	...	9.3	4.4	5.2	11.7	7.2	5.2	7.2	2.1	0.0	9.8	...
1998	...	7.7	4.1	3.9	11.4	7.2	3.9	5.8	1.9	0.0	9.9	...
1999	...	8.7	3.9	5.2	11.1	7.2	5.2	6.3	1.8	0.7	9.1	...
2000	...	9.7	3.6	6.5	10.7	7.1	6.5	7.4	1.9	0.9	9.5	...
2001	...	11.2	3.7	8.1	10.8	7.1	8.1	8.1	1.5	1.5	8.7	...
2002	...	9.7	3.4	7.0	10.5	7.1	7.0	7.3	1.2	0.9	9.1	...
2003	...	9.5	3.4	6.7	10.6	7.2	6.7	7.0	1.0	0.7	8.3	...
2004	...	9.4	3.5	6.6	10.6	7.1	6.6	7.4	1.2	0.4	8.5	...
2005	...	9.9	3.5	7.0	10.6	7.1	7.0	8.1	1.2	0.1	9.1	...
2006	...	10.5	3.9	6.9	10.9	7.0	6.9	7.7	1.2	0.3	9.5	...
2007	...	11.1	4.0	7.1	11.2	7.1	7.1	7.2	1.5	1.3	8.9	...
2008	...	12.2	4.0	8.1	11.3	7.2	8.1	7.4	1.4	2.1	8.7	...
2009	...	11.7	4.0	7.7	11.3	7.3	7.7	7.5	1.4	1.6	8.6	...
2010	...	11.0	3.8	7.2	11.2	7.4	7.2	8.2	1.4	0.4	9.8	...
2011	...	..	..	..	..	..	..	..	..	..	..	...

See notes at the end of the tables

Table A1-2

## Population as of January 1 and components of population growth, Canada, provinces and territories, 1981 to 2011 — Newfoundland and Labrador

Year	Population as of January 1	Growth			Births	Deaths	International migration				Interprovincial migration			Residual
		Total	Natural	Migratory			Net	Immigration	Emigration	Non-permanent residents	Net	In	Out	
numbers in thousands														
1981	573.4	3.7	6.9	-5.1	10.1	3.2	0.3	0.5	0.2	0.1	-5.4	8.4	13.8	1.9
1986	577.2	1.7	4.6	-4.6	8.1	3.5	0.1	0.3	0.3	0.2	-4.7	7.7	12.4	1.7
1991	577.4	5.2	3.4	0.2	7.2	3.8	1.4	0.6	0.3	1.0	-1.2	9.8	11.0	1.6
1992	579.4	5.0	3.1	0.1	6.9	3.8	2.7	0.8	0.2	2.1	-2.6	8.1	10.7	1.8
1993	580.8	-0.1	2.5	-4.4	6.4	3.9	-1.0	0.8	0.2	-1.6	-3.4	6.9	10.3	1.8
1994	577.1	-2.9	2.3	-7.0	6.3	4.1	-0.8	0.6	0.2	-1.2	-6.2	6.3	12.5	1.8
1995	570.6	-3.3	1.9	-7.0	5.9	3.9	-0.4	0.6	0.2	-0.8	-6.6	7.0	13.5	1.8
1996	563.7	-4.0	1.8	-8.0	5.7	3.9	0.0	0.6	0.2	-0.4	-7.9	6.6	14.5	2.1
1997	555.4	-5.1	1.1	-8.5	5.4	4.3	0.0	0.4	0.3	-0.1	-8.5	7.0	15.5	2.3
1998	545.8	-4.7	0.8	-7.7	5.0	4.2	0.2	0.4	0.2	0.1	-8.0	7.4	15.4	2.3
1999	536.5	-0.2	0.9	-3.4	5.1	4.1	0.5	0.4	0.3	0.4	-3.9	8.6	12.5	2.3
2000	531.8	-1.9	0.5	-4.7	4.9	4.3	0.2	0.4	0.3	0.1	-4.9	8.1	13.0	2.3
2001	525.3	-2.4	0.6	-3.7	4.7	4.2	0.0	0.4	0.3	0.0	-3.7	7.7	11.4	0.7
2002	521.5	-2.4	0.5	-2.9	4.7	4.2	0.4	0.4	0.3	0.2	-3.2	9.0	12.2	-0.2
2003	519.3	-0.7	0.3	-1.1	4.6	4.3	0.2	0.4	0.3	0.1	-1.3	9.0	10.3	-0.2
2004	518.8	-2.2	0.2	-2.4	4.5	4.3	0.1	0.6	0.4	-0.1	-2.5	8.3	10.8	-0.2
2005	516.8	-4.5	0.0	-4.5	4.5	4.5	0.2	0.5	0.4	0.1	-4.7	8.2	12.9	-0.2
2006	512.6	-3.8	0.0	-3.9	4.5	4.5	0.3	0.5	0.4	0.2	-4.2	8.8	13.0	-0.1
2007	508.8	-1.8	0.0	-1.8	4.6	4.5	0.2	0.5	0.5	0.1	-2.1	8.9	10.9	...
2008	507.1	0.3	-0.1	0.4	4.5	4.6	0.4	0.6	0.5	0.3	-0.1	9.7	9.7	...
2009	507.3	2.8	-0.2	3.0	4.5	4.7	0.5	0.6	0.5	0.4	2.5	10.8	8.3	...
2010	510.1	-1.0	-0.4	-0.6	4.5	4.8	0.3	0.7	0.5	0.1	-0.9	9.9	10.8	...
2011	509.1	..	..	..	..	..	..	..	..	..	..	..	..	...
rate per 1,000														
1981	...	-0.1	12.0	-8.9	17.7	5.6	0.6	0.8	0.3	0.1	-9.5	14.7	24.1	...
1986	...	-2.9	7.9	-7.9	14.1	6.1	0.2	0.5	0.5	0.3	-8.2	13.3	21.4	...
1991	...	3.5	5.8	0.4	12.4	6.6	2.4	1.1	0.5	1.8	-2.0	17.0	19.0	...
1992	...	2.4	5.4	0.2	11.9	6.5	4.6	1.4	0.4	3.6	-4.4	14.0	18.5	...
1993	...	-6.4	4.4	-7.6	11.1	6.7	-1.8	1.4	0.3	-2.8	-5.9	11.9	17.7	...
1994	...	-11.4	4.0	-12.3	11.0	7.1	-1.5	1.0	0.4	-2.0	-10.8	11.0	21.8	...
1995	...	-12.1	3.4	-12.3	10.3	6.9	-0.8	1.0	0.4	-1.4	-11.6	12.3	23.8	...
1996	...	-14.7	3.3	-14.2	10.3	7.0	0.0	1.0	0.3	-0.7	-14.2	11.7	25.9	...
1997	...	-17.5	2.0	-15.4	9.8	7.8	0.1	0.8	0.5	-0.2	-15.5	12.6	28.1	...
1998	...	-17.1	1.4	-14.3	9.2	7.8	0.4	0.7	0.4	0.1	-14.7	13.6	28.4	...
1999	...	-8.9	1.7	-6.3	9.5	7.7	1.0	0.8	0.5	0.7	-7.3	16.0	23.3	...
2000	...	-12.3	1.0	-8.9	9.2	8.2	0.3	0.8	0.6	0.1	-9.2	15.4	24.7	...
2001	...	-7.3	1.1	-7.1	9.0	7.9	0.0	0.7	0.6	-0.1	-7.1	14.7	21.8	...
2002	...	-4.2	0.9	-5.5	8.9	8.0	0.7	0.8	0.6	0.5	-6.2	17.2	23.5	...
2003	...	-1.0	0.7	-2.1	8.9	8.2	0.3	0.7	0.5	0.2	-2.4	17.4	19.8	...
2004	...	-3.8	0.3	-4.6	8.7	8.3	0.2	1.1	0.7	-0.2	-4.8	16.0	20.8	...
2005	...	-8.2	0.0	-8.7	8.7	8.7	0.4	1.0	0.8	0.2	-9.1	15.9	25.0	...
2006	...	-7.4	0.1	-7.6	8.9	8.8	0.6	1.0	0.7	0.3	-8.2	17.2	25.4	...
2007	...	-3.5	0.1	-3.6	9.0	8.9	0.4	1.1	0.9	0.2	-4.0	17.5	21.5	...
2008	...	0.5	-0.2	0.7	8.8	9.1	0.8	1.2	1.0	0.6	-0.1	19.1	19.2	...
2009	...	5.5	-0.5	6.0	8.8	9.2	1.0	1.2	1.0	0.8	5.0	21.2	16.2	...
2010	...	-1.9	-0.7	-1.2	8.8	9.5	0.6	1.3	1.0	0.2	-1.8	19.3	21.1	...
2011	...	..	..	..	..	..	..	..	..	..	..	..	..	...

See notes at the end of the tables

Table A1-3

## Population as of January 1 and components of population growth, Canada, provinces and territories, 1981 to 2011 — Prince Edward Island

Year	Population as of January 1	Growth			Births	Deaths	International migration				Interprovincial migration			Residual
		Total	Natural	Migratory			Net	Immigration	Emigration	Non-permanent residents	Net	In	Out	
numbers in thousands														
1981	123.3	0.1	0.9	-0.8	1.9	1.0	0.1	0.1	0.0	0.0	-1.0	3.3	4.2	0.1
1986	128.3	0.9	0.8	-0.2	1.9	1.1	0.2	0.2	0.0	0.1	-0.4	2.5	3.0	0.4
1991	130.5	0.7	0.7	-0.3	1.9	1.2	0.0	0.2	0.1	0.0	-0.3	2.9	3.2	0.3
1992	130.6	1.2	0.7	0.3	1.9	1.1	0.1	0.2	0.1	0.0	0.2	2.8	2.6	0.1
1993	131.6	1.4	0.6	0.7	1.8	1.1	0.1	0.2	0.1	0.0	0.5	2.5	1.9	0.1
1994	132.8	1.5	0.6	0.8	1.7	1.1	0.1	0.2	0.1	0.0	0.7	2.7	2.0	0.1
1995	134.1	1.3	0.6	0.6	1.8	1.2	0.2	0.2	0.0	0.1	0.4	2.6	2.2	0.1
1996	135.1	1.3	0.4	0.6	1.7	1.3	0.2	0.2	0.0	0.1	0.4	2.7	2.3	0.2
1997	135.9	0.6	0.6	-0.3	1.6	1.0	0.0	0.1	0.1	-0.1	-0.2	2.5	2.8	0.3
1998	135.9	0.6	0.3	0.1	1.5	1.2	0.1	0.1	0.1	0.0	0.0	2.6	2.6	0.3
1999	136.0	1.0	0.4	0.4	1.5	1.1	0.2	0.1	0.1	0.1	0.2	2.6	2.4	0.3
2000	136.4	0.5	0.2	0.0	1.4	1.2	0.1	0.2	0.1	0.0	-0.1	2.6	2.7	0.3
2001	136.4	0.7	0.2	0.4	1.4	1.2	0.1	0.1	0.1	0.0	0.3	2.5	2.2	0.1
2002	136.9	0.2	0.1	0.1	1.3	1.2	0.0	0.1	0.1	0.0	0.1	2.7	2.6	0.0
2003	137.1	0.4	0.2	0.2	1.4	1.2	0.1	0.2	0.1	0.0	0.1	2.7	2.6	0.0
2004	137.5	0.2	0.2	0.0	1.4	1.2	0.3	0.3	0.1	0.0	-0.2	2.3	2.5	0.0
2005	137.7	0.2	0.2	0.0	1.3	1.1	0.3	0.3	0.1	0.0	-0.3	2.6	2.9	0.0
2006	137.9	0.1	0.2	-0.1	1.4	1.2	0.6	0.6	0.1	0.2	-0.8	2.6	3.4	0.0
2007	138.0	0.6	0.2	0.4	1.4	1.1	1.1	1.0	0.1	0.2	-0.7	2.5	3.2	...
2008	138.6	1.5	0.2	1.2	1.4	1.2	1.5	1.5	0.1	0.2	-0.3	2.8	3.1	...
2009	140.1	1.3	0.2	1.1	1.4	1.2	2.0	1.8	0.1	0.3	-0.9	2.9	3.7	...
2010	141.4	2.1	0.2	1.9	1.4	1.2	2.7	2.6	0.1	0.2	-0.8	3.6	4.4	...
2011	143.5	..	..	..	..	..	..	..	..	..	..	..	..	...
rate per 1,000														
1981	...	0.2	7.3	-6.7	15.4	8.0	1.0	1.0	0.3	0.3	-7.8	26.4	34.2	...
1986	...	1.3	6.3	-1.9	15.0	8.7	1.5	1.3	0.3	0.5	-3.4	19.7	23.1	...
1991	...	1.0	5.3	-2.1	14.4	9.1	0.4	1.2	0.7	-0.2	-2.5	22.0	24.5	...
1992	...	7.3	5.6	2.4	14.1	8.5	0.7	1.2	0.6	0.1	1.8	21.6	19.8	...
1993	...	9.0	4.6	5.1	13.3	8.7	1.1	1.2	0.4	0.2	4.0	18.6	14.6	...
1994	...	9.8	4.5	6.0	12.9	8.4	0.8	1.2	0.5	0.1	5.2	20.2	15.0	...
1995	...	7.9	4.5	4.1	13.0	8.6	1.4	1.2	0.3	0.5	2.7	19.0	16.3	...
1996	...	6.0	3.1	4.5	12.5	9.4	1.6	1.1	0.1	0.6	3.0	20.1	17.2	...
1997	...	0.0	4.1	-1.9	11.7	7.6	-0.1	1.1	0.4	-0.8	-1.8	18.7	20.4	...
1998	...	0.4	2.2	0.4	11.1	8.9	0.5	1.0	0.7	0.2	-0.1	19.3	19.4	...
1999	...	3.3	2.8	2.7	11.1	8.3	1.1	1.0	0.7	0.8	1.6	19.0	17.4	...
2000	...	-0.5	1.6	0.1	10.6	9.0	0.6	1.4	0.6	-0.2	-0.5	19.3	19.7	...
2001	...	3.6	1.6	2.9	10.1	8.5	0.5	1.0	0.5	0.1	2.3	18.5	16.2	...
2002	...	1.5	0.7	0.9	9.7	9.0	0.3	0.8	0.6	0.1	0.6	19.7	19.0	...
2003	...	3.1	1.7	1.5	10.3	8.6	0.5	1.1	0.8	0.2	1.0	19.6	18.6	...
2004	...	1.3	1.2	0.2	10.1	8.9	1.8	2.3	0.8	0.3	-1.6	16.6	18.2	...
2005	...	1.6	1.6	0.1	9.7	8.1	1.9	2.4	0.5	0.1	-1.8	19.1	20.9	...
2006	...	0.9	1.7	-0.8	10.2	8.5	4.6	4.1	0.6	1.1	-5.5	18.9	24.4	...
2007	...	4.5	1.7	2.7	10.0	8.3	7.8	7.2	0.6	1.2	-5.1	18.3	23.3	...
2008	...	10.5	1.6	9.0	10.0	8.4	11.1	10.4	0.5	1.2	-2.1	19.8	21.9	...
2009	...	9.2	1.4	7.8	9.9	8.6	13.9	12.5	0.5	2.0	-6.1	20.3	26.4	...
2010	...	14.5	1.2	13.3	9.8	8.6	18.9	18.2	0.5	1.2	-5.6	25.6	31.1	...
2011	...	..	..	..	..	..	..	..	..	..	..	..	..	...

See notes at the end of the tables

Table A1-4

## Population as of January 1 and components of population growth, Canada, provinces and territories, 1981 to 2011 — Nova Scotia

Year	Population as of January 1	Growth			Births	Deaths	International migration				Interprovincial			Residual
		Total	Natural	Migratory			Net	Immigration	Emigration	Non-permanent residents	Net	In	Out	
numbers in thousands														
1981	853.7	5.9	5.1	-0.3	12.1	7.0	1.7	1.4	0.3	0.6	-2.0	18.8	20.8	1.0
1986	887.4	5.5	5.1	-0.4	12.4	7.3	0.8	1.1	0.3	0.0	-1.2	16.3	17.5	0.7
1991	912.8	6.6	4.8	0.8	12.0	7.3	0.1	1.5	0.8	-0.7	0.7	18.8	18.0	1.0
1992	917.3	7.4	4.3	1.8	11.9	7.5	1.4	2.4	0.8	-0.2	0.4	18.1	17.8	1.3
1993	922.1	6.3	4.0	1.0	11.6	7.6	2.1	3.0	0.6	-0.2	-1.1	15.5	16.7	1.3
1994	925.9	4.1	3.3	-0.5	11.1	7.8	2.2	3.5	0.9	-0.4	-2.7	15.1	17.8	1.3
1995	927.4	4.9	3.0	0.6	10.7	7.7	2.6	3.6	0.9	-0.1	-2.0	15.4	17.4	1.3
1996	929.8	5.8	2.8	1.4	10.6	7.8	2.4	3.2	0.8	0.0	-1.1	16.0	17.1	1.6
1997	932.3	3.8	1.9	0.1	10.0	8.0	2.2	2.8	0.9	0.3	-2.1	15.8	17.9	1.8
1998	932.5	3.2	1.5	-0.1	9.6	8.1	1.4	2.1	0.9	0.3	-1.6	15.2	16.8	1.8
1999	932.1	6.0	1.9	2.3	9.6	7.6	1.4	1.6	0.9	0.6	0.9	16.0	15.1	1.8
2000	934.6	2.5	1.2	-0.6	9.1	7.9	0.8	1.6	1.0	0.3	-1.4	16.5	17.9	1.8
2001	933.5	1.0	1.0	-0.3	8.9	7.9	1.7	1.7	1.0	1.0	-2.0	15.0	17.0	0.3
2002	933.8	1.0	0.7	0.3	8.7	8.0	1.3	1.4	0.9	0.8	-1.0	16.0	17.0	-0.6
2003	935.4	2.8	0.6	2.3	8.7	8.1	1.3	1.5	0.7	0.6	1.0	16.5	15.5	-0.6
2004	938.8	-0.2	0.5	-0.7	8.7	8.2	1.4	1.8	0.8	0.4	-2.0	15.1	17.1	-0.6
2005	939.1	-1.5	0.3	-1.8	8.6	8.3	1.4	1.9	0.7	0.2	-3.2	15.1	18.3	-0.6
2006	938.1	-1.8	0.4	-2.2	8.5	8.1	1.9	2.6	0.8	0.2	-4.1	15.9	20.0	-0.2
2007	936.6	-0.1	0.5	-0.7	8.9	8.4	1.9	2.5	0.9	0.3	-2.6	14.4	17.0	...
2008	936.5	2.0	0.3	1.7	8.8	8.5	2.9	2.7	0.7	1.0	-1.2	16.1	17.2	...
2009	938.4	3.4	0.1	3.4	8.8	8.7	3.0	2.4	0.7	1.4	0.4	16.2	15.8	...
2010	941.9	1.5	-0.1	1.6	8.9	8.9	3.4	2.4	0.7	1.8	-1.8	17.9	19.7	...
2011	943.4	..	..	..	..	..	..	..	..	..	..	..	..	...
rate per 1,000														
1981	...	4.4	6.0	-0.3	14.1	8.1	2.0	1.6	0.3	0.7	-2.3	22.0	24.3	...
1986	...	4.5	5.7	-0.4	13.9	8.2	0.9	1.2	0.4	0.0	-1.3	18.4	19.7	...
1991	...	4.9	5.2	0.9	13.1	7.9	0.1	1.6	0.9	-0.7	0.8	20.5	19.7	...
1992	...	5.2	4.7	1.9	12.9	8.2	1.5	2.6	0.8	-0.2	0.4	19.7	19.3	...
1993	...	4.0	4.3	1.1	12.5	8.2	2.3	3.3	0.7	-0.3	-1.2	16.8	18.0	...
1994	...	1.7	3.6	-0.6	12.0	8.4	2.4	3.7	1.0	-0.4	-2.9	16.3	19.2	...
1995	...	2.6	3.3	0.7	11.6	8.3	2.8	3.9	1.0	-0.1	-2.1	16.6	18.7	...
1996	...	2.8	3.0	1.5	11.4	8.3	2.6	3.5	0.8	0.0	-1.1	17.2	18.4	...
1997	...	0.2	2.0	0.1	10.7	8.6	2.3	3.0	1.0	0.3	-2.2	17.0	19.2	...
1998	...	-0.4	1.6	-0.1	10.3	8.7	1.5	2.2	1.0	0.3	-1.7	16.3	18.0	...
1999	...	2.6	2.1	2.5	10.3	8.2	1.5	1.7	0.9	0.7	1.0	17.2	16.1	...
2000	...	-1.2	1.3	-0.6	9.8	8.4	0.9	1.7	1.1	0.3	-1.5	17.7	19.2	...
2001	...	0.4	1.1	-0.4	9.5	8.4	1.8	1.8	1.1	1.1	-2.2	16.1	18.3	...
2002	...	1.6	0.7	0.3	9.3	8.6	1.4	1.5	1.0	0.8	-1.1	17.2	18.2	...
2003	...	3.6	0.6	2.4	9.2	8.6	1.4	1.6	0.8	0.6	1.0	17.6	16.6	...
2004	...	0.4	0.5	-0.7	9.3	8.8	1.4	1.9	0.8	0.4	-2.2	16.1	18.2	...
2005	...	-1.1	0.3	-2.0	9.1	8.8	1.5	2.1	0.7	0.2	-3.5	16.1	19.5	...
2006	...	-1.7	0.4	-2.3	9.1	8.6	2.0	2.8	0.9	0.2	-4.3	17.0	21.3	...
2007	...	-0.1	0.5	-0.7	9.5	8.9	2.0	2.7	0.9	0.3	-2.7	15.4	18.2	...
2008	...	2.1	0.3	1.8	9.4	9.1	3.1	2.8	0.8	1.0	-1.3	17.1	18.4	...
2009	...	3.7	0.1	3.6	9.4	9.3	3.2	2.5	0.8	1.5	0.4	17.2	16.8	...
2010	...	1.6	-0.1	1.7	9.4	9.5	3.6	2.5	0.8	1.9	-1.9	19.0	20.9	...
2011	...	..	..	..	..	..	..	..	..	..	..	..	..	...

See notes at the end of the tables

Table A1-5

## Population as of January 1 and components of population growth, Canada, provinces and territories, 1981 to 2011 — New Brunswick

Year	Population as of January 1	Growth			Births	Deaths	International migration				Interprovincial migration			Residual
		Total	Natural	Migratory			Net	Immigration	Emigration	Non-permanent residents	Net	In	Out	
numbers in thousands														
1981	704.8	3.5	5.4	-3.2	10.5	5.1	0.8	1.0	0.6	0.4	-4.0	13.6	17.6	1.3
1986	724.3	2.0	4.3	-2.8	9.8	5.5	0.1	0.6	0.6	0.1	-3.0	11.2	14.1	0.4
1991	743.2	4.4	4.0	-0.1	9.5	5.5	-0.1	0.7	0.6	-0.1	-0.1	12.8	12.9	0.5
1992	746.6	3.6	3.8	-1.3	9.4	5.6	-0.2	0.8	0.8	-0.2	-1.1	12.0	13.1	1.1
1993	747.9	3.9	3.2	-0.5	9.0	5.8	0.0	0.7	0.6	-0.1	-0.5	11.0	11.5	1.1
1994	749.5	3.6	3.1	-0.6	9.0	5.9	-0.1	0.6	0.5	-0.2	-0.5	10.7	11.2	1.1
1995	750.8	3.1	2.6	-0.7	8.6	5.9	0.2	0.6	0.4	0.0	-0.9	11.2	12.1	1.1
1996	751.6	2.8	2.3	-0.5	8.2	5.9	0.4	0.7	0.2	-0.1	-0.9	11.1	12.0	1.0
1997	752.3	1.5	2.0	-1.4	7.9	5.9	0.4	0.7	0.4	0.1	-1.8	11.4	13.2	0.9
1998	752.0	0.0	1.6	-2.5	7.9	6.3	0.4	0.7	0.4	0.1	-2.9	9.7	12.6	0.9
1999	750.1	2.5	1.5	0.0	7.6	6.1	0.7	0.7	0.5	0.5	-0.6	11.0	11.7	0.9
2000	750.8	0.8	1.3	-1.4	7.3	6.1	0.3	0.8	0.7	0.2	-1.7	11.3	13.1	0.9
2001	749.7	0.5	1.1	-1.4	7.2	6.1	0.6	0.8	0.7	0.4	-1.9	10.5	12.4	0.8
2002	748.7	1.2	1.0	0.2	7.0	6.1	0.7	0.7	0.5	0.5	-0.4	11.8	12.2	0.7
2003	749.2	0.6	0.9	-0.3	7.1	6.3	0.7	0.7	0.4	0.4	-1.0	10.7	11.7	0.7
2004	749.1	0.5	0.7	-0.2	7.0	6.2	0.6	0.8	0.5	0.3	-0.9	10.9	11.8	0.7
2005	748.9	-1.3	0.7	-2.0	6.9	6.2	0.7	1.1	0.6	0.2	-2.7	10.8	13.5	0.7
2006	747.0	-1.8	1.0	-2.8	7.0	6.0	1.2	1.6	0.5	0.1	-4.1	10.2	14.3	0.3
2007	744.9	1.5	0.8	0.7	7.1	6.3	1.4	1.6	0.6	0.4	-0.8	11.9	12.7	...
2008	746.4	1.7	0.6	1.1	7.1	6.5	2.0	1.9	0.6	0.7	-0.9	11.2	12.0	...
2009	748.1	2.3	0.4	1.9	7.1	6.7	1.7	1.9	0.6	0.3	0.3	12.1	11.8	...
2010	750.4	2.8	0.2	2.6	7.1	6.8	1.9	2.1	0.6	0.3	0.7	13.3	12.6	...
2011	753.2	..	..	..	..	..	..	..	..	..	..	..	..	...
rate per 1,000														
1981	...	1.2	7.6	-4.5	14.9	7.3	1.1	1.4	0.9	0.6	-5.6	19.4	25.0	...
1986	...	1.5	6.0	-3.9	13.5	7.5	0.2	0.9	0.9	0.2	-4.1	15.4	19.5	...
1991	...	4.5	5.4	-0.2	12.7	7.3	-0.1	0.9	0.9	-0.2	-0.1	17.2	17.3	...
1992	...	1.8	5.1	-1.8	12.6	7.5	-0.3	1.0	1.1	-0.2	-1.5	16.1	17.6	...
1993	...	2.2	4.3	-0.6	12.1	7.8	0.0	0.9	0.8	-0.1	-0.7	14.7	15.4	...
1994	...	1.7	4.1	-0.8	12.0	7.9	-0.2	0.8	0.7	-0.3	-0.7	14.3	15.0	...
1995	...	1.0	3.5	-1.0	11.4	7.9	0.3	0.9	0.6	0.0	-1.2	14.9	16.2	...
1996	...	1.0	3.0	-0.7	10.9	7.8	0.5	1.0	0.3	-0.1	-1.2	14.7	15.9	...
1997	...	-0.5	2.6	-1.9	10.5	7.9	0.5	0.9	0.5	0.2	-2.4	15.2	17.6	...
1998	...	-2.5	2.1	-3.3	10.5	8.4	0.6	1.0	0.5	0.1	-3.9	12.9	16.8	...
1999	...	0.9	2.1	0.0	10.1	8.1	0.9	0.9	0.7	0.7	-0.9	14.7	15.5	...
2000	...	-1.4	1.7	-1.9	9.8	8.1	0.4	1.0	0.9	0.3	-2.3	15.1	17.4	...
2001	...	-1.3	1.5	-1.8	9.6	8.1	0.8	1.1	0.9	0.6	-2.6	14.0	16.6	...
2002	...	0.7	1.3	0.3	9.4	8.1	0.9	0.9	0.7	0.6	-0.6	15.7	16.3	...
2003	...	-0.1	1.1	-0.4	9.5	8.4	1.0	0.9	0.5	0.6	-1.3	14.3	15.7	...
2004	...	-0.3	1.0	-0.3	9.3	8.3	0.9	1.1	0.7	0.5	-1.2	14.6	15.8	...
2005	...	-2.6	1.0	-2.7	9.2	8.3	0.9	1.5	0.8	0.2	-3.6	14.4	18.0	...
2006	...	-2.8	1.4	-3.8	9.4	8.1	1.7	2.2	0.6	0.1	-5.5	13.7	19.2	...
2007	...	2.0	1.1	0.9	9.6	8.5	1.9	2.2	0.7	0.5	-1.0	16.0	17.0	...
2008	...	2.3	0.8	1.5	9.5	8.7	2.7	2.5	0.7	0.9	-1.2	14.9	16.1	...
2009	...	3.1	0.5	2.5	9.4	8.9	2.2	2.6	0.8	0.4	0.3	16.1	15.8	...
2010	...	3.8	0.3	3.4	9.4	9.1	2.5	2.8	0.8	0.5	0.9	17.7	16.8	...
2011	...	..	..	..	..	..	..	..	..	..	..	..	..	...

See notes at the end of the tables

Table A1-6

## Population as of January 1 and components of population growth, Canada, provinces and territories, 1981 to 2011 — Quebec

Year	Population as of January 1	Growth			Births	Deaths	International migration				Interprovincial migration			Residual
		Total	Natural	Migratory			Net	Immigration	Emigration	Non-permanent residents	Net	In	Out	
numbers in thousands														
1981	6,523.3	62.1	52.6	-0.3	95.3	42.7	22.4	21.2	3.6	4.8	-22.7	22.8	45.5	9.8
1986	6,684.7	68.9	37.7	26.9	84.6	46.9	29.1	19.5	4.3	13.9	-2.2	26.4	28.6	4.3
1991	7,026.2	79.2	48.2	19.6	97.3	49.1	31.9	51.9	6.7	-13.4	-12.3	24.4	36.7	11.4
1992	7,082.6	95.0	47.3	27.6	96.1	48.8	37.4	48.8	7.8	-3.6	-9.8	25.5	35.3	20.1
1993	7,137.5	80.5	40.7	19.8	92.4	51.7	27.2	45.0	8.0	-9.8	-7.4	24.5	32.0	20.0
1994	7,177.9	67.2	39.2	8.0	90.6	51.4	18.2	28.1	9.5	-0.3	-10.3	22.7	33.0	20.0
1995	7,205.1	68.0	34.7	13.2	87.4	52.7	23.5	27.2	9.0	5.3	-10.2	23.1	33.4	20.0
1996	7,233.0	44.6	32.9	4.4	85.2	52.3	19.8	29.8	8.9	-1.1	-15.4	20.8	36.2	7.3
1997	7,262.9	23.0	25.4	-2.4	79.8	54.4	15.2	27.9	11.2	-1.6	-17.6	20.4	37.9	0.0
1998	7,286.0	24.1	21.7	2.5	75.9	54.2	17.0	26.6	10.3	0.7	-14.5	20.2	34.7	0.0
1999	7,310.2	29.9	19.0	11.0	73.6	54.6	22.7	29.2	9.2	2.7	-11.7	20.0	31.7	0.0
2000	7,340.3	33.6	18.8	14.8	72.0	53.2	26.1	32.5	9.3	2.9	-11.2	22.1	33.3	0.0
2001	7,374.0	51.1	19.5	28.3	73.7	54.2	35.4	37.6	7.4	5.2	-7.1	21.7	28.8	3.3
2002	7,418.5	48.0	16.9	31.1	72.5	55.5	34.2	37.6	5.5	2.1	-3.1	24.5	27.6	5.2
2003	7,461.3	54.3	19.0	35.4	73.9	54.9	35.6	39.6	4.6	0.6	-0.2	23.7	23.9	5.2
2004	7,510.4	54.6	18.4	36.2	74.1	55.6	39.2	44.2	5.8	0.7	-3.0	23.4	26.3	5.2
2005	7,559.8	49.6	20.5	29.0	76.3	55.8	36.2	43.3	6.0	-1.1	-7.2	21.9	29.0	5.2
2006	7,604.2	55.8	27.7	28.1	81.9	54.2	40.0	44.7	5.0	0.2	-11.8	20.5	32.4	1.9
2007	7,658.1	58.7	27.9	30.9	84.4	56.5	43.6	45.2	6.5	4.9	-12.7	18.8	31.5	...
2008	7,716.8	69.3	30.9	38.5	87.8	56.9	48.2	45.2	6.9	9.9	-9.7	20.6	30.3	...
2009	7,786.2	80.9	31.5	49.4	88.7	57.2	53.2	49.5	7.1	10.8	-3.7	23.6	27.4	...
2010	7,867.0	75.9	30.0	46.0	88.6	58.7	49.7	54.0	7.2	2.9	-3.7	27.3	31.1	...
2011	7,943.0	..	..	..	..	..	..	..	..	..	..	..	..	...
rate per 1,000														
1981	...	6.5	8.0	-0.1	14.6	6.5	3.4	3.2	0.6	0.7	-3.5	3.5	6.9	...
1986	...	9.0	5.6	4.0	12.6	7.0	4.3	2.9	0.6	2.1	-0.3	3.9	4.3	...
1991	...	8.0	6.8	2.8	13.8	7.0	4.5	7.4	0.9	-1.9	-1.7	3.5	5.2	...
1992	...	7.7	6.7	3.9	13.5	6.9	5.3	6.9	1.1	-0.5	-1.4	3.6	5.0	...
1993	...	5.6	5.7	2.8	12.9	7.2	3.8	6.3	1.1	-1.4	-1.0	3.4	4.5	...
1994	...	3.8	5.5	1.1	12.6	7.1	2.5	3.9	1.3	0.0	-1.4	3.2	4.6	...
1995	...	3.9	4.8	1.8	12.1	7.3	3.3	3.8	1.3	0.7	-1.4	3.2	4.6	...
1996	...	4.1	4.5	0.6	11.8	7.2	2.7	4.1	1.2	-0.2	-2.1	2.9	5.0	...
1997	...	3.2	3.5	-0.3	11.0	7.5	2.1	3.8	1.5	-0.2	-2.4	2.8	5.2	...
1998	...	3.3	3.0	0.3	10.4	7.4	2.3	3.6	1.4	0.1	-2.0	2.8	4.8	...
1999	...	4.1	2.6	1.5	10.0	7.5	3.1	4.0	1.3	0.4	-1.6	2.7	4.3	...
2000	...	4.6	2.6	2.0	9.8	7.2	3.5	4.4	1.3	0.4	-1.5	3.0	4.5	...
2001	...	6.0	2.6	3.8	10.0	7.3	4.8	5.1	1.0	0.7	-1.0	2.9	3.9	...
2002	...	5.8	2.3	4.2	9.7	7.5	4.6	5.1	0.7	0.3	-0.4	3.3	3.7	...
2003	...	6.6	2.5	4.7	9.9	7.3	4.8	5.3	0.6	0.1	0.0	3.2	3.2	...
2004	...	6.6	2.4	4.8	9.8	7.4	5.2	5.9	0.8	0.1	-0.4	3.1	3.5	...
2005	...	5.9	2.7	3.8	10.1	7.4	4.8	5.7	0.8	-0.1	-0.9	2.9	3.8	...
2006	...	7.1	3.6	3.7	10.7	7.1	5.2	5.9	0.6	0.0	-1.5	2.7	4.2	...
2007	...	7.6	3.6	4.0	11.0	7.4	5.7	5.9	0.9	0.6	-1.6	2.4	4.1	...
2008	...	8.9	4.0	5.0	11.3	7.3	6.2	5.8	0.9	1.3	-1.3	2.7	3.9	...
2009	...	10.3	4.0	6.3	11.3	7.3	6.8	6.3	0.9	1.4	-0.5	3.0	3.5	...
2010	...	9.6	3.8	5.8	11.2	7.4	6.3	6.8	0.9	0.4	-0.5	3.5	3.9	...
2011	...	..	..	..	..	..	..	..	..	..	..	..	..	...

See notes at the end of the tables

Table A1-7

## Population as of January 1 and components of population growth, Canada, provinces and territories, 1981 to 2011 — Ontario

Year	Population as of January 1	Growth			Births	Deaths	International migration				Interprovincial migration			Residual
		Total	Natural	Migratory			Net	Immigration	Emigration	Non-permanent residents	Net	In	Out	
numbers in thousands														
1981	8,770.6	108.4	59.3	42.4	122.2	62.8	61.7	55.1	11.0	17.5	-19.2	79.2	98.4	6.6
1986	9,362.0	167.0	66.0	102.2	133.9	67.9	60.8	49.7	13.6	24.7	41.4	98.1	56.7	-1.2
1991	10,355.1	145.0	78.6	60.4	151.5	72.9	70.7	120.1	19.6	-29.8	-10.3	70.8	81.1	6.0
1992	10,488.0	166.1	77.4	76.7	150.6	73.2	90.2	139.2	21.9	-27.2	-13.5	68.0	81.5	12.1
1993	10,630.0	138.9	72.0	54.8	147.8	75.9	67.6	135.0	24.8	-42.6	-12.8	62.3	75.1	12.0
1994	10,744.8	154.6	69.6	73.0	147.1	77.5	77.5	117.6	27.9	-12.2	-4.5	66.0	70.5	12.0
1995	10,875.3	158.1	67.8	78.3	146.3	78.5	80.0	115.9	25.7	-10.2	-1.8	68.5	70.3	12.0
1996	11,009.3	148.7	60.9	81.9	140.0	79.1	83.6	119.7	23.9	-12.2	-1.7	67.0	68.7	5.9
1997	11,146.3	150.3	53.5	94.6	133.0	79.5	87.8	117.7	27.9	-2.0	6.8	71.1	64.3	2.3
1998	11,292.1	132.0	52.4	77.3	132.6	80.2	65.9	92.3	25.2	-1.3	11.5	73.4	62.0	2.3
1999	11,419.6	161.9	49.7	110.0	131.1	81.4	91.5	104.2	23.5	10.9	18.4	74.2	55.8	2.3
2000	11,577.0	199.5	46.1	151.1	127.4	81.3	127.8	133.5	23.8	18.1	23.3	81.1	57.8	2.3
2001	11,771.9	223.9	50.5	166.2	131.7	81.2	154.7	148.7	19.9	26.0	11.5	69.7	58.2	7.2
2002	11,981.5	182.7	46.3	136.4	128.5	82.2	132.4	133.6	17.5	16.3	4.0	69.1	65.1	10.0
2003	12,154.2	159.4	46.7	112.7	130.9	84.2	117.6	119.7	15.2	13.1	-4.9	58.7	63.6	10.0
2004	12,303.6	152.4	49.4	103.0	132.6	83.2	112.2	125.1	18.2	5.3	-9.2	57.5	66.7	10.1
2005	12,445.9	150.9	48.1	102.8	133.8	85.6	116.3	140.5	18.6	-5.6	-13.5	59.3	72.8	10.0
2006	12,586.8	134.0	51.1	83.0	135.6	84.5	104.9	125.9	19.0	-2.0	-21.9	59.2	81.2	3.7
2007	12,717.1	134.8	51.1	83.7	138.4	87.3	97.1	111.3	22.7	8.5	-13.4	59.5	72.9	...
2008	12,851.9	138.9	49.4	89.5	139.7	90.3	104.7	110.9	21.6	15.3	-15.1	59.7	74.8	...
2009	12,990.8	138.4	47.8	90.5	141.1	93.2	100.4	106.9	22.1	15.7	-9.9	64.0	73.9	...
2010	13,129.2	153.3	46.2	107.1	142.6	96.4	111.6	118.1	22.3	15.8	-4.5	76.7	81.3	...
2011	13,282.4	..	..	..	..	..	..	..	..	..	..	..	..	...
rate per 1,000														
1981	...	10.8	6.7	4.8	13.9	7.1	7.0	6.2	1.2	2.0	-2.2	9.0	11.2	...
1986	...	17.9	7.0	10.8	14.2	7.2	6.4	5.3	1.4	2.6	4.4	10.4	6.0	...
1991	...	12.8	7.5	5.8	14.5	7.0	6.8	11.5	1.9	-2.9	-1.0	6.8	7.8	...
1992	...	13.4	7.3	7.3	14.3	6.9	8.5	13.2	2.1	-2.6	-1.3	6.4	7.7	...
1993	...	10.7	6.7	5.1	13.8	7.1	6.3	12.6	2.3	-4.0	-1.2	5.8	7.0	...
1994	...	12.1	6.4	6.8	13.6	7.2	7.2	10.9	2.6	-1.1	-0.4	6.1	6.5	...
1995	...	12.2	6.2	7.2	13.4	7.2	7.3	10.6	2.3	-0.9	-0.2	6.3	6.4	...
1996	...	12.4	5.5	7.4	12.6	7.1	7.5	10.8	2.2	-1.1	-0.2	6.0	6.2	...
1997	...	13.0	4.8	8.4	11.9	7.1	7.8	10.5	2.5	-0.2	0.6	6.3	5.7	...
1998	...	11.2	4.6	6.8	11.7	7.1	5.8	8.1	2.2	-0.1	1.0	6.5	5.5	...
1999	...	13.7	4.3	9.6	11.4	7.1	8.0	9.1	2.0	0.9	1.6	6.5	4.9	...
2000	...	16.7	3.9	12.9	10.9	7.0	10.9	11.4	2.0	1.6	2.0	6.9	5.0	...
2001	...	17.6	4.2	14.0	11.1	6.8	13.0	12.5	1.7	2.2	1.0	5.9	4.9	...
2002	...	14.3	3.8	11.3	10.7	6.8	11.0	11.1	1.5	1.4	0.3	5.7	5.4	...
2003	...	12.2	3.8	9.2	10.7	6.9	9.6	9.8	1.2	1.1	-0.4	4.8	5.2	...
2004	...	11.5	4.0	8.3	10.7	6.7	9.1	10.1	1.5	0.4	-0.7	4.6	5.4	...
2005	...	11.3	3.8	8.2	10.7	6.8	9.3	11.2	1.5	-0.4	-1.1	4.7	5.8	...
2006	...	10.3	4.0	6.6	10.7	6.7	8.3	10.0	1.5	-0.2	-1.7	4.7	6.4	...
2007	...	10.5	4.0	6.5	10.8	6.8	7.6	8.7	1.8	0.7	-1.1	4.7	5.7	...
2008	...	10.8	3.8	6.9	10.8	7.0	8.1	8.6	1.7	1.2	-1.2	4.6	5.8	...
2009	...	10.6	3.7	6.9	10.8	7.1	7.7	8.2	1.7	1.2	-0.8	4.9	5.7	...
2010	...	11.6	3.5	8.1	10.8	7.3	8.5	8.9	1.7	1.2	-0.3	5.8	6.2	...
2011	...	..	..	..	..	..	..	..	..	..	..	..	..	...

See notes at the end of the tables

Table A1-8

## Population as of January 1 and components of population growth, Canada, provinces and territories, 1981 to 2011 — Manitoba

Year	Population as of January 1	Growth			Births	Deaths	International migration				Interprovincial migration			Residual
		Total	Natural	Migratory			Net	Immigration	Emigration	Non-permanent residents	Net	In	Out	
numbers in thousands														
1981	1,034.0	7.9	7.4	-0.8	16.1	8.6	5.1	5.4	1.0	0.7	-5.9	21.0	27.0	1.3
1986	1,087.9	8.9	8.1	-0.2	17.0	8.9	2.8	3.7	1.1	0.2	-3.0	17.6	20.6	1.0
1991	1,106.2	5.3	8.3	-3.8	17.3	8.9	3.7	5.7	1.6	-0.3	-7.5	16.0	23.5	0.8
1992	1,110.0	3.9	7.6	-3.6	16.6	9.0	2.8	5.1	1.9	-0.4	-6.4	15.9	22.3	-0.2
1993	1,114.2	4.8	7.4	-2.5	16.7	9.3	2.7	4.9	1.7	-0.4	-5.2	14.6	19.8	-0.2
1994	1,119.3	5.3	7.3	-1.8	16.5	9.1	2.2	4.1	1.7	-0.2	-4.0	15.4	19.4	-0.2
1995	1,124.9	5.0	6.5	-1.3	16.1	9.7	2.1	3.6	1.4	-0.1	-3.3	15.5	18.9	-0.2
1996	1,130.3	4.3	6.0	-1.5	15.5	9.5	2.3	3.9	1.4	-0.3	-3.7	14.4	18.1	-0.2
1997	1,135.0	0.4	5.1	-4.6	14.7	9.5	2.1	3.7	1.8	0.3	-6.7	13.2	19.9	-0.2
1998	1,135.8	2.8	4.6	-1.7	14.5	9.8	1.4	3.0	1.6	0.0	-3.1	15.3	18.4	-0.2
1999	1,138.9	5.1	4.5	0.8	14.3	9.9	3.2	3.7	1.1	0.6	-2.4	14.0	16.4	-0.2
2000	1,144.4	3.6	4.2	-0.4	14.1	9.9	3.8	4.6	1.1	0.3	-4.2	13.7	17.9	-0.2
2001	1,148.5	3.1	4.3	-0.4	14.0	9.7	4.2	4.6	1.0	0.7	-4.6	13.0	17.6	-0.8
2002	1,153.1	4.4	4.0	0.3	13.9	9.8	4.5	4.6	0.9	0.8	-4.1	13.5	17.7	-1.1
2003	1,158.5	8.4	4.1	4.3	13.9	9.9	6.5	6.5	0.8	0.8	-2.2	13.3	15.5	-1.1
2004	1,168.0	7.0	3.9	3.1	13.8	9.9	7.0	7.4	1.3	0.8	-3.8	13.3	17.2	-1.1
2005	1,176.1	2.8	4.3	-1.5	14.1	9.9	7.1	8.1	1.5	0.6	-8.6	11.6	20.2	-1.1
2006	1,180.0	6.4	4.8	1.6	14.6	9.8	8.9	10.0	1.7	0.5	-7.3	12.6	19.9	-0.4
2007	1,186.8	12.5	5.3	7.2	15.3	10.0	10.6	11.0	1.7	1.4	-3.4	12.4	15.9	...
2008	1,199.4	11.9	5.4	6.5	15.5	10.1	10.5	11.2	1.5	0.8	-3.9	12.2	16.1	...
2009	1,211.2	15.5	5.5	10.0	15.8	10.3	12.4	13.5	1.6	0.4	-2.4	13.6	16.0	...
2010	1,226.7	16.9	5.6	11.3	16.1	10.5	13.7	15.8	1.6	-0.5	-2.4	16.9	19.4	...
2011	1,243.7	..	..	..	..	..	..	..	..	..	..	..	..	...
rate per 1,000														
1981	...	5.1	7.2	-0.8	15.5	8.3	5.0	5.2	0.9	0.7	-5.7	20.3	26.0	...
1986	...	6.2	7.4	-0.2	15.6	8.2	2.6	3.4	1.0	0.2	-2.8	16.1	18.9	...
1991	...	3.4	7.5	-3.4	15.6	8.1	3.4	5.1	1.5	-0.3	-6.8	14.4	21.2	...
1992	...	3.8	6.8	-3.2	14.9	8.1	2.5	4.6	1.7	-0.4	-5.8	14.3	20.1	...
1993	...	4.6	6.6	-2.2	15.0	8.3	2.4	4.4	1.5	-0.4	-4.7	13.1	17.7	...
1994	...	5.0	6.5	-1.6	14.7	8.2	1.9	3.7	1.6	-0.2	-3.6	13.7	17.3	...
1995	...	4.7	5.7	-1.1	14.3	8.6	1.8	3.2	1.3	-0.1	-3.0	13.8	16.7	...
1996	...	4.2	5.3	-1.3	13.7	8.4	2.0	3.5	1.2	-0.2	-3.3	12.7	16.0	...
1997	...	0.7	4.5	-4.0	12.9	8.4	1.9	3.3	1.6	0.2	-5.9	11.6	17.5	...
1998	...	2.8	4.1	-1.5	12.7	8.6	1.2	2.6	1.4	0.0	-2.7	13.5	16.2	...
1999	...	4.8	3.9	0.7	12.5	8.6	2.8	3.3	1.0	0.5	-2.1	12.3	14.4	...
2000	...	3.5	3.7	-0.3	12.3	8.6	3.3	4.1	1.0	0.3	-3.7	12.0	15.6	...
2001	...	4.0	3.7	-0.4	12.2	8.5	3.7	4.0	0.9	0.6	-4.0	11.3	15.3	...
2002	...	4.7	3.5	0.3	12.0	8.5	3.9	4.0	0.8	0.7	-3.6	11.7	15.3	...
2003	...	8.2	3.5	3.7	12.0	8.5	5.6	5.6	0.7	0.7	-1.9	11.4	13.3	...
2004	...	6.9	3.3	2.7	11.8	8.4	5.9	6.3	1.1	0.7	-3.3	11.4	14.6	...
2005	...	3.3	3.6	-1.3	12.0	8.4	6.0	6.9	1.3	0.5	-7.3	9.8	17.1	...
2006	...	5.8	4.0	1.4	12.3	8.3	7.5	8.5	1.4	0.4	-6.1	10.7	16.8	...
2007	...	10.5	4.5	6.0	12.8	8.3	8.9	9.2	1.5	1.2	-2.9	10.4	13.3	...
2008	...	9.9	4.4	5.4	12.9	8.4	8.7	9.3	1.3	0.6	-3.3	10.1	13.4	...
2009	...	12.7	4.5	8.2	13.0	8.5	10.2	11.1	1.3	0.4	-1.9	11.2	13.1	...
2010	...	13.7	4.5	9.2	13.1	8.5	11.1	12.8	1.3	-0.4	-2.0	13.7	15.7	...
2011	...	..	..	..	..	..	..	..	..	..	..	..	..	...

See notes at the end of the tables



Table A1-9

## Population as of January 1 and components of population growth, Canada, provinces and territories, 1981 to 2011 — Saskatchewan

Year	Population as of January 1	Growth			Births	Deaths	International migration				Interprovincial migration			Residual
		Total	Natural	Migratory			Net	Immigration	Emigration	Non-permanent residents	Net	In	Out	
numbers in thousands														
1981	971.5	10.8	9.7	0.7	17.2	7.5	2.2	2.4	0.5	0.3	-1.5	22.1	23.6	0.4
1986	1,027.1	5.7	9.5	-5.4	17.5	8.1	1.7	1.9	0.5	0.4	-7.1	15.8	22.9	1.6
1991	1,002.7	-1.1	7.2	-8.5	15.3	8.1	1.2	2.5	0.8	-0.5	-9.7	17.2	26.9	0.2
1992	1,001.1	-0.7	7.2	-6.4	15.0	7.8	1.3	2.5	1.1	-0.1	-7.7	17.3	25.1	-1.5
1993	1,003.4	1.1	6.1	-3.5	14.3	8.2	1.1	2.4	1.1	-0.3	-4.5	16.3	20.8	-1.5
1994	1,007.6	1.3	5.7	-3.0	14.0	8.3	1.0	2.3	1.1	-0.2	-4.0	16.9	20.8	-1.5
1995	1,011.8	1.4	5.0	-2.1	13.5	8.5	1.1	1.9	1.0	0.2	-3.2	16.9	20.1	-1.5
1996	1,016.2	5.1	4.5	-0.9	13.3	8.8	1.0	1.8	1.0	0.2	-1.9	16.8	18.7	1.5
1997	1,018.3	5.6	4.2	-1.8	12.9	8.6	0.8	1.7	1.2	0.3	-2.7	16.7	19.4	3.2
1998	1,017.5	5.8	3.9	-1.3	12.8	8.9	0.5	1.6	1.2	0.1	-1.8	18.7	20.5	3.2
1999	1,016.9	0.7	3.6	-6.1	12.6	9.0	1.0	1.7	1.2	0.5	-7.1	13.9	21.1	3.2
2000	1,011.1	-1.3	3.2	-7.6	12.1	9.0	0.7	1.9	1.4	0.1	-8.3	14.6	22.9	3.2
2001	1,003.5	-3.1	3.5	-7.4	12.3	8.7	1.1	1.7	0.9	0.3	-8.5	13.2	21.7	0.8
2002	998.8	-3.1	2.9	-6.0	11.8	8.9	1.4	1.7	0.6	0.3	-7.4	14.7	22.0	-0.6
2003	996.3	-0.2	3.0	-3.2	12.0	9.0	1.5	1.7	0.4	0.2	-4.7	14.6	19.3	-0.6
2004	996.8	-1.3	3.1	-4.5	12.0	8.8	1.8	1.9	0.4	0.3	-6.2	14.2	20.4	-0.6
2005	996.0	-4.4	3.1	-7.5	12.0	8.9	2.0	2.1	0.5	0.4	-9.5	13.8	23.3	-0.6
2006	992.3	1.6	3.2	-1.6	12.3	9.1	2.1	2.7	0.4	-0.2	-3.7	16.2	19.9	-0.2
2007	994.1	13.4	4.2	9.2	13.2	9.1	4.0	3.5	0.4	0.8	5.2	20.7	15.4	...
2008	1,007.5	13.9	4.4	9.5	13.6	9.2	6.3	4.8	0.3	1.9	3.2	18.6	15.4	...
2009	1,021.5	15.5	4.6	10.9	13.9	9.3	8.5	6.9	0.4	2.0	2.4	20.2	17.8	...
2010	1,037.0	15.1	4.9	10.2	14.3	9.4	7.5	7.6	0.4	0.2	2.7	23.6	20.9	...
2011	1,052.1	..	..	..	..	..	..	..	..	..	..	..	..	..
rate per 1,000														
1981	...	10.3	9.9	0.7	17.6	7.7	2.3	2.5	0.5	0.3	-1.6	22.6	24.2	...
1986	...	2.4	9.2	-5.2	17.0	7.8	1.6	1.8	0.5	0.4	-6.9	15.4	22.2	...
1991	...	-1.5	7.2	-8.5	15.3	8.1	1.2	2.5	0.8	-0.5	-9.7	17.2	26.9	...
1992	...	2.3	7.2	-6.4	15.0	7.8	1.3	2.5	1.1	-0.1	-7.7	17.3	25.0	...
1993	...	4.1	6.1	-3.5	14.2	8.1	1.1	2.4	1.0	-0.3	-4.5	16.2	20.7	...
1994	...	4.2	5.7	-3.0	13.9	8.2	1.0	2.2	1.0	-0.2	-3.9	16.7	20.6	...
1995	...	4.4	4.9	-2.0	13.3	8.4	1.1	1.9	1.0	0.2	-3.1	16.7	19.8	...
1996	...	2.1	4.5	-0.9	13.1	8.6	0.9	1.8	1.0	0.2	-1.8	16.5	18.3	...
1997	...	-0.8	4.1	-1.8	12.6	8.5	0.8	1.7	1.2	0.3	-2.6	16.4	19.0	...
1998	...	-0.6	3.8	-1.3	12.6	8.8	0.5	1.5	1.2	0.1	-1.8	18.4	20.2	...
1999	...	-5.7	3.5	-6.0	12.4	8.9	1.0	1.7	1.2	0.5	-7.0	13.7	20.8	...
2000	...	-7.6	3.2	-7.6	12.1	8.9	0.6	1.9	1.3	0.1	-8.2	14.4	22.7	...
2001	...	-4.6	3.5	-7.4	12.3	8.7	1.1	1.7	0.9	0.3	-8.5	13.2	21.7	...
2002	...	-2.5	2.9	-6.0	11.8	8.9	1.4	1.7	0.6	0.3	-7.4	14.7	22.1	...
2003	...	0.4	3.0	-3.2	12.1	9.0	1.5	1.7	0.4	0.2	-4.8	14.7	19.4	...
2004	...	-0.7	3.2	-4.5	12.0	8.9	1.8	2.0	0.4	0.3	-6.3	14.2	20.5	...
2005	...	-3.8	3.1	-7.5	12.0	8.9	2.1	2.1	0.5	0.4	-9.6	13.9	23.5	...
2006	...	1.9	3.3	-1.6	12.4	9.1	2.1	2.7	0.4	-0.2	-3.8	16.3	20.0	...
2007	...	13.4	4.2	9.2	13.2	9.1	4.0	3.5	0.4	0.8	5.2	20.7	15.4	...
2008	...	13.7	4.3	9.4	13.4	9.1	6.2	4.8	0.3	1.8	3.2	18.3	15.2	...
2009	...	15.1	4.5	10.6	13.5	9.0	8.2	6.7	0.3	1.9	2.3	19.6	17.3	...
2010	...	14.4	4.7	9.8	13.7	9.0	7.2	7.3	0.3	0.2	2.6	22.6	20.0	...
2011	...	..	..	..	..	..	..	..	..	..	..	..	..	...

See notes at the end of the tables

Table A1-10

## Population as of January 1 and components of population growth, Canada, provinces and territories, 1981 to 2011 — Alberta

Year	Population as of January 1	Growth			Births	Deaths	International migration				Interprovincial migration			Residual
		Total	Natural	Migratory			Net	Immigration	Emigration	Non-permanent residents	Net	In	Out	
numbers in thousands														
1981	2,249.9	84.5	29.8	56.2	42.6	12.8	17.7	19.4	4.1	2.5	38.5	102.4	63.9	-1.5
1986	2,415.6	23.5	30.2	-9.7	43.7	13.6	7.6	9.7	4.5	2.5	-17.4	50.7	68.0	3.1
1991	2,572.9	37.9	28.3	10.0	42.8	14.5	4.4	17.1	7.1	-5.5	5.6	60.8	55.2	-0.5
1992	2,611.8	35.7	27.4	10.0	42.0	14.7	9.0	17.8	7.2	-1.6	1.0	57.0	56.0	-1.7
1993	2,650.9	29.1	25.0	5.8	40.3	15.3	8.2	18.6	6.7	-3.7	-2.4	49.7	52.0	-1.7
1994	2,683.3	28.9	24.2	6.5	39.8	15.6	9.2	18.0	7.0	-1.8	-2.7	51.0	53.7	-1.7
1995	2,715.7	34.4	23.0	13.0	38.9	15.9	8.8	14.4	6.3	0.7	4.3	53.8	49.5	-1.7
1996	2,753.5	45.3	21.5	24.2	37.9	16.4	9.1	13.9	5.8	1.1	15.1	61.2	46.1	-0.4
1997	2,799.6	60.4	20.5	39.6	36.9	16.5	7.2	12.8	7.4	1.7	32.5	74.5	42.0	0.3
1998	2,859.3	67.4	21.1	46.0	37.9	16.8	5.9	11.2	6.3	0.9	40.1	84.3	44.2	0.3
1999	2,926.1	49.1	21.0	27.8	38.2	17.2	8.1	12.1	5.5	1.5	19.7	68.0	48.3	0.3
2000	2,974.5	54.1	19.7	34.0	37.0	17.3	9.6	14.3	6.5	1.8	24.4	71.8	47.4	0.3
2001	3,027.9	53.0	20.0	38.9	37.6	17.6	15.3	16.4	5.0	3.8	23.6	68.6	44.9	-5.9
2002	3,092.8	53.0	20.5	32.5	38.7	18.2	12.9	14.8	3.6	1.7	19.6	69.9	50.3	-9.6
2003	3,155.4	45.3	21.7	23.6	40.3	18.6	14.1	15.8	3.5	1.7	9.5	60.6	51.0	-9.5
2004	3,210.2	57.6	22.1	35.5	40.8	18.7	14.6	16.5	4.1	2.2	20.9	69.5	48.6	-9.6
2005	3,277.3	84.9	22.8	62.1	42.1	19.3	18.7	19.4	3.8	3.1	43.4	90.3	46.9	-9.6
2006	3,371.8	96.4	25.7	70.7	45.2	19.5	24.4	20.7	4.1	7.8	46.2	101.1	54.8	-3.5
2007	3,471.7	73.5	28.8	44.6	49.0	20.2	31.0	20.9	7.2	17.3	13.6	82.4	68.8	...
2008	3,545.2	86.9	29.6	57.3	50.5	20.9	39.5	24.2	8.2	23.5	17.8	80.5	62.6	...
2009	3,632.1	58.2	30.7	27.5	52.3	21.6	26.4	27.0	8.4	7.7	1.1	70.3	69.2	...
2010	3,690.3	52.5	30.7	21.8	53.0	22.3	15.0	32.6	8.5	-9.2	6.8	80.2	73.4	...
2011	3,742.8	..	..	..	..	..	..	..	..	..	..	..	..	...
rate per 1,000														
1981	...	38.2	13.0	24.5	18.6	5.6	7.7	8.4	1.8	1.1	16.8	44.6	27.9	...
1986	...	7.2	12.5	-4.0	18.0	5.6	3.2	4.0	1.9	1.0	-7.2	20.9	28.1	...
1991	...	15.0	10.9	3.9	16.5	5.6	1.7	6.6	2.7	-2.1	2.2	23.5	21.3	...
1992	...	14.9	10.4	3.8	16.0	5.6	3.4	6.8	2.8	-0.6	0.4	21.7	21.3	...
1993	...	12.2	9.4	2.2	15.1	5.8	3.1	7.0	2.5	-1.4	-0.9	18.6	19.5	...
1994	...	12.0	9.0	2.4	14.7	5.8	3.4	6.7	2.6	-0.7	-1.0	18.9	19.9	...
1995	...	13.8	8.4	4.8	14.2	5.8	3.2	5.3	2.3	0.3	1.6	19.7	18.1	...
1996	...	16.6	7.7	8.7	13.6	5.9	3.3	5.0	2.1	0.4	5.4	22.0	16.6	...
1997	...	21.1	7.2	14.0	13.0	5.8	2.5	4.5	2.6	0.6	11.5	26.3	14.8	...
1998	...	23.1	7.3	15.9	13.1	5.8	2.0	3.9	2.2	0.3	13.9	29.1	15.3	...
1999	...	16.4	7.1	9.4	12.9	5.8	2.7	4.1	1.9	0.5	6.7	23.0	16.4	...
2000	...	17.8	6.6	11.3	12.3	5.8	3.2	4.8	2.2	0.6	8.1	23.9	15.8	...
2001	...	21.2	6.5	12.7	12.3	5.7	5.0	5.4	1.6	1.3	7.7	22.4	14.7	...
2002	...	20.0	6.5	10.4	12.4	5.8	4.1	4.7	1.1	0.5	6.3	22.4	16.1	...
2003	...	17.2	6.8	7.4	12.7	5.8	4.4	5.0	1.1	0.5	3.0	19.0	16.0	...
2004	...	20.7	6.8	10.9	12.6	5.8	4.5	5.1	1.3	0.7	6.4	21.4	15.0	...
2005	...	28.4	6.9	18.7	12.7	5.8	5.6	5.8	1.2	0.9	13.1	27.2	14.1	...
2006	...	29.2	7.5	20.7	13.2	5.7	7.1	6.1	1.2	2.3	13.5	29.5	16.0	...
2007	...	20.9	8.2	12.7	14.0	5.8	8.8	5.9	2.0	4.9	3.9	23.5	19.6	...
2008	...	24.2	8.2	16.0	14.1	5.8	11.0	6.7	2.3	6.6	5.0	22.4	17.4	...
2009	...	15.9	8.4	7.5	14.3	5.9	7.2	7.4	2.3	2.1	0.3	19.2	18.9	...
2010	...	14.1	8.3	5.9	14.3	6.0	4.0	8.8	2.3	-2.5	1.8	21.6	19.7	...
2011	...	..	..	..	..	..	..	..	..	..	..	..	..	...

See notes at the end of the tables

Table A1-11

## Population as of January 1 and components of population growth, Canada, provinces and territories, 1981 to 2011 — British Columbia

Year	Population as of January 1	Growth			Births	Deaths	International migration				Interprovincial migration			Residual
		Total	Natural	Migratory			Net	Immigration	Emigration	Non-permanent residents	Net	In	Out	
numbers in thousands														
1981	2,790.8	67.5	21.6	45.4	41.5	19.9	22.1	22.1	3.2	3.3	23.3	69.3	46.1	0.5
1986	2,989.0	31.6	20.8	11.5	42.0	21.2	12.3	12.6	4.8	4.5	-0.8	48.1	48.9	-0.7
1991	3,339.9	71.7	21.6	55.9	45.6	24.0	21.3	32.4	5.7	-5.4	34.6	73.9	39.3	-5.8
1992	3,423.2	81.9	21.5	69.1	46.2	24.6	29.5	37.0	6.8	-0.7	39.6	78.6	39.0	-8.7
1993	3,522.5	83.9	20.3	72.3	46.0	25.8	34.7	46.0	6.9	-4.4	37.6	75.2	37.6	-8.7
1994	3,623.7	89.5	21.1	77.1	47.0	25.9	42.7	49.1	6.6	0.2	34.4	74.5	40.1	-8.7
1995	3,730.6	78.8	20.4	67.1	46.8	26.4	43.6	44.6	6.1	5.1	23.4	67.1	43.7	-8.7
1996	3,826.7	80.3	18.6	65.4	46.1	27.5	47.6	52.0	7.6	3.2	17.8	62.7	44.9	-3.7
1997	3,914.5	56.6	17.2	40.3	44.6	27.4	38.3	47.8	11.4	1.9	2.0	54.0	52.0	-0.9
1998	3,972.8	21.1	15.1	6.9	43.1	28.0	24.4	36.0	11.5	-0.1	-17.5	46.5	64.0	-0.9
1999	3,995.6	29.3	13.9	16.2	41.9	28.0	28.6	36.1	12.1	4.6	-12.4	43.6	56.0	-0.9
2000	4,026.7	26.8	13.2	14.5	40.7	27.5	29.3	37.4	12.8	4.6	-14.8	44.0	58.8	-0.9
2001	4,055.2	53.7	12.2	30.6	40.6	28.4	37.7	38.5	10.5	9.6	-7.0	44.4	51.4	10.8
2002	4,087.3	39.0	11.2	27.9	40.1	28.9	32.3	34.1	8.0	6.3	-4.4	47.8	52.2	17.6
2003	4,108.7	47.8	11.2	36.6	40.5	29.3	33.6	35.2	6.6	5.0	3.0	48.3	45.3	17.6
2004	4,138.9	53.1	10.6	42.5	40.5	29.9	34.7	37.0	6.5	4.2	7.8	51.1	43.3	17.6
2005	4,174.4	61.4	10.6	50.8	40.8	30.2	43.6	44.8	5.7	4.6	7.2	54.0	46.8	17.6
2006	4,218.2	63.4	11.0	52.3	41.7	30.7	39.5	42.1	6.0	3.4	12.8	58.8	46.0	6.5
2007	4,275.0	71.0	12.3	58.7	43.6	31.3	41.9	39.0	7.3	10.3	16.8	57.0	40.3	...
2008	4,346.1	77.9	12.2	65.7	44.1	31.9	54.8	44.0	6.9	17.8	10.8	53.7	42.8	...
2009	4,424.0	74.8	13.7	61.1	44.9	31.2	50.8	41.4	7.1	16.4	10.4	53.1	42.8	...
2010	4,498.8	55.3	12.5	42.8	43.6	31.1	38.2	44.2	7.1	1.1	4.6	58.9	54.2	...
2011	4,554.1	..	..	..	..	..	..	..	..	..	..	..	..	...
rate per 1,000														
1981	...	23.6	7.7	16.1	14.7	7.0	7.8	7.8	1.1	1.2	8.2	24.6	16.3	...
1986	...	11.0	6.9	3.8	14.0	7.1	4.1	4.2	1.6	1.5	-0.3	16.0	16.3	...
1991	...	24.6	6.4	16.5	13.5	7.1	6.3	9.6	1.7	-1.6	10.2	21.8	11.6	...
1992	...	28.6	6.2	19.9	13.3	7.1	8.5	10.7	2.0	-0.2	11.4	22.6	11.2	...
1993	...	28.3	5.7	20.2	12.9	7.2	9.7	12.9	1.9	-1.2	10.5	21.1	10.5	...
1994	...	29.1	5.7	21.0	12.8	7.1	11.6	13.4	1.8	0.0	9.4	20.3	10.9	...
1995	...	25.5	5.4	17.7	12.4	7.0	11.6	11.8	1.6	1.4	6.2	17.8	11.6	...
1996	...	22.7	4.8	16.9	11.9	7.1	12.3	13.4	2.0	0.8	4.6	16.2	11.6	...
1997	...	14.8	4.4	10.2	11.3	7.0	9.7	12.1	2.9	0.5	0.5	13.7	13.2	...
1998	...	5.7	3.8	1.7	10.8	7.0	6.1	9.0	2.9	0.0	-4.4	11.7	16.1	...
1999	...	7.7	3.5	4.0	10.5	7.0	7.1	9.0	3.0	1.1	-3.1	10.9	14.0	...
2000	...	7.1	3.3	3.6	10.1	6.8	7.2	9.3	3.2	1.1	-3.7	10.9	14.5	...
2001	...	7.9	3.0	7.5	10.0	7.0	9.3	9.5	2.6	2.4	-1.7	10.9	12.6	...
2002	...	5.2	2.7	6.8	9.8	7.0	7.9	8.3	2.0	1.5	-1.1	11.7	12.7	...
2003	...	7.3	2.7	8.9	9.8	7.1	8.2	8.5	1.6	1.2	0.7	11.7	11.0	...
2004	...	8.5	2.5	10.2	9.7	7.2	8.4	8.9	1.6	1.0	1.9	12.3	10.4	...
2005	...	10.4	2.5	12.1	9.7	7.2	10.4	10.7	1.4	1.1	1.7	12.9	11.1	...
2006	...	13.4	2.6	12.3	9.8	7.2	9.3	9.9	1.4	0.8	3.0	13.9	10.8	...
2007	...	16.5	2.9	13.6	10.1	7.3	9.7	9.0	1.7	2.4	3.9	13.2	9.3	...
2008	...	17.8	2.8	15.0	10.1	7.3	12.5	10.0	1.6	4.1	2.5	12.2	9.8	...
2009	...	16.8	3.1	13.7	10.1	7.0	11.4	9.3	1.6	3.7	2.3	11.9	9.6	...
2010	...	12.2	2.8	9.5	9.6	6.9	8.4	9.8	1.6	0.2	1.0	13.0	12.0	...
2011	...	..	..	..	..	..	..	..	..	..	..	..	..	...

See notes at the end of the tables

Table A1-12

## Population as of January 1 and components of population growth, Canada, provinces and territories, 1981 to 2011 — Yukon

Year	Population as of January 1	Growth			Births	Deaths	International migration				Interprovincial migration			Residual	
		Total	Natural	Migratory			Net	Immigration	Emigration	Non-permanent residents	Net	In	Out		
numbers in thousands															
1981	23.3	0.6	0.4	0.4	0.5	0.1	0.1	0.1	0.0	0.0	0.0	0.3	2.6	2.2	-0.2
1986	24.4	0.3	0.4	0.2	0.5	0.1	0.0	0.1	0.0	0.0	0.0	0.2	2.2	2.0	-0.2
1991	28.2	0.8	0.5	0.4	0.6	0.1	0.1	0.1	0.1	0.0	0.4	2.3	1.9	-0.1	
1992	29.2	0.6	0.4	0.3	0.5	0.1	0.0	0.1	0.1	0.0	0.2	2.3	2.1	-0.1	
1993	30.0	-0.4	0.4	-0.7	0.5	0.1	0.0	0.1	0.0	0.0	-0.8	1.6	2.4	-0.1	
1994	29.7	0.1	0.3	-0.2	0.4	0.1	0.1	0.1	0.0	0.0	-0.2	1.8	2.0	-0.1	
1995	29.9	1.0	0.3	0.7	0.5	0.2	0.1	0.1	0.1	0.0	0.7	2.3	1.7	-0.1	
1996	31.0	0.5	0.3	0.3	0.4	0.1	0.1	0.1	0.0	0.0	0.2	1.9	1.7	-0.1	
1997	31.6	-0.3	0.4	-0.5	0.5	0.1	0.0	0.1	0.1	0.0	-0.6	1.6	2.2	-0.1	
1998	31.5	-0.9	0.3	-1.1	0.4	0.1	0.0	0.1	0.1	0.0	-1.1	1.5	2.6	-0.1	
1999	30.7	-0.4	0.2	-0.6	0.4	0.1	0.0	0.1	0.1	0.0	-0.6	1.3	1.9	-0.1	
2000	30.5	-0.5	0.2	-0.6	0.4	0.2	0.0	0.1	0.0	0.0	-0.7	1.2	1.8	-0.1	
2001	30.1	-0.3	0.2	-0.3	0.3	0.1	0.0	0.1	0.0	0.0	-0.4	1.2	1.6	-0.2	
2002	30.2	0.1	0.2	-0.1	0.3	0.1	0.1	0.1	0.0	0.1	-0.2	1.4	1.6	-0.2	
2003	30.5	0.7	0.2	0.5	0.3	0.1	0.0	0.1	0.0	0.0	0.4	1.5	1.0	-0.2	
2004	31.3	0.2	0.2	0.0	0.4	0.2	0.1	0.1	0.0	0.0	0.0	1.4	1.4	-0.2	
2005	31.8	0.1	0.2	0.0	0.3	0.2	0.0	0.1	0.0	0.0	-0.1	1.4	1.5	-0.2	
2006	32.1	0.1	0.2	0.0	0.4	0.2	0.1	0.1	0.0	0.0	-0.1	1.3	1.4	-0.1	
2007	32.3	0.4	0.2	0.3	0.4	0.2	0.1	0.1	0.0	0.0	0.2	1.5	1.3	...	
2008	32.8	0.6	0.2	0.5	0.4	0.2	0.1	0.1	0.1	0.1	0.3	1.4	1.1	...	
2009	33.4	0.6	0.2	0.4	0.4	0.2	0.2	0.2	0.1	0.1	0.2	1.6	1.3	...	
2010	34.0	0.3	0.2	0.2	0.4	0.2	0.4	0.4	0.1	0.1	-0.2	1.7	1.8	...	
2011	34.3	..	..	..	..	..	..	..	..	..	..	..	..	..	...
rate per 1,000															
1981	...	41.6	16.6	17.6	22.5	5.9	4.5	5.0	1.9	1.4	13.1	107.3	94.1	...	
1986	...	31.0	15.0	6.5	19.5	4.6	0.2	2.0	1.0	-0.9	6.3	88.3	82.0	...	
1991	...	35.4	15.8	15.1	19.8	4.0	2.0	3.0	2.2	1.1	13.1	79.8	66.7	...	
1992	...	24.5	13.9	8.6	17.9	4.0	1.4	4.6	2.5	-0.7	7.3	78.9	71.6	...	
1993	...	-9.9	12.9	-24.7	17.0	4.1	0.6	3.5	1.4	-1.4	-25.3	54.9	80.2	...	
1994	...	7.1	10.7	-5.4	14.8	4.2	2.8	4.0	0.9	-0.3	-8.2	60.1	68.3	...	
1995	...	35.5	10.3	23.4	15.4	5.2	1.8	3.1	2.0	0.8	21.5	75.8	54.3	...	
1996	...	21.4	10.3	8.9	14.2	3.8	2.0	3.0	1.1	0.1	6.9	60.9	54.0	...	
1997	...	-3.9	11.1	-17.3	15.0	3.9	0.4	2.8	2.0	-0.4	-17.7	51.6	69.3	...	
1998	...	-24.5	8.4	-35.2	12.7	4.3	0.6	2.0	2.0	0.6	-35.8	48.8	84.6	...	
1999	...	-8.3	8.1	-18.7	12.5	4.4	0.9	2.6	1.7	0.0	-19.6	41.9	61.5	...	
2000	...	-11.5	7.1	-20.9	12.2	5.1	0.6	2.0	1.4	0.1	-21.6	38.9	60.4	...	
2001	...	0.9	7.0	-11.0	11.4	4.4	0.7	2.2	0.8	-0.6	-11.7	40.2	51.9	...	
2002	...	9.2	6.3	-3.6	11.2	4.8	2.5	1.6	0.9	1.8	-6.1	45.1	51.3	...	
2003	...	28.7	6.5	15.8	10.8	4.3	1.5	1.9	0.8	0.3	14.4	47.5	33.2	...	
2004	...	14.0	6.3	1.5	11.6	5.3	1.8	2.0	0.9	0.7	-0.3	43.6	43.9	...	
2005	...	10.3	4.9	-0.8	10.0	5.1	0.9	2.0	0.9	-0.1	-1.7	44.2	45.9	...	
2006	...	6.6	5.8	-1.4	11.3	5.5	1.7	2.0	0.9	0.6	-3.1	39.2	42.3	...	
2007	...	13.7	5.0	8.7	10.9	5.9	2.2	2.6	1.5	1.1	6.5	45.0	38.5	...	
2008	...	18.7	4.8	13.8	10.8	6.0	4.2	3.3	1.9	2.8	9.6	43.6	34.0	...	
2009	...	17.5	4.7	12.9	10.7	6.1	6.4	5.1	1.9	3.2	6.5	46.0	39.5	...	
2010	...	9.7	4.6	5.1	10.9	6.3	10.4	10.3	1.9	2.1	-5.3	48.8	54.1	...	
2011	...	..	..	..	..	..	..	..	..	..	..	..	..	..	...

See notes at the end of the tables

Table A1-13

**Population as of January 1 and components of population growth , Canada, provinces and territories, 1981 to 2011 — Northwest Territories (Nunavut is included in the Northwest Territories before 1992)**

Year	Population as of January 1	Growth			Births	Deaths	International migration				Interprovincial migration			Residual	
		Total	Natural	Migratory			Net	Immigration	Emigration	Non-permanent residents	Net	In	Out		
numbers in thousands															
1981	46.9	0.6	1.1	-0.2	1.3	0.2	0.1	0.1	0.0	0.0	0.0	-0.3	3.8	4.2	-0.3
1986	54.6	-1.0	1.3	-1.8	1.5	0.2	0.0	0.1	0.0	0.0	0.0	-1.8	3.1	4.9	-0.5
1991	59.7	1.0	1.1	0.1	1.3	0.2	0.1	0.1	0.0	0.0	0.0	0.1	3.2	3.2	-0.3
1992	39.1	0.5	0.7	-0.2	0.9	0.1	0.0	0.1	0.0	0.0	-0.1	-0.2	2.9	3.1	0.0
1993	39.5	0.7	0.7	0.0	0.8	0.1	0.1	0.1	0.0	0.0	0.0	0.0	2.6	2.6	0.0
1994	40.3	0.8	0.7	0.1	0.8	0.1	0.1	0.1	0.0	0.0	0.0	0.1	2.8	2.7	0.0
1995	41.1	0.4	0.7	-0.4	0.9	0.1	0.1	0.1	0.0	0.0	0.0	-0.4	2.5	2.9	0.0
1996	41.5	0.1	0.7	-0.6	0.8	0.2	0.1	0.1	0.0	0.0	0.0	-0.6	2.4	3.0	0.1
1997	41.5	-0.1	0.6	-0.8	0.7	0.1	0.1	0.1	0.0	0.0	0.0	-0.8	2.4	3.3	0.1
1998	41.2	-0.4	0.5	-1.0	0.7	0.1	0.0	0.1	0.1	0.0	0.0	-1.1	2.3	3.4	0.1
1999	40.6	0.2	0.5	-0.4	0.7	0.2	0.0	0.1	0.0	0.0	0.0	-0.5	2.3	2.8	0.1
2000	40.6	0.2	0.5	-0.4	0.7	0.2	0.1	0.1	0.0	0.0	0.1	-0.5	2.3	2.8	0.1
2001	40.6	0.4	0.5	0.0	0.6	0.2	0.1	0.1	0.0	0.0	0.0	-0.1	2.3	2.4	-0.1
2002	41.2	0.6	0.5	0.2	0.6	0.2	0.0	0.1	0.0	0.0	0.0	0.2	2.8	2.6	-0.2
2003	42.0	1.0	0.5	0.5	0.7	0.2	0.1	0.1	0.0	0.1	0.1	0.4	2.5	2.2	-0.2
2004	43.1	0.1	0.5	-0.4	0.7	0.2	0.1	0.1	0.0	0.0	0.0	-0.5	2.3	2.8	-0.2
2005	43.4	-0.3	0.6	-0.9	0.7	0.1	0.0	0.1	0.0	0.0	0.0	-0.9	2.1	3.0	-0.2
2006	43.3	-0.2	0.5	-0.7	0.7	0.2	0.0	0.1	0.1	0.1	0.0	-0.8	2.2	3.0	-0.1
2007	43.2	0.4	0.6	-0.1	0.7	0.2	0.0	0.1	0.1	0.1	0.0	-0.1	2.2	2.3	...
2008	43.6	-0.1	0.6	-0.6	0.7	0.2	0.1	0.1	0.1	0.1	0.1	-0.7	1.9	2.6	...
2009	43.5	0.0	0.6	-0.6	0.7	0.2	0.0	0.1	0.1	0.1	0.0	-0.6	1.9	2.5	...
2010	43.5	0.1	0.6	-0.5	0.7	0.2	0.0	0.1	0.1	0.1	0.0	-0.5	2.2	2.7	...
2011	43.6	..	..	..	..	..	..	..	..	..	..	..	..	..	...
rate per 1,000															
1981	...	25.6	23.3	-4.3	27.4	4.1	2.4	1.7	0.2	0.9	-6.7	81.0	87.7	...	
1986	...	-1.6	23.3	-33.3	27.6	4.3	0.4	1.2	0.8	0.0	-33.8	56.2	90.0	...	
1991	...	37.3	22.4	2.5	25.9	3.5	1.4	2.4	0.9	-0.2	1.1	65.5	64.4	...	
1992	...	12.3	18.0	-6.1	21.7	3.7	-0.5	2.4	1.2	-1.7	-5.6	73.3	78.9	...	
1993	...	18.4	17.3	0.7	20.9	3.6	1.8	3.5	1.1	-0.6	-1.1	65.2	66.3	...	
1994	...	20.7	16.7	3.6	20.2	3.5	1.7	3.3	0.7	-0.9	1.8	68.6	66.7	...	
1995	...	9.2	18.0	-9.1	21.2	3.2	1.7	2.6	1.0	0.1	-10.8	60.5	71.3	...	
1996	...	0.8	16.0	-13.8	19.6	3.7	1.8	2.1	1.0	0.7	-15.6	57.5	73.1	...	
1997	...	-7.4	14.1	-19.1	17.5	3.3	1.3	2.0	1.1	0.4	-20.4	58.4	78.8	...	
1998	...	-14.3	13.1	-25.0	16.6	3.6	0.9	1.3	1.2	0.8	-25.8	56.7	82.5	...	
1999	...	-0.3	12.2	-10.1	16.2	4.0	1.1	1.4	0.9	0.6	-11.2	57.3	68.5	...	
2000	...	0.0	12.7	-10.2	16.6	3.9	2.4	2.0	0.9	1.3	-12.7	57.2	69.9	...	
2001	...	13.0	11.0	0.1	15.0	4.0	2.3	2.3	1.0	0.9	-2.2	55.6	57.7	...	
2002	...	19.7	11.2	4.3	15.3	4.1	-0.1	1.4	1.1	-0.5	4.4	66.4	62.0	...	
2003	...	27.6	11.7	11.8	16.5	4.7	3.4	2.2	1.0	2.2	8.4	59.6	51.2	...	
2004	...	6.6	12.6	-10.0	16.1	3.5	1.4	2.1	1.0	0.3	-11.4	52.5	63.9	...	
2005	...	-2.7	13.0	-19.8	16.4	3.4	0.7	1.9	1.1	-0.2	-20.4	47.7	68.1	...	
2006	...	-3.4	11.7	-16.6	15.9	4.2	0.8	2.3	1.2	-0.3	-17.4	50.9	68.3	...	
2007	...	9.9	12.7	-2.8	16.7	4.0	-0.3	2.0	1.7	-0.6	-2.5	51.4	53.9	...	
2008	...	-1.5	12.7	-14.3	16.8	4.1	2.4	2.9	1.9	1.4	-16.7	43.5	60.2	...	
2009	...	-0.9	12.7	-13.6	16.9	4.2	-0.5	2.5	2.0	-1.0	-13.1	43.3	56.4	...	
2010	...	1.4	12.7	-11.2	17.1	4.4	1.0	3.1	2.0	-0.2	-12.2	50.8	63.1	...	
2011	...	..	..	..	..	..	..	..	..	..	..	..	..	..	...

See notes at the end of the tables

Table A1-14

## Population as of January 1 and components of population growth, Canada, provinces and territories, 1992 to 2011 — Nunavut

Year	Population as of January 1	Growth			Births	Deaths	International migration				Interprovincial migration			Residual	
		Total	Natural	Migratory			Net	Immigration	Emigration	Non-permanent residents	Net	In	Out		
numbers in thousands															
1992	22.5	0.3	0.6	-0.1	0.7	0.1	0.0	0.0	0.0	0.0	0.0	-0.1	1.0	1.0	-0.2
1993	23.2	0.5	0.6	0.0	0.7	0.1	0.0	0.0	0.0	0.0	0.0	0.0	1.0	1.0	-0.2
1994	24.0	0.4	0.7	-0.1	0.8	0.1	0.0	0.0	0.0	0.0	0.0	-0.1	0.9	1.1	-0.2
1995	24.7	0.2	0.6	-0.2	0.7	0.1	0.0	0.0	0.0	0.0	0.0	-0.2	0.8	1.1	-0.2
1996	25.3	0.3	0.6	-0.2	0.7	0.1	0.0	0.0	0.0	0.0	0.0	-0.2	0.9	1.1	-0.1
1997	25.7	0.4	0.6	-0.3	0.7	0.1	0.0	0.0	0.0	0.0	0.0	-0.3	0.9	1.2	0.0
1998	26.1	0.5	0.5	0.0	0.7	0.1	0.0	0.0	0.0	0.0	0.0	0.0	1.0	1.0	0.0
1999	26.6	0.6	0.6	0.0	0.7	0.1	0.0	0.0	0.0	0.0	0.0	0.0	1.0	1.0	0.0
2000	27.1	0.7	0.6	0.1	0.7	0.1	0.0	0.0	0.0	0.0	0.0	0.1	1.2	1.1	0.0
2001	27.8	0.4	0.6	-0.1	0.7	0.1	0.0	0.0	0.0	0.0	0.0	-0.1	0.9	1.0	0.0
2002	28.3	0.6	0.6	0.0	0.7	0.1	0.0	0.0	0.0	0.0	0.0	0.0	1.0	1.0	-0.1
2003	29.0	0.5	0.6	-0.2	0.8	0.1	0.0	0.0	0.0	0.0	0.0	-0.1	1.0	1.1	-0.1
2004	29.5	0.3	0.6	-0.3	0.7	0.1	0.0	0.0	0.0	0.0	0.0	-0.3	0.7	1.0	-0.1
2005	29.9	0.5	0.6	0.0	0.7	0.1	0.0	0.0	0.0	0.0	0.0	0.0	0.9	1.0	-0.1
2006	30.6	0.3	0.6	-0.3	0.7	0.1	0.0	0.0	0.0	0.0	0.0	-0.3	1.0	1.3	0.0
2007	30.9	0.5	0.7	-0.1	0.8	0.1	0.0	0.0	0.1	0.0	0.0	-0.1	0.9	1.0	...
2008	31.4	0.3	0.7	-0.3	0.8	0.1	0.0	0.1	0.1	0.0	0.0	-0.3	0.8	1.1	...
2009	31.7	0.8	0.7	0.2	0.8	0.1	0.0	0.0	0.1	0.0	0.0	0.2	1.0	0.8	...
2010	32.5	0.8	0.7	0.1	0.8	0.1	0.0	0.0	0.1	0.0	0.0	0.1	1.3	1.2	...
2011	33.3	..	..	..	..	..	..	..	..	..	..	..	..	..	...
rate per 1,000															
1992	...	29.5	25.8	-4.1	30.7	4.9	-0.6	0.8	0.9	-0.5	-3.5	42.1	45.7	...	
1993	...	34.3	25.8	0.9	30.8	5.0	0.8	1.5	0.6	-0.1	0.2	40.8	40.6	...	
1994	...	29.2	27.0	-5.1	31.1	4.0	0.6	1.0	0.1	-0.3	-5.7	38.9	44.6	...	
1995	...	24.0	25.7	-8.8	29.6	3.8	0.2	0.4	0.2	0.0	-9.0	33.9	43.0	...	
1996	...	17.4	24.6	-9.4	29.3	4.7	0.1	0.5	0.6	0.2	-9.6	35.0	44.6	...	
1997	...	13.4	24.1	-10.4	28.8	4.6	-0.1	0.7	1.0	0.2	-10.3	35.8	46.0	...	
1998	...	18.7	19.9	-0.8	25.3	5.4	-0.4	0.4	1.0	0.2	-0.5	39.2	39.7	...	
1999	...	21.2	22.7	-1.1	27.4	4.7	-0.9	0.5	0.8	-0.6	-0.3	37.7	38.0	...	
2000	...	23.8	21.7	2.4	26.5	4.7	-0.2	0.4	0.8	0.1	2.6	42.1	39.5	...	
2001	...	19.2	20.9	-3.4	25.3	4.4	-0.3	0.5	1.1	0.3	-3.1	30.9	34.0	...	
2002	...	22.2	20.9	-1.6	25.3	4.4	-0.3	0.4	1.1	0.3	-1.3	34.0	35.2	...	
2003	...	18.5	21.3	-5.7	25.9	4.6	-0.6	0.3	1.0	0.0	-5.0	33.0	38.1	...	
2004	...	14.4	21.1	-9.5	25.1	4.1	-0.6	0.3	1.0	0.2	-8.9	24.6	33.5	...	
2005	...	20.7	19.3	-1.3	23.1	3.8	-0.5	0.4	1.1	0.2	-0.8	31.0	31.8	...	
2006	...	10.2	20.1	-10.9	24.3	4.2	-0.8	0.3	1.2	0.1	-10.1	31.7	41.8	...	
2007	...	17.1	21.3	-4.3	25.5	4.1	-0.8	0.6	1.7	0.2	-3.4	27.4	30.9	...	
2008	...	9.9	20.9	-11.0	25.2	4.3	-1.2	1.6	1.9	-0.9	-9.8	25.6	35.3	...	
2009	...	25.5	20.7	4.7	25.1	4.4	-1.3	0.3	1.9	0.3	6.0	31.3	25.3	...	
2010	...	23.0	20.8	2.2	25.3	4.5	-0.9	0.6	1.9	0.5	3.0	40.2	37.1	...	
2011	...	..	..	..	..	..	..	..	..	..	..	..	..	..	...

**Notes:** Population: Final intercensal estimates from 1981 to 2006, final postcensal estimates for 2007, updated postcensal estimates from 2008 to 2010 and preliminary postcensal estimates for 2011.

Births and deaths: Final data from 1981 to 2007, updated data from 2008 to 2009 and preliminary data for 2010.

Immigration: Final data from 1981 to 2009 and preliminary data for 2010.

Emigration, returning emigration, temporary emigration and non-permanent residents: Final data from 1981 to 2006, updated data from 2007 to 2009 and preliminary data for 2010.

Interprovincial migration: Final data from 1981 to 2008, updated data for 2009 and preliminary data for 2010.

Emigration is the number of returning emigrants minus emigrants and net temporary emigrants.

**Source:** Statistics Canada, Demography Division.