

Catalogue no. 91-002-X

Quarterly Demographic Estimates



April to June 2013



Statistics
Canada

Statistique
Canada

Canada

How to obtain more information

For information about this product or the wide range of services and data available from Statistics Canada, visit our website, www.statcan.gc.ca.

You can also contact us by

e-mail at infostats@statcan.gc.ca

telephone, from Monday to Friday, 8:30 a.m. to 4:30 p.m., at the following toll-free numbers:

- Statistical Information Service 1-800-263-1136
- National telecommunications device for the hearing impaired 1-800-363-7629
- Fax line 1-877-287-4369

Depository Services Program

- Inquiries line 1-800-635-7943
- Fax line 1-800-565-7757

To access this product

This product, Catalogue no. 91-002-X, is available free in electronic format. To obtain a single issue, visit our website, www.statcan.gc.ca and browse by "Key resource" > "Publications."

Standards of service to the public

Statistics Canada is committed to serving its clients in a prompt, reliable and courteous manner. To this end, this agency has developed standards of service that its employees observe. To obtain a copy of these service standards, please contact Statistics Canada toll-free at 1-800-263-1136. The service standards are also published at www.statcan.gc.ca under "About us" > "The agency" > "Providing services to Canadians."

Statistics Canada
Demography Division

Quarterly Demographic Estimates

April to June 2013

Published by authority of the Minister responsible for Statistics Canada

© Minister of Industry, 2013

All rights reserved. Use of this publication is governed by the Statistics Canada
Open License Agreement.

<http://www.statcan.gc.ca/reference/licence-eng.html>

September 2013

Catalogue no. 91-002-X, vol. 27, no. 2

ISSN 1911-0928

Frequency: Quarterly

Ottawa

Cette publication est également disponible en français.

Note of appreciation

Canada owes the success of its statistical system to a long-standing partnership between Statistics Canada, the citizens of Canada, its businesses, governments and other institutions. Accurate and timely statistical information could not be produced without their continued cooperation and goodwill.

User information

Symbols

The following standard symbols are used in Statistics Canada publications:

- . not available for any reference period
- .. not available for a specific reference period
- ... not applicable
- 0 true zero or a value rounded to zero
- 0^s value rounded to 0 (zero) where there is a meaningful distinction between true zero and the value that was rounded
- p preliminary
- r revised
- x suppressed to meet the confidentiality requirements of the *Statistics Act*
- E use with caution
- F too unreliable to be published
- * significantly different from reference category ($p < 0.05$)

Notice to readers

Estimates released in this publication are based on the 2011 Census counts adjusted for census net undercoverage and incompletely enumerated Indian reserves to which is added the estimated demographic growth for the period going from May 10, 2011 to the date of the estimate.

These estimates are not to be mistaken with the 2011 Census counts.

The analysis in this publication is based on preliminary data. These data will be revised over the coming years, and it is possible that some trends described in this publication will change as a result of these revisions. Therefore, this publication should be interpreted with caution.

Most of the components, used to produce preliminary population estimates, are estimated using demographic models or based on data sources less complete or reliable, albeit more timely, than those used for updated or final estimates.

Table of contents

Highlights	7
Analysis	8
Population growth in the provinces and territories	8
Atlantic provinces	9
Central Canada	9
Western Canada	10
The territories	10
Related products	11
Statistical tables	
1 Quarterly population estimates, national perspective	15
1-1 Population	15
1-2 Total growth in percentage	17
1-3 Total growth	19
2 Quarterly population estimates and factors of demographic growth, provincial perspective	21
2-1 Canada	21
2-2 Newfoundland and Labrador	22
2-3 Prince Edward Island	23
2-4 Nova Scotia	24
2-5 New Brunswick	25
2-6 Quebec	26
2-7 Ontario	27
2-8 Manitoba	28
2-9 Saskatchewan	29
2-10 Alberta	30
2-11 British Columbia	31
2-12 Yukon	32
2-13 Northwest Territories	33
2-14 Nunavut	34

Table of contents – continued

3	Quarterly estimates of components of demographic growth, provincial perspective	35
3-1	Canada	35
3-2	Newfoundland and Labrador	36
3-3	Prince Edward Island	37
3-4	Nova Scotia	38
3-5	New Brunswick	39
3-6	Quebec	40
3-7	Ontario	41
3-8	Manitoba	42
3-9	Saskatchewan	43
3-10	Alberta	44
3-11	British Columbia	45
3-12	Yukon	46
3-13	Northwest Territories	47
3-14	Nunavut	48
4	Quarterly estimates of components of demographic growth, national perspective	49
4-1	Births	49
4-2	Deaths	51
4-3	Immigrants	53
4-4	Emigrants	55
4-5	Returning emigrants	57
4-6	Net temporary emigrants	59
4-7	Net non-permanent residents	61
4-8	Interprovincial in-migrants	63
4-9	Interprovincial out-migrants	65
4-10	Total growth	67
4-11	Natural increase	69
4-12	Net interprovincial migration	71
4-13	Net international migration	73
4-14	Total net migration	75
4-15	Residual deviation	77
5	Quarterly estimates of interprovincial migrants by province or territory of origin and destination, Canada, April to June 2013	79
Data quality, concepts and methodology		
	Methodology	80
	Quality of demographic data	88
	Explanatory notes for the tables	95

Table of contents – continued

Appendix

I	Glossary	97
II	Source and remarks	100

Charts

1.	Quarterly factors of demographic growth, April to June, 1979 to 2013, Canada	8
2.	Quarterly variation of population estimates, Canada, provinces and territories, April to June, 2012 and 2013	9

Highlights

- On July 1, 2013, the population of Canada was estimated at 35,158,300, up 133,000 from April 1, 2013. This represents a growth of 0.4%, similar to the second-quarter growth recorded in 2012.
- Net international migration accounted for 73.4% of the country's population growth in the second quarter of 2013.
- In the second quarter of 2013, population growth was above the national average (+0.4%) in Nunavut (+1.6%), Alberta (+1.1%) and Saskatchewan (+0.6%).
- For the tenth consecutive quarter, Alberta led all provinces in population growth (+1.1%). During the second quarter of 2013, Alberta's population surpassed the 4 million mark and reached 4,025,100 on July 1, 2013.

Analysis

In the second quarter of 2013, Canada's population grew by 133,000 or 0.4% to an estimated 35,158,300 on July 1, 2013. This is similar to the second-quarter growth observed in the previous year.¹

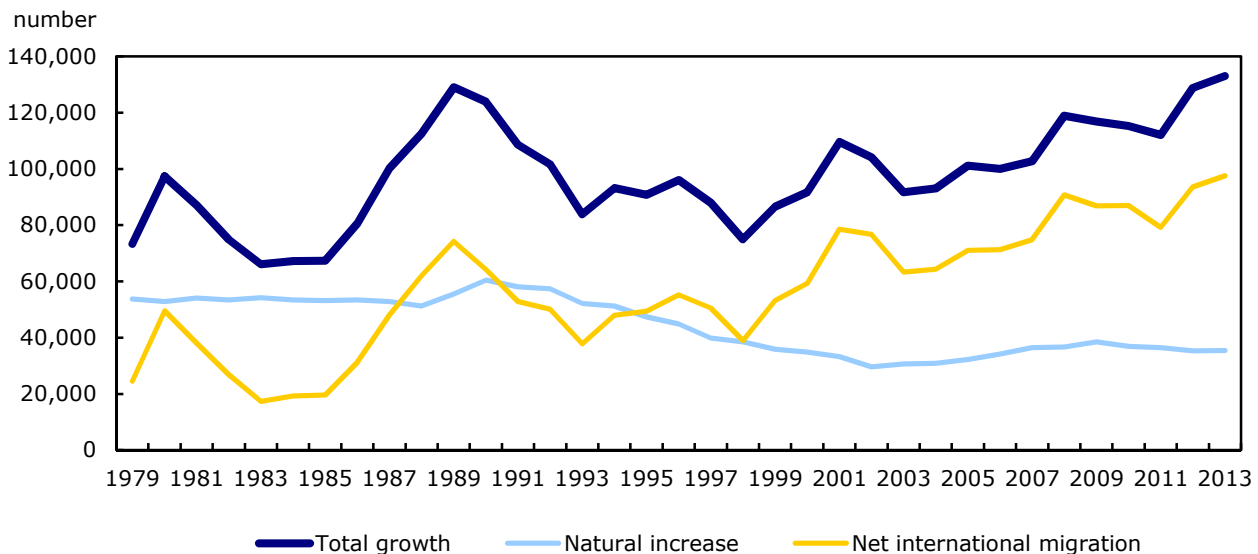
Net international migration in the second quarter of 2013 accounted for 73.4% of the country's population growth while natural increase contributed to the remaining 26.6% of this growth.

In the second quarter of 2013, net international migration was close to 97,600, up 4,000 from the same period in 2012. From April 1 to June 30, 2013, Canada received 75,400 immigrants, almost 2,400 more than in the same period in 2012. The net flow of non-permanent residents also rose in the second quarter of 2013 compared with 2012, going from 27,600 to 29,300.

Canada's natural increase for the second quarter of 2013 remained relatively stable at 35,400, compared with 2012.

Chart 1

Quarterly factors of demographic growth, April to June, 1979 to 2013, Canada

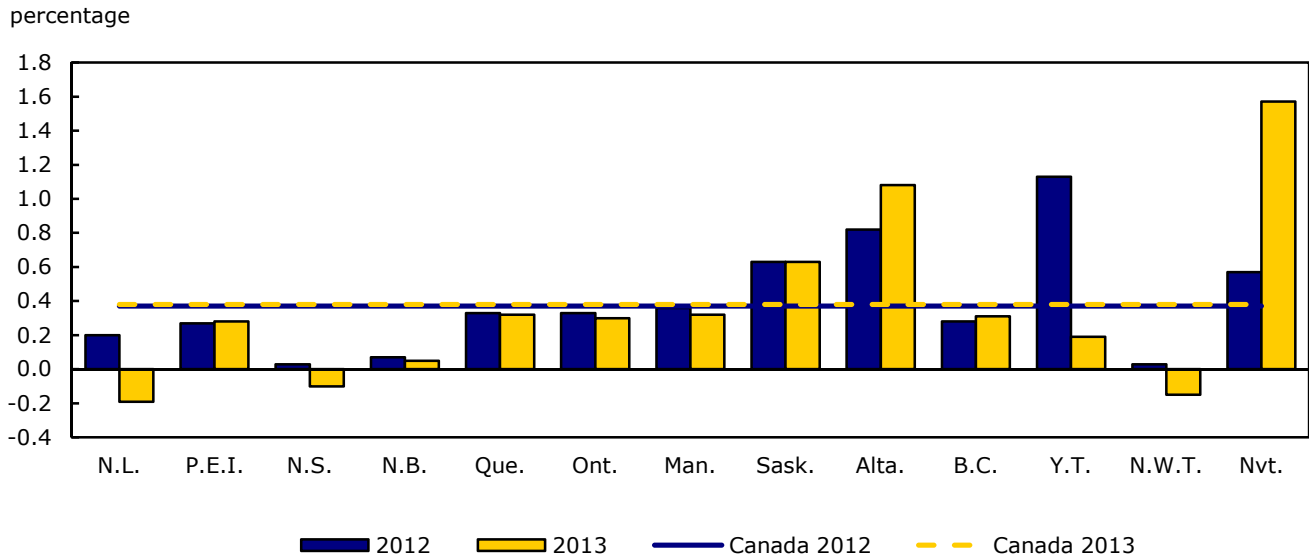


Population growth in the provinces and territories

Preliminary estimates show that in the second quarter of 2013, population growth was above the national average (+0.4%) in Nunavut (+1.6%), Alberta (+1.1%) and Saskatchewan (+0.6%). By contrast, population declined in Newfoundland and Labrador (-0.2%), the Northwest Territories (-0.2%), and Nova Scotia (-0.1%).

1. Unless otherwise specified, the data compared are second-quarter data.

Chart 2
Quarterly variation of population estimates, Canada, provinces and territories, April to June, 2012 and 2013



Atlantic provinces

As of July 1, 2013, the population of Newfoundland and Labrador was estimated at 526,700, a decline of almost 1,000 (-0.2%) from April 1, 2013. Population decline had not been this large for a second quarter since 2005 and was the result of losses in interprovincial migration, losing mostly in exchanges with Alberta (-800).

The population of Prince Edward Island increased by 0.3% in the second quarter of 2013, to a total of 145,200 on July 1, 2013. Net international migration (+500) was mainly responsible for the province’s population growth.

Nova Scotia’s population was estimated at 940,800 on July 1, 2013, down by 900 (-0.1%) from April 1, 2013. This was the largest population decrease for a second quarter in Nova Scotia since 1972.² The population decline was mainly due to record loss in interprovincial migration (-1,000) in a second quarter. Preliminary estimates indicate that Nova Scotia lost 1,100 people in interprovincial migration exchanges with Alberta.

The population of New Brunswick was estimated at 756,100 as of July 1, 2013, an increase of 400 (+0.1%) from April 1, 2013. Net international migration (+800) was mainly responsible for the province’s population growth, the second highest second-quarter level since 1972, with the highest in 2012. However, the province’s gains in net international migration were partially offset by negative net interprovincial migration, with most of the net outflow going to Alberta (-500).

Central Canada

The population of Quebec was estimated at 8,155,300 on July 1, 2013, following a growth of 25,800 (+0.3%) from April 1, 2013. The growth was mainly due to net international migration (+22,800) which was the highest level for any quarter ever recorded in Quebec. This gain in net international migration was fueled by the arrival of 16,000 immigrants and an increase in the net flow of non-permanent residents (+8,000), both were the highest second-quarter levels ever recorded. On the contrary, Quebec recorded net outflow of interprovincial migration

2. The period covered by the current record-keeping system as used at Statistics Canada began in July 1971. The second quarter was covered for the first time in 1972.

of 4,800 people during the second quarter of 2013, which was more than double the level recorded in the same quarter in 2012. Most of the province's net outflow in interprovincial migration went to Ontario (-2,300) and Alberta (-1,400).

As of July 1, 2013, the population of Ontario was estimated at 13,538,000, an increase of 39,900 (+0.3%) during the quarter. This growth was slightly lower than what was recorded in the same period last year (+43,500). Net international migration (+31,900) continued to be the main factor of the province's growth in this quarter. Between April 1 and June 30, 2013, Ontario received 30,300 immigrants, almost 2,600 people higher than in 2012. In the second quarter of 2013, Ontario posted a loss of 4,800 people in net interprovincial migration which was similar to the level recorded in the same quarter of last year. Again, most of the province's net outflow in interprovincial migration went to Alberta (-6,000).

Western Canada

The population of Manitoba was estimated at 1,265,000 as of July 1, 2013, an increase of 4,100 (+0.3%) from April 1, 2013. Net international migration (+4,200) continued to be the major factor of the province's growth. During the second quarter of 2013, Manitoba received close to 3,600 immigrants. These levels in net international migration and immigration were similar to those recorded in the same quarter in 2012. However, the gains in net international migration were partially offset by losses in interprovincial migration exchanges (-1,600), mainly with Alberta (-1,100).

Saskatchewan's population grew by 6,900 (+0.6%) in the second quarter of 2013, reaching a population of 1,108,300 on July 1, 2013. It was the largest population increase for any quarter since 1971. Net international migration (+4,100), which accounted for most of the increase, was the highest for any quarter ever recorded. During this quarter, Saskatchewan welcomed 2,900 immigrants which was the second highest number for any quarter recorded for Saskatchewan, with the highest in the second quarter of 2012. The province's net interprovincial migration (+1,200) was also at its highest level for a second quarter since 2007. Saskatchewan gained mostly from interprovincial migration exchanges with Ontario (+800).

During the second quarter of 2013, Alberta's population surpassed the 4 million mark and reached 4,025,100 on July 1, 2013. The population grew by 1.1% or 42,800 since April 1, 2013. Not only that Alberta recorded the largest second-quarter population increase since 1972 in the past quarter, it also led all provinces in terms of population growth for a tenth consecutive quarter. This growth was mainly the result of an unprecedented level of net international migration. Between April 1 and June 30, 2013, Alberta recorded the highest number in net international migration (+20,500) for any quarter since 1971 which was fueled by record numbers in immigration (+10,500) and net non-permanent residents (+10,500). In addition, net interprovincial migration (+13,800) was the second highest ever recorded in Alberta for a second quarter, with the highest in 1998. Most of the province's net inflows in interprovincial migration came from Ontario (+6,000) and British Columbia (+2,100).

The population of British Columbia was estimated at 4,582,000 as of July 1, 2013, an increase of 14,000 (+0.3%) in the second quarter. The population growth was similar to what was observed for the same period in 2012. Gains in net international migration (+12,400) accounted for most of the increase. During the second quarter of 2013, British Columbia welcomed 10,100 immigrants, a level comparable to what was recorded in the same period last year. In addition, it posted an increase in the net flow of non-permanent residents (+4,900) from the same quarter a year ago (+2,800). For a sixth quarter in a row, British Columbia recorded a loss in net interprovincial migration (-1,300). This loss was more than double the level observed during the second quarter of 2012 (-600). The province's largest deficit was in exchanges with Alberta (-2,100).

The territories

In the North, two of the three territories posted population increase in the second quarter of 2013. The population of Yukon was estimated at 36,700 on July 1, 2013, up 0.2%. The population of Nunavut increased by 1.6% to reach 35,600 as of July 1, 2013. The growth was mainly due to an increase in net interprovincial migration. The population of the Northwest Territories was estimated at 43,500 on July 1, 2013, a population decline of 0.2%.

Related products

Selected publications from Statistics Canada

91-003-X	Canadian Demographics at a Glance
91-209-X	Report on the Demographic Situation in Canada
91-214-X	Annual Demographic Estimates: Subprovincial Areas
91-215-X	Annual Demographic Estimates: Canada, Provinces and Territories
91-520-X	Population Projections for Canada, Provinces and Territories
91-528-X	Population and Family Estimation Methods at Statistics Canada

Selected CANSIM tables from Statistics Canada

051-0001	Estimates of population, by age group and sex for July 1, Canada, provinces and territories, annual
051-0002	Estimates of deaths, by sex and age group, Canada, provinces and territories, annual
051-0004	Components of population growth, Canada, provinces and territories, annual
051-0005	Estimates of population, Canada, provinces and territories, quarterly
051-0006	Immigrants to Canada, by country of last permanent residence, quarterly
051-0011	International migrants, by age group and sex, Canada, provinces, and territories, annual
051-0012	Interprovincial migrants, by age group and sex, Canada, provinces and territories, annual
051-0013	Estimates of births, by sex, Canada, provinces and territories, annual
051-0017	Interprovincial migrants, Canada, provinces and territories, quarterly
051-0018	Interprovincial in-, out- and net-migrants, Canada, provinces and territories, annual
051-0019	Interprovincial migrants, by province or territory of origin and destination, annual
051-0020	Number of non-permanent residents, Canada, provinces and territories, quarterly
051-0037	International migration components, Canada, provinces and territories, quarterly
051-0041	Number of non-permanent residents, by age group and sex for July 1, Canada, provinces and territories, annual

051-0042	Estimates of population, by marital status, age group and sex for July 1, Canada, provinces and territories, annual
051-0045	Interprovincial migrants, by province or territory of origin and destination, quarterly
053-0001	Estimates of births, deaths and marriages, Canada, provinces and territories, quarterly
102-0502	Deaths, by month, Canada, provinces and territories, annual
102-0503	Deaths, by age and sex, Canada, provinces and territories, annual
102-0504	Deaths and mortality rates, by age group and sex, Canada, provinces and territories, annual
102-4502	Live births, by month, Canada, provinces and territories, annual
102-4503	Live births, by age of mother, Canada, provinces and territories, annual
102-4505	Crude birth rate, age-specific and total fertility rates (live births), Canada, provinces and territories, annual

Selected surveys from Statistics Canada

3231	Vital Statistics - Birth Database
3233	Vital Statistics - Death Database
3601	Estimates of Total Population, Canada, Provinces and Territories
3604	Estimates of Population by Age and Sex for Canada, Provinces and Territories
3605	Estimates of Population by Marital Status, Age and Sex for Canada, Provinces and Territories

Selected summary tables from Statistics Canada

- *Births and total fertility rate, by province and territory*
- *Births, estimates, by province and territory*
- *Deaths, estimates, by province and territory*
- *Components of population growth, by province and territory*
- *Population by year, by province and territory*

- *Population by sex and age group*
- *Population by sex and age group, by province and territory*
- *Population by marital status and sex*
- *Population by marital status and sex, by province and territory*

Statistical tables

Table 1-1
Quarterly population estimates, national perspective — Population

	Canada	Newfoundland and Labrador	Prince Edward Island	Nova Scotia	New Brunswick	Quebec	Ontario
	number						
2013							
July 1 st	35,158,304	526,702	145,237	940,789	756,050	8,155,334	13,537,994
April 1 st	35,025,296	527,690	144,825	941,709	755,635	8,129,546	13,498,102
January 1 st	34,940,975	527,754	144,963	943,573	756,228	8,115,740	13,474,940
2012							
October 1 st	34,884,137	527,653	145,254	944,406	756,583	8,107,125	13,457,445
July 1 st	34,754,312	526,841	145,165	945,061	756,997	8,084,059	13,411,994
April 1 st	34,625,485	525,795	144,767	944,770	756,457	8,057,455	13,368,518
January 1 st	34,542,673	526,166	144,567	944,990	756,727	8,042,412	13,342,385
2011							
October 1 st	34,473,479	525,955	144,657	945,496	756,147	8,030,046	13,317,089
July 1 st	34,342,780	525,037	144,038	944,469	755,530	8,007,656	13,263,544
April 1 st	34,230,654	524,234	143,269	943,917	754,846	7,982,163	13,221,993
January 1 st	34,165,913	523,716	143,030	944,062	754,793	7,967,128	13,198,204
2010							
October 1 st	34,131,451	522,843	142,747	944,154	754,294	7,954,970	13,188,726
July 1 st	34,005,274	521,972	141,678	942,073	753,044	7,929,365	13,135,063
April 1 st	33,889,957	521,175	141,016	940,905	752,026	7,903,491	13,087,609
January 1 st	33,807,668	520,254	140,634	940,799	751,276	7,885,853	13,057,792
2009							
October 1 st	33,756,714	518,954	140,632	940,477	751,064	7,871,410	13,046,751
July 1 st	33,628,571	516,729	139,909	938,194	749,954	7,843,475	12,997,687
April 1 st	33,511,750	514,703	139,226	937,424	749,165	7,817,123	12,956,070
January 1 st	33,427,285	514,202	139,154	937,373	748,375	7,799,190	12,931,917
2008							
October 1 st	33,371,810	513,410	139,480	937,026	747,756	7,786,400	12,926,563
July 1 st	33,245,773	511,543	138,764	935,865	746,855	7,761,504	12,882,625
April 1 st	33,126,855	511,223	138,201	935,611	746,514	7,740,199	12,839,678
January 1 st	33,049,761	510,981	138,014	935,443	746,270	7,725,359	12,813,807
2007							
October 1 st	33,001,076	510,232	138,037	935,343	746,115	7,713,018	12,806,584
July 1 st	32,887,928	509,039	137,721	935,071	745,407	7,692,736	12,764,195
April 1 st	32,785,139	509,121	137,715	934,962	744,921	7,674,235	12,726,217
January 1 st	32,716,557	510,326	137,783	936,172	744,833	7,661,429	12,702,292
2006							
October 1 st	32,678,986	510,316	137,895	937,008	744,944	7,652,894	12,700,318
July 1 st	32,570,505	510,584	137,865	937,869	745,609	7,631,873	12,661,566

Table 1-1 – continued

Quarterly population estimates, national perspective — Population

	Manitoba	Saskatchewan	Alberta	British Columbia	Yukon	Northwest Territories	Nunavut
	number						
2013							
July 1 st	1,265,015	1,108,303	4,025,074	4,581,978	36,700	43,537	35,591
April 1 st	1,260,919	1,101,408	3,982,240	4,567,947	36,629	43,604	35,042
January 1 st	1,257,951	1,097,447	3,948,242	4,558,900	36,421	43,672	35,144
2012							
October 1 st	1,254,245	1,094,373	3,923,016	4,558,879	36,543	43,606	35,009
July 1 st	1,250,032	1,087,546	3,888,739	4,543,308	36,247	43,620	34,703
April 1 st	1,245,550	1,080,777	3,856,988	4,530,453	35,841	43,606	34,508
January 1 st	1,242,229	1,076,191	3,830,778	4,522,712	35,654	43,495	34,367
2011							
October 1 st	1,238,264	1,071,998	3,812,298	4,518,127	35,609	43,518	34,275
July 1 st	1,233,728	1,066,349	3,790,191	4,499,139	35,402	43,501	34,196
April 1 st	1,229,087	1,061,484	3,768,845	4,488,643	34,987	43,263	33,923
January 1 st	1,227,261	1,058,963	3,754,621	4,482,338	34,806	43,258	33,733
2010							
October 1 st	1,224,773	1,056,108	3,747,504	4,483,677	34,786	43,298	33,571
July 1 st	1,220,930	1,051,425	3,732,573	4,465,924	34,596	43,278	33,353
April 1 st	1,216,717	1,046,788	3,715,456	4,454,248	34,242	43,145	33,139
January 1 st	1,214,008	1,042,925	3,702,578	4,441,657	34,007	42,962	32,923
2009							
October 1 st	1,211,929	1,039,520	3,694,520	4,431,701	34,025	42,916	32,815
July 1 st	1,208,589	1,034,782	3,679,092	4,410,679	33,732	43,149	32,600
April 1 st	1,204,052	1,029,868	3,659,414	4,395,638	33,583	43,097	32,387
January 1 st	1,201,724	1,025,958	3,638,623	4,382,189	33,408	43,109	32,063
2008							
October 1 st	1,199,571	1,022,499	3,619,298	4,371,250	33,309	43,285	31,963
July 1 st	1,197,774	1,017,346	3,595,755	4,349,412	33,088	43,350	31,892
April 1 st	1,194,654	1,013,434	3,567,398	4,331,948	32,958	43,355	31,682
January 1 st	1,193,399	1,010,263	3,548,699	4,319,805	32,755	43,351	31,615
2007							
October 1 st	1,191,653	1,007,276	3,533,289	4,312,048	32,665	43,255	31,561
July 1 st	1,189,366	1,002,048	3,514,031	4,290,988	32,557	43,374	31,395
April 1 st	1,186,361	997,516	3,490,747	4,276,777	32,277	43,107	31,183
January 1 st	1,184,433	995,140	3,472,643	4,265,161	32,319	43,074	30,952
2006							
October 1 st	1,183,907	993,325	3,453,730	4,258,216	32,363	43,193	30,877
July 1 st	1,183,524	992,302	3,421,361	4,241,691	32,271	43,178	30,812

Note(s): Estimates are final intercensal up to April 1, 2011, final postcensal for July 1, 2011, updated postcensal from October 1, 2011 to April 1, 2013 and preliminary postcensal from July 1, 2013.

Table 1-2
Quarterly population estimates, national perspective — Total growth in percentage

	Canada	Newfoundland and Labrador	Prince Edward Island	Nova Scotia	New Brunswick	Quebec	Ontario
	percent						
2013							
April to June	0.38	-0.19	0.28	-0.10	0.05	0.32	0.30
January to March	0.24	-0.01	-0.10	-0.20	-0.08	0.17	0.17
2012							
October to December	0.16	0.02	-0.20	-0.09	-0.05	0.11	0.13
July to September	0.37	0.15	0.06	-0.07	-0.05	0.29	0.34
April to June	0.37	0.20	0.27	0.03	0.07	0.33	0.33
January to March	0.24	-0.07	0.14	-0.02	-0.04	0.19	0.20
2011							
October to December	0.20	0.04	-0.06	-0.05	0.08	0.15	0.19
July to September	0.38	0.17	0.43	0.11	0.08	0.28	0.40
April to June	0.33	0.15	0.54	0.06	0.09	0.32	0.31
January to March	0.19	0.10	0.17	-0.02	0.01	0.19	0.18
2010							
October to December	0.10	0.17	0.20	-0.01	0.07	0.15	0.07
July to September	0.37	0.17	0.75	0.22	0.17	0.32	0.41
April to June	0.34	0.15	0.47	0.12	0.14	0.33	0.36
January to March	0.24	0.18	0.27	0.01	0.10	0.22	0.23
2009							
October to December	0.15	0.25	0.00	0.03	0.03	0.18	0.08
July to September	0.38	0.43	0.52	0.24	0.15	0.36	0.38
April to June	0.35	0.39	0.49	0.08	0.11	0.34	0.32
January to March	0.25	0.10	0.05	0.01	0.11	0.23	0.19
2008							
October to December	0.17	0.15	-0.23	0.04	0.08	0.16	0.04
July to September	0.38	0.36	0.52	0.12	0.12	0.32	0.34
April to June	0.36	0.06	0.41	0.03	0.05	0.28	0.33
January to March	0.23	0.05	0.14	0.02	0.03	0.19	0.20
2007							
October to December	0.15	0.15	-0.02	0.01	0.02	0.16	0.06
July to September	0.34	0.23	0.23	0.03	0.09	0.26	0.33
April to June	0.31	-0.02	0.00	0.01	0.07	0.24	0.30
January to March	0.21	-0.24	-0.05	-0.13	0.01	0.17	0.19
2006							
October to December	0.11	0.00	-0.08	-0.09	-0.01	0.11	0.02
July to September	0.33	-0.05	0.02	-0.09	-0.09	0.28	0.31

Table 1-2 – continued

Quarterly population estimates, national perspective — Total growth in percentage

	Manitoba	Saskatchewan	Alberta	British Columbia	Yukon	Northwest Territories	Nunavut
	percent						
2013							
April to June	0.32	0.63	1.08	0.31	0.19	-0.15	1.57
January to March	0.24	0.36	0.86	0.20	0.57	-0.16	-0.29
2012							
October to December	0.30	0.28	0.64	0.00	-0.33	0.15	0.39
July to September	0.34	0.63	0.88	0.34	0.82	-0.03	0.88
April to June	0.36	0.63	0.82	0.28	1.13	0.03	0.57
January to March	0.27	0.43	0.68	0.17	0.52	0.26	0.41
2011							
October to December	0.32	0.39	0.48	0.10	0.13	-0.05	0.27
July to September	0.37	0.53	0.58	0.42	0.58	0.04	0.23
April to June	0.38	0.46	0.57	0.23	1.19	0.55	0.80
January to March	0.15	0.24	0.38	0.14	0.52	0.01	0.56
2010							
October to December	0.20	0.27	0.19	-0.03	0.06	-0.09	0.48
July to September	0.31	0.45	0.40	0.40	0.55	0.05	0.65
April to June	0.35	0.44	0.46	0.26	1.03	0.31	0.65
January to March	0.22	0.37	0.35	0.28	0.69	0.43	0.66
2009							
October to December	0.17	0.33	0.22	0.22	-0.05	0.11	0.33
July to September	0.28	0.46	0.42	0.48	0.87	-0.54	0.66
April to June	0.38	0.48	0.54	0.34	0.44	0.12	0.66
January to March	0.19	0.38	0.57	0.31	0.52	-0.03	1.01
2008							
October to December	0.18	0.34	0.53	0.25	0.30	-0.41	0.31
July to September	0.15	0.51	0.65	0.50	0.67	-0.15	0.22
April to June	0.26	0.39	0.79	0.40	0.39	-0.01	0.66
January to March	0.11	0.31	0.53	0.28	0.62	0.01	0.21
2007							
October to December	0.15	0.30	0.44	0.18	0.28	0.22	0.17
July to September	0.19	0.52	0.55	0.49	0.33	-0.27	0.53
April to June	0.25	0.45	0.67	0.33	0.87	0.62	0.68
January to March	0.16	0.24	0.52	0.27	-0.13	0.08	0.75
2006							
October to December	0.04	0.18	0.55	0.16	-0.14	-0.28	0.24
July to September	0.03	0.10	0.95	0.39	0.29	0.03	0.21

Note(s): Total growth is final up to June 2011, updated from July 2011 to March 2013 and preliminary from April 2013.

Table 1-3
Quarterly population estimates, national perspective — Total growth

	Canada	Newfoundland and Labrador	Prince Edward Island	Nova Scotia	New Brunswick	Quebec	Ontario
	number						
2013							
April to June	133,008	-988	412	-920	415	25,788	39,892
January to March	84,321	-64	-138	-1,864	-593	13,806	23,162
2012							
October to December	56,838	101	-291	-833	-355	8,615	17,495
July to September	129,825	812	89	-655	-414	23,066	45,451
April to June	128,827	1,046	398	291	540	26,604	43,476
January to March	82,812	-371	200	-220	-270	15,043	26,133
2011							
October to December	69,194	211	-90	-506	580	12,366	25,296
July to September	130,699	918	619	1,027	617	22,390	53,545
April to June	112,126	803	769	552	684	25,493	41,551
January to March	64,741	518	239	-145	53	15,035	23,789
2010							
October to December	34,462	873	283	-92	499	12,158	9,478
July to September	126,177	871	1,069	2,081	1,250	25,605	53,663
April to June	115,317	797	662	1,168	1,018	25,874	47,454
January to March	82,289	921	382	106	750	17,638	29,817
2009							
October to December	50,954	1,300	2	322	212	14,443	11,041
July to September	128,143	2,225	723	2,283	1,110	27,935	49,064
April to June	116,821	2,026	683	770	789	26,352	41,617
January to March	84,465	501	72	51	790	17,933	24,153
2008							
October to December	55,475	792	-326	347	619	12,790	5,354
July to September	126,037	1,867	716	1,161	901	24,896	43,938
April to June	118,918	320	563	254	341	21,305	42,947
January to March	77,094	242	187	168	244	14,840	25,871
2007							
October to December	48,685	749	-23	100	155	12,341	7,223
July to September	113,148	1,193	316	272	708	20,282	42,389
April to June	102,789	-82	6	109	486	18,501	37,978
January to March	68,582	-1,205	-68	-1,210	88	12,806	23,925
2006							
October to December	37,571	10	-112	-836	-111	8,535	1,974
July to September	108,481	-268	30	-861	-665	21,021	38,752

Table 1-3 – continued

Quarterly population estimates, national perspective — Total growth

	Manitoba	Saskatchewan	Alberta	British Columbia	Yukon	Northwest Territories	Nunavut
	number						
2013							
April to June	4,096	6,895	42,834	14,031	71	-67	549
January to March	2,968	3,961	33,998	9,047	208	-68	-102
2012							
October to December	3,706	3,074	25,226	21	-122	66	135
July to September	4,213	6,827	34,277	15,571	296	-14	306
April to June	4,482	6,769	31,751	12,855	406	14	195
January to March	3,321	4,586	26,210	7,741	187	111	141
2011							
October to December	3,965	4,193	18,480	4,585	45	-23	92
July to September	4,536	5,649	22,107	18,988	207	17	79
April to June	4,641	4,865	21,346	10,496	415	238	273
January to March	1,826	2,521	14,224	6,305	181	5	190
2010							
October to December	2,488	2,855	7,117	-1,339	20	-40	162
July to September	3,843	4,683	14,931	17,753	190	20	218
April to June	4,213	4,637	17,117	11,676	354	133	214
January to March	2,709	3,863	12,878	12,591	235	183	216
2009							
October to December	2,079	3,405	8,058	9,956	-18	46	108
July to September	3,340	4,738	15,428	21,022	293	-233	215
April to June	4,537	4,914	19,678	15,041	149	52	213
January to March	2,328	3,910	20,791	13,449	175	-12	324
2008							
October to December	2,153	3,459	19,325	10,939	99	-176	100
July to September	1,797	5,153	23,543	21,838	221	-65	71
April to June	3,120	3,912	28,357	17,464	130	-5	210
January to March	1,255	3,171	18,699	12,143	203	4	67
2007							
October to December	1,746	2,987	15,410	7,757	90	96	54
July to September	2,287	5,228	19,258	21,060	108	-119	166
April to June	3,005	4,532	23,284	14,211	280	267	212
January to March	1,928	2,376	18,104	11,616	-42	33	231
2006							
October to December	526	1,815	18,913	6,945	-44	-119	75
July to September	383	1,023	32,369	16,525	92	15	65

Note(s): Total growth is final up to June 2011, updated from July 2011 to March 2013 and preliminary from April 2013.

Table 2-1
Quarterly population estimates and factors of demographic growth, provincial perspective — Canada

	Population at beginning period	Natural increase	Net interprovincial migration	Net international migration	Total net migration	Residual deviation	Total growth	Total growth
	number						percent	
2013								
July to September	35,158,304
April to June	35,025,296	35,425	0	97,583	97,583	..	133,008	0.38
January to March	34,940,975	22,232	0	62,089	62,089	..	84,321	0.24
2012								
October to December	34,884,137	30,505	0	26,333	26,333	..	56,838	0.16
July to September	34,754,312	42,419	0	87,406	87,406	..	129,825	0.37
April to June	34,625,485	35,283	0	93,544	93,544	..	128,827	0.37
January to March	34,542,673	24,175	0	58,637	58,637	..	82,812	0.24
2011								
October to December	34,473,479	30,831	0	38,363	38,363	..	69,194	0.20
July to September	34,342,780	43,828	0	86,871	86,871	..	130,699	0.38
April to June	34,230,654	36,485	0	79,307	79,307	3,666	112,126	0.33
January to March	34,165,913	24,418	0	48,786	48,786	8,463	64,741	0.19
2010								
October to December	34,131,451	30,045	0	13,066	13,066	8,649	34,462	0.10
July to September	34,005,274	41,035	0	93,793	93,793	8,651	126,177	0.37
April to June	33,889,957	36,864	0	87,008	87,008	8,555	115,317	0.34
January to March	33,807,668	29,194	0	61,556	61,556	8,461	82,289	0.24
2009								
October to December	33,756,714	30,876	0	28,729	28,729	8,651	50,954	0.15
July to September	33,628,571	45,301	0	91,491	91,491	8,649	128,143	0.38
April to June	33,511,750	38,482	0	86,895	86,895	8,556	116,821	0.35
January to March	33,427,285	27,786	0	65,141	65,141	8,462	84,465	0.25
2008								
October to December	33,371,810	30,519	0	33,606	33,606	8,650	55,475	0.17
July to September	33,245,773	44,795	0	89,890	89,890	8,648	126,037	0.38
April to June	33,126,855	36,669	0	90,807	90,807	8,558	118,918	0.36
January to March	33,049,761	27,286	0	58,364	58,364	8,556	77,094	0.23
2007								
October to December	33,001,076	30,818	0	26,513	26,513	8,646	48,685	0.15
July to September	32,887,928	42,397	0	79,403	79,403	8,652	113,148	0.34
April to June	32,785,139	36,491	0	74,853	74,853	8,555	102,789	0.31
January to March	32,716,557	22,941	0	54,104	54,104	8,463	68,582	0.21
2006								
October to December	32,678,986	27,617	0	18,603	18,603	8,649	37,571	0.11
July to September	32,570,505	40,042	0	77,090	77,090	8,651	108,481	0.33

Note(s): See "Data quality, concepts and methodology — Explanatory notes for the tables" section.

Table 2-2
Quarterly population estimates and factors of demographic growth, provincial perspective — Newfoundland and Labrador

	Population at beginning period	Natural increase	Net interprovincial migration	Net international migration	Total net migration	Residual deviation	Total growth	Total growth
	number						percent	
2013								
July to September	526,702
April to June	527,690	-45	-1,023	80	-943	..	-988	-0.19
January to March	527,754	-182	-124	242	118	..	-64	-0.01
2012								
October to December	527,653	-47	114	34	148	..	101	0.02
July to September	526,841	-12	158	666	824	..	812	0.15
April to June	525,795	-8	371	683	1,054	..	1,046	0.20
January to March	526,166	-142	-439	210	-229	..	-371	-0.07
2011								
October to December	525,955	-9	166	54	220	..	211	0.04
July to September	525,037	28	447	443	890	..	918	0.17
April to June	524,234	36	50	482	532	-235	803	0.15
January to March	523,716	-103	-69	147	78	-543	518	0.10
2010								
October to December	522,843	81	353	-117	236	-556	873	0.17
July to September	521,972	220	-304	400	96	-555	871	0.17
April to June	521,175	82	-138	304	166	-549	797	0.15
January to March	520,254	36	238	104	342	-543	921	0.18
2009								
October to December	518,954	103	577	65	642	-555	1,300	0.25
July to September	516,729	292	881	497	1,378	-555	2,225	0.43
April to June	514,703	119	992	365	1,357	-550	2,026	0.39
January to March	514,202	10	6	-58	-52	-543	501	0.10
2008								
October to December	513,410	58	259	-80	179	-555	792	0.15
July to September	511,543	378	620	314	934	-555	1,867	0.36
April to June	511,223	27	-490	234	-256	-549	320	0.06
January to March	510,981	-104	-446	243	-203	-549	242	0.05
2007								
October to December	510,232	48	115	30	145	-556	749	0.15
July to September	509,039	174	293	171	464	-555	1,193	0.23
April to June	509,121	-12	-791	172	-619	-549	-82	-0.02
January to March	510,326	-162	-1,671	85	-1,586	-543	-1,205	-0.24
2006								
October to December	510,316	-82	-558	95	-463	-555	10	0.00
July to September	510,584	74	-1,047	150	-897	-555	-268	-0.05

Note(s): See "Data quality, concepts and methodology — Explanatory notes for the tables" section.

Table 2-3
Quarterly population estimates and factors of demographic growth, provincial perspective — Prince Edward Island

	Population at beginning period	Natural increase	Net interprovincial migration	Net international migration	Total net migration	Residual deviation	Total growth	Total growth
	number						percent	
2013								
July to September	145,237
April to June	144,825	71	-157	498	341	..	412	0.28
January to March	144,963	-28	-60	-50	-110	..	-138	-0.10
2012								
October to December	145,254	35	-452	126	-326	..	-291	-0.20
July to September	145,165	75	-405	419	14	..	89	0.06
April to June	144,767	78	-254	574	320	..	398	0.27
January to March	144,567	-20	34	186	220	..	200	0.14
2011								
October to December	144,657	42	-346	214	-132	..	-90	-0.06
July to September	144,038	81	-52	590	538	..	619	0.43
April to June	143,269	80	61	674	735	46	769	0.54
January to March	143,030	-16	-12	374	362	107	239	0.17
2010								
October to December	142,747	90	-60	362	302	109	283	0.20
July to September	141,678	98	-199	1,279	1,080	109	1,069	0.75
April to June	141,016	72	13	684	697	107	662	0.47
January to March	140,634	27	113	349	462	107	382	0.27
2009								
October to December	140,632	36	-124	199	75	109	2	0.00
July to September	139,909	95	58	679	737	109	723	0.52
April to June	139,226	98	-97	790	693	108	683	0.49
January to March	139,154	-40	-108	326	218	106	72	0.05
2008								
October to December	139,480	46	-381	118	-263	109	-326	-0.23
July to September	138,764	93	50	682	732	109	716	0.52
April to June	138,201	71	157	443	600	108	563	0.41
January to March	138,014	72	-120	342	222	107	187	0.14
2007								
October to December	138,037	59	-150	177	27	109	-23	-0.02
July to September	137,721	79	-178	524	346	109	316	0.23
April to June	137,715	100	-216	230	14	108	6	0.00
January to March	137,783	4	-155	190	35	107	-68	-0.05
2006								
October to December	137,895	48	-159	108	-51	109	-112	-0.08
July to September	137,865	133	-319	325	6	109	30	0.02

Note(s): See "Data quality, concepts and methodology — Explanatory notes for the tables" section.

Table 2-4
Quarterly population estimates and factors of demographic growth, provincial perspective — Nova Scotia

	Population at beginning period	Natural increase	Net interprovincial migration	Net international migration	Total net migration	Residual deviation	Total growth	Total growth
	number						percent	
2013								
July to September	940,789
April to June	941,709	-66	-976	122	-854	..	-920	-0.10
January to March	943,573	-339	-1,793	268	-1,525	..	-1,864	-0.20
2012								
October to December	944,406	15	-1,110	262	-848	..	-833	-0.09
July to September	945,061	373	-1,998	970	-1,028	..	-655	-0.07
April to June	944,770	-1	-423	715	292	..	291	0.03
January to March	944,990	-274	-698	752	54	..	-220	-0.02
2011								
October to December	945,496	70	-1,035	459	-576	..	-506	-0.05
July to September	944,469	423	-710	1,314	604	..	1,027	0.11
April to June	943,917	53	-21	628	607	108	552	0.06
January to March	944,062	-216	-191	513	322	251	-145	-0.02
2010								
October to December	944,154	3	84	76	160	255	-92	-0.01
July to September	942,073	357	87	1,893	1,980	256	2,081	0.22
April to June	940,905	168	274	979	1,253	253	1,168	0.12
January to March	940,799	48	-374	682	308	250	106	0.01
2009								
October to December	940,477	63	355	160	515	256	322	0.03
July to September	938,194	515	357	1,667	2,024	256	2,283	0.24
April to June	937,424	248	-50	825	775	253	770	0.08
January to March	937,373	-64	-263	628	365	250	51	0.01
2008								
October to December	937,026	79	116	407	523	255	347	0.04
July to September	935,865	594	-554	1,377	823	256	1,161	0.12
April to June	935,611	193	-492	806	314	253	254	0.03
January to March	935,443	102	-259	578	319	253	168	0.02
2007								
October to December	935,343	94	-39	301	262	256	100	0.01
July to September	935,071	485	-1,004	1,047	43	256	272	0.03
April to June	934,962	262	-449	549	100	253	109	0.01
January to March	936,172	-326	-1,082	448	-634	250	-1,210	-0.13
2006								
October to December	937,008	57	-929	291	-638	255	-836	-0.09
July to September	937,869	310	-1,666	751	-915	256	-861	-0.09

Note(s): See "Data quality, concepts and methodology — Explanatory notes for the tables" section.

Table 2-5
Quarterly population estimates and factors of demographic growth, provincial perspective — New Brunswick

	Population at beginning period	Natural increase	Net interprovincial migration	Net international migration	Total net migration	Residual deviation	Total growth	Total growth
	number						percent	
2013								
July to September	756,050
April to June	755,635	-25	-378	818	440	..	415	0.05
January to March	756,228	-134	-534	75	-459	..	-593	-0.08
2012								
October to December	756,583	136	-701	210	-491	..	-355	-0.05
July to September	756,997	409	-1,603	780	-823	..	-414	-0.05
April to June	756,457	35	-435	940	505	..	540	0.07
January to March	756,727	-67	-752	549	-203	..	-270	-0.04
2011								
October to December	756,147	194	-19	405	386	..	580	0.08
July to September	755,530	468	-600	749	149	..	617	0.08
April to June	754,846	86	-33	664	631	33	684	0.09
January to March	754,793	-9	-174	311	137	75	53	0.01
2010								
October to December	754,294	144	149	284	433	78	499	0.07
July to September	753,044	452	-100	975	875	77	1,250	0.17
April to June	752,026	254	203	637	840	76	1,018	0.14
January to March	751,276	193	243	390	633	76	750	0.10
2009								
October to December	751,064	90	113	86	199	77	212	0.03
July to September	749,954	547	12	629	641	78	1,110	0.15
April to June	749,165	294	30	541	571	76	789	0.11
January to March	748,375	94	47	725	772	76	790	0.11
2008								
October to December	747,756	131	220	345	565	77	619	0.08
July to September	746,855	573	-534	939	405	77	901	0.12
April to June	746,514	172	-303	549	246	77	341	0.05
January to March	746,270	76	-250	494	244	76	244	0.03
2007								
October to December	746,115	117	-85	200	115	77	155	0.02
July to September	745,407	445	-270	611	341	78	708	0.09
April to June	744,921	295	-120	387	267	76	486	0.07
January to March	744,833	-35	-305	504	199	76	88	0.01
2006								
October to December	744,944	124	-373	215	-158	77	-111	-0.01
July to September	745,609	549	-1,834	697	-1,137	77	-665	-0.09

Note(s): See "Data quality, concepts and methodology — Explanatory notes for the tables" section.

Table 2-6
Quarterly population estimates and factors of demographic growth, provincial perspective — Quebec

	Population at beginning period	Natural increase	Net interprovincial migration	Net international migration	Total net migration	Residual deviation	Total growth	Total growth
	number						percent	
2013								
July to September	8,155,334
April to June	8,129,546	7,750	-4,753	22,791	18,038	..	25,788	0.32
January to March	8,115,740	3,450	-941	11,297	10,356	..	13,806	0.17
2012								
October to December	8,107,125	6,400	-1,988	4,203	2,215	..	8,615	0.11
July to September	8,084,059	9,300	-1,886	15,652	13,766	..	23,066	0.29
April to June	8,057,455	7,250	-2,210	21,564	19,354	..	26,604	0.33
January to March	8,042,412	4,950	-2,193	12,286	10,093	..	15,043	0.19
2011								
October to December	8,030,046	6,963	-1,431	6,834	5,403	..	12,366	0.15
July to September	8,007,656	10,289	-1,081	13,182	12,101	..	22,390	0.28
April to June	7,982,163	7,889	-2,169	19,335	17,166	-438	25,493	0.32
January to March	7,967,128	4,512	-1,144	10,655	9,511	-1,012	15,035	0.19
2010								
October to December	7,954,970	6,550	-739	5,314	4,575	-1,033	12,158	0.15
July to September	7,929,365	9,535	-711	15,747	15,036	-1,034	25,605	0.32
April to June	7,903,491	7,769	-1,693	18,775	17,082	-1,023	25,874	0.33
January to March	7,885,853	5,792	-1,205	12,040	10,835	-1,011	17,638	0.22
2009								
October to December	7,871,410	6,725	15	6,669	6,684	-1,034	14,443	0.18
July to September	7,843,475	10,391	-375	16,885	16,510	-1,034	27,935	0.36
April to June	7,817,123	8,203	-2,448	19,575	17,127	-1,022	26,352	0.34
January to March	7,799,190	5,777	-1,439	12,584	11,145	-1,011	17,933	0.23
2008								
October to December	7,786,400	7,012	-1,446	6,190	4,744	-1,034	12,790	0.16
July to September	7,761,504	10,375	-2,086	15,573	13,487	-1,034	24,896	0.32
April to June	7,740,199	7,887	-4,399	16,794	12,395	-1,023	21,305	0.28
January to March	7,725,359	5,484	-1,776	10,110	8,334	-1,022	14,840	0.19
2007								
October to December	7,713,018	6,578	-1,991	6,720	4,729	-1,034	12,341	0.16
July to September	7,692,736	9,469	-3,516	13,295	9,779	-1,034	20,282	0.26
April to June	7,674,235	7,567	-4,665	14,577	9,912	-1,022	18,501	0.24
January to March	7,661,429	4,251	-2,503	10,046	7,543	-1,012	12,806	0.17
2006								
October to December	7,652,894	6,149	-2,429	3,782	1,353	-1,033	8,535	0.11
July to September	7,631,873	8,724	-3,268	14,531	11,263	-1,034	21,021	0.28

Note(s): See "Data quality, concepts and methodology — Explanatory notes for the tables" section.

Table 2-7
Quarterly population estimates and factors of demographic growth, provincial perspective — Ontario

	Population at beginning period	Natural increase	Net interprovincial migration	Net international migration	Total net migration	Residual deviation	Total growth	Total growth
	number						percent	
2013								
July to September	13,537,994
April to June	13,498,102	12,881	-4,848	31,859	27,011	..	39,892	0.30
January to March	13,474,940	8,064	-6,823	21,921	15,098	..	23,162	0.17
2012								
October to December	13,457,445	11,626	-4,061	9,930	5,869	..	17,495	0.13
July to September	13,411,994	16,136	-5,591	34,906	29,315	..	45,451	0.34
April to June	13,368,518	13,249	-4,891	35,118	30,227	..	43,476	0.33
January to March	13,342,385	8,560	-3,925	21,498	17,573	..	26,133	0.20
2011								
October to December	13,317,089	11,983	-1,632	14,945	13,313	..	25,296	0.19
July to September	13,263,544	16,369	-163	37,339	37,176	..	53,545	0.40
April to June	13,221,993	13,567	-1,944	32,574	30,630	2,646	41,551	0.31
January to March	13,198,204	9,021	-1,003	21,877	20,874	6,106	23,789	0.18
2010								
October to December	13,188,726	11,196	-1,950	6,474	4,524	6,242	9,478	0.07
July to September	13,135,063	14,807	890	44,208	45,098	6,242	53,663	0.41
April to June	13,087,609	13,792	-1,453	41,288	39,835	6,173	47,454	0.36
January to March	13,057,792	10,469	-1,396	26,850	25,454	6,106	29,817	0.23
2009								
October to December	13,046,751	11,202	-525	6,606	6,081	6,242	11,041	0.08
July to September	12,997,687	16,706	-1,288	39,888	38,600	6,242	49,064	0.38
April to June	12,956,070	14,142	-3,263	36,912	33,649	6,174	41,617	0.32
January to March	12,931,917	9,852	-4,157	24,564	20,407	6,106	24,153	0.19
2008								
October to December	12,926,563	11,346	-5,253	5,503	250	6,242	5,354	0.04
July to September	12,882,625	16,627	-2,928	36,480	33,552	6,241	43,938	0.34
April to June	12,839,678	13,971	-3,502	38,652	35,150	6,174	42,947	0.33
January to March	12,813,807	10,792	-3,458	24,711	21,253	6,174	25,871	0.20
2007								
October to December	12,806,584	11,745	-3,588	5,308	1,720	6,242	7,223	0.06
July to September	12,764,195	16,537	-4,202	36,296	32,094	6,242	42,389	0.33
April to June	12,726,217	13,836	-3,451	33,767	30,316	6,174	37,978	0.30
January to March	12,702,292	8,978	-2,185	23,238	21,053	6,106	23,925	0.19
2006								
October to December	12,700,318	11,195	-5,957	2,977	-2,980	6,241	1,974	0.02
July to September	12,661,566	16,160	-8,454	37,288	28,834	6,242	38,752	0.31

Note(s): See "Data quality, concepts and methodology — Explanatory notes for the tables" section.

Table 2-8
Quarterly population estimates and factors of demographic growth, provincial perspective — Manitoba

	Population at beginning period	Natural increase	Net interprovincial migration	Net international migration	Total net migration	Residual deviation	Total growth	Total growth
	number						percent	
2013								
July to September	1,265,015	2,565	..	4,096	0.32
April to June	1,260,919	1,531	-1,630	4,195	2,565	..	4,096	0.32
January to March	1,257,951	949	-796	2,815	2,019	..	2,968	0.24
2012								
October to December	1,254,245	1,280	-555	2,981	2,426	..	3,706	0.30
July to September	1,250,032	1,701	-1,240	3,752	2,512	..	4,213	0.34
April to June	1,245,550	1,516	-1,181	4,147	2,966	..	4,482	0.36
January to March	1,242,229	947	-755	3,129	2,374	..	3,321	0.27
2011								
October to December	1,238,264	1,269	-853	3,549	2,696	..	3,965	0.32
July to September	1,233,728	1,679	-1,423	4,280	2,857	..	4,536	0.37
April to June	1,229,087	1,491	-990	4,613	3,623	473	4,641	0.38
January to March	1,227,261	935	-915	2,899	1,984	1,093	1,826	0.15
2010								
October to December	1,224,773	1,226	-357	2,735	2,378	1,116	2,488	0.20
July to September	1,220,930	1,698	-1,255	4,517	3,262	1,117	3,843	0.31
April to June	1,216,717	1,538	-754	4,533	3,779	1,104	4,213	0.35
January to March	1,214,008	1,339	-224	2,686	2,462	1,092	2,709	0.22
2009								
October to December	1,211,929	1,385	-601	2,412	1,811	1,117	2,079	0.17
July to September	1,208,589	1,782	-833	3,507	2,674	1,116	3,340	0.28
April to June	1,204,052	1,497	-440	4,585	4,145	1,105	4,537	0.38
January to March	1,201,724	1,304	-640	2,756	2,116	1,092	2,328	0.19
2008								
October to December	1,199,571	1,206	-195	2,259	2,064	1,117	2,153	0.18
July to September	1,197,774	1,750	-1,836	2,999	1,163	1,116	1,797	0.15
April to June	1,194,654	1,374	-1,148	3,999	2,851	1,105	3,120	0.26
January to March	1,193,399	1,082	-752	2,029	1,277	1,104	1,255	0.11
2007								
October to December	1,191,653	1,157	-453	2,158	1,705	1,116	1,746	0.15
July to September	1,189,366	1,720	-1,350	3,034	1,684	1,117	2,287	0.19
April to June	1,186,361	1,511	-1,268	3,866	2,598	1,104	3,005	0.25
January to March	1,184,433	939	-378	2,460	2,082	1,093	1,928	0.16
2006								
October to December	1,183,907	863	-1,035	1,814	779	1,116	526	0.04
July to September	1,183,524	1,567	-2,819	2,752	-67	1,117	383	0.03

Note(s): See "Data quality, concepts and methodology — Explanatory notes for the tables" section.

Table 2-9
Quarterly population estimates and factors of demographic growth, provincial perspective — Saskatchewan

	Population at beginning period	Natural increase	Net interprovincial migration	Net international migration	Total net migration	Residual deviation	Total growth	Total growth
	number						percent	
2013								
July to September	1,108,303
April to June	1,101,408	1,550	1,207	4,138	5,345	..	6,895	0.63
January to March	1,097,447	1,172	-339	3,128	2,789	..	3,961	0.36
2012								
October to December	1,094,373	1,074	-339	2,339	2,000	..	3,074	0.28
July to September	1,087,546	1,632	1,286	3,909	5,195	..	6,827	0.63
April to June	1,080,777	1,476	1,171	4,122	5,293	..	6,769	0.63
January to March	1,076,191	1,100	65	3,421	3,486	..	4,586	0.43
2011								
October to December	1,071,998	1,002	82	3,109	3,191	..	4,193	0.39
July to September	1,066,349	1,546	560	3,543	4,103	..	5,649	0.53
April to June	1,061,484	1,407	581	2,711	3,292	-166	4,865	0.46
January to March	1,058,963	1,049	-425	1,514	1,089	-383	2,521	0.24
2010								
October to December	1,056,108	1,092	235	1,137	1,372	-391	2,855	0.27
July to September	1,051,425	1,497	154	2,641	2,795	-391	4,683	0.45
April to June	1,046,788	1,324	556	2,370	2,926	-387	4,637	0.44
January to March	1,042,925	1,178	757	1,545	2,302	-383	3,863	0.37
2009								
October to December	1,039,520	1,217	463	1,334	1,797	-391	3,405	0.33
July to September	1,034,782	1,492	377	2,477	2,854	-392	4,738	0.46
April to June	1,029,868	1,388	480	2,659	3,139	-387	4,914	0.48
January to March	1,025,958	1,172	338	2,017	2,355	-383	3,910	0.38
2008								
October to December	1,022,499	859	625	1,584	2,209	-391	3,459	0.34
July to September	1,017,346	1,467	1,540	1,755	3,295	-391	5,153	0.51
April to June	1,013,434	1,339	362	1,824	2,186	-387	3,912	0.39
January to March	1,010,263	829	682	1,273	1,955	-387	3,171	0.31
2007								
October to December	1,007,276	910	974	711	1,685	-392	2,987	0.30
July to September	1,002,048	1,259	2,153	1,425	3,578	-391	5,228	0.52
April to June	997,516	1,237	1,691	1,217	2,908	-387	4,532	0.45
January to March	995,140	780	427	786	1,213	-383	2,376	0.24
2006								
October to December	993,325	419	529	476	1,005	-391	1,815	0.18
July to September	992,302	1,094	-1,098	636	-462	-391	1,023	0.10

Note(s): See "Data quality, concepts and methodology — Explanatory notes for the tables" section.

Table 2-10
Quarterly population estimates and factors of demographic growth, provincial perspective — Alberta

	Population at beginning period	Natural increase	Net interprovincial migration	Net international migration	Total net migration	Residual deviation	Total growth	Total growth
	number						percent	
2013								
July to September	4,025,074
April to June	3,982,240	8,556	13,791	20,487	34,278	..	42,834	1.08
January to March	3,948,242	6,928	13,438	13,632	27,070	..	33,998	0.86
2012								
October to December	3,923,016	7,102	11,533	6,591	18,124	..	25,226	0.64
July to September	3,888,739	8,521	13,915	11,841	25,756	..	34,277	0.88
April to June	3,856,988	8,214	8,338	15,199	23,537	..	31,751	0.82
January to March	3,830,778	6,688	10,720	8,802	19,522	..	26,210	0.68
2011								
October to December	3,812,298	6,865	5,117	6,498	11,615	..	18,480	0.48
July to September	3,790,191	8,287	3,477	10,343	13,820	..	22,107	0.58
April to June	3,768,845	8,034	3,954	9,331	13,285	-27	21,346	0.57
January to March	3,754,621	6,621	3,160	4,381	7,541	-62	14,224	0.38
2010								
October to December	3,747,504	6,784	1,330	-1,061	269	-64	7,117	0.19
July to September	3,732,573	8,108	-1	6,760	6,759	-64	14,931	0.40
April to June	3,715,456	8,136	803	8,116	8,919	-62	17,117	0.46
January to March	3,702,578	7,085	148	5,582	5,730	-63	12,878	0.35
2009								
October to December	3,694,520	6,821	-2,202	3,376	1,174	-63	8,058	0.22
July to September	3,679,092	8,810	-2,020	8,574	6,554	-64	15,428	0.42
April to June	3,659,414	8,221	1,731	9,663	11,394	-63	19,678	0.54
January to March	3,638,623	6,883	4,685	9,161	13,846	-62	20,791	0.57
2008								
October to December	3,619,298	6,746	4,111	8,404	12,515	-64	19,325	0.53
July to September	3,595,755	8,418	2,657	12,404	15,061	-64	23,543	0.65
April to June	3,567,398	7,895	7,215	13,185	20,400	-62	28,357	0.79
January to March	3,548,699	6,717	3,862	8,057	11,919	-63	18,699	0.53
2007								
October to December	3,533,289	6,936	2,035	6,375	8,410	-64	15,410	0.44
July to September	3,514,031	7,833	2,205	9,156	11,361	-64	19,258	0.55
April to June	3,490,747	7,805	4,677	10,739	15,416	-63	23,284	0.67
January to March	3,472,643	6,252	4,725	7,065	11,790	-62	18,104	0.52
2006								
October to December	3,453,730	6,294	7,678	4,877	12,555	-64	18,913	0.55
July to September	3,421,361	7,404	16,729	8,173	24,902	-63	32,369	0.95

Note(s): See "Data quality, concepts and methodology — Explanatory notes for the tables" section.

Table 2-11
Quarterly population estimates and factors of demographic growth, provincial perspective — British Columbia

	Population at beginning period	Natural increase	Net interprovincial migration	Net international migration	Total net migration	Residual deviation	Total growth	Total growth
	number						percent	
2013								
July to September	4,581,978
April to June	4,567,947	2,882	-1,258	12,407	11,149	..	14,031	0.31
January to March	4,558,900	1,990	-1,611	8,668	7,057	..	9,047	0.20
2012								
October to December	4,558,879	2,560	-2,234	-305	-2,539	..	21	0.00
July to September	4,543,308	3,914	-2,748	14,405	11,657	..	15,571	0.34
April to June	4,530,453	3,133	-572	10,294	9,722	..	12,855	0.28
January to March	4,522,712	2,068	-1,985	7,658	5,673	..	7,741	0.17
2011								
October to December	4,518,127	2,126	156	2,303	2,459	..	4,585	0.10
July to September	4,499,139	4,282	-310	15,016	14,706	..	18,988	0.42
April to June	4,488,643	3,499	73	8,144	8,217	1,220	10,496	0.23
January to March	4,482,338	2,258	780	6,082	6,862	2,815	6,305	0.14
2010								
October to December	4,483,677	2,526	1,105	-2,092	-987	2,878	-1,339	-0.03
July to September	4,465,924	3,925	1,463	15,243	16,706	2,878	17,753	0.40
April to June	4,454,248	3,379	2,031	9,113	11,144	2,847	11,676	0.26
January to March	4,441,657	2,672	1,613	11,121	12,734	2,815	12,591	0.28
2009								
October to December	4,431,701	2,928	2,048	7,858	9,906	2,878	9,956	0.22
July to September	4,410,679	4,263	3,036	16,601	19,637	2,878	21,022	0.48
April to June	4,395,638	3,908	3,117	10,862	13,979	2,846	15,041	0.34
January to March	4,382,189	2,454	1,471	12,340	13,811	2,816	13,449	0.31
2008								
October to December	4,371,250	2,719	2,195	8,903	11,098	2,878	10,939	0.25
July to September	4,349,412	4,173	3,212	17,330	20,542	2,877	21,838	0.50
April to June	4,331,948	3,375	2,815	14,121	16,936	2,847	17,464	0.40
January to March	4,319,805	1,912	2,627	10,451	13,078	2,847	12,143	0.28
2007								
October to December	4,312,048	2,864	3,074	4,696	7,770	2,877	7,757	0.18
July to September	4,290,988	4,014	6,127	13,797	19,924	2,878	21,060	0.49
April to June	4,276,777	3,532	4,337	9,189	13,526	2,847	14,211	0.33
January to March	4,265,161	1,931	3,238	9,262	12,500	2,815	11,616	0.27
2006								
October to December	4,258,216	2,271	3,511	4,041	7,552	2,878	6,945	0.16
July to September	4,241,691	3,688	3,919	11,796	15,715	2,878	16,525	0.39

Note(s): See "Data quality, concepts and methodology — Explanatory notes for the tables" section.

Table 2-12
Quarterly population estimates and factors of demographic growth, provincial perspective — Yukon

	Population at beginning period	Natural increase	Net interprovincial migration	Net international migration	Total net migration	Residual deviation	Total growth	Total growth
	number						percent	
2013								
July to September	36,700
April to June	36,629	68	-118	121	3	..	71	0.19
January to March	36,421	57	112	39	151	..	208	0.57
2012								
October to December	36,543	34	-86	-70	-156	..	-122	-0.33
July to September	36,247	82	130	84	214	..	296	0.82
April to June	35,841	68	184	154	338	..	406	1.13
January to March	35,654	57	10	120	130	..	187	0.52
2011								
October to December	35,609	34	30	-19	11	..	45	0.13
July to September	35,402	81	89	37	126	..	207	0.58
April to June	34,987	66	180	171	351	2	415	1.19
January to March	34,806	57	107	23	130	6	181	0.52
2010								
October to December	34,786	37	21	-33	-12	5	20	0.06
July to September	34,596	55	55	86	141	6	190	0.55
April to June	34,242	46	137	177	314	6	354	1.03
January to March	34,007	46	19	175	194	5	235	0.69
2009								
October to December	34,025	18	-6	-24	-30	6	-18	-0.05
July to September	33,732	42	175	81	256	5	293	0.87
April to June	33,583	65	9	81	90	6	149	0.44
January to March	33,408	57	4	119	123	5	175	0.52
2008								
October to December	33,309	55	88	-38	50	6	99	0.30
July to September	33,088	52	127	48	175	6	221	0.67
April to June	32,958	35	13	87	100	5	130	0.39
January to March	32,755	33	90	86	176	6	203	0.62
2007								
October to December	32,665	45	79	-29	50	5	90	0.28
July to September	32,557	40	53	21	74	6	108	0.33
April to June	32,277	55	154	76	230	5	280	0.87
January to March	32,319	23	-76	17	-59	6	-42	-0.13
2006								
October to December	32,363	45	-41	-42	-83	6	-44	-0.14
July to September	32,271	34	64	-1	63	5	92	0.29

Note(s): See "Data quality, concepts and methodology — Explanatory notes for the tables" section.

Table 2-13
Quarterly population estimates and factors of demographic growth, provincial perspective — Northwest Territories

	Population at beginning period	Natural increase	Net interprovincial migration	Net international migration	Total net migration	Residual deviation	Total growth	Total growth
	number						percent	
2013								
July to September	43,537
April to June	43,604	108	-249	74	-175	..	-67	-0.15
January to March	43,672	134	-255	53	-202	..	-68	-0.16
2012								
October to December	43,606	105	-73	34	-39	..	66	0.15
July to September	43,620	135	-166	17	-149	..	-14	-0.03
April to June	43,606	109	-136	41	-95	..	14	0.03
January to March	43,495	138	-63	36	-27	..	111	0.26
2011								
October to December	43,518	108	-144	13	-131	..	-23	-0.05
July to September	43,501	141	-153	29	-124	..	17	0.04
April to June	43,263	113	166	-27	139	14	238	0.55
January to March	43,258	140	-116	15	-101	34	5	0.01
2010								
October to December	43,298	136	-135	-7	-142	34	-40	-0.09
July to September	43,278	114	-94	34	-60	34	20	0.05
April to June	43,145	133	6	28	34	34	133	0.31
January to March	42,962	133	53	30	83	33	183	0.43
2009								
October to December	42,916	120	-46	6	-40	34	46	0.11
July to September	43,149	159	-364	6	-358	34	-233	-0.54
April to June	43,097	135	-82	33	-49	34	52	0.12
January to March	43,109	111	-61	-29	-90	33	-12	-0.03
2008								
October to December	43,285	119	-280	19	-261	34	-176	-0.41
July to September	43,350	141	-154	-18	-172	34	-65	-0.15
April to June	43,355	134	-200	95	-105	34	-5	-0.01
January to March	43,351	126	-92	4	-88	34	4	0.01
2007								
October to December	43,255	102	99	-71	28	34	96	0.22
July to September	43,374	169	-227	-27	-254	34	-119	-0.27
April to June	43,107	132	94	74	168	33	267	0.62
January to March	43,074	148	-75	-6	-81	34	33	0.08
2006								
October to December	43,193	104	-165	-24	-189	34	-119	-0.28
July to September	43,178	128	-75	-4	-79	34	15	0.03

Note(s): See "Data quality, concepts and methodology — Explanatory notes for the tables" section.

Table 2-14
Quarterly population estimates and factors of demographic growth, provincial perspective — Nunavut

	Population at beginning period	Natural increase	Net interprovincial migration	Net international migration	Total net migration	Residual deviation	Total growth	Total growth
	number						percent	
2013								
July to September	35,591
April to June	35,042	164	392	-7	385	..	549	1.57
January to March	35,144	171	-274	1	-273	..	-102	-0.29
2012								
October to December	35,009	185	-48	-2	-50	..	135	0.39
July to September	34,703	153	148	5	153	..	306	0.88
April to June	34,508	164	38	-7	31	..	195	0.57
January to March	34,367	170	-19	-10	-29	..	141	0.41
2011								
October to December	34,275	184	-91	-1	-92	..	92	0.27
July to September	34,196	154	-81	6	-75	..	79	0.23
April to June	33,923	164	92	7	99	-10	273	0.80
January to March	33,733	169	2	-5	-3	-24	190	0.56
2010								
October to December	33,571	180	-36	-6	-42	-24	162	0.48
July to September	33,353	169	15	10	25	-24	218	0.65
April to June	33,139	171	15	4	19	-24	214	0.65
January to March	32,923	176	15	2	17	-23	216	0.66
2009								
October to December	32,815	168	-67	-18	-85	-25	108	0.33
July to September	32,600	207	-16	0	-16	-24	215	0.66
April to June	32,387	164	21	4	25	-24	213	0.66
January to March	32,063	176	117	8	125	-23	324	1.01
2008								
October to December	31,963	143	-59	-8	-67	-24	100	0.31
July to September	31,892	154	-114	7	-107	-24	71	0.22
April to June	31,682	196	-28	18	-10	-24	210	0.66
January to March	31,615	165	-108	-14	-122	-24	67	0.21
2007								
October to December	31,561	163	-70	-63	-133	-24	54	0.17
July to September	31,395	173	-84	53	-31	-24	166	0.53
April to June	31,183	171	7	10	17	-24	212	0.68
January to March	30,952	158	40	9	49	-24	231	0.75
2006								
October to December	30,877	130	-72	-7	-79	-24	75	0.24
July to September	30,812	177	-132	-4	-136	-24	65	0.21

Note(s): See "Data quality, concepts and methodology — Explanatory notes for the tables" section.

Table 3-1
Quarterly estimates of components of demographic growth, provincial perspective — Canada

	Natural increase		Interprovincial migration		International migration				Residual deviation	
	Births	Deaths	In-migrants	Out-migrants	Immigrants	Emigrants	Returning emigrants	Net temporary emigrants		Net non-permanent residents
	number									
2013										
April to June	97,515	62,090	108,159	108,159	75,440	13,086	10,987	5,062	29,304	..
January to March	91,235	69,003	73,990	73,990	58,246	12,651	5,970	3,800	14,324	..
2012										
October to December	93,941	63,436	54,705	54,705	62,334	12,753	6,084	3,830	-25,502	..
July to September	101,131	58,712	102,400	102,400	66,927	18,620	13,604	5,720	31,215	..
April to June	96,033	60,750	81,143	81,143	73,044	13,037	10,987	5,062	27,612	..
January to March	90,324	66,149	64,026	64,026	55,587	12,607	5,970	3,800	13,487	..
2011										
October to December	91,731	60,900	49,813	49,813	59,608	12,707	6,084	3,830	-10,792	..
July to September	100,674	56,846	85,365	85,365	71,876	18,558	13,604	5,720	25,669	..
April to June	95,678	59,193	72,491	72,491	67,694	13,005	10,987	5,062	18,693	3,666
January to March	89,553	65,135	58,571	58,571	49,568	12,573	5,969	3,799	9,621	8,463
2010										
October to December	92,957	62,912	50,002	50,002	57,552	12,676	6,084	3,830	-34,064	8,649
July to September	98,763	57,728	76,021	76,021	84,292	18,512	13,603	5,720	20,130	8,651
April to June	95,122	58,258	74,544	74,544	80,797	12,413	10,403	5,086	13,307	8,555
January to March	90,371	61,177	62,564	62,564	58,041	11,031	5,720	3,831	12,657	8,461
2009										
October to December	92,680	61,804	44,902	44,902	56,353	12,077	5,939	3,887	-17,599	8,651
July to September	101,200	55,899	77,224	77,224	75,390	16,814	12,353	5,604	26,166	8,649
April to June	96,573	58,091	71,277	71,277	69,651	10,861	9,132	4,942	23,915	8,556
January to March	90,410	62,624	64,164	64,164	50,783	10,900	5,564	3,907	23,601	8,462
2008										
October to December	91,866	61,347	51,448	51,448	53,543	13,215	5,239	3,816	-8,145	8,650
July to September	100,441	55,646	90,957	90,957	71,312	20,080	11,915	5,749	32,492	8,648
April to June	95,409	58,740	82,653	82,653	69,247	14,303	9,726	4,981	31,118	8,558
January to March	90,170	62,884	63,981	63,981	53,145	12,615	5,534	3,825	16,125	8,556
2007										
October to December	90,681	59,863	55,440	55,440	55,573	13,539	5,619	3,847	-17,293	8,646
July to September	97,435	55,038	99,163	99,163	71,657	20,523	12,552	5,755	21,472	8,652
April to June	93,338	56,847	77,629	77,629	61,649	14,695	9,727	4,571	22,743	8,555
January to March	86,410	63,469	60,920	60,920	47,875	12,728	5,559	3,596	16,994	8,463
2006										
October to December	86,920	59,303	62,974	62,974	58,245	14,001	5,371	3,551	-27,461	8,649
July to September	94,248	54,206	103,539	103,539	70,356	20,516	18,817	6,688	15,121	8,651

Note(s): See "Data quality, concepts and methodology — Explanatory notes for the tables" section.

Table 3-2
Quarterly estimates of components of demographic growth, provincial perspective — Newfoundland and Labrador

	Natural increase		Interprovincial migration		International migration					Residual deviation
	Births	Deaths	In-migrants	Out-migrants	Immigrants	Emigrants	Returning emigrants	Net temporary emigrants	Net non-permanent residents	
	number									
2013										
April to June	1,168	1,213	2,782	3,805	255	60	60	34	-141	..
January to March	1,060	1,242	2,290	2,414	76	45	34	26	203	..
2012										
October to December	1,073	1,120	1,478	1,364	184	52	34	26	-106	..
July to September	1,119	1,131	2,547	2,389	165	83	75	38	547	..
April to June	1,176	1,184	2,562	2,191	227	60	60	34	490	..
January to March	1,069	1,211	2,014	2,453	157	45	34	26	90	..
2011										
October to December	1,084	1,093	1,260	1,094	186	51	34	26	-89	..
July to September	1,131	1,103	2,337	1,890	172	83	75	38	317	..
April to June	1,188	1,152	2,171	2,121	197	60	60	34	319	-235
January to March	1,075	1,178	2,012	2,081	130	45	34	26	54	-543
2010										
October to December	1,233	1,152	1,698	1,345	184	51	34	26	-258	-556
July to September	1,279	1,059	1,904	2,208	188	83	75	38	258	-555
April to June	1,219	1,137	2,108	2,246	200	30	42	35	127	-549
January to March	1,169	1,133	2,392	2,154	142	20	23	26	-15	-543
2009										
October to December	1,235	1,132	1,806	1,229	145	23	24	26	-55	-555
July to September	1,322	1,030	2,692	1,811	193	67	50	37	358	-555
April to June	1,205	1,086	2,973	1,981	154	55	59	33	240	-550
January to March	1,153	1,143	2,404	2,398	114	53	37	26	-130	-543
2008										
October to December	1,191	1,133	1,929	1,670	138	67	34	26	-159	-555
July to September	1,376	998	2,956	2,336	165	127	77	39	238	-555
April to June	1,193	1,166	2,568	3,058	174	59	67	33	85	-549
January to March	1,138	1,242	2,233	2,679	150	57	38	26	138	-549
2007										
October to December	1,111	1,063	1,959	1,844	167	61	39	26	-89	-556
July to September	1,222	1,048	2,999	2,706	144	136	87	39	115	-555
April to June	1,119	1,131	2,327	3,118	126	43	44	32	77	-549
January to March	1,101	1,263	1,601	3,272	109	36	25	25	12	-543
2006										
October to December	1,092	1,174	1,637	2,195	154	42	24	24	-17	-555
July to September	1,183	1,109	2,841	3,888	127	83	84	45	67	-555

Note(s): See "Data quality, concepts and methodology — Explanatory notes for the tables" section.

Table 3-3
Quarterly estimates of components of demographic growth, provincial perspective — Prince Edward Island

	Natural increase		Interprovincial migration		International migration					Residual deviation	
	Births	Deaths	In-migrants	Out-migrants	Immigrants	Emigrants	Returning emigrants	Net temporary emigrants	Net non-permanent residents		
	number										
2013											
April to June	373	302	1,182	1,339	254	37	15	10	276	..	
January to March	333	361	866	926	121	34	8	7	-138	..	
2012											
October to December	356	321	319	771	181	40	8	8	-15	..	
July to September	378	303	779	1,184	307	50	19	11	154	..	
April to June	374	296	729	983	333	37	15	10	273	..	
January to March	334	354	682	648	284	34	8	7	-65	..	
2011											
October to December	357	315	302	648	233	40	8	8	21	..	
July to September	377	296	907	959	529	50	19	11	103	..	
April to June	371	291	851	790	543	37	15	10	163	46	
January to March	331	347	534	546	433	33	8	7	-27	107	
2010											
October to December	363	273	434	494	467	40	8	8	-65	109	
July to September	363	265	675	874	1,166	50	19	11	155	109	
April to June	348	276	811	798	572	5	7	10	120	107	
January to March	329	302	716	603	388	4	3	7	-31	107	
2009											
October to December	361	325	360	484	314	3	4	7	-109	109	
July to September	369	274	822	764	518	12	9	11	175	109	
April to June	400	302	636	733	599	9	17	10	193	108	
January to March	327	367	687	795	328	11	10	7	6	106	
2008											
October to December	366	320	347	728	191	13	9	6	-63	109	
July to September	378	285	852	802	605	25	21	11	92	109	
April to June	362	291	952	795	325	14	24	10	118	108	
January to March	377	305	609	729	333	19	13	7	22	107	
2007											
October to December	358	299	487	637	204	19	13	7	-14	109	
July to September	350	271	773	951	420	29	30	11	114	109	
April to June	344	244	684	900	219	15	14	9	21	108	
January to March	337	333	581	736	149	9	9	6	47	107	
2006											
October to December	347	299	422	581	170	12	8	6	-52	109	
July to September	400	267	798	1,117	200	26	29	12	134	109	

Note(s): See "Data quality, concepts and methodology — Explanatory notes for the tables" section.

Table 3-4
Quarterly estimates of components of demographic growth, provincial perspective — Nova Scotia

	Natural increase		Interprovincial migration		International migration				Residual deviation	
	Births	Deaths	In-migrants	Out-migrants	Immigrants	Emigrants	Returning emigrants	Net temporary emigrants		Net non-permanent residents
	number									
2013										
April to June	2,216	2,282	5,026	6,002	751	252	180	64	-493	..
January to March	2,088	2,427	3,180	4,973	411	193	97	48	1	..
2012										
October to December	2,127	2,112	2,505	3,615	551	216	100	48	-125	..
July to September	2,393	2,020	4,954	6,952	529	360	224	71	648	..
April to June	2,233	2,234	3,843	4,266	710	250	180	64	139	..
January to March	2,097	2,371	3,645	4,343	551	193	97	48	345	..
2011										
October to December	2,134	2,064	2,381	3,416	497	214	100	48	124	..
July to September	2,395	1,972	4,541	5,251	597	359	224	71	923	..
April to June	2,235	2,182	3,877	3,898	572	249	180	64	189	108
January to March	2,098	2,314	3,243	3,434	470	193	97	48	187	251
2010										
October to December	2,157	2,154	2,755	2,671	479	213	100	48	-242	255
July to September	2,328	1,971	4,678	4,591	766	357	224	71	1,331	256
April to June	2,236	2,068	4,072	3,798	694	145	182	64	312	253
January to March	2,150	2,102	3,852	4,226	458	151	99	48	324	250
2009										
October to December	2,224	2,161	2,669	2,314	483	158	104	48	-221	256
July to September	2,486	1,971	4,579	4,222	778	372	215	71	1,117	256
April to June	2,223	1,975	3,822	3,872	629	166	181	62	243	253
January to March	2,056	2,120	3,519	3,782	498	158	110	48	226	250
2008										
October to December	2,179	2,100	2,987	2,871	491	195	104	47	54	255
July to September	2,472	1,878	5,139	5,693	828	376	236	71	760	256
April to June	2,293	2,100	4,320	4,812	732	170	217	63	90	253
January to March	2,244	2,142	3,605	3,864	600	173	123	48	76	253
2007										
October to December	2,191	2,097	2,973	3,012	581	177	126	49	-180	256
July to September	2,386	1,901	5,092	6,096	755	347	281	72	430	256
April to June	2,297	2,035	3,668	4,117	645	224	196	57	-11	253
January to March	1,994	2,320	2,699	3,781	542	193	112	45	32	250
2006										
October to December	2,117	2,060	3,141	4,070	632	229	109	44	-177	255
July to September	2,267	1,957	5,406	7,072	896	457	380	84	16	256

Note(s): See "Data quality, concepts and methodology — Explanatory notes for the tables" section.

Table 3-5
Quarterly estimates of components of demographic growth, provincial perspective — New Brunswick

	Natural increase		Interprovincial migration		International migration				Residual deviation	
	Births	Deaths	In-migrants	Out-migrants	Immigrants	Emigrants	Returning emigrants	Net temporary emigrants		Net non-permanent residents
	number									
2013										
April to June	1,690	1,715	3,622	4,000	581	89	107	50	269	..
January to March	1,668	1,802	2,819	3,353	353	67	59	38	-232	..
2012										
October to December	1,707	1,571	1,676	2,377	492	78	59	38	-225	..
July to September	1,956	1,547	3,384	4,987	592	122	132	57	235	..
April to June	1,712	1,677	2,687	3,122	575	89	107	50	397	..
January to March	1,688	1,755	2,159	2,911	554	67	59	38	41	..
2011										
October to December	1,725	1,531	2,025	2,044	615	78	59	38	-153	..
July to September	1,976	1,508	3,173	3,773	511	122	132	57	285	..
April to June	1,724	1,638	2,774	2,807	464	89	107	50	232	33
January to March	1,699	1,708	2,353	2,527	377	67	58	38	-19	75
2010										
October to December	1,748	1,604	1,930	1,781	428	78	59	38	-87	78
July to September	1,969	1,517	3,110	3,210	717	121	132	57	304	77
April to June	1,847	1,593	2,763	2,560	555	92	145	50	79	76
January to March	1,791	1,598	2,819	2,576	425	95	79	38	19	76
2009										
October to December	1,744	1,654	1,933	1,820	346	103	82	39	-200	77
July to September	2,008	1,461	3,368	3,356	602	244	173	56	154	78
April to June	1,864	1,570	2,854	2,824	588	81	111	50	-27	76
January to March	1,775	1,681	2,561	2,514	377	70	68	39	389	76
2008										
October to December	1,799	1,668	1,981	1,761	343	87	65	38	62	77
July to September	2,002	1,429	3,872	4,406	610	160	145	57	401	77
April to June	1,817	1,645	2,871	3,174	443	111	144	50	123	77
January to March	1,784	1,708	2,447	2,697	460	129	83	38	118	76
2007										
October to December	1,723	1,606	2,336	2,421	397	111	84	38	-132	77
July to September	1,945	1,500	4,023	4,293	497	259	186	56	243	78
April to June	1,798	1,503	3,170	3,290	375	107	114	46	51	76
January to March	1,680	1,715	2,369	2,674	374	72	64	36	174	76
2006										
October to December	1,649	1,525	2,062	2,435	397	103	62	35	-106	77
July to September	2,000	1,451	3,409	5,243	470	178	219	67	253	77

Note(s): See "Data quality, concepts and methodology — Explanatory notes for the tables" section.

Table 3-6
Quarterly estimates of components of demographic growth, provincial perspective — Quebec

	Natural increase		Interprovincial migration		International migration				Residual deviation	
	Births	Deaths	In-migrants	Out-migrants	Immigrants	Emigrants	Returning emigrants	Net temporary emigrants		Net non-permanent residents
	number									
2013										
April to June	22,400	14,650	7,136	11,889	16,035	2,232	1,605	601	7,984	..
January to March	20,700	17,250	4,762	5,703	11,694	1,980	871	451	1,163	..
2012										
October to December	22,400	16,000	3,561	5,549	12,927	1,928	889	455	-7,230	..
July to September	23,550	14,250	8,753	10,639	15,291	3,104	1,988	679	2,156	..
April to June	21,800	14,550	5,846	8,056	15,899	2,224	1,605	601	6,885	..
January to March	20,950	16,000	3,225	5,418	10,933	1,972	871	451	2,905	..
2011										
October to December	21,644	14,681	3,500	4,931	12,274	1,921	889	455	-3,953	..
July to September	23,917	13,628	7,608	8,689	15,147	3,095	1,988	679	-179	..
April to June	22,176	14,287	5,458	7,627	14,198	2,218	1,605	601	6,351	-438
January to March	20,846	16,334	3,843	4,987	10,122	1,968	871	450	2,080	-1,012
2010										
October to December	21,794	15,244	3,760	4,499	12,572	1,916	889	455	-5,776	-1,033
July to September	23,795	14,260	6,823	7,534	16,504	3,087	1,988	679	1,021	-1,034
April to June	22,017	14,248	5,897	7,590	14,058	2,028	1,578	604	5,771	-1,023
January to March	20,846	15,054	4,129	5,334	10,847	1,518	868	454	2,297	-1,011
2009										
October to December	21,797	15,072	3,759	3,744	11,658	1,749	901	461	-3,680	-1,034
July to September	23,773	13,382	7,263	7,638	14,958	2,425	1,874	665	3,143	-1,034
April to June	22,217	14,014	5,158	7,606	13,482	1,802	1,304	586	7,177	-1,022
January to March	21,080	15,303	4,059	5,498	9,391	1,409	795	464	4,271	-1,011
2008										
October to December	21,686	14,674	3,542	4,988	10,038	1,902	748	453	-2,241	-1,034
July to September	23,693	13,318	7,548	9,634	13,597	2,856	1,702	682	3,812	-1,034
April to June	21,887	14,000	5,699	10,098	12,074	2,249	1,384	590	6,175	-1,023
January to March	20,604	15,120	3,812	5,588	9,500	1,619	788	454	1,895	-1,022
2007										
October to December	20,708	14,130	3,446	5,437	10,404	1,893	799	457	-2,133	-1,034
July to September	22,450	12,981	7,145	10,661	13,892	2,916	1,786	683	1,216	-1,034
April to June	21,444	13,877	4,972	9,637	11,554	2,327	1,782	543	4,111	-1,022
January to March	19,785	15,534	3,223	5,726	9,363	1,606	1,019	427	1,697	-1,012
2006										
October to December	20,167	14,018	4,042	6,471	10,218	1,836	984	421	-5,163	-1,033
July to September	21,712	12,988	7,460	10,728	13,945	2,988	3,447	794	921	-1,034

Note(s): See "Data quality, concepts and methodology — Explanatory notes for the tables" section.

Table 3-7
Quarterly estimates of components of demographic growth, provincial perspective — Ontario

	Natural increase		Interprovincial migration		International migration				Residual deviation	
	Births	Deaths	In-migrants	Out-migrants	Immigrants	Emigrants	Returning emigrants	Net temporary emigrants		Net non-permanent residents
	number									
2013										
April to June	36,107	23,226	22,861	27,709	30,337	5,853	5,328	1,902	3,949	..
January to March	33,819	25,755	13,542	20,365	24,805	5,737	2,894	1,428	1,387	..
2012										
October to December	34,800	23,174	11,032	15,093	24,738	5,595	2,950	1,439	-10,724	..
July to September	37,736	21,600	22,259	27,850	25,938	8,356	6,597	2,150	12,877	..
April to June	35,755	22,506	16,488	21,379	27,756	5,832	5,328	1,902	9,768	..
January to March	33,492	24,932	12,539	16,464	20,727	5,717	2,894	1,428	5,022	..
2011										
October to December	34,414	22,431	10,728	12,360	24,062	5,576	2,950	1,439	-5,052	..
July to September	37,271	20,902	20,704	20,867	28,742	8,328	6,597	2,150	12,478	..
April to June	35,336	21,769	15,857	17,801	26,712	5,818	5,328	1,902	8,254	2,646
January to March	33,114	24,093	12,362	13,365	19,947	5,701	2,894	1,428	6,165	6,106
2010										
October to December	34,779	23,583	11,178	13,128	23,471	5,562	2,950	1,439	-12,946	6,242
July to September	36,219	21,412	18,920	18,030	34,885	8,308	6,597	2,150	13,184	6,242
April to June	35,041	21,249	17,523	18,976	35,311	5,665	4,938	1,911	8,615	6,173
January to March	33,507	23,038	13,444	14,840	24,448	5,092	2,718	1,440	6,216	6,106
2009										
October to December	33,987	22,785	10,431	10,956	23,834	5,565	2,820	1,462	-13,021	6,242
July to September	37,236	20,530	18,343	19,631	32,979	7,833	5,863	2,106	10,985	6,242
April to June	35,865	21,723	15,149	18,412	29,090	4,872	4,141	1,857	10,410	6,174
January to March	33,288	23,436	12,767	16,924	20,963	5,191	2,523	1,470	7,739	6,106
2008										
October to December	34,111	22,765	9,541	14,794	23,572	6,122	2,376	1,434	-12,889	6,242
July to September	37,062	20,435	20,001	22,929	31,798	9,761	5,402	2,160	11,201	6,241
April to June	35,687	21,716	17,506	21,008	32,002	6,932	4,618	1,872	10,836	6,174
January to March	33,932	23,140	12,655	16,113	23,531	6,402	2,626	1,438	6,394	6,174
2007										
October to December	34,241	22,496	10,797	14,385	26,227	6,438	2,667	1,447	-15,701	6,242
July to September	36,687	20,150	20,760	24,962	33,291	9,972	5,958	2,164	9,183	6,242
April to June	34,932	21,096	15,805	19,256	29,478	7,078	4,095	1,718	8,990	6,174
January to March	32,577	23,599	12,144	14,329	22,344	6,279	2,342	1,352	6,183	6,106
2006										
October to December	33,283	22,088	11,460	17,417	29,444	6,677	2,262	1,335	-20,717	6,241
July to September	36,188	20,028	19,382	27,836	34,179	9,888	7,924	2,514	7,587	6,242

Note(s): See "Data quality, concepts and methodology — Explanatory notes for the tables" section.

Table 3-8
Quarterly estimates of components of demographic growth, provincial perspective — Manitoba

	Natural increase		Interprovincial migration		International migration				Residual deviation	
	Births	Deaths	In-migrants	Out-migrants	Immigrants	Emigrants	Returning emigrants	Net temporary emigrants		Net non-permanent residents
	number									
2013										
April to June	4,087	2,556	4,194	5,824	3,567	382	388	115	737	..
January to March	3,815	2,866	3,442	4,238	2,610	304	211	86	384	..
2012										
October to December	3,913	2,633	2,463	3,018	3,251	480	215	88	83	..
July to September	4,211	2,510	4,376	5,616	3,234	528	480	130	696	..
April to June	4,022	2,506	3,412	4,593	3,581	381	388	115	674	..
January to March	3,755	2,808	2,581	3,336	3,246	303	211	86	61	..
2011										
October to December	3,849	2,580	2,082	2,935	3,737	478	215	88	163	..
July to September	4,138	2,459	3,368	4,791	4,523	525	480	130	-68	..
April to June	3,946	2,455	2,893	3,883	4,615	380	388	115	105	473
January to March	3,687	2,752	2,713	3,628	3,089	303	211	86	-12	1,093
2010										
October to December	3,961	2,735	2,367	2,724	3,458	478	215	88	-372	1,116
July to September	4,020	2,322	3,112	4,367	4,676	525	480	130	16	1,117
April to June	4,023	2,485	3,368	4,122	4,451	350	335	116	213	1,104
January to March	3,782	2,443	3,088	3,312	3,223	287	184	87	-347	1,092
2009										
October to December	4,004	2,619	1,946	2,547	2,860	380	191	88	-171	1,117
July to September	4,143	2,361	3,384	4,217	3,583	519	397	127	173	1,116
April to June	3,984	2,487	2,942	3,382	4,325	287	390	112	269	1,105
January to March	3,809	2,505	2,822	3,462	2,752	273	237	88	128	1,092
2008										
October to December	3,786	2,580	2,427	2,622	2,622	425	224	88	-74	1,117
July to September	4,152	2,402	3,725	5,561	3,264	541	509	131	-102	1,116
April to June	3,869	2,495	3,230	4,378	3,270	375	380	114	838	1,105
January to March	3,678	2,596	2,827	3,579	2,063	253	216	87	90	1,104
2007										
October to December	3,721	2,564	2,385	2,838	2,305	379	220	87	99	1,116
July to September	4,123	2,403	4,269	5,619	3,101	605	491	131	178	1,117
April to June	3,821	2,310	2,939	4,207	3,236	341	266	104	809	1,104
January to March	3,620	2,681	2,850	3,228	2,313	248	151	82	326	1,093
2006										
October to December	3,534	2,671	2,659	3,694	2,188	364	147	81	-76	1,116
July to September	3,867	2,300	4,042	6,861	3,052	673	513	151	11	1,117

Note(s): See "Data quality, concepts and methodology — Explanatory notes for the tables" section.

Table 3-9
Quarterly estimates of components of demographic growth, provincial perspective — Saskatchewan

	Natural increase		Interprovincial migration		International migration				Residual deviation	
	Births	Deaths	In-migrants	Out-migrants	Immigrants	Emigrants	Returning emigrants	Net temporary emigrants		Net non-permanent residents
	number									
2013										
April to June	3,879	2,329	8,053	6,846	2,874	155	183	57	1,293	..
January to March	3,689	2,517	4,690	5,029	1,916	141	100	43	1,296	..
2012										
October to December	3,453	2,379	3,554	3,893	2,353	131	101	43	59	..
July to September	3,897	2,265	7,178	5,892	2,666	182	226	64	1,263	..
April to June	3,770	2,294	6,301	5,130	3,339	155	183	57	812	..
January to March	3,581	2,481	4,360	4,295	2,819	141	100	43	686	..
2011										
October to December	3,341	2,339	3,438	3,356	2,572	131	101	43	610	..
July to September	3,774	2,228	5,287	4,727	2,717	182	226	64	846	..
April to June	3,663	2,256	5,093	4,512	2,248	155	183	57	492	-166
January to March	3,493	2,444	3,706	4,131	1,418	140	100	43	179	-383
2010										
October to December	3,570	2,478	3,098	2,863	1,603	131	101	43	-393	-391
July to September	3,712	2,215	4,705	4,551	2,283	181	225	64	378	-391
April to June	3,541	2,217	4,912	4,356	2,184	128	175	57	196	-387
January to March	3,473	2,295	4,363	3,606	1,545	124	96	44	72	-383
2009										
October to December	3,530	2,313	3,061	2,598	1,476	158	100	44	-40	-391
July to September	3,695	2,203	4,901	4,524	1,999	298	208	63	631	-392
April to June	3,585	2,197	4,499	4,019	2,115	127	177	56	550	-387
January to March	3,431	2,259	4,321	3,983	1,300	111	109	44	763	-383
2008										
October to December	3,246	2,387	3,368	2,743	1,310	115	102	44	331	-391
July to September	3,635	2,168	5,939	4,399	1,203	267	232	65	652	-391
April to June	3,493	2,154	4,984	4,622	1,350	143	151	57	523	-387
January to March	3,363	2,534	4,293	3,611	972	106	86	43	364	-387
2007										
October to December	3,264	2,354	3,920	2,946	854	87	87	43	-100	-392
July to September	3,510	2,251	7,000	4,847	1,115	182	195	64	361	-391
April to June	3,370	2,133	5,615	3,924	891	110	146	51	341	-387
January to March	3,104	2,324	4,147	3,720	656	104	84	40	190	-383
2006										
October to December	2,844	2,425	4,045	3,516	851	122	80	41	-292	-391
July to September	3,205	2,111	5,230	6,328	697	258	282	75	-10	-391

Note(s): See "Data quality, concepts and methodology — Explanatory notes for the tables" section.

Table 3-10
Quarterly estimates of components of demographic growth, provincial perspective — Alberta

	Natural increase		Interprovincial migration		International migration				Residual deviation	
	Births	Deaths	In-migrants	Out-migrants	Immigrants	Emigrants	Returning emigrants	Net temporary emigrants		Net non-permanent residents
	number									
2013										
April to June	14,136	5,580	34,229	20,438	10,543	1,469	1,569	628	10,472	..
January to March	12,946	6,018	26,714	13,276	8,094	1,617	852	471	6,774	..
2012										
October to December	12,669	5,567	19,910	8,377	9,103	1,519	868	475	-1,386	..
July to September	13,834	5,313	31,963	18,048	9,086	2,177	1,942	710	3,700	..
April to June	13,583	5,369	23,619	15,281	10,386	1,462	1,569	628	5,334	..
January to March	12,475	5,787	21,569	10,849	7,520	1,611	852	471	2,512	..
2011										
October to December	12,223	5,358	14,677	9,560	7,690	1,514	868	475	-71	..
July to September	13,404	5,117	20,972	17,495	8,970	2,169	1,942	710	2,310	..
April to June	13,210	5,176	19,013	15,059	8,389	1,459	1,569	628	1,460	-27
January to March	12,203	5,582	15,768	12,608	5,916	1,607	852	471	-309	-62
2010										
October to December	12,222	5,438	12,428	11,098	6,667	1,511	868	475	-6,610	-64
July to September	13,218	5,110	16,766	16,767	9,485	2,165	1,942	710	-1,792	-64
April to June	13,165	5,029	17,251	16,448	9,729	1,531	1,216	630	-668	-62
January to March	12,263	5,178	15,008	14,860	6,762	1,247	669	476	-126	-63
2009										
October to December	12,397	5,576	9,436	11,638	5,929	1,279	695	483	-1,486	-63
July to September	13,697	4,887	16,263	18,283	7,585	2,040	1,444	695	2,280	-64
April to June	13,319	5,098	18,658	16,927	7,739	1,350	1,182	612	2,704	-63
January to March	12,310	5,427	18,711	14,026	5,764	1,335	720	485	4,497	-62
2008										
October to December	12,241	5,495	15,137	11,026	5,201	1,601	678	474	4,600	-64
July to September	13,438	5,020	22,732	20,075	6,455	2,643	1,543	714	7,763	-64
April to June	13,075	5,180	24,023	16,808	7,196	1,703	1,059	618	7,251	-62
January to March	12,102	5,385	18,572	14,710	5,352	1,480	603	475	4,057	-63
2007										
October to December	12,095	5,159	15,614	13,579	5,085	1,454	612	477	2,609	-64
July to September	12,677	4,844	26,228	24,023	6,171	2,504	1,367	715	4,837	-64
April to June	12,612	4,807	21,947	17,270	5,595	1,599	1,531	567	5,779	-63
January to March	11,644	5,392	18,625	13,900	4,015	1,433	875	446	4,054	-62
2006										
October to December	11,300	5,006	20,628	12,950	4,832	1,499	846	441	1,139	-64
July to September	12,002	4,598	34,456	17,727	5,714	2,290	2,963	830	2,616	-63

Note(s): See "Data quality, concepts and methodology — Explanatory notes for the tables" section.

Table 3-11
Quarterly estimates of components of demographic growth, provincial perspective — British Columbia

	Natural increase		Interprovincial migration		International migration				Residual deviation	
	Births	Deaths	In-migrants	Out-migrants	Immigrants	Emigrants	Returning emigrants	Net temporary emigrants		Net non-permanent residents
	number									
2013										
April to June	10,962	8,080	17,172	18,430	10,106	2,541	1,548	1,584	4,878	..
January to March	10,638	8,648	10,287	11,898	8,102	2,516	841	1,190	3,431	..
2012										
October to December	10,963	8,403	7,593	9,827	8,468	2,700	857	1,198	-5,732	..
July to September	11,550	7,636	14,852	17,600	9,029	3,638	1,916	1,791	8,889	..
April to June	11,115	7,982	14,324	14,896	10,087	2,531	1,548	1,584	2,774	..
January to March	10,405	8,337	10,024	12,009	8,658	2,507	841	1,190	1,856	..
2011										
October to December	10,482	8,356	8,834	8,678	7,619	2,690	857	1,198	-2,285	..
July to September	11,779	7,497	15,411	15,721	9,882	3,625	1,916	1,791	8,634	..
April to June	11,337	7,838	12,896	12,823	9,671	2,524	1,548	1,584	1,033	1,220
January to March	10,531	8,273	10,899	10,119	7,614	2,499	841	1,190	1,316	2,815
2010										
October to December	10,654	8,128	9,639	8,534	8,153	2,682	857	1,198	-7,222	2,878
July to September	11,386	7,461	14,420	12,957	13,508	3,615	1,916	1,791	5,225	2,878
April to June	11,218	7,839	14,517	12,486	12,895	2,431	1,776	1,592	-1,535	2,847
January to March	10,568	7,896	11,474	9,861	9,629	2,488	977	1,199	4,202	2,815
2009										
October to December	10,918	7,990	8,899	6,851	9,231	2,647	1,014	1,217	1,477	2,878
July to September	11,937	7,674	14,579	11,543	12,116	2,989	2,109	1,754	7,119	2,878
April to June	11,428	7,520	13,488	10,371	10,848	2,094	1,562	1,547	2,093	2,846
January to March	10,710	8,256	11,143	9,672	9,244	2,275	952	1,224	5,643	2,816
2008										
October to December	10,814	8,095	9,479	7,284	9,569	2,673	896	1,194	2,305	2,878
July to September	11,738	7,565	16,951	13,739	12,714	3,293	2,038	1,799	7,670	2,877
April to June	11,238	7,863	15,382	12,567	11,592	2,517	1,678	1,558	4,926	2,847
January to March	10,486	8,574	11,851	9,224	10,127	2,353	955	1,197	2,919	2,847
2007										
October to December	10,841	7,977	10,587	7,513	9,293	2,895	969	1,204	-1,467	2,877
July to September	11,577	7,563	19,576	13,449	12,208	3,525	2,165	1,802	4,751	2,878
April to June	11,123	7,591	15,164	10,827	9,497	2,836	1,533	1,430	2,425	2,847
January to March	10,108	8,177	11,705	8,467	7,972	2,734	876	1,126	4,274	2,815
2006										
October to December	10,197	7,926	12,150	8,639	9,321	3,102	847	1,112	-1,913	2,878
July to September	10,951	7,263	19,163	15,244	11,021	3,648	2,965	2,094	3,552	2,878

Note(s): See "Data quality, concepts and methodology — Explanatory notes for the tables" section.

Table 3-12
Quarterly estimates of components of demographic growth, provincial perspective — Yukon

	Natural increase		Interprovincial migration		International migration				Residual deviation	
	Births	Deaths	In-migrants	Out-migrants	Immigrants	Emigrants	Returning emigrants	Net temporary emigrants		Net non-permanent residents
	number									
2013										
April to June	120	52	574	692	85	3	4	6	41	..
January to March	95	38	475	363	39	3	3	3	3	..
2012										
October to December	103	69	250	336	45	3	3	3	-112	..
July to September	122	40	512	382	43	6	5	6	48	..
April to June	118	50	518	334	104	3	4	6	55	..
January to March	94	37	413	403	87	3	3	3	36	..
2011										
October to December	101	67	241	211	79	3	3	3	-95	..
July to September	121	40	352	263	61	6	5	6	-17	..
April to June	116	50	492	312	62	3	4	6	114	2
January to March	93	36	370	263	35	3	3	3	-9	6
2010										
October to December	92	55	281	260	41	3	3	3	-71	5
July to September	103	48	334	279	76	6	5	6	17	6
April to June	90	44	483	346	100	5	8	5	79	6
January to March	97	51	264	245	133	4	4	3	45	5
2009										
October to December	91	73	232	238	43	9	4	3	-59	6
July to September	92	50	439	264	57	8	9	6	29	5
April to June	103	38	331	322	39	6	7	6	47	6
January to March	97	40	350	346	34	4	3	3	89	5
2008										
October to December	103	48	260	172	40	4	3	3	-74	6
July to September	97	45	507	380	21	7	8	6	32	6
April to June	87	52	301	288	27	7	1	5	71	5
January to March	86	53	375	285	22	8	0	3	75	6
2007										
October to December	84	39	340	261	19	6	0	3	-39	5
July to September	92	52	460	407	29	13	2	5	8	6
April to June	104	49	386	232	14	3	3	4	66	5
January to March	75	52	277	353	21	2	1	3	0	6
2006										
October to December	94	49	208	249	12	3	2	3	-50	6
July to September	81	47	487	423	8	3	6	7	-5	5

Note(s): See "Data quality, concepts and methodology — Explanatory notes for the tables" section.

Table 3-13
Quarterly estimates of components of demographic growth, provincial perspective — Northwest Territories

	Natural increase		Interprovincial migration		International migration					Residual deviation
	Births	Deaths	In-migrants	Out-migrants	Immigrants	Emigrants	Returning emigrants	Net temporary emigrants	Net non-permanent residents	
number										
2013										
April to June	155	47	651	900	50	10	0	7	41	..
January to March	179	45	642	897	23	8	0	6	44	..
2012										
October to December	154	49	261	334	39	8	0	6	9	..
July to September	189	54	550	716	41	11	0	8	-5	..
April to June	154	45	452	588	45	10	0	7	13	..
January to March	181	43	516	579	41	8	0	6	9	..
2011										
October to December	156	48	290	434	36	8	0	6	-9	..
July to September	195	54	561	714	19	11	0	8	29	..
April to June	157	44	783	617	18	10	0	7	-28	14
January to March	182	42	549	665	12	8	0	6	17	34
2010										
October to December	176	40	313	448	28	8	0	6	-21	34
July to September	161	47	345	439	32	11	0	8	21	34
April to June	175	42	579	573	41	0	0	7	-6	34
January to March	188	55	653	600	36	0	0	6	0	33
2009										
October to December	168	48	271	317	30	0	0	6	-18	34
July to September	206	47	432	796	22	2	0	8	-6	34
April to June	178	43	474	556	40	12	1	7	11	34
January to March	159	48	484	545	15	9	0	6	-29	33
2008										
October to December	169	50	352	632	16	11	0	6	20	34
July to September	190	49	553	707	38	22	2	8	-28	34
April to June	185	51	493	693	45	23	3	7	77	34
January to March	177	51	499	591	28	16	3	6	-5	34
2007										
October to December	153	51	486	387	30	19	3	6	-79	34
July to September	210	41	606	833	29	35	4	8	-17	34
April to June	170	38	667	573	13	12	3	6	76	33
January to March	192	44	471	546	16	12	1	5	-6	34
2006										
October to December	139	35	360	525	24	11	0	5	-32	34
July to September	185	57	704	779	45	22	5	9	-23	34

Note(s): See "Data quality, concepts and methodology — Explanatory notes for the tables" section.

Table 3-14
Quarterly estimates of components of demographic growth, provincial perspective — Nunavut

	Natural increase		Interprovincial migration		International migration					Residual deviation	
	Births	Deaths	In-migrants	Out-migrants	Immigrants	Emigrants	Returning emigrants	Net temporary emigrants	Net non-permanent residents		
	number										
2013											
April to June	222	58	677	285	2	3	0	4	-2	..	
January to March	205	34	281	555	2	6	0	3	8	..	
2012											
October to December	223	38	103	151	2	3	0	3	2	..	
July to September	196	43	293	145	6	3	0	5	7	..	
April to June	221	57	362	324	2	3	0	4	-2	..	
January to March	203	33	299	318	10	6	0	3	-11	..	
2011											
October to December	221	37	55	146	8	3	0	3	-3	..	
July to September	196	42	144	225	6	3	0	5	8	..	
April to June	219	55	333	241	5	3	0	4	9	-10	
January to March	201	32	219	217	5	6	0	3	-1	-24	
2010											
October to December	208	28	121	157	1	3	0	3	-1	-24	
July to September	210	41	229	214	6	3	0	5	12	-24	
April to June	202	31	260	245	7	3	1	5	4	-24	
January to March	208	32	362	347	5	1	0	3	1	-23	
2009											
October to December	224	56	99	166	4	3	0	3	-16	-25	
July to September	236	29	159	175	0	5	2	5	8	-24	
April to June	202	38	293	272	3	0	0	4	5	-24	
January to March	215	39	336	219	3	1	0	3	9	-23	
2008											
October to December	175	32	98	157	12	0	0	3	-17	-24	
July to September	208	54	182	296	14	2	0	6	1	-24	
April to June	223	27	324	352	17	0	0	4	5	-24	
January to March	199	34	203	311	7	0	0	3	-18	-24	
2007											
October to December	191	28	110	180	7	0	0	3	-67	-24	
July to September	206	33	232	316	5	0	0	5	53	-24	
April to June	204	33	285	278	6	0	0	4	8	-24	
January to March	193	35	228	188	1	0	0	3	11	-24	
2006											
October to December	157	27	160	232	2	1	0	3	-5	-24	
July to September	207	30	161	293	2	2	0	6	2	-24	

Note(s): See "Data quality, concepts and methodology — Explanatory notes for the tables" section.

Table 4-1
Quarterly estimates of components of demographic growth, national perspective — Births

	Canada	Newfoundland and Labrador	Prince Edward Island	Nova Scotia	New Brunswick	Quebec	Ontario
	number						
2013							
April to June	97,515	1,168	373	2,216	1,690	22,400	36,107
January to March	91,235	1,060	333	2,088	1,668	20,700	33,819
2012							
October to December	93,941	1,073	356	2,127	1,707	22,400	34,800
July to September	101,131	1,119	378	2,393	1,956	23,550	37,736
April to June	96,033	1,176	374	2,233	1,712	21,800	35,755
January to March	90,324	1,069	334	2,097	1,688	20,950	33,492
2011							
October to December	91,731	1,084	357	2,134	1,725	21,644	34,414
July to September	100,674	1,131	377	2,395	1,976	23,917	37,271
April to June	95,678	1,188	371	2,235	1,724	22,176	35,336
January to March	89,553	1,075	331	2,098	1,699	20,846	33,114
2010							
October to December	92,957	1,233	363	2,157	1,748	21,794	34,779
July to September	98,763	1,279	363	2,328	1,969	23,795	36,219
April to June	95,122	1,219	348	2,236	1,847	22,017	35,041
January to March	90,371	1,169	329	2,150	1,791	20,846	33,507
2009							
October to December	92,680	1,235	361	2,224	1,744	21,797	33,987
July to September	101,200	1,322	369	2,486	2,008	23,773	37,236
April to June	96,573	1,205	400	2,223	1,864	22,217	35,865
January to March	90,410	1,153	327	2,056	1,775	21,080	33,288
2008							
October to December	91,866	1,191	366	2,179	1,799	21,686	34,111
July to September	100,441	1,376	378	2,472	2,002	23,693	37,062
April to June	95,409	1,193	362	2,293	1,817	21,887	35,687
January to March	90,170	1,138	377	2,244	1,784	20,604	33,932
2007							
October to December	90,681	1,111	358	2,191	1,723	20,708	34,241
July to September	97,435	1,222	350	2,386	1,945	22,450	36,687
April to June	93,338	1,119	344	2,297	1,798	21,444	34,932
January to March	86,410	1,101	337	1,994	1,680	19,785	32,577
2006							
October to December	86,920	1,092	347	2,117	1,649	20,167	33,283
July to September	94,248	1,183	400	2,267	2,000	21,712	36,188

Table 4-1 – continued

Quarterly estimates of components of demographic growth, national perspective — Births

	Manitoba	Saskat- chewan	Alberta	British Columbia	Yukon	Northwest Territories	Nunavut
	number						
2013							
April to June	4,087	3,879	14,136	10,962	120	155	222
January to March	3,815	3,689	12,946	10,638	95	179	205
2012							
October to December	3,913	3,453	12,669	10,963	103	154	223
July to September	4,211	3,897	13,834	11,550	122	189	196
April to June	4,022	3,770	13,583	11,115	118	154	221
January to March	3,755	3,581	12,475	10,405	94	181	203
2011							
October to December	3,849	3,341	12,223	10,482	101	156	221
July to September	4,138	3,774	13,404	11,779	121	195	196
April to June	3,946	3,663	13,210	11,337	116	157	219
January to March	3,687	3,493	12,203	10,531	93	182	201
2010							
October to December	3,961	3,570	12,222	10,654	92	176	208
July to September	4,020	3,712	13,218	11,386	103	161	210
April to June	4,023	3,541	13,165	11,218	90	175	202
January to March	3,782	3,473	12,263	10,568	97	188	208
2009							
October to December	4,004	3,530	12,397	10,918	91	168	224
July to September	4,143	3,695	13,697	11,937	92	206	236
April to June	3,984	3,585	13,319	11,428	103	178	202
January to March	3,809	3,431	12,310	10,710	97	159	215
2008							
October to December	3,786	3,246	12,241	10,814	103	169	175
July to September	4,152	3,635	13,438	11,738	97	190	208
April to June	3,869	3,493	13,075	11,238	87	185	223
January to March	3,678	3,363	12,102	10,486	86	177	199
2007							
October to December	3,721	3,264	12,095	10,841	84	153	191
July to September	4,123	3,510	12,677	11,577	92	210	206
April to June	3,821	3,370	12,612	11,123	104	170	204
January to March	3,620	3,104	11,644	10,108	75	192	193
2006							
October to December	3,534	2,844	11,300	10,197	94	139	157
July to September	3,867	3,205	12,002	10,951	81	185	207

Note(s): The number of births is final up to December 2011, updated from January 2012 to March 2013 and preliminary from April 2013.

Table 4-2
Quarterly estimates of components of demographic growth, national perspective — Deaths

	Canada	Newfoundland and Labrador	Prince Edward Island	Nova Scotia	New Brunswick	Quebec	Ontario
	number						
2013							
April to June	62,090	1,213	302	2,282	1,715	14,650	23,226
January to March	69,003	1,242	361	2,427	1,802	17,250	25,755
2012							
October to December	63,436	1,120	321	2,112	1,571	16,000	23,174
July to September	58,712	1,131	303	2,020	1,547	14,250	21,600
April to June	60,750	1,184	296	2,234	1,677	14,550	22,506
January to March	66,149	1,211	354	2,371	1,755	16,000	24,932
2011							
October to December	60,900	1,093	315	2,064	1,531	14,681	22,431
July to September	56,846	1,103	296	1,972	1,508	13,628	20,902
April to June	59,193	1,152	291	2,182	1,638	14,287	21,769
January to March	65,135	1,178	347	2,314	1,708	16,334	24,093
2010							
October to December	62,912	1,152	273	2,154	1,604	15,244	23,583
July to September	57,728	1,059	265	1,971	1,517	14,260	21,412
April to June	58,258	1,137	276	2,068	1,593	14,248	21,249
January to March	61,177	1,133	302	2,102	1,598	15,054	23,038
2009							
October to December	61,804	1,132	325	2,161	1,654	15,072	22,785
July to September	55,899	1,030	274	1,971	1,461	13,382	20,530
April to June	58,091	1,086	302	1,975	1,570	14,014	21,723
January to March	62,624	1,143	367	2,120	1,681	15,303	23,436
2008							
October to December	61,347	1,133	320	2,100	1,668	14,674	22,765
July to September	55,646	998	285	1,878	1,429	13,318	20,435
April to June	58,740	1,166	291	2,100	1,645	14,000	21,716
January to March	62,884	1,242	305	2,142	1,708	15,120	23,140
2007							
October to December	59,863	1,063	299	2,097	1,606	14,130	22,496
July to September	55,038	1,048	271	1,901	1,500	12,981	20,150
April to June	56,847	1,131	244	2,035	1,503	13,877	21,096
January to March	63,469	1,263	333	2,320	1,715	15,534	23,599
2006							
October to December	59,303	1,174	299	2,060	1,525	14,018	22,088
July to September	54,206	1,109	267	1,957	1,451	12,988	20,028

Table 4-2 – continued

Quarterly estimates of components of demographic growth, national perspective — Deaths

	Manitoba	Saskat- chewan	Alberta	British Columbia	Yukon	Northwest Territories	Nunavut
	number						
2013							
April to June	2,556	2,329	5,580	8,080	52	47	58
January to March	2,866	2,517	6,018	8,648	38	45	34
2012							
October to December	2,633	2,379	5,567	8,403	69	49	38
July to September	2,510	2,265	5,313	7,636	40	54	43
April to June	2,506	2,294	5,369	7,982	50	45	57
January to March	2,808	2,481	5,787	8,337	37	43	33
2011							
October to December	2,580	2,339	5,358	8,356	67	48	37
July to September	2,459	2,228	5,117	7,497	40	54	42
April to June	2,455	2,256	5,176	7,838	50	44	55
January to March	2,752	2,444	5,582	8,273	36	42	32
2010							
October to December	2,735	2,478	5,438	8,128	55	40	28
July to September	2,322	2,215	5,110	7,461	48	47	41
April to June	2,485	2,217	5,029	7,839	44	42	31
January to March	2,443	2,295	5,178	7,896	51	55	32
2009							
October to December	2,619	2,313	5,576	7,990	73	48	56
July to September	2,361	2,203	4,887	7,674	50	47	29
April to June	2,487	2,197	5,098	7,520	38	43	38
January to March	2,505	2,259	5,427	8,256	40	48	39
2008							
October to December	2,580	2,387	5,495	8,095	48	50	32
July to September	2,402	2,168	5,020	7,565	45	49	54
April to June	2,495	2,154	5,180	7,863	52	51	27
January to March	2,596	2,534	5,385	8,574	53	51	34
2007							
October to December	2,564	2,354	5,159	7,977	39	51	28
July to September	2,403	2,251	4,844	7,563	52	41	33
April to June	2,310	2,133	4,807	7,591	49	38	33
January to March	2,681	2,324	5,392	8,177	52	44	35
2006							
October to December	2,671	2,425	5,006	7,926	49	35	27
July to September	2,300	2,111	4,598	7,263	47	57	30

Note(s): The number of deaths is final up to December 2011, updated from January 2012 to March 2013 and preliminary from April 2013.

Table 4-3
Quarterly estimates of components of demographic growth, national perspective — Immigrants

	Canada	Newfoundland and Labrador	Prince Edward Island	Nova Scotia	New Brunswick	Quebec	Ontario
	number						
2013							
April to June	75,440	255	254	751	581	16,035	30,337
January to March	58,246	76	121	411	353	11,694	24,805
2012							
October to December	62,334	184	181	551	492	12,927	24,738
July to September	66,927	165	307	529	592	15,291	25,938
April to June	73,044	227	333	710	575	15,899	27,756
January to March	55,587	157	284	551	554	10,933	20,727
2011							
October to December	59,608	186	233	497	615	12,274	24,062
July to September	71,876	172	529	597	511	15,147	28,742
April to June	67,694	197	543	572	464	14,198	26,712
January to March	49,568	130	433	470	377	10,122	19,947
2010							
October to December	57,552	184	467	479	428	12,572	23,471
July to September	84,292	188	1,166	766	717	16,504	34,885
April to June	80,797	200	572	694	555	14,058	35,311
January to March	58,041	142	388	458	425	10,847	24,448
2009							
October to December	56,353	145	314	483	346	11,658	23,834
July to September	75,390	193	518	778	602	14,958	32,979
April to June	69,651	154	599	629	588	13,482	29,090
January to March	50,783	114	328	498	377	9,391	20,963
2008							
October to December	53,543	138	191	491	343	10,038	23,572
July to September	71,312	165	605	828	610	13,597	31,798
April to June	69,247	174	325	732	443	12,074	32,002
January to March	53,145	150	333	600	460	9,500	23,531
2007							
October to December	55,573	167	204	581	397	10,404	26,227
July to September	71,657	144	420	755	497	13,892	33,291
April to June	61,649	126	219	645	375	11,554	29,478
January to March	47,875	109	149	542	374	9,363	22,344
2006							
October to December	58,245	154	170	632	397	10,218	29,444
July to September	70,356	127	200	896	470	13,945	34,179

Table 4-3 – continued

Quarterly estimates of components of demographic growth, national perspective — Immigrants

	Manitoba	Saskat- chewan	Alberta	British Columbia	Yukon	Northwest Territories	Nunavut
	number						
2013							
April to June	3,567	2,874	10,543	10,106	85	50	2
January to March	2,610	1,916	8,094	8,102	39	23	2
2012							
October to December	3,251	2,353	9,103	8,468	45	39	2
July to September	3,234	2,666	9,086	9,029	43	41	6
April to June	3,581	3,339	10,386	10,087	104	45	2
January to March	3,246	2,819	7,520	8,658	87	41	10
2011							
October to December	3,737	2,572	7,690	7,619	79	36	8
July to September	4,523	2,717	8,970	9,882	61	19	6
April to June	4,615	2,248	8,389	9,671	62	18	5
January to March	3,089	1,418	5,916	7,614	35	12	5
2010							
October to December	3,458	1,603	6,667	8,153	41	28	1
July to September	4,676	2,283	9,485	13,508	76	32	6
April to June	4,451	2,184	9,729	12,895	100	41	7
January to March	3,223	1,545	6,762	9,629	133	36	5
2009							
October to December	2,860	1,476	5,929	9,231	43	30	4
July to September	3,583	1,999	7,585	12,116	57	22	0
April to June	4,325	2,115	7,739	10,848	39	40	3
January to March	2,752	1,300	5,764	9,244	34	15	3
2008							
October to December	2,622	1,310	5,201	9,569	40	16	12
July to September	3,264	1,203	6,455	12,714	21	38	14
April to June	3,270	1,350	7,196	11,592	27	45	17
January to March	2,063	972	5,352	10,127	22	28	7
2007							
October to December	2,305	854	5,085	9,293	19	30	7
July to September	3,101	1,115	6,171	12,208	29	29	5
April to June	3,236	891	5,595	9,497	14	13	6
January to March	2,313	656	4,015	7,972	21	16	1
2006							
October to December	2,188	851	4,832	9,321	12	24	2
July to September	3,052	697	5,714	11,021	8	45	2

Note(s): The number of immigrants is final up to December 2012, updated from January to March 2013 and preliminary from April 2013.

Table 4-4
Quarterly estimates of components of demographic growth, national perspective — Emigrants

	Canada	Newfoundland and Labrador	Prince Edward Island	Nova Scotia	New Brunswick	Quebec	Ontario
	number						
2013							
April to June	13,086	60	37	252	89	2,232	5,853
January to March	12,651	45	34	193	67	1,980	5,737
2012							
October to December	12,753	52	40	216	78	1,928	5,595
July to September	18,620	83	50	360	122	3,104	8,356
April to June	13,037	60	37	250	89	2,224	5,832
January to March	12,607	45	34	193	67	1,972	5,717
2011							
October to December	12,707	51	40	214	78	1,921	5,576
July to September	18,558	83	50	359	122	3,095	8,328
April to June	13,005	60	37	249	89	2,218	5,818
January to March	12,573	45	33	193	67	1,968	5,701
2010							
October to December	12,676	51	40	213	78	1,916	5,562
July to September	18,512	83	50	357	121	3,087	8,308
April to June	12,413	30	5	145	92	2,028	5,665
January to March	11,031	20	4	151	95	1,518	5,092
2009							
October to December	12,077	23	3	158	103	1,749	5,565
July to September	16,814	67	12	372	244	2,425	7,833
April to June	10,861	55	9	166	81	1,802	4,872
January to March	10,900	53	11	158	70	1,409	5,191
2008							
October to December	13,215	67	13	195	87	1,902	6,122
July to September	20,080	127	25	376	160	2,856	9,761
April to June	14,303	59	14	170	111	2,249	6,932
January to March	12,615	57	19	173	129	1,619	6,402
2007							
October to December	13,539	61	19	177	111	1,893	6,438
July to September	20,523	136	29	347	259	2,916	9,972
April to June	14,695	43	15	224	107	2,327	7,078
January to March	12,728	36	9	193	72	1,606	6,279
2006							
October to December	14,001	42	12	229	103	1,836	6,677
July to September	20,516	83	26	457	178	2,988	9,888

Table 4-4 – continued

Quarterly estimates of components of demographic growth, national perspective — Emigrants

	Manitoba	Saskat- chewan	Alberta	British Columbia	Yukon	Northwest Territories	Nunavut
	number						
2013							
April to June	382	155	1,469	2,541	3	10	3
January to March	304	141	1,617	2,516	3	8	6
2012							
October to December	480	131	1,519	2,700	3	8	3
July to September	528	182	2,177	3,638	6	11	3
April to June	381	155	1,462	2,531	3	10	3
January to March	303	141	1,611	2,507	3	8	6
2011							
October to December	478	131	1,514	2,690	3	8	3
July to September	525	182	2,169	3,625	6	11	3
April to June	380	155	1,459	2,524	3	10	3
January to March	303	140	1,607	2,499	3	8	6
2010							
October to December	478	131	1,511	2,682	3	8	3
July to September	525	181	2,165	3,615	6	11	3
April to June	350	128	1,531	2,431	5	0	3
January to March	287	124	1,247	2,488	4	0	1
2009							
October to December	380	158	1,279	2,647	9	0	3
July to September	519	298	2,040	2,989	8	2	5
April to June	287	127	1,350	2,094	6	12	0
January to March	273	111	1,335	2,275	4	9	1
2008							
October to December	425	115	1,601	2,673	4	11	0
July to September	541	267	2,643	3,293	7	22	2
April to June	375	143	1,703	2,517	7	23	0
January to March	253	106	1,480	2,353	8	16	0
2007							
October to December	379	87	1,454	2,895	6	19	0
July to September	605	182	2,504	3,525	13	35	0
April to June	341	110	1,599	2,836	3	12	0
January to March	248	104	1,433	2,734	2	12	0
2006							
October to December	364	122	1,499	3,102	3	11	1
July to September	673	258	2,290	3,648	3	22	2

Note(s): The number of emigrants is final up to June 2011, updated from July 2011 to March 2013 and preliminary from April 2013.

Table 4-5
Quarterly estimates of components of demographic growth, national perspective — Returning emigrants

	Canada	Newfoundland and Labrador	Prince Edward Island	Nova Scotia	New Brunswick	Quebec	Ontario
	number						
2013							
April to June	10,987	60	15	180	107	1,605	5,328
January to March	5,970	34	8	97	59	871	2,894
2012							
October to December	6,084	34	8	100	59	889	2,950
July to September	13,604	75	19	224	132	1,988	6,597
April to June	10,987	60	15	180	107	1,605	5,328
January to March	5,970	34	8	97	59	871	2,894
2011							
October to December	6,084	34	8	100	59	889	2,950
July to September	13,604	75	19	224	132	1,988	6,597
April to June	10,987	60	15	180	107	1,605	5,328
January to March	5,969	34	8	97	58	871	2,894
2010							
October to December	6,084	34	8	100	59	889	2,950
July to September	13,603	75	19	224	132	1,988	6,597
April to June	10,403	42	7	182	145	1,578	4,938
January to March	5,720	23	3	99	79	868	2,718
2009							
October to December	5,939	24	4	104	82	901	2,820
July to September	12,353	50	9	215	173	1,874	5,863
April to June	9,132	59	17	181	111	1,304	4,141
January to March	5,564	37	10	110	68	795	2,523
2008							
October to December	5,239	34	9	104	65	748	2,376
July to September	11,915	77	21	236	145	1,702	5,402
April to June	9,726	67	24	217	144	1,384	4,618
January to March	5,534	38	13	123	83	788	2,626
2007							
October to December	5,619	39	13	126	84	799	2,667
July to September	12,552	87	30	281	186	1,786	5,958
April to June	9,727	44	14	196	114	1,782	4,095
January to March	5,559	25	9	112	64	1,019	2,342
2006							
October to December	5,371	24	8	109	62	984	2,262
July to September	18,817	84	29	380	219	3,447	7,924

Table 4-5 – continued

Quarterly estimates of components of demographic growth, national perspective — Returning emigrants

	Manitoba	Saskat- chewan	Alberta	British Columbia	Yukon	Northwest Territories	Nunavut
	number						
2013							
April to June	388	183	1,569	1,548	4	0	0
January to March	211	100	852	841	3	0	0
2012							
October to December	215	101	868	857	3	0	0
July to September	480	226	1,942	1,916	5	0	0
April to June	388	183	1,569	1,548	4	0	0
January to March	211	100	852	841	3	0	0
2011							
October to December	215	101	868	857	3	0	0
July to September	480	226	1,942	1,916	5	0	0
April to June	388	183	1,569	1,548	4	0	0
January to March	211	100	852	841	3	0	0
2010							
October to December	215	101	868	857	3	0	0
July to September	480	225	1,942	1,916	5	0	0
April to June	335	175	1,216	1,776	8	0	1
January to March	184	96	669	977	4	0	0
2009							
October to December	191	100	695	1,014	4	0	0
July to September	397	208	1,444	2,109	9	0	2
April to June	390	177	1,182	1,562	7	1	0
January to March	237	109	720	952	3	0	0
2008							
October to December	224	102	678	896	3	0	0
July to September	509	232	1,543	2,038	8	2	0
April to June	380	151	1,059	1,678	1	3	0
January to March	216	86	603	955	0	3	0
2007							
October to December	220	87	612	969	0	3	0
July to September	491	195	1,367	2,165	2	4	0
April to June	266	146	1,531	1,533	3	3	0
January to March	151	84	875	876	1	1	0
2006							
October to December	147	80	846	847	2	0	0
July to September	513	282	2,963	2,965	6	5	0

Note(s): The number of returning emigrants is final up to June 2011, updated from July 2011 to March 2013 and preliminary from April 2013.

Table 4-6
Quarterly estimates of components of demographic growth, national perspective — Net temporary emigrants

	Canada	Newfoundland and Labrador	Prince Edward Island	Nova Scotia	New Brunswick	Quebec	Ontario
	number						
2013							
April to June	5,062	34	10	64	50	601	1,902
January to March	3,800	26	7	48	38	451	1,428
2012							
October to December	3,830	26	8	48	38	455	1,439
July to September	5,720	38	11	71	57	679	2,150
April to June	5,062	34	10	64	50	601	1,902
January to March	3,800	26	7	48	38	451	1,428
2011							
October to December	3,830	26	8	48	38	455	1,439
July to September	5,720	38	11	71	57	679	2,150
April to June	5,062	34	10	64	50	601	1,902
January to March	3,799	26	7	48	38	450	1,428
2010							
October to December	3,830	26	8	48	38	455	1,439
July to September	5,720	38	11	71	57	679	2,150
April to June	5,086	35	10	64	50	604	1,911
January to March	3,831	26	7	48	38	454	1,440
2009							
October to December	3,887	26	7	48	39	461	1,462
July to September	5,604	37	11	71	56	665	2,106
April to June	4,942	33	10	62	50	586	1,857
January to March	3,907	26	7	48	39	464	1,470
2008							
October to December	3,816	26	6	47	38	453	1,434
July to September	5,749	39	11	71	57	682	2,160
April to June	4,981	33	10	63	50	590	1,872
January to March	3,825	26	7	48	38	454	1,438
2007							
October to December	3,847	26	7	49	38	457	1,447
July to September	5,755	39	11	72	56	683	2,164
April to June	4,571	32	9	57	46	543	1,718
January to March	3,596	25	6	45	36	427	1,352
2006							
October to December	3,551	24	6	44	35	421	1,335
July to September	6,688	45	12	84	67	794	2,514

Table 4-6 – continued

Quarterly estimates of components of demographic growth, national perspective — Net temporary emigrants

	Manitoba	Saskat- chewan	Alberta	British Columbia	Yukon	Northwest Territories	Nunavut
	number						
2013							
April to June	115	57	628	1,584	6	7	4
January to March	86	43	471	1,190	3	6	3
2012							
October to December	88	43	475	1,198	3	6	3
July to September	130	64	710	1,791	6	8	5
April to June	115	57	628	1,584	6	7	4
January to March	86	43	471	1,190	3	6	3
2011							
October to December	88	43	475	1,198	3	6	3
July to September	130	64	710	1,791	6	8	5
April to June	115	57	628	1,584	6	7	4
January to March	86	43	471	1,190	3	6	3
2010							
October to December	88	43	475	1,198	3	6	3
July to September	130	64	710	1,791	6	8	5
April to June	116	57	630	1,592	5	7	5
January to March	87	44	476	1,199	3	6	3
2009							
October to December	88	44	483	1,217	3	6	3
July to September	127	63	695	1,754	6	8	5
April to June	112	56	612	1,547	6	7	4
January to March	88	44	485	1,224	3	6	3
2008							
October to December	88	44	474	1,194	3	6	3
July to September	131	65	714	1,799	6	8	6
April to June	114	57	618	1,558	5	7	4
January to March	87	43	475	1,197	3	6	3
2007							
October to December	87	43	477	1,204	3	6	3
July to September	131	64	715	1,802	5	8	5
April to June	104	51	567	1,430	4	6	4
January to March	82	40	446	1,126	3	5	3
2006							
October to December	81	41	441	1,112	3	5	3
July to September	151	75	830	2,094	7	9	6

Note(s): The number of net temporary emigrants is final up to June 2011, updated from July 2011 to March 2013 and preliminary from April 2013.

Table 4-7

Quarterly estimates of components of demographic growth, national perspective — Net non-permanent residents

	Canada	Newfoundland and Labrador	Prince Edward Island	Nova Scotia	New Brunswick	Quebec	Ontario
	number						
2013							
April to June	29,304	-141	276	-493	269	7,984	3,949
January to March	14,324	203	-138	1	-232	1,163	1,387
2012							
October to December	-25,502	-106	-15	-125	-225	-7,230	-10,724
July to September	31,215	547	154	648	235	2,156	12,877
April to June	27,612	490	273	139	397	6,885	9,768
January to March	13,487	90	-65	345	41	2,905	5,022
2011							
October to December	-10,792	-89	21	124	-153	-3,953	-5,052
July to September	25,669	317	103	923	285	-179	12,478
April to June	18,693	319	163	189	232	6,351	8,254
January to March	9,621	54	-27	187	-19	2,080	6,165
2010							
October to December	-34,064	-258	-65	-242	-87	-5,776	-12,946
July to September	20,130	258	155	1,331	304	1,021	13,184
April to June	13,307	127	120	312	79	5,771	8,615
January to March	12,657	-15	-31	324	19	2,297	6,216
2009							
October to December	-17,599	-55	-109	-221	-200	-3,680	-13,021
July to September	26,166	358	175	1,117	154	3,143	10,985
April to June	23,915	240	193	243	-27	7,177	10,410
January to March	23,601	-130	6	226	389	4,271	7,739
2008							
October to December	-8,145	-159	-63	54	62	-2,241	-12,889
July to September	32,492	238	92	760	401	3,812	11,201
April to June	31,118	85	118	90	123	6,175	10,836
January to March	16,125	138	22	76	118	1,895	6,394
2007							
October to December	-17,293	-89	-14	-180	-132	-2,133	-15,701
July to September	21,472	115	114	430	243	1,216	9,183
April to June	22,743	77	21	-11	51	4,111	8,990
January to March	16,994	12	47	32	174	1,697	6,183
2006							
October to December	-27,461	-17	-52	-177	-106	-5,163	-20,717
July to September	15,121	67	134	16	253	921	7,587

Table 4-7 – continued

Quarterly estimates of components of demographic growth, national perspective — Net non-permanent residents

	Manitoba	Saskat- chewan	Alberta	British Columbia	Yukon	Northwest Territories	Nunavut
	number						
2013							
April to June	737	1,293	10,472	4,878	41	41	-2
January to March	384	1,296	6,774	3,431	3	44	8
2012							
October to December	83	59	-1,386	-5,732	-112	9	2
July to September	696	1,263	3,700	8,889	48	-5	7
April to June	674	812	5,334	2,774	55	13	-2
January to March	61	686	2,512	1,856	36	9	-11
2011							
October to December	163	610	-71	-2,285	-95	-9	-3
July to September	-68	846	2,310	8,634	-17	29	8
April to June	105	492	1,460	1,033	114	-28	9
January to March	-12	179	-309	1,316	-9	17	-1
2010							
October to December	-372	-393	-6,610	-7,222	-71	-21	-1
July to September	16	378	-1,792	5,225	17	21	12
April to June	213	196	-668	-1,535	79	-6	4
January to March	-347	72	-126	4,202	45	0	1
2009							
October to December	-171	-40	-1,486	1,477	-59	-18	-16
July to September	173	631	2,280	7,119	29	-6	8
April to June	269	550	2,704	2,093	47	11	5
January to March	128	763	4,497	5,643	89	-29	9
2008							
October to December	-74	331	4,600	2,305	-74	20	-17
July to September	-102	652	7,763	7,670	32	-28	1
April to June	838	523	7,251	4,926	71	77	5
January to March	90	364	4,057	2,919	75	-5	-18
2007							
October to December	99	-100	2,609	-1,467	-39	-79	-67
July to September	178	361	4,837	4,751	8	-17	53
April to June	809	341	5,779	2,425	66	76	8
January to March	326	190	4,054	4,274	0	-6	11
2006							
October to December	-76	-292	1,139	-1,913	-50	-32	-5
July to September	11	-10	2,616	3,552	-5	-23	2

Note(s): The net non-permanent residents is final up to June 2011, updated from July 2011 to March 2013 and preliminary from April 2013.

Table 4-8
Quarterly estimates of components of demographic growth, national perspective — Interprovincial in-migrants

	Canada	Newfoundland and Labrador	Prince Edward Island	Nova Scotia	New Brunswick	Quebec	Ontario
	number						
2013							
April to June	108,159	2,782	1,182	5,026	3,622	7,136	22,861
January to March	73,990	2,290	866	3,180	2,819	4,762	13,542
2012							
October to December	54,705	1,478	319	2,505	1,676	3,561	11,032
July to September	102,400	2,547	779	4,954	3,384	8,753	22,259
April to June	81,143	2,562	729	3,843	2,687	5,846	16,488
January to March	64,026	2,014	682	3,645	2,159	3,225	12,539
2011							
October to December	49,813	1,260	302	2,381	2,025	3,500	10,728
July to September	85,365	2,337	907	4,541	3,173	7,608	20,704
April to June	72,491	2,171	851	3,877	2,774	5,458	15,857
January to March	58,571	2,012	534	3,243	2,353	3,843	12,362
2010							
October to December	50,002	1,698	434	2,755	1,930	3,760	11,178
July to September	76,021	1,904	675	4,678	3,110	6,823	18,920
April to June	74,544	2,108	811	4,072	2,763	5,897	17,523
January to March	62,564	2,392	716	3,852	2,819	4,129	13,444
2009							
October to December	44,902	1,806	360	2,669	1,933	3,759	10,431
July to September	77,224	2,692	822	4,579	3,368	7,263	18,343
April to June	71,277	2,973	636	3,822	2,854	5,158	15,149
January to March	64,164	2,404	687	3,519	2,561	4,059	12,767
2008							
October to December	51,448	1,929	347	2,987	1,981	3,542	9,541
July to September	90,957	2,956	852	5,139	3,872	7,548	20,001
April to June	82,653	2,568	952	4,320	2,871	5,699	17,506
January to March	63,981	2,233	609	3,605	2,447	3,812	12,655
2007							
October to December	55,440	1,959	487	2,973	2,336	3,446	10,797
July to September	99,163	2,999	773	5,092	4,023	7,145	20,760
April to June	77,629	2,327	684	3,668	3,170	4,972	15,805
January to March	60,920	1,601	581	2,699	2,369	3,223	12,144
2006							
October to December	62,974	1,637	422	3,141	2,062	4,042	11,460
July to September	103,539	2,841	798	5,406	3,409	7,460	19,382

Table 4-8 – continued

Quarterly estimates of components of demographic growth, national perspective — Interprovincial in-migrants

	Manitoba	Saskat- chewan	Alberta	British Columbia	Yukon	Northwest Territories	Nunavut
	number						
2013							
April to June	4,194	8,053	34,229	17,172	574	651	677
January to March	3,442	4,690	26,714	10,287	475	642	281
2012							
October to December	2,463	3,554	19,910	7,593	250	261	103
July to September	4,376	7,178	31,963	14,852	512	550	293
April to June	3,412	6,301	23,619	14,324	518	452	362
January to March	2,581	4,360	21,569	10,024	413	516	299
2011							
October to December	2,082	3,438	14,677	8,834	241	290	55
July to September	3,368	5,287	20,972	15,411	352	561	144
April to June	2,893	5,093	19,013	12,896	492	783	333
January to March	2,713	3,706	15,768	10,899	370	549	219
2010							
October to December	2,367	3,098	12,428	9,639	281	313	121
July to September	3,112	4,705	16,766	14,420	334	345	229
April to June	3,368	4,912	17,251	14,517	483	579	260
January to March	3,088	4,363	15,008	11,474	264	653	362
2009							
October to December	1,946	3,061	9,436	8,899	232	271	99
July to September	3,384	4,901	16,263	14,579	439	432	159
April to June	2,942	4,499	18,658	13,488	331	474	293
January to March	2,822	4,321	18,711	11,143	350	484	336
2008							
October to December	2,427	3,368	15,137	9,479	260	352	98
July to September	3,725	5,939	22,732	16,951	507	553	182
April to June	3,230	4,984	24,023	15,382	301	493	324
January to March	2,827	4,293	18,572	11,851	375	499	203
2007							
October to December	2,385	3,920	15,614	10,587	340	486	110
July to September	4,269	7,000	26,228	19,576	460	606	232
April to June	2,939	5,615	21,947	15,164	386	667	285
January to March	2,850	4,147	18,625	11,705	277	471	228
2006							
October to December	2,659	4,045	20,628	12,150	208	360	160
July to September	4,042	5,230	34,456	19,163	487	704	161

Note(s): The number of interprovincial migrants is final up to June 2012 and preliminary from July 2012.

Table 4-9

Quarterly estimates of components of demographic growth, national perspective — Interprovincial out-migrants

	Canada	Newfoundland and Labrador	Prince Edward Island	Nova Scotia	New Brunswick	Quebec	Ontario
	number						
2013							
April to June	108,159	3,805	1,339	6,002	4,000	11,889	27,709
January to March	73,990	2,414	926	4,973	3,353	5,703	20,365
2012							
October to December	54,705	1,364	771	3,615	2,377	5,549	15,093
July to September	102,400	2,389	1,184	6,952	4,987	10,639	27,850
April to June	81,143	2,191	983	4,266	3,122	8,056	21,379
January to March	64,026	2,453	648	4,343	2,911	5,418	16,464
2011							
October to December	49,813	1,094	648	3,416	2,044	4,931	12,360
July to September	85,365	1,890	959	5,251	3,773	8,689	20,867
April to June	72,491	2,121	790	3,898	2,807	7,627	17,801
January to March	58,571	2,081	546	3,434	2,527	4,987	13,365
2010							
October to December	50,002	1,345	494	2,671	1,781	4,499	13,128
July to September	76,021	2,208	874	4,591	3,210	7,534	18,030
April to June	74,544	2,246	798	3,798	2,560	7,590	18,976
January to March	62,564	2,154	603	4,226	2,576	5,334	14,840
2009							
October to December	44,902	1,229	484	2,314	1,820	3,744	10,956
July to September	77,224	1,811	764	4,222	3,356	7,638	19,631
April to June	71,277	1,981	733	3,872	2,824	7,606	18,412
January to March	64,164	2,398	795	3,782	2,514	5,498	16,924
2008							
October to December	51,448	1,670	728	2,871	1,761	4,988	14,794
July to September	90,957	2,336	802	5,693	4,406	9,634	22,929
April to June	82,653	3,058	795	4,812	3,174	10,098	21,008
January to March	63,981	2,679	729	3,864	2,697	5,588	16,113
2007							
October to December	55,440	1,844	637	3,012	2,421	5,437	14,385
July to September	99,163	2,706	951	6,096	4,293	10,661	24,962
April to June	77,629	3,118	900	4,117	3,290	9,637	19,256
January to March	60,920	3,272	736	3,781	2,674	5,726	14,329
2006							
October to December	62,974	2,195	581	4,070	2,435	6,471	17,417
July to September	103,539	3,888	1,117	7,072	5,243	10,728	27,836

Table 4-9 – continued

Quarterly estimates of components of demographic growth, national perspective — Interprovincial out-migrants

	Manitoba	Saskatchewan	Alberta	British Columbia	Yukon	Northwest Territories	Nunavut
	number						
2013							
April to June	5,824	6,846	20,438	18,430	692	900	285
January to March	4,238	5,029	13,276	11,898	363	897	555
2012							
October to December	3,018	3,893	8,377	9,827	336	334	151
July to September	5,616	5,892	18,048	17,600	382	716	145
April to June	4,593	5,130	15,281	14,896	334	588	324
January to March	3,336	4,295	10,849	12,009	403	579	318
2011							
October to December	2,935	3,356	9,560	8,678	211	434	146
July to September	4,791	4,727	17,495	15,721	263	714	225
April to June	3,883	4,512	15,059	12,823	312	617	241
January to March	3,628	4,131	12,608	10,119	263	665	217
2010							
October to December	2,724	2,863	11,098	8,534	260	448	157
July to September	4,367	4,551	16,767	12,957	279	439	214
April to June	4,122	4,356	16,448	12,486	346	573	245
January to March	3,312	3,606	14,860	9,861	245	600	347
2009							
October to December	2,547	2,598	11,638	6,851	238	317	166
July to September	4,217	4,524	18,283	11,543	264	796	175
April to June	3,382	4,019	16,927	10,371	322	556	272
January to March	3,462	3,983	14,026	9,672	346	545	219
2008							
October to December	2,622	2,743	11,026	7,284	172	632	157
July to September	5,561	4,399	20,075	13,739	380	707	296
April to June	4,378	4,622	16,808	12,567	288	693	352
January to March	3,579	3,611	14,710	9,224	285	591	311
2007							
October to December	2,838	2,946	13,579	7,513	261	387	180
July to September	5,619	4,847	24,023	13,449	407	833	316
April to June	4,207	3,924	17,270	10,827	232	573	278
January to March	3,228	3,720	13,900	8,467	353	546	188
2006							
October to December	3,694	3,516	12,950	8,639	249	525	232
July to September	6,861	6,328	17,727	15,244	423	779	293

Note(s): The number of interprovincial migrants is final up to June 2012 and preliminary from July 2012.

Table 4-10
Quarterly estimates of components of demographic growth, national perspective — Total growth

	Canada	Newfoundland and Labrador	Prince Edward Island	Nova Scotia	New Brunswick	Quebec	Ontario
	number						
2013							
April to June	133,008	-988	412	-920	415	25,788	39,892
January to March	84,321	-64	-138	-1,864	-593	13,806	23,162
2012							
October to December	56,838	101	-291	-833	-355	8,615	17,495
July to September	129,825	812	89	-655	-414	23,066	45,451
April to June	128,827	1,046	398	291	540	26,604	43,476
January to March	82,812	-371	200	-220	-270	15,043	26,133
2011							
October to December	69,194	211	-90	-506	580	12,366	25,296
July to September	130,699	918	619	1,027	617	22,390	53,545
April to June	112,126	803	769	552	684	25,493	41,551
January to March	64,741	518	239	-145	53	15,035	23,789
2010							
October to December	34,462	873	283	-92	499	12,158	9,478
July to September	126,177	871	1,069	2,081	1,250	25,605	53,663
April to June	115,317	797	662	1,168	1,018	25,874	47,454
January to March	82,289	921	382	106	750	17,638	29,817
2009							
October to December	50,954	1,300	2	322	212	14,443	11,041
July to September	128,143	2,225	723	2,283	1,110	27,935	49,064
April to June	116,821	2,026	683	770	789	26,352	41,617
January to March	84,465	501	72	51	790	17,933	24,153
2008							
October to December	55,475	792	-326	347	619	12,790	5,354
July to September	126,037	1,867	716	1,161	901	24,896	43,938
April to June	118,918	320	563	254	341	21,305	42,947
January to March	77,094	242	187	168	244	14,840	25,871
2007							
October to December	48,685	749	-23	100	155	12,341	7,223
July to September	113,148	1,193	316	272	708	20,282	42,389
April to June	102,789	-82	6	109	486	18,501	37,978
January to March	68,582	-1,205	-68	-1,210	88	12,806	23,925
2006							
October to December	37,571	10	-112	-836	-111	8,535	1,974
July to September	108,481	-268	30	-861	-665	21,021	38,752

Table 4-10 – continued

Quarterly estimates of components of demographic growth, national perspective — Total growth

	Manitoba	Saskat- chewan	Alberta	British Columbia	Yukon	Northwest Territories	Nunavut
	number						
2013							
April to June	4,096	6,895	42,834	14,031	71	-67	549
January to March	2,968	3,961	33,998	9,047	208	-68	-102
2012							
October to December	3,706	3,074	25,226	21	-122	66	135
July to September	4,213	6,827	34,277	15,571	296	-14	306
April to June	4,482	6,769	31,751	12,855	406	14	195
January to March	3,321	4,586	26,210	7,741	187	111	141
2011							
October to December	3,965	4,193	18,480	4,585	45	-23	92
July to September	4,536	5,649	22,107	18,988	207	17	79
April to June	4,641	4,865	21,346	10,496	415	238	273
January to March	1,826	2,521	14,224	6,305	181	5	190
2010							
October to December	2,488	2,855	7,117	-1,339	20	-40	162
July to September	3,843	4,683	14,931	17,753	190	20	218
April to June	4,213	4,637	17,117	11,676	354	133	214
January to March	2,709	3,863	12,878	12,591	235	183	216
2009							
October to December	2,079	3,405	8,058	9,956	-18	46	108
July to September	3,340	4,738	15,428	21,022	293	-233	215
April to June	4,537	4,914	19,678	15,041	149	52	213
January to March	2,328	3,910	20,791	13,449	175	-12	324
2008							
October to December	2,153	3,459	19,325	10,939	99	-176	100
July to September	1,797	5,153	23,543	21,838	221	-65	71
April to June	3,120	3,912	28,357	17,464	130	-5	210
January to March	1,255	3,171	18,699	12,143	203	4	67
2007							
October to December	1,746	2,987	15,410	7,757	90	96	54
July to September	2,287	5,228	19,258	21,060	108	-119	166
April to June	3,005	4,532	23,284	14,211	280	267	212
January to March	1,928	2,376	18,104	11,616	-42	33	231
2006							
October to December	526	1,815	18,913	6,945	-44	-119	75
July to September	383	1,023	32,369	16,525	92	15	65

Note(s): Total growth is final up to June 2011, updated from July 2011 to March 2013 and preliminary from April 2013.

Table 4-11
Quarterly estimates of components of demographic growth, national perspective — Natural increase

	Canada	Newfoundland and Labrador	Prince Edward Island	Nova Scotia	New Brunswick	Quebec	Ontario
	number						
2013							
April to June	35,425	-45	71	-66	-25	7,750	12,881
January to March	22,232	-182	-28	-339	-134	3,450	8,064
2012							
October to December	30,505	-47	35	15	136	6,400	11,626
July to September	42,419	-12	75	373	409	9,300	16,136
April to June	35,283	-8	78	-1	35	7,250	13,249
January to March	24,175	-142	-20	-274	-67	4,950	8,560
2011							
October to December	30,831	-9	42	70	194	6,963	11,983
July to September	43,828	28	81	423	468	10,289	16,369
April to June	36,485	36	80	53	86	7,889	13,567
January to March	24,418	-103	-16	-216	-9	4,512	9,021
2010							
October to December	30,045	81	90	3	144	6,550	11,196
July to September	41,035	220	98	357	452	9,535	14,807
April to June	36,864	82	72	168	254	7,769	13,792
January to March	29,194	36	27	48	193	5,792	10,469
2009							
October to December	30,876	103	36	63	90	6,725	11,202
July to September	45,301	292	95	515	547	10,391	16,706
April to June	38,482	119	98	248	294	8,203	14,142
January to March	27,786	10	-40	-64	94	5,777	9,852
2008							
October to December	30,519	58	46	79	131	7,012	11,346
July to September	44,795	378	93	594	573	10,375	16,627
April to June	36,669	27	71	193	172	7,887	13,971
January to March	27,286	-104	72	102	76	5,484	10,792
2007							
October to December	30,818	48	59	94	117	6,578	11,745
July to September	42,397	174	79	485	445	9,469	16,537
April to June	36,491	-12	100	262	295	7,567	13,836
January to March	22,941	-162	4	-326	-35	4,251	8,978
2006							
October to December	27,617	-82	48	57	124	6,149	11,195
July to September	40,042	74	133	310	549	8,724	16,160

Table 4-11 – continued

Quarterly estimates of components of demographic growth, national perspective — Natural increase

	Manitoba	Saskat- chewan	Alberta	British Columbia	Yukon	Northwest Territories	Nunavut
	number						
2013							
April to June	1,531	1,550	8,556	2,882	68	108	164
January to March	949	1,172	6,928	1,990	57	134	171
2012							
October to December	1,280	1,074	7,102	2,560	34	105	185
July to September	1,701	1,632	8,521	3,914	82	135	153
April to June	1,516	1,476	8,214	3,133	68	109	164
January to March	947	1,100	6,688	2,068	57	138	170
2011							
October to December	1,269	1,002	6,865	2,126	34	108	184
July to September	1,679	1,546	8,287	4,282	81	141	154
April to June	1,491	1,407	8,034	3,499	66	113	164
January to March	935	1,049	6,621	2,258	57	140	169
2010							
October to December	1,226	1,092	6,784	2,526	37	136	180
July to September	1,698	1,497	8,108	3,925	55	114	169
April to June	1,538	1,324	8,136	3,379	46	133	171
January to March	1,339	1,178	7,085	2,672	46	133	176
2009							
October to December	1,385	1,217	6,821	2,928	18	120	168
July to September	1,782	1,492	8,810	4,263	42	159	207
April to June	1,497	1,388	8,221	3,908	65	135	164
January to March	1,304	1,172	6,883	2,454	57	111	176
2008							
October to December	1,206	859	6,746	2,719	55	119	143
July to September	1,750	1,467	8,418	4,173	52	141	154
April to June	1,374	1,339	7,895	3,375	35	134	196
January to March	1,082	829	6,717	1,912	33	126	165
2007							
October to December	1,157	910	6,936	2,864	45	102	163
July to September	1,720	1,259	7,833	4,014	40	169	173
April to June	1,511	1,237	7,805	3,532	55	132	171
January to March	939	780	6,252	1,931	23	148	158
2006							
October to December	863	419	6,294	2,271	45	104	130
July to September	1,567	1,094	7,404	3,688	34	128	177

Note(s): Natural increase is final up to December 2011, updated from January 2012 to March 2013 and preliminary from April 2013.

Table 4-12
Quarterly estimates of components of demographic growth, national perspective — Net interprovincial migration

	Canada	Newfoundland and Labrador	Prince Edward Island	Nova Scotia	New Brunswick	Quebec	Ontario
	number						
2013							
April to June	0	-1,023	-157	-976	-378	-4,753	-4,848
January to March	0	-124	-60	-1,793	-534	-941	-6,823
2012							
October to December	0	114	-452	-1,110	-701	-1,988	-4,061
July to September	0	158	-405	-1,998	-1,603	-1,886	-5,591
April to June	0	371	-254	-423	-435	-2,210	-4,891
January to March	0	-439	34	-698	-752	-2,193	-3,925
2011							
October to December	0	166	-346	-1,035	-19	-1,431	-1,632
July to September	0	447	-52	-710	-600	-1,081	-163
April to June	0	50	61	-21	-33	-2,169	-1,944
January to March	0	-69	-12	-191	-174	-1,144	-1,003
2010							
October to December	0	353	-60	84	149	-739	-1,950
July to September	0	-304	-199	87	-100	-711	890
April to June	0	-138	13	274	203	-1,693	-1,453
January to March	0	238	113	-374	243	-1,205	-1,396
2009							
October to December	0	577	-124	355	113	15	-525
July to September	0	881	58	357	12	-375	-1,288
April to June	0	992	-97	-50	30	-2,448	-3,263
January to March	0	6	-108	-263	47	-1,439	-4,157
2008							
October to December	0	259	-381	116	220	-1,446	-5,253
July to September	0	620	50	-554	-534	-2,086	-2,928
April to June	0	-490	157	-492	-303	-4,399	-3,502
January to March	0	-446	-120	-259	-250	-1,776	-3,458
2007							
October to December	0	115	-150	-39	-85	-1,991	-3,588
July to September	0	293	-178	-1,004	-270	-3,516	-4,202
April to June	0	-791	-216	-449	-120	-4,665	-3,451
January to March	0	-1,671	-155	-1,082	-305	-2,503	-2,185
2006							
October to December	0	-558	-159	-929	-373	-2,429	-5,957
July to September	0	-1,047	-319	-1,666	-1,834	-3,268	-8,454

Table 4-12 – continued

Quarterly estimates of components of demographic growth, national perspective — Net interprovincial migration

	Manitoba	Saskat- chewan	Alberta	British Columbia	Yukon	Northwest Territories	Nunavut
	number						
2013							
April to June	-1,630	1,207	13,791	-1,258	-118	-249	392
January to March	-796	-339	13,438	-1,611	112	-255	-274
2012							
October to December	-555	-339	11,533	-2,234	-86	-73	-48
July to September	-1,240	1,286	13,915	-2,748	130	-166	148
April to June	-1,181	1,171	8,338	-572	184	-136	38
January to March	-755	65	10,720	-1,985	10	-63	-19
2011							
October to December	-853	82	5,117	156	30	-144	-91
July to September	-1,423	560	3,477	-310	89	-153	-81
April to June	-990	581	3,954	73	180	166	92
January to March	-915	-425	3,160	780	107	-116	2
2010							
October to December	-357	235	1,330	1,105	21	-135	-36
July to September	-1,255	154	-1	1,463	55	-94	15
April to June	-754	556	803	2,031	137	6	15
January to March	-224	757	148	1,613	19	53	15
2009							
October to December	-601	463	-2,202	2,048	-6	-46	-67
July to September	-833	377	-2,020	3,036	175	-364	-16
April to June	-440	480	1,731	3,117	9	-82	21
January to March	-640	338	4,685	1,471	4	-61	117
2008							
October to December	-195	625	4,111	2,195	88	-280	-59
July to September	-1,836	1,540	2,657	3,212	127	-154	-114
April to June	-1,148	362	7,215	2,815	13	-200	-28
January to March	-752	682	3,862	2,627	90	-92	-108
2007							
October to December	-453	974	2,035	3,074	79	99	-70
July to September	-1,350	2,153	2,205	6,127	53	-227	-84
April to June	-1,268	1,691	4,677	4,337	154	94	7
January to March	-378	427	4,725	3,238	-76	-75	40
2006							
October to December	-1,035	529	7,678	3,511	-41	-165	-72
July to September	-2,819	-1,098	16,729	3,919	64	-75	-132

Note(s): The number of interprovincial migrants is final up to June 2012 and preliminary from July 2012.

Table 4-13

Quarterly estimates of components of demographic growth, national perspective — Net international migration

	Canada	Newfoundland and Labrador	Prince Edward Island	Nova Scotia	New Brunswick	Quebec	Ontario
	number						
2013							
April to June	97,583	80	498	122	818	22,791	31,859
January to March	62,089	242	-50	268	75	11,297	21,921
2012							
October to December	26,333	34	126	262	210	4,203	9,930
July to September	87,406	666	419	970	780	15,652	34,906
April to June	93,544	683	574	715	940	21,564	35,118
January to March	58,637	210	186	752	549	12,286	21,498
2011							
October to December	38,363	54	214	459	405	6,834	14,945
July to September	86,871	443	590	1,314	749	13,182	37,339
April to June	79,307	482	674	628	664	19,335	32,574
January to March	48,786	147	374	513	311	10,655	21,877
2010							
October to December	13,066	-117	362	76	284	5,314	6,474
July to September	93,793	400	1,279	1,893	975	15,747	44,208
April to June	87,008	304	684	979	637	18,775	41,288
January to March	61,556	104	349	682	390	12,040	26,850
2009							
October to December	28,729	65	199	160	86	6,669	6,606
July to September	91,491	497	679	1,667	629	16,885	39,888
April to June	86,895	365	790	825	541	19,575	36,912
January to March	65,141	-58	326	628	725	12,584	24,564
2008							
October to December	33,606	-80	118	407	345	6,190	5,503
July to September	89,890	314	682	1,377	939	15,573	36,480
April to June	90,807	234	443	806	549	16,794	38,652
January to March	58,364	243	342	578	494	10,110	24,711
2007							
October to December	26,513	30	177	301	200	6,720	5,308
July to September	79,403	171	524	1,047	611	13,295	36,296
April to June	74,853	172	230	549	387	14,577	33,767
January to March	54,104	85	190	448	504	10,046	23,238
2006							
October to December	18,603	95	108	291	215	3,782	2,977
July to September	77,090	150	325	751	697	14,531	37,288

Table 4-13 – continued

Quarterly estimates of components of demographic growth, national perspective — Net international migration

	Manitoba	Saskat- chewan	Alberta	British Columbia	Yukon	Northwest Territories	Nunavut
	number						
2013							
April to June	4,195	4,138	20,487	12,407	121	74	-7
January to March	2,815	3,128	13,632	8,668	39	53	1
2012							
October to December	2,981	2,339	6,591	-305	-70	34	-2
July to September	3,752	3,909	11,841	14,405	84	17	5
April to June	4,147	4,122	15,199	10,294	154	41	-7
January to March	3,129	3,421	8,802	7,658	120	36	-10
2011							
October to December	3,549	3,109	6,498	2,303	-19	13	-1
July to September	4,280	3,543	10,343	15,016	37	29	6
April to June	4,613	2,711	9,331	8,144	171	-27	7
January to March	2,899	1,514	4,381	6,082	23	15	-5
2010							
October to December	2,735	1,137	-1,061	-2,092	-33	-7	-6
July to September	4,517	2,641	6,760	15,243	86	34	10
April to June	4,533	2,370	8,116	9,113	177	28	4
January to March	2,686	1,545	5,582	11,121	175	30	2
2009							
October to December	2,412	1,334	3,376	7,858	-24	6	-18
July to September	3,507	2,477	8,574	16,601	81	6	0
April to June	4,585	2,659	9,663	10,862	81	33	4
January to March	2,756	2,017	9,161	12,340	119	-29	8
2008							
October to December	2,259	1,584	8,404	8,903	-38	19	-8
July to September	2,999	1,755	12,404	17,330	48	-18	7
April to June	3,999	1,824	13,185	14,121	87	95	18
January to March	2,029	1,273	8,057	10,451	86	4	-14
2007							
October to December	2,158	711	6,375	4,696	-29	-71	-63
July to September	3,034	1,425	9,156	13,797	21	-27	53
April to June	3,866	1,217	10,739	9,189	76	74	10
January to March	2,460	786	7,065	9,262	17	-6	9
2006							
October to December	1,814	476	4,877	4,041	-42	-24	-7
July to September	2,752	636	8,173	11,796	-1	-4	-4

Note(s): Net international migration is final up to June 2011, updated from July 2011 to March 2013 and preliminary from April 2013.

Table 4-14

Quarterly estimates of components of demographic growth, national perspective — Total net migration

	Canada	Newfoundland and Labrador	Prince Edward Island	Nova Scotia	New Brunswick	Quebec	Ontario
	number						
2013							
April to June	97,583	-943	341	-854	440	18,038	27,011
January to March	62,089	118	-110	-1,525	-459	10,356	15,098
2012							
October to December	26,333	148	-326	-848	-491	2,215	5,869
July to September	87,406	824	14	-1,028	-823	13,766	29,315
April to June	93,544	1,054	320	292	505	19,354	30,227
January to March	58,637	-229	220	54	-203	10,093	17,573
2011							
October to December	38,363	220	-132	-576	386	5,403	13,313
July to September	86,871	890	538	604	149	12,101	37,176
April to June	79,307	532	735	607	631	17,166	30,630
January to March	48,786	78	362	322	137	9,511	20,874
2010							
October to December	13,066	236	302	160	433	4,575	4,524
July to September	93,793	96	1,080	1,980	875	15,036	45,098
April to June	87,008	166	697	1,253	840	17,082	39,835
January to March	61,556	342	462	308	633	10,835	25,454
2009							
October to December	28,729	642	75	515	199	6,684	6,081
July to September	91,491	1,378	737	2,024	641	16,510	38,600
April to June	86,895	1,357	693	775	571	17,127	33,649
January to March	65,141	-52	218	365	772	11,145	20,407
2008							
October to December	33,606	179	-263	523	565	4,744	250
July to September	89,890	934	732	823	405	13,487	33,552
April to June	90,807	-256	600	314	246	12,395	35,150
January to March	58,364	-203	222	319	244	8,334	21,253
2007							
October to December	26,513	145	27	262	115	4,729	1,720
July to September	79,403	464	346	43	341	9,779	32,094
April to June	74,853	-619	14	100	267	9,912	30,316
January to March	54,104	-1,586	35	-634	199	7,543	21,053
2006							
October to December	18,603	-463	-51	-638	-158	1,353	-2,980
July to September	77,090	-897	6	-915	-1,137	11,263	28,834

Table 4-14 – continued

Quarterly estimates of components of demographic growth, national perspective — Total net migration

	Manitoba	Saskat- chewan	Alberta	British Columbia	Yukon	Northwest Territories	Nunavut
	number						
2013							
April to June	2,565	5,345	34,278	11,149	3	-175	385
January to March	2,019	2,789	27,070	7,057	151	-202	-273
2012							
October to December	2,426	2,000	18,124	-2,539	-156	-39	-50
July to September	2,512	5,195	25,756	11,657	214	-149	153
April to June	2,966	5,293	23,537	9,722	338	-95	31
January to March	2,374	3,486	19,522	5,673	130	-27	-29
2011							
October to December	2,696	3,191	11,615	2,459	11	-131	-92
July to September	2,857	4,103	13,820	14,706	126	-124	-75
April to June	3,623	3,292	13,285	8,217	351	139	99
January to March	1,984	1,089	7,541	6,862	130	-101	-3
2010							
October to December	2,378	1,372	269	-987	-12	-142	-42
July to September	3,262	2,795	6,759	16,706	141	-60	25
April to June	3,779	2,926	8,919	11,144	314	34	19
January to March	2,462	2,302	5,730	12,734	194	83	17
2009							
October to December	1,811	1,797	1,174	9,906	-30	-40	-85
July to September	2,674	2,854	6,554	19,637	256	-358	-16
April to June	4,145	3,139	11,394	13,979	90	-49	25
January to March	2,116	2,355	13,846	13,811	123	-90	125
2008							
October to December	2,064	2,209	12,515	11,098	50	-261	-67
July to September	1,163	3,295	15,061	20,542	175	-172	-107
April to June	2,851	2,186	20,400	16,936	100	-105	-10
January to March	1,277	1,955	11,919	13,078	176	-88	-122
2007							
October to December	1,705	1,685	8,410	7,770	50	28	-133
July to September	1,684	3,578	11,361	19,924	74	-254	-31
April to June	2,598	2,908	15,416	13,526	230	168	17
January to March	2,082	1,213	11,790	12,500	-59	-81	49
2006							
October to December	779	1,005	12,555	7,552	-83	-189	-79
July to September	-67	-462	24,902	15,715	63	-79	-136

Note(s): Total net migration is final up to June 2011, updated from July 2011 to March 2013 and preliminary from April 2013.

Table 4-15
Quarterly estimates of components of demographic growth, national perspective — Residual deviation

	Canada	Newfoundland and Labrador	Prince Edward Island	Nova Scotia	New Brunswick	Quebec	Ontario
	number						
2013							
April to June
January to March
2012							
October to December
July to September
April to June
January to March
2011							
October to December
July to September
April to June	3,666	-235	46	108	33	-438	2,646
January to March	8,463	-543	107	251	75	-1,012	6,106
2010							
October to December	8,649	-556	109	255	78	-1,033	6,242
July to September	8,651	-555	109	256	77	-1,034	6,242
April to June	8,555	-549	107	253	76	-1,023	6,173
January to March	8,461	-543	107	250	76	-1,011	6,106
2009							
October to December	8,651	-555	109	256	77	-1,034	6,242
July to September	8,649	-555	109	256	78	-1,034	6,242
April to June	8,556	-550	108	253	76	-1,022	6,174
January to March	8,462	-543	106	250	76	-1,011	6,106
2008							
October to December	8,650	-555	109	255	77	-1,034	6,242
July to September	8,648	-555	109	256	77	-1,034	6,241
April to June	8,558	-549	108	253	77	-1,023	6,174
January to March	8,556	-549	107	253	76	-1,022	6,174
2007							
October to December	8,646	-556	109	256	77	-1,034	6,242
July to September	8,652	-555	109	256	78	-1,034	6,242
April to June	8,555	-549	108	253	76	-1,022	6,174
January to March	8,463	-543	107	250	76	-1,012	6,106
2006							
October to December	8,649	-555	109	255	77	-1,033	6,241
July to September	8,651	-555	109	256	77	-1,034	6,242

See notes at the end of the table.

Table 4-15 – continued

Quarterly estimates of components of demographic growth, national perspective — Residual deviation

	Manitoba	Saskat- chewan	Alberta	British Columbia	Yukon	Northwest Territories	Nunavut
	number						
2013							
April to June
January to March
2012							
October to December
July to September
April to June
January to March
2011							
October to December
July to September
April to June	473	-166	-27	1,220	2	14	-10
January to March	1,093	-383	-62	2,815	6	34	-24
2010							
October to December	1,116	-391	-64	2,878	5	34	-24
July to September	1,117	-391	-64	2,878	6	34	-24
April to June	1,104	-387	-62	2,847	6	34	-24
January to March	1,092	-383	-63	2,815	5	33	-23
2009							
October to December	1,117	-391	-63	2,878	6	34	-25
July to September	1,116	-392	-64	2,878	5	34	-24
April to June	1,105	-387	-63	2,846	6	34	-24
January to March	1,092	-383	-62	2,816	5	33	-23
2008							
October to December	1,117	-391	-64	2,878	6	34	-24
July to September	1,116	-391	-64	2,877	6	34	-24
April to June	1,105	-387	-62	2,847	5	34	-24
January to March	1,104	-387	-63	2,847	6	34	-24
2007							
October to December	1,116	-392	-64	2,877	5	34	-24
July to September	1,117	-391	-64	2,878	6	34	-24
April to June	1,104	-387	-63	2,847	5	33	-24
January to March	1,093	-383	-62	2,815	6	34	-24
2006							
October to December	1,116	-391	-64	2,878	6	34	-24
July to September	1,117	-391	-63	2,878	5	34	-24

1. Residual deviation numbers are final intercensal up to May 2011.

Table 5
Quarterly estimates of interprovincial migrants by province or territory of origin and destination, Canada, April to June 2013

Origin	Destination												
	Newfoundland and Labrador	Prince Edward Island	Nova Scotia	New Brunswick	Quebec	Ontario	Manitoba	Saskatchewan	Alberta	British Columbia	Yukon	Northwest Territories	Nunavut
	number												
Newfoundland and Labrador	...	40	441	119	85	742	69	63	1,886	220	6	20	114
Prince Edward Island	4	...	220	211	50	418	35	64	287	39	5	0	6
Nova Scotia	350	199	...	696	95	1,861	90	161	1,892	521	31	84	22
New Brunswick	166	95	751	...	323	1,181	49	82	1,105	241	0	7	0
Quebec	114	124	322	509	...	6,980	176	245	2,114	1,181	27	17	80
Ontario	856	431	1,707	1,105	4,702	...	1,318	1,737	10,748	4,652	97	136	220
Manitoba	25	5	65	107	239	1,430	...	965	2,017	887	4	29	51
Saskatchewan	8	64	88	24	163	954	668	...	3,794	1,037	23	23	0
Alberta	1,089	69	830	600	676	4,771	916	3,269	...	7,885	126	137	70
British Columbia	151	138	514	175	699	4,178	811	1,352	9,991	...	184	152	85
Yukon	0	0	11	0	55	56	0	38	112	390	...	20	10
Northwest Territories	19	0	55	68	49	170	0	56	283	119	62	...	19
Nunavut	0	17	22	8	0	120	62	21	0	0	9	26	...
In-migrants	2,782	1,182	5,026	3,622	7,136	22,861	4,194	8,053	34,229	17,172	574	651	677
Out-migrants	3,805	1,339	6,002	4,000	11,889	27,709	5,824	6,846	20,438	18,430	692	900	285
Net	-1,023	-157	-976	-378	-4,753	-4,848	-1,630	1,207	13,791	-1,258	-118	-249	392
Total number of migrants: 108,159													

Note(s): Preliminary estimates based on data from the Canada Child Tax Benefit (CCTB) program and Fjk factors calculated using 2009/2010, 2010/2011 and 2011/2012 tax file data from Canada Revenue Agency.

Methodology

This document describes the concepts, data sources and methodology used to produce the population estimates. Population estimates are produced to measure the population counts according to various characteristics and geographies between two censuses. The demographic estimates are the official population estimates at the national, provincial and territorial levels.

Postcensal estimates are based on the 2011 Census.

Population Estimates

Estimates of the total population

Types of estimates

Population estimates can be either intercensal or postcensal. Intercensal estimates are produced using counts from two consecutive censuses adjusted for census net undercoverage (CNU)¹ and postcensal estimates. The production of intercensal estimates involves updating the postcensal estimates using the counts from a new census adjusted for CNU.¹

Postcensal estimates are produced using data from the most recent census adjusted for CNU¹ and the components of demographic growth. In terms of timeliness, postcensal estimates are more up-to-date than data from the most recent census adjusted for CNU,¹ but as they get farther from the date of that census, they become more variable.

Levels of estimates

Updating population estimates between censuses entails the use of data from administrative files or surveys. The quality of population estimates therefore depends on the availability of a number of administrative data files that are provided to Statistics Canada by Canadian and foreign government departments. Since some components are not available until several months after the reference date, three kinds of postcensal estimates are produced preliminary postcensal (PP), updated postcensal (PR) and final postcensal (PD). The time lag between the reference date and the release date is three months for preliminary estimates and two to three years for final estimates. Though it requires more vigilance on the part of users, the production of three successive series of postcensal estimates is the strategy that best satisfies the need for both timeliness and accuracy of the estimates. All tables indicate the level of the estimates they contain.

Calculation of postcensal population estimates

Population estimates – preliminary, updated and final – are produced by the component method. This method consists of taking the population figures from the most recent census, adjusted for the CNU¹ (census undercoverage minus census overcoverage), and adding or subtracting the number of births, deaths, and components of international and interprovincial migration.

A. Provincial / territorial estimates of total population

Population estimates are produced for the provinces and territories first; then they are summed to obtain an estimate of the population of Canada.

1. In this case, the adjustment for the census net undercoverage also includes the incompletely enumerated Indian reserves (IEIR).

The component-method formula for estimating the total provincial / territorial populations is as follows:

Figure 1

Component-method formula for estimating total population

$$P_{(t+i)} = P_{(t)} + B_{(t,t+i)} - D_{(t,t+i)} + I_{(t,t+i)} - [E_{(t,t+i)} + \Delta TE_{(t,t+i)}] + RE_{(t,t+i)} + \Delta Ninter_{(t,t+i)} + \Delta N_{(t,t+i)} - Resid_{(t,t+i)}$$

where, for each province and territory:

$(t,t+i)$	interval between times t and t+i;
$P_{(t+i)}$	estimate of the population at time t+i;
$P_{(t)}$	base population at time t (census adjusted for (CNU) ¹ or most recent estimate);
B	number of births;
D	number of deaths;
I	number of immigrants;
E	number of emigrants;
ΔTE	net temporary emigration;
RE	number of returning emigrants;
ΔNPR	net non-permanent residents;
$\Delta Ninter$	net interprovincial migration;
Resid	residual deviation (for intercensal estimates).

B. Levels of estimates

The difference between preliminary² and final postcensal population estimates lies in the timeliness of the components. When all the components are preliminary, the population estimate is described as preliminary postcensal (PP). When they are all final, the estimate is referred to as final postcensal (PD). Any other combination of levels is referred to as updated postcensal (PR).

Base population and components of demographic growth

A. Base population

The base populations are derived from the quinquennial censuses between 1971 and 2011. The population universe of the 2011³ Census includes the following groups:

- Canadian citizens (by birth or by naturalization) and immigrants with a usual place of residence in Canada;
- Canadian citizens (by birth or by naturalization) and immigrants who are abroad either on a military base or attached to a diplomatic mission;
- Canadian citizens (by birth or by naturalization) and immigrants at sea or in port aboard merchant vessels under Canadian registry or Canadian government vessels;
- persons with a usual place of residence in Canada who are claiming refugee status and the family members living with them;
- persons with a usual place of residence in Canada who hold study permits and the family members living with them;
- persons with a usual place of residence in Canada who hold work permits and the family members living with them.

2. Unless otherwise noted, the term *preliminary* include both preliminary and updated estimates

3. From 1991 to 2001 Census, "persons with a usual place of residence in Canada who hold Minister's permits (including extensions) and members of their families living with them" were included in the census universe

For census purposes, the last three groups are referred to as non-permanent residents (NPR). They have been included in the census universe since 1991 but foreign residents are not included. Foreign residents are persons who belong to the following groups:

- government representatives of another country attached to the embassy, high commission or other diplomatic body of that country in Canada, and members of their families living with them;
- members of the Armed Forces of another country who are stationed in Canada, and family members living with them;
- residents of another country visiting Canada temporarily (for example, a foreign visitor on vacation or on business, with or without a visitor's permit).

These base populations are adjusted as follows:

- adjustment of the population for CNU;
- addition of independent estimates for incompletely enumerated Indian reserves in 1991, 1996, 2001, 2006 and 2011;
- adjustment for early enumeration in 1991 and 1996 in parts of Northern Quebec, Newfoundland and Labrador, the Yukon and the Northwest Territories;
- addition of estimates of NPRs in 1971, 1976, 1981 and 1986. Since 1991, NPRs are included in the census universe;
- estimation of the July 1 base population by addition or subtraction of the components of growth between Census Day and June 30.

Adjustment for the census net undercoverage (CNU)

The adjustment for CNU is important. CNU is the difference between the number of persons who should have been enumerated but were missed (undercoverage) and the number of persons who were enumerated but should not have been or who were counted more than once (overcoverage).

Coverage studies provide undercoverage estimates for the 1991, 1996, 2001, 2006 and 2011 censuses at the provincial and territorial levels, and for the 1971, 1976, 1981 and 1986 censuses at the provincial level only. Estimates of overcoverage at the provincial and territorial levels are available only for the last five censuses (1991, 1996, 2001, 2006 and 2011). Overcoverage for previous censuses was estimated by assuming that the overcoverage-to-undercoverage ratio for each census between 1971 and 1986 was the same as in 1991. The CNU for the Yukon and the Northwest Territories prior to 1991 was estimated by assuming that the ratio between the CNU for each territory and the 10 provinces for each census between 1971 and 1986 was the same as in 1991.

For consistency, the 1991 Census undercoverage and overcoverage were revised in 1998 to take into account the methodological improvements made in the 1996 Census coverage studies. This revision altered CNU in all censuses between 1971 and 1986. Similarly, the 1996 Census undercoverage and overcoverage were revised in 2003.

B. Births and deaths

The numbers of births and deaths are derived directly from the vital statistics database of Statistics Canada's Health Statistics Division. Although Statistics Canada manages the National system of vital statistics, the central vital statistics registries of the provinces and territories are responsible for collecting and processing the information from those administrative files. Under provincial / territorial vital statistics statutes (or similar legislation), all live births and all deaths must be registered, and all provinces and territories provide this information to Statistics Canada.

The vital statistics universe closely parallels the census universe. Both universes include the births and deaths of all Canadians, immigrants and non-permanent residents (NPR) and exclude foreign residents.

Vital statistics by province or territory of residence are used to produce our final estimates of births and deaths.

When there are no vital statistics, the number of births is estimated using fertility rates by the mother's age. The number of deaths is estimated by using mortality rates by age and sex. These methods are used to calculate preliminary² estimates.

Special treatment for preliminary² estimates for Quebec and British Columbia

Quebec and British Columbia provide their most recent estimates of births and deaths. The figures are used to produce preliminary² estimates. For the final estimates, the two provinces' births and deaths are derived from the vital statistics compiled by Health Statistics Division.

Levels of estimates

For information on the differences between preliminary² and final estimates, see sections **B. Births and Deaths**, above.

C. Immigration

Like the numbers of births and deaths, Canadian immigration statistics must be kept by law. In Canada, immigration is regulated by the Immigration and Refugee Protection Act (IRPA) of 2002. This statute superseded the Immigration Act, which was passed in 1976 and amended more than 30 times in the years thereafter. Citizenship and Immigration Canada (CIC) collects and processes immigrants' administrative files. It then provides Statistics Canada with information from Field Operational Support System (FOSS) files. The information is used to estimate the number and characteristics of people granted permanent resident status by the federal government on a given date. For Demography Division, the terms immigrant and permanent resident are equivalent.

An immigrant is a person who is not a Canadian citizen by birth, but has been granted the right to live in Canada permanently by Canadian immigration authorities. The number of immigrants does not include persons born abroad to Canadian parents who are only temporarily outside the country.

Immigrants are usually counted on or after the date on which they are granted permanent resident status or the right to live in Canada.

Levels of estimates

The difference between preliminary² and final postcensal estimates lies in the timeliness of the source used to estimate this component. Since the FOSS files are continually being updated, new calculations are carried out each year to update the immigration estimates. Immigration estimates are preliminary the first year and final the following year.

D. Net non-permanent residents

Like the numbers of births and deaths, Canadian immigration statistics must be kept by law. In Canada, the non-permanent residents (NPR) are regulated by the *Immigration and Refugee Protection Act* (IRPA) of 2002. This statute superseded the *Immigration Act*, which was passed in 1976 and amended more than 30 times in the years thereafter. Citizenship and Immigration Canada (CIC) collects and processes the administrative files of immigrants and NPRs in Canada. It then provides Statistics Canada with information from Field Operational Support System (FOSS) files. The information is used to estimate the number and characteristics of people granted non-permanent resident status by the federal government.

NPRs are persons who are lawfully in Canada on a temporary basis under the authority of a temporary resident permit, along with members of their family living with them. NPRs include foreign workers, foreign students, the humanitarian population and other temporary residents. The humanitarian population includes refugee claimants and temporary residents who are allowed to remain in Canada on humanitarian grounds and are not categorized as either foreign workers or foreign students. For Demography Division, the terms non-permanent resident and temporary resident are equivalent.

NPR estimates are based on the number of NPRs, not on the net. The number of people in CIC's administrative system is estimated on a specific date in each period of observation. First, the end-of-period number of NPR is estimated, and then the start-of-period number of NPR is subtracted from that estimate. That yields the net number of NPR.

Anyone who received non-permanent resident status prior to the observation date is counted. For refugee claimants, the date of their application is used. Permit holders and refugee claimants are excluded from the population if their permit has expired, if they receive permanent resident status, or if they are deported. In addition, refugee claimants are excluded if their file has been inactive for two years.

Since FOSS files are continually being updated, the figures are recalculated each year until the estimates of net NPR are final.

Levels of estimates

The difference between preliminary² and final estimates lies in the timeliness of the source used to estimate this component. Since the FOSS files are continually being updated, the figures are recalculated each year to update the estimates of the net number of NPRs. Non-permanent resident (NPR) estimates are preliminary the first year and updated the following year. They become final two to three years after the reference year, when all other components are also final.

E. Emigration

The number of emigrants is estimated using data from the Office of Immigration Statistics, U.S. Department of Homeland Security, data collected by the Canada Child Tax Benefit (CCTB) program, and data from the T1 Family File (T1FF).⁴ The first source is used to estimate emigration to the United States. CCTB data are used to estimate emigration to other countries. The estimates of the number of child emigrants have to be adjusted because the CCTB is not universal and does not provide direct information on the number of adult emigrants. As a result, four adjustment factors are taken into account:

- incomplete coverage due to a delay in the receipt and processing of the files of children eligible for the CCTB. Since it seems to take four years after the reference period for CCTB administrative files to become complete, the adjustment is made if the estimates are finalized after two years. The factor is derived from the two-year ratios of emigrant children based on two versions of the CCTB files;
- the program's partial coverage, that is, people who do not apply for the CCTB or who are not eligible. This factor is obtained by comparing the estimated number of children in the population with the number of children in CCTB files;
- the differential propensity to emigrate between children who are eligible for the CCTB and children who are not. This factor is obtained by comparing the emigration rates of CCTB-eligible children with the rates for all children (aged 0 to 17). This factor is calculated for each province and territory and is based on the last three available years of T1FF;⁴

4. The T1 family file (T1FF) is derived from the Canada Revenue Agency (CRA) T1 file by Income Statistics Division of Statistics Canada.

- the differential propensity to emigrate between adults and children. This factor generates the emigration rate for the population aged 18 and over. It is obtained by (1) calculating the average ratio over three years of the adult and child emigration rates based on T1FF4 data, (2) calculating the average ratio over three years of the adult and child emigration rates based on data from the Office of Immigration Statistics, U.S. Department of Homeland Security, and (3) taking the average of the two rates. This factor is calculated for Canada only.

The adult emigration rate is applied to the adult population. Adult emigration is distributed by province and territory using data from the T1FF4 file. We calculate a ratio of the number of emigrant adults to the number of emigrant children from the T1FF4 file. We then apply this ratio to the number of emigrant children from the CCTB by province, which yields the number of adult emigrants whose provincial distribution will differ from that of the children.

The number of adult emigrants combined with the number of child emigrants (once adjusted for the coverage and differential emigration factors) generate the number of emigrants for the entire population.

Emigration is disaggregated by province and territory based on the number of child emigrants adjusted for coverage and differential emigration.

Levels of estimates

The difference between preliminary² and final estimates lies in the timeliness of the sources used to estimate this component. The same estimation method is used.

F. Net temporary emigration

Some people leave Canada to live temporarily in another country while others who were temporarily outside of Canada return. The net result of those departures and returns is the component known as “net temporary emigration”. Estimates of the number of departures are derived from the Reverse Record Check (RRC), the most important census coverage study. The RRC provides an estimate of the number of people who left Canada temporarily during an intercensal period and are still out of the country at the end of the period. Estimates of the number of returns are based on two sources: the census and Demography Division’s estimates of returning emigrants. The census provides the number of people who were outside Canada at the time of the previous census and returned during the intercensal period. That number includes all returning emigrants. Then Demography Division’s estimate of the returning emigrants component is subtracted to produce the number of returning temporary emigrants. The estimated numbers of departures (RRC) and returns (census and Demography Division) yield an estimate of net temporary emigration.

This estimate is for the whole intercensal period; it is disaggregated into estimates for each of the five years in the period and then into monthly estimates using a seasonal adjustment that is an average between zero seasonality and the seasonality of emigration.

Net temporary emigration is calculated first for the national level. It is then disaggregated by province or group of provinces based on RRC estimates of temporary emigration. For the Atlantic provinces and the territories, the estimate for the group is disaggregated on the basis of each province / territory’s proportion of the group’s total population.

Net temporary emigration can be estimated only for the intercensal period preceding the most recent census. Net temporary emigration in the current period is assumed to be the same as in the previous period for each province and territory.

Levels of estimates

The difference between preliminary² and final estimates lies in the timeliness of the emigration estimate used to calculate the seasonal adjustment for the net temporary emigration. The same estimation method is used.

G. Returning emigrants

A returning emigrant is a person who returns to Canada after having been classified as an emigrant. In a manner similar to the procedure used to calculate the number of emigrants, data from the Canada Child Tax Benefit (CCTB) file from Canada Revenue Agency (CRA) and T1FF4 file are used to estimate the number of returning emigrants.

Adjustment factors are applied to compensate for the fact that the CCTB program is not universal, and an adult/child ratio is used to estimate the number of adult returning emigrants. As a result, four adjustment factors are used to take into account:

- incomplete coverage due to a delay in the receipt and processing of the files of children eligible for the CCTB. Since it seems to take four years after the reference period for CCTB administrative files to become complete, the adjustment is made if the estimates are finalized after two years. The factor is derived from the two-year ratios of returning emigrant children based on two versions of the CCTB files;
- the program's partial coverage, that is, people who do not apply for the CCTB or who are not eligible. This factor is obtained by comparing the estimated number of children in the population with the number of children in CCTB files;
- the differential propensity to emigrate between children who are eligible for the CCTB and children who are not. This factor is obtained by comparing the emigration rates of CCTB-eligible children with the rates for all children (aged 0 to 17). This factor is calculated for each province and territory and is based on the last three available years of T1FFs;⁴
- the adult / child ratio, which is based on the census by age and sex (From 2006/2007, we are using distribution by age and sex derived from 2006 Census. The 2011 ratio will be available only after the release of the estimates by age and sex based on the 2011 Census).

Levels of estimates

The difference between preliminary² and final estimates lies in the timeliness of the sources used to estimate this component. The same estimation method is used.

H. Interprovincial migration

Interprovincial migration represents movements from one province or territory to another, involving a change in usual place of residence. As is the case for emigration, there is no provision for recording interprovincial migration in Canada. Consequently, such movements have to be estimated using data from the Canada Child Tax Benefit (CCTB) of Canada Revenue Agency (CRA) and T1FF.⁴

Final estimates of interprovincial migration are obtained by comparing addresses indicated on personal income tax returns over two consecutive tax years. However, the migration status of tax filers' dependants has to be imputed. An adjustment is also required to take into account migrants who do not file income tax returns. From 2001/2002 to 2005/2006, the adjustment was slightly modified (for further information, see *Wilkinson, 2004*). From 2006/2007, this adjustment has been slightly modified (Cyr, 2008 – Internal document).

Since income tax returns are not available at the time preliminary estimates are produced, the estimation of preliminary² interprovincial migration is based on CCTB administrative files, which provide counts of child migrants (aged 0 to 17) receiving benefits under the program. The estimates have to be adjusted later for children who are not receiving the CCTB. Finally, the number of adult migrants is calculated using the number of child migrants and factors derived from the T1FF.⁴ As a result, three adjustment factors are used to take into account:

- the program's partial coverage, that is, people who do not apply for CCTB or who are not receiving benefits. This factor is obtained by comparing the estimated number of children in the population with the number of children in CCTB files;
- the differential propensity to migrate between children who are receiving the CCTB and children who are not. This factor is obtained by comparing the out-migration rates of children receiving the CCTB with the rates for all children (aged 0 to 17). This factor is calculated for each province and territory and is based on the last available year of T1FF;⁴

- the differential propensity to migrate between adults and children. This factor generates the out-migration rate of the population aged 18 and over for each province / territory of origin and destination. It is obtained by calculating the ratio of the central migration rate for adults to the rate for children. It is estimated using data from the last three available years of T1FF.⁴

The adult migration rate is then applied to the estimated adult population. The number of adult migrants is then added to the number of child migrants to produce the number of interprovincial migrants for the entire population.

Levels of estimates

For information on the differences between preliminary² and final estimates of total interprovincial migration, see section **H. Interprovincial migration** above.

Intercensal population estimates

Intercensal estimates – population estimates for reference dates between two censuses – are produced following each census. They reconcile previous postcensal estimates with the new census counts.

There are two main steps in the production of intercensal estimates:

- calculation of the error of closure;
- linear distribution of the error of closure.

The error of closure is defined as the difference between the postcensal population estimates on Census Day and the population enumerated in that census adjusted for CNU.¹

The error of closure is spread uniformly over the intercensal period of days within each month.

Quality of demographic data

The estimates contain certain inaccuracies stemming from two types of errors:

- errors in the census data;
- imperfections in other data sources and the method used to estimate the components.

Census data

A. Coverage, response and imputation errors

The errors attributable to census data can be divided into two groups: response and processing errors, and coverage errors. The first group implies non-response error, misinterpretation by respondents, incorrect coding and non-response imputation. Errors in the second group primarily result from undercoverage and, to a lesser extent, overcoverage. It should be noted that both types of errors are intrinsic to any survey data.

The coverage errors occur when dwellings and/or individuals are missed, incorrectly included (except for the 2006 and 2011 censuses, where people incorrectly included were not considered in the Census Overcoverage Study) or counted more than once. Following each census, Statistics Canada undertakes coverage studies to measure these errors. The main studies are the Reverse Record Check Survey (RRC) and the Census Overcoverage Study (COS). Based on these studies, estimates of census net undercoverage (CNU) (which is equal to the difference between undercoverage and overcoverage) are produced. Demography Division adjusts the population enumerated in the census by province and territory using these estimates.

When creating base populations, the Estimates Program corrects the census populations only for coverage errors. This correction, which is based on the findings of coverage studies, is primarily subject to sampling errors, and to a lesser extent, processing errors. Statistical tests indicate that coverage adjustments improve the quality of census data. The Estimates Program uses the estimates from coverage studies for the provinces and territories. However, given the size of the samples in these studies, estimates by age and sex are modelled. Furthermore, it is assumed that the coverage rates estimated for a province or territory apply to the regions within that geographic area. Prior to 1991, the Estimates Program used census data that was unadjusted for coverage errors. Coverage studies had been done to measure undercoverage, but none measured overcoverage. Following the decision to integrate a correction for the coverage to the enumerated population in 1991, the Program had to revise the population estimates for the period from 1971 to 1986. The correction is based on the findings of the coverage studies conducted during this period and on hypotheses regarding the ratio between the overcoverage and undercoverage levels based on the findings of subsequent coverage studies.

The corrections to the census data due to CNU improved, in general, the quality of the estimates by compensating for the differential undercoverage by age, sex and by province/territory across censuses.

Text table 1
Estimated census net undercoverage, Canada, provinces and territories, 2001, 2006 and 2011 Censuses

Geography	Census population	Census net undercoverage	Incompletely enumerated Indian reserves	Adjusted population	Rate
	A	B	C	D=A+B+C	(B+C)/D*100
	number			percent	
2011¹					
Canada	33,476,688	759,125	37,392	34,273,205	2.32
Newfoundland and Labrador	514,536	10,192	0	524,728	1.94
Prince Edward Island	140,204	3,386	0	143,590	2.36
Nova Scotia	921,727	21,911	0	943,638	2.32
New Brunswick	751,171	3,930	0	755,101	0.52
Quebec	7,903,001	73,240	16,882	7,993,123	1.13
Ontario	12,851,821	369,874	14,926	13,236,621	2.91
Manitoba	1,208,268	21,698	608	1,230,574	1.81
Saskatchewan	1,033,381	29,580	768	1,063,729	2.85
Alberta	3,645,257	128,584	4,094	3,777,935	3.51
British Columbia	4,400,057	91,280	114	4,491,451	2.03
Yukon	33,897	1,356	0	35,253	3.85
Northwest Territories	41,462	1,977	0	43,439	4.55
Nunavut	31,906	2,117	0	34,023	6.22
2006¹					
Canada	31,612,897	868,658	40,115	32,521,670	2.79
Newfoundland and Labrador	505,469	5,046	0	510,515	0.99
Prince Edward Island	135,851	1,903	0	137,754	1.38
Nova Scotia	913,462	24,558	0	938,020	2.62
New Brunswick	729,997	16,059	0	746,056	2.15
Quebec	7,546,131	60,751	16,600	7,623,482	1.01
Ontario	12,160,282	465,824	15,391	12,641,497	3.81
Manitoba	1,148,401	34,330	0	1,182,731	2.90
Saskatchewan	968,157	22,594	739	991,490	2.35
Alberta	3,290,350	111,353	7,272	3,408,975	3.48
British Columbia	4,113,487	121,551	113	4,235,151	2.87
Yukon	30,372	1,805	0	32,177	5.61
Northwest Territories	41,464	1,620	0	43,084	3.76
Nunavut	29,474	1,264	0	30,738	4.11
2001¹					
Canada	30,007,094	924,430	34,539	30,966,063	3.10
Newfoundland and Labrador	512,930	9,401	0	522,331	1.80
Prince Edward Island	135,294	1,325	0	136,619	0.97
Nova Scotia	908,007	24,521	0	932,528	2.63
New Brunswick	729,498	20,095	0	749,593	2.68
Quebec	7,237,479	140,232	12,648	7,390,359	2.07
Ontario	11,410,046	436,349	15,960	11,862,355	3.81
Manitoba	1,119,583	30,903	110	1,150,596	2.70
Saskatchewan	978,933	21,231	581	1,000,745	2.18
Alberta	2,974,807	69,857	4,977	3,049,641	2.45
British Columbia	3,907,738	164,542	263	4,072,543	4.05
Yukon	28,674	1,423	0	30,097	4.73
Northwest Territories	37,360	3,295	0	40,655	8.10
Nunavut	26,745	1,256	0	28,001	4.49

1. The levels and rates are based on the Reverse Record Check (RRC) and the Overcoverage Study and include non-permanent residents.

The adjustment also incorporates the results of a study on the estimates of the number of people living on incompletely enumerated Indian reserves to complete the corrections for coverage errors in the census. The results of the coverage studies contain mainly sampling errors.

These adjustments have a direct impact on:

- the error of closure and its distribution by age and sex within a province or a territory as well as by province/territory as the CNU¹ and its distribution vary from one census to another;

- within-cohort consistency of population estimates. If for example, the male cohort in age group 0 to 4 in 1981 was tracked up to the 2001 Census (unadjusted for CNU)¹ the age group 20 to 24 would be noticeably smaller in 2001 than the age group 15 to 19 in 1996. Since Canada receives many immigrants within these age groups, the opposite would be expected. However, only after adjustment for CNU,¹ the cohort size increases from 1996 to 2001.

For further information regarding the main coverage studies, please see the following document on Statistics Canada's web site: *1996, 2001, 2006 and 2011 Census Technical Report on Coverage*.

Components

Errors due to estimation methodologies and data sources other than the census can also be significant.

A. Births and deaths

Since the law requires the recording of vital statistics, the final estimates for births and deaths data meet very high standards. Nevertheless, since preliminary estimates are derived, they can be slightly different from final estimates.

B. Immigration and non-permanent residents

With respect to immigrants and non-permanent residents, Citizenship and Immigration Canada (CIC) administers special data files on both of these components. Since immigration is controlled by law, data on immigrants and NPRs are compiled upon arrival in Canada. These data represent only "legal" immigration and exclude illegal immigrants. Thus, for the "legal" part of international movement into Canada, the data are considered to be of high quality. However, some biases such as the difference between the stated province of intended residence at the time of arrival and the actual province of residence, may persist. Finally, since information provided by the Visitor Data System (VDS) from (CIC) is not complete (age and sex of dependents, province of residence for certain groups of permit holders), estimates of NPRs are more prone to error than data on immigrants.

C. Emigration, returning emigration and net temporary emigration

Of all the demographic components that are used in the population estimates program, the emigration, returning emigration and net temporary emigration are the most difficult to estimate with precision. Canada does not have a complete border registration system. While immigration and non-permanent residents (NPRs) are well documented by the federal government, Statistics Canada has always used indirect techniques for the estimation of the number of persons leaving the country. For this reason, available statistics regarding these three components have historically been of a lower quality than other components.

Estimates of the number of emigrants and returning emigrants are both derived using Canada Child Tax Benefit (CCTB) data provided by Canada Revenue Agency (CRA). Estimates must be adjusted to take into account the incomplete coverage of the program and to derive the emigration and returning emigration of adults.

These adjustments and the delay in obtaining the data are the two main sources of errors. As current information on the number of persons living temporarily abroad does not exist, estimates are based on the Reverse Record Check (RRC) and the census. Estimates for the intercensal period, distributed equally among the five years, are maintained constant for the postcensal period. Moreover, assumptions were made to allow for the distribution of annual estimates to a quarterly level. Any geographical or quarterly variation may introduce error in the estimation of these components.

D. Interprovincial migration

Since July 1993, preliminary² interprovincial migration estimates have been based on Canada Child Tax Benefit (CCTB) files. Under this program, only 76% of children aged 0 to 17 at the Canada level were entitled to benefits on July 1, 2001. Consequently, preliminary CCTB based estimates are subject to larger error than final estimates derived from Canada Revenue Agency (CRA) tax files.

Quality assessment

In order to assess the quality of our estimates, two evaluation measures are used: precocity errors and errors of closure.

A. Precocity error

The quality of preliminary estimates of components is analyzed using precocity errors. Precocity error is defined as the difference between preliminary and final estimate in terms of its relative proportion of the total population most up to date postcensal population estimate. It can be calculated for both population and component estimates.

The precocity error allows for useful comparisons between components, as well as between provinces and territories of different population size. Note that when compared to the total population for an area, the differences between preliminary and final estimates of the components are quite small. There are, however, differences in the amount of impact on the population estimates between components and between provinces and territories.

Generally speaking, net interprovincial migration yields the greatest precocity errors. This is the result of the use of different data sources for preliminary and final estimates. In most years and for most provinces/territories, births, deaths and immigration estimates yield the smallest precocity errors. For immigration estimates, this reflects the completeness of the data source and the availability of data for the more timely preliminary estimates. In the case of births and deaths, small precocity errors can be explained by the use of a different method (method of ratios) for preliminary estimates.

According to the analysis of the most recent precocity errors and assuming that the quality of the basic data remains constant, the present postcensal estimates should have an acceptable degree of reliability.

For more information on annual precocity error analysis, see publication *91-215-XWE 2013000* (Quality of demographic data section).

Text table 2
Quarterly precocity errors for components, Canada, provinces and territories

Year/Component	Canada	N.L.	P.E.I.	N.S.	N.B.	Que.	Ont.	Man.	Sask.	Alta.	B.C.	Y.T.	N.W.T.	Nvt.
	per thousand													
Births														
2011Q01	0.05	-0.02	0.06	-0.11	-0.06	0.04	0.06	0.16	-0.06	0.14	-0.01	-0.40	0.41	0.18
2011Q02	0.07	-0.03	-0.03	0.08	0.11	-0.02	0.11	0.12	0.09	0.19	-0.01	-0.68	0.68	0.54
2011Q03	0.08	0.42	0.09	0.10	0.02	0.02	0.07	0.21	0.14	0.22	-0.01	-0.56	0.00	0.64
2011Q04	0.06	0.17	0.12	0.05	0.08	0.01	0.06	0.14	0.15	0.19	-0.01	0.17	0.44	-1.17
Deaths														
2011Q01	0.13	0.42	0.14	0.23	0.24	0.03	0.22	0.13	0.01	0.16	-0.01	0.63	0.16	0.24
2011Q02	0.09	0.19	0.14	0.05	0.17	0.01	0.17	0.14	-0.02	0.15	-0.01	0.26	0.27	-0.75
2011Q03	0.07	-0.06	0.08	0.05	0.03	0.02	0.13	0.07	0.02	0.11	-0.02	0.23	-0.05	0.53
2011Q04	0.14	0.25	0.21	0.20	0.34	0.05	0.21	0.13	0.12	0.18	-0.01	-0.39	0.16	-0.06
Immigration														
2012Q01	0.00	0.00	0.00	0.00	0.00	0.00	0.00	0.00	0.00	0.00	0.00	0.00	0.00	0.00
2012Q02	0.00	0.00	0.00	0.00	0.00	0.00	-0.01	0.04	-0.01	-0.01	0.00	0.00	-0.05	0.00
2012Q03	0.00	0.00	-0.01	0.00	-0.01	0.00	0.00	-0.04	0.01	0.00	0.00	-0.17	0.05	0.00
2012Q04	0.00	0.00	0.00	0.00	0.01	0.00	0.00	0.00	0.00	-0.01	0.00	0.00	0.00	0.00
Emigration														
2010Q03	0.07	0.12	-0.14	-0.08	0.11	0.00	0.11	0.21	0.01	0.35	-0.15	0.35	0.27	0.42
2010Q04	-0.02	0.06	-0.16	-0.06	0.05	-0.02	0.00	-0.02	-0.02	0.13	-0.22	0.20	0.11	0.21
2011Q01	-0.09	0.04	-0.13	-0.07	0.03	-0.07	-0.09	0.05	-0.05	-0.01	-0.26	0.14	0.07	0.06
2011Q02	-0.11	-0.02	-0.20	-0.12	-0.04	-0.09	-0.13	0.02	-0.05	0.02	-0.24	0.06	-0.05	0.06
Returning emigration														
2010Q03	-0.12	-0.06	0.06	-0.06	-0.01	-0.08	-0.14	-0.07	-0.07	-0.23	-0.08	-0.14	0.00	0.00
2010Q04	-0.06	-0.03	0.02	-0.03	-0.01	-0.04	-0.07	-0.04	-0.03	-0.11	-0.05	-0.09	0.00	0.00
2011Q01	-0.05	-0.03	0.03	-0.02	0.00	-0.03	-0.06	-0.03	-0.03	-0.10	-0.03	-0.09	0.00	0.00
2011Q02	-0.11	-0.05	-0.02	-0.06	-0.02	-0.07	-0.13	-0.07	-0.06	-0.20	-0.08	-0.11	0.00	0.00
Net temporary emigration														
2010Q03	0.02	0.08	0.08	0.08	0.08	0.03	0.06	0.04	0.02	0.01	-0.14	0.00	0.00	0.03
2010Q04	0.03	0.07	0.06	0.07	0.07	0.03	0.06	0.04	0.02	0.02	-0.08	0.03	0.00	0.03
2011Q01	0.02	0.06	0.06	0.06	0.06	0.02	0.04	0.03	0.01	0.01	-0.09	0.03	0.00	0.03
2011Q02	-0.02	0.04	0.03	0.04	0.04	0.00	0.01	0.01	0.00	-0.04	-0.18	-0.06	-0.02	0.00
Net non-permanent residents														
2010Q03	0.02	0.01	0.03	0.02	0.05	-0.01	0.02	-0.02	0.02	0.04	0.10	-0.17	-0.07	-0.06
2010Q04	0.00	0.01	0.00	-0.01	-0.01	-0.02	0.03	-0.03	-0.02	-0.03	-0.03	-0.09	-0.07	0.00
2011Q01	-0.01	-0.01	0.02	0.00	-0.02	-0.01	-0.02	-0.01	0.00	-0.05	-0.04	-0.20	-0.14	0.03
2011Q02	-0.02	-0.01	0.00	-0.01	0.01	-0.02	-0.03	-0.01	-0.01	-0.06	-0.01	0.03	-0.07	-0.03
In-migrants														
2011Q03	0.36	0.60	0.76	0.42	0.45	0.30	0.24	0.69	1.00	0.79	0.13	2.82	-2.62	0.06
2011Q04	0.40	0.63	1.49	0.60	0.68	0.18	0.25	0.64	0.98	1.09	0.31	1.80	1.31	1.37
2012Q01	0.41	1.00	1.12	0.57	0.63	0.17	0.22	0.54	0.99	1.39	0.23	2.19	-0.16	1.11
2012Q02	0.28	0.68	0.88	0.30	0.24	0.26	0.20	0.48	1.02	0.65	-0.02	3.07	-0.53	-2.43
Out-migrants														
2011Q03	0.36	1.30	3.40	0.49	0.68	0.13	0.19	0.73	1.03	0.88	0.22	1.24	1.89	1.96
2011Q04	0.40	1.32	2.34	0.71	0.84	0.15	0.21	0.77	1.05	0.85	0.43	3.37	4.23	1.08
2012Q01	0.41	3.17	1.83	1.09	0.98	0.14	0.22	0.64	1.06	0.70	0.36	3.20	4.32	-0.64
2012Q02	0.28	1.73	2.31	0.31	0.37	0.11	0.16	0.58	0.84	0.60	0.12	5.11	3.55	4.96
Net interprovincial migration														
2011Q03	...	-0.70	-2.64	-0.07	-0.24	0.17	0.05	-0.04	-0.02	-0.09	-0.09	1.58	-4.51	-1.90
2011Q04	...	-0.69	-0.84	-0.11	-0.15	0.02	0.04	-0.12	-0.08	0.23	-0.11	-1.57	-2.92	0.29
2012Q01	...	-2.17	-0.71	-0.52	-0.35	0.03	0.00	-0.10	-0.07	0.70	-0.13	-1.01	-4.48	1.75
2012Q02	...	-1.05	-1.42	-0.02	-0.12	0.15	0.04	-0.10	0.19	0.05	-0.14	-2.04	-4.08	-7.39

B. Error of closure

The error of closure measures the exactness of the final postcensal estimates. It is defined as the difference between the final postcensal population estimates on Census Day and the enumerated population of the most recent census adjusted for census net undercoverage (CNU¹). A positive error of closure means that the postcensal population estimates have overestimated the population.

The error of closure comes from two sources: errors primarily due to sampling when measuring census coverage and errors related to the components of population growth over the intercensal period. For each five-year intercensal period, the error of closure can only be calculated following the release of census data and estimates of CNU.¹ The error of closure can be calculated for the total population of each province and territory as well as by age and sex.

Table 3 shows postcensal population estimates on May 10, 2011 and census counts adjusted for CNU¹ and the errors of closure for Canada, provinces and territories for 2001, 2006 and 2011.

For Canada as a whole, the error of closure was estimated at 171,115 or 0.50% in 2011. This is an increase over the errors for 2001 (0.16%) and 2006 (0.14%).

The population estimates overestimated the population of six provinces, two territories and Canada as a whole. Four provinces and two territories posted errors of closure greater than 1% or less than -1%. Of these jurisdictions, only Newfoundland and Labrador's estimated population differed from the adjusted census population by more than 2% (-2.09%). In 2006, two provinces and three territories posted errors of closure greater than 1% or less than -1%, while this was the case for three provinces and two territories in 2001.

By considering the variance in CNU, it is possible to identify errors of closure that are statistically significant. Table 3 shows the results of this analysis.

The error of closure is statistically significant for Canada, five provinces and one territory. This means that the population estimates significantly overestimated or underestimated the adjusted census population in these jurisdictions. As noted above, these results are due to both the sampling for census coverage studies and errors in the components of population growth over the intercensal period. Among these components, interprovincial migration and emigration are mostly associated with large errors of closure.

Text table 3

Error of closure of the population estimates, Canada, provinces and territories, 2001, 2006 and 2011

Geography	Postcensal estimate on Census Day	Census adjusted for CNU ¹	Error of closure		CNU standard error ²	t value ³
	A	B	C=A-B	D=C/B*100	E	F=C/E
	number			%	number	
2011						
Canada	34,444,320	34,273,205	171,115	0.50	57,546	2.97
Newfoundland and Labrador	513,745	524,728	-10,983	-2.09	2,912	-3.77
Prince Edward Island	145,745	143,590	2,155	1.50	923	2.33
Nova Scotia	948,697	943,638	5,059	0.54	5,346	0.95
New Brunswick	756,630	755,101	1,529	0.20	3,335	0.46
Quebec	7,972,672	7,993,123	-20,451	-0.26	23,660	-0.86
Ontario	13,360,099	13,236,621	123,478	0.93	44,121	2.80
Manitoba	1,252,662	1,230,574	22,088	1.79	6,104	3.62
Saskatchewan	1,055,988	1,063,729	-7,741	-0.73	6,306	-1.23
Alberta	3,776,676	3,777,935	-1,259	-0.03	18,046	-0.07
British Columbia	4,548,383	4,491,451	56,932	1.27	19,494	2.92
Yukon	35,364	35,253	111	0.31	303	0.37
Northwest Territories	44,113	43,439	674	1.55	323	2.09
Nunavut	33,546	34,023	-477	-1.40	608	-0.78
2006						
Canada	32,565,797	32,521,670	44,127	0.14	53,926	0.82
Newfoundland and Labrador	508,881	510,515	-1,634	-0.32	2,710	-0.60
Prince Edward Island	137,748	137,754	-6	0.00	701	-0.01
Nova Scotia	933,827	938,020	-4,193	-0.45	4,885	-0.86
New Brunswick	748,785	746,056	2,729	0.37	3,105	0.88
Quebec	7,646,288	7,623,482	22,806	0.30	24,077	0.95
Ontario	12,664,181	12,641,497	22,684	0.18	41,363	0.55
Manitoba	1,176,919	1,182,731	-5,812	-0.49	6,469	-0.90
Saskatchewan	987,735	991,490	-3,755	-0.38	4,805	-0.78
Alberta	3,358,568	3,408,975	-50,407	-1.48	16,091	-3.13
British Columbia	4,299,225	4,235,151	64,074	1.51	16,591	3.86
Yukon	31,151	32,177	-1,026	-3.19	194	-5.29
Northwest Territories	42,165	43,084	-919	-2.13	236	-3.89
Nunavut	30,324	30,738	-414	-1.35	176	-2.35
2001						
Canada	31,016,011	30,966,063	49,948	0.16	44,749	1.12
Newfoundland and Labrador	533,712	522,331	11,381	2.18	1,782	6.39
Prince Edward Island	138,102	136,619	1,483	1.09	775	1.91
Nova Scotia	941,533	932,528	9,005	0.97	4,170	2.16
New Brunswick	754,180	749,593	4,587	0.61	3,555	1.29
Quebec	7,390,137	7,390,359	-222	0.00	21,033	-0.01
Ontario	11,873,643	11,862,355	11,288	0.10	33,472	0.34
Manitoba	1,149,561	1,150,596	-1,035	-0.09	5,423	-0.19
Saskatchewan	1,016,762	1,000,745	16,017	1.60	4,333	3.70
Alberta	3,051,245	3,049,641	1,604	0.05	11,308	0.14
British Columbia	4,068,196	4,072,543	-4,347	-0.11	15,598	-0.28
Yukon	29,737	30,097	-360	-1.20	372	-0.97
Northwest Territories	41,152	40,655	497	1.22	362	1.37
Nunavut	28,051	28,001	50	0.18	411	0.12

1. Census net undercoverage includes the incompletely enumerated Indian reserves.
2. Census net undercoverage excludes the incompletely enumerated Indian reserves.
3. An error of closure with a t value greater than 1.96 or less than -1.96 is statistically significant at the 95% confidence level.

Explanatory notes for the tables

Text table 1
Quarterly population estimates and factors of demographic growth, provincial perspective

Quarter	Population at beginning period	Natural increase	Net interprovincial migration	Net international migration	Total net migration	Residual deviation	Total growth
Q3 2001	ID	D	D	D	D	D	D
Q4 2001	ID	D	D	D	D	D	D
Q1 2002	ID	D	D	D	D	D	D
Q2 2002	ID	D	D	D	D	D	D
Q3 2002	ID	D	D	D	D	D	D
Q4 2002	ID	D	D	D	D	D	D
Q1 2003	ID	D	D	D	D	D	D
Q2 2003	ID	D	D	D	D	D	D
Q3 2003	ID	D	D	D	D	D	D
Q4 2003	ID	D	D	D	D	D	D
Q1 2004	ID	D	D	D	D	D	D
Q2 2004	ID	D	D	D	D	D	D
Q3 2004	ID	D	D	D	D	D	D
Q4 2004	ID	D	D	D	D	D	D
Q1 2005	ID	D	D	D	D	D	D
Q2 2005	ID	D	D	D	D	D	D
Q3 2005	ID	D	D	D	D	D	D
Q4 2005	ID	D	D	D	D	D	D
Q1 2006	ID	D	D	D	D	D	D
Q2 2006	ID	D	D	D	D	D	D
Q3 2006	ID	D	D	D	D	D	D
Q4 2006	ID	D	D	D	D	D	D
Q1 2007	ID	D	D	D	D	D	D
Q2 2007	ID	D	D	D	D	D	D
Q3 2007	ID	D	D	D	D	D	D
Q4 2007	ID	D	D	D	D	D	D
Q1 2008	ID	D	D	D	D	D	D
Q2 2008	ID	D	D	D	D	D	D
Q3 2008	ID	D	D	D	D	D	D
Q4 2008	ID	D	D	D	D	D	D
Q1 2009	ID	D	D	D	D	D	D
Q2 2009	ID	D	D	D	D	D	D
Q3 2009	ID	D	D	D	D	D	D
Q4 2009	ID	D	D	D	D	D	D
Q1 2010	ID	D	D	D	D	D	D
Q2 2010	ID	D	D	D	D	D	D
Q3 2010	ID	D	D	D	D	D	D
Q4 2010	ID	D	D	D	D	D	D
Q1 2011	ID	D	D	D	D	D	D
Q2 2011	ID	D	D	D	D	D	D
Q3 2011	PD	D	D	R	R	..	R
Q4 2011	PR	D	D	R	R	..	R
Q1 2012	PR	R	D	R	R	..	R
Q2 2012	PR	R	D	R	R	..	R
Q3 2012	PR	R	P	R	R	..	R
Q4 2012	PR	R	P	R	R	..	R
Q1 2013	PR	R	P	R	R	..	R
Q2 2013	PR	P	P	P	P	..	P
Q3 2013	PP
Modified since ¹	Q3 2001	Q1 2010	Q3 2011	Q3 2001	Q3 2001	Q2 2001	Q3 2001

1. **Modified since** indicates the quarter from which the data were revised since the last release. Last quarter's data were not modified as they are released for the first time.

Note(s): D: Final estimates. ID: Final intercensal estimates. PD : Final postcensal estimates. R : Updated estimates. PR : Updated postcensal estimates. P : Preliminary estimates. PP : Preliminary postcensal estimates, Q1 : January to March, Q2 : April to June, Q3 : July to September, Q4 : October to December.

Text table 2
Quarterly estimates of components of demographic growth, provincial perspective

Quarter	Births	Deaths	In-migrants	Out-migrants	Immigrants	Emigrants	Returning emigrants	Net temporary emigrants	Net non-permanent residents	Residual deviation
Q3 2001	D	D	D	D	D	D	D	D	D	D
Q4 2001	D	D	D	D	D	D	D	D	D	D
Q1 2002	D	D	D	D	D	D	D	D	D	D
Q2 2002	D	D	D	D	D	D	D	D	D	D
Q3 2002	D	D	D	D	D	D	D	D	D	D
Q4 2002	D	D	D	D	D	D	D	D	D	D
Q1 2003	D	D	D	D	D	D	D	D	D	D
Q2 2003	D	D	D	D	D	D	D	D	D	D
Q3 2003	D	D	D	D	D	D	D	D	D	D
Q4 2003	D	D	D	D	D	D	D	D	D	D
Q1 2004	D	D	D	D	D	D	D	D	D	D
Q2 2004	D	D	D	D	D	D	D	D	D	D
Q3 2004	D	D	D	D	D	D	D	D	D	D
Q4 2004	D	D	D	D	D	D	D	D	D	D
Q1 2005	D	D	D	D	D	D	D	D	D	D
Q2 2005	D	D	D	D	D	D	D	D	D	D
Q3 2005	D	D	D	D	D	D	D	D	D	D
Q4 2005	D	D	D	D	D	D	D	D	D	D
Q1 2006	D	D	D	D	D	D	D	D	D	D
Q2 2006	D	D	D	D	D	D	D	D	D	D
Q3 2006	D	D	D	D	D	D	D	D	D	D
Q4 2006	D	D	D	D	D	D	D	D	D	D
Q1 2007	D	D	D	D	D	D	D	D	D	D
Q2 2007	D	D	D	D	D	D	D	D	D	D
Q3 2007	D	D	D	D	D	D	D	D	D	D
Q4 2007	D	D	D	D	D	D	D	D	D	D
Q1 2008	D	D	D	D	D	D	D	D	D	D
Q2 2008	D	D	D	D	D	D	D	D	D	D
Q3 2008	D	D	D	D	D	D	D	D	D	D
Q4 2008	D	D	D	D	D	D	D	D	D	D
Q1 2009	D	D	D	D	D	D	D	D	D	D
Q2 2009	D	D	D	D	D	D	D	D	D	D
Q3 2009	D	D	D	D	D	D	D	D	D	D
Q4 2009	D	D	D	D	D	D	D	D	D	D
Q1 2010	D	D	D	D	D	D	D	D	D	D
Q2 2010	D	D	D	D	D	D	D	D	D	D
Q3 2010	D	D	D	D	D	D	D	D	D	D
Q4 2010	D	D	D	D	D	D	D	D	D	D
Q1 2011	D	D	D	D	D	D	D	D	D	D
Q2 2011	D	D	D	D	D	D	D	D	D	D
Q3 2011	D	D	D	D	D	D	R	R	R	..
Q4 2011	D	D	D	D	D	D	R	R	R	..
Q1 2012	R	R	D	D	D	D	R	R	R	..
Q2 2012	R	R	D	D	D	D	R	R	R	..
Q3 2012	R	R	P	P	D	R	R	R	R	..
Q4 2012	R	R	P	P	D	R	R	R	R	..
Q1 2013	R	R	P	P	R	R	R	R	R	..
Q2 2013	P	P	P	P	P	P	P	P	P	..
Modified since ¹	Q1 2011	Q1 2010	Q3 2011	Q3 2011	Q1 2012	Q3 2001	Q3 2001	Q3 2001	Q3 2001	Q2 2001

1. **Modified since** indicates the quarter from which the data were revised since the last release. Last quarter's data were not modified as they are released for the first time.

Note(s): D : Final estimates. R : Updated estimates. P : Preliminary estimates. Q1 : January to March, Q2 : April to June, Q3 : July to September, Q4 : October to December.

Appendix I

Glossary

Annualized rate

Refers to the ratio of the estimated number of events converted to an annual basis divided by the average quarterly populations. In this respect, birth, death, immigration rates, etc are calculated. Generally, the rate is expressed in per 1,000.

Census coverage

Census net undercoverage: Difference between undercoverage and overcoverage.

Overcoverage: Number of persons who should not have been counted in the census or who were counted more than once.

Undercoverage: Number of persons who were intended to have been enumerated in a census but were not enumerated.

Components of demographic growth

Any of the classes of events generating population movement variations. Births, deaths and migrations are the components responsible for the variation since they alter the total population.

Emigrant

Canadian citizen or *immigrant* who has left Canada to establish a permanent residence in another country.

Error of closure

Difference between the *postcensal estimate* for the same date as the census and the results of the census adjusted for *census net undercoverage* (including adjustment for incompletely enumerated Indian reserves).

Immigrant

Within the framework of this publication, the term immigrant refers to *landed immigrant*. A landed immigrant is a person who does not have Canadian citizenship but was granted the right by immigration authorities to live in Canada on a permanent basis.

International migration

International migration represents movement of population between Canada and a foreign country which involves a change in the usual place of residence. A distinction is made with regard to *immigrants*, *emigrants*, *returning emigrants*, *net temporary emigrants* and *net non-permanent residents*.

Interprovincial migration

Interprovincial migration represents movement from one province or territory involving a permanent change in residence. A person who takes up residence in another province or territory is an *out-migrant* with reference to the province or territory of origin and an *in-migrant* with reference to the province or territory of destination.

Natural increase

Variation in population size over a given period as a result of the difference between the numbers of births and deaths.

Net international migration

Net international migration is obtained according to the following formula:

Immigrants + returning emigrants + net non permanent residents – (emigrants + net temporary emigrants)

Net interprovincial migration

Net interprovincial migration represents the difference between ***in-migrants*** and ***out-migrants*** for a given province or territory.

Net non-permanent residents

Net non-permanent residents represent the variation in the number of non-permanent residents between two dates.

Non-permanent residents

A non permanent resident belongs to one of the five following groups:

- persons residing in Canada claiming refugee status;
- persons residing in Canada who hold a study permit;
- persons residing in Canada who hold a work permit;
- persons residing in Canada who hold a minister's permit;
- all non-Canadian born dependants of persons claiming refugee status, or of persons holding study permits, work permits or minister's permits and living in Canada.

Net temporary emigration

Net temporary emigration represents the variation in the number of temporary emigrants between two dates. Temporary emigration includes Canadian citizens and ***immigrants*** living temporarily abroad who have not maintained a usual place of residence in Canada.

Population

Estimated population and population according to the census are both defined as being the number of Canadians whose usual place of residence is in that area, regardless of where they happened to be on Census Day. Also included are any Canadians staying in a dwelling in that area on Census Day and having no usual place of residence elsewhere in Canada, as well as those considered ***non-permanent residents***.

Population estimate

Postcensal: Population estimate produced by using data from the most recent available census adjusted for ***census net undercoverage*** (including adjustment for incompletely enumerated Indian reserves) and estimate of the ***components of demographic growth*** since that last census. This estimate can be preliminary, updated or final.

Intercensal: Population estimate derived by using ***postcensal estimates*** and data adjusted for ***census net undercoverage*** (including adjustment for incompletely enumerated Indian reserves) of censuses preceding and following the year in question.

Population growth or total growth

Variation of population size between two dates. It can also be obtained by summing the *natural increase*, *total net migration* and if possible, subtract *residual deviation*. It can be positive or negative.

Precocity error

Difference between preliminary and final estimate of a particular component in terms of its relative proportion of the total population for the relevant geographical area. It can be calculated for both population estimates and component of population growth.

Residual deviation

Difference between demographic *population growth* calculated using *intercensal estimates* of population between two dates and that obtained by the sum of the components for the same period. This deviation results from the distribution of the *error of closure* between years within the quinquennial period. This distribution is calculated by taking into account the number of days within each month.

Returning emigrant

Canadian citizen or *immigrant* having previously emigrated from Canada and subsequently returned to the country.

Total net migration

Sum of *net international* and *net interprovincial* migration.

Vital events

Includes all the demographic events (that is to say births, deaths, marriages and divorces) for which there exist a legal requirement to inform the Provincial or Territorial Registrar's Office.

Appendix II

Source and remarks

Base population

May 10, 2011 Census of Population adjusted for census net undercoverage and incompletely enumerated Indian reserves.

2011 Census: Statistics Canada, Census of Canada, 2011, Catalogue no. 98-310-X.

Census net undercoverage: See The Daily, September 26, 2013.

Incompletely enumerated Indian reserves: See The Daily, September 26, 2013.

Births and deaths

Statistics Canada, Health Statistics Division.

Statistics Canada, Demography Division, Catalogue no. 91-002-X, Quarterly.

Births Fertility rates for 2011 based on births by age of mother provided by Health Statistics Division applied to the female population estimates at the beginning of the quarter. Births for Quebec and British Columbia were provided by their respective agencies.

Deaths Mortality rates for 2011 based on deaths by age group and sex provided by Health Statistics Division applied to the population estimates by age group and sex at the beginning of the quarter. Deaths for Quebec and British Columbia were provided by their respective agencies.

Immigration

Estimates are based on the immigrant files provided by Citizenship and Immigration Canada (CIC) according to information made available on August 19, 2013.

Emigration

The estimates are produced by Demography Division using:

- data from Canada Revenue Agency (CRA) Canada Child Tax Benefit files (CCTB) program. For 2011/2012 and 2012/2013, we used 2010/2011 data;
- tax data calculated using T1FF file provided by the Income Statistics Division of Statistics Canada. For 2011/2012 and 2012/2013, we used 2010/2011 data;
- data provided by the U.S. Department of Homeland Security, Office of Immigration Statistics. For 2012/2013, we used 2011/2012 data;
- data on the number of adult and children emigrants from T1FF file used for the provincial distribution of adults.

Returning emigration

The estimates are produced by Demography Division using:

- data from Canada Revenue Agency (CRA) Canada Child Tax Benefit files (CCTB) program. For 2011/2012 and 2012/2013, we used 2010/2011 data;
- 2006 Census – question on the place of residence one year ago

Net temporary emigration

The estimates are produced by Demography Division using:

- data from the Reverse Record Check (RRC) of the 2011 Census;
- 2011 National Household Survey – question on the place of residence one year ago;
- estimates of returning emigrants for 2006/2011 intercensal period.

Non-permanent residents

The estimates are produced by Demography Division using Field Operational Support System files (FOSS) from CIC. These files, received on August 19, 2013, document the number of persons holding permits/authorizations or claiming refugee status.

Interprovincial migration

The estimates are produced by Demography Division using:

- CCTB-based adjusted migration data for children;
- factors corresponding to the ratio of the migration rate of all children to the migration rate of eligible children calculated using 2011/2012 tax file data;
- factors used to calculate adult migration and corresponding to the ratio of the adult to child migration rates, calculated on a three-year basis using tax file data for 2009/2010, 2010/2011 and 2011/2012.