

Catalogue no. 91-002-X

Quarterly Demographic Estimates



April to June 2008



Statistics
Canada

Statistique
Canada

Canada

How to obtain more information

For information about this product or the wide range of services and data available from Statistics Canada, visit our website at www.statcan.ca, e-mail us at infostats@statcan.ca, or telephone us, Monday to Friday from 8:30 a.m. to 4:30 p.m., at the following numbers:

Statistics Canada's National Contact Centre

Toll-free telephone (Canada and the United States):

Inquiries line	1-800-263-1136
National telecommunications device for the hearing impaired	1-800-363-7629
Fax line	1-877-287-4369

Local or international calls:

Inquiries line	1-613-951-8116
Fax line	1-613-951-0581

Depository Services Program

Inquiries line	1-800-635-7943
Fax line	1-800-565-7757

To access this product

This product, Catalogue no. 91-002-X, is available free in electronic format. To obtain a single issue, visit our website at www.statcan.ca and select "Publications" > "Free Internet publications."

Standards of service to the public

Statistics Canada is committed to serving its clients in a prompt, reliable and courteous manner. To this end, Statistics Canada has developed *standards of service* that its employees observe. To obtain a copy of these service standards, please contact Statistics Canada toll-free at 1-800-263-1136. The service standards are also published on www.statcan.ca under "About us" > "Providing services to Canadians."

Quarterly Demographic Estimates

April to June 2008

Published by authority of the Minister responsible for Statistics Canada

© Minister of Industry, 2008

All rights reserved. The content of this electronic publication may be reproduced, in whole or in part, and by any means, without further permission from Statistics Canada, subject to the following conditions: that it be done solely for the purposes of private study, research, criticism, review or newspaper summary, and/or for non-commercial purposes; and that Statistics Canada be fully acknowledged as follows: Source (or "Adapted from", if appropriate): Statistics Canada, year of publication, name of product, catalogue number, volume and issue numbers, reference period and page(s). Otherwise, no part of this publication may be reproduced, stored in a retrieval system or transmitted in any form, by any means—electronic, mechanical or photocopy—or for any purposes without prior written permission of Licensing Services, Client Services Division, Statistics Canada, Ottawa, Ontario, Canada K1A 0T6.

September 2008

Catalogue no. 91-002-X, vol. 22, no. 2

ISSN 1911-0928

Frequency: Quarterly

Ottawa

La version française de cette publication est disponible sur demande (n° 91-002-X au catalogue).

Note of appreciation

Canada owes the success of its statistical system to a long standing partnership between Statistics Canada, the citizens of Canada, its businesses, governments and other institutions. Accurate and timely statistical information could not be produced without their continued cooperation and goodwill.

User information

Symbols

The following standard symbols are used in Statistics Canada publications:

- . not available for any reference period
- .. not available for a specific reference period
- ... not applicable
- 0 true zero or a value rounded to zero
- 0^s value rounded to 0 (zero) where there is a meaningful distinction between true zero and the value that was rounded
- p preliminary
- r revised
- x suppressed to meet the confidentiality requirements of the *Statistics Act*
- E use with caution
- F too unreliable to be published

Notice to readers

Most of the components used to produce preliminary population estimates are estimated using demographic models or based on data sources less complete or reliable, albeit more timely, than those used for updated or final estimates.

Table of contents

Highlights	7
Analysis	8
Related products	12
Statistical tables	
1 Quarterly population estimates, national perspective	15
1-1 Population	15
1-2 Quarterly variation	17
1-3 Quarterly population growth	19
2 Quarterly population estimates and factors of growth, provincial perspective	21
2-1 Canada	21
2-2 Newfoundland and Labrador	22
2-3 Prince Edward Island	23
2-4 Nova Scotia	24
2-5 New Brunswick	25
2-6 Quebec	26
2-7 Ontario	27
2-8 Manitoba	28
2-9 Saskatchewan	29
2-10 Alberta	30
2-11 British Columbia	31
2-12 Yukon Territory	32
2-13 Northwest Territories	33
2-14 Nunavut	34
3 Quarterly estimates of demographic components, provincial perspective	35
3-1 Canada	35
3-2 Newfoundland and Labrador	36
3-3 Prince Edward Island	37
3-4 Nova Scotia	38
3-5 New Brunswick	39
3-6 Quebec	40
3-7 Ontario	41

Table of contents – continued

3-8	Manitoba	42
3-9	Saskatchewan	43
3-10	Alberta	44
3-11	British Columbia	45
3-12	Yukon Territory	46
3-13	Northwest Territories	47
3-14	Nunavut	48
4	Quarterly estimates of demographic components, national perspective	49
4-1	Births	49
4-2	Deaths	51
4-3	Immigrants	53
4-4	Emigrants	55
4-5	Returning emigrants	57
4-6	Net temporary emigrants	59
4-7	Net non-permanent residents	61
4-8	Interprovincial in-migrants	63
4-9	Interprovincial out-migrants	65
4-10	Total growth	67
4-11	Natural increase	69
4-12	Net interprovincial migration	71
4-13	Net international migration	73
4-14	Total net migration	75
4-15	Residual deviation	77
5	Quarterly estimates of interprovincial migrants by province or territory of origin and destination, Canada, April to June 2008	79
Data quality, concepts and methodology		
	Methodology	80
	Quality of estimates	88
	Explanatory notes for the tables	94
Appendix		
I	Glossary	95
II	Source and remarks	98

Table of contents – continued

Charts

- | | |
|---|----|
| 1. Quarterly aggregated demographic components, April to June, 1974 to 2008, Canada | 8 |
| 2. Quarterly variation of population estimates, Canada, provinces and territories, April to June, 2007 and 2008 | 10 |

Highlights

- On July 1, 2008, Canada's population was estimated at 33,311,400, up 125,800 from April 1, 2008.
- In the April-June 2008 period, Canada's population grew by 0.38%, the largest increase since the 2nd quarter of 1991, all quarters combined.
- As a result of sustained immigration and a record increase in the number of non-permanent residents, Canada's net international migration rose to 91,600 individuals, a new high for a 2nd quarter.
- Demographic growth remains strongest in the west. The population growth in each of the four provinces west of Ontario surpassed the national rate.
- Alberta remained the province with the strongest population growth. In the second quarter of 2008, it dominated the provinces in terms of natural increase and international migration. The province also posted a much higher interprovincial net migration than in the second quarter of 2007.

Analysis

On July 1, 2008, Canada's population was estimated at 33,311,400, up 125,800 from April 1, 2008. During the April-June 2008 period, Canada's population grew by 0.38%, the strongest growth since the 2nd quarter of 1991.

Record net international migration

The higher rate of growth for Canada's population was notably due to a strong increase in its net international migration. During the April-June 2008 period, Canada's net international migration rose to 91,600, the highest ever posted for a 2nd quarter.

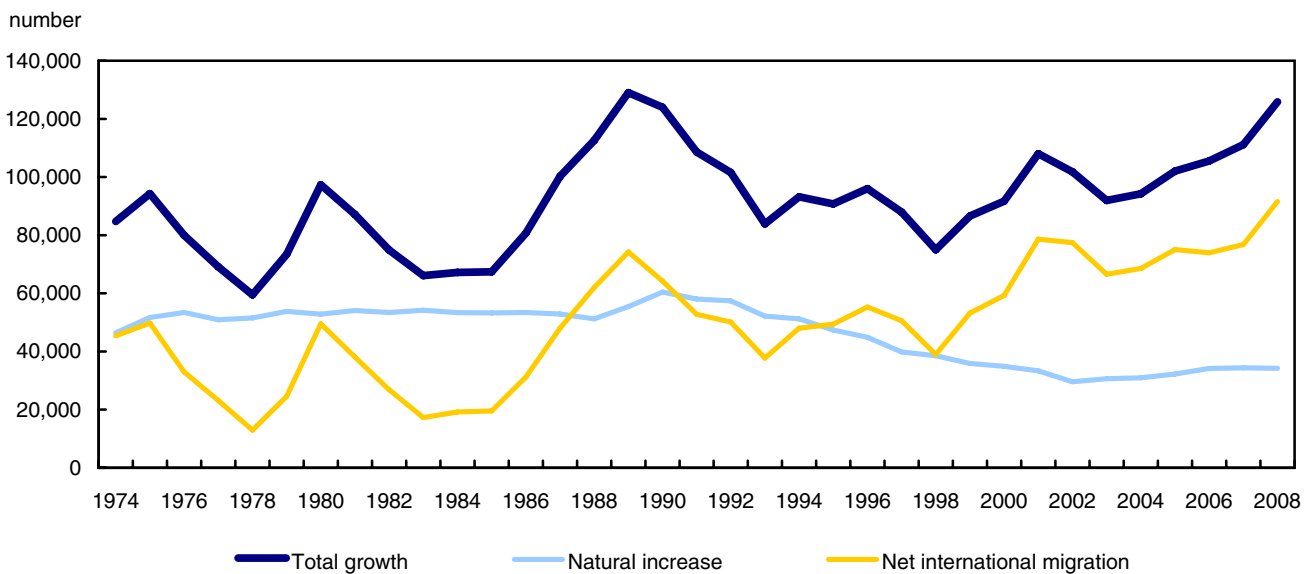
Immigration remains strong. In the 2nd quarter 2008, the country welcomed 69,200 immigrants, 7,600 more than in the same period the year before.

Ontario remained the most popular province among immigrants. In the 2nd quarter, it welcomed 46.7% of all new Canadians. However, its appeal is waning: for a sixth consecutive quarter, the province took in less than half of the country's immigrants.

Manitoba was the province with the strongest annualized rate of immigration (10.8 per thousand). This province was in the lead in this category for the third time in the past six quarters. Three other provinces surpassed the national immigration rate (8.3 per thousand): British Columbia (10.6 per thousand) and Ontario (9.9 per thousand) and Prince Edward Island (9.3 per thousand).

Immigration reached higher quarterly levels than ever before in four jurisdictions: Manitoba, Saskatchewan, Alberta and Nunavut.

Chart 1
Quarterly aggregated demographic components, April to June, 1974 to 2008, Canada



The number of non-permanent residents also rose substantially. During the April to June 2008 period, this figure rose by 30,800, setting a new record for a 2nd quarter.

Compared to the same period in the previous year, the number of non-permanent residents in the 2nd quarter rose in every Canadian jurisdiction. Alberta posted the sharpest rise in the number of non-permanent residents (annualized rate of 8.0 per thousand).

The rise in the number of non-permanent residents reached a new high in several jurisdictions across Canada. Record hikes, all quarters combined, were observed in Manitoba, Saskatchewan and Alberta. Quebec, New Brunswick and British Columbia posted balances never before seen for a 2nd quarter.

A stable natural increase

When compared to the same quarter of last year, natural increase remained relatively stable in the 2nd quarter of 2008, shifting from 34,400 to 34,200.

With an annualized rate of 8.3 per thousand, Alberta had the highest natural increase among the provinces, more than double the Canadian level (4.1 per thousand). The other provinces whose natural increase rate surpassed the national level were Quebec, Manitoba and Saskatchewan. Nunavut remained the jurisdiction with the highest natural increase in the country, at 22.2 per thousand.

The number of births in Canada is rising. From 91,578 in the April-June period of 2007, it rose to an estimated 93,071 in the 2nd quarter of 2008. This is the largest number of births for a 2nd quarter since 1996 (96,237).

Alberta is the province with the highest birth rate (annualized rate of 14.0 per thousand). As in the case of natural increase, the birth rates in Quebec, Manitoba and Saskatchewan were higher than the national level (11.2 per thousand). In the territories, Nunavut was in the lead, with a birth rate of 26.9 per thousand, the highest in Canada.

As expected with an aging population, the number of deaths is also on the rise. From 57,200 in the 2nd quarter of 2007, it rose to 58,800 in the April-June period of 2008.

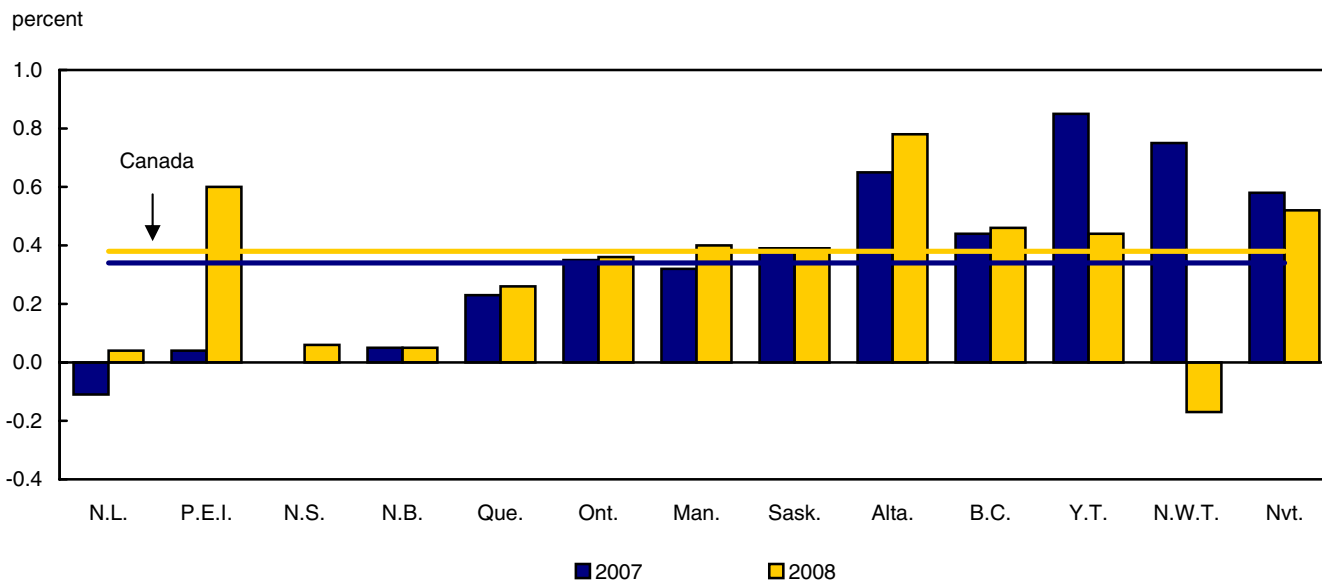
The annualized mortality rate in Canada for the 2nd quarter was 7.1 per thousand. The highest provincial rate was in Prince Edward Island (9.2 per thousand), and the lowest in Alberta (5.7 per thousand). In the territories, the Northwest Territories had the lowest mortality rate (4.3 per thousand).

Population growth still higher in the west

As a result of the rise in the country's net international migration, which manifested itself right across the country, every jurisdiction saw its population rise in the 2nd quarter, the only exception being the Northwest Territories.

Population growth remains strongest west of Ontario. This growth was higher in every one of Canada's four western provinces than in the country overall.

Chart 2
Quarterly variation of population estimates, Canada, provinces and territories, April to June, 2007 and 2008



For a third consecutive quarter, Alberta posted the sharpest population growth of all provinces. The increase in Alberta’s population in the April-June 2008 period was the strongest for a 2nd quarter since 1998, surpassing even the growth observed during the 2005/2006 boom.

Alberta’s sustained growth can be explained in a number of ways. First, its rate of natural increase was the highest among all of the provinces. During the April-June 2008 quarter, Alberta’s natural increase rose to 7,400, the highest ever for a 2nd quarter since 1992.

This province also posted the highest rate of international migration in the country, and saw its interprovincial migration rate rebound. Although falling short of the levels observed in 2005 and 2006, Alberta’s interprovincial migration gains in the 2nd quarter of 2008 surpassed the balance observed for the same period in the previous year.

While Alberta was losing population to its neighbours Saskatchewan and British Columbia, it still posted strong gains in its population exchanges with Quebec and Ontario.

British Columbia had its strongest population growth for a 2nd quarter since 1996. The sharp rise in the province’s net international migration enabled it to maintain its population growth despite a decline in its interprovincial migration gains, which were lower compared to those for the same quarter of 2007.

Manitoba’s population increased faster than ever before for a 2nd quarter. In addition to new highs in international migration, the province also posted its lowest interprovincial migration losses for a 2nd quarter since 1983.

Saskatchewan posted its strongest demographic growth for a 2nd quarter since 1983, namely because of record international net migration. This increase compensated for the province’s decrease in interprovincial migration gains, which were below the same period in the previous year. Nonetheless, this was a seventh consecutive quarter in which Saskatchewan came out ahead in its population exchanges with the rest of the country. Such a pattern had not been observed since 1983.

The Atlantic provinces are growing

The increase in Canada’s net international migration also manifested itself in the Atlantic provinces, which all posted population increases in the 2nd quarter, a first since 1992.

Prince Edward Island dominated the region in terms of population growth. Its rate of growth in the April-June 2008 quarter was surpassed only by Alberta's. The province's growth can be attributed not only to record international migration gains for a 2nd quarter, but also to net interprovincial migration beyond anything observed since the 4th quarter of 1989.

Newfoundland and Labrador's population rose for the first time since 1992 in a 2nd quarter, namely because of positive interprovincial net migration, which had not been seen since 1991.

Nova Scotia had its strongest demographic growth since 2004 for a 2nd quarter. This growth can be attributed to a rise in the province's net international migration, which combined with much smaller losses from interprovincial migration than those observed in the 2nd quarters of the past three years.

During the April-June 2008 quarter, New Brunswick's population growth rate was similar to what was observed last year for the same period. A rise in the province's international migration net gains offset the increase of its interprovincial migration deficit.

At the centre

Although Ontario's population growth in the 2nd quarter of 2008 was higher than for that quarter in the previous year, its population nonetheless grew more slowly than that of the country as a whole, and this for a third consecutive quarter. Higher interprovincial migration net outflows, namely towards Alberta, cancelled out the increase in Ontario's international net migration.

Quebec posted its sharpest population growth for a 2nd quarter since 1991. This growth can be mainly attributed to a net international migration not observed since the 3rd quarter of 1988. However, these gains were in part cancelled out by the highest interprovincial migration deficit for a 2nd quarter since 1998. As with Ontario, a significant part of Quebec's interprovincial migratory losses can be attributed to the province's exchanges with Alberta.

The number of births in Quebec is still on the rise. During the April-June 2008 period, births were estimated at 22,200 in the province, a level not observed for 2nd quarter since 1996.

Various situations in the north

For the first time since the 1st quarter of 2007, Nunavut posted the sharpest population growth of all of the territories. Its growth continued to be driven mainly by the highest natural increase in the country.

The Yukon Territory's population rose for a fifth consecutive quarter mainly because of its highest international migration gains for a 2nd quarter since 1989.

For a second consecutive quarter, the Northwest Territories were the only jurisdiction in the country to post a negative population balance. The strongest interprovincial migratory losses for a 2nd quarter since 1988 cancelled out a record international migratory balance.

Related products

Selected publications from Statistics Canada

91-209-X	Report on the Demographic Situation in Canada
91-213-X	Annual Demographic Statistics
91-214-X	Annual Demographic Estimates: Census Metropolitan Areas, Economic Regions and Census Divisions, Age and Sex
91-215-X	Annual Demographic Estimates: Canada, Provinces and Territories
91-520-X	Population Projections for Canada, Provinces and Territories

Selected CANSIM tables from Statistics Canada

051-0001	Estimates of population, by age group and sex, Canada, provinces and territories, annual
051-0002	Deaths, by sex and age group, Canada, provinces and territories, annual
051-0004	Components of population growth, Canada, provinces and territories, annual
051-0005	Estimates of population, Canada, provinces and territories, quarterly
051-0006	Immigrants to Canada, by country of last permanent residence, quarterly
051-0010	Estimates of population, by marital status, age group and sex, Canada, provinces and territories, annual
051-0011	International migrants, by age group and sex, Canada, provinces, and territories, annual
051-0012	Interprovincial migrants, by age group and sex, Canada, provinces and territories, annual
051-0013	Births by sex, Canada, provinces and territories, annual
051-0017	Interprovincial migrants, Canada, provinces and territories, quarterly
051-0018	Interprovincial in-, out- and net-migrants, by province or territory, annual
051-0019	Interprovincial migrants, by province or territory of origin and destination, annual
051-0020	Number of non-permanent residents, Canada, provinces and territories, quarterly
051-0035	Components of population growth, census divisions and census metropolitan areas, 2001 Census boundaries, annual
051-0037	International migration components, Canada, provinces and territories, quarterly

051-0045	Interprovincial migrants, by province or territory of origin and destination, quarterly
053-0001	Vital statistics, births, deaths and marriages, quarterly
102-0502	Deaths, by month, Canada, provinces and territories, annual
102-0503	Deaths, by age and sex, Canada, provinces and territories, annual
102-0504	Deaths, by age group and sex, Canada, provinces and territories, annual
102-0505	Deaths, by marital status, age group and sex, Canada, provinces and territories, annual
102-4502	Live births, by month, Canada, provinces and territories, annual
102-4503	Live births, by age of mother, Canada, provinces and territories, annual
102-4504	Live births, mean age of mother, Canada, provinces and territories, annual

Selected surveys from Statistics Canada

3231	Vital Statistics - Birth Database
3233	Vital Statistics - Death Database
3601	Estimates of Total Population, Canada, Provinces and Territories
3604	Estimates of Population by Age and Sex for Canada, Provinces and Territories
3605	Estimates of Population by Marital Status, Age and Sex for Canada, Provinces and Territories

Selected summary tables from Statistics Canada

- *Births and birth rate, by provinces and territories*
- *Deaths and death rate, by provinces and territories*
- *Components of population growth, by province and territory*
- *Marriages by provinces and territories*
- *Population by marital status and sex*
- *Population by marital status and sex, by province and territory*

Statistical tables

Table 1-1
Quarterly population estimates, national perspective — Population 1

	Canada	Newfoundland and Labrador	Prince Edward Island	Nova Scotia	New Brunswick	Quebec	Ontario
	number						
2008							
July 1 st	33,311,389	507,895	139,818	938,310	747,302	7,750,504	12,928,996
April 1 st	33,185,549	507,716	138,987	937,789	746,902	7,730,252	12,882,119
January 1 st	33,103,039	507,768	138,675	937,217	746,603	7,716,495	12,852,221
2007							
October 1 st	33,046,696	507,436	138,615	936,698	746,379	7,704,948	12,840,049
July 1 st	32,927,372	506,459	138,118	936,039	745,370	7,686,038	12,793,572
April 1 st	32,816,259	507,036	138,056	936,025	744,971	7,668,666	12,749,408
January 1 st	32,737,289	508,809	138,034	936,749	744,830	7,657,183	12,717,723
2006							
October 1 st	32,688,303	509,405	138,051	937,332	744,928	7,649,790	12,708,345
July 1 st	32,576,074	510,313	137,920	938,010	745,674	7,631,552	12,665,346
April 1 st	32,470,572	510,975	137,849	937,684	746,339	7,615,488	12,618,505
January 1 st	32,394,898	512,591	137,909	938,145	746,961	7,604,200	12,586,799
2005							
October 1 st	32,352,977	513,764	138,127	938,764	747,608	7,598,756	12,577,928
July 1 st	32,245,209	514,363	138,055	937,941	747,960	7,581,911	12,528,480
April 1 st	32,143,172	515,396	137,780	937,946	748,593	7,567,462	12,477,947
January 1 st	32,077,339	516,825	137,686	939,137	748,933	7,559,834	12,445,889
2004							
October 1 st	32,038,401	516,930	137,691	939,755	749,176	7,553,487	12,436,034
July 1 st	31,940,676	517,447	137,674	939,376	749,369	7,535,929	12,390,599
April 1 st	31,846,440	517,978	137,631	938,536	749,285	7,520,499	12,340,659
January 1 st	31,776,075	518,776	137,508	938,768	749,143	7,510,426	12,303,570
2003							
October 1 st	31,734,093	518,833	137,420	938,564	749,405	7,503,524	12,289,156
July 1 st	31,639,670	518,520	137,221	937,491	749,389	7,485,838	12,242,273
April 1 st	31,547,712	518,880	137,118	935,636	749,248	7,471,791	12,193,432
January 1 st	31,476,734	519,288	137,077	935,364	749,232	7,461,291	12,154,171
2002							
October 1 st	31,446,719	519,483	137,079	935,843	749,399	7,455,498	12,143,234
July 1 st	31,353,656	519,531	136,876	935,015	749,331	7,441,076	12,091,029
April 1 st	31,251,898	520,288	136,899	934,140	748,809	7,428,006	12,029,551
January 1 st	31,172,522	521,474	136,871	933,845	748,729	7,418,486	11,981,486
2001							
October 1 st	31,129,298	521,632	136,884	933,400	749,369	7,411,566	11,961,650
July 1 st	31,019,020	522,033	136,663	932,454	749,801	7,396,331	11,896,663

See footnotes at the end of the table.

Table 1-1 – continued

Quarterly population estimates, national perspective — Population 1

	Manitoba	Saskatchewan	Alberta	British Columbia	Yukon Territory	Northwest Territories	Nunavut
	number						
2008							
July 1 st	1,207,959	1,015,985	3,585,142	4,381,603	33,144	43,283	31,448
April 1 st	1,203,156	1,012,044	3,557,555	4,361,388	33,000	43,356	31,285
January 1 st	1,200,478	1,008,679	3,541,232	4,346,201	32,754	43,435	31,281
2007							
October 1 st	1,197,423	1,005,840	3,527,567	4,334,464	32,673	43,303	31,301
July 1 st	1,193,514	999,697	3,510,892	4,310,305	32,582	43,535	31,251
April 1 st	1,189,654	995,846	3,488,381	4,291,628	32,306	43,210	31,072
January 1 st	1,186,795	993,986	3,471,300	4,275,512	32,319	43,169	30,880
2006							
October 1 st	1,185,242	992,595	3,452,379	4,263,784	32,364	43,253	30,835
July 1 st	1,184,031	992,122	3,421,253	4,243,580	32,276	43,198	30,799
April 1 st	1,181,669	991,260	3,396,821	4,228,090	32,152	43,101	30,639
January 1 st	1,179,993	992,295	3,371,821	4,218,189	32,109	43,317	30,569
2005							
October 1 st	1,179,133	993,356	3,346,914	4,212,574	32,128	43,526	30,399
July 1 st	1,178,301	993,579	3,322,200	4,196,788	31,904	43,399	30,328
April 1 st	1,177,277	994,996	3,296,821	4,183,527	31,870	43,454	30,103
January 1 st	1,176,114	996,047	3,277,348	4,174,367	31,781	43,436	29,942
2004							
October 1 st	1,174,737	997,164	3,261,151	4,167,424	31,702	43,349	29,801
July 1 st	1,173,566	997,447	3,239,471	4,155,170	31,473	43,301	29,854
April 1 st	1,170,723	997,263	3,224,413	4,145,260	31,419	43,194	29,580
January 1 st	1,167,997	996,754	3,210,199	4,138,930	31,340	43,149	29,515
2003							
October 1 st	1,165,762	996,731	3,198,544	4,132,718	31,241	42,827	29,368
July 1 st	1,163,819	996,483	3,183,396	4,122,396	30,963	42,561	29,320
April 1 st	1,161,045	995,848	3,169,364	4,113,449	30,599	42,186	29,116
January 1 st	1,158,511	996,338	3,155,362	4,108,700	30,453	41,973	28,974
2002							
October 1 st	1,157,368	996,351	3,145,009	4,106,462	30,289	41,842	28,862
July 1 st	1,156,613	996,801	3,128,364	4,098,178	30,358	41,665	28,819
April 1 st	1,154,831	997,805	3,108,709	4,093,058	30,161	41,254	28,387
January 1 st	1,153,051	998,827	3,092,825	4,087,260	30,175	41,155	28,338
2001							
October 1 st	1,152,248	999,270	3,078,737	4,085,114	30,084	41,162	28,182
July 1 st	1,151,439	1,000,221	3,058,017	4,076,264	30,156	40,844	28,134

1. Population estimates are final intercensal from July 1, 2001 to April 1, 2006, final postcensal for July 1, 2006, updated postcensal from October 1, 2006 to April 1, 2008 and preliminary postcensal from July 1, 2008.

Table 1-2
Quarterly population estimates, national perspective — Quarterly variation ¹

	Canada	Newfoundland and Labrador	Prince Edward Island	Nova Scotia	New Brunswick	Quebec	Ontario
	percent						
2008							
April - June	0.38	0.04	0.60	0.06	0.05	0.26	0.36
January - March	0.25	-0.01	0.22	0.06	0.04	0.18	0.23
2007							
October - December	0.17	0.07	0.04	0.06	0.03	0.15	0.09
July - September	0.36	0.19	0.36	0.07	0.14	0.25	0.36
April - June	0.34	-0.11	0.04	0.00	0.05	0.23	0.35
January - March	0.24	-0.35	0.02	-0.08	0.02	0.15	0.25
2006							
October - December	0.15	-0.12	-0.01	-0.06	-0.01	0.10	0.07
July - September	0.34	-0.18	0.09	-0.07	-0.10	0.24	0.34
April - June	0.32	-0.13	0.05	0.03	-0.09	0.21	0.37
January - March	0.23	-0.32	-0.04	-0.05	-0.08	0.15	0.25
2005							
October - December	0.13	-0.23	-0.16	-0.07	-0.09	0.07	0.07
July - September	0.33	-0.12	0.05	0.09	-0.05	0.22	0.39
April - June	0.32	-0.20	0.20	0.00	-0.08	0.19	0.40
January - March	0.21	-0.28	0.07	-0.13	-0.05	0.10	0.26
2004							
October - December	0.12	-0.02	0.00	-0.07	-0.03	0.08	0.08
July - September	0.31	-0.10	0.01	0.04	-0.03	0.23	0.37
April - June	0.30	-0.10	0.03	0.09	0.01	0.21	0.40
January - March	0.22	-0.15	0.09	-0.02	0.02	0.13	0.30
2003							
October - December	0.13	-0.01	0.06	0.02	-0.03	0.09	0.12
July - September	0.30	0.06	0.15	0.11	0.00	0.24	0.38
April - June	0.29	-0.07	0.08	0.20	0.02	0.19	0.40
January - March	0.23	-0.08	0.03	0.03	0.00	0.14	0.32
2002							
October - December	0.10	-0.04	0.00	-0.05	-0.02	0.08	0.09
July - September	0.30	-0.01	0.15	0.09	0.01	0.19	0.43
April - June	0.33	-0.15	-0.02	0.09	0.07	0.18	0.51
January - March	0.25	-0.23	0.02	0.03	0.01	0.13	0.40
2001							
October - December	0.14	-0.03	-0.01	0.05	-0.09	0.09	0.17
July - September	0.36	-0.08	0.16	0.10	-0.06	0.21	0.55

See footnotes at the end of the table.

Table 1-2 – continued

 Quarterly population estimates, national perspective — Quarterly variation ¹

	Manitoba	Saskatchewan	Alberta	British Columbia	Yukon Territory	Northwest Territories	Nunavut
	percent						
2008							
April - June	0.40	0.39	0.78	0.46	0.44	-0.17	0.52
January - March	0.22	0.33	0.46	0.35	0.75	-0.18	0.01
2007							
October - December	0.26	0.28	0.39	0.27	0.25	0.30	-0.06
July - September	0.33	0.61	0.47	0.56	0.28	-0.53	0.16
April - June	0.32	0.39	0.65	0.44	0.85	0.75	0.58
January - March	0.24	0.19	0.49	0.38	-0.04	0.09	0.62
2006							
October - December	0.13	0.14	0.55	0.28	-0.14	-0.19	0.15
July - September	0.10	0.05	0.91	0.48	0.27	0.13	0.12
April - June	0.20	0.09	0.72	0.37	0.39	0.23	0.52
January - March	0.14	-0.10	0.74	0.23	0.13	-0.50	0.23
2005							
October - December	0.07	-0.11	0.74	0.13	-0.06	-0.48	0.56
July - September	0.07	-0.02	0.74	0.38	0.70	0.29	0.23
April - June	0.09	-0.14	0.77	0.32	0.11	-0.13	0.75
January - March	0.10	-0.11	0.59	0.22	0.28	0.04	0.54
2004							
October - December	0.12	-0.11	0.50	0.17	0.25	0.20	0.47
July - September	0.10	-0.03	0.67	0.29	0.73	0.11	-0.18
April - June	0.24	0.02	0.47	0.24	0.17	0.25	0.93
January - March	0.23	0.05	0.44	0.15	0.25	0.10	0.22
2003							
October - December	0.19	0.00	0.36	0.15	0.32	0.75	0.50
July - September	0.17	0.02	0.48	0.25	0.90	0.62	0.16
April - June	0.24	0.06	0.44	0.22	1.19	0.89	0.70
January - March	0.22	-0.05	0.44	0.12	0.48	0.51	0.49
2002							
October - December	0.10	0.00	0.33	0.05	0.54	0.31	0.39
July - September	0.07	-0.05	0.53	0.20	-0.23	0.42	0.15
April - June	0.15	-0.10	0.63	0.13	0.65	1.00	1.52
January - March	0.15	-0.10	0.51	0.14	-0.05	0.24	0.17
2001							
October - December	0.07	-0.04	0.46	0.05	0.30	-0.02	0.55
July - September	0.07	-0.10	0.68	0.22	-0.24	0.78	0.17

1. Numbers for total growth are final up to June 2006, updated from July 2006 to March 2008 and preliminary from April 2008.

Table 1-3
Quarterly population estimates, national perspective — Quarterly population growth ¹

	Canada	Newfoundland and Labrador	Prince Edward Island	Nova Scotia	New Brunswick	Quebec	Ontario
	number						
2008							
April - June	125,840	179	831	521	400	20,252	46,877
January - March	82,510	-52	312	572	299	13,757	29,898
2007							
October - December	56,343	332	60	519	224	11,547	12,172
July - September	119,324	977	497	659	1,009	18,910	46,477
April - June	111,113	-577	62	14	399	17,372	44,164
January - March	78,970	-1,773	22	-724	141	11,483	31,685
2006							
October - December	48,986	-596	-17	-583	-98	7,393	9,378
July - September	112,229	-908	131	-678	-746	18,238	42,999
April - June	105,502	-662	71	326	-665	16,064	46,841
January - March	75,674	-1,616	-60	-461	-622	11,288	31,706
2005							
October - December	41,921	-1,173	-218	-619	-647	5,444	8,871
July - September	107,768	-599	72	823	-352	16,845	49,448
April - June	102,037	-1,033	275	-5	-633	14,449	50,533
January - March	65,833	-1,429	94	-1,191	-340	7,628	32,058
2004							
October - December	38,938	-105	-5	-618	-243	6,347	9,855
July - September	97,725	-517	17	379	-193	17,558	45,435
April - June	94,236	-531	43	840	84	15,430	49,940
January - March	70,365	-798	123	-232	142	10,073	37,089
2003							
October - December	41,982	-57	88	204	-262	6,902	14,414
July - September	94,423	313	199	1,073	16	17,686	46,883
April - June	91,958	-360	103	1,855	141	14,047	48,841
January - March	70,978	-408	41	272	16	10,500	39,261
2002							
October - December	30,015	-195	-2	-479	-167	5,793	10,937
July - September	93,063	-48	203	828	68	14,422	52,205
April - June	101,758	-757	-23	875	522	13,070	61,478
January - March	79,376	-1,186	28	295	80	9,520	48,065
2001							
October - December	43,224	-158	-13	445	-640	6,920	19,836
July - September	110,278	-401	221	946	-432	15,235	64,987

See footnotes at the end of the table.

Table 1-3 – continued

 Quarterly population estimates, national perspective — Quarterly population growth ¹

	Manitoba	Saskatchewan	Alberta	British Columbia	Yukon Territory	Northwest Territories	Nunavut
	number						
2008							
April - June	4,803	3,941	27,587	20,215	144	-73	163
January - March	2,678	3,365	16,323	15,187	246	-79	4
2007							
October - December	3,055	2,839	13,665	11,737	81	132	-20
July - September	3,909	6,143	16,675	24,159	91	-232	50
April - June	3,860	3,851	22,511	18,677	276	325	179
January - March	2,859	1,860	17,081	16,116	-13	41	192
2006							
October - December	1,553	1,391	18,921	11,728	-45	-84	45
July - September	1,211	473	31,126	20,204	88	55	36
April - June	2,362	862	24,432	15,490	124	97	160
January - March	1,676	-1,035	25,000	9,901	43	-216	70
2005							
October - December	860	-1,061	24,907	5,615	-19	-209	170
July - September	832	-223	24,714	15,786	224	127	71
April - June	1,024	-1,417	25,379	13,261	34	-55	225
January - March	1,163	-1,051	19,473	9,160	89	18	161
2004							
October - December	1,377	-1,117	16,197	6,943	79	87	141
July - September	1,171	-283	21,680	12,254	229	48	-53
April - June	2,843	184	15,058	9,910	54	107	274
January - March	2,726	509	14,214	6,330	79	45	65
2003							
October - December	2,235	23	11,655	6,212	99	322	147
July - September	1,943	248	15,148	10,322	278	266	48
April - June	2,774	635	14,032	8,947	364	375	204
January - March	2,534	-490	14,002	4,749	146	213	142
2002							
October - December	1,143	-13	10,353	2,238	164	131	112
July - September	755	-450	16,645	8,284	-69	177	43
April - June	1,782	-1,004	19,655	5,120	197	411	432
January - March	1,780	-1,022	15,884	5,798	-14	99	49
2001							
October - December	803	-443	14,088	2,146	91	-7	156
July - September	809	-951	20,720	8,850	-72	318	48

1. Numbers for total growth are final up to June 2006, updated from July 2006 to March 2008 and preliminary from April 2008.

Table 2-1
Quarterly population estimates and factors of growth, provincial perspective — Canada

	Population at beginning period	Natural increase	Net interprovincial migration	Net international migration	Total net migration	Residual deviation	Total growth	Total growth
	number						percent	
2008								
July - September	33,311,389
April - June	33,185,549	34,241	0	91,599	91,599	..	125,840	0.38
January - March	33,103,039	23,395	0	59,115	59,115	..	82,510	0.25
2007								
October - December	33,046,696	28,294	0	28,049	28,049	..	56,343	0.17
July - September	32,927,372	40,953	0	78,371	78,371	..	119,324	0.36
April - June	32,816,259	34,353	0	76,760	76,760	..	111,113	0.34
January - March	32,737,289	22,743	0	56,227	56,227	..	78,970	0.24
2006								
October - December	32,688,303	27,617	0	21,369	21,369	..	48,986	0.15
July - September	32,576,074	40,042	0	72,187	72,187	..	112,229	0.34
April - June	32,470,572	34,143	0	73,956	73,956	2,597	105,502	0.32
January - March	32,394,898	24,736	0	56,126	56,126	5,188	75,674	0.23
2005								
October - December	32,352,977	24,797	0	22,429	22,429	5,305	41,921	0.13
July - September	32,245,209	36,917	0	76,155	76,155	5,304	107,768	0.33
April - June	32,143,172	32,255	0	75,030	75,030	5,248	102,037	0.32
January - March	32,077,339	18,075	0	52,949	52,949	5,191	65,833	0.21
2004								
October - December	32,038,401	23,823	0	20,419	20,419	5,304	38,938	0.12
July - September	31,940,676	35,211	0	67,818	67,818	5,304	97,725	0.31
April - June	31,846,440	30,923	0	68,562	68,562	5,249	94,236	0.30
January - March	31,776,075	20,531	0	55,079	55,079	5,245	70,365	0.22
2003								
October - December	31,734,093	22,034	0	25,255	25,255	5,307	41,982	0.13
July - September	31,639,670	35,445	0	64,282	64,282	5,304	94,423	0.30
April - June	31,547,712	30,645	0	66,562	66,562	5,249	91,958	0.29
January - March	31,476,734	20,909	0	55,259	55,259	5,190	70,978	0.23
2002								
October - December	31,446,719	21,887	0	13,431	13,431	5,303	30,015	0.10
July - September	31,353,656	33,177	0	65,191	65,191	5,305	93,063	0.30
April - June	31,251,898	29,589	0	77,419	77,419	5,250	101,758	0.33
January - March	31,172,522	20,546	0	64,020	64,020	5,190	79,376	0.25
2001								
October - December	31,129,298	23,562	0	24,967	24,967	5,305	43,224	0.14
July - September	31,019,020	33,964	0	81,618	81,618	5,304	110,278	0.36

Note(s): See "Data quality, concepts and methodology — Explanatory notes for the tables" section.

Table 2-2
Quarterly population estimates and factors of growth, provincial perspective — Newfoundland and Labrador

	Population at beginning period	Natural increase	Net interprovincial migration	Net international migration	Total net migration	Residual deviation	Total growth	Total growth
	number							percent
2008								
July - September	507,895
April - June	507,716	33	6	140	146	..	179	0.04
January - March	507,768	-191	-40	179	139	..	-52	-0.01
2007								
October - December	507,436	-139	489	-18	471	..	332	0.07
July - September	506,459	20	844	113	957	..	977	0.19
April - June	507,036	88	-791	126	-665	..	-577	-0.11
January - March	508,809	-137	-1,671	35	-1,636	..	-1,773	-0.35
2006								
October - December	509,405	-82	-558	44	-514	..	-596	-0.12
July - September	510,313	74	-1,047	65	-982	..	-908	-0.18
April - June	510,975	142	-946	114	-832	-28	-662	-0.13
January - March	512,591	-85	-1,647	60	-1,587	-56	-1,616	-0.32
2005								
October - December	513,764	16	-995	-251	-1,246	-57	-1,173	-0.23
July - September	514,363	61	-754	36	-718	-58	-599	-0.12
April - June	515,396	11	-1,356	256	-1,100	-56	-1,033	-0.20
January - March	516,825	-73	-1,575	163	-1,412	-56	-1,429	-0.28
2004								
October - December	516,930	64	-108	-118	-226	-57	-105	-0.02
July - September	517,447	107	-671	-11	-682	-58	-517	-0.10
April - June	517,978	69	-927	271	-656	-56	-531	-0.10
January - March	518,776	-60	-778	-17	-795	-57	-798	-0.15
2003								
October - December	518,833	109	-252	29	-223	-57	-57	-0.01
July - September	518,520	226	-70	100	30	-57	313	0.06
April - June	518,880	94	-601	90	-511	-57	-360	-0.07
January - March	519,288	-81	-331	-52	-383	-56	-408	-0.08
2002								
October - December	519,483	38	-177	-113	-290	-57	-195	-0.04
July - September	519,531	269	-574	199	-375	-58	-48	-0.01
April - June	520,288	130	-1,132	189	-943	-56	-757	-0.15
January - March	521,474	31	-1,349	76	-1,273	-56	-1,186	-0.23
2001								
October - December	521,632	7	-218	-4	-222	-57	-158	-0.03
July - September	522,033	342	-653	-148	-801	-58	-401	-0.08

Note(s): See "Data quality, concepts and methodology — Explanatory notes for the tables" section.

Table 2-3
Quarterly population estimates and factors of growth, provincial perspective — Prince Edward Island

	Population at beginning period	Natural increase	Net interprovincial migration	Net international migration	Total net migration	Residual deviation	Total growth	Total growth
	number						percent	
2008								
July - September	139,818
April - June	138,987	48	357	426	783	..	831	0.60
January - March	138,675	-7	-16	335	319	..	312	0.22
2007								
October - December	138,615	44	-156	172	16	..	60	0.04
July - September	138,118	129	-143	511	368	..	497	0.36
April - June	138,056	52	-216	226	10	..	62	0.04
January - March	138,034	-1	-155	178	23	..	22	0.02
2006								
October - December	138,051	48	-159	94	-65	..	-17	-0.01
July - September	137,920	133	-319	317	-2	..	131	0.09
April - June	137,849	57	-140	156	16	2	71	0.05
January - March	137,909	3	-134	74	-60	3	-60	-0.04
2005								
October - December	138,127	16	-251	21	-230	4	-218	-0.16
July - September	138,055	88	-114	102	-12	4	72	0.05
April - June	137,780	86	91	102	193	4	275	0.20
January - March	137,686	32	22	43	65	3	94	0.07
2004								
October - December	137,691	20	-94	73	-21	4	-5	0.00
July - September	137,674	107	-158	72	-86	4	17	0.01
April - June	137,631	65	-65	46	-19	3	43	0.03
January - March	137,508	-25	93	59	152	4	123	0.09
2003								
October - December	137,420	40	83	-31	52	4	88	0.06
July - September	137,221	98	33	72	105	4	199	0.15
April - June	137,118	92	-6	20	14	3	103	0.08
January - March	137,077	4	29	12	41	4	41	0.03
2002								
October - December	137,079	6	10	-14	-4	4	-2	0.00
July - September	136,876	55	132	19	151	3	203	0.15
April - June	136,899	47	-95	29	-66	4	-23	-0.02
January - March	136,871	-16	39	9	48	4	28	0.02
2001								
October - December	136,884	11	-10	-11	-21	3	-13	-0.01
July - September	136,663	66	128	31	159	4	221	0.16

Note(s): See "Data quality, concepts and methodology — Explanatory notes for the tables" section.

Table 2-4
Quarterly population estimates and factors of growth, provincial perspective — Nova Scotia

	Population at beginning period	Natural increase	Net interprovincial migration	Net international migration	Total net migration	Residual deviation	Total growth	Total growth
	number							percent
2008								
July - September	938,310
April - June	937,789	-88	-60	669	609	..	521	0.06
January - March	937,217	-122	181	513	694	..	572	0.06
2007								
October - December	936,698	-3	304	218	522	..	519	0.06
July - September	936,039	252	-542	949	407	..	659	0.07
April - June	936,025	-30	-449	493	44	..	14	0.00
January - March	936,749	-62	-1,082	420	-662	..	-724	-0.08
2006								
October - December	937,332	57	-929	289	-640	..	-583	-0.06
July - September	938,010	310	-1,666	678	-988	..	-678	-0.07
April - June	937,684	29	-457	686	229	-68	326	0.03
January - March	938,145	1	-1,019	420	-599	-137	-461	-0.05
2005								
October - December	938,764	41	-820	20	-800	-140	-619	-0.07
July - September	937,941	440	-728	971	243	-140	823	0.09
April - June	937,946	238	-623	242	-381	-138	-5	0.00
January - March	939,137	-435	-1,072	179	-893	-137	-1,191	-0.13
2004								
October - December	939,755	1	-518	-241	-759	-140	-618	-0.07
July - September	939,376	399	-828	668	-160	-140	379	0.04
April - June	938,536	196	-67	573	506	-138	840	0.09
January - March	938,768	-103	-625	357	-268	-139	-232	-0.02
2003								
October - December	938,564	-45	105	4	109	-140	204	0.02
July - September	937,491	396	-185	722	537	-140	1,073	0.11
April - June	935,636	283	999	435	1,434	-138	1,855	0.20
January - March	935,364	-48	34	149	183	-137	272	0.03
2002								
October - December	935,843	35	-329	-325	-654	-140	-479	-0.05
July - September	935,015	421	-194	461	267	-140	828	0.09
April - June	934,140	128	55	554	609	-138	875	0.09
January - March	933,845	82	-516	592	76	-137	295	0.03
2001								
October - December	933,400	101	-10	214	204	-140	445	0.05
July - September	932,454	460	-427	773	346	-140	946	0.10

Note(s): See "Data quality, concepts and methodology — Explanatory notes for the tables" section.

Table 2-5
Quarterly population estimates and factors of growth, provincial perspective — New Brunswick

	Population at beginning period	Natural increase	Net interprovincial migration	Net international migration	Total net migration	Residual deviation	Total growth	Total growth
	number							percent
2008								
July - September	747,302
April - June	746,902	165	-206	441	235	..	400	0.05
January - March	746,603	-32	-117	448	331	..	299	0.04
2007								
October - December	746,379	74	22	128	150	..	224	0.03
July - September	745,370	495	-24	538	514	..	1,009	0.14
April - June	744,971	214	-120	305	185	..	399	0.05
January - March	744,830	22	-305	424	119	..	141	0.02
2006								
October - December	744,928	124	-373	151	-222	..	-98	-0.01
July - September	745,674	549	-1,834	539	-1,295	..	-746	-0.10
April - June	746,339	266	-1,085	238	-847	84	-665	-0.09
January - March	746,961	81	-785	250	-535	168	-622	-0.08
2005								
October - December	747,608	144	-677	57	-620	171	-647	-0.09
July - September	747,960	391	-940	368	-572	171	-352	-0.05
April - June	748,593	243	-767	61	-706	170	-633	-0.08
January - March	748,933	-61	-313	202	-111	168	-340	-0.05
2004								
October - December	749,176	113	-255	70	-185	171	-243	-0.03
July - September	749,369	388	-739	329	-410	171	-193	-0.03
April - June	749,285	243	-60	71	11	170	84	0.01
January - March	749,143	-32	174	169	343	169	142	0.02
2003								
October - December	749,405	95	-281	96	-185	172	-262	-0.03
July - September	749,389	393	-593	387	-206	171	16	0.00
April - June	749,248	236	-31	106	75	170	141	0.02
January - March	749,232	136	-94	142	48	168	16	0.00
2002								
October - December	749,399	92	-83	-5	-88	171	-167	-0.02
July - September	749,331	459	-635	415	-220	171	68	0.01
April - June	748,809	229	430	33	463	170	522	0.07
January - March	748,729	170	-149	227	78	168	80	0.01
2001								
October - December	749,369	54	-471	-52	-523	171	-640	-0.09
July - September	749,801	453	-1,028	314	-714	171	-432	-0.06

Note(s): See "Data quality, concepts and methodology — Explanatory notes for the tables" section.

Table 2-6
Quarterly population estimates and factors of growth, provincial perspective — Quebec

	Population at beginning period	Natural increase	Net interprovincial migration	Net international migration	Total net migration	Residual deviation	Total growth	Total growth
	number						percent	
2008								
July - September	7,750,504
April - June	7,730,252	8,050	-4,952	17,154	12,202	..	20,252	0.26
January - March	7,716,495	5,450	-1,772	10,079	8,307	..	13,757	0.18
2007								
October - December	7,704,948	6,750	-2,105	6,902	4,797	..	11,547	0.15
July - September	7,686,038	9,650	-3,570	12,830	9,260	..	18,910	0.25
April - June	7,668,666	7,550	-4,665	14,487	9,822	..	17,372	0.23
January - March	7,657,183	4,200	-2,503	9,786	7,283	..	11,483	0.15
2006								
October - December	7,649,790	6,149	-2,429	3,673	1,244	..	7,393	0.10
July - September	7,631,552	8,724	-3,268	12,782	9,514	..	18,238	0.24
April - June	7,615,488	7,136	-4,000	13,571	9,571	643	16,064	0.21
January - March	7,604,200	5,688	-2,131	9,016	6,885	1,285	11,288	0.15
2005								
October - December	7,598,756	4,552	-1,873	4,078	2,205	1,313	5,444	0.07
July - September	7,581,911	7,732	-1,407	11,834	10,427	1,314	16,845	0.22
April - June	7,567,462	6,405	-3,048	12,391	9,343	1,299	14,449	0.19
January - March	7,559,834	1,854	-828	7,888	7,060	1,286	7,628	0.10
2004								
October - December	7,553,487	3,927	-627	4,360	3,733	1,313	6,347	0.08
July - September	7,535,929	7,379	-460	11,953	11,493	1,314	17,558	0.23
April - June	7,520,499	5,163	-1,588	13,154	11,566	1,299	15,430	0.21
January - March	7,510,426	1,976	-297	9,694	9,397	1,300	10,073	0.13
2003								
October - December	7,503,524	3,920	85	4,210	4,295	1,313	6,902	0.09
July - September	7,485,838	6,894	978	11,128	12,106	1,314	17,686	0.24
April - June	7,471,791	5,283	-936	11,000	10,064	1,300	14,047	0.19
January - March	7,461,291	2,881	-348	9,252	8,904	1,285	10,500	0.14
2002								
October - December	7,455,498	3,623	696	2,787	3,483	1,313	5,793	0.08
July - September	7,441,076	5,590	-1,241	11,387	10,146	1,314	14,422	0.19
April - June	7,428,006	5,290	-1,505	10,584	9,079	1,299	13,070	0.18
January - March	7,418,486	2,439	-1,045	9,412	8,367	1,286	9,520	0.13
2001								
October - December	7,411,566	4,039	-168	4,362	4,194	1,313	6,920	0.09
July - September	7,396,331	6,097	-1,632	12,084	10,452	1,314	15,235	0.21

Note(s): See "Data quality, concepts and methodology — Explanatory notes for the tables" section.

Table 2-7
Quarterly population estimates and factors of growth, provincial perspective — Ontario

	Population at beginning period	Natural increase	Net interprovincial migration	Net international migration	Total net migration	Residual deviation	Total growth	Total growth
	number						percent	
2008								
July - September	12,928,996
April - June	12,882,119	12,377	-3,942	38,442	34,500	..	46,877	0.36
January - March	12,852,221	8,960	-4,020	24,958	20,938	..	29,898	0.23
2007								
October - December	12,840,049	10,582	-4,047	5,637	1,590	..	12,172	0.09
July - September	12,793,572	15,618	-4,513	35,372	30,859	..	46,477	0.36
April - June	12,749,408	12,926	-3,451	34,689	31,238	..	44,164	0.35
January - March	12,717,723	9,563	-2,185	24,307	22,122	..	31,685	0.25
2006								
October - December	12,708,345	11,195	-5,957	4,140	-1,817	..	9,378	0.07
July - September	12,665,346	16,160	-8,454	35,293	26,839	..	42,999	0.34
April - June	12,618,505	13,512	-3,474	38,039	34,565	1,236	46,841	0.37
January - March	12,586,799	10,203	-4,056	28,030	23,974	2,471	31,706	0.25
2005								
October - December	12,577,928	10,678	-5,248	5,968	720	2,527	8,871	0.07
July - September	12,528,480	15,630	-4,723	41,067	36,344	2,526	49,448	0.39
April - June	12,477,947	13,211	-1,794	41,615	39,821	2,499	50,533	0.40
January - March	12,445,889	8,626	-1,748	27,652	25,904	2,472	32,058	0.26
2004								
October - December	12,436,034	10,752	-3,628	5,257	1,629	2,526	9,855	0.08
July - September	12,390,599	14,924	-4,002	37,040	33,038	2,527	45,435	0.37
April - June	12,340,659	13,858	-694	39,275	38,581	2,499	49,940	0.40
January - March	12,303,570	9,871	-905	30,622	29,717	2,499	37,089	0.30
2003								
October - December	12,289,156	9,806	-2,012	9,147	7,135	2,527	14,414	0.12
July - September	12,242,273	15,184	-3,324	37,549	34,225	2,526	46,883	0.38
April - June	12,193,432	12,908	-51	38,483	38,432	2,499	48,841	0.40
January - March	12,154,171	8,821	485	32,427	32,912	2,472	39,261	0.32
2002								
October - December	12,143,234	9,645	-1,034	4,852	3,818	2,526	10,937	0.09
July - September	12,091,029	14,472	1,237	39,023	40,260	2,527	52,205	0.43
April - June	12,029,551	12,833	705	50,439	51,144	2,499	61,478	0.51
January - March	11,981,486	9,342	3,130	38,064	41,194	2,471	48,065	0.40
2001								
October - December	11,961,650	10,878	-125	11,610	11,485	2,527	19,836	0.17
July - September	11,896,663	14,905	1,644	50,964	52,608	2,526	64,987	0.55

Note(s): See "Data quality, concepts and methodology — Explanatory notes for the tables" section.

Table 2-8
Quarterly population estimates and factors of growth, provincial perspective — Manitoba

	Population at beginning period	Natural increase	Net interprovincial migration	Net international migration	Total net migration	Residual deviation	Total growth	Total growth
	number						percent	
2008								
July - September	1,207,959
April - June	1,203,156	1,416	-360	3,747	3,387	..	4,803	0.40
January - March	1,200,478	939	-34	1,773	1,739	..	2,678	0.22
2007								
October - December	1,197,423	863	192	2,000	2,192	..	3,055	0.26
July - September	1,193,514	1,572	-301	2,638	2,337	..	3,909	0.33
April - June	1,189,654	1,406	-1,268	3,722	2,454	..	3,860	0.32
January - March	1,186,795	936	-378	2,301	1,923	..	2,859	0.24
2006								
October - December	1,185,242	863	-1,035	1,725	690	..	1,553	0.13
July - September	1,184,031	1,567	-2,819	2,463	-356	..	1,211	0.10
April - June	1,181,669	1,409	-1,900	2,720	820	-133	2,362	0.20
January - March	1,179,993	952	-1,523	1,981	458	-266	1,676	0.14
2005								
October - December	1,179,133	948	-1,734	1,375	-359	-271	860	0.07
July - September	1,178,301	1,327	-2,724	1,957	-767	-272	832	0.07
April - June	1,177,277	1,252	-2,887	2,390	-497	-269	1,024	0.09
January - March	1,176,114	761	-1,257	1,393	136	-266	1,163	0.10
2004								
October - December	1,174,737	758	-889	1,237	348	-271	1,377	0.12
July - September	1,173,566	1,245	-2,194	1,848	-346	-272	1,171	0.10
April - June	1,170,723	985	-747	2,336	1,589	-269	2,843	0.24
January - March	1,167,997	920	7	1,530	1,537	-269	2,726	0.23
2003								
October - December	1,165,762	786	-371	1,549	1,178	-271	2,235	0.19
July - September	1,163,819	1,396	-1,454	1,729	275	-272	1,943	0.17
April - June	1,161,045	1,037	-574	2,042	1,468	-269	2,774	0.24
January - March	1,158,511	854	210	1,204	1,414	-266	2,534	0.22
2002								
October - December	1,157,368	748	-535	659	124	-271	1,143	0.10
July - September	1,156,613	1,274	-1,976	1,185	-791	-272	755	0.07
April - June	1,154,831	1,087	-1,154	1,580	426	-269	1,782	0.15
January - March	1,153,051	930	-455	1,039	584	-266	1,780	0.15
2001								
October - December	1,152,248	743	-929	718	-211	-271	803	0.07
July - September	1,151,439	1,266	-1,806	1,077	-729	-272	809	0.07

Note(s): See "Data quality, concepts and methodology — Explanatory notes for the tables" section.

Table 2-9
Quarterly population estimates and factors of growth, provincial perspective — Saskatchewan

	Population at beginning period	Natural increase	Net interprovincial migration	Net international migration	Total net migration	Residual deviation	Total growth	Total growth
	number						percent	
2008								
July - September	1,015,985
April - June	1,012,044	1,077	1,107	1,757	2,864	..	3,941	0.39
January - March	1,008,679	732	1,439	1,194	2,633	..	3,365	0.33
2007								
October - December	1,005,840	446	1,782	611	2,393	..	2,839	0.28
July - September	999,697	1,128	3,739	1,276	5,015	..	6,143	0.61
April - June	995,846	1,034	1,691	1,126	2,817	..	3,851	0.39
January - March	993,986	697	427	736	1,163	..	1,860	0.19
2006								
October - December	992,595	419	529	443	972	..	1,391	0.14
July - September	992,122	1,094	-1,098	477	-621	..	473	0.05
April - June	991,260	1,019	-832	600	-232	-75	862	0.09
January - March	992,295	702	-2,330	442	-1,888	-151	-1,035	-0.10
2005								
October - December	993,356	611	-2,020	194	-1,826	-154	-1,061	-0.11
July - September	993,579	969	-1,901	555	-1,346	-154	-223	-0.02
April - June	994,996	965	-3,207	672	-2,535	-153	-1,417	-0.14
January - March	996,047	572	-2,393	619	-1,774	-151	-1,051	-0.11
2004								
October - December	997,164	620	-2,016	125	-1,891	-154	-1,117	-0.11
July - September	997,447	930	-1,899	532	-1,367	-154	-283	-0.03
April - June	997,263	885	-1,504	651	-853	-152	184	0.02
January - March	996,754	704	-822	474	-348	-153	509	0.05
2003								
October - December	996,731	416	-846	299	-547	-154	23	0.00
July - September	996,483	986	-1,349	457	-892	-154	248	0.02
April - June	995,848	962	-875	395	-480	-153	635	0.06
January - March	996,338	667	-1,665	358	-1,307	-150	-490	-0.05
2002								
October - December	996,351	389	-680	123	-557	-155	-13	0.00
July - September	996,801	896	-1,921	421	-1,500	-154	-450	-0.05
April - June	997,805	822	-2,350	372	-1,978	-152	-1,004	-0.10
January - March	998,827	748	-2,416	495	-1,921	-151	-1,022	-0.10
2001								
October - December	999,270	747	-1,503	159	-1,344	-154	-443	-0.04
July - September	1,000,221	1,029	-2,551	417	-2,134	-154	-951	-0.10

Note(s): See "Data quality, concepts and methodology — Explanatory notes for the tables" section.

Table 2-10
Quarterly population estimates and factors of growth, provincial perspective — Alberta

	Population at beginning period	Natural increase	Net interprovincial migration	Net international migration	Total net migration	Residual deviation	Total growth	Total growth
	number						percent	
2008								
July - September	3,585,142
April - June	3,557,555	7,418	6,730	13,439	20,169	..	27,587	0.78
January - March	3,541,232	5,426	2,761	8,136	10,897	..	16,323	0.46
2007								
October - December	3,527,567	6,511	864	6,290	7,154	..	13,665	0.39
July - September	3,510,892	7,712	-345	9,308	8,963	..	16,675	0.47
April - June	3,488,381	7,200	4,677	10,634	15,311	..	22,511	0.65
January - March	3,471,300	5,257	4,725	7,099	11,824	..	17,081	0.49
2006								
October - December	3,452,379	6,294	7,678	4,949	12,627	..	18,921	0.55
July - September	3,421,253	7,404	16,729	6,993	23,722	..	31,126	0.91
April - June	3,396,821	6,923	9,512	6,820	16,332	-1,177	24,432	0.72
January - March	3,371,821	5,068	12,320	5,257	17,577	-2,355	25,000	0.74
2005								
October - December	3,346,914	5,332	13,820	3,348	17,168	-2,407	24,907	0.74
July - September	3,322,200	6,310	10,143	5,854	15,997	-2,407	24,714	0.74
April - June	3,296,821	6,336	11,165	5,497	16,662	-2,381	25,379	0.77
January - March	3,277,348	4,839	8,290	3,989	12,279	-2,355	19,473	0.59
2004								
October - December	3,261,151	4,887	6,189	2,714	8,903	-2,407	16,197	0.50
July - September	3,239,471	6,217	8,779	4,277	13,056	-2,407	21,680	0.67
April - June	3,224,413	5,964	2,717	3,996	6,713	-2,381	15,058	0.47
January - March	3,210,199	5,035	3,192	3,606	6,798	-2,381	14,214	0.44
2003								
October - December	3,198,544	4,767	1,678	2,803	4,481	-2,407	11,655	0.36
July - September	3,183,396	6,093	3,019	3,629	6,648	-2,407	15,148	0.48
April - June	3,169,364	5,785	1,673	4,193	5,866	-2,381	14,032	0.44
January - March	3,155,362	5,057	3,159	3,432	6,591	-2,354	14,002	0.44
2002								
October - December	3,145,009	4,697	1,783	1,465	3,248	-2,408	10,353	0.33
July - September	3,128,364	5,813	5,288	3,137	8,425	-2,407	16,645	0.53
April - June	3,108,709	5,382	7,147	4,746	11,893	-2,380	19,655	0.63
January - March	3,092,825	4,565	5,378	3,586	8,964	-2,355	15,884	0.51
2001								
October - December	3,078,737	4,331	5,349	2,001	7,350	-2,407	14,088	0.46
July - September	3,058,017	5,387	8,361	4,565	12,926	-2,407	20,720	0.68

Note(s): See "Data quality, concepts and methodology — Explanatory notes for the tables" section.

Table 2-11
Quarterly population estimates and factors of growth, provincial perspective — British Columbia

	Population at beginning period	Natural increase	Net interprovincial migration	Net international migration	Total net migration	Residual deviation	Total growth	Total growth
	number						percent	
2008								
July - September	4,381,603
April - June	4,361,388	3,368	1,669	15,178	16,847	..	20,215	0.46
January - March	4,346,201	1,921	1,844	11,422	13,266	..	15,187	0.35
2007								
October - December	4,334,464	2,886	2,599	6,252	8,851	..	11,737	0.27
July - September	4,310,305	4,034	5,346	14,779	20,125	..	24,159	0.56
April - June	4,291,628	3,540	4,337	10,800	15,137	..	18,677	0.44
January - March	4,275,512	1,952	3,238	10,926	14,164	..	16,116	0.38
2006								
October - December	4,263,784	2,271	3,511	5,946	9,457	..	11,728	0.28
July - September	4,243,580	3,688	3,919	12,597	16,516	..	20,204	0.48
April - June	4,228,090	3,278	3,486	10,895	14,381	2,169	15,490	0.37
January - March	4,218,189	1,804	1,883	10,552	12,435	4,338	9,901	0.23
2005								
October - December	4,212,574	2,165	259	7,625	7,884	4,434	5,615	0.13
July - September	4,196,788	3,634	3,172	13,414	16,586	4,434	15,786	0.38
April - June	4,183,527	3,150	2,726	11,771	14,497	4,386	13,261	0.32
January - March	4,174,367	1,643	1,055	10,800	11,855	4,338	9,160	0.22
2004								
October - December	4,167,424	2,335	2,055	6,987	9,042	4,434	6,943	0.17
July - September	4,155,170	3,171	2,378	11,139	13,517	4,434	12,254	0.29
April - June	4,145,260	3,160	3,042	8,094	11,136	4,386	9,910	0.24
January - March	4,138,930	1,900	310	8,506	8,816	4,386	6,330	0.15
2003								
October - December	4,132,718	1,860	1,683	7,103	8,786	4,434	6,212	0.15
July - September	4,122,396	3,423	2,830	8,503	11,333	4,434	10,322	0.25
April - June	4,113,449	3,627	-28	9,734	9,706	4,386	8,947	0.22
January - March	4,108,700	2,267	-1,460	8,280	6,820	4,338	4,749	0.12
2002								
October - December	4,106,462	2,330	298	4,044	4,342	4,434	2,238	0.05
July - September	4,098,178	3,616	153	8,950	9,103	4,435	8,284	0.20
April - June	4,093,058	3,302	-2,624	8,828	6,204	4,386	5,120	0.13
January - March	4,087,260	1,933	-2,272	10,474	8,202	4,337	5,798	0.14
2001								
October - December	4,085,114	2,348	-1,787	6,020	4,233	4,435	2,146	0.05
July - September	4,076,264	3,650	-1,873	11,507	9,634	4,434	8,850	0.22

Note(s): See "Data quality, concepts and methodology — Explanatory notes for the tables" section.

Table 2-12
Quarterly population estimates and factors of growth, provincial perspective — Yukon Territory

	Population at beginning period	Natural increase	Net interprovincial migration	Net international migration	Total net migration	Residual deviation	Total growth	Total growth
	number							percent
2008								
July - September	33,144
April - June	33,000	48	5	91	96	..	144	0.44
January - March	32,754	47	114	85	199	..	246	0.75
2007								
October - December	32,673	40	68	-27	41	..	81	0.25
July - September	32,582	30	34	27	61	..	91	0.28
April - June	32,306	50	154	72	226	..	276	0.85
January - March	32,319	50	-76	13	-63	..	-13	-0.04
2006								
October - December	32,364	45	-41	-49	-90	..	-45	-0.14
July - September	32,276	34	64	-10	54	..	88	0.27
April - June	32,152	53	-31	78	47	-24	124	0.39
January - March	32,109	54	-92	33	-59	-48	43	0.13
2005								
October - December	32,128	30	-92	-7	-99	-50	-19	-0.06
July - September	31,904	39	142	-6	136	-49	224	0.70
April - June	31,870	46	-105	44	-61	-49	34	0.11
January - March	31,781	41	1	-1	0	-48	89	0.28
2004								
October - December	31,702	55	5	-30	-25	-49	79	0.25
July - September	31,473	48	152	-21	131	-50	229	0.73
April - June	31,419	55	-119	70	-49	-48	54	0.17
January - March	31,340	41	-48	37	-11	-49	79	0.25
2003								
October - December	31,241	49	17	-16	1	-49	99	0.32
July - September	30,963	71	177	-20	157	-50	278	0.90
April - June	30,599	45	227	44	271	-48	364	1.19
January - March	30,453	37	23	37	60	-49	146	0.48
2002								
October - December	30,289	49	82	-16	66	-49	164	0.54
July - September	30,358	46	-183	19	-164	-49	-69	-0.23
April - June	30,161	41	38	69	107	-49	197	0.65
January - March	30,175	56	-123	5	-118	-48	-14	-0.05
2001								
October - December	30,084	45	32	-36	-4	-50	91	0.30
July - September	30,156	52	-168	-5	-173	-49	-72	-0.24

Note(s): See "Data quality, concepts and methodology — Explanatory notes for the tables" section.

Table 2-13
Quarterly population estimates and factors of growth, provincial perspective — Northwest Territories

	Population at beginning period	Natural increase	Net interprovincial migration	Net international migration	Total net migration	Residual deviation	Total growth	Total growth
	number						percent	
2008								
July - September	43,283
April - June	43,356	155	-334	106	-228	..	-73	-0.17
January - March	43,435	117	-207	11	-196	..	-79	-0.18
2007								
October - December	43,303	104	87	-59	28	..	132	0.30
July - September	43,535	128	-351	-9	-360	..	-232	-0.53
April - June	43,210	154	94	77	171	..	325	0.75
January - March	43,169	117	-75	-1	-76	..	41	0.09
2006								
October - December	43,253	104	-165	-23	-188	..	-84	-0.19
July - September	43,198	128	-75	2	-73	..	55	0.13
April - June	43,101	154	-119	40	-79	-22	97	0.23
January - March	43,317	119	-393	15	-378	-43	-216	-0.50
2005								
October - December	43,526	109	-355	-7	-362	-44	-209	-0.48
July - September	43,399	154	-87	16	-71	-44	127	0.29
April - June	43,454	172	-267	-3	-270	-43	-55	-0.13
January - March	43,436	129	-178	24	-154	-43	18	0.04
2004								
October - December	43,349	132	-80	-10	-90	-45	87	0.20
July - September	43,301	135	-143	12	-131	-44	48	0.11
April - June	43,194	128	-87	23	-64	-43	107	0.25
January - March	43,149	150	-185	36	-149	-44	45	0.10
2003								
October - December	42,827	99	107	72	179	-44	322	0.75
July - September	42,561	132	60	30	90	-44	266	0.62
April - June	42,186	130	175	27	202	-43	375	0.89
January - March	41,973	138	15	16	31	-44	213	0.51
2002								
October - December	41,842	103	2	-18	-16	-44	131	0.31
July - September	41,665	104	50	-21	29	-44	177	0.42
April - June	41,254	135	229	4	233	-43	411	1.00
January - March	41,155	124	-99	31	-68	-43	99	0.24
2001								
October - December	41,162	110	-150	-11	-161	-44	-7	-0.02
July - September	40,844	118	104	52	156	-44	318	0.78

Note(s): See "Data quality, concepts and methodology — Explanatory notes for the tables" section.

Table 2-14
Quarterly population estimates and factors of growth, provincial perspective — Nunavut

	Population at beginning period	Natural increase	Net interprovincial migration	Net international migration	Total net migration	Residual deviation	Total growth	Total growth
	number						percent	
2008								
July - September	31,448
April - June	31,285	174	-20	9	-11	..	163	0.52
January - March	31,281	155	-133	-18	-151	..	4	0.01
2007								
October - December	31,301	136	-99	-57	-156	..	-20	-0.06
July - September	31,251	185	-174	39	-135	..	50	0.16
April - June	31,072	169	7	3	10	..	179	0.58
January - March	30,880	149	40	3	43	..	192	0.62
2006								
October - December	30,835	130	-72	-13	-85	..	45	0.15
July - September	30,799	177	-132	-9	-141	..	36	0.12
April - June	30,639	165	-14	-1	-15	-10	160	0.52
January - March	30,569	146	-93	-4	-97	-21	70	0.23
2005								
October - December	30,399	155	-14	8	-6	-21	170	0.56
July - September	30,328	142	-79	-13	-92	-21	71	0.23
April - June	30,103	140	72	-8	64	-21	225	0.75
January - March	29,942	147	-4	-2	-6	-20	161	0.54
2004								
October - December	29,801	159	-34	-5	-39	-21	141	0.47
July - September	29,854	161	-215	-20	-235	-21	-53	-0.18
April - June	29,580	152	99	2	101	-21	274	0.93
January - March	29,515	154	-116	6	-110	-21	65	0.22
2003								
October - December	29,368	132	4	-10	-6	-21	147	0.50
July - September	29,320	153	-122	-4	-126	-21	48	0.16
April - June	29,116	163	28	-7	21	-20	204	0.70
January - March	28,974	176	-57	2	-55	-21	142	0.49
2002								
October - December	28,862	132	-33	-8	-41	-21	112	0.39
July - September	28,819	162	-136	-4	-140	-21	43	0.15
April - June	28,387	163	256	-8	248	-21	432	1.52
January - March	28,338	142	-123	10	-113	-20	49	0.17
2001								
October - December	28,182	148	-10	-3	-13	-21	156	0.55
July - September	28,134	139	-99	-13	-112	-21	48	0.17

Note(s): See "Data quality, concepts and methodology — Explanatory notes for the tables" section.

Table 3-1
Quarterly estimates of demographic components, provincial perspective — Canada

	Natural increase		Interprovincial migration		International migration					Residual deviation
	Births	Deaths	In-migrants	Out-migrants	Immigrants	Emigrants	Returning emigrants	Net temporary emigrants	Net non-permanent residents	
	number									
2008										
April - June	93,071	58,830	105,691	105,691	69,228	10,029	6,323	4,766	30,843	..
January - March	86,238	62,843	81,561	81,561	53,147	8,855	3,774	4,501	15,550	..
2007										
October - December	88,603	60,309	70,551	70,551	55,572	9,012	3,499	4,537	-17,473	..
July - September	96,173	55,220	125,673	125,673	71,656	17,153	9,019	6,361	21,210	..
April - June	91,578	57,225	77,629	77,629	61,649	8,925	6,107	4,745	22,674	..
January - March	84,543	61,800	60,920	60,920	47,875	7,660	3,579	4,430	16,863	..
2006										
October - December	86,920	59,303	62,974	62,974	58,245	8,297	3,450	4,591	-27,438	..
July - September	94,248	54,206	103,539	103,539	70,356	15,575	8,894	6,403	14,915	..
April - June	89,855	55,712	77,633	77,633	67,909	9,809	6,350	4,802	14,308	2,597
January - March	83,594	58,858	66,297	66,297	55,134	8,668	3,840	4,535	10,355	5,188
2005										
October - December	82,264	57,467	53,020	53,020	55,386	8,815	3,564	4,570	-23,136	5,305
July - September	90,369	53,452	88,918	88,918	75,945	16,107	9,180	6,266	13,403	5,304
April - June	88,353	56,098	89,175	89,175	74,471	8,932	6,910	4,729	7,310	5,248
January - March	81,190	63,115	60,810	60,810	56,438	7,682	3,762	4,419	4,850	5,191
2004										
October - December	81,735	57,912	53,280	53,280	48,090	7,953	3,909	4,487	-19,140	5,304
July - September	87,992	52,781	82,279	82,279	65,579	16,244	9,104	6,533	15,912	5,304
April - June	85,762	54,839	78,153	78,153	67,241	9,175	6,415	4,893	8,974	5,249
January - March	81,583	61,052	56,219	56,219	54,914	7,416	3,698	4,436	8,319	5,245
2003										
October - December	81,561	59,527	44,648	44,648	53,588	8,068	3,881	4,606	-19,540	5,307
July - September	88,856	53,411	82,360	82,360	63,340	14,379	9,159	6,234	12,396	5,304
April - June	85,486	54,841	82,033	82,033	58,863	8,154	6,579	4,691	13,965	5,249
January - March	79,299	58,390	54,000	54,000	45,558	6,409	4,504	4,230	15,836	5,190
2002										
October - December	79,120	57,233	47,994	47,994	41,830	8,092	3,541	4,677	-19,171	5,303
July - September	86,618	53,441	90,872	90,872	52,919	15,207	8,294	6,571	25,756	5,305
April - June	83,719	54,130	86,463	86,463	72,711	8,372	6,125	4,539	11,494	5,250
January - March	79,345	58,799	58,756	58,756	61,589	7,193	3,024	4,252	10,852	5,190
2001										
October - December	78,968	55,406	50,973	50,973	52,154	8,113	3,773	4,476	-18,371	5,305
July - September	86,123	52,159	94,298	94,298	69,951	18,219	7,346	6,905	29,445	5,304

Note(s): See "Data quality, concepts and methodology — Explanatory notes for the tables" section.

Table 3-2
Quarterly estimates of demographic components, provincial perspective — Newfoundland and Labrador

	Natural increase		Interprovincial migration		International migration				Residual deviation	
	Births	Deaths	In-migrants	Out-migrants	Immigrants	Emigrants	Returning emigrants	Net temporary emigrants		Net non-permanent residents
number										
2008										
April - June	1,145	1,112	3,554	3,548	151	64	31	61	83	..
January - March	1,023	1,214	3,099	3,139	137	57	19	58	138	..
2007										
October - December	1,066	1,205	2,687	2,198	167	57	17	58	-87	..
July - September	1,152	1,132	4,142	3,298	143	109	44	81	116	..
April - June	1,166	1,078	2,327	3,118	126	52	29	60	83	..
January - March	1,045	1,182	1,601	3,272	109	44	17	57	10	..
2006										
October - December	1,092	1,174	1,637	2,195	154	48	17	59	-20	..
July - September	1,183	1,109	2,841	3,888	127	89	42	82	67	..
April - June	1,197	1,055	2,334	3,280	115	62	31	62	92	-28
January - March	1,070	1,155	1,974	3,621	112	55	20	58	41	-56
2005										
October - December	1,105	1,089	1,486	2,481	117	56	17	59	-270	-57
July - September	1,154	1,093	2,501	3,255	108	102	46	81	65	-58
April - June	1,141	1,130	2,422	3,778	125	43	18	61	217	-56
January - March	1,101	1,174	1,780	3,355	147	36	10	56	98	-56
2004										
October - December	1,124	1,060	1,715	1,823	93	38	11	58	-126	-57
July - September	1,177	1,070	2,296	2,967	176	78	24	84	-49	-58
April - June	1,087	1,018	2,371	3,298	159	36	26	62	184	-56
January - March	1,100	1,160	1,908	2,686	151	30	15	57	-96	-57
2003										
October - December	1,177	1,068	1,567	1,819	78	33	15	59	28	-57
July - September	1,234	1,008	2,551	2,621	148	58	38	80	52	-57
April - June	1,153	1,059	2,819	3,420	65	24	31	60	78	-57
January - March	1,065	1,146	2,111	2,442	68	19	21	55	-67	-56
2002										
October - December	1,127	1,089	1,587	1,764	117	25	16	60	-161	-57
July - September	1,251	982	2,681	3,255	66	46	40	84	223	-58
April - June	1,178	1,048	2,793	3,925	115	37	26	58	143	-56
January - March	1,095	1,064	1,913	3,262	106	32	13	54	43	-56
2001										
October - December	1,076	1,069	1,508	1,726	104	37	16	57	-30	-57
July - September	1,287	945	2,570	3,223	89	82	31	88	-98	-58

Note(s): See "Data quality, concepts and methodology — Explanatory notes for the tables" section.

Table 3-3
Quarterly estimates of demographic components, provincial perspective — Prince Edward Island

	Natural increase		Interprovincial migration		International migration				Residual deviation	
	Births	Deaths	In-migrants	Out-migrants	Immigrants	Emigrants	Returning emigrants	Net temporary emigrants		Net non-permanent residents
number										
2008										
April - June	369	321	1,443	1,086	323	15	17	17	118	..
January - March	301	308	892	908	332	13	9	15	22	..
2007										
October - December	349	305	659	815	206	12	9	16	-15	..
July - September	401	272	1,093	1,236	420	25	24	22	114	..
April - June	366	314	684	900	219	14	16	17	22	..
January - March	300	301	581	736	149	12	9	15	47	..
2006										
October - December	347	299	422	581	170	12	8	16	-56	..
July - September	400	267	798	1,117	200	24	24	22	139	..
April - June	366	309	706	846	135	15	16	17	37	2
January - March	300	297	688	822	60	13	9	16	34	3
2005										
October - December	308	292	276	527	59	12	7	16	-17	4
July - September	355	267	790	904	98	23	24	21	24	4
April - June	335	249	979	888	101	8	9	17	17	4
January - March	342	310	589	567	72	7	4	15	-11	3
2004										
October - December	328	308	316	410	86	7	5	16	5	4
July - September	366	259	653	811	53	14	12	23	44	4
April - June	363	298	775	840	89	35	20	17	-11	3
January - March	333	358	542	449	82	28	12	16	9	4
2003										
October - December	328	288	503	420	50	30	12	16	-47	4
July - September	379	281	750	717	47	55	28	22	74	4
April - June	386	294	918	924	34	7	8	17	2	3
January - March	324	320	521	492	23	5	5	15	4	4
2002										
October - December	315	309	426	416	25	7	3	16	-19	4
July - September	349	294	821	689	7	13	10	23	38	3
April - June	348	301	907	1,002	44	13	17	16	-3	4
January - March	316	332	538	499	31	11	8	16	-3	4
2001										
October - December	291	280	393	403	41	12	10	16	-34	3
July - September	358	292	801	673	29	27	21	24	32	4

Note(s): See "Data quality, concepts and methodology — Explanatory notes for the tables" section.

Table 3-4
Quarterly estimates of demographic components, provincial perspective — Nova Scotia

	Natural increase		Interprovincial migration		International migration				Residual deviation	
	Births	Deaths	In-migrants	Out-migrants	Immigrants	Emigrants	Returning emigrants	Net temporary emigrants		Net non-permanent residents
number										
2008										
April - June	2,037	2,125	5,636	5,696	724	149	113	112	93	..
January - March	1,991	2,113	4,695	4,514	599	131	67	105	83	..
2007										
October - December	2,099	2,102	3,815	3,511	581	135	62	107	-183	..
July - September	2,245	1,993	6,526	7,068	756	254	161	149	435	..
April - June	2,050	2,080	3,668	4,117	645	128	98	112	-10	..
January - March	2,007	2,069	2,699	3,781	542	110	58	104	34	..
2006										
October - December	2,117	2,060	3,141	4,070	632	119	55	108	-171	..
July - September	2,267	1,957	5,406	7,072	896	224	142	150	14	..
April - June	2,071	2,042	4,224	4,681	554	146	113	113	278	-68
January - March	2,030	2,029	3,123	4,142	504	128	68	107	83	-137
2005										
October - December	2,070	2,029	2,536	3,356	459	131	63	108	-263	-140
July - September	2,308	1,868	5,180	5,908	680	239	164	148	514	-140
April - June	2,231	1,993	4,183	4,806	462	166	144	111	-87	-138
January - March	1,948	2,383	3,184	4,256	328	144	79	104	20	-137
2004										
October - December	2,121	2,120	2,529	3,047	372	149	81	105	-440	-140
July - September	2,275	1,876	5,144	5,972	546	303	189	153	389	-140
April - June	2,188	1,992	4,570	4,637	459	179	130	115	278	-138
January - March	2,150	2,253	2,832	3,457	394	145	75	104	137	-139
2003										
October - December	2,043	2,088	2,538	2,433	389	158	79	108	-198	-140
July - September	2,332	1,936	5,147	5,332	465	280	185	146	498	-140
April - June	2,226	1,943	5,575	4,576	309	180	138	110	278	-138
January - March	2,049	2,097	3,232	3,198	311	141	94	99	-16	-137
2002										
October - December	2,032	1,997	2,391	2,720	322	177	75	110	-435	-140
July - September	2,328	1,907	5,488	5,682	315	335	173	155	463	-140
April - June	2,194	2,066	4,808	4,753	418	164	92	107	315	-138
January - March	2,109	2,027	3,350	3,866	364	140	46	99	421	-137
2001										
October - December	2,084	1,983	2,912	2,922	332	159	57	106	90	-140
July - September	2,306	1,846	5,261	5,688	495	357	110	162	687	-140

Note(s): See "Data quality, concepts and methodology — Explanatory notes for the tables" section.

Table 3-5
Quarterly estimates of demographic components, provincial perspective — New Brunswick

	Natural increase		Interprovincial migration		International migration					Residual deviation
	Births	Deaths	In-migrants	Out-migrants	Immigrants	Emigrants	Returning emigrants	Net temporary emigrants	Net non-permanent residents	
number										
2008										
April - June	1,677	1,512	3,806	4,012	447	108	73	89	118	..
January - March	1,628	1,660	3,244	3,361	462	95	43	84	122	..
2007										
October - December	1,635	1,561	3,092	3,070	397	96	40	85	-128	..
July - September	1,978	1,483	5,297	5,321	497	185	103	120	243	..
April - June	1,691	1,477	3,170	3,290	375	103	71	89	51	..
January - March	1,642	1,620	2,369	2,674	374	88	42	83	179	..
2006										
October - December	1,649	1,525	2,062	2,435	397	96	42	87	-105	..
July - September	2,000	1,451	3,409	5,243	470	180	105	120	264	..
April - June	1,714	1,448	2,463	3,548	457	105	74	90	-98	84
January - March	1,667	1,586	2,277	3,062	322	93	44	86	63	168
2005										
October - December	1,666	1,522	1,590	2,267	240	95	42	87	-43	171
July - September	1,822	1,431	3,856	4,796	367	173	105	118	187	171
April - June	1,733	1,490	3,196	3,963	306	96	75	88	-136	170
January - March	1,671	1,732	2,149	2,462	178	83	41	84	150	168
2004										
October - December	1,642	1,529	1,956	2,211	182	86	42	85	17	171
July - September	1,828	1,440	3,303	4,042	199	176	100	123	329	171
April - June	1,765	1,522	3,146	3,206	232	73	86	92	-82	170
January - March	1,724	1,756	2,524	2,350	182	59	48	83	81	169
2003										
October - December	1,724	1,629	1,592	1,873	182	65	50	87	16	172
July - September	1,859	1,466	3,428	4,021	164	115	122	117	333	171
April - June	1,796	1,560	3,478	3,509	165	68	90	88	7	170
January - March	1,738	1,602	2,228	2,322	155	54	61	80	60	168
2002										
October - December	1,680	1,588	1,897	1,980	161	69	48	88	-57	171
July - September	1,890	1,431	3,630	4,265	164	129	114	123	389	171
April - June	1,736	1,507	3,738	3,308	210	118	91	85	-65	170
January - March	1,740	1,570	2,513	2,662	170	101	46	80	192	168
2001										
October - December	1,637	1,583	1,819	2,290	165	115	57	84	-75	171
July - September	1,858	1,405	3,640	4,668	220	257	110	130	371	171

Note(s): See "Data quality, concepts and methodology — Explanatory notes for the tables" section.

Table 3-6
Quarterly estimates of demographic components, provincial perspective — Quebec

	Natural increase		Interprovincial migration		International migration				Residual deviation	
	Births	Deaths	In-migrants	Out-migrants	Immigrants	Emigrants	Returning emigrants	Net temporary emigrants		Net non-permanent residents
number										
2008										
April - June	22,200	14,150	7,901	12,853	12,163	1,550	853	669	6,357	..
January - March	20,550	15,100	5,247	7,019	9,592	1,370	510	631	1,978	..
2007										
October - December	20,700	13,950	4,700	6,805	10,407	1,394	472	636	-1,947	..
July - September	22,450	12,800	9,716	13,286	13,893	2,654	1,216	893	1,268	..
April - June	21,400	13,850	4,972	9,637	11,554	1,355	831	665	4,122	..
January - March	19,750	15,550	3,223	5,726	9,363	1,163	487	622	1,721	..
2006										
October - December	20,167	14,018	4,042	6,471	10,218	1,260	470	644	-5,111	..
July - September	21,712	12,988	7,460	10,728	13,945	2,364	1,210	898	889	..
April - June	20,575	13,439	5,200	9,200	11,421	1,517	857	674	3,484	643
January - March	19,485	13,797	3,847	5,978	9,105	1,340	518	636	1,369	1,285
2005										
October - December	18,089	13,537	3,653	5,526	8,426	1,363	481	641	-2,825	1,313
July - September	20,332	12,600	7,264	8,671	13,049	2,491	1,238	878	916	1,314
April - June	19,979	13,574	6,908	9,956	12,496	1,446	1,055	664	950	1,299
January - March	17,946	16,092	4,028	4,856	9,344	1,244	574	620	-166	1,286
2004										
October - December	17,818	13,891	4,812	5,439	9,159	1,287	597	629	-3,480	1,313
July - September	19,679	12,300	6,985	7,445	12,419	2,630	1,389	917	1,692	1,314
April - June	18,825	13,662	7,078	8,666	12,327	1,477	1,050	687	1,941	1,299
January - March	17,750	15,774	4,477	4,774	10,340	1,194	606	622	564	1,300
2003										
October - December	17,954	14,034	3,861	3,776	10,018	1,299	635	647	-4,497	1,313
July - September	19,835	12,941	8,311	7,333	11,870	2,315	1,498	874	949	1,314
April - June	18,923	13,640	7,236	8,172	10,184	1,256	1,118	658	1,612	1,300
January - March	17,193	14,312	4,251	4,599	7,488	988	766	594	2,580	1,285
2002										
October - December	17,263	13,640	4,558	3,862	7,836	1,247	602	657	-3,747	1,313
July - September	18,894	13,304	8,227	9,468	9,405	2,342	1,409	922	3,837	1,314
April - June	18,616	13,326	7,669	9,174	10,578	1,382	998	637	1,027	1,299
January - March	17,704	15,265	4,075	5,120	9,762	1,188	493	596	941	1,286
2001										
October - December	17,434	13,395	4,326	4,494	8,716	1,339	615	628	-3,002	1,313
July - September	18,849	12,752	8,418	10,050	10,058	3,008	1,197	969	4,806	1,314

Note(s): See "Data quality, concepts and methodology — Explanatory notes for the tables" section.

Table 3-7
Quarterly estimates of demographic components, provincial perspective — Ontario

	Natural increase		Interprovincial migration		International migration					Residual deviation
	Births	Deaths	In-migrants	Out-migrants	Immigrants	Emigrants	Returning emigrants	Net temporary emigrants	Net non-permanent residents	
number										
2008										
April - June	34,364	21,987	22,313	26,255	31,977	4,858	2,978	2,208	10,553	..
January - March	32,198	23,238	16,176	20,196	23,491	4,288	1,777	2,085	6,063	..
2007										
October - December	33,386	22,804	13,844	17,891	26,221	4,365	1,648	2,101	-15,766	..
July - September	36,269	20,651	26,367	30,880	33,292	8,307	4,248	2,946	9,085	..
April - June	34,216	21,290	15,805	19,256	29,478	4,337	2,876	2,199	8,871	..
January - March	32,066	22,503	12,144	14,329	22,345	3,721	1,684	2,052	6,051	..
2006										
October - December	33,283	22,088	11,460	17,417	29,444	4,031	1,624	2,125	-20,772	..
July - September	36,188	20,028	19,382	27,836	34,179	7,568	4,186	2,966	7,462	..
April - June	34,139	20,627	16,279	19,753	34,916	4,752	2,991	2,224	7,108	1,236
January - March	31,989	21,786	12,125	16,181	27,367	4,200	1,809	2,100	5,154	2,471
2005										
October - December	32,112	21,434	9,108	14,356	30,238	4,272	1,680	2,116	-19,562	2,527
July - September	35,535	19,905	18,236	22,959	40,541	7,805	4,323	2,901	6,909	2,526
April - June	34,229	21,018	19,632	21,426	40,485	4,254	2,975	2,190	4,599	2,499
January - March	31,884	23,258	12,285	14,033	29,269	3,658	1,620	2,047	2,468	2,472
2004										
October - December	32,334	21,582	10,584	14,212	25,298	3,787	1,683	2,078	-15,859	2,526
July - September	34,348	19,424	16,991	20,993	34,733	7,737	3,919	3,027	9,152	2,527
April - June	33,812	19,954	17,505	18,199	36,346	4,023	2,832	2,266	6,386	2,499
January - March	32,062	22,191	12,439	13,344	28,719	3,250	1,634	2,055	5,574	2,499
2003										
October - December	32,142	22,336	9,243	11,255	28,638	3,537	1,716	2,133	-15,537	2,527
July - September	34,857	19,673	17,999	21,323	34,239	6,303	4,043	2,888	8,458	2,526
April - June	33,071	20,163	18,893	18,944	31,866	3,715	2,781	2,173	9,724	2,499
January - March	30,858	22,037	12,584	12,099	24,990	2,920	1,905	1,959	10,411	2,472
2002										
October - December	31,239	21,594	10,617	11,651	22,532	3,686	1,498	2,166	-13,326	2,526
July - September	34,088	19,616	22,142	20,905	30,426	6,925	3,507	3,043	15,058	2,527
April - June	32,517	19,684	21,558	20,853	44,496	3,534	2,645	2,102	8,934	2,499
January - March	30,688	21,346	14,788	11,658	36,136	3,037	1,307	1,970	5,628	2,471
2001										
October - December	31,468	20,590	11,177	11,302	30,039	3,426	1,630	2,072	-14,561	2,527
July - September	34,273	19,368	22,560	20,916	42,152	7,691	3,171	3,199	16,531	2,526

Note(s): See "Data quality, concepts and methodology — Explanatory notes for the tables" section.

Table 3-8
Quarterly estimates of demographic components, provincial perspective — Manitoba

	Natural increase		Interprovincial migration		International migration				Residual deviation	
	Births	Deaths	In-migrants	Out-migrants	Immigrants	Emigrants	Returning emigrants	Net temporary emigrants		Net non-permanent residents
number										
2008										
April - June	3,781	2,365	4,787	5,147	3,269	410	174	136	850	..
January - March	3,535	2,596	4,177	4,211	2,066	362	104	129	94	..
2007										
October - December	3,579	2,716	3,534	3,342	2,304	369	97	130	98	..
July - September	3,906	2,334	6,234	6,535	3,102	701	248	182	171	..
April - June	3,728	2,322	2,939	4,207	3,237	374	169	135	825	..
January - March	3,485	2,549	2,850	3,228	2,313	322	99	126	337	..
2006										
October - December	3,534	2,671	2,659	3,694	2,188	348	95	132	-78	..
July - September	3,867	2,300	4,042	6,861	3,052	654	245	184	4	..
April - June	3,698	2,289	3,150	5,050	2,647	402	175	137	437	-133
January - March	3,466	2,514	2,788	4,311	2,160	355	106	129	199	-266
2005										
October - December	3,463	2,515	1,794	3,528	1,580	361	99	131	188	-271
July - September	3,643	2,316	3,712	6,436	2,493	660	252	180	52	-272
April - June	3,672	2,420	3,191	6,078	2,356	367	255	136	282	-269
January - March	3,367	2,606	2,898	4,155	1,668	316	138	126	29	-266
2004										
October - December	3,297	2,539	2,408	3,297	1,600	327	144	129	-51	-271
July - September	3,695	2,450	3,683	5,877	2,062	668	335	186	305	-272
April - June	3,435	2,450	3,997	4,744	2,234	294	232	140	304	-269
January - March	3,384	2,464	3,252	3,245	1,530	238	134	127	231	-269
2003										
October - December	3,440	2,654	2,211	2,582	1,734	258	141	131	63	-271
July - September	3,722	2,326	3,841	5,295	1,919	461	332	178	117	-272
April - June	3,489	2,452	3,982	4,556	1,803	290	338	134	325	-269
January - March	3,289	2,435	3,256	3,046	1,047	228	231	121	275	-266
2002										
October - December	3,329	2,581	2,396	2,931	1,004	288	182	134	-105	-271
July - September	3,658	2,384	4,073	6,049	1,048	541	426	188	440	-272
April - June	3,472	2,385	4,015	5,169	1,527	269	259	130	193	-269
January - March	3,429	2,499	3,065	3,520	1,036	231	128	122	228	-266
2001										
October - December	3,243	2,500	2,482	3,411	1,098	260	159	128	-151	-271
July - September	3,602	2,336	4,398	6,204	1,164	585	312	197	383	-272

Note(s): See "Data quality, concepts and methodology — Explanatory notes for the tables" section.

Table 3-9
Quarterly estimates of demographic components, provincial perspective — Saskatchewan

	Natural increase		Interprovincial migration		International migration					Residual deviation
	Births	Deaths	In-migrants	Out-migrants	Immigrants	Emigrants	Returning emigrants	Net temporary emigrants	Net non-permanent residents	
number										
2008										
April - June	3,335	2,258	7,419	6,312	1,352	117	55	62	529	..
January - March	3,150	2,418	6,350	4,911	975	104	33	59	349	..
2007										
October - December	2,919	2,473	5,769	3,987	858	106	30	60	-111	..
July - September	3,270	2,142	10,264	6,525	1,115	201	79	84	367	..
April - June	3,243	2,209	5,615	3,924	891	107	51	62	353	..
January - March	3,066	2,369	4,147	3,720	656	92	30	58	200	..
2006										
October - December	2,844	2,425	4,045	3,516	851	99	29	60	-278	..
July - September	3,205	2,111	5,230	6,328	697	187	76	84	-25	..
April - June	3,198	2,179	3,895	4,727	697	114	55	63	25	-75
January - March	3,041	2,339	2,998	5,328	479	101	34	60	90	-151
2005										
October - December	2,846	2,235	2,253	4,273	411	103	32	60	-86	-154
July - September	3,093	2,124	4,589	6,490	521	188	80	82	224	-154
April - June	3,138	2,173	3,962	7,169	644	116	100	62	106	-153
January - March	2,890	2,318	2,999	5,392	532	100	55	58	190	-151
2004										
October - December	2,818	2,198	2,436	4,452	450	103	57	58	-221	-154
July - September	3,069	2,139	4,034	5,933	473	211	132	85	223	-154
April - June	3,044	2,159	4,406	5,910	584	115	116	65	131	-152
January - March	3,052	2,348	3,316	4,138	436	94	68	57	121	-153
2003										
October - December	2,877	2,461	2,395	3,241	462	101	71	61	-72	-154
July - September	3,148	2,162	4,434	5,783	412	182	166	82	143	-154
April - June	3,113	2,151	5,005	5,880	415	126	88	62	80	-153
January - March	2,900	2,233	2,771	4,436	379	99	61	55	72	-150
2002										
October - December	2,741	2,352	2,657	3,337	398	125	47	61	-136	-155
July - September	3,040	2,144	4,739	6,660	368	236	110	87	266	-154
April - June	2,991	2,169	4,358	6,708	450	133	79	59	35	-152
January - March	2,989	2,241	2,905	5,321	451	115	39	55	175	-151
2001										
October - December	2,904	2,157	2,713	4,216	361	129	49	59	-63	-154
July - September	3,112	2,083	4,622	7,173	556	288	95	91	145	-154

Note(s): See "Data quality, concepts and methodology — Explanatory notes for the tables" section.

Table 3-10
Quarterly estimates of demographic components, provincial perspective — Alberta

	Natural increase		Interprovincial migration		International migration					Residual deviation
	Births	Deaths	In-migrants	Out-migrants	Immigrants	Emigrants	Returning emigrants	Net temporary emigrants	Net non-permanent residents	
number										
2008										
April - June	12,476	5,058	29,230	22,500	7,200	1,196	881	545	7,099	..
January - March	10,955	5,529	22,319	19,558	5,350	1,055	527	516	3,830	..
2007										
October - December	11,665	5,154	18,840	17,976	5,087	1,074	488	519	2,308	..
July - September	12,483	4,771	31,491	31,836	6,169	2,044	1,257	727	4,653	..
April - June	12,139	4,939	21,947	17,270	5,595	1,067	866	543	5,783	..
January - March	10,647	5,390	18,625	13,900	4,015	916	508	507	3,999	..
2006										
October - December	11,300	5,006	20,628	12,950	4,832	992	489	525	1,145	..
July - September	12,002	4,598	34,456	17,727	5,714	1,861	1,261	733	2,612	..
April - June	11,681	4,758	22,820	13,308	5,444	1,170	885	549	2,210	-1,177
January - March	10,246	5,178	23,163	10,843	4,727	1,033	536	519	1,546	-2,355
2005										
October - December	10,315	4,983	20,824	7,004	4,168	1,050	496	522	256	-2,407
July - September	10,951	4,641	25,027	14,884	5,591	1,920	1,280	718	1,621	-2,407
April - June	10,984	4,648	25,803	14,638	5,291	1,082	1,068	541	761	-2,381
January - March	9,860	5,021	18,653	10,363	4,355	931	582	505	488	-2,355
2004										
October - December	9,784	4,897	15,045	8,856	3,274	963	604	513	312	-2,407
July - September	10,717	4,500	22,917	14,138	4,521	1,969	1,407	747	1,065	-2,407
April - June	10,461	4,497	17,688	14,971	4,605	1,258	927	559	281	-2,381
January - March	9,817	4,782	13,863	10,671	4,074	1,016	535	508	521	-2,381
2003										
October - December	9,719	4,952	10,693	9,015	3,861	1,106	562	527	13	-2,407
July - September	10,638	4,545	18,578	15,559	4,576	1,971	1,324	713	413	-2,407
April - June	10,312	4,527	17,994	16,321	4,298	930	939	537	423	-2,381
January - March	9,618	4,561	13,290	10,131	3,102	731	644	483	900	-2,354
2002										
October - December	9,305	4,608	11,639	9,856	3,131	922	506	535	-715	-2,408
July - September	10,215	4,402	21,704	16,416	3,099	1,735	1,185	752	1,340	-2,407
April - June	9,927	4,545	21,330	14,183	4,623	996	1,045	519	593	-2,380
January - March	9,244	4,679	15,210	9,832	3,929	856	516	487	484	-2,355
2001										
October - December	8,815	4,484	14,486	9,137	3,546	965	644	512	-712	-2,407
July - September	9,616	4,229	24,589	16,228	4,591	2,168	1,252	790	1,680	-2,407

Note(s): See "Data quality, concepts and methodology — Explanatory notes for the tables" section.

Table 3-11
Quarterly estimates of demographic components, provincial perspective — British Columbia

	Natural increase		Interprovincial migration		International migration					Residual deviation
	Births	Deaths	In-migrants	Out-migrants	Immigrants	Emigrants	Returning emigrants	Net temporary emigrants	Net non-permanent residents	
number										
2008										
April - June	11,181	7,813	18,133	16,464	11,536	1,548	1,147	852	4,895	..
January - March	10,454	8,533	13,941	12,097	10,087	1,367	685	805	2,822	..
2007										
October - December	10,809	7,923	12,430	9,831	9,288	1,391	636	811	-1,470	..
July - September	11,536	7,502	22,890	17,544	12,203	2,648	1,637	1,137	4,724	..
April - June	11,081	7,541	15,164	10,827	9,496	1,373	1,099	849	2,427	..
January - March	10,091	8,139	11,705	8,467	7,971	1,178	645	792	4,280	..
2006										
October - December	10,197	7,926	12,150	8,639	9,321	1,276	621	821	-1,899	..
July - September	10,951	7,263	19,163	15,244	11,021	2,396	1,600	1,144	3,516	..
April - June	10,723	7,445	15,223	11,737	11,473	1,513	1,152	858	641	2,169
January - March	9,858	8,054	12,294	10,411	10,270	1,337	696	810	1,733	4,338
2005										
October - December	9,866	7,701	8,948	8,689	9,653	1,360	647	816	-499	4,434
July - September	10,745	7,111	16,631	13,459	12,450	2,483	1,665	1,119	2,901	4,434
April - June	10,455	7,305	17,172	14,446	12,167	1,345	1,210	845	584	4,386
January - March	9,761	8,118	11,239	10,184	10,505	1,156	659	790	1,582	4,338
2004										
October - December	10,022	7,687	10,760	8,705	7,543	1,197	685	802	758	4,434
July - September	10,394	7,223	15,109	12,731	10,362	2,445	1,595	1,168	2,795	4,434
April - June	10,334	7,174	15,204	12,162	10,155	1,673	991	875	-504	4,386
January - March	9,740	7,840	9,984	9,674	8,966	1,352	571	793	1,114	4,386
2003										
October - December	9,737	7,877	9,295	7,612	8,132	1,471	600	823	665	4,434
July - September	10,395	6,972	15,923	13,093	9,459	2,621	1,414	1,114	1,365	4,434
April - June	10,552	6,925	14,379	14,407	9,688	1,548	1,046	838	1,386	4,386
January - March	9,813	7,546	8,685	10,145	7,954	1,217	716	755	1,582	4,338
2002										
October - December	9,699	7,369	8,925	8,627	6,290	1,537	564	836	-437	4,434
July - September	10,470	6,854	16,089	15,936	7,992	2,888	1,318	1,174	3,702	4,435
April - June	10,291	6,989	13,521	16,145	10,202	1,713	868	811	282	4,386
January - March	9,605	7,672	9,244	11,516	9,573	1,472	428	760	2,705	4,337
2001										
October - December	9,592	7,244	8,365	10,152	7,720	1,661	534	800	227	4,435
July - September	10,444	6,794	16,029	17,902	10,529	3,730	1,040	1,235	4,903	4,434

Note(s): See "Data quality, concepts and methodology — Explanatory notes for the tables" section.

Table 3-12
Quarterly estimates of demographic components, provincial perspective — Yukon Territory

	Natural increase		Interprovincial migration		International migration				Residual deviation	
	Births	Deaths	In-migrants	Out-migrants	Immigrants	Emigrants	Returning emigrants	Net temporary emigrants		Net non-permanent residents
	number									
2008										
April - June	93	45	383	378	28	4	1	4	70	..
January - March	91	44	489	375	22	4	0	4	71	..
2007										
October - December	92	52	437	369	19	4	0	4	-38	..
July - September	79	49	562	528	32	8	2	6	7	..
April - June	93	43	386	232	14	4	1	4	65	..
January - March	92	42	277	353	21	4	0	4	0	..
2006										
October - December	94	49	208	249	12	5	0	4	-52	..
July - September	81	47	487	423	8	8	3	6	-7	..
April - June	95	42	327	358	29	4	1	4	56	-24
January - March	94	40	241	333	15	4	0	4	26	-48
2005										
October - December	79	49	228	320	17	4	0	4	-16	-50
July - September	76	37	471	329	16	7	3	6	-12	-49
April - June	87	41	478	583	18	3	1	4	32	-49
January - March	78	37	235	234	13	2	0	4	-8	-48
2004										
October - December	92	37	221	216	12	3	0	4	-35	-49
July - September	83	35	492	340	15	4	2	6	-28	-50
April - June	103	48	362	481	14	4	3	4	61	-48
January - March	87	46	301	349	21	3	0	4	23	-49
2003										
October - December	85	36	205	188	17	3	0	4	-26	-49
July - September	99	28	491	314	8	5	5	6	-22	-50
April - June	81	36	501	274	13	3	2	4	36	-48
January - March	70	33	272	249	21	2	0	4	22	-49
2002										
October - December	82	33	309	227	9	3	0	4	-18	-49
July - September	89	43	317	500	13	5	2	6	15	-49
April - June	76	35	435	397	23	4	4	4	50	-49
January - March	92	36	307	430	5	3	0	4	7	-48
2001										
October - December	90	45	252	220	12	3	2	4	-43	-50
July - September	86	34	354	522	26	8	5	6	-22	-49

Note(s): See "Data quality, concepts and methodology — Explanatory notes for the tables" section.

Table 3-13
Quarterly estimates of demographic components, provincial perspective — Northwest Territories

	Natural increase		Interprovincial migration		International migration				Residual deviation	
	Births	Deaths	In-migrants	Out-migrants	Immigrants	Emigrants	Returning emigrants	Net temporary emigrants		Net non-permanent residents
number										
2008										
April - June	202	47	604	938	44	6	0	7	75	..
January - March	165	48	615	822	28	5	0	6	-6	..
2007										
October - December	140	36	598	511	30	5	0	6	-78	..
July - September	188	60	761	1,112	29	9	0	8	-21	..
April - June	200	46	667	573	13	7	0	6	77	..
January - March	163	46	471	546	16	6	0	6	-5	..
2006										
October - December	139	35	360	525	24	7	0	6	-34	..
July - September	185	57	704	779	45	12	0	8	-23	..
April - June	199	45	620	739	18	5	0	7	34	-22
January - March	164	45	518	911	11	5	0	6	15	-43
2005										
October - December	163	54	201	556	16	5	0	6	-12	-44
July - September	181	27	557	644	28	9	0	8	5	-44
April - June	199	27	777	1,044	20	3	0	6	-14	-43
January - March	169	40	533	711	20	3	0	6	13	-43
2004										
October - December	166	34	409	489	20	3	0	6	-21	-45
July - September	171	36	593	736	19	5	0	8	6	-44
April - June	163	35	664	751	34	4	1	7	-1	-43
January - March	198	48	605	790	16	4	0	6	30	-44
2003										
October - December	160	61	430	323	25	4	0	6	57	-44
July - September	176	44	764	704	30	8	2	8	14	-44
April - June	182	52	785	610	23	4	0	6	14	-43
January - March	183	45	559	544	16	3	0	6	9	-44
2002										
October - December	142	39	485	483	5	3	0	6	-14	-44
July - September	151	47	833	783	15	7	0	8	-21	-44
April - June	177	42	817	588	20	5	1	7	-5	-43
January - March	165	41	624	723	20	4	0	6	21	-43
2001										
October - December	147	37	349	499	18	4	0	6	-19	-44
July - September	162	44	879	775	36	10	2	8	32	-44

Note(s): See "Data quality, concepts and methodology — Explanatory notes for the tables" section.

Table 3-14
Quarterly estimates of demographic components, provincial perspective — Nunavut

	Natural increase		Interprovincial migration		International migration				Residual deviation	
	Births	Deaths	In-migrants	Out-migrants	Immigrants	Emigrants	Returning emigrants	Net temporary emigrants		Net non-permanent residents
	number									
2008										
April - June	211	37	482	502	14	4	0	4	3	..
January - March	197	42	317	450	6	4	0	4	-16	..
2007										
October - December	164	28	146	245	7	4	0	4	-56	..
July - September	216	31	330	504	5	8	0	6	48	..
April - June	205	36	285	278	6	4	0	4	5	..
January - March	189	40	228	188	1	4	0	4	10	..
2006										
October - December	157	27	160	232	2	4	0	4	-7	..
July - September	207	30	161	293	2	8	0	6	3	..
April - June	199	34	392	406	3	4	0	4	4	-10
January - March	184	38	261	354	2	4	0	4	2	-21
2005										
October - December	182	27	123	137	2	3	0	4	13	-21
July - September	174	32	104	183	3	7	0	6	-3	-21
April - June	170	30	472	400	0	3	0	4	-1	-21
January - March	173	26	238	242	7	2	0	4	-3	-20
2004										
October - December	189	30	89	123	1	3	0	4	1	-21
July - September	190	29	79	294	1	4	0	6	-11	-21
April - June	182	30	387	288	3	4	1	4	6	-21
January - March	186	32	176	292	3	3	0	4	10	-21
2003										
October - December	175	43	115	111	2	3	0	4	-5	-21
July - September	182	29	143	265	3	5	2	6	2	-21
April - June	202	39	468	440	0	3	0	4	0	-20
January - March	199	23	240	297	4	2	0	4	4	-21
2002										
October - December	166	34	107	140	0	3	0	4	-1	-21
July - September	195	33	128	264	1	5	0	6	6	-21
April - June	196	33	514	258	5	4	0	4	-5	-21
January - March	169	27	224	347	6	3	0	3	10	-20
2001										
October - December	187	39	191	201	2	3	0	4	2	-21
July - September	170	31	177	276	6	8	0	6	-5	-21

Note(s): See "Data quality, concepts and methodology — Explanatory notes for the tables" section.

Table 4-1
Quarterly estimates of demographic components, national perspective — Births ¹

	Canada	Newfoundland and Labrador	Prince Edward Island	Nova Scotia	New Brunswick	Quebec	Ontario
	number						
2008							
April - June	93,071	1,145	369	2,037	1,677	22,200	34,364
January - March	86,238	1,023	301	1,991	1,628	20,550	32,198
2007							
October - December	88,603	1,066	349	2,099	1,635	20,700	33,386
July - September	96,173	1,152	401	2,245	1,978	22,450	36,269
April - June	91,578	1,166	366	2,050	1,691	21,400	34,216
January - March	84,543	1,045	300	2,007	1,642	19,750	32,066
2006							
October - December	86,920	1,092	347	2,117	1,649	20,167	33,283
July - September	94,248	1,183	400	2,267	2,000	21,712	36,188
April - June	89,855	1,197	366	2,071	1,714	20,575	34,139
January - March	83,594	1,070	300	2,030	1,667	19,485	31,989
2005							
October - December	82,264	1,105	308	2,070	1,666	18,089	32,112
July - September	90,369	1,154	355	2,308	1,822	20,332	35,535
April - June	88,353	1,141	335	2,231	1,733	19,979	34,229
January - March	81,190	1,101	342	1,948	1,671	17,946	31,884
2004							
October - December	81,735	1,124	328	2,121	1,642	17,818	32,334
July - September	87,992	1,177	366	2,275	1,828	19,679	34,348
April - June	85,762	1,087	363	2,188	1,765	18,825	33,812
January - March	81,583	1,100	333	2,150	1,724	17,750	32,062
2003							
October - December	81,561	1,177	328	2,043	1,724	17,954	32,142
July - September	88,856	1,234	379	2,332	1,859	19,835	34,857
April - June	85,486	1,153	386	2,226	1,796	18,923	33,071
January - March	79,299	1,065	324	2,049	1,738	17,193	30,858
2002							
October - December	79,120	1,127	315	2,032	1,680	17,263	31,239
July - September	86,618	1,251	349	2,328	1,890	18,894	34,088
April - June	83,719	1,178	348	2,194	1,736	18,616	32,517
January - March	79,345	1,095	316	2,109	1,740	17,704	30,688
2001							
October - December	78,968	1,076	291	2,084	1,637	17,434	31,468
July - September	86,123	1,287	358	2,306	1,858	18,849	34,273

See footnotes at the end of the table.

Table 4-1 – continued

 Quarterly estimates of demographic components, national perspective — Births ¹

	Manitoba	Saskat- chewan	Alberta	British Columbia	Yukon Territory	Northwest Territories	Nunavut
	number						
2008							
April - June	3,781	3,335	12,476	11,181	93	202	211
January - March	3,535	3,150	10,955	10,454	91	165	197
2007							
October - December	3,579	2,919	11,665	10,809	92	140	164
July - September	3,906	3,270	12,483	11,536	79	188	216
April - June	3,728	3,243	12,139	11,081	93	200	205
January - March	3,485	3,066	10,647	10,091	92	163	189
2006							
October - December	3,534	2,844	11,300	10,197	94	139	157
July - September	3,867	3,205	12,002	10,951	81	185	207
April - June	3,698	3,198	11,681	10,723	95	199	199
January - March	3,466	3,041	10,246	9,858	94	164	184
2005							
October - December	3,463	2,846	10,315	9,866	79	163	182
July - September	3,643	3,093	10,951	10,745	76	181	174
April - June	3,672	3,138	10,984	10,455	87	199	170
January - March	3,367	2,890	9,860	9,761	78	169	173
2004							
October - December	3,297	2,818	9,784	10,022	92	166	189
July - September	3,695	3,069	10,717	10,394	83	171	190
April - June	3,435	3,044	10,461	10,334	103	163	182
January - March	3,384	3,052	9,817	9,740	87	198	186
2003							
October - December	3,440	2,877	9,719	9,737	85	160	175
July - September	3,722	3,148	10,638	10,395	99	176	182
April - June	3,489	3,113	10,312	10,552	81	182	202
January - March	3,289	2,900	9,618	9,813	70	183	199
2002							
October - December	3,329	2,741	9,305	9,699	82	142	166
July - September	3,658	3,040	10,215	10,470	89	151	195
April - June	3,472	2,991	9,927	10,291	76	177	196
January - March	3,429	2,989	9,244	9,605	92	165	169
2001							
October - December	3,243	2,904	8,815	9,592	90	147	187
July - September	3,602	3,112	9,616	10,444	86	162	170

1. The numbers of births are final up to December 2006, updated from January 2007 to March 2008 and preliminary from April 2008.

Table 4-2
Quarterly estimates of demographic components, national perspective — Deaths ¹

	Canada	Newfoundland and Labrador	Prince Edward Island	Nova Scotia	New Brunswick	Quebec	Ontario
	number						
2008							
April - June	58,830	1,112	321	2,125	1,512	14,150	21,987
January - March	62,843	1,214	308	2,113	1,660	15,100	23,238
2007							
October - December	60,309	1,205	305	2,102	1,561	13,950	22,804
July - September	55,220	1,132	272	1,993	1,483	12,800	20,651
April - June	57,225	1,078	314	2,080	1,477	13,850	21,290
January - March	61,800	1,182	301	2,069	1,620	15,550	22,503
2006							
October - December	59,303	1,174	299	2,060	1,525	14,018	22,088
July - September	54,206	1,109	267	1,957	1,451	12,988	20,028
April - June	55,712	1,055	309	2,042	1,448	13,439	20,627
January - March	58,858	1,155	297	2,029	1,586	13,797	21,786
2005							
October - December	57,467	1,089	292	2,029	1,522	13,537	21,434
July - September	53,452	1,093	267	1,868	1,431	12,600	19,905
April - June	56,098	1,130	249	1,993	1,490	13,574	21,018
January - March	63,115	1,174	310	2,383	1,732	16,092	23,258
2004							
October - December	57,912	1,060	308	2,120	1,529	13,891	21,582
July - September	52,781	1,070	259	1,876	1,440	12,300	19,424
April - June	54,839	1,018	298	1,992	1,522	13,662	19,954
January - March	61,052	1,160	358	2,253	1,756	15,774	22,191
2003							
October - December	59,527	1,068	288	2,088	1,629	14,034	22,336
July - September	53,411	1,008	281	1,936	1,466	12,941	19,673
April - June	54,841	1,059	294	1,943	1,560	13,640	20,163
January - March	58,390	1,146	320	2,097	1,602	14,312	22,037
2002							
October - December	57,233	1,089	309	1,997	1,588	13,640	21,594
July - September	53,441	982	294	1,907	1,431	13,304	19,616
April - June	54,130	1,048	301	2,066	1,507	13,326	19,684
January - March	58,799	1,064	332	2,027	1,570	15,265	21,346
2001							
October - December	55,406	1,069	280	1,983	1,583	13,395	20,590
July - September	52,159	945	292	1,846	1,405	12,752	19,368

See footnotes at the end of the table.

Table 4-2 – continued

 Quarterly estimates of demographic components, national perspective — Deaths ¹

	Manitoba	Saskat- chewan	Alberta	British Columbia	Yukon Territory	Northwest Territories	Nunavut
	number						
2008							
April - June	2,365	2,258	5,058	7,813	45	47	37
January - March	2,596	2,418	5,529	8,533	44	48	42
2007							
October - December	2,716	2,473	5,154	7,923	52	36	28
July - September	2,334	2,142	4,771	7,502	49	60	31
April - June	2,322	2,209	4,939	7,541	43	46	36
January - March	2,549	2,369	5,390	8,139	42	46	40
2006							
October - December	2,671	2,425	5,006	7,926	49	35	27
July - September	2,300	2,111	4,598	7,263	47	57	30
April - June	2,289	2,179	4,758	7,445	42	45	34
January - March	2,514	2,339	5,178	8,054	40	45	38
2005							
October - December	2,515	2,235	4,983	7,701	49	54	27
July - September	2,316	2,124	4,641	7,111	37	27	32
April - June	2,420	2,173	4,648	7,305	41	27	30
January - March	2,606	2,318	5,021	8,118	37	40	26
2004							
October - December	2,539	2,198	4,897	7,687	37	34	30
July - September	2,450	2,139	4,500	7,223	35	36	29
April - June	2,450	2,159	4,497	7,174	48	35	30
January - March	2,464	2,348	4,782	7,840	46	48	32
2003							
October - December	2,654	2,461	4,952	7,877	36	61	43
July - September	2,326	2,162	4,545	6,972	28	44	29
April - June	2,452	2,151	4,527	6,925	36	52	39
January - March	2,435	2,233	4,561	7,546	33	45	23
2002							
October - December	2,581	2,352	4,608	7,369	33	39	34
July - September	2,384	2,144	4,402	6,854	43	47	33
April - June	2,385	2,169	4,545	6,989	35	42	33
January - March	2,499	2,241	4,679	7,672	36	41	27
2001							
October - December	2,500	2,157	4,484	7,244	45	37	39
July - September	2,336	2,083	4,229	6,794	34	44	31

1. The numbers of deaths are final up to December 2006, updated from January 2007 to March 2008 and preliminary from April 2008.

Table 4-3
Quarterly estimates of demographic components, national perspective — Immigrants ¹

	Canada	Newfoundland and Labrador	Prince Edward Island	Nova Scotia	New Brunswick	Quebec	Ontario
	number						
2008							
April - June	69,228	151	323	724	447	12,163	31,977
January - March	53,147	137	332	599	462	9,592	23,491
2007							
October - December	55,572	167	206	581	397	10,407	26,221
July - September	71,656	143	420	756	497	13,893	33,292
April - June	61,649	126	219	645	375	11,554	29,478
January - March	47,875	109	149	542	374	9,363	22,345
2006							
October - December	58,245	154	170	632	397	10,218	29,444
July - September	70,356	127	200	896	470	13,945	34,179
April - June	67,909	115	135	554	457	11,421	34,916
January - March	55,134	112	60	504	322	9,105	27,367
2005							
October - December	55,386	117	59	459	240	8,426	30,238
July - September	75,945	108	98	680	367	13,049	40,541
April - June	74,471	125	101	462	306	12,496	40,485
January - March	56,438	147	72	328	178	9,344	29,269
2004							
October - December	48,090	93	86	372	182	9,159	25,298
July - September	65,579	176	53	546	199	12,419	34,733
April - June	67,241	159	89	459	232	12,327	36,346
January - March	54,914	151	82	394	182	10,340	28,719
2003							
October - December	53,588	78	50	389	182	10,018	28,638
July - September	63,340	148	47	465	164	11,870	34,239
April - June	58,863	65	34	309	165	10,184	31,866
January - March	45,558	68	23	311	155	7,488	24,990
2002							
October - December	41,830	117	25	322	161	7,836	22,532
July - September	52,919	66	7	315	164	9,405	30,426
April - June	72,711	115	44	418	210	10,578	44,496
January - March	61,589	106	31	364	170	9,762	36,136
2001							
October - December	52,154	104	41	332	165	8,716	30,039
July - September	69,951	89	29	495	220	10,058	42,152

See footnotes at the end of the table.

Table 4-3 – continued

 Quarterly estimates of demographic components, national perspective — Immigrants ¹

	Manitoba	Saskat- chewan	Alberta	British Columbia	Yukon Territory	Northwest Territories	Nunavut
	number						
2008							
April - June	3,269	1,352	7,200	11,536	28	44	14
January - March	2,066	975	5,350	10,087	22	28	6
2007							
October - December	2,304	858	5,087	9,288	19	30	7
July - September	3,102	1,115	6,169	12,203	32	29	5
April - June	3,237	891	5,595	9,496	14	13	6
January - March	2,313	656	4,015	7,971	21	16	1
2006							
October - December	2,188	851	4,832	9,321	12	24	2
July - September	3,052	697	5,714	11,021	8	45	2
April - June	2,647	697	5,444	11,473	29	18	3
January - March	2,160	479	4,727	10,270	15	11	2
2005							
October - December	1,580	411	4,168	9,653	17	16	2
July - September	2,493	521	5,591	12,450	16	28	3
April - June	2,356	644	5,291	12,167	18	20	0
January - March	1,668	532	4,355	10,505	13	20	7
2004							
October - December	1,600	450	3,274	7,543	12	20	1
July - September	2,062	473	4,521	10,362	15	19	1
April - June	2,234	584	4,605	10,155	14	34	3
January - March	1,530	436	4,074	8,966	21	16	3
2003							
October - December	1,734	462	3,861	8,132	17	25	2
July - September	1,919	412	4,576	9,459	8	30	3
April - June	1,803	415	4,298	9,688	13	23	0
January - March	1,047	379	3,102	7,954	21	16	4
2002							
October - December	1,004	398	3,131	6,290	9	5	0
July - September	1,048	368	3,099	7,992	13	15	1
April - June	1,527	450	4,623	10,202	23	20	5
January - March	1,036	451	3,929	9,573	5	20	6
2001							
October - December	1,098	361	3,546	7,720	12	18	2
July - September	1,164	556	4,591	10,529	26	36	6

1. The numbers of immigrants are final up to December 2006, updated from January 2007 to March 2008 and preliminary from April 2008.

Table 4-4
Quarterly estimates of demographic components, national perspective — Emigrants ¹

	Canada	Newfoundland and Labrador	Prince Edward Island	Nova Scotia	New Brunswick	Quebec	Ontario
	number						
2008							
April - June	10,029	64	15	149	108	1,550	4,858
January - March	8,855	57	13	131	95	1,370	4,288
2007							
October - December	9,012	57	12	135	96	1,394	4,365
July - September	17,153	109	25	254	185	2,654	8,307
April - June	8,925	52	14	128	103	1,355	4,337
January - March	7,660	44	12	110	88	1,163	3,721
2006							
October - December	8,297	48	12	119	96	1,260	4,031
July - September	15,575	89	24	224	180	2,364	7,568
April - June	9,809	62	15	146	105	1,517	4,752
January - March	8,668	55	13	128	93	1,340	4,200
2005							
October - December	8,815	56	12	131	95	1,363	4,272
July - September	16,107	102	23	239	173	2,491	7,805
April - June	8,932	43	8	166	96	1,446	4,254
January - March	7,682	36	7	144	83	1,244	3,658
2004							
October - December	7,953	38	7	149	86	1,287	3,787
July - September	16,244	78	14	303	176	2,630	7,737
April - June	9,175	36	35	179	73	1,477	4,023
January - March	7,416	30	28	145	59	1,194	3,250
2003							
October - December	8,068	33	30	158	65	1,299	3,537
July - September	14,379	58	55	280	115	2,315	6,303
April - June	8,154	24	7	180	68	1,256	3,715
January - March	6,409	19	5	141	54	988	2,920
2002							
October - December	8,092	25	7	177	69	1,247	3,686
July - September	15,207	46	13	335	129	2,342	6,925
April - June	8,372	37	13	164	118	1,382	3,534
January - March	7,193	32	11	140	101	1,188	3,037
2001							
October - December	8,113	37	12	159	115	1,339	3,426
July - September	18,219	82	27	357	257	3,008	7,691

See footnotes at the end of the table.

Table 4-4 – continued

 Quarterly estimates of demographic components, national perspective — Emigrants ¹

	Manitoba	Saskat- chewan	Alberta	British Columbia	Yukon Territory	Northwest Territories	Nunavut
	number						
2008							
April - June	410	117	1,196	1,548	4	6	4
January - March	362	104	1,055	1,367	4	5	4
2007							
October - December	369	106	1,074	1,391	4	5	4
July - September	701	201	2,044	2,648	8	9	8
April - June	374	107	1,067	1,373	4	7	4
January - March	322	92	916	1,178	4	6	4
2006							
October - December	348	99	992	1,276	5	7	4
July - September	654	187	1,861	2,396	8	12	8
April - June	402	114	1,170	1,513	4	5	4
January - March	355	101	1,033	1,337	4	5	4
2005							
October - December	361	103	1,050	1,360	4	5	3
July - September	660	188	1,920	2,483	7	9	7
April - June	367	116	1,082	1,345	3	3	3
January - March	316	100	931	1,156	2	3	2
2004							
October - December	327	103	963	1,197	3	3	3
July - September	668	211	1,969	2,445	4	5	4
April - June	294	115	1,258	1,673	4	4	4
January - March	238	94	1,016	1,352	3	4	3
2003							
October - December	258	101	1,106	1,471	3	4	3
July - September	461	182	1,971	2,621	5	8	5
April - June	290	126	930	1,548	3	4	3
January - March	228	99	731	1,217	2	3	2
2002							
October - December	288	125	922	1,537	3	3	3
July - September	541	236	1,735	2,888	5	7	5
April - June	269	133	996	1,713	4	5	4
January - March	231	115	856	1,472	3	4	3
2001							
October - December	260	129	965	1,661	3	4	3
July - September	585	288	2,168	3,730	8	10	8

1. The numbers of emigrants are final up to June 2006, updated from July 2006 to March 2008 and preliminary from April 2008.

Table 4-5
Quarterly estimates of demographic components, national perspective — Returning emigrants ¹

	Canada	Newfoundland and Labrador	Prince Edward Island	Nova Scotia	New Brunswick	Quebec	Ontario
	number						
2008							
April - June	6,323	31	17	113	73	853	2,978
January - March	3,774	19	9	67	43	510	1,777
2007							
October - December	3,499	17	9	62	40	472	1,648
July - September	9,019	44	24	161	103	1,216	4,248
April - June	6,107	29	16	98	71	831	2,876
January - March	3,579	17	9	58	42	487	1,684
2006							
October - December	3,450	17	8	55	42	470	1,624
July - September	8,894	42	24	142	105	1,210	4,186
April - June	6,350	31	16	113	74	857	2,991
January - March	3,840	20	9	68	44	518	1,809
2005							
October - December	3,564	17	7	63	42	481	1,680
July - September	9,180	46	24	164	105	1,238	4,323
April - June	6,910	18	9	144	75	1,055	2,975
January - March	3,762	10	4	79	41	574	1,620
2004							
October - December	3,909	11	5	81	42	597	1,683
July - September	9,104	24	12	189	100	1,389	3,919
April - June	6,415	26	20	130	86	1,050	2,832
January - March	3,698	15	12	75	48	606	1,634
2003							
October - December	3,881	15	12	79	50	635	1,716
July - September	9,159	38	28	185	122	1,498	4,043
April - June	6,579	31	8	138	90	1,118	2,781
January - March	4,504	21	5	94	61	766	1,905
2002							
October - December	3,541	16	3	75	48	602	1,498
July - September	8,294	40	10	173	114	1,409	3,507
April - June	6,125	26	17	92	91	998	2,645
January - March	3,024	13	8	46	46	493	1,307
2001							
October - December	3,773	16	10	57	57	615	1,630
July - September	7,346	31	21	110	110	1,197	3,171

See footnotes at the end of the table.

Table 4-5 – continued

 Quarterly estimates of demographic components, national perspective — Returning emigrants ¹

	Manitoba	Saskat- chewan	Alberta	British Columbia	Yukon Territory	Northwest Territories	Nunavut
	number						
2008							
April - June	174	55	881	1,147	1	0	0
January - March	104	33	527	685	0	0	0
2007							
October - December	97	30	488	636	0	0	0
July - September	248	79	1,257	1,637	2	0	0
April - June	169	51	866	1,099	1	0	0
January - March	99	30	508	645	0	0	0
2006							
October - December	95	29	489	621	0	0	0
July - September	245	76	1,261	1,600	3	0	0
April - June	175	55	885	1,152	1	0	0
January - March	106	34	536	696	0	0	0
2005							
October - December	99	32	496	647	0	0	0
July - September	252	80	1,280	1,665	3	0	0
April - June	255	100	1,068	1,210	1	0	0
January - March	138	55	582	659	0	0	0
2004							
October - December	144	57	604	685	0	0	0
July - September	335	132	1,407	1,595	2	0	0
April - June	232	116	927	991	3	1	1
January - March	134	68	535	571	0	0	0
2003							
October - December	141	71	562	600	0	0	0
July - September	332	166	1,324	1,414	5	2	2
April - June	338	88	939	1,046	2	0	0
January - March	231	61	644	716	0	0	0
2002							
October - December	182	47	506	564	0	0	0
July - September	426	110	1,185	1,318	2	0	0
April - June	259	79	1,045	868	4	1	0
January - March	128	39	516	428	0	0	0
2001							
October - December	159	49	644	534	2	0	0
July - September	312	95	1,252	1,040	5	2	0

1. The numbers of returning emigrants are final up to June 2006, updated from July 2006 to March 2008 and preliminary from April 2008.

Table 4-6
Quarterly estimates of demographic components, national perspective — Net temporary emigrants ¹

	Canada	Newfoundland and Labrador	Prince Edward Island	Nova Scotia	New Brunswick	Quebec	Ontario
	number						
2008							
April - June	4,766	61	17	112	89	669	2,208
January - March	4,501	58	15	105	84	631	2,085
2007							
October - December	4,537	58	16	107	85	636	2,101
July - September	6,361	81	22	149	120	893	2,946
April - June	4,745	60	17	112	89	665	2,199
January - March	4,430	57	15	104	83	622	2,052
2006							
October - December	4,591	59	16	108	87	644	2,125
July - September	6,403	82	22	150	120	898	2,966
April - June	4,802	62	17	113	90	674	2,224
January - March	4,535	58	16	107	86	636	2,100
2005							
October - December	4,570	59	16	108	87	641	2,116
July - September	6,266	81	21	148	118	878	2,901
April - June	4,729	61	17	111	88	664	2,190
January - March	4,419	56	15	104	84	620	2,047
2004							
October - December	4,487	58	16	105	85	629	2,078
July - September	6,533	84	23	153	123	917	3,027
April - June	4,893	62	17	115	92	687	2,266
January - March	4,436	57	16	104	83	622	2,055
2003							
October - December	4,606	59	16	108	87	647	2,133
July - September	6,234	80	22	146	117	874	2,888
April - June	4,691	60	17	110	88	658	2,173
January - March	4,230	55	15	99	80	594	1,959
2002							
October - December	4,677	60	16	110	88	657	2,166
July - September	6,571	84	23	155	123	922	3,043
April - June	4,539	58	16	107	85	637	2,102
January - March	4,252	54	16	99	80	596	1,970
2001							
October - December	4,476	57	16	106	84	628	2,072
July - September	6,905	88	24	162	130	969	3,199

See footnotes at the end of the table.

Table 4-6 – continued

 Quarterly estimates of demographic components, national perspective — Net temporary emigrants ¹

	Manitoba	Saskat- chewan	Alberta	British Columbia	Yukon Territory	Northwest Territories	Nunavut
	number						
2008							
April - June	136	62	545	852	4	7	4
January - March	129	59	516	805	4	6	4
2007							
October - December	130	60	519	811	4	6	4
July - September	182	84	727	1,137	6	8	6
April - June	135	62	543	849	4	6	4
January - March	126	58	507	792	4	6	4
2006							
October - December	132	60	525	821	4	6	4
July - September	184	84	733	1,144	6	8	6
April - June	137	63	549	858	4	7	4
January - March	129	60	519	810	4	6	4
2005							
October - December	131	60	522	816	4	6	4
July - September	180	82	718	1,119	6	8	6
April - June	136	62	541	845	4	6	4
January - March	126	58	505	790	4	6	4
2004							
October - December	129	58	513	802	4	6	4
July - September	186	85	747	1,168	6	8	6
April - June	140	65	559	875	4	7	4
January - March	127	57	508	793	4	6	4
2003							
October - December	131	61	527	823	4	6	4
July - September	178	82	713	1,114	6	8	6
April - June	134	62	537	838	4	6	4
January - March	121	55	483	755	4	6	4
2002							
October - December	134	61	535	836	4	6	4
July - September	188	87	752	1,174	6	8	6
April - June	130	59	519	811	4	7	4
January - March	122	55	487	760	4	6	3
2001							
October - December	128	59	512	800	4	6	4
July - September	197	91	790	1,235	6	8	6

1. The numbers of net temporary emigrants are final up to June 2006, updated from July 2006 to March 2008 and preliminary from April 2008.

Table 4-7
Quarterly estimates of demographic components, national perspective — Net non-permanent residents ¹

	Canada	Newfoundland and Labrador	Prince Edward Island	Nova Scotia	New Brunswick	Quebec	Ontario
	number						
2008							
April - June	30,843	83	118	93	118	6,357	10,553
January - March	15,550	138	22	83	122	1,978	6,063
2007							
October - December	-17,473	-87	-15	-183	-128	-1,947	-15,766
July - September	21,210	116	114	435	243	1,268	9,085
April - June	22,674	83	22	-10	51	4,122	8,871
January - March	16,863	10	47	34	179	1,721	6,051
2006							
October - December	-27,438	-20	-56	-171	-105	-5,111	-20,772
July - September	14,915	67	139	14	264	889	7,462
April - June	14,308	92	37	278	-98	3,484	7,108
January - March	10,355	41	34	83	63	1,369	5,154
2005							
October - December	-23,136	-270	-17	-263	-43	-2,825	-19,562
July - September	13,403	65	24	514	187	916	6,909
April - June	7,310	217	17	-87	-136	950	4,599
January - March	4,850	98	-11	20	150	-166	2,468
2004							
October - December	-19,140	-126	5	-440	17	-3,480	-15,859
July - September	15,912	-49	44	389	329	1,692	9,152
April - June	8,974	184	-11	278	-82	1,941	6,386
January - March	8,319	-96	9	137	81	564	5,574
2003							
October - December	-19,540	28	-47	-198	16	-4,497	-15,537
July - September	12,396	52	74	498	333	949	8,458
April - June	13,965	78	2	278	7	1,612	9,724
January - March	15,836	-67	4	-16	60	2,580	10,411
2002							
October - December	-19,171	-161	-19	-435	-57	-3,747	-13,326
July - September	25,756	223	38	463	389	3,837	15,058
April - June	11,494	143	-3	315	-65	1,027	8,934
January - March	10,852	43	-3	421	192	941	5,628
2001							
October - December	-18,371	-30	-34	90	-75	-3,002	-14,561
July - September	29,445	-98	32	687	371	4,806	16,531

See footnotes at the end of the table.

Table 4-7 – continued

 Quarterly estimates of demographic components, national perspective — Net non-permanent residents ¹

	Manitoba	Saskat- chewan	Alberta	British Columbia	Yukon Territory	Northwest Territories	Nunavut
	number						
2008							
April - June	850	529	7,099	4,895	70	75	3
January - March	94	349	3,830	2,822	71	-6	-16
2007							
October - December	98	-111	2,308	-1,470	-38	-78	-56
July - September	171	367	4,653	4,724	7	-21	48
April - June	825	353	5,783	2,427	65	77	5
January - March	337	200	3,999	4,280	0	-5	10
2006							
October - December	-78	-278	1,145	-1,899	-52	-34	-7
July - September	4	-25	2,612	3,516	-7	-23	3
April - June	437	25	2,210	641	56	34	4
January - March	199	90	1,546	1,733	26	15	2
2005							
October - December	188	-86	256	-499	-16	-12	13
July - September	52	224	1,621	2,901	-12	5	-3
April - June	282	106	761	584	32	-14	-1
January - March	29	190	488	1,582	-8	13	-3
2004							
October - December	-51	-221	312	758	-35	-21	1
July - September	305	223	1,065	2,795	-28	6	-11
April - June	304	131	281	-504	61	-1	6
January - March	231	121	521	1,114	23	30	10
2003							
October - December	63	-72	13	665	-26	57	-5
July - September	117	143	413	1,365	-22	14	2
April - June	325	80	423	1,386	36	14	0
January - March	275	72	900	1,582	22	9	4
2002							
October - December	-105	-136	-715	-437	-18	-14	-1
July - September	440	266	1,340	3,702	15	-21	6
April - June	193	35	593	282	50	-5	-5
January - March	228	175	484	2,705	7	21	10
2001							
October - December	-151	-63	-712	227	-43	-19	2
July - September	383	145	1,680	4,903	-22	32	-5

1. The numbers of net non-permanent residents are final up to June 2006, updated from July 2006 to March 2008 and preliminary from April 2008.

Table 4-8
Quarterly estimates of demographic components, national perspective — Interprovincial in-migrants ¹

	Canada	Newfoundland and Labrador	Prince Edward Island	Nova Scotia	New Brunswick	Quebec	Ontario
	number						
2008							
April - June	105,691	3,554	1,443	5,636	3,806	7,901	22,313
January - March	81,561	3,099	892	4,695	3,244	5,247	16,176
2007							
October - December	70,551	2,687	659	3,815	3,092	4,700	13,844
July - September	125,673	4,142	1,093	6,526	5,297	9,716	26,367
April - June	77,629	2,327	684	3,668	3,170	4,972	15,805
January - March	60,920	1,601	581	2,699	2,369	3,223	12,144
2006							
October - December	62,974	1,637	422	3,141	2,062	4,042	11,460
July - September	103,539	2,841	798	5,406	3,409	7,460	19,382
April - June	77,633	2,334	706	4,224	2,463	5,200	16,279
January - March	66,297	1,974	688	3,123	2,277	3,847	12,125
2005							
October - December	53,020	1,486	276	2,536	1,590	3,653	9,108
July - September	88,918	2,501	790	5,180	3,856	7,264	18,236
April - June	89,175	2,422	979	4,183	3,196	6,908	19,632
January - March	60,810	1,780	589	3,184	2,149	4,028	12,285
2004							
October - December	53,280	1,715	316	2,529	1,956	4,812	10,584
July - September	82,279	2,296	653	5,144	3,303	6,985	16,991
April - June	78,153	2,371	775	4,570	3,146	7,078	17,505
January - March	56,219	1,908	542	2,832	2,524	4,477	12,439
2003							
October - December	44,648	1,567	503	2,538	1,592	3,861	9,243
July - September	82,360	2,551	750	5,147	3,428	8,311	17,999
April - June	82,033	2,819	918	5,575	3,478	7,236	18,893
January - March	54,000	2,111	521	3,232	2,228	4,251	12,584
2002							
October - December	47,994	1,587	426	2,391	1,897	4,558	10,617
July - September	90,872	2,681	821	5,488	3,630	8,227	22,142
April - June	86,463	2,793	907	4,808	3,738	7,669	21,558
January - March	58,756	1,913	538	3,350	2,513	4,075	14,788
2001							
October - December	50,973	1,508	393	2,912	1,819	4,326	11,177
July - September	94,298	2,570	801	5,261	3,640	8,418	22,560

See footnotes at the end of the table.

Table 4-8 – continued

 Quarterly estimates of demographic components, national perspective — Interprovincial in-migrants ¹

	Manitoba	Saskat- chewan	Alberta	British Columbia	Yukon Territory	Northwest Territories	Nunavut
	number						
2008							
April - June	4,787	7,419	29,230	18,133	383	604	482
January - March	4,177	6,350	22,319	13,941	489	615	317
2007							
October - December	3,534	5,769	18,840	12,430	437	598	146
July - September	6,234	10,264	31,491	22,890	562	761	330
April - June	2,939	5,615	21,947	15,164	386	667	285
January - March	2,850	4,147	18,625	11,705	277	471	228
2006							
October - December	2,659	4,045	20,628	12,150	208	360	160
July - September	4,042	5,230	34,456	19,163	487	704	161
April - June	3,150	3,895	22,820	15,223	327	620	392
January - March	2,788	2,998	23,163	12,294	241	518	261
2005							
October - December	1,794	2,253	20,824	8,948	228	201	123
July - September	3,712	4,589	25,027	16,631	471	557	104
April - June	3,191	3,962	25,803	17,172	478	777	472
January - March	2,898	2,999	18,653	11,239	235	533	238
2004							
October - December	2,408	2,436	15,045	10,760	221	409	89
July - September	3,683	4,034	22,917	15,109	492	593	79
April - June	3,997	4,406	17,688	15,204	362	664	387
January - March	3,252	3,316	13,863	9,984	301	605	176
2003							
October - December	2,211	2,395	10,693	9,295	205	430	115
July - September	3,841	4,434	18,578	15,923	491	764	143
April - June	3,982	5,005	17,994	14,379	501	785	468
January - March	3,256	2,771	13,290	8,685	272	559	240
2002							
October - December	2,396	2,657	11,639	8,925	309	485	107
July - September	4,073	4,739	21,704	16,089	317	833	128
April - June	4,015	4,358	21,330	13,521	435	817	514
January - March	3,065	2,905	15,210	9,244	307	624	224
2001							
October - December	2,482	2,713	14,486	8,365	252	349	191
July - September	4,398	4,622	24,589	16,029	354	879	177

1. The numbers of interprovincial in-migrants are final up to June 2007, updated from July 2007 to March 2008 and preliminary from April 2008.

Table 4-9
Quarterly estimates of demographic components, national perspective — Interprovincial out-migrants ¹

	Canada	Newfoundland and Labrador	Prince Edward Island	Nova Scotia	New Brunswick	Quebec	Ontario
	number						
2008							
April - June	105,691	3,548	1,086	5,696	4,012	12,853	26,255
January - March	81,561	3,139	908	4,514	3,361	7,019	20,196
2007							
October - December	70,551	2,198	815	3,511	3,070	6,805	17,891
July - September	125,673	3,298	1,236	7,068	5,321	13,286	30,880
April - June	77,629	3,118	900	4,117	3,290	9,637	19,256
January - March	60,920	3,272	736	3,781	2,674	5,726	14,329
2006							
October - December	62,974	2,195	581	4,070	2,435	6,471	17,417
July - September	103,539	3,888	1,117	7,072	5,243	10,728	27,836
April - June	77,633	3,280	846	4,681	3,548	9,200	19,753
January - March	66,297	3,621	822	4,142	3,062	5,978	16,181
2005							
October - December	53,020	2,481	527	3,356	2,267	5,526	14,356
July - September	88,918	3,255	904	5,908	4,796	8,671	22,959
April - June	89,175	3,778	888	4,806	3,963	9,956	21,426
January - March	60,810	3,355	567	4,256	2,462	4,856	14,033
2004							
October - December	53,280	1,823	410	3,047	2,211	5,439	14,212
July - September	82,279	2,967	811	5,972	4,042	7,445	20,993
April - June	78,153	3,298	840	4,637	3,206	8,666	18,199
January - March	56,219	2,686	449	3,457	2,350	4,774	13,344
2003							
October - December	44,648	1,819	420	2,433	1,873	3,776	11,255
July - September	82,360	2,621	717	5,332	4,021	7,333	21,323
April - June	82,033	3,420	924	4,576	3,509	8,172	18,944
January - March	54,000	2,442	492	3,198	2,322	4,599	12,099
2002							
October - December	47,994	1,764	416	2,720	1,980	3,862	11,651
July - September	90,872	3,255	689	5,682	4,265	9,468	20,905
April - June	86,463	3,925	1,002	4,753	3,308	9,174	20,853
January - March	58,756	3,262	499	3,866	2,662	5,120	11,658
2001							
October - December	50,973	1,726	403	2,922	2,290	4,494	11,302
July - September	94,298	3,223	673	5,688	4,668	10,050	20,916

See footnotes at the end of the table.

Table 4-9 – continued

 Quarterly estimates of demographic components, national perspective — Interprovincial out-migrants ¹

	Manitoba	Saskatchewan	Alberta	British Columbia	Yukon Territory	Northwest Territories	Nunavut
	number						
2008							
April - June	5,147	6,312	22,500	16,464	378	938	502
January - March	4,211	4,911	19,558	12,097	375	822	450
2007							
October - December	3,342	3,987	17,976	9,831	369	511	245
July - September	6,535	6,525	31,836	17,544	528	1,112	504
April - June	4,207	3,924	17,270	10,827	232	573	278
January - March	3,228	3,720	13,900	8,467	353	546	188
2006							
October - December	3,694	3,516	12,950	8,639	249	525	232
July - September	6,861	6,328	17,727	15,244	423	779	293
April - June	5,050	4,727	13,308	11,737	358	739	406
January - March	4,311	5,328	10,843	10,411	333	911	354
2005							
October - December	3,528	4,273	7,004	8,689	320	556	137
July - September	6,436	6,490	14,884	13,459	329	644	183
April - June	6,078	7,169	14,638	14,446	583	1,044	400
January - March	4,155	5,392	10,363	10,184	234	711	242
2004							
October - December	3,297	4,452	8,856	8,705	216	489	123
July - September	5,877	5,933	14,138	12,731	340	736	294
April - June	4,744	5,910	14,971	12,162	481	751	288
January - March	3,245	4,138	10,671	9,674	349	790	292
2003							
October - December	2,582	3,241	9,015	7,612	188	323	111
July - September	5,295	5,783	15,559	13,093	314	704	265
April - June	4,556	5,880	16,321	14,407	274	610	440
January - March	3,046	4,436	10,131	10,145	249	544	297
2002							
October - December	2,931	3,337	9,856	8,627	227	483	140
July - September	6,049	6,660	16,416	15,936	500	783	264
April - June	5,169	6,708	14,183	16,145	397	588	258
January - March	3,520	5,321	9,832	11,516	430	723	347
2001							
October - December	3,411	4,216	9,137	10,152	220	499	201
July - September	6,204	7,173	16,228	17,902	522	775	276

1. The numbers of interprovincial out-migrants are final up to June 2007, updated from July 2007 to March 2008 and preliminary from April 2008.

Table 4-10
Quarterly estimates of demographic components, national perspective — Total growth ¹

	Canada	Newfoundland and Labrador	Prince Edward Island	Nova Scotia	New Brunswick	Quebec	Ontario
	number						
2008							
April - June	125,840	179	831	521	400	20,252	46,877
January - March	82,510	-52	312	572	299	13,757	29,898
2007							
October - December	56,343	332	60	519	224	11,547	12,172
July - September	119,324	977	497	659	1,009	18,910	46,477
April - June	111,113	-577	62	14	399	17,372	44,164
January - March	78,970	-1,773	22	-724	141	11,483	31,685
2006							
October - December	48,986	-596	-17	-583	-98	7,393	9,378
July - September	112,229	-908	131	-678	-746	18,238	42,999
April - June	105,502	-662	71	326	-665	16,064	46,841
January - March	75,674	-1,616	-60	-461	-622	11,288	31,706
2005							
October - December	41,921	-1,173	-218	-619	-647	5,444	8,871
July - September	107,768	-599	72	823	-352	16,845	49,448
April - June	102,037	-1,033	275	-5	-633	14,449	50,533
January - March	65,833	-1,429	94	-1,191	-340	7,628	32,058
2004							
October - December	38,938	-105	-5	-618	-243	6,347	9,855
July - September	97,725	-517	17	379	-193	17,558	45,435
April - June	94,236	-531	43	840	84	15,430	49,940
January - March	70,365	-798	123	-232	142	10,073	37,089
2003							
October - December	41,982	-57	88	204	-262	6,902	14,414
July - September	94,423	313	199	1,073	16	17,686	46,883
April - June	91,958	-360	103	1,855	141	14,047	48,841
January - March	70,978	-408	41	272	16	10,500	39,261
2002							
October - December	30,015	-195	-2	-479	-167	5,793	10,937
July - September	93,063	-48	203	828	68	14,422	52,205
April - June	101,758	-757	-23	875	522	13,070	61,478
January - March	79,376	-1,186	28	295	80	9,520	48,065
2001							
October - December	43,224	-158	-13	445	-640	6,920	19,836
July - September	110,278	-401	221	946	-432	15,235	64,987

See footnotes at the end of the table.

Table 4-10 – continued

 Quarterly estimates of demographic components, national perspective — Total growth ¹

	Manitoba	Saskat- chewan	Alberta	British Columbia	Yukon Territory	Northwest Territories	Nunavut
	number						
2008							
April - June	4,803	3,941	27,587	20,215	144	-73	163
January - March	2,678	3,365	16,323	15,187	246	-79	4
2007							
October - December	3,055	2,839	13,665	11,737	81	132	-20
July - September	3,909	6,143	16,675	24,159	91	-232	50
April - June	3,860	3,851	22,511	18,677	276	325	179
January - March	2,859	1,860	17,081	16,116	-13	41	192
2006							
October - December	1,553	1,391	18,921	11,728	-45	-84	45
July - September	1,211	473	31,126	20,204	88	55	36
April - June	2,362	862	24,432	15,490	124	97	160
January - March	1,676	-1,035	25,000	9,901	43	-216	70
2005							
October - December	860	-1,061	24,907	5,615	-19	-209	170
July - September	832	-223	24,714	15,786	224	127	71
April - June	1,024	-1,417	25,379	13,261	34	-55	225
January - March	1,163	-1,051	19,473	9,160	89	18	161
2004							
October - December	1,377	-1,117	16,197	6,943	79	87	141
July - September	1,171	-283	21,680	12,254	229	48	-53
April - June	2,843	184	15,058	9,910	54	107	274
January - March	2,726	509	14,214	6,330	79	45	65
2003							
October - December	2,235	23	11,655	6,212	99	322	147
July - September	1,943	248	15,148	10,322	278	266	48
April - June	2,774	635	14,032	8,947	364	375	204
January - March	2,534	-490	14,002	4,749	146	213	142
2002							
October - December	1,143	-13	10,353	2,238	164	131	112
July - September	755	-450	16,645	8,284	-69	177	43
April - June	1,782	-1,004	19,655	5,120	197	411	432
January - March	1,780	-1,022	15,884	5,798	-14	99	49
2001							
October - December	803	-443	14,088	2,146	91	-7	156
July - September	809	-951	20,720	8,850	-72	318	48

1. Numbers for total growth are final up to June 2006, updated from July 2006 to March 2008 and preliminary from April 2008.

Table 4-11
Quarterly estimates of demographic components, national perspective — Natural increase ¹

	Canada	Newfoundland and Labrador	Prince Edward Island	Nova Scotia	New Brunswick	Quebec	Ontario
	number						
2008							
April - June	34,241	33	48	-88	165	8,050	12,377
January - March	23,395	-191	-7	-122	-32	5,450	8,960
2007							
October - December	28,294	-139	44	-3	74	6,750	10,582
July - September	40,953	20	129	252	495	9,650	15,618
April - June	34,353	88	52	-30	214	7,550	12,926
January - March	22,743	-137	-1	-62	22	4,200	9,563
2006							
October - December	27,617	-82	48	57	124	6,149	11,195
July - September	40,042	74	133	310	549	8,724	16,160
April - June	34,143	142	57	29	266	7,136	13,512
January - March	24,736	-85	3	1	81	5,688	10,203
2005							
October - December	24,797	16	16	41	144	4,552	10,678
July - September	36,917	61	88	440	391	7,732	15,630
April - June	32,255	11	86	238	243	6,405	13,211
January - March	18,075	-73	32	-435	-61	1,854	8,626
2004							
October - December	23,823	64	20	1	113	3,927	10,752
July - September	35,211	107	107	399	388	7,379	14,924
April - June	30,923	69	65	196	243	5,163	13,858
January - March	20,531	-60	-25	-103	-32	1,976	9,871
2003							
October - December	22,034	109	40	-45	95	3,920	9,806
July - September	35,445	226	98	396	393	6,894	15,184
April - June	30,645	94	92	283	236	5,283	12,908
January - March	20,909	-81	4	-48	136	2,881	8,821
2002							
October - December	21,887	38	6	35	92	3,623	9,645
July - September	33,177	269	55	421	459	5,590	14,472
April - June	29,589	130	47	128	229	5,290	12,833
January - March	20,546	31	-16	82	170	2,439	9,342
2001							
October - December	23,562	7	11	101	54	4,039	10,878
July - September	33,964	342	66	460	453	6,097	14,905

See footnotes at the end of the table.

Table 4-11 – continued

 Quarterly estimates of demographic components, national perspective — Natural increase ¹

	Manitoba	Saskat- chewan	Alberta	British Columbia	Yukon Territory	Northwest Territories	Nunavut
	number						
2008							
April - June	1,416	1,077	7,418	3,368	48	155	174
January - March	939	732	5,426	1,921	47	117	155
2007							
October - December	863	446	6,511	2,886	40	104	136
July - September	1,572	1,128	7,712	4,034	30	128	185
April - June	1,406	1,034	7,200	3,540	50	154	169
January - March	936	697	5,257	1,952	50	117	149
2006							
October - December	863	419	6,294	2,271	45	104	130
July - September	1,567	1,094	7,404	3,688	34	128	177
April - June	1,409	1,019	6,923	3,278	53	154	165
January - March	952	702	5,068	1,804	54	119	146
2005							
October - December	948	611	5,332	2,165	30	109	155
July - September	1,327	969	6,310	3,634	39	154	142
April - June	1,252	965	6,336	3,150	46	172	140
January - March	761	572	4,839	1,643	41	129	147
2004							
October - December	758	620	4,887	2,335	55	132	159
July - September	1,245	930	6,217	3,171	48	135	161
April - June	985	885	5,964	3,160	55	128	152
January - March	920	704	5,035	1,900	41	150	154
2003							
October - December	786	416	4,767	1,860	49	99	132
July - September	1,396	986	6,093	3,423	71	132	153
April - June	1,037	962	5,785	3,627	45	130	163
January - March	854	667	5,057	2,267	37	138	176
2002							
October - December	748	389	4,697	2,330	49	103	132
July - September	1,274	896	5,813	3,616	46	104	162
April - June	1,087	822	5,382	3,302	41	135	163
January - March	930	748	4,565	1,933	56	124	142
2001							
October - December	743	747	4,331	2,348	45	110	148
July - September	1,266	1,029	5,387	3,650	52	118	139

1. Natural increase is final up to December 2006, updated from January 2007 to March 2008 and preliminary from April 2008.

Table 4-12
Quarterly estimates of demographic components, national perspective — Net interprovincial migration ¹

	Canada	Newfoundland and Labrador	Prince Edward Island	Nova Scotia	New Brunswick	Quebec	Ontario
	number						
2008							
April - June	0	6	357	-60	-206	-4,952	-3,942
January - March	0	-40	-16	181	-117	-1,772	-4,020
2007							
October - December	0	489	-156	304	22	-2,105	-4,047
July - September	0	844	-143	-542	-24	-3,570	-4,513
April - June	0	-791	-216	-449	-120	-4,665	-3,451
January - March	0	-1,671	-155	-1,082	-305	-2,503	-2,185
2006							
October - December	0	-558	-159	-929	-373	-2,429	-5,957
July - September	0	-1,047	-319	-1,666	-1,834	-3,268	-8,454
April - June	0	-946	-140	-457	-1,085	-4,000	-3,474
January - March	0	-1,647	-134	-1,019	-785	-2,131	-4,056
2005							
October - December	0	-995	-251	-820	-677	-1,873	-5,248
July - September	0	-754	-114	-728	-940	-1,407	-4,723
April - June	0	-1,356	91	-623	-767	-3,048	-1,794
January - March	0	-1,575	22	-1,072	-313	-828	-1,748
2004							
October - December	0	-108	-94	-518	-255	-627	-3,628
July - September	0	-671	-158	-828	-739	-460	-4,002
April - June	0	-927	-65	-67	-60	-1,588	-694
January - March	0	-778	93	-625	174	-297	-905
2003							
October - December	0	-252	83	105	-281	85	-2,012
July - September	0	-70	33	-185	-593	978	-3,324
April - June	0	-601	-6	999	-31	-936	-51
January - March	0	-331	29	34	-94	-348	485
2002							
October - December	0	-177	10	-329	-83	696	-1,034
July - September	0	-574	132	-194	-635	-1,241	1,237
April - June	0	-1,132	-95	55	430	-1,505	705
January - March	0	-1,349	39	-516	-149	-1,045	3,130
2001							
October - December	0	-218	-10	-10	-471	-168	-125
July - September	0	-653	128	-427	-1,028	-1,632	1,644

See footnotes at the end of the table.

Table 4-12 – continued

 Quarterly estimates of demographic components, national perspective — Net interprovincial migration ¹

	Manitoba	Saskat- chewan	Alberta	British Columbia	Yukon Territory	Northwest Territories	Nunavut
	number						
2008							
April - June	-360	1,107	6,730	1,669	5	-334	-20
January - March	-34	1,439	2,761	1,844	114	-207	-133
2007							
October - December	192	1,782	864	2,599	68	87	-99
July - September	-301	3,739	-345	5,346	34	-351	-174
April - June	-1,268	1,691	4,677	4,337	154	94	7
January - March	-378	427	4,725	3,238	-76	-75	40
2006							
October - December	-1,035	529	7,678	3,511	-41	-165	-72
July - September	-2,819	-1,098	16,729	3,919	64	-75	-132
April - June	-1,900	-832	9,512	3,486	-31	-119	-14
January - March	-1,523	-2,330	12,320	1,883	-92	-393	-93
2005							
October - December	-1,734	-2,020	13,820	259	-92	-355	-14
July - September	-2,724	-1,901	10,143	3,172	142	-87	-79
April - June	-2,887	-3,207	11,165	2,726	-105	-267	72
January - March	-1,257	-2,393	8,290	1,055	1	-178	-4
2004							
October - December	-889	-2,016	6,189	2,055	5	-80	-34
July - September	-2,194	-1,899	8,779	2,378	152	-143	-215
April - June	-747	-1,504	2,717	3,042	-119	-87	99
January - March	7	-822	3,192	310	-48	-185	-116
2003							
October - December	-371	-846	1,678	1,683	17	107	4
July - September	-1,454	-1,349	3,019	2,830	177	60	-122
April - June	-574	-875	1,673	-28	227	175	28
January - March	210	-1,665	3,159	-1,460	23	15	-57
2002							
October - December	-535	-680	1,783	298	82	2	-33
July - September	-1,976	-1,921	5,288	153	-183	50	-136
April - June	-1,154	-2,350	7,147	-2,624	38	229	256
January - March	-455	-2,416	5,378	-2,272	-123	-99	-123
2001							
October - December	-929	-1,503	5,349	-1,787	32	-150	-10
July - September	-1,806	-2,551	8,361	-1,873	-168	104	-99

1. Net interprovincial migration numbers are final up to June 2007, updated from July 2007 to March 2008 and preliminary from April 2008.

Table 4-13
Quarterly estimates of demographic components, national perspective — Net international migration ¹

	Canada	Newfoundland and Labrador	Prince Edward Island	Nova Scotia	New Brunswick	Quebec	Ontario
	number						
2008							
April - June	91,599	140	426	669	441	17,154	38,442
January - March	59,115	179	335	513	448	10,079	24,958
2007							
October - December	28,049	-18	172	218	128	6,902	5,637
July - September	78,371	113	511	949	538	12,830	35,372
April - June	76,760	126	226	493	305	14,487	34,689
January - March	56,227	35	178	420	424	9,786	24,307
2006							
October - December	21,369	44	94	289	151	3,673	4,140
July - September	72,187	65	317	678	539	12,782	35,293
April - June	73,956	114	156	686	238	13,571	38,039
January - March	56,126	60	74	420	250	9,016	28,030
2005							
October - December	22,429	-251	21	20	57	4,078	5,968
July - September	76,155	36	102	971	368	11,834	41,067
April - June	75,030	256	102	242	61	12,391	41,615
January - March	52,949	163	43	179	202	7,888	27,652
2004							
October - December	20,419	-118	73	-241	70	4,360	5,257
July - September	67,818	-11	72	668	329	11,953	37,040
April - June	68,562	271	46	573	71	13,154	39,275
January - March	55,079	-17	59	357	169	9,694	30,622
2003							
October - December	25,255	29	-31	4	96	4,210	9,147
July - September	64,282	100	72	722	387	11,128	37,549
April - June	66,562	90	20	435	106	11,000	38,483
January - March	55,259	-52	12	149	142	9,252	32,427
2002							
October - December	13,431	-113	-14	-325	-5	2,787	4,852
July - September	65,191	199	19	461	415	11,387	39,023
April - June	77,419	189	29	554	33	10,584	50,439
January - March	64,020	76	9	592	227	9,412	38,064
2001							
October - December	24,967	-4	-11	214	-52	4,362	11,610
July - September	81,618	-148	31	773	314	12,084	50,964

See footnotes at the end of the table.

Table 4-13 – continued

 Quarterly estimates of demographic components, national perspective — Net international migration¹

	Manitoba	Saskat- chewan	Alberta	British Columbia	Yukon Territory	Northwest Territories	Nunavut
	number						
2008							
April - June	3,747	1,757	13,439	15,178	91	106	9
January - March	1,773	1,194	8,136	11,422	85	11	-18
2007							
October - December	2,000	611	6,290	6,252	-27	-59	-57
July - September	2,638	1,276	9,308	14,779	27	-9	39
April - June	3,722	1,126	10,634	10,800	72	77	3
January - March	2,301	736	7,099	10,926	13	-1	3
2006							
October - December	1,725	443	4,949	5,946	-49	-23	-13
July - September	2,463	477	6,993	12,597	-10	2	-9
April - June	2,720	600	6,820	10,895	78	40	-1
January - March	1,981	442	5,257	10,552	33	15	-4
2005							
October - December	1,375	194	3,348	7,625	-7	-7	8
July - September	1,957	555	5,854	13,414	-6	16	-13
April - June	2,390	672	5,497	11,771	44	-3	-8
January - March	1,393	619	3,989	10,800	-1	24	-2
2004							
October - December	1,237	125	2,714	6,987	-30	-10	-5
July - September	1,848	532	4,277	11,139	-21	12	-20
April - June	2,336	651	3,996	8,094	70	23	2
January - March	1,530	474	3,606	8,506	37	36	6
2003							
October - December	1,549	299	2,803	7,103	-16	72	-10
July - September	1,729	457	3,629	8,503	-20	30	-4
April - June	2,042	395	4,193	9,734	44	27	-7
January - March	1,204	358	3,432	8,280	37	16	2
2002							
October - December	659	123	1,465	4,044	-16	-18	-8
July - September	1,185	421	3,137	8,950	19	-21	-4
April - June	1,580	372	4,746	8,828	69	4	-8
January - March	1,039	495	3,586	10,474	5	31	10
2001							
October - December	718	159	2,001	6,020	-36	-11	-3
July - September	1,077	417	4,565	11,507	-5	52	-13

1. Net international migration numbers are final up to June 2006, updated from July 2006 to March 2008 and preliminary from April 2008.

Table 4-14
Quarterly estimates of demographic components, national perspective — Total net migration ¹

	Canada	Newfoundland and Labrador	Prince Edward Island	Nova Scotia	New Brunswick	Quebec	Ontario
	number						
2008							
April - June	91,599	146	783	609	235	12,202	34,500
January - March	59,115	139	319	694	331	8,307	20,938
2007							
October - December	28,049	471	16	522	150	4,797	1,590
July - September	78,371	957	368	407	514	9,260	30,859
April - June	76,760	-665	10	44	185	9,822	31,238
January - March	56,227	-1,636	23	-662	119	7,283	22,122
2006							
October - December	21,369	-514	-65	-640	-222	1,244	-1,817
July - September	72,187	-982	-2	-988	-1,295	9,514	26,839
April - June	73,956	-832	16	229	-847	9,571	34,565
January - March	56,126	-1,587	-60	-599	-535	6,885	23,974
2005							
October - December	22,429	-1,246	-230	-800	-620	2,205	720
July - September	76,155	-718	-12	243	-572	10,427	36,344
April - June	75,030	-1,100	193	-381	-706	9,343	39,821
January - March	52,949	-1,412	65	-893	-111	7,060	25,904
2004							
October - December	20,419	-226	-21	-759	-185	3,733	1,629
July - September	67,818	-682	-86	-160	-410	11,493	33,038
April - June	68,562	-656	-19	506	11	11,566	38,581
January - March	55,079	-795	152	-268	343	9,397	29,717
2003							
October - December	25,255	-223	52	109	-185	4,295	7,135
July - September	64,282	30	105	537	-206	12,106	34,225
April - June	66,562	-511	14	1,434	75	10,064	38,432
January - March	55,259	-383	41	183	48	8,904	32,912
2002							
October - December	13,431	-290	-4	-654	-88	3,483	3,818
July - September	65,191	-375	151	267	-220	10,146	40,260
April - June	77,419	-943	-66	609	463	9,079	51,144
January - March	64,020	-1,273	48	76	78	8,367	41,194
2001							
October - December	24,967	-222	-21	204	-523	4,194	11,485
July - September	81,618	-801	159	346	-714	10,452	52,608

See footnotes at the end of the table.

Table 4-14 – continued

Quarterly estimates of demographic components, national perspective — Total net migration ¹

	Manitoba	Saskatchewan	Alberta	British Columbia	Yukon Territory	Northwest Territories	Nunavut
	number						
2008							
April - June	3,387	2,864	20,169	16,847	96	-228	-11
January - March	1,739	2,633	10,897	13,266	199	-196	-151
2007							
October - December	2,192	2,393	7,154	8,851	41	28	-156
July - September	2,337	5,015	8,963	20,125	61	-360	-135
April - June	2,454	2,817	15,311	15,137	226	171	10
January - March	1,923	1,163	11,824	14,164	-63	-76	43
2006							
October - December	690	972	12,627	9,457	-90	-188	-85
July - September	-356	-621	23,722	16,516	54	-73	-141
April - June	820	-232	16,332	14,381	47	-79	-15
January - March	458	-1,888	17,577	12,435	-59	-378	-97
2005							
October - December	-359	-1,826	17,168	7,884	-99	-362	-6
July - September	-767	-1,346	15,997	16,586	136	-71	-92
April - June	-497	-2,535	16,662	14,497	-61	-270	64
January - March	136	-1,774	12,279	11,855	0	-154	-6
2004							
October - December	348	-1,891	8,903	9,042	-25	-90	-39
July - September	-346	-1,367	13,056	13,517	131	-131	-235
April - June	1,589	-853	6,713	11,136	-49	-64	101
January - March	1,537	-348	6,798	8,816	-11	-149	-110
2003							
October - December	1,178	-547	4,481	8,786	1	179	-6
July - September	275	-892	6,648	11,333	157	90	-126
April - June	1,468	-480	5,866	9,706	271	202	21
January - March	1,414	-1,307	6,591	6,820	60	31	-55
2002							
October - December	124	-557	3,248	4,342	66	-16	-41
July - September	-791	-1,500	8,425	9,103	-164	29	-140
April - June	426	-1,978	11,893	6,204	107	233	248
January - March	584	-1,921	8,964	8,202	-118	-68	-113
2001							
October - December	-211	-1,344	7,350	4,233	-4	-161	-13
July - September	-729	-2,134	12,926	9,634	-173	156	-112

1. Total net migration numbers are final up to June 2006, updated from July 2006 to March 2008 and preliminary from April 2008.

Table 4-15
Quarterly estimates of demographic components, national perspective — Residual deviation

	Canada	Newfoundland and Labrador	Prince Edward Island	Nova Scotia	New Brunswick	Quebec	Ontario
	number						
2008							
April - June
January - March
2007							
October - December
July - September
April - June
January - March
2006							
October - December
July - September
April - June	2,597	-28	2	-68	84	643	1,236
January - March	5,188	-56	3	-137	168	1,285	2,471
2005							
October - December	5,305	-57	4	-140	171	1,313	2,527
July - September	5,304	-58	4	-140	171	1,314	2,526
April - June	5,248	-56	4	-138	170	1,299	2,499
January - March	5,191	-56	3	-137	168	1,286	2,472
2004							
October - December	5,304	-57	4	-140	171	1,313	2,526
July - September	5,304	-58	4	-140	171	1,314	2,527
April - June	5,249	-56	3	-138	170	1,299	2,499
January - March	5,245	-57	4	-139	169	1,300	2,499
2003							
October - December	5,307	-57	4	-140	172	1,313	2,527
July - September	5,304	-57	4	-140	171	1,314	2,526
April - June	5,249	-57	3	-138	170	1,300	2,499
January - March	5,190	-56	4	-137	168	1,285	2,472
2002							
October - December	5,303	-57	4	-140	171	1,313	2,526
July - September	5,305	-58	3	-140	171	1,314	2,527
April - June	5,250	-56	4	-138	170	1,299	2,499
January - March	5,190	-56	4	-137	168	1,286	2,471
2001							
October - December	5,305	-57	3	-140	171	1,313	2,527
July - September	5,304	-58	4	-140	171	1,314	2,526

See footnotes at the end of the table.

Table 4-15 – continued

Quarterly estimates of demographic components, national perspective — Residual deviation

	Manitoba	Saskatchewan	Alberta	British Columbia	Yukon Territory	Northwest Territories	Nunavut
	number						
2008							
April - June
January - March
2007							
October - December
July - September
April - June
January - March
2006							
October - December
July - September
April - June	-133	-75	-1,177	2,169	-24	-22	-10
January - March	-266	-151	-2,355	4,338	-48	-43	-21
2005							
October - December	-271	-154	-2,407	4,434	-50	-44	-21
July - September	-272	-154	-2,407	4,434	-49	-44	-21
April - June	-269	-153	-2,381	4,386	-49	-43	-21
January - March	-266	-151	-2,355	4,338	-48	-43	-20
2004							
October - December	-271	-154	-2,407	4,434	-49	-45	-21
July - September	-272	-154	-2,407	4,434	-50	-44	-21
April - June	-269	-152	-2,381	4,386	-48	-43	-21
January - March	-269	-153	-2,381	4,386	-49	-44	-21
2003							
October - December	-271	-154	-2,407	4,434	-49	-44	-21
July - September	-272	-154	-2,407	4,434	-50	-44	-21
April - June	-269	-153	-2,381	4,386	-48	-43	-20
January - March	-266	-150	-2,354	4,338	-49	-44	-21
2002							
October - December	-271	-155	-2,408	4,434	-49	-44	-21
July - September	-272	-154	-2,407	4,435	-49	-44	-21
April - June	-269	-152	-2,380	4,386	-49	-43	-21
January - March	-266	-151	-2,355	4,337	-48	-43	-20
2001							
October - December	-271	-154	-2,407	4,435	-50	-44	-21
July - September	-272	-154	-2,407	4,434	-49	-44	-21

1. Residual deviation numbers are final intercensal up to May 2006.

Table 5
Quarterly estimates of interprovincial migrants by province or territory of origin and destination, Canada, April to June 2008 P

Origin	Destination												
	Newfoundland and Labrador	Prince Edward Island	Nova Scotia	New Brunswick	Quebec	Ontario	Manitoba	Saskatchewan	Alberta	British Columbia	Yukon Territory	Northwest Territories	Nunavut
	number												
Newfoundland and Labrador	...	59	521	83	99	796	63	0	1,699	183	7	6	32
Prince Edward Island	28	...	191	119	139	240	0	23	213	109	24	0	0
Nova Scotia	520	229	...	795	376	1,733	83	95	1,248	520	22	27	48
New Brunswick	104	155	801	...	414	1,128	81	52	960	204	17	54	42
Quebec	83	225	375	685	...	6,531	352	343	3,030	1,149	21	53	6
Ontario	1,219	319	1,624	998	4,785	...	1,501	1,088	8,889	5,550	63	98	121
Manitoba	80	4	60	87	118	1,238	...	658	1,776	1,074	5	39	8
Saskatchewan	80	0	66	48	236	628	712	...	3,391	1,110	0	28	13
Alberta	1,079	249	1,221	751	866	5,034	1,299	3,930	...	7,776	60	164	71
British Columbia	205	139	690	185	812	4,801	649	1,130	7,620	...	138	65	30
Yukon Territory	0	12	0	35	17	18	5	0	10	271	...	10	0
Northwest Territories	47	32	74	8	24	93	9	78	280	161	21	...	111
Nunavut	109	20	13	12	15	73	33	22	114	26	5	60	...
In-migrants	3,554	1,443	5,636	3,806	7,901	22,313	4,787	7,419	29,230	18,133	383	604	482
Out-migrants	3,548	1,086	5,696	4,012	12,853	26,255	5,147	6,312	22,500	16,464	378	938	502
Net	6	357	-60	-206	-4,952	-3,942	-360	1,107	6,730	1,669	5	-334	-20
Total number of migrants: 105,691													

P Preliminary data.

Note(s): Preliminary estimates based on data from the Canada Child Tax Benefit (CCTB) Program and F_{jk} factors calculated using 2004-2005, 2005-2006 and 2006-2007 tax file data from Canada Revenue Agency.

Methodology

This document describes the concepts, data sources and methodology used to produce the population estimates. Population estimates are produced to measure the population counts according to various characteristics and geographies between two censuses. Population estimates are the official figures used for the count of the population at the national, provincial and territorial levels.

Estimates of the total population

Types of estimates

Population estimates can be either intercensal or postcensal. Intercensal estimates are produced using counts from two consecutive censuses adjusted for census net undercoverage (CNU)¹ (including adjustment for incompletely enumerated Indian reserves) and postcensal estimates. The production of intercensal estimates involves updating the postcensal estimates using the counts from a new census adjusted for CNU¹.

Postcensal estimates are produced using data from the most recent census adjusted for CNU¹ and the components of population growth. In terms of timeliness, postcensal estimates are more up-to-date than data from the most recent census adjusted for CNU¹, but as they get farther from the date of that census, they become more variable.

Levels of estimates

Updating population estimates between censuses entails the use of data from administrative files or surveys. The quality of population estimates therefore depends on the availability of a number of administrative data files that are provided to Statistics Canada by Canadian and foreign government departments. Since some components are not available until several months after the reference date, three kinds of postcensal estimates are produced: preliminary postcensal (PP), updated postcensal (PR) and final postcensal (PD). The time lag between the reference date and the release date is three to four months for preliminary estimates and two to three years for final estimates. Though it requires more vigilance on the part of users, the production of three successive series of postcensal estimates is the strategy that best satisfies the need for both timeliness and accuracy of the estimates. All tables indicate the level of the estimates they contain.

Calculation of population estimates

Population estimates – preliminary, updated and final – are produced by the component method. This method consists in taking the population figures from the most recent census, adjusted for census net undercoverage (CNU¹) (census undercoverage minus census overcoverage), and adding or subtracting the number of births, deaths, and components of international and interprovincial migration.

A. Provincial/territorial estimates of total population

Population estimates are produced for the provinces and territories first; then they are summed to obtain an estimate of the population of Canada.

1. In this case, the adjustment for the census net undercoverage also includes the incompletely enumerated Indian reserves

The component-method formula for estimating total provincial/territorial populations is as follows:

$$P_{(t+i)} = P_{(t)} + B_{(t,t+i)} - D_{(t,t+i)} + I_{(t,t+i)} - [E_{(t,t+i)} + \Delta TE_{(t,t+i)}] + RE_{(t,t+i)} + \Delta NPR_{(t,t+i)} + \Delta N_{(t,t+i)} - \text{Resid}_{(t,t+i)}$$

where, for each province and territory:

- (t,t+i) = interval between times t and t+i;
- $P_{(t+i)}$ = estimate of the population at time t+i;
- $P_{(t)}$ = base population at time t (census adjusted for (CNU¹), or most recent estimate);
- B = number of births;
- D = number of deaths;
- I = number of immigrants;
- E = number of emigrants;
- ΔTE = net temporary emigration;
- RE = number of returning emigrants;
- ΔNPR = net non-permanent residents;
- ΔN = net interprovincial migration;
- Resid = residual deviation (for intercensal estimates).

B. Levels of estimates

The difference between preliminary² and final postcensal population estimates lies in the timeliness of the components. When all the components are preliminary, the estimate is described as preliminary postcensal (PP). When they are all final, the estimate is referred to as final postcensal (PD). Any other combination of levels is referred to as updated postcensal (PR).

Population estimates are final intercensal up to April 2006, final postcensal for July 2006, updated postcensal from October 2006 to April 2008, and preliminary postcensal from July 2008 on.

Base population and components of population growth

A. Base population

The base populations are derived from the quinquennial censuses between 1971 and 2006. The population universe of the 2006³ Census includes the following groups:

- Canadian citizens (by birth or by naturalization) and landed immigrants with a usual place of residence in Canada;
- Canadian citizens (by birth or by naturalization) and landed immigrants who are abroad, either on a military base or attached to a diplomatic mission;
- Canadian citizens (by birth or by naturalization) and landed immigrants at sea or in port aboard merchant vessels under Canadian registry;
- persons with a usual place of residence in Canada who are claiming refugee status and members of their families living with them;
- persons with a usual place of residence in Canada who hold Study Permits and members of their families living with them;

2. Unless otherwise noted, the term *preliminary* include both preliminary and updated estimates.

3. From 1991 to 2001 Census, "persons with a usual place of residence in Canada who hold Minister's permits (including extensions) and members of their families living with them" were included in the census universe.

- persons with a usual place of residence in Canada who hold Work Permits and members of their families living with them;

For census purposes, the last four groups in this list are referred to as non-permanent residents (NPR).

Foreign residents have not been enumerated since 1991. Foreign residents are persons who belong to the following groups:

- Government representatives of another country attached to the embassy, high commission or other diplomatic body of that country in Canada, and members of their families living with them;
- members of the Armed Forces of another country who are stationed in Canada, and members of their families living with them;
- residents of another country visiting Canada temporarily (for example, a foreign visitor on vacation or on business, with or without a visitor's permit).

These populations are adjusted as follows:

- adjustment of the population for census net undercoverage (CNU);
- addition of independent estimates for incompletely enumerated Indian reserves in 1991, 1996, 2001 and 2006;
- adjustment for early enumeration in 1991 and 1996 in parts of northern Quebec, Newfoundland and Labrador, the Yukon Territory and the Northwest Territories;
- addition of estimates of NPRs in 1971, 1976, 1981 and 1986. Since 1991, NPRs included in the census universe;
- estimation of the July 1 base population by addition or subtraction of the components of growth between Census Day and June 30. At the subprovincial level, the estimate of the July 1 base population is obtained by applying the subprovincial age-sex distribution of the adjusted census to the provincial / territorial population estimate.

Adjustment for census net undercoverage (CNU)

The adjustment for CNU is important. CNU is the difference between the number of persons who should have been enumerated but were missed (undercoverage) and the number of persons who were enumerated but should not have been or who were counted more than once (overcoverage).

Coverage studies provide undercoverage estimates for the 1991, 1996, 2001 and 2006 Censuses at the provincial and territorial levels, and for the 1971, 1976, 1981 and 1986 Censuses at the provincial level only. Estimates of overcoverage at the provincial and territorial levels are available only for the last four censuses (1991, 1996, 2001 and 2006). Overcoverage for previous censuses was estimated by assuming that the overcoverage-to-undercoverage ratio for each census between 1971 and 1986 was the same as in 1991. The CNU for the Yukon Territory and the Northwest Territories prior to 1991 was estimated by assuming that the ratio between the CNU for each territory and the 10 provinces for each census between 1971 and 1986 was the same as in 1991.

For consistency, 1991 Census undercoverage and overcoverage were revised in 1998 to take into account the methodological improvements made in the 1996 Census coverage studies. This revision altered the CNU in all censuses between 1971 and 1986. Similarly, 1996 Census undercoverage and overcoverage were revised in 2003.

B. Births and deaths

Numbers of births and deaths are derived directly from the vital statistics database of Statistics Canada's Health Statistics Division. Although Statistics Canada manages the National system of vital statistics, the central vital statistics registries of the provinces and territories are responsible for collecting and processing the information from those administrative files. Under provincial/territorial vital statistics statutes (or similar legislation), all live births and all deaths must be registered, and all provinces and territories provide the information to Statistics Canada.

The vital statistics universe closely parallels the census universe. Both universes include births and deaths of all Canadians, immigrants and non-permanent residents (NPR) and exclude foreign residents.

Vital statistics by province or territory of residence are used to produce our final estimates of births and deaths.

When there are no vital statistics, the number of births is estimated using fertility rates by mother's age. The number of deaths is estimated using mortality rates by age and sex. These methods are used to calculate preliminary² estimates.

Special treatment for preliminary estimates for Quebec and British Columbia

Quebec and British Columbia provide their most recent estimates of births and deaths. The figures are used to produce preliminary² estimates. For the final estimates, the two provinces' births and deaths are derived from the vital statistics compiled by Health Statistics Division.

Levels of estimates

For information on the differences between preliminary² and final estimates, see sections **B. Births and deaths**, above.

Estimates of births and deaths are final up to December 2006, updated from January 2007 to March 2008, and preliminary from April 2008 on.

C. Immigration

Like the numbers of births and deaths, Canadian immigration statistics must be kept by law. In Canada, immigration is regulated by the *Immigration and Refugee Protection Act* (IRPA) of 2002. This statute superseded the *Immigration Act*, which was passed in 1976 and amended more than 30 times in the years thereafter. *Citizenship and Immigration Canada* (CIC) collects and processes immigrants' administrative files. It then provides Statistics Canada with information from *Field Operational Support System* (FOSS) files. The information is used to estimate the number and characteristics of people granted permanent resident status by the federal government on a given date. For Demography Division, the terms immigrant and permanent resident are equivalent.

An immigrant is a person who is not a Canadian citizen by birth, but has been granted the right to live in Canada permanently by Canadian immigration authorities. The number of immigrants does not include persons born abroad to Canadian parents who are only temporarily outside the country.

Immigrants are usually counted on or after the date on which they are granted permanent resident status or the right to live in Canada.

Levels of estimates

The difference between preliminary² and final postcensal estimates lies in the timeliness of the source used to estimate this component. Since the FOSS file is continually being updated, new calculations are carried out each year to update the immigration estimates. Immigration estimates are preliminary the first year and updated the following year. They become final two years after the reference year.

The numbers of immigrants are final up to December 2006, updated from January 2007 to March 2008, and preliminary from April 2008 on.

D. Net non-permanent residents

Like the numbers of births and deaths, Canadian immigration statistics must be kept by law. In Canada, the non-permanent residents (NPR) are regulated by the *Immigration and Refugee Protection Act* (IRPA) of 2002. This statute superseded the *Immigration Act*, which was passed in 1976 and amended more than 30 times in the years thereafter. *Citizenship and Immigration Canada* (CIC) collects and processes the administrative files of immigrants and NPRs in Canada. It then provides Statistics Canada with information from *Field Operational Support System* (FOSS) files. The information is used to estimate the number and characteristics of people granted or permanent resident status by the federal government.

Non-permanent residents (NPR) are persons who are lawfully in Canada on a temporary basis under the authority of a temporary resident permit, along with members of their family living with them. Non-permanent residents (NPR) include foreign workers, foreign students, the humanitarian population and other temporary residents. The humanitarian population includes refugee claimants and temporary residents who are allowed to remain in Canada on humanitarian grounds and are not categorized as either foreign workers or foreign students. For Demography Division, the terms non-permanent resident and temporary resident are equivalent.

Estimates of the number of NPR are based on population estimates. The number of people in CIC's system is estimated on a specific date in each year of observation. First, the end-of-period population is estimated, and then the start-of-period population is subtracted from that estimate. That yields the net number of NPR.

Anyone who received non-permanent resident status prior to the observation date is counted. For refugee claimants, the date of their application is used. Permit holders and refugee claimants are excluded from the population if their permit has expired, if they receive permanent resident status, or if they are deported. In addition, refugee claimants are excluded if their file has been inactive for two years.

Since the FOSS file is continually being updated, the figures are recalculated for each new release period to update the estimates of the net number of NPRs in Canada. Non-permanent residents (NPR) estimates are preliminary the first year and updated the following year. They are finalized two to three years after the reference year, when all other components are also final.

Levels of estimates

The difference between preliminary² and final estimates lies in the timeliness of the source used to estimate this component. Since the FOSS file is continually being updated, the figures are recalculated for each new release period to update the estimates of the net number of NPRs. Non-permanent residents (NPR) estimates are preliminary the first year and updated the following year. They become final two to three years after the reference year.

Estimates of the net number of NPR are final up to June 2006, updated from July 2006 to March 2008, and preliminary from April 2008 on.

E. Emigration

The number of emigrants is estimated using data from the *Office of Immigration Statistics, U.S. Department of Homeland Security*, data collected by the *Canada Child Tax Benefit (CCTB)* program, and data from the *T1 Family File (T1FF)*⁴. The first source is used to estimate emigration to the United States. CCTB data are used to estimate emigration to other countries. The estimates of the number of child emigrants have to be adjusted because the CCTB is not universal and does not provide direct information on the number of adult emigrants. As a result, four adjustment factors are used to take into account:

- incomplete coverage due to a delay in the receipt and processing of the files of children *eligible* for the CCTB. Since it seems to take four years after the reference period for CCTB administrative files to become complete, the adjustment is made if the estimates are finalized after two years. The factor is derived from the two-year ratios of emigrant children based on two versions of the CCTB files;
- the program's partial coverage, that is, people who do not apply for the CCTB or are not *eligible*. This factor is obtained by comparing the estimated number of children in the population with the number of children in CCTB files;
- the differential propensity to emigrate between children who are *eligible* for the CCTB and children who are not. This factor is obtained by comparing the emigration rates of CCTB-eligible children with the rates for all children (aged 0-17). This factor is calculated for each province and territory and is based on the last three available years of T1FF⁴;

4. The T1 family file (T1FF) is derived from the *Canada Revenue Agency (CRA)* T1 file by Small Area and Administrative Data Division of Statistics Canada.

- the differential propensity to emigrate between adults and children. This factor generates the emigration rate for the population aged 18 and over. It is obtained by (1) calculating the average ratio over three years of the adult and child emigration rates based on T1FF⁴ data, (2) calculating the average ratio over three years of the adult and child emigration rates based on data from the *Office of Immigration Statistics, U.S. Department of Homeland Security*, and (3) taking the average of the two rates. This factor is calculated for Canada only.

The adult emigration rate is applied to the adult population to generate the number of adult emigrants, which is then added to the number of child emigrants to produce the number of emigrants for the entire population.

Emigration is disaggregated by province and territory based on the number of child emigrants adjusted for coverage and differential emigration.

Levels of estimates

The difference between preliminary² and final estimates lies in the timeliness of the sources used to estimate this component. The same estimation method is used.

The numbers of emigrants are final up to June 2006, updated from July 2006 to March 2008, and preliminary from April 2008 on.

F. Net temporary emigration

Some people leave Canada to live temporarily in another country; others who were temporarily outside Canada return. The net result of those departures and returns is the component known as “net temporary emigration”. Estimates of the number of departures are derived from the *Reverse Record Check (RRC)*, the most important census coverage study. The RRC provides an estimate of the number of people who left Canada temporarily during an intercensal period and are still out of the country at the end of the period. Estimates of the number of returns are based on two sources: the Census and Demography Division’s estimates of returning emigrants. The census provides the number of people who were outside Canada at the time of the previous census and returned during the intercensal period. That number includes all returning emigrants. Then Demography Division’s estimate of the returning emigrants’ component is subtracted to produce the number of returning temporary emigrants. The estimated numbers of departures (RRC) and returns (Census and Demography Division) yield an estimate of net temporary emigration.

That estimate is for the whole intercensal period; it is disaggregated into estimates for each of the five years in the period and then into monthly estimates using a seasonal adjustment that is an average between zero seasonality and the seasonality of emigration.

Net temporary emigration is calculated first for the national level. It is then disaggregated by province or group of provinces based on the RRC estimates of temporary emigration. For the Atlantic provinces and the territories, the estimate for the group is disaggregated on the basis of each province/territory’s proportion of the group’s total population.

Net temporary emigration can be estimated only for the intercensal period preceding the most recent census. Net temporary emigration in the current period is assumed to be the same as in the previous period for each province and territory.

Levels of estimates

The difference between preliminary² and final estimates lies in the timeliness of the emigration estimate used to calculate the seasonal adjustment for the net temporary emigration. The same estimation method is used.

The estimates of net temporary emigration are final up to June 2006, updated from July 2006 to March 2008, and preliminary from April 2008 on. From July 2001, we are using trends observed between 2001 and 2006.

G. Returning emigrants

A returning emigrant is a person who returns to Canada after having been classified as an emigrant. In a manner similar to the procedure used to calculate the number of emigrants, data from the *Canada Child Tax Benefit (CCTB)*

file and the *Canada Revenue Agency's* (CRA) 's T1FF⁴ are used to estimate the number of returning emigrants. Adjustment factors are applied to compensate for the fact that the CCTB program is not universal, and an adult/child ratio is used to estimate the number of adult returning emigrants. As a result, three adjustment factors are used to take into account:

- the program's partial coverage, that is, people who do not apply for the CCTB or are not *eligible*. This factor is obtained by comparing the estimated number of children in the population with the number of children in CCTB files;
- the differential propensity to emigrate between children who are *eligible* for the CCTB and children who are not. This factor is obtained by comparing the emigration rates of CCTB-*eligible* children with the rates for all children (aged 0-17). This factor is calculated for each province and territory and is based on the last three available years of T1FFs⁴;
- the adult/child ratio, which is based on the census used in estimating the base population.

Levels of estimates

The difference between preliminary² and final estimates lies in the timeliness of the sources used to estimate this component. The same estimation method is used.

The numbers of returning emigrants are final up to June 2006, updated from July 2006 to March 2008, and preliminary from April 2008 on.

H. Interprovincial migration

Interprovincial migration represents movements from one province or territory to another, involving a change in usual place of residence. As is the case for emigration, there is no provision for recording interprovincial migration in Canada. Consequently, such movements have to be estimated using data from the *Canada Child Tax Benefit* (CCTB) of *Canada Revenue Agency* (CRA) and the T1FF⁴.

Final estimates of interprovincial migration are obtained by comparing addresses indicated on personal income tax returns over two consecutive tax years. However, the migration status of taxfilers' dependants has to be imputed. An adjustment is also required to take into account migrants who do not file income tax returns. For 2001-2002 and subsequent years, the adjustment was slightly modified (for further information, see *Wilkinson, 2004*). From 2006-2007, this adjustment has slightly modified (Cyr, 2008 – Internal document).

Since income tax returns are not available at the time preliminary estimates are produced, the estimation of preliminary² interprovincial migration is based on CCTB administrative files, which provide counts of child migrants (aged 0-17) *receiving benefits* under the program. The estimates have to be adjusted later for children who are not receiving the CCTB. Finally, the number of adult migrants is calculated using the number of child migrants and factors derived from the T1FF⁴. As a result, three adjustment factors are used to take into account:

- the program's partial coverage, that is, people who do not apply for the CCTB or are not receiving *benefits*. This factor is obtained by comparing the estimated number of children in the population with the number of children in CCTB files;
- the differential propensity to migrate between children who are receiving the CCTB and children who are not. This factor is obtained by comparing the out-migration rates of children receiving the CCTB with the rates for all children (aged 0-17). This factor is calculated for each province and territory and is based on the last available year of T1FFs⁴;
- the differential propensity to migrate between adults and children. This factor generates the out-migration rate of the population aged 18 and over for each province/territory of origin and destination. It is obtained by calculating the ratio of the central migration rate for adults to the rate for children. It is estimated using data from the last three available years of T1FFs⁴.

The adult migration rate is then applied to the estimated adult population. The number of adult migrants is then added to the number of child migrants to produce the number of interprovincial migrants for the entire population.

Levels of estimates

For information on the differences between preliminary² and final estimates of total interprovincial migration, see section **H. Interprovincial migration** above.

The estimate of interprovincial migration is final up to June 2007, updated from July 2007 to March 2008 and preliminary from April 2008 on.

Intercensal population estimates

Intercensal estimates – population estimates for reference dates between two censuses – are produced following each census. They reconcile previous postcensal estimates with the new census counts.

There are two main steps in the production of intercensal estimates:

- calculation of the error of closure;
- linear distribution of the error of closure.

Error of closure is defined as the difference between the postcensal population estimates on Census Day and the population enumerated in that census (after adjustment for census net undercoverage (CNU¹)).

The error of closure is spread uniformly over the intercensal period of days within each month.

Quality of estimates

The estimates contain certain inaccuracies stemming from two types of errors:

- errors in the census data;
- imperfections in other data sources and the method used to estimate the components.

Census data

A. Coverage, response and imputation errors

The errors attributable to census data can be divided into two groups: Response and processing errors, and coverage errors. The first group implies non-response error, misinterpretation by respondents, incorrect coding and non-response imputation. Errors in the second group primarily result from undercoverage and, to a lesser extent, overcoverage. It should be noted that both types of errors are intrinsic to any survey data.

The coverage errors occur when dwellings and/or individuals are missed, incorrectly included or counted more than once. Following each census, Statistics Canada undertakes coverage studies to measure these errors. The main studies are the *Reverse Record Check Survey* (RRC) and the *Census Overcoverage Study* (COS). Based on these studies, estimates of *census net undercoverage* (CNU) (which is equal to the difference between undercoverage and overcoverage) are produced. Demography Division adjusts the population enumerated in the census by province and territory using these estimates.

During the process of developing base populations, an attempt was made to correct only coverage errors in the population base. However, the correction based on the results of the coverage studies and on modeling of overcoverage for provinces and territories by age and sex prior to 1991, was also subject to sampling, collection, response and processing errors and uncertainty in the assumptions underlying the models. With respect to the coverage studies, statistical analysis concluded that the adjustment, although not without errors itself, improved the quality of census data (Royce, 1993). They were deemed to be consistent over time and across geographical areas, and to provide logical results. Users should also be aware that when calculating *census net undercoverage* (CNU) rates for small areas, it is likely that the underlying assumptions may be violated. If this is true, the resulting CNU rate would be misleading. Errors associated with these assumptions are, however, very difficult to quantify.

Nevertheless, the corrections to the census data due to CNU improved, in general, the quality of the estimates by compensating for the differential undercoverage by age, sex and by province/territory across censuses.

The adjustment also incorporates the results of a study on the estimates of the number of people living on incompletely enumerated Indian reserves to complete the corrections for coverage errors in the census. The results of the coverage studies contain mainly sampling errors.

Text table 1
Estimated census net undercoverage, Canada, provinces and territories, 2001 and 2006 Censuses

Geography	Census population	Census net undercoverage	Incompletely enumerated Indian reserves	Adjusted population	Rate
	A	B	C	D=A+B+C	(B+C)/D*100
	number			in percent	
2001¹					
Canada	30,007,094	924,430	34,539	30,966,063	3.10
Newfoundland and Labrador	512,930	9,401	0	522,331	1.80
Prince Edward Island	135,294	1,325	0	136,619	0.97
Nova Scotia	908,007	24,521	0	932,528	2.63
New Brunswick	729,498	20,095	0	749,593	2.68
Quebec	7,237,479	140,232	12,648	7,390,359	2.07
Ontario	11,410,046	436,349	15,960	11,862,355	3.81
Manitoba	1,119,583	30,903	110	1,150,596	2.70
Saskatchewan	978,933	21,231	581	1,000,745	2.18
Alberta	2,974,807	69,857	4,977	3,049,641	2.45
British Columbia	3,907,738	164,542	263	4,072,543	4.05
Yukon Territory	28,674	1,423	0	30,097	4.73
Northwest Territories	37,360	3,295	0	40,655	8.10
Nunavut	26,745	1,256	0	28,001	4.49
2006¹					
Canada	31,612,897	868,658	40,115	32,521,670	2.79
Newfoundland and Labrador	505,469	5,046	0	510,515	0.99
Prince Edward Island	135,851	1,903	0	137,754	1.38
Nova Scotia	913,462	24,558	0	938,020	2.62
New Brunswick	729,997	16,059	0	746,056	2.15
Quebec	7,546,131	60,751	16,600	7,623,482	1.01
Ontario	12,160,282	465,824	15,391	12,641,497	3.81
Manitoba	1,148,401	34,330	0	1,182,731	2.90
Saskatchewan	968,157	22,594	739	991,490	2.35
Alberta	3,290,350	111,353	7,272	3,408,975	3.48
British Columbia	4,113,487	121,551	113	4,235,151	2.87
Yukon Territory	30,372	1,805	0	32,177	5.61
Northwest Territories	41,464	1,620	0	43,084	3.76
Nunavut	29,474	1,264	0	30,738	4.11

1. The levels and rates are based on the Reverse Record Check (RRC) and the Overcoverage Study and include non-permanent residents.

These adjustments have a direct impact on:

- the error of closure and its distribution by age and sex within a province or a territory as well as by province/territory as the CNU¹ and its distribution vary from one census to another;
- within-cohort consistency of population estimates. If for example, the male cohort in age group 0-4 in 1981 was tracked up to the 2001 Census (unadjusted for CNU¹) the age group 20-24 would be noticeably smaller in 2001 than the age group 15-19 in 1996. Since Canada receives many immigrants within these age groups, the opposite would be expected. However, only after adjustment for CNU¹, the cohort size increases from 1996 to 2001.

For further information regarding the main coverage studies, please see the following document on Statistics Canada's web site: 1996 and 2001 Census Technical Report on Coverage.

Components

Errors due to estimation methodologies and data sources other than the census can also be significant.

A. Births and deaths

Since the law requires the recording of vital statistics, the final estimates for births and deaths data meet very high standards. Nevertheless, since preliminary estimates are derived, they can be slightly different from final estimates.

1. In this case, the adjustment for the census net undercoverage also includes the incompletely enumerated Indian reserves

B. Immigration and non-permanent residents

With respect to immigrants and NPRs, Citizenship and Immigration Canada administers special data files on both of these components. Since immigration is controlled by law, data on immigrants and net permanent residents (NPRs) are compiled upon arrival in Canada. These data represent only “legal” immigration and exclude illegal immigrants. Thus, for the “legal” part of international movement into Canada, the data are considered to be of high quality. However, some biases such as the difference between the stated province of intended residence at the time of arrival and the actual province of residence, may persist. Finally, since information provided by the *Visitor Data System (VDS)* from *Citizenship and Immigration Canada (CIC)* is not complete (age and sex of dependents, province of residence for certain groups of permit holders), estimates of NPRs are more prone to error than data on immigrants.

C. Emigration, returning emigration and net temporary emigration

Of all the demographic components that are used in the population estimates program, these components are the most difficult to estimate with precision. Canada does not have a complete border registration system. While immigration and net permanent residents (NPRs) are well documented by the federal government, Statistics Canada has always used techniques of indirect estimation in the estimation of persons leaving the country. For this reason, available statistics regarding these three components have historically been of a lower quality than other components.

Estimates of the number of emigrants and returning emigrants are both derived using *Canada Child Tax Benefit (CCTB)* data provided by *Canada Revenue Agency (CRA)*. Data are adjusted to take into account the incomplete coverage of the program and to derive the emigration and returning emigration of adults.

These adjustments and the delay in obtaining the data are the two main sources of errors. As current information on the number of persons living temporarily abroad does not exist, estimates are based on the *Reverse Record Check (RRC)* and the census. Estimates for the intercensal period, distributed equally among the five years, are maintained constant for the postcensal period. Moreover, assumptions were made to allow for the distribution of annual estimates to a quarterly level. Any geographical or quarterly variation may introduce error in the estimation of these components.

D. Interprovincial migration

Since July 1993, preliminary² interprovincial migration estimates have been based on *Canada Child Tax Benefit (CCTB)* files. Under this program, only 76% of children aged 0-17 at the Canada level were entitled to benefits on July 1, 2001. Consequently, preliminary CCTB based estimates are subject to larger error than final estimates derived from *Canada Revenue Agency (CRA)* tax files.

Quality assessment

In order to assess the quality of our estimates, two evaluation measures are used: Precocity errors and errors of closure.

A. Precocity error

The quality of preliminary estimates of components is analyzed using precocity errors. Precocity error, is defined as the difference between preliminary and final estimate of a particular component in terms of its relative proportion of the total population for the relevant geographical area. It can be calculated for both population and component estimates.

Precocity error allows for useful comparisons between components, as well as between provinces and territories or geographical areas of different population size. Note that when compared to the total population for an area, the differences between preliminary and final estimates of the components are quite small. There are, however,

2. Unless otherwise noted, the term *preliminary* include both preliminary and updated estimates

differences in the amount of impact on the population estimates between components and between provinces and territories.

Generally speaking, net interprovincial migration yields the greatest precocity errors. This is likely the result of the use of different data sources for preliminary and final estimates. In most years and for most provinces/territories, births, deaths and immigration estimates yielded the smallest precocity errors. For immigration estimates, this reflects the completeness of the data source and the availability of data for the more timely preliminary estimates. In the case of births and deaths, small precocity errors support the use of short-term projections for preliminary estimates.

According to the analysis of the most recent precocity errors and assuming that the quality of the basic data remains constant, the present postcensal estimates should have an acceptable degree of reliability.

Text table 2
Quarterly precocity errors for population and components, Canada, provinces and territories, 2005 to 2006

Quarter/Geography	Population	Births	Deaths	Immigration	Emigration	Returning emigration	Net temporary emigration	Net NPR	Interprovincial migration		
									In-migrants	Out-migrants	Net
rates per thousand											
Canada											
July-September 2005	-0.18	-0.01	0.05	0.00	-0.01	-0.09	0.08	0.04	0.46	0.46	...
October-December 2005	-0.08	0.01	0.11	0.00	-0.04	-0.04	0.04	0.06	0.29	0.29	...
January-March 2006	-0.09	-0.05	0.09	0.00	-0.10	-0.03	0.02	0.00	0.37	0.37	...
April-June 2006	-0.27	-0.05	0.07	0.00	-0.04	-0.02	0.04	-0.13	0.41	0.41	...
Newfoundland and Labrador											
July-September 2005	0.53	0.08	-0.09	0.00	-0.13	-0.03	-0.08	0.01	1.27	1.09	0.18
October-December 2005	0.09	0.06	0.04	-0.01	-0.07	-0.01	-0.07	-0.01	0.81	0.84	-0.03
January-March 2006	-0.43	-0.11	0.11	0.01	-0.08	-0.01	-0.07	-0.01	0.99	1.33	-0.34
April-June 2006	-0.12	-0.28	0.12	0.00	-0.06	-0.02	-0.07	0.04	1.13	0.99	0.14
Prince Edward Island											
July-September 2005	0.65	0.20	0.17	0.11	-0.07	-0.10	-0.07	-0.02	1.37	0.88	0.49
October-December 2005	0.68	0.15	0.04	-0.11	-0.04	-0.03	-0.06	0.01	0.81	0.20	0.61
January-March 2006	1.50	0.20	0.27	0.00	-0.07	-0.04	-0.07	-0.04	2.08	0.56	1.52
April-June 2006	1.01	-0.01	0.00	-0.07	0.12	0.00	-0.07	0.04	2.25	1.15	1.09
Nova Scotia											
July-September 2005	-0.48	-0.01	0.15	0.00	0.12	-0.03	-0.02	0.06	0.50	0.75	-0.25
October-December 2005	-0.39	-0.06	0.15	0.01	0.04	-0.01	-0.02	0.02	0.27	0.45	-0.18
January-March 2006	-0.60	-0.03	0.20	-0.01	0.00	0.00	-0.03	-0.05	0.32	0.66	-0.34
April-June 2006	-0.14	0.08	0.01	0.00	0.03	-0.01	-0.03	-0.01	0.42	0.62	-0.20
New Brunswick											
July-September 2005	-0.13	0.00	0.13	-0.01	-0.06	0.00	-0.06	0.00	0.96	1.07	-0.11
October-December 2005	-0.18	0.03	0.23	0.01	-0.04	0.00	-0.05	-0.02	0.40	0.46	-0.06
January-March 2006	-0.20	0.02	0.16	0.00	-0.06	0.01	-0.05	-0.01	0.53	0.71	-0.18
April-June 2006	-0.23	0.01	0.27	0.00	-0.04	0.02	-0.05	-0.02	0.67	0.72	-0.06
Quebec											
July-September 2005	0.05	-0.02	-0.02	0.02	0.00	-0.02	0.07	0.01	0.27	0.17	0.10
October-December 2005	0.06	0.04	-0.02	-0.03	-0.02	-0.01	0.04	0.02	0.14	0.11	0.03
January-March 2006	0.04	-0.02	0.02	0.01	-0.06	0.00	0.03	0.00	0.14	0.12	0.02
April-June 2006	-0.07	0.00	-0.01	0.00	-0.02	0.01	0.04	-0.07	0.21	0.19	0.02
Ontario											
July-September 2005	-0.30	-0.04	0.08	-0.02	-0.07	-0.15	0.06	0.08	0.23	0.33	-0.10
October-December 2005	-0.16	0.02	0.20	0.00	-0.07	-0.06	0.03	0.14	0.11	0.21	-0.10
January-March 2006	-0.25	-0.07	0.21	0.00	-0.14	-0.05	0.01	0.01	0.16	0.24	-0.08
April-June 2006	-0.41	-0.01	0.12	0.00	-0.08	-0.04	0.03	-0.25	0.22	0.26	-0.05
Manitoba											
July-September 2005	-0.01	0.11	0.07	0.01	-0.07	0.12	0.01	0.03	0.74	1.02	-0.27
October-December 2005	-0.31	0.02	0.19	0.00	-0.07	0.04	0.00	0.00	0.36	0.60	-0.24
January-March 2006	-0.07	-0.10	0.02	-0.01	-0.13	0.07	-0.01	-0.04	0.59	0.68	-0.10
April-June 2006	-0.36	-0.20	0.23	0.01	-0.08	0.04	0.00	0.00	0.72	0.77	-0.05
Saskatchewan											
July-September 2005	-0.74	0.08	0.08	0.03	0.07	-0.01	0.09	0.00	0.70	1.29	-0.59
October-December 2005	-0.83	0.05	0.28	-0.02	0.02	0.00	0.06	0.01	0.35	0.86	-0.50
January-March 2006	-0.75	-0.12	-0.03	-0.02	-0.01	0.00	0.04	0.00	0.49	1.09	-0.60
April-June 2006	-0.43	-0.14	0.03	0.00	0.00	0.05	0.06	0.02	0.71	0.97	-0.26
Alberta											
July-September 2005	0.72	-0.01	0.07	0.00	-0.05	-0.16	0.10	0.02	1.62	0.63	0.99
October-December 2005	0.85	-0.09	0.11	0.02	-0.06	-0.07	0.05	0.01	1.38	0.31	1.07
January-March 2006	1.06	-0.05	-0.03	-0.03	-0.13	-0.05	0.03	-0.02	1.58	0.51	1.07
April-June 2006	0.09	-0.25	0.10	-0.02	0.01	-0.02	0.05	-0.07	1.32	0.71	0.61
British Columbia											
July-September 2005	-0.88	0.00	-0.01	0.00	0.15	-0.16	0.24	0.04	0.16	0.53	-0.37
October-December 2005	-0.44	-0.02	-0.03	0.03	0.03	-0.06	0.14	0.03	0.11	0.39	-0.28
January-March 2006	-0.38	-0.03	-0.04	0.00	-0.05	-0.05	0.11	0.01	0.15	0.45	-0.30
April-June 2006	-0.59	-0.03	-0.03	0.00	0.02	-0.08	0.14	-0.06	0.24	0.53	-0.29
Yukon Territory											
July-September 2005	2.39	0.73	-0.23	0.03	-0.07	0.07	0.07	-0.13	3.52	2.06	1.46
October-December 2005	-0.53	0.20	-0.33	-0.07	-0.03	0.10	0.07	0.10	1.00	2.17	-1.17
January-March 2006	-2.55	-0.77	-0.10	-0.03	-0.07	0.10	0.00	0.07	1.41	3.49	-2.08
April-June 2006	-2.32	0.27	0.03	0.03	0.00	0.03	0.07	-0.27	1.65	3.93	-2.28
Northwest Territories											
July-September 2005	-2.45	-0.12	0.46	0.00	-0.05	0.00	-0.05	0.10	0.93	2.98	-2.05
October-December 2005	-4.54	-0.10	0.24	-0.02	-0.05	0.00	-0.05	-0.05	0.59	4.80	-4.22
January-March 2006	-2.14	0.46	0.05	-0.05	-0.05	0.00	-0.07	0.05	2.75	5.43	-2.68
April-June 2006	-1.44	-1.02	0.29	0.00	-0.02	0.02	-0.07	-0.10	3.87	4.01	-0.15
Nunavut											
July-September 2005	3.30	0.58	-0.07	-0.04	-0.07	0.00	-0.11	0.07	1.78	-0.65	2.43
October-December 2005	-1.33	0.04	0.61	0.00	0.00	0.00	-0.04	-0.11	-1.01	-0.32	-0.69
January-March 2006	5.46	1.01	-0.54	0.00	-0.07	0.00	-0.11	0.00	1.58	-2.15	3.74
April-June 2006	5.08	-0.32	0.18	0.00	0.00	0.04	-0.04	0.07	4.32	-1.11	5.43

B. Error of closure

The error of closure measures the exactness level of the final postcensal estimates. It can be defined as the difference between the enumerated population of the most recent census (after adjustments for census net undercoverage (CNU¹)) and the most current postcensal population estimates as of Census Day.

The error of closure comes from two sources: The relative differences in the amount of CNU¹ and errors in the components of demographic growth over the intercensal period. This can be calculated for total population estimates and for age, sex and marital status. With each 5-year intercensal period, the error of closure can only be calculated with the release of census data and estimates of CNU¹.

By dividing the error of closure by the census population adjusted for CNU¹, the differences are relatively small at the national level (0.16% for 2001 and 0.32% for 2006). At the provincial and territorial level, differences are understandably larger, since the estimates are also affected by errors in estimating interprovincial migration. Nevertheless, the provincial/territorial final postcensal estimates generally fall within 1% of the adjusted census population, except for the territories that falls within closer adjustments.

Text table 3

Error of closure of the estimates of population, Canada, provinces and territories, 2001 and 2006

	2001		2006	
	number	rate in percent	number	rate in percent
Canada	49,948	0.16	105,352	0.32
Newfoundland and Labrador	11,381	2.18	-1,137	-0.22
Prince Edward Island	1,483	1.09	74	0.05
Nova Scotia	9,005	0.97	-2,778	-0.30
New Brunswick	4,587	0.61	3,404	0.46
Quebec	-222	0.00	26,088	0.34
Ontario	11,288	0.10	50,173	0.40
Manitoba	-1,035	-0.09	-5,396	-0.46
Saskatchewan	16,017	1.60	-3,061	-0.31
Alberta	1,604	0.05	-47,801	-1.40
British Columbia	-4,347	-0.11	88,057	2.08
Yukon Territory	-360	-1.20	-979	-3.04
Northwest Territories	497	1.22	-875	-2.03
Nunavut	50	0.18	-417	-1.36

Note(s): The error of closure is equal to the postcensal estimate (at the census date) minus the census count adjusted for census net undercoverage (including adjustment for incompletely enumerated Indian reserves). The percentage is: error of closure, divided by the census count adjusted for census net undercoverage and incompletely enumerated Indian reserves, multiplied by 100.

Explanatory notes for the tables

Table 2 Quarterly population estimates and factors of growth, provincial perspective

Population	Population estimates are final intercensal from July 1, 2001 to April 1, 2006, final postcensal for July 1, 2006, updated postcensal from October 1, 2006 to April 1, 2008 and preliminary postcensal from July 1, 2008.
Natural increase	Natural increase is final up to December 2006, updated from January 2007 to March 2008 and preliminary from April 2008.
International migration	Net international migration numbers are final up to June 2006, updated from July 2006 to March 2008 and preliminary from April 2008.
Interprovincial migration	Net interprovincial migration numbers are final up to June 2007, updated from July 2007 to March 2008 and preliminary from April 2008.
Total migration	Total net migration numbers are final up to June 2006, updated from July 2006 to March 2008 and preliminary from April 2008.
Total growth	Numbers for total growth are final up to June 2006, updated from July 2006 to March 2008 and preliminary from April 2008.
Residual deviation	Residual deviation numbers are final intercensal up to May 2006.

Table 3 Quarterly estimates of demographic components, provincial perspective

Birth	The numbers of births are final up to December 2006, updated from January 2007 to March 2008 and preliminary from April 2008.
Death	The numbers of deaths are final up to December 2006, updated from January 2007 to March 2008 and preliminary from April 2008.
Immigrant	The numbers of immigrants are final up to December 2006, updated from January 2007 to March 2008 and preliminary from April 2008.
Emigrant	The numbers of emigrants are final up to June 2006, updated from July 2006 to March 2008 and preliminary from April 2008.
Returning emigrant	The numbers of returning emigrants are final up to June 2006, updated from July 2006 to March 2008 and preliminary from April 2008.
Net temporary emigrant	The numbers of net temporary emigrants are final up to June 2006, updated from July 2006 to March 2008 and preliminary from April 2008.
Net non-permanent resident	The numbers of net non-permanent residents are final up to June 2006, updated from July 2006 to March 2008 and preliminary from April 2008.
In-migrant	The numbers of interprovincial in-migrants are final up to June 2007, updated from July 2007 to March 2008 and preliminary from April 2008.
Out-migrant	The numbers of interprovincial out-migrants are final up to June 2007, updated from July 2007 to March 2008 and preliminary from April 2008.
Residual deviation	Residual deviation numbers are final intercensal up to May 2006.

Appendix I

Glossary

Annualized rate

Refers to the ratio of the estimated number of events converted to an annual basis divided by the average quarterly populations. In this respect, birth, death, immigration rates, etc are calculated. Generally, the rate is expressed in per 1,000.

Census coverage

Census net undercoverage: Difference between undercoverage and overcoverage.

Overcoverage: Number of persons who should not have been counted in the census or who were counted more than once.

Undercoverage: Number of persons who were intended to have been enumerated in a census but were not enumerated.

Components of demographic growth

Any of the classes of events generating population movement variations. Births, deaths and migrations are the components responsible for the variation since they alter the total population.

Emigrant

Canadian citizen or **immigrant** who has left Canada to establish a permanent residence in another country.

Error of closure

Difference between the **postcensal estimate** for the same date as the census and the results of the census adjusted for **census net undercoverage** (including adjustment for incompletely enumerated Indian reserves).

Immigrant

Within the framework of this publication, the term immigrant refers to **landed immigrant**. A landed immigrant is a person who does not have Canadian citizenship but was granted the right by immigration authorities to live in Canada on a permanent basis.

International migration

International migration represents movement of population between Canada and a foreign country which involves a change in the usual place of residence. A distinction is made with regard to **immigrants, emigrants, returning emigrants, net temporary emigrants** and **net non-permanent residents**.

Interprovincial migration

Interprovincial migration represents movement from one province or territory involving a permanent change in residence. A person who takes up residence in another province or territory is an **out-migrant** with reference to the province or territory of origin and an **in-migrant** with reference to the province or territory of destination.

Natural increase

Variation in population size over a given period as a result of the difference between the numbers of births and deaths.

Net international migration

Net international migration is obtained according to the following formula:

Immigrants + returning emigrants + net non permanent residents – (emigrants + net temporary emigrants)

Net interprovincial migration

Net interprovincial migration represents the difference between *in-migrants* and *out-migrants* for a given province or territory.

Net non-permanent residents

Net non-permanent residents represent the variation in the number of non-permanent residents between two dates.

Non-permanent residents

A non permanent resident belongs to one of the five following groups:

- persons residing in Canada claiming refugee status;
- persons residing in Canada who hold a study permit;
- persons residing in Canada who hold a work permit;
- persons residing in Canada who hold a minister's permit;
- all non-Canadian born dependants of persons claiming refugee status, or of persons holding study permits, work permits or minister's permits and living in Canada.

Net temporary emigration

Net temporary emigration represents the variation in the number of temporary emigrants between two dates. Temporary emigration includes Canadian citizens and *immigrants* living temporarily abroad who have not maintained a usual place of residence in Canada.

Population

Estimated population and population according to the census are both defined as being the number of Canadians whose usual place of residence is in that area, regardless of where they happened to be on Census Day. Also included are any Canadians staying in a dwelling in that area on Census Day and having no usual place of residence elsewhere in Canada, as well as those considered *non-permanent residents*.

Population estimate

Postcensal: Population estimate produced by using data from the most recent available census adjusted for *census net undercoverage* (including adjustment for incompletely enumerated Indian reserves) and estimate of the *components of demographic growth* since that last census. This estimate can be preliminary, updated or final.

Intercensal: Population estimate derived by using **postcensal estimates** and data adjusted for **census net undercoverage** (including adjustment for incompletely enumerated Indian reserves) of censuses preceding and following the year in question.

Population growth or total growth

Variation of population size between two dates. It can also be obtained by summing the **natural increase**, **total net migration** and if possible, subtract **residual deviation**. It can be positive or negative.

Residual deviation

Difference between demographic **population growth** calculated using **intercensal estimates** of population between two dates and that obtained by the sum of the components for the same period. This deviation results from the distribution of the **error of closure** between years within the quinquennial period. This distribution is calculated by taking into account the number of days within each month.

Returning emigrant

Canadian citizen or **immigrant** having previously emigrated from Canada and subsequently returned to the country.

Total net migration

Sum of **net international** and **net interprovincial** migration.

Vital events

Includes all the demographic events (that is to say births, deaths, marriages and divorces) for which there exist a legal requirement to inform the Provincial or Territorial Registrar's Office.

Appendix II

Source and remarks

Base population

May 16, 2006 Census of Population adjusted for census net undercoverage and incompletely enumerated Indian reserves.

2006 Census: Statistics Canada, Census of Canada, 2006, Catalogue no. 92-200-XPB.

Census net undercoverage: See The Daily, September 29, 2008.

Incompletely enumerated Indian reserves: See The Daily, September 29, 2008.

Births and deaths

Statistics Canada, Health Statistics Division.

Statistics Canada, Demography Division, Catalogue no. 91-002-X, Quarterly, Analytical table.4.

Immigration

Citizenship and Immigration Canada.

Emigrants

Statistics Canada, Demography Division - from data on emigrant children from the Canada Child Tax Benefit program (CCTB) from Canada Revenue Agency files - CRA and data from the « U.S. Department of Homeland Security, Office of Immigration Statistics ».

Returning emigrants

Statistics Canada, Demography Division – based on data from the CCTB program and adjustment factors calculated using CRA files.

Net temporary emigrants

Statistics Canada, Demography Division – based on data from the Reverse Record Check (RRC), 2001 and 2006 Censuses of Canada.

Non-permanent residents

Statistics Canada, Demography Division – based on data provided by Citizenship and Immigration Canada.

Interprovincial migration

Statistics Canada, Demography Division – based on the CTB program and adjustment factors calculated using CRA files.