

Catalogue no. 91-002-X

# Quarterly Demographic Estimates



January to March 2008



Statistics  
Canada

Statistique  
Canada

Canada

## How to obtain more information

For information about this product or the wide range of services and data available from Statistics Canada, visit our website at [www.statcan.ca](http://www.statcan.ca), e-mail us at [infostats@statcan.ca](mailto:infostats@statcan.ca), or telephone us, Monday to Friday from 8:30 a.m. to 4:30 p.m., at the following numbers:

### Statistics Canada's National Contact Centre

Toll-free telephone (Canada and the United States):

Inquiries line	1-800-263-1136
National telecommunications device for the hearing impaired	1-800-363-7629
Fax line	1-877-287-4369

Local or international calls:

Inquiries line	1-613-951-8116
Fax line	1-613-951-0581

### Depository Services Program

Inquiries line	1-800-635-7943
Fax line	1-800-565-7757

## To access this product

This product, Catalogue no. 91-002-X, is available free in electronic format. To obtain a single issue, visit our website at [www.statcan.ca](http://www.statcan.ca) and select "Publications" > "Free Internet publications."

## Standards of service to the public

Statistics Canada is committed to serving its clients in a prompt, reliable and courteous manner. To this end, Statistics Canada has developed *standards of service* that its employees observe. To obtain a copy of these service standards, please contact Statistics Canada toll-free at 1-800-263-1136. The service standards are also published on [www.statcan.ca](http://www.statcan.ca) under "About us" > "Providing services to Canadians."

# Quarterly Demographic Estimates

January to March 2008

Published by authority of the Minister responsible for Statistics Canada

© Minister of Industry, 2008

All rights reserved. The content of this electronic publication may be reproduced, in whole or in part, and by any means, without further permission from Statistics Canada, subject to the following conditions: that it be done solely for the purposes of private study, research, criticism, review or newspaper summary, and/or for non-commercial purposes; and that Statistics Canada be fully acknowledged as follows: Source (or "Adapted from", if appropriate): Statistics Canada, year of publication, name of product, catalogue number, volume and issue numbers, reference period and page(s). Otherwise, no part of this publication may be reproduced, stored in a retrieval system or transmitted in any form, by any means—electronic, mechanical or photocopy—or for any purposes without prior written permission of Licensing Services, Client Services Division, Statistics Canada, Ottawa, Ontario, Canada K1A 0T6.

June 2008

Catalogue no. 91-002-X, vol. 22, no. 1

ISSN 1911-0928

Frequency: Quarterly

Ottawa

La version française de cette publication est disponible sur demande (n° 91-002-X au catalogue).

---

#### **Note of appreciation**

*Canada owes the success of its statistical system to a long standing partnership between Statistics Canada, the citizens of Canada, its businesses, governments and other institutions. Accurate and timely statistical information could not be produced without their continued cooperation and goodwill.*

# User information

---

## Symbols

The following standard symbols are used in Statistics Canada publications:

- . not available for any reference period
- .. not available for a specific reference period
- ... not applicable
- 0 true zero or a value rounded to zero
- 0<sup>s</sup> value rounded to 0 (zero) where there is a meaningful distinction between true zero and the value that was rounded
- p preliminary
- r revised
- x suppressed to meet the confidentiality requirements of the *Statistics Act*
- E use with caution
- F too unreliable to be published

## Notice to readers

---

Most of the components used to produce preliminary population estimates are estimated using demographic models or based on data sources less complete or reliable, albeit more timely, than those used for updated or final estimates.

# Table of contents

---

<b>Highlights</b>	<b>7</b>
<b>Analysis</b>	<b>8</b>
<b>Related products</b>	<b>14</b>
<b>Statistical tables</b>	
1 Quarterly population estimates, national perspective	17
1-1 Population	17
1-2 Quarterly variation	19
1-3 Quarterly population growth	21
2 Quarterly population estimates and factors of growth, provincial perspective	23
2-1 Canada	23
2-2 Newfoundland and Labrador	24
2-3 Prince Edward Island	25
2-4 Nova Scotia	26
2-5 New Brunswick	27
2-6 Quebec	28
2-7 Ontario	29
2-8 Manitoba	30
2-9 Saskatchewan	31
2-10 Alberta	32
2-11 British Columbia	33
2-12 Yukon Territory	34
2-13 Northwest Territories	35
2-14 Nunavut	36
3 Quarterly estimates of demographic components, provincial perspective	37
3-1 Canada	37
3-2 Newfoundland and Labrador	38
3-3 Prince Edward Island	39
3-4 Nova Scotia	40
3-5 New Brunswick	41
3-6 Quebec	42
3-7 Ontario	43

**Table of contents – continued**

3-8	Manitoba	44
3-9	Saskatchewan	45
3-10	Alberta	46
3-11	British Columbia	47
3-12	Yukon Territory	48
3-13	Northwest Territories	49
3-14	Nunavut	50
4	Quarterly estimates of demographic components, national perspective	51
4-1	Births	51
4-2	Deaths	53
4-3	Immigrants	55
4-4	Emigrants	57
4-5	Returning emigrants	59
4-6	Net temporary emigrants	61
4-7	Net non-permanent residents	63
4-8	Interprovincial in-migrants	65
4-9	Interprovincial out-migrants	67
4-10	Total growth	69
4-11	Natural increase	71
4-12	Net interprovincial migration	73
4-13	Net international migration	75
4-14	Total net migration	77
5	Quarterly estimates of interprovincial migrants by province or territory of origin and destination, Canada, January to March 2008	79
<b>Data quality, concepts and methodology</b>		
	Methodology	80
	Quality of estimates	88
	Explanatory notes for the tables	93
<b>Appendix</b>		
I	Glossary	94
II	Source and remarks	97

## Table of contents – continued

### Charts

1. Quarterly aggregated demographic components, January to March, 1974 to 2008, Canada	8
2. Net non-permanent residents, provinces and territories, January to March, 2007 and 2008, Canada	9
3. Net interprovincial migration, provinces and territories, January to March, 2006 to 2008, Canada	10
4. Quarterly variation of population estimates, Canada, provinces and territories, January to March, 2007 and 2008	11



## Highlights

---

- On April 1, 2008, Canada's population stood at 33,223,800, up 80,200 from January 1, 2008. At 0.24%, this was the strongest population growth since 2002 (0.27%) for a 1<sup>st</sup> quarter.
- International net migration was up. Over the first three months of 2008, the country gained 60,200 people in its population exchanges with the rest of the world, more than anything recorded since 2002 for a 1<sup>st</sup> quarter.
- The country welcomed 53,100 immigrants in January, February and March 2008. This number was higher than for the same period in the previous year (47,900) but similar to the average observed for every first quarter since the start of the millennium (53,200).
- The number of non-permanent residents rose by 16,300 between January 1 and April 1, 2008. This was the largest net increase for a 1<sup>st</sup> quarter since 1990 (17,700).
- Alberta again posted the strongest increase in the country, despite a significant drop in its net interprovincial migration. In the first three months of 2008, the province took in more new immigrants and had a higher net number of non-permanent residents than any ever observed for a 1<sup>st</sup> quarter.
- In January-March 2008, the populations of all four Atlantic provinces grew. This was the first time since 1992 for a 1<sup>st</sup> quarter.
- The Yukon reported the sharpest population growth in Canada in the 1<sup>st</sup> quarter of 2008, largely because of a combination of net international migration, but also, its positive interprovincial migration.

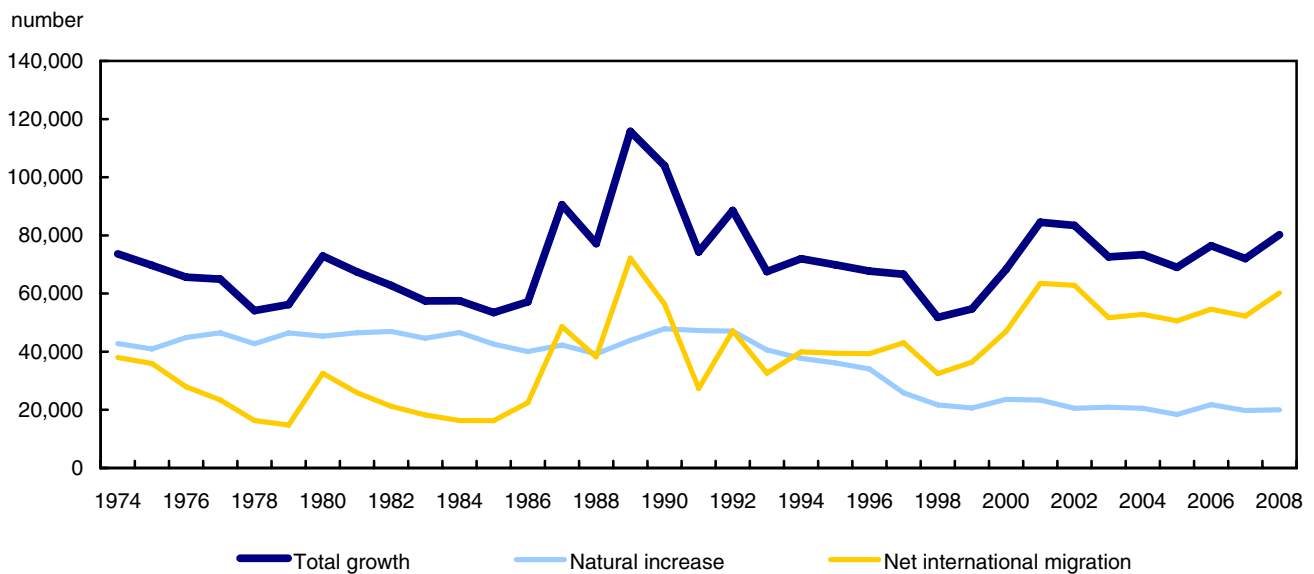
# Analysis

On April 1, 2008, Canada's population stood at 33,223,800, up 80,200 from January 1, 2008. At 0.24%, this was the strongest population growth since 2002 for a first quarter (0.27%).

International migration accounted for most of the population growth in Canada. Over the first three months of 2008, the country's net international migration was 60,200, the highest for a 1<sup>st</sup> quarter since 2002 (62,800). At this same time last year, the balance was 52,300.

Canada welcomed 53,100 immigrants in the first three months of 2008. This was higher than for the first three months of 2007 (47,900) but still in the ballpark of the average observed for 1<sup>st</sup> quarters since the start of the millennium (53,200).

**Chart 1**  
**Quarterly aggregated demographic components, January to March, 1974 to 2008, Canada**



While Ontario remained at the top of the list for immigrants as a place of residence, it has gradually been losing its appeal. In the 1<sup>st</sup> quarter of 2008, Ontario took in 44.2% of new immigrants. The last time it was any lower than this (43.9%) was in the 2<sup>nd</sup> quarter of 1983.

Nonetheless, immigration remained strong in the first quarter in Ontario, the third highest (annualized rate of 7.3 per thousand) after Prince Edward Island (9.6 per thousand) and British Columbia (9.1 per thousand). Manitoba (6.9 per thousand) was the only other province to post a higher immigration rate than that of Canada as a whole (6.4 per thousand).

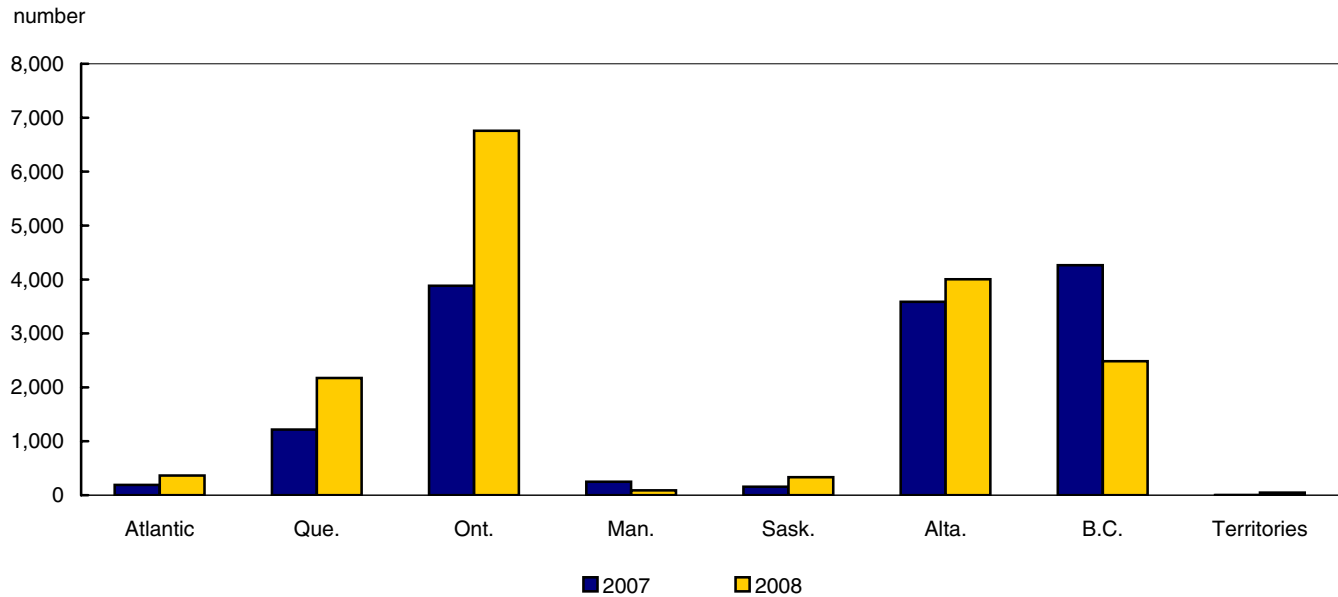
## More and more non-permanent residents

The increase in the number of non-permanent residents has been particularly strong over the past few quarters, and the 1<sup>st</sup> quarter of 2008 was no exception. The balance of 16,300 non-permanent residents reported over the first three months of the year was the highest for a first quarter since 1990 (17,700). By way of comparison, this balance

was 13,600 people over the same period in 2007, and the average balance of non-permanent residents has been up to 10,300 people for the first quarters of the 2000-2007 period.

The change in the number of non-permanent residents varied from province to province. Over the first three months of 2008, Alberta had the strongest increase (an annualized rate of 4.6 per thousand). This was a record for this province in a 1<sup>st</sup> quarter.

**Chart 2**  
**Net non-permanent residents, provinces and territories, January to March, 2007 and 2008, Canada**



The net increase in the number of non-permanent residents was also higher in British Columbia (annualized rate of 2.3 per thousand) and Ontario (2.1 per thousand), which were, with Alberta, the only provinces to post a higher rate than that of Canada as a whole (2.0 per thousand).

Some other provinces also posted a marked increase in the number of non-permanent residents. Newfoundland and Labrador reported a net balance that had not been observed for a first quarter since 1992. The same applied to Quebec, whose balance (+2,200) was higher than any recorded, for the three first months of a year, since 1990. Like Alberta, Saskatchewan and the Yukon Territory also posted higher net figures than ever before for a 1<sup>st</sup> quarter.

**A stable natural increase**

The natural growth observed in the first three months of 2008 (20,000) was similar to that for the previous year for the same period (19,800). The number of births in the country was estimated at 86,000, the highest ever for a 1<sup>st</sup> quarter since 1996 (90,000). For a third consecutive year, the number of Canadian births rose. However this rise was offset by the number of deaths, which is to be expected in an ageing population.

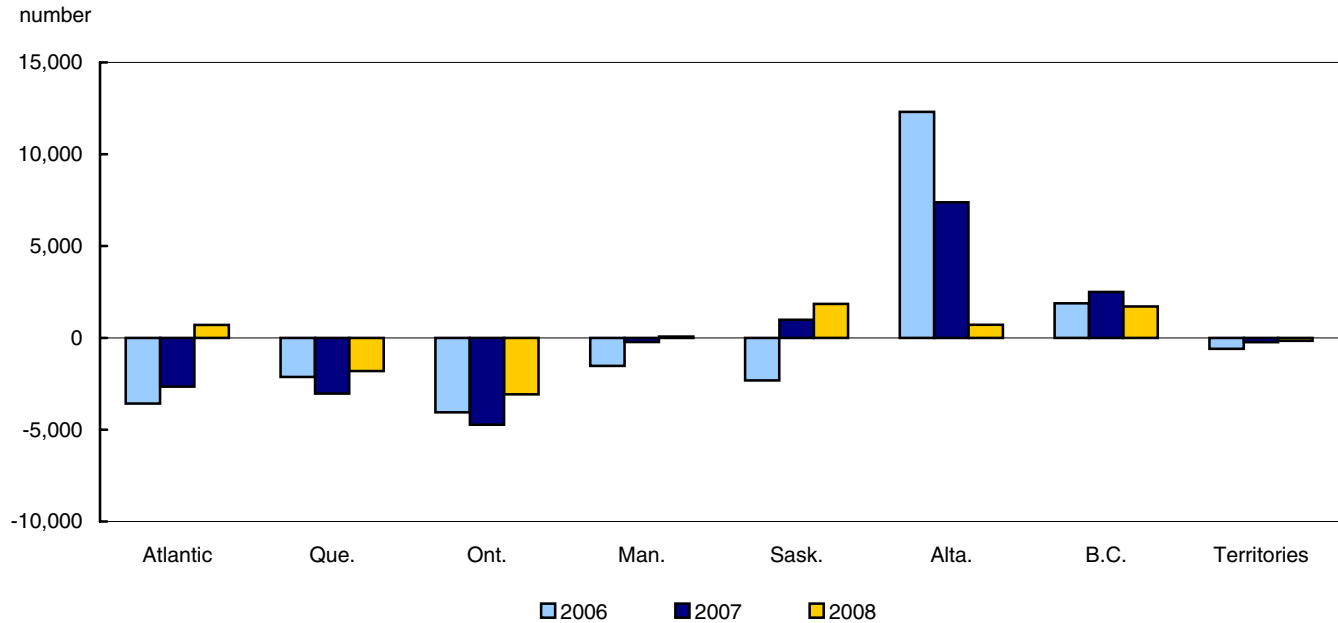
The level of natural growth differed by province. It was decreasing and negative in the Atlantic provinces, but on the rise in Quebec and Alberta. Alberta’s natural growth rate (annualized rate of 6.1 per thousand) was the highest of all provinces in Canada.

### Interprovincial migration changing

The growth in the natural resource sector is changing the demographic mix in Canada. It started with the boom in Alberta, which by the 3<sup>rd</sup> quarter of 2004 was affecting the picture in every part of the country, at a time when Alberta was posting interprovincial net migration levels seldom seen before.

Since mid-2007, Alberta’s appeal has waned, and most other parts of the country have seen their net migration improve. In addition, other hot spots have developed, in particular Saskatchewan.

**Chart 3**  
**Net interprovincial migration, provinces and territories, January to March, 2006 to 2008, Canada**



Compared to the 1<sup>st</sup> quarter of 2007, the biggest changes in terms of interprovincial migration were observed in Newfoundland and Labrador, Nova Scotia and the Yukon Territory. After some heavy losses in 2007, these three jurisdictions posted relatively high gains in 2008 for the same period.

For the first time since 1991, Newfoundland and Labrador posted positive interprovincial net migration for a first quarter. The last time Nova Scotia experienced this for the first three months of the year was in 1984. The same applies for the Yukon, which posted its strongest interprovincial balance for a 1<sup>st</sup> quarter.

Losing more than it gained in its interprovincial exchanges with other parts of the country for all 1<sup>st</sup> quarters since 1984, Saskatchewan is now posting gains for a second consecutive year, even setting a record in 2008. Its annualized rate of 7.3 per thousand was the highest of all provinces in the first three months of 2008.

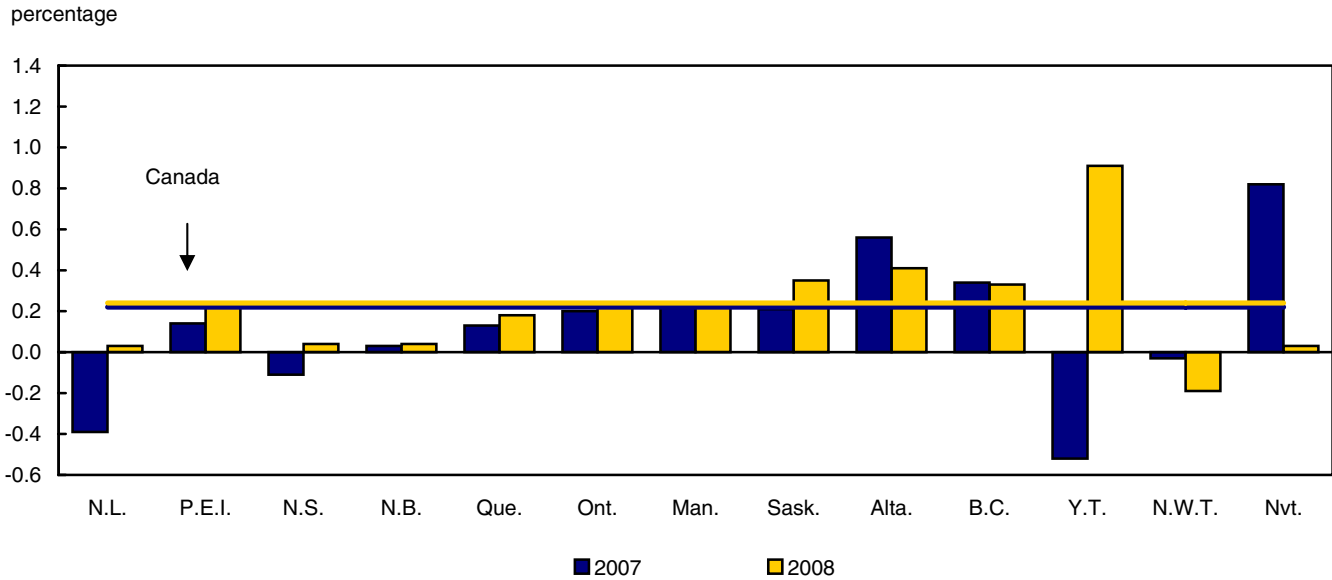
Three other provinces posted rates higher than 1 per thousand: Nova Scotia (annualized rate of 1.7 per thousand), Newfoundland and Labrador (1.6 per thousand) and British Columbia (1.6 per thousand). In the latter case, this represented a decrease compared to 2007 for the same period. At that time, the province’s rate was 2.3 per thousand, placing it third among provinces behind Alberta and Saskatchewan.

As a result of these changes in interprovincial migration trends, provinces that have had negative net migration for several years, such as Newfoundland and Labrador and Saskatchewan, are now experiencing population growth.

Thus, the population of Newfoundland and Labrador is increasing for a third consecutive quarter. Not since 1992 has anything resembling this growth been observed for a 1<sup>st</sup> quarter. Newfoundland and Labrador’s gains, as well as

those in Canada other jurisdictions, largely explained this situation. Although the province lost 1,800 people in the 1<sup>st</sup> quarter of 2007, it gained 200 a year later.

**Chart 4**  
**Quarterly variation of population estimates, Canada, provinces and territories, January to March, 2007 and 2008**



The same applies for Saskatchewan, which posted its strongest growth ever for a 1<sup>st</sup> quarter. The province’s population increased for an eighth consecutive quarter, after an almost uninterrupted decrease since 1999. In addition to its positive interprovincial migration, the province saw its net international migration rise. In the first three months of 2008, the province welcomed close to 1,000 immigrants, a record for a 1<sup>st</sup> quarter.

**Continued stronger growth in the West**

Demographic growth keeps being faster west of Ontario. While Alberta, Saskatchewan and British Columbia took the three first ranks amongst provinces, Manitoba is not far behind with a growth just below than that of the country taken as a whole.

Despite much smaller interprovincial migration gains when compared to last year’s 1<sup>st</sup> quarter, Alberta ranked first among the provinces in terms of population growth. However, the province grew much less steadily than in the past few years. Not since 2004 had its growth been as weak for a 1<sup>st</sup> quarter.

The province owes its growth not only to natural growth—by far the strongest in the country—but also to a significant boost in its net international migration. In the first three months of 2008, the province took in 5,300 immigrants and its number of non-permanent residents posted a net increase of 4,000, both records for a 1<sup>st</sup> quarter.

It should also be noted that Alberta’s net interprovincial gains followed two consecutive quarters of losses. Nonetheless, Alberta’s gains in the 1<sup>st</sup> quarter of 2008 (700) were small compared to the same quarter in the previous year (7,400). Not since 1995 has the province had such weak net interprovincial migration for a 1<sup>st</sup> quarter (400).

Despite a slightly smaller population growth compared to the previous year for the same period, Manitoba’s growth rate remained higher than ever since the mid-1980s. This slight dip is attributed to the fact that the province’s net international migration fell slightly compared to the 1<sup>st</sup> quarter of 2007. Nonetheless, Manitoba continues

to post one of the highest immigration rates in the country, and for a ninth consecutive quarter it took in more than 2,000 immigrants.

Manitoba is also one of the provinces that has benefited the most from Alberta's petering boom. From January to March 2008, the province's net interprovincial migration was positive (+ 100), compared to its losses in the same period of the previous year (- 200). This was the province's strongest interprovincial gain for a 1<sup>st</sup> quarter since 1999.

Just like Manitoba, even though British Columbia's growth fell slightly compared to the same period in the previous year, it nonetheless posted Canada's third strongest provincial growth. Moreover, it was the only province, along with Saskatchewan and Alberta, to post a population growth higher than that for Canada as a whole.

Smaller interprovincial migration gains, which nonetheless remained the highest in the country, account for this smaller growth in British Columbia. It should be noted that, aside from its largely positive exchanges with Alberta, this province had a negative net interprovincial balance with the rest of the country.

The province remains one of the provinces with the highest net international migration rate in the country. Second only to Prince Edward Island in terms of its net international migration rate, British Columbia posted its highest rate (annualized rate of 9.8 per thousand) since 1997 for a first quarter.

### **Growth for the Atlantic provinces**

The Atlantic provinces are also benefiting from changing trends in Canada's demographics. Despite an increasingly negative natural growth rate, the populations of the fourth provinces to the east of Quebec increased in the first three months of 2008. The last time this happened for a 1<sup>st</sup> quarter was in 1992.

Prince Edward Island had its strongest population growth since 1983 for a 1<sup>st</sup> quarter. The province owes this mainly to a sharp increase in its international net migration. It took in a record number of immigrants (300) for a 1<sup>st</sup> quarter.

Nova Scotia had its strongest population growth since 1991 for a 1<sup>st</sup> quarter. The province's population rose for a fourth consecutive quarter, largely because of a marked increase in its net international migration. The province took in more immigrants than ever before since 1997, and posted its strongest balance of non-permanent residents since 2002 for a 1<sup>st</sup> quarter. The province's growth is noteworthy in that it has Canada's most negative natural growth rate.

The province also had positive net interprovincial migration (+ 400) in the 1<sup>st</sup> quarter, after posting losses for the same period in the previous year (- 900). It owes this change mainly to its demographic exchanges with Alberta, whose balance rose from - 1,100 to + 50.

New Brunswick's population grew for a sixth consecutive quarter, largely thanks to a record net international migration (+ 500) for a 1<sup>st</sup> quarter. Not since 1975 had the province taken in so many immigrants for a 1<sup>st</sup> quarter. Its net interprovincial migration was positive for a fifth consecutive quarter, and was the highest for a 1<sup>st</sup> quarter since 2004.

### **Growth at the centre weaker than for the country as a whole**

In the first three months of 2008, Ontario's population growth rose compared to the same period in the previous year. A drop in interprovincial migration net losses and an increase in the net international migration account for this province's situation.

Nonetheless, the province is currently experiencing its weakest population growth since the early 1980s. This is the second consecutive quarter in which the province grows more slowly than the country. Ontario's smaller growth, when compared to that of the previous decades, is attributed to a number of factors: other than the decrease in its natural growth, a common occurrence in almost every part of the country, the province's net international migration is no longer as strong as in the past, and the province is now often in the red in terms of its exchanges with other parts of the country.

Quebec posted its strongest growth since 1992 for a 1<sup>st</sup> quarter. A number of factors account for this situation. First of all, the province's natural growth is currently high compared to mid-1990 levels because of the highest number of births for a 1<sup>st</sup> quarter since 1995 and a lower than usual number of deaths. In addition, the province posted its strongest net international migration since 1989 for a 1<sup>st</sup> quarter thanks to a large influx of international immigrants and the strongest net increase in non-permanent residents in a 1<sup>st</sup> quarter since 1990.

### **The Yukon Territory makes a mark in the north**

For a third consecutive quarter, the Yukon surpassed the other northern territories in population growth. In the first three months of 2008, it had the strongest growth of all Canadian jurisdictions (0.91%), at a level not seen for a 1<sup>st</sup> quarter since 1992.

The Yukon posted its strongest gains from interprovincial migration for a 1<sup>st</sup> quarter since 1988. In addition, it had a record international migration balance largely because of a strong increase in its number of non-permanent residents.

For a fourth consecutive year, the population of the Northwest Territories fell in the 1<sup>st</sup> quarter. It was the only jurisdiction in Canada to post a population decrease in the first three months of 2008. This decrease was largely attributable to its higher losses from interprovincial migration.

As for Nunavut, its population was still rising, but much more slowly than for the 1<sup>st</sup> quarters of the past few years. In the first three months of 2008, Nunavut had one of the weakest growth rates in its short history. Whereas last year the territory posted a positive net interprovincial migration (+ 100), this year it was in the red (- 100). Rarely in the past had such losses been observed for a 1<sup>st</sup> quarter.

## Related products

---

### Selected publications from Statistics Canada

---

91-209-X	Report on the Demographic Situation in Canada
91-213-X	Annual Demographic Statistics
91-214-X	Annual Demographic Estimates: Census Metropolitan Areas, Economic Regions and Census Divisions, Age and Sex
91-215-X	Annual Demographic Estimates: Canada, Provinces and Territories
91-520-X	Population Projections for Canada, Provinces and Territories

---

### Selected CANSIM tables from Statistics Canada

---

051-0001	Estimates of population, by age group and sex, Canada, provinces and territories, annual
051-0002	Deaths, by sex and age group, Canada, provinces and territories, annual
051-0004	Components of population growth, Canada, provinces and territories, annual
051-0005	Estimates of population, Canada, provinces and territories, quarterly
051-0006	Immigrants to Canada, by country of last permanent residence, quarterly
051-0010	Estimates of population, by marital status, age group and sex, Canada, provinces and territories, annual
051-0011	International migrants, by age group and sex, Canada, provinces, and territories, annual
051-0012	Interprovincial migrants, by age group and sex, Canada, provinces and territories, annual
051-0013	Births by sex, Canada, provinces and territories, annual
051-0017	Interprovincial migrants, Canada, provinces and territories, quarterly
051-0018	Interprovincial in-, out- and net-migrants, by province or territory, annual
051-0019	Interprovincial migrants, by province or territory of origin and destination, annual
051-0020	Number of non-permanent residents, Canada, provinces and territories, quarterly
051-0035	Components of population growth, census divisions and census metropolitan areas, 2001 Census boundaries, annual
051-0037	International migration components, Canada, provinces and territories, quarterly



051-0045	Interprovincial migrants, by province or territory of origin and destination, quarterly
053-0001	Vital statistics, births, deaths and marriages, quarterly
102-0502	Deaths, by month, Canada, provinces and territories, annual
102-0503	Deaths, by age and sex, Canada, provinces and territories, annual
102-0504	Deaths, by age group and sex, Canada, provinces and territories, annual
102-0505	Deaths, by marital status, age group and sex, Canada, provinces and territories, annual
102-4502	Live births, by month, Canada, provinces and territories, annual
102-4503	Live births, by age of mother, Canada, provinces and territories, annual
102-4504	Live births, mean age of mother, Canada, provinces and territories, annual

---

### **Selected surveys from Statistics Canada**

---

3231	Vital Statistics - Birth Database
3233	Vital Statistics - Death Database
3601	Estimates of Total Population, Canada, Provinces and Territories
3604	Estimates of Population by Age and Sex for Canada, Provinces and Territories
3605	Estimates of Population by Marital Status, Age and Sex for Canada, Provinces and Territories

---

### **Selected summary tables from Statistics Canada**

---

- *Births and birth rate, by provinces and territories*
- *Deaths and death rate, by provinces and territories*
- *Components of population growth, by province and territory*
- *Marriages by provinces and territories*
- *Population by marital status and sex*
- *Population by marital status and sex, by province and territory*

# Statistical tables

---

---

**Table 1-1**  
**Quarterly population estimates, national perspective — Population 1**

	Canada	Newfoundland and Labrador	Prince Edward Island	Nova Scotia	New Brunswick	Quebec	Ontario
	number						
<b>2008</b>							
April 1 <sup>st</sup>	33,223,840	508,270	139,407	935,962	751,527	7,744,530	12,891,787
January 1 <sup>st</sup>	33,143,610	508,099	139,089	935,573	751,250	7,730,612	12,861,940
<b>2007</b>							
October 1 <sup>st</sup>	33,091,228	507,475	139,103	935,106	750,851	7,719,993	12,850,636
July 1 <sup>st</sup>	32,976,026	506,275	138,627	934,147	749,782	7,700,807	12,803,861
April 1 <sup>st</sup>	32,870,726	506,727	138,359	933,560	748,846	7,684,983	12,765,731
January 1 <sup>st</sup>	32,798,684	508,713	138,164	934,562	748,622	7,674,632	12,740,721
<b>2006</b>							
October 1 <sup>st</sup>	32,755,248	509,140	138,142	934,985	748,493	7,668,235	12,739,216
July 1 <sup>st</sup>	32,649,482	509,940	138,027	935,050	749,225	7,651,033	12,705,328
April 1 <sup>st</sup>	32,543,059	510,670	137,956	934,680	749,928	7,634,259	12,657,891
January 1 <sup>st</sup>	32,466,635	512,368	138,039	935,730	750,632	7,621,852	12,626,327
<b>2005</b>							
October 1 <sup>st</sup>	32,421,715	513,569	138,266	936,606	751,113	7,615,519	12,615,912
July 1 <sup>st</sup>	32,312,077	514,144	138,188	935,990	751,319	7,598,034	12,565,446
April 1 <sup>st</sup>	32,205,936	515,008	137,939	936,372	751,839	7,582,310	12,513,318
January 1 <sup>st</sup>	32,136,939	516,417	137,876	937,840	752,044	7,574,100	12,479,594
<b>2004</b>							
October 1 <sup>st</sup>	32,095,827	516,500	137,864	938,720	752,117	7,566,938	12,469,000
July 1 <sup>st</sup>	31,995,199	517,303	137,862	937,960	752,040	7,548,984	12,420,289
April 1 <sup>st</sup>	31,894,707	517,834	137,809	937,153	751,729	7,532,061	12,367,141
January 1 <sup>st</sup>	31,821,342	518,675	137,665	937,538	751,415	7,521,212	12,328,459
<b>2003</b>							
October 1 <sup>st</sup>	31,775,637	518,765	137,549	937,471	751,467	7,513,279	12,312,134
July 1 <sup>st</sup>	31,676,077	518,428	137,325	936,513	751,222	7,494,690	12,262,560
April 1 <sup>st</sup>	31,577,688	518,622	137,152	935,601	751,014	7,478,748	12,210,254
January 1 <sup>st</sup>	31,505,085	519,032	137,088	935,404	750,937	7,467,705	12,170,542
<b>2002</b>							
October 1 <sup>st</sup>	31,471,094	519,382	137,067	935,571	750,976	7,461,823	12,156,386
July 1 <sup>st</sup>	31,372,587	519,449	136,934	934,507	750,327	7,445,745	12,102,045
April 1 <sup>st</sup>	31,265,843	519,790	136,835	933,720	749,618	7,432,197	12,036,968
January 1 <sup>st</sup>	31,182,448	521,229	136,847	933,609	749,286	7,421,309	11,986,887
<b>2001</b>							
October 1 <sup>st</sup>	31,135,823	521,455	136,872	933,245	749,716	7,413,392	11,965,417
July 1 <sup>st</sup>	31,021,251	521,986	136,672	932,389	749,890	7,396,990	11,897,647

See footnotes at the end of the table.

Table 1-1 – continued

## Quarterly population estimates, national perspective — Population 1

	Manitoba	Saskatchewan	Alberta	British Columbia	Yukon Territory	Northwest Territories	Nunavut
	number						
<b>2008</b>							
April 1 <sup>st</sup>	1,196,291	1,010,146	3,512,368	4,428,356	31,530	42,514	31,152
January 1 <sup>st</sup>	1,193,566	1,006,644	3,497,881	4,413,973	31,247	42,594	31,142
<b>2007</b>							
October 1 <sup>st</sup>	1,190,400	1,003,299	3,486,767	4,402,931	31,115	42,425	31,127
July 1 <sup>st</sup>	1,186,679	996,869	3,473,984	4,380,256	30,989	42,637	31,113
April 1 <sup>st</sup>	1,183,305	992,238	3,449,527	4,363,539	30,820	42,314	30,777
January 1 <sup>st</sup>	1,180,479	990,152	3,430,221	4,348,583	30,980	42,328	30,527
<b>2006</b>							
October 1 <sup>st</sup>	1,178,929	988,036	3,408,269	4,337,757	31,117	42,483	30,446
July 1 <sup>st</sup>	1,178,492	987,520	3,370,600	4,320,255	31,211	42,401	30,400
April 1 <sup>st</sup>	1,176,418	986,864	3,347,675	4,303,025	31,133	42,308	30,252
January 1 <sup>st</sup>	1,175,132	988,299	3,325,144	4,289,161	31,172	42,565	30,214
<b>2005</b>							
October 1 <sup>st</sup>	1,174,587	989,526	3,302,849	4,279,652	31,241	42,802	30,073
July 1 <sup>st</sup>	1,174,150	990,044	3,280,728	4,260,246	31,051	42,724	30,013
April 1 <sup>st</sup>	1,173,835	991,825	3,256,864	4,242,942	30,977	42,834	29,873
January 1 <sup>st</sup>	1,173,200	993,217	3,239,154	4,229,977	30,918	42,851	29,751
<b>2004</b>							
October 1 <sup>st</sup>	1,172,342	994,642	3,225,151	4,219,238	30,836	42,832	29,647
July 1 <sup>st</sup>	1,170,555	994,898	3,208,173	4,203,807	30,875	42,822	29,631
April 1 <sup>st</sup>	1,167,969	994,885	3,195,351	4,189,785	30,874	42,745	29,371
January 1 <sup>st</sup>	1,165,553	994,607	3,183,624	4,179,691	30,848	42,727	29,328
<b>2003</b>							
October 1 <sup>st</sup>	1,163,599	994,799	3,174,572	4,169,543	30,802	42,456	29,201
July 1 <sup>st</sup>	1,161,896	994,732	3,161,371	4,155,370	30,574	42,231	29,165
April 1 <sup>st</sup>	1,159,432	994,667	3,148,466	4,142,216	30,455	41,988	29,073
January 1 <sup>st</sup>	1,158,042	994,856	3,137,751	4,132,665	30,334	41,802	28,927
<b>2002</b>							
October 1 <sup>st</sup>	1,157,140	995,358	3,129,563	4,127,013	30,267	41,681	28,867
July 1 <sup>st</sup>	1,155,584	995,886	3,116,332	4,115,413	30,137	41,489	28,739
April 1 <sup>st</sup>	1,153,533	996,916	3,100,798	4,105,904	30,092	41,239	28,233
January 1 <sup>st</sup>	1,152,079	998,219	3,087,024	4,096,473	30,155	41,107	28,224
<b>2001</b>							
October 1 <sup>st</sup>	1,151,644	998,926	3,075,186	4,090,659	30,032	41,144	28,135
July 1 <sup>st</sup>	1,151,285	1,000,134	3,056,739	4,078,447	30,129	40,822	28,121

1. Population estimates are final postcensal from July 1, 2001 to July 1, 2004, updated postcensal from October 1, 2004 to April 1, 2007 and preliminary postcensal from July 1, 2007.

**Table 1-2**  
**Quarterly population estimates, national perspective — Quarterly variation <sup>1</sup>**

	Canada	Newfoundland and Labrador	Prince Edward Island	Nova Scotia	New Brunswick	Quebec	Ontario
	in percentage						
<b>2008</b>							
January - March	0.24	0.03	0.23	0.04	0.04	0.18	0.23
<b>2007</b>							
October - December	0.16	0.12	-0.01	0.05	0.05	0.14	0.09
July - September	0.35	0.24	0.34	0.10	0.14	0.25	0.37
April - June	0.32	-0.09	0.19	0.06	0.12	0.21	0.30
January - March	0.22	-0.39	0.14	-0.11	0.03	0.13	0.20
<b>2006</b>							
October - December	0.13	-0.08	0.02	-0.05	0.02	0.08	0.01
July - September	0.32	-0.16	0.08	-0.01	-0.10	0.22	0.27
April - June	0.33	-0.14	0.05	0.04	-0.09	0.22	0.37
January - March	0.24	-0.33	-0.06	-0.11	-0.09	0.16	0.25
<b>2005</b>							
October - December	0.14	-0.23	-0.16	-0.09	-0.06	0.08	0.08
July - September	0.34	-0.11	0.06	0.07	-0.03	0.23	0.40
April - June	0.33	-0.17	0.18	-0.04	-0.07	0.21	0.42
January - March	0.21	-0.27	0.05	-0.16	-0.03	0.11	0.27
<b>2004</b>							
October - December	0.13	-0.02	0.01	-0.09	-0.01	0.09	0.08
July - September	0.31	-0.16	0.00	0.08	0.01	0.24	0.39
April - June	0.32	-0.10	0.04	0.09	0.04	0.22	0.43
January - March	0.23	-0.16	0.10	-0.04	0.04	0.14	0.31
<b>2003</b>							
October - December	0.14	-0.02	0.08	0.01	-0.01	0.11	0.13
July - September	0.31	0.07	0.16	0.10	0.03	0.25	0.40
April - June	0.31	-0.04	0.13	0.10	0.03	0.21	0.43
January - March	0.23	-0.08	0.05	0.02	0.01	0.15	0.33
<b>2002</b>							
October - December	0.11	-0.07	0.02	-0.02	-0.01	0.08	0.12
July - September	0.31	-0.01	0.10	0.11	0.09	0.22	0.45
April - June	0.34	-0.07	0.07	0.08	0.09	0.18	0.54
January - March	0.27	-0.28	-0.01	0.01	0.04	0.15	0.42
<b>2001</b>							
October - December	0.15	-0.04	-0.02	0.04	-0.06	0.11	0.18
July - September	0.37	-0.10	0.15	0.09	-0.02	0.22	0.57

See footnotes at the end of the table.

Table 1-2 – continued

 Quarterly population estimates, national perspective — Quarterly variation <sup>1</sup>

	Manitoba	Saskatchewan	Alberta	British Columbia	Yukon Territory	Northwest Territories	Nunavut
	variation in percentage						
<b>2008</b>							
January - March	0.23	0.35	0.41	0.33	0.91	-0.19	0.03
<b>2007</b>							
October - December	0.27	0.33	0.32	0.25	0.42	0.40	0.05
July - September	0.31	0.65	0.37	0.52	0.41	-0.50	0.04
April - June	0.29	0.47	0.71	0.38	0.55	0.76	1.09
January - March	0.24	0.21	0.56	0.34	-0.52	-0.03	0.82
<b>2006</b>							
October - December	0.13	0.21	0.64	0.25	-0.44	-0.36	0.27
July - September	0.04	0.05	1.12	0.41	-0.30	0.19	0.15
April - June	0.18	0.07	0.68	0.40	0.25	0.22	0.49
January - March	0.11	-0.15	0.68	0.32	-0.13	-0.60	0.13
<b>2005</b>							
October - December	0.05	-0.12	0.68	0.22	-0.22	-0.55	0.47
July - September	0.04	-0.05	0.67	0.46	0.61	0.18	0.20
April - June	0.03	-0.18	0.73	0.41	0.24	-0.26	0.47
January - March	0.05	-0.14	0.55	0.31	0.19	-0.04	0.41
<b>2004</b>							
October - December	0.07	-0.14	0.43	0.25	0.27	0.04	0.35
July - September	0.15	-0.03	0.53	0.37	-0.13	0.02	0.05
April - June	0.22	0.00	0.40	0.33	0.00	0.18	0.89
January - March	0.21	0.03	0.37	0.24	0.08	0.04	0.15
<b>2003</b>							
October - December	0.17	-0.02	0.29	0.24	0.15	0.64	0.43
July - September	0.15	0.01	0.42	0.34	0.75	0.53	0.12
April - June	0.21	0.01	0.41	0.32	0.39	0.58	0.32
January - March	0.12	-0.02	0.34	0.23	0.40	0.44	0.50
<b>2002</b>							
October - December	0.08	-0.05	0.26	0.14	0.22	0.29	0.21
July - September	0.13	-0.05	0.42	0.28	0.43	0.46	0.45
April - June	0.18	-0.10	0.50	0.23	0.15	0.61	1.79
January - March	0.13	-0.13	0.45	0.23	-0.21	0.32	0.03
<b>2001</b>							
October - December	0.04	-0.07	0.38	0.14	0.41	-0.09	0.32
July - September	0.03	-0.12	0.60	0.30	-0.32	0.79	0.05

1. Numbers for total growth are final up to June 2004, updated from July 2004 to March 2007 and preliminary from April 2007.

**Table 1-3**  
**Quarterly population estimates, national perspective — Quarterly population growth <sup>1</sup>**

	Canada	Newfoundland and Labrador	Prince Edward Island	Nova Scotia	New Brunswick	Quebec	Ontario
	number						
<b>2008</b>							
January - March	80,230	171	318	389	277	13,918	29,847
<b>2007</b>							
October - December	52,382	624	-14	467	399	10,619	11,304
July - September	115,202	1,200	476	959	1,069	19,186	46,775
April - June	105,300	-452	268	587	936	15,824	38,130
January - March	72,042	-1,986	195	-1,002	224	10,351	25,010
<b>2006</b>							
October - December	43,436	-427	22	-423	129	6,397	1,505
July - September	105,766	-800	115	-65	-732	17,202	33,888
April - June	106,423	-730	71	370	-703	16,774	47,437
January - March	76,424	-1,698	-83	-1,050	-704	12,407	31,564
<b>2005</b>							
October - December	44,920	-1,201	-227	-876	-481	6,333	10,415
July - September	109,638	-575	78	616	-206	17,485	50,466
April - June	106,141	-864	249	-382	-520	15,724	52,128
January - March	68,997	-1,409	63	-1,468	-205	8,210	33,724
<b>2004</b>							
October - December	41,112	-83	12	-880	-73	7,162	10,594
July - September	100,628	-803	2	760	77	17,954	48,711
April - June	100,492	-531	53	807	311	16,923	53,148
January - March	73,365	-841	144	-385	314	10,849	38,682
<b>2003</b>							
October - December	45,705	-90	116	67	-52	7,933	16,325
July - September	99,560	337	224	958	245	18,589	49,574
April - June	98,389	-194	173	912	208	15,942	52,306
January - March	72,603	-410	64	197	77	11,043	39,712
<b>2002</b>							
October - December	33,991	-350	21	-167	-39	5,882	14,156
July - September	98,507	-67	133	1,064	649	16,078	54,341
April - June	106,744	-341	99	787	709	13,548	65,077
January - March	83,395	-1,439	-12	111	332	10,888	50,081
<b>2001</b>							
October - December	46,625	-226	-25	364	-430	7,917	21,470
July - September	114,572	-531	200	856	-174	16,402	67,770

See footnotes at the end of the table.

Table 1-3 – continued

 Quarterly population estimates, national perspective — Quarterly population growth <sup>1</sup>

	Manitoba	Saskatchewan	Alberta	British Columbia	Yukon Territory	Northwest Territories	Nunavut
	number						
<b>2008</b>							
January - March	2,725	3,502	14,487	14,383	283	-80	10
<b>2007</b>							
October - December	3,166	3,345	11,114	11,042	132	169	15
July - September	3,721	6,430	12,783	22,675	126	-212	14
April - June	3,374	4,631	24,457	16,717	169	323	336
January - March	2,826	2,086	19,306	14,956	-160	-14	250
<b>2006</b>							
October - December	1,550	2,116	21,952	10,826	-137	-155	81
July - September	437	516	37,669	17,502	-94	82	46
April - June	2,074	656	22,925	17,230	78	93	148
January - March	1,286	-1,435	22,531	13,864	-39	-257	38
<b>2005</b>							
October - December	545	-1,227	22,295	9,509	-69	-237	141
July - September	437	-518	22,121	19,406	190	78	60
April - June	315	-1,781	23,864	17,304	74	-110	140
January - March	635	-1,392	17,710	12,965	59	-17	122
<b>2004</b>							
October - December	858	-1,425	14,003	10,739	82	19	104
July - September	1,787	-256	16,978	15,431	-39	10	16
April - June	2,586	13	12,822	14,022	1	77	260
January - March	2,416	278	11,727	10,094	26	18	43
<b>2003</b>							
October - December	1,954	-192	9,052	10,148	46	271	127
July - September	1,703	67	13,201	14,173	228	225	36
April - June	2,464	65	12,905	13,154	119	243	92
January - March	1,390	-189	10,715	9,551	121	186	146
<b>2002</b>							
October - December	902	-502	8,188	5,652	67	121	60
July - September	1,556	-528	13,231	11,600	130	192	128
April - June	2,051	-1,030	15,534	9,509	45	250	506
January - March	1,454	-1,303	13,774	9,431	-63	132	9
<b>2001</b>							
October - December	435	-707	11,838	5,814	123	-37	89
July - September	359	-1,208	18,447	12,212	-97	322	14

1. Numbers for total growth are final up to June 2004, updated from July 2004 to March 2007 and preliminary from April 2007.



**Table 2-1**  
**Quarterly population estimates and factors of growth, provincial perspective — Canada**

	Population at beginning period	Natural increase	Net interprovincial migration	Net international migration	Total net migration	Total growth	Total growth
	number					in percentage	
<b>2008</b>							
April - June	33,223,840	..	..	..	..	..	..
January - March	33,143,610	20,018	0	60,212	60,212	80,230	0.24
<b>2007</b>							
October - December	33,091,228	24,652	0	27,730	27,730	52,382	0.16
July - September	32,976,026	37,475	0	77,727	77,727	115,202	0.35
April - June	32,870,726	32,985	0	72,315	72,315	105,300	0.32
January - March	32,798,684	19,762	0	52,280	52,280	72,042	0.22
<b>2006</b>							
October - December	32,755,248	24,960	0	18,476	18,476	43,436	0.13
July - September	32,649,482	37,210	0	68,556	68,556	105,766	0.32
April - June	32,543,059	32,798	0	73,625	73,625	106,423	0.33
January - March	32,466,635	21,798	0	54,626	54,626	76,424	0.24
<b>2005</b>							
October - December	32,421,715	23,608	0	21,312	21,312	44,920	0.14
July - September	32,312,077	36,464	0	73,174	73,174	109,638	0.34
April - June	32,205,936	32,478	0	73,663	73,663	106,141	0.33
January - March	32,136,939	18,386	0	50,611	50,611	68,997	0.21
<b>2004</b>							
October - December	32,095,827	23,823	0	17,289	17,289	41,112	0.13
July - September	31,995,199	35,211	0	65,417	65,417	100,628	0.31
April - June	31,894,707	30,923	0	69,569	69,569	100,492	0.32
January - March	31,821,342	20,531	0	52,834	52,834	73,365	0.23
<b>2003</b>							
October - December	31,775,637	22,034	0	23,671	23,671	45,705	0.14
July - September	31,676,077	35,445	0	64,115	64,115	99,560	0.31
April - June	31,577,688	30,645	0	67,744	67,744	98,389	0.31
January - March	31,505,085	20,909	0	51,694	51,694	72,603	0.23
<b>2002</b>							
October - December	31,471,094	21,887	0	12,104	12,104	33,991	0.11
July - September	31,372,587	33,177	0	65,330	65,330	98,507	0.31
April - June	31,265,843	29,589	0	77,155	77,155	106,744	0.34
January - March	31,182,448	20,546	0	62,849	62,849	83,395	0.27
<b>2001</b>							
October - December	31,135,823	23,562	0	23,063	23,063	46,625	0.15
July - September	31,021,251	33,964	0	80,608	80,608	114,572	0.37

**Note(s):** See "Data quality, concepts and methodology — Explanatory notes for the tables" section.

**Table 2-2**  
**Quarterly population estimates and factors of growth, provincial perspective — Newfoundland and Labrador**

	Population at beginning period	Natural increase	Net interprovincial migration	Net international migration	Total net migration	Total growth	Total growth
	number					in percentage	
<b>2008</b>							
April - June	508,270	..	..	..	..	..	..
January - March	508,099	-253	206	218	424	171	0.03
<b>2007</b>							
October - December	507,475	-85	655	54	709	624	0.12
July - September	506,275	-40	1,084	156	1,240	1,200	0.24
April - June	506,727	-1	-583	132	-451	-452	-0.09
January - March	508,713	-198	-1,850	62	-1,788	-1,986	-0.39
<b>2006</b>							
October - December	509,140	-33	-466	72	-394	-427	-0.08
July - September	509,940	9	-887	78	-809	-800	-0.16
April - June	510,670	50	-962	182	-780	-730	-0.14
January - March	512,368	-142	-1,649	93	-1,556	-1,698	-0.33
<b>2005</b>							
October - December	513,569	20	-996	-225	-1,221	-1,201	-0.23
July - September	514,144	62	-735	98	-637	-575	-0.11
April - June	515,008	101	-1,258	293	-965	-864	-0.17
January - March	516,417	-86	-1,508	185	-1,323	-1,409	-0.27
<b>2004</b>							
October - December	516,500	64	-49	-98	-147	-83	-0.02
July - September	517,303	107	-895	-15	-910	-803	-0.16
April - June	517,834	69	-920	320	-600	-531	-0.10
January - March	518,675	-60	-787	6	-781	-841	-0.16
<b>2003</b>							
October - December	518,765	109	-252	53	-199	-90	-0.02
July - September	518,428	226	-68	179	111	337	0.07
April - June	518,622	94	-408	120	-288	-194	-0.04
January - March	519,032	-81	-375	46	-329	-410	-0.08
<b>2002</b>							
October - December	519,382	38	-309	-79	-388	-350	-0.07
July - September	519,449	269	-591	255	-336	-67	-0.01
April - June	519,790	130	-699	228	-471	-341	-0.07
January - March	521,229	31	-1,588	118	-1,470	-1,439	-0.28
<b>2001</b>							
October - December	521,455	7	-270	37	-233	-226	-0.04
July - September	521,986	342	-795	-78	-873	-531	-0.10

**Note(s):** See "Data quality, concepts and methodology — Explanatory notes for the tables" section.

**Table 2-3**  
**Quarterly population estimates and factors of growth, provincial perspective — Prince Edward Island**

	Population at beginning period	Natural increase	Net interprovincial migration	Net international migration	Total net migration	Total growth	Total growth
	number					in percentage	
<b>2008</b>							
April - June	139,407	..	..	..	..	..	..
January - March	139,089	-35	0	353	353	318	0.23
<b>2007</b>							
October - December	139,103	-16	-175	177	2	-14	-0.01
July - September	138,627	84	-122	514	392	476	0.34
April - June	138,359	22	17	229	246	268	0.19
January - March	138,164	-33	43	185	228	195	0.14
<b>2006</b>							
October - December	138,142	-11	-74	107	33	22	0.02
July - September	138,027	88	-252	279	27	115	0.08
April - June	137,956	27	-132	176	44	71	0.05
January - March	138,039	-28	-133	78	-55	-83	-0.06
<b>2005</b>							
October - December	138,266	-7	-255	35	-220	-227	-0.16
July - September	138,188	91	-119	106	-13	78	0.06
April - June	137,939	31	104	114	218	249	0.18
January - March	137,876	-23	33	53	86	63	0.05
<b>2004</b>							
October - December	137,864	20	-83	75	-8	12	0.01
July - September	137,862	107	-193	88	-105	2	0.00
April - June	137,809	65	-74	62	-12	53	0.04
January - March	137,665	-25	91	78	169	144	0.10
<b>2003</b>							
October - December	137,549	40	96	-20	76	116	0.08
July - September	137,325	98	31	95	126	224	0.16
April - June	137,152	92	53	28	81	173	0.13
January - March	137,088	4	44	16	60	64	0.05
<b>2002</b>							
October - December	137,067	6	20	-5	15	21	0.02
July - September	136,934	55	48	30	78	133	0.10
April - June	136,835	47	10	42	52	99	0.07
January - March	136,847	-16	-13	17	4	-12	-0.01
<b>2001</b>							
October - December	136,872	11	-29	-7	-36	-25	-0.02
July - September	136,672	66	94	40	134	200	0.15

**Note(s):** See "Data quality, concepts and methodology — Explanatory notes for the tables" section.

**Table 2-4**  
**Quarterly population estimates and factors of growth, provincial perspective — Nova Scotia**

	Population at beginning period	Natural increase	Net interprovincial migration	Net international migration	Total net migration	Total growth	Total growth
	number					in percentage	
<b>2008</b>							
April - June	935,962	..	..	..	..	..	..
January - March	935,573	-551	393	547	940	389	0.04
<b>2007</b>							
October - December	935,106	-220	458	229	687	467	0.05
July - September	934,147	276	-187	870	683	959	0.10
April - June	933,560	56	67	464	531	587	0.06
January - March	934,562	-494	-884	376	-508	-1,002	-0.11
<b>2006</b>							
October - December	934,985	-162	-548	287	-261	-423	-0.05
July - September	935,050	328	-1,036	643	-393	-65	-0.01
April - June	934,680	127	-466	709	243	370	0.04
January - March	935,730	-422	-1,010	382	-628	-1,050	-0.11
<b>2005</b>							
October - December	936,606	-92	-813	29	-784	-876	-0.09
July - September	935,990	395	-735	956	221	616	0.07
April - June	936,372	198	-868	288	-580	-382	-0.04
January - March	937,840	-352	-1,263	147	-1,116	-1,468	-0.16
<b>2004</b>							
October - December	938,720	1	-637	-244	-881	-880	-0.09
July - September	937,960	399	-273	634	361	760	0.08
April - June	937,153	196	-65	676	611	807	0.09
January - March	937,538	-103	-619	337	-282	-385	-0.04
<b>2003</b>							
October - December	937,471	-45	91	21	112	67	0.01
July - September	936,513	396	-179	741	562	958	0.10
April - June	935,601	283	117	512	629	912	0.10
January - March	935,404	-48	113	132	245	197	0.02
<b>2002</b>							
October - December	935,571	35	95	-297	-202	-167	-0.02
July - September	934,507	421	185	458	643	1,064	0.11
April - June	933,720	128	44	615	659	787	0.08
January - March	933,609	82	-580	609	29	111	0.01
<b>2001</b>							
October - December	933,245	101	31	232	263	364	0.04
July - September	932,389	460	-393	789	396	856	0.09

**Note(s):** See "Data quality, concepts and methodology — Explanatory notes for the tables" section.

**Table 2-5**  
**Quarterly population estimates and factors of growth, provincial perspective — New Brunswick**

	Population at beginning period	Natural increase	Net interprovincial migration	Net international migration	Total net migration	Total growth	Total growth
	number					in percentage	
<b>2008</b>							
April - June	751,527	..	..	..	..	..	..
January - March	751,250	-308	106	479	585	277	0.04
<b>2007</b>							
October - December	750,851	-5	221	183	404	399	0.05
July - September	749,782	237	317	515	832	1,069	0.14
April - June	748,846	57	526	353	879	936	0.12
January - March	748,622	-253	36	441	477	224	0.03
<b>2006</b>							
October - December	748,493	45	-101	185	84	129	0.02
July - September	749,225	290	-1,605	583	-1,022	-732	-0.10
April - June	749,928	118	-1,084	263	-821	-703	-0.09
January - March	750,632	-187	-784	267	-517	-704	-0.09
<b>2005</b>							
October - December	751,113	105	-674	88	-586	-481	-0.06
July - September	751,319	351	-945	388	-557	-206	-0.03
April - June	751,839	178	-800	102	-698	-520	-0.07
January - March	752,044	-124	-289	208	-81	-205	-0.03
<b>2004</b>							
October - December	752,117	113	-276	90	-186	-73	-0.01
July - September	752,040	388	-709	398	-311	77	0.01
April - June	751,729	243	-58	126	68	311	0.04
January - March	751,415	-32	176	170	346	314	0.04
<b>2003</b>							
October - December	751,467	95	-279	132	-147	-52	-0.01
July - September	751,222	393	-599	451	-148	245	0.03
April - June	751,014	236	-212	184	-28	208	0.03
January - March	750,937	136	-187	128	-59	77	0.01
<b>2002</b>							
October - December	750,976	92	-167	36	-131	-39	-0.01
July - September	750,327	459	-277	467	190	649	0.09
April - June	749,618	229	377	103	480	709	0.09
January - March	749,286	170	-97	259	162	332	0.04
<b>2001</b>							
October - December	749,716	54	-478	-6	-484	-430	-0.06
July - September	749,890	453	-1,020	393	-627	-174	-0.02

**Note(s):** See "Data quality, concepts and methodology — Explanatory notes for the tables" section.

**Table 2-6**  
**Quarterly population estimates and factors of growth, provincial perspective — Quebec**

	Population at beginning period	Natural increase	Net interprovincial migration	Net international migration	Total net migration	Total growth	Total growth
	number					in percentage	
<b>2008</b>							
April - June	7,744,530	..	..	..	..	..	..
January - March	7,730,612	5,450	-1,808	10,276	8,468	13,918	0.18
<b>2007</b>							
October - December	7,719,993	6,200	-2,110	6,529	4,419	10,619	0.14
July - September	7,700,807	9,450	-3,546	13,282	9,736	19,186	0.25
April - June	7,684,983	7,650	-5,756	13,930	8,174	15,824	0.21
January - March	7,674,632	4,300	-3,032	9,083	6,051	10,351	0.13
<b>2006</b>							
October - December	7,668,235	6,350	-2,858	2,905	47	6,397	0.08
July - September	7,651,033	8,900	-3,922	12,224	8,302	17,202	0.22
April - June	7,634,259	7,150	-4,006	13,630	9,624	16,774	0.22
January - March	7,621,852	5,800	-2,129	8,736	6,607	12,407	0.16
<b>2005</b>							
October - December	7,615,519	4,489	-1,865	3,709	1,844	6,333	0.08
July - September	7,598,034	7,682	-1,411	11,214	9,803	17,485	0.23
April - June	7,582,310	6,329	-2,845	12,240	9,395	15,724	0.21
January - March	7,574,100	1,746	-713	7,177	6,464	8,210	0.11
<b>2004</b>							
October - December	7,566,938	3,927	-524	3,759	3,235	7,162	0.09
July - September	7,548,984	7,379	-881	11,456	10,575	17,954	0.24
April - June	7,532,061	5,163	-1,601	13,361	11,760	16,923	0.22
January - March	7,521,212	1,976	-291	9,164	8,873	10,849	0.14
<b>2003</b>							
October - December	7,513,279	3,920	96	3,917	4,013	7,933	0.11
July - September	7,494,690	6,894	974	10,721	11,695	18,589	0.25
April - June	7,478,748	5,283	-449	11,108	10,659	15,942	0.21
January - March	7,467,705	2,881	-403	8,565	8,162	11,043	0.15
<b>2002</b>							
October - December	7,461,823	3,623	-331	2,590	2,259	5,882	0.08
July - September	7,445,745	5,590	-646	11,134	10,488	16,078	0.22
April - June	7,432,197	5,290	-2,399	10,657	8,258	13,548	0.18
January - March	7,421,309	2,439	-852	9,301	8,449	10,888	0.15
<b>2001</b>							
October - December	7,413,392	4,042	91	3,784	3,875	7,917	0.11
July - September	7,396,990	6,096	-1,190	11,496	10,306	16,402	0.22

**Note(s):** See "Data quality, concepts and methodology — Explanatory notes for the tables" section.

**Table 2-7**  
**Quarterly population estimates and factors of growth, provincial perspective — Ontario**

	Population at beginning period	Natural increase	Net interprovincial migration	Net international migration	Total net migration	Total growth	Total growth
	number					in percentage	
<b>2008</b>							
April - June	12,891,787	..	..	..	..	..	..
January - March	12,861,940	6,866	-3,074	26,055	22,981	29,847	0.23
<b>2007</b>							
October - December	12,850,636	8,479	-3,224	6,049	2,825	11,304	0.09
July - September	12,803,861	14,315	-3,133	35,593	32,460	46,775	0.37
April - June	12,765,731	12,517	-6,676	32,289	25,613	38,130	0.30
January - March	12,740,721	7,691	-4,729	22,048	17,319	25,010	0.20
<b>2006</b>							
October - December	12,739,216	9,225	-10,071	2,351	-7,720	1,505	0.01
July - September	12,705,328	14,971	-14,720	33,637	18,917	33,888	0.27
April - June	12,657,891	13,096	-3,473	37,814	34,341	47,437	0.37
January - March	12,626,327	8,343	-4,054	27,275	23,221	31,564	0.25
<b>2005</b>							
October - December	12,615,912	9,840	-5,264	5,839	575	10,415	0.08
July - September	12,565,446	15,501	-4,710	39,675	34,965	50,466	0.40
April - June	12,513,318	13,645	-2,377	40,860	38,483	52,128	0.42
January - March	12,479,594	8,979	-2,149	26,894	24,745	33,724	0.27
<b>2004</b>							
October - December	12,469,000	10,752	-4,010	3,852	-158	10,594	0.08
July - September	12,420,289	14,925	-2,636	36,422	33,786	48,711	0.39
April - June	12,367,141	13,858	-674	39,964	39,290	53,148	0.43
January - March	12,328,459	9,870	-902	29,714	28,812	38,682	0.31
<b>2003</b>							
October - December	12,312,134	9,806	-2,028	8,547	6,519	16,325	0.13
July - September	12,262,560	15,185	-3,331	37,720	34,389	49,574	0.40
April - June	12,210,254	12,908	149	39,249	39,398	52,306	0.43
January - March	12,170,542	8,821	136	30,755	30,891	39,712	0.33
<b>2002</b>							
October - December	12,156,386	9,645	127	4,384	4,511	14,156	0.12
July - September	12,102,045	14,472	225	39,644	39,869	54,341	0.45
April - June	12,036,968	12,833	1,586	50,658	52,244	65,077	0.54
January - March	11,986,887	9,342	3,127	37,612	40,739	50,081	0.42
<b>2001</b>							
October - December	11,965,417	10,874	-428	11,024	10,596	21,470	0.18
July - September	11,897,647	14,905	1,069	51,796	52,865	67,770	0.57

**Note(s):** See "Data quality, concepts and methodology — Explanatory notes for the tables" section.

**Table 2-8**  
**Quarterly population estimates and factors of growth, provincial perspective — Manitoba**

	Population at beginning period	Natural increase	Net interprovincial migration	Net international migration	Total net migration	Total growth	Total growth
	number					in percentage	
<b>2008</b>							
April - June	1,196,291	..	..	..	..	..	..
January - March	1,193,566	806	67	1,852	1,919	2,725	0.23
<b>2007</b>							
October - December	1,190,400	866	288	2,012	2,300	3,166	0.27
July - September	1,186,679	1,134	-65	2,652	2,587	3,721	0.31
April - June	1,183,305	1,115	-1,385	3,644	2,259	3,374	0.29
January - March	1,180,479	793	-228	2,261	2,033	2,826	0.24
<b>2006</b>							
October - December	1,178,929	858	-1,059	1,751	692	1,550	0.13
July - September	1,178,492	1,128	-3,180	2,489	-691	437	0.04
April - June	1,176,418	1,142	-1,894	2,826	932	2,074	0.18
January - March	1,175,132	821	-1,525	1,990	465	1,286	0.11
<b>2005</b>							
October - December	1,174,587	887	-1,738	1,396	-342	545	0.05
July - September	1,174,150	1,156	-2,724	2,005	-719	437	0.04
April - June	1,173,835	1,179	-3,267	2,403	-864	315	0.03
January - March	1,173,200	860	-1,569	1,344	-225	635	0.05
<b>2004</b>							
October - December	1,172,342	758	-1,116	1,216	100	858	0.07
July - September	1,170,555	1,245	-1,275	1,817	542	1,787	0.15
April - June	1,167,969	985	-766	2,367	1,601	2,586	0.22
January - March	1,165,553	920	4	1,492	1,496	2,416	0.21
<b>2003</b>							
October - December	1,163,599	786	-363	1,531	1,168	1,954	0.17
July - September	1,161,896	1,396	-1,440	1,747	307	1,703	0.15
April - June	1,159,432	1,037	-731	2,158	1,427	2,464	0.21
January - March	1,158,042	854	-628	1,164	536	1,390	0.12
<b>2002</b>							
October - December	1,157,140	748	-524	678	154	902	0.08
July - September	1,155,584	1,274	-992	1,274	282	1,556	0.13
April - June	1,153,533	1,087	-667	1,631	964	2,051	0.18
January - March	1,152,079	930	-550	1,074	524	1,454	0.13
<b>2001</b>							
October - December	1,151,644	743	-1,072	764	-308	435	0.04
July - September	1,151,285	1,266	-2,055	1,148	-907	359	0.03

**Note(s):** See "Data quality, concepts and methodology — Explanatory notes for the tables" section.



**Table 2-9**  
**Quarterly population estimates and factors of growth, provincial perspective — Saskatchewan**

	Population at beginning period	Natural increase	Net interprovincial migration	Net international migration	Total net migration	Total growth	Total growth
	number					in percentage	
<b>2008</b>							
April - June	1,010,146	..	..	..	..	..	..
January - March	1,006,644	499	1,850	1,153	3,003	3,502	0.35
<b>2007</b>							
October - December	1,003,299	641	2,155	549	2,704	3,345	0.33
July - September	996,869	931	4,324	1,175	5,499	6,430	0.65
April - June	992,238	890	2,707	1,034	3,741	4,631	0.47
January - March	990,152	447	988	651	1,639	2,086	0.21
<b>2006</b>							
October - December	988,036	602	1,086	428	1,514	2,116	0.21
July - September	987,520	900	-782	398	-384	516	0.05
April - June	986,864	913	-844	587	-257	656	0.07
January - March	988,299	475	-2,316	406	-1,910	-1,435	-0.15
<b>2005</b>							
October - December	989,526	630	-2,009	152	-1,857	-1,227	-0.12
July - September	990,044	932	-1,914	464	-1,450	-518	-0.05
April - June	991,825	952	-3,356	623	-2,733	-1,781	-0.18
January - March	993,217	513	-2,458	553	-1,905	-1,392	-0.14
<b>2004</b>							
October - December	994,642	620	-2,080	35	-2,045	-1,425	-0.14
July - September	994,898	930	-1,621	435	-1,186	-256	-0.03
April - June	994,885	885	-1,498	626	-872	13	0.00
January - March	994,607	704	-828	402	-426	278	0.03
<b>2003</b>							
October - December	994,799	416	-846	238	-608	-192	-0.02
July - September	994,732	986	-1,349	430	-919	67	0.01
April - June	994,667	962	-1,280	383	-897	65	0.01
January - March	994,856	667	-1,115	259	-856	-189	-0.02
<b>2002</b>							
October - December	995,358	389	-966	75	-891	-502	-0.05
July - September	995,886	896	-1,780	356	-1,424	-528	-0.05
April - June	996,916	822	-2,208	356	-1,852	-1,030	-0.10
January - March	998,219	748	-2,477	426	-2,051	-1,303	-0.13
<b>2001</b>							
October - December	998,926	747	-1,568	114	-1,454	-707	-0.07
July - September	1,000,134	1,029	-2,567	330	-2,237	-1,208	-0.12

**Note(s):** See "Data quality, concepts and methodology — Explanatory notes for the tables" section.

**Table 2-10**  
**Quarterly population estimates and factors of growth, provincial perspective — Alberta**

	Population at beginning period	Natural increase	Net interprovincial migration	Net international migration	Total net migration	Total growth	Total growth
	number					in percentage	
<b>2008</b>							
April - June	3,512,368	..	..	..	..	..	..
January - March	3,497,881	5,371	713	8,403	9,116	14,487	0.41
<b>2007</b>							
October - December	3,486,767	5,592	-880	6,402	5,522	11,114	0.32
July - September	3,473,984	6,739	-3,316	9,360	6,044	12,783	0.37
April - June	3,449,527	6,820	7,437	10,200	17,637	24,457	0.71
January - March	3,430,221	5,267	7,384	6,655	14,039	19,306	0.56
<b>2006</b>							
October - December	3,408,269	5,455	11,813	4,684	16,497	21,952	0.64
July - September	3,370,600	6,538	24,535	6,596	31,131	37,669	1.12
April - June	3,347,675	6,554	9,508	6,863	16,371	22,925	0.68
January - March	3,325,144	5,050	12,310	5,171	17,481	22,531	0.68
<b>2005</b>							
October - December	3,302,849	5,229	13,827	3,239	17,066	22,295	0.68
July - September	3,280,728	6,285	10,150	5,686	15,836	22,121	0.67
April - June	3,256,864	6,326	12,056	5,482	17,538	23,864	0.73
January - March	3,239,154	4,911	8,935	3,864	12,799	17,710	0.55
<b>2004</b>							
October - December	3,225,151	4,887	6,729	2,387	9,116	14,003	0.43
July - September	3,208,173	6,217	6,703	4,058	10,761	16,978	0.53
April - June	3,195,351	5,964	2,718	4,140	6,858	12,822	0.40
January - March	3,183,624	5,036	3,198	3,493	6,691	11,727	0.37
<b>2003</b>							
October - December	3,174,572	4,767	1,685	2,600	4,285	9,052	0.29
July - September	3,161,371	6,093	3,005	4,103	7,108	13,201	0.42
April - June	3,148,466	5,785	2,981	4,139	7,120	12,905	0.41
January - March	3,137,751	5,057	2,583	3,075	5,658	10,715	0.34
<b>2002</b>							
October - December	3,129,563	4,697	2,234	1,257	3,491	8,188	0.26
July - September	3,116,332	5,813	4,105	3,313	7,418	13,231	0.42
April - June	3,100,798	5,382	5,752	4,400	10,152	15,534	0.50
January - March	3,087,024	4,565	5,792	3,417	9,209	13,774	0.45
<b>2001</b>							
October - December	3,075,186	4,331	5,759	1,748	7,507	11,838	0.38
July - September	3,056,739	5,387	8,932	4,128	13,060	18,447	0.60

**Note(s):** See "Data quality, concepts and methodology — Explanatory notes for the tables" section.

**Table 2-11**  
**Quarterly population estimates and factors of growth, provincial perspective — British Columbia**

	Population at beginning period	Natural increase	Net interprovincial migration	Net international migration	Total net migration	Total growth	Total growth
<b>2008</b>							
April - June	4,428,356	..	..	..	..	..	..
January - March	4,413,973	1,884	1,710	10,789	12,499	14,383	0.33
<b>2007</b>							
October - December	4,402,931	2,879	2,499	5,664	8,163	11,042	0.25
July - September	4,380,256	4,020	5,089	13,566	18,655	22,675	0.52
April - June	4,363,539	3,531	3,295	9,891	13,186	16,717	0.38
January - March	4,348,583	1,961	2,502	10,493	12,995	14,956	0.34
<b>2006</b>							
October - December	4,337,757	2,317	2,724	5,785	8,509	10,826	0.25
July - September	4,320,255	3,736	2,125	11,641	13,766	17,502	0.41
April - June	4,303,025	3,290	3,487	10,453	13,940	17,230	0.40
January - March	4,289,161	1,803	1,885	10,176	12,061	13,864	0.32
<b>2005</b>							
October - December	4,279,652	2,188	268	7,053	7,321	9,509	0.22
July - September	4,260,246	3,680	3,160	12,566	15,726	19,406	0.46
April - June	4,242,942	3,199	2,879	11,226	14,105	17,304	0.41
January - March	4,229,977	1,673	1,127	10,165	11,292	12,965	0.31
<b>2004</b>							
October - December	4,219,238	2,335	2,138	6,266	8,404	10,739	0.25
July - September	4,203,807	3,170	2,070	10,191	12,261	15,431	0.37
April - June	4,189,785	3,160	3,049	7,813	10,862	14,022	0.33
January - March	4,179,691	1,900	294	7,900	8,194	10,094	0.24
<b>2003</b>							
October - December	4,169,543	1,860	1,683	6,605	8,288	10,148	0.24
July - September	4,155,370	3,422	2,839	7,912	10,751	14,173	0.34
April - June	4,142,216	3,627	-255	9,782	9,527	13,154	0.32
January - March	4,132,665	2,267	-212	7,496	7,284	9,551	0.23
<b>2002</b>							
October - December	4,127,013	2,330	-180	3,502	3,322	5,652	0.14
July - September	4,115,413	3,616	-390	8,374	7,984	11,600	0.28
April - June	4,105,904	3,302	-2,182	8,389	6,207	9,509	0.23
January - March	4,096,473	1,933	-2,464	9,962	7,498	9,431	0.23
<b>2001</b>							
October - December	4,090,659	2,349	-1,960	5,425	3,465	5,814	0.14
July - September	4,078,447	3,651	-1,950	10,511	8,561	12,212	0.30

**Note(s):** See "Data quality, concepts and methodology — Explanatory notes for the tables" section.

**Table 2-12**  
**Quarterly population estimates and factors of growth, provincial perspective — Yukon Territory**

	Population at beginning period	Natural increase	Net interprovincial migration	Net international migration	Total net migration	Total growth	Total growth
	number					in percentage	
<b>2008</b>							
April - June	31,530	..	..	..	..	..	..
January - March	31,247	23	174	86	260	283	0.91
<b>2007</b>							
October - December	31,115	34	115	-17	98	132	0.42
July - September	30,989	35	75	16	91	126	0.41
April - June	30,820	30	79	60	139	169	0.55
January - March	30,980	25	-198	13	-185	-160	-0.52
<b>2006</b>							
October - December	31,117	37	-136	-38	-174	-137	-0.44
July - September	31,211	37	-115	-16	-131	-94	-0.30
April - June	31,133	34	-27	71	44	78	0.25
January - March	31,172	28	-101	34	-67	-39	-0.13
<b>2005</b>							
October - December	31,241	40	-100	-9	-109	-69	-0.22
July - September	31,051	40	155	-5	150	190	0.61
April - June	30,977	38	-3	39	36	74	0.24
January - March	30,918	30	37	-8	29	59	0.19
<b>2004</b>							
October - December	30,836	55	58	-31	27	82	0.27
July - September	30,875	48	-39	-48	-87	-39	-0.13
April - June	30,874	55	-124	70	-54	1	0.00
January - March	30,848	41	-51	36	-15	26	0.08
<b>2003</b>							
October - December	30,802	49	18	-21	-3	46	0.15
July - September	30,574	71	184	-27	157	228	0.75
April - June	30,455	45	30	44	74	119	0.39
January - March	30,334	37	41	43	84	121	0.40
<b>2002</b>							
October - December	30,267	49	39	-21	18	67	0.22
July - September	30,137	46	39	45	84	130	0.43
April - June	30,092	41	-68	72	4	45	0.15
January - March	30,155	56	-125	6	-119	-63	-0.21
<b>2001</b>							
October - December	30,032	45	117	-39	78	123	0.41
July - September	30,129	52	-145	-4	-149	-97	-0.32

**Note(s):** See "Data quality, concepts and methodology — Explanatory notes for the tables" section.

**Table 2-13**  
**Quarterly population estimates and factors of growth, provincial perspective — Northwest Territories**

	Population at beginning period	Natural increase	Net interprovincial migration	Net international migration	Total net migration	Total growth	Total growth
	number					in percentage	
<b>2008</b>							
April - June	42,514	..	..	..	..	..	..
January - March	42,594	114	-210	16	-194	-80	-0.19
<b>2007</b>							
October - December	42,425	124	93	-48	45	169	0.40
July - September	42,637	139	-337	-14	-351	-212	-0.50
April - June	42,314	149	94	80	174	323	0.76
January - March	42,328	109	-128	5	-123	-14	-0.03
<b>2006</b>							
October - December	42,483	121	-247	-29	-276	-155	-0.36
July - September	42,401	136	-65	11	-54	82	0.19
April - June	42,308	154	-108	47	-61	93	0.22
January - March	42,565	114	-389	18	-371	-257	-0.60
<b>2005</b>							
October - December	42,802	128	-365	0	-365	-237	-0.55
July - September	42,724	144	-92	26	-66	78	0.18
April - June	42,834	163	-274	1	-273	-110	-0.26
January - March	42,851	120	-165	28	-137	-17	-0.04
<b>2004</b>							
October - December	42,832	132	-100	-13	-113	19	0.04
July - September	42,822	135	-129	4	-125	10	0.02
April - June	42,745	128	-84	33	-51	77	0.18
January - March	42,727	150	-169	37	-132	18	0.04
<b>2003</b>							
October - December	42,456	99	94	78	172	271	0.64
July - September	42,231	132	54	39	93	225	0.53
April - June	41,988	130	73	40	113	243	0.58
January - March	41,802	138	37	11	48	186	0.44
<b>2002</b>							
October - December	41,681	103	26	-8	18	121	0.29
July - September	41,489	104	106	-18	88	192	0.46
April - June	41,239	135	107	8	115	250	0.61
January - March	41,107	124	-26	34	8	132	0.32
<b>2001</b>							
October - December	41,144	110	-136	-11	-147	-37	-0.09
July - September	40,822	118	139	65	204	322	0.79

**Note(s):** See "Data quality, concepts and methodology — Explanatory notes for the tables" section.

**Table 2-14**  
**Quarterly population estimates and factors of growth, provincial perspective — Nunavut**

	Population at beginning period	Natural increase	Net interprovincial migration	Net international migration	Total net migration	Total growth	Total growth
	number					in percentage	
<b>2008</b>							
April - June	31,152	..	..	..	..	..	..
January - March	31,142	152	-127	-15	-142	10	0.03
<b>2007</b>							
October - December	31,127	163	-95	-53	-148	15	0.05
July - September	31,113	155	-183	42	-141	14	0.04
April - June	30,777	149	178	9	187	336	1.09
January - March	30,527	147	96	7	103	250	0.82
<b>2006</b>							
October - December	30,446	156	-63	-12	-75	81	0.27
July - September	30,400	149	-96	-7	-103	46	0.15
April - June	30,252	143	1	4	5	148	0.49
January - March	30,214	143	-105	0	-105	38	0.13
<b>2005</b>							
October - December	30,073	151	-16	6	-10	141	0.47
July - September	30,013	145	-80	-5	-85	60	0.20
April - June	29,873	139	9	-8	1	140	0.47
January - March	29,751	139	-18	1	-17	122	0.41
<b>2004</b>							
October - December	29,647	159	-50	-5	-55	104	0.35
July - September	29,631	161	-122	-23	-145	16	0.05
April - June	29,371	152	97	11	108	260	0.89
January - March	29,328	154	-116	5	-111	43	0.15
<b>2003</b>							
October - December	29,201	132	5	-10	-5	127	0.43
July - September	29,165	153	-121	4	-117	36	0.12
April - June	29,073	163	-68	-3	-71	92	0.32
January - March	28,927	176	-34	4	-30	146	0.50
<b>2002</b>							
October - December	28,867	132	-64	-8	-72	60	0.21
July - September	28,739	162	-32	-2	-34	128	0.45
April - June	28,233	163	347	-4	343	506	1.79
January - March	28,224	142	-147	14	-133	9	0.03
<b>2001</b>							
October - December	28,135	148	-57	-2	-59	89	0.32
July - September	28,121	139	-119	-6	-125	14	0.05

**Note(s):** See "Data quality, concepts and methodology — Explanatory notes for the tables" section.

**Table 3-1**  
**Quarterly estimates of demographic components, provincial perspective — Canada**

	Natural increase		Interprovincial migration		International migration				
	Births	Deaths	In-migrants	Out-migrants	Immigrants	Emigrants	Returning emigrants	Net temporary emigrants	Net non-permanent residents
	number								
<b>2008</b>									
January - March	85,966	65,948	78,974	78,974	53,138	7,259	3,508	5,431	16,256
<b>2007</b>									
October - December	86,596	61,944	68,381	68,381	55,593	8,752	3,691	5,884	-16,918
July - September	94,186	56,711	121,904	121,904	71,641	16,554	8,835	8,264	22,069
April - June	91,321	58,336	101,875	101,875	61,647	9,038	6,498	5,988	19,196
January - March	84,068	64,306	78,603	78,603	47,877	7,230	3,508	5,431	13,556
<b>2006</b>									
October - December	85,052	60,092	81,549	81,549	58,245	8,688	3,691	5,884	-28,888
July - September	92,407	55,197	133,080	133,080	70,358	16,393	8,835	8,264	14,020
April - June	89,573	56,775	77,592	77,592	67,908	8,986	6,498	5,994	14,199
January - March	83,149	61,351	66,295	66,295	55,134	7,187	3,508	5,437	8,608
<b>2005</b>									
October - December	82,264	58,656	53,058	53,058	55,385	8,621	3,691	5,884	-23,259
July - September	90,369	53,905	88,923	88,923	75,945	16,231	8,835	8,253	12,878
April - June	88,353	55,875	89,302	89,302	74,471	8,928	6,498	5,998	7,620
January - March	81,190	62,804	60,889	60,889	56,438	7,150	3,508	5,444	3,259
<b>2004</b>									
October - December	81,735	57,912	53,428	53,428	48,092	8,555	3,691	5,886	-20,053
July - September	87,992	52,781	81,925	81,925	65,578	16,065	8,835	8,242	15,311
April - June	85,762	54,839	78,127	78,127	67,242	8,738	6,269	6,128	10,924
January - March	81,583	61,052	56,247	56,247	54,912	6,942	3,610	5,525	6,779
<b>2003</b>									
October - December	81,561	59,527	44,713	44,713	53,588	7,853	3,799	5,835	-20,028
July - September	88,856	53,411	82,293	82,293	63,340	14,524	9,024	8,076	14,351
April - June	85,486	54,841	68,827	68,827	58,864	7,286	6,048	5,779	15,897
January - March	79,299	58,390	59,732	59,732	45,560	5,978	4,191	5,315	13,236
<b>2002</b>									
October - December	79,120	57,233	51,553	51,553	41,843	7,797	3,237	5,965	-19,214
July - September	86,618	53,441	94,787	94,787	52,926	14,952	7,864	8,502	27,994
April - June	83,719	54,130	72,566	72,566	72,719	7,857	5,382	5,774	12,685
January - March	79,345	58,799	62,967	62,967	61,583	5,959	2,627	5,148	9,746
<b>2001</b>									
October - December	78,968	55,406	54,510	54,510	52,132	7,525	3,285	5,670	-19,159
July - September	86,123	52,159	100,447	100,447	69,900	17,587	6,785	8,968	30,478

**Note(s):** See "Data quality, concepts and methodology — Explanatory notes for the tables" section.

**Table 3-2**  
**Quarterly estimates of demographic components, provincial perspective — Newfoundland and Labrador**

	Natural increase		Interprovincial migration		International migration				
	Births	Deaths	In-migrants	Out-migrants	Immigrants	Emigrants	Returning emigrants	Net temporary emigrants	Net non-permanent residents
	number								
<b>2008</b>									
January - March	1,025	1,278	3,129	2,923	136	35	10	23	130
<b>2007</b>									
October - December	1,052	1,137	2,715	2,060	174	43	10	25	-62
July - September	1,099	1,139	4,162	3,078	143	81	24	34	104
April - June	1,084	1,085	3,327	3,910	115	44	18	25	68
January - March	1,044	1,242	2,237	4,087	109	35	10	23	1
<b>2006</b>									
October - December	1,074	1,107	2,289	2,755	155	43	10	25	-25
July - September	1,124	1,115	3,962	4,849	127	81	24	34	42
April - June	1,112	1,062	2,327	3,289	115	44	18	25	118
January - March	1,072	1,214	1,974	3,623	112	35	10	23	29
<b>2005</b>									
October - December	1,105	1,085	1,488	2,484	116	43	10	25	-283
July - September	1,154	1,092	2,506	3,241	108	79	24	34	79
April - June	1,141	1,040	2,457	3,715	125	44	18	25	219
January - March	1,101	1,187	1,800	3,308	147	35	10	23	86
<b>2004</b>									
October - December	1,124	1,060	1,748	1,797	93	42	10	25	-134
July - September	1,177	1,070	2,208	3,103	176	79	24	34	-102
April - June	1,087	1,018	2,365	3,285	159	31	26	26	192
January - March	1,100	1,160	1,908	2,695	151	24	15	23	-113
<b>2003</b>									
October - December	1,177	1,068	1,574	1,826	78	28	15	24	12
July - September	1,234	1,008	2,550	2,618	148	52	38	33	78
April - June	1,153	1,059	2,310	2,718	65	19	27	24	71
January - March	1,065	1,146	1,995	2,370	68	17	18	22	-1
<b>2002</b>									
October - December	1,127	1,089	1,726	2,035	115	22	13	25	-160
July - September	1,251	982	3,167	3,758	66	41	35	35	230
April - June	1,178	1,048	2,357	3,056	117	35	26	24	144
January - March	1,095	1,064	2,056	3,644	109	26	13	22	44
<b>2001</b>									
October - December	1,076	1,069	1,619	1,889	104	33	16	24	-26
July - September	1,287	945	2,752	3,547	92	78	33	37	-88

**Note(s):** See "Data quality, concepts and methodology — Explanatory notes for the tables" section.



**Table 3-3**  
**Quarterly estimates of demographic components, provincial perspective — Prince Edward Island**

	Natural increase		Interprovincial migration		International migration				
	Births	Deaths	In-migrants	Out-migrants	Immigrants	Emigrants	Returning emigrants	Net temporary emigrants	Net non-permanent residents
	number								
<b>2008</b>									
January - March	346	381	910	910	334	5	3	7	28
<b>2007</b>									
October - December	309	325	659	834	205	6	3	8	-17
July - September	356	272	1,120	1,242	419	10	10	11	106
April - June	337	315	1,080	1,063	214	6	7	7	21
January - March	345	378	836	793	148	5	3	7	46
<b>2006</b>									
October - December	309	320	572	646	170	6	3	8	-52
July - September	357	269	1,087	1,339	200	10	10	11	90
April - June	336	309	708	840	135	6	7	7	47
January - March	344	372	692	825	60	5	3	7	27
<b>2005</b>									
October - December	308	315	274	529	59	6	3	8	-13
July - September	355	264	786	905	98	10	10	11	19
April - June	335	304	994	890	101	6	7	7	19
January - March	342	365	603	570	72	5	3	7	-10
<b>2004</b>									
October - December	328	308	314	397	86	6	3	8	0
July - September	366	259	626	819	53	10	10	11	46
April - June	363	298	771	845	89	29	20	7	-11
January - March	333	358	543	452	82	24	12	7	15
<b>2003</b>									
October - December	328	288	505	409	50	26	12	8	-48
July - September	379	281	751	720	46	49	28	11	81
April - June	386	294	683	630	34	5	5	7	1
January - March	324	320	587	543	23	4	3	7	1
<b>2002</b>									
October - December	315	309	498	478	25	6	3	8	-19
July - September	349	294	918	870	7	11	7	11	38
April - June	348	301	705	695	44	13	18	7	0
January - March	316	332	602	615	31	10	7	7	-4
<b>2001</b>									
October - December	291	280	441	470	41	13	10	7	-38
July - September	358	292	891	797	29	30	23	12	30

**Note(s):** See "Data quality, concepts and methodology — Explanatory notes for the tables" section.

**Table 3-4**  
**Quarterly estimates of demographic components, provincial perspective — Nova Scotia**

	Natural increase		Interprovincial migration		International migration				
	Births	Deaths	In-migrants	Out-migrants	Immigrants	Emigrants	Returning emigrants	Net temporary emigrants	Net non-permanent residents
	number								
<b>2008</b>									
January - March	1,886	2,437	4,567	4,174	601	145	71	80	100
<b>2007</b>									
October - December	2,031	2,251	3,722	3,264	571	174	74	86	-156
July - September	2,261	1,985	6,382	6,569	764	330	178	121	379
April - June	2,169	2,113	4,930	4,863	646	180	131	88	-45
January - March	1,894	2,388	3,519	4,403	542	145	71	80	-12
<b>2006</b>									
October - December	2,042	2,204	4,123	4,671	631	173	74	86	-159
July - September	2,277	1,949	7,026	8,062	896	327	178	121	17
April - June	2,200	2,073	4,214	4,680	554	180	131	88	292
January - March	1,921	2,343	3,124	4,134	504	143	71	80	30
<b>2005</b>									
October - December	2,070	2,162	2,544	3,357	459	172	74	86	-246
July - September	2,308	1,913	5,181	5,916	680	324	178	121	543
April - June	2,231	2,033	4,071	4,939	462	177	131	88	-40
January - March	1,948	2,300	3,105	4,368	328	142	71	80	-30
<b>2004</b>									
October - December	2,121	2,120	2,479	3,116	372	171	74	86	-433
July - September	2,275	1,876	5,385	5,658	546	321	178	121	352
April - June	2,188	1,992	4,573	4,638	459	175	127	89	354
January - March	2,150	2,253	2,839	3,458	393	138	73	80	89
<b>2003</b>									
October - December	2,043	2,088	2,532	2,441	390	158	76	86	-201
July - September	2,332	1,936	5,143	5,322	465	290	183	119	502
April - June	2,226	1,943	4,172	4,055	309	156	117	85	327
January - March	2,049	2,097	3,627	3,514	310	128	82	78	-54
<b>2002</b>									
October - December	2,032	1,997	3,127	3,032	322	167	63	88	-427
July - September	2,328	1,907	5,760	5,575	314	320	153	124	435
April - June	2,194	2,066	4,118	4,074	421	160	81	85	358
January - March	2,109	2,027	3,553	4,133	365	121	40	75	400
<b>2001</b>									
October - December	2,084	1,983	3,093	3,062	331	154	49	83	89
July - September	2,306	1,846	5,567	5,960	498	358	102	131	678

**Note(s):** See "Data quality, concepts and methodology — Explanatory notes for the tables" section.

**Table 3-5**  
**Quarterly estimates of demographic components, provincial perspective — New Brunswick**

	Natural increase		Interprovincial migration		International migration				
	Births	Deaths	In-migrants	Out-migrants	Immigrants	Emigrants	Returning emigrants	Net temporary emigrants	Net non-permanent residents
	number								
<b>2008</b>									
January - March	1,609	1,917	3,299	3,193	463	81	38	48	107
<b>2007</b>									
October - December	1,625	1,630	3,142	2,921	394	98	39	52	-100
July - September	1,774	1,537	5,372	5,055	487	186	94	73	193
April - June	1,679	1,622	4,377	3,851	388	101	70	52	48
January - March	1,620	1,873	3,144	3,108	375	81	38	48	157
<b>2006</b>									
October - December	1,637	1,592	2,726	2,827	397	98	39	52	-101
July - September	1,792	1,502	4,475	6,080	470	184	94	73	276
April - June	1,705	1,587	2,463	3,547	457	101	70	52	-111
January - March	1,647	1,834	2,278	3,062	322	80	38	48	35
<b>2005</b>									
October - December	1,666	1,561	1,593	2,267	240	97	39	52	-42
July - September	1,822	1,471	3,852	4,797	367	182	94	72	181
April - June	1,733	1,555	3,192	3,992	306	101	70	52	-121
January - March	1,671	1,795	2,147	2,436	178	80	38	48	120
<b>2004</b>									
October - December	1,642	1,529	1,943	2,219	182	96	39	52	17
July - September	1,828	1,440	3,322	4,031	199	181	94	72	358
April - June	1,765	1,522	3,148	3,206	232	71	85	53	-67
January - March	1,724	1,756	2,529	2,353	182	57	48	48	45
<b>2003</b>									
October - December	1,724	1,629	1,593	1,872	182	64	50	51	15
July - September	1,859	1,466	3,420	4,019	164	120	122	70	355
April - June	1,796	1,560	2,813	3,025	164	61	83	50	48
January - March	1,738	1,602	2,436	2,623	155	49	57	47	12
<b>2002</b>									
October - December	1,680	1,588	2,105	2,272	161	65	44	52	-52
July - September	1,890	1,431	3,879	4,156	168	125	109	73	388
April - June	1,736	1,507	3,183	2,806	211	109	95	50	-44
January - March	1,740	1,570	2,716	2,813	170	83	46	44	170
<b>2001</b>									
October - December	1,637	1,583	1,955	2,433	169	104	58	50	-79
July - September	1,858	1,405	3,856	4,876	218	245	120	79	379

**Note(s):** See "Data quality, concepts and methodology — Explanatory notes for the tables" section.

**Table 3-6**  
**Quarterly estimates of demographic components, provincial perspective — Quebec**

	Natural increase		Interprovincial migration		International migration				
	Births	Deaths	In-migrants	Out-migrants	Immigrants	Emigrants	Returning emigrants	Net temporary emigrants	Net non-permanent residents
	number								
<b>2008</b>									
January - March	20,750	15,300	4,993	6,801	9,603	1,174	540	865	2,172
<b>2007</b>									
October - December	20,550	14,350	4,474	6,584	10,399	1,417	569	937	-2,085
July - September	22,400	12,950	9,301	12,847	13,900	2,677	1,358	1,316	2,017
April - June	21,500	13,850	6,821	12,577	11,565	1,461	999	954	3,781
January - March	19,750	15,450	4,336	7,368	9,360	1,169	540	865	1,217
<b>2006</b>									
October - December	20,150	13,800	5,378	8,236	10,216	1,406	569	937	-5,537
July - September	21,750	12,850	9,728	13,650	13,941	2,651	1,358	1,316	892
April - June	20,550	13,400	5,194	9,200	11,420	1,453	999	955	3,619
January - March	19,500	13,700	3,848	5,977	9,104	1,163	540	867	1,122
<b>2005</b>									
October - December	18,089	13,600	3,663	5,528	8,426	1,393	569	937	-2,956
July - September	20,332	12,650	7,259	8,670	13,049	2,626	1,358	1,315	748
April - June	19,979	13,650	6,999	9,844	12,496	1,444	999	955	1,144
January - March	17,946	16,200	4,077	4,790	9,343	1,157	540	867	-682
<b>2004</b>									
October - December	17,818	13,891	4,875	5,399	9,159	1,383	569	937	-3,649
July - September	19,679	12,300	6,782	7,663	12,418	2,599	1,358	1,313	1,592
April - June	18,825	13,662	7,070	8,671	12,326	1,423	1,033	977	2,402
January - March	17,750	15,774	4,488	4,779	10,341	1,131	595	881	240
<b>2003</b>									
October - December	17,954	14,034	3,874	3,778	10,016	1,280	627	929	-4,517
July - September	19,835	12,941	8,295	7,321	11,869	2,367	1,487	1,287	1,019
April - June	18,923	13,640	6,081	6,530	10,184	1,113	1,028	922	1,931
January - March	17,193	14,312	5,276	5,679	7,489	913	712	847	2,124
<b>2002</b>									
October - December	17,263	13,640	4,560	4,891	7,846	1,191	550	950	-3,665
July - September	18,894	13,304	8,355	9,001	9,407	2,283	1,336	1,355	4,029
April - June	18,616	13,326	5,717	8,116	10,572	1,264	859	920	1,410
January - March	17,704	15,265	4,563	5,415	9,754	959	420	821	907
<b>2001</b>									
October - December	17,434	13,392	4,827	4,736	8,715	1,211	524	903	-3,341
July - September	18,848	12,752	9,381	10,571	10,038	2,831	1,082	1,429	4,636

**Note(s):** See "Data quality, concepts and methodology — Explanatory notes for the tables" section.

**Table 3-7**  
**Quarterly estimates of demographic components, provincial perspective — Ontario**

	Natural increase		Interprovincial migration		International migration				
	Births	Deaths	In-migrants	Out-migrants	Immigrants	Emigrants	Returning emigrants	Net temporary emigrants	Net non-permanent residents
	number								
<b>2008</b>									
January - March	32,210	25,344	15,921	18,995	23,497	3,428	1,486	2,257	6,757
<b>2007</b>									
October - December	32,289	23,810	13,603	16,827	26,267	4,132	1,565	2,445	-15,206
July - September	35,727	21,412	25,900	29,033	33,310	7,819	3,744	3,435	9,793
April - June	34,355	21,838	19,566	26,242	29,511	4,267	2,753	2,489	6,781
January - March	32,021	24,330	14,796	19,525	22,348	3,413	1,486	2,257	3,884
<b>2006</b>									
October - December	32,149	22,924	13,808	23,879	29,446	4,101	1,565	2,445	-22,114
July - September	35,616	20,645	23,224	37,944	34,192	7,742	3,744	3,435	6,878
April - June	34,328	21,232	16,270	19,743	34,912	4,243	2,753	2,492	6,884
January - March	31,986	23,643	12,127	16,181	27,367	3,394	1,486	2,259	4,075
<b>2005</b>									
October - December	32,112	22,272	9,101	14,365	30,239	4,070	1,565	2,445	-19,450
July - September	35,535	20,034	18,250	22,960	40,541	7,665	3,744	3,431	6,486
April - June	34,229	20,584	19,339	21,716	40,486	4,216	2,753	2,494	4,331
January - March	31,884	22,905	12,108	14,257	29,269	3,376	1,486	2,262	1,777
<b>2004</b>									
October - December	32,334	21,582	10,422	14,432	25,301	4,038	1,565	2,445	-16,531
July - September	34,349	19,424	17,623	20,259	34,734	7,586	3,744	3,425	8,955
April - June	33,812	19,954	17,504	18,178	36,347	3,788	2,754	2,548	7,199
January - March	32,062	22,192	12,448	13,350	28,720	3,010	1,587	2,298	4,715
<b>2003</b>									
October - December	32,142	22,336	9,246	11,274	28,639	3,403	1,671	2,424	-15,936
July - September	34,858	19,673	17,988	21,319	34,239	6,296	3,961	3,357	9,173
April - June	33,071	20,163	16,066	15,917	31,869	3,297	2,537	2,403	10,543
January - March	30,858	22,037	13,959	13,823	24,989	2,705	1,759	2,210	8,922
<b>2002</b>									
October - December	31,239	21,594	12,054	11,927	22,532	3,525	1,358	2,479	-13,502
July - September	34,088	19,616	22,157	21,932	30,437	6,764	3,298	3,534	16,207
April - June	32,517	19,684	17,783	16,197	44,525	3,253	2,352	2,400	9,434
January - March	30,688	21,346	16,018	12,891	36,136	2,466	1,150	2,141	4,933
<b>2001</b>									
October - December	31,468	20,594	12,065	12,493	30,033	3,114	1,437	2,356	-14,976
July - September	34,274	19,369	24,217	23,148	42,142	7,281	2,964	3,728	17,699

**Note(s):** See "Data quality, concepts and methodology — Explanatory notes for the tables" section.

**Table 3-8**  
**Quarterly estimates of demographic components, provincial perspective — Manitoba**

	Natural increase		Interprovincial migration		International migration				
	Births	Deaths	In-migrants	Out-migrants	Immigrants	Emigrants	Returning emigrants	Net temporary emigrants	Net non-permanent residents
	number								
<b>2008</b>									
January - March	3,432	2,626	4,062	3,995	2,065	310	126	119	90
<b>2007</b>									
October - December	3,520	2,654	3,449	3,161	2,298	374	133	129	84
July - September	3,690	2,556	6,081	6,146	3,100	707	318	181	122
April - June	3,682	2,567	4,110	5,495	3,236	387	234	131	692
January - March	3,371	2,578	3,935	4,163	2,313	309	126	119	250
<b>2006</b>									
October - December	3,467	2,609	3,705	4,764	2,188	371	133	129	-70
July - September	3,646	2,518	5,575	8,755	3,052	700	318	181	0
April - June	3,668	2,526	3,150	5,044	2,647	384	234	131	460
January - March	3,362	2,541	2,788	4,313	2,160	307	126	119	130
<b>2005</b>									
October - December	3,463	2,576	1,794	3,532	1,580	368	133	129	180
July - September	3,643	2,487	3,712	6,436	2,493	694	318	181	69
April - June	3,672	2,493	3,049	6,316	2,356	382	234	131	326
January - March	3,367	2,507	2,742	4,311	1,668	306	126	120	-24
<b>2004</b>									
October - December	3,297	2,539	2,309	3,425	1,600	366	133	129	-22
July - September	3,695	2,450	4,080	5,355	2,062	687	318	181	305
April - June	3,435	2,450	3,987	4,753	2,234	312	232	135	348
January - March	3,384	2,464	3,251	3,247	1,530	247	134	121	196
<b>2003</b>									
October - December	3,440	2,654	2,220	2,583	1,733	280	140	128	66
July - September	3,722	2,326	3,843	5,283	1,920	518	334	177	188
April - June	3,489	2,452	3,429	4,160	1,803	256	320	126	417
January - March	3,289	2,435	2,976	3,604	1,047	211	222	116	222
<b>2002</b>									
October - December	3,329	2,581	2,580	3,104	1,004	275	172	131	-92
July - September	3,658	2,384	4,722	5,714	1,052	527	417	187	519
April - June	3,472	2,385	3,312	3,979	1,524	251	254	127	231
January - March	3,429	2,499	3,293	3,843	1,035	190	123	112	218
<b>2001</b>									
October - December	3,243	2,500	2,659	3,731	1,100	240	155	125	-126
July - September	3,602	2,336	4,696	6,751	1,166	560	320	197	419

**Note(s):** See "Data quality, concepts and methodology — Explanatory notes for the tables" section.

**Table 3-9**  
**Quarterly estimates of demographic components, provincial perspective — Saskatchewan**

	Natural increase		Interprovincial migration		International migration				
	Births	Deaths	In-migrants	Out-migrants	Immigrants	Emigrants	Returning emigrants	Net temporary emigrants	Net non-permanent residents
	number								
<b>2008</b>									
January - March	2,980	2,481	6,402	4,552	979	101	50	110	335
<b>2007</b>									
October - December	2,927	2,286	5,830	3,675	856	122	53	119	-119
July - September	3,154	2,223	10,403	6,079	1,121	231	126	166	325
April - June	3,131	2,241	7,762	5,055	883	127	93	120	305
January - March	2,873	2,426	5,639	4,651	655	101	50	110	157
<b>2006</b>									
October - December	2,836	2,234	5,453	4,367	851	122	53	119	-235
July - September	3,078	2,178	7,049	7,831	697	229	126	166	-30
April - June	3,115	2,202	3,894	4,738	697	125	93	120	42
January - March	2,871	2,396	2,995	5,311	479	101	50	110	88
<b>2005</b>									
October - December	2,846	2,216	2,259	4,268	411	120	53	119	-73
July - September	3,093	2,161	4,587	6,501	521	227	126	166	210
April - June	3,138	2,186	3,911	7,267	643	124	93	120	131
January - March	2,890	2,377	2,987	5,445	532	100	50	110	181
<b>2004</b>									
October - December	2,818	2,198	2,412	4,492	450	119	53	119	-230
July - September	3,069	2,139	4,121	5,742	472	224	126	166	227
April - June	3,044	2,159	4,407	5,905	584	116	115	122	165
January - March	3,052	2,348	3,313	4,141	436	92	67	111	102
<b>2003</b>									
October - December	2,877	2,461	2,398	3,244	462	104	71	117	-74
July - September	3,148	2,162	4,433	5,782	412	193	167	162	206
April - June	3,113	2,151	3,804	5,084	415	115	79	116	120
January - March	2,900	2,233	3,294	4,409	379	93	55	106	24
<b>2002</b>									
October - December	2,741	2,352	2,841	3,807	397	123	43	120	-122
July - September	3,040	2,144	5,233	7,013	367	235	102	171	293
April - June	2,991	2,169	3,715	5,923	452	128	74	116	74
January - March	2,989	2,241	3,100	5,577	451	98	36	103	140
<b>2001</b>									
October - December	2,904	2,157	2,876	4,444	361	123	45	114	-55
July - September	3,112	2,083	4,907	7,474	557	287	93	179	146

**Note(s):** See "Data quality, concepts and methodology — Explanatory notes for the tables" section.

**Table 3-10**  
**Quarterly estimates of demographic components, provincial perspective — Alberta**

	Natural increase		Interprovincial migration		International migration				
	Births	Deaths	In-migrants	Out-migrants	Immigrants	Emigrants	Returning emigrants	Net temporary emigrants	Net non-permanent residents
	number								
<b>2008</b>									
January - March	10,880	5,509	20,788	20,075	5,346	893	568	623	4,005
<b>2007</b>									
October - December	11,060	5,468	17,577	18,457	5,086	1,075	597	674	2,468
July - September	11,776	5,037	29,374	32,690	6,166	2,035	1,428	949	4,750
April - June	11,869	5,049	30,105	22,668	5,559	1,111	1,050	687	5,389
January - March	10,638	5,371	25,389	18,005	4,012	889	568	623	3,587
<b>2006</b>									
October - December	10,764	5,309	28,596	16,783	4,832	1,067	597	674	996
July - September	11,390	4,852	47,351	22,816	5,713	2,015	1,428	949	2,419
April - June	11,407	4,853	22,816	13,308	5,445	1,104	1,050	687	2,159
January - March	10,202	5,152	23,159	10,849	4,727	883	568	624	1,383
<b>2005</b>									
October - December	10,315	5,086	20,832	7,005	4,168	1,060	597	674	208
July - September	10,951	4,666	25,027	14,877	5,591	1,995	1,428	946	1,608
April - June	10,984	4,658	26,321	14,265	5,291	1,097	1,050	689	927
January - March	9,860	4,949	19,030	10,095	4,355	878	568	625	444
<b>2004</b>									
October - December	9,784	4,897	15,371	8,642	3,274	1,052	597	675	243
July - September	10,717	4,500	21,696	14,993	4,521	1,974	1,428	946	1,029
April - June	10,461	4,497	17,684	14,966	4,605	1,184	918	703	504
January - March	9,817	4,781	13,869	10,671	4,072	940	530	633	464
<b>2003</b>									
October - December	9,719	4,952	10,715	9,030	3,861	1,064	558	670	-85
July - September	10,638	4,545	18,554	15,549	4,573	1,966	1,322	926	1,100
April - June	10,312	4,527	16,180	13,199	4,296	848	880	663	474
January - March	9,618	4,561	14,036	11,453	3,105	695	610	610	665
<b>2002</b>									
October - December	9,305	4,608	12,121	9,887	3,130	907	472	684	-754
July - September	10,215	4,402	22,290	18,185	3,090	1,741	1,143	976	1,797
April - June	9,927	4,545	18,584	12,832	4,601	943	824	663	581
January - March	9,244	4,679	16,033	10,241	3,931	715	403	592	390
<b>2001</b>									
October - December	8,815	4,484	15,261	9,502	3,548	904	503	650	-749
July - September	9,616	4,229	25,737	16,805	4,578	2,111	1,038	1,030	1,653

**Note(s):** See "Data quality, concepts and methodology — Explanatory notes for the tables" section.



**Table 3-11**  
**Quarterly estimates of demographic components, provincial perspective — British Columbia**

	Natural increase		Interprovincial migration		International migration				
	Births	Deaths	In-migrants	Out-migrants	Immigrants	Emigrants	Returning emigrants	Net temporary emigrants	Net non-permanent residents
	number								
<b>2008</b>									
January - March	10,415	8,531	13,513	11,803	10,058	1,080	616	1,289	2,484
<b>2007</b>									
October - December	10,800	7,921	12,073	9,574	9,281	1,302	648	1,396	-1,567
July - September	11,510	7,490	22,203	17,114	12,172	2,463	1,552	1,961	4,266
April - June	11,063	7,532	18,000	14,705	9,497	1,345	1,141	1,422	2,020
January - March	10,093	8,132	13,516	11,014	7,977	1,076	616	1,289	4,265
<b>2006</b>									
October - December	10,202	7,885	13,951	11,227	9,321	1,292	648	1,396	-1,496
July - September	10,948	7,212	21,867	19,742	11,015	2,439	1,552	1,961	3,474
April - June	10,700	7,410	15,217	11,730	11,476	1,337	1,141	1,424	597
January - March	9,824	8,021	12,297	10,412	10,272	1,069	616	1,290	1,647
<b>2005</b>									
October - December	9,866	7,678	8,956	8,688	9,653	1,283	648	1,396	-569
July - September	10,745	7,065	16,626	13,466	12,450	2,415	1,552	1,959	2,938
April - June	10,455	7,256	17,246	14,367	12,167	1,328	1,141	1,424	670
January - March	9,761	8,088	11,261	10,134	10,506	1,064	616	1,292	1,399
<b>2004</b>									
October - December	10,022	7,687	10,805	8,667	7,542	1,273	648	1,397	746
July - September	10,393	7,223	14,968	12,898	10,362	2,390	1,552	1,956	2,623
April - June	10,334	7,174	15,207	12,158	10,156	1,597	954	1,455	-245
January - March	9,740	7,840	9,982	9,688	8,965	1,269	549	1,312	967
<b>2003</b>									
October - December	9,737	7,877	9,307	7,624	8,135	1,436	579	1,385	712
July - September	10,394	6,972	15,910	13,071	9,463	2,655	1,372	1,917	1,649
April - June	10,552	6,925	12,037	12,292	9,691	1,408	971	1,372	1,900
January - March	9,813	7,546	10,461	10,673	7,954	1,156	673	1,262	1,287
<b>2002</b>									
October - December	9,699	7,369	9,011	9,191	6,297	1,507	519	1,415	-392
July - September	10,470	6,854	16,569	16,959	7,989	2,890	1,262	2,019	4,032
April - June	10,291	6,989	11,579	13,761	10,205	1,690	794	1,371	451
January - March	9,605	7,672	9,822	12,286	9,570	1,282	388	1,223	2,509
<b>2001</b>									
October - December	9,592	7,243	8,811	10,771	7,698	1,619	486	1,346	206
July - September	10,444	6,793	16,947	18,897	10,512	3,785	1,002	2,129	4,911

**Note(s):** See "Data quality, concepts and methodology — Explanatory notes for the tables" section.

**Table 3-12**  
**Quarterly estimates of demographic components, provincial perspective — Yukon Territory**

	Natural increase		Interprovincial migration		International migration				
	Births	Deaths	In-migrants	Out-migrants	Immigrants	Emigrants	Returning emigrants	Net temporary emigrants	Net non-permanent residents
	number								
<b>2008</b>									
January - March	75	52	472	298	22	2	0	5	71
<b>2007</b>									
October - December	76	42	406	291	23	3	0	6	-31
July - September	73	38	535	460	27	5	3	8	-1
April - June	83	53	455	376	14	3	2	6	53
January - March	76	51	325	523	21	2	0	5	-1
<b>2006</b>									
October - December	77	40	261	397	12	3	0	6	-41
July - September	75	38	556	671	8	5	3	8	-14
April - June	86	52	327	354	29	3	2	6	49
January - March	78	50	238	339	14	2	0	5	27
<b>2005</b>									
October - December	79	39	228	328	16	3	0	6	-16
July - September	76	36	474	319	16	5	3	8	-11
April - June	87	49	517	520	18	3	2	6	28
January - March	78	48	250	213	13	2	0	5	-14
<b>2004</b>									
October - December	92	37	248	190	12	3	0	6	-34
July - September	83	35	411	450	15	5	3	8	-53
April - June	103	48	363	487	14	4	3	6	63
January - March	87	46	293	344	21	3	0	5	23
<b>2003</b>									
October - December	85	36	208	190	15	3	0	6	-27
July - September	99	28	495	311	8	5	5	8	-27
April - June	81	36	345	315	11	2	1	5	39
January - March	70	33	308	267	21	2	0	5	29
<b>2002</b>									
October - December	82	33	275	236	9	3	0	6	-21
July - September	89	43	471	432	13	5	2	8	43
April - June	76	35	368	436	22	4	4	5	55
January - March	92	36	361	486	5	3	1	4	7
<b>2001</b>									
October - December	90	45	311	194	12	3	2	5	-45
July - September	86	34	308	453	28	7	5	8	-22

**Note(s):** See "Data quality, concepts and methodology — Explanatory notes for the tables" section.

**Table 3-13**  
**Quarterly estimates of demographic components, provincial perspective — Northwest Territories**

	Natural increase		Interprovincial migration		International migration				
	Births	Deaths	In-migrants	Out-migrants	Immigrants	Emigrants	Returning emigrants	Net temporary emigrants	Net non-permanent residents
	number								
<b>2008</b>									
January - March	169	55	598	808	28	3	0	3	-6
<b>2007</b>									
October - December	162	38	585	492	32	3	0	4	-73
July - September	180	41	745	1,082	27	5	0	6	-30
April - June	187	38	837	743	13	3	0	4	74
January - March	160	51	607	735	16	3	0	3	-5
<b>2006</b>									
October - December	157	36	452	699	24	3	0	4	-46
July - September	174	38	912	977	45	5	0	6	-23
April - June	191	37	621	729	18	3	0	4	36
January - March	164	50	515	904	11	3	0	3	13
<b>2005</b>									
October - December	163	35	201	566	16	3	0	4	-9
July - September	181	37	559	651	28	5	0	6	9
April - June	199	36	770	1,044	20	3	0	4	-12
January - March	169	49	550	715	20	3	0	3	14
<b>2004</b>									
October - December	166	34	418	518	20	3	0	4	-26
July - September	171	36	574	703	19	5	0	6	-4
April - June	163	35	664	748	34	4	1	4	6
January - March	198	48	607	776	16	4	0	4	29
<b>2003</b>									
October - December	160	61	425	331	25	4	0	4	61
July - September	176	44	767	713	30	8	3	6	20
April - June	182	52	678	605	23	4	0	4	25
January - March	183	45	569	532	16	3	0	3	1
<b>2002</b>									
October - December	142	39	491	465	5	3	0	4	-6
July - September	151	47	924	818	15	5	0	6	-22
April - June	177	42	640	533	20	4	1	4	-5
January - March	165	41	669	695	20	3	0	3	20
<b>2001</b>									
October - December	147	37	389	525	18	4	0	4	-21
July - September	162	44	971	832	36	9	3	6	41

**Note(s):** See "Data quality, concepts and methodology — Explanatory notes for the tables" section.

**Table 3-14**  
**Quarterly estimates of demographic components, provincial perspective — Nunavut**

	Natural increase		Interprovincial migration		International migration				
	Births	Deaths	In-migrants	Out-migrants	Immigrants	Emigrants	Returning emigrants	Net temporary emigrants	Net non-permanent residents
	number								
<b>2008</b>									
January - March	189	37	320	447	6	2	0	2	-17
<b>2007</b>									
October - December	195	32	146	241	7	3	0	3	-54
July - September	186	31	326	509	5	5	0	3	45
April - June	182	33	505	327	6	3	0	3	9
January - March	183	36	324	228	1	2	0	2	10
<b>2006</b>									
October - December	188	32	235	298	2	3	0	3	-8
July - September	180	31	268	364	2	5	0	3	-1
April - June	175	32	391	390	3	3	0	3	7
January - March	178	35	260	365	2	2	0	2	2
<b>2005</b>									
October - December	182	31	125	141	2	3	0	3	10
July - September	174	29	104	184	3	4	0	3	-1
April - June	170	31	436	427	0	3	0	3	-2
January - March	173	34	229	247	7	2	0	2	-2
<b>2004</b>									
October - December	189	30	84	134	1	3	0	3	0
July - September	190	29	129	251	1	4	0	3	-17
April - June	182	30	384	287	3	4	1	3	14
January - March	186	32	177	293	3	3	0	2	7
<b>2003</b>									
October - December	175	43	116	111	2	3	0	3	-6
July - September	182	29	144	265	3	5	2	3	7
April - June	202	39	229	297	0	2	0	2	1
January - March	199	23	208	242	4	2	0	2	4
<b>2002</b>									
October - December	166	34	164	228	0	3	0	3	-2
July - September	195	33	342	374	1	5	0	3	5
April - June	196	33	505	158	5	3	0	2	-4
January - March	169	27	181	328	6	3	0	1	12
<b>2001</b>									
October - December	187	39	203	260	2	3	0	3	2
July - September	170	31	217	336	6	5	0	3	-4

**Note(s):** See "Data quality, concepts and methodology — Explanatory notes for the tables" section.

**Table 4-1**  
**Quarterly estimates of demographic components, national perspective — Births <sup>1</sup>**

	Canada	Newfoundland and Labrador	Prince Edward Island	Nova Scotia	New Brunswick	Quebec	Ontario
	number						
<b>2008</b>							
January - March	85,966	1,025	346	1,886	1,609	20,750	32,210
<b>2007</b>							
October - December	86,596	1,052	309	2,031	1,625	20,550	32,289
July - September	94,186	1,099	356	2,261	1,774	22,400	35,727
April - June	91,321	1,084	337	2,169	1,679	21,500	34,355
January - March	84,068	1,044	345	1,894	1,620	19,750	32,021
<b>2006</b>							
October - December	85,052	1,074	309	2,042	1,637	20,150	32,149
July - September	92,407	1,124	357	2,277	1,792	21,750	35,616
April - June	89,573	1,112	336	2,200	1,705	20,550	34,328
January - March	83,149	1,072	344	1,921	1,647	19,500	31,986
<b>2005</b>							
October - December	82,264	1,105	308	2,070	1,666	18,089	32,112
July - September	90,369	1,154	355	2,308	1,822	20,332	35,535
April - June	88,353	1,141	335	2,231	1,733	19,979	34,229
January - March	81,190	1,101	342	1,948	1,671	17,946	31,884
<b>2004</b>							
October - December	81,735	1,124	328	2,121	1,642	17,818	32,334
July - September	87,992	1,177	366	2,275	1,828	19,679	34,349
April - June	85,762	1,087	363	2,188	1,765	18,825	33,812
January - March	81,583	1,100	333	2,150	1,724	17,750	32,062
<b>2003</b>							
October - December	81,561	1,177	328	2,043	1,724	17,954	32,142
July - September	88,856	1,234	379	2,332	1,859	19,835	34,858
April - June	85,486	1,153	386	2,226	1,796	18,923	33,071
January - March	79,299	1,065	324	2,049	1,738	17,193	30,858
<b>2002</b>							
October - December	79,120	1,127	315	2,032	1,680	17,263	31,239
July - September	86,618	1,251	349	2,328	1,890	18,894	34,088
April - June	83,719	1,178	348	2,194	1,736	18,616	32,517
January - March	79,345	1,095	316	2,109	1,740	17,704	30,688
<b>2001</b>							
October - December	78,968	1,076	291	2,084	1,637	17,434	31,468
July - September	86,123	1,287	358	2,306	1,858	18,848	34,274

See footnotes at the end of the table.

Table 4-1 – continued

## Quarterly estimates of demographic components, national perspective — Births 1

	Manitoba	Saskat- chewan	Alberta	British Columbia	Yukon Territory	Northwest Territories	Nunavut
	number						
<b>2008</b>							
January - March	3,432	2,980	10,880	10,415	75	169	189
<b>2007</b>							
October - December	3,520	2,927	11,060	10,800	76	162	195
July - September	3,690	3,154	11,776	11,510	73	180	186
April - June	3,682	3,131	11,869	11,063	83	187	182
January - March	3,371	2,873	10,638	10,093	76	160	183
<b>2006</b>							
October - December	3,467	2,836	10,764	10,202	77	157	188
July - September	3,646	3,078	11,390	10,948	75	174	180
April - June	3,668	3,115	11,407	10,700	86	191	175
January - March	3,362	2,871	10,202	9,824	78	164	178
<b>2005</b>							
October - December	3,463	2,846	10,315	9,866	79	163	182
July - September	3,643	3,093	10,951	10,745	76	181	174
April - June	3,672	3,138	10,984	10,455	87	199	170
January - March	3,367	2,890	9,860	9,761	78	169	173
<b>2004</b>							
October - December	3,297	2,818	9,784	10,022	92	166	189
July - September	3,695	3,069	10,717	10,393	83	171	190
April - June	3,435	3,044	10,461	10,334	103	163	182
January - March	3,384	3,052	9,817	9,740	87	198	186
<b>2003</b>							
October - December	3,440	2,877	9,719	9,737	85	160	175
July - September	3,722	3,148	10,638	10,394	99	176	182
April - June	3,489	3,113	10,312	10,552	81	182	202
January - March	3,289	2,900	9,618	9,813	70	183	199
<b>2002</b>							
October - December	3,329	2,741	9,305	9,699	82	142	166
July - September	3,658	3,040	10,215	10,470	89	151	195
April - June	3,472	2,991	9,927	10,291	76	177	196
January - March	3,429	2,989	9,244	9,605	92	165	169
<b>2001</b>							
October - December	3,243	2,904	8,815	9,592	90	147	187
July - September	3,602	3,112	9,616	10,444	86	162	170

1. The numbers of births are final up to December 2005, updated from January 2006 to March 2007 and preliminary from April 2007.

**Table 4-2**  
**Quarterly estimates of demographic components, national perspective — Deaths <sup>1</sup>**

	Canada	Newfoundland and Labrador	Prince Edward Island	Nova Scotia	New Brunswick	Quebec	Ontario
	number						
<b>2008</b>							
January - March	65,948	1,278	381	2,437	1,917	15,300	25,344
<b>2007</b>							
October - December	61,944	1,137	325	2,251	1,630	14,350	23,810
July - September	56,711	1,139	272	1,985	1,537	12,950	21,412
April - June	58,336	1,085	315	2,113	1,622	13,850	21,838
January - March	64,306	1,242	378	2,388	1,873	15,450	24,330
<b>2006</b>							
October - December	60,092	1,107	320	2,204	1,592	13,800	22,924
July - September	55,197	1,115	269	1,949	1,502	12,850	20,645
April - June	56,775	1,062	309	2,073	1,587	13,400	21,232
January - March	61,351	1,214	372	2,343	1,834	13,700	23,643
<b>2005</b>							
October - December	58,656	1,085	315	2,162	1,561	13,600	22,272
July - September	53,905	1,092	264	1,913	1,471	12,650	20,034
April - June	55,875	1,040	304	2,033	1,555	13,650	20,584
January - March	62,804	1,187	365	2,300	1,795	16,200	22,905
<b>2004</b>							
October - December	57,912	1,060	308	2,120	1,529	13,891	21,582
July - September	52,781	1,070	259	1,876	1,440	12,300	19,424
April - June	54,839	1,018	298	1,992	1,522	13,662	19,954
January - March	61,052	1,160	358	2,253	1,756	15,774	22,192
<b>2003</b>							
October - December	59,527	1,068	288	2,088	1,629	14,034	22,336
July - September	53,411	1,008	281	1,936	1,466	12,941	19,673
April - June	54,841	1,059	294	1,943	1,560	13,640	20,163
January - March	58,390	1,146	320	2,097	1,602	14,312	22,037
<b>2002</b>							
October - December	57,233	1,089	309	1,997	1,588	13,640	21,594
July - September	53,441	982	294	1,907	1,431	13,304	19,616
April - June	54,130	1,048	301	2,066	1,507	13,326	19,684
January - March	58,799	1,064	332	2,027	1,570	15,265	21,346
<b>2001</b>							
October - December	55,406	1,069	280	1,983	1,583	13,392	20,594
July - September	52,159	945	292	1,846	1,405	12,752	19,369

See footnotes at the end of the table.

Table 4-2 – continued

 Quarterly estimates of demographic components, national perspective — Deaths <sup>1</sup>

	Manitoba	Saskat- chewan	Alberta	British Columbia	Yukon Territory	Northwest Territories	Nunavut
	number						
<b>2008</b>							
January - March	2,626	2,481	5,509	8,531	52	55	37
<b>2007</b>							
October - December	2,654	2,286	5,468	7,921	42	38	32
July - September	2,556	2,223	5,037	7,490	38	41	31
April - June	2,567	2,241	5,049	7,532	53	38	33
January - March	2,578	2,426	5,371	8,132	51	51	36
<b>2006</b>							
October - December	2,609	2,234	5,309	7,885	40	36	32
July - September	2,518	2,178	4,852	7,212	38	38	31
April - June	2,526	2,202	4,853	7,410	52	37	32
January - March	2,541	2,396	5,152	8,021	50	50	35
<b>2005</b>							
October - December	2,576	2,216	5,086	7,678	39	35	31
July - September	2,487	2,161	4,666	7,065	36	37	29
April - June	2,493	2,186	4,658	7,256	49	36	31
January - March	2,507	2,377	4,949	8,088	48	49	34
<b>2004</b>							
October - December	2,539	2,198	4,897	7,687	37	34	30
July - September	2,450	2,139	4,500	7,223	35	36	29
April - June	2,450	2,159	4,497	7,174	48	35	30
January - March	2,464	2,348	4,781	7,840	46	48	32
<b>2003</b>							
October - December	2,654	2,461	4,952	7,877	36	61	43
July - September	2,326	2,162	4,545	6,972	28	44	29
April - June	2,452	2,151	4,527	6,925	36	52	39
January - March	2,435	2,233	4,561	7,546	33	45	23
<b>2002</b>							
October - December	2,581	2,352	4,608	7,369	33	39	34
July - September	2,384	2,144	4,402	6,854	43	47	33
April - June	2,385	2,169	4,545	6,989	35	42	33
January - March	2,499	2,241	4,679	7,672	36	41	27
<b>2001</b>							
October - December	2,500	2,157	4,484	7,243	45	37	39
July - September	2,336	2,083	4,229	6,793	34	44	31

1. The numbers of deaths are final up to December 2004, updated from January 2005 to March 2007 and preliminary from April 2007.



**Table 4-3**  
**Quarterly estimates of demographic components, national perspective — Immigrants <sup>1</sup>**

	Canada	Newfoundland and Labrador	Prince Edward Island	Nova Scotia	New Brunswick	Quebec	Ontario
	number						
<b>2008</b>							
January - March	53,138	136	334	601	463	9,603	23,497
<b>2007</b>							
October - December	55,593	174	205	571	394	10,399	26,267
July - September	71,641	143	419	764	487	13,900	33,310
April - June	61,647	115	214	646	388	11,565	29,511
January - March	47,877	109	148	542	375	9,360	22,348
<b>2006</b>							
October - December	58,245	155	170	631	397	10,216	29,446
July - September	70,358	127	200	896	470	13,941	34,192
April - June	67,908	115	135	554	457	11,420	34,912
January - March	55,134	112	60	504	322	9,104	27,367
<b>2005</b>							
October - December	55,385	116	59	459	240	8,426	30,239
July - September	75,945	108	98	680	367	13,049	40,541
April - June	74,471	125	101	462	306	12,496	40,486
January - March	56,438	147	72	328	178	9,343	29,269
<b>2004</b>							
October - December	48,092	93	86	372	182	9,159	25,301
July - September	65,578	176	53	546	199	12,418	34,734
April - June	67,242	159	89	459	232	12,326	36,347
January - March	54,912	151	82	393	182	10,341	28,720
<b>2003</b>							
October - December	53,588	78	50	390	182	10,016	28,639
July - September	63,340	148	46	465	164	11,869	34,239
April - June	58,864	65	34	309	164	10,184	31,869
January - March	45,560	68	23	310	155	7,489	24,989
<b>2002</b>							
October - December	41,843	115	25	322	161	7,846	22,532
July - September	52,926	66	7	314	168	9,407	30,437
April - June	72,719	117	44	421	211	10,572	44,525
January - March	61,583	109	31	365	170	9,754	36,136
<b>2001</b>							
October - December	52,132	104	41	331	169	8,715	30,033
July - September	69,900	92	29	498	218	10,038	42,142

See footnotes at the end of the table.

Table 4-3 – continued

 Quarterly estimates of demographic components, national perspective — Immigrants <sup>1</sup>

	Manitoba	Saskat- chewan	Alberta	British Columbia	Yukon Territory	Northwest Territories	Nunavut
	number						
<b>2008</b>							
January - March	2,065	979	5,346	10,058	22	28	6
<b>2007</b>							
October - December	2,298	856	5,086	9,281	23	32	7
July - September	3,100	1,121	6,166	12,172	27	27	5
April - June	3,236	883	5,559	9,497	14	13	6
January - March	2,313	655	4,012	7,977	21	16	1
<b>2006</b>							
October - December	2,188	851	4,832	9,321	12	24	2
July - September	3,052	697	5,713	11,015	8	45	2
April - June	2,647	697	5,445	11,476	29	18	3
January - March	2,160	479	4,727	10,272	14	11	2
<b>2005</b>							
October - December	1,580	411	4,168	9,653	16	16	2
July - September	2,493	521	5,591	12,450	16	28	3
April - June	2,356	643	5,291	12,167	18	20	0
January - March	1,668	532	4,355	10,506	13	20	7
<b>2004</b>							
October - December	1,600	450	3,274	7,542	12	20	1
July - September	2,062	472	4,521	10,362	15	19	1
April - June	2,234	584	4,605	10,156	14	34	3
January - March	1,530	436	4,072	8,965	21	16	3
<b>2003</b>							
October - December	1,733	462	3,861	8,135	15	25	2
July - September	1,920	412	4,573	9,463	8	30	3
April - June	1,803	415	4,296	9,691	11	23	0
January - March	1,047	379	3,105	7,954	21	16	4
<b>2002</b>							
October - December	1,004	397	3,130	6,297	9	5	0
July - September	1,052	367	3,090	7,989	13	15	1
April - June	1,524	452	4,601	10,205	22	20	5
January - March	1,035	451	3,931	9,570	5	20	6
<b>2001</b>							
October - December	1,100	361	3,548	7,698	12	18	2
July - September	1,166	557	4,578	10,512	28	36	6

1. The numbers of immigrants are final up to December 2005, updated from January 2006 to March 2007 and preliminary from April 2007.

**Table 4-4**  
**Quarterly estimates of demographic components, national perspective — Emigrants <sup>1</sup>**

	Canada	Newfoundland and Labrador	Prince Edward Island	Nova Scotia	New Brunswick	Quebec	Ontario
	number						
<b>2008</b>							
January - March	7,259	35	5	145	81	1,174	3,428
<b>2007</b>							
October - December	8,752	43	6	174	98	1,417	4,132
July - September	16,554	81	10	330	186	2,677	7,819
April - June	9,038	44	6	180	101	1,461	4,267
January - March	7,230	35	5	145	81	1,169	3,413
<b>2006</b>							
October - December	8,688	43	6	173	98	1,406	4,101
July - September	16,393	81	10	327	184	2,651	7,742
April - June	8,986	44	6	180	101	1,453	4,243
January - March	7,187	35	5	143	80	1,163	3,394
<b>2005</b>							
October - December	8,621	43	6	172	97	1,393	4,070
July - September	16,231	79	10	324	182	2,626	7,665
April - June	8,928	44	6	177	101	1,444	4,216
January - March	7,150	35	5	142	80	1,157	3,376
<b>2004</b>							
October - December	8,555	42	6	171	96	1,383	4,038
July - September	16,065	79	10	321	181	2,599	7,586
April - June	8,738	31	29	175	71	1,423	3,788
January - March	6,942	24	24	138	57	1,131	3,010
<b>2003</b>							
October - December	7,853	28	26	158	64	1,280	3,403
July - September	14,524	52	49	290	120	2,367	6,296
April - June	7,286	19	5	156	61	1,113	3,297
January - March	5,978	17	4	128	49	913	2,705
<b>2002</b>							
October - December	7,797	22	6	167	65	1,191	3,525
July - September	14,952	41	11	320	125	2,283	6,764
April - June	7,857	35	13	160	109	1,264	3,253
January - March	5,959	26	10	121	83	959	2,466
<b>2001</b>							
October - December	7,525	33	13	154	104	1,211	3,114
July - September	17,587	78	30	358	245	2,831	7,281

See footnotes at the end of the table.

Table 4-4 – continued

Quarterly estimates of demographic components, national perspective — Emigrants <sup>1</sup>

	Manitoba	Saskat- chewan	Alberta	British Columbia	Yukon Territory	Northwest Territories	Nunavut
	number						
<b>2008</b>							
January - March	310	101	893	1,080	2	3	2
<b>2007</b>							
October - December	374	122	1,075	1,302	3	3	3
July - September	707	231	2,035	2,463	5	5	5
April - June	387	127	1,111	1,345	3	3	3
January - March	309	101	889	1,076	2	3	2
<b>2006</b>							
October - December	371	122	1,067	1,292	3	3	3
July - September	700	229	2,015	2,439	5	5	5
April - June	384	125	1,104	1,337	3	3	3
January - March	307	101	883	1,069	2	3	2
<b>2005</b>							
October - December	368	120	1,060	1,283	3	3	3
July - September	694	227	1,995	2,415	5	5	4
April - June	382	124	1,097	1,328	3	3	3
January - March	306	100	878	1,064	2	3	2
<b>2004</b>							
October - December	366	119	1,052	1,273	3	3	3
July - September	687	224	1,974	2,390	5	5	4
April - June	312	116	1,184	1,597	4	4	4
January - March	247	92	940	1,269	3	4	3
<b>2003</b>							
October - December	280	104	1,064	1,436	3	4	3
July - September	518	193	1,966	2,655	5	8	5
April - June	256	115	848	1,408	2	4	2
January - March	211	93	695	1,156	2	3	2
<b>2002</b>							
October - December	275	123	907	1,507	3	3	3
July - September	527	235	1,741	2,890	5	5	5
April - June	251	128	943	1,690	4	4	3
January - March	190	98	715	1,282	3	3	3
<b>2001</b>							
October - December	240	123	904	1,619	3	4	3
July - September	560	287	2,111	3,785	7	9	5

1. The numbers of emigrants are final up to June 2004, updated from July 2004 to March 2007 and preliminary from April 2007.

**Table 4-5**  
**Quarterly estimates of demographic components, national perspective — Returning emigrants <sup>1</sup>**

	Canada	Newfoundland and Labrador	Prince Edward Island	Nova Scotia	New Brunswick	Quebec	Ontario
	number						
<b>2008</b>							
January - March	3,508	10	3	71	38	540	1,486
<b>2007</b>							
October - December	3,691	10	3	74	39	569	1,565
July - September	8,835	24	10	178	94	1,358	3,744
April - June	6,498	18	7	131	70	999	2,753
January - March	3,508	10	3	71	38	540	1,486
<b>2006</b>							
October - December	3,691	10	3	74	39	569	1,565
July - September	8,835	24	10	178	94	1,358	3,744
April - June	6,498	18	7	131	70	999	2,753
January - March	3,508	10	3	71	38	540	1,486
<b>2005</b>							
October - December	3,691	10	3	74	39	569	1,565
July - September	8,835	24	10	178	94	1,358	3,744
April - June	6,498	18	7	131	70	999	2,753
January - March	3,508	10	3	71	38	540	1,486
<b>2004</b>							
October - December	3,691	10	3	74	39	569	1,565
July - September	8,835	24	10	178	94	1,358	3,744
April - June	6,269	26	20	127	85	1,033	2,754
January - March	3,610	15	12	73	48	595	1,587
<b>2003</b>							
October - December	3,799	15	12	76	50	627	1,671
July - September	9,024	38	28	183	122	1,487	3,961
April - June	6,048	27	5	117	83	1,028	2,537
January - March	4,191	18	3	82	57	712	1,759
<b>2002</b>							
October - December	3,237	13	3	63	44	550	1,358
July - September	7,864	35	7	153	109	1,336	3,298
April - June	5,382	26	18	81	95	859	2,352
January - March	2,627	13	7	40	46	420	1,150
<b>2001</b>							
October - December	3,285	16	10	49	58	524	1,437
July - September	6,785	33	23	102	120	1,082	2,964

See footnotes at the end of the table.

Table 4-5 – continued

 Quarterly estimates of demographic components, national perspective — Returning emigrants <sup>1</sup>

	Manitoba	Saskat- chewan	Alberta	British Columbia	Yukon Territory	Northwest Territories	Nunavut
	number						
<b>2008</b>							
January - March	126	50	568	616	0	0	0
<b>2007</b>							
October - December	133	53	597	648	0	0	0
July - September	318	126	1,428	1,552	3	0	0
April - June	234	93	1,050	1,141	2	0	0
January - March	126	50	568	616	0	0	0
<b>2006</b>							
October - December	133	53	597	648	0	0	0
July - September	318	126	1,428	1,552	3	0	0
April - June	234	93	1,050	1,141	2	0	0
January - March	126	50	568	616	0	0	0
<b>2005</b>							
October - December	133	53	597	648	0	0	0
July - September	318	126	1,428	1,552	3	0	0
April - June	234	93	1,050	1,141	2	0	0
January - March	126	50	568	616	0	0	0
<b>2004</b>							
October - December	133	53	597	648	0	0	0
July - September	318	126	1,428	1,552	3	0	0
April - June	232	115	918	954	3	1	1
January - March	134	67	530	549	0	0	0
<b>2003</b>							
October - December	140	71	558	579	0	0	0
July - September	334	167	1,322	1,372	5	3	2
April - June	320	79	880	971	1	0	0
January - March	222	55	610	673	0	0	0
<b>2002</b>							
October - December	172	43	472	519	0	0	0
July - September	417	102	1,143	1,262	2	0	0
April - June	254	74	824	794	4	1	0
January - March	123	36	403	388	1	0	0
<b>2001</b>							
October - December	155	45	503	486	2	0	0
July - September	320	93	1,038	1,002	5	3	0

1. The numbers of returning emigrants are final up to June 2004, updated from July 2004 to March 2007 and preliminary from April 2007.

**Table 4-6**  
**Quarterly estimates of demographic components, national perspective — Net temporary emigrants <sup>1</sup>**

	Canada	Newfoundland and Labrador	Prince Edward Island	Nova Scotia	New Brunswick	Quebec	Ontario
	number						
<b>2008</b>							
January - March	5,431	23	7	80	48	865	2,257
<b>2007</b>							
October - December	5,884	25	8	86	52	937	2,445
July - September	8,264	34	11	121	73	1,316	3,435
April - June	5,988	25	7	88	52	954	2,489
January - March	5,431	23	7	80	48	865	2,257
<b>2006</b>							
October - December	5,884	25	8	86	52	937	2,445
July - September	8,264	34	11	121	73	1,316	3,435
April - June	5,994	25	7	88	52	955	2,492
January - March	5,437	23	7	80	48	867	2,259
<b>2005</b>							
October - December	5,884	25	8	86	52	937	2,445
July - September	8,253	34	11	121	72	1,315	3,431
April - June	5,998	25	7	88	52	955	2,494
January - March	5,444	23	7	80	48	867	2,262
<b>2004</b>							
October - December	5,886	25	8	86	52	937	2,445
July - September	8,242	34	11	121	72	1,313	3,425
April - June	6,128	26	7	89	53	977	2,548
January - March	5,525	23	7	80	48	881	2,298
<b>2003</b>							
October - December	5,835	24	8	86	51	929	2,424
July - September	8,076	33	11	119	70	1,287	3,357
April - June	5,779	24	7	85	50	922	2,403
January - March	5,315	22	7	78	47	847	2,210
<b>2002</b>							
October - December	5,965	25	8	88	52	950	2,479
July - September	8,502	35	11	124	73	1,355	3,534
April - June	5,774	24	7	85	50	920	2,400
January - March	5,148	22	7	75	44	821	2,141
<b>2001</b>							
October - December	5,670	24	7	83	50	903	2,356
July - September	8,968	37	12	131	79	1,429	3,728

See footnotes at the end of the table.

Table 4-6 – continued

 Quarterly estimates of demographic components, national perspective — Net temporary emigrants <sup>1</sup>

	Manitoba	Saskat- chewan	Alberta	British Columbia	Yukon Territory	Northwest Territories	Nunavut
	number						
<b>2008</b>							
January - March	119	110	623	1,289	5	3	2
<b>2007</b>							
October - December	129	119	674	1,396	6	4	3
July - September	181	166	949	1,961	8	6	3
April - June	131	120	687	1,422	6	4	3
January - March	119	110	623	1,289	5	3	2
<b>2006</b>							
October - December	129	119	674	1,396	6	4	3
July - September	181	166	949	1,961	8	6	3
April - June	131	120	687	1,424	6	4	3
January - March	119	110	624	1,290	5	3	2
<b>2005</b>							
October - December	129	119	674	1,396	6	4	3
July - September	181	166	946	1,959	8	6	3
April - June	131	120	689	1,424	6	4	3
January - March	120	110	625	1,292	5	3	2
<b>2004</b>							
October - December	129	119	675	1,397	6	4	3
July - September	181	166	946	1,956	8	6	3
April - June	135	122	703	1,455	6	4	3
January - March	121	111	633	1,312	5	4	2
<b>2003</b>							
October - December	128	117	670	1,385	6	4	3
July - September	177	162	926	1,917	8	6	3
April - June	126	116	663	1,372	5	4	2
January - March	116	106	610	1,262	5	3	2
<b>2002</b>							
October - December	131	120	684	1,415	6	4	3
July - September	187	171	976	2,019	8	6	3
April - June	127	116	663	1,371	5	4	2
January - March	112	103	592	1,223	4	3	1
<b>2001</b>							
October - December	125	114	650	1,346	5	4	3
July - September	197	179	1,030	2,129	8	6	3

1. The numbers of net temporary emigrants are final up to June 2004, updated from July 2004 to March 2007 and preliminary from April 2007.



**Table 4-7**  
**Quarterly estimates of demographic components, national perspective — Net non-permanent residents <sup>1</sup>**

	Canada	Newfoundland and Labrador	Prince Edward Island	Nova Scotia	New Brunswick	Quebec	Ontario
	number						
<b>2008</b>							
January - March	16,256	130	28	100	107	2,172	6,757
<b>2007</b>							
October - December	-16,918	-62	-17	-156	-100	-2,085	-15,206
July - September	22,069	104	106	379	193	2,017	9,793
April - June	19,196	68	21	-45	48	3,781	6,781
January - March	13,556	1	46	-12	157	1,217	3,884
<b>2006</b>							
October - December	-28,888	-25	-52	-159	-101	-5,537	-22,114
July - September	14,020	42	90	17	276	892	6,878
April - June	14,199	118	47	292	-111	3,619	6,884
January - March	8,608	29	27	30	35	1,122	4,075
<b>2005</b>							
October - December	-23,259	-283	-13	-246	-42	-2,956	-19,450
July - September	12,878	79	19	543	181	748	6,486
April - June	7,620	219	19	-40	-121	1,144	4,331
January - March	3,259	86	-10	-30	120	-682	1,777
<b>2004</b>							
October - December	-20,053	-134	0	-433	17	-3,649	-16,531
July - September	15,311	-102	46	352	358	1,592	8,955
April - June	10,924	192	-11	354	-67	2,402	7,199
January - March	6,779	-113	15	89	45	240	4,715
<b>2003</b>							
October - December	-20,028	12	-48	-201	15	-4,517	-15,936
July - September	14,351	78	81	502	355	1,019	9,173
April - June	15,897	71	1	327	48	1,931	10,543
January - March	13,236	-1	1	-54	12	2,124	8,922
<b>2002</b>							
October - December	-19,214	-160	-19	-427	-52	-3,665	-13,502
July - September	27,994	230	38	435	388	4,029	16,207
April - June	12,685	144	0	358	-44	1,410	9,434
January - March	9,746	44	-4	400	170	907	4,933
<b>2001</b>							
October - December	-19,159	-26	-38	89	-79	-3,341	-14,976
July - September	30,478	-88	30	678	379	4,636	17,699

See footnotes at the end of the table.

Table 4-7 – continued

 Quarterly estimates of demographic components, national perspective — Net non-permanent residents <sup>1</sup>

	Manitoba	Saskat- chewan	Alberta	British Columbia	Yukon Territory	Northwest Territories	Nunavut
	number						
<b>2008</b>							
January - March	90	335	4,005	2,484	71	-6	-17
<b>2007</b>							
October - December	84	-119	2,468	-1,567	-31	-73	-54
July - September	122	325	4,750	4,266	-1	-30	45
April - June	692	305	5,389	2,020	53	74	9
January - March	250	157	3,587	4,265	-1	-5	10
<b>2006</b>							
October - December	-70	-235	996	-1,496	-41	-46	-8
July - September	0	-30	2,419	3,474	-14	-23	-1
April - June	460	42	2,159	597	49	36	7
January - March	130	88	1,383	1,647	27	13	2
<b>2005</b>							
October - December	180	-73	208	-569	-16	-9	10
July - September	69	210	1,608	2,938	-11	9	-1
April - June	326	131	927	670	28	-12	-2
January - March	-24	181	444	1,399	-14	14	-2
<b>2004</b>							
October - December	-22	-230	243	746	-34	-26	0
July - September	305	227	1,029	2,623	-53	-4	-17
April - June	348	165	504	-245	63	6	14
January - March	196	102	464	967	23	29	7
<b>2003</b>							
October - December	66	-74	-85	712	-27	61	-6
July - September	188	206	1,100	1,649	-27	20	7
April - June	417	120	474	1,900	39	25	1
January - March	222	24	665	1,287	29	1	4
<b>2002</b>							
October - December	-92	-122	-754	-392	-21	-6	-2
July - September	519	293	1,797	4,032	43	-22	5
April - June	231	74	581	451	55	-5	-4
January - March	218	140	390	2,509	7	20	12
<b>2001</b>							
October - December	-126	-55	-749	206	-45	-21	2
July - September	419	146	1,653	4,911	-22	41	-4

1. The numbers of net non-permanent residents are final up to June 2004, updated from July 2004 to March 2007 and preliminary from April 2007.

**Table 4-8**  
**Quarterly estimates of demographic components, national perspective — Interprovincial in-migrants <sup>1</sup>**

	Canada	Newfoundland and Labrador	Prince Edward Island	Nova Scotia	New Brunswick	Quebec	Ontario
	number						
<b>2008</b>							
January - March	78,974	3,129	910	4,567	3,299	4,993	15,921
<b>2007</b>							
October - December	68,381	2,715	659	3,722	3,142	4,474	13,603
July - September	121,904	4,162	1,120	6,382	5,372	9,301	25,900
April - June	101,875	3,327	1,080	4,930	4,377	6,821	19,566
January - March	78,603	2,237	836	3,519	3,144	4,336	14,796
<b>2006</b>							
October - December	81,549	2,289	572	4,123	2,726	5,378	13,808
July - September	133,080	3,962	1,087	7,026	4,475	9,728	23,224
April - June	77,592	2,327	708	4,214	2,463	5,194	16,270
January - March	66,295	1,974	692	3,124	2,278	3,848	12,127
<b>2005</b>							
October - December	53,058	1,488	274	2,544	1,593	3,663	9,101
July - September	88,923	2,506	786	5,181	3,852	7,259	18,250
April - June	89,302	2,457	994	4,071	3,192	6,999	19,339
January - March	60,889	1,800	603	3,105	2,147	4,077	12,108
<b>2004</b>							
October - December	53,428	1,748	314	2,479	1,943	4,875	10,422
July - September	81,925	2,208	626	5,385	3,322	6,782	17,623
April - June	78,127	2,365	771	4,573	3,148	7,070	17,504
January - March	56,247	1,908	543	2,839	2,529	4,488	12,448
<b>2003</b>							
October - December	44,713	1,574	505	2,532	1,593	3,874	9,246
July - September	82,293	2,550	751	5,143	3,420	8,295	17,988
April - June	68,827	2,310	683	4,172	2,813	6,081	16,066
January - March	59,732	1,995	587	3,627	2,436	5,276	13,959
<b>2002</b>							
October - December	51,553	1,726	498	3,127	2,105	4,560	12,054
July - September	94,787	3,167	918	5,760	3,879	8,355	22,157
April - June	72,566	2,357	705	4,118	3,183	5,717	17,783
January - March	62,967	2,056	602	3,553	2,716	4,563	16,018
<b>2001</b>							
October - December	54,510	1,619	441	3,093	1,955	4,827	12,065
July - September	100,447	2,752	891	5,567	3,856	9,381	24,217

See footnotes at the end of the table.

Table 4-8 – continued

 Quarterly estimates of demographic components, national perspective — Interprovincial in-migrants <sup>1</sup>

	Manitoba	Saskat- chewan	Alberta	British Columbia	Yukon Territory	Northwest Territories	Nunavut
	number						
<b>2008</b>							
January - March	4,062	6,402	20,788	13,513	472	598	320
<b>2007</b>							
October - December	3,449	5,830	17,577	12,073	406	585	146
July - September	6,081	10,403	29,374	22,203	535	745	326
April - June	4,110	7,762	30,105	18,000	455	837	505
January - March	3,935	5,639	25,389	13,516	325	607	324
<b>2006</b>							
October - December	3,705	5,453	28,596	13,951	261	452	235
July - September	5,575	7,049	47,351	21,867	556	912	268
April - June	3,150	3,894	22,816	15,217	327	621	391
January - March	2,788	2,995	23,159	12,297	238	515	260
<b>2005</b>							
October - December	1,794	2,259	20,832	8,956	228	201	125
July - September	3,712	4,587	25,027	16,626	474	559	104
April - June	3,049	3,911	26,321	17,246	517	770	436
January - March	2,742	2,987	19,030	11,261	250	550	229
<b>2004</b>							
October - December	2,309	2,412	15,371	10,805	248	418	84
July - September	4,080	4,121	21,696	14,968	411	574	129
April - June	3,987	4,407	17,684	15,207	363	664	384
January - March	3,251	3,313	13,869	9,982	293	607	177
<b>2003</b>							
October - December	2,220	2,398	10,715	9,307	208	425	116
July - September	3,843	4,433	18,554	15,910	495	767	144
April - June	3,429	3,804	16,180	12,037	345	678	229
January - March	2,976	3,294	14,036	10,461	308	569	208
<b>2002</b>							
October - December	2,580	2,841	12,121	9,011	275	491	164
July - September	4,722	5,233	22,290	16,569	471	924	342
April - June	3,312	3,715	18,584	11,579	368	640	505
January - March	3,293	3,100	16,033	9,822	361	669	181
<b>2001</b>							
October - December	2,659	2,876	15,261	8,811	311	389	203
July - September	4,696	4,907	25,737	16,947	308	971	217

1. The numbers of interprovincial in-migrants are final up to June 2006 and preliminary from July 2006.

**Table 4-9**  
**Quarterly estimates of demographic components, national perspective — Interprovincial out-migrants <sup>1</sup>**

	Canada	Newfoundland and Labrador	Prince Edward Island	Nova Scotia	New Brunswick	Quebec	Ontario
	number						
<b>2008</b>							
January - March	78,974	2,923	910	4,174	3,193	6,801	18,995
<b>2007</b>							
October - December	68,381	2,060	834	3,264	2,921	6,584	16,827
July - September	121,904	3,078	1,242	6,569	5,055	12,847	29,033
April - June	101,875	3,910	1,063	4,863	3,851	12,577	26,242
January - March	78,603	4,087	793	4,403	3,108	7,368	19,525
<b>2006</b>							
October - December	81,549	2,755	646	4,671	2,827	8,236	23,879
July - September	133,080	4,849	1,339	8,062	6,080	13,650	37,944
April - June	77,592	3,289	840	4,680	3,547	9,200	19,743
January - March	66,295	3,623	825	4,134	3,062	5,977	16,181
<b>2005</b>							
October - December	53,058	2,484	529	3,357	2,267	5,528	14,365
July - September	88,923	3,241	905	5,916	4,797	8,670	22,960
April - June	89,302	3,715	890	4,939	3,992	9,844	21,716
January - March	60,889	3,308	570	4,368	2,436	4,790	14,257
<b>2004</b>							
October - December	53,428	1,797	397	3,116	2,219	5,399	14,432
July - September	81,925	3,103	819	5,658	4,031	7,663	20,259
April - June	78,127	3,285	845	4,638	3,206	8,671	18,178
January - March	56,247	2,695	452	3,458	2,353	4,779	13,350
<b>2003</b>							
October - December	44,713	1,826	409	2,441	1,872	3,778	11,274
July - September	82,293	2,618	720	5,322	4,019	7,321	21,319
April - June	68,827	2,718	630	4,055	3,025	6,530	15,917
January - March	59,732	2,370	543	3,514	2,623	5,679	13,823
<b>2002</b>							
October - December	51,553	2,035	478	3,032	2,272	4,891	11,927
July - September	94,787	3,758	870	5,575	4,156	9,001	21,932
April - June	72,566	3,056	695	4,074	2,806	8,116	16,197
January - March	62,967	3,644	615	4,133	2,813	5,415	12,891
<b>2001</b>							
October - December	54,510	1,889	470	3,062	2,433	4,736	12,493
July - September	100,447	3,547	797	5,960	4,876	10,571	23,148

See footnotes at the end of the table.

Table 4-9 – continued

 Quarterly estimates of demographic components, national perspective — Interprovincial out-migrants <sup>1</sup>

	Manitoba	Saskat- chewan	Alberta	British Columbia	Yukon Territory	Northwest Territories	Nunavut
	number						
<b>2008</b>							
January - March	3,995	4,552	20,075	11,803	298	808	447
<b>2007</b>							
October - December	3,161	3,675	18,457	9,574	291	492	241
July - September	6,146	6,079	32,690	17,114	460	1,082	509
April - June	5,495	5,055	22,668	14,705	376	743	327
January - March	4,163	4,651	18,005	11,014	523	735	228
<b>2006</b>							
October - December	4,764	4,367	16,783	11,227	397	699	298
July - September	8,755	7,831	22,816	19,742	671	977	364
April - June	5,044	4,738	13,308	11,730	354	729	390
January - March	4,313	5,311	10,849	10,412	339	904	365
<b>2005</b>							
October - December	3,532	4,268	7,005	8,688	328	566	141
July - September	6,436	6,501	14,877	13,466	319	651	184
April - June	6,316	7,267	14,265	14,367	520	1,044	427
January - March	4,311	5,445	10,095	10,134	213	715	247
<b>2004</b>							
October - December	3,425	4,492	8,642	8,667	190	518	134
July - September	5,355	5,742	14,993	12,898	450	703	251
April - June	4,753	5,905	14,966	12,158	487	748	287
January - March	3,247	4,141	10,671	9,688	344	776	293
<b>2003</b>							
October - December	2,583	3,244	9,030	7,624	190	331	111
July - September	5,283	5,782	15,549	13,071	311	713	265
April - June	4,160	5,084	13,199	12,292	315	605	297
January - March	3,604	4,409	11,453	10,673	267	532	242
<b>2002</b>							
October - December	3,104	3,807	9,887	9,191	236	465	228
July - September	5,714	7,013	18,185	16,959	432	818	374
April - June	3,979	5,923	12,832	13,761	436	533	158
January - March	3,843	5,577	10,241	12,286	486	695	328
<b>2001</b>							
October - December	3,731	4,444	9,502	10,771	194	525	260
July - September	6,751	7,474	16,805	18,897	453	832	336

1. The numbers of interprovincial out-migrants are final up to June 2006 and preliminary from July 2006.

**Table 4-10**  
**Quarterly estimates of demographic components, national perspective — Total growth <sup>1</sup>**

	Canada	Newfoundland and Labrador	Prince Edward Island	Nova Scotia	New Brunswick	Quebec	Ontario
	number						
<b>2008</b>							
January - March	80,230	171	318	389	277	13,918	29,847
<b>2007</b>							
October - December	52,382	624	-14	467	399	10,619	11,304
July - September	115,202	1,200	476	959	1,069	19,186	46,775
April - June	105,300	-452	268	587	936	15,824	38,130
January - March	72,042	-1,986	195	-1,002	224	10,351	25,010
<b>2006</b>							
October - December	43,436	-427	22	-423	129	6,397	1,505
July - September	105,766	-800	115	-65	-732	17,202	33,888
April - June	106,423	-730	71	370	-703	16,774	47,437
January - March	76,424	-1,698	-83	-1,050	-704	12,407	31,564
<b>2005</b>							
October - December	44,920	-1,201	-227	-876	-481	6,333	10,415
July - September	109,638	-575	78	616	-206	17,485	50,466
April - June	106,141	-864	249	-382	-520	15,724	52,128
January - March	68,997	-1,409	63	-1,468	-205	8,210	33,724
<b>2004</b>							
October - December	41,112	-83	12	-880	-73	7,162	10,594
July - September	100,628	-803	2	760	77	17,954	48,711
April - June	100,492	-531	53	807	311	16,923	53,148
January - March	73,365	-841	144	-385	314	10,849	38,682
<b>2003</b>							
October - December	45,705	-90	116	67	-52	7,933	16,325
July - September	99,560	337	224	958	245	18,589	49,574
April - June	98,389	-194	173	912	208	15,942	52,306
January - March	72,603	-410	64	197	77	11,043	39,712
<b>2002</b>							
October - December	33,991	-350	21	-167	-39	5,882	14,156
July - September	98,507	-67	133	1,064	649	16,078	54,341
April - June	106,744	-341	99	787	709	13,548	65,077
January - March	83,395	-1,439	-12	111	332	10,888	50,081
<b>2001</b>							
October - December	46,625	-226	-25	364	-430	7,917	21,470
July - September	114,572	-531	200	856	-174	16,402	67,770

See footnotes at the end of the table.

Table 4-10 – continued

 Quarterly estimates of demographic components, national perspective — Total growth <sup>1</sup>

	Manitoba	Saskat- chewan	Alberta	British Columbia	Yukon Territory	Northwest Territories	Nunavut
	number						
<b>2008</b>							
January - March	2,725	3,502	14,487	14,383	283	-80	10
<b>2007</b>							
October - December	3,166	3,345	11,114	11,042	132	169	15
July - September	3,721	6,430	12,783	22,675	126	-212	14
April - June	3,374	4,631	24,457	16,717	169	323	336
January - March	2,826	2,086	19,306	14,956	-160	-14	250
<b>2006</b>							
October - December	1,550	2,116	21,952	10,826	-137	-155	81
July - September	437	516	37,669	17,502	-94	82	46
April - June	2,074	656	22,925	17,230	78	93	148
January - March	1,286	-1,435	22,531	13,864	-39	-257	38
<b>2005</b>							
October - December	545	-1,227	22,295	9,509	-69	-237	141
July - September	437	-518	22,121	19,406	190	78	60
April - June	315	-1,781	23,864	17,304	74	-110	140
January - March	635	-1,392	17,710	12,965	59	-17	122
<b>2004</b>							
October - December	858	-1,425	14,003	10,739	82	19	104
July - September	1,787	-256	16,978	15,431	-39	10	16
April - June	2,586	13	12,822	14,022	1	77	260
January - March	2,416	278	11,727	10,094	26	18	43
<b>2003</b>							
October - December	1,954	-192	9,052	10,148	46	271	127
July - September	1,703	67	13,201	14,173	228	225	36
April - June	2,464	65	12,905	13,154	119	243	92
January - March	1,390	-189	10,715	9,551	121	186	146
<b>2002</b>							
October - December	902	-502	8,188	5,652	67	121	60
July - September	1,556	-528	13,231	11,600	130	192	128
April - June	2,051	-1,030	15,534	9,509	45	250	506
January - March	1,454	-1,303	13,774	9,431	-63	132	9
<b>2001</b>							
October - December	435	-707	11,838	5,814	123	-37	89
July - September	359	-1,208	18,447	12,212	-97	322	14

1. Numbers for total growth are final up to June 2004, updated from July 2004 to March 2007 and preliminary from April 2007.



**Table 4-11**  
**Quarterly estimates of demographic components, national perspective — Natural increase <sup>1</sup>**

	Canada	Newfoundland and Labrador	Prince Edward Island	Nova Scotia	New Brunswick	Quebec	Ontario
	number						
<b>2008</b>							
January - March	20,018	-253	-35	-551	-308	5,450	6,866
<b>2007</b>							
October - December	24,652	-85	-16	-220	-5	6,200	8,479
July - September	37,475	-40	84	276	237	9,450	14,315
April - June	32,985	-1	22	56	57	7,650	12,517
January - March	19,762	-198	-33	-494	-253	4,300	7,691
<b>2006</b>							
October - December	24,960	-33	-11	-162	45	6,350	9,225
July - September	37,210	9	88	328	290	8,900	14,971
April - June	32,798	50	27	127	118	7,150	13,096
January - March	21,798	-142	-28	-422	-187	5,800	8,343
<b>2005</b>							
October - December	23,608	20	-7	-92	105	4,489	9,840
July - September	36,464	62	91	395	351	7,682	15,501
April - June	32,478	101	31	198	178	6,329	13,645
January - March	18,386	-86	-23	-352	-124	1,746	8,979
<b>2004</b>							
October - December	23,823	64	20	1	113	3,927	10,752
July - September	35,211	107	107	399	388	7,379	14,925
April - June	30,923	69	65	196	243	5,163	13,858
January - March	20,531	-60	-25	-103	-32	1,976	9,870
<b>2003</b>							
October - December	22,034	109	40	-45	95	3,920	9,806
July - September	35,445	226	98	396	393	6,894	15,185
April - June	30,645	94	92	283	236	5,283	12,908
January - March	20,909	-81	4	-48	136	2,881	8,821
<b>2002</b>							
October - December	21,887	38	6	35	92	3,623	9,645
July - September	33,177	269	55	421	459	5,590	14,472
April - June	29,589	130	47	128	229	5,290	12,833
January - March	20,546	31	-16	82	170	2,439	9,342
<b>2001</b>							
October - December	23,562	7	11	101	54	4,042	10,874
July - September	33,964	342	66	460	453	6,096	14,905

See footnotes at the end of the table.

Table 4-11 – continued

 Quarterly estimates of demographic components, national perspective — Natural increase <sup>1</sup>

	Manitoba	Saskat- chewan	Alberta	British Columbia	Yukon Territory	Northwest Territories	Nunavut
	number						
<b>2008</b>							
January - March	806	499	5,371	1,884	23	114	152
<b>2007</b>							
October - December	866	641	5,592	2,879	34	124	163
July - September	1,134	931	6,739	4,020	35	139	155
April - June	1,115	890	6,820	3,531	30	149	149
January - March	793	447	5,267	1,961	25	109	147
<b>2006</b>							
October - December	858	602	5,455	2,317	37	121	156
July - September	1,128	900	6,538	3,736	37	136	149
April - June	1,142	913	6,554	3,290	34	154	143
January - March	821	475	5,050	1,803	28	114	143
<b>2005</b>							
October - December	887	630	5,229	2,188	40	128	151
July - September	1,156	932	6,285	3,680	40	144	145
April - June	1,179	952	6,326	3,199	38	163	139
January - March	860	513	4,911	1,673	30	120	139
<b>2004</b>							
October - December	758	620	4,887	2,335	55	132	159
July - September	1,245	930	6,217	3,170	48	135	161
April - June	985	885	5,964	3,160	55	128	152
January - March	920	704	5,036	1,900	41	150	154
<b>2003</b>							
October - December	786	416	4,767	1,860	49	99	132
July - September	1,396	986	6,093	3,422	71	132	153
April - June	1,037	962	5,785	3,627	45	130	163
January - March	854	667	5,057	2,267	37	138	176
<b>2002</b>							
October - December	748	389	4,697	2,330	49	103	132
July - September	1,274	896	5,813	3,616	46	104	162
April - June	1,087	822	5,382	3,302	41	135	163
January - March	930	748	4,565	1,933	56	124	142
<b>2001</b>							
October - December	743	747	4,331	2,349	45	110	148
July - September	1,266	1,029	5,387	3,651	52	118	139

1. Natural increase is final up to December 2004, updated from January 2005 to March 2007 and preliminary from April 2007.

**Table 4-12**  
**Quarterly estimates of demographic components, national perspective — Net interprovincial migration <sup>1</sup>**

	Canada	Newfoundland and Labrador	Prince Edward Island	Nova Scotia	New Brunswick	Quebec	Ontario
	number						
<b>2008</b>							
January - March	0	206	0	393	106	-1,808	-3,074
<b>2007</b>							
October - December	0	655	-175	458	221	-2,110	-3,224
July - September	0	1,084	-122	-187	317	-3,546	-3,133
April - June	0	-583	17	67	526	-5,756	-6,676
January - March	0	-1,850	43	-884	36	-3,032	-4,729
<b>2006</b>							
October - December	0	-466	-74	-548	-101	-2,858	-10,071
July - September	0	-887	-252	-1,036	-1,605	-3,922	-14,720
April - June	0	-962	-132	-466	-1,084	-4,006	-3,473
January - March	0	-1,649	-133	-1,010	-784	-2,129	-4,054
<b>2005</b>							
October - December	0	-996	-255	-813	-674	-1,865	-5,264
July - September	0	-735	-119	-735	-945	-1,411	-4,710
April - June	0	-1,258	104	-868	-800	-2,845	-2,377
January - March	0	-1,508	33	-1,263	-289	-713	-2,149
<b>2004</b>							
October - December	0	-49	-83	-637	-276	-524	-4,010
July - September	0	-895	-193	-273	-709	-881	-2,636
April - June	0	-920	-74	-65	-58	-1,601	-674
January - March	0	-787	91	-619	176	-291	-902
<b>2003</b>							
October - December	0	-252	96	91	-279	96	-2,028
July - September	0	-68	31	-179	-599	974	-3,331
April - June	0	-408	53	117	-212	-449	149
January - March	0	-375	44	113	-187	-403	136
<b>2002</b>							
October - December	0	-309	20	95	-167	-331	127
July - September	0	-591	48	185	-277	-646	225
April - June	0	-699	10	44	377	-2,399	1,586
January - March	0	-1,588	-13	-580	-97	-852	3,127
<b>2001</b>							
October - December	0	-270	-29	31	-478	91	-428
July - September	0	-795	94	-393	-1,020	-1,190	1,069

See footnotes at the end of the table.

Table 4-12 – continued

 Quarterly estimates of demographic components, national perspective — Net interprovincial migration <sup>1</sup>

	Manitoba	Saskat- chewan	Alberta	British Columbia	Yukon Territory	Northwest Territories	Nunavut
	number						
<b>2008</b>							
January - March	67	1,850	713	1,710	174	-210	-127
<b>2007</b>							
October - December	288	2,155	-880	2,499	115	93	-95
July - September	-65	4,324	-3,316	5,089	75	-337	-183
April - June	-1,385	2,707	7,437	3,295	79	94	178
January - March	-228	988	7,384	2,502	-198	-128	96
<b>2006</b>							
October - December	-1,059	1,086	11,813	2,724	-136	-247	-63
July - September	-3,180	-782	24,535	2,125	-115	-65	-96
April - June	-1,894	-844	9,508	3,487	-27	-108	1
January - March	-1,525	-2,316	12,310	1,885	-101	-389	-105
<b>2005</b>							
October - December	-1,738	-2,009	13,827	268	-100	-365	-16
July - September	-2,724	-1,914	10,150	3,160	155	-92	-80
April - June	-3,267	-3,356	12,056	2,879	-3	-274	9
January - March	-1,569	-2,458	8,935	1,127	37	-165	-18
<b>2004</b>							
October - December	-1,116	-2,080	6,729	2,138	58	-100	-50
July - September	-1,275	-1,621	6,703	2,070	-39	-129	-122
April - June	-766	-1,498	2,718	3,049	-124	-84	97
January - March	4	-828	3,198	294	-51	-169	-116
<b>2003</b>							
October - December	-363	-846	1,685	1,683	18	94	5
July - September	-1,440	-1,349	3,005	2,839	184	54	-121
April - June	-731	-1,280	2,981	-255	30	73	-68
January - March	-628	-1,115	2,583	-212	41	37	-34
<b>2002</b>							
October - December	-524	-966	2,234	-180	39	26	-64
July - September	-992	-1,780	4,105	-390	39	106	-32
April - June	-667	-2,208	5,752	-2,182	-68	107	347
January - March	-550	-2,477	5,792	-2,464	-125	-26	-147
<b>2001</b>							
October - December	-1,072	-1,568	5,759	-1,960	117	-136	-57
July - September	-2,055	-2,567	8,932	-1,950	-145	139	-119

1. Net interprovincial migration numbers are final up to June 2006 and preliminary from July 2006.

**Table 4-13**  
**Quarterly estimates of demographic components, national perspective — Net international migration <sup>1</sup>**

	Canada	Newfoundland and Labrador	Prince Edward Island	Nova Scotia	New Brunswick	Quebec	Ontario
	number						
<b>2008</b>							
January - March	60,212	218	353	547	479	10,276	26,055
<b>2007</b>							
October - December	27,730	54	177	229	183	6,529	6,049
July - September	77,727	156	514	870	515	13,282	35,593
April - June	72,315	132	229	464	353	13,930	32,289
January - March	52,280	62	185	376	441	9,083	22,048
<b>2006</b>							
October - December	18,476	72	107	287	185	2,905	2,351
July - September	68,556	78	279	643	583	12,224	33,637
April - June	73,625	182	176	709	263	13,630	37,814
January - March	54,626	93	78	382	267	8,736	27,275
<b>2005</b>							
October - December	21,312	-225	35	29	88	3,709	5,839
July - September	73,174	98	106	956	388	11,214	39,675
April - June	73,663	293	114	288	102	12,240	40,860
January - March	50,611	185	53	147	208	7,177	26,894
<b>2004</b>							
October - December	17,289	-98	75	-244	90	3,759	3,852
July - September	65,417	-15	88	634	398	11,456	36,422
April - June	69,569	320	62	676	126	13,361	39,964
January - March	52,834	6	78	337	170	9,164	29,714
<b>2003</b>							
October - December	23,671	53	-20	21	132	3,917	8,547
July - September	64,115	179	95	741	451	10,721	37,720
April - June	67,744	120	28	512	184	11,108	39,249
January - March	51,694	46	16	132	128	8,565	30,755
<b>2002</b>							
October - December	12,104	-79	-5	-297	36	2,590	4,384
July - September	65,330	255	30	458	467	11,134	39,644
April - June	77,155	228	42	615	103	10,657	50,658
January - March	62,849	118	17	609	259	9,301	37,612
<b>2001</b>							
October - December	23,063	37	-7	232	-6	3,784	11,024
July - September	80,608	-78	40	789	393	11,496	51,796

See footnotes at the end of the table.

Table 4-13 – continued

 Quarterly estimates of demographic components, national perspective — Net international migration <sup>1</sup>

	Manitoba	Saskat- chewan	Alberta	British Columbia	Yukon Territory	Northwest Territories	Nunavut
	number						
<b>2008</b>							
January - March	1,852	1,153	8,403	10,789	86	16	-15
<b>2007</b>							
October - December	2,012	549	6,402	5,664	-17	-48	-53
July - September	2,652	1,175	9,360	13,566	16	-14	42
April - June	3,644	1,034	10,200	9,891	60	80	9
January - March	2,261	651	6,655	10,493	13	5	7
<b>2006</b>							
October - December	1,751	428	4,684	5,785	-38	-29	-12
July - September	2,489	398	6,596	11,641	-16	11	-7
April - June	2,826	587	6,863	10,453	71	47	4
January - March	1,990	406	5,171	10,176	34	18	0
<b>2005</b>							
October - December	1,396	152	3,239	7,053	-9	0	6
July - September	2,005	464	5,686	12,566	-5	26	-5
April - June	2,403	623	5,482	11,226	39	1	-8
January - March	1,344	553	3,864	10,165	-8	28	1
<b>2004</b>							
October - December	1,216	35	2,387	6,266	-31	-13	-5
July - September	1,817	435	4,058	10,191	-48	4	-23
April - June	2,367	626	4,140	7,813	70	33	11
January - March	1,492	402	3,493	7,900	36	37	5
<b>2003</b>							
October - December	1,531	238	2,600	6,605	-21	78	-10
July - September	1,747	430	4,103	7,912	-27	39	4
April - June	2,158	383	4,139	9,782	44	40	-3
January - March	1,164	259	3,075	7,496	43	11	4
<b>2002</b>							
October - December	678	75	1,257	3,502	-21	-8	-8
July - September	1,274	356	3,313	8,374	45	-18	-2
April - June	1,631	356	4,400	8,389	72	8	-4
January - March	1,074	426	3,417	9,962	6	34	14
<b>2001</b>							
October - December	764	114	1,748	5,425	-39	-11	-2
July - September	1,148	330	4,128	10,511	-4	65	-6

1. Net international migration numbers are final up to June 2004, updated from July 2004 to March 2007 and preliminary from April 2007.

**Table 4-14**  
**Quarterly estimates of demographic components, national perspective — Total net migration <sup>1</sup>**

	Canada	Newfoundland and Labrador	Prince Edward Island	Nova Scotia	New Brunswick	Quebec	Ontario
	number						
<b>2008</b>							
January - March	60,212	424	353	940	585	8,468	22,981
<b>2007</b>							
October - December	27,730	709	2	687	404	4,419	2,825
July - September	77,727	1,240	392	683	832	9,736	32,460
April - June	72,315	-451	246	531	879	8,174	25,613
January - March	52,280	-1,788	228	-508	477	6,051	17,319
<b>2006</b>							
October - December	18,476	-394	33	-261	84	47	-7,720
July - September	68,556	-809	27	-393	-1,022	8,302	18,917
April - June	73,625	-780	44	243	-821	9,624	34,341
January - March	54,626	-1,556	-55	-628	-517	6,607	23,221
<b>2005</b>							
October - December	21,312	-1,221	-220	-784	-586	1,844	575
July - September	73,174	-637	-13	221	-557	9,803	34,965
April - June	73,663	-965	218	-580	-698	9,395	38,483
January - March	50,611	-1,323	86	-1,116	-81	6,464	24,745
<b>2004</b>							
October - December	17,289	-147	-8	-881	-186	3,235	-158
July - September	65,417	-910	-105	361	-311	10,575	33,786
April - June	69,569	-600	-12	611	68	11,760	39,290
January - March	52,834	-781	169	-282	346	8,873	28,812
<b>2003</b>							
October - December	23,671	-199	76	112	-147	4,013	6,519
July - September	64,115	111	126	562	-148	11,695	34,389
April - June	67,744	-288	81	629	-28	10,659	39,398
January - March	51,694	-329	60	245	-59	8,162	30,891
<b>2002</b>							
October - December	12,104	-388	15	-202	-131	2,259	4,511
July - September	65,330	-336	78	643	190	10,488	39,869
April - June	77,155	-471	52	659	480	8,258	52,244
January - March	62,849	-1,470	4	29	162	8,449	40,739
<b>2001</b>							
October - December	23,063	-233	-36	263	-484	3,875	10,596
July - September	80,608	-873	134	396	-627	10,306	52,865

See footnotes at the end of the table.

Table 4-14 – continued

 Quarterly estimates of demographic components, national perspective — Total net migration <sup>1</sup>

	Manitoba	Saskat- chewan	Alberta	British Columbia	Yukon Territory	Northwest Territories	Nunavut
	number						
<b>2008</b>							
January - March	1,919	3,003	9,116	12,499	260	-194	-142
<b>2007</b>							
October - December	2,300	2,704	5,522	8,163	98	45	-148
July - September	2,587	5,499	6,044	18,655	91	-351	-141
April - June	2,259	3,741	17,637	13,186	139	174	187
January - March	2,033	1,639	14,039	12,995	-185	-123	103
<b>2006</b>							
October - December	692	1,514	16,497	8,509	-174	-276	-75
July - September	-691	-384	31,131	13,766	-131	-54	-103
April - June	932	-257	16,371	13,940	44	-61	5
January - March	465	-1,910	17,481	12,061	-67	-371	-105
<b>2005</b>							
October - December	-342	-1,857	17,066	7,321	-109	-365	-10
July - September	-719	-1,450	15,836	15,726	150	-66	-85
April - June	-864	-2,733	17,538	14,105	36	-273	1
January - March	-225	-1,905	12,799	11,292	29	-137	-17
<b>2004</b>							
October - December	100	-2,045	9,116	8,404	27	-113	-55
July - September	542	-1,186	10,761	12,261	-87	-125	-145
April - June	1,601	-872	6,858	10,862	-54	-51	108
January - March	1,496	-426	6,691	8,194	-15	-132	-111
<b>2003</b>							
October - December	1,168	-608	4,285	8,288	-3	172	-5
July - September	307	-919	7,108	10,751	157	93	-117
April - June	1,427	-897	7,120	9,527	74	113	-71
January - March	536	-856	5,658	7,284	84	48	-30
<b>2002</b>							
October - December	154	-891	3,491	3,322	18	18	-72
July - September	282	-1,424	7,418	7,984	84	88	-34
April - June	964	-1,852	10,152	6,207	4	115	343
January - March	524	-2,051	9,209	7,498	-119	8	-133
<b>2001</b>							
October - December	-308	-1,454	7,507	3,465	78	-147	-59
July - September	-907	-2,237	13,060	8,561	-149	204	-125

1. Total net migration numbers are final up to June 2004, updated from July 2004 to March 2007 and preliminary from April 2007.



**Table 5**  
**Quarterly estimates of interprovincial migrants by province or territory of origin and destination, Canada, January to March 2008 <sup>P</sup>**

Origin	Destination												
	Newfoundland and Labrador	Prince Edward Island	Nova Scotia	New Brunswick	Quebec	Ontario	Manitoba	Saskatchewan	Alberta	British Columbia	Yukon Territory	Northwest Territories	Nunavut
	number												
Newfoundland and Labrador	...	70	419	108	33	746	10	33	1,241	154	0	68	41
Prince Edward Island	90	...	168	125	0	165	8	11	324	19	0	0	0
Nova Scotia	374	151	...	611	125	1,196	82	121	1,088	372	29	18	7
New Brunswick	35	173	659	...	309	904	40	41	839	181	0	5	7
Quebec	33	66	148	370	...	3,521	69	183	1,641	697	21	7	45
Ontario	1,300	197	1,320	895	2,930	...	1,313	838	6,374	3,585	84	102	57
Manitoba	34	8	45	41	135	1,061	...	516	1,426	618	37	64	10
Saskatchewan	32	0	55	31	124	455	529	...	2,506	808	0	12	0
Alberta	1,074	147	1,135	788	679	4,173	1,402	3,558	...	6,871	75	166	7
British Columbia	120	46	510	261	594	3,438	560	997	4,912	...	226	80	59
Yukon Territory	0	0	19	0	8	46	0	15	93	111	...	6	0
Northwest Territories	9	52	63	22	21	136	35	57	242	84	0	...	87
Nunavut	28	0	26	47	35	80	14	32	102	13	0	70	...
In-migrants	3,129	910	4,567	3,299	4,993	15,921	4,062	6,402	20,788	13,513	472	598	320
Out-migrants	2,923	910	4,174	3,193	6,801	18,995	3,995	4,552	20,075	11,803	298	808	447
Net	206	0	393	106	-1,808	-3,074	67	1,850	713	1,710	174	-210	-127
<b>Total number of migrants: 78,974</b>													

<sup>P</sup> Preliminary data.

**Note(s):** Preliminary estimates based on data from the Child Tax Benefit (CTB) Program and  $F_{jk}$  factors calculated using 2003-2004, 2004-2005 and 2005-2006 tax file data from Canada Revenue Agency.

# Methodology

---

This section describes the concepts, data sources and methodology used to produce the population estimates. Population estimates are produced to measure the population counts according to various characteristics and geographies between two censuses. Population estimates are the official figures used for the count of the population at the national, provincial and territorial levels.

## Differences between census counts and population estimates

The population estimates differ from the 2006 Census results published on March 13, 2007, in two respects. First, the estimates are based on 2001 Census counts, adjusted for net census undercoverage (NCU) and updated between censuses using data on births, deaths and migration from administrative sources.

Second, the 2006 Census provides population figures on May 16, 2006, whereas the population estimates present population counts for a later date. Population estimates based on 2006 Census counts adjusted for NCU will be released in the fall of 2008. For further information on this subject, please refer to the *detailed explanation*.

## Total population estimates

### Types of estimates

Population estimates can be either intercensal or postcensal. Intercensal estimates are produced using counts from two consecutive censuses adjusted for net census undercoverage (NCU) and postcensal estimates. The production of intercensal estimates involves updating the postcensal estimates using the counts from a new census adjusted for NCU.

Postcensal estimates are produced using data from the most recent census adjusted for NCU and the components of population growth. In terms of timeliness, postcensal estimates are more up-to-date than data from the most recent census adjusted for NCU, but as they get farther from the date of that census, they become more variable.

### Levels of estimates

Updating population estimates between censuses entails the use of data from administrative files or surveys. The quality of population estimates therefore depends on the availability of a number of administrative data files that are provided to Statistics Canada by Canadian and foreign government departments. Since some components are not available until several months after the reference date, three kinds of postcensal estimates are produced: preliminary postcensal (PP), updated postcensal (PR) and final postcensal (PD). The time lag between the reference date and the release date is three to four months for preliminary estimates and two to three years for final estimates. Though it requires more vigilance on the part of users, the production of three successive series of postcensal estimates is the strategy that best satisfies the need for both timeliness and accuracy of the estimates. All tables indicate the level of the estimates they contain.

### Calculation of postcensal population estimates

Population estimates – preliminary, updated and final – are produced by the component method. This method consists in taking the population figures from the most recent census, adjusted for net census undercoverage (NCU) (census undercoverage minus census overcoverage), and adding or subtracting the number of births, deaths, and components of international and interprovincial migration.

### A. Provincial / territorial estimates of total population

Population estimates are produced for the provinces and territories first; then they are summed to obtain an estimate of the population of Canada.

The component-method formula for estimating total provincial / territorial populations is as follows:

$$P_{(t+i)} = P_{(t)} + B_{(t,t+i)} - D_{(t,t+i)} + I_{(t,t+i)} - [E_{(t,t+i)} + \Delta TE_{(t,t+i)}] + RE_{(t,t+i)} + \Delta NPR_{(t,t+i)} + \Delta N_{(t,t+i)}$$

**where, for each province and territory:**

$(t, t+i)$	=	interval between times t and t+i;
$P_{(t+i)}$	=	estimate of the population at time t+i;
$P_{(t)}$	=	base population at time t (census adjusted for (NCU), or most recent estimate);
B	=	number of births;
D	=	number of deaths;
I	=	number of immigrants;
E	=	number of emigrants;
$\Delta TE$	=	net temporary emigration;
RE	=	number of returning emigrants;
$\Delta NPR$	=	net non-permanent residents;
$\Delta N$	=	net interprovincial migration.

### B. Levels of estimates

The difference between preliminary<sup>1</sup> and final postcensal population estimates lies in the timeliness of the components. When all the components are preliminary, the estimate is described as preliminary postcensal (PP). When they are all final, the estimate is referred to as final postcensal (PD). Any other combination of levels is referred to as updated postcensal (PR).

Quarterly population estimates are final intercensal up to April 2001, final postcensal from July 2001 to July 2004, updated postcensal from October 2004 to April 2007, and preliminary postcensal from July 2007 on.

## Base population and components of population growth

### A. Base population

The base populations are derived from the quinquennial censuses between 1971 and 2001. The population universe of the 2001 Census includes the following groups:

- Canadian citizens (by birth or by naturalization) and landed immigrants with a usual place of residence in Canada;
- Canadian citizens (by birth or by naturalization) and landed immigrants who are abroad, either on a military base or attached to a diplomatic mission;
- Canadian citizens (by birth or by naturalization) and landed immigrants at sea or in port aboard merchant vessels under Canadian registry;
- persons with a usual place of residence in Canada who are claiming refugee status and members of their families living with them;

1. In this case, the term *preliminary* include both preliminary and updated estimates.

- persons with a usual place of residence in Canada who hold student authorizations (student visas or student permits) and members of their families living with them;
- persons with a usual place of residence in Canada who hold employment authorizations (or work permits) and members of their families living with them;
- persons with a usual place of residence in Canada who hold Minister's permits (including extensions) and members of their families living with them.

For census purposes, the last four groups in this list are referred to as non-permanent residents(NPR). For further information, please refer to the Glossary in Appendix I.

Foreign residents have not been enumerated since 1991. Foreign residents are persons who belong to the following groups:

- Government representatives of another country attached to the embassy, high commission or other diplomatic body of that country in Canada, and members of their families living with them;
- members of the Armed Forces of another country who are stationed in Canada, and members of their families living with them;
- residents of another country visiting Canada temporarily (for example, a foreign visitor on vacation or on business, with or without a visitor's permit).

The base populations are adjusted as follows (unless otherwise noted, adjustments to the base population apply to both provincial / territorial and subprovincial levels):

- Adjustment of the population for net census undercoverage (NCU);
- addition of independent estimates for incompletely enumerated Indian reserves in 1991, 1996 and 2001;
- adjustment for early enumeration in 1991 and 1996 in parts of northern Quebec, Newfoundland and Labrador, the Yukon Territory and the Northwest Territories;
- addition of estimates of NPRs in 1971, 1976, 1981 and 1986. Since 1991, NPRs included in the census universe;
- estimation of the July 1 base population by addition or subtraction of the components of growth between Census Day and June 30.

#### **Adjustment for net census undercoverage (NCU)**

The adjustment for NCU is important. NCU is the difference between the number of persons who should have been enumerated but were missed (undercoverage) and the number of persons who were enumerated but should not have been or who were counted more than once (overcoverage).

Coverage studies provide undercoverage estimates for the 1991, 1996 and 2001 Censuses at the provincial and territorial levels, and for the 1971, 1976, 1981 and 1986 Censuses at the provincial level only. Estimates of overcoverage at the provincial and territorial levels are available only for the last three censuses (1991, 1996 and 2001). Overcoverage for previous censuses was estimated by assuming that the overcoverage-to-undercoverage ratio for each census between 1971 and 1986 was the same as in 1991. The NCU for the Yukon Territory and the Northwest Territories prior to 1991 was estimated by assuming that the ratio between the NCU for each territory and the 10 provinces for each census between 1971 and 1986 was the same as in 1991.

For consistency, 1991 Census undercoverage and overcoverage were revised in 1998 to take into account the methodological improvements made in the 1996 Census coverage studies. This revision altered the NCU in all censuses between 1971 and 1986. Similarly, 1996 Census undercoverage and overcoverage were revised in 2003.

## B. Births and deaths

Numbers of births and deaths are derived directly from the vital statistics database of Statistics Canada's Health Statistics Division. Although Statistics Canada manages the National system of vital statistics, the central vital statistics registries of the provinces and territories are responsible for collecting and processing the information from those administrative files. Under provincial / territorial vital statistics statutes (or similar legislation), all live births and all deaths must be registered, and all provinces and territories provide the information to Statistics Canada.

The vital statistics universe closely parallels the census universe. Both universes include births and deaths of all Canadians, immigrants and non-permanent residents (NPR) and exclude foreign residents.

Vital statistics by province or territory of residence are used to produce our final estimates of births and deaths.

When there are no vital statistics, the number of births is estimated using fertility rates by mother's age. The number of deaths is estimated using mortality rates by age and sex. These methods are used to calculate preliminary<sup>1</sup> estimates.

### *Special treatment for preliminary<sup>1</sup> estimates for Quebec and British Columbia*

Quebec and British Columbia provide their most recent estimates of births and deaths. The figures are used to produce preliminary<sup>1</sup> estimates. For the final estimates, the two provinces' births and deaths are derived from the vital statistics compiled by Health Statistics Division.

### *Levels of estimates*

For information on the differences between preliminary<sup>1</sup> and final estimates, see sections **B. Births and Deaths**, above.

Estimates of births are final up to December 2005, updated from January 2006 to March 2007, and preliminary from April 2007 on. Estimates of deaths are final up to December 2004, updated from January 2005 to March 2007, and preliminary from April 2007 on.

## C. Immigration

Like the numbers of births and deaths, Canadian immigration statistics must be kept by law. In Canada, immigration is regulated by the *Immigration and Refugee Protection Act* (IRPA) of 2002. This statute superseded the *Immigration Act*, which was passed in 1976 and amended more than 30 times in the years thereafter. *Citizenship and Immigration Canada* (CIC) collects and processes immigrants' administrative files. It then provides Statistics Canada with information from *Field Operational Support System* (FOSS) files. The information is used to estimate the number and characteristics of people granted permanent resident status by the federal government on a given date. For Demography Division, the terms immigrant and permanent resident are equivalent.

An immigrant is a person who is not a Canadian citizen by birth, but has been granted the right to live in Canada permanently by Canadian immigration authorities. The number of immigrants does not include persons born abroad to Canadian parents who are only temporarily outside the country.

Immigrants are usually counted on or after the date on which they are granted permanent resident status or the right to live in Canada.

### *Levels of estimates*

The difference between preliminary<sup>1</sup> and final postcensal estimates lies in the timeliness of the source used to estimate this component. Since the FOSS file is continually being updated, new calculations are carried out each year to update the immigration estimates. Immigration estimates are preliminary the first year and updated the following year. They become final two years after the reference year.

The numbers of immigrants are final up to December 2005, updated from January 2006 to March 2007, and preliminary from April 2007 on.

#### D. Net non-permanent residents

Like the numbers of births and deaths, Canadian immigration statistics must be kept by law. In Canada, the non-permanent residents (NPR) are regulated by the *Immigration and Refugee Protection Act (IRPA)* of 2002. This statute superseded the *Immigration Act*, which was passed in 1976 and amended more than 30 times in the years thereafter. *Citizenship and Immigration Canada (CIC)* collects and processes the administrative files of immigrants and NPRs in Canada. It then provides Statistics Canada with information from *Field Operational Support System (FOSS)* files. The information is used to estimate the number and characteristics of people granted or permanent resident status by the federal government.

Non-permanent residents (NPR) are persons who are lawfully in Canada on a temporary basis under the authority of a temporary resident permit, along with members of their family living with them. Non-permanent residents (NPR) include foreign workers, foreign students, the humanitarian population and other temporary residents. The humanitarian population includes refugee claimants and temporary residents who are allowed to remain in Canada on humanitarian grounds and are not categorized as either foreign workers or foreign students. For Demography Division, the terms non-permanent resident and temporary resident are equivalent.

Estimates of the number of NPR are based on population estimates. The number of people in CIC's system is estimated on a specific date in each year of observation. First, the end-of-period population is estimated, and then the start-of-period population is subtracted from that estimate. That yields the net number of NPR.

Anyone who received non-permanent resident status prior to the observation date is counted. For refugee claimants, the date of their application is used. Permit holders and refugee claimants are excluded from the population if their permit has expired, if they receive permanent resident status, or if they are deported. In addition, refugee claimants are excluded if their file has been inactive for two years.

Since the FOSS file is continually being updated, the figures are recalculated for each new release period to update the estimates of the net number of NPRs in Canada. Non-permanent residents (NPR) estimates are preliminary the first year and updated the following year. They are finalized two to three years after the reference year, when all other components are also final.

##### *Levels of estimates*

The difference between preliminary<sup>1</sup> and final estimates lies in the timeliness of the source used to estimate this component. Since the FOSS file is continually being updated, the figures are recalculated for each new release period to update the estimates of the net number of NPRs. Non-permanent residents (NPR) estimates are preliminary the first year and updated the following year. They become final two to three years after the reference year.

Estimates of the net number of NPR are final up to June 2004, updated from July 2004 to March 2007, and preliminary from April 2007 on.

#### E. Emigration

The number of emigrants is estimated using data from the *Office of Immigration Statistics, U.S. Department of Homeland Security*, data collected by the *Canada Child Tax Benefit (CCTB)* program, and data from the *T1 Family File (T1FF)*.<sup>2</sup> The first source is used to estimate emigration to the United States. CCTB data are used to estimate emigration to other countries. The estimates of the number of child emigrants have to be adjusted because the CCTB is not universal and does not provide direct information on the number of adult emigrants. As a result, four adjustment factors are used to take into account:

- Incomplete coverage due to a delay in the receipt and processing of the files of children *eligible* for the CCTB. Since it seems to take four years after the reference period for CCTB administrative files to become complete, the adjustment is made if the estimates are finalized after two years. The factor is derived from the two-year ratios of emigrant children based on two versions of the CCTB files;

---

2. The T1 family file (T1FF) is derived from the *Canada Revenue Agency (CRA)* T1 file by Small Area and Administrative Data Division of Statistics Canada.

- the program's partial coverage, that is, people who do not apply for the CCTB or are not *eligible*. This factor is obtained by comparing the estimated number of children in the population with the number of children in CCTB files;
- the differential propensity to emigrate between children who are *eligible* for the CCTB and children who are not. This factor is obtained by comparing the emigration rates of CCTB-eligible children with the rates for all children (aged 0-17). This factor is calculated for each province and territory and is based on the last three available years of T1FF2;
- the differential propensity to emigrate between adults and children. This factor generates the emigration rate for the population aged 18 and over. It is obtained by (1) calculating the average ratio over three years of the adult and child emigration rates based on T1FF2 data, (2) calculating the average ratio over three years of the adult and child emigration rates based on data from the *Office of Immigration Statistics, U.S. Department of Homeland Security*, and (3) taking the average of the two rates. This factor is calculated for Canada only.

The adult emigration rate is applied to the adult population to generate the number of adult emigrants, which is then added to the number of child emigrants to produce the number of emigrants for the entire population.

Emigration is disaggregated by province and territory based on the number of child emigrants adjusted for coverage and differential emigration.

#### *Levels of estimates*

The difference between preliminary<sup>1</sup> and final estimates lies in the timeliness of the sources used to estimate this component. The same estimation method is used.

The numbers of emigrants are final up to June 2004, updated from July 2004 to March 2007, and preliminary from April 2007 on.

#### **F. Net temporary emigration**

Some people leave Canada to live temporarily in another country; others who were temporarily outside Canada return. The net result of those departures and returns is the component known as "net temporary emigration". Estimates of the number of departures are derived from the *Reverse Record Check* (RRC), the most important census coverage study. The RRC provides an estimate of the number of people who left Canada temporarily during an intercensal period and are still out of the country at the end of the period. Estimates of the number of returns are based on two sources: the Census and Demography Division's estimates of returning emigrants. The census provides the number of people who were outside Canada at the time of the previous census and returned during the intercensal period. That number includes all returning emigrants. Then Demography Division's estimate of the returning emigrants' component is subtracted to produce the number of returning temporary emigrants. The estimated numbers of departures (RRC) and returns (Census and Demography Division) yield an estimate of net temporary emigration.

That estimate is for the whole intercensal period; it is disaggregated into estimates for each of the five years in the period and then into monthly estimates using a seasonal adjustment that is an average between zero seasonality and the seasonality of emigration.

Net temporary emigration is calculated first for the national level. It is then disaggregated by province or group of provinces based on the RRC estimates of temporary emigration. For the Atlantic provinces and the territories, the estimate for the group is disaggregated on the basis of each province / territory's proportion of the group's total population.

Net temporary emigration can be estimated only for the intercensal period preceding the most recent census. Net temporary emigration in the current period is assumed to be the same as in the previous period for each province and territory.

#### *Levels of estimates*

The difference between preliminary<sup>1</sup> and final estimates lies in the timeliness of the emigration estimate used to calculate the seasonal adjustment for the net temporary emigration. The same estimation method is used.

The estimates of net temporary emigration are final up to June 2004, updated from July 2004 to March 2007, and preliminary from April 2007 on.

#### **G. Returning emigrants**

A returning emigrant is a person who returns to Canada after having been classified as an emigrant. In a manner similar to the procedure used to calculate the number of emigrants, data from the *Canada Child Tax Benefit* (CCTB) file and the *Canada Revenue Agency's* (CRA) 's T1FF<sup>2</sup> are used to estimate the number of returning emigrants. Adjustment factors are applied to compensate for the fact that the CCTB program is not universal, and an adult/child ratio is used to estimate the number of adult returning emigrants. As a result, three adjustment factors are used to take into account:

- The program's partial coverage, that is, people who do not apply for the CCTB or are not *eligible*. This factor is obtained by comparing the estimated number of children in the population with the number of children in CCTB files;
- the differential propensity to emigrate between children who are *eligible* for the CCTB and children who are not. This factor is obtained by comparing the emigration rates of CCTB-*eligible* children with the rates for all children (aged 0-17). This factor is calculated for each province and territory and is based on the last three available years of T1FFs<sup>2</sup>;
- the adult / child ratio, which is based on the census used in estimating the base population.

#### *Levels of estimates*

The difference between preliminary<sup>1</sup> and final estimates lies in the timeliness of the sources used to estimate this component. The same estimation method is used.

The numbers of returning emigrants are final up to June 2004, updated from July 2004 to March 2007, and preliminary from April 2007 on.

#### **H. Interprovincial migration**

Interprovincial migration represents movements from one province or territory to another, involving a change in usual place of residence. As is the case for emigration, there is no provision for recording interprovincial migration in Canada. Consequently, such movements have to be estimated using data from the *Canada Child Tax Benefit* (CCTB) of *Canada Revenue Agency* (CRA) and the T1FF.<sup>2</sup>

Final estimates of interprovincial migration are obtained by comparing addresses indicated on personal income tax returns over two consecutive tax years. However, the migration status of taxfilers' dependants has to be imputed. An adjustment is also required to take into account migrants who do not file income tax returns. For 2001-2002 and subsequent years, the adjustment was slightly modified (for further information, see *Wilkinson, 2004*).

Since income tax returns are not available at the time preliminary estimates are produced, the estimation of preliminary<sup>1</sup> interprovincial migration is based on CCTB administrative files, which provide counts of child migrants (aged 0-17) *receiving benefits* under the program. The estimates have to be adjusted later for children who are not receiving the CCTB. Finally, the number of adult migrants is calculated using the number of child migrants and factors derived from the T1FF.<sup>2</sup> As a result, three adjustment factors are used to take into account:

- The program's partial coverage, that is, people who do not apply for the CCTB or are not receiving *benefits*. This factor is obtained by comparing the estimated number of children in the population with the number of children in CCTB files;



- the differential propensity to migrate between children who are receiving the CCTB and children who are not. This factor is obtained by comparing the out-migration rates of children receiving the CCTB with the rates for all children (aged 0-17). This factor is calculated for each province and territory and is based on the last available year of T1FFs<sup>2</sup>;
- the differential propensity to migrate between adults and children. This factor generates the out-migration rate of the population aged 18 and over for each province / territory of origin and destination. It is obtained by calculating the ratio of the central migration rate for adults to the rate for children. It is estimated using data from the last three available years of T1FFs.<sup>2</sup>

The adult migration rate is then applied to the estimated adult population. The number of adult migrants is then added to the number of child migrants to produce the number of interprovincial migrants for the entire population.

#### *Levels of estimates*

For information on the differences between preliminary<sup>1</sup> and final estimates of total interprovincial migration, see section **H. Interprovincial migration** above. For all levels of estimates, the age-sex distribution is based on the 2001 Census one-year mobility question and data from the T1FF.<sup>2</sup>

The estimate of interprovincial migration is final up to June 2006 and preliminary from July 2006 on.

#### **Intercensal population estimates**

Intercensal estimates – population estimates for reference dates between two censuses – are produced following each census. They reconcile previous postcensal estimates with the new census counts.

There are two main steps in the production of intercensal estimates:

- Calculation of the error of closure;
- linear distribution of the error of closure.

Error of closure is defined as the difference between the postcensal population estimates on Census Day and the population enumerated in that census (after adjustment for net census undercoverage (NCU)).

The error of closure is spread uniformly over the intercensal period.

# Quality of estimates

## Post-2001 postcensal population estimates

The postcensal estimates contain certain inaccuracies stemming from:

- (a) errors in the 2001 Census data (the base population on which these estimates were constructed) and
- (b) imperfections in other data sources and the method used to estimate the components.

### Errors in census data

Census data for total population by province or territory are affected by coverage errors. These errors occur when dwellings and/or individuals are missed, incorrectly included or counted more than once. Following each census, Statistics Canada undertakes coverage studies to measure these errors. The main study are the Reverse Record Check Survey (RRC) and the Census Overcoverage Study (COS). Based on these studies, estimates of net undercoverage (which is equal to the difference between undercoverage and overcoverage) are produced. Demography Division adjusts the population enumerated in the census by province and territory using these estimates.

#### Text table 1

#### Estimated net undercoverage of population for Canada, provinces and territories, 1996 and 2001 Censuses

	1996 <sup>1</sup>		2001 <sup>1</sup>	
	Number	Rate in percent	Number	Rate in percent
<b>Canada</b>	<b>712,119</b>	<b>2.41</b>	<b>958,969</b>	<b>3.10</b>
Newfoundland and Labrador	8,840	1.58	9,401	1.80
Prince Edward Island	896	0.66	1,325	0.97
Nova Scotia	21,126	2.27	24,521	2.63
New Brunswick	14,073	1.87	20,095	2.68
Quebec	102,680	1.42	152,880	2.07
Ontario	304,139	2.75	452,309	3.81
Manitoba	19,052	1.68	31,013	2.70
Saskatchewan	28,599	2.81	21,812	2.18
Alberta	71,971	2.60	74,834	2.45
British Columbia	137,446	3.56	164,805	4.05
Yukon Territory	467	1.50	1,423	4.73
Northwest Territories	1,979	4.75	3,295	8.11
Nunavut	851	3.33	1,256	4.49

1. The levels and rates are based on the Reverse Record Check (RRC) and the Overcoverage Study and include non-permanent residents.

The adjustment also incorporates the results of a study on the estimates of the number of people living on incompletely enumerated Indian reserves to complete the corrections for coverage errors in the census. The results of the coverage studies contain mainly sampling errors. For further information regarding the main coverage studies, please see the following document on Statistics Canada's web site: 2001 Census Technical Report on Coverage.

### Errors coming from methodology and other data sources

Errors due to estimation methodologies and data sources other than the census are can also be significant.

Since the law requires the recording of vital statistics, births and deaths data meet very high standards. Nevertheless, since preliminary estimates are derived, they can be slightly different from final estimates.

With respect to immigrants and non-permanent residents, Citizenship and Immigration Canada administers special data files on both of these components. Since immigration is controlled by law (the Immigration Act), data on immigrants and non-permanent residents are compiled upon arrival in Canada. These data represent only "legal" immigration and exclude illegal immigrants. Thus, for the "legal" part of international movement into Canada, the data are considered to be of high quality.

However, some biases such as the difference between the stated province of intended residence at the time of arrival and the actual province of residence, may persist. Finally, since information provided by the Visitor Data System from Citizenship and Immigration Canada is not complete (age and sex of dependents, province of residence for certain groups of permit holders), estimates of nonpermanent residents are more prone to error than data on immigrants.

Estimates of the number of emigrants and returning emigrants are both derived using Child Tax Benefit (CTB) data provided by Canada Revenue Agency (CRA). Data are adjusted to take into account the incomplete coverage of the CTB program and to derive the emigration and returning emigration of adults. These adjustments and the delay in obtaining the data are the two main sources of errors.

As current information on the number of persons living temporarily abroad does not exist, estimates are based on the Reverse Record Check (RRC) and the census. Estimates for the intercensal period, distributed equally among the five years, are maintained constant for the postcensal period. Provincial/territorial distributions are obtained from RRC. Moreover, assumptions were made to allow for the distribution of annual to a quarterly level. Any geographical or quarterly variation may introduce error in the estimation of these components.

While preliminary estimates of interprovincial migration are produced using data from the Child Tax Benefit (CTB) program, final estimates are calculated from the annual taxfile received from Canada Revenue Agency (CRA). Since the two estimates of interprovincial migration are produced from different sources of information, they are more subject to error.

### **Quality assessment**

In order to assess the quality of our estimates, two evaluation measures are used : precocity errors and errors of closure.

### **Precocity errors**

The quality of preliminary estimates of components is analysed using precocity errors. Precocity error, which is calculated on a quarterly basis, is defined as the difference between preliminary and final estimate of a particular component in terms of its relative proportion of the total population for the relevant geographical area. It can be calculated for both population and component estimates.

Precocity error allows for useful comparisons between components, as well as between provinces and territories or geographical areas of different population size. Note that when compared to the total population for an area, the differences between preliminary and final estimates of the components are quite small. There are, however, differences in the amount of impact on the population estimates between components and between provinces and territories.

Generally speaking, net interprovincial migration yields the greatest precocity errors. This is likely the result of the use of different data sources for preliminary and final estimates of interprovincial migration. In most years and for most provinces/territories, births, deaths and immigration estimates yielded the smallest precocity errors. For immigration estimates, this reflects the completeness of the data source and the availability of data for the more timely preliminary estimates. In the case of births and deaths, small precocity errors support the use of short-term projections for preliminary estimates.

According to the analysis of the most recent precocity errors and assuming that the quality of the basic data remains constant, the present postcensal estimates should have an acceptable degree of reliability.

**Text table 2**  
**Quarterly precocity errors for population and components, Canada, provinces and territories, 2003-2004**

Quarter/Geography	Population	Births	Deaths	Immigration	Emigration	Returning emigration	Net temporary emigration	Net NPR	Interprovincial migration		
									In-migrants	Out-migrants	Net
<b>Rates per thousand</b>											
<b>Canada</b>											
July-September 2003	-0.46	-0.04	0.03	0.00	0.17	-0.07	0.01	-0.14	0.53	0.53	n/d
October-December 2003	-0.24	-0.07	-0.01	0.00	0.10	-0.03	0.01	-0.04	0.31	0.31	n/d
January-March 2004	-0.02	-0.06	0.07	0.00	0.02	-0.03	-0.01	0.15	0.40	0.40	n/d
April-June 2004	-0.36	-0.06	0.09	0.00	-0.03	-0.03	-0.01	-0.23	0.40	0.40	n/d
<b>Newfoundland and Labrador</b>											
July-September 2003	0.51	0.02	-0.03	0.00	0.13	0.00	0.00	0.02	1.85	1.27	0.58
October-December 2003	-0.35	-0.34	0.10	-0.01	0.07	0.00	0.00	0.02	1.28	1.13	0.15
January-March 2004	-0.19	-0.07	0.07	0.03	0.04	0.00	0.00	0.00	1.46	1.51	-0.04
April-June 2004	-0.72	0.11	0.22	0.02	0.01	0.00	0.00	-0.03	1.71	2.31	-0.59
<b>Prince Edward Island</b>											
July-September 2003	-0.47	-0.15	0.15	-0.01	-0.09	-0.07	0.00	-0.08	1.74	1.85	-0.11
October-December 2003	0.33	-0.36	0.02	0.00	-0.04	-0.04	0.01	0.00	1.66	0.94	0.72
January-March 2004	0.86	-0.13	-0.34	-0.10	-0.08	-0.04	0.00	0.00	1.81	1.10	0.71
April-June 2004	-0.38	-0.12	0.15	-0.04	-0.12	0.01	0.00	0.01	2.73	2.92	-0.20
<b>Nova Scotia</b>											
July-September 2003	-0.11	-0.07	-0.01	0.00	0.16	-0.06	0.01	-0.03	0.86	0.66	0.20
October-December 2003	-0.06	-0.06	-0.01	0.00	0.09	-0.03	0.00	0.01	0.44	0.34	0.10
January-March 2004	0.00	-0.09	-0.08	-0.01	0.03	-0.02	0.00	0.05	0.57	0.55	0.02
April-June 2004	-0.80	-0.05	0.23	-0.01	-0.01	-0.05	0.00	-0.08	-0.18	0.22	-0.40
<b>New Brunswick</b>											
July-September 2003	-0.50	-0.05	0.01	0.02	0.20	-0.07	0.01	-0.01	0.87	1.05	-0.18
October-December 2003	-0.42	-0.21	0.06	-0.02	0.11	-0.03	0.00	-0.01	0.48	0.45	0.03
January-March 2004	0.17	-0.03	-0.12	-0.02	0.06	-0.03	0.00	0.03	0.73	0.56	0.17
April-June 2004	-0.22	-0.10	0.12	0.00	0.05	0.01	0.00	-0.04	0.26	0.18	0.08
<b>Quebec</b>											
July-September 2003	-0.30	0.00	0.03	0.00	0.14	-0.03	0.01	-0.09	0.23	0.24	-0.01
October-December 2003	-0.20	0.03	0.07	0.00	0.08	-0.02	0.01	-0.05	0.11	0.13	-0.01
January-March 2004	0.02	0.02	0.05	0.02	0.02	-0.01	-0.01	0.09	0.14	0.17	-0.03
April-June 2004	-0.21	0.02	0.02	0.01	-0.02	-0.02	-0.01	-0.18	0.09	0.13	-0.04
<b>Ontario</b>											
July-September 2003	-0.58	-0.01	0.08	0.00	0.15	-0.09	0.01	-0.18	0.30	0.36	-0.06
October-December 2003	-0.28	-0.07	-0.04	-0.01	0.09	-0.04	0.01	-0.07	0.17	0.20	-0.03
January-March 2004	0.02	-0.11	0.12	0.01	0.01	-0.03	-0.01	0.28	0.23	0.25	-0.02
April-June 2004	-0.64	-0.12	0.13	0.01	-0.04	-0.03	-0.01	-0.38	0.21	0.25	-0.04
<b>Manitoba</b>											
July-September 2003	-0.30	-0.09	0.08	-0.04	0.13	0.06	0.01	-0.04	0.85	0.81	0.03
October-December 2003	-0.12	-0.18	-0.03	0.03	0.07	0.02	0.01	0.00	0.53	0.46	0.07
January-March 2004	-0.01	0.05	0.26	0.01	0.01	0.02	-0.01	0.02	0.78	0.64	0.14
April-June 2004	0.15	0.04	0.07	0.01	-0.05	0.02	-0.01	-0.05	0.90	0.74	0.16
<b>Saskatchewan</b>											
July-September 2003	0.09	-0.05	-0.02	-0.01	0.32	-0.03	0.01	-0.04	1.38	0.85	0.52
October-December 2003	0.03	-0.11	-0.24	-0.01	0.17	-0.02	0.01	-0.01	0.77	0.66	0.11
January-March 2004	-0.07	-0.07	0.12	0.01	0.10	-0.01	-0.01	0.02	1.03	0.83	0.20
April-June 2004	0.53	-0.06	0.12	0.00	0.01	-0.04	-0.01	-0.03	1.80	1.01	0.79
<b>Alberta</b>											
July-September 2003	-0.80	-0.25	0.00	-0.01	0.23	-0.10	0.01	-0.24	1.11	1.08	0.04
October-December 2003	-0.42	-0.27	-0.05	0.00	0.13	-0.05	0.01	-0.05	0.71	0.67	0.04
January-March 2004	-0.17	-0.14	0.11	-0.02	0.02	-0.04	-0.01	0.05	0.93	0.83	0.10
April-June 2004	-0.43	-0.14	0.15	-0.01	-0.07	-0.03	-0.01	-0.10	0.78	0.86	-0.08
<b>British Columbia</b>											
July-September 2003	-0.51	-0.01	-0.02	0.00	0.22	-0.10	0.02	-0.12	0.55	0.61	-0.05
October-December 2003	-0.16	-0.02	-0.03	0.03	0.12	-0.05	0.01	0.00	0.36	0.38	-0.02
January-March 2004	-0.19	-0.03	-0.03	-0.07	0.02	-0.04	-0.02	0.06	0.38	0.51	-0.13
April-June 2004	-0.14	-0.01	-0.02	-0.02	0.02	-0.04	-0.02	-0.16	0.57	0.49	0.08
<b>Yukon Territory</b>											
July-September 2003	2.71	-0.29	0.36	-0.07	0.16	0.00	0.00	-0.20	5.99	2.19	3.79
October-December 2003	-0.29	0.29	0.49	0.00	0.10	0.10	0.00	-0.16	2.21	2.14	0.06
January-March 2004	2.53	0.29	-0.45	0.00	0.03	0.10	0.00	-0.13	4.34	2.50	1.85
April-June 2004	6.15	-0.74	-0.29	0.00	0.00	0.13	-0.06	0.00	4.11	-2.30	6.41
<b>Northwest Territories</b>											
July-September 2003	-1.35	-0.28	0.05	-0.05	0.12	0.02	0.00	-0.14	3.32	4.05	-0.73
October-December 2003	0.24	-0.31	-0.54	0.05	0.07	0.05	0.00	0.02	2.00	2.05	-0.05
January-March 2004	-1.52	-0.75	0.02	0.00	0.00	0.02	-0.02	0.05	3.09	3.93	-0.84
April-June 2004	3.46	0.33	0.21	0.00	0.00	0.00	0.00	0.00	2.95	-0.40	3.35
<b>Nunavut</b>											
July-September 2003	-2.16	-0.07	0.17	0.00	0.00	-0.07	-0.03	-0.03	2.64	4.49	-1.85
October-December 2003	0.41	0.68	-0.07	0.03	0.00	0.00	-0.03	0.00	2.67	3.08	-0.41
January-March 2004	0.95	-0.24	-0.03	0.00	0.00	0.00	0.00	0.03	3.17	2.05	1.13
April-June 2004	1.97	0.82	0.24	0.00	-0.03	-0.03	-0.03	-0.03	3.75	2.35	1.40

## Errors of closure

The error of closure measures the exactness level of the final postcensal estimates. It can be defined as the difference between the enumerated population of the most recent census (after adjustments for net undercoverage) and the most current postcensal population estimates as of census day.

The error of closure comes from two sources: differences in the amount of net undercoverage and errors in the components of population change over the intercensal period. This can be calculated for population estimates and for age, sex and marital status. With each 5-year intercensal period, the error of closure can only be calculated with the release of census data and estimates of net undercoverage.

By dividing the error of closure by the adjusted census population rates are relatively small at the national level (0.38% for 1996 and 0.15% for 2001). At the provincial and territorial level, differences are understandably larger, since the estimates are also affected by errors in estimating interprovincial migration. Nevertheless, the provincial/territorial final postcensal estimates generally fall within 1% of the adjusted census population.

### Text table 3

#### Error of closure of the estimates of total population for Canada, provinces and territories, July 1, 1996 and 2001

	1996		2001	
	Number	Rate in percent	Number	Rate in percent
Canada	113,416	0.38	46,467	0.15
Newfoundland and Labrador	8,840	1.58	11,416	2.19
Prince Edward Island	411	0.30	1,481	1.08
Nova Scotia	6,446	0.69	9,034	0.97
New Brunswick	5,634	0.75	4,638	0.62
Quebec	96,449	1.33	-320	0.00
Ontario	56,479	0.51	8,857	0.07
Manitoba	-852	-0.08	-1,121	-0.10
Saskatchewan	-7,400	-0.73	15,952	1.59
Alberta	-8,124	-0.29	714	0.02
British Columbia	-43,313	-1.12	-4,357	-0.11
Yukon Territory	-244	-0.78	-354	-1.18
Northwest Territories	-42	-0.10	481	1.18
Nunavut	-868	-3.39	46	0.16

**Note(s):** The error of closure is equal to the July 1 postcensal estimate minus the census count adjusted to July 1 and for net census undercoverage. The percentage is: error of closure, divided by the census count adjusted to July 1 and for net census undercoverage, multiplied by 100.

## Explanatory notes for the tables

---

**Table 2**  
**Quarterly population estimates and aggregated demographic components**

Population	Population estimates are final postcensal from July 1, 2001 to July 1, 2004, updated postcensal from October 1, 2004 to April 1, 2007 and preliminary postcensal from July 1, 2007.
Natural increase	Natural increase is final up to December 2004, updated from January 2005 to March 2007 and preliminary from April 2007.
Interprovincial migration	Net interprovincial migration numbers are final up to June 2006 and preliminary from July 2006.
International migration	Net international migration numbers are final up to June 2004, updated from July 2004 to March 2007 and preliminary from April 2007.
Total migration	Total net migration numbers are final up to June 2004, updated from July 2004 to March 2007 and preliminary from April 2007.
Total growth	Numbers for total growth are final up to June 2004, updated from July 2004 to March 2007 and preliminary from April 2007.

**Table 3**  
**Quarterly estimates of demographic components**

Births	The numbers of births are final up to December 2005, updated from January 2006 to March 2007 and preliminary from April 2007.
Deaths	The numbers of deaths are final up to December 2004, updated from January 2005 to March 2007 and preliminary from April 2007.
In-migrants	The numbers of interprovincial in-migrants are final up to June 2006 and preliminary from July 2006.
Out-migrants	The numbers of interprovincial out-migrants are final up to June 2006 and preliminary from July 2006.
Immigrants	The numbers of immigrants are final up to December 2005, updated from January 2006 to March 2007 and preliminary from April 2007.
Emigrants	The numbers of emigrants are final up to June 2004, updated from July 2004 to March 2007 and preliminary from April 2007.
Returning emigrants	The numbers of returning emigrants are final up to June 2004, updated from July 2004 to March 2007 and preliminary from April 2007.
Net temporary emigrants	The numbers of net temporary emigrants are final up to June 2004, updated from July 2004 to March 2007 and preliminary from April 2007.
Net non-permanent residents	The numbers of net non-permanent residents are final up to June 2004, updated from July 2004 to March 2007 and preliminary from April 2007.

# Appendix I

---

## Glossary

### Annualized rate

Refers to the ratio of the estimated number of events converted to an annual basis divided by the average quarterly populations. In this respect, birth, death, immigration rates, etc are calculated. Generally, the rate is expressed in per 1,000.

### Census coverage

**Net undercoverage:** Difference between undercoverage and overcoverage.

**Overcoverage:** Number of persons who should not have been counted in the census or who were counted more than once.

**Undercoverage:** Number of persons who were intended to have been enumerated in a census but were not enumerated.

### Components of demographic growth

Any of the classes of events generating population movement variations. Births, deaths and migrations are the components responsible for the variation since they alter the total population.

### Emigrants

Canadian citizen or **immigrant** who has left Canada to establish a permanent residence in another country.

### Error of closure

Difference between the **postcensal estimate** for the same date as the census and the results of the census adjusted for **net undercoverage**.

### Immigrant

Within the framework of this publication, the term immigrant refers to **landed immigrant**. A landed immigrant is a person who does not have Canadian citizenship but was granted the right by immigration authorities to live in Canada on a permanent basis.

### International migration

International migration represents movement of population between Canada and a foreign country which involves a change in the usual place of residence. A distinction is made with regard to **immigrants, emigrants, returning emigrants, net temporary emigrants** and **net non-permanent residents**.

### Interprovincial migration

Interprovincial migration represents movement from one province or territory involving a permanent change in residence. A person who takes up residence in another province or territory is an **out-migrant** with reference to the province or territory of origin and an **in-migrant** with reference to the province or territory of destination.



### Natural increase

Variation in population size over a given period as a result of the difference between the numbers of births and deaths.

### Net international migration

Net international migration is obtained according to the following formula: **Immigrants + returning emigrants + net non permanent residents – (emigrants + net temporary emigrants)**

### Net interprovincial migration

Net interprovincial migration represents the difference between **in-migrants** and **out-migrants** for a given province or territory.

### Net non-permanent residents

Net non-permanent residents represent the variation in the number of non-permanent residents between two dates.

### Non-permanent residents

A non permanent resident belongs to one of the five following groups:

- persons residing in Canada claiming refugee status;
- persons residing in Canada who hold a study permit;
- persons residing in Canada who hold a work permit;
- persons residing in Canada who hold a minister's permit;
- all non-Canadian born dependants of persons claiming refugee status, or of persons holding study permits, work permits or minister's permits and living in Canada.

### Net temporary emigration

Net temporary emigration represents the variation in the number of temporary emigrants between two dates. Temporary emigration includes Canadian citizens and **immigrants** living temporarily abroad who have not maintained a usual place of residence in Canada.

### Population

Estimated population and population according to the census are both defined as being the number of Canadians whose usual place of residence is in that area, regardless of where they happened to be on Census Day. Also included are any Canadians staying in a dwelling in that area on Census Day and having no usual place of residence elsewhere in Canada, as well as those considered **non-permanent residents**.

### Population estimate

- (a) **postcensal**: Population estimate produced by using data from the most recent available census adjusted for **net undercoverage** and estimate of the **components of demographic growth** since that last census. This estimate can be preliminary, updated or final.
- (b) **intercensal**: Population estimate derived by using **postcensal estimates** and data adjusted for **net undercoverage** of censuses preceding and following the year in question.

### Population growth or total growth

Variation of population size between two dates. It can also be obtained by summing the **natural increase**, **total net migration** and if possible, **residual deviation**. It can be positive or negative.

### Residual deviation

Difference between demographic **population growth** calculated using **intercensal estimates** of population between two dates and that obtained by the sum of the components for the same period. This deviation results from the distribution of the **error of closure** between years within the quinquennial period.

### Returning emigrants

Canadian citizen or **immigrant** having previously emigrated from Canada and subsequently returned to the country.

### Total net migration

Sum of **net international** and **net interprovincial** migration.

### Vital events

Includes all the demographic events (that is to say births, deaths, marriages and divorces) for which there exists a legal requirement to inform the Provincial or Territorial Registrar's Office.

## Appendix II

---

### Source and remarks

#### Base population

May 15, 2001 Census of Population, adjusted to July 1 and for net undercount.

Statistics Canada, **Census of Canada, 2001**, Catalogue no. 93-360-X.

#### Births and deaths

Statistics Canada, Health Statistics Division.

Statistics Canada, Demography Division, Catalogue no. 91-002-X, Quarterly, Analytical table 4.

#### Immigration

Citizenship and Immigration Canada

#### Emigrants

Statistics Canada, Demography Division - from data on emigrant children from the Child Tax Benefit program (CTB) from Canada Revenue Agency files - CRA and data from the "U.S.Department of Homeland Security, Office of Immigration Statistics"

#### Returning emigrants

Statistics Canada, Demography Division – based on data from the CTB program and adjustment factors calculated using CRA files.

#### Net temporary emigrants

Statistics Canada, Demography Division – based on data from the Reverse Record Check (RRC), 1996 and 2001 Censuses of Canada.

#### Non-permanent residents

Statistics Canada, Demography Division – based on data provided by Citizenship and Immigration Canada.

#### Interprovincial migration

Statistics Canada, Demography Division – based on the CTB program and adjustment factors calculated using CRA files.