

Catalogue no. 84F0211X

# Deaths

2006



Statistics  
Canada

Statistique  
Canada

Canada

## How to obtain more information

For information about this product or the wide range of services and data available from Statistics Canada, visit our website at [www.statcan.gc.ca](http://www.statcan.gc.ca), e-mail us at [infostats@statcan.gc.ca](mailto:infostats@statcan.gc.ca), or telephone us, Monday to Friday from 8:30 a.m. to 4:30 p.m., at the following numbers:

### Statistics Canada's National Contact Centre

Toll-free telephone (Canada and the United States):

Inquiries line	1-800-263-1136
National telecommunications device for the hearing impaired	1-800-363-7629
Fax line	1-877-287-4369

Local or international calls:

Inquiries line	1-613-951-8116
Fax line	1-613-951-0581

### Depository Services Program

Inquiries line	1-800-635-7943
Fax line	1-800-565-7757

## To access this product

This product, Catalogue no. 84F0211X, is available free in electronic format. To obtain a single issue, visit our website at [www.statcan.gc.ca](http://www.statcan.gc.ca) and select "Publications."

## Standards of service to the public

Statistics Canada is committed to serving its clients in a prompt, reliable and courteous manner. To this end, Statistics Canada has developed *standards of service* that its employees observe. To obtain a copy of these service standards, please contact Statistics Canada toll-free at 1-800-263-1136. The service standards are also published on [www.statcan.gc.ca](http://www.statcan.gc.ca) under "About us" > "Providing services to Canadians."

# Deaths

2006

Published by authority of the Minister responsible for Statistics Canada

© Minister of Industry, 2009

All rights reserved. The content of this electronic publication may be reproduced, in whole or in part, and by any means, without further permission from Statistics Canada, subject to the following conditions: that it be done solely for the purposes of private study, research, criticism, review or newspaper summary, and/or for non-commercial purposes; and that Statistics Canada be fully acknowledged as follows: Source (or "Adapted from", if appropriate): Statistics Canada, year of publication, name of product, catalogue number, volume and issue numbers, reference period and page(s). Otherwise, no part of this publication may be reproduced, stored in a retrieval system or transmitted in any form, by any means—electronic, mechanical or photocopy—or for any purposes without prior written permission of Licensing Services, Client Services Division, Statistics Canada, Ottawa, Ontario, Canada K1A 0T6.

November 2009

Catalogue no. 84F0211X

ISSN 1708-654X

Frequency: Annual

Ottawa

Cette publication est également disponible en français.

---

#### **Note of appreciation**

*Canada owes the success of its statistical system to a long-standing partnership between Statistics Canada, the citizens of Canada, its businesses, governments and other institutions. Accurate and timely statistical information could not be produced without their continued cooperation and goodwill.*

# User information

---

## Symbols

The following standard symbols are used in Statistics Canada publications:

- . not available for any reference period
- .. not available for a specific reference period
- ... not applicable
- 0 true zero or a value rounded to zero
- 0<sup>s</sup> value rounded to 0 (zero) where there is a meaningful distinction between true zero and the value that was rounded
- p preliminary
- r revised
- x suppressed to meet the confidentiality requirements of the *Statistics Act*
- E use with caution
- F too unreliable to be published

## Acknowledgements

The cooperation of provincial and territorial Vital Statistics registries who supply the mortality data in this report to Statistics Canada is gratefully acknowledged.

# Introduction

---

This product presents statistical tables showing the numbers and rates of death by marital status, age and sex; infant, neonatal, post-neonatal and perinatal deaths; and stillbirths of at least twenty-eight weeks of gestation at the time of birth. Numbers are shown for Canada, the ten provinces and the three territories.

Free access to the data is provided through a special CANSIM interface. The CANSIM tables can be linked directly from three different locations in the HTML product:

**Tables** section:

- Related CANSIM tables
- Individual tables, in the Source

**Related products** section:

- Selected CANSIM tables from Statistics Canada

# Table of contents

---

<b>Highlights</b>	<b>6</b>
<b>Analysis</b>	<b>7</b>
Annual number of deaths	7
Mortality rates	8
Infant deaths and mortality	9
Life expectancy	11
International comparisons	13
<b>Related products</b>	<b>15</b>
<b>Statistical tables</b>	
1 Deaths by sex and geography	18
2 Deaths by geography	19
2-1 Month	19
2-2 In hospital and elsewhere	19
2-3 Subject to autopsy	20
3 Deaths by single year of age and geography	21
3-1 Both sexes	21
3-2 Males	25
3-3 Females	29
4 Deaths by age group and geography	33
4-1 Both sexes	33
4-2 Males	37
4-3 Females	41
5 Deaths by marital status, age group and geography	45
5-1 Both sexes	45
5-2 Males	48
5-3 Females	51
6 Infant mortality by age group	54
6-1 and sex, Canada	54
6-2 and geography	55

---

**Table of contents – continued**

7	Perinatal mortality and components by geography	56
8	Life expectancy at birth and at age 65 - abridged life table by sex and geography	56
9	Deaths, by place of residence and place of occurrence, Canada, provinces, territories and outside Canada	57

**Data quality, concepts and methodology**

	Definitions	58
	Explanatory notes for the tables	61

**Appendix**

I	Postcensal Population Estimates	65
---	---------------------------------	----

**Charts**

1.	Annual number of deaths by sex, Canada, 1981 to 2006	7
2.	Early neonatal, late fetal and perinatal deaths, Canada, 1991 to 2006	11

# Highlights

---

## Life expectancy

- In 2006, life expectancy at birth was 80.8 years, an increase of 0.4 year from 2005.
- From 2005 to 2006, the male life expectancy at birth gained 0.4 year from 78.0 to 78.4 years, while the female's gained 0.3 year, from 82.7 to 83.0 years.
- Life expectancy at age 65 was 19.9 years in 2006: 18.2 years for males and 21.4 years for females.
- In 2006, life expectancy at birth in three large provinces exceeded the national average of 80.8 years. British Columbia led with 81.4 years, followed by Ontario (81.1 years) and Quebec (80.9 years).
- From 2001 to 2006, life expectancy at birth rose by 1.2 years, from 79.6 to 80.8 years. During this period, life expectancy for men increased by 1.4 years, whereas life expectancy for women advanced by 0.9. As a result, the gender gap narrowed by 0.5 year from 5.1 years in 2001 to 4.6 years in 2006.

## Annual number of deaths

- In 2006, a total of 228,079 deaths were registered in Canada. From 2005 to 2006, the number of deaths was down 0.9%, the largest decrease since 1981.
- From 1981 to 2006, the number of deaths rose 33%. In this 25-year time span, the annual number of deaths recorded an overall upward trend with the exception of years 2000 and 2006.

## Crude Mortality rates

- In 2006, Canada's crude death rate was 7.0 per 1,000 population, down 1.4% from 2005.
- In 2006, crude death rates ranged from a low of 4.2 per 1,000 population in Nunavut to a high of 9.2 per 1,000 population in Saskatchewan.
- Northwest Territories had the largest rise in crude death rates (0.8) and Quebec (-0.3) registered the largest decline.

## Infant deaths and mortality

- The number of infant deaths decreased 4.9% from 1,863 in 2005 to 1,771 in 2006.
- From 2005 to 2006, the number of male infant deaths dropped 4.6% while for females it decreased by 5.4%.
- During the same period, infant mortality rate declined 7.4% from 5.4 deaths per 1,000 live births in 2005 to 5.0 in 2006.
- Between 2005 and 2006, the male infant mortality rate dropped from 5.9 to 5.4 infant deaths per 1,000 live births, while the female rate declined from 5.0 to 4.6 infant deaths per 1,000 live births.



# Analysis

## Annual number of deaths

In 2006, a total of 228,079 deaths were registered in Canada. From 2005 to 2006, the number of deaths was down 0.9%, the largest decrease since 1981.

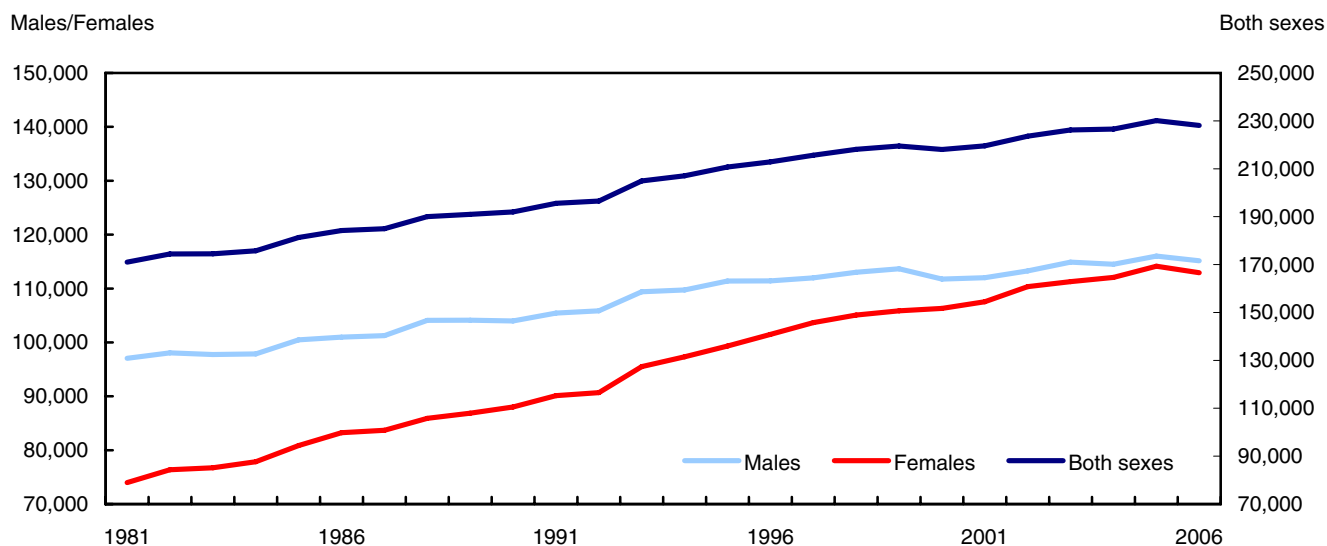
Both male and female deaths decreased during this period. However, the decline in the number of female deaths was more pronounced than that of males: 1.0% versus 0.7%. Consequently, the male-female gap increased slightly from 1,880 deaths in 2005 to 2,219 in 2006.

## Trends in deaths

From 1981 to 2006, the annual number of deaths rose 33% from 171,029 to 228,079. In this 25-year time span, the annual number of deaths recorded an overall upward trend with the exception of 2000 and 2006 (Chart 1).

The upward trend of male deaths was less pronounced than that of female deaths. However, male deaths experienced five years (1983, 1990, 2000, 2004 and 2006) of downturn during this period and the largest decline was in 2000. Meanwhile, the continual increase in female deaths since 1981 turned to downwards for the first time in 2006.

**Chart 1**  
Annual number of deaths by sex, Canada, 1981 to 2006



Source(s): Statistics Canada, *Selected Mortality Statistics, Canada, 1921-1990*, catalogue no. 82-548 and CANSIM table 102-0503.

## Mortality rates

### Crude death rates

In 2006, Canada's crude death rate was 7.0 per 1,000 population, down 1.4% from 2005. This result is due to the combined effect of a decline in deaths and an increase in Canada's population between 2005 and 2006.

From 1981 to 2006, male crude death rates were persistently higher than female rates. Nevertheless, the male-female gap in the crude death rates has narrowed during the past 25 years.

In 1981, male crude death rate was 8.0 deaths per 1,000 population, 1.4 times higher than that of female crude rate (5.9 deaths per 1,000 population). By 2006, the male crude death rate declined to 7.1 deaths per 1,000 population, while the female crude rate increased to 6.9 deaths per 1,000 population, narrowing the gap between the sexes.

In 2006, crude death rates ranged from a low of 4.2 per 1,000 population in Nunavut to a high of 9.2 per 1,000 population in Saskatchewan. Crude death rates were below the national level in Ontario (6.7), Alberta (5.8), Yukon (5.7), Northwest Territories (4.3), and Nunavut (4.2). Rates in the remaining provinces exceeded the national level.

From 2005 to 2006, crude death rates increased in six regions: Newfoundland and Labrador, Prince Edward Island, Saskatchewan and in the three territories. The largest rise in crude rates was in the Northwest Territories (Table 1).

During this period, the crude death rates remained the same in British Columbia, but declined in all other provinces. The largest decline was in Quebec.

**Text table 1**  
**Number of deaths and crude death rates by geography, 2005 to 2006**

Geography	Deaths			Crude rate		
	2005	2006	2005 to 2006 percent change	2005	2006	2005 to 2006 change
Canada	230,132	228,079	-0.9	7.1	7.0	-0.1
Males	116,006	115,149	-0.7	7.3	7.1	-0.2
Females	114,126	112,930	-1.0	7.0	6.9	-0.1
Newfoundland and Labrador	4,486	4,493	0.2	8.7	8.8	0.1
Prince Edward Island	1,118	1,172	4.8	8.1	8.5	0.4
Nova Scotia	8,273	8,088	-2.2	8.8	8.6	-0.2
New Brunswick	6,175	6,010	-2.7	8.2	8.0	-0.2
Quebec	55,787	54,240	-2.8	7.3	7.1	-0.3
Ontario	85,591	84,524	-1.2	6.8	6.7	-0.2
Manitoba	9,856	9,774	-0.8	8.4	8.3	-0.1
Saskatchewan	8,850	9,054	2.3	8.9	9.2	0.2
Alberta	19,288	19,540	1.3	5.9	5.8	-0.1
British Columbia	30,227	30,688	1.5	7.1	7.1	0.0
Yukon	164	178	8.5	5.3	5.7	0.4
Northwest Territories	148	182	23.0	3.5	4.3	0.8
Nunavut	115	129	12.2	3.8	4.2	0.4

**Source(s):** Statistics Canada, CANSIM table 102-0504.

### Age-specific mortality rates

Two factors can contribute to the decrease in the number of deaths: a decrease in the population at risk of dying and/or a downturn in mortality rates.

By applying 2005 age-specific mortality rates to the 2006 population, it is possible to assess the extent to which the change in the number of deaths in 2006 was due to changes in population size versus changes in mortality rates (Table 2).

Had age-specific mortality rates remained the same between 2005 and 2006, the number of deaths in 2006 would have been 237,762. However, the actual number of deaths registered in 2006 was lower at 228,079. Thus, the

difference between the actual and the expected number of deaths (-9,683) could be attributed to the decrease in mortality rates.

### Text table 2

#### Expected number of deaths in 2006 and age-specific mortality rates in 2005 and 2006, Canada

Age Group in years	2005 ASMR <sup>1</sup>	2006 population	2006 expected deaths <sup>2</sup>	2006 ASMR <sup>1</sup>	ASMR <sup>3</sup> difference	ASMR % difference
under 1	5.44	354,617	1,931	4.99	-0.45	-8.3
1 to 4	0.21	1,361,153	282	0.21	0.00	0.6
5 to 9	0.11	1,846,096	194	0.11	0.00	2.1
10 to 14	0.15	2,089,644	308	0.13	-0.02	-10.8
15 to 19	0.46	2,171,546	997	0.45	-0.01	-1.2
20 to 24	0.60	2,262,352	1,352	0.58	-0.01	-2.5
25 to 29	0.58	2,236,286	1,287	0.56	-0.01	-2.6
30 to 34	0.69	2,227,271	1,541	0.63	-0.06	-8.4
35 to 39	0.92	2,357,234	2,168	0.90	-0.02	-2.1
40 to 44	1.41	2,704,985	3,814	1.35	-0.06	-4.0
45 to 49	2.22	2,676,629	5,953	2.18	-0.05	-2.1
50 to 54	3.45	2,368,253	8,164	3.45	0.00	0.0
55 to 59	5.41	2,085,833	11,277	5.20	-0.21	-3.8
60 to 64	8.76	1,584,973	13,879	8.43	-0.32	-3.7
65 to 69	13.73	1,229,157	16,881	13.26	-0.48	-3.5
70 to 74	22.46	1,046,909	23,511	21.27	-1.19	-5.3
75 to 79	36.63	880,880	32,269	35.15	-1.48	-4.0
80 to 84	61.43	640,944	39,371	58.70	-2.72	-4.4
85 to 89	106.15	346,151	36,742	99.75	-6.39	-6.0
90 and over	200.72	178,569	35,842	195.45	-5.27	-2.6
All ages			<b>237,762</b>			

1. The age-specific mortality rate is per 1,000 population.

2. Expected deaths for 2006, were obtained by applying 2005 age-specific mortality rates to the 2006 population.

3. This represents the difference in age-specific mortality rates between 2005 and 2006.

Source(s): Statistics Canada, CANSIM table 102-0504.

In 2006, there was no increase in age-specific mortality rates. Young age groups (ages 1 to 14) experienced lowest age-specific mortality rates and also the lowest changes in mortality rates.

As population ages their mortality rates also increases. The largest reduction in mortality rates was observed in those aged less than one year and those aged 65 and plus.

Between 2005 and 2006, the largest relative decline was among those aged 10 to 14 (10.8%), followed by those aged 30 to 34 (8.4%) and infants less than one year old (8.3%).

Therefore, the outcome of 9,683 fewer deaths than expected (in 2006) could be attributable to the overall decline in age-specific mortality rates.

### Infant deaths and mortality

The number of infant deaths (under one year of age) decreased 4.9% from 1,863 in 2005 to 1,771 in 2006. The number of male infant deaths dropped 4.6% from 1,030 to 983, while for females it decreased by 5.4% from 833 to 788.

### Infant mortality rate

The infant mortality rate decreased 7.4% from 5.4 deaths per 1,000 live births in 2005 to 5.0 in 2006. The male infant mortality rate decreased from 5.9 to 5.4 deaths per 1,000 live births, while for females it decreased from 5.0 to 4.6 deaths per 1,000 live births.

**Text table 3**  
**Infant mortality rate by sex and geography, 2005 to 2006**

Geography	2005			2006			Difference between 2005 and 2006		
	Both sexes	Males	Females	Both sexes	Males	Females	Both sexes	Males	Females
Canada	5.4	5.9	5.0	5.0	5.4	4.6	-0.4	-0.5	-0.4
Newfoundland and Labrador	6.2	5.6	6.8	5.3	6.7	3.7	-0.9	1.1	-3.1
Prince Edward Island	2.2	2.9	1.5	2.1	2.7	1.5	-0.1	-0.2	0.0
Nova Scotia	4.0	3.8	4.1	4.0	3.7	4.4	0.0	-0.1	0.3
New Brunswick	4.1	4.0	4.1	4.0	4.4	3.5	-0.1	0.4	-0.6
Quebec	4.6	5.4	3.8	5.1	5.3	4.8	0.5	-0.1	1.0
Ontario	5.6	5.7	5.4	5.0	5.6	4.3	-0.6	-0.1	-1.1
Manitoba	6.6	6.6	6.7	6.0	6.3	5.7	-0.6	-0.3	-1.0
Saskatchewan	8.3	9.3	7.2	6.1	6.6	5.6	-2.2	-2.7	-1.6
Alberta	6.8	7.6	5.9	5.3	5.7	4.8	-1.5	-1.9	-1.1
British Columbia	4.5	5.2	3.7	4.1	4.2	4.0	-0.4	-1.0	0.3
Yukon	0.0	0.0	0.0	8.2	5.1	11.9	8.2	5.1	11.9
Northwest Territories	4.2	8.0	0.0	10.2	8.4	12.1	6.0	0.4	12.1
Nunavut	10.0	5.9	13.9	13.4	14.4	12.1	3.4	8.5	-1.8

Source(s): Statistics Canada, CANSIM table 102-0504.

From 2005 to 2006, four regions, Quebec, Yukon, Northwest Territories and Nunavut recorded increases in their infant mortality rate; the largest increase was in Yukon.

During this period, infant mortality rate remained the same for Nova Scotia, but declined in all other provinces. The largest decrease was in Saskatchewan.

Between 2005 and 2006, the decline of male infant mortality rate in Canada was due to decreases observed in eight out of ten Canadian provinces. In contrast, the reduction of the female infant mortality rate was due to a decline in the rates of six provinces and one territory.

### Neonatal, post-neonatal and perinatal mortality

Infant mortality can be subdivided into neonatal mortality (deaths of infants aged 0 to 27 days) and post-neonatal mortality (deaths of infants aged 28 to 364 days). Perinatal mortality refers to stillbirths with 28 or more weeks' gestation and early neonatal deaths (deaths of infants aged 0 to 6 days).

From 2005 and 2006, Canada's neonatal mortality rate decreased almost 10% from 4.1 deaths per 1,000 live births in 2005 to 3.7 in 2006. In contrast, post-neonatal rates remained at 1.3 deaths per 1,000 live births since 2003. As a result, the reduction in the infant mortality rate was mainly due to the decline in the neonatal mortality rate (Table 4).

The perinatal mortality rate decreased from 6.3 to 6.1 deaths per 1,000 total births (live births plus stillbirths of 28 or more weeks of gestation).

### Trends in infant mortality

From 1991 to 2006, the infant mortality rate fell from 6.4 to 5.0 deaths per 1,000 live births.

Over the 15-year period, the neonatal mortality rate declined from 4.1 to 3.7 deaths per 1,000 live births, while the post-neonatal mortality rate fell from 2.3 to 1.3 deaths per 1,000 live births. The perinatal mortality rate also declined from 6.8 in 1991 to 6.1 deaths per 1,000 total births in 2006 (Table 4).

The infant mortality and neonatal mortality rates fell from 1991 to 1992 and increased slightly until 1994. From 1995 to 1998, the infant mortality rate declined and had since fluctuated around 5.3 or 5.4 deaths per 1,000 live births until 2005. By contrast, since 2001, neonatal mortality rates increased steadily from a low of 3.6 to the level of 4.1 per 1,000 live births until 2005. In 2006, both rates declined.

The post-neonatal mortality rate declined from 1991 to 2003 and remained at 1.3 deaths per 1,000 live births since 2003.

**Text table 4**  
**Infant, neonatal, post-neonatal and perinatal mortality rates, 1991 to 2006**

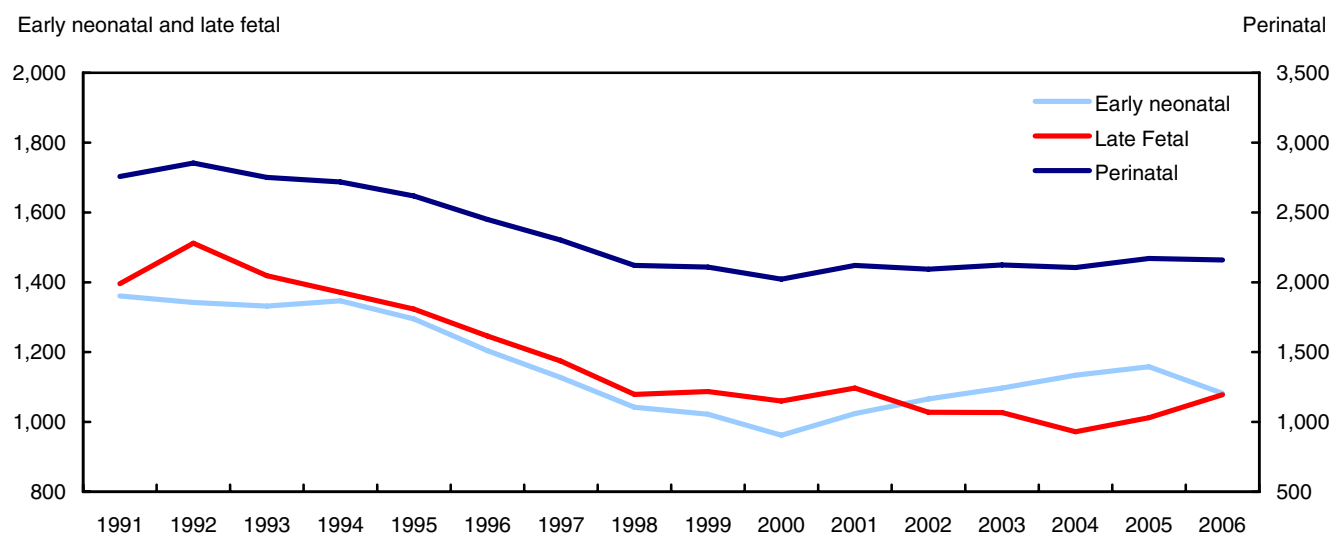
Year	Mortality rates				Annual change			
	Infant	Neonatal	Post-neonatal	Perinatal	Infant	Neonatal	Post-neonatal	Perinatal
1991	6.4	4.1	2.3	6.8				
1992	6.1	4.0	2.1	7.1	-0.3	-0.1	-0.2	0.3
1993	6.3	4.2	2.1	7.1	0.2	0.2	0.0	0.0
1994	6.3	4.2	2.0	7.0	0.0	0.0	-0.1	-0.1
1995	6.1	4.2	1.9	6.9	-0.2	0.0	-0.1	-0.1
1996	5.6	3.9	1.7	6.7	-0.5	-0.3	-0.2	-0.2
1997	5.5	3.9	1.6	6.6	-0.1	0.0	-0.1	-0.1
1998	5.3	3.7	1.6	6.2	-0.2	-0.2	0.0	-0.4
1999	5.3	3.6	1.6	6.2	0.0	-0.1	0.0	0.0
2000	5.3	3.6	1.7	6.1	0.0	0.0	0.1	-0.1
2001	5.2	3.8	1.4	6.3	-0.1	0.2	-0.3	0.2
2002	5.4	3.9	1.5	6.3	0.2	0.1	0.1	0.0
2003	5.3	3.9	1.3	6.3	-0.1	0.0	-0.2	0.0
2004	5.3	4.0	1.3	6.2	0.0	0.1	0.0	-0.1
2005	5.4	4.1	1.3	6.3	0.1	0.1	0.0	0.1
2006	5.0	3.7	1.3	6.1	-0.4	-0.4	0.0	-0.2

Source(s): Statistics Canada, CANSIM tables 102-0507 and 102-0508.

From 1991 to 1992, perinatal mortality rates increased from 6.8 to 7.1 deaths per 1,000 total births. Since 1994, perinatal mortality rate experienced a downward trend until year 2000. Between 2001 and 2005, the perinatal rate remained stable around 6.3 deaths per 1,000 total births and then declined in 2006 to 6.1.

Trends in the two components of perinatal deaths—early neonatal and late fetal deaths—differed in the last fifteen years. The number of late fetal deaths had a decreasing trend since 1992, but changed to an upward trend since 2004. The number of early neonatal deaths declined from 1991 to 2000, but rose from 2000 to 2005 and then turned downwards in 2006.

**Chart 2**  
**Early neonatal, late fetal and perinatal deaths, Canada, 1991 to 2006**



Source(s): Statistics Canada, CANSIM table 102-0508.

## Life expectancy

Life expectancy is the average number of years of life remaining—at birth or at another age—based on age-specific mortality rates calculated using a 3-year average (Table 5).

In 2006, life expectancy at birth was 80.8 years, an increase of 0.4 year from 2005. From 2005 to 2006, the male life expectancy at birth gained 0.4 year from 78.0 to 78.4 years, while the female's gained 0.3 year, from 82.7 to 83.0 years (Table 5).

Life expectancy at age 65 was 19.9 years in 2006: 18.2 years for males and 21.4 years for females. Between 2005 and 2006, the gain in life expectancy at age 65 (0.3 year) was the same for males, females or both sexes combined.

### Life expectancy from 2001 to 2006

From 2001 to 2006, life expectancy in Canada increased steadily while the gender gap continued to narrow.

From 2001 to 2006, life expectancy at birth rose by 1.2 years, from 79.6 to 80.8 years (Table 5). Life expectancy for men improved by 1.4 years, whereas life expectancy for women advanced by 0.9. As a result, the gender gap narrowed by 0.5 year from 5.1 years in 2001 to 4.6 years in 2006.

Between 2001 and 2006, the life expectancy at age 65 rose by 0.9 year. Male's increase surpassed that of females (1.1 versus 0.8 years) and the male-female gap in life expectancy at age 65 reduced from 3.5 in 2001 to 3.2 years in 2006.

**Text table 5**  
**Life expectancy at birth and at age 65, Canada, 2001 to 2006**

Year	At birth			At age 65		
	Both sexes	Males	Females	Both sexes	Males	Females
2001	79.6	77.0	82.1	19.0	17.1	20.6
2002	79.7	77.2	82.1	19.1	17.2	20.6
2003	79.9	77.4	82.4	19.2	17.4	20.8
2004	80.2	77.8	82.6	19.5	17.7	21.0
2005 <sup>1</sup>	80.4	78.0	82.7	19.6	17.9	21.1
2006 <sup>1</sup>	80.8	78.4	83.0	19.9	18.2	21.4

1. Based on age-specific mortality rates calculated using a 3-year average.

Source(s): Statistics Canada, CANSIM table 102-0511.

### Geographic differences in life expectancy at birth

In 2006, life expectancy at birth in three large provinces exceeded the national average of 80.8 years. British Columbia led with 81.4 years, followed by Ontario (81.1 years) and Quebec (80.9 years) (Table 6). In the other provinces and in the territories, life expectancy at birth was below the Canadian figure. The lowest life expectancy was in the three territories (75.7 years).

Ontario had the narrowest gender gap (4.3 years) in life expectancy at birth while the three territories had the widest (5.8 years). Except Ontario and British Columbia, all other provinces and the territories had higher male-female gap than the national average.

**Text table 6**  
**Life expectancy at birth by sex and geography, 2006**

Geography	Both sexes	Males	Females	Male-Female gap
Canada	80.8	78.4	83.0	4.6
Newfoundland and Labrador	78.2	75.6	80.8	5.2
Prince Edward Island	79.9	77.3	82.2	4.9
Nova Scotia	79.6	77.0	82.2	5.2
New Brunswick	80.1	77.7	82.4	4.7
Quebec	80.9	78.3	83.3	5.0
Ontario	81.1	78.9	83.2	4.3
Manitoba	79.3	76.8	81.7	4.9
Saskatchewan	79.4	76.8	82.0	5.2
Alberta	80.5	78.1	82.9	4.8
British Columbia	81.4	79.2	83.6	4.4
Territories	75.7	73.1	78.9	5.8

Source(s): Statistics Canada, CANSIM table 102-0511.

### Geographic differences in life expectancy at age 65

In 2006, British Columbia had the highest life expectancy at age 65: 20.5 years. Quebec, Ontario and Alberta had the same life expectancy at 20.0 years. Life expectancy at age 65 in the other provinces and the territories was below the national level (19.9 years). The lowest life expectancy at age 65 was in the three territories: 16.8 years.

In three provinces, the gender gap in life expectancy at age 65 was less than the national level of 3.2 years: British Columbia (2.7 years), Ontario (2.9 years) and New Brunswick (3.1 years). The widest gap was in the three territories (3.9 years).

**Text table 7**  
**Life expectancy at age 65, by sex and geography, 2006**

Geography	Both sexes	Males	Females	Male-female gap
Canada	19.9	18.2	21.4	3.2
Newfoundland and Labrador	17.9	16.1	19.5	3.4
Prince Edward Island	19.1	17.3	20.7	3.4
Nova Scotia	18.9	17.1	20.4	3.3
New Brunswick	19.4	17.7	20.8	3.1
Quebec	20.0	18.1	21.6	3.5
Ontario	20.0	18.4	21.3	2.9
Manitoba	19.3	17.6	20.8	3.2
Saskatchewan	19.5	17.7	21.2	3.5
Alberta	20.0	18.3	21.5	3.2
British Columbia	20.5	19.1	21.8	2.7
Territories	16.8	15.2	19.1	3.9

Source(s): Statistics Canada, CANSIM table 102-0511.

## International comparisons

### Infant mortality

Among 15 selected low mortality countries for which 2006 infant mortality rates were available, Canada ranked 13<sup>th</sup> with 5.0 infant deaths per 1,000 live births, the same rate as United Kingdom and just above United States (6.7 infant deaths per 1,000 live births).

Iceland had the lowest rate at 2.4 infant deaths per 1,000 live births, followed by Japan, Sweden and Finland.

**Text table 8**  
**Infant mortality rate, selected countries, 2006**

Rank	Country	Rate <sup>1</sup>
1	Iceland	2.4
2	Japan	2.6
3	Sweden	2.8
3	Finland	2.8
5	Norway	3.2
6	Czech Republic	3.3
7	France	3.6
8	Germany	3.8
8	Denmark	3.8
10	Switzerland	4.4
10	Netherlands	4.4
12	Australia	4.7
<b>13</b>	<b>Canada</b>	<b>5.0</b>
13	United Kingdom	5.0
15	United States <sup>P</sup>	6.7

<sup>P</sup> This rate was calculated with preliminary data.

1. The rates are per 1,000 live births.

Source(s): National Statistics Offices.

## Life expectancy at birth

Compared with 15 countries with high life expectancy at birth and for which 2006 data were available, Canada ranked 6<sup>th</sup> for males and 5<sup>th</sup> for females.

Iceland had the highest male life expectancy (79.4 years), followed by Switzerland and Japan.

Japan led with the highest female life expectancy, followed by France and Switzerland.

**Text table 9**  
**Life expectancy at birth by sex, selected countries, 2006**

Rank	Country	Males	Rank	Country	Females
1	Iceland	79.4	1	Japan	85.8
2	Switzerland	79.1	2	France	84.2
3	Japan	79.0	3	Switzerland	84.0
4	Australia	78.7	4	Australia	83.5
4	Sweden	78.7	<b>5</b>	<b>Canada</b>	<b>83.0</b>
<b>6</b>	<b>Canada</b>	<b>78.4</b>	5	Iceland	83.0
7	Norway	78.1	7	Sweden	82.9
8	Netherlands	77.6	8	Finland	82.8
9	United Kingdom	77.3	9	Norway	82.7
10	France	77.2	10	Germany	82.3
11	Germany	76.9	11	Netherlands	81.9
12	Denmark	75.9	12	United Kingdom	81.5
13	Finland	75.8	13	United States <sup>P</sup>	80.7
14	United States <sup>P</sup>	75.4	14	Denmark	80.4
15	Czech Republic	73.4	15	Czech Republic	79.7

<sup>P</sup> This rate was calculated with preliminary data.

Source(s): National Statistics Offices.



## Related products

---

### Selected publications from Statistics Canada

---

82-221-X	Health indicators
84-208-X	Causes of death
84-537-X	Life tables, Canada, provinces and territories
84-548-X	Comparability of ICD-10 and ICD-9 for Mortality Statistics in Canada
84F0209X	Mortality, Summary List of Causes

---

### Selected CANSIM tables from Statistics Canada

---

102-0501	Deaths, by place of residence and place of occurrence, Canada, provinces, territories and outside Canada
102-0502	Deaths, by month, Canada, provinces and territories
102-0503	Deaths, by age and sex, Canada, provinces and territories
102-0504	Deaths, by age group and sex, Canada, provinces and territories
102-0505	Deaths, by marital status, age group and sex, Canada, provinces and territories
102-0506	Infant mortality, by age group and sex, Canada
102-0507	Infant mortality, by age group, Canada, provinces and territories
102-0508	Perinatal mortality and components, Canada, provinces and territories
102-0509	Deaths in hospital and elsewhere, Canada, provinces and territories
102-0510	Deaths subject to autopsy, Canada, provinces and territories
102-0511	Life expectancy, abridged life table, at birth and at age 65, by sex, Canada, provinces and territories

---

### **Selected surveys from Statistics Canada**

---

3231	Vital Statistics - Birth Database
3233	Vital Statistics - Death Database
3234	Vital Statistics - Stillbirth Database
3604	Estimates of Population by Age and Sex for Canada, Provinces and Territories

---

### **Selected tables of Canadian statistics from Statistics Canada**

---

- *Births and birth rate, by provinces and territories*
- *Deaths and death rate, by provinces and territories*
- *Components of population growth, by province and territory*
- *Infant mortality rates, by province and territory*
- *Disability-free life expectancy, by province and territory*
- *Induced abortions by age group*
- *Pregnancy outcomes by province or territory of residence*
- *Pregnancy outcomes by age group*

# Statistical tables

---

---

**Table 1**  
**Deaths<sup>1</sup> by sex and geography**

Place of residence <sup>2</sup>	Both sexes	Males	Females	Both sexes	Males	Females
	number			percent		
<b>Canada</b>	<b>228,079</b>	<b>115,149</b>	<b>112,930</b>	<b>100.0</b>	<b>100.0</b>	<b>100.0</b>
Newfoundland and Labrador	4,493	2,346	2,147	2.0	2.0	1.9
Prince Edward Island	1,172	587	585	0.5	0.5	0.5
Nova Scotia	8,088	4,089	3,999	3.5	3.6	3.5
New Brunswick	6,010	2,943	3,067	2.6	2.6	2.7
Quebec	54,240	27,035	27,205	23.8	23.5	24.1
Ontario	84,524	42,480	42,044	37.1	36.9	37.2
Manitoba	9,774	4,852	4,922	4.3	4.2	4.4
Saskatchewan	9,054	4,590	4,464	4.0	4.0	4.0
Alberta	19,540	10,257	9,283	8.6	8.9	8.2
British Columbia	30,688	15,672	15,016	13.5	13.6	13.3
Yukon	178	99	79	0.1	0.1	0.1
Northwest Territories	182	113	69	0.1	0.1	0.1
Nunavut	129	82	47	0.1	0.1	0.0
Unknown <sup>3</sup>	7	4	3	0.0	0.0	0.0

1. Death refers to the permanent disappearance of all evidence of life at any time after a live birth has taken place. Stillbirths are excluded.

2. The geographic distribution of deaths in this table is based on the deceased's usual place of residence.

3. The category "Unknown province or territory" refers to deaths of residents of Canada, province or territory of residence unknown.

**Note(s):** See "Data quality, concepts and methodology — Explanatory notes for the tables" section.

**Source(s):** Statistics Canada, Canadian Vital Statistics, Death Database (CANSIM table 102-0503).

**Table 2-1**  
**Deaths by geography — Month**

Place of residence	number of deaths												
	Total	January	February	March	April	May	June	July	August	September	October	November	December
<b>Canada</b>	<b>228,079</b>	<b>20,120</b>	<b>18,388</b>	<b>20,350</b>	<b>18,786</b>	<b>19,143</b>	<b>17,783</b>	<b>18,043</b>	<b>18,237</b>	<b>17,926</b>	<b>19,652</b>	<b>19,126</b>	<b>20,525</b>
Newfoundland and Labrador	4,493	393	389	373	374	354	327	379	369	361	372	395	407
Prince Edward Island	1,172	102	96	99	113	102	94	95	93	79	100	88	111
Nova Scotia	8,088	731	619	679	665	719	658	640	679	638	689	629	742
New Brunswick	6,010	545	481	560	507	483	458	501	459	491	482	524	519
Quebec	54,240	4,657	4,389	4,750	4,467	4,596	4,375	4,362	4,399	4,227	4,636	4,525	4,857
Ontario	84,524	7,427	6,736	7,621	6,941	7,198	6,487	6,571	6,827	6,630	7,344	7,043	7,699
Manitoba	9,774	876	785	853	816	738	735	752	753	795	880	851	940
Saskatchewan	9,054	854	693	792	745	733	701	712	692	707	767	837	821
Alberta	19,540	1,761	1,638	1,779	1,601	1,648	1,509	1,510	1,504	1,584	1,707	1,686	1,613
British Columbia	30,688	2,729	2,522	2,803	2,509	2,538	2,398	2,472	2,417	2,374	2,634	2,515	2,777
Yukon	178	13	12	15	18	12	12	18	14	15	15	15	19
Northwest Territories	182	12	19	14	16	12	17	20	23	14	14	13	8
Nunavut	129	20	7	11	14	10	10	11	8	11	12	5	10
Unknown	7	0	2	1	0	0	2	0	0	0	0	0	2
	percentage												
<b>Canada</b>	<b>100.0</b>	<b>8.8</b>	<b>8.1</b>	<b>8.9</b>	<b>8.2</b>	<b>8.4</b>	<b>7.8</b>	<b>7.9</b>	<b>8.0</b>	<b>7.9</b>	<b>8.6</b>	<b>8.4</b>	<b>9.0</b>
Newfoundland and Labrador	100.0	8.7	8.7	8.3	8.3	7.9	7.3	8.4	8.2	8.0	8.3	8.8	9.1
Prince Edward Island	100.0	8.7	8.2	8.4	9.6	8.7	8.0	8.1	7.9	6.7	8.5	7.5	9.5
Nova Scotia	100.0	9.0	7.7	8.4	8.2	8.9	8.1	7.9	8.4	7.9	8.5	7.8	9.2
New Brunswick	100.0	9.1	8.0	9.3	8.4	8.0	7.6	8.3	7.6	8.2	8.0	8.7	8.6
Quebec	100.0	8.6	8.1	8.8	8.2	8.5	8.1	8.0	8.1	7.8	8.5	8.3	9.0
Ontario	100.0	8.8	8.0	9.0	8.2	8.5	7.7	7.8	8.1	7.8	8.7	8.3	9.1
Manitoba	100.0	9.0	8.0	8.7	8.3	7.6	7.5	7.7	7.7	8.1	9.0	8.7	9.6
Saskatchewan	100.0	9.4	7.7	8.7	8.2	8.1	7.7	7.9	7.6	7.8	8.5	9.2	9.1
Alberta	100.0	9.0	8.4	9.1	8.2	8.4	7.7	7.7	7.7	8.1	8.7	8.6	8.3
British Columbia	100.0	8.9	8.2	9.1	8.2	8.3	7.8	8.1	7.9	7.7	8.6	8.2	9.0
Yukon	100.0	7.3	6.7	8.4	10.1	6.7	6.7	10.1	7.9	8.4	8.4	8.4	10.7
Northwest Territories	100.0	6.6	10.4	7.7	8.8	6.6	9.3	11.0	12.6	7.7	7.7	7.1	4.4
Nunavut	100.0	15.5	5.4	8.5	10.9	7.8	7.8	8.5	6.2	8.5	9.3	3.9	7.8
Unknown	100.0	0.0	28.6	14.3	0.0	0.0	28.6	0.0	0.0	0.0	0.0	0.0	28.6

**Note(s):** See "Data quality, concepts and methodology — Explanatory notes for the tables" section.

**Source(s):** Statistics Canada, Canadian Vital Statistics, Death Database (CANSIM table 102-0502).

**Table 2-2**  
**Deaths by geography — In hospital and elsewhere**

Place of residence	Place of death							
	Total		Hospital		Non-hospital		Unknown	
	number	percentage	number	percentage	number	percentage	number	percentage
<b>Canada</b>	<b>228,079</b>	<b>136,730</b>	<b>59.9</b>	<b>60,601</b>	<b>26.6</b>	<b>30,748</b>	<b>13.5</b>	
Newfoundland and Labrador	4,493	2,936	65.3	1,554	34.6	3	0.1	
Prince Edward Island	1,172	713	60.8	453	38.7	6	0.5	
Nova Scotia	8,088	4,999	61.8	3,084	38.1	5	0.1	
New Brunswick	6,010	3,811	63.4	2,196	36.5	3	0.0	
Quebec	54,240	46,979	86.6	7,250	13.4	11	0.0	
Ontario	84,524	52,818	62.5	31,660	37.5	46	0.1	
Manitoba	9,774	7,799	79.8	1,953	20.0	22	0.2	
Saskatchewan	9,054	4,773	52.7	4,271	47.2	10	0.1	
Alberta	19,540	11,501	58.9	7,919	40.5	120	0.6	
British Columbia	30,688	138	0.4	46	0.1	30,504	99.4	
Yukon	178	95	53.4	72	40.4	11	6.2	
Northwest Territories	182	108	59.3	71	39.0	3	1.6	
Nunavut	129	56	43.4	69	53.5	4	3.1	
Unknown	7	4	57.1	3	42.9	0	0.0	

**Note(s):** See "Data quality, concepts and methodology — Explanatory notes for the tables" section.

**Source(s):** Statistics Canada, Canadian Vital Statistics, Death Database (CANSIM table 102-0509).

**Table 2-3**  
**Deaths by geography — Subject to autopsy**

Place of residence	Total, deaths	Death subject to autopsy		Death not subject to autopsy		Unknown whether death subject to autopsy	
	number	percentage	number	percentage	number	percentage	
<b>Canada</b>	<b>228,079</b>	<b>13,596</b>	<b>6.0</b>	<b>208,222</b>	<b>91.3</b>	<b>6,261</b>	<b>2.7</b>
Newfoundland and Labrador	4,493	343	7.6	3,973	88.4	177	3.9
Prince Edward Island	1,172	159	13.6	1,005	85.8	8	0.7
Nova Scotia	8,088	886	11.0	7,195	89.0	7	0.1
New Brunswick	6,010	589	9.8	4,558	75.8	863	14.4
Quebec	54,240	3,443	6.3	48,930	90.2	1,867	3.4
Ontario	84,524	2,143	2.5	82,366	97.4	15	0.0
Manitoba	9,774	1,027	10.5	6,715	68.7	2,032	20.8
Saskatchewan	9,054	750	8.3	8,274	91.4	30	0.3
Alberta	19,540	1,555	8.0	17,524	89.7	461	2.4
British Columbia	30,688	2,618	8.5	27,305	89.0	765	2.5
Yukon	178	28	15.7	146	82.0	4	2.2
Northwest Territories	182	38	20.9	120	65.9	24	13.2
Nunavut	129	16	12.4	105	81.4	8	6.2
Unknown	7	1	14.3	6	85.7	0	0.0

**Note(s):** See "Data quality, concepts and methodology — Explanatory notes for the tables" section.

**Source(s):** Statistics Canada, Canadian Vital Statistics, Death Database (CANSIM table 102-0510).

**Table 3-1**  
**Deaths by single year of age and geography — Both sexes**

Age at time of death <sup>1</sup>	Place of residence						
	Canada	Newfoundland and Labrador	Prince Edward Island	Nova Scotia	New Brunswick	Quebec	Ontario
	number						
<b>All ages</b>	<b>228,079</b>	<b>4,493</b>	<b>1,172</b>	<b>8,088</b>	<b>6,010</b>	<b>54,240</b>	<b>84,524</b>
<b>0 to 4 years</b>	<b>2,055</b>	<b>29</b>	<b>3</b>	<b>41</b>	<b>37</b>	<b>468</b>	<b>779</b>
Under 1 year	1,771	24	3	34	28	415	674
1 to 4 years	284	5	0	7	9	53	105
<b>5 to 9 years</b>	<b>198</b>	<b>6</b>	<b>2</b>	<b>2</b>	<b>5</b>	<b>38</b>	<b>75</b>
<b>10 to 14 years</b>	<b>275</b>	<b>7</b>	<b>2</b>	<b>8</b>	<b>9</b>	<b>66</b>	<b>90</b>
<b>15 to 19 years</b>	<b>985</b>	<b>17</b>	<b>6</b>	<b>26</b>	<b>23</b>	<b>207</b>	<b>305</b>
15 years	116	1	2	0	3	22	40
16 years	151	2	3	6	8	29	49
17 years	206	4	0	3	5	44	70
18 years	264	6	1	8	4	57	77
19 years	248	4	0	9	3	55	69
<b>20 to 24 years</b>	<b>1,318</b>	<b>22</b>	<b>5</b>	<b>38</b>	<b>34</b>	<b>255</b>	<b>418</b>
20 years	279	3	1	9	7	50	102
21 years	259	5	1	10	13	44	77
22 years	280	4	1	9	6	45	100
23 years	257	6	1	5	5	54	75
24 years	243	4	1	5	3	62	64
<b>25 to 29 years</b>	<b>1,254</b>	<b>25</b>	<b>5</b>	<b>29</b>	<b>42</b>	<b>292</b>	<b>379</b>
25 years	252	5	1	7	6	60	73
26 years	221	3	1	0	6	54	76
27 years	266	8	0	7	8	56	71
28 years	269	5	2	6	10	62	77
29 years	246	4	1	9	12	60	82
<b>30 to 34 years</b>	<b>1,412</b>	<b>28</b>	<b>6</b>	<b>37</b>	<b>45</b>	<b>311</b>	<b>470</b>
30 years	279	3	1	6	10	65	98
31 years	249	5	0	8	12	52	81
32 years	270	6	3	10	1	55	97
33 years	300	7	1	7	15	66	95
34 years	314	7	1	6	7	73	99
<b>35 to 39 years</b>	<b>2,121</b>	<b>38</b>	<b>13</b>	<b>75</b>	<b>45</b>	<b>472</b>	<b>736</b>
35 years	358	8	3	9	2	77	131
36 years	356	5	4	8	12	74	119
37 years	395	6	0	21	6	98	129
38 years	487	7	4	13	10	102	181
39 years	525	12	2	24	15	121	176
<b>40 to 44 years</b>	<b>3,663</b>	<b>54</b>	<b>15</b>	<b>111</b>	<b>78</b>	<b>837</b>	<b>1,322</b>
40 years	620	8	2	20	16	142	214
41 years	654	10	0	18	7	151	251
42 years	715	11	1	19	20	155	266
43 years	829	14	7	25	17	196	275
44 years	845	11	5	29	18	193	316
<b>45 to 49 years</b>	<b>5,830</b>	<b>94</b>	<b>20</b>	<b>192</b>	<b>131</b>	<b>1,420</b>	<b>2,072</b>
45 years	974	6	4	35	26	235	349
46 years	1,066	20	3	39	22	262	367
47 years	1,137	25	4	28	30	271	409
48 years	1,257	20	4	46	23	309	460
49 years	1,396	23	5	44	30	343	487
<b>50 to 54 years</b>	<b>8,163</b>	<b>164</b>	<b>36</b>	<b>249</b>	<b>181</b>	<b>1,959</b>	<b>3,015</b>
50 years	1,420	31	5	46	32	321	540
51 years	1,502	32	10	48	25	364	564
52 years	1,713	31	6	49	41	443	611
53 years	1,695	37	11	49	39	398	624
54 years	1,833	33	4	57	44	433	676
<b>55 to 59 years</b>	<b>10,848</b>	<b>270</b>	<b>61</b>	<b>391</b>	<b>290</b>	<b>2,712</b>	<b>3,888</b>
55 years	1,875	52	5	67	39	491	638
56 years	1,990	41	12	61	56	501	727
57 years	2,081	52	16	86	55	541	732
58 years	2,278	54	14	76	75	569	804
59 years	2,624	71	14	101	65	610	987

See notes at the end of the table.

Table 3-1 – continued

## Deaths by single year of age and geography — Both sexes

Age at time of death <sup>1</sup>	Place of residence						
	Canada	Newfoundland and Labrador	Prince Edward Island	Nova Scotia	New Brunswick	Quebec	Ontario
	number						
<b>60 to 64 years</b>	<b>13,365</b>	<b>320</b>	<b>75</b>	<b>495</b>	<b>374</b>	<b>3,452</b>	<b>4,937</b>
60 years	2,444	65	14	91	64	659	898
61 years	2,480	55	10	102	64	650	914
62 years	2,650	62	20	104	83	685	956
63 years	2,768	66	7	84	70	694	1,048
64 years	3,023	72	24	114	93	764	1,121
<b>65 to 69 years</b>	<b>16,295</b>	<b>383</b>	<b>92</b>	<b>612</b>	<b>477</b>	<b>4,214</b>	<b>5,925</b>
65 years	2,932	68	11	112	86	751	1,038
66 years	3,087	86	22	95	84	796	1,139
67 years	3,306	83	20	133	102	859	1,195
68 years	3,459	65	22	139	86	918	1,252
69 years	3,511	81	17	133	119	890	1,301
<b>70 to 74 years</b>	<b>22,263</b>	<b>456</b>	<b>111</b>	<b>837</b>	<b>580</b>	<b>5,667</b>	<b>8,370</b>
70 years	3,941	82	23	151	105	982	1,477
71 years	4,095	83	17	145	115	1,075	1,538
72 years	4,320	82	25	164	102	1,135	1,645
73 years	4,743	88	19	187	126	1,142	1,786
74 years	5,164	121	27	190	132	1,333	1,924
<b>75 to 79 years</b>	<b>30,964</b>	<b>641</b>	<b>133</b>	<b>1,097</b>	<b>766</b>	<b>7,700</b>	<b>11,790</b>
75 years	5,531	120	22	187	139	1,383	2,063
76 years	5,980	113	23	235	154	1,515	2,246
77 years	6,209	145	22	203	153	1,536	2,409
78 years	6,495	138	32	224	158	1,602	2,492
79 years	6,749	125	34	248	162	1,664	2,580
<b>80 to 84 years</b>	<b>37,626</b>	<b>740</b>	<b>180</b>	<b>1,293</b>	<b>961</b>	<b>9,042</b>	<b>14,390</b>
80 years	7,131	164	33	254	168	1,746	2,774
81 years	7,235	142	39	260	181	1,759	2,805
82 years	7,608	153	37	247	180	1,874	2,893
83 years	7,639	126	43	236	209	1,812	2,920
84 years	8,013	155	28	296	223	1,851	2,998
<b>85 to 89 years</b>	<b>34,530</b>	<b>634</b>	<b>200</b>	<b>1,238</b>	<b>948</b>	<b>7,660</b>	<b>12,714</b>
85 years	7,824	130	48	269	199	1,689	3,065
86 years	7,469	141	41	298	212	1,615	2,826
87 years	6,778	136	33	236	192	1,565	2,417
88 years	6,334	116	39	225	183	1,484	2,183
89 years	6,125	111	39	210	162	1,307	2,223
<b>90 to 94 years</b>	<b>24,025</b>	<b>425</b>	<b>140</b>	<b>902</b>	<b>658</b>	<b>5,137</b>	<b>8,863</b>
90 years	5,848	105	39	220	179	1,263	2,174
91 years	5,528	90	29	198	152	1,139	2,032
92 years	4,832	94	19	192	134	1,018	1,793
93 years	4,298	74	29	164	111	933	1,567
94 years	3,519	62	24	128	82	784	1,297
<b>95 to 99 years</b>	<b>9,060</b>	<b>121</b>	<b>57</b>	<b>335</b>	<b>270</b>	<b>1,980</b>	<b>3,254</b>
95 years	2,839	32	20	99	88	591	1,041
96 years	2,266	39	11	71	60	503	828
97 years	1,675	26	13	68	55	367	595
98 years	1,355	13	8	59	39	308	464
99 years	925	11	5	38	28	211	326
<b>100 years and over</b>	<b>1,816</b>	<b>19</b>	<b>10</b>	<b>80</b>	<b>56</b>	<b>350</b>	<b>721</b>
<b>Not stated</b>	<b>13</b>	<b>0</b>	<b>0</b>	<b>0</b>	<b>0</b>	<b>1</b>	<b>11</b>

See notes at the end of the table.



Table 3-1 – continued

## Deaths by single year of age and geography — Both sexes

Age at time of death <sup>1</sup>	Place of residence								
	Canada	Manitoba	Saskatchewan	Alberta	British Columbia	Yukon	Northwest Territories	Nunavut	Unknown
	number								
<b>All ages</b>	<b>228,079</b>	<b>9,774</b>	<b>9,054</b>	<b>19,540</b>	<b>30,688</b>	<b>178</b>	<b>182</b>	<b>129</b>	<b>7</b>
<b>0 to 4 years</b>	<b>2,055</b>	<b>107</b>	<b>87</b>	<b>278</b>	<b>201</b>	<b>3</b>	<b>9</b>	<b>12</b>	<b>1</b>
Under 1 year	1,771	88	75	238	171	3	7	10	1
1 to 4 years	284	19	12	40	30	0	2	2	0
<b>5 to 9 years</b>	<b>198</b>	<b>6</b>	<b>10</b>	<b>30</b>	<b>24</b>	<b>0</b>	<b>0</b>	<b>0</b>	<b>0</b>
<b>10 to 14 years</b>	<b>275</b>	<b>19</b>	<b>6</b>	<b>36</b>	<b>31</b>	<b>0</b>	<b>0</b>	<b>1</b>	<b>0</b>
<b>15 to 19 years</b>	<b>985</b>	<b>60</b>	<b>52</b>	<b>142</b>	<b>137</b>	<b>1</b>	<b>3</b>	<b>6</b>	<b>0</b>
15 years	116	16	1	13	17	0	0	1	0
16 years	151	7	10	17	18	0	1	1	0
17 years	206	9	11	32	24	0	2	2	0
18 years	264	11	19	39	40	1	0	1	0
19 years	248	17	11	41	38	0	0	1	0
<b>20 to 24 years</b>	<b>1,318</b>	<b>71</b>	<b>85</b>	<b>187</b>	<b>187</b>	<b>2</b>	<b>7</b>	<b>7</b>	<b>0</b>
20 years	279	19	24	22	38	1	2	1	0
21 years	259	18	14	37	36	0	1	3	0
22 years	280	9	17	47	40	0	2	0	0
23 years	257	15	15	44	31	1	2	3	0
24 years	243	10	15	37	42	0	0	0	0
<b>25 to 29 years</b>	<b>1,254</b>	<b>49</b>	<b>54</b>	<b>187</b>	<b>177</b>	<b>3</b>	<b>6</b>	<b>6</b>	<b>0</b>
25 years	252	8	11	47	32	0	0	2	0
26 years	221	9	8	37	24	0	2	1	0
27 years	266	13	12	42	46	1	2	0	0
28 years	269	13	14	32	43	2	1	2	0
29 years	246	6	9	29	32	0	1	1	0
<b>30 to 34 years</b>	<b>1,412</b>	<b>74</b>	<b>65</b>	<b>182</b>	<b>183</b>	<b>5</b>	<b>2</b>	<b>4</b>	<b>0</b>
30 years	279	11	8	46	30	1	0	0	0
31 years	249	11	19	28	32	0	1	0	0
32 years	270	11	13	30	42	1	1	0	0
33 years	300	20	12	33	40	1	0	3	0
34 years	314	21	13	45	39	2	0	1	0
<b>35 to 39 years</b>	<b>2,121</b>	<b>91</b>	<b>72</b>	<b>260</b>	<b>301</b>	<b>6</b>	<b>4</b>	<b>8</b>	<b>0</b>
35 years	358	15	19	41	50	1	1	1	0
36 years	356	15	12	52	52	0	1	2	0
37 years	395	19	8	50	54	2	0	2	0
38 years	487	19	14	57	76	2	1	1	0
39 years	525	23	19	60	69	1	1	2	0
<b>40 to 44 years</b>	<b>3,663</b>	<b>140</b>	<b>137</b>	<b>426</b>	<b>528</b>	<b>5</b>	<b>6</b>	<b>3</b>	<b>1</b>
40 years	620	35	24	80	77	1	1	0	0
41 years	654	24	23	64	105	0	1	0	0
42 years	715	25	26	90	101	0	0	1	0
43 years	829	28	43	99	119	1	3	2	0
44 years	845	28	21	93	126	3	1	0	1
<b>45 to 49 years</b>	<b>5,830</b>	<b>257</b>	<b>179</b>	<b>655</b>	<b>775</b>	<b>13</b>	<b>11</b>	<b>10</b>	<b>1</b>
45 years	974	58	25	103	129	2	1	1	0
46 years	1,066	46	35	115	147	6	1	3	0
47 years	1,137	45	38	130	150	1	4	2	0
48 years	1,257	53	40	134	165	3	0	0	0
49 years	1,396	55	41	173	184	1	5	4	1
<b>50 to 54 years</b>	<b>8,163</b>	<b>325</b>	<b>287</b>	<b>845</b>	<b>1,073</b>	<b>12</b>	<b>9</b>	<b>8</b>	<b>0</b>
50 years	1,420	44	47	158	190	3	0	3	0
51 years	1,502	50	54	150	200	2	2	1	0
52 years	1,713	69	70	192	197	1	2	1	0
53 years	1,695	77	52	160	243	2	3	0	0
54 years	1,833	85	64	185	243	4	2	3	0
<b>55 to 59 years</b>	<b>10,848</b>	<b>437</b>	<b>331</b>	<b>985</b>	<b>1,454</b>	<b>8</b>	<b>13</b>	<b>7</b>	<b>1</b>
55 years	1,875	59	65	186	267	2	3	1	0
56 years	1,990	81	50	182	275	1	1	2	0
57 years	2,081	76	61	175	280	4	2	0	1
58 years	2,278	105	64	211	301	0	2	3	0
59 years	2,624	116	91	231	331	1	5	1	0
<b>60 to 64 years</b>	<b>13,365</b>	<b>506</b>	<b>406</b>	<b>1,121</b>	<b>1,641</b>	<b>16</b>	<b>13</b>	<b>9</b>	<b>0</b>
60 years	2,444	93	75	199	278	3	4	1	0
61 years	2,480	93	72	188	326	2	2	2	0
62 years	2,650	92	88	223	329	4	2	2	0
63 years	2,768	111	87	260	332	4	3	2	0
64 years	3,023	117	84	251	376	3	2	2	0

See notes at the end of the table.

Table 3-1 – continued

## Deaths by single year of age and geography — Both sexes

Age at time of death <sup>1</sup>	Place of residence								
	Canada	Manitoba	Saskatchewan	Alberta	British Columbia	Yukon	Northwest Territories	Nunavut	Unknown
	number								
<b>65 to 69 years</b>	<b>16,295</b>	<b>625</b>	<b>528</b>	<b>1,336</b>	<b>2,054</b>	<b>16</b>	<b>18</b>	<b>14</b>	<b>1</b>
65 years	2,932	116	98	263	378	4	2	4	1
66 years	3,087	113	92	253	399	0	6	2	0
67 years	3,306	118	119	251	412	5	5	4	0
68 years	3,459	136	111	285	435	4	4	2	0
69 years	3,511	142	108	284	430	3	1	2	0
<b>70 to 74 years</b>	<b>22,263</b>	<b>878</b>	<b>785</b>	<b>1,821</b>	<b>2,713</b>	<b>19</b>	<b>17</b>	<b>7</b>	<b>2</b>
70 years	3,941	170	126	334	485	3	3	0	0
71 years	4,095	140	148	345	479	3	5	2	0
72 years	4,320	164	126	328	536	7	2	3	1
73 years	4,743	188	188	408	605	2	3	0	1
74 years	5,164	216	197	406	608	4	4	2	0
<b>75 to 79 years</b>	<b>30,964</b>	<b>1,175</b>	<b>1,109</b>	<b>2,457</b>	<b>4,040</b>	<b>21</b>	<b>22</b>	<b>13</b>	<b>0</b>
75 years	5,531	199	191	462	750	6	6	3	0
76 years	5,980	230	240	417	800	1	4	2	0
77 years	6,209	250	212	481	789	3	3	3	0
78 years	6,495	246	220	545	826	7	2	3	0
79 years	6,749	250	246	552	875	4	7	2	0
<b>80 to 84 years</b>	<b>37,626</b>	<b>1,586</b>	<b>1,442</b>	<b>2,923</b>	<b>5,026</b>	<b>20</b>	<b>17</b>	<b>6</b>	<b>0</b>
80 years	7,131	275	241	564	907	2	2	1	0
81 years	7,235	293	287	569	888	8	2	2	0
82 years	7,608	315	289	579	1,034	3	3	1	0
83 years	7,639	342	290	585	1,067	3	4	2	0
84 years	8,013	361	335	626	1,130	4	6	0	0
<b>85 to 89 years</b>	<b>34,530</b>	<b>1,612</b>	<b>1,575</b>	<b>2,840</b>	<b>5,069</b>	<b>17</b>	<b>19</b>	<b>4</b>	<b>0</b>
85 years	7,824	338	336	598	1,142	5	4	1	0
86 years	7,469	328	323	595	1,077	5	7	1	0
87 years	6,778	340	341	578	934	3	3	0	0
88 years	6,334	299	319	543	937	3	1	2	0
89 years	6,125	307	256	526	979	1	4	0	0
<b>90 to 94 years</b>	<b>24,025</b>	<b>1,197</b>	<b>1,239</b>	<b>1,944</b>	<b>3,504</b>	<b>8</b>	<b>4</b>	<b>4</b>	<b>0</b>
90 years	5,848	304	260	445	853	3	2	1	0
91 years	5,528	280	277	485	844	2	0	0	0
92 years	4,832	234	266	394	682	2	1	3	0
93 years	4,298	213	223	352	631	0	1	0	0
94 years	3,519	166	213	268	494	1	0	0	0
<b>95 to 99 years</b>	<b>9,060</b>	<b>456</b>	<b>502</b>	<b>744</b>	<b>1,337</b>	<b>3</b>	<b>1</b>	<b>0</b>	<b>0</b>
95 years	2,839	139	179	223	427	0	0	0	0
96 years	2,266	105	107	185	356	0	1	0	0
97 years	1,675	92	87	139	232	1	0	0	0
98 years	1,355	69	71	110	212	2	0	0	0
99 years	925	51	58	87	110	0	0	0	0
<b>100 years and over</b>	<b>1,816</b>	<b>103</b>	<b>103</b>	<b>140</b>	<b>233</b>	<b>0</b>	<b>1</b>	<b>0</b>	<b>0</b>
<b>Not stated</b>	<b>13</b>	<b>0</b>	<b>0</b>	<b>1</b>	<b>0</b>	<b>0</b>	<b>0</b>	<b>0</b>	<b>0</b>

1. Age attained at the last birthday preceding death.

**Note(s):** See "Data quality, concepts and methodology — Explanatory notes for the tables" section.

**Source(s):** Statistics Canada, Canadian Vital Statistics, Death Database (CANSIM table 102-0503).

**Table 3-2**  
**Deaths by single year of age and geography — Males**

Age at time of death <sup>1</sup>	Place of residence						
	Canada	Newfoundland and Labrador	Prince Edward Island	Nova Scotia	New Brunswick	Quebec	Ontario
	number						
<b>All ages</b>	<b>115,149</b>	<b>2,346</b>	<b>587</b>	<b>4,089</b>	<b>2,943</b>	<b>27,035</b>	<b>42,480</b>
<b>0 to 4 years</b>	<b>1,146</b>	<b>18</b>	<b>2</b>	<b>21</b>	<b>21</b>	<b>259</b>	<b>443</b>
Under 1 year	983	16	2	16	16	223	390
1 to 4 years	163	2	0	5	5	36	53
<b>5 to 9 years</b>	<b>111</b>	<b>2</b>	<b>1</b>	<b>2</b>	<b>2</b>	<b>23</b>	<b>44</b>
<b>10 to 14 years</b>	<b>160</b>	<b>3</b>	<b>2</b>	<b>3</b>	<b>3</b>	<b>42</b>	<b>51</b>
<b>15 to 19 years</b>	<b>674</b>	<b>10</b>	<b>1</b>	<b>19</b>	<b>16</b>	<b>143</b>	<b>215</b>
15 years	67	0	1	0	2	12	24
16 years	93	1	0	4	6	18	32
17 years	140	2	0	2	4	30	49
18 years	189	4	0	6	2	43	58
19 years	185	3	0	7	2	40	52
<b>20 to 24 years</b>	<b>978</b>	<b>16</b>	<b>4</b>	<b>33</b>	<b>28</b>	<b>187</b>	<b>307</b>
20 years	202	3	1	9	5	35	69
21 years	191	2	1	9	11	29	55
22 years	216	4	1	6	5	37	82
23 years	187	5	1	4	4	41	52
24 years	182	2	0	5	3	45	49
<b>25 to 29 years</b>	<b>888</b>	<b>22</b>	<b>3</b>	<b>20</b>	<b>26</b>	<b>207</b>	<b>253</b>
25 years	189	5	1	5	3	45	52
26 years	174	3	0	0	5	42	58
27 years	192	6	0	7	6	41	42
28 years	178	5	1	3	4	42	50
29 years	155	3	1	5	8	37	51
<b>30 to 34 years</b>	<b>957</b>	<b>18</b>	<b>4</b>	<b>25</b>	<b>26</b>	<b>231</b>	<b>309</b>
30 years	194	2	0	4	5	53	68
31 years	182	4	0	4	6	39	61
32 years	173	5	2	7	1	34	56
33 years	196	3	1	7	9	50	55
34 years	212	4	1	3	5	55	69
<b>35 to 39 years</b>	<b>1,352</b>	<b>22</b>	<b>10</b>	<b>56</b>	<b>32</b>	<b>308</b>	<b>451</b>
35 years	228	6	2	7	1	53	86
36 years	231	4	3	7	8	49	65
37 years	249	4	0	16	5	69	68
38 years	309	4	4	9	8	63	111
39 years	335	4	1	17	10	74	121
<b>40 to 44 years</b>	<b>2,265</b>	<b>32</b>	<b>6</b>	<b>69</b>	<b>52</b>	<b>521</b>	<b>820</b>
40 years	404	6	1	14	15	89	136
41 years	412	6	0	11	2	97	147
42 years	439	8	1	10	14	96	168
43 years	500	6	2	14	9	121	175
44 years	510	6	2	20	12	118	194
<b>45 to 49 years</b>	<b>3,574</b>	<b>61</b>	<b>13</b>	<b>121</b>	<b>82</b>	<b>827</b>	<b>1,277</b>
45 years	589	3	3	19	15	121	220
46 years	649	16	1	20	14	160	219
47 years	708	15	2	19	22	157	256
48 years	782	12	4	31	16	188	296
49 years	846	15	3	32	15	201	286
<b>50 to 54 years</b>	<b>4,908</b>	<b>106</b>	<b>20</b>	<b>153</b>	<b>107</b>	<b>1,158</b>	<b>1,786</b>
50 years	870	21	2	24	18	189	313
51 years	887	22	4	23	13	221	342
52 years	1,015	18	3	35	26	260	357
53 years	1,029	21	7	30	26	235	376
54 years	1,107	24	4	41	24	253	398
<b>55 to 59 years</b>	<b>6,642</b>	<b>179</b>	<b>37</b>	<b>256</b>	<b>180</b>	<b>1,606</b>	<b>2,378</b>
55 years	1,171	36	4	44	22	305	381
56 years	1,238	29	8	44	37	297	442
57 years	1,295	31	11	57	37	323	459
58 years	1,375	37	8	48	46	331	501
59 years	1,563	46	6	63	38	350	595

See notes at the end of the table.

Table 3-2 – continued

## Deaths by single year of age and geography — Males

Age at time of death <sup>1</sup>	Place of residence						
	Canada	Newfoundland and Labrador	Prince Edward Island	Nova Scotia	New Brunswick	Quebec	Ontario
	number						
<b>60 to 64 years</b>	<b>8,187</b>	<b>198</b>	<b>50</b>	<b>318</b>	<b>220</b>	<b>2,107</b>	<b>2,997</b>
60 years	1,544	33	9	63	41	426	562
61 years	1,464	40	7	62	37	377	523
62 years	1,612	37	12	68	43	425	569
63 years	1,720	40	4	60	41	418	649
64 years	1,847	48	18	65	58	461	694
<b>65 to 69 years</b>	<b>9,735</b>	<b>240</b>	<b>58</b>	<b>374</b>	<b>287</b>	<b>2,535</b>	<b>3,529</b>
65 years	1,827	51	8	75	52	480	635
66 years	1,824	48	16	54	50	494	673
67 years	1,952	56	7	80	60	497	700
68 years	2,071	41	13	87	57	551	764
69 years	2,061	44	14	78	68	513	757
<b>70 to 74 years</b>	<b>13,018</b>	<b>264</b>	<b>75</b>	<b>502</b>	<b>332</b>	<b>3,285</b>	<b>4,862</b>
70 years	2,366	52	17	96	65	571	899
71 years	2,392	53	12	86	73	631	884
72 years	2,570	44	16	98	55	678	956
73 years	2,707	49	13	103	67	650	1,024
74 years	2,983	66	17	119	72	755	1,099
<b>75 to 79 years</b>	<b>17,098</b>	<b>355</b>	<b>65</b>	<b>579</b>	<b>407</b>	<b>4,165</b>	<b>6,488</b>
75 years	3,191	70	13	97	76	776	1,184
76 years	3,382	71	7	121	82	869	1,263
77 years	3,366	71	9	111	79	815	1,296
78 years	3,579	79	20	121	89	829	1,393
79 years	3,580	64	16	129	81	876	1,352
<b>80 to 84 years</b>	<b>18,551</b>	<b>368</b>	<b>95</b>	<b>647</b>	<b>459</b>	<b>4,358</b>	<b>7,048</b>
80 years	3,705	77	18	126	80	912	1,445
81 years	3,734	74	30	128	95	911	1,417
82 years	3,723	77	17	148	87	907	1,395
83 years	3,650	70	23	108	94	841	1,371
84 years	3,739	70	7	137	103	787	1,420
<b>85 to 89 years</b>	<b>14,367</b>	<b>270</b>	<b>82</b>	<b>504</b>	<b>395</b>	<b>3,032</b>	<b>5,327</b>
85 years	3,439	57	17	119	100	732	1,327
86 years	3,291	65	18	124	95	683	1,259
87 years	2,779	63	14	108	72	593	1,003
88 years	2,519	47	16	83	74	555	870
89 years	2,339	38	17	70	54	469	868
<b>90 to 94 years</b>	<b>8,031</b>	<b>142</b>	<b>39</b>	<b>292</b>	<b>206</b>	<b>1,540</b>	<b>3,022</b>
90 years	2,157	38	12	94	64	413	839
91 years	1,957	35	8	74	41	365	732
92 years	1,571	30	4	50	43	313	564
93 years	1,326	24	6	42	32	251	497
94 years	1,020	15	9	32	26	198	390
<b>95 to 99 years</b>	<b>2,190</b>	<b>20</b>	<b>17</b>	<b>81</b>	<b>55</b>	<b>449</b>	<b>751</b>
95 years	764	4	7	26	26	147	275
96 years	563	7	4	20	7	124	197
97 years	375	5	2	18	12	64	134
98 years	301	2	3	10	5	77	83
99 years	187	2	1	7	5	37	62
<b>100 years and over</b>	<b>310</b>	<b>0</b>	<b>3</b>	<b>14</b>	<b>7</b>	<b>51</b>	<b>117</b>
<b>Not stated</b>	<b>7</b>	<b>0</b>	<b>0</b>	<b>0</b>	<b>0</b>	<b>1</b>	<b>5</b>

See notes at the end of the table.

Table 3-2 – continued

## Deaths by single year of age and geography — Males

Age at time of death <sup>1</sup>	Place of residence								
	Canada	Manitoba	Saskatchewan	Alberta	British Columbia	Yukon	Northwest Territories	Nunavut	Unknown
	number								
<b>All ages</b>	<b>115,149</b>	<b>4,852</b>	<b>4,590</b>	<b>10,257</b>	<b>15,672</b>	<b>99</b>	<b>113</b>	<b>82</b>	<b>4</b>
<b>0 to 4 years</b>	<b>1,146</b>	<b>60</b>	<b>48</b>	<b>156</b>	<b>106</b>	<b>1</b>	<b>5</b>	<b>6</b>	<b>0</b>
Under 1 year	983	47	42	131	90	1	3	6	0
1 to 4 years	163	13	6	25	16	0	2	0	0
<b>5 to 9 years</b>	<b>111</b>	<b>4</b>	<b>5</b>	<b>19</b>	<b>9</b>	<b>0</b>	<b>0</b>	<b>0</b>	<b>0</b>
<b>10 to 14 years</b>	<b>160</b>	<b>9</b>	<b>4</b>	<b>22</b>	<b>20</b>	<b>0</b>	<b>0</b>	<b>1</b>	<b>0</b>
<b>15 to 19 years</b>	<b>674</b>	<b>39</b>	<b>39</b>	<b>94</b>	<b>91</b>	<b>1</b>	<b>1</b>	<b>5</b>	<b>0</b>
15 years	67	10	1	8	8	0	0	1	0
16 years	93	5	6	9	11	0	0	1	0
17 years	140	6	8	21	16	0	1	1	0
18 years	189	8	13	28	25	1	0	1	0
19 years	185	10	11	28	31	0	0	1	0
<b>20 to 24 years</b>	<b>978</b>	<b>53</b>	<b>59</b>	<b>138</b>	<b>142</b>	<b>0</b>	<b>5</b>	<b>6</b>	<b>0</b>
20 years	202	12	19	18	28	0	2	1	0
21 years	191	14	8	29	30	0	1	2	0
22 years	216	7	11	32	30	0	1	0	0
23 years	187	10	13	31	22	0	1	3	0
24 years	182	10	8	28	32	0	0	0	0
<b>25 to 29 years</b>	<b>888</b>	<b>36</b>	<b>34</b>	<b>143</b>	<b>131</b>	<b>2</b>	<b>5</b>	<b>6</b>	<b>0</b>
25 years	189	5	9	35	27	0	0	2	0
26 years	174	6	7	29	21	0	2	1	0
27 years	192	11	8	34	34	1	2	0	0
28 years	178	10	7	24	29	1	0	2	0
29 years	155	4	3	21	20	0	1	1	0
<b>30 to 34 years</b>	<b>957</b>	<b>54</b>	<b>36</b>	<b>121</b>	<b>124</b>	<b>3</b>	<b>2</b>	<b>4</b>	<b>0</b>
30 years	194	10	2	29	21	0	0	0	0
31 years	182	9	10	20	28	0	1	0	0
32 years	173	7	8	23	28	1	1	0	0
33 years	196	16	9	21	21	1	0	3	0
34 years	212	12	7	28	26	1	0	1	0
<b>35 to 39 years</b>	<b>1,352</b>	<b>55</b>	<b>43</b>	<b>167</b>	<b>198</b>	<b>5</b>	<b>1</b>	<b>4</b>	<b>0</b>
35 years	228	8	10	22	32	0	1	0	0
36 years	231	11	10	36	37	0	0	1	0
37 years	249	10	5	32	36	2	0	2	0
38 years	309	11	8	40	48	2	0	1	0
39 years	335	15	10	37	45	1	0	0	0
<b>40 to 44 years</b>	<b>2,265</b>	<b>85</b>	<b>86</b>	<b>243</b>	<b>342</b>	<b>4</b>	<b>4</b>	<b>0</b>	<b>1</b>
40 years	404	26	12	50	53	1	1	0	0
41 years	412	14	18	41	76	0	0	0	0
42 years	439	17	16	46	63	0	0	0	0
43 years	500	17	24	55	75	0	2	0	0
44 years	510	11	16	51	75	3	1	0	1
<b>45 to 49 years</b>	<b>3,574</b>	<b>173</b>	<b>109</b>	<b>427</b>	<b>463</b>	<b>6</b>	<b>7</b>	<b>7</b>	<b>1</b>
45 years	589	42	14	64	85	2	1	0	0
46 years	649	29	23	66	95	3	1	2	0
47 years	708	31	23	93	86	0	2	2	0
48 years	782	38	25	80	91	1	0	0	0
49 years	846	33	24	124	106	0	3	3	1
<b>50 to 54 years</b>	<b>4,908</b>	<b>193</b>	<b>170</b>	<b>523</b>	<b>675</b>	<b>6</b>	<b>6</b>	<b>5</b>	<b>0</b>
50 years	870	29	30	109	131	2	0	2	0
51 years	887	25	33	86	117	0	0	1	0
52 years	1,015	39	38	117	119	1	2	0	0
53 years	1,029	48	26	100	156	1	3	0	0
54 years	1,107	52	43	111	152	2	1	2	0
<b>55 to 59 years</b>	<b>6,642</b>	<b>275</b>	<b>202</b>	<b>605</b>	<b>909</b>	<b>4</b>	<b>6</b>	<b>5</b>	<b>0</b>
55 years	1,171	44	41	113	178	1	2	0	0
56 years	1,238	56	35	119	169	0	0	2	0
57 years	1,295	47	36	107	184	2	1	0	0
58 years	1,375	67	36	130	168	0	1	2	0
59 years	1,563	61	54	136	210	1	2	1	0
<b>60 to 64 years</b>	<b>8,187</b>	<b>315</b>	<b>260</b>	<b>676</b>	<b>1,027</b>	<b>8</b>	<b>6</b>	<b>5</b>	<b>0</b>
60 years	1,544	60	51	129	166	1	3	0	0
61 years	1,464	56	50	109	200	1	1	1	0
62 years	1,612	60	54	130	210	2	1	1	0
63 years	1,720	68	55	162	217	3	1	2	0
64 years	1,847	71	50	146	234	1	0	1	0

See notes at the end of the table.

Table 3-2 – continued

## Deaths by single year of age and geography — Males

Age at time of death <sup>1</sup>	Place of residence								
	Canada	Manitoba	Saskatchewan	Alberta	British Columbia	Yukon	Northwest Territories	Nunavut	Unknown
	number								
<b>65 to 69 years</b>	<b>9,735</b>	<b>355</b>	<b>302</b>	<b>787</b>	<b>1,243</b>	<b>9</b>	<b>9</b>	<b>6</b>	<b>1</b>
65 years	1,827	66	53	157	244	2	0	3	1
66 years	1,824	60	54	136	235	0	4	0	0
67 years	1,952	73	68	151	252	3	4	1	0
68 years	2,071	77	63	169	247	1	0	1	0
69 years	2,061	79	64	174	265	3	1	1	0
<b>70 to 74 years</b>	<b>13,018</b>	<b>502</b>	<b>469</b>	<b>1,095</b>	<b>1,603</b>	<b>13</b>	<b>12</b>	<b>3</b>	<b>1</b>
70 years	2,366	101	77	198	288	0	2	0	0
71 years	2,392	78	92	198	280	2	3	0	0
72 years	2,570	88	81	215	329	6	2	1	1
73 years	2,707	108	104	237	349	1	2	0	0
74 years	2,983	127	115	247	357	4	3	2	0
<b>75 to 79 years</b>	<b>17,098</b>	<b>655</b>	<b>641</b>	<b>1,404</b>	<b>2,303</b>	<b>12</b>	<b>14</b>	<b>10</b>	<b>0</b>
75 years	3,191	115	109	295	448	4	2	2	0
76 years	3,382	137	134	231	462	0	4	1	0
77 years	3,366	133	127	272	447	2	2	2	0
78 years	3,579	130	138	315	456	4	2	3	0
79 years	3,580	140	133	291	490	2	4	2	0
<b>80 to 84 years</b>	<b>18,551</b>	<b>791</b>	<b>792</b>	<b>1,508</b>	<b>2,458</b>	<b>10</b>	<b>13</b>	<b>4</b>	<b>0</b>
80 years	3,705	147	144	300	454	0	1	1	0
81 years	3,734	153	167	306	446	5	2	0	0
82 years	3,723	152	147	303	486	1	2	1	0
83 years	3,650	170	156	294	517	1	3	2	0
84 years	3,739	169	178	305	555	3	5	0	0
<b>85 to 89 years</b>	<b>14,367</b>	<b>647</b>	<b>683</b>	<b>1,222</b>	<b>2,179</b>	<b>10</b>	<b>14</b>	<b>2</b>	<b>0</b>
85 years	3,439	146	174	257	505	3	2	0	0
86 years	3,291	138	138	268	493	3	6	1	0
87 years	2,779	136	139	251	397	1	2	0	0
88 years	2,519	113	130	236	391	2	1	1	0
89 years	2,339	114	102	210	393	1	3	0	0
<b>90 to 94 years</b>	<b>8,031</b>	<b>421</b>	<b>438</b>	<b>692</b>	<b>1,231</b>	<b>3</b>	<b>2</b>	<b>3</b>	<b>0</b>
90 years	2,157	111	100	167	316	0	2	1	0
91 years	1,957	99	117	187	298	1	0	0	0
92 years	1,571	79	85	135	264	2	0	2	0
93 years	1,326	75	77	111	211	0	0	0	0
94 years	1,020	57	59	92	142	0	0	0	0
<b>95 to 99 years</b>	<b>2,190</b>	<b>110</b>	<b>146</b>	<b>188</b>	<b>370</b>	<b>2</b>	<b>1</b>	<b>0</b>	<b>0</b>
95 years	764	35	49	64	131	0	0	0	0
96 years	563	26	30	48	99	0	1	0	0
97 years	375	20	32	27	60	1	0	0	0
98 years	301	15	20	30	55	1	0	0	0
99 years	187	14	15	19	25	0	0	0	0
<b>100 years and over</b>	<b>310</b>	<b>20</b>	<b>24</b>	<b>26</b>	<b>48</b>	<b>0</b>	<b>0</b>	<b>0</b>	<b>0</b>
<b>Not stated</b>	<b>7</b>	<b>0</b>	<b>0</b>	<b>1</b>	<b>0</b>	<b>0</b>	<b>0</b>	<b>0</b>	<b>0</b>

1. Age attained at the last birthday preceding death.

**Note(s):** See "Data quality, concepts and methodology — Explanatory notes for the tables" section.

**Source(s):** Statistics Canada, Canadian Vital Statistics, Death Database (CANSIM table 102-0503).

**Table 3-3**  
**Deaths by single year of age and geography — Females**

Age at time of death <sup>1</sup>	Place of residence						
	Canada	Newfoundland and Labrador	Prince Edward Island	Nova Scotia	New Brunswick	Quebec	Ontario
	number						
<b>All ages</b>	<b>112,930</b>	<b>2,147</b>	<b>585</b>	<b>3,999</b>	<b>3,067</b>	<b>27,205</b>	<b>42,044</b>
<b>0 to 4 years</b>	<b>909</b>	<b>11</b>	<b>1</b>	<b>20</b>	<b>16</b>	<b>209</b>	<b>336</b>
Under 1 year	788	8	1	18	12	192	284
1 to 4 years	121	3	0	2	4	17	52
<b>5 to 9 years</b>	<b>87</b>	<b>4</b>	<b>1</b>	<b>0</b>	<b>3</b>	<b>15</b>	<b>31</b>
<b>10 to 14 years</b>	<b>115</b>	<b>4</b>	<b>0</b>	<b>5</b>	<b>6</b>	<b>24</b>	<b>39</b>
<b>15 to 19 years</b>	<b>311</b>	<b>7</b>	<b>5</b>	<b>7</b>	<b>7</b>	<b>64</b>	<b>90</b>
15 years	49	1	1	0	1	10	16
16 years	58	1	3	2	2	11	17
17 years	66	2	0	1	1	14	21
18 years	75	2	1	2	2	14	19
19 years	63	1	0	2	1	15	17
<b>20 to 24 years</b>	<b>340</b>	<b>6</b>	<b>1</b>	<b>5</b>	<b>6</b>	<b>68</b>	<b>111</b>
20 years	77	0	0	0	2	15	33
21 years	68	3	0	1	2	15	22
22 years	64	0	0	3	1	8	18
23 years	70	1	0	1	1	13	23
24 years	61	2	1	0	0	17	15
<b>25 to 29 years</b>	<b>366</b>	<b>3</b>	<b>2</b>	<b>9</b>	<b>16</b>	<b>85</b>	<b>126</b>
25 years	63	0	0	2	3	15	21
26 years	47	0	1	0	1	12	18
27 years	74	2	0	0	2	15	29
28 years	91	0	1	3	6	20	27
29 years	91	1	0	4	4	23	31
<b>30 to 34 years</b>	<b>455</b>	<b>10</b>	<b>2</b>	<b>12</b>	<b>19</b>	<b>80</b>	<b>161</b>
30 years	85	1	1	2	5	12	30
31 years	67	1	0	4	6	13	20
32 years	97	1	1	3	0	21	41
33 years	104	4	0	0	6	16	40
34 years	102	3	0	3	2	18	30
<b>35 to 39 years</b>	<b>769</b>	<b>16</b>	<b>3</b>	<b>19</b>	<b>13</b>	<b>164</b>	<b>285</b>
35 years	130	2	1	2	1	24	45
36 years	125	1	1	1	4	25	54
37 years	146	2	0	5	1	29	61
38 years	178	3	0	4	2	39	70
39 years	190	8	1	7	5	47	55
<b>40 to 44 years</b>	<b>1,398</b>	<b>22</b>	<b>9</b>	<b>42</b>	<b>26</b>	<b>316</b>	<b>502</b>
40 years	216	2	1	6	1	53	78
41 years	242	4	0	7	5	54	104
42 years	276	3	0	9	6	59	98
43 years	329	8	5	11	8	75	100
44 years	335	5	3	9	6	75	122
<b>45 to 49 years</b>	<b>2,256</b>	<b>33</b>	<b>7</b>	<b>71</b>	<b>49</b>	<b>593</b>	<b>795</b>
45 years	385	3	1	16	11	114	129
46 years	417	4	2	19	8	102	148
47 years	429	10	2	9	8	114	153
48 years	475	8	0	15	7	121	164
49 years	550	8	2	12	15	142	201
<b>50 to 54 years</b>	<b>3,255</b>	<b>58</b>	<b>16</b>	<b>96</b>	<b>74</b>	<b>801</b>	<b>1,229</b>
50 years	550	10	3	22	14	132	227
51 years	615	10	6	25	12	143	222
52 years	698	13	3	14	15	183	254
53 years	666	16	4	19	13	163	248
54 years	726	9	0	16	20	180	278
<b>55 to 59 years</b>	<b>4,206</b>	<b>91</b>	<b>24</b>	<b>135</b>	<b>110</b>	<b>1,106</b>	<b>1,510</b>
55 years	704	16	1	23	17	186	257
56 years	752	12	4	17	19	204	285
57 years	786	21	5	29	18	218	273
58 years	903	17	6	28	29	238	303
59 years	1,061	25	8	38	27	260	392

See notes at the end of the table.

Table 3-3 – continued

## Deaths by single year of age and geography — Females

Age at time of death <sup>1</sup>	Place of residence						
	Canada	Newfoundland and Labrador	Prince Edward Island	Nova Scotia	New Brunswick	Quebec	Ontario
	number						
<b>60 to 64 years</b>	<b>5,178</b>	<b>122</b>	<b>25</b>	<b>177</b>	<b>154</b>	<b>1,345</b>	<b>1,940</b>
60 years	900	32	5	28	23	233	336
61 years	1,016	15	3	40	27	273	391
62 years	1,038	25	8	36	40	260	387
63 years	1,048	26	3	24	29	276	399
64 years	1,176	24	6	49	35	303	427
<b>65 to 69 years</b>	<b>6,560</b>	<b>143</b>	<b>34</b>	<b>238</b>	<b>190</b>	<b>1,679</b>	<b>2,396</b>
65 years	1,105	17	3	37	34	271	403
66 years	1,263	38	6	41	34	302	466
67 years	1,354	27	13	53	42	362	495
68 years	1,388	24	9	52	29	367	488
69 years	1,450	37	3	55	51	377	544
<b>70 to 74 years</b>	<b>9,245</b>	<b>192</b>	<b>36</b>	<b>335</b>	<b>248</b>	<b>2,382</b>	<b>3,508</b>
70 years	1,575	30	6	55	40	411	578
71 years	1,703	30	5	59	42	444	654
72 years	1,750	38	9	66	47	457	689
73 years	2,036	39	6	84	59	492	762
74 years	2,181	55	10	71	60	578	825
<b>75 to 79 years</b>	<b>13,866</b>	<b>286</b>	<b>68</b>	<b>518</b>	<b>359</b>	<b>3,535</b>	<b>5,302</b>
75 years	2,340	50	9	90	63	607	879
76 years	2,598	42	16	114	72	646	983
77 years	2,843	74	13	92	74	721	1,113
78 years	2,916	59	12	103	69	773	1,099
79 years	3,169	61	18	119	81	788	1,228
<b>80 to 84 years</b>	<b>19,075</b>	<b>372</b>	<b>85</b>	<b>646</b>	<b>502</b>	<b>4,684</b>	<b>7,342</b>
80 years	3,426	87	15	128	88	834	1,329
81 years	3,501	68	9	132	86	848	1,388
82 years	3,885	76	20	99	93	967	1,498
83 years	3,989	56	20	128	115	971	1,549
84 years	4,274	85	21	159	120	1,064	1,578
<b>85 to 89 years</b>	<b>20,163</b>	<b>364</b>	<b>118</b>	<b>734</b>	<b>553</b>	<b>4,628</b>	<b>7,387</b>
85 years	4,385	73	31	150	99	957	1,738
86 years	4,178	76	23	174	117	932	1,567
87 years	3,999	73	19	128	120	972	1,414
88 years	3,815	69	23	142	109	929	1,313
89 years	3,786	73	22	140	108	838	1,355
<b>90 to 94 years</b>	<b>15,994</b>	<b>283</b>	<b>101</b>	<b>610</b>	<b>452</b>	<b>3,597</b>	<b>5,841</b>
90 years	3,691	67	27	126	115	850	1,335
91 years	3,571	55	21	124	111	774	1,300
92 years	3,261	64	15	142	91	705	1,229
93 years	2,972	50	23	122	79	682	1,070
94 years	2,499	47	15	96	56	586	907
<b>95 to 99 years</b>	<b>6,870</b>	<b>101</b>	<b>40</b>	<b>254</b>	<b>215</b>	<b>1,531</b>	<b>2,503</b>
95 years	2,075	28	13	73	62	444	766
96 years	1,703	32	7	51	53	379	631
97 years	1,300	21	11	50	43	303	461
98 years	1,054	11	5	49	34	231	381
99 years	738	9	4	31	23	174	264
<b>100 years and over</b>	<b>1,506</b>	<b>19</b>	<b>7</b>	<b>66</b>	<b>49</b>	<b>299</b>	<b>604</b>
<b>Not stated</b>	<b>6</b>	<b>0</b>	<b>0</b>	<b>0</b>	<b>0</b>	<b>0</b>	<b>6</b>

See notes at the end of the table.



Table 3-3 – continued

## Deaths by single year of age and geography — Females

Age at time of death <sup>1</sup>	Place of residence								
	Canada	Manitoba	Saskatchewan	Alberta	British Columbia	Yukon	Northwest Territories	Nunavut	Unknown
	number								
<b>All ages</b>	<b>112,930</b>	<b>4,922</b>	<b>4,464</b>	<b>9,283</b>	<b>15,016</b>	<b>79</b>	<b>69</b>	<b>47</b>	<b>3</b>
<b>0 to 4 years</b>	<b>909</b>	<b>47</b>	<b>39</b>	<b>122</b>	<b>95</b>	<b>2</b>	<b>4</b>	<b>6</b>	<b>1</b>
Under 1 year	788	41	33	107	81	2	4	4	1
1 to 4 years	121	6	6	15	14	0	0	2	0
<b>5 to 9 years</b>	<b>87</b>	<b>2</b>	<b>5</b>	<b>11</b>	<b>15</b>	<b>0</b>	<b>0</b>	<b>0</b>	<b>0</b>
<b>10 to 14 years</b>	<b>115</b>	<b>10</b>	<b>2</b>	<b>14</b>	<b>11</b>	<b>0</b>	<b>0</b>	<b>0</b>	<b>0</b>
<b>15 to 19 years</b>	<b>311</b>	<b>21</b>	<b>13</b>	<b>48</b>	<b>46</b>	<b>0</b>	<b>2</b>	<b>1</b>	<b>0</b>
15 years	49	6	0	5	9	0	0	0	0
16 years	58	2	4	8	7	0	1	0	0
17 years	66	3	3	11	8	0	1	1	0
18 years	75	3	6	11	15	0	0	0	0
19 years	63	7	0	13	7	0	0	0	0
<b>20 to 24 years</b>	<b>340</b>	<b>18</b>	<b>26</b>	<b>49</b>	<b>45</b>	<b>2</b>	<b>2</b>	<b>1</b>	<b>0</b>
20 years	77	7	5	4	10	1	0	0	0
21 years	68	4	6	8	6	0	0	1	0
22 years	64	2	6	15	10	0	1	0	0
23 years	70	5	2	13	9	1	1	0	0
24 years	61	0	7	9	10	0	0	0	0
<b>25 to 29 years</b>	<b>366</b>	<b>13</b>	<b>20</b>	<b>44</b>	<b>46</b>	<b>1</b>	<b>1</b>	<b>0</b>	<b>0</b>
25 years	63	3	2	12	5	0	0	0	0
26 years	47	3	1	8	3	0	0	0	0
27 years	74	2	4	8	12	0	0	0	0
28 years	91	3	7	8	14	1	1	0	0
29 years	91	2	6	8	12	0	0	0	0
<b>30 to 34 years</b>	<b>455</b>	<b>20</b>	<b>29</b>	<b>61</b>	<b>59</b>	<b>2</b>	<b>0</b>	<b>0</b>	<b>0</b>
30 years	85	1	6	17	9	1	0	0	0
31 years	67	2	9	8	4	0	0	0	0
32 years	97	4	5	7	14	0	0	0	0
33 years	104	4	3	12	19	0	0	0	0
34 years	102	9	6	17	13	1	0	0	0
<b>35 to 39 years</b>	<b>769</b>	<b>36</b>	<b>29</b>	<b>93</b>	<b>103</b>	<b>1</b>	<b>3</b>	<b>4</b>	<b>0</b>
35 years	130	7	9	19	18	1	0	1	0
36 years	125	4	2	16	15	0	1	1	0
37 years	146	9	3	18	18	0	0	0	0
38 years	178	8	6	17	28	0	1	0	0
39 years	190	8	9	23	24	0	1	2	0
<b>40 to 44 years</b>	<b>1,398</b>	<b>55</b>	<b>51</b>	<b>183</b>	<b>186</b>	<b>1</b>	<b>2</b>	<b>3</b>	<b>0</b>
40 years	216	9	12	30	24	0	0	0	0
41 years	242	10	5	23	29	0	1	0	0
42 years	276	8	10	44	38	0	0	1	0
43 years	329	11	19	44	44	1	1	2	0
44 years	335	17	5	42	51	0	0	0	0
<b>45 to 49 years</b>	<b>2,256</b>	<b>84</b>	<b>70</b>	<b>228</b>	<b>312</b>	<b>7</b>	<b>4</b>	<b>3</b>	<b>0</b>
45 years	385	16	11	39	44	0	0	1	0
46 years	417	17	12	49	52	3	0	1	0
47 years	429	14	15	37	64	1	2	0	0
48 years	475	15	15	54	74	2	0	0	0
49 years	550	22	17	49	78	1	2	1	0
<b>50 to 54 years</b>	<b>3,255</b>	<b>132</b>	<b>117</b>	<b>322</b>	<b>398</b>	<b>6</b>	<b>3</b>	<b>3</b>	<b>0</b>
50 years	550	15	17	49	59	1	0	1	0
51 years	615	25	21	64	83	2	2	0	0
52 years	698	30	32	75	78	0	0	1	0
53 years	666	29	26	60	87	1	0	0	0
54 years	726	33	21	74	91	2	1	1	0
<b>55 to 59 years</b>	<b>4,206</b>	<b>162</b>	<b>129</b>	<b>380</b>	<b>545</b>	<b>4</b>	<b>7</b>	<b>2</b>	<b>1</b>
55 years	704	15	24	73	89	1	1	1	0
56 years	752	25	15	63	106	1	1	0	0
57 years	786	29	25	68	96	2	1	0	1
58 years	903	38	28	81	133	0	1	1	0
59 years	1,061	55	37	95	121	0	3	0	0
<b>60 to 64 years</b>	<b>5,178</b>	<b>191</b>	<b>146</b>	<b>445</b>	<b>614</b>	<b>8</b>	<b>7</b>	<b>4</b>	<b>0</b>
60 years	900	33	24	70	112	2	1	1	0
61 years	1,016	37	22	79	126	1	1	1	0
62 years	1,038	32	34	93	119	2	1	1	0
63 years	1,048	43	32	98	115	1	2	0	0
64 years	1,176	46	34	105	142	2	2	1	0

See notes at the end of the table.

Table 3-3 – continued

## Deaths by single year of age and geography — Females

Age at time of death <sup>1</sup>	Place of residence								
	Canada	Manitoba	Saskatchewan	Alberta	British Columbia	Yukon	Northwest Territories	Nunavut	Unknown
	number								
<b>65 to 69 years</b>	<b>6,560</b>	<b>270</b>	<b>226</b>	<b>549</b>	<b>811</b>	<b>7</b>	<b>9</b>	<b>8</b>	<b>0</b>
65 years	1,105	50	45	106	134	2	2	1	0
66 years	1,263	53	38	117	164	0	2	2	0
67 years	1,354	45	51	100	160	2	1	3	0
68 years	1,388	59	48	116	188	3	4	1	0
69 years	1,450	63	44	110	165	0	0	1	0
<b>70 to 74 years</b>	<b>9,245</b>	<b>376</b>	<b>316</b>	<b>726</b>	<b>1,110</b>	<b>6</b>	<b>5</b>	<b>4</b>	<b>1</b>
70 years	1,575	69	49	136	197	3	1	0	0
71 years	1,703	62	56	147	199	1	2	2	0
72 years	1,750	76	45	113	207	1	0	2	0
73 years	2,036	80	84	171	256	1	1	0	1
74 years	2,181	89	82	159	251	0	1	0	0
<b>75 to 79 years</b>	<b>13,866</b>	<b>520</b>	<b>468</b>	<b>1,053</b>	<b>1,737</b>	<b>9</b>	<b>8</b>	<b>3</b>	<b>0</b>
75 years	2,340	84	82	167	302	2	4	1	0
76 years	2,598	93	106	186	338	1	0	1	0
77 years	2,843	117	85	209	342	1	1	1	0
78 years	2,916	116	82	230	370	3	0	0	0
79 years	3,169	110	113	261	385	2	3	0	0
<b>80 to 84 years</b>	<b>19,075</b>	<b>795</b>	<b>650</b>	<b>1,415</b>	<b>2,568</b>	<b>10</b>	<b>4</b>	<b>2</b>	<b>0</b>
80 years	3,426	128	97	264	453	2	1	0	0
81 years	3,501	140	120	263	442	3	0	2	0
82 years	3,885	163	142	276	548	2	1	0	0
83 years	3,989	172	134	291	550	2	1	0	0
84 years	4,274	192	157	321	575	1	1	0	0
<b>85 to 89 years</b>	<b>20,163</b>	<b>965</b>	<b>892</b>	<b>1,618</b>	<b>2,890</b>	<b>7</b>	<b>5</b>	<b>2</b>	<b>0</b>
85 years	4,385	192	162	341	637	2	2	1	0
86 years	4,178	190	185	327	584	2	1	0	0
87 years	3,999	204	202	327	537	2	1	0	0
88 years	3,815	186	189	307	546	1	0	1	0
89 years	3,786	193	154	316	586	0	1	0	0
<b>90 to 94 years</b>	<b>15,994</b>	<b>776</b>	<b>801</b>	<b>1,252</b>	<b>2,273</b>	<b>5</b>	<b>2</b>	<b>1</b>	<b>0</b>
90 years	3,691	193	160	278	537	3	0	0	0
91 years	3,571	181	160	298	546	1	0	0	0
92 years	3,261	155	181	259	418	0	1	1	0
93 years	2,972	138	146	241	420	0	1	0	0
94 years	2,499	109	154	176	352	1	0	0	0
<b>95 to 99 years</b>	<b>6,870</b>	<b>346</b>	<b>356</b>	<b>556</b>	<b>967</b>	<b>1</b>	<b>0</b>	<b>0</b>	<b>0</b>
95 years	2,075	104	130	159	296	0	0	0	0
96 years	1,703	79	77	137	257	0	0	0	0
97 years	1,300	72	55	112	172	0	0	0	0
98 years	1,054	54	51	80	157	1	0	0	0
99 years	738	37	43	68	85	0	0	0	0
<b>100 years and over</b>	<b>1,506</b>	<b>83</b>	<b>79</b>	<b>114</b>	<b>185</b>	<b>0</b>	<b>1</b>	<b>0</b>	<b>0</b>
<b>Not stated</b>	<b>6</b>	<b>0</b>	<b>0</b>	<b>0</b>	<b>0</b>	<b>0</b>	<b>0</b>	<b>0</b>	<b>0</b>

1. Age attained at the last birthday preceding death.

**Note(s):** See "Data quality, concepts and methodology — Explanatory notes for the tables" section.

**Source(s):** Statistics Canada, Canadian Vital Statistics, Death Database (CANSIM table 102-0503).

**Table 4-1**  
**Deaths by age group and geography — Both sexes**

Age at time of death <sup>1,2</sup>	Place of residence						
	Canada	Newfoundland and Labrador	Prince Edward Island	Nova Scotia	New Brunswick	Quebec	Ontario
<b>All ages <sup>3</sup></b>							
Number of deaths	<b>228,079</b>	<b>4,493</b>	<b>1,172</b>	<b>8,088</b>	<b>6,010</b>	<b>54,240</b>	<b>84,524</b>
Mortality rate per 1,000 population <sup>4</sup>	<b>7.0</b>	<b>8.8</b>	<b>8.5</b>	<b>8.6</b>	<b>8.0</b>	<b>7.1</b>	<b>6.7</b>
<b>Under 1 year <sup>5</sup></b>							
Number of deaths	1,771	24	3	34	28	415	674
Mortality rate per 1,000 population <sup>4</sup>	5.0	5.3	2.1	4.0	4.0	5.1	5.0
<b>1 to 4 years <sup>6</sup></b>							
Number of deaths	284	5	0	7	9	53	105
Mortality rate per 1,000 population <sup>4</sup>	0.2	0.3	0.0	0.2	0.3	0.2	0.2
<b>5 to 9 years</b>							
Number of deaths	198	6	2	2	5	38	75
Mortality rate per 1,000 population <sup>4</sup>	0.1	0.2	0.3	0.0	0.1	0.1	0.1
<b>10 to 14 years</b>							
Number of deaths	275	7	2	8	9	66	90
Mortality rate per 1,000 population <sup>4</sup>	0.1	0.2	0.2	0.1	0.2	0.1	0.1
<b>15 to 19 years</b>							
Number of deaths	985	17	6	26	23	207	305
Mortality rate per 1,000 population <sup>4</sup>	0.5	0.5	0.6	0.4	0.5	0.4	0.4
<b>20 to 24 years</b>							
Number of deaths	1,318	22	5	38	34	255	418
Mortality rate per 1,000 population <sup>4</sup>	0.6	0.6	0.5	0.6	0.7	0.5	0.5
<b>25 to 29 years</b>							
Number of deaths	1,254	25	5	29	42	292	379
Mortality rate per 1,000 population <sup>4</sup>	0.6	0.8	0.6	0.5	0.9	0.5	0.4
<b>30 to 34 years</b>							
Number of deaths	1,412	28	6	37	45	311	470
Mortality rate per 1,000 population <sup>4</sup>	0.6	0.9	0.7	0.6	0.9	0.6	0.5
<b>35 to 39 years</b>							
Number of deaths	2,121	38	13	75	45	472	736
Mortality rate per 1,000 population <sup>4</sup>	0.9	1.0	1.5	1.2	0.9	0.9	0.8
<b>40 to 44 years</b>							
Number of deaths	3,663	54	15	111	78	837	1,322
Mortality rate per 1,000 population <sup>4</sup>	1.4	1.3	1.4	1.4	1.3	1.3	1.2
<b>45 to 49 years</b>							
Number of deaths	5,830	94	20	192	131	1,420	2,072
Mortality rate per 1,000 population <sup>4</sup>	2.2	2.2	1.9	2.5	2.1	2.2	2.0
<b>50 to 54 years</b>							
Number of deaths	8,163	164	36	249	181	1,959	3,015
Mortality rate per 1,000 population <sup>4</sup>	3.4	3.9	3.5	3.5	3.1	3.4	3.4
<b>55 to 59 years</b>							
Number of deaths	10,848	270	61	391	290	2,712	3,888
Mortality rate per 1,000 population <sup>4</sup>	5.2	7.0	6.0	5.8	5.3	5.2	5.0
<b>60 to 64 years</b>							
Number of deaths	13,365	320	75	495	374	3,452	4,937
Mortality rate per 1,000 population <sup>4</sup>	8.4	10.8	10.4	9.7	9.3	8.2	8.4
<b>65 to 69 years</b>							
Number of deaths	16,295	383	92	612	477	4,214	5,925
Mortality rate per 1,000 population <sup>4</sup>	13.3	17.8	16.0	15.5	15.5	13.4	12.7
<b>70 to 74 years</b>							
Number of deaths	22,263	456	111	837	580	5,667	8,370
Mortality rate per 1,000 population <sup>4</sup>	21.3	26.6	22.8	25.7	23.2	21.4	20.8
<b>75 to 79 years</b>							
Number of deaths	30,964	641	133	1,097	766	7,700	11,790
Mortality rate per 1,000 population <sup>4</sup>	35.2	47.3	36.5	42.3	37.2	34.9	34.6

See notes at the end of the table.

Table 4-1 – continued

## Deaths by age group and geography — Both sexes

Age at time of death <sup>1,2</sup>	Place of residence						
	Canada	Newfoundland and Labrador	Prince Edward Island	Nova Scotia	New Brunswick	Quebec	Ontario
<b>80 to 84 years</b>							
Number of deaths	37,626	740	180	1,293	961	9,042	14,390
Mortality rate per 1,000 population <sup>4</sup>	58.7	80.0	62.4	66.5	59.7	58.8	57.8
<b>85 to 89 years</b>							
Number of deaths	34,530	634	200	1,238	948	7,660	12,714
Mortality rate per 1,000 population <sup>4</sup>	99.8	121.6	117.2	102.1	103.7	95.9	99.3
<b>90 years and over</b>							
Number of deaths	34,901	565	207	1,317	984	7,467	12,838
Mortality rate per 1,000 population <sup>4</sup>	195.4	235.4	226.2	204.9	201.4	182.2	200.4
<b>Not stated</b>							
Number of deaths	13	0	0	0	0	1	11
Mortality rate per 1,000 population <sup>4</sup>	0.0	0.0	0.0	0.0	0.0	0.0	0.0

See notes at the end of the table.

Table 4-1 – continued

## Deaths by age group and geography — Both sexes

Age at time of death <sup>1,2</sup>	Place of residence								
	Canada	Manitoba	Saskatchewan	Alberta	British Columbia	Yukon	Northwest Territories	Nunavut	Unknown
<b>All ages<sup>3</sup></b>									
Number of deaths	228,079	9,774	9,054	19,540	30,688	178	182	129	7
Mortality rate per 1,000 population <sup>4</sup>	7.0	8.3	9.2	5.8	7.1	5.7	4.3	4.2	..
<b>Under 1 year<sup>5</sup></b>									
Number of deaths	1,771	88	75	238	171	3	7	10	1
Mortality rate per 1,000 population <sup>4</sup>	5.0	6.0	6.1	5.3	4.1	8.2	10.2	13.4	..
<b>1 to 4 years<sup>6</sup></b>									
Number of deaths	284	19	12	40	30	0	2	2	0
Mortality rate per 1,000 population <sup>4</sup>	0.2	0.3	0.3	0.2	0.2	0.0	0.8	0.7	..
<b>5 to 9 years</b>									
Number of deaths	198	6	10	30	24	0	0	0	0
Mortality rate per 1,000 population <sup>4</sup>	0.1	0.1	0.2	0.1	0.1	0.0	0.0	0.0	..
<b>10 to 14 years</b>									
Number of deaths	275	19	6	36	31	0	0	1	0
Mortality rate per 1,000 population <sup>4</sup>	0.1	0.2	0.1	0.2	0.1	0.0	0.0	0.3	..
<b>15 to 19 years</b>									
Number of deaths	985	60	52	142	137	1	3	6	0
Mortality rate per 1,000 population <sup>4</sup>	0.5	0.7	0.7	0.6	0.5	0.4	0.9	1.9	..
<b>20 to 24 years</b>									
Number of deaths	1,318	71	85	187	187	2	7	7	0
Mortality rate per 1,000 population <sup>4</sup>	0.6	0.8	1.1	0.7	0.6	0.8	2.0	2.6	..
<b>25 to 29 years</b>									
Number of deaths	1,254	49	54	187	177	3	6	6	0
Mortality rate per 1,000 population <sup>4</sup>	0.6	0.6	0.8	0.7	0.6	1.7	1.8	2.4	..
<b>30 to 34 years</b>									
Number of deaths	1,412	74	65	182	183	5	2	4	0
Mortality rate per 1,000 population <sup>4</sup>	0.6	1.0	1.1	0.7	0.6	2.5	0.6	1.5	..
<b>35 to 39 years</b>									
Number of deaths	2,121	91	72	260	301	6	4	8	0
Mortality rate per 1,000 population <sup>4</sup>	0.9	1.2	1.2	1.0	0.9	2.5	1.1	3.8	..
<b>40 to 44 years</b>									
Number of deaths	3,663	140	137	426	528	5	6	3	1
Mortality rate per 1,000 population <sup>4</sup>	1.4	1.6	1.9	1.6	1.5	1.7	1.7	1.7	..
<b>45 to 49 years</b>									
Number of deaths	5,830	257	179	655	775	13	11	10	1
Mortality rate per 1,000 population <sup>4</sup>	2.2	2.8	2.4	2.4	2.2	4.2	3.6	6.3	..
<b>50 to 54 years</b>									
Number of deaths	8,163	325	287	845	1,073	12	9	8	0
Mortality rate per 1,000 population <sup>4</sup>	3.4	4.0	4.1	3.6	3.3	4.4	3.5	6.6	..
<b>55 to 59 years</b>									
Number of deaths	10,848	437	331	985	1,454	8	13	7	1
Mortality rate per 1,000 population <sup>4</sup>	5.2	6.1	5.7	5.2	5.0	3.6	6.3	7.4	..
<b>60 to 64 years</b>									
Number of deaths	13,365	506	406	1,121	1,641	16	13	9	0
Mortality rate per 1,000 population <sup>4</sup>	8.4	9.5	9.3	8.3	7.6	10.5	9.8	13.7	..
<b>65 to 69 years</b>									
Number of deaths	16,295	625	528	1,336	2,054	16	18	14	1
Mortality rate per 1,000 population <sup>4</sup>	13.3	15.2	14.5	13.0	12.2	17.2	22.2	30.8	..
<b>70 to 74 years</b>									
Number of deaths	22,263	878	785	1,821	2,713	19	17	7	2
Mortality rate per 1,000 population <sup>4</sup>	21.3	24.1	23.8	21.2	18.9	29.6	31.6	31.7	..
<b>75 to 79 years</b>									
Number of deaths	30,964	1,175	1,109	2,457	4,040	21	22	13	0
Mortality rate per 1,000 population <sup>4</sup>	35.2	36.3	36.7	34.4	33.2	55.0	60.9	126.2	..

See notes at the end of the table.

Table 4-1 – continued

## Deaths by age group and geography — Both sexes

Age at time of death <sup>1,2</sup>	Place of residence								
	Canada	Manitoba	Saskatchewan	Alberta	British Columbia	Yukon	Northwest Territories	Nunavut	Unknown
<b>80 to 84 years</b>									
Number of deaths	37,626	1,586	1,442	2,923	5,026	20	17	6	0
Mortality rate per 1,000 population <sup>4</sup>	58.7	61.0	60.2	58.4	55.7	92.2	78.3	105.3	..
<b>85 to 89 years</b>									
Number of deaths	34,530	1,612	1,575	2,840	5,069	17	19	4	0
Mortality rate per 1,000 population <sup>4</sup>	99.8	105.2	104.8	101.7	98.4	195.4	206.5	129.0	..
<b>90 years and over</b>									
Number of deaths	34,901	1,756	1,844	2,828	5,074	11	6	4	0
Mortality rate per 1,000 population <sup>4</sup>	195.4	206.0	204.6	196.9	188.6	196.4	120.0	210.5	..
<b>Not stated</b>									
Number of deaths	13	0	0	1	0	0	0	0	0
Mortality rate per 1,000 population <sup>4</sup>	0.0	0.0	0.0	0.0	0.0	0.0	0.0	0.0	..

1. Age attained at the last birthday preceding death.

2. For "Age at time of death", all age groups except "all ages", the mortality rate represents the age-specific death rate, or the number of deaths in a particular age group during a given year per 1,000 population in the same age group as of July 1 of the same year.

3. For "Age at time of death, all ages", the mortality rate represents the crude death rate, or the number of deaths during a given year per 1,000 population as of July 1 of the same year.

4. Starting in 2005, the population estimates used for the calculations of the mortality rate are presented in the Appendix I of the publication "Deaths" (catalogue number 84F0211XWE).

5. For "Age at time of death, under 1 year", mortality rate calculation uses live births in calendar year instead of the under one year of age population estimate.

6. For "Age at time of death, 1 to 4 years", mortality rate calculation uses population estimates for 0 to 4-year olds less live births in calendar year.

**Note(s):** See "Data quality, concepts and methodology — Explanatory notes for the tables" section.

**Source(s):** Statistics Canada, Canadian Vital Statistics, Birth and Death Databases, and Appendix 1 (CANSIM table 102-0504).

**Table 4-2**  
**Deaths by age group and geography — Males**

Age at time of death <sup>1,2</sup>	Place of residence						
	Canada	Newfoundland and Labrador	Prince Edward Island	Nova Scotia	New Brunswick	Quebec	Ontario
<b>All ages <sup>3</sup></b>							
Number of deaths	<b>115,149</b>	<b>2,346</b>	<b>587</b>	<b>4,089</b>	<b>2,943</b>	<b>27,035</b>	<b>42,480</b>
Mortality rate per 1,000 population <sup>4</sup>	<b>7.1</b>	<b>9.4</b>	<b>8.7</b>	<b>8.9</b>	<b>8.0</b>	<b>7.2</b>	<b>6.8</b>
<b>Under 1 year <sup>5</sup></b>							
Number of deaths	983	16	2	16	16	223	390
Mortality rate per 1,000 population <sup>4</sup>	5.4	6.7	2.7	3.7	4.4	5.3	5.6
<b>1 to 4 years <sup>6</sup></b>							
Number of deaths	163	2	0	5	5	36	53
Mortality rate per 1,000 population <sup>4</sup>	0.2	0.2	0.0	0.3	0.4	0.2	0.2
<b>5 to 9 years</b>							
Number of deaths	111	2	1	2	2	23	44
Mortality rate per 1,000 population <sup>4</sup>	0.1	0.2	0.2	0.1	0.1	0.1	0.1
<b>10 to 14 years</b>							
Number of deaths	160	3	2	3	3	42	51
Mortality rate per 1,000 population <sup>4</sup>	0.1	0.2	0.4	0.1	0.1	0.2	0.1
<b>15 to 19 years</b>							
Number of deaths	674	10	1	19	16	143	215
Mortality rate per 1,000 population <sup>4</sup>	0.6	0.6	0.2	0.6	0.6	0.6	0.5
<b>20 to 24 years</b>							
Number of deaths	978	16	4	33	28	187	307
Mortality rate per 1,000 population <sup>4</sup>	0.8	0.9	0.8	1.0	1.1	0.7	0.7
<b>25 to 29 years</b>							
Number of deaths	888	22	3	20	26	207	253
Mortality rate per 1,000 population <sup>4</sup>	0.8	1.5	0.7	0.7	1.1	0.8	0.6
<b>30 to 34 years</b>							
Number of deaths	957	18	4	25	26	231	309
Mortality rate per 1,000 population <sup>4</sup>	0.9	1.2	1.0	0.9	1.0	0.9	0.7
<b>35 to 39 years</b>							
Number of deaths	1,352	22	10	56	32	308	451
Mortality rate per 1,000 population <sup>4</sup>	1.1	1.2	2.4	1.8	1.2	1.2	0.9
<b>40 to 44 years</b>							
Number of deaths	2,265	32	6	69	52	521	820
Mortality rate per 1,000 population <sup>4</sup>	1.7	1.6	1.2	1.8	1.7	1.6	1.5
<b>45 to 49 years</b>							
Number of deaths	3,574	61	13	121	82	827	1,277
Mortality rate per 1,000 population <sup>4</sup>	2.7	2.8	2.5	3.1	2.6	2.5	2.5
<b>50 to 54 years</b>							
Number of deaths	4,908	106	20	153	107	1,158	1,786
Mortality rate per 1,000 population <sup>4</sup>	4.2	5.1	4.0	4.4	3.7	4.0	4.1
<b>55 to 59 years</b>							
Number of deaths	6,642	179	37	256	180	1,606	2,378
Mortality rate per 1,000 population <sup>4</sup>	6.4	9.3	7.4	7.7	6.7	6.3	6.2
<b>60 to 64 years</b>							
Number of deaths	8,187	198	50	318	220	2,107	2,997
Mortality rate per 1,000 population <sup>4</sup>	10.5	13.6	14.0	12.6	11.0	10.3	10.4
<b>65 to 69 years</b>							
Number of deaths	9,735	240	58	374	287	2,535	3,529
Mortality rate per 1,000 population <sup>4</sup>	16.4	22.6	20.6	19.6	19.1	16.9	15.8
<b>70 to 74 years</b>							
Number of deaths	13,018	264	75	502	332	3,285	4,862
Mortality rate per 1,000 population <sup>4</sup>	26.5	31.8	32.4	33.0	28.6	27.2	25.8
<b>75 to 79 years</b>							
Number of deaths	17,098	355	65	579	407	4,165	6,488
Mortality rate per 1,000 population <sup>4</sup>	43.9	59.3	40.2	51.5	46.5	44.9	42.9

See notes at the end of the table.

Table 4-2 – continued

## Deaths by age group and geography — Males

Age at time of death <sup>1,2</sup>	Place of residence						
	Canada	Newfoundland and Labrador	Prince Edward Island	Nova Scotia	New Brunswick	Quebec	Ontario
<b>80 to 84 years</b>							
Number of deaths	18,551	368	95	647	459	4,358	7,048
Mortality rate per 1,000 population <sup>4</sup>	74.0	99.8	85.8	84.0	73.7	76.9	72.1
<b>85 to 89 years</b>							
Number of deaths	14,367	270	82	504	395	3,032	5,327
Mortality rate per 1,000 population <sup>4</sup>	123.4	156.0	159.8	127.7	132.2	123.4	120.8
<b>90 years and over</b>							
Number of deaths	10,531	162	59	387	268	2,040	3,890
Mortality rate per 1,000 population <sup>4</sup>	220.9	260.5	270.6	228.9	209.2	211.1	227.0
<b>Not stated</b>							
Number of deaths	7	0	0	0	0	1	5
Mortality rate per 1,000 population <sup>4</sup>	0.0	0.0	0.0	0.0	0.0	0.0	0.0

See notes at the end of the table.



Table 4-2 – continued

## Deaths by age group and geography — Males

Age at time of death <sup>1,2</sup>	Place of residence								
	Canada	Manitoba	Saskatchewan	Alberta	British Columbia	Yukon	Northwest Territories	Nunavut	Unknown
<b>All ages<sup>3</sup></b>									
Number of deaths	115,149	4,852	4,590	10,257	15,672	99	113	82	4
Mortality rate per 1,000 population <sup>4</sup>	7.1	8.3	9.4	6.0	7.3	6.3	5.2	5.2	..
<b>Under 1 year<sup>5</sup></b>									
Number of deaths	983	47	42	131	90	1	3	6	0
Mortality rate per 1,000 population <sup>4</sup>	5.4	6.3	6.6	5.7	4.2	5.1	8.4	14.4	..
<b>1 to 4 years<sup>6</sup></b>									
Number of deaths	163	13	6	25	16	0	2	0	0
Mortality rate per 1,000 population <sup>4</sup>	0.2	0.5	0.2	0.3	0.2	0.0	1.6	0.0	..
<b>5 to 9 years</b>									
Number of deaths	111	4	5	19	9	0	0	0	0
Mortality rate per 1,000 population <sup>4</sup>	0.1	0.1	0.2	0.2	0.1	0.0	0.0	0.0	..
<b>10 to 14 years</b>									
Number of deaths	160	9	4	22	20	0	0	1	0
Mortality rate per 1,000 population <sup>4</sup>	0.1	0.2	0.1	0.2	0.1	0.0	0.0	0.6	..
<b>15 to 19 years</b>									
Number of deaths	674	39	39	94	91	1	1	5	0
Mortality rate per 1,000 population <sup>4</sup>	0.6	0.9	1.0	0.8	0.6	0.8	0.6	3.1	..
<b>20 to 24 years</b>									
Number of deaths	978	53	59	138	142	0	5	6	0
Mortality rate per 1,000 population <sup>4</sup>	0.8	1.2	1.5	1.0	0.9	0.0	2.8	4.5	..
<b>25 to 29 years</b>									
Number of deaths	888	36	34	143	131	2	5	6	0
Mortality rate per 1,000 population <sup>4</sup>	0.8	0.9	1.0	1.0	0.9	2.3	2.8	4.7	..
<b>30 to 34 years</b>									
Number of deaths	957	54	36	121	124	3	2	4	0
Mortality rate per 1,000 population <sup>4</sup>	0.9	1.4	1.2	0.9	0.9	3.3	1.0	3.1	..
<b>35 to 39 years</b>									
Number of deaths	1,352	55	43	167	198	5	1	4	0
Mortality rate per 1,000 population <sup>4</sup>	1.1	1.4	1.5	1.3	1.3	4.4	0.6	3.6	..
<b>40 to 44 years</b>									
Number of deaths	2,265	85	86	243	342	4	4	0	1
Mortality rate per 1,000 population <sup>4</sup>	1.7	1.9	2.4	1.7	1.9	2.9	2.4	0.0	..
<b>45 to 49 years</b>									
Number of deaths	3,574	173	109	427	463	6	7	7	1
Mortality rate per 1,000 population <sup>4</sup>	2.7	3.7	2.8	3.1	2.6	4.1	4.6	7.7	..
<b>50 to 54 years</b>									
Number of deaths	4,908	193	170	523	675	6	6	5	0
Mortality rate per 1,000 population <sup>4</sup>	4.2	4.8	4.8	4.4	4.2	4.2	4.5	7.5	..
<b>55 to 59 years</b>									
Number of deaths	6,642	275	202	605	909	4	6	5	0
Mortality rate per 1,000 population <sup>4</sup>	6.4	7.7	7.0	6.3	6.3	3.3	5.3	12.2	..
<b>60 to 64 years</b>									
Number of deaths	8,187	315	260	676	1,027	8	6	5	0
Mortality rate per 1,000 population <sup>4</sup>	10.5	11.9	12.0	10.0	9.7	9.5	7.6	15.1	..
<b>65 to 69 years</b>									
Number of deaths	9,735	355	302	787	1,243	9	9	6	1
Mortality rate per 1,000 population <sup>4</sup>	16.4	18.0	17.2	15.6	15.1	16.8	19.8	25.6	..
<b>70 to 74 years</b>									
Number of deaths	13,018	502	469	1,095	1,603	13	12	3	1
Mortality rate per 1,000 population <sup>4</sup>	26.5	29.4	30.1	26.6	22.7	38.9	44.0	22.9	..
<b>75 to 79 years</b>									
Number of deaths	17,098	655	641	1,404	2,303	12	14	10	0
Mortality rate per 1,000 population <sup>4</sup>	43.9	46.1	47.3	42.9	40.7	66.7	76.1	142.9	..

See notes at the end of the table.

Table 4-2 – continued

## Deaths by age group and geography — Males

Age at time of death <sup>1,2</sup>	Place of residence								
	Canada	Manitoba	Saskatchewan	Alberta	British Columbia	Yukon	Northwest Territories	Nunavut	Unknown
<b>80 to 84 years</b>									
Number of deaths	18,551	791	792	1,508	2,458	10	13	4	0
Mortality rate per 1,000 population <sup>4</sup>	74.0	78.3	81.1	74.3	66.2	90.1	127.5	117.6	..
<b>85 to 89 years</b>									
Number of deaths	14,367	647	683	1,222	2,179	10	14	2	0
Mortality rate per 1,000 population <sup>4</sup>	123.4	127.7	128.8	125.2	118.6	476.2	259.3	111.1	..
<b>90 years and over</b>									
Number of deaths	10,531	551	608	906	1,649	5	3	3	0
Mortality rate per 1,000 population <sup>4</sup>	220.9	244.9	228.5	229.7	201.9	263.2	187.5	272.7	..
<b>Not stated</b>									
Number of deaths	7	0	0	1	0	0	0	0	0
Mortality rate per 1,000 population <sup>4</sup>	0.0	0.0	0.0	0.0	0.0	0.0	0.0	0.0	..

1. Age attained at the last birthday preceding death.

2. For "Age at time of death", all age groups except "all ages", the mortality rate represents the age-specific death rate, or the number of deaths in a particular age group during a given year per 1,000 population in the same age group as of July 1 of the same year.

3. For "Age at time of death, all ages", the mortality rate represents the crude death rate, or the number of deaths during a given year per 1,000 population as of July 1 of the same year.

4. Starting in 2005, the population estimates used for the calculations of the mortality rate are presented in the Appendix I of the publication "Deaths" (catalogue number 84F0211XWE).

5. For "Age at time of death, under 1 year", mortality rate calculation uses live births in calendar year instead of the under one year of age population estimate.

6. For "Age at time of death, 1 to 4 years", mortality rate calculation uses population estimates for 0 to 4-year olds less live births in calendar year.

**Note(s):** See "Data quality, concepts and methodology — Explanatory notes for the tables" section.

**Source(s):** Statistics Canada, Canadian Vital Statistics, Birth and Death Databases, and Appendix 1 (CANSIM table 102-0504).

**Table 4-3**  
**Deaths by age group and geography — Females**

Age at time of death <sup>1,2</sup>	Place of residence						
	Canada	Newfoundland and Labrador	Prince Edward Island	Nova Scotia	New Brunswick	Quebec	Ontario
<b>All ages <sup>3</sup></b>							
Number of deaths	112,930	2,147	585	3,999	3,067	27,205	42,044
Mortality rate per 1,000 population <sup>4</sup>	6.9	8.3	8.3	8.4	8.1	7.0	6.5
<b>Under 1 year <sup>5</sup></b>							
Number of deaths	788	8	1	18	12	192	284
Mortality rate per 1,000 population <sup>4</sup>	4.6	3.7	1.5	4.4	3.5	4.8	4.3
<b>1 to 4 years <sup>6</sup></b>							
Number of deaths	121	3	0	2	4	17	52
Mortality rate per 1,000 population <sup>4</sup>	0.2	0.3	0.0	0.1	0.3	0.1	0.2
<b>5 to 9 years</b>							
Number of deaths	87	4	1	0	3	15	31
Mortality rate per 1,000 population <sup>4</sup>	0.1	0.3	0.3	0.0	0.2	0.1	0.1
<b>10 to 14 years</b>							
Number of deaths	115	4	0	5	6	24	39
Mortality rate per 1,000 population <sup>4</sup>	0.1	0.3	0.0	0.2	0.3	0.1	0.1
<b>15 to 19 years</b>							
Number of deaths	311	7	5	7	7	64	90
Mortality rate per 1,000 population <sup>4</sup>	0.3	0.4	1.0	0.2	0.3	0.3	0.2
<b>20 to 24 years</b>							
Number of deaths	340	6	1	5	6	68	111
Mortality rate per 1,000 population <sup>4</sup>	0.3	0.4	0.2	0.2	0.2	0.3	0.3
<b>25 to 29 years</b>							
Number of deaths	366	3	2	9	16	85	126
Mortality rate per 1,000 population <sup>4</sup>	0.3	0.2	0.5	0.3	0.7	0.3	0.3
<b>30 to 34 years</b>							
Number of deaths	455	10	2	12	19	80	161
Mortality rate per 1,000 population <sup>4</sup>	0.4	0.6	0.5	0.4	0.8	0.3	0.4
<b>35 to 39 years</b>							
Number of deaths	769	16	3	19	13	164	285
Mortality rate per 1,000 population <sup>4</sup>	0.7	0.8	0.7	0.6	0.5	0.6	0.6
<b>40 to 44 years</b>							
Number of deaths	1,398	22	9	42	26	316	502
Mortality rate per 1,000 population <sup>4</sup>	1.0	1.0	1.7	1.1	0.8	1.0	0.9
<b>45 to 49 years</b>							
Number of deaths	2,256	33	7	71	49	593	795
Mortality rate per 1,000 population <sup>4</sup>	1.7	1.5	1.3	1.8	1.6	1.8	1.5
<b>50 to 54 years</b>							
Number of deaths	3,255	58	16	96	74	801	1,229
Mortality rate per 1,000 population <sup>4</sup>	2.7	2.7	3.1	2.6	2.5	2.7	2.7
<b>55 to 59 years</b>							
Number of deaths	4,206	91	24	135	110	1,106	1,510
Mortality rate per 1,000 population <sup>4</sup>	4.0	4.6	4.6	4.0	4.0	4.2	3.8
<b>60 to 64 years</b>							
Number of deaths	5,178	122	25	177	154	1,345	1,940
Mortality rate per 1,000 population <sup>4</sup>	6.4	8.1	6.9	6.8	7.6	6.2	6.5
<b>65 to 69 years</b>							
Number of deaths	6,560	143	34	238	190	1,679	2,396
Mortality rate per 1,000 population <sup>4</sup>	10.3	13.1	11.6	11.7	12.0	10.2	9.9
<b>70 to 74 years</b>							
Number of deaths	9,245	192	36	335	248	2,382	3,508
Mortality rate per 1,000 population <sup>4</sup>	16.7	21.8	14.1	19.3	18.5	16.5	16.4
<b>75 to 79 years</b>							
Number of deaths	13,866	286	68	518	359	3,535	5,302
Mortality rate per 1,000 population <sup>4</sup>	28.2	37.8	33.6	35.2	30.3	27.7	28.1

See notes at the end of the table.

Table 4-3 – continued

## Deaths by age group and geography — Females

Age at time of death <sup>1,2</sup>	Place of residence						
	Canada	Newfoundland and Labrador	Prince Edward Island	Nova Scotia	New Brunswick	Quebec	Ontario
<b>80 to 84 years</b>							
Number of deaths	19,075	372	85	646	502	4,684	7,342
Mortality rate per 1,000 population <sup>4</sup>	48.9	66.9	47.9	55.0	50.9	48.3	48.6
<b>85 to 89 years</b>							
Number of deaths	20,163	364	118	734	553	4,628	7,387
Mortality rate per 1,000 population <sup>4</sup>	87.8	104.5	98.9	89.7	89.8	83.6	88.0
<b>90 years and over</b>							
Number of deaths	24,370	403	148	930	716	5,427	8,948
Mortality rate per 1,000 population <sup>4</sup>	186.2	226.7	212.3	196.3	198.6	173.3	190.7
<b>Not stated</b>							
Number of deaths	6	0	0	0	0	0	6
Mortality rate per 1,000 population <sup>4</sup>	0.0	0.0	0.0	0.0	0.0	0.0	0.0

See notes at the end of the table.

Table 4-3 – continued

## Deaths by age group and geography — Females

Age at time of death <sup>1,2</sup>	Place of residence								
	Canada	Manitoba	Saskatchewan	Alberta	British Columbia	Yukon	Northwest Territories	Nunavut	Unknown
<b>All ages<sup>3</sup></b>									
Number of deaths	112,930	4,922	4,464	9,283	15,016	79	69	47	3
Mortality rate per 1,000 population <sup>4</sup>	6.9	8.3	9.0	5.6	6.9	5.1	3.4	3.2	..
<b>Under 1 year<sup>5</sup></b>									
Number of deaths	788	41	33	107	81	2	4	4	1
Mortality rate per 1,000 population <sup>4</sup>	4.6	5.7	5.6	4.8	4.0	11.9	12.1	12.1	..
<b>1 to 4 years<sup>6</sup></b>									
Number of deaths	121	6	6	15	14	0	0	2	0
Mortality rate per 1,000 population <sup>4</sup>	0.2	0.2	0.3	0.2	0.2	0.0	0.0	1.4	..
<b>5 to 9 years</b>									
Number of deaths	87	2	5	11	15	0	0	0	0
Mortality rate per 1,000 population <sup>4</sup>	0.1	0.1	0.2	0.1	0.1	0.0	0.0	0.0	..
<b>10 to 14 years</b>									
Number of deaths	115	10	2	14	11	0	0	0	0
Mortality rate per 1,000 population <sup>4</sup>	0.1	0.2	0.1	0.1	0.1	0.0	0.0	0.0	..
<b>15 to 19 years</b>									
Number of deaths	311	21	13	48	46	0	2	1	0
Mortality rate per 1,000 population <sup>4</sup>	0.3	0.5	0.4	0.4	0.3	0.0	1.2	0.6	..
<b>20 to 24 years</b>									
Number of deaths	340	18	26	49	45	2	2	1	0
Mortality rate per 1,000 population <sup>4</sup>	0.3	0.4	0.7	0.4	0.3	1.7	1.2	0.7	..
<b>25 to 29 years</b>									
Number of deaths	366	13	20	44	46	1	1	0	0
Mortality rate per 1,000 population <sup>4</sup>	0.3	0.3	0.6	0.3	0.3	1.1	0.6	0.0	..
<b>30 to 34 years</b>									
Number of deaths	455	20	29	61	59	2	0	0	0
Mortality rate per 1,000 population <sup>4</sup>	0.4	0.5	1.0	0.5	0.4	1.9	0.0	0.0	..
<b>35 to 39 years</b>									
Number of deaths	769	36	29	93	103	1	3	4	0
Mortality rate per 1,000 population <sup>4</sup>	0.7	1.0	1.0	0.8	0.6	0.8	1.7	3.9	..
<b>40 to 44 years</b>									
Number of deaths	1,398	55	51	183	186	1	2	3	0
Mortality rate per 1,000 population <sup>4</sup>	1.0	1.2	1.4	1.4	1.0	0.7	1.1	3.7	..
<b>45 to 49 years</b>									
Number of deaths	2,256	84	70	228	312	7	4	3	0
Mortality rate per 1,000 population <sup>4</sup>	1.7	1.9	1.9	1.7	1.7	4.3	2.6	4.5	..
<b>50 to 54 years</b>									
Number of deaths	3,255	132	117	322	398	6	3	3	0
Mortality rate per 1,000 population <sup>4</sup>	2.7	3.2	3.4	2.8	2.4	4.7	2.4	5.6	..
<b>55 to 59 years</b>									
Number of deaths	4,206	162	129	380	545	4	7	2	1
Mortality rate per 1,000 population <sup>4</sup>	4.0	4.5	4.5	4.1	3.7	4.1	7.4	3.8	..
<b>60 to 64 years</b>									
Number of deaths	5,178	191	146	445	614	8	7	4	0
Mortality rate per 1,000 population <sup>4</sup>	6.4	7.1	6.7	6.6	5.7	11.7	13.1	12.3	..
<b>65 to 69 years</b>									
Number of deaths	6,560	270	226	549	811	7	9	8	0
Mortality rate per 1,000 population <sup>4</sup>	10.3	12.6	12.0	10.5	9.5	17.9	25.2	36.2	..
<b>70 to 74 years</b>									
Number of deaths	9,245	376	316	726	1,110	6	5	4	1
Mortality rate per 1,000 population <sup>4</sup>	16.7	19.5	18.1	16.2	15.2	19.5	18.9	44.4	..
<b>75 to 79 years</b>									
Number of deaths	13,866	520	468	1,053	1,737	9	8	3	0
Mortality rate per 1,000 population <sup>4</sup>	28.2	28.6	28.1	27.2	26.7	44.6	45.2	90.9	..

See notes at the end of the table.

Table 4-3 – continued

## Deaths by age group and geography — Females

Age at time of death <sup>1,2</sup>	Place of residence								
	Canada	Manitoba	Saskatchewan	Alberta	British Columbia	Yukon	Northwest Territories	Nunavut	Unknown
<b>80 to 84 years</b>									
Number of deaths	19,075	795	650	1,415	2,568	10	4	2	0
Mortality rate per 1,000 population <sup>4</sup>	48.9	50.0	45.9	47.6	48.4	94.3	34.8	87.0	..
<b>85 to 89 years</b>									
Number of deaths	20,163	965	892	1,618	2,890	7	5	2	0
Mortality rate per 1,000 population <sup>4</sup>	87.8	94.1	91.8	89.0	87.2	106.1	131.6	153.8	..
<b>90 years and over</b>									
Number of deaths	24,370	1,205	1,236	1,922	3,425	6	3	1	0
Mortality rate per 1,000 population <sup>4</sup>	186.2	192.0	194.6	184.5	182.9	162.2	88.2	125.0	..
<b>Not stated</b>									
Number of deaths	6	0	0	0	0	0	0	0	0
Mortality rate per 1,000 population <sup>4</sup>	0.0	0.0	0.0	0.0	0.0	0.0	0.0	0.0	..

1. Age attained at the last birthday preceding death.

2. For "Age at time of death", all age groups except "all ages", the mortality rate represents the age-specific death rate, or the number of deaths in a particular age group during a given year per 1,000 population in the same age group as of July 1 of the same year.

3. For "Age at time of death, all ages", the mortality rate represents the crude death rate, or the number of deaths during a given year per 1,000 population as of July 1 of the same year.

4. Starting in 2005, the population estimates used for the calculations of the mortality rate are presented in the Appendix I of the publication "Deaths" (catalogue number 84F0211XWE).

5. For "Age at time of death, under 1 year", mortality rate calculation uses live births in calendar year instead of the under one year of age population estimate.

6. For "Age at time of death, 1 to 4 years", mortality rate calculation uses population estimates for 0 to 4-year olds less live births in calendar year.

**Note(s):** See "Data quality, concepts and methodology — Explanatory notes for the tables" section.

**Source(s):** Statistics Canada, Canadian Vital Statistics, Birth and Death Databases, and Appendix 1 (CANSIM table 102-0504).

**Table 5-1**  
**Deaths by marital status, age group<sup>1</sup> and geography — Both sexes**

Place of residence and age group	Marital status						
	Total	Single (never married)	Married	Widowed	Divorced	Separated	Not stated
	number						
<b>Canada</b>	<b>228,079</b>	<b>30,365</b>	<b>93,006</b>	<b>82,510</b>	<b>16,782</b>	<b>1,996</b>	<b>3,420</b>
Under 15 years	2,528	2,525	0	0	0	0	3
15 to 44 years	10,753	6,521	2,810	130	618	148	526
45 to 64 years	38,206	7,442	19,997	2,376	6,309	650	1,432
65 to 74 years	38,558	3,783	21,871	7,333	4,378	452	741
75 to 84 years	68,590	5,168	31,725	26,851	3,831	512	503
85 years and over	69,431	4,920	16,602	45,818	1,645	234	212
Not stated	13	6	1	2	1	0	3
<b>Newfoundland and Labrador</b>	<b>4,493</b>	<b>125</b>	<b>2,147</b>	<b>1,898</b>	<b>226</b>	<b>88</b>	<b>9</b>
Under 15 years	42	42	0	0	0	0	0
15 to 44 years	184	23	80	70	7	4	0
45 to 64 years	848	20	432	327	52	17	0
65 to 74 years	839	17	423	330	45	19	5
75 to 84 years	1,381	12	678	591	72	26	2
85 years and over	1,199	11	534	580	50	22	2
Not stated	0	0	0	0	0	0	0
<b>Prince Edward Island</b>	<b>1,172</b>	<b>175</b>	<b>459</b>	<b>454</b>	<b>65</b>	<b>17</b>	<b>2</b>
Under 15 years	7	7	0	0	0	0	0
15 to 44 years	50	31	14	0	1	4	0
45 to 64 years	192	40	113	12	22	4	1
65 to 74 years	203	28	112	46	14	3	0
75 to 84 years	313	34	138	117	18	6	0
85 years and over	407	35	82	279	10	0	1
Not stated	0	0	0	0	0	0	0
<b>Nova Scotia</b>	<b>8,088</b>	<b>1,051</b>	<b>3,343</b>	<b>3,127</b>	<b>555</b>	<b>0</b>	<b>12</b>
Under 15 years	51	51	0	0	0	0	0
15 to 44 years	316	188	103	1	22	0	2
45 to 64 years	1,327	253	783	81	207	0	3
65 to 74 years	1,449	163	853	267	160	0	6
75 to 84 years	2,390	215	1,030	1,020	125	0	0
85 years and over	2,555	181	574	1,758	41	0	1
Not stated	0	0	0	0	0	0	0
<b>New Brunswick</b>	<b>6,010</b>	<b>763</b>	<b>2,341</b>	<b>2,330</b>	<b>353</b>	<b>131</b>	<b>92</b>
Under 15 years	51	51	0	0	0	0	0
15 to 44 years	267	166	60	1	19	14	7
45 to 64 years	976	158	528	52	144	52	42
65 to 74 years	1,057	101	596	212	92	27	29
75 to 84 years	1,727	134	721	759	75	29	9
85 years and over	1,932	153	436	1,306	23	9	5
Not stated	0	0	0	0	0	0	0
<b>Quebec</b>	<b>54,240</b>	<b>10,638</b>	<b>20,258</b>	<b>17,935</b>	<b>4,231</b>	<b>1,065</b>	<b>113</b>
Under 15 years	572	571	0	0	0	0	1
15 to 44 years	2,374	1,749	419	5	117	49	35
45 to 64 years	9,543	2,728	4,181	491	1,773	317	53
65 to 74 years	9,881	1,517	5,082	1,787	1,199	283	13
75 to 84 years	16,742	2,027	7,268	6,301	843	297	6
85 years and over	15,127	2,045	3,308	9,351	299	119	5
Not stated	1	1	0	0	0	0	0
<b>Ontario</b>	<b>84,524</b>	<b>8,879</b>	<b>36,627</b>	<b>31,343</b>	<b>5,545</b>	<b>6</b>	<b>2,124</b>
Under 15 years	944	942	0	0	0	0	2
15 to 44 years	3,630	1,922	1,159	23	213	1	312
45 to 64 years	13,912	2,125	8,054	786	2,037	2	908
65 to 74 years	14,295	1,046	8,648	2,680	1,438	0	483
75 to 84 years	26,180	1,501	12,649	10,421	1,293	3	313
85 years and over	25,552	1,339	6,116	17,431	563	0	103
Not stated	11	4	1	2	1	0	3

See notes at the end of the table.

Table 5-1 – continued

Deaths by marital status, age group<sup>1</sup> and geography — Both sexes

Place of residence and age group	Marital status						Not stated
	Total	Single (never married)	Married	Widowed	Divorced	Separated	
	number						
<b>Manitoba</b>	<b>9,774</b>	<b>1,370</b>	<b>3,677</b>	<b>3,888</b>	<b>646</b>	<b>132</b>	<b>61</b>
Under 15 years	132	132	0	0	0	0	0
15 to 44 years	485	320	121	1	29	12	2
45 to 64 years	1,525	307	810	92	255	38	23
65 to 74 years	1,503	150	835	329	148	30	11
75 to 84 years	2,761	226	1,161	1,188	138	32	16
85 years and over	3,368	235	750	2,278	76	20	9
Not stated	0	0	0	0	0	0	0
<b>Saskatchewan</b>	<b>9,054</b>	<b>1,313</b>	<b>3,506</b>	<b>3,660</b>	<b>559</b>	<b>0</b>	<b>16</b>
Under 15 years	103	103	0	0	0	0	0
15 to 44 years	465	323	115	2	24	0	1
45 to 64 years	1,203	260	651	91	190	0	11
65 to 74 years	1,313	159	739	273	139	0	3
75 to 84 years	2,551	222	1,176	1,016	136	0	1
85 years and over	3,419	246	825	2,278	70	0	0
Not stated	0	0	0	0	0	0	0
<b>Alberta</b>	<b>19,540</b>	<b>2,718</b>	<b>8,089</b>	<b>6,628</b>	<b>1,969</b>	<b>3</b>	<b>133</b>
Under 15 years	344	344	0	0	0	0	0
15 to 44 years	1,384	867	386	9	97	2	23
45 to 64 years	3,606	654	1,932	197	777	1	45
65 to 74 years	3,157	244	1,840	562	483	0	28
75 to 84 years	5,380	312	2,556	2,065	422	0	25
85 years and over	5,668	296	1,375	3,795	190	0	12
Not stated	1	1	0	0	0	0	0
<b>British Columbia</b>	<b>30,688</b>	<b>3,163</b>	<b>12,393</b>	<b>11,145</b>	<b>2,595</b>	<b>546</b>	<b>846</b>
Under 15 years	256	256	0	0	0	0	0
15 to 44 years	1,513	865	342	17	88	60	141
45 to 64 years	4,943	852	2,462	236	837	213	343
65 to 74 years	4,767	342	2,703	826	648	90	158
75 to 84 years	9,066	472	4,303	3,342	700	119	130
85 years and over	10,143	376	2,583	6,724	322	64	74
Not stated	0	0	0	0	0	0	0
<b>Yukon</b>	<b>178</b>	<b>41</b>	<b>66</b>	<b>38</b>	<b>28</b>	<b>3</b>	<b>2</b>
Under 15 years	3	3	0	0	0	0	0
15 to 44 years	22	16	4	1	1	0	0
45 to 64 years	49	15	18	3	9	3	1
65 to 74 years	35	6	13	6	9	0	1
75 to 84 years	41	1	21	11	8	0	0
85 years and over	28	0	10	17	1	0	0
Not stated	0	0	0	0	0	0	0
<b>Northwest Territories</b>	<b>182</b>	<b>72</b>	<b>55</b>	<b>41</b>	<b>8</b>	<b>3</b>	<b>3</b>
Under 15 years	9	9	0	0	0	0	0
15 to 44 years	28	23	4	0	0	1	0
45 to 64 years	46	16	16	6	5	2	1
65 to 74 years	35	9	13	9	2	0	2
75 to 84 years	39	12	17	9	1	0	0
85 years and over	25	3	5	17	0	0	0
Not stated	0	0	0	0	0	0	0
<b>Nunavut</b>	<b>129</b>	<b>54</b>	<b>42</b>	<b>23</b>	<b>1</b>	<b>2</b>	<b>7</b>
Under 15 years	13	13	0	0	0	0	0
15 to 44 years	34	28	2	0	0	1	3
45 to 64 years	34	12	17	2	1	1	1
65 to 74 years	21	1	12	6	0	0	2
75 to 84 years	19	0	7	11	0	0	1
85 years and over	8	0	4	4	0	0	0
Not stated	0	0	0	0	0	0	0

See notes at the end of the table.



Table 5-1 – continued

Deaths by marital status, age group<sup>1</sup> and geography — Both sexes

Place of residence and age group	Marital status						
	Total	Single (never married)	Married	Widowed	Divorced	Separated	Not stated
	number						
<b>Unknown</b>	<b>7</b>	<b>3</b>	<b>3</b>	<b>0</b>	<b>1</b>	<b>0</b>	<b>0</b>
Under 15 years	1	1	0	0	0	0	0
15 to 44 years	1	0	1	0	0	0	0
45 to 64 years	2	2	0	0	0	0	0
65 to 74 years	3	0	2	0	1	0	0
75 to 84 years	0	0	0	0	0	0	0
85 years and over	0	0	0	0	0	0	0
Not stated	0	0	0	0	0	0	0

1. Age attained at the last birthday preceding death.

**Note(s):** See "Data quality, concepts and methodology — Explanatory notes for the tables" section.

**Source(s):** Statistics Canada, Canadian Vital Statistics, Death Database (CANSIM table 102-0505).

**Table 5-2**  
**Deaths by marital status, age group<sup>1</sup> and geography — Males**

Place of residence and age group	Marital status						
	Total	Single (never married)	Married	Widowed	Divorced	Separated	Not stated
	number						
<b>Canada</b>	<b>115,149</b>	<b>18,172</b>	<b>62,603</b>	<b>21,631</b>	<b>9,223</b>	<b>1,216</b>	<b>2,304</b>
Under 15 years	1,417	1,417	0	0	0	0	0
15 to 44 years	7,114	4,661	1,598	62	359	91	343
45 to 64 years	23,311	5,145	12,150	915	3,791	389	921
65 to 74 years	22,753	2,540	14,408	2,373	2,579	305	548
75 to 84 years	35,649	2,920	22,327	7,801	1,925	306	370
85 years and over	24,898	1,485	12,120	10,480	569	125	119
Not stated	7	4	0	0	0	0	3
<b>Newfoundland and Labrador</b>	<b>2,346</b>	<b>83</b>	<b>1,163</b>	<b>934</b>	<b>108</b>	<b>53</b>	<b>5</b>
Under 15 years	23	23	0	0	0	0	0
15 to 44 years	120	18	49	44	6	3	0
45 to 64 years	544	12	288	200	29	15	0
65 to 74 years	504	15	259	192	25	10	3
75 to 84 years	723	8	365	299	33	17	1
85 years and over	432	7	202	199	15	8	1
Not stated	0	0	0	0	0	0	0
<b>Prince Edward Island</b>	<b>587</b>	<b>112</b>	<b>320</b>	<b>111</b>	<b>31</b>	<b>12</b>	<b>1</b>
Under 15 years	5	5	0	0	0	0	0
15 to 44 years	28	18	7	0	1	2	0
45 to 64 years	120	28	72	5	10	4	1
65 to 74 years	133	20	88	15	8	2	0
75 to 84 years	160	28	89	30	9	4	0
85 years and over	141	13	64	61	3	0	0
Not stated	0	0	0	0	0	0	0
<b>Nova Scotia</b>	<b>4,089</b>	<b>650</b>	<b>2,314</b>	<b>784</b>	<b>334</b>	<b>0</b>	<b>7</b>
Under 15 years	26	26	0	0	0	0	0
15 to 44 years	222	139	66	1	15	0	1
45 to 64 years	848	174	509	28	134	0	3
65 to 74 years	876	122	574	73	104	0	3
75 to 84 years	1,226	132	737	293	64	0	0
85 years and over	891	57	428	389	17	0	0
Not stated	0	0	0	0	0	0	0
<b>New Brunswick</b>	<b>2,943</b>	<b>457</b>	<b>1,568</b>	<b>562</b>	<b>212</b>	<b>86</b>	<b>58</b>
Under 15 years	26	26	0	0	0	0	0
15 to 44 years	180	119	32	1	12	10	6
45 to 64 years	589	109	322	13	88	30	27
65 to 74 years	619	71	399	48	63	20	18
75 to 84 years	866	85	500	214	41	19	7
85 years and over	663	47	315	286	8	7	0
Not stated	0	0	0	0	0	0	0
<b>Quebec</b>	<b>27,035</b>	<b>5,837</b>	<b>13,523</b>	<b>4,548</b>	<b>2,405</b>	<b>646</b>	<b>76</b>
Under 15 years	324	324	0	0	0	0	0
15 to 44 years	1,597	1,250	221	0	67	34	25
45 to 64 years	5,698	1,804	2,501	180	995	183	35
65 to 74 years	5,820	941	3,343	588	743	195	10
75 to 84 years	8,523	1,006	5,091	1,788	465	169	4
85 years and over	5,072	511	2,367	1,992	135	65	2
Not stated	1	1	0	0	0	0	0
<b>Ontario</b>	<b>42,480</b>	<b>5,277</b>	<b>24,816</b>	<b>8,070</b>	<b>2,880</b>	<b>4</b>	<b>1,433</b>
Under 15 years	538	538	0	0	0	0	0
15 to 44 years	2,355	1,374	651	5	120	1	204
45 to 64 years	8,438	1,455	4,917	272	1,227	1	566
65 to 74 years	8,391	708	5,726	819	776	0	362
75 to 84 years	13,536	836	8,926	2,939	597	2	236
85 years and over	9,217	364	4,596	4,035	160	0	62
Not stated	5	2	0	0	0	0	3

See notes at the end of the table.

Table 5-2 – continued

Deaths by marital status, age group<sup>1</sup> and geography — Males

Place of residence and age group	Marital status						Not stated
	Total	Single (never married)	Married	Widowed	Divorced	Separated	
	number						
<b>Manitoba</b>	<b>4,852</b>	<b>852</b>	<b>2,501</b>	<b>996</b>	<b>380</b>	<b>82</b>	<b>41</b>
Under 15 years	73	73	0	0	0	0	0
15 to 44 years	322	226	71	1	17	5	2
45 to 64 years	956	211	514	30	166	21	14
65 to 74 years	857	104	540	98	89	18	8
75 to 84 years	1,446	147	831	354	81	23	10
85 years and over	1,198	91	545	513	27	15	7
Not stated	0	0	0	0	0	0	0
<b>Saskatchewan</b>	<b>4,590</b>	<b>862</b>	<b>2,458</b>	<b>924</b>	<b>337</b>	<b>0</b>	<b>9</b>
Under 15 years	57	57	0	0	0	0	0
15 to 44 years	297	214	67	0	16	0	0
45 to 64 years	741	185	401	28	119	0	8
65 to 74 years	771	121	487	77	85	0	1
75 to 84 years	1,433	152	887	310	84	0	0
85 years and over	1,291	133	616	509	33	0	0
Not stated	0	0	0	0	0	0	0
<b>Alberta</b>	<b>10,257</b>	<b>1,825</b>	<b>5,459</b>	<b>1,747</b>	<b>1,130</b>	<b>1</b>	<b>95</b>
Under 15 years	197	197	0	0	0	0	0
15 to 44 years	906	614	222	3	51	1	15
45 to 64 years	2,231	494	1,130	76	500	0	31
65 to 74 years	1,882	171	1,203	185	301	0	22
75 to 84 years	2,912	213	1,854	606	218	0	21
85 years and over	2,128	135	1,050	877	60	0	6
Not stated	1	1	0	0	0	0	0
<b>British Columbia</b>	<b>15,672</b>	<b>2,096</b>	<b>8,385</b>	<b>2,905</b>	<b>1,385</b>	<b>328</b>	<b>573</b>
Under 15 years	135	135	0	0	0	0	0
15 to 44 years	1,028	640	207	6	53	33	89
45 to 64 years	3,074	641	1,471	79	515	133	235
65 to 74 years	2,846	255	1,766	269	379	60	117
75 to 84 years	4,761	301	3,018	951	328	72	91
85 years and over	3,828	124	1,923	1,600	110	30	41
Not stated	0	0	0	0	0	0	0
<b>Yukon</b>	<b>99</b>	<b>27</b>	<b>39</b>	<b>14</b>	<b>16</b>	<b>1</b>	<b>2</b>
Under 15 years	1	1	0	0	0	0	0
15 to 44 years	15	11	2	1	1	0	0
45 to 64 years	24	9	8	0	5	1	1
65 to 74 years	22	5	9	3	4	0	1
75 to 84 years	22	1	13	3	5	0	0
85 years and over	15	0	7	7	1	0	0
Not stated	0	0	0	0	0	0	0
<b>Northwest Territories</b>	<b>113</b>	<b>53</b>	<b>34</b>	<b>20</b>	<b>3</b>	<b>1</b>	<b>2</b>
Under 15 years	5	5	0	0	0	0	0
15 to 44 years	18	15	2	0	0	1	0
45 to 64 years	25	13	8	2	2	0	0
65 to 74 years	21	6	8	4	1	0	2
75 to 84 years	27	11	11	5	0	0	0
85 years and over	17	3	5	9	0	0	0
Not stated	0	0	0	0	0	0	0
<b>Nunavut</b>	<b>82</b>	<b>40</b>	<b>21</b>	<b>16</b>	<b>1</b>	<b>2</b>	<b>2</b>
Under 15 years	7	7	0	0	0	0	0
15 to 44 years	25	23	0	0	0	1	1
45 to 64 years	22	9	9	2	1	1	0
65 to 74 years	9	1	5	2	0	0	1
75 to 84 years	14	0	5	9	0	0	0
85 years and over	5	0	2	3	0	0	0
Not stated	0	0	0	0	0	0	0

See notes at the end of the table.

Table 5-2 – continued

Deaths by marital status, age group<sup>1</sup> and geography — Males

Place of residence and age group	Marital status						
	Total	Single (never married)	Married	Widowed	Divorced	Separated	Not stated
	number						
<b>Unknown</b>	<b>4</b>	<b>1</b>	<b>2</b>	<b>0</b>	<b>1</b>	<b>0</b>	<b>0</b>
Under 15 years	0	0	0	0	0	0	0
15 to 44 years	1	0	1	0	0	0	0
45 to 64 years	1	1	0	0	0	0	0
65 to 74 years	2	0	1	0	1	0	0
75 to 84 years	0	0	0	0	0	0	0
85 years and over	0	0	0	0	0	0	0
Not stated	0	0	0	0	0	0	0

1. Age attained at the last birthday preceding death.

**Note(s):** See "Data quality, concepts and methodology — Explanatory notes for the tables" section.

**Source(s):** Statistics Canada, Canadian Vital Statistics, Death Database (CANSIM table 102-0505).

**Table 5-3**  
**Deaths by marital status, age group<sup>1</sup> and geography — Females**

Place of residence and age group	Marital status						Not stated
	Total	Single (never married)	Married	Widowed	Divorced	Separated	
	number						
<b>Canada</b>	<b>112,930</b>	<b>12,193</b>	<b>30,403</b>	<b>60,879</b>	<b>7,559</b>	<b>780</b>	<b>1,116</b>
Under 15 years	1,111	1,108	0	0	0	0	3
15 to 44 years	3,639	1,860	1,212	68	259	57	183
45 to 64 years	14,895	2,297	7,847	1,461	2,518	261	511
65 to 74 years	15,805	1,243	7,463	4,960	1,799	147	193
75 to 84 years	32,941	2,248	9,398	19,050	1,906	206	133
85 years and over	44,533	3,435	4,482	35,338	1,076	109	93
Not stated	6	2	1	2	1	0	0
<b>Newfoundland and Labrador</b>	<b>2,147</b>	<b>42</b>	<b>984</b>	<b>964</b>	<b>118</b>	<b>35</b>	<b>4</b>
Under 15 years	19	19	0	0	0	0	0
15 to 44 years	64	5	31	26	1	1	0
45 to 64 years	304	8	144	127	23	2	0
65 to 74 years	335	2	164	138	20	9	2
75 to 84 years	658	4	313	292	39	9	1
85 years and over	767	4	332	381	35	14	1
Not stated	0	0	0	0	0	0	0
<b>Prince Edward Island</b>	<b>585</b>	<b>63</b>	<b>139</b>	<b>343</b>	<b>34</b>	<b>5</b>	<b>1</b>
Under 15 years	2	2	0	0	0	0	0
15 to 44 years	22	13	7	0	0	2	0
45 to 64 years	72	12	41	7	12	0	0
65 to 74 years	70	8	24	31	6	1	0
75 to 84 years	153	6	49	87	9	2	0
85 years and over	266	22	18	218	7	0	1
Not stated	0	0	0	0	0	0	0
<b>Nova Scotia</b>	<b>3,999</b>	<b>401</b>	<b>1,029</b>	<b>2,343</b>	<b>221</b>	<b>0</b>	<b>5</b>
Under 15 years	25	25	0	0	0	0	0
15 to 44 years	94	49	37	0	7	0	1
45 to 64 years	479	79	274	53	73	0	0
65 to 74 years	573	41	279	194	56	0	3
75 to 84 years	1,164	83	293	727	61	0	0
85 years and over	1,664	124	146	1,369	24	0	1
Not stated	0	0	0	0	0	0	0
<b>New Brunswick</b>	<b>3,067</b>	<b>306</b>	<b>773</b>	<b>1,768</b>	<b>141</b>	<b>45</b>	<b>34</b>
Under 15 years	25	25	0	0	0	0	0
15 to 44 years	87	47	28	0	7	4	1
45 to 64 years	387	49	206	39	56	22	15
65 to 74 years	438	30	197	164	29	7	11
75 to 84 years	861	49	221	545	34	10	2
85 years and over	1,269	106	121	1,020	15	2	5
Not stated	0	0	0	0	0	0	0
<b>Quebec</b>	<b>27,205</b>	<b>4,801</b>	<b>6,735</b>	<b>13,387</b>	<b>1,826</b>	<b>419</b>	<b>37</b>
Under 15 years	248	247	0	0	0	0	1
15 to 44 years	777	499	198	5	50	15	10
45 to 64 years	3,845	924	1,680	311	778	134	18
65 to 74 years	4,061	576	1,739	1,199	456	88	3
75 to 84 years	8,219	1,021	2,177	4,513	378	128	2
85 years and over	10,055	1,534	941	7,359	164	54	3
Not stated	0	0	0	0	0	0	0
<b>Ontario</b>	<b>42,044</b>	<b>3,602</b>	<b>11,811</b>	<b>23,273</b>	<b>2,665</b>	<b>2</b>	<b>691</b>
Under 15 years	406	404	0	0	0	0	2
15 to 44 years	1,275	548	508	18	93	0	108
45 to 64 years	5,474	670	3,137	514	810	1	342
65 to 74 years	5,904	338	2,922	1,861	662	0	121
75 to 84 years	12,644	665	3,723	7,482	696	1	77
85 years and over	16,335	975	1,520	13,396	403	0	41
Not stated	6	2	1	2	1	0	0

See notes at the end of the table.

Table 5-3 – continued

Deaths by marital status, age group<sup>1</sup> and geography — Females

Place of residence and age group	Marital status						
	Total	Single (never married)	Married	Widowed	Divorced	Separated	Not stated
	number						
<b>Manitoba</b>	<b>4,922</b>	<b>518</b>	<b>1,176</b>	<b>2,892</b>	<b>266</b>	<b>50</b>	<b>20</b>
Under 15 years	59	59	0	0	0	0	0
15 to 44 years	163	94	50	0	12	7	0
45 to 64 years	569	96	296	62	89	17	9
65 to 74 years	646	46	295	231	59	12	3
75 to 84 years	1,315	79	330	834	57	9	6
85 years and over	2,170	144	205	1,765	49	5	2
Not stated	0	0	0	0	0	0	0
<b>Saskatchewan</b>	<b>4,464</b>	<b>451</b>	<b>1,048</b>	<b>2,736</b>	<b>222</b>	<b>0</b>	<b>7</b>
Under 15 years	46	46	0	0	0	0	0
15 to 44 years	168	109	48	2	8	0	1
45 to 64 years	462	75	250	63	71	0	3
65 to 74 years	542	38	252	196	54	0	2
75 to 84 years	1,118	70	289	706	52	0	1
85 years and over	2,128	113	209	1,769	37	0	0
Not stated	0	0	0	0	0	0	0
<b>Alberta</b>	<b>9,283</b>	<b>893</b>	<b>2,630</b>	<b>4,881</b>	<b>839</b>	<b>2</b>	<b>38</b>
Under 15 years	147	147	0	0	0	0	0
15 to 44 years	478	253	164	6	46	1	8
45 to 64 years	1,375	160	802	121	277	1	14
65 to 74 years	1,275	73	637	377	182	0	6
75 to 84 years	2,468	99	702	1,459	204	0	4
85 years and over	3,540	161	325	2,918	130	0	6
Not stated	0	0	0	0	0	0	0
<b>British Columbia</b>	<b>15,016</b>	<b>1,067</b>	<b>4,008</b>	<b>8,240</b>	<b>1,210</b>	<b>218</b>	<b>273</b>
Under 15 years	121	121	0	0	0	0	0
15 to 44 years	485	225	135	11	35	27	52
45 to 64 years	1,869	211	991	157	322	80	108
65 to 74 years	1,921	87	937	557	269	30	41
75 to 84 years	4,305	171	1,285	2,391	372	47	39
85 years and over	6,315	252	660	5,124	212	34	33
Not stated	0	0	0	0	0	0	0
<b>Yukon</b>	<b>79</b>	<b>14</b>	<b>27</b>	<b>24</b>	<b>12</b>	<b>2</b>	<b>0</b>
Under 15 years	2	2	0	0	0	0	0
15 to 44 years	7	5	2	0	0	0	0
45 to 64 years	25	6	10	3	4	2	0
65 to 74 years	13	1	4	3	5	0	0
75 to 84 years	19	0	8	8	3	0	0
85 years and over	13	0	3	10	0	0	0
Not stated	0	0	0	0	0	0	0
<b>Northwest Territories</b>	<b>69</b>	<b>19</b>	<b>21</b>	<b>21</b>	<b>5</b>	<b>2</b>	<b>1</b>
Under 15 years	4	4	0	0	0	0	0
15 to 44 years	10	8	2	0	0	0	0
45 to 64 years	21	3	8	4	3	2	1
65 to 74 years	14	3	5	5	1	0	0
75 to 84 years	12	1	6	4	1	0	0
85 years and over	8	0	0	8	0	0	0
Not stated	0	0	0	0	0	0	0
<b>Nunavut</b>	<b>47</b>	<b>14</b>	<b>21</b>	<b>7</b>	<b>0</b>	<b>0</b>	<b>5</b>
Under 15 years	6	6	0	0	0	0	0
15 to 44 years	9	5	2	0	0	0	2
45 to 64 years	12	3	8	0	0	0	1
65 to 74 years	12	0	7	4	0	0	1
75 to 84 years	5	0	2	2	0	0	1
85 years and over	3	0	2	1	0	0	0
Not stated	0	0	0	0	0	0	0

See notes at the end of the table.

Table 5-3 – continued

Deaths by marital status, age group<sup>1</sup> and geography — Females

Place of residence and age group	Marital status						
	Total	Single (never married)	Married	Widowed	Divorced	Separated	Not stated
	number						
<b>Unknown</b>	<b>3</b>	<b>2</b>	<b>1</b>	<b>0</b>	<b>0</b>	<b>0</b>	<b>0</b>
Under 15 years	1	1	0	0	0	0	0
15 to 44 years	0	0	0	0	0	0	0
45 to 64 years	1	1	0	0	0	0	0
65 to 74 years	1	0	1	0	0	0	0
75 to 84 years	0	0	0	0	0	0	0
85 years and over	0	0	0	0	0	0	0
Not stated	0	0	0	0	0	0	0

1. Age attained at the last birthday preceding death.

**Note(s):** See "Data quality, concepts and methodology — Explanatory notes for the tables" section.

**Source(s):** Statistics Canada, Canadian Vital Statistics, Death Database (CANSIM table 102-0505).

**Table 6-1**  
**Infant mortality by age group and sex, Canada**

Age at time of death <sup>1</sup>	Both sexes		Males		Females	
	Deaths	Mortality <sup>2,3</sup> rate per 1,000 live births	Deaths	Mortality <sup>2,3</sup> rate per 1,000 live births	Deaths	Mortality <sup>2,3</sup> rate per 1,000 live births
	number	rate	number	rate	number	rate
<b>Total, under 1 year <sup>4</sup></b>	<b>1,771</b>	<b>5.0</b>	<b>983</b>	<b>5.4</b>	<b>788</b>	<b>4.6</b>
<b>Neonatal <sup>5</sup></b>						
<b>0 to 27 days</b>	<b>1,296</b>	<b>3.7</b>	<b>714</b>	<b>3.9</b>	<b>582</b>	<b>3.4</b>
Under 1 day	888	2.5	481	2.6	407	2.4
1 day	43	0.1	21	0.1	22	0.1
2 days	47	0.1	25	0.1	22	0.1
3 days	34	0.1	20	0.1	14	0.1
4 days	30	0.1	18	0.1	12	0.1
5 days	18	0.1	11	0.1	7	0.0
6 days	22	0.1	15	0.1	7	0.0
7 to 13 days	110	0.3	62	0.3	48	0.3
14 to 20 days	60	0.2	34	0.2	26	0.2
21 to 27 days	44	0.1	27	0.1	17	0.1
<b>Post-neonatal <sup>6</sup></b>						
<b>1 to 11 months</b>	<b>475</b>	<b>1.3</b>	<b>269</b>	<b>1.5</b>	<b>206</b>	<b>1.2</b>
1 month	141	0.4	80	0.4	61	0.4
2 months	78	0.2	42	0.2	36	0.2
3 months	60	0.2	37	0.2	23	0.1
4 months	55	0.2	33	0.2	22	0.1
5 months	42	0.1	21	0.1	21	0.1
6 months	24	0.1	16	0.1	8	0.0
7 months	19	0.1	9	0.0	10	0.1
8 months	19	0.1	14	0.1	5	0.0
9 months	18	0.1	8	0.0	10	0.1
10 months	9	0.0	4	0.0	5	0.0
11 months	10	0.0	5	0.0	5	0.0

1. Age, in the case of infant deaths, corresponds to the completed number of months (or minutes, hours, or days) since birth.

2. Mortality rate calculations in this table use live births in the calendar year instead of the Demography Division's under one year of age population estimate (Appendix 1).

3. The mortality rate represents the number of deaths in a particular age group during a given year per 1,000 live births in the same calendar year.

4. Infant death rate is the number of infant deaths during a given year per 1,000 live births in the same year.

5. Neonatal mortality rate is the number of neonatal deaths during a given year per 1,000 live births in the same year.

6. Post-neonatal mortality rate is the number of post-neonatal deaths during a given year per 1,000 live births in the same year.

**Note(s):** See "Data quality, concepts and methodology — Explanatory notes for the tables" section.

**Source(s):** Statistics Canada, Canadian Vital Statistics, Birth and Death Databases (CANSIM table 102-0506).



**Table 6-2**  
**Infant mortality by age group and geography**

Place of residence	Total, <sup>1,2</sup> under 1 year	Neonatal <sup>1,3</sup>				Post-neonatal <sup>1,4</sup>			
		0 to 27 days	Under 1 day	1 to 6 days	7 to 27 days	1 to 11 months	1 to 2 months	3 to 5 months	6 to 11 months
<b>Canada</b>									
Number of deaths	1,771	1,296	888	194	214	475	219	157	99
Mortality rate per 1,000 live births <sup>5, 6</sup>	5.0	3.7	2.5	0.5	0.6	1.3	0.6	0.4	0.3
<b>Newfoundland and Labrador</b>									
Number of deaths	24	16	12	2	2	8	7	0	1
Mortality rate per 1,000 live births <sup>5, 6</sup>	5.3	3.5	2.6	0.4	0.4	1.8	1.5	0.0	0.2
<b>Prince Edward Island</b>									
Number of deaths	3	2	1	0	1	1	1	0	0
Mortality rate per 1,000 live births <sup>5, 6</sup>	2.1	1.4	0.7	0.0	0.7	0.7	0.7	0.0	0.0
<b>Nova Scotia</b>									
Number of deaths	34	22	14	3	5	12	4	6	2
Mortality rate per 1,000 live births <sup>5, 6</sup>	4.0	2.6	1.6	0.4	0.6	1.4	0.5	0.7	0.2
<b>New Brunswick</b>									
Number of deaths	28	23	13	4	6	5	2	2	1
Mortality rate per 1,000 live births <sup>5, 6</sup>	4.0	3.3	1.8	0.6	0.9	0.7	0.3	0.3	0.1
<b>Quebec</b>									
Number of deaths	415	336	239	48	49	79	35	24	20
Mortality rate per 1,000 live births <sup>5, 6</sup>	5.1	4.1	2.9	0.6	0.6	1.0	0.4	0.3	0.2
<b>Ontario</b>									
Number of deaths	674	491	332	80	79	183	84	57	42
Mortality rate per 1,000 live births <sup>5, 6</sup>	5.0	3.6	2.4	0.6	0.6	1.3	0.6	0.4	0.3
<b>Manitoba</b>									
Number of deaths	88	63	48	6	9	25	11	12	2
Mortality rate per 1,000 live births <sup>5, 6</sup>	6.0	4.3	3.3	0.4	0.6	1.7	0.8	0.8	0.1
<b>Saskatchewan</b>									
Number of deaths	75	45	29	10	6	30	11	9	10
Mortality rate per 1,000 live births <sup>5, 6</sup>	6.1	3.7	2.4	0.8	0.5	2.4	0.9	0.7	0.8
<b>Alberta</b>									
Number of deaths	238	168	121	25	22	70	34	27	9
Mortality rate per 1,000 live births <sup>5, 6</sup>	5.3	3.7	2.7	0.6	0.5	1.5	0.8	0.6	0.2
<b>British Columbia</b>									
Number of deaths	171	120	70	15	35	51	27	15	9
Mortality rate per 1,000 live births <sup>5, 6</sup>	4.1	2.9	1.7	0.4	0.8	1.2	0.6	0.4	0.2
<b>Yukon</b>									
Number of deaths	3	1	1	0	0	2	1	1	0
Mortality rate per 1,000 live births <sup>5, 6</sup>	8.2	2.7	2.7	0.0	0.0	5.5	2.7	2.7	0.0
<b>Northwest Territories</b>									
Number of deaths	7	2	2	0	0	5	0	4	1
Mortality rate per 1,000 live births <sup>5, 6</sup>	10.2	2.9	2.9	0.0	0.0	7.3	0.0	5.8	1.5
<b>Nunavut</b>									
Number of deaths	10	6	5	1	0	4	2	0	2
Mortality rate per 1,000 live births <sup>5, 6</sup>	13.4	8.0	6.7	1.3	0.0	5.4	2.7	0.0	2.7
<b>Unknown</b>									
Number of deaths	1	1	1	0	0	0	0	0	0
Mortality rate per 1,000 live births <sup>5, 6</sup>	..	..	..	..	..	..	..	..	..

1. Age, in the case of infant deaths, corresponds to the completed number of months (or minutes, hours, or days) since birth.

2. Infant death rate is the number of infant deaths during a given year per 1,000 live births in the same year.

3. Neonatal mortality rate is the number of neonatal deaths during a given year per 1,000 live births in the same year.

4. Post-neonatal mortality rate is the number of post-neonatal deaths during a given year per 1,000 live births in the same year.

5. Mortality rate calculations in this table use live births in the calendar year instead of the Demography Division's under one year of age population estimate (Appendix 1).

6. The mortality rate represents the number of deaths in a particular age group during a given year per 1,000 live births in the same calendar year.

**Note(s):** See "Data quality, concepts and methodology — Explanatory notes for the tables" section.

**Source(s):** Statistics Canada, Canadian Vital Statistics, Birth and Death Databases (CANSIM table 102-0507).

**Table 7**  
**Perinatal mortality and components by geography**

Place of residence	Perinatal deaths <sup>1</sup>		Late fetal deaths <sup>2</sup>		Early neonatal deaths <sup>3</sup>	
	Deaths <sup>4</sup>	Mortality rate <sup>5</sup> per 1,000 total births	Deaths <sup>4</sup>	Mortality rate <sup>5</sup> per 1,000 total births	Deaths <sup>4</sup>	Mortality rate <sup>5</sup> per 1,000 total births
	number	rate	number	rate	number	rate
<b>Canada</b>	<b>2,160</b>	<b>6.1</b>	<b>1,078</b>	...	<b>1,082</b>	...
Newfoundland and Labrador	31	6.8	17	...	14	...
Prince Edward Island	3	2.1	2	...	1	...
Nova Scotia	48	5.6	31	...	17	...
New Brunswick	33	4.7	16	...	17	...
Quebec	500	6.1	213	...	287	...
Ontario	845	6.2	433	...	412	...
Manitoba	108	7.4	54	...	54	...
Saskatchewan	77	6.2	38	...	39	...
Alberta	286	6.3	140	...	146	...
British Columbia	207	4.9	122	...	85	...
Yukon	2	5.5	1	...	1	...
Northwest Territories	6	8.7	4	...	2	...
Nunavut	13	17.2	7	...	6	...
Unknown	1	0.0	0	...	1	...

1. Perinatal death is the death of a child under one week of age (0 to 6 days) or a stillbirth of 28 or more weeks of gestation.

2. Late fetal death refers to a stillbirth of 28 or more weeks of gestation, excluding unknown gestational age.

3. Early neonatal death is the death of a child under one week of age (0 to 6 days).

4. Mortality rates for late fetal deaths and early neonatal deaths are not calculated; however, these two components are used in the calculation of mortality rates for perinatal deaths.

5. Perinatal death rate is the number of perinatal deaths during a given year per 1,000 total births (live births plus late fetal deaths) in the same year.

**Note(s):** See "Data quality, concepts and methodology — Explanatory notes for the tables" section.

**Source(s):** Statistics Canada, Canadian Vital Statistics, Birth, Death and Stillbirth Databases (CANSIM table 102-0508).

**Table 8**  
**Life expectancy<sup>1</sup> at birth and at age 65 - abridged life table<sup>2</sup> by sex and geography**

	At birth			At age 65		
	Both sexes	Males	Females	Both sexes	Males	Females
	year					
<b>Canada</b>	<b>80.8</b>	<b>78.4</b>	<b>83.0</b>	<b>19.9</b>	<b>18.2</b>	<b>21.4</b>
Newfoundland and Labrador	78.2	75.6	80.8	17.9	16.1	19.5
Prince Edward Island	79.9	77.3	82.2	19.1	17.3	20.7
Nova Scotia	79.6	77.0	82.2	18.9	17.1	20.4
New Brunswick	80.1	77.7	82.4	19.4	17.7	20.8
Quebec	80.9	78.3	83.3	20.0	18.1	21.6
Ontario	81.1	78.9	83.2	20.0	18.4	21.3
Manitoba	79.3	76.8	81.7	19.3	17.6	20.8
Saskatchewan	79.4	76.8	82.0	19.5	17.7	21.2
Alberta	80.5	78.1	82.9	20.0	18.3	21.5
British Columbia	81.4	79.2	83.6	20.5	19.1	21.8
Territories <sup>3</sup>	75.7	73.1	78.9	16.8	15.2	19.1

1. Starting in 2005, the population estimates used for the calculations of the life expectancy are presented in the Appendix I of the publication "Deaths" (catalogue number 84F0211XIE).

2. Starting in 2005, life expectancy is calculated using a 3-year average of age-specific mortality rates.

3. The "Territories" include Yukon, Northwest Territories and Nunavut.

**Note(s):** See "Data quality, concepts and methodology — Explanatory notes for the tables" section.

**Source(s):** Statistics Canada, Canadian Vital Statistics, Birth and Death Databases, and Appendix 1 (CANSIM table 102-0511).

**Table 9**  
**Deaths, by place of residence and place of occurrence, Canada, provinces, territories and outside Canada**

Place of residence <sup>1</sup>	Place of occurrence								
	Total, Canada and USA	United States	Canada	Newfoundland and Labrador	Prince Edward Island	Nova Scotia	New Brunswick	Quebec	Ontario
	number								
<b>Total, Canada and other</b>	<b>228,717</b>	<b>239</b>	<b>228,478</b>	<b>4,476</b>	<b>1,149</b>	<b>8,104</b>	<b>6,053</b>	<b>54,067</b>	<b>84,846</b>
<b>Canada</b>	<b>228,079</b>	<b>239</b>	<b>227,840</b>	<b>4,469</b>	<b>1,148</b>	<b>8,092</b>	<b>6,047</b>	<b>54,006</b>	<b>84,474</b>
Newfoundland and Labrador	4,493	3	4,490	4,452	1	8	3	4	10
Prince Edward Island	1,172	1	1,171	0	1,133	26	10	0	2
Nova Scotia	8,088	2	8,086	3	7	8,019	28	2	16
New Brunswick	6,010	5	6,005	0	2	23	5,941	18	16
Quebec	54,240	63	54,177	2	1	2	58	53,892	204
Ontario	84,524	155	84,369	5	4	7	6	82	84,140
Manitoba	9,774	2	9,772	2	0	1	0	1	22
Saskatchewan	9,054	0	9,054	0	0	1	0	0	6
Alberta	19,540	5	19,535	2	0	5	1	2	22
British Columbia	30,688	3	30,685	2	0	0	0	5	23
Yukon	178	0	178	0	0	0	0	0	0
Northwest Territories	182	0	182	0	0	0	0	0	0
Nunavut	129	0	129	0	0	0	0	0	13
Unknown province or territory <sup>2</sup>	7	0	7	1	0	0	0	0	0
<b>Outside Canada</b>	<b>391</b>	<b>...</b>	<b>391</b>	<b>7</b>	<b>1</b>	<b>12</b>	<b>6</b>	<b>60</b>	<b>135</b>
<b>Unknown place of residence <sup>3</sup></b>	<b>247</b>	<b>.</b>	<b>247</b>	<b>0</b>	<b>0</b>	<b>0</b>	<b>0</b>	<b>1</b>	<b>237</b>

Place of residence <sup>1</sup>	Place of occurrence								
	Total, Canada and USA	Canada	Manitoba	Saskatchewan	Alberta	British Columbia	Yukon	Northwest Territories	Nunavut
	number								
<b>Total, Canada and other</b>	<b>228,717</b>	<b>228,478</b>	<b>9,802</b>	<b>9,067</b>	<b>19,658</b>	<b>30,809</b>	<b>174</b>	<b>175</b>	<b>98</b>
<b>Canada</b>	<b>228,079</b>	<b>227,840</b>	<b>9,793</b>	<b>9,062</b>	<b>19,604</b>	<b>30,704</b>	<b>169</b>	<b>174</b>	<b>98</b>
Newfoundland and Labrador	4,493	4,490	0	0	10	2	0	0	0
Prince Edward Island	1,172	1,171	0	0	0	0	0	0	0
Nova Scotia	8,088	8,086	1	0	8	2	0	0	0
New Brunswick	6,010	6,005	0	0	3	2	0	0	0
Quebec	54,240	54,177	1	2	8	6	0	0	1
Ontario	84,524	84,369	44	9	26	40	4	2	0
Manitoba	9,774	9,772	9,691	18	16	21	0	0	0
Saskatchewan	9,054	9,054	25	8,946	66	10	0	0	0
Alberta	19,540	19,535	8	81	19,317	97	0	0	0
British Columbia	30,688	30,685	12	5	126	30,509	3	0	0
Yukon	178	178	0	0	4	11	162	1	0
Northwest Territories	182	182	0	1	13	3	0	165	0
Nunavut	129	129	9	0	5	1	0	5	96
Unknown province or territory <sup>2</sup>	7	7	2	0	2	0	0	1	1
<b>Outside Canada</b>	<b>391</b>	<b>391</b>	<b>9</b>	<b>5</b>	<b>47</b>	<b>103</b>	<b>5</b>	<b>1</b>	<b>0</b>
<b>Unknown place of residence <sup>3</sup></b>	<b>247</b>	<b>247</b>	<b>0</b>	<b>0</b>	<b>7</b>	<b>2</b>	<b>0</b>	<b>0</b>	<b>0</b>

1. The geographic distribution of deaths in this table is based on the deceased's usual place of residence and on the place of occurrence.

2. The category "Unknown province or territory" refers to deaths of residents of Canada with province or territory of residence unknown.

3. The category "Unknown place of residence" refers to deaths of residents or non-residents of Canada with place of residence unknown.

**Note(s):** See "Data quality, concepts and methodology — Explanatory notes for the tables" section.

**Source(s):** Statistics Canada, Canadian Vital Statistics, Death Database (CANSIM table 102-0501).

## Definitions

---

The definitions used for the production of statistical tables of Canadian vital statistics data are based on those recommended by the World Health Organization <sup>1</sup> and the United Nations. <sup>2</sup>

**Age.** Age attained at the last birthday preceding death. In the case of infant deaths, the completed number of months (or minutes, hours, or days) since birth.

**Cause of death.** The cause of death coded and tabulated is the underlying cause of death. This is defined as “(a) the disease or injury which initiated the train of morbid events leading directly to death, or (b) the circumstances of the accident or violence which produced the fatal injury”. This underlying cause of death is selected from a number of conditions listed on the medical certificate of cause of death.

Beginning in the year 2000 in Canada, causes of death and stillbirth are coded to the 10th revision of the World Health Organization’s **International Statistical Classification of Diseases and Related Health Problems (ICD-10)**. The previous revision, ICD-9 <sup>3</sup> was used in Canada for the classification of cause of death and stillbirth from 1979 to 1999.

**Death.** The permanent disappearance of all evidence of life at any time after a live birth has taken place. Stillbirths are excluded from death statistics unless otherwise indicated.

- **Early neonatal death:** Death of a child under one week of age (0 to 6 days).
- **Infant death:** Death of a child under one year of age.
- **Neonatal death:** Death of a child under four weeks of age (0 to 27 days).
- **Perinatal death:** Death of a child under one week of age (0 to 6 days) or a stillbirth of 28 or more weeks of gestation
- **Post-neonatal death:** Death of a child under one year of age but at least 28 days old (28 to 364 days).

### Death rates

- **Age-specific death rate:** The number of deaths in a particular age group during a given year per 1,000 population in the same age group as of July 1 of the same year.
- **Crude death rate:** The number of deaths during a given year per 1,000 population as of July 1 of the same year.
- **Early neonatal death rate:** The number of early neonatal deaths during a given year per 1,000 live births in the same year.
- **Infant death rate:** The number of infant deaths during a given year per 1,000 live births in the same year.
- **Neonatal death rate:** The number of neonatal deaths during a given year per 1,000 live births in the same year.
- **Perinatal death rate:** The number of perinatal deaths during a given year per 1,000 total births (live births plus stillbirths of 28 or more weeks of gestation) in the same year.

---

1. World Health Organization (WHO). **International Statistical Classification of Diseases and Related Health Problems, Tenth Revision, Volumes 1 and 2 (ICD-10)**. Geneva, 1992.  
2. United Nations. **Principles and Recommendations for a Vital Statistics System**. Statistical Papers, Series M, No. 19, Rev. 1. New York, 1974.  
3. World Health Organization (WHO). **International Classification of Diseases, 1975 Revision, Volume 1 (ICD-9)**. Geneva, 1977.

- **Post-neonatal death rate:** The number of post-neonatal deaths during a given year per 1,000 live births in the same year.

**Delivery.** A delivery may consist of one or more live born or stillborn fetuses. The number of deliveries in a given period will be equal to or less than the total number of births because a multiple birth (twins, triplets or higher-order multiple births) is counted as a single delivery.

**Fetal death (stillbirth).** See Stillbirth.

**Fetal death (stillbirth) rate.** See Stillbirth rate.

**Gestational age.** The interval, in completed weeks, between the first day of the mother's last menstrual period and the day of delivery (that is, the duration of pregnancy). It can also be an estimate of that interval, based on ultrasound, a physical examination, or other method. Canadian birth registration documents do not specify how the gestational age was calculated. **Pre-term** refers to a period of gestation under 37 completed weeks; **term**, 37 through 41 completed weeks; and **post-term**, 42 or more completed weeks.

**ICD-10 codes.** The **International Statistical Classification of Diseases and Related Health Problems (ICD)** codes, 10th Revision, were established by the World Health Organization in 1992. The ICD-10 manual assigns codes to specific diseases, injuries and causes of death.

**Life expectancy.** The average number of remaining years of life, at birth or other age, based on the set of age-specific mortality rates calculated using a 3-year average.

**Live birth.** The complete expulsion or extraction from its mother of a product of conception, irrespective of the duration of the pregnancy, which, after such separation, breathes or shows any other evidence of life, such as beating of the heart, pulsation of the umbilical cord, or definite movement of voluntary muscles, whether or not the umbilical cord has been cut or the placenta is attached.

**Marital status.** The legal conjugal status of the deceased at the time of death. Persons in common-law relationships are categorized by their legal marital status. A **single** person is one who has never been married, or a person whose marriage has been annulled and who has not remarried. A **separated** person is legally married but is not living with his or her spouse because the couple no longer wants to live together. A **divorced** person is one who has obtained a legal divorce and has not remarried. A **married** person is one who is legally married and not separated. A person whose spouse has died and who has not remarried is **widowed**.

**Population.** Persons whose usual place of residence is somewhere in Canada, including Canadian government employees stationed abroad and their families, members of the Canadian Armed Forces stationed abroad and their families, crews of Canadian merchant vessels, and non-permanent residents of Canada.

Mid-year (July 1) population estimates are used to calculate the rates in vital statistics publications (see table footnotes). Population estimates are frequently revised by Statistics Canada's Demography Division.

**Provinces and territories.** Unless otherwise stated, the geographic distribution of deaths in the tables of this publication is based on the deceased's usual place of residence.

Nunavut came into being officially as a Territory of Canada on April 1, 1999. The name Northwest Territories applies to a Territory with different geographic boundaries before and after April 1, 1999.

Deaths and stillbirths of residents of Nunavut which took place before April 1, 1999 are included with deaths and stillbirths of residents of the Northwest Territories. Deaths and stillbirths which took place on or after April 1, 1999 are tabulated separately for residents of Nunavut.

**Stillbirth (fetal death).** Death prior to the complete expulsion or extraction from its mother of a product of conception, irrespective of the duration of pregnancy; the death is indicated by the fact that after such separation the fetus does not breathe or show any other evidence of life, such as beating of the heart, pulsation of the umbilical cord, or definite movement of voluntary muscles. Only stillbirths where the product of conception has a birth weight of 500 grams or more or the duration of pregnancy is 20 weeks or longer are registered in Canada.

In Quebec (as well as in Saskatchewan prior to 2001 and in New Brunswick prior to November 1996), only stillbirths (fetal deaths) weighing 500 or more grams must be reported, regardless of the gestation period.

Because of these differences in reporting requirements, stillbirths (fetal deaths) data are presented for two gestation periods: 20 or more weeks of gestation (including fetal deaths or stillbirths with unknown weeks of gestation), and 28 or more weeks of gestation (excluding unknown weeks of gestation).

**Stillbirth (fetal death) rate.** The number of stillbirths (fetal deaths) per 1,000 live births plus stillbirths (fetal deaths).

## Explanatory notes for the tables

---

### Table 1 Deaths by sex and geography

Death refers to the permanent disappearance of all evidence of life at any time after a live birth has taken place. Stillbirths are excluded.

The geographic distribution of deaths in this table is based on the deceased's usual place of residence and on the place of occurrence.

The category "Unknown province or territory" refers to deaths of residents of Canada with province or territory of residence unknown.

### Table 2 Deaths by geography

#### Month

Death refers to the permanent disappearance of all evidence of life at any time after a live birth has taken place. Stillbirths are excluded.

The geographic distribution of deaths in this table is based on the deceased's usual place of residence.

#### In hospital and elsewhere

Death refers to the permanent disappearance of all evidence of life at any time after a live birth has taken place. Stillbirths are excluded.

In Quebec, deaths in residential and long-term care centres are included in "hospital" category.

The category "Place of death, non-hospital" includes deaths that occurred in private homes, in health care institutions such as nursing homes and other long-term care facilities, nursing stations and other short-term care facilities and other health care facilities not licensed to operate as hospitals by provincial, territorial or federal governments and at other specified sites.

The geographic distribution of deaths in this table is based on the deceased's usual place of residence.

#### Subject to autopsy

Death refers to the permanent disappearance of all evidence of life at any time after a live birth has taken place. Stillbirths are excluded.

The geographic distribution of deaths in this table is based on the deceased's usual place of residence.

### Table 3 Deaths by single year of age and geography

Death refers to the permanent disappearance of all evidence of life at any time after a live birth has taken place. Stillbirths are excluded.

The geographic distribution of deaths in this table is based on the deceased's usual place of residence.

#### **Table 4 Deaths by age group and geography**

Death refers to the permanent disappearance of all evidence of life at any time after a live birth has taken place. Stillbirths are excluded.

The geographic distribution of deaths in this table is based on the deceased's usual place of residence.

#### **Table 5 Deaths by marital status, age group and geography**

Death refers to the permanent disappearance of all evidence of life at any time after a live birth has taken place. Stillbirths are excluded.

Marital status refers to the legal conjugal status of the deceased at the time of death. Persons in common-law relationships are categorized by their legal marital status. A single person is one who has never been married, or a person whose marriage has been annulled and who has not remarried. A separated person is legally married but is not living with his or her spouse because the couple no longer wants to live together. A divorced person is one who has obtained a legal divorce and has not remarried. A married person is one who is legally married and not separated. A person whose spouse has died and who has not remarried is widowed.

The geographic distribution of deaths in this table is based on the deceased's usual place of residence.

#### **Table 6 Infant mortality by age group**

##### **and sex, Canada**

Death refers to the permanent disappearance of all evidence of life at any time after a live birth has taken place. Stillbirths are excluded.

Infant death is the death of a child under one year of age.

Neonatal death is the death of a child under 4 weeks of age (0 to 27 days).

Post-neonatal death is the death of a child under one year of age but at least 28 days old (28 to 364 days).

Live birth is the complete expulsion or extraction from its mother of a product of conception which, regardless of the duration of pregnancy, subsequently breathes or shows any other evidence of life.

##### **and geography**

Mortality rate calculations in this table use live births in the calendar year instead of the Demography Division's under one year of age population estimate (Appendix 1).

Death refers to the permanent disappearance of all evidence of life at any time after a live birth has taken place. Stillbirths are excluded.

Age, in the case of infant deaths, corresponds to the completed number of months (or minutes, hours, or days) since birth.

Infant death is the death of a child under one year of age.

Infant death rate is the number of infant deaths during a given year per 1,000 live births in the same year.

Neonatal death is the death of a child under 4 weeks of age (0 to 27 days).

Neonatal mortality rate is the number of neonatal deaths during a given year per 1,000 live births in the same year.



Post-neonatal death is the death of a child under one year of age but at least 28 days old (28 to 364 days).

Post-neonatal mortality rate is the number of post-neonatal deaths during a given year per 1,000 live births in the same year.

The mortality rate represents the number of deaths in a particular age group during a given year per 1,000 live births in the same calendar year.

Live birth is the complete expulsion or extraction from its mother of a product of conception which, regardless of the duration of pregnancy, subsequently breathes or shows any other evidence of life.

The geographic distribution of deaths in this table is based on the deceased's usual place of residence.

#### **Table 7 Perinatal mortality and components by geography**

Death refers to the permanent disappearance of all evidence of life at any time after a live birth has taken place. Stillbirths are excluded.

Live birth is the complete expulsion or extraction from its mother of a product of conception which, regardless of the duration of pregnancy, subsequently breathes or shows any other evidence of life.

Stillbirth corresponds to the complete expulsion or extraction from its mother of a product of conception, which did not at any time after birth breathe or show any other sign of life.

Most provinces and the three territories require a stillbirth with a gestational age of 20 weeks or more or a birth weight of at least 500 grams to be registered. In Quebec (as well as in Saskatchewan prior to 2001 and in New Brunswick prior to November 1996), only fetal deaths (stillbirths) weighing 500 or more grams must be reported, regardless of the gestational period. Until 1997, only stillbirths with gestational periods of 20 weeks or more were required to be registered in Prince Edward Island, regardless of birth weight.

Stillbirth data are tabulated according to the mother's usual place of residence.

The geographic distribution of deaths in this table is based on the deceased's usual place of residence.

#### **Table 8 Life expectancy at birth and at age 65 - abridged life table by sex and geography**

Life expectancy is the number of years a person would be expected to live, starting at birth (for life expectancy at birth) or at age 65 (for life expectancy at age 65) if the age- and sex-specific mortality rates for a given observation period (such as a calendar year) were held constant over the estimated life span.

Life expectancy is calculated by Greville's method for abridged life tables, using annual mortality rates with five-year age groupings of population and mortality rates. See "Life Tables, Canada, provinces and territories, 1995-1997" (catalogue number 84-537-XIE) for a complete explanation of the methodology used to produce abridged life tables.

Rates used in this table for the calculation of life expectancy are calculated with data that exclude: births to mothers not resident in Canada, births to mothers resident in Canada, province or territory of residence unknown, deaths of non-residents of Canada, deaths of residents of Canada whose province or territory of residence was unknown and deaths for which age or sex of decedent was unknown.

Rates used in this table for the calculation of life expectancy are based on data tabulated by place of residence.

Starting in 2005, life expectancy is calculated using a 3-year average of age-specific mortality rates.

The "Territories" include Yukon, Northwest Territories and Nunavut.

**Table 9 Deaths, by place of residence and place of occurrence**

Death refers to the permanent disappearance of all evidence of life at any time after a live birth has taken place. Stillbirths are excluded.

The geographic distribution of deaths in this table is based on the deceased's usual place of residence and on the place of occurrence.

The category "Unknown province or territory" refers to deaths of residents of Canada with province or territory of residence unknown.

The category "Unknown place of residence" refers to deaths of residents or non-residents of Canada with place of residence unknown.

# Appendix I

## Postcensal Population Estimates

Text table 1

Postcensal population estimates by sex and age group, Canada, Provinces and Territories, July 1, 2006<sup>1</sup>

Age in years	Canada	N.L.	P.E.I.	N.S.	N.B.	Que.	Ont.
	number						
<b>Both sexes</b>							
<b>Total</b>	<b>32,649,482</b>	<b>509,940</b>	<b>138,027</b>	<b>935,050</b>	<b>749,225</b>	<b>7,651,033</b>	<b>12,705,328</b>
under 1 <sup>2</sup>	354,617	4,542	1,413	8,485	7,030	81,937	135,595
1 to 4 <sup>2</sup>	1,361,153	18,583	5,406	34,633	27,675	297,855	538,870
5 to 9	1,846,096	25,620	7,854	48,601	38,513	394,178	754,915
10 to 14	2,089,644	29,511	9,235	56,121	44,781	468,379	837,260
15 to 19	2,171,546	33,575	10,197	62,697	48,773	474,505	851,174
20 to 24	2,262,352	33,857	9,689	63,131	50,093	491,981	874,020
25 to 29	2,236,286	30,523	8,547	57,446	47,077	539,240	849,211
30 to 34	2,227,271	31,472	8,435	58,579	49,317	504,622	891,649
35 to 39	2,357,234	36,715	8,530	63,757	51,510	523,283	962,682
40 to 44	2,704,985	42,300	10,504	77,782	62,011	627,829	1,086,932
45 to 49	2,676,629	43,347	10,759	78,223	62,747	649,149	1,025,201
50 to 54	2,368,253	42,383	10,279	71,392	58,698	582,124	882,680
55 to 59	2,085,833	38,832	10,183	67,143	54,268	519,510	780,161
60 to 64	1,584,973	29,590	7,225	51,041	40,179	421,340	585,688
65 to 69	1,229,157	21,562	5,757	39,457	30,819	314,788	466,270
70 to 74	1,046,909	17,126	4,869	32,593	25,017	265,281	401,766
75 to 79	880,880	13,542	3,641	25,959	20,601	220,427	340,265
80 to 84	640,944	9,247	2,883	19,453	16,084	153,716	248,887
85 to 89	346,151	5,213	1,706	12,128	9,146	79,916	128,055
90 and over	178,569	2,400	915	6,429	4,886	40,973	64,047
<b>Males</b>							
<b>Total</b>	<b>16,170,723</b>	<b>250,003</b>	<b>67,166</b>	<b>457,387</b>	<b>369,518</b>	<b>3,777,306</b>	<b>6,271,889</b>
under 1 <sup>2</sup>	182,240	2,387	735	4,375	3,602	42,110	69,677
1 to 4 <sup>2</sup>	695,786	9,388	2,572	17,684	14,038	152,325	275,912
5 to 9	944,994	13,198	4,097	24,772	19,810	202,756	383,885
10 to 14	1,070,899	15,273	4,844	28,404	22,979	239,352	428,633
15 to 19	1,112,570	17,080	5,091	32,080	25,212	242,633	436,605
20 to 24	1,157,368	16,923	4,835	32,266	25,856	252,120	444,352
25 to 29	1,129,918	15,005	4,141	28,023	23,694	274,858	424,431
30 to 34	1,123,984	15,305	4,016	28,732	24,825	258,030	446,078
35 to 39	1,185,790	17,636	4,157	31,549	25,803	267,621	479,669
40 to 44	1,360,219	20,645	5,188	38,713	30,786	318,811	545,600
45 to 49	1,337,134	21,488	5,243	38,693	31,214	324,668	510,811
50 to 54	1,172,631	20,943	5,054	34,832	28,963	287,676	434,262
55 to 59	1,030,587	19,171	5,019	33,232	26,948	255,195	383,194
60 to 64	779,095	14,587	3,584	25,143	19,910	205,111	286,827
65 to 69	591,886	10,639	2,822	19,090	15,032	149,689	223,261
70 to 74	491,721	8,308	2,315	15,210	11,598	120,728	188,491
75 to 79	389,172	5,985	1,615	11,253	8,749	92,731	151,300
80 to 84	250,622	3,689	1,107	7,699	6,231	56,652	97,687
85 to 89	116,429	1,731	513	3,946	2,987	24,576	44,080
90 and over	47,678	622	218	1,691	1,281	9,664	17,134

See notes at the end of the table.

Text table 1 – continued

Postcental population estimates by sex and age group, Canada, Provinces and Territories, July 1, 2006<sup>1</sup>

Age in years	Canada	N.L.	P.E.I.	N.S.	N.B.	Que.	Ont.
	number						
<b>Females</b>							
<b>Total</b>	<b>16,478,759</b>	<b>259,937</b>	<b>70,861</b>	<b>477,663</b>	<b>379,707</b>	<b>3,873,727</b>	<b>6,433,439</b>
under 1 <sup>2</sup>	172,377	2,155	678	4,110	3,428	39,827	65,918
1 to 4 <sup>2</sup>	665,367	9,195	2,834	16,949	13,637	145,530	262,958
5 to 9	901,102	12,422	3,757	23,829	18,703	191,422	371,030
10 to 14	1,018,745	14,238	4,391	27,717	21,802	229,027	408,627
15 to 19	1,058,976	16,495	5,106	30,617	23,561	231,872	414,569
20 to 24	1,104,984	16,934	4,854	30,865	24,237	239,861	429,668
25 to 29	1,106,368	15,518	4,406	29,423	23,383	264,382	424,780
30 to 34	1,103,287	16,167	4,419	29,847	24,492	246,592	445,571
35 to 39	1,171,444	19,079	4,373	32,208	25,707	255,662	483,013
40 to 44	1,344,766	21,655	5,316	39,069	31,225	309,018	541,332
45 to 49	1,339,495	21,859	5,516	39,530	31,533	324,481	514,390
50 to 54	1,195,622	21,440	5,225	36,560	29,735	294,448	448,418
55 to 59	1,055,246	19,661	5,164	33,911	27,320	264,315	396,967
60 to 64	805,878	15,003	3,641	25,898	20,269	216,229	298,861
65 to 69	637,271	10,923	2,935	20,367	15,787	165,099	243,009
70 to 74	555,188	8,818	2,554	17,383	13,419	144,553	213,275
75 to 79	491,708	7,557	2,026	14,706	11,852	127,696	188,965
80 to 84	390,322	5,558	1,776	11,754	9,853	97,064	151,200
85 to 89	229,722	3,482	1,193	8,182	6,159	55,340	83,975
90 and over	130,891	1,778	697	4,738	3,605	31,309	46,913

See notes at the end of the table.

Text table 1 – continued

Postcental population estimates by sex and age group, Canada, Provinces and Territories, July 1, 2006<sup>1</sup>

Age in years	Canada	Man.	Sask.	Alta.	B.C.	Y.T.	N.W.T.	Nvt.
	number							
<b>Both sexes</b>								
<b>Total</b>	<b>32,649,482</b>	<b>1,178,492</b>	<b>987,520</b>	<b>3,370,600</b>	<b>4,320,255</b>	<b>31,211</b>	<b>42,401</b>	<b>30,400</b>
under 1 <sup>2</sup>	354,617	14,565	12,288	45,229	41,729	364	687	747
1 to 4 <sup>2</sup>	1,361,153	55,344	47,120	163,074	165,876	1,249	2,608	2,866
5 to 9	1,846,096	75,109	61,383	206,124	225,257	1,807	3,318	3,417
10 to 14	2,089,644	83,625	69,553	222,432	259,736	2,158	3,621	3,232
15 to 19	2,171,546	85,053	76,112	239,215	281,239	2,387	3,457	3,162
20 to 24	2,262,352	84,267	73,943	264,637	308,223	2,382	3,465	2,664
25 to 29	2,236,286	78,247	63,663	268,462	286,158	1,808	3,388	2,516
30 to 34	2,227,271	77,093	58,333	251,528	288,045	1,982	3,582	2,634
35 to 39	2,357,234	76,951	58,417	248,774	318,473	2,396	3,622	2,124
40 to 44	2,704,985	90,289	71,966	274,163	353,068	2,859	3,514	1,768
45 to 49	2,676,629	91,224	76,148	275,724	356,365	3,074	3,090	1,578
50 to 54	2,368,253	81,485	69,740	235,369	327,617	2,697	2,581	1,208
55 to 59	2,085,833	72,016	57,712	188,839	291,942	2,211	2,075	941
60 to 64	1,584,973	53,342	43,522	134,689	214,851	1,526	1,323	657
65 to 69	1,229,157	41,238	36,437	102,658	167,976	928	812	455
70 to 74	1,046,909	36,401	33,011	85,956	143,489	641	538	221
75 to 79	880,880	32,380	30,198	71,410	121,611	382	361	103
80 to 84	640,944	26,012	23,939	50,026	90,206	217	217	57
85 to 89	346,151	15,326	15,023	27,932	51,496	87	92	31
90 and over	178,569	8,525	9,012	14,359	26,898	56	50	19
<b>Males</b>								
<b>Total</b>	<b>16,170,723</b>	<b>585,427</b>	<b>490,449</b>	<b>1,706,284</b>	<b>2,142,065</b>	<b>15,715</b>	<b>21,873</b>	<b>15,641</b>
under 1 <sup>2</sup>	182,240	7,424	6,365	23,158	21,436	196	357	416
1 to 4 <sup>2</sup>	695,786	28,159	24,027	83,244	85,121	636	1,265	1,417
5 to 9	944,994	38,833	31,535	105,643	116,071	862	1,737	1,795
10 to 14	1,070,899	42,774	35,631	114,712	133,714	1,065	1,878	1,640
15 to 19	1,112,570	43,227	39,095	122,983	143,937	1,289	1,732	1,606
20 to 24	1,157,368	43,374	38,479	136,958	157,842	1,230	1,804	1,329
25 to 29	1,129,918	39,762	32,396	139,797	143,881	869	1,797	1,264
30 to 34	1,123,984	39,624	29,173	130,471	143,574	912	1,951	1,293
35 to 39	1,185,790	39,307	29,191	128,963	157,830	1,143	1,815	1,106
40 to 44	1,360,219	45,538	35,874	139,572	175,513	1,361	1,664	954
45 to 49	1,337,134	46,375	38,530	139,974	176,241	1,458	1,527	912
50 to 54	1,172,631	40,519	35,285	119,393	162,268	1,420	1,346	670
55 to 59	1,030,587	35,659	28,827	95,575	145,003	1,227	1,127	410
60 to 64	779,095	26,364	21,603	67,701	106,300	845	789	331
65 to 69	591,886	19,761	17,567	50,295	82,504	537	455	234
70 to 74	491,721	17,102	15,582	41,110	70,539	334	273	131
75 to 79	389,172	14,202	13,560	32,720	56,623	180	184	70
80 to 84	250,622	10,105	9,765	20,309	37,131	111	102	34
85 to 89	116,429	5,068	5,303	9,762	18,370	21	54	18
90 and over	47,678	2,250	2,661	3,944	8,167	19	16	11

See notes at the end of the table.

Text table 1 – continued

Postcensal population estimates by sex and age group, Canada, Provinces and Territories, July 1, 2006<sup>1</sup>

Age in years	Canada	Man.	Sask.	Alta.	B.C.	Y.T.	N.W.T.	Nvt.
	number							
<b>Females</b>								
<b>Total</b>	<b>16,478,759</b>	<b>593,065</b>	<b>497,071</b>	<b>1,664,316</b>	<b>2,178,190</b>	<b>15,496</b>	<b>20,528</b>	<b>14,759</b>
under 1 <sup>2</sup>	172,377	7,141	5,923	22,071	20,293	168	330	331
1 to 4 <sup>2</sup>	665,367	27,185	23,093	79,830	80,755	613	1,343	1,449
5 to 9	901,102	36,276	29,848	100,481	109,186	945	1,581	1,622
10 to 14	1,018,745	40,851	33,922	107,720	126,022	1,093	1,743	1,592
15 to 19	1,058,976	41,826	37,017	116,232	137,302	1,098	1,725	1,556
20 to 24	1,104,984	40,893	35,464	127,679	150,381	1,152	1,661	1,335
25 to 29	1,106,368	38,485	31,267	128,665	142,277	939	1,591	1,252
30 to 34	1,103,287	37,469	29,160	121,057	144,471	1,070	1,631	1,341
35 to 39	1,171,444	37,644	29,226	119,811	160,643	1,253	1,807	1,018
40 to 44	1,344,766	44,751	36,092	134,591	177,555	1,498	1,850	814
45 to 49	1,339,495	44,849	37,618	135,750	180,124	1,616	1,563	666
50 to 54	1,195,622	40,966	34,455	115,976	165,349	1,277	1,235	538
55 to 59	1,055,246	36,357	28,885	93,264	146,939	984	948	531
60 to 64	805,878	26,978	21,919	66,988	108,551	681	534	326
65 to 69	637,271	21,477	18,870	52,363	85,472	391	357	221
70 to 74	555,188	19,299	17,429	44,846	72,950	307	265	90
75 to 79	491,708	18,178	16,638	38,690	64,988	202	177	33
80 to 84	390,322	15,907	14,174	29,717	53,075	106	115	23
85 to 89	229,722	10,258	9,720	18,170	33,126	66	38	13
90 and over	130,891	6,275	6,351	10,415	18,731	37	34	8

1. These postcensal population estimates, which are based on the 2001 census, are adjusted for net census undercoverage and include non-permanent residents.

2. 2006 population counts for the "under 1" and "1 to 4" categories were adjusted for new births by Health Statistics Division.

Source(s): "Demographic Estimates Compendium, 2007" (Catalogue number 91-213-SCB) and Health Statistics Division, Statistics Canada.