

Births

2009



Statistics
Canada

Statistique
Canada

Canada

How to obtain more information

For information about this product or the wide range of services and data available from Statistics Canada, visit our website at www.statcan.gc.ca, e-mail us at infostats@statcan.gc.ca, or telephone us, Monday to Friday from 8:30 a.m. to 4:30 p.m., at the following numbers:

Statistics Canada's National Contact Centre

Toll-free telephone (Canada and the United States):

Inquiries line	1-800-263-1136
National telecommunications device for the hearing impaired	1-800-363-7629
Fax line	1-877-287-4369

Local or international calls:

Inquiries line	1-613-951-8116
Fax line	1-613-951-0581

Depository Services Program

Inquiries line	1-800-635-7943
Fax line	1-800-565-7757

To access this product

This product, Catalogue no. 84F0210X, is available free in electronic format. To obtain a single issue, visit our website at www.statcan.gc.ca and browse by "Key resource" > "Publications."

Standards of service to the public

Statistics Canada is committed to serving its clients in a prompt, reliable and courteous manner. To this end, Statistics Canada has developed *standards of service* that its employees observe. To obtain a copy of these service standards, please contact Statistics Canada toll-free at 1-800-263-1136. The service standards are also published on www.statcan.gc.ca under "About us" > "The agency" > "Providing services to Canadians."

Births

2009

Published by authority of the Minister responsible for Statistics Canada

© Minister of Industry, 2012

All rights reserved. The content of this electronic publication may be reproduced, in whole or in part, and by any means, without further permission from Statistics Canada, subject to the following conditions: that it be done solely for the purposes of private study, research, criticism, review or newspaper summary, and/or for non-commercial purposes; and that Statistics Canada be fully acknowledged as follows: Source (or "Adapted from", if appropriate): Statistics Canada, year of publication, name of product, catalogue number, volume and issue numbers, reference period and page(s). Otherwise, no part of this publication may be reproduced, stored in a retrieval system or transmitted in any form, by any means—electronic, mechanical or photocopy—or for any purposes without prior written permission of Licensing Services, Information Management Division, Statistics Canada, Ottawa, Ontario, Canada K1A 0T6.

January 2012

Catalogue no. 84F0210X

ISSN 1710-5285

Frequency: Annual

Ottawa

Cette publication est également disponible en français.

Note of appreciation

Canada owes the success of its statistical system to a long-standing partnership between Statistics Canada, the citizens of Canada, its businesses, governments and other institutions. Accurate and timely statistical information could not be produced without their continued cooperation and goodwill.

User information

Symbols

The following standard symbols are used in Statistics Canada publications:

- . not available for any reference period
- .. not available for a specific reference period
- ... not applicable
- 0 true zero or a value rounded to zero
- 0^s value rounded to 0 (zero) where there is a meaningful distinction between true zero and the value that was rounded
- p preliminary
- r revised
- x suppressed to meet the confidentiality requirements of the *Statistics Act*
- E use with caution
- F too unreliable to be published
- * significantly different from reference category ($p < 0.05$)

Note to readers

Figures for the following section has been updated: B.2.

March 13, 2012

Acknowledgements

The cooperation of provincial and territorial Vital Statistics registries who supply the birth data in this report to Statistics Canada is gratefully acknowledged.

Table of contents

Highlights	5
Introduction	6
Analysis	7
A. Change in births	7
B. Change in fertility	8
C. Historical and recent birth trends	12
D. Comparison with selected low-fertility countries	13
E. Change in stillbirths	14
Related products	15
Statistical tables	
1 Live births, by sex and geography	18
2 Live births, by geography	18
2-1 Month	18
2-2 Age of mother	19
2-3 Marital status of mother	20
3 Mean age of mother, by geography	21
4 Crude birth rate, age-specific and total fertility rates, by geography	21
5 Mean and median birth weight, by geography	22
6 Live births, Canada	22
6-1 Age and marital status of mother	22
6-2 Age and parity of mother	23
7 Live births, by birth weight and geography	24
7-1 Both sexes	24
7-2 Males	26
7-3 Females	28

Table of contents – continued

8	Live births, by weeks of gestation and geography	30
8-1	Both sexes	30
8-2	Males	32
8-3	Females	34
9	Live births, by characteristics of the mother and child, Canada	36
9-1	Birth weight indicators	36
9-2	Weeks of gestation indicators	37
10	Live births, by place of residence of mother and place of occurrence, Canada, provinces, territories and outside Canada	38
11	Fetal deaths (20 weeks or more of gestation) and late fetal deaths (28 weeks or more of gestation), Canada, provinces and territories	39
12	Live births and fetal deaths (stillbirths), by geography	40
12-1	Type of birth (single or multiple)	40
12-2	Place of birth (hospital and non-hospital)	41

Data quality, concepts and methodology

Definitions	43
Explanatory notes for the tables	46

Appendix

I	Postcensal Population Estimates	51
---	---------------------------------	----

Charts

1.	Births and total fertility rates, Canada, 1989 to 2009	7
2.	Age-specific fertility rates, Canada, 1989 to 2009	10
3.	Age-specific fertility rate of first-time mothers, Canada, 1999 and 2009	11
4.	Births, Canada, 1921 to 2009	13

Text tables

1.	Births, Canada, provinces and territories, 2008 to 2009	8
2.	Total fertility rate by geography, Canada, 2008 and 2009	9
3.	Expected number of births in 2009 by age group, Canada	12
4.	Total fertility rates, selected OECD countries, 2005 to 2009	14

Highlights

Births continued an upward trend but at a slower pace while fertility decreased

- For the seventh consecutive year, the number of live births in Canada increased, reaching 380,863 in 2009. However, the upward trend slowed down from the annual increase of 2.7% in 2008 to 0.8% in 2009.
- In 2009, for the first time since 2002, the fertility of Canadian women showed a decrease from the previous year down to 1.67 children per woman.
- Nunavut, the Northwest Territories and Saskatchewan had the highest fertility in the country with more than two children per woman on average. In contrast, Nova Scotia and British Columbia had the lowest fertility of the country.

Births are still up in most Canadian regions, but down in five regions

- From 2008 to 2009, the gain in the number of births from most regions had offset the loss from other regions. Quebec had the largest rise in the number of births and Ontario had the largest decline.
- Nunavut presented the largest relative increase in births and Nova Scotia the largest relative decrease.

Fertility was highest for women in their early thirties

- For the fifth consecutive year, the age-specific fertility rate for women aged 30 to 34 was the highest (107 births per 1,000 women).
- From 2008 to 2009, while the age-specific fertility rate of Canadian women decreased for younger age groups, it increased in the two older age groups: 35 to 39 and 40 to 44 years. The highest augmentation occurred for women aged 40 to 44, from 8.4 to 9.2 births per 1,000 women.

Fertility of first-time mothers peaked in their late twenties

- From 1999 to 2009, the peak age group of fertility has been shifting from younger to older age groups. The fertility rate of women who were first-time mothers also showed the same trend, although the transition is more gradual.
- During this ten-year period, the modal age of fertility of first-time mothers remained in the 25 to 29 age group in 2009, while the modal age of fertility for all mothers had shifted from those aged 25 to 29 to 30 to 34.

Introduction

This product presents statistical tables showing the number of live births and fetal deaths (stillbirths) of at least 20 weeks' gestation or birth weight of 500 grams or more; total and age-specific fertility rates and crude birth rates; live births by age of mother and live birth order; male and female birth weights; weeks of gestation at the time of birth; and multiple births. Numbers are shown for Canada, the ten provinces and the three territories.

History note

Births - Shelf tables (84F0210X) data for 2000 and 2001 were released in the year 2003 in paper format. Since April 2004, this product is available on the Internet under the title "Births" (84F0210X).

The "Births, 2004" publication had two volumes. Volume 1 reported on live births and Volume 2 reported on fetal deaths (stillbirths).

CANSIM data

Free access to data is provided through a special CANSIM interface. The CANSIM tables can be linked directly from three different locations in the HTML product:

Tables section:

- Related CANSIM tables
- Individual tables, in the Source

Related products section:

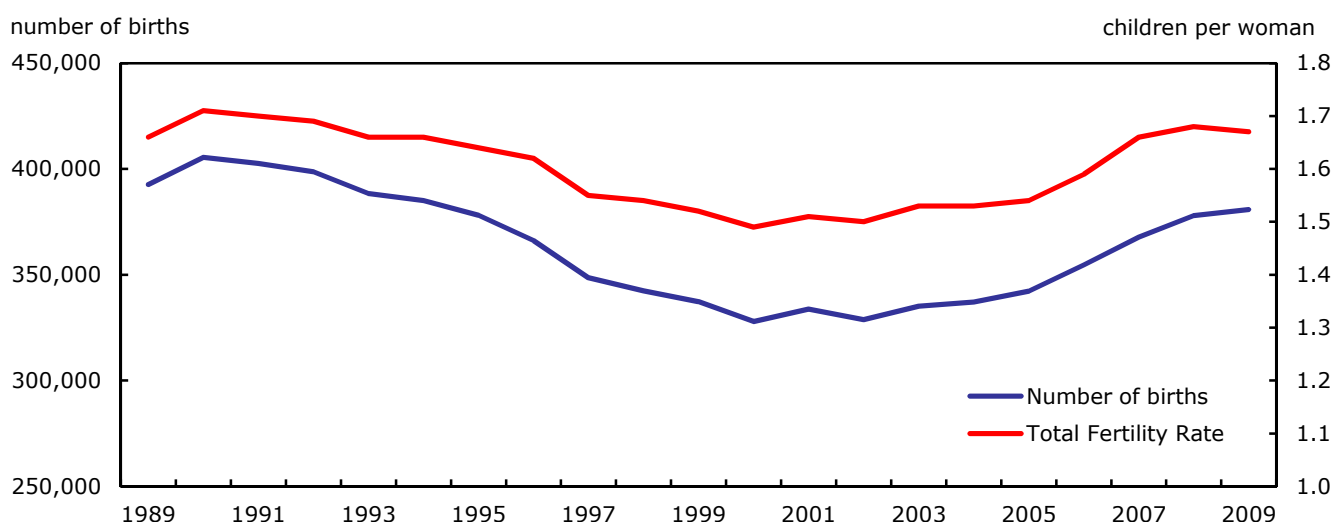
- Selected CANSIM tables from Statistics Canada

Analysis

A. Change in births

In 2009, there were 380,863 live births registered in Canada, a slight increase of 2,977 from 2008. While the number of births continued to grow, the upward trend slowed down from the annual increase of 2.7% in 2008 to 0.8% in 2009 (Chart 1).

Chart 1
Births and total fertility rates, Canada, 1989 to 2009



Note(s): Total fertility rate is the average number of children per woman.

Source(s): Statistics Canada, CANSIM table 102-4502 and 102-4505 and Vital Statistics Compendium, 1996, catalogue no. 84-214-XPE.

Over the past 20 years, Canada has seen both upward and downward trends in the number of births. After peaking in 1990 at 405,486 births, the number of births fell steadily throughout the 1990s. In 2000, there were 327,882 registered births, the lowest level since the end of the Second World War. With the exception of 2002, there has been an upward trend in the number of births since 2001 and the first sign of slowing down was observed in 2008 which continued in 2009.

A.1. Geographic differences

In 2009, Quebec, Alberta and British Columbia were the top three contributors to the increase in the total number of births in Canada. Nunavut had the largest relative increase of 8.9% (Table 1).

From 2008 to 2009, the gain in the number of births from most regions had offset the loss from other regions. However it slowed down the upward trend of births in Canada in recent years. While the number of births increased in six provinces and two territories, it decreased in Prince Edward Island, Nova Scotia, New Brunswick, Ontario and Northwest Territories. Quebec had the largest rise in the number of births and Ontario had the largest decline. Nunavut presented the largest relative increase in births and Nova Scotia the largest relative decrease.

Text table 1
Births, Canada, provinces and territories, 2008 to 2009

Place of residence of mother	2008	2009	2008 to 2009 difference	
			number	percent
Canada	377,886	380,863	2,977	0.8
Newfoundland and Labrador	4,898	4,915	17	0.3
Prince Edward Island	1,483	1,457	-26	-1.8
Nova Scotia	9,188	8,989	-199	-2.2
New Brunswick	7,402	7,391	-11	-0.1
Quebec	87,870	88,867	997	1.1
Ontario	140,791	140,370	-421	-0.3
Manitoba	15,485	15,940	455	2.9
Saskatchewan	13,737	14,241	504	3.7
Alberta	50,856	51,722	866	1.7
British Columbia	44,276	44,993	717	1.6
Yukon	373	383	10	2.7
Northwest Territories	721	711	-10	-1.4
Nunavut	805	877	72	8.9

Source(s): Statistics Canada, CANSIM table 102-4502.

B. Change in fertility

The total fertility rate (TFR) is the sum of single-year, age-specific fertility rates during a given year. It represents the average number of children that a woman would have if the current age-specific fertility rates prevail over her reproductive period.

In 2009, the TFR was 1.67 children per woman, down 0.8% from 2008 (Table 2). For the first time since 2002 the TFR went down.

This rate was below the generational replacement level of 2.1 children per woman—the fertility rate that must be maintained to replace the population in the absence of migration. The last year that the total fertility rate exceeded the generational replacement level was 1971.¹

In the past twenty years, the TFR has closely paralleled the trend in number of births (Chart 1). After peaking in 1990 at 1.71 children per woman, the TFR fell throughout the 1990s and then began climbing at the beginning of the 2000s. The drop in the TFR (and the number of births) in 2000 and the recovery in 2001 may have been related to the desire to have a baby in the first year of the new millennium. The number of marriages also increased in 2000.²

1. Statistics Canada. 2008. *Report on the Demographic Situation in Canada, 2005 and 2006*, Catalogue no. 91-209-X.

2. Statistics Canada. 2007. "Marriages 2003." *The Daily*, January 17.

Text table 2
Total fertility rate by geography, Canada, 2008 and 2009

Geography	2008	2009	Difference in percentage
Canada	1.68	1.67	-0.8
Newfoundland and Labrador	1.58	1.59	0.6
Prince Edward Island	1.73	1.69	-2.4
Nova Scotia	1.54	1.50	-2.5
New Brunswick	1.59	1.59	0.0
Quebec	1.74	1.74	-0.1
Ontario	1.58	1.56	-1.3
Manitoba	1.96	1.98	1.1
Saskatchewan	2.05	2.06	0.6
Alberta	1.92	1.89	-1.3
British Columbia	1.51	1.50	-0.7
Yukon	1.64	1.66	1.1
Northwest Territories	2.08	2.06	-1.0
Nunavut	2.98	3.24	8.8

Note(s): Total fertility rate is the average number of children per woman.

Source(s): Statistics Canada, CANSIM table 102-4505.

In 2009, Nunavut continued to have the highest fertility in the country, with a TFR of 3.24 children per woman, the only region ensuring the generational replacement level. Two regions presented the TFR close to the replacement level: Saskatchewan and Northwest Territories (Table 2).

In contrast, Nova Scotia and British Columbia had the lowest TFR in Canada. Other provinces and territories with a TFR lower than the national average of 1.67 children per woman were Newfoundland and Labrador, New Brunswick, Ontario and Yukon.

From 2008 to 2009, the TFR rose in three provinces and two territories (Newfoundland and Labrador, Manitoba, Saskatchewan, Yukon and Nunavut). The TFR of New Brunswick remained unchanged followed by a slight decrease in Quebec, while the TFR in all other regions declined.

In 2009, Nunavut experienced the largest relative increase in the TFR and Nova Scotia the largest relative decline followed by Prince Edward Island.

B.1. Age-specific fertility rate

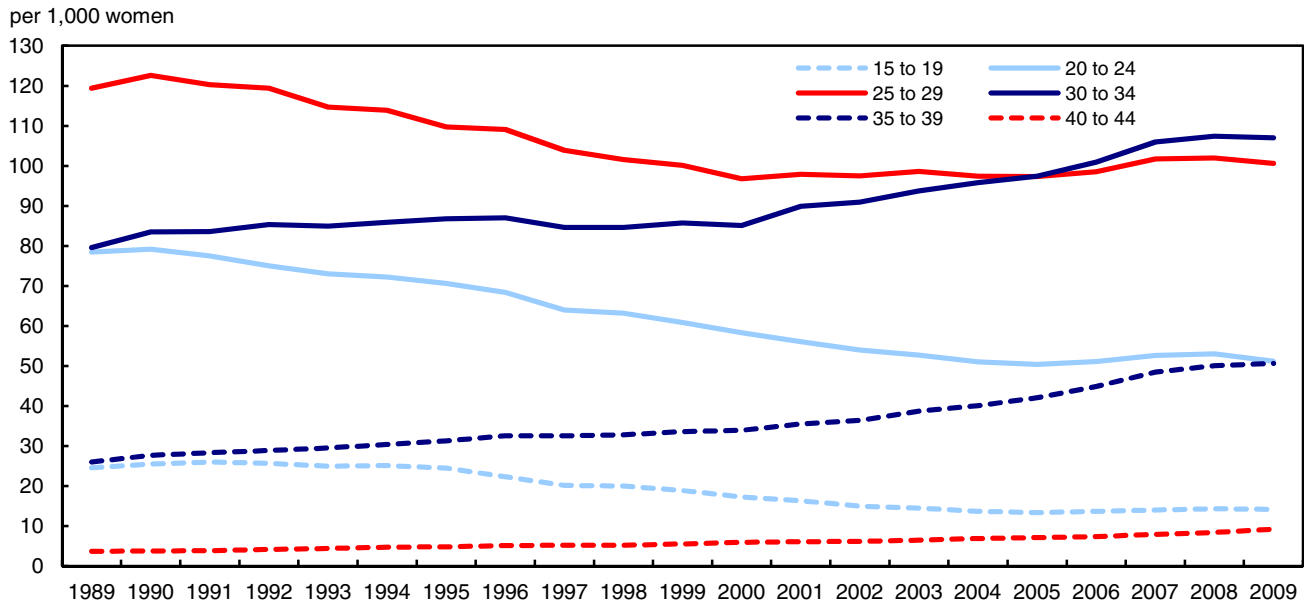
From 1989 to 2009, there have been significant changes in the trend of age-specific fertility rates in Canada. The past twenty years saw an overall decline in the total fertility rate of Canadian women in their twenties, while that of women in their thirties increased steadily (Chart 2).

From 2008 to 2009, while the age-specific fertility rate of Canadian women decreased for younger age groups, it increased in the two older age groups: 35 to 39 and 40 to 44 years. The highest rise occurred for women aged 40 to 44, from 8.4 births per 1,000 women to 9.2. The fertility rate of women aged 40 to 44 increased about 2.5 times in the last 20 years, from 3.7 per 1,000 women in 1989 to 9.2 in 2009.

However, for the fifth consecutive year, the highest fertility rate continued to be among women aged 30 to 34 (107 births per 1,000 women). The gap in fertility rates between age 20 to 24 and age 35 to 39 narrowed further to 0.6 per 1,000 women in 2009.

The fertility rate of women aged 15 to 19 was 24.6 births per 1,000 women in 1989, it decreased to its lowest point in 2005 (13.4 per 1,000) and has increased slightly in recent years. In 2009, their fertility rate was 14.2 births per 1,000 women.

Chart 2
Age-specific fertility rates, Canada, 1989 to 2009



Source(s): Statistics Canada, CANSIM table 102-4505 and Births, Catalogue no. 84-210-X.

B.2. Geographic differences of age-specific fertility rate

In 2009, among the 10 provinces³, Saskatchewan had the highest fertility rate for women aged less than 30 years: 34.3 live births per 1,000 women aged 15 to 19, 89.3 per 1,000 women aged 20 to 24 and 137.3 per 1,000 women aged 25 to 29. The highest fertility rate for women aged 30 to 34 was in Alberta (114.8 per 1,000) and for those aged 35 to 39 and 40 to 44 was in British Columbia (54.5 and 10.6 per 1,000 women respectively).

B.3 Age-specific fertility rate of first-time mothers

The first-time mothers⁴ have also delayed their childbearing. However, the shift from younger to older age of childbearing for first-time mothers was less pronounced than that of all mothers, particularly for those aged 30 to 34 (Chart 3).

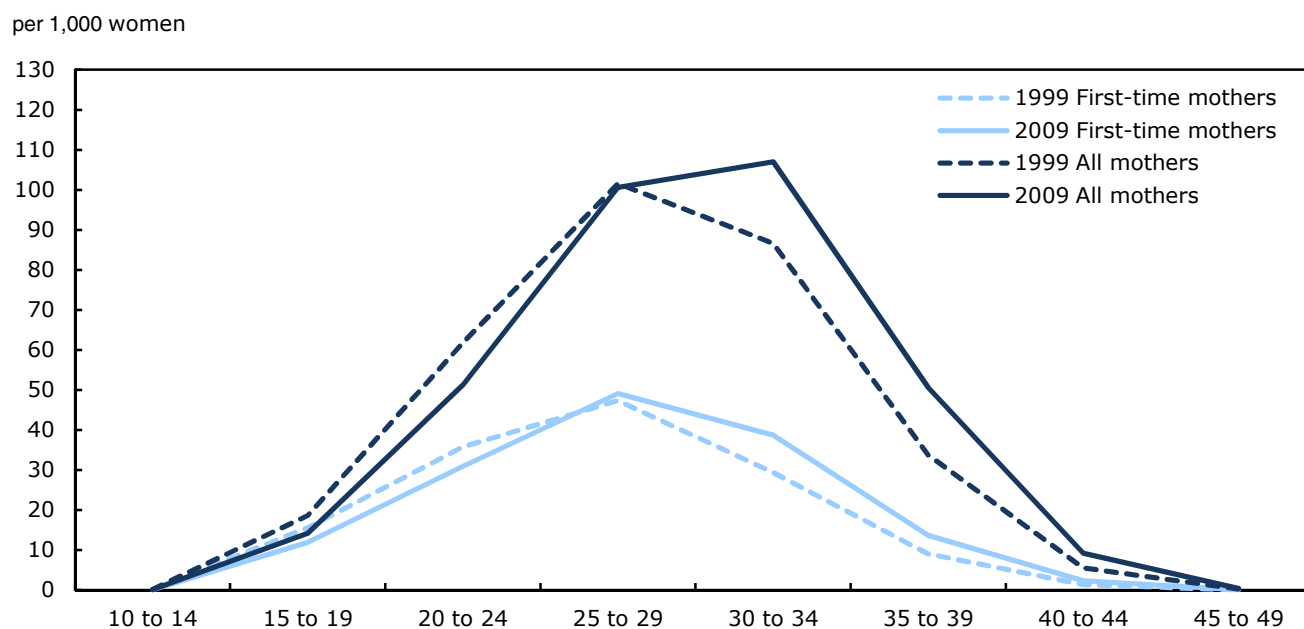
From 1999 to 2009, while the age-specific fertility rate of women younger than 25 years declined, the rate of those aged 30 years and older went up. The fertility rates of women who were first-time mothers also showed the same trend as that of all mothers.

However, during this ten-year period, the modal age of fertility of first-time mothers were still in the 25 to 29 age group in 2009, while the modal age of fertility for all mothers had shifted from those aged 25 to 29 to 30 to 34.

3. CANSIM Table 102-4505.

4. Women who gave birth to their first child.

Chart 3
Age-specific fertility rate of first-time mothers, Canada, 1999 and 2009



Source(s): Statistics Canada, CANSIM table 102-4508 and Appendix 1 of "Births" publication, catalogue no. 84F0210X.

B.4 Analysing 2009 fertility rates

Two factors could account for the change in the number of births in recent years: the number of women at childbearing age and the fertility rates.

By applying age-specific fertility rates (ASFRs) for 2008 to the female population in 2009, it is possible to estimate how much of the increase in births in 2009 can be attributed to changes in the size of the female population compared with changes in fertility rates (Table 3).

If there had been no change in age-specific fertility rates from 2008 to 2009, the expected number of births in 2009 would have been 383,244, or 5,358 more births than in 2008. In fact, from 2008 to 2009, there was an increase of only 2,977 births. The gap of 2,381 births can therefore be attributed to decreases in fertility. The largest decrease in fertility rate between 2008 and 2009 was found in women aged 20 to 29.

Text table 3
Expected number of births in 2009 by age group, Canada

Age Group	2008 ASFR ¹	2009 female population (PR)	Expected births ²	2009 ASFR ¹	Difference 2008-2009 ASFR ³	2008 female population (PR)	Difference 2008-2009 female population
15 to 19	14.3	1,098,266	15,705	14.2	-0.1	1,099,776	-1,510
20 to 24	53.0	1,128,631	59,817	51.2	-1.8	1,113,723	14,908
25 to 29	102.0	1,161,526	118,476	100.6	-1.4	1,134,348	27,178
30 to 34	107.4	1,128,411	121,191	107.0	-0.4	1,106,058	22,353
35 to 39	50.1	1,140,807	57,154	50.6	0.5	1,143,256	-2,449
40 to 44	8.4	1,231,568	10,345	9.2	0.8	1,270,897	-39,329
45 to 49	0.4	1,386,192	554	0.4	0.0	1,370,043	16,149
Total		8,275,401	383,244			8,238,101	37,300

1. Births per 1,000 women.

2. Expected births for 2009, obtained by applying 2008 age-specific fertility rates to the 2009 female population.

3. Difference between 2008 and 2009 age-specific fertility rates.

Note(s): ASFR = age-specific fertility rate, PR = updated postcensal.

Source(s): Statistics Canada, CANSIM table 102-4508 and Appendix 1 of "Births" publication, catalogue no. 84F0210X.

C. Historical and recent birth trends

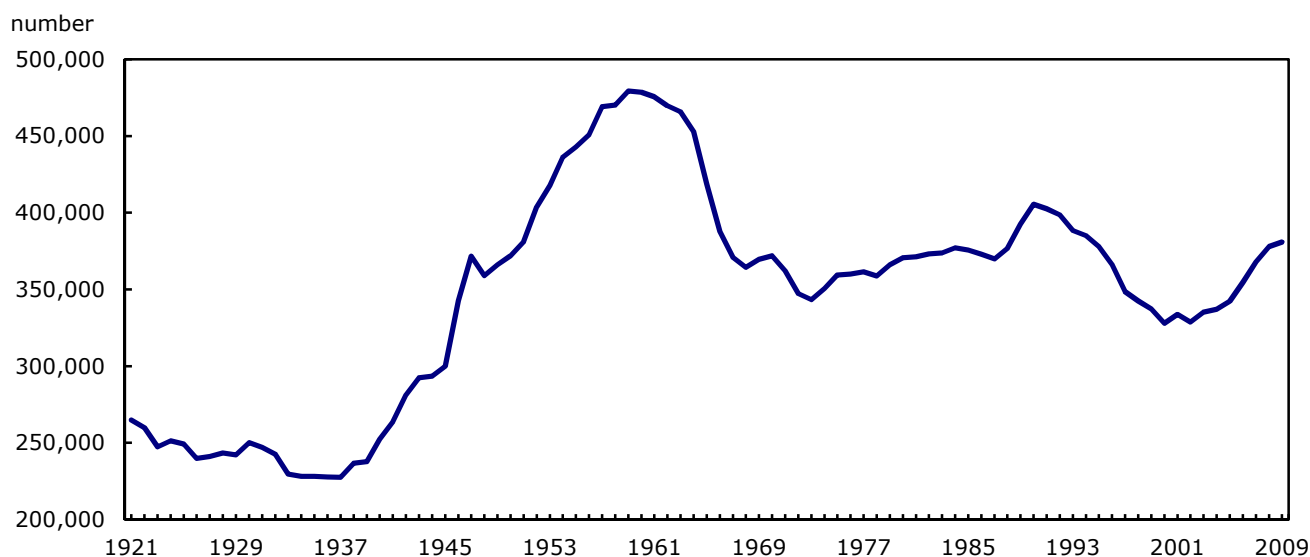
The period from the end of the Second World War to the mid-1960s witnessed a dramatic increase in the fertility rates, the result of which was the baby boom phenomenon.

In 1947, when the TFR was 3.6 children per woman—the highest rate since 1921⁵—the number of births totalled 372,600 and the crude birth rate was 28.9 births per 1,000 population.

At the height of the baby boom in 1959, when the TFR was 3.9 children per woman, annual births exceeded 479,000, the highest number recorded since comparable Canada-wide vital statistics were first compiled in 1921 (Chart 4).

5. Statistics Canada. Selected Birth and Fertility Statistics, Canada, 1921 to 1990, Catalogue no. 82-553, Occasional.

Chart 4
Births, Canada, 1921 to 2009



Source(s): Statistics Canada, CANSIM table 102-4502, Births, Catalogue no. 84F0210X and Selected Historical Statistics, Canada, 1921-1990, Catalogue no. 82-553X Occasional.

The annual number of births remained high for a few more years, and then dropped sharply starting in 1964. This period of low numbers of births, known as the baby bust,⁶ lasted for approximately 10 years until the mid-1970s, reaching its lowest level in 1973.

The first baby boom "echo"⁷ was expected in the mid-1970s, approximately 25 years after the beginning of the baby boom. But while there was a sizable increase in the number of births in 1974 and 1975, gains in the following years were relatively modest. Only in the late 1980s (1988 to 1990) was there a substantial rise in the number of births.

From 1988 to 1995, Canada experienced a large number of births. Specifically, births peaked at 405,486 in 1990. Thereafter, annual births dropped, falling to 327,882 in 2000, which was less than the lowest number in the baby bust period.

Between 2002 and 2009, Canada has seen a continuous upward trend in the number of births. Part of the recent increase in births could be explained by the fact that many women from the baby boomer's children's generation have now entered their childbearing years, as well as by the increase in fertility rates. Total fertility rate increased from 1.50 children per woman in 2002 to 1.68 in 2008. However, in 2009, for the first time since 2002, the fertility of Canadian women showed a decrease from the previous year down to 1.67 children per woman.

D. Comparison with selected low-fertility countries

A low-fertility country is one in which the total fertility rate (TFR) is below or near the generational replacement level (2.1 children per woman). Low fertility is a phenomenon that Canada shares with many countries. Moreover, the recent rise in the number of births in Canada parallels trends in several other low-fertility OECD countries, which have also experienced an upturn in fertility in recent years and a downturn between 2008 and 2009 (Table 4).

6. Romaniuc, A. 1984. *Fertility in Canada: From Baby-boom to Baby-bust*. Statistics Canada, Catalogue no. 91-524-XPE. Ottawa, Ontario.

7. Demency, P. and G. McNicoll, editors. 2003. *Encyclopedia of Population*. Vol. 1, New York, U.S.A. MacMillan Reference USA, p. 73.

From 2005 to 2008, the TFR had an increasing trend in the 15 selected OECD countries (Table 4). In Canada, the increase in fertility was modest until 2006, whereas in 2007, there was a surge which subsequently slowed. United States was the only country that showed a decrease from 2007 to 2008.

From 2008 to 2009, more than half of the selected OECD countries saw their fertility decline. The United States had the largest decline of TFR (0.08 children per woman). Among those six countries that had a rise in fertility, Iceland had the largest increase of TFR (0.08 children per woman).

Text table 4
Total fertility rates, selected OECD countries, 2005 to 2009

OECD ¹ Countries	2005	2006	2007	2008	2009
Germany	1.34	1.33	1.37	1.38	1.36
Japan	1.26	1.32	1.34	1.37	1.37
Czech Republic	1.28	1.33	1.44	1.50	1.49
Switzerland	1.42	1.44	1.46	1.48	1.50
Canada	1.54	1.59	1.66	1.68	1.67
Netherlands	1.71	1.72	1.72	1.77	1.79
Denmark	1.80	1.85	1.85	1.89	1.84
Finland	1.80	1.84	1.83	1.85	1.86
Australia	1.79	1.82	1.93	1.97	1.90
Sweden	1.77	1.86	1.88	1.91	1.94
United Kingdom	1.80	1.84	1.90	1.96	1.94
Norway	1.84	1.90	1.90	1.96	1.98
France	1.94	2.00	1.98	2.01	2.00
United States	2.05	2.10	2.12	2.08	2.00
Iceland	2.05	2.08	2.09	2.15	2.23

1. OECD = Organisation for Economic Co-Operation and Development.

Note(s): Total fertility rate is the average number of children per woman.

Source(s): National Statistics Offices, National Vital Statistics Reports and Eurostat.

E. Change in stillbirths

The number of stillbirths (or fetal deaths) in Canada was 2,734 in 2009, a decrease of 40 stillbirths (1.4%) from 2008.

The stillbirth rate also went down from 7.3 per 1,000 total births (live births and stillbirths) in 2008 to 7.1 in 2009. From 1991 to 2006, stillbirth rates fluctuated at around 6.0 per 1,000 total births. However, the late stillbirth rate (fetal deaths at 28 or more weeks of gestation) peaked at 3.8 per 1,000 total births in 1992 and then decreased to 3.0 in 2009.

Related products

Selected publications from Statistics Canada

82-221-X Health indicators

Selected CANSIM tables from Statistics Canada

102-4501	Live births, by place of residence of mother and place of occurrence, Canada, provinces, territories and outside Canada
102-4502	Live births, by month, Canada, provinces and territories
102-4503	Live births, by age of mother, Canada, provinces and territories
102-4504	Mean age of mother at time of delivery (live births), Canada, provinces and territories
102-4505	Crude birth rate, age-specific and total fertility rates (live births), Canada, provinces and territories
102-4506	Live births, by marital status of mother, Canada, provinces and territories
102-4507	Live births, by age and marital status of mother, Canada
102-4508	Live births, by age and parity of mother, Canada
102-4509	Live births, by birth weight and sex, Canada, provinces and territories
102-4510	Mean and median birth weight (live births), by sex, Canada, provinces and territories
102-4511	Live births, birth weight indicators, by characteristics of the mother and child, Canada
102-4512	Live births, by weeks of gestation and sex, Canada, provinces and territories
102-4513	Live births, weeks of gestation indicators, by characteristics of the mother and child, Canada
102-4514	Fetal deaths (20 weeks or more of gestation) and late fetal deaths (28 weeks or more of gestation), Canada, provinces and territories
102-4515	Live births and fetal deaths (stillbirths), by type (single or multiple), Canada, provinces and territories
102-4516	Live births and fetal deaths (stillbirths), by place of birth (hospital and non-hospital), Canada, provinces and territories

Selected surveys from Statistics Canada

3231	Vital Statistics - Birth Database (www.statcan.gc.ca/english/sdds/3231.htm)
3234	Vital Statistics - Stillbirth Database (www.statcan.gc.ca/english/sdds/3234.htm)

Selected tables of Canadian statistics from Statistics Canada

- *Births and birth rate, by provinces and territories*
- *Deaths and death rate, by provinces and territories*
- *Infant mortality rates, by province and territory*

Statistical tables

Table 1
Live births, by sex and geography

Place of residence of mother	Both sexes			Both sexes		
	number	number	number	percent	percent	percent
Canada	380,863	195,445	185,418	100.0	100.0	100.0
Newfoundland and Labrador	4,915	2,574	2,341	1.3	1.3	1.3
Prince Edward Island	1,457	732	725	0.4	0.4	0.4
Nova Scotia	8,989	4,656	4,333	2.4	2.4	2.3
New Brunswick	7,391	3,715	3,676	1.9	1.9	2.0
Quebec	88,867	45,621	43,246	23.3	23.3	23.3
Ontario	140,370	72,021	68,349	36.9	36.8	36.9
Manitoba	15,940	8,089	7,851	4.2	4.1	4.2
Saskatchewan	14,241	7,236	7,005	3.7	3.7	3.8
Alberta	51,722	26,552	25,170	13.6	13.6	13.6
British Columbia	44,993	23,231	21,762	11.8	11.9	11.7
Yukon	383	204	179	0.1	0.1	0.1
Northwest Territories	711	375	336	0.2	0.2	0.2
Nunavut	877	436	441	0.2	0.2	0.2
Unknown	7	3	4	0.0	0.0	0.0

Note(s): See "Data quality, concepts and methodology — Explanatory notes for the tables".

Source(s): Statistics Canada, Canadian Vital Statistics, Birth Database (CANSIM table 102-4512).

Table 2-1
Live births, by geography — Month

Place of residence of mother	Total	number												
		January	February	March	April	May	June	July	August	September	October	November	December	
Canada	380,863	30,340	28,246	31,824	31,475	32,828	32,270	34,225	33,157	33,818	32,828	30,017	29,835	
Newfoundland and Labrador	4,915	353	387	413	397	386	422	450	453	419	469	424	342	
Prince Edward Island	1,457	111	97	119	131	122	147	122	115	132	114	116	131	
Nova Scotia	8,989	675	656	725	663	805	755	862	783	841	773	752	699	
New Brunswick	7,391	625	538	612	576	629	659	655	650	703	621	558	565	
Quebec	88,867	7,138	6,602	7,340	7,300	7,512	7,405	7,955	7,847	7,971	7,741	6,969	7,087	
Ontario	140,370	11,125	10,424	11,737	11,707	12,077	12,080	12,667	12,162	12,406	12,091	10,992	10,902	
Manitoba	15,940	1,293	1,113	1,403	1,284	1,408	1,292	1,383	1,325	1,435	1,372	1,301	1,331	
Saskatchewan	14,241	1,150	1,095	1,186	1,153	1,238	1,194	1,263	1,193	1,239	1,235	1,146	1,149	
Alberta	51,722	4,196	3,762	4,351	4,379	4,552	4,388	4,590	4,496	4,611	4,367	4,015	4,015	
British Columbia	44,993	3,513	3,419	3,778	3,741	3,909	3,778	4,063	3,966	3,908	3,867	3,604	3,447	
Yukon	383	33	29	35	33	39	31	39	25	28	30	31	30	
Northwest Territories	711	48	52	59	42	77	59	75	73	58	64	48	56	
Nunavut	877	79	71	65	69	73	60	101	69	66	84	60	80	
Unknown	7	1	1	1	0	1	0	0	0	1	0	1	1	
			percent											
Canada	100.0	8.0	7.4	8.4	8.3	8.6	8.5	9.0	8.7	8.9	8.6	7.9	7.8	
Newfoundland and Labrador	100.0	7.2	7.9	8.4	8.1	7.9	8.6	9.2	9.2	8.5	9.5	8.6	7.0	
Prince Edward Island	100.0	7.6	6.7	8.2	9.0	8.4	10.1	8.4	7.9	9.1	7.8	8.0	9.0	
Nova Scotia	100.0	7.5	7.3	8.1	7.4	9.0	8.4	9.6	8.7	9.4	8.6	8.4	7.8	
New Brunswick	100.0	8.5	7.3	8.3	7.8	8.5	8.9	8.9	8.8	9.5	8.4	7.5	7.6	
Quebec	100.0	8.0	7.4	8.3	8.2	8.5	8.3	9.0	8.8	9.0	8.7	7.8	8.0	
Ontario	100.0	7.9	7.4	8.4	8.3	8.6	8.6	9.0	8.7	8.8	8.6	7.8	7.8	
Manitoba	100.0	8.1	7.0	8.8	8.1	8.8	8.1	8.7	8.3	9.0	8.6	8.2	8.4	
Saskatchewan	100.0	8.1	7.7	8.3	8.1	8.7	8.4	8.9	8.4	8.7	8.7	8.0	8.1	
Alberta	100.0	8.1	7.3	8.4	8.5	8.8	8.5	8.9	8.7	8.9	8.4	7.8	7.8	
British Columbia	100.0	7.8	7.6	8.4	8.3	8.7	8.4	9.0	8.8	8.7	8.6	8.0	7.7	
Yukon	100.0	8.6	7.6	9.1	8.6	10.2	8.1	10.2	6.5	7.3	7.8	8.1	7.8	
Northwest Territories	100.0	6.8	7.3	8.3	5.9	10.8	8.3	10.5	10.3	8.2	9.0	6.8	7.9	
Nunavut	100.0	9.0	8.1	7.4	7.9	8.3	6.8	11.5	7.9	7.5	9.6	6.8	9.1	
Unknown	100.0	14.3	14.3	14.3	0.0	14.3	0.0	0.0	0.0	14.3	0.0	14.3	14.3	

Note(s): See "Data quality, concepts and methodology — Explanatory notes for the tables".

Source(s): Statistics Canada, Canadian Vital Statistics, Birth Database (CANSIM table 102-4502).

Table 2-2
Live births, by geography — Age of mother

Place of residence of mother	Age of mother 1									
	All ages	Under 15 years	15 to 19 years	20 to 24 years	25 to 29 years	30 to 34 years	35 to 39 years	40 to 44 years	45 to 49 years	Not stated 2
	number									
Canada	380,863	104	15,534	57,778	116,878	120,734	57,733	11,364	605	133
Newfoundland and Labrador	4,915	3	294	920	1,486	1,514	614	83	1	0
Prince Edward Island	1,457	0	86	291	418	435	190	36	1	0
Nova Scotia	8,989	4	554	1,728	2,586	2,640	1,259	213	5	0
New Brunswick	7,391	3	488	1,619	2,481	1,946	741	104	3	6
Quebec	88,867	13	2,712	12,688	30,671	28,907	11,533	2,236	99	8
Ontario	140,370	24	4,660	18,267	39,511	47,541	24,999	5,038	278	52
Manitoba	15,940	20	1,417	3,294	4,828	4,177	1,815	371	16	2
Saskatchewan	14,241	0	1,261	3,295	4,863	3,350	1,211	220	0	41
Alberta	51,722	21	2,384	8,946	16,834	15,355	6,827	1,263	84	8
British Columbia	44,993	14	1,416	6,201	12,712	14,447	8,333	1,742	117	11
Yukon	383	0	25	72	101	102	68	15	0	0
Northwest Territories	711	0	61	168	187	185	88	21	0	1
Nunavut	877	2	175	288	199	135	55	21	1	1
Unknown	7	0	1	1	1	0	0	1	0	3
	percent									
Canada	100.0	0.0	4.1	15.2	30.7	31.7	15.2	3.0	0.2	0.0
Newfoundland and Labrador	100.0	0.1	6.0	18.7	30.2	30.8	12.5	1.7	0.0	0.0
Prince Edward Island	100.0	0.0	5.9	20.0	28.7	29.9	13.0	2.5	0.1	0.0
Nova Scotia	100.0	0.0	6.2	19.2	28.8	29.4	14.0	2.4	0.1	0.0
New Brunswick	100.0	0.0	6.6	21.9	33.6	26.3	10.0	1.4	0.0	0.1
Quebec	100.0	0.0	3.1	14.3	34.5	32.5	13.0	2.5	0.1	0.0
Ontario	100.0	0.0	3.3	13.0	28.1	33.9	17.8	3.6	0.2	0.0
Manitoba	100.0	0.1	8.9	20.7	30.3	26.2	11.4	2.3	0.1	0.0
Saskatchewan	100.0	0.0	8.9	23.1	34.1	23.5	8.5	1.5	0.0	0.3
Alberta	100.0	0.0	4.6	17.3	32.5	29.7	13.2	2.4	0.2	0.0
British Columbia	100.0	0.0	3.1	13.8	28.3	32.1	18.5	3.9	0.3	0.0
Yukon	100.0	0.0	6.5	18.8	26.4	26.6	17.8	3.9	0.0	0.0
Northwest Territories	100.0	0.0	8.6	23.6	26.3	26.0	12.4	3.0	0.0	0.1
Nunavut	100.0	0.2	20.0	32.8	22.7	15.4	6.3	2.4	0.1	0.1
Unknown	100.0	0.0	14.3	14.3	14.3	0.0	0.0	14.3	0.0	42.9

1. Age of mother attained at the last birthday preceding delivery.

2. For confidentiality reasons, live births to mothers aged 50 and over are included in the category "Age of mother, not stated." Where information is unavailable on the birth mother of children who are adopted, these records are included in the category "Age of mother, not stated."

Note(s): See "Data quality, concepts and methodology — Explanatory notes for the tables".

Source(s): Statistics Canada, Canadian Vital Statistics, Birth Database (CANSIM table 102-4503).

Table 2-3
Live births, by geography — Marital status of mother

Place of residence of mother	Marital status of mother						Not stated
	Total	Single (never married)	Married	Widowed	Divorced	Separated	
	number						
Canada	380,863	103,693	228,917	168	3,551	1,352	43,182
Newfoundland and Labrador	4,915	2,333	2,460	0	71	46	5
Prince Edward Island	1,457	582	814	1	8	0	52
Nova Scotia	8,989	4,004	4,849	9	96	3	28
New Brunswick	7,391	3,427	3,646	8	148	137	25
Quebec	88,867	52,855	32,267	39	1,163	236	2,307
Ontario	140,370	18,845	100,502	53	954	5	20,011
Manitoba	15,940	6,314	9,124	18	233	210	41
Saskatchewan	14,241	5,808	7,634	16	211	3	569
Alberta ¹	51,722	204	36,166	0	5	1	15,346
British Columbia	44,993	8,074	30,932	23	649	688	4,627
Yukon	383	186	77	0	6	3	111
Northwest Territories	711	385	281	0	6	15	24
Nunavut	877	673	163	1	1	5	34
Unknown	7	3	2	0	0	0	2
	percent						
Canada	100.0	27.2	60.1	0.0	0.9	0.4	11.3
Newfoundland and Labrador	100.0	47.5	50.1	0.0	1.4	0.9	0.1
Prince Edward Island	100.0	39.9	55.9	0.1	0.5	0.0	3.6
Nova Scotia	100.0	44.5	53.9	0.1	1.1	0.0	0.3
New Brunswick	100.0	46.4	49.3	0.1	2.0	1.9	0.3
Quebec	100.0	59.5	36.3	0.0	1.3	0.3	2.6
Ontario	100.0	13.4	71.6	0.0	0.7	0.0	14.3
Manitoba	100.0	39.6	57.2	0.1	1.5	1.3	0.3
Saskatchewan	100.0	40.8	53.6	0.1	1.5	0.0	4.0
Alberta ¹	100.0	0.4	69.9	0.0	0.0	0.0	29.7
British Columbia	100.0	17.9	68.7	0.1	1.4	1.5	10.3
Yukon	100.0	48.6	20.1	0.0	1.6	0.8	29.0
Northwest Territories	100.0	54.1	39.5	0.0	0.8	2.1	3.4
Nunavut	100.0	76.7	18.6	0.1	0.1	0.6	3.9
Unknown	100.0	42.9	28.6	0.0	0.0	0.0	28.6

1. Partway through 2003, Alberta Registries amended their Registration of Birth form in such a way that Statistics Canada can no longer determine the legal marital status of those persons in common-law marriages.

Note(s): See "Data quality, concepts and methodology — Explanatory notes for the tables".

Source(s): Statistics Canada, Canadian Vital Statistics, Birth Database (CANSIM table 102-4506).

Table 3
Mean age of mother¹, by geography

Place of residence of mother	Mean age of mother
	years
Canada	29.4
Newfoundland and Labrador	28.5
Prince Edward Island	28.6
Nova Scotia	28.6
New Brunswick	27.8
Quebec	29.3
Ontario	30.1
Manitoba	27.9
Saskatchewan	27.2
Alberta	28.9
British Columbia	30.1
Yukon	29.0
Northwest Territories	28.0
Nunavut	25.1

1. Mean age of mother for Canada, a province or a territory is calculated by summing the mothers' ages at their last birthday preceding delivery and then dividing the sum by the total number of live births in that jurisdiction. To estimate mid-year mean age, a statistic often used in analyses, add 0.5 to the mean age in this table.

Note(s): See "Data quality, concepts and methodology — Explanatory notes for the tables".

Source(s): Statistics Canada, Canadian Vital Statistics, Birth Database (CANSIM table 102-4504).

Table 4
Crude birth rate, age-specific and total fertility rates, by geography

Place of residence of mother	Age specific fertility rate ^{1,2}							Crude birth rate, live births	Total fertility rate ⁴
	15 to 19 years ³	20 to 24 years	25 to 29 years	30 to 34 years	35 to 39 years	40 to 44 years	45 to 49 years		
	rate per 1,000 females							rate per 1,000 population	rate per 1,000 females
Canada	14.2	51.2	100.6	107.0	50.6	9.2	0.4	11.3	1,668.0
Newfoundland and Labrador	19.2	58.9	101.5	98.0	34.9	4.1	0.0	9.7	1,586.6
Prince Edward Island	16.9	62.4	102.3	104.2	43.0	7.2	0.2	10.3	1,686.4
Nova Scotia	18.3	55.0	88.1	92.2	40.3	6.2	0.1	9.6	1,502.0
New Brunswick	20.9	70.7	108.8	83.2	29.8	3.8	0.1	9.9	1,587.6
Quebec	11.0	53.2	117.2	111.1	47.1	8.1	0.3	11.4	1,737.1
Ontario	10.8	41.0	88.3	107.3	54.0	10.1	0.5	10.7	1,564.1
Manitoba	32.7	78.2	119.3	108.7	47.1	9.2	0.3	13.1	1,981.3
Saskatchewan	34.3	89.3	137.3	104.3	40.7	6.9	0.0	13.8	2,060.5
Alberta	20.0	65.6	115.6	114.8	52.6	9.8	0.6	14.1	1,891.8
British Columbia	10.3	41.1	81.7	99.6	54.5	10.6	0.6	10.1	1,495.6
Yukon	23.3	63.9	94.6	85.5	51.4	10.8	0.0	11.4	1,656.2
Northwest Territories	34.3	100.9	95.1	106.4	58.4	13.4	0.0	16.3	2,061.0
Nunavut	111.5	199.0	142.3	119.3	51.0	19.3	1.2	27.2	3,242.9

1. Age of mother attained at the last birthday preceding delivery.

2. Age-specific fertility rate (ASFR) is the number of live births per 1,000 females in a specific age group. Five-year age groups were used in these tabulations (ranging from 15 to 19 years to 45 to 49 years).

3. Live births to females under 20 years of age per 1,000 females aged 15 to 19.

4. Total fertility rate is an estimate of the average number of live births a female can be expected to have in her lifetime, based on the age-specific fertility rates (ASFR) of a given year. The total fertility rate (TFR) = SUM of single year of age-specific fertility rates.

Note(s): See "Data quality, concepts and methodology — Explanatory notes for the tables".

Source(s): Statistics Canada, Canadian Vital Statistics, Birth Database (CANSIM table 102-4505) and Appendix I.

Table 5
Mean and median birth weight, by geography

Place of residence of mother	Birth weight					
	Both sexes		Males		Females	
	Mean ¹	Median ²	Mean ¹	Median ²	Mean ¹	Median ²
grams						
Canada	3,364	3,391	3,421	3,455	3,304	3,330
Newfoundland and Labrador	3,436	3,477	3,487	3,540	3,379	3,410
Prince Edward Island	3,392	3,438	3,419	3,486	3,365	3,398
Nova Scotia	3,404	3,430	3,457	3,487	3,347	3,374
New Brunswick	3,396	3,445	3,454	3,506	3,338	3,380
Quebec	3,349	3,375	3,409	3,440	3,286	3,315
Ontario	3,353	3,380	3,409	3,440	3,293	3,320
Manitoba	3,438	3,458	3,488	3,515	3,386	3,402
Saskatchewan	3,431	3,463	3,495	3,530	3,365	3,400
Alberta	3,333	3,366	3,391	3,430	3,271	3,307
British Columbia	3,394	3,415	3,450	3,476	3,334	3,355
Yukon	3,383	3,438	3,424	3,482	3,336	3,375
Northwest Territories	3,533	3,572	3,593	3,657	3,466	3,487
Nunavut	3,329	3,345	3,340	3,366	3,318	3,334
Unknown	2,891	3,005	2,912	3,005	2,876	2,975

1. Mean birth weight is calculated for Canada, a province or a territory by summing the first weight of each newborn (obtained immediately after birth) and then dividing the sum by the total number of live births in that jurisdiction.
2. Median birth weight refers to the middle value birth weight when newborns' birth weight is ranked from lightest to heaviest. In the case of an even number of observations, the median is the arithmetic average of the two middle values.

Note(s): See "Data quality, concepts and methodology — Explanatory notes for the tables".

Source(s): Statistics Canada, Canadian Vital Statistics, Birth Database (CANSIM table 102-4510).

Table 6-1
Live births, Canada — Age and marital status of mother

Marital status of mother	Age of mother ¹									
	All ages	Under 15 years	15 to 19 years	20 to 24 years	25 to 29 years	30 to 34 years	35 to 39 years	40 to 44 years	45 to 49 years	Not stated ²
	number									
Total ³	380,863	104	15,534	57,778	116,878	120,734	57,733	11,364	605	133
Single (never married)	103,693	84	10,365	26,646	33,865	22,737	8,289	1,588	81	38
Married	228,917	3	925	18,426	69,548	87,819	43,532	8,177	425	62
Widowed	168	0	0	15	28	53	41	29	2	0
Divorced	3,551	0	6	126	682	1,243	1,083	378	32	1
Separated	1,352	0	23	176	372	428	278	70	5	0
Not stated	43,182	17	4,215	12,389	12,383	8,454	4,510	1,122	60	32
	percent									
Total ³	100.0	100.0	100.0	100.0	100.0	100.0	100.0	100.0	100.0	100.0
Single (never married)	27.2	80.8	66.7	46.1	29.0	18.8	14.4	14.0	13.4	28.6
Married	60.1	2.9	6.0	31.9	59.5	72.7	75.4	72.0	70.2	46.6
Widowed	0.0	0.0	0.0	0.0	0.0	0.0	0.1	0.3	0.3	0.0
Divorced	0.9	0.0	0.0	0.2	0.6	1.0	1.9	3.3	5.3	0.8
Separated	0.4	0.0	0.1	0.3	0.3	0.4	0.5	0.6	0.8	0.0
Not stated	11.3	16.3	27.1	21.4	10.6	7.0	7.8	9.9	9.9	24.1

1. Age of mother attained at the last birthday preceding delivery.
2. For confidentiality reasons, live births to mothers aged 50 and over are included in the category "Age of mother, not stated." Where information is unavailable on the birth mother of children who are adopted, these records are included in the category "Age of mother, not stated."
3. Partway through 2003, Alberta Registries amended their Registration of Birth form in such a way that Statistics Canada can no longer determine the legal marital status of those persons in common-law marriages.

Note(s): See "Data quality, concepts and methodology — Explanatory notes for the tables".

Source(s): Statistics Canada, Canadian Vital Statistics, Birth Database (CANSIM table 102-4507).

Table 6-2
Live births, Canada — Age and parity of mother

Parity of mother	Age of mother ¹									
	All ages	Under 15 years	15 to 19 years	20 to 24 years	25 to 29 years	30 to 34 years	35 to 39 years	40 to 44 years	45 to 49 years	Not stated ²
	number									
Total	380,863	104	15,534	57,778	116,878	120,734	57,733	11,364	605	133
First live birth	167,564	102	13,120	34,835	57,066	43,665	15,648	2,896	179	53
Second live birth	133,413	1	2,117	16,721	39,252	47,874	23,256	3,985	179	28
Third live birth	51,747	1	262	4,662	13,731	19,201	11,503	2,262	112	13
Fourth live birth	17,202	0	30	1,220	4,547	6,066	4,239	1,046	49	5
Fifth live birth	6,024	0	2	260	1,467	2,252	1,506	504	29	4
Sixth live birth	2,719	0	0	65	565	987	774	304	18	6
Seventh live birth	902	0	0	3	141	329	296	124	9	0
Eighth live birth	480	0	0	0	48	161	191	70	10	0
Ninth live birth	275	0	0	0	13	72	124	60	6	0
Tenth live birth or more	272	0	0	0	6	49	119	83	14	1
Not stated	265	0	3	12	42	78	77	30	0	23
	percent									
Total	100.0	100.0	100.0	100.0	100.0	100.0	100.0	100.0	100.0	100.0
First live birth	44.0	98.1	84.5	60.3	48.8	36.2	27.1	25.5	29.6	39.8
Second live birth	35.0	1.0	13.6	28.9	33.6	39.7	40.3	35.1	29.6	21.1
Third live birth	13.6	1.0	1.7	8.1	11.7	15.9	19.9	19.9	18.5	9.8
Fourth live birth	4.5	0.0	0.2	2.1	3.9	5.0	7.3	9.2	8.1	3.8
Fifth live birth	1.6	0.0	0.0	0.4	1.3	1.9	2.6	4.4	4.8	3.0
Sixth live birth	0.7	0.0	0.0	0.1	0.5	0.8	1.3	2.7	3.0	4.5
Seventh live birth	0.2	0.0	0.0	0.0	0.1	0.3	0.5	1.1	1.5	0.0
Eighth live birth	0.1	0.0	0.0	0.0	0.0	0.1	0.3	0.6	1.7	0.0
Ninth live birth	0.1	0.0	0.0	0.0	0.0	0.1	0.2	0.5	1.0	0.0
Tenth live birth or more	0.1	0.0	0.0	0.0	0.0	0.0	0.2	0.7	2.3	0.8
Not stated	0.1	0.0	0.0	0.0	0.0	0.1	0.1	0.3	0.0	17.3

1. Age of mother attained at the last birthday preceding delivery.

2. For confidentiality reasons, live births to mothers aged 50 and over are included in the category "Age of mother, not stated." Where information is unavailable on the birth mother of children who are adopted, these records are included in the category "Age of mother, not stated."

Note(s): See "Data quality, concepts and methodology — Explanatory notes for the tables".

Source(s): Statistics Canada, Canadian Vital Statistics, Birth Database (CANSIM table 102-4508).

Table 7-1
Live births, by birth weight and geography — Both sexes

Birth weight	Place of residence of mother						
	Canada	Newfoundland and Labrador	Prince Edward Island	Nova Scotia	New Brunswick	Quebec	Ontario
	number						
Total	380,863	4,915	1,457	8,989	7,391	88,867	140,370
Less than 500 grams	289	13	1	5	12	97	49
500 to 1,499 grams	3,452	48	29	77	74	687	1,364
500 to 749 grams	650	10	7	16	10	143	240
750 to 999 grams	726	12	6	13	17	163	289
1,000 to 1,249 grams	906	9	6	23	19	164	372
1,250 to 1,499 grams	1,170	17	10	25	28	217	463
1,500 to 2,499 grams	19,552	208	65	440	362	4,375	7,555
1,500 to 1,749 grams	1,705	18	6	41	27	353	635
1,750 to 1,999 grams	2,936	28	10	76	68	639	1,123
2,000 to 2,249 grams	5,129	59	23	105	98	1,155	1,998
2,250 to 2,499 grams	9,782	103	26	218	169	2,228	3,799
2,500 to 4,499 grams	350,643	4,512	1,321	8,279	6,814	82,508	128,981
2,500 to 2,749 grams	19,793	229	54	418	374	4,741	7,559
2,750 to 2,999 grams	39,133	465	128	850	626	9,339	14,920
3,000 to 3,249 grams	64,068	676	231	1,389	1,143	15,523	24,058
3,250 to 3,499 grams	76,578	905	290	1,829	1,439	18,602	27,875
3,500 to 3,749 grams	68,117	864	268	1,628	1,405	16,008	24,795
3,750 to 3,999 grams	46,563	738	181	1,184	1,011	10,691	16,689
4,000 to 4,249 grams	25,055	452	127	622	573	5,355	8,981
4,250 to 4,499 grams	11,336	183	42	359	243	2,249	4,104
4,500 grams or more	6,697	133	36	188	128	1,199	2,396
4,500 to 4,749 grams	4,411	88	21	115	79	818	1,579
4,750 to 4,999 grams	1,572	26	8	54	30	268	560
5,000 to 5,249 grams	500	12	6	10	11	81	174
5,250 to 5,499 grams	148	7	1	4	7	17	58
5,500 grams or more	66	0	0	5	1	15	25
Not stated	230	1	5	0	1	1	25
	percent						
Total	100.0	100.0	100.0	100.0	100.0	100.0	100.0
Less than 500 grams	0.1	0.3	0.1	0.1	0.2	0.1	0.0
500 to 1,499 grams	0.9	1.0	2.0	0.9	1.0	0.8	1.0
500 to 749 grams	0.2	0.2	0.5	0.2	0.1	0.2	0.2
750 to 999 grams	0.2	0.2	0.4	0.1	0.2	0.2	0.2
1,000 to 1,249 grams	0.2	0.2	0.4	0.3	0.3	0.2	0.3
1,250 to 1,499 grams	0.3	0.3	0.7	0.3	0.4	0.2	0.3
1,500 to 2,499 grams	5.1	4.2	4.5	4.9	4.9	4.9	5.4
1,500 to 1,749 grams	0.4	0.4	0.4	0.5	0.4	0.4	0.5
1,750 to 1,999 grams	0.8	0.6	0.7	0.8	0.9	0.7	0.8
2,000 to 2,249 grams	1.3	1.2	1.6	1.2	1.3	1.3	1.4
2,250 to 2,499 grams	2.6	2.1	1.8	2.4	2.3	2.5	2.7
2,500 to 4,499 grams	92.1	91.8	90.7	92.1	92.2	92.8	91.9
2,500 to 2,749 grams	5.2	4.7	3.7	4.7	5.1	5.3	5.4
2,750 to 2,999 grams	10.3	9.5	8.8	9.5	8.5	10.5	10.6
3,000 to 3,249 grams	16.8	13.8	15.9	15.5	15.5	17.5	17.1
3,250 to 3,499 grams	20.1	18.4	19.9	20.3	19.5	20.9	19.9
3,500 to 3,749 grams	17.9	17.6	18.4	18.1	19.0	18.0	17.7
3,750 to 3,999 grams	12.2	15.0	12.4	13.2	13.7	12.0	11.9
4,000 to 4,249 grams	6.6	9.2	8.7	6.9	7.8	6.0	6.4
4,250 to 4,499 grams	3.0	3.7	2.9	4.0	3.3	2.5	2.9
4,500 grams or more	1.8	2.7	2.5	2.1	1.7	1.3	1.7
4,500 to 4,749 grams	1.2	1.8	1.4	1.3	1.1	0.9	1.1
4,750 to 4,999 grams	0.4	0.5	0.5	0.6	0.4	0.3	0.4
5,000 to 5,249 grams	0.1	0.2	0.4	0.1	0.1	0.1	0.1
5,250 to 5,499 grams	0.0	0.1	0.1	0.0	0.1	0.0	0.0
5,500 grams or more	0.0	0.0	0.0	0.1	0.0	0.0	0.0
Not stated	0.1	0.0	0.3	0.0	0.0	0.0	0.0

Table 7-1 – continued

Live births, by birth weight and geography — Both sexes

Birth weight	Place of residence of mother								
	Canada	Manitoba	Saskatchewan	Alberta	British Columbia	Yukon	Northwest Territories	Nunavut	Unknown
	number								
Total	380,863	15,940	14,241	51,722	44,993	383	711	877	7
Less than 500 grams	289	16	12	69	13	2	0	0	0
500 to 1,499 grams	3,452	148	128	548	328	4	7	10	0
500 to 749 grams	650	30	27	105	55	0	4	3	0
750 to 999 grams	726	23	27	109	61	1	2	3	0
1,000 to 1,249 grams	906	38	34	150	89	0	1	1	0
1,250 to 1,499 grams	1,170	57	40	184	123	3	0	3	0
1,500 to 2,499 grams	19,552	708	674	2,951	2,100	20	27	64	3
1,500 to 1,749 grams	1,705	56	60	277	219	1	3	9	0
1,750 to 1,999 grams	2,936	103	115	446	307	3	6	11	1
2,000 to 2,249 grams	5,129	180	167	777	543	4	5	15	0
2,250 to 2,499 grams	9,782	369	332	1,451	1,031	12	13	29	2
2,500 to 4,499 grams	350,643	14,605	13,028	47,340	41,461	351	652	787	4
2,500 to 2,749 grams	19,793	713	670	2,876	2,069	24	17	49	0
2,750 to 2,999 grams	39,133	1,391	1,272	5,501	4,490	27	53	71	0
3,000 to 3,249 grams	64,068	2,413	2,071	8,886	7,367	65	79	165	2
3,250 to 3,499 grams	76,578	3,041	2,647	10,494	9,083	67	127	179	0
3,500 to 3,749 grams	68,117	2,934	2,628	8,998	8,224	83	148	132	2
3,750 to 3,999 grams	46,563	2,237	1,972	6,010	5,599	43	117	91	0
4,000 to 4,249 grams	25,055	1,193	1,206	3,139	3,241	27	70	69	0
4,250 to 4,499 grams	11,336	683	562	1,436	1,388	15	41	31	0
4,500 grams or more	6,697	460	390	813	909	6	24	15	0
4,500 to 4,749 grams	4,411	287	258	546	593	3	11	13	0
4,750 to 4,999 grams	1,572	111	79	197	228	1	9	1	0
5,000 to 5,249 grams	500	43	37	52	69	1	3	1	0
5,250 to 5,499 grams	148	12	11	11	18	1	1	0	0
5,500 grams or more	66	7	5	7	1	0	0	0	0
Not stated	230	3	9	1	182	0	1	1	0
	percent								
Total	100.0	100.0	100.0	100.0	100.0	100.0	100.0	100.0	100.0
Less than 500 grams	0.1	0.1	0.1	0.1	0.0	0.5	0.0	0.0	0.0
500 to 1,499 grams	0.9	0.9	0.9	1.1	0.7	1.0	1.0	1.1	0.0
500 to 749 grams	0.2	0.2	0.2	0.2	0.1	0.0	0.6	0.3	0.0
750 to 999 grams	0.2	0.1	0.2	0.2	0.1	0.3	0.3	0.3	0.0
1,000 to 1,249 grams	0.2	0.2	0.2	0.3	0.2	0.0	0.1	0.1	0.0
1,250 to 1,499 grams	0.3	0.4	0.3	0.4	0.3	0.8	0.0	0.3	0.0
1,500 to 2,499 grams	5.1	4.4	4.7	5.7	4.7	5.2	3.8	7.3	42.9
1,500 to 1,749 grams	0.4	0.4	0.4	0.5	0.5	0.3	0.4	1.0	0.0
1,750 to 1,999 grams	0.8	0.6	0.8	0.9	0.7	0.8	0.8	1.3	14.3
2,000 to 2,249 grams	1.3	1.1	1.2	1.5	1.2	1.0	0.7	1.7	0.0
2,250 to 2,499 grams	2.6	2.3	2.3	2.8	2.3	3.1	1.8	3.3	28.6
2,500 to 4,499 grams	92.1	91.6	91.5	91.5	92.1	91.6	91.7	89.7	57.1
2,500 to 2,749 grams	5.2	4.5	4.7	5.6	4.6	6.3	2.4	5.6	0.0
2,750 to 2,999 grams	10.3	8.7	8.9	10.6	10.0	7.0	7.5	8.1	0.0
3,000 to 3,249 grams	16.8	15.1	14.5	17.2	16.4	17.0	11.1	18.8	28.6
3,250 to 3,499 grams	20.1	19.1	18.6	20.3	20.2	17.5	17.9	20.4	0.0
3,500 to 3,749 grams	17.9	18.4	18.5	17.4	18.3	21.7	20.8	15.1	28.6
3,750 to 3,999 grams	12.2	14.0	13.8	11.6	12.4	11.2	16.5	10.4	0.0
4,000 to 4,249 grams	6.6	7.5	8.5	6.1	7.2	7.0	9.8	7.9	0.0
4,250 to 4,499 grams	3.0	4.3	3.9	2.8	3.1	3.9	5.8	3.5	0.0
4,500 grams or more	1.8	2.9	2.7	1.6	2.0	1.6	3.4	1.7	0.0
4,500 to 4,749 grams	1.2	1.8	1.8	1.1	1.3	0.8	1.5	1.5	0.0
4,750 to 4,999 grams	0.4	0.7	0.6	0.4	0.5	0.3	1.3	0.1	0.0
5,000 to 5,249 grams	0.1	0.3	0.3	0.1	0.2	0.3	0.4	0.1	0.0
5,250 to 5,499 grams	0.0	0.1	0.1	0.0	0.0	0.3	0.1	0.0	0.0
5,500 grams or more	0.0	0.0	0.0	0.0	0.0	0.0	0.0	0.0	0.0
Not stated	0.1	0.0	0.1	0.0	0.4	0.0	0.1	0.1	0.0

Note(s): See "Data quality, concepts and methodology — Explanatory notes for the tables".

Source(s): Statistics Canada, Canadian Vital Statistics, Birth Database (CANSIM table 102-4509).

Table 7-2
Live births, by birth weight and geography — Males

Birth weight	Place of residence of mother						
	Canada	Newfoundland and Labrador	Prince Edward Island	Nova Scotia	New Brunswick	Quebec	Ontario
	number						
Total	195,445	2,574	732	4,656	3,715	45,621	72,021
Less than 500 grams	143	7	1	5	6	47	23
500 to 1,499 grams	1,786	26	16	38	40	357	717
500 to 749 grams	319	6	5	7	6	75	121
750 to 999 grams	381	6	3	8	9	92	151
1,000 to 1,249 grams	488	6	2	9	12	89	194
1,250 to 1,499 grams	598	8	6	14	13	101	251
1,500 to 2,499 grams	9,227	106	33	218	162	2,009	3,553
1,500 to 1,749 grams	870	14	1	21	17	187	298
1,750 to 1,999 grams	1,407	11	8	38	37	294	539
2,000 to 2,249 grams	2,460	28	10	56	41	534	977
2,250 to 2,499 grams	4,490	53	14	103	67	994	1,739
2,500 to 4,499 grams	179,596	2,353	659	4,266	3,414	42,398	66,079
2,500 to 2,749 grams	8,641	105	26	181	178	1,995	3,315
2,750 to 2,999 grams	17,258	217	72	402	268	4,080	6,631
3,000 to 3,249 grams	29,709	310	95	651	494	7,187	11,166
3,250 to 3,499 grams	37,936	434	129	887	683	9,306	13,888
3,500 to 3,749 grams	36,421	467	141	841	713	8,651	13,235
3,750 to 3,999 grams	26,827	415	93	683	578	6,319	9,643
4,000 to 4,249 grams	15,466	288	74	379	347	3,367	5,567
4,250 to 4,499 grams	7,338	117	29	242	153	1,493	2,634
4,500 grams or more	4,572	82	21	129	92	809	1,635
4,500 to 4,749 grams	3,003	52	11	77	55	561	1,072
4,750 to 4,999 grams	1,071	18	5	40	22	171	384
5,000 to 5,249 grams	343	7	5	6	10	52	120
5,250 to 5,499 grams	106	5	0	3	5	14	41
5,500 grams or more	49	0	0	3	0	11	18
Not stated	121	0	2	0	1	1	14
	percent						
Total	100.0	100.0	100.0	100.0	100.0	100.0	100.0
Less than 500 grams	0.1	0.3	0.1	0.1	0.2	0.1	0.0
500 to 1,499 grams	0.9	1.0	2.2	0.8	1.1	0.8	1.0
500 to 749 grams	0.2	0.2	0.7	0.2	0.2	0.2	0.2
750 to 999 grams	0.2	0.2	0.4	0.2	0.2	0.2	0.2
1,000 to 1,249 grams	0.2	0.2	0.3	0.2	0.3	0.2	0.3
1,250 to 1,499 grams	0.3	0.3	0.8	0.3	0.3	0.2	0.3
1,500 to 2,499 grams	4.7	4.1	4.5	4.7	4.4	4.4	4.9
1,500 to 1,749 grams	0.4	0.5	0.1	0.5	0.5	0.4	0.4
1,750 to 1,999 grams	0.7	0.4	1.1	0.8	1.0	0.6	0.7
2,000 to 2,249 grams	1.3	1.1	1.4	1.2	1.1	1.2	1.4
2,250 to 2,499 grams	2.3	2.1	1.9	2.2	1.8	2.2	2.4
2,500 to 4,499 grams	91.9	91.4	90.0	91.6	91.9	92.9	91.7
2,500 to 2,749 grams	4.4	4.1	3.6	3.9	4.8	4.4	4.6
2,750 to 2,999 grams	8.8	8.4	9.8	8.6	7.2	8.9	9.2
3,000 to 3,249 grams	15.2	12.0	13.0	14.0	13.3	15.8	15.5
3,250 to 3,499 grams	19.4	16.9	17.6	19.1	18.4	20.4	19.3
3,500 to 3,749 grams	18.6	18.1	19.3	18.1	19.2	19.0	18.4
3,750 to 3,999 grams	13.7	16.1	12.7	14.7	15.6	13.9	13.4
4,000 to 4,249 grams	7.9	11.2	10.1	8.1	9.3	7.4	7.7
4,250 to 4,499 grams	3.8	4.5	4.0	5.2	4.1	3.3	3.7
4,500 grams or more	2.3	3.2	2.9	2.8	2.5	1.8	2.3
4,500 to 4,749 grams	1.5	2.0	1.5	1.7	1.5	1.2	1.5
4,750 to 4,999 grams	0.5	0.7	0.7	0.9	0.6	0.4	0.5
5,000 to 5,249 grams	0.2	0.3	0.7	0.1	0.3	0.1	0.2
5,250 to 5,499 grams	0.1	0.2	0.0	0.1	0.1	0.0	0.1
5,500 grams or more	0.0	0.0	0.0	0.1	0.0	0.0	0.0
Not stated	0.1	0.0	0.3	0.0	0.0	0.0	0.0

Table 7-2 – continued

Live births, by birth weight and geography — Males

Birth weight	Place of residence of mother								
	Canada	Manitoba	Saskatchewan	Alberta	British Columbia	Yukon	Northwest Territories	Nunavut	Unknown
	number								
Total	195,445	8,089	7,236	26,552	23,231	204	375	436	3
Less than 500 grams	143	9	4	33	6	2	0	0	0
500 to 1,499 grams	1,786	72	65	273	171	1	4	6	0
500 to 749 grams	319	11	12	48	23	0	3	2	0
750 to 999 grams	381	15	13	49	32	1	0	2	0
1,000 to 1,249 grams	488	20	19	82	53	0	1	1	0
1,250 to 1,499 grams	598	26	21	94	63	0	0	1	0
1,500 to 2,499 grams	9,227	346	316	1,404	1,023	11	12	33	1
1,500 to 1,749 grams	870	33	28	145	120	0	1	5	0
1,750 to 1,999 grams	1,407	48	57	220	146	2	2	5	0
2,000 to 2,249 grams	2,460	81	78	373	267	2	4	9	0
2,250 to 2,499 grams	4,490	184	153	666	490	7	5	14	1
2,500 to 4,499 grams	179,596	7,349	6,581	24,282	21,298	186	344	385	2
2,500 to 2,749 grams	8,641	332	300	1,231	936	12	6	24	0
2,750 to 2,999 grams	17,258	616	525	2,396	1,983	13	25	30	0
3,000 to 3,249 grams	29,709	1,109	955	4,172	3,416	36	34	82	2
3,250 to 3,499 grams	37,936	1,454	1,267	5,253	4,459	30	59	87	0
3,500 to 3,749 grams	36,421	1,541	1,361	4,877	4,410	39	82	63	0
3,750 to 3,999 grams	26,827	1,197	1,076	3,467	3,208	24	76	48	0
4,000 to 4,249 grams	15,466	689	730	1,961	1,971	22	39	32	0
4,250 to 4,499 grams	7,338	411	367	925	915	10	23	19	0
4,500 grams or more	4,572	312	265	560	637	4	15	11	0
4,500 to 4,749 grams	3,003	197	180	374	408	2	5	9	0
4,750 to 4,999 grams	1,071	72	49	136	165	1	7	1	0
5,000 to 5,249 grams	343	28	26	35	51	0	2	1	0
5,250 to 5,499 grams	106	8	7	9	12	1	1	0	0
5,500 grams or more	49	7	3	6	1	0	0	0	0
Not stated	121	1	5	0	96	0	0	1	0
	percent								
Total	100.0	100.0	100.0	100.0	100.0	100.0	100.0	100.0	100.0
Less than 500 grams	0.1	0.1	0.1	0.1	0.0	1.0	0.0	0.0	0.0
500 to 1,499 grams	0.9	0.9	0.9	1.0	0.7	0.5	1.1	1.4	0.0
500 to 749 grams	0.2	0.1	0.2	0.2	0.1	0.0	0.8	0.5	0.0
750 to 999 grams	0.2	0.2	0.2	0.2	0.1	0.5	0.0	0.5	0.0
1,000 to 1,249 grams	0.2	0.2	0.3	0.3	0.2	0.0	0.3	0.2	0.0
1,250 to 1,499 grams	0.3	0.3	0.3	0.4	0.3	0.0	0.0	0.2	0.0
1,500 to 2,499 grams	4.7	4.3	4.4	5.3	4.4	5.4	3.2	7.6	33.3
1,500 to 1,749 grams	0.4	0.4	0.4	0.5	0.5	0.0	0.3	1.1	0.0
1,750 to 1,999 grams	0.7	0.6	0.8	0.8	0.6	1.0	0.5	1.1	0.0
2,000 to 2,249 grams	1.3	1.0	1.1	1.4	1.1	1.0	1.1	2.1	0.0
2,250 to 2,499 grams	2.3	2.3	2.1	2.5	2.1	3.4	1.3	3.2	33.3
2,500 to 4,499 grams	91.9	90.9	90.9	91.5	91.7	91.2	91.7	88.3	66.7
2,500 to 2,749 grams	4.4	4.1	4.1	4.6	4.0	5.9	1.6	5.5	0.0
2,750 to 2,999 grams	8.8	7.6	7.3	9.0	8.5	6.4	6.7	6.9	0.0
3,000 to 3,249 grams	15.2	13.7	13.2	15.7	14.7	17.6	9.1	18.8	66.7
3,250 to 3,499 grams	19.4	18.0	17.5	19.8	19.2	14.7	15.7	20.0	0.0
3,500 to 3,749 grams	18.6	19.1	18.8	18.4	19.0	19.1	21.9	14.4	0.0
3,750 to 3,999 grams	13.7	14.8	14.9	13.1	13.8	11.8	20.3	11.0	0.0
4,000 to 4,249 grams	7.9	8.5	10.1	7.4	8.5	10.8	10.4	7.3	0.0
4,250 to 4,499 grams	3.8	5.1	5.1	3.5	3.9	4.9	6.1	4.4	0.0
4,500 grams or more	2.3	3.9	3.7	2.1	2.7	2.0	4.0	2.5	0.0
4,500 to 4,749 grams	1.5	2.4	2.5	1.4	1.8	1.0	1.3	2.1	0.0
4,750 to 4,999 grams	0.5	0.9	0.7	0.5	0.7	0.5	1.9	0.2	0.0
5,000 to 5,249 grams	0.2	0.3	0.4	0.1	0.2	0.0	0.5	0.2	0.0
5,250 to 5,499 grams	0.1	0.1	0.1	0.0	0.1	0.5	0.3	0.0	0.0
5,500 grams or more	0.0	0.1	0.0	0.0	0.0	0.0	0.0	0.0	0.0
Not stated	0.1	0.0	0.1	0.0	0.4	0.0	0.0	0.2	0.0

Note(s): See "Data quality, concepts and methodology — Explanatory notes for the tables".

Source(s): Statistics Canada, Canadian Vital Statistics, Birth Database (CANSIM table 102-4509).

Table 7-3
Live births, by birth weight and geography — Females

Birth weight	Place of residence of mother						
	Canada	Newfoundland and Labrador	Prince Edward Island	Nova Scotia	New Brunswick	Quebec	Ontario
	number						
Total	185,418	2,341	725	4,333	3,676	43,246	68,349
Less than 500 grams	146	6	0	0	6	50	26
500 to 1,499 grams	1,666	22	13	39	34	330	647
500 to 749 grams	331	4	2	9	4	68	119
750 to 999 grams	345	6	3	5	8	71	138
1,000 to 1,249 grams	418	3	4	14	7	75	178
1,250 to 1,499 grams	572	9	4	11	15	116	212
1,500 to 2,499 grams	10,325	102	32	222	200	2,366	4,002
1,500 to 1,749 grams	835	4	5	20	10	166	337
1,750 to 1,999 grams	1,529	17	2	38	31	345	584
2,000 to 2,249 grams	2,669	31	13	49	57	621	1,021
2,250 to 2,499 grams	5,292	50	12	115	102	1,234	2,060
2,500 to 4,499 grams	171,047	2,159	662	4,013	3,400	40,110	62,902
2,500 to 2,749 grams	11,152	124	28	237	196	2,746	4,244
2,750 to 2,999 grams	21,875	248	56	448	358	5,259	8,289
3,000 to 3,249 grams	34,359	366	136	738	649	8,336	12,892
3,250 to 3,499 grams	38,642	471	161	942	756	9,296	13,987
3,500 to 3,749 grams	31,696	397	127	787	692	7,357	11,560
3,750 to 3,999 grams	19,736	323	88	501	433	4,372	7,046
4,000 to 4,249 grams	9,589	164	53	243	226	1,988	3,414
4,250 to 4,499 grams	3,998	66	13	117	90	756	1,470
4,500 grams or more	2,125	51	15	59	36	390	761
4,500 to 4,749 grams	1,408	36	10	38	24	257	507
4,750 to 4,999 grams	501	8	3	14	8	97	176
5,000 to 5,249 grams	157	5	1	4	1	29	54
5,250 to 5,499 grams	42	2	1	2	2	3	17
5,500 grams or more	17	0	0	2	1	4	7
Not stated	109	1	3	0	0	0	11
	percent						
Total	100.0	100.0	100.0	100.0	100.0	100.0	100.0
Less than 500 grams	0.1	0.3	0.0	0.0	0.2	0.1	0.0
500 to 1,499 grams	0.9	0.9	1.8	0.9	0.9	0.8	0.9
500 to 749 grams	0.2	0.2	0.3	0.2	0.1	0.2	0.2
750 to 999 grams	0.2	0.3	0.4	0.1	0.2	0.2	0.2
1,000 to 1,249 grams	0.2	0.1	0.6	0.3	0.2	0.2	0.3
1,250 to 1,499 grams	0.3	0.4	0.6	0.3	0.4	0.3	0.3
1,500 to 2,499 grams	5.6	4.4	4.4	5.1	5.4	5.5	5.9
1,500 to 1,749 grams	0.5	0.2	0.7	0.5	0.3	0.4	0.5
1,750 to 1,999 grams	0.8	0.7	0.3	0.9	0.8	0.8	0.9
2,000 to 2,249 grams	1.4	1.3	1.8	1.1	1.6	1.4	1.5
2,250 to 2,499 grams	2.9	2.1	1.7	2.7	2.8	2.9	3.0
2,500 to 4,499 grams	92.2	92.2	91.3	92.6	92.5	92.7	92.0
2,500 to 2,749 grams	6.0	5.3	3.9	5.5	5.3	6.3	6.2
2,750 to 2,999 grams	11.8	10.6	7.7	10.3	9.7	12.2	12.1
3,000 to 3,249 grams	18.5	15.6	18.8	17.0	17.7	19.3	18.9
3,250 to 3,499 grams	20.8	20.1	22.2	21.7	20.6	21.5	20.5
3,500 to 3,749 grams	17.1	17.0	17.5	18.2	18.8	17.0	16.9
3,750 to 3,999 grams	10.6	13.8	12.1	11.6	11.8	10.1	10.3
4,000 to 4,249 grams	5.2	7.0	7.3	5.6	6.1	4.6	5.0
4,250 to 4,499 grams	2.2	2.8	1.8	2.7	2.4	1.7	2.2
4,500 grams or more	1.1	2.2	2.1	1.4	1.0	0.9	1.1
4,500 to 4,749 grams	0.8	1.5	1.4	0.9	0.7	0.6	0.7
4,750 to 4,999 grams	0.3	0.3	0.4	0.3	0.2	0.2	0.3
5,000 to 5,249 grams	0.1	0.2	0.1	0.1	0.0	0.1	0.1
5,250 to 5,499 grams	0.0	0.1	0.1	0.0	0.1	0.0	0.0
5,500 grams or more	0.0	0.0	0.0	0.0	0.0	0.0	0.0
Not stated	0.1	0.0	0.4	0.0	0.0	0.0	0.0

Table 7-3 – continued

Live births, by birth weight and geography — Females

Birth weight	Place of residence of mother								
	Canada	Manitoba	Saskatchewan	Alberta	British Columbia	Yukon	Northwest Territories	Nunavut	Unknown
	number								
Total	185,418	7,851	7,005	25,170	21,762	179	336	441	4
Less than 500 grams	146	7	8	36	7	0	0	0	0
500 to 1,499 grams	1,666	76	63	275	157	3	3	4	0
500 to 749 grams	331	19	15	57	32	0	1	1	0
750 to 999 grams	345	8	14	60	29	0	2	1	0
1,000 to 1,249 grams	418	18	15	68	36	0	0	0	0
1,250 to 1,499 grams	572	31	19	90	60	3	0	2	0
1,500 to 2,499 grams	10,325	362	358	1,547	1,077	9	15	31	2
1,500 to 1,749 grams	835	23	32	132	99	1	2	4	0
1,750 to 1,999 grams	1,529	55	58	226	161	1	4	6	1
2,000 to 2,249 grams	2,669	99	89	404	276	2	1	6	0
2,250 to 2,499 grams	5,292	185	179	785	541	5	8	15	1
2,500 to 4,499 grams	171,047	7,256	6,447	23,058	20,163	165	308	402	2
2,500 to 2,749 grams	11,152	381	370	1,645	1,133	12	11	25	0
2,750 to 2,999 grams	21,875	775	747	3,105	2,507	14	28	41	0
3,000 to 3,249 grams	34,359	1,304	1,116	4,714	3,951	29	45	83	0
3,250 to 3,499 grams	38,642	1,587	1,380	5,241	4,624	37	68	92	0
3,500 to 3,749 grams	31,696	1,393	1,267	4,121	3,814	44	66	69	2
3,750 to 3,999 grams	19,736	1,040	896	2,543	2,391	19	41	43	0
4,000 to 4,249 grams	9,589	504	476	1,178	1,270	5	31	37	0
4,250 to 4,499 grams	3,998	272	195	511	473	5	18	12	0
4,500 grams or more	2,125	148	125	253	272	2	9	4	0
4,500 to 4,749 grams	1,408	90	78	172	185	1	6	4	0
4,750 to 4,999 grams	501	39	30	61	63	0	2	0	0
5,000 to 5,249 grams	157	15	11	17	18	1	1	0	0
5,250 to 5,499 grams	42	4	4	2	6	0	0	0	0
5,500 grams or more	17	0	2	1	0	0	0	0	0
Not stated	109	2	4	1	86	0	1	0	0
	percent								
Total	100.0	100.0	100.0	100.0	100.0	100.0	100.0	100.0	100.0
Less than 500 grams	0.1	0.1	0.1	0.1	0.0	0.0	0.0	0.0	0.0
500 to 1,499 grams	0.9	1.0	0.9	1.1	0.7	1.7	0.9	0.9	0.0
500 to 749 grams	0.2	0.2	0.2	0.2	0.1	0.0	0.3	0.2	0.0
750 to 999 grams	0.2	0.1	0.2	0.2	0.1	0.0	0.6	0.2	0.0
1,000 to 1,249 grams	0.2	0.2	0.2	0.3	0.2	0.0	0.0	0.0	0.0
1,250 to 1,499 grams	0.3	0.4	0.3	0.4	0.3	1.7	0.0	0.5	0.0
1,500 to 2,499 grams	5.6	4.6	5.1	6.1	4.9	5.0	4.5	7.0	50.0
1,500 to 1,749 grams	0.5	0.3	0.5	0.5	0.5	0.6	0.6	0.9	0.0
1,750 to 1,999 grams	0.8	0.7	0.8	0.9	0.7	0.6	1.2	1.4	25.0
2,000 to 2,249 grams	1.4	1.3	1.3	1.6	1.3	1.1	0.3	1.4	0.0
2,250 to 2,499 grams	2.9	2.4	2.6	3.1	2.5	2.8	2.4	3.4	25.0
2,500 to 4,499 grams	92.2	92.4	92.0	91.6	92.7	92.2	91.7	91.2	50.0
2,500 to 2,749 grams	6.0	4.9	5.3	6.5	5.2	6.7	3.3	5.7	0.0
2,750 to 2,999 grams	11.8	9.9	10.7	12.3	11.5	7.8	8.3	9.3	0.0
3,000 to 3,249 grams	18.5	16.6	15.9	18.7	18.2	16.2	13.4	18.8	0.0
3,250 to 3,499 grams	20.8	20.2	19.7	20.8	21.2	20.7	20.2	20.9	0.0
3,500 to 3,749 grams	17.1	17.7	18.1	16.4	17.5	24.6	19.6	15.6	50.0
3,750 to 3,999 grams	10.6	13.2	12.8	10.1	11.0	10.6	12.2	9.8	0.0
4,000 to 4,249 grams	5.2	6.4	6.8	4.7	5.8	2.8	9.2	8.4	0.0
4,250 to 4,499 grams	2.2	3.5	2.8	2.0	2.2	2.8	5.4	2.7	0.0
4,500 grams or more	1.1	1.9	1.8	1.0	1.2	1.1	2.7	0.9	0.0
4,500 to 4,749 grams	0.8	1.1	1.1	0.7	0.9	0.6	1.8	0.9	0.0
4,750 to 4,999 grams	0.3	0.5	0.4	0.2	0.3	0.0	0.6	0.0	0.0
5,000 to 5,249 grams	0.1	0.2	0.2	0.1	0.1	0.6	0.3	0.0	0.0
5,250 to 5,499 grams	0.0	0.1	0.1	0.0	0.0	0.0	0.0	0.0	0.0
5,500 grams or more	0.0	0.0	0.0	0.0	0.0	0.0	0.0	0.0	0.0
Not stated	0.1	0.0	0.1	0.0	0.4	0.0	0.3	0.0	0.0

Note(s): See "Data quality, concepts and methodology — Explanatory notes for the tables".

Source(s): Statistics Canada, Canadian Vital Statistics, Birth Database (CANSIM table 102-4509).

Table 8-1
Live births, by weeks of gestation and geography — Both sexes

Weeks of gestation	Place of residence of mother						
	Canada	Newfoundland and Labrador	Prince Edward Island	Nova Scotia	New Brunswick	Quebec	Ontario
	number						
Total	380,863	4,915	1,457	8,989	7,391	88,867	140,370
42 weeks or more	1,931	17	2	82	21	292	444
37 to 41 weeks	349,103	4,503	1,321	8,209	6,801	82,180	128,797
37 to 39 weeks	197,496	2,462	751	4,121	3,670	47,387	75,025
40 to 41 weeks	151,607	2,041	570	4,088	3,131	34,793	53,772
Less than 37 weeks	29,424	394	134	698	568	6,394	11,096
28 to 36 weeks	27,903	359	117	665	530	6,024	10,536
28 to 31 weeks	2,567	35	12	66	62	511	951
32 to 33 weeks	3,558	35	14	89	75	715	1,386
34 to 36 weeks	21,778	289	91	510	393	4,798	8,199
20 to 27 weeks	1,484	35	17	33	35	352	559
20 to 23 weeks	437	15	3	13	12	131	119
24 to 27 weeks	1,047	20	14	20	23	221	440
Less than 20 weeks	37	0	0	0	3	18	1
Not stated	405	1	0	0	1	1	33
	percent						
Total	100.0	100.0	100.0	100.0	100.0	100.0	100.0
42 weeks or more	0.5	0.3	0.1	0.9	0.3	0.3	0.3
37 to 41 weeks	91.7	91.6	90.7	91.3	92.0	92.5	91.8
37 to 39 weeks	51.9	50.1	51.5	45.8	49.7	53.3	53.4
40 to 41 weeks	39.8	41.5	39.1	45.5	42.4	39.2	38.3
Less than 37 weeks	7.7	8.0	9.2	7.8	7.7	7.2	7.9
28 to 36 weeks	7.3	7.3	8.0	7.4	7.2	6.8	7.5
28 to 31 weeks	0.7	0.7	0.8	0.7	0.8	0.6	0.7
32 to 33 weeks	0.9	0.7	1.0	1.0	1.0	0.8	1.0
34 to 36 weeks	5.7	5.9	6.2	5.7	5.3	5.4	5.8
20 to 27 weeks	0.4	0.7	1.2	0.4	0.5	0.4	0.4
20 to 23 weeks	0.1	0.3	0.2	0.1	0.2	0.1	0.1
24 to 27 weeks	0.3	0.4	1.0	0.2	0.3	0.2	0.3
Less than 20 weeks	0.0	0.0	0.0	0.0	0.0	0.0	0.0
Not stated	0.1	0.0	0.0	0.0	0.0	0.0	0.0

Table 8-1 – continued

Live births, by weeks of gestation and geography — Both sexes

Weeks of gestation	Place of residence of mother								
	Canada	Manitoba	Saskatchewan	Alberta	British Columbia	Yukon	Northwest Territories	Nunavut	Unknown
	number								
Total	380,863	15,940	14,241	51,722	44,993	383	711	877	7
42 weeks or more	1,931	449	149	183	259	5	26	2	0
37 to 41 weeks	349,103	14,272	13,021	46,994	41,273	332	626	769	5
37 to 39 weeks	197,496	7,121	6,563	26,605	22,784	171	277	556	3
40 to 41 weeks	151,607	7,151	6,458	20,389	18,489	161	349	213	2
Less than 37 weeks	29,424	1,214	975	4,542	3,199	46	58	105	1
28 to 36 weeks	27,903	1,148	946	4,244	3,136	43	52	102	1
28 to 31 weeks	2,567	114	87	405	292	5	6	20	1
32 to 33 weeks	3,558	137	109	558	416	2	7	15	0
34 to 36 weeks	21,778	897	750	3,281	2,428	36	39	67	0
20 to 27 weeks	1,484	62	28	288	63	3	6	3	0
20 to 23 weeks	437	20	2	113	5	2	1	1	0
24 to 27 weeks	1,047	42	26	175	58	1	5	2	0
Less than 20 weeks	37	4	1	10	0	0	0	0	0
Not stated	405	5	96	3	262	0	1	1	1
	percent								
Total	100.0	100.0	100.0	100.0	100.0	100.0	100.0	100.0	100.0
42 weeks or more	0.5	2.8	1.0	0.4	0.6	1.3	3.7	0.2	0.0
37 to 41 weeks	91.7	89.5	91.4	90.9	91.7	86.7	88.0	87.7	71.4
37 to 39 weeks	51.9	44.7	46.1	51.4	50.6	44.6	39.0	63.4	42.9
40 to 41 weeks	39.8	44.9	45.3	39.4	41.1	42.0	49.1	24.3	28.6
Less than 37 weeks	7.7	7.6	6.8	8.8	7.1	12.0	8.2	12.0	14.3
28 to 36 weeks	7.3	7.2	6.6	8.2	7.0	11.2	7.3	11.6	14.3
28 to 31 weeks	0.7	0.7	0.6	0.8	0.6	1.3	0.8	2.3	14.3
32 to 33 weeks	0.9	0.9	0.8	1.1	0.9	0.5	1.0	1.7	0.0
34 to 36 weeks	5.7	5.6	5.3	6.3	5.4	9.4	5.5	7.6	0.0
20 to 27 weeks	0.4	0.4	0.2	0.6	0.1	0.8	0.8	0.3	0.0
20 to 23 weeks	0.1	0.1	0.0	0.2	0.0	0.5	0.1	0.1	0.0
24 to 27 weeks	0.3	0.3	0.2	0.3	0.1	0.3	0.7	0.2	0.0
Less than 20 weeks	0.0	0.0	0.0	0.0	0.0	0.0	0.0	0.0	0.0
Not stated	0.1	0.0	0.7	0.0	0.6	0.0	0.1	0.1	14.3

Note(s): See "Data quality, concepts and methodology — Explanatory notes for the tables".

Source(s): Statistics Canada, Canadian Vital Statistics, Birth Database (CANSIM table 102-4512).

Table 8-2
Live births, by weeks of gestation and geography — Males

Weeks of gestation	Place of residence of mother						
	Canada	Newfoundland and Labrador	Prince Edward Island	Nova Scotia	New Brunswick	Quebec	Ontario
	number						
Total	195,445	2,574	732	4,656	3,715	45,621	72,021
42 weeks or more	1,033	11	2	50	11	155	248
37 to 41 weeks	178,391	2,350	651	4,227	3,404	42,082	65,837
37 to 39 weeks	101,565	1,298	366	2,153	1,852	24,445	38,578
40 to 41 weeks	76,826	1,052	285	2,074	1,552	17,637	27,259
Less than 37 weeks	15,821	213	79	379	299	3,384	5,920
28 to 36 weeks	14,977	194	67	359	278	3,182	5,608
28 to 31 weeks	1,371	22	7	38	40	267	497
32 to 33 weeks	1,985	21	9	39	40	401	770
34 to 36 weeks	11,621	151	51	282	198	2,514	4,341
20 to 27 weeks	824	19	12	20	19	193	312
20 to 23 weeks	237	8	3	11	7	65	65
24 to 27 weeks	587	11	9	9	12	128	247
Less than 20 weeks	20	0	0	0	2	9	0
Not stated	200	0	0	0	1	0	16
	percent						
Total	100.0	100.0	100.0	100.0	100.0	100.0	100.0
42 weeks or more	0.5	0.4	0.3	1.1	0.3	0.3	0.3
37 to 41 weeks	91.3	91.3	88.9	90.8	91.6	92.2	91.4
37 to 39 weeks	52.0	50.4	50.0	46.2	49.9	53.6	53.6
40 to 41 weeks	39.3	40.9	38.9	44.5	41.8	38.7	37.8
Less than 37 weeks	8.1	8.3	10.8	8.1	8.0	7.4	8.2
28 to 36 weeks	7.7	7.5	9.2	7.7	7.5	7.0	7.8
28 to 31 weeks	0.7	0.9	1.0	0.8	1.1	0.6	0.7
32 to 33 weeks	1.0	0.8	1.2	0.8	1.1	0.9	1.1
34 to 36 weeks	5.9	5.9	7.0	6.1	5.3	5.5	6.0
20 to 27 weeks	0.4	0.7	1.6	0.4	0.5	0.4	0.4
20 to 23 weeks	0.1	0.3	0.4	0.2	0.2	0.1	0.1
24 to 27 weeks	0.3	0.4	1.2	0.2	0.3	0.3	0.3
Less than 20 weeks	0.0	0.0	0.0	0.0	0.1	0.0	0.0
Not stated	0.1	0.0	0.0	0.0	0.0	0.0	0.0

Table 8-2 – continued

Live births, by weeks of gestation and geography — Males

Weeks of gestation	Place of residence of mother								
	Canada	Manitoba	Saskatchewan	Alberta	British Columbia	Yukon	Northwest Territories	Nunavut	Unknown
	number								
Total	195,445	8,089	7,236	26,552	23,231	204	375	436	3
42 weeks or more	1,033	238	70	92	144	2	10	0	0
37 to 41 weeks	178,391	7,168	6,601	23,983	21,184	181	338	383	2
37 to 39 weeks	101,565	3,609	3,345	13,542	11,861	87	154	273	2
40 to 41 weeks	76,826	3,559	3,256	10,441	9,323	94	184	110	0
Less than 37 weeks	15,821	682	520	2,477	1,769	21	26	52	0
28 to 36 weeks	14,977	645	502	2,320	1,730	18	24	50	0
28 to 31 weeks	1,371	56	51	214	161	1	2	15	0
32 to 33 weeks	1,985	72	61	335	227	2	2	6	0
34 to 36 weeks	11,621	517	390	1,771	1,342	15	20	29	0
20 to 27 weeks	824	34	17	152	39	3	2	2	0
20 to 23 weeks	237	11	2	57	4	2	1	1	0
24 to 27 weeks	587	23	15	95	35	1	1	1	0
Less than 20 weeks	20	3	1	5	0	0	0	0	0
Not stated	200	1	45	0	134	0	1	1	1
	percent								
Total	100.0	100.0	100.0	100.0	100.0	100.0	100.0	100.0	100.0
42 weeks or more	0.5	2.9	1.0	0.3	0.6	1.0	2.7	0.0	0.0
37 to 41 weeks	91.3	88.6	91.2	90.3	91.2	88.7	90.1	87.8	66.7
37 to 39 weeks	52.0	44.6	46.2	51.0	51.1	42.6	41.1	62.6	66.7
40 to 41 weeks	39.3	44.0	45.0	39.3	40.1	46.1	49.1	25.2	0.0
Less than 37 weeks	8.1	8.4	7.2	9.3	7.6	10.3	6.9	11.9	0.0
28 to 36 weeks	7.7	8.0	6.9	8.7	7.4	8.8	6.4	11.5	0.0
28 to 31 weeks	0.7	0.7	0.7	0.8	0.7	0.5	0.5	3.4	0.0
32 to 33 weeks	1.0	0.9	0.8	1.3	1.0	1.0	0.5	1.4	0.0
34 to 36 weeks	5.9	6.4	5.4	6.7	5.8	7.4	5.3	6.7	0.0
20 to 27 weeks	0.4	0.4	0.2	0.6	0.2	1.5	0.5	0.5	0.0
20 to 23 weeks	0.1	0.1	0.0	0.2	0.0	1.0	0.3	0.2	0.0
24 to 27 weeks	0.3	0.3	0.2	0.4	0.2	0.5	0.3	0.2	0.0
Less than 20 weeks	0.0	0.0	0.0	0.0	0.0	0.0	0.0	0.0	0.0
Not stated	0.1	0.0	0.6	0.0	0.6	0.0	0.3	0.2	33.3

Note(s): See "Data quality, concepts and methodology — Explanatory notes for the tables".

Source(s): Statistics Canada, Canadian Vital Statistics, Birth Database (CANSIM table 102-4512).

Table 8-3
Live births, by weeks of gestation and geography — Females

Weeks of gestation	Place of residence of mother						
	Canada	Newfoundland and Labrador	Prince Edward Island	Nova Scotia	New Brunswick	Quebec	Ontario
	number						
Total	185,418	2,341	725	4,333	3,676	43,246	68,349
42 weeks or more	898	6	0	32	10	137	196
37 to 41 weeks	170,712	2,153	670	3,982	3,397	40,098	62,960
37 to 39 weeks	95,931	1,164	385	1,968	1,818	22,942	36,447
40 to 41 weeks	74,781	989	285	2,014	1,579	17,156	26,513
Less than 37 weeks	13,603	181	55	319	269	3,010	5,176
28 to 36 weeks	12,926	165	50	306	252	2,842	4,928
28 to 31 weeks	1,196	13	5	28	22	244	454
32 to 33 weeks	1,573	14	5	50	35	314	616
34 to 36 weeks	10,157	138	40	228	195	2,284	3,858
20 to 27 weeks	660	16	5	13	16	159	247
20 to 23 weeks	200	7	0	2	5	66	54
24 to 27 weeks	460	9	5	11	11	93	193
Less than 20 weeks	17	0	0	0	1	9	1
Not stated	205	1	0	0	0	1	17
	percent						
Total	100.0	100.0	100.0	100.0	100.0	100.0	100.0
42 weeks or more	0.5	0.3	0.0	0.7	0.3	0.3	0.3
37 to 41 weeks	92.1	92.0	92.4	91.9	92.4	92.7	92.1
37 to 39 weeks	51.7	49.7	53.1	45.4	49.5	53.0	53.3
40 to 41 weeks	40.3	42.2	39.3	46.5	43.0	39.7	38.8
Less than 37 weeks	7.3	7.7	7.6	7.4	7.3	7.0	7.6
28 to 36 weeks	7.0	7.0	6.9	7.1	6.9	6.6	7.2
28 to 31 weeks	0.6	0.6	0.7	0.6	0.6	0.6	0.7
32 to 33 weeks	0.8	0.6	0.7	1.2	1.0	0.7	0.9
34 to 36 weeks	5.5	5.9	5.5	5.3	5.3	5.3	5.6
20 to 27 weeks	0.4	0.7	0.7	0.3	0.4	0.4	0.4
20 to 23 weeks	0.1	0.3	0.0	0.0	0.1	0.2	0.1
24 to 27 weeks	0.2	0.4	0.7	0.3	0.3	0.2	0.3
Less than 20 weeks	0.0	0.0	0.0	0.0	0.0	0.0	0.0
Not stated	0.1	0.0	0.0	0.0	0.0	0.0	0.0

Table 8-3 – continued

Live births, by weeks of gestation and geography — Females

Weeks of gestation	Place of residence of mother								
	Canada	Manitoba	Saskatchewan	Alberta	British Columbia	Yukon	Northwest Territories	Nunavut	Unknown
	number								
Total	185,418	7,851	7,005	25,170	21,762	179	336	441	4
42 weeks or more	898	211	79	91	115	3	16	2	0
37 to 41 weeks	170,712	7,104	6,420	23,011	20,089	151	288	386	3
37 to 39 weeks	95,931	3,512	3,218	13,063	10,923	84	123	283	1
40 to 41 weeks	74,781	3,592	3,202	9,948	9,166	67	165	103	2
Less than 37 weeks	13,603	532	455	2,065	1,430	25	32	53	1
28 to 36 weeks	12,926	503	444	1,924	1,406	25	28	52	1
28 to 31 weeks	1,196	58	36	191	131	4	4	5	1
32 to 33 weeks	1,573	65	48	223	189	0	5	9	0
34 to 36 weeks	10,157	380	360	1,510	1,086	21	19	38	0
20 to 27 weeks	660	28	11	136	24	0	4	1	0
20 to 23 weeks	200	9	0	56	1	0	0	0	0
24 to 27 weeks	460	19	11	80	23	0	4	1	0
Less than 20 weeks	17	1	0	5	0	0	0	0	0
Not stated	205	4	51	3	128	0	0	0	0
	percent								
Total	100.0	100.0	100.0	100.0	100.0	100.0	100.0	100.0	100.0
42 weeks or more	0.5	2.7	1.1	0.4	0.5	1.7	4.8	0.5	0.0
37 to 41 weeks	92.1	90.5	91.6	91.4	92.3	84.4	85.7	87.5	75.0
37 to 39 weeks	51.7	44.7	45.9	51.9	50.2	46.9	36.6	64.2	25.0
40 to 41 weeks	40.3	45.8	45.7	39.5	42.1	37.4	49.1	23.4	50.0
Less than 37 weeks	7.3	6.8	6.5	8.2	6.6	14.0	9.5	12.0	25.0
28 to 36 weeks	7.0	6.4	6.3	7.6	6.5	14.0	8.3	11.8	25.0
28 to 31 weeks	0.6	0.7	0.5	0.8	0.6	2.2	1.2	1.1	25.0
32 to 33 weeks	0.8	0.8	0.7	0.9	0.9	0.0	1.5	2.0	0.0
34 to 36 weeks	5.5	4.8	5.1	6.0	5.0	11.7	5.7	8.6	0.0
20 to 27 weeks	0.4	0.4	0.2	0.5	0.1	0.0	1.2	0.2	0.0
20 to 23 weeks	0.1	0.1	0.0	0.2	0.0	0.0	0.0	0.0	0.0
24 to 27 weeks	0.2	0.2	0.2	0.3	0.1	0.0	1.2	0.2	0.0
Less than 20 weeks	0.0	0.0	0.0	0.0	0.0	0.0	0.0	0.0	0.0
Not stated	0.1	0.1	0.7	0.0	0.6	0.0	0.0	0.0	0.0

Note(s): See "Data quality, concepts and methodology — Explanatory notes for the tables".

Source(s): Statistics Canada, Canadian Vital Statistics, Birth Database (CANSIM table 102-4512).

Table 9-1
Live births, by characteristics of the mother and child, Canada — Birth weight indicators

Characteristics of mother and child	Live ¹ births	Birth weight			
		Less than 1,500 grams	Less than 2,500 grams	2,500 to 4,499 grams	4,500 grams or more
	number	percent			
Age of mother, all ages²	380,863	1.0	6.1	92.1	1.8
Under 20 years	15,638	1.1	5.9	92.2	1.9
20 to 34 years	295,390	0.9	5.8	92.4	1.7
35 to 49 years	69,702	1.2	7.5	90.5	1.9
Not stated ³	133	3.8	17.3	78.2	3.0
Total, parity of mother	380,863	1.0	6.1	92.1	1.8
First live birth	167,564	1.0	6.3	92.2	1.4
Second live birth	133,413	0.9	5.5	92.6	1.8
Third live birth or more	79,621	1.1	6.6	90.8	2.5
Not stated	265	1.5	9.1	77.4	4.9
Total, marital status of mother⁴	380,863	1.0	6.1	92.1	1.8
Married and/or separated	230,269	0.9	5.8	92.3	1.8
Not married	107,412	1.0	6.3	91.9	1.7
Not stated	43,182	1.2	7.0	90.9	1.9
Total, birthplace of mother	380,863	1.0	6.1	92.1	1.8
Canada	276,873	0.9	5.9	92.1	2.0
Outside Canada	100,225	1.1	6.7	92.1	1.1
Not stated	3,765	1.8	7.1	91.4	1.2
Both sexes	380,863	1.0	6.1	92.1	1.8
Males	195,445	1.0	5.7	91.9	2.3
Females	185,418	1.0	6.5	92.2	1.1
Total	380,863	1.0	6.1	92.1	1.8
Single	368,156	0.7	4.6	93.6	1.8
Multiple	12,707	9.0	51.4	48.4	0.0
Total, weeks of gestation	380,863	1.0	6.1	92.1	1.8
Less than 28 weeks	1,521	99.3	99.3	0.3	0.0
28 to 36 weeks	27,903	7.4	52.6	47.2	0.1
37 to 41 weeks	349,103	0.0	2.0	96.1	1.9
42 weeks or more	1,931	0.0	0.2	92.9	6.9
Not stated	405	37.3	39.8	9.6	2.7

1. Number of live births includes births with unknown birth weight.

2. Age of mother attained at the last birthday preceding delivery.

3. For confidentiality reasons, live births to mothers aged 50 and over are included in the category "Age of mother, not stated." Where information is unavailable on the birth mother of children who are adopted, these records are included in the category "Age of mother, not stated."

4. Partway through 2003, Alberta Registries amended their Registration of Birth form in such a way that Statistics Canada can no longer determine the legal marital status of those persons in common-law marriages.

Note(s): See "Data quality, concepts and methodology — Explanatory notes for the tables".

Source(s): Statistics Canada, Canadian Vital Statistics, Birth Database (CANSIM table 102-4511).

Table 9-2
Live births, by characteristics of the mother and child, Canada — Weeks of gestation indicators

Characteristics of mother and child	Live births	Gestation		
		Less than 37 weeks	37 to 41 weeks	42 weeks or more
	number	percent		
Age of mother, all ages ¹	380,863	7.7	91.7	0.5
Under 20 years	15,638	7.4	91.8	0.7
20 to 34 years	295,390	7.3	92.0	0.5
35 to 49 years	69,702	9.4	90.0	0.5
Not stated ²	133	19.5	77.4	0.0
Total, parity of mother	380,863	7.7	91.7	0.5
First live birth	167,564	7.5	91.7	0.7
Second live birth	133,413	7.2	92.5	0.3
Third live birth or more	79,621	9.0	90.3	0.5
Not stated	265	10.9	78.5	0.8
Total, marital status of mother ³	380,863	7.7	91.7	0.5
Married and/or separated	230,269	7.5	92.0	0.5
Not married	107,412	7.8	91.5	0.6
Not stated	43,182	8.9	90.5	0.4
Total, birthplace of mother	380,863	7.7	91.7	0.5
Canada	276,873	7.9	91.5	0.5
Outside Canada	100,225	7.4	92.1	0.4
Not stated	3,765	7.8	91.1	0.4
Both sexes	380,863	7.7	91.7	0.5
Males	195,445	8.1	91.3	0.5
Females	185,418	7.3	92.1	0.5
Total	380,863	7.7	91.7	0.5
Single	368,156	6.1	93.3	0.5
Multiple	12,707	54.4	45.2	0.0
Total, birth weight	380,863	7.7	91.7	0.5
Less than 500 grams	289	91.3	0.3	0.0
500 to 1,499 grams	3,452	95.7	0.6	0.0
1,500 to 2,499 grams	19,552	64.6	35.3	0.0
2,500 to 4,499 grams	350,643	3.8	95.7	0.5
4,500 grams or more	6,697	0.6	97.3	2.0
Not stated	230	9.6	6.1	0.0

1. Age of mother attained at the last birthday preceding delivery.

2. For confidentiality reasons, live births to mothers aged 50 and over are included in the category "Age of mother, not stated." Where information is unavailable on the birth mother of children who are adopted, these records are included in the category "Age of mother, not stated."

3. Partway through 2003, Alberta Registries amended their Registration of Birth form in such a way that Statistics Canada can no longer determine the legal marital status of those persons in common-law marriages.

Note(s): See "Data quality, concepts and methodology — Explanatory notes for the tables".

Source(s): Statistics Canada, Canadian Vital Statistics, Birth Database (CANSIM table 102-4513).

Table 10
Live births, by place of residence of mother and place of occurrence,¹ Canada, provinces, territories and outside Canada

Place of residence of mother	Place of occurrence								
	Total, Canada and USA	United States	Canada	Newfoundland and Labrador	Prince Edward Island	Nova Scotia	New Brunswick	Quebec	Ontario
number									
Total, Canada and other	381,193	13	381,180	4,936	1,406	9,056	7,490	87,436	141,688
Canada	380,863	13	380,850	4,928	1,406	9,040	7,489	87,402	141,575
Newfoundland and Labrador	4,915	0	4,915	4,899	0	12	1	0	3
Prince Edward Island	1,457	0	1,457	1	1,404	47	3	0	1
Nova Scotia	8,989	0	8,989	2	2	8,906	68	0	9
New Brunswick	7,391	0	7,391	2	0	58	7,321	3	4
Quebec	88,867	0	88,867	15	0	0	85	87,340	1,422
Ontario	140,370	0	140,370	2	0	8	4	49	140,074
Manitoba	15,940	0	15,940	0	0	0	1	1	4
Saskatchewan	14,241	1	14,240	0	0	0	0	0	7
Alberta	51,722	2	51,720	2	0	4	5	3	24
British Columbia	44,993	8	44,985	1	0	1	0	0	2
Yukon	383	0	383	1	0	0	0	1	0
Northwest Territories	711	0	711	1	0	1	0	0	1
Nunavut	877	0	877	2	0	3	1	5	19
Unknown province or territory	7	2	5	0	0	0	0	0	5
Outside Canada	330	...	330	8	0	16	1	34	113

Place of residence of mother	Place of occurrence								
	Total, Canada and USA	Canada	Manitoba	Saskatchewan	Alberta	British Columbia	Yukon	Northwest Territories	Nunavut
number									
Total, Canada and other	381,193	381,180	16,366	14,536	51,499	45,110	375	798	484
Canada	380,863	380,850	16,355	14,473	51,481	45,044	375	798	484
Newfoundland and Labrador	4,915	4,915	0	0	0	0	0	0	0
Prince Edward Island	1,457	1,457	0	0	0	1	0	0	0
Nova Scotia	8,989	8,989	0	0	1	1	0	0	0
New Brunswick	7,391	7,391	0	1	1	1	0	0	0
Quebec	88,867	88,867	0	0	1	4	0	0	0
Ontario	140,370	140,370	198	4	5	25	0	0	1
Manitoba	15,940	15,940	15,763	160	9	2	0	0	0
Saskatchewan	14,241	14,240	164	13,834	227	7	0	1	0
Alberta	51,722	51,720	12	470	51,084	113	2	1	0
British Columbia	44,993	44,985	0	2	93	44,877	8	1	0
Yukon	383	383	1	0	8	7	365	0	0
Northwest Territories	711	711	0	1	36	2	0	668	1
Nunavut	877	877	217	1	16	4	0	127	482
Unknown province or territory	7	5	0	0	0	0	0	0	0
Outside Canada	330	330	11	63	18	66	0	0	0

1. The geographic distribution of live births in this table is based on the mother's usual place of residence and on the place of occurrence.

Note(s): See "Data quality, concepts and methodology — Explanatory notes for the tables".

Source(s): Statistics Canada, Canadian Vital Statistics, Birth Database (CANSIM table 102-4501).

Table 11
Fetal deaths (20 weeks or more of gestation) and late fetal deaths (28 weeks or more of gestation), Canada, provinces and territories

Place of residence of mother	Gestation	
	20 weeks or more ¹ (fetal deaths)	28 weeks or more ² (late fetal deaths)
	number	
Canada	2,734	1,145
Newfoundland and Labrador	37	20
Prince Edward Island	10	3
Nova Scotia	66	29
New Brunswick	46	17
Quebec	370	238
Ontario	1,132	429
Manitoba	136	66
Saskatchewan	116	58
Alberta	354	162
British Columbia	435	113
Yukon	2	1
Northwest Territories	9	4
Nunavut	20	5
Unknown	1	0

1. Weeks of gestation, 20 weeks or more (fetal deaths) refers to a fetal death (stillbirth) with a duration of pregnancy of 20 weeks or more, or a birth weight of 500 grams or more. Fetal deaths with unknown weeks of gestation are included.

2. Weeks of gestation, 28 weeks or more (late fetal deaths) refers to a fetal death (stillbirth) with a duration of pregnancy of 28 weeks or more. Fetal deaths with unknown weeks of gestation are excluded.

Note(s): See "Data quality, concepts and methodology — Explanatory notes for the tables".

Source(s): Statistics Canada, Canadian Vital Statistics, Stillbirth Database (CANSIM table 102-4514).

Table 12-1
Live births and fetal deaths (stillbirths), by geography — Type of birth (single or multiple)

Place of residence of mother	Type of birth								
	Total			Single			Multiple		
	Total, births	Live births	Fetal deaths (stillbirths)	Total, births	Live births	Fetal deaths (stillbirths)	Total, births	Live births	Fetal deaths (stillbirths)
	number								
Canada	383,597	380,863	2,734	370,717	368,156	2,561	12,880	12,707	173
Newfoundland and Labrador	4,952	4,915	37	4,781	4,747	34	171	168	3
Prince Edward Island	1,467	1,457	10	1,401	1,393	8	66	64	2
Nova Scotia	9,055	8,989	66	8,748	8,684	64	307	305	2
New Brunswick	7,437	7,391	46	7,222	7,182	40	215	209	6
Quebec	89,237	88,867	370	86,426	86,076	350	2,811	2,791	20
Ontario	141,502	140,370	1,132	136,477	135,409	1,068	5,025	4,961	64
Manitoba	16,076	15,940	136	15,609	15,476	133	467	464	3
Saskatchewan	14,357	14,241	116	13,906	13,798	108	451	443	8
Alberta	52,076	51,722	354	50,251	49,913	338	1,825	1,809	16
British Columbia	45,428	44,993	435	43,939	43,551	388	1,489	1,442	47
Yukon	385	383	2	363	361	2	22	22	0
Northwest Territories	720	711	9	707	698	9	13	13	0
Nunavut	897	877	20	879	861	18	18	16	2
Unknown	8	7	1	8	7	1	0	0	0

Note(s): See "Data quality, concepts and methodology — Explanatory notes for the tables".

Source(s): Statistics Canada, Canadian Vital Statistics, Birth and Stillbirth Databases (CANSIM table 102-4515).

Table 12-2
Live births and fetal deaths (stillbirths), by geography — Place of birth (hospital and non-hospital)

Place of residence of mother	Live births and fetal deaths (stillbirths)					
	Total, births		Live births		Fetal deaths (stillbirths)	
	number	percent	number	percent	number	percent
Canada						
Total, place of birth	383,597	100.0	380,863	100.0	2,734	100.0
Hospital	378,105	98.6	375,430	98.6	2,675	97.8
Non-hospital	5,459	1.4	5,402	1.4	57	2.1
Unknown	33	0.0	31	0.0	2	0.1
Newfoundland and Labrador						
Total, place of birth	4,952	100.0	4,915	100.0	37	100.0
Hospital	4,941	99.8	4,904	99.8	37	100.0
Non-hospital	11	0.2	11	0.2	0	0.0
Unknown	0	0.0	0	0.0	0	0.0
Prince Edward Island						
Total, place of birth	1,467	100.0	1,457	100.0	10	100.0
Hospital	1,465	99.9	1,455	99.9	10	100.0
Non-hospital	2	0.1	2	0.1	0	0.0
Unknown	0	0.0	0	0.0	0	0.0
Nova Scotia						
Total, place of birth	9,055	100.0	8,989	100.0	66	100.0
Hospital	9,007	99.5	8,942	99.5	65	98.5
Non-hospital	48	0.5	47	0.5	1	1.5
Unknown	0	0.0	0	0.0	0	0.0
New Brunswick						
Total, place of birth	7,437	100.0	7,391	100.0	46	100.0
Hospital	7,416	99.7	7,370	99.7	46	100.0
Non-hospital	21	0.3	21	0.3	0	0.0
Unknown	0	0.0	0	0.0	0	0.0
Quebec						
Total, place of birth	89,237	100.0	88,867	100.0	370	100.0
Hospital	88,882	99.6	88,512	99.6	370	100.0
Non-hospital	355	0.4	355	0.4	0	0.0
Unknown	0	0.0	0	0.0	0	0.0
Ontario						
Total, place of birth	141,502	100.0	140,370	100.0	1,132	100.0
Hospital	138,661	98.0	137,536	98.0	1,125	99.4
Non-hospital	2,841	2.0	2,834	2.0	7	0.6
Unknown	0	0.0	0	0.0	0	0.0
Manitoba						
Total, place of birth	16,076	100.0	15,940	100.0	136	100.0
Hospital	15,832	98.5	15,716	98.6	116	85.3
Non-hospital	221	1.4	201	1.3	20	14.7
Unknown	23	0.1	23	0.1	0	0.0
Saskatchewan						
Total, place of birth	14,357	100.0	14,241	100.0	116	100.0
Hospital	14,255	99.3	14,143	99.3	112	96.6
Non-hospital	100	0.7	98	0.7	2	1.7
Unknown	2	0.0	0	0.0	2	1.7
Alberta						
Total, place of birth	52,076	100.0	51,722	100.0	354	100.0
Hospital	51,398	98.7	51,068	98.7	330	93.2
Non-hospital	677	1.3	653	1.3	24	6.8
Unknown	1	0.0	1	0.0	0	0.0
British Columbia						
Total, place of birth	45,428	100.0	44,993	100.0	435	100.0
Hospital	44,361	97.7	43,928	97.6	433	99.5
Non-hospital	1,065	2.3	1,063	2.4	2	0.5
Unknown	2	0.0	2	0.0	0	0.0
Yukon						
Total, place of birth	385	100.0	383	100.0	2	100.0
Hospital	378	98.2	376	98.2	2	100.0
Non-hospital	7	1.8	7	1.8	0	0.0
Unknown	0	0.0	0	0.0	0	0.0

Table 12-2 – continued

Live births and fetal deaths (stillbirths), by geography — Place of birth (hospital and non-hospital)

Place of residence of mother	Live births and fetal deaths (stillbirths)					
	Total, births		Live births		Fetal deaths (stillbirths)	
	number	percent	number	percent	number	percent
Northwest Territories						
Total, place of birth	720	100.0	711	100.0	9	100.0
Hospital	693	96.3	684	96.2	9	100.0
Non-hospital	27	3.8	27	3.8	0	0.0
Unknown	0	0.0	0	0.0	0	0.0
Nunavut						
Total, place of birth	897	100.0	877	100.0	20	100.0
Hospital	808	90.1	789	90.0	19	95.0
Non-hospital	84	9.4	83	9.5	1	5.0
Unknown	5	0.6	5	0.6	0	0.0
Unknown						
Total, place of birth	8	100.0	7	100.0	1	100.0
Hospital	8	100.0	7	100.0	1	100.0
Non-hospital	0	0.0	0	0.0	0	0.0
Unknown	0	0.0	0	0.0	0	0.0

Note(s): See "Data quality, concepts and methodology — Explanatory notes for the tables".

Source(s): Statistics Canada, Canadian Vital Statistics, Birth and Stillbirth Databases (CANSIM table 102-4516).

Definitions

The definitions used for the production of statistical tables of Canadian vital statistics data are based on those recommended by the World Health Organization¹ and the United Nations.²

Age of mother. Age the mother attained at her last birthday preceding delivery.

Birth. The complete expulsion or extraction from its mother of a product of conception, irrespective of the duration of the pregnancy. See also “Fetal death (stillbirth)” and “Live birth”.

Birth and fertility rates

- **Age-specific fertility rate (ASFR):** The number of live births per 1,000 women in a specific age group. Five-year age groups were used in these tabulations (ranging from 15 to 19 to 45 to 49 years).
- **Age-specific fertility rate, women 15 to 19 years:** Live births to women under age 20 per 1,000 women aged 15 to 19.
- **Crude birth rate:** The number of live births per 1,000 population.
- **Total fertility rate (TFR):** An estimate of the average number of live births a woman can be expected to have in her lifetime, based on the age-specific fertility rates (ASFR) of a given year. The total fertility rate (TFR) = SUM of single year of age-specific fertility rate.

Birth weight. The first weight of the fetus or newborn obtained immediately after birth, expressed in grams.

- **Extremely low birth weight:** Birth weight under 1,000 grams.
- **Very low birth weight:** Birth weight under 1,500 grams.
- **Low birth weight:** Birth weight under 2,500 grams.
- **Normal birth weight:** Ranges from 2,500 to 4,499 grams.
- **High birth weight:** Birth weight of 4,500 or more grams.

Delivery. A delivery may consist of one or more live born or stillborn fetuses. The number of deliveries in a given period will be equal to or less than the number of births because multiple births (twins, triplets or higher-order births) are counted as single deliveries.

Fetal death (stillbirth). See Stillbirth definition.

Fetal death (stillbirth) rate. See Stillbirth rate definition.

Live birth. The complete expulsion or extraction from its mother of a product of conception, irrespective of the duration of the pregnancy, which, after such separation, breathes or shows any other evidence of life, such as beating of the heart, pulsation of the umbilical cord, or definite movement of voluntary muscles, whether or not the umbilical cord has been cut or the placenta is attached.

1. World Health Organization (WHO). *International Statistical Classification of Diseases and Related Health Problems, Tenth Revision, Volumes 1 and 2 (ICD-10)*. Geneva, 1992.

2. United Nations. *Principles and Recommendations for a Vital Statistics System*. Statistical Papers, Series M, No. 19, Rev. 1. New York, 1974.

Marital status of mother. Refers to the legal conjugal status of the mother at the time of the delivery. Persons in common-law relationships are assigned to their legal marital status category. A **single** person is one who has never been married, or a person whose marriage has been annulled and who has not remarried. A **separated** person is legally married but is not living with his or her spouse because the couple no longer wants to live together. A **divorced** person is one who has obtained a legal divorce and has not remarried. A **married** person is one who is legally married and not separated. A person whose spouse has died and who has not remarried is **widowed**.

Mean age of mother. The mean (average) age of mother for Canada, a province or a territory is calculated by summing the mothers' ages at their last birthday preceding delivery, and then dividing the sum by the total number of live births in that jurisdiction. To estimate mid-year mean age, a statistic often used in analyses, add 0.5 to mean age.

Mean birth weight. The mean (average) birth weight for Canada, a province or a territory is calculated by summing the first weight of each live newborn (obtained immediately after birth), and then dividing the sum by the total number of live births in that jurisdiction.

Median birth weight. The median is the middle value in a set of ordered numbers (for example, newborns' birth weight ranked from lightest to heaviest). In the case of an even number of observations, the median is the average of the two middle values.

Multiple birth. A delivery that results in more than one birth, whether live born or stillborn. This includes the delivery of twins, triplets, quadruplets, quintuplets and more.

Parity of mother. The number of live births a woman has had to date (excludes fetal deaths or stillbirths). A woman with zero parity has had no live births; a woman of parity 1 has had one live birth, of parity 2, two live births, and so on. In the case of a first delivery resulting in live twins, the woman has a parity of 1 after the first twin is born and a parity of 2 after the second twin is born.

Population. Persons whose usual place of residence is somewhere in Canada, including Canadian government employees stationed abroad and their families, members of the Canadian Armed Forces stationed abroad and their families, crews of Canadian merchant vessels, and non-permanent residents of Canada.

Mid-year (July 1) population estimates are used to calculate the rates in vital statistics publications (see Appendix I).

Provinces and territories. Unless otherwise stated, the geographic distribution of births and fetal deaths (stillbirths) in the tables of this publication is based on the mother's usual place of residence.

Nunavut came into being officially as a Territory of Canada on April 1, 1999. The name Northwest Territories applies to a Territory with different geographic boundaries before and after April 1, 1999.

Stillbirth (fetal death). Death prior to the complete expulsion or extraction from its mother of a product of conception, irrespective of the duration of pregnancy; the death is indicated by the fact that after such separation the fetus does not breathe or show any other evidence of life, such as beating of the heart, pulsation of the umbilical cord, or definite movement of voluntary muscles. Only fetal deaths where the product of conception has a birth weight of 500 grams or more or the duration of pregnancy is 20 weeks or longer are registered in Canada.

In Quebec (as well as in Saskatchewan prior to 2001 and in New Brunswick prior to November 1996), only fetal deaths (stillbirths) weighing 500 or more grams must be reported, regardless of the gestation period.

Because of these differences in reporting requirements, fetal death (stillbirth) data are presented for two gestation periods: 20 or more weeks of gestation (including fetal deaths or stillbirths with unknown weeks of gestation), and 28 or more weeks of gestation (excluding unknown weeks of gestation).

Stillbirth (fetal death) rate. The number of fetal deaths (stillbirths) per 1,000 live births plus fetal deaths (stillbirths).

Type of birth. Type of birth refers to the plurality of a delivery, that is, whether the delivery results in the birth of one or more live born or stillborn infants.

Weeks of gestation. The interval, in completed weeks, between the first day of the mother's last menstrual period and the day of delivery (that is, the duration of pregnancy). It can also be any estimate of that interval, based

on ultrasound, a physical examination or other method. Canadian birth registration documents do not specify how the gestational age was calculated. **Pre-term** refers to a period of gestation less than 37 completed weeks; **term**, 37 through 41 completed weeks; and **post-term**, 42 or more completed weeks.

Explanatory notes for the tables

Table 1 Live births, by sex and geography

- Live birth is the complete expulsion or extraction from its mother of a product of conception, irrespective of the duration of the pregnancy, which, after such separation, breathes or shows any other evidence of life, such as beating of the heart, pulsation of the umbilical cord, or definite movement of voluntary muscles, whether or not the umbilical cord has been cut or the placenta is attached.
- The geographic distribution of live births in this table is based on the mother's usual place of residence.
- Unknown province or territory of residence of mother, refers to live births to mothers who are residents of Canada, with unknown province or territory of residence.

Table 2 Live births, by geography

- Live birth is the complete expulsion or extraction from its mother of a product of conception, irrespective of the duration of the pregnancy, which, after such separation, breathes or shows any other evidence of life, such as beating of the heart, pulsation of the umbilical cord, or definite movement of voluntary muscles, whether or not the umbilical cord has been cut or the placenta is attached.
- The geographic distribution of live births in this table is based on the mother's usual place of residence.
- Unknown province or territory of residence of mother, refers to live births to mothers who are residents of Canada, with unknown province or territory of residence.
- Marital status of mother refers to her legal conjugal status at the time of the birth. Persons in common-law relationships are assigned to their legal marital status category. A single person is one who has never been married, or a person whose marriage has been annulled and who has not remarried. A separated person is legally married but is not living with his or her spouse because the couple no longer wants to live together. A divorced person is one who has obtained a legal divorce and has not remarried. A married person is one who is legally married and not separated. A person whose spouse has died and who has not remarried is widowed.

Table 3 Mean age of mother, by geography

- Live birth is the complete expulsion or extraction from its mother of a product of conception, irrespective of the duration of the pregnancy, which, after such separation, breathes or shows any other evidence of life, such as beating of the heart, pulsation of the umbilical cord, or definite movement of voluntary muscles, whether or not the umbilical cord has been cut or the placenta is attached.
- The geographic distribution of live births in this table is based on the mother's usual place of residence.
- Unknown province or territory of residence of mother, refers to live births to mothers who are residents of Canada, with unknown province or territory of residence.

Table 4 Crude birth rate, age specific and total fertility rates, by geography

- Live birth is the complete expulsion or extraction from its mother of a product of conception, irrespective of the duration of the pregnancy, which, after such separation, breathes or shows any other evidence of life, such as beating of the heart, pulsation of the umbilical cord, or definite movement of voluntary muscles, whether or not the umbilical cord has been cut or the placenta is attached.

- The geographic distribution of live births in this table is based on the mother's usual place of residence.
- Rates for Canada include live births to mothers who are residents of Canada, with unknown province or territory of residence.

Table 5 Mean and median birth weight, by geography

- Live birth is the complete expulsion or extraction from its mother of a product of conception, irrespective of the duration of the pregnancy, which, after such separation, breathes or shows any other evidence of life, such as beating of the heart, pulsation of the umbilical cord, or definite movement of voluntary muscles, whether or not the umbilical cord has been cut or the placenta is attached.
- The geographic distribution of live births in this table is based on the mother's usual place of residence.
- Unknown province or territory of residence of mother, refers to live births to mothers who are residents of Canada, with unknown province or territory of residence.
- Birth weight is the first weight of the newborn obtained immediately after birth, expressed in grams.

Table 6 Live births, Canada

- Live birth is the complete expulsion or extraction from its mother of a product of conception, irrespective of the duration of the pregnancy, which, after such separation, breathes or shows any other evidence of life, such as beating of the heart, pulsation of the umbilical cord, or definite movement of voluntary muscles, whether or not the umbilical cord has been cut or the placenta is attached.
- Marital status of mother refers to her legal conjugal status at the time of the birth. Persons in common-law relationships are assigned to their legal marital status category. A single person is one who has never been married, or a person whose marriage has been annulled and who has not remarried. A separated person is legally married but is not living with his or her spouse because the couple no longer wants to live together. A divorced person is one who has obtained a legal divorce and has not remarried. A married person is one who is legally married and not separated. A person whose spouse has died and who has not remarried is widowed.
- The geographic distribution of live births in this table is based on the mother's usual place of residence.
- Parity refers to the number of live births a female has had to date (excludes fetal deaths or stillbirths). A female with zero parity has had no live births; a female of parity 1 has had one live birth, of parity 2, two live births and so on. In the case of a first delivery resulting in live twins, the female has a parity of 1 after the first twin is born and a parity of 2 after the second twin is born.

Table 7 Live births, by birth weight and geography

- Live birth is the complete expulsion or extraction from its mother of a product of conception, irrespective of the duration of the pregnancy, which, after such separation, breathes or shows any other evidence of life, such as beating of the heart, pulsation of the umbilical cord, or definite movement of voluntary muscles, whether or not the umbilical cord has been cut or the placenta is attached.
- Birth weight is the first weight of the newborn obtained immediately after birth, expressed in grams.
- The geographic distribution of live births in this table is based on the mother's usual place of residence.
- Unknown province or territory of residence of mother, refers to live births to mothers who are residents of Canada, with unknown province or territory of residence.

Table 8 Live births, by weeks of gestation and geography

- Live birth is the complete expulsion or extraction from its mother of a product of conception, irrespective of the duration of the pregnancy, which, after such separation, breathes or shows any other evidence of life, such as beating of the heart, pulsation of the umbilical cord, or definite movement of voluntary muscles, whether or not the umbilical cord has been cut or the placenta is attached.
- Weeks of gestation refers to the interval, in completed weeks, between the first day of the mother's last menstrual period and the day of delivery (that is, the duration of the pregnancy). It can also be any estimate of that interval, based on ultrasound, a physical examination or other method. Canadian birth registration documents do not specify how the weeks of gestation are to be calculated.
- The geographic distribution of live births in this table is based on the mother's usual place of residence.
- Unknown province or territory of residence of mother, refers to live births to mothers who are residents of Canada, with unknown province or territory of residence.

Table 9 Live births, by characteristics of the mother and child, Canada

- Live birth is the complete expulsion or extraction from its mother of a product of conception, irrespective of the duration of the pregnancy, which, after such separation, breathes or shows any other evidence of life, such as beating of the heart, pulsation of the umbilical cord, or definite movement of voluntary muscles, whether or not the umbilical cord has been cut or the placenta is attached.
- The geographic distribution of live births in this table is based on the mother's usual place of residence.
- Birth weight is the first weight of the newborn obtained immediately after birth, expressed in grams.
- Parity refers to the number of live births a female has had to date (excludes fetal deaths or stillbirths). A female with zero parity has had no live births; a female of parity 1 has had one live birth, of parity 2, two live births and so on. In the case of a first delivery resulting in live twins, the female has a parity of 1 after the first twin is born and a parity of 2 after the second twin is born.
- Marital status of mother refers to her legal conjugal status at the time of the birth. Persons in common-law relationships are assigned to their legal marital status category. A single person is one who has never been married, or a person whose marriage has been annulled and who has not remarried. A separated person is legally married but is not living with his or her spouse because the couple no longer wants to live together. A divorced person is one who has obtained a legal divorce and has not remarried. A married person is one who is legally married and not separated. A person whose spouse has died and who has not remarried is widowed.
- Type of birth refers to the plurality of a delivery, that is, whether the delivery results in the birth of one or more liveborn or stillborn infants. The delivery must result in the birth of at least one liveborn infant to be included in this table. The category "Type of birth, multiple" includes the delivery of twins, triplets, quadruplets, quintuplets or more.
- Weeks of gestation refers to the interval, in completed weeks, between the first day of the mother's last menstrual period and the day of delivery (that is, the duration of the pregnancy). It can also be any estimate of that interval, based on ultrasound, a physical examination or other method. Canadian birth registration documents do not specify how the weeks of gestation are to be calculated.

Table 10 Live births, by place of residence of mother and place of occurrence, Canada, provinces, territories and outside Canada

- Live birth is the complete expulsion or extraction from its mother of a product of conception, irrespective of the duration of the pregnancy, which, after such separation, breathes or shows any other evidence of life, such as beating of the heart, pulsation of the umbilical cord, or definite movement of voluntary muscles, whether or not the umbilical cord has been cut or the placenta is attached.
- Unknown province or territory of residence of mother, refers to live births to mothers who are residents of Canada, with unknown province or territory of residence.
- Place of residence of mother outside Canada includes live births to mothers who are non-residents of Canada and births with unknown country of residence of mother. Data by place of residence outside Canada have been revised for 2007.

Table 11 Fetal deaths (20 weeks or more of gestation) and late fetal deaths (28 weeks or more of gestation), Canada, provinces and territories

- Fetal death (stillbirth) is death prior to the complete expulsion or extraction from its mother of a product of conception, irrespective of the duration of pregnancy; the death is indicated by the fact that after such separation the fetus does not breathe or show any other evidence of life, such as beating of the heart, pulsation of the umbilical cord, or definite movement of voluntary muscles. Only fetal deaths where the product of conception has a birth weight of 500 grams or more or the duration of pregnancy is 20 weeks or longer are registered in Canada.
- Weeks of gestation refers to the interval, in completed weeks, between the first day of the mother's last menstrual period and the day of delivery (that is, the duration of the pregnancy). It can also be any estimate of that interval, based on ultrasound, a physical examination or other method. Canadian birth registration documents do not specify how the weeks of gestation are to be calculated.
- Fetal death (stillbirth) data are tabulated according to the mother's usual place of residence.
- Unknown province or territory of residence of mother, refers to fetal deaths (stillbirths) to mothers who are residents of Canada, with unknown province or territory of residence.

Table 12-1 Live births and fetal deaths (stillbirths), by geography – Type of birth (single or multiple)

- Live birth is the complete expulsion or extraction from its mother of a product of conception, irrespective of the duration of the pregnancy, which, after such separation, breathes or shows any other evidence of life, such as beating of the heart, pulsation of the umbilical cord, or definite movement of voluntary muscles, whether or not the umbilical cord has been cut or the placenta is attached.
- Fetal death (stillbirth) is death prior to the complete expulsion or extraction from its mother of a product of conception, irrespective of the duration of pregnancy; the death is indicated by the fact that after such separation the fetus does not breathe or show any other evidence of life, such as beating of the heart, pulsation of the umbilical cord, or definite movement of voluntary muscles. Only fetal deaths where the product of conception has a birth weight of 500 grams or more or the duration of pregnancy is 20 weeks or longer are registered in Canada.
- Type of birth refers to the plurality of a delivery, that is, whether the delivery results in one or more live born or stillborn infants. The category "Type of birth, multiples" includes the delivery of twins, triplets, quadruplets, quintuplets or more.
- The geographic distribution of live births and fetal deaths (stillbirths) in this table is based on the mother's usual place of residence.
- Unknown province or territory of residence of mother, refers to live births or fetal deaths (stillbirths) to mothers who are residents of Canada, with unknown province or territory of residence.

Table 12-2 Live births and fetal deaths (stillbirths), by geography – Place of birth (hospital and non-hospital)

- Live birth is the complete expulsion or extraction from its mother of a product of conception, irrespective of the duration of the pregnancy, which, after such separation, breathes or shows any other evidence of life, such as beating of the heart, pulsation of the umbilical cord, or definite movement of voluntary muscles, whether or not the umbilical cord has been cut or the placenta is attached.
- Fetal death (stillbirth) is death prior to the complete expulsion or extraction from its mother of a product of conception, irrespective of the duration of pregnancy; the death is indicated by the fact that after such separation the fetus does not breathe or show any other evidence of life, such as beating of the heart, pulsation of the umbilical cord, or definite movement of voluntary muscles. Only fetal deaths where the product of conception has a birth weight of 500 grams or more or the duration of pregnancy is 20 weeks or longer are registered in Canada.
- The category "Place of birth , non-hospital" includes births in private homes, in health care institutions such as nursing homes and other long-term care facilities, nursing stations and other short-term care facilities and other health care facilities not licensed to operate as hospitals by provincial, territorial or federal governments, such as free-standing birthing centres and at other specified sites.
- The geographic distribution of live births and fetal deaths (stillbirths) in this table is based on the mother's usual place of residence.
- Unknown province or territory of residence of mother, refers to live births or fetal deaths (stillbirths) to mothers who are residents of Canada, with unknown province or territory of residence.

Appendix I

Postcensal Population Estimates

Text table 1

Postcensal (PR) population estimates by sex and age group, Canada, provinces and territories, July 1, 2009¹

	Canada	N.L.	P.E.I.	N.S.	N.B.	Que.	Ont.
	number						
Both sexes							
All ages	33,729,690	508,862	141,219	940,293	749,983	7,826,891	13,072,727
under 1 year ²	380,856	4,915	1,457	8,989	7,391	88,867	140,370
1 to 4 years ²	1,462,842	18,770	5,589	35,617	28,572	327,369	568,571
5 to 9 years	1,798,651	24,909	7,543	45,403	37,311	385,735	720,005
10 to 14 years	1,973,368	27,569	8,795	51,840	41,623	432,050	787,664
15 to 19 years	2,251,152	31,975	10,308	61,588	48,156	505,413	885,579
20 to 24 years	2,320,946	31,306	9,415	62,575	47,292	487,753	909,514
25 to 29 years	2,346,626	28,959	7,807	56,109	45,671	534,950	889,892
30 to 34 years	2,258,763	30,061	7,976	55,030	45,886	531,968	867,504
35 to 39 years	2,299,593	33,998	8,799	61,279	49,091	503,139	919,725
40 to 44 years	2,481,922	39,508	10,097	67,221	54,121	562,306	998,999
45 to 49 years	2,788,154	42,842	11,721	80,051	62,224	650,646	1,097,182
50 to 54 years	2,574,037	42,297	10,881	76,379	61,018	624,787	969,122
55 to 59 years	2,215,782	40,879	9,960	68,350	56,078	545,918	823,017
60 to 64 years	1,887,767	35,636	9,260	61,831	49,370	476,176	704,921
65 to 69 years	1,406,877	24,957	6,537	45,559	35,834	365,606	525,435
70 to 74 years	1,080,703	18,579	5,175	34,602	26,642	268,916	416,155
75 to 79 years	908,950	14,013	4,112	27,444	21,499	227,584	350,931
80 to 84 years	676,702	9,553	2,926	20,093	16,247	165,138	264,064
85 to 89 years	412,297	5,495	1,845	13,069	10,395	95,091	160,064
90 years and over	203,702	2,641	1,016	7,264	5,562	47,479	74,013
Males							
All ages	16,727,239	249,643	68,981	456,480	368,168	3,878,407	6,443,356
under 1 year ²	195,442	2,574	732	4,656	3,715	45,621	72,021
1 to 4 years ²	749,976	9,604	2,817	18,156	14,827	167,135	291,592
5 to 9 years	925,395	12,690	3,861	23,158	19,141	197,922	370,015
10 to 14 years	1,011,205	14,186	4,534	26,524	21,573	221,031	402,857
15 to 19 years	1,152,886	16,525	5,220	31,053	24,661	258,793	452,129
20 to 24 years	1,192,315	15,681	4,752	31,159	24,403	249,152	464,485
25 to 29 years	1,185,100	14,323	3,721	26,749	22,876	273,302	442,358
30 to 34 years	1,130,352	14,617	3,800	26,389	22,490	271,712	424,436
35 to 39 years	1,158,786	16,406	4,384	30,033	24,223	258,411	456,893
40 to 44 years	1,250,354	19,116	5,114	33,047	26,673	286,911	500,072
45 to 49 years	1,401,962	21,239	5,740	39,412	30,465	328,566	551,866
50 to 54 years	1,282,324	20,658	5,266	37,323	29,883	310,481	482,271
55 to 59 years	1,092,615	20,136	4,902	33,596	27,518	268,313	402,756
60 to 64 years	925,990	17,617	4,567	30,389	24,531	231,954	343,620
65 to 69 years	681,575	12,302	3,136	22,019	17,660	176,056	252,476
70 to 74 years	507,348	8,978	2,457	16,405	12,609	125,362	192,978
75 to 79 years	409,370	6,451	1,895	12,140	9,524	99,800	157,247
80 to 84 years	275,687	3,959	1,199	8,010	6,442	64,795	107,315
85 to 89 years	143,929	1,947	619	4,399	3,520	31,645	55,752
90 years and over	54,628	634	265	1,863	1,434	11,445	20,217

See notes at the end of the table.

Text table 1 – continued

Postcensal (PR) population estimates by sex and age group, Canada, provinces and territories, July 1, 2009¹

	Canada	N.L.	P.E.I.	N.S.	N.B.	Que.	Ont.
	number						
Females							
All ages	17,002,451	259,219	72,238	483,813	381,815	3,948,484	6,629,371
under 1 year ²	185,414	2,341	725	4,333	3,676	43,246	68,349
1 to 4 years ²	712,866	9,166	2,772	17,461	13,745	160,234	276,979
5 to 9 years	873,256	12,219	3,682	22,245	18,170	187,813	349,990
10 to 14 years	962,163	13,383	4,261	25,316	20,050	211,019	384,807
15 to 19 years	1,098,266	15,450	5,088	30,535	23,495	246,620	433,450
20 to 24 years	1,128,631	15,625	4,663	31,416	22,889	238,601	445,029
25 to 29 years	1,161,526	14,636	4,086	29,360	22,795	261,648	447,534
30 to 34 years	1,128,411	15,444	4,176	28,641	23,396	260,256	443,068
35 to 39 years	1,140,807	17,592	4,415	31,246	24,868	244,728	462,832
40 to 44 years	1,231,568	20,392	4,983	34,174	27,448	275,395	498,927
45 to 49 years	1,386,192	21,603	5,981	40,639	31,759	322,080	545,316
50 to 54 years	1,291,713	21,639	5,615	39,056	31,135	314,306	486,851
55 to 59 years	1,123,167	20,743	5,058	34,754	28,560	277,605	420,261
60 to 64 years	961,777	18,019	4,693	31,442	24,839	244,222	361,301
65 to 69 years	725,302	12,655	3,401	23,540	18,174	189,550	272,959
70 to 74 years	573,355	9,601	2,718	18,197	14,033	143,554	223,177
75 to 79 years	499,580	7,562	2,217	15,304	11,975	127,784	193,684
80 to 84 years	401,015	5,594	1,727	12,083	9,805	100,343	156,749
85 to 89 years	268,368	3,548	1,226	8,670	6,875	63,446	104,312
90 years and over	149,074	2,007	751	5,401	4,128	36,034	53,796

See notes at the end of the table.

Text table 1 – continued

Postcensal (PR) population estimates by sex and age group, Canada, provinces and territories, July 1, 2009¹

	Canada	Man.	Sask.	Alta.	B.C.	Y.T.	N.W.T.	Nvt.
	number							
Both sexes								
All ages	33,729,690	1,219,183	1,029,325	3,671,699	4,459,947	33,683	43,638	32,240
under 1 year ²	380,856	15,940	14,241	51,722	44,993	383	711	877
1 to 4 years ²	1,462,842	59,195	51,558	185,900	174,813	1,497	2,674	2,717
5 to 9 years	1,798,651	74,373	62,307	212,477	220,130	1,953	3,090	3,415
10 to 14 years	1,973,368	80,819	66,818	221,134	246,610	2,019	3,077	3,350
15 to 19 years	2,251,152	89,506	75,779	246,899	286,632	2,297	3,762	3,258
20 to 24 years	2,320,946	86,743	76,188	287,624	313,691	2,342	3,505	2,998
25 to 29 years	2,346,626	82,847	71,374	309,092	311,200	2,180	3,847	2,698
30 to 34 years	2,258,763	77,672	64,349	283,138	286,943	2,258	3,577	2,401
35 to 39 years	2,299,593	78,136	59,996	273,659	303,695	2,545	3,314	2,217
40 to 44 years	2,481,922	81,438	64,355	268,094	327,781	2,644	3,183	2,175
45 to 49 years	2,788,154	94,315	77,931	294,460	368,130	3,314	3,508	1,830
50 to 54 years	2,574,037	88,721	75,923	270,352	346,986	3,035	3,059	1,477
55 to 59 years	2,215,782	76,853	64,393	214,864	309,309	2,578	2,475	1,108
60 to 64 years	1,887,767	64,192	52,135	167,271	262,692	1,940	1,597	746
65 to 69 years	1,406,877	47,068	39,698	117,779	195,943	1,127	875	459
70 to 74 years	1,080,703	36,510	33,186	88,806	150,659	684	533	256
75 to 79 years	908,950	32,160	29,816	74,880	125,466	480	413	152
80 to 84 years	676,702	25,691	24,206	54,078	94,172	216	258	60
85 to 89 years	412,297	17,450	15,784	32,758	60,051	134	130	31
90 years and over	203,702	9,554	9,288	16,712	30,051	57	50	15
Males								
All ages	16,727,239	606,757	511,385	1,875,669	2,211,954	17,228	22,541	16,670
under 1 year ²	195,442	8,089	7,236	26,552	23,231	204	375	436
1 to 4 years ²	749,976	30,412	26,336	95,288	90,245	808	1,348	1,408
5 to 9 years	925,395	38,289	32,010	110,101	113,909	1,038	1,460	1,801
10 to 14 years	1,011,205	41,549	34,221	113,382	127,099	980	1,566	1,703
15 to 19 years	1,152,886	45,612	38,966	126,885	148,164	1,224	1,983	1,671
20 to 24 years	1,192,315	44,619	39,287	151,221	162,950	1,215	1,840	1,551
25 to 29 years	1,185,100	42,394	35,950	163,452	155,683	1,112	1,880	1,300
30 to 34 years	1,130,352	39,248	32,235	149,381	141,872	1,065	1,838	1,269
35 to 39 years	1,158,786	39,592	30,242	143,774	150,661	1,222	1,806	1,139
40 to 44 years	1,250,354	41,222	32,409	139,098	162,734	1,260	1,611	1,087
45 to 49 years	1,401,962	47,955	38,962	150,626	182,710	1,627	1,814	980
50 to 54 years	1,282,324	45,261	37,910	138,858	170,393	1,644	1,554	822
55 to 59 years	1,092,615	38,108	32,534	109,289	152,108	1,386	1,360	609
60 to 64 years	925,990	31,607	25,999	83,867	129,478	1,025	948	388
65 to 69 years	681,575	22,808	19,377	58,038	96,349	644	483	227
70 to 74 years	507,348	16,897	15,718	42,115	73,047	367	269	146
75 to 79 years	409,370	14,303	13,521	34,505	59,447	237	214	86
80 to 84 years	275,687	10,313	10,188	22,801	40,415	100	124	26
85 to 89 years	143,929	5,867	5,691	11,835	22,534	54	49	17
90 years and over	54,628	2,612	2,593	4,601	8,925	16	19	4

See notes at the end of the table.

Text table 1 – continued

Postcensal (PR) population estimates by sex and age group, Canada, provinces and territories, July 1, 2009¹

	Canada	Man.	Sask.	Alta.	B.C.	Y.T.	N.W.T.	Nvt.
	number							
Females								
All ages	17,002,451	612,426	517,940	1,796,030	2,247,993	16,455	21,097	15,570
under 1 year ²	185,414	7,851	7,005	25,170	21,762	179	336	441
1 to 4 years ²	712,866	28,783	25,222	90,612	84,568	689	1,326	1,309
5 to 9 years	873,256	36,084	30,297	102,376	106,221	915	1,630	1,614
10 to 14 years	962,163	39,270	32,597	107,752	119,511	1,039	1,511	1,647
15 to 19 years	1,098,266	43,894	36,813	120,014	138,468	1,073	1,779	1,587
20 to 24 years	1,128,631	42,124	36,901	136,403	150,741	1,127	1,665	1,447
25 to 29 years	1,161,526	40,453	35,424	145,640	155,517	1,068	1,967	1,398
30 to 34 years	1,128,411	38,424	32,114	133,757	145,071	1,193	1,739	1,132
35 to 39 years	1,140,807	38,544	29,754	129,885	153,034	1,323	1,508	1,078
40 to 44 years	1,231,568	40,216	31,946	128,996	165,047	1,384	1,572	1,088
45 to 49 years	1,386,192	46,360	38,969	143,834	185,420	1,687	1,694	850
50 to 54 years	1,291,713	43,460	38,013	131,494	176,593	1,391	1,505	655
55 to 59 years	1,123,167	38,745	31,859	105,575	157,201	1,192	1,115	499
60 to 64 years	961,777	32,585	26,136	83,404	133,214	915	649	358
65 to 69 years	725,302	24,260	20,321	59,741	99,594	483	392	232
70 to 74 years	573,355	19,613	17,468	46,691	77,612	317	264	110
75 to 79 years	499,580	17,857	16,295	40,375	66,019	243	199	66
80 to 84 years	401,015	15,378	14,018	31,277	53,757	116	134	34
85 to 89 years	268,368	11,583	10,093	20,923	37,517	80	81	14
90 years and over	149,074	6,942	6,695	12,111	21,126	41	31	11

1. These postcensal population estimates, which are based on the 2006 census, are adjusted for net census undercoverage and include non-permanent residents.

2. 2009 population counts for the "under 1" and "1 to 4" categories were adjusted for 2009 births by Health Statistics Division.

Note(s): PR=updated postcensal.

Source(s): Statistics Canada, Demography Division (CANSIM table 051-0001 released on September 27, 2011) and Health Statistics Division.