

# Births

2008



Statistics  
Canada

Statistique  
Canada

Canada

## How to obtain more information

For information about this product or the wide range of services and data available from Statistics Canada, visit our website at [www.statcan.gc.ca](http://www.statcan.gc.ca), e-mail us at [infostats@statcan.gc.ca](mailto:infostats@statcan.gc.ca), or telephone us, Monday to Friday from 8:30 a.m. to 4:30 p.m., at the following numbers:

### Statistics Canada's National Contact Centre

Toll-free telephone (Canada and the United States):

Inquiries line	1-800-263-1136
National telecommunications device for the hearing impaired	1-800-363-7629
Fax line	1-877-287-4369

Local or international calls:

Inquiries line	1-613-951-8116
Fax line	1-613-951-0581

### Depository Services Program

Inquiries line	1-800-635-7943
Fax line	1-800-565-7757

## To access this product

This product, Catalogue no. 84F0210X, is available free in electronic format. To obtain a single issue, visit our website at [www.statcan.gc.ca](http://www.statcan.gc.ca) and browse by "Key resource" > "Publications."

## Standards of service to the public

Statistics Canada is committed to serving its clients in a prompt, reliable and courteous manner. To this end, Statistics Canada has developed *standards of service* that its employees observe. To obtain a copy of these service standards, please contact Statistics Canada toll-free at 1-800-263-1136. The service standards are also published on [www.statcan.gc.ca](http://www.statcan.gc.ca) under "About us" > "The agency" > "Providing services to Canadians."

# Births

2008

Published by authority of the Minister responsible for Statistics Canada

© Minister of Industry, 2011

All rights reserved. The content of this electronic publication may be reproduced, in whole or in part, and by any means, without further permission from Statistics Canada, subject to the following conditions: that it be done solely for the purposes of private study, research, criticism, review or newspaper summary, and/or for non-commercial purposes; and that Statistics Canada be fully acknowledged as follows: Source (or "Adapted from", if appropriate): Statistics Canada, year of publication, name of product, catalogue number, volume and issue numbers, reference period and page(s). Otherwise, no part of this publication may be reproduced, stored in a retrieval system or transmitted in any form, by any means—electronic, mechanical or photocopy—or for any purposes without prior written permission of Licensing Services, Client Services Division, Statistics Canada, Ottawa, Ontario, Canada K1A 0T6.

April 2011

Catalogue no. 84F0210X

ISSN 1710-5285

Frequency: Annual

Ottawa

Cette publication est également disponible en français.

---

#### **Note of appreciation**

*Canada owes the success of its statistical system to a long-standing partnership between Statistics Canada, the citizens of Canada, its businesses, governments and other institutions. Accurate and timely statistical information could not be produced without their continued cooperation and goodwill.*

# User information

---

## Symbols

The following standard symbols are used in Statistics Canada publications:

- . not available for any reference period
- .. not available for a specific reference period
- ... not applicable
- 0 true zero or a value rounded to zero
- 0<sup>s</sup> value rounded to 0 (zero) where there is a meaningful distinction between true zero and the value that was rounded
- p preliminary
- r revised
- x suppressed to meet the confidentiality requirements of the *Statistics Act*
- E use with caution
- F too unreliable to be published

## Acknowledgements

The cooperation of provincial and territorial Vital Statistics registries who supply the birth data in this report to Statistics Canada is gratefully acknowledged.

# Table of contents

---

<b>Highlights</b>	<b>5</b>
<b>Introduction</b>	<b>6</b>
<b>Analysis</b>	<b>7</b>
A. Change in births	7
B. Change in fertility	8
C. Historical and recent birth trends	12
D. Comparison with selected low-fertility countries	13
E. Change in stillbirths	14
<b>Related products</b>	<b>15</b>
<b>Statistical tables</b>	
1 Live births, by sex and geography	18
2 Live births, by geography	18
2-1 Month	18
2-2 Age of mother	19
2-3 Marital status of mother	20
3 Mean age of mother, by geography	21
4 Crude birth rate, age-specific and total fertility rates, by geography	21
5 Mean and median birth weight, by geography	22
6 Live births, Canada	22
6-1 Age and marital status of mother	22
6-2 Age and parity of mother	23
7 Live births, by birth weight and geography	24
7-1 Both sexes	24
7-2 Males	26
7-3 Females	28

## Table of contents – continued

8	Live births, by weeks of gestation and geography	30
8-1	Both sexes	30
8-2	Males	32
8-3	Females	34
9	Live births, by characteristics of the mother and child, Canada	36
9-1	Birth weight indicators	36
9-2	Weeks of gestation indicators	37
10	Live births, by place of residence of mother and place of occurrence, Canada, provinces, territories and outside Canada	38
11	Fetal deaths (20 weeks or more of gestation) and late fetal deaths (28 weeks or more of gestation), Canada, provinces and territories	39
12	Live births and fetal deaths (stillbirths), by geography	40
12-1	Type of birth (single or multiple)	40
12-2	Place of birth (hospital and non-hospital)	41

## Data quality, concepts and methodology

Definitions	43
Explanatory notes for the tables	46

## Appendix

I	Postcensal Population Estimates	51
---	---------------------------------	----

## Charts

1.	Percentage change in numbers of births, Canada, 1987/1988 to 2007/2008	7
2.	Births and total fertility rates, Canada, 1988 to 2008	9
3.	Age-specific fertility rates, Canada, 1988 to 2008	11
4.	Births, Canada, 1921 to 2008	13

## Text tables

1.	Births, Canada, provinces and territories, 2006 to 2008	8
2.	Total fertility rate by geography, Canada, 2007 and 2008	9
3.	Expected number of births in 2008 by age group, Canada	12
4.	Total fertility rates, selected OECD countries, 2004 to 2008	14

# Highlights

---

## **Births and fertility are still continuing an upward trend but at a slowing pace compared to the two previous years**

- For a sixth consecutive year, the number of live births in Canada increased, reaching 377,886 in 2008. However, this annual increase of 2.7% was less pronounced than the growth registered in the previous two years, namely 3.6% in 2006 and 3.7% in 2007.
- Since 2003, the TFR has seen an upward trend where the total fertility rate went from 1.53 to 1.68 in 2008. However, the increase between 2007 and 2008 was smaller (1.3%) than the two previous years where it was 2.8% between 2005 and 2006 and 4.6% between 2006 and 2007
- Nunavut, the Northwest Territories and Saskatchewan had the highest fertility in the country with more than two children per woman on average. In contrast, British Columbia had the lowest fertility of the country.
- The recent increase in births could be explained partly by a rise in fertility rates and by the fact that many women have entered their childbearing years.

## **Fertility was highest for women in their early thirties**

- For a fourth consecutive year, the age-specific fertility rate for women aged 30 to 34 was the highest. In 2008, it was 107.4 births per 1,000 women.

## **Fertility continues to increase for women in their early forties**

- The age-specific fertility rate of women aged 40 to 44 has more than doubled from 1988 to 2008, going from 3.6 to 8.4 per 1,000 women.

## **Births are up in all of Canada except the Northwest Territories**

- From 2007 to 2008, the number of births rose in all provinces and territories except the Northwest Territories.
- The largest increases in number of births were in Newfoundland and Labrador (7.6%), Prince Edward Island (6.8%) and Yukon (5.1%).
- For Newfoundland and Labrador this is the fourth consecutive year of birth growth and the largest increase since 2005.

## **Stillbirths and stillbirth rate trends**

- The number of stillbirths (or fetal deaths) in Canada was 2,774 in 2008, an increase of 5.2 % from 2007.
- From 2007 to 2008, the stillbirth rate went up from 7.1 per 1,000 total births (live births and stillbirths) to 7.3.

# Introduction

---

This product presents statistical tables showing the number of live births and fetal deaths (stillbirths) of at least 20 weeks' gestation; total and age-specific fertility rates and crude birth rates; live births by age of mother and live birth order; male and female birth weights; weeks of gestation at the time of birth; and multiple births. Numbers are shown for Canada, the ten provinces and the three territories.

## History note

Births - Shelf tables (84F0210X) data for 2000 and 2001 were released in the year 2003 in paper format. Since April 2004, this product is available on the Internet under the title "Births" (84F0210X).

The "Births, 2004" publication had two volumes. Volume 1 reported on live births and Volume 2 reported on fetal deaths (stillbirths).

## CANSIM data

Free access to data is provided through a special CANSIM interface. The CANSIM tables can be linked directly from three different locations in the HTML product:

### Tables section:

- Related CANSIM tables
- Individual tables, in the Source

### Related products section:

- Selected CANSIM tables from Statistics Canada

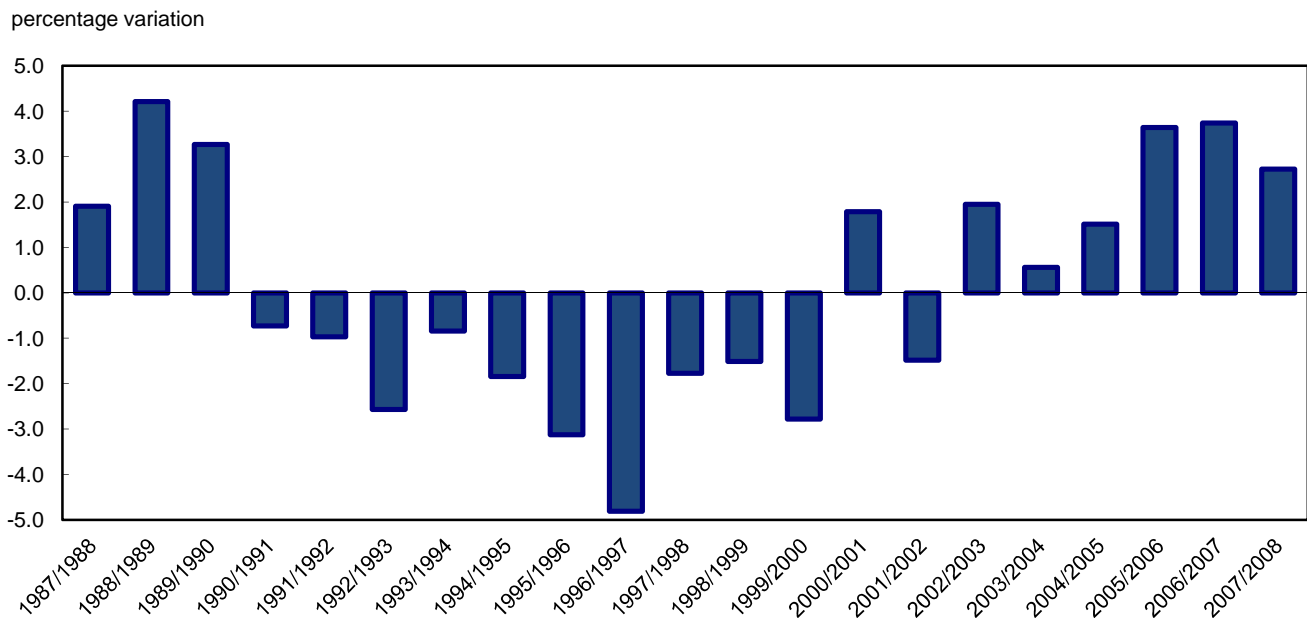


# Analysis

## A. Change in births

For a sixth consecutive year, the number of live births in Canada increased, reaching 377,886 in 2008. However, this annual increase of 2.7% was less pronounced than the growth registered in the previous two years, namely 3.6% in 2006 and 3.7% in 2007 (Chart 1).

**Chart 1**  
Percentage change in numbers of births, Canada, 1987/1988 to 2007/2008



**Source(s):** Statistics Canada, CANSIM table 102-4502 and *Vital Statistics Compendium*, 1996, catalogue no. 84-214-XPE.

Over the past 20 years, Canada has seen both upward and downward trends in the number of births. After peaking in 1990 at 405,486 births, the number of births fell steadily throughout the 1990s. In 2000, there were 327,882 registered births, the lowest level since the end of the Second World War. With the exception of 2002, there has been an upward trend in the number of births since 2001, with a slowing in 2008 when compared to the two previous years.

### A.1. Geographic differences

From 2007 to 2008, the number of births rose in all provinces and territories except the Northwest Territories (Table 1). Eight provinces and one territory had relative increases exceeding the national average of 2.7%. The largest were in Newfoundland and Labrador (7.6%), Prince Edward Island (6.8%) and Yukon (5.1%). In Newfoundland and Labrador this is the fourth consecutive year of growth and the largest increase since 2005. On the other hand, a first sign of slowing in the increase of births was observed in 2008, mainly in Ontario and the Western provinces.

In 2008, three provinces accounted for 76% of the total increase in the number of births. Quebec was the largest contributor with 35% of the total increase, followed by Ontario (23%) and Alberta (18%). In 2007 Alberta led with 29%, followed by Ontario (21%), Quebec (18%), and British Columbia (14%).

**Text table 1**  
**Births, Canada, provinces and territories, 2006 to 2008**

Place of residence of mother	2006		2007		2008		2006 to 2007 difference		2007 to 2008 difference	
	number	percent	number	percent	number	percent	number	percent	number	percent
Canada	354,617		367,864		377,886		13,247	3.7	10,022	2.7
Newfoundland and Labrador	4,542		4,553		4,898		11	0.2	345	7.6
Prince Edward Island	1,413		1,389		1,483		-24	-1.7	94	6.8
Nova Scotia	8,485		8,868		9,188		383	4.5	320	3.6
New Brunswick	7,030		7,146		7,402		116	1.7	256	3.6
Quebec	81,937		84,387		87,870		2,450	3.0	3,483	4.1
Ontario	135,595		138,436		140,791		2,841	2.1	2,355	1.7
Manitoba	14,565		15,285		15,485		720	4.9	200	1.3
Saskatchewan	12,288		13,248		13,737		960	7.8	489	3.7
Alberta	45,229		49,028		50,856		3,799	8.4	1,828	3.7
British Columbia	41,729		43,649		44,276		1,920	4.6	627	1.4
Yukon	364		355		373		-9	-2.5	18	5.1
Northwest Territories	687		725		721		38	5.5	-4	-0.6
Nunavut	747		794		805		47	6.3	11	1.4

Source(s): Statistics Canada, CANSIM table 102-4502.

## B. Change in fertility

The total fertility rate (TFR) is the sum of single-year, age-specific fertility rates during a given year. It represents the average number of children that a woman would have if the current age-specific fertility rates prevail over her reproductive period.

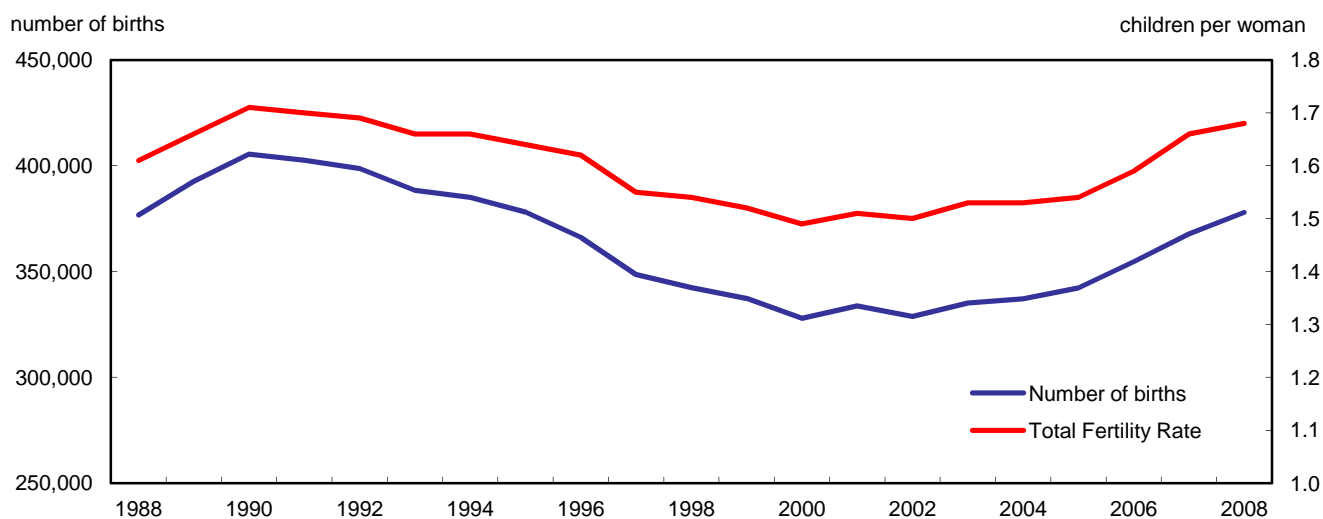
In 2008, the TFR was 1.68 children per woman (Table 2). This is the highest TFR recorded since 1992, when it was 1.69. However, the TFR is well below the generational replacement level of 2.1 children per woman—the fertility rate that must be maintained to replace the population in the absence of migration. The last year that the total fertility rate exceeded the generational replacement level was 1971.<sup>1</sup>

In the past twenty years, the TFR has closely paralleled the trend in number of births (Chart 2). After peaking in 1990 at 1.71 children per woman, the TFR fell throughout the 1990s and then began climbing at the beginning of the 2000s. The drop in the TFR (and the number of births) in 2000 and the recovery in 2001 may have been related to the desire to have a baby in the first year of the new millennium. The number of marriages also increased in 2000.<sup>2</sup>

1. Statistics Canada. 2008. *Report on the Demographic Situation in Canada, 2005 and 2006*, Catalogue no. 91-209-X.

2. Statistics Canada. 2007. "Marriages 2003." *The Daily*, January 17.

**Chart 2**  
Births and total fertility rates, Canada, 1988 to 2008



**Note(s):** Total fertility rate is the average number of children per woman.

**Source(s):** Statistics Canada, CANSIM table 102-4502 and 102-4505 and Vital Statistics Compendium, 1996, catalogue no. 84-214-XPE.

With the exception of 2002, the TFR has seen an upward trend since 2001 (Table 2). The TFR rose 1.3% from 2007 to 2008, a smaller increase than those observed the two previous years, where the increases were 2.8% and 4.6%, respectively.

**Text table 2**  
Total fertility rate by geography, Canada, 2007 and 2008

Geography	2007	2008	Difference in percentage
Canada	1.66	1.68	1.3
Newfoundland and Labrador	1.46	1.58	8.4
Prince Edward Island	1.63	1.73	5.8
Nova Scotia	1.48	1.54	4.0
New Brunswick	1.52	1.59	4.2
Quebec	1.69	1.74	3.1
Ontario	1.57	1.58	0.7
Manitoba	1.96	1.96	-0.2
Saskatchewan	2.03	2.05	1.0
Alberta	1.90	1.92	0.7
British Columbia	1.52	1.51	-0.6
Yukon	1.58	1.64	3.7
Northwest Territories	2.11	2.08	-1.4
Nunavut	2.97	2.98	0.3

**Note(s):** Total fertility rate is the average number of children per woman.

**Source(s):** Statistics Canada, CANSIM table 102-4505.

In 2008, Nunavut had the highest fertility in the country, with a TFR of 2.98 children per woman, ensuring the generational replacement level. In contrast, British Columbia had the lowest TFR with 1.51 children per woman (Table 2).

Other provinces and territories with a TFR lower than the national average of 1.68 children per woman were Nova Scotia, Newfoundland and Labrador, Ontario, New Brunswick and Yukon. On the other hand, the Northwest Territories and Saskatchewan were the two other regions where fertility was higher than two children per

woman, 2.08 and 2.05 respectively. This may be explained by the fact that Aboriginal people made up the largest share of the population in the territories and in the Prairie provinces<sup>3</sup> and it is known that Aboriginal population is a relatively young population with a higher fertility than the non-Aboriginal population.

From 2007 to 2008, the TFR rose in all provinces and territories except the Northwest Territories, British Columbia and Manitoba. The largest increase was observed in Newfoundland and Labrador, with 0.12 children per woman more than in 2007. Five other regions (Prince Edward Island, Nova Scotia, New Brunswick, Quebec and Yukon) had a larger percentage change than the national average. On the other hand, increases below the national average were registered in Ontario, Saskatchewan, Alberta and Nunavut.

### **B.1. Age of mother and age-specific fertility rate**

The average age of Canadian women who gave birth in 1991 was 27.7 years. In subsequent years it increased to reach 29.3 years in 2006 where it has since remained stable. The lowest average age of women who gave birth in 2008 was observed in Nunavut (24.4 years) while the highest was in Ontario and British Columbia (30.0 years).

From 1988 to 2008, there have been significant changes in the trend of age-specific fertility rates in Canada. The past twenty years saw an overall decline in the total fertility rate of Canadian women in their twenties, while that of women in their thirties increased steadily. In 2006, the fertility rate of women aged 30 to 34 surpassed the fertility rate of those aged 25 to 29 (Chart 3).

From 2006 to 2008, all age-specific fertility rates of Canadian women increased. For a fourth consecutive year, the fertility rate was highest for women aged 30 to 34 (107.4 births per 1,000 women in 2008). This rate was also the highest since 1965 (119 births per 1,000 women). In addition, since 2006, the increase in the fertility rate of women aged 30 to 34 was larger than for those aged 25 to 29, widening the gap between these two age groups.

Although the fertility of females aged 15 to 19 has risen slightly in recent years, the level in 2008 (14.3 births per 1,000 women) was 1.6 times lower than in 1988 (23.0 births per 1,000 women).

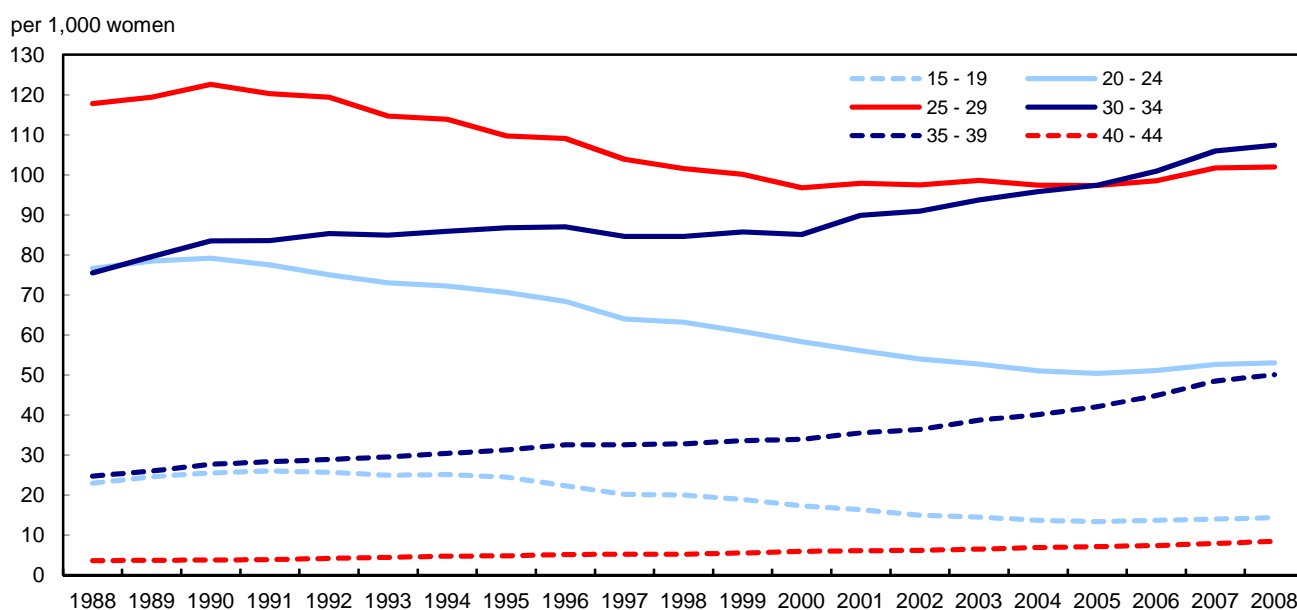
The fertility of women aged 40 to 44 has more than doubled from 1988 to 2008, going from 3.6 to 8.4 per 1,000 women. A recent study found that the length of schooling is an important factor in explaining that increase.<sup>4</sup> The study also indicates that immigrant women, who are more likely to have a university degree, are also more likely to have a young child when they are in their forties. The demographic share of these women is increasing due to steady immigration levels since the beginning of the 1990's<sup>5</sup>.

3. Statistics Canada. 2008. *Aboriginal Peoples in Canada in 2006: Inuit, Métis and First Nations, 2006 Census*, Catalogue no. 97-558.

4. Vézina, M. and M. Turcotte (September 2009). Forty-year-old mothers of pre-school children: A profile. *Canadian Social Trends*, 88, 33-44, Statistics Canada, Catalogue no. 11-008.

5. Statistics Canada, 2006 Census of Population, Statistics Canada catalogue no. 97-557-XCB2006010 (Canada, Code01)

**Chart 3**  
**Age-specific fertility rates, Canada, 1988 to 2008**



**Source(s):** Statistics Canada, CANSIM table 102-4505 and *Births*, Catalogue no. 84F0210X.

In 2008, among the 10 provinces and females aged 29 years and under, Saskatchewan had the highest fertility rates. For women aged 30 to 34, the fertility rate was highest in Alberta. Ontario had the highest rate for women aged 35 to 39 and British Columbia for women aged 40 years and over.

## B.2. Analysing 2008 fertility rates

Two factors could account for the increase in the number of births in recent years: an increase in the number of women of childbearing age and a rise in fertility rates.

By applying age-specific fertility rates (ASFRs) for 2007 to the female population in 2008, it is possible to estimate how much of the increase in births in 2008 can be attributed to changes in the size of the population compared with changes in fertility rates (Table 3).

If there had been no change in age-specific fertility rates from 2007 to 2008, the expected number of births in 2008 would have been 372,620, or 4,756 more births than in 2007. In fact, from 2007 to 2008, there was an increase of 10,022 births. The additional 5,266 births can therefore be attributed to changes in fertility. Also, the greatest change in fertility rate between 2007 and 2008 is found in women aged 30 to 39.

**Text table 3**  
**Expected number of births in 2008 by age group, Canada**

Age Group	2007 ASFR <sup>1</sup>	2008 female population (PR)	Expected births <sup>2</sup>	2008 ASFR <sup>1</sup>	Difference 2007-2008 ASFR <sup>3</sup>	2007 female population (PR)	Difference 2007-2008 female population
15 to 19	14.0	1,099,776	15,397	14.3	0.3	1,089,315	10,461
20 to 24	52.6	1,113,723	58,582	53.0	0.4	1,105,812	7,911
25 to 29	101.7	1,134,348	115,363	102.0	0.3	1,107,611	26,737
30 to 34	106.0	1,106,058	117,242	107.4	1.4	1,088,614	17,444
35 to 39	48.5	1,143,256	55,448	50.1	1.6	1,144,484	-1,228
40 to 44	7.9	1,270,897	10,040	8.4	0.5	1,312,012	-41,115
45 to 49	0.4	1,370,043	548	0.4	0.0	1,349,672	20,371
Total		8,238,101	372,620			8,197,520	40,581

1. Births per 1,000 women.

2. Expected births for 2008, obtained by applying 2007 age-specific fertility rates to the 2008 female population.

3. Difference between 2007 and 2008 age-specific fertility rates.

**Note(s):** ASFR = age-specific fertility rate, PR = updated postcensal.

**Sources:** Statistics Canada, CANSIM Table 102-4505 and Appendix 1 of "Births" publication, catalogue no. 84F0210X.

## C. Historical and recent birth trends

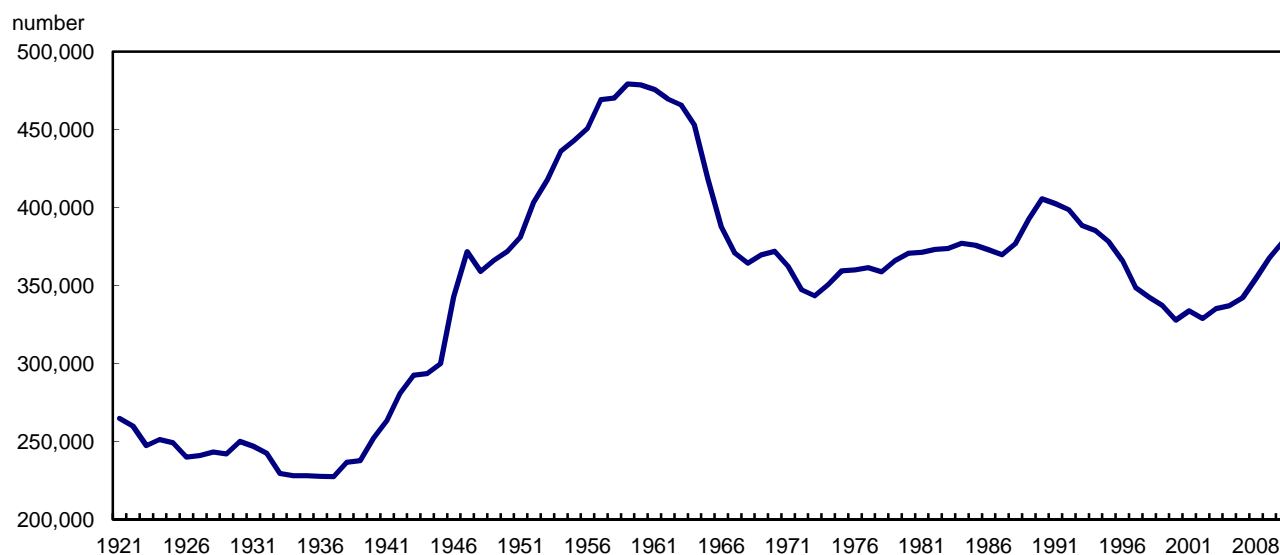
The period from the end of the Second World War to the mid-1960s witnessed a dramatic increase in the fertility rates, the result of which was the baby boom phenomenon.

In 1947, when the TFR was 3.6 children per woman—the highest rate since 1921<sup>6</sup>—the number of births totalled 372,600 and the crude birth rate was 28.9 births per 1,000 population.

At the height of the baby boom in 1959, when the TFR was 3.9 children per woman, annual births exceeded 479,000, the highest number recorded since comparable Canada-wide vital statistics were first compiled in 1921 (Chart 4).

6. Statistics Canada. Selected Birth and Fertility Statistics, Canada, 1921 to 1990, Catalogue no. 82-553, Occasional.

**Chart 4**  
**Births, Canada, 1921 to 2008**



**Source(s):** Statistics Canada, CANSIM table 102-4502, *Births*, Catalogue no. 84F0210X and *Selected Birth and Fertility Statistics, Canada, 1921-1990*, Catalogue no. 82-553-X Discontinued.

The annual number of births remained high for a few more years, and then dropped sharply starting in 1964. This period of low numbers of births, known as the baby bust,<sup>7</sup> lasted for approximately 10 years until the mid-1970s, reaching its lowest level in 1973.

The first baby boom "echo"<sup>8</sup> was expected in the mid-1970s, approximately 25 years after the beginning of the baby boom. But while there was a sizable increase in the number of births in 1974 and 1975, gains in the following years were relatively modest. Only in the late 1980s (1988 to 1990) was there a substantial rise in the number of births.

From 1988 to 1995, Canada experienced a large number of births. Specifically, births peaked at 405,486 in 1990. Thereafter, annual births dropped, falling to 327,882 in 2000, which was less than the lowest number in the baby bust period.

Between 2002 and 2008, Canada has seen a continuous upward trend in the number of births. Part of the recent increase in births could be explained by the fact that many women from the baby boomer's children's generation have now entered their childbearing years, as well as by the increase in fertility rates. Total fertility rate increased from 1.50 children per woman in 2002 to 1.68 in 2008.

#### D. Comparison with selected low-fertility countries

A low-fertility country is one in which the total fertility rate (TFR) is below or near the generational replacement level (2.1 children per woman). Low fertility is a phenomenon that Canada shares with many countries. Moreover, the recent rise in the number of births in Canada parallels trends in several other low-fertility OECD countries, which have also experienced an upturn in fertility in recent years (Table 4).

From 2004 to 2008, the TFR increased in the 15 selected OECD countries (see Table 4). In Canada, the increase in fertility was modest until 2006, whereas in 2007, there was a surge which subsequently slowed.

7. Romaniuc, A. 1984. *Fertility in Canada: From Baby-boom to Baby-bust*. Statistics Canada, Catalogue no. 91-524-XPE. Ottawa, Ontario.

8. Demency, P. and G. McNicoll, editors. 2003. *Encyclopedia of Population*. Vol. 1, New York, U.S.A. MacMillan Reference USA, p. 73.

Between 2006 and 2007, two other countries, the Czech Republic and Australia, had a stronger increase in fertility than Canada and a slight slowdown between 2007 and 2008.

From 2007 to 2008, all the selected OECD countries saw their fertility rise, except the United States, for which the total fertility rate went from 2.12 to 2.08 children per woman.

**Text table 4**  
**Total fertility rates, selected OECD countries, 2004 to 2008**

OECD <sup>1</sup> Countries	2004	2005	2006	2007	2008
Japan	1.29	1.26	1.32	1.34	1.37
Germany	1.36	1.34	1.33	1.37	1.38
Switzerland	1.42	1.42	1.44	1.46	1.48
Czech Republic	1.23	1.28	1.33	1.44	1.50
<b>Canada</b>	<b>1.53</b>	<b>1.54</b>	<b>1.59</b>	<b>1.66</b>	<b>1.68</b>
Netherlands	1.72	1.71	1.72	1.72	1.77
Finland	1.80	1.80	1.84	1.83	1.85
Denmark	1.78	1.80	1.85	1.85	1.89
Sweden	1.76	1.77	1.86	1.88	1.91
United Kingdom	1.78	1.80	1.84	1.90	1.96
Norway	1.83	1.84	1.90	1.90	1.96
Australia	1.76	1.79	1.82	1.93	1.97
France	1.92	1.94	2.00	1.98	2.01
United States	2.05	2.05	2.10	2.12	2.08
Iceland	2.04	2.05	2.08	2.09	2.15

1. OECD = Organisation for Economic Co-Operation and Development.

**Note(s):** Total fertility rate is the average number of children per woman.

**Sources:** National Statistics Offices, National Vital Statistics Reports and Eurostat.

## E. Change in stillbirths

The number of stillbirths (or fetal deaths) in Canada was 2,774 in 2008, an increase of 137 stillbirths (5.2%) from 2007.

The stillbirth rate also went up slightly from 7.1 per 1,000 total births (live births and stillbirths) in 2007 to 7.3 in 2008. From 1991 to 2006, stillbirth rates fluctuated at around 6.0 per 1,000 total births. However, the late stillbirth rate (fetal deaths at 28 or more weeks of gestation) peaked at 3.8 per 1,000 total births in 1992 and then decreased to 3.1 in 2008.



## Related products

---

### Selected publications from Statistics Canada

---

82-221-X	Health indicators
82-223-X	Induced abortion statistics
82-224-X	Pregnancy outcomes

---

### Selected CANSIM tables from Statistics Canada

---

102-4501	Live births, by place of residence of mother and place of occurrence, Canada, provinces, territories and outside Canada
102-4502	Live births, by month, Canada, provinces and territories
102-4503	Live births, by age of mother, Canada, provinces and territories
102-4504	Mean age of mother at time of delivery (live births), Canada, provinces and territories
102-4505	Crude birth rate, age-specific and total fertility rates (live births), Canada, provinces and territories
102-4506	Live births, by marital status of mother, Canada, provinces and territories
102-4507	Live births, by age and marital status of mother, Canada
102-4508	Live births, by age and parity of mother, Canada
102-4509	Live births, by birth weight and sex, Canada, provinces and territories
102-4510	Mean and median birth weight (live births), by sex, Canada, provinces and territories
102-4511	Live births, birth weight indicators, by characteristics of the mother and child, Canada
102-4512	Live births, by weeks of gestation and sex, Canada, provinces and territories
102-4513	Live births, weeks of gestation indicators, by characteristics of the mother and child, Canada
102-4514	Fetal deaths (20 weeks or more of gestation) and late fetal deaths (28 weeks or more of gestation), Canada, provinces and territories
102-4515	Live births and fetal deaths (stillbirths), by type (single or multiple), Canada, provinces and territories
102-4516	Live births and fetal deaths (stillbirths), by place of birth (hospital and non-hospital), Canada, provinces and territories

---

### **Selected surveys from Statistics Canada**

---

3231	Vital Statistics - Birth Database ( <a href="http://www.statcan.gc.ca/english/sdds/3231.htm">www.statcan.gc.ca/english/sdds/3231.htm</a> )
3234	Vital Statistics - Stillbirth Database ( <a href="http://www.statcan.gc.ca/english/sdds/3234.htm">www.statcan.gc.ca/english/sdds/3234.htm</a> )
3604	Estimates of Population by Age and Sex for Canada, Provinces and Territories ( <a href="http://www.statcan.gc.ca/english/sdds/3604.htm">www.statcan.gc.ca/english/sdds/3604.htm</a> )

---

### **Selected tables of Canadian statistics from Statistics Canada**

---

- *Births, estimates, by province and territory*
- *Deaths, estimates, by province and territory*
- *Components of population growth, by province and territory*
- *Infant mortality rates, by province and territory*

# Statistical tables

---

---

**Table 1**  
**Live births, by sex and geography**

Place of residence of mother	number			percent		
	Both sexes	Males	Females	Both sexes	Males	Females
<b>Canada</b>	<b>377,886</b>	<b>193,755</b>	<b>184,131</b>	<b>100.0</b>	<b>100.0</b>	<b>100.0</b>
Newfoundland and Labrador	4,898	2,487	2,411	1.3	1.3	1.3
Prince Edward Island	1,483	754	729	0.4	0.4	0.4
Nova Scotia	9,188	4,708	4,480	2.4	2.4	2.4
New Brunswick	7,402	3,825	3,577	2.0	2.0	1.9
Quebec	87,870	45,010	42,860	23.3	23.2	23.3
Ontario	140,791	72,170	68,621	37.3	37.2	37.3
Manitoba	15,485	7,855	7,630	4.1	4.1	4.1
Saskatchewan	13,737	6,958	6,779	3.6	3.6	3.7
Alberta	50,856	26,182	24,674	13.5	13.5	13.4
British Columbia	44,276	22,828	21,448	11.7	11.8	11.6
Yukon	373	186	187	0.1	0.1	0.1
Northwest Territories	721	358	363	0.2	0.2	0.2
Nunavut	805	433	372	0.2	0.2	0.2
Unknown	1	1	0	0.0	0.0	0.0

**Note(s):** See "Data quality, concepts and methodology — Explanatory notes for the tables".

**Source(s):** Statistics Canada, Canadian Vital Statistics, Birth Database (CANSIM table 102-4512).

**Table 2-1**  
**Live births, by geography — Month**

Place of residence of mother	number													
	Total	January	February	March	April	May	June	July	August	September	October	November	December	
<b>Canada</b>	<b>377,886</b>	<b>30,176</b>	<b>29,117</b>	<b>30,877</b>	<b>31,215</b>	<b>32,589</b>	<b>31,605</b>	<b>33,809</b>	<b>32,905</b>	<b>33,727</b>	<b>32,529</b>	<b>29,438</b>	<b>29,899</b>	
Newfoundland and Labrador	4,898	363	364	411	381	430	382	433	475	468	438	382	371	
Prince Edward Island	1,483	109	134	134	112	128	122	143	112	123	125	129	112	
Nova Scotia	9,188	765	746	733	743	782	768	873	782	817	785	701	693	
New Brunswick	7,402	594	573	617	571	619	627	641	692	669	628	585	586	
Quebec	87,870	6,729	6,708	7,167	7,194	7,495	7,198	8,071	7,671	7,951	7,816	6,924	6,946	
Ontario	140,791	11,492	10,929	11,510	11,797	12,108	11,782	12,443	12,111	12,508	12,059	11,074	10,978	
Manitoba	15,485	1,273	1,184	1,221	1,248	1,341	1,280	1,398	1,369	1,385	1,388	1,164	1,234	
Saskatchewan	13,737	1,127	1,093	1,143	1,124	1,213	1,156	1,194	1,141	1,300	1,139	1,015	1,092	
Alberta	50,856	4,054	3,871	4,177	4,260	4,395	4,420	4,537	4,507	4,394	4,269	3,849	4,123	
British Columbia	44,276	3,522	3,371	3,593	3,628	3,898	3,712	3,924	3,869	3,945	3,737	3,463	3,614	
Yukon	373	23	29	34	24	38	25	22	35	40	34	31	38	
Northwest Territories	721	63	52	62	61	68	56	59	74	57	57	61	51	
Nunavut	805	62	62	75	72	74	77	71	67	70	54	60	61	
Unknown	1	0	1	0	0	0	0	0	0	0	0	0	0	
	percent													
<b>Canada</b>	<b>100.0</b>	<b>8.0</b>	<b>7.7</b>	<b>8.2</b>	<b>8.3</b>	<b>8.6</b>	<b>8.4</b>	<b>8.9</b>	<b>8.7</b>	<b>8.9</b>	<b>8.6</b>	<b>7.8</b>	<b>7.9</b>	
Newfoundland and Labrador	100.0	7.4	7.4	8.4	7.8	8.8	7.8	8.8	9.7	9.6	8.9	7.8	7.6	
Prince Edward Island	100.0	7.3	9.0	9.0	7.6	8.6	8.2	9.6	7.6	8.3	8.4	8.7	7.6	
Nova Scotia	100.0	8.3	8.1	8.0	8.1	8.5	8.4	9.5	8.5	8.9	8.5	7.6	7.5	
New Brunswick	100.0	8.0	7.7	8.3	7.7	8.4	8.5	8.7	9.3	9.0	8.5	7.9	7.9	
Quebec	100.0	7.7	7.6	8.2	8.2	8.5	8.2	9.2	8.7	9.0	8.9	7.9	7.9	
Ontario	100.0	8.2	7.8	8.2	8.4	8.6	8.4	8.8	8.6	8.9	8.6	7.9	7.8	
Manitoba	100.0	8.2	7.6	7.9	8.1	8.7	8.3	9.0	8.8	8.9	9.0	7.5	8.0	
Saskatchewan	100.0	8.2	8.0	8.3	8.2	8.8	8.4	8.7	8.3	9.5	8.3	7.4	7.9	
Alberta	100.0	8.0	7.6	8.2	8.4	8.6	8.7	8.9	8.9	8.6	8.4	7.6	8.1	
British Columbia	100.0	8.0	7.6	8.1	8.2	8.8	8.4	8.9	8.7	8.9	8.4	7.8	8.2	
Yukon	100.0	6.2	7.8	9.1	6.4	10.2	6.7	5.9	9.4	10.7	9.1	8.3	10.2	
Northwest Territories	100.0	8.7	7.2	8.6	8.5	9.4	7.8	8.2	10.3	7.9	7.9	8.5	7.1	
Nunavut	100.0	7.7	7.7	9.3	8.9	9.2	9.6	8.8	8.3	8.7	6.7	7.5	7.6	
Unknown	100.0	0.0	100.0	0.0	0.0	0.0	0.0	0.0	0.0	0.0	0.0	0.0	0.0	

**Note(s):** See "Data quality, concepts and methodology — Explanatory notes for the tables".

**Source(s):** Statistics Canada, Canadian Vital Statistics, Birth Database (CANSIM table 102-4502).

**Table 2-2**  
**Live births, by geography — Age of mother**

Place of residence of mother	Age of mother 1									
	All ages	Under 15 years	15 to 19 years	20 to 24 years	25 to 29 years	30 to 34 years	35 to 39 years	40 to 44 years	45 to 49 years	Not stated 2
	number									
<b>Canada</b>	<b>377,886</b>	<b>134</b>	<b>15,570</b>	<b>59,060</b>	<b>115,705</b>	<b>118,775</b>	<b>57,316</b>	<b>10,705</b>	<b>559</b>	<b>62</b>
Newfoundland and Labrador	4,898	0	308	1,016	1,432	1,455	600	84	2	1
Prince Edward Island	1,483	0	78	307	455	393	219	31	0	0
Nova Scotia	9,188	7	571	1,707	2,692	2,710	1,293	200	7	1
New Brunswick	7,402	3	488	1,620	2,346	2,027	783	125	5	5
Quebec	87,870	21	2,456	12,879	30,724	28,263	11,392	2,027	100	8
Ontario	140,791	24	4,797	18,664	39,887	47,345	24,943	4,853	261	17
Manitoba	15,485	28	1,338	3,388	4,561	4,062	1,786	311	11	0
Saskatchewan	13,737	10	1,345	3,281	4,462	3,222	1,191	201	8	17
Alberta	50,856	22	2,457	9,177	16,383	14,902	6,670	1,177	60	8
British Columbia	44,276	14	1,471	6,499	12,285	14,014	8,236	1,648	104	5
Yukon	373	0	28	62	96	112	62	13	0	0
Northwest Territories	721	2	54	173	201	174	93	23	1	0
Nunavut	805	3	178	287	181	96	48	12	0	0
Unknown	1	0	1	0	0	0	0	0	0	0
	percent									
<b>Canada</b>	<b>100.0</b>	<b>0.0</b>	<b>4.1</b>	<b>15.6</b>	<b>30.6</b>	<b>31.4</b>	<b>15.2</b>	<b>2.8</b>	<b>0.1</b>	<b>0.0</b>
Newfoundland and Labrador	100.0	0.0	6.3	20.7	29.2	29.7	12.2	1.7	0.0	0.0
Prince Edward Island	100.0	0.0	5.3	20.7	30.7	26.5	14.8	2.1	0.0	0.0
Nova Scotia	100.0	0.1	6.2	18.6	29.3	29.5	14.1	2.2	0.1	0.0
New Brunswick	100.0	0.0	6.6	21.9	31.7	27.4	10.6	1.7	0.1	0.1
Quebec	100.0	0.0	2.8	14.7	35.0	32.2	13.0	2.3	0.1	0.0
Ontario	100.0	0.0	3.4	13.3	28.3	33.6	17.7	3.4	0.2	0.0
Manitoba	100.0	0.2	8.6	21.9	29.5	26.2	11.5	2.0	0.1	0.0
Saskatchewan	100.0	0.1	9.8	23.9	32.5	23.5	8.7	1.5	0.1	0.1
Alberta	100.0	0.0	4.8	18.0	32.2	29.3	13.1	2.3	0.1	0.0
British Columbia	100.0	0.0	3.3	14.7	27.7	31.7	18.6	3.7	0.2	0.0
Yukon	100.0	0.0	7.5	16.6	25.7	30.0	16.6	3.5	0.0	0.0
Northwest Territories	100.0	0.3	7.5	24.0	27.9	24.1	12.9	3.2	0.1	0.0
Nunavut	100.0	0.4	22.1	35.7	22.5	11.9	6.0	1.5	0.0	0.0
Unknown	100.0	0.0	100.0	0.0	0.0	0.0	0.0	0.0	0.0	0.0

1. Age of mother attained at the last birthday preceding delivery.

2. For confidentiality reasons, live births to mothers aged 50 and over are included in the category "Age of mother, not stated." Where information is unavailable on the birth mother of children who are adopted, these records are included in the category "Age of mother, not stated."

**Note(s):** See "Data quality, concepts and methodology — Explanatory notes for the tables".

**Source(s):** Statistics Canada, Canadian Vital Statistics, Birth Database (CANSIM table 102-4503).

**Table 2-3**  
**Live births, by geography — Marital status of mother**

Place of residence of mother	Marital status of mother						
	Total	Single (never married)	Married	Widowed	Divorced	Separated	Not stated
	number						
<b>Canada</b>	<b>377,886</b>	<b>102,775</b>	<b>228,541</b>	<b>213</b>	<b>3,658</b>	<b>1,326</b>	<b>41,373</b>
Newfoundland and Labrador	4,898	2,266	2,489	3	71	42	27
Prince Edward Island	1,483	579	621	0	10	0	273
Nova Scotia	9,188	3,997	5,055	4	79	2	51
New Brunswick	7,402	3,322	3,752	12	139	156	21
Quebec	87,870	53,220	32,541	74	1,285	247	503
Ontario	140,791	18,010	101,642	59	933	6	20,141
Manitoba	15,485	6,076	8,910	20	248	195	36
Saskatchewan	13,737	5,736	7,216	13	225	3	544
Alberta <sup>1</sup>	50,856	219	35,470	0	14	0	15,153
British Columbia	44,276	8,172	30,231	26	635	666	4,546
Yukon	373	164	187	0	9	1	12
Northwest Territories	721	376	297	1	7	6	34
Nunavut	805	637	130	1	3	2	32
Unknown	1	1	0	0	0	0	0
	percent						
<b>Canada</b>	<b>100.0</b>	<b>27.2</b>	<b>60.5</b>	<b>0.1</b>	<b>1.0</b>	<b>0.4</b>	<b>10.9</b>
Newfoundland and Labrador	100.0	46.3	50.8	0.1	1.4	0.9	0.6
Prince Edward Island	100.0	39.0	41.9	0.0	0.7	0.0	18.4
Nova Scotia	100.0	43.5	55.0	0.0	0.9	0.0	0.6
New Brunswick	100.0	44.9	50.7	0.2	1.9	2.1	0.3
Quebec	100.0	60.6	37.0	0.1	1.5	0.3	0.6
Ontario	100.0	12.8	72.2	0.0	0.7	0.0	14.3
Manitoba	100.0	39.2	57.5	0.1	1.6	1.3	0.2
Saskatchewan	100.0	41.8	52.5	0.1	1.6	0.0	4.0
Alberta <sup>1</sup>	100.0	0.4	69.7	0.0	0.0	0.0	29.8
British Columbia	100.0	18.5	68.3	0.1	1.4	1.5	10.3
Yukon	100.0	44.0	50.1	0.0	2.4	0.3	3.2
Northwest Territories	100.0	52.1	41.2	0.1	1.0	0.8	4.7
Nunavut	100.0	79.1	16.1	0.1	0.4	0.2	4.0
Unknown	100.0	100.0	0.0	0.0	0.0	0.0	0.0

1. Partway through 2003, Alberta Registries amended their Registration of Birth form in such a way that Statistics Canada can no longer determine the legal marital status of those persons in common-law marriages.

**Note(s):** See "Data quality, concepts and methodology — Explanatory notes for the tables".

**Source(s):** Statistics Canada, Canadian Vital Statistics, Birth Database (CANSIM table 102-4506).

**Table 3**  
**Mean age of mother<sup>1</sup>, by geography**

Place of residence of mother	Mean age of mother
	years
<b>Canada</b>	<b>29.3</b>
Newfoundland and Labrador	28.3
Prince Edward Island	28.5
Nova Scotia	28.6
New Brunswick	27.9
Quebec	29.3
Ontario	30.0
Manitoba	27.8
Saskatchewan	27.1
Alberta	28.8
British Columbia	30.0
Yukon	29.0
Northwest Territories	27.9
Nunavut	24.4

1. Mean age of mother for Canada, a province or a territory is calculated by summing the mothers' ages at their last birthday preceding delivery and then dividing the sum by the total number of live births in that jurisdiction. To estimate mid-year mean age, a statistic often used in analyses, add 0.5 to the mean age in this table.

**Note(s):** See "Data quality, concepts and methodology — Explanatory notes for the tables".

**Source(s):** Statistics Canada, Canadian Vital Statistics, Birth Database (CANSIM table 102-4504).

**Table 4**  
**Crude birth rate, age-specific and total fertility rates, by geography**

Place of residence of mother	Age specific fertility rate <sup>1,2</sup>							Crude birth rate, live births	Total fertility rate <sup>4</sup>
	15 to 19 years <sup>3</sup>	20 to 24 years	25 to 29 years	30 to 34 years	35 to 39 years	40 to 44 years	45 to 49 years		
	rate per 1,000 females								
<b>Canada</b>	<b>14.3</b>	<b>53.0</b>	<b>102.0</b>	<b>107.4</b>	<b>50.1</b>	<b>8.4</b>	<b>0.4</b>	<b>11.3</b>	<b>1,680.8</b>
Newfoundland and Labrador	19.4	65.2	99.6	93.2	33.2	4.0	0.1	9.7	1,577.7
Prince Edward Island	15.4	67.1	110.7	94.3	50.1	6.0	0.0	10.6	1,728.0
Nova Scotia	18.7	55.2	92.6	94.5	41.0	5.5	0.2	9.8	1,541.3
New Brunswick	20.8	70.7	104.0	86.0	31.2	4.4	0.2	9.9	1,587.9
Quebec	10.1	54.3	117.6	112.1	46.4	7.1	0.3	11.3	1,738.1
Ontario	11.1	42.5	91.2	107.8	53.6	9.4	0.5	10.9	1,584.8
Manitoba	31.3	81.8	116.2	107.8	46.5	7.5	0.2	12.8	1,959.5
Saskatchewan	36.3	91.1	131.0	105.4	40.4	6.0	0.2	13.6	2,048.5
Alberta	20.5	67.9	118.2	115.5	52.4	9.0	0.4	14.2	1,917.3
British Columbia	10.7	44.3	82.3	99.1	53.4	9.8	0.6	10.1	1,505.4
Yukon	26.3	55.3	94.4	95.4	47.3	9.2	0.0	11.3	1,637.9
Northwest Territories	31.0	105.1	101.5	106.7	58.1	13.6	0.6	16.5	2,081.8
Nunavut	117.8	203.5	134.2	88.2	42.0	11.8	0.0	25.5	2,980.9

1. Age of mother attained at the last birthday preceding delivery.

2. Age-specific fertility rate (ASFR) is the number of live births per 1,000 females in a specific age group. Five-year age groups were used in these tabulations (ranging from 15 to 19 years to 45 to 49 years).

3. Live births to females under 20 years of age per 1,000 females aged 15 to 19.

4. Total fertility rate is an estimate of the average number of live births a female can be expected to have in her lifetime, based on the age-specific fertility rates (ASFR) of a given year. The total fertility rate (TFR) = SUM of single year of age-specific fertility rates.

**Note(s):** See "Data quality, concepts and methodology — Explanatory notes for the tables".

**Source(s):** Statistics Canada, Canadian Vital Statistics, Birth Database (CANSIM table 102-4505) and Appendix I.

**Table 5**  
**Mean and median birth weight, by geography**

Place of residence of mother	Birth weight					
	Both sexes		Males		Females	
	Mean <sup>1</sup>	Median <sup>2</sup>	Mean <sup>1</sup>	Median <sup>2</sup>	Mean <sup>1</sup>	Median <sup>2</sup>
grams						
<b>Canada</b>	<b>3,374</b>	<b>3,402</b>	<b>3,429</b>	<b>3,460</b>	<b>3,316</b>	<b>3,343</b>
Newfoundland and Labrador	3,446	3,480	3,517	3,555	3,372	3,410
Prince Edward Island	3,446	3,450	3,515	3,530	3,374	3,391
Nova Scotia	3,419	3,459	3,483	3,515	3,351	3,380
New Brunswick	3,427	3,445	3,478	3,495	3,374	3,400
Quebec	3,357	3,385	3,415	3,445	3,296	3,325
Ontario	3,361	3,390	3,414	3,449	3,305	3,330
Manitoba	3,452	3,487	3,511	3,543	3,391	3,413
Saskatchewan	3,442	3,465	3,490	3,520	3,393	3,418
Alberta	3,344	3,380	3,399	3,440	3,285	3,320
British Columbia	3,401	3,425	3,457	3,490	3,342	3,364
Yukon	3,483	3,504	3,491	3,517	3,476	3,453
Northwest Territories	3,521	3,544	3,562	3,629	3,480	3,487
Nunavut	3,348	3,410	3,387	3,504	3,302	3,355
Unknown	0	0	0	0	0	0

1. Mean birth weight is calculated for Canada, a province or a territory by summing the first weight of each newborn (obtained immediately after birth) and then dividing the sum by the total number of live births in that jurisdiction.
2. Median birth weight refers to the middle value birth weight when newborns' birth weight is ranked from lightest to heaviest. In the case of an even number of observations, the median is the arithmetic average of the two middle values.

**Note(s):** See "Data quality, concepts and methodology — Explanatory notes for the tables".

**Source(s):** Statistics Canada, Canadian Vital Statistics, Birth Database (CANSIM table 102-4510).

**Table 6-1**  
**Live births, Canada — Age and marital status of mother**

Marital status of mother	Age of mother <sup>1</sup>									
	All ages	Under 15 years	15 to 19 years	20 to 24 years	25 to 29 years	30 to 34 years	35 to 39 years	40 to 44 years	45 to 49 years	Not stated <sup>2</sup>
	number									
<b>Total <sup>3</sup></b>	<b>377,886</b>	<b>134</b>	<b>15,570</b>	<b>59,060</b>	<b>115,705</b>	<b>118,775</b>	<b>57,316</b>	<b>10,705</b>	<b>559</b>	<b>62</b>
Single (never married)	102,775	109	10,279	27,495	33,344	22,154	7,855	1,457	73	9
Married	228,541	1	956	18,921	69,628	87,085	43,731	7,767	420	32
Widowed	213	0	1	16	35	69	70	22	0	0
Divorced	3,658	0	2	121	734	1,291	1,153	333	22	2
Separated	1,326	0	22	182	349	438	263	69	3	0
Not stated	41,373	24	4,310	12,325	11,615	7,738	4,244	1,057	41	19
	percent									
<b>Total <sup>3</sup></b>	<b>100.0</b>	<b>100.0</b>	<b>100.0</b>	<b>100.0</b>	<b>100.0</b>	<b>100.0</b>	<b>100.0</b>	<b>100.0</b>	<b>100.0</b>	<b>100.0</b>
Single (never married)	27.2	81.3	66.0	46.6	28.8	18.7	13.7	13.6	13.1	14.5
Married	60.5	0.7	6.1	32.0	60.2	73.3	76.3	72.6	75.1	51.6
Widowed	0.1	0.0	0.0	0.0	0.0	0.1	0.1	0.2	0.0	0.0
Divorced	1.0	0.0	0.0	0.2	0.6	1.1	2.0	3.1	3.9	3.2
Separated	0.4	0.0	0.1	0.3	0.3	0.4	0.5	0.6	0.5	0.0
Not stated	10.9	17.9	27.7	20.9	10.0	6.5	7.4	9.9	7.3	30.6

1. Age of mother attained at the last birthday preceding delivery.
2. For confidentiality reasons, live births to mothers aged 50 and over are included in the category "Age of mother, not stated." Where information is unavailable on the birth mother of children who are adopted, these records are included in the category "Age of mother, not stated."
3. Partway through 2003, Alberta Registries amended their Registration of Birth form in such a way that Statistics Canada can no longer determine the legal marital status of those persons in common-law marriages.

**Note(s):** See "Data quality, concepts and methodology — Explanatory notes for the tables".

**Source(s):** Statistics Canada, Canadian Vital Statistics, Birth Database (CANSIM table 102-4507).



**Table 6-2**  
**Live births, Canada — Age and parity of mother**

Parity of mother	Age of mother <sup>1</sup>									
	All ages	Under 15 years	15 to 19 years	20 to 24 years	25 to 29 years	30 to 34 years	35 to 39 years	40 to 44 years	45 to 49 years	Not stated <sup>2</sup>
	number									
<b>Total</b>	<b>377,886</b>	<b>134</b>	<b>15,570</b>	<b>59,060</b>	<b>115,705</b>	<b>118,775</b>	<b>57,316</b>	<b>10,705</b>	<b>559</b>	<b>62</b>
First live birth	166,610	132	13,218	35,707	56,319	42,434	15,890	2,701	181	28
Second live birth	133,148	2	2,093	17,046	39,176	47,908	22,983	3,779	152	9
Third live birth	50,908	0	234	4,719	13,507	18,843	11,396	2,121	79	9
Fourth live birth	16,713	0	21	1,237	4,463	5,831	4,084	1,018	54	5
Fifth live birth	5,694	0	2	286	1,471	2,015	1,428	456	33	3
Sixth live birth	2,508	0	1	50	544	947	717	223	20	6
Seventh live birth	1,086	0	0	12	164	427	336	138	7	2
Eighth live birth	566	0	0	1	41	200	213	101	10	0
Ninth live birth	314	0	0	0	13	97	138	63	3	0
Tenth live birth or more	328	0	0	0	6	68	129	105	20	0
Not stated	11	0	1	2	1	5	2	0	0	0
	percent									
<b>Total</b>	<b>100.0</b>	<b>100.0</b>	<b>100.0</b>	<b>100.0</b>	<b>100.0</b>	<b>100.0</b>	<b>100.0</b>	<b>100.0</b>	<b>100.0</b>	<b>100.0</b>
First live birth	44.1	98.5	84.9	60.5	48.7	35.7	27.7	25.2	32.4	45.2
Second live birth	35.2	1.5	13.4	28.9	33.9	40.3	40.1	35.3	27.2	14.5
Third live birth	13.5	0.0	1.5	8.0	11.7	15.9	19.9	19.8	14.1	14.5
Fourth live birth	4.4	0.0	0.1	2.1	3.9	4.9	7.1	9.5	9.7	8.1
Fifth live birth	1.5	0.0	0.0	0.5	1.3	1.7	2.5	4.3	5.9	4.8
Sixth live birth	0.7	0.0	0.0	0.1	0.5	0.8	1.3	2.1	3.6	9.7
Seventh live birth	0.3	0.0	0.0	0.0	0.1	0.4	0.6	1.3	1.3	3.2
Eighth live birth	0.1	0.0	0.0	0.0	0.0	0.2	0.4	0.9	1.8	0.0
Ninth live birth	0.1	0.0	0.0	0.0	0.0	0.1	0.2	0.6	0.5	0.0
Tenth live birth or more	0.1	0.0	0.0	0.0	0.0	0.1	0.2	1.0	3.6	0.0
Not stated	0.0	0.0	0.0	0.0	0.0	0.0	0.0	0.0	0.0	0.0

1. Age of mother attained at the last birthday preceding delivery.

2. For confidentiality reasons, live births to mothers aged 50 and over are included in the category "Age of mother, not stated." Where information is unavailable on the birth mother of children who are adopted, these records are included in the category "Age of mother, not stated."

**Note(s):** See "Data quality, concepts and methodology — Explanatory notes for the tables".

**Source(s):** Statistics Canada, Canadian Vital Statistics, Birth Database (CANSIM table 102-4508).

**Table 7-1**  
**Live births, by birth weight and geography — Both sexes**

Birth weight	Place of residence of mother						
	Canada	Newfoundland and Labrador	Prince Edward Island	Nova Scotia	New Brunswick	Quebec	Ontario
	number						
<b>Total</b>	<b>377,886</b>	<b>4,898</b>	<b>1,483</b>	<b>9,188</b>	<b>7,402</b>	<b>87,870</b>	<b>140,791</b>
<b>Less than 500 grams</b>	<b>378</b>	<b>11</b>	<b>0</b>	<b>10</b>	<b>7</b>	<b>103</b>	<b>95</b>
<b>500 to 1,499 grams</b>	<b>3,388</b>	<b>40</b>	<b>5</b>	<b>95</b>	<b>52</b>	<b>744</b>	<b>1,286</b>
500 to 749 grams	600	11	0	16	11	132	216
750 to 999 grams	698	5	1	19	10	130	297
1,000 to 1,249 grams	946	8	2	34	13	219	351
1,250 to 1,499 grams	1,144	16	2	26	18	263	422
<b>1,500 to 2,499 grams</b>	<b>18,920</b>	<b>246</b>	<b>70</b>	<b>435</b>	<b>329</b>	<b>4,068</b>	<b>7,498</b>
1,500 to 1,749 grams	1,698	24	4	42	34	351	675
1,750 to 1,999 grams	2,815	32	10	66	53	617	1,120
2,000 to 2,249 grams	4,881	70	14	117	67	1,046	1,946
2,250 to 2,499 grams	9,526	120	42	210	175	2,054	3,757
<b>2,500 to 4,499 grams</b>	<b>347,922</b>	<b>4,450</b>	<b>1,366</b>	<b>8,426</b>	<b>6,835</b>	<b>81,716</b>	<b>129,286</b>
2,500 to 2,749 grams	19,441	239	49	430	307	4,515	7,608
2,750 to 2,999 grams	38,259	378	125	836	671	9,096	14,832
3,000 to 3,249 grams	62,109	684	250	1,325	1,168	15,334	23,432
3,250 to 3,499 grams	75,764	911	294	1,810	1,499	18,450	27,795
3,500 to 3,749 grams	67,802	896	283	1,691	1,325	16,020	24,854
3,750 to 3,999 grams	46,946	690	194	1,241	974	10,541	17,065
4,000 to 4,249 grams	25,745	450	108	696	581	5,430	9,396
4,250 to 4,499 grams	11,856	202	63	397	310	2,330	4,304
<b>4,500 grams or more</b>	<b>7,131</b>	<b>150</b>	<b>40</b>	<b>222</b>	<b>178</b>	<b>1,236</b>	<b>2,563</b>
4,500 to 4,749 grams	4,713	93	33	148	125	869	1,677
4,750 to 4,999 grams	1,632	36	6	51	36	257	586
5,000 to 5,249 grams	534	12	1	15	11	77	209
5,250 to 5,499 grams	165	6	0	4	4	23	61
5,500 grams or more	87	3	0	4	2	10	30
<b>Not stated</b>	<b>147</b>	<b>1</b>	<b>2</b>	<b>0</b>	<b>1</b>	<b>3</b>	<b>63</b>
	percent						
<b>Total</b>	<b>100.0</b>	<b>100.0</b>	<b>100.0</b>	<b>100.0</b>	<b>100.0</b>	<b>100.0</b>	<b>100.0</b>
<b>Less than 500 grams</b>	<b>0.1</b>	<b>0.2</b>	<b>0.0</b>	<b>0.1</b>	<b>0.1</b>	<b>0.1</b>	<b>0.1</b>
<b>500 to 1,499 grams</b>	<b>0.9</b>	<b>0.8</b>	<b>0.3</b>	<b>1.0</b>	<b>0.7</b>	<b>0.8</b>	<b>0.9</b>
500 to 749 grams	0.2	0.2	0.0	0.2	0.1	0.2	0.2
750 to 999 grams	0.2	0.1	0.1	0.2	0.1	0.1	0.2
1,000 to 1,249 grams	0.3	0.2	0.1	0.4	0.2	0.2	0.2
1,250 to 1,499 grams	0.3	0.3	0.1	0.3	0.2	0.3	0.3
<b>1,500 to 2,499 grams</b>	<b>5.0</b>	<b>5.0</b>	<b>4.7</b>	<b>4.7</b>	<b>4.4</b>	<b>4.6</b>	<b>5.3</b>
1,500 to 1,749 grams	0.4	0.5	0.3	0.5	0.5	0.4	0.5
1,750 to 1,999 grams	0.7	0.7	0.7	0.7	0.7	0.7	0.8
2,000 to 2,249 grams	1.3	1.4	0.9	1.3	0.9	1.2	1.4
2,250 to 2,499 grams	2.5	2.4	2.8	2.3	2.4	2.3	2.7
<b>2,500 to 4,499 grams</b>	<b>92.1</b>	<b>90.9</b>	<b>92.1</b>	<b>91.7</b>	<b>92.3</b>	<b>93.0</b>	<b>91.8</b>
2,500 to 2,749 grams	5.1	4.9	3.3	4.7	4.1	5.1	5.4
2,750 to 2,999 grams	10.1	7.7	8.4	9.1	9.1	10.4	10.5
3,000 to 3,249 grams	16.4	14.0	16.9	14.4	15.8	17.5	16.6
3,250 to 3,499 grams	20.0	18.6	19.8	19.7	20.3	21.0	19.7
3,500 to 3,749 grams	17.9	18.3	19.1	18.4	17.9	18.2	17.7
3,750 to 3,999 grams	12.4	14.1	13.1	13.5	13.2	12.0	12.1
4,000 to 4,249 grams	6.8	9.2	7.3	7.6	7.8	6.2	6.7
4,250 to 4,499 grams	3.1	4.1	4.2	4.3	4.2	2.7	3.1
<b>4,500 grams or more</b>	<b>1.9</b>	<b>3.1</b>	<b>2.7</b>	<b>2.4</b>	<b>2.4</b>	<b>1.4</b>	<b>1.8</b>
4,500 to 4,749 grams	1.2	1.9	2.2	1.6	1.7	1.0	1.2
4,750 to 4,999 grams	0.4	0.7	0.4	0.6	0.5	0.3	0.4
5,000 to 5,249 grams	0.1	0.2	0.1	0.2	0.1	0.1	0.1
5,250 to 5,499 grams	0.0	0.1	0.0	0.0	0.1	0.0	0.0
5,500 grams or more	0.0	0.1	0.0	0.0	0.0	0.0	0.0
<b>Not stated</b>	<b>0.0</b>	<b>0.0</b>	<b>0.1</b>	<b>0.0</b>	<b>0.0</b>	<b>0.0</b>	<b>0.0</b>

Table 7-1 – continued

## Live births, by birth weight and geography — Both sexes

Birth weight	Place of residence of mother								
	Canada	Manitoba	Saskatchewan	Alberta	British Columbia	Yukon	Northwest Territories	Nunavut	Unknown
	number								
<b>Total</b>	<b>377,886</b>	<b>15,485</b>	<b>13,737</b>	<b>50,856</b>	<b>44,276</b>	<b>373</b>	<b>721</b>	<b>805</b>	<b>1</b>
<b>Less than 500 grams</b>	<b>378</b>	<b>24</b>	<b>11</b>	<b>86</b>	<b>26</b>	<b>0</b>	<b>4</b>	<b>1</b>	<b>0</b>
<b>500 to 1,499 grams</b>	<b>3,388</b>	<b>141</b>	<b>120</b>	<b>548</b>	<b>336</b>	<b>4</b>	<b>7</b>	<b>10</b>	<b>0</b>
500 to 749 grams	600	26	22	102	63	0	1	0	0
750 to 999 grams	698	33	20	120	58	1	2	2	0
1,000 to 1,249 grams	946	38	46	137	88	3	3	4	0
1,250 to 1,499 grams	1,144	44	32	189	127	0	1	4	0
<b>1,500 to 2,499 grams</b>	<b>18,920</b>	<b>693</b>	<b>615</b>	<b>2,800</b>	<b>2,067</b>	<b>12</b>	<b>32</b>	<b>55</b>	<b>0</b>
1,500 to 1,749 grams	1,698	57	61	260	183	0	4	3	0
1,750 to 1,999 grams	2,815	79	87	420	315	1	6	9	0
2,000 to 2,249 grams	4,881	204	164	728	491	4	8	22	0
2,250 to 2,499 grams	9,526	353	303	1,392	1,078	7	14	21	0
<b>2,500 to 4,499 grams</b>	<b>347,922</b>	<b>14,119</b>	<b>12,578</b>	<b>46,550</b>	<b>40,876</b>	<b>351</b>	<b>643</b>	<b>726</b>	<b>0</b>
2,500 to 2,749 grams	19,441	713	624	2,736	2,134	16	26	44	0
2,750 to 2,999 grams	38,259	1,317	1,142	5,453	4,253	29	49	78	0
3,000 to 3,249 grams	62,109	2,173	2,004	8,367	7,122	54	81	115	0
3,250 to 3,499 grams	75,764	2,883	2,701	10,275	8,800	71	128	147	0
3,500 to 3,749 grams	67,802	2,831	2,499	8,962	8,083	69	133	156	0
3,750 to 3,999 grams	46,946	2,277	1,950	6,027	5,733	51	100	103	0
4,000 to 4,249 grams	25,745	1,226	1,106	3,340	3,244	36	79	53	0
4,250 to 4,499 grams	11,856	699	552	1,390	1,507	25	47	30	0
<b>4,500 grams or more</b>	<b>7,131</b>	<b>507</b>	<b>411</b>	<b>871</b>	<b>901</b>	<b>6</b>	<b>35</b>	<b>11</b>	<b>0</b>
4,500 to 4,749 grams	4,713	311	244	582	596	5	21	9	0
4,750 to 4,999 grams	1,632	117	101	209	219	1	11	2	0
5,000 to 5,249 grams	534	56	40	51	62	0	0	0	0
5,250 to 5,499 grams	165	15	17	19	16	0	0	0	0
5,500 grams or more	87	8	9	10	8	0	3	0	0
<b>Not stated</b>	<b>147</b>	<b>1</b>	<b>2</b>	<b>1</b>	<b>70</b>	<b>0</b>	<b>0</b>	<b>2</b>	<b>1</b>
	percent								
<b>Total</b>	<b>100.0</b>	<b>100.0</b>	<b>100.0</b>	<b>100.0</b>	<b>100.0</b>	<b>100.0</b>	<b>100.0</b>	<b>100.0</b>	<b>100.0</b>
<b>Less than 500 grams</b>	<b>0.1</b>	<b>0.2</b>	<b>0.1</b>	<b>0.2</b>	<b>0.1</b>	<b>0.0</b>	<b>0.6</b>	<b>0.1</b>	<b>0.0</b>
<b>500 to 1,499 grams</b>	<b>0.9</b>	<b>0.9</b>	<b>0.9</b>	<b>1.1</b>	<b>0.8</b>	<b>1.1</b>	<b>1.0</b>	<b>1.2</b>	<b>0.0</b>
500 to 749 grams	0.2	0.2	0.2	0.2	0.1	0.0	0.1	0.0	0.0
750 to 999 grams	0.2	0.2	0.1	0.2	0.1	0.3	0.3	0.2	0.0
1,000 to 1,249 grams	0.3	0.2	0.3	0.3	0.2	0.8	0.4	0.5	0.0
1,250 to 1,499 grams	0.3	0.3	0.2	0.4	0.3	0.0	0.1	0.5	0.0
<b>1,500 to 2,499 grams</b>	<b>5.0</b>	<b>4.5</b>	<b>4.5</b>	<b>5.5</b>	<b>4.7</b>	<b>3.2</b>	<b>4.4</b>	<b>6.8</b>	<b>0.0</b>
1,500 to 1,749 grams	0.4	0.4	0.4	0.5	0.4	0.0	0.6	0.4	0.0
1,750 to 1,999 grams	0.7	0.5	0.6	0.8	0.7	0.3	0.8	1.1	0.0
2,000 to 2,249 grams	1.3	1.3	1.2	1.4	1.1	1.1	1.1	2.7	0.0
2,250 to 2,499 grams	2.5	2.3	2.2	2.7	2.4	1.9	1.9	2.6	0.0
<b>2,500 to 4,499 grams</b>	<b>92.1</b>	<b>91.2</b>	<b>91.6</b>	<b>91.5</b>	<b>92.3</b>	<b>94.1</b>	<b>89.2</b>	<b>90.2</b>	<b>0.0</b>
2,500 to 2,749 grams	5.1	4.6	4.5	5.4	4.8	4.3	3.6	5.5	0.0
2,750 to 2,999 grams	10.1	8.5	8.3	10.7	9.6	7.8	6.8	9.7	0.0
3,000 to 3,249 grams	16.4	14.0	14.6	16.5	16.1	14.5	11.2	14.3	0.0
3,250 to 3,499 grams	20.0	18.6	19.7	20.2	19.9	19.0	17.8	18.3	0.0
3,500 to 3,749 grams	17.9	18.3	18.2	17.6	18.3	18.5	18.4	19.4	0.0
3,750 to 3,999 grams	12.4	14.7	14.2	11.9	12.9	13.7	13.9	12.8	0.0
4,000 to 4,249 grams	6.8	7.9	8.1	6.6	7.3	9.7	11.0	6.6	0.0
4,250 to 4,499 grams	3.1	4.5	4.0	2.7	3.4	6.7	6.5	3.7	0.0
<b>4,500 grams or more</b>	<b>1.9</b>	<b>3.3</b>	<b>3.0</b>	<b>1.7</b>	<b>2.0</b>	<b>1.6</b>	<b>4.9</b>	<b>1.4</b>	<b>0.0</b>
4,500 to 4,749 grams	1.2	2.0	1.8	1.1	1.3	1.3	2.9	1.1	0.0
4,750 to 4,999 grams	0.4	0.8	0.7	0.4	0.5	0.3	1.5	0.2	0.0
5,000 to 5,249 grams	0.1	0.4	0.3	0.1	0.1	0.0	0.0	0.0	0.0
5,250 to 5,499 grams	0.0	0.1	0.1	0.0	0.0	0.0	0.0	0.0	0.0
5,500 grams or more	0.0	0.1	0.1	0.0	0.0	0.0	0.4	0.0	0.0
<b>Not stated</b>	<b>0.0</b>	<b>0.0</b>	<b>0.0</b>	<b>0.0</b>	<b>0.2</b>	<b>0.0</b>	<b>0.0</b>	<b>0.2</b>	<b>100.0</b>

**Note(s):** See "Data quality, concepts and methodology — Explanatory notes for the tables".

**Source(s):** Statistics Canada, Canadian Vital Statistics, Birth Database (CANSIM table 102-4509).

**Table 7-2**  
**Live births, by birth weight and geography — Males**

Birth weight	Place of residence of mother						
	Canada	Newfoundland and Labrador	Prince Edward Island	Nova Scotia	New Brunswick	Quebec	Ontario
	number						
<b>Total</b>	<b>193,755</b>	<b>2,487</b>	<b>754</b>	<b>4,708</b>	<b>3,825</b>	<b>45,010</b>	<b>72,170</b>
<b>Less than 500 grams</b>	<b>192</b>	<b>4</b>	<b>0</b>	<b>5</b>	<b>4</b>	<b>53</b>	<b>47</b>
<b>500 to 1,499 grams</b>	<b>1,700</b>	<b>13</b>	<b>3</b>	<b>46</b>	<b>22</b>	<b>362</b>	<b>662</b>
500 to 749 grams	292	3	0	8	5	61	105
750 to 999 grams	363	1	0	8	7	68	155
1,000 to 1,249 grams	482	3	1	18	3	114	181
1,250 to 1,499 grams	563	6	2	12	7	119	221
<b>1,500 to 2,499 grams</b>	<b>8,984</b>	<b>121</b>	<b>30</b>	<b>200</b>	<b>165</b>	<b>1,850</b>	<b>3,594</b>
1,500 to 1,749 grams	858	13	2	24	14	173	350
1,750 to 1,999 grams	1,392	16	4	34	33	311	555
2,000 to 2,249 grams	2,364	38	5	54	30	480	925
2,250 to 2,499 grams	4,370	54	19	88	88	886	1,764
<b>2,500 to 4,499 grams</b>	<b>178,072</b>	<b>2,243</b>	<b>690</b>	<b>4,318</b>	<b>3,517</b>	<b>41,886</b>	<b>66,139</b>
2,500 to 2,749 grams	8,645	109	16	186	134	2,021	3,410
2,750 to 2,999 grams	16,840	150	53	369	285	3,942	6,588
3,000 to 3,249 grams	28,805	298	116	609	571	7,125	10,881
3,250 to 3,499 grams	37,281	448	138	883	740	9,114	13,733
3,500 to 3,749 grams	36,271	465	157	841	699	8,666	13,276
3,750 to 3,999 grams	26,972	389	111	723	546	6,105	9,845
4,000 to 4,249 grams	15,703	262	60	432	353	3,396	5,668
4,250 to 4,499 grams	7,555	122	39	275	189	1,517	2,738
<b>4,500 grams or more</b>	<b>4,728</b>	<b>105</b>	<b>30</b>	<b>139</b>	<b>117</b>	<b>857</b>	<b>1,694</b>
4,500 to 4,749 grams	3,101	66	24	96	86	592	1,102
4,750 to 4,999 grams	1,096	21	5	31	20	185	395
5,000 to 5,249 grams	367	10	1	7	5	60	139
5,250 to 5,499 grams	112	6	0	3	4	15	41
5,500 grams or more	52	2	0	2	2	5	17
<b>Not stated</b>	<b>79</b>	<b>1</b>	<b>1</b>	<b>0</b>	<b>0</b>	<b>2</b>	<b>34</b>
	percent						
<b>Total</b>	<b>100.0</b>	<b>100.0</b>	<b>100.0</b>	<b>100.0</b>	<b>100.0</b>	<b>100.0</b>	<b>100.0</b>
<b>Less than 500 grams</b>	<b>0.1</b>	<b>0.2</b>	<b>0.0</b>	<b>0.1</b>	<b>0.1</b>	<b>0.1</b>	<b>0.1</b>
<b>500 to 1,499 grams</b>	<b>0.9</b>	<b>0.5</b>	<b>0.4</b>	<b>1.0</b>	<b>0.6</b>	<b>0.8</b>	<b>0.9</b>
500 to 749 grams	0.2	0.1	0.0	0.2	0.1	0.1	0.1
750 to 999 grams	0.2	0.0	0.0	0.2	0.2	0.2	0.2
1,000 to 1,249 grams	0.2	0.1	0.1	0.4	0.1	0.3	0.3
1,250 to 1,499 grams	0.3	0.2	0.3	0.3	0.2	0.3	0.3
<b>1,500 to 2,499 grams</b>	<b>4.6</b>	<b>4.9</b>	<b>4.0</b>	<b>4.2</b>	<b>4.3</b>	<b>4.1</b>	<b>5.0</b>
1,500 to 1,749 grams	0.4	0.5	0.3	0.5	0.4	0.4	0.5
1,750 to 1,999 grams	0.7	0.6	0.5	0.7	0.9	0.7	0.8
2,000 to 2,249 grams	1.2	1.5	0.7	1.1	0.8	1.1	1.3
2,250 to 2,499 grams	2.3	2.2	2.5	1.9	2.3	2.0	2.4
<b>2,500 to 4,499 grams</b>	<b>91.9</b>	<b>90.2</b>	<b>91.5</b>	<b>91.7</b>	<b>91.9</b>	<b>93.1</b>	<b>91.6</b>
2,500 to 2,749 grams	4.5	4.4	2.1	4.0	3.5	4.5	4.7
2,750 to 2,999 grams	8.7	6.0	7.0	7.8	7.5	8.8	9.1
3,000 to 3,249 grams	14.9	12.0	15.4	12.9	14.9	15.8	15.1
3,250 to 3,499 grams	19.2	18.0	18.3	18.8	19.3	20.2	19.0
3,500 to 3,749 grams	18.7	18.7	20.8	17.9	18.3	19.3	18.4
3,750 to 3,999 grams	13.9	15.6	14.7	15.4	14.3	13.6	13.6
4,000 to 4,249 grams	8.1	10.5	8.0	9.2	9.2	7.5	7.9
4,250 to 4,499 grams	3.9	4.9	5.2	5.8	4.9	3.4	3.8
<b>4,500 grams or more</b>	<b>2.4</b>	<b>4.2</b>	<b>4.0</b>	<b>3.0</b>	<b>3.1</b>	<b>1.9</b>	<b>2.3</b>
4,500 to 4,749 grams	1.6	2.7	3.2	2.0	2.2	1.3	1.5
4,750 to 4,999 grams	0.6	0.8	0.7	0.7	0.5	0.4	0.5
5,000 to 5,249 grams	0.2	0.4	0.1	0.1	0.1	0.1	0.2
5,250 to 5,499 grams	0.1	0.2	0.0	0.1	0.1	0.0	0.1
5,500 grams or more	0.0	0.1	0.0	0.0	0.1	0.0	0.0
<b>Not stated</b>	<b>0.0</b>	<b>0.0</b>	<b>0.1</b>	<b>0.0</b>	<b>0.0</b>	<b>0.0</b>	<b>0.0</b>

Table 7-2 – continued

## Live births, by birth weight and geography — Males

Birth weight	Place of residence of mother								
	Canada	Manitoba	Saskatchewan	Alberta	British Columbia	Yukon	Northwest Territories	Nunavut	Unknown
	number								
<b>Total</b>	<b>193,755</b>	<b>7,855</b>	<b>6,958</b>	<b>26,182</b>	<b>22,828</b>	<b>186</b>	<b>358</b>	<b>433</b>	<b>1</b>
<b>Less than 500 grams</b>	<b>192</b>	<b>14</b>	<b>7</b>	<b>40</b>	<b>13</b>	<b>0</b>	<b>4</b>	<b>1</b>	<b>0</b>
<b>500 to 1,499 grams</b>	<b>1,700</b>	<b>77</b>	<b>59</b>	<b>283</b>	<b>162</b>	<b>3</b>	<b>3</b>	<b>5</b>	<b>0</b>
500 to 749 grams	292	13	10	55	31	0	1	0	0
750 to 999 grams	363	20	10	64	27	1	1	1	0
1,000 to 1,249 grams	482	16	19	79	45	2	0	1	0
1,250 to 1,499 grams	563	28	20	85	59	0	1	3	0
<b>1,500 to 2,499 grams</b>	<b>8,984</b>	<b>330</b>	<b>295</b>	<b>1,325</b>	<b>1,024</b>	<b>6</b>	<b>12</b>	<b>32</b>	<b>0</b>
1,500 to 1,749 grams	858	21	34	127	96	0	2	2	0
1,750 to 1,999 grams	1,392	37	48	199	149	1	2	3	0
2,000 to 2,249 grams	2,364	99	79	371	260	3	4	16	0
2,250 to 2,499 grams	4,370	173	134	628	519	2	4	11	0
<b>2,500 to 4,499 grams</b>	<b>178,072</b>	<b>7,109</b>	<b>6,364</b>	<b>23,949</b>	<b>20,976</b>	<b>173</b>	<b>320</b>	<b>388</b>	<b>0</b>
2,500 to 2,749 grams	8,645	303	274	1,226	929	3	15	19	0
2,750 to 2,999 grams	16,840	582	482	2,442	1,884	15	16	32	0
3,000 to 3,249 grams	28,805	960	933	3,857	3,329	28	40	58	0
3,250 to 3,499 grams	37,281	1,353	1,315	5,146	4,254	34	55	68	0
3,500 to 3,749 grams	36,271	1,477	1,268	4,825	4,395	38	68	96	0
3,750 to 3,999 grams	26,972	1,267	1,090	3,464	3,286	25	54	67	0
4,000 to 4,249 grams	15,703	740	672	2,089	1,933	15	49	34	0
4,250 to 4,499 grams	7,555	427	330	900	966	15	23	14	0
<b>4,500 grams or more</b>	<b>4,728</b>	<b>325</b>	<b>231</b>	<b>585</b>	<b>616</b>	<b>4</b>	<b>19</b>	<b>6</b>	<b>0</b>
4,500 to 4,749 grams	3,101	187	146	386	395	4	13	4	0
4,750 to 4,999 grams	1,096	79	50	146	157	0	5	2	0
5,000 to 5,249 grams	367	41	23	35	46	0	0	0	0
5,250 to 5,499 grams	112	12	7	11	13	0	0	0	0
5,500 grams or more	52	6	5	7	5	0	1	0	0
<b>Not stated</b>	<b>79</b>	<b>0</b>	<b>2</b>	<b>0</b>	<b>37</b>	<b>0</b>	<b>0</b>	<b>1</b>	<b>1</b>
	percent								
<b>Total</b>	<b>100.0</b>	<b>100.0</b>	<b>100.0</b>	<b>100.0</b>	<b>100.0</b>	<b>100.0</b>	<b>100.0</b>	<b>100.0</b>	<b>100.0</b>
<b>Less than 500 grams</b>	<b>0.1</b>	<b>0.2</b>	<b>0.1</b>	<b>0.2</b>	<b>0.1</b>	<b>0.0</b>	<b>1.1</b>	<b>0.2</b>	<b>0.0</b>
<b>500 to 1,499 grams</b>	<b>0.9</b>	<b>1.0</b>	<b>0.8</b>	<b>1.1</b>	<b>0.7</b>	<b>1.6</b>	<b>0.8</b>	<b>1.2</b>	<b>0.0</b>
500 to 749 grams	0.2	0.2	0.1	0.2	0.1	0.0	0.3	0.0	0.0
750 to 999 grams	0.2	0.3	0.1	0.2	0.1	0.5	0.3	0.2	0.0
1,000 to 1,249 grams	0.2	0.2	0.3	0.3	0.2	1.1	0.0	0.2	0.0
1,250 to 1,499 grams	0.3	0.4	0.3	0.3	0.3	0.0	0.3	0.7	0.0
<b>1,500 to 2,499 grams</b>	<b>4.6</b>	<b>4.2</b>	<b>4.2</b>	<b>5.1</b>	<b>4.5</b>	<b>3.2</b>	<b>3.4</b>	<b>7.4</b>	<b>0.0</b>
1,500 to 1,749 grams	0.4	0.3	0.5	0.5	0.4	0.0	0.6	0.5	0.0
1,750 to 1,999 grams	0.7	0.5	0.7	0.8	0.7	0.5	0.6	0.7	0.0
2,000 to 2,249 grams	1.2	1.3	1.1	1.4	1.1	1.6	1.1	3.7	0.0
2,250 to 2,499 grams	2.3	2.2	1.9	2.4	2.3	1.1	1.1	2.5	0.0
<b>2,500 to 4,499 grams</b>	<b>91.9</b>	<b>90.5</b>	<b>91.5</b>	<b>91.5</b>	<b>91.9</b>	<b>93.0</b>	<b>89.4</b>	<b>89.6</b>	<b>0.0</b>
2,500 to 2,749 grams	4.5	3.9	3.9	4.7	4.1	1.6	4.2	4.4	0.0
2,750 to 2,999 grams	8.7	7.4	6.9	9.3	8.3	8.1	4.5	7.4	0.0
3,000 to 3,249 grams	14.9	12.2	13.4	14.7	14.6	15.1	11.2	13.4	0.0
3,250 to 3,499 grams	19.2	17.2	18.9	19.7	18.6	18.3	15.4	15.7	0.0
3,500 to 3,749 grams	18.7	18.8	18.2	18.4	19.3	20.4	19.0	22.2	0.0
3,750 to 3,999 grams	13.9	16.1	15.7	13.2	14.4	13.4	15.1	15.5	0.0
4,000 to 4,249 grams	8.1	9.4	9.7	8.0	8.5	8.1	13.7	7.9	0.0
4,250 to 4,499 grams	3.9	5.4	4.7	3.4	4.2	8.1	6.4	3.2	0.0
<b>4,500 grams or more</b>	<b>2.4</b>	<b>4.1</b>	<b>3.3</b>	<b>2.2</b>	<b>2.7</b>	<b>2.2</b>	<b>5.3</b>	<b>1.4</b>	<b>0.0</b>
4,500 to 4,749 grams	1.6	2.4	2.1	1.5	1.7	2.2	3.6	0.9	0.0
4,750 to 4,999 grams	0.6	1.0	0.7	0.6	0.7	0.0	1.4	0.5	0.0
5,000 to 5,249 grams	0.2	0.5	0.3	0.1	0.2	0.0	0.0	0.0	0.0
5,250 to 5,499 grams	0.1	0.2	0.1	0.0	0.1	0.0	0.0	0.0	0.0
5,500 grams or more	0.0	0.1	0.1	0.0	0.0	0.0	0.3	0.0	0.0
<b>Not stated</b>	<b>0.0</b>	<b>0.0</b>	<b>0.0</b>	<b>0.0</b>	<b>0.2</b>	<b>0.0</b>	<b>0.0</b>	<b>0.2</b>	<b>100.0</b>

**Note(s):** See "Data quality, concepts and methodology — Explanatory notes for the tables".

**Source(s):** Statistics Canada, Canadian Vital Statistics, Birth Database (CANSIM table 102-4509).

**Table 7-3**  
**Live births, by birth weight and geography — Females**

Birth weight	Place of residence of mother						
	Canada	Newfoundland and Labrador	Prince Edward Island	Nova Scotia	New Brunswick	Quebec	Ontario
	number						
<b>Total</b>	<b>184,131</b>	<b>2,411</b>	<b>729</b>	<b>4,480</b>	<b>3,577</b>	<b>42,860</b>	<b>68,621</b>
<b>Less than 500 grams</b>	<b>186</b>	<b>7</b>	<b>0</b>	<b>5</b>	<b>3</b>	<b>50</b>	<b>48</b>
<b>500 to 1,499 grams</b>	<b>1,688</b>	<b>27</b>	<b>2</b>	<b>49</b>	<b>30</b>	<b>382</b>	<b>624</b>
500 to 749 grams	308	8	0	8	6	71	111
750 to 999 grams	335	4	1	11	3	62	142
1,000 to 1,249 grams	464	5	1	16	10	105	170
1,250 to 1,499 grams	581	10	0	14	11	144	201
<b>1,500 to 2,499 grams</b>	<b>9,936</b>	<b>125</b>	<b>40</b>	<b>235</b>	<b>164</b>	<b>2,218</b>	<b>3,904</b>
1,500 to 1,749 grams	840	11	2	18	20	178	325
1,750 to 1,999 grams	1,423	16	6	32	20	306	565
2,000 to 2,249 grams	2,517	32	9	63	37	566	1,021
2,250 to 2,499 grams	5,156	66	23	122	87	1,168	1,993
<b>2,500 to 4,499 grams</b>	<b>169,850</b>	<b>2,207</b>	<b>676</b>	<b>4,108</b>	<b>3,318</b>	<b>39,830</b>	<b>63,147</b>
2,500 to 2,749 grams	10,796	130	33	244	173	2,494	4,198
2,750 to 2,999 grams	21,419	228	72	467	386	5,154	8,244
3,000 to 3,249 grams	33,304	386	134	716	597	8,209	12,551
3,250 to 3,499 grams	38,483	463	156	927	759	9,336	14,062
3,500 to 3,749 grams	31,531	431	126	850	626	7,354	11,578
3,750 to 3,999 grams	19,974	301	83	518	428	4,436	7,220
4,000 to 4,249 grams	10,042	188	48	264	228	2,034	3,728
4,250 to 4,499 grams	4,301	80	24	122	121	813	1,566
<b>4,500 grams or more</b>	<b>2,403</b>	<b>45</b>	<b>10</b>	<b>83</b>	<b>61</b>	<b>379</b>	<b>869</b>
4,500 to 4,749 grams	1,612	27	9	52	39	277	575
4,750 to 4,999 grams	536	15	1	20	16	72	191
5,000 to 5,249 grams	167	2	0	8	6	17	70
5,250 to 5,499 grams	53	0	0	1	0	8	20
5,500 grams or more	35	1	0	2	0	5	13
<b>Not stated</b>	<b>68</b>	<b>0</b>	<b>1</b>	<b>0</b>	<b>1</b>	<b>1</b>	<b>29</b>
	percent						
<b>Total</b>	<b>100.0</b>	<b>100.0</b>	<b>100.0</b>	<b>100.0</b>	<b>100.0</b>	<b>100.0</b>	<b>100.0</b>
<b>Less than 500 grams</b>	<b>0.1</b>	<b>0.3</b>	<b>0.0</b>	<b>0.1</b>	<b>0.1</b>	<b>0.1</b>	<b>0.1</b>
<b>500 to 1,499 grams</b>	<b>0.9</b>	<b>1.1</b>	<b>0.3</b>	<b>1.1</b>	<b>0.8</b>	<b>0.9</b>	<b>0.9</b>
500 to 749 grams	0.2	0.3	0.0	0.2	0.2	0.2	0.2
750 to 999 grams	0.2	0.2	0.1	0.2	0.1	0.1	0.2
1,000 to 1,249 grams	0.3	0.2	0.1	0.4	0.3	0.2	0.2
1,250 to 1,499 grams	0.3	0.4	0.0	0.3	0.3	0.3	0.3
<b>1,500 to 2,499 grams</b>	<b>5.4</b>	<b>5.2</b>	<b>5.5</b>	<b>5.2</b>	<b>4.6</b>	<b>5.2</b>	<b>5.7</b>
1,500 to 1,749 grams	0.5	0.5	0.3	0.4	0.6	0.4	0.5
1,750 to 1,999 grams	0.8	0.7	0.8	0.7	0.6	0.7	0.8
2,000 to 2,249 grams	1.4	1.3	1.2	1.4	1.0	1.3	1.5
2,250 to 2,499 grams	2.8	2.7	3.2	2.7	2.4	2.7	2.9
<b>2,500 to 4,499 grams</b>	<b>92.2</b>	<b>91.5</b>	<b>92.7</b>	<b>91.7</b>	<b>92.8</b>	<b>92.9</b>	<b>92.0</b>
2,500 to 2,749 grams	5.9	5.4	4.5	5.4	4.8	5.8	6.1
2,750 to 2,999 grams	11.6	9.5	9.9	10.4	10.8	12.0	12.0
3,000 to 3,249 grams	18.1	16.0	18.4	16.0	16.7	19.2	18.3
3,250 to 3,499 grams	20.9	19.2	21.4	20.7	21.2	21.8	20.5
3,500 to 3,749 grams	17.1	17.9	17.3	19.0	17.5	17.2	16.9
3,750 to 3,999 grams	10.8	12.5	11.4	11.6	12.0	10.3	10.5
4,000 to 4,249 grams	5.5	7.8	6.6	5.9	6.4	4.7	5.4
4,250 to 4,499 grams	2.3	3.3	3.3	2.7	3.4	1.9	2.3
<b>4,500 grams or more</b>	<b>1.3</b>	<b>1.9</b>	<b>1.4</b>	<b>1.9</b>	<b>1.7</b>	<b>0.9</b>	<b>1.3</b>
4,500 to 4,749 grams	0.9	1.1	1.2	1.2	1.1	0.6	0.8
4,750 to 4,999 grams	0.3	0.6	0.1	0.4	0.4	0.2	0.3
5,000 to 5,249 grams	0.1	0.1	0.0	0.2	0.2	0.0	0.1
5,250 to 5,499 grams	0.0	0.0	0.0	0.0	0.0	0.0	0.0
5,500 grams or more	0.0	0.0	0.0	0.0	0.0	0.0	0.0
<b>Not stated</b>	<b>0.0</b>	<b>0.0</b>	<b>0.1</b>	<b>0.0</b>	<b>0.0</b>	<b>0.0</b>	<b>0.0</b>

Table 7-3 – continued

## Live births, by birth weight and geography — Females

Birth weight	Place of residence of mother								
	Canada	Manitoba	Saskatchewan	Alberta	British Columbia	Yukon	Northwest Territories	Nunavut	Unknown
	number								
<b>Total</b>	<b>184,131</b>	<b>7,630</b>	<b>6,779</b>	<b>24,674</b>	<b>21,448</b>	<b>187</b>	<b>363</b>	<b>372</b>	<b>0</b>
<b>Less than 500 grams</b>	<b>186</b>	<b>10</b>	<b>4</b>	<b>46</b>	<b>13</b>	<b>0</b>	<b>0</b>	<b>0</b>	<b>0</b>
<b>500 to 1,499 grams</b>	<b>1,688</b>	<b>64</b>	<b>61</b>	<b>265</b>	<b>174</b>	<b>1</b>	<b>4</b>	<b>5</b>	<b>0</b>
500 to 749 grams	308	13	12	47	32	0	0	0	0
750 to 999 grams	335	13	10	56	31	0	1	1	0
1,000 to 1,249 grams	464	22	27	58	43	1	3	3	0
1,250 to 1,499 grams	581	16	12	104	68	0	0	1	0
<b>1,500 to 2,499 grams</b>	<b>9,936</b>	<b>363</b>	<b>320</b>	<b>1,475</b>	<b>1,043</b>	<b>6</b>	<b>20</b>	<b>23</b>	<b>0</b>
1,500 to 1,749 grams	840	36	27	133	87	0	2	1	0
1,750 to 1,999 grams	1,423	42	39	221	166	0	4	6	0
2,000 to 2,249 grams	2,517	105	85	357	231	1	4	6	0
2,250 to 2,499 grams	5,156	180	169	764	559	5	10	10	0
<b>2,500 to 4,499 grams</b>	<b>169,850</b>	<b>7,010</b>	<b>6,214</b>	<b>22,601</b>	<b>19,900</b>	<b>178</b>	<b>323</b>	<b>338</b>	<b>0</b>
2,500 to 2,749 grams	10,796	410	350	1,510	1,205	13	11	25	0
2,750 to 2,999 grams	21,419	735	660	3,011	2,369	14	33	46	0
3,000 to 3,249 grams	33,304	1,213	1,071	4,510	3,793	26	41	57	0
3,250 to 3,499 grams	38,483	1,530	1,386	5,129	4,546	37	73	79	0
3,500 to 3,749 grams	31,531	1,354	1,231	4,137	3,688	31	65	60	0
3,750 to 3,999 grams	19,974	1,010	860	2,563	2,447	26	46	36	0
4,000 to 4,249 grams	10,042	486	434	1,251	1,311	21	30	19	0
4,250 to 4,499 grams	4,301	272	222	490	541	10	24	16	0
<b>4,500 grams or more</b>	<b>2,403</b>	<b>182</b>	<b>180</b>	<b>286</b>	<b>285</b>	<b>2</b>	<b>16</b>	<b>5</b>	<b>0</b>
4,500 to 4,749 grams	1,612	124	98	196	201	1	8	5	0
4,750 to 4,999 grams	536	38	51	63	62	1	6	0	0
5,000 to 5,249 grams	167	15	17	16	16	0	0	0	0
5,250 to 5,499 grams	53	3	10	8	3	0	0	0	0
5,500 grams or more	35	2	4	3	3	0	2	0	0
<b>Not stated</b>	<b>68</b>	<b>1</b>	<b>0</b>	<b>1</b>	<b>33</b>	<b>0</b>	<b>0</b>	<b>1</b>	<b>0</b>
	percent								
<b>Total</b>	<b>100.0</b>	<b>100.0</b>	<b>100.0</b>	<b>100.0</b>	<b>100.0</b>	<b>100.0</b>	<b>100.0</b>	<b>100.0</b>	<b>0.0</b>
<b>Less than 500 grams</b>	<b>0.1</b>	<b>0.1</b>	<b>0.1</b>	<b>0.2</b>	<b>0.1</b>	<b>0.0</b>	<b>0.0</b>	<b>0.0</b>	<b>0.0</b>
<b>500 to 1,499 grams</b>	<b>0.9</b>	<b>0.8</b>	<b>0.9</b>	<b>1.1</b>	<b>0.8</b>	<b>0.5</b>	<b>1.1</b>	<b>1.3</b>	<b>0.0</b>
500 to 749 grams	0.2	0.2	0.2	0.2	0.1	0.0	0.0	0.0	0.0
750 to 999 grams	0.2	0.2	0.1	0.2	0.1	0.0	0.3	0.3	0.0
1,000 to 1,249 grams	0.3	0.3	0.4	0.2	0.2	0.5	0.8	0.8	0.0
1,250 to 1,499 grams	0.3	0.2	0.2	0.4	0.3	0.0	0.0	0.3	0.0
<b>1,500 to 2,499 grams</b>	<b>5.4</b>	<b>4.8</b>	<b>4.7</b>	<b>6.0</b>	<b>4.9</b>	<b>3.2</b>	<b>5.5</b>	<b>6.2</b>	<b>0.0</b>
1,500 to 1,749 grams	0.5	0.5	0.4	0.5	0.4	0.0	0.6	0.3	0.0
1,750 to 1,999 grams	0.8	0.6	0.6	0.9	0.8	0.0	1.1	1.6	0.0
2,000 to 2,249 grams	1.4	1.4	1.3	1.4	1.1	0.5	1.1	1.6	0.0
2,250 to 2,499 grams	2.8	2.4	2.5	3.1	2.6	2.7	2.8	2.7	0.0
<b>2,500 to 4,499 grams</b>	<b>92.2</b>	<b>91.9</b>	<b>91.7</b>	<b>91.6</b>	<b>92.8</b>	<b>95.2</b>	<b>89.0</b>	<b>90.9</b>	<b>0.0</b>
2,500 to 2,749 grams	5.9	5.4	5.2	6.1	5.6	7.0	3.0	6.7	0.0
2,750 to 2,999 grams	11.6	9.6	9.7	12.2	11.0	7.5	9.1	12.4	0.0
3,000 to 3,249 grams	18.1	15.9	15.8	18.3	17.7	13.9	11.3	15.3	0.0
3,250 to 3,499 grams	20.9	20.1	20.4	20.8	21.2	19.8	20.1	21.2	0.0
3,500 to 3,749 grams	17.1	17.7	18.2	16.8	17.2	16.6	17.9	16.1	0.0
3,750 to 3,999 grams	10.8	13.2	12.7	10.4	11.4	13.9	12.7	9.7	0.0
4,000 to 4,249 grams	5.5	6.4	6.4	5.1	6.1	11.2	8.3	5.1	0.0
4,250 to 4,499 grams	2.3	3.6	3.3	2.0	2.5	5.3	6.6	4.3	0.0
<b>4,500 grams or more</b>	<b>1.3</b>	<b>2.4</b>	<b>2.7</b>	<b>1.2</b>	<b>1.3</b>	<b>1.1</b>	<b>4.4</b>	<b>1.3</b>	<b>0.0</b>
4,500 to 4,749 grams	0.9	1.6	1.4	0.8	0.9	0.5	2.2	1.3	0.0
4,750 to 4,999 grams	0.3	0.5	0.8	0.3	0.3	0.5	1.7	0.0	0.0
5,000 to 5,249 grams	0.1	0.2	0.3	0.1	0.1	0.0	0.0	0.0	0.0
5,250 to 5,499 grams	0.0	0.0	0.1	0.0	0.0	0.0	0.0	0.0	0.0
5,500 grams or more	0.0	0.0	0.1	0.0	0.0	0.0	0.6	0.0	0.0
<b>Not stated</b>	<b>0.0</b>	<b>0.0</b>	<b>0.0</b>	<b>0.0</b>	<b>0.2</b>	<b>0.0</b>	<b>0.0</b>	<b>0.3</b>	<b>0.0</b>

**Note(s):** See "Data quality, concepts and methodology — Explanatory notes for the tables".

**Source(s):** Statistics Canada, Canadian Vital Statistics, Birth Database (CANSIM table 102-4509).

**Table 8-1**  
**Live births, by weeks of gestation and geography — Both sexes**

Weeks of gestation	Place of residence of mother						
	Canada	Newfoundland and Labrador	Prince Edward Island	Nova Scotia	New Brunswick	Quebec	Ontario
	number						
<b>Total</b>	<b>377,886</b>	<b>4,898</b>	<b>1,483</b>	<b>9,188</b>	<b>7,402</b>	<b>87,870</b>	<b>140,791</b>
<b>42 weeks or more</b>	<b>1,939</b>	<b>14</b>	<b>7</b>	<b>95</b>	<b>23</b>	<b>242</b>	<b>458</b>
<b>37 to 41 weeks</b>	<b>345,680</b>	<b>4,440</b>	<b>1,364</b>	<b>8,341</b>	<b>6,835</b>	<b>80,977</b>	<b>128,907</b>
37 to 39 weeks	197,102	2,311	808	4,286	3,709	47,625	75,584
40 to 41 weeks	148,578	2,129	556	4,055	3,126	33,352	53,323
<b>Less than 37 weeks</b>	<b>30,117</b>	<b>443</b>	<b>112</b>	<b>752</b>	<b>544</b>	<b>6,633</b>	<b>11,365</b>
28 to 36 weeks	28,456	417	111	703	516	6,280	10,773
28 to 31 weeks	2,648	36	7	71	48	553	985
32 to 33 weeks	3,605	37	9	94	79	749	1,334
34 to 36 weeks	22,203	344	95	538	389	4,978	8,454
20 to 27 weeks	1,589	25	1	43	23	332	578
20 to 23 weeks	483	12	0	9	4	121	137
24 to 27 weeks	1,106	13	1	34	19	211	441
Less than 20 weeks	72	1	0	6	5	21	14
<b>Not stated</b>	<b>150</b>	<b>1</b>	<b>0</b>	<b>0</b>	<b>0</b>	<b>18</b>	<b>61</b>
	percent						
<b>Total</b>	<b>100.0</b>	<b>100.0</b>	<b>100.0</b>	<b>100.0</b>	<b>100.0</b>	<b>100.0</b>	<b>100.0</b>
<b>42 weeks or more</b>	<b>0.5</b>	<b>0.3</b>	<b>0.5</b>	<b>1.0</b>	<b>0.3</b>	<b>0.3</b>	<b>0.3</b>
<b>37 to 41 weeks</b>	<b>91.5</b>	<b>90.6</b>	<b>92.0</b>	<b>90.8</b>	<b>92.3</b>	<b>92.2</b>	<b>91.6</b>
37 to 39 weeks	52.2	47.2	54.5	46.6	50.1	54.2	53.7
40 to 41 weeks	39.3	43.5	37.5	44.1	42.2	38.0	37.9
<b>Less than 37 weeks</b>	<b>8.0</b>	<b>9.0</b>	<b>7.6</b>	<b>8.2</b>	<b>7.3</b>	<b>7.5</b>	<b>8.1</b>
28 to 36 weeks	7.5	8.5	7.5	7.7	7.0	7.1	7.7
28 to 31 weeks	0.7	0.7	0.5	0.8	0.6	0.6	0.7
32 to 33 weeks	1.0	0.8	0.6	1.0	1.1	0.9	0.9
34 to 36 weeks	5.9	7.0	6.4	5.9	5.3	5.7	6.0
20 to 27 weeks	0.4	0.5	0.1	0.5	0.3	0.4	0.4
20 to 23 weeks	0.1	0.2	0.0	0.1	0.1	0.1	0.1
24 to 27 weeks	0.3	0.3	0.1	0.4	0.3	0.2	0.3
Less than 20 weeks	0.0	0.0	0.0	0.1	0.1	0.0	0.0
<b>Not stated</b>	<b>0.0</b>	<b>0.0</b>	<b>0.0</b>	<b>0.0</b>	<b>0.0</b>	<b>0.0</b>	<b>0.0</b>



Table 8-1 – continued

## Live births, by weeks of gestation and geography — Both sexes

Weeks of gestation	Place of residence of mother								
	Canada	Manitoba	Saskatchewan	Alberta	British Columbia	Yukon	Northwest Territories	Nunavut	Unknown
	number								
<b>Total</b>	<b>377,886</b>	<b>15,485</b>	<b>13,737</b>	<b>50,856</b>	<b>44,276</b>	<b>373</b>	<b>721</b>	<b>805</b>	<b>1</b>
<b>42 weeks or more</b>	<b>1,939</b>	<b>387</b>	<b>182</b>	<b>248</b>	<b>231</b>	<b>17</b>	<b>30</b>	<b>5</b>	<b>0</b>
<b>37 to 41 weeks</b>	<b>345,680</b>	<b>13,842</b>	<b>12,540</b>	<b>46,222</b>	<b>40,569</b>	<b>328</b>	<b>624</b>	<b>690</b>	<b>1</b>
37 to 39 weeks	197,102	7,003	6,280	26,052	22,490	177	292	484	1
40 to 41 weeks	148,578	6,839	6,260	20,170	18,079	151	332	206	0
<b>Less than 37 weeks</b>	<b>30,117</b>	<b>1,253</b>	<b>1,014</b>	<b>4,385</b>	<b>3,411</b>	<b>28</b>	<b>67</b>	<b>110</b>	<b>0</b>
28 to 36 weeks	28,456	1,174	956	4,075	3,260	25	60	106	0
28 to 31 weeks	2,648	109	103	401	318	0	8	9	0
32 to 33 weeks	3,605	152	121	551	447	5	10	17	0
34 to 36 weeks	22,203	913	732	3,123	2,495	20	42	80	0
20 to 27 weeks	1,589	73	58	297	149	3	3	4	0
20 to 23 weeks	483	29	14	119	37	0	0	1	0
24 to 27 weeks	1,106	44	44	178	112	3	3	3	0
Less than 20 weeks	72	6	0	13	2	0	4	0	0
<b>Not stated</b>	<b>150</b>	<b>3</b>	<b>1</b>	<b>1</b>	<b>65</b>	<b>0</b>	<b>0</b>	<b>0</b>	<b>0</b>
	percent								
<b>Total</b>	<b>100.0</b>	<b>100.0</b>	<b>100.0</b>	<b>100.0</b>	<b>100.0</b>	<b>100.0</b>	<b>100.0</b>	<b>100.0</b>	<b>100.0</b>
<b>42 weeks or more</b>	<b>0.5</b>	<b>2.5</b>	<b>1.3</b>	<b>0.5</b>	<b>0.5</b>	<b>4.6</b>	<b>4.2</b>	<b>0.6</b>	<b>0.0</b>
<b>37 to 41 weeks</b>	<b>91.5</b>	<b>89.4</b>	<b>91.3</b>	<b>90.9</b>	<b>91.6</b>	<b>87.9</b>	<b>86.5</b>	<b>85.7</b>	<b>100.0</b>
37 to 39 weeks	52.2	45.2	45.7	51.2	50.8	47.5	40.5	60.1	100.0
40 to 41 weeks	39.3	44.2	45.6	39.7	40.8	40.5	46.0	25.6	0.0
<b>Less than 37 weeks</b>	<b>8.0</b>	<b>8.1</b>	<b>7.4</b>	<b>8.6</b>	<b>7.7</b>	<b>7.5</b>	<b>9.3</b>	<b>13.7</b>	<b>0.0</b>
28 to 36 weeks	7.5	7.6	7.0	8.0	7.4	6.7	8.3	13.2	0.0
28 to 31 weeks	0.7	0.7	0.7	0.8	0.7	0.0	1.1	1.1	0.0
32 to 33 weeks	1.0	1.0	0.9	1.1	1.0	1.3	1.4	2.1	0.0
34 to 36 weeks	5.9	5.9	5.3	6.1	5.6	5.4	5.8	9.9	0.0
20 to 27 weeks	0.4	0.5	0.4	0.6	0.3	0.8	0.4	0.5	0.0
20 to 23 weeks	0.1	0.2	0.1	0.2	0.1	0.0	0.0	0.1	0.0
24 to 27 weeks	0.3	0.3	0.3	0.4	0.3	0.8	0.4	0.4	0.0
Less than 20 weeks	0.0	0.0	0.0	0.0	0.0	0.0	0.6	0.0	0.0
<b>Not stated</b>	<b>0.0</b>	<b>0.0</b>	<b>0.0</b>	<b>0.0</b>	<b>0.1</b>	<b>0.0</b>	<b>0.0</b>	<b>0.0</b>	<b>0.0</b>

**Note(s):** See "Data quality, concepts and methodology — Explanatory notes for the tables".

**Source(s):** Statistics Canada, Canadian Vital Statistics, Birth Database (CANSIM table 102-4512).

**Table 8-2**  
**Live births, by weeks of gestation and geography — Males**

Weeks of gestation	Place of residence of mother						
	Canada	Newfoundland and Labrador	Prince Edward Island	Nova Scotia	New Brunswick	Quebec	Ontario
	number						
<b>Total</b>	<b>193,755</b>	<b>2,487</b>	<b>754</b>	<b>4,708</b>	<b>3,825</b>	<b>45,010</b>	<b>72,170</b>
<b>42 weeks or more</b>	<b>1,046</b>	<b>7</b>	<b>3</b>	<b>60</b>	<b>11</b>	<b>139</b>	<b>234</b>
<b>37 to 41 weeks</b>	<b>176,382</b>	<b>2,261</b>	<b>694</b>	<b>4,240</b>	<b>3,521</b>	<b>41,339</b>	<b>65,710</b>
37 to 39 weeks	101,259	1,173	400	2,198	1,918	24,531	38,742
40 to 41 weeks	75,123	1,088	294	2,042	1,603	16,808	26,968
<b>Less than 37 weeks</b>	<b>16,250</b>	<b>218</b>	<b>57</b>	<b>408</b>	<b>293</b>	<b>3,520</b>	<b>6,193</b>
28 to 36 weeks	15,366	208	57	384	279	3,339	5,870
28 to 31 weeks	1,424	18	4	37	26	294	545
32 to 33 weeks	2,002	19	6	53	44	391	734
34 to 36 weeks	11,940	171	47	294	209	2,654	4,591
20 to 27 weeks	842	10	0	20	11	169	318
20 to 23 weeks	256	6	0	5	2	61	77
24 to 27 weeks	586	4	0	15	9	108	241
Less than 20 weeks	42	0	0	4	3	12	5
<b>Not stated</b>	<b>77</b>	<b>1</b>	<b>0</b>	<b>0</b>	<b>0</b>	<b>12</b>	<b>33</b>
	percent						
<b>Total</b>	<b>100.0</b>	<b>100.0</b>	<b>100.0</b>	<b>100.0</b>	<b>100.0</b>	<b>100.0</b>	<b>100.0</b>
<b>42 weeks or more</b>	<b>0.5</b>	<b>0.3</b>	<b>0.4</b>	<b>1.3</b>	<b>0.3</b>	<b>0.3</b>	<b>0.3</b>
<b>37 to 41 weeks</b>	<b>91.0</b>	<b>90.9</b>	<b>92.0</b>	<b>90.1</b>	<b>92.1</b>	<b>91.8</b>	<b>91.0</b>
37 to 39 weeks	52.3	47.2	53.1	46.7	50.1	54.5	53.7
40 to 41 weeks	38.8	43.7	39.0	43.4	41.9	37.3	37.4
<b>Less than 37 weeks</b>	<b>8.4</b>	<b>8.8</b>	<b>7.6</b>	<b>8.7</b>	<b>7.7</b>	<b>7.8</b>	<b>8.6</b>
28 to 36 weeks	7.9	8.4	7.6	8.2	7.3	7.4	8.1
28 to 31 weeks	0.7	0.7	0.5	0.8	0.7	0.7	0.8
32 to 33 weeks	1.0	0.8	0.8	1.1	1.2	0.9	1.0
34 to 36 weeks	6.2	6.9	6.2	6.2	5.5	5.9	6.4
20 to 27 weeks	0.4	0.4	0.0	0.4	0.3	0.4	0.4
20 to 23 weeks	0.1	0.2	0.0	0.1	0.1	0.1	0.1
24 to 27 weeks	0.3	0.2	0.0	0.3	0.2	0.2	0.3
Less than 20 weeks	0.0	0.0	0.0	0.1	0.1	0.0	0.0
<b>Not stated</b>	<b>0.0</b>	<b>0.0</b>	<b>0.0</b>	<b>0.0</b>	<b>0.0</b>	<b>0.0</b>	<b>0.0</b>

Table 8-2 – continued

## Live births, by weeks of gestation and geography — Males

Weeks of gestation	Place of residence of mother								
	Canada	Manitoba	Saskatchewan	Alberta	British Columbia	Yukon	Northwest Territories	Nunavut	Unknown
	number								
<b>Total</b>	<b>193,755</b>	<b>7,855</b>	<b>6,958</b>	<b>26,182</b>	<b>22,828</b>	<b>186</b>	<b>358</b>	<b>433</b>	<b>1</b>
<b>42 weeks or more</b>	<b>1,046</b>	<b>206</b>	<b>92</b>	<b>148</b>	<b>125</b>	<b>7</b>	<b>12</b>	<b>2</b>	<b>0</b>
<b>37 to 41 weeks</b>	<b>176,382</b>	<b>6,990</b>	<b>6,299</b>	<b>23,688</b>	<b>20,808</b>	<b>162</b>	<b>306</b>	<b>363</b>	<b>1</b>
37 to 39 weeks	101,259	3,554	3,155	13,462	11,628	91	146	260	1
40 to 41 weeks	75,123	3,436	3,144	10,226	9,180	71	160	103	0
<b>Less than 37 weeks</b>	<b>16,250</b>	<b>659</b>	<b>566</b>	<b>2,346</b>	<b>1,865</b>	<b>17</b>	<b>40</b>	<b>68</b>	<b>0</b>
28 to 36 weeks	15,366	618	536	2,174	1,786	15	34	66	0
28 to 31 weeks	1,424	66	60	212	154	0	3	5	0
32 to 33 weeks	2,002	81	69	306	276	4	8	11	0
34 to 36 weeks	11,940	471	407	1,656	1,356	11	23	50	0
20 to 27 weeks	842	35	30	166	77	2	2	2	0
20 to 23 weeks	256	15	6	65	18	0	0	1	0
24 to 27 weeks	586	20	24	101	59	2	2	1	0
Less than 20 weeks	42	6	0	6	2	0	4	0	0
<b>Not stated</b>	<b>77</b>	<b>0</b>	<b>1</b>	<b>0</b>	<b>30</b>	<b>0</b>	<b>0</b>	<b>0</b>	<b>0</b>
	percent								
<b>Total</b>	<b>100.0</b>	<b>100.0</b>	<b>100.0</b>	<b>100.0</b>	<b>100.0</b>	<b>100.0</b>	<b>100.0</b>	<b>100.0</b>	<b>100.0</b>
<b>42 weeks or more</b>	<b>0.5</b>	<b>2.6</b>	<b>1.3</b>	<b>0.6</b>	<b>0.5</b>	<b>3.8</b>	<b>3.4</b>	<b>0.5</b>	<b>0.0</b>
<b>37 to 41 weeks</b>	<b>91.0</b>	<b>89.0</b>	<b>90.5</b>	<b>90.5</b>	<b>91.2</b>	<b>87.1</b>	<b>85.5</b>	<b>83.8</b>	<b>100.0</b>
37 to 39 weeks	52.3	45.2	45.3	51.4	50.9	48.9	40.8	60.0	100.0
40 to 41 weeks	38.8	43.7	45.2	39.1	40.2	38.2	44.7	23.8	0.0
<b>Less than 37 weeks</b>	<b>8.4</b>	<b>8.4</b>	<b>8.1</b>	<b>9.0</b>	<b>8.2</b>	<b>9.1</b>	<b>11.2</b>	<b>15.7</b>	<b>0.0</b>
28 to 36 weeks	7.9	7.9	7.7	8.3	7.8	8.1	9.5	15.2	0.0
28 to 31 weeks	0.7	0.8	0.9	0.8	0.7	0.0	0.8	1.2	0.0
32 to 33 weeks	1.0	1.0	1.0	1.2	1.2	2.2	2.2	2.5	0.0
34 to 36 weeks	6.2	6.0	5.8	6.3	5.9	5.9	6.4	11.5	0.0
20 to 27 weeks	0.4	0.4	0.4	0.6	0.3	1.1	0.6	0.5	0.0
20 to 23 weeks	0.1	0.2	0.1	0.2	0.1	0.0	0.0	0.2	0.0
24 to 27 weeks	0.3	0.3	0.3	0.4	0.3	1.1	0.6	0.2	0.0
Less than 20 weeks	0.0	0.1	0.0	0.0	0.0	0.0	1.1	0.0	0.0
<b>Not stated</b>	<b>0.0</b>	<b>0.0</b>	<b>0.0</b>	<b>0.0</b>	<b>0.1</b>	<b>0.0</b>	<b>0.0</b>	<b>0.0</b>	<b>0.0</b>

**Note(s):** See "Data quality, concepts and methodology — Explanatory notes for the tables".

**Source(s):** Statistics Canada, Canadian Vital Statistics, Birth Database (CANSIM table 102-4512).

**Table 8-3**  
**Live births, by weeks of gestation and geography — Females**

Weeks of gestation	Place of residence of mother						
	Canada	Newfoundland and Labrador	Prince Edward Island	Nova Scotia	New Brunswick	Quebec	Ontario
	number						
<b>Total</b>	<b>184,131</b>	<b>2,411</b>	<b>729</b>	<b>4,480</b>	<b>3,577</b>	<b>42,860</b>	<b>68,621</b>
<b>42 weeks or more</b>	<b>893</b>	<b>7</b>	<b>4</b>	<b>35</b>	<b>12</b>	<b>103</b>	<b>224</b>
<b>37 to 41 weeks</b>	<b>169,298</b>	<b>2,179</b>	<b>670</b>	<b>4,101</b>	<b>3,314</b>	<b>39,638</b>	<b>63,197</b>
37 to 39 weeks	95,843	1,138	408	2,088	1,791	23,094	36,842
40 to 41 weeks	73,455	1,041	262	2,013	1,523	16,544	26,355
<b>Less than 37 weeks</b>	<b>13,867</b>	<b>225</b>	<b>55</b>	<b>344</b>	<b>251</b>	<b>3,113</b>	<b>5,172</b>
28 to 36 weeks	13,090	209	54	319	237	2,941	4,903
28 to 31 weeks	1,224	18	3	34	22	259	440
32 to 33 weeks	1,603	18	3	41	35	358	600
34 to 36 weeks	10,263	173	48	244	180	2,324	3,863
20 to 27 weeks	747	15	1	23	12	163	260
20 to 23 weeks	227	6	0	4	2	60	60
24 to 27 weeks	520	9	1	19	10	103	200
Less than 20 weeks	30	1	0	2	2	9	9
<b>Not stated</b>	<b>73</b>	<b>0</b>	<b>0</b>	<b>0</b>	<b>0</b>	<b>6</b>	<b>28</b>
	percent						
<b>Total</b>	<b>100.0</b>	<b>100.0</b>	<b>100.0</b>	<b>100.0</b>	<b>100.0</b>	<b>100.0</b>	<b>100.0</b>
<b>42 weeks or more</b>	<b>0.5</b>	<b>0.3</b>	<b>0.5</b>	<b>0.8</b>	<b>0.3</b>	<b>0.2</b>	<b>0.3</b>
<b>37 to 41 weeks</b>	<b>91.9</b>	<b>90.4</b>	<b>91.9</b>	<b>91.5</b>	<b>92.6</b>	<b>92.5</b>	<b>92.1</b>
37 to 39 weeks	52.1	47.2	56.0	46.6	50.1	53.9	53.7
40 to 41 weeks	39.9	43.2	35.9	44.9	42.6	38.6	38.4
<b>Less than 37 weeks</b>	<b>7.5</b>	<b>9.3</b>	<b>7.5</b>	<b>7.7</b>	<b>7.0</b>	<b>7.3</b>	<b>7.5</b>
28 to 36 weeks	7.1	8.7	7.4	7.1	6.6	6.9	7.1
28 to 31 weeks	0.7	0.7	0.4	0.8	0.6	0.6	0.6
32 to 33 weeks	0.9	0.7	0.4	0.9	1.0	0.8	0.9
34 to 36 weeks	5.6	7.2	6.6	5.4	5.0	5.4	5.6
20 to 27 weeks	0.4	0.6	0.1	0.5	0.3	0.4	0.4
20 to 23 weeks	0.1	0.2	0.0	0.1	0.1	0.1	0.1
24 to 27 weeks	0.3	0.4	0.1	0.4	0.3	0.2	0.3
Less than 20 weeks	0.0	0.0	0.0	0.0	0.1	0.0	0.0
<b>Not stated</b>	<b>0.0</b>	<b>0.0</b>	<b>0.0</b>	<b>0.0</b>	<b>0.0</b>	<b>0.0</b>	<b>0.0</b>

Table 8-3 – continued

## Live births, by weeks of gestation and geography — Females

Weeks of gestation	Place of residence of mother								
	Canada	Manitoba	Saskatchewan	Alberta	British Columbia	Yukon	Northwest Territories	Nunavut	Unknown
	number								
<b>Total</b>	<b>184,131</b>	<b>7,630</b>	<b>6,779</b>	<b>24,674</b>	<b>21,448</b>	<b>187</b>	<b>363</b>	<b>372</b>	<b>0</b>
<b>42 weeks or more</b>	<b>893</b>	<b>181</b>	<b>90</b>	<b>100</b>	<b>106</b>	<b>10</b>	<b>18</b>	<b>3</b>	<b>0</b>
<b>37 to 41 weeks</b>	<b>169,298</b>	<b>6,852</b>	<b>6,241</b>	<b>22,534</b>	<b>19,761</b>	<b>166</b>	<b>318</b>	<b>327</b>	<b>0</b>
37 to 39 weeks	95,843	3,449	3,125	12,590	10,862	86	146	224	0
40 to 41 weeks	73,455	3,403	3,116	9,944	8,899	80	172	103	0
<b>Less than 37 weeks</b>	<b>13,867</b>	<b>594</b>	<b>448</b>	<b>2,039</b>	<b>1,546</b>	<b>11</b>	<b>27</b>	<b>42</b>	<b>0</b>
28 to 36 weeks	13,090	556	420	1,901	1,474	10	26	40	0
28 to 31 weeks	1,224	43	43	189	164	0	5	4	0
32 to 33 weeks	1,603	71	52	245	171	1	2	6	0
34 to 36 weeks	10,263	442	325	1,467	1,139	9	19	30	0
20 to 27 weeks	747	38	28	131	72	1	1	2	0
20 to 23 weeks	227	14	8	54	19	0	0	0	0
24 to 27 weeks	520	24	20	77	53	1	1	2	0
Less than 20 weeks	30	0	0	7	0	0	0	0	0
<b>Not stated</b>	<b>73</b>	<b>3</b>	<b>0</b>	<b>1</b>	<b>35</b>	<b>0</b>	<b>0</b>	<b>0</b>	<b>0</b>
	percent								
<b>Total</b>	<b>100.0</b>	<b>100.0</b>	<b>100.0</b>	<b>100.0</b>	<b>100.0</b>	<b>100.0</b>	<b>100.0</b>	<b>100.0</b>	<b>0.0</b>
<b>42 weeks or more</b>	<b>0.5</b>	<b>2.4</b>	<b>1.3</b>	<b>0.4</b>	<b>0.5</b>	<b>5.3</b>	<b>5.0</b>	<b>0.8</b>	<b>0.0</b>
<b>37 to 41 weeks</b>	<b>91.9</b>	<b>89.8</b>	<b>92.1</b>	<b>91.3</b>	<b>92.1</b>	<b>88.8</b>	<b>87.6</b>	<b>87.9</b>	<b>0.0</b>
37 to 39 weeks	52.1	45.2	46.1	51.0	50.6	46.0	40.2	60.2	0.0
40 to 41 weeks	39.9	44.6	46.0	40.3	41.5	42.8	47.4	27.7	0.0
<b>Less than 37 weeks</b>	<b>7.5</b>	<b>7.8</b>	<b>6.6</b>	<b>8.3</b>	<b>7.2</b>	<b>5.9</b>	<b>7.4</b>	<b>11.3</b>	<b>0.0</b>
28 to 36 weeks	7.1	7.3	6.2	7.7	6.9	5.3	7.2	10.8	0.0
28 to 31 weeks	0.7	0.6	0.6	0.8	0.8	0.0	1.4	1.1	0.0
32 to 33 weeks	0.9	0.9	0.8	1.0	0.8	0.5	0.6	1.6	0.0
34 to 36 weeks	5.6	5.8	4.8	5.9	5.3	4.8	5.2	8.1	0.0
20 to 27 weeks	0.4	0.5	0.4	0.5	0.3	0.5	0.3	0.5	0.0
20 to 23 weeks	0.1	0.2	0.1	0.2	0.1	0.0	0.0	0.0	0.0
24 to 27 weeks	0.3	0.3	0.3	0.3	0.2	0.5	0.3	0.5	0.0
Less than 20 weeks	0.0	0.0	0.0	0.0	0.0	0.0	0.0	0.0	0.0
<b>Not stated</b>	<b>0.0</b>	<b>0.0</b>	<b>0.0</b>	<b>0.0</b>	<b>0.2</b>	<b>0.0</b>	<b>0.0</b>	<b>0.0</b>	<b>0.0</b>

**Note(s):** See "Data quality, concepts and methodology — Explanatory notes for the tables".

**Source(s):** Statistics Canada, Canadian Vital Statistics, Birth Database (CANSIM table 102-4512).

**Table 9-1**  
**Live births, by characteristics of the mother and child, Canada — Birth weight indicators**

Characteristics of mother and child	Live <sup>1</sup> births	Birth weight			
		Less than 1,500 grams	Less than 2,500 grams	2,500 to 4,499 grams	4,500 grams or more
	number	percent			
<b>Age of mother, all ages <sup>2</sup></b>	<b>377,886</b>	<b>1.0</b>	<b>6.0</b>	<b>92.1</b>	<b>1.9</b>
Under 20 years	15,704	1.2	6.5	91.6	1.8
20 to 34 years	293,540	0.9	5.7	92.4	1.8
35 to 49 years	68,580	1.3	7.0	90.9	2.1
Not stated <sup>3</sup>	62	6.5	17.7	82.3	0.0
<b>Total, parity of mother</b>	<b>377,886</b>	<b>1.0</b>	<b>6.0</b>	<b>92.1</b>	<b>1.9</b>
First live birth	166,610	1.1	6.3	92.1	1.5
Second live birth	133,148	0.9	5.4	92.6	2.0
Third live birth or more	78,117	1.1	6.4	91.1	2.5
Not stated	11	0.0	0.0	45.5	0.0
<b>Total, marital status of mother <sup>4</sup></b>	<b>377,886</b>	<b>1.0</b>	<b>6.0</b>	<b>92.1</b>	<b>1.9</b>
Married and/or separated	229,867	0.9	5.6	92.4	1.9
Not married	106,646	1.1	6.4	91.8	1.8
Not stated	41,373	1.4	7.0	90.8	2.1
<b>Total, birthplace of mother</b>	<b>377,886</b>	<b>1.0</b>	<b>6.0</b>	<b>92.1</b>	<b>1.9</b>
Canada	275,718	1.0	5.8	92.0	2.2
Outside Canada	98,077	1.0	6.4	92.4	1.1
Not stated	4,091	1.8	6.5	92.5	1.0
<b>Both sexes</b>	<b>377,886</b>	<b>1.0</b>	<b>6.0</b>	<b>92.1</b>	<b>1.9</b>
Males	193,755	1.0	5.6	91.9	2.4
Females	184,131	1.0	6.4	92.2	1.3
<b>Total</b>	<b>377,886</b>	<b>1.0</b>	<b>6.0</b>	<b>92.1</b>	<b>1.9</b>
Single	366,070	0.7	4.5	93.5	1.9
Multiple	11,816	9.3	52.0	47.9	0.0
<b>Total, weeks of gestation</b>	<b>377,886</b>	<b>1.0</b>	<b>6.0</b>	<b>92.1</b>	<b>1.9</b>
Less than 28 weeks	1,661	99.4	99.7	0.2	0.0
28 to 36 weeks	28,456	7.3	51.0	48.8	0.1
37 to 41 weeks	345,680	0.0	1.9	96.1	2.0
42 weeks or more	1,939	0.1	0.4	90.7	8.9
Not stated	150	10.0	10.0	15.3	1.3

1. Number of live births includes births with unknown birth weight.

2. Age of mother attained at the last birthday preceding delivery.

3. For confidentiality reasons, live births to mothers aged 50 and over are included in the category "Age of mother, not stated." Where information is unavailable on the birth mother of children who are adopted, these records are included in the category "Age of mother, not stated."

4. Partway through 2003, Alberta Registries amended their Registration of Birth form in such a way that Statistics Canada can no longer determine the legal marital status of those persons in common-law marriages.

**Note(s):** See "Data quality, concepts and methodology — Explanatory notes for the tables".

**Source(s):** Statistics Canada, Canadian Vital Statistics, Birth Database (CANSIM table 102-4511).

**Table 9-2**  
**Live births, by characteristics of the mother and child, Canada — Weeks of gestation indicators**

Characteristics of mother and child	Live births	Gestation		
		Less than 37 weeks	37 to 41 weeks	42 weeks or more
	number	percent		
<b>Age of mother, all ages <sup>1</sup></b>	<b>377,886</b>	<b>8.0</b>	<b>91.5</b>	<b>0.5</b>
Under 20 years	15,704	8.3	90.7	0.9
20 to 34 years	293,540	7.6	91.8	0.5
35 to 49 years	68,580	9.3	90.1	0.5
Not stated <sup>2</sup>	62	19.4	80.6	0.0
<b>Total, parity of mother</b>	<b>377,886</b>	<b>8.0</b>	<b>91.5</b>	<b>0.5</b>
First live birth	166,610	8.0	91.3	0.7
Second live birth	133,148	7.3	92.4	0.3
Third live birth or more	78,117	9.1	90.3	0.5
Not stated	11	0.0	45.5	0.0
<b>Total, marital status of mother <sup>3</sup></b>	<b>377,886</b>	<b>8.0</b>	<b>91.5</b>	<b>0.5</b>
Married and/or separated	229,867	7.6	91.9	0.5
Not married	106,646	8.4	91.0	0.6
Not stated	41,373	9.2	90.3	0.5
<b>Total, birthplace of mother</b>	<b>377,886</b>	<b>8.0</b>	<b>91.5</b>	<b>0.5</b>
Canada	275,718	8.1	91.3	0.6
Outside Canada	98,077	7.6	92.0	0.4
Not stated	4,091	8.0	91.7	0.2
<b>Both sexes</b>	<b>377,886</b>	<b>8.0</b>	<b>91.5</b>	<b>0.5</b>
Males	193,755	8.4	91.0	0.5
Females	184,131	7.5	91.9	0.5
<b>Total</b>	<b>377,886</b>	<b>8.0</b>	<b>91.5</b>	<b>0.5</b>
Single	366,070	6.4	93.0	0.5
Multiple	11,816	57.1	42.9	0.0
<b>Total, birth weight</b>	<b>377,886</b>	<b>8.0</b>	<b>91.5</b>	<b>0.5</b>
Less than 500 grams	378	98.4	0.3	0.3
500 to 1,499 grams	3,388	99.1	0.6	0.0
1,500 to 2,499 grams	18,920	65.8	34.1	0.0
2,500 to 4,499 grams	347,922	4.0	95.5	0.5
4,500 grams or more	7,131	0.5	97.0	2.4
Not stated	147	8.2	17.0	0.0

1. Age of mother attained at the last birthday preceding delivery.

2. For confidentiality reasons, live births to mothers aged 50 and over are included in the category "Age of mother, not stated." Where information is unavailable on the birth mother of children who are adopted, these records are included in the category "Age of mother, not stated."

3. Partway through 2003, Alberta Registries amended their Registration of Birth form in such a way that Statistics Canada can no longer determine the legal marital status of those persons in common-law marriages.

**Note(s):** See "Data quality, concepts and methodology — Explanatory notes for the tables".

**Source(s):** Statistics Canada, Canadian Vital Statistics, Birth Database (CANSIM table 102-4513).

**Table 10**  
**Live births, by place of residence of mother and place of occurrence,<sup>1</sup> Canada, provinces, territories and outside Canada**

Place of residence of mother	Place of occurrence								
	Total, Canada and USA	United States	Canada	Newfoundland and Labrador	Prince Edward Island	Nova Scotia	New Brunswick	Quebec	Ontario
number									
<b>Total, Canada and other</b>	<b>378,133</b>	<b>22</b>	<b>378,111</b>	<b>4,905</b>	<b>1,452</b>	<b>9,254</b>	<b>7,459</b>	<b>86,548</b>	<b>142,053</b>
Canada	377,886	22	377,864	4,901	1,452	9,245	7,458	86,512	141,936
Newfoundland and Labrador	4,898	0	4,898	4,869	1	3	3	2	12
Prince Edward Island	1,483	0	1,483	0	1,447	28	3	1	2
Nova Scotia	9,188	0	9,188	0	1	9,137	33	3	8
New Brunswick	7,402	0	7,402	1	2	54	7,329	6	9
Quebec	87,870	1	87,869	18	0	0	77	86,440	1,325
Ontario	140,791	8	140,783	6	0	6	4	48	140,501
Manitoba	15,485	1	15,484	0	0	1	0	1	8
Saskatchewan	13,737	0	13,737	0	0	1	0	0	6
Alberta	50,856	1	50,855	2	1	8	7	4	34
British Columbia	44,276	11	44,265	1	0	3	1	4	8
Yukon	373	0	373	0	0	1	0	0	1
Northwest Territories	721	0	721	2	0	3	0	0	1
Nunavut	805	0	805	2	0	0	1	3	20
Unknown province or territory	1	0	1	0	0	0	0	0	1
Outside Canada	247	...	247	4	0	9	1	36	117

Place of residence of mother	Place of occurrence								
	Total, Canada and USA	Canada	Manitoba	Saskatchewan	Alberta	British Columbia	Yukon	Northwest Territories	Nunavut
number									
<b>Total, Canada and other</b>	<b>378,133</b>	<b>378,111</b>	<b>15,905</b>	<b>13,968</b>	<b>50,554</b>	<b>44,365</b>	<b>361</b>	<b>808</b>	<b>479</b>
Canada	377,886	377,864	15,900	13,962	50,550	44,302	361	808	477
Newfoundland and Labrador	4,898	4,898	0	0	5	2	0	1	0
Prince Edward Island	1,483	1,483	0	0	2	0	0	0	0
Nova Scotia	9,188	9,188	0	1	1	4	0	0	0
New Brunswick	7,402	7,402	0	0	1	0	0	0	0
Quebec	87,870	87,869	0	1	0	6	0	0	2
Ontario	140,791	140,783	184	4	11	19	0	0	0
Manitoba	15,485	15,484	15,359	99	10	6	0	0	0
Saskatchewan	13,737	13,737	174	13,330	216	10	0	0	0
Alberta	50,856	50,855	15	519	50,168	93	2	2	0
British Columbia	44,276	44,265	5	6	92	44,140	4	1	0
Yukon	373	373	0	0	3	13	353	2	0
Northwest Territories	721	721	1	0	29	9	2	674	0
Nunavut	805	805	162	2	12	0	0	128	475
Unknown province or territory	1	1	0	0	0	0	0	0	0
Outside Canada	247	247	5	6	4	63	0	0	2

1. The geographic distribution of live births in this table is based on the mother's usual place of residence and on the place of occurrence.

**Note(s):** See "Data quality, concepts and methodology — Explanatory notes for the tables".

**Source(s):** Statistics Canada, Canadian Vital Statistics, Birth Database (CANSIM table 102-4501).



**Table 11**  
**Fetal deaths (20 weeks or more of gestation) and late fetal deaths (28 weeks or more of gestation), Canada, provinces and territories**

Place of residence of mother	Gestation	
	20 weeks or more <sup>1</sup> (fetal deaths)	28 weeks or more <sup>2</sup> (late fetal deaths)
	number	
<b>Canada</b>	<b>2,774</b>	<b>1,170</b>
Newfoundland and Labrador	36	16
Prince Edward Island	9	4
Nova Scotia	81	36
New Brunswick	40	16
Quebec	377	223
Ontario	1,189	459
Manitoba	140	81
Saskatchewan	86	47
Alberta	367	151
British Columbia	431	127
Yukon	5	2
Northwest Territories	5	4
Nunavut	8	4
Unknown	0	0

1. Weeks of gestation, 20 weeks or more (fetal deaths) refers to a fetal death (stillbirth) with a duration of pregnancy of 20 weeks or more, or a birth weight of 500 grams or more. Fetal deaths with unknown weeks of gestation are included.

2. Weeks of gestation, 28 weeks or more (late fetal deaths) refers to a fetal death (stillbirth) with a duration of pregnancy of 28 weeks or more. Fetal deaths with unknown weeks of gestation are excluded.

**Note(s):** See "Data quality, concepts and methodology — Explanatory notes for the tables".

**Source(s):** Statistics Canada, Canadian Vital Statistics, Stillbirth Database (CANSIM table 102-4514).

**Table 12-1**  
**Live births and fetal deaths (stillbirths), by geography — Type of birth (single or multiple)**

Place of residence of mother	Type of birth								
	Total			Single			Multiple		
	Total, births	Live births	Fetal deaths (stillbirths)	Total, births	Live births	Fetal deaths (stillbirths)	Total, births	Live births	Fetal deaths (stillbirths)
	number								
<b>Canada</b>	<b>380,660</b>	<b>377,886</b>	<b>2,774</b>	<b>368,647</b>	<b>366,070</b>	<b>2,577</b>	<b>12,013</b>	<b>11,816</b>	<b>197</b>
Newfoundland and Labrador	4,934	4,898	36	4,772	4,737	35	162	161	1
Prince Edward Island	1,492	1,483	9	1,444	1,436	8	48	47	1
Nova Scotia	9,269	9,188	81	8,970	8,891	79	299	297	2
New Brunswick	7,442	7,402	40	7,252	7,217	35	190	185	5
Quebec	88,247	87,870	377	85,660	85,302	358	2,587	2,568	19
Ontario	141,980	140,791	1,189	137,187	136,107	1,080	4,793	4,684	109
Manitoba	15,625	15,485	140	15,231	15,101	130	394	384	10
Saskatchewan	13,823	13,737	86	13,430	13,347	83	393	390	3
Alberta	51,223	50,856	367	49,461	49,110	351	1,762	1,746	16
British Columbia	44,707	44,276	431	43,374	42,973	401	1,333	1,303	30
Yukon	378	373	5	374	369	5	4	4	0
Northwest Territories	726	721	5	692	687	5	34	34	0
Nunavut	813	805	8	799	792	7	14	13	1
Unknown	1	1	0	1	1	0	0	0	0

**Note(s):** See "Data quality, concepts and methodology — Explanatory notes for the tables".

**Source(s):** Statistics Canada, Canadian Vital Statistics, Birth and Stillbirth Databases (CANSIM table 102-4515).

**Table 12-2**  
**Live births and fetal deaths (stillbirths), by geography — Place of birth (hospital and non-hospital)**

Place of residence of mother	Live births and fetal deaths (stillbirths)					
	Total, births		Live births		Fetal deaths (stillbirths)	
	number	percent	number	percent	number	percent
<b>Canada</b>						
Total, place of birth	380,660	100.0	377,886	100.0	2,774	100.0
Hospital	375,857	98.7	373,134	98.7	2,723	98.2
Non-hospital	4,770	1.3	4,722	1.2	48	1.7
Unknown	33	0.0	30	0.0	3	0.1
<b>Newfoundland and Labrador</b>						
Total, place of birth	4,934	100.0	4,898	100.0	36	100.0
Hospital	4,917	99.7	4,882	99.7	35	97.2
Non-hospital	17	0.3	16	0.3	1	2.8
Unknown	0	0.0	0	0.0	0	0.0
<b>Prince Edward Island</b>						
Total, place of birth	1,492	100.0	1,483	100.0	9	100.0
Hospital	1,489	99.8	1,480	99.8	9	100.0
Non-hospital	1	0.1	1	0.1	0	0.0
Unknown	2	0.1	2	0.1	0	0.0
<b>Nova Scotia</b>						
Total, place of birth	9,269	100.0	9,188	100.0	81	100.0
Hospital	9,218	99.4	9,137	99.4	81	100.0
Non-hospital	51	0.6	51	0.6	0	0.0
Unknown	0	0.0	0	0.0	0	0.0
<b>New Brunswick</b>						
Total, place of birth	7,442	100.0	7,402	100.0	40	100.0
Hospital	7,429	99.8	7,390	99.8	39	97.5
Non-hospital	12	0.2	12	0.2	0	0.0
Unknown	1	0.0	0	0.0	1	2.5
<b>Quebec</b>						
Total, place of birth	88,247	100.0	87,870	100.0	377	100.0
Hospital	87,891	99.6	87,516	99.6	375	99.5
Non-hospital	356	0.4	354	0.4	2	0.5
Unknown	0	0.0	0	0.0	0	0.0
<b>Ontario</b>						
Total, place of birth	141,980	100.0	140,791	100.0	1,189	100.0
Hospital	139,475	98.2	138,295	98.2	1,180	99.2
Non-hospital	2,504	1.8	2,495	1.8	9	0.8
Unknown	1	0.0	1	0.0	0	0.0
<b>Manitoba</b>						
Total, place of birth	15,625	100.0	15,485	100.0	140	100.0
Hospital	15,397	98.5	15,281	98.7	116	82.9
Non-hospital	202	1.3	178	1.1	24	17.1
Unknown	26	0.2	26	0.2	0	0.0
<b>Saskatchewan</b>						
Total, place of birth	13,823	100.0	13,737	100.0	86	100.0
Hospital	13,751	99.5	13,669	99.5	82	95.3
Non-hospital	71	0.5	68	0.5	3	3.5
Unknown	1	0.0	0	0.0	1	1.2
<b>Alberta</b>						
Total, place of birth	51,223	100.0	50,856	100.0	367	100.0
Hospital	50,701	99.0	50,342	99.0	359	97.8
Non-hospital	520	1.0	513	1.0	7	1.9
Unknown	2	0.0	1	0.0	1	0.3
<b>British Columbia</b>						
Total, place of birth	44,707	100.0	44,276	100.0	431	100.0
Hospital	43,786	97.9	43,356	97.9	430	99.8
Non-hospital	921	2.1	920	2.1	1	0.2
Unknown	0	0.0	0	0.0	0	0.0
<b>Yukon</b>						
Total, place of birth	378	100.0	373	100.0	5	100.0
Hospital	366	96.8	361	96.8	5	100.0
Non-hospital	12	3.2	12	3.2	0	0.0
Unknown	0	0.0	0	0.0	0	0.0

Table 12-2 – continued

Live births and fetal deaths (stillbirths), by geography — Place of birth (hospital and non-hospital)

Place of residence of mother	Live births and fetal deaths (stillbirths)					
	Total, births		Live births		Fetal deaths (stillbirths)	
	number	percent	number	percent	number	percent
<b>Northwest Territories</b>						
Total, place of birth	726	100.0	721	100.0	5	100.0
Hospital	701	96.6	696	96.5	5	100.0
Non-hospital	25	3.4	25	3.5	0	0.0
Unknown	0	0.0	0	0.0	0	0.0
<b>Nunavut</b>						
Total, place of birth	813	100.0	805	100.0	8	100.0
Hospital	735	90.4	728	90.4	7	87.5
Non-hospital	78	9.6	77	9.6	1	12.5
Unknown	0	0.0	0	0.0	0	0.0
<b>Unknown</b>						
Total, place of birth	1	100.0	1	100.0	0	0.0
Hospital	1	100.0	1	100.0	0	0.0
Non-hospital	0	0.0	0	0.0	0	0.0
Unknown	0	0.0	0	0.0	0	0.0

**Note(s):** See "Data quality, concepts and methodology — Explanatory notes for the tables".

**Source(s):** Statistics Canada, Canadian Vital Statistics, Birth and Stillbirth Databases (CANSIM table 102-4516).

## Definitions

---

The definitions used for the production of statistical tables of Canadian vital statistics data are based on those recommended by the World Health Organization<sup>1</sup> and the United Nations.<sup>2</sup>

**Age of mother.** Age the mother attained at her last birthday preceding delivery.

**Birth.** The complete expulsion or extraction from its mother of a product of conception, irrespective of the duration of the pregnancy. See also “Fetal death (stillbirth)” and “Live birth”.

### Birth and fertility rates

- **Age-specific fertility rate (ASFR):** The number of live births per 1,000 women in a specific age group. Five-year age groups were used in these tabulations (ranging from 15 to 19 to 45 to 49 years).
- **Age-specific fertility rate, women 15 to 19 years:** Live births to women under age 20 per 1,000 women aged 15 to 19.
- **Crude birth rate:** The number of live births per 1,000 population.
- **Total fertility rate (TFR):** An estimate of the average number of live births a woman can be expected to have in her lifetime, based on the age-specific fertility rates (ASFR) of a given year. The total fertility rate (TFR) = SUM of single year of age-specific fertility rate.

**Birth weight.** The first weight of the fetus or newborn obtained immediately after birth, expressed in grams.

- **Extremely low birth weight:** Birth weight under 1,000 grams.
- **Very low birth weight:** Birth weight under 1,500 grams.
- **Low birth weight:** Birth weight under 2,500 grams.
- **Normal birth weight:** Ranges from 2,500 to 4,499 grams.
- **High birth weight:** Birth weight of 4,500 or more grams.

**Delivery.** A delivery may consist of one or more live born or stillborn fetuses. The number of deliveries in a given period will be equal to or less than the number of births because multiple births (twins, triplets or higher-order births) are counted as single deliveries.

**Fetal death (stillbirth).** See Stillbirth definition.

**Fetal death (stillbirth) rate.** See Stillbirth rate definition.

**Live birth.** The complete expulsion or extraction from its mother of a product of conception, irrespective of the duration of the pregnancy, which, after such separation, breathes or shows any other evidence of life, such as beating of the heart, pulsation of the umbilical cord, or definite movement of voluntary muscles, whether or not the umbilical cord has been cut or the placenta is attached.

1. World Health Organization (WHO). *International Statistical Classification of Diseases and Related Health Problems, Tenth Revision, Volumes 1 and 2 (ICD-10)*. Geneva, 1992.

2. United Nations. *Principles and Recommendations for a Vital Statistics System*. Statistical Papers, Series M, No. 19, Rev. 1. New York, 1974.

**Marital status of mother.** Refers to the legal conjugal status of the mother at the time of the delivery. Persons in common-law relationships are assigned to their legal marital status category. A **single** person is one who has never been married, or a person whose marriage has been annulled and who has not remarried. A **separated** person is legally married but is not living with his or her spouse because the couple no longer wants to live together. A **divorced** person is one who has obtained a legal divorce and has not remarried. A **married** person is one who is legally married and not separated. A person whose spouse has died and who has not remarried is **widowed**.

**Mean age of mother.** The mean (average) age of mother for Canada, a province or a territory is calculated by summing the mothers' ages at their last birthday preceding delivery, and then dividing the sum by the total number of live births in that jurisdiction. To estimate mid-year mean age, a statistic often used in analyses, add 0.5 to mean age.

**Mean birth weight.** The mean (average) birth weight for Canada, a province or a territory is calculated by summing the first weight of each live newborn (obtained immediately after birth), and then dividing the sum by the total number of live births in that jurisdiction.

**Median birth weight.** The median is the middle value in a set of ordered numbers (for example, newborns' birth weight ranked from lightest to heaviest). In the case of an even number of observations, the median is the average of the two middle values.

**Multiple birth.** A delivery that results in more than one birth, whether live born or stillborn. This includes the delivery of twins, triplets, quadruplets, quintuplets and more.

**Parity of mother.** The number of live births a woman has had to date (excludes fetal deaths or stillbirths). A woman with zero parity has had no live births; a woman of parity 1 has had one live birth, of parity 2, two live births, and so on. In the case of a first delivery resulting in live twins, the woman has a parity of 1 after the first twin is born and a parity of 2 after the second twin is born.

**Population.** Persons whose usual place of residence is somewhere in Canada, including Canadian government employees stationed abroad and their families, members of the Canadian Armed Forces stationed abroad and their families, crews of Canadian merchant vessels, and non-permanent residents of Canada.

Mid-year (July 1) population estimates are used to calculate the rates in vital statistics publications (see Appendix I).

**Provinces and territories.** Unless otherwise stated, the geographic distribution of births and fetal deaths (stillbirths) in the tables of this publication is based on the mother's usual place of residence.

Nunavut came into being officially as a Territory of Canada on April 1, 1999. The name Northwest Territories applies to a Territory with different geographic boundaries before and after April 1, 1999.

**Stillbirth (fetal death).** Death prior to the complete expulsion or extraction from its mother of a product of conception, irrespective of the duration of pregnancy; the death is indicated by the fact that after such separation the fetus does not breathe or show any other evidence of life, such as beating of the heart, pulsation of the umbilical cord, or definite movement of voluntary muscles. Only fetal deaths where the product of conception has a birth weight of 500 grams or more or the duration of pregnancy is 20 weeks or longer are registered in Canada.

In Quebec (as well as in Saskatchewan prior to 2001 and in New Brunswick prior to November 1996), only fetal deaths (stillbirths) weighing 500 or more grams must be reported, regardless of the gestation period.

Because of these differences in reporting requirements, fetal death (stillbirth) data are presented for two gestation periods: 20 or more weeks of gestation (including fetal deaths or stillbirths with unknown weeks of gestation), and 28 or more weeks of gestation (excluding unknown weeks of gestation).

**Stillbirth (fetal death) rate.** The number of fetal deaths (stillbirths) per 1,000 live births plus fetal deaths (stillbirths).

**Type of birth.** Type of birth refers to the plurality of a delivery, that is, whether the delivery results in the birth of one or more live born or stillborn infants.

**Weeks of gestation.** The interval, in completed weeks, between the first day of the mother's last menstrual period and the day of delivery (that is, the duration of pregnancy). It can also be any estimate of that interval, based on ultrasound, a physical examination or other method. Canadian birth registration documents do not specify how the gestational age was calculated. **Pre-term** refers to a period of gestation less than 37 completed weeks; **term**, 37 through 41 completed weeks; and **post-term**, 42 or more completed weeks.

## Explanatory notes for the tables

---

### Table 1 Live births, by sex and geography

- Live birth is the complete expulsion or extraction from its mother of a product of conception, irrespective of the duration of the pregnancy, which, after such separation, breathes or shows any other evidence of life, such as beating of the heart, pulsation of the umbilical cord, or definite movement of voluntary muscles, whether or not the umbilical cord has been cut or the placenta is attached.
- The geographic distribution of live births in this table is based on the mother's usual place of residence.
- Unknown province or territory of residence of mother, refers to live births to mothers who are residents of Canada, with unknown province or territory of residence.

### Table 2 Live births, by geography

- Live birth is the complete expulsion or extraction from its mother of a product of conception, irrespective of the duration of the pregnancy, which, after such separation, breathes or shows any other evidence of life, such as beating of the heart, pulsation of the umbilical cord, or definite movement of voluntary muscles, whether or not the umbilical cord has been cut or the placenta is attached.
- The geographic distribution of live births in this table is based on the mother's usual place of residence.
- Unknown province or territory of residence of mother, refers to live births to mothers who are residents of Canada, with unknown province or territory of residence.
- Marital status of mother refers to her legal conjugal status at the time of the birth. Persons in common-law relationships are assigned to their legal marital status category. A single person is one who has never been married, or a person whose marriage has been annulled and who has not remarried. A separated person is legally married but is not living with his or her spouse because the couple no longer wants to live together. A divorced person is one who has obtained a legal divorce and has not remarried. A married person is one who is legally married and not separated. A person whose spouse has died and who has not remarried is widowed.

### Table 3 Mean age of mother, by geography

- Live birth is the complete expulsion or extraction from its mother of a product of conception, irrespective of the duration of the pregnancy, which, after such separation, breathes or shows any other evidence of life, such as beating of the heart, pulsation of the umbilical cord, or definite movement of voluntary muscles, whether or not the umbilical cord has been cut or the placenta is attached.
- The geographic distribution of live births in this table is based on the mother's usual place of residence.
- Unknown province or territory of residence of mother, refers to live births to mothers who are residents of Canada, with unknown province or territory of residence.

### Table 4 Crude birth rate, age specific and total fertility rates, by geography

- Live birth is the complete expulsion or extraction from its mother of a product of conception, irrespective of the duration of the pregnancy, which, after such separation, breathes or shows any other evidence of life, such as beating of the heart, pulsation of the umbilical cord, or definite movement of voluntary muscles, whether or not the umbilical cord has been cut or the placenta is attached.



- The geographic distribution of live births in this table is based on the mother's usual place of residence.
- Rates for Canada include live births to mothers who are residents of Canada, with unknown province or territory of residence.

#### **Table 5 Mean and median birth weight, by geography**

- Live birth is the complete expulsion or extraction from its mother of a product of conception, irrespective of the duration of the pregnancy, which, after such separation, breathes or shows any other evidence of life, such as beating of the heart, pulsation of the umbilical cord, or definite movement of voluntary muscles, whether or not the umbilical cord has been cut or the placenta is attached.
- The geographic distribution of live births in this table is based on the mother's usual place of residence.
- Unknown province or territory of residence of mother, refers to live births to mothers who are residents of Canada, with unknown province or territory of residence.
- Birth weight is the first weight of the newborn obtained immediately after birth, expressed in grams.

#### **Table 6 Live births, Canada**

- Live birth is the complete expulsion or extraction from its mother of a product of conception, irrespective of the duration of the pregnancy, which, after such separation, breathes or shows any other evidence of life, such as beating of the heart, pulsation of the umbilical cord, or definite movement of voluntary muscles, whether or not the umbilical cord has been cut or the placenta is attached.
- Marital status of mother refers to her legal conjugal status at the time of the birth. Persons in common-law relationships are assigned to their legal marital status category. A single person is one who has never been married, or a person whose marriage has been annulled and who has not remarried. A separated person is legally married but is not living with his or her spouse because the couple no longer wants to live together. A divorced person is one who has obtained a legal divorce and has not remarried. A married person is one who is legally married and not separated. A person whose spouse has died and who has not remarried is widowed.
- The geographic distribution of live births in this table is based on the mother's usual place of residence.
- Parity refers to the number of live births a female has had to date (excludes fetal deaths or stillbirths). A female with zero parity has had no live births; a female of parity 1 has had one live birth, of parity 2, two live births and so on. In the case of a first delivery resulting in live twins, the female has a parity of 1 after the first twin is born and a parity of 2 after the second twin is born.

#### **Table 7 Live births, by birth weight and geography**

- Live birth is the complete expulsion or extraction from its mother of a product of conception, irrespective of the duration of the pregnancy, which, after such separation, breathes or shows any other evidence of life, such as beating of the heart, pulsation of the umbilical cord, or definite movement of voluntary muscles, whether or not the umbilical cord has been cut or the placenta is attached.
- Birth weight is the first weight of the newborn obtained immediately after birth, expressed in grams.
- The geographic distribution of live births in this table is based on the mother's usual place of residence.
- Unknown province or territory of residence of mother, refers to live births to mothers who are residents of Canada, with unknown province or territory of residence.

#### **Table 8 Live births, by weeks of gestation and geography**

- Live birth is the complete expulsion or extraction from its mother of a product of conception, irrespective of the duration of the pregnancy, which, after such separation, breathes or shows any other evidence of life, such as beating of the heart, pulsation of the umbilical cord, or definite movement of voluntary muscles, whether or not the umbilical cord has been cut or the placenta is attached.
- Weeks of gestation refers to the interval, in completed weeks, between the first day of the mother's last menstrual period and the day of delivery (that is, the duration of the pregnancy). It can also be any estimate of that interval, based on ultrasound, a physical examination or other method. Canadian birth registration documents do not specify how the weeks of gestation are to be calculated.
- The geographic distribution of live births in this table is based on the mother's usual place of residence.
- Unknown province or territory of residence of mother, refers to live births to mothers who are residents of Canada, with unknown province or territory of residence.

**Table 9 Live births, by characteristics of the mother and child, Canada**

- Live birth is the complete expulsion or extraction from its mother of a product of conception, irrespective of the duration of the pregnancy, which, after such separation, breathes or shows any other evidence of life, such as beating of the heart, pulsation of the umbilical cord, or definite movement of voluntary muscles, whether or not the umbilical cord has been cut or the placenta is attached.
- The geographic distribution of live births in this table is based on the mother's usual place of residence.
- Birth weight is the first weight of the newborn obtained immediately after birth, expressed in grams.
- Parity refers to the number of live births a female has had to date (excludes fetal deaths or stillbirths). A female with zero parity has had no live births; a female of parity 1 has had one live birth, of parity 2, two live births and so on. In the case of a first delivery resulting in live twins, the female has a parity of 1 after the first twin is born and a parity of 2 after the second twin is born.
- Marital status of mother refers to her legal conjugal status at the time of the birth. Persons in common-law relationships are assigned to their legal marital status category. A single person is one who has never been married, or a person whose marriage has been annulled and who has not remarried. A separated person is legally married but is not living with his or her spouse because the couple no longer wants to live together. A divorced person is one who has obtained a legal divorce and has not remarried. A married person is one who is legally married and not separated. A person whose spouse has died and who has not remarried is widowed.
- Type of birth refers to the plurality of a delivery, that is, whether the delivery results in the birth of one or more liveborn or stillborn infants. The delivery must result in the birth of at least one liveborn infant to be included in this table. The category "Type of birth, multiple" includes the delivery of twins, triplets, quadruplets, quintuplets or more.
- Weeks of gestation refers to the interval, in completed weeks, between the first day of the mother's last menstrual period and the day of delivery (that is, the duration of the pregnancy). It can also be any estimate of that interval, based on ultrasound, a physical examination or other method. Canadian birth registration documents do not specify how the weeks of gestation are to be calculated.

**Table 10 Live births, by place of residence of mother and place of occurrence, Canada, provinces, territories and outside Canada**

- Live birth is the complete expulsion or extraction from its mother of a product of conception, irrespective of the duration of the pregnancy, which, after such separation, breathes or shows any other evidence of life, such as beating of the heart, pulsation of the umbilical cord, or definite movement of voluntary muscles, whether or not the umbilical cord has been cut or the placenta is attached.

- Unknown province or territory of residence of mother, refers to live births to mothers who are residents of Canada, with unknown province or territory of residence.
- Place of residence of mother outside Canada includes live births to mothers who are non-residents of Canada and births with unknown country of residence of mother. Data by place of residence outside Canada have been revised for 2007.

**Table 11 Fetal deaths (20 weeks or more of gestation) and late fetal deaths (28 weeks or more of gestation), Canada, provinces and territories**

- Fetal death (stillbirth) is death prior to the complete expulsion or extraction from its mother of a product of conception, irrespective of the duration of pregnancy; the death is indicated by the fact that after such separation the fetus does not breathe or show any other evidence of life, such as beating of the heart, pulsation of the umbilical cord, or definite movement of voluntary muscles. Only fetal deaths where the product of conception has a birth weight of 500 grams or more or the duration of pregnancy is 20 weeks or longer are registered in Canada.
- Weeks of gestation refers to the interval, in completed weeks, between the first day of the mother's last menstrual period and the day of delivery (that is, the duration of the pregnancy). It can also be any estimate of that interval, based on ultrasound, a physical examination or other method. Canadian birth registration documents do not specify how the weeks of gestation are to be calculated.
- Fetal death (stillbirth) data are tabulated according to the mother's usual place of residence.
- Unknown province or territory of residence of mother, refers to fetal deaths (stillbirths) to mothers who are residents of Canada, with unknown province or territory of residence.

**Table 12-1 Live births and fetal deaths (stillbirths), by geography – Type of birth (single or multiple)**

- Live birth is the complete expulsion or extraction from its mother of a product of conception, irrespective of the duration of the pregnancy, which, after such separation, breathes or shows any other evidence of life, such as beating of the heart, pulsation of the umbilical cord, or definite movement of voluntary muscles, whether or not the umbilical cord has been cut or the placenta is attached.
- Fetal death (stillbirth) is death prior to the complete expulsion or extraction from its mother of a product of conception, irrespective of the duration of pregnancy; the death is indicated by the fact that after such separation the fetus does not breathe or show any other evidence of life, such as beating of the heart, pulsation of the umbilical cord, or definite movement of voluntary muscles. Only fetal deaths where the product of conception has a birth weight of 500 grams or more or the duration of pregnancy is 20 weeks or longer are registered in Canada.
- Type of birth refers to the plurality of a delivery, that is, whether the delivery results in one or more liveborn or stillborn infants. The category "Type of birth, multiples" includes the delivery of twins, triplets, quadruplets, quintuplets or more.
- The geographic distribution of live births and fetal deaths (stillbirths) in this table is based on the mother's usual place of residence.
- Unknown province or territory of residence of mother, refers to live births or fetal deaths (stillbirths) to mothers who are residents of Canada, with unknown province or territory of residence.

**Table 12-2 Live births and fetal deaths (stillbirths), by geography – Place of birth (hospital and non-hospital)**

- Live birth is the complete expulsion or extraction from its mother of a product of conception, irrespective of the duration of the pregnancy, which, after such separation, breathes or shows any other evidence of life, such as beating of the heart, pulsation of the umbilical cord, or definite movement of voluntary muscles, whether or not the umbilical cord has been cut or the placenta is attached.

- Fetal death (stillbirth) is death prior to the complete expulsion or extraction from its mother of a product of conception, irrespective of the duration of pregnancy; the death is indicated by the fact that after such separation the fetus does not breathe or show any other evidence of life, such as beating of the heart, pulsation of the umbilical cord, or definite movement of voluntary muscles. Only fetal deaths where the product of conception has a birth weight of 500 grams or more or the duration of pregnancy is 20 weeks or longer are registered in Canada.
- The category "Place of birth , non-hospital" includes births in private homes, in health care institutions such as nursing homes and other long-term care facilities, nursing stations and other short-term care facilities and other health care facilities not licensed to operate as hospitals by provincial, territorial or federal governments, such as free-standing birthing centres and at other specified sites.
- The geographic distribution of live births and fetal deaths (stillbirths) in this table is based on the mother's usual place of residence.
- Unknown province or territory of residence of mother, refers to live births or fetal deaths (stillbirths) to mothers who are residents of Canada, with unknown province or territory of residence.

# Appendix I

## Postcensal Population Estimates

Text table 1

Postcensal population estimates by sex and age group, Canada, provinces and territories, July 1, 2008<sup>1</sup>

	Canada	N.L.	P.E.I.	N.S.	N.B.	Que.	Ont.
	number						
<b>Both sexes</b>							
All ages	<b>33,315,976</b>	<b>506,193</b>	<b>139,545</b>	<b>936,737</b>	<b>746,902</b>	<b>7,751,332</b>	<b>12,932,297</b>
under 1 year <sup>2</sup>	377,886	4,898	1,483	9,188	7,402	87,870	140,791
1 to 4 years <sup>2</sup>	1,423,325	18,042	5,374	34,285	27,895	312,642	562,416
5 to 9 years	1,793,543	25,061	7,606	46,132	37,678	385,045	718,253
10 to 14 years	2,013,387	27,942	8,833	53,353	42,643	446,949	802,233
15 to 19 years	2,256,523	32,790	10,296	62,754	48,634	502,801	887,311
20 to 24 years	2,286,903	31,282	9,169	61,477	47,090	485,221	895,811
25 to 29 years	2,287,061	28,565	7,891	55,305	45,288	533,052	868,084
30 to 34 years	2,216,826	30,226	8,004	55,347	46,062	516,020	862,956
35 to 39 years	2,307,993	34,978	8,791	62,156	49,716	503,695	929,833
40 to 44 years	2,562,724	40,639	10,353	71,007	56,609	586,988	1,032,287
45 to 49 years	2,751,603	42,562	11,346	79,555	61,766	650,002	1,073,566
50 to 54 years	2,523,412	42,400	10,678	75,617	60,828	615,388	944,852
55 to 59 years	2,152,371	39,932	9,872	67,151	55,175	532,864	800,139
60 to 64 years	1,806,950	33,932	8,795	59,356	46,881	461,154	673,419
65 to 69 years	1,343,799	23,704	6,195	43,737	34,289	347,153	504,501
70 to 74 years	1,058,456	18,001	5,107	33,657	25,968	263,109	406,991
75 to 79 years	902,177	13,782	4,002	27,069	21,227	225,810	348,013
80 to 84 years	666,437	9,308	2,858	19,781	16,272	161,393	260,765
85 to 89 years	391,312	5,604	1,883	12,892	10,162	89,596	149,905
90 years and over	193,288	2,545	1,009	6,918	5,317	44,580	70,171
<b>Males</b>							
All ages	<b>16,519,001</b>	<b>248,432</b>	<b>68,116</b>	<b>454,868</b>	<b>366,635</b>	<b>3,838,941</b>	<b>6,377,127</b>
under 1 year <sup>2</sup>	193,755	2,487	754	4,708	3,825	45,010	72,170
1 to 4 years <sup>2</sup>	731,662	9,391	2,717	17,473	14,261	160,360	288,744
5 to 9 years	921,883	12,771	3,889	23,595	19,423	197,635	368,567
10 to 14 years	1,031,210	14,415	4,544	27,149	21,975	228,819	410,037
15 to 19 years	1,156,747	16,921	5,225	31,781	24,991	257,433	453,417
20 to 24 years	1,173,180	15,701	4,591	30,538	24,164	247,825	456,967
25 to 29 years	1,152,713	14,186	3,780	26,244	22,729	271,848	430,646
30 to 34 years	1,110,768	14,619	3,836	26,666	22,501	263,866	423,623
35 to 39 years	1,164,737	16,926	4,420	30,652	24,633	258,318	464,496
40 to 44 years	1,291,827	19,666	5,149	34,940	27,982	299,554	517,916
45 to 49 years	1,381,560	21,038	5,540	39,086	30,266	326,782	540,201
50 to 54 years	1,254,748	20,677	5,173	36,996	29,871	305,195	468,597
55 to 59 years	1,062,135	19,758	4,855	33,116	27,078	261,818	392,216
60 to 64 years	887,739	16,851	4,358	29,161	23,261	224,540	328,922
65 to 69 years	649,984	11,660	3,022	21,128	16,924	167,394	241,544
70 to 74 years	496,178	8,753	2,441	15,889	12,234	121,926	188,729
75 to 79 years	404,381	6,256	1,826	11,958	9,352	98,246	155,403
80 to 84 years	267,768	3,828	1,150	7,757	6,405	62,590	104,334
85 to 89 years	134,614	1,915	597	4,259	3,366	29,254	51,586
90 years and over	51,412	613	249	1,772	1,394	10,528	19,012

See notes at the end of the table.

Text table 1 – continued

Postcensal population estimates by sex and age group, Canada, provinces and territories, July 1, 2008<sup>1</sup>

	Canada	N.L.	P.E.I.	N.S.	N.B.	Que.	Ont.
	number						
<b>Females</b>							
<b>All ages</b>	<b>16,796,975</b>	<b>257,761</b>	<b>71,429</b>	<b>481,869</b>	<b>380,267</b>	<b>3,912,391</b>	<b>6,555,170</b>
under 1 year <sup>2</sup>	184,131	2,411	729	4,480	3,577	42,860	68,621
1 to 4 years <sup>2</sup>	691,663	8,651	2,657	16,812	13,634	152,282	273,672
5 to 9 years	871,660	12,290	3,717	22,537	18,255	187,410	349,686
10 to 14 years	982,177	13,527	4,289	26,204	20,668	218,130	392,196
15 to 19 years	1,099,776	15,869	5,071	30,973	23,643	245,368	433,894
20 to 24 years	1,113,723	15,581	4,578	30,939	22,926	237,396	438,844
25 to 29 years	1,134,348	14,379	4,111	29,061	22,559	261,204	437,438
30 to 34 years	1,106,058	15,607	4,168	28,681	23,561	252,154	439,333
35 to 39 years	1,143,256	18,052	4,371	31,504	25,083	245,377	465,337
40 to 44 years	1,270,897	20,973	5,204	36,067	28,627	287,434	514,371
45 to 49 years	1,370,043	21,524	5,806	40,469	31,500	323,220	533,365
50 to 54 years	1,268,664	21,723	5,505	38,621	30,957	310,193	476,255
55 to 59 years	1,090,236	20,174	5,017	34,035	28,097	271,046	407,923
60 to 64 years	919,211	17,081	4,437	30,195	23,620	236,614	344,497
65 to 69 years	693,815	12,044	3,173	22,609	17,365	179,759	262,957
70 to 74 years	562,278	9,248	2,666	17,768	13,734	141,183	218,262
75 to 79 years	497,796	7,526	2,176	15,111	11,875	127,564	192,610
80 to 84 years	398,669	5,480	1,708	12,024	9,867	98,803	156,431
85 to 89 years	256,698	3,689	1,286	8,633	6,796	60,342	98,319
90 years and over	141,876	1,932	760	5,146	3,923	34,052	51,159

See notes at the end of the table.

Text table 1 – continued

Postcensal population estimates by sex and age group, Canada, provinces and territories, July 1, 2008<sup>1</sup>

	Canada	Man.	Sask.	Alta.	B.C.	Y.T.	N.W.T.	Nvt.
	number							
<b>Both sexes</b>								
<b>All ages</b>	<b>33,315,976</b>	<b>1,205,517</b>	<b>1,013,792</b>	<b>3,591,391</b>	<b>4,383,860</b>	<b>33,116</b>	<b>43,699</b>	<b>31,595</b>
under 1 year <sup>2</sup>	377,886	15,485	13,737	50,856	44,276	373	721	805
1 to 4 years <sup>2</sup>	1,423,325	57,770	49,394	177,542	171,079	1,480	2,658	2,749
5 to 9 years	1,793,543	74,135	61,636	209,770	219,897	1,913	3,050	3,367
10 to 14 years	2,013,387	81,791	67,503	222,679	250,836	2,029	3,239	3,357
15 to 19 years	2,256,523	88,940	76,798	249,031	287,827	2,343	3,768	3,230
20 to 24 years	2,286,903	85,186	74,085	285,689	303,206	2,299	3,504	2,884
25 to 29 years	2,287,061	80,397	68,481	293,883	297,502	2,112	3,848	2,653
30 to 34 years	2,216,826	76,444	61,252	272,599	279,900	2,203	3,462	2,351
35 to 39 years	2,307,993	77,773	59,269	266,970	306,589	2,513	3,434	2,276
40 to 44 years	2,562,724	84,257	66,878	271,440	333,996	2,739	3,410	2,121
45 to 49 years	2,751,603	93,972	77,628	291,065	361,542	3,293	3,588	1,718
50 to 54 years	2,523,412	87,390	74,774	263,269	340,808	3,013	2,978	1,417
55 to 59 years	2,152,371	74,482	61,679	204,374	300,790	2,491	2,366	1,056
60 to 64 years	1,806,950	61,680	49,524	158,084	250,104	1,824	1,506	691
65 to 69 years	1,343,799	45,180	38,731	112,036	186,029	988	829	427
70 to 74 years	1,058,456	36,160	33,354	87,495	147,194	660	518	242
75 to 79 years	902,177	32,418	30,066	74,322	124,463	455	397	153
80 to 84 years	666,437	25,962	24,279	52,801	92,513	210	238	57
85 to 89 years	391,312	16,930	15,521	31,511	57,037	114	132	25
90 years and over	193,288	9,165	9,203	15,975	28,272	64	53	16
<b>Males</b>								
<b>All ages</b>	<b>16,519,001</b>	<b>599,598</b>	<b>503,012</b>	<b>1,832,911</b>	<b>2,173,400</b>	<b>16,924</b>	<b>22,645</b>	<b>16,392</b>
under 1 year <sup>2</sup>	193,755	7,855	6,958	26,182	22,828	186	358	433
1 to 4 years <sup>2</sup>	731,662	29,638	25,515	91,451	88,523	788	1,391	1,411
5 to 9 years	921,883	38,280	31,632	108,366	113,520	985	1,463	1,757
10 to 14 years	1,031,210	41,989	34,488	114,106	129,365	994	1,655	1,674
15 to 19 years	1,156,747	45,259	39,503	128,192	149,091	1,277	1,963	1,694
20 to 24 years	1,173,180	43,786	38,065	150,528	156,506	1,177	1,858	1,474
25 to 29 years	1,152,713	41,135	34,412	155,254	148,213	1,095	1,867	1,304
30 to 34 years	1,110,768	38,751	30,679	143,549	138,556	1,029	1,831	1,262
35 to 39 years	1,164,737	39,381	29,771	139,699	152,272	1,201	1,834	1,134
40 to 44 years	1,291,827	42,609	33,496	140,258	166,104	1,324	1,725	1,104
45 to 49 years	1,381,560	47,913	38,774	148,623	178,889	1,657	1,874	917
50 to 54 years	1,254,748	44,286	37,364	135,149	167,512	1,612	1,525	791
55 to 59 years	1,062,135	36,919	31,157	103,888	148,124	1,315	1,306	585
60 to 64 years	887,739	30,509	24,712	79,347	123,807	1,004	903	364
65 to 69 years	649,984	21,737	18,871	55,043	91,450	555	437	219
70 to 74 years	496,178	16,790	15,720	41,596	71,343	346	270	141
75 to 79 years	404,381	14,316	13,635	34,139	58,735	226	208	81
80 to 84 years	267,768	10,249	10,153	21,923	39,161	89	101	28
85 to 89 years	134,614	5,708	5,525	11,258	21,030	46	56	14
90 years and over	51,412	2,488	2,582	4,360	8,371	18	20	5

See notes at the end of the table.

Text table 1 – continued

Postcensal population estimates by sex and age group, Canada, provinces and territories, July 1, 2008<sup>1</sup>

	Canada	Man.	Sask.	Alta.	B.C.	Y.T.	N.W.T.	Nvt.
	number							
<b>Females</b>								
<b>All ages</b>	<b>16,796,975</b>	<b>605,919</b>	<b>510,780</b>	<b>1,758,480</b>	<b>2,210,460</b>	<b>16,192</b>	<b>21,054</b>	<b>15,203</b>
under 1 year <sup>2</sup>	184,131	7,630	6,779	24,674	21,448	187	363	372
1 to 4 years <sup>2</sup>	691,663	28,132	23,879	86,091	82,556	692	1,267	1,338
5 to 9 years	871,660	35,855	30,004	101,404	106,377	928	1,587	1,610
10 to 14 years	982,177	39,802	33,015	108,573	121,471	1,035	1,584	1,683
15 to 19 years	1,099,776	43,681	37,295	120,839	138,736	1,066	1,805	1,536
20 to 24 years	1,113,723	41,400	36,020	135,161	146,700	1,122	1,646	1,410
25 to 29 years	1,134,348	39,262	34,069	138,629	149,289	1,017	1,981	1,349
30 to 34 years	1,106,058	37,693	30,573	129,050	141,344	1,174	1,631	1,089
35 to 39 years	1,143,256	38,392	29,498	127,271	154,317	1,312	1,600	1,142
40 to 44 years	1,270,897	41,648	33,382	131,182	167,892	1,415	1,685	1,017
45 to 49 years	1,370,043	46,059	38,854	142,442	182,653	1,636	1,714	801
50 to 54 years	1,268,664	43,104	37,410	128,120	173,296	1,401	1,453	626
55 to 59 years	1,090,236	37,563	30,522	100,486	152,666	1,176	1,060	471
60 to 64 years	919,211	31,171	24,812	78,737	126,297	820	603	327
65 to 69 years	693,815	23,443	19,860	56,993	94,579	433	392	208
70 to 74 years	562,278	19,370	17,634	45,899	75,851	314	248	101
75 to 79 years	497,796	18,102	16,431	40,183	65,728	229	189	72
80 to 84 years	398,669	15,713	14,126	30,878	53,352	121	137	29
85 to 89 years	256,698	11,222	9,996	20,253	36,007	68	76	11
90 years and over	141,876	6,677	6,621	11,615	19,901	46	33	11

1. These postcensal population estimates, which are based on the 2006 census, are adjusted for net census undercoverage and include non-permanent residents.

2. 2008 population counts for the "under 1" and "1 to 4" categories were adjusted for 2008 births by Health Statistics Division.

Sources: Statistics Canada, Demography Division (CANSIM table 051-0001 released on September 29, 2010) and Health Statistics Division.