

# Births

2006



Statistics  
Canada

Statistique  
Canada

Canada

## How to obtain more information

For information about this product or the wide range of services and data available from Statistics Canada, visit our website at [www.statcan.ca](http://www.statcan.ca), e-mail us at [infostats@statcan.ca](mailto:infostats@statcan.ca), or telephone us, Monday to Friday from 8:30 a.m. to 4:30 p.m., at the following numbers:

### Statistics Canada's National Contact Centre

Toll-free telephone (Canada and the United States):

Inquiries line	1-800-263-1136
National telecommunications device for the hearing impaired	1-800-363-7629
Fax line	1-877-287-4369

Local or international calls:

Inquiries line	1-613-951-8116
Fax line	1-613-951-0581

### Depository Services Program

Inquiries line	1-800-635-7943
Fax line	1-800-565-7757

## To access this product

This product, Catalogue no. 84F0210X, is available free in electronic format. To obtain a single issue, visit our website at [www.statcan.ca](http://www.statcan.ca) and select "Publications" > "Free Internet publications."

## Standards of service to the public

Statistics Canada is committed to serving its clients in a prompt, reliable and courteous manner. To this end, Statistics Canada has developed *standards of service* that its employees observe. To obtain a copy of these service standards, please contact Statistics Canada toll-free at 1-800-263-1136. The service standards are also published on [www.statcan.ca](http://www.statcan.ca) under "About us" > "Providing services to Canadians."

# Births

2006

Published by authority of the Minister responsible for Statistics Canada

© Minister of Industry, 2008

All rights reserved. The content of this electronic publication may be reproduced, in whole or in part, and by any means, without further permission from Statistics Canada, subject to the following conditions: that it be done solely for the purposes of private study, research, criticism, review or newspaper summary, and/or for non-commercial purposes; and that Statistics Canada be fully acknowledged as follows: Source (or "Adapted from", if appropriate): Statistics Canada, year of publication, name of product, catalogue number, volume and issue numbers, reference period and page(s). Otherwise, no part of this publication may be reproduced, stored in a retrieval system or transmitted in any form, by any means—electronic, mechanical or photocopy—or for any purposes without prior written permission of Licensing Services, Client Services Division, Statistics Canada, Ottawa, Ontario, Canada K1A 0T6.

September 2008

Catalogue no. 84F0210X

ISSN 1710-5285

Frequency: Annual

Ottawa

La version française de cette publication est disponible sur demande (n° 84F0210X au catalogue).

---

**Note of appreciation**

*Canada owes the success of its statistical system to a long standing partnership between Statistics Canada, the citizens of Canada, its businesses, governments and other institutions. Accurate and timely statistical information could not be produced without their continued cooperation and goodwill.*

# User information

---

## Symbols

The following standard symbols are used in Statistics Canada publications:

- . not available for any reference period
- .. not available for a specific reference period
- ... not applicable
- 0 true zero or a value rounded to zero
- 0<sup>s</sup> value rounded to 0 (zero) where there is a meaningful distinction between true zero and the value that was rounded
- p preliminary
- r revised
- x suppressed to meet the confidentiality requirements of the *Statistics Act*
- E use with caution
- F too unreliable to be published

## Acknowledgements

The cooperation of provincial and territorial Vital Statistics registries who supply the birth data in this report to Statistics Canada is gratefully acknowledged.

# Table of contents

---

<b>Highlights</b>	<b>5</b>
<b>Introduction</b>	<b>6</b>
<b>Analysis</b>	<b>7</b>
A. Number of births	7
B. Fertility	8
C. Echoes of the baby boom	10
D. Change in stillbirths	12
<b>Related products</b>	<b>14</b>
<b>Statistical tables</b>	
1 Live births, by sex and geography	17
2 Live births, by geography	17
2-1 Month	17
2-2 Age of mother	18
2-3 Mean age of mother	19
2-4 Crude birth rate, age-specific and total fertility rates	19
2-5 Marital status of mother	20
2-6 Mean and median birth weight	21
3 Live births, Canada	21
3-1 Age and marital status of mother	21
3-2 Age and parity of mother	22
4 Live births, by birth weight and geography	23
4-1 Both sexes	23
4-2 Males	25
4-3 Females	27
5 Live births, by weeks of gestation and geography	29
5-1 Both sexes	29
5-2 Males	31
5-3 Females	33

## Table of contents – continued

6	Live births, by characteristics of the mother and child, Canada	35
6-1	Birth weight indicators	35
6-2	Weeks of gestation indicators	36
7	Live births, by place of residence of mother and place of occurrence, Canada, provinces, territories and outside Canada	37
8	Fetal deaths (20 weeks or more of gestation) and late fetal deaths (28 weeks or more of gestation), Canada, provinces and territories	38
9	Live births and fetal deaths (stillbirths), by geography	38
9-1	Type of birth (single or multiple)	38
9-2	Place of birth (hospital and non-hospital)	39

## Data quality, concepts and methodology

Definitions	41
Explanatory notes for the tables	44

## Appendix

I	Postcensal Population Estimates	48
---	---------------------------------	----

## Charts

1.	Births, Canada, 1986 to 2006	7
2.	Births and total fertility rates, Canada, 1986 to 2006	9
3.	Age-specific fertility rates, Canada 1986 to 2006	9
4.	Births, Canada, 1921 to 2006	11
5.	Stillbirth and late stillbirth rates, Canada, 1991 to 2006	12

## Text tables

1.	Births, Canada, provinces and territories, 2005 and 2006	8
2.	Expected number of births in 2006 by age group, Canada	10
3.	Total fertility rates, selected countries, 2004 to 2006	12
4.	Stillbirths and stillbirth rates, Canada, provinces and territories, 2006	13

# Highlights

---

## Births and fertility continuing an upward trend

- In 2006, a total of 354,617 births were registered in Canada, the largest annual number since 1996 (366,200).
- Births continued an upward trend that began in 2002. From 2005 to 2006, the annual birth increase is 3.6% , the highest growth since 1989.
- There was a noticeable increase in the total fertility rate, or the average number of children per woman, which jumped from 1.54 in 2005 to 1.59 in 2006.
- The recent increase in births could be explained partly by the fact that many women from the echo generation had entered their childbearing years and their fertility rates edged up.

## Women postponing childbearing

- The average age of women giving birth rose steadily in the past 20 years, from 27.0 years in 1986 to 29.3 years in 2006.
- The period between 1986 and 2006 saw a decline in the fertility rate of Canadian women in their twenties, while that of women in their thirties increased steadily.
- In 2006, for the first time, the fertility rate of Canadian women aged 30 to 34 surpassed that of women aged 25 to 29. This rate has been higher than that of women aged 20 to 24 since 1989.

## Births are up in almost every part of Canada

- Between 2005 and 2006, the number of births rose in all provinces and territories except Nova Scotia and the Northwest Territories.
- Quebec and Alberta were the largest contributors accounting for 70% of the total increase of births.

## Stillbirths and stillbirth rate trends

- The number of stillbirths (or fetal deaths) in Canada was 2,272 in 2006, an increase of 2.9% from 2005.
- The stillbirth rate remained stable at 6.4 per 1,000 total births (live births and stillbirths) between 2005 and 2006.

## Stillbirth rates vary by geography

- Four provinces (Quebec, Prince Edward Island, New Brunswick, Saskatchewan) and the Yukon Territory registered stillbirth rates below the national average (6.4 per 1,000 total births).

# Introduction

---

This product presents statistical tables showing the number of live births and fetal deaths (stillbirths) of at least 20 weeks' gestation; total and age-specific fertility rates and crude birth rates; live births by age of mother and live birth order; male and female birth weights; weeks of gestation at the time of birth; and multiple births. Numbers are shown for Canada, the ten provinces and the three territories.

## History note

Births - Shelf tables (84F0210X) data for 2000 and 2001 were released in the year 2003 in paper format. Since April 2004, this product is available on the Internet under the title "Births" (84F0210X).

The "Births, 2004" publication had two volumes. Volume 1 reported on live births and Volume 2 reported on fetal deaths (stillbirths).

## CANSIM data

Free access to the 2000 to 2006 data is provided through a special CANSIM interface. The CANSIM tables can be linked directly from three different locations in the HTML product:

### Tables section:

- Related CANSIM tables
- Individual tables, in the Source

### Related products section:

- Selected CANSIM tables from Statistics Canada



# Analysis

---

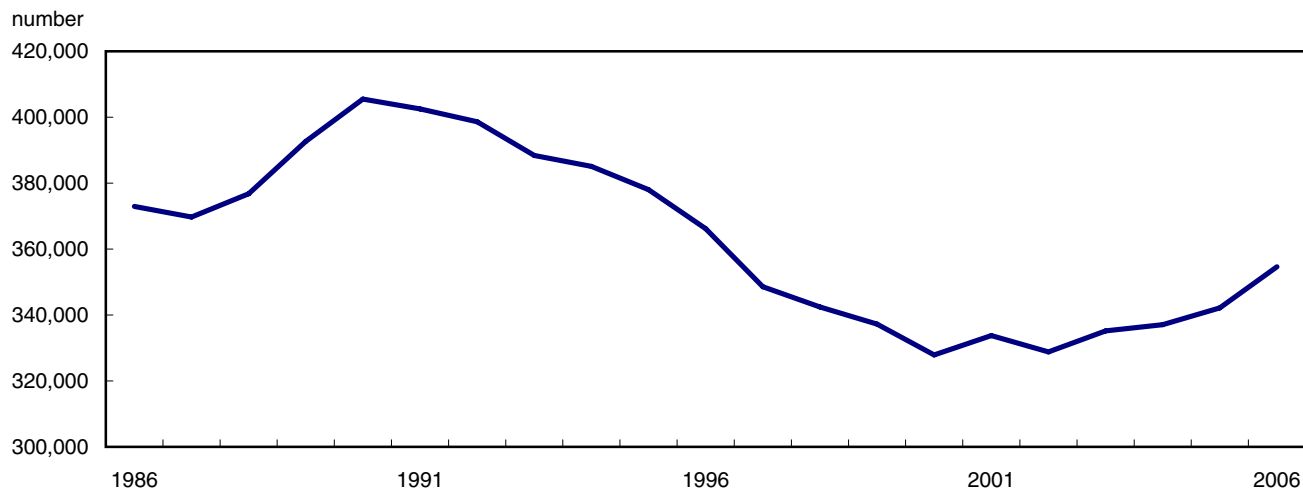
## A. Number of births

In 2006, 354,617 babies were born in Canada, the largest number of births since 1996 (366,200) and the highest annual increase (3.6%) since 1989 (4.2%).

### A.1. Trends in births

Over the past 20 years, Canada has seen both upward and downward trends in the number of births (Chart 1). After peaking in 1990, the number of births fell steadily throughout the 1990s. In 2000, almost 328,000 births were registered, the lowest number since the end of World War II. In general, with the exception of 2002, there has been a recovery with an upward trend in the number of births since 2001.

**Chart 1**  
**Births, Canada, 1986 to 2006**



### A.2. Geographic differences

Between 2005 and 2006, the number of births rose in all provinces and territories except Nova Scotia and the Northwest Territories (Table 1). The largest differences from the national average occurred in the Yukon Territory (13.8%), Alberta (7.4%), Quebec (7.3%), Nunavut (6.9%) and Prince Edward Island (5.4%). However, Quebec and Alberta were the largest contributors accounting for 70% of the total increase.

**Text table 1**  
**Births, Canada, provinces and territories, 2005 and 2006**

Place of residence of mother	2005	2006	Change	
			number	percent
<b>Canada</b>	<b>342,176</b>	<b>354,617</b>	<b>12,441</b>	<b>3.6</b>
Newfoundland and Labrador	4,501	4,542	41	0.9
Prince Edward Island	1,340	1,413	73	5.4
Nova Scotia	8,557	8,485	-72	-0.8
New Brunswick	6,892	7,030	138	2.0
Quebec	76,346	81,937	5,591	7.3
Ontario	133,760	135,595	1,835	1.4
Manitoba	14,145	14,565	420	3.0
Saskatchewan	11,967	12,288	321	2.7
Alberta	42,110	45,229	3,119	7.4
British Columbia	40,827	41,729	902	2.2
Yukon Territory	320	364	44	13.8
Northwest Territories	712	687	-25	-3.5
Nunavut	699	747	48	6.9

## B. Fertility

The total fertility rate (TFR) estimates the average number of children a woman can be expected to have in her lifetime, based on the age-specific fertility rates of a given year. This is a cross-sectional measure that is not affected by variations in the size of the population or the age structure, thereby facilitating year-to-year comparisons.

### B.1. General trends in fertility

The TFR in 2006 was 1.59 children per woman in Canada, up from the previous year (1.54) (Chart 2). This is the highest TFR recorded since 1996 (1.62) but is still well below the replacement level (2.1). This level represents the fertility rate that must be maintained to replace the population in the absence of migration. The last year that the total fertility rate exceeded the replacement level of generations was 1971.<sup>1</sup>

In 2006, Nunavut, where the population is the youngest in Canada, had the highest fertility rate in the country, with a TFR of 2.84 children per woman, ensuring the generational replacement level. In contrast, Newfoundland and Labrador, which is among the oldest population in Canada, had the lowest TFR with 1.38 children per woman.

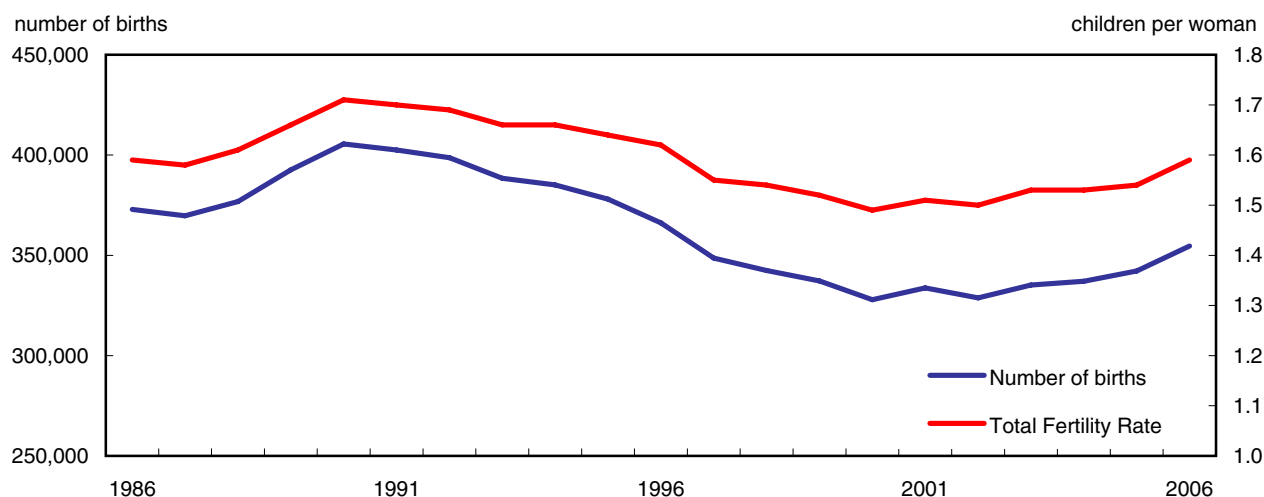
Other provinces with a TFR lower than the national average were Nova Scotia (1.40), British Columbia (1.41), New Brunswick (1.46), and Ontario (1.52). Saskatchewan was the province with the highest fertility, with 1.92 children per woman.

Closely paralleling the trend in births, the TFR fell throughout the 1990s and then began climbing in 2001. The drop in the TFR (and consequently, in the number of births) in 2000, and the quick recovery in 2001, may have been related to a desire to have a baby in the first year of the new millennium, given the increase in the number of marriages in 2000.<sup>2</sup>

Between 2005 and 2006, the TFR rose in all provinces and territories except the Northwest Territories.

1. Statistics Canada. 2008. *Report on the Demographic Situation in Canada, 2005 and 2006*, Catalogue 91-209-X.  
 2. The Daily – January 17, 2007, Marriages, 2003.

**Chart 2**  
Births and total fertility rates, Canada, 1986 to 2006

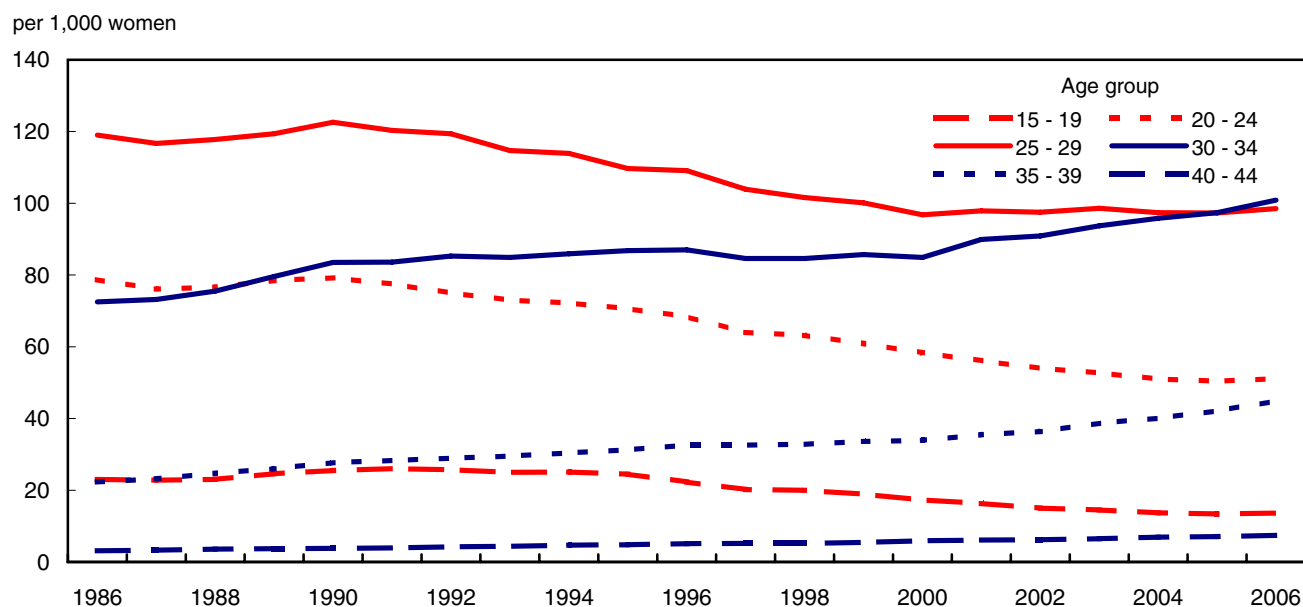


### B.2. Age of mother and age-specific fertility rate

The average age of women giving birth rose steadily in the past 20 years, from 27.0 years in 1986 to 29.3 years in 2006.

From 2005 to 2006, all age-specific fertility rates increased, except in the 45 to 49 age group. Changes in fertility rates by province and territory differ from region to region. However, fertility rates for women in their thirties rose in all provinces between 2005 and 2006.

**Chart 3**  
Age-specific fertility rates, Canada 1986 to 2006



Over the past 20 years, there have been significant changes in the age-specific fertility rates in Canada (Chart 3). The trend among women to delay having children is evident when analysing fertility rates by age.<sup>3</sup> The fertility rate of women aged 30 to 34 surpassed that of women aged 20 to 24 in 1989 and then that of women aged 25 to 29 in 2006. An examination of fertility rates by geography for 2006 reveals that the fertility rate of women aged 30 to 34 surpassed that of women aged 25 to 29 only in Ontario, British Columbia, the Yukon Territory and Nova Scotia. In all other provinces and territories, and even if there was an increase in the fertility rate of women in their 30s, the age group with the highest fertility rate remained women aged 25 to 29.

The period between 1986 and 2006 saw a decline in the fertility rate of Canadian women in their twenties, while that of women in their thirties increased steadily. The gap continues to narrow between the fertility rates of women aged 20 to 24 and that of women aged 35 to 39.

### B.3. Analyzing 2006 fertility rate

Two factors could account for the increases in the number of births in recent years: an increase in the number of women of reproductive age and/or a rise in fertility rates.

By applying age-specific fertility rates (ASFR) for 2005 to the female population in 2006 (Table 2), it is possible to estimate how much of the increase in births in 2006 can be attributed to changes in the size of the population compared to changes in fertility rates.

**Text table 2**  
**Expected number of births in 2006 by age group, Canada**

Age Group	2005 ASFR <sup>1</sup>	2006 female population	Expected <sup>2</sup> births	2006 ASFR <sup>1</sup>	Difference <sup>3</sup>
15 to 19	13.4	1,058,976	14,190	13.7	0.3
20 to 24	50.4	1,104,984	55,721	51.1	0.7
25 to 29	97.3	1,106,368	107,613	98.5	1.2
30 to 34	97.4	1,103,287	107,497	100.9	3.5
35 to 39	42.1	1,171,444	49,306	44.9	2.8
40 to 44	7.1	1,344,766	9,575	7.4	0.3
45 to 59	0.3	1,339,495	426	0.3	0.0
Total			344,328		

1. Births per 1,000 women.

2. Expected births for 2006, obtained by applying 2005 age-specific fertility rates to the 2006 female population.

3. Difference between 2005 and 2006 age-specific fertility rates.

If there had been no change in age-specific fertility rates between 2005 and 2006, the number of births in 2006 would have been 344,328 (Table 2), or 2,152 births more than in 2005. However, the total increase between 2005 and 2006 was much higher, at 12,441 births. The additional 10,289 births can, therefore, be attributed to changes in fertility.

## C. Echoes of the baby boom

The period between the end of World War II and the mid-1960s witnessed a dramatic increase in the fertility rates of women of childbearing age, the result of which was the baby boom.

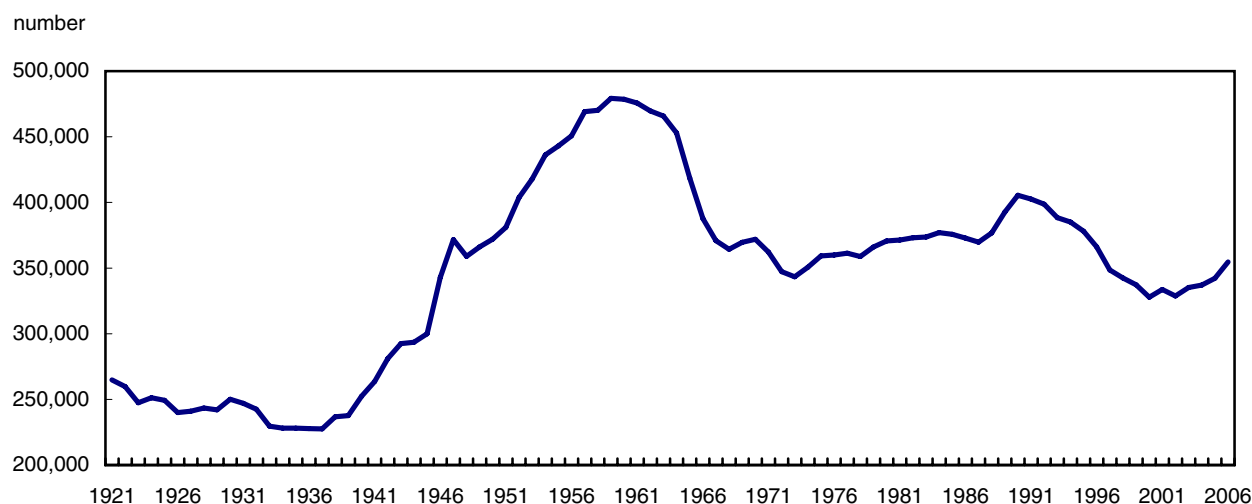
### C.1. Historical trends

In 1947, the TFR was 3.6 children per woman, the highest rate since 1921.<sup>4</sup> In that same year, the number of births totalled 372,600, and the crude birth rate was 28.9 per 1,000 population (Chart 4).

3. Statistics Canada. 2008. *Report on the Demographic Situation in Canada, 2005 and 2006*, Catalogue 91-209-X.

4. Selected Birth and Fertility Statistics, Canada, 1921-1990, Catalogue 82-553 Occasional.

**Chart 4**  
**Births, Canada, 1921 to 2006**



At the height of the baby boom in 1959, annual births exceeded 479,000, the highest number recorded since comparable Canada-wide vital statistics were first compiled in 1921.

The annual number of births remained high for a few more years, and then dropped sharply starting in 1964. This period of relatively low births, known as the baby bust, lasted for approximately ten years until the mid-1970s.

## C.2. Echo

The first baby boom “echo” was expected in the mid-1970s, approximately 25 years after the beginning of the baby boom. But while there was a sizeable increase in the number of births in 1974 and 1975, gains in the following years were relatively modest. Only in the late 1980s (1988 to 1990) was there a substantial rise in the number of births (Chart 4).

Between 1988 and 1995, Canada experienced a clear baby boom echo as the baby boomers had a large number of births, peaking at 405,486 in 1990. Thereafter, annual births dropped, falling to 327,882 in 2000, which was less than the lowest number in the baby bust period.

Over the past six years, Canada has seen an upward trend in the number of births, with the mean age of mothers at 29.3 years. The recent increase in births could be explained partly by the fact that currently, many women from the echo generation have entered their childbearing years and their fertility rates have edged up.

## C.3. Comparison with other low-birth-rate countries

Low birth rate is a phenomenon that Canada shares with many countries. The rising number of births in Canada parallels trends in several other low-birth-rate countries, which have also experienced an upturn in fertility in recent years (Table 3).

From 2004 to 2006, the Czech Republic, Greece, Sweden, France and Norway have all registered a more significant jump in the total fertility rate than Canada.

**Text table 3**  
**Total fertility rates, selected countries, 2004 to 2006**

Country	2004	2005	2006
Czech Republic	1.23	1.28	1.33
Spain	1.33	1.35	1.38
Greece	1.30	1.33	1.39
<b>Canada</b>	<b>1.53</b>	<b>1.54</b>	<b>1.59</b>
Australia	1.77	1.81	1.81
Denmark	1.78	1.80	1.83
United Kingdom	1.78	1.80	1.84
Sweden	1.76	1.77	1.85
Norway	1.83	1.84	1.90
France	1.92	1.94	2.00

Source(s): National Statistics Offices and Eurostat.

### D. Change in stillbirths

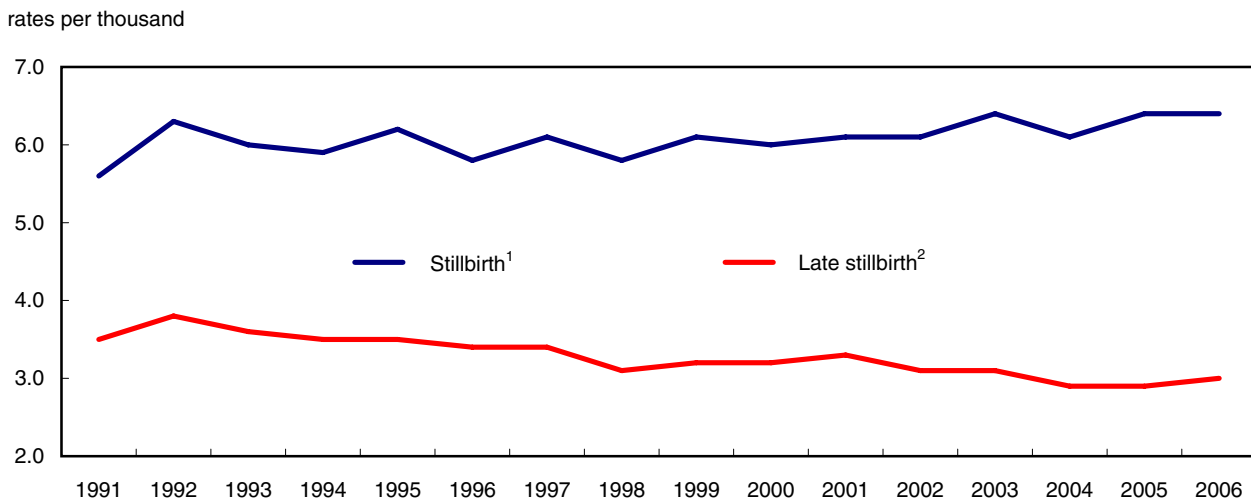
The number of stillbirths (or fetal deaths) in Canada was 2,272 in 2006, an increase of 63 stillbirths (2.9%) from 2005.

The stillbirth rate remained stable at 6.4 per 1,000 total births (live births and stillbirths) between 2005 and 2006.

#### D.1. Trends in stillbirth rates

Since 1991, stillbirth rates have fluctuated around 6.0 per 1,000 total births (Chart 5). The lowest rate was 5.6 in 1991 and the highest was 6.4 in 2003, 2005 and 2006. However, the late stillbirth rate (fetal deaths at 28 or more weeks of gestation) peaked at 3.8 per 1,000 in 1992, and has since decreased to 3.0 in 2006.

**Chart 5**  
**Stillbirth<sup>1</sup> and late stillbirth<sup>2</sup> rates, Canada, 1991 to 2006**



<sup>1</sup>(Number of stillbirths\*1,000) / (Live births+ total stillbirths).

<sup>2</sup>(Number of late stillbirths\*1,000) / (Live births+late stillbirths).

## D.2. Stillbirth rates, by geography

Stillbirth rates varied considerably across Canada in 2006, from 4.0 per 1,000 total births in Quebec to 12.9 per 1,000 in the Northwest Territories (Table 4). Four provinces and one territory registered stillbirth rates below the national average: Quebec, Prince Edward Island, New Brunswick, Saskatchewan and the Yukon Territory. In all the other provinces and territories, stillbirth rates were above the national average.

### Text table 4

#### Stillbirths and stillbirth rates, Canada, provinces and territories, 2006

Place of residence of mother	Stillbirths (fetal deaths)	
	number	rate <sup>1</sup>
Quebec	329	4.0
Prince Edward Island	6	4.2
New Brunswick	34	4.8
Yukon Territory	2	5.5
Saskatchewan	77	6.2
<b>Canada</b>	<b>2,272</b>	<b>6.4</b>
Alberta	302	6.6
Ontario	950	7.0
Newfoundland and Labrador	32	7.0
Manitoba	112	7.6
British Columbia	334	7.9
Nova Scotia	76	8.9
Nunavut	9	11.9
Northwest Territories	9	12.9

1. (Number of stillbirths \*1000) / (Live births + stillbirths)

## Related products

---

### Selected publications from Statistics Canada

---

82-221-X	Health indicators
82-223-X	Induced abortion statistics
82-224-X	Pregnancy outcomes

---

### Selected CANSIM tables from Statistics Canada

---

102-4501	Live births, by place of residence of mother and place of occurrence, Canada, provinces, territories and outside Canada
102-4502	Live births, by month, Canada, provinces and territories
102-4503	Live births, by age of mother, Canada, provinces and territories
102-4504	Live births, mean age of mother, Canada, provinces and territories
102-4505	Live births, crude birth rate, age-specific and total fertility rates, Canada, provinces and territories
102-4506	Live births, by marital status of mother, Canada, provinces and territories
102-4507	Live births, by age and marital status of mother, Canada
102-4508	Live births, by age and parity of mother, Canada
102-4509	Live births, by birth weight and sex, Canada, provinces and territories
102-4510	Live births, mean and median birth weight, by sex, Canada, provinces and territories
102-4511	Live births, birth weight indicators, by characteristics of the mother and child, Canada
102-4512	Live births, by weeks of gestation and sex, Canada, provinces and territories
102-4513	Live births, weeks of gestation indicators, by characteristics of the mother and child, Canada
102-4514	Fetal deaths (20 weeks or more of gestation) and late fetal deaths (28 weeks or more of gestation), Canada, provinces and territories



102-4515	Live births and fetal deaths (stillbirths), by type (single or multiple), Canada, provinces and territories
102-4516	Live births and fetal deaths (stillbirths), by place of birth (hospital and non-hospital), Canada, provinces and territories

---

### **Selected surveys from Statistics Canada**

---

3231	Vital Statistics - Birth Database ( <a href="http://www.statcan.ca/english/sdds/3231.htm">www.statcan.ca/english/sdds/3231.htm</a> )
3234	Vital Statistics - Stillbirth Database ( <a href="http://www.statcan.ca/english/sdds/3234.htm">www.statcan.ca/english/sdds/3234.htm</a> )
3604	Estimates of Population by Age and Sex for Canada, Provinces and Territories ( <a href="http://www.statcan.ca/english/sdds/3604.htm">www.statcan.ca/english/sdds/3604.htm</a> )

---

### **Selected tables of Canadian statistics from Statistics Canada**

---

- *Births and birth rate, by provinces and territories*
- *Deaths and death rate, by provinces and territories*
- *Components of population growth, by province and territory*
- *Infant mortality rates, by province and territory*
- *Disability-free life expectancy, by province and territory*
- *Induced abortions by age group*
- *Pregnancy outcomes by province or territory of residence*
- *Pregnancy outcomes by age group*

# Statistical tables

---

---

**Table 1**  
**Live births, by sex and geography**

Place of residence of mother	Both sexes	Males	Females	Both sexes	Males	Females
	number			percent		
<b>Canada</b>	<b>354,617</b>	<b>182,240</b>	<b>172,377</b>	<b>100.0</b>	<b>100.0</b>	<b>100.0</b>
Newfoundland and Labrador	4,542	2,387	2,155	1.3	1.3	1.3
Prince Edward Island	1,413	735	678	0.4	0.4	0.4
Nova Scotia	8,485	4,375	4,110	2.4	2.4	2.4
New Brunswick	7,030	3,602	3,428	2.0	2.0	2.0
Quebec	81,937	42,110	39,827	23.1	23.1	23.1
Ontario	135,595	69,677	65,918	38.2	38.2	38.2
Manitoba	14,565	7,424	7,141	4.1	4.1	4.1
Saskatchewan	12,288	6,365	5,923	3.5	3.5	3.4
Alberta	45,229	23,158	22,071	12.8	12.7	12.8
British Columbia	41,729	21,436	20,293	11.8	11.8	11.8
Yukon Territory	364	196	168	0.1	0.1	0.1
Northwest Territories	687	357	330	0.2	0.2	0.2
Nunavut	747	416	331	0.2	0.2	0.2
Unknown	6	2	4	0.0	0.0	0.0

**Note(s):** See "Data quality, concepts and methodology — Explanatory notes for the tables".

**Source(s):** Statistics Canada, Canadian Vital Statistics, Birth Database (CANSIM table 102-4512).

**Table 2-1**  
**Live births, by geography — Month**

Place of residence of mother	Total	January	February	March	April	May	June	July	August	September	October	November	December
	number												
<b>Canada</b>	<b>354,617</b>	<b>28,028</b>	<b>26,026</b>	<b>29,540</b>	<b>28,695</b>	<b>31,010</b>	<b>30,150</b>	<b>30,854</b>	<b>31,807</b>	<b>31,587</b>	<b>30,385</b>	<b>28,461</b>	<b>28,074</b>
Newfoundland and Labrador	4,542	370	325	375	414	395	388	389	390	404	367	362	363
Prince Edward Island	1,413	91	98	111	111	126	129	135	130	135	126	105	116
Nova Scotia	8,485	691	622	717	646	754	671	723	787	757	751	699	667
New Brunswick	7,030	545	544	578	573	604	537	652	679	669	588	528	533
Quebec	81,937	6,465	6,182	6,838	6,665	6,991	6,917	7,084	7,264	7,364	7,095	6,650	6,422
Ontario	135,595	10,685	9,994	11,310	10,777	11,886	11,473	11,809	12,344	12,035	11,695	10,820	10,767
Manitoba	14,565	1,157	1,081	1,228	1,159	1,261	1,278	1,300	1,321	1,246	1,190	1,180	1,164
Saskatchewan	12,288	1,056	943	1,042	1,038	1,106	1,054	1,069	1,043	1,093	979	921	944
Alberta	45,229	3,443	3,142	3,661	3,793	4,040	3,848	3,872	4,108	4,022	3,938	3,719	3,643
British Columbia	41,729	3,368	2,967	3,523	3,379	3,668	3,676	3,661	3,576	3,714	3,519	3,354	3,324
Yukon Territory	364	33	25	36	25	28	42	26	28	27	29	41	24
Northwest Territories	687	59	49	56	59	73	67	66	67	52	52	40	47
Nunavut	747	65	54	65	56	74	69	68	70	69	55	42	60
Unknown	6	0	0	0	0	4	1	0	0	0	1	0	0
	percent												
<b>Canada</b>	<b>100.0</b>	<b>7.9</b>	<b>7.3</b>	<b>8.3</b>	<b>8.1</b>	<b>8.7</b>	<b>8.5</b>	<b>8.7</b>	<b>9.0</b>	<b>8.9</b>	<b>8.6</b>	<b>8.0</b>	<b>7.9</b>
Newfoundland and Labrador	100.0	8.1	7.2	8.3	9.1	8.7	8.5	8.6	8.6	8.9	8.1	8.0	8.0
Prince Edward Island	100.0	6.4	6.9	7.9	7.9	8.9	9.1	9.6	9.2	9.6	8.9	7.4	8.2
Nova Scotia	100.0	8.1	7.3	8.5	7.6	8.9	7.9	8.5	9.3	8.9	8.9	8.2	7.9
New Brunswick	100.0	7.8	7.7	8.2	8.2	8.6	7.6	9.3	9.7	9.5	8.4	7.5	7.6
Quebec	100.0	7.9	7.5	8.3	8.1	8.5	8.4	8.6	8.9	9.0	8.7	8.1	7.8
Ontario	100.0	7.9	7.4	8.3	7.9	8.8	8.5	8.7	9.1	8.9	8.6	8.0	7.9
Manitoba	100.0	7.9	7.4	8.4	8.0	8.7	8.8	8.9	9.1	8.6	8.2	8.1	8.0
Saskatchewan	100.0	8.6	7.7	8.5	8.4	9.0	8.6	8.7	8.5	8.9	8.0	7.5	7.7
Alberta	100.0	7.6	6.9	8.1	8.4	8.9	8.5	8.6	9.1	8.9	8.7	8.2	8.1
British Columbia	100.0	8.1	7.1	8.4	8.1	8.8	8.8	8.8	8.6	8.9	8.4	8.0	8.0
Yukon Territory	100.0	9.1	6.9	9.9	6.9	7.7	11.5	7.1	7.7	7.4	8.0	11.3	6.6
Northwest Territories	100.0	8.6	7.1	8.2	8.6	10.6	9.8	9.6	9.8	7.6	7.6	5.8	6.8
Nunavut	100.0	8.7	7.2	8.7	7.5	9.9	9.2	9.1	9.4	9.2	7.4	5.6	8.0
Unknown	100.0	0.0	0.0	0.0	0.0	66.7	16.7	0.0	0.0	0.0	16.7	0.0	0.0

**Note(s):** See "Data quality, concepts and methodology — Explanatory notes for the tables".

**Source(s):** Statistics Canada, Canadian Vital Statistics, Birth Database (CANSIM table 102-4502).

**Table 2-2**  
**Live births, by geography — Age of mother**

Place of residence of mother	Age of mother 1									Not stated 2
	All ages	Under 15 years	15 to 19 years	20 to 24 years	25 to 29 years	30 to 34 years	35 to 39 years	40 to 44 years	45 to 49 years	
	number									
<b>Canada</b>	<b>354,617</b>	<b>116</b>	<b>14,432</b>	<b>56,441</b>	<b>108,948</b>	<b>111,321</b>	<b>52,593</b>	<b>9,939</b>	<b>424</b>	<b>403</b>
Newfoundland and Labrador	4,542	1	275	919	1,364	1,331	583	65	4	0
Prince Edward Island	1,413	0	61	282	423	416	199	31	1	0
Nova Scotia	8,485	1	464	1,615	2,511	2,574	1,110	201	6	3
New Brunswick	7,030	3	432	1,515	2,304	1,960	713	94	5	4
Quebec	81,937	11	2,178	12,624	29,387	25,433	10,354	1,877	64	9
Ontario	135,595	17	4,458	17,871	38,429	46,325	23,369	4,570	176	380
Manitoba	14,565	19	1,271	3,207	4,347	3,765	1,640	300	16	0
Saskatchewan	12,288	16	1,245	3,052	3,954	2,781	1,047	187	5	1
Alberta	45,229	22	2,321	8,755	14,221	13,081	5,749	1,029	51	0
British Columbia	41,729	19	1,455	6,145	11,536	13,293	7,642	1,542	92	5
Yukon Territory	364	2	19	76	91	107	57	11	1	0
Northwest Territories	687	0	73	147	201	162	83	19	1	1
Nunavut	747	5	179	231	178	92	47	13	2	0
Unknown	6	0	1	2	2	1	0	0	0	0
	percent									
<b>Canada</b>	<b>100.0</b>	<b>0.0</b>	<b>4.1</b>	<b>15.9</b>	<b>30.7</b>	<b>31.4</b>	<b>14.8</b>	<b>2.8</b>	<b>0.1</b>	<b>0.1</b>
Newfoundland and Labrador	100.0	0.0	6.1	20.2	30.0	29.3	12.8	1.4	0.1	0.0
Prince Edward Island	100.0	0.0	4.3	20.0	29.9	29.4	14.1	2.2	0.1	0.0
Nova Scotia	100.0	0.0	5.5	19.0	29.6	30.3	13.1	2.4	0.1	0.0
New Brunswick	100.0	0.0	6.1	21.6	32.8	27.9	10.1	1.3	0.1	0.1
Quebec	100.0	0.0	2.7	15.4	35.9	31.0	12.6	2.3	0.1	0.0
Ontario	100.0	0.0	3.3	13.2	28.3	34.2	17.2	3.4	0.1	0.3
Manitoba	100.0	0.1	8.7	22.0	29.8	25.8	11.3	2.1	0.1	0.0
Saskatchewan	100.0	0.1	10.1	24.8	32.2	22.6	8.5	1.5	0.0	0.0
Alberta	100.0	0.0	5.1	19.4	31.4	28.9	12.7	2.3	0.1	0.0
British Columbia	100.0	0.0	3.5	14.7	27.6	31.9	18.3	3.7	0.2	0.0
Yukon Territory	100.0	0.5	5.2	20.9	25.0	29.4	15.7	3.0	0.3	0.0
Northwest Territories	100.0	0.0	10.6	21.4	29.3	23.6	12.1	2.8	0.1	0.1
Nunavut	100.0	0.7	24.0	30.9	23.8	12.3	6.3	1.7	0.3	0.0
Unknown	100.0	0.0	16.7	33.3	33.3	16.7	0.0	0.0	0.0	0.0

1. Age attained at the last birthday preceding delivery.

2. For confidentiality reasons, live births to mothers aged 50 and over are included in the category "Age of mother, not stated." Where information is unavailable on the birth mother of children who are adopted, these records are included in the category "Age of mother, not stated."

**Note(s):** See "Data quality, concepts and methodology — Explanatory notes for the tables".

**Source(s):** Statistics Canada, Canadian Vital Statistics, Birth Database (CANSIM table 102-4503).

**Table 2-3**  
**Live births, by geography — Mean age of mother <sup>1</sup>**

Place of residence of mother	Mean age of mother
	years
<b>Canada</b>	<b>29.3</b>
Newfoundland and Labrador	28.4
Prince Edward Island	28.8
Nova Scotia	28.6
New Brunswick	27.9
Quebec	29.1
Ontario	30.0
Manitoba	27.8
Saskatchewan	27.0
Alberta	28.6
British Columbia	29.9
Yukon Territory	28.9
Northwest Territories	27.7
Nunavut	24.6
Unknown	25.3

1. Mean age of mother for Canada, a province or a territory is calculated by summing the mothers' ages at their last birthday preceding delivery and then dividing the sum by the total number of live births in that jurisdiction. To estimate mid-year mean age, a statistic often used in analyses, add 0.5 to the mean age in this table.

**Note(s):** See "Data quality, concepts and methodology — Explanatory notes for the tables".

**Source(s):** Statistics Canada, Canadian Vital Statistics, Birth Database (CANSIM table 102-4504).

**Table 2-4**  
**Live births, by geography — Crude birth rate, age-specific and total fertility rates**

Place of residence of mother	Age specific fertility rate <sup>1,2</sup>							Crude <sup>4</sup> birth rate, live births	Total <sup>5</sup> fertility rate
	15 to <sup>3</sup> 19 years	20 to 24 years	25 to 29 years	30 to 34 years	35 to 39 years	40 to 44 years	45 to 49 years		
	rate per 1,000 females							rate per 1,000 population	rate per 1,000 females
<b>Canada</b>	<b>13.7</b>	<b>51.1</b>	<b>98.5</b>	<b>100.9</b>	<b>44.9</b>	<b>7.4</b>	<b>0.3</b>	<b>10.9</b>	<b>1,586.2</b>
Newfoundland and Labrador	16.7	54.3	87.9	82.3	30.6	3.0	0.2	8.9	1,384.2
Prince Edward Island	11.9	58.1	96.0	94.1	45.5	5.8	0.2	10.2	1,563.7
Nova Scotia	15.2	52.3	85.3	86.2	34.5	5.1	0.2	9.1	1,400.2
New Brunswick	18.5	62.5	98.5	80.0	27.7	3.0	0.2	9.4	1,457.5
Quebec	9.4	52.6	111.2	103.1	40.5	6.1	0.2	10.7	1,616.5
Ontario	10.8	41.6	90.5	104.0	48.4	8.4	0.3	10.7	1,521.8
Manitoba	30.8	78.4	113.0	100.5	43.6	6.7	0.4	12.4	1,870.4
Saskatchewan	34.1	86.1	126.5	95.4	35.8	5.2	0.1	12.4	1,921.9
Alberta	20.2	68.6	110.5	108.1	48.0	7.6	0.4	13.4	1,815.0
British Columbia	10.7	40.9	81.1	92.0	47.6	8.7	0.5	9.7	1,408.0
Yukon Territory	19.1	66.0	98.9	100.0	45.5	7.3	0.6	11.7	1,686.1
Northwest Territories	42.3	88.5	126.3	99.3	45.9	10.3	0.6	16.2	2,068.6
Nunavut	118.3	173.0	142.2	68.6	46.2	16.0	3.0	24.6	2,842.9

1. Age attained at the last birthday preceding delivery.

2. Age-specific fertility rate (ASFR) is the number of live births per 1,000 females in a specific age group. Five-year age groups were used in these tabulations (ranging from 15 to 19 years to 45 to 49 years).

3. Live births to females under 20 years of age per 1,000 females aged 15 to 19.

4. The population estimates used for the 2006 birth and fertility rate calculations are July 1, 2006 updated postcensal estimates, adjusted for net census under-coverage and include non-permanent residents. These population estimates appear in the Appendix 1 of "Births 2006" (catalogue number 84F0210XWE).

5. Total fertility rate is an estimate of the average number of live births a female can be expected to have in her lifetime, based on the age-specific fertility rates (ASFR) of a given year. The total fertility rate (TFR) = SUM of single year of age-specific fertility rates.

**Note(s):** See "Data quality, concepts and methodology — Explanatory notes for the tables".

**Source(s):** Statistics Canada, Canadian Vital Statistics, Birth Database (CANSIM table 102-4505) and Appendix I.

**Table 2-5**  
**Live births, by geography — Marital status of mother**

Place of residence of mother	Marital status of mother						
	Total	Single (never married)	Married	Widowed	Divorced	Separated	Not stated
	number						
<b>Canada</b>	<b>354,617</b>	<b>92,121</b>	<b>220,937</b>	<b>328</b>	<b>3,669</b>	<b>1,344</b>	<b>36,218</b>
Newfoundland and Labrador	4,542	1,936	2,513	3	38	43	9
Prince Edward Island	1,413	491	906	1	9	1	5
Nova Scotia	8,485	3,407	4,919	5	114	1	39
New Brunswick	7,030	2,973	3,737	8	127	158	27
Quebec	81,937	48,049	31,579	191	1,402	302	414
Ontario	135,595	15,922	100,455	64	831	3	18,320
Manitoba	14,565	5,477	8,596	18	235	205	34
Saskatchewan	12,288	5,077	6,524	8	222	0	457
Alberta <sup>1</sup>	45,229	239	31,832	0	12	4	13,142
British Columbia	41,729	7,449	29,264	28	677	618	3,693
Yukon Territory	364	179	184	0	1	0	0
Northwest Territories	687	353	278	0	1	5	50
Nunavut	747	566	148	2	0	4	27
Unknown	6	3	2	0	0	0	1
	percent						
<b>Canada</b>	<b>100.0</b>	<b>26.0</b>	<b>62.3</b>	<b>0.1</b>	<b>1.0</b>	<b>0.4</b>	<b>10.2</b>
Newfoundland and Labrador	100.0	42.6	55.3	0.1	0.8	0.9	0.2
Prince Edward Island	100.0	34.7	64.1	0.1	0.6	0.1	0.4
Nova Scotia	100.0	40.2	58.0	0.1	1.3	0.0	0.5
New Brunswick	100.0	42.3	53.2	0.1	1.8	2.2	0.4
Quebec	100.0	58.6	38.5	0.2	1.7	0.4	0.5
Ontario	100.0	11.7	74.1	0.0	0.6	0.0	13.5
Manitoba	100.0	37.6	59.0	0.1	1.6	1.4	0.2
Saskatchewan	100.0	41.3	53.1	0.1	1.8	0.0	3.7
Alberta <sup>1</sup>	100.0	0.5	70.4	0.0	0.0	0.0	29.1
British Columbia	100.0	17.9	70.1	0.1	1.6	1.5	8.8
Yukon Territory	100.0	49.2	50.5	0.0	0.3	0.0	0.0
Northwest Territories	100.0	51.4	40.5	0.0	0.1	0.7	7.3
Nunavut	100.0	75.8	19.8	0.3	0.0	0.5	3.6
Unknown	100.0	50.0	33.3	0.0	0.0	0.0	16.7

1. Partway through 2003, Alberta Registries amended their Registration of Birth form in such a way that Statistics Canada can no longer determine the legal marital status of those persons in common-law marriages.

**Note(s):** See "Data quality, concepts and methodology — Explanatory notes for the tables".

**Source(s):** Statistics Canada, Canadian Vital Statistics, Birth Database (CANSIM table 102-4506).

**Table 2-6**  
**Live births, by geography — Mean and median birth weight**

Place of residence of mother	Birth weight					
	Both sexes		Males		Females	
	Mean <sup>1</sup>	Median <sup>2</sup>	Mean <sup>1</sup>	Median <sup>2</sup>	Mean <sup>1</sup>	Median <sup>2</sup>
grams						
<b>Canada</b>	<b>3,370</b>	<b>3,400</b>	<b>3,426</b>	<b>3,458</b>	<b>3,311</b>	<b>3,340</b>
Newfoundland and Labrador	3,466	3,505	3,532	3,568	3,393	3,420
Prince Edward Island	3,455	3,490	3,517	3,570	3,389	3,406
Nova Scotia	3,415	3,458	3,484	3,515	3,343	3,400
New Brunswick	3,413	3,450	3,467	3,510	3,357	3,385
Quebec	3,350	3,380	3,407	3,440	3,289	3,320
Ontario	3,361	3,385	3,416	3,450	3,303	3,323
Manitoba	3,437	3,465	3,481	3,517	3,390	3,424
Saskatchewan	3,441	3,470	3,492	3,535	3,386	3,403
Alberta	3,345	3,380	3,404	3,445	3,283	3,315
British Columbia	3,391	3,418	3,445	3,468	3,334	3,363
Yukon Territory	3,454	3,481	3,527	3,575	3,370	3,383
Northwest Territories	3,500	3,510	3,537	3,566	3,460	3,444
Nunavut	3,369	3,410	3,431	3,458	3,290	3,333
Unknown	3,283	3,271	3,832	3,832	3,008	3,136

1. Mean birth weight is calculated for Canada, a province or a territory by summing the first weight of each newborn (obtained immediately after birth) and then dividing the sum by the total number of live births in that jurisdiction.
2. Median birth weight refers to the middle value birth weight when newborns' birth weight is ranked from lightest to heaviest. In the case of an even number of observations, the median is the arithmetic average of the two middle values.

**Note(s):** See "Data quality, concepts and methodology — Explanatory notes for the tables".

**Source(s):** Statistics Canada, Canadian Vital Statistics, Birth Database (CANSIM table 102-4510).

**Table 3-1**  
**Live births, Canada — Age and marital status of mother**

Marital status of mother	Age of mother <sup>1</sup>									
	All ages	Under 15 years	15 to 19 years	20 to 24 years	25 to 29 years	30 to 34 years	35 to 39 years	40 to 44 years	45 to 49 years	Not stated <sup>2</sup>
	number									
<b>Total <sup>3</sup></b>	<b>354,617</b>	<b>116</b>	<b>14,432</b>	<b>56,441</b>	<b>108,948</b>	<b>111,321</b>	<b>52,593</b>	<b>9,939</b>	<b>424</b>	<b>403</b>
Single (never married)	92,121	113	9,528	25,611	29,961	18,539	6,961	1,303	58	47
Married	220,937	0	1,073	19,343	68,125	84,199	40,490	7,310	296	101
Widowed	328	0	0	23	80	117	76	28	4	0
Divorced	3,669	0	5	123	715	1,321	1,130	349	21	5
Separated	1,344	0	18	192	395	401	273	60	5	0
Not stated	36,218	3	3,808	11,149	9,672	6,744	3,663	889	40	250
	percent									
<b>Total <sup>3</sup></b>	<b>100.0</b>	<b>100.0</b>	<b>100.0</b>	<b>100.0</b>	<b>100.0</b>	<b>100.0</b>	<b>100.0</b>	<b>100.0</b>	<b>100.0</b>	<b>100.0</b>
Single (never married)	26.0	97.4	66.0	45.4	27.5	16.7	13.2	13.1	13.7	11.7
Married	62.3	0.0	7.4	34.3	62.5	75.6	77.0	73.5	69.8	25.1
Widowed	0.1	0.0	0.0	0.0	0.1	0.1	0.1	0.3	0.9	0.0
Divorced	1.0	0.0	0.0	0.2	0.7	1.2	2.1	3.5	5.0	1.2
Separated	0.4	0.0	0.1	0.3	0.4	0.4	0.5	0.6	1.2	0.0
Not stated	10.2	2.6	26.4	19.8	8.9	6.1	7.0	8.9	9.4	62.0

1. Age attained at the last birthday preceding delivery.
2. For confidentiality reasons, live births to mothers aged 50 and over are included in the category "Age of mother, not stated." Where information is unavailable on the birth mother of children who are adopted, these records are included in the category "Age of mother, not stated."
3. Partway through 2003, Alberta Registries amended their Registration of Birth form in such a way that Statistics Canada can no longer determine the legal marital status of those persons in common-law marriages.

**Note(s):** See "Data quality, concepts and methodology — Explanatory notes for the tables".

**Source(s):** Statistics Canada, Canadian Vital Statistics, Birth Database (CANSIM table 102-4507).

**Table 3-2**  
**Live births, Canada — Age and parity of mother**

Parity of mother	Age of mother <sup>1</sup>										Not stated <sup>2</sup>
	All ages	Under 15 years	15 to 19 years	20 to 24 years	25 to 29 years	30 to 34 years	35 to 39 years	40 to 44 years	45 to 49 years	50 to 54 years	
	number										
<b>Total</b>	<b>354,617</b>	<b>116</b>	<b>14,432</b>	<b>56,441</b>	<b>108,948</b>	<b>111,321</b>	<b>52,593</b>	<b>9,939</b>	<b>424</b>	<b>403</b>	
First live birth	158,408	114	12,342	34,200	53,352	41,037	14,599	2,629	117	18	
Second live birth	125,736	2	1,866	16,228	37,003	45,394	21,635	3,466	122	20	
Third live birth	45,949	0	203	4,552	12,575	16,557	10,047	1,948	62	5	
Fourth live birth	14,975	0	15	1,167	4,032	5,161	3,680	868	49	3	
Fifth live birth	4,944	0	4	235	1,300	1,697	1,257	419	31	1	
Sixth live birth	2,180	0	0	47	463	814	623	217	16	0	
Seventh live birth	1,000	0	0	6	141	376	327	141	8	1	
Eighth live birth	491	0	0	1	50	162	192	82	3	1	
Ninth live birth	273	0	0	0	21	70	109	69	4	0	
Tenth live birth or more	296	0	0	0	9	49	124	100	12	2	
Not stated	365	0	2	5	2	4	0	0	0	352	
	percent										
<b>Total</b>	<b>100.0</b>	<b>100.0</b>	<b>100.0</b>	<b>100.0</b>	<b>100.0</b>	<b>100.0</b>	<b>100.0</b>	<b>100.0</b>	<b>100.0</b>	<b>100.0</b>	
First live birth	44.7	98.3	85.5	60.6	49.0	36.9	27.8	26.5	27.6	4.5	
Second live birth	35.5	1.7	12.9	28.8	34.0	40.8	41.1	34.9	28.8	5.0	
Third live birth	13.0	0.0	1.4	8.1	11.5	14.9	19.1	19.6	14.6	1.2	
Fourth live birth	4.2	0.0	0.1	2.1	3.7	4.6	7.0	8.7	11.6	0.7	
Fifth live birth	1.4	0.0	0.0	0.4	1.2	1.5	2.4	4.2	7.3	0.2	
Sixth live birth	0.6	0.0	0.0	0.1	0.4	0.7	1.2	2.2	3.8	0.0	
Seventh live birth	0.3	0.0	0.0	0.0	0.1	0.3	0.6	1.4	1.9	0.2	
Eighth live birth	0.1	0.0	0.0	0.0	0.0	0.1	0.4	0.8	0.7	0.2	
Ninth live birth	0.1	0.0	0.0	0.0	0.0	0.1	0.2	0.7	0.9	0.0	
Tenth live birth or more	0.1	0.0	0.0	0.0	0.0	0.0	0.2	1.0	2.8	0.5	
Not stated	0.1	0.0	0.0	0.0	0.0	0.0	0.0	0.0	0.0	87.3	

1. Age attained at the last birthday preceding delivery.

2. For confidentiality reasons, live births to mothers aged 50 and over are included in the category "Age of mother, not stated." Where information is unavailable on the birth mother of children who are adopted, these records are included in the category "Age of mother, not stated."

**Note(s):** See "Data quality, concepts and methodology — Explanatory notes for the tables".

**Source(s):** Statistics Canada, Canadian Vital Statistics, Birth Database (CANSIM table 102-4508).



**Table 4-1**  
**Live births, by birth weight and geography — Both sexes**

Birth weight	Place of residence of mother						
	Canada	Newfoundland and Labrador	Prince Edward Island	Nova Scotia	New Brunswick	Quebec	Ontario
	number						
<b>Total</b>	<b>354,617</b>	<b>4,542</b>	<b>1,413</b>	<b>8,485</b>	<b>7,030</b>	<b>81,937</b>	<b>135,595</b>
<b>Less than 500 grams</b>	<b>354</b>	<b>13</b>	<b>1</b>	<b>9</b>	<b>4</b>	<b>126</b>	<b>76</b>
<b>500 to 1,499 grams</b>	<b>3,168</b>	<b>36</b>	<b>15</b>	<b>73</b>	<b>64</b>	<b>686</b>	<b>1,238</b>
500 to 749 grams	544	1	1	15	12	119	200
750 to 999 grams	665	5	4	16	14	135	263
1,000 to 1,249 grams	854	12	5	25	17	208	333
1,250 to 1,499 grams	1,105	18	5	17	21	224	442
<b>1,500 to 2,499 grams</b>	<b>18,032</b>	<b>204</b>	<b>53</b>	<b>458</b>	<b>340</b>	<b>3,953</b>	<b>7,066</b>
1,500 to 1,749 grams	1,612	15	5	43	28	317	643
1,750 to 1,999 grams	2,550	34	10	63	51	539	998
2,000 to 2,249 grams	4,689	45	13	116	93	1,067	1,800
2,250 to 2,499 grams	9,181	110	25	236	168	2,030	3,625
<b>2,500 to 4,499 grams</b>	<b>326,088</b>	<b>4,150</b>	<b>1,310</b>	<b>7,701</b>	<b>6,449</b>	<b>75,980</b>	<b>124,444</b>
2,500 to 2,749 grams	18,991	189	51	449	350	4,418	7,555
2,750 to 2,999 grams	35,160	334	118	712	634	8,489	13,706
3,000 to 3,249 grams	58,542	626	206	1,249	1,041	14,140	22,834
3,250 to 3,499 grams	71,238	834	272	1,632	1,360	17,180	27,372
3,500 to 3,749 grams	63,510	838	272	1,576	1,344	14,805	23,813
3,750 to 3,999 grams	43,932	698	207	1,151	952	9,757	16,491
4,000 to 4,249 grams	23,625	424	127	582	542	5,025	8,557
4,250 to 4,499 grams	11,090	207	57	350	226	2,166	4,116
<b>4,500 grams or more</b>	<b>6,441</b>	<b>135</b>	<b>33</b>	<b>242</b>	<b>173</b>	<b>1,085</b>	<b>2,416</b>
4,500 to 4,749 grams	4,212	85	18	156	109	744	1,571
4,750 to 4,999 grams	1,502	34	13	56	38	238	578
5,000 to 5,249 grams	505	13	1	20	17	67	192
5,250 to 5,499 grams	139	3	0	5	4	26	50
5,500 grams or more	83	0	1	5	5	10	25
<b>Not stated</b>	<b>534</b>	<b>4</b>	<b>1</b>	<b>2</b>	<b>0</b>	<b>107</b>	<b>355</b>
	percent						
<b>Total</b>	<b>100.0</b>	<b>100.0</b>	<b>100.0</b>	<b>100.0</b>	<b>100.0</b>	<b>100.0</b>	<b>100.0</b>
<b>Less than 500 grams</b>	<b>0.1</b>	<b>0.3</b>	<b>0.1</b>	<b>0.1</b>	<b>0.1</b>	<b>0.2</b>	<b>0.1</b>
<b>500 to 1,499 grams</b>	<b>0.9</b>	<b>0.8</b>	<b>1.1</b>	<b>0.9</b>	<b>0.9</b>	<b>0.8</b>	<b>0.9</b>
500 to 749 grams	0.2	0.0	0.1	0.2	0.2	0.1	0.1
750 to 999 grams	0.2	0.1	0.3	0.2	0.2	0.2	0.2
1,000 to 1,249 grams	0.2	0.3	0.4	0.3	0.2	0.3	0.2
1,250 to 1,499 grams	0.3	0.4	0.4	0.2	0.3	0.3	0.3
<b>1,500 to 2,499 grams</b>	<b>5.1</b>	<b>4.5</b>	<b>3.8</b>	<b>5.4</b>	<b>4.8</b>	<b>4.8</b>	<b>5.2</b>
1,500 to 1,749 grams	0.5	0.3	0.4	0.5	0.4	0.4	0.5
1,750 to 1,999 grams	0.7	0.7	0.7	0.7	0.7	0.7	0.7
2,000 to 2,249 grams	1.3	1.0	0.9	1.4	1.3	1.3	1.3
2,250 to 2,499 grams	2.6	2.4	1.8	2.8	2.4	2.5	2.7
<b>2,500 to 4,499 grams</b>	<b>92.0</b>	<b>91.4</b>	<b>92.7</b>	<b>90.8</b>	<b>91.7</b>	<b>92.7</b>	<b>91.8</b>
2,500 to 2,749 grams	5.4	4.2	3.6	5.3	5.0	5.4	5.6
2,750 to 2,999 grams	9.9	7.4	8.4	8.4	9.0	10.4	10.1
3,000 to 3,249 grams	16.5	13.8	14.6	14.7	14.8	17.3	16.8
3,250 to 3,499 grams	20.1	18.4	19.2	19.2	19.3	21.0	20.2
3,500 to 3,749 grams	17.9	18.5	19.2	18.6	19.1	18.1	17.6
3,750 to 3,999 grams	12.4	15.4	14.6	13.6	13.5	11.9	12.2
4,000 to 4,249 grams	6.7	9.3	9.0	6.9	7.7	6.1	6.3
4,250 to 4,499 grams	3.1	4.6	4.0	4.1	3.2	2.6	3.0
<b>4,500 grams or more</b>	<b>1.8</b>	<b>3.0</b>	<b>2.3</b>	<b>2.9</b>	<b>2.5</b>	<b>1.3</b>	<b>1.8</b>
4,500 to 4,749 grams	1.2	1.9	1.3	1.8	1.6	0.9	1.2
4,750 to 4,999 grams	0.4	0.7	0.9	0.7	0.5	0.3	0.4
5,000 to 5,249 grams	0.1	0.3	0.1	0.2	0.2	0.1	0.1
5,250 to 5,499 grams	0.0	0.1	0.0	0.1	0.1	0.0	0.0
5,500 grams or more	0.0	0.0	0.1	0.1	0.1	0.0	0.0
<b>Not stated</b>	<b>0.2</b>	<b>0.1</b>	<b>0.1</b>	<b>0.0</b>	<b>0.0</b>	<b>0.1</b>	<b>0.3</b>

Table 4-1 – continued

Live births, by birth weight and geography — Both sexes

Birth weight	Place of residence of mother								
	Canada	Manitoba	Saskatchewan	Alberta	British Columbia	Yukon Territory	Northwest Territories	Nunavut	Unknown
	number								
<b>Total</b>	<b>354,617</b>	<b>14,565</b>	<b>12,288</b>	<b>45,229</b>	<b>41,729</b>	<b>364</b>	<b>687</b>	<b>747</b>	<b>6</b>
<b>Less than 500 grams</b>	<b>354</b>	<b>16</b>	<b>8</b>	<b>67</b>	<b>33</b>	<b>1</b>	<b>0</b>	<b>0</b>	<b>0</b>
<b>500 to 1,499 grams</b>	<b>3,168</b>	<b>152</b>	<b>122</b>	<b>468</b>	<b>301</b>	<b>0</b>	<b>3</b>	<b>10</b>	<b>0</b>
500 to 749 grams	544	32	24	80	55	0	2	3	0
750 to 999 grams	665	34	26	112	53	0	0	3	0
1,000 to 1,249 grams	854	36	30	102	83	0	1	2	0
1,250 to 1,499 grams	1,105	50	42	174	110	0	0	2	0
<b>1,500 to 2,499 grams</b>	<b>18,032</b>	<b>685</b>	<b>562</b>	<b>2,603</b>	<b>2,012</b>	<b>19</b>	<b>23</b>	<b>53</b>	<b>1</b>
1,500 to 1,749 grams	1,612	55	72	227	201	1	2	3	0
1,750 to 1,999 grams	2,550	109	74	351	301	3	5	12	0
2,000 to 2,249 grams	4,689	189	139	695	513	3	8	8	0
2,250 to 2,499 grams	9,181	332	277	1,330	997	12	8	30	1
<b>2,500 to 4,499 grams</b>	<b>326,088</b>	<b>13,278</b>	<b>11,222</b>	<b>41,345</b>	<b>38,570</b>	<b>338</b>	<b>633</b>	<b>663</b>	<b>5</b>
2,500 to 2,749 grams	18,991	698	542	2,544	2,109	16	31	39	0
2,750 to 2,999 grams	35,160	1,268	1,053	4,672	4,014	24	60	76	0
3,000 to 3,249 grams	58,542	2,111	1,781	7,453	6,868	58	73	100	2
3,250 to 3,499 grams	71,238	2,666	2,337	8,934	8,297	67	141	144	2
3,500 to 3,749 grams	63,510	2,664	2,288	8,026	7,578	72	131	103	0
3,750 to 3,999 grams	43,932	2,060	1,686	5,396	5,266	57	98	113	0
4,000 to 4,249 grams	23,625	1,155	1,025	3,035	3,005	27	62	59	0
4,250 to 4,499 grams	11,090	656	510	1,285	1,433	17	37	29	1
<b>4,500 grams or more</b>	<b>6,441</b>	<b>433</b>	<b>374</b>	<b>745</b>	<b>759</b>	<b>6</b>	<b>23</b>	<b>17</b>	<b>0</b>
4,500 to 4,749 grams	4,212	279	216	491	512	4	15	12	0
4,750 to 4,999 grams	1,502	99	99	174	164	2	5	2	0
5,000 to 5,249 grams	505	36	32	56	67	0	3	1	0
5,250 to 5,499 grams	139	10	16	14	11	0	0	0	0
5,500 grams or more	83	9	11	10	5	0	0	2	0
<b>Not stated</b>	<b>534</b>	<b>1</b>	<b>0</b>	<b>1</b>	<b>54</b>	<b>0</b>	<b>5</b>	<b>4</b>	<b>0</b>
	percent								
<b>Total</b>	<b>100.0</b>	<b>100.0</b>	<b>100.0</b>	<b>100.0</b>	<b>100.0</b>	<b>100.0</b>	<b>100.0</b>	<b>100.0</b>	<b>100.0</b>
<b>Less than 500 grams</b>	<b>0.1</b>	<b>0.1</b>	<b>0.1</b>	<b>0.1</b>	<b>0.1</b>	<b>0.3</b>	<b>0.0</b>	<b>0.0</b>	<b>0.0</b>
<b>500 to 1,499 grams</b>	<b>0.9</b>	<b>1.0</b>	<b>1.0</b>	<b>1.0</b>	<b>0.7</b>	<b>0.0</b>	<b>0.4</b>	<b>1.3</b>	<b>0.0</b>
500 to 749 grams	0.2	0.2	0.2	0.2	0.1	0.0	0.3	0.4	0.0
750 to 999 grams	0.2	0.2	0.2	0.2	0.1	0.0	0.0	0.4	0.0
1,000 to 1,249 grams	0.2	0.2	0.2	0.2	0.2	0.0	0.1	0.3	0.0
1,250 to 1,499 grams	0.3	0.3	0.3	0.4	0.3	0.0	0.0	0.3	0.0
<b>1,500 to 2,499 grams</b>	<b>5.1</b>	<b>4.7</b>	<b>4.6</b>	<b>5.8</b>	<b>4.8</b>	<b>5.2</b>	<b>3.3</b>	<b>7.1</b>	<b>16.7</b>
1,500 to 1,749 grams	0.5	0.4	0.6	0.5	0.5	0.3	0.3	0.4	0.0
1,750 to 1,999 grams	0.7	0.7	0.6	0.8	0.7	0.8	0.7	1.6	0.0
2,000 to 2,249 grams	1.3	1.3	1.1	1.5	1.2	0.8	1.2	1.1	0.0
2,250 to 2,499 grams	2.6	2.3	2.3	2.9	2.4	3.3	1.2	4.0	16.7
<b>2,500 to 4,499 grams</b>	<b>92.0</b>	<b>91.2</b>	<b>91.3</b>	<b>91.4</b>	<b>92.4</b>	<b>92.9</b>	<b>92.1</b>	<b>88.8</b>	<b>83.3</b>
2,500 to 2,749 grams	5.4	4.8	4.4	5.6	5.1	4.4	4.5	5.2	0.0
2,750 to 2,999 grams	9.9	8.7	8.6	10.3	9.6	6.6	8.7	10.2	0.0
3,000 to 3,249 grams	16.5	14.5	14.5	16.5	16.5	15.9	10.6	13.4	33.3
3,250 to 3,499 grams	20.1	18.3	19.0	19.8	19.9	18.4	20.5	19.3	33.3
3,500 to 3,749 grams	17.9	18.3	18.6	17.7	18.2	19.8	19.1	13.8	0.0
3,750 to 3,999 grams	12.4	14.1	13.7	11.9	12.6	15.7	14.3	15.1	0.0
4,000 to 4,249 grams	6.7	7.9	8.3	6.7	7.2	7.4	9.0	7.9	0.0
4,250 to 4,499 grams	3.1	4.5	4.2	2.8	3.4	4.7	5.4	3.9	16.7
<b>4,500 grams or more</b>	<b>1.8</b>	<b>3.0</b>	<b>3.0</b>	<b>1.6</b>	<b>1.8</b>	<b>1.6</b>	<b>3.3</b>	<b>2.3</b>	<b>0.0</b>
4,500 to 4,749 grams	1.2	1.9	1.8	1.1	1.2	1.1	2.2	1.6	0.0
4,750 to 4,999 grams	0.4	0.7	0.8	0.4	0.4	0.5	0.7	0.3	0.0
5,000 to 5,249 grams	0.1	0.2	0.3	0.1	0.2	0.0	0.4	0.1	0.0
5,250 to 5,499 grams	0.0	0.1	0.1	0.0	0.0	0.0	0.0	0.0	0.0
5,500 grams or more	0.0	0.1	0.1	0.0	0.0	0.0	0.0	0.3	0.0
<b>Not stated</b>	<b>0.2</b>	<b>0.0</b>	<b>0.0</b>	<b>0.0</b>	<b>0.1</b>	<b>0.0</b>	<b>0.7</b>	<b>0.5</b>	<b>0.0</b>

Note(s): See "Data quality, concepts and methodology — Explanatory notes for the tables".  
 Source(s): Statistics Canada, Canadian Vital Statistics, Birth Database (CANSIM table 102-4509).

**Table 4-2**  
**Live births, by birth weight and geography — Males**

Birth weight	Place of residence of mother						
	Canada	Newfoundland and Labrador	Prince Edward Island	Nova Scotia	New Brunswick	Quebec	Ontario
	number						
<b>Total</b>	<b>182,240</b>	<b>2,387</b>	<b>735</b>	<b>4,375</b>	<b>3,602</b>	<b>42,110</b>	<b>69,677</b>
<b>Less than 500 grams</b>	<b>178</b>	<b>7</b>	<b>1</b>	<b>5</b>	<b>2</b>	<b>61</b>	<b>40</b>
<b>500 to 1,499 grams</b>	<b>1,630</b>	<b>19</b>	<b>9</b>	<b>27</b>	<b>33</b>	<b>364</b>	<b>656</b>
500 to 749 grams	278	1	1	6	7	65	103
750 to 999 grams	359	1	0	7	10	69	143
1,000 to 1,249 grams	449	6	4	10	7	108	187
1,250 to 1,499 grams	544	11	4	4	9	122	223
<b>1,500 to 2,499 grams</b>	<b>8,539</b>	<b>91</b>	<b>22</b>	<b>217</b>	<b>166</b>	<b>1,855</b>	<b>3,367</b>
1,500 to 1,749 grams	817	9	3	18	12	146	321
1,750 to 1,999 grams	1,238	14	6	25	32	271	483
2,000 to 2,249 grams	2,233	23	4	61	46	510	874
2,250 to 2,499 grams	4,251	45	9	113	76	928	1,689
<b>2,500 to 4,499 grams</b>	<b>167,325</b>	<b>2,172</b>	<b>683</b>	<b>3,944</b>	<b>3,289</b>	<b>39,023</b>	<b>63,846</b>
2,500 to 2,749 grams	8,366	85	25	190	146	1,887	3,365
2,750 to 2,999 grams	15,494	159	51	344	269	3,703	6,026
3,000 to 3,249 grams	27,131	269	81	566	472	6,598	10,571
3,250 to 3,499 grams	35,378	406	140	797	684	8,550	13,615
3,500 to 3,749 grams	34,109	466	143	821	734	8,000	12,799
3,750 to 3,999 grams	25,175	385	125	648	519	5,746	9,496
4,000 to 4,249 grams	14,542	262	75	353	332	3,143	5,303
4,250 to 4,499 grams	7,130	140	43	225	133	1,396	2,671
<b>4,500 grams or more</b>	<b>4,290</b>	<b>96</b>	<b>19</b>	<b>181</b>	<b>112</b>	<b>747</b>	<b>1,590</b>
4,500 to 4,749 grams	2,789	61	12	114	68	506	1,025
4,750 to 4,999 grams	1,006	23	7	44	26	164	388
5,000 to 5,249 grams	347	9	0	17	12	48	128
5,250 to 5,499 grams	95	3	0	4	3	22	31
5,500 grams or more	53	0	0	2	3	7	18
<b>Not stated</b>	<b>278</b>	<b>2</b>	<b>1</b>	<b>1</b>	<b>0</b>	<b>60</b>	<b>178</b>
	percent						
<b>Total</b>	<b>100.0</b>	<b>100.0</b>	<b>100.0</b>	<b>100.0</b>	<b>100.0</b>	<b>100.0</b>	<b>100.0</b>
<b>Less than 500 grams</b>	<b>0.1</b>	<b>0.3</b>	<b>0.1</b>	<b>0.1</b>	<b>0.1</b>	<b>0.1</b>	<b>0.1</b>
<b>500 to 1,499 grams</b>	<b>0.9</b>	<b>0.8</b>	<b>1.2</b>	<b>0.6</b>	<b>0.9</b>	<b>0.9</b>	<b>0.9</b>
500 to 749 grams	0.2	0.0	0.1	0.1	0.2	0.2	0.1
750 to 999 grams	0.2	0.0	0.0	0.2	0.3	0.2	0.2
1,000 to 1,249 grams	0.2	0.3	0.5	0.2	0.2	0.3	0.3
1,250 to 1,499 grams	0.3	0.5	0.5	0.1	0.2	0.3	0.3
<b>1,500 to 2,499 grams</b>	<b>4.7</b>	<b>3.8</b>	<b>3.0</b>	<b>5.0</b>	<b>4.6</b>	<b>4.4</b>	<b>4.8</b>
1,500 to 1,749 grams	0.4	0.4	0.4	0.4	0.3	0.3	0.5
1,750 to 1,999 grams	0.7	0.6	0.8	0.6	0.9	0.6	0.7
2,000 to 2,249 grams	1.2	1.0	0.5	1.4	1.3	1.2	1.3
2,250 to 2,499 grams	2.3	1.9	1.2	2.6	2.1	2.2	2.4
<b>2,500 to 4,499 grams</b>	<b>91.8</b>	<b>91.0</b>	<b>92.9</b>	<b>90.1</b>	<b>91.3</b>	<b>92.7</b>	<b>91.6</b>
2,500 to 2,749 grams	4.6	3.6	3.4	4.3	4.1	4.5	4.8
2,750 to 2,999 grams	8.5	6.7	6.9	7.9	7.5	8.8	8.6
3,000 to 3,249 grams	14.9	11.3	11.0	12.9	13.1	15.7	15.2
3,250 to 3,499 grams	19.4	17.0	19.0	18.2	19.0	20.3	19.5
3,500 to 3,749 grams	18.7	19.5	19.5	18.8	20.4	19.0	18.4
3,750 to 3,999 grams	13.8	16.1	17.0	14.8	14.4	13.6	13.6
4,000 to 4,249 grams	8.0	11.0	10.2	8.1	9.2	7.5	7.6
4,250 to 4,499 grams	3.9	5.9	5.9	5.1	3.7	3.3	3.8
<b>4,500 grams or more</b>	<b>2.4</b>	<b>4.0</b>	<b>2.6</b>	<b>4.1</b>	<b>3.1</b>	<b>1.8</b>	<b>2.3</b>
4,500 to 4,749 grams	1.5	2.6	1.6	2.6	1.9	1.2	1.5
4,750 to 4,999 grams	0.6	1.0	1.0	1.0	0.7	0.4	0.6
5,000 to 5,249 grams	0.2	0.4	0.0	0.4	0.3	0.1	0.2
5,250 to 5,499 grams	0.1	0.1	0.0	0.1	0.1	0.1	0.0
5,500 grams or more	0.0	0.0	0.0	0.0	0.1	0.0	0.0
<b>Not stated</b>	<b>0.2</b>	<b>0.1</b>	<b>0.1</b>	<b>0.0</b>	<b>0.0</b>	<b>0.1</b>	<b>0.3</b>

Table 4-2 – continued

Live births, by birth weight and geography — Males

Birth weight	Place of residence of mother								
	Canada	Manitoba	Saskatchewan	Alberta	British Columbia	Yukon Territory	Northwest Territories	Nunavut	Unknown
	number								
<b>Total</b>	<b>182,240</b>	<b>7,424</b>	<b>6,365</b>	<b>23,158</b>	<b>21,436</b>	<b>196</b>	<b>357</b>	<b>416</b>	<b>2</b>
<b>Less than 500 grams</b>	<b>178</b>	<b>6</b>	<b>4</b>	<b>37</b>	<b>15</b>	<b>0</b>	<b>0</b>	<b>0</b>	<b>0</b>
<b>500 to 1,499 grams</b>	<b>1,630</b>	<b>72</b>	<b>74</b>	<b>227</b>	<b>140</b>	<b>0</b>	<b>1</b>	<b>8</b>	<b>0</b>
500 to 749 grams	278	15	13	38	26	0	1	2	0
750 to 999 grams	359	14	22	62	28	0	0	3	0
1,000 to 1,249 grams	449	17	17	50	42	0	0	1	0
1,250 to 1,499 grams	544	26	22	77	44	0	0	2	0
<b>1,500 to 2,499 grams</b>	<b>8,539</b>	<b>345</b>	<b>265</b>	<b>1,228</b>	<b>946</b>	<b>8</b>	<b>12</b>	<b>17</b>	<b>0</b>
1,500 to 1,749 grams	817	35	33	124	113	1	1	1	0
1,750 to 1,999 grams	1,238	55	37	171	135	1	3	5	0
2,000 to 2,249 grams	2,233	94	67	316	231	1	4	2	0
2,250 to 2,499 grams	4,251	161	128	617	467	5	4	9	0
<b>2,500 to 4,499 grams</b>	<b>167,325</b>	<b>6,725</b>	<b>5,782</b>	<b>21,180</b>	<b>19,789</b>	<b>185</b>	<b>325</b>	<b>380</b>	<b>2</b>
2,500 to 2,749 grams	8,366	347	255	1,110	913	8	16	19	0
2,750 to 2,999 grams	15,494	579	481	1,993	1,808	15	28	38	0
3,000 to 3,249 grams	27,131	946	804	3,464	3,249	22	33	56	0
3,250 to 3,499 grams	35,378	1,289	1,136	4,456	4,123	33	67	81	1
3,500 to 3,749 grams	34,109	1,373	1,223	4,362	4,009	40	82	57	0
3,750 to 3,999 grams	25,175	1,121	920	3,088	2,975	37	45	70	0
4,000 to 4,249 grams	14,542	671	649	1,876	1,791	20	30	37	0
4,250 to 4,499 grams	7,130	399	314	831	921	10	24	22	1
<b>4,500 grams or more</b>	<b>4,290</b>	<b>275</b>	<b>240</b>	<b>486</b>	<b>517</b>	<b>3</b>	<b>14</b>	<b>10</b>	<b>0</b>
4,500 to 4,749 grams	2,789	173	146	319	346	2	10	7	0
4,750 to 4,999 grams	1,006	67	58	112	113	1	2	1	0
5,000 to 5,249 grams	347	21	21	36	52	0	2	1	0
5,250 to 5,499 grams	95	7	8	12	5	0	0	0	0
5,500 grams or more	53	7	7	7	1	0	0	1	0
<b>Not stated</b>	<b>278</b>	<b>1</b>	<b>0</b>	<b>0</b>	<b>29</b>	<b>0</b>	<b>5</b>	<b>1</b>	<b>0</b>
	percent								
<b>Total</b>	<b>100.0</b>	<b>100.0</b>	<b>100.0</b>	<b>100.0</b>	<b>100.0</b>	<b>100.0</b>	<b>100.0</b>	<b>100.0</b>	<b>100.0</b>
<b>Less than 500 grams</b>	<b>0.1</b>	<b>0.1</b>	<b>0.1</b>	<b>0.2</b>	<b>0.1</b>	<b>0.0</b>	<b>0.0</b>	<b>0.0</b>	<b>0.0</b>
<b>500 to 1,499 grams</b>	<b>0.9</b>	<b>1.0</b>	<b>1.2</b>	<b>1.0</b>	<b>0.7</b>	<b>0.0</b>	<b>0.3</b>	<b>1.9</b>	<b>0.0</b>
500 to 749 grams	0.2	0.2	0.2	0.2	0.1	0.0	0.3	0.5	0.0
750 to 999 grams	0.2	0.2	0.3	0.3	0.1	0.0	0.0	0.7	0.0
1,000 to 1,249 grams	0.2	0.2	0.3	0.2	0.2	0.0	0.0	0.2	0.0
1,250 to 1,499 grams	0.3	0.4	0.3	0.3	0.2	0.0	0.0	0.5	0.0
<b>1,500 to 2,499 grams</b>	<b>4.7</b>	<b>4.6</b>	<b>4.2</b>	<b>5.3</b>	<b>4.4</b>	<b>4.1</b>	<b>3.4</b>	<b>4.1</b>	<b>0.0</b>
1,500 to 1,749 grams	0.4	0.5	0.5	0.5	0.5	0.5	0.3	0.2	0.0
1,750 to 1,999 grams	0.7	0.7	0.6	0.7	0.6	0.5	0.8	1.2	0.0
2,000 to 2,249 grams	1.2	1.3	1.1	1.4	1.1	0.5	1.1	0.5	0.0
2,250 to 2,499 grams	2.3	2.2	2.0	2.7	2.2	2.6	1.1	2.2	0.0
<b>2,500 to 4,499 grams</b>	<b>91.8</b>	<b>90.6</b>	<b>90.8</b>	<b>91.5</b>	<b>92.3</b>	<b>94.4</b>	<b>91.0</b>	<b>91.3</b>	<b>100.0</b>
2,500 to 2,749 grams	4.6	4.7	4.0	4.8	4.3	4.1	4.5	4.6	0.0
2,750 to 2,999 grams	8.5	7.8	7.6	8.6	8.4	7.7	7.8	9.1	0.0
3,000 to 3,249 grams	14.9	12.7	12.6	15.0	15.2	11.2	9.2	13.5	0.0
3,250 to 3,499 grams	19.4	17.4	17.8	19.2	19.2	16.8	18.8	19.5	50.0
3,500 to 3,749 grams	18.7	18.5	19.2	18.8	18.7	20.4	23.0	13.7	0.0
3,750 to 3,999 grams	13.8	15.1	14.5	13.3	13.9	18.9	12.6	16.8	0.0
4,000 to 4,249 grams	8.0	9.0	10.2	8.1	8.4	10.2	8.4	8.9	0.0
4,250 to 4,499 grams	3.9	5.4	4.9	3.6	4.3	5.1	6.7	5.3	50.0
<b>4,500 grams or more</b>	<b>2.4</b>	<b>3.7</b>	<b>3.8</b>	<b>2.1</b>	<b>2.4</b>	<b>1.5</b>	<b>3.9</b>	<b>2.4</b>	<b>0.0</b>
4,500 to 4,749 grams	1.5	2.3	2.3	1.4	1.6	1.0	2.8	1.7	0.0
4,750 to 4,999 grams	0.6	0.9	0.9	0.5	0.5	0.5	0.6	0.2	0.0
5,000 to 5,249 grams	0.2	0.3	0.3	0.2	0.2	0.0	0.6	0.2	0.0
5,250 to 5,499 grams	0.1	0.1	0.1	0.1	0.0	0.0	0.0	0.0	0.0
5,500 grams or more	0.0	0.1	0.1	0.0	0.0	0.0	0.0	0.2	0.0
<b>Not stated</b>	<b>0.2</b>	<b>0.0</b>	<b>0.0</b>	<b>0.0</b>	<b>0.1</b>	<b>0.0</b>	<b>1.4</b>	<b>0.2</b>	<b>0.0</b>

Note(s): See "Data quality, concepts and methodology — Explanatory notes for the tables".  
 Source(s): Statistics Canada, Canadian Vital Statistics, Birth Database (CANSIM table 102-4509).

**Table 4-3**  
**Live births, by birth weight and geography — Females**

Birth weight	Place of residence of mother						
	Canada	Newfoundland and Labrador	Prince Edward Island	Nova Scotia	New Brunswick	Quebec	Ontario
	number						
<b>Total</b>	<b>172,377</b>	<b>2,155</b>	<b>678</b>	<b>4,110</b>	<b>3,428</b>	<b>39,827</b>	<b>65,918</b>
<b>Less than 500 grams</b>	<b>176</b>	<b>6</b>	<b>0</b>	<b>4</b>	<b>2</b>	<b>65</b>	<b>36</b>
<b>500 to 1,499 grams</b>	<b>1,538</b>	<b>17</b>	<b>6</b>	<b>46</b>	<b>31</b>	<b>322</b>	<b>582</b>
500 to 749 grams	266	0	0	9	5	54	97
750 to 999 grams	306	4	4	9	4	66	120
1,000 to 1,249 grams	405	6	1	15	10	100	146
1,250 to 1,499 grams	561	7	1	13	12	102	219
<b>1,500 to 2,499 grams</b>	<b>9,493</b>	<b>113</b>	<b>31</b>	<b>241</b>	<b>174</b>	<b>2,098</b>	<b>3,699</b>
1,500 to 1,749 grams	795	6	2	25	16	171	322
1,750 to 1,999 grams	1,312	20	4	38	19	268	515
2,000 to 2,249 grams	2,456	22	9	55	47	557	926
2,250 to 2,499 grams	4,930	65	16	123	92	1,102	1,936
<b>2,500 to 4,499 grams</b>	<b>158,763</b>	<b>1,978</b>	<b>627</b>	<b>3,757</b>	<b>3,160</b>	<b>36,957</b>	<b>60,598</b>
2,500 to 2,749 grams	10,625	104	26	259	204	2,531	4,190
2,750 to 2,999 grams	19,666	175	67	368	365	4,786	7,680
3,000 to 3,249 grams	31,411	357	125	683	569	7,542	12,263
3,250 to 3,499 grams	35,860	428	132	835	676	8,630	13,757
3,500 to 3,749 grams	29,401	372	129	755	610	6,805	11,014
3,750 to 3,999 grams	18,757	313	82	503	433	4,011	6,995
4,000 to 4,249 grams	9,083	162	52	229	210	1,882	3,254
4,250 to 4,499 grams	3,960	67	14	125	93	770	1,445
<b>4,500 grams or more</b>	<b>2,151</b>	<b>39</b>	<b>14</b>	<b>61</b>	<b>61</b>	<b>338</b>	<b>826</b>
4,500 to 4,749 grams	1,423	24	6	42	41	238	546
4,750 to 4,999 grams	496	11	6	12	12	74	190
5,000 to 5,249 grams	158	4	1	3	5	19	64
5,250 to 5,499 grams	44	0	0	1	1	4	19
5,500 grams or more	30	0	1	3	2	3	7
<b>Not stated</b>	<b>256</b>	<b>2</b>	<b>0</b>	<b>1</b>	<b>0</b>	<b>47</b>	<b>177</b>
	percent						
<b>Total</b>	<b>100.0</b>	<b>100.0</b>	<b>100.0</b>	<b>100.0</b>	<b>100.0</b>	<b>100.0</b>	<b>100.0</b>
<b>Less than 500 grams</b>	<b>0.1</b>	<b>0.3</b>	<b>0.0</b>	<b>0.1</b>	<b>0.1</b>	<b>0.2</b>	<b>0.1</b>
<b>500 to 1,499 grams</b>	<b>0.9</b>	<b>0.8</b>	<b>0.9</b>	<b>1.1</b>	<b>0.9</b>	<b>0.8</b>	<b>0.9</b>
500 to 749 grams	0.2	0.0	0.0	0.2	0.1	0.1	0.1
750 to 999 grams	0.2	0.2	0.6	0.2	0.1	0.2	0.2
1,000 to 1,249 grams	0.2	0.3	0.1	0.4	0.3	0.3	0.2
1,250 to 1,499 grams	0.3	0.3	0.1	0.3	0.4	0.3	0.3
<b>1,500 to 2,499 grams</b>	<b>5.5</b>	<b>5.2</b>	<b>4.6</b>	<b>5.9</b>	<b>5.1</b>	<b>5.3</b>	<b>5.6</b>
1,500 to 1,749 grams	0.5	0.3	0.3	0.6	0.5	0.4	0.5
1,750 to 1,999 grams	0.8	0.9	0.6	0.9	0.6	0.7	0.8
2,000 to 2,249 grams	1.4	1.0	1.3	1.3	1.4	1.4	1.4
2,250 to 2,499 grams	2.9	3.0	2.4	3.0	2.7	2.8	2.9
<b>2,500 to 4,499 grams</b>	<b>92.1</b>	<b>91.8</b>	<b>92.5</b>	<b>91.4</b>	<b>92.2</b>	<b>92.8</b>	<b>91.9</b>
2,500 to 2,749 grams	6.2	4.8	3.8	6.3	6.0	6.4	6.4
2,750 to 2,999 grams	11.4	8.1	9.9	9.0	10.6	12.0	11.7
3,000 to 3,249 grams	18.2	16.6	18.4	16.6	16.6	18.9	18.6
3,250 to 3,499 grams	20.8	19.9	19.5	20.3	19.7	21.7	20.9
3,500 to 3,749 grams	17.1	17.3	19.0	18.4	17.8	17.1	16.7
3,750 to 3,999 grams	10.9	14.5	12.1	12.2	12.6	10.1	10.6
4,000 to 4,249 grams	5.3	7.5	7.7	5.6	6.1	4.7	4.9
4,250 to 4,499 grams	2.3	3.1	2.1	3.0	2.7	1.9	2.2
<b>4,500 grams or more</b>	<b>1.2</b>	<b>1.8</b>	<b>2.1</b>	<b>1.5</b>	<b>1.8</b>	<b>0.8</b>	<b>1.3</b>
4,500 to 4,749 grams	0.8	1.1	0.9	1.0	1.2	0.6	0.8
4,750 to 4,999 grams	0.3	0.5	0.9	0.3	0.4	0.2	0.3
5,000 to 5,249 grams	0.1	0.2	0.1	0.1	0.1	0.0	0.1
5,250 to 5,499 grams	0.0	0.0	0.0	0.0	0.0	0.0	0.0
5,500 grams or more	0.0	0.0	0.1	0.1	0.1	0.0	0.0
<b>Not stated</b>	<b>0.1</b>	<b>0.1</b>	<b>0.0</b>	<b>0.0</b>	<b>0.0</b>	<b>0.1</b>	<b>0.3</b>

Table 4-3 – continued

Live births, by birth weight and geography — Females

Birth weight	Place of residence of mother								
	Canada	Manitoba	Saskatchewan	Alberta	British Columbia	Yukon Territory	Northwest Territories	Nunavut	Unknown
	number								
<b>Total</b>	<b>172,377</b>	<b>7,141</b>	<b>5,923</b>	<b>22,071</b>	<b>20,293</b>	<b>168</b>	<b>330</b>	<b>331</b>	<b>4</b>
<b>Less than 500 grams</b>	<b>176</b>	<b>10</b>	<b>4</b>	<b>30</b>	<b>18</b>	<b>1</b>	<b>0</b>	<b>0</b>	<b>0</b>
<b>500 to 1,499 grams</b>	<b>1,538</b>	<b>80</b>	<b>48</b>	<b>241</b>	<b>161</b>	<b>0</b>	<b>2</b>	<b>2</b>	<b>0</b>
500 to 749 grams	266	17	11	42	29	0	1	1	0
750 to 999 grams	306	20	4	50	25	0	0	0	0
1,000 to 1,249 grams	405	19	13	52	41	0	1	1	0
1,250 to 1,499 grams	561	24	20	97	66	0	0	0	0
<b>1,500 to 2,499 grams</b>	<b>9,493</b>	<b>340</b>	<b>297</b>	<b>1,375</b>	<b>1,066</b>	<b>11</b>	<b>11</b>	<b>36</b>	<b>1</b>
1,500 to 1,749 grams	795	20	39	103	88	0	1	2	0
1,750 to 1,999 grams	1,312	54	37	180	166	2	2	7	0
2,000 to 2,249 grams	2,456	95	72	379	282	2	4	6	0
2,250 to 2,499 grams	4,930	171	149	713	530	7	4	21	1
<b>2,500 to 4,499 grams</b>	<b>158,763</b>	<b>6,553</b>	<b>5,440</b>	<b>20,165</b>	<b>18,781</b>	<b>153</b>	<b>308</b>	<b>283</b>	<b>3</b>
2,500 to 2,749 grams	10,625	351	287	1,434	1,196	8	15	20	0
2,750 to 2,999 grams	19,666	689	572	2,679	2,206	9	32	38	0
3,000 to 3,249 grams	31,411	1,165	977	3,989	3,619	36	40	44	2
3,250 to 3,499 grams	35,860	1,377	1,201	4,478	4,174	34	74	63	1
3,500 to 3,749 grams	29,401	1,291	1,065	3,664	3,569	32	49	46	0
3,750 to 3,999 grams	18,757	939	766	2,308	2,291	20	53	43	0
4,000 to 4,249 grams	9,083	484	376	1,159	1,214	7	32	22	0
4,250 to 4,499 grams	3,960	257	196	454	512	7	13	7	0
<b>4,500 grams or more</b>	<b>2,151</b>	<b>158</b>	<b>134</b>	<b>259</b>	<b>242</b>	<b>3</b>	<b>9</b>	<b>7</b>	<b>0</b>
4,500 to 4,749 grams	1,423	106	70	172	166	2	5	5	0
4,750 to 4,999 grams	496	32	41	62	51	1	3	1	0
5,000 to 5,249 grams	158	15	11	20	15	0	1	0	0
5,250 to 5,499 grams	44	3	8	2	6	0	0	0	0
5,500 grams or more	30	2	4	3	4	0	0	1	0
<b>Not stated</b>	<b>256</b>	<b>0</b>	<b>0</b>	<b>1</b>	<b>25</b>	<b>0</b>	<b>0</b>	<b>3</b>	<b>0</b>
	percent								
<b>Total</b>	<b>100.0</b>	<b>100.0</b>	<b>100.0</b>	<b>100.0</b>	<b>100.0</b>	<b>100.0</b>	<b>100.0</b>	<b>100.0</b>	<b>100.0</b>
<b>Less than 500 grams</b>	<b>0.1</b>	<b>0.1</b>	<b>0.1</b>	<b>0.1</b>	<b>0.1</b>	<b>0.6</b>	<b>0.0</b>	<b>0.0</b>	<b>0.0</b>
<b>500 to 1,499 grams</b>	<b>0.9</b>	<b>1.1</b>	<b>0.8</b>	<b>1.1</b>	<b>0.8</b>	<b>0.0</b>	<b>0.6</b>	<b>0.6</b>	<b>0.0</b>
500 to 749 grams	0.2	0.2	0.2	0.2	0.1	0.0	0.3	0.3	0.0
750 to 999 grams	0.2	0.3	0.1	0.2	0.1	0.0	0.0	0.0	0.0
1,000 to 1,249 grams	0.2	0.3	0.2	0.2	0.2	0.0	0.3	0.3	0.0
1,250 to 1,499 grams	0.3	0.3	0.3	0.4	0.3	0.0	0.0	0.0	0.0
<b>1,500 to 2,499 grams</b>	<b>5.5</b>	<b>4.8</b>	<b>5.0</b>	<b>6.2</b>	<b>5.3</b>	<b>6.5</b>	<b>3.3</b>	<b>10.9</b>	<b>25.0</b>
1,500 to 1,749 grams	0.5	0.3	0.7	0.5	0.4	0.0	0.3	0.6	0.0
1,750 to 1,999 grams	0.8	0.8	0.6	0.8	0.8	1.2	0.6	2.1	0.0
2,000 to 2,249 grams	1.4	1.3	1.2	1.7	1.4	1.2	1.2	1.8	0.0
2,250 to 2,499 grams	2.9	2.4	2.5	3.2	2.6	4.2	1.2	6.3	25.0
<b>2,500 to 4,499 grams</b>	<b>92.1</b>	<b>91.8</b>	<b>91.8</b>	<b>91.4</b>	<b>92.5</b>	<b>91.1</b>	<b>93.3</b>	<b>85.5</b>	<b>75.0</b>
2,500 to 2,749 grams	6.2	4.9	4.8	6.5	5.9	4.8	4.5	6.0	0.0
2,750 to 2,999 grams	11.4	9.6	9.7	12.1	10.9	5.4	9.7	11.5	0.0
3,000 to 3,249 grams	18.2	16.3	16.5	18.1	17.8	21.4	12.1	13.3	50.0
3,250 to 3,499 grams	20.8	19.3	20.3	20.3	20.6	20.2	22.4	19.0	25.0
3,500 to 3,749 grams	17.1	18.1	18.0	16.6	17.6	19.0	14.8	13.9	0.0
3,750 to 3,999 grams	10.9	13.1	12.9	10.5	11.3	11.9	16.1	13.0	0.0
4,000 to 4,249 grams	5.3	6.8	6.3	5.3	6.0	4.2	9.7	6.6	0.0
4,250 to 4,499 grams	2.3	3.6	3.3	2.1	2.5	4.2	3.9	2.1	0.0
<b>4,500 grams or more</b>	<b>1.2</b>	<b>2.2</b>	<b>2.3</b>	<b>1.2</b>	<b>1.2</b>	<b>1.8</b>	<b>2.7</b>	<b>2.1</b>	<b>0.0</b>
4,500 to 4,749 grams	0.8	1.5	1.2	0.8	0.8	1.2	1.5	1.5	0.0
4,750 to 4,999 grams	0.3	0.4	0.7	0.3	0.3	0.6	0.9	0.3	0.0
5,000 to 5,249 grams	0.1	0.2	0.2	0.1	0.1	0.0	0.3	0.0	0.0
5,250 to 5,499 grams	0.0	0.0	0.1	0.0	0.0	0.0	0.0	0.0	0.0
5,500 grams or more	0.0	0.0	0.1	0.0	0.0	0.0	0.0	0.3	0.0
<b>Not stated</b>	<b>0.1</b>	<b>0.0</b>	<b>0.0</b>	<b>0.0</b>	<b>0.1</b>	<b>0.0</b>	<b>0.0</b>	<b>0.9</b>	<b>0.0</b>

Note(s): See "Data quality, concepts and methodology — Explanatory notes for the tables".  
 Source(s): Statistics Canada, Canadian Vital Statistics, Birth Database (CANSIM table 102-4509).

**Table 5-1**  
**Live births, by weeks of gestation and geography — Both sexes**

Weeks of gestation	Place of residence of mother						
	Canada	Newfoundland and Labrador	Prince Edward Island	Nova Scotia	New Brunswick	Quebec	Ontario
	number						
<b>Total</b>	<b>354,617</b>	<b>4,542</b>	<b>1,413</b>	<b>8,485</b>	<b>7,030</b>	<b>81,937</b>	<b>135,595</b>
<b>42 weeks or more</b>	<b>1,973</b>	<b>20</b>	<b>13</b>	<b>93</b>	<b>30</b>	<b>308</b>	<b>466</b>
<b>37 to 41 weeks</b>	<b>324,020</b>	<b>4,115</b>	<b>1,294</b>	<b>7,711</b>	<b>6,447</b>	<b>75,230</b>	<b>124,243</b>
37 to 39 weeks	179,337	2,102	661	3,870	3,318	43,510	69,749
40 to 41 weeks	144,683	2,013	633	3,841	3,129	31,720	54,494
<b>Less than 37 weeks</b>	<b>28,089</b>	<b>404</b>	<b>106</b>	<b>678</b>	<b>553</b>	<b>6,338</b>	<b>10,527</b>
28 to 36 weeks	26,551	382	97	643	532	5,947	10,011
28 to 31 weeks	2,460	33	6	69	50	504	938
32 to 33 weeks	3,311	46	12	101	87	629	1,280
34 to 36 weeks	20,780	303	79	473	395	4,814	7,793
20 to 27 weeks	1,483	21	9	32	20	364	513
20 to 23 weeks	465	11	1	9	9	136	119
24 to 27 weeks	1,018	10	8	23	11	228	394
Less than 20 weeks	55	1	0	3	1	27	3
<b>Not stated</b>	<b>535</b>	<b>3</b>	<b>0</b>	<b>3</b>	<b>0</b>	<b>61</b>	<b>359</b>
	percent						
<b>Total</b>	<b>100.0</b>	<b>100.0</b>	<b>100.0</b>	<b>100.0</b>	<b>100.0</b>	<b>100.0</b>	<b>100.0</b>
<b>42 weeks or more</b>	<b>0.6</b>	<b>0.4</b>	<b>0.9</b>	<b>1.1</b>	<b>0.4</b>	<b>0.4</b>	<b>0.3</b>
<b>37 to 41 weeks</b>	<b>91.4</b>	<b>90.6</b>	<b>91.6</b>	<b>90.9</b>	<b>91.7</b>	<b>91.8</b>	<b>91.6</b>
37 to 39 weeks	50.6	46.3	46.8	45.6	47.2	53.1	51.4
40 to 41 weeks	40.8	44.3	44.8	45.3	44.5	38.7	40.2
<b>Less than 37 weeks</b>	<b>7.9</b>	<b>8.9</b>	<b>7.5</b>	<b>8.0</b>	<b>7.9</b>	<b>7.7</b>	<b>7.8</b>
28 to 36 weeks	7.5	8.4	6.9	7.6	7.6	7.3	7.4
28 to 31 weeks	0.7	0.7	0.4	0.8	0.7	0.6	0.7
32 to 33 weeks	0.9	1.0	0.8	1.2	1.2	0.8	0.9
34 to 36 weeks	5.9	6.7	5.6	5.6	5.6	5.9	5.7
20 to 27 weeks	0.4	0.5	0.6	0.4	0.3	0.4	0.4
20 to 23 weeks	0.1	0.2	0.1	0.1	0.1	0.2	0.1
24 to 27 weeks	0.3	0.2	0.6	0.3	0.2	0.3	0.3
Less than 20 weeks	0.0	0.0	0.0	0.0	0.0	0.0	0.0
<b>Not stated</b>	<b>0.2</b>	<b>0.1</b>	<b>0.0</b>	<b>0.0</b>	<b>0.0</b>	<b>0.1</b>	<b>0.3</b>

Table 5-1 – continued

Live births, by weeks of gestation and geography — Both sexes

Weeks of gestation	Place of residence of mother								
	Canada	Manitoba	Saskatchewan	Alberta	British Columbia	Yukon Territory	Northwest Territories	Nunavut	Unknown
	number								
<b>Total</b>	<b>354,617</b>	<b>14,565</b>	<b>12,288</b>	<b>45,229</b>	<b>41,729</b>	<b>364</b>	<b>687</b>	<b>747</b>	<b>6</b>
<b>42 weeks or more</b>	<b>1,973</b>	<b>368</b>	<b>159</b>	<b>226</b>	<b>261</b>	<b>8</b>	<b>17</b>	<b>4</b>	<b>0</b>
<b>37 to 41 weeks</b>	<b>324,020</b>	<b>12,976</b>	<b>11,182</b>	<b>41,006</b>	<b>38,246</b>	<b>323</b>	<b>608</b>	<b>635</b>	<b>4</b>
37 to 39 weeks	179,337	6,192	5,440	22,806	20,821	180	276	410	2
40 to 41 weeks	144,683	6,784	5,742	18,200	17,425	143	332	225	2
<b>Less than 37 weeks</b>	<b>28,089</b>	<b>1,186</b>	<b>947</b>	<b>3,996</b>	<b>3,164</b>	<b>33</b>	<b>55</b>	<b>100</b>	<b>2</b>
28 to 36 weeks	26,551	1,109	887	3,743	3,018	32	53	95	2
28 to 31 weeks	2,460	111	97	373	269	1	2	7	0
32 to 33 weeks	3,311	144	120	484	384	3	5	16	0
34 to 36 weeks	20,780	854	670	2,886	2,365	28	46	72	2
20 to 27 weeks	1,483	74	59	242	142	0	2	5	0
20 to 23 weeks	465	30	19	84	45	0	1	1	0
24 to 27 weeks	1,018	44	40	158	97	0	1	4	0
Less than 20 weeks	55	3	1	11	4	1	0	0	0
<b>Not stated</b>	<b>535</b>	<b>35</b>	<b>0</b>	<b>1</b>	<b>58</b>	<b>0</b>	<b>7</b>	<b>8</b>	<b>0</b>
	percent								
<b>Total</b>	<b>100.0</b>	<b>100.0</b>	<b>100.0</b>	<b>100.0</b>	<b>100.0</b>	<b>100.0</b>	<b>100.0</b>	<b>100.0</b>	<b>100.0</b>
<b>42 weeks or more</b>	<b>0.6</b>	<b>2.5</b>	<b>1.3</b>	<b>0.5</b>	<b>0.6</b>	<b>2.2</b>	<b>2.5</b>	<b>0.5</b>	<b>0.0</b>
<b>37 to 41 weeks</b>	<b>91.4</b>	<b>89.1</b>	<b>91.0</b>	<b>90.7</b>	<b>91.7</b>	<b>88.7</b>	<b>88.5</b>	<b>85.0</b>	<b>66.7</b>
37 to 39 weeks	50.6	42.5	44.3	50.4	49.9	49.5	40.2	54.9	33.3
40 to 41 weeks	40.8	46.6	46.7	40.2	41.8	39.3	48.3	30.1	33.3
<b>Less than 37 weeks</b>	<b>7.9</b>	<b>8.1</b>	<b>7.7</b>	<b>8.8</b>	<b>7.6</b>	<b>9.1</b>	<b>8.0</b>	<b>13.4</b>	<b>33.3</b>
28 to 36 weeks	7.5	7.6	7.2	8.3	7.2	8.8	7.7	12.7	33.3
28 to 31 weeks	0.7	0.8	0.8	0.8	0.6	0.3	0.3	0.9	0.0
32 to 33 weeks	0.9	1.0	1.0	1.1	0.9	0.8	0.7	2.1	0.0
34 to 36 weeks	5.9	5.9	5.5	6.4	5.7	7.7	6.7	9.6	33.3
20 to 27 weeks	0.4	0.5	0.5	0.5	0.3	0.0	0.3	0.7	0.0
20 to 23 weeks	0.1	0.2	0.2	0.2	0.1	0.0	0.1	0.1	0.0
24 to 27 weeks	0.3	0.3	0.3	0.3	0.2	0.0	0.1	0.5	0.0
Less than 20 weeks	0.0	0.0	0.0	0.0	0.0	0.3	0.0	0.0	0.0
<b>Not stated</b>	<b>0.2</b>	<b>0.2</b>	<b>0.0</b>	<b>0.0</b>	<b>0.1</b>	<b>0.0</b>	<b>1.0</b>	<b>1.1</b>	<b>0.0</b>

Note(s): See "Data quality, concepts and methodology — Explanatory notes for the tables".

Source(s): Statistics Canada, Canadian Vital Statistics, Birth Database (CANSIM table 102-4512).



**Table 5-2**  
**Live births, by weeks of gestation and geography — Males**

Weeks of gestation	Place of residence of mother						
	Canada	Newfoundland and Labrador	Prince Edward Island	Nova Scotia	New Brunswick	Quebec	Ontario
	number						
<b>Total</b>	<b>182,240</b>	<b>2,387</b>	<b>735</b>	<b>4,375</b>	<b>3,602</b>	<b>42,110</b>	<b>69,677</b>
<b>42 weeks or more</b>	<b>1,092</b>	<b>10</b>	<b>6</b>	<b>56</b>	<b>16</b>	<b>176</b>	<b>247</b>
<b>37 to 41 weeks</b>	<b>165,734</b>	<b>2,158</b>	<b>675</b>	<b>3,950</b>	<b>3,291</b>	<b>38,492</b>	<b>63,558</b>
37 to 39 weeks	92,328	1,093	328	1,950	1,714	22,370	35,950
40 to 41 weeks	73,406	1,065	347	2,000	1,577	16,122	27,608
<b>Less than 37 weeks</b>	<b>15,140</b>	<b>218</b>	<b>54</b>	<b>367</b>	<b>295</b>	<b>3,411</b>	<b>5,690</b>
28 to 36 weeks	14,310	205	50	347	282	3,207	5,404
28 to 31 weeks	1,340	20	6	23	26	281	527
32 to 33 weeks	1,752	21	6	50	48	342	678
34 to 36 weeks	11,218	164	38	274	208	2,584	4,199
20 to 27 weeks	800	12	4	18	13	191	286
20 to 23 weeks	252	5	1	4	7	73	69
24 to 27 weeks	548	7	3	14	6	118	217
Less than 20 weeks	30	1	0	2	0	13	0
<b>Not stated</b>	<b>274</b>	<b>1</b>	<b>0</b>	<b>2</b>	<b>0</b>	<b>31</b>	<b>182</b>
	percent						
<b>Total</b>	<b>100.0</b>	<b>100.0</b>	<b>100.0</b>	<b>100.0</b>	<b>100.0</b>	<b>100.0</b>	<b>100.0</b>
<b>42 weeks or more</b>	<b>0.6</b>	<b>0.4</b>	<b>0.8</b>	<b>1.3</b>	<b>0.4</b>	<b>0.4</b>	<b>0.4</b>
<b>37 to 41 weeks</b>	<b>90.9</b>	<b>90.4</b>	<b>91.8</b>	<b>90.3</b>	<b>91.4</b>	<b>91.4</b>	<b>91.2</b>
37 to 39 weeks	50.7	45.8	44.6	44.6	47.6	53.1	51.6
40 to 41 weeks	40.3	44.6	47.2	45.7	43.8	38.3	39.6
<b>Less than 37 weeks</b>	<b>8.3</b>	<b>9.1</b>	<b>7.3</b>	<b>8.4</b>	<b>8.2</b>	<b>8.1</b>	<b>8.2</b>
28 to 36 weeks	7.9	8.6	6.8	7.9	7.8	7.6	7.8
28 to 31 weeks	0.7	0.8	0.8	0.5	0.7	0.7	0.8
32 to 33 weeks	1.0	0.9	0.8	1.1	1.3	0.8	1.0
34 to 36 weeks	6.2	6.9	5.2	6.3	5.8	6.1	6.0
20 to 27 weeks	0.4	0.5	0.5	0.4	0.4	0.5	0.4
20 to 23 weeks	0.1	0.2	0.1	0.1	0.2	0.2	0.1
24 to 27 weeks	0.3	0.3	0.4	0.3	0.2	0.3	0.3
Less than 20 weeks	0.0	0.0	0.0	0.0	0.0	0.0	0.0
<b>Not stated</b>	<b>0.2</b>	<b>0.0</b>	<b>0.0</b>	<b>0.0</b>	<b>0.0</b>	<b>0.1</b>	<b>0.3</b>

Table 5-2 – continued

Live births, by weeks of gestation and geography — Males

Weeks of gestation	Place of residence of mother								
	Canada	Manitoba	Saskatchewan	Alberta	British Columbia	Yukon Territory	Northwest Territories	Nunavut	Unknown
	number								
<b>Total</b>	<b>182,240</b>	<b>7,424</b>	<b>6,365</b>	<b>23,158</b>	<b>21,436</b>	<b>196</b>	<b>357</b>	<b>416</b>	<b>2</b>
<b>42 weeks or more</b>	<b>1,092</b>	<b>207</b>	<b>90</b>	<b>125</b>	<b>146</b>	<b>4</b>	<b>8</b>	<b>1</b>	<b>0</b>
<b>37 to 41 weeks</b>	<b>165,734</b>	<b>6,533</b>	<b>5,769</b>	<b>20,897</b>	<b>19,564</b>	<b>174</b>	<b>312</b>	<b>359</b>	<b>2</b>
37 to 39 weeks	92,328	3,161	2,830	11,694	10,763	93	146	235	1
40 to 41 weeks	73,406	3,372	2,939	9,203	8,801	81	166	124	1
<b>Less than 37 weeks</b>	<b>15,140</b>	<b>665</b>	<b>506</b>	<b>2,136</b>	<b>1,692</b>	<b>18</b>	<b>32</b>	<b>56</b>	<b>0</b>
28 to 36 weeks	14,310	627	465	1,998	1,624	18	31	52	0
28 to 31 weeks	1,340	56	55	194	146	1	0	5	0
32 to 33 weeks	1,752	82	59	260	194	2	3	7	0
34 to 36 weeks	11,218	489	351	1,544	1,284	15	28	40	0
20 to 27 weeks	800	36	40	130	65	0	1	4	0
20 to 23 weeks	252	15	11	44	21	0	1	1	0
24 to 27 weeks	548	21	29	86	44	0	0	3	0
Less than 20 weeks	30	2	1	8	3	0	0	0	0
<b>Not stated</b>	<b>274</b>	<b>19</b>	<b>0</b>	<b>0</b>	<b>34</b>	<b>0</b>	<b>5</b>	<b>0</b>	<b>0</b>
	percent								
<b>Total</b>	<b>100.0</b>	<b>100.0</b>	<b>100.0</b>	<b>100.0</b>	<b>100.0</b>	<b>100.0</b>	<b>100.0</b>	<b>100.0</b>	<b>100.0</b>
<b>42 weeks or more</b>	<b>0.6</b>	<b>2.8</b>	<b>1.4</b>	<b>0.5</b>	<b>0.7</b>	<b>2.0</b>	<b>2.2</b>	<b>0.2</b>	<b>0.0</b>
<b>37 to 41 weeks</b>	<b>90.9</b>	<b>88.0</b>	<b>90.6</b>	<b>90.2</b>	<b>91.3</b>	<b>88.8</b>	<b>87.4</b>	<b>86.3</b>	<b>100.0</b>
37 to 39 weeks	50.7	42.6	44.5	50.5	50.2	47.4	40.9	56.5	50.0
40 to 41 weeks	40.3	45.4	46.2	39.7	41.1	41.3	46.5	29.8	50.0
<b>Less than 37 weeks</b>	<b>8.3</b>	<b>9.0</b>	<b>7.9</b>	<b>9.2</b>	<b>7.9</b>	<b>9.2</b>	<b>9.0</b>	<b>13.5</b>	<b>0.0</b>
28 to 36 weeks	7.9	8.4	7.3	8.6	7.6	9.2	8.7	12.5	0.0
28 to 31 weeks	0.7	0.8	0.9	0.8	0.7	0.5	0.0	1.2	0.0
32 to 33 weeks	1.0	1.1	0.9	1.1	0.9	1.0	0.8	1.7	0.0
34 to 36 weeks	6.2	6.6	5.5	6.7	6.0	7.7	7.8	9.6	0.0
20 to 27 weeks	0.4	0.5	0.6	0.6	0.3	0.0	0.3	1.0	0.0
20 to 23 weeks	0.1	0.2	0.2	0.2	0.1	0.0	0.3	0.2	0.0
24 to 27 weeks	0.3	0.3	0.5	0.4	0.2	0.0	0.0	0.7	0.0
Less than 20 weeks	0.0	0.0	0.0	0.0	0.0	0.0	0.0	0.0	0.0
<b>Not stated</b>	<b>0.2</b>	<b>0.3</b>	<b>0.0</b>	<b>0.0</b>	<b>0.2</b>	<b>0.0</b>	<b>1.4</b>	<b>0.0</b>	<b>0.0</b>

Note(s): See "Data quality, concepts and methodology — Explanatory notes for the tables".

Source(s): Statistics Canada, Canadian Vital Statistics, Birth Database (CANSIM table 102-4512).

**Table 5-3**  
**Live births, by weeks of gestation and geography — Females**

Weeks of gestation	Place of residence of mother						
	Canada	Newfoundland and Labrador	Prince Edward Island	Nova Scotia	New Brunswick	Quebec	Ontario
	number						
<b>Total</b>	<b>172,377</b>	<b>2,155</b>	<b>678</b>	<b>4,110</b>	<b>3,428</b>	<b>39,827</b>	<b>65,918</b>
<b>42 weeks or more</b>	<b>881</b>	<b>10</b>	<b>7</b>	<b>37</b>	<b>14</b>	<b>132</b>	<b>219</b>
<b>37 to 41 weeks</b>	<b>158,286</b>	<b>1,957</b>	<b>619</b>	<b>3,761</b>	<b>3,156</b>	<b>36,738</b>	<b>60,685</b>
37 to 39 weeks	87,009	1,009	333	1,920	1,604	21,140	33,799
40 to 41 weeks	71,277	948	286	1,841	1,552	15,598	26,886
<b>Less than 37 weeks</b>	<b>12,949</b>	<b>186</b>	<b>52</b>	<b>311</b>	<b>258</b>	<b>2,927</b>	<b>4,837</b>
28 to 36 weeks	12,241	177	47	296	250	2,740	4,607
28 to 31 weeks	1,120	13	0	46	24	223	411
32 to 33 weeks	1,559	25	6	51	39	287	602
34 to 36 weeks	9,562	139	41	199	187	2,230	3,594
20 to 27 weeks	683	9	5	14	7	173	227
20 to 23 weeks	213	6	0	5	2	63	50
24 to 27 weeks	470	3	5	9	5	110	177
Less than 20 weeks	25	0	0	1	1	14	3
<b>Not stated</b>	<b>261</b>	<b>2</b>	<b>0</b>	<b>1</b>	<b>0</b>	<b>30</b>	<b>177</b>
	percent						
<b>Total</b>	<b>100.0</b>	<b>100.0</b>	<b>100.0</b>	<b>100.0</b>	<b>100.0</b>	<b>100.0</b>	<b>100.0</b>
<b>42 weeks or more</b>	<b>0.5</b>	<b>0.5</b>	<b>1.0</b>	<b>0.9</b>	<b>0.4</b>	<b>0.3</b>	<b>0.3</b>
<b>37 to 41 weeks</b>	<b>91.8</b>	<b>90.8</b>	<b>91.3</b>	<b>91.5</b>	<b>92.1</b>	<b>92.2</b>	<b>92.1</b>
37 to 39 weeks	50.5	46.8	49.1	46.7	46.8	53.1	51.3
40 to 41 weeks	41.3	44.0	42.2	44.8	45.3	39.2	40.8
<b>Less than 37 weeks</b>	<b>7.5</b>	<b>8.6</b>	<b>7.7</b>	<b>7.6</b>	<b>7.5</b>	<b>7.3</b>	<b>7.3</b>
28 to 36 weeks	7.1	8.2	6.9	7.2	7.3	6.9	7.0
28 to 31 weeks	0.6	0.6	0.0	1.1	0.7	0.6	0.6
32 to 33 weeks	0.9	1.2	0.9	1.2	1.1	0.7	0.9
34 to 36 weeks	5.5	6.5	6.0	4.8	5.5	5.6	5.5
20 to 27 weeks	0.4	0.4	0.7	0.3	0.2	0.4	0.3
20 to 23 weeks	0.1	0.3	0.0	0.1	0.1	0.2	0.1
24 to 27 weeks	0.3	0.1	0.7	0.2	0.1	0.3	0.3
Less than 20 weeks	0.0	0.0	0.0	0.0	0.0	0.0	0.0
<b>Not stated</b>	<b>0.2</b>	<b>0.1</b>	<b>0.0</b>	<b>0.0</b>	<b>0.0</b>	<b>0.1</b>	<b>0.3</b>

Table 5-3 – continued

Live births, by weeks of gestation and geography — Females

Weeks of gestation	Place of residence of mother								
	Canada	Manitoba	Saskatchewan	Alberta	British Columbia	Yukon Territory	Northwest Territories	Nunavut	Unknown
	number								
<b>Total</b>	<b>172,377</b>	<b>7,141</b>	<b>5,923</b>	<b>22,071</b>	<b>20,293</b>	<b>168</b>	<b>330</b>	<b>331</b>	<b>4</b>
<b>42 weeks or more</b>	<b>881</b>	<b>161</b>	<b>69</b>	<b>101</b>	<b>115</b>	<b>4</b>	<b>9</b>	<b>3</b>	<b>0</b>
<b>37 to 41 weeks</b>	<b>158,286</b>	<b>6,443</b>	<b>5,413</b>	<b>20,109</b>	<b>18,682</b>	<b>149</b>	<b>296</b>	<b>276</b>	<b>2</b>
37 to 39 weeks	87,009	3,031	2,610	11,112	10,058	87	130	175	1
40 to 41 weeks	71,277	3,412	2,803	8,997	8,624	62	166	101	1
<b>Less than 37 weeks</b>	<b>12,949</b>	<b>521</b>	<b>441</b>	<b>1,860</b>	<b>1,472</b>	<b>15</b>	<b>23</b>	<b>44</b>	<b>2</b>
28 to 36 weeks	12,241	482	422	1,745	1,394	14	22	43	2
28 to 31 weeks	1,120	55	42	179	123	0	2	2	0
32 to 33 weeks	1,559	62	61	224	190	1	2	9	0
34 to 36 weeks	9,562	365	319	1,342	1,081	13	18	32	2
20 to 27 weeks	683	38	19	112	77	0	1	1	0
20 to 23 weeks	213	15	8	40	24	0	0	0	0
24 to 27 weeks	470	23	11	72	53	0	1	1	0
Less than 20 weeks	25	1	0	3	1	1	0	0	0
<b>Not stated</b>	<b>261</b>	<b>16</b>	<b>0</b>	<b>1</b>	<b>24</b>	<b>0</b>	<b>2</b>	<b>8</b>	<b>0</b>
	percent								
<b>Total</b>	<b>100.0</b>	<b>100.0</b>	<b>100.0</b>	<b>100.0</b>	<b>100.0</b>	<b>100.0</b>	<b>100.0</b>	<b>100.0</b>	<b>100.0</b>
<b>42 weeks or more</b>	<b>0.5</b>	<b>2.3</b>	<b>1.2</b>	<b>0.5</b>	<b>0.6</b>	<b>2.4</b>	<b>2.7</b>	<b>0.9</b>	<b>0.0</b>
<b>37 to 41 weeks</b>	<b>91.8</b>	<b>90.2</b>	<b>91.4</b>	<b>91.1</b>	<b>92.1</b>	<b>88.7</b>	<b>89.7</b>	<b>83.4</b>	<b>50.0</b>
37 to 39 weeks	50.5	42.4	44.1	50.3	49.6	51.8	39.4	52.9	25.0
40 to 41 weeks	41.3	47.8	47.3	40.8	42.5	36.9	50.3	30.5	25.0
<b>Less than 37 weeks</b>	<b>7.5</b>	<b>7.3</b>	<b>7.4</b>	<b>8.4</b>	<b>7.3</b>	<b>8.9</b>	<b>7.0</b>	<b>13.3</b>	<b>50.0</b>
28 to 36 weeks	7.1	6.7	7.1	7.9	6.9	8.3	6.7	13.0	50.0
28 to 31 weeks	0.6	0.8	0.7	0.8	0.6	0.0	0.6	0.6	0.0
32 to 33 weeks	0.9	0.9	1.0	1.0	0.9	0.6	0.6	2.7	0.0
34 to 36 weeks	5.5	5.1	5.4	6.1	5.3	7.7	5.5	9.7	50.0
20 to 27 weeks	0.4	0.5	0.3	0.5	0.4	0.0	0.3	0.3	0.0
20 to 23 weeks	0.1	0.2	0.1	0.2	0.1	0.0	0.0	0.0	0.0
24 to 27 weeks	0.3	0.3	0.2	0.3	0.3	0.0	0.3	0.3	0.0
Less than 20 weeks	0.0	0.0	0.0	0.0	0.0	0.6	0.0	0.0	0.0
<b>Not stated</b>	<b>0.2</b>	<b>0.2</b>	<b>0.0</b>	<b>0.0</b>	<b>0.1</b>	<b>0.0</b>	<b>0.6</b>	<b>2.4</b>	<b>0.0</b>

Note(s): See "Data quality, concepts and methodology — Explanatory notes for the tables".

Source(s): Statistics Canada, Canadian Vital Statistics, Birth Database (CANSIM table 102-4512).

**Table 6-1**  
**Live births, by characteristics of the mother and child, Canada — Birth weight indicators**

Characteristics of mother and child	Live <sup>1</sup> births	Birth weight			
		Less than 1,500 grams	Less than 2,500 grams	2,500 to 4,499 grams	4,500 grams or more
	number	percent			
<b>Age of mother, all ages<sup>2</sup></b>	<b>354,617</b>	<b>1.0</b>	<b>6.1</b>	<b>92.0</b>	<b>1.8</b>
Under 20 years	14,548	1.3	6.8	91.4	1.8
20 to 34 years	276,710	0.9	5.8	92.3	1.8
35 to 49 years	62,956	1.3	7.0	91.0	1.9
Not stated <sup>3</sup>	403	0.7	2.7	9.9	0.0
<b>Total, parity of mother</b>	<b>354,617</b>	<b>1.0</b>	<b>6.1</b>	<b>92.0</b>	<b>1.8</b>
First live birth	158,408	1.0	6.4	92.1	1.4
Second live birth	125,736	0.9	5.3	92.7	1.9
Third live birth or more	70,108	1.1	6.8	90.7	2.5
Not stated	365	0.0	0.0	2.5	0.3
<b>Total, marital status of mother<sup>4</sup></b>	<b>354,617</b>	<b>1.0</b>	<b>6.1</b>	<b>92.0</b>	<b>1.8</b>
Married and/or separated	222,281	0.9	5.7	92.3	1.8
Not married	96,118	1.1	6.5	91.7	1.7
Not stated	36,218	1.4	7.1	90.2	2.0
<b>Total, birthplace of mother</b>	<b>354,617</b>	<b>1.0</b>	<b>6.1</b>	<b>92.0</b>	<b>1.8</b>
Canada	258,139	1.0	5.9	91.9	2.1
Outside Canada	90,031	1.0	6.7	92.1	1.1
Not stated	6,447	1.6	6.4	92.1	1.2
<b>Both sexes</b>	<b>354,617</b>	<b>1.0</b>	<b>6.1</b>	<b>92.0</b>	<b>1.8</b>
Males	182,240	1.0	5.7	91.8	2.4
Females	172,377	1.0	6.5	92.1	1.2
<b>Total</b>	<b>354,617</b>	<b>1.0</b>	<b>6.1</b>	<b>92.0</b>	<b>1.8</b>
Single	343,583	0.7	4.6	93.4	1.9
Multiple	11,034	9.0	52.3	47.5	0.0
<b>Total, weeks of gestation</b>	<b>354,617</b>	<b>1.0</b>	<b>6.1</b>	<b>92.0</b>	<b>1.8</b>
Less than 28 weeks	1,538	99.0	99.3	0.3	0.0
28 to 36 weeks	26,551	7.4	51.1	48.7	0.1
37 to 41 weeks	324,020	0.0	2.0	96.1	1.9
42 weeks or more	1,973	0.0	0.2	92.1	7.7
Not stated	535	0.4	1.9	20.6	0.7

1. Number of live births includes births with unknown birth weight.

2. Age attained at the last birthday preceding delivery.

3. For confidentiality reasons, live births to mothers aged 50 and over are included in the category "Age of mother, not stated." Where information is unavailable on the birth mother of children who are adopted, these records are included in the category "Age of mother, not stated."

4. Partway through 2003, Alberta Registries amended their Registration of Birth form in such a way that Statistics Canada can no longer determine the legal marital status of those persons in common-law marriages.

**Note(s):** See "Data quality, concepts and methodology — Explanatory notes for the tables".

**Source(s):** Statistics Canada, Canadian Vital Statistics, Birth Database (CANSIM table 102-4511).

**Table 6-2**  
**Live births, by characteristics of the mother and child, Canada — Weeks of gestation indicators**

Characteristics of mother and child	Live births	Gestation		
		Less than 37 weeks	37 to 41 weeks	42 weeks or more
	number	percent		
<b>Age of mother, all ages <sup>1</sup></b>	<b>354,617</b>	<b>7.9</b>	<b>91.4</b>	<b>0.6</b>
Under 20 years	14,548	8.4	90.6	0.9
20 to 34 years	276,710	7.6	91.8	0.5
35 to 49 years	62,956	9.1	90.3	0.5
Not stated <sup>2</sup>	403	2.0	10.2	0.7
<b>Total, parity of mother</b>	<b>354,617</b>	<b>7.9</b>	<b>91.4</b>	<b>0.6</b>
First live birth	158,408	8.0	91.2	0.7
Second live birth	125,736	7.2	92.5	0.3
Third live birth or more	70,108	9.2	90.2	0.6
Not stated	365	0.0	2.5	0.0
<b>Total, marital status of mother <sup>3</sup></b>	<b>354,617</b>	<b>7.9</b>	<b>91.4</b>	<b>0.6</b>
Married and/or separated	222,281	7.5	91.9	0.5
Not married	96,118	8.5	90.8	0.6
Not stated	36,218	9.2	89.7	0.5
<b>Total, birthplace of mother</b>	<b>354,617</b>	<b>7.9</b>	<b>91.4</b>	<b>0.6</b>
Canada	258,139	8.1	91.1	0.6
Outside Canada	90,031	7.3	92.1	0.4
Not stated	6,447	8.2	91.2	0.2
<b>Both sexes</b>	<b>354,617</b>	<b>7.9</b>	<b>91.4</b>	<b>0.6</b>
Males	182,240	8.3	90.9	0.6
Females	172,377	7.5	91.8	0.5
<b>Total</b>	<b>354,617</b>	<b>7.9</b>	<b>91.4</b>	<b>0.6</b>
Single	343,583	6.4	92.9	0.6
Multiple	11,034	55.6	44.3	0.0
<b>Total, birth weight</b>	<b>354,617</b>	<b>7.9</b>	<b>91.4</b>	<b>0.6</b>
Less than 500 grams	354	98.9	1.1	0.0
500 to 1,499 grams	3,168	99.5	0.5	0.0
1,500 to 2,499 grams	18,032	64.4	35.6	0.0
2,500 to 4,499 grams	326,088	4.0	95.4	0.6
4,500 grams or more	6,441	0.4	97.2	2.3
Not stated	534	4.3	18.5	0.2

1. Age attained at the last birthday preceding delivery.
2. For confidentiality reasons, live births to mothers aged 50 and over are included in the category "Age of mother, not stated." Where information is unavailable on the birth mother of children who are adopted, these records are included in the category "Age of mother, not stated."
3. Partway through 2003, Alberta Registries amended their Registration of Birth form in such a way that Statistics Canada can no longer determine the legal marital status of those persons in common-law marriages.

**Note(s):** See "Data quality, concepts and methodology — Explanatory notes for the tables".

**Source(s):** Statistics Canada, Canadian Vital Statistics, Birth Database (CANSIM table 102-4513).

**Table 7**  
**Live births, by place of residence of mother and place of occurrence, <sup>1</sup> Canada, provinces, territories and outside Canada**

Place of residence of mother	Place of occurrence								
	Total, Canada and USA	United States	Canada	Newfoundland and Labrador	Prince Edward Island	Nova Scotia	New Brunswick	Quebec	Ontario
	number								
<b>Total, Canada and other</b>	<b>354,906</b>	<b>45</b>	<b>354,861</b>	<b>4,579</b>	<b>1,388</b>	<b>8,549</b>	<b>7,086</b>	<b>80,853</b>	<b>136,644</b>
Canada	354,617	45	354,572	4,570	1,388	8,542	7,083	80,828	136,477
Newfoundland and Labrador	4,542	0	4,542	4,531	0	2	0	0	6
Prince Edward Island	1,413	0	1,413	0	1,384	25	1	0	3
Nova Scotia	8,485	0	8,485	1	0	8,442	36	0	5
New Brunswick	7,030	0	7,030	1	0	47	6,960	11	7
Quebec	81,937	6	81,931	20	1	0	78	80,753	1,071
Ontario	135,595	33	135,562	6	1	11	4	59	135,291
Manitoba	14,565	0	14,565	0	0	0	0	0	11
Saskatchewan	12,288	0	12,288	0	0	1	0	0	6
Alberta	45,229	3	45,226	5	1	6	0	0	35
British Columbia	41,729	3	41,726	0	0	4	2	0	24
Yukon Territory	364	0	364	0	0	0	0	0	0
Northwest Territories	687	0	687	0	0	1	1	0	2
Nunavut	747	0	747	6	1	3	1	5	15
Unknown province or territory	6	0	6	0	0	0	0	0	1
Outside Canada	289	...	289	9	0	7	3	25	167

Place of residence of mother	Place of occurrence								
	Total, Canada and USA	Canada	Manitoba	Saskatchewan	Alberta	British Columbia	Yukon Territory	Northwest Territories	Nunavut
	number								
<b>Total, Canada and other</b>	<b>354,906</b>	<b>354,861</b>	<b>15,004</b>	<b>12,425</b>	<b>45,092</b>	<b>41,741</b>	<b>370</b>	<b>716</b>	<b>414</b>
Canada	354,617	354,572	14,992	12,422	45,083	41,696	369	714	408
Newfoundland and Labrador	4,542	4,542	0	0	3	0	0	0	0
Prince Edward Island	1,413	1,413	0	0	0	0	0	0	0
Nova Scotia	8,485	8,485	0	0	1	0	0	0	0
New Brunswick	7,030	7,030	1	0	2	1	0	0	0
Quebec	81,937	81,931	0	0	2	3	0	0	3
Ontario	135,595	135,562	170	1	4	14	0	1	0
Manitoba	14,565	14,565	14,441	102	5	6	0	0	0
Saskatchewan	12,288	12,288	164	11,865	249	3	0	0	0
Alberta	45,229	45,226	5	444	44,657	70	1	2	0
British Columbia	41,729	41,726	5	8	92	41,581	10	0	0
Yukon Territory	364	364	0	0	2	5	357	0	0
Northwest Territories	687	687	3	1	52	6	1	618	2
Nunavut	747	747	203	1	13	3	0	93	403
Unknown province or territory	6	6	0	0	1	4	0	0	0
Outside Canada	289	289	12	3	9	45	1	2	6

1. The geographic distribution of live births in this table is based on the mother's usual place of residence and on the place of occurrence.

**Note(s):** See "Data quality, concepts and methodology — Explanatory notes for the tables".

**Source(s):** Statistics Canada, Canadian Vital Statistics, Birth Database (CANSIM table 102-4501).

**Table 8**  
**Fetal deaths (20 weeks or more of gestation) and late fetal deaths (28 weeks or more of gestation), Canada, provinces and territories**

Place of residence of mother	Gestation	
	20 weeks or more (fetal deaths)	28 weeks or more (late fetal deaths)
	number	
<b>Canada</b>	<b>2,272</b>	<b>1,078</b>
Newfoundland and Labrador	32	17
Prince Edward Island	6	2
Nova Scotia	76	31
New Brunswick	34	16
Quebec	329	213
Ontario	950	433
Manitoba	112	54
Saskatchewan	77	38
Alberta	302	140
British Columbia	334	122
Yukon Territory	2	1
Northwest Territories	9	4
Nunavut	9	7
Unknown	0	0

**Note(s):** See "Data quality, concepts and methodology — Explanatory notes for the tables".

**Source(s):** Statistics Canada, Canadian Vital Statistics, Stillbirth Database (CANSIM table 102-4514).

**Table 9-1**  
**Live births and fetal deaths (stillbirths), by geography — Type of birth (single or multiple)**

Place of residence of mother	Type of birth								
	Total			Single			Multiple		
	Total, births	Live births	Fetal deaths (stillbirths)	Total, births	Live births	Fetal deaths (stillbirths)	Total, births	Live births	Fetal deaths (stillbirths)
	number								
<b>Canada</b>	<b>356,889</b>	<b>354,617</b>	<b>2,272</b>	<b>345,649</b>	<b>343,583</b>	<b>2,066</b>	<b>11,240</b>	<b>11,034</b>	<b>206</b>
Newfoundland and Labrador	4,574	4,542	32	4,437	4,407	30	137	135	2
Prince Edward Island	1,419	1,413	6	1,371	1,365	6	48	48	0
Nova Scotia	8,561	8,485	76	8,303	8,229	74	258	256	2
New Brunswick	7,064	7,030	34	6,837	6,804	33	227	226	1
Quebec	82,266	81,937	329	79,783	79,472	311	2,483	2,465	18
Ontario	136,545	135,595	950	132,047	131,203	844	4,498	4,392	106
Manitoba	14,677	14,565	112	14,275	14,172	103	402	393	9
Saskatchewan	12,365	12,288	77	12,046	11,975	71	319	313	6
Alberta	45,531	45,229	302	44,031	43,769	262	1,500	1,460	40
British Columbia	42,063	41,729	334	40,731	40,419	312	1,332	1,310	22
Yukon Territory	366	364	2	360	358	2	6	6	0
Northwest Territories	696	687	9	678	669	9	18	18	0
Nunavut	756	747	9	744	735	9	12	12	0
Unknown	6	6	0	6	6	0	0	0	0

**Note(s):** See "Data quality, concepts and methodology — Explanatory notes for the tables".

**Source(s):** Statistics Canada, Canadian Vital Statistics, Birth and Stillbirth Databases (CANSIM table 102-4515).



**Table 9-2**  
**Live births and fetal deaths (stillbirths), by geography — Place of birth (hospital and non-hospital)**

Place of residence of mother	Live births and fetal deaths (stillbirths)					
	Total, births		Live births		Fetal deaths (stillbirths)	
	number	percent	number	percent	number	percent
<b>Canada</b>						
Total, place of birth	356,889	100.0	354,617	100.0	2,272	100.0
Hospital	352,753	98.8	350,507	98.8	2,246	98.9
Non-hospital	4,046	1.1	4,023	1.1	23	1.0
Unknown	90	0.0	87	0.0	3	0.1
<b>Newfoundland and Labrador</b>						
Total, place of birth	4,574	100.0	4,542	100.0	32	100.0
Hospital	4,565	99.8	4,534	99.8	31	96.9
Non-hospital	8	0.2	7	0.2	1	3.1
Unknown	1	0.0	1	0.0	0	0.0
<b>Prince Edward Island</b>						
Total, place of birth	1,419	100.0	1,413	100.0	6	100.0
Hospital	1,417	99.9	1,411	99.9	6	100.0
Non-hospital	0	0.0	0	0.0	0	0.0
Unknown	2	0.1	2	0.1	0	0.0
<b>Nova Scotia</b>						
Total, place of birth	8,561	100.0	8,485	100.0	76	100.0
Hospital	8,515	99.5	8,440	99.5	75	98.7
Non-hospital	46	0.5	45	0.5	1	1.3
Unknown	0	0.0	0	0.0	0	0.0
<b>New Brunswick</b>						
Total, place of birth	7,064	100.0	7,030	100.0	34	100.0
Hospital	7,049	99.8	7,016	99.8	33	97.1
Non-hospital	14	0.2	14	0.2	0	0.0
Unknown	1	0.0	0	0.0	1	2.9
<b>Quebec</b>						
Total, place of birth	82,266	100.0	81,937	100.0	329	100.0
Hospital	82,011	99.7	81,686	99.7	325	98.8
Non-hospital	255	0.3	251	0.3	4	1.2
Unknown	0	0.0	0	0.0	0	0.0
<b>Ontario</b>						
Total, place of birth	136,545	100.0	135,595	100.0	950	100.0
Hospital	134,349	98.4	133,406	98.4	943	99.3
Non-hospital	2,182	1.6	2,175	1.6	7	0.7
Unknown	14	0.0	14	0.0	0	0.0
<b>Manitoba</b>						
Total, place of birth	14,677	100.0	14,565	100.0	112	100.0
Hospital	14,466	98.6	14,357	98.6	109	97.3
Non-hospital	195	1.3	193	1.3	2	1.8
Unknown	16	0.1	15	0.1	1	0.9
<b>Saskatchewan</b>						
Total, place of birth	12,365	100.0	12,288	100.0	77	100.0
Hospital	12,301	99.5	12,225	99.5	76	98.7
Non-hospital	64	0.5	63	0.5	1	1.3
Unknown	0	0.0	0	0.0	0	0.0
<b>Alberta</b>						
Total, place of birth	45,531	100.0	45,229	100.0	302	100.0
Hospital	45,053	99.0	44,756	99.0	297	98.3
Non-hospital	477	1.0	472	1.0	5	1.7
Unknown	1	0.0	1	0.0	0	0.0
<b>British Columbia</b>						
Total, place of birth	42,063	100.0	41,729	100.0	334	100.0
Hospital	41,307	98.2	40,975	98.2	332	99.4
Non-hospital	704	1.7	703	1.7	1	0.3
Unknown	52	0.1	51	0.1	1	0.3
<b>Yukon Territory</b>						
Total, place of birth	366	100.0	364	100.0	2	100.0
Hospital	351	95.9	349	95.9	2	100.0
Non-hospital	13	3.6	13	3.6	0	0.0
Unknown	2	0.5	2	0.5	0	0.0

Table 9-2 – continued

Live births and fetal deaths (stillbirths), by geography — Place of birth (hospital and non-hospital)

Place of residence of mother	Live births and fetal deaths (stillbirths)					
	Total, births		Live births		Fetal deaths (stillbirths)	
	number	percent	number	percent	number	percent
<b>Northwest Territories</b>						
Total, place of birth	696	100.0	687	100.0	9	100.0
Hospital	672	96.6	664	96.7	8	88.9
Non-hospital	24	3.4	23	3.3	1	11.1
Unknown	0	0.0	0	0.0	0	0.0
<b>Nunavut</b>						
Total, place of birth	756	100.0	747	100.0	9	100.0
Hospital	691	91.4	682	91.3	9	100.0
Non-hospital	64	8.5	64	8.6	0	0.0
Unknown	1	0.1	1	0.1	0	0.0
<b>Unknown</b>						
Total, place of birth	6	100.0	6	100.0	0	0.0
Hospital	6	100.0	6	100.0	0	0.0
Non-hospital	0	0.0	0	0.0	0	0.0
Unknown	0	0.0	0	0.0	0	0.0

**Note(s):** See "Data quality, concepts and methodology — Explanatory notes for the tables".

**Source(s):** Statistics Canada, Canadian Vital Statistics, Birth and Stillbirth Databases (CANSIM table 102-4516).

## Definitions

---

The definitions used for the production of statistical tables of Canadian vital statistics data are based on those recommended by the World Health Organization<sup>1</sup> and the United Nations.<sup>2</sup>

**Age of mother.** Age the mother attained at her last birthday preceding delivery.

**Birth.** The complete expulsion or extraction from its mother of a product of conception, irrespective of the duration of the pregnancy. See also “Fetal death (stillbirth)” and “Live birth”.

### Birth and fertility rates

- **Age-specific fertility rate (ASFR):** The number of live births per 1,000 women in a specific age group. Five-year age groups were used in these tabulations (ranging from 15 to 19 to 45 to 49 years).
- **Age-specific fertility rate, women 15 to 19 years:** Live births to women under age 20 per 1,000 women aged 15 to 19.
- **Age-specific fertility rate, women 45 to 49 years:** Live births to women aged 45 years and over per 1,000 women aged 45 to 49.
- **Crude birth rate:** The number of live births per 1,000 population.
- **Total fertility rate (TFR):** An estimate of the average number of live births a woman can be expected to have in her lifetime, based on the age-specific fertility rates (ASFR) of a given year. The total fertility rate (TFR) = SUM of single year of age-specific fertility rate.

**Birth weight.** The first weight of the fetus or newborn obtained immediately after birth, expressed in grams.

- **Extremely low birth weight:** Birth weight under 1,000 grams.
- **Very low birth weight:** Birth weight under 1,500 grams.
- **Low birth weight:** Birth weight under 2,500 grams.
- **Normal birth weight** ranges from 2,500 to 4,499 grams.
- **High birth weight:** Birth weight of 4,500 or more grams.

**Cause of fetal death (stillbirth).** The cause of fetal death (stillbirth) coded is the underlying cause of fetal death. This is defined as “(a) the disease or injury which initiated the train of morbid events leading directly to death, or (b) the circumstances of the accident or violence which produced the fatal injury”. This underlying cause of fetal death is selected from a number of conditions listed on the medical certificate of cause of fetal death (stillbirth).

Beginning in the year 2000 in Canada, causes of death and fetal death (stillbirth) are coded to the 10th revision of the World Health Organization’s **International Statistical Classification of Diseases and Related Health Problems (ICD–10)**. The previous revision, ICD–9<sup>3</sup> was used in Canada for the classification of cause of death and fetal death (stillbirth) from 1979 to 1999.

---

1. World Health Organization (WHO). *International Statistical Classification of Diseases and Related Health Problems, Tenth Revision*, Volumes 1 and 2 (ICD–10). Geneva, 1992.

2. United Nations. *Principles and Recommendations for a Vital Statistics System*. Statistical Papers, Series M, No. 19, Rev. 1. New York, 1974.

3. World Health Organization (WHO). *International Classification of Diseases, 1975 Revision*, Volume 1 (ICD–9). Geneva, 1977.

**Delivery.** A delivery may consist of one or more live born or stillborn fetuses. The number of deliveries in a given period will be equal to or less than the number of births because multiple births (twins, triplets or higher-order births) are counted as single deliveries.

**Fetal death (stillbirth).** Death prior to the complete expulsion or extraction from its mother of a product of conception, irrespective of the duration of pregnancy; the death is indicated by the fact that after such separation the fetus does not breathe or show any other evidence of life, such as beating of the heart, pulsation of the umbilical cord, or definite movement of voluntary muscles. Only fetal deaths where the product of conception has a birth weight of 500 grams or more or the duration of pregnancy is 20 weeks or longer are registered in Canada.

In Quebec (as well as in Saskatchewan prior to 2001 and in New Brunswick prior to November 1996), only fetal deaths (stillbirths) weighing 500 or more grams must be reported, regardless of the gestation period.

Because of these differences in reporting requirements, fetal death (stillbirth) data are presented for two gestation periods: 20 or more weeks of gestation (including fetal deaths or stillbirths with unknown weeks of gestation), and 28 or more weeks of gestation (excluding unknown weeks of gestation).

**Fetal death (stillbirth) rate.** The number of fetal deaths (stillbirths) per 1,000 live births plus fetal deaths (stillbirths).

**ICD-10 codes. International Statistical Classification of Diseases and Related Health Problems (ICD)** codes, 10th revision, were established by the World Health Organization in 1992. The ICD-10 manual assigns codes to specific diseases, injuries and causes of death and fetal death (stillbirth).

**Live birth.** The complete expulsion or extraction from its mother of a product of conception, irrespective of the duration of the pregnancy, which, after such separation, breathes or shows any other evidence of life, such as beating of the heart, pulsation of the umbilical cord, or definite movement of voluntary muscles, whether or not the umbilical cord has been cut or the placenta is attached.

**Marital status of mother.** Refers to the legal conjugal status of the mother at the time of the delivery. Persons in common-law relationships are assigned to their legal marital status category. A **single** person is one who has never been married, or a person whose marriage has been annulled and who has not remarried. A **separated** person is legally married but is not living with his or her spouse because the couple no longer wants to live together. A **divorced** person is one who has obtained a legal divorce and has not remarried. A **married** person is one who is legally married and not separated. A person whose spouse has died and who has not remarried is **widowed**.

**Mean age of mother.** The mean (average) age of mother for Canada, a province or a territory is calculated by summing the mothers' ages at their last birthday, and then dividing the sum by the total number of live births in that jurisdiction. To estimate mid-year mean age, a statistic often used in analyses, add 0.5 to mean age.

**Mean birth weight.** The mean (average) birth weight for Canada, a province or a territory is calculated by summing the first weight of each live newborn (obtained immediately after birth), and then dividing the sum by the total number of live births in that jurisdiction.

**Median birth weight.** The median is the middle value in a set of ordered numbers (for example, newborns' birth weight ranked from lightest to heaviest). In the case of an even number of observations, the median is the average of the two middle values.

**Multiple birth.** A delivery that results in more than one birth, whether live born or stillborn. This includes the delivery of twins, triplets, quadruplets, quintuplets and more.

**Parity of mother.** The number of live births a woman has had to date (excludes fetal deaths or stillbirths). A woman with zero parity has had no live births; a woman of parity 1 has had one live birth, of parity 2, two live births, and so on. In the case of a first delivery resulting in live twins, the woman has a parity of 1 after the first twin is born and a parity of 2 after the second twin is born.

**Population.** Persons whose usual place of residence is somewhere in Canada, including Canadian government employees stationed abroad and their families, members of the Canadian Armed Forces stationed abroad and their families, crews of Canadian merchant vessels, and non-permanent residents of Canada.

The population estimates used for vital statistics rate calculations are adjusted for net census under-coverage and include non-permanent residents. Net census under-coverage is the difference between census under-coverage and census over-coverage. The former refers to persons who were part of the census universe but were not enumerated in the census; the latter, to persons either enumerated more than once or enumerated but not part of the census universe. Non-permanent residents are persons claiming refugee status, persons holding a student or employment authorization, or a Minister's permit, and all non-Canadian-born dependents of the above individuals.

Mid-year (July 1) population estimates are used to calculate the rates in vital statistics publications (see Appendix I).

**Provinces and territories.** Unless otherwise stated, the geographic distribution of births and fetal deaths (stillbirths) in the tables of this publication is based on the mother's usual place of residence.

Nunavut came into being officially as a Territory of Canada on April 1, 1999. The name Northwest Territories applies to a Territory with different geographic boundaries before and after April 1, 1999.

**Stillbirth (fetal death).** Death prior to the complete expulsion or extraction from its mother of a product of conception, irrespective of the duration of pregnancy; the death is indicated by the fact that after such separation the fetus does not breathe or show any other evidence of life, such as beating of the heart, pulsation of the umbilical cord, or definite movement of voluntary muscles. Only fetal deaths where the product of conception has a birth weight of 500 grams or more or the duration of pregnancy is 20 weeks or longer are registered in Canada.

In Quebec (as well as in Saskatchewan prior to 2001 and in New Brunswick prior to November 1996), only fetal deaths (stillbirths) weighing 500 or more grams must be reported, regardless of the gestation period.

Because of these differences in reporting requirements, fetal death (stillbirth) data are presented for two gestation periods: 20 or more weeks of gestation (including fetal deaths or stillbirths with unknown weeks of gestation), and 28 or more weeks of gestation (excluding unknown weeks of gestation).

**Stillbirth (fetal death) rate.** The number of fetal deaths (stillbirths) per 1,000 live births plus fetal deaths (stillbirths).

**Type of birth.** Type of birth refers to the plurality of a delivery, that is, whether the delivery results in the birth of one or more live born or stillborn infants.

**Weeks of gestation.** The interval, in completed weeks, between the first day of the mother's last menstrual period and the day of delivery (that is, the duration of pregnancy). It can also be any estimate of that interval, based on ultrasound, a physical examination or other method. Canadian birth registration documents do not specify how the gestational age was calculated. **Pre-term** refers to a period of gestation less than 37 completed weeks; **term**, 37 through 41 completed weeks; and **post-term**, 42 or more completed weeks.

## Explanatory notes for the tables

---

### Table 1 Live births, by sex and geography

- Live birth is the complete expulsion or extraction from its mother of a product of conception, irrespective of the duration of the pregnancy, which, after such separation, breathes or shows any other evidence of life, such as beating of the heart, pulsation of the umbilical cord, or definite movement of voluntary muscles, whether or not the umbilical cord has been cut or the placenta is attached.
- The geographic distribution of live births in this table is based on the mother's usual place of residence.
- Unknown province or territory of residence of mother refers to live births to residents of Canada, province or territory of residence unknown.

### Table 2 Live births, by geography

- Live birth is the complete expulsion or extraction from its mother of a product of conception, irrespective of the duration of the pregnancy, which, after such separation, breathes or shows any other evidence of life, such as beating of the heart, pulsation of the umbilical cord, or definite movement of voluntary muscles, whether or not the umbilical cord has been cut or the placenta is attached.
- The geographic distribution of live births in this table is based on the mother's usual place of residence.
- Unknown province or territory of residence of mother refers to live births to residents of Canada, province or territory of residence unknown.
- Rates for Canada include live births to residents of Canada, province or territory of residence unknown.
- Marital status of mother refers to her legal conjugal status at the time of the birth. Persons in common-law relationships are assigned to their legal marital status category. A single person is one who has never been married, or a person whose marriage has been annulled and who has not remarried. A separated person is legally married but is not living with his or her spouse because the couple no longer wants to live together. A divorced person is one who has obtained a legal divorce and has not remarried. A married person is one who is legally married and not separated. A person whose spouse has died and who has not remarried is widowed.
- Birth weight is the first weight of the newborn obtained immediately after birth, expressed in grams.

### Table 3 Live births, Canada

- Live birth is the complete expulsion or extraction from its mother of a product of conception, irrespective of the duration of the pregnancy, which, after such separation, breathes or shows any other evidence of life, such as beating of the heart, pulsation of the umbilical cord, or definite movement of voluntary muscles, whether or not the umbilical cord has been cut or the placenta is attached.
- Marital status of mother refers to her legal conjugal status at the time of the birth. Persons in common-law relationships are assigned to their legal marital status category. A single person is one who has never been married, or a person whose marriage has been annulled and who has not remarried. A separated person is legally married but is not living with his or her spouse because the couple no longer wants to live together. A divorced person is one who has obtained a legal divorce and has not remarried. A married person is one who is legally married and not separated. A person whose spouse has died and who has not remarried is widowed.

- The geographic distribution of live births in this table is based on the mother's usual place of residence.
- Parity refers to the number of live births a female has had to date (excludes fetal deaths or stillbirths). A female with zero parity has had no live births; a female of parity 1 has had one live birth, of parity 2, two live births and so on. In the case of a first delivery resulting in live twins, the female has a parity of 1 after the first twin is born and a parity of 2 after the second twin is born.

**Table 4 Live births, by birth weight and geography**

- Live birth is the complete expulsion or extraction from its mother of a product of conception, irrespective of the duration of the pregnancy, which, after such separation, breathes or shows any other evidence of life, such as beating of the heart, pulsation of the umbilical cord, or definite movement of voluntary muscles, whether or not the umbilical cord has been cut or the placenta is attached.
- Birth weight is the first weight of the newborn obtained immediately after birth, expressed in grams.
- The geographic distribution of live births in this table is based on the mother's usual place of residence.
- Unknown province or territory of residence of mother refers to live births to residents of Canada, province or territory of residence unknown.

**Table 5 Live births, by weeks of gestation and geography**

- Live birth is the complete expulsion or extraction from its mother of a product of conception, irrespective of the duration of the pregnancy, which, after such separation, breathes or shows any other evidence of life, such as beating of the heart, pulsation of the umbilical cord, or definite movement of voluntary muscles, whether or not the umbilical cord has been cut or the placenta is attached.
- Weeks of gestation refers to the interval, in completed weeks, between the first day of the mother's last menstrual period and the day of delivery (that is, the duration of the pregnancy). It can also be any estimate of that interval, based on ultrasound, a physical examination or other method. Canadian birth registration documents do not specify how the weeks of gestation are to be calculated.
- The geographic distribution of live births in this table is based on the mother's usual place of residence.
- Unknown province or territory of residence of mother refers to live births to residents of Canada, province or territory of residence unknown.

**Table 6 Live births, by characteristics of the mother and child, Canada**

- Live birth is the complete expulsion or extraction from its mother of a product of conception, irrespective of the duration of the pregnancy, which, after such separation, breathes or shows any other evidence of life, such as beating of the heart, pulsation of the umbilical cord, or definite movement of voluntary muscles, whether or not the umbilical cord has been cut or the placenta is attached.
- The geographic distribution of live births in this table is based on the mother's usual place of residence.
- Birth weight is the first weight of the newborn obtained immediately after birth, expressed in grams.
- Parity refers to the number of live births a female has had to date (excludes fetal deaths or stillbirths). A female with zero parity has had no live births; a female of parity 1 has had one live birth, of parity 2, two live births and so on. In the case of a first delivery resulting in live twins, the female has a parity of 1 after the first twin is born and a parity of 2 after the second twin is born.

- Marital status of mother refers to her legal conjugal status at the time of the birth. Persons in common-law relationships are assigned to their legal marital status category. A single person is one who has never been married, or a person whose marriage has been annulled and who has not remarried. A separated person is legally married but is not living with his or her spouse because the couple no longer wants to live together. A divorced person is one who has obtained a legal divorce and has not remarried. A married person is one who is legally married and not separated. A person whose spouse has died and who has not remarried is widowed.
- Type of birth refers to the plurality of a delivery, that is, whether the delivery results in the birth of one or more liveborn or stillborn infants. The delivery must result in the birth of at least one liveborn infant to be included in this table. The category "Type of birth, multiple" includes the delivery of twins, triplets, quadruplets, quintuplets or more.
- Weeks of gestation refers to the interval, in completed weeks, between the first day of the mother's last menstrual period and the day of delivery (that is, the duration of the pregnancy). It can also be any estimate of that interval, based on ultrasound, a physical examination or other method. Canadian birth registration documents do not specify how the weeks of gestation are to be calculated.

**Table 7 Live births, by place of residence of mother and place of occurrence, Canada, provinces, territories and outside Canada**

- Live birth is the complete expulsion or extraction from its mother of a product of conception, irrespective of the duration of the pregnancy, which, after such separation, breathes or shows any other evidence of life, such as beating of the heart, pulsation of the umbilical cord, or definite movement of voluntary muscles, whether or not the umbilical cord has been cut or the placenta is attached.
- Unknown province or territory of residence of mother refers to live births to residents of Canada, province or territory of residence unknown.
- Place of residence of mother outside Canada includes live births to non-residents of Canada and births with unknown country of residence of mother.

**Table 8 Fetal deaths (20 weeks or more of gestation) and late fetal deaths (28 weeks or more of gestation), Canada, provinces and territories**

- Fetal death (stillbirth) is death prior to the complete expulsion or extraction from its mother of a product of conception, irrespective of the duration of pregnancy; the death is indicated by the fact that after such separation the fetus does not breathe or show any other evidence of life, such as beating of the heart, pulsation of the umbilical cord, or definite movement of voluntary muscles. Only fetal deaths where the product of conception has a birth weight of 500 grams or more or the duration of pregnancy is 20 weeks or longer are registered in Canada.
- Weeks of gestation refers to the interval, in completed weeks, between the first day of the mother's last menstrual period and the day of delivery (that is, the duration of the pregnancy). It can also be any estimate of that interval, based on ultrasound, a physical examination or other method. Canadian birth registration documents do not specify how the weeks of gestation are to be calculated.
- Weeks of gestation, 20 weeks or more (fetal deaths) refers to a fetal death (stillbirth) with a duration of pregnancy of 20 weeks or more, or a birth weight of 500 grams or more. Fetal deaths with unknown weeks of gestation are included.
- Weeks of gestation, 28 weeks or more (late fetal deaths) refers to a fetal death (stillbirth) with a duration of pregnancy of 28 weeks or more. Fetal deaths with unknown weeks of gestation are excluded.
- Fetal death (stillbirth) data are tabulated according to the mother's usual place of residence.



- Unknown province or territory of residence of mother refers to fetal deaths (stillbirths) to residents of Canada, province or territory of residence unknown.

**Table 9-1 Live births and fetal deaths (stillbirths), by geography – Type of birth (single or multiple)**

- Live birth is the complete expulsion or extraction from its mother of a product of conception, irrespective of the duration of the pregnancy, which, after such separation, breathes or shows any other evidence of life, such as beating of the heart, pulsation of the umbilical cord, or definite movement of voluntary muscles, whether or not the umbilical cord has been cut or the placenta is attached.
- Fetal death (stillbirth) is death prior to the complete expulsion or extraction from its mother of a product of conception, irrespective of the duration of pregnancy; the death is indicated by the fact that after such separation the fetus does not breathe or show any other evidence of life, such as beating of the heart, pulsation of the umbilical cord, or definite movement of voluntary muscles. Only fetal deaths where the product of conception has a birth weight of 500 grams or more or the duration of pregnancy is 20 weeks or longer are registered in Canada.
- Type of birth refers to the plurality of a delivery, that is, whether the delivery results in one or more liveborn or stillborn infants. The category "Type of birth, multiples" includes the delivery of twins, triplets, quadruplets, quintuplets or more.
- The geographic distribution of live births and fetal deaths (stillbirths) in this table is based on the mother's usual place of residence.
- Unknown province or territory of residence of mother refers to live births and fetal deaths (stillbirths) to residents of Canada, province or territory of residence unknown.

**Table 9-2 Live births and fetal deaths (stillbirths), by geography – Place of birth (hospital and non-hospital)**

- Live birth is the complete expulsion or extraction from its mother of a product of conception, irrespective of the duration of the pregnancy, which, after such separation, breathes or shows any other evidence of life, such as beating of the heart, pulsation of the umbilical cord, or definite movement of voluntary muscles, whether or not the umbilical cord has been cut or the placenta is attached.
- Fetal death (stillbirth) is death prior to the complete expulsion or extraction from its mother of a product of conception, irrespective of the duration of pregnancy; the death is indicated by the fact that after such separation the fetus does not breathe or show any other evidence of life, such as beating of the heart, pulsation of the umbilical cord, or definite movement of voluntary muscles. Only fetal deaths where the product of conception has a birth weight of 500 grams or more or the duration of pregnancy is 20 weeks or longer are registered in Canada.
- The category "Place of birth , non-hospital" includes births in private homes, in health care institutions such as nursing homes and other long-term care facilities, nursing stations and other short-term care facilities and other health care facilities not licensed to operate as hospitals by provincial, territorial or federal governments, such as free-standing birthing centres and at other specified sites.
- The geographic distribution of live births and fetal deaths (stillbirths) in this table is based on the mother's usual place of residence.
- Unknown province or territory of residence of mother refers to live births and fetal deaths (stillbirths) to residents of Canada, province or territory of residence unknown.

# Appendix I

## Postcensal Population Estimates

Text table 1

Postcensal Population Estimates by Sex and Age Group, Canada, Provinces and Territories, July 1, 2006<sup>1</sup>

Age	Canada	N.L.	P.E.I.	N.S.	N.B.	Que.	Ont.
	number						
<b>Both sexes</b>							
<b>Total</b>	<b>32,649,482</b>	<b>509,940</b>	<b>138,027</b>	<b>935,050</b>	<b>749,225</b>	<b>7,651,033</b>	<b>12,705,328</b>
<1 <sup>2</sup>	354,617	4,542	1,413	8,485	7,030	81,937	135,595
1-4 <sup>2</sup>	1,361,153	18,583	5,406	34,633	27,675	297,855	538,870
39,577	1,846,096	25,620	7,854	48,601	38,513	394,178	754,915
39,735	2,089,644	29,511	9,235	56,121	44,781	468,379	837,260
15-19	2,171,546	33,575	10,197	62,697	48,773	474,505	851,174
20-24	2,262,352	33,857	9,689	63,131	50,093	491,981	874,020
25-29	2,236,286	30,523	8,547	57,446	47,077	539,240	849,211
30-34	2,227,271	31,472	8,435	58,579	49,317	504,622	891,649
35-39	2,357,234	36,715	8,530	63,757	51,510	523,283	962,682
40-44	2,704,985	42,300	10,504	77,782	62,011	627,829	1,086,932
45-49	2,676,629	43,347	10,759	78,223	62,747	649,149	1,025,201
50-54	2,368,253	42,383	10,279	71,392	58,698	582,124	882,680
55-59	2,085,833	38,832	10,183	67,143	54,268	519,510	780,161
60-64	1,584,973	29,590	7,225	51,041	40,179	421,340	585,688
65-69	1,229,157	21,562	5,757	39,457	30,819	314,788	466,270
70-74	1,046,909	17,126	4,869	32,593	25,017	265,281	401,766
75-79	880,880	13,542	3,641	25,959	20,601	220,427	340,265
80-84	640,944	9,247	2,883	19,453	16,084	153,716	248,887
85-89	346,151	5,213	1,706	12,128	9,146	79,916	128,055
90+	178,569	2,400	915	6,429	4,886	40,973	64,047
<b>Males</b>							
<b>Total</b>	<b>16,170,723</b>	<b>250,003</b>	<b>67,166</b>	<b>457,387</b>	<b>369,518</b>	<b>3,777,306</b>	<b>6,271,889</b>
<1 <sup>2</sup>	182,240	2,387	735	4,375	3,602	42,110	69,677
1-4 <sup>2</sup>	695,786	9,388	2,572	17,684	14,038	152,325	275,912
39,577	944,994	13,198	4,097	24,772	19,810	202,756	383,885
39,735	1,070,899	15,273	4,844	28,404	22,979	239,352	428,633
15-19	1,112,570	17,080	5,091	32,080	25,212	242,633	436,605
20-24	1,157,368	16,923	4,835	32,266	25,856	252,120	444,352
25-29	1,129,918	15,005	4,141	28,023	23,694	274,858	424,431
30-34	1,123,984	15,305	4,016	28,732	24,825	258,030	446,078
35-39	1,185,790	17,636	4,157	31,549	25,803	267,621	479,669
40-44	1,360,219	20,645	5,188	38,713	30,786	318,811	545,600
45-49	1,337,134	21,488	5,243	38,693	31,214	324,668	510,811
50-54	1,172,631	20,943	5,054	34,832	28,963	287,676	434,262
55-59	1,030,587	19,171	5,019	33,232	26,948	255,195	383,194
60-64	779,095	14,587	3,584	25,143	19,910	205,111	286,827
65-69	591,886	10,639	2,822	19,090	15,032	149,689	223,261
70-74	491,721	8,308	2,315	15,210	11,598	120,728	188,491
75-79	389,172	5,985	1,615	11,253	8,749	92,731	151,300
80-84	250,622	3,689	1,107	7,699	6,231	56,652	97,687
85-89	116,429	1,731	513	3,946	2,987	24,576	44,080
90+	47,678	622	218	1,691	1,281	9,664	17,134

See footnotes at the end of the table.

Text table 1 – continued

Postcental Population Estimates by Sex and Age Group, Canada, Provinces and Territories, July 1, 2006<sup>1</sup>

Age	Canada	N.L.	P.E.I.	N.S.	N.B.	Que.	Ont.
	number						
<b>Females</b>							
<b>Total</b>	<b>16,478,759</b>	<b>259,937</b>	<b>70,861</b>	<b>477,663</b>	<b>379,707</b>	<b>3,873,727</b>	<b>6,433,439</b>
<1 <sup>2</sup>	172,377	2,155	678	4,110	3,428	39,827	65,918
1-4 <sup>2</sup>	665,367	9,195	2,834	16,949	13,637	145,530	262,958
39,577	901,102	12,422	3,757	23,829	18,703	191,422	371,030
39,735	1,018,745	14,238	4,391	27,717	21,802	229,027	408,627
15-19	1,058,976	16,495	5,106	30,617	23,561	231,872	414,569
20-24	1,104,984	16,934	4,854	30,865	24,237	239,861	429,668
25-29	1,106,368	15,518	4,406	29,423	23,383	264,382	424,780
30-34	1,103,287	16,167	4,419	29,847	24,492	246,592	445,571
35-39	1,171,444	19,079	4,373	32,208	25,707	255,662	483,013
40-44	1,344,766	21,655	5,316	39,069	31,225	309,018	541,332
45-49	1,339,495	21,859	5,516	39,530	31,533	324,481	514,390
50-54	1,195,622	21,440	5,225	36,560	29,735	294,448	448,418
55-59	1,055,246	19,661	5,164	33,911	27,320	264,315	396,967
60-64	805,878	15,003	3,641	25,898	20,269	216,229	298,861
65-69	637,271	10,923	2,935	20,367	15,787	165,099	243,009
70-74	555,188	8,818	2,554	17,383	13,419	144,553	213,275
75-79	491,708	7,557	2,026	14,706	11,852	127,696	188,965
80-84	390,322	5,558	1,776	11,754	9,853	97,064	151,200
85-89	229,722	3,482	1,193	8,182	6,159	55,340	83,975
90+	130,891	1,778	697	4,738	3,605	31,309	46,913

See footnotes at the end of the table.

Text table 1 – continued

Postcental Population Estimates by Sex and Age Group, Canada, Provinces and Territories, July 1, 2006<sup>1</sup>

Age	Canada	Man.	Sask.	Alta.	B.C.	Y.T.	N.W.T.	Nvt.
	number							
<b>Both sexes</b>								
<b>Total</b>	<b>32,649,482</b>	<b>1,178,492</b>	<b>987,520</b>	<b>3,370,600</b>	<b>4,320,255</b>	<b>31,211</b>	<b>42,401</b>	<b>30,400</b>
<1 2	354,617	14,565	12,288	45,229	41,729	364	687	747
1-4 2	1,361,153	55,344	47,120	163,074	165,876	1,249	2,608	2,866
39,577	1,846,096	75,109	61,383	206,124	225,257	1,807	3,318	3,417
39,735	2,089,644	83,625	69,553	222,432	259,736	2,158	3,621	3,232
15-19	2,171,546	85,053	76,112	239,215	281,239	2,387	3,457	3,162
20-24	2,262,352	84,267	73,943	264,637	308,223	2,382	3,465	2,664
25-29	2,236,286	78,247	63,663	268,462	286,158	1,808	3,388	2,516
30-34	2,227,271	77,093	58,333	251,528	288,045	1,982	3,582	2,634
35-39	2,357,234	76,951	58,417	248,774	318,473	2,396	3,622	2,124
40-44	2,704,985	90,289	71,966	274,163	353,068	2,859	3,514	1,768
45-49	2,676,629	91,224	76,148	275,724	356,365	3,074	3,090	1,578
50-54	2,368,253	81,485	69,740	235,369	327,617	2,697	2,581	1,208
55-59	2,085,833	72,016	57,712	188,839	291,942	2,211	2,075	941
60-64	1,584,973	53,342	43,522	134,689	214,851	1,526	1,323	657
65-69	1,229,157	41,238	36,437	102,658	167,976	928	812	455
70-74	1,046,909	36,401	33,011	85,956	143,489	641	538	221
75-79	880,880	32,380	30,198	71,410	121,611	382	361	103
80-84	640,944	26,012	23,939	50,026	90,206	217	217	57
85-89	346,151	15,326	15,023	27,932	51,496	87	92	31
90+	178,569	8,525	9,012	14,359	26,898	56	50	19
<b>Males</b>								
<b>Total</b>	<b>16,170,723</b>	<b>585,427</b>	<b>490,449</b>	<b>1,706,284</b>	<b>2,142,065</b>	<b>15,715</b>	<b>21,873</b>	<b>15,641</b>
<1 2	182,240	7,424	6,365	23,158	21,436	196	357	416
1-4 2	695,786	28,159	24,027	83,244	85,121	636	1,265	1,417
39,577	944,994	38,833	31,535	105,643	116,071	862	1,737	1,795
39,735	1,070,899	42,774	35,631	114,712	133,714	1,065	1,878	1,640
15-19	1,112,570	43,227	39,095	122,983	143,937	1,289	1,732	1,606
20-24	1,157,368	43,374	38,479	136,958	157,842	1,230	1,804	1,329
25-29	1,129,918	39,762	32,396	139,797	143,881	869	1,797	1,264
30-34	1,123,984	39,624	29,173	130,471	143,574	912	1,951	1,293
35-39	1,185,790	39,307	29,191	128,963	157,830	1,143	1,815	1,106
40-44	1,360,219	45,538	35,874	139,572	175,513	1,361	1,664	954
45-49	1,337,134	46,375	38,530	139,974	176,241	1,458	1,527	912
50-54	1,172,631	40,519	35,285	119,393	162,268	1,420	1,346	670
55-59	1,030,587	35,659	28,827	95,575	145,003	1,227	1,127	410
60-64	779,095	26,364	21,603	67,701	106,300	845	789	331
65-69	591,886	19,761	17,567	50,295	82,504	537	455	234
70-74	491,721	17,102	15,582	41,110	70,539	334	273	131
75-79	389,172	14,202	13,560	32,720	56,623	180	184	70
80-84	250,622	10,105	9,765	20,309	37,131	111	102	34
85-89	116,429	5,068	5,303	9,762	18,370	21	54	18
90+	47,678	2,250	2,661	3,944	8,167	19	16	11

See footnotes at the end of the table.

Text table 1 – continued

Postcental Population Estimates by Sex and Age Group, Canada, Provinces and Territories, July 1, 2006<sup>1</sup>

Age	Canada	Man.	Sask.	Alta.	B.C.	Y.T.	N.W.T.	Nvt.
	number							
<b>Females</b>								
<b>Total</b>	<b>16,478,759</b>	<b>593,065</b>	<b>497,071</b>	<b>1,664,316</b>	<b>2,178,190</b>	<b>15,496</b>	<b>20,528</b>	<b>14,759</b>
<1 <sup>2</sup>	172,377	7,141	5,923	22,071	20,293	168	330	331
1-4 <sup>2</sup>	665,367	27,185	23,093	79,830	80,755	613	1,343	1,449
39,577	901,102	36,276	29,848	100,481	109,186	945	1,581	1,622
39,735	1,018,745	40,851	33,922	107,720	126,022	1,093	1,743	1,592
15-19	1,058,976	41,826	37,017	116,232	137,302	1,098	1,725	1,556
20-24	1,104,984	40,893	35,464	127,679	150,381	1,152	1,661	1,335
25-29	1,106,368	38,485	31,267	128,665	142,277	939	1,591	1,252
30-34	1,103,287	37,469	29,160	121,057	144,471	1,070	1,631	1,341
35-39	1,171,444	37,644	29,226	119,811	160,643	1,253	1,807	1,018
40-44	1,344,766	44,751	36,092	134,591	177,555	1,498	1,850	814
45-49	1,339,495	44,849	37,618	135,750	180,124	1,616	1,563	666
50-54	1,195,622	40,966	34,455	115,976	165,349	1,277	1,235	538
55-59	1,055,246	36,357	28,885	93,264	146,939	984	948	531
60-64	805,878	26,978	21,919	66,988	108,551	681	534	326
65-69	637,271	21,477	18,870	52,363	85,472	391	357	221
70-74	555,188	19,299	17,429	44,846	72,950	307	265	90
75-79	491,708	18,178	16,638	38,690	64,988	202	177	33
80-84	390,322	15,907	14,174	29,717	53,075	106	115	23
85-89	229,722	10,258	9,720	18,170	33,126	66	38	13
90+	130,891	6,275	6,351	10,415	18,731	37	34	8

1. These postcental population estimates, which are based on the 2001 census, are adjusted for net census undercoverage and include non-permanent residents.  
 2. 2006 population counts for the "<1" and "1-4" categories were adjusted for new births by Health Statistics Division.

Source(s): "Demographic Estimates Compendium, 2007" (Catalogue number 91-213-SCB) and Health Statistics Division, Statistics Canada