

Catalogue no. 81-595-M — No. 088

ISSN: 1711-831X

ISBN: 978-1-100-17475-4

Research Paper

Culture, Tourism and the Centre for Education Statistics

Summary Public School Indicators for Canada, the Provinces and Territories, 2002/2003 to 2008/2009



by Riley Brockington

Tourism and Centre for Education Statistics Division
Main Building, Room 2001, Ottawa, K1A 0T6

Telephone: 1-800-307-3382 Fax: 1-613-951-9040



Statistics
Canada

Statistique
Canada

Canada

How to obtain more information

For information about this product or the wide range of services and data available from Statistics Canada, visit our website at www.statcan.gc.ca, e-mail us at infostats@statcan.gc.ca, or telephone us, Monday to Friday from 8:30 a.m. to 4:30 p.m., at the following numbers:

Statistics Canada's National Contact Centre

Toll-free telephone (Canada and United States):

Inquiries line	1-800-263-1136
National telecommunications device for the hearing impaired	1-800-363-7629
Fax line	1-877-287-4369

Local or international calls:

Inquiries line	1-613-951-8116
Fax line	1-613-951-0581

Depository Services Program

Inquiries line	1-800-635-7943
Fax line	1-800-565-7757

To access this product

This product, Catalogue no. 81-595-M, is available for free in electronic format. To obtain a single issue, visit our website at www.statcan.gc.ca and browse by "Key resource" > "Publications."

Standards of service to the public

Statistics Canada is committed to serving its clients in a prompt, reliable and courteous manner. To this end, Statistics Canada has developed standards of service that its employees observe. To obtain a copy of these service standards, please contact Statistics Canada toll-free at 1-800-263-1136. The service standards are also published on www.statcan.gc.ca under "About us" > "Providing services to Canadians."

**Culture, Tourism and the Centre for Education Statistics
Research papers**

Summary Public School Indicators for Canada, the Provinces and Territories, 2002/2003 to 2008/2009

Riley Brockington
Statistics Canada

Published by authority of the Minister responsible for Statistics Canada

© Minister of Industry, 2010

All rights reserved. The content of this electronic publication may be reproduced, in whole or in part, and by any means, without further permission from Statistics Canada, subject to the following conditions: that it be done solely for the purposes of private study, research, criticism, review or newspaper summary, and/or for non-commercial purposes; and that Statistics Canada be fully acknowledged as follows: Source (or "Adapted from", if appropriate): Statistics Canada, year of publication, name of product, catalogue number, volume and issue numbers, reference period and page(s). Otherwise, no part of this publication may be reproduced, stored in a retrieval system or transmitted in any form, by any means—electronic, mechanical or photocopy—or for any purposes without prior written permission of Licensing Services, Client Services Division, Statistics Canada, Ottawa, Ontario, Canada K1A 0T6.

December 2010

Catalogue no. 81-595-M No. 088

Frequency: Occasional

ISSN 1711-831X

ISBN 978-1-100-17475-4

Ottawa

Cette publication est disponible en français (n° 81-595-M N° 088 au catalogue)

Statistics Canada

Acknowledgements

The Centre for Education Statistics Division at Statistics Canada sincerely appreciates the continued support and collaboration from the Departments/Ministries of Education from each province and territory and their employees who work diligently to collect and compile data for the Elementary-Secondary Education Survey (ESES) in a timely and thorough fashion.

Statistics Canada maintains a close relationship with the Canadian Education Statistics Council, particularly the Strategic Management Committee (SMC) and seeks their on-going advice and guidance on the survey.

The Centre for Education Statistics Division also appreciates the efforts of Jean Francois Laroche, former Chief, and Chantal Vaillancourt, Acting Chief of the Institutional Surveys Section, for their guidance and oversight, Elaine Tremblay for her technical assistance with the data tables and charts, Danielle Baum and Rosemarie Andrews for the production of PDF and HTML dissemination tables and Klarka Zeman, Manager, Dissemination Unit.

Note of appreciation

Canada owes the success of its statistical system to a long-standing partnership between Statistics Canada, the citizens of Canada, its businesses, governments and other institutions. Accurate and timely statistical information could not be produced without their continued cooperation and goodwill.

Table of contents

Acknowledgements	4
------------------	---

Note to readers	8
-----------------	---

Appendix 1: Tables

Table A.1	Headcount enrolments in public elementary and secondary schools, Canada, provinces and territories, 2002/2003 to 2008/2009	9
Table A.2	Full-time equivalent enrolments in public elementary and secondary schools, Canada, provinces and territories, 2002/2003 to 2008/2009	10
Table A.3	Enrolments in public elementary and secondary schools as a percentage of total population, Canada, provinces and territories, 2002/2003 to 2008/2009	11
Table A.4	Regular second language program enrolments in public elementary and secondary schools, Canada, provinces and territories, 2002/2003 to 2008/2009	12
Table A.5	Second language immersion program enrolments in public elementary and secondary schools, Canada, provinces and territories, 2002/2003 to 2008/2009	13
Table A.6	Minority language program enrolments in public elementary and secondary schools, Canada, provinces and territories, 2002/2003 to 2008/2009	14
Table A.7	Headcount enrolments in Aboriginal Language Programs, Canada, provinces and territories, 2002/2003 to 2008/2009	15
Table A.8	Headcount enrolments in Special Needs Education, Canada, provinces and territories, 2002/2003 to 2008/2009	16
Table A.9	Enrolment in the Special Needs Program, as a percentage of total enrolment, 2002/2003 to 2008/2009	17
Table A.10	Number of graduates, Canada, provinces and territories, 2002/2003 to 2008/2009	18
Table A.11	Graduation rate, Canada, provinces and territories, 2002/2003 to 2008/2009	19
Table A.12	Educators headcount in public elementary and secondary schools, Canada, provinces and territories, 2002/2003 to 2008/2009	20
Table A.13	Full-time equivalent educators in public elementary and secondary schools, Canada, provinces and territories, 2002/2003 to 2008/2009	21

Table of contents

Table A.14	Student-educator ratio in public elementary and secondary schools, Canada, provinces and territories, 2002/2003 to 2008/2009	22
Table A.15	Average remuneration per educator in public elementary and secondary schools, Canada, provinces and territories, 2002/2003 to 2008/2009 (in current dollars)	23
Table A.16	Educator remuneration in public elementary and secondary schools, Canada, provinces and territories, 2002/2003 to 2008/2009 (in millions of current dollars)	24
Table A.17	Operating expenditures in public elementary and secondary schools, Canada, provinces and territories, 2002/2003 to 2008/2009 (in millions of current dollars)	25
Table A.18	Capital expenditures in public elementary and secondary schools, Canada, provinces and territories, 2002/2003 to 2008/2009 (in millions of current dollars)	26
Table A.19	Total expenditures in public elementary and secondary schools, Canada, provinces and territories, 2002/2003 to 2008/2009 (in millions of current dollars)	27
Table A.20.1	Total expenditures per student in public elementary and secondary schools, Canada, provinces and territories, 2002/2003 to 2008/2009 (in current dollars)	28
Table A.20.2	Total expenditures per student in public elementary and secondary schools, Canada, provinces and territories, 2002/2003 to 2008/2009 (in 2002 constant dollars)	29
Table A.21	Educator remuneration per student in public elementary and secondary schools, Canada, provinces and territories, 2002/2003 to 2008/2009 (in current dollars)	30
Table A.22	Operating expenditures per student in public elementary and secondary schools, Canada, provinces and territories, 2002/2003 to 2008/2009 (in current dollars)	31
Table A.23	Annual capital expenditures per student in public elementary and secondary schools, Canada, provinces and territories, 2002/2003 to 2008/2009 (in current dollars)	32
Table A.24	Educator remuneration as a percentage of total expenditures in public elementary and secondary schools, Canada, provinces and territories, 2002/2003 to 2008/2009	33
Table A.25	Educator remuneration as a percentage of operating expenditures in public elementary and secondary schools, Canada, provinces and territories, 2002/2003 to 2008/2009	34
Table A.26.1	Total expenditures in public elementary and secondary schools per capita, Canada, provinces and territories, 2002/2003 to 2008/2009 (in current dollars)	35
Table A.26.2	Total expenditures in public elementary and secondary schools per capita, Canada, provinces and territories, 2002/2003 to 2008/2009 (in 2002 constant dollars)	36
Table A.27	Total expenditures in public elementary and secondary schools as a percentage of GDP, Canada, provinces and territories, 2002/2003 to 2008/2009	37

Table of contents

Table A.28	Total expenditures per student in public elementary and secondary schools as a percentage of GDP per capita, Canada, provinces and territories, 2002/2003 to 2008/2009	38
Table A.29	Total expenditures in public elementary and secondary schools as a percentage total expenditures by provincial and local governments, Canada, provinces and territories, 2002/2003 to 2008/2009	39
Table A.30	Total population estimates, Canada, provinces and territories, July 1 st , 2002 to 2008	40
Table A.31	School age population estimates (5 to 17 years), Canada, provinces and territories, July 1 st , 2002 to 2008	41
Table A.32	Gross domestic product, Canada, provinces and territories, 2002/2003 to 2008/2009 (in millions of current dollars)	42
Table A.33	Gross domestic product per capita, Canada, provinces and territories, 2002/2003 to 2008/2009 (in current dollars)	43
Table A.34	Average earnings for full-time, full-year workers with a Bachelor degree, Canada, provinces and territories, 2002/2003 to 2008/2009	44
Table A.35	Total expenditures by provincial and local governments, Canada, provinces and territories, 2002/2003 to 2008/2009 (in millions of current dollars)	45
Table A.36	Consumer price index, Canada, provinces and territories, 2002/2003 to 2008/2009	46
Appendix 2: Definitions		47
Cumulative index		51

Note to readers

1. The number of graduates is at the end of the school year, while population estimates are as of July 1 of the corresponding school year. Late graduates are included in the calculations while graduates from private schools are not. For this reason, the methodology underestimates the actual graduation rate. The graduation rate should not be used to infer a dropout rate. The four programs that comprise the graduate pool are: regular programs for youth, adult upgrading programs (GED), vocational programs for youth and vocational programs for adults. Due to the small population in the three territories, changes in the number of graduates may yield high percentage changes from year to year.

2. The graduation rate used by the Elementary Secondary Education Survey (ESES) is aligned with the Organization for Economic Cooperation and Development (OECD) requirements in order to ensure that Canadian graduation rate data can be compared with other nations. It is calculated by dividing the number of graduates by the average of the 17 and 18 year old population:

$$\text{Graduation rate} = \frac{\text{Graduates (High school graduates (youth and adults) and Vocational program graduates (youth and adults))}}{\text{Average number of the 17 and 18 year-old population}}$$

Due to differences in reporting, comparing graduation rate data between jurisdictions should be done with caution.

3. The term “educator” refers to not only a teacher, but to all employees in the public school system who are required to have teaching certification as a condition of their employment.

This definition generally includes principals, vice-principals and professional non-teaching staff such as education consultants, guidance counselors and religious and pastoral counselors.

4. Note that the student-educator ratio is not the same as the student-teacher ratio. The student-educator ratio includes teachers, as well as personnel outside of the classroom, such as principals, counselors and specialists.

5. Changes in methodology for Alberta does not allow for data comparability prior to 2004/2005, as well as for Nova Scotia, prior to 2005/2006 for the Average Remuneration of Educators.

Appendix 1: Tables

Table A.1

Headcount enrolments in public elementary and secondary schools, Canada, provinces and territories, 2002/2003 to 2008/2009

	Canada	N.L.	P.E.I.	N.S.	N.B.	Que.	Ont.	Man.	Sask.	Alta.	B.C.	Y.T.	N.W.T.	Nvt.
2002/2003	5,352,040	84,337	23,242	150,599	120,600	1,244,943	2,164,940	186,892	184,605	554,397	613,227	5,610	9,747	8,901
Percentage change	-0.2	-3.0	1.7	-1.9	-1.8	0.0	0.1	-1.1	0.9	1.1	-1.5	0.0	0.4	1.9
2003/2004	5,293,261	81,511	22,905	148,514	118,869	1,240,820	2,129,742	186,287	182,128	552,592	605,536	5,520	9,718	9,119
Percentage change	-1.1	-3.4	-1.4	-1.4	-1.4	-0.3	-1.6	-0.3	-1.3	-0.3	-1.3	-1.6	-0.3	2.4
2004/2005	5,255,616	79,483	22,393	145,396	117,145	1,232,663	2,123,904	184,352	178,709	550,983	596,168	5,459	9,607	9,354
Percentage change	-0.7	-2.5	-2.2	-2.1	-1.5	-0.7	-0.3	-1.0	-1.9	-0.3	-1.5	-1.1	-1.1	2.6
2005/2006	5,213,457	76,806	21,948	142,304	114,820	1,215,922	2,118,544	182,371	175,588	551,740	589,379	5,335	9,571	9,129
Percentage change	-0.8	-3.4	-2.0	-2.1	-2.0	-1.4	-0.3	-1.1	-1.7	0.1	-1.1	-2.3	-0.4	-2.4
2006/2007	5,169,516	74,345	21,365	138,661	112,013	1,204,540	2,103,464	180,043	172,109	560,563	578,797	5,227	9,332	9,065
Percentage change	-0.8	-3.2	-2.7	-2.6	-2.4	-0.9	-0.7	-1.3	-2.0	1.6	-1.8	-2.0	-2.5	-0.7
2007/2008	5,116,727	72,109	20,813	135,303	110,288	1,188,853	2,087,588	179,320	168,622	559,118	571,415	5,227	9,048	9,023
Percentage change	-1.0	-3.0	-2.6	-2.4	-1.5	-1.3	-0.8	-0.4	-2.0	-0.3	-1.3	0.0	-3.0	-0.5
2008/2009	5,088,789	70,641	20,324	133,134	108,407	1,186,886	2,070,736	177,962	167,553	564,051	566,048	5,005	8,762	9,280
Percentage change	-0.5	-2.0	-2.3	-1.6	-1.7	-0.2	-0.8	-0.8	-0.6	0.9	-0.9	-4.2	-3.2	2.8

0 true zero or a value rounded to zero

Chart A.1.1
Percentage change between 2007/2008 and 2008/2009

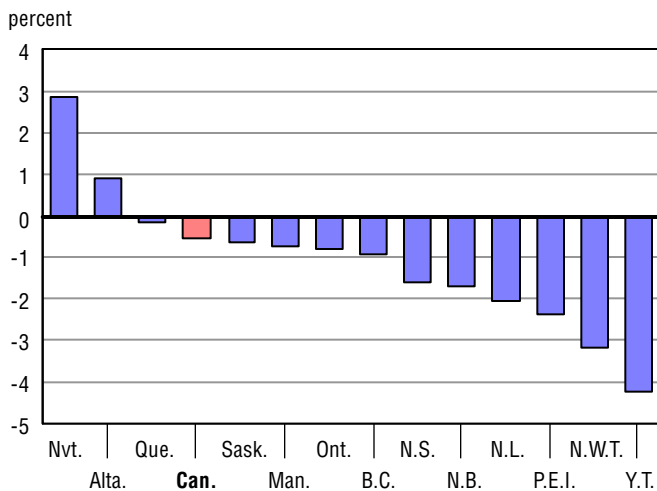


Chart A.1.2
Percentage change between 2002/2003 and 2008/2009

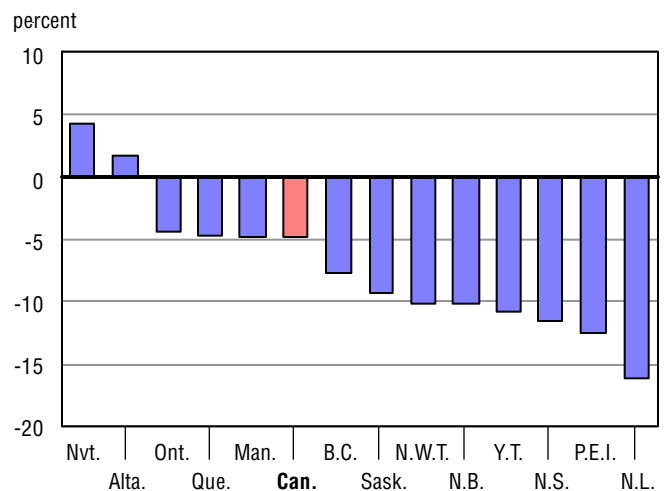


Table A.2

Full-time equivalent enrolments in public elementary and secondary schools, Canada, provinces and territories, 2002/2003 to 2008/2009

	Canada	N.L.	P.E.I.	N.S.	N.B.	Que.	Ont.	Man.	Sask.	Alta.	B.C.	Y.T.	N.W.T.	Nvt.
2002/2003	5,024,286	81,707	23,242	150,599	120,600	1,083,082	2,049,535	180,723	178,510	536,035	596,858	5,412	9,422	8,564
Percentage change	-0.2	-3.0	1.7	-1.9	-1.8	-0.5	0.2	-0.9	0.8	1.2	-1.4	0.3	0.9	2.1
2003/2004	4,963,209	78,967	22,905	148,514	118,869	1,075,140	2,015,627	180,132	175,897	533,834	589,854	5,327	9,346	8,799
Percentage change	-1.2	-3.4	-1.4	-1.4	-1.4	-0.7	-1.7	-0.3	-1.5	-0.4	-1.2	-1.6	-0.8	2.7
2004/2005	4,926,376	76,903	22,393	145,396	117,145	1,065,214	2,012,093	178,256	172,452	532,063	580,965	5,272	9,220	9,005
Percentage change	-0.7	-2.6	-2.2	-2.1	-1.5	-0.9	-0.2	-1.0	-2.0	-0.3	-1.5	-1.0	-1.3	2.3
2005/2006	4,889,303	74,328	21,948	142,304	114,820	1,053,200	2,006,732	176,350	169,302	532,876	574,428	5,148	9,090	8,779
Percentage change	-0.8	-3.3	-2.0	-2.1	-2.0	-1.1	-0.3	-1.1	-1.8	0.2	-1.1	-2.4	-1.4	-2.5
2006/2007	4,836,484	71,945	21,365	138,661	112,013	1,033,868	1,991,157	174,107	165,590	540,880	563,939	5,040	9,198	8,723
Percentage change	-1.1	-3.2	-2.7	-2.6	-2.4	-1.8	-0.8	-1.3	-2.2	1.5	-1.8	-2.1	1.2	-0.6
2007/2008	4,781,704	69,733	20,813	135,303	110,288	1,015,195	1,976,773	173,392	162,182	538,611	556,779	5,015	8,928	8,694
Percentage change	-1.1	-3.1	-2.6	-2.4	-1.5	-1.8	-0.7	-0.4	-2.1	-0.4	-1.3	-0.5	-2.9	-0.3
2008/2009	4,735,867	68,255	20,324	133,134	108,407	998,251	1,958,840	172,045	160,362	542,581	551,321	4,804	8,628	8,917
Percentage change	-1.0	-2.1	-2.3	-1.6	-1.7	-1.7	-0.9	-0.8	-1.1	0.7	-1.0	-4.2	-3.4	2.6

Chart A.2.1
Percentage change between 2007/2008 and 2008/2009

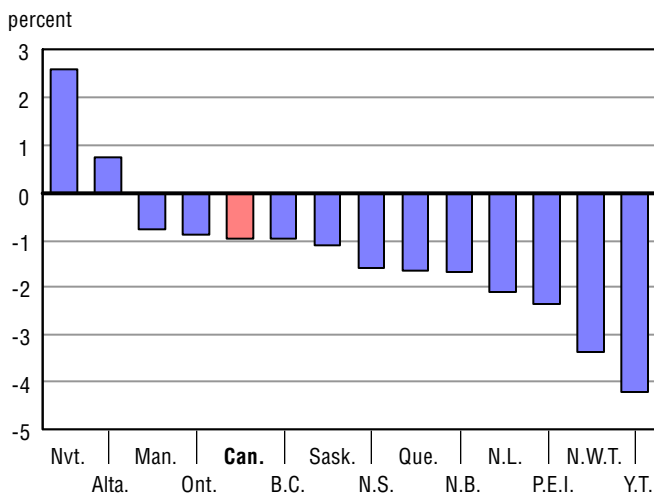


Chart A.2.2
Percentage change between 2002/2003 and 2008/2009

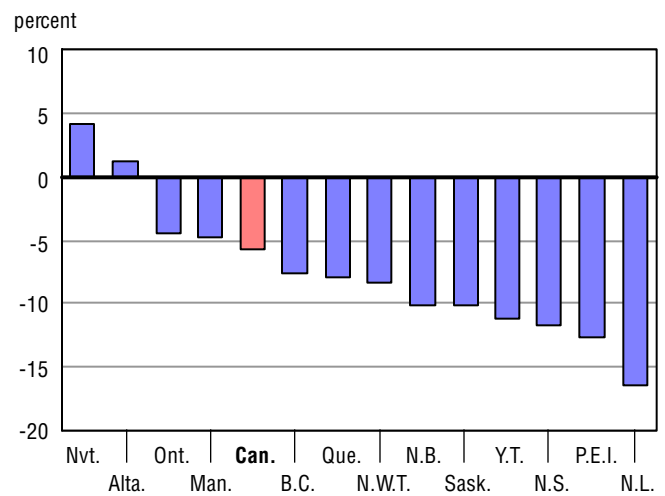


Table A.3

Enrolments in public elementary and secondary schools as a percentage of total population, Canada, provinces and territories, 2002/2003 to 2008/2009

	Canada	N.L.	P.E.I.	N.S.	N.B.	Que.	Ont.	Man.	Sask.	Alta.	B.C.	Y.T.	N.W.T.	Nvt.
2002/2003	16.9	16.3	16.9	16.1	16.1	16.6	17.7	16.1	18.5	17.4	14.9	18.1	22.9	30.4
Percentage change	-2.1	-2.4	1.3	-2.4	-1.7	-1.2	-2.7	-2.1	1.2	-2.8	-2.6	-2.6	-3.6	-2.3
2003/2004	16.6	15.8	16.6	15.8	15.9	16.5	17.2	15.9	18.3	17.1	14.6	17.5	22.4	30.5
Percentage change	-2.0	-3.2	-1.8	-1.6	-1.4	-1.0	-2.8	-1.2	-1.4	-2.1	-2.0	-3.2	-2.0	0.6
2004/2005	16.3	15.5	16.2	15.5	15.7	16.3	17.0	15.6	18.0	16.6	14.2	17.1	22.1	30.8
Percentage change	-1.6	-1.9	-2.5	-1.9	-1.3	-1.3	-1.4	-1.4	-1.5	-2.8	-2.5	-2.4	-1.4	1.0
2005/2006	16.0	15.1	15.9	15.2	15.4	15.9	16.7	15.4	17.7	16.1	13.9	16.5	22.2	29.6
Percentage change	-1.8	-2.6	-1.9	-2.1	-1.7	-2.0	-1.3	-1.6	-1.6	-2.8	-2.2	-3.4	0.1	-3.9
2006/2007	15.7	14.7	15.5	14.8	15.0	15.7	16.4	15.1	17.2	16.0	13.4	16.0	21.4	29.0
Percentage change	-1.9	-2.5	-2.8	-2.3	-2.4	-1.7	-1.7	-2.1	-2.8	-1.1	-3.3	-3.0	-3.3	-2.2
2007/2008	15.4	14.2	14.9	14.4	14.8	15.3	16.1	14.9	16.6	15.5	13.0	15.8	20.7	28.5
Percentage change	-2.2	-3.0	-3.5	-2.5	-1.7	-2.1	-1.8	-1.4	-3.3	-2.6	-3.0	-1.8	-3.4	-1.6
2008/2009	15.1	13.9	14.4	14.2	14.5	15.2	15.8	14.6	16.3	15.3	12.7	14.9	20.2	28.8
Percentage change	-1.8	-2.5	-3.4	-1.8	-2.0	-1.1	-1.8	-2.0	-2.2	-1.6	-2.5	-5.6	-2.5	1.1

Note: Table A.3 = Table A.1 (Enrolments) divided by Table A.30 (Total population estimates).

Chart A.3.1
Enrolments as a percentage of total population, 2008/2009

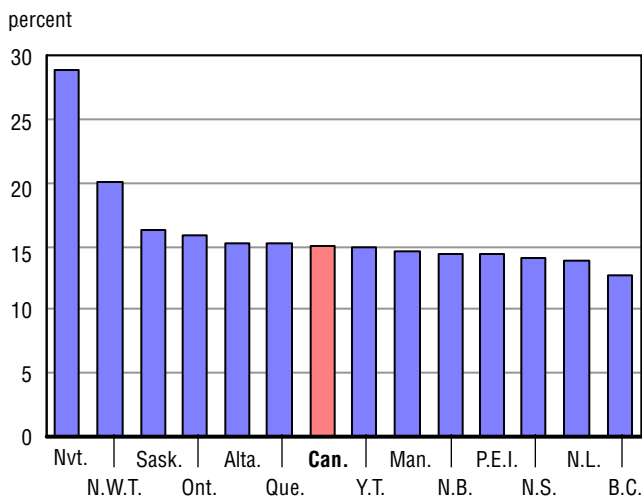


Chart A.3.2
Percentage change between 2002/2003 and 2008/2009

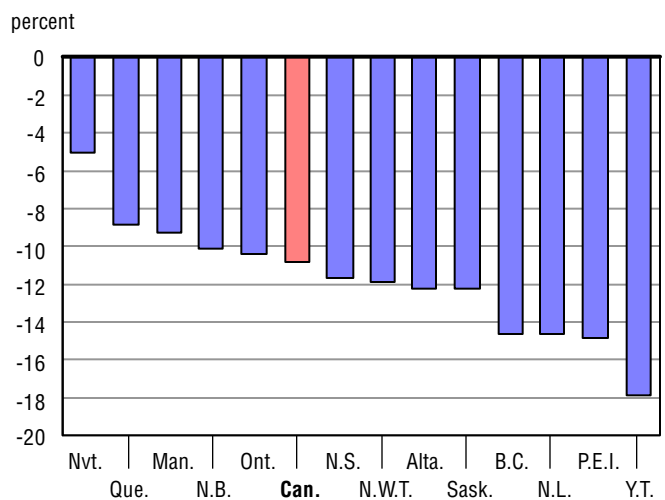
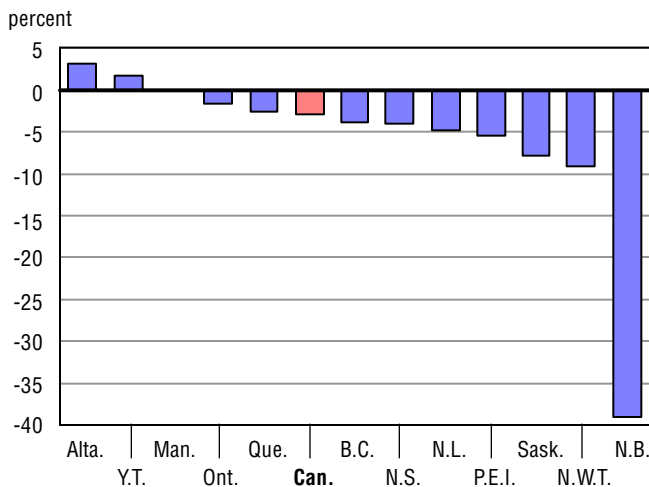


Table A.4
Regular second language program enrolments in public elementary and secondary schools, Canada, provinces and territories, 2002/2003 to 2008/2009¹

	Canada	N.L.	P.E.I.	N.S.	N.B. ²	Que. ³	Ont.	Man.	Sask.	Alta.	B.C.	Y.T.	N.W.T.	Nvt.
2002/2003	2,183,291	43,462	10,546	69,358	46,367	651,557	871,280	70,853	71,943	109,593	232,814	2,736	2,782	.
Percentage change	-1.4	-3.7	1.6	-3.3	-2.4	0.0	-1.3	-1.2	-4.1	-4.2	-2.4	-4.4	-0.5	.
2003/2004	2,156,369	43,352	10,020	67,269	46,672	650,111	861,251	70,852	66,545	110,459	224,676	2,742	2,420	.
Percentage change	-1.2	-0.3	-5.0	-3.0	0.7	-0.2	-1.2	0.0	-7.5	0.8	-3.5	0.2	-13.0	.
2004/2005	2,130,185	41,917	9,943	64,001	45,021	647,715	852,723	69,647	59,814	111,497	223,065	2,439	2,403	.
Percentage change	-1.2	-3.3	-0.8	-4.9	-3.5	-0.4	-1.0	-1.7	-10.1	0.9	-0.7	-11.1	-0.7	.
2005/2006	2,101,136	40,451	9,460	61,001	44,686	641,881	841,033	69,693	54,237	118,646	215,826	2,254	1,968	.
Percentage change	-1.4	-3.5	-4.9	-4.7	-0.7	-0.9	-1.4	0.1	-9.3	6.4	-3.2	-7.6	-18.1	.
2006/2007	2,200,112	37,417	8,867	58,251	43,437	759,119	822,917	67,591	56,158	131,542	210,400	2,154	2,259	.
Percentage change	4.7	-7.5	-6.3	-4.5	-2.8	18.3	-2.2	-3.0	3.5	10.9	-2.5	-4.4	14.8	.
2007/2008	2,167,881	36,367	8,445	55,863	39,652	739,227	817,890	65,534	55,745	137,696	207,225	2,091	2,146	.
Percentage change	-1.5	-2.8	-4.8	-4.1	-8.7	-2.6	-0.6	-3.0	-0.7	4.7	-1.5	-2.9	-5.0	.
2008/2009	2,106,238	34,593	7,980	53,541	24,185	720,263	803,471	65,593	51,327	142,001	199,208	2,124	1,952	.
Percentage change	-2.8	-4.9	-5.5	-4.2	-39.0	-2.6	-1.8	0.1	-7.9	3.1	-3.9	1.6	-9.0	.

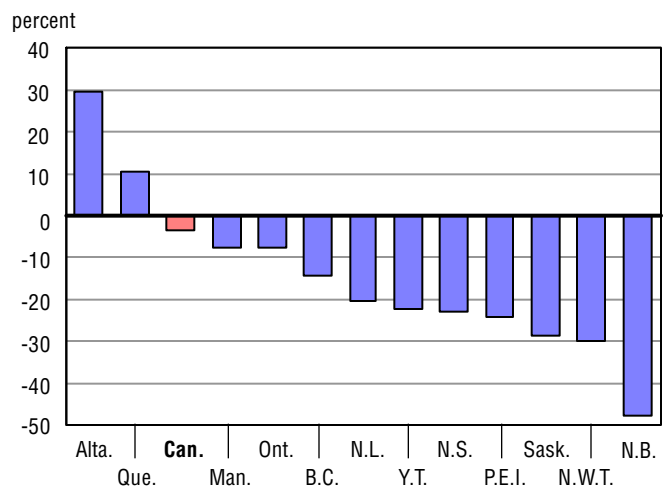
- .
- 0 not available for any reference period
- 0 true zero or a value rounded to zero
- 1. All jurisdictions, 2002/2003 to 2008/2009. Data is available for English second language programs for Québec. Data is available for French second language programs for the other provinces.
- 2. A significant overhaul of the French as a Second Language program began in September 2008. Since then, multiple offerings have been revised, discontinued or introduced at the primary division.
- 3. From 2001/2002 to 2005/2006 data is for students in grades 3 to 11. Data for 2006/2007 to 2008/2009 includes students from grades 1 to 11.

Chart A.4.1
Percentage change between 2007/2008 and 2008/2009



Note: Nvt. is excluded, data unavailable for entire period.

Chart A.4.2
Percentage change between 2002/2003 and 2008/2009



Note: Nvt. is excluded, data unavailable for entire period.

Table A.5

Second language immersion program enrolments in public elementary and secondary schools, Canada, provinces and territories, 2002/2003 to 2008/2009¹

	Canada	N.L.	P.E.I.	N.S.	N.B.	Que. ²	Ont. ³	Man.	Sask.	Alta.	B.C.	Y.T.	N.W.T.	Nvt. ²
2002/2003	280,219	5,690	3,972	13,154	22,639	0	147,792	17,174	9,172	27,653	31,990	371	612	0
Percentage change	0.5	5.5	4.7	6.9	-0.8	...	-0.8	0.1	5.8	0.6	2.7	8.2	0.7	...
2003/2004	282,839	6,068	4,223	13,753	22,145	0	148,512	17,249	8,288	28,197	33,407	385	612	0
Percentage change	0.9	6.6	6.3	4.6	-2.2	...	0.5	0.4	-9.6	2.0	4.4	3.8	0.0	...
2004/2005	288,970	6,477	3,923	14,181	21,868	0	150,477	17,429	8,650	29,414	35,519	410	622	0
Percentage change	2.2	6.7	-7.1	3.1	-1.3	...	1.3	1.0	4.4	4.3	6.3	6.5	1.6	...
2005/2006	295,197	6,823	4,164	14,341	21,526	0	152,723	17,604	8,472	30,452	38,002	444	646	0
Percentage change	2.2	5.3	6.1	1.1	-1.6	...	1.5	1.0	-2.1	3.5	7.0	8.3	3.9	...
2006/2007	304,292	7,222	4,108	14,625	21,285	0	158,405	17,871	8,858	31,317	39,509	462	630	0
Percentage change	3.1	5.8	-1.3	2.0	-1.1	...	3.7	1.5	4.6	2.8	4.0	4.1	-2.5	...
2007/2008	311,051	7,501	4,246	14,683	20,719	0	162,321	18,214	9,114	32,060	40,996	536	661	0
Percentage change	2.2	3.9	3.4	0.4	-2.7	...	2.5	1.9	2.9	2.4	3.8	16.0	4.9	...
2008/2009	317,590	8,008	4,237	15,055	18,658	0	167,215	18,563	9,346	32,797	42,471	576	664	0
Percentage change	2.1	6.8	-0.2	2.5	-9.9	...	3.0	1.9	2.5	2.3	3.6	7.5	0.5	...

... not applicable

0 true zero or a value rounded to zero

1. All jurisdictions, 2002/2003 to 2008/2009. Data is available for French immersion.

2. There is no Second Language Immersion Program in Quebec and Nunavut.

3. Includes French Immersion and Extended French programs, 2002/2003 to 2008/2009.

Chart A.5.1
Percentage change between 2007/2008 and 2008/2009

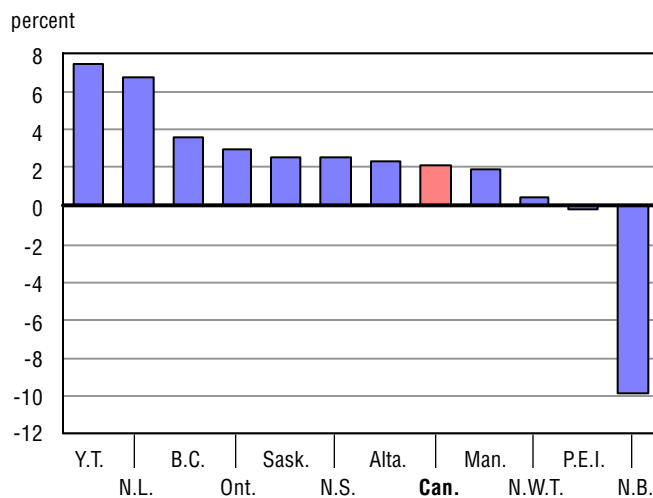


Chart A.5.2
Percentage change between 2002/2003 and 2008/2009

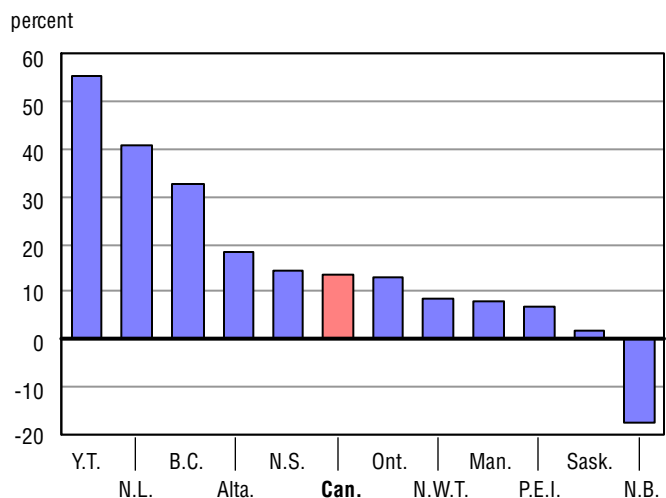


Table A.6
Minority language program enrolments in public elementary and secondary schools, Canada, provinces and territories, 2002/2003 to 2008/2009¹

	Canada	N.L.	P.E.I.	N.S.	N.B.	Que.	Ont.	Man.	Sask.	Alta.	B.C.	Y.T.	N.W.T.	Nvt.
2002/2003	254,211	230	630	4,059	36,025	107,928	92,351	5,274	1,026	3,474	2,930	115	129	40
Percentage change	-0.1	-7.3	3.3	0.7	-2.9	1.0	-0.5	-0.7	0.1	5.9	2.0	-12.2	-3.0	0.0
2003/2004	251,748	210	664	4,153	35,070	108,161	90,138	5,242	1,060	3,619	3,146	119	128	38
Percentage change	-1.0	-8.7	5.4	2.3	-2.7	0.2	-2.4	-0.6	3.3	4.2	7.4	3.5	-0.8	-5.0
2004/2005	250,754	193	673	4,121	34,326	107,715	89,839	5,207	1,054	3,871	3,455	116	137	47
Percentage change	-0.4	-8.1	1.4	-0.8	-2.1	-0.4	-0.3	-0.7	-0.6	7.0	9.8	-2.5	7.0	23.7
2005/2006	249,390	203	697	4,153	33,460	106,361	90,075	5,250	1,124	4,138	3,632	110	143	44
Percentage change	-0.5	5.2	3.6	0.8	-2.5	-1.3	0.3	0.8	6.6	6.9	5.1	-5.2	4.4	-6.4
2006/2007	247,131	222	705	4,124	32,353	104,129	90,217	5,338	1,132	4,737	3,816	147	163	48
Percentage change	-0.9	9.4	1.1	-0.7	-3.3	-2.1	0.2	1.7	0.7	14.5	5.1	33.6	14.0	9.1
2007/2008	245,276	251	694	4,256	31,725	101,285	91,071	5,378	1,118	5,161	3,964	143	181	49
Percentage change	-0.8	13.1	-1.6	3.2	-1.9	-2.7	0.9	0.7	-1.2	9.0	3.9	-2.7	11.0	2.1
2008/2009	243,494	269	712	4,358	31,119	98,842	91,830	5,323	1,162	5,254	4,221	158	193	53
Percentage change	-0.7	7.2	2.6	2.4	-1.9	-2.4	0.8	-1.0	3.9	1.8	6.5	10.5	6.6	8.2

0 true zero or a value rounded to zero

1. All jurisdictions, 2002/2003 to 2008/2009. Data is available for English minority language programs for Québec. Data is available for French minority language programs for the other provinces.

Chart A.6.1
Percentage change between 2007/2008 and 2008/2009

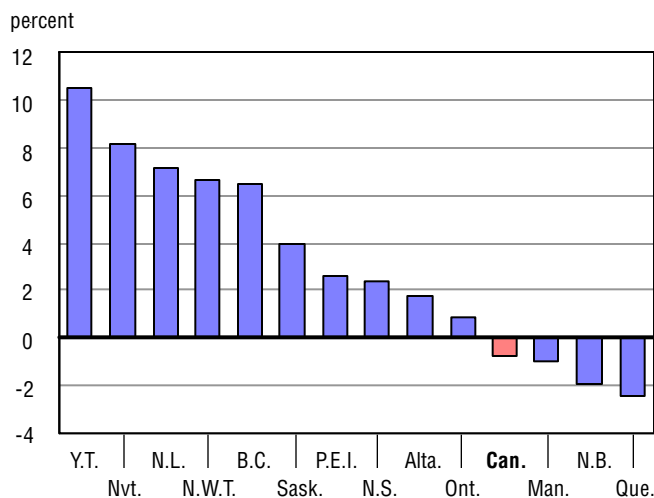


Chart A.6.2
Percentage change between 2002/2003 and 2008/2009

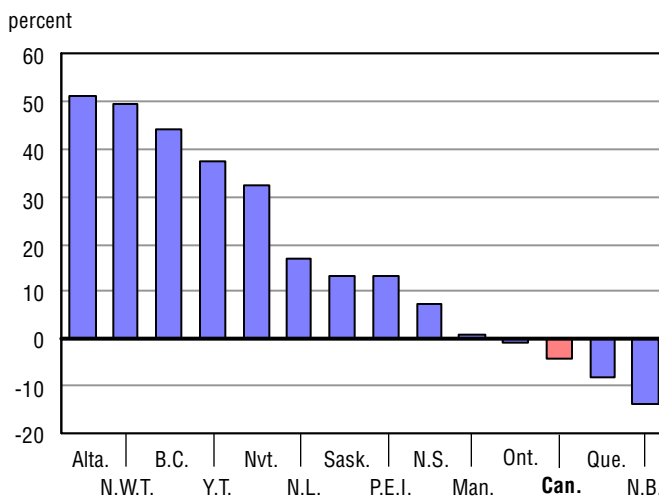


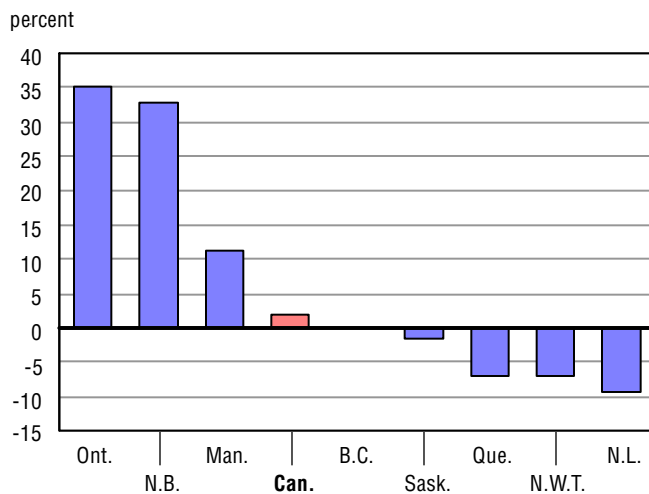
Table A.7

Headcount enrolments in Aboriginal Language Programs, Canada, provinces and territories, 2002/2003 to 2008/2009

	Canada ¹	N.L.	P.E.I.	N.S.	N.B.	Que.	Ont.	Man.	Sask.	Alta.	B.C.	Y.T.	N.W.T.	Nvt.
2002/2003	46,483	576	0	0	55 ^e	2,178	3,887	1,079	7,386	..	27,233	0	4,089 ^e	..
Percentage change	-2.5	-6.0	22.2	0.4	-8.9	-4.0	-0.2	..	-3.0	...	2.0	..
2003/2004	46,518	542	0	0	65 ^e	2,085	4,076	1,089	7,095	..	27,460	0	4,106 ^e	..
Percentage change	0.1	-11.6	18.2	-4.3	4.9	0.9	-3.9	..	0.8	...	0.4	..
2004/2005	47,612	516	0	0	79	2,009	4,013	1,059	7,151	..	28,691	0	4,094 ^e	..
Percentage change	2.4	-10.4	21.5	-3.6	-1.5	-2.8	0.8	..	4.5	...	-0.3	..
2005/2006	47,858	481	0	0	101	1,977	4,003	1,131	6,914	..	29,202	0	4,049 ^e	..
Percentage change	0.5	-11.3	27.8	-1.6	-0.2	6.8	-3.3	..	1.8	...	-1.1	..
2006/2007	47,261	430	0	0	130	2,021	3,972	969	6,447	..	29,259	0	4,033 ^e	..
Percentage change	-1.2	-16.7	28.7	2.2	-0.8	-14.3	-6.8	..	0.2	...	-0.4	..
2007/2008	46,961	419	0	0	146	2,085	3,644	991	6,259	..	29,482	0	3,935 ^e	..
Percentage change	-0.6	-12.9	12.3	3.2	-8.3	2.3	-2.9	..	0.8	...	-2.4	..
2008/2009	47,860	390	0	0	194	1,943	4,922	1,103	6,164	..	29,477	0	3,667 ^e	..
Percentage change	1.9	-9.3	32.9	-6.8	35.1	11.3	-1.5	..	0.0	...	-6.8	..

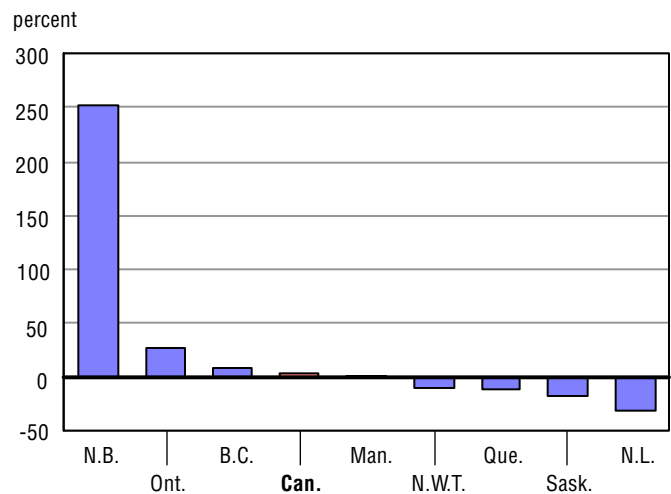
.. not available for a specific reference period
 ... not applicable
^e estimate
 0 true zero or a value rounded to zero
 1. The Canada total does not include data from Alberta and Nunavut.

Chart A.7.1
Percentage change between 2007/2008 and 2008/2009



Note: Nvt. and Alta. are excluded, data unavailable for entire period.

Chart A.7.2
Percentage change between 2002/2003 and 2008/2009



Note: Nvt. and Alta. are excluded, data unavailable for entire period.

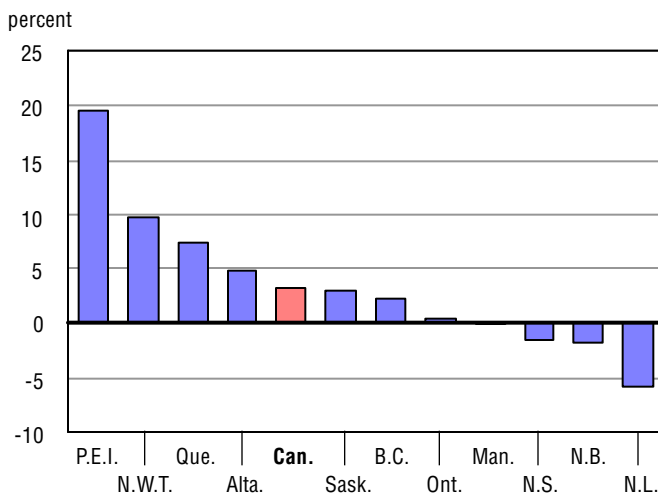
Table A.8

Headcount enrolments in Special Needs Education, Canada, provinces and territories, 2002/2003 to 2008/2009

	Canada	N.L.	P.E.I.	N.S.	N.B.	Que.	Ont.	Man.	Sask.	Alta.	B.C.	Y.T.	N.W.T.	Nvt.
2002/2003	544,241	11,970	2,978	21,987 ^e	17,608 ^e	135,302	185,331	3,607	38,413 ^e	78,474	46,733	..	1,838 ^e	..
Percentage change	2.3	1.7	0.7	-1.7	-1.8	15.2	-2.4	-4.0	1.3	-1.0	-4.5
2003/2004	551,345	11,567	4,859	21,683 ^e	17,355 ^e	145,456	187,375	3,801	38,872 ^e	71,332	47,207	..	1,838 ^e	..
Percentage change	1.3	-3.4	63.2	-1.4	-1.4	7.5	1.1	5.4	1.2	-9.1	1.0	..	0.0	..
2004/2005	557,509	11,823	5,238	21,228 ^e	17,103 ^e	147,981	190,272	3,928	41,030	68,624	48,444	..	1,838 ^e	..
Percentage change	1.1	2.2	7.8	-2.1	-1.5	1.7	1.5	3.3	5.6	-3.8	2.6	..	0.0	..
2005/2006	565,472	12,146	5,021	20,776 ^e	16,764 ^e	152,742	191,929	4,384	42,983	67,733	49,156	..	1,838 ^e	..
Percentage change	1.4	2.7	-4.1	-2.1	-2.0	3.2	0.9	11.6	4.8	-1.3	1.5	..	0.0	..
2006/2007	561,392	11,708	5,501	20,245 ^e	16,354 ^e	150,202	190,874	4,756	44,067 ^e	68,201	48,138	..	1,346	..
Percentage change	-0.7	-3.6	9.6	-2.6	-2.4	-1.7	-0.5	8.5	2.5	0.7	-2.1	..	-26.8	..
2007/2008	565,777	12,407	5,909	19,754 ^e	16,102 ^e	149,919	192,044	5,644	45,517	68,713	47,781	..	1,987	..
Percentage change	0.8	6.0	7.4	-2.4	-1.5	-0.2	0.6	18.7	3.3	0.8	-0.7	..	47.6	..
2008/2009	583,672	11,692	7,056	19,438 ^e	15,827 ^e	161,109	192,930	5,642	46,879	72,075	48,843	..	2,181	..
Percentage change	3.2	-5.8	19.4	-1.6	-1.7	7.5	0.5	0.0	3.0	4.9	2.2	..	9.8	..

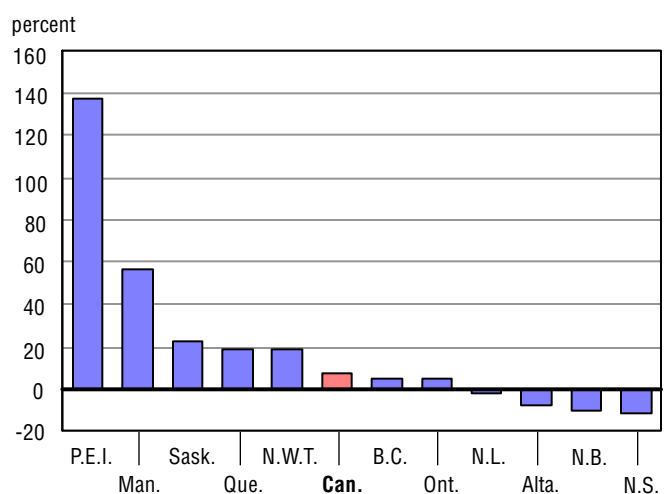
.. not available for a specific reference period
^e estimate
 0 true zero or a value rounded to zero

Chart A.8.1
 Percentage change between 2007/2008 and 2008/2009



Note: Nvt. and Y.T. are excluded, data unavailable for entire period.

Chart A.8.2
 Percentage change between 2002/2003 and 2008/2009



Note: Nvt. and Y.T. are excluded, data unavailable for entire period.

Table A.9
Enrolment in the Special Needs Program, as a percentage of total enrolment, 2002/2003 to 2008/2009

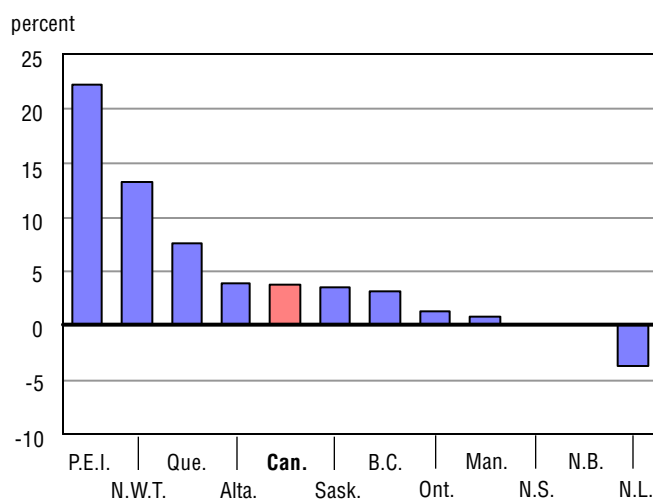
	Canada	N.L.	P.E.I.	N.S.	N.B.	Que.	Ont.	Man.	Sask.	Alta.	B.C.	Y.T.	N.W.T.	Nvt.
2002/2003	10.2	14.2	12.8	14.6 ^e	14.6 ^e	10.9	8.6	1.9	20.8 ^e	14.2	7.6	..	18.9 ^e	..
Percentage change	2.4	4.9	-1.0	0.2	0.0	15.1	-2.5	-3.0	0.4	-2.1	-3.0
2003/2004	10.4	14.2	21.2	14.6 ^e	14.6 ^e	11.7	8.8	2.0	21.3 ^e	12.9	7.8	..	18.9 ^e	..
Percentage change	2.4	0.0	65.6	0.0	0.0	7.9	2.8	5.7	2.6	-8.8	2.3	..	0.3	..
2004/2005	10.6	14.9	23.4	14.6 ^e	14.6 ^e	12.0	9.0	2.1	23.0	12.5	8.1	..	19.1 ^e	..
Percentage change	1.8	4.8	10.3	0.0	0.0	2.4	1.8	4.4	7.6	-3.5	4.2	..	1.2	..
2005/2006	10.8	15.8	22.9	14.6 ^e	14.6 ^e	12.6	9.1	2.4	24.5	12.3	8.3	..	19.2 ^e	..
Percentage change	2.2	6.3	-2.2	0.0	0.0	4.6	1.1	12.8	6.6	-1.4	2.6	..	0.4	..
2006/2007	10.9	15.7	25.7	14.6 ^e	14.6 ^e	12.5	9.1	2.6	25.6 ^e	12.2	8.3	..	14.4	..
Percentage change	0.1	-0.4	12.5	0.0	0.0	-0.7	0.2	9.9	4.6	-0.9	-0.3	..	-24.9	..
2007/2008	11.1	17.2	28.4	14.6 ^e	14.6 ^e	12.6	9.2	3.1	27.0	12.3	8.4	..	22.0	..
Percentage change	1.8	9.3	10.3	0.0	0.0	1.1	1.4	19.1	5.4	1.0	0.5	..	52.3	..
2008/2009	11.5	16.6	34.7	14.6 ^e	14.6 ^e	13.6	9.3	3.2	28.0	12.8	8.6	..	24.9	..
Percentage change	3.7	-3.8	22.3	0.0	0.0	7.6	1.3	0.7	3.6	4.0	3.2	..	13.3	..

.. not available for a specific reference period

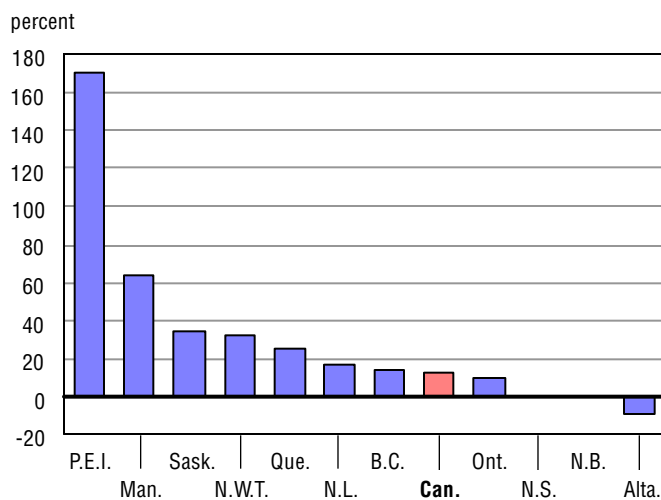
^e estimate

0 true zero or a value rounded to zero

Note: Table A.9 = Table A.8 (Enrolment in Special Needs Education) divided by Table A.1 (Headcount enrolments).

Chart A.9.1
Percentage change between 2007/2008 and 2008/2009


Note: Nvt. and Y.T. are excluded, data unavailable for entire period.

Chart A.9.2
Percentage change between 2002/2003 and 2008/2009


Note: Nvt. and Y.T. are excluded, data unavailable for entire period.

Table A.10
Number of graduates, Canada, provinces and territories, 2002/2003 to 2008/2009

	Canada	N.L.	P.E.I.	N.S.	N.B.	Que. ¹	Ont.	Man. ²	Sask.	Alta.	B.C. ³	Y.T.	N.W.T.	Nvt.
2002/2003	329,221	5,960	1,753	10,387	8,291	61,586	143,187	11,052	12,445	31,109	42,725	264	321	141
Percentage change	5.8	-2.0	5.2	5.5	-3.3	-4.3	14.7	4.5	-2.3	4.5	1.7	-0.8	19.3	2.9
2003/2004	310,519	5,650	1,734	10,483	7,996	64,173	123,238	11,373	12,107	32,033	40,920	315	363	134
Percentage change	-5.7	-5.2	-1.1	0.9	-3.6	4.2	-13.9	2.9	-2.7	3.0	-4.2	19.3	13.1	-5.0
2004/2005	313,899	5,521	1,695	10,407	8,200	65,144	124,902	11,191	12,223	31,847	41,882	316	393	178
Percentage change	1.1	-2.3	-2.2	-0.7	2.6	1.5	1.4	-1.6	1.0	-0.6	2.4	0.3	8.3	32.8
2005/2006	310,474	5,276	1,736	10,298	8,299	66,971	118,099	11,183	12,486	32,287	42,929	311	414	185
Percentage change	-1.1	-4.4	2.4	-1.0	1.2	2.8	-5.4	-0.1	2.2	1.4	2.5	-1.6	5.3	3.9
2006/2007	320,438	5,465	1,746	10,440	7,977	69,683	126,048	11,523	12,106	33,115	41,413	316	407	199
Percentage change	3.2	3.6	0.6	1.4	-3.9	4.0	6.7	3.0	-3.0	2.6	-3.5	1.6	-1.7	7.6
2007/2008	330,932	5,411	1,771	10,570	8,030	73,118	131,283	11,882	11,974	33,344	42,540	347	451	211
Percentage change	3.3	-1.0	1.4	1.2	0.7	4.9	4.2	3.1	-1.1	0.7	2.7	9.8	10.8	6.0
2008/2009	341,744	5,106	1,764	10,296	8,095	74,140	141,572	11,995	11,660	33,722	42,365	323	459	247
Percentage change	3.3	-5.6	-0.4	-2.6	0.8	1.4	7.8	1.0	-2.6	1.1	-0.4	-6.9	1.8	17.1

1. The private sector, excluded from these figures, is quite important in Quebec and represents roughly 15% of the number of graduates annually. Thus, the number of graduates in this table for Quebec represents less than 85% of the total number of graduates.
2. Historical revisions have been made to this table to exclude students who graduated from Adult Learning Centres registered under the *Adult Learning Centres Act*, effective July 2001. This has the effect of understating the number of graduates and the associated graduation rate for Manitoba as compared to other provinces and jurisdictions and should not be considered directly comparable.
3. The number of graduates in the final year is understated by 2 - 3% because some schools have not submitted course information before the data collection cutoff for this report.

Chart A.10.1
Percentage change between 2007/2008 and 2008/2009

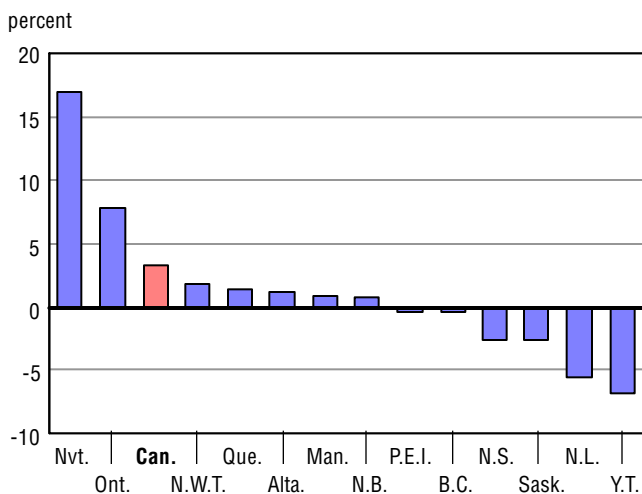


Chart A.10.2
Percentage change between 2002/2003 and 2008/2009

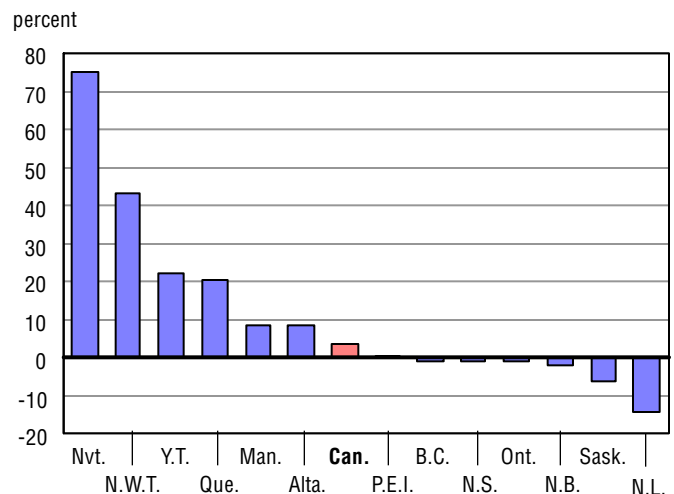


Table A.11
Graduation rate^{1,2}, Canada, provinces and territories, 2002/2003 to 2008/2009

	Canada	N.L.	P.E.I.	N.S.	N.B.	Que.	Ont.	Man. ³	Sask.	Alta.	B.C.	Y.T.	N.W.T.	Nvt.
2002/2003	76.4	79.0	83.3	81.7	82.2	66.3	85.4	65.7	78.5	65.1	76.7	52.2	47.7	25.0
Percentage change	5.0	2.6	2.8	6.2	-0.8	-4.0	12.6	4.0	-1.0	1.3	4.8	-1.4	17.4	-1.6
2003/2004	72.6	78.9	84.5	83.3	81.5	70.9	73.2	67.3	77.7	66.4	74.7	68.0	52.5	23.3
Percentage change	-5.0	0.0	1.4	1.9	-0.8	6.9	-14.2	2.3	-1.0	2.0	-2.5	30.4	10.1	-6.7
2004/2005	73.9	80.3	86.8	83.2	85.3	73.6	74.1	66.4	80.5	66.1	76.3	65.2	54.0	29.2
Percentage change	1.7	1.8	2.8	-0.1	4.6	3.8	1.1	-1.3	3.6	-0.4	2.1	-4.1	2.8	25.1
2005/2006	71.1	77.5	87.8	81.4	85.4	73.2	68.5	65.1	80.7	65.4	75.6 ⁴	63.8	57.9	28.5
Percentage change	-3.7	-3.6	1.1	-2.2	0.2	-0.6	-7.6	-2.0	0.2	-1.0	-0.9	-2.2	7.3	-2.5
2006/2007	70.7	78.8	85.3	80.7	80.9	70.9	70.6	64.4	76.2	65.1	71.0 ⁴	67.7	55.4	29.8
Percentage change	-0.6	1.7	-2.8	-0.8	-5.2	-3.1	3.2	-1.0	-5.5	-0.5	-6.1	6.2	-4.4	4.6
2007/2008	71.8	78.6	84.4	81.8	80.6	71.1	72.6	65.2	75.7	65.7	72.7 ⁴	71.9	57.8	31.8
Percentage change	1.6	-0.3	-1.0	1.3	-0.4	0.2	2.8	1.2	-0.7	0.9	2.5	6.2	4.3	6.9
2008/2009	74.8	78.6	82.1	82.1	82.7	71.8	79.0	66.1	76.3	67.4	73.3 ⁴	67.3	56.6	39.3
Percentage change	4.2	0.0	-2.7	0.4	2.6	1.0	8.8	1.4	0.8	2.6	0.8	-6.4	-2.0	23.5

0 true zero or a value rounded to zero

1. The number of graduates is as of the end of a school year while the population estimates are as of July 1 of the corresponding school year. Late graduates are included in the calculations while graduates from private schools, are not. For this reason, this methodology underestimates the "final" graduation rate and should not be used to infer dropout rate.
2. Data are not comparable between jurisdictions.
3. Historical revisions have been made to this table to exclude students who graduated from Adult Learning Centres registered under the *Adult Learning Centres Act*, effective July 2001. This has the effect of understating the number of graduates and the associated graduation rate for Manitoba as compared to other provinces and jurisdictions and should not be considered directly comparable.
4. The graduation rate in the final year is slightly understated because some schools have not submitted course information before the data collection cutoff for this report.

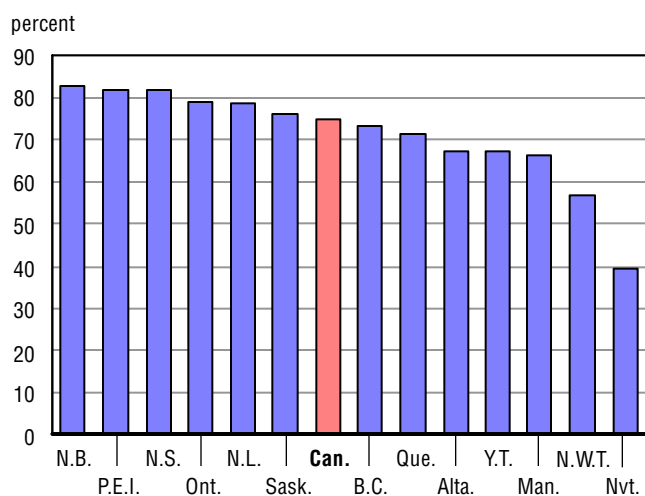
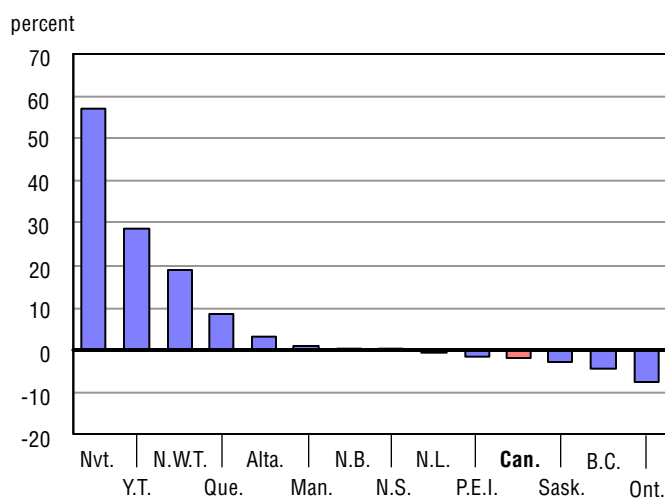
Chart A.11.1
Graduation rate, 2008/2009

Chart A.11.2
Percentage change between 2002/2003 and 2008/2009


Table A.12

Educators headcount in public elementary and secondary schools, Canada, provinces and territories, 2002/2003 to 2008/2009

	Canada	N.L.	P.E.I. ¹	N.S.	N.B.	Que.	Ont.	Man.	Sask. ²	Alta. ²	B.C.	Y.T.	N.W.T.	Nvt.
2002/2003	351,567	8,035	1,600	9,592	7,417	93,083	130,823	13,025	14,406	34,760 ³	37,150	491	645 ^e	537
Percentage change	0.4	-0.9	-11.7	-0.4	0.3	1.9	0.7	-0.3	20.9	-1.9	-6.8	0.2	0.2	0.4
2003/2004	353,767	7,822	1,589	9,613	7,473	93,360	129,913	13,117	15,268	37,349 ³	36,562	490	680 ^e	528 ^e
Percentage change	0.6	-2.7	-0.7	0.2	0.8	0.3	-0.7	0.7	6.0	7.4	-1.6	-0.2	5.4	-1.7
2004/2005	358,196	7,652	1,587	9,581	7,509	93,201	132,677	13,130	15,346	39,391	36,331	493	676 ^e	622 ^e
Percentage change	1.3	-2.2	-0.1	-0.3	0.5	-0.2	2.1	0.1	0.5	5.5	-0.6	0.6	-0.6	17.8
2005/2006	365,374	7,230	1,541	9,708	7,510	93,272	137,889	13,106	16,063	40,293	36,886	496	668 ^e	712 ^e
Percentage change	2.0	-5.5	-2.9	1.3	0.0	0.1	3.9	-0.2	4.7	2.3	1.5	0.6	-1.2	14.5
2006/2007	381,859	7,311	1,547	9,919	7,629	96,130	149,713	13,733	16,289	40,556	37,149	510	671 ^e	702 ^e
Percentage change	4.5	1.1	0.4	2.2	1.6	3.1	8.6	4.8	1.4	0.7	0.7	2.8	0.4	-1.4
2007/2008	387,676	7,395	1,581	9,973	7,899	96,221	154,963	13,752	16,296	40,542	37,118	517	715 ^e	704 ^e
Percentage change	1.5	1.2	2.2	0.5	3.5	0.1	3.5	0.1	0.0	0.0	-0.1	1.4	6.6	0.3
2008/2009	392,632	7,462	1,638	10,064	8,077	96,098	157,303	13,880	16,751	42,515	36,921	550	720 ^e	653 ^e
Percentage change	1.3	0.9	3.6	0.9	2.3	-0.1	1.5	0.9	2.8	4.9	-0.5	6.4	0.7	-7.2

^e estimate

0 true zero or a value rounded to zero

1. Educational Assistants are not included.

2. All educators in Lloydminster are included in Saskatchewan's counts and none of them are captured in the counts for Alberta.

3. Alberta data prior to 2004/2005 not comparable to more recent data due to change in methodology.

Chart A.12.1
Percentage change between 2007/2008 and 2008/2009

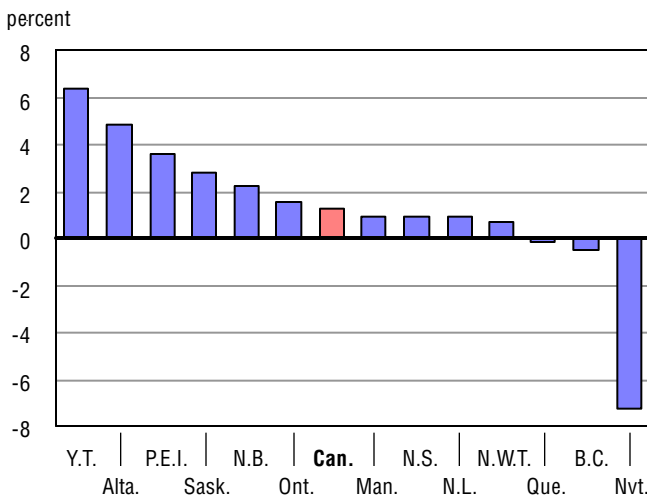


Chart A.12.2
Percentage change between 2002/2003 and 2008/2009

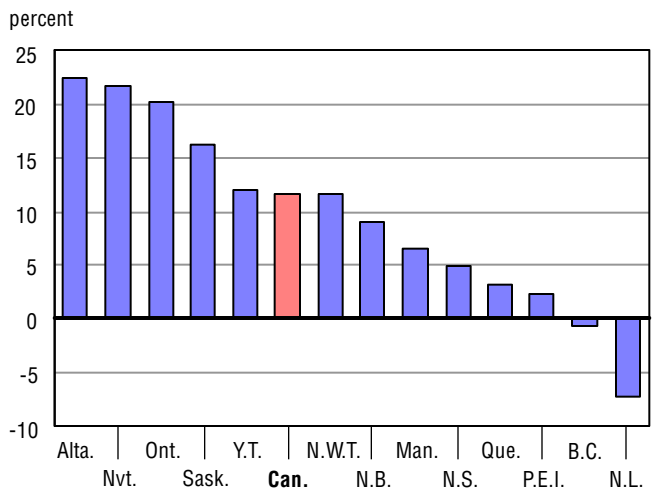


Table A.13

Full-time equivalent educators in public elementary and secondary schools, Canada, provinces and territories, 2002/2003 to 2008/2009

	Canada	N.L.	P.E.I. ¹	N.S.	N.B.	Que.	Ont.	Man.	Sask. ²	Alta. ²	B.C.	Y.T.	N.W.T.	Nvt.
2002/2003	317,612	6,155	1,446	9,276	7,285	76,025	126,888	12,129	13,487	29,513 ³	33,901	446	578	481
Percentage change	0.3	-3.1	-12.1	-0.3	0.3	1.5	0.5	-0.1	19.9	-1.5	-5.6	-1.3	0.1	0.5
2003/2004	316,698	5,953	1,456	9,306	7,330	76,077	125,967	12,169	14,176	29,391 ³	33,345	444	609	473
Percentage change	-0.3	-3.3	0.7	0.3	0.6	0.1	-0.7	0.3	5.1	-0.4	-1.6	-0.4	5.4	-1.7
2004/2005	320,295	5,702	1,451	9,268	7,371	75,194	128,712	12,245	14,320	31,262	33,146	460	606	557
Percentage change	1.1	-4.2	-0.3	-0.4	0.6	-1.2	2.2	0.6	1.0	6.4	-0.6	3.6	-0.5	17.8
2005/2006	325,056	5,556	1,422	9,394	7,385	74,830	132,106	12,278	14,863	31,813	33,701	470	599	638
Percentage change	1.5	-2.6	-2.0	1.4	0.2	-0.5	2.6	0.3	3.8	1.8	1.7	2.1	-1.1	14.5
2006/2007	333,076	5,515	1,436	9,616	7,510	76,839	137,375	12,264	14,741	32,109	33,966	476	601	629
Percentage change	2.5	-0.7	1.0	2.4	1.7	2.7	4.0	-0.1	-0.8	0.9	0.8	1.4	0.3	-1.4
2007/2008	336,470	5,579	1,456	9,662	7,778	76,949	141,125	12,337	14,736	31,303	33,801	471	641	631
Percentage change	1.0	1.2	1.4	0.5	3.6	0.1	2.7	0.6	0.0	-2.5	-0.5	-1.0	6.6	0.3
2008/2009	339,361	5,661	1,506	9,757	7,959	76,569	142,298	12,402	15,070	32,797	33,585	474	644	639
Percentage change	0.9	1.5	3.4	1.0	2.3	-0.5	0.8	0.5	2.3	4.8	-0.6	0.6	0.5	1.3

1. Educational Assistants are not included.
2. All educators in Lloydminster are included in Saskatchewan's counts and none of them are captured in the counts for Alberta.
3. Alberta data prior to 2004/2005 not comparable to more recent data due to change in methodology.

Chart A.13.1
Percentage change between 2007/2008 and 2008/2009

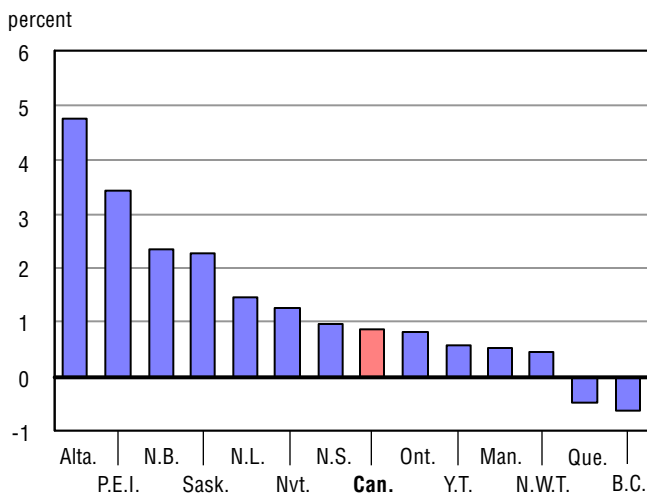


Chart A.13.2
Percentage change between 2002/2003 and 2008/2009

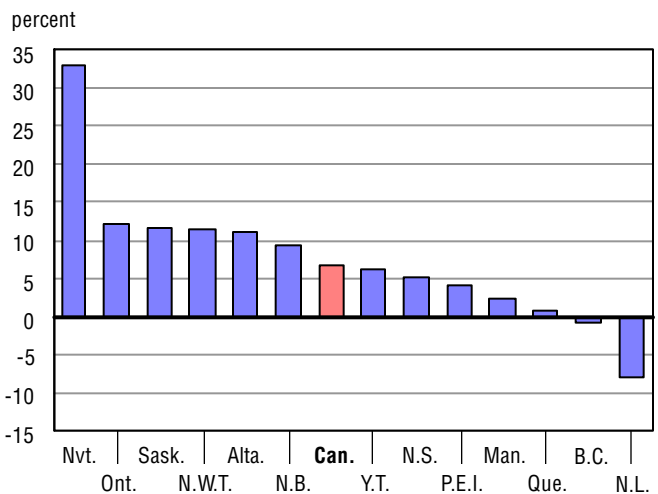


Table A.14

Student-educator ratio in public elementary and secondary schools, Canada, provinces and territories, 2002/2003 to 2008/2009

	Canada	N.L.	P.E.I.	N.S.	N.B.	Que.	Ont.	Man.	Sask.	Alta.	B.C.	Y.T.	N.W.T.	Nvt.
2002/2003	15.8	13.3	16.1	16.2	16.6	14.2	16.2	14.9	13.2	18.2 ¹	17.6	12.1	16.3	17.8
Percentage change	-0.6	0.2	15.7	-1.6	-2.1	-2.0	-0.3	-0.8	-15.9	2.7	4.5	1.7	0.9	1.6
2003/2004	15.7	13.3	15.7	16.0	16.2	14.1	16.0	14.8	12.4	18.2 ¹	17.7	12.0	15.4	18.6
Percentage change	-0.9	-0.1	-2.1	-1.7	-2.0	-0.8	-0.9	-0.6	-6.3	0.0	0.5	-1.1	-5.9	4.5
2004/2005	15.4	13.5	15.4	15.7	15.9	14.2	15.6	14.6	12.0	17.0	17.5	11.5	15.2	16.2
Percentage change	-1.9	1.7	-1.9	-1.7	-2.0	0.2	-2.3	-1.7	-2.9	-6.3	-0.9	-4.4	-0.9	-13.1
2005/2006	15.0	13.4	15.4	15.1	15.5	14.1	15.2	14.4	11.4	16.8	17.0	11.0	15.2	13.8
Percentage change	-2.2	-0.8	0.0	-3.4	-2.2	-0.6	-2.8	-1.3	-5.4	-1.6	-2.8	-4.4	-0.3	-14.9
2006/2007	14.5	13.0	14.9	14.4	14.9	13.5	14.5	14.2	11.2	16.8	16.6	10.6	15.3	13.9
Percentage change	-3.5	-2.5	-3.6	-4.8	-4.1	-4.4	-4.6	-1.2	-1.4	0.6	-2.6	-3.4	0.9	0.8
2007/2008	14.2	12.5	14.3	14.0	14.2	13.2	14.0	14.1	11.0	17.2	16.5	10.6	13.9	13.8
Percentage change	-2.1	-4.2	-3.9	-2.9	-4.9	-1.9	-3.4	-1.0	-2.0	2.1	-0.8	0.6	-9.0	-0.7
2008/2009	14.0	12.1	13.5	13.6	13.6	13.0	13.8	13.9	10.6	16.5	16.4	10.1	13.4	14.0
Percentage change	-1.8	-3.5	-5.6	-2.6	-3.9	-1.2	-1.7	-1.3	-3.3	-3.8	-0.3	-4.8	-3.8	1.3

1. Alberta data prior to 2004/2005 not comparable to more recent data due to change in methodology.

Note: Table A.14 = Table A.2 (Full-time equivalent enrolments) divided by Table A.13 (Full-time equivalent educators).

Chart A.14.1
Student-educator ratio, 2008/2009

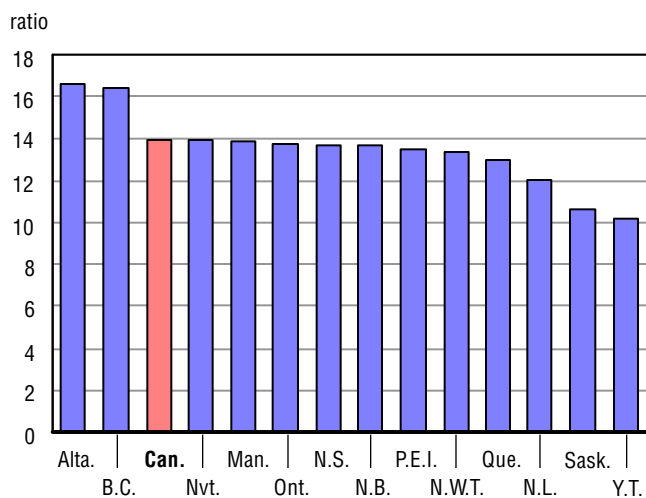


Chart A.14.2
Percentage change between 2002/2003 and 2008/2009

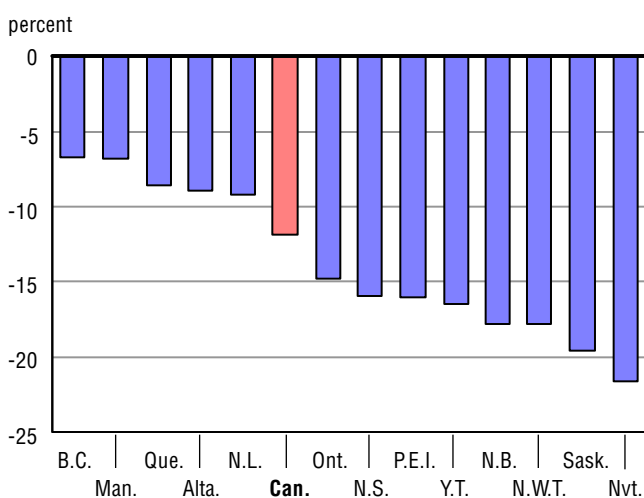


Table A.15
Average remuneration per educator in public elementary and secondary schools, Canada, provinces and territories, 2002/2003 to 2008/2009 (in current dollars)¹

	Canada	N.L.	P.E.I.	N.S. ²	N.B.	Que.	Ont.	Man.	Sask. ³	Alta.	B.C.	Y.T.	N.W.T.	Nvt.
2002/2003	59,446	54,046	56,224	62,104	52,611	51,030	63,067	59,705	53,174	67,480 ⁴	60,976	77,457	68,478	107,019
Percentage change	3.9	6.4	18.4	10.4	3.4	1.2	3.0	4.0	-4.7	10.4	8.2	4.1	1.3	6.7
2003/2004	62,061	58,220	56,868	64,087	53,280	52,717	66,302	61,982	51,773	69,190 ⁴	66,587	79,096	71,597	116,842
Percentage change	4.4	7.7	1.1	3.2	1.3	3.3	5.1	3.8	-2.6	2.5	9.2	2.1	4.6	9.2
2004/2005	63,830	59,372	58,504	67,410	53,972	53,621	69,101	63,395	53,727	69,468	66,784	77,964	75,756	106,676
Percentage change	2.8	2.0	2.9	5.2	1.3	1.7	4.2	2.3	3.8	0.4	0.3	-1.4	5.8	-8.7
2005/2006	65,153	59,350	59,923	63,510	56,890	55,164	70,523	65,804	52,020 ⁵	70,667	68,989	81,546	80,818	96,271
Percentage change	2.1	0.0	2.4	-5.8	5.4	2.9	2.1	3.8	-3.2	1.7	3.3	4.6	6.7	-9.8
2006/2007	66,783	60,773	63,999	61,345	57,806	57,476	71,350	68,161	54,806 ⁶	73,345	71,013	81,870	84,986	117,281
Percentage change	2.5	2.4	6.8	-3.4	1.6	4.2	1.2	3.6	5.4	3.8	2.9	0.4	5.2	21.8
2007/2008	68,717	62,567	65,419	63,907	59,485	58,433	72,473	70,543	57,535 ⁶	80,393	72,818	88,943	88,657	123,303
Percentage change	2.9	3.0	2.2	4.2	2.9	1.7	1.6	3.5	5.0	9.6	2.5	8.6	4.3	5.1
2008/2009	71,145	67,722	67,952	66,539	63,437	60,182	75,294	73,033	59,068 ⁶	80,376	76,317	90,869	95,025	128,968
Percentage change	3.5	8.2	3.9	4.1	6.6	3.0	3.9	3.5	2.7	0.0	4.8	2.2	7.2	4.6

^e estimate

0 true zero or a value rounded to zero

1. Due to differences in methodology, comparisons between jurisdictions should be made with care.

2. Nova Scotia data prior to 2005/2006 not comparable to more recent data due to change in methodology.

3. Saskatchewan data prior to 2005/2006 is not directly comparable due to school division amalgamations, changes to fiscal years and reporting changes.

4. Alberta data prior to 2004/2005 not comparable to more recent data due to change in methodology. The number of educators working in Lloydminster includes educators from Alberta. The corresponding remuneration for these Alberta educators is excluded.

5. Figure has been adjusted to reflect the change in school year reporting period.

Note: Table A.15 = Table A.16 (Educator remuneration) divided by Table A.13 (Full-time equivalent educators).

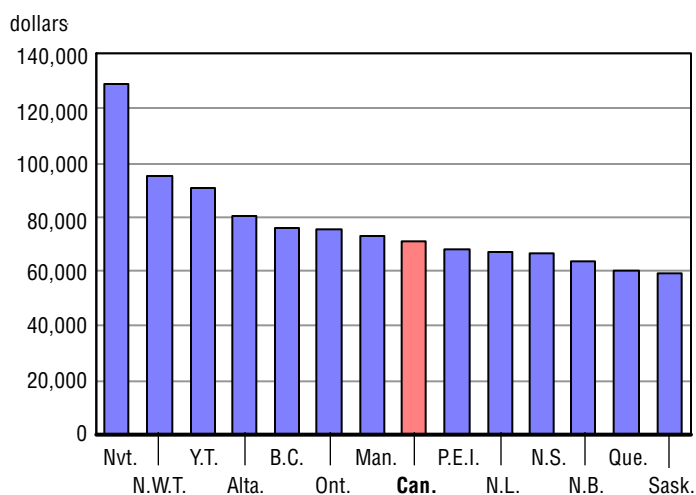
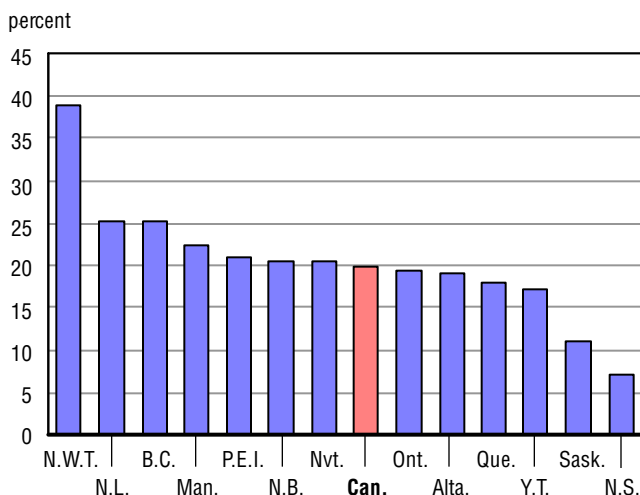
Chart A.15.1
Average remuneration per educator, 2008/2009

Chart A.15.2
Percentage change between 2002/2003 and 2008/2009


Table A.16

Educator remuneration in public elementary and secondary schools, Canada, provinces and territories, 2002/2003 to 2008/2009 (in millions of current dollars)¹

	Canada	N.L. ²	P.E.I.	N.S. ³	N.B.	Que.	Ont.	Man. ⁴	Sask.	Alta.	B.C.	Y.T.	N.W.T.	Nvt.
2002/2003	18,880.9	332.7	81.3	576.1	383.3	3,879.5	8,002.4	724.2	717.2	1,991.5	2,067.1	34.6	39.6	51.5
Percentage change	4.3	3.0	4.1	10.1	3.7	2.7	3.5	3.8	14.3	8.8	2.1	2.7	1.3	7.2
2003/2004	19,654.7	346.6	82.8	596.4	390.5	4,010.5	8,351.8	754.2	734.0	2,033.6	2,220.4	35.1	43.6	55.3
Percentage change	4.1	4.2	1.8	3.5	1.9	3.4	4.4	4.1	2.3	2.1	7.4	1.7	10.2	7.4
2004/2005	20,444.4	338.5	84.9	624.7	397.8	4,032.0	8,894.2	776.3	769.4	2,171.7	2,213.6	35.9	45.9	59.4
Percentage change	4.0	-2.3	2.5	4.8	1.9	0.5	6.5	2.9	4.8	6.8	-0.3	2.1	5.3	7.5
2005/2006	21,178.5	329.7	85.2	596.6	420.2	4,127.9	9,316.5	807.9	773.2 ⁵	2,248.1	2,325.0	38.3	48.4	61.4
Percentage change	3.6	-2.6	0.4	-4.5	5.6	2.4	4.7	4.1	0.5	3.5	5.0	6.8	5.5	3.4
2006/2007	22,243.9	335.2	91.9	589.9	434.1	4,416.4	9,801.8	835.9	807.9 ^e	2,355.0	2,412.0	39.0	51.1	73.8
Percentage change	5.0	1.6	7.9	-1.1	3.3	7.0	5.2	3.5	4.5	4.8	3.7	1.8	5.5	20.1
2007/2008	23,121.2	349.1	95.2	617.5	462.7	4,496.4	10,227.7	870.3	847.8 ^e	2,516.6	2,461.3	41.9	56.8	77.8
Percentage change	3.9	4.2	3.6	4.7	6.6	1.8	4.3	4.1	4.9	6.9	2.0	7.5	11.2	5.5
2008/2009	24,143.8	383.4	102.3	649.2	504.9	4,608.1	10,714.1	905.8	890.2 ^e	2,636.1	2,563.1	43.1	61.2	82.4
Percentage change	4.4	9.8	7.4	5.1	9.1	2.5	4.8	4.1	5.0	4.7	4.1	2.8	7.7	5.9

^e estimate

1. Educator remuneration includes educators' salaries, wages and allowances, but excludes fringe benefits and teachers' superannuation pension funds.
2. In Newfoundland and Labrador, the educator remuneration increased in 2001/2002 and 2002/2003, following contract negotiations. Please note that in 2002/2003, the school year was increased by a week.
3. Nova Scotia data prior to 2005/2006 not comparable to more recent data due to change in methodology.
4. Data exclude adult upgrading programs.
5. Figure has been adjusted to reflect the change in school year reporting period.

Chart A.16.1
Percentage change between 2007/2008 and 2008/2009

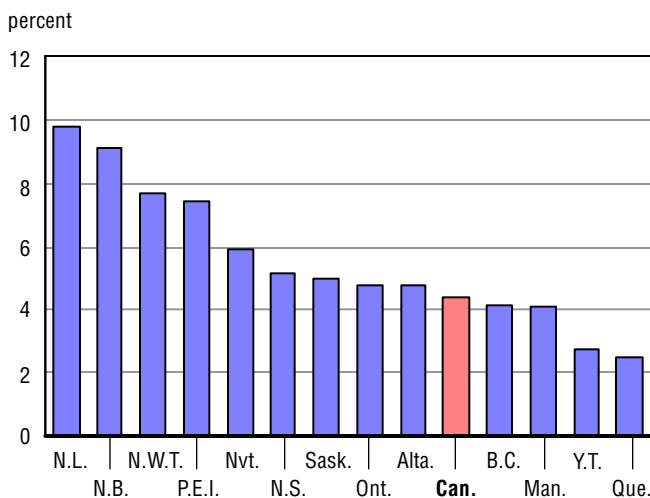


Chart A.16.2
Percentage change between 2002/2003 and 2008/2009

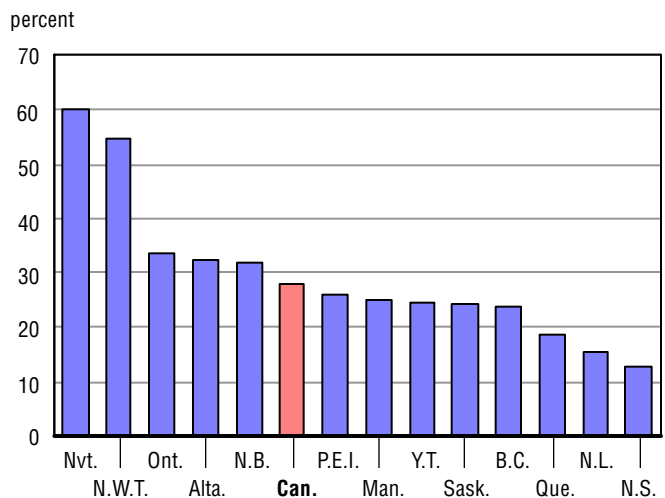


Table A.17

Operating expenditures¹ in public elementary and secondary schools, Canada, provinces and territories, 2002/2003 to 2008/2009 (in millions of current dollars)

	Canada	N.L.	P.E.I.	N.S. ²	N.B.	Que.	Ont.	Man. ³	Sask.	Alta.	B.C.	Y.T.	N.W.T.	Nvt.
2002/2003	37,409.4	598.0	149.7	1,025.9	753.4	8,155.5	14,919.0	1,460.7	1,359.8	4,224.1	4,494.9	70.2	110.5	87.7
Percentage change	4.8	4.7	3.0	-6.5	2.9	4.2	4.1	4.1	7.9	8.3	7.4	2.4	7.7	5.8
2003/2004	38,895.3	616.8	156.4	1,073.4	837.4	8,377.3	15,665.5	1,530.8	1,405.8	4,405.0	4,544.5	72.8	115.8	93.8
Percentage change	4.0	3.1	4.5	4.6	11.1	2.7	5.0	4.8	3.4	4.3	1.1	3.7	4.7	6.9
2004/2005	40,728.3	609.8	163.5	1,090.8	864.3	8,494.5	16,653.4	1,578.7	1,476.9	4,732.9	4,769.6	76.6	119.9	97.4
Percentage change	4.7	-1.1	4.5	1.6	3.2	1.4	6.3	3.1	5.1	7.4	5.0	5.2	3.6	3.9
2005/2006	43,021.7	621.6	166.5	1,189.4	908.4	8,762.5	17,628.5	1,651.5	1,489.1 ⁴	5,159.9	5,134.5	84.2	123.7	101.9
Percentage change	5.6	1.9	1.8	9.0	5.1	3.2	5.9	4.6	0.8	9.0	7.7	9.9	3.1	4.6
2006/2007	44,787.9	640.1	173.5	1,217.8	945.9	9,441.8	18,263.4	1,728.5	1,579.5 ⁴	5,240.8	5,220.7	88.8	131.3	115.8
Percentage change	4.1	3.0	4.2	2.4	4.1	7.8	3.6	4.7	6.1	1.6	1.7	5.5	6.1	13.6
2007/2008	46,451.9	690.7	185.5	1,276.9	998.6	9,639.6	18,959.2	1,795.9	1,632.3 ⁴	5,457.7	5,455.7	95.3	143.3	121.1
Percentage change	3.7	7.9	6.9	4.9	5.6	2.1	3.8	3.9	3.3	4.1	4.5	7.3	9.1	4.6
2008/2009	49,343.3	745.9	195.7	1,353.1	1,075.9	9,939.0	20,148.3	1,987.1	1,762.6 ⁴	6,134.9	5,629.5	93.4	149.2	128.6
Percentage change	6.2	8.0	5.5	6.0	7.7	3.1	6.3	10.6	8.0	12.4	3.2	-2.0	4.1	6.2

1. Operating expenditures include educators salaries, wages and allowances, fringe benefits, teachers' pension funds and other operating expenditures. Please note that the type of pension systems may affect the comparability of the expenditures.
2. Nova Scotia data prior to 2005/2006 not comparable to more recent data due to change in methodology.
3. Data exclude adult upgrading programs.
4. Figure has been adjusted to reflect the change in school year reporting period.

Chart A.17.1
Percentage change between 2007/2008 and 2008/2009

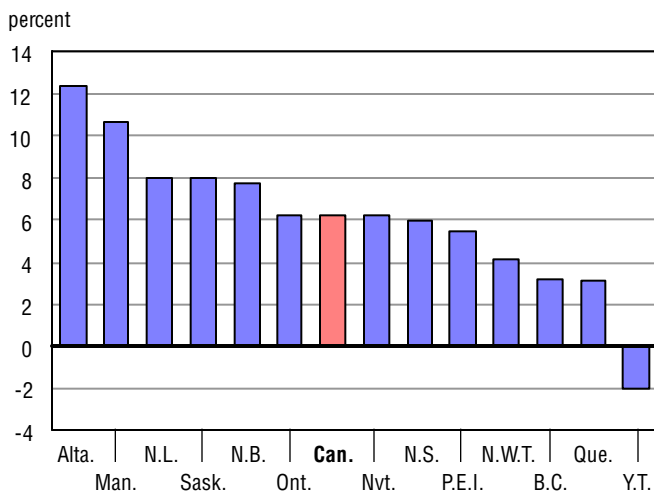


Chart A.17.2
Percentage change between 2002/2003 and 2008/2009

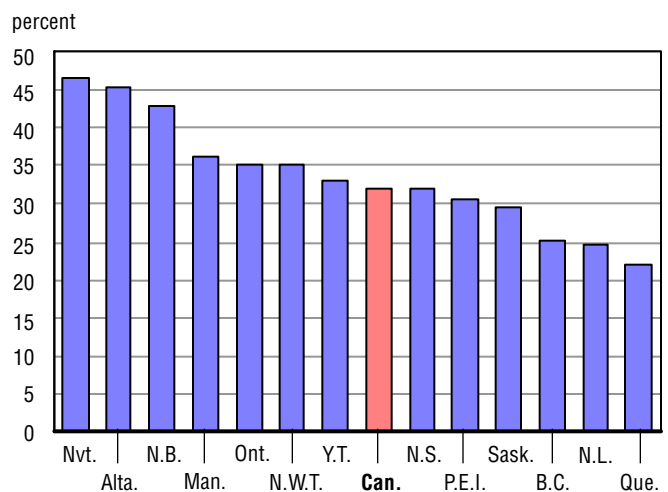


Table A.18

Capital expenditures in public elementary and secondary schools, Canada, provinces and territories, 2002/2003 to 2008/2009 (in millions of current dollars)

	Canada	N.L.	P.E.I.	N.S. ¹	N.B.	Que.	Ont.	Man. ²	Sask.	Alta.	B.C.	Y.T.	N.W.T.	Nvt.
2002/2003	2,849.6	8.8	13.1	89.8	34.3	582.2	1,279.3	65.2	74.0	343.2	328.0	7.3	5.3	19.1
Percentage change	-2.0	-59.3	92.6	-19.1	-27.5	16.6	-9.8	1.4	420.3	8.8	-8.5	-36.0	-44.9	-36.7
2003/2004	2,839.2	8.0	11.1	78.2	41.6	461.9	1,542.4	73.0	80.8	302.0	207.7	7.2	3.8	21.6
Percentage change	-0.4	-9.3	-15.3	-12.9	21.3	-20.7	20.6	11.9	9.2	-12.0	-36.7	-1.7	-28.5	12.9
2004/2005	3,076.3	10.6	5.5	61.2	59.0	485.2	1,799.3	58.9	84.0	266.8	206.9	6.9	12.1	20.0
Percentage change	8.3	32.7	-50.3	-21.8	41.7	5.0	16.6	-19.3	4.0	-11.6	-0.4	-4.5	221.5	-7.3
2005/2006	3,423.7	22.1	1.5	64.1	49.4	545.0	2,000.3	80.8	88.6	281.9	253.5	11.2	9.4	15.9
Percentage change	11.3	108.2	-72.0	4.8	-16.3	12.3	11.2	37.3	5.4	5.6	22.5	63.2	-22.0	-20.7
2006/2007	3,818.0	22.4	10.1	83.6	59.7	701.2	2,031.6	106.3	114.8	293.2	347.9	15.9	18.6	12.7
Percentage change	11.5	1.2	555.2	30.4	21.0	28.7	1.6	31.5	29.6	4.0	37.3	41.1	97.3	-19.7
2007/2008	3,585.3	27.4	4.7	74.0	39.0	767.7	1,670.1	69.0	74.2	483.4	333.9	7.7	19.7	14.6
Percentage change	-6.1	22.1	-54.0	-11.4	-34.8	9.5	-17.8	-35.1	-35.4	64.9	-4.0	-51.6	5.8	14.9
2008/2009	4,356.8	32.2	11.9	77.6	51.8	867.5	1,881.4	88.9	103.7	767.1	414.3	4.4	43.0	13.0
Percentage change	21.5	17.9	154.9	4.8	33.1	13.0	12.6	28.9	39.8	58.7	24.1	-42.1	118.2	-11.4

1. Nova Scotia data prior to 2005/2006 not comparable to more recent data due to change in methodology.
2. Data exclude adult upgrading programs.

Chart A.18.1
Percentage change between 2007/2008 and 2008/2009

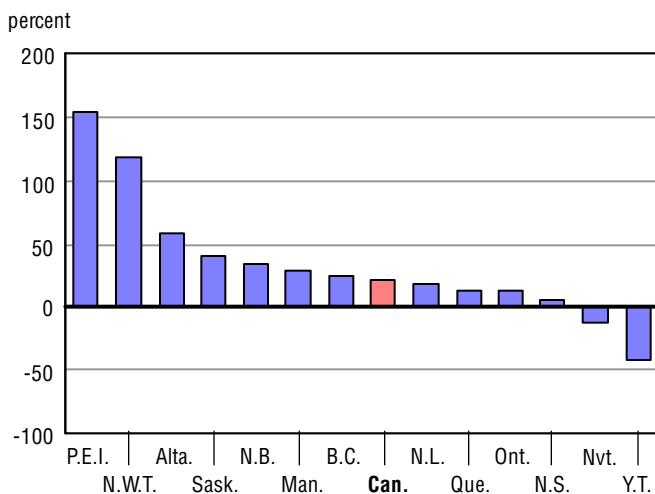


Chart A.18.2
Percentage change between 2002/2003 and 2008/2009

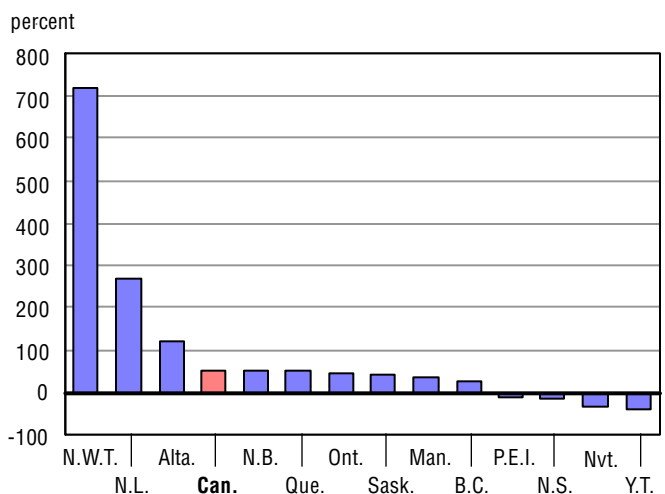


Table A.19
Total expenditures¹ in public elementary and secondary schools, Canada, provinces and territories, 2002/2003 to 2008/2009 (in millions of current dollars)

	Canada	N.L.	P.E.I.	N.S. ²	N.B.	Que.	Ont.	Man. ³	Sask.	Alta.	B.C.	Y.T.	N.W.T.	Nvt.
2002/2003	41,419.0	607.3	162.8	1,125.4	888.5	9,095.0	16,453.4	1,564.1	1,441.2	4,633.5	5,147.7	77.5	115.8	106.8
Percentage change	4.1	2.3	7.0	-7.6	1.0	4.6	3.0	3.9	11.7	7.9	5.7	-3.1	3.2	-5.6
2003/2004	42,963.5	625.2	167.5	1,158.8	974.9	9,193.4	17,550.6	1,642.4	1,493.5	4,764.0	5,078.3	80.0	119.5	115.4
Percentage change	3.7	3.0	2.9	3.0	9.7	1.1	6.7	5.0	3.6	2.8	-1.3	3.2	3.2	8.0
2004/2005	45,008.2	621.2	169.0	1,156.4	1,016.4	9,325.1	18,795.9	1,676.4	1,567.9	5,048.7	5,298.2	83.5	132.0	117.4
Percentage change	4.8	-0.7	0.9	-0.2	4.3	1.4	7.1	2.1	5.0	6.0	4.3	4.3	10.5	1.8
2005/2006	47,644.1	644.2	168.0	1,257.2	1,050.6	9,639.3	19,992.4	1,770.4	1,586.3 ⁴	5,485.0	5,708.3	95.4	133.1	117.8
Percentage change	5.9	3.7	-0.6	8.7	3.4	3.4	6.4	5.6	1.2	8.6	7.7	14.3	0.8	0.3
2006/2007	49,856.1	662.8	183.6	1,304.7	1,093.2	10,480.3	20,694.8	1,885.8	1,702.5 ⁴	5,569.1	5,900.2	104.7	149.9	128.5
Percentage change	4.6	2.9	9.3	3.8	4.1	8.7	3.5	6.5	7.3	1.5	3.4	9.7	12.6	9.1
2007/2008	51,357.2	718.3	190.2	1,354.0	1,121.4	10,776.6	21,065.8	1,906.6	1,714.6 ⁴	5,970.9	6,141.1	103.0	163.0	135.7
Percentage change	3.0	8.4	3.6	3.8	2.6	2.8	1.8	1.1	0.7	7.2	4.1	-1.6	8.7	5.6
2008/2009	55,003.8	778.4	207.5	1,432.6	1,223.4	11,120.4	22,486.8	2,112.3	1,872.8 ⁴	6,926.2	6,415.9	97.9	192.2	141.5
Percentage change	7.1	8.4	9.1	5.8	9.1	3.2	6.7	10.8	9.2	16.0	4.5	-5.0	17.9	4.3

1. Total expenditures include: operating expenditures, annual capital expenditures and interest on debt services.
2. Nova Scotia data prior to 2005/2006 not comparable to more recent data due to change in methodology.
3. Data exclude adult upgrading programs.
4. Figure has been adjusted to reflect the change in school year reporting period.

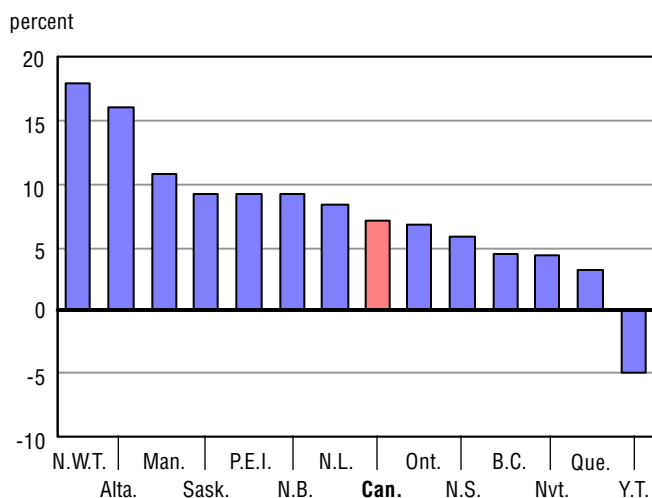
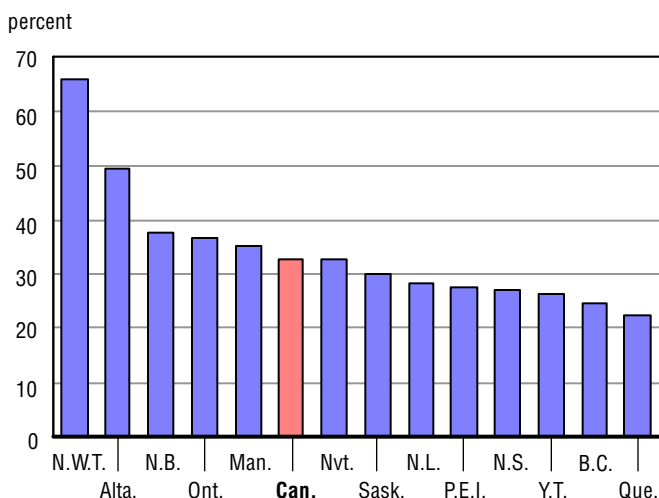
Chart A.19.1
Percentage change between 2007/2008 and 2008/2009

Chart A.19.2
Percentage change between 2002/2003 and 2008/2009


Table A.20.1

Total expenditures per student in public elementary and secondary schools, Canada, provinces and territories, 2002/2003 to 2008/2009 (in current dollars)¹

	Canada	N.L.	P.E.I.	N.S. ²	N.B.	Que.	Ont.	Man.	Sask.	Alta.	B.C.	Y.T.	N.W.T.	Nvt.
2002/2003	8,244	7,432	7,005	7,473	7,367	8,397	8,028	8,655	8,073	8,644	8,625	14,326	12,289	12,471
Percentage change	4.4	5.5	5.2	-5.8	2.8	5.2	2.8	4.9	10.8	6.7	7.2	-3.4	2.3	-7.5
2003/2004	8,656	7,918	7,313	7,803	8,202	8,551	8,707	9,118	8,491	8,924	8,609	15,021	12,787	13,112
Percentage change	5.0	6.5	4.4	4.4	11.3	1.8	8.5	5.3	5.2	3.2	-0.2	4.8	4.1	5.1
2004/2005	9,136	8,077	7,546	7,953	8,677	8,754	9,341	9,405	9,092	9,489	9,120	15,837	14,318	13,040
Percentage change	5.5	2.0	3.2	1.9	5.8	2.4	7.3	3.1	7.1	6.3	5.9	5.4	12.0	-0.5
2005/2006	9,745	8,667	7,655	8,835	9,150	9,152	9,963	10,039	9,370	10,293	9,937	18,533	14,647	13,418
Percentage change	6.7	7.3	1.4	11.1	5.5	4.5	6.7	6.7	3.1	8.5	9.0	17.0	2.3	2.9
2006/2007	10,309	9,213	8,594	9,409	9,760	10,137	10,393	10,831	10,282	10,296	10,462	20,772	16,297	14,735
Percentage change	5.8	6.3	12.3	6.5	6.7	10.8	4.3	7.9	9.7	0.0	5.3	12.1	11.3	9.8
2007/2008	10,740	10,301	9,137	10,007	10,168	10,615	10,657	10,996	10,572	11,086	11,030	20,539	18,256	15,610
Percentage change	4.2	11.8	6.3	6.4	4.2	4.7	2.5	1.5	2.8	7.7	5.4	-1.1	12.0	5.9
2008/2009	11,614	11,404	10,210	10,761	11,285	11,140	11,480	12,277	11,678	12,765	11,637	20,374	22,278	15,875
Percentage change	8.1	10.7	11.7	7.5	11.0	4.9	7.7	11.7	10.5	15.1	5.5	-0.8	22.0	1.7

0 true zero or a value rounded to zero

1. Comparisons between jurisdictions should be made with care. Factors that influence spending on education, such as the size of the school-age population, need to be taken into account.

2. Nova Scotia data prior to 2005/2006 not comparable to more recent data due to change in methodology.

Note: Table A.20.1 = Table A.19 (Total expenditures) divided by Table A.2 (Full-time equivalent enrolment).

Chart A.20.1.1
Total expenditures per student, 2008/2009 (in current dollars)

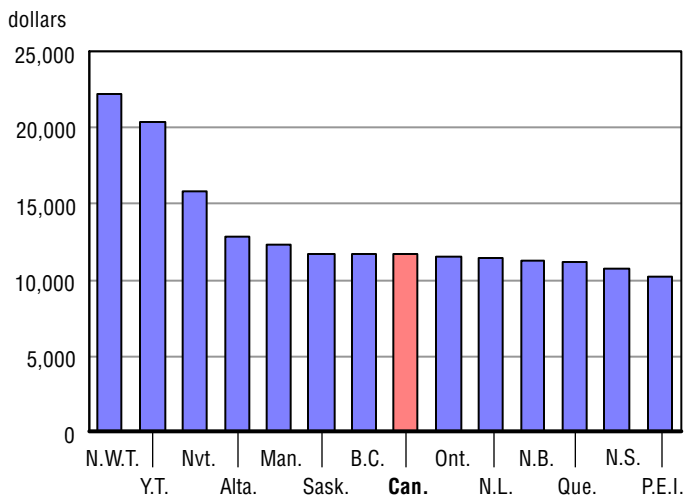


Chart A.20.1.2
Percentage change between 2002/2003 and 2008/2009

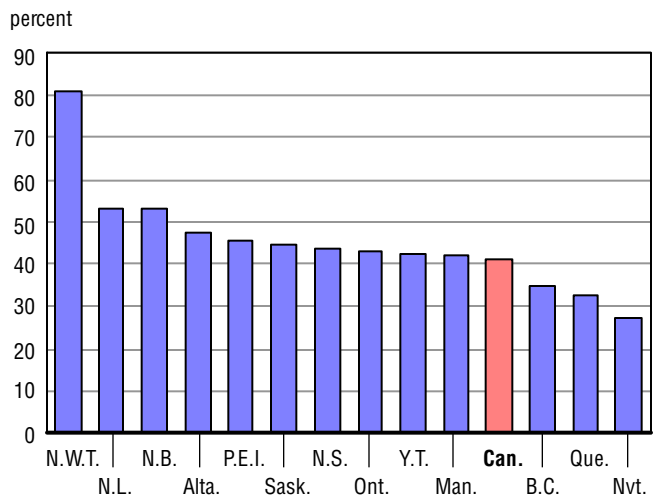


Table A.20.2
Total expenditures per student in public elementary and secondary schools, Canada, provinces and territories, 2002/2003 to 2008/2009 (in 2002 constant dollars)¹

	Canada	N.L.	P.E.I.	N.S. ²	N.B.	Que.	Ont.	Man.	Sask.	Alta.	B.C.	Y.T.	N.W.T.	Nvt.
2002/2003	8,244	7,432	7,005	7,473	7,367	8,397	8,028	8,655	8,073	8,644	8,625	14,326	12,289	..
Percentage change	2.1	3.1	2.5	-8.5	-0.5	3.1	0.8	3.3	7.7	3.2	4.7	-4.1	-0.7	..
2003/2004	8,421	7,694	7,066	7,546	7,932	8,342	8,478	8,956	8,300	8,548	8,424	14,741	12,500	13,086
Percentage change	2.1	3.5	0.9	1.0	7.7	-0.7	5.6	3.5	2.8	-1.1	-2.3	2.9	1.7	..
2004/2005	8,726	7,707	7,133	7,553	8,271	8,377	8,931	9,060	8,692	8,960	8,752	15,376	13,794	12,885
Percentage change	3.6	0.2	1.0	0.1	4.3	0.4	5.3	1.2	4.7	4.8	3.9	4.3	10.4	-1.5
2005/2006	9,107	8,055	7,017	8,165	8,520	8,562	9,320	9,418	8,765	9,522	9,348	17,600	13,792	13,040
Percentage change	4.4	4.5	-1.6	8.1	3.0	2.2	4.4	3.9	0.8	6.3	6.8	14.5	0.0	1.2
2006/2007	9,449	8,413	7,701	8,523	8,937	9,326	9,553	9,964	9,424	9,169	9,678	19,449	15,132	14,087
Percentage change	3.7	4.5	9.8	4.4	4.9	8.9	2.5	5.8	7.5	-3.7	3.5	10.5	9.7	8.0
2007/2008	9,633	9,272	8,043	8,896	9,135	9,615	9,618	9,915	9,423	9,403	10,027	18,757	16,477	14,467
Percentage change	1.9	10.2	4.4	4.4	2.2	3.1	0.7	-0.5	0.0	2.6	3.6	-3.6	8.9	2.7
2008/2009	10,179	9,977	8,690	9,285	9,969	9,885	10,132	10,827	10,076	10,498	10,363	17,966	19,338	14,379
Percentage change	5.7	7.6	8.0	4.4	9.1	2.8	5.3	9.2	6.9	11.6	3.3	-4.2	17.4	-0.6

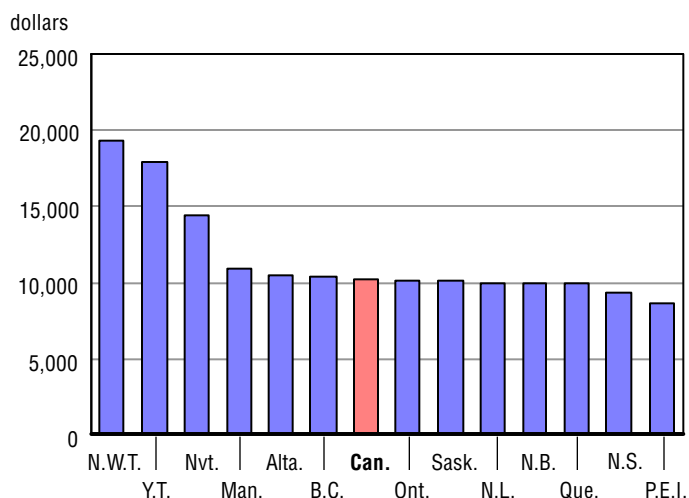
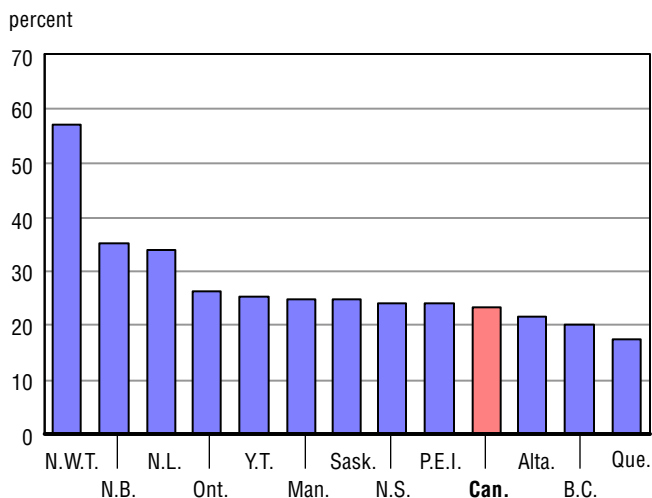
.. not available for a specific reference period

0 true zero or a value rounded to zero

1. Comparisons between jurisdictions should be made with care. Factors that influence total spending per student on education, such as the size of the school-age population, need to be taken into account.

2. Nova Scotia data prior to 2005/2006 not comparable to more recent data due to change in methodology.

Note: Table A.20.2 = Table A.19 (Total expenditures) divided by Table A.2 (Full-time equivalent enrolment) divided by Table A.36 (Consumer Price Index).

Chart A.20.2.1
Total expenditures per student, 2008/2009
(in 2002 constant dollars)

Chart A.20.2.2
Percentage change between 2002/2003 and 2008/2009


Note: Nvt. is excluded, data unavailable for entire period.

Table A.21

Educator remuneration per student in public elementary and secondary schools, Canada, provinces and territories, 2002/2003 to 2008/2009 (in current dollars)¹

	Canada	N.L.	P.E.I.	N.S. ²	N.B.	Que.	Ont.	Man.	Sask.	Alta.	B.C.	Y.T.	N.W.T.	Nvt.
2002/2003	3,758	4,071	3,498	3,825	3,178	3,582	3,905	4,007	4,018	3,715	3,463	6,385	4,198	6,011
Percentage change	4.5	6.2	2.3	12.2	5.6	3.3	3.3	4.8	13.4	7.5	3.5	2.4	0.4	5.0
2003/2004	3,960	4,389	3,615	4,016	3,285	3,730	4,144	4,187	4,173	3,809	3,764	6,596	4,662	6,281
Percentage change	5.4	7.8	3.3	5.0	3.4	4.1	6.1	4.5	3.9	2.5	8.7	3.3	11.1	4.5
2004/2005	4,150	4,402	3,791	4,297	3,396	3,785	4,420	4,355	4,461	4,082	3,810	6,803	4,976	6,598
Percentage change	4.8	0.3	4.9	7.0	3.4	1.5	6.7	4.0	6.9	7.1	1.2	3.1	6.7	5.0
2005/2006	4,332	4,436	3,882	4,193	3,659	3,919	4,643	4,581	4,567 ³	4,219	4,047	7,441	5,326	6,996
Percentage change	4.4	0.8	2.4	-2.4	7.7	3.5	5.0	5.2	2.4	3.4	6.2	9.4	7.0	6.0
2006/2007	4,599	4,659	4,302	4,254	3,876	4,272	4,923	4,801	4,879 ³	4,354	4,277	7,735	5,552	8,457
Percentage change	6.2	5.0	10.8	1.5	5.9	9.0	6.0	4.8	6.8	3.2	5.7	4.0	4.2	20.9
2007/2008	4,835	5,006	4,576	4,564	4,195	4,429	5,174	5,019	5,228 ³	4,672	4,421	8,357	6,362	8,950
Percentage change	5.1	7.5	6.4	7.3	8.2	3.7	5.1	4.5	7.1	7.3	3.4	8.0	14.6	5.8
2008/2009	5,098	5,617	5,035	4,876	4,658	4,616	5,470	5,265	5,551 ³	4,858	4,649	8,967	7,089	9,242
Percentage change	5.4	12.2	10.0	6.9	11.0	4.2	5.7	4.9	6.2	4.0	5.2	7.3	11.4	3.3

1. Due to differences in methodology, comparisons between jurisdictions should be made with care.
 2. Nova Scotia data prior to 2005/2006 not comparable to more recent data due to change in methodology.
 3. Figure has been adjusted to reflect the change in school year reporting period.
- Note:** Table A.21 = Table A.16 (Educator remuneration) divided by Table A.2 (Full-time equivalent enrolment).

Chart A.21.1
Educator remuneration per student, 2008/2009 (in current dollars)

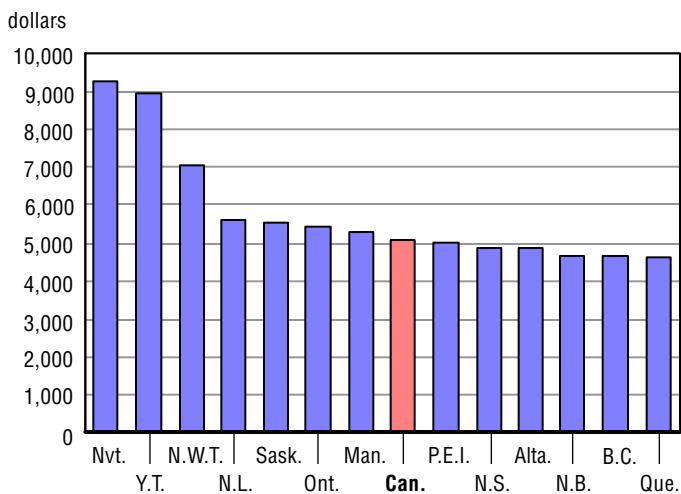


Chart A.21.2
Percentage change between 2002/2003 and 2008/2009

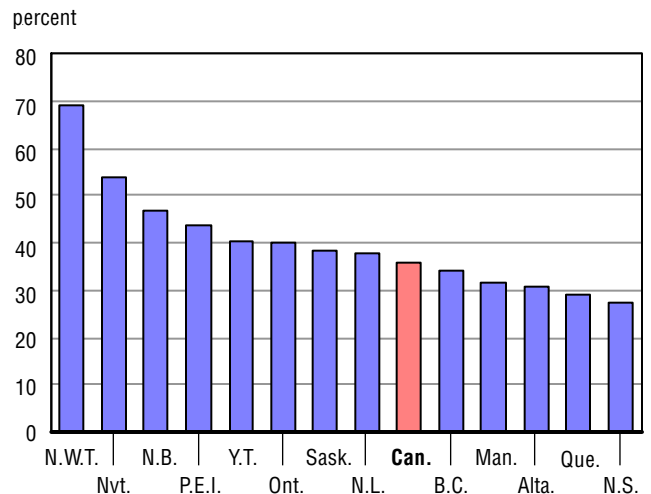


Table A.22

Operating expenditures per student in public elementary and secondary schools, Canada, provinces and territories, 2002/2003 to 2008/2009 (in current dollars)

	Canada	N.L.	P.E.I.	N.S. ¹	N.B.	Que.	Ont.	Man.	Sask.	Alta.	B.C.	Y.T.	N.W.T.	Nvt.
2002/2003	7,446	7,319	6,441	6,812	6,247	7,530	7,279	8,083	7,618	7,880	7,531	12,969	11,732	10,239
Percentage change	5.0	7.9	1.3	-4.7	4.8	4.7	4.0	5.1	7.0	7.0	8.9	2.1	6.7	3.6
2003/2004	7,837	7,811	6,828	7,228	7,044	7,792	7,772	8,498	7,992	8,252	7,705	13,665	12,385	10,658
Percentage change	5.3	6.7	6.0	6.1	12.8	3.5	6.8	5.1	4.9	4.7	2.3	5.4	5.6	4.1
2004/2005	8,267	7,930	7,300	7,502	7,378	7,974	8,277	8,856	8,564	8,895	8,210	14,530	13,008	10,818
Percentage change	5.5	1.5	6.9	3.8	4.7	2.3	6.5	4.2	7.2	7.8	6.6	6.3	5.0	1.5
2005/2006	8,799	8,363	7,585	8,358	7,912	8,320	8,785	9,365	8,795 ²	9,683	8,938	16,348	13,609	11,610
Percentage change	6.4	5.5	3.9	11.4	7.2	4.3	6.1	5.7	2.7	8.9	8.9	12.5	4.6	7.3
2006/2007	9,260	8,897	8,121	8,782	8,444	9,133	9,172	9,928	9,539 ²	9,689	9,258	17,624	14,274	13,273
Percentage change	5.2	6.4	7.1	5.1	6.7	9.8	4.4	6.0	8.5	0.1	3.6	7.8	4.9	14.3
2007/2008	9,714	9,905	8,913	9,437	9,055	9,495	9,591	10,358	10,064 ²	10,133	9,799	19,009	16,050	13,926
Percentage change	4.9	11.3	9.8	7.5	7.2	4.0	4.6	4.3	5.5	4.6	5.8	7.9	12.4	4.9
2008/2009	10,419	10,928	9,627	10,164	9,925	9,956	10,286	11,550	10,992 ²	11,307	10,211	19,450	17,298	14,420
Percentage change	7.3	10.3	8.0	7.7	9.6	4.9	7.2	11.5	9.2	11.6	4.2	2.3	7.8	3.6

1. Nova Scotia data prior to 2005/2006 not comparable to more recent data due to change in methodology.

2. Figure has been adjusted to reflect the change in school year reporting period.

Note: Table A.22 = Table A.17 (Operating expenditures) divided by Table A.2 (Full-time equivalent enrolment).

Chart A.22.1
Operating expenditures per student, 2008/2009 (in current dollars)

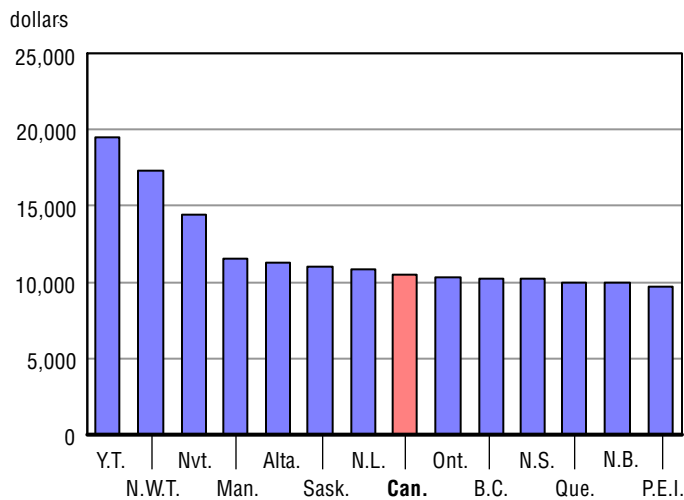


Chart A.22.2
Percentage change between 2002/2003 and 2008/2009

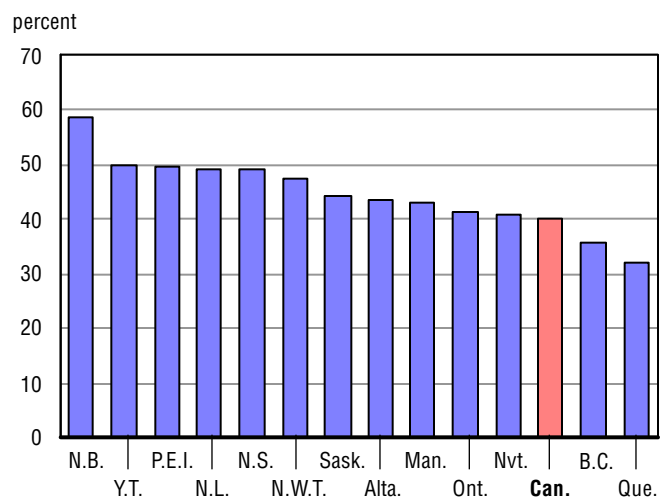


Table A.23

Annual capital expenditures per student in public elementary and secondary schools, Canada, provinces and territories, 2002/2003 to 2008/2009 (in current dollars)

	Canada	N.L.	P.E.I.	N.S. ¹	N.B.	Que.	Ont.	Man.	Sask.	Alta.	B.C.	Y.T.	N.W.T.	Nvt.
2002/2003	567	108	564	596	284	538	624	361	414	640	550	1,358	558	2,232
Percentage change	-1.8	-58.0	89.3	-17.6	-26.2	17.3	-9.9	2.3	416.1	7.6	-7.2	-36.2	-45.4	-38.0
2003/2004	572	101	485	526	350	430	765	405	459	566	352	1,355	402	2,454
Percentage change	0.9	-6.1	-14.0	-11.7	23.1	-20.1	22.6	12.3	10.8	-11.6	-35.9	-0.2	-27.9	9.9
2004/2005	624	138	246	421	504	455	894	330	487	501	356	1,307	1,311	2,222
Percentage change	9.2	36.3	-49.1	-20.1	43.8	6.0	16.9	-18.5	6.1	-11.4	1.1	-3.5	225.9	-9.4
2005/2006	700	298	70	450	430	517	997	458	523	529	441	2,184	1,037	1,808
Percentage change	12.1	115.4	-71.5	7.1	-14.6	13.6	11.5	38.8	7.4	5.5	23.9	67.1	-20.8	-18.6
2006/2007	789	311	473	603	533	678	1,020	610	693	542	617	3,148	2,023	1,461
Percentage change	12.7	4.6	573.1	33.9	24.0	31.1	2.4	33.2	32.5	2.5	39.8	44.1	95.0	-19.2
2007/2008	750	392	224	547	353	756	845	398	457	898	600	1,530	2,206	1,685
Percentage change	-5.0	26.0	-52.7	-9.2	-33.8	11.5	-17.2	-34.8	-34.1	65.6	-2.8	-51.4	9.0	15.3
2008/2009	920	472	584	583	478	869	960	517	647	1,414	751	924	4,980	1,455
Percentage change	22.7	20.5	161.0	6.5	35.4	14.9	13.7	29.9	41.4	57.5	25.3	-39.6	125.8	-13.6

1. Nova Scotia data prior to 2005/2006 not comparable to more recent data due to change in methodology.

Note: Table A.23 = Table A.18 (Capital expenditures) divided by Table A.2 (Full-time equivalent enrolment).

Chart A.23.1
Annual capital expenditures per student, 2008/2009 (in current dollars)

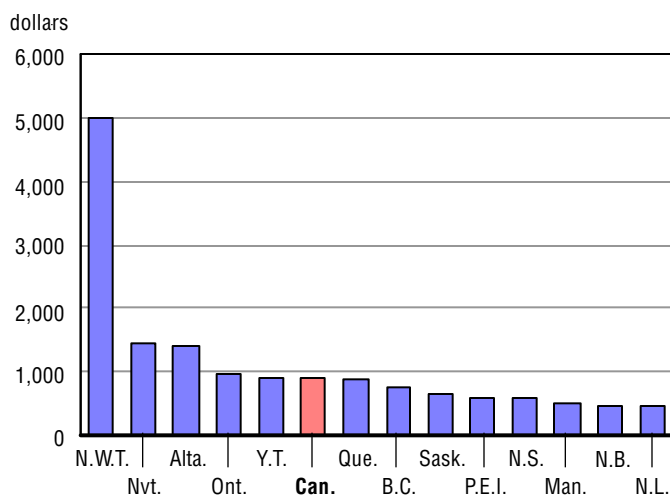


Chart A.23.2
Percentage change between 2002/2003 and 2008/2009

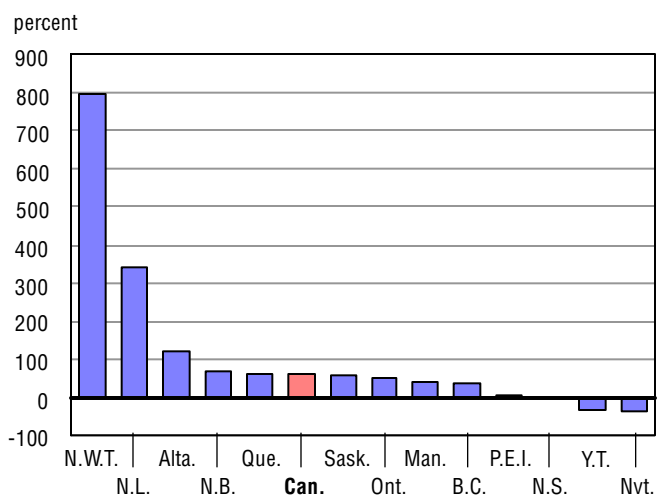


Table A.24

Educator remuneration as a percentage of total expenditures in public elementary and secondary schools, Canada, provinces and territories, 2002/2003 to 2008/2009

	Canada	N.L.	P.E.I.	N.S. ¹	N.B.	Que.	Ont.	Man.	Sask.	Alta.	B.C.	Y.T.	N.W.T.	Nvt.
2002/2003	45.6	54.8	49.9	51.2	43.1	42.7	48.6	46.3	49.8	43.0	40.2	44.6	34.2	48.2
Percentage change	0.1	0.7	-2.7	19.1	2.7	-1.8	0.5	-0.1	2.3	0.8	-3.4	6.0	-1.8	13.5
2003/2004	45.7	55.4	49.4	51.5	40.1	43.6	47.6	45.9	49.1	42.7	43.7	43.9	36.5	47.9
Percentage change	0.4	1.2	-1.0	0.5	-7.1	2.3	-2.2	-0.8	-1.2	-0.7	8.9	-1.5	6.7	-0.6
2004/2005	45.4	54.5	50.2	54.0	39.1	43.2	47.3	46.3	49.1	43.0	41.8	43.0	34.8	50.6
Percentage change	-0.7	-1.7	1.6	5.0	-2.3	-0.9	-0.6	0.8	-0.2	0.8	-4.4	-2.2	-4.7	5.6
2005/2006	44.5	51.2	50.7	47.5	40.0	42.8	46.6	45.6	48.7 ²	41.0	40.7	40.2	36.4	52.1
Percentage change	-2.1	-6.1	1.0	-12.2	2.2	-1.0	-1.5	-1.4	-0.7	-4.7	-2.5	-6.5	4.6	3.0
2006/2007	44.6	50.6	50.1	45.2	39.7	42.1	47.4	44.3	47.5 ²	42.3	40.9	37.2	34.1	57.4
Percentage change	0.4	-1.2	-1.3	-4.7	-0.7	-1.6	1.6	-2.9	-2.6	3.2	0.4	-7.2	-6.3	10.1
2007/2008	45.0	48.6	50.1	45.6	41.3	41.7	48.6	45.6	49.4 ²	42.1	40.1	40.7	34.8	57.3
Percentage change	0.9	-3.9	0.1	0.9	3.9	-1.0	2.5	3.0	4.2	-0.3	-2.0	9.3	2.3	-0.1
2008/2009	43.9	49.3	49.3	45.3	41.3	41.4	47.6	42.9	47.5 ²	38.1	39.9	44.0	31.8	58.2
Percentage change	-2.5	1.3	-1.5	-0.6	0.0	-0.7	-1.9	-6.1	-3.9	-9.7	-0.3	8.2	-8.7	1.5

0 true zero or a value rounded to zero

1. Nova Scotia data prior to 2005/2006 not comparable to more recent data due to change in methodology.

2. Figure has been adjusted to reflect the change in school year reporting period.

Note: Table A.24 = Table A.16 (Educator remuneration) divided by Table A.19 (Total expenditures).

Chart A.24.1
Educator remuneration as a percentage of total expenditures, 2008/2009

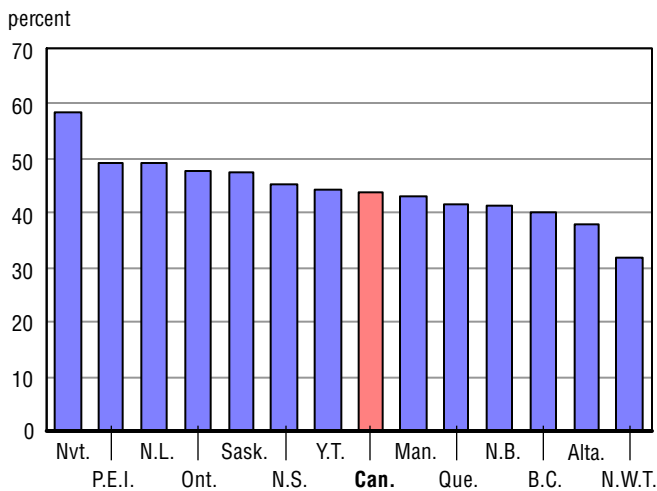


Chart A.24.2
Percentage change between 2002/2003 and 2008/2009

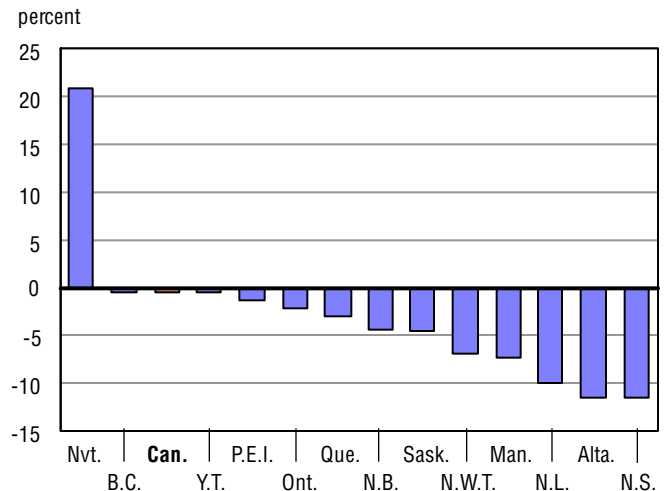


Table A.25

Educator remuneration as a percentage of operating expenditures in public elementary and secondary schools, Canada, provinces and territories, 2002/2003 to 2008/2009

	Canada	N.L.	P.E.I.	N.S. ¹	N.B.	Que.	Ont.	Man.	Sask.	Alta.	B.C.	Y.T.	N.W.T.	Nvt.
2002/2003	50.5	55.6	54.3	56.2	50.9	47.6	53.6	49.6	52.7	47.1	46.0	49.2	35.8	58.7
Percentage change	-0.5	-1.6	1.0	17.7	0.8	-1.4	-0.6	-0.2	6.0	0.5	-4.9	0.3	-5.9	1.3
2003/2004	50.5	56.2	52.9	55.6	46.6	47.9	53.3	49.3	52.2	46.2	48.9	48.3	37.6	58.9
Percentage change	0.1	1.0	-2.5	-1.1	-8.3	0.6	-0.6	-0.6	-1.0	-2.1	6.2	-2.0	5.2	0.4
2004/2005	50.2	55.5	51.9	57.3	46.0	47.5	53.4	49.2	52.1	45.9	46.4	46.8	38.3	61.0
Percentage change	-0.7	-1.2	-1.9	3.1	-1.3	-0.9	0.2	-0.2	-0.2	-0.6	-5.0	-3.0	1.6	3.5
2005/2006	49.2	53.0	51.2	50.2	46.3	47.1	52.8	48.9	51.9 ²	43.6	45.3	45.5	39.1	60.3
Percentage change	-1.9	-4.4	-1.4	-12.4	0.5	-0.8	-1.0	-0.5	-0.3	-5.0	-2.4	-2.8	2.3	-1.2
2006/2007	49.7	52.4	53.0	48.4	45.9	46.8	53.7	48.4	51.2 ²	44.9	46.2	43.9	38.9	63.7
Percentage change	0.9	-1.3	3.5	-3.4	-0.8	-0.7	1.6	-1.1	-1.5	3.1	2.0	-3.6	-0.6	5.7
2007/2008	49.8	50.5	51.3	48.4	46.3	46.6	53.9	48.5	51.9 ²	46.1	45.1	44.0	39.6	64.3
Percentage change	0.2	-3.5	-3.1	-0.2	0.9	-0.3	0.5	0.2	1.5	2.6	-2.3	0.2	1.9	0.9
2008/2009	48.9	51.4	52.3	48.0	46.9	46.4	53.2	45.6	50.5 ²	43.0	45.5	46.1	41.0	64.1
Percentage change	-1.7	1.7	1.9	-0.8	1.3	-0.6	-1.4	-5.9	-2.8	-6.8	0.9	4.9	3.4	-0.3

1. Nova Scotia data prior to 2005/2006 not comparable to more recent data due to change in methodology.

2. Figure has been adjusted to reflect the change in school year reporting period.

Note: Table A.25 = Table A.16 (Educator remuneration) divided by Table A.17 (Operating expenditures).

Chart A.25.1
Educator remuneration as a percentage of operating expenditures, 2008/2009

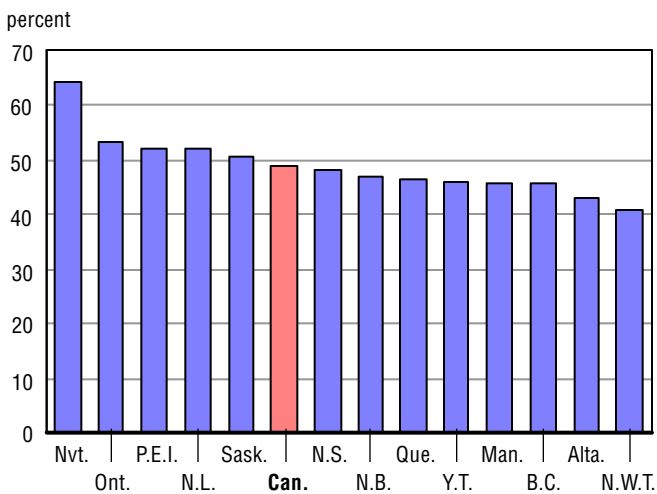


Chart A.25.2
Percentage change between 2002/2003 and 2008/2009

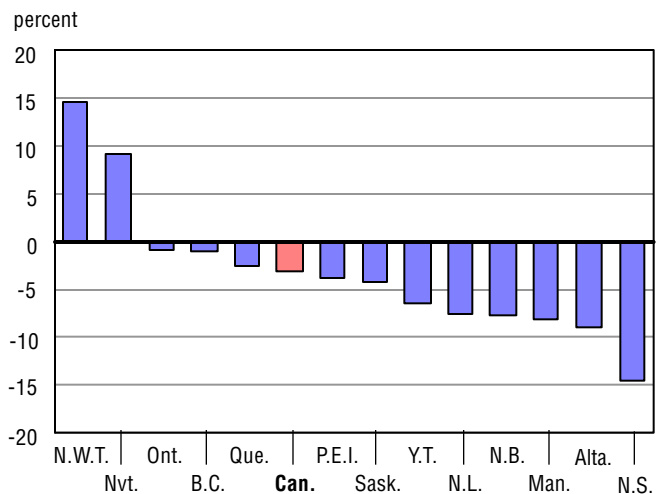


Table A.26.1
Total expenditures in public elementary and secondary schools per capita, Canada, provinces and territories, 2002/2003 to 2008/2009 (in current dollars)

	Canada	N.L.	P.E.I.	N.S. ¹	N.B.	Que.	Ont.	Man.	Sask.	Alta.	B.C.	Y.T.	N.W.T.	Nvt.
2002/2003	1,309	1,171	1,186	1,200	1,186	1,215	1,344	1,344	1,446	1,456	1,249	2,504	2,721	3,643
Percentage change	2.1	3.0	6.6	-8.1	1.0	3.4	0.1	2.8	12.2	3.7	4.6	-5.7	-1.0	-9.4
2003/2004	1,345	1,208	1,217	1,234	1,301	1,220	1,416	1,399	1,497	1,471	1,222	2,542	2,760	3,864
Percentage change	2.8	3.2	2.5	2.8	9.7	0.4	5.4	4.1	3.5	1.0	-2.1	1.5	1.4	6.1
2004/2005	1,396	1,208	1,224	1,233	1,359	1,230	1,500	1,423	1,578	1,520	1,262	2,617	3,042	3,872
Percentage change	3.8	-0.1	0.6	-0.1	4.5	0.8	5.9	1.7	5.4	3.3	3.3	2.9	10.2	0.2
2005/2006	1,463	1,262	1,218	1,340	1,409	1,263	1,579	1,495	1,599 ²	1,603	1,345	2,956	3,082	3,825
Percentage change	4.8	4.5	-0.5	8.7	3.7	2.7	5.2	5.1	1.3	5.5	6.6	12.9	1.3	-1.2
2006/2007	1,514	1,309	1,329	1,394	1,466	1,363	1,617	1,579	1,702 ²	1,585	1,369	3,213	3,442	4,110
Percentage change	3.5	3.7	9.1	4.0	4.1	7.9	2.5	5.6	6.5	-1.1	1.8	8.7	11.7	7.5
2007/2008	1,541	1,418	1,364	1,446	1,501	1,390	1,628	1,581	1,692 ²	1,661	1,401	3,105	3,728	4,291
Percentage change	1.8	8.4	2.6	3.7	2.4	1.9	0.7	0.1	-0.6	4.7	2.3	-3.3	8.3	4.4
2008/2009	1,630	1,529	1,472	1,527	1,632	1,420	1,721	1,729	1,818 ²	1,878	1,440	2,908	4,425	4,398
Percentage change	5.8	7.8	7.9	5.6	8.8	2.2	5.7	9.3	7.5	13.1	2.8	-6.3	18.7	2.5

1. Nova Scotia data prior to 2005/2006 not comparable to more recent data due to change in methodology.

2. Figure has been adjusted to reflect the change in school year reporting period.

Note: Table A.26.1 = Table A.19 (Total expenditures) divided by Table A.30 (Total population estimates).

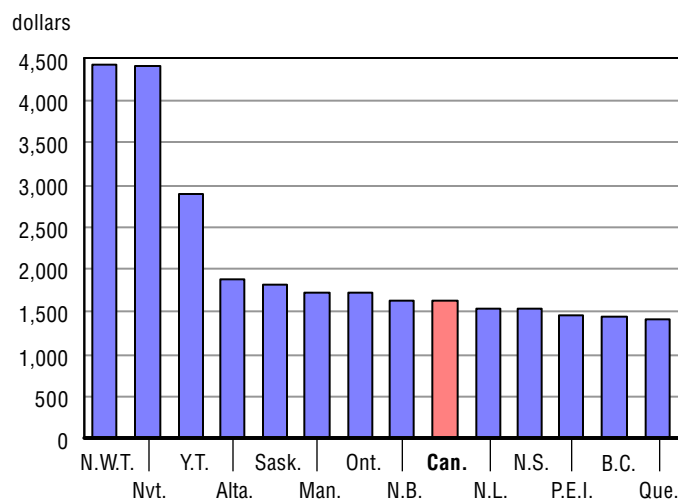
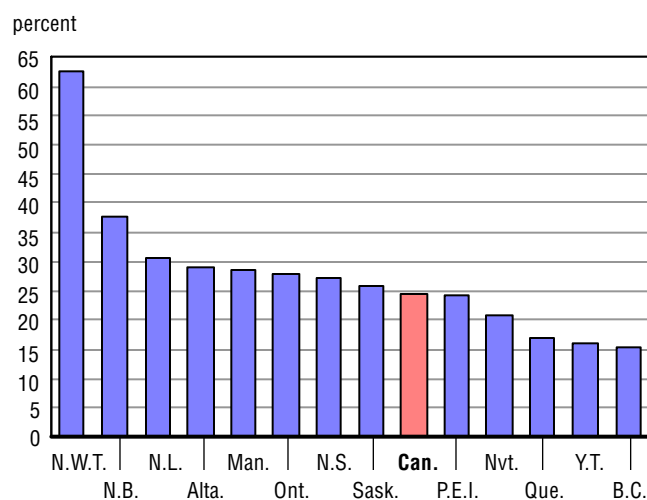
Chart A.26.1.1
Total expenditures per capita, 2008/2009
(in current dollars)

Chart A.26.1.2
Percentage change between 2002/2003 and 2008/2009


Table A.26.2

Total expenditures in public elementary and secondary schools per capita, Canada, provinces and territories, 2002/2003 to 2008/2009 (in 2002 constant dollars)

	Canada	N.L.	P.E.I.	N.S. ¹	N.B.	Que.	Ont.	Man.	Sask.	Alta.	B.C.	Y.T.	N.W.T.	Nvt.
2002/2003	1,309	1,171	1,186	1,200	1,186	1,215	1,344	1,344	1,446	1,456	1,249	2,504	2,721	..
Percentage change	-0.1	0.6	3.8	-10.7	-2.2	1.3	-1.9	1.3	9.0	0.3	2.1	-6.3	-3.8	..
2003/2004	1,308	1,174	1,175	1,193	1,258	1,190	1,379	1,375	1,464	1,409	1,196	2,495	2,698	3,857
Percentage change	0.0	0.3	-0.9	-0.6	6.1	-2.0	2.6	2.3	1.2	-3.2	-4.2	-0.4	-0.8	..
2004/2005	1,333	1,152	1,157	1,171	1,295	1,177	1,434	1,371	1,509	1,435	1,212	2,541	2,931	3,826
Percentage change	1.9	-1.9	-1.6	-1.9	3.0	-1.1	4.0	-0.3	3.1	1.9	1.3	1.8	8.6	-0.8
2005/2006	1,367	1,173	1,117	1,239	1,312	1,182	1,477	1,403	1,496 ²	1,483	1,265	2,807	2,902	3,717
Percentage change	2.5	1.8	-3.5	5.8	1.3	0.4	3.0	2.3	-0.9	3.3	4.4	10.5	-1.0	-2.8
2006/2007	1,388	1,195	1,191	1,263	1,343	1,254	1,487	1,453	1,560 ²	1,412	1,267	3,008	3,196	3,929
Percentage change	1.5	1.9	6.7	1.9	2.4	6.2	0.7	3.6	4.3	-4.8	0.1	7.2	10.1	5.7
2007/2008	1,382	1,277	1,200	1,285	1,348	1,259	1,470	1,425	1,508 ²	1,408	1,273	2,836	3,365	3,977
Percentage change	-0.4	6.8	0.8	1.8	0.4	0.4	-1.1	-1.9	-3.4	-0.2	0.5	-5.7	5.3	1.2
2008/2009	1,429	1,338	1,253	1,318	1,442	1,260	1,519	1,524	1,569 ²	1,545	1,282	2,564	3,841	3,984
Percentage change	3.4	4.8	4.4	2.5	6.9	0.1	3.3	6.9	4.0	9.7	0.7	-9.6	14.2	0.2

.. not available for a specific reference period

0 true zero or a value rounded to zero

1. Nova Scotia data prior to 2005/2006 not comparable to more recent data due to change in methodology.

2. Figure has been adjusted to reflect the change in school year reporting period.

Note: Table A.26.2 = Table A.19 (Total expenditures) divided by Table A.30 (Total population estimates) divided by Table A.36 (Consumer Price Index).

Chart A.26.2.1
Total expenditures per capita, 2008/2009 (in 2002 constant dollars)

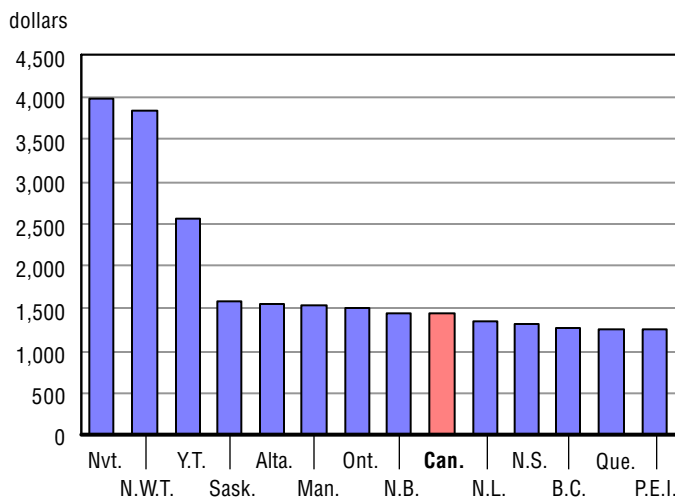
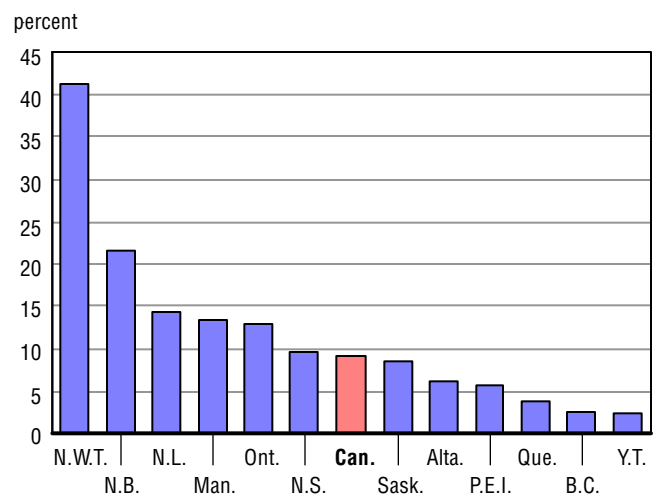


Chart A.26.2.2
Percentage change between 2002/2003 and 2008/2009



Note: Nvt. is excluded, data unavailable for entire period.

Table A.27

Total expenditures in public elementary and secondary schools as a percentage of GDP, Canada, provinces and territories, 2002/2003 to 2008/2009

	Canada	N.L.	P.E.I.	N.S. ¹	N.B.	Que.	Ont.	Man.	Sask.	Alta.	B.C.	Y.T.	N.W.T.	Nvt.
2002/2003	3.5	3.5	4.3	4.0	4.1	3.7	3.4	4.2	4.1	2.9	3.6	6.1	3.4	11.0
Percentage change	-0.5	-9.3	1.8	-12.4	-2.9	0.5	-1.2	0.7	6.2	1.6	1.2	-4.4	-7.8	-11.2
2003/2004	3.4	3.3	4.3	3.9	4.2	3.6	3.5	4.3	3.9	2.6	3.3	6.0	3.0	11.2
Percentage change	-2.0	-5.1	-0.8	-1.9	3.8	-3.1	2.6	0.7	-5.0	-8.4	-7.7	-2.2	-13.4	1.6
2004/2005	3.4	3.0	4.2	3.8	4.2	3.5	3.6	4.1	3.7	2.5	3.2	5.8	3.1	10.6
Percentage change	-1.6	-9.9	-2.8	-4.0	-0.8	-2.6	2.6	-3.2	-4.1	-6.9	-3.3	-3.1	3.1	-4.9
2005/2006	3.4	2.7	4.0	4.0	4.2	3.5	3.6	4.1	3.5	2.4	3.2	6.1	3.1	10.0
Percentage change	-0.1	-10.7	-4.5	5.6	-1.1	-0.3	2.1	-1.0	-4.3	-3.0	0.2	5.5	1.3	-6.1
2006/2007	3.3	2.4	4.1	4.0	4.1	3.6	3.6	4.0	3.5	2.3	3.2	6.1	3.4	10.0
Percentage change	-0.8	-10.7	3.8	0.8	-0.5	4.2	-0.7	-1.7	-0.3	-5.9	-2.8	-0.3	8.4	0.4
2007/2008	3.3	2.4	4.1	4.0	4.1	3.6	3.6	3.8	2.9	2.2	3.2	5.5	3.4	9.5
Percentage change	-1.9	-1.6	-0.2	0.1	-0.3	-0.6	-0.3	-4.8	-16.5	-3.1	0.0	-9.5	0.6	-5.3
2008/2009	3.5	2.7	4.4	4.2	4.5	3.7	3.9	4.1	3.1	2.6	3.3	4.9	4.2	9.4
Percentage change	7.2	16.5	6.7	3.9	8.2	1.9	7.3	8.6	4.1	17.9	4.8	-10.1	24.0	-1.3

0 true zero or a value rounded to zero

1. Nova Scotia data prior to 2005/2006 not comparable to more recent data due to change in methodology.

Note: Table A.27 = Table A.19 (Total expenditures) divided by Table A.32 (Gross Domestic Product).

Chart A.27.1
Total expenditures as a percentage of GDP, 2008/2009

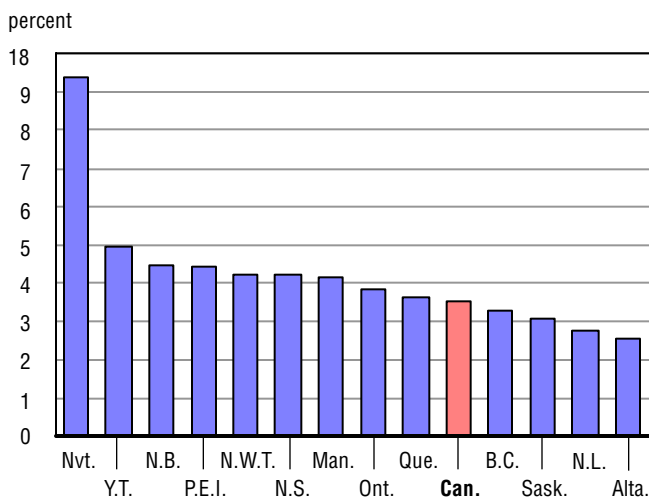


Chart A.27.2
Percentage change between 2002/2003 and 2008/2009

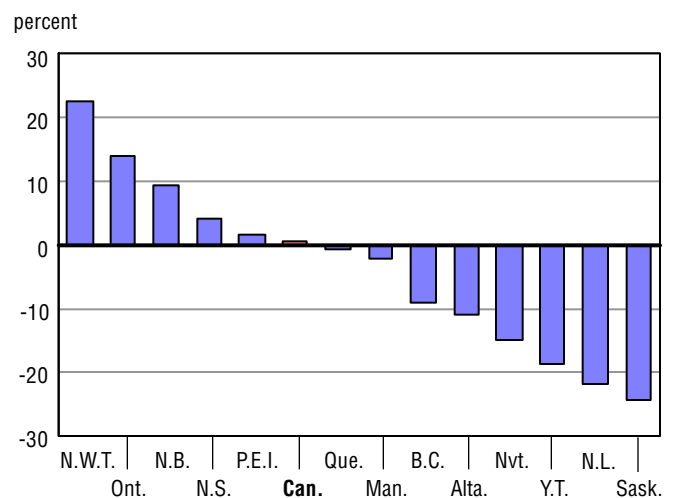


Table A.28

Total expenditures per student in public elementary and secondary schools as a percentage of GDP per capita, Canada, provinces and territories, 2002/2003 to 2008/2009

	Canada	N.L.	P.E.I.	N.S. ¹	N.B.	Que.	Ont.	Man.	Sask.	Alta.	B.C.	Y.T.	N.W.T.	Nvt.
2002/2003	22.0	22.3	25.6	25.1	25.4	25.5	20.2	27.2	22.7	17.2	25.1	34.8	15.6	37.7
Percentage change	1.7	-7.2	0.5	-10.3	-1.2	2.3	1.5	2.7	4.9	4.5	3.8	-2.1	-4.8	-9.3
2003/2004	22.1	21.8	25.9	25.0	26.7	25.1	21.4	27.7	21.9	16.1	23.6	35.2	13.8	37.9
Percentage change	0.2	-2.0	0.9	-0.3	5.3	-1.7	5.6	1.8	-3.5	-6.4	-5.8	1.0	-11.1	0.7
2004/2005	22.1	20.1	25.8	24.4	26.8	24.8	22.2	27.2	21.3	15.4	23.4	35.0	14.5	35.8
Percentage change	0.1	-8.0	-0.3	-2.1	0.5	-1.1	3.9	-1.8	-2.6	-4.2	-0.9	-0.7	4.7	-5.6
2005/2006	22.5	18.4	25.1	26.4	27.0	25.2	23.0	27.4	20.7	15.4	24.0	38.2	14.8	35.0
Percentage change	1.7	-8.3	-2.7	7.9	0.6	1.5	3.4	0.6	-2.6	-0.3	2.5	9.3	2.3	-2.2
2006/2007	22.8	16.9	26.8	27.2	27.5	26.9	23.2	27.5	21.3	14.6	24.1	39.3	16.0	35.9
Percentage change	1.4	-8.4	6.8	3.3	2.0	7.0	1.1	0.4	2.7	-4.8	0.5	2.8	8.0	2.6
2007/2008	22.9	17.1	27.7	27.9	27.9	27.5	23.6	26.5	18.4	14.6	24.8	36.4	16.6	34.5
Percentage change	0.4	1.5	3.4	2.6	1.5	2.1	1.5	-3.5	-13.5	-0.4	3.0	-7.4	4.1	-3.9
2008/2009	25.1	20.5	30.6	29.6	30.8	28.8	25.8	29.4	19.7	17.5	26.7	34.6	21.2	33.8
Percentage change	9.6	19.7	10.5	5.7	10.4	4.6	9.4	10.8	7.0	20.0	7.5	-4.8	27.5	-2.1

1. Nova Scotia data prior to 2005/2006 not comparable to more recent data due to change in methodology.
Note: Table A.28 = Table A.20.1 (Total expenditures per student) divided by Table A.33 (Gross Domestic Product).

Chart A.28.1
Total expenditures per student as a percentage of GDP per capita, 2008/2009

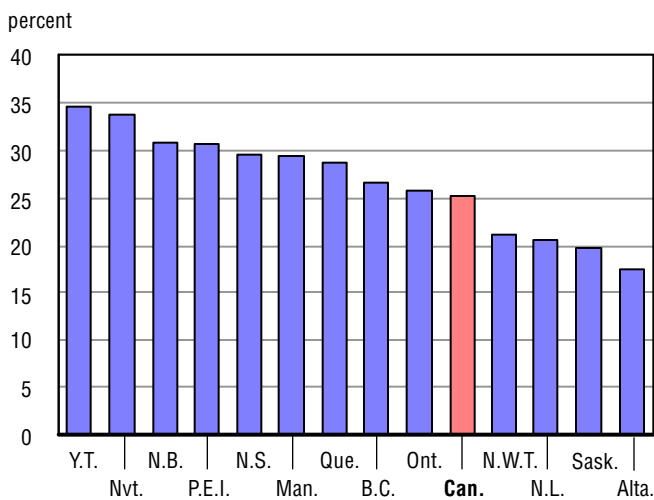


Chart A.28.2
Percentage change between 2002/2003 and 2008/2009

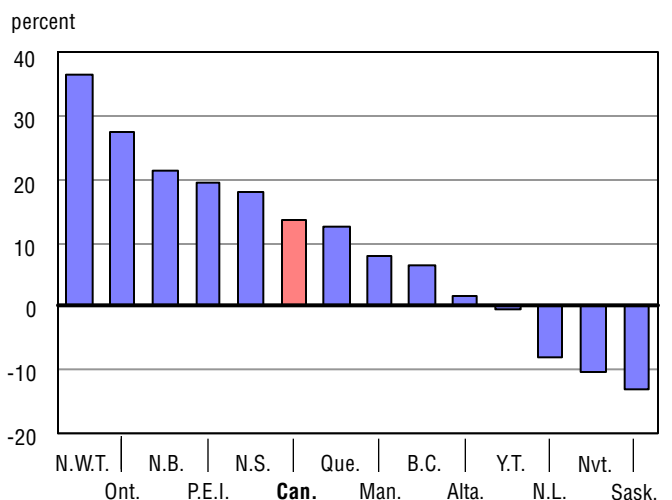


Table A.29

Total expenditures in public elementary and secondary schools as a percentage total expenditures by provincial and local governments, Canada, provinces and territories, 2002/2003 to 2008/2009

	Canada	N.L.	P.E.I.	N.S. ¹	N.B.	Que.	Ont.	Man.	Sask.	Alta.	B.C.	Y.T.	N.W.T.	Nvt.
2002/2003	13.8	11.9	12.6	14.0	13.4	11.7	15.1	14.3	13.1	15.5	14.0	12.4	9.7	10.5
Percentage change	-0.6	2.1	1.7	-11.6	-2.4	0.2	-4.7	2.5	-8.1	9.1	4.3	-7.6	-2.3	-12.4
2003/2004	13.6	11.6	11.9	13.8	13.9	11.1	15.1	14.4	14.1	15.4	13.4	11.6	9.8	10.4
Percentage change	-1.4	-2.5	-5.6	-1.6	4.3	-4.9	0.3	0.2	7.5	-1.2	-4.0	-6.8	0.6	-0.7
2004/2005	13.8	11.8	12.7	13.1	13.8	11.0	15.4	14.1	14.2	15.3	13.9	10.7	10.3	10.3
Percentage change	1.1	1.5	6.8	-4.7	-0.8	-0.7	2.2	-1.5	0.7	0.0	3.1	-7.7	5.0	-0.9
2005/2006	13.6	8.5	11.8	13.3	13.5	10.6	15.4	14.0	13.8	15.2	14.0	11.3	10.1	9.9
Percentage change	-1.6	-27.4	-6.7	1.3	-2.6	-3.4	-0.6	-1.3	-2.4	-0.7	1.1	6.1	-1.9	-4.2
2006/2007	13.4	10.6	11.9	13.1	13.0	10.8	15.1	14.3	14.1	14.2	13.4	11.7	10.8	10.4
Percentage change	-1.3	24.5	0.8	-1.7	-3.3	1.4	-1.7	2.0	2.0	-6.6	-4.7	3.2	7.0	5.5
2007/2008	12.9	10.6	12.1	12.6	12.0	10.7	14.5	13.1	13.4	13.3	13.1	11.2	10.3	9.9
Percentage change	-3.6	-0.6	1.5	-3.6	-7.8	-1.1	-4.3	-7.8	-4.7	-6.6	-1.9	-4.6	-5.0	-5.7
2008/2009	13.1	10.9	12.4	12.7	13.1	10.3	15.2	14.1	13.1	14.1	12.4	9.6	11.1	10.1
Percentage change	1.8	3.5	2.4	1.1	8.6	-3.1	5.4	6.9	-2.8	5.9	-5.0	-13.9	8.4	2.4

0 true zero or a value rounded to zero

1. Nova Scotia data prior to 2005/2006 not comparable to more recent data due to change in methodology.

Note: Table A.29 = Table A.19 (Total expenditures) divided by Table A.35 (Total expenditures by a provincial/territorial and municipal governments).

Chart A.29.1

Total expenditures in public elementary and secondary schools as a percentage of total public expenditures by provincial and local governments, 2008/2009

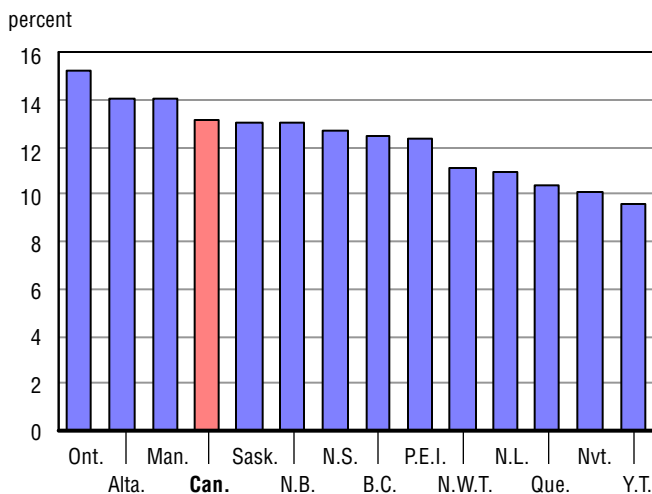


Chart A.29.2

Percentage change between 2002/2003 and 2008/2009

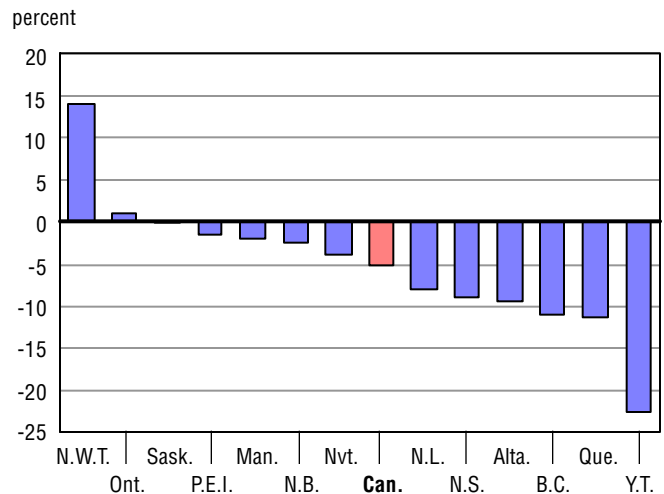


Table A.30

Total population estimates, Canada, provinces and territories, July 1st, 2003 to 2009

	Canada	N.L.	P.E.I.	N.S.	N.B.	Que.	Ont.	Man.	Sask.	Alta.	B.C.	Y.T.	N.W.T.	Nvt.
2003	31,639,670	518,520	137,221	937,491	749,389	7,485,838	12,242,273	1,163,819	996,483	3,183,396	4,122,396	30,963	42,561	29,320
Percentage change	2.0	-0.7	0.4	0.5	-0.1	1.2	2.9	1.1	-0.4	4.1	1.1	2.7	4.2	4.2
2004	31,940,676	517,447	137,674	939,376	749,369	7,535,929	12,390,599	1,173,566	997,447	3,239,471	4,155,170	31,473	43,301	29,854
Percentage change	1.0	-0.2	0.3	0.2	0.0	0.7	1.2	0.8	0.1	1.8	0.8	1.6	1.7	1.8
2005	32,245,209	514,363	138,055	937,941	747,960	7,581,911	12,528,480	1,178,301	993,579	3,322,200	4,196,788	31,904	43,399	30,328
Percentage change	1.0	-0.6	0.3	-0.2	-0.2	0.6	1.1	0.4	-0.4	2.6	1.0	1.4	0.2	1.6
2006	32,576,074	510,313	137,920	938,010	745,674	7,631,552	12,665,346	1,184,031	992,122	3,421,253	4,243,580	32,276	43,198	30,799
Percentage change	1.0	-0.8	-0.1	0.0	-0.3	0.7	1.1	0.5	-0.1	3.0	1.1	1.2	-0.5	1.6
2007	32,931,956	506,530	138,127	935,889	745,561	7,687,125	12,794,689	1,193,932	1,000,139	3,513,106	4,309,453	32,586	43,545	31,274
Percentage change	1.1	-0.7	0.2	-0.2	0.0	0.7	1.0	0.8	0.8	2.7	1.6	1.0	0.8	1.5
2008	33,327,337	506,441	139,451	936,585	747,147	7,753,470	12,936,296	1,206,100	1,013,620	3,595,867	4,383,845	33,172	43,720	31,623
Percentage change	1.2	0.0	1.0	0.1	0.2	0.9	1.1	1.0	1.3	2.4	1.7	1.8	0.4	1.1
2009	33,739,859	508,925	140,985	938,183	749,468	7,828,879	13,069,182	1,221,964	1,030,129	3,687,662	4,455,207	33,653	43,439	32,183
Percentage change	1.2	0.5	1.1	0.2	0.3	1.0	1.0	1.3	1.6	2.6	1.6	1.5	-0.6	1.8

0 true zero or a value rounded to zero

Source: CANSIM, Statistics Canada, Table 051-0001 Demography Division: Estimates of Population by Age and Sex for Canada, Provinces and Territories.

Chart A.30.1
Percentage change between 2008 and 2009

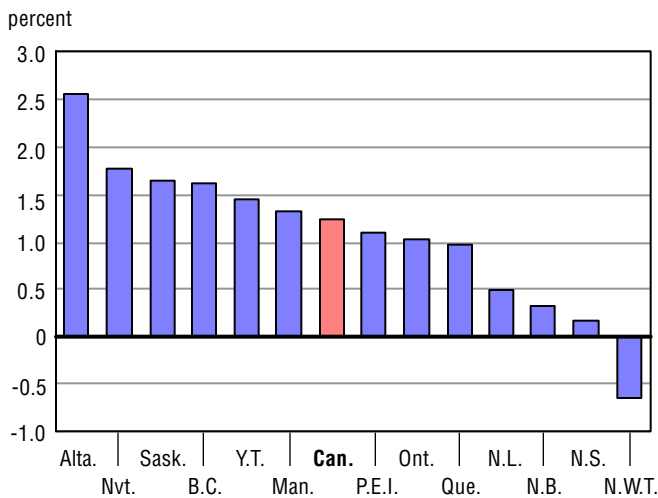


Chart A.30.2
Percentage change between 2003 and 2009

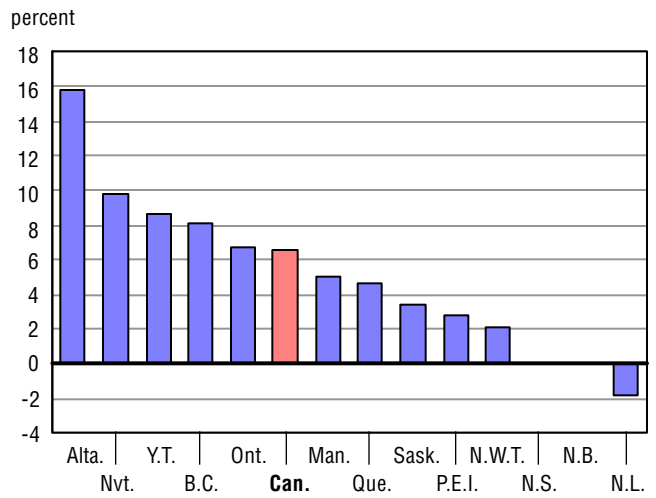


Table A.31

School age population estimates (5 to 17 years), Canada, provinces and territories, July 1st, 2003 to 2009

	Canada	N.L.	P.E.I.	N.S.	N.B.	Que.	Ont.	Man.	Sask.	Alta.	B.C.	Y.T.	N.W.T.	Nvt.
2003	5,345,510	82,308	24,408	151,782	119,510	1,189,912	2,111,051	214,432	188,652	576,911	662,694	5,748	9,471	8,631
Percentage change	-0.4	-3.1	-2.2	-1.5	-1.7	-0.6	0.1	-0.3	-1.9	0.0	-1.1	-0.5	0.0	0.9
2004	5,316,656	79,983	23,925	149,192	117,495	1,181,527	2,107,827	214,193	185,250	575,885	657,637	5,680	9,411	8,651
Percentage change	-0.5	-2.8	-2.0	-1.7	-1.7	-0.7	-0.2	-0.1	-1.8	-0.2	-0.8	-1.2	-0.6	0.2
2005	5,296,233	78,092	23,626	146,548	115,891	1,177,367	2,102,752	212,996	181,743	579,058	654,610	5,619	9,210	8,721
Percentage change	-0.4	-2.4	-1.2	-1.8	-1.4	-0.4	-0.2	-0.6	-1.9	0.6	-0.5	-1.1	-2.1	0.8
2006	5,262,385	75,797	23,250	143,551	113,541	1,170,989	2,088,306	211,742	178,343	583,311	650,444	5,490	8,949	8,672
Percentage change	-0.6	-2.9	-1.6	-2.0	-2.0	-0.5	-0.7	-0.6	-1.9	0.7	-0.6	-2.3	-2.8	-0.6
2007	5,207,781	73,844	22,841	140,050	111,397	1,156,225	2,067,997	210,553	176,083	581,076	644,827	5,401	8,818	8,669
Percentage change	-1.0	-2.6	-1.8	-2.4	-1.9	-1.3	-1.0	-0.6	-1.3	-0.4	-0.9	-1.6	-1.5	0.0
2008	5,142,299	71,986	22,594	136,079	109,142	1,135,656	2,044,685	208,803	174,127	578,521	638,104	5,366	8,584	8,652
Percentage change	-1.3	-2.5	-1.1	-2.8	-2.0	-1.8	-1.1	-0.8	-1.1	-0.4	-1.0	-0.6	-2.7	-0.2
2009	5,086,736	70,991	22,363	132,423	107,049	1,114,219	2,024,220	208,152	173,738	579,902	631,390	5,305	8,278	8,706
Percentage change	-1.1	-1.4	-1.0	-2.7	-1.9	-1.9	-1.0	-0.3	-0.2	0.2	-1.1	-1.1	-3.6	0.6

0 true zero or a value rounded to zero

Source: CANSIM, Statistics Canada, Table 051-0001: Estimates of Population by Age and Sex for Canada, Provinces and Territories.

Chart A.31.1
Percentage change between 2008 and 2009

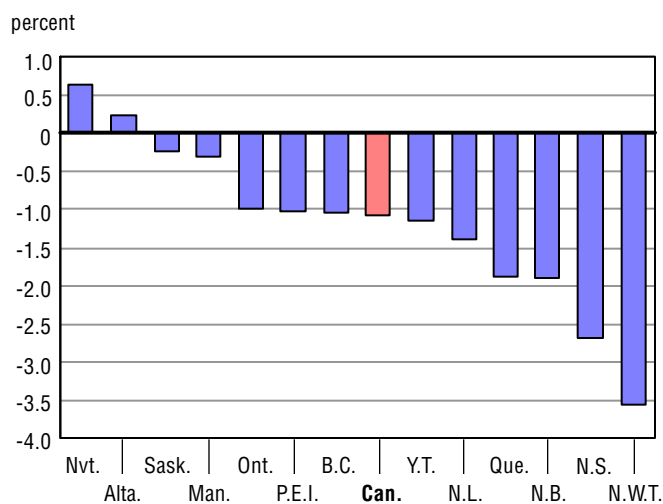


Chart A.31.2
Percentage change between 2003 and 2009

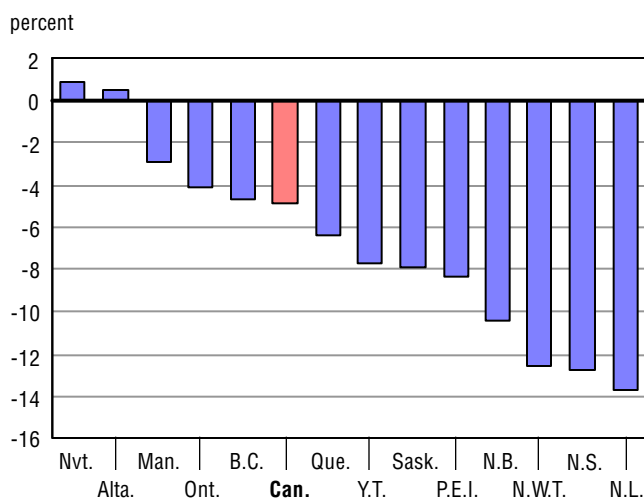


Table A.32

**Gross domestic product, Canada, provinces and territories, 2002/2003 to 2008/2009
(in millions of current dollars)**

	Canada	N.L.	P.E.I.	N.S.	N.B.	Que.	Ont.	Man.	Sask.	Alta.	B.C.	Y.T.	N.W.T.	Nvt.
2002/2003	1,183,040	17,288	3,750	27,967	21,768	246,100	485,422	37,005	35,498	160,354	141,918	1,273	3,363	971
Percentage change	4.6	12.9	5.1	5.6	4.0	4.0	4.2	3.2	5.2	6.2	4.5	1.3	12.0	6.3
2003/2004	1,252,041	18,763	3,891	29,352	23,019	256,757	504,594	38,600	38,725	179,928	151,659	1,343	4,006	1,033
Percentage change	5.8	8.5	3.8	5.0	5.7	4.3	3.9	4.3	9.1	12.2	6.9	5.5	19.1	6.3
2004/2005	1,332,376	20,684	4,040	30,526	24,194	267,405	526,745	40,715	42,396	204,777	163,670	1,446	4,294	1,106
Percentage change	6.4	10.2	3.8	4.0	5.1	4.1	4.4	5.5	9.5	13.8	7.9	7.6	7.2	7.1
2005/2006	1,412,125	24,012	4,206	31,422	25,282	277,277	548,980	43,427	44,800	229,348	175,958	1,566	4,275	1,182
Percentage change	6.0	16.1	4.1	2.9	4.5	3.7	4.2	6.7	5.7	12.0	7.5	8.3	-0.4	6.9
2006/2007	1,489,997	27,657	4,429	32,338	26,446	289,217	572,261	47,047	48,234	247,337	187,184	1,723	4,440	1,285
Percentage change	5.5	15.2	5.3	2.9	4.6	4.3	4.2	8.3	7.7	7.8	6.4	10.1	3.9	8.7
2007/2008	1,564,599	30,460	4,597	33,536	27,210	299,338	584,203	49,984	58,144	273,682	194,923	1,873	4,798	1,432
Percentage change	5.0	10.1	3.8	3.7	2.9	3.5	2.1	6.2	20.5	10.7	4.1	8.7	8.1	11.5
2008/2009	1,563,433	28,321	4,700	34,162	27,437	303,248	581,322	51,011	60,989	269,381	194,367	1,980	4,561	1,514
Percentage change	-0.1	-7.0	2.3	1.9	0.8	1.3	-0.5	2.1	4.9	-1.6	-0.3	5.7	-4.9	5.7

Source: CANSIM, Statistics Canada, Table: 384-0013 (converted to school (July-June) year): Gross Domestic Product.

Chart A.32.1
Percentage change between 2007/2008 and 2008/2009

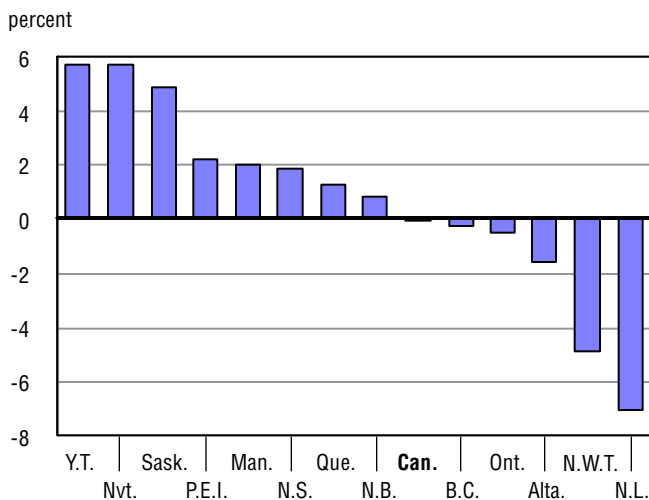


Chart A.32.2
Percentage change between 2002/2003 and 2008/2009

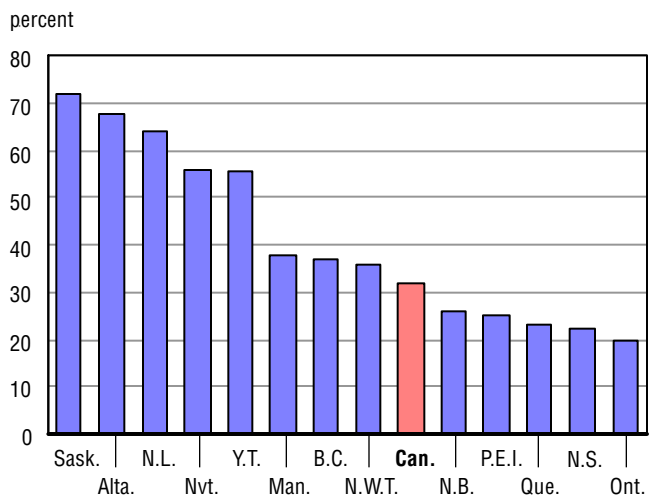


Table A.33
**Gross domestic product per capita, Canada, provinces and territories, 2002/2003 to 2008/2009
(in current dollars)**

	Canada	N.L.	P.E.I.	N.S.	N.B.	Que.	Ont.	Man.	Sask.	Alta.	B.C.	Y.T.	N.W.T.	Nvt.
2002/2003	37,391	33,341	27,325	29,831	29,047	32,875	39,651	31,796	35,623	50,372	34,426	41,114	79,004	33,117
Percentage change	2.6	13.6	4.7	5.0	4.1	2.8	1.3	2.1	5.6	2.1	3.3	-1.3	7.5	2.0
2003/2004	39,199	36,261	28,259	31,246	30,718	34,071	40,724	32,891	38,824	55,542	36,499	42,671	92,515	34,585
Percentage change	4.8	8.8	3.4	4.7	5.8	3.6	2.7	3.4	9.0	10.3	6.0	3.8	17.1	4.4
2004/2005	41,320	40,212	29,260	32,546	32,347	35,269	42,044	34,554	42,670	61,639	38,999	45,308	98,931	36,451
Percentage change	5.4	10.9	3.5	4.2	5.3	3.5	3.2	5.1	9.9	11.0	6.8	6.2	6.9	5.4
2005/2006	43,349	47,053	30,492	33,498	33,904	36,333	43,345	36,677	45,156	67,036	41,464	48,504	98,951	38,362
Percentage change	4.9	17.0	4.2	2.9	4.8	3.0	3.1	6.1	5.8	8.8	6.3	7.1	0.0	5.2
2006/2007	45,245	54,600	32,065	34,553	35,471	37,623	44,726	39,405	48,227	70,404	43,436	52,875	101,963	41,072
Percentage change	4.4	16.0	5.2	3.1	4.6	3.6	3.2	7.4	6.8	5.0	4.8	9.0	3.0	7.1
2007/2008	46,946	60,145	32,961	35,807	36,419	38,607	45,160	41,443	57,363	76,110	44,464	56,463	109,732	45,283
Percentage change	3.8	10.2	2.8	3.6	2.7	2.6	1.0	5.2	18.9	8.1	2.4	6.8	7.6	10.3
2008/2009	46,338	55,648	33,337	36,413	36,608	38,734	44,480	41,745	59,205	73,049	43,627	58,836	104,986	47,028
Percentage change	-1.3	-7.5	1.1	1.7	0.5	0.3	-1.5	0.7	3.2	-4.0	-1.9	4.2	-4.3	3.9

0 true zero or a value rounded to zero

Note: Table A.33 = Table A.32 (Gross Domestic Product) divided by Table A.30 (Total population estimates).

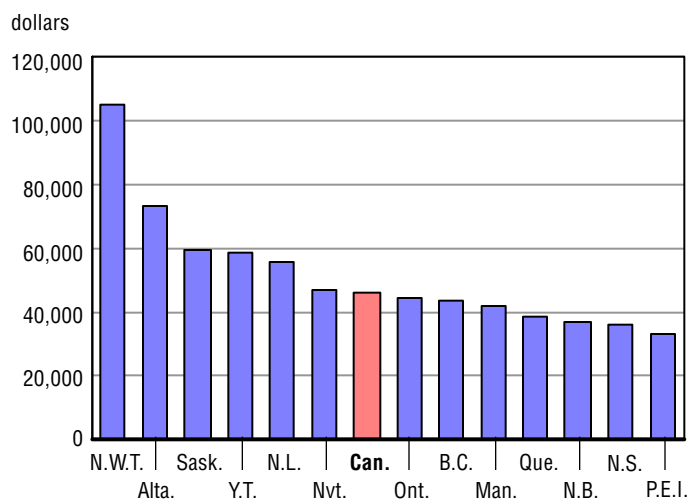
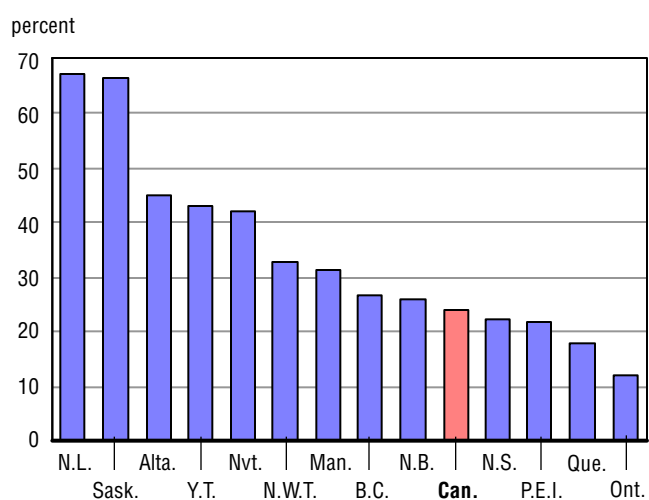
Chart A.33.1
Gross domestic product per capita, 2008/2009

Chart A.33.2
Percentage change between 2002/2003 and 2008/2009


Table A.34

Average earnings for full-time, full-year workers with a Bachelor degree, Canada, provinces and territories, 2002/2003 to 2008/2009¹

	Canada	N.L.	P.E.I.	N.S.	N.B.	Que.	Ont.	Man.	Sask.	Alta.	B.C.	Y.T.	N.W.T.	Nvt.
2002/2003	54,222	49,682	38,983	43,702	50,119	51,526	58,875	48,446	45,490	55,541	51,052	.	.	.
Percentage change	-0.8	6.0	1.4	-9.0	3.0	0.6	0.3	0.6	-2.2	-5.1	-1.2	.	.	.
2003/2004	55,064	52,842	40,425	44,184	51,767	52,923	59,501	47,452	44,993	55,841	52,158	.	.	.
Percentage change	1.6	6.4	3.7	1.1	3.3	2.7	1.1	-2.1	-1.1	0.5	2.2	.	.	.
2004/2005	56,289	55,647	41,284	46,238	52,819	53,194	59,856	49,835	48,346	58,346	55,202	.	.	.
Percentage change	2.2	5.3	2.1	4.6	2.0	0.5	0.6	5.0	7.5	4.5	5.8	.	.	.
2005/2006	59,059	59,309	43,832	50,472	54,948	54,563	62,787	52,623	54,535	63,638	56,293	.	.	.
Percentage change	4.9	6.6	6.2	9.2	4.0	2.6	4.9	5.6	12.8	9.1	2.0	.	.	.
2006/2007	62,116	62,430	46,358	51,841	58,197	56,652	66,357	53,492	58,164	68,752	57,999	.	.	.
Percentage change	5.2	5.3	5.8	2.7	5.9	3.8	5.7	1.7	6.7	8.0	3.0	.	.	.
2007/2008	64,072	60,614	49,335	53,746	58,870	57,649	67,078	57,569	63,687	74,275	61,412	.	.	.
Percentage change	3.1	-2.9	6.4	3.7	1.2	1.8	1.1	7.6	9.5	8.0	5.9	.	.	.
2008/2009	64,616	59,140	51,751	56,338	57,401	58,055	66,104	62,515	67,903	77,656	62,690	.	.	.
Percentage change	0.8	-2.4	4.9	4.8	-2.5	0.7	-1.5	8.6	6.6	4.6	2.1	.	.	.

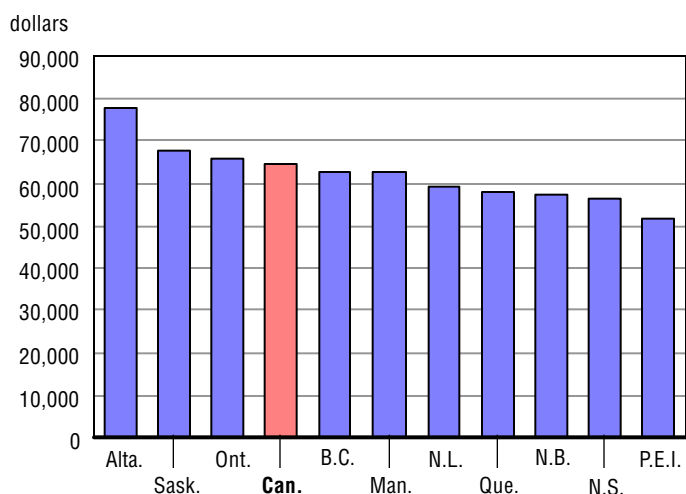
. not available for any reference period

1. Data for 2009 is not yet available.

Source: Statistics Canada, Survey of Labour and Income Dynamics.

Chart A.34.1

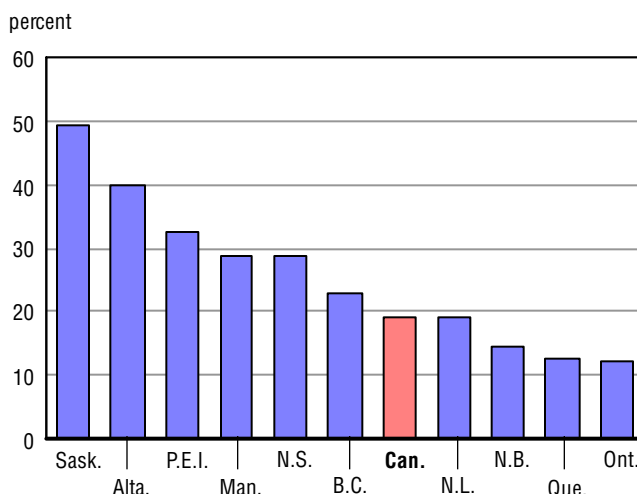
Average earnings of full-time, full-year workers with a Bachelor degree, 2008/2009



Note: Y.T., N.W.T., Nvt. are excluded, data unavailable for entire period.

Chart A.34.2

Percentage change between 2002/2003 and 2008/2009



Note: Y.T., N.W.T., Nvt. are excluded, data unavailable for entire period.

Table A.35

Total expenditures by provincial and local governments¹, Canada, provinces and territories, 2002/2003 to 2008/2009 (in millions of current dollars)

	Canada ²	N.L.	P.E.I.	N.S.	N.B.	Que.	Ont.	Man.	Sask.	Alta.	B.C.	Y.T.	N.W.T.	Nvt.
2002/2003	299,372	5,113	1,293	8,050	6,644	77,924	109,149	10,910	11,004	29,805	36,764	625	1,190	1,016
Percentage change	4.8	0.3	5.2	4.5	3.4	4.4	8.0	1.4	21.6	-1.0	1.4	4.9	5.6	7.9
2003/2004	314,919	5,397	1,409	8,427	6,992	82,810	116,099	11,435	10,607	31,026	37,799	692	1,221	1,105
Percentage change	5.2	5.6	9.0	4.7	5.2	6.3	6.4	4.8	-3.6	4.1	2.8	10.7	2.6	8.8
2004/2005	326,272	5,282	1,331	8,823	7,347	84,613	121,718	11,849	11,062	32,895	38,252	782	1,284	1,135
Percentage change	3.6	-2.1	-5.5	4.7	5.1	2.2	4.8	3.6	4.3	6.0	1.2	13.0	5.2	2.7
2005/2006	351,068	7,544	1,418	9,467	7,793	90,516	130,192	12,675	11,467	35,998	40,753	842	1,320	1,189
Percentage change	7.6	42.8	6.5	7.3	6.1	7.0	7.0	7.0	3.7	9.4	6.5	7.7	2.8	4.8
2006/2007	372,298	6,237	1,538	9,994	8,385	97,071	137,047	13,231	12,071	39,145	44,182	895	1,389	1,230
Percentage change	6.0	-17.3	8.5	5.6	7.6	7.2	5.3	4.4	5.3	8.7	8.4	6.3	5.2	3.4
2007/2008	398,000	6,800	1,570	10,763	9,329	100,945	145,767	14,504	12,752	44,936	46,866	923	1,590	1,377
Percentage change	6.9	9.0	2.1	7.7	11.3	4.0	6.4	9.6	5.6	14.8	6.1	3.1	14.5	12.0
2008/2009	418,606	7,121	1,673	11,259	9,373	107,491	147,581	15,025	14,325	49,201	51,533	1,019	1,730	1,402
Percentage change	5.2	4.7	6.6	4.6	0.5	6.5	1.2	3.6	12.3	9.5	10.0	10.4	8.8	1.8

1. Includes municipalities and school boards.

2. Data may not add to the total due to rounding.

Source: CANSIM, Statistics Canada, Table: 385-0001: Consolidated provincial, territorial and local government expenditures, for fiscal year ending March 31.

Chart A.35.1
Percentage change between 2007/2008 and 2008/2009

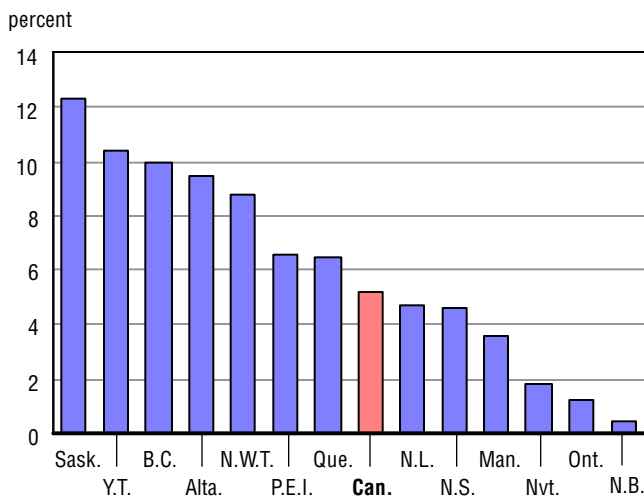


Chart A.35.2
Percentage change between 2002/2003 and 2008/2009

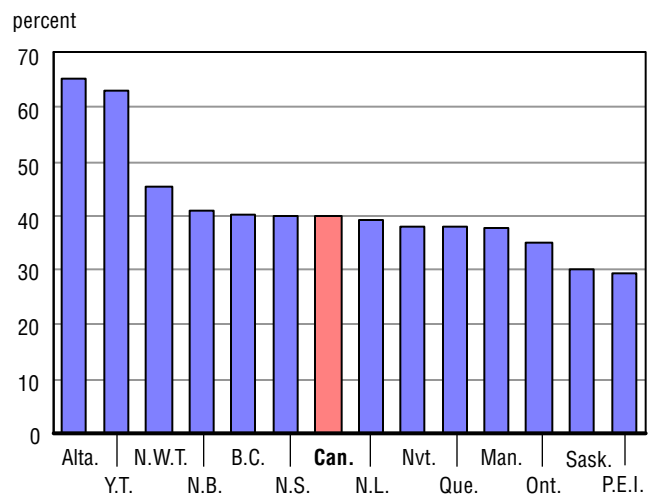


Table A.36
Consumer price index, Canada, provinces and territories, 2002/2003 to 2008/2009

	Canada	N.L.	P.E.I.	N.S.	N.B.	Que.	Ont.	Man.	Sask.	Alta.	B.C.	Y.T.	N.W.T.	Nvt.
2002/2003	1.000	1.000	1.000	1.000	1.000	1.000	1.000	1.000	1.000	1.000	1.000	1.000	1.000	..
Percentage change	2.2	2.4	2.7	3.0	3.3	2.0	2.0	1.5	2.9	3.4	2.4	0.7	3.0	...
2003/2004	1.028	1.029	1.035	1.034	1.034	1.025	1.027	1.018	1.023	1.044	1.022	1.019	1.023	1.002
Percentage change	2.8	2.9	3.5	3.4	3.4	2.5	2.7	1.8	2.3	4.4	2.2	1.9	2.3	...
2004/2005	1.047	1.048	1.058	1.053	1.049	1.045	1.046	1.038	1.046	1.059	1.042	1.030	1.038	1.012
Percentage change	1.8	1.8	2.2	1.8	1.5	2.0	1.9	2.0	2.2	1.4	2.0	1.1	1.5	1.0
2005/2006	1.070	1.076	1.091	1.082	1.074	1.069	1.069	1.066	1.069	1.081	1.063	1.053	1.062	1.029
Percentage change	2.2	2.7	3.1	2.8	2.4	2.3	2.2	2.7	2.2	2.1	2.0	2.2	2.3	1.7
2006/2007	1.091	1.095	1.116	1.104	1.092	1.087	1.088	1.087	1.091	1.123	1.081	1.068	1.077	1.046
Percentage change	2.0	1.8	2.3	2.0	1.7	1.7	1.8	2.0	2.1	3.9	1.7	1.4	1.4	1.7
2007/2008	1.115	1.111	1.136	1.125	1.113	1.104	1.108	1.109	1.122	1.179	1.100	1.095	1.108	1.079
Percentage change	2.2	1.5	1.8	1.9	1.9	1.6	1.8	2.0	2.8	5.0	1.8	2.5	2.9	3.2
2008/2009	1.141	1.143	1.175	1.159	1.132	1.127	1.133	1.134	1.159	1.216	1.123	1.134	1.152	1.104
Percentage change	2.3	2.9	3.4	3.0	1.7	2.1	2.3	2.3	3.3	3.1	2.1	3.6	4.0	2.3

.. not available for a specific reference period

... not applicable

Source: CANSIM, Statistics Canada, Table 326-0002: Consumer price index, 2005 basket content; All-items (Index, 2002=100).

Chart A.36.1
Percentage change between 2007/2008 and 2008/2009

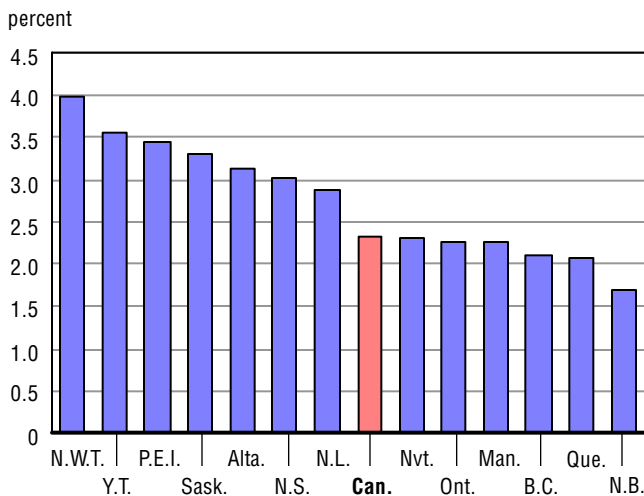
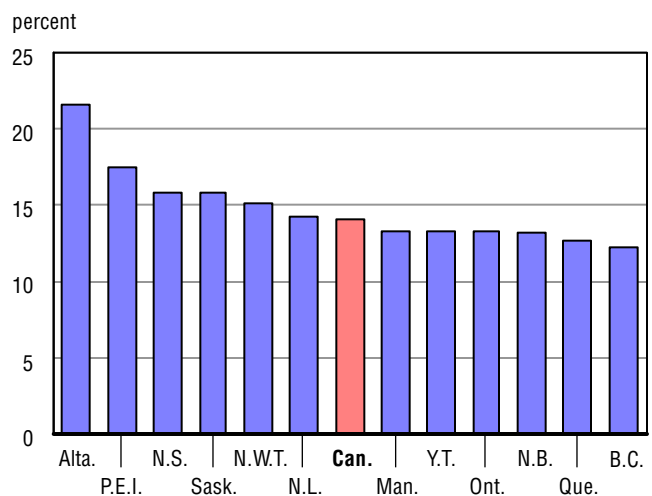


Chart A.36.2
Percentage change between 2002/2003 and 2008/2009



Note: Nvt. is excluded, data unavailable for entire period.

Appendix 2

Definitions

Enrolments

Number of students enrolled in public schools operated by school boards or the province in September (or as close as possible thereafter) of the school year. It includes all students in publicly funded schools (graded and ungraded), provincial reformatory or custodial schools, and other students recognized and funded by a province or territory. It excludes correspondence or distance education enrolments, private school students, independent school students or students in schools financed by federal departments (e.g. the Department of National Defense and the Department of Indian and Northern Affairs).

Includes other non-standard enrolment including students receiving educational services (if recognized by the province) and for schools and/or school districts that receive funding in a unique manner. They may be non-graduates who are taking only a few courses required to complete graduation. For example, a student who is enrolled in only 25% of a 'regular' course load and for whom the school or school district receives only 25% of the usual funding. This category may not apply to some provinces or territories.

Headcount enrolment

Defined as the number of students enrolled in September (or as close as possible thereafter) of the school year.

Full Time Equivalent (FTE) enrolment

Defined as the number of full-time students enrolled in September (or as close as possible thereafter) of the school year, plus the sum of part-time students according to the time fraction spent in the classroom and for which students are funded. For example, junior kindergarten and kindergarten students taking a half-time program and where a half-time program is being funded, the FTE enrolment would be the headcount enrolment divided by two, which is 0.5. If a student is only taking a quarter of the usual course load and is funded on that basis, the FTE enrolment would be the headcount enrolment divided by four, which is 0.25.

Minority and Second Language Programs

Regular Second Language Programs

Enrolments in programs where French is taught to Anglophone students or English is taught to Francophone students as a “subject” in the regular course offerings. One or more additional subjects can also be taught in the student’s second official language but second language instruction must total less than 25% of all instruction time.

Second Language Immersion Programs

Enrolments in programs where French is the language of instruction for Anglophone students or English is the language of instruction for Francophone students. Instruction time in the student’s second official language is more than 25% of all instruction time.

Minority Language Programs

Enrolments in programs for students from the official language linguistic minority in the relevant province or territory (French outside Québec, English in Québec). These programs allow children in the linguistic minority to pursue their education in their first official language.

Graduates

Graduates of general training programs offered to similarly aged young students. Includes first time graduates only.

Includes graduates in General Education Development (GED), Adult Basic Education (ABE) and other equivalency programs. Excludes any graduates of upgrading programs offered at the postsecondary level.

Includes graduates in all professional and technical training programs. Excludes any graduates of vocational programs offered at the postsecondary level.

Graduation rate

The number of graduates is as of the end of a school year while the population estimates are as of July 1 of the corresponding school year. Late graduates are included in the calculations while graduates from private schools, are not. For this reason, this methodology underestimates the “final” graduation rate and should not be used to infer dropout rate.

The graduation rate is calculated by dividing the number of graduates with the average of the 17 and 18 year-old population:

Graduation Rate = Total number of secondary graduates / [(17 year old population + 18 year-old population)/2]

Educators

Includes all employees in the public school system (either school-based or school district-based) who belong to one of the three following categories: teachers, school administrators and pedagogical support.

It includes all educators in regular public schools, provincial reformatory or custodial schools, and other students recognized and funded by a province or territory. It excludes correspondence or distance programs, private schools or independent schools financed by federal departments (e.g. the Department of National Defense and the Department of Indian and Northern Affairs).

Please note that all teachers in regular programs for youth, adult upgrading programs and vocational programs for youth and adults are also included. Any programs offered at the postsecondary level are excluded.

Teachers

This category includes personnel involved in direct student instruction in a group or one-on-one basis. Chairpersons of departments who spend the majority of their time teaching are also reported in this category. Personnel temporarily not at work (e.g. for reasons of illness or injury, maternity or parental leave, holiday or vacation) are also included.

Includes:

- Classroom teachers
- Special education teachers
- Specialists (music, physical education)
- Other teachers who work with students as a whole class in a classroom, in small groups in a resource room, or one-on-one inside or outside a regular classroom

Excludes:

- Teacher aides, student teachers
- Other personnel who do not get paid for their employment.

School Administrators

This category includes all personnel who support the administration and management of the school (e.g. principals, vice-principals and other management staff with similar responsibilities), only if they do not spend the majority of their time teaching.

Excludes:

- Higher level management
- Receptionists, secretaries, clerks and other staff who support the administrative activities of the school

Pedagogical support

This category covers professional non-teaching which provides services to students to support their instruction program. It includes guidance counselors, librarians and educational media specialists.

Excludes:

- Health and social support

Headcount educator

Defined as the number of educators on September the 30th (or as close as possible thereafter) of the school year who are responsible for providing services to the headcount enrolment students.

Full Time Equivalent (FTE) educator

Defined as the number of full-time educators on September the 30th (or as close as possible thereafter) of the school year, plus the sum of part-time educators according to their percentage of a full-time employment allocation (determined by the province or territory). For example, if a normal full-time work allocation is ten months per year, an educator who works for six months of the year would be counted as 0.6 of a Full Time Equivalent (FTE) or an employee who works part time for ten months at 60% of full time would be 0.6 of an FTE.

Culture, Tourism and the Centre for Education Statistics

Research Papers

Cumulative index

Statistics Canada's **Division of Culture, Tourism and the Centre for Education Statistics** develops surveys, provides statistics and conducts research and analysis relevant to current issues in its three areas of responsibility.

The **Culture Statistics Program** creates and disseminates timely and comprehensive information on the culture sector in Canada. The program manages a dozen regular census surveys and databanks to produce data that support policy decision and program management requirements. Issues include the economic impact of culture, the consumption of culture goods and services, government, personal and corporate spending on culture, the culture labour market, and international trade of culture goods and services. Analysis is also published in *Focus on Culture* (87-004-XIE, free, <http://www.statcan.ca/bsolc/english/bsolc?catno=87-004-X>).

The **Tourism Statistics Program** provides information on domestic and international tourism. The program covers the Canadian Travel Survey and the International Travel Survey. Together, these surveys shed light on the volume and characteristics of trips and travellers to, from and within Canada.

The **Centre for Education Statistics** develops and delivers a comprehensive program of pan-Canadian education statistics and analysis in order to support policy decisions and program management, and to ensure that accurate and relevant information concerning education is available to the Canadian public and to other educational stakeholders. The Centre conducts fifteen institutional and over ten household education surveys. Analysis is also published in *Education Matters* (81-004-XIE, free, <http://www.statcan.ca/bsolc/english/bsolc?catno=81-004-X>), and in the *Analytical Studies Branch research paper series* (11F0019MIE, free, <http://www.statcan.ca/bsolc/english/bsolc?catno=11F0019M>).

Following is a cumulative index of Culture, Tourism and the Centre for Education Statistics research papers published to date

Research papers

- 81-595-M no. 001 Understanding the rural-urban reading gap
- 81-595-M no. 002 Canadian education and training services abroad: the role of contracts funded by international financial institution
- 81-595-M No. 003 Finding their way: a profile of young Canadian graduates
- 81-595-M No. 004 Learning, earning and leaving – The relationship between working while in high school and dropping out
- 81-595-M No. 005 Linking provincial student assessments with national and international assessments
- 81-595-M No. 006 Who goes to post-secondary education and when: Pathways chosen by 20 year-olds
- 81-595-M No. 007 Access, persistence and financing: First results from the Postsecondary Education Participation Survey (PEPS)
- 81-595-M No. 008 The labour market impacts of adult education and training in Canada
- 81-595-M No. 009 Issues in the design of Canada’s Adult Education and Training Survey
- 81-595-M No. 010 Planning and preparation: First results from the Survey of Approaches to Educational Planning (SAEP) 2002
- 81-595-M No. 011 A new understanding of postsecondary education in Canada: A discussion paper
- 81-595-M No. 012 Variation in literacy skills among Canadian provinces: Findings from the OECD PISA
- 81-595-M No. 013 Salaries and salary scales of full-time teaching staff at Canadian universities, 2001-2002: final report
- 81-595-M No. 014 In and out of high school: First results from the second cycle of the Youth in Transition Survey, 2002
- 81-595-M No. 015 Working and Training: First Results of the 2003 Adult Education and Training Survey
- 81-595-M No. 016 Class of 2000: Profile of Postsecondary Graduates and Student Debt
- 81-595-M No. 017 Connectivity and ICT integration in Canadian elementary and secondary schools: First results from the Information and Communications Technologies in Schools Survey, 2003-2004
- 81-595-M No. 018 Education and Labour Market Pathways of Young Canadians Between age 20 and 22: an Overview
- 81-595-M No. 019 Salaries and salary scales of full-time teaching staff at Canadian universities, 2003-2004
- 81-595-M No. 020 Culture Goods Trade Estimates: Methodology and Technical Notes
- 81-595-M No. 021 Canadian Framework for Culture Statistics
- 81-595-M No. 022 Summary public school indicators for the provinces and territories, 1996-1997 to 2002-2003
- 81-595-M No. 023 Economic Contribution of Culture in Canada
- 81-595-M No. 024 Economic Contributions of the Culture Sector in Ontario

Following is a cumulative index of Culture, Tourism and the Centre for Education Statistics research papers published to date

Research papers

- 81-595-M No. 025 Economic Contribution of the Culture Sector in Canada – A Provincial Perspective
- 81-595-M No. 026 Who pursues postsecondary education, who leaves and why: Results from the Youth in Transition Survey
- 81-595-M No. 027 Salaries and salary scales of full-time teaching staff at Canadian universities, 2002-2003: final report
- 81-595-M No. 028 Canadian School Libraries and Teacher-Librarians: Results from the 2003/04 Information and Communications Technologies in Schools Survey
- 81-595-M No. 029 Manitoba Postsecondary Graduates from the Class of 2000: How Did They Fare?
- 81-595-M No. 030 Salaries and Salary Scales of Full-time teaching Staff at Canadian Universities, 2004-2005: Preliminary Report
- 81-595-M No. 031 Salaries and salary scales of full-time teaching staff at Canadian universities, 2003-2004: final report
- 81-595-M No. 032 Survey of Earned Doctorates: A Profile of Doctoral Degree Recipients
- 81-595-M No. 033 The Education Services Industry in Canada
- 81-595-M No. 034 Connectivity and ICT Integration in First Nations Schools: Results from the Information and Communications Technologies in Schools Survey, 2003/04
- 81-595-M No. 035 Registered Apprentices: A Class Ten Years Later
- 81-595-M No. 036 Participation in Postsecondary Education: Evidence from the Survey of Labour Income Dynamics
- 81-595-M No. 037 Economic Contribution of the Culture sector to Canada's Provinces
- 81-595-M No. 038 Profile of Selected Culture Industries in Ontario
- 81-595-M No. 039 Factors Affecting the Repayment of Student Loans
- 81-595-M No. 040 Culture Goods Trade Data User Guide
- 81-595-M No. 041 Health Human Resources and Education: Outlining Information Needs
- 81-595-M No. 042 How Students Fund Their Postsecondary Education: Findings from the Postsecondary Education Participation Survey
- 81-595-M No. 043 Educational Outcomes at Age 19 Associated with Reading Ability at Age 15
- 81-595-M No. 044 Summary Public School Indicators for the Provinces and Territories, 1997-1998 to 2003-2004
- 81-595-M No. 045 Follow-up on Education and Labour Market Pathways of Young Canadians Aged 18 to 20 – Results from YITS Cycle 3
- 81-595-M No. 046 Salaries and Salary Scales of Full-time Teaching Staff at Canadian Universities, 2005/2006: Preliminary Report
- 81-595-M No. 047 Canada Student Loans Repayment Assistance: Who Does and Does Not Use Interest Relief?

Following is a cumulative index of Culture, Tourism and the Centre for Education Statistics research papers published to date

Research papers

- 81-595-M No. 048 Salaries and Salary Scales of Full-time Teaching Staff at Canadian Universities, 2004/2005: Final Report
- 81-595-M No. 049 Educating Health Workers: A Statistical Portrait
- 81-595-M No. 050 Summary Public School Indicators for the Provinces and Territories, 1997-1998 to 2003-2004
- 81-595-M No. 051 Culture Employment in a North American Context
- 81-595-M No. 052 Salaries and Salary Scales of Full-time Teaching Staff at Canadian Universities, 2006/2007: Preliminary Report
- 81-595-M No. 053 Towards a Geography of Culture: Culture Occupations Across the Canadian Urban-Rural Divide
- 81-595-M No. 054 Education-to-Labour Market Pathways of Canadian Youth: Findings from the Youth in Transition Survey
- 81-595-M No. 055 High School Dropouts Returning to School
- 81-595-M No. 056 Trade in Culture Services A Handbook of Concepts and Methods
- 81-595-M No. 057 Educational Outcomes at Age 19 by Gender and Parental Income: A First Look at Provincial differences
- 81-595-M No. 058 Postsecondary Enrolment Trends to 2031: Three Scenarios
- 81-595-M No. 059 Participation in Postsecondary Education: Graduates, Continuers and Drop Outs, Results from YITS Cycle 4
- 81-595-M No. 060 Sport Participation in Canada, 2005
- 81-595-M No. 061 Salaries and Salary Scales of Full-time Teaching Staff at Canadian Universities, 2005/2006: Final Report
- 81-595-M No. 062 Salaries and Salary Scales of Full-time Teaching Staff at Canadian Universities, 2007/2008: Preliminary Report
- 81-595-M No. 063 Registered Apprentices: The Cohort of 1993, a Decade Later, Comparisons with the 1992 Cohort
- 81-595-M No. 064 Creative Input: The Role of Culture Occupations in the Economy During the 1990s
- 81-595-M No. 065 Doctoral Graduates in Canada: Findings from the Survey of Earned Doctorates, 2004/2005
- 81-595-M No. 066 Understanding Culture Consumption in Canada
- 81-595-M No. 067 Summary Public School Indicators for the Provinces and Territories, 1999/2000 to 2005/2006
- 81-595-M No. 068 Educating Health Workers: Provincial Results
- 81-595-M No. 069 Doctorate Education in Canada: Findings from the Survey of Earned Doctorates, 2005/2006
- 81-595-M No. 070 Postsecondary Education – Participation and Dropping Out: Differences Across University, College and Other Types of Postsecondary Institutions
- 81-595-M No. 071 Statistics Canada’s Definition and Classification of Postsecondary and Adult Education Providers in Canada

Following is a cumulative index of Culture, Tourism and the Centre for Education Statistics research papers published to date

Research papers

- 81-595-M No. 072 Moving Through, Moving On: Persistence in Postsecondary Education in Atlantic Canada, Evidence from the PSIS
- 81-595-M No. 073 Salaries and Salary Scales of Full-time Teaching Staff at Canadian Universities, 2006/2007: Final Report
- 81-595-M No. 074 Graduating in Canada: Profile, Labour Market Outcomes and Student Debt of the Class of 2005
- 81-595-M No. 075 Education and Labour Market Transitions in Young Adulthood
- 81-595-M No. 076 Salaries and Salary Scales of Full-time Teaching Staff at Canadian Universities, 2008/2009: Preliminary Report
- 81-595-M No. 077 Developing a Culture Satellite Account for Canada
- 81-595-M No. 078 Summary Public School Indicators for the Provinces and Territories, 2000/2001 to 2006/2007
- 81-595-M No. 079 Lifelong Learning Among Canadians Aged 18 to 64 Years: First Results from the 2008 Access and Support to Education and Training Survey
- 81-595-M No. 080 Registered Apprentices: The Cohorts of 1994 and 1995, One Decade Later
- 81-595-M No. 081 The High Education / Low Income Paradox: College and University Graduates with Low Earnings, Ontario, 2006
- 81-595-M No. 082 Salaries and Salary Scales of Full-time Teaching Staff at Canadian Universities, 2007/2008: Final Report
- 81-595-M No. 083 Summary Public School Indicators for Canada, the Provinces and Territories, 2001/2002 to 2007/2008
- 81-595-M No. 084 Characteristics and Labour Market Outcomes of Internationally-educated Immigrants: Results from the 2006 Census
- 81-595-M No. 085 Salaries and Salary Scales of Full-time Teaching Staff at Canadian Universities, 2008/2009: Final Report
- 81-595-M No. 086 Salaries and Salary Scales of Full-time Teaching Staff at Canadian Universities, 2009/2010: Preliminary Report
- 81-595-M No. 087 Labour Market Experiences of Youth After Leaving School: Exploring the Effect of Educational Pathways Over Time
- 81-595-M No. 088 Summary Public School Indicators for the Provinces and Territories, 2002/2003 to 2008/2009