



Catalogue no. 81-595-MIE — No. 022

ISSN: 1711-831X

ISBN: 0-662-38036-3

Research Paper

Culture, Tourism and the Centre for Education Statistics

Summary public school indicators for the provinces and territories, 1996-1997 to 2002-2003

by François Nault

Culture, Tourism and the Centre for Education Statistics Division
2001 Main Building, Ottawa, K1A 0T6
Telephone: 1 800 307-3382 Fax: 1 613 951-9040



This paper represents the views of the author and does not necessarily reflect the opinions of Statistics Canada.



Statistics Statistique
Canada Canada

Canada

How to obtain more information

Specific inquiries about this product and related statistics or services should be directed to: Client Services, Culture, Tourism and the Centre for Education Statistics, Statistics Canada, Ottawa, Ontario, K1A 0T6 (telephone: (613) 951-7608; toll free at 1 800 307-3382; by fax at (613) 951-9040; or e-mail: educationstats@statcan.ca).

For information on the wide range of data available from Statistics Canada, you can contact us by calling one of our toll-free numbers. You can also contact us by e-mail or by visiting our Web site.

National inquiries line 1 800 263-1136

National telecommunications device for the hearing impaired 1 800 363-7629

E-mail inquiries infostats@statcan.ca

Web site www.statcan.ca

Ordering information

This product, Catalogue No. 81-595-MIE2004022, is available on the Internet for free. Users can obtain single issues at: <http://www.statcan.ca/cgi-bin/downpub/studiesfree.cgi>.

Standards of service to the public

Statistics Canada is committed to serving its clients in a prompt, reliable and courteous manner and in the official language of their choice. To this end, the Agency has developed standards of service which its employees observe in serving its clients. To obtain a copy of these service standards, please contact Statistics Canada toll free at 1 800 263-1136.

Culture, Tourism and the Centre for Education Statistics
Research papers

Summary public school indicators for the provinces and territories, 1996-1997 to 2002-2003

by **François Nault**
Statistics Canada

Published by authority of the Minister responsible for Statistics Canada

© Minister of Industry, 2004

All rights reserved. No part of this publication may be reproduced, stored in a retrieval system or transmitted in any form or by any means, electronic, mechanical, photocopying, recording or otherwise without prior written permission from Licence Services, Marketing Division, Statistics Canada, Ottawa, Ontario, Canada K1A 0T6.

September 2004

Catalogue no. 81-595-MIE2004022

Frequency: Irregular

ISSN: 1711-831X

ISBN: 0-662-38036-3

Ottawa

La version française de cette publication est disponible sur demande (n° 81-595-MIF2004022 au catalogue).

Statistics Canada

Acknowledgements

The Centre for Education Statistics wishes to thank the Departments of Education from each province and territory for their commitment and prompt response to this new survey. It would also like to thank Danielle Baum for her dedication in preparing reports for dissemination.

Note of appreciation

Canada owes the success of its statistical system to a long-standing partnership between Statistics Canada, the citizens of Canada, its businesses, governments and other institutions. Accurate and timely statistical information could not be produced without their continued cooperation and good will.

Table of Contents

Highlights	6
Enrolment down in nine provinces and territories	6
Educators: Numbers hold stable during six-year period	8
Average remuneration for educators: Largest gain in Alberta	9
Spending per student rises faster than inflation	11
Cost to society: spending versus gross domestic product	11
Cost to society: spending per student versus GDP per capita	13
Note to readers	14
Endnotes	14
<hr/>	
Tables	
Enrolments	15
Educators	18
Expenditures	22
Cost to society	33
Reference tables	38
<hr/>	
Appendix 1	44
Definitions	44
Enrolment	44
Educators	44
Expenditures	45
Other definitions	47
Endnotes	47
<hr/>	
Cumulative Index	48
<hr/>	

Highlights

Declining enrolments and rising costs are challenges faced by school boards across Canada.

Between the school years 1996/97 and 2002/03, enrolment in public elementary and secondary schools increased in only two provinces, Ontario and Alberta.

In the case of Ontario, this was essentially due to high levels of immigration, and in the case of Alberta, the reason was migration from other provinces.

At the same time, spending on education rose. In 1996/97, total spending amounted to \$33.0 billion nationwide. Six years later, this total hit nearly \$39.6 billion, an increase of almost 20%.

The increase was just as important on a per student basis. Total spending on each student in public elementary and secondary schools rose 19.1% during the six-year period.

Nationwide in 2002/03, total spending per student represented more than one-fifth (21%) of the gross domestic product per capita.

This report explores these basic statistics on enrolments, educators and expenditures in public elementary and secondary schools during the period from 1996-1997 to 2002-2003 by jurisdiction. No financial information was available for Nunavut and statistics on educators in Ontario were available only up to 2001/02.

These data were combined to yield indexes such as the student-educator ratio and spending per student. They are presented in the context of other global statistics, including population size, gross domestic product and the Consumer Price Index.

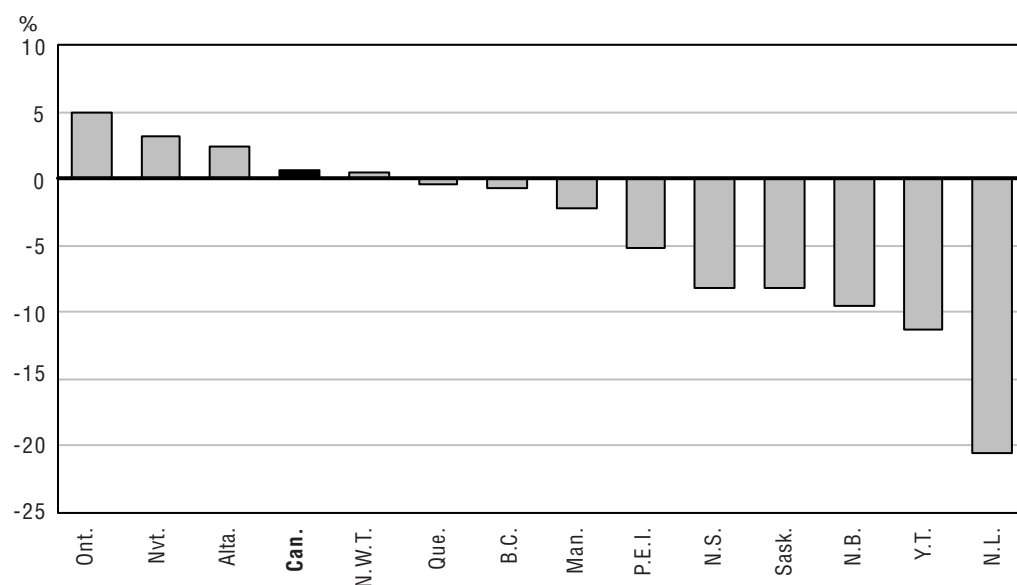
Enrolment down in nine provinces and territories

Between 1996/97 and 2002/03, enrolments based on full-time equivalents declined in nine of the 13 provinces and territories (Figure 1 and Table 2).

The largest decline occurred in Newfoundland and Labrador, where enrolment in 2002/03 fell to 81,650, down 20.7% from six years earlier. This was the result mainly of an extremely strong net outflow of migration to other provinces, as well as the nation's lowest fertility rate.

Elsewhere, enrolments declined by 5% or more in the other three Atlantic provinces, Saskatchewan and the Yukon. They were also down in Quebec, Manitoba and British Columbia, but at a slower pace.

Figure 1

Percent change in enrolments (in full-time equivalent) between 1996-1997 and 2002-2003, Canada, provinces and territories

Note: Northwest Territories: 1999-2000 to 2002-2003; Nunavut: 2000-2001 to 2002-2003.

In Ontario, enrolment reached over 2 million in 2002/03, up 4.9% from six years earlier. In Alberta, enrolment hit nearly 521,000, a 2.4% gain. Positive net migration sustained enrolments in both provinces.

Data for Nunavut cover only the period 2000/01 to 2002/03. But during this time frame, enrolment rose 3.1% to nearly 8,600.

As noted in the 2003 report of the Pan-Canadian Education Indicators Program, the downward trend in enrolment was largely due to a decline in births. From a peak of 405,000 in 1990, the number of births in Canada dropped 19% to 329,000 in 2002¹.

As these declining cohorts enter school, enrolments can be expected to continue to fall over the next 10 years. The magnitude and timing of the decline, however, vary because of migration at both the international and interprovincial levels.

In all provinces and territories, enrolments represented a declining proportion of the total population, a reflection of the demographic aging (Table 3). Nationwide, enrolment represented 16.9% of the population in 2002/03, down from 17.9% six years earlier.

Enrolments represented 31.3% of the total population in Nunavut, and 23.4% in the Northwest Territories in 2002/03. This proportion changed the least in these two territories, where fertility is higher than in other jurisdictions. In the Yukon, enrolment represented 18.4% of the total population.

The proportion fell most in Newfoundland and Labrador, where enrolment represented 16.2% of the total population in 2002/03, down from 19.1% in 1996-1997.

In the other provinces, enrolment represented between 16% and 18% of the total population in 2002/03, except British Columbia, where it accounted only for 14.5%.

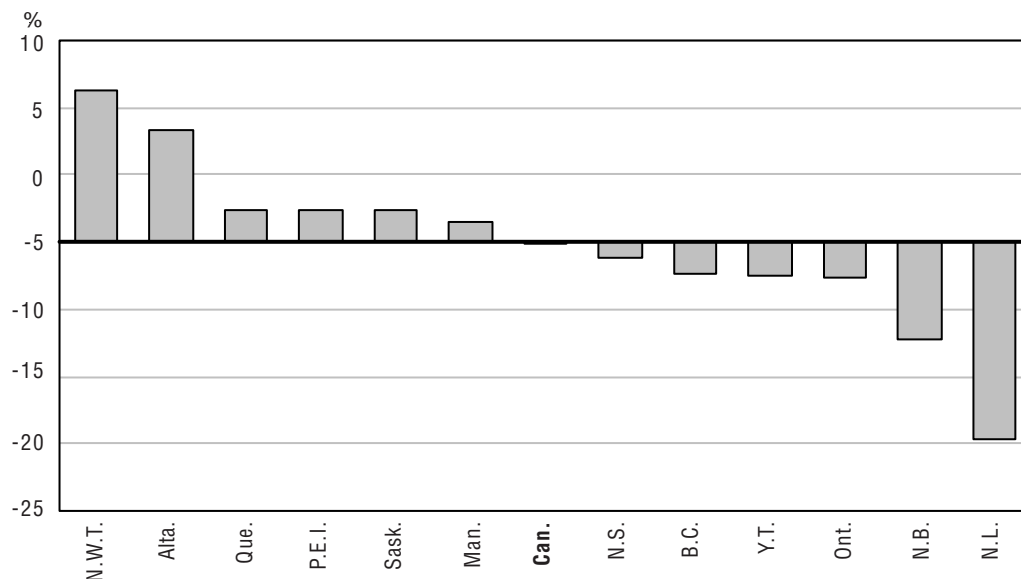
Educators: Numbers hold stable during six-year period

The nation had just under 310,000 educators in 2001/02, virtually the same level as it did six years earlier. The term “educator” refers not only to teachers, but to all employees in the public school system who are required to have teaching certification as a condition of their employment. This definition generally includes principals, vice-principals and professional non-teaching staff such as education consultants, guidance counselors and religious and pastoral counselors.

Between 1996/97 and 2002/03, the number of educators based on full-time equivalents varied by less than 3% in all jurisdictions, except four – Alberta, the Northwest Territories, New Brunswick and Newfoundland and Labrador (Figure 2 and Table 5).

The number of educators increased 8% in Alberta and 11% in the Northwest Territories, and fell 7% in New Brunswick and 15% in Newfoundland and Labrador.

Figure 2
Percent change in the number of educators (in full-time equivalent) between 1996-1997 and 2002-2003, Canada, provinces and territories



Note: Canada and Ontario: 1996-1997 to 2001-2002; Northwest Territories: 1999-2000 to 2002-2003.

Between 1996/97 and 2002/03, the number of educators increased more – or decreased less – than enrolments in every jurisdiction, except for Ontario and British Columbia.

As a result, the student-educator ratio declined everywhere, except in Ontario and British Columbia (Table 6). A decline in the student-educator ratio means fewer students per educator, which tends to improve educational services but to increase the overall cost per student.

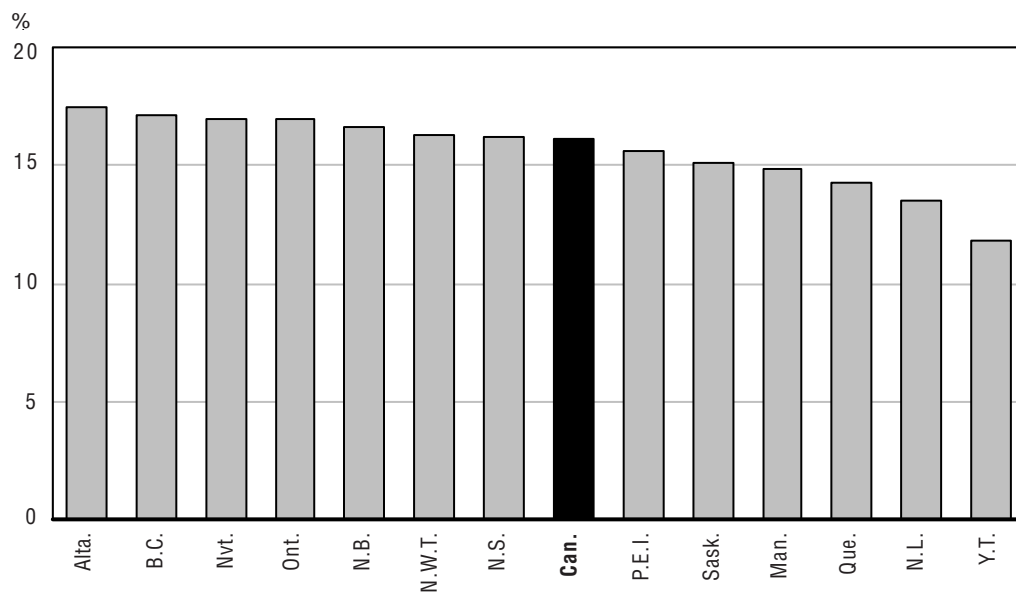
The student-educator ratio must not be confused with class size. The former is much smaller because it accounts for the personnel (principals, counselors or specialists) and teachers' time outside the classroom (for preparation and marking).

At the national level in 2001/02, there were 16 students for every one educator. This ratio was lower than 17 to one in Ontario², Alberta, British Columbia and Nunavut.

The ratio was less than 15 students for every educator in Newfoundland and Labrador, Quebec, Manitoba and the Yukon (Figure 3 and Table 6).

Figure 3

Student-educator ratio, Canada, provinces and territories, 2002-2003



Note: Canada and Ontario: 2001-2002.

Average remuneration for educators: Largest gain in Alberta

Between 1996/97 and 2002/03 period, average remuneration for educators rose in constant dollars everywhere but the Northwest Territories. The gain was largest in Alberta (+11.7%), and smallest in Quebec (+0.9%) and Saskatchewan (+0.2%) (Figure 4).

On average, in Ontario, Alberta and British Columbia, educators were paid more than \$61,000 and were responsible for 17 students or more. On the other hand, in Quebec, they were paid \$51,700 and were responsible for 14 students.

Average remuneration more than kept pace with inflation in all provinces during these six years. However, it was outstripped by gains in average earnings of all full-year, full-time workers³ in all provinces, but three: Newfoundland and Labrador, Prince Edward Island and New Brunswick (Figure 4 and Table 25).

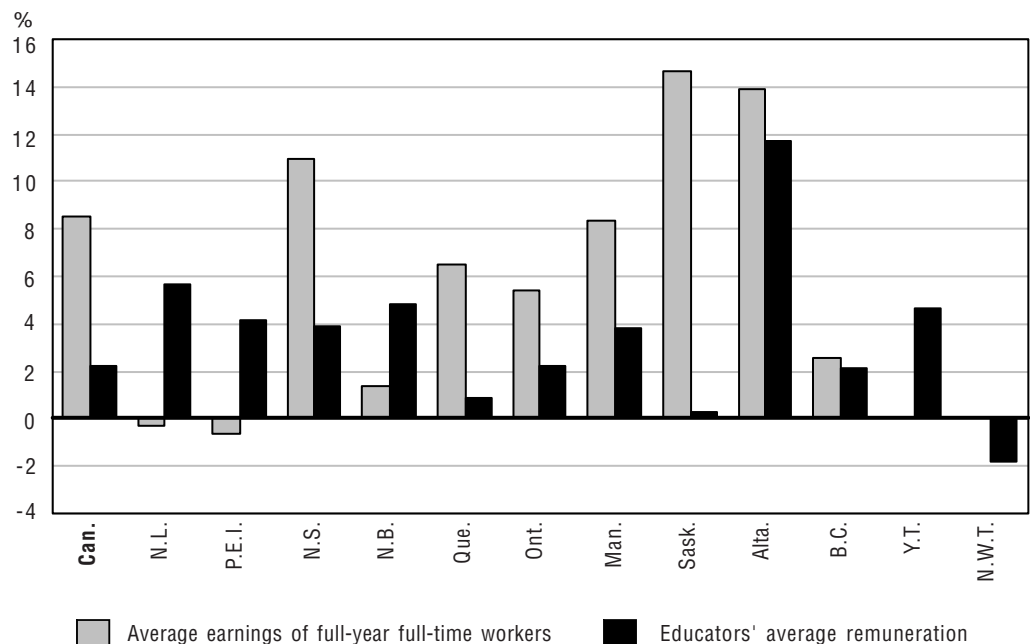
In Saskatchewan, where the difference was the most pronounced, average remuneration rose less than 1% in six years. At the same time, average earnings of all full-year, full-time workers increased nearly 15%.

The gap in average remuneration between educators and full-year, full-time workers was smallest in Quebec in 2002/03 (Tables 7 and 25). There, the average remuneration for educators was \$51,740, compared with \$40,900 in average earnings for full-time full-year workers, a difference of \$10,840.

In all other provinces, average remuneration for educators exceeded average earnings of all full-time, full-year workers by more than \$15,000.

Remuneration for educators accounted for between 36% and 52% of operating expenses in 2002/03 (Table 17).

Figure 4
Percent change in average earnings of educators compared to all full-year full-time workers between 1996-97 and 2002-03, Canada, provinces and territories (in constant dollars)



Note: Canada and Ontario: 1996-1997 to 2001-2002; New Brunswick: 1997-1998 to 2002-2003; Northwest Territories: 1999-2000 to 2002-2003.

Spending per student rises faster than inflation

Spending per student increased at a faster rate than inflation, as measured by the Consumer Price Index during the six-year period.

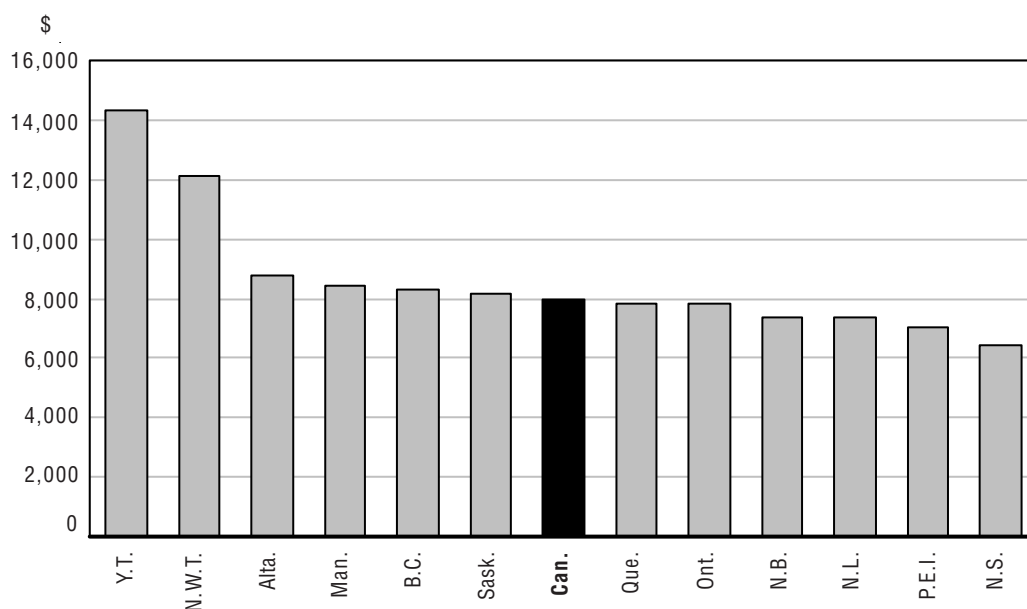
Nationally in 1996/97, total spending for each student in public elementary and secondary schools amounted to \$6,672. Six years later, it had reached \$7,946, a 19% increase. In comparison, inflation went up only 12% during the same time frame.

Ontario was the only province in which total spending per student rose at a slower pace than the rate of inflation. In fact, in most jurisdictions, total spending per student increased more than twice the rate of inflation (Tables 12a and 27).

In 2002/03, it cost more than \$14,300 yearly to educate a student in the Yukon, and more than \$12,100 to educate a student in the Northwest Territories. Among the provinces, the annual cost per student varied from a high of \$8,800 in Alberta to a low of \$6,400 in Nova Scotia (Figure 5).

Figure 5

Total expenditures per student, Canada, provinces and territories, 2002-2003



Cost to society: spending versus gross domestic product

One way of looking at the cost of education to society is to calculate the proportion that spending represents of gross domestic product (GDP).

Between 1996/97 and 2002/03, total spending per capita on education (in constant dollars) increased everywhere except Newfoundland and Labrador, New Brunswick and Ontario (Table 18b).

However, because of economic growth, this spending represented a lower proportion of GDP in all jurisdictions, except Prince Edward Island and Saskatchewan (Figure 6 & Table 19).

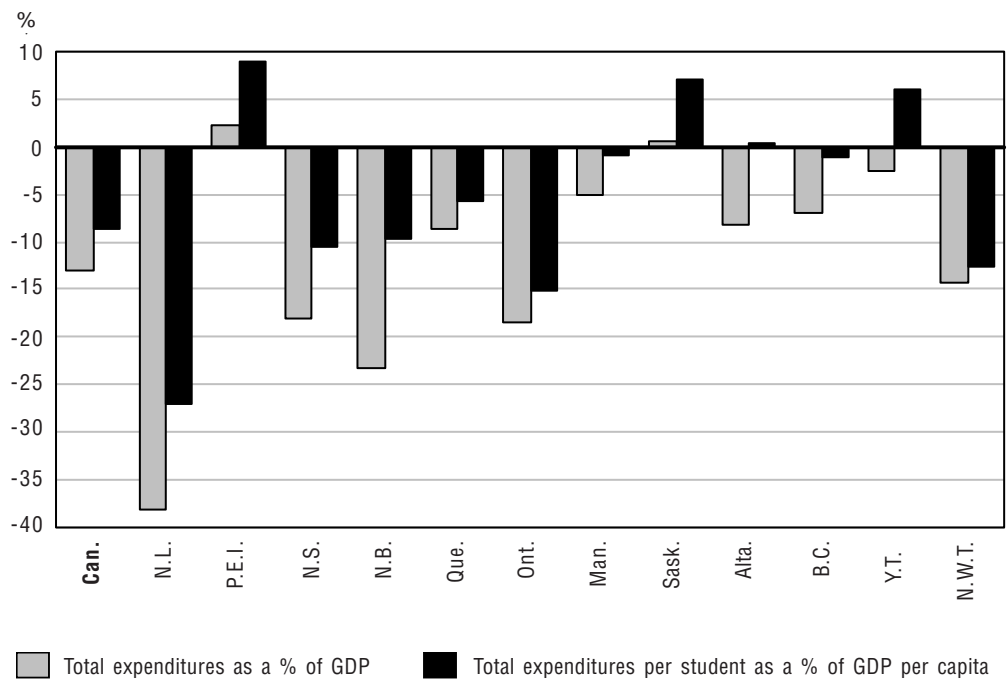
Nationally, spending on education represented 3.3% of GDP in 2002/03, down from 3.8% six years earlier.

In Newfoundland and Labrador, the proportion fell from 5.6% to 3.5%. That is because declines in total spending were relatively small, while economic output soared, largely due to production at offshore oil fields.

In Ontario, spending on education accounted for 3.3% of GDP in 2002/03, down from 4.0% six years earlier. In Alberta, the proportion fell from 3.1% to only 2.9%, the lowest level in Canada.

Figure 6

Percent change in total expenditures as a percentage of GDP and in total expenditures per student as a percentage of GDP per capita between 1996-97 and 2002-03, Canada, provinces and territories



Note: New Brunswick: 1997-1998 to 2002-2003; Northwest Territories: 1999-2000 to 2002-2003

Cost to society: spending per student versus GDP per capita

Another way of looking at the cost of education to society is to calculate the proportion that the cost per student represents of GDP per capita. This measure can be interpreted as the resources spent on youth education relative to a jurisdiction's wealth⁴ (Table 20).

Nationally, spending per student represented 21% of GDP per capita in 2002/03, down from 23% six years earlier.

In all but four jurisdictions, the cost per student represented between 21% and 26% of the GDP per capita. The exceptions were the Yukon, Ontario, Alberta and the Northwest Territories.

In the Yukon, the cost per student represented a high 34% of GDP per capita. The cost per student in the Yukon \$14,300, while GDP per capita was \$41,800.

In Ontario, Alberta and the Northwest Territories, high costs per student were offset by high GDP per capita.

For example, in the Northwest Territories, the cost per student represented only 16% of GDP per capita. The cost per student amounted to \$12,100, while GDP per capita was \$75,400.

Among provinces, Alberta posted both the highest cost per student (\$8,800) and the highest GDP per capita (\$51,200), resulting in the lowest ratio, only 17%. In Ontario, the ratio was 20%, the result of a cost per student of \$7,800 and GDP per capita of \$40,000.

Note to readers

The figures in this report were provided by provincial and territorial departments of education in accordance with definitions detailed in Appendix 1.

However, there are exceptions that may affect the comparability of the results. The most notable are:

- The inclusion of adult education and professional training under the authority of school districts or school boards in the enrolments in New Brunswick, Quebec and Manitoba (up to 2000-2001).
- The inclusion of non-funded students in the enrolments in some jurisdictions.
- The type of educators' pensions system: fully unfunded (pay-as-you-go), partially funded or fully funded.
- The type of accounting (cash or accrual) and method of asset amortization.

Symbols for the tables

- . not available for any reference period
- .. not available for a specific reference period
- ... not applicable

Endnotes

1. For more information on birth statistics, see <http://dissemination.statcan.ca/Daily/English/040419/d040419b.htm>.
2. In 2001-2002: because the information on educators is missing in Ontario for 2002-2003, the student-educator ratio cannot be calculated for that year.
3. Not available for the Territories.
4. In a federation such as Canada, the costs of education in a jurisdiction can be partly supported by other jurisdictions.

Enrolments

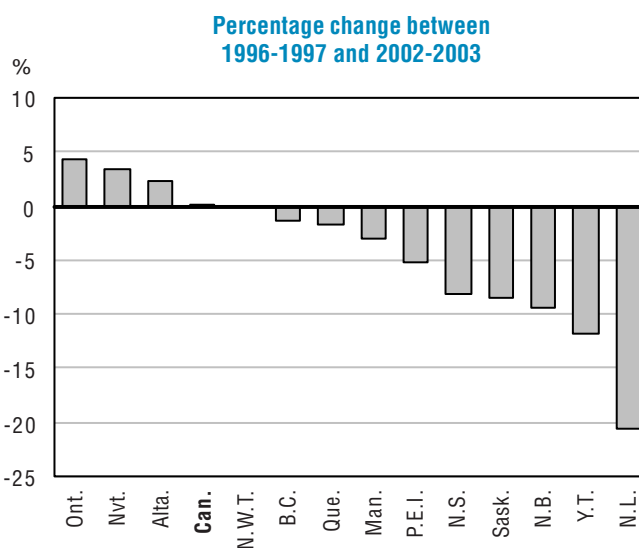
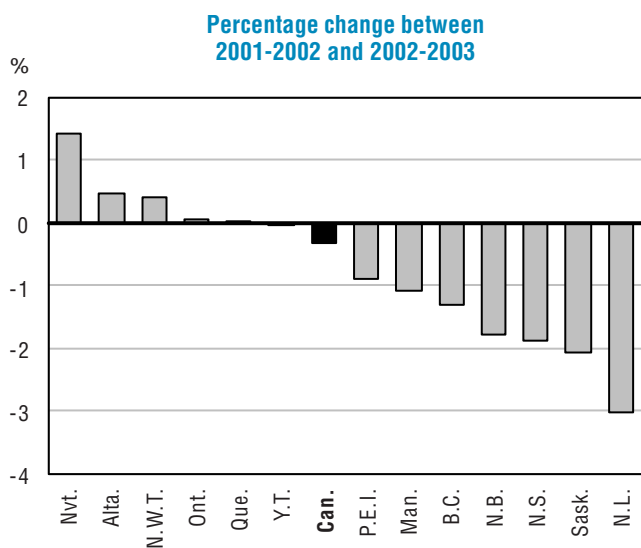
Table 1

Headcount enrolments¹ in public elementary and secondary schools, provinces and territories, 1996-1997 to 2002-2003

	Canada	N.L.	P.E.I.	N.S.	N.B.	Que.	Ont.	Man.	Sask.	Alta.	B.C.	Y.T.	N.W.T. ²	Nvt.
1996/97	5,319,748	106,205	24,537	163,941	133,276	1,267,336	2,080,197	192,176	193,881	526,930	607,644	6,366	17,259	...
Percentage change	-0.7	-3.8	0.5	0.0	-1.3	-0.7	-1.7	0.1	-0.4	0.7	2.2	3.9	1.0	...
1997/98	5,330,456	101,608	24,397	162,359	131,586	1,260,301	2,103,586	191,856	192,650	522,159	615,980	6,411	17,563	...
Percentage change	0.2	-4.3	-0.6	-1.0	-1.3	-0.6	1.1	-0.2	-0.6	-0.9	1.4	0.7	1.8	...
1998/99	5,333,254	97,401	24,146	160,011	129,131	1,250,248	2,119,841	192,204	190,896	530,744	614,458	6,106	18,068	...
Percentage change	0.1	-4.1	-1.0	-1.4	-1.9	-0.8	0.8	0.2	-0.9	1.6	-0.2	-4.8	2.9	...
1999/00	5,335,581	93,957	24,089	158,205	127,003	1,244,999	2,138,577	196,638	188,619	534,156	613,607	5,978	9,753	...
Percentage change	0.0	-3.5	-0.2	-1.1	-1.6	-0.4	0.9	2.3	-1.2	0.6	-0.1	-2.1	-46.0	...
2000/01	5,326,782	90,167	23,691	155,873	124,942	1,237,840	2,150,588	189,474	184,494	534,605	610,851	5,795	9,672	8,790
Percentage change	-0.2	-4.0	-1.7	-1.5	-1.6	-0.6	0.6	-3.6	-2.2	0.1	-0.4	-3.1	-0.8	...
2001/02	5,338,199	86,898	23,449	153,450	122,792	1,244,689	2,169,339	188,498	181,103	536,262	607,437	5,613	9,707	8,962
Percentage change	0.2	-3.6	-1.0	-1.6	-1.7	0.6	0.9	-0.5	-1.8	0.3	-0.6	-3.1	0.4	2.0
2002/03	5,321,343	84,268	23,242	150,599	120,600	1,245,021	2,170,943	186,456	177,375	538,877	599,514	5,611	9,747	9,090
Percentage change	-0.3	-3.0	-0.9	-1.9	-1.8	0.0	0.1	-1.1	-2.1	0.5	-1.3	0.0	0.4	1.4

1. See appendix for definitions. New-Brunswick, Quebec and Manitoba (up to 2000-2001) include enrolments in adult programs and professional training under the authority of the school boards or districts. Certain jurisdictions include all students whether they are funded or not while others include only funded students.

2. Starting in 1999-2000, NWT excludes Nunavut.



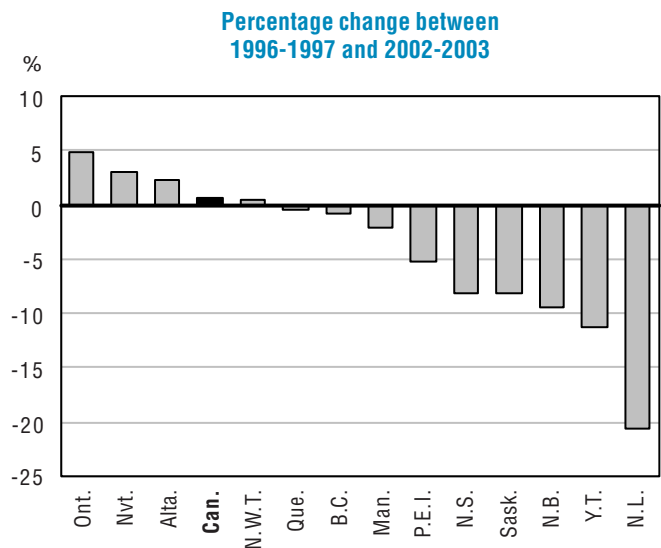
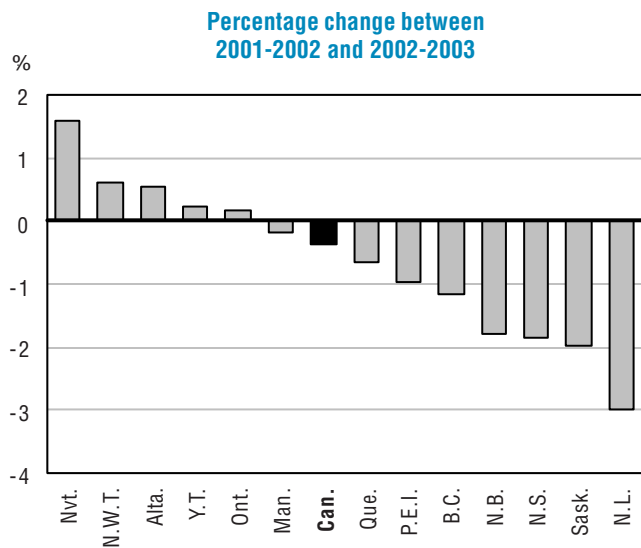
Note: Northwest Territories: 1999-2000 to 2002-2003;
Nunavut: 2000-2001 to 2002-2003.

Table 2

Full-time equivalent enrolments¹ in public elementary and secondary schools, provinces and territories, 1996-1997 to 2002-2003

	Canada	N.L.	P.E.I.	N.S.	N.B.	Que.	Ont.	Man.	Sask.	Alta.	B.C.	Y.T.	N.W.T. ²	Nvt.
1996/97	4,946,733	102,794	24,415	163,941	133,276	1,087,696	1,946,390	184,900	186,964	508,868	584,905	6,103	16,482	...
Percentage change	-0.1	-3.7	0.5	0.0	-1.3	0.0	-1.0	0.1	-0.2	1.7	2.2	4.2	1.2	...
1997/98	4,997,252	98,379	24,279	162,359	131,586	1,118,323	1,972,060	184,161	185,828	504,288	593,362	6,186	16,442	...
Percentage change	1.0	-4.3	-0.6	-1.0	-1.3	2.8	1.3	-0.4	-0.6	-0.9	1.4	1.4	-0.2	...
1998/99	5,009,341	94,493	24,051	160,011	129,131	1,116,249	1,989,159	183,766	184,366	512,724	592,695	5,874	16,823	...
Percentage change	0.2	-4.0	-0.9	-1.4	-1.9	-0.2	0.9	-0.2	-0.8	1.7	-0.1	-5.0	2.3	...
1999/00	4,998,392	91,053	23,999	158,205	127,003	1,101,644	2,004,356	186,693	182,224	516,010	592,057	5,768	9,381	...
Percentage change	-0.2	-3.6	-0.2	-1.1	-1.6	-1.3	0.8	1.6	-1.2	0.6	-0.1	-1.8	-44.2	...
2000/01	5,001,913	87,438	23,591	155,873	124,942	1,094,333	2,019,835	187,944	178,461	516,395	589,914	5,608	9,291	8,289
Percentage change	0.1	-4.0	-1.7	-1.5	-1.6	-0.7	0.8	0.7	-2.1	0.1	-0.4	-2.8	-1.0	...
2001/02	4,998,050	84,173	23,355	153,450	122,792	1,090,435	2,039,013	181,232	175,116	518,108	587,198	5,402	9,366	8,412
Percentage change	-0.1	-3.7	-1.0	-1.6	-1.7	-0.4	0.9	-3.6	-1.9	0.3	-0.5	-3.7	0.8	1.5
2002/03	4,979,112	81,651	23,132	150,599	120,600	1,083,427	2,042,392	180,895	171,674	520,956	580,407	5,414	9,422	8,545
Percentage change	-0.4	-3.0	-1.0	-1.9	-1.8	-0.6	0.2	-0.2	-2.0	0.5	-1.2	0.2	0.6	1.6

1. See appendix for definitions. New-Brunswick, Quebec and Manitoba (up to 2000-2001) include enrolments in adult programs and professional training under the authority of the school boards or districts. Certain jurisdictions include all students whether they are funded or not while others include only funded students.
2. Starting in 1999-2000, NWT excludes Nunavut.



Note: Northwest Territories: 1999-2000 to 2002-2003; Nunavut: 2000-2001 to 2002-2003.

Table 3

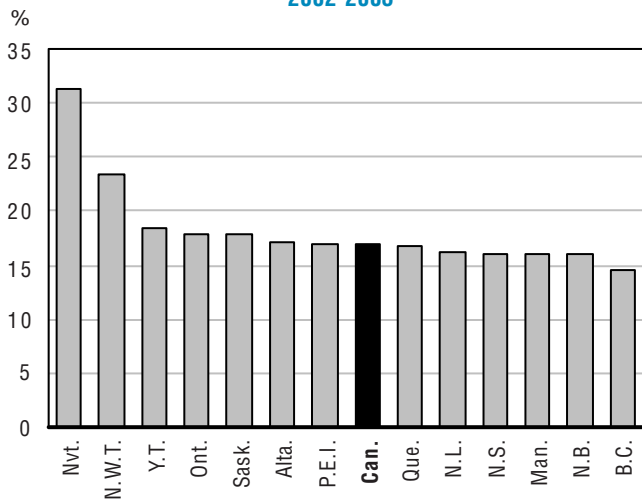
Enrolments in public elementary and secondary schools as a percentage of total population, provinces and territories, 1996-1997 to 2002-2003

	Canada	N.L.	P.E.I.	N.S.	N.B.	Que.	Ont.	Man.	Sask.	Alta.	B.C.	Y.T.	N.W.T. ¹	Nvt.
1996/97	17.88	19.12	18.05	17.58	17.71	17.45	18.66	16.93	19.04	18.82	15.52	20.13	25.66	...
Percentage change	-1.7	-2.4	-0.1	-0.3	-1.4	-1.1	-2.9	-0.3	-0.6	-1.0	-0.1	1.7	0.2	...
1997/98	17.75	18.61	17.95	17.41	17.50	17.30	18.63	16.89	18.93	18.26	15.51	20.35	26.09	...
Percentage change	-0.7	-2.6	-0.6	-1.0	-1.2	-0.9	-0.2	-0.2	-0.6	-3.0	-0.1	1.1	1.7	...
1998/99	17.62	18.15	17.75	17.16	17.21	17.10	18.56	16.88	18.77	18.14	15.38	19.86	26.88	...
Percentage change	-0.7	-2.5	-1.1	-1.4	-1.6	-1.1	-0.4	-0.1	-0.9	-0.7	-0.8	-2.4	3.0	...
1999/00	17.48	17.67	17.65	16.93	16.92	16.96	18.47	17.18	18.65	17.95	15.24	19.61	24.00	...
Percentage change	-0.8	-2.7	-0.6	-1.4	-1.7	-0.8	-0.5	1.8	-0.6	-1.0	-0.9	-1.3	-10.7	...
2000/01	17.28	17.16	17.37	16.70	16.67	16.79	18.27	16.50	18.38	17.65	15.06	19.23	23.80	31.62
Percentage change	-1.1	-2.9	-1.6	-1.4	-1.5	-1.0	-1.1	-4.0	-1.4	-1.7	-1.2	-1.9	-0.8	...
2001/02	17.12	16.67	17.14	16.44	16.39	16.77	18.10	16.36	18.15	17.38	14.83	18.62	23.62	31.75
Percentage change	-0.9	-2.8	-1.3	-1.5	-1.6	-0.1	-0.9	-0.8	-1.3	-1.5	-1.5	-3.2	-0.7	0.4
2002/03	16.91	16.22	16.92	16.10	16.07	16.68	17.86	16.10	17.83	17.20	14.53	18.36	23.41	31.28
Percentage change	-1.3	-2.7	-1.3	-2.0	-2.0	-0.5	-1.4	-1.6	-1.8	-1.0	-2.1	-1.4	-0.9	-1.5

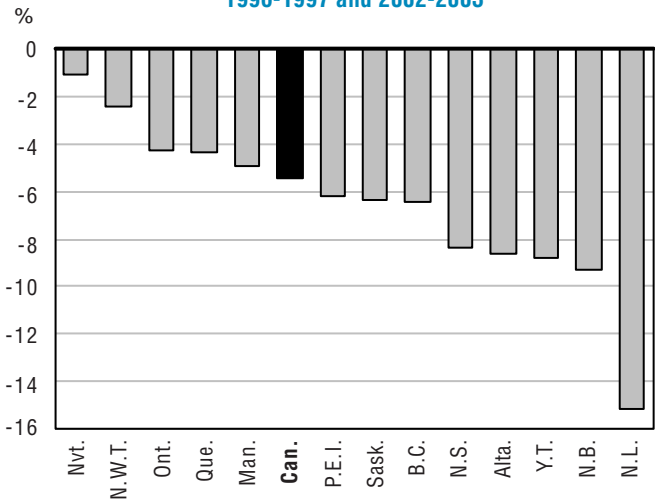
Table 1 divided by Table 22.

1. Starting in 1999-2000, NWT excludes Nunavut.

Enrolments as a percentage of total population, 2002-2003



Percentage change between 1996-1997 and 2002-2003



Note: Northwest Territories: 1999-2000 to 2002-2003; Nunavut: 2000-2001 to 2002-2003.

Educators

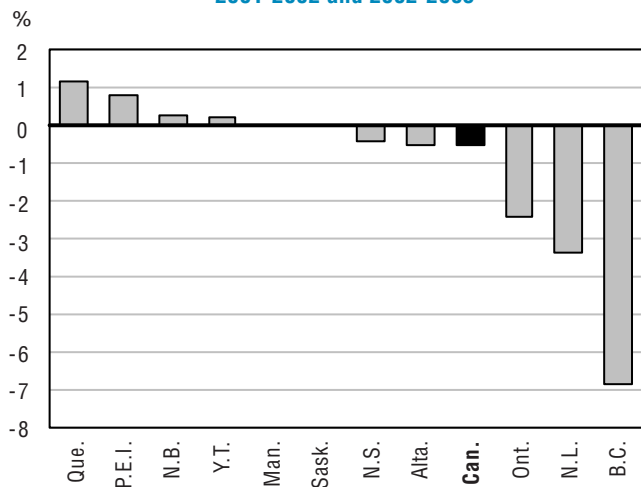
Table 4

Educators headcount¹ in public elementary and secondary schools, provinces and territories, 1996-1997 to 2002-2003

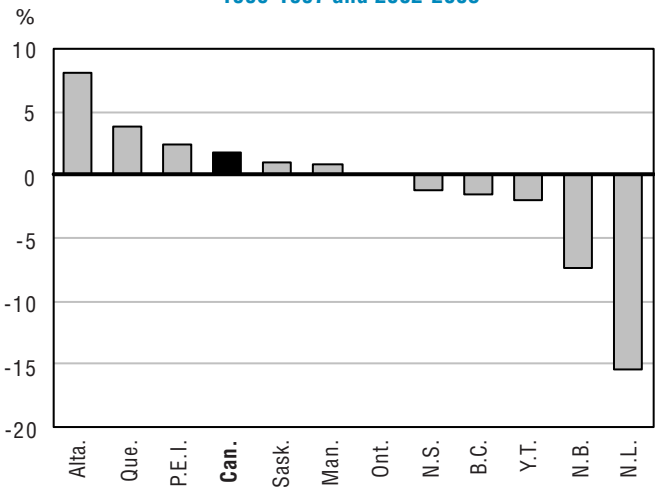
	Canada	N.L.	P.E.I.	N.S.	N.B.	Que.	Ont.	Man.	Sask.	Alta.	B.C.	Y.T.	N.W.T. ²	Nvt.
1996/97	336,721	7,277	1,485	9,712	7,996	89,976	128,028	12,829	11,966	29,245	37,706	501
Percentage change	4.0	-1.6	0.4	0.5	-2.4	19.1	-1.9	0.2	1.1	1.1	1.9	4.4
1997/98	330,387	6,850	1,480	9,729	7,840	88,162	123,216	12,870	11,911	29,695	38,126	508
Percentage change	-1.9	-5.9	-0.3	0.2	-2.0	-2.0	-3.8	0.3	-0.5	1.5	1.1	1.4
1998/99	337,194	6,592	1,489	9,913	7,720	88,903	127,666	12,926	12,072	30,395	39,003	515
Percentage change	2.1	-3.8	0.6	1.9	-1.5	0.8	3.6	0.4	1.4	2.4	2.3	1.4
1999/00	339,393	6,513	1,488	9,926	7,717	89,948	128,289	13,039	11,980	30,469	39,506	518
Percentage change	0.7	-1.2	-0.1	0.1	0.0	1.2	0.5	0.9	-0.8	0.2	1.3	0.6
2000/01	344,397	6,403	1,500	9,752	7,608	91,330	131,244	13,011	11,963	30,848	40,228	510	.	..
Percentage change	1.5	-1.7	0.8	-1.8	-1.4	1.5	2.3	-0.2	-0.1	1.2	1.8	-1.5
2001/02	342,496	6,367	1,510	9,634	7,383	92,392	128,039	12,944	12,090	31,768	39,879	490
Percentage change	-0.6	-0.6	0.7	-1.2	-3.0	1.2	-2.4	-0.5	1.1	3.0	-0.9	-3.9	.	..
2002/03	..	6,154	1,522	9,592	7,403	93,475	..	12,947	12,089	31,604	37,150	491	.	537
Percentage change	..	-3.3	0.8	-0.4	0.3	1.2	..	0.0	0.0	-0.5	-6.8	0.2	.	..

1. See appendix for definitions.
2. Starting in 1999-2000, NWT excludes Nunavut.

Percentage change between 2001-2002 and 2002-2003



Percentage change between 1996-1997 and 2002-2003



Note: Canada and Ontario: 2000-2001 to 2001-2002.

Note: Canada and Ontario: 1996-1997 to 2001-2002.

Table 5

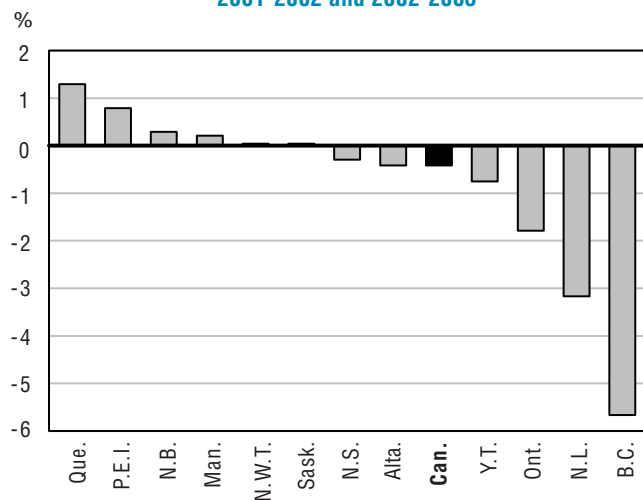
Full-time equivalent educators¹ in public elementary and secondary schools, provinces and territories, 1996-1997 to 2002-2003

	Canada	N.L.	P.E.I.	N.S.	N.B.	Que.	Ont.	Man.	Sask.	Alta.	B.C.	Y.T.	N.W.T. ²	Nvt.
1996/97	310,189	7,101	1,444	9,384	7,836	74,121	123,554	11,997	11,123	27,510	34,711	469	939	...
Percentage change	-1.0	-2.2	0.7	0.3	-2.2	-1.9	-1.8	-0.6	0.8	0.8	1.7	5.2	-1.2	...
1997/98	303,442	6,705	1,439	9,396	7,696	73,761	117,047	12,028	11,103	27,908	34,966	477	917	...
Percentage change	-2.2	-5.6	-0.3	0.1	-1.8	-0.5	-5.3	0.3	-0.2	1.4	0.7	1.7	-2.3	...
1998/99	308,855	6,453	1,444	9,621	7,568	74,446	120,542	12,034	11,319	28,583	35,461	468	916	...
Percentage change	1.8	-3.8	0.3	2.4	-1.7	0.9	3.0	0.0	1.9	2.4	1.4	-1.9	-0.1	...
1999/00	308,726	6,372	1,444	9,611	7,571	74,424	120,597	12,147	11,249	28,629	35,688	475	519	...
Percentage change	0.0	-1.3	0.0	-0.1	0.0	0.0	0.0	0.9	-0.6	0.2	0.6	1.5	-43.3	...
2000/01	311,190	6,283	1,457	9,444	7,460	74,719	122,394	12,224	11,222	28,847	36,114	473	553	..
Percentage change	0.8	-1.4	0.9	-1.7	-1.5	0.4	1.5	0.6	-0.2	0.8	1.2	-0.4	6.5	...
2001/02	309,852	6,264	1,467	9,304	7,249	74,939	120,215	12,147	11,383	29,915	35,930	461	577	..
Percentage change	-0.4	-0.3	0.7	-1.5	-2.8	0.3	-1.8	-0.6	1.4	3.7	-0.5	-2.5	4.4	..
2002/03	..	6,064	1,479	9,276	7,271	75,921	..	12,172	11,389	29,793	33,901	458	578	503
Percentage change	..	-3.2	0.8	-0.3	0.3	1.3	..	0.2	0.1	-0.4	-5.6	-0.8	0.1	..

1. See appendix for definitions.

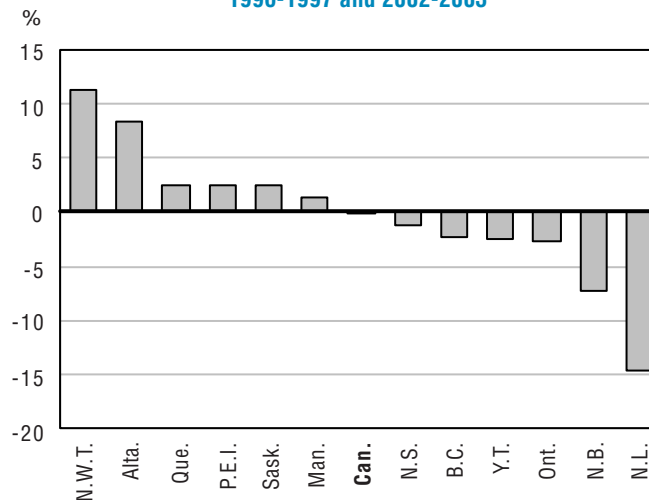
2. NWT Educator FTEs are funding-based only. Starting in 1999-2000, NWT excludes Nunavut.

Percentage change between 2001-2002 and 2002-2003



Note: Canada and Ontario: 2000-2001 to 2001-2002.

Percentage change between 1996-1997 and 2002-2003



Note: Canada and Ontario: 1996-1997 to 2001-2002; Northwest Territories: 1999-2000 to 2002-2003.

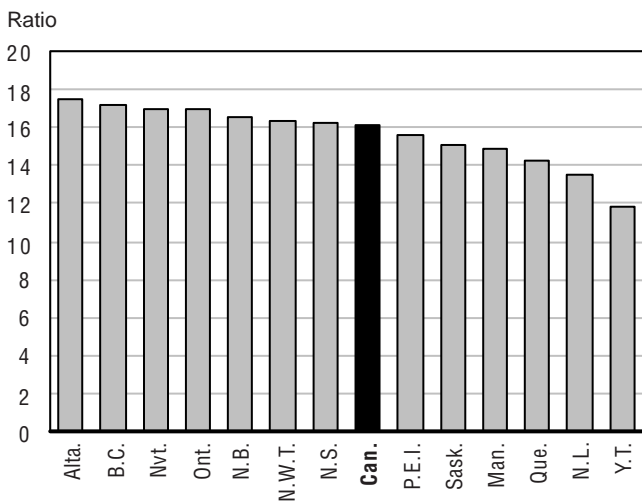
Table 6
Student-educator ratio¹ in public elementary and secondary schools, provinces and territories, 1996-1997 to 2002-2003

	Canada	N.L.	P.E.I.	N.S.	N.B.	Que.	Ont.	Man.	Sask.	Alta.	B.C.	Y.T.	N.W.T. ²	Nvt.
1996/97	15.95	14.48	16.91	17.47	17.01	14.67	15.75	15.41	16.81	18.50	16.85	13.01	17.55	..
Percentage change	1.0	-1.5	-0.2	-0.3	0.9	2.0	0.9	0.7	-0.9	0.9	0.5	-0.9	2.4	..
1997/98	16.47	14.67	16.87	17.28	17.10	15.16	16.85	15.31	16.74	18.07	16.97	12.97	17.93	..
Percentage change	3.3	1.4	-0.2	-1.1	0.5	3.3	7.0	-0.7	-0.4	-2.3	0.7	-0.3	2.2	..
1998/99	16.22	14.64	16.66	16.63	17.06	14.99	16.50	15.27	16.29	17.94	16.71	12.55	18.37	..
Percentage change	-1.5	-0.2	-1.3	-3.7	-0.2	-1.1	-2.1	-0.3	-2.7	-0.7	-1.5	-3.2	2.4	..
1999/00	16.19	14.29	16.62	16.46	16.77	14.80	16.62	15.37	16.20	18.02	16.59	12.14	18.08	..
Percentage change	-0.2	-2.4	-0.2	-1.0	-1.7	-1.3	0.7	0.6	-0.5	0.5	-0.7	-3.3	-1.6	..
2000/01	16.07	13.92	16.19	16.51	16.75	14.65	16.50	15.37	15.90	17.90	16.33	11.86	16.81	..
Percentage change	-0.7	-2.6	-2.6	0.3	-0.2	-1.1	-0.7	0.0	-1.8	-0.7	-1.5	-2.4	-7.0	..
2001/02	16.13	13.44	15.92	16.49	16.94	14.55	16.96	14.92	15.38	17.32	16.34	11.72	16.22	..
Percentage change	0.4	-3.4	-1.7	-0.1	1.1	-0.6	2.8	-3.0	-3.3	-3.3	0.0	-1.2	-3.5	..
2002/03	..	13.46	15.64	16.24	16.59	14.27	..	14.86	15.07	17.49	17.12	11.83	16.31	16.99
Percentage change	..	0.2	-1.7	-1.6	-2.1	-1.9	..	-0.4	-2.0	1.0	4.8	1.0	0.5	..

Table 2 divided by Table 5.

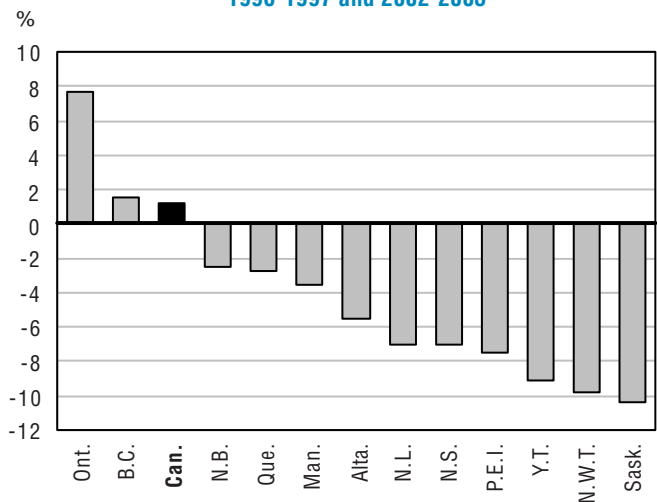
1. See appendix for definitions.
2. Starting in 1999-2000, NWT excludes Nunavut.

Student-educator ratio, 2002-2003



Note: Canada and Ontario: 2001-2002.

Percentage change between 1996-1997 and 2002-2003



Note: Canada and Ontario: 1996-1997 to 2001-2002;
 Northwest Territories: 1999-2000 to 2002-2003.

Table 7

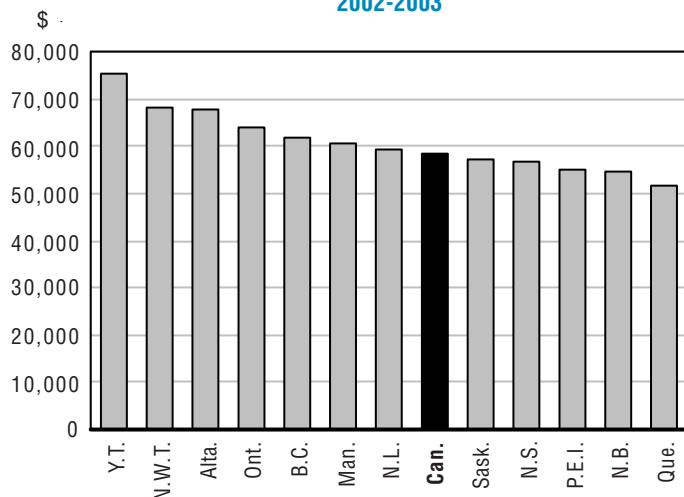
Average remuneration per educator in public elementary and secondary schools, provinces and territories, 1996-1997 to 2002-2003 (in current dollars)

	Canada	N.L.	P.E.I.	N.S.	N.B.	Que.	Ont.	Man.	Sask.	Alta.	B.C.	Y.T.	N.W.T. ¹	Nvt.
1996/97	51,988	50,544	47,158	48,289	27,735	45,904	56,444	51,865	50,313	52,454	55,787	65,912	64,013	...
Percentage change	0.1	3.2	1.3	-0.7	-39.4	0.2	1.6	0.2	-0.5	2.0	0.8	-3.6	-10.3	...
1997/98	53,090	49,396	48,636	48,174	46,769	43,447	59,144	52,404	51,598	53,816	56,418	67,081	64,268	...
Percentage change	2.1	-2.3	3.1	-0.2	68.6	-5.4	4.8	1.0	2.6	2.6	1.1	1.8	0.4	...
1998/99	54,042	50,478	49,446	49,150	47,973	44,780	60,013	53,729	49,798	55,906	56,146	67,081	64,998	...
Percentage change	1.8	2.2	1.7	2.0	2.6	3.1	1.5	2.5	-3.5	3.9	-0.5	0.0	1.1	...
1999/00	55,238	51,289	46,537	50,975	50,117	47,459	60,671	54,577	50,310	57,801	55,815	67,081	65,185	...
Percentage change	2.2	1.6	-5.9	3.7	4.5	6.0	1.1	1.6	1.0	3.4	-0.6	0.0	0.3	...
2000/01	56,678	52,340	50,775	52,746	49,782	49,480	61,503	55,981	54,129	61,057	55,927	67,707	64,937	...
Percentage change	2.6	2.0	9.1	3.5	-0.7	4.3	1.4	2.6	7.6	5.6	0.2	0.9	-0.4	...
2001/02	58,427	55,294	53,231	56,239	52,965	50,415	64,106	57,420	55,145	62,235	56,444	73,016	67,284	..
Percentage change	3.1	5.6	4.8	6.6	6.4	1.9	4.2	2.6	1.9	1.9	0.9	7.8	3.6	..
2002/03	..	<i>59,090</i>	<i>54,970</i>	<i>56,911</i>	<i>54,402</i>	<i>51,738</i>	..	<i>60,708</i>	<i>57,291</i>	<i>67,836</i>	<i>61,691</i>	<i>75,527</i>	<i>68,128</i>	..
Percentage change	..	<i>6.9</i>	<i>3.3</i>	<i>1.2</i>	<i>2.7</i>	<i>2.6</i>	..	<i>5.7</i>	<i>3.9</i>	<i>9.0</i>	<i>9.3</i>	<i>3.4</i>	<i>1.3</i>	..

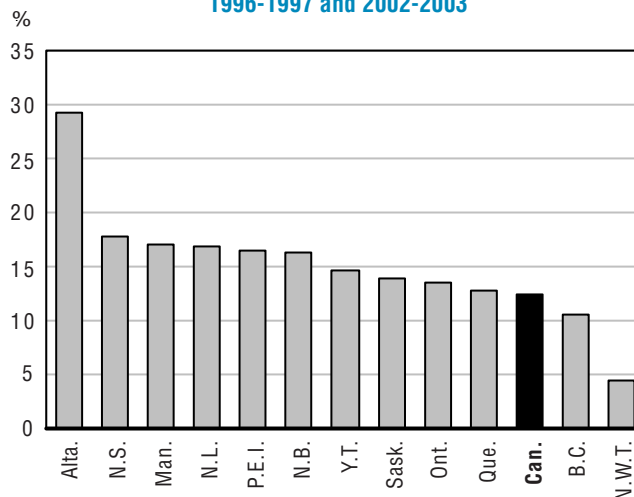
Italicized figures are estimates.

Table 8 divided by Table 5.

1. Starting in 1999-2000, NWT excludes Nunavut.

Average remuneration per educator, 2002-2003


Note: Canada and Ontario: 2001-2002.

Percentage change between 1996-1997 and 2002-2003


Note: Canada and Ontario: 1996-1997 to 2001-2002;
 New Brunswick: 1997-1998 to 2002-2003;
 Northwest Territories: 1999-2000 to 2002-2003.

Expenditures

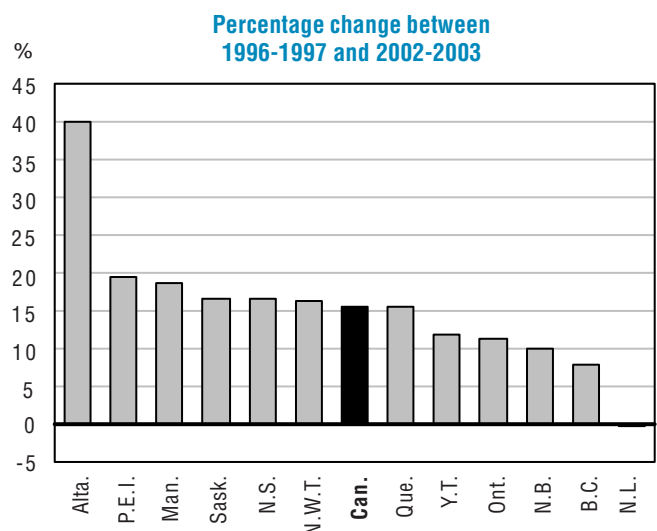
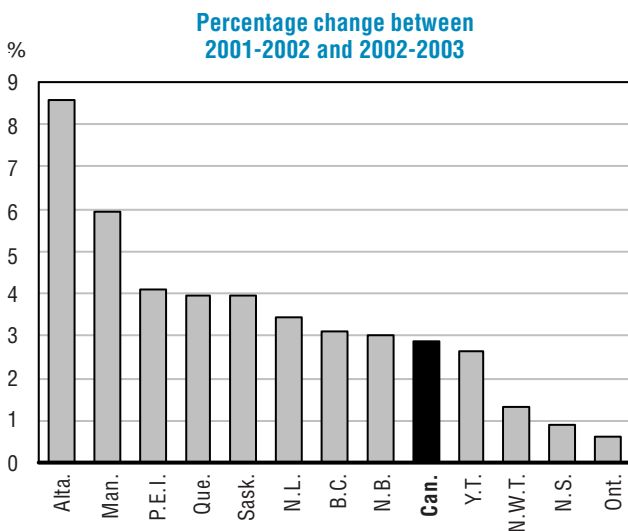
Table 8

Educator remuneration in public elementary and secondary schools, provinces and territories, 1996-1997 to 2002-2003 (in millions of current dollars)

	Canada	N.L. ¹	P.E.I.	N.S.	N.B. ²	Que.	Ont. ³	Man.	Sask.	Alta.	B.C.	Y.T.	N.W.T. ⁴	Nvt.
1996/97	16,126.1	358.9	68.1	453.2	217.3	3,402.4	6,973.9	622.2	559.6	1,443.0	1,936.4	30.9	60.1	...
Percentage change	-0.9	1.0	2.0	-0.4	-40.7	-1.7	-0.3	-0.4	0.3	2.8	2.6	1.3	-11.4	...
1997/98	16,109.8	331.2	70.0	452.6	359.9	3,204.7	6,922.6	630.3	572.9	1,501.9	1,972.7	32.0	58.9	...
Percentage change	-0.1	-7.7	2.8	-0.1	65.6	-5.8	-0.7	1.3	2.4	4.1	1.9	3.5	-2.0	...
1998/99	16,691.0	325.7	71.4	472.9	363.1	3,333.7	7,234.1	646.5	563.7	1,598.0	1,991.0	31.4	59.5	...
Percentage change	3.6	-1.7	2.0	4.5	0.9	4.0	4.5	2.6	-1.6	6.4	0.9	-1.9	1.0	...
1999/00	17,053.4	326.8	67.2	489.9	379.4	3,532.1	7,316.7	662.9	565.9	1,654.8	1,991.9	31.9	33.8	...
Percentage change	2.2	0.3	-5.9	3.6	4.5	5.9	1.1	2.5	0.4	3.6	0.0	1.5	-43.2	...
2000/01	17,637.7	328.9	74.0	498.1	371.4	3,697.1	7,527.6	684.3	607.4	1,761.3	2,019.7	32.0	35.9	..
Percentage change	3.4	0.6	10.1	1.7	-2.1	4.7	2.9	3.2	7.3	6.4	1.4	0.5	6.1	...
2001/02	18,103.7	346.4	78.1	523.2	383.9	3,778.0	7,706.5	697.5	627.7	1,861.8	2,028.0	33.7	38.8	..
Percentage change	2.6	5.3	5.5	5.0	3.4	2.2	2.4	1.9	3.3	5.7	0.4	5.1	8.2	..
2002/03	18,622.9	358.3	81.3	527.9	395.6	3,928.0	7,754.0	738.9	652.5	2,021.0	2,091.4	34.6	39.4	..
Percentage change	2.9	3.5	4.1	0.9	3.0	4.0	0.6	5.9	3.9	8.6	3.1	2.7	1.3	..

Italicized figures are estimates.

1. In Newfoundland and Labrador, due to school board restructuring, 1996-1997 is for 27 pay periods, while the following years are for 26. Educator remuneration was increased in 2001-2002 and 2002-2003 following contract negotiations and because the school year was increased by a week in 2002-2003.
2. New Brunswick figures for 1996/97 are for a nine-month period only.
3. Ontario figures have been adjusted from 1998/99 on to better correspond to educator definition.
4. NWT data is funding-based only. Starting in 1999-2000, NWT excludes Nunavut.



Note: New Brunswick: 1997-1998 to 2002-2003;
Northwest Territories: 1999-2000 to 2002-2003.

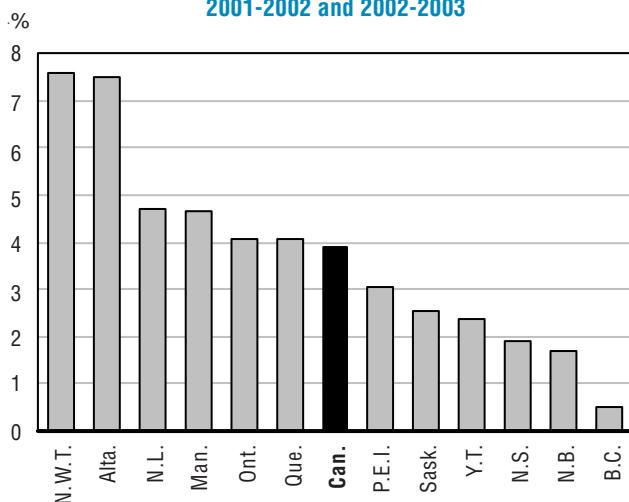
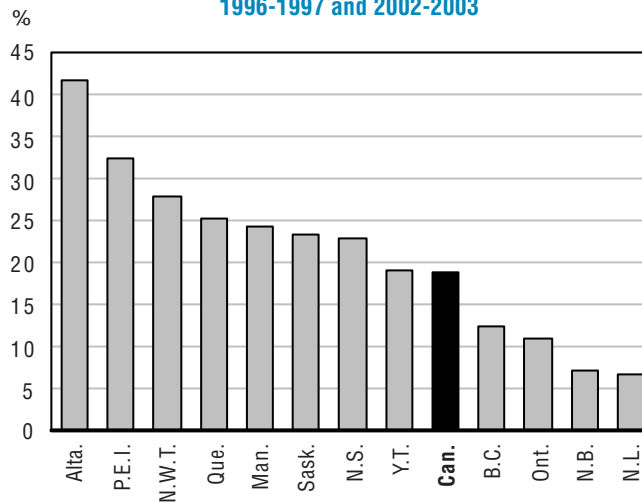
Table 9

Operating expenditures¹ in public elementary and secondary schools, provinces and territories, 1996-1997 to 2002-2003 (in millions of current dollars)

	Canada	N.L. ²	P.E.I.	N.S.	N.B. ³	Que.	Ont. ⁴	Man.	Sask.	Alta.	B.C.	Y.T.	N.W.T. ⁵	Nvt.
1996/97	30,638.4	559.2	113.1	776.4	487.8	6,449.2	13,242.3	1,175.7	1,067.1	2,874.2	3,689.4	59.0	145.0	...
Percentage change	0.4	-2.4	4.3	0.0	-29.1	-2.2	1.4	1.2	0.8	6.1	3.2	5.8	-5.1	...
1997/98	31,239.8	552.4	120.3	841.3	706.4	6,402.1	13,363.3	1,203.9	1,101.8	3,005.1	3,732.1	60.7	150.4	...
Percentage change	2.0	-1.2	6.4	8.4	44.8	-0.7	0.9	2.4	3.2	4.6	1.2	2.9	3.7	...
1998/99	32,018.5	535.3	122.6	851.9	709.0	6,607.6	13,607.8	1,252.0	1,089.5	3,212.7	3,817.6	60.7	151.9	...
Percentage change	2.5	-3.1	1.9	1.3	0.4	3.2	1.8	4.0	-1.1	6.9	2.3	0.0	1.0	...
1999/00	32,612.3	536.9	130.3	913.0	762.9	7,076.5	13,372.4	1,300.0	1,150.8	3,340.7	3,881.2	61.5	86.1	...
Percentage change	1.9	0.3	6.3	7.2	7.6	7.1	-1.7	3.8	5.6	4.0	1.7	1.4	-43.3	...
2000/01	33,889.8	539.4	138.1	904.2	739.5	7,437.8	13,800.5	1,349.5	1,190.3	3,612.8	4,016.7	66.0	95.0	...
Percentage change	3.9	0.5	6.0	-1.0	-3.1	5.1	3.2	3.8	3.4	8.1	3.5	7.2	10.4	...
2001/02	35,048.2	569.2	145.3	936.2	744.3	7,760.0	14,131.3	1,395.1	1,282.6	3,791.7	4,121.7	68.5	102.2	...
Percentage change	3.4	5.5	5.2	3.5	0.7	4.3	2.4	3.4	7.8	5.0	2.6	3.9	7.6	...
2002/03	36,410.0	595.9	149.7	953.9	756.8	8,074.9	14,705.5	1,459.9	1,314.9	4,075.1	4,143.2	70.2	110.0	...
Percentage change	3.9	4.7	3.0	1.9	1.7	4.1	4.1	4.6	2.5	7.5	0.5	2.4	7.6	...

Italicized figures are estimates.

1. Differences in the type of educators' pensions system may affect the comparability of the operating expenditures between jurisdictions.
2. In Newfoundland and Labrador, operating expenditures from 1996-1997 to 1999-2000 include accrued teachers severance; in 1999-2000, the student assistant payroll was added and, in 2001-2002 and 2002-2003, funds for the Center for Distance Learning and Innovation were increased.
3. New Brunswick figures for 1996/97 are for a nine-month period only.
4. In Ontario, the government's contribution into teacher pensions and the unfunded liability are deferred in some years causing Operating Expenditures to fluctuate.
5. Northwest Territories data is funding-based only. Starting in 1999-2000, NWT excludes Nunavut.

Percentage change between 2001-2002 and 2002-2003

Percentage change between 1996-1997 and 2002-2003


Note: New Brunswick: 1997-1998 to 2002-2003;
Northwest Territories: 1999-2000 to 2002-2003.

Table 10

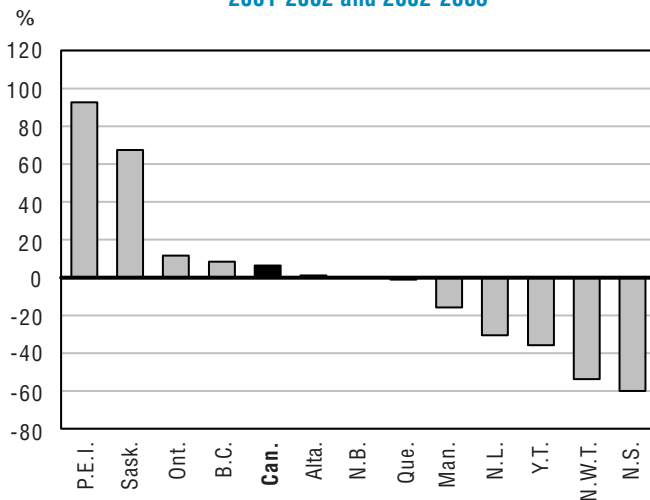
Capital expenditures¹ in public elementary and secondary schools, provinces and territories, 1996-1997 to 2002-2003 (in millions of current dollars)

	Canada	N.L. ²	P.E.I.	N.S.	N.B. ³	Que.	Ont.	Man.	Sask.	Alta.	B.C.	Y.T.	N.W.T. ⁴	Nvt.
1996/97	2,367.9	26.8	4.3	63.0	119.5	423.6	783.1	65.9	65.8	320.9	455.2	10.7	29.2	...
Percentage change	-14.5	46.4	128.5	-6.3	5.3	-3.2	-28.9	0.0	-4.1	-16.0	-4.2	3.6	5.4	...
1997/98	2,730.1	9.9	6.7	52.7	144.6	440.1	973.8	76.5	75.9	405.2	495.6	13.9	35.1	...
Percentage change	15.3	-63.1	57.7	-16.4	21.1	3.9	24.3	16.1	15.4	26.3	8.9	30.6	20.2	...
1998/99	2,925.9	12.5	10.0	54.1	139.5	435.0	1,174.5	71.7	87.9	406.3	494.8	9.2	30.5	...
Percentage change	7.2	26.8	48.3	2.6	-3.5	-1.2	20.6	-6.3	15.8	0.3	-0.2	-34.1	-13.2	...
1999/00	2,917.4	21.6	10.3	45.6	162.1	434.3	1,181.0	72.1	71.1	379.7	512.2	11.5	15.8	...
Percentage change	-0.3	72.5	3.0	-15.6	16.1	-0.2	0.6	0.6	-19.1	-6.5	3.5	25.6	-48.0	...
2000/01	2,972.6	10.9	8.7	30.9	143.5	453.2	1,184.0	81.2	54.0	418.3	571.1	8.1	8.7	...
Percentage change	1.9	-49.3	-15.5	-32.2	-11.4	4.3	0.3	12.5	-24.0	10.2	11.5	-30.1	-45.2	...
2001/02	2,973.4	12.7	6.8	25.6	133.7	436.8	1,108.7	75.3	51.4	489.4	612.0	11.5	9.3	..
Percentage change	0.0	16.4	-21.8	-17.4	-6.9	-3.6	-6.4	-7.2	-4.8	17.0	7.2	42.6	7.4	..
2002/03	3,157.9	<i>8.8</i>	<i>13.1</i>	<i>10.3</i>	<i>133.5</i>	<i>431.2</i>	<i>1,240.4</i>	<i>63.7</i>	<i>86.1</i>	<i>496.3</i>	<i>662.8</i>	<i>7.3</i>	<i>4.3</i>	..
Percentage change	6.2	-30.7	92.6	-59.7	-0.1	-1.3	11.9	-15.5	67.4	1.4	8.3	-36.0	-54.0	..

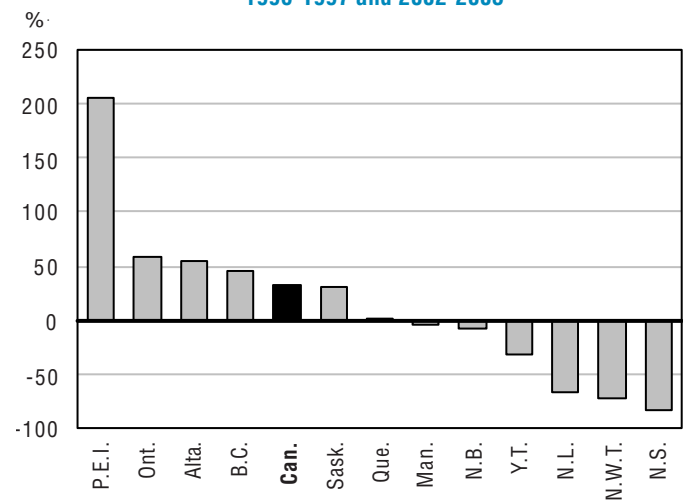
Italicized figures are estimates.

1. Differences in the accounting method, cash or accrual, and amortisation method may affect the comparability of the capital expenditures between jurisdictions.
2. In Newfoundland and Labrador, the 1996-1997 capital expenditures include provisions from the provincial government to pay the outstanding debt of the school boards at the time of restructuring.
3. New Brunswick figures for 1996/97 are for a nine-month period only.
4. Starting in 1999-2000, NWT excludes Nunavut.

Percentage change between 2001-2002 and 2002-2003



Percentage change between 1996-1997 and 2002-2003



Note: New Brunswick: 1997-1998 to 2002-2003;
Northwest Territories: 1999-2000 to 2002-2003.

Table 11

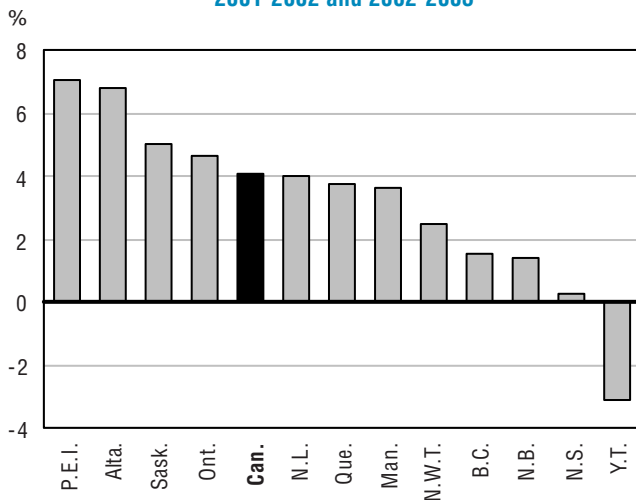
Total expenditures¹ in public elementary and secondary schools, provinces and territories, 1996-1997 to 2002-2003 (in millions of current dollars)

	Canada	N.L.	P.E.I.	N.S.	N.B. ²	Que.	Ont.	Man.	Sask.	Alta.	B.C.	Y.T.	N.W.T. ³	Nvt.
1996/97	33,005.2	585.9	117.4	839.4	606.2	6,872.8	14,025.4	1,241.6	1,132.9	3,195.1	4,144.6	69.6	174.2	...
Percentage change	-0.8	-0.9	6.4	-0.5	-24.2	-2.3	-1.0	1.1	0.5	3.3	2.3	5.5	-3.5	...
1997/98	33,964.2	556.6	127.1	894.0	851.0	6,842.2	14,337.1	1,280.4	1,177.7	3,410.3	4,227.8	74.6	185.5	...
Percentage change	2.9	-5.0	8.3	6.5	40.4	-0.4	2.2	3.1	4.0	6.7	2.0	7.1	6.5	...
1998/99	34,939.6	542.9	132.6	906.0	848.6	7,042.6	14,782.3	1,323.7	1,177.4	3,619.0	4,312.4	69.8	182.3	...
Percentage change	2.9	-2.5	4.4	1.3	-0.3	2.9	3.1	3.4	0.0	6.1	2.0	-6.4	-1.7	...
1999/00	35,524.3	553.2	140.6	958.6	924.9	7,510.8	14,553.4	1,372.2	1,221.9	3,720.4	4,393.4	73.1	101.9	...
Percentage change	1.7	1.9	6.0	5.8	9.0	6.6	-1.5	3.7	3.8	2.8	1.9	4.6	-44.1	...
2000/01	36,855.6	543.5	146.8	935.1	883.1	7,891.0	14,984.5	1,430.7	1,244.4	4,031.0	4,587.8	74.1	103.6	...
Percentage change	3.7	-1.8	4.4	-2.5	-4.5	5.1	3.0	4.3	1.8	8.3	4.4	1.4	1.7	...
2001/02	38,015.4	575.7	152.1	961.7	878.0	8,196.8	15,240.1	1,470.4	1,334.1	4,281.1	4,733.7	80.0	111.5	..
Percentage change	3.1	5.9	3.6	2.9	-0.6	3.9	1.7	2.8	7.2	6.2	3.2	8.1	7.6	..
2002/03	39,562.1	<i>598.9</i>	<i>162.8</i>	<i>964.2</i>	<i>890.3</i>	<i>8,506.1</i>	<i>15,946.0</i>	<i>1,523.6</i>	<i>1,401.1</i>	<i>4,571.5</i>	<i>4,806.0</i>	<i>77.5</i>	<i>114.3</i>	..
Percentage change	4.1	<i>4.0</i>	<i>7.0</i>	<i>0.3</i>	<i>1.4</i>	<i>3.8</i>	<i>4.6</i>	<i>3.6</i>	<i>5.0</i>	<i>6.8</i>	<i>1.5</i>	<i>-3.1</i>	<i>2.4</i>	..

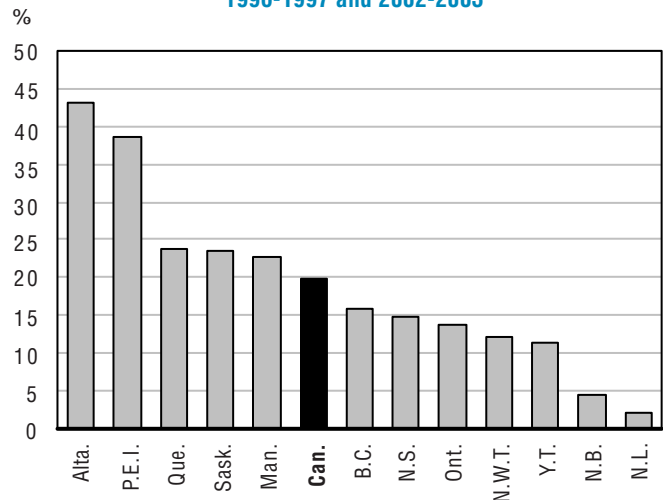
Italicized figures are estimates.

1. Sum of operating and capital expenditures: limitations in the comparability of both the operating and capital expenditures affect the comparability of the total expenditures.
2. New Brunswick figures for 1996/97 are for a nine-month period only.
3. Northwest Territories data is funding-based only. Starting in 1999-2000, NWT excludes Nunavut.

Percentage change between 2001-2002 and 2002-2003



Percentage change between 1996-1997 and 2002-2003



Note: New Brunswick: 1997-1998 to 2002-2003;
Northwest Territories: 1999-2000 to 2002-2003.

Table 12a

Total expenditures per student in public elementary and secondary schools, provinces and territories, 1996-1997 to 2002-2003 (in current dollars)

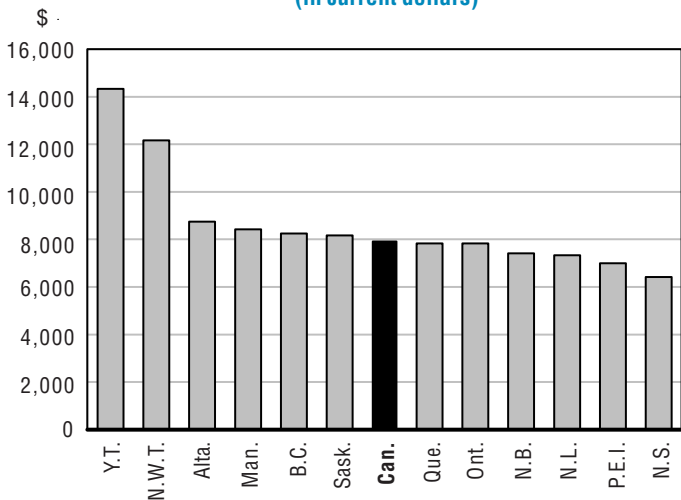
	Canada	N.L.	P.E.I.	N.S.	N.B.	Que.	Ont.	Man.	Sask.	Alta.	B.C.	Y.T.	N.W.T. ¹	Nvt.
1996/97	6,672	5,700	4,808	5,120	4,549	6,319	7,206	6,715	6,059	6,279	7,086	11,410	10,572	...
Percentage change	-0.8	2.9	5.9	-0.5	-23.2	-2.3	0.0	1.0	0.6	1.7	0.1	1.3	-4.6	...
1997/98	6,797	5,658	5,234	5,506	6,468	6,118	7,270	6,953	6,337	6,763	7,125	12,062	11,283	...
Percentage change	1.9	-0.7	8.9	7.5	42.2	-3.2	0.9	3.5	4.6	7.7	0.6	5.7	6.7	...
1998/99	6,975	5,745	5,513	5,662	6,571	6,309	7,431	7,203	6,386	7,058	7,276	11,890	10,837	...
Percentage change	2.6	1.5	5.3	2.8	1.6	3.1	2.2	3.6	0.8	4.4	2.1	-1.4	-3.9	...
1999/00	7,107	6,076	5,859	6,059	7,283	6,818	7,261	7,350	6,705	7,210	7,421	12,667	10,862	...
Percentage change	1.9	5.8	6.3	7.0	10.8	8.1	-2.3	2.0	5.0	2.1	2.0	6.5	0.2	...
2000/01	7,368	6,216	6,223	5,999	7,068	7,211	7,419	7,612	6,973	7,806	7,777	13,205	11,155	...
Percentage change	3.7	2.3	6.2	-1.0	-2.9	5.8	2.2	3.6	4.0	8.3	4.8	4.2	2.7	...
2001/02	7,606	6,839	6,513	6,267	7,150	7,517	7,474	8,114	7,618	8,263	8,062	14,816	11,909	..
Percentage change	3.2	10.0	4.7	4.5	1.2	4.2	0.7	6.6	9.3	5.9	3.7	12.2	6.8	..
2002/03	7,946	7,335	7,038	6,402	7,382	7,851	7,807	8,423	8,161	8,775	8,280	14,321	12,129	..
Percentage change	4.5	7.2	8.1	2.2	3.2	4.4	4.5	3.8	7.1	6.2	2.7	-3.3	1.8	..

Italicized figures are estimates.

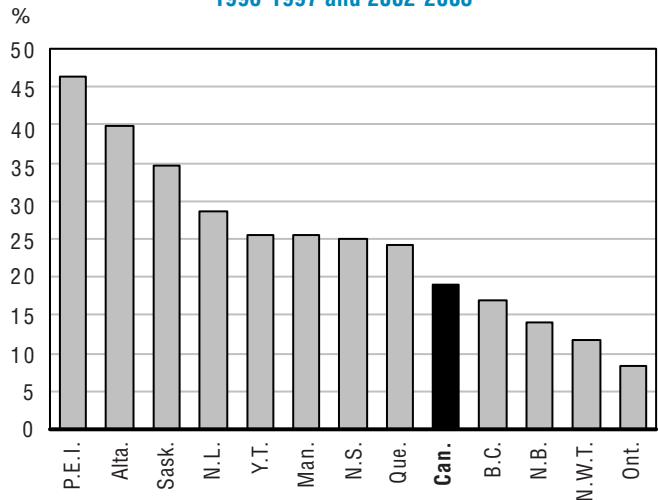
Table 11 divided by Table 2.

1. Starting in 1999-2000, NWT excludes Nunavut.

Total expenditures per student, 2002-2003 (in current dollars)



Percentage change between 1996-1997 and 2002-2003



Note: New Brunswick: 1997-1998 to 2002-2003;
Northwest Territories: 1999-2000 to 2002-2003.

Table 12b

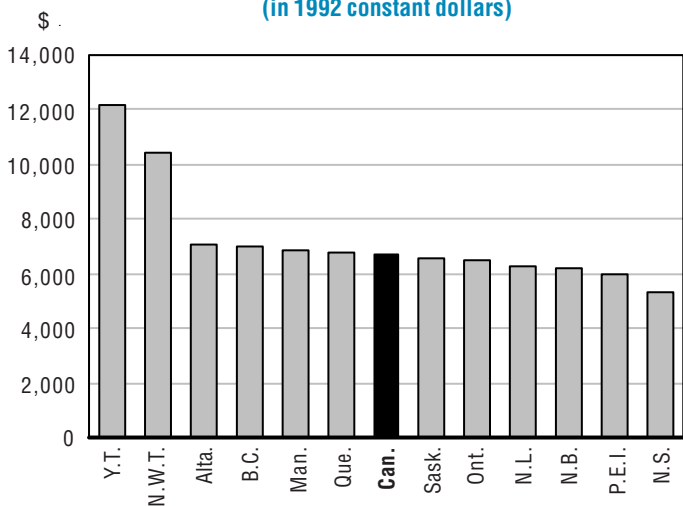
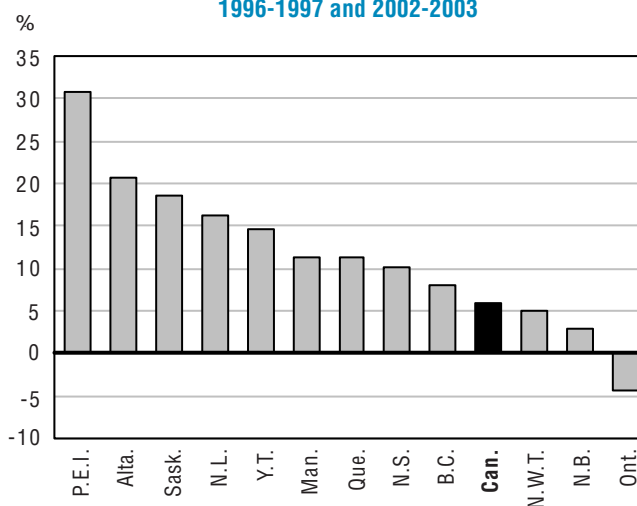
Total expenditures per student in public elementary and secondary schools, provinces and territories, 1996-1997 to 2002-2003 (in 1992 constant dollars)

	Canada	N.L.	P.E.I.	N.S.	N.B.	Que.	Ont.	Man.	Sask.	Alta.	B.C.	Y.T.	N.W.T. ¹	Nvt.
1996/97	6,300	5,377	4,570	4,849	4,336	6,111	6,804	6,149	5,564	5,852	6,507	10,614	9,771	...
Percentage change	-2.4	1.4	4.0	-2.2	-24.3	-3.8	-1.5	-1.1	-1.2	-0.5	-0.9	-0.4	-6.1	...
1997/98	6,317	5,229	4,914	5,108	6,050	5,832	6,738	6,230	5,746	6,176	6,495	10,975	10,418	...
Percentage change	0.3	-2.8	7.5	5.3	39.5	-4.6	-1.0	1.3	3.3	5.5	-0.2	3.4	6.6	...
1998/99	6,423	5,300	5,201	5,219	6,113	5,930	6,824	6,375	5,712	6,376	6,614	10,712	10,016	...
Percentage change	1.7	1.4	5.8	2.2	1.0	1.7	1.3	2.3	-0.6	3.2	1.8	-2.4	-3.9	...
1999/00	6,432	5,524	5,460	5,493	6,669	6,313	6,541	6,380	5,897	6,358	6,673	11,300	9,937	...
Percentage change	0.1	4.2	5.0	5.3	9.1	6.5	-4.1	0.1	3.2	-0.3	0.9	5.5	-0.8	...
2000/01	6,492	5,486	5,571	5,253	6,266	6,520	6,496	6,446	5,975	6,649	6,864	11,523	10,031	..
Percentage change	0.9	-0.7	2.0	-4.4	-6.0	3.3	-0.7	1.0	1.3	4.6	2.9	2.0	0.9	...
2001/02	6,534	5,973	5,683	5,389	6,234	6,640	6,350	6,694	6,333	6,880	6,998	12,674	10,539	..
Percentage change	0.7	8.9	2.0	2.6	-0.5	1.9	-2.2	3.9	6.0	3.5	1.9	10.0	5.1	..
2002/03	6,677	<i>6,253</i>	<i>5,979</i>	<i>5,344</i>	<i>6,225</i>	<i>6,797</i>	<i>6,501</i>	<i>6,842</i>	<i>6,598</i>	<i>7,065</i>	<i>7,023</i>	<i>12,167</i>	<i>10,429</i>	..
Percentage change	2.2	<i>4.7</i>	<i>5.2</i>	<i>-0.8</i>	<i>-0.1</i>	<i>2.4</i>	<i>2.4</i>	<i>2.2</i>	<i>4.2</i>	<i>2.7</i>	<i>0.4</i>	<i>-4.0</i>	<i>-1.0</i>	..

Italicized figures are estimates.

Table 11 divided by Table 2 divided by Table 27.

1. Starting in 1999-2000, NWT excludes Nunavut.

Total expenditures per student, 2002-2003 (in 1992 constant dollars)

Percentage change between 1996-1997 and 2002-2003


Note: New Brunswick: 1997-1998 to 2002-2003;
Northwest Territories: 1999-2000 to 2002-2003.

Table 13

Educator remuneration per student in public elementary and secondary schools, provinces and territories, 1996-1997 to 2002-2003 (in current dollars)

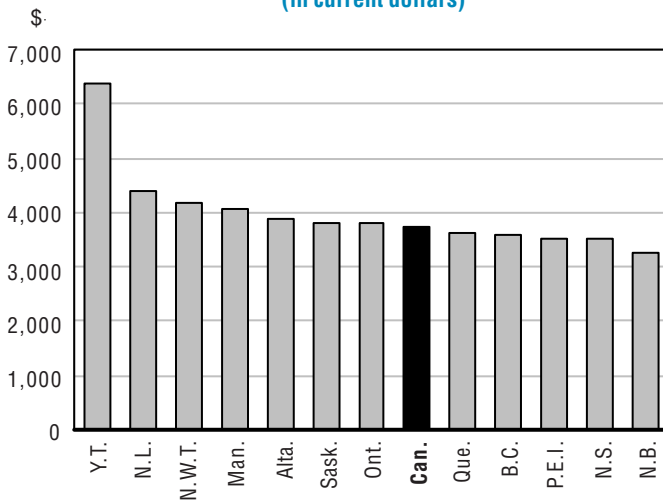
	Canada	N.L.	P.E.I.	N.S.	N.B.	Que.	Ont.	Man.	Sask.	Alta.	B.C.	Y.T.	N.W.T. ¹	Nvt.
1996/97	3,260	3,492	2,789	2,764	1,631	3,128	3,583	3,365	2,993	2,836	3,311	5,065	3,647	...
Percentage change	-0.8	4.8	1.5	-0.4	-39.9	-1.7	0.7	-0.5	0.4	1.1	0.3	-2.7	-12.4	...
1997/98	3,224	3,367	2,883	2,788	2,735	2,866	3,510	3,422	3,083	2,978	3,325	5,173	3,584	...
Percentage change	-1.1	-3.6	3.4	0.9	67.8	-8.4	-2.0	1.7	3.0	5.0	0.4	2.1	-1.7	...
1998/99	3,332	3,447	2,969	2,955	2,812	2,987	3,637	3,518	3,057	3,117	3,359	5,345	3,539	...
Percentage change	3.4	2.4	3.0	6.0	2.8	4.2	3.6	2.8	-0.8	4.6	1.0	3.3	-1.3	...
1999/00	3,412	3,589	2,800	3,097	2,988	3,206	3,650	3,551	3,106	3,207	3,364	5,524	3,606	...
Percentage change	2.4	4.1	-5.7	4.8	6.3	7.4	0.4	0.9	1.6	2.9	0.2	3.4	1.9	...
2000/01	3,526	3,761	3,137	3,196	2,972	3,378	3,727	3,641	3,404	3,411	3,424	5,711	3,864	...
Percentage change	3.4	4.8	12.0	3.2	-0.5	5.4	2.1	2.5	9.6	6.4	1.8	3.4	7.1	...
2001/02	3,622	4,115	3,344	3,410	3,127	3,465	3,780	3,849	3,585	3,593	3,454	6,231	4,147	...
Percentage change	2.7	9.4	6.6	6.7	5.2	2.6	1.4	5.7	5.3	5.4	0.9	9.1	7.3	...
2002/03	3,740	4,389	3,515	3,505	3,280	3,626	3,797	4,085	3,801	3,879	3,603	6,382	4,177	...
Percentage change	3.3	6.7	5.1	2.8	4.9	4.6	0.5	6.1	6.0	8.0	4.3	2.4	0.7	...

Italicized figures are estimates.

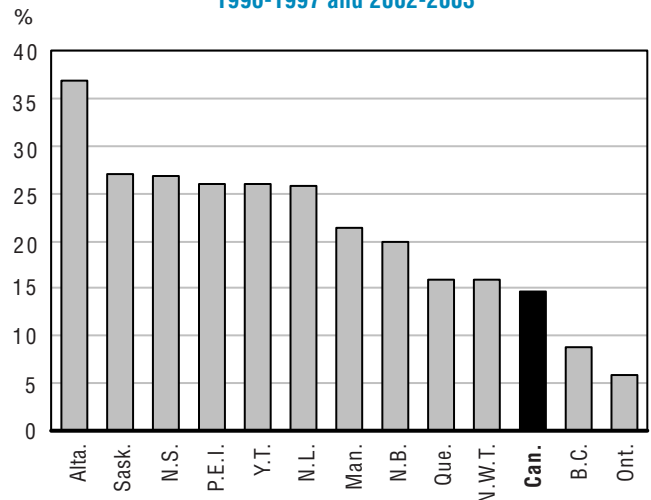
Table 8 divided by Table 2.

1. Starting in 1999-2000, NWT excludes Nunavut.

Educator remuneration per student, 2002-2003 (in current dollars)



Percentage change between 1996-1997 and 2002-2003



Note: New Brunswick: 1997-1998 to 2002-2003;
Northwest Territories: 1999-2000 to 2002-2003.

Table 14

Operating expenditures per student in public elementary and secondary schools, provinces and territories, 1996-1997 to 2002-2003 (in current dollars)

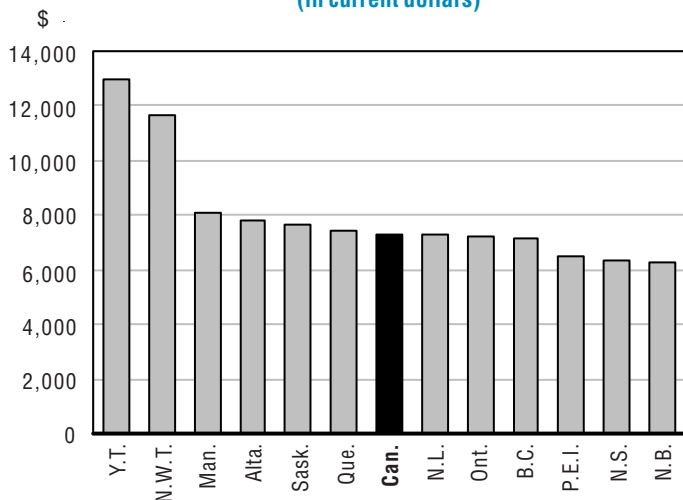
	Canada	N.L.	P.E.I.	N.S.	N.B.	Que.	Ont.	Man.	Sask.	Alta.	B.C.	Y.T.	N.W.T. ¹	Nvt.
1996/97	6,194	5,440	4,632	4,736	3,660	5,929	6,804	6,359	5,708	5,648	6,308	9,662	8,800	...
Percentage change	0.5	1.4	3.8	0.0	-28.1	-2.2	2.4	1.0	0.9	4.3	0.9	1.6	-6.2	...
1997/98	6,251	5,615	4,956	5,181	5,368	5,725	6,776	6,537	5,929	5,959	6,290	9,809	9,147	...
Percent change	0.9	3.2	7.0	9.4	46.7	-3.4	-0.4	2.8	3.9	5.5	-0.3	1.5	3.9	...
1998/99	6,392	5,665	5,098	5,324	5,491	5,919	6,841	6,813	5,909	6,266	6,441	10,328	9,026	...
Percentage change	2.2	0.9	2.9	2.8	2.3	3.4	1.0	4.2	-0.3	5.2	2.4	5.3	-1.3	...
1999/00	6,525	5,897	5,429	5,771	6,007	6,424	6,672	6,963	6,315	6,474	6,555	10,669	9,173	...
Percentage change	2.1	4.1	6.5	8.4	9.4	8.5	-2.5	2.2	6.9	3.3	1.8	3.3	1.6	...
2000/01	6,775	6,169	5,854	5,801	5,919	6,797	6,832	7,180	6,670	6,996	6,809	11,769	10,222	...
Percentage change	3.8	4.6	7.8	0.5	-1.5	5.8	2.4	3.1	5.6	8.1	3.9	10.3	11.4	...
2001/02	7,012	6,762	6,221	6,101	6,062	7,116	6,930	7,698	7,324	7,318	7,019	12,690	10,914	..
Percentage change	3.5	9.6	6.3	5.2	2.4	4.7	1.4	7.2	9.8	4.6	3.1	7.8	6.8	..
2002/03	7,313	<i>7,298</i>	<i>6,472</i>	<i>6,334</i>	<i>6,275</i>	<i>7,453</i>	<i>7,200</i>	<i>8,071</i>	<i>7,660</i>	<i>7,822</i>	<i>7,138</i>	<i>12,964</i>	<i>11,674</i>	..
Percentage change	4.3	<i>7.9</i>	<i>4.0</i>	<i>3.8</i>	<i>3.5</i>	<i>4.7</i>	<i>3.9</i>	<i>4.8</i>	<i>4.6</i>	<i>6.9</i>	<i>1.7</i>	<i>2.2</i>	<i>7.0</i>	..

Italicized figures are estimates.

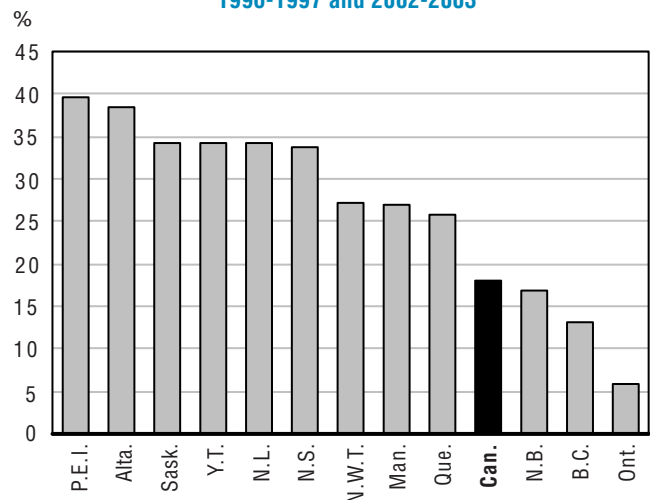
Table 9 divided by Table 2.

1. Starting in 1999-2000, NWT excludes Nunavut.

Operating expenditures per student, 2002-2003 (in current dollars)



Percentage change between 1996-1997 and 2002-2003



Note: New Brunswick: 1997-1998 to 2002-2003;
Northwest Territories: 1999-2000 to 2002-2003.

Table 15

Capital expenditures per student in public elementary and secondary schools, provinces and territories, 1996-1997 to 2002-2003 (in current dollars)

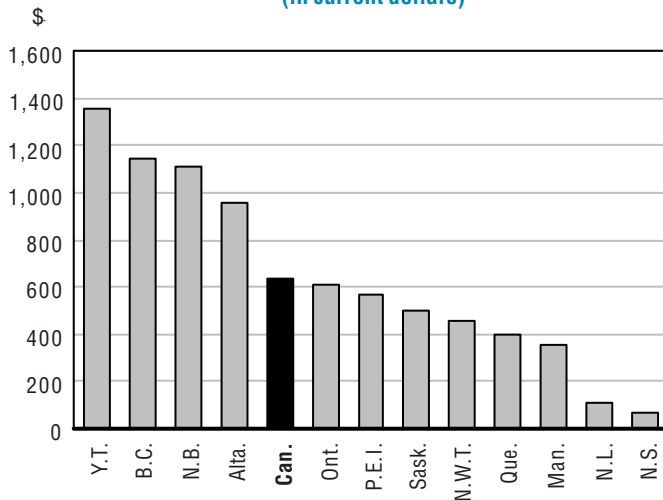
	Canada	N.L.	P.E.I.	N.S.	N.B.	Que.	Ont.	Man.	Sask.	Alta.	B.C.	Y.T.	N.W.T. ¹	Nvt.
1996/97	479	260	175	384	896	389	402	356	352	631	778	1,747	1,772	...
Percentage change	-14.5	52.0	127.3	-6.2	6.7	-3.2	-28.2	-0.1	-4.0	-17.4	-6.3	-0.6	4.1	...
1997/98	546	100	278	325	1,099	394	494	416	408	803	835	2,252	2,135	...
Percentage change	14.1	-61.5	58.6	-15.6	22.6	1.0	22.7	16.6	16.1	27.4	7.3	28.9	20.5	...
1998/99	584	132	416	338	1,081	390	590	390	477	792	835	1,562	1,811	...
Percentage change	6.9	32.0	49.7	4.1	-1.7	-1.0	19.6	-6.1	16.7	-1.4	0.0	-30.6	-15.2	...
1999/00	584	237	429	288	1,276	394	589	386	390	736	865	1,998	1,688	...
Percentage change	-0.1	79.0	3.2	-14.7	18.1	1.2	-0.2	-1.0	-18.2	-7.1	3.6	27.9	-6.8	...
2000/01	594	125	369	198	1,149	414	586	432	303	810	968	1,436	933	...
Percentage change	1.8	-47.2	-14.1	-31.2	-10.0	5.0	-0.5	11.8	-22.4	10.1	11.9	-28.1	-44.7	...
2001/02	595	151	291	167	1,089	401	544	416	294	945	1,042	2,127	995	...
Percentage change	0.1	20.9	-21.0	-16.0	-5.3	-3.3	-7.2	-3.7	-3.0	16.6	7.7	48.1	6.6	...
2002/03	634	108	566	68	1,107	398	607	352	502	953	1,142	1,357	455	...
Percentage change	6.6	-28.6	94.5	-59.0	1.7	-0.7	11.7	-15.3	70.8	0.9	9.6	-36.2	-54.3	...

Italicized figures are estimates.

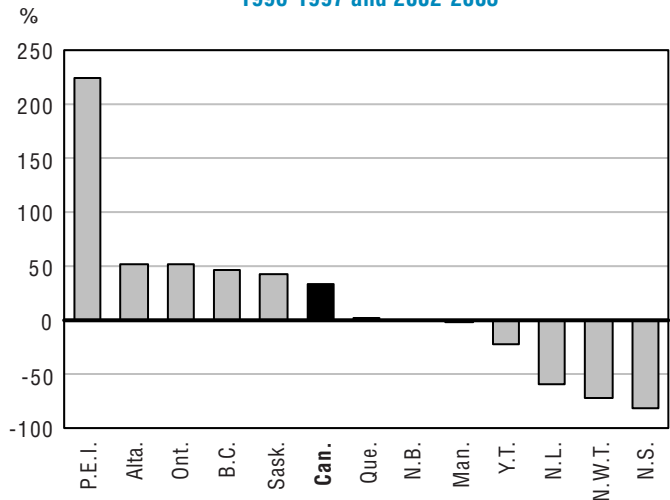
Table 10 divided by Table 2.

1. Starting in 1999-2000, NWT excludes Nunavut.

Capital expenditures per student, 2002-2003 (in current dollars)



Percentage change between 1996-1997 and 2002-2003



Note: New Brunswick: 1997-1998 to 2002-2003;
Northwest Territories: 1999-2000 to 2002-2003.

Table 16

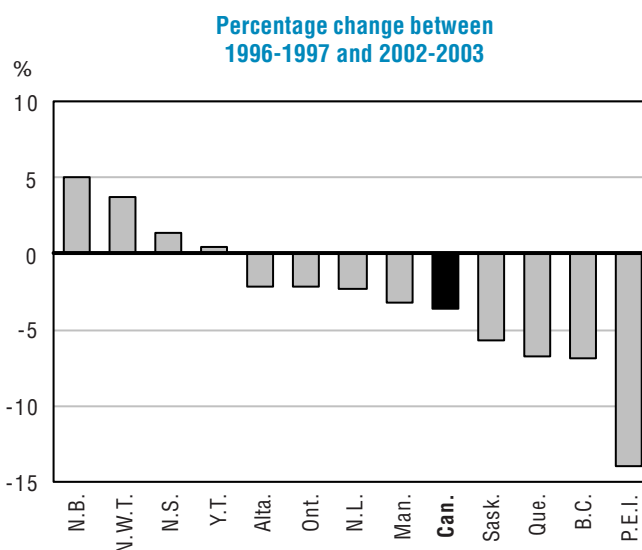
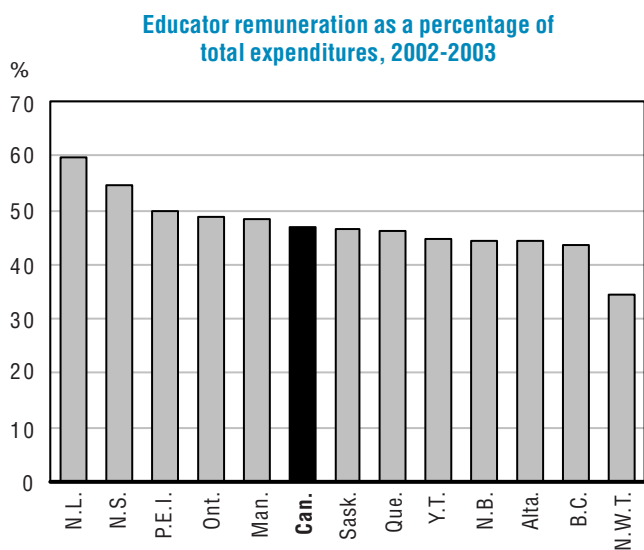
Educator remuneration as a percentage of total expenditures in public elementary and secondary schools, provinces and territories, 1996-1997 to 2002-2003

	Canada	N.L.	P.E.I.	N.S.	N.B.	Que.	Ont.	Man.	Sask.	Alta.	B.C.	Y.T.	N.W.T. ¹	Nvt.
1996/97	48.86	61.26	58.01	53.98	35.85	49.51	49.72	50.12	49.40	45.16	46.72	44.39	34.50	...
Percentage change	0.0	1.9	-4.2	0.1	-21.7	0.6	0.7	-1.4	-0.2	-0.5	0.2	-3.9	-8.1	...
1997/98	47.43	59.50	55.08	50.63	42.29	46.84	48.28	49.22	48.64	44.04	46.66	42.88	31.77	...
Percentage change	-2.9	-2.9	-5.1	-6.2	18.0	-5.4	-2.9	-1.8	-1.5	-2.5	-0.1	-3.4	-7.9	...
1998/99	47.77	60.00	53.85	52.19	42.79	47.34	48.94	48.84	47.87	44.16	46.17	44.95	32.66	...
Percentage change	0.7	0.8	-2.2	3.1	1.2	1.1	1.4	-0.8	-1.6	0.3	-1.1	4.8	2.8	...
1999/00	48.00	59.07	47.80	51.11	41.02	47.03	50.27	48.31	46.32	44.48	45.34	43.61	33.20	...
Percentage change	0.5	-1.6	-11.2	-2.1	-4.1	-0.7	2.7	-1.1	-3.3	0.7	-1.8	-3.0	1.7	...
2000/01	47.86	60.51	50.41	53.27	42.06	46.85	50.24	47.83	48.81	43.69	44.02	43.25	34.64	..
Percentage change	-0.3	2.4	5.5	4.2	2.5	-0.4	-0.1	-1.0	5.4	-1.8	-2.9	-0.8	4.3	...
2001/02	47.62	60.16	51.35	54.41	43.73	46.09	50.57	47.43	47.05	43.49	42.84	42.06	34.82	..
Percentage change	-0.5	-0.6	1.9	2.1	4.0	-1.6	0.7	-0.8	-3.6	-0.5	-2.7	-2.8	0.5	..
2002/03	47.07	<i>59.83</i>	<i>49.94</i>	<i>54.75</i>	<i>44.43</i>	<i>46.18</i>	<i>48.63</i>	<i>48.50</i>	<i>46.57</i>	<i>44.21</i>	<i>43.52</i>	<i>44.57</i>	<i>34.44</i>	..
Percentage change	-1.2	<i>-0.5</i>	<i>-2.7</i>	<i>0.6</i>	<i>1.6</i>	<i>0.2</i>	<i>-3.8</i>	<i>2.2</i>	<i>-1.0</i>	<i>1.7</i>	<i>1.6</i>	<i>6.0</i>	<i>-1.1</i>	..

Italicized figures are estimates.

Table 8 divided by Table 11.

1. Starting in 1999-2000, NWT excludes Nunavut.



Note: New Brunswick: 1997-1998 to 2002-2003;
Northwest Territories: 1999-2000 to 2002-2003.

Table 17

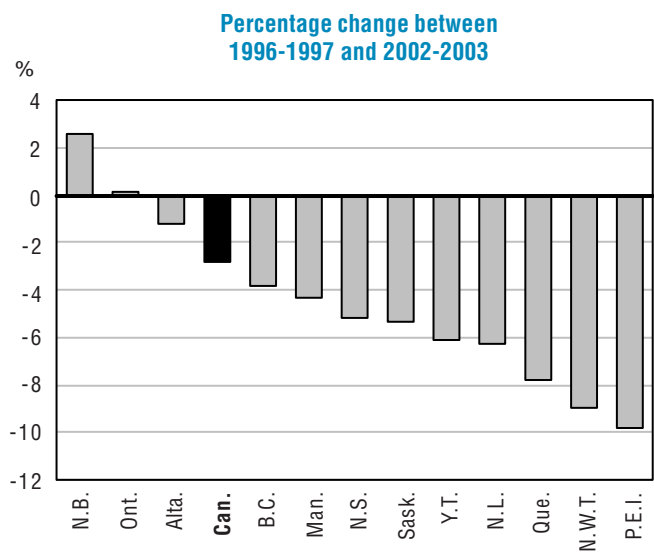
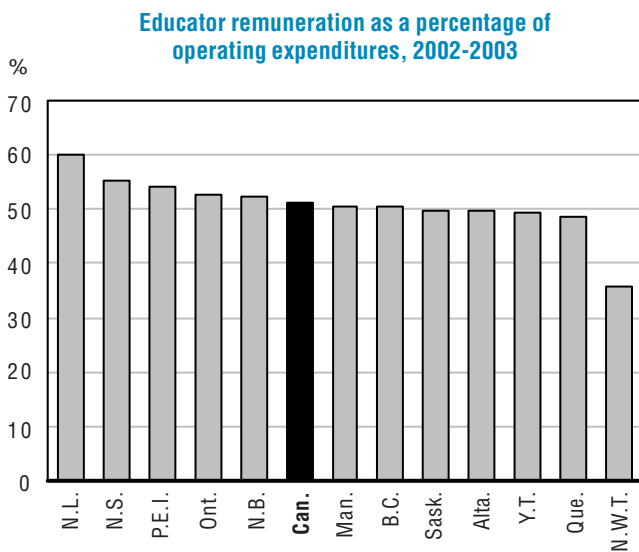
Educator remuneration as a percentage of operating expenditures in public elementary and secondary schools, provinces and territories, 1996-1997 to 2002-2003

	Canada	N.L.	P.E.I.	N.S.	N.B.	Que.	Ont.	Man.	Sask.	Alta.	B.C.	Y.T.	N.W.T. ¹	Nvt.
1996/97	52.63	64.19	60.21	58.36	44.55	52.76	52.66	52.92	52.44	50.20	52.49	52.42	41.44	...
Percentage change	-1.3	3.4	-2.2	-0.4	-16.4	0.6	-1.7	-1.5	-0.5	-3.1	-0.6	-4.2	-6.6	...
1997/98	51.57	59.96	58.17	53.81	50.95	50.06	51.80	52.35	51.99	49.98	52.86	52.73	39.19	...
Percentage change	-2.0	-6.6	-3.4	-7.8	14.4	-5.1	-1.6	-1.1	-0.9	-0.5	0.7	0.6	-5.5	...
1998/99	52.13	60.85	58.24	55.50	51.21	50.45	53.16	51.64	51.74	49.74	52.15	51.75	39.21	...
Percentage change	1.1	1.5	0.1	3.2	0.5	0.8	2.6	-1.4	-0.5	-0.5	-1.3	-1.9	0.1	...
1999/00	52.29	60.87	51.57	53.66	49.74	49.91	54.71	50.99	49.18	49.53	51.32	51.78	39.31	...
Percentage change	0.3	0.0	-11.4	-3.3	-2.9	-1.1	2.9	-1.3	-4.9	-0.4	-1.6	0.1	0.3	...
2000/01	52.04	60.97	53.58	55.09	50.22	49.71	54.55	50.71	51.03	48.75	50.28	48.52	37.80	..
Percentage change	-0.5	0.2	3.9	2.7	1.0	-0.4	-0.3	-0.6	3.8	-1.6	-2.0	-6.3	-3.9	...
2001/02	51.65	60.85	53.75	55.89	51.58	48.69	54.53	50.00	48.94	49.10	49.20	49.10	38.00	..
Percentage change	-0.8	-0.2	0.3	1.4	2.7	-2.1	0.0	-1.4	-4.1	0.7	-2.1	1.2	0.5	..
2002/03	51.15	60.14	54.31	55.34	52.27	48.65	52.73	50.61	49.62	49.59	50.48	49.23	35.78	..
Percentage change	-1.0	-1.2	1.0	-1.0	1.3	-0.1	-3.3	1.2	1.4	1.0	2.6	0.3	-5.8	..

Italicized figures are estimates.

Table 8 divided by Table 9.

1. Starting in 1999-2000, NWT excludes Nunavut.



Note: New Brunswick: 1997-1998 to 2002-2003;
Northwest Territories: 1999-2000 to 2002-2003.

Cost to society

Table 18a

Total expenditures in public elementary and secondary schools per capita, provinces and territories, 1996-1997 to 2002-2003 (in current dollars)

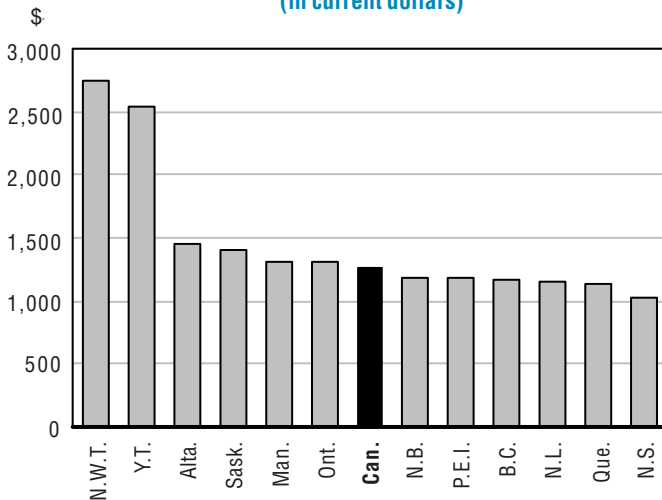
	Canada	N.L.	P.E.I.	N.S.	N.B.	Que.	Ont.	Man.	Sask.	Alta.	B.C.	Y.T.	N.W.T. ¹	Nvt.
1996/97	1,109	1,055	863	900	806	946	1,258	1,094	1,112	1,141	1,059	2,202	2,590	...
Percentage change	-1.9	0.6	5.8	-0.8	-24.3	-2.7	-2.2	0.7	0.2	1.6	0.0	3.3	-4.2	...
1997/98	1,131	1,020	935	959	1,132	939	1,270	1,127	1,157	1,193	1,064	2,368	2,756	...
Percentage change	2.0	-3.3	8.3	6.5	40.5	-0.8	0.9	3.1	4.0	4.5	0.5	7.6	6.4	...
1998/99	1,155	1,012	975	972	1,131	963	1,294	1,162	1,158	1,237	1,079	2,272	2,712	...
Percentage change	2.1	-0.8	4.3	1.4	0.0	2.6	1.9	3.1	0.0	3.7	1.4	-4.1	-1.6	...
1999/00	1,164	1,040	1,030	1,026	1,232	1,023	1,257	1,199	1,208	1,250	1,091	2,397	2,507	...
Percentage change	0.8	2.8	5.7	5.5	8.9	6.2	-2.9	3.2	4.4	1.1	1.1	5.5	-7.6	...
2000/01	1,196	1,034	1,076	1,002	1,178	1,070	1,273	1,246	1,240	1,331	1,131	2,457	2,550	..
Percentage change	2.7	-0.6	4.5	-2.3	-4.4	4.6	1.3	3.9	2.6	6.4	3.7	2.5	1.7	...
2001/02	1,219	1,105	1,112	1,030	1,172	1,105	1,272	1,277	1,337	1,387	1,156	2,655	2,714	...
Percentage change	2.0	6.8	3.3	2.9	-0.5	3.2	-0.1	2.5	7.8	4.2	2.2	8.0	6.5	...
2002/03	1,257	1,153	1,185	1,031	1,186	1,140	1,312	1,315	1,408	1,459	1,164	2,536	2,745	..
Percentage change	3.1	4.3	6.6	0.1	1.2	3.2	3.1	3.0	5.3	5.2	0.8	-4.5	1.1	..

Italicized figures are estimates.

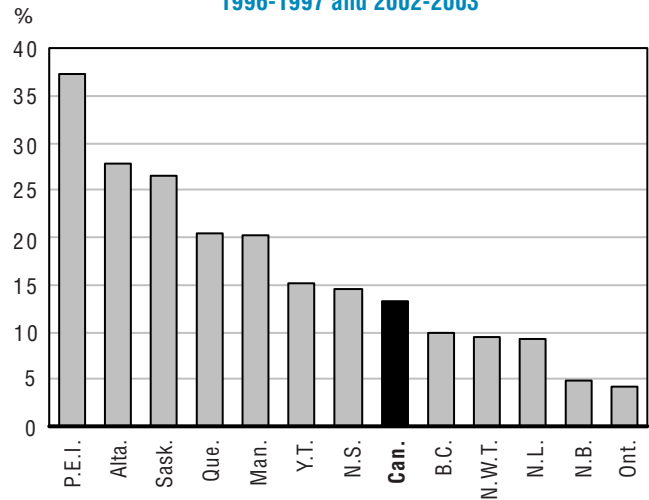
Table 11 divided by Table 22.

1. Starting in 1999-2000, NWT excludes Nunavut.

Total expenditures per capita, 2002-2003 (in current dollars)



Percentage change between 1996-1997 and 2002-2003



Note: New Brunswick: 1997-1998 to 2002-2003;
Northwest Territories: 1999-2000 to 2002-2003.

Table 18b

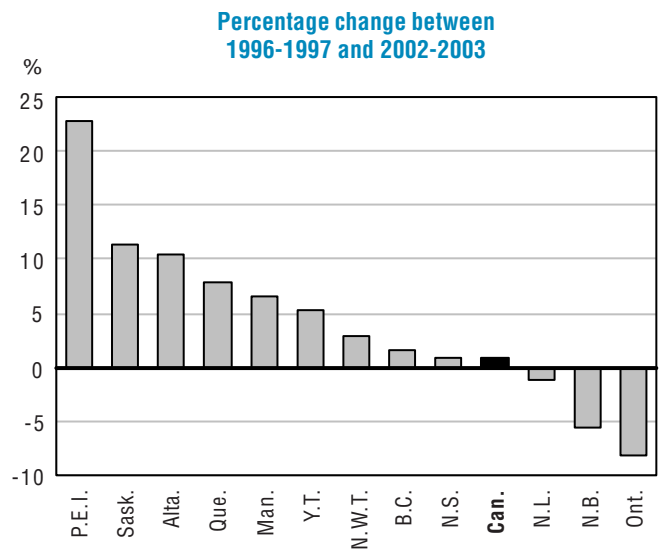
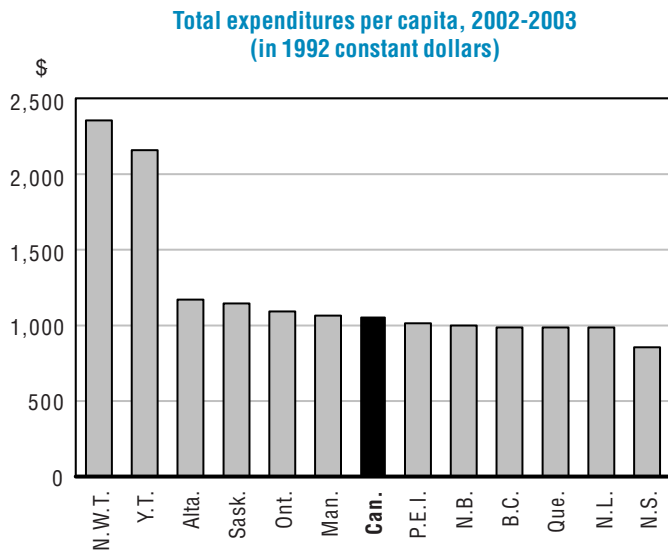
Total expenditures in public elementary and secondary schools per capita, provinces and territories, 1996-1997 to 2002-2003 (in 1992 constant dollars)

	Canada	N.L.	P.E.I.	N.S.	N.B.	Que.	Ont.	Man.	Sask.	Alta.	B.C.	Y.T.	N.W.T. ¹	Nvt.
1996/97	1,048	995	821	853	768	915	1,188	1,002	1,021	1,064	972	2,048	2,394	...
Percentage change	-3.4	-0.9	3.9	-2.5	-25.4	-4.2	-3.7	-1.5	-1.6	-0.5	-0.9	1.5	-5.7	...
1997/98	1,051	942	878	889	1,059	895	1,177	1,010	1,049	1,089	970	2,155	2,545	...
Percentage change	0.3	-5.3	6.9	4.3	37.8	-2.2	-1.0	0.8	2.7	2.4	-0.2	5.2	6.3	...
1998/99	1,063	933	920	896	1,052	905	1,189	1,028	1,035	1,117	981	2,047	2,506	...
Percentage change	1.1	-1.0	4.8	0.7	-0.6	1.1	1.0	1.8	-1.3	2.6	1.1	-5.0	-1.5	...
1999/00	1,053	946	960	930	1,128	947	1,132	1,041	1,063	1,103	981	2,138	2,294	...
Percentage change	-0.9	1.3	4.4	3.8	7.2	4.6	-4.7	1.2	2.6	-1.3	0.0	4.4	-8.5	...
2000/01	1,053	913	964	877	1,044	968	1,114	1,055	1,062	1,134	999	2,144	2,293	...
Percentage change	0.0	-3.5	0.3	-5.7	-7.4	2.1	-1.6	1.3	0.0	2.8	1.8	0.3	0.0	...
2001/02	1,048	965	970	886	1,022	976	1,081	1,053	1,111	1,155	1,003	2,271	2,402	..
Percentage change	-0.5	5.7	0.7	1.0	-2.1	0.9	-3.0	-0.1	4.6	1.9	0.5	5.9	4.8	..
2002/03	1,056	983	1,007	861	1,000	987	1,092	1,068	1,138	1,175	988	2,155	2,360	...
Percentage change	0.8	1.9	3.8	-2.9	-2.1	1.1	1.1	1.4	2.4	1.7	-1.6	-5.1	-1.7	..

Italicized figures are estimates.

Table 11 divided by Table 22 divided by Table 27.

1. Starting in 1999-2000, NWT excludes Nunavut.



Note: New Brunswick: 1997-1998 to 2002-2003;
Northwest Territories: 1999-2000 to 2002-2003.

Table 19

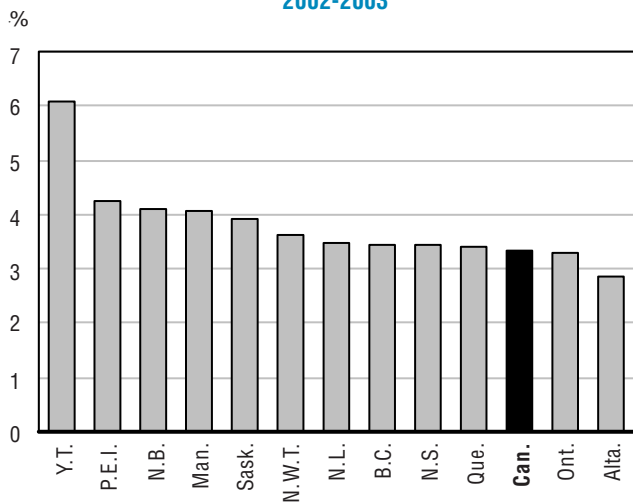
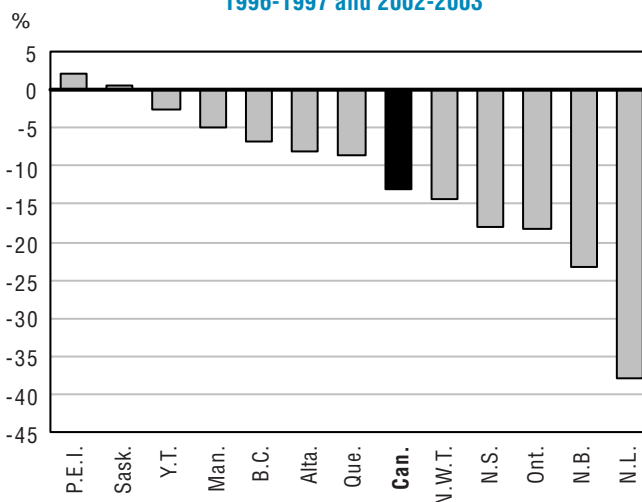
Total expenditures in public elementary and secondary schools as a percentage of GDP, provinces and territories, 1996-1997 to 2002-2003

	Canada	N.L.	P.E.I.	N.S.	N.B.	Que.	Ont.	Man.	Sask.	Alta.	B.C.	Y.T.	N.W.T. ¹	Nvt.
1996/97	3.8	5.6	4.2	4.2	3.6	3.7	4.0	4.3	3.9	3.1	3.7	6.2	6.7	...
Percentage change	-5.0	-0.3	3.8	-3.2	-25.3	-5.2	-5.2	-3.8	-4.3	-4.2	-1.7	2.6	-8.9	...
1997/98	3.8	5.1	4.4	4.3	4.9	3.6	3.9	4.2	4.0	3.2	3.7	6.8	6.9	...
Percentage change	-1.6	-8.3	5.3	1.7	36.3	-4.5	-3.3	-1.2	2.9	2.4	-1.0	9.2	3.9	...
1998/99	3.7	4.6	4.3	4.1	4.6	3.5	3.8	4.2	3.9	3.2	3.6	6.4	6.9	...
Percentage change	-2.5	-9.4	-1.7	-4.8	-6.3	-2.7	-3.4	-0.3	-2.7	1.4	-0.8	-5.4	-1.0	...
1999/00	3.5	4.2	4.3	4.0	4.7	3.4	3.4	4.2	3.8	2.9	3.5	6.4	4.2	...
Percentage change	-6.3	-8.6	0.0	-1.6	1.9	-0.4	-8.8	-1.3	-2.9	-11.5	-4.4	0.0	-38.3	...
2000/01	3.4	3.9	4.3	3.7	4.3	3.4	3.4	4.1	3.7	2.7	3.5	6.1	3.8	...
Percentage change	-2.2	-8.8	-0.4	-8.2	-8.6	0.1	-2.1	-0.7	-2.4	-4.2	0.0	-4.8	-9.5	...
2001/02	3.4	3.7	4.2	3.6	4.2	3.4	3.3	4.1	3.9	2.8	3.5	6.5	3.8	...
Percentage change	-0.5	-3.3	-2.1	-1.7	-2.9	-0.5	-2.4	-1.4	5.8	4.0	1.5	5.5	-0.5	...
2002/03	3.3	3.5	4.3	3.4	4.1	3.4	3.3	4.1	3.9	2.9	3.5	6.1	3.6	...
Percentage change	-0.6	-7.5	1.3	-4.7	-2.3	-0.7	0.3	-0.2	0.3	0.3	-2.3	-6.0	-4.8	...

Italicized figures are estimates.

Table 11 divided by Table 23.

1. Starting in 1999-2000, NWT excludes Nunavut.

Total expenditures as a percentage of GDP, 2002-2003

Percentage change between 1996-1997 and 2002-2003


Note: New Brunswick: 1997-1998 to 2002-2003;
Northwest Territories: 1999-2000 to 2002-2003.

Table 20

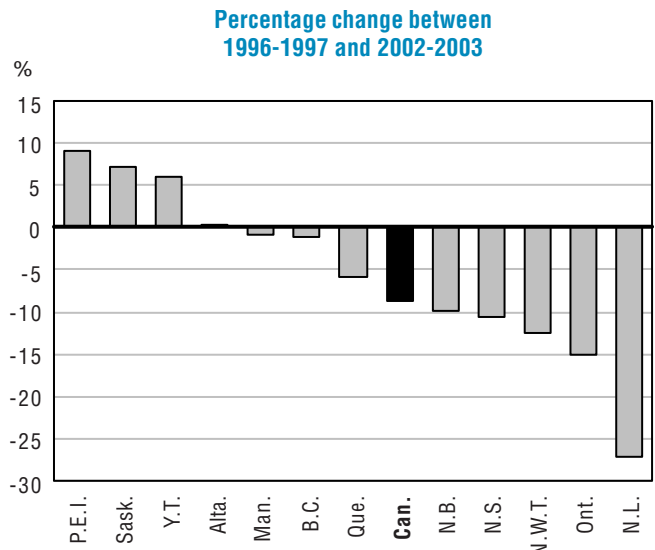
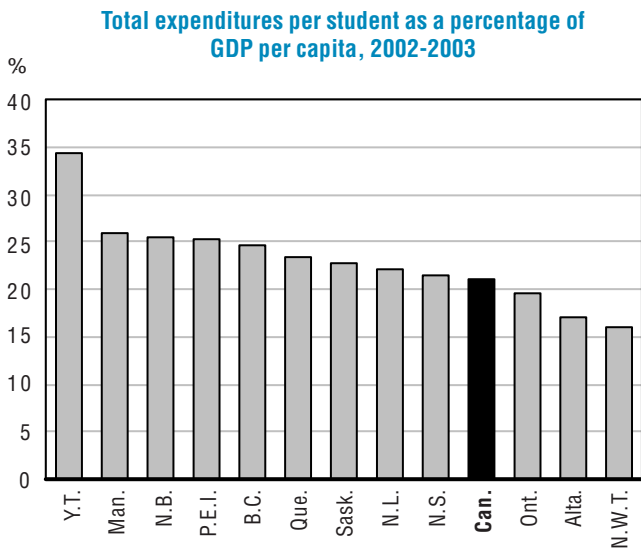
Total expenditures per student in public elementary and secondary schools as a percentage of GDP per capita, provinces and territories, 1996-1997 to 2002-2003

	Canada	N.L.	P.E.I.	N.S.	N.B.	Que.	Ont.	Man.	Sask.	Alta.	B.C.	Y.T.	N.W.T. ¹	Nvt.
1996/97	23.09	30.23	23.25	23.94	20.45	24.88	23.03	26.20	21.24	17.09	24.85	32.29	27.27	...
Percentage change	-4.0	2.0	3.9	-2.9	-24.2	-4.8	-3.1	-3.4	-3.9	-4.2	-1.6	0.6	-9.3	...
1997/98	22.71	28.45	24.62	24.59	28.21	23.18	22.27	26.01	21.97	18.03	24.61	34.64	28.43	...
Percentage change	-1.7	-5.9	5.9	2.7	38.0	-6.8	-3.3	-0.7	3.4	5.5	-1.0	7.3	4.3	...
1998/99	22.25	26.39	24.43	23.74	26.88	22.66	21.57	26.07	21.53	18.40	24.58	33.66	27.47	...
Percentage change	-2.0	-7.2	-0.8	-3.4	-4.7	-2.2	-3.1	0.2	-2.0	2.0	-0.1	-2.8	-3.4	...
1999/00	21.09	24.81	24.57	23.68	27.88	22.96	19.79	25.45	21.03	16.45	23.71	33.98	18.38	...
Percentage change	-5.2	-6.0	0.6	-0.3	3.7	1.3	-8.3	-2.4	-2.3	-10.6	-3.5	1.0	-33.1	...
2000/01	20.81	23.28	24.88	22.03	25.88	23.23	19.55	25.18	20.80	16.03	23.97	32.88	16.80	..
Percentage change	-1.3	-6.2	1.3	-7.0	-7.2	1.2	-1.2	-1.0	-1.1	-2.5	1.1	-3.2	-8.6	...
2001/02	20.96	23.18	24.68	22.01	25.55	23.33	19.24	25.83	22.30	16.93	24.68	36.03	16.77	..
Percentage change	0.7	-0.4	-0.8	-0.1	-1.3	0.4	-1.6	2.6	7.2	5.6	3.0	9.6	-0.2	..
2002/03	21.11	<i>22.05</i>	<i>25.33</i>	<i>21.42</i>	<i>25.46</i>	<i>23.44</i>	<i>19.54</i>	<i>25.96</i>	<i>22.75</i>	<i>17.15</i>	<i>24.59</i>	<i>34.25</i>	<i>16.08</i>	..
Percentage change	0.7	<i>-4.9</i>	<i>2.7</i>	<i>-2.7</i>	<i>-0.3</i>	<i>0.5</i>	<i>1.6</i>	<i>0.5</i>	<i>2.0</i>	<i>1.3</i>	<i>-0.4</i>	<i>-4.9</i>	<i>-4.1</i>	..

Italicized figures are estimates.

Table 12a divided by Table 24.

1. Starting in 1999-2000, NWT excludes Nunavut.



Note: New Brunswick: 1997-1998 to 2002-2003;
Northwest Territories: 1999-2000 to 2002-2003.

Table 21

Total expenditures in public elementary and secondary schools as a percentage total expenditures by provincial and local governments, provinces and territories, 1996-1997 to 2002-2003

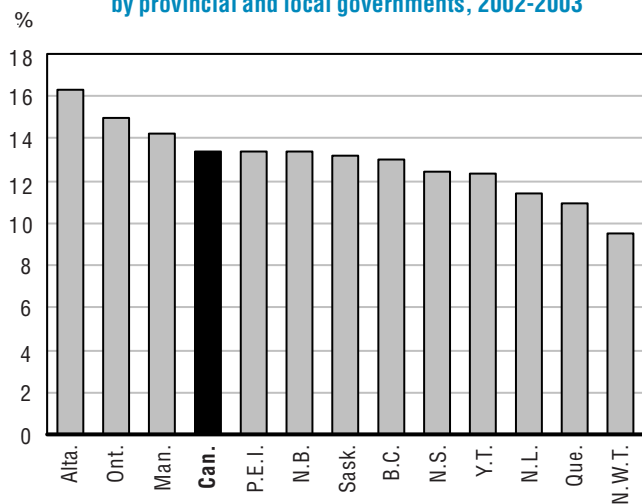
	Canada	N.L.	P.E.I.	N.S.	N.B.	Que.	Ont.	Man.	Sask.	Alta.	B.C.	Y.T.	N.W.T. ¹	Nvt.
1996/97	14.23	13.85	12.25	13.41	10.91	11.28	16.52	14.18	14.40	16.16	13.50	13.60	11.42	...
Percentage change	0.5	0.1	-0.6	2.9	-23.1	-0.7	1.9	1.6	1.3	3.9	-0.4	12.7	1.1	...
1997/98	14.41	13.32	13.26	13.58	15.18	11.11	16.79	14.19	14.60	16.50	13.36	14.80	11.85	...
Percentage change	1.3	-3.8	8.3	1.2	39.1	-1.5	1.7	0.1	1.4	2.1	-1.1	8.9	3.7	...
1998/99	14.16	12.60	12.77	13.05	14.30	11.08	16.67	14.17	13.78	16.44	12.60	14.05	11.25	...
Percentage change	-1.7	-5.3	-3.7	-3.9	-5.8	-0.2	-0.8	-0.2	-5.7	-0.4	-5.7	-5.1	-5.1	...
1999/00	13.80	11.83	12.67	13.22	14.44	11.30	15.71	13.48	13.31	15.91	13.06	13.63	10.32	...
Percentage change	-2.5	-6.1	-0.8	1.3	1.0	1.9	-5.7	-4.8	-3.4	-3.2	3.7	-3.0	-8.2	...
2000/01	13.56	11.08	12.45	12.82	14.26	11.24	15.24	13.72	13.75	14.78	13.26	13.08	10.66	..
Percentage change	-1.8	-6.4	-1.7	-3.1	-1.2	-0.5	-3.0	1.7	3.3	-7.1	1.5	-4.0	3.3	...
2001/02	13.29	11.24	12.39	12.67	13.70	11.02	15.07	13.62	13.28	14.19	12.94	13.43	9.85	..
Percentage change	-2.0	1.5	-0.5	-1.1	-4.0	-2.0	-1.1	-0.8	-3.4	-4.0	-2.4	2.6	-7.6	..
2002/03	13.42	11.40	13.41	12.48	13.35	10.92	14.95	14.20	13.16	16.27	12.96	12.35	9.51	..
Percentage change	1.0	1.4	8.3	-1.5	-2.5	-0.8	-0.8	4.3	-1.0	14.6	0.2	-8.1	-3.4	..

Italicized figures are estimates.

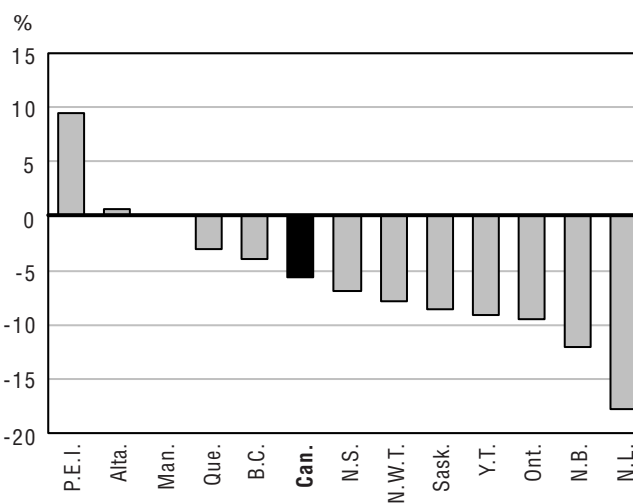
Table 12a divided by Table 26.

1. Starting in 1999-2000, NWT excludes Nunavut.

Total expenditures in public elementary and secondary schools as a percentage of total of public expenditures by provincial and local governments, 2002-2003



Percentage change between 1996-1997 and 2002-2003



Note: New Brunswick: 1997-1998 to 2002-2003;
Northwest Territories: 1999-2000 to 2002-2003.

Reference tables

Table 22

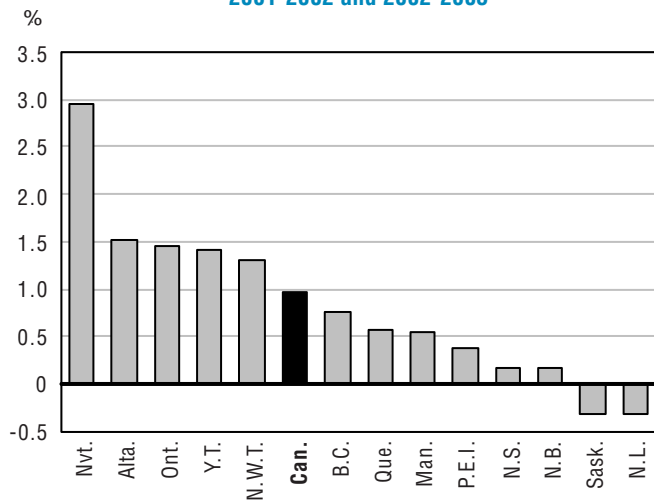
Total population estimates, Canada, provinces and territories, January 1st, 1997 to 2003 (in thousands)

	Canada	N.L.	P.E.I.	N.S.	N.B.	Que.	Ont.	Man.	Sask.	Alta.	B.C.	Y.T.	N.W.T. ¹	Nvt.
1996/97	29,752	556	136	932	752	7,263	11,147	1,135	1,018	2,800	3,914	32	67	...
Percentage change	1.0	-1.5	0.6	0.3	0.1	0.4	1.2	0.4	0.2	1.7	2.3	2.1	0.7	...
1997/98	30,030	546	136	933	752	7,286	11,293	1,136	1,018	2,860	3,973	32	67	...
Percentage change	0.9	-1.7	0.0	0.0	0.0	0.3	1.3	0.1	-0.1	2.1	1.5	-0.4	0.1	...
1998/99	30,262	537	136	932	750	7,310	11,421	1,139	1,017	2,927	3,996	31	67	...
Percentage change	0.8	-1.7	0.0	0.0	-0.2	0.3	1.1	0.3	-0.1	2.3	0.6	-2.4	-0.1	...
1999/00	30,529	532	136	935	751	7,340	11,579	1,144	1,011	2,975	4,027	30	41	27
Percentage change	0.9	-0.9	0.3	0.3	0.1	0.4	1.4	0.5	-0.6	1.7	0.8	-0.8	-39.5	...
2000/01	30,828	525	136	934	750	7,374	11,774	1,149	1,004	3,029	4,055	30	41	28
Percentage change	1.0	-1.2	0.0	-0.1	-0.1	0.5	1.7	0.4	-0.8	1.8	0.7	-1.1	0.0	2.4
2001/02	31,174	521	137	933	749	7,420	11,982	1,152	998	3,086	4,096	30	41	28
Percentage change	1.1	-0.8	0.3	0.0	-0.1	0.6	1.8	0.3	-0.6	1.9	1.0	0.0	1.1	1.5
2002/03	31,476	520	137	935	750	7,462	12,157	1,158	995	3,132	4,127	31	42	29
Percentage change	1.0	-0.3	0.4	0.2	0.2	0.6	1.5	0.6	-0.3	1.5	0.8	1.4	1.3	2.9

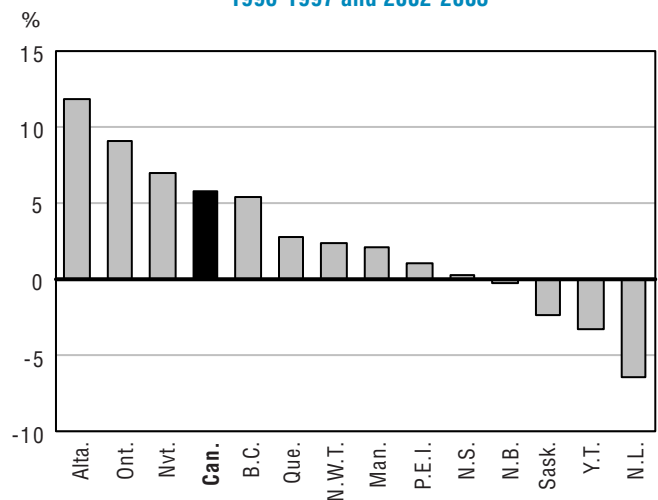
1. Starting in 1999-2000, NWT excludes Nunavut.

Source: As of January 1st of the academic year, Demography Division, Statistics Canada.

Percentage change between 2001-2002 and 2002-2003



Percentage change between 1996-1997 and 2002-2003



Note: Northwest Territories and Nunavut: 1999-2000 to 2002-2003.

Table 23

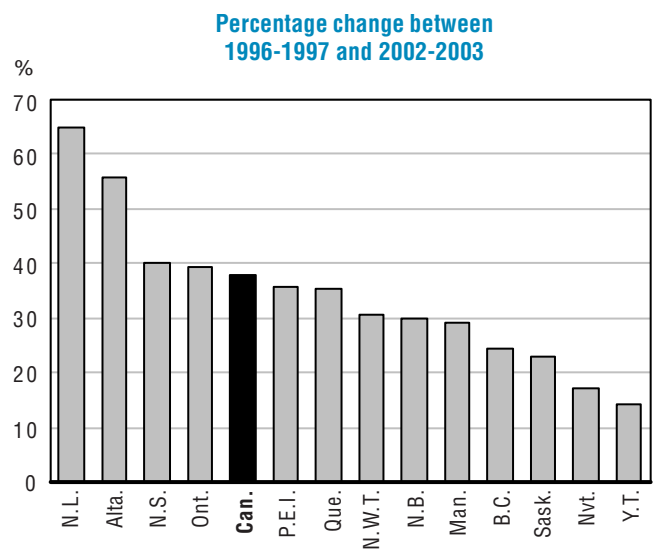
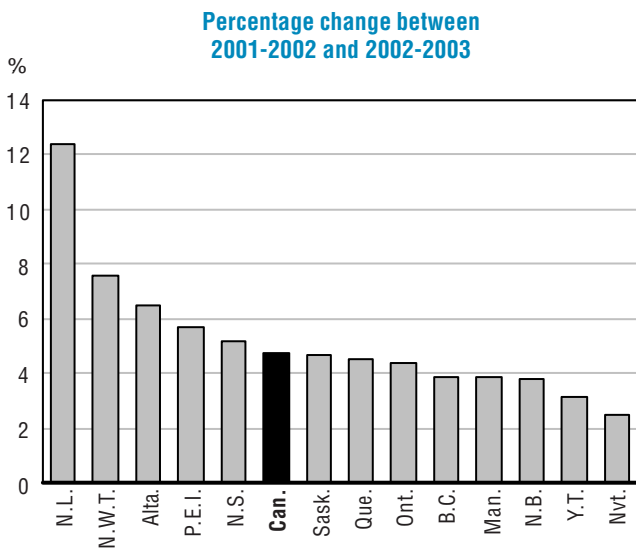
**Gross domestic product, Canada, provinces and territories, 1996-1997 to 2002-2003
(in millions of current dollars)**

	Canada	N.L.	P.E.I.	N.S.	N.B.	Que.	Ont.	Man.	Sask.	Alta.	B.C.	Y.T.	N.W.T. ¹	Nvt.
1996/97	859,799	10,475	2,812	19,940	16,736	184,475	348,763	29,093	29,051	102,841	111,624	1,118	2,608	...
Percentage change	4.4	-0.6	2.5	2.8	1.4	3.1	4.5	5.0	4.9	7.9	4.1	2.8	5.9	...
1997/98	898,853	10,855	2,891	20,885	17,239	192,341	368,625	30,362	29,354	107,244	115,012	1,097	2,672	...
Percentage change	4.5	3.6	2.8	4.7	3.0	4.3	5.7	4.4	1.0	4.3	3.0	-1.8	2.4	...
1998/99	948,707	11,680	3,070	22,230	18,337	203,534	393,459	31,469	30,164	112,260	118,281	1,086	2,652	...
Percentage change	5.5	7.6	6.2	6.4	6.4	5.8	6.7	3.6	2.8	4.7	2.8	-1.0	-0.7	...
1999/00	1,029,004	13,024	3,254	23,915	19,610	218,006	424,864	33,054	32,241	130,401	126,004	1,137	2,401	790
Percentage change	8.5	11.5	6.0	7.6	6.9	7.1	8.0	5.0	6.9	16.2	6.5	4.7	-	...
2000/01	1,091,513	14,030	3,412	25,420	20,475	228,897	446,816	34,718	33,642	147,447	131,568	1,211	2,700	852
Percentage change	6.1	7.7	4.8	6.3	4.4	5.0	5.2	5.0	4.3	13.1	4.4	6.5	12.4	7.9
2001/02	1,131,204	15,376	3,611	26,586	20,968	239,076	465,518	36,185	34,086	150,586	133,801	1,240	2,919	901
Percentage change	3.6	9.6	5.8	4.6	2.4	4.4	4.2	4.2	1.3	2.1	1.7	2.4	8.1	5.8
2002/03	1,184,775	17,285	3,816	27,958	21,761	249,911	485,764	37,577	35,685	160,315	138,985	1,278	3,141	924
Percentage change	4.7	12.4	5.7	5.2	3.8	4.5	4.3	3.8	4.7	6.5	3.9	3.1	7.6	2.5

Italicized figures are estimates.

1. Starting in 1999-2000, NWT excludes Nunavut.

Source: CANSIM, Statistics Canada, Table: 384-0013 (converted to school (July-June) year).



Note: Northwest Territories and Nunavut: 1999-2000 to 2002-2003.

Table 24

Gross domestic product per capita, Canada, provinces and territories, 1996-1997 to 2002-2003 (in current dollars)

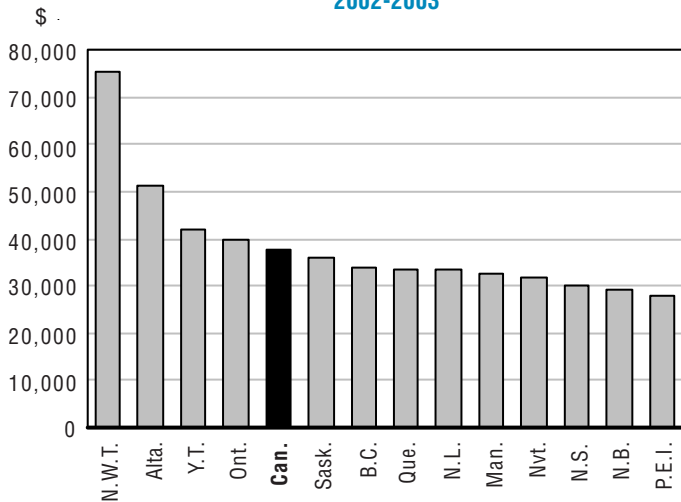
	Canada	N.L.	P.E.I.	N.S.	N.B.	Que.	Ont.	Man.	Sask.	Alta.	B.C.	Y.T.	N.W.T. ¹	Nvt.
1996	28,898	18,855	20,680	21,385	22,244	25,399	31,289	25,632	28,523	36,733	28,516	35,334	38,767	...
Percentage change	3.3	0.9	1.9	2.5	1.3	2.7	3.2	4.6	4.7	6.1	1.7	0.6	5.1	...
1997	29,932	19,885	21,261	22,393	22,924	26,399	32,642	26,732	28,843	37,503	28,950	34,822	39,686	...
Percentage change	3.6	5.5	2.8	4.7	3.1	3.9	4.3	4.3	1.1	2.1	1.5	-1.4	2.4	...
1998	31,349	21,766	22,572	23,846	24,445	27,842	34,451	27,629	29,658	38,359	29,603	35,330	39,449	...
Percentage change	4.7	9.5	6.2	6.5	6.6	5.5	5.5	3.4	2.8	2.3	2.3	1.5	-0.6	...
1999	33,706	24,487	23,846	25,586	26,118	29,700	36,693	28,881	31,879	43,830	31,293	37,279	59,078	29,082
Percentage change	7.5	12.5	5.6	7.3	6.8	6.7	6.5	4.5	7.5	14.3	5.7	5.5	49.8	...
2000	35,406	26,704	25,012	27,230	27,310	31,041	37,948	30,228	33,518	48,682	32,444	40,168	66,415	30,628
Percentage change	5.0	9.1	4.9	6.4	4.6	4.5	3.4	4.7	5.1	11.1	3.7	7.7	12.4	5.3
2001	36,287	29,503	26,393	28,481	27,989	32,220	38,850	31,413	34,157	48,803	32,666	41,119	71,032	31,921
Percentage change	2.5	10.5	5.5	4.6	2.5	3.8	2.4	3.9	1.9	0.2	0.7	2.4	7.0	4.2
2002	37,641	<i>33,269</i>	<i>27,783</i>	<i>29,895</i>	<i>28,997</i>	<i>33,489</i>	<i>39,959</i>	<i>32,439</i>	<i>35,868</i>	<i>51,178</i>	<i>33,673</i>	<i>41,807</i>	<i>75,438</i>	<i>31,782</i>
Percentage change	3.7	<i>12.8</i>	<i>5.3</i>	<i>5.0</i>	<i>3.6</i>	<i>3.9</i>	<i>2.9</i>	<i>3.3</i>	<i>5.0</i>	<i>4.9</i>	<i>3.1</i>	<i>1.7</i>	<i>6.2</i>	<i>-0.4</i>

Italicized figures are estimates.

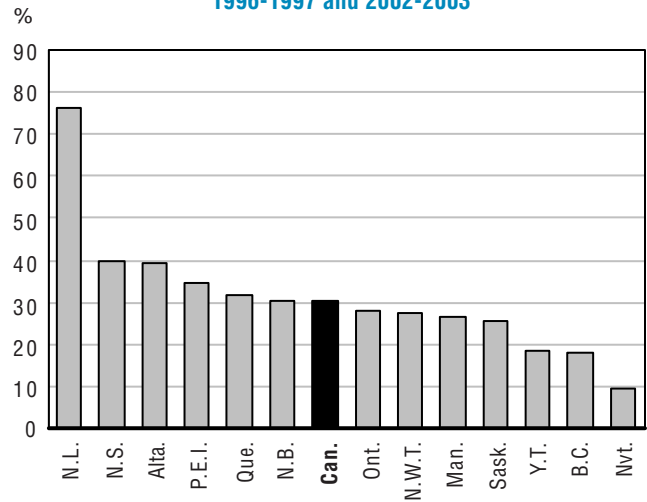
Table 23 divided by Table 22.

1. Starting in 1999-2000, NWT excludes Nunavut.

Gross domestic product per capita, 2002-2003



Percentage change between 1996-1997 and 2002-2003



Note: Northwest Territories and Nunavut: 1999-2000 to 2002-2003.

Table 25

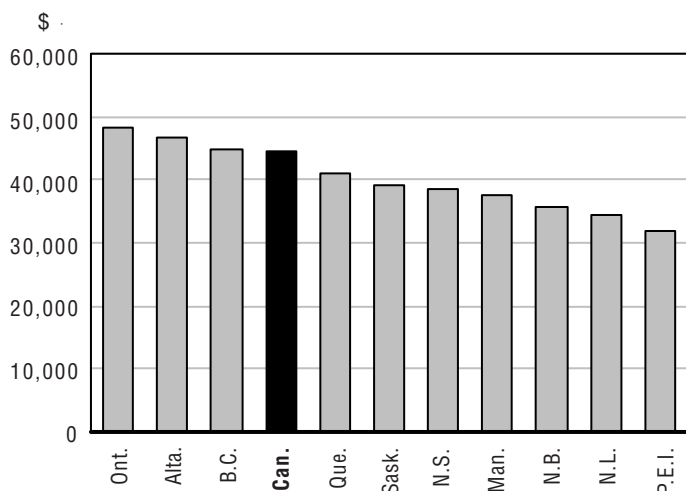
**Average earnings of full-year full-time workers, Canada and provinces, 1996 to 2002
(in constant 2002 dollars)**

	Canada	N.L.	P.E.I.	N.S.	N.B.	Que.	Ont.	Man.	Sask.	Alta.	B.C.	Y.T.	N.W.T.	Nvt.
1996	40,900	34,500	32,000	34,600	34,900	38,400	43,800	34,600	34,100	41,000	43,600
Percentage change	-1.2	-10.4	-0.6	-4.9	-4.9	-0.3	-1.6	-5.7	-6.6	6.8	-1.1
1997	42,100	35,100	32,000	35,400	35,300	38,900	45,900	36,100	35,200	43,300	42,400
Percentage change	2.9	1.7	0.0	2.3	1.1	1.3	4.8	4.3	3.2	5.6	-2.8
1998	43,600	35,800	34,400	36,500	35,700	40,100	48,200	37,800	35,700	43,700	43,800
Percentage change	3.6	2.0	7.5	3.1	1.1	3.1	5.0	4.7	1.4	0.9	3.3
1999	43,200	37,700	32,400	38,000	36,500	39,300	47,800	35,400	35,700	42,600	44,100
Percentage change	-0.9	5.3	-5.8	4.1	2.2	-2.0	-0.8	-6.3	0.0	-2.5	0.7
2000	43,600	36,800	31,900	36,600	35,400	41,000	48,000	36,000	36,400	43,100	43,400
Percentage change	0.9	-2.4	-1.5	-3.7	-3.0	4.3	0.4	1.7	2.0	1.2	-1.6
2001	44,500	35,300	30,600	36,300	35,800	41,600	48,700	36,100	37,400	46,900	43,600
Percentage change	2.1	-4.1	-4.1	-0.8	1.1	1.5	1.5	0.3	2.7	8.8	0.5
2002	44,400	34,400	31,800	38,400	35,800	40,900	48,400	37,500	39,100	46,700	44,700
Percentage change	-0.2	-2.5	3.9	5.8	0.0	-1.7	-0.6	3.9	4.5	-0.4	2.5

Italicized figures are estimates.

Source: CANSIM, Statistics Canada, Table 202-0101: Survey of Labour and Income Dynamics.

Average earnings of full-year full-time workers, 2002



Percentage change between 1996 and 2002

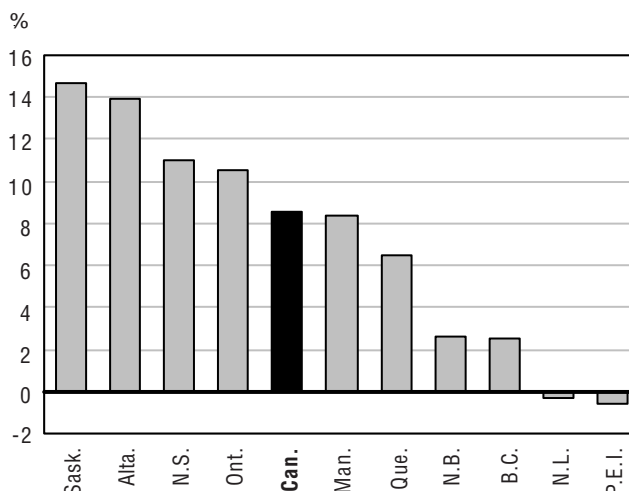


Table 26

Total expenditures by provincial and local governments¹, provinces and territories, 1996-1997 to 2002-2003 (in millions of current dollars)

	Canada	N.L.	P.E.I.	N.S.	N.B.	Que.	Ont.	Man.	Sask.	Alta.	B.C.	Y.T.	N.W.T. ²	Nvt.
1996/97	231,991	4,231	958	6,258	5,555	60,946	84,912	8,755	7,869	19,774	30,695	512	1,526	...
Percentage change	-1.4	-0.9	7.0	-3.4	-1.5	-1.6	-2.8	-0.5	-0.8	-0.6	2.7	-6.4	-4.6	...
1997/98	235,756	4,180	958	6,583	5,605	61,592	85,371	9,022	8,065	20,664	31,646	504	1,566	...
Percentage change	1.6	-1.2	0.0	5.2	0.9	1.1	0.5	3.0	2.5	4.5	3.1	-1.6	2.6	...
1998/99	246,722	4,307	1,038	6,940	5,934	63,544	88,700	9,345	8,547	22,011	34,238	497	1,621	...
Percentage change	4.7	3.0	8.4	5.4	5.9	3.2	3.9	3.6	6.0	6.5	8.2	-1.4	3.5	...
1999/00	257,382	4,675	1,110	7,249	6,407	66,490	92,653	10,177	9,178	23,384	33,649	536	987	887
Percentage change	4.3	8.5	6.9	4.5	8.0	4.6	4.5	8.9	7.4	6.2	-1.7	7.8	-39.1	...
2000/01	271,864	4,906	1,179	7,295	6,192	70,193	98,327	10,429	9,051	27,277	34,607	566	972	870
Percentage change	5.6	4.9	6.2	0.6	-3.4	5.6	6.1	2.5	-1.4	16.6	2.8	5.6	-1.5	-1.9
2001/02	286,113	5,121	1,228	7,590	6,411	74,409	101,110	10,800	10,042	30,173	36,586	596	1,132	915
Percentage change	5.2	4.4	4.2	4.0	3.5	6.0	2.8	3.6	10.9	10.6	5.7	5.3	16.5	5.2
2002/03	294,817	5,255	1,214	7,726	6,670	77,872	106,649	10,732	10,650	28,103	37,084	628	1,201	1,033
Percentage change	3.0	2.6	-1.1	1.8	4.0	4.7	5.5	-0.6	6.1	-6.9	1.4	5.4	6.1	12.9

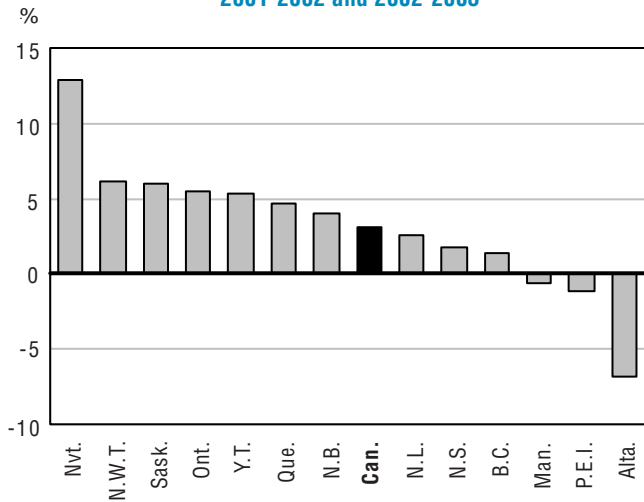
Italicized figures are estimates.

1. Includes municipalities and school boards.

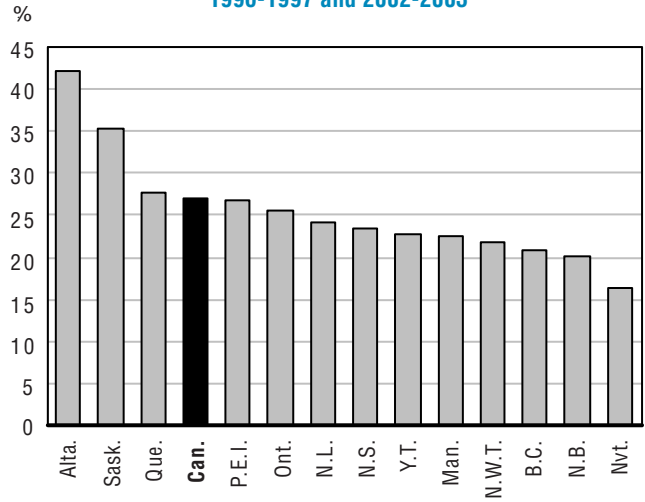
2. Starting in 1999-2000, NWT excludes Nunavut.

Source: CANSIM, Statistics Canada, Table: 385-0001.

Percentage change between 2001-2002 and 2002-2003



Percentage change between 1996-1997 and 2002-2003



Note: Northwest Territories and Nunavut: 1999-2000 to 2002-2003.

Table 27

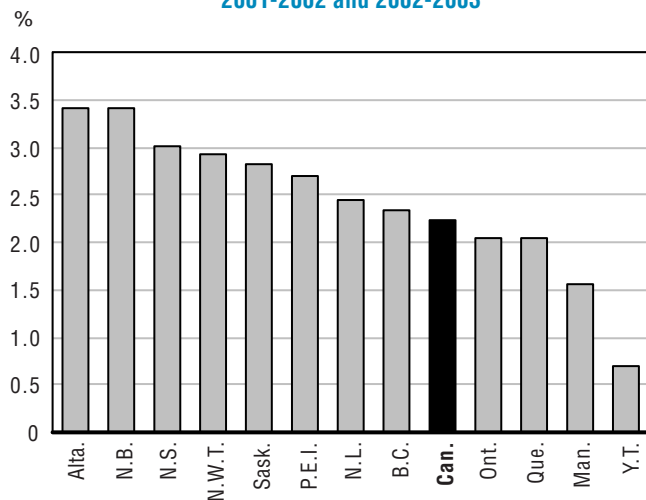
Consumer price index, Canada, provinces and territories, 1996 to 2002

	Canada	N.L.	P.E.I.	N.S.	N.B.	Que.	Ont.	Man.	Sask.	Alta.	B.C.	Y.T.	N.W.T. ¹	Nvt.
1996	1.059	1.060	1.052	1.056	1.049	1.034	1.059	1.092	1.089	1.073	1.089	1.075	1.082	...
Percentage change	3.8	3.0	3.4	3.2	3.0	3.4	4.0	4.9	3.8	4.6	3.2	3.0	4.4	...
1997	1.076	1.082	1.065	1.078	1.069	1.049	1.079	1.116	1.103	1.095	1.097	1.099	1.083	...
Percentage change	1.6	2.1	1.2	2.1	1.9	1.5	1.9	2.2	1.3	2.1	0.7	2.2	0.1	...
1998	1.086	1.084	1.060	1.085	1.075	1.064	1.089	1.130	1.118	1.107	1.100	1.110	1.082	...
Percentage change	0.9	0.2	-0.5	0.6	0.6	1.4	0.9	1.3	1.4	1.1	0.3	1.0	-0.1	...
1999	1.105	1.100	1.073	1.103	1.092	1.080	1.110	1.152	1.137	1.134	1.112	1.121	1.093	...
Percentage change	1.7	1.5	1.2	1.7	1.6	1.5	1.9	1.9	1.7	2.4	1.1	1.0	1.0	...
2000	1.135	1.133	1.117	1.142	1.128	1.106	1.142	1.181	1.167	1.174	1.133	1.146	1.112	..
Percentage change	2.7	3.0	4.1	3.5	3.3	2.4	2.9	2.5	2.6	3.5	1.9	2.2	1.7	...
2001	1.164	1.145	1.146	1.163	1.147	1.132	1.177	1.212	1.203	1.201	1.152	1.169	1.130	..
Percentage change	2.6	1.1	2.6	1.8	1.7	2.4	3.1	2.6	3.1	2.3	1.7	2.0	1.6	...
2002	1.190	1.173	1.177	1.198	1.186	1.155	1.201	1.231	1.237	1.242	1.179	1.177	1.163	..
Percentage change	2.2	2.4	2.7	3.0	3.4	2.0	2.0	1.6	2.8	3.4	2.3	0.7	2.9	...

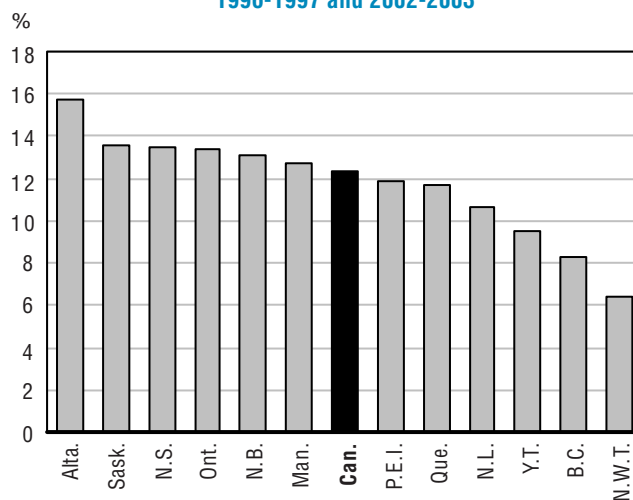
1. Starting in 1999-2000, NWT excludes Nunavut.

Source: CANSIM, Statistics Canada, Table 326-0002: Consumer price index, 2001 basket content; All-items (Index, 1992=100).

Percentage change between 2001-2002 and 2002-2003



Percentage change between 1996-1997 and 2002-2003



Appendix 1

Definitions

Enrolment

Headcount Enrolment (Table 1) is the number of students enrolled in public schools operated by school boards or the province or territory on September the 30th (or as close as possible thereafter) of the school year. It includes all students in regular public schools (graded and not), provincial reformatory or custodial schools, and other students recognized and funded by a province or territory. It excludes students who do not receive provincial funding or who are enrolled in adult programs. It also excludes distance education students, independent school students, and students in schools financed by federal departments (e.g. the Department of National Defense and the Department of Indian and Northern Affairs).

The exceptions are as follows:

- New Brunswick and Quebec include enrolments in adult programs under the authority of the school boards or districts. Manitoba did so up to 1999-2000 for the headcount enrolments and up to 2000-2001 in the FTE enrolments.
- Nova Scotia, New Brunswick, Quebec and Manitoba include all students regardless whether or not they are eligible for provincial funding. Alberta and British Columbia exclude non-funded students except for Aboriginal students registered in public school not receiving provincial funding and visiting students from outside the province.

Full-Time Equivalent (FTE) Enrolment (Table 2) uses the same criteria as HEADCOUNT Enrolment, except that students are counted according to the time fraction for which they are funded. This applies, for instance, to pre-Grade 1 students taking half-time programs, students receiving special recognized educational services funded in a unique manner, and non-graduates taking only the few courses required to complete graduation. If the time fraction is unknown, an estimate is used. For all regular students in Grades 1 and above, FTE enrolment equals headcount enrolment.

Educators

The educators include all employees in the public school system (either school-based or school district-based) who are required to have teaching certification as a condition of their employment. This definition generally includes principals, vice-principals and professional non-teaching staff which includes, among others, education consultants, guidance counselors and religious and pastoral counselors.

It excludes substitute/supply teachers, temporary replacement teachers, teachers on leave, student assistants, teaching assistants and consultants.

Headcount Educator (Table 4) is defined as the number of educators on September the 30th (or as close as possible thereafter) of the school year who are responsible for providing services to the Headcount Enrolment students.

Full Time Equivalent (FTE) Educator (Table 5) is defined as the number of full-time educators on September the 30th (or as close as possible thereafter) of the school year, plus the sum of part-time educators according to their percentage of a full-time employment allocation (determined by the province or territory). For example, if a normal full-time work allocation is ten months per year, an educator who works for six months of the year would be counted as 6/10 (0.6) of a Full Time Equivalent (FTE) or an employee who works part time for ten months at 60% of full time would be 0.6 of an FTE.

Some jurisdictions make minor adjustments to the enrolment or educator counts of September the 30th, to account for absentees. Furthermore, in Quebec, the part-time educators are as of the school year not just as of September the 30th.

Student-Educator Ratio (Table 6) must not be confused with class size. The former is much smaller because it accounts for the personnel outside the class (principals, counselors or specialists) and teachers' time outside the classroom (for preparation and marking).

Expenditures

These include all expenditures incurred by public school boards and provincial or territorial Departments of Education for direct services to school boards in a given year¹. The following are excluded:

- federal expenditures (e.g. schools operated by the Department of Indian and Northern Affairs or the Department of National Defense, federal programs such as Official Languages, Human Resources Development Canada programs, CIDA programs, Health and Welfare programs)
- expenditures for private schools (see Private schools below)
- all expenses incurred by provincial Departments of Education other than those incurred directly on behalf of school boards
- adult education and post-secondary expenditures
- retroactive salaries, transfers to and from reserves, and the reporting of capital expenditures funded through loans (report the annual debt charges)

Educator Remuneration (Table 8) is the salaries, wages and allowances paid to educators for their services. The allowances are payments made in addition to salaries and wages to compensate for isolation, additional administrative duties or other responsibilities and other similar costs. They include sick leave payments, maternity leave and other approved leave. Ad hoc allowances for travel and accommodation are excluded and are reported in other operating expenditures.

Operating Expenditures (Table 9) includes the educator remuneration and the following other expenditures:

- Fringe benefits which include payment on behalf of the educator for unemployment insurance premiums, life insurance plans, health, dental and drug plans, vision care plans, workers' compensation plans, disability insurance plans, termination and early retirement gratuities, private use of institution's goods and services, employee discounts, professional fees related to professional development, payments to government work safety agencies, purchase and maintenance of clothing, moving fees, employee counseling services, union duties leave, annuity funds, paid recognition for years of service, paid holidays, trips, jury duty pay, employee parking lot fees, and board-sponsored recreation or paid memberships.
- Educator superannuation or pension which includes the payment of superannuation or pension premiums by Other Government Agencies (e.g. the Ministry of Education or the Ministry of Finance). Differences in the type of educators' pensions system, fully unfunded (pay-as-you-go), partially funded or fully funded, affect the comparability of the operating expenditures. Quebec has a fully funded system, Nova Scotia is partially funded while Manitoba has a "pay-as-you-go" system.
- Other operating expenditures, incurred by both the school boards and provincial and territorial departments, which include salaries, wages, allowances and superannuation/pensions for staff other than educators, plant operation and maintenance, non-major repairs and the replacement of equipment and furniture, school district administration, instructional supplies and materials, such as textbooks, audio-visual materials, writing materials and any other resources used for instructional purposes, services purchased or contracted, transportation and any other expenditure related to the provision of services in the public school system.

Capital Expenditures (Table 10) include the following:

- Expenditures for physical assets of a fixed or permanent nature with a useful life of more than one operating year that are not financed by debt services.
- Expenditures of an annual or cyclical nature for major repairs and upgrades to school and board buildings, new school and board furniture and equipment and vehicles.
- Debt services expenditures incurred to repay loans used for capital purposes. It includes principal and interest payment, sinking fund payments and temporary borrowing for capital purposes such as interest on interim financing prior to debenture sales.
- Capital expenditures incurred on behalf of school boards by provincial agencies other than departments of education (e.g. transportation, debt charges from consolidated revenue or other sources).

Total Expenditures (Table 11) is the sum of the operating and capital expenditures.

Other definitions

Public Schools: Regular elementary/secondary schools operated under locally elected or appointed school boards or districts, including Roman Catholic and Protestant Separate schools, where such exists. They include provincial reformatory and custody schools.

Private Schools: Elementary-secondary schools that are operated by an individual or private society and provide academic courses.

Endnotes

1. In most jurisdictions, expenditures are for the period from July of year (n-1) to June of year (n). In others they are for the April to March period. No adjustments were made to account for differences in the accounting period.

Culture, Tourism and the Centre for Education Statistics

Research Papers

Cumulative Index

Statistics Canada's **Division of Culture, Tourism and the Centre for Education Statistics** develops surveys, provides statistics and conducts research and analysis relevant to current issues in its three areas of responsibility.

The **Culture Statistics Program** creates and disseminates timely and comprehensive information on the culture sector in Canada. The program manages a dozen regular census surveys and databanks to produce data that support policy decision and program management requirements. Issues include the economic impact of culture, the consumption of culture goods and services, government, personal and corporate spending on culture, the culture labour market, and international trade of culture goods and services. Analysis is also published in *Focus on Culture* (87-004-XIE, \$8, <http://www.statcan.ca:8096/bsolc/english/bsolc?catno=87-004-X>).

The **Tourism Statistics Program** provides information on domestic and international tourism. The program covers the Canadian Travel Survey and the International Travel Survey. Together, these surveys shed light on the volume and characteristics of trips and travellers to, from and within Canada. Analysis is also published in *Travel-log* (87-003-XIE, \$5, <http://www.statcan.ca:8096/bsolc/english/bsolc?catno=87-003-X>).

The **Centre for Education Statistics** develops and delivers a comprehensive program of pan-Canadian education statistics and analysis in order to support policy decisions and program management, and to ensure that accurate and relevant information concerning education is available to the Canadian public and to other educational stakeholders. The Centre conducts fifteen institutional and over ten household education surveys. Analysis is also published in *Education Matters* (81-004-XIE, free, <http://www.statcan.ca:8096/bsolc/english/bsolc?catno=81-004-X>), and in the *Analytical Studies Branch research paper series* (11F0019MIE, free, <http://www.statcan.ca:8096/bsolc/english/bsolc?catno=11F0019M>).

**Following is a cumulative index of Culture, Tourism and the Centre for Education
Statistics research papers published to date**

Research papers

81-595-MIE2002001	Understanding the rural-urban reading gap
81-595-MIE2003002	Canadian education and training services abroad: the role of contracts funded by international financial institution
81-595-MIE2003003	Finding their way: a profile of young Canadian graduates
81-595-MIE2003004	Learning, earning and leaving – The relationship between working while in high school and dropping out
81-595-MIE2003005	Linking provincial student assessments with national and international assessments
81-595-MIE2003006	Who goes to post-secondary education and when: Pathways chosen by 20 year-olds
81-595-MIE2003007	Access, persistence and financing: First results from the Postsecondary Education Participation Survey (PEPS)
81-595-MIE2003008	The labour market impacts of adult education and training in Canada
81-595-MIE2003009	Issues in the design of Canada's Adult Education and Training Survey
81-595-MIE2003010	Planning and preparation: First results from the Survey of Approaches to Educational Planning (SAEP) 2002
81-595-MIE2003011	A new understanding of postsecondary education in Canada: A discussion paper
81-595-MIE2004012	Variation in literacy skills among Canadian provinces: Findings from the OECD PISA
81-595-MIE2004013	Salaries and salary scales of full-time teaching staff at Canadian universities, 2001-2002: final report
81-595-MIE2004014	In and out of high school: First results from the second cycle of the Youth in Transition Survey, 2002
81-595-MIE2004015	Working and Training: First Results of the 2003 Adult Education and Training Survey
81-595-MIE2004016	Class of 2000: Profile of Postsecondary Graduates and Student Debt
81-595-MIE2004017	Connectivity and ICT integration in Canadian elementary and secondary schools: First results from the Information and Communications Technologies in Schools Survey, 2003-2004

Following is a cumulative index of Culture, Tourism and the Centre for Education Statistics research papers published to date

Research papers

81-595-MIE2004018	Education and labour market pathways of young Canadians between age 20 and 22: an Overview
81-595-MIE2004019	Salaries and salary scales of full-time teaching staff at Canadian universities, 2003-2004
81-595-MIE2004020	Culture Goods Trade Estimates: Methodology and Technical Notes
81-595-MIE2004021	Canadian Framework for Culture Statistics
81-595-MIE2004022	Summary public school indicators for the provinces and territories, 1996-1997 to 2002-2003