

Catalogue no. 75F0002M — No. 003

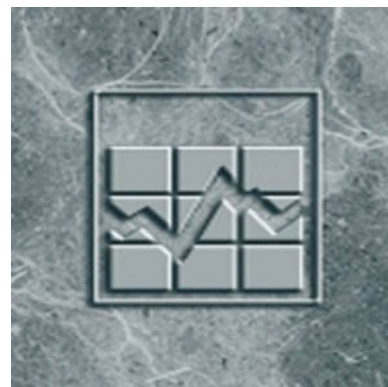
ISSN 1707-2840

ISBN 978-1-100-20991-3

Research Paper

Income Research Paper Series

Survey of Labour and Income Dynamics: Historical Revision, 2006 to 2009



Income Statistics Division
Jean Talon Building, 170 Tunney's Pasture Driveway
Ottawa, Ontario K1A 0T6

Telephone: 1-613-951-7355

 Statistics Canada Statistique Canada

Canada

How to obtain more information

For information about this product or the wide range of services and data available from Statistics Canada, visit our website, www.statcan.gc.ca.

You can also contact us by

email at infostats@statcan.gc.ca,

telephone, from Monday to Friday, 8:30 a.m. to 4:30 p.m., at the following toll-free numbers:

Statistics Canada's National Contact Centre

- | | |
|---|----------------|
| • Statistical Information Service | 1-800-263-1136 |
| • National telecommunications device for the hearing impaired | 1-800-363-7629 |
| • Fax line | 1-877-287-4369 |

Depository Services Program

- | | |
|------------------|----------------|
| • Inquiries line | 1-800-635-7943 |
| • Fax line | 1-800-565-7757 |

To access this product

This product, Catalogue no. 75F0002M, is available free in electronic format. To obtain a single issue, visit our website, www.statcan.gc.ca, and browse by "Key resource" > "Publications."

Standards of service to the public

Statistics Canada is committed to serving its clients in a prompt, reliable and courteous manner. To this end, Statistics Canada has developed standards of service that its employees observe. To obtain a copy of these service standards, please contact Statistics Canada toll-free at 1-800-263-1136. The service standards are also published on www.statcan.gc.ca under "About us" > "The agency" > "Providing services to Canadians."

Published by authority of the Minister responsible for
Statistics Canada

© Minister of Industry, 2012

All rights reserved. Use of this publication is governed by the
Statistics Canada Open Licence Agreement ([http://www.
statcan.gc.ca/reference/copyright-droit-auteur-eng.htm](http://www.statcan.gc.ca/reference/copyright-droit-auteur-eng.htm)).

Cette publication est aussi disponible en français.

Note of appreciation

Canada owes the success of its statistical system to a long-standing partnership between Statistics Canada, the citizens of Canada, its businesses, governments and other institutions. Accurate and timely statistical information could not be produced without their continued co-operation and goodwill.

Standard symbols

The following symbols are used in Statistics Canada publications:

- | | |
|----------------|--|
| . | not available for any reference period |
| .. | not available for a specific reference period |
| ... | not applicable |
| 0 | true zero or a value rounded to zero |
| 0 ^s | value rounded to 0 (zero) where there is a meaningful distinction between true zero and the value that was rounded |
| P | preliminary |
| r | revised |
| X | suppressed to meet the confidentiality requirements of the <i>Statistics Act</i> |
| E | use with caution |
| F | too unreliable to be published |
| * | significantly different from reference category ($p < 0.05$) |

Income Research Paper Series

Survey of Labour and Income Dynamics: Historical Revision, 2006 to 2009

Published by authority of the Minister responsible for Statistics Canada

© Minister of Industry, 2012

All rights reserved. Use of this publication is governed by the
Statistics Canada Open Licence Agreement
(<http://www.statcan.gc.ca/reference/copyright-droit-auteur-eng.htm>).

November 2012

Catalogue no. 75F0002M, no. 003

ISSN 1707-2840

ISBN 978-1-100-20991-3

Frequency: Occasional

Ottawa

Cette publication est également disponible en français.

Note of appreciation

Canada owes the success of its statistical system to a long-standing partnership between Statistics Canada, the citizens of Canada, its businesses, governments and other institutions. Accurate and timely statistical information could not be produced without their continued cooperation and goodwill.

Abstract

The release of the 2010 Survey of Labour and Income Dynamics (SLID) data coincided with a historical revision of the 2006 to 2009 data. The survey weights were updated to take into account new population estimates based on the 2006 Census rather than the 2001 Census.

This paper presents a summary of the impact of this revision on the 2006 to 2009 survey estimates. The effects for each year are quite similar, and as a result, the annual trends from the data remain steady. However, in many cases, the actual levels of estimates do change.

Acknowledgements: This paper was made possible with the collaboration of Claude Normandin, Laura Ng, Sarah Alam, Sue Moore, Quy Do and Jane Imai from the Income Statistics Division.

Contents

1.0	Introduction	3
2.0	Impact on population counts	4
3.0	Impact on survey estimates	5
3.1	Family Type	5
3.2	Income	7
3.3	Low income	9
4.0	Impact on previous findings	11
4.1	Reference year 2007	11
4.2	Reference year 2008	11
4.3	Reference year 2009	12
5.0	Limitations	13
6.0	References	14
7.0	Statistical graphs	15
7.1	Comparison of revised and unrevised low income rates from 2005 to 2009, Canada	15
7.2	Comparison of revised and unrevised low income rates from 2005 to 2009, Newfoundland and Labrador	15
7.3	Comparison of revised and unrevised low income rates from 2005 to 2009, Prince Edward Island	16
7.4	Comparison of revised and unrevised low income rates from 2005 to 2009, Nova Scotia	16
7.5	Comparison of revised and unrevised low income rates from 2005 to 2009, New Brunswick	17
7.6	Comparison of revised and unrevised low income rates from 2005 to 2009, Quebec	17
7.7	Comparison of revised and unrevised low income rates from 2005 to 2009, Ontario	18
7.8	Comparison of revised and unrevised low income rates from 2005 to 2009, Manitoba	18
7.9	Comparison of revised and unrevised low income rates from 2005 to 2009, Saskatchewan	19
7.10	Comparison of revised and unrevised low income rates from 2005 to 2009, Alberta	19
7.11	Comparison of revised and unrevised low income rates from 2005 to 2009, British Columbia	20
8.0	Statistical tables	21
8.1	Comparison of revised and unrevised population estimates by family type for 2006 and 2009 at the Canada level	21
8.2	Comparison of revised and unrevised population estimates by family type for 2006 and 2009, Newfoundland and Labrador	22
8.3	Comparison of revised and unrevised population estimates by family type for 2006 and 2009, Prince Edward Island	23
8.4	Comparison of revised and unrevised population estimates by family type for 2006 and 2009, Nova Scotia	24
8.5	Comparison of revised and unrevised population estimates by family type for 2006 and 2009, New Brunswick	25

8.6	Comparison of revised and unrevised population estimates by family type for 2006 and 2009, Quebec	26
8.7	Comparison of revised and unrevised population estimates by family type for 2006 and 2009, Ontario	27
8.8	Comparison of revised and unrevised population estimates by family type for 2006 and 2009, Manitoba	28
8.9	Comparison of revised and unrevised population estimates by family type for 2006 and 2009, Saskatchewan	29
8.10	Comparison of revised and unrevised population estimates by family type for 2006 and 2009, Alberta	30
8.11	Comparison of revised and unrevised population estimates by family type for 2006 and 2009, British Columbia	31
8.12	Comparison of revised and unrevised income estimates for 2006 and 2009, Canada	32
8.13	Comparison of revised and unrevised income estimates for 2006 and 2009, Newfoundland and Labrador	33
8.14	Comparison of revised and unrevised income estimates for 2006 and 2009, Prince Edward Island	34
8.15	Comparison of revised and unrevised income estimates for 2006 and 2009, Nova Scotia	35
8.16	Comparison of revised and unrevised income estimates for 2006 and 2009, New Brunswick	36
8.17	Comparison of revised and unrevised income estimates for 2006 and 2009, Quebec	37
8.18	Comparison of revised and unrevised income estimates for 2006 and 2009, Ontario	38
8.19	Comparison of revised and unrevised income estimates for 2006 and 2009, Manitoba	39
8.20	Comparison of revised and unrevised income estimates for 2006 and 2009, Saskatchewan	40
8.21	Comparison of revised and unrevised income estimates for 2006 and 2009, Alberta	41
8.22	Comparison of revised and unrevised income estimates for 2006 and 2009, British Columbia	42
9.0	Related products	43

1.0 Introduction

The Survey of Labour and Income Dynamics (SLID) is an important source of Canadian data on family, household and personal income. First conducted in 1993, SLID complements traditional surveys on labour market activity and income by adding another dimension: changes that affect individuals or families over time. At the heart of the survey's objectives is understanding the economic well-being of Canadians.

Statistics Canada has long had a process in place by which survey estimates are revised once a new series of postcensal population estimates becomes available. Just as a historical revision of the Labour Force Survey was done in 2011 (Statistics Canada, 2011a), a revision of SLID was also required. Up to 2009, estimates from SLID were based on 2001 Census population data. With the release of the 2010 data, all the estimates are based on population counts from the 2006 Census. In light of this revision, the total Canadian population in 2009 was revised downward by 0.02%.

SLID improves the representativeness of its sample by adjusting the survey weights. The result is that some of the survey's population estimates for certain population sub-groups correspond to known population totals for a given year. Consequently, income estimates are of better quality and the various estimates from the survey and from external sources are more comparable (Tremblay, 2005). To adjust the weights, SLID uses different provincial counts: individual counts by age group and gender, economic family and household counts by size, and counts of individuals with employment income by wage class (LaRoche, 2003). The survey methodology is briefly explained in the annual survey documentation.

In December 2011, the Demography Division released the new population, economic entity and household estimates derived from the 2006 Census (Statistics Canada, 2011b). Individual counts and the distribution of economic entities and households by size were both revised. The total Canadian population fell slightly following the revision, but there were more significant changes in the economic entities and households. The new estimates were produced using a new method based on tax data. The results of this comparison show that the new method produces estimates that are closer to the adjusted census figures than the maintainer rate method (Bérard-Chagnon, 2012). These new population estimates were used to recalculate all the SLID weights between 2006 and 2009 inclusive. The reweighting resulted in a historical revision of the time series produced by the survey.

This paper presents a summary of the impact of the revision on the key national and provincial estimates produced by SLID. The next section discusses the direct impact on population counts for individuals, households and families (economic entities). Section 3 deals with the indirect impact of the revision on the main survey estimates, namely family type, income and low income, while section 4 presents the impact on previous findings. Lastly, section 5 cautions on comparisons between the periods 2002-2005 and 2006-2009. Various tables and charts by province are provided in sections 7 and 8.

2.0 Impact on population counts

The Demography Division of Statistics Canada has revised the population counts in 2011. The SLID target population counts¹ for the years 2006 to 2009 were revised using the 2006 Census base. Little change was seen for each of the four years (Table 1). For years 2006, 2007 and 2009 there was a slight decrease in population estimates of 0.06% or lower, while 2008 saw a slight increase of 0.03%.

Alberta and British Columbia were the two provinces that saw the biggest changes in counts, both seeing changes of greater than 1% from the unrevised estimates. Population estimates in Alberta increased for all four years, with changes ranging from 1.23% to 1.90%, while British Columbia saw decreases in its estimates for all four years varying from 1.01% to 1.33%.

Table 1
Percentage change between revised and unrevised population estimates by province and year

	Year			
	2006	2007	2008	2009
	Percentage change (%)			
Canada	-0.06	-0.02	0.03	-0.02
Newfoundland and Labrador	-0.35	-0.19	-0.62	-0.68
Prince Edward Island	-0.29	-0.43	-0.42	-0.03
Nova Scotia	0.27	0.30	0.18	0.23
New Brunswick	-0.45	-0.62	-0.72	-0.76
Quebec	-0.19	-0.11	0.02	0.02
Ontario	-0.13	-0.06	-0.07	-0.07
Manitoba	0.85	0.96	0.80	0.62
Saskatchewan	0.80	0.54	-0.01	0.05
Alberta	1.62	1.42	1.90	1.23
British Columbia	-1.33	-1.23	-1.12	-1.01

Despite little change in the population counts, the distribution of households by size changed substantially (Table 2). The largest change was seen with one person households where counts for 2006 to 2009 were revised downward (between 2.91% and 5.01%). The provinces with the greatest decreases were Newfoundland and Labrador, Quebec and British Columbia, with decreases ranging from 5.29% to 8.50%.

Two person households also saw a decrease in estimates ranging from 0.62% to 1.56%. In contrast, there was an increase of between 0.78% and 1.99% in the number of households with more than two persons between 2006 and 2009.

1. SLID covers all individuals in Canada, excluding residents of the Yukon, the Northwest Territories and Nunavut, residents of institutions and persons living on Indian reserves or in military barracks.

Table 2
Percentage change between revised and unrevised estimates of household size estimates by year

	Year			
	2006	2007	2008	2009
	Percentage change (%)			
Households with 1 person	-2.91	-3.57	-4.29	-5.01
Households with 2 persons	-0.62	-0.82	-1.16	-1.56
Households with 3 or more persons	0.78	1.06	1.53	1.99

The distribution of the economic entities by size was also affected in a similar fashion as household size, but to a lesser degree. The magnitude of the changes was less than 2% in absolute value, as seen in Table 3.

Table 3
Percentage change between revised and unrevised estimates of economic entity size estimates by year

	Year			
	2006	2007	2008	2009
	Percentage change (%)			
Economic entity with 1 person	-0.63	-0.99	-1.37	-1.81
Economic entity with 2 persons	-0.58	-0.79	-1.15	-1.55
Economic entity with 3 or more persons	0.33	0.56	0.98	1.39

3.0 Impact on survey estimates

The estimates have been recalculated to take into account changes in population counts from the 2006 Census. These revisions have had some minor impacts on the SLID survey estimates. In evaluating the effect of the historical revision on the SLID estimates for 2006 to 2009, the first focus was on family type, followed by income and low income.

3.1 Family type

Some changes were noted in the different family types (Table 4). At the Canada level, the number of people in economic families of 2 persons or more increased slightly (0.3% in 2009), while the number of unattached individuals decreased (0.6% in 2006 and 1.8% in 2009). Half of the provinces saw an increase in economic families of 2 persons or more, with Alberta seeing the largest increase (2.0% in 2006 and 1.9% in 2009). Out of the provinces that saw a decrease in unattached individuals, Quebec showed the largest difference, with a reduction of 4.7% in 2006 and 7.4% in 2009.

In addition to a decline in the number of unattached people, SLID also saw a noticeable decrease in the number of people who were married without children (married couples) at the Canada level. These estimates were reduced by 54,000 (-1.2%) in 2006 and 111,000 (-2.5%) in 2009. This was most apparent in New Brunswick and Newfoundland and Labrador, that respectively saw decreases of 11.2% and 10.1% in their 2009 estimates.

In contrast, the number of people who were considered to be in a married couple with other relatives (without children) increased by 2.4% in 2009. This was most prominent in Quebec and Newfoundland and Labrador with increases of 8.1% and 4.9%, respectively.

Table 4
Comparison of revised and unrevised population estimates by family type for 2006 and 2009, Canada

	2006			2009		
	Pre-revision	Post-revision	% change ¹	Pre-revision	Post-revision	% change ¹
	Number of persons ('000)			Number of persons ('000)		
All family units	31,853	31,835	-0.1	32,970	32,962	0.0
Economic families, 2 persons or more	27,183	27,194	0.0	27,993	28,075	0.3
Elderly families	3,002	3,015	0.4	3,279	3,309	0.9
Elderly Married couples	2,130	2,148	0.8	2,422	2,439	0.7
Other elderly families	872	867	-0.6	857	870	1.5
Non-elderly families	24,181	24,180	0.0	24,713	24,766	0.2
Married couples	4,338	4,284	-1.2	4,592	4,481	-2.5
Married couples, no earner	308	304	-1.4	293	286	-2.4
Married couples, one earner	1,042	1,028	-1.4	1,051	1,030	-2.1
Married couples, two earners	2,987	2,952	-1.2	3,248	3,165	-2.6
Two-parent families with children	12,039	12,109	0.6	12,134	12,221	0.7
Two-parent families with children, no earner	184	176	-4.1	237	238	0.2
Two-parent families with children, one earner	1,763	1,754	-0.5	1,855	1,867	0.6
Two-parent families with children, two earners	7,251	7,316	0.9	7,088	7,147	0.8
Two-parent families with children, three or more earners	2,842	2,863	0.8	2,954	2,970	0.6
Married couples with other relatives	3,456	3,435	-0.6	3,464	3,548	2.4
Lone-parent families	2,049	2,052	0.1	1,967	1,937	-1.5
Male lone-parent families	356	361	1.5	321	317	-1.4
Female lone-parent families	1,693	1,691	-0.1	1,646	1,620	-1.6
Female lone-parent families, no earner	288	283	-1.7	275	267	-2.9
Female lone-parent families, one earner	891	895	0.5	904	887	-1.9
Female lone-parent families, two or more earners	515	513	-0.4	467	466	-0.2
All other non-elderly families	2,300	2,299	0.0	2,556	2,579	0.9
Unattached individuals	4,670	4,640	-0.6	4,977	4,887	-1.8
Elderly male	321	318	-1.1	379	372	-2.0
Elderly male, non-earner	252	251	-0.6	311	306	-1.8
Elderly male, earner	69	67	-3.3	68	66	-3.2
Elderly female	834	835	0.1	922	916	-0.7
Elderly female, non-earner	749	749	0.0	802	797	-0.6
Elderly female, earner	85	86	1.6	120	119	-1.0
Non-elderly male	2,029	2,025	-0.2	2,170	2,129	-1.9
Non-elderly male, non-earner	297	299	0.7	373	366	-1.9
Non-elderly male, earner	1,733	1,726	-0.4	1,797	1,762	-2.0
Non-elderly female	1,485	1,462	-1.6	1,506	1,471	-2.4
Non-elderly female, non-earner	308	300	-2.6	300	289	-4.0
Non-elderly female, earner	1,177	1,162	-1.3	1,205	1,182	-2.0

1. Percentage changes were calculated using unrounded numbers.

3.2 Income

Overall, the historical revision had a small effect on the average and median income estimates, but had no impact on the trends previously shown by SLID. These trends will be discussed in Section 4. Because the impact of the revision is similar in magnitude for all years during the 2006-2009 period, the discussion is limited to 2006 and 2009.

Table 5 presents the revised and unrevised estimates of median earnings, median government transfers, median income tax and median after-tax income for 2006 and 2009 at the Canada level. The total number of earners in 2006 and 2009 was revised downward with the new population counts. The same trend is seen with the number of full-time full-year earners, while median earnings for all earners increased slightly.

Table 5
Comparison of revised and unrevised income estimates for 2006 and 2009, Canada

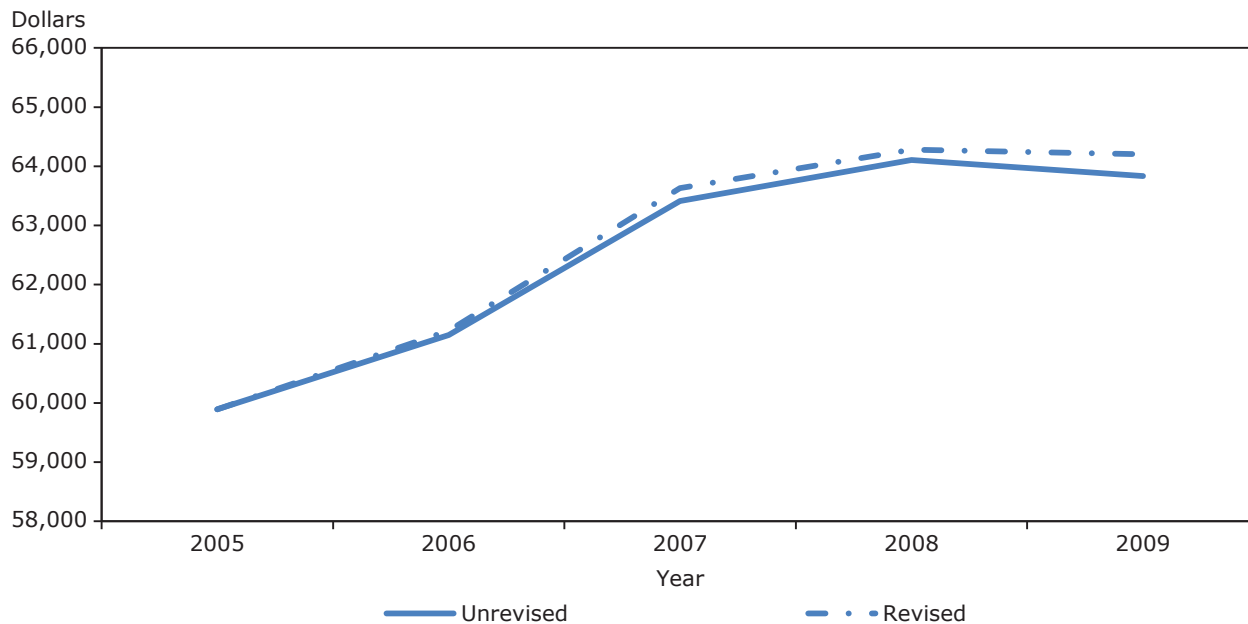
	2006			2009		
	Pre-revision	Post-revision	% change ¹	Pre-revision	Post-revision	% change ¹
	('000)			('000)		
Earnings						
Number of earners	18,863	18,837	-0.1	19,477	19,451	-0.1
Number of full-time full-year earners	9,072	9,041	-0.3	8,916	8,889	-0.3
	(2009 constant dollars)		% change ¹	(2009 constant dollars)		% change ¹
Median earnings, all earners	28,200	28,200	0.1	28,700	28,700	0.1
Median government transfers						
Economic families	4,800	4,800	0.1	6,200	6,200	0.7
Unattached individuals	700	700	0.0	1,700	1,600	-3.8
Median income tax						
Economic families	9,400	9,400	0.3	7,900	7,900	1.1
Unattached individuals	2,200	2,200	-2.0	2,300	2,200	-1.6
Median after-tax income						
Economic families	61,100	61,200	0.1	63,800	64,200	0.6
Unattached individuals	23,900	23,700	-0.7	25,500	25,400	-0.3

1. Percentage changes were calculated using unrounded numbers.

After the revision, the median income tax and median after-tax income both decreased for unattached individuals in 2006 and 2009. The median income tax for unattached individuals decreased 2.0% in 2006 and 1.6% in 2009, while their median after-tax income decreased 0.7% in 2006 and 0.3% in 2009. The opposite was seen with economic families. They saw an upward revision of median income tax of 0.3% in 2006 and 1.1% in 2009. Median after-tax income was also revised upward, with an increase of 0.1% in 2006 and 0.6% in 2009. The majority of provinces saw a slight increase in median after-tax income for economic families, while over half of the provinces saw a decrease in median after-tax income for unattached individuals. See Statistical tables 8.13 to 8.22 for provincial statistics.

While the revision brought about slight changes to the income estimates mentioned above, there was little impact on the trends. Graphs 1 and 2 show the impact of the revision on the time series for median after-tax income for economic families and unattached individuals. The historical revision produced series that are comparable to the original ones. Both the revised and unrevised estimates for economic families and unattached individuals saw the largest increase between 2006 and 2007 (of approximately 4%), while between 2007 and 2008 and between 2008 and 2009 the estimates were virtually unchanged.

Graph 1
Comparison of revised and unrevised median after-tax income for economic families of 2 persons or more, 2005 to 2009, Canada



Graph 2
Comparison of revised and unrevised median after-tax income for unattached individuals, 2005 to 2009, Canada

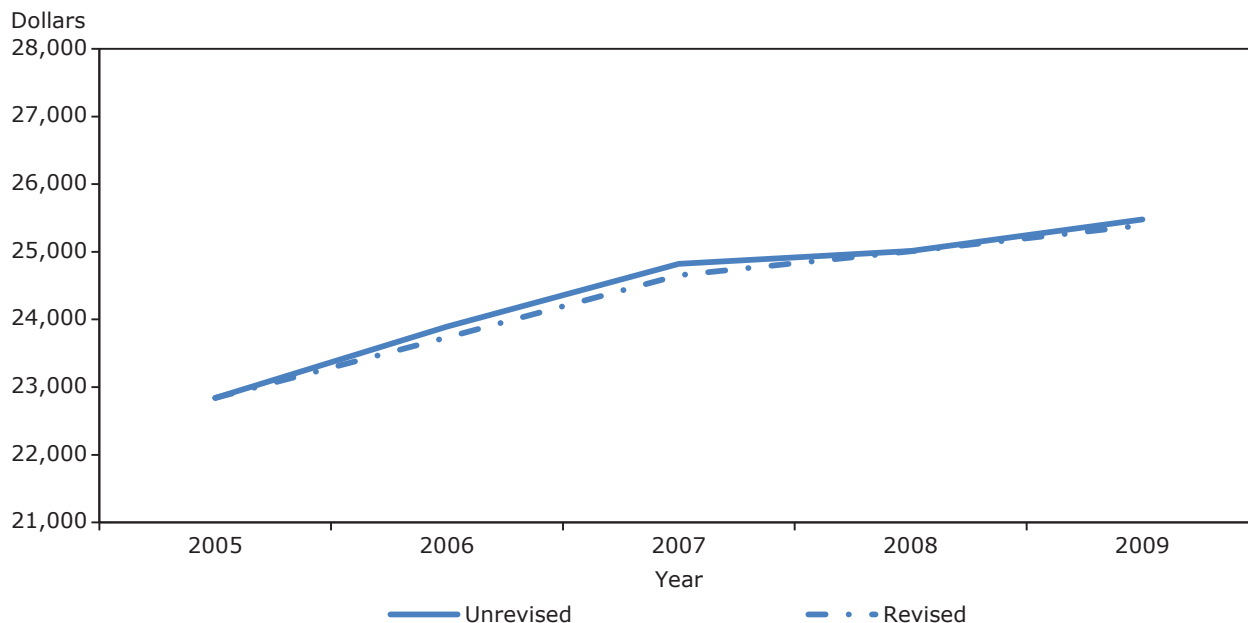


Table 6 shows the revised and unrevised after-tax income shares by adjusted after-tax income quintiles² for 2006 and 2009. At both the Canada and provincial levels, the income distribution amongst the five quintiles was not affected by the historical revision. Provincial statistics are provided in the section 8.

Table 6
Comparison of unrevised and revised after-tax income shares for 2006 and 2009, Canada

Quintile	2006 after-tax income shares			2009 after-tax income shares		
	Pre-revision	Post-revision	% point difference ¹	Pre-revision	Post-revision	% point difference ¹
	(%)	(%)		(%)	(%)	
Lowest quintile	6.8	6.8	0.1	6.7	6.7	0.1
Second quintiles	12.4	12.4	0.0	12.3	12.4	0.1
Third quintile	17.3	17.3	0.0	17.4	17.5	0.0
Fourth quintile	23.4	23.4	0.0	23.5	23.5	0.0
Highest quintile	40.2	40.1	-0.1	40.1	39.9	-0.2

1. Percentage point differences were calculated using unrounded numbers.

3.3 Low income

SLID produces low income statistics using three complementary low income lines (Statistics Canada, 2012): Statistics Canada's Low Income Cut-off (LICO) and Low Income Measure (LIM) as well as the Market Basket Measure (MBM) developed by Human Resources and Skills Development Canada (HRSDC).

The three measures of low income rates were revised slightly downwards (Table 7). All three of the low income measures were similarly affected, with no significant decreases at the Canada level for all persons.

Table 7
Comparison of unrevised and revised low income rates (%) for 2006 and 2009, Canada

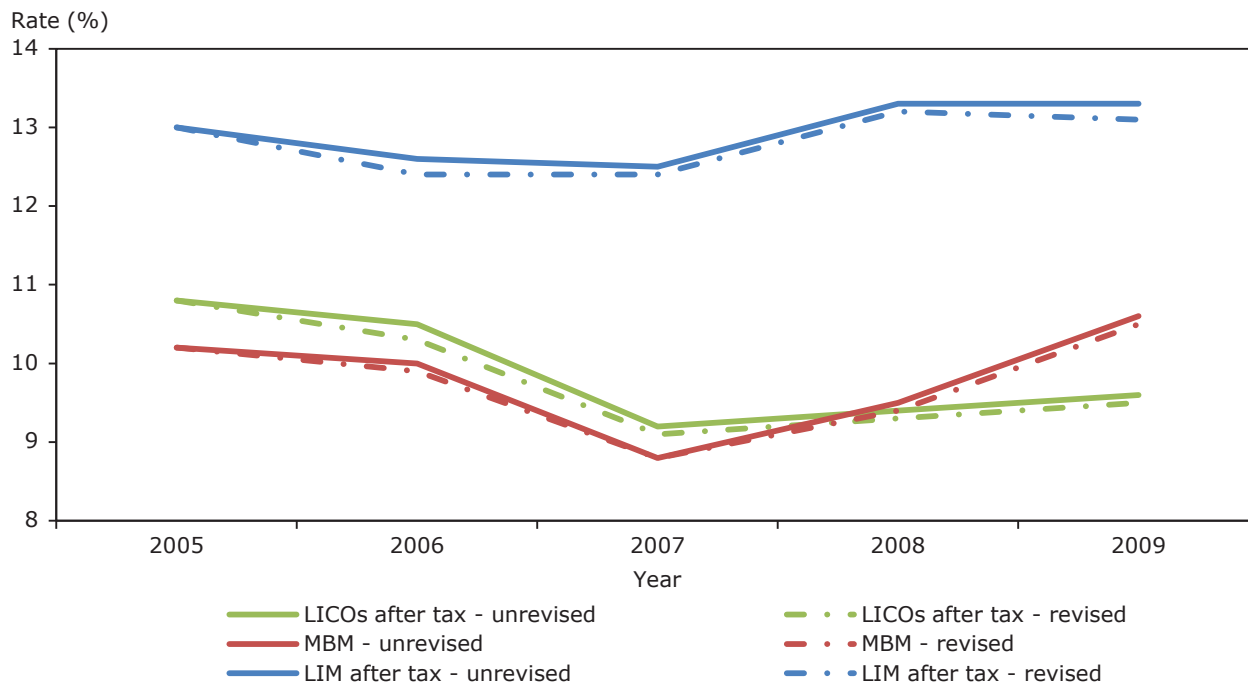
Percentage of persons in low income	2006			2009		
	Pre-revision	Post-revision	% point difference ¹	Pre-revision	Post-revision	% point difference ¹
	(%)	(%)		(%)	(%)	
Low Income Cut-offs after-tax	10.5	10.3	-0.2	9.6	9.5	-0.1
Low Income Measure after-tax	12.6	12.4	-0.2	13.3	13.1	-0.1
Market Basket Measure	10.0	9.9	-0.1	10.6	10.5	-0.2

1. Percentage point differences were calculated using unrounded numbers.

Graph 3 shows the impact of the revision on the time series of the various low income measures. The revision produced series that are parallel to the original ones.

2. The quintiles are calculated over the population of individuals where each of them is represented by their household after-tax income. This income is further adjusted to take into account the number of persons in the household, and the relative increase in expenses associated with larger households.

Graph 3
Comparison of unrevised and revised low income rates from 2005 to 2009, Canada



The provincial low income statistics can be seen on Charts 7.2 to 7.11. The Quebec LICOs for all persons and person living in families were revised downwards by 0.4 percentage points in 2009; these were the only significant differences observed at the provincial level for all three measures of low income. Larger drops in levels of low income can be seen in smaller populations groups, such as elderly families in some Atlantic provinces.

4.0 Impact on previous findings

At the national and provincial levels, the previous analytical conclusions for the period 2006 to 2009 remained unchanged. These conclusions are highlighted below.

4.1 Reference year 2007

(Statistics Canada, 2009)

- From 2006 to 2007, the median after-tax income rose for both Canadian families and unattached individuals.
- Families living in Alberta had the highest median after-tax income, followed by those in Ontario and British Columbia.
- Newfoundland and Labrador families experienced the largest growth in median after-tax income.
- Median market income increased for both families and unattached individuals.
- Families of two persons or more saw a decrease in median income taxes, while their government transfers remained virtually unchanged from 2006.
- The low income situation in Canada improved in 2007. The percentage of Canadians living below the after-tax low income cut offs decreased in 2007.

4.2 Reference year 2008

(Statistics Canada, 2010)

- Median after-tax income for Canadian families of two or more persons in 2008 was virtually unchanged from 2007.
- Median after-tax income for families with two persons or more rose in British Columbia and Saskatchewan. In the other provinces, it was unchanged in 2008 from 2007.
- Unattached individuals saw increases in median after-tax income in both Alberta and Manitoba, while it remained virtually unchanged in the other provinces.
- In 2008, there was virtually no change in median market income for any of the main family types.
- There was little difference in median government transfers compared to 2007, but transfers varied widely across different family types.
- Median income taxes—both federal and provincial—were stable for most family types.
- According to the after-tax low income cut-offs, the number of Canadians who lived in low income in 2008 was virtually unchanged from 2007.

4.3 Reference year 2009

(Statistics Canada, 2011c)

- Median after-tax income for Canadian families of two or more persons was virtually unchanged from 2008.
- After-tax income for unattached individuals remained stable, though this was not the case for all categories of unattached individuals. For senior unattached individuals, the median rose.
- In most provinces, median after-tax income for families with two persons or more was unchanged between 2008 and 2009.
- Between 2008 and 2009, more people experienced an increase in their adjusted after-tax household income, than a decrease.
- Median market income saw a decrease in 2009.
- Median government transfers increased in 2009.
- Among families of two persons or more, the median income tax paid was lower than in 2008.
- According to the after-tax low income cut-offs, the number of Canadians who lived in low income in 2009 was virtually unchanged from 2008.

5.0 Limitations

The period between 2002 and 2005 was not revised with the release of the 2010 data. For this reason comparisons between the years 2002 to 2005 and the years 2006 to 2010 could be slightly affected.

Table 8 provides example of differences in 2005-2006 trends produced before and after the revision. It can be seen that trends can vary.

Table 8
Comparison of 2005 income estimates with unrevised and revised 2006 income estimates, Canada

	Estimates			2005-2006 trends	
	2005	2006		Pre-revision ¹	Post-revision ¹
		Pre-revision	Post-revision		
	('000)			Percentage point change	
Earnings					
Number of earners	18,393	18,863	18,837	2.6	2.4
Number of full-time full-year earners	9,342	9,072	9,041	-2.9	-3.2
	(2009 constant dollars)			Percentage point change	
Median earnings, all earners	28,100	28,200	28,200	0.2	0.4
Median government transfers					
Economic families	4,200	4,800	4,800	14.1	14.1
Unattached individuals	500	700	700	21.6	21.6
Median income tax					
Economic families	9,200	9,400	9,400	2.4	2.7
Unattached individuals	2,100	2,200	2,200	6.6	4.5
Median after-tax income					
Economic families	59,900	61,100	61,200	2.1	2.2
Unattached individuals	22,800	23,900	23,700	4.6	3.9
	(%)			Percentage point change	
Percentage of persons in low income					
Low Income Cut-offs after-tax	10.8	10.5	10.3	-0.3	-0.5
Low Income Measure after-tax	13.0	12.6	12.4	-0.4	-0.6
Market Basket Measure	10.2	10.0	9.9	-0.3	-0.4
Income share by adjusted after-tax income quintile (%)					
Lowest quintile	6.6	6.8	6.8	0.1	0.2
Second quintile	12.4	12.4	12.4	0.0	0.0
Third quintile	17.4	17.3	17.3	-0.1	-0.1
Fourth quintile	23.6	23.4	23.4	-0.2	-0.2
Highest quintile	40.0	40.2	40.1	0.2	0.1

1. Percentage changes were calculated using unrounded numbers.

6.0 References

Bérard-Chagnon, Julien (2012). “Estimations des ménages: comparaison de la nouvelle méthode avec la méthode précédente”. Statistics Canada, internal document produced by Demography Division, March 2012.

LaRoche, Sylvie (2007). “Longitudinal and Cross-Sectional Weighting of the Survey of Labour and Income Dynamics, 2003”. Statistics Canada, Income Research Paper Series. Catalogue no. 75F0002MIE— no. 007, October 2007. <http://www.statcan.gc.ca/pub/75f0002m/75f0002m2007007-eng.pdf>

Statistics Canada (2011a). Improvements to the Labour Force Survey, “The 2011 revisions of the Labour Force Survey (LFS)”. Catalogue no. 71F0031X, no. 4. January 2011. <http://www.statcan.gc.ca/daily-quotidien/110128/dq110128b-eng.htm>

Statistics Canada (2011b). “Population and Family Estimation Methods at Statistics Canada”. Catalogue no. 91-528-XWE, December 2011. <http://www5.statcan.gc.ca/bsolc/olc-cel/olc-cel?catno=91-528-x&lang=eng>

Statistics Canada (2009). Income in Canada 2007. Catalogue no. 75-202-X, June 2009. <http://www.statcan.gc.ca/pub/75-202-x/75-202-x2007000-eng.pdf>

Statistics Canada (2010). Income in Canada 2008. Catalogue no. 75-202-X, June 2010. <http://www.statcan.gc.ca/pub/75-202-x/75-202-x2008000-eng.htm>

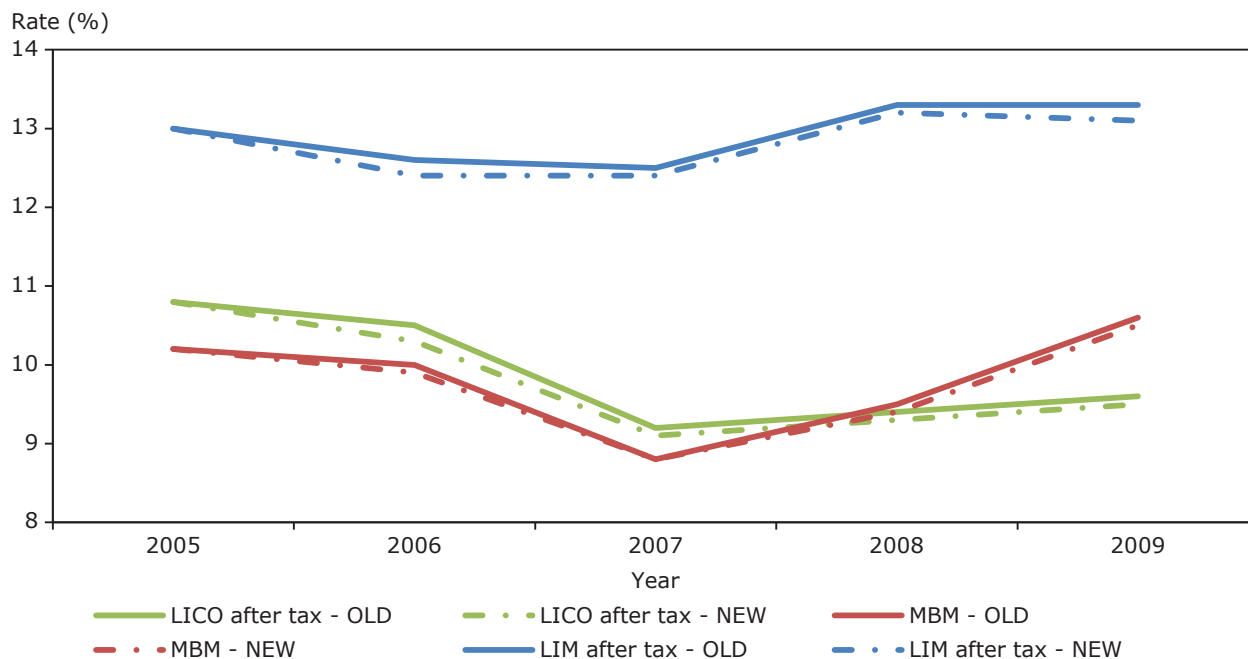
Statistics Canada (2011c). Income in Canada 2009. Catalogue no. 75-202-X, June 2011. <http://www.statcan.gc.ca/pub/75-202-x/75-202-x2009000-eng.htm>

Statistics Canada (2012). “Low Income Lines, 2010–2011”. Income Research Paper Series. 75F0002MIE <http://www.statcan.gc.ca/bsolc/olc-cel/olc-cel?catno=75F0002M&chprog=1&lang=eng>

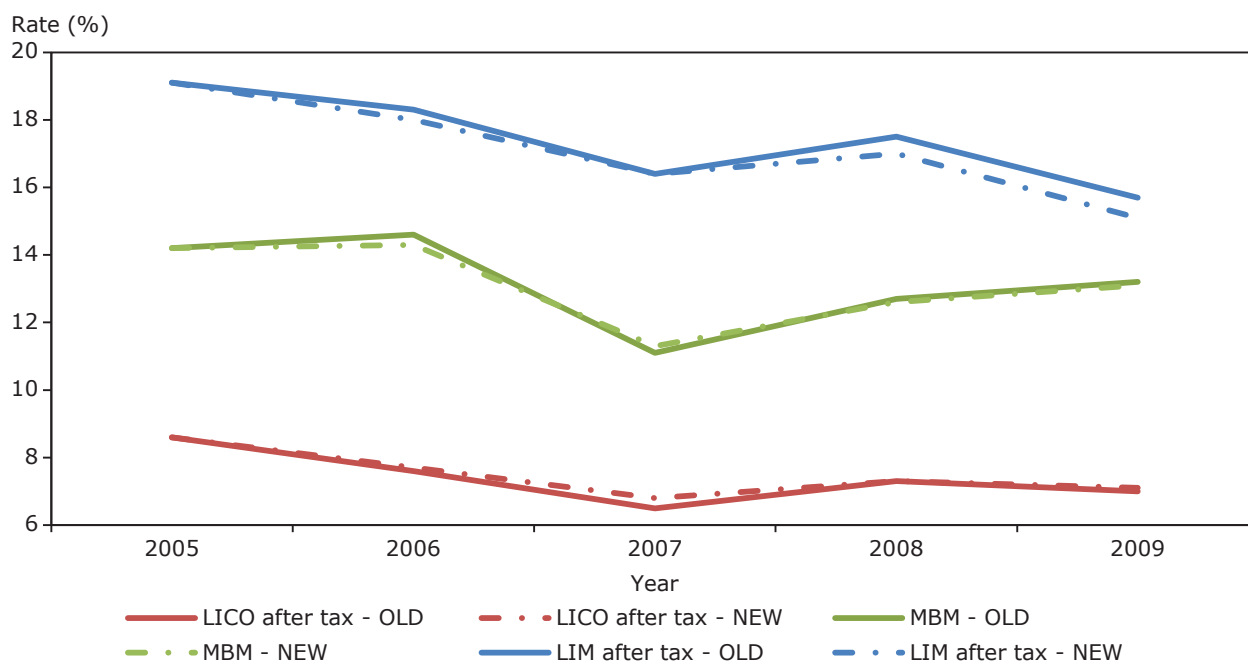
Tremblay, J. (2005). “*Aperçu de la stratégie de calage harmonisée des statistiques du revenu de Statistique Canada*”. Proceedings of the Survey Methods Section of the Annual Meeting of the Statistical Society of Canada, June 2005.

7.0 Statistical graphs

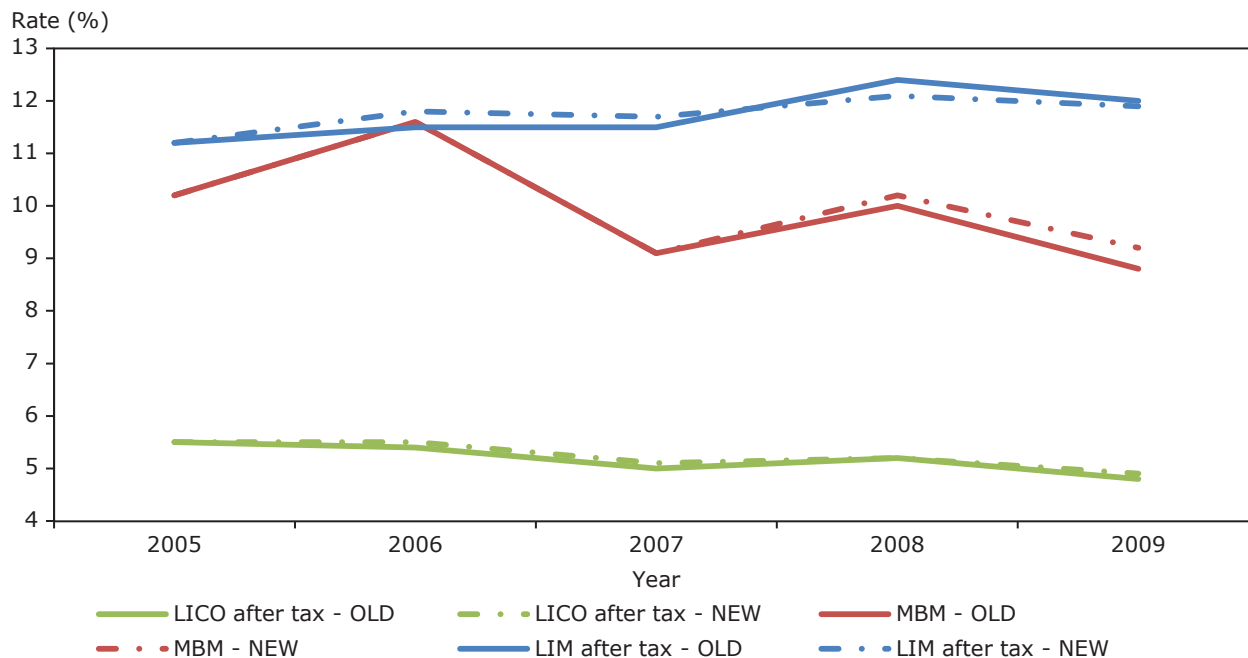
7.1 Comparison of revised and unrevised low income rates from 2005 to 2009, Canada



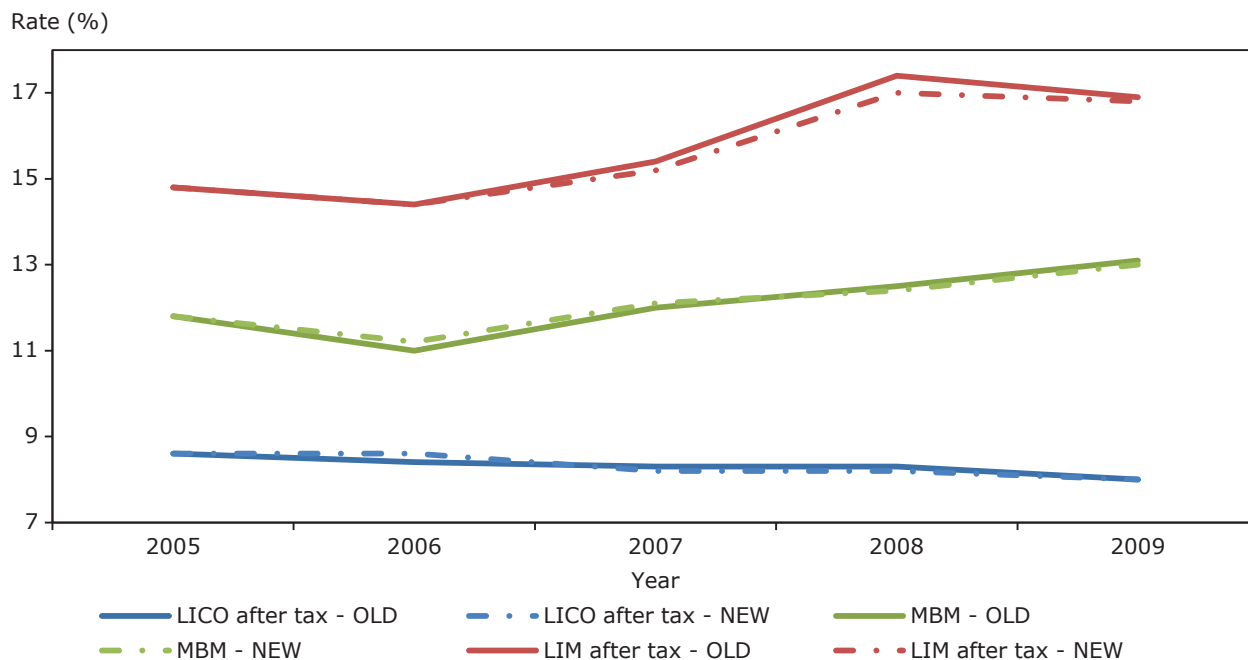
7.2 Comparison of revised and unrevised low income rates from 2005 to 2009, Newfoundland and Labrador



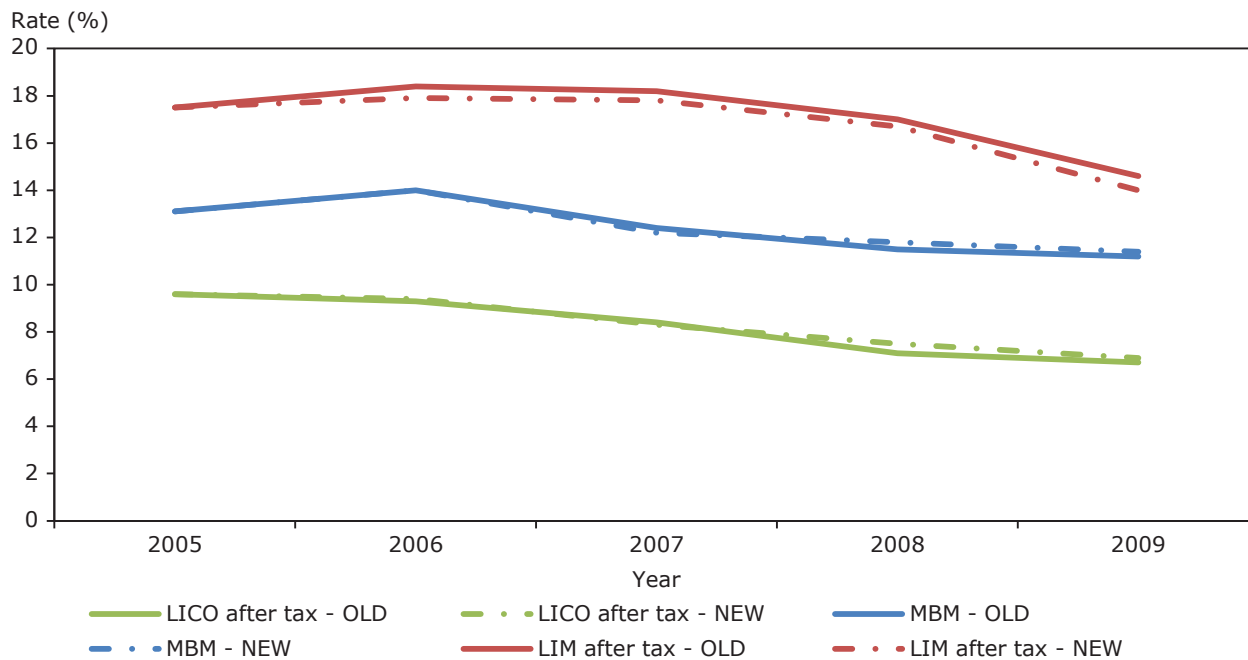
7.3 Comparison of revised and unrevised low income rates from 2005 to 2009, Prince Edward Island



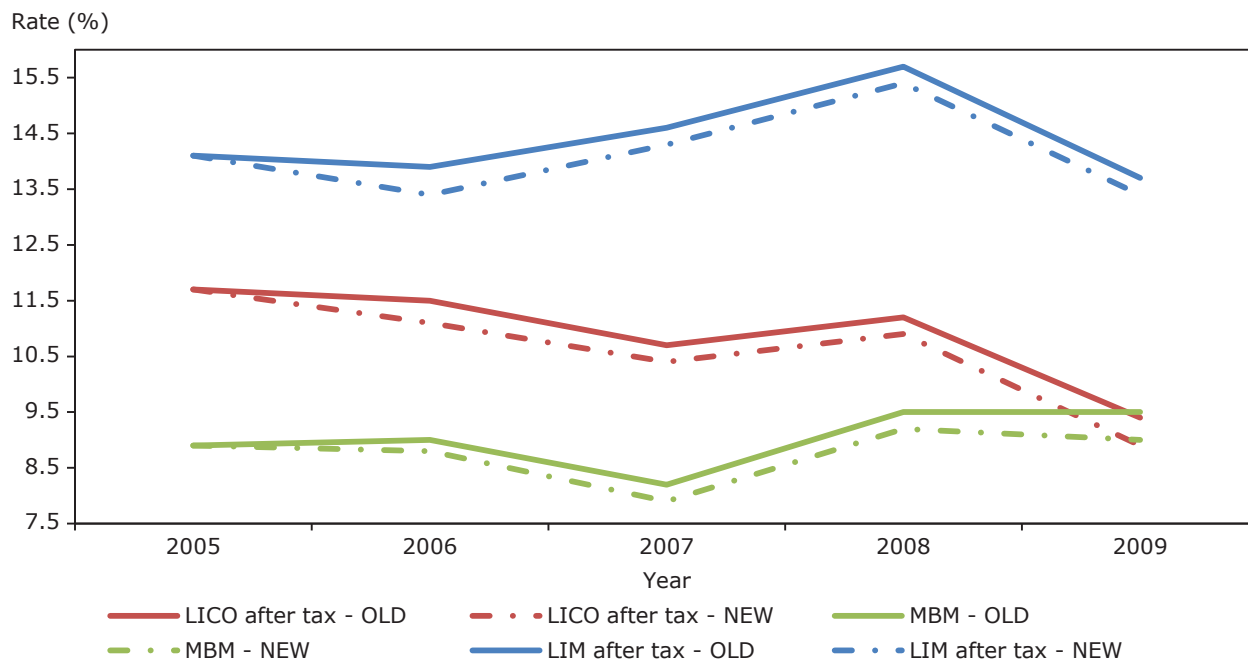
7.4 Comparison of revised and unrevised low income rates from 2005 to 2009, Nova Scotia



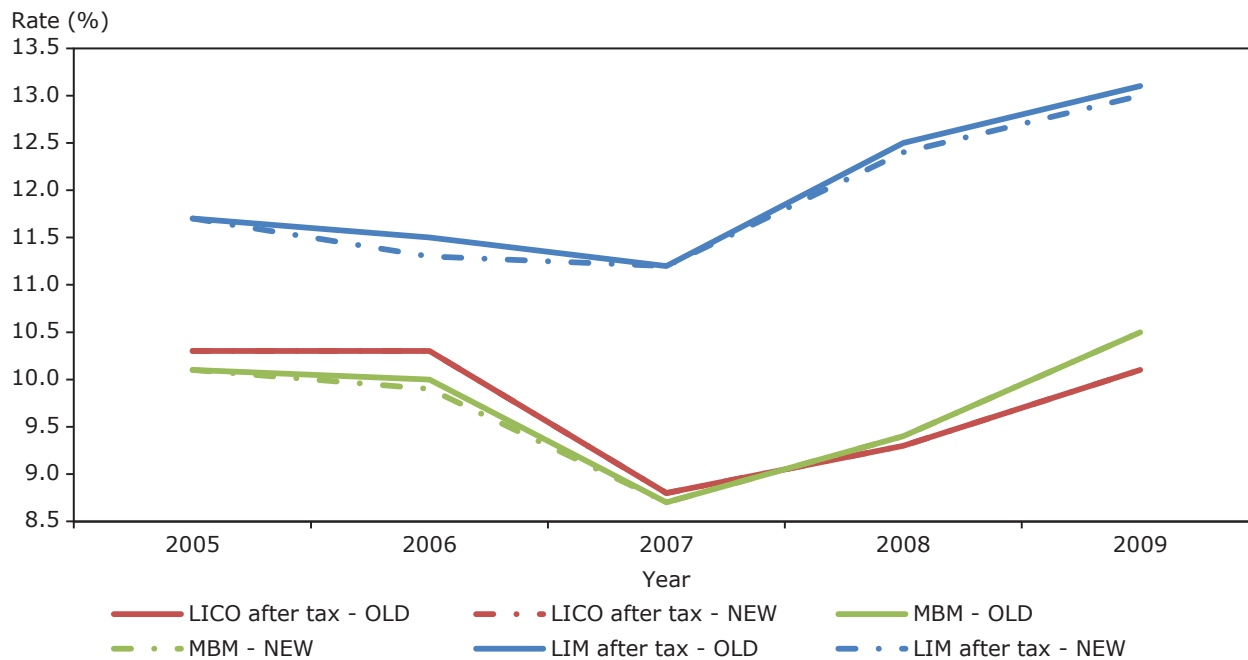
7.5 Comparison of revised and unrevised low income rates from 2005 to 2009, New Brunswick



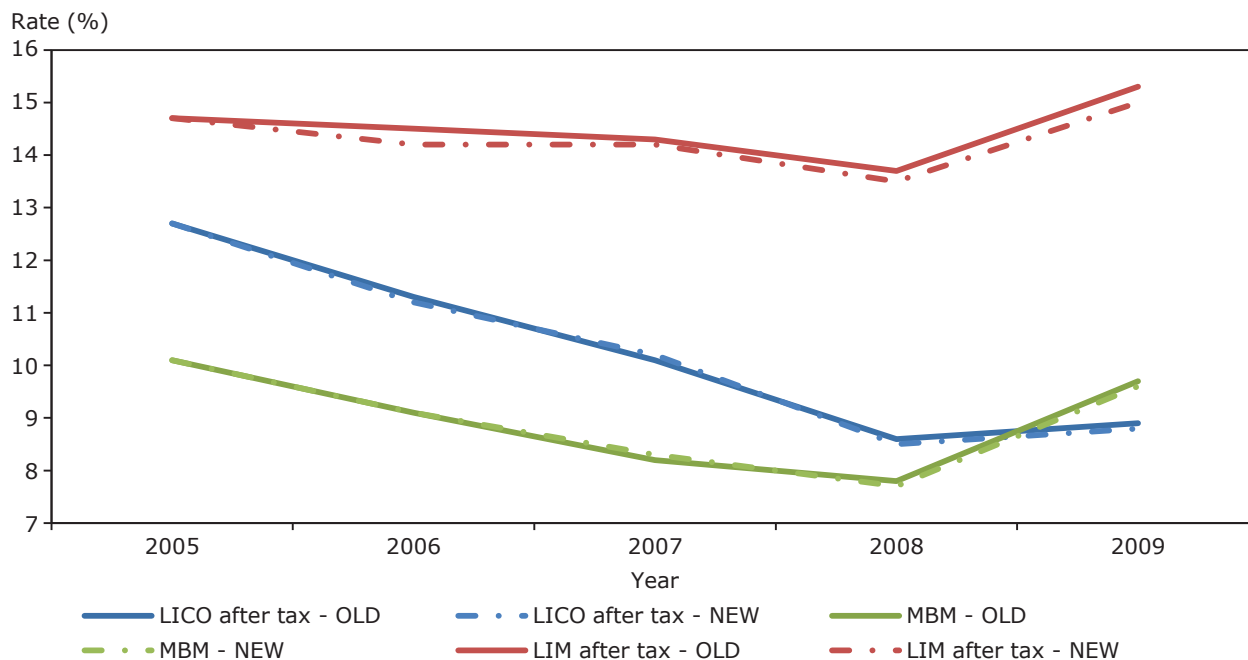
7.6 Comparison of revised and unrevised low income rates from 2005 to 2009, Quebec



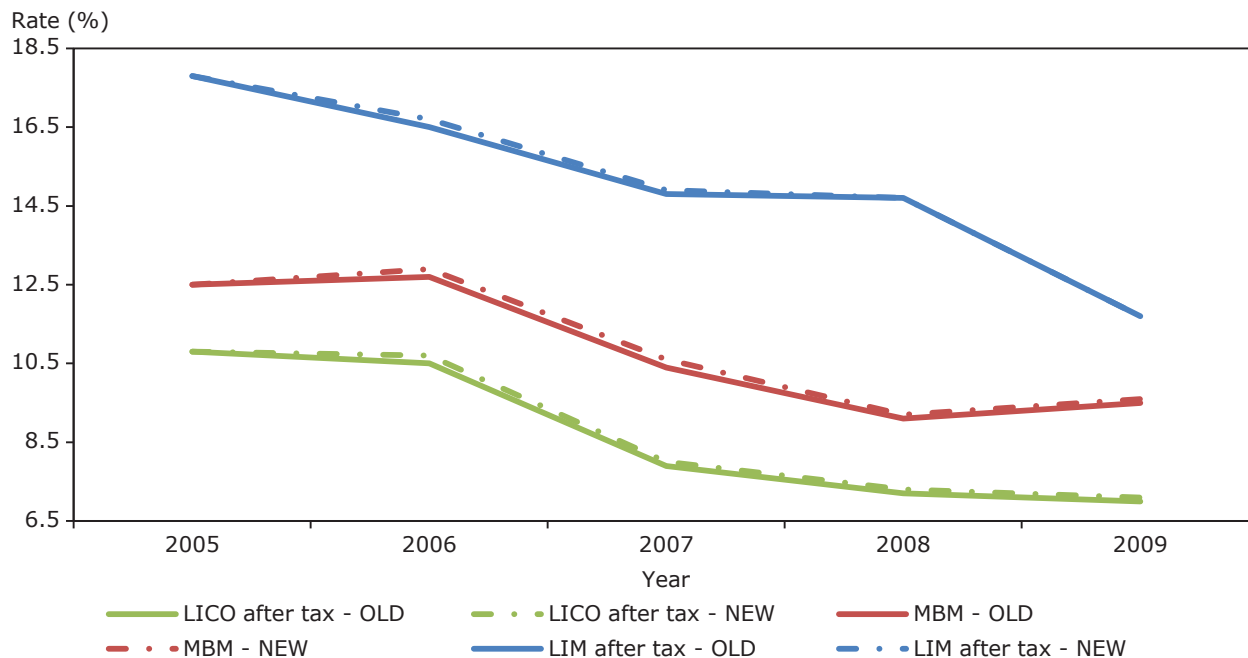
7.7 Comparison of revised and unrevised low income rates from 2005 to 2009, Ontario



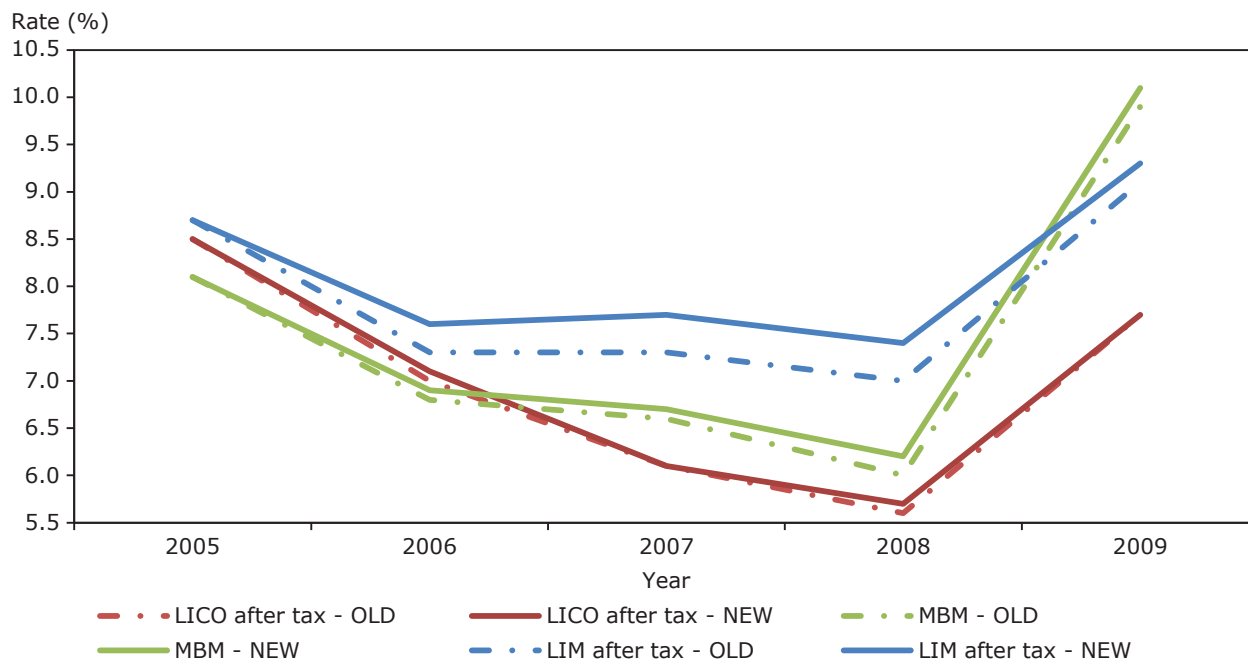
7.8 Comparison of revised and unrevised low income rates from 2005 to 2009, Manitoba



7.9 Comparison of revised and unrevised low income rates from 2005 to 2009, Saskatchewan

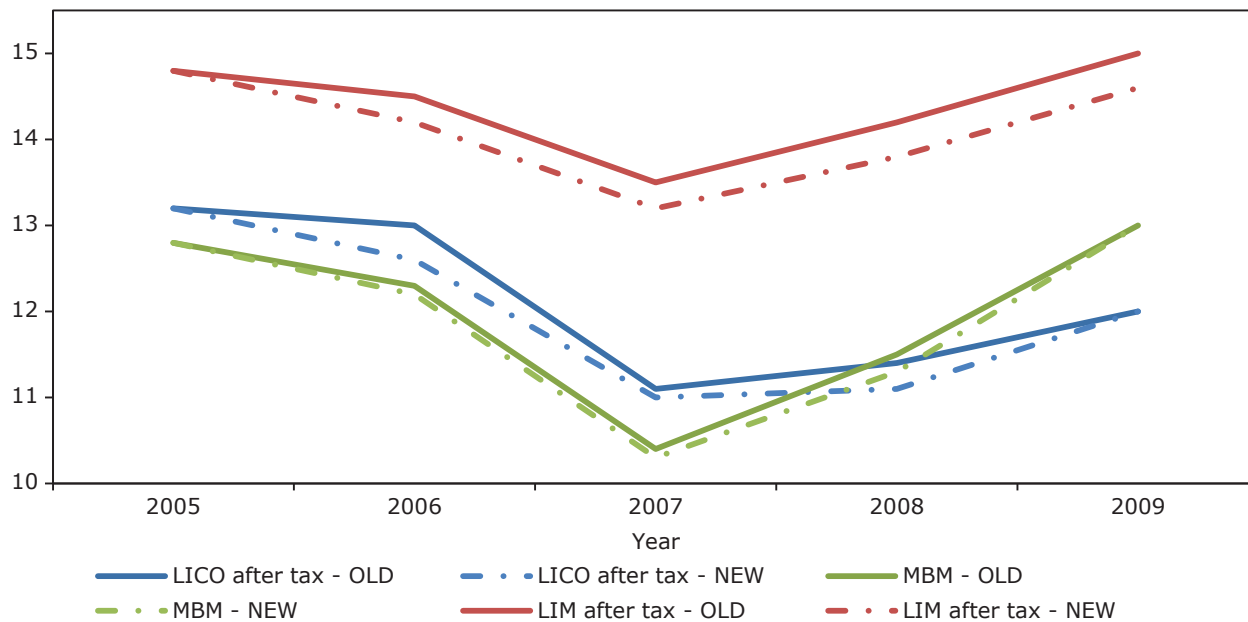


7.10 Comparison of revised and unrevised low income rates from 2005 to 2009, Alberta



7.11 Comparison of revised and unrevised low income rates from 2005 to 2009, British Columbia

Rate (%)



8.0 Statistical tables

Table 8.1 Comparison of revised and unrevised population estimates by family type for 2006 and 2009, Canada

	2006			2009		
	Pre-revision	Post-revision	% change ¹	Pre-revision	Post-revision	% change ¹
	Number of persons ('000)			Number of persons ('000)		
All family units	31,853	31,835	-0.1	32,970	32,962	0.0
Economic families, 2 persons or more	27,183	27,194	0.0	27,993	28,075	0.3
Elderly families	3,002	3,015	0.4	3,279	3,309	0.9
Elderly Married couples	2,130	2,148	0.8	2,422	2,439	0.7
Other elderly families	872	867	-0.6	857	870	1.5
Non-elderly families	24,181	24,180	0.0	24,713	24,766	0.2
Married couples	4,338	4,284	-1.2	4,592	4,481	-2.5
Married couples, no earner	308	304	-1.4	293	286	-2.4
Married couples, one earner	1,042	1,028	-1.4	1,051	1,030	-2.1
Married couples, two earners	2,987	2,952	-1.2	3,248	3,165	-2.6
Two-parent families with children	12,039	12,109	0.6	12,134	12,221	0.7
Two-parent families with children, no earner	184	176	-4.1	237	238	0.2
Two-parent families with children, one earner	1,763	1,754	-0.5	1,855	1,867	0.6
Two-parent families with children, two earners	7,251	7,316	0.9	7,088	7,147	0.8
Two-parent families with children, three or more earners	2,842	2,863	0.8	2,954	2,970	0.6
Married couples with other relatives	3,456	3,435	-0.6	3,464	3,548	2.4
Lone-parent families	2,049	2,052	0.1	1,967	1,937	-1.5
Male lone-parent families	356	361	1.5	321	317	-1.4
Female lone-parent families	1,693	1,691	-0.1	1,646	1,620	-1.6
Female lone-parent families, no earner	288	283	-1.7	275	267	-2.9
Female lone-parent families, one earner	891	895	0.5	904	887	-1.9
Female lone-parent families, two or more earners	515	513	-0.4	467	466	-0.2
All other non-elderly families	2,300	2,299	0.0	2,556	2,579	0.9
Unattached individuals	4,670	4,640	-0.6	4,977	4,887	-1.8
Elderly male	321	318	-1.1	379	372	-2.0
Elderly male, non-earner	252	251	-0.6	311	306	-1.8
Elderly male, earner	69	67	-3.3	68	66	-3.2
Elderly female	834	835	0.1	922	916	-0.7
Elderly female, non-earner	749	749	0.0	802	797	-0.6
Elderly female, earner	85	86	1.6	120	119	-1.0
Non-elderly male	2,029	2,025	-0.2	2,170	2,129	-1.9
Non-elderly male, non-earner	297	299	0.7	373	366	-1.9
Non-elderly male, earner	1,733	1,726	-0.4	1,797	1,762	-2.0
Non-elderly female	1,485	1,462	-1.6	1,506	1,471	-2.4
Non-elderly female, non-earner	308	300	-2.6	300	289	-4.0
Non-elderly female, earner	1,177	1,162	-1.3	1,205	1,182	-2.0

1. Percentage changes were calculated using unrounded numbers.

Table 8.2 Comparison of revised and unrevised population estimates by family type for 2006 and 2009, Newfoundland and Labrador

	2006			2009		
	Pre-revision	Post-revision	% change ¹	Pre-revision	Post-revision	% change ¹
	Number of persons ('000)			Number of persons ('000)		
All family units	504	502	-0.4	506	503	-0.7
Economic families, 2 persons or more	451	446	-1.1	450	442	-1.7
Elderly families	59	60	0.6	62	62	-0.8
Elderly Married couples	39	39	0.0	46	45	-1.3
Other elderly families	20	20	1.8	16	17	0.8
Non-elderly families	391	386	-1.3	387	381	-1.8
Married couples	83	81	-2.9	93	84	-10.1
Married couples, no earner	F	F	F	F	F	F
Married couples, one earner	19	19	1.1	27	25	-8.2
Married couples, two earners	56	54	-3.7	60	54	-11.0
Two-parent families with children	169	170	0.5	172	171	-0.5
Two-parent families with children, no earner	F	F	F	F	F	F
Two-parent families with children, one earner	24	24	1.9	23	22	-3.2
Two-parent families with children, two earners	108	109	1.0	107	106	-0.8
Two-parent families with children, three or more earners	33	33	-1.5	35	36	1.8
Married couples with other relatives	65	64	-2.6	58	61	4.9
Lone-parent families	42	41	-3.4	31	30	-1.6
Male lone-parent families	F	F	F	F	F	F
Female lone-parent families	37	35	-4.9	26	26	-2.2
Female lone-parent families, no earner	F	F	F	F	F	F
Female lone-parent families, one earner	14	13	-9.1	13	12	-4.2
Female lone-parent families, two or more earners	F	F	F	F	F	F
All other non-elderly families	31	31	-1.8	34	34	0.2
Unattached individuals	53	56	5.3	57	61	6.5
Elderly male	4	4	9.1	F	F	F
Elderly male, non-earner	4	4	8.9	F	F	F
Elderly male, earner	F	F	F	F	F	F
Elderly female	12	12	-3.9	12	12	2.9
Elderly female, non-earner	12	12	-3.9	11	12	3.1
Elderly female, earner	F	F	F	F	F	F
Non-elderly male	21	22	5.5	23	25	7.6
Non-elderly male, non-earner	F	F	F	F	F	F
Non-elderly male, earner	16	17	7.4	18	20	6.8
Non-elderly female	16	18	10.0	19	20	5.9
Non-elderly female, non-earner	F	F	F	6	6	-5.2
Non-elderly female, earner	10	12	17.3	13	15	10.0

F too unreliable to be published

1. Percentage changes were calculated using unrounded numbers.

Table 8.3 Comparison of revised and unrevised population estimates by family type for 2006 and 2009, Prince Edward Island

	2006			2009		
	Pre-revision	Post-revision	% change ¹	Pre-revision	Post-revision	% change ¹
	Number of persons ('000)			Number of persons ('000)		
All family units	136	136	-0.3	139	139	0.0
Economic families, 2 persons or more	120	118	-1.8	123	120	-2.1
Elderly families	14	14	-1.9	16	16	-1.1
Elderly Married couples	10	10	-2.6	13	13	-2.1
Other elderly families	F	F	F	F	F	F
Non-elderly families	106	104	-1.8	107	105	-2.3
Married couples	19	19	-4.7	21	19	-8.8
Married couples, no earner	F	F	F	F	F	F
Married couples, one earner	4	4	-3.6	4	3	-9.3
Married couples, two earners	15	14	-4.9	16	14	-8.4
Two-parent families with children	52	52	-0.2	50	51	2.2
Two-parent families with children, no earner	F	F	F	F	F	F
Two-parent families with children, one earner	F	F	F	F	F	F
Two-parent families with children, two earners	33	33	0.8	33	34	2.2
Two-parent families with children, three or more earners	15	15	-0.7	13	14	2.7
Married couples with other relatives	14	14	-4.0	16	16	-2.5
Lone-parent families	10	10	-1.6	10	9	-10.4
Male lone-parent families	F	F	F	F	F	F
Female lone-parent families	9	9	-1.4	9	8	-11.5
Female lone-parent families, no earner	F	F	F	F	F	F
Female lone-parent families, one earner	7	7	-1.5	6	5	-16.0
Female lone-parent families, two or more earners	F	F	F	F	F	F
All other non-elderly families	11	11	-1.9	10	9	-4.8
Unattached individuals	16	18	9.7	17	19	12.9
Elderly male	F	F	F	F	F	F
Elderly male, non-earner	F	F	F	F	F	F
Elderly male, earner	F	F	F	F	F	F
Elderly female	4	4	8.0	4	4	11.4
Elderly female, non-earner	4	4	8.0	3	4	10.7
Elderly female, earner	F	F	F	F	F	F
Non-elderly male	6	7	13.3	6	7	11.3
Non-elderly male, non-earner	F	F	F	F	F	F
Non-elderly male, earner	5	5	13.6	5	6	13.6
Non-elderly female	5	5	4.8	6	7	12.7
Non-elderly female, non-earner	F	F	F	F	F	F
Non-elderly female, earner	4	4	7.3	5	6	12.4

F too unreliable to be published

1. Percentage changes were calculated using unrounded numbers.

Table 8.4 Comparison of revised and unrevised population estimates by family type for 2006 and 2009, Nova Scotia

	2006			2009		
	Pre-revision	Post-revision	% change ¹	Pre-revision	Post-revision	% change ¹
	Number of persons ('000)			Number of persons ('000)		
All family units	906	909	0.3	912	914	0.2
Economic families, 2 persons or more	769	766	-0.4	764	765	0.2
Elderly families	98	100	1.7	107	109	1.6
Elderly Married couples	68	69	1.1	81	81	0.6
Other elderly families	30	31	3.1	26	28	4.5
Non-elderly families	671	666	-0.7	656	656	0.0
Married couples	140	137	-2.1	156	150	-4.1
Married couples, no earner	12	11	-1.8	F	F	F
Married couples, one earner	38	38	-1.5	37	36	-4.1
Married couples, two earners	90	88	-2.3	107	103	-4.3
Two-parent families with children	318	319	0.3	297	301	1.1
Two-parent families with children, no earner	F	F	F	F	F	F
Two-parent families with children, one earner	47	47	-0.1	67	67	0.5
Two-parent families with children, two earners	188	189	0.5	162	164	1.3
Two-parent families with children, three or more earners	77	77	0.3	67	68	1.4
Married couples with other relatives	98	96	-2.9	95	97	2.7
Lone-parent families	61	63	1.9	55	54	-1.4
Male lone-parent families	F	F	F	F	F	F
Female lone-parent families	53	54	2.1	49	48	-1.3
Female lone-parent families, no earner	F	F	F	F	F	F
Female lone-parent families, one earner	36	36	2.5	32	32	-0.7
Female lone-parent families, two or more earners	F	F	F	F	F	F
All other non-elderly families	54	52	-2.8	54	54	1.3
Unattached individuals	137	143	3.8	148	149	0.3
Elderly male	9	10	1.3	11	11	2.3
Elderly male, non-earner	9	9	2.2	9	10	2.3
Elderly male, earner	F	F	F	F	F	F
Elderly female	29	30	2.5	32	33	3.5
Elderly female, non-earner	28	28	2.4	30	31	3.5
Elderly female, earner	F	F	F	F	F	F
Non-elderly male	49	50	2.3	55	53	-3.8
Non-elderly male, non-earner	9	9	0.5	11	10	-4.9
Non-elderly male, earner	40	41	2.7	44	43	-3.5
Non-elderly female	50	53	6.5	51	52	2.1
Non-elderly female, non-earner	10	10	3.7	11	10	-4.5
Non-elderly female, earner	40	43	7.1	40	42	3.7

F too unreliable to be published

1. Percentage changes were calculated using unrounded numbers.

Table 8.5 Comparison of revised and unrevised population estimates by family type for 2006 and 2009, New Brunswick

	2006			2009		
	Pre-revision	Post-revision	% change ¹	Pre-revision	Post-revision	% change ¹
	Number of persons ('000)			Number of persons ('000)		
All family units	726	723	-0.4	733	727	-0.8
Economic families, 2 persons or more	633	621	-2.0	637	621	-2.5
Elderly families	78	77	-1.1	85	84	-1.2
Elderly Married couples	55	54	-0.7	65	64	-1.1
Other elderly families	24	23	-1.9	20	20	-1.4
Non-elderly families	555	543	-2.1	552	537	-2.7
Married couples	131	123	-6.4	133	120	-11.2
Married couples, no earner	14	13	-11.5	F	F	F
Married couples, one earner	32	30	-6.2	36	33	-10.4
Married couples, two earners	85	80	-5.6	91	82	-10.8
Two-parent families with children	257	256	-0.5	259	262	1.2
Two-parent families with children, no earner	F	F	F	F	F	F
Two-parent families with children, one earner	32	32	0.5	26	25	-2.0
Two-parent families with children, two earners	153	152	-0.5	159	163	2.0
Two-parent families with children, three or more earners	66	66	0.0	71	72	0.6
Married couples with other relatives	77	74	-3.4	75	75	-1.0
Lone-parent families	53	55	3.4	46	46	-0.3
Male lone-parent families	F	F	F	F	F	F
Female lone-parent families	47	49	4.2	42	42	-0.2
Female lone-parent families, no earner	F	F	F	F	F	F
Female lone-parent families, one earner	19	21	6.6	22	23	3.4
Female lone-parent families, two or more earners	F	F	F	F	F	F
All other non-elderly families	37	35	-4.6	39	35	-10.2
Unattached individuals	93	102	8.9	96	106	9.6
Elderly male	7	8	12.0	7	9	15.2
Elderly male, non-earner	5	6	10.8	6	7	15.1
Elderly male, earner	F	F	F	F	F	F
Elderly female	20	21	4.7	19	20	5.2
Elderly female, non-earner	18	19	4.1	17	18	5.0
Elderly female, earner	F	F	F	F	F	F
Non-elderly male	38	41	6.7	37	39	6.4
Non-elderly male, non-earner	8	8	7.1	10	9	-9.9
Non-elderly male, earner	31	33	6.6	27	30	11.2
Non-elderly female	28	32	13.7	33	38	13.9
Non-elderly female, non-earner	6	7	11.8	8	9	10.9
Non-elderly female, earner	21	25	14.3	25	29	14.8

F too unreliable to be published

1. Percentage changes were calculated using unrounded numbers.

Table 8.6 Comparison of revised and unrevised population estimates by family type for 2006 and 2009, Quebec

	2006			2009		
	Pre-revision	Post-revision	% change ¹	Pre-revision	Post-revision	% change ¹
	Number of persons ('000)			Number of persons ('000)		
All family units	7,503	7,489	-0.2	7,692	7,694	0.0
Economic families, 2 persons or more	6,195	6,239	0.7	6,293	6,391	1.5
Elderly families	682	688	0.9	799	815	2.0
Elderly Married couples	500	504	0.8	618	624	0.9
Other elderly families	181	184	1.3	181	191	5.3
Non-elderly families	5,513	5,551	0.7	5,494	5,577	1.5
Married couples	1,182	1,167	-1.2	1,144	1,111	-2.9
Married couples, no earner	98	98	-0.2	78	77	-1.6
Married couples, one earner	285	280	-1.6	279	273	-1.9
Married couples, two earners	799	789	-1.2	787	761	-3.4
Two-parent families with children	2,678	2,709	1.1	2,596	2,662	2.5
Two-parent families with children, no earner	F	F	F	F	F	F
Two-parent families with children, one earner	384	374	-2.6	298	303	1.4
Two-parent families with children, two earners	1,764	1,786	1.2	1,691	1,730	2.3
Two-parent families with children, three or more earners	492	509	3.4	545	566	3.8
Married couples with other relatives	647	656	1.4	655	713	8.1
Lone-parent families	498	497	-0.1	561	534	-5.1
Male lone-parent families	113	119	5.3	108	103	-5.1
Female lone-parent families	385	378	-1.8	453	431	-5.1
Female lone-parent families, no earner	60	56	-6.4	75	67	-11.1
Female lone-parent families, one earner	193	192	-0.4	255	241	-5.9
Female lone-parent families, two or more earners	132	130	-1.9	123	123	-0.1
All other non-elderly families	509	522	2.4	538	558	3.5
Unattached individuals	1,308	1,250	-4.7	1,399	1,303	-7.4
Elderly male	94	92	-2.0	102	97	-5.2
Elderly male, non-earner	75	75	-1.1	91	87	-5.0
Elderly male, earner	18	17	-5.7	10	10	-7.1
Elderly female	245	233	-5.2	269	252	-6.6
Elderly female, non-earner	221	209	-5.8	240	226	-6.5
Elderly female, earner	24	24	-0.2	28	26	-7.3
Non-elderly male	536	514	-4.3	621	581	-6.8
Non-elderly male, non-earner	88	86	-2.7	113	106	-6.6
Non-elderly male, earner	448	429	-4.6	508	476	-6.8
Non-elderly female	432	410	-5.4	408	372	-9.6
Non-elderly female, non-earner	108	102	-6.0	93	87	-7.0
Non-elderly female, earner	324	308	-5.2	315	285	-10.4

F too unreliable to be published

1. Percentage changes were calculated using unrounded numbers.

Table 8.7 Comparison of revised and unrevised population estimates by family type for 2006 and 2009, Ontario

	2006			2009		
	Pre-revision	Post-revision	% change ¹	Pre-revision	Post-revision	% change ¹
	Number of persons ('000)			Number of persons ('000)		
All family units	12,525	12,509	-0.1	12,920	12,911	-0.1
Economic families, 2 persons or more	10,950	10,917	-0.3	11,253	11,238	-0.1
Elderly families	1,206	1,201	-0.4	1,268	1,270	0.1
Elderly Married couples	812	813	0.2	873	874	0.0
Other elderly families	394	388	-1.7	395	396	0.3
Non-elderly families	9,744	9,716	-0.3	9,984	9,968	-0.2
Married couples	1,425	1,407	-1.3	1,545	1,510	-2.3
Married couples, no earner	113	110	-2.8	115	112	-2.7
Married couples, one earner	357	346	-3.2	387	379	-2.2
Married couples, two earners	955	951	-0.5	1,043	1,020	-2.3
Two-parent families with children	4,923	4,933	0.2	4,976	4,977	0.0
Two-parent families with children, no earner	F	F	F	F	F	F
Two-parent families with children, one earner	754	752	-0.3	847	848	0.2
Two-parent families with children, two earners	2,924	2,939	0.5	2,810	2,813	0.1
Two-parent families with children, three or more earners	1,190	1,189	-0.1	1,238	1,235	-0.2
Married couples with other relatives	1,587	1,568	-1.2	1,630	1,644	0.8
Lone-parent families	791	789	-0.2	717	718	0.1
Male lone-parent families	124	124	0.4	110	111	0.9
Female lone-parent families	667	665	-0.4	607	607	0.0
Female lone-parent families, no earner	131	129	-1.9	106	107	1.3
Female lone-parent families, one earner	348	347	-0.3	312	311	-0.3
Female lone-parent families, two or more earners	188	189	0.7	190	189	-0.3
All other non-elderly families	1,018	1,019	0.2	1,116	1,118	0.2
Unattached individuals	1,575	1,592	1.1	1,667	1,673	0.3
Elderly male	109	108	-0.3	141	138	-1.8
Elderly male, non-earner	83	84	0.1	114	112	-0.9
Elderly male, earner	25	25	-1.7	27	26	-5.2
Elderly female	281	288	2.6	339	345	1.9
Elderly female, non-earner	253	260	2.6	291	296	1.6
Elderly female, earner	28	29	2.8	48	49	3.2
Non-elderly male	684	695	1.5	681	686	0.7
Non-elderly male, non-earner	112	115	2.4	146	150	2.8
Non-elderly male, earner	572	580	1.4	535	536	0.2
Non-elderly female	502	500	-0.3	507	503	-0.6
Non-elderly female, non-earner	108	109	0.4	113	110	-2.8
Non-elderly female, earner	393	392	-0.4	393	393	0.0

F too unreliable to be published

1. Percentage changes were calculated using unrounded numbers.

Table 8.8 Comparison of revised and unrevised population estimates by family type for 2006 and 2009, Manitoba

	2006			2009		
	Pre-revision	Post-revision	% change ¹	Pre-revision	Post-revision	% change ¹
	Number of persons ('000)			Number of persons ('000)		
All family units	1,099	1,109	0.8	1,137	1,144	0.6
Economic families, 2 persons or more	935	944	1.0	963	972	1.0
Elderly families	100	105	3.9	101	103	2.4
Elderly Married couples	73	75	2.9	81	82	1.5
Other elderly families	27	29	6.3	20	21	5.6
Non-elderly families	834	839	0.6	862	869	0.9
Married couples	154	150	-2.7	162	156	-3.4
Married couples, no earner	F	F	F	F	F	F
Married couples, one earner	36	36	-0.2	31	31	-0.6
Married couples, two earners	107	102	-5.1	122	117	-4.4
Two-parent families with children	445	451	1.4	433	441	1.7
Two-parent families with children, no earner	F	F	F	F	F	F
Two-parent families with children, one earner	56	54	-3.7	55	56	2.1
Two-parent families with children, two earners	276	280	1.5	270	275	1.9
Two-parent families with children, three or more earners	110	114	3.5	103	104	0.8
Married couples with other relatives	101	104	2.7	111	116	4.9
Lone-parent families	67	67	-0.1	86	84	-2.8
Male lone-parent families	10	10	-7.5	F	F	F
Female lone-parent families	56	57	1.1	78	76	-2.5
Female lone-parent families, no earner	F	F	F	F	F	F
Female lone-parent families, one earner	38	39	0.9	40	38	-4.3
Female lone-parent families, two or more earners	F	F	F	F	F	F
All other non-elderly families	68	68	0.0	70	72	2.4
Unattached individuals	165	165	0.2	174	172	-1.6
Elderly male	15	15	-2.1	18	18	1.3
Elderly male, non-earner	12	12	-2.5	15	16	3.2
Elderly male, earner	F	F	F	F	F	F
Elderly female	36	36	0.9	35	36	2.1
Elderly female, non-earner	32	33	1.5	32	33	2.3
Elderly female, earner	F	F	F	F	F	F
Non-elderly male	67	67	0.9	76	75	-2.0
Non-elderly male, non-earner	8	8	5.9	F	F	F
Non-elderly male, earner	59	59	0.2	68	66	-2.5
Non-elderly female	47	46	-0.8	45	43	-5.5
Non-elderly female, non-earner	8	8	3.7	F	F	F
Non-elderly female, earner	39	38	-1.7	36	34	-6.1

F too unreliable to be published

1. Percentage changes were calculated using unrounded numbers.

Table 8.9 Comparison of revised and unrevised population estimates by family type for 2006 and 2009, Saskatchewan

	2006			2009		
	Pre-revision	Post-revision	% change ¹	Pre-revision	Post-revision	% change ¹
	Number of persons ('000)			Number of persons ('000)		
All family units	916	923	0.8	962	962	0.1
Economic families, 2 persons or more	776	778	0.2	811	807	-0.5
Elderly families	92	93	1.0	95	95	0.3
Elderly Married couples	71	72	1.9	80	80	0.3
Other elderly families	21	21	-2.4	15	15	-0.2
Non-elderly families	684	685	0.1	716	712	-0.6
Married couples	145	145	-0.3	154	150	-2.5
Married couples, no earner	F	F	F	F	F	F
Married couples, one earner	28	29	3.6	24	23	-0.9
Married couples, two earners	111	110	-1.3	124	120	-2.8
Two-parent families with children	344	346	0.8	361	361	0.0
Two-parent families with children, no earner	F	F	F	F	F	F
Two-parent families with children, one earner	39	39	1.5	34	34	0.2
Two-parent families with children, two earners	192	193	0.8	233	234	0.1
Two-parent families with children, three or more earners	105	105	-0.1	88	87	-0.2
Married couples with other relatives	73	72	-1.2	89	90	1.1
Lone-parent families	77	77	-0.5	68	67	-0.6
Male lone-parent families	12	12	-3.9	F	F	F
Female lone-parent families	65	65	0.1	57	57	-0.5
Female lone-parent families, no earner	F	F	F	F	F	F
Female lone-parent families, one earner	32	32	-0.6	32	32	-1.1
Female lone-parent families, two or more earners	17	16	-3.2	F	F	F
All other non-elderly families	46	45	-1.6	44	43	-2.4
Unattached individuals	140	145	4.0	151	155	2.8
Elderly male	13	13	6.6	13	14	5.8
Elderly male, non-earner	9	10	8.3	10	10	5.8
Elderly male, earner	F	F	F	F	F	F
Elderly female	35	36	3.2	34	34	1.0
Elderly female, non-earner	31	32	3.3	29	29	1.0
Elderly female, earner	4	4	2.5	5	5	1.3
Non-elderly male	53	55	2.4	62	64	3.2
Non-elderly male, non-earner	7	7	5.0	F	F	F
Non-elderly male, earner	47	48	2.1	56	58	3.3
Non-elderly female	38	41	6.0	42	43	2.9
Non-elderly female, non-earner	5	6	7.6	F	F	F
Non-elderly female, earner	33	35	5.8	36	37	3.5

F too unreliable to be published

1. Percentage changes were calculated using unrounded numbers.

Table 8.10 Comparison of revised and unrevised population estimates by family type for 2006 and 2009, Alberta

	2006			2009		
	Pre-revision	Post-revision	% change ¹	Pre-revision	Post-revision	% change ¹
	Number of persons ('000)			Number of persons ('000)		
All family units	3,325	3,379	1.6	3,552	3,595	1.2
Economic families, 2 persons or more	2,820	2,877	2.0	2,999	3,057	1.9
Elderly families	243	247	1.6	272	277	1.6
Elderly Married couples	196	199	1.4	213	216	1.2
Other elderly families	47	48	2.4	59	60	3.1
Non-elderly families	2,577	2,630	2.0	2,727	2,781	1.9
Married couples	460	466	1.2	542	554	2.1
Married couples, no earner	F	F	F	F	F	F
Married couples, one earner	79	84	6.3	97	101	4.3
Married couples, two earners	368	367	-0.3	424	430	1.3
Two-parent families with children	1,383	1,407	1.7	1,418	1,438	1.4
Two-parent families with children, no earner	F	F	F	F	F	F
Two-parent families with children, one earner	206	216	4.8	249	257	3.2
Two-parent families with children, two earners	786	801	2.0	800	809	1.1
Two-parent families with children, three or more earners	377	375	-0.4	334	335	0.3
Married couples with other relatives	305	318	4.1	335	351	4.6
Lone-parent families	199	200	0.5	182	180	-1.1
Male lone-parent families	39	40	1.5	39	39	-0.1
Female lone-parent families	159	160	0.3	143	141	-1.4
Female lone-parent families, no earner	F	F	F	F	F	F
Female lone-parent families, one earner	86	85	-0.5	83	81	-2.5
Female lone-parent families, two or more earners	56	54	-2.9	37	36	-1.5
All other non-elderly families	231	240	3.8	251	258	2.9
Unattached individuals	505	501	-0.6	553	538	-2.7
Elderly male	20	20	-1.6	26	26	-2.6
Elderly male, non-earner	13	14	3.4	21	20	-3.7
Elderly male, earner	.	.	F	5	6	1.5
Elderly female	65	67	2.5	64	65	2.4
Elderly female, non-earner	56	57	3.4	54	56	4.0
Elderly female, earner	10	10	-2.8	.	.	F
Non-elderly male	261	265	1.6	291	285	-2.4
Non-elderly male, non-earner	.	.	F	15	16	7.6
Non-elderly male, earner	244	248	1.6	277	268	-3.0
Non-elderly female	158	149	-5.9	171	162	-5.4
Non-elderly female, non-earner	16	17	8.8	18	18	2.4
Non-elderly female, earner	142	132	-7.8	154	144	-6.4

F too unreliable to be published

1. Percentage changes were calculated using unrounded numbers.

Table 8.11 Comparison of revised and unrevised population estimates by family type for 2006 and 2009, British Columbia

	2006			2009		
	Pre-revision	Post-revision	% change ¹	Pre-revision	Post-revision	% change ¹
	Number of persons ('000)			Number of persons ('000)		
All family units	4,212	4,156	-1.3	4,417	4,373	-1.0
Economic families, 2 persons or more	3,534	3,488	-1.3	3,701	3,660	-1.1
Elderly families	429	431	0.4	474	479	1.0
Elderly Married couples	305	311	1.9	353	360	2.0
Other elderly families	124	119	-3.8	122	120	-1.8
Non-elderly families	3,105	3,058	-1.6	3,227	3,181	-1.5
Married couples	599	591	-1.3	643	626	-2.7
Married couples, no earner	F	F	F	F	F	F
Married couples, one earner	165	162	-1.6	130	126	-3.6
Married couples, two earners	400	397	-0.9	475	466	-2.1
Two-parent families with children	1,471	1,466	-0.3	1,572	1,557	-0.9
Two-parent families with children, no earner	F	F	F	F	F	F
Two-parent families with children, one earner	217	212	-2.7	253	251	-1.0
Two-parent families with children, two earners	829	833	0.5	823	819	-0.5
Two-parent families with children, three or more earners	376	380	0.9	460	454	-1.4
Married couples with other relatives	489	470	-4.0	400	385	-3.9
Lone-parent families	251	255	1.3	211	215	1.6
Male lone-parent families	37	36	-2.7	F	F	F
Female lone-parent families	214	219	2.0	182	185	1.7
Female lone-parent families, no earner	F	F	F	F	F	F
Female lone-parent families, one earner	118	124	4.5	108	111	3.2
Female lone-parent families, two or more earners	74	74	1.0	50	50	0.7
All other non-elderly families	296	276	-7.2	402	398	-0.9
Unattached individuals	678	668	-1.5	716	713	-0.4
Elderly male	49	46	-7.5	57	54	-5.3
Elderly male, non-earner	40	36	-8.6	42	40	-5.5
Elderly male, earner	F	F	F	15	14	-4.8
Elderly female	107	108	0.8	116	115	-1.3
Elderly female, non-earner	95	95	0.3	94	93	-1.0
Elderly female, earner	12	12	5.0	22	22	-2.5
Non-elderly male	313	308	-1.5	318	314	-1.1
Non-elderly male, non-earner	41	41	-0.2	59	54	-8.8
Non-elderly male, earner	271	267	-1.7	259	260	0.5
Non-elderly female	210	207	-1.3	225	230	2.2
Non-elderly female, non-earner	40	35	-14.9	37	34	-8.9
Non-elderly female, earner	170	172	1.4	188	196	4.1

F too unreliable to be published

1. Percentage changes were calculated using unrounded numbers.

Table 8.12 Comparison of revised and unrevised income estimates for 2006 and 2009, Canada

	2006			2009		
	Pre-revision (‘000)	Post-revision (‘000)	% change ¹	Pre-revision (‘000)	Post-revision (‘000)	% change ¹
Earnings						
Number of earners	18,863	18,837	-0.1	19,477	19,451	-0.1
Number of full-time full-year earners	9,072	9,041	-0.3	8,916	8,889	-0.3
	(2009 constant dollars)		% change ¹	(2009 constant dollars)		% change ¹
Median earnings, all earners	28,200	28,200	0.1	28,700	28,700	0.1
Median government transfers						
Economic families	4,800	4,800	0.1	6,200	6,200	0.7
Unattached individuals	700	700	0.0	1,700	1,600	-3.8
Median income tax						
Economic families	9,400	9,400	0.3	7,900	7,900	1.1
Unattached individuals	2,200	2,200	-2.0	2,300	2,200	-1.6
Median after-tax income						
Economic families	61,100	61,200	0.1	63,800	64,200	0.6
Unattached individuals	23,900	23,700	-0.7	25,500	25,400	-0.3
	Pre-revision	Post-revision	% point difference ¹	Pre-revision	Post-revision	% point difference ¹
	Percentage			Percentage		
Persons in low income						
Low Income Cut-offs after tax	10.5	10.3	-0.2	9.6	9.5	-0.1
Low Income Measure after tax	12.6	12.4	-0.2	13.3	13.1	-0.1
Market Basket Measure	10.0	9.9	-0.1	10.6	10.5	-0.2
Income share by adjusted after-tax income quintile						
Lowest quintile	6.8	6.8	0.1	6.7	6.7	0.1
Second quintile	12.4	12.4	0.0	12.3	12.4	0.1
Third quintile	17.3	17.3	0.0	17.4	17.5	0.0
Fourth quintile	23.4	23.4	0.0	23.5	23.5	0.0
Highest quintile	40.2	40.1	-0.1	40.1	39.9	-0.2

1. Changes were calculated using unrounded numbers.

Table 8.13 Comparison of revised and unrevised income estimates for 2006 and 2009, Newfoundland and Labrador

	2006			2009		
	Pre-revision (‘000)	Post-revision (‘000)	% change ¹	Pre-revision (‘000)	Post-revision (‘000)	% change ¹
Earnings						
Number of earners	281	281	0.0	291	290	-0.3
Number of full-time full-year earners	124	124	-0.7	132	129	-1.9
	(2009 constant dollars)		% change ¹	(2009 constant dollars)		% change ¹
Median earnings, all earners	18,800	18,900	0.1	22,300	22,500	0.7
Median government transfers						
Economic families	12,900	12,900	-0.1	14,000	14,000	0.5
Unattached individuals	6,700	5,500	-21.5	6,500	5,900	-11.4
Median income tax						
Economic families	6,600	6,700	1.0	5,900	6,000	1.0
Unattached individuals	200	100	-80.7	700	700	0.0
Median after-tax income						
Economic families	48,000	48,400	0.7	53,900	54,500	1.1
Unattached individuals	18,200	18,200	0.0	19,800	20,000	0.9
	Pre-revision	Post-revision	% point difference ¹	Pre-revision	Post-revision	% point difference ¹
	Percentage			Percentage		
Persons in low income						
Low Income Cut-offs after tax	7.6	7.7	0.0	7.0	7.1	0.1
Low Income Measure after tax	18.3	18.0	-0.3	15.7	15.1	-0.6
Market Basket Measure	14.6	14.3	-0.3	13.2	13.1	-0.2
Income share by adjusted after-tax income quintile						
Lowest quintile	7.5	7.5	0.0	7.4	7.5	0.1
Second quintile	12.6	12.6	0.0	12.5	12.7	0.2
Third quintile	17.4	17.4	0.0	17.6	17.9	0.2
Fourth quintile	23.8	23.7	-0.1	24.2	24.1	-0.2
Highest quintile	38.7	38.7	0.0	38.3	37.9	-0.4

1. Changes were calculated using unrounded numbers.

Table 8.14 Comparison of revised and unrevised income estimates for 2006 and 2009, Prince Edward Island

	2006			2009		
	Pre-revision (^{'000})	Post-revision (^{'000})	% change ¹	Pre-revision (^{'000})	Post-revision (^{'000})	% change ¹
Earnings						
Number of earners	84	83	-0.3	87	87	-0.3
Number of full-time full-year earners	38	38	-0.5	39	38	-1.1
	(2009 constant dollars)		% change ¹	(2009 constant dollars)		% change ¹
Median earnings, all earners	20,600	20,800	0.8	21,200	21,200	0.1
Median government transfers						
Economic families	9,900	10,000	1.0	11,300	11,400	0.6
Unattached individuals	6,500	6,400	-1.4	7,300	6,500	-13.4
Median income tax						
Economic families	7,500	7,500	0.6	6,300	6,400	1.2
Unattached individuals	1,800	1,800	-0.9	2,500	2,500	0.0
Median after-tax income						
Economic families	52,400	52,900	0.9	55,800	56,400	1.1
Unattached individuals	19,900	19,900	0.0	24,300	23,500	-3.3
	Pre-revision Post-revision		% point difference ¹	Pre-revision Post-revision		% point difference ¹
	Percentage			Percentage		
Persons in low income						
Low Income Cut-offs after tax	5.4	5.5	0.1	4.8	4.9	0.1
Low Income Measure after tax	11.5	11.8	0.3	12.0	11.9	-0.1
Market Basket Measure	11.6	11.6	-0.1	8.8	9.2	0.4
Income share by adjusted after-tax income quintile						
Lowest quintile	8.6	8.7	0.2	8.7	8.8	0.1
Second quintile	13.8	13.8	0.1	13.7	13.8	0.1
Third quintile	17.8	17.8	0.0	17.9	17.9	0.1
Fourth quintile	23.5	23.4	0.0	23.3	23.3	0.0
Highest quintile	36.4	36.2	-0.2	36.3	36.1	-0.2

1. Changes were calculated using unrounded numbers.

Table 8.15 Comparison of revised and unrevised income estimates for 2006 and 2009, Nova Scotia

	2006			2009		
	Pre-revision	Post-revision	% change ¹	Pre-revision	Post-revision	% change ¹
	('000)			('000)		
Earnings						
Number of earners	528	528	-0.1	527	528	0.0
Number of full-time full-year earners	275	275	-0.3	252	251	-0.4
	(2009 constant dollars)		% change ¹	(2009 constant dollars)		% change ¹
Median earnings, all earners	23,600	23,600	0.0	25,300	25,300	-0.3
Median government transfers						
Economic families	5,800	5,800	0.4	6,900	7,000	0.7
Unattached individuals	1,800	1,500	-24.3	4,100	3,800	-7.7
Median income tax						
Economic families	8,600	8,600	0.2	6,700	6,800	0.5
Unattached individuals	1,300	1,200	-6.1	1,300	1,100	-16.2
Median after-tax income						
Economic families	54,100	54,300	0.3	55,100	55,300	0.5
Unattached individuals	20,900	20,300	-2.6	20,900	20,900	-0.2
	Pre-revision	Post-revision	% point difference ¹	Pre-revision	Post-revision	% point difference ¹
	Percentage			Percentage		
Persons in low income						
Low Income Cut-offs after tax	8.4	8.6	0.2	8.0	8.0	-0.1
Low Income Measure after tax	14.4	14.4	0.0	16.9	16.8	-0.1
Market Basket Measure	11.0	11.2	0.2	13.1	13.0	-0.1
Income share by adjusted after-tax income quintile						
Lowest quintile	7.2	7.1	-0.1	7.1	7.2	0.2
Second quintile	13.0	13.0	0.0	12.6	12.7	0.0
Third quintile	18.1	18.1	0.0	17.5	17.5	0.0
Fourth quintile	23.8	23.8	0.0	23.9	23.9	0.0
Highest quintile	37.9	37.9	0.1	38.8	38.7	-0.2

1. Changes were calculated using unrounded numbers.

Table 8.16 Comparison of revised and unrevised income estimates for 2006 and 2009, New Brunswick

	2006			2009		
	Pre-revision	Post-revision	% change ¹	Pre-revision	Post-revision	% change ¹
	('000)			('000)		
Earnings						
Number of earners	423	420	-0.5	438	435	-0.7
Number of full-time full-year earners	209	207	-1.0	206	204	-0.8
	(2009 constant dollars)		% change ¹	(2009 constant dollars)		% change ¹
Median earnings, all earners	22,100	22,200	0.3	23,800	24,000	0.8
Median government transfers						
Economic families	7,800	7,800	0.3	8,500	8,700	1.7
Unattached individuals	3,900	3,600	-8.4	6,300	5,500	-14.2
Median income tax						
Economic families	6,500	6,600	1.8	6,300	6,500	3.6
Unattached individuals	1,000	1,000	0.0	1,200	1,400	12.3
Median after-tax income						
Economic families	49,900	50,200	0.5	55,000	56,000	1.9
Unattached individuals	20,000	19,600	-1.8	21,800	22,100	1.0
	Pre-revision	Post-revision	% point difference ¹	Pre-revision	Post-revision	% point difference ¹
	Percentage			Percentage		
Persons in low income						
Low Income Cut-offs after tax	9.3	9.4	0.1	6.7	6.9	0.2
Low Income Measure after tax	18.4	17.9	-0.4	14.6	14.0	-0.6
Market Basket Measure	14.0	14.0	0.1	11.2	11.4	0.1
Income share by adjusted after-tax income quintile						
Lowest quintile	7.3	7.5	0.1	7.4	7.7	0.3
Second quintile	12.9	12.9	0.0	13.1	13.1	0.0
Third quintile	17.8	17.8	0.0	17.7	17.6	-0.1
Fourth quintile	23.8	23.9	0.0	23.9	23.9	0.0
Highest quintile	38.0	37.9	-0.2	37.9	37.7	-0.2

1. Changes were calculated using unrounded numbers.

Table 8.17 Comparison of revised and unrevised income estimates for 2006 and 2009, Quebec

	2006			2009		
	Pre-revision (^{'000})	Post-revision (^{'000})	% change ¹	Pre-revision (^{'000})	Post-revision (^{'000})	% change ¹
Earnings						
Number of earners	4,360	4,353	-0.2	4,454	4,453	0.0
Number of full-time full-year earners	2,148	2,139	-0.4	2,178	2,172	-0.3
	(2009 constant dollars)		% change ¹	(2009 constant dollars)		% change ¹
Median earnings, all earners	25,900	25,900	0.1	27,000	27,000	0.0
Median government transfers						
Economic families	7,000	7,000	0.0	8,400	8,500	0.6
Unattached individuals	2,600	2,500	0.0	2,900	3,000	3.1
Median income tax						
Economic families	8,600	8,600	0.3	7,200	7,300	1.4
Unattached individuals	1,900	1,900	-0.7	1,800	1,800	-3.0
Median after-tax income						
Economic families	53,900	54,300	0.6	57,300	58,000	1.1
Unattached individuals	21,800	21,700	-0.2	23,500	23,500	-0.1
	Pre-revision	Post-revision	% point difference ¹	Pre-revision	Post-revision	% point difference ¹
	Percentage			Percentage		
Persons in low income						
Low Income Cut-offs after tax	11.5	11.1	-0.4	9.4	8.9	-0.4
Low Income Measure after tax	13.9	13.4	-0.4	13.7	13.4	-0.4
Market Basket Measure	9.0	8.8	-0.3	9.5	9.0	-0.4
Income share by adjusted after-tax income quintile						
Lowest quintile	7.5	7.6	0.1	7.4	7.5	0.1
Second quintile	12.9	13.0	0.1	12.9	13.0	0.1
Third quintile	17.5	17.6	0.0	17.8	17.8	0.0
Fourth quintile	23.2	23.2	0.0	23.4	23.4	0.0
Highest quintile	38.8	38.6	-0.2	38.5	38.2	-0.3

1. Changes were calculated using unrounded numbers.

Table 8.18 Comparison of revised and unrevised income estimates for 2006 and 2009, Ontario

	2006			2009		
	Pre-revision (^{'000})	Post-revision (^{'000})	% change ¹	Pre-revision (^{'000})	Post-revision (^{'000})	% change ¹
Earnings						
Number of earners	7,274	7,262	-0.2	7,473	7,459	-0.2
Number of full-time full-year earners	3,503	3,494	-0.3	3,330	3,317	-0.4
	(2009 constant dollars)		% change ¹	(2009 constant dollars)		% change ¹
Median earnings, all earners	30,500	30,400	-0.3	29,600	29,600	0.1
Median government transfers						
Economic families	4,200	4,200	0.0	5,600	5,600	0.1
Unattached individuals	500	500	1.0	3,100	3,100	0.0
Median income tax						
Economic families	10,200	10,200	0.4	8,100	8,100	0.6
Unattached individuals	2,700	2,500	-5.0	2,500	2,500	-1.2
Median after-tax income						
Economic families	65,500	65,500	0.0	66,200	66,400	0.3
Unattached individuals	26,200	25,900	-1.1	26,900	26,700	-0.8
	Pre-revision	Post-revision	% point difference ¹	Pre-revision	Post-revision	% point difference ¹
	Percentage			Percentage		
Persons in low income						
Low Income Cut-offs after tax	10.3	10.3	-0.1	10.1	10.1	0.0
Low Income Measure after tax	11.5	11.3	-0.2	13.1	13.0	-0.1
Market Basket Measure	10.0	9.9	0.0	10.5	10.5	0.0
Income share by adjusted after-tax income quintile						
Lowest quintile	6.6	6.7	0.1	6.5	6.5	0.1
Second quintile	12.4	12.5	0.0	12.3	12.3	0.1
Third quintile	17.5	17.4	0.0	17.4	17.4	0.0
Fourth quintile	23.4	23.4	0.0	23.4	23.4	0.0
Highest quintile	40.1	40.0	0.0	40.4	40.3	-0.1

1. Changes were calculated using unrounded numbers.

Table 8.19 Comparison of revised and unrevised income estimates for 2006 and 2009, Manitoba

	2006			2009		
	Pre-revision (‘000)	Post-revision (‘000)	% change ¹	Pre-revision (‘000)	Post-revision (‘000)	% change ¹
Earnings						
Number of earners	655	655	0.1	683	684	0.0
Number of full-time full-year earners	316	314	-0.5	325	323	-0.8
	(2009 constant dollars)		% change ¹	(2009 constant dollars)		% change ¹
Median earnings, all earners	25,900	25,900	-0.1	29,200	29,200	0.0
Median government transfers						
Economic families	3,700	3,800	2.9	4,900	5,000	1.6
Unattached individuals	900	900	1.7	1,200	1,300	6.8
Median income tax						
Economic families	9,000	9,000	0.0	9,000	9,000	0.1
Unattached individuals	2,400	2,500	1.7	3,000	2,900	-6.4
Median after-tax income						
Economic families	56,500	56,500	0.1	62,400	62,800	0.8
Unattached individuals	22,100	22,100	-0.1	26,100	26,100	-0.2
	Pre-revision	Post-revision	% point difference ¹	Pre-revision	Post-revision	% point difference ¹
	Percentage			Percentage		
Persons in low income						
Low Income Cut-offs	11.3	11.2	-0.1	8.9	8.8	-0.1
Low Income Measure after tax	14.5	14.1	-0.3	15.3	15.0	-0.3
Market Basket Measure after tax	9.1	9.1	0.0	9.7	9.6	-0.1
Income share by adjusted after-tax income quintile						
Lowest quintile	7.2	7.3	0.1	7.3	7.4	0.1
Second quintile	12.9	12.9	0.0	13.1	13.2	0.1
Third quintile	17.7	17.7	0.0	18.1	18.1	0.0
Fourth quintile	23.3	23.2	0.0	23.7	23.7	0.0
Highest quintile	38.9	38.9	0.0	37.8	37.6	-0.2

1. Changes were calculated using unrounded numbers.

Table 8.20 Comparison of revised and unrevised income estimates for 2006 and 2009, Saskatchewan

	2006			2009		
	Pre-revision (‘000)	Post-revision (‘000)	% change ¹	Pre-revision (‘000)	Post-revision (‘000)	% change ¹
Earnings						
Number of earners	554	556	0.2	596	596	0.0
Number of full-time full-year earners	258	259	0.3	278	278	0.0
	(2009 constant dollars)		% change ¹	(2009 constant dollars)		% change ¹
Median earnings, all earners	25,700	25,700	-0.2	29,900	29,900	0.0
Median government transfers						
Economic families	3,300	3,400	2.7	3,900	3,900	1.6
Unattached individuals	800	800	6.1	2,300	2,100	-8.1
Median income tax						
Economic families	9,300	9,100	-1.9	9,100	9,100	0.6
Unattached individuals	1,300	1,300	0.0	1,700	1,700	0.0
Median after-tax income						
Economic families	58,600	58,500	-0.1	69,900	70,100	0.3
Unattached individuals	21,000	21,000	0.0	25,100	25,100	0.0
	Pre-revision	Post-revision	% point difference ¹	Pre-revision	Post-revision	% point difference ¹
	Percentage			Percentage		
Persons in low income						
Low Income Cut-offs after tax	10.5	10.7	0.2	7.0	7.1	0.1
Low Income Measure after tax	16.5	16.6	0.2	11.7	11.7	0.0
Market Basket Measure	12.7	12.9	0.1	9.5	9.6	0.1
Income share by adjusted after-tax income quintile						
Lowest quintile	6.5	6.5	0.0	6.9	6.9	0.0
Second quintile	12.3	12.4	0.0	12.6	12.6	0.0
Third quintile	17.4	17.4	0.0	17.6	17.7	0.0
Fourth quintile	24.2	24.2	0.0	23.9	23.9	0.0
Highest quintile	39.6	39.5	-0.1	38.9	38.9	0.0

1. Changes were calculated using unrounded numbers.

Table 8.21 Comparison of revised and unrevised income estimates for 2006 and 2009, Alberta

	2006			2009		
	Pre-revision (^{'000})	Post-revision (^{'000})	% change ¹	Pre-revision (^{'000})	Post-revision (^{'000})	% change ¹
Earnings						
Number of earners	2,171	2,187	0.7	2,276	2,290	0.6
Number of full-time full-year earners	1,019	1,027	0.8	1,053	1,063	0.9
	(2009 constant dollars)		% change ¹	(2009 constant dollars)		% change ¹
Median earnings, all earners	33,100	33,000	-0.4	35,700	35,600	-0.2
Median government transfers						
Economic families	3,200	3,200	0.9	2,700	2,700	0.4
Unattached individuals	700	700	1.0	400	400	0.0
Median income tax						
Economic families	12,000	11,700	-2.4	11,300	11,200	-0.8
Unattached individuals	3,100	2,900	-5.1	3,900	3,700	-4.9
Median after-tax income						
Economic families	73,900	73,600	-0.4	77,800	77,700	-0.1
Unattached individuals	29,300	29,000	-1.0	32,200	31,700	-1.6
	Pre-revision	Post-revision	% point difference ¹	Pre-revision	Post-revision	% point difference ¹
	Percentage			Percentage		
Persons in low income						
Low Income Cut-offs after tax	7.0	7.1	0.1	7.7	7.7	0.0
Low Income Measure after tax	7.3	7.6	0.3	9.1	9.3	0.1
Market Basket Measure	6.8	6.9	0.1	9.9	10.1	0.3
Income share by adjusted after-tax income quintile						
Lowest quintile	6.9	6.8	-0.1	6.6	6.5	-0.1
Second quintile	12.5	12.5	0.0	12.7	12.6	-0.1
Third quintile	17.4	17.4	0.0	17.7	17.7	0.0
Fourth quintile	23.4	23.4	0.0	23.5	23.6	0.1
Highest quintile	39.8	39.9	0.1	39.4	39.6	0.2

1. Changes were calculated using unrounded numbers.

Table 8.22 Comparison of revised and unrevised income estimates for 2006 and 2009, British Columbia

	2006			2009		
	Pre-revision	Post-revision	% change ¹	Pre-revision	Post-revision	% change ¹
	('000)			('000)		
Earnings						
Number of earners	2,533	2,512	-0.9	2,651	2,630	-0.8
Number of full-time full-year earners	1,180	1,165	-1.3	1,124	1,114	-0.9
	(2009 constant dollars)		% change ¹	(2009 constant dollars)		% change ¹
Median earnings, all earners	26,400	26,500	0.6	26,700	27,000	1.1
Median government transfers						
Economic families	3,500	3,500	0.7	4,600	4,700	1.4
Unattached individuals	400	400	0.0	800	700	-15.3
Median income tax						
Economic families	8,400	8,500	1.2	6,600	6,600	0.0
Unattached individuals	1,500	1,500	1.7	1,600	1,600	0.4
Median after-tax income						
Economic families	63,200	63,600	0.6	67,200	67,200	0.0
Unattached individuals	24,200	24,200	0.0	26,200	26,300	0.3
	Pre-revision	Post-revision	% point difference ¹	Pre-revision	Post-revision	% point difference ¹
	Percentage			Percentage		
Persons in low income						
Low Income Cut-offs after tax	13.0	12.6	-0.4	12.0	12.0	0.0
Low Income Measure after tax	14.5	14.2	-0.3	15.0	14.6	-0.4
Market Basket Measure	12.3	12.2	-0.2	13.0	13.0	0.0
Income share by adjusted after-tax income quintile						
Lowest quintile	6.2	6.4	0.1	6.1	6.2	0.1
Second quintile	12.2	12.3	0.1	12.2	12.3	0.1
Third quintile	17.5	17.5	0.0	17.8	17.9	0.1
Fourth quintile	23.6	23.5	-0.1	23.9	23.8	-0.1
Highest quintile	40.5	40.3	-0.2	40.0	39.7	-0.3

1. Changes were calculated using unrounded numbers.

9.0 Related products

- 75F0011X** **Survey of Labour and Income Dynamics (SLID) - A Survey Overview**
<http://www.statcan.gc.ca/pub/75f0011x/75f0011x2011001-eng.htm>
- 75F0002M** **Data Quality for the 2009 Survey of Labour and Income Dynamics (SLID)**
http://www23.statcan.gc.ca:81/imdb/p2SV.pl?Function=getDocumentationLink&Item_Id=112820&qItem_Id=103220&TItem_Id=1370&lang=en&db=imdb&adm=8&dis=2
- 75-202-X** **Income in Canada 2010**
<http://www5.statcan.gc.ca/bsolc/olc-cel/olc-cel?catno=75-202-x&lang=eng>
- 75-202-X** **Income in Canada 2009**
<http://www.statcan.gc.ca/pub/75-202-x/75-202-x2009000-eng.htm>
- 75-202-X** **Income in Canada 2008**
<http://www.statcan.gc.ca/pub/75-202-x/75-202-x2008000-eng.htm>
- 75-202-X** **Income in Canada 2007**
<http://www.statcan.gc.ca/pub/75-202-x/75-202-x2007000-eng.htm>
- 75F0002M** **Income Research Paper Series**
<http://www5.statcan.gc.ca/bsolc/olc-cel/olc-cel?catno=75f0002m&lang=eng>