

Catalogue no. 71-543-G
ISSN 1704-8842

Guide to the Labour Force Survey 2018

Release date: September 7, 2018



Statistics
Canada

Statistique
Canada

Canada

How to obtain more information

For information about this product or the wide range of services and data available from Statistics Canada, visit our website, www.statcan.gc.ca.

You can also contact us by

email at STATCAN.infostats-infostats.STATCAN@canada.ca

telephone, from Monday to Friday, 8:30 a.m. to 4:30 p.m., at the following numbers:

- Statistical Information Service 1-800-263-1136
- National telecommunications device for the hearing impaired 1-800-363-7629
- Fax line 1-514-283-9350

Depository Services Program

- Inquiries line 1-800-635-7943
- Fax line 1-800-565-7757

Standards of service to the public

Statistics Canada is committed to serving its clients in a prompt, reliable and courteous manner. To this end, Statistics Canada has developed standards of service that its employees observe. To obtain a copy of these service standards, please contact Statistics Canada toll-free at 1-800-263-1136. The service standards are also published on www.statcan.gc.ca under “Contact us” > “Standards of service to the public.”

Note of appreciation

Canada owes the success of its statistical system to a long-standing partnership between Statistics Canada, the citizens of Canada, its businesses, governments and other institutions. Accurate and timely statistical information could not be produced without their continued co-operation and goodwill.

Published by authority of the Minister responsible for Statistics Canada

© Her Majesty the Queen in Right of Canada as represented by the Minister of Industry, 2018

All rights reserved. Use of this publication is governed by the Statistics Canada [Open Licence Agreement](#).

An HTML version is also available.

Cette publication est aussi disponible en français.

Table of contents

Section 1: Background and objectives.....	5
Introduction	5
Background and objectives.....	5
Section 2: Determining labour force status	6
Labour force classification	7
Section 3: Dictionary of concepts and definitions	9
Section 4: Survey methodology	18
Population coverage.....	18
Sample design and sample size for the provinces.....	18
Selection of dwellings for the provinces.....	20
Selection of household members for the provinces.....	20
Sample rotation for the provinces	20
Survey coverage and collection for the territories.....	20
Sample design and allocation for the territories.....	21
Why the territories are not included in the national total.....	22
Exclusions from the Labour Force Survey coverage for the provinces and territories	22
Section 5: Data collection.....	22
Interviewing for the LFS.....	22
Supervision and quality control	23
Non-response to the LFS	23
Section 6: Data processing.....	23
Data capture.....	23
Editing and imputation	23
Industry and occupation coding.....	24
Creation of derived variables.....	24
Weighting.....	24
Seasonal adjustment.....	25
Procedures used in seasonal adjustment	25
Adjustment for reference week effect.....	25
Adjustment for holiday effects on actual hours worked	25
Regular annual revisions for seasonal adjustment.....	26
Other revisions and redesigns.....	26

Section 7: Data quality	27
Non-sampling errors.....	27
Sampling errors	27
Confidentiality release criteria	32
Section 8: Comparing the Survey of Employment, Payrolls and Hours and the Labour Force Survey	33
Comparing employment trends from the two surveys	34
Sampling error in the LFS.....	35
Worker classification in the LFS	35
‘Off the books’ employment.....	35
Estimates by province	35
Payroll estimates and detailed industry data	35
Release schedule differences.....	36
Revision schedule	36
Section 9: Products and services	36
Appendices	39
Appendix A – Sub-provincial geography descriptions	39
Appendix B – Sample size by sub-provincial region, based on the 2015 sample design	45
Appendix C – Labour Force Survey questionnaire.....	50
Related products	74

Guide to the Labour Force Survey 2018

Section 1: Background and objectives

Introduction

The Labour Force Survey (LFS) is a household survey carried out monthly by Statistics Canada. Since its inception in 1945, the objectives of the LFS have been to divide the working-age population into three mutually exclusive categories in relation to the labour market — employed, unemployed, and not in the labour force — and to provide descriptive and explanatory data on each of these groups. Data from the survey provide information on major labour market trends, such as shifts in employment across industrial sectors, hours worked, labour force participation and unemployment rates.

Background and objectives

The Labour Force Survey was developed following the Second World War to satisfy a need for reliable and timely data on the labour market. Information was urgently required on the massive labour market changes involved in the transition from a war-time to a peace-time economy. The survey was designed to provide estimates of employment by industry and occupation at the regional as well as the national level.

Initially a quarterly survey, the LFS became a monthly survey in 1952. In 1960, the Interdepartmental Committee on Unemployment Statistics recommended that the LFS be designated as the source of the official measure of unemployment in Canada. This endorsement was followed by demand for a broader range of labour market statistics, particularly more detailed regional data. The scope of the survey has expanded considerably over the years, with a major redesign of the survey content in 1976 and again in 1997, and provides a rich and detailed picture of the Canadian labour market.

The LFS is the only source of monthly estimates of total employment, including self-employment, full- and part-time employment, and unemployment. It publishes monthly standard labour market indicators such as the unemployment rate, the employment rate and the participation rate. In addition, the LFS provides information on the personal characteristics of the working-age population, including age, sex, marital status, educational attainment, and family characteristics.

Employment estimates include detailed breakdowns by demographic characteristics, industry and occupation, job tenure, and usual and actual hours worked. The LFS questionnaire permits analyses of many topical issues, such as involuntary part-time employment, multiple job-holding and work absences. Since January 1997, it also provides monthly information on the wages and union status of employees, as well as the number of employees at their workplace and the permanency of their job.

Starting in late 2003 in Alberta, and then in April 2004 for the rest of western Canada, questions were added to the LFS to identify Aboriginal respondents, with the goal of producing labour market statistics for the off-reserve Aboriginal population in the provinces. According to the 2011 National Household Survey, the off-reserve Aboriginal population accounted for approximately 75% of all Aboriginal people aged 15 and over living in private households in the provinces.

Starting in 2004, the Aboriginal group questions were asked in the territories. In January 2007, these questions were extended to all provinces. Labour market data for the Aboriginal population have been available since the fall of 2008.

In January 2006, there were five questions added to the LFS to identify the immigrant population. Specifically, questions were added to identify the country of birth of the respondent, whether or not the respondent was a 'landed immigrant', the month and year he/she became a landed immigrant, and the country where the respondent received his/her highest level of education. These questions are comparable to those used in the census questionnaire. Labour market data for the immigrant population have been available since the fall of 2007.

Unemployment estimates are produced by demographic group, and information on duration of unemployment and activity before looking for work are available. Information on industry, occupation and reason for leaving last job is collected from persons with recent labour market involvement who are currently unemployed or not in the labour market.

In addition to providing national, provincial and territorial estimates, the LFS also releases estimates of labour force status for sub-provincial areas such as economic regions (ERs) and census metropolitan areas (CMAs).

Section 2: Determining labour force status

The concepts of employment and unemployment are derived from the theory of labour supply as a factor in production. In this context, production refers to the goods and services included in the System of National Accounts. For this reason, unpaid housework and volunteer work are not counted as work for purposes of the LFS, although these activities need not differ from paid work either in purpose or in the nature of the tasks involved.

While the logical and precise unit of measurement for total labour supply is person-hours, the conceptual terms of reference for the LFS require that individual members of the population be classified as employed, unemployed or not in the labour force. Accordingly, persons who are supplying services in the reference period, regardless of the quantity supplied, are classified as employed, while those who provide evidence that they are offering their labour services to the market are classified as unemployed. The remainder of the population, who are neither currently supplying, nor offering their labour services, are considered to be not in the labour force.

The concepts and definitions of employment and unemployment adopted by the survey are based on those endorsed by the International Labour Organisation (ILO).

Employment: Employed persons are those who, during the reference week:

- did any work at all at a job or business, that is, paid work in the context of an employer-employee relationship, or self-employment. It also includes persons who did unpaid family work, which is defined as unpaid work contributing directly to the operation of a farm, business or professional practice owned and operated by a related member of the same household; or
- had a job but were not at work due to illness or disability, personal or family responsibilities, vacation or labour dispute. This category excludes persons not at work because they were on layoff or between casual jobs, and those who did not then have a job (even if they had a job to start at a future date).

Unemployment: Given the concept of unemployment as the unutilized supply of labour, the operational definition of unemployment is based primarily on the activity of job search and the availability to take a job. In addition to being conceptually appropriate, job search activities can, in a household survey, be objectively and consistently measured over time. The definition of unemployment is therefore the following:

Unemployed persons are those who, during the reference week:

- were without work, but had looked for work in the past four weeks ending with the reference period and were available for work;
- were on temporary layoff due to business conditions, with an expectation of recall, and were available for work; or
- were without work, but had a job to start within four weeks from the reference period and were available for work.

Persons are regarded as available if they reported that they could have worked in the reference week had a suitable job been offered (or recalled if on temporary layoff), or if their reason for not taking a job was of a temporary nature, such as own illness or disability, personal or family responsibilities, they already had a job to start in the near future, or they were on vacation (prior to 1997, those on vacation were not considered available). Full-time students currently attending school and looking for full-time work are not considered to be available for work during the reference week. They are assumed to be looking for a summer or co-op job, or permanent job to start sometime in the future, and are therefore not part of the current labour supply.

It should be noted that, in the above definition, there are two groups for which job search is not required: persons on temporary layoff and persons with a job to start at a definite date in the future. Persons on temporary layoff are included among the unemployed on the grounds that their willingness to supply labour services is apparent in their expectation of returning to work. A similar argument is applied for persons who will be starting at a new job in four weeks or less.

Finally, for the purposes of measuring job search as an identification of unemployment, the LFS uses a four-week search period, although the reference period for identifying the employed is one week. The justification for this difference is that delays inherent in job search (for example, periods spent awaiting the results of earlier job applications) require that the active element of looking for work be measured over a period greater than one week, if a comprehensive measure of job search is to be obtained.

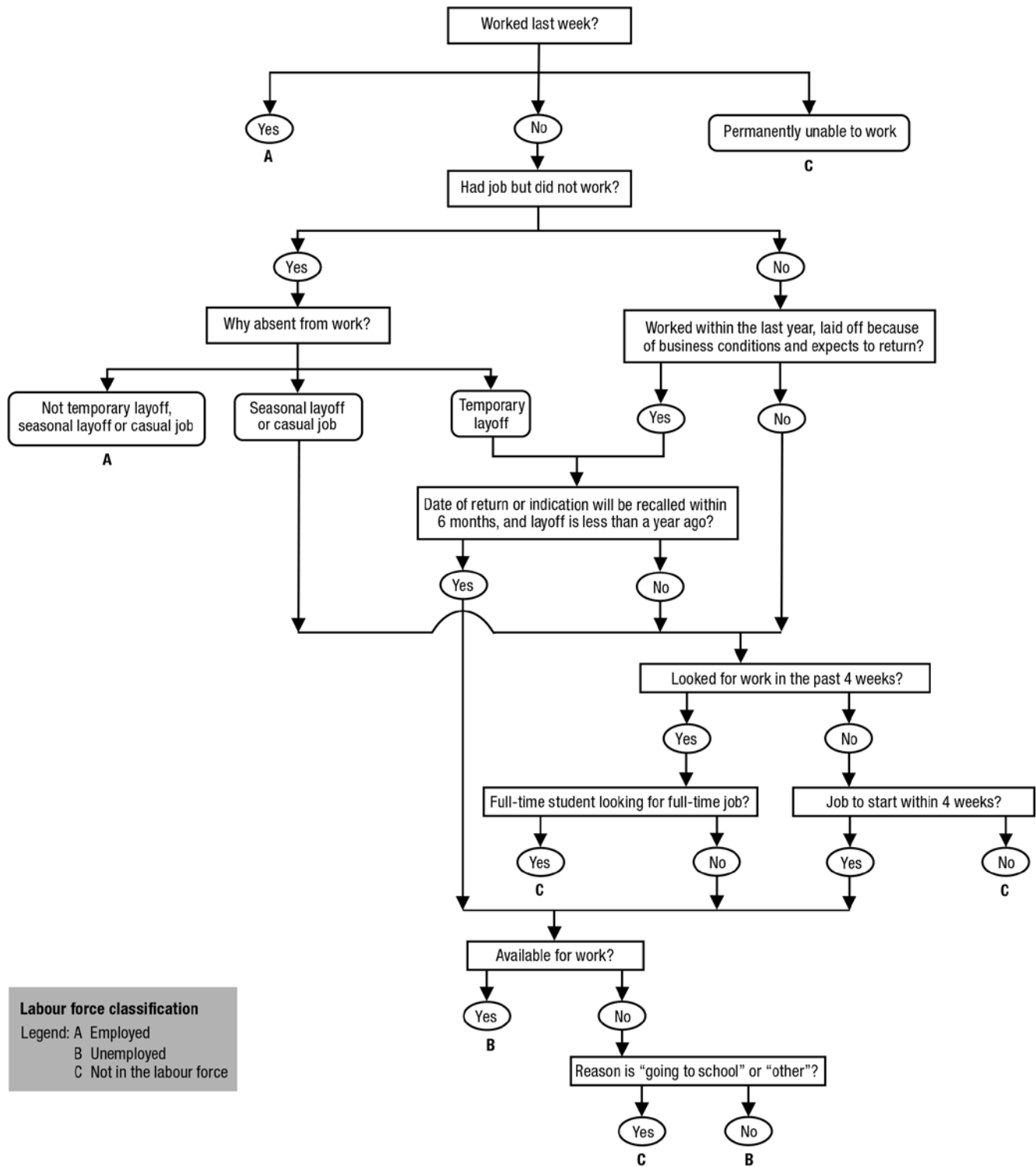
Not in the labour force: Persons who were neither employed, nor unemployed during the reference period. This includes persons who, during the reference period, were either unable to work or unavailable for work. It also includes persons who were without work and who had neither looked for work in the past four weeks, nor had a job to start within four weeks of the reference period.

Note on international comparisons: Most industrialized countries, including Canada and the United States, subscribe to guidelines established by the International Labour Organization and the United Nations for defining and measuring labour market status, including unemployment. However, the guidelines are, by design, rather imprecise, so that individual countries can interpret them within their particular labour market context. As a result, unemployment rates are not strictly comparable across all countries. Analysts in the Labour Statistics Division at Statistics Canada have thoroughly examined measurement differences between American and Canadian unemployment rates. Adjusting the Canadian unemployment rate to the U.S. measurement lowers it by approximately one percentage point. For more information on conceptual differences between American and Canadian measures of employment and unemployment, consult the technical document entitled “**Measuring employment and unemployment in Canada and the United States – a comparison.**”

Labour force classification

A labour force status (employed, unemployed and not in the labour force) is assigned to each respondent aged 15 and over, according to their responses to a number of questions during the interview. Figure 2.1 illustrates how the classification is derived.

Figure 2.1
Labour force classification



Source: Labour Force Survey (3701).

Section 3: Dictionary of concepts and definitions

The LFS dictionary provides users with definitions of terms and variables associated with the survey. Where appropriate, changes to definitions through time are documented.

Aboriginal group: Includes persons who reported being an Aboriginal person, that is, First Nations (North American Indian), Métis or Inuk (Inuit). Excluded from the survey's coverage are persons living on reserves and other Aboriginal settlements in the provinces, as well as those living in the territories. In the LFS, a person may report more than one Aboriginal group. For example, a respondent could report being both First Nations and Métis.

Absence from work (hours lost): A distinction is made between those who lose hours from work because they missed part of the work week or the full work week. Reasons for the absence are collected for both situations:

- **Part-week absence:** Collected for employees only. Reasons for absence include: own illness or disability, personal or family responsibilities, maternity or parental leave, vacation, weather, labour dispute, job started or ended during reference week, holiday, working short time, and other reasons.
- **Full-week absence:** Collected for all employed persons. Reasons for absence include: own illness or disability, personal or family responsibilities, maternity or parental leave, vacation, labour dispute, work schedule, self-employed (no work available), seasonal business (self-employed), and other reasons. The number of full-weeks absent from work is recorded. In addition, employees and self-employed with an incorporated business are asked if they received wages or salary for any time off during the reference week.

Activity prior to unemployment: Main activity before looking for work. Distinguishes between those who were working (that is, job leavers, job losers and temporary layoffs) and those who were not in the labour force but were keeping house, going to school or involved in some other type of activity.

Actual hours worked: Number of hours actually worked by the respondent during the reference week, including paid and unpaid hours. These hours reflect temporary decreases or increases in work hours (for example, hours lost due to illness, vacation or holidays, or more hours worked due to overtime).

Age: Age is collected for every household member in the survey, and the information on labour market activity is collected for all persons aged 15 and over. Prior to 1966, information on labour market activity was collected for persons aged 14 and over. Effective January 1997, date of birth is collected to ensure inclusion of respondents who turn 15 during their six-month rotation in the survey.

Availability: Persons are regarded as available if they reported that they could have worked in the reference week, had a suitable job been offered (or recalled if on temporary layoff), or if they could not take a job because of their own illness or disability, personal or family responsibilities, they already had a job to start in the near future, or vacation (prior to 1997, those on vacation were not considered available). Full-time students currently attending school and looking for full-time work are not considered to be available for work during the reference week. They are assumed to be looking for a summer or co-op job or permanent job to start sometime in the future.

Average hours worked: Average number of hours worked per week, usual or actual, is calculated by dividing total hours worked at main job during the reference week by the total number of employees. Also available is the average number of actual hours worked in the reference week, calculated by excluding persons who were not at work during the reference week.

Born in Canada: Anyone born in Canada, regardless of citizenship.

Census metropolitan area (CMA) and census agglomeration (CA): A CMA or a CA is formed by one or more adjacent municipalities centred on a **population centre** (known as the core). A CMA must have a total population of at least 100,000, of which 50,000 or more must live in the core. A CA must have a core population of at least 10,000. To be included in the CMA or CA, other adjacent municipalities must have a high degree of integration with the core, as measured by commuting flows derived from previous place of work census data. The boundaries of CMAs and CAs are based on the 2011 Standard Geographical Classification.

The terms 'core', 'fringe' and 'rural area' replaced the terms 'urban core', 'urban fringe' and 'rural fringe' in the 2011 Census. These terms distinguish between population centres and rural areas within a CMA or CA.

A CMA or CA can have two types of cores: the core and the secondary core. The **core** is the population centre with the highest population, around which a CMA or a CA is delineated. The core must have a population (based on the previous census) of at least 50,000 persons in the case of a CMA, or at least 10,000 persons in the case of a CA.

The **secondary core** is a population centre within a CMA that has at least 10,000 persons and was the core of a CA that has been merged with an adjacent CMA.

The **fringe** includes all population centres within a CMA or CA that have less than 10,000 persons and are not contiguous with the core or secondary core.

All territory within a CMA or CA that is not classified as a core or fringe is classified as **rural area**.

Class of worker: There are two broad categories of workers: those who work for others (employees) and those who work for themselves (self-employed). The first group is subdivided into two classes: public sector employees and private sector employees. See **Public/private sector employment** and **Self-employment**.

Country of birth: The country of birth of the respondent. This is based on current geographic names and boundaries at the time of collection.

Country of highest education: Identifies the country in which the respondent obtained their highest degree, certificate or diploma. This information is only available for those who are now, or have ever been, landed immigrants to Canada and who have a level of educational attainment above high school.

Discouraged searcher (also called Discouraged worker): Since 1997, discouraged searchers are defined as those persons who reported wanting to work at a job or business during the reference week and were available, but who did not look for work because they believed no suitable work was available. Prior to January 1997, the definition of discouraged searcher was limited to those who looked for work within the previous six months, but not during the last four weeks, although they were available, and did not look because they believed no suitable work was available. The change in concept and question wording resulted in a complete break in the series.

Duration of joblessness: Number of months or years elapsed since persons who are not currently employed last worked, provided they worked at some time in the past.

Duration of unemployment: Number of continuous weeks during which a person has been on temporary layoff or without work and looking for work. Respondents are required to look for work at least once every four weeks; they are not required to undertake job search activities each week in order to be counted as unemployed. The LFS measures the duration of incomplete spells of unemployment, since the information is collected only from those currently unemployed. A spell of unemployment is interrupted or completed by any period of work or withdrawal from the labour force.

Dwelling: Any set of living quarters that is structurally separate and has a private entrance outside the building, or from a common hall or stairway inside the building.

Earnings: See **Wages**.

Economic region: An economic region (ER) is a grouping of complete census divisions (CDs) (with one exception in Ontario) created as a standard geographic unit for analysis of regional economic activity. They have been established in consultation with the provinces, except for Quebec, where economic regions are designated by law (*les régions administratives*). ERs generally correspond to regions used by the province for administrative and statistical purposes. The current boundaries are based on the 2011 Standard Geographical Classification.

Educational attainment: Highest level of schooling completed. Questions relating to educational attainment were changed in 1990 to better capture the relationship between education and labour market outcomes.

From 1976 to 1989: data on primary and secondary education reflected the number of years of primary and secondary education completed. In the case of those whose highest level was grades 11 through 13, no attempt was made to determine if the respondent had actually graduated from high school. However, post-secondary education was limited to levels that normally require high school graduation. In addition, information on type of post-secondary education was limited to three categories: 1) some post-secondary; 2) post-secondary certificate or diploma; and 3) university degree.

Beginning January 1990: data on primary and secondary education reflect the highest grade completed. This provides a more consistent measure for those who accelerate or fail a grade than did years of school. A question on high school graduation has also been added, since it is generally believed that persons who have never completed their secondary education have greater difficulty competing in the labour market. With the new questions, any education that could be counted towards a degree, certificate or diploma from an educational institution is taken as post-secondary education. The change allows more persons into the post-secondary education category. For example, trades programs offered through apprenticeship, vocational schools or private trade schools do not always require high school graduation. Such education is now considered as post-secondary, while only primary or secondary would have been recognized prior to 1990. Finally, more information is collected on the type of post-secondary education: 1) some post-secondary; 2) trades certificate or diploma from a vocational or apprenticeship training; 3) non-university certificate or diploma from a community college, CEGEP, school of nursing, etc.; 4) university certificate below bachelor's degree; 5) bachelor's degree; and 6) university degree or certificate above bachelor's degree.

Employee: A person who works for others. Employees can be subdivided into public sector employees and private sector employees. See **Public/private sector employment**.

Note: The definition of a paid worker may vary depending on the nature of the analysis. Those concerned with estimating the number of workers associated with total labour income usually include both employees and the self-employed with an incorporated business in estimates of paid workers. In contrast, most labour market analysts include only employees in paid worker estimates, while incorporated owners are grouped with the rest of the self-employed.

Employment: Employed persons are those who, during the reference week, did any work for pay or profit or had a job and were absent from work. See the section entitled **Determining labour force status** for more detail.

Employment rate (employment/population ratio): Number of employed persons expressed as a percentage of the population 15 years of age and over. The employment rate for a particular group (for example, one defined by age, sex, marital status, or province) is the number employed in that group expressed as a percentage of the population for that group.

Establishment size: Beginning January 1997, the number of employees at the location of employment (building or compound) is collected from employees. Responses are recorded according to the following size groups: less than 20, 20 to 99, 100 to 500, or more than 500. The concept of location of employment approximates the concept of establishment used by many Statistics Canada business surveys.

Family: The LFS identifies families according to the criteria for 'economic families': a group of two or more persons who live in the same dwelling and who are related by blood, marriage (including common-law) or adoption. A person living alone or who is related to no one else in the dwelling where he or she lives is classified as an 'unattached individual'.

Firm size: Beginning January 1998, the number of employees at all locations of the employer is collected from employees. Responses are recorded according to the following size groups: less than 20, 20 to 99, 100 to 500, or more than 500.

Flows into unemployment: Characterizes the unemployed in terms of their activity immediately prior to looking for work. See **Job leavers, Job losers, Re-entrants** and **New entrants**.

Full-time employment: See **Type of work**.

Future starts: Persons who did not have a job during the survey reference week and did not search for work within the previous four weeks, but were available to work and had a job to start within the next four weeks. These persons are classified as unemployed, despite the lack of job search within the previous four weeks, since it is apparent that they are part of the current supply of labour. In contrast, those with jobs to start at a later time than the next four weeks are designated as long-term future starts, and are classified as not in the labour force since they are not part of current labour supply.

Goods-producing industries (or goods sector/goods industries): Includes agriculture; forestry, fishing, mining, and oil and gas extraction; utilities (electric power, gas and water); construction; and manufacturing.

Government sector: See **Public/private sector employment**.

Head of family: See **Reference person**.

Hours: See **Actual hours worked**, **Usual hours worked**, **Average hours worked**, and **Overtime hours**.

Hours lost: See **Absence from work**.

Household: Any person or group of persons living in a dwelling. A household may consist of any combination of: one person living alone, one or more families or a group of people who are not related.

Immigrant: Refers to a person who is or has ever been a landed immigrant or permanent resident in Canada. This person has been granted the right to live in Canada permanently by immigration authorities. Some immigrants have resided in Canada for a number of years, while others have arrived more recently. Some immigrants are Canadian citizens, while others are not.

Immigrant status: See **Born in Canada**, **Immigrant**, **Non-immigrant**, and **Other non-immigrant**.

Industry: General nature of the business carried out in the establishment where the person worked (main job only), based on the 2012 North American Industry Classification System (NAICS). If a person did not have a job during the survey reference week, the information is collected for the last job held, provided the person worked within the previous twelve months.

Involuntary part-time rate: The rate of involuntary part-time workers can be derived in different ways. Published rates are based on all involuntary part-time workers, whether they looked for full-time work or not. The rates can be presented as the number of involuntary part-timers as a share of the labour force, as a share of the total employed or as a share of the part-time employed, depending on one's analytical preference.

Involuntary part-time workers: Also referred to as underemployed, these respondents work part-time because they could not find work with 30 or more hours or due to business conditions, whether or not they looked for full-time work. This group generally represents one-quarter to one-third of the total number of part-time workers, depending on current economic conditions. This is the most widely used and inclusive definition of involuntary part-time workers.

Another, more restrictive definition would be to limit involuntary part-time workers to those who also looked for full-time work during the past four weeks. They generally represent less than a third of all involuntary part-time workers.

Job leavers: Persons who are not currently employed, but who worked within the last year and left that job voluntarily (i.e., the employer did not initiate the termination). Detailed reasons include own illness, personal or family responsibilities, going to school, no specific reason, changed residence, dissatisfied with job, and retired. Since 1997, further detail is available, including business sold or closed down (self-employed only) and pregnancy.

Job losers: Persons currently not employed who last worked within the previous year and left that job involuntarily (employer initiated job termination because of business conditions, downsizing, etc.). Prior to 1997, this category was broken down into those on temporary layoff and those laid off on a permanent basis. Since January 1997, more detail regarding the reason for permanent layoff is available: end of seasonal job; end of temporary, term or contract job; casual job; no work; company moved; company went out of business; laid off due to business conditions with no expectation of recall; dismissal by employer; and other reasons.

Job permanency: Beginning January 1997, information is collected to allow the classification of paid jobs as either permanent or temporary. This classification is based on the intentions of the employer and characteristics of the job, rather than the intentions of the employee. If a job that was formerly considered permanent is ending in the near future because of downsizing or closure, it would still be regarded as permanent.

- **Permanent:** A permanent job is one that is expected to last as long as the employee wants it, business conditions permitting. That is, there is no pre-determined termination date.
- **Temporary:** A temporary job has a predetermined end date, or will end as soon as a specified project is completed. Information is collected to allow the sub-classification of temporary jobs into four groups: seasonal; temporary, term or contract, including work done through a temporary help agency; casual job; and other temporary work.

Job search: See **Methods of job search**.

Job security: See **Job permanency**.

Job tenure: The number of consecutive months or years that a person has worked for the current (or, if employed within the previous twelve months, the most recent) employer. The employee may have worked in one or more occupations, one or more locations, or have experienced periods of temporary layoff with recall and still be considered to have continuous tenure if their employer has not changed. However, if a person has worked for the same employer over different periods of time, job tenure measures the most recent period of uninterrupted work.

Labour force: Civilian non-institutional population 15 years of age and over who, during the survey reference week, were employed or unemployed. Prior to 1966, persons aged 14 and over were covered by the survey.

Labour force by industry or occupation: See **Unemployment by industry or occupation**.

Labour force status: Designates the status of the respondent vis-à-vis the labour market: a member of the non-institutional population 15 years of age and over is either employed, unemployed, or not in the labour force. See the **Determining labour force status** section for more detail.

Main job: When a respondent holds more than one job or business, the job or business involving the greatest number of usual hours worked is considered to be the main job. The information available from the LFS regarding full- or part-time status, industry and occupation refer to the main job, as does employee information regarding wages, union status, job permanency, and workplace size.

Marital status: Refers to the marital status reported by the respondent. No differentiation is made between married and common-law relationships; both are classified as married in the survey. The classification of 'single' is reserved for those who have never married; otherwise, respondents are classified as either widowed or separated/divorced.

Methods of job search: Identifies the various job search activities undertaken by unemployed persons in the previous four weeks. If more than one method is used, each one is recorded. Search methods include: checked with public employment agency, private employment agency, union, employers directly, friends or relatives, placed or answered ads, looked at job ads, and other methods.

Month of immigration: Refers to the month in which the immigrant obtained landed immigrant status. The month of immigration is available only for those immigrants who landed in Canada within the five-year period prior to the year of the birth interview.

Multiple jobholders: Persons who, during the reference week, were employed in two or more jobs simultaneously. This group is sometimes referred to as 'moonlighters'.

New entrants: Persons entering the labour force in search of their first job (unemployed).

Non-immigrant: A concept used by the census and the National Household Survey, a non-immigrant refers to a person who is a Canadian citizen by birth. Since the LFS does not include questions on citizenship, this category cannot be produced. It is comprised of two groups: born in Canada and other non-immigrants.

Not in the labour force: See the **Determining labour force status** section.

Occupation: Refers to the kind of work persons were doing during the reference week, as determined by the kind of work reported and the description of the most important duties. For those not currently employed, information on occupation is collected for the most recent job held within the previous year. Occupational classification is based on the 2016 National Occupational Classification (NOC).

Other job (see also Main job): Information collected about the second job of multiple job holders or the old job of those who changed jobs during reference week regarding: usual hours, actual hours worked and status in employment.

Other non-immigrant: Refers to a person who is either a Canadian citizen by birth who was born outside of Canada, or is a non-permanent resident. Since the LFS does not include questions on citizenship, these two groups cannot be separated. A non-permanent resident refers to a person from another country who has a work permit (i.e., temporary foreign workers), study permit or who is a refugee claimant, and any non-Canadian-born

family member living in Canada with them. In 2014, other non-immigrants represented 2% of the total employed population.

Overtime hours (extra hours worked): The number of hours worked during the reference week in excess of the usual hours reported at main job. It includes all extra hours, whether the work was done at a premium or regular wage rate or without pay. Since January 1997, extra hours are collected from employees only, through two questions regarding the number of paid overtime hours worked in the reference week and the number of extra hours worked without pay.

- **Paid overtime:** Includes any hours worked during the reference week over and above standard or scheduled paid hours, for overtime pay or compensation (including time off in lieu).
- **Unpaid overtime:** Refers to time spent directly on work or work-related activities over and above scheduled paid hours. These must be extra hours worked for which the respondent received no additional compensation.

Participation rate: Total labour force expressed as a percentage of the population aged 15 years and over. The participation rate for a particular group (for example, women aged 25 years and over) is the labour force of that group expressed as a percentage of the population for that group.

Part-time employment: See **Type of work** and **Reason for working part-time**.

Permanent job: See **Job permanency**.

Personal or family responsibilities: Beginning January 1997, more detail is collected on the personal or family reasons for the following data items: reason for absence from work, reason for leaving last job, reason for working part-time, and reason for not looking for work. Personal or family reasons include: a) caring for own children; b) caring for elder relative; and c) other personal or family reasons. Pregnancy is also included in the response list for the question on reason for leaving last job, and maternity or parental leave is included in the response list for the question on reason for absence from work.

Population: The target population covered by the survey corresponds to all persons aged 15 years and over residing in the provinces of Canada, with the exception of the following: persons living on Indian reserves, full-time members of the regular Armed Forces and persons living in institutions (for example, inmates of penal institutions and patients in hospitals or nursing homes).

Population centre: A population centre has a population of at least 1,000 and a population density of 400 persons or more per square kilometre, based on the current census population count. All areas outside population centres are classified as rural areas. Taken together, population centres and rural areas cover all of Canada. Population centre population includes all population living in the cores, secondary cores and fringes of census metropolitan areas (CMAs) and census agglomerations (CAs), as well as the population living in population centres outside CMAs and CAs.

Public/private sector employment:

- The **public sector** includes employees in federal, provincial, territorial, municipal and Aboriginal public administrations, as well as in Crown corporations, liquor control boards and other government institutions such as schools (including universities), hospitals and public libraries.
- The **private sector** comprises all other employees and self-employed owners of businesses (including unpaid family workers in those businesses), and self-employed persons without businesses.

The LFS definition of public/private sector employment was changed in January 1999 in order to harmonize estimates with the System of National Accounts standard. Prior to January 1999, 'ownership' rules were used as the basis for classification of health care institutions and universities to the public sector by the LFS. Since January 1999, 'funding' rules are used. As a result, all employees in universities and hospitals are now classified in the public sector. All historical data were revised to reflect this new definition. Thus, there is no break in public and private sector series.

Reason for leaving last job: Asked of all persons classified as unemployed or not in the labour force who last worked within the previous year. See **Job Losers** and **Job Leavers** for detailed reasons.

Reason for not looking for work: Beginning January 1997, this question is asked of those who were not employed and did not search for work, but said they wanted work during reference week. Prior to 1997, this question was asked of persons who had looked for work in the previous six months, but not during the past four weeks. See also **Discouraged searchers**.

Reason for time lost/absence from work: See **Absence from work**.

Reason for working part-time (see also Type of work): Beginning January 1997, with the redesign of the LFS, all respondents who usually worked less than 30 hours per week at their main or only job are asked if they want to work more or less than 30 hours at a (single) job or business. Depending on the response, the main reason for working part-time is collected. For those who respond that they want to work less than 30 hours, the main reason for not wanting to work 30 or more hours per week is collected. Responses include: own illness, personal or family responsibilities, going to school, personal preference, and other.

For those who respond that they want to work 30 or more hours per week, the main reason for working less than 30 hours is collected. Responses include: own illness, personal or family responsibilities, going to school, business conditions, could not find work with 30 or more hours, and other. Those whose response is 'business conditions' or 'could not find work with 30 or more hours' are further asked if they looked for work with 30 or more hours during the past four weeks. See **Involuntary part-time rate** or **Involuntary part-time workers**.

Prior to January 1997, the question on reason for working part-time was asked of all persons whose total usual work hours at all jobs or businesses were below 30 per week as opposed to their main or only job. Reasons included: own illness, personal or family responsibilities, going to school, could only find part-time work, did not want full-time work, other, and full-time work less than 30 hours. This last category of respondents was redefined as full-time workers and not counted in any part-time estimates.

The change in concepts and definitions introduced in January 1997 resulted in a complete break in the series on reason for working part-time and involuntary part-time work. Estimates prior to 1997 are available upon request.

Re-entrants: Persons currently unemployed who worked in the past and were out of the labour force for some time following separation from their last job.

Reference person: At the time of interview, the respondent designates a reference person for the family. The reference person is normally an adult with responsibility for the care or support of the family. The relationship of each family member to that reference person is recorded. See also **Relationship to family reference person**.

Reference week: The labour force status of respondents is based on their activities during a specific week each month. This reference week usually contains the 15th day of the month and stretches from Sunday to Saturday. In December, and sometimes in November, the reference week is earlier, usually the second week in the month, in order to leave enough time to finish data collection before Christmas. The survey or collection period, which is ten days following the reference week (Sunday to Tuesday), is when the LFS interviews are conducted.

Relationship to family reference person: Relationship of each family member to the person who has been identified as the reference person (for example, someone with responsibility for the care or support of the family). Relationships include: self, spouse, son or daughter, grandchild, son or daughter-in-law, foster child, parent, parent-in-law, brother or sister, and other relative.

Retirement age: The Labour Force Survey asks people who are not working, and who have left their last job within the year prior to being surveyed, why they left this job. One of the response categories is 'retired'. The average or median retirement age is calculated from this variable. For a complete description of who is represented and how the age is calculated, refer to the article "Defining retirement" in the February 2007 issue of *Perspectives on Labour and Income* (75-001-X) on the Statistics Canada website.

Returning students: Since a majority of students are not attending school during the summer, supplementary questions are asked from May to August to identify those who are on summer break, so that their labour market situation can be monitored. Youth (aged 15 to 24) are given the status of 'returning student' if they reported they were attending school full-time in the previous March and intend to return to school full-time in the fall. Information is also available on those who were full-time students in the previous March, but do not intend to return to school full-time or are unsure of their intentions.

Rural areas: Rural areas include all territory lying outside population centres. Taken together, population centres and rural areas cover all of Canada. Rural population includes all population living in the rural areas of census metropolitan areas (CMAs) and census agglomerations (CAs), as well as population living in rural areas outside CMAs and CAs.

School attendance: Establishes whether or not a respondent is attending an educational establishment. For those who are students, information is collected on the type of school, and whether enrolment is full- or part-time, as designated by the educational establishment.

Seasonal adjustment: Fluctuations in economic time series are caused by seasonal, cyclical and irregular movements. A seasonally adjusted series is one from which seasonal movements have been eliminated. Seasonal movements are defined as those which are caused by regular annual events such as climate, holidays, vacation periods, cycles related to crops, and production and retail sales associated with Christmas and Easter. It should be noted that the seasonally adjusted series contain irregular as well as longer-term cyclical fluctuations.

The seasonal adjustment program is a complex computer program which differentiates between these seasonal, cyclical and irregular movements in a series over a number of years and, on the basis of past movements, estimates appropriate seasonal factors for current data. On an annual basis, the historical series of seasonally adjusted data are revised in light of the most recent information on changes in seasonality. For more information on seasonal adjustment, see “**Seasonally adjusted data – Frequently asked questions.**”

Self-employment: Working owners of an incorporated business, farm or professional practice, or working owners of an unincorporated business, farm or professional practice. The latter group also includes self-employed workers who do not own a business (such as babysitters and newspaper carriers). Self-employed workers are further subdivided by those with or without paid help. Also included among the self-employed are unpaid family workers. They are persons who work without pay on a farm or in a business or professional practice owned and operated by another family member living in the same dwelling. They represented approximately 1% of the self-employed in 2016.

Seniority: See **Job tenure**.

Services-producing industries (or service sector/service industries): Includes wholesale and retail trade; transportation and warehousing; finance, insurance, real estate, rental and leasing; professional, scientific and technical services; business, building and other support services; educational services; health care and social assistance; information, culture and recreation; accommodation and food services; other services (except public administration); and public administration.

Student: See **School attendance** and **Returning students**.

Temporary layoff: Persons on temporary layoff are employees who did not work during the reference week because they had been temporarily released by their employer due to business conditions (not enough work, drop in orders or sales, retooling, etc.). They must have a definite date of return to work, or an indication from their employer that they will be recalled in the future, and they must be available for work during the reference week. Persons on temporary layoff are not required to undertake any job search in order to be counted as unemployed.

Prior to January 1997, the wording and structure of the questionnaire was such that it was likely that a number of persons on temporary layoff were not identified as such, and were classified as ‘not in the labour force’, rather than ‘unemployed’. The 1997 redesign addressed this problem, resulting in a higher number of identified persons on temporary layoff. These changes resulted in a break in the temporary layoff series. Since those on temporary layoff account for a small proportion of the unemployed (less than 10%), the impact of these changes on the overall unemployment rate is negligible.

Temporary work: See **Job permanency**.

Type of work: Full-time or part-time work schedule. Full-time employment consists of persons who usually work 30 hours or more per week at their main or only job. Part-time employment consists of persons who usually work less than 30 hours per week at their main or only job. This information is available for those currently employed or who last worked within the previous year.

Note: prior to 1996, full-time and part-time had been defined according to usual hours at all jobs, and those who considered their work schedule of less than 30 hours per week to be full-time work were classified as full-time workers. In January 1996, when the definition was revised, all historical data and records were adjusted to reflect this new definition. Thus, there is no break in part-time and full-time data series.

Type of work sought: Identifies whether a job searcher is looking for full-time or part-time work. Unemployed persons on temporary layoff are classified as looking for full- or part-time work on the basis of their usual hours at their former job. This information is not available for non-searchers who are classified as unemployed because they have a job to start in the next four weeks (future-starts).

Unattached individuals: Persons who live alone or who are not related to anyone else in the household. They are excluded from the family member counts.

Unemployment: Unemployed persons are those who, during reference week, were without work, were available for work and were either on temporary layoff, had looked for work in the past four weeks or had a job to start within the next four weeks. See the **Determining labour force status** section for more detail.

Unemployment by industry or occupation: The LFS produces data on the number of unemployed, the unemployment rate and the labour force by industry or occupation. The basis for these categories is industry or occupation of last job for those currently unemployed who held a job in the previous year. It is important to note that no data are collected on industry or occupation of job search. Thus, these data should be interpreted with caution. For example, a recent graduate of law school looking for work as a lawyer in a law firm, may have last held a job as a waiter in a restaurant. For this person, unemployment is attributed to the accommodation and food services industry and the services occupation.

Unemployment rate: Number of unemployed persons expressed as a percentage of the labour force. The unemployment rate for a particular group (for example, one defined by age, sex, or marital status) is the number of unemployed persons in that group expressed as a percentage of the labour force for that same group. For a note on international comparisons, see the **Determining labour force status** section.

Union status: Beginning January 1997, employees are classified as: a) union member; b) not a member, but covered by a union contract or collective agreement; or c) non-unionized.

Unpaid family workers: Persons who work without pay on a farm or in a business or professional practice owned and operated by another family member living in the same dwelling. They represented approximately 1% of the self-employed in 2016.

Usual hours worked: Prior to January 1997, usual hours was the number of hours usually worked by the respondent in a typical week, regardless of whether they were paid. Beginning January 1997, usual hours for employees refers to their normal paid or contract hours, not counting any overtime. However, the definition of usual hours remains unchanged for the self-employed and unpaid family workers.

Variable hours: Beginning January 1997, information is collected to determine if the number of hours worked varies from week to week. In these cases, usual hours worked are calculated as the average of the hours worked in the last four weeks.

Wages: Beginning January 1997, information is collected on the usual wages or salary of employees at their main job. Respondents are asked to report their wage/salary before taxes and other deductions, and include tips and commissions. Weekly and hourly wages/salary are calculated in conjunction with usual paid work hours per week. Average hourly wages, average weekly wages and wage distributions can then be cross-tabulated by other characteristics such as age, sex, education, occupation, and union status. Those who are paid on an hourly basis are also identified.

Work: Includes any work for pay or profit, that is, paid work in the context of an employer-employee relationship or self-employment. It also includes work performed by those working in family business without pay (unpaid family workers).

Year of immigration: Refers to the year in which the immigrant obtained landed immigrant status by immigration authorities.

Section 4: Survey methodology

Population coverage

The Labour Force Survey (LFS) is a monthly household survey of a sample of individuals who are representative of the civilian, non-institutionalized population 15 years of age or older. It is conducted nationwide, in both the provinces and the territories.

Excluded from the survey's coverage are: persons living on reserves and other Aboriginal settlements in the provinces, full-time members of the Canadian Armed Forces, the institutionalized population, and households in extremely remote areas with very low population density. These groups together represent an exclusion of approximately 2% of the population aged 15 and over (see the sub-section entitled **Exclusions from the Labour Force Survey coverage for the provinces and territories** for more information).

National Labour Force Survey estimates are derived using the results of the LFS in the provinces. Territorial LFS results are not included in the national estimates, but are published separately (see the sub-section entitled **Why the territories are not included in the national total** for more information).

Sample design and sample size for the provinces

The LFS plays a central role in the national statistical system in several ways. First, the LFS provides monthly estimates of employment and unemployment, which are among the most timely and important measures of the overall performance of the Canadian economy.

Secondly, the *Employment Insurance Act* has designated the LFS as the official source of monthly unemployment rates for all the employment insurance economic regions (EIERS) used in the administration of the Employment Insurance program.

Thirdly, the infrastructure used for the LFS (frame, sample, interviewers, processing systems) supports a wide range of other Statistics Canada household surveys that are conducted in response to the policy and information needs of government.

In order for the LFS to continue to uphold these three key roles, the sampling frame must be up-to-date and the estimates must be sufficiently reliable to support the various uses of the data. Every ten years, after the decennial population census, the LFS undergoes a sample redesign to reflect changes in population characteristics and new definitions of geographical boundaries. From 2005 to 2014, the LFS sample design was based on information from the 2001 Census and reflected the population size, provincial distribution and the sub-provincial boundaries as of 2001.

Since that time, there has been significant population growth, change in population and labour market characteristics, as well as a realignment of municipal and census metropolitan area (CMA) boundaries. In January 2015, a new sample design was introduced, based on the 2011 Census information and geographical boundaries.

The LFS design strata, which are a way to divide the population in order to make sampling more efficient, are set out to be homogeneous with respect to some key labour market variables. An added benefit of stratification is to stabilize the sample size by areas. However, the strata become less efficient the further the design is from the source year (i.e., 2001 for the design in place from 2005 to 2014) and as the population and labour market characteristics shift over time.

The 2015 design defines new strata based on the most recent census information (2011), the National Household Survey (2011), as well as administrative data. The large majority of strata are constructed to improve the design's efficiency. A few strata are set aside to target specific sub-populations. High-income strata are constructed in most CMAs to group together areas with higher prevalence of high-income households. During LFS sampling, these special strata are not treated differently, but they are available for other surveys, such as the Survey of Household Spending. Similarly, Aboriginal strata are constructed in regions with a higher prevalence of Aboriginal persons in Saskatchewan, Alberta and British Columbia. These strata were constructed based on the requirements of external clients to have funded additional sample in the LFS to target special and Aboriginal populations in these provinces.

The sample is allocated to provinces and to strata within provinces in the way that best meets the need for reliable estimates at various geographic levels. Preliminary studies showed that, given the current sample size, the reliability guidelines used to allocate the sample in 2005 were no longer achievable. The guidelines for the 2015 design are therefore slightly different from those used in 2005.

In the past, the reliability indicator used to allocate the sample was the coefficient of variation (CV; see the section entitled **Data quality** for a definition). The CV is a relative quality measure. Based on the CV, areas with a lower unemployment rate require a larger sample size compared to areas with a higher unemployment rate. Accordingly, an allocation solely based on CV would result in estimates of much better quality for low unemployment areas than if quality is measured with an absolute quality indicator, for example, the width of the confidence interval (see the **Data quality** section for a definition).

For this reason, the targets guiding sample allocation for provinces and sub-provincial areas now combine a relative and an absolute quality indicator. For areas with low unemployment rates (less than 5%), an absolute quality indicator (width of the confidence interval) is used. For areas with an unemployment rate higher than 5%, a relative quality indicator is used. The following guidelines were used in the 2015 sample allocation.

For monthly estimates of unemployment at the Canada level:

- a CV lower than 2%.

For monthly estimates of unemployment at the provincial level:

- a CV lower than 7% if the unemployment rate is higher than 5%, or a fixed confidence interval width for the unemployment estimates equivalent to that of an unemployment rate of 5% with a CV of 7%.

For three-month moving average estimates at the sub-provincial level:

- a CV lower than 25% for the unemployment estimate at the ER level
- a CV lower than 15% for the unemployment rate estimate at the EIER level if the unemployment rate is higher than 5%, or a fixed confidence interval width¹ equivalent to that of an unemployment rate of 5% with a CV of 15%.

Since most CMAs are also EIERs, setting objectives for the EIERs guarantees the quality of the estimates for the corresponding CMAs. Even though the guidelines do not set targets directly at the CMA level, the allocation ensures that the eight CMAs that are not EIERs (Moncton, Saint John, Peterborough, Brantford, Guelph, Barrie, and Kelowna) will have a CV less than 25% for the three-month moving average estimates of unemployment.

All of the above objectives for the 2015 design were satisfied in the allocation without changing the overall sample size. This revised sample allocation has resulted in some changes to the target sample size for most provinces.

Table 4.1 compares the national and provincial sample sizes from the 2015 design to those from the 2005 design. As can be seen, the largest absolute change was a decrease of over 900 sampled households per month in Ontario, which was offset by increases in the sample in the three Prairie provinces and Quebec. For the four Atlantic provinces and British Columbia, the changes were all relatively small. These revisions also reflect demographic and labour market changes.

Over the recent years, additional sample was added to Manitoba, Alberta and British Columbia to target special sub-populations, such as immigrant and Aboriginal populations. This additional sample is funded by the provinces.

1. The width of the confidence interval would be approximately 2.9 percentage points, assuming a 95% confidence interval.

Table 4.1
Sample size, Canada and provinces

	Design		Difference
	2005	2015	
Canada	56,027	55,989	-38
Newfoundland and Labrador	2,004	2,009	5
Prince Edward Island	1,421	1,421	0
Nova Scotia	2,962	2,965	3
New Brunswick	2,840	2,810	-30
Quebec	10,075	10,185	110
Ontario	15,893	14,972	-921
Manitoba	4,849	5,277	428
Saskatchewan	3,897	4,122	225
Alberta	5,540	5,690	150
British Columbia	6,546	6,538	-8

Source: Labour Force Survey (3701).

Selection of dwellings for the provinces

A two-stage approach is used for all provinces except Prince Edward Island. Within each stratum, 'clusters' containing approximately 230 households are defined as small areas. During the first stage of sampling, a number of clusters, typically six, is selected from each stratum. For each selected cluster, a list of its dwellings is created. For most clusters, the list is extracted from the Dwelling Universe Frame created and maintained by Statistics Canada. For the remaining clusters, using a map of the cluster, an interviewer goes to the cluster and lists all dwellings. During the second stage of sampling, a sample of dwellings is selected from these lists.

Given the specific characteristics of Prince Edward Island, sampling is done in a single stage by using a complete list of addresses for all strata and selecting dwellings from this list.

Selection of household members for the provinces

Demographic information is collected for all persons who consider a selected dwelling their usual place of residence. Labour force information is collected for all civilian household members 15 years of age or older. Respondent burden is minimized for persons aged 70 years and over by carrying forward their responses from the initial interview to the subsequent five months in survey.

Sample rotation for the provinces

The LFS follows a rotating panel sample design, in which households remain in the sample for six consecutive months. The total sample consists of six representative sub-samples or panels, and each month a panel is replaced after completing its six-month stay in the survey. Outgoing households are replaced by households in the same or a similar area. This results in a five-sixths month-to-month sample overlap, which makes the design efficient for estimating month-to-month changes. The rotation after six months prevents undue respondent burden for households that are selected for the survey.

For comprehensive information on the LFS methodology see the publication *Methodology of the Canadian Labour Force Survey (71-526-X)*.

Survey coverage and collection for the territories

The LFS in the territories started as a pilot project, first in Yukon beginning in 1991 and then in the Northwest Territories and Nunavut starting in 2000. Given the complexities of collecting data in northern areas, and associated data quality issues at the outset of collection, data are available since 1992 for Yukon, 2001 for the Northwest Territories and 2004 for Nunavut.

Survey coverage in the Northwest Territories is about 96%, while Yukon has about 92% coverage. In Nunavut, the survey coverage started at 70% between 2004 and 2007 and was expanded to 93% in 2008.

The same Labour Force Survey questions are asked in the territories as in the provinces, with a few exceptions. The rent questions are not asked in the territories nor are there any supplementary surveys to the LFS.

Like the provinces, survey operations are conducted by Statistics Canada staff. The first contact is generally in person and most of the other interviews are done over the phone (where possible). Aside from a different rotation schedule as explained below, data collection and processing are otherwise the same for the territories as for the provinces.

Sample design and allocation for the territories

Like the provinces, the sample design for the territories is based on a rotating panel but at different intervals. Occupants of selected dwellings in the territories are interviewed every three months over a two-year period, for a total of eight interviews. For example, if a household was first selected for the month of January 2014, household members were interviewed again every three months: April, July, and October 2014; January, April, July, and October 2015.

After eight interviews, the household is replaced by another from the same community or from another community in the same stratum. Each quarter, one-eighth of the sampled households are experiencing their first interview.

The following guidelines were used in sample allocation for the territories:

- a CV of 25% or less for three-month average estimates of unemployment (see the **Data quality** section for explanation of sampling error and CVs).

The quarterly sample is collected over three months and estimates for the territories are only available as three-month moving averages.

The sample design for Yukon, the Northwest Territories and Nunavut was updated in 2011, when revised sampling fractions and new labeling conventions were implemented.

Table 4.2
Sample size, territories

	Quarterly sample size (2015 sample design)
	number of households
Yukon	690
Northwest Territories	693
Nunavut	669

Source: Labour Force Survey (3701).

The community boundaries are usually consistent with the 2011 Standard Geographical Classification. The communities included on the frame and eligible to be sampled are:

Yukon – The census agglomeration of Whitehorse and communities of Dawson and Watson Lake are always in sample; plus one community is selected from Carmacks, Mayo, Haines Junction or Teslin; and one community from Pelly Crossing, Ross River, Carcross or Faro. Watson Lake includes the small neighbouring villages of Upper Liard, Two Mile Village and Two and One-Half Mile Village.

Northwest Territories – Yellowknife, Norman Wells, Hay River and Inuvik are always in sample. One community from each of the following groups is also selected: Fort Smith or Fort Simpson; Behchokö, Fort Liard, Fort Providence, or Fort Resolution; Tuktoyaktuk, Fort McPherson or Aklavik; Fort Good Hope, Déline or Tulita; Hay River Dene 1 or Detah; Whatì, Wekweèti, Gamètì, Lutselk'e, Tsiigehtchic, or Wrigley.

Nunavut – Iqaluit, Rankin Inlet, Cambridge Bay and Kugluktuk are always in sample. One community from each of the following groups is also selected: Baker Lake or Arviat; Igloolik or Pond Inlet; Cape Dorset or Pangnirtung; Taloyoak, Gjoa Haven or Kugaaruk; Coral Harbour or Repulse Bay; Qikiqtarjuaq, Arctic Bay, Hall Beach, or Clyde River.

Why the territories are not included in the national total

Although Statistics Canada collects and produces labour force data on the territories in an identical questionnaire as used for the provinces, a different methodology is used in the territories, and these data are collected separately from the provinces.

There are many challenges in conducting a survey that covers the many relatively small and scattered communities in the territories, and factors such as survey costs, logistics around travel, sample sizes, and the burden on respondents must all be taken into account.

The Labour Force Survey achieves this by using a sample design, a rotation pattern and reliability criteria that are different from those in the ten provinces. To improve their reliability, estimates for the territories are calculated and reported separately as moving averages and are therefore not included with the monthly provincial totals.

Exclusions from the Labour Force Survey coverage for the provinces and territories

Indian reserves have historically been excluded from the LFS conducted in the provinces due to the serious challenges in contacting and interviewing potential respondents. Many live in remote locations not easily accessible to LFS interviewers. Given the short data collection period each month, and the large effort and cost associated with travelling to these locations, the LFS is not collected on reserves in the provinces. However, Aboriginal populations living off-reserve are included in the provincial sample. In the territories, both Aboriginal and non-Aboriginal communities are included in the sample.

The LFS also excludes residents of institutions (for example, inmates of penal institutions and patients in hospitals or nursing homes) for conceptual reasons; the LFS is designed to measure the labour force participation in the current labour market. Residents of institutions are for the most part not able to participate in the labour market and are not economically active.

Full-time members of the Canadian Armed Forces are not included in the LFS because of the practical difficulties associated with sampling and interviewing, since many of these persons live in locations that are not accessible for the purposes of conducting the LFS, such as naval vessels, military camps and barracks, or are stationed in other countries.

Also excluded are households in extremely remote areas with very low population density. The large effort and cost associated with travelling to these locations are considered against the impact, in terms of potential bias to the LFS estimates, of excluding these areas from the survey frame. Altogether, remote areas that are excluded represent less than 1% of the Canadian population and therefore cannot lead to a significant bias to the estimates.

Section 5: Data collection

Interviewing for the LFS

Data collection for the LFS is carried out each month over the ten days following the LFS reference week. The reference week is normally the week containing the 15th day of the month.

Statistics Canada interviewers are employees hired and trained to carry out the LFS and other household surveys. Each month, they contact the sampled dwellings to obtain the required labour force information.

LFS interviews are conducted by telephone interviewers working out of regional office CATI (Computer Assisted Telephone Interview) sites or by personal visits from a field interviewer. Since 2004, dwellings new to the sample in urban areas are contacted by telephone if the telephone number is available from administrative files; otherwise, the dwelling is contacted by a field interviewer. The interviewer first obtains socio-demographic information for each household member and then obtains labour force information for all members aged 15 and over who are not members of the regular Canadian Armed Forces. The majority of subsequent interviews are conducted by telephone. In subsequent monthly interviews, the interviewer confirms the socio-demographic information collected in the first month and collects the labour force information for the current month. Starting in 2015, respondents also have the option of completing the survey on-line for subsequent interviews.

In each dwelling, information about all household members is usually obtained from one knowledgeable household member. Such 'proxy' reporting, which accounts for approximately 65% of the information collected, is used to avoid the high cost and extended time requirements that would be involved in repeat visits or calls necessary to obtain information directly from each respondent.

If, during the course of the six months that a dwelling normally remains in the sample, an entire household moves out and is replaced by a new household, information is obtained about the new household for the remainder of the six-month period.

Supervision and quality control

All LFS interviewers are under the supervision of senior interviewers who are responsible for ensuring that their staff are familiar with the concepts and procedures of the LFS and its many supplementary surveys, as well as periodically monitoring their interviews. The senior interviewers are, in turn, under the supervision of the LFS program managers.

Non-response to the LFS

Non-response to the LFS tends to average about 10% of eligible households. Interviewers are instructed to make all reasonable attempts to obtain interviews with members of eligible households. For individuals who at first refuse to participate in the LFS, a letter is sent from the Regional Office to the dwelling address stressing the importance of the survey and the household's co-operation. This is followed by a second call (or visit) from the interviewer. For cases in which the timing of the interviewer's call (or visit) is inconvenient, an appointment is arranged to call back at a more convenient time. For cases in which there is no one home, numerous call backs are made. Under no circumstances are sampled dwellings replaced by other dwellings for reasons of non-response.

Each month, after all attempts to obtain interviews have been made, a small number of non-responding households remain. A weight adjustment is applied to account for non-responding households.

Section 6: Data processing

Data capture

Since 1994, responses to survey questions are captured directly by the interviewer at the time of the interview using a computerized questionnaire on a laptop or desktop computer. The computerized questionnaire reduces processing time and costs associated with data entry, transcription errors and data transmission. The response data are encrypted to ensure confidentiality and sent electronically to the appropriate Statistics Canada Regional Office. From there, they are transmitted over a secure line to the head office in Ottawa for further processing.

Editing and imputation

Some editing is done directly at the time of interview. Where the information entered is out of range (too large or too small) of expected values or inconsistent with previous entries, the interviewer is prompted, through message screens on the computer, to modify the information. However, interviewers have the option of bypassing the edits or skipping questions if the respondent does not know the answer or refuses to answer. Therefore, the response data are subjected to further edit and imputation processes once they arrive at head office.

The editing and imputation phases of processing involve the identification of logically inconsistent or missing information items and the modification of such data. Since the true value of each entry on the questionnaire is not known, the identification of errors can be done only through recognition of obvious inconsistencies (for example, a 15-year-old respondent who is recorded as having last worked in 1940). If a value is suspicious but reasonable, the value will find its way into the monthly statistics. For that reason, emphasis must be placed on quality controls and interviewer training to ensure errors are both minimal in number and non-systematic in nature.

During the editing phase of processing, it may be observed that all questionnaire items for individuals (persons) in the household are missing. This is referred to as complete (or total) non-response. Item non-response occurs when only some questionnaire data items are missing. Imputation and non-response weight adjustment are the methods used to resolve complete non-response. Imputation alone is the method used to resolve item non-response. The imputation methods employed for the LFS include carry-forward, deterministic and donor (hot-deck) imputation. The non-response adjustment method is discussed below in the sub-section entitled **Weighting**.

Where errors or omissions are detected, the erroneous or missing items are replaced by the imputation of logically consistent values. This is referred to as deterministic (or substitution) imputation. Such changes are made automatically by the edit and imputation system or through intervention of experts. These changes are based on pre-specified criteria and may involve the internal logic of the questionnaire, reference to earlier month's information (if available) or the use of similar records to impute one or more values.

Some missing items are resolved by carrying forward last month's data, if available and appropriate. Other missing items may require the use of donor (hot-deck) imputation, which involves the copying of data from another person (i.e., a 'donor') with similar characteristics. In all cases, editing and imputation changes are recorded and this information is used to assess various aspects of survey performance. These records of errors are also used to advise interviewers of mistakes made in the past in order to avoid repetition of these mistakes in the future.

Industry and occupation coding

In this process, industry and occupation codes are assigned using the respondent's job description on the questionnaire. The coding is performed manually, and is based on the classifications described in the North American Industry Classification System (NAICS) 2012 and the National Occupational Classification (NOC) 2016 manuals.

Creation of derived variables

A number of variables on the microdata file are derived by combining items on the questionnaire according to classification rules. For example, labour force status is derived from specific combinations of responses to a number of survey questions regarding work activity, status in employment, job search, availability, etc.

Weighting

The sample data are weighted to enable tabulations of estimates at national, provincial, and sub-provincial levels of aggregation.

The sample design determines a certain number of weighting factors to be used in the calculation of the individual weights. The main component is the inverse of the probability of selection, known as the basic weight. For example, in an area where 2% of the households are sampled, each household would be assigned a basic weight of $1/0.02 = 50$. The basic weight is then adjusted for any sub-sampling due to growth that may have occurred in the area. This weight is then adjusted for non-response and coverage error.

In the LFS, some survey non-response is compensated for by imputation: carry forward, substitution or donor imputation methods (as discussed above in the sub-section entitled **Editing and imputation**). Any remaining non-response is accounted for by adjusting the weights for the responding households in the same area. This non-response adjustment assumes that the characteristics of the responding households are not significantly different from the non-responding households.

To the extent that this assumption is true, non-response will not be a source of bias in the LFS estimates. The weights derived after the non-response adjustments are called the subweights. The final adjustment to the weight is made to correct for coverage errors. The subweights are adjusted so that the survey estimates of population conform to control totals.

There are two sets of control totals and thus, two sets of weights used in the LFS tabulations. First, for most tables, the weights are calibrated to standard population totals (age, gender, geography, etc.). The second set of weights include additional adjustments to ensure proper coverage of the Aboriginal population based on census projections. As a result of this additional adjustment, the labour force estimates for the total population in Aboriginal tables will not match exactly those in other tables.

Seasonal adjustment

Most estimates associated with the labour market are subject to seasonal variation; that is, annually-recurring fluctuations attributable to climate and regular institutional events, such as vacations and holiday seasons. Seasonal adjustment is used to remove these seasonal variations from more than 2,000 series in the LFS in order to facilitate analysis of short-term change for major indicators, such as employment and unemployment by age and sex, employment by industry, and employment by class of worker (public and private employees or self-employed). Many of these indicators are adjusted at national and provincial levels. Main labour force status estimates are also seasonally adjusted for census metropolitan areas (CMAs), and published as three-month moving averages to reduce irregular movements caused by relatively small sample sizes.

Procedures used in seasonal adjustment

The method being used for seasonal adjustment is X-12-ARIMA, as implemented in SAS (version 9.2) Proc X12.

Seasonally adjusted estimates of overall employment and unemployment for Canada are derived by summing adjusted estimates for major age/sex groups (men aged 15 to 24, 25 to 54, and 55 and over; women aged 15 to 24, 25 to 54, and 55 and over). The resulting overall estimate is used as a benchmark for other seasonally adjusted series. For example, employment estimates by industry and class of worker are adjusted independently and then increased or decreased proportionately so that their total sums to the overall benchmark. This procedure is known as raking, and Statistics Canada's in-house SAS Proc TSRAking program is used for this purpose.

Overall employment and unemployment estimates for the provinces are also derived by summing adjusted estimates for major age/sex groups (men 15 to 24, 25 and over; women aged 15 to 24, 25 and over). However, prior to summation, the estimate for each age/sex group is raked to the corresponding national estimate. Similarly, estimates of employment by industry are raked to the provincial employment total.

Seasonally adjusted estimates of labour force for any particular group are derived by adding the seasonally adjusted estimates of employment and unemployment for that group. Similarly, seasonally adjusted rates (for example, unemployment rate) are calculated by dividing the seasonally adjusted numerator by the seasonally adjusted denominator. In the case of the participation rate and employment rate, only the numerator is seasonally adjusted.

Adjustment for reference week effect

The definition of the LFS reference week (usually the week with the 15th day of the month) implies that the actual dates of the week vary from year to year. This variability may impact the month-to-month change in major labour market estimates. For example, more students may have finished exams and entered the labour market before the end of reference week in years when the 15th day of June falls near the beginning of the week than is the case in years when the 15th falls near the end of reference week. The reference week effects are removed from the series so that the underlying trend is easier to interpret. These adjustments compensate for early or late reference weeks.

These effects are estimated by the seasonal adjustment method X-12-ARIMA using a regression model with ARIMA residuals.

Adjustment for holiday effects on actual hours worked

In addition, actual hours of work are affected by variability in the dates of the reference week, combined with the presence of fixed (Remembrance Day) or moving (Easter, Thanksgiving) holidays. Specifically, in some years, holidays may occur during the reference week, reducing work hours during that week. Similarly, fluctuations can also occur in July, depending on the timing of the reference week, as the usual vacation period tends to peak in

the latter half of the month. This variability could introduce significant fluctuations in estimates of actual hours worked, and it is therefore removed from the series prior to seasonal adjustment.

Starting in January 2010, a method used by the System of National Accounts labour statistics was adopted. Permanent prior adjustments are now generated by adding back the hours lost due to the holiday as reported by respondents of the Labour Force Survey. The historical series have been revised using this new method. The holidays that may occur during the reference week, and for which an adjustment (adding back the hours lost) is made, include Family Day (for certain provinces), March break (for certain provinces), Easter Friday or Easter Monday, Thanksgiving, and Remembrance Day.

As hours lost due to holidays are not reported for the self-employed, a model is used to estimate and remove systematic fluctuations due to holiday occurrence in the reference week. This model is based on a time series regression, similar to the calendar adjustment performed for reference week location.

Starting in January 2015, to better reflect the actual hours from the self-employed workers, the seasonally adjusted total actual hours worked series is derived as the sum of the three seasonally adjusted classes of workers (public employees, private employees and self-employed). The provincial series is slightly modified to match this improved seasonally adjusted actual hours total. All actual hours series have been revised back to the start of the series based on this new methodology.

Since holiday effects on actual hours worked vary a great deal from industry to industry, depending on the characteristics of each regarding the observance of holidays and summer vacation practices, prior adjustments are calculated and performed separately for each major industry group.

Regular annual revisions for seasonal adjustment

Each year, the Labour Force Survey revises its estimates for the previous three years, using the latest seasonal factors.

Seasonal adjustment requires data from past, current and future values. As new data become available, various time series components can be better estimated which lead to revised and more accurate seasonally adjusted estimates.

Seasonal adjustment models and options for each series are also reviewed each year. When appropriate, updated options will be used to produce the revised seasonally adjusted estimates (and the on-going seasonally adjusted estimates on a monthly basis for the year to come).

Other revisions and redesigns

Every five years, population estimates are rebased or reweighted to the most recent census population counts. As of January 2015, LFS estimates are obtained using the 2011 Census data adjusted to July 1 and for net census undercount as the base population. Data series were also revised back to 2001. Generally, the introduction of the latest classification systems for industry, occupation and geography, along with other changes, occur at this time. For more information, see **The 2015 Revisions of the Labour Force Survey (LFS)**.

The LFS undergoes a sample redesign every ten years to reflect changes in population characteristics and new definitions of geographical boundaries. The most recent redesign defines new strata based on the 2011 Census. For more information, see **The 2015 Revisions of the Labour Force Survey (LFS)**.

Redesign of the questionnaire, data collection, processing and dissemination systems occur approximately every 20 years. The next such redesign is scheduled for 2018/2019. The main goals of this upcoming redesign will be to: 1) transition to a corporate data collection platform capable of supporting personal, telephone and respondent self-complete modes of interviewing; and 2) modernize computer systems and processes used to edit, code and process data.

Furthermore, in 2018, survey outputs were aligned with the modernization of Statistics Canada's website.

Section 7: Data quality

Non-sampling errors

Errors that are not related to sampling may occur at almost every phase of a survey operation. Interviewers may misunderstand instructions, respondents may make errors in answering questions, the answers may be incorrectly entered, and errors may be introduced in the processing and tabulation of the data. These are all examples of non-sampling errors.

Over a large number of observations, randomly occurring errors will have little effect on estimates derived from the survey. However, errors occurring systematically will contribute to biases in the survey estimates. Quality assurance measures are implemented at each step of the data collection and processing cycle to monitor the quality of the data. These measures include the use of highly skilled interviewers, extensive training of interviewers with respect to the survey procedures and questionnaire, observation of interviewers to detect problems of questionnaire design or misunderstanding of instructions, edits to ensure data entry errors are minimized, and coding and edit quality checks to verify the processing logic.

Sampling errors

The Labour Force Survey collects information from a sample of households. Somewhat different figures might have been obtained if a complete census had been taken using the same questionnaires, interviewers, supervisors, processing methods, etc. The difference between the estimates obtained from a sample and those that would give a complete count taken under similar conditions is called the sampling error, the precision of the estimate or sampling variability.

Three related methods can be used to interpret and evaluate sampling error or the precision of the estimates: the standard error and two other methods also based on standard error; coefficients of variation and confidence intervals. These methods can be used to conduct hypothesis tests.

Approximate measures of sampling error accompany Labour Force Survey products and users are urged to make use of them while analyzing the data. All seasonally adjusted data tables include standard errors for monthly estimates, month-to-month estimates of change, and year-over-year estimates of change. An economic region table includes the standard error of the estimate and of the year-over-year change. Tables 7.1, 7.2, and 7.3 can be used to obtain approximate CVs for most other released estimates.

With the release of occupation estimates based on the 2011 National Occupation Classification (NOC) in January 2016, CVs and standard errors are available for all tables with occupation data upon request. For these measures or measures for other series, please contact Statistics Canada's Statistical Information Service (toll-free 1-800-263-1136; 514-283-8300; STATCAN.infostats-infostats.STATCAN@canada.ca).

Another option is to obtain direct access to Labour Force Survey data and bootstrap weights through the Research Data Centres (RDCs). See the sub-section entitled **Access to microdata** in Section 9 for more information.

Interpretation using standard error

The standard error is a numerical measure of the sampling error that quantifies how different the estimates from all potential samples would be from one another, assuming the same sampling plan. On its own, it is a value that can be difficult to interpret but it is used in developing other more intuitive measures including coefficients of variation and confidence intervals. They are also useful in data analysis with hypothesis tests.

Although the concept of standard error is based on the idea of selecting several samples, in practice only one sample is drawn and the standard error is estimated based on the information collected from the units in that sample.

The standard error depends on the sample size, the response rate, the size of the population, the variability of the characteristic of interest in the population, and the sample design and estimation methods. Typically, of similar estimates, the one with larger sample size will yield the smaller standard error.

Interpretation using coefficient of variation

Coefficients of variation (CVs) are widely used in practice to report the sampling error of survey estimates. One feature of CVs is that they are a relative measure, meaning that the quality of estimates of varying sizes can be compared. To obtain the CV, the standard error is divided by the estimate.

Small CVs are desirable because they indicate that the sampling variability is small relative to the estimate. Since the CV is the standard error expressed as a percentage of the estimate, the smaller the estimate, the larger the CV (all other things being equal). For example, when the unemployment rate is high, the CV may be small. If the unemployment rate falls due to improved economic conditions, then the corresponding CV will become larger.

Interpretation using confidence intervals

Confidence intervals provide another way of looking at the variability inherent in estimates of sample surveys. A confidence interval is a range of values that has a probability, known as the level of confidence, of containing the actual value. In other words, a 95% confidence interval means that if a large number of samples were drawn and a confidence interval was constructed for each sample, 95% of the constructed confidence intervals should contain the actual value. To illustrate how to calculate the confidence interval, let us say that one month the published estimate for total employment rose by 60,000 and the associated standard error for the movement estimate is 25,000. We can say that:

- A 95% confidence interval can be constructed by adding and subtracting 50,000 (two standard errors) from 60,000. This means that there are approximately nineteen chances in twenty (95%) that the range (10,000 to 110,000) contains the real value of the change between the two months.
- If one standard error (25,000) is added and subtracted from 60,000, a 68% confidence interval is constructed. This means that there are approximately two chances in three (68%) that the range (35,000 to 85,000) contains the real value of the change between the two months.

Conducting hypothesis tests

Standard errors may also be used to perform hypothesis testing, a procedure for distinguishing between population parameters using sample estimates. The larger the observed change between two estimates relative to its standard error, the better the chance that we are observing a real change as opposed to a change due to sampling variability.

One simple way to conduct a hypothesis test is with a confidence interval. If the 95% confidence interval of an observed estimate of change does not contain zero then the change is considered statistically significant at the 5% level of significance. The level of significance is the probability of concluding that there is a change, when in fact the actual change is zero. If the confidence interval of the estimate does contain zero, it is less likely to reflect a real change and more likely to be due to sampling variability.

To illustrate, let us say that between two months, the published estimate for total employment is an increase of 60,000 and the associated standard error for the movement estimate is 25,000. Since the 95% confidence interval (10,000 to 110,000) does not contain zero, this change in employment is considered significant at the 5% level of significance.

Using approximate sampling variability tables

In practice, standard errors are not provided with all published estimates so approximate CV tables are provided to allow users to obtain CVs. Standard errors can be calculated from a CV by multiplying the CV by the estimate. Standard errors can then be used to produce confidence intervals and perform hypothesis tests, as described above.

Three tables are available: 7.1 for monthly totals for Canada and the provinces, 7.2 for annual averages for Canada and the provinces, and 7.3 for three-month moving averages and annual averages for the territories.

These tables are supplied as a rough guide to the sampling variability. The sampling variability is modeled so that, given an estimate, approximately 75% of the actual CVs will be less than or equal to the CVs derived from the table. There will, however, be 25% of the actual CVs that will be somewhat higher than the ones given in the table.

Table 7.1
Coefficient of variation (CV) for estimates of monthly totals, Canada and provinces

	Coefficient of variation								
	1.0%	2.5%	5.0%	7.5%	10.0%	16.5%	20.0%	25.0%	33.3%
	estimates (in thousands)								
Canada	1,362.0	415.9	185.0	109.2	64.1	35.2	25.6	18.8	13.3
Newfoundland and Labrador	249.2	69.9	28.4	16.1	9.5	4.9	3.6	2.6	1.7
Prince Edward Island	64.8	19.7	8.6	5.1	3.0	1.6	1.2	0.9	0.6
Nova Scotia	231.8	70.2	31.1	18.3	10.7	5.8	4.2	3.1	2.2
New Brunswick	206.2	62.1	27.1	15.9	9.4	5.1	3.7	2.7	1.9
Quebec	1,150.6	343.9	149.7	87.5	51.4	27.7	20.2	14.7	10.3
Ontario	1,334.7	388.8	166.3	96.1	55.8	29.7	21.5	15.5	10.8
Manitoba	154.6	50.1	24.2	14.8	8.4	4.9	3.5	2.6	1.9
Saskatchewan	165.5	52.9	25.2	15.3	8.7	5.0	3.6	2.7	2.0
Alberta	625.2	203.6	97.8	59.8	34.5	20.1	14.6	10.8	8.0
British Columbia	799.3	241.0	107.2	63.1	36.3	19.9	14.4	10.5	7.4

Source: Labour Force Survey (3701).

Table 7.2
Coefficient of variation (CV) for estimates of annual averages, Canada and provinces

	Coefficient of variation								
	1.0%	2.5%	5.0%	7.5%	10.0%	16.5%	20.0%	25.0%	33.3%
	estimates (in thousands)								
Canada	583.8	163.1	69.9	39.9	21.7	11.6	8.1	5.8	4.1
Newfoundland and Labrador	111.3	30.6	12.6	7.1	4.0	2.1	1.5	1.0	0.7
Prince Edward Island	26.2	7.9	3.6	2.1	1.2	0.7	0.5	0.3	0.2
Nova Scotia	101.4	29.9	13.6	8.0	4.3	2.4	1.7	1.2	0.9
New Brunswick	82.9	24.3	11.1	6.5	3.5	1.9	1.4	1.0	0.7
Quebec	388.0	115.3	53.9	32.0	16.8	9.7	6.7	4.9	3.6
Ontario	500.8	142.3	63.4	36.7	19.4	10.7	7.4	5.3	3.8
Manitoba	64.6	19.9	9.9	6.1	3.1	1.9	1.3	0.9	0.7
Saskatchewan	67.0	20.0	9.8	5.9	2.9	1.8	1.2	0.9	0.7
Alberta	243.3	74.8	37.1	22.7	11.5	7.0	4.8	3.5	2.7
British Columbia	284.4	84.0	39.5	23.5	12.1	7.0	4.8	3.5	2.6

Source: Labour Force Survey (3701).

Table 7.3
Coefficient of variation (CV) for estimates of three-month moving averages and annual averages, territories

	Coefficient of variation								
	2.0%	3.5%	5.0%	7.5%	10.0%	16.5%	20.0%	25.0%	33.3%
	estimates (in thousands)								
Three-month moving average									
Yukon	22.6	10.9	5.6	3.1	1.7	0.9	0.6	0.4	0.3
Northwest Territories	27.7	13.5	6.4	3.6	1.8	1.0	0.6	0.5	0.3
Nunavut	15.7	7.9	4.0	2.3	1.2	0.7	0.5	0.3	0.2
Annual average									
Yukon	18.7	8.1	4.0	2.1	1.1	0.5	0.4	0.2	0.2
Northwest Territories	22.6	10.3	4.5	2.4	1.1	0.6	0.4	0.2	0.2
Nunavut	12.7	5.8	2.8	1.5	0.8	0.4	0.3	0.2	0.1

Source: Labour Force Survey (3701).

Variability of monthly estimates for Canada and the provinces

To look up an approximate measure of the CV of an estimate of a monthly total, consult Table 7.1, which gives the size of the estimate as a function of the geography and the CV. The rows give the geographic area of the estimate, while the columns indicate the resulting level of accuracy in terms of the CV, given the size of the estimate. To determine the CV for an estimate of size X in area A, look across the row for area A and find the first estimate that is less than or equal to X. The title of that column will give the approximate CV. For example, to determine the standard error for an estimate of 38.5 thousand unemployed in Newfoundland and Labrador in November 2017, we find the closest but smaller estimate of 28.4 thousand, giving a CV of 5%. Therefore, the estimate of 38,500 unemployed in Newfoundland and Labrador has a CV of roughly 5%.

The CV values given in Table 7.1 are derived from a model based on LFS sample data for the 48-month period from January 2014 through December 2017 inclusive. It is important to bear in mind that these values are approximations.

Table 7.1 can be used with either seasonally adjusted estimates, or with estimates that have not been seasonally adjusted. Studies have shown that LFS standard errors for seasonally adjusted data are close to those for unadjusted data, particularly when estimates are for larger populations and domains.

Variability of annual estimates for Canada and the provinces

To look up an approximate measure of the CV of an estimate of an annual average, consult Table 7.2, which gives the size of the estimate as a function of the geography and the CV. The rows give the geographic level of the estimate, while the columns indicate the resulting level of accuracy in terms of the CV, given the size of the estimate. To determine the CV for an estimate of size X in area A, look across the row for area A and find the first estimate that is less than or equal to X. The title of that column will give the approximate CV. For example, to determine the standard error for an annual average estimate of 38.8 thousand unemployed in Newfoundland and Labrador in 2017, we find the closest but smaller estimate of 30.6 thousand, giving a CV of 2.5%. Therefore, the estimate of 38,800 unemployed in Newfoundland and Labrador has a CV of roughly 2.5%.

The CV values given in Table 7.2 are derived from a model based on LFS sample data for the five-year period from 2013 to 2017. It is important to bear in mind that these values are approximations.

Sampling variability tables for the territories

The CV values for three-month moving averages given in Table 7.3 for Yukon, the Northwest Territories and Nunavut are derived from a model based on LFS sample data for the 48-month period of January 2014 through December 2017 inclusive. The CV values for annual averages given in the same table are derived from a model based on LFS sample data for the five-year period of 2013 to 2017.

Variability of rates

Estimates that are rates and percentages are subject to sampling variability that is related to the variability of the numerator and the denominator of the ratio. The various rates given are treated differently because some of the denominators are calibrated figures that have no sampling variability associated with them.

Unemployment rate

The unemployment rate is the ratio of X, the total number of unemployed in a group, to Y, which is the total number of participants in the labour force in the same group. Here, the group may be a province or CMA and/or it may be an age-sex group.

The CV for the unemployment rate can be estimated with the following formula:

$$[CV(X/Y)]^2 = [CV(X)]^2 + [CV(Y)]^2 - 2p[CV(X)][CV(Y)]$$

where CV(X) would be the CV for the total number of unemployed in a specific geographic or demographic subgroup and CV(Y) would be the CV for the total number of participants in the labour force in the same subgroup. The correlation coefficient, denoted p , measures the amount of linear association between X and Y (respectively, the number of unemployed and the number of participants in the labour force in the same subgroup). The value of p ranges between -1 and 1. For example, a strong positive linear association would indicate that unemployment counts generally increase as the total number of participants in the labour force increases. Note that we can expect a larger CV for the unemployment rate when p is negative, since in this case, the third term on the right side of the equation above becomes positive.

When p is not available, the most conservative approach is to take $p = -1$, which leads to the simplified formula:

$$CV(X/Y) = CV(X) + CV(Y)$$

Note that this will likely lead to an overestimation of the CV(X/Y).

For example, in November 2017, there were 38,500 unemployed persons in Newfoundland and Labrador and 262,900 participants in the labour force, giving an unemployment rate of 14.6%. Table 7.1 gives the CVs for the two counts as 5.0% and 1.0%, respectively. An approximation of the CV for the unemployment rate of 14.6% using the above formula would be:

$$5.0\% + 1.0\% = 6.0\%$$

Note that, in the case of this particular estimate, the above approximation is only slightly above the 5.8% CV that is estimated using complex computer-intensive variance estimation methods.

Participation rate and employment rate

The participation rate represents the number of persons in the labour force expressed as a percentage of the total population size. The employment rate is the total number of employed divided by the total population size. For both the above rates, the numerator and the denominator represent the same geographic and demographic group.

For Canada, the provinces, CMAs and some age-sex groups, the LFS population estimates are not subject to sampling variability because they are calibrated to independent sources. Therefore, in the case of the participation rate and the employment rate of these geographic and demographic groups, the CV is equal to that of the contributing numerator.

Some subgroups of Canada such as industry and occupation groups are not calibrated to independent sources. For example, there is no official independent source for a monthly count of persons in the agriculture industry in Manitoba. To determine the CV of rates in the case of such subgroups, the variability of both the numerator and the denominator has to be taken into account because the denominator is no longer a controlled total and is subject to sampling variability. Therefore, for participation rates and employment rates of subgroups, the CV can be determined similar to the unemployment rate. The totals in the numerator and denominator for the relevant rate should reflect the same subgroup.

Variability of estimates of change

The difference of estimates from two time periods gives an estimate of change that is also subject to sampling variability. Users are typically interested in determining if this change is statistically significant or not. An estimate of year-over-year or month-to-month change is based on two samples which may have some households in common. Hence, the sampling variability of change depends on the sampling variability of the estimates for both periods and the correlation ρ , between the periods.

The value of ρ ranges between -1 and 1, with 1 being the perfect positive linear association. One can generally use the sample overlap to approximate the correlation coefficient as follows:

- For the provinces: use $\rho = 5/6$ for month-to-month changes, and $\rho = 0$ for year-over-year changes.
- Empirical studies at Statistics Canada have shown that for the provinces, a value of ρ equal to 5/6 is a good approximation for estimates of employment, but for estimates of unemployment, a ρ of 0.45 would yield a better approximation for month-to-month changes.

Typically, the CV of the estimate of change is not a useful measure for analysis but can be used to derive more useful statistics. As described in the sub-section entitled **Conducting hypothesis tests**, a hypothesis test can be conducted by using confidence intervals based on the standard error of the estimate. The standard error can be derived from the CV by multiplying the CV by the estimate of change ($Y_2 - Y_1$). The CV for an estimate of change can be calculated from the CVs of the estimates from the two time periods using the following formula:

(1)

$$CV(Y_2 - Y_1) = \sqrt{1 - \rho} \frac{\sqrt{Y_1^2 CV(Y_1)^2 + Y_2^2 CV(Y_2)^2}}{(Y_2 - Y_1)}$$

where Y_1 and Y_2 are the estimates for the two periods. The value of ρ is the correlation coefficient between Y_1 and Y_2 .

Note: If the estimate of change ($Y_2 - Y_1$) is negative then the calculated CV will be negative, but generally the equivalent positive value is reported.

When comparing the annual averages of two years, the CV of the annual estimates (Table 7.2) should be used. For month-to-month change, seasonally adjusted estimates should be used in conjunction with the CVs of the monthly estimates from Table 7.1. Note that the above formula gives an approximate estimate of the sampling variability associated with an estimate of change.

Guidelines on data reliability

Household surveys within Statistics Canada generally use the following guidelines and reliability categories in interpreting CV values for data accuracy and in the dissemination of statistical information.

Category 1 — If the CV is $\leq 16.5\%$ — no release restrictions: data are of sufficient accuracy that no special warnings to users or other restrictions are required.

Category 2 — If the CV is $> 16.5\%$ and $\leq 33.3\%$ — release with caveats: data are potentially useful for some purposes but should be accompanied by a warning to users regarding their accuracy.

Category 3 — If the CV $> 33.3\%$ — not recommended for release: data contain a level of error that makes them so potentially misleading that they should not be released in most circumstances. If users insist on inclusion of Category 3 data in a non-standard product, even after being advised of their accuracy, the data should be accompanied by a disclaimer. The user should acknowledge the warnings given and undertake not to disseminate, present or report the data, directly or indirectly, without this disclaimer.

Confidentiality release criteria

Statistics Canada is prohibited by law from releasing any data which would divulge information obtained under the *Statistics Act* that relates to any identifiable person, business or organization without the prior knowledge or the consent in writing of that person, business or organization. Various confidentiality rules are applied to all data that are released or published to prevent the publication or disclosure of any information deemed confidential. If necessary, data are suppressed to prevent direct or residual disclosure of identifiable data.

The LFS produces a wide range of outputs that contain estimates for various labour force characteristics. Most of these outputs are estimates in the form of tabular cross-classifications. Estimates are rounded to the nearest hundred and a series of suppression rules are used so that any estimate below a minimum level is not released.

The LFS suppresses estimates below the levels presented in Table 7.4.

Table 7.4
Minimum size for release, Canada, provinces and territories

	<u>Minimum size for release</u> thousands
Canada	1.5
Newfoundland and Labrador	0.5
Prince Edward Island	0.2
Nova Scotia	0.5
New Brunswick	0.5
Quebec	1.5
Ontario	1.5
Manitoba	0.5
Saskatchewan	0.5
Alberta	1.5
British Columbia	1.5
Yukon	0.2
Northwest Territories	0.2
Nunavut	0.2

Source: Labour Force Survey (3701).

Section 8: Comparing the Survey of Employment, Payrolls and Hours and the Labour Force Survey

Statistics Canada has two monthly surveys that measure employment levels and trends: the Labour Force Survey (LFS), referred to here as the household survey, and the Survey of Employment, Payrolls and Hours (SEPH), referred to here as the payroll or establishment survey.

The LFS provides the first timely picture of overall labour market conditions, with total employment, unemployment and unemployment rate, as well as information on which groups of Canadians are most affected by changes in the labour market.

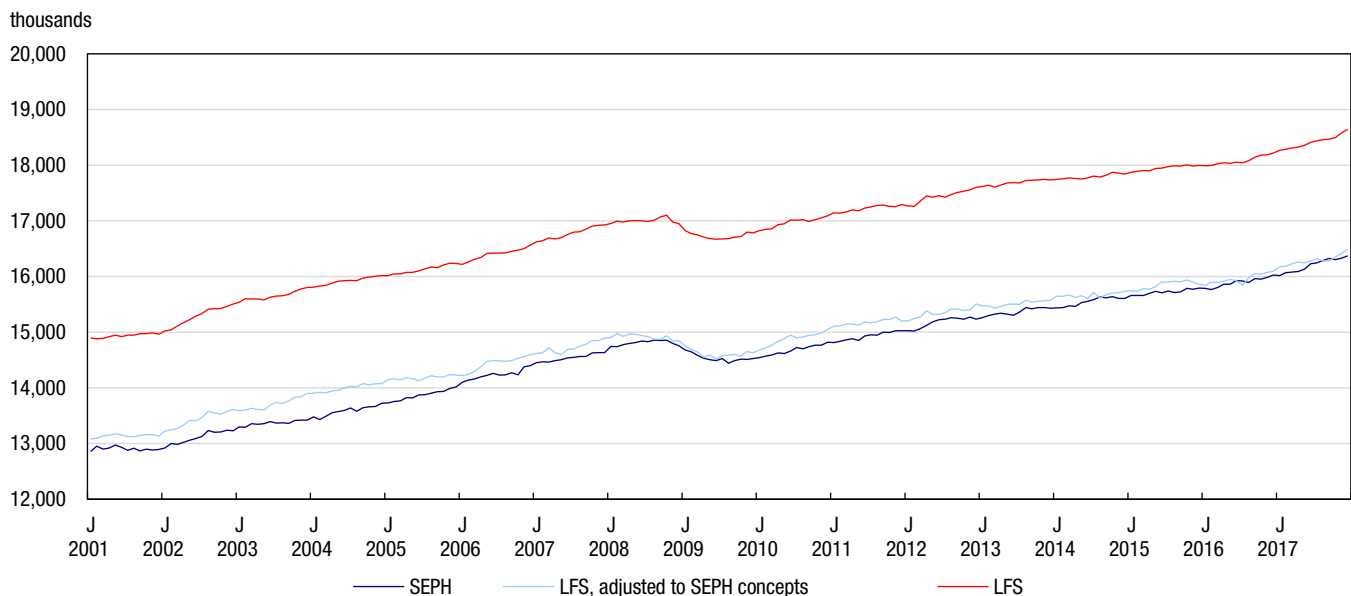
Approximately two months later, the SEPH provides additional detail of the same month by industry, along with estimations of earnings and hours worked.

Statistics from both the household and business payroll surveys, along with those from the Employment Insurance program and the Job Vacancy program all contribute to understanding the supply and demand components of the labour market.

The household survey (LFS) provides a broader picture of employment, including employment in agriculture and the number of self-employed. The payroll survey (SEPH) provides a highly reliable gauge of monthly change in non-farm payroll employment.

Because the LFS has a broader definition of employment than the SEPH, the LFS employment level exceeds the SEPH employment level. See Chart 8.1 below for more details.

Chart 8.1
SEPH and LFS employment levels, January 2001 to December 2017, seasonally adjusted



Sources: Statistics Canada, Labour Force Survey and Survey of Employment, Payrolls and Hours.

For comparability purposes, an adjusted LFS series was added to Chart 8.1 to be more similar in concept and definition to SEPH employment. This adjusted series is created by subtracting agriculture, fishing and hunting employment, non-agricultural self-employed, unpaid family and private household workers, as well as workers absent without pay from their jobs, and then adding non-agricultural wage and salary multiple job holders.

The LFS adjusted series tracks much more closely with the SEPH measure; nonetheless, trend discrepancies occur occasionally. For example, during the 2008–2009 employment downturn, the decline was more pronounced in the LFS than the SEPH.

Some of the discrepancies are attributable to conceptual and measurement differences between the two surveys. The major features and distinctions of the two surveys are shown in Table 8.1.

Table 8.1
Features of the Labour Force Survey (LFS) and the Survey of Employment, Payrolls and Hours (SEPH)

Comparison	LFS	SEPH
Population	Non-institutionalized civilian population aged 15 and over.	Non-farm wage and salary jobs.
Type of survey	Monthly sample survey of approximately 56,000 households.	Monthly census of businesses (from administrative data), plus a survey of 15,000 establishments for the earnings.
Major outputs	Labour force, employment, unemployment, by province, and associated rates with demographic details.	Employment, earnings and hours with industry and geographic details.
Reference period	Calendar week that includes the 15 th of the month. ¹	The last seven days of the month. ²
Employment concept	Estimate of employed persons (multiple jobholders are counted only once). Includes individuals absent from work without pay.	Number of jobs (multiple jobholders counted for each non-farm payroll job). Includes only those receiving pay for the reference period.
Employment definition differences	Includes the unincorporated self-employed, unpaid family workers, agriculture, forestry, fishing and hunting, religious organization workers, private household workers, international and other extraterritorial public administration and workers absent without pay.	Excludes all of the groups listed in the column to the left, except for forestry, logging and support activities for forestry.
Size of month-to-month change in employment for a statistically significant movement	+/- 46,000 for 90% confidence (updated twice a year).	Based on a census, so there is no statistical uncertainty associated with the employment estimates.
Benchmark adjustment to survey results	No direct benchmark for employment. Adjustment to underlying population every 5 years to the census.	No benchmark adjustment.

1. Except for November and December, when the reference week is often one week earlier.

2. In fact, there is a mix of different periods, since pay period lengths and dates vary between employers and even between groups of employees working for the same employer. In all cases, the information for the most recent pay period is used in processing the administrative data.

Sources: Statistics Canada, Labour Force Survey and Survey of Employment, Payrolls and Hours.

Comparing employment trends from the two surveys

The LFS is the only survey conducted by Statistics Canada designed to provide the official unemployment rate every month, with a monthly sample size of approximately 56,000 households. It is the earliest and most timely indicator of the pulse of the labour market in Canada. The sample size makes it a very reliable source for different geographic levels. It provides a complete picture as it includes employees, self-employed as well as unemployed people. Characteristics of all three groups, including age, sex and occupation are also available.

The SEPH, also a monthly survey, is designed to provide data on payroll employment as well as average earnings and hours worked. It is a census of all payroll employees in Canada. Consequently, the SEPH does not survey the self-employed or the unemployed. However, the employment payrolls data are available at a detailed industry level.

As mentioned earlier, SEPH and LFS estimates track well over the long term, but discrepancies in trends occur occasionally. These discrepancies might be more common for sub-groups, for example, at the provincial level or in a specific industry.

Table 8.2 provides year-over-year employment change from the two sources of data.

Table 8.2
Year-over-year employment change, based on the Survey of Employment, Payrolls and Hours and the Labour Force Survey

	December 2016 to December 2017, seasonally adjusted	
	level change, in thousands	% change
LFS employment	427.3	2.3
Adjusted LFS employment ¹	383.5	2.4
SEPH employment ²	348.3	2.2

1. This is an internal series created from LFS employment to be more similar in concepts and definition to the SEPH employment. LFS employment is adjusted by including employees, the incorporated self-employed with employees and the additional payroll job of multiple job holders. Then, agriculture, fishing and hunting employment, unpaid family and private household workers, as well as workers absent without pay from their jobs, are subtracted.

2. Excluding the territories.

Sources: Statistics Canada, Labour Force Survey and Survey of Employment, Payrolls and Hours.

Sampling error in the LFS

The LFS is subject to sampling and non-sampling error. While it is one of the largest sample surveys internationally, reaching 56,000 households, it covers a small portion of all employed persons. When looking at short-term trends, especially over-the-month changes, it is essential to assess the statistical significance of the change.

Employment estimates from the SEPH, as they are derived from all the administrative payroll deduction forms submitted by employers to the Canada Revenue Agency, are not subject to sampling error. They are, however, subject to non-sampling error.

Worker classification in the LFS

An adjusted LFS employment series was created to be more similar in concept and definition to the SEPH employment series, as featured in Chart 8.1. This adjusted series is calculated by subtracting agriculture and related employment; unpaid family and private household workers; workers absent without pay from their job; as well as military reservists; and adding wage and salary multiple jobholders whose second job is either as an employee or as an incorporated self-employed with employees. For the SEPH, employment data from the three northern territories are removed to make it comparable to the LFS.

This adjustment process also has some limitations. For example, some independent contractors in LFS may have mistakenly reported themselves as wage and salary workers rather than self-employed. This could lead to some overstatement in the adjusted LFS employment estimates. Separately, the adjustment for multiple jobholders adds the number of workers whose primary job is non-agricultural wage and salary, but not necessarily their secondary job. However, there are no adjustments to account for the number of multiple jobholders with three or more jobs; the adjustment process presumes all multiple jobholders only hold two jobs. This introduces some understatement into the adjusted household survey employment. These types of worker classification issues limit the ability to fully reconcile the two employment measures.

'Off the books' employment

Workers may be working for pay but not necessarily declared in the SEPH (for example, 'off-the-books' employment). The LFS could possibly include some of these workers, but it is not possible to determine the extent to which they might be reflected in the survey estimates.

Estimates by province

Estimates from the LFS are based on where people usually reside. However, the SEPH counts employees in the province or territory where they work. This does not affect comparability at the national level, but can create differences at the provincial/territorial level.

Payroll estimates and detailed industry data

New businesses are included in the Statistics Canada Business Register, which is used by the SEPH to obtain the industry information. However, there can be delays before all new businesses are classified, which can mean

temporary under-reporting in some of the detailed industry data. Also, the Business Register regularly reviews and updates the industry and provincial classification of current establishments. This can cause changes to employment levels of updated industries, not reflecting real growth or decline.

Employment industry data available from the household survey are based on information provided by survey respondents when asked about the detailed characteristics of their employment. That information is then processed and an industrial classification code is assigned by Statistics Canada.

Release schedule differences

The LFS interviews take place over the ten days following the reference week. This is followed by nine days of processing and analysis, enabling the release of the estimates 19 days after the Saturday of the reference week. The release usually takes place the first or second Friday of the month.

Businesses have until the 15th of the following month to file data from the last pay period of the reference month to the Canada Revenue Agency. These data, or approximately one million records, are provided to Statistics Canada at the beginning of the next month, or five weeks after the reference period. This is followed by three and a half weeks of processing and analysis, bringing the release to eight and a half weeks after the reference period.

Revision schedule

Estimates from both surveys are revised according to different schedules. While this does not impact the overall trends, it could affect the month-to-month change.

The seasonally adjusted LFS estimates are revised yearly, going back three years, and are published around the end of January. Every five years, population controls are updated according to the latest census population projections and all LFS estimates are revised historically over a longer time span. This exercise is called a rebasing and the last one occurred in January 2015. At the time of the rebasing, the latest classifications for geography, industry and occupation are updated along with the latest seasonal factors.

With the SEPH, monthly estimates are revised the month after the estimates are first publicly released. For example, when estimates for May are released, estimates for April are revised.

Every year at the end of March, the SEPH estimates undergo a historical revision. The span and the breadth of the revisions vary depending on the year. The revisions to specific industries sometimes go back as far as 2001 and can include updates to new classification systems (i.e., moving from NAICS 2007 to NAICS 2012), or sometimes will span only a few years with minimal changes. At the same time, seasonally adjusted data are revised back three years.

Section 9: Products and services

A broad range of tabulated data compiled from the Labour Force Survey (LFS) is contained in regular publications and data tables. Analytical articles based on LFS data frequently appear in the Statistics Canada publications listed below. However, the wealth of information that can be extracted from the survey, and the variety of questions that can be addressed, are far too vast for regular publication. In order to meet particular analytical needs and address issues of current interest, the survey provides a custom tabulation service on a cost-recovery basis. A public use microdata file is also available for clients wishing to do their own data extractions and analyses.

Catalogued publications

Monthly: Labour Force Information (catalogue no. 71-001-X)

This publication, which contains charts of major data series, is available at 8:30 a.m. on the day of each monthly release on either the first or second Friday of the month.

The timeliness and analytical content of this publication contribute to its popularity and use by the media, government, research institutions, and others who need quick reference to the latest labour market trends. An Internet version available in PDF or HTML on the Statistics Canada website ensures timely delivery.

Monthly: Statistics Canada – Data Visualization Products: Labour Market Indicators, by province and census metropolitan area, seasonally adjusted (catalogue no. 71-607-X, issue 2017001)

This web application provides access to Statistics Canada’s Labour Market Indicators for Canada, by province and by census metropolitan area. This dynamic application allows users to view geographical rankings for each labour market indicator and to create quick reports with interactive maps and charts that can be easily copied into other programs. All provincial and CMA estimates used in this application are seasonally adjusted, three-month moving averages.

Monthly: Statistics Canada – Data Visualization Products: Labour Market Indicators, by province, territory and economic region, unadjusted for seasonality (catalogue no. 71-607-X, issue 2017002)

This web application provides access to Statistics Canada’s Labour Market Indicators for Canada, by province, territory and economic region (ER). This dynamic application allows users to view a snapshot of key labour market indicators, observe geographical rankings for each indicator using an interactive map and table, and easily copy data into other programs. The provincial and ER estimates used in this application from the Labour Force Survey (LFS) are three-month moving averages, unadjusted for seasonality. The provincial, territorial and ER estimates used in this application from the Job Vacancy and Wage Survey (JVWS) are quarterly data, unadjusted for seasonality. Historical estimates are available in this application, with data going back 10 years for the LFS and from the first quarter of 2016 for JVWS.

Occasional: Labour Statistics: Research Papers (catalogue no. 75-004-M)

The papers in this series cover a variety of topics related to labour statistics. These more in-depth studies are intended to showcase recent or historical trends in the labour market using data from Labour Statistics Division surveys as well as other administrative data sources.

Occasional: Labour Statistics: Technical Papers (catalogue no. 75-005-M)

The papers in this series cover a variety of technical topics related to the surveys of the Labour Statistics Division as well as data from administrative sources.

Occasional: Insights on Canadian Society (catalogue no. 75-006-X)

This publication brings together and analyzes a wide range of data sources in order to provide information on various aspects of Canadian society, including labour, income, education, social, and demographic issues that affect the lives of Canadians. This publication replaces *Perspectives on Labour and Income* (catalogue no. 75-001-X).

Monthly: Microdata File (catalogue no. 71M0001X)

This public use microdata file (PUMF) contains anonymized non-aggregated data for a wide variety of variables collected from the LFS. It is for users who prefer to do their own analysis by focusing on specific sub-groups in the population or by cross-classifying variables that are not in our catalogued products.

This PUMF contains both personal characteristics for all individuals in the household and most labour force characteristics for household members 15 years of age and over. These variables are available by province and for nine CMAs: Québec, Montreal, Ottawa, Toronto, Hamilton, Winnipeg, Calgary, Edmonton and Vancouver. This is a monthly file, and is available going back to 1976.

Occasional: Improvements to the Labour Force Survey (LFS) (catalogue no. 71F0031X)

This paper introduces and explains the standard revisions and other modifications made to the Labour Force Survey estimates.

Occasional: Aboriginal Peoples Living Off-reserve in Western Canada: Estimates from the Labour Force Survey (catalogue no. 71-587-X)

This paper provides information on Aboriginal employment and unemployment, Aboriginal youths and the impact of education on labour market performance in Manitoba, Saskatchewan, Alberta, and British Columbia.

Occasional: The Aboriginal Labour Force Analysis Series (catalogue no. 71-588-X)

This series of analytical reports provides an overview of the labour market conditions among the Aboriginal off-reserve populations, based on estimates from the Labour Force Survey. These reports examine the Aboriginal labour force characteristics by Aboriginal group as well as diverse socio-economic and employment characteristics.

Occasional: The Immigrant Labour Force Analysis Series (catalogue no. 71-606-X)

This series of analytical reports provides an overview of the Canadian labour market experiences of immigrants to Canada, based on data from the Labour Force Survey. These reports examine the labour force characteristics of immigrants by reporting on employment and unemployment at the national level, the provincial level and large metropolitan areas. They also provide more detailed analysis by region of birth as well as in-depth analysis of other specific aspects of the immigrant labour market.

Occasional: Methodology of the Canadian Labour Force Survey (catalogue no. 71-526-X)

This publication offers an in-depth look at the methodological and operational aspects of the LFS, covering stratification, sampling, survey operations, weighting, estimation, and data quality. This document would be of interest to those who would like more in-depth methodological information on the LFS than provided by the *Guide to the Labour Force Survey*.

Data tables

A large selection of high-demand LFS monthly and annual average time series is available on Statistics Canada's website. These data tables are dynamically updated as new results are released. See the section entitled **Related products** of this document for a complete listing.

Custom tabulations

Custom tabulations can be arranged on an ad hoc or regular basis for a fee. This service enables users to specify tables and time series to meet their own requirements. For example, users may wish to have labour force estimates for age groups or educational levels that differ from those used in LFS publications. Subject matter and tabulation expertise is also provided to ensure that the customized data package is accurate and appropriate.

Access to microdata

A Research Data Centre (RDC) provides access to Statistics Canada's confidential microdata files. They are accessible only to researchers with approved projects who have been sworn in as 'deemed employees' of Statistics Canada. The RDC confidential microdata files contain most of the original information collected during the survey interview with the subject as well as derived variables added to the dataset afterwards. They also contain the bootstrap weights used to calculate the exact variance, which are available only in the master file. RDCs are located throughout the country. The following website has more information: www.statcan.gc.ca/eng/rdc/index.

The Real Time Remote Access (RTRA) complements existing methods of access to confidential micro-data. Using a secure username and password, the RTRA provides around the clock access to survey results from any computer with internet access. Confidentiality of the micro data is automated in the RTRA system, eliminating the need for manual intervention and allowing for rapid access to results. In order to utilize the RTRA program, applicants must complete an application form. More information is provided on the website www.statcan.gc.ca/eng/rtra/rtra.

General inquiries

For inquiries on any of these products and services, contact Statistics Canada's Statistical Information Service (toll-free: 1-800-263-1136; 514-283-8300; statcan.infostats-infostats.statcan@canada.ca).

Appendices

Appendix A – Sub-provincial geography descriptions

Labour market information from the LFS is available for a variety of geographic levels. While designed to provide highly reliable data at the national and provincial levels, key labour market estimates are also available for census metropolitan areas, economic regions and employment insurance economic regions.

Census metropolitan area (CMA)

A CMA is formed by one or more adjacent municipalities centred on a population centre (known as the core). A CMA must have a total population of at least 100,000, of which 50,000 or more must live in the core.

The CMAs are based on the 2011 Standard Geographical Classification (SGC). Below is a list of the 33 CMAs and their associated census subdivisions. Please note that Indian reserves, although geographically part of certain CMAs, are excluded from the LFS.

Labour Force Survey estimates are based on a sample and are therefore subject to sampling variability. As a result, estimates will show more variability than trends observed over longer periods of time. Estimates for smaller geographic areas also have more variability. For an explanation of sampling variability of estimates and how to use standard errors to assess this variability, see Section 7 of this publication.

To view the geographical maps for the CMAs, visit our website at: http://www23.statcan.gc.ca/imdb/p2SV.pl?Function=getSurvDocument&Item_Id=213697&Instald=269295.

For further descriptions of CMAs or other geographic areas used by Statistics Canada, visit the website: <http://www.statcan.gc.ca/subjects-sujets/standard-norme/sgc-cgt/2011/sgc-cgt-intro-eng.htm>.

St. John's: Bauline, Bay Bulls, Conception Bay South, Flatrock, Logy Bay-Middle Cove-Outer Cove, Mount Pearl, Paradise, Petty Harbour-Maddox Cove, Portugal Cove-St. Philip's, Pouch Cove, St. John's, Torbay, Witless Bay.

Halifax: Halifax.

Moncton: Coverdale, Dieppe, Dorchester (parish), Dorchester (village), Elgin, Hillsborough (parish), Hillsborough (village), Memramcook, Moncton (city), Moncton (parish), Riverview, Saint-Paul, Salisbury.

Saint John: Grand Bay-Westfield, Greenwich, Hampton (parish), Hampton (town), Kingston, Lepreau, Musquash, Petersville, Quispamsis, Rothesay (parish), Rothesay (town), Saint John, Saint Martins, Simonds, St. Martins, Upham, Westfield.

Saguenay: Larouche, Saguenay, Saint-Charles-de-Bourget, Saint-David-de-Falardeau, Saint-Félix-d'Otis, Saint-Fulgence, Saint-Honoré, Sainte-Rose-du-Nord.

Québec: Beaumont, Boischatel, Château-Richer, Fossambault-sur-le-Lac, Lac-Beauport, Lac-Delage, Lac-Saint-Joseph, L'Ancienne-Lorette, L'Ange-Gardien, Lévis, Neuville, Notre-Dame-des-Anges, Québec, Saint-Augustin-de-Desmaures, Sainte-Brigitte-de-Laval, Sainte-Catherine-de-la-Jacques-Cartier, Sainte-Famille, Sainte-Pétronille, Saint-François-de-l'Île-d'Orléans, Saint-Gabriel-de-Valcartier, Saint-Henri, Saint-Jean-de-l'Île-d'Orléans, Saint-Lambert-de-Lauzon, Saint-Laurent-de-l'Île-d'Orléans, Saint-Pierre-de-l'Île-d'Orléans, Shannon, Stoneham-et-Tewkesbury.

Sherbrooke: Ascot Corner, Compton, Hatley, Magog, North Hatley, Orford, Saint-Denis-de-Brompton, Sherbrooke, Stoke, Val-Joli, Waterville.

Trois-Rivières: Bécancour, Champlain, Saint-Luc-de-Vincennes, Saint-Maurice, Trois-Rivières, Yamachiche.

Montréal: Baie-D'Urfé, Beaconsfield, Beauharnois, Beloeil, Blainville, Boisbriand, Bois-des-Filion, Boucherville, Brossard, Candiac, Carignan, Chambly, Charlemagne, Châteauguay, Coteau-du-Lac, Côte-Saint-Luc, Delson, Deux-Montagnes, Dollard-Des Ormeaux, Dorval, Gore, Hampstead, Hudson, Kirkland, La Prairie, L'Assomption, Laval, Lavaltrie, L'Épiphanie (parish), L'Épiphanie (town), Léry, Les Cèdres, Les Coteaux, L'Île-Cadieux, L'Île-Dorval, L'Île-Perrot, Longueuil, Lorraine, Mascouche, McMasterville, Mercier, Mirabel, Montréal, Montréal-Est, Montréal-Ouest, Mont-Royal, Mont-Saint-Hilaire, Notre-Dame-de-l'Île-Perrot, Oka, Otterburn Park, Pincourt,

Pointe-Calumet, Pointe-Claire, Pointe-des-Cascades, Repentigny, Richelieu, Rosemère, Saint-Amable, Saint-Basile-le-Grand, Saint-Bruno-de-Montarville, Saint-Colomban, Saint-Constant, Sainte-Anne-de-Bellevue, Sainte-Anne-des-Plaines, Sainte-Catherine, Sainte-Julie, Sainte-Marthe-sur-le-Lac, Sainte-Thérèse, Saint-Eustache, Saint-Isidore, Saint-Jérôme, Saint-Joseph-du-Lac, Saint-Lambert, Saint-Lazare, Saint-Mathias-sur-Richelieu, Saint-Mathieu, Saint-Mathieu-de-Beloeil, Saint-Philippe, Saint-Placide, Saint-Sulpice, Saint-Zotique, Senneville, Terrasse-Vaudreuil, Terrebonne, Varennes, Vaudreuil-Dorion, Vaudreuil-sur-le-Lac, Verchères, Westmount.

Ottawa–Gatineau: Bowman, Cantley, Chelsea, Clarence-Rockland, Denholm, Gatineau, La Pêche, L'Ange-Gardien, Mayo, Notre-Dame-de-la-Salette, Ottawa, Pontiac, Russell, Val-des-Bois, Val-des-Monts.

Ottawa–Gatineau (Quebec part): Bowman, Cantley, Chelsea, Denholm, Gatineau, La Pêche, L'Ange-Gardien, Mayo, Notre-Dame-de-la-Salette, Pontiac, Val-des-Bois, Val-des-Monts.

Ottawa–Gatineau (Ontario part): Clarence-Rockland, Ottawa, Russell.

Kingston: Frontenac Islands, Kingston, Loyalist, South Frontenac.

Peterborough: Cavan-Monaghan, Douro-Dummer, Otonabee-South Monaghan, Peterborough, Smith-Ennismore-Lakefield.

Oshawa: Clarington, Oshawa, Whitby.

Toronto: Ajax, Aurora, Bradford West Gwillimbury, Brampton, Caledon, East Gwillimbury, Georgina, Halton Hills, King, Markham, Milton, Mississauga, Mono, New Tecumseth, Newmarket, Oakville, Orangeville, Pickering, Richmond Hill, Toronto, Uxbridge, Vaughan, Whitchurch-Stouffville.

Hamilton: Burlington, Grimsby, Hamilton.

St. Catharines–Niagara: Fort Erie, Lincoln, Niagara Falls, Niagara-on-the-Lake, Pelham, Port Colborne, St. Catharines, Thorold, Wainfleet, Welland.

Kitchener–Cambridge–Waterloo: Cambridge, Kitchener, North Dumfries, Waterloo, Woolwich.

Brantford: Brant, Brantford.

Guelph: Guelph, Guelph/Eramosa, Puslinch.

London: Adelaide-Metcalf, Central Elgin, London, Middlesex Centre, Southwold, St. Thomas, Strathroy-Caradoc, Thames Centre.

Windsor: Amherstburg, Lakeshore, LaSalle, Tecumseh, Windsor.

Barrie: Barrie, Innisfil, Springwater.

Greater Sudbury: Greater Sudbury.

Thunder Bay: Conmee, Gillies, Neebing, O'Connor, Oliver Paipoonge, Shuniah, Thunder Bay.

Winnipeg: East St. Paul, Headingley, Macdonald, Ritchot, Rosser, Springfield, St. Clements, St. François Xavier, Taché, West St. Paul, Winnipeg.

Regina: Balgonie, Belle Plaine, Buena Vista, Disley, Edenwold, Edenwold No. 158, Grand Coulee, Lumsden, Lumsden Beach, Lumsden No. 189, Pense, Pense No. 160, Pilot Butte, Regina, Regina Beach, Sherwood No. 159, White City.

Saskatoon: Allan, Asquith, Blucher No. 343, Bradwell, Clavet, Colonsay, Colonsay No. 342, Corman Park No. 344, Dalmeny, Delisle, Dundurn, Dundurn No. 314, Elstow, Langham, Martensville, Meacham, Osler, Saskatoon, Shields, Thode, Vanscoy, Vanscoy No. 345, Warman.

Calgary: Airdrie, Beiseker, Calgary, Chestermere, Cochrane, Crossfield, Irricana, Rocky View County.

Edmonton: Beaumont, Betula Beach, Bon Accord, Bruderheim, Calmar, Devon, Edmonton, Fort Saskatchewan, Gibbons, Golden Days, Itaska Beach, Kapasiwin, Lakeview, Leduc, Leduc County, Legal, Morinville, Parkland County, Point Alison, Redwater, Seba Beach, Spring Lake, Spruce Grove, St. Albert, Stony Plain, Strathcona County, Sturgeon County, Sundance Beach, Thorsby, Wabamun, Warburg.

Kelowna: Central Okanagan, Central Okanagan J, Kelowna, Lake Country, Peachland, West Kelowna.

Abbotsford–Mission: Abbotsford, Mission.

Vancouver: Anmore, Belcarra, Bowen Island, Burnaby, Coquitlam, Delta, Greater Vancouver A, Langley (city), Langley (district municipality), Lions Bay, Maple Ridge, New Westminster, North Vancouver (city), North Vancouver (district municipality), Pitt Meadows, Port Coquitlam, Port Moody, Richmond, Surrey, Vancouver, West Vancouver, White Rock.

Victoria: Capital H (Part 1), Central Saanich, Colwood, Esquimalt, Highlands, Langford, Metchosin, North Saanich, Oak Bay, Saanich, Sidney, Sooke, Victoria, View Royal.

Economic region (ER)

An economic region is a grouping of complete census divisions (with one exception in Ontario) created as a standard geographic unit for analysis of regional economic activity. In the case of Prince Edward Island, the province constitutes one economic region.

The composition of economic regions is determined through a consultative process with the provinces, except for Quebec, where economic regions (*régions administratives*) are designated by law.

The current boundaries are based on the 2011 Standard Geographical Classification (SGC). Excluding the territories, the LFS publishes estimates for 66 ERs, seven of which are combined for data quality purposes.

Labour Force Survey estimates are based on a sample and are therefore subject to sampling variability. As a result, estimates will show more variability than trends observed over longer periods of time. Estimates for smaller geographic areas also have more variability. For an explanation of sampling variability of estimates and how to use standard errors to assess this variability, see Section 7 of this publication.

To view the geographical maps for the economic regions, visit our website at: http://www23.statcan.gc.ca/imdb/p2SV.pl?Function=getSurvDocument&Item_Id=213698&InstalD=269295.

Brief descriptions of the economic regions currently used and their associated census divisions are provided below.

Newfoundland and Labrador

1010	Avalon Peninsula: Division No. 1.
1020 and 1040	South Coast–Burin Peninsula and Notre Dame–Central Bonavista Bay: Division No. 2, Division No. 3, Division No. 6, Division No. 7, and Division No. 8.
1030	West Coast–Northern Peninsula–Labrador: Division No. 4, Division No. 5, Division No. 9, Division No. 10, and Division No. 11.

Prince Edward Island

1110	Prince Edward Island: Kings, Queens and Prince.
------	---

Nova Scotia

1210	Cape Breton: Inverness, Richmond, Cape Breton, and Victoria.
1220	North Shore: Colchester, Cumberland, Pictou, Guysborough, and Antigonish.
1230	Annapolis Valley: Annapolis, Kings and Hants.
1240	Southern: Shelburne, Yarmouth, Digby, Queens, and Lunenburg.
1250	Halifax: Halifax.

New Brunswick

1310	Campbellton–Miramichi: Northumberland, Restigouche and Gloucester.
1320	Moncton–Richibucto: Albert, Westmorland and Kent.
1330	Saint John–St. Stephen: Saint John, Charlotte and Kings.
1340	Fredericton–Oromocto: Sunbury, Queens and York.
1350	Edmundston–Woodstock: Carleton, Victoria and Madawaska.

Quebec

- 2410 Gaspésie-Îles-de-la-Madeleine: Les Îles-de-la-Madeleine, Le Rocher-Percé, La Côte-de-Gaspé, La Haute-Gaspésie, Bonaventure, and Avignon.
- 2415 Bas-Saint-Laurent: La Matapédia, Matane, La Mitis, Rimouski-Neigette, Les Basques, Rivière-du-Loup, Témiscouata, and Kamouraska.
- 2420 Capitale-Nationale: Charlevoix- Est, Charlevoix, L'Île-d'Orléans, La Côte-de-Beaupré, La Jacques-Cartier, Québec, and Portneuf.
- 2425 Chaudière-Appalaches: L'Islet, Montmagny, Bellechasse, Lévis, La Nouvelle-Beauce, Robert-Cliche, Les Etchemins, Beauce-Sartigan, Les Appalaches, and Lotbinière.
- 2430 Estrie: Le Granit, Les Sources, Le Haut-Saint-François, Le Val-Saint-François, Sherbrooke, Coaticook, and Memphrémagog.
- 2433 Centre-du-Québec: L'Érable, Bécancour, Arthabaska, Drummond, and Nicolet-Yamaska.
- 2435 Montérégie: Brome-Missisquoi, La Haute-Yamaska, Acton, Pierre-De Saurel, Les Maskoutains, Rouville, Le Haut-Richelieu, La Vallée-du-Richelieu, Longueuil, Lajemmerais, Roussillon, Les Jardins-de-Napierville, Le Haut-Saint-Laurent, Beauharnois-Salaberry, and Vaudreuil-Soulanges.
- 2440 Montréal: Montréal.
- 2445 Laval: Laval.
- 2450 Lanaudière: D'Autray, L'Assomption, Joliette, Matawinie, Montcalm, and Les Moulins.
- 2455 Laurentides: Deux-Montagnes, Thérèse-De Blainville, Mirabel, La Rivière-du-Nord, Argenteuil, Les Pays-d'en-Haut, Les Laurentides, and Antoine-Labelle.
- 2460 Outaouais: Papineau, Gatineau, Les Collines-de-l'Outaouais, La Vallée-de-la-Gatineau, and Pontiac.
- 2465 Abitibi-Témiscamingue: Témiscamingue, Rouyn-Noranda, Abitibi-Ouest, Abitibi, and La Vallée-de-l'Or.
- 2470 Mauricie: Mékinac, Shawinigan, Francheville, Maskinongé, and La Tuque.
- 2475 Saguenay-Lac-Saint-Jean: Le Domaine-du-Roy, Maria-Chapdelaine, Lac-Saint-Jean-Est, and Le Saguenay-et-son-Fjord.
- 2480 and 2490 Côte-Nord and Nord-du-Québec: La Haute-Côte-Nord, Manicouagan, Sept-Rivières-Caniapiscau, Minganie-Le Golfe-du-Saint-Laurent, and Nord-du-Québec.

Ontario

- 3510 Ottawa: Stormont, Dundas and Glengarry; Prescott and Russell; Ottawa; Leeds and Grenville; and Lanark.
- 3515 Kingston-Pembroke: Frontenac, Lennox and Addington, Hastings, Prince Edward, and Renfrew.
- 3520 Muskoka-Kawarthas: Northumberland, Peterborough, Kawartha Lakes, Muskoka, and Haliburton.
- 3530 Toronto: Durham, York, Toronto, Peel, and Halton (Toronto part).
- 3540 Kitchener-Waterloo-Barrie: Dufferin, Wellington, Waterloo, and Simcoe.
- 3550 Hamilton-Niagara Peninsula: Halton (Hamilton-Niagara Peninsula part), Hamilton, Niagara, Haldimand-Norfolk, and Brant.
- 3560 London: Oxford, Elgin and Middlesex.
- 3570 Windsor-Sarnia: Chatham-Kent, Essex and Lambton.
- 3580 Stratford-Bruce Peninsula: Perth, Huron, Bruce, and Grey.
- 3590 Northeast: Nipissing, Parry Sound, Manitoulin, Sudbury, Greater Sudbury, Timiskaming, Cochrane, and Algoma.
- 3595 Northwest: Thunder Bay, Rainy River and Kenora.

Manitoba

4610	Southeast: Division No. 1, Division No. 2 and Division no. 12.
4620 and 4640	South Central and North Central: Division No. 3, Division No. 4, Division No. 8, Division No. 9, and Division No. 10.
4630	Southwest: Division No. 5, Division No. 6, Division No. 7, and Division No. 15.
4650	Winnipeg: Division No. 11.
4660	Interlake: Division No. 13, Division No. 14 and Division No. 18.
4670 and 4680	Parklands and North: Division No. 16, Division No. 17, Division No. 19, Division No. 20, Division No. 21, Division No. 22, and Division No. 23.

Saskatchewan

4710	Regina–Moose Mountain: Division No. 1, Division No. 2 and Division No. 6.
4720	Swift Current–Moose Jaw: Division No. 3, Division No. 4, Division No. 7, and Division No. 8.
4730	Saskatoon–Biggar: Division No. 11, Division No. 12 and Division No. 13.
4740	Yorkton–Melville: Division No. 5, Division No. 9 and Division No. 10.
4750 and 4760	Prince Albert and Northern: Division No. 14, Division No. 15, Division No. 16, Division No. 17, and Division No. 18.

Alberta

4810	Lethbridge–Medicine Hat: Division No. 1, Division No. 2 and Division No. 3.
4820	Camrose–Drumheller: Division No. 4, Division No. 5, Division No. 7, and Division No. 10.
4830	Calgary: Division No. 6.
4840 and 4870	Banff–Jasper–Rocky Mountain House and Athabasca–Grande Prairie–Peace River: Division No. 9, Division No. 13, Division No. 14, Division No. 15, Division No. 17, Division No. 18, and Division No. 19.
4850	Red Deer: Division No. 8.
4860	Edmonton: Division No. 11.
4880	Wood Buffalo–Cold Lake: Division No. 12 and Division No. 16.

British Columbia

5910	Vancouver Island and Coast: Capital, Cowichan Valley, Nanaimo, Alberni-Clayoquot, Strathcona, Comox Valley, Powell River, Mount Waddington, and Central Coast.
5920	Lower Mainland–Southwest: Fraser Valley, Greater Vancouver, Sunshine Coast, and Squamish-Lillooet.
5930	Thompson–Okanagan: Okanagan-Similkameen, Thompson-Nicola, Central Okanagan, North Okanagan, and Columbia-Shuswap.
5940	Kootenay: East Kootenay, Central Kootenay and Kootenay Boundary.
5950	Cariboo: Cariboo and Fraser-Fort George.
5960 and 5970	North Coast and Nechako: Skeena-Queen Charlotte, Kitimat-Stikine, Bulkley-Nechako, and Stikine.
5980	Northeast: Peace River and Northern Rockies.

Employment insurance economic region (EIER)

In compliance with the *Employment Insurance Act*, the Labour Force Survey publishes seasonally adjusted, three-month moving average unemployment rates for employment insurance economic regions (EIERs). These rates are generally used to determine eligibility, benefit entitlement and weekly amount of benefits for persons living within a particular EIER.

The boundaries of these regions are determined by Employment and Social Development Canada (ESDC) and are currently based on 1996 Census boundaries, with the exception of those in Prince Edward Island and in the territories, which respect the 2011 Census boundaries.

For geographic descriptions and maps of employment insurance economic regions, see the ESDC website: <http://srv129.services.gc.ca/eiregions/eng/geocont.aspx>.

The employment insurance economic regions are outlined below by province.

Newfoundland and Labrador

01. St. John's; 02. Newfoundland and Labrador.

Prince Edward Island

65. Charlottetown; 66. Prince Edward Island.

Nova Scotia

04. Eastern Nova Scotia; 05. Western Nova Scotia; 06. Halifax.

New Brunswick

07. Fredericton–Moncton–Saint John; 08. Madawaska–Charlotte; 09. Restigouche–Albert.

Quebec

10. Gaspésie–Îles-de-la-Madeleine; 11. Quebec; 12. Trois-Rivières; 13. South Central Quebec; 14. Sherbrooke; 15. Montérégie; 16. Montreal; 17. Central Quebec; 18. North Western Quebec; 19. Lower Saint Lawrence and North Shore; 20. Hull; 21. Chicoutimi–Jonquière.

Ontario

22. Ottawa; 23. Eastern Ontario; 24. Kingston; 25. Central Ontario; 26. Oshawa; 27. Toronto; 28. Hamilton; 29. St. Catharines; 30. London; 31. Niagara; 32. Windsor; 33. Kitchener; 34. Huron; 35. South Central Ontario; 36. Sudbury; 37. Thunder Bay; 38. Northern Ontario.

Manitoba

39. Winnipeg; 40. Southern Manitoba; 41. Northern Manitoba.

Saskatchewan

42. Regina; 43. Saskatoon; 44. Southern Saskatchewan; 45. Northern Saskatchewan.

Alberta

46. Calgary; 47. Edmonton; 48. Northern Alberta; 49. Southern Alberta.

British Columbia

50. Southern Interior British Columbia; 51. Abbotsford; 52. Vancouver; 53. Victoria; 54. Southern Coastal British Columbia; 55. Northern British Columbia.

Yukon

59. Whitehorse; 60. Yukon (excluding Whitehorse).

Northwest Territories

61. Yellowknife; 62. Northwest Territories (excluding Yellowknife).

Nunavut

63. Iqaluit; 64. Nunavut (excluding Iqaluit).

Appendix B – Sample size by sub-provincial region, based on the 2015 sample design

Table B-1
Sample size by census metropolitan area (CMA), based on the 2015 sample design

CMA	Standard Geographical Classification (SGC) code	Sample size number of households
St. John's	10001	699
Halifax	12205	1,096
Moncton	13305	408
Saint John	13310	392
Saguenay	24408	659
Québec	24421	889
Sherbrooke	24433	795
Trois-Rivières	24442	738
Montréal	24462	2,057
Ottawa–Gatineau	24505, 35505	1,678
Ottawa–Gatineau (Quebec part)	24505	883
Ottawa–Gatineau (Ontario part)	35505	795
Kingston	35521	877
Peterborough	35529	187
Oshawa	35532	591
Toronto	35535	2,837
Hamilton	35537	797
St. Catharines–Niagara	35539	633
Kitchener–Cambridge–Waterloo	35541	702
Brantford	35543	336
Guelph	35550	270
London	35555	721
Windsor	35559	562
Barrie	35568	193
Greater Sudbury	35580	853
Thunder Bay	35595	815
Winnipeg	46602	3,308
Regina	47705	868
Saskatoon	47725	1,056
Calgary	48825	1,345
Edmonton	48835	1,355
Kelowna	59915	297
Abbotsford–Mission	59932	687
Vancouver	59933	2,004
Victoria	59935	902

Source: Labour Force Survey (3701).

Table B-2
Sample size by economic region (ER), based on the 2015 sample design

ER	Standard Geographical Classification (SGC) code	Sample size
		number of households
Avalon Peninsula	1010	971
South Coast–Burin Peninsula and Notre Dame–Central Bonavista Bay	1020, 1040	605
West Coast–Northern Peninsula–Labrador	1030	433
Prince Edward Island	1110	1,421
Cape Breton	1210	532
North Shore	1220	546
Annapolis Valley	1230	382
Southern	1240	409
Halifax	1250	1,096
Campbellton–Miramichi	1310	697
Moncton–Richibucto	1320	657
Saint John–St. Stephen	1330	627
Fredericton–Oromocto	1340	440
Edmundston–Woodstock	1350	389
Gaspésie–Îles-de-la-Madeleine	2410	352
Bas-Saint-Laurent	2415	332
Capitale-Nationale	2420	756
Chaudière-Appalaches	2425	1,053
Estrie	2430	1,016
Centre-du-Québec	2433	247
Montérégie	2435	1,160
Montréal	2440	1,162
Laval	2445	200
Lanaudière	2450	239
Laurentides	2455	370
Outaouais	2460	1,004
Abitibi-Témiscamingue	2465	383
Mauricie	2470	764
Saguenay–Lac-Saint-Jean	2475	818
Côte-Nord and Nord-du-Québec	2480, 2490	329
Ottawa	3510	1,338
Kingston–Pembroke	3515	1,168
Muskoka–Kawartha	3520	303
Toronto	3530	3,397
Kitchener–Waterloo–Barrie	3540	1,532
Hamilton–Niagara Peninsula	3550	2,018
London	3560	917
Windsor–Sarnia	3570	1,233
Stratford–Bruce Peninsula	3580	302
Northeast	3590	1,682
Northwest	3595	1,082
Southeast	4610	530
South Central and North Central	4620, 4640	357
Southwest	4630	373
Winnipeg	4650	3,132
Interlake	4660	407
Parklands and North	4670, 4680	478
Regina–Moose Mountain	4710	1,099
Swift Current–Moose Jaw	4720	355
Saskatoon–Biggar	4730	1,230
Yorkton–Melville	4740	303
Prince Albert and Northern	4750, 4760	1,136
Lethbridge–Medicine Hat	4810	535
Camrose–Drumheller	4820	294
Calgary	4830	1,438
Banff–Jasper–Rocky Mountain House and Athabasca–Grande Prairie–Peace River	4840, 4870	830
Red Deer	4850	277
Edmonton	4860	1,418
Wood Buffalo–Cold Lake	4880	899

Table B-2
Sample size by economic region (ER), based on the 2015 sample design (continued)

ER	Standard Geographical Classification (SGC) code	Sample size number of households
Vancouver Island and Coast	5910	1,574
Lower Mainland–Southwest	5920	3,022
Thompson–Okanagan	5930	634
Kootenay	5940	246
Cariboo	5950	536
North Coast and Nechako	5960, 5970	246
Northeast	5980	280

Source: Labour Force Survey (3701).

Table B-3
Sample size by employment insurance economic region (EIER), based on the 2015 sample design

EIER	Code	Sample size
		number of households
St. John's	1001	692
Newfoundland and Labrador	1002	1,318
Charlottetown	1165	679
Prince Edward Island	1166	742
Eastern Nova Scotia	1204	654
Western Nova Scotia	1205	1,242
Halifax	1206	1,069
Fredericton–Moncton–Saint John	1307	1,191
Madawaska–Charlotte	1308	595
Restigouche–Albert	1309	1,025
Gaspésie–Îles-de-la-Madeleine	2410	471
Quebec	2411	879
Trois-Rivières	2412	723
South Central Quebec	2413	813
Sherbrooke	2414	664
Montréal	2415	721
Montreal	2416	2,042
Central Quebec	2417	919
North Western Quebec	2418	705
Lower Saint Lawrence and North Shore	2419	744
Hull	2420	860
Chicoutimi–Jonquière	2421	644
Ottawa	3522	806
Eastern Ontario	3523	726
Kingston	3524	873
Central Ontario	3525	867
Oshawa	3526	591
Toronto	3527	2,837
Hamilton	3528	797
St. Catharines	3529	633
London	3530	688
Niagara	3531	629
Windsor	3532	550
Kitchener	3533	702
Huron	3534	704
South Central Ontario	3535	806
Sudbury	3536	830
Thunder Bay	3537	808
Northern Ontario	3538	1,126
Winnipeg	4639	3,290
Southern Manitoba	4640	1,274
Northern Manitoba	4641	714
Regina	4742	868
Saskatoon	4743	1,056
Southern Saskatchewan	4744	1,038
Northern Saskatchewan	4745	1,160

Table B-3
Sample size by employment insurance economic region (EIER), based on the 2015 sample design (continued)

EIER	Code	Sample size
		number of households
Calgary	4846	1,345
Edmonton	4847	1,355
Northern Alberta	4848	1,483
Southern Alberta	4849	1,507
Southern Interior British Columbia	5950	880
Abbotsford	5951	687
Vancouver	5952	2,004
Victoria	5953	902
Southern Coastal British Columbia	5954	978
Northern British Columbia	5955	1,087
Whitehorse	6059	164
Yukon (excluding Whitehorse)	6060	66
Yellowknife	6161	105
Northwest Territories (excluding Yellowknife)	6162	126
Iqaluit	6263	58
Nunavut (excluding Iqaluit)	6264	165

Source: Labour Force Survey (3701).

Appendix C – Labour Force Survey questionnaire

The LFS application consists of several questionnaire components (Contact, Household, Demographics, Rent, Labour Force Information and Exit), each of which is summarized below, followed by the lists of codesets. Each of the questionnaire components is comprised of a number of question blocks.

For simplicity, as a result of the complexity of the logic within the application, not all possible questions and flows are presented. This is especially the case within the Contact Component where the scope of possible questions and flows is somewhat greater than that summarized below.

Selected dwellings are in the survey for six consecutive months. A birth interview corresponds to the first interview for a new household, and is usually conducted in person. Some birth interviews are now also conducted by telephone from centralized CATI work sites.

Subsequent interviews are conducted in the following months, and are usually done by telephone. Starting in 2015, LFS respondents who met certain criteria were also offered the option of completing the survey on-line for subsequent interviews.

Contact component

The following information is collected at the start of each contact attempt.

II_R01A – Hello, I’m calling from Statistics Canada. My name is ...

If interview in person, go to IC_R01

If birth interview by telephone, go to AR_Q01

If subsequent interview by telephone, go to SR_Q01

SR_Q01 – May I speak with ...?

If “Speaking”, go to IC_R01

If “Available”, go to II_R01B

If “Not available” or “No longer a household member”, go to AR_Q01

If “Wrong number”, go to TC_Q01

II_R01B – Hello, I’m calling from Statistics Canada. My name is ...

Go to IC_R01

TC_Q01 – I would like to make sure I’ve dialed the right number. Is this: [telephone number]?

If yes, go to AR_Q01

If no, thank person and end call

AR_Q01 – May I speak with an adult member of the household?

If “Speaking” and CATI birth interview, go to TFCC_Q01

If “Speaking” and not CATI birth interview, go to IC_R01

If “Available”, go to II_R01C

If “Not available” and birth interview, go to ARA_Q01

If “Not available” and subsequent interview and SR_Q01 = “Not available”, go to SRA_Q01

If “Not available” and subsequent interview and SR_Q01 = “No longer a household member” or “Wrong number”, go to ARA_Q01

II_R01C – Hello, I’m calling from Statistics Canada. My name is ...

If CATI birth interview, go to TFCC_Q01

If not CATI birth interview, go to IC_R01

SRA_Q01 – I would like to contact ... When would he/she be available?

If “Available”, make appointment and then thank person and end call

If “Not available”, go to ARA_Q01

ARA_Q01 – When would an adult member of the household be available?

If “Available”, make appointment and then thank person and end call

If “Not available”, thank person and end call

TFCC_Q01 – In order to make sure I’ve reached the correct household, I need to confirm your address. Is it: *[listing address]*?

If yes, go to IC_R01

If no, go to TFCC_Q02

TFCC_Q02 – I would like to make sure I’ve dialed the right number. Is this *[telephone number]*?

Thank person and end call

IC_R01

I’m calling regarding the Labour Force Survey.

Given its importance, participation is mandatory under the authority of the Statistics Act, which ensures that the information you provide will be kept strictly confidential.

Statistics Canada may combine your information with other survey or administrative data.

LP_Q01 – Would you prefer to be interviewed in English or in French?

If CATI interview, go to MON_R01

If not CATI interview, go to Household Component

MON_R01

My supervisor may listen to this call for the purpose of quality control.

Household and demographics component

Household blocks

LA_N01

If CATI birth interview, go to MA_Q01

If subsequent interview in person, go to CMA_Q01

If subsequent interview by telephone, go to SD_Q01

Confirm the listing address.

Go to MA_Q01

SD_Q01 – I would like to confirm your address. Are you still living at *[listing address]*?

If yes and listing address is the same as mailing address, go to CHM_Q01

If yes and listing address is different from mailing address, go to CMA_Q01

If no, go to SD_Q02

If “Respondent never lived there”, go to SD_Q05

SD_Q02 – Does anyone who was living with you at that address still live there?

If yes, go to SD_Q03

If no, thank person and end call

SD_Q03 – Can you provide me with the current telephone number for that address?

If yes, go to SD_Q04

If no, thank person and end call

SD_Q04 – What is that telephone number, including the area code?

Thank person and end call

SD_Q05 – I would like to make sure I’ve dialed the right number. Is this *[telephone number]*?

Thank person and end call

CHM_Q01 – Is this also your mailing address?

If yes, go to TN_Q01

If no, go to MA_Q01

CMA_Q01 – I would like to confirm your mailing address. Is it: *[mailing address]*?

If yes, go to TN_Q01

If no, go to MA_Q01

MA_Q01 – What is your correct mailing address?

If birth interview in person, go to DW_N02

If birth interview by telephone, go to DW_Q01

If subsequent interview, go to TN_Q01

DW_Q01 – What type of dwelling do you live in? Is it a:

Read categories to respondent.

Go to TN_Q01

DW_N02

Select the dwelling type.

TN_Q01 – Is this dwelling owned by a member of this household?

RS_R01

The next few questions ask for important basic information on the people in your household.

If birth interview, go to USU_Q01

If subsequent interview, go to PV2_Q01

USU_Q01 – What are the names of all persons who usually live here?

Begin with adults who have responsibility for the care or support of the family.

RS_Q02 – Is anyone staying here temporarily?

If yes, go to TEM_Q01

If no, go to RS_Q04

TEM_Q01 – What are the names of all persons who are staying here temporarily?

Add a person only if he/she has no other usual residence elsewhere.

RS_Q04 – Are there any other persons who usually live here but are now away at school, in hospital, or somewhere else?

If yes, go to OTH1_Q01

If no, go to Individual Demographics

OTH1_Q01 – What are the names of the other people who live or stay here?

Add a person only if he/she has no other usual residence elsewhere.

Go to Individual Demographics

PV2_Q01 – Do the following people still live or stay in this dwelling?

If yes, go to RS_Q05

If no, go to PV2_Q01_RES_Q02

PV2_Q01_RES_Q02 – Is ... no longer a member of the household or deceased?

RS_Q05 – Does anyone else now live or stay here?

If yes, go to OTH2_Q01

If no, go to Individual Demographics

OTH2_Q01 – What are the names of the other people who live or stay here?

Add a person only if he/she has no other usual residence elsewhere.

Demographics blocks

The following demographic information is collected for each household member.

ANC_Q01 – What is ...'s date of birth?

ANC_Q02 – So ...'s age on [date of last day of reference week] was [calculated age].

Is that correct?

If yes, go to SEX_Q01

If no, go to ANC_Q03

ANC_Q03 – What is ...’s age?**SEX_Q01**

Enter ...’s sex.

MSNC_Q01

If age < 16, go to FI_N01

What is ...’s marital status? Is he/she:

Read categories to respondent.

FI_N01

Enter ...’s family identifier: A to Z.

Assign the same letter to all persons related by blood, marriage or adoption.

RR_N01

Determine a reference person for the family and select ...’s relationship to that reference person. The reference person should be an adult involved in the care or support of the family.

IMM_Q01 – In what country was ... born?

If age < 14, go to CAF_Q01

Specify country of birth according to current boundaries.

If 01-Canada, go to ABO_Q01

IMM_Q02 – Is ... now, or has he/she ever been, a landed immigrant in Canada?

A landed immigrant (permanent resident) is a person who has been granted the right to live in Canada permanently by immigration authorities.

If yes, go to IMM_Q03

If no, go to ABO_Q01

IMM_Q03 – In what year did ... first become a landed immigrant?

Year:

IMM_Q04

If IMM_Q03 is more than five years ago go to ABO_Q01

In what month?

Month:

ABO_Q01

If Country of Birth is not Canada, USA or Greenland go to ED_Q01

Is ... an Aboriginal person, that is, North American Indian, Métis or Inuit?

If yes, go to ABO_Q02

If no, go to ED_Q01

ABO_Q02

If respondent has already specified the Aboriginal group(s), select the group(s) from list below; if not, ask: Is ... a North American Indian, Métis or Inuit?

Mark all that apply.

ED_Q01**What is the highest grade of elementary or high school ... ever completed?**

If “Grade 8 or lower” or “Grade 9 – 10”, go to ED_Q03

If “Grade 11 – 13”, go to ED_Q02

ED_Q02 – Did ... graduate from high school (secondary school)?**ED_Q03 – Has ... received any other education that could be counted towards a degree, certificate or diploma from an educational institution?**

If yes, go to ED_Q04

If no, go to CAF_Q01

ED_Q04 – What is the highest degree, certificate or diploma ... has obtained?

CHE_Q01

If (Country of Birth is Canada) or (IMM_Q02 is No) or (respondent has not received a post-secondary degree, certificate or diploma) go to CAF_Q01

In what country did ... complete his/her highest degree, certificate or diploma?

Specify country of highest education according to current boundaries.

CAF_Q01

If age < 16 or age > 65, go to ANC_Q01 for next household member

Is ... a full-time member of the regular Canadian Armed Forces?

For each person aged 15 or over who is not a full-time member of the regular armed forces complete the Labour force information component.

Rent component

The Rent Component is generated only for cases where the answer to TN_Q01 (“Is this dwelling owned by a member of this household?”) in the Household Component is “No”, and province/territory is not Yukon, the Northwest Territories or Nunavut.

RRF_R01

The next few questions are about your rent. The information collected is used to calculate the rent portion of the Consumer Price Index.

RM_Q01

If rent information exists from the previous month, go to RM_Q04

If dwelling type is not “Low-rise apartment” and not “High-rise apartment”, go to RM_Q02

On which floor do you live?

RM_Q02 – To the best of your knowledge, how old is your building?

RM_Q03 – How many bedrooms are there in your dwelling?

RM_Q04 – This month, is the rent for your dwelling subsidized by government or an employer, or a relative?

If yes, go to RM_Q04A

If no, go to RM_Q05

RM_Q04A – In what manner is the rent for your dwelling subsidized?

RM_Q05 – This month, are you operating a business from your dwelling?

If yes, go to RM_Q05A

If no, go to RM_Q06

RM_Q05A – Does the business affect the amount of rent paid?

RM_Q06 – How much is the total monthly rent for your dwelling?

If \$0, go to RM_Q07

If > \$0, go to RM_Q08

RM_Q07 – What is the reason that the rent is \$0?

If RM_Q04 = yes, go to end of Rent Component

RM_Q08

If rent information does not exist from the previous month, go to RM_Q09B

If there has been a complete change in household membership, go to RM_Q09B

If RM_Q04 = yes, go to RM_Q09B

Since last month, have there been any changes in the amount of rent paid?

If yes, go to RM_Q08A

If no, go to RM_Q09B

RM_Q08A – What is the reason for the change in rent since last month?

Mark all that apply.

RM_Q09B

If dwelling type is not “Low-rise apartment” and not “High-rise apartment”, go to RM_Q14

If rent information exists from the previous month and there has not been a complete change in household membership, go to RM_Q09S

Does this month’s rent include parking facilities?

If yes, go to RM_Q10

If no, go to RM_Q14

RM_Q09S – Since last month, have there been any changes in the parking facilities?

If yes, go to RM_Q10

If no, go to RM_Q14

RM_Q10 – What types of parking facilities are included in your rent?

Mark all that apply.

RM_Q11

If “Closed garage or indoor parking” is not marked in RM_Q10, go to RM_Q12

How many closed garage or indoor parking spaces are included in your rent?**RM_Q12**

If “Outside parking with plug-in” is not marked in RM_Q10, go to RM_Q13

How many outside parking spaces with plug-in are included in your rent?**RM_Q13**

If “Outside parking without plug-in” is not marked in RM_Q10, go to RM_Q14

How many outside parking spaces without plug-in are included in your rent?**RM_Q14**

If rent information does not exist from the previous month, go to RM_Q15

If there has been a complete change in household membership, go to RM_Q15

If “Change in utilities, services, appliances, or furnishings” is marked in RM_Q08A, go to RM_Q15

Since last month, have there been any changes in the utilities, services, household appliances, or furnishings included in the rent?

If yes, go to RM_Q15

If no, go to end of Rent Component

RM_Q15 – Which of the following utilities, services, household appliances, or furnishings are included as part of the monthly rent?

Read list to respondent. Mark all that apply.

Labour force information component

In this component, a path is assigned according to the answers provided. This path is used to control the flow through the component. For paths 1, 2, 6, and 7 the path determines the labour force status, but for paths 3, 4 and 5 other conditions (for example, availability for work) must be considered to distinguish between those who are unemployed and those who are not in the labour force.

PATHS

- 1 Employed, at work
- 2 Employed, absent from work
- 3 Temporary layoff
- 4 Job seeker
- 5 Future start
- 6 Not in labour force, able to work
- 7 Not in labour force, permanently unable to work

Job attachment block

LFI_Q100 — Many of the following questions concern ...’s activities last week. By last week, I mean the week beginning on Sunday, *[date of first day of reference week]*, and ending last Saturday, *[date of last day of reference week]*.

**Last week, did ... work at a job or business?
(regardless of the number of hours)**

If yes, then PATH = 1 and go to 102

If no, go to 101

If “Permanently unable to work”, then PATH = 7 and go to 104

LFI_Q101 — Last week, did ... have a job or business from which *he/she* was absent?

If no, go to 104

LFI_Q102 — Did *he/she* have more than one job or business last week?

If no, go to 110

LFI_Q103 — Was this a result of changing employers?

Go to 110

Past job attachment block

LFI_Q104 — Has *he/she* ever worked at a job or business?

If no, go to 170

LFI_Q105 — When did *he/she* last work?

If subsequent interview and no change in 105 and last month’s PATH = 3, go to 131

Else if subsequent interview and no change in 105 and last month’s PATH = 4 to 7, go to 170

Else if not within past year, go to 170

Else if PATH = 7, go to 131

Else if PATH not 7, go to 110

Job description block

LFI_Q110 — *If 103 = yes*, I am now going to ask some questions about ...’s new job or business. Was *he/she* an employee or self-employed?

If 103 = no, I am now going to ask some questions about the job or business at which *he/she* usually works the most hours. Was *he/she* an employee or self-employed?

Otherwise, Was *he/she* an employee or self-employed?

If not “Self-employed”, go to 114

LFI_Q111 — Did *he/she* have an incorporated business?

LFI_Q112 — Did *he/she* have any employees?

LFI_Q113 — What was the name of *his/her* business?

Go to 115

LFI_Q114 — For whom did *he/she* work?

(name of business, government department or agency, or person)

LFI_Q115 — What kind of business, industry or service was this?

(e.g., cardboard box manufacturing, road maintenance, retail shoe store, secondary school, dairy farm, municipal government)

LFI_Q116 — What kind of work was *he/she* doing?

(e.g., babysitting in own home, factory worker, forestry technician)

LFI_Q117 — What were *his/her* most important activities or duties?

(e.g., caring for children, stamp press machine operator, forest examiner)

LFI_Q118 — When did *he/she* start working for/at *[name of employer/name of business]*?

Absence – Separation block**LFI_Q130**

If PATH = 1, go to 150

If 101 = no, go to 131

What was the main reason ... was absent from work last week?

If “Temporary layoff due to business conditions”, go to 134

If “Seasonal layoff”, go to 136

If “Casual job, no work available”, go to 137

Otherwise, PATH = 2 and go to 150

LFI_Q131 – What was the main reason ... stopped working at that [job/business]?

If not “Lost job, laid off or job ended”, go to 137

LFI_Q132 – Can you be more specific about the main reason for his/her job loss?

If PATH = 7, go to 137

Else if “Business conditions”, go to 133

Otherwise, go to 137

LFI_Q133 – Does he/she expect to return to that job?

If no or “Not sure”, go to 137

LFI_Q134 – Has ...’s employer given him/her a date to return?

If yes, go to 136

LFI_Q135 – Has he/she been given any indication that he/she will be recalled within the next 6 months?**LFI_Q136 – As of last week, how many weeks had ... been on layoff?**

If 130 = “Seasonal layoff”, go to 137

Else if 134 = no and 135 = no, go to 137

Else if on layoff more than 52 weeks, go to 137

Otherwise, PATH = 3 and go to 137

LFI_Q137 – Did he/she usually work more or less than 30 hours per week?

If PATH = 3, go to 190

Otherwise, go to 170

Work hours (Main job) block**LFI_Q150**

The following questions refer to ...’s work hours at his/her [new] [job/business] [at name of employer].

If 110 = “Employee”, Excluding overtime, does the number of paid hours ... works vary from week to week?

Otherwise, Does the number of hours ... works vary from week to week?

If yes, go to 152

LFI_Q151

If 110 = “Employee”, Excluding overtime, how many paid hours does ... work per week?

Otherwise, How many hours does ... work per week?

If PATH = 2, go to 158

If 110 = “Employee”, go to 153

Otherwise, go to 157

LFI_Q152

If 110 = “Employee”, Excluding overtime, on average, how many paid hours does ... usually work per week?

Otherwise, On average, how many hours does ... usually work per week?

If PATH = 2, go to 158

If 110 = “Employee”, go to 153

Otherwise, go to 157

LFI_Q153 – Last week, how many hours was *he/she* away from this job because of vacation, illness, or any other reason?

If 0 hours, go to 155

LFI_Q154 – What was the main reason for that absence?

LFI_Q155 – Last week, how many hours of paid overtime did *he/she* work at this job?

LFI_Q156 – Last week, how many extra hours without pay did *he/she* work at this job?

If 150 = no, then actual hours = 151 - 153 + 155 + 156 and go to 158

LFI_Q157 – Last week, how many hours did *he/she* actually work at *his/her [new] [job/business] [at name of employer]?*

LFI_Q158

If 151 >= 29.5 or 152 >= 29.5, and PATH = 2, go to 162

If 151 >= 29.5 or 152 >= 29.5, and PATH = 1, go to 200

Does *he/she* want to work 30 or more hours per week [at a single job]?

If yes, go to 160

LFI_Q159 – What is the main reason ... does not want to work 30 or more hours per week [at a single job]?

If PATH = 2, go to 162

Otherwise, go to 200

LFI_Q160 – What is the main reason ... usually works less than 30 hours per week [at *his/her* main job]?

If not (“Business conditions” or “Could not find work with 30 or more hours per week”) and PATH = 2, go to 162

If not (“Business conditions” or “Could not find work with 30 or more hours per week”) and PATH = 1, go to 200

LFI_Q161 – At any time in the 4 weeks ending last Saturday, [date of last day of reference week], did *he/she* look for full-time work?

If PATH = 2, go to 162

Otherwise, go to 200

Absence block

LFI_Q162 – As of last week, how many weeks had ... been continuously absent from work?

If (110 is “Employee”) or (110 is “Self-employed” and 111 is yes), go to 163

Otherwise, go to 200

LFI_Q163 – Is *he/she* getting any wages or salary from *his/her [employer/business]* for any time off last week?

Go to 200

Job search - Future start block

LFI_Q170

If PATH = 7, go to 500

In the 4 weeks ending last Saturday, [date of last day of reference week], did ... do anything to find work?

If no and age >= 65, then PATH = 6 and go to 500

If no and age <= 64, go to 174

If yes, then PATH = 4 and go to 171

LFI_Q171 – What did *he/she* do to find work in those 4 weeks? Did *he/she* do anything else to find work?

LFI_Q172 – As of last week, how many weeks had *he/she* been looking for work?

[since the date last worked]

LFI_Q173 – What was *his/her* main activity before *he/she* started looking for work?

Go to 177

LFI_Q174 – Last week, did ... have a job to start at a definite date in the future?

If no, then PATH = 6 and go to 176

LFI_Q175 — Will he/she start that job before or after Sunday, [date of the first day after four weeks from the last day of reference week]?

If “Before the date above”, then PATH = 5 and go to 190

If “On or after the date above”, then PATH = 6 and go to 500

LFI_Q176 — Did he/she want a job last week?

If no, go to 500

LFI_Q177 — Did he/she want a job with more or less than 30 hours per week?

LFI_Q178

If PATH = 4, go to 190

What was the main reason he/she did not look for work last week?

If “Believes no work available”, go to 190

Otherwise, go to 500

Availability block

LFI_Q190 — Could he/she have worked last week [if he/she had been recalled/if a suitable job had been offered]?

If yes, go to 400

LFI_Q191 — What was the main reason ... was not available to work last week?

Go to 400

Earnings block

LFI_Q200

If 110 is not “Employee”, go to 300

If subsequent interview and no change in 110, 114, 115, 116, 117, 118, go to 300

Now I'd like to ask a few short questions about ...'s earnings from his/her [new] job [at name of employer]. Is he/she paid by the hour?

LFI_Q201 — Does he/she usually receive tips or commissions?

If 200 = no, go to 204

LFI_Q202 — [Including tips and commissions,] what is his/her hourly rate of pay?

Go to 220

LFI_Q204 — What is the easiest way for you to tell us his/her wage or salary, [including tips and commissions,] before taxes and other deductions?

Would it be yearly, monthly, weekly, or on some other basis?

If “Yearly”, go to 209

If “Monthly”, go to 208

If “Semi-monthly”, go to 207

If “Bi-weekly”, go to 206

If “Weekly” or “Other”, go to 205

LFI_Q205 — [Including tips and commissions,] what is his/her weekly wage or salary, before taxes and other deductions?

Go to 220

LFI_Q206 — [Including tips and commissions,] what is his/her bi-weekly wage or salary, before taxes and other deductions?

Go to 220

LFI_Q207 — [Including tips and commissions,] what is his/her semi-monthly wage or salary, before taxes and other deductions?

Go to 220

LFI_Q208 — *[Including tips and commissions,]* what is *his/her* monthly wage or salary, before taxes and other deductions?

Go to 220

LFI_Q209 — *[Including tips and commissions,]* what is *his/her* yearly wage or salary, before taxes and other deductions?

Go to 220

Union block

LFI_Q220 — Is *he/she* a union member at *his/her [new] job [at name of employer]*?

If yes, go to 240

LFI_Q221 — Is *he/she* covered by a union contract or collective agreement?

Permanence block

LFI_Q240 — Is ...'s *[new] job [at name of employer]* permanent, or is there some way that it is not permanent?

(e.g., seasonal, temporary, term or casual)

If "Permanent", go to 260

LFI_Q241 — In what way is *his/her* job not permanent?

Go to 260

Firm size block

LFI_Q260 — About how many persons are employed at the location where ... works for *[name of employer]*?

Would it be: *[Less than 20, 20 to 99, 100 to 500, or over 500]*?

Read categories to respondent.

LFI_Q261 — Does *[name of employer]* operate at more than one location?

If no, or 260 = "Over 500", go to 300

LFI_Q262 — In total, about how many persons are employed at all locations?

Would it be: *[Less than 20, 20 to 99, 100 to 500, or over 500]*?

Read categories to respondent.

Go to 300

Class of worker – Hours at other job block

LFI_Q300

If 102 = no, go to 400

Now I have a couple of questions about ...'s [other/old] job or business. Was *he/she* an employee or self-employed?

If not "Self-employed", go to 320

LFI_Q301 — Did *he/she* have an incorporated business?

LFI_Q302 — Did *he/she* have any employees?

LFI_Q320

If 300 = "Employee", Excluding overtime, how many paid hours [does/did] ... usually work per week at this job?

Otherwise, How many hours [does/did] ... usually work per week at this [business/family business]?

If PATH = 2, go to 400

LFI_Q321 — Last week, how many hours did ... actually work at this *[job/business/family business]*?

Go to 400

Temporary layoff job search block**LFI_Q400***If PATH not 3, go to 500***In the 4 weeks ending last Saturday, [date of last day of reference week], did ... look for a job with a different employer?***Go to 500***School attendance block****LFI_Q500***If age >= 65, go to END***Last week, was ... attending a school, college or university?***If no, go to 520***LFI_Q501 – Was he/she enrolled as a full-time or part-time student?****LFI_Q502 – What kind of school was this?***Go to 520***Returning students block****LFI_Q520***If survey month not May through August, go to END**Else if age not 15 to 24, go to END**Else if subsequent interview and 520 in previous month was “no”, go to END**Else if subsequent interview and 520 in previous month was “yes”, go to 521***Was he/she a full-time student in March of this year?***If no, go to END***LFI_Q521 – Does he/she expect to be a full-time student this fall?****Exit component**

The following information is collected at the end of the LFS interview each month to gather information for future contacts and to thank respondents for their participation. In many cases, this information will be pre-filled for confirmation in subsequent interviews.

EI_R01*If rotate-out (for example, last month for interview), go to TY_R02***Before we finish, I would like to ask you a few other questions.****FC_R01****As part of the Labour Force Survey, we will contact your household next month during the week of [date of first day of next month survey week].****After this month, this dwelling has [calculated number of remaining interviews] LFS interview(s) left.****HC_Q01 – Who would be the best person to contact?***If non-household member, go to TEL_Q01***IRO2_N03***Are you currently speaking with [household contact]?**If no, go to TEL_Q01***IRO2_N04***Did you complete the entire survey from beginning to end with [household contact]?**If no or not sure, go to TEL_Q01***IRO2_N05***Do any of the household members have fictitious names?*

TEL_Q01

If no telephone number exists, go to TEL_Q02

I would like to confirm your telephone number. Is it [telephone number]?

If yes, go to EQOF_Q01

If no, go to TEL_Q02

TEL_Q02 – What is your telephone number, including the area code?

EQOF_Q01

If IRO2_N03 = No, go to PC_Q01

If IRO2_N04 = No or Not sure, go to PC_Q01

If IRO2_N05 = Yes, go to PC_Q01

If invalid telephone number, go to PV_R01

Statistics Canada will send you an email on [date of first day of next month survey week] with instructions for accessing the questionnaire on the Internet. You will have five days to complete the questionnaire. Otherwise, an interviewer will telephone you.

Parts of the Internet questionnaire will be pre-filled with some information that you have provided during this interview such as the ages of members of your household and descriptions of their jobs.

EQOF_R02

Statistics Canada will send you an email on [date of first day of next month survey week] with instructions for accessing the questionnaire on the Internet. You will have five days to complete the questionnaire. Otherwise, an interviewer will telephone you.

Parts of the Internet questionnaire will be pre-filled with some information that you have provided during this interview such as the ages of members of your household and descriptions of their jobs.

EA_Q01

If no email address exists, go to EA_Q02

I would like to confirm your email address. Is it [email address]?

If yes, go to LQ_Q01

EA_Q02 – What is your email address?

If email address is invalid, go to EQQ4_R04B

EA_Q03 – I would like to confirm your email address. Is it [EA_Q02]?

If yes, go to LQ_Q01

If no, go to EA_Q02

EQQ4_R04B – An email address is required in order to access the questionnaire on the Internet. Therefore, an interviewer will contact you next month to complete the survey.

PC_Q01

If CATI interview, go to PTC_Q01

May we conduct the next interview by telephone?

If yes, go to PTC_Q01

If no, go to PV_R01

PV_R01

In this case we will make a personal visit next month during the week of [date of first day of next month survey week].

PTC_Q01

If preferred time to call information does not exist from the previous month, go to PTC_Q02

I would like to confirm the time of day you would prefer that we call. Is it [preferred time to call]?

If yes, go to PTC_N03

If no, go to PTC_Q02

PTC_Q02 – What time of day would you prefer that we call? Would it be the morning, the afternoon, the evening, or ANY TIME?

Mark all that apply.

PTC_N03

Enter any other information about the preferred time to call.

LQ_Q01

If CATI interview, go to TY_R01

If subsequent interview, go to TY_R01

If dwelling type is not "Single detached" and not "Double" and not "Row or terrace" and not "Duplex", go to TY_R01

Is there another set of living quarters within this structure?

If yes, go to LQ_N02

If no, go to TY_R01

LQ_N02

Remember to verify the cluster list and add one or more multiples if necessary.

TY_R01

Thank you very much for your participation in this month's Labour Force Survey. Have a nice [day/evening].

Go to END

TY_R02

Thank you very much for your participation in the Labour Force Survey. Although your six months in this Survey are over, your household may be contacted by Statistics Canada some time in the future for another survey. Have a nice [day/evening].

List of codesets**Codes for Contact component****SR_Q01**

- 1 Yes, speaking to respondent
- 2 Yes, respondent available
- 3 No, respondent not available
- 4 No, respondent no longer a household member
- 5 Wrong number

AR_Q01

- 1 Yes, speaking to an adult member
- 2 Yes, an adult member is available
- 3 No, an adult member is not available

SRA_Q01 / ARA_Q01

- 1 Make hard appointment
- 2 Make soft appointment
- 3 Not available

LP_Q01

- 1 English
- 2 French
- 3 Other

Codes for Household component

SD_Q01

- 1 Yes
- 2 No
- 3 No, respondent never lived there

DW_Q01 / DW_N02

- 01 Single detached
- 02 Double
- 03 Row or terrace
- 04 Duplex
- 05 Low rise apartment of fewer than 5 stories or a flat
- 06 High rise apartment of 5 stories or more
- 07 Institution
- 08 Hotel; rooming/lodging house; camp
- 09 Mobile home
- 10 Other – Specify

PV2_Q01_RES_Q02

- 1 No longer a member
- 2 Deceased

Codes for Individual demographics

SEX_Q01

- 1 Male
- 2 Female

MSNC_Q01

- 1 Married
- 2 Living common-law
- 3 Widowed
- 4 Separated
- 5 Divorced
- 6 Single, never married

RR_N01

- 1 Reference person
- 2 Spouse
- 3 Son or daughter (birth, adopted or step)
- 4 Grandchild
- 5 Son-in-law or daughter-in-law
- 6 Foster child (less than 18 years of age)
- 7 Parent
- 8 Parent-in-law
- 9 Brother or sister
- 10 Other relative – Specify

IMM_Q01

Responses that do not correspond to one of the twelve countries explicitly listed are recorded as “Other – Search” and invoke a country search file containing a list of all current countries.

- 01 Canada
- 02 United States
- 03 United Kingdom
- 04 Germany
- 05 Italy
- 06 Poland
- 07 Portugal
- 08 China (People’s Republic of)
- 09 Hong Kong
- 10 India
- 11 Philippines
- 12 Vietnam
- 13 Other – Search

IMM_Q02

- 1 Yes
- 2 No

ABO_Q01

- 1 Yes
- 2 No

ABO_Q02

Mark all that apply.

- 1 North American Indian
- 2 Métis
- 3 Inuit (Eskimo)

ED_Q01

- 1 Grade 8 or lower (Quebec: Secondary II or lower)
- 2 Grade 9 - 10 (Quebec: Secondary III or IV, Newfoundland and Labrador: 1st year of secondary)
- 3 Grade 11 - 13 (Quebec: Secondary V, Newfoundland and Labrador: 2nd to 4th year of secondary)

ED_Q04

- 1 No postsecondary degree, certificate or diploma
- 2 Trade certificate or diploma from a vocational school or apprenticeship training
- 3 Non-university certificate or diploma from a community college, CEGEP, school of nursing, etc.
- 4 University certificate below bachelor's level
- 5 Bachelor's degree
- 6 University degree or certificate above bachelor's degree

CHE_Q01

Responses that do not correspond to one of the twelve countries explicitly listed are recorded as "Other – Search" and invoke a country search file containing a list of all current countries.

- 01 Canada
- 02 United States
- 03 United Kingdom
- 04 Germany
- 05 Italy
- 06 Poland
- 07 Portugal
- 08 China (People's Republic of)
- 09 Hong Kong
- 10 India
- 11 Philippines
- 12 Vietnam
- 13 Other – Search

Codes for Rent component**RM_Q02**

- 1 No more than 5 years old
- 2 More than 5 but no more than 10 years old
- 3 More than 10 but no more than 20 years old
- 4 More than 20 but no more than 40 years old
- 5 More than 40 years old

RM_Q04A

- 1 Income-related/Government agencies
- 2 Employer
- 3 Owned by a relative
- 4 Other – Specify

RM_Q08A

- 1 Change in utilities, services, appliances, or furnishings
- 2 Change in parking facilities
- 3 New Lease
- 4 Other – Specify

RM_Q10

- 1 Closed garage or indoor parking
- 2 Outside parking with plug-in
- 3 Outside parking without plug-in

RM_Q15

- 1 Heat – Electric
- 2 Heat – Natural Gas
- 3 Heat – Other Specify
- 4 Electricity
- 5 Cablevision
- 6 Refrigerator
- 7 Range
- 8 Washer
- 9 Dryer
- 10 Other major appliance – Specify
- 11 Furniture
- 12 None of the above

Codes for Labour force information

LFI_Q100

- 1 Yes
- 2 No
- 3 Permanently unable to work

LFI_Q110 / LFI_Q300

- 1 Employee
- 2 Self-employed
- 3 Working in a family business without pay

LFI_Q130

- 01 Own illness or disability
- 02 Caring for own children
- 03 Caring for elder relative (60 years of age or older)
- 04 Maternity or parental leave
- 05 Other personal or family responsibilities
- 06 Vacation
- 07 Labour dispute (strike or lockout) (Employees only)
- 08 Temporary layoff due to business conditions (Employees only)
- 09 Seasonal layoff (Employees only)
- 10 Casual job, no work available (Employees only)
- 11 Work schedule (e.g., shift work) (Employees only)
- 12 Self-employed, no work available (Self-employed only)
- 13 Seasonal business (excluding employees)
- 14 Other – Specify

LFI_Q131

- 01 Own illness or disability
- 02 Caring for own children
- 03 Caring for elder relative (60 years of age or older)
- 04 Pregnancy (Females only)
- 05 Other personal or family responsibilities
- 06 Going to school
- 07 Lost job, laid off or job ended (Employees only)
- 08 Business sold or closed down (excluding employees)
- 09 Changed residence
- 10 Dissatisfied with job
- 11 Retired
- 12 Other – Specify

LFI_Q132

- 1 End of seasonal job
- 2 End of temporary, term or contract job (non-seasonal)
- 3 Casual job
- 4 Company moved
- 5 Company went out of business
- 6 Business conditions (e.g., not enough work, drop in orders, retooling)
- 7 Dismissal by employer (e.g., fired)
- 8 Other – Specify

LFI_Q133 / LFI_Q521

- 1 Yes
- 2 No
- 3 Not sure

LFI_Q137 / LFI_Q177

- 1 30 or more hours per week
- 2 Less than 30 hours per week

LFI_Q154

- 01 Own illness or disability
- 02 Caring for own children
- 03 Caring for elder relative (60 years of age or older)
- 04 Maternity or parental leave
- 05 Other personal or family responsibilities
- 06 Vacation
- 07 Labour dispute (strike or lockout)
- 08 Temporary layoff due to business conditions
- 09 Holiday (legal or religious)
- 10 Weather
- 11 Job started or ended during week
- 12 Working short-time (e.g., due to material shortages, plant maintenance or repair, etc.)
- 13 Other – Specify

LFI_Q159

- 1 Own illness or disability
- 2 Caring for own children
- 3 Caring for elder relative (60 years of age or older)
- 4 Other personal or family responsibilities
- 5 Going to school
- 6 Personal preference
- 7 Other – Specify

LFI_Q160

- 1 Own illness or disability
- 2 Caring for own children
- 3 Caring for elder relative (60 years of age or older)
- 4 Other personal or family responsibilities
- 5 Going to school
- 6 Business conditions
- 7 Could not find work with 30 or more hours per week
- 8 Other – Specify

LFI_Q171

- 1 Public employment agency
- 2 Private employment agency
- 3 Union
- 4 Employers directly
- 5 Friends or relatives
- 6 Placed or answered ads
- 7 Looked at job ads
- 8 Other – Specify

LFI_Q173

- 1 Working
- 2 Managing a home
- 3 Going to school
- 4 Other – Specify

LFI_Q175

- 1 Before the date above
- 2 On or after the date above

LFI_Q178

- 1 Own illness or disability
- 2 Caring for own children
- 3 Caring for elder relative (60 years of age or older)
- 4 Other personal or family responsibilities
- 5 Going to school
- 6 Waiting for recall (to former job)
- 7 Waiting for replies from employers
- 8 Believes no work available (in area, or suited to skills)
- 9 No reason given
- 10 Other – Specify

LFI_Q191

- 1 Own illness or disability
- 2 Caring for own children
- 3 Caring for elder relative (60 years of age or older)
- 4 Other personal or family responsibilities
- 5 Going to school
- 6 Vacation
- 7 Already has a job
- 8 Other – Specify

LFI_Q204

- 1 Yearly
- 2 Monthly
- 3 Semi-monthly
- 4 Bi-weekly
- 5 Weekly
- 6 Other – Specify

LFI_Q241

- 1 Seasonal job
- 2 Temporary, term or contract job (non-seasonal)
- 3 Casual job
- 5 Other – Specify

LFI_Q260 / LFI_Q262

- 1 Less than 20
- 2 20 to 99
- 3 100 to 500
- 4 Over 500

LFI_Q501

- 1 Full-time
- 2 Part-time

LFI_Q502

- 1 Elementary, junior high school, high school or equivalent
- 2 Community college, junior college, or CEGEP
- 3 University
- 4 Other – Specify

Codes for Exit component**IRO2_N03**

- 1 Yes
- 2 No

IRO2_N04

- 1 Yes
- 2 No
- 3 Not sure

IRO2_N05 / TEL_Q01

- 1 Yes
- 2 No

EQOF_Q01

- 1 Internet
- 2 Statistics Canada interviewer

EA_Q01 / EA_Q03

- 1 Yes
- 2 No

PC_Q01 / PTC_Q01

- 1 Yes
- 2 No

PTC_Q02

- 1 ANY TIME
- 2 Morning
- 3 Afternoon
- 4 Evening
- 5 NOT morning
- 6 NOT afternoon
- 7 NOT evening

LQ_Q01

- 1 Yes
- 2 No

Related products

Publications

71-001-X	Labour Force Information
71-607-X2017001	Labour Market Indicators, by province and census metropolitan area, seasonally adjusted
71-607-X2017002	Labour Market Indicators, by province, territory and economic region, unadjusted for seasonality
71-526-X	Methodology of the Canadian Labour Force Survey
71-587-X	Aboriginal Peoples Living Off-reserve in Western Canada: Estimates from the Labour Force Survey
71-588-X	The Aboriginal Labour Force Analysis Series
71-606-X	The Immigrant Labour Force Analysis Series
71F0031X	Improvements to the Labour Force Survey (LFS)
71M0001X	Labour Force Survey Microdata File
75-004-M	Labour Statistics: Research Papers
75-005-M	Labour Statistics: Technical Papers

Tables

14-10-0190-01 (formerly CANSIM table 279-0029)	Work absence of full-time employees by geography, annual
14-10-0191-01 (formerly CANSIM table 279-0030)	Work absence of full-time employees by industry, annual
14-10-0193-01 (formerly CANSIM table 279-0032)	Work absence of full-time employees by age group, annual
14-10-0194-01 (formerly CANSIM table 279-0033)	Work absence of full-time employees by sex and presence of children, annual
14-10-0195-01 (formerly CANSIM table 279-0034)	Work absence of full-time employees by job tenure, annual
14-10-0196-01 (formerly CANSIM table 279-0035)	Work absence of full-time employees by public and private sector, annual

14-10-0197-01 (formerly CANSIM table 279-0036)	Work absence of full-time employees by educational attainment, annual
14-10-0198-01 (formerly CANSIM table 279-0037)	Work absence of full-time employees by establishment size, annual
14-10-0199-01 (formerly CANSIM table 279-0038)	Work absence of full-time employees by job permanency, annual
14-10-0200-01 (formerly CANSIM table 279-0039)	Work absence of full-time employees by union coverage, annual
14-10-0285-01 (formerly CANSIM table 279-0040)	Work absence of full-time employees by occupation, annual
14-10-0017-01 (formerly CANSIM table 282-0001)	Labour force characteristics by sex and detailed age group, monthly, unadjusted for seasonality
14-10-0017-02 (formerly CANSIM table 282-0001)	Labour force characteristics by province, monthly, unadjusted for seasonality
14-10-0018-01 (formerly CANSIM table 282-0002)	Labour force characteristics by sex and detailed age group, annual
14-10-0019-01 (formerly CANSIM table 282-0003)	Labour force characteristics by educational attainment, monthly, unadjusted for seasonality
14-10-0020-01 (formerly CANSIM table 282-0004)	Unemployment rate, participation rate and employment rate by educational attainment, annual
14-10-0021-01 (formerly CANSIM table 282-0005)	Unemployment rate, participation rate, and employment rate by type of student during school months, monthly, unadjusted for seasonality
14-10-0286-01 (formerly CANSIM table 282-0006)	Unemployment rate and employment rate by type of student during summer months, monthly, unadjusted for seasonality, last 5 months
14-10-0286-02 (formerly CANSIM table 282-0006)	Labour force characteristics by type of student during summer months, monthly, unadjusted for seasonality
14-10-0286-03 (formerly CANSIM table 282-0006)	Labour force characteristics by province and type of student during summer months, monthly, unadjusted for seasonality
14-10-0022-01 (formerly CANSIM table 282-0007)	Labour force characteristics by industry, monthly, unadjusted for seasonality
14-10-0023-01 (formerly CANSIM table 282-0008)	Labour force characteristics by industry, annual

14-10-0026-01 (formerly CANSIM table 282-0011)	Employment by class of worker, monthly, unadjusted for seasonality
14-10-0027-01 (formerly CANSIM table 282-0012)	Employment by class of worker, annual
14-10-0028-01 (formerly CANSIM table 282-0013)	Part-time employment by reason, monthly, unadjusted for seasonality
14-10-0029-01 (formerly CANSIM table 282-0014)	Part-time employment by reason, annual
14-10-0030-01 (formerly CANSIM table 282-0015)	Usual hours worked by job type (main or all jobs), monthly, unadjusted for seasonality
14-10-0031-01 (formerly CANSIM table 282-0016)	Usual hours worked by job type (main or all jobs), annual
14-10-0032-01 (formerly CANSIM table 282-0017)	Actual hours worked by job type (main or all jobs), monthly, unadjusted for seasonality
14-10-0033-01 (formerly CANSIM table 282-0018)	Actual hours worked by job type (main or all jobs), annual
14-10-0034-01 (formerly CANSIM table 282-0019)	Usual hours worked by industry, monthly, unadjusted for seasonality
14-10-0035-01 (formerly CANSIM table 282-0020)	Usual hours worked by industry, annual
14-10-0036-01 (formerly CANSIM table 282-0021)	Actual hours worked by industry, monthly, unadjusted for seasonality
14-10-0037-01 (formerly CANSIM table 282-0022)	Actual hours worked by industry, annual
14-10-0042-01 (formerly CANSIM table 282-0027)	Average usual and actual hours worked in a reference week by type of work (full- and part-time), monthly, unadjusted for seasonality
14-10-0043-01 (formerly CANSIM table 282-0028)	Average usual and actual hours worked in a reference week by type of work (full- and part-time), annual
14-10-0044-01 (formerly CANSIM table 282-0031)	Multiple jobholders by industry, annual

14-10-0045-01 (formerly CANSIM table 282-0032)	Multiple jobholders by industry, monthly, unadjusted for seasonality
14-10-0048-01 (formerly CANSIM table 282-0035)	Multiple jobholders by usual hours worked at all jobs, monthly, unadjusted for seasonality
14-10-0048-02 (formerly CANSIM table 282-0035)	Multiple jobholders by usual hours worked at main job, monthly, unadjusted for seasonality
14-10-0049-01 (formerly CANSIM table 282-0036)	Multiple jobholders by usual hours worked at all jobs, annual
14-10-0049-02 (formerly CANSIM table 282-0036)	Multiple jobholders by usual hours worked at main job, annual
14-10-0050-01 (formerly CANSIM table 282-0037)	Job tenure by type of work (full- and part-time), monthly, unadjusted for seasonality
14-10-0051-01 (formerly CANSIM table 282-0038)	Job tenure by type of work (full- and part-time), annual
14-10-0054-01 (formerly CANSIM table 282-0041)	Job tenure by industry, monthly, unadjusted for seasonality
14-10-0055-01 (formerly CANSIM table 282-0042)	Job tenure by industry, annual
14-10-0056-01 (formerly CANSIM table 282-0047)	Duration of unemployment, monthly, unadjusted for seasonality
14-10-0057-01 (formerly CANSIM table 282-0048)	Duration of unemployment, annual
14-10-0058-01 (formerly CANSIM table 282-0049)	Unemployment by type of work sought and search method, monthly, unadjusted for seasonality
14-10-0059-01 (formerly CANSIM table 282-0050)	Unemployment by type of work sought and search method, annual
14-10-0060-01 (formerly CANSIM table 282-0051)	Retirement age by class of worker, annual
14-10-0063-01 (formerly CANSIM table 282-0071)	Employee wages by industry, monthly, unadjusted for seasonality

14-10-0064-01 (formerly CANSIM table 282-0072)	Employee wages by industry, annual
14-10-0065-01 (formerly CANSIM table 282-0073)	Employee wages by job permanency and union coverage, monthly, unadjusted for seasonality
14-10-0066-01 (formerly CANSIM table 282-0074)	Employee wages by job permanency and union coverage, annual
14-10-0067-01 (formerly CANSIM table 282-0075)	Employment by establishment size, monthly, unadjusted for seasonality
14-10-0068-01 (formerly CANSIM table 282-0076)	Employment by establishment size, annual
14-10-0069-01 (formerly CANSIM table 282-0077)	Union coverage by industry, monthly, unadjusted for seasonality
14-10-0070-01 (formerly CANSIM table 282-0078)	Union coverage by industry, annual
14-10-0071-01 (formerly CANSIM table 282-0079)	Job permanency (permanent and temporary) by industry, monthly, unadjusted for seasonality
14-10-0072-01 (formerly CANSIM table 282-0080)	Job permanency (permanent and temporary) by industry, annual
14-10-0075-01 (formerly CANSIM table 282-0083)	Employees working overtime (weekly) by industry, monthly, unadjusted for seasonality
14-10-0076-01 (formerly CANSIM table 282-0084)	Employees working overtime (weekly) by industry, annual
14-10-0077-01 (formerly CANSIM table 282-0085)	Supplementary unemployment rates, monthly, unadjusted for seasonality
14-10-0078-01 (formerly CANSIM table 282-0086)	Supplementary unemployment rates, annual
14-10-0287-01 (formerly CANSIM table 282-0087)	Labour force characteristics, monthly, seasonally adjusted and trend-cycle, last 5 months
14-10-0287-02 (formerly CANSIM table 282-0087)	Labour force characteristics by age group, monthly, seasonally adjusted

14-10-0287-03 (formerly CANSIM table 282-0087)	Labour force characteristics by province, monthly, seasonally adjusted
14-10-0355-01 (formerly CANSIM table 282-0088)	Employment by industry, monthly, seasonally adjusted and unadjusted, last 5 months
14-10-0355-02 (formerly CANSIM table 282-0088)	Employment by industry, monthly, seasonally adjusted
14-10-0288-01 (formerly CANSIM table 282-0089)	Employment by class of worker, monthly, seasonally adjusted and unadjusted, last 5 months
14-10-0288-02 (formerly CANSIM table 282-0089)	Employment by class of worker, monthly, seasonally adjusted
14-10-0289-01 (formerly CANSIM table 282-0092)	Actual hours worked at main job by industry, monthly, seasonally adjusted, last 5 months
14-10-0289-02 (formerly CANSIM table 282-0092)	Actual hours worked at main job by industry, monthly, seasonally adjusted
14-10-0291-01 (formerly CANSIM table 282-0094)	Labour force characteristics by industry, monthly, seasonally adjusted, last 5 months
14-10-0291-02 (formerly CANSIM table 282-0094)	Labour force characteristics by industry, monthly, seasonally adjusted
14-10-0081-01 (formerly CANSIM table 282-0095)	Unemployment rate, participation rate, and employment rate by type of student during school months, annual
14-10-0292-01 (formerly CANSIM table 282-0100)	Labour force characteristics by territory, three-month moving average, seasonally adjusted and unadjusted, last 5 months
14-10-0292-02 (formerly CANSIM table 282-0100)	Labour force characteristics by territory, three-month moving average, seasonally adjusted
14-10-0082-01 (formerly CANSIM table 282-0101)	Labour force characteristics by immigrant status, three-month moving average, unadjusted for seasonality
14-10-0083-01 (formerly CANSIM table 282-0102)	Labour force characteristics by immigrant status, annual
14-10-0084-01 (formerly CANSIM table 282-0103)	Labour force characteristics of immigrants by sex and age group, three-month moving average, unadjusted for seasonality

14-10-0085-01 (formerly CANSIM table 282-0104)	Labour force characteristics of immigrants by sex and age group, annual
14-10-0086-01 (formerly CANSIM table 282-0105)	Labour force characteristics of immigrants by educational attainment, three-month moving average, unadjusted for seasonality
14-10-0087-01 (formerly CANSIM table 282-0106)	Labour force characteristics of immigrants by educational attainment, annual
14-10-0088-01 (formerly CANSIM table 282-0107)	Labour force characteristics of immigrants by country of birth, three-month moving average, unadjusted for seasonality
14-10-0089-01 (formerly CANSIM table 282-0108)	Labour force characteristics of immigrants by country of birth, annual
14-10-0293-01 (formerly CANSIM table 282-0122)	Labour force characteristics by economic region, three-month moving average, unadjusted for seasonality, last 5 months
14-10-0293-02 (formerly CANSIM table 282-0122)	Labour force characteristics by economic region, three-month moving average, unadjusted for seasonality
14-10-0090-01 (formerly CANSIM table 282-0123)	Labour force characteristics by province, territory and economic region, annual
14-10-0091-01 (formerly CANSIM table 282-0124)	Employment by industry, three-month moving average, unadjusted for seasonality, provinces and economic regions
14-10-0092-01 (formerly CANSIM table 282-0125)	Employment by industry, annual, provinces and economic regions
14-10-0095-01 (formerly CANSIM table 282-0128)	Labour force characteristics by census metropolitan area, three-month moving average, unadjusted for seasonality
14-10-0096-01 (formerly CANSIM table 282-0129)	Labour force characteristics by census metropolitan area, annual
14-10-0097-01 (formerly CANSIM table 282-0130)	Employment by industry, three-month moving average, unadjusted for seasonality, census metropolitan areas
14-10-0098-01 (formerly CANSIM table 282-0131)	Employment by industry, annual, census metropolitan areas
14-10-0102-01 (formerly CANSIM table 282-0134)	Labour force characteristics by census agglomeration, annual

14-10-0294-01 (formerly CANSIM table 282-0135)	Labour force characteristics by census metropolitan area, three-month moving average, seasonally adjusted and unadjusted, last 5 months
14-10-0294-02 (formerly CANSIM table 282-0135)	Labour force characteristics by census metropolitan area, three-month moving average, seasonally adjusted
14-10-0295-01 (formerly CANSIM table 282-0136)	Labour force characteristics by Montréal, Toronto and Vancouver census metropolitan areas, seasonally adjusted and unadjusted, last 5 months
14-10-0295-02 (formerly CANSIM table 282-0136)	Labour force characteristics by Montréal, Toronto and Vancouver census metropolitan areas, monthly, seasonally adjusted
14-10-0105-01 (formerly CANSIM table 282-0137)	Employment and unemployment rate, monthly, unadjusted for seasonality, population centres and rural areas
14-10-0106-01 (formerly CANSIM table 282-0138)	Employment and unemployment rate, annual, population centres and rural areas
14-10-0107-01 (formerly CANSIM table 282-0139)	Employment by class of worker and industry, monthly, unadjusted for seasonality, population centres and rural areas
14-10-0108-01 (formerly CANSIM table 282-0140)	Employment by class of worker and industry, annual, population centres and rural areas
14-10-0296-01 (formerly CANSIM table 282-0141)	Labour force characteristics by occupation, monthly, unadjusted for seasonality
14-10-0297-01 (formerly CANSIM table 282-0142)	Labour force characteristics by occupation, annual
14-10-0298-01 (formerly CANSIM table 282-0143)	Usual hours worked by occupation, monthly, unadjusted for seasonality
14-10-0299-01 (formerly CANSIM table 282-0144)	Usual hours worked by occupation, annual
14-10-0300-01 (formerly CANSIM table 282-0145)	Actual hours worked by occupation, monthly, unadjusted for seasonality
14-10-0301-01 (formerly CANSIM table 282-0146)	Actual hours worked by occupation, annual
14-10-0302-01 (formerly CANSIM table 282-0147)	Multiple jobholders by occupation, monthly, unadjusted for seasonality

14-10-0303-01 (formerly CANSIM table 282-0148)	Multiple jobholders by occupation, annual
14-10-0304-01 (formerly CANSIM table 282-0149)	Job tenure by occupation, monthly, unadjusted for seasonality
14-10-0305-01 (formerly CANSIM table 282-0150)	Job tenure by occupation, annual
14-10-0306-01 (formerly CANSIM table 282-0151)	Employee wages by occupation, monthly, unadjusted for seasonality
14-10-0307-01 (formerly CANSIM table 282-0152)	Employee wages by occupation, annual
14-10-0308-01 (formerly CANSIM table 282-0153)	Employees working overtime (weekly) by occupation, monthly, unadjusted for seasonality
14-10-0309-01 (formerly CANSIM table 282-0154)	Employees working overtime (weekly) by occupation, annual
14-10-0310-01 (formerly CANSIM table 282-0155)	Employment by occupation, monthly, seasonally adjusted, last 5 months
14-10-0310-02 (formerly CANSIM table 282-0155)	Employment by occupation, monthly, seasonally adjusted
14-10-0311-01 (formerly CANSIM table 282-0156)	Employment by economic regions and occupation, three-month moving average, unadjusted for seasonality
14-10-0312-01 (formerly CANSIM table 282-0157)	Employment by economic regions and occupation, annual
14-10-0313-01 (formerly CANSIM table 282-0158)	Employment by census metropolitan areas and occupation, three-month moving average, unadjusted for seasonality
14-10-0314-01 (formerly CANSIM table 282-0159)	Employment by census metropolitan areas and occupation, annual
14-10-0315-01 (formerly CANSIM table 282-0160)	Weekly wage distributions by occupation, monthly, unadjusted for seasonality
14-10-0316-01 (formerly CANSIM table 282-0161)	Weekly wage distributions by occupation, annual

14-10-0317-01 (formerly CANSIM table 282-0162)	Hourly wage distributions by occupation, monthly, unadjusted for seasonality
14-10-0318-01 (formerly CANSIM table 282-0163)	Hourly wage distributions by occupation, annual
14-10-0319-01 (formerly CANSIM table 282-0164)	Union status by occupation
14-10-0104-01 (formerly CANSIM table 282-0165)	Employment by Aboriginal group and occupation
14-10-0363-01 (formerly CANSIM table 282-0166)	Employment by Aboriginal group and occupation, selected provinces and regions
14-10-0320-01 (formerly CANSIM table 282-0167)	Average usual hours and wages by selected characteristics, monthly, unadjusted for seasonality, last 5 months
14-10-0320-02 (formerly CANSIM table 282-0167)	Average usual hours and wages by selected characteristics, monthly, unadjusted for seasonality
14-10-0354-01 (formerly CANSIM table 282-0168)	Regional unemployment rates used by the Employment Insurance program, three-month moving average, seasonally adjusted
14-10-0109-01 (formerly CANSIM table 282-0200)	Weekly wage distributions by type of work, monthly, unadjusted for seasonality
14-10-0110-01 (formerly CANSIM table 282-0201)	Weekly wage distributions by type of work, annual
14-10-0113-01 (formerly CANSIM table 282-0204)	Hourly wage distributions by type of work, monthly, unadjusted for seasonality
14-10-0114-01 (formerly CANSIM table 282-0205)	Hourly wage distributions by type of work, annual
14-10-0117-01 (formerly CANSIM table 282-0208)	Labour force characteristics by educational degree, monthly, unadjusted for seasonality
14-10-0118-01 (formerly CANSIM table 282-0209)	Labour force characteristics by educational degree, annual
14-10-0119-01 (formerly CANSIM table 282-0210)	Labour force characteristics by family age composition, monthly, unadjusted for seasonality

14-10-0120-01 (formerly CANSIM table 282-0211)	Labour force characteristics by family age composition, annual
14-10-0121-01 (formerly CANSIM table 282-0212)	Hours lost by reason of absence, monthly, unadjusted for seasonality
14-10-0122-01 (formerly CANSIM table 282-0213)	Hours lost by reason of absence, annual
14-10-0123-01 (formerly CANSIM table 282-0214)	Activity prior to unemployment, monthly, unadjusted for seasonality
14-10-0124-01 (formerly CANSIM table 282-0215)	Activity prior to unemployment, annual
14-10-0125-01 (formerly CANSIM table 282-0216)	Reason for leaving job during previous year, monthly, unadjusted for seasonality
14-10-0126-01 (formerly CANSIM table 282-0217)	Reason for leaving job during previous year, annual
14-10-0127-01 (formerly CANSIM table 282-0218)	Reason for not looking for work, monthly, unadjusted for seasonality
14-10-0128-01 (formerly CANSIM table 282-0219)	Reason for not looking for work, annual
14-10-0129-01 (formerly CANSIM table 282-0220)	Union status by geography
14-10-0130-01 (formerly CANSIM table 282-0221)	Union status by education level
14-10-0132-01 (formerly CANSIM table 282-0223)	Union status by industry
14-10-0133-01 (formerly CANSIM table 282-0224)	Union status by establishment size
14-10-0134-01 (formerly CANSIM table 282-0225)	Average weekly earnings, average hourly wage rate and average usual weekly hours by union status, annual
14-10-0364-01 (formerly CANSIM table 282-0226)	Labour force characteristics by province, region and Aboriginal group

14-10-0365-01 (formerly CANSIM table 282-0227)	Labour force characteristics by region and detailed Aboriginal group
14-10-0359-01 (formerly CANSIM table 282-0228)	Labour force characteristics by Aboriginal group and educational attainment
14-10-0366-01 (formerly CANSIM table 282-0229)	Employment by Aboriginal group and industry
14-10-0367-01 (formerly CANSIM table 282-0230)	Employment by geography, Aboriginal group and industry
14-10-0370-01 (formerly CANSIM table 282-0233)	Average hourly and weekly wages and average usual weekly hours by Aboriginal group

Survey

3701	Labour Force Survey
------	---------------------

Summary tables

Effective June 4, 2018, all but two summary tables were discontinued:

Canada: Economic and financial data

Latest statistics

- Average hourly wages of employees by selected characteristics and occupation, unadjusted data, by province (monthly) was replaced by table 14-10-0320-02.
- Days lost per worker by industry and sex was replaced by table 14-10-0191-01.
- People employed, by educational attainment was replaced by table 14-10-0020-01.
- Reasons for part-time work by sex and age group was replaced by table 14-10-0029-01.
- Self-employment, historical summary was replaced by table 14-10-0027-01.
- Employment by age, sex, type of work, class of worker and province (monthly) was replaced by table 14-10-0288-02.
- Actual hours worked per week by industry, seasonally adjusted (monthly) was replaced by table 14-10-0289-02.
- Labour force characteristics, unadjusted, by territory (3 month moving average) was replaced by table 14-10-0292-01.
- Employment by industry and sex was replaced by table 14-10-0023-01.
- Full-time and part-time employment by sex and age group was replaced by table 14-10-0018-01.
- Labour force characteristics by age and sex was replaced by table 14-10-0018-01.
- Labour force characteristics by immigrant status of population aged 25 to 54, and by educational attainment was replaced by table 14-10-0087-01.
- Labour force characteristics by immigrant status, by detailed age group was replaced by table 14-10-0085-01.

- Labour force characteristics by immigrant status of population aged 25 to 54, by country of birth was replaced by table 14-10-0089-01.
- Days lost per worker due to illness or disability, by sex, by province was replaced by table 14-10-0190-01.
- Employment by industry was replaced by table 14-10-0023-01.
- Labour force characteristics, seasonally adjusted, by province (monthly) was replaced by table 14-10-0287-03.
- Labour force characteristics, unadjusted, by province (monthly) was replaced by table 14-10-0017-02.
- Labour force, employment and unemployment, levels and rates, by province was replaced by table 14-10-0018-01.
- Economic indicators, by province and territory (monthly and quarterly) was replaced by summary table Canada: Economic and financial data.
- Days lost per worker by reason, by provinces was replaced by table 14-10-0190-01.
- Labour force characteristics, seasonally adjusted, by census metropolitan area (3 month moving average) was replaced by table 14-10-0294-02.
- Labour force characteristics, unadjusted, by economic region (3 month moving average) was replaced by table 14-10-0293-02.
- Distribution of employed people, by industry, by province was replaced by table 14-10-0023-01.
- Employment by major industry group, seasonally adjusted, by province (monthly) was replaced by table 14-10-0355-02.
- Labour force characteristics was replaced by table 14-10-0037-01.
- Labour force characteristics, unadjusted, by census metropolitan area (3 month moving average) was replaced by table 14-10-0294-01.
- Labour force characteristics, population 15 years and older, by census metropolitan area was replaced by table 14-10-0096-01.
- Labour force characteristics, population 15 years and older, by economic region, by province was replaced by table 14-10-0090-01.
- Labour force characteristics by sex and age group was replaced by table 14-10-0018-01.
- Labour force characteristics by immigrant status of population aged 25 to 54, by province was replaced by table 14-10-0083-01.