

Catalogue no. 71-001-X

Labour Force Information

Friday, October 7, 2016

September 11 to 17, 2016



Statistics
Canada

Statistique
Canada

Canada

How to obtain more information

For information about this product or the wide range of services and data available from Statistics Canada, visit our website, www.statcan.gc.ca.

You can also contact us by

e-mail at STATCAN.infostats-infostats.STATCAN@canada.ca

telephone, from Monday to Friday, 8:30 a.m. to 4:30 p.m., at the following toll-free numbers:

- | | |
|---|----------------|
| • Statistical Information Service | 1-800-263-1136 |
| • National telecommunications device for the hearing impaired | 1-800-363-7629 |
| • Fax line | 1-877-287-4369 |

Depository Services Program

- | | |
|------------------|----------------|
| • Inquiries line | 1-800-635-7943 |
| • Fax line | 1-800-565-7757 |

To access this product

This product, Catalogue no. 71-001-X, is available free in electronic format. To obtain a single issue, visit our website, www.statcan.gc.ca and browse by "Key resource" > "Publications."

Standards of service to the public

Statistics Canada is committed to serving its clients in a prompt, reliable and courteous manner. To this end, this agency has developed standards of service that its employees observe. To obtain a copy of these service standards, please contact Statistics Canada toll-free at 1-800-263-1136. The service standards are also published at www.statcan.gc.ca under "Contact us" > "Standards of service to the public."

Statistics Canada
Labour Statistics Division
Labour Force Survey Program

Labour Force Information

Friday, October 7, 2016

September 11 to 17, 2016

Published by authority of the Minister responsible for Statistics Canada

© Minister of Industry, 2016

All rights reserved. Use of this publication is governed by the Statistics Canada
Open License Agreement.

<http://www.statcan.gc.ca/reference/licence-eng.html>

October 2016

Catalogue no. 71-001-X

ISSN 1492-5478

Frequency: Monthly

Ottawa

Cette publication est également disponible en français.

Note of appreciation

Canada owes the success of its statistical system to a long-standing partnership between Statistics Canada, the citizens of Canada, its businesses, governments and other institutions. Accurate and timely statistical information could not be produced without their continued cooperation and goodwill.

User information

Symbols

The following standard symbols are used in Statistics Canada publications:

- . not available for any reference period
- .. not available for a specific reference period
- ... not applicable
- 0 true zero or a value rounded to zero
- 0^s value rounded to 0 (zero) where there is a meaningful distinction between true zero and the value that was rounded
- p preliminary
- r revised
- x suppressed to meet the confidentiality requirements of the *Statistics Act*
- E use with caution
- F too unreliable to be published
- * significantly different from reference category ($p < 0.05$)

Special requests (\$)

Custom tabulations can be arranged on an ad hoc or regular basis. This service enables you to specify tables and time series to meet your own requirements. The cost varies according to the request. For more information, contact us toll-free at 1-866-873-8788 or e-mail us at statcan.labour-travail.statcan@canada.ca.

Schedule of LFS releases

Release date	Reference period
February 5, 2016	January 10 to 16, 2016
March 11, 2016	February 14 to 20, 2016
April 8, 2016	March 13 to 19, 2016
May 6, 2016	April 10 to 16 2016
June 10, 2016	May 15 to 21, 2016
July 8, 2016	June 12 to 18, 2016
August 5, 2016	July 10 to 16, 2016
September 9, 2016	August 14 to 20, 2016
October 7, 2016	September 11 to 17, 2016
November 4, 2016	October 9 to 15, 2016
December 2, 2016	November 6 to 12, 2016
January 6, 2017	December 4 to 10, 2016

Table of contents

Highlights	5
Analysis — September 2016	6
Charts	
1. Employment indexes, Canada, seasonally adjusted	9
2. Unemployment, employment, and participation rates, Canada, seasonally adjusted	10
3. Employment indexes by industry, Canada, seasonally adjusted	11
4. Employment indexes by industry, Canada, seasonally adjusted	12
5. Employment indexes by industry, Canada, seasonally adjusted	13
6. Employment indexes by province, Canada, seasonally adjusted	14
7. Employment indexes by province, Canada, seasonally adjusted	15
Related products	16
Statistical tables	
1 Labour force characteristics by age and sex, Canada, seasonally adjusted	27
2 Employment by class of worker and industry, Canada, seasonally adjusted	29
3 Labour force characteristics by province, seasonally adjusted	30
4 Selected labour force characteristics (seasonally adjusted)	32
4-1 Newfoundland and Labrador	32
4-2 Prince Edward Island	33
4-3 Nova Scotia	34
4-4 New Brunswick	35
4-5 Quebec	36
4-6 Ontario	37
4-7 Manitoba	38
4-8 Saskatchewan	39
4-9 Alberta	40
4-10 British Columbia	41
5 Labour force characteristics by census metropolitan area (seasonally adjusted)	42
5-1 3 month moving average	42
5-2 Monthly	47

Table of contents – continued

6	Labour force characteristics	48
6-1	by province and economic region, unadjusted for seasonality, 3 month moving average ending in September 2015 and September 2016	48
6-2	by territory (seasonally adjusted) - 3 month moving average	53
7	Average usual hours and wages of employees by selected characteristics, Canada, unadjusted for seasonality	54
8	Regional unemployment rates used by the Employment Insurance program, seasonally adjusted, 3-month moving average	55

Data quality, concepts and methodology

Data quality	57
--------------	----

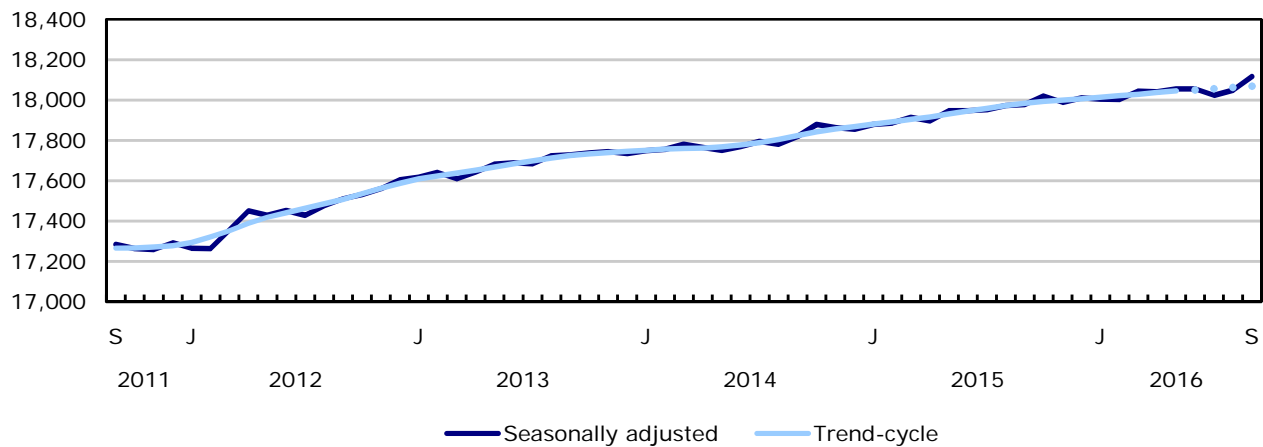
Highlights

Employment rose by 67,000 (+0.4%) in September, with most of the increase in part-time work. The unemployment rate was unchanged at 7.0%, as more people participated in the labour market.

Chart 1
Employment and unemployment rate, Canada, seasonally adjusted

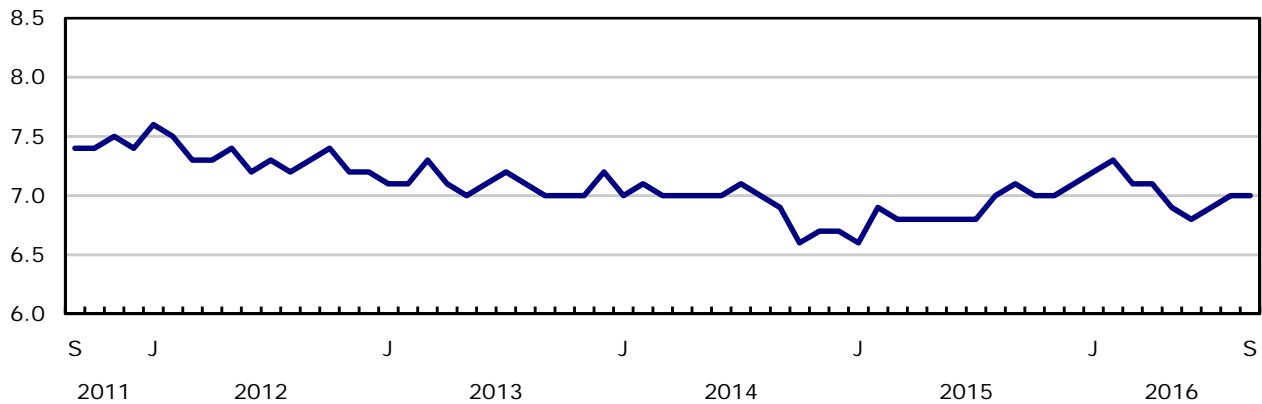
Employment

thousands



Unemployment rate

percent



Analysis — September 2016

Employment rose by 67,000 (+0.4%) in September, with most of the increase in part-time work. The unemployment rate was unchanged at 7.0%, as more people participated in the labour market.

In the third quarter of 2016, employment gains totalled 62,000 (+0.3%). This followed little change in employment in the second quarter and a slight increase of 33,000 (+0.2%) in the first quarter.

Compared with 12 months earlier, employment rose by 139,000 (+0.8%), with most of the gains in part-time work. Over the same period, the total number of hours worked edged up 0.2%.

In September, there were more employed people aged 55 and older. At the same time, there was little change in employment among both the 15 to 24 and 25 to 54 age groups.

Provincially, employment rose in Quebec, Alberta and New Brunswick. There was little change in the other provinces.

In September, more people worked in public administration, educational services as well as in transportation and warehousing. At the same time, employment declined in health care and social assistance.

Self-employment increased in September, while there was little change in the number of private and public sector employees.

Demographic overview

Among women aged 55 and older, employment grew by 38,000 in September. However, their unemployment rate was little changed at 5.3% as their participation in the labour market also increased. Compared with 12 months earlier, employment among women aged 55 and older increased by 122,000 (+7.5%) and their population rose by 156,000 (+2.9%).

There were 19,000 more men aged 55 and older working in September. At the same time, their unemployment rate increased 0.3 percentage points to 6.7% as more men in this age group searched for work. Compared with 12 months earlier, employment among men aged 55 and older rose by 49,000 (+2.4%) and their population increased by 154,000 (+3.1%).

Employment among both men and women aged 25 to 54 held steady in September. Among this age group, the unemployment rates were essentially unchanged at 6.5% for men and 5.3% for women. On a year-over-year basis, employment for men and women aged 25 to 54 was little changed, while their population rose by 48,000 (+0.3%).

In September, employment among youths aged 15 to 24 was little changed and their unemployment rate stayed at 13.2%. The unemployment rate for this group was essentially unchanged compared with 12 months earlier. Over the same period, fewer youths were working (-35,000 or -1.4%) and their population was also down (-47,000 or -1.1%).

Provincial summary

In Quebec, employment increased for the second consecutive month, up 38,000 in September. The unemployment rate edged down to 6.9%, the lowest since the start of 2008. Compared with September 2015, employment in the province was up 61,000 (+1.5%).

Employment in Alberta increased by 13,000 in September. The unemployment rate was little changed at 8.5% as more people participated in the labour market. Compared with 12 months earlier, there were 47,000 (-2.0%) fewer people employed and the provincial unemployment rate was up 1.9 percentage points.

In New Brunswick, employment rose by 4,400 in September, and the unemployment rate was 9.3%. Employment has been on an upward trend since the spring, following losses observed from October to March.

Employment in Ontario was little changed in September, and the unemployment rate was 6.6%. However, on a year-over-year basis, employment in the province increased by 82,000 (+1.2%) and the unemployment rate declined 0.3 percentage points.

In British Columbia, employment was essentially unchanged for the second consecutive month. At 5.7% in September, the unemployment rate remained the lowest among the provinces. On a year-over-year basis, employment in British Columbia increased by 62,000 or 2.6%, the fastest growth rate among the provinces.

Quarterly update for the territories

The LFS also collects labour market information on the territories. This information is produced monthly in the form of three-month moving averages.

In the third quarter of 2016, employment in Yukon was essentially unchanged compared with the second quarter. The unemployment rate increased 1.7 percentage points to 6.9% in the third quarter as more people searched for work.

Employment in the Northwest Territories edged down (-500) between the second and third quarter. Over the same period, the unemployment rate fell 1.4 percentage points to 6.6% as fewer people searched for work.

In Nunavut, employment held steady in the third quarter compared with the second quarter. Over the same period, the unemployment rate was little changed at 14.5%.

Industry perspective

Employment in public administration increased for the second consecutive month, up 19,000 in September, with gains in federal, provincial and territorial public administration. On a year-over-year basis, employment in public administration was up 22,000 (+2.4%).

In September, employment in educational services rose by 17,000. Compared with 12 months earlier, employment in the industry increased by 25,000 (+2.0%).

There were also more people employed in transportation and warehousing in September (+8,300). However, there was little change compared with 12 months earlier.

In contrast, there were fewer people working in health care and social assistance in September (-14,000). Despite this decline, employment in the industry was up 33,000 (+1.4%) compared with September 2015.

The number of self-employed workers rose by 50,000 in September. Most of the increase was in health care and social assistance, followed by professional, scientific and technical services. On year-over-year basis there was little change overall in the number of self-employed.

The number of employees was little changed in both the private and public sectors in September. Compared with 12 months earlier, the number of private sector employees increased by 106,000 (+0.9%), while public sector employment was little changed.

Note to readers

The Labour Force Survey (LFS) estimates for September are for the week of September 11 to 17.

The LFS estimates are based on a sample and are therefore subject to sampling variability. As a result, monthly estimates will show more variability than trends observed over longer time periods. For more information, see "*Interpreting Monthly Changes in Employment from the Labour Force Survey*". Estimates for smaller geographic areas or industries also have more variability. For an explanation of sampling variability of estimates and how to use standard errors to assess this variability, consult the "Data quality" section of the publication *Labour Force Information (71-001-X)*.

This analysis focuses on differences between estimates that are statistically significant at the 68% confidence level.

The LFS estimates are the first in a series of labour market indicators released by Statistics Canada, which includes indicators from programs such as the Survey of Payroll Employment, Earnings and Hours (SEPH), Employment Insurance Statistics, and the Job Vacancy and Wage Survey. For more information on the conceptual differences between employment measures from the LFS and SEPH, refer to *section 8* of the *Guide to the Labour Force Survey (71-543-G)*.

The **employment rate** is the number of employed people as a percentage of the population aged 15 and older. The rate for a particular group (for example, youths aged 15 to 24) is the number employed in that group as a percentage of the population for that group.

The **unemployment rate** is the number of unemployed as a percentage of the labour force (employed and unemployed).

The **participation rate** is the number of employed and unemployed as a percentage of the population.

Seasonal adjustment

Unless otherwise stated, this release presents seasonally adjusted estimates, which facilitates comparisons by removing the effects of seasonal variations. For more information on seasonal adjustment, see *Seasonally adjusted data – Frequently asked questions*.

Chart 1 shows trend-cycle data on employment. These data represent a smoothed version of the seasonally adjusted time series, which provides information on longer-term movements, including changes in direction underlying the series. These data are available in CANSIM table 282-0087 for the national level employment series. For more information, see the *StatCan Blog* and *Trend-cycle estimates – Frequently asked questions*.

Data for the Fort McMurray area

As a result of the wildfire affecting northern Alberta, LFS data for the census agglomeration of Wood Buffalo, which includes Fort McMurray, were not collected from May to July 2016. Collection resumed in Wood Buffalo in August. Data for this area are reflected in the national and Alberta estimates published in August and September. Separate estimates for the economic region of Wood Buffalo–Cold Lake, which are published as three-month moving averages, are not available for June through September 2016.

Next release

The next release of the LFS will be on November 4.

Chart 1
Employment indexes, Canada, seasonally adjusted

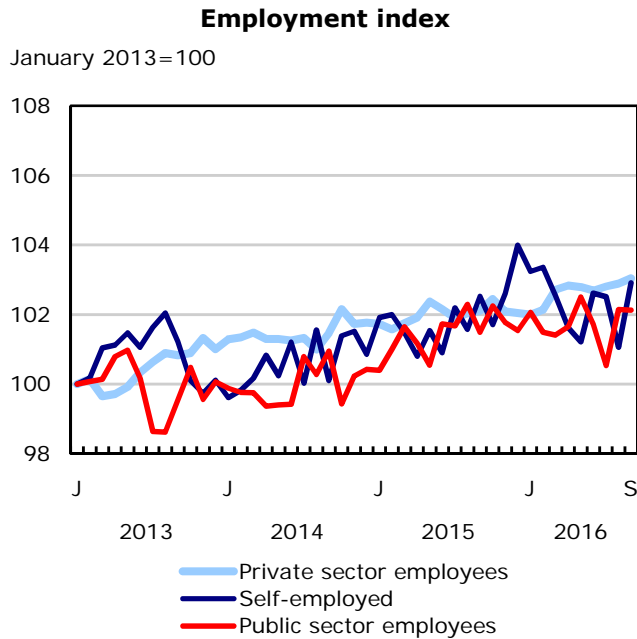
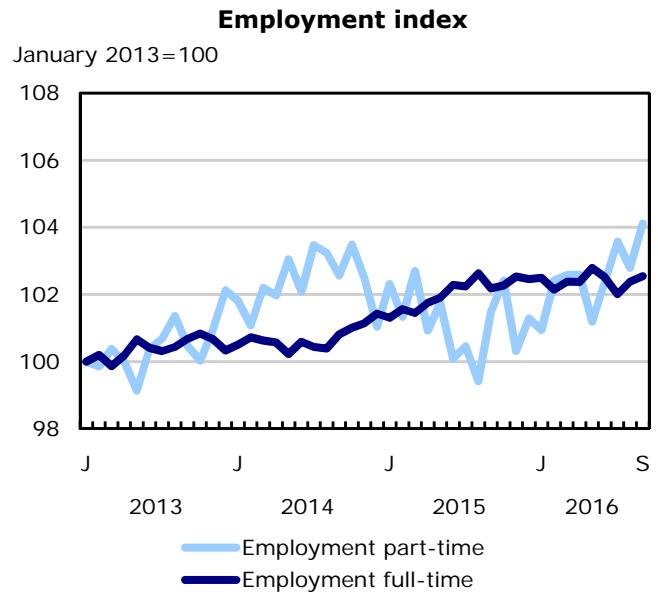
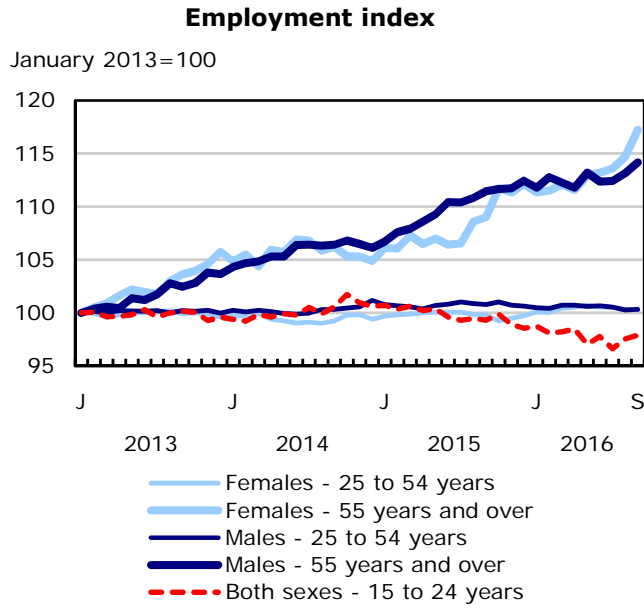


Chart 2
Unemployment, employment, and participation rates, Canada, seasonally adjusted

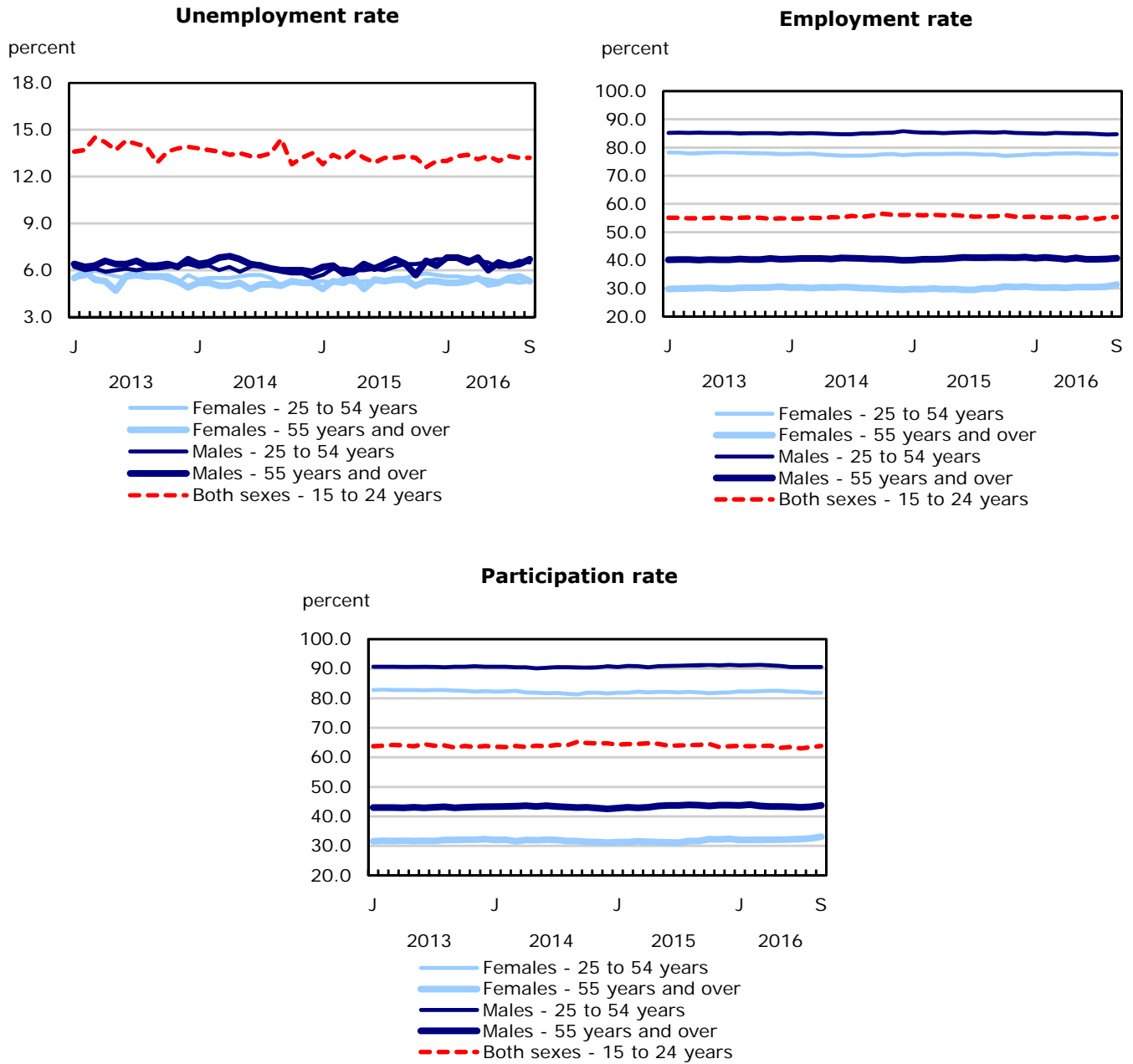


Chart 3
Employment indexes by industry, Canada, seasonally adjusted

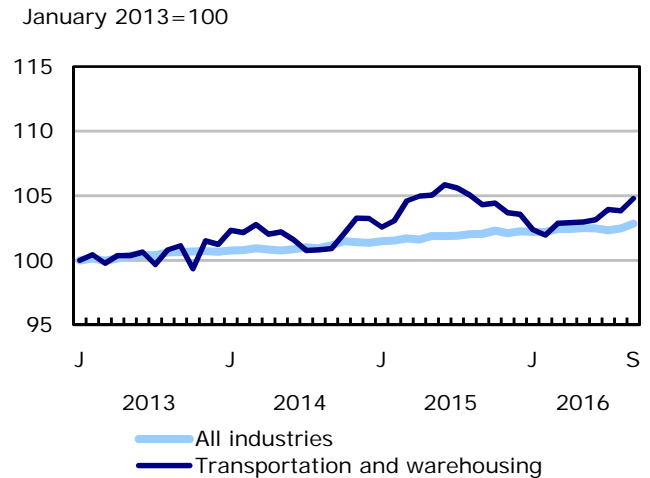
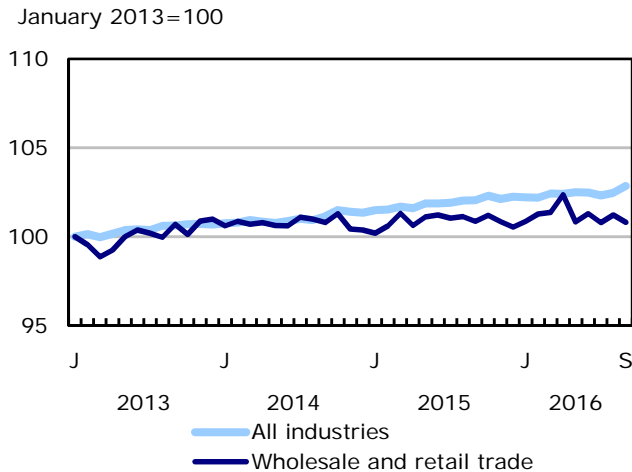
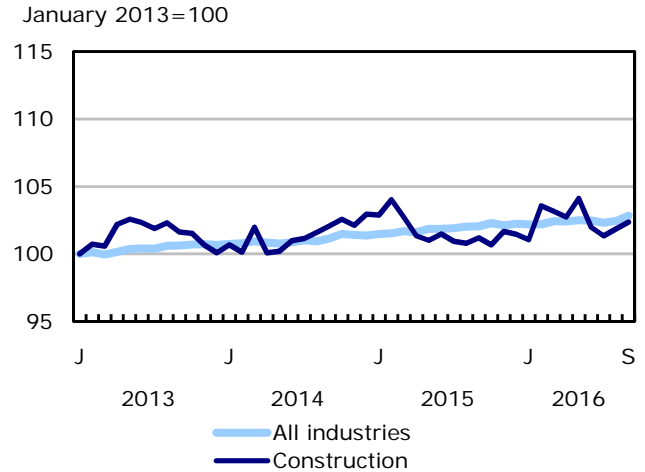
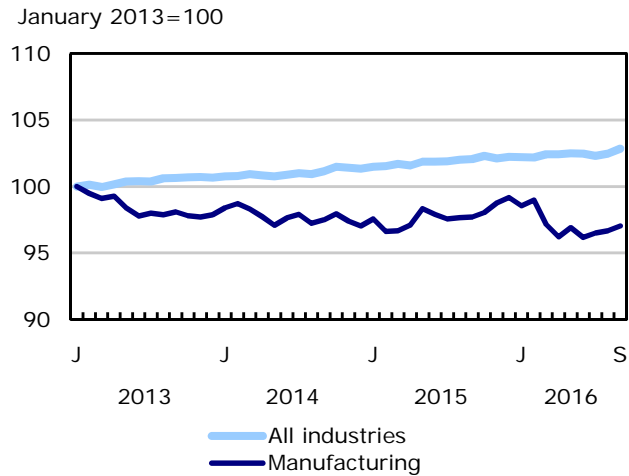
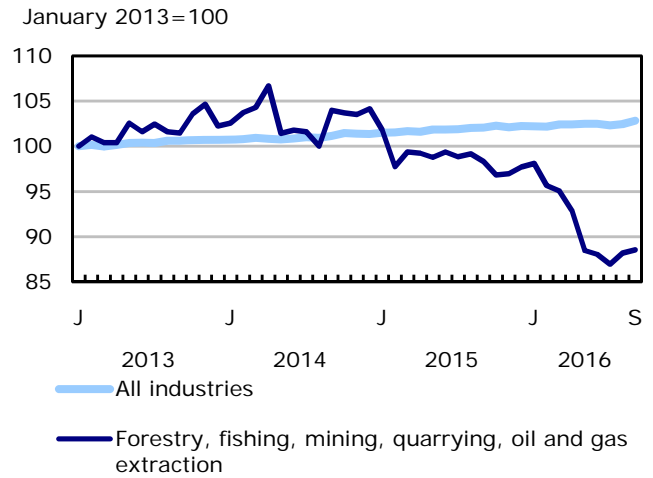
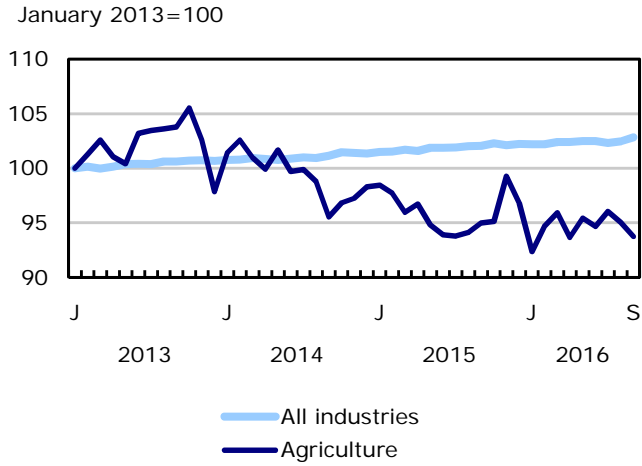


Chart 4
Employment indexes by industry, Canada, seasonally adjusted

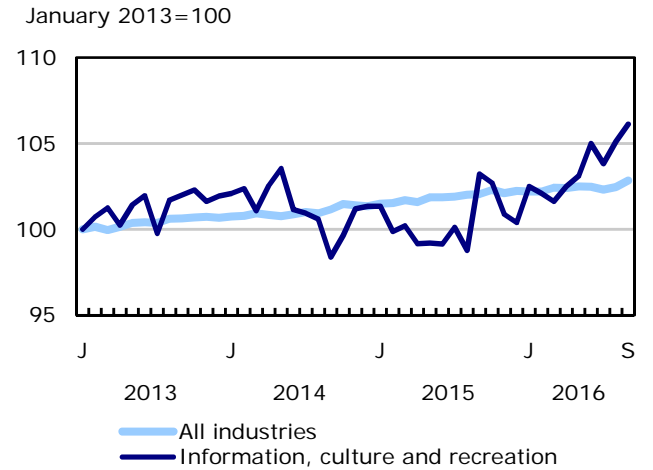
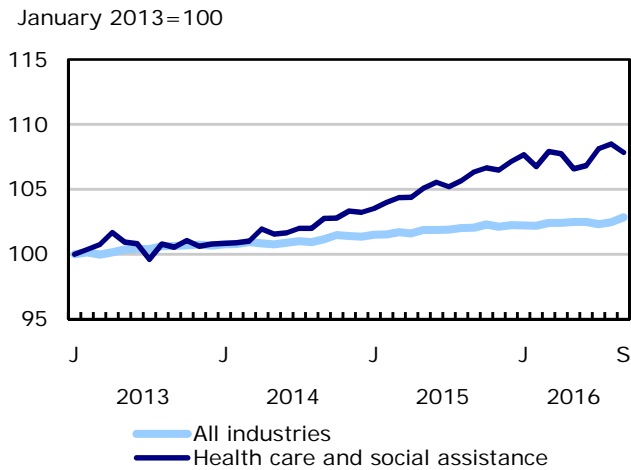
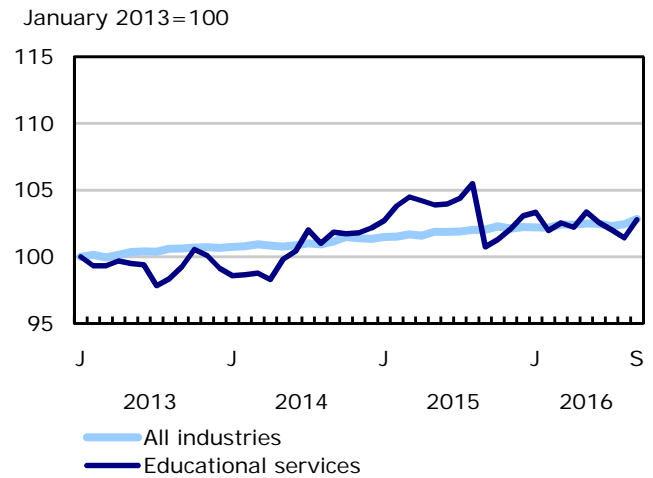
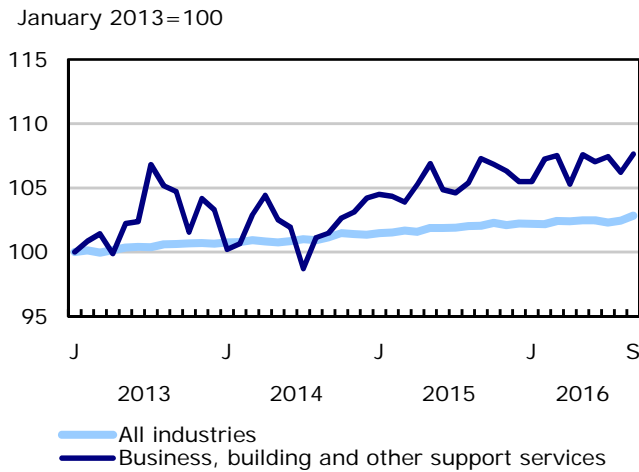
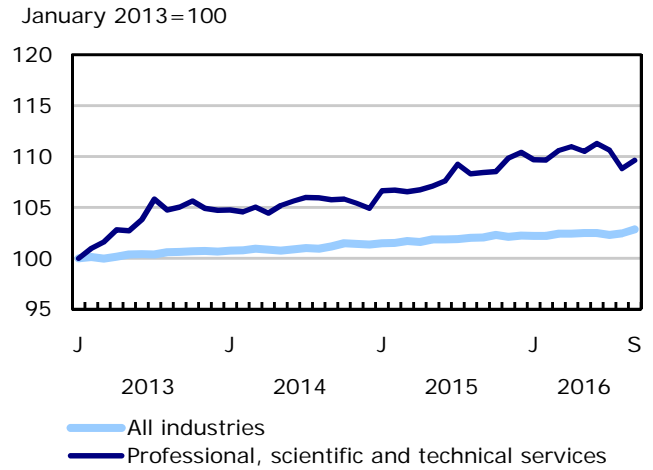
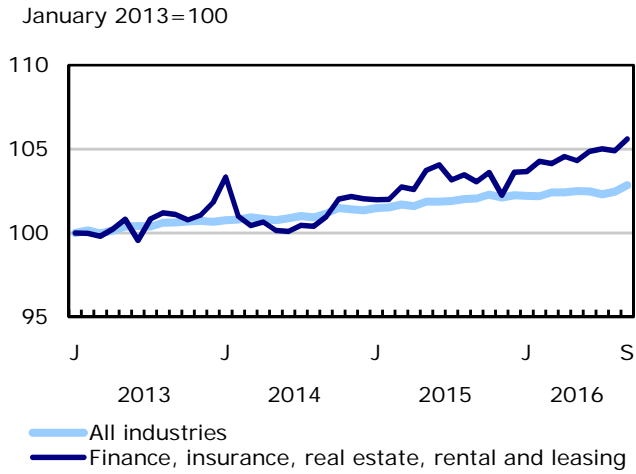


Chart 5
Employment indexes by industry, Canada, seasonally adjusted

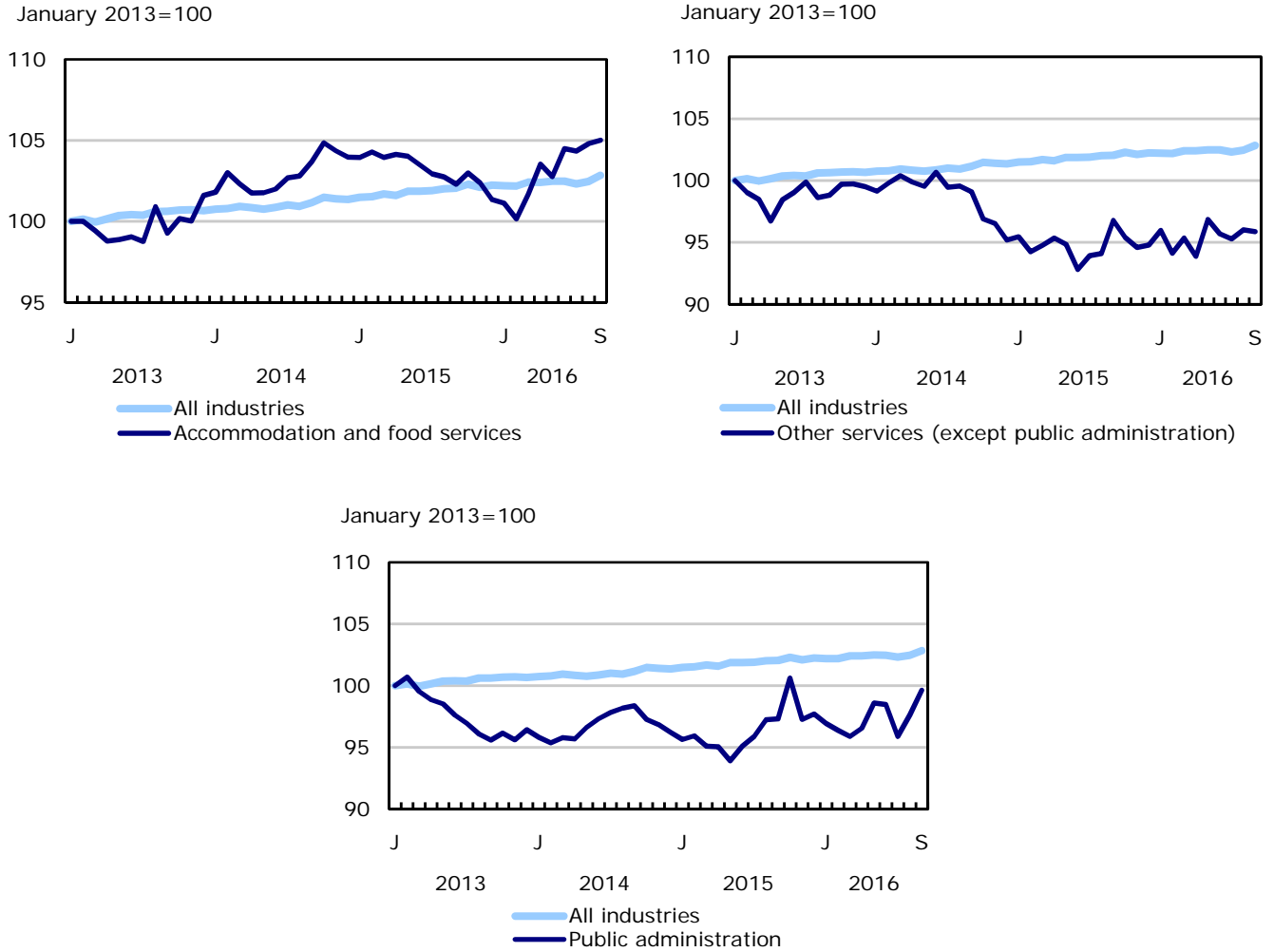
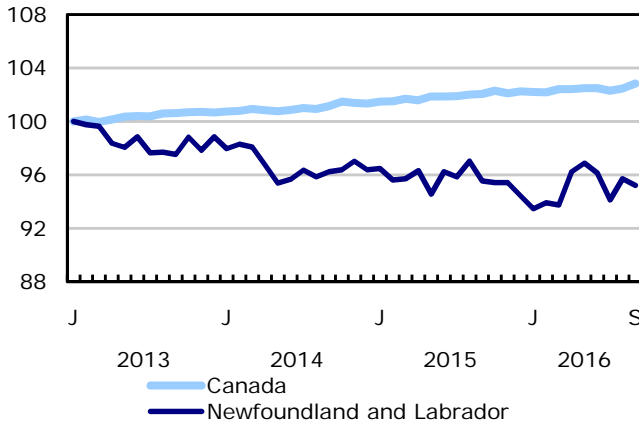
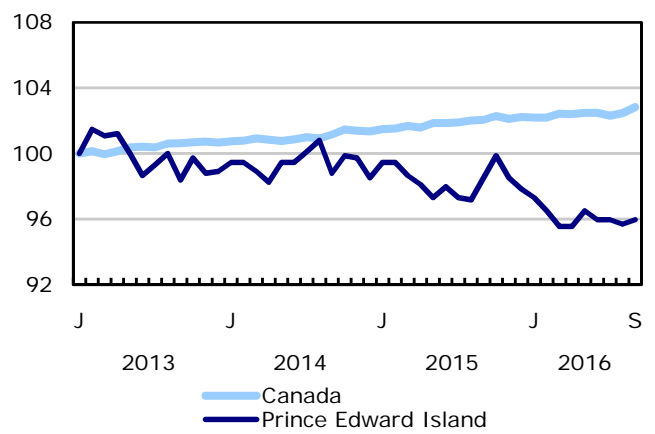


Chart 6
Employment indexes by province, Canada, seasonally adjusted

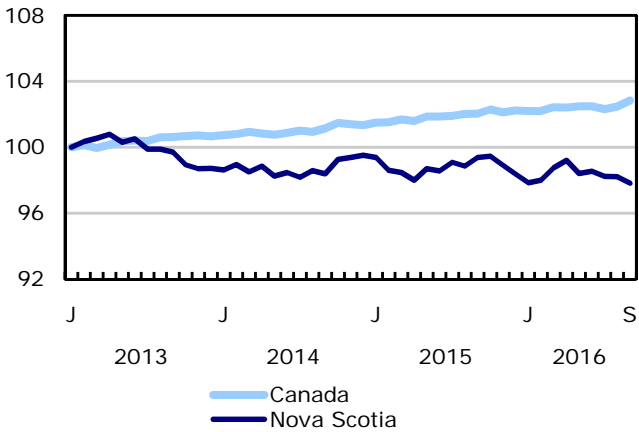
January 2013=100



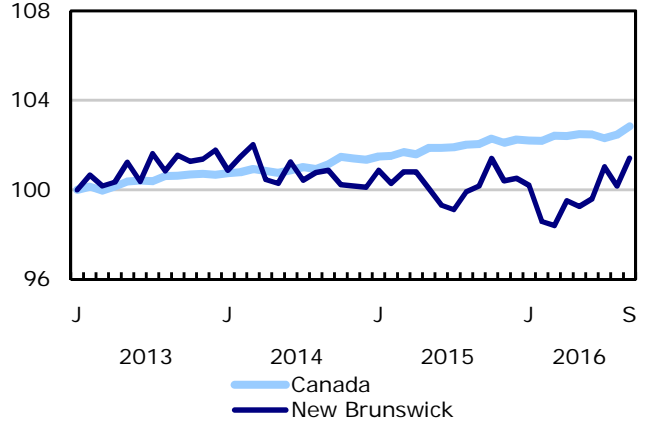
January 2013=100



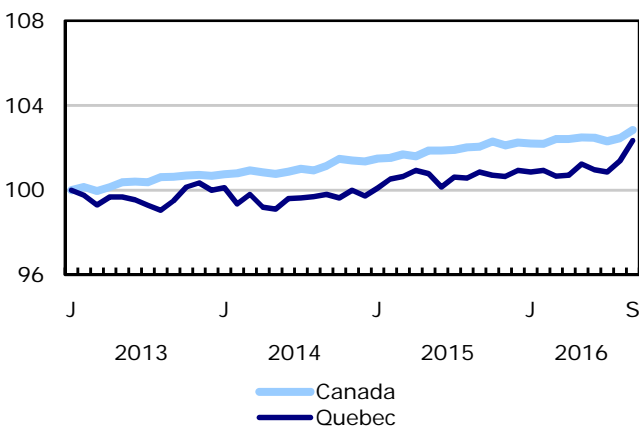
January 2013=100



January 2013=100



January 2013=100



January 2013=100

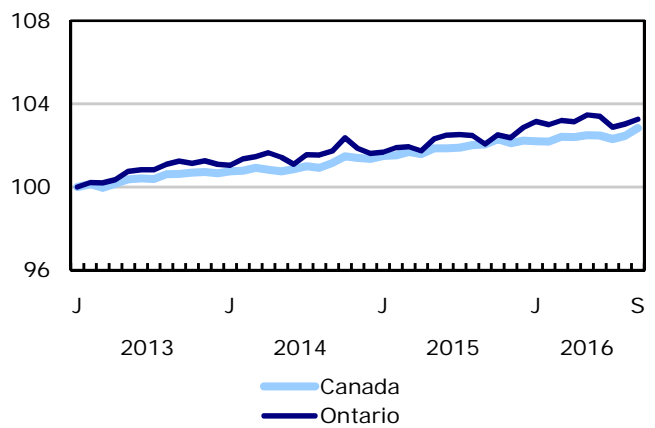
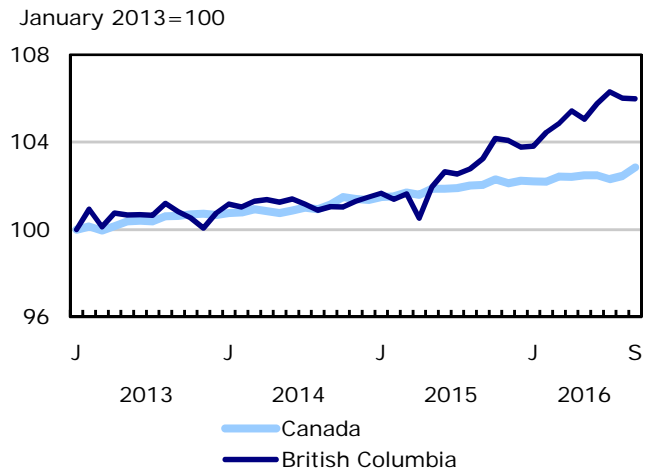
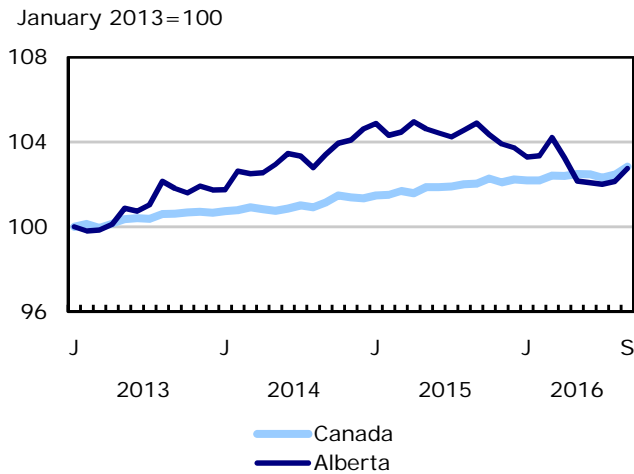
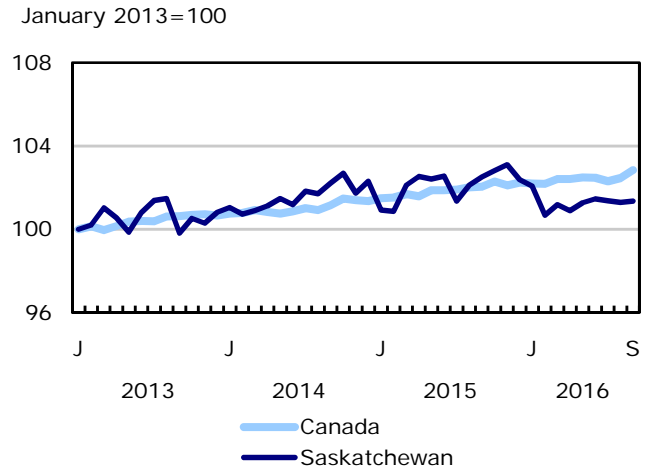
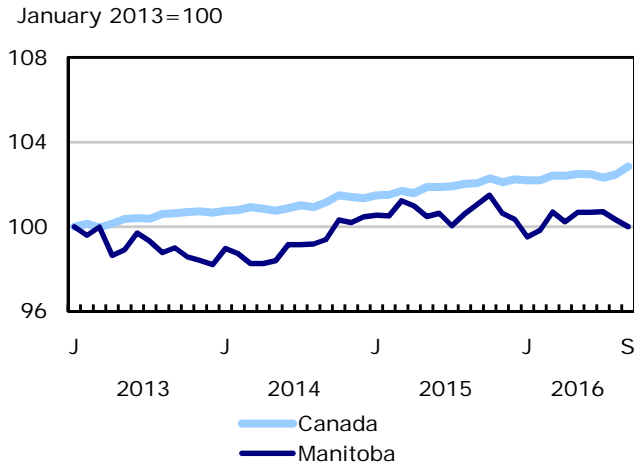


Chart 7
Employment indexes by province, Canada, seasonally adjusted



Related products

Selected publications from Statistics Canada

71-526-X	Methodology of the Canadian Labour Force Survey
71-543-G	Guide to the Labour Force Survey
71-587-X	Aboriginal Peoples Living Off-reserve in Western Canada: Estimates from the Labour Force Survey
71-588-X	The Aboriginal Labour Force Analysis Series
71-606-X	The Immigrant Labour Force Analysis Series
71F0031X	Improvements to the Labour Force Survey (LFS)
71M0001X	Labour Force Survey Microdata File

Selected CANSIM tables from Statistics Canada

279-0029	Work absence statistics of full-time employees by province, census metropolitan area (CMA) and sex, annual
279-0030	Work absence statistics of full-time employees by sex and North American Industry Classification System (NAICS), annual
279-0032	Work absence statistics of full-time employees by sex and age group, annual
279-0033	Work absence statistics of full-time employees by sex and presence of children, annual
279-0034	Work absence statistics of full-time employees by sex and job tenure, annual
279-0035	Work absence statistics of full-time employees by sex and public and private sector, annual
279-0036	Work absence statistics of full-time employees by sex and educational attainment, annual
279-0037	Work absence statistics of full-time employees by sex and workplace size, annual
279-0038	Work absence statistics of full-time employees by sex and job status, annual
279-0039	Work absence statistics of full-time employees by sex and union coverage, annual
279-0040	Work absence statistics of full-time employees by sex and National Occupational Classification (NOC), annual
282-0001	Labour force survey estimates (LFS), by sex and detailed age group, unadjusted for seasonality, monthly

282-0002	Labour force survey estimates (LFS), by sex and detailed age group, annual
282-0003	Labour force survey estimates (LFS), by educational attainment, sex and age group, unadjusted for seasonality, monthly
282-0004	Labour force survey estimates (LFS), by educational attainment, sex and age group, annual
282-0005	Labour force survey estimates (LFS), by full- and part-time students during school months, sex and age group, unadjusted for seasonality, monthly
282-0006	Labour force survey estimates (LFS), by students during summer months, sex and age group, unadjusted for seasonality, monthly
282-0007	Labour force survey estimates (LFS), by North American Industry Classification System (NAICS), sex and age group, unadjusted for seasonality, monthly
282-0008	Labour force survey estimates (LFS), by North American Industry Classification System (NAICS), sex and age group, annual
282-0011	Labour force survey estimates (LFS), employment by class of worker, North American Industry Classification System (NAICS) and sex, unadjusted for seasonality, monthly
282-0012	Labour force survey estimates (LFS), employment by class of worker, North American Industry Classification System (NAICS) and sex, annual
282-0013	Labour force survey estimates (LFS), part-time employment by reason for part-time work, sex and age group, unadjusted for seasonality, monthly
282-0014	Labour force survey estimates (LFS), part-time employment by reason for part-time work, sex and age group, annual
282-0015	Labour force survey estimates (LFS), by usual hours worked, main or all jobs, sex and age group, unadjusted for seasonality, monthly
282-0016	Labour force survey estimates (LFS), by usual hours worked, main or all jobs, sex and age group, annual
282-0017	Labour force survey estimates (LFS), by actual hours worked, main or all jobs, sex and age group, unadjusted for seasonality, monthly
282-0018	Labour force survey estimates (LFS), by actual hours worked, main or all jobs, sex and age group, annual
282-0019	Labour force survey estimates (LFS), by usual hours worked, class of worker, North American Industry Classification System (NAICS) and sex, unadjusted for seasonality, monthly
282-0020	Labour force survey estimates (LFS), by usual hours worked, class of worker, North American Industry Classification System (NAICS) and sex, annual
282-0021	Labour force survey estimates (LFS), by actual hours worked, class of worker, North American Industry Classification System (NAICS) and sex, unadjusted for seasonality, monthly
282-0022	Labour force survey estimates (LFS), by actual hours worked, class of worker, North American Industry Classification System (NAICS) and sex, annual

282-0027	Labour force survey estimates (LFS), by total and average usual and actual hours worked, main or all jobs, type of work, sex and age group, unadjusted for seasonality, monthly
282-0028	Labour force survey estimates (LFS), by total and average usual and actual hours worked, main or all jobs, type of work, sex and age group, annual
282-0031	Labour force survey estimates (LFS), multiple jobholders by North American Industry Classification System (NAICS), sex and age group, annual
282-0032	Labour force survey estimates (LFS), multiple jobholders by North American Industry Classification System (NAICS), sex and age group, unadjusted for seasonality, monthly
282-0035	Labour force survey estimates (LFS), multiple jobholders by usual hours worked at main and all jobs, unadjusted for seasonality, monthly
282-0036	Labour force survey estimates (LFS), multiple jobholders by usual hours worked at main and all jobs, annual
282-0037	Labour force survey estimates (LFS), job tenure by type of work, sex and age group, unadjusted for seasonality, monthly
282-0038	Labour force survey estimates (LFS), job tenure by type of work, sex and age group, annual
282-0041	Labour force survey estimates (LFS), job tenure by North American Industry Classification System (NAICS) and sex, unadjusted for seasonality, monthly
282-0042	Labour force survey estimates (LFS), job tenure by North American Industry Classification System (NAICS) and sex, annual
282-0047	Labour force survey estimates (LFS), duration of unemployment by sex and age group, unadjusted for seasonality, monthly
282-0048	Labour force survey estimates (LFS), duration of unemployment by sex and age group, annual
282-0049	Labour force survey estimates (LFS), unemployment by type of work sought and search method, sex and age group, unadjusted for seasonality, monthly
282-0050	Labour force survey estimates (LFS), unemployment by type of work sought and search method, sex and age group, annual
282-0051	Labour force survey estimates (LFS), retirement age by class of worker and sex, annual
282-0071	Labour force survey estimates (LFS), wages of employees by type of work, North American Industry Classification System (NAICS), sex and age group, unadjusted for seasonality, monthly
282-0072	Labour force survey estimates (LFS), wages of employees by type of work, North American Industry Classification System (NAICS), sex and age group, annual
282-0073	Labour force survey estimates (LFS), wages of employees by job permanence, union coverage, sex and age group, unadjusted for seasonality, monthly
282-0074	Labour force survey estimates (LFS), wages of employees by job permanence, union coverage, sex and age group, annual
282-0075	Labour force survey estimates (LFS), employees by establishment size, North American Industry Classification System (NAICS), sex and age group, unadjusted for seasonality, monthly

282-0076	Labour force survey estimates (LFS), employees by establishment size, North American Industry Classification System (NAICS), sex and age group, annual
282-0077	Labour force survey estimates (LFS), employees by union coverage, North American Industry Classification System (NAICS), sex and age group, unadjusted for seasonality, monthly
282-0078	Labour force survey estimates (LFS), employees by union coverage, North American Industry Classification System (NAICS), sex and age group, annual
282-0079	Labour force survey estimates (LFS), employees by job permanency, North American Industry Classification System (NAICS), sex and age group, unadjusted for seasonality, monthly
282-0080	Labour force survey estimates (LFS), employees by job permanency, North American Industry Classification System (NAICS), sex and age group, annual
282-0083	Labour force survey estimates (LFS), employees working overtime (weekly) by North American Industry Classification System (NAICS), sex and age group, unadjusted for seasonality, monthly
282-0084	Labour force survey estimates (LFS), employees working overtime (weekly) by North American Industry Classification System (NAICS), sex and age group, annual
282-0085	Labour force survey estimates (LFS), supplementary unemployment rates by sex and age group, unadjusted for seasonality, monthly
282-0086	Labour force survey estimates (LFS), supplementary unemployment rates by sex and age group, annual
282-0087	Labour force survey estimates (LFS), by sex and age group, seasonally adjusted and unadjusted, monthly
282-0088	Labour force survey estimates (LFS), employment by North American Industry Classification System (NAICS), seasonally adjusted and unadjusted, monthly
282-0089	Labour force survey estimates (LFS), employment by class of worker and sex, seasonally adjusted and unadjusted, monthly
282-0092	Labour force survey estimates (LFS), actual hours worked at main job by North American Industry Classification System (NAICS), seasonally adjusted, monthly
282-0094	Labour force survey estimates (LFS), by North American Industry Classification System (NAICS), Canada, seasonally adjusted, monthly
282-0095	Labour force survey estimates (LFS), by full- and part-time students during school months, sex and age group, annual
282-0100	Labour force survey estimates (LFS), by territories, sex and age group, 3-month moving average, seasonally adjusted and unadjusted, monthly
282-0101	Labour force survey estimates (LFS), by immigrant status, age group, Canada, regions, provinces and Montreal, Toronto, Vancouver census metropolitan areas, 3-month moving average, unadjusted for seasonality, monthly
282-0102	Labour force survey estimates (LFS), by immigrant status, age group, Canada, regions, provinces and Montreal, Toronto, Vancouver census metropolitan areas, annual

282-0103	Labour force survey estimates (LFS), by immigrant status, sex and detailed age group, Canada, 3-month moving average, unadjusted for seasonality, monthly
282-0104	Labour force survey estimates (LFS), by immigrant status, sex and detailed age group, Canada, annual
282-0105	Labour force survey estimates (LFS), by immigrant status, educational attainment, sex and age group, Canada, 3-month moving average, unadjusted for seasonality, monthly
282-0106	Labour force survey estimates (LFS), by immigrant status, educational attainment, sex and age group, Canada, annual
282-0107	Labour force survey estimates (LFS), by immigrant status, country of birth, sex and age group, Canada, 3-month moving average, unadjusted for seasonality, monthly
282-0108	Labour force survey estimates (LFS), by immigrant status, country of birth, sex and age group, Canada, annual
282-0122	Labour force survey estimates (LFS), by provinces and economic regions based on 2011 Census boundaries, 3-month moving average, unadjusted for seasonality, monthly
282-0123	Labour force survey estimates (LFS), by provinces, territories and economic regions based on 2011 Census boundaries, annual
282-0124	Labour force survey estimates (LFS), employment by economic region based on 2011 Census boundaries and North American Industry Classification System (NAICS), 3-month moving average, unadjusted for seasonality, monthly
282-0125	Labour force survey estimates (LFS), employment by economic region based on 2011 Census boundaries and North American Industry Classification System (NAICS), annual
282-0128	Labour force survey estimates (LFS), by census metropolitan area based on 2011 Census boundaries, sex and age group, 3-month moving average, unadjusted for seasonality, monthly
282-0129	Labour force survey estimates (LFS), by census metropolitan area based on 2011 Census boundaries, sex and age group, annual
282-0130	Labour force survey estimates (LFS), employment by census metropolitan area based on 2011 Census boundaries and North American Industry Classification System (NAICS), 3-month moving average, unadjusted for seasonality, monthly
282-0131	Labour force survey estimates (LFS), employment by census metropolitan area based on 2011 Census boundaries and North American Industry Classification System (NAICS), annual
282-0134	Labour force survey estimates (LFS), by selected census agglomerations based on 2011 Census boundaries, annual
282-0135	Labour force survey estimates (LFS), by census metropolitan area based on 2011 Census boundaries, 3-month moving average, seasonally adjusted and unadjusted, monthly
282-0136	Labour force survey estimates (LFS), by Montréal, Toronto and Vancouver census metropolitan areas based on 2011 Census boundaries, seasonally adjusted and unadjusted, monthly

282-0137	Labour force survey estimates (LFS), by population centres and rural areas based on 2011 Census boundaries, sex and age group, unadjusted for seasonality, monthly
282-0138	Labour force survey estimates (LFS), by population centres and rural areas based on 2011 Census boundaries, sex and age group, annual
282-0139	Labour force survey estimates (LFS), employment by population centres and rural areas based on 2011 Census boundaries, class of worker and North American Industry Classification System (NAICS), unadjusted for seasonality, monthly
282-0140	Labour force survey estimates (LFS), employment by population centres and rural areas based on 2011 Census boundaries, class of worker and North American Industry Classification System (NAICS), annual
282-0141	Labour force survey estimates (LFS), by National Occupational Classification (NOC) and sex, unadjusted for seasonality, monthly
282-0142	Labour force survey estimates (LFS), by National Occupational Classification (NOC) and sex, annual
282-0143	Labour force survey estimates (LFS), by usual hours worked, National Occupational Classification (NOC) and sex, unadjusted for seasonality, monthly
282-0144	Labour force survey estimates (LFS), by usual hours worked, National Occupational Classification (NOC) and sex, annual
282-0145	Labour force survey estimates (LFS), by actual hours worked, National Occupational Classification (NOC) and sex, unadjusted for seasonality, monthly
282-0146	Labour force survey estimates (LFS), by actual hours worked, National Occupational Classification (NOC) and sex, annual
282-0147	Labour force survey estimates (LFS), multiple jobholders by National Occupational Classification (NOC), sex and age group, unadjusted for seasonality, monthly
282-0148	Labour force survey estimates (LFS), multiple jobholders by National Occupational Classification (NOC), sex and age group, annual
282-0149	Labour force survey estimates (LFS), job tenure by National Occupational Classification (NOC) and sex, unadjusted for seasonality, monthly
282-0150	Labour force survey estimates (LFS), job tenure by National Occupational Classification (NOC) and sex, annual
282-0151	Labour force survey estimates (LFS), wages of employees by type of work, National Occupational Classification (NOC), sex, and age group, unadjusted for seasonality, monthly
282-0152	Labour force survey estimates (LFS), wages of employees by type of work, National Occupational Classification (NOC), sex, and age group, annual
282-0153	Labour force survey estimates (LFS), employees working overtime (weekly) by National Occupational Classification (NOC), sex and age group, unadjusted for seasonality, monthly
282-0154	Labour force survey estimates (LFS), employees working overtime (weekly) by National Occupational Classification (NOC), sex and age group, annual

282-0155	Labour force survey estimates (LFS), employment by National Occupational Classification (NOC), seasonally adjusted, monthly
282-0156	Labour force survey estimates (LFS), employment by economic region based on 2011 Census boundaries and National Occupational Classification (NOC), three-month moving average, unadjusted for seasonality, monthly
282-0157	Labour force survey estimates (LFS), employment by economic region based on 2011 Census boundaries and National Occupational Classification (NOC), annual
282-0158	Labour force survey estimates (LFS), employment by census metropolitan area based on 2011 Census boundaries and National Occupational Classification (NOC), three-month moving average, unadjusted for seasonality, monthly
282-0159	Labour force survey estimates (LFS), employment by census metropolitan area based on 2011 Census boundaries and National Occupational Classification (NOC), annual
282-0160	Labour force survey estimates (LFS), weekly wage distributions of employees by type of work, National Occupational Classification (NOC) and sex, unadjusted for seasonality, monthly
282-0161	Labour force survey estimates (LFS), weekly wage distributions of employees by type of work, National Occupational Classification (NOC) and sex, annual
282-0162	Labour force survey estimates (LFS), hourly wage distribution of employees by type of work, National Occupational Classification (NOC) and sex, unadjusted for seasonality, monthly
282-0163	Labour force survey estimates (LFS), hourly wage distribution of employees by type of work, National Occupational Classification (NOC) and sex, annual
282-0164	Labour force survey estimates (LFS), employees by union status and National Occupational Classification (NOC), Canada, annual
282-0165	Labour force survey estimates (LFS), employment by Aboriginal group, National Occupational Classification (NOC), sex and age group, annual
282-0166	Labour force survey estimates (LFS), employment by Aboriginal group, National Occupational Classification (NOC) and age group, Canada, selected provinces and regions, annual
282-0167	Labour force survey estimates (LFS), average usual hours and wages of employees by age group, sex, union coverage, job permanency, and National Occupational Classification (NOC), unadjusted for seasonality, monthly
282-0168	Labour force survey estimates (LFS), regional unemployment rates used by the Employment Insurance Program, three-month moving average, seasonally adjusted, monthly
282-0200	Labour force survey estimates (LFS), weekly wage distributions of employees by type of work, North American Industry Classification System (NAICS), and sex, unadjusted for seasonality, monthly
282-0201	Labour force survey estimates (LFS), weekly wage distributions of employees by type of work, North American Industry Classification System (NAICS), and sex, annual
282-0204	Labour force survey estimates (LFS), hourly wage distributions of employees by type of work, North American Industry Classification System (NAICS), and sex, unadjusted for seasonality, monthly

282-0205	Labour force survey estimates (LFS), hourly wage distributions of employees by type of work, North American Industry Classification System (NAICS), and sex, annual
282-0208	Labour force survey estimates (LFS), by educational degree, sex and age group, unadjusted for seasonality, monthly
282-0209	Labour force survey estimates (LFS), by educational degree, sex and age group, annual
282-0210	Labour force survey estimates (LFS), by family type and family age composition, unadjusted for seasonality, monthly
282-0211	Labour force survey estimates (LFS), by family type and family age composition, annual
282-0212	Labour force survey estimates (LFS), hours lost by employees by reason of absence, full and part week and sex, unadjusted for seasonality, monthly
282-0213	Labour force survey estimates (LFS), hours lost by employees by reason of absence, full and part week and sex, annual
282-0214	Labour force survey estimates (LFS), activity prior to unemployment by sex and age group, unadjusted for seasonality, monthly
282-0215	Labour force survey estimates (LFS), activity prior to unemployment, by sex and age group, annual
282-0216	Labour force survey estimates (LFS), reason for leaving job during previous year by sex and age group, unadjusted for seasonality, monthly
282-0217	Labour force survey estimates (LFS), reason for leaving job during previous year by sex and age group, annual
282-0218	Labour force survey estimates (LFS), reason for not looking for work, by sex and age group, unadjusted for seasonality, monthly
282-0219	Labour force survey estimates (LFS), reason for not looking for work, by sex and age group, annual
282-0220	Labour Force Survey estimates (LFS), employees by union status, sex and age group, Canada and provinces, annual
282-0221	Labour Force Survey estimates (LFS), employees by union status, sex, age group and education level, Canada, annual
282-0223	Labour Force Survey estimates (LFS), employees by union status, North American Industry Classification System (NAICS) and sex, Canada, annual
282-0224	Labour Force Survey estimates (LFS), employees by union status, establishment size, job tenure, type of work and job permanency, Canada, annual
282-0225	Labour Force Survey estimates (LFS), average weekly earnings, average hourly wage rate and average usual weekly hours by union status and type of work, Canada and provinces, annual
282-0226	Labour force survey estimates (LFS), by Aboriginal group, sex and age group, Canada, selected provinces and regions, annual

282-0227	Labour force survey estimates (LFS), by detailed Aboriginal group, sex and age group, Canada and selected regions, annual
282-0228	Labour force survey estimates (LFS), by Aboriginal group, educational attainment and age group, Canada and selected regions, annual
282-0229	Labour force survey estimates (LFS), employment by Aboriginal group, North American Industry Classification System (NAICS), sex and age group, annual
282-0230	Labour force survey estimates (LFS), employment by Aboriginal group, North American Industry Classification System (NAICS) and age group, Canada and selected regions, annual
282-0233	Labour force survey estimates (LFS), average hourly and weekly wages and average usual weekly hours by Aboriginal group and age group, Canada, selected provinces and regions, annual

Selected surveys from Statistics Canada

3701	Labour Force Survey
------	---------------------

Selected summary tables from Statistics Canada

- *Average hourly wages of employees by selected characteristics and occupation, unadjusted data, by province (monthly)*
- *Days lost per worker by industry and sex*
- *People employed, by educational attainment*
- *Reasons for part-time work by sex and age group*
- *Self-employment, historical summary*
- *Employment by age, sex, type of work, class of worker and province (monthly)*
- *Actual hours worked per week by industry, seasonally adjusted (monthly)*
- *Labour force characteristics, unadjusted, by territory (3 month moving average)*
- *Employment by industry and sex*
- *Full-time and part-time employment by sex and age group*
- *Labour force characteristics by age and sex*
- *Labour force characteristics by immigrant status of population aged 25 to 54, and by educational attainment*
- *Labour force characteristics by immigrant status, by detailed age group*

- *Labour force characteristics by immigrant status of population aged 25 to 54, by country of birth*
- *Days lost per worker due to illness or disability, by sex, by province*
- *Employment by industry*
- *Labour force characteristics, seasonally adjusted, by province (monthly)*
- *Labour force characteristics, unadjusted, by province (monthly)*
- *Labour force, employment and unemployment, levels and rates, by province*
- *Economic indicators, by province and territory (monthly and quarterly)*
- *Days lost per worker by reason, by provinces*
- *Labour force characteristics, seasonally adjusted, by census metropolitan area (3 month moving average)*
- *Labour force characteristics, unadjusted, by economic region (3 month moving average)*
- *Distribution of employed people, by industry, by province*
- *Employment by major industry group, seasonally adjusted, by province (monthly)*
- *Labour force characteristics*
- *Labour force characteristics, unadjusted, by census metropolitan area (3 month moving average)*
- *Labour force characteristics, population 15 years and older, by census metropolitan area*
- *Labour force characteristics, population 15 years and older, by economic region, by province*
- *Canada: Economic and financial data*
- *Labour force characteristics by sex and age group*
- *Labour force characteristics by immigrant status of population aged 25 to 54, by province*
- *Latest statistics (monthly)*

Statistical tables

Table 1
Labour force characteristics by age and sex, Canada, seasonally adjusted

	August 2016	September 2016	S.E. ¹	Change from			Percent change from		
				last month	last December	twelve months ago	last month	last December	twelve months ago
15 years and over, both sexes									
Population	29,639.0	29,662.4	...	23.4	243.4	310.1	0.1	0.8	1.1
Labour force	19,410.7	19,479.7	30.3	69.0	82.4	137.7	0.4	0.4	0.7
Employment	18,049.5	18,116.7	29.9	67.2	105.8	138.8	0.4	0.6	0.8
Employment full-time	14,605.7	14,628.7	41.1	23.0	10.9	50.2	0.2	0.1	0.3
Employment part-time	3,443.8	3,487.9	38.2	44.1	94.8	88.5	1.3	2.8	2.6
Unemployment	1,361.1	1,363.1	25.3	2.0	-23.3	-1.0	0.1	-1.7	-0.1
Participation rate	65.5	65.7	0.1	0.2	-0.2	-0.2
Unemployment rate	7.0	7.0	0.1	0.0	-0.1	-0.1
Employment rate	60.9	61.1	0.1	0.2	-0.1	-0.1
Part-time rate	19.1	19.3	0.2	0.2	0.4	0.3
15 to 24 years, both sexes									
Population	4,380.4	4,377.0	...	-3.4	-35.0	-47.1	-0.1	-0.8	-1.1
Labour force	2,783.5	2,793.1	17.5	9.6	-15.2	-45.9	0.3	-0.5	-1.6
Employment	2,416.4	2,425.7	16.3	9.3	-16.8	-34.8	0.4	-0.7	-1.4
Employment full-time	1,249.8	1,276.7	20.4	26.9	-12.1	-9.5	2.2	-0.9	-0.7
Employment part-time	1,166.7	1,149.0	21.1	-17.7	-4.7	-25.3	-1.5	-0.4	-2.2
Unemployment	367.0	367.4	14.7	0.4	1.6	-11.1	0.1	0.4	-2.9
Participation rate	63.5	63.8	0.4	0.3	0.1	-0.4
Unemployment rate	13.2	13.2	0.5	0.0	0.2	-0.1
Employment rate	55.2	55.4	0.4	0.2	0.0	-0.2
Part-time rate	48.3	47.4	0.8	-0.9	0.1	-0.4
25 years and over, men									
Population	12,355.2	12,368.6	...	13.4	136.0	173.9	0.1	1.1	1.4
Labour force	8,797.3	8,822.0	15.8	24.7	9.6	40.2	0.3	0.1	0.5
Employment	8,219.2	8,241.1	16.8	21.9	12.9	20.9	0.3	0.2	0.3
Employment full-time	7,525.8	7,516.6	23.0	-9.2	-60.4	-54.6	-0.1	-0.8	-0.7
Employment part-time	693.4	724.5	18.4	31.1	73.3	75.6	4.5	11.3	11.7
Unemployment	578.2	581.0	15.1	2.8	-3.2	19.4	0.5	-0.5	3.5
Participation rate	71.2	71.3	0.1	0.1	-0.7	-0.7
Unemployment rate	6.6	6.6	0.2	0.0	0.0	0.2
Employment rate	66.5	66.6	0.1	0.1	-0.7	-0.8
Part-time rate	8.4	8.8	0.2	0.4	0.9	0.9
25 years and over, women									
Population	12,903.4	12,916.8	...	13.4	142.4	183.4	0.1	1.1	1.4
Labour force	7,829.9	7,864.6	17.4	34.7	88.1	143.4	0.4	1.1	1.9
Employment	7,413.9	7,449.9	17.0	36.0	109.7	152.7	0.5	1.5	2.1
Employment full-time	5,830.2	5,835.4	26.4	5.2	83.4	114.3	0.1	1.4	2.0
Employment part-time	1,583.7	1,614.5	25.1	30.8	26.3	38.3	1.9	1.7	2.4
Unemployment	416.0	414.7	13.9	-1.3	-21.6	-9.2	-0.3	-5.0	-2.2
Participation rate	60.7	60.9	0.1	0.2	0.0	0.3
Unemployment rate	5.3	5.3	0.2	0.0	-0.3	-0.2
Employment rate	57.5	57.7	0.1	0.2	0.2	0.4
Part-time rate	21.4	21.7	0.3	0.3	0.0	0.1
25 to 54 years, both sexes									
Population	14,644.2	14,645.4	...	1.2	40.7	47.7	0.0	0.3	0.3
Labour force	12,628.7	12,627.5	23.2	-1.2	-25.2	-2.4	0.0	-0.2	0.0
Employment	11,876.5	11,878.0	24.7	1.5	16.2	2.4	0.0	0.1	0.0
Unemployment	752.3	749.5	18.9	-2.8	-41.4	-4.8	-0.4	-5.2	-0.6
Participation rate	86.2	86.2	0.2	0.0	-0.4	-0.3
Unemployment rate	6.0	5.9	0.1	-0.1	-0.4	-0.1
Employment rate	81.1	81.1	0.2	0.0	-0.1	-0.3
25 to 54 years, men									
Population	7,290.0	7,290.6	...	0.6	18.1	20.4	0.0	0.2	0.3
Labour force	6,605.3	6,603.7	14.6	-1.6	-33.9	-19.4	0.0	-0.5	-0.3
Employment	6,168.4	6,171.9	16.6	3.5	-17.9	-28.1	0.1	-0.3	-0.5
Unemployment	436.8	431.8	13.6	-5.0	-16.0	8.7	-1.1	-3.6	2.1
Participation rate	90.6	90.6	0.2	0.0	-0.7	-0.5
Unemployment rate	6.6	6.5	0.2	-0.1	-0.2	0.1
Employment rate	84.6	84.7	0.2	0.1	-0.4	-0.6

See notes at the end of the table.

Table 1 – continued

Labour force characteristics by age and sex, Canada, seasonally adjusted

	August 2016	September 2016	S.E. ¹	Change from			Percent change from		
				last month	last December	twelve months ago	last month	last December	twelve months ago
in thousands (except rates)									
25 to 54 years, women									
Population	7,354.2	7,354.8	...	0.6	22.6	27.3	0.0	0.3	0.4
Labour force	6,023.5	6,023.8	17.0	0.3	8.7	17.0	0.0	0.1	0.3
Employment	5,708.1	5,706.1	17.3	-2.0	34.0	30.5	0.0	0.6	0.5
Unemployment	315.4	317.7	12.8	2.3	-25.3	-13.5	0.7	-7.4	-4.1
Participation rate	81.9	81.9	0.2	0.0	-0.1	-0.1
Unemployment rate	5.2	5.3	0.2	0.1	-0.4	-0.2
Employment rate	77.6	77.6	0.2	0.0	0.2	0.1
55 years and over, both sexes									
Population	10,614.4	10,640.1	...	25.7	237.8	309.7	0.2	2.3	3.0
Labour force	3,998.5	4,059.2	18.8	60.7	122.9	186.1	1.5	3.1	4.8
Employment	3,756.6	3,813.0	18.8	56.4	106.4	171.2	1.5	2.9	4.7
Unemployment	241.9	246.2	10.2	4.3	16.5	14.9	1.8	7.2	6.4
Participation rate	37.7	38.2	0.2	0.5	0.4	0.7
Unemployment rate	6.0	6.1	0.3	0.1	0.3	0.1
Employment rate	35.4	35.8	0.2	0.4	0.2	0.5
55 years and over, men									
Population	5,065.2	5,078.0	...	12.8	117.9	153.5	0.3	2.4	3.1
Labour force	2,192.1	2,218.4	12.5	26.3	43.6	59.7	1.2	2.0	2.8
Employment	2,050.7	2,069.2	12.7	18.5	30.8	49.0	0.9	1.5	2.4
Unemployment	141.3	149.2	7.6	7.9	12.8	10.6	5.6	9.4	7.6
Participation rate	43.3	43.7	0.3	0.4	-0.1	-0.1
Unemployment rate	6.4	6.7	0.3	0.3	0.4	0.3
Employment rate	40.5	40.7	0.3	0.2	-0.4	-0.3
55 years and over, women									
Population	5,549.2	5,562.0	...	12.8	119.8	156.1	0.2	2.2	2.9
Labour force	1,806.4	1,840.8	13.1	34.4	79.4	126.4	1.9	4.5	7.4
Employment	1,705.9	1,743.8	13.0	37.9	75.7	122.2	2.2	4.5	7.5
Unemployment	100.6	97.0	6.6	-3.6	3.7	4.2	-3.6	4.0	4.5
Participation rate	32.6	33.1	0.2	0.5	0.7	1.4
Unemployment rate	5.6	5.3	0.4	-0.3	0.0	-0.1
Employment rate	30.7	31.4	0.2	0.7	0.7	1.4

1. Average standard error of change in two consecutive months (see "Sampling Errors" in Data Quality for further explanations).

Note(s): Related CANSIM table 282-0087. The sum of individual categories may not always add to the total due to rounding.

Table 2
Employment by class of worker and industry, Canada, seasonally adjusted

	August 2016	September 2016	S.E. ¹	Change from			Percent change from		
				last month	last December	twelve months ago	last month	last December	twelve months ago
in thousands									
Class of worker									
Employees	15,312.0	15,329.0	36.7	17.0	135.0	128.1	0.1	0.9	0.8
Self-employed ²	2,737.6	2,787.7	26.5	50.1	-29.2	10.7	1.8	-1.0	0.4
Public/private sector employees									
Public sector employees	3,623.7	3,622.9	21.0	-0.8	20.6	22.1	0.0	0.6	0.6
Private sector employees	11,688.2	11,706.1	36.8	17.9	114.5	106.0	0.2	1.0	0.9
Industry	18,049.5	18,116.7	29.9	67.2	105.8	138.8	0.4	0.6	0.8
Goods-producing sector	3,811.6	3,823.2	16.9	11.6	-63.4	-34.6	0.3	-1.6	-0.9
Agriculture	292.0	288.0	5.6	-4.0	-9.4	-3.8	-1.4	-3.2	-1.3
Forestry, fishing, mining, quarrying, oil and gas extraction ³	317.5	318.8	5.3	1.3	-33.1	-35.2	0.4	-9.4	-9.9
Utilities	135.3	136.8	2.8	1.5	4.5	0.9	1.1	3.4	0.7
Construction	1,375.1	1,381.5	11.6	6.4	12.1	15.6	0.5	0.9	1.1
Manufacturing	1,691.7	1,698.0	11.0	6.3	-37.6	-12.2	0.4	-2.2	-0.7
Services-producing sector	14,237.9	14,293.4	28.5	55.5	169.2	173.3	0.4	1.2	1.2
Wholesale and retail trade	2,741.6	2,730.6	15.2	-11.0	7.0	-1.4	-0.4	0.3	-0.1
Transportation and warehousing	912.0	920.3	8.3	8.3	10.8	4.2	0.9	1.2	0.5
Finance, insurance, real estate, rental and leasing	1,123.9	1,131.5	8.7	7.6	21.2	27.3	0.7	1.9	2.5
Professional, scientific and technical services	1,377.1	1,387.3	11.3	10.2	-9.9	15.2	0.7	-0.7	1.1
Business, building and other support services	765.6	775.9	10.5	10.3	15.6	2.6	1.3	2.1	0.3
Educational services	1,251.2	1,267.9	10.5	16.7	-3.6	25.0	1.3	-0.3	2.0
Health care and social assistance	2,360.6	2,346.3	11.5	-14.3	15.2	32.6	-0.6	0.7	1.4
Information, culture and recreation	786.6	794.2	10.2	7.6	42.9	21.7	1.0	5.7	2.8
Accommodation and food services	1,228.5	1,231.2	11.8	2.7	43.1	31.7	0.2	3.6	2.6
Other services (except public administration)	771.8	770.5	8.2	-1.3	8.7	-7.3	-0.2	1.1	-0.9
Public administration	918.9	937.8	7.5	18.9	18.2	21.7	2.1	2.0	2.4

1. Average standard error of change in two consecutive months (see "Sampling Errors" in Data Quality for further explanations).

2. Includes both incorporated and unincorporated working owners, self-employed persons who do not have a business and persons working in a family business without pay.

3. Also referred to as Natural resources.

Note(s): Related CANSIM Tables 282-0088, 282-0089. The sum of individual categories may not always add to the total due to rounding.

Table 3
Labour force characteristics by province, seasonally adjusted

	August 2016	September 2016	S.E. ¹	Change from			Percent change from		
				last month	last December	twelve months ago	last month	last December	twelve months ago
in thousands (except rates)									
Newfoundland and Labrador									
Population	444.6	444.8	...	0.2	1.8	2.3	0.0	0.4	0.5
Labour force	269.1	271.8	2.1	2.7	-0.3	-1.1	1.0	-0.1	-0.4
Employment	235.9	234.7	2.1	-1.2	1.9	-0.8	-0.5	0.8	-0.3
Employment full-time	197.6	194.7	2.6	-2.9	0.0	-4.7	-1.5	0.0	-2.4
Employment part-time	38.3	40.1	2.1	1.8	2.0	3.9	4.7	5.2	10.8
Unemployment	33.2	37.1	2.1	3.9	-2.2	-0.2	11.7	-5.6	-0.5
Participation rate	60.5	61.1	0.5	0.6	-0.3	-0.6
Unemployment rate	12.3	13.6	0.7	1.3	-0.8	-0.1
Employment rate	53.1	52.8	0.5	-0.3	0.2	-0.4
Prince Edward Island									
Population	122.1	122.2	...	0.1	1.0	1.2	0.1	0.8	1.0
Labour force	81.0	80.0	0.6	-1.0	-0.6	-0.7	-1.2	-0.7	-0.9
Employment	71.2	71.4	0.7	0.2	-1.4	-1.9	0.3	-1.9	-2.6
Employment full-time	58.5	58.4	0.8	-0.1	-2.3	-3.4	-0.2	-3.8	-5.5
Employment part-time	12.7	13.0	0.7	0.3	0.9	1.4	2.4	7.4	12.1
Unemployment	9.8	8.6	0.6	-1.2	0.7	1.2	-12.2	8.9	16.2
Participation rate	66.3	65.5	0.5	-0.8	-1.0	-1.2
Unemployment rate	12.1	10.8	0.7	-1.3	1.0	1.6
Employment rate	58.3	58.4	0.5	0.1	-1.7	-2.2
Nova Scotia									
Population	789.3	789.5	...	0.2	2.5	3.1	0.0	0.3	0.4
Labour force	486.6	482.5	2.6	-4.1	-5.6	-11.9	-0.8	-1.1	-2.4
Employment	445.2	443.4	2.7	-1.8	-2.5	-7.1	-0.4	-0.6	-1.6
Employment full-time	365.0	363.3	3.6	-1.7	-5.1	-7.6	-0.5	-1.4	-2.0
Employment part-time	80.2	80.1	3.2	-0.1	2.6	0.5	-0.1	3.4	0.6
Unemployment	41.4	39.1	2.4	-2.3	-3.1	-4.8	-5.6	-7.3	-10.9
Participation rate	61.6	61.1	0.3	-0.5	-0.9	-1.8
Unemployment rate	8.5	8.1	0.5	-0.4	-0.5	-0.8
Employment rate	56.4	56.2	0.3	-0.2	-0.5	-1.1
New Brunswick									
Population	623.6	623.7	...	0.1	1.8	1.9	0.0	0.3	0.3
Labour force	388.1	392.4	2.2	4.3	5.1	6.7	1.1	1.3	1.7
Employment	351.6	356.0	2.3	4.4	3.2	4.4	1.3	0.9	1.3
Employment full-time	294.7	298.3	2.8	3.6	-3.0	0.9	1.2	-1.0	0.3
Employment part-time	57.0	57.7	2.4	0.7	6.2	3.5	1.2	12.0	6.5
Unemployment	36.5	36.4	2.1	-0.1	1.9	2.3	-0.3	5.5	6.7
Participation rate	62.2	62.9	0.3	0.7	0.6	0.9
Unemployment rate	9.4	9.3	0.5	-0.1	0.4	0.5
Employment rate	56.4	57.1	0.4	0.7	0.4	0.6
Quebec									
Population	6,896.9	6,900.1	...	3.2	37.9	46.9	0.0	0.6	0.7
Labour force	4,443.0	4,477.3	15.8	34.3	17.5	28.6	0.8	0.4	0.6
Employment	4,128.7	4,167.0	16.1	38.3	57.4	60.6	0.9	1.4	1.5
Employment full-time	3,325.1	3,370.5	21.8	45.4	60.0	69.9	1.4	1.8	2.1
Employment part-time	803.5	796.5	19.8	-7.0	-2.6	-9.2	-0.9	-0.3	-1.1
Unemployment	314.3	310.3	13.9	-4.0	-39.9	-32.0	-1.3	-11.4	-9.3
Participation rate	64.4	64.9	0.2	0.5	-0.1	0.0
Unemployment rate	7.1	6.9	0.3	-0.2	-1.0	-0.8
Employment rate	59.9	60.4	0.2	0.5	0.5	0.5
Ontario									
Population	11,545.9	11,557.9	...	12.0	113.4	143.2	0.1	1.0	1.3
Labour force	7,477.4	7,484.6	20.5	7.2	18.4	62.5	0.1	0.2	0.8
Employment	6,977.1	6,993.3	19.5	16.2	27.2	82.1	0.2	0.4	1.2
Employment full-time	5,672.2	5,667.0	26.9	-5.2	-17.0	53.8	-0.1	-0.3	1.0
Employment part-time	1,304.8	1,326.3	25.5	21.5	44.3	28.3	1.6	3.5	2.2
Unemployment	500.3	491.3	16.7	-9.0	-8.8	-19.6	-1.8	-1.8	-3.8
Participation rate	64.8	64.8	0.2	0.0	-0.4	-0.2
Unemployment rate	6.7	6.6	0.2	-0.1	-0.1	-0.3
Employment rate	60.4	60.5	0.2	0.1	-0.4	0.0

See notes at the end of the table.

Table 3 – continued

Labour force characteristics by province, seasonally adjusted

	August 2016	September 2016	S.E. ¹	Change from			Percent change from		
				last month	last December	twelve months ago	last month	last December	twelve months ago
in thousands (except rates)									
Manitoba									
Population	1,001.3	1,002.2	...	0.9	10.3	12.6	0.1	1.0	1.3
Labour force	674.0	674.9	2.6	0.9	0.7	1.2	0.1	0.1	0.2
Employment	633.9	631.8	2.6	-2.1	-2.2	-6.6	-0.3	-0.3	-1.0
Employment full-time	511.9	507.3	3.6	-4.6	0.8	-9.5	-0.9	0.2	-1.8
Employment part-time	122.0	124.5	3.3	2.5	-3.1	2.9	2.0	-2.4	2.4
Unemployment	40.1	43.1	2.1	3.0	3.0	7.8	7.5	7.5	22.1
Participation rate	67.3	67.3	0.3	0.0	-0.7	-0.8
Unemployment rate	5.9	6.4	0.3	0.5	0.5	1.2
Employment rate	63.3	63.0	0.3	-0.3	-0.9	-1.5
Saskatchewan									
Population	870.7	871.0	...	0.3	6.0	7.6	0.0	0.7	0.9
Labour force	607.4	611.0	2.6	3.6	2.4	3.3	0.6	0.4	0.5
Employment	569.0	569.3	2.6	0.3	-5.8	-6.5	0.1	-1.0	-1.1
Employment full-time	462.7	466.4	3.5	3.7	-12.5	-4.1	0.8	-2.6	-0.9
Employment part-time	106.3	102.9	3.2	-3.4	6.7	-2.4	-3.2	7.0	-2.3
Unemployment	38.5	41.7	2.2	3.2	8.1	9.8	8.3	24.1	30.7
Participation rate	69.8	70.1	0.3	0.3	-0.3	-0.3
Unemployment rate	6.3	6.8	0.3	0.5	1.3	1.6
Employment rate	65.3	65.4	0.3	0.1	-1.1	-1.3
Alberta									
Population	3,405.2	3,407.2	...	2.0	28.2	37.5	0.1	0.8	1.1
Labour force	2,457.8	2,475.8	9.6	18.0	18.7	1.8	0.7	0.8	0.1
Employment	2,250.9	2,264.2	9.7	13.3	-21.9	-47.1	0.6	-1.0	-2.0
Employment full-time	1,836.3	1,840.3	13.6	4.0	-40.6	-59.1	0.2	-2.2	-3.1
Employment part-time	414.6	423.9	12.6	9.3	18.7	12.0	2.2	4.6	2.9
Unemployment	206.9	211.6	8.2	4.7	40.6	48.9	2.3	23.7	30.1
Participation rate	72.2	72.7	0.3	0.5	0.0	-0.7
Unemployment rate	8.4	8.5	0.3	0.1	1.5	1.9
Employment rate	66.1	66.5	0.3	0.4	-1.2	-2.1
British Columbia									
Population	3,939.5	3,943.9	...	4.4	40.7	54.0	0.1	1.0	1.4
Labour force	2,526.2	2,529.4	10.8	3.2	26.2	47.2	0.1	1.0	1.9
Employment	2,386.1	2,385.5	10.7	-0.6	49.8	61.5	0.0	2.1	2.6
Employment full-time	1,881.7	1,862.5	15.1	-19.2	30.6	14.0	-1.0	1.7	0.8
Employment part-time	504.4	522.9	14.4	18.5	19.1	47.4	3.7	3.8	10.0
Unemployment	140.1	143.9	8.9	3.8	-23.6	-14.3	2.7	-14.1	-9.0
Participation rate	64.1	64.1	0.3	0.0	0.0	0.3
Unemployment rate	5.5	5.7	0.3	0.2	-1.0	-0.7
Employment rate	60.6	60.5	0.3	-0.1	0.7	0.8

1. Average standard error of change in two consecutive months (see "Sampling Errors" in Data Quality for further explanations).

Note(s): Related CANSIM Table 282-0087. The sum of individual categories may not always add to the total due to rounding.

Table 4-1
Selected labour force characteristics (seasonally adjusted) — Newfoundland and Labrador

	August 2016	September 2016	S.E. ¹	Change from			Percent change from		
				last month	last December	twelve months ago	last month	last December	twelve months ago
in thousands (except rates)									
Both sexes, 15 years and over									
Population	444.6	444.8	...	0.2	1.8	2.3	0.0	0.4	0.5
Labour force	269.1	271.8	2.1	2.7	-0.3	-1.1	1.0	-0.1	-0.4
Employment	235.9	234.7	2.1	-1.2	1.9	-0.8	-0.5	0.8	-0.3
Employment full-time	197.6	194.7	2.6	-2.9	0.0	-4.7	-1.5	0.0	-2.4
Unemployment	33.2	37.1	2.1	3.9	-2.2	-0.2	11.7	-5.6	-0.5
Participation rate	60.5	61.1	0.5	0.6	-0.3	-0.6
Unemployment rate	12.3	13.6	0.7	1.3	-0.8	-0.1
Employment rate	53.1	52.8	0.5	-0.3	0.2	-0.4
Part-time rate	16.2	17.1	0.9	0.8	0.7	1.7
Both sexes, 15 to 24 years									
Population	55.3	55.2	...	-0.1	-0.5	-0.6	-0.2	-0.9	-1.1
Labour force	34.8	37.5	0.9	2.7	0.0	-0.2	7.8	0.0	-0.5
Employment	30.3	29.1	1.0	-1.2	-2.1	-1.0	-4.0	-6.7	-3.3
Unemployment	4.5	8.5	0.9	4.0	2.2	0.9	88.9	34.9	11.8
Participation rate	62.9	67.9	1.7	5.0	0.6	0.3
Unemployment rate	12.9	22.7	2.4	9.8	5.9	2.5
Employment rate	54.8	52.7	1.7	-2.1	-3.3	-1.2
Part-time rate	40.9	44.0	3.6	3.1	-4.7	-2.2
Men, 25 years and over									
Population	189.8	189.9	...	0.1	1.1	1.4	0.1	0.6	0.7
Labour force	123.8	123.1	1.2	-0.7	-0.7	-1.6	-0.6	-0.6	-1.3
Employment	104.9	104.7	1.4	-0.2	2.3	-0.7	-0.2	2.2	-0.7
Unemployment	18.9	18.4	1.4	-0.5	-3.0	-0.9	-2.6	-14.0	-4.7
Participation rate	65.2	64.8	0.7	-0.4	-0.8	-1.4
Unemployment rate	15.3	14.9	1.1	-0.4	-2.4	-0.6
Employment rate	55.3	55.1	0.7	-0.2	0.9	-0.8
Part-time rate	8.0	7.4	0.9	-0.7	4.1	2.0
Women, 25 years and over									
Population	199.5	199.7	...	0.2	1.1	1.5	0.1	0.6	0.8
Labour force	110.5	111.1	1.2	0.6	0.3	0.6	0.5	0.3	0.5
Employment	100.7	100.9	1.2	0.2	1.7	0.9	0.2	1.7	0.9
Unemployment	9.8	10.2	1.1	0.4	-1.4	-0.3	4.1	-12.1	-2.9
Participation rate	55.4	55.6	0.6	0.2	-0.2	-0.2
Unemployment rate	8.9	9.2	0.9	0.3	-1.3	-0.3
Employment rate	50.5	50.5	0.6	0.0	0.6	0.0
Part-time rate	17.3	19.4	1.4	2.1	-0.3	2.7
Industry									
	235.9	234.7	2.1	-1.2	1.9	-0.8	-0.5	0.8	-0.3
Goods-producing sector									
Agriculture	52.2	51.8	1.4	-0.4	0.1	-0.5	-0.8	0.2	-1.0
Forestry, fishing, mining, quarrying, oil and gas extraction ²	2.0	1.5	0.3	-0.5	0.3	0.8	-25.0	25.0	114.3
Utilities	14.6	14.7	0.8	0.1	-0.6	-1.6	0.7	-3.9	-9.8
Construction	3.2	3.1	0.2	-0.1	0.8	0.9	-3.1	34.8	40.9
Manufacturing	22.2	22.7	1.0	0.5	0.8	-0.1	2.3	3.7	-0.4
	10.2	9.7	0.8	-0.5	-1.3	-0.6	-4.9	-11.8	-5.8
Services-producing sector									
	183.7	183.0	1.8	-0.7	1.9	-0.2	-0.4	1.0	-0.1
Wholesale and retail trade	44.7	43.7	0.9	-1.0	0.5	0.1	-2.2	1.2	0.2
Transportation and warehousing	9.5	9.5	0.6	0.0	0.4	-0.6	0.0	4.4	-5.9
Finance, insurance, real estate, rental and leasing	8.0	7.5	0.4	-0.5	-1.3	-1.7	-6.2	-14.8	-18.5
Professional, scientific and technical services	10.2	10.2	0.4	0.0	-1.1	-0.6	0.0	-9.7	-5.6
Business, building and other support services	6.4	6.0	0.5	-0.4	-2.3	-1.6	-6.3	-27.7	-21.1
Educational services	14.0	14.1	0.6	0.1	-0.8	0.1	0.7	-5.4	0.7
Health care and social assistance	39.5	40.0	0.8	0.5	1.1	2.5	1.3	2.8	6.7
Information, culture and recreation	7.3	6.7	0.6	-0.6	0.8	-0.7	-8.2	13.6	-9.5
Accommodation and food services	17.2	16.5	0.8	-0.7	2.3	1.5	-4.1	16.2	10.0
Other services (except public administration)	11.7	12.8	0.6	1.1	0.4	0.1	9.4	3.2	0.8
Public administration	15.1	15.8	0.6	0.7	1.6	0.5	4.6	11.3	3.3

1. Average standard error of change in two consecutive months (see "Sampling Errors" in Data Quality for further explanations).

2. Also referred to as Natural resources.

Note(s): Related CANSIM Tables 282-0087, 282-0088. The sum of individual categories may not always add to the total due to rounding.

Table 4-2
Selected labour force characteristics (seasonally adjusted) — Prince Edward Island

	August 2016	September 2016	S.E. ¹	Change from			Percent change from		
				last month	last December	twelve months ago	last month	last December	twelve months ago
in thousands (except rates)									
Both sexes, 15 years and over									
Population	122.1	122.2	...	0.1	1.0	1.2	0.1	0.8	1.0
Labour force	81.0	80.0	0.6	-1.0	-0.6	-0.7	-1.2	-0.7	-0.9
Employment	71.2	71.4	0.7	0.2	-1.4	-1.9	0.3	-1.9	-2.6
Employment full-time	58.5	58.4	0.8	-0.1	-2.3	-3.4	-0.2	-3.8	-5.5
Unemployment	9.8	8.6	0.6	-1.2	0.7	1.2	-12.2	8.9	16.2
Participation rate	66.3	65.5	0.5	-0.8	-1.0	-1.2
Unemployment rate	12.1	10.8	0.7	-1.3	1.0	1.6
Employment rate	58.3	58.4	0.5	0.1	-1.7	-2.2
Part-time rate	17.8	18.2	0.9	0.4	1.6	2.4
Both sexes, 15 to 24 years									
Population	17.8	17.8	...	0.0	-0.3	-0.4	0.0	-1.7	-2.2
Labour force	12.7	12.3	0.3	-0.4	-0.5	-0.4	-3.1	-3.9	-3.1
Employment	10.5	10.3	0.3	-0.2	-0.8	-0.9	-1.9	-7.2	-8.0
Unemployment	2.3	2.0	0.3	-0.3	0.2	0.5	-13.0	11.1	33.3
Participation rate	71.3	69.1	1.7	-2.2	-1.6	-0.7
Unemployment rate	18.1	16.3	2.3	-1.8	2.2	4.5
Employment rate	59.0	57.9	1.9	-1.1	-3.4	-3.6
Part-time rate	46.7	46.6	3.6	-0.1	4.3	10.9
Men, 25 years and over									
Population	50.0	50.1	...	0.1	0.7	0.8	0.2	1.4	1.6
Labour force	35.2	35.0	0.3	-0.2	0.3	0.3	-0.6	0.9	0.9
Employment	30.6	30.6	0.4	0.0	-0.8	-1.3	0.0	-2.5	-4.1
Unemployment	4.6	4.4	0.4	-0.2	1.1	1.6	-4.3	33.3	57.1
Participation rate	70.4	69.9	0.7	-0.5	-0.3	-0.5
Unemployment rate	13.1	12.6	1.0	-0.5	3.1	4.5
Employment rate	61.2	61.1	0.8	-0.1	-2.5	-3.6
Part-time rate	8.2	8.5	1.0	0.3	0.9	0.0
Women, 25 years and over									
Population	54.3	54.3	...	0.0	0.6	0.7	0.0	1.1	1.3
Labour force	33.1	32.7	0.3	-0.4	-0.4	-0.6	-1.2	-1.2	-1.8
Employment	30.2	30.5	0.4	0.3	0.2	0.3	1.0	0.7	1.0
Unemployment	2.9	2.2	0.3	-0.7	-0.6	-0.9	-24.1	-21.4	-29.0
Participation rate	61.0	60.2	0.6	-0.8	-1.4	-1.9
Unemployment rate	8.8	6.7	1.0	-2.1	-1.8	-2.6
Employment rate	55.6	56.2	0.7	0.6	-0.2	-0.1
Part-time rate	17.5	18.4	1.4	0.8	1.9	2.5
Industry									
Industry	71.2	71.4	0.7	0.2	-1.4	-1.9	0.3	-1.9	-2.6
Goods-producing sector									
Goods-producing sector	16.3	16.7	0.5	0.4	-0.1	-0.3	2.5	-0.6	-1.8
Agriculture	3.1	3.5	0.3	0.4	0.5	0.3	12.9	16.7	9.4
Forestry, fishing, mining, quarrying, oil and gas extraction ²	2.5	2.3	0.3	-0.2	-0.1	-0.2	-8.0	-4.2	-8.0
Utilities	0.3	0.4	0.1	0.1	0.1	0.0	33.3	33.3	0.0
Construction	4.8	4.8	0.3	0.0	-0.1	-0.6	0.0	-2.0	-11.1
Manufacturing	5.7	5.8	0.3	0.1	-0.3	0.3	1.8	-4.9	5.5
Services-producing sector									
Services-producing sector	54.9	54.7	0.6	-0.2	-1.3	-1.6	-0.4	-2.3	-2.8
Wholesale and retail trade	10.4	10.1	0.3	-0.3	-0.7	-1.1	-2.9	-6.5	-9.8
Transportation and warehousing	2.5	2.4	0.2	-0.1	0.0	0.0	-4.0	0.0	0.0
Finance, insurance, real estate, rental and leasing	2.5	2.7	0.1	0.2	0.0	0.2	8.0	0.0	8.0
Professional, scientific and technical services	3.9	3.5	0.2	-0.4	0.2	0.4	-10.3	6.1	12.9
Business, building and other support services	2.3	2.4	0.2	0.1	-0.1	-0.1	4.3	-4.0	-4.0
Educational services	4.8	5.1	0.2	0.3	-0.4	-0.3	6.2	-7.3	-5.6
Health care and social assistance	10.5	10.0	0.3	-0.5	0.4	-0.1	-4.8	4.2	-1.0
Information, culture and recreation	2.6	2.8	0.2	0.2	0.6	0.7	7.7	27.3	33.3
Accommodation and food services	5.8	5.8	0.3	0.0	-0.9	-0.8	0.0	-13.4	-12.1
Other services (except public administration)	3.0	3.2	0.2	0.2	-0.2	0.1	6.7	-5.9	3.2
Public administration	6.5	6.6	0.2	0.1	-0.3	-0.7	1.5	-4.3	-9.6

1. Average standard error of change in two consecutive months (see "Sampling Errors" in Data Quality for further explanations).

2. Also referred to as Natural resources.

Note(s): Related CANSIM Tables 282-0087, 282-0088. The sum of individual categories may not always add to the total due to rounding.

Table 4-3
Selected labour force characteristics (seasonally adjusted) — Nova Scotia

	August 2016	September 2016	S.E. ¹	Change from			Percent change from		
				last month	last December	twelve months ago	last month	last December	twelve months ago
in thousands (except rates)									
Both sexes, 15 years and over									
Population	789.3	789.5	...	0.2	2.5	3.1	0.0	0.3	0.4
Labour force	486.6	482.5	2.6	-4.1	-5.6	-11.9	-0.8	-1.1	-2.4
Employment	445.2	443.4	2.7	-1.8	-2.5	-7.1	-0.4	-0.6	-1.6
Employment full-time	365.0	363.3	3.6	-1.7	-5.1	-7.6	-0.5	-1.4	-2.0
Unemployment	41.4	39.1	2.4	-2.3	-3.1	-4.8	-5.6	-7.3	-10.9
Participation rate	61.6	61.1	0.3	-0.5	-0.9	-1.8
Unemployment rate	8.5	8.1	0.5	-0.4	-0.5	-0.8
Employment rate	56.4	56.2	0.3	-0.2	-0.5	-1.1
Part-time rate	18.0	18.1	0.7	0.1	0.7	0.4
Both sexes, 15 to 24 years									
Population	109.7	109.5	...	-0.2	-1.1	-1.6	-0.2	-1.0	-1.4
Labour force	68.9	63.6	1.5	-5.3	-7.2	-9.2	-7.7	-10.2	-12.6
Employment	58.6	55.5	1.4	-3.1	-4.5	-5.6	-5.3	-7.5	-9.2
Unemployment	10.3	8.1	1.3	-2.2	-2.8	-3.6	-21.4	-25.7	-30.8
Participation rate	62.8	58.1	1.4	-4.7	-5.9	-7.4
Unemployment rate	14.9	12.7	1.7	-2.2	-2.7	-3.4
Employment rate	53.4	50.7	1.3	-2.7	-3.5	-4.3
Part-time rate	46.4	44.1	2.7	-2.3	0.6	-0.5
Men, 25 years and over									
Population	325.4	325.6	...	0.2	1.7	2.2	0.1	0.5	0.7
Labour force	213.1	214.9	1.5	1.8	3.1	-2.1	0.8	1.5	-1.0
Employment	193.0	193.4	1.6	0.4	0.1	-3.2	0.2	0.1	-1.6
Unemployment	20.0	21.5	1.5	1.5	3.0	1.1	7.5	16.2	5.4
Participation rate	65.5	66.0	0.5	0.5	0.6	-1.1
Unemployment rate	9.4	10.0	0.7	0.6	1.3	0.6
Employment rate	59.3	59.4	0.5	0.1	-0.3	-1.4
Part-time rate	7.9	8.4	0.8	0.5	1.0	1.0
Women, 25 years and over									
Population	354.1	354.3	...	0.2	1.8	2.3	0.1	0.5	0.7
Labour force	204.6	204.1	1.5	-0.5	-1.4	-0.5	-0.2	-0.7	-0.2
Employment	193.5	194.5	1.5	1.0	1.9	1.6	0.5	1.0	0.8
Unemployment	11.1	9.5	1.2	-1.6	-3.4	-2.3	-14.4	-26.4	-19.5
Participation rate	57.8	57.6	0.4	-0.2	-0.7	-0.5
Unemployment rate	5.4	4.7	0.6	-0.7	-1.6	-1.1
Employment rate	54.6	54.9	0.4	0.3	0.3	0.1
Part-time rate	19.5	20.3	1.0	0.8	1.0	0.7
Industry									
Industry	445.2	443.4	2.7	-1.8	-2.5	-7.1	-0.4	-0.6	-1.6
Goods-producing sector									
Goods-producing sector	79.0	81.0	1.6	2.0	-3.8	-1.5	2.5	-4.5	-1.8
Agriculture	4.6	4.7	0.6	0.1	-1.3	-0.8	2.2	-21.7	-14.5
Forestry, fishing, mining, quarrying, oil and gas extraction ²	10.0	11.3	0.9	1.3	0.5	-0.6	13.0	4.6	-5.0
Utilities	3.3	3.4	0.2	0.1	-0.4	0.0	3.0	-10.5	0.0
Construction	32.8	32.7	1.1	-0.1	-0.8	0.2	-0.3	-2.4	0.6
Manufacturing	28.3	28.9	0.8	0.6	-1.9	-0.3	2.1	-6.2	-1.0
Services-producing sector									
Services-producing sector	366.2	362.5	2.5	-3.7	1.5	-5.5	-1.0	0.4	-1.5
Wholesale and retail trade	70.7	74.4	1.3	3.7	3.2	3.0	5.2	4.5	4.2
Transportation and warehousing	21.0	19.6	0.7	-1.4	-0.9	-1.5	-6.7	-4.4	-7.1
Finance, insurance, real estate, rental and leasing	24.2	23.9	0.6	-0.3	-0.7	0.7	-1.2	-2.8	3.0
Professional, scientific and technical services	27.9	27.2	0.9	-0.7	1.3	-1.9	-2.5	5.0	-6.5
Business, building and other support services	16.7	16.3	0.8	-0.4	-1.6	-3.8	-2.4	-8.9	-18.9
Educational services	36.6	34.8	1.1	-1.8	-1.8	-1.1	-4.9	-4.9	-3.1
Health care and social assistance	76.2	76.6	1.1	0.4	4.5	1.1	0.5	6.2	1.5
Information, culture and recreation	16.1	16.3	0.9	0.2	0.2	-0.5	1.2	1.2	-3.0
Accommodation and food services	29.6	25.7	1.1	-3.9	-4.3	-3.4	-13.2	-14.3	-11.7
Other services (except public administration)	19.8	19.6	0.8	-0.2	0.9	1.6	-1.0	4.8	8.9
Public administration	27.3	28.0	0.8	0.7	0.4	0.2	2.6	1.4	0.7

1. Average standard error of change in two consecutive months (see "Sampling Errors" in Data Quality for further explanations).

2. Also referred to as Natural resources.

Note(s): Related CANSIM Tables 282-0087, 282-0088. The sum of individual categories may not always add to the total due to rounding.

Table 4-4
Selected labour force characteristics (seasonally adjusted) — New Brunswick

	August 2016	September 2016	S.E. ¹	Change from			Percent change from		
				last month	last December	twelve months ago	last month	last December	twelve months ago
in thousands (except rates)									
Both sexes, 15 years and over									
Population	623.6	623.7	...	0.1	1.8	1.9	0.0	0.3	0.3
Labour force	388.1	392.4	2.2	4.3	5.1	6.7	1.1	1.3	1.7
Employment	351.6	356.0	2.3	4.4	3.2	4.4	1.3	0.9	1.3
Employment full-time	294.7	298.3	2.8	3.6	-3.0	0.9	1.2	-1.0	0.3
Unemployment	36.5	36.4	2.1	-0.1	1.9	2.3	-0.3	5.5	6.7
Participation rate	62.2	62.9	0.3	0.7	0.6	0.9
Unemployment rate	9.4	9.3	0.5	-0.1	0.4	0.5
Employment rate	56.4	57.1	0.4	0.7	0.4	0.6
Part-time rate	16.2	16.2	0.7	0.0	1.6	0.8
Both sexes, 15 to 24 years									
Population	82.8	82.7	...	-0.1	-0.9	-1.4	-0.1	-1.1	-1.7
Labour force	52.2	55.2	1.2	3.0	3.4	3.1	5.7	6.6	6.0
Employment	46.2	48.7	1.2	2.5	5.8	6.3	5.4	13.5	14.9
Unemployment	6.0	6.5	1.2	0.5	-2.4	-3.2	8.3	-27.0	-33.0
Participation rate	63.0	66.7	1.4	3.7	4.7	4.7
Unemployment rate	11.5	11.8	2.1	0.3	-5.4	-6.8
Employment rate	55.8	58.9	1.4	3.1	7.6	8.5
Part-time rate	42.4	42.3	2.9	-0.1	-2.0	2.4
Men, 25 years and over									
Population	261.8	261.9	...	0.1	1.3	1.5	0.0	0.5	0.6
Labour force	175.4	175.9	1.3	0.5	3.0	3.3	0.3	1.7	1.9
Employment	155.2	156.6	1.5	1.4	-0.1	0.8	0.9	-0.1	0.5
Unemployment	20.1	19.3	1.4	-0.8	3.1	2.5	-4.0	19.1	14.9
Participation rate	67.0	67.2	0.5	0.2	0.9	0.9
Unemployment rate	11.5	11.0	0.8	-0.5	1.6	1.3
Employment rate	59.3	59.8	0.6	0.5	-0.3	0.0
Part-time rate	6.8	6.3	0.7	-0.6	0.3	-1.6
Women, 25 years and over									
Population	278.9	279.0	...	0.1	1.4	1.7	0.0	0.5	0.6
Labour force	160.6	161.3	1.2	0.7	-1.3	0.3	0.4	-0.8	0.2
Employment	150.2	150.7	1.2	0.5	-2.5	-2.7	0.3	-1.6	-1.8
Unemployment	10.4	10.6	1.0	0.2	1.2	3.0	1.9	12.8	39.5
Participation rate	57.6	57.8	0.4	0.2	-0.8	-0.3
Unemployment rate	6.5	6.6	0.6	0.1	0.8	1.9
Employment rate	53.9	54.0	0.4	0.1	-1.2	-1.3
Part-time rate	17.8	18.1	1.0	0.3	3.0	1.8
Industry	351.6	356.0	2.3	4.4	3.2	4.4	1.3	0.9	1.3
Goods-producing sector	73.5	75.7	1.5	2.2	-0.1	4.1	3.0	-0.1	5.7
Agriculture	5.3	5.9	0.5	0.6	1.5	1.9	11.3	34.1	47.5
Forestry, fishing, mining, quarrying, oil and gas extraction ²	9.2	9.0	0.8	-0.2	-2.2	-2.4	-2.2	-19.6	-21.1
Utilities	3.8	3.8	0.2	0.0	0.1	0.2	0.0	2.7	5.6
Construction	24.7	24.3	1.0	-0.4	-2.3	0.4	-1.6	-8.6	1.7
Manufacturing	30.4	32.8	0.9	2.4	2.8	4.2	7.9	9.3	14.7
Services-producing sector	278.2	280.3	2.1	2.1	3.3	0.3	0.8	1.2	0.1
Wholesale and retail trade	59.3	59.7	1.1	0.4	4.9	3.1	0.7	8.9	5.5
Transportation and warehousing	19.6	19.0	0.7	-0.6	-1.5	-1.1	-3.1	-7.3	-5.5
Finance, insurance, real estate, rental and leasing	17.3	16.9	0.6	-0.4	1.5	2.3	-2.3	9.7	15.8
Professional, scientific and technical services	14.8	14.4	0.6	-0.4	-0.2	-1.9	-2.7	-1.4	-11.7
Business, building and other support services	16.6	15.8	0.8	-0.8	-2.0	-1.9	-4.8	-11.2	-10.7
Educational services	26.5	25.6	0.8	-0.9	-0.5	-1.2	-3.4	-1.9	-4.5
Health care and social assistance	51.5	53.5	0.9	2.0	0.8	0.6	3.9	1.5	1.1
Information, culture and recreation	11.4	12.6	0.6	1.2	0.8	-0.2	10.5	6.8	-1.6
Accommodation and food services	21.7	21.8	0.9	0.1	-2.2	-1.0	0.5	-9.2	-4.4
Other services (except public administration)	16.1	17.3	0.6	1.2	2.3	1.6	7.5	15.3	10.2
Public administration	23.4	23.5	0.6	0.1	-0.8	-0.1	0.4	-3.3	-0.4

1. Average standard error of change in two consecutive months (see "Sampling Errors" in Data Quality for further explanations).

2. Also referred to as Natural resources.

Note(s): Related CANSIM Tables 282-0087, 282-0088. The sum of individual categories may not always add to the total due to rounding.

Table 4-5
Selected labour force characteristics (seasonally adjusted) — Quebec

	August 2016	September 2016	S.E. ¹	Change from			Percent change from		
				last month	last December	twelve months ago	last month	last December	twelve months ago
in thousands (except rates)									
Both sexes, 15 years and over									
Population	6,896.9	6,900.1	...	3.2	37.9	46.9	0.0	0.6	0.7
Labour force	4,443.0	4,477.3	15.8	34.3	17.5	28.6	0.8	0.4	0.6
Employment	4,128.7	4,167.0	16.1	38.3	57.4	60.6	0.9	1.4	1.5
Employment full-time	3,325.1	3,370.5	21.8	45.4	60.0	69.9	1.4	1.8	2.1
Unemployment	314.3	310.3	13.9	-4.0	-39.9	-32.0	-1.3	-11.4	-9.3
Participation rate	64.4	64.9	0.2	0.5	-0.1	0.0
Unemployment rate	7.1	6.9	0.3	-0.2	-1.0	-0.8
Employment rate	59.9	60.4	0.2	0.5	0.5	0.5
Part-time rate	19.5	19.1	0.5	-0.3	-0.3	-0.5
Both sexes, 15 to 24 years									
Population	933.0	931.5	...	-1.5	-17.1	-22.7	-0.2	-1.8	-2.4
Labour force	622.0	632.0	8.8	10.0	-13.9	-31.2	1.6	-2.2	-4.7
Employment	538.2	548.2	8.4	10.0	-14.1	-34.6	1.9	-2.5	-5.9
Unemployment	83.8	83.8	7.7	0.0	0.3	3.4	0.0	0.4	4.2
Participation rate	66.7	67.8	0.9	1.1	-0.3	-1.7
Unemployment rate	13.5	13.3	1.1	-0.2	0.4	1.2
Employment rate	57.7	58.9	0.9	1.2	-0.4	-2.2
Part-time rate	53.8	54.2	1.8	0.3	0.9	0.0
Men, 25 years and over									
Population	2,941.3	2,943.8	...	2.5	27.0	34.0	0.1	0.9	1.2
Labour force	2,023.7	2,032.0	8.6	8.3	-7.0	11.0	0.4	-0.3	0.5
Employment	1,886.3	1,894.5	9.5	8.2	10.2	30.1	0.4	0.5	1.6
Unemployment	137.3	137.6	8.7	0.3	-17.2	-19.0	0.2	-11.1	-12.1
Participation rate	68.8	69.0	0.3	0.2	-0.9	-0.5
Unemployment rate	6.8	6.8	0.4	0.0	-0.8	-0.9
Employment rate	64.1	64.4	0.3	0.3	-0.2	0.3
Part-time rate	9.6	9.3	0.5	-0.4	0.5	0.5
Women, 25 years and over									
Population	3,022.6	3,024.8	...	2.2	28.0	35.6	0.1	0.9	1.2
Labour force	1,797.3	1,813.3	8.8	16.0	38.3	48.8	0.9	2.2	2.8
Employment	1,704.1	1,724.3	8.7	20.2	61.3	65.1	1.2	3.7	3.9
Unemployment	93.2	89.0	7.4	-4.3	-23.0	-16.4	-4.6	-20.6	-15.6
Participation rate	59.5	59.9	0.3	0.4	0.7	0.9
Unemployment rate	5.2	4.9	0.4	-0.3	-1.4	-1.1
Employment rate	56.4	57.0	0.3	0.6	1.5	1.5
Part-time rate	19.5	18.8	0.7	-0.7	-1.3	-0.9
Industry									
	4,128.7	4,167.0	16.1	38.3	57.4	60.6	0.9	1.4	1.5
Goods-producing sector									
Agriculture	839.1	843.9	8.7	4.8	5.7	16.0	0.6	0.7	1.9
Forestry, fishing, mining, quarrying, oil and gas extraction ²	56.9	54.1	2.4	-2.8	-7.2	-2.5	-4.9	-11.7	-4.4
Utilities	31.8	32.0	1.7	0.2	-0.3	1.1	0.6	-0.9	3.6
Construction	25.9	26.6	1.4	0.7	0.1	0.0	2.7	0.4	0.0
Manufacturing	232.7	238.8	5.8	6.1	11.4	17.4	2.6	5.0	7.9
	491.8	492.3	6.1	0.5	1.6	-0.1	0.1	0.3	0.0
Services-producing sector									
	3,289.6	3,323.1	15.0	33.5	51.7	44.7	1.0	1.6	1.4
Wholesale and retail trade	645.3	648.9	8.1	3.6	-3.9	-14.3	0.6	-0.6	-2.2
Transportation and warehousing	200.6	200.8	4.2	0.2	4.0	3.0	0.1	2.0	1.5
Finance, insurance, real estate, rental and leasing	216.2	220.7	4.0	4.5	10.6	11.1	2.1	5.0	5.3
Professional, scientific and technical services	306.5	309.1	5.9	2.6	-14.8	-11.5	0.8	-4.6	-3.6
Business, building and other support services	186.8	188.1	5.3	1.3	11.4	17.9	0.7	6.5	10.5
Educational services	275.5	298.7	5.5	23.2	26.3	32.5	8.4	9.7	12.2
Health care and social assistance	591.7	583.1	6.4	-8.6	-0.3	2.4	-1.5	-0.1	0.4
Information, culture and recreation	182.4	178.7	5.5	-3.7	6.7	5.8	-2.0	3.9	3.4
Accommodation and food services	291.9	288.3	6.1	-3.6	7.4	4.2	-1.2	2.6	1.5
Other services (except public administration)	158.4	164.1	4.3	5.7	3.4	0.5	3.6	2.1	0.3
Public administration	234.2	242.7	4.1	8.5	1.0	-7.0	3.6	0.4	-2.8

1. Average standard error of change in two consecutive months (see "Sampling Errors" in Data Quality for further explanations).

2. Also referred to as Natural resources.

Note(s): Related CANSIM Tables 282-0087, 282-0088. The sum of individual categories may not always add to the total due to rounding.

Table 4-6
Selected labour force characteristics (seasonally adjusted) — Ontario

	August 2016	September 2016	S.E. ¹	Change from			Percent change from		
				last month	last December	twelve months ago	last month	last December	twelve months ago
in thousands (except rates)									
Both sexes, 15 years and over									
Population	11,545.9	11,557.9	...	12.0	113.4	143.2	0.1	1.0	1.3
Labour force	7,477.4	7,484.6	20.5	7.2	18.4	62.5	0.1	0.2	0.8
Employment	6,977.1	6,993.3	19.5	16.2	27.2	82.1	0.2	0.4	1.2
Employment full-time	5,672.2	5,667.0	26.9	-5.2	-17.0	53.8	-0.1	-0.3	1.0
Unemployment	500.3	491.3	16.7	-9.0	-8.8	-19.6	-1.8	-1.8	-3.8
Participation rate	64.8	64.8	0.2	0.0	-0.4	-0.2
Unemployment rate	6.7	6.6	0.2	-0.1	-0.1	-0.3
Employment rate	60.4	60.5	0.2	0.1	-0.4	0.0
Part-time rate	18.7	19.0	0.4	0.3	0.6	0.2
Both sexes, 15 to 24 years									
Population	1,784.3	1,783.6	...	-0.7	-7.5	-11.2	0.0	-0.4	-0.6
Labour force	1,079.7	1,075.6	12.4	-4.1	7.2	-3.5	-0.4	0.7	-0.3
Employment	922.7	922.5	11.2	-0.2	0.7	1.5	0.0	0.1	0.2
Unemployment	157.1	153.1	10.0	-4.0	6.5	-4.9	-2.5	4.4	-3.1
Participation rate	60.5	60.3	0.7	-0.2	0.6	0.2
Unemployment rate	14.6	14.2	0.9	-0.4	0.5	-0.4
Employment rate	51.7	51.7	0.6	0.0	0.2	0.4
Part-time rate	50.8	47.5	1.4	-3.3	-0.7	-1.6
Men, 25 years and over									
Population	4,710.3	4,716.7	...	6.4	60.3	76.7	0.1	1.3	1.7
Labour force	3,341.2	3,341.4	10.1	0.2	-15.3	1.0	0.0	-0.5	0.0
Employment	3,154.7	3,161.7	10.3	7.0	-3.5	11.0	0.2	-0.1	0.3
Unemployment	186.5	179.7	9.2	-6.8	-11.8	-10.0	-3.6	-6.2	-5.3
Participation rate	70.9	70.8	0.2	-0.1	-1.3	-1.2
Unemployment rate	5.6	5.4	0.3	-0.2	-0.3	-0.3
Employment rate	67.0	67.0	0.2	0.0	-1.0	-0.9
Part-time rate	8.0	9.0	0.4	1.1	1.3	0.9
Women, 25 years and over									
Population	5,051.3	5,057.6	...	6.3	60.7	77.7	0.1	1.2	1.6
Labour force	3,056.5	3,067.6	11.8	11.1	26.5	64.9	0.4	0.9	2.2
Employment	2,899.7	2,909.1	11.5	9.4	30.0	69.7	0.3	1.0	2.5
Unemployment	156.7	158.5	9.4	1.8	-3.5	-4.8	1.1	-2.2	-2.9
Participation rate	60.5	60.7	0.2	0.2	-0.2	0.4
Unemployment rate	5.1	5.2	0.3	0.1	-0.1	-0.2
Employment rate	57.4	57.5	0.2	0.1	-0.1	0.5
Part-time rate	20.2	20.7	0.6	0.5	0.1	-0.1
Industry									
	6,977.1	6,993.3	19.5	16.2	27.2	82.1	0.2	0.4	1.2
Goods-producing sector									
Agriculture	1,416.9	1,411.3	10.4	-5.6	-7.0	14.1	-0.4	-0.5	1.0
Forestry, fishing, mining, quarrying, oil and gas extraction ²	75.4	74.9	2.9	-0.5	-1.5	-0.7	-0.7	-2.0	-0.9
Utilities	32.5	32.6	1.9	0.1	-10.9	-13.4	0.3	-25.1	-29.1
Utilities	50.0	50.2	1.8	0.2	4.6	0.3	0.4	10.1	0.6
Construction	506.6	501.1	6.9	-5.5	5.1	8.9	-1.1	1.0	1.8
Manufacturing	752.4	752.5	7.3	0.1	-4.4	19.0	0.0	-0.6	2.6
Services-producing sector									
	5,560.2	5,582.0	18.8	21.8	34.3	68.0	0.4	0.6	1.2
Wholesale and retail trade	1,037.6	1,023.6	9.8	-14.0	-9.2	0.3	-1.3	-0.9	0.0
Transportation and warehousing	324.9	330.5	5.2	5.6	5.0	6.0	1.7	1.5	1.8
Finance, insurance, real estate, rental and leasing	553.4	549.7	6.4	-3.7	-7.7	-5.0	-0.7	-1.4	-0.9
Professional, scientific and technical services	590.5	586.5	7.7	-4.0	-9.6	5.5	-0.7	-1.6	0.9
Business, building and other support services	317.6	327.5	7.4	9.9	1.6	-16.8	3.1	0.5	-4.9
Educational services	488.8	501.4	7.0	12.6	-6.0	-3.6	2.6	-1.2	-0.7
Health care and social assistance	845.9	842.7	7.3	-3.2	13.6	29.2	-0.4	1.6	3.6
Information, culture and recreation	325.9	325.6	6.6	-0.3	26.4	11.3	-0.1	8.8	3.6
Accommodation and food services	448.2	464.4	7.8	16.2	20.1	32.1	3.6	4.5	7.4
Other services (except public administration)	281.3	275.1	5.2	-6.2	-5.3	-10.4	-2.2	-1.9	-3.6
Public administration	345.8	355.0	4.9	9.2	5.5	19.3	2.7	1.6	5.7

1. Average standard error of change in two consecutive months (see "Sampling Errors" in Data Quality for further explanations).

2. Also referred to as Natural resources.

Note(s): Related CANSIM Tables 282-0087, 282-0088. The sum of individual categories may not always add to the total due to rounding.

Table 4-7
Selected labour force characteristics (seasonally adjusted) — Manitoba

	August 2016	September 2016	S.E. ¹	Change from			Percent change from		
				last month	last December	twelve months ago	last month	last December	twelve months ago
in thousands (except rates)									
Both sexes, 15 years and over									
Population	1,001.3	1,002.2	...	0.9	10.3	12.6	0.1	1.0	1.3
Labour force	674.0	674.9	2.6	0.9	0.7	1.2	0.1	0.1	0.2
Employment	633.9	631.8	2.6	-2.1	-2.2	-6.6	-0.3	-0.3	-1.0
Employment full-time	511.9	507.3	3.6	-4.6	0.8	-9.5	-0.9	0.2	-1.8
Unemployment	40.1	43.1	2.1	3.0	3.0	7.8	7.5	7.5	22.1
Participation rate	67.3	67.3	0.3	0.0	-0.7	-0.8
Unemployment rate	5.9	6.4	0.3	0.5	0.5	1.2
Employment rate	63.3	63.0	0.3	-0.3	-0.9	-1.5
Part-time rate	19.2	19.7	0.5	0.5	-0.4	0.7
Both sexes, 15 to 24 years									
Population	163.2	163.3	...	0.1	0.4	0.3	0.1	0.2	0.2
Labour force	108.3	107.8	1.6	-0.5	0.9	2.8	-0.5	0.8	2.7
Employment	93.4	93.8	1.5	0.4	0.5	-1.3	0.4	0.5	-1.4
Unemployment	14.9	14.0	1.3	-0.9	0.4	4.1	-6.0	2.9	41.4
Participation rate	66.4	66.0	1.0	-0.4	0.4	1.6
Unemployment rate	13.8	13.0	1.2	-0.8	0.3	3.6
Employment rate	57.2	57.4	0.9	0.2	0.1	-0.9
Part-time rate	44.0	45.3	1.8	1.3	-1.2	2.4
Men, 25 years and over									
Population	410.8	411.2	...	0.4	4.7	5.9	0.1	1.2	1.5
Labour force	302.8	303.7	1.3	0.9	3.1	2.1	0.3	1.0	0.7
Employment	287.6	287.6	1.4	0.0	0.9	-0.8	0.0	0.3	-0.3
Unemployment	15.2	16.0	1.2	0.8	2.1	2.8	5.3	15.1	21.2
Participation rate	73.7	73.9	0.3	0.2	0.0	-0.5
Unemployment rate	5.0	5.3	0.4	0.3	0.7	0.9
Employment rate	70.0	69.9	0.3	-0.1	-0.6	-1.3
Part-time rate	9.2	9.3	0.5	0.1	1.6	1.7
Women, 25 years and over									
Population	427.3	427.7	...	0.4	5.1	6.4	0.1	1.2	1.5
Labour force	262.9	263.4	1.5	0.5	-3.3	-3.8	0.2	-1.2	-1.4
Employment	252.9	250.3	1.5	-2.6	-3.7	-4.6	-1.0	-1.5	-1.8
Unemployment	10.0	13.1	1.1	3.1	0.4	0.9	31.0	3.1	7.4
Participation rate	61.5	61.6	0.4	0.1	-1.5	-1.8
Unemployment rate	3.8	5.0	0.4	1.2	0.2	0.4
Employment rate	59.2	58.5	0.4	-0.7	-1.6	-2.0
Part-time rate	21.5	22.1	0.9	0.6	-2.4	-1.1
Industry									
Goods-producing sector	633.9	631.8	2.6	-2.1	-2.2	-6.6	-0.3	-0.3	-1.0
Agriculture	152.3	152.0	1.6	-0.3	2.0	4.7	-0.2	1.3	3.2
Forestry, fishing, mining, quarrying, oil and gas extraction ²	26.6	25.7	0.9	-0.9	1.1	3.2	-3.4	4.5	14.2
Utilities	6.1	6.0	0.4	-0.1	-0.2	0.3	-1.6	-3.2	5.3
Construction	10.2	10.0	0.3	-0.2	1.3	1.4	-2.0	14.9	16.3
Manufacturing	46.0	45.3	1.1	-0.7	-0.9	-0.7	-1.5	-1.9	-1.5
Services-producing sector	63.4	65.0	0.9	1.6	0.6	0.5	2.5	0.9	0.8
Wholesale and retail trade	481.6	479.8	2.4	-1.8	-4.2	-11.2	-0.4	-0.9	-2.3
Transportation and warehousing	90.7	89.0	1.2	-1.7	-0.3	-2.7	-1.9	-0.3	-2.9
Finance, insurance, real estate, rental and leasing	35.2	35.6	0.8	0.4	-1.0	-2.6	1.1	-2.7	-6.8
Professional, scientific and technical services	33.7	34.6	0.7	0.9	2.6	2.7	2.7	8.1	8.5
Business, building and other support services	28.2	27.7	0.7	-0.5	2.0	2.1	-1.8	7.8	8.2
Educational services	17.8	18.3	0.8	0.5	-1.4	-0.6	2.8	-7.1	-3.2
Health care and social assistance	51.6	46.8	1.0	-4.8	-5.5	-5.9	-9.3	-10.5	-11.2
Information, culture and recreation	100.7	103.1	1.2	2.4	1.0	-0.3	2.4	1.0	-0.3
Accommodation and food services	20.7	22.3	0.9	1.6	-0.1	-0.1	7.7	-0.4	-0.4
Other services (except public administration)	42.6	41.8	1.0	-0.8	0.4	-0.9	-1.9	1.0	-2.1
Public administration	28.3	27.4	0.8	-0.9	-1.4	-2.0	-3.2	-4.9	-6.8
Public administration	32.1	33.2	0.7	1.1	-0.6	-1.1	3.4	-1.8	-3.2

1. Average standard error of change in two consecutive months (see "Sampling Errors" in Data Quality for further explanations).

2. Also referred to as Natural resources.

Note(s): Related CANSIM Tables 282-0087, 282-0088. The sum of individual categories may not always add to the total due to rounding.

Table 4-8
Selected labour force characteristics (seasonally adjusted) — Saskatchewan

	August 2016	September 2016	S.E. ¹	Change from			Percent change from		
				last month	last December	twelve months ago	last month	last December	twelve months ago
in thousands (except rates)									
Both sexes, 15 years and over									
Population	870.7	871.0	...	0.3	6.0	7.6	0.0	0.7	0.9
Labour force	607.4	611.0	2.6	3.6	2.4	3.3	0.6	0.4	0.5
Employment	569.0	569.3	2.6	0.3	-5.8	-6.5	0.1	-1.0	-1.1
Employment full-time	462.7	466.4	3.5	3.7	-12.5	-4.1	0.8	-2.6	-0.9
Unemployment	38.5	41.7	2.2	3.2	8.1	9.8	8.3	24.1	30.7
Participation rate	69.8	70.1	0.3	0.3	-0.3	-0.3
Unemployment rate	6.3	6.8	0.3	0.5	1.3	1.6
Employment rate	65.3	65.4	0.3	0.1	-1.1	-1.3
Part-time rate	18.7	18.1	0.5	-0.6	1.3	-0.2
Both sexes, 15 to 24 years									
Population	134.7	134.6	...	-0.1	-1.1	-1.5	-0.1	-0.8	-1.1
Labour force	92.0	91.3	1.4	-0.7	-0.7	-1.7	-0.8	-0.8	-1.8
Employment	80.4	79.4	1.4	-1.0	-3.3	-5.4	-1.2	-4.0	-6.4
Unemployment	11.6	11.9	1.2	0.3	2.6	3.7	2.6	28.0	45.1
Participation rate	68.3	67.8	1.0	-0.5	0.0	-0.5
Unemployment rate	12.6	13.0	1.3	0.4	2.9	4.2
Employment rate	59.7	59.0	1.0	-0.7	-1.9	-3.3
Part-time rate	40.2	36.8	1.9	-3.4	2.6	-0.6
Men, 25 years and over									
Population	368.4	368.6	...	0.2	3.4	4.4	0.1	0.9	1.2
Labour force	283.9	284.9	1.4	1.0	2.1	4.1	0.4	0.7	1.5
Employment	267.9	267.8	1.5	-0.1	0.0	2.3	0.0	0.0	0.9
Unemployment	16.0	17.1	1.3	1.1	2.1	1.8	6.9	14.0	11.8
Participation rate	77.1	77.3	0.4	0.2	-0.1	0.2
Unemployment rate	5.6	6.0	0.4	0.4	0.7	0.6
Employment rate	72.7	72.7	0.4	0.0	-0.6	-0.2
Part-time rate	7.6	7.7	0.6	0.0	0.9	0.1
Women, 25 years and over									
Population	367.6	367.8	...	0.2	3.6	4.7	0.1	1.0	1.3
Labour force	231.5	234.8	1.4	3.3	0.9	1.0	1.4	0.4	0.4
Employment	220.7	222.1	1.5	1.4	-2.5	-3.3	0.6	-1.1	-1.5
Unemployment	10.8	12.7	1.1	1.9	3.4	4.3	17.6	36.6	51.2
Participation rate	63.0	63.8	0.4	0.8	-0.4	-0.6
Unemployment rate	4.7	5.4	0.5	0.7	1.4	1.8
Employment rate	60.0	60.4	0.4	0.4	-1.3	-1.7
Part-time rate	24.2	24.0	0.9	-0.2	1.9	0.2
Industry									
Industry	569.0	569.3	2.6	0.3	-5.8	-6.5	0.1	-1.0	-1.1
Goods-producing sector									
Goods-producing sector	149.7	150.6	1.9	0.9	-6.5	-4.7	0.6	-4.1	-3.0
Agriculture	42.4	40.8	1.2	-1.6	-1.3	0.1	-3.8	-3.1	0.2
Forestry, fishing, mining, quarrying, oil and gas extraction ²	24.9	24.6	0.7	-0.3	-1.7	-1.3	-1.2	-6.5	-5.0
Utilities	6.8	6.8	0.3	0.0	0.5	0.1	0.0	7.9	1.5
Construction	50.7	51.7	1.2	1.0	-4.1	-4.1	2.0	-7.3	-7.3
Manufacturing	24.9	26.8	0.7	1.9	0.2	0.6	7.6	0.8	2.3
Services-producing sector									
Services-producing sector	419.2	418.7	2.4	-0.5	0.7	-1.7	-0.1	0.2	-0.4
Wholesale and retail trade	89.2	88.4	1.3	-0.8	3.0	3.0	-0.9	3.5	3.5
Transportation and warehousing	27.7	28.0	0.8	0.3	-2.0	-1.5	1.1	-6.7	-5.1
Finance, insurance, real estate, rental and leasing	26.7	27.3	0.6	0.6	-3.8	-2.9	2.2	-12.2	-9.6
Professional, scientific and technical services	29.0	28.6	0.7	-0.4	1.8	3.7	-1.4	6.7	14.9
Business, building and other support services	12.6	12.8	0.7	0.2	-1.1	-1.5	1.6	-7.9	-10.5
Educational services	38.6	41.0	1.0	2.4	-0.5	-1.2	6.2	-1.2	-2.8
Health care and social assistance	81.2	79.8	1.1	-1.4	1.0	0.1	-1.7	1.3	0.1
Information, culture and recreation	20.0	20.0	0.8	0.0	-0.6	-1.4	0.0	-2.9	-6.5
Accommodation and food services	39.3	38.5	1.0	-0.8	0.3	-0.5	-2.0	0.8	-1.3
Other services (except public administration)	25.6	24.2	0.8	-1.4	0.2	-2.3	-5.5	0.8	-8.7
Public administration	29.4	30.3	0.7	0.9	2.8	3.0	3.1	10.2	11.0

1. Average standard error of change in two consecutive months (see "Sampling Errors" in Data Quality for further explanations).

2. Also referred to as Natural resources.

Note(s): Related CANSIM Tables 282-0087, 282-0088. The sum of individual categories may not always add to the total due to rounding.

Table 4-9
Selected labour force characteristics (seasonally adjusted) — Alberta

	August 2016	September 2016	S.E. ¹	Change from			Percent change from		
				last month	last December	twelve months ago	last month	last December	twelve months ago
in thousands (except rates)									
Both sexes, 15 years and over									
Population	3,405.2	3,407.2	...	2.0	28.2	37.5	0.1	0.8	1.1
Labour force	2,457.8	2,475.8	9.6	18.0	18.7	1.8	0.7	0.8	0.1
Employment	2,250.9	2,264.2	9.7	13.3	-21.9	-47.1	0.6	-1.0	-2.0
Employment full-time	1,836.3	1,840.3	13.6	4.0	-40.6	-59.1	0.2	-2.2	-3.1
Unemployment	206.9	211.6	8.2	4.7	40.6	48.9	2.3	23.7	30.1
Participation rate	72.2	72.7	0.3	0.5	0.0	-0.7
Unemployment rate	8.4	8.5	0.3	0.1	1.5	1.9
Employment rate	66.1	66.5	0.3	0.4	-1.2	-2.1
Part-time rate	18.4	18.7	0.5	0.3	1.0	0.9
Both sexes, 15 to 24 years									
Population	515.6	515.0	...	-0.6	-5.9	-7.8	-0.1	-1.1	-1.5
Labour force	346.9	352.3	5.3	5.4	4.3	-9.4	1.6	1.2	-2.6
Employment	294.5	305.3	5.1	10.8	-4.1	-13.8	3.7	-1.3	-4.3
Unemployment	52.4	47.1	4.6	-5.3	8.5	4.6	-10.1	22.0	10.8
Participation rate	67.3	68.4	1.0	1.1	1.6	-0.8
Unemployment rate	15.1	13.4	1.2	-1.7	2.3	1.6
Employment rate	57.1	59.3	1.0	2.2	-0.1	-1.7
Part-time rate	39.8	40.0	2.0	0.2	-2.6	0.6
Men, 25 years and over									
Population	1,460.3	1,461.4	...	1.1	15.7	20.8	0.1	1.1	1.4
Labour force	1,164.1	1,178.7	5.2	14.6	13.8	11.3	1.3	1.2	1.0
Employment	1,072.1	1,075.4	6.0	3.3	-8.2	-22.7	0.3	-0.8	-2.1
Unemployment	92.0	103.3	5.3	11.3	22.0	33.9	12.3	27.1	48.8
Participation rate	79.7	80.7	0.4	1.0	0.1	-0.3
Unemployment rate	7.9	8.8	0.4	0.9	1.8	2.9
Employment rate	73.4	73.6	0.4	0.2	-1.4	-2.6
Part-time rate	7.6	7.8	0.5	0.2	0.9	1.2
Women, 25 years and over									
Population	1,429.3	1,430.7	...	1.4	18.4	24.4	0.1	1.3	1.7
Labour force	946.7	944.7	5.8	-2.0	0.5	-0.2	-0.2	0.1	0.0
Employment	884.3	883.5	5.8	-0.8	-9.6	-10.6	-0.1	-1.1	-1.2
Unemployment	62.5	61.2	4.5	-1.3	10.1	10.4	-2.1	19.8	20.5
Participation rate	66.2	66.0	0.4	-0.2	-0.9	-1.2
Unemployment rate	6.6	6.5	0.5	-0.1	1.1	1.1
Employment rate	61.9	61.8	0.4	-0.1	-1.4	-1.8
Part-time rate	24.4	24.7	0.9	0.3	2.4	0.8
Industry									
	2,250.9	2,264.2	9.7	13.3	-21.9	-47.1	0.6	-1.0	-2.0
Goods-producing sector									
Agriculture	566.2	575.6	6.7	9.4	-47.5	-60.3	1.7	-7.6	-9.5
Forestry, fishing, mining, quarrying, oil and gas extraction ²	51.4	51.1	2.6	-0.3	-6.9	-10.1	-0.6	-11.9	-16.5
Utilities	137.6	138.6	3.5	1.0	-13.2	-17.6	0.7	-8.7	-11.3
Construction	18.7	19.8	1.0	1.1	0.4	-0.6	5.9	2.1	-2.9
Manufacturing	245.9	251.2	4.9	5.3	-5.0	-8.7	2.2	-2.0	-3.3
	112.5	114.8	3.1	2.3	-22.9	-23.5	2.0	-16.6	-17.0
Services-producing sector									
	1,684.7	1,688.6	9.0	3.9	25.6	13.2	0.2	1.5	0.8
Wholesale and retail trade	328.2	331.3	4.9	3.1	7.4	0.8	0.9	2.3	0.2
Transportation and warehousing	130.3	133.3	2.9	3.0	5.8	1.6	2.3	4.5	1.2
Finance, insurance, real estate, rental and leasing	106.6	107.2	2.5	0.6	5.2	3.8	0.6	5.1	3.7
Professional, scientific and technical services	173.9	179.1	3.8	5.2	-1.0	5.0	3.0	-0.6	2.9
Business, building and other support services	77.1	78.9	3.0	1.8	-3.4	-7.2	2.3	-4.1	-8.4
Educational services	149.5	153.1	3.3	3.6	5.0	11.7	2.4	3.4	8.3
Health care and social assistance	271.2	268.1	3.6	-3.1	0.0	1.9	-1.1	0.0	0.7
Information, culture and recreation	71.3	73.0	3.3	1.7	-10.0	-6.4	2.4	-12.0	-8.1
Accommodation and food services	151.2	150.9	3.9	-0.3	10.1	1.6	-0.2	7.2	1.1
Other services (except public administration)	125.3	117.5	3.1	-7.8	7.2	1.1	-6.2	6.5	0.9
Public administration	100.3	96.3	2.3	-4.0	-0.5	-0.6	-4.0	-0.5	-0.6

1. Average standard error of change in two consecutive months (see "Sampling Errors" in Data Quality for further explanations).

2. Also referred to as Natural resources.

Note(s): Related CANSIM Tables 282-0087, 282-0088. The sum of individual categories may not always add to the total due to rounding.

Table 4-10
Selected labour force characteristics (seasonally adjusted) — British Columbia

	August 2016	September 2016	S.E. ¹	Change from			Percent change from		
				last month	last December	twelve months ago	last month	last December	twelve months ago
in thousands (except rates)									
Both sexes, 15 years and over									
Population	3,939.5	3,943.9	...	4.4	40.7	54.0	0.1	1.0	1.4
Labour force	2,526.2	2,529.4	10.8	3.2	26.2	47.2	0.1	1.0	1.9
Employment	2,386.1	2,385.5	10.7	-0.6	49.8	61.5	0.0	2.1	2.6
Employment full-time	1,881.7	1,862.5	15.1	-19.2	30.6	14.0	-1.0	1.7	0.8
Unemployment	140.1	143.9	8.9	3.8	-23.6	-14.3	2.7	-14.1	-9.0
Participation rate	64.1	64.1	0.3	0.0	0.0	0.3
Unemployment rate	5.5	5.7	0.3	0.2	-1.0	-0.7
Employment rate	60.6	60.5	0.3	-0.1	0.7	0.8
Part-time rate	21.1	21.9	0.6	0.8	0.4	1.5
Both sexes, 15 to 24 years									
Population	583.8	583.8	...	0.0	-0.9	-0.4	0.0	-0.2	-0.1
Labour force	365.9	365.4	6.1	-0.5	-8.8	3.6	-0.1	-2.4	1.0
Employment	341.7	333.0	6.0	-8.7	5.2	20.1	-2.5	1.6	6.4
Unemployment	24.2	32.4	5.3	8.2	-14.0	-16.5	33.9	-30.2	-33.7
Participation rate	62.7	62.6	1.0	-0.1	-1.4	0.7
Unemployment rate	6.6	8.9	1.4	2.3	-3.5	-4.6
Employment rate	58.5	57.0	1.0	-1.5	0.9	3.4
Part-time rate	45.0	47.2	2.2	2.2	4.1	0.6
Men, 25 years and over									
Population	1,637.1	1,639.3	...	2.2	20.0	26.1	0.1	1.2	1.6
Labour force	1,134.2	1,132.4	5.9	-1.8	7.3	10.8	-0.2	0.6	1.0
Employment	1,066.9	1,068.7	6.0	1.8	11.9	5.3	0.2	1.1	0.5
Unemployment	67.3	63.7	5.2	-3.6	-4.7	5.5	-5.3	-6.9	9.5
Participation rate	69.3	69.1	0.4	-0.2	-0.4	-0.4
Unemployment rate	5.9	5.6	0.4	-0.3	-0.5	0.4
Employment rate	65.2	65.2	0.4	0.0	-0.1	-0.7
Part-time rate	8.8	9.0	0.6	0.1	-0.3	1.5
Women, 25 years and over									
Population	1,718.5	1,720.7	...	2.2	21.6	28.2	0.1	1.3	1.7
Labour force	1,026.1	1,031.5	6.3	5.4	27.7	32.7	0.5	2.8	3.3
Employment	977.5	983.7	6.1	6.2	32.6	36.0	0.6	3.4	3.8
Unemployment	48.6	47.8	4.9	-0.8	-4.9	-3.3	-1.6	-9.3	-6.5
Participation rate	59.7	59.9	0.4	0.2	0.8	0.9
Unemployment rate	4.7	4.6	0.5	-0.1	-0.7	-0.5
Employment rate	56.9	57.2	0.4	0.3	1.2	1.2
Part-time rate	26.2	27.4	1.0	1.2	-0.4	1.1
Industry									
	2,386.1	2,385.5	10.7	-0.6	49.8	61.5	0.0	2.1	2.6
Goods-producing sector									
Agriculture	467.5	462.4	6.5	-5.1	-7.7	-6.3	-1.1	-1.6	-1.3
Forestry, fishing, mining, quarrying, oil and gas extraction ²	23.7	24.9	2.6	1.2	4.6	2.8	5.1	22.7	12.7
Utilities	51.1	49.5	2.5	-1.6	-1.8	0.9	-3.1	-3.5	1.9
Construction	13.3	13.6	0.8	0.3	-1.9	-0.5	2.3	-12.3	-3.5
Manufacturing	210.5	212.4	4.5	1.9	10.4	4.0	0.9	5.1	1.9
	169.0	162.0	3.7	-7.0	-19.0	-13.5	-4.1	-10.5	-7.7
Services-producing sector									
	1,918.6	1,923.0	10.6	4.4	57.4	67.7	0.2	3.1	3.6
Wholesale and retail trade	362.3	360.6	5.8	-1.7	0.2	3.9	-0.5	0.1	1.1
Transportation and warehousing	139.1	139.9	3.6	0.8	-0.1	1.8	0.6	-0.1	1.3
Finance, insurance, real estate, rental and leasing	135.7	140.5	3.2	4.8	17.0	15.1	3.5	13.8	12.0
Professional, scientific and technical services	198.7	196.4	4.2	-2.3	7.2	12.0	-1.2	3.8	6.5
Business, building and other support services	111.4	112.7	3.8	1.3	17.5	17.5	1.2	18.4	18.4
Educational services	161.9	163.6	3.9	1.7	-3.5	0.9	1.1	-2.1	0.6
Health care and social assistance	290.8	288.7	4.5	-2.1	-6.7	-5.1	-0.7	-2.3	-1.7
Information, culture and recreation	130.6	133.2	3.9	2.6	13.6	14.5	2.0	11.4	12.2
Accommodation and food services	179.0	173.0	4.7	-6.0	4.0	-3.6	-3.4	2.4	-2.0
Other services (except public administration)	103.4	107.0	3.1	3.6	-1.2	2.4	3.5	-1.1	2.3
Public administration	105.7	107.4	2.5	1.7	9.2	8.4	1.6	9.4	8.5

1. Average standard error of change in two consecutive months (see "Sampling Errors" in Data Quality for further explanations).

2. Also referred to as Natural resources.

Note(s): Related CANSIM Tables 282-0087, 282-0088. The sum of individual categories may not always add to the total due to rounding.

Table 5-1
Labour force characteristics by census metropolitan area (seasonally adjusted) — 3 month moving average

	August 2016	September 2016	S.E. ¹	Change from			Percent change from		
				last month	last December	twelve months ago	last month	last December	twelve months ago
in thousands (except rates)									
St. John's, Newfoundland and Labrador									
Population	181.7	182.0	...	0.3	2.5	3.2	0.2	1.4	1.8
Labour force	127.1	127.3	0.9	0.2	5.0	3.9	0.2	4.1	3.2
Employment	118.5	118.4	1.0	-0.1	4.0	3.2	-0.1	3.5	2.8
Unemployment	8.5	8.9	0.5	0.4	1.1	0.7	4.7	14.1	8.5
Participation rate	70.0	69.9	0.5	-0.1	1.8	0.9
Unemployment rate	6.7	7.0	0.4	0.3	0.6	0.4
Employment rate	65.2	65.1	0.5	-0.1	1.4	0.7
Halifax, Nova Scotia									
Population	354.1	354.6	...	0.5	4.0	5.2	0.1	1.1	1.5
Labour force	241.7	241.0	1.3	-0.7	2.9	0.5	-0.3	1.2	0.2
Employment	228.2	227.1	1.3	-1.1	3.7	0.7	-0.5	1.7	0.3
Unemployment	13.5	13.9	0.7	0.4	-0.8	-0.2	3.0	-5.4	-1.4
Participation rate	68.3	68.0	0.4	-0.3	0.1	-0.8
Unemployment rate	5.6	5.8	0.3	0.2	-0.4	-0.1
Employment rate	64.4	64.0	0.4	-0.4	0.3	-0.8
Moncton, New Brunswick									
Population	125.7	125.8	...	0.1	1.5	1.9	0.1	1.2	1.5
Labour force	85.8	85.2	0.8	-0.6	0.9	1.3	-0.7	1.1	1.5
Employment	79.6	79.3	0.8	-0.3	0.2	1.2	-0.4	0.3	1.5
Unemployment	6.2	5.9	0.4	-0.3	0.7	0.1	-4.8	13.5	1.7
Participation rate	68.3	67.7	0.7	-0.6	-0.1	0.0
Unemployment rate	7.2	6.9	0.5	-0.3	0.7	0.0
Employment rate	63.3	63.0	0.7	-0.3	-0.6	0.0
Saint John, New Brunswick									
Population	105.5	105.5	...	0.0	0.1	0.1	0.0	0.1	0.1
Labour force	67.8	68.1	0.8	0.3	0.6	-2.7	0.4	0.9	-3.8
Employment	62.6	63.1	0.7	0.5	0.9	-1.7	0.8	1.4	-2.6
Unemployment	5.2	5.0	0.4	-0.2	-0.3	-0.9	-3.8	-5.7	-15.3
Participation rate	64.3	64.5	0.7	0.2	0.5	-2.7
Unemployment rate	7.7	7.3	0.6	-0.4	-0.6	-1.0
Employment rate	59.3	59.8	0.7	0.5	0.8	-1.7
Saguenay, Quebec									
Population	135.0	135.0	...	0.0	-0.1	-0.1	0.0	-0.1	-0.1
Labour force	77.2	78.8	0.9	1.6	-3.4	-1.0	2.1	-4.1	-1.3
Employment	72.0	73.5	0.9	1.5	-2.6	0.5	2.1	-3.4	0.7
Unemployment	5.2	5.2	0.4	0.0	-0.9	-1.6	0.0	-14.8	-23.5
Participation rate	57.2	58.4	0.6	1.2	-2.4	-0.7
Unemployment rate	6.7	6.6	0.5	-0.1	-0.8	-1.9
Employment rate	53.3	54.4	0.7	1.1	-1.9	0.4
Québec, Quebec									
Population	675.9	676.5	...	0.6	4.4	5.8	0.1	0.7	0.9
Labour force	461.1	463.9	3.5	2.8	-4.2	-3.7	0.6	-0.9	-0.8
Employment	439.6	442.0	3.5	2.4	-3.3	-2.6	0.5	-0.7	-0.6
Unemployment	21.5	21.9	1.4	0.4	-0.9	-1.1	1.9	-3.9	-4.8
Participation rate	68.2	68.6	0.5	0.4	-1.0	-1.1
Unemployment rate	4.7	4.7	0.3	0.0	-0.2	-0.2
Employment rate	65.0	65.3	0.5	0.3	-1.0	-1.0
Sherbrooke, Quebec									
Population	181.5	181.7	...	0.2	1.6	2.1	0.1	0.9	1.2
Labour force	113.3	112.9	1.1	-0.4	-0.1	-1.5	-0.4	-0.1	-1.3
Employment	106.7	106.4	1.1	-0.3	0.9	-0.3	-0.3	0.9	-0.3
Unemployment	6.6	6.5	0.5	-0.1	-1.0	-1.2	-1.5	-13.3	-15.6
Participation rate	62.4	62.1	0.6	-0.3	-0.6	-1.6
Unemployment rate	5.8	5.8	0.4	0.0	-0.8	-0.9
Employment rate	58.8	58.6	0.6	-0.2	0.0	-0.8

See notes at the end of the table.

Table 5-1 – continued

Labour force characteristics by census metropolitan area (seasonally adjusted) — 3 month moving average

	August 2016	September 2016	S.E. ¹	Change from			Percent change from		
				last month	last December	twelve months ago	last month	last December	twelve months ago
in thousands (except rates)									
Trois-Rivières, Quebec									
Population	133.3	133.4	...	0.1	0.5	0.6	0.1	0.4	0.5
Labour force	79.5	79.0	0.9	-0.5	-1.8	0.3	-0.6	-2.2	0.4
Employment	74.2	73.4	0.9	-0.8	-1.5	0.2	-1.1	-2.0	0.3
Unemployment	5.3	5.6	0.4	0.3	-0.3	0.1	5.7	-5.1	1.8
Participation rate	59.6	59.2	0.7	-0.4	-1.6	-0.1
Unemployment rate	6.7	7.1	0.4	0.4	-0.2	0.1
Employment rate	55.7	55.0	0.7	-0.7	-1.4	-0.1
Montréal, Quebec									
Population	3,390.1	3,393.4	...	3.3	27.0	35.1	0.1	0.8	1.0
Labour force	2,221.8	2,241.6	8.5	19.8	8.8	1.0	0.9	0.4	0.0
Employment	2,048.9	2,070.2	8.6	21.3	31.4	23.5	1.0	1.5	1.1
Unemployment	172.8	171.4	5.3	-1.4	-22.6	-22.5	-0.8	-11.6	-11.6
Participation rate	65.5	66.1	0.3	0.6	-0.2	-0.6
Unemployment rate	7.8	7.6	0.2	-0.2	-1.1	-1.1
Employment rate	60.4	61.0	0.3	0.6	0.4	0.1
Ottawa-Gatineau, Ontario/Quebec									
Population	1,111.7	1,113.0	...	1.3	10.6	13.8	0.1	1.0	1.3
Labour force	770.0	767.2	4.2	-2.8	8.5	4.6	-0.4	1.1	0.6
Employment	720.2	718.1	4.2	-2.1	6.4	3.5	-0.3	0.9	0.5
Unemployment	49.8	49.1	2.1	-0.7	2.1	1.1	-1.4	4.5	2.3
Participation rate	69.3	68.9	0.4	-0.4	0.1	-0.5
Unemployment rate	6.5	6.4	0.3	-0.1	0.2	0.1
Employment rate	64.8	64.5	0.4	-0.3	-0.1	-0.5
Ottawa-Gatineau, Quebec part, Ontario/Quebec									
Population	274.3	274.4	...	0.1	1.3	1.7	0.0	0.5	0.6
Labour force	189.1	189.6	1.4	0.5	-3.2	-8.2	0.3	-1.7	-4.1
Employment	174.9	175.3	1.4	0.4	-6.0	-9.2	0.2	-3.3	-5.0
Unemployment	14.2	14.3	0.7	0.1	2.8	1.0	0.7	24.3	7.5
Participation rate	68.9	69.1	0.5	0.2	-1.5	-3.4
Unemployment rate	7.5	7.5	0.3	0.0	1.5	0.8
Employment rate	63.8	63.9	0.5	0.1	-2.5	-3.8
Ottawa-Gatineau, Ontario part, Ontario/Quebec									
Population	837.4	838.5	...	1.1	9.2	12.0	0.1	1.1	1.5
Labour force	580.9	577.6	3.9	-3.3	11.8	12.8	-0.6	2.1	2.3
Employment	545.3	542.8	3.9	-2.5	12.4	12.7	-0.5	2.3	2.4
Unemployment	35.6	34.8	1.9	-0.8	-0.7	0.1	-2.2	-2.0	0.3
Participation rate	69.4	68.9	0.5	-0.5	0.7	0.6
Unemployment rate	6.1	6.0	0.3	-0.1	-0.3	-0.1
Employment rate	65.1	64.7	0.5	-0.4	0.7	0.6
Kingston, Ontario									
Population	139.8	139.9	...	0.1	1.2	1.3	0.1	0.9	0.9
Labour force	88.7	88.8	0.8	0.1	-1.4	-1.5	0.1	-1.6	-1.7
Employment	84.0	84.0	0.8	0.0	-0.4	0.1	0.0	-0.5	0.1
Unemployment	4.7	4.8	0.3	0.1	-1.0	-1.5	2.1	-17.2	-23.8
Participation rate	63.4	63.5	0.6	0.1	-1.5	-1.7
Unemployment rate	5.3	5.4	0.3	0.1	-1.0	-1.6
Employment rate	60.1	60.0	0.6	-0.1	-0.9	-0.5
Peterborough, Ontario									
Population	104.7	104.7	...	0.0	0.2	0.3	0.0	0.2	0.3
Labour force	62.0	61.4	1.1	-0.6	-3.3	-4.8	-1.0	-5.1	-7.3
Employment	58.2	57.7	1.1	-0.5	-2.1	-3.1	-0.9	-3.5	-5.1
Unemployment	3.8	3.7	0.5	-0.1	-1.2	-1.7	-2.6	-24.5	-31.5
Participation rate	59.2	58.6	1.0	-0.6	-3.3	-4.8
Unemployment rate	6.1	6.0	0.8	-0.1	-1.6	-2.2
Employment rate	55.6	55.1	1.0	-0.5	-2.1	-3.1

See notes at the end of the table.

Table 5-1 – continued

Labour force characteristics by census metropolitan area (seasonally adjusted) — 3 month moving average

	August 2016	September 2016	S.E. ¹	Change from			Percent change from		
				last month	last December	twelve months ago	last month	last December	twelve months ago
in thousands (except rates)									
Oshawa, Ontario									
Population	327.3	327.8	...	0.5	4.3	5.6	0.2	1.3	1.7
Labour force	229.3	229.6	1.8	0.3	11.7	27.3	0.1	5.4	13.5
Employment	213.4	215.2	2.0	1.8	12.3	29.7	0.8	6.1	16.0
Unemployment	15.9	14.4	1.0	-1.5	-0.6	-2.4	-9.4	-4.0	-14.3
Participation rate	70.1	70.0	0.6	-0.1	2.6	7.2
Unemployment rate	6.9	6.3	0.5	-0.6	-0.6	-2.0
Employment rate	65.2	65.6	0.6	0.4	2.9	8.0
Toronto, Ontario									
Population	5,200.5	5,209.2	...	8.7	69.6	91.8	0.2	1.4	1.8
Labour force	3,446.7	3,455.9	10.3	9.2	-5.5	-0.1	0.3	-0.2	0.0
Employment	3,221.5	3,210.6	10.6	-10.9	-7.9	-6.5	-0.3	-0.2	-0.2
Unemployment	225.2	245.2	6.1	20.0	2.2	6.2	8.9	0.9	2.6
Participation rate	66.3	66.3	0.2	0.0	-1.0	-1.2
Unemployment rate	6.5	7.1	0.2	0.6	0.1	0.2
Employment rate	61.9	61.6	0.2	-0.3	-1.0	-1.3
Hamilton, Ontario									
Population	650.6	651.4	...	0.8	6.0	7.9	0.1	0.9	1.2
Labour force	403.8	407.9	3.5	4.1	-1.8	-5.2	1.0	-0.4	-1.3
Employment	378.7	381.9	3.6	3.2	-3.5	-9.4	0.8	-0.9	-2.4
Unemployment	25.2	26.0	1.5	0.8	1.7	4.2	3.2	7.0	19.3
Participation rate	62.1	62.6	0.5	0.5	-0.9	-1.6
Unemployment rate	6.2	6.4	0.4	0.2	0.5	1.1
Employment rate	58.2	58.6	0.6	0.4	-1.1	-2.2
St. Catharines-Niagara, Ontario									
Population	345.2	345.5	...	0.3	1.7	2.1	0.1	0.5	0.6
Labour force	216.6	216.5	2.2	-0.1	-9.1	-7.3	0.0	-4.0	-3.3
Employment	201.8	203.5	2.3	1.7	-4.0	-4.5	0.8	-1.9	-2.2
Unemployment	14.8	13.0	1.0	-1.8	-5.1	-2.7	-12.2	-28.2	-17.2
Participation rate	62.7	62.7	0.6	0.0	-2.9	-2.5
Unemployment rate	6.8	6.0	0.4	-0.8	-2.0	-1.0
Employment rate	58.5	58.9	0.7	0.4	-1.5	-1.7
Kitchener-Cambridge-Waterloo, Ontario									
Population	426.5	427.0	...	0.5	3.7	4.8	0.1	0.9	1.1
Labour force	297.7	295.4	2.4	-2.3	-3.1	-0.1	-0.8	-1.0	0.0
Employment	280.6	279.8	2.5	-0.8	0.4	1.6	-0.3	0.1	0.6
Unemployment	17.1	15.6	1.0	-1.5	-3.5	-1.7	-8.8	-18.3	-9.8
Participation rate	69.8	69.2	0.6	-0.6	-1.3	-0.8
Unemployment rate	5.7	5.3	0.3	-0.4	-1.1	-0.6
Employment rate	65.8	65.5	0.6	-0.3	-0.5	-0.4
Brantford, Ontario									
Population	113.1	113.3	...	0.2	1.1	1.3	0.2	1.0	1.2
Labour force	73.8	73.3	0.9	-0.5	1.3	1.0	-0.7	1.8	1.4
Employment	69.3	68.8	0.9	-0.5	0.3	1.0	-0.7	0.4	1.5
Unemployment	4.5	4.5	0.4	0.0	1.0	-0.1	0.0	28.6	-2.2
Participation rate	65.3	64.7	0.8	-0.6	0.5	0.1
Unemployment rate	6.1	6.1	0.5	0.0	1.2	-0.3
Employment rate	61.3	60.7	0.8	-0.6	-0.4	0.2
Guelph, Ontario									
Population	130.6	130.7	...	0.1	1.4	1.7	0.1	1.1	1.3
Labour force	92.2	91.8	1.0	-0.4	-5.5	-1.2	-0.4	-5.7	-1.3
Employment	87.6	87.3	1.1	-0.3	-5.9	-2.3	-0.3	-6.3	-2.6
Unemployment	4.6	4.5	0.5	-0.1	0.4	1.1	-2.2	9.8	32.4
Participation rate	70.6	70.2	0.8	-0.4	-5.1	-1.9
Unemployment rate	5.0	4.9	0.5	-0.1	0.7	1.2
Employment rate	67.1	66.8	0.8	-0.3	-5.3	-2.7

See notes at the end of the table.

Table 5-1 – continued

Labour force characteristics by census metropolitan area (seasonally adjusted) — 3 month moving average

	August 2016	September 2016	S.E. ¹	Change from			Percent change from		
				last month	last December	twelve months ago	last month	last December	twelve months ago
in thousands (except rates)									
London, Ontario									
Population	426.6	427.1	...	0.5	3.4	4.4	0.1	0.8	1.0
Labour force	264.9	264.7	2.6	-0.2	-7.5	-7.1	-0.1	-2.8	-2.6
Employment	245.8	246.3	2.7	0.5	-9.1	-5.9	0.2	-3.6	-2.3
Unemployment	19.1	18.4	1.1	-0.7	1.7	-1.2	-3.7	10.2	-6.1
Participation rate	62.1	62.0	0.6	-0.1	-2.2	-2.3
Unemployment rate	7.2	7.0	0.4	-0.2	0.9	-0.2
Employment rate	57.6	57.7	0.6	0.1	-2.6	-2.0
Windsor, Ontario									
Population	282.2	282.5	...	0.3	2.0	2.5	0.1	0.7	0.9
Labour force	180.3	178.6	1.6	-1.7	9.1	6.0	-0.9	5.4	3.5
Employment	169.3	168.5	1.6	-0.8	15.4	12.7	-0.5	10.1	8.2
Unemployment	11.0	10.1	0.9	-0.9	-6.3	-6.7	-8.2	-38.4	-39.9
Participation rate	63.9	63.2	0.6	-0.7	2.8	1.6
Unemployment rate	6.1	5.7	0.5	-0.4	-4.0	-4.0
Employment rate	60.0	59.6	0.6	-0.4	5.0	4.0
Barrie, Ontario									
Population	170.2	170.5	...	0.3	2.3	3.0	0.2	1.4	1.8
Labour force	111.5	111.0	1.7	-0.5	-0.7	-5.2	-0.4	-0.6	-4.5
Employment	101.8	101.6	1.8	-0.2	-3.0	-6.5	-0.2	-2.9	-6.0
Unemployment	9.7	9.4	0.8	-0.3	2.2	1.3	-3.1	30.6	16.0
Participation rate	65.5	65.1	1.0	-0.4	-1.3	-4.3
Unemployment rate	8.7	8.5	0.7	-0.2	2.1	1.5
Employment rate	59.8	59.6	1.1	-0.2	-2.6	-4.9
Greater Sudbury, Ontario									
Population	140.2	140.3	...	0.1	0.2	0.3	0.1	0.1	0.2
Labour force	89.7	89.8	0.8	0.1	3.2	2.0	0.1	3.7	2.3
Employment	82.7	83.2	0.8	0.5	3.9	1.8	0.6	4.9	2.2
Unemployment	7.0	6.6	0.4	-0.4	-0.7	0.2	-5.7	-9.6	3.1
Participation rate	64.0	64.0	0.6	0.0	2.2	1.3
Unemployment rate	7.8	7.3	0.4	-0.5	-1.1	0.0
Employment rate	59.0	59.3	0.6	0.3	2.7	1.2
Thunder Bay, Ontario									
Population	104.7	104.7	...	0.0	0.1	0.1	0.0	0.1	0.1
Labour force	64.6	64.2	0.6	-0.4	0.8	2.7	-0.6	1.3	4.4
Employment	60.5	60.3	0.6	-0.2	0.6	1.9	-0.3	1.0	3.3
Unemployment	4.1	3.8	0.3	-0.3	0.1	0.6	-7.3	2.7	18.8
Participation rate	61.7	61.3	0.5	-0.4	0.7	2.5
Unemployment rate	6.3	5.9	0.4	-0.4	0.1	0.7
Employment rate	57.8	57.6	0.5	-0.2	0.5	1.8
Winnipeg, Manitoba									
Population	663.9	664.9	...	1.0	8.3	10.6	0.2	1.3	1.6
Labour force	454.0	454.3	1.3	0.3	1.3	2.5	0.1	0.3	0.6
Employment	424.4	424.3	1.3	-0.1	-0.8	-2.3	0.0	-0.2	-0.5
Unemployment	29.7	30.0	0.7	0.3	2.1	4.8	1.0	7.5	19.0
Participation rate	68.4	68.3	0.2	-0.1	-0.7	-0.8
Unemployment rate	6.5	6.6	0.2	0.1	0.4	1.0
Employment rate	63.9	63.8	0.2	-0.1	-0.9	-1.4
Regina, Saskatchewan									
Population	201.8	202.1	...	0.3	2.3	3.2	0.1	1.2	1.6
Labour force	148.3	147.2	0.9	-1.1	1.6	4.2	-0.7	1.1	2.9
Employment	140.2	139.5	0.9	-0.7	0.0	2.7	-0.5	0.0	2.0
Unemployment	8.1	7.7	0.4	-0.4	1.6	1.4	-4.9	26.2	22.2
Participation rate	73.5	72.8	0.4	-0.7	-0.1	0.9
Unemployment rate	5.5	5.2	0.3	-0.3	1.0	0.8
Employment rate	69.5	69.0	0.5	-0.5	-0.8	0.2

See notes at the end of the table.

Table 5-1 – continued

Labour force characteristics by census metropolitan area (seasonally adjusted) — 3 month moving average

	August 2016	September 2016	S.E. ¹	Change from			Percent change from		
				last month	last December	twelve months ago	last month	last December	twelve months ago
in thousands (except rates)									
Saskatoon, Saskatchewan									
Population	258.1	258.6	...	0.5	3.8	5.3	0.2	1.5	2.1
Labour force	179.2	181.2	1.0	2.0	-2.1	1.2	1.1	-1.1	0.7
Employment	167.5	168.8	1.1	1.3	-2.7	-0.5	0.8	-1.6	-0.3
Unemployment	11.7	12.5	0.6	0.8	0.7	1.8	6.8	5.9	16.8
Participation rate	69.4	70.1	0.4	0.7	-1.8	-1.0
Unemployment rate	6.5	6.9	0.3	0.4	0.5	1.0
Employment rate	64.9	65.3	0.4	0.4	-2.0	-1.5
Calgary, Alberta									
Population	1,205.9	1,207.4	...	1.5	15.6	21.6	0.1	1.3	1.8
Labour force	875.2	884.5	4.3	9.3	22.1	5.5	1.1	2.6	0.6
Employment	796.1	800.2	4.4	4.1	-2.0	-17.6	0.5	-0.2	-2.2
Unemployment	79.1	84.2	2.6	5.1	24.1	22.9	6.4	40.1	37.4
Participation rate	72.6	73.3	0.4	0.7	0.9	-0.8
Unemployment rate	9.0	9.5	0.3	0.5	2.5	2.5
Employment rate	66.0	66.3	0.4	0.3	-1.0	-2.7
Edmonton, Alberta									
Population	1,123.4	1,124.8	...	1.4	13.5	18.3	0.1	1.2	1.7
Labour force	816.2	813.4	3.9	-2.8	-14.2	2.6	-0.3	-1.7	0.3
Employment	751.2	750.8	4.0	-0.4	-25.0	-11.6	-0.1	-3.2	-1.5
Unemployment	65.0	62.6	2.3	-2.4	10.8	14.2	-3.7	20.8	29.3
Participation rate	72.7	72.3	0.3	-0.4	-2.2	-1.0
Unemployment rate	8.0	7.7	0.3	-0.3	1.4	1.7
Employment rate	66.9	66.7	0.4	-0.2	-3.1	-2.2
Kelowna, British Columbia									
Population	155.9	156.3	...	0.4	2.8	3.5	0.3	1.8	2.3
Labour force	96.1	95.7	1.4	-0.4	-1.8	-2.1	-0.4	-1.8	-2.1
Employment	89.1	88.7	1.4	-0.4	-2.2	-2.6	-0.4	-2.4	-2.8
Unemployment	7.1	7.0	0.6	-0.1	0.4	0.5	-1.4	6.1	7.7
Participation rate	61.6	61.2	0.9	-0.4	-2.3	-2.8
Unemployment rate	7.4	7.3	0.6	-0.1	0.5	0.7
Employment rate	57.2	56.7	0.9	-0.5	-2.5	-3.1
Abbotsford-Mission, British Columbia									
Population	147.7	147.9	...	0.2	1.9	2.5	0.1	1.3	1.7
Labour force	97.3	98.6	0.8	1.3	0.8	2.3	1.3	0.8	2.4
Employment	91.5	92.7	0.8	1.2	2.3	2.3	1.3	2.5	2.5
Unemployment	5.8	5.9	0.4	0.1	-1.5	0.0	1.7	-20.3	0.0
Participation rate	65.9	66.7	0.5	0.8	-0.3	0.5
Unemployment rate	6.0	6.0	0.4	0.0	-1.6	-0.1
Employment rate	61.9	62.7	0.6	0.8	0.8	0.5
Vancouver, British Columbia									
Population	2,167.7	2,170.6	...	2.9	24.1	34.1	0.1	1.1	1.6
Labour force	1,447.2	1,445.4	5.8	-1.8	27.2	65.8	-0.1	1.9	4.8
Employment	1,372.0	1,374.3	5.9	2.3	37.3	74.8	0.2	2.8	5.8
Unemployment	75.3	71.1	3.2	-4.2	-10.1	-9.0	-5.6	-12.4	-11.2
Participation rate	66.8	66.6	0.3	-0.2	0.5	2.0
Unemployment rate	5.2	4.9	0.2	-0.3	-0.8	-0.9
Employment rate	63.3	63.3	0.3	0.0	1.0	2.5
Victoria, British Columbia									
Population	307.5	307.8	...	0.3	2.7	3.8	0.1	0.9	1.3
Labour force	193.9	195.8	1.6	1.9	1.0	4.6	1.0	0.5	2.4
Employment	184.8	186.6	1.7	1.8	3.6	6.5	1.0	2.0	3.6
Unemployment	9.2	9.2	0.8	0.0	-2.6	-1.9	0.0	-22.0	-17.1
Participation rate	63.1	63.6	0.5	0.5	-0.2	0.7
Unemployment rate	4.7	4.7	0.4	0.0	-1.4	-1.1
Employment rate	60.1	60.6	0.5	0.5	0.6	1.4

1. Average standard error of change in two consecutive months (see "Sampling Errors" in Data Quality for further explanations).

Note(s): Estimates in this table are based on 2011 Census boundaries. Related CANSIM Table 282-0135. The sum of individual categories may not always add to the total due to rounding.

Table 5-2
Labour force characteristics by census metropolitan area (seasonally adjusted) — Monthly

	August 2016	September 2016	S.E. ¹	Change from			Percent change from		
				last month	last December	twelve months ago	last month	last December	twelve months ago
in thousands (except rates)									
Montréal, Quebec									
Population	3,393.9	3,396.2	...	2.3	27.5	34.8	0.1	0.8	1.0
Labour force	2,237.3	2,271.1	17.5	33.8	25.1	38.3	1.5	1.1	1.7
Employment	2,063.3	2,106.8	17.7	43.5	58.4	63.6	2.1	2.9	3.1
Unemployment	174.0	164.3	12.6	-9.7	-33.3	-25.3	-5.6	-16.9	-13.3
Participation rate	65.9	66.9	0.5	1.0	0.2	0.5
Unemployment rate	7.8	7.2	0.5	-0.6	-1.6	-1.3
Employment rate	60.8	62.0	0.5	1.2	1.2	1.2
Toronto, Ontario									
Population	5,210.0	5,217.4	...	7.4	71.6	91.7	0.1	1.4	1.8
Labour force	3,447.1	3,464.7	21.6	17.6	-12.1	14.7	0.5	-0.3	0.4
Employment	3,199.5	3,212.1	20.8	12.6	-18.1	7.6	0.4	-0.6	0.2
Unemployment	247.6	252.7	14.4	5.1	6.1	7.3	2.1	2.5	3.0
Participation rate	66.2	66.4	0.4	0.2	-1.2	-0.9
Unemployment rate	7.2	7.3	0.4	0.1	0.2	0.2
Employment rate	61.4	61.6	0.4	0.2	-1.2	-0.9
Vancouver, British Columbia									
Population	2,170.6	2,173.3	...	2.7	24.2	33.2	0.1	1.1	1.6
Labour force	1,443.4	1,436.8	11.9	-6.6	16.1	38.0	-0.5	1.1	2.7
Employment	1,376.4	1,368.5	11.9	-7.9	32.9	55.0	-0.6	2.5	4.2
Unemployment	66.9	68.3	7.8	1.4	-16.8	-17.0	2.1	-19.7	-19.9
Participation rate	66.5	66.1	0.6	-0.4	0.0	0.7
Unemployment rate	4.6	4.8	0.5	0.2	-1.2	-1.3
Employment rate	63.4	63.0	0.6	-0.4	0.9	1.6

1. Average standard error of change in two consecutive months (see "Sampling Errors" in Data Quality for further explanations).

Note(s): Estimates in this table are based on 2011 Census boundaries. Related CANSIM Table 282-0136. The sum of individual categories may not always add to the total due to rounding.

Table 6-1

Labour force characteristics by province and economic region, ¹ unadjusted for seasonality, 3 month moving average ending in September 2015 and September 2016

	Population	Labour force			Participation rate	Unemployment rate	Employment rate
		Labour force	Employment	Unemployment			
	in thousands			percent			
Canada							
2015	29,323.3	19,550.4	18,179.3	1,371.1	66.7	7.0	62.0
2016	29,637.1	19,658.6	18,270.1	1,388.4	66.3	7.1	61.6
Newfoundland and Labrador							
2015	442.5	278.4	247.8	30.6	62.9	11.0	56.0
2016	444.7	275.9	244.1	31.7	62.0	11.5	54.9
<i>Avalon Peninsula [1010]</i>							
2015	232.8	153.5	140.3	13.2	65.9	8.6	60.3
2016	235.5	159.0	143.2	15.8	67.5	9.9	60.8
<i>South Coast-Burin Peninsula and Notre Dame-Central Bonavista Bay [1020, 1040]</i>							
2015	122.5	71.8	62.2	9.6	58.6	13.4	50.8
2016	122.1	65.3	56.7	8.6	53.5	13.2	46.4
<i>West Coast-Northern Peninsula-Labrador [1030]</i>							
2015	87.1	53.2	45.4	7.8	61.1	14.7	52.1
2016	87.1	51.5	44.2	7.3	59.1	14.2	50.7
Prince Edward Island							
2015	121.0	83.8	76.7	7.1	69.3	8.5	63.4
2016	122.1	82.6	75.3	7.3	67.6	8.8	61.7
Nova Scotia							
2015	786.1	501.0	460.9	40.2	63.7	8.0	58.6
2016	789.2	494.2	455.3	38.9	62.6	7.9	57.7
<i>Cape Breton [1210]</i>							
2015	106.9	58.8	50.5	8.3	55.0	14.1	47.2
2016	105.9	58.2	50.7	7.5	55.0	12.9	47.9
<i>North Shore [1220]</i>							
2015	128.8	82.4	75.6	6.8	64.0	8.3	58.7
2016	128.2	77.0	70.3	6.6	60.1	8.6	54.8
<i>Annapolis Valley [1230]</i>							
2015	102.6	60.0	55.8	4.2	58.5	7.0	54.4
2016	102.7	61.4	57.2	4.2	59.8	6.8	55.7
<i>Southern [1240]</i>							
2015	98.3	56.3	49.7	6.6	57.3	11.7	50.6
2016	97.8	54.5	47.3	7.1	55.7	13.0	48.4
<i>Halifax [1250]</i>							
2015	349.4	243.5	229.3	14.2	69.7	5.8	65.6
2016	354.6	243.2	229.7	13.5	68.6	5.6	64.8
New Brunswick							
2015	621.8	397.2	360.4	36.9	63.9	9.3	58.0
2016	623.6	400.4	365.8	34.5	64.2	8.6	58.7
<i>Campbellton-Miramichi [1310]</i>							
2015	129.0	73.0	63.8	9.2	56.6	12.6	49.5
2016	128.3	71.3	61.4	9.9	55.6	13.9	47.9
<i>Moncton-Richibucto [1320]</i>							
2015	176.8	117.4	108.0	9.4	66.4	8.0	61.1
2016	178.6	120.3	110.6	9.7	67.4	8.1	61.9
<i>Saint John-St. Stephen [1330]</i>							
2015	142.1	94.0	85.6	8.4	66.2	8.9	60.2
2016	141.9	92.6	85.4	7.2	65.3	7.8	60.2
<i>Fredericton-Oromocto [1340]</i>							
2015	110.0	72.5	66.3	6.3	65.9	8.7	60.3
2016	111.2	75.1	70.1	5.0	67.5	6.7	63.0

See notes at the end of the table.

Table 6-1 – continued

Labour force characteristics by province and economic region, ¹ unadjusted for seasonality, 3 month moving average ending in September 2015 and September 2016

	Population	Labour force			Participation rate	Unemployment rate	Employment rate
		Labour force	Employment	Unemployment			
	in thousands			percent			
Edmundston-Woodstock [1350]							
2015	63.9	40.2	36.6	3.6	62.9	9.0	57.3
2016	63.5	41.1	38.3	2.7	64.7	6.6	60.3
Quebec							
2015	6,849.0	4,496.5	4,161.2	335.3	65.7	7.5	60.8
2016	6,896.4	4,504.7	4,196.8	307.9	65.3	6.8	60.9
Gaspésie-Îles-de-la-Madeleine [2410]							
2015	78.0	43.6	39.7	3.9	55.9	8.9	50.9
2016	77.2	42.4	38.6	3.9	54.9	9.2	50.0
Bas-Saint-Laurent [2415]							
2015	169.8	94.2	89.1	5.2	55.5	5.5	52.5
2016	169.2	93.9	87.7	6.3	55.5	6.7	51.8
Capitale-Nationale [2420]							
2015	617.4	422.0	404.1	17.9	68.4	4.2	65.5
2016	622.5	432.9	411.9	21.0	69.5	4.9	66.2
Chaudière-Appalaches [2425]							
2015	349.3	226.8	215.3	11.5	64.9	5.1	61.6
2016	350.1	229.9	218.2	11.7	65.7	5.1	62.3
Estrie [2430]							
2015	269.4	162.8	153.5	9.3	60.4	5.7	57.0
2016	271.2	162.9	153.2	9.6	60.1	5.9	56.5
Centre-du-Québec [2433]							
2015	200.5	126.7	119.1	7.6	63.2	6.0	59.4
2016	201.3	135.8	129.9	5.9	67.5	4.3	64.5
Montérégie [2435]							
2015	1,252.0	835.6	782.7	52.9	66.7	6.3	62.5
2016	1,261.6	815.1	766.9	48.2	64.6	5.9	60.8
Montréal [2440]							
2015	1,666.8	1,113.5	994.0	119.4	66.8	10.7	59.6
2016	1,683.5	1,130.6	1,022.8	107.8	67.2	9.5	60.8
Laval [2445]							
2015	352.1	226.4	202.8	23.5	64.3	10.4	57.6
2016	355.6	236.9	219.4	17.5	66.6	7.4	61.7
Lanaudière [2450]							
2015	411.8	287.8	265.0	22.9	69.9	8.0	64.4
2016	415.2	270.5	254.2	16.3	65.1	6.0	61.2
Laurentides [2455]							
2015	493.3	337.5	323.4	14.1	68.4	4.2	65.6
2016	499.1	331.5	311.5	20.0	66.4	6.0	62.4
Outaouais [2460]							
2015	318.5	222.0	206.6	15.4	69.7	6.9	64.9
2016	320.7	216.6	200.0	16.6	67.5	7.7	62.4
Abitibi-Témiscamingue [2465]							
2015	120.5	75.1	70.8	4.3	62.3	5.7	58.8
2016	120.6	78.1	73.6	4.5	64.8	5.8	61.0
Mauricie [2470]							
2015	225.5	124.9	115.5	9.3	55.4	7.4	51.2
2016	225.4	128.7	121.7	6.9	57.1	5.4	54.0
Saguenay-Lac-Saint-Jean [2475]							
2015	231.9	139.5	126.9	12.7	60.2	9.1	54.7
2016	231.5	138.6	130.8	7.8	59.9	5.6	56.5

See notes at the end of the table.

Table 6-1 – continued

Labour force characteristics by province and economic region, ¹ unadjusted for seasonality, 3 month moving average ending in September 2015 and September 2016

	Population	Labour force			Participation rate	Unemployment rate	Employment rate
		Labour force	Employment	Unemployment			
	in thousands			percent			
Côte-Nord and Nord-du-Québec [2480, 2490]							
2015	91.9	58.0	52.8	5.3	63.1	9.1	57.5
2016	91.7	60.5	56.5	3.9	66.0	6.4	61.6
Ontario							
2015	11,402.1	7,530.4	6,994.9	535.4	66.0	7.1	61.3
2016	11,545.0	7,559.8	7,037.0	522.8	65.5	6.9	61.0
Ottawa [3510]							
2015	1,098.3	741.5	690.1	51.3	67.5	6.9	62.8
2016	1,110.1	742.9	693.5	49.3	66.9	6.6	62.5
Kingston-Pembroke [3515]							
2015	377.3	217.4	201.0	16.4	57.6	7.5	53.3
2016	378.9	231.5	217.8	13.8	61.1	6.0	57.5
Muskoka-Kawartha [3520]							
2015	326.4	171.1	159.8	11.3	52.4	6.6	49.0
2016	328.5	177.3	164.5	12.7	54.0	7.2	50.1
Toronto [3530]							
2015	5,369.4	3,657.8	3,380.8	276.9	68.1	7.6	63.0
2016	5,461.3	3,673.9	3,393.4	280.5	67.3	7.6	62.1
Kitchener-Waterloo-Barrie [3540]							
2015	1,078.6	753.0	710.2	42.8	69.8	5.7	65.8
2016	1,094.3	743.5	702.4	41.2	67.9	5.5	64.2
Hamilton-Niagara Peninsula [3550]							
2015	1,199.7	785.0	736.8	48.2	65.4	6.1	61.4
2016	1,212.7	773.3	723.3	50.0	63.8	6.5	59.6
London [3560]							
2015	554.1	365.0	340.4	24.6	65.9	6.7	61.4
2016	559.1	357.1	334.1	23.0	63.9	6.4	59.8
Windsor-Sarnia [3570]							
2015	524.3	315.5	288.7	26.9	60.2	8.5	55.1
2016	525.9	328.2	307.1	21.1	62.4	6.4	58.4
Stratford-Bruce Peninsula [3580]							
2015	245.8	147.0	137.3	9.7	59.8	6.6	55.9
2016	246.3	153.1	146.3	6.8	62.2	4.4	59.4
Northeast [3590]							
2015	456.8	272.8	251.8	21.0	59.7	7.7	55.1
2016	456.2	271.3	253.7	17.7	59.5	6.5	55.6
Northwest [3595]							
2015	171.4	104.4	98.0	6.4	60.9	6.1	57.2
2016	171.8	107.6	100.9	6.7	62.6	6.2	58.7
Manitoba							
2015	988.6	680.1	638.5	41.6	68.8	6.1	64.6
2016	1,001.2	683.9	637.7	46.3	68.3	6.8	63.7
Southeast [4610]							
2015	89.4	58.8	55.5	3.3	65.8	5.6	62.1
2016	91.3	63.3	60.3	2.9	69.3	4.6	66.0
South Central and North Central [4620, 4640]							
2015	84.6	58.2	55.0	3.2	68.8	5.5	65.0
2016	85.6	57.3	54.2	3.2	66.9	5.6	63.3
Southwest [4630]							
2015	88.0	61.4	58.7	2.8	69.8	4.6	66.7
2016	88.6	58.2	55.3	3.0	65.7	5.2	62.4

See notes at the end of the table.

Table 6-1 – continued

Labour force characteristics by province and economic region, ¹ unadjusted for seasonality, 3 month moving average ending in September 2015 and September 2016

	Population	Labour force			Participation rate	Unemployment rate	Employment rate
		Labour force	Employment	Unemployment			
	in thousands			percent			
Winnipeg [4650]							
2015	595.7	412.7	386.0	26.7	69.3	6.5	64.8
2016	604.7	415.5	383.6	31.9	68.7	7.7	63.4
Interlake [4660]							
2015	75.0	50.2	47.3	3.0	66.9	6.0	63.1
2016	75.6	50.8	47.4	3.4	67.2	6.7	62.7
Parklands and Northern [4670, 4680]							
2015	55.9	38.8	36.1	2.7	69.4	7.0	64.6
2016	55.4	38.8	36.9	1.9	70.0	4.9	66.6
Saskatchewan							
2015	862.7	609.9	577.8	32.1	70.7	5.3	67.0
2016	870.5	613.6	574.7	38.9	70.5	6.3	66.0
Regina-Moose Mountain [4710]							
2015	263.6	192.8	184.8	7.9	73.1	4.1	70.1
2016	266.8	194.9	185.0	9.9	73.1	5.1	69.3
Swift Current-Moose Jaw [4720]							
2015	82.5	55.2	53.0	2.2	66.9	4.0	64.2
2016	82.0	55.7	53.3	2.3	67.9	4.1	65.0
Saskatoon-Biggar [4730]							
2015	296.0	212.6	200.7	11.9	71.8	5.6	67.8
2016	300.9	213.4	199.4	14.0	70.9	6.6	66.3
Yorkton-Melville [4740]							
2015	62.4	39.9	37.5	2.5	63.9	6.3	60.1
2016	61.8	40.1	37.4	2.7	64.9	6.7	60.5
Prince Albert and Northern [4750, 4760]							
2015	158.1	109.3	101.8	7.5	69.1	6.9	64.4
2016	159.0	109.6	99.6	10.0	68.9	9.1	62.6
Alberta							
2015	3,365.1	2,481.7	2,325.9	155.8	73.7	6.3	69.1
2016	3,405.1	2,485.4	2,272.6	212.8	73.0	8.6	66.7
Lethbridge-Medicine Hat [4810]							
2015	230.5	155.8	147.8	8.1	67.6	5.2	64.1
2016	230.3	162.7	151.8	10.9	70.6	6.7	65.9
Camrose-Drumheller [4820]							
2015	162.0	109.2	105.1	4.1	67.4	3.8	64.9
2016	161.4	113.3	103.9	9.5	70.2	8.4	64.4
Calgary [4830]							
2015	1,271.8	952.1	886.7	65.4	74.9	6.9	69.7
2016	1,293.4	960.4	867.4	92.9	74.3	9.7	67.1
Banff-Jasper-Rocky Mountain House and Athabasca-Grande Prairie-Peace River [4840, 4870]							
2015	277.4	205.1	193.9	11.2	73.9	5.5	69.9
2016	277.0	196.3	183.4	12.9	70.9	6.6	66.2
Red Deer [4850]							
2015	170.7	125.3	116.5	8.8	73.4	7.0	68.2
2016	172.6	125.0	114.1	10.9	72.4	8.7	66.1
Edmonton [4860]							
2015	1,134.8	840.2	789.0	51.3	74.0	6.1	69.5
2016	1,151.9	837.5	770.2	67.3	72.7	8.0	66.9
Wood Buffalo-Cold Lake [4880]							
2015	117.8	93.9	86.9	7.0	79.7	7.5	73.8
2016

See notes at the end of the table.

Table 6-1 – continued

Labour force characteristics by province and economic region, ¹ unadjusted for seasonality, 3 month moving average ending in September 2015 and September 2016

	Population	Labour force			Participation rate	Unemployment rate	Employment rate
		Labour force	Employment	Unemployment			
	in thousands			percent			
British Columbia							
2015	3,884.5	2,491.5	2,335.3	156.2	64.1	6.3	60.1
2016	3,939.3	2,558.1	2,410.6	147.4	64.9	5.8	61.2
Vancouver Island and Coast [5910]							
2015	655.7	383.4	358.0	25.4	58.5	6.6	54.6
2016	663.2	391.6	370.4	21.2	59.0	5.4	55.9
Lower Mainland-Southwest [5920]							
2015	2,425.3	1,577.6	1,481.4	96.2	65.0	6.1	61.1
2016	2,464.8	1,651.7	1,563.7	88.0	67.0	5.3	63.4
Thompson-Okanagan [5930]							
2015	431.8	275.9	260.1	15.8	63.9	5.7	60.2
2016	437.4	268.6	250.5	18.1	61.4	6.7	57.3
Kootenay [5940]							
2015	122.0	79.2	72.9	6.3	64.9	8.0	59.8
2016	122.5	71.4	65.3	6.1	58.3	8.5	53.3
Cariboo [5950]							
2015	127.4	87.3	80.6	6.7	68.5	7.7	63.3
2016	127.9	86.1	79.6	6.4	67.3	7.4	62.2
North Coast and Nechako [5960, 5970]							
2015	66.5	46.6	43.0	3.6	70.1	7.7	64.7
2016	67.0	46.3	42.8	3.6	69.1	7.8	63.9
Northeast [5980]							
2015	55.9	41.6	39.2	2.3	74.4	5.5	70.1
2016	56.4	42.4	38.3	4.0	75.2	9.4	67.9

1. For geographic descriptions of economic regions, refer to the Guide to the Labour Force Survey (catalogue number 71-543-GIE).

Note(s): Estimates in this table are based on 2011 Census boundaries. Related CANSIM table 282-0122. Due to wildfires in northern Alberta, LFS data for the census agglomeration of Wood Buffalo were not collected from May to July 2016. Data collection resumed in August 2016. Estimates for the economic region of Wood Buffalo–Cold Lake, which are three-month moving averages, are not published for June, July, August, and September 2016.

Table 6-2
Labour force characteristics by territory (seasonally adjusted) - 3 month moving average

	August 2016	September 2016	S.E. ¹	Change from			Percent change from		
				last month	last December	twelve months ago	last month	last December	twelve months ago
in thousands (except rates)									
Yukon ²									
Population	28.3	28.4	...	0.1	0.2	0.1	0.4	0.7	0.4
Labour force	21.8	21.8	0.3	0.0	1.2	0.9	0.0	5.8	4.3
Employment	20.1	20.3	0.3	0.2	0.8	0.5	1.0	4.1	2.5
Unemployment	1.7	1.5	0.1	-0.2	0.3	0.4	-11.8	25.0	36.4
Participation rate	77.0	76.8	0.9	-0.2	3.8	2.9
Unemployment rate	7.8	6.9	0.7	-0.9	1.1	1.6
Employment rate	71.0	71.5	1.0	0.5	2.4	1.5
Northwest Territories ³									
Population	32.7	32.6	...	-0.1	0.6	0.8	-0.3	1.9	2.5
Labour force	25.0	24.2	0.3	-0.8	0.0	0.2	-3.2	0.0	0.8
Employment	23.0	22.6	0.3	-0.4	0.9	0.7	-1.7	4.1	3.2
Unemployment	1.9	1.6	0.2	-0.3	-0.8	-0.5	-15.8	-33.3	-23.8
Participation rate	76.5	74.2	0.8	-2.3	-1.4	-1.3
Unemployment rate	7.6	6.6	0.7	-1.0	-3.3	-2.2
Employment rate	70.3	69.3	0.9	-1.0	1.5	0.4
Nunavut ⁴									
Population	24.3	24.3	...	0.0	0.2	0.3	0.0	0.8	1.3
Labour force	15.9	16.0	0.2	0.1	0.6	0.4	0.6	3.9	2.6
Employment	13.7	13.7	0.2	0.0	0.9	0.8	0.0	7.0	6.2
Unemployment	2.2	2.3	0.2	0.1	-0.4	-0.4	4.5	-14.8	-14.8
Participation rate	65.3	65.9	0.9	0.6	1.8	0.9
Unemployment rate	13.9	14.5	0.9	0.6	-2.7	-2.7
Employment rate	56.2	56.3	1.0	0.1	3.2	2.5

1. Average standard error of change in two consecutive months (see "Sampling Errors" in Data Quality for further explanations).
2. Since 1992, the Labour force survey (LFS) has been conducted in the Yukon, using an alternative methodology that accommodates some of the operational difficulties inherent to remote locales. These estimates are not included in the national totals. In 1995, the LFS in the Yukon underwent a sample redesign. One result of the redesign was that the covered population increased from 85% to 92%, which is reflected by the sharp increase in the three month moving averages estimates of January, February and March of 1995 for all the level estimates. Users are therefore warned to be cautious when comparing estimates before January 1995 to estimates for January 1995 and forward.
3. Since 2001, the Labour force survey (LFS) has been administered in the Northwest Territories, using an alternative methodology that accommodates some of the operational difficulties inherent to remote locales. These estimates are not included in national totals.
4. Since 2004, the Labour force survey (LFS) has been administered in Nunavut, using an alternative methodology that accommodates some of the operational difficulties inherent to remote locales. These estimates are 3-month moving averages and are not included in national totals. From January 2004 to December 2007, estimates represent about 70% of all Nunavut residents aged 15 and over. Starting in January 2008, coverage was extended to 92%, so that by March 2008, the 3-month moving average is completely based on the extended coverage. Because of the large difference in coverage, users are recommended not to compare estimates prior to January 2008 with data afterwards. The January and February 2008 3-month moving average estimates are based on a mix of both coverages, since the extended coverage was introduced in January 2008. Estimates from January 2004 to December 2007 are based on the 10 largest communities in Nunavut: Iqaluit, Rankin Inlet, Cambridge Bay, Kugluktuk, Baker Lake, Arviat, Pond Inlet, Cape Dorset, Pangnirtung, Igloolik. Estimates from March 2008 to present cover the above communities as well as: Taloyoak, Gjoa Haven, Kugaaruk, Coral Harbour, Repulse Bay, Qikiqtarjuaq, Arctic Bay, Hall Beach, Clyde River.

Note(s): Related CANSIM table 282-0100.

Table 7
Average usual hours and wages of employees by selected characteristics, Canada, unadjusted for seasonality

	Employees				Full-time			Part-time		
	Number	Average weekly hours	Average weekly wages	Average hourly wages	Number	Average weekly hours	Average weekly wages	Number	Average weekly hours	Average weekly wages
	thousands		current dollars		thousands		current dollars	thousands		current dollars
September 2016										
15 years and over	15,407.1	35.4	944.70	25.80	12,661.9	39.3	1,079.55	2,745.3	17.3	322.75
15 to 24 years	2,287.3	27.2	442.03	15.17	1,175.9	38.7	674.76	1,111.4	15.1	195.80
25 years and over	13,119.8	36.8	1,032.33	27.66	11,486.0	39.3	1,120.99	1,633.8	18.7	409.10
Males	7,780.9	37.8	1,067.85	27.54	6,891.6	40.5	1,167.08	889.3	16.9	298.89
Females	7,626.2	32.9	819.05	24.03	5,770.2	37.8	975.01	1,856.0	17.4	334.18
Union coverage										
Union coverage	4,752.7	35.8	1,075.96	29.67	4,075.0	38.6	1,176.85	677.7	19.1	469.27
No union coverage	10,654.4	35.2	886.15	24.08	8,586.8	39.6	1,033.37	2,067.6	16.7	274.72
Job permanency										
Permanent	13,323.7	36.3	990.37	26.58	11,437.0	39.2	1,096.42	1,886.7	18.2	347.50
Temporary	2,083.5	29.5	652.65	20.86	1,224.9	39.5	922.02	858.5	15.1	268.34
Occupation										
Management occupations	978.5	39.8	1,667.55	42.08	957.7	40.2	1,688.54	20.8	19.6	700.90
Business, finance and administration occupations	2,586.2	35.6	927.64	25.64	2,242.0	38.3	1,013.82	344.2	17.8	366.28
Natural and applied sciences and related occupations	1,186.0	38.6	1,374.66	35.69	1,142.3	39.3	1,403.92	43.7	18.9	610.11
Health occupations	1,131.3	33.5	983.84	29.23	865.3	37.7	1,111.99	266.0	19.9	567.05
Occupations in education, law and social, community and government services	1,859.1	33.9	1,112.97	32.17	1,496.1	38.0	1,269.38	363.0	17.0	468.40
Occupations in art, culture, recreation and sport	317.7	29.5	741.01	23.76	205.2	39.0	1,021.49	112.4	12.2	228.99
Sales and service occupations	4,007.2	30.8	536.28	16.40	2,603.6	38.3	704.99	1,403.6	16.9	223.34
Trades, transport and equipment operators and related occupations	2,221.6	40.3	1,048.75	25.66	2,094.3	41.7	1,092.46	127.3	18.3	329.91
Natural resources, agriculture and related production occupations	299.4	40.7	932.23	22.22	259.5	44.5	1,036.38	40.0	15.7	255.98
Occupations in manufacturing and utilities	820.0	39.7	876.02	21.87	796.0	40.4	894.56	24.1	16.8	262.21
September 2015										
15 years and over	15,283.4	35.4	932.82	25.45	12,530.7	39.4	1,067.37	2,752.7	17.4	320.32
15 to 24 years	2,303.8	27.2	428.44	14.76	1,162.8	38.7	656.97	1,141.0	15.3	195.55
25 years and over	12,979.6	36.9	1,022.35	27.34	11,367.9	39.4	1,109.35	1,611.6	18.8	408.66
Males	7,792.7	37.8	1,063.06	27.45	6,908.1	40.5	1,160.02	884.6	16.8	305.83
Females	7,490.6	32.9	797.34	23.36	5,622.5	38.0	953.54	1,868.1	17.7	327.18
Union coverage										
Union coverage	4,721.6	35.8	1,056.05	29.13	4,048.9	38.6	1,154.77	672.7	18.9	461.92
No union coverage	10,561.8	35.2	877.73	23.80	8,481.8	39.7	1,025.66	2,080.0	16.9	274.53
Job permanency										
Permanent	13,199.3	36.3	976.42	26.15	11,279.6	39.3	1,084.96	1,919.8	18.4	338.69
Temporary	2,084.0	29.9	656.70	20.96	1,251.1	39.8	908.84	832.9	15.1	277.99
Occupation										
Management occupations	992.1	39.8	1,559.62	39.25	959.4	40.5	1,594.80	32.7	18.5	528.37
Business, finance and administration occupations	2,580.8	35.5	913.18	25.20	2,224.5	38.3	1,001.40	356.3	18.1	362.41
Natural and applied sciences and related occupations	1,254.2	38.5	1,364.54	35.33	1,210.7	39.2	1,394.79	43.5	18.6	522.81
Health occupations	1,134.9	33.9	997.34	29.27	880.0	38.0	1,121.67	254.8	20.0	568.02
Occupations in education, law and social, community and government services	1,779.0	33.5	1,049.48	30.80	1,411.0	37.9	1,207.73	368.1	16.5	442.86
Occupations in art, culture, recreation and sport	309.5	30.6	814.08	25.11	208.4	38.9	1,068.05	101.2	13.4	290.93
Sales and service occupations	3,955.4	30.8	546.19	16.62	2,542.3	38.4	725.47	1,413.0	17.1	223.63
Trades, transport and equipment operators and related occupations	2,182.4	40.4	1,034.98	25.34	2,056.2	41.8	1,076.73	126.2	18.7	355.12
Natural resources, agriculture and related production occupations	316.6	41.8	994.35	22.90	283.8	44.9	1,080.76	32.8	15.2	246.62
Occupations in manufacturing and utilities	778.4	39.4	843.20	21.23	754.5	40.1	861.42	24.0	16.7	269.43

Note(s): Related CANSIM table 282-0167.

Table 8
Regional unemployment rates used by the Employment Insurance program, ¹ seasonally adjusted, 3-month moving average

Region	Effective from October 9, 2016 to November 5, 2016
	percent
Newfoundland and Labrador	
01. St. John's, Newfoundland and Labrador	6.7
02. Newfoundland and Labrador ²	18.0
Prince Edward Island ³	
03. Charlottetown, Prince Edward Island	8.4
04. Prince Edward Island ⁴	13.8
Nova Scotia	
05. Eastern Nova Scotia	14.7
06. Western Nova Scotia	10.2
07. Halifax, Nova Scotia	5.7
New Brunswick	
08. Fredericton-Moncton-Saint John, New Brunswick	6.9
09. Madawaska-Charlotte, New Brunswick	8.8
10. Restigouche-Albert, New Brunswick	15.5
Quebec	
11. Gaspésie-Îles-de-la-Madeleine, Quebec	16.3
12. Quebec, Quebec	5.0
13. Trois-Rivières, Quebec	6.8
14. South Central Quebec	5.8
15. Sherbrooke, Quebec	5.8
16. Montérégie, Quebec	6.9
17. Montreal, Quebec	7.9
18. Central Quebec	6.8
19. North Western Quebec	8.3
20. Lower Saint Lawrence and North Shore, Quebec	9.0
21. Hull, Quebec	7.5
22. Chicoutimi-Jonquière, Quebec	6.7
Ontario	
23. Ottawa, Ontario	5.9
24. Eastern Ontario	7.9
25. Kingston, Ontario	5.5
26. Central Ontario	7.3
27. Oshawa, Ontario	6.4
28. Toronto, Ontario	6.9
29. Hamilton, Ontario	6.3
30. St. Catharines, Ontario	5.8
31. London, Ontario	7.1
32. Niagara, Ontario	7.9
33. Windsor, Ontario	5.9
34. Kitchener, Ontario	5.4
35. Huron, Ontario	7.6
36. South Central Ontario	4.4
37. Sudbury, Ontario	7.1
38. Thunder Bay, Ontario	6.0
39. Northern Ontario	11.2
Manitoba	
40. Winnipeg, Manitoba	6.6
41. Southern Manitoba	6.8
42. Northern Manitoba	32.4
Saskatchewan	
43. Regina, Saskatchewan	5.2
44. Saskatoon, Saskatchewan	6.9
45. Southern Saskatchewan	7.9
46. Northern Saskatchewan	20.1

See notes at the end of the table.

Table 8 – continued

Regional unemployment rates used by the Employment Insurance program, ¹ seasonally adjusted, 3-month moving average

Region	Effective from October 9, 2016 to November 5, 2016
	percent
Alberta	
47. Calgary, Alberta	9.6
48. Edmonton, Alberta	7.9
49. Northern Alberta	12.1
50. Southern Alberta	8.9
British Columbia	
51. Southern Interior British Columbia	8.9
52. Abbotsford, British Columbia	6.1
53. Vancouver, British Columbia	5.0
54. Victoria, British Columbia	5.6
55. Southern Coastal British Columbia	7.2
56. Northern British Columbia	11.4
Territories ^{3, 5}	
57. Whitehorse, Yukon ⁶	6.6
58. Yukon	6.8
59. Yellowknife, Northwest Territories	5.3
60. Northwest Territories ⁷	11.1
61. Iqaluit, Nunavut	4.2
62. Nunavut ⁸	20.1

1. The boundaries of these regions are determined by Employment and Social Development Canada (ESDC). For geographic descriptions and maps of employment insurance regions, see the ESDC website: <http://srv129.services.gc.ca/eiregions/en/geocont.aspx>.

2. This region excludes St. John's.

3. Prince Edward Island as well as the territories are each comprised of two regions effective October 12, 2014.

4. This region excludes Charlottetown.

5. The monthly regional unemployment rates for EI purposes in the territories are subject to the greater of a seasonally adjusted 3-month-moving average or 12-month-moving average.

6. This region excludes Whitehorse.

7. This region excludes Yellowknife.

8. This region excludes Iqaluit.

Note(s): Related CANSIM table 282-0168. All regions are based on the 1996 Census boundaries, with the exception of those in Prince Edward Island and in the territories, which respect the 2011 Census boundaries.

Data quality

Definitions and explanations

The **labour force** is composed of those members of the civilian non-institutional population 15 years of age and over who, during the reference week, were employed or unemployed.

Employed persons are those who, during the reference week:

- (a) did any work at all at a job or business;
- (b) had a job but were not at work.

A person is considered to be **full-time** if his/her usual hours at the main job are 30 or more hours per week. When the number of hours worked at the main job is usually less than 30 hours per week then he/she is considered to be **part-time**.

Unemployed persons are those who, during the reference week:

- (a) were without work, had actively looked for work in the past four weeks (ending with reference week) and were available for work;
- (b) had not actively looked for work in the past four weeks but were on temporary layoff and were available for work;
- (c) had not actively looked for work but had a new job to start within four weeks from the reference week and were available for work.

Persons in the civilian non-institutional population 15 years of age and over who, during the reference week, were neither employed nor unemployed are classified as **not in the labour force**.

The **unemployment rate** represents the number of unemployed persons expressed as a percentage of the labour force (employed and unemployed). The unemployment rate for a particular group (for example, age, sex, or marital status) is the number unemployed in that group expressed as a percentage of the labour force for that group.

The **participation rate** represents the total labour force expressed as a percentage of the population aged 15 years and over. The participation rate for a particular group (for example, women aged 25 years and over) is the labour force in that group expressed as a percentage of the population for that group.

The **employment rate** represents the number of employed persons expressed as a percentage of the population aged 15 years and over. The employment rate for a particular group (for example, age, sex, marital status, or province) is the number employed in that group expressed as a percentage of the population for that group.

The **part-time rate** represents the number of persons employed part-time expressed as a percentage of the employed. The part-time rate for a particular group (for example, age or sex) is the number of persons employed part-time in that group expressed as a percentage of the employed for that group.

All geographic regions are based on the 2011 Census boundaries.

Seasonal adjustment

Fluctuations in economic time series are caused by seasonal, cyclical and irregular movements. A seasonally adjusted series is one from which seasonal movements have been eliminated. Seasonal movements are defined as those which are caused by regular annual events such as climate, holidays, vacation periods and cycles related to crops, production and retail sales associated with Christmas and Easter. The seasonally adjusted series contains irregular as well as longer-term cyclical fluctuations.

The seasonally adjusted series are revised each year to take into account current data and to generate new forecast factors for the next twelve months. The data are therefore subject to slight revisions in future issues of this publication.

For more information on seasonal adjustment, see *Seasonally adjusted data – Frequently asked questions*.

Sampling variability of estimates

Estimates in this publication are based on the Labour Force Survey, a monthly survey of approximately 56,000 households across Canada. Because the entire population is not surveyed, the estimates are subject to sampling error. While the published estimate is the best available indicator of the real value, changes in the level of any estimates between two months can be the result of a true change, or sampling variability. The sampling error can be estimated by calculating the standard error for the published estimate or statistic. These standard errors have been included in the publication tables in order to assist users in interpreting the data. They are based on 12-month averages and are updated twice a year, in February and August.

Interpretation based on standard error

Approximately two-thirds (68%) of the time, a change greater than the sampling error indicates a real change. The larger the change compared to the standard error, the better the chance that we are observing a real change, as opposed to a change due to sampling variability. At the 95% confidence level, the change in the estimate must be greater than twice the standard error in order to ensure that change is real.

Movements in estimates that are smaller than the standard error are less likely to reflect a real change and more likely to be due to sampling variability. While the above is true for monthly movements, one can have more confidence in a series of consecutive movements in the same direction, even though some of the monthly movements may be smaller than the standard error.

Interpretation based on confidence intervals

Confidence intervals provide another way of looking at the variability inherent in estimates of sample surveys. To illustrate how to calculate the confidence interval, let us say that one month the published estimate for total employment rose by 16,000 to reach 18,000,000. The associated standard error for the movement estimate is 29,500. The standard error used to interpret the movement estimate indicates that:

- There are approximately two chances in three (68%) that the real value of the movement between the two months falls within the range -13,500 to +45,500 (16,000 + or – one standard error).
- There are approximately nine chances in ten (90%) that the real value of the movement between the two months falls within the range -31,200 to +63,200 (16,000 + or – 1.6 times the standard error).
- There are approximately nineteen chances in twenty (95%) that the real value of the movement between the two months falls within the range -43,000 to +75,000 (16,000 + or – two standard errors).

For more detailed explanations on the sampling variability of estimates, and in particular for information on how to assess the variability of level estimates, consult the **Data quality** section of the *Guide to the Labour Force Survey (71-543-G)*.

Documentation

For more detailed information about the Labour Force Survey, see the following documents:

- Overview of the Labour Force Survey (LFS) 3701
- *Guide to the Labour Force Survey (71-543-G)*
- *Methodology of the Canadian Labour Force Survey (71-526-X)*
- *LFS geographical maps*