

Catalogue no. 71-001-X

Labour Force Information

Friday, March 11, 2016

February 14 to 20, 2016



Statistics
Canada

Statistique
Canada

Canada

How to obtain more information

For information about this product or the wide range of services and data available from Statistics Canada, visit our website, www.statcan.gc.ca.

You can also contact us by

e-mail at STATCAN.infostats-infostats.STATCAN@canada.ca

telephone, from Monday to Friday, 8:30 a.m. to 4:30 p.m., at the following toll-free numbers:

- | | |
|---------------------------------------------------------------|----------------|
| • Statistical Information Service | 1-800-263-1136 |
| • National telecommunications device for the hearing impaired | 1-800-363-7629 |
| • Fax line | 1-877-287-4369 |

Depository Services Program

- | | |
|------------------|----------------|
| • Inquiries line | 1-800-635-7943 |
| • Fax line | 1-800-565-7757 |

To access this product

This product, Catalogue no. 71-001-X, is available free in electronic format. To obtain a single issue, visit our website, www.statcan.gc.ca and browse by "Key resource" > "Publications."

Standards of service to the public

Statistics Canada is committed to serving its clients in a prompt, reliable and courteous manner. To this end, this agency has developed standards of service that its employees observe. To obtain a copy of these service standards, please contact Statistics Canada toll-free at 1-800-263-1136. The service standards are also published at www.statcan.gc.ca under "About us" > "The agency" > "Providing services to Canadians."

Statistics Canada
Labour Statistics Division
Labour Force Survey Program

Labour Force Information

Friday, March 11, 2016

February 14 to 20, 2016

Published by authority of the Minister responsible for Statistics Canada

© Minister of Industry, 2016

All rights reserved. Use of this publication is governed by the Statistics Canada
Open License Agreement.

<http://www.statcan.gc.ca/reference/licence-eng.html>

March 2016

Catalogue no. 71-001-X

ISSN 1492-5478

Frequency: Monthly

Ottawa

Cette publication est également disponible en français.

Note of appreciation

Canada owes the success of its statistical system to a long-standing partnership between Statistics Canada, the citizens of Canada, its businesses, governments and other institutions. Accurate and timely statistical information could not be produced without their continued cooperation and goodwill.

User information

Symbols

The following standard symbols are used in Statistics Canada publications:

- . not available for any reference period
- .. not available for a specific reference period
- ... not applicable
- 0 true zero or a value rounded to zero
- 0^s value rounded to 0 (zero) where there is a meaningful distinction between true zero and the value that was rounded
- p preliminary
- r revised
- x suppressed to meet the confidentiality requirements of the *Statistics Act*
- E use with caution
- F too unreliable to be published
- * significantly different from reference category ($p < 0.05$)

Special requests (\$)

Custom tabulations can be arranged on an ad hoc or regular basis. This service enables you to specify tables and time series to meet your own requirements. The cost varies according to the request. For more information, contact us toll-free at 1-866-873-8788 or e-mail us at statcan.labour-travail.statcan@canada.ca.

Schedule of LFS releases

Release date	Reference period
February 5, 2016	January 10 to 16, 2016
March 11, 2016	February 14 to 20, 2016
April 8, 2016	March 13 to 19, 2016
May 6, 2016	April 10 to 16 2016
June 10, 2016	May 15 to 21, 2016
July 8, 2016	June 12 to 18, 2016
August 5, 2016	July 10 to 16, 2016
September 9, 2016	August 14 to 20, 2016
October 7, 2016	September 11 to 17, 2016
November 4, 2016	October 9 to 15, 2016
December 2, 2016	November 6 to 12, 2016
January 6, 2017	December 4 to 10, 2016

Table of contents

Highlights	5
Analysis — February 2016	6
Charts	
1. Employment indexes, Canada, seasonally adjusted	9
2. Unemployment, employment, and participation rates, Canada, seasonally adjusted	10
3. Employment indexes by industry, Canada, seasonally adjusted	11
4. Employment indexes by industry, Canada, seasonally adjusted	12
5. Employment indexes by industry, Canada, seasonally adjusted	13
6. Employment indexes by province, Canada, seasonally adjusted	14
7. Employment indexes by province, Canada, seasonally adjusted	15
8. Year-over-year growth in employment in British Columbia and Canada	16
Related products	17
Statistical tables	
1 Labour force characteristics by age and sex, Canada, seasonally adjusted	28
2 Employment by class of worker and industry, Canada, seasonally adjusted	30
3 Labour force characteristics by province, seasonally adjusted	31
4 Selected labour force characteristics (seasonally adjusted)	33
4-1 Newfoundland and Labrador	33
4-2 Prince Edward Island	34
4-3 Nova Scotia	35
4-4 New Brunswick	36
4-5 Quebec	37
4-6 Ontario	38
4-7 Manitoba	39
4-8 Saskatchewan	40
4-9 Alberta	41
4-10 British Columbia	42
5 Labour force characteristics by census metropolitan area (seasonally adjusted)	43
5-1 3 month moving average	43
5-2 Monthly	48

Table of contents – continued

6	Labour force characteristics	49
6-1	by province and economic region, unadjusted for seasonality, 3 month moving average ending in February 2015 and February 2016	49
6-2	by territory (seasonally adjusted) - 3 month moving average	54
7	Average usual hours and wages of employees by selected characteristics, Canada, unadjusted for seasonality	55
8	Regional unemployment rates used by the Employment Insurance program, seasonally adjusted, 3 month moving average	56
Data quality, concepts and methodology		
	Data quality	58

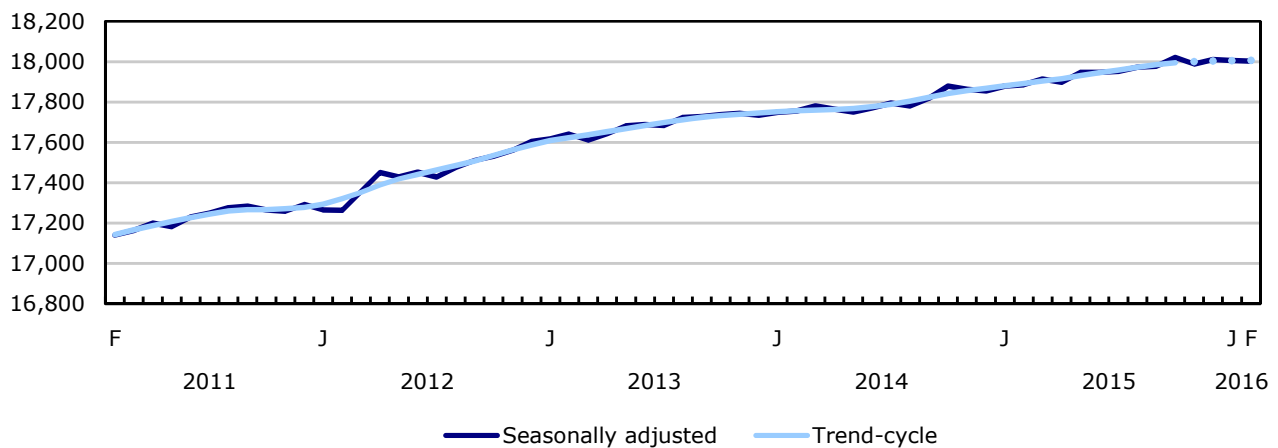
Highlights

Employment was virtually unchanged in February (-2,300 or 0.0%) as gains in part-time work were offset by losses in full time. The unemployment rate rose by 0.1 percentage points for the third consecutive month, reaching 7.3% for the first time since March 2013.

Chart 1
Employment and unemployment rate, Canada, seasonally adjusted

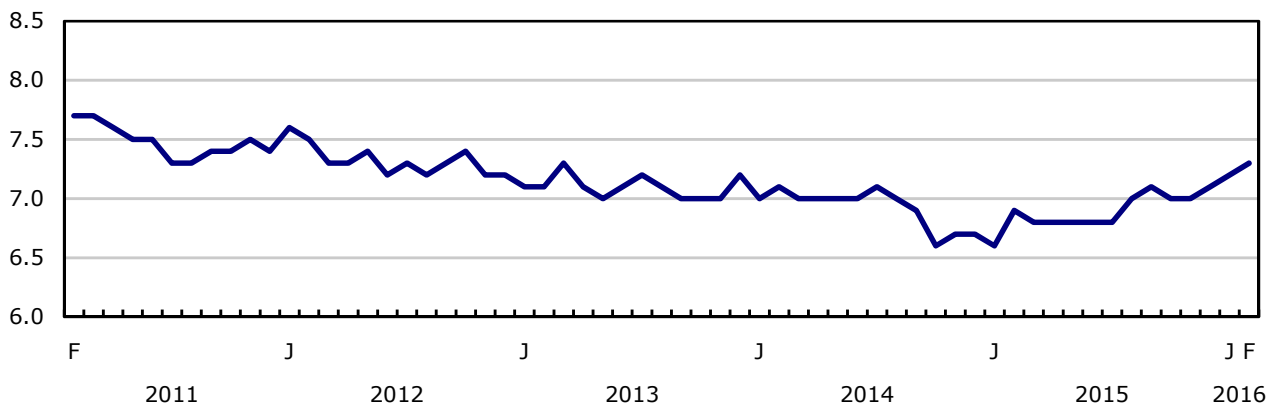
Employment

thousands



Unemployment rate

percent



Analysis — February 2016

Employment was virtually unchanged in February (-2,300 or 0.0%) as gains in part-time work were offset by losses in full time. The unemployment rate rose by 0.1 percentage points for the third consecutive month, reaching 7.3% for the first time since March 2013.

On a year-over-year basis, employment grew by 0.7% (+118,000), with the gains mostly coming from full-time work (+82,000 or +0.6%). At the same time, the number of hours worked increased by 1.0%.

Employment increased among men aged 55 and older in February, while the other demographic groups saw little change.

Saskatchewan, New Brunswick and Prince Edward Island registered employment declines, whereas British Columbia recorded an increase. There was little change in the remaining provinces.

Employment fell in health care and social assistance, educational services, 'other services', and natural resources. At the same time, there were more people working in construction, in business, building and other support services, as well as agriculture.

The number of public and private sector employees as well as the number of self-employed workers were little changed in February.

More men aged 55 and older employed

There were 18,000 more men aged 55 and older working in February. On a year-over-year basis, employment for this group was up 4.8% (+94,000). For their female counterparts, employment was little changed in February, but was up 5.1% (+81,000) on a year-over-year basis. Employment growth for men and women 55 and older has been driven by growth in their population.

Employment for men and women aged 25 to 54 was little changed on both a monthly and year-over-year basis. However, their unemployment rate was 6.3% in February, an increase of 0.6 percentage points compared with February 2015 as more of them searched for work.

For youths aged 15 to 24, employment edged down in February (-16,000), and the unemployment rate was 13.3%. On a year-over-year basis, youth employment fell by 2.2% (-56,000) while their population declined by 1.0% (-44,000).

Provincial summary

In February, employment fell by 7,800 in Saskatchewan, and the unemployment rate increased 0.3 percentage points to 5.9%. Compared with 12 months earlier, employment in the province was little changed. However, the unemployment rate was up 0.8 percentage points—the result of more people searching for work.

In New Brunswick, employment declined by 5,700 in February, and the unemployment rate increased 0.6 percentage points to 9.9%. Provincial employment has been on a downward trend since the autumn of 2015.

Employment in Prince Edward Island declined by 600, and the unemployment rate rose from 9.5% to 11.0%. In the 12 months to February, employment in the province was down 2,200 (-3.0%).

British Columbia was the lone province with more people working in February (+14,000). This brought total employment gains to 69,000 or 3.0% on a year-over-year basis, the highest rate of growth of all the provinces. In addition, British Columbia has outpaced the national year-over-year employment growth rate since June 2015. The unemployment rate in the province was 6.6% in February, unchanged from the previous month.

Following two monthly increases, employment in Ontario was little changed in February and the unemployment rate was 6.8%. On a year-over-year basis, employment in the province advanced by 74,000 or 1.1%, the second highest rate of growth among the provinces. The gains were mostly in full-time work.

Employment in Quebec was little changed both on a monthly and year-over-year basis, and the unemployment rate remained at 7.6% in February.

While employment in Alberta was also little changed in February, year-over-year declines totalled 21,000 (-0.9%), driven by losses in full-time work (-56,000 or -2.9%). With more Albertans in search of employment, the unemployment rate in the province reached 7.9% in February—an increase of 0.5 percentage points from January and up 2.5 percentage points from February 2015.

Industry perspective

In February, there were 20,000 fewer people working in health care and social assistance. Despite this decline, employment in the industry was up 61,000 (+2.7%) on a year-over-year basis.

The number of workers also fell in educational services (-17,000), bringing employment in the industry down to a level slightly lower than that of 12 months earlier.

In the 'other services' industry, such as repair and maintenance, employment declined by 15,000. In the 12 months to February, however, the number of people working in this industry was virtually unchanged.

There were 8,900 fewer people working in natural resources, which continued a downward trend that began late in 2014.

On the other hand, there were 34,000 more people working in construction in February. On a year-over-year basis, however, employment in the industry was virtually unchanged.

The number of people working in business, building and other support services also increased, up 13,000 in February. Despite this increase, employment in this industry was close to the level observed 12 months earlier.

Employment in agriculture rose by 7,200 in February. On a year-over-year basis, employment in the industry was little changed.

Despite little change in February, employment in manufacturing increased by 41,000 (+2.4%) from 12 months earlier. These gains were driven by growth in Ontario, Quebec and British Columbia.

The number of employees in the private and public sectors as well as self-employment were little changed in February, as well as on a year-over-year basis.

Canada–United States comparison

Adjusted to US concepts, the unemployment rate in Canada was 6.2% in February versus 4.9% in the United States. Compared with February 2015, the unemployment rate increased by 0.2 percentage points in Canada, while it declined by 0.6 percentage points in the United States.

The labour force participation rate in Canada (adjusted to US concepts) was 65.7% in February, compared with 62.9% in the United States.

In February, the US-adjusted employment rate in Canada stood at 61.7%, compared with 59.8% in the United States. Compared with 12 months earlier, the employment rate in Canada declined by 0.3 percentage points, while in the United States, it increased by 0.5 percentage points.

For further information on Canada-US comparisons, see *Measuring Employment and Unemployment in Canada and the United States – A comparison*.

Note to readers

The Labour Force Survey (LFS) estimates for February are for the week of February 14 to 20.

The LFS estimates are based on a sample and are therefore subject to sampling variability. As a result, monthly estimates will show more variability than trends observed over longer time periods. For more information, see *Interpreting Monthly Changes in Employment from the Labour Force Survey*. Estimates for smaller geographic areas or industries also have more variability. For an explanation of sampling variability of estimates and how to use standard errors to assess this variability, consult the "Data quality" section of the publication *Labour Force Information (71-001-X)*.

This analysis focuses on differences between estimates that are statistically significant at the 68% confidence level.

The **employment rate** is the number of employed persons as a percentage of the population 15 years of age and over. The rate for a particular group (for example, youths aged 15 to 24) is the number employed in that group as a percentage of the population for that group.

The **unemployment rate** is the number of unemployed as a percentage of the labour force (employed and unemployed).

The **participation rate** is the number of employed and unemployed as a percentage of the population.

For more detailed information, see the *Guide to the Labour Force Survey (71-543-G)*.

Seasonal adjustment

Unless otherwise stated, this release presents seasonally adjusted estimates, which facilitates comparisons by removing the effects of seasonal variations. For more information on seasonal adjustment, see *Seasonally adjusted data – Frequently asked questions*.

Chart 1 shows trend-cycle data on employment. These data represent a smoothed version of the seasonally adjusted time series, which provide information on longer-term movements, including changes in direction underlying the series. These data are available in CANSIM table 282-0087 for the Canada-level employment series. For more information, see the *StatCan Blog* and *Trend-cycle estimates – Frequently asked questions*.

Next release

The next release of the LFS will be on April 8.

Chart 1
Employment indexes, Canada, seasonally adjusted

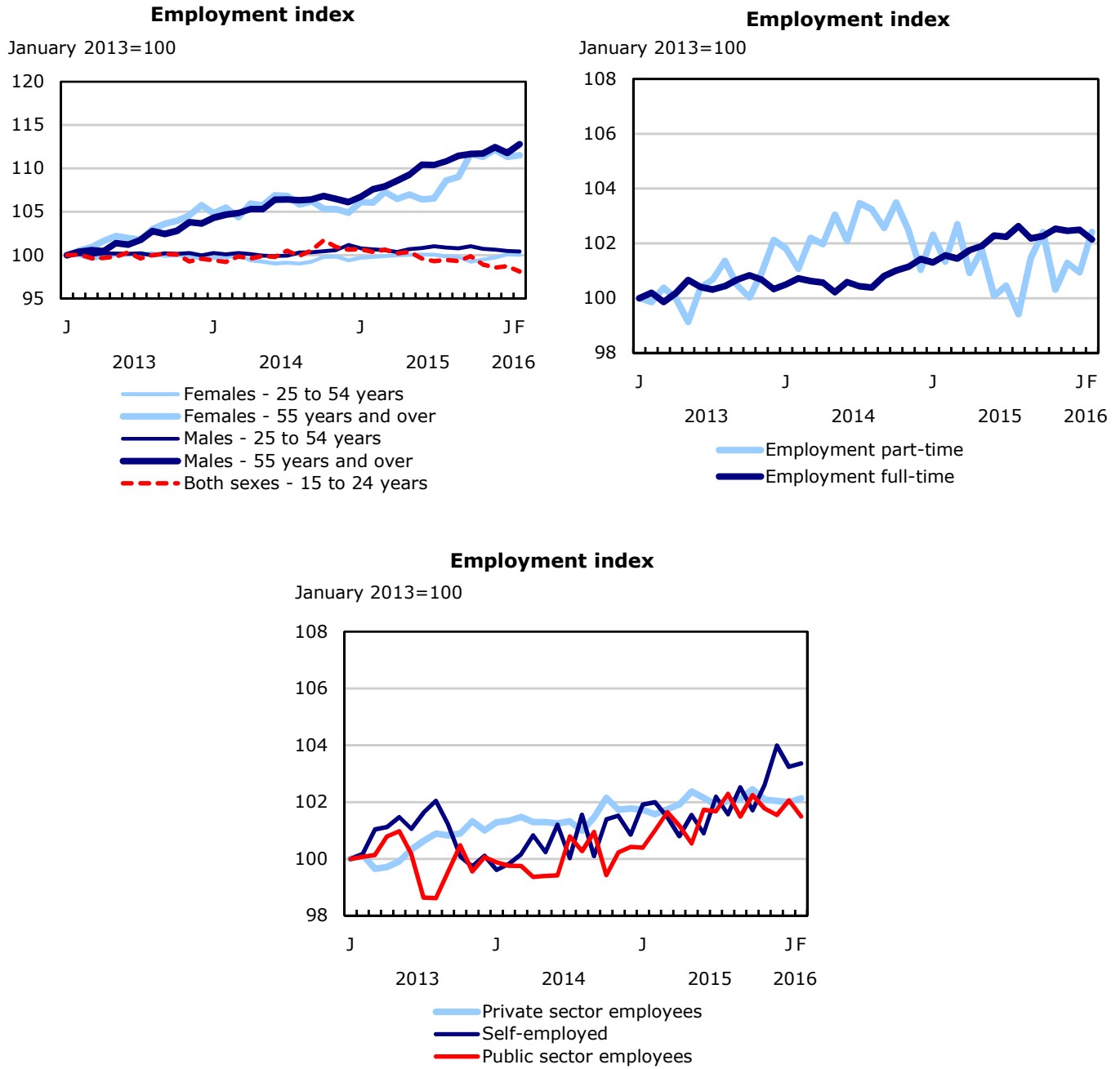


Chart 2
Unemployment, employment, and participation rates, Canada, seasonally adjusted

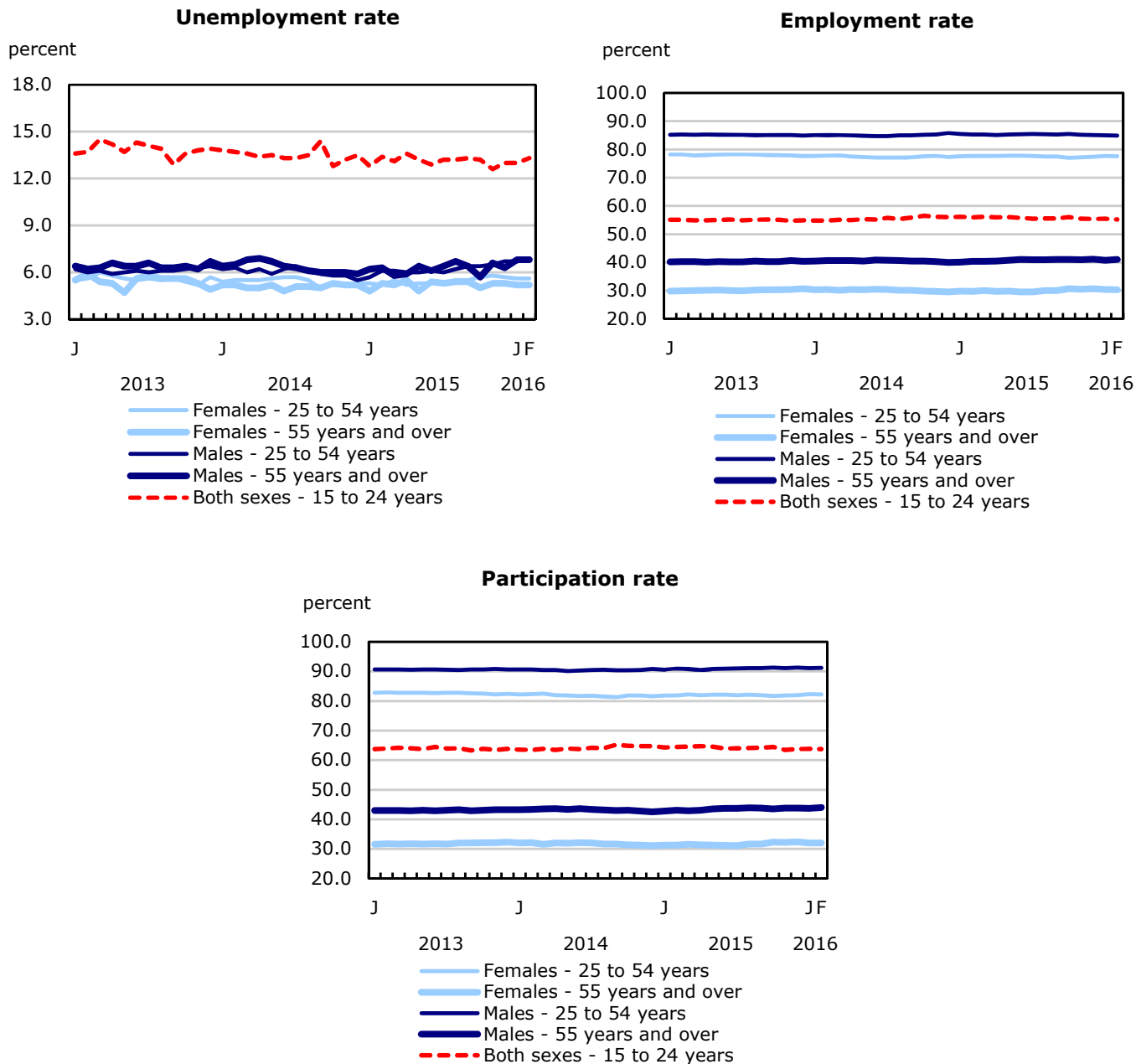


Chart 3
Employment indexes by industry, Canada, seasonally adjusted

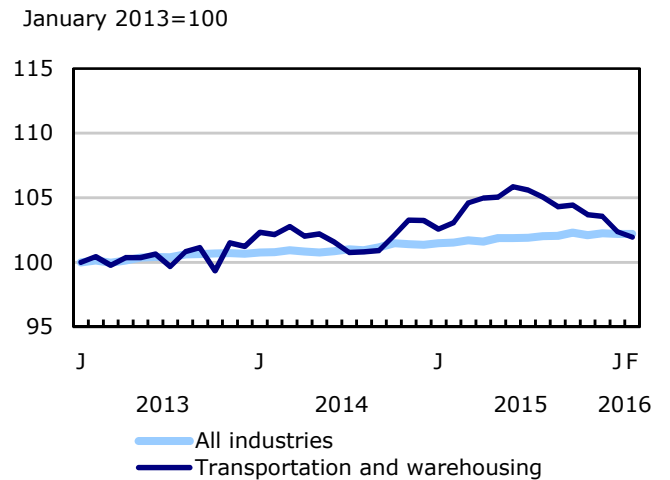
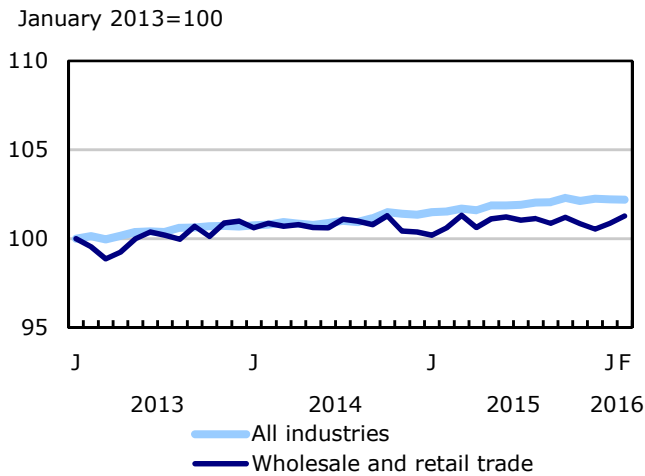
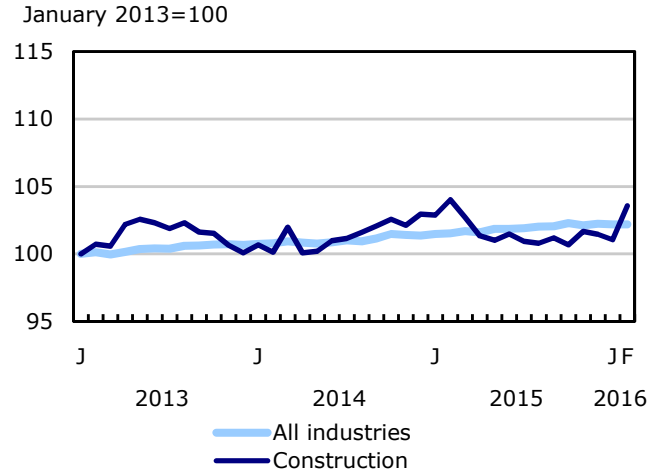
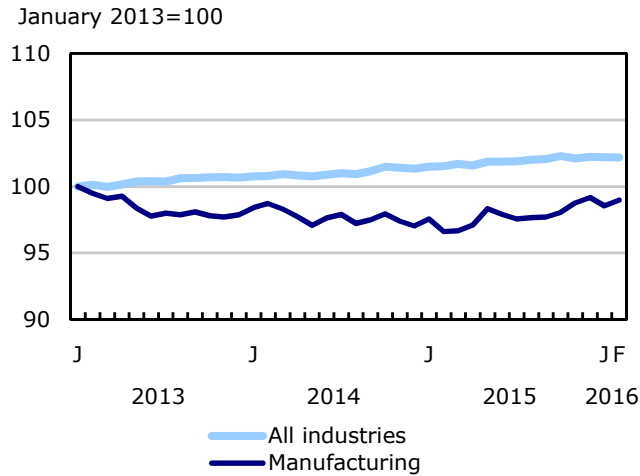
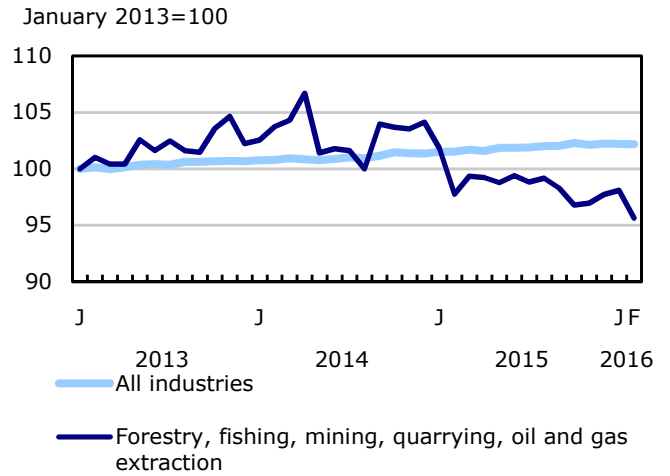
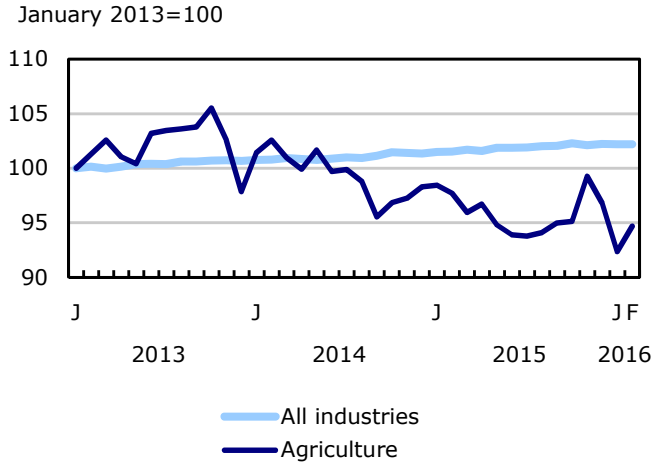


Chart 4
Employment indexes by industry, Canada, seasonally adjusted

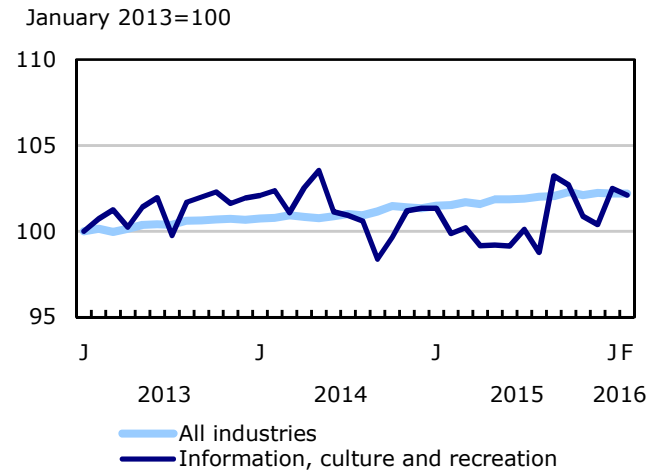
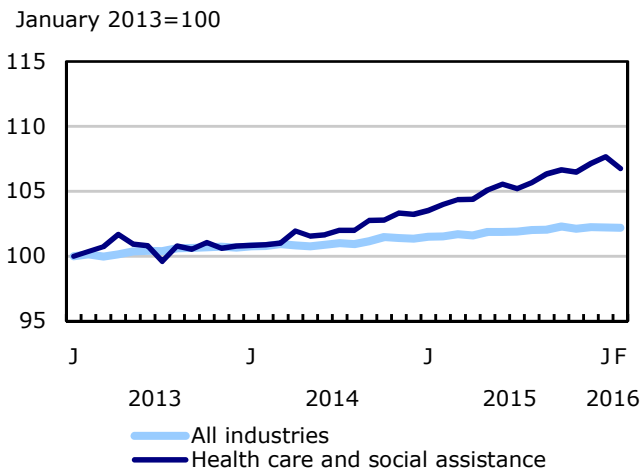
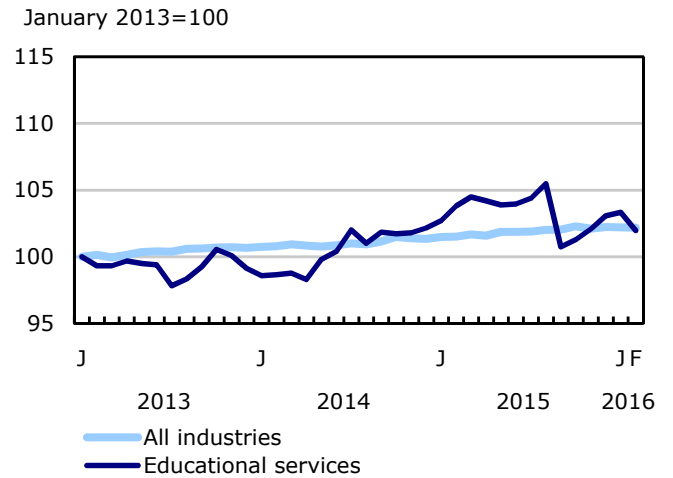
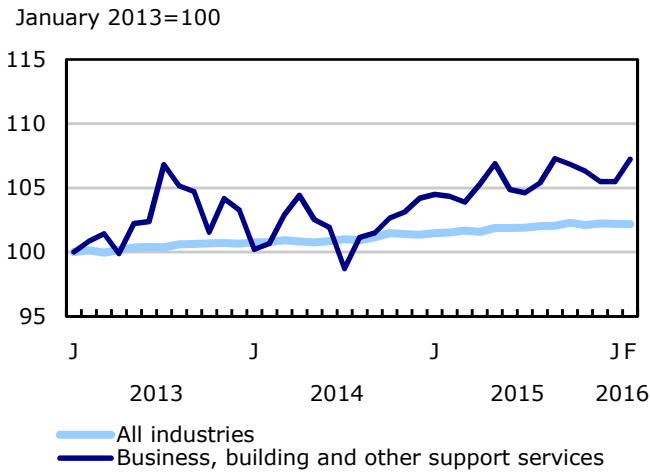
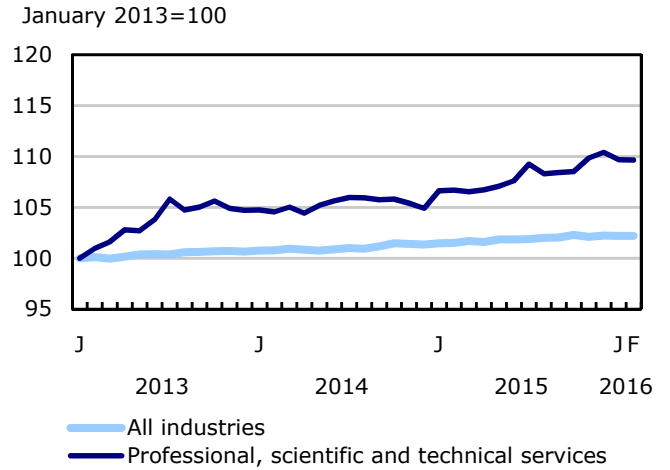
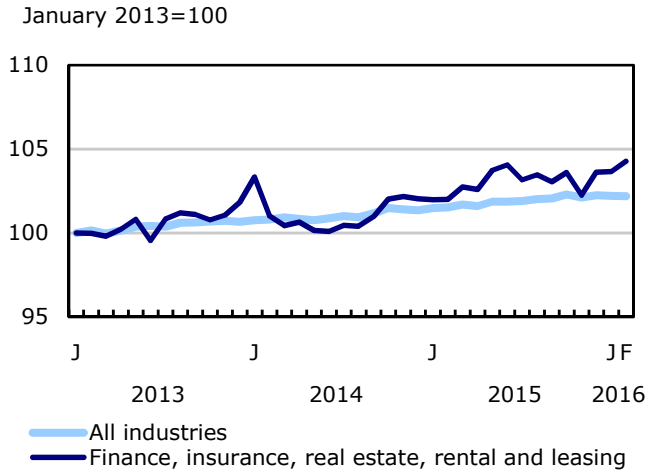


Chart 5
Employment indexes by industry, Canada, seasonally adjusted

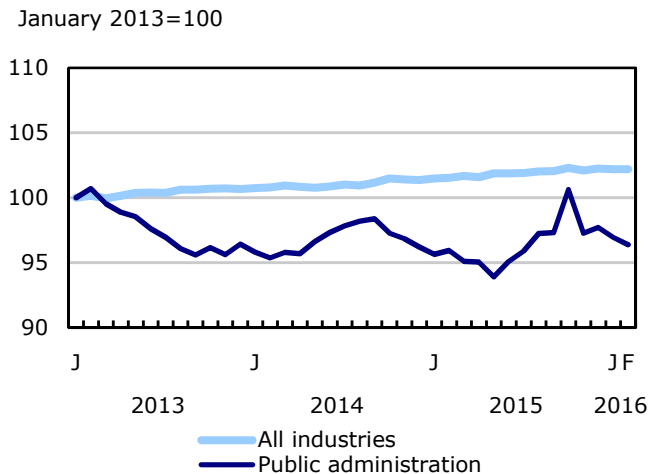
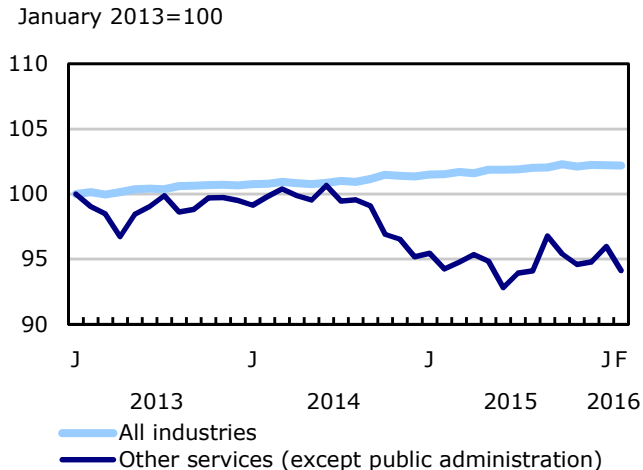
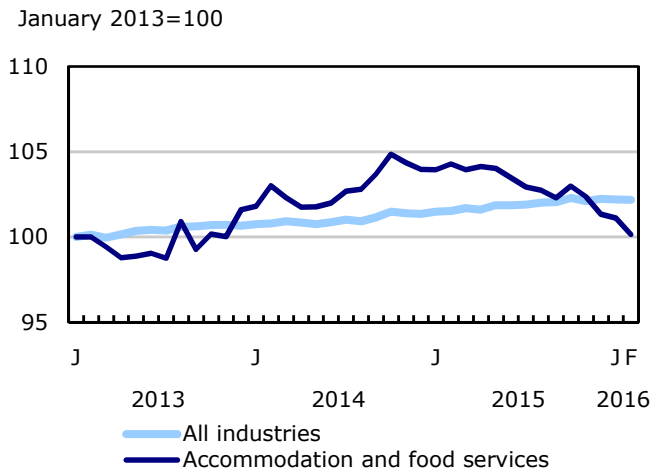


Chart 6
Employment indexes by province, Canada, seasonally adjusted

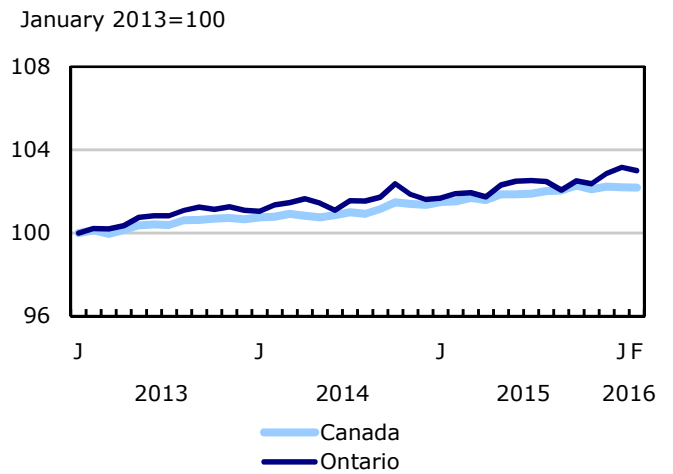
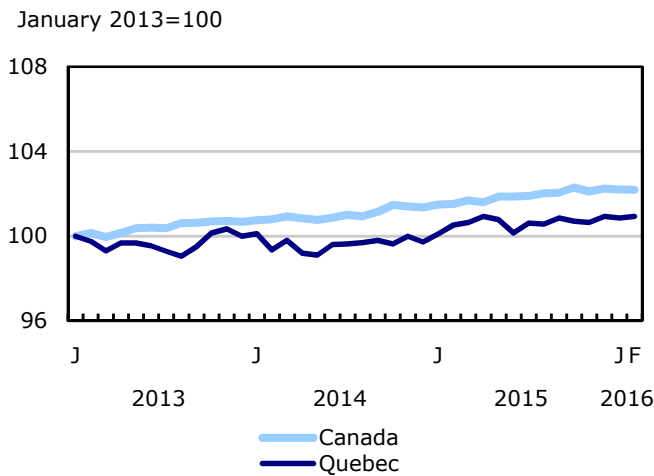
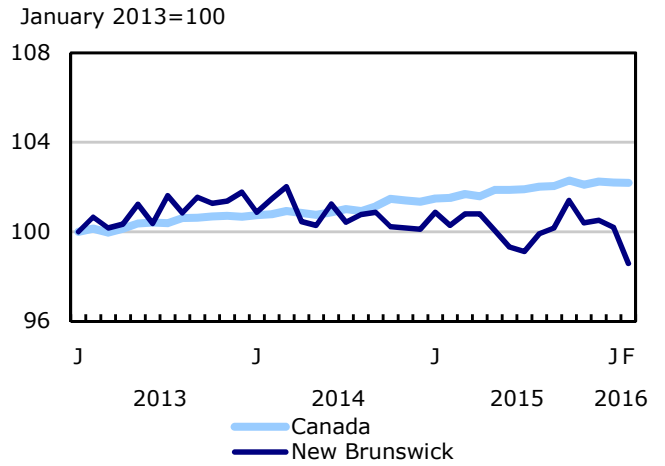
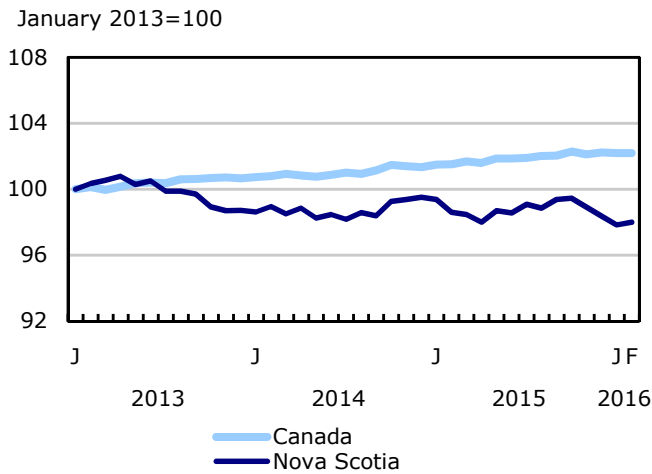
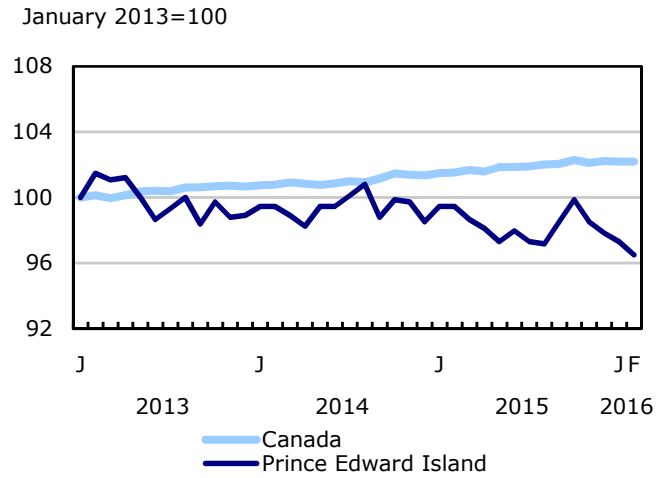
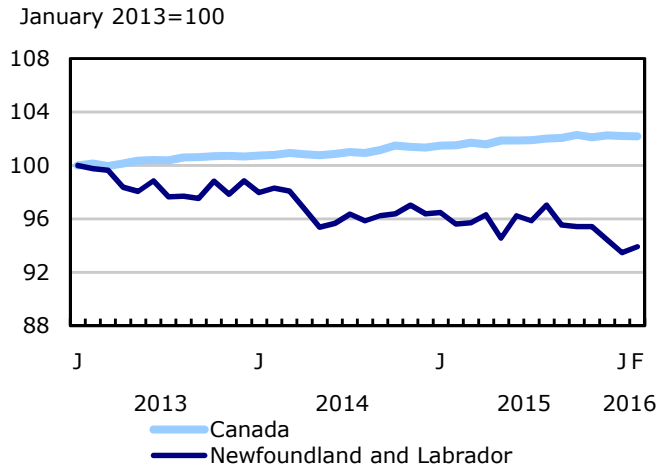


Chart 7
Employment indexes by province, Canada, seasonally adjusted

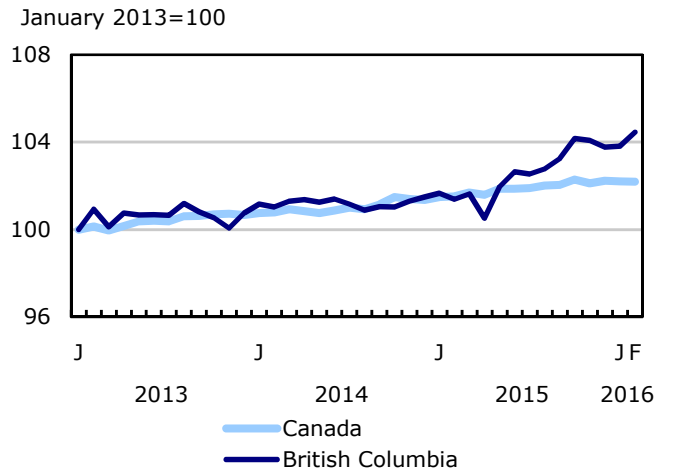
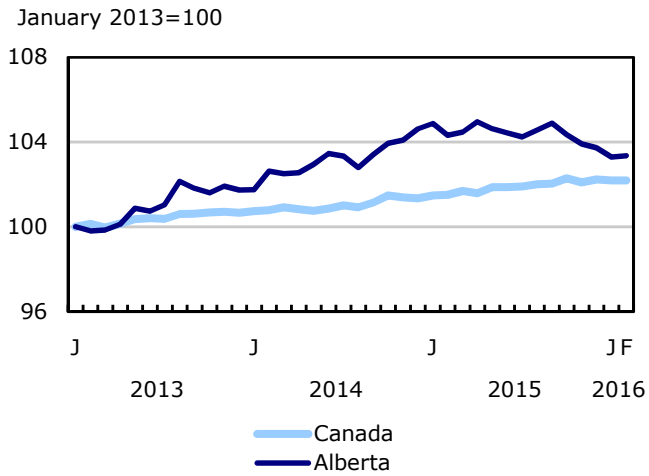
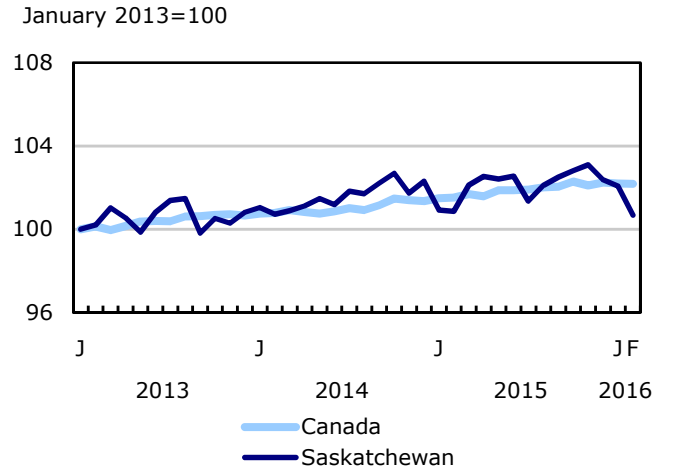
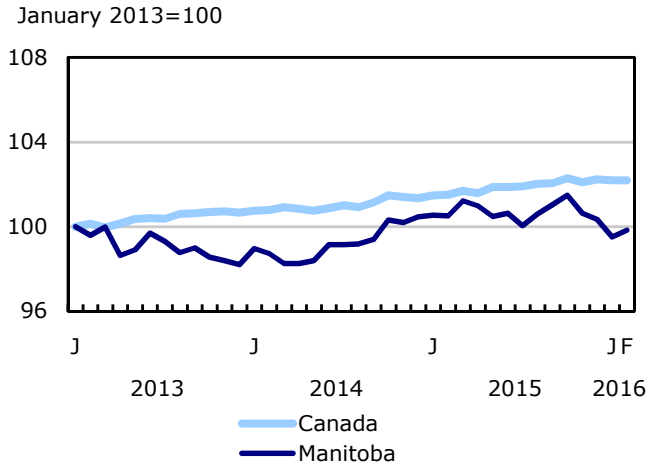
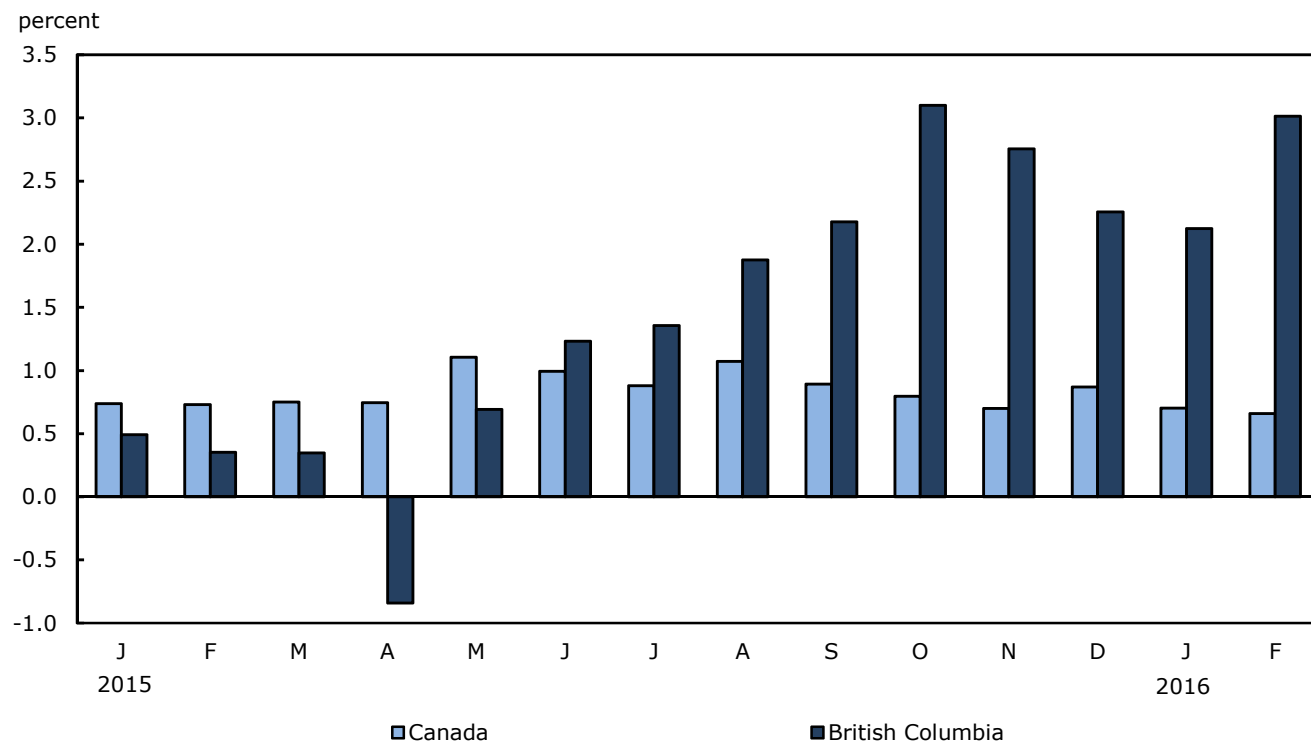


Chart 8
Year-over-year growth in employment in British Columbia and Canada



Source(s): CANSIM table 282-0087.

Related products

Selected publications from Statistics Canada

71-526-X	Methodology of the Canadian Labour Force Survey
71-543-G	Guide to the Labour Force Survey
71-587-X	Aboriginal Peoples Living Off-reserve in Western Canada: Estimates from the Labour Force Survey
71-588-X	The Aboriginal Labour Force Analysis Series
71-606-X	The Immigrant Labour Force Analysis Series
71F0031X	Improvements to the Labour Force Survey (LFS)
71M0001X	Labour Force Survey Microdata File

Selected CANSIM tables from Statistics Canada

279-0029	Work absence statistics of full-time employees by province, census metropolitan area (CMA) and sex, annual
279-0030	Work absence statistics of full-time employees by sex and North American Industry Classification System (NAICS), annual
279-0032	Work absence statistics of full-time employees by sex and age group, annual
279-0033	Work absence statistics of full-time employees by sex and presence of children, annual
279-0034	Work absence statistics of full-time employees by sex and job tenure, annual
279-0035	Work absence statistics of full-time employees by sex and public and private sector, annual
279-0036	Work absence statistics of full-time employees by sex and educational attainment, annual
279-0037	Work absence statistics of full-time employees by sex and workplace size, annual
279-0038	Work absence statistics of full-time employees by sex and job status, annual
279-0039	Work absence statistics of full-time employees by sex and union coverage, annual
279-0040	Work absence statistics of full-time employees by sex and National Occupational Classification (NOC), annual
282-0001	Labour force survey estimates (LFS), by sex and detailed age group, unadjusted for seasonality, monthly

282-0002	Labour force survey estimates (LFS), by sex and detailed age group, annual
282-0003	Labour force survey estimates (LFS), by educational attainment, sex and age group, unadjusted for seasonality, monthly
282-0004	Labour force survey estimates (LFS), by educational attainment, sex and age group, annual
282-0005	Labour force survey estimates (LFS), by full- and part-time students during school months, sex and age group, unadjusted for seasonality, monthly
282-0006	Labour force survey estimates (LFS), by students during summer months, sex and age group, unadjusted for seasonality, monthly
282-0007	Labour force survey estimates (LFS), by North American Industry Classification System (NAICS), sex and age group, unadjusted for seasonality, monthly
282-0008	Labour force survey estimates (LFS), by North American Industry Classification System (NAICS), sex and age group, annual
282-0011	Labour force survey estimates (LFS), employment by class of worker, North American Industry Classification System (NAICS) and sex, unadjusted for seasonality, monthly
282-0012	Labour force survey estimates (LFS), employment by class of worker, North American Industry Classification System (NAICS) and sex, annual
282-0013	Labour force survey estimates (LFS), part-time employment by reason for part-time work, sex and age group, unadjusted for seasonality, monthly
282-0014	Labour force survey estimates (LFS), part-time employment by reason for part-time work, sex and age group, annual
282-0015	Labour force survey estimates (LFS), by usual hours worked, main or all jobs, sex and age group, unadjusted for seasonality, monthly
282-0016	Labour force survey estimates (LFS), by usual hours worked, main or all jobs, sex and age group, annual
282-0017	Labour force survey estimates (LFS), by actual hours worked, main or all jobs, sex and age group, unadjusted for seasonality, monthly
282-0018	Labour force survey estimates (LFS), by actual hours worked, main or all jobs, sex and age group, annual
282-0019	Labour force survey estimates (LFS), by usual hours worked, class of worker, North American Industry Classification System (NAICS) and sex, unadjusted for seasonality, monthly
282-0020	Labour force survey estimates (LFS), by usual hours worked, class of worker, North American Industry Classification System (NAICS) and sex, annual
282-0021	Labour force survey estimates (LFS), by actual hours worked, class of worker, North American Industry Classification System (NAICS) and sex, unadjusted for seasonality, monthly
282-0022	Labour force survey estimates (LFS), by actual hours worked, class of worker, North American Industry Classification System (NAICS) and sex, annual

282-0027	Labour force survey estimates (LFS), by total and average usual and actual hours worked, main or all jobs, type of work, sex and age group, unadjusted for seasonality, monthly
282-0028	Labour force survey estimates (LFS), by total and average usual and actual hours worked, main or all jobs, type of work, sex and age group, annual
282-0031	Labour force survey estimates (LFS), multiple jobholders by North American Industry Classification System (NAICS), sex and age group, annual
282-0032	Labour force survey estimates (LFS), multiple jobholders by North American Industry Classification System (NAICS), sex and age group, unadjusted for seasonality, monthly
282-0035	Labour force survey estimates (LFS), multiple jobholders by usual hours worked at main and all jobs, unadjusted for seasonality, monthly
282-0036	Labour force survey estimates (LFS), multiple jobholders by usual hours worked at main and all jobs, annual
282-0037	Labour force survey estimates (LFS), job tenure by type of work, sex and age group, unadjusted for seasonality, monthly
282-0038	Labour force survey estimates (LFS), job tenure by type of work, sex and age group, annual
282-0041	Labour force survey estimates (LFS), job tenure by North American Industry Classification System (NAICS) and sex, unadjusted for seasonality, monthly
282-0042	Labour force survey estimates (LFS), job tenure by North American Industry Classification System (NAICS) and sex, annual
282-0047	Labour force survey estimates (LFS), duration of unemployment by sex and age group, unadjusted for seasonality, monthly
282-0048	Labour force survey estimates (LFS), duration of unemployment by sex and age group, annual
282-0049	Labour force survey estimates (LFS), unemployment by type of work sought and search method, sex and age group, unadjusted for seasonality, monthly
282-0050	Labour force survey estimates (LFS), unemployment by type of work sought and search method, sex and age group, annual
282-0051	Labour force survey estimates (LFS), retirement age by class of worker and sex, annual
282-0071	Labour force survey estimates (LFS), wages of employees by type of work, North American Industry Classification System (NAICS), sex and age group, unadjusted for seasonality, monthly
282-0072	Labour force survey estimates (LFS), wages of employees by type of work, North American Industry Classification System (NAICS), sex and age group, annual
282-0073	Labour force survey estimates (LFS), wages of employees by job permanence, union coverage, sex and age group, unadjusted for seasonality, monthly
282-0074	Labour force survey estimates (LFS), wages of employees by job permanence, union coverage, sex and age group, annual
282-0075	Labour force survey estimates (LFS), employees by establishment size, North American Industry Classification System (NAICS), sex and age group, unadjusted for seasonality, monthly

282-0076	Labour force survey estimates (LFS), employees by establishment size, North American Industry Classification System (NAICS), sex and age group, annual
282-0077	Labour force survey estimates (LFS), employees by union coverage, North American Industry Classification System (NAICS), sex and age group, unadjusted for seasonality, monthly
282-0078	Labour force survey estimates (LFS), employees by union coverage, North American Industry Classification System (NAICS), sex and age group, annual
282-0079	Labour force survey estimates (LFS), employees by job permanency, North American Industry Classification System (NAICS), sex and age group, unadjusted for seasonality, monthly
282-0080	Labour force survey estimates (LFS), employees by job permanency, North American Industry Classification System (NAICS), sex and age group, annual
282-0083	Labour force survey estimates (LFS), employees working overtime (weekly) by North American Industry Classification System (NAICS), sex and age group, unadjusted for seasonality, monthly
282-0084	Labour force survey estimates (LFS), employees working overtime (weekly) by North American Industry Classification System (NAICS), sex and age group, annual
282-0085	Labour force survey estimates (LFS), supplementary unemployment rates by sex and age group, unadjusted for seasonality, monthly
282-0086	Labour force survey estimates (LFS), supplementary unemployment rates by sex and age group, annual
282-0087	Labour force survey estimates (LFS), by sex and age group, seasonally adjusted and unadjusted, monthly
282-0088	Labour force survey estimates (LFS), employment by North American Industry Classification System (NAICS), seasonally adjusted and unadjusted, monthly
282-0089	Labour force survey estimates (LFS), employment by class of worker and sex, seasonally adjusted and unadjusted, monthly
282-0092	Labour force survey estimates (LFS), actual hours worked at main job by North American Industry Classification System (NAICS), seasonally adjusted, monthly
282-0094	Labour force survey estimates (LFS), by North American Industry Classification System (NAICS), Canada, seasonally adjusted, monthly
282-0095	Labour force survey estimates (LFS), by full- and part-time students during school months, sex and age group, annual
282-0100	Labour force survey estimates (LFS), by territories, sex and age group, 3-month moving average, seasonally adjusted and unadjusted, monthly
282-0101	Labour force survey estimates (LFS), by immigrant status, age group, Canada, regions, provinces and Montreal, Toronto, Vancouver census metropolitan areas, 3-month moving average, unadjusted for seasonality, monthly
282-0102	Labour force survey estimates (LFS), by immigrant status, age group, Canada, regions, provinces and Montreal, Toronto, Vancouver census metropolitan areas, annual

282-0103	Labour force survey estimates (LFS), by immigrant status, sex and detailed age group, Canada, 3-month moving average, unadjusted for seasonality, monthly
282-0104	Labour force survey estimates (LFS), by immigrant status, sex and detailed age group, Canada, annual
282-0105	Labour force survey estimates (LFS), by immigrant status, educational attainment, sex and age group, Canada, 3-month moving average, unadjusted for seasonality, monthly
282-0106	Labour force survey estimates (LFS), by immigrant status, educational attainment, sex and age group, Canada, annual
282-0107	Labour force survey estimates (LFS), by immigrant status, country of birth, sex and age group, Canada, 3-month moving average, unadjusted for seasonality, monthly
282-0108	Labour force survey estimates (LFS), by immigrant status, country of birth, sex and age group, Canada, annual
282-0122	Labour force survey estimates (LFS), by provinces and economic regions based on 2011 Census boundaries, 3-month moving average, unadjusted for seasonality, monthly
282-0123	Labour force survey estimates (LFS), by provinces, territories and economic regions based on 2011 Census boundaries, annual
282-0124	Labour force survey estimates (LFS), employment by economic region based on 2011 Census boundaries and North American Industry Classification System (NAICS), 3-month moving average, unadjusted for seasonality, monthly
282-0125	Labour force survey estimates (LFS), employment by economic region based on 2011 Census boundaries and North American Industry Classification System (NAICS), annual
282-0128	Labour force survey estimates (LFS), by census metropolitan area based on 2011 Census boundaries, sex and age group, 3-month moving average, unadjusted for seasonality, monthly
282-0129	Labour force survey estimates (LFS), by census metropolitan area based on 2011 Census boundaries, sex and age group, annual
282-0130	Labour force survey estimates (LFS), employment by census metropolitan area based on 2011 Census boundaries and North American Industry Classification System (NAICS), 3-month moving average, unadjusted for seasonality, monthly
282-0131	Labour force survey estimates (LFS), employment by census metropolitan area based on 2011 Census boundaries and North American Industry Classification System (NAICS), annual
282-0134	Labour force survey estimates (LFS), by selected census agglomerations based on 2011 Census boundaries, annual
282-0135	Labour force survey estimates (LFS), by census metropolitan area based on 2011 Census boundaries, 3-month moving average, seasonally adjusted and unadjusted, monthly
282-0136	Labour force survey estimates (LFS), by Montréal, Toronto and Vancouver census metropolitan areas based on 2011 Census boundaries, seasonally adjusted and unadjusted, monthly

282-0137	Labour force survey estimates (LFS), by population centres and rural areas based on 2011 Census boundaries, sex and age group, unadjusted for seasonality, monthly
282-0138	Labour force survey estimates (LFS), by population centres and rural areas based on 2011 Census boundaries, sex and age group, annual
282-0139	Labour force survey estimates (LFS), employment by population centres and rural areas based on 2011 Census boundaries, class of worker and North American Industry Classification System (NAICS), unadjusted for seasonality, monthly
282-0140	Labour force survey estimates (LFS), employment by population centres and rural areas based on 2011 Census boundaries, class of worker and North American Industry Classification System (NAICS), annual
282-0141	Labour force survey estimates (LFS), by National Occupational Classification (NOC) and sex, unadjusted for seasonality, monthly
282-0142	Labour force survey estimates (LFS), by National Occupational Classification (NOC) and sex, annual
282-0143	Labour force survey estimates (LFS), by usual hours worked, National Occupational Classification (NOC) and sex, unadjusted for seasonality, monthly
282-0144	Labour force survey estimates (LFS), by usual hours worked, National Occupational Classification (NOC) and sex, annual
282-0145	Labour force survey estimates (LFS), by actual hours worked, National Occupational Classification (NOC) and sex, unadjusted for seasonality, monthly
282-0146	Labour force survey estimates (LFS), by actual hours worked, National Occupational Classification (NOC) and sex, annual
282-0147	Labour force survey estimates (LFS), multiple jobholders by National Occupational Classification (NOC), sex and age group, unadjusted for seasonality, monthly
282-0148	Labour force survey estimates (LFS), multiple jobholders by National Occupational Classification (NOC), sex and age group, annual
282-0149	Labour force survey estimates (LFS), job tenure by National Occupational Classification (NOC) and sex, unadjusted for seasonality, monthly
282-0150	Labour force survey estimates (LFS), job tenure by National Occupational Classification (NOC) and sex, annual
282-0151	Labour force survey estimates (LFS), wages of employees by type of work, National Occupational Classification (NOC), sex, and age group, unadjusted for seasonality, monthly
282-0152	Labour force survey estimates (LFS), wages of employees by type of work, National Occupational Classification (NOC), sex, and age group, annual
282-0153	Labour force survey estimates (LFS), employees working overtime (weekly) by National Occupational Classification (NOC), sex and age group, unadjusted for seasonality, monthly
282-0154	Labour force survey estimates (LFS), employees working overtime (weekly) by National Occupational Classification (NOC), sex and age group, annual

282-0155	Labour force survey estimates (LFS), employment by National Occupational Classification (NOC), seasonally adjusted, monthly
282-0156	Labour force survey estimates (LFS), employment by economic region based on 2011 Census boundaries and National Occupational Classification (NOC), three-month moving average, unadjusted for seasonality, monthly
282-0157	Labour force survey estimates (LFS), employment by economic region based on 2011 Census boundaries and National Occupational Classification (NOC), annual
282-0158	Labour force survey estimates (LFS), employment by census metropolitan area based on 2011 Census boundaries and National Occupational Classification (NOC), three-month moving average, unadjusted for seasonality, monthly
282-0159	Labour force survey estimates (LFS), employment by census metropolitan area based on 2011 Census boundaries and National Occupational Classification (NOC), annual
282-0160	Labour force survey estimates (LFS), weekly wage distributions of employees by type of work, National Occupational Classification (NOC) and sex, unadjusted for seasonality, monthly
282-0161	Labour force survey estimates (LFS), weekly wage distributions of employees by type of work, National Occupational Classification (NOC) and sex, annual
282-0162	Labour force survey estimates (LFS), hourly wage distribution of employees by type of work, National Occupational Classification (NOC) and sex, unadjusted for seasonality, monthly
282-0163	Labour force survey estimates (LFS), hourly wage distribution of employees by type of work, National Occupational Classification (NOC) and sex, annual
282-0164	Labour force survey estimates (LFS), employees by union status and National Occupational Classification (NOC), Canada, annual
282-0165	Labour force survey estimates (LFS), employment by Aboriginal group, National Occupational Classification (NOC), sex and age group, annual
282-0166	Labour force survey estimates (LFS), employment by Aboriginal group, National Occupational Classification (NOC) and age group, Canada, selected provinces and regions, annual
282-0167	Labour force survey estimates (LFS), average usual hours and wages of employees by age group, sex, union coverage, job permanency, and National Occupational Classification (NOC), unadjusted for seasonality, monthly
282-0200	Labour force survey estimates (LFS), weekly wage distributions of employees by type of work, North American Industry Classification System (NAICS), and sex, unadjusted for seasonality, monthly
282-0201	Labour force survey estimates (LFS), weekly wage distributions of employees by type of work, North American Industry Classification System (NAICS), and sex, annual
282-0204	Labour force survey estimates (LFS), hourly wage distributions of employees by type of work, North American Industry Classification System (NAICS), and sex, unadjusted for seasonality, monthly
282-0205	Labour force survey estimates (LFS), hourly wage distributions of employees by type of work, North American Industry Classification System (NAICS), and sex, annual

282-0208	Labour force survey estimates (LFS), by educational degree, sex and age group, unadjusted for seasonality, monthly
282-0209	Labour force survey estimates (LFS), by educational degree, sex and age group, annual
282-0210	Labour force survey estimates (LFS), by family type and family age composition, unadjusted for seasonality, monthly
282-0211	Labour force survey estimates (LFS), by family type and family age composition, annual
282-0212	Labour force survey estimates (LFS), hours lost by employees by reason of absence, full and part week and sex, unadjusted for seasonality, monthly
282-0213	Labour force survey estimates (LFS), hours lost by employees by reason of absence, full and part week and sex, annual
282-0214	Labour force survey estimates (LFS), activity prior to unemployment by sex and age group, unadjusted for seasonality, monthly
282-0215	Labour force survey estimates (LFS), activity prior to unemployment, by sex and age group, annual
282-0216	Labour force survey estimates (LFS), reason for leaving job during previous year by sex and age group, unadjusted for seasonality, monthly
282-0217	Labour force survey estimates (LFS), reason for leaving job during previous year by sex and age group, annual
282-0218	Labour force survey estimates (LFS), reason for not looking for work, by sex and age group, unadjusted for seasonality, monthly
282-0219	Labour force survey estimates (LFS), reason for not looking for work, by sex and age group, annual
282-0220	Labour Force Survey estimates (LFS), employees by union status, sex and age group, Canada and provinces, annual
282-0221	Labour Force Survey estimates (LFS), employees by union status, sex, age group and education level, Canada, annual
282-0223	Labour Force Survey estimates (LFS), employees by union status, North American Industry Classification System (NAICS) and sex, Canada, annual
282-0224	Labour Force Survey estimates (LFS), employees by union status, establishment size, job tenure, type of work and job permanency, Canada, annual
282-0225	Labour Force Survey estimates (LFS), average weekly earnings, average hourly wage rate and average usual weekly hours by union status and type of work, Canada and provinces, annual
282-0226	Labour force survey estimates (LFS), by Aboriginal group, sex and age group, Canada, selected provinces and regions, annual
282-0227	Labour force survey estimates (LFS), by detailed Aboriginal group, sex and age group, Canada and selected regions, annual

282-0228	Labour force survey estimates (LFS), by Aboriginal group, educational attainment and age group, Canada and selected regions, annual
282-0229	Labour force survey estimates (LFS), employment by Aboriginal group, North American Industry Classification System (NAICS), sex and age group, annual
282-0230	Labour force survey estimates (LFS), employment by Aboriginal group, North American Industry Classification System (NAICS) and age group, Canada and selected regions, annual
282-0233	Labour force survey estimates (LFS), average hourly and weekly wages and average usual weekly hours by Aboriginal group and age group, Canada, selected provinces and regions, annual

Selected surveys from Statistics Canada

3701	Labour Force Survey
------	---------------------

Selected summary tables from Statistics Canada

- *Average hourly wages of employees by selected characteristics and occupation, unadjusted data, by province (monthly)*
- *Days lost per worker by industry and sex*
- *People employed, by educational attainment*
- *Reasons for part-time work by sex and age group*
- *Self-employment, historical summary*
- *Employment by age, sex, type of work, class of worker and province (monthly)*
- *Actual hours worked per week by industry, seasonally adjusted (monthly)*
- *Labour force characteristics, unadjusted, by territory (3 month moving average)*
- *Employment by industry and sex*
- *Full-time and part-time employment by sex and age group*
- *Labour force characteristics by age and sex*
- *Labour force characteristics by immigrant status of population aged 25 to 54, and by educational attainment*
- *Labour force characteristics by immigrant status, by detailed age group*
- *Labour force characteristics by immigrant status of population aged 25 to 54, by country of birth*
- *Days lost per worker due to illness or disability, by sex, by province*

- *Employment by industry*
- *Labour force characteristics, seasonally adjusted, by province (monthly)*
- *Labour force characteristics, unadjusted, by province (monthly)*
- *Labour force, employment and unemployment, levels and rates, by province*
- *Economic indicators, by province and territory (monthly and quarterly)*
- *Days lost per worker by reason, by provinces*
- *Labour force characteristics, seasonally adjusted, by census metropolitan area (3 month moving average)*
- *Labour force characteristics, unadjusted, by economic region (3 month moving average)*
- *Distribution of employed people, by industry, by province*
- *Employment by major industry group, seasonally adjusted, by province (monthly)*
- *Labour force characteristics*
- *Labour force characteristics, unadjusted, by census metropolitan area (3 month moving average)*
- *Labour force characteristics, population 15 years and older, by census metropolitan area*
- *Labour force characteristics, population 15 years and older, by economic region, by province*
- *Canada: Economic and financial data*
- *Labour force characteristics by sex and age group*
- *Labour force characteristics by immigrant status of population aged 25 to 54, by province*
- *Latest statistics (monthly)*

Statistical tables

Table 1
Labour force characteristics by age and sex, Canada, seasonally adjusted

	January 2016	February 2016	S.E. ¹	Change from			Percent change from		
				last month	last December	twelve months ago	last month	last December	twelve months ago
in thousands (except rates)									
15 years and over, both sexes									
Population	29,439.8	29,465.4	...	25.6	46.4	304.7	0.1	0.2	1.0
Labour force	19,395.5	19,413.3	29.8	17.8	16.0	212.6	0.1	0.1	1.1
Employment	18,005.2	18,002.9	29.5	-2.3	-8.0	117.9	0.0	0.0	0.7
Employment full-time	14,623.4	14,571.6	42.5	-51.8	-46.2	81.6	-0.4	-0.3	0.6
Employment part-time	3,381.8	3,431.3	39.7	49.5	38.2	36.3	1.5	1.1	1.1
Unemployment	1,390.3	1,410.4	25.3	20.1	24.0	94.7	1.4	1.7	7.2
Participation rate	65.9	65.9	0.1	0.0	0.0	0.1
Unemployment rate	7.2	7.3	0.1	0.1	0.2	0.4
Employment rate	61.2	61.1	0.1	-0.1	-0.1	-0.2
Part-time rate	18.8	19.1	0.2	0.3	0.2	0.1
15 to 24 years, both sexes									
Population	4,407.3	4,402.6	...	-4.7	-9.4	-44.3	-0.1	-0.2	-1.0
Labour force	2,813.0	2,804.2	17.4	-8.8	-4.1	-66.1	-0.3	-0.1	-2.3
Employment	2,447.0	2,431.4	16.4	-15.6	-11.1	-55.5	-0.6	-0.5	-2.2
Employment full-time	1,309.6	1,288.7	20.6	-20.9	-0.1	19.1	-1.6	0.0	1.5
Employment part-time	1,137.4	1,142.6	21.4	5.2	-11.1	-74.7	0.5	-1.0	-6.1
Unemployment	366.0	372.9	14.9	6.9	7.1	-10.4	1.9	1.9	-2.7
Participation rate	63.8	63.7	0.4	-0.1	0.0	-0.8
Unemployment rate	13.0	13.3	0.5	0.3	0.3	-0.1
Employment rate	55.5	55.2	0.4	-0.3	-0.2	-0.7
Part-time rate	46.5	47.0	0.8	0.5	-0.2	-2.0
25 years and over, men									
Population	12,244.7	12,259.4	...	14.7	26.8	171.9	0.1	0.2	1.4
Labour force	8,801.0	8,828.9	16.0	27.9	16.5	151.6	0.3	0.2	1.7
Employment	8,207.3	8,222.2	16.7	14.9	-6.0	79.9	0.2	-0.1	1.0
Employment full-time	7,549.9	7,545.4	23.4	-4.5	-31.6	42.1	-0.1	-0.4	0.6
Employment part-time	657.3	676.8	19.2	19.5	25.6	37.8	3.0	3.9	5.9
Unemployment	593.7	606.7	14.9	13.0	22.5	71.7	2.2	3.9	13.4
Participation rate	71.9	72.0	0.1	0.1	0.0	0.2
Unemployment rate	6.7	6.9	0.2	0.2	0.3	0.7
Employment rate	67.0	67.1	0.1	0.1	-0.2	-0.3
Part-time rate	8.0	8.2	0.2	0.2	0.3	0.4
25 years and over, women									
Population	12,787.9	12,803.4	...	15.5	29.0	177.2	0.1	0.2	1.4
Labour force	7,781.5	7,780.2	17.0	-1.3	3.7	127.1	0.0	0.0	1.7
Employment	7,350.9	7,349.3	16.9	-1.6	9.1	93.6	0.0	0.1	1.3
Employment full-time	5,763.9	5,737.4	27.9	-26.5	-14.6	20.3	-0.5	-0.3	0.4
Employment part-time	1,587.1	1,611.9	26.7	24.8	23.7	73.3	1.6	1.5	4.8
Unemployment	430.5	430.8	13.5	0.3	-5.5	33.4	0.1	-1.3	8.4
Participation rate	60.9	60.8	0.1	-0.1	-0.1	0.2
Unemployment rate	5.5	5.5	0.2	0.0	-0.1	0.3
Employment rate	57.5	57.4	0.1	-0.1	-0.1	-0.1
Part-time rate	21.6	21.9	0.4	0.3	0.3	0.7
25 to 54 years, both sexes									
Population	14,603.0	14,607.0	...	4.0	2.3	40.5	0.0	0.0	0.3
Labour force	12,662.4	12,664.1	24.6	1.7	11.4	81.2	0.0	0.1	0.6
Employment	11,875.9	11,868.5	26.2	-7.4	6.7	-1.5	-0.1	0.1	0.0
Employment full-time	786.5	795.6	19.0	9.1	4.7	82.7	1.2	0.6	11.6
Employment part-time	86.7	86.7	0.2	0.0	0.1	0.3
Unemployment	86.7	86.7	0.2	0.0	0.1	0.3
Participation rate	6.2	6.3	0.1	0.1	0.0	0.6
Unemployment rate	81.3	81.3	0.2	0.0	0.1	-0.2
Employment rate	81.3	81.3	0.2	0.0	0.1	-0.2
25 to 54 years, men									
Population	7,271.1	7,272.9	...	1.8	0.4	18.2	0.0	0.0	0.3
Labour force	6,627.1	6,634.5	15.7	7.4	-3.1	39.0	0.1	0.0	0.6
Employment	6,181.1	6,178.0	17.3	-3.1	-11.8	-13.8	-0.1	-0.2	-0.2
Employment full-time	446.1	456.6	13.7	10.5	8.8	52.9	2.4	2.0	13.1
Employment part-time	91.1	91.2	0.2	0.1	-0.1	0.3
Unemployment	446.1	456.6	13.7	10.5	8.8	52.9	2.4	2.0	13.1
Participation rate	91.1	91.2	0.2	0.1	-0.1	0.3
Unemployment rate	6.7	6.9	0.2	0.2	0.2	0.8
Employment rate	85.0	84.9	0.2	-0.1	-0.2	-0.4

See notes at the end of the table.

Table 1 – continued

Labour force characteristics by age and sex, Canada, seasonally adjusted

	January 2016	February 2016	S.E. ¹	Change from			Percent change from		
				last month	last December	twelve months ago	last month	last December	twelve months ago
in thousands (except rates)									
25 to 54 years, women									
Population	7,331.9	7,334.1	...	2.2	1.9	22.3	0.0	0.0	0.3
Labour force	6,035.2	6,029.5	17.8	-5.7	14.4	42.1	-0.1	0.2	0.7
Employment	5,694.8	5,690.5	18.2	-4.3	18.4	12.3	-0.1	0.3	0.2
Unemployment	340.4	339.0	12.7	-1.4	-4.0	29.8	-0.4	-1.2	9.6
Participation rate	82.3	82.2	0.2	-0.1	0.2	0.3
Unemployment rate	5.6	5.6	0.2	0.0	-0.1	0.4
Employment rate	77.7	77.6	0.2	-0.1	0.2	-0.1
55 years and over, both sexes									
Population	10,429.6	10,455.8	...	26.2	53.5	308.6	0.3	0.5	3.0
Labour force	3,920.1	3,945.0	20.7	24.9	8.7	197.4	0.6	0.2	5.3
Employment	3,682.3	3,703.1	20.7	20.8	-3.5	175.1	0.6	-0.1	5.0
Unemployment	237.8	241.9	10.5	4.1	12.2	22.3	1.7	5.3	10.2
Participation rate	37.6	37.7	0.2	0.1	-0.1	0.8
Unemployment rate	6.1	6.1	0.3	0.0	0.3	0.2
Employment rate	35.3	35.4	0.2	0.1	-0.2	0.6
55 years and over, men									
Population	4,973.6	4,986.5	...	12.9	26.4	153.6	0.3	0.5	3.2
Labour force	2,173.8	2,194.4	13.6	20.6	19.6	112.6	0.9	0.9	5.4
Employment	2,026.2	2,044.3	13.9	18.1	5.9	93.8	0.9	0.3	4.8
Unemployment	147.6	150.1	7.8	2.5	13.7	18.7	1.7	10.0	14.2
Participation rate	43.7	44.0	0.3	0.3	0.2	0.9
Unemployment rate	6.8	6.8	0.4	0.0	0.5	0.5
Employment rate	40.7	41.0	0.3	0.3	-0.1	0.6
55 years and over, women									
Population	5,456.0	5,469.3	...	13.3	27.1	155.0	0.2	0.5	2.9
Labour force	1,746.3	1,750.6	14.2	4.3	-10.8	84.9	0.2	-0.6	5.1
Employment	1,656.1	1,658.8	14.2	2.7	-9.3	81.2	0.2	-0.6	5.1
Unemployment	90.1	91.8	6.7	1.7	-1.5	3.6	1.9	-1.6	4.1
Participation rate	32.0	32.0	0.3	0.0	-0.4	0.7
Unemployment rate	5.2	5.2	0.4	0.0	-0.1	-0.1
Employment rate	30.4	30.3	0.3	-0.1	-0.4	0.6

1. Average standard error of change in two consecutive months (see "Sampling Errors" in Data Quality for further explanations).

Note(s): Related CANSIM table 282-0087. The sum of individual categories may not always add to the total due to rounding.

Table 2
Employment by class of worker and industry, Canada, seasonally adjusted

	January 2016	February 2016	S.E. ¹	Change from			Percent change from		
				last month	last December	twelve months ago	last month	last December	twelve months ago
in thousands									
Class of worker									
Employees	15,208.5	15,203.2	36.5	-5.3	9.2	81.3	0.0	0.1	0.5
Self-employed ²	2,796.7	2,799.7	26.2	3.0	-17.2	36.6	0.1	-0.6	1.3
Public/private sector employees									
Public sector employees	3,621.0	3,600.6	21.1	-20.4	-1.7	17.3	-0.6	0.0	0.5
Private sector employees	11,587.5	11,602.7	36.6	15.2	11.1	64.1	0.1	0.1	0.6
Industry	18,005.2	18,002.9	29.5	-2.3	-8.0	117.9	0.0	0.0	0.7
Goods-producing sector	3,861.3	3,903.5	17.0	42.2	16.9	17.7	1.1	0.4	0.5
Agriculture	283.7	290.9	5.6	7.2	-6.5	-9.3	2.5	-2.2	-3.1
Forestry, fishing, mining, quarrying, oil and gas extraction ³	353.3	344.4	5.5	-8.9	-7.5	-7.6	-2.5	-2.1	-2.2
Utilities	135.6	137.9	2.6	2.3	5.6	-0.7	1.7	4.2	-0.5
Construction	1,364.0	1,398.0	11.6	34.0	28.6	-6.1	2.5	2.1	-0.4
Manufacturing	1,724.6	1,732.2	10.8	7.6	-3.4	41.3	0.4	-0.2	2.4
Services-producing sector	14,143.9	14,099.4	28.0	-44.5	-24.8	100.3	-0.3	-0.2	0.7
Wholesale and retail trade	2,732.0	2,743.3	14.7	11.3	19.7	18.1	0.4	0.7	0.7
Transportation and warehousing	899.1	895.3	8.4	-3.8	-14.2	-9.9	-0.4	-1.6	-1.1
Finance, insurance, real estate, rental and leasing	1,110.7	1,117.2	8.8	6.5	6.9	24.3	0.6	0.6	2.2
Professional, scientific and technical services	1,388.1	1,387.6	10.9	-0.5	-9.6	37.4	0.0	-0.7	2.8
Business, building and other support services	760.3	773.0	10.4	12.7	12.7	20.9	1.7	1.7	2.8
Educational services	1,274.7	1,257.8	10.4	-16.9	-13.7	-22.8	-1.3	-1.1	-1.8
Health care and social assistance	2,342.4	2,322.8	11.5	-19.6	-8.3	60.5	-0.8	-0.4	2.7
Information, culture and recreation	767.1	764.2	10.0	-2.9	12.9	16.8	-0.4	1.7	2.2
Accommodation and food services	1,185.6	1,174.4	11.9	-11.2	-13.7	-48.4	-0.9	-1.2	-4.0
Other services (except public administration)	771.4	756.5	8.1	-14.9	-5.3	-0.9	-1.9	-0.7	-0.1
Public administration	912.4	907.2	7.1	-5.2	-12.4	4.2	-0.6	-1.3	0.5

1. Average standard error of change in two consecutive months (see "Sampling Errors" in Data Quality for further explanations).

2. Includes both incorporated and unincorporated working owners, self-employed persons who do not have a business and persons working in a family business without pay.

3. Also referred to as Natural resources.

Note(s): Related CANSIM Tables 282-0088, 282-0089. The sum of individual categories may not always add to the total due to rounding.

Table 3
Labour force characteristics by province, seasonally adjusted

	January 2016	February 2016	S.E. ¹	Change from			Percent change from		
				last month	last December	twelve months ago	last month	last December	twelve months ago
in thousands (except rates)									
Newfoundland and Labrador									
Population	443.3	443.5	...	0.2	0.5	0.3	0.0	0.1	0.1
Labour force	269.2	269.6	2.0	0.4	-2.5	-0.3	0.1	-0.9	-0.1
Employment	230.4	231.5	2.1	1.1	-1.3	-4.2	0.5	-0.6	-1.8
Employment full-time	193.8	194.6	2.7	0.8	-0.1	-6.6	0.4	-0.1	-3.3
Employment part-time	36.7	36.9	2.1	0.2	-1.2	2.4	0.5	-3.1	7.0
Unemployment	38.8	38.1	2.1	-0.7	-1.2	3.9	-1.8	-3.1	11.4
Participation rate	60.7	60.8	0.5	0.1	-0.6	-0.1
Unemployment rate	14.4	14.1	0.7	-0.3	-0.3	1.4
Employment rate	52.0	52.2	0.5	0.2	-0.4	-1.0
Prince Edward Island									
Population	121.2	121.2	...	0.0	0.0	0.5	0.0	0.0	0.4
Labour force	80.1	80.7	0.6	0.6	0.1	-1.7	0.7	0.1	-2.1
Employment	72.4	71.8	0.6	-0.6	-1.0	-2.2	-0.8	-1.4	-3.0
Employment full-time	60.6	61.0	0.9	0.4	0.3	-0.5	0.7	0.5	-0.8
Employment part-time	11.8	10.8	0.7	-1.0	-1.3	-1.8	-8.5	-10.7	-14.3
Unemployment	7.6	8.9	0.6	1.3	1.0	0.5	17.1	12.7	6.0
Participation rate	66.1	66.6	0.5	0.5	0.1	-1.7
Unemployment rate	9.5	11.0	0.7	1.5	1.2	0.8
Employment rate	59.7	59.2	0.5	-0.5	-0.9	-2.1
Nova Scotia									
Population	787.1	787.4	...	0.3	0.4	3.2	0.0	0.1	0.4
Labour force	484.8	488.8	2.7	4.0	0.7	-2.6	0.8	0.1	-0.5
Employment	443.5	444.3	2.7	0.8	-1.6	-2.7	0.2	-0.4	-0.6
Employment full-time	365.5	364.8	3.8	-0.7	-3.6	-2.3	-0.2	-1.0	-0.6
Employment part-time	78.0	79.4	3.3	1.4	1.9	-0.5	1.8	2.5	-0.6
Unemployment	41.4	44.5	2.5	3.1	2.3	0.1	7.5	5.5	0.2
Participation rate	61.6	62.1	0.3	0.5	0.1	-0.6
Unemployment rate	8.5	9.1	0.5	0.6	0.5	0.1
Employment rate	56.3	56.4	0.3	0.1	-0.3	-0.6
New Brunswick									
Population	622.2	622.6	...	0.4	0.7	0.5	0.1	0.1	0.1
Labour force	387.5	383.9	2.2	-3.6	-3.4	-9.3	-0.9	-0.9	-2.4
Employment	351.7	346.0	2.3	-5.7	-6.8	-6.0	-1.6	-1.9	-1.7
Employment full-time	296.7	292.7	3.0	-4.0	-8.6	-3.9	-1.3	-2.9	-1.3
Employment part-time	55.0	53.3	2.6	-1.7	1.8	-2.2	-3.1	3.5	-4.0
Unemployment	35.9	37.9	2.1	2.0	3.4	-3.3	5.6	9.9	-8.0
Participation rate	62.3	61.7	0.4	-0.6	-0.6	-1.5
Unemployment rate	9.3	9.9	0.5	0.6	1.0	-0.6
Employment rate	56.5	55.6	0.4	-0.9	-1.1	-1.0
Quebec									
Population	6,865.9	6,869.3	...	3.4	7.1	41.8	0.0	0.1	0.6
Labour force	4,445.2	4,447.4	15.6	2.2	-12.4	25.6	0.0	-0.3	0.6
Employment	4,106.4	4,109.8	15.9	3.4	0.2	16.6	0.1	0.0	0.4
Employment full-time	3,324.4	3,326.0	22.5	1.6	15.5	69.5	0.0	0.5	2.1
Employment part-time	781.9	783.9	20.9	2.0	-15.2	-52.8	0.3	-1.9	-6.3
Unemployment	338.8	337.6	13.7	-1.2	-12.6	9.0	-0.4	-3.6	2.7
Participation rate	64.7	64.7	0.2	0.0	-0.3	-0.1
Unemployment rate	7.6	7.6	0.3	0.0	-0.3	0.2
Employment rate	59.8	59.8	0.2	0.0	-0.1	-0.2
Ontario									
Population	11,454.5	11,466.0	...	11.5	21.5	127.9	0.1	0.2	1.1
Labour force	7,491.4	7,480.7	19.8	-10.7	14.5	67.6	-0.1	0.2	0.9
Employment	6,985.9	6,974.7	19.3	-11.2	8.6	74.1	-0.2	0.1	1.1
Employment full-time	5,700.3	5,651.4	28.0	-48.9	-32.6	66.4	-0.9	-0.6	1.2
Employment part-time	1,285.6	1,323.3	26.2	37.7	41.3	7.7	2.9	3.2	0.6
Unemployment	505.6	506.0	17.0	0.4	5.9	-6.5	0.1	1.2	-1.3
Participation rate	65.4	65.2	0.2	-0.2	0.0	-0.2
Unemployment rate	6.7	6.8	0.2	0.1	0.1	-0.1
Employment rate	61.0	60.8	0.2	-0.2	-0.1	-0.1

See notes at the end of the table.

Table 3 – continued

Labour force characteristics by province, seasonally adjusted

	January 2016	February 2016	S.E. ¹	Change from			Percent change from		
				last month	last December	twelve months ago	last month	last December	twelve months ago
in thousands (except rates)									
Manitoba									
Population	992.8	994.0	...	1.2	2.1	10.9	0.1	0.2	1.1
Labour force	669.5	671.2	2.5	1.7	-3.0	-0.8	0.3	-0.4	-0.1
Employment	628.7	630.7	2.6	2.0	-3.3	-4.3	0.3	-0.5	-0.7
Employment full-time	507.6	508.5	3.8	0.9	2.0	-10.5	0.2	0.4	-2.0
Employment part-time	121.1	122.2	3.6	1.1	-5.4	6.2	0.9	-4.2	5.3
Unemployment	40.8	40.5	2.1	-0.3	0.4	3.5	-0.7	1.0	9.5
Participation rate	67.4	67.5	0.3	0.1	-0.5	-0.9
Unemployment rate	6.1	6.0	0.3	-0.1	0.1	0.5
Employment rate	63.3	63.5	0.3	0.2	-0.4	-1.1
Saskatchewan									
Population	865.2	865.8	...	0.6	0.8	7.4	0.1	0.1	0.9
Labour force	607.0	601.1	2.6	-5.9	-7.5	4.1	-1.0	-1.2	0.7
Employment	573.3	565.5	2.7	-7.8	-9.6	-1.1	-1.4	-1.7	-0.2
Employment full-time	472.9	467.1	3.8	-5.8	-11.8	-2.4	-1.2	-2.5	-0.5
Employment part-time	100.4	98.4	3.5	-2.0	2.2	1.3	-2.0	2.3	1.3
Unemployment	33.7	35.6	2.1	1.9	2.0	5.2	5.6	6.0	17.1
Participation rate	70.2	69.4	0.3	-0.8	-1.0	-0.1
Unemployment rate	5.6	5.9	0.3	0.3	0.4	0.8
Employment rate	66.3	65.3	0.3	-1.0	-1.2	-0.7
Alberta									
Population	3,381.7	3,385.6	...	3.9	6.6	57.8	0.1	0.2	1.7
Labour force	2,457.8	2,471.9	9.8	14.1	14.8	41.5	0.6	0.6	1.7
Employment	2,276.1	2,277.5	9.8	1.4	-8.6	-21.2	0.1	-0.4	-0.9
Employment full-time	1,859.0	1,869.0	14.1	10.0	-11.9	-56.3	0.5	-0.6	-2.9
Employment part-time	417.1	408.6	13.1	-8.5	3.4	35.2	-2.0	0.8	9.4
Unemployment	181.7	194.3	8.1	12.6	23.3	62.6	6.9	13.6	47.5
Participation rate	72.7	73.0	0.3	0.3	0.3	0.0
Unemployment rate	7.4	7.9	0.3	0.5	0.9	2.5
Employment rate	67.3	67.3	0.3	0.0	-0.4	-1.8
British Columbia									
Population	3,905.9	3,910.0	...	4.1	6.8	54.5	0.1	0.2	1.4
Labour force	2,503.0	2,518.0	10.5	15.0	14.8	88.5	0.6	0.6	3.6
Employment	2,336.9	2,351.0	10.6	14.1	15.3	68.8	0.6	0.7	3.0
Employment full-time	1,842.6	1,836.6	15.6	-6.0	4.7	28.2	-0.3	0.3	1.6
Employment part-time	494.3	514.4	14.8	20.1	10.6	40.6	4.1	2.1	8.6
Unemployment	166.0	167.0	8.5	1.0	-0.5	19.7	0.6	-0.3	13.4
Participation rate	64.1	64.4	0.3	0.3	0.3	1.4
Unemployment rate	6.6	6.6	0.3	0.0	-0.1	0.5
Employment rate	59.8	60.1	0.3	0.3	0.3	0.9

1. Average standard error of change in two consecutive months (see "Sampling Errors" in Data Quality for further explanations).

Note(s): Related CANSIM Table 282-0087. The sum of individual categories may not always add to the total due to rounding.

Table 4-1
Selected labour force characteristics (seasonally adjusted) — Newfoundland and Labrador

	January 2016	February 2016	S.E. ¹	Change from			Percent change from		
				last month	last December	twelve months ago	last month	last December	twelve months ago
in thousands (except rates)									
Both sexes, 15 years and over									
Population	443.3	443.5	...	0.2	0.5	0.3	0.0	0.1	0.1
Labour force	269.2	269.6	2.0	0.4	-2.5	-0.3	0.1	-0.9	-0.1
Employment	230.4	231.5	2.1	1.1	-1.3	-4.2	0.5	-0.6	-1.8
Employment full-time	193.8	194.6	2.7	0.8	-0.1	-6.6	0.4	-0.1	-3.3
Unemployment	38.8	38.1	2.1	-0.7	-1.2	3.9	-1.8	-3.1	11.4
Participation rate	60.7	60.8	0.5	0.1	-0.6	-0.1
Unemployment rate	14.4	14.1	0.7	-0.3	-0.3	1.4
Employment rate	52.0	52.2	0.5	0.2	-0.4	-1.0
Part-time rate	15.9	15.9	0.9	0.0	-0.4	1.3
Both sexes, 15 to 24 years									
Population	55.6	55.6	...	0.0	-0.1	-1.4	0.0	-0.2	-2.5
Labour force	37.8	37.0	1.0	-0.8	-0.5	0.6	-2.1	-1.3	1.6
Employment	30.9	31.6	1.0	0.7	0.4	1.2	2.3	1.3	3.9
Unemployment	6.8	5.4	0.9	-1.4	-0.9	-0.6	-20.6	-14.3	-10.0
Participation rate	68.0	66.5	1.7	-1.5	-0.8	2.6
Unemployment rate	18.0	14.6	2.3	-3.4	-2.2	-1.9
Employment rate	55.6	56.8	1.7	1.2	0.8	3.5
Part-time rate	51.1	46.5	3.8	-4.6	-2.2	5.1
Men, 25 years and over									
Population	189.0	189.1	...	0.1	0.3	0.9	0.1	0.2	0.5
Labour force	121.7	122.4	1.3	0.7	-1.4	-1.7	0.6	-1.1	-1.4
Employment	101.4	101.3	1.4	-0.1	-1.1	-5.0	-0.1	-1.1	-4.7
Unemployment	20.3	21.1	1.4	0.8	-0.3	3.2	3.9	-1.4	17.9
Participation rate	64.4	64.7	0.7	0.3	-0.9	-1.2
Unemployment rate	16.7	17.2	1.1	0.5	-0.1	2.8
Employment rate	53.7	53.6	0.7	-0.1	-0.6	-2.9
Part-time rate	4.0	4.4	0.9	0.4	1.2	-1.0
Women, 25 years and over									
Population	198.7	198.8	...	0.1	0.2	0.8	0.1	0.1	0.4
Labour force	109.8	110.2	1.1	0.4	-0.6	0.8	0.4	-0.5	0.7
Employment	98.1	98.6	1.2	0.5	-0.6	-0.4	0.5	-0.6	-0.4
Unemployment	11.7	11.6	1.1	-0.1	0.0	1.3	-0.9	0.0	12.6
Participation rate	55.3	55.4	0.6	0.1	-0.4	0.1
Unemployment rate	10.7	10.5	1.0	-0.2	0.0	1.1
Employment rate	49.4	49.6	0.6	0.2	-0.3	-0.4
Part-time rate	17.0	18.1	1.5	1.0	-1.7	1.7
Industry									
	230.4	231.5	2.1	1.1	-1.3	-4.2	0.5	-0.6	-1.8
Goods-producing sector									
Agriculture	50.2	50.7	1.5	0.5	-1.0	-3.8	1.0	-1.9	-7.0
Forestry, fishing, mining, quarrying, oil and gas extraction ²	1.1	1.3	0.3	0.2	0.1	-0.1	18.2	8.3	-7.1
Utilities	15.1	14.9	0.8	-0.2	-0.4	-2.0	-1.3	-2.6	-11.8
Construction	2.5	2.4	0.3	-0.1	0.1	-0.2	-4.0	4.3	-7.7
Manufacturing	20.6	21.3	1.1	0.7	-0.6	-1.5	3.4	-2.7	-6.6
	10.9	10.7	0.8	-0.2	-0.3	-0.1	-1.8	-2.7	-0.9
Services-producing sector									
Wholesale and retail trade	180.3	180.8	1.8	0.5	-0.3	-0.4	0.3	-0.2	-0.2
Transportation and warehousing	43.5	44.2	0.9	0.7	1.0	3.2	1.6	2.3	7.8
Finance, insurance, real estate, rental and leasing	9.5	8.8	0.6	-0.7	-0.3	-1.7	-7.4	-3.3	-16.2
Professional, scientific and technical services	8.7	8.5	0.4	-0.2	-0.3	0.9	-2.3	-3.4	11.8
Business, building and other support services	10.8	10.8	0.5	0.0	-0.5	-0.5	0.0	-4.4	-4.4
Educational services	7.9	7.1	0.5	-0.8	-1.2	0.4	-10.1	-14.5	6.0
Health care and social assistance	14.1	14.2	0.7	0.1	-0.7	-2.1	0.7	-4.7	-12.9
Information, culture and recreation	38.5	38.2	0.8	-0.3	-0.7	1.4	-0.8	-1.8	3.8
Accommodation and food services	6.8	7.3	0.6	0.5	1.4	-0.2	7.4	23.7	-2.7
Other services (except public administration)	14.6	15.1	0.8	0.5	0.9	-0.7	3.4	6.3	-4.4
Public administration	12.5	12.5	0.6	0.0	0.1	1.0	0.0	0.8	8.7
	13.4	14.2	0.6	0.8	0.0	-2.0	6.0	0.0	-12.3

1. Average standard error of change in two consecutive months (see "Sampling Errors" in Data Quality for further explanations).

2. Also referred to as Natural resources.

Note(s): Related CANSIM Tables 282-0087, 282-0088. The sum of individual categories may not always add to the total due to rounding.

Table 4-2
Selected labour force characteristics (seasonally adjusted) — Prince Edward Island

	January 2016	February 2016	S.E. ¹	Change from			Percent change from		
				last month	last December	twelve months ago	last month	last December	twelve months ago
in thousands (except rates)									
Both sexes, 15 years and over									
Population	121.2	121.2	...	0.0	0.0	0.5	0.0	0.0	0.4
Labour force	80.1	80.7	0.6	0.6	0.1	-1.7	0.7	0.1	-2.1
Employment	72.4	71.8	0.6	-0.6	-1.0	-2.2	-0.8	-1.4	-3.0
Employment full-time	60.6	61.0	0.9	0.4	0.3	-0.5	0.7	0.5	-0.8
Unemployment	7.6	8.9	0.6	1.3	1.0	0.5	17.1	12.7	6.0
Participation rate	66.1	66.6	0.5	0.5	0.1	-1.7
Unemployment rate	9.5	11.0	0.7	1.5	1.2	0.8
Employment rate	59.7	59.2	0.5	-0.5	-0.9	-2.1
Part-time rate	16.3	15.0	1.0	-1.3	-1.6	-2.0
Both sexes, 15 to 24 years									
Population	18.0	18.0	...	0.0	-0.1	-0.4	0.0	-0.6	-2.2
Labour force	12.6	12.8	0.3	0.2	0.0	0.2	1.6	0.0	1.6
Employment	11.2	10.9	0.3	-0.3	-0.2	0.3	-2.7	-1.8	2.8
Unemployment	1.4	1.9	0.3	0.5	0.1	-0.1	35.7	5.6	-5.0
Participation rate	70.0	71.1	1.8	1.1	0.4	2.6
Unemployment rate	11.1	14.8	2.2	3.7	0.7	-1.1
Employment rate	62.2	60.6	1.8	-1.6	-0.7	3.0
Part-time rate	41.1	38.5	3.6	-2.5	-3.8	-5.8
Men, 25 years and over									
Population	49.4	49.5	...	0.1	0.1	0.5	0.2	0.2	1.0
Labour force	34.8	34.8	0.3	0.0	0.1	-1.0	0.0	0.3	-2.8
Employment	31.1	30.8	0.4	-0.3	-0.6	-1.3	-1.0	-1.9	-4.0
Unemployment	3.8	4.0	0.4	0.2	0.7	0.3	5.3	21.2	8.1
Participation rate	70.4	70.3	0.7	-0.1	0.1	-2.8
Unemployment rate	10.9	11.5	1.0	0.6	2.0	1.2
Employment rate	63.0	62.2	0.8	-0.8	-1.4	-3.3
Part-time rate	7.1	7.1	1.1	0.1	-0.5	0.3
Women, 25 years and over									
Population	53.8	53.8	...	0.0	0.1	0.5	0.0	0.2	0.9
Labour force	32.7	33.1	0.3	0.4	0.0	-0.9	1.2	0.0	-2.6
Employment	30.2	30.2	0.4	0.0	-0.1	-1.1	0.0	-0.3	-3.5
Unemployment	2.5	2.9	0.4	0.4	0.1	0.2	16.0	3.6	7.4
Participation rate	60.8	61.5	0.6	0.7	-0.1	-2.3
Unemployment rate	7.6	8.8	1.0	1.2	0.3	0.9
Employment rate	56.1	56.1	0.7	0.0	-0.3	-2.6
Part-time rate	16.6	14.6	1.6	-2.0	-1.9	-3.6
Industry	72.4	71.8	0.6	-0.6	-1.0	-2.2	-0.8	-1.4	-3.0
Goods-producing sector	16.5	17.4	0.5	0.9	0.6	0.3	5.5	3.6	1.8
Agriculture	3.0	3.3	0.3	0.3	0.3	0.4	10.0	10.0	13.8
Forestry, fishing, mining, quarrying, oil and gas extraction ²	2.2	2.1	0.2	-0.1	-0.3	-0.3	-4.5	-12.5	-12.5
Utilities	0.4	0.5	0.1	0.1	0.2	0.2	25.0	66.7	66.7
Construction	4.8	4.9	0.3	0.1	0.0	-0.5	2.1	0.0	-9.3
Manufacturing	6.2	6.6	0.2	0.4	0.5	0.5	6.5	8.2	8.2
Services-producing sector	55.9	54.5	0.6	-1.4	-1.5	-2.4	-2.5	-2.7	-4.2
Wholesale and retail trade	10.6	10.5	0.3	-0.1	-0.3	-0.9	-0.9	-2.8	-7.9
Transportation and warehousing	2.7	2.6	0.2	-0.1	0.2	-0.2	-3.7	8.3	-7.1
Finance, insurance, real estate, rental and leasing	2.5	2.6	0.1	0.1	-0.1	0.2	4.0	-3.7	8.3
Professional, scientific and technical services	3.5	3.5	0.1	0.0	0.2	0.6	0.0	6.1	20.7
Business, building and other support services	2.5	2.2	0.2	-0.3	-0.3	-0.3	-12.0	-12.0	-12.0
Educational services	5.4	5.6	0.2	0.2	0.1	0.4	3.7	1.8	7.7
Health care and social assistance	10.2	9.8	0.2	-0.4	0.2	0.0	-3.9	2.1	0.0
Information, culture and recreation	2.0	2.3	0.2	0.3	0.1	-0.6	15.0	4.5	-20.7
Accommodation and food services	6.3	5.4	0.3	-0.9	-1.3	-0.3	-14.3	-19.4	-5.3
Other services (except public administration)	3.4	3.2	0.2	-0.2	-0.2	-0.6	-5.9	-5.9	-15.8
Public administration	6.8	6.7	0.2	-0.1	-0.2	-0.8	-1.5	-2.9	-10.7

1. Average standard error of change in two consecutive months (see "Sampling Errors" in Data Quality for further explanations).

2. Also referred to as Natural resources.

Note(s): Related CANSIM Tables 282-0087, 282-0088. The sum of individual categories may not always add to the total due to rounding.

Table 4-3
Selected labour force characteristics (seasonally adjusted) — Nova Scotia

	January 2016	February 2016	S.E. ¹	Change from			Percent change from		
				last month	last December	twelve months ago	last month	last December	twelve months ago
in thousands (except rates)									
Both sexes, 15 years and over									
Population	787.1	787.4	...	0.3	0.4	3.2	0.0	0.1	0.4
Labour force	484.8	488.8	2.7	4.0	0.7	-2.6	0.8	0.1	-0.5
Employment	443.5	444.3	2.7	0.8	-1.6	-2.7	0.2	-0.4	-0.6
Employment full-time	365.5	364.8	3.8	-0.7	-3.6	-2.3	-0.2	-1.0	-0.6
Unemployment	41.4	44.5	2.5	3.1	2.3	0.1	7.5	5.5	0.2
Participation rate	61.6	62.1	0.3	0.5	0.1	-0.6
Unemployment rate	8.5	9.1	0.5	0.6	0.5	0.1
Employment rate	56.3	56.4	0.3	0.1	-0.3	-0.6
Part-time rate	17.6	17.9	0.7	0.3	0.5	0.0
Both sexes, 15 to 24 years									
Population	110.4	110.4	...	0.0	-0.2	-2.0	0.0	-0.2	-1.8
Labour force	71.3	72.0	1.5	0.7	1.2	-3.0	1.0	1.7	-4.0
Employment	60.6	61.9	1.4	1.3	1.9	-2.2	2.1	3.2	-3.4
Unemployment	10.7	10.1	1.4	-0.6	-0.8	-0.8	-5.6	-7.3	-7.3
Participation rate	64.6	65.2	1.4	0.6	1.2	-1.5
Unemployment rate	15.0	14.0	1.7	-1.0	-1.4	-0.5
Employment rate	54.9	56.1	1.3	1.2	1.9	-0.9
Part-time rate	43.1	44.3	2.8	1.2	0.8	-1.6
Men, 25 years and over									
Population	324.0	324.2	...	0.2	0.3	2.6	0.1	0.1	0.8
Labour force	209.5	212.9	1.5	3.4	1.1	0.6	1.6	0.5	0.3
Employment	191.1	191.7	1.7	0.6	-1.6	-0.1	0.3	-0.8	-0.1
Unemployment	18.3	21.2	1.6	2.9	2.7	0.8	15.8	14.6	3.9
Participation rate	64.7	65.7	0.5	1.0	0.3	-0.3
Unemployment rate	8.7	10.0	0.7	1.3	1.3	0.4
Employment rate	59.0	59.1	0.5	0.1	-0.6	-0.5
Part-time rate	7.7	6.7	0.8	-1.0	-0.7	-0.7
Women, 25 years and over									
Population	352.7	352.8	...	0.1	0.3	2.5	0.0	0.1	0.7
Labour force	204.1	203.9	1.5	-0.2	-1.6	-0.3	-0.1	-0.8	-0.1
Employment	191.7	190.7	1.5	-1.0	-1.9	-0.4	-0.5	-1.0	-0.2
Unemployment	12.4	13.2	1.2	0.8	0.3	0.1	6.5	2.3	0.8
Participation rate	57.9	57.8	0.4	-0.1	-0.5	-0.5
Unemployment rate	6.1	6.5	0.6	0.4	0.2	0.1
Employment rate	54.4	54.1	0.4	-0.3	-0.5	-0.5
Part-time rate	19.4	20.6	1.1	1.2	1.3	1.6
Industry									
Industry	443.5	444.3	2.7	0.8	-1.6	-2.7	0.2	-0.4	-0.6
Goods-producing sector									
Goods-producing sector	82.2	83.1	1.7	0.9	-1.7	3.9	1.1	-2.0	4.9
Agriculture	3.8	5.4	0.6	1.6	-0.6	0.2	42.1	-10.0	3.8
Forestry, fishing, mining, quarrying, oil and gas extraction ²	11.8	12.3	0.9	0.5	1.5	1.7	4.2	13.9	16.0
Utilities	3.3	3.1	0.2	-0.2	-0.7	-0.5	-6.1	-18.4	-13.9
Construction	32.5	32.3	1.2	-0.2	-1.2	0.3	-0.6	-3.6	0.9
Manufacturing	30.9	30.0	0.8	-0.9	-0.8	2.2	-2.9	-2.6	7.9
Services-producing sector									
Services-producing sector	361.3	361.1	2.6	-0.2	0.1	-6.7	-0.1	0.0	-1.8
Wholesale and retail trade	68.8	69.0	1.4	0.2	-2.2	-3.6	0.3	-3.1	-5.0
Transportation and warehousing	20.6	20.6	0.8	0.0	0.1	-0.1	0.0	0.5	-0.5
Finance, insurance, real estate, rental and leasing	24.0	24.2	0.6	0.2	-0.4	1.6	0.8	-1.6	7.1
Professional, scientific and technical services	26.9	26.1	0.8	-0.8	0.2	-1.7	-3.0	0.8	-6.1
Business, building and other support services	16.5	16.9	0.8	0.4	-1.0	-4.9	2.4	-5.6	-22.5
Educational services	37.8	38.0	1.1	0.2	1.4	1.8	0.5	3.8	5.0
Health care and social assistance	73.1	74.4	1.0	1.3	2.3	3.4	1.8	3.2	4.8
Information, culture and recreation	15.5	16.1	0.8	0.6	0.0	-3.1	3.9	0.0	-16.1
Accommodation and food services	31.1	30.7	1.1	-0.4	0.7	-2.0	-1.3	2.3	-6.1
Other services (except public administration)	19.1	18.9	0.8	-0.2	0.2	2.4	-1.0	1.1	14.5
Public administration	27.7	26.1	0.7	-1.6	-1.5	-0.7	-5.8	-5.4	-2.6

1. Average standard error of change in two consecutive months (see "Sampling Errors" in Data Quality for further explanations).

2. Also referred to as Natural resources.

Note(s): Related CANSIM Tables 282-0087, 282-0088. The sum of individual categories may not always add to the total due to rounding.

Table 4-4
Selected labour force characteristics (seasonally adjusted) — New Brunswick

	January 2016	February 2016	S.E. ¹	Change from			Percent change from		
				last month	last December	twelve months ago	last month	last December	twelve months ago
in thousands (except rates)									
Both sexes, 15 years and over									
Population	622.2	622.6	...	0.4	0.7	0.5	0.1	0.1	0.1
Labour force	387.5	383.9	2.2	-3.6	-3.4	-9.3	-0.9	-0.9	-2.4
Employment	351.7	346.0	2.3	-5.7	-6.8	-6.0	-1.6	-1.9	-1.7
Employment full-time	296.7	292.7	3.0	-4.0	-8.6	-3.9	-1.3	-2.9	-1.3
Unemployment	35.9	37.9	2.1	2.0	3.4	-3.3	5.6	9.9	-8.0
Participation rate	62.3	61.7	0.4	-0.6	-0.6	-1.5
Unemployment rate	9.3	9.9	0.5	0.6	1.0	-0.6
Employment rate	56.5	55.6	0.4	-0.9	-1.1	-1.0
Part-time rate	15.6	15.4	0.7	-0.2	0.8	-0.4
Both sexes, 15 to 24 years									
Population	83.6	83.6	...	0.0	0.0	-1.7	0.0	0.0	-2.0
Labour force	52.9	49.6	1.2	-3.3	-2.2	-5.8	-6.2	-4.2	-10.5
Employment	43.9	41.1	1.1	-2.8	-1.8	-4.1	-6.4	-4.2	-9.1
Unemployment	8.9	8.4	1.2	-0.5	-0.5	-1.8	-5.6	-5.6	-17.6
Participation rate	63.3	59.3	1.4	-4.0	-2.7	-5.6
Unemployment rate	16.8	16.9	2.0	0.1	-0.3	-1.5
Employment rate	52.5	49.2	1.3	-3.3	-2.1	-3.8
Part-time rate	43.5	44.5	3.0	1.0	0.2	2.7
Men, 25 years and over									
Population	260.8	261.0	...	0.2	0.4	1.0	0.1	0.2	0.4
Labour force	173.5	172.8	1.2	-0.7	-0.1	-3.1	-0.4	-0.1	-1.8
Employment	155.4	152.6	1.5	-2.8	-4.1	-4.4	-1.8	-2.6	-2.8
Unemployment	18.1	20.2	1.4	2.1	4.0	1.3	11.6	24.7	6.9
Participation rate	66.5	66.2	0.5	-0.3	-0.1	-1.5
Unemployment rate	10.4	11.7	0.8	1.3	2.3	1.0
Employment rate	59.6	58.5	0.6	-1.1	-1.6	-1.9
Part-time rate	7.5	6.6	0.8	-0.8	0.7	0.0
Women, 25 years and over									
Population	277.8	278.0	...	0.2	0.4	1.2	0.1	0.1	0.4
Labour force	161.2	161.6	1.2	0.4	-1.0	-0.3	0.2	-0.6	-0.2
Employment	152.4	152.3	1.2	-0.1	-0.9	2.5	-0.1	-0.6	1.7
Unemployment	8.8	9.3	1.1	0.5	-0.1	-2.8	5.7	-1.1	-23.1
Participation rate	58.0	58.1	0.4	0.1	-0.5	-0.4
Unemployment rate	5.5	5.8	0.7	0.3	0.0	-1.7
Employment rate	54.9	54.8	0.4	-0.1	-0.4	0.7
Part-time rate	15.9	16.4	1.1	0.5	1.3	-1.0
Industry									
	351.7	346.0	2.3	-5.7	-6.8	-6.0	-1.6	-1.9	-1.7
Goods-producing sector									
Agriculture	75.2	73.4	1.5	-1.8	-2.4	0.7	-2.4	-3.2	1.0
Forestry, fishing, mining, quarrying, oil and gas extraction ²	4.0	4.3	0.5	0.3	-0.1	0.5	7.5	-2.3	13.2
Utilities	11.2	10.6	0.8	-0.6	-0.6	0.0	-5.4	-5.4	0.0
Construction	3.3	3.4	0.2	0.1	-0.3	0.1	3.0	-8.1	3.0
Manufacturing	26.3	26.5	1.0	0.2	-0.1	2.0	0.8	-0.4	8.2
	30.3	28.5	0.9	-1.8	-1.5	-2.0	-5.9	-5.0	-6.6
Services-producing sector									
	276.5	272.6	2.1	-3.9	-4.4	-6.7	-1.4	-1.6	-2.4
Wholesale and retail trade	56.2	54.2	1.1	-2.0	-0.6	-0.9	-3.6	-1.1	-1.6
Transportation and warehousing	20.0	19.0	0.6	-1.0	-1.5	1.4	-5.0	-7.3	8.0
Finance, insurance, real estate, rental and leasing	15.5	15.7	0.5	0.2	0.3	0.3	1.3	1.9	1.9
Professional, scientific and technical services	14.3	15.3	0.6	1.0	0.7	-2.5	7.0	4.8	-14.0
Business, building and other support services	18.0	17.1	0.8	-0.9	-0.7	-4.3	-5.0	-3.9	-20.1
Educational services	24.9	24.9	0.8	0.0	-1.2	-2.4	0.0	-4.6	-8.8
Health care and social assistance	52.5	52.1	0.9	-0.4	-0.6	1.1	-0.8	-1.1	2.2
Information, culture and recreation	11.5	11.6	0.7	0.1	-0.2	0.4	0.9	-1.7	3.6
Accommodation and food services	24.1	23.2	0.9	-0.9	-0.8	-0.3	-3.7	-3.3	-1.3
Other services (except public administration)	16.2	16.1	0.6	-0.1	1.1	0.9	-0.6	7.3	5.9
Public administration	23.2	23.5	0.6	0.3	-0.8	-0.4	1.3	-3.3	-1.7

1. Average standard error of change in two consecutive months (see "Sampling Errors" in Data Quality for further explanations).

2. Also referred to as Natural resources.

Note(s): Related CANSIM Tables 282-0087, 282-0088. The sum of individual categories may not always add to the total due to rounding.

Table 4-5
Selected labour force characteristics (seasonally adjusted) — Quebec

	January 2016	February 2016	S.E. ¹	Change from			Percent change from		
				last month	last December	twelve months ago	last month	last December	twelve months ago
in thousands (except rates)									
Both sexes, 15 years and over									
Population	6,865.9	6,869.3	...	3.4	7.1	41.8	0.0	0.1	0.6
Labour force	4,445.2	4,447.4	15.6	2.2	-12.4	25.6	0.0	-0.3	0.6
Employment	4,106.4	4,109.8	15.9	3.4	0.2	16.6	0.1	0.0	0.4
Employment full-time	3,324.4	3,326.0	22.5	1.6	15.5	69.5	0.0	0.5	2.1
Unemployment	338.8	337.6	13.7	-1.2	-12.6	9.0	-0.4	-3.6	2.7
Participation rate	64.7	64.7	0.2	0.0	-0.3	-0.1
Unemployment rate	7.6	7.6	0.3	0.0	-0.3	0.2
Employment rate	59.8	59.8	0.2	0.0	-0.1	-0.2
Part-time rate	19.0	19.1	0.5	0.0	-0.4	-1.4
Both sexes, 15 to 24 years									
Population	946.9	944.4	...	-2.5	-4.2	-22.6	-0.3	-0.4	-2.3
Labour force	641.7	644.7	8.7	3.0	-1.2	-12.2	0.5	-0.2	-1.9
Employment	562.0	562.1	8.5	0.1	-0.2	-6.1	0.0	0.0	-1.1
Unemployment	79.7	82.6	7.8	2.9	-0.9	-6.1	3.6	-1.1	-6.9
Participation rate	67.8	68.3	0.9	0.5	0.2	0.4
Unemployment rate	12.4	12.8	1.1	0.4	-0.1	-0.7
Employment rate	59.4	59.5	0.9	0.1	0.2	0.7
Part-time rate	50.8	51.1	1.8	0.3	-2.1	-4.9
Men, 25 years and over									
Population	2,919.4	2,922.3	...	2.9	5.5	32.1	0.1	0.2	1.1
Labour force	2,028.1	2,034.4	8.6	6.3	-4.6	34.3	0.3	-0.2	1.7
Employment	1,875.9	1,871.5	9.5	-4.4	-12.8	13.8	-0.2	-0.7	0.7
Unemployment	152.3	162.9	8.6	10.6	8.1	20.5	7.0	5.2	14.4
Participation rate	69.5	69.6	0.3	0.1	-0.3	0.4
Unemployment rate	7.5	8.0	0.4	0.5	0.4	0.9
Employment rate	64.3	64.0	0.3	-0.3	-0.6	-0.3
Part-time rate	8.3	8.3	0.6	0.0	-0.4	-0.6
Women, 25 years and over									
Population	2,999.6	3,002.6	...	3.0	5.8	32.3	0.1	0.2	1.1
Labour force	1,775.3	1,768.3	8.7	-7.0	-6.7	3.4	-0.4	-0.4	0.2
Employment	1,668.5	1,676.2	8.6	7.7	13.2	8.9	0.5	0.8	0.5
Unemployment	106.8	92.1	7.4	-14.7	-19.8	-5.5	-13.8	-17.7	-5.6
Participation rate	59.2	58.9	0.3	-0.3	-0.3	-0.5
Unemployment rate	6.0	5.2	0.4	-0.8	-1.1	-0.3
Employment rate	55.6	55.8	0.3	0.2	0.3	-0.3
Part-time rate	20.4	20.3	0.8	-0.1	0.2	-0.8
Industry									
	4,106.4	4,109.8	15.9	3.4	0.2	16.6	0.1	0.0	0.4
Goods-producing sector									
Agriculture	845.0	859.7	8.9	14.7	21.5	10.5	1.7	2.6	1.2
Forestry, fishing, mining, quarrying, oil and gas extraction ²	59.6	56.7	2.4	-2.9	-4.6	0.9	-4.9	-7.5	1.6
Utilities	31.1	31.4	1.9	0.3	-0.9	0.4	1.0	-2.8	1.3
Construction	28.7	29.6	1.4	0.9	3.1	1.6	3.1	11.7	5.7
Manufacturing	230.1	243.1	6.0	13.0	15.7	-7.4	5.6	6.9	-3.0
	495.4	498.8	6.0	3.4	8.1	15.0	0.7	1.7	3.1
Services-producing sector									
	3,261.4	3,250.1	14.7	-11.3	-21.3	6.1	-0.3	-0.7	0.2
Wholesale and retail trade	647.0	648.5	7.6	1.5	-4.3	-14.3	0.2	-0.7	-2.2
Transportation and warehousing	193.7	193.5	4.2	-0.2	-3.3	0.7	-0.1	-1.7	0.4
Finance, insurance, real estate, rental and leasing	209.7	212.0	4.1	2.3	1.9	-6.5	1.1	0.9	-3.0
Professional, scientific and technical services	315.6	313.6	5.5	-2.0	-10.3	2.2	-0.6	-3.2	0.7
Business, building and other support services	180.8	180.7	5.1	-0.1	4.0	19.8	-0.1	2.3	12.3
Educational services	267.4	266.0	5.2	-1.4	-6.4	-18.0	-0.5	-2.3	-6.3
Health care and social assistance	585.9	582.0	6.3	-3.9	-1.4	6.6	-0.7	-0.2	1.1
Information, culture and recreation	175.6	178.0	5.5	2.4	6.0	0.9	1.4	3.5	0.5
Accommodation and food services	279.4	276.4	6.2	-3.0	-4.5	-5.6	-1.1	-1.6	-2.0
Other services (except public administration)	166.2	159.8	4.4	-6.4	-0.9	9.4	-3.9	-0.6	6.2
Public administration	240.0	239.6	4.0	-0.4	-2.1	11.0	-0.2	-0.9	4.8

1. Average standard error of change in two consecutive months (see "Sampling Errors" in Data Quality for further explanations).

2. Also referred to as Natural resources.

Note(s): Related CANSIM Tables 282-0087, 282-0088. The sum of individual categories may not always add to the total due to rounding.

Table 4-6
Selected labour force characteristics (seasonally adjusted) — Ontario

	January 2016	February 2016	S.E. ¹	Change from			Percent change from		
				last month	last December	twelve months ago	last month	last December	twelve months ago
in thousands (except rates)									
Both sexes, 15 years and over									
Population	11,454.5	11,466.0	...	11.5	21.5	127.9	0.1	0.2	1.1
Labour force	7,491.4	7,480.7	19.8	-10.7	14.5	67.6	-0.1	0.2	0.9
Employment	6,985.9	6,974.7	19.3	-11.2	8.6	74.1	-0.2	0.1	1.1
Employment full-time	5,700.3	5,651.4	28.0	-48.9	-32.6	66.4	-0.9	-0.6	1.2
Unemployment	505.6	506.0	17.0	0.4	5.9	-6.5	0.1	1.2	-1.3
Participation rate	65.4	65.2	0.2	-0.2	0.0	-0.2
Unemployment rate	6.7	6.8	0.2	0.1	0.1	-0.1
Employment rate	61.0	60.8	0.2	-0.2	-0.1	-0.1
Part-time rate	18.4	19.0	0.4	0.6	0.6	-0.1
Both sexes, 15 to 24 years									
Population	1,789.8	1,788.6	...	-1.2	-2.5	-12.5	-0.1	-0.1	-0.7
Labour force	1,075.5	1,062.9	12.4	-12.6	-5.5	-55.0	-1.2	-0.5	-4.9
Employment	929.9	911.0	11.2	-18.9	-10.8	-40.7	-2.0	-1.2	-4.3
Unemployment	145.6	152.0	10.4	6.4	5.4	-14.3	4.4	3.7	-8.6
Participation rate	60.1	59.4	0.7	-0.7	-0.3	-2.7
Unemployment rate	13.5	14.3	0.9	0.8	0.6	-0.6
Employment rate	52.0	50.9	0.6	-1.1	-0.6	-1.9
Part-time rate	47.7	48.5	1.4	0.8	0.2	-3.7
Men, 25 years and over									
Population	4,662.0	4,668.4	...	6.4	12.0	68.6	0.1	0.3	1.5
Labour force	3,368.2	3,375.6	10.3	7.4	18.9	67.2	0.2	0.6	2.0
Employment	3,172.5	3,185.3	10.5	12.8	20.1	69.3	0.4	0.6	2.2
Unemployment	195.7	190.3	9.3	-5.4	-1.2	-2.1	-2.8	-0.6	-1.1
Participation rate	72.2	72.3	0.2	0.1	0.2	0.4
Unemployment rate	5.8	5.6	0.3	-0.2	-0.1	-0.2
Employment rate	68.1	68.2	0.2	0.1	0.2	0.5
Part-time rate	7.7	8.1	0.4	0.4	0.4	0.4
Women, 25 years and over									
Population	5,002.7	5,009.0	...	6.3	12.1	71.8	0.1	0.2	1.5
Labour force	3,047.8	3,042.1	11.2	-5.7	1.0	55.3	-0.2	0.0	1.9
Employment	2,883.5	2,878.5	11.1	-5.0	-0.6	45.5	-0.2	0.0	1.6
Unemployment	164.4	163.7	8.9	-0.7	1.7	9.9	-0.4	1.0	6.4
Participation rate	60.9	60.7	0.2	-0.2	-0.2	0.2
Unemployment rate	5.4	5.4	0.3	0.0	0.1	0.3
Employment rate	57.6	57.5	0.2	-0.1	-0.1	0.1
Part-time rate	20.7	21.6	0.6	0.9	1.0	1.2
Industry									
Industry	6,985.9	6,974.7	19.3	-11.2	8.6	74.1	-0.2	0.1	1.1
Goods-producing sector									
Goods-producing sector	1,415.5	1,439.9	10.4	24.4	21.6	50.6	1.7	1.5	3.6
Agriculture	79.4	83.0	2.8	3.6	6.6	5.7	4.5	8.6	7.4
Forestry, fishing, mining, quarrying, oil and gas extraction ²	42.3	41.0	2.1	-1.3	-2.5	1.4	-3.1	-5.7	3.5
Utilities	47.3	48.0	1.4	0.7	2.4	-3.7	1.5	5.3	-7.2
Construction	492.6	503.3	7.0	10.7	7.3	14.5	2.2	1.5	3.0
Manufacturing	754.0	764.7	7.3	10.7	7.8	32.7	1.4	1.0	4.5
Services-producing sector									
Services-producing sector	5,570.3	5,534.7	18.6	-35.6	-13.0	23.4	-0.6	-0.2	0.4
Wholesale and retail trade	1,041.0	1,034.1	9.5	-6.9	1.3	-19.8	-0.7	0.1	-1.9
Transportation and warehousing	331.6	326.1	5.2	-5.5	0.6	11.9	-1.7	0.2	3.8
Finance, insurance, real estate, rental and leasing	553.4	553.8	6.4	0.4	-3.6	26.3	0.1	-0.6	5.0
Professional, scientific and technical services	596.5	594.3	7.4	-2.2	-1.8	24.9	-0.4	-0.3	4.4
Business, building and other support services	326.4	341.2	7.4	14.8	15.3	2.6	4.5	4.7	0.8
Educational services	515.5	507.8	7.0	-7.7	0.4	-10.8	-1.5	0.1	-2.1
Health care and social assistance	827.8	824.5	7.3	-3.3	-4.6	15.3	-0.4	-0.6	1.9
Information, culture and recreation	306.3	299.4	6.5	-6.9	0.2	-8.5	-2.3	0.1	-2.8
Accommodation and food services	453.3	446.1	7.6	-7.2	1.8	-2.2	-1.6	0.4	-0.5
Other services (except public administration)	272.3	264.4	5.0	-7.9	-16.0	-6.5	-2.9	-5.7	-2.4
Public administration	346.2	343.0	4.6	-3.2	-6.5	-9.7	-0.9	-1.9	-2.8

1. Average standard error of change in two consecutive months (see "Sampling Errors" in Data Quality for further explanations).

2. Also referred to as Natural resources.

Note(s): Related CANSIM Tables 282-0087, 282-0088. The sum of individual categories may not always add to the total due to rounding.

Table 4-7
Selected labour force characteristics (seasonally adjusted) — Manitoba

	January 2016	February 2016	S.E. ¹	Change from			Percent change from		
				last month	last December	twelve months ago	last month	last December	twelve months ago
in thousands (except rates)									
Both sexes, 15 years and over									
Population	992.8	994.0	...	1.2	2.1	10.9	0.1	0.2	1.1
Labour force	669.5	671.2	2.5	1.7	-3.0	-0.8	0.3	-0.4	-0.1
Employment	628.7	630.7	2.6	2.0	-3.3	-4.3	0.3	-0.5	-0.7
Employment full-time	507.6	508.5	3.8	0.9	2.0	-10.5	0.2	0.4	-2.0
Unemployment	40.8	40.5	2.1	-0.3	0.4	3.5	-0.7	1.0	9.5
Participation rate	67.4	67.5	0.3	0.1	-0.5	-0.9
Unemployment rate	6.1	6.0	0.3	-0.1	0.1	0.5
Employment rate	63.3	63.5	0.3	0.2	-0.4	-1.1
Part-time rate	19.3	19.4	0.5	0.1	-0.8	1.1
Both sexes, 15 to 24 years									
Population	162.9	162.9	...	0.0	0.0	-0.3	0.0	0.0	-0.2
Labour force	106.7	105.8	1.5	-0.9	-1.1	-5.1	-0.8	-1.0	-4.6
Employment	92.9	92.9	1.4	0.0	-0.4	-5.2	0.0	-0.4	-5.3
Unemployment	13.8	12.9	1.3	-0.9	-0.7	0.1	-6.5	-5.1	0.8
Participation rate	65.5	64.9	1.0	-0.6	-0.7	-3.1
Unemployment rate	12.9	12.2	1.2	-0.7	-0.5	0.7
Employment rate	57.0	57.0	0.9	0.0	-0.3	-3.1
Part-time rate	44.5	44.9	1.9	0.4	-1.6	2.5
Men, 25 years and over									
Population	406.8	407.4	...	0.6	0.9	5.5	0.1	0.2	1.4
Labour force	300.6	301.6	1.3	1.0	1.0	2.2	0.3	0.3	0.7
Employment	285.9	285.4	1.4	-0.5	-1.3	-1.3	-0.2	-0.5	-0.5
Unemployment	14.7	16.3	1.2	1.6	2.4	3.5	10.9	17.3	27.3
Participation rate	73.9	74.0	0.3	0.1	0.1	-0.5
Unemployment rate	4.9	5.4	0.4	0.5	0.8	1.1
Employment rate	70.3	70.1	0.3	-0.2	-0.4	-1.2
Part-time rate	7.3	7.7	0.6	0.4	0.1	0.6
Women, 25 years and over									
Population	423.1	423.7	...	0.6	1.1	5.6	0.1	0.3	1.3
Labour force	262.2	263.7	1.5	1.5	-3.0	2.1	0.6	-1.1	0.8
Employment	249.9	252.4	1.5	2.5	-1.6	2.2	1.0	-0.6	0.9
Unemployment	12.3	11.3	1.1	-1.0	-1.4	-0.1	-8.1	-11.0	-0.9
Participation rate	62.0	62.2	0.4	0.2	-0.9	-0.4
Unemployment rate	4.7	4.3	0.4	-0.4	-0.5	-0.1
Employment rate	59.1	59.6	0.4	0.5	-0.5	-0.2
Part-time rate	23.6	23.1	0.9	-0.4	-1.4	1.6
Industry									
Goods-producing sector	150.4	149.6	1.6	-0.8	-0.4	2.5	-0.5	-0.3	1.7
Agriculture	23.4	23.0	0.9	-0.4	-1.6	0.2	-1.7	-6.5	0.9
Forestry, fishing, mining, quarrying, oil and gas extraction ²	6.3	6.2	0.4	-0.1	0.0	-0.2	-1.6	0.0	-3.1
Utilities	9.3	10.1	0.3	0.8	1.4	2.3	8.6	16.1	29.5
Construction	46.6	46.3	1.0	-0.3	0.1	2.9	-0.6	0.2	6.7
Manufacturing	64.8	64.0	0.9	-0.8	-0.4	-2.7	-1.2	-0.6	-4.0
Services-producing sector	478.2	481.1	2.5	2.9	-2.9	-6.8	0.6	-0.6	-1.4
Wholesale and retail trade	87.9	89.0	1.2	1.1	-0.3	-5.6	1.3	-0.3	-5.9
Transportation and warehousing	35.8	35.3	0.8	-0.5	-1.3	-3.3	-1.4	-3.6	-8.5
Finance, insurance, real estate, rental and leasing	31.3	32.5	0.7	1.2	0.5	-1.0	3.8	1.6	-3.0
Professional, scientific and technical services	25.8	26.5	0.7	0.7	0.8	1.6	2.7	3.1	6.4
Business, building and other support services	19.2	19.3	0.8	0.1	-0.4	2.4	0.5	-2.0	14.2
Educational services	51.1	50.5	1.0	-0.6	-1.8	-1.5	-1.2	-3.4	-2.9
Health care and social assistance	101.4	101.8	1.2	0.4	-0.3	0.1	0.4	-0.3	0.1
Information, culture and recreation	22.6	22.9	0.8	0.3	0.5	0.5	1.3	2.2	2.2
Accommodation and food services	39.9	40.7	1.0	0.8	-0.7	0.7	2.0	-1.7	1.8
Other services (except public administration)	30.0	29.4	0.7	-0.6	0.6	0.4	-2.0	2.1	1.4
Public administration	33.2	33.2	0.7	0.0	-0.6	-1.0	0.0	-1.8	-2.9

1. Average standard error of change in two consecutive months (see "Sampling Errors" in Data Quality for further explanations).

2. Also referred to as Natural resources.

Note(s): Related CANSIM Tables 282-0087, 282-0088. The sum of individual categories may not always add to the total due to rounding.

Table 4-8
Selected labour force characteristics (seasonally adjusted) — Saskatchewan

	January 2016	February 2016	S.E. ¹	Change from			Percent change from		
				last month	last December	twelve months ago	last month	last December	twelve months ago
in thousands (except rates)									
Both sexes, 15 years and over									
Population	865.2	865.8	...	0.6	0.8	7.4	0.1	0.1	0.9
Labour force	607.0	601.1	2.6	-5.9	-7.5	4.1	-1.0	-1.2	0.7
Employment	573.3	565.5	2.7	-7.8	-9.6	-1.1	-1.4	-1.7	-0.2
Employment full-time	472.9	467.1	3.8	-5.8	-11.8	-2.4	-1.2	-2.5	-0.5
Unemployment	33.7	35.6	2.1	1.9	2.0	5.2	5.6	6.0	17.1
Participation rate	70.2	69.4	0.3	-0.8	-1.0	-0.1
Unemployment rate	5.6	5.9	0.3	0.3	0.4	0.8
Employment rate	66.3	65.3	0.3	-1.0	-1.2	-0.7
Part-time rate	17.5	17.4	0.6	-0.1	0.7	0.3
Both sexes, 15 to 24 years									
Population	135.4	135.3	...	-0.1	-0.4	-2.3	-0.1	-0.3	-1.7
Labour force	92.4	90.1	1.5	-2.3	-1.9	-4.4	-2.5	-2.1	-4.7
Employment	82.6	79.3	1.4	-3.3	-3.4	-5.5	-4.0	-4.1	-6.5
Unemployment	9.9	10.9	1.2	1.0	1.6	1.3	10.1	17.2	13.5
Participation rate	68.2	66.6	1.1	-1.6	-1.2	-2.1
Unemployment rate	10.7	12.1	1.3	1.4	2.0	1.9
Employment rate	61.0	58.6	1.0	-2.4	-2.3	-3.0
Part-time rate	35.7	38.1	2.0	2.4	3.9	-2.0
Men, 25 years and over									
Population	365.3	365.7	...	0.4	0.5	5.1	0.1	0.1	1.4
Labour force	281.1	279.4	1.4	-1.7	-3.4	4.7	-0.6	-1.2	1.7
Employment	267.1	264.9	1.6	-2.2	-2.9	2.5	-0.8	-1.1	1.0
Unemployment	14.0	14.4	1.2	0.4	-0.6	2.2	2.9	-4.0	18.0
Participation rate	77.0	76.4	0.4	-0.6	-1.0	0.2
Unemployment rate	5.0	5.2	0.4	0.2	-0.1	0.8
Employment rate	73.1	72.4	0.4	-0.7	-0.9	-0.4
Part-time rate	7.5	6.9	0.6	-0.5	0.1	0.6
Women, 25 years and over									
Population	364.5	364.8	...	0.3	0.6	4.6	0.1	0.2	1.3
Labour force	233.5	231.6	1.5	-1.9	-2.3	3.8	-0.8	-1.0	1.7
Employment	223.7	221.3	1.5	-2.4	-3.3	2.0	-1.1	-1.5	0.9
Unemployment	9.8	10.3	1.1	0.5	1.0	1.8	5.1	10.8	21.2
Participation rate	64.1	63.5	0.4	-0.6	-0.7	0.3
Unemployment rate	4.2	4.4	0.5	0.2	0.4	0.7
Employment rate	61.4	60.7	0.4	-0.7	-1.0	-0.2
Part-time rate	22.8	22.5	1.0	-0.2	0.4	1.3
Industry									
Industry	573.3	565.5	2.7	-7.8	-9.6	-1.1	-1.4	-1.7	-0.2
Goods-producing sector									
Goods-producing sector	154.9	153.3	1.9	-1.6	-3.8	-3.0	-1.0	-2.4	-1.9
Agriculture	41.5	43.3	1.2	1.8	1.2	2.0	4.3	2.9	4.8
Forestry, fishing, mining, quarrying, oil and gas extraction ²	25.7	25.6	0.8	-0.1	-0.7	-0.4	-0.4	-2.7	-1.5
Utilities	6.5	6.8	0.3	0.3	0.5	0.4	4.6	7.9	6.2
Construction	54.7	52.1	1.3	-2.6	-3.7	-5.5	-4.8	-6.6	-9.5
Manufacturing	26.5	25.5	0.8	-1.0	-1.1	0.5	-3.8	-4.1	2.0
Services-producing sector									
Services-producing sector	418.4	412.2	2.4	-6.2	-5.8	1.9	-1.5	-1.4	0.5
Wholesale and retail trade	85.2	84.3	1.4	-0.9	-1.1	0.6	-1.1	-1.3	0.7
Transportation and warehousing	27.7	27.0	0.8	-0.7	-3.0	-1.1	-2.5	-10.0	-3.9
Finance, insurance, real estate, rental and leasing	31.0	30.1	0.6	-0.9	-1.0	-1.3	-2.9	-3.2	-4.1
Professional, scientific and technical services	27.1	27.0	0.7	-0.1	0.2	2.0	-0.4	0.7	8.0
Business, building and other support services	14.1	12.7	0.8	-1.4	-1.2	-1.7	-9.9	-8.6	-11.8
Educational services	40.7	39.2	1.1	-1.5	-2.3	-4.0	-3.7	-5.5	-9.3
Health care and social assistance	79.6	79.6	1.1	0.0	0.8	4.7	0.0	1.0	6.3
Information, culture and recreation	21.7	20.9	0.7	-0.8	0.3	3.4	-3.7	1.5	19.4
Accommodation and food services	38.3	36.6	1.1	-1.7	-1.6	0.0	-4.4	-4.2	0.0
Other services (except public administration)	25.0	27.0	0.8	2.0	3.0	2.5	8.0	12.5	10.2
Public administration	28.0	27.8	0.7	-0.2	0.3	-3.2	-0.7	1.1	-10.3

1. Average standard error of change in two consecutive months (see "Sampling Errors" in Data Quality for further explanations).

2. Also referred to as Natural resources.

Note(s): Related CANSIM Tables 282-0087, 282-0088. The sum of individual categories may not always add to the total due to rounding.

Table 4-9
Selected labour force characteristics (seasonally adjusted) — Alberta

	January 2016	February 2016	S.E. ¹	Change from			Percent change from		
				last month	last December	twelve months ago	last month	last December	twelve months ago
in thousands (except rates)									
Both sexes, 15 years and over									
Population	3,381.7	3,385.6	...	3.9	6.6	57.8	0.1	0.2	1.7
Labour force	2,457.8	2,471.9	9.8	14.1	14.8	41.5	0.6	0.6	1.7
Employment	2,276.1	2,277.5	9.8	1.4	-8.6	-21.2	0.1	-0.4	-0.9
Employment full-time	1,859.0	1,869.0	14.1	10.0	-11.9	-56.3	0.5	-0.6	-2.9
Unemployment	181.7	194.3	8.1	12.6	23.3	62.6	6.9	13.6	47.5
Participation rate	72.7	73.0	0.3	0.3	0.3	0.0
Unemployment rate	7.4	7.9	0.3	0.5	0.9	2.5
Employment rate	67.3	67.3	0.3	0.0	-0.4	-1.8
Part-time rate	18.3	17.9	0.6	-0.4	0.2	1.7
Both sexes, 15 to 24 years									
Population	520.0	519.2	...	-0.8	-1.7	-4.6	-0.2	-0.3	-0.9
Labour force	348.7	350.4	5.5	1.7	2.4	-5.5	0.5	0.7	-1.5
Employment	306.5	308.3	5.3	1.8	-1.1	-11.2	0.6	-0.4	-3.5
Unemployment	42.2	42.1	4.6	-0.1	3.5	5.7	-0.2	9.1	15.7
Participation rate	67.1	67.5	1.1	0.4	0.7	-0.4
Unemployment rate	12.1	12.0	1.2	-0.1	0.9	1.8
Employment rate	58.9	59.4	1.0	0.5	0.0	-1.6
Part-time rate	41.1	39.1	2.0	-2.0	-3.4	3.2
Men, 25 years and over									
Population	1,447.3	1,449.4	...	2.1	3.7	31.1	0.1	0.3	2.2
Labour force	1,161.6	1,162.8	5.2	1.2	-2.1	15.5	0.1	-0.2	1.4
Employment	1,075.7	1,076.9	5.9	1.2	-6.7	-16.7	0.1	-0.6	-1.5
Unemployment	85.9	85.9	5.0	0.0	4.6	32.3	0.0	5.7	60.3
Participation rate	80.3	80.2	0.4	-0.1	-0.4	-0.7
Unemployment rate	7.4	7.4	0.4	0.0	0.4	2.7
Employment rate	74.3	74.3	0.4	0.0	-0.7	-2.8
Part-time rate	7.7	7.8	0.5	0.1	1.0	1.5
Women, 25 years and over									
Population	1,414.5	1,417.0	...	2.5	4.7	31.3	0.2	0.3	2.3
Labour force	947.5	958.6	5.7	11.1	14.4	31.4	1.2	1.5	3.4
Employment	894.0	892.3	6.0	-1.7	-0.8	6.7	-0.2	-0.1	0.8
Unemployment	53.5	66.3	4.2	12.8	15.2	24.6	23.9	29.7	59.0
Participation rate	67.0	67.6	0.4	0.6	0.7	0.7
Unemployment rate	5.6	6.9	0.4	1.3	1.5	2.4
Employment rate	63.2	63.0	0.4	-0.2	-0.2	-0.9
Part-time rate	23.2	22.8	1.0	-0.4	0.5	1.4
Industry									
	2,276.1	2,277.5	9.8	1.4	-8.6	-21.2	0.1	-0.4	-0.9
Goods-producing sector									
Agriculture	607.6	606.9	6.8	-0.7	-16.2	-56.0	-0.1	-2.6	-8.4
Forestry, fishing, mining, quarrying, oil and gas extraction ²	50.2	52.3	2.8	2.1	-5.7	-15.9	4.2	-9.8	-23.3
Utilities	155.8	148.4	3.4	-7.4	-3.4	-15.2	-4.7	-2.2	-9.3
Construction	20.6	21.0	1.1	0.4	1.6	1.4	1.9	8.2	7.1
Manufacturing	255.1	259.8	4.8	4.7	3.6	-8.9	1.8	1.4	-3.3
	125.9	125.4	3.2	-0.5	-12.3	-17.3	-0.4	-8.9	-12.1
Services-producing sector									
	1,668.5	1,670.6	9.2	2.1	7.6	34.8	0.1	0.5	2.1
Wholesale and retail trade	324.1	324.5	5.0	0.4	0.6	22.7	0.1	0.2	7.5
Transportation and warehousing	129.0	128.1	3.1	-0.9	0.6	-18.3	-0.7	0.5	-12.5
Finance, insurance, real estate, rental and leasing	103.6	106.4	2.4	2.8	4.4	5.6	2.7	4.3	5.6
Professional, scientific and technical services	175.6	182.6	3.5	7.0	2.5	11.0	4.0	1.4	6.4
Business, building and other support services	78.4	79.4	3.1	1.0	-2.9	-1.4	1.3	-3.5	-1.7
Educational services	148.8	147.4	3.3	-1.4	-0.7	16.1	-0.9	-0.5	12.3
Health care and social assistance	273.3	271.0	3.7	-2.3	2.9	9.0	-0.8	1.1	3.4
Information, culture and recreation	80.1	81.1	3.2	1.0	-1.9	9.4	1.2	-2.3	13.1
Accommodation and food services	138.0	135.7	3.9	-2.3	-5.1	-21.6	-1.7	-3.6	-13.7
Other services (except public administration)	120.5	119.0	3.0	-1.5	8.7	-5.1	-1.2	7.9	-4.1
Public administration	97.2	95.2	2.2	-2.0	-1.6	7.3	-2.1	-1.7	8.3

1. Average standard error of change in two consecutive months (see "Sampling Errors" in Data Quality for further explanations).

2. Also referred to as Natural resources.

Note(s): Related CANSIM Tables 282-0087, 282-0088. The sum of individual categories may not always add to the total due to rounding.

Table 4-10
Selected labour force characteristics (seasonally adjusted) — British Columbia

	January 2016	February 2016	S.E. ¹	Change from			Percent change from		
				last month	last December	twelve months ago	last month	last December	twelve months ago
in thousands (except rates)									
Both sexes, 15 years and over									
Population	3,905.9	3,910.0	...	4.1	6.8	54.5	0.1	0.2	1.4
Labour force	2,503.0	2,518.0	10.5	15.0	14.8	88.5	0.6	0.6	3.6
Employment	2,336.9	2,351.0	10.6	14.1	15.3	68.8	0.6	0.7	3.0
Employment full-time	1,842.6	1,836.6	15.6	-6.0	4.7	28.2	-0.3	0.3	1.6
Unemployment	166.0	167.0	8.5	1.0	-0.5	19.7	0.6	-0.3	13.4
Participation rate	64.1	64.4	0.3	0.3	0.3	1.4
Unemployment rate	6.6	6.6	0.3	0.0	-0.1	0.5
Employment rate	59.8	60.1	0.3	0.3	0.3	0.9
Part-time rate	21.2	21.9	0.6	0.7	0.3	1.1
Both sexes, 15 to 24 years									
Population	584.6	584.6	...	0.0	-0.1	3.4	0.0	0.0	0.6
Labour force	373.7	378.8	6.1	5.1	4.6	24.0	1.4	1.2	6.8
Employment	326.7	332.3	5.9	5.6	4.5	18.0	1.7	1.4	5.7
Unemployment	47.0	46.5	5.2	-0.5	0.1	6.0	-1.1	0.2	14.8
Participation rate	63.9	64.8	1.0	0.9	0.8	3.8
Unemployment rate	12.6	12.3	1.4	-0.3	-0.1	0.9
Employment rate	55.9	56.8	1.0	0.9	0.7	2.7
Part-time rate	44.7	47.2	2.3	2.5	4.0	0.4
Men, 25 years and over									
Population	1,620.6	1,622.5	...	1.9	3.2	24.5	0.1	0.2	1.5
Labour force	1,122.0	1,132.3	5.6	10.3	7.2	32.9	0.9	0.6	3.0
Employment	1,051.3	1,062.0	5.9	10.7	5.2	23.3	1.0	0.5	2.2
Unemployment	70.7	70.3	4.9	-0.4	1.9	9.6	-0.6	2.8	15.8
Participation rate	69.2	69.8	0.4	0.6	0.3	1.0
Unemployment rate	6.3	6.2	0.4	-0.1	0.1	0.7
Employment rate	64.9	65.5	0.4	0.6	0.2	0.5
Part-time rate	9.5	10.1	0.7	0.6	0.9	1.2
Women, 25 years and over									
Population	1,700.7	1,702.8	...	2.1	3.7	26.5	0.1	0.2	1.6
Labour force	1,007.4	1,007.0	6.2	-0.4	3.2	31.7	0.0	0.3	3.3
Employment	959.0	956.8	6.1	-2.2	5.7	27.6	-0.2	0.6	3.0
Unemployment	48.4	50.2	4.7	1.8	-2.5	4.1	3.7	-4.7	8.9
Participation rate	59.2	59.1	0.4	-0.1	0.0	0.9
Unemployment rate	4.8	5.0	0.5	0.2	-0.3	0.3
Employment rate	56.4	56.2	0.4	-0.2	0.2	0.8
Part-time rate	25.9	26.1	1.0	0.3	-1.7	1.0
Industry									
2,336.9	2,351.0	10.6	14.1	15.3	68.8	0.6	0.7	3.0	
Goods-producing sector									
466.5	471.7	6.3	5.2	1.6	14.7	1.1	0.3	3.2	
Agriculture	18.7	19.6	2.5	0.9	-0.7	-2.2	4.8	-3.4	-10.1
Forestry, fishing, mining, quarrying, oil and gas extraction ²	52.0	54.1	2.6	2.1	2.8	7.1	4.0	5.5	15.1
Utilities	14.4	13.4	0.9	-1.0	-2.1	-2.2	-6.9	-13.5	-14.1
Construction	202.1	205.8	4.4	3.7	3.8	3.0	1.8	1.9	1.5
Manufacturing	179.4	178.8	3.5	-0.6	-2.2	9.1	-0.3	-1.2	5.4
Services-producing sector									
1,870.4	1,879.3	10.3	8.9	13.7	54.1	0.5	0.7	3.0	
Wholesale and retail trade	365.1	387.1	5.6	22.0	26.7	39.3	6.0	7.4	11.3
Transportation and warehousing	128.4	132.4	3.7	4.0	-7.6	-0.4	3.1	-5.4	-0.3
Finance, insurance, real estate, rental and leasing	127.5	129.2	3.3	1.7	5.7	-2.6	1.3	4.6	-2.0
Professional, scientific and technical services	187.0	189.9	3.9	2.9	0.7	-0.6	1.6	0.4	-0.3
Business, building and other support services	98.7	96.7	3.5	-2.0	1.5	8.8	-2.0	1.6	10.0
Educational services	169.1	164.0	3.6	-5.1	-3.1	-2.3	-3.0	-1.9	-1.4
Health care and social assistance	299.8	291.8	4.2	-8.0	-3.6	16.1	-2.7	-1.2	5.8
Information, culture and recreation	124.8	122.5	3.7	-2.3	2.9	12.7	-1.8	2.4	11.6
Accommodation and food services	163.7	164.1	4.9	0.4	-4.9	-14.0	0.2	-2.9	-7.9
Other services (except public administration)	108.6	103.0	3.1	-5.6	-5.2	-5.9	-5.2	-4.8	-5.4
Public administration	97.7	98.5	2.2	0.8	0.3	2.9	0.8	0.3	3.0

1. Average standard error of change in two consecutive months (see "Sampling Errors" in Data Quality for further explanations).

2. Also referred to as Natural resources.

Note(s): Related CANSIM Tables 282-0087, 282-0088. The sum of individual categories may not always add to the total due to rounding.

Table 5-1
Labour force characteristics by census metropolitan area (seasonally adjusted) — 3 month moving average

	January 2016	February 2016	S.E. ¹	Change from			Percent change from		
				last month	last December	twelve months ago	last month	last December	twelve months ago
in thousands (except rates)									
St. John's, Newfoundland and Labrador									
Population	179.7	180.0	...	0.3	0.5	2.2	0.2	0.3	1.2
Labour force	121.7	122.6	1.0	0.9	0.3	-3.1	0.7	0.2	-2.5
Employment	113.6	113.3	1.0	-0.3	-1.1	-5.0	-0.3	-1.0	-4.2
Unemployment	8.2	9.3	0.5	1.1	1.5	1.9	13.4	19.2	25.7
Participation rate	67.7	68.1	0.5	0.4	0.0	-2.6
Unemployment rate	6.7	7.6	0.4	0.9	1.2	1.7
Employment rate	63.2	62.9	0.6	-0.3	-0.8	-3.6
Halifax, Nova Scotia									
Population	351.0	351.4	...	0.4	0.8	5.0	0.1	0.2	1.4
Labour force	238.8	239.2	1.5	0.4	1.1	-2.3	0.2	0.5	-1.0
Employment	223.3	223.0	1.5	-0.3	-0.4	-3.3	-0.1	-0.2	-1.5
Unemployment	15.6	16.2	0.7	0.6	1.5	1.1	3.8	10.2	7.3
Participation rate	68.0	68.1	0.4	0.1	0.2	-1.6
Unemployment rate	6.5	6.8	0.3	0.3	0.6	0.5
Employment rate	63.6	63.5	0.4	-0.1	-0.2	-1.8
Moncton, New Brunswick									
Population	124.4	124.6	...	0.2	0.3	1.6	0.2	0.2	1.3
Labour force	83.6	83.0	1.0	-0.6	-1.3	0.3	-0.7	-1.5	0.4
Employment	78.4	77.5	1.0	-0.9	-1.6	0.2	-1.1	-2.0	0.3
Unemployment	5.2	5.5	0.4	0.3	0.3	0.0	5.8	5.8	0.0
Participation rate	67.2	66.6	0.8	-0.6	-1.2	-0.6
Unemployment rate	6.2	6.6	0.5	0.4	0.4	-0.1
Employment rate	63.0	62.2	0.8	-0.8	-1.4	-0.6
Saint John, New Brunswick									
Population	105.4	105.4	...	0.0	0.0	-0.2	0.0	0.0	-0.2
Labour force	67.7	68.3	0.9	0.6	0.8	-1.1	0.9	1.2	-1.6
Employment	62.1	62.6	0.9	0.5	0.4	-0.7	0.8	0.6	-1.1
Unemployment	5.6	5.7	0.4	0.1	0.4	-0.4	1.8	7.5	-6.6
Participation rate	64.2	64.8	0.8	0.6	0.8	-0.9
Unemployment rate	8.3	8.3	0.6	0.0	0.4	-0.5
Employment rate	58.9	59.4	0.8	0.5	0.4	-0.5
Saguenay, Quebec									
Population	135.1	135.0	...	-0.1	-0.1	-0.2	-0.1	-0.1	-0.1
Labour force	82.8	83.5	1.0	0.7	1.3	-1.4	0.8	1.6	-1.6
Employment	76.6	76.5	1.0	-0.1	0.4	-1.3	-0.1	0.5	-1.7
Unemployment	6.3	7.1	0.4	0.8	1.0	0.1	12.7	16.4	1.4
Participation rate	61.3	61.9	0.8	0.6	1.1	-0.9
Unemployment rate	7.6	8.5	0.5	0.9	1.1	0.3
Employment rate	56.7	56.7	0.8	0.0	0.4	-0.8
Québec, Quebec									
Population	672.4	672.9	...	0.5	0.8	5.1	0.1	0.1	0.8
Labour force	466.3	462.8	4.1	-3.5	-5.3	9.9	-0.8	-1.1	2.2
Employment	441.9	439.3	4.1	-2.6	-6.0	11.4	-0.6	-1.3	2.7
Unemployment	24.3	23.5	1.5	-0.8	0.7	-1.5	-3.3	3.1	-6.0
Participation rate	69.3	68.8	0.6	-0.5	-0.8	1.0
Unemployment rate	5.2	5.1	0.3	-0.1	0.2	-0.4
Employment rate	65.7	65.3	0.6	-0.4	-1.0	1.2
Sherbrooke, Quebec									
Population	180.2	180.4	...	0.2	0.3	1.9	0.1	0.2	1.1
Labour force	112.8	114.0	1.2	1.2	1.0	2.8	1.1	0.9	2.5
Employment	105.3	106.1	1.2	0.8	0.6	3.3	0.8	0.6	3.2
Unemployment	7.5	7.9	0.5	0.4	0.4	-0.5	5.3	5.3	-6.0
Participation rate	62.6	63.2	0.7	0.6	0.5	0.9
Unemployment rate	6.6	6.9	0.4	0.3	0.3	-0.7
Employment rate	58.4	58.8	0.6	0.4	0.2	1.2

See notes at the end of the table.

Table 5-1 – continued

Labour force characteristics by census metropolitan area (seasonally adjusted) — 3 month moving average

	January 2016	February 2016	S.E. ¹	Change from			Percent change from		
				last month	last December	twelve months ago	last month	last December	twelve months ago
in thousands (except rates)									
Trois-Rivières, Quebec									
Population	132.9	132.9	...	0.0	0.0	0.3	0.0	0.0	0.2
Labour force	80.6	80.9	1.0	0.3	0.1	4.6	0.4	0.1	6.0
Employment	74.7	75.6	1.0	0.9	0.7	4.1	1.2	0.9	5.7
Unemployment	5.9	5.3	0.4	-0.6	-0.6	0.4	-10.2	-10.2	8.2
Participation rate	60.6	60.9	0.8	0.3	0.1	3.4
Unemployment rate	7.3	6.6	0.5	-0.7	-0.7	0.2
Employment rate	56.2	56.9	0.8	0.7	0.5	3.0
Montréal, Quebec									
Population	3,368.8	3,371.5	...	2.7	5.1	32.0	0.1	0.2	1.0
Labour force	2,238.9	2,242.0	8.9	3.1	9.2	39.0	0.1	0.4	1.8
Employment	2,046.2	2,047.0	9.1	0.8	8.2	10.8	0.0	0.4	0.5
Unemployment	192.6	194.9	5.2	2.3	0.9	28.1	1.2	0.5	16.8
Participation rate	66.5	66.5	0.3	0.0	0.2	0.5
Unemployment rate	8.6	8.7	0.2	0.1	0.0	1.1
Employment rate	60.7	60.7	0.3	0.0	0.1	-0.3
Ottawa-Gatineau, Ontario/Quebec									
Population	1,103.3	1,104.3	...	1.0	1.9	12.0	0.1	0.2	1.1
Labour force	755.9	761.3	4.7	5.4	2.6	-0.5	0.7	0.3	-0.1
Employment	707.9	711.7	4.9	3.8	0.0	4.4	0.5	0.0	0.6
Unemployment	47.9	49.6	2.1	1.7	2.6	-4.8	3.5	5.5	-8.8
Participation rate	68.5	68.9	0.4	0.4	0.1	-0.8
Unemployment rate	6.3	6.5	0.3	0.2	0.3	-0.6
Employment rate	64.2	64.4	0.4	0.2	-0.2	-0.4
Ottawa-Gatineau, Quebec part, Ontario/Quebec									
Population	273.2	273.3	...	0.1	0.2	1.5	0.0	0.1	0.6
Labour force	190.3	189.0	1.6	-1.3	-3.8	-0.4	-0.7	-2.0	-0.2
Employment	178.7	177.1	1.7	-1.6	-4.2	2.6	-0.9	-2.3	1.5
Unemployment	11.7	11.9	0.7	0.2	0.4	-3.0	1.7	3.5	-20.1
Participation rate	69.7	69.2	0.6	-0.5	-1.4	-0.5
Unemployment rate	6.1	6.3	0.4	0.2	0.3	-1.6
Employment rate	65.4	64.8	0.6	-0.6	-1.6	0.6
Ottawa-Gatineau, Ontario part, Ontario/Quebec									
Population	830.1	831.0	...	0.9	1.7	10.5	0.1	0.2	1.3
Labour force	565.5	572.3	4.4	6.8	6.5	0.0	1.2	1.1	0.0
Employment	529.3	534.6	4.6	5.3	4.2	1.7	1.0	0.8	0.3
Unemployment	36.3	37.7	2.0	1.4	2.2	-1.8	3.9	6.2	-4.6
Participation rate	68.1	68.9	0.5	0.8	0.7	-0.9
Unemployment rate	6.4	6.6	0.4	0.2	0.3	-0.3
Employment rate	63.8	64.3	0.6	0.5	0.3	-0.6
Kingston, Ontario									
Population	138.8	138.9	...	0.1	0.2	1.1	0.1	0.1	0.8
Labour force	89.8	89.7	0.9	-0.1	-0.5	3.4	-0.1	-0.6	3.9
Employment	84.1	84.3	0.9	0.2	-0.1	3.9	0.2	-0.1	4.9
Unemployment	5.7	5.4	0.4	-0.3	-0.4	-0.5	-5.3	-6.9	-8.5
Participation rate	64.7	64.6	0.6	-0.1	-0.4	2.0
Unemployment rate	6.3	6.0	0.4	-0.3	-0.4	-0.8
Employment rate	60.6	60.7	0.6	0.1	-0.2	2.4
Peterborough, Ontario									
Population	104.6	104.6	...	0.0	0.1	0.4	0.0	0.1	0.4
Labour force	64.5	63.8	1.2	-0.7	-0.9	-3.4	-1.1	-1.4	-5.1
Employment	60.2	60.0	1.3	-0.2	0.2	-2.1	-0.3	0.3	-3.4
Unemployment	4.3	3.8	0.6	-0.5	-1.1	-1.3	-11.6	-22.4	-25.5
Participation rate	61.7	61.0	1.2	-0.7	-0.9	-3.5
Unemployment rate	6.7	6.0	0.8	-0.7	-1.6	-1.6
Employment rate	57.6	57.4	1.2	-0.2	0.2	-2.2

See notes at the end of the table.

Table 5-1 – continued

Labour force characteristics by census metropolitan area (seasonally adjusted) — 3 month moving average

	January 2016	February 2016	S.E. ¹	Change from			Percent change from		
				last month	last December	twelve months ago	last month	last December	twelve months ago
in thousands (except rates)									
Oshawa, Ontario									
Population	324.0	324.4	...	0.4	0.9	5.2	0.1	0.3	1.6
Labour force	222.2	223.5	2.0	1.3	5.6	4.6	0.6	2.6	2.1
Employment	207.9	209.9	2.2	2.0	7.0	6.4	1.0	3.4	3.1
Unemployment	14.2	13.6	1.0	-0.6	-1.4	-1.9	-4.2	-9.3	-12.3
Participation rate	68.6	68.9	0.6	0.3	1.5	0.3
Unemployment rate	6.4	6.1	0.5	-0.3	-0.8	-1.0
Employment rate	64.2	64.7	0.7	0.5	2.0	0.9
Toronto, Ontario									
Population	5,146.3	5,153.1	...	6.8	13.5	86.6	0.1	0.3	1.7
Labour force	3,472.0	3,472.5	11.3	0.5	11.1	141.1	0.0	0.3	4.2
Employment	3,226.1	3,222.7	11.6	-3.4	4.2	138.6	-0.1	0.1	4.5
Unemployment	246.0	249.8	6.2	3.8	6.8	2.5	1.5	2.8	1.0
Participation rate	67.5	67.4	0.2	-0.1	0.1	1.6
Unemployment rate	7.1	7.2	0.2	0.1	0.2	-0.2
Employment rate	62.7	62.5	0.2	-0.2	-0.1	1.6
Hamilton, Ontario									
Population	645.9	646.5	...	0.6	1.1	6.9	0.1	0.2	1.1
Labour force	410.0	408.2	3.9	-1.8	-1.5	7.9	-0.4	-0.4	2.0
Employment	383.8	383.4	4.0	-0.4	-2.0	4.9	-0.1	-0.5	1.3
Unemployment	26.2	24.8	1.5	-1.4	0.5	3.0	-5.3	2.1	13.8
Participation rate	63.5	63.1	0.6	-0.4	-0.4	0.5
Unemployment rate	6.4	6.1	0.4	-0.3	0.2	0.7
Employment rate	59.4	59.3	0.6	-0.1	-0.4	0.1
St. Catharines-Niagara, Ontario									
Population	343.9	344.0	...	0.1	0.2	1.3	0.0	0.1	0.4
Labour force	225.8	225.1	2.3	-0.7	-0.5	13.9	-0.3	-0.2	6.6
Employment	206.3	206.1	2.4	-0.2	-1.4	9.0	-0.1	-0.7	4.6
Unemployment	19.5	19.1	1.0	-0.4	1.0	4.9	-2.1	5.5	34.5
Participation rate	65.7	65.4	0.7	-0.3	-0.2	3.8
Unemployment rate	8.6	8.5	0.4	-0.1	0.5	1.8
Employment rate	60.0	59.9	0.7	-0.1	-0.5	2.4
Kitchener-Cambridge-Waterloo, Ontario									
Population	423.6	423.9	...	0.3	0.6	4.0	0.1	0.1	1.0
Labour force	299.5	301.6	2.8	2.1	3.1	-2.5	0.7	1.0	-0.8
Employment	280.1	283.0	3.0	2.9	3.6	-4.6	1.0	1.3	-1.6
Unemployment	19.4	18.7	1.0	-0.7	-0.4	2.2	-3.6	-2.1	13.3
Participation rate	70.7	71.1	0.7	0.4	0.6	-1.3
Unemployment rate	6.5	6.2	0.3	-0.3	-0.2	0.8
Employment rate	66.1	66.8	0.7	0.7	0.8	-1.7
Brantford, Ontario									
Population	112.3	112.4	...	0.1	0.2	1.0	0.1	0.2	0.9
Labour force	72.5	72.9	0.9	0.4	0.9	-3.7	0.6	1.2	-4.8
Employment	68.3	68.7	1.0	0.4	0.2	-3.7	0.6	0.3	-5.1
Unemployment	4.2	4.2	0.4	0.0	0.7	0.0	0.0	20.0	0.0
Participation rate	64.6	64.9	0.8	0.3	0.7	-3.9
Unemployment rate	5.8	5.8	0.5	0.0	0.9	0.3
Employment rate	60.8	61.1	0.9	0.3	0.0	-3.9
Guelph, Ontario									
Population	129.5	129.6	...	0.1	0.3	1.5	0.1	0.2	1.2
Labour force	99.0	100.4	1.1	1.4	3.1	7.8	1.4	3.2	8.4
Employment	95.1	96.5	1.2	1.4	3.3	8.4	1.5	3.5	9.5
Unemployment	4.0	3.9	0.4	-0.1	-0.2	-0.6	-2.5	-4.9	-13.3
Participation rate	76.4	77.5	0.9	1.1	2.2	5.2
Unemployment rate	4.0	3.9	0.5	-0.1	-0.3	-1.0
Employment rate	73.4	74.5	0.9	1.1	2.4	5.7

See notes at the end of the table.

Table 5-1 – continued

Labour force characteristics by census metropolitan area (seasonally adjusted) — 3 month moving average

	January 2016	February 2016	S.E. ¹	Change from			Percent change from		
				last month	last December	twelve months ago	last month	last December	twelve months ago
in thousands (except rates)									
London, Ontario									
Population	424.0	424.3	...	0.3	0.6	3.7	0.1	0.1	0.9
Labour force	270.9	271.2	2.7	0.3	-1.0	2.8	0.1	-0.4	1.0
Employment	255.3	253.9	2.8	-1.4	-1.5	3.8	-0.5	-0.6	1.5
Unemployment	15.6	17.4	1.1	1.8	0.7	-0.9	11.5	4.2	-4.9
Participation rate	63.9	63.9	0.6	0.0	-0.3	0.1
Unemployment rate	5.8	6.4	0.4	0.6	0.3	-0.4
Employment rate	60.2	59.8	0.7	-0.4	-0.5	0.3
Windsor, Ontario									
Population	280.7	280.8	...	0.1	0.3	1.9	0.0	0.1	0.7
Labour force	170.4	169.8	1.9	-0.6	0.3	-8.1	-0.4	0.2	-4.6
Employment	154.6	156.6	1.9	2.0	3.5	-4.2	1.3	2.3	-2.6
Unemployment	15.8	13.1	1.0	-2.7	-3.3	-4.0	-17.1	-20.1	-23.4
Participation rate	60.7	60.5	0.7	-0.2	0.1	-3.3
Unemployment rate	9.3	7.7	0.6	-1.6	-2.0	-1.9
Employment rate	55.1	55.8	0.7	0.7	1.2	-1.9
Barrie, Ontario									
Population	168.5	168.7	...	0.2	0.5	2.7	0.1	0.3	1.6
Labour force	114.3	116.6	1.7	2.3	4.9	-4.3	2.0	4.4	-3.6
Employment	107.0	108.8	1.9	1.8	4.2	-4.3	1.7	4.0	-3.8
Unemployment	7.3	7.8	0.8	0.5	0.6	0.0	6.8	8.3	0.0
Participation rate	67.8	69.1	1.0	1.3	2.7	-3.7
Unemployment rate	6.4	6.7	0.7	0.3	0.3	0.2
Employment rate	63.5	64.5	1.1	1.0	2.3	-3.6
Greater Sudbury, Ontario									
Population	140.1	140.1	...	0.0	0.0	0.3	0.0	0.0	0.2
Labour force	86.1	86.6	0.9	0.5	0.0	-3.6	0.6	0.0	-4.0
Employment	78.7	79.5	0.9	0.8	0.2	-4.9	1.0	0.3	-5.8
Unemployment	7.4	7.2	0.4	-0.2	-0.1	1.4	-2.7	-1.4	24.1
Participation rate	61.5	61.8	0.6	0.3	0.0	-2.7
Unemployment rate	8.6	8.3	0.4	-0.3	-0.1	1.9
Employment rate	56.2	56.7	0.7	0.5	0.1	-3.7
Thunder Bay, Ontario									
Population	104.6	104.6	...	0.0	0.0	0.0	0.0	0.0	0.0
Labour force	64.4	64.8	0.7	0.4	1.4	1.9	0.6	2.2	3.0
Employment	60.1	60.2	0.7	0.1	0.5	0.1	0.2	0.8	0.2
Unemployment	4.2	4.6	0.2	0.4	0.9	1.8	9.5	24.3	64.3
Participation rate	61.6	62.0	0.6	0.4	1.4	1.9
Unemployment rate	6.5	7.1	0.4	0.6	1.3	2.6
Employment rate	57.5	57.6	0.7	0.1	0.5	0.1
Winnipeg, Manitoba									
Population	657.2	658.0	...	0.8	1.4	9.2	0.1	0.2	1.4
Labour force	451.7	452.8	1.4	1.1	-0.2	6.7	0.2	0.0	1.5
Employment	423.1	424.0	1.4	0.9	-1.1	5.8	0.2	-0.3	1.4
Unemployment	28.6	28.8	0.8	0.2	0.9	0.9	0.7	3.2	3.2
Participation rate	68.7	68.8	0.2	0.1	-0.2	0.0
Unemployment rate	6.3	6.4	0.2	0.1	0.2	0.1
Employment rate	64.4	64.4	0.2	0.0	-0.3	-0.1
Regina, Saskatchewan									
Population	200.0	200.2	...	0.2	0.4	3.6	0.1	0.2	1.8
Labour force	146.1	145.1	1.0	-1.0	-0.5	0.9	-0.7	-0.3	0.6
Employment	139.8	138.4	1.1	-1.4	-1.1	0.9	-1.0	-0.8	0.7
Unemployment	6.3	6.7	0.4	0.4	0.6	0.1	6.3	9.8	1.5
Participation rate	73.1	72.5	0.5	-0.6	-0.4	-0.8
Unemployment rate	4.3	4.6	0.3	0.3	0.4	0.0
Employment rate	69.9	69.1	0.5	-0.8	-0.7	-0.8

See notes at the end of the table.

Table 5-1 – continued

Labour force characteristics by census metropolitan area (seasonally adjusted) — 3 month moving average

	January 2016	February 2016	S.E. ¹	Change from			Percent change from		
				last month	last December	twelve months ago	last month	last December	twelve months ago
in thousands (except rates)									
Saskatoon, Saskatchewan									
Population	255.2	255.6	...	0.4	0.8	6.1	0.2	0.3	2.4
Labour force	181.1	179.3	1.2	-1.8	-4.0	0.1	-1.0	-2.2	0.1
Employment	170.0	168.1	1.3	-1.9	-3.4	-2.1	-1.1	-2.0	-1.2
Unemployment	11.1	11.3	0.6	0.2	-0.5	2.3	1.8	-4.2	25.6
Participation rate	71.0	70.1	0.5	-0.9	-1.8	-1.7
Unemployment rate	6.1	6.3	0.3	0.2	-0.1	1.3
Employment rate	66.6	65.8	0.5	-0.8	-1.5	-2.4
Calgary, Alberta									
Population	1,193.4	1,195.1	...	1.7	3.3	29.0	0.1	0.3	2.5
Labour force	865.2	872.9	4.5	7.7	10.5	10.1	0.9	1.2	1.2
Employment	798.9	799.3	4.6	0.4	-2.9	-20.2	0.1	-0.4	-2.5
Unemployment	66.3	73.6	2.5	7.3	13.5	30.3	11.0	22.5	70.0
Participation rate	72.5	73.0	0.4	0.5	0.6	-1.0
Unemployment rate	7.7	8.4	0.3	0.7	1.4	3.4
Employment rate	66.9	66.9	0.4	0.0	-0.4	-3.4
Edmonton, Alberta									
Population	1,112.5	1,113.8	...	1.3	2.5	23.8	0.1	0.2	2.2
Labour force	830.9	835.0	4.4	4.1	7.4	42.2	0.5	0.9	5.3
Employment	776.8	778.1	4.6	1.3	2.3	24.8	0.2	0.3	3.3
Unemployment	54.1	57.0	2.2	2.9	5.2	17.5	5.4	10.0	44.3
Participation rate	74.7	75.0	0.4	0.3	0.5	2.3
Unemployment rate	6.5	6.8	0.3	0.3	0.5	1.8
Employment rate	69.8	69.9	0.4	0.1	0.1	0.8
Kelowna, British Columbia									
Population	153.7	154.0	...	0.3	0.5	2.8	0.2	0.3	1.9
Labour force	98.8	98.0	2.0	-0.8	0.5	1.0	-0.8	0.5	1.0
Employment	91.3	90.1	2.0	-1.2	-0.8	-3.6	-1.3	-0.9	-3.8
Unemployment	7.5	7.9	0.6	0.4	1.3	4.7	5.3	19.7	146.9
Participation rate	64.3	63.6	1.3	-0.7	0.1	-0.6
Unemployment rate	7.6	8.1	0.6	0.5	1.3	4.8
Employment rate	59.4	58.5	1.3	-0.9	-0.7	-3.5
Abbotsford-Mission, British Columbia									
Population	146.2	146.4	...	0.2	0.4	2.3	0.1	0.3	1.6
Labour force	97.5	96.7	0.9	-0.8	-1.1	2.3	-0.8	-1.1	2.4
Employment	90.3	89.8	1.0	-0.5	-0.6	0.7	-0.6	-0.7	0.8
Unemployment	7.1	6.9	0.4	-0.2	-0.5	1.6	-2.8	-6.8	30.2
Participation rate	66.7	66.1	0.6	-0.6	-0.9	0.6
Unemployment rate	7.3	7.1	0.4	-0.2	-0.5	1.5
Employment rate	61.8	61.3	0.7	-0.5	-0.6	-0.5
Vancouver, British Columbia									
Population	2,149.1	2,151.4	...	2.3	4.9	38.8	0.1	0.2	1.8
Labour force	1,418.3	1,426.1	6.0	7.8	7.9	66.3	0.5	0.6	4.9
Employment	1,337.1	1,339.0	6.1	1.9	2.0	60.0	0.1	0.1	4.7
Unemployment	81.2	87.1	3.1	5.9	5.9	6.3	7.3	7.3	7.8
Participation rate	66.0	66.3	0.3	0.3	0.2	1.9
Unemployment rate	5.7	6.1	0.2	0.4	0.4	0.2
Employment rate	62.2	62.2	0.3	0.0	-0.1	1.7
Victoria, British Columbia									
Population	305.3	305.5	...	0.2	0.4	3.7	0.1	0.1	1.2
Labour force	193.8	192.9	1.8	-0.9	-1.9	12.4	-0.5	-1.0	6.9
Employment	182.6	181.7	1.9	-0.9	-1.3	10.0	-0.5	-0.7	5.8
Unemployment	11.2	11.2	0.7	0.0	-0.6	2.4	0.0	-5.1	27.3
Participation rate	63.5	63.1	0.6	-0.4	-0.7	3.3
Unemployment rate	5.8	5.8	0.4	0.0	-0.3	0.9
Employment rate	59.8	59.5	0.6	-0.3	-0.5	2.6

1. Average standard error of change in two consecutive months (see "Sampling Errors" in Data Quality for further explanations).

Note(s): Estimates in this table are based on 2011 Census boundaries. Related CANSIM Table 282-0135. The sum of individual categories may not always add to the total due to rounding.

Table 5-2
Labour force characteristics by census metropolitan area (seasonally adjusted) — Monthly

	January 2016	February 2016	S.E. ¹	Change from			Percent change from		
				last month	last December	twelve months ago	last month	last December	twelve months ago
in thousands (except rates)									
Montréal, Quebec									
Population	3,371.3	3,374.4	...	3.1	5.7	32.5	0.1	0.2	1.0
Labour force	2,240.3	2,239.7	19.3	-0.6	-6.3	25.2	0.0	-0.3	1.1
Employment	2,049.1	2,043.6	19.4	-5.5	-4.8	-4.7	-0.3	-0.2	-0.2
Unemployment	191.2	196.1	12.6	4.9	-1.5	29.9	2.6	-0.8	18.0
Participation rate	66.5	66.4	0.6	-0.1	-0.3	0.1
Unemployment rate	8.5	8.8	0.5	0.3	0.0	1.3
Employment rate	60.8	60.6	0.6	-0.2	-0.2	-0.7
Toronto, Ontario									
Population	5,153.1	5,160.5	...	7.4	14.7	87.1	0.1	0.3	1.7
Labour force	3,483.5	3,457.3	24.1	-26.2	-19.5	103.6	-0.8	-0.6	3.1
Employment	3,235.8	3,202.2	23.9	-33.6	-28.0	94.1	-1.0	-0.9	3.0
Unemployment	247.6	255.2	15.1	7.6	8.6	9.5	3.1	3.5	3.9
Participation rate	67.6	67.0	0.5	-0.6	-0.6	0.9
Unemployment rate	7.1	7.4	0.4	0.3	0.3	0.1
Employment rate	62.8	62.1	0.5	-0.7	-0.7	0.8
Vancouver, British Columbia									
Population	2,151.2	2,153.7	...	2.5	4.6	38.0	0.1	0.2	1.8
Labour force	1,420.3	1,437.2	12.8	16.9	16.5	77.9	1.2	1.2	5.7
Employment	1,336.5	1,345.0	13.1	8.5	9.4	68.5	0.6	0.7	5.4
Unemployment	83.8	92.3	7.8	8.5	7.2	9.5	10.1	8.5	11.5
Participation rate	66.0	66.7	0.6	0.7	0.6	2.5
Unemployment rate	5.9	6.4	0.6	0.5	0.4	0.3
Employment rate	62.1	62.5	0.6	0.4	0.4	2.2

1. Average standard error of change in two consecutive months (see "Sampling Errors" in Data Quality for further explanations).

Note(s): Estimates in this table are based on 2011 Census boundaries. Related CANSIM Table 282-0136. The sum of individual categories may not always add to the total due to rounding.

Table 6-1

Labour force characteristics by province and economic region, ¹ unadjusted for seasonality, 3 month moving average ending in February 2015 and February 2016

	Population	Labour force			Participation rate	Unemployment rate	Employment rate
		Labour force	Employment	Unemployment			
Canada							
2015	29,138.8	18,913.8	17,629.3	1,284.5	64.9	6.8	60.5
2016	29,441.4	19,162.1	17,758.0	1,404.1	65.1	7.3	60.3
Newfoundland and Labrador							
2015	443.3	261.2	227.6	33.6	58.9	12.9	51.3
2016	443.3	263.5	222.3	41.3	59.4	15.7	50.1
<i>Avalon Peninsula [1010]</i>							
2015	232.3	153.0	140.0	13.0	65.9	8.5	60.3
2016	233.8	148.7	132.8	15.9	63.6	10.7	56.8
<i>South Coast-Burin Peninsula and Notre Dame-Central Bonavista Bay [1020, 1040]</i>							
2015	123.4	60.7	47.9	12.9	49.2	21.3	38.8
2016	122.3	62.3	47.7	14.6	50.9	23.4	39.0
<i>West Coast-Northern Peninsula-Labrador [1030]</i>							
2015	87.5	47.5	39.7	7.8	54.3	16.4	45.4
2016	87.1	52.5	41.8	10.7	60.3	20.4	48.0
Prince Edward Island							
2015	120.8	80.1	69.8	10.3	66.3	12.9	57.8
2016	121.2	78.0	68.4	9.6	64.4	12.3	56.4
Nova Scotia							
2015	784.1	482.7	439.0	43.7	61.6	9.1	56.0
2016	787.2	478.3	433.7	44.6	60.8	9.3	55.1
<i>Cape Breton [1210]</i>							
2015	107.5	58.6	50.0	8.6	54.5	14.7	46.5
2016	106.4	53.5	43.4	10.1	50.3	18.9	40.8
<i>North Shore [1220]</i>							
2015	129.1	71.6	62.6	9.0	55.5	12.6	48.5
2016	128.6	74.7	67.7	7.0	58.1	9.4	52.6
<i>Annapolis Valley [1230]</i>							
2015	102.5	56.9	51.9	5.0	55.5	8.8	50.6
2016	102.7	58.3	53.4	4.9	56.8	8.4	52.0
<i>Southern [1240]</i>							
2015	98.6	55.6	49.7	5.9	56.4	10.6	50.4
2016	98.1	53.7	47.8	6.0	54.7	11.2	48.7
<i>Halifax [1250]</i>							
2015	346.4	240.1	224.8	15.3	69.3	6.4	64.9
2016	351.4	238.1	221.4	16.7	67.8	7.0	63.0
New Brunswick							
2015	622.0	383.4	341.5	41.9	61.6	10.9	54.9
2016	622.2	376.7	338.6	38.1	60.5	10.1	54.4
<i>Campbellton-Miramichi [1310]</i>							
2015	129.5	69.8	56.2	13.6	53.9	19.5	43.4
2016	128.7	69.1	57.7	11.4	53.7	16.5	44.8
<i>Moncton-Richibucto [1320]</i>							
2015	176.2	113.7	104.1	9.6	64.5	8.4	59.1
2016	177.4	109.2	100.4	8.8	61.6	8.1	56.6
<i>Saint John-St. Stephen [1330]</i>							
2015	142.4	88.6	80.8	7.8	62.2	8.8	56.7
2016	141.9	87.9	80.0	7.9	61.9	9.0	56.4
<i>Fredericton-Oromocto [1340]</i>							
2015	109.5	70.8	64.6	6.2	64.7	8.8	59.0
2016	110.5	71.8	65.3	6.4	65.0	8.9	59.1

See notes at the end of the table.

Table 6-1 – continued

Labour force characteristics by province and economic region, ¹ unadjusted for seasonality, 3 month moving average ending in February 2015 and February 2016

	Population	Labour force			Participation rate	Unemployment rate	Employment rate
		Labour force	Employment	Unemployment			
	in thousands			percent			
Edmundston-Woodstock [1350]							
2015	64.3	40.5	35.8	4.7	63.0	11.6	55.7
2016	63.7	38.8	35.2	3.6	60.9	9.3	55.3
Quebec							
2015	6,824.9	4,340.8	4,003.9	336.9	63.6	7.8	58.7
2016	6,865.8	4,388.5	4,036.2	352.3	63.9	8.0	58.8
Gaspésie-Îles-de-la-Madeleine [2410]							
2015	78.5	39.7	31.3	8.3	50.6	20.9	39.9
2016	77.7	41.1	33.3	7.8	52.9	19.0	42.9
Bas-Saint-Laurent [2415]							
2015	170.3	88.6	79.4	9.2	52.0	10.4	46.6
2016	169.5	94.9	86.0	8.9	56.0	9.4	50.7
Capitale-Nationale [2420]							
2015	614.8	404.0	379.4	24.6	65.7	6.1	61.7
2016	619.3	418.6	396.9	21.7	67.6	5.2	64.1
Chaudière-Appalaches [2425]							
2015	349.1	231.3	218.4	12.9	66.3	5.6	62.6
2016	349.4	228.1	213.5	14.6	65.3	6.4	61.1
Estrie [2430]							
2015	268.6	170.5	158.3	12.2	63.5	7.2	58.9
2016	270.0	165.1	153.6	11.6	61.1	7.0	56.9
Centre-du-Québec [2433]							
2015	200.1	120.0	108.7	11.3	60.0	9.4	54.3
2016	200.8	117.5	109.5	8.0	58.5	6.8	54.5
Montérégie [2435]							
2015	1,247.3	806.5	761.0	45.5	64.7	5.6	61.0
2016	1,255.3	831.4	779.5	51.8	66.2	6.2	62.1
Montréal [2440]							
2015	1,657.3	1,043.6	944.9	98.7	63.0	9.5	57.0
2016	1,673.2	1,061.6	945.0	116.7	63.4	11.0	56.5
Laval [2445]							
2015	350.3	242.3	228.0	14.2	69.2	5.9	65.1
2016	353.4	218.1	199.5	18.6	61.7	8.5	56.5
Lanaudière [2450]							
2015	410.0	270.9	248.3	22.5	66.1	8.3	60.6
2016	413.2	268.4	250.3	18.1	65.0	6.7	60.6
Laurentides [2455]							
2015	490.4	318.2	294.2	24.0	64.9	7.5	60.0
2016	495.5	328.5	309.5	19.0	66.3	5.8	62.5
Outaouais [2460]							
2015	317.5	208.5	190.2	18.2	65.7	8.7	59.9
2016	319.3	215.4	200.3	15.1	67.5	7.0	62.7
Abitibi-Témiscamingue [2465]							
2015	120.5	76.8	70.1	6.8	63.7	8.9	58.2
2016	120.5	77.2	72.0	5.2	64.1	6.7	59.8
Mauricie [2470]							
2015	225.9	125.7	116.6	9.1	55.6	7.2	51.6
2016	225.4	130.0	115.3	14.7	57.7	11.3	51.2
Saguenay-Lac-Saint-Jean [2475]							
2015	232.3	139.5	126.7	12.8	60.1	9.2	54.5
2016	231.7	135.8	121.8	14.0	58.6	10.3	52.6

See notes at the end of the table.

Table 6-1 – continued

Labour force characteristics by province and economic region, ¹ unadjusted for seasonality, 3 month moving average ending in February 2015 and February 2016

	Population	Labour force			Participation rate	Unemployment rate	Employment rate
		Labour force	Employment	Unemployment			
	in thousands			percent			
Côte-Nord and Nord-du-Québec [2480, 2490]							
2015	92.0	54.7	48.1	6.6	59.5	12.1	52.3
2016	91.9	56.7	50.3	6.4	61.7	11.3	54.7
Ontario							
2015	11,329.2	7,305.3	6,810.3	495.0	64.5	6.8	60.1
2016	11,455.0	7,384.4	6,896.8	487.6	64.5	6.6	60.2
Ottawa [3510]							
2015	1,092.6	735.4	685.1	50.3	67.3	6.8	62.7
2016	1,102.7	728.5	681.3	47.2	66.1	6.5	61.8
Kingston-Pembroke [3515]							
2015	376.7	220.6	203.8	16.8	58.6	7.6	54.1
2016	377.6	213.7	198.0	15.6	56.6	7.3	52.4
Muskoka-Kawartha [3520]							
2015	325.3	203.6	187.9	15.7	62.6	7.7	57.8
2016	327.2	166.6	158.4	8.2	50.9	4.9	48.4
Toronto [3530]							
2015	5,318.5	3,457.3	3,213.9	243.4	65.0	7.0	60.4
2016	5,405.2	3,588.8	3,345.0	243.7	66.4	6.8	61.9
Kitchener-Waterloo-Barrie [3540]							
2015	1,071.1	740.1	700.1	40.0	69.1	5.4	65.4
2016	1,084.3	752.8	710.9	41.9	69.4	5.6	65.6
Hamilton-Niagara Peninsula [3550]							
2015	1,193.7	741.4	696.7	44.7	62.1	6.0	58.4
2016	1,204.3	761.9	709.5	52.4	63.3	6.9	58.9
London [3560]							
2015	551.7	341.3	320.2	21.1	61.9	6.2	58.0
2016	555.8	346.2	326.8	19.4	62.3	5.6	58.8
Windsor-Sarnia [3570]							
2015	524.2	328.4	300.6	27.7	62.6	8.4	57.3
2016	524.5	311.8	288.0	23.8	59.4	7.6	54.9
Stratford-Bruce Peninsula [3580]							
2015	245.7	161.7	152.5	9.1	65.8	5.6	62.1
2016	245.9	150.7	142.1	8.5	61.3	5.6	57.8
Northeast [3590]							
2015	457.7	272.4	252.0	20.3	59.5	7.5	55.1
2016	456.4	257.0	237.5	19.5	56.3	7.6	52.0
Northwest [3595]							
2015	171.9	103.2	97.4	5.8	60.0	5.6	56.7
2016	171.2	106.5	99.2	7.3	62.2	6.9	57.9
Manitoba							
2015	982.4	665.8	629.2	36.7	67.8	5.5	64.0
2016	992.9	663.9	624.5	39.3	66.9	5.9	62.9
Southeast [4610]							
2015	88.2	59.9	56.5	3.3	67.9	5.5	64.1
2016	90.2	60.6	56.9	3.6	67.2	5.9	63.1
South Central and North Central [4620, 4640]							
2015	83.9	58.6	56.7	1.8	69.8	3.1	67.6
2016	85.0	54.5	52.6	2.0	64.1	3.7	61.9
Southwest [4630]							
2015	87.8	59.4	57.2	2.2	67.7	3.7	65.1
2016	88.1	57.7	54.2	3.5	65.5	6.1	61.5

See notes at the end of the table.

Table 6-1 – continued

Labour force characteristics by province and economic region, ¹ unadjusted for seasonality, 3 month moving average ending in February 2015 and February 2016

	Population	Labour force			Participation rate	Unemployment rate	Employment rate
		Labour force	Employment	Unemployment			
	in thousands			percent			
Winnipeg [4650]							
2015	591.2	402.9	378.2	24.6	68.1	6.1	64.0
2016	598.7	406.3	380.8	25.5	67.9	6.3	63.6
Interlake [4660]							
2015	74.5	47.3	44.9	2.3	63.5	4.9	60.3
2016	75.3	48.1	45.1	3.0	63.9	6.2	59.9
Parklands and Northern [4670, 4680]							
2015	56.7	37.9	35.5	2.4	66.8	6.3	62.6
2016	55.5	36.6	34.9	1.7	65.9	4.6	62.9
Saskatchewan							
2015	857.7	589.8	562.6	27.2	68.8	4.6	65.6
2016	865.4	598.7	563.1	35.6	69.2	5.9	65.1
Regina-Moose Mountain [4710]							
2015	261.2	187.8	180.1	7.8	71.9	4.2	69.0
2016	264.9	191.7	183.0	8.7	72.4	4.5	69.1
Swift Current-Moose Jaw [4720]							
2015	82.6	54.8	53.4	1.5	66.3	2.7	64.6
2016	82.3	54.5	52.2	2.2	66.2	4.0	63.4
Saskatoon-Biggar [4730]							
2015	292.6	204.8	194.4	10.3	70.0	5.0	66.4
2016	298.0	205.7	192.7	13.0	69.0	6.3	64.7
Yorkton-Melville [4740]							
2015	62.8	40.3	39.0	1.3	64.2	3.2	62.1
2016	62.1	37.7	34.8	2.8	60.7	7.4	56.0
Prince Albert and Northern [4750, 4760]							
2015	158.5	102.0	95.8	6.3	64.4	6.2	60.4
2016	158.0	109.1	100.3	8.8	69.1	8.1	63.5
Alberta							
2015	3,322.7	2,404.4	2,285.2	119.2	72.4	5.0	68.8
2016	3,382.1	2,444.3	2,257.7	186.6	72.3	7.6	66.8
Lethbridge-Medicine Hat [4810]							
2015	229.6	150.0	142.4	7.6	65.3	5.1	62.0
2016	230.3	158.4	148.0	10.4	68.8	6.6	64.3
Camrose-Drumheller [4820]							
2015	161.6	109.0	103.1	5.9	67.5	5.4	63.8
2016	161.8	107.8	101.0	6.8	66.6	6.3	62.4
Calgary [4830]							
2015	1,251.4	916.6	871.4	45.2	73.2	4.9	69.6
2016	1,281.2	925.9	847.5	78.4	72.3	8.5	66.1
Banff-Jasper-Rocky Mountain House and Athabasca-Grande Prairie-Peace River [4840, 4870]							
2015	276.3	205.5	196.8	8.7	74.4	4.2	71.2
2016	277.3	197.0	181.4	15.6	71.0	7.9	65.4
Red Deer [4850]							
2015	168.7	127.9	121.6	6.3	75.8	4.9	72.1
2016	171.6	117.5	107.7	9.8	68.5	8.3	62.8
Edmonton [4860]							
2015	1,118.7	804.7	765.3	39.5	71.9	4.9	68.4
2016	1,141.7	847.4	790.1	57.3	74.2	6.8	69.2
Wood Buffalo-Cold Lake [4880]							
2015	116.3	90.6	84.6	6.0	77.9	6.6	72.7
2016	118.2	90.4	82.0	8.4	76.5	9.3	69.4

See notes at the end of the table.

Table 6-1 – continued

Labour force characteristics by province and economic region, ¹ unadjusted for seasonality, 3 month moving average ending in February 2015 and February 2016

	Population	Labour force			Participation rate	Unemployment rate	Employment rate
		Labour force	Employment	Unemployment			
	in thousands			percent			
British Columbia							
2015	3,851.8	2,400.3	2,260.2	140.0	62.3	5.8	58.7
2016	3,906.3	2,485.8	2,316.7	169.1	63.6	6.8	59.3
Vancouver Island and Coast [5910]							
2015	652.3	372.6	351.9	20.8	57.1	5.6	53.9
2016	658.3	386.1	357.2	28.9	58.7	7.5	54.3
Lower Mainland-Southwest [5920]							
2015	2,399.0	1,518.1	1,429.9	88.2	63.3	5.8	59.6
2016	2,442.2	1,596.6	1,499.2	97.5	65.4	6.1	61.4
Thompson-Okanagan [5930]							
2015	429.8	261.6	242.9	18.7	60.9	7.1	56.5
2016	433.5	262.0	237.7	24.3	60.4	9.3	54.8
Kootenay [5940]							
2015	121.9	73.4	69.0	4.4	60.2	6.0	56.6
2016	122.1	71.5	66.1	5.4	58.6	7.6	54.1
Cariboo [5950]							
2015	127.1	86.2	81.9	4.3	67.8	5.0	64.4
2016	127.6	82.8	76.7	6.1	64.9	7.4	60.1
North Coast and Nechako [5960, 5970]							
2015	66.4	45.8	43.3	2.5	69.0	5.5	65.2
2016	66.6	43.2	40.3	2.9	64.9	6.7	60.5
Northeast [5980]							
2015	55.5	42.6	41.4	x	76.8	x	74.6
2016	56.1	43.6	39.6	4.0	77.7	9.2	70.6

1. For geographic descriptions of economic regions, refer to the Guide to the Labour Force Survey (catalogue number 71-543-GIE).

Note(s): Estimates in this table are based on 2011 Census boundaries. Related CANSIM table 282-0122.

Table 6-2
Labour force characteristics by territory (seasonally adjusted) - 3 month moving average

	January 2016	February 2016	S.E. ¹	Change from			Percent change from		
				last month	last December	twelve months ago	last month	last December	twelve months ago
in thousands (except rates)									
Yukon ²									
Population	28.2	28.2	...	0.0	0.0	0.3	0.0	0.0	1.1
Labour force	20.6	20.7	0.2	0.1	0.1	-0.1	0.5	0.5	-0.5
Employment	19.3	19.4	0.2	0.1	-0.1	-0.2	0.5	-0.5	-1.0
Unemployment	1.3	1.3	0.1	0.0	0.1	0.1	0.0	8.3	8.3
Participation rate	73.0	73.4	0.8	0.4	0.4	-1.2
Unemployment rate	6.3	6.3	0.7	0.0	0.5	0.5
Employment rate	68.4	68.8	0.9	0.4	-0.3	-1.5
Northwest Territories ³									
Population	32.1	32.2	...	0.1	0.2	0.0	0.3	0.6	0.0
Labour force	24.6	24.5	0.2	-0.1	0.3	0.9	-0.4	1.2	3.8
Employment	22.3	22.4	0.3	0.1	0.7	0.5	0.4	3.2	2.3
Unemployment	2.3	2.1	0.2	-0.2	-0.3	0.3	-8.7	-12.5	16.7
Participation rate	76.6	76.1	0.8	-0.5	0.5	2.8
Unemployment rate	9.3	8.6	0.7	-0.7	-1.3	1.0
Employment rate	69.5	69.6	0.8	0.1	1.8	1.6
Nunavut ⁴									
Population	24.1	24.1	...	0.0	0.0	0.7	0.0	0.0	3.0
Labour force	15.6	15.6	0.2	0.0	0.2	1.3	0.0	1.3	9.1
Employment	13.0	13.2	0.2	0.2	0.4	0.7	1.5	3.1	5.6
Unemployment	2.5	2.4	0.1	-0.1	-0.3	0.6	-4.0	-11.1	33.3
Participation rate	64.6	64.8	0.9	0.2	0.7	3.8
Unemployment rate	16.2	15.1	0.8	-1.1	-2.1	2.8
Employment rate	54.1	55.0	0.8	0.9	1.9	1.5

1. Average standard error of change in two consecutive months (see "Sampling Errors" in Data Quality for further explanations).
2. Since 1992, the Labour force survey (LFS) has been conducted in the Yukon, using an alternative methodology that accommodates some of the operational difficulties inherent to remote locales. These estimates are not included in the national totals. In 1995, the LFS in the Yukon underwent a sample redesign. One result of the redesign was that the covered population increased from 85% to 92%, which is reflected by the sharp increase in the three month moving averages estimates of January, February and March of 1995 for all the level estimates. Users are therefore warned to be cautious when comparing estimates before January 1995 to estimates for January 1995 and forward.
3. Since 2001, the Labour force survey (LFS) has been administered in the Northwest Territories, using an alternative methodology that accommodates some of the operational difficulties inherent to remote locales. These estimates are not included in national totals.
4. Since 2004, the Labour force survey (LFS) has been administered in Nunavut, using an alternative methodology that accommodates some of the operational difficulties inherent to remote locales. These estimates are 3-month moving averages and are not included in national totals. From January 2004 to December 2007, estimates represent about 70% of all Nunavut residents aged 15 and over. Starting in January 2008, coverage was extended to 92%, so that by March 2008, the 3-month moving average is completely based on the extended coverage. Because of the large difference in coverage, users are recommended not to compare estimates prior to January 2008 with data afterwards. The January and February 2008 3-month moving average estimates are based on a mix of both coverages, since the extended coverage was introduced in January 2008. Estimates from January 2004 to December 2007 are based on the 10 largest communities in Nunavut: Iqaluit, Rankin Inlet, Cambridge Bay, Kugluktuk, Baker Lake, Arviat, Pond Inlet, Cape Dorset, Pangnirtung, Igloodik. Estimates from March 2008 to present cover the above communities as well as: Taloyoak, Gjoa Haven, Kugaaruk, Coral Harbour, Repulse Bay, Qikiqtarjuaq, Arctic Bay, Hall Beach, Clyde River.

Note(s): Related CANSIM table 282-0100.

Table 7
Average usual hours and wages of employees by selected characteristics, Canada, unadjusted for seasonality

	Employees				Full-time			Part-time		
	Number	Average weekly hours	Average weekly wages	Average hourly wages	Number	Average weekly hours	Average weekly wages	Number	Average weekly hours	Average weekly wages
	thousands		current dollars		thousands		current dollars	thousands		current dollars
February 2016										
15 years and over	14,923.1	34.9	937.69	25.77	12,031.0	39.2	1,087.84	2,892.1	17.1	313.05
15 to 24 years	2,193.4	25.8	411.47	14.79	1,017.8	38.6	671.21	1,175.6	14.6	186.60
25 years and over	12,729.7	36.5	1,028.36	27.67	11,013.2	39.2	1,126.34	1,716.5	18.8	399.66
Males	7,443.3	37.3	1,067.63	27.75	6,509.2	40.3	1,181.71	934.2	16.0	272.72
Females	7,479.8	32.5	808.38	23.81	5,521.9	37.8	977.18	1,957.9	17.6	332.30
Union coverage										
Union coverage	4,616.4	35.5	1,061.11	29.42	3,910.6	38.5	1,167.81	705.8	19.2	469.84
No union coverage	10,306.7	34.6	882.41	24.14	8,120.4	39.5	1,049.33	2,186.3	16.4	262.44
Job permanency										
Permanent	13,160.4	35.9	980.77	26.45	11,087.8	39.2	1,101.72	2,072.6	18.1	333.70
Temporary	1,762.8	27.6	616.06	20.76	943.2	38.9	924.71	819.5	14.6	260.83
Occupation										
Management occupations	931.3	39.8	1,632.16	41.01	906.4	40.4	1,660.85	24.9	18.8	589.47
Business, finance and administration occupations	2,601.7	35.3	926.93	25.77	2,223.4	38.3	1,023.25	378.3	17.9	360.76
Natural and applied sciences and related occupations	1,260.8	38.4	1,385.68	36.07	1,216.8	39.1	1,416.52	44.0	17.9	532.62
Health occupations	1,116.7	33.3	974.83	29.02	840.7	37.7	1,112.64	276.1	19.9	555.16
Occupations in education, law and social, community and government services	1,839.9	33.5	1,080.35	31.34	1,449.0	38.0	1,255.14	390.9	16.9	432.44
Occupations in art, culture, recreation and sport	320.4	28.9	699.80	22.33	202.8	38.5	979.29	117.6	12.3	217.86
Sales and service occupations	3,865.3	30.2	531.89	16.42	2,403.6	38.4	721.35	1,461.7	16.7	220.36
Trades, transport and equipment operators and related occupations	1,979.7	39.6	1,032.71	25.72	1,836.2	41.4	1,088.46	143.5	17.2	319.36
Natural resources, agriculture and related production occupations	222.8	42.0	1,074.20	24.55	201.7	44.8	1,161.48	21.1	15.4	240.62
Occupations in manufacturing and utilities	784.5	39.4	859.44	21.48	750.5	40.3	885.26	34.0	19.0	289.71
February 2015										
15 years and over	14,844.7	34.8	908.32	24.96	11,981.3	39.2	1,055.05	2,863.4	16.8	294.37
15 to 24 years	2,248.8	24.9	388.36	14.46	996.2	38.4	650.56	1,252.7	14.2	179.84
25 years and over	12,595.8	36.6	1,001.16	26.83	10,985.1	39.2	1,091.73	1,610.7	18.8	383.44
Males	7,415.6	37.2	1,032.17	26.77	6,469.9	40.3	1,145.87	945.6	16.0	254.26
Females	7,429.1	32.5	784.70	23.15	5,511.4	37.8	948.44	1,917.7	17.1	314.15
Union coverage										
Union coverage	4,567.3	35.5	1,031.72	28.51	3,900.3	38.4	1,132.09	667.0	18.8	444.78
No union coverage	10,277.4	34.5	853.49	23.38	8,081.0	39.5	1,017.87	2,196.4	16.1	248.69
Job permanency										
Permanent	13,057.7	35.9	950.00	25.61	11,030.5	39.2	1,066.48	2,027.2	17.8	316.20
Temporary	1,787.0	27.4	603.82	20.19	950.8	39.0	922.47	836.2	14.2	241.46
Occupation										
Management occupations	897.7	39.6	1,550.88	39.06	874.4	40.2	1,579.21	23.3	19.3	489.49
Business, finance and administration occupations	2,628.6	35.3	899.33	24.84	2,267.0	38.3	990.18	361.5	17.0	329.59
Natural and applied sciences and related occupations	1,156.6	38.6	1,325.68	34.28	1,124.1	39.2	1,350.43	32.5	17.5	469.26
Health occupations	1,023.4	33.7	976.89	28.68	788.0	37.8	1,109.11	235.5	20.1	534.42
Occupations in education, law and social, community and government services	1,845.8	33.4	1,036.24	30.25	1,452.7	37.8	1,200.48	393.1	16.8	429.33
Occupations in art, culture, recreation and sport	307.7	27.8	733.56	23.89	184.5	38.5	1,078.53	123.1	11.7	216.57
Sales and service occupations	3,937.2	30.1	531.57	16.42	2,462.1	38.3	722.46	1,475.1	16.5	212.95
Trades, transport and equipment operators and related occupations	2,071.3	39.8	1,010.17	24.96	1,914.3	41.6	1,068.81	157.1	17.8	295.47
Natural resources, agriculture and related production occupations	220.9	40.7	1,005.36	23.66	190.7	44.8	1,129.78	30.2	14.4	219.03
Occupations in manufacturing and utilities	755.5	39.1	858.73	21.70	723.5	40.1	884.77	32.0	18.2	270.23

Note(s): Related CANSIM table 282-0167.

Table 8
Regional unemployment rates used by the Employment Insurance program ¹, seasonally adjusted, 3 month moving average

Region	Effective from March 13, 2016 to April 9, 2016
	percent
Newfoundland and Labrador	
01. St. John's	7.5
02. Newfoundland and Labrador ²	20.1
Prince Edward Island ³	
65. Charlottetown	7.0
66. Prince Edward Island ⁴	13.4
Nova Scotia	
04. Eastern Nova Scotia	16.5
05. Western Nova Scotia	8.7
06. Halifax	6.7
New Brunswick	
07. Fredericton—Moncton—Saint John	7.9
08. Madawaska—Charlotte	9.5
09. Restigouche—Albert	13.4
Quebec	
10. Gaspésie—Îles-de-la-Madeleine	16.7
11. Québec	5.2
12. Trois-Rivières	6.5
13. South Central Quebec	5.2
14. Sherbrooke	7.5
15. Montérégie	6.0
16. Montréal	8.8
17. Central Quebec	7.3
18. North Western Quebec	8.6
19. Bas-Saint-Laurent—Côte-Nord	9.9
20. Hull	6.2
21. Chicoutimi—Jonquière	8.4
Ontario	
22. Ottawa	6.5
23. Eastern Ontario	7.6
24. Kingston	6.0
25. Central Ontario	6.4
26. Oshawa	6.1
27. Toronto	7.2
28. Hamilton	6.0
29. St. Catharines	8.4
30. London	6.3
31. Niagara	8.1
32. Windsor	8.1
33. Kitchener	6.3
34. Huron	7.8
35. South Central Ontario	4.8
36. Sudbury	8.2
37. Thunder Bay	7.0
38. Northern Ontario	11.9
Manitoba	
39. Winnipeg	6.3
40. Southern Manitoba	6.3
41. Northern Manitoba	35.2
Saskatchewan	
42. Regina	4.3
43. Saskatoon	6.3
44. Southern Saskatchewan	7.5
45. Northern Saskatchewan	19.7
Alberta	
46. Calgary	8.5
47. Edmonton	6.8
48. Northern Alberta	12.3
49. Southern Alberta	8.3

See notes at the end of the table.

Table 8 – continued

Regional unemployment rates used by the Employment Insurance program 1, seasonally adjusted, 3 month moving average

Region	Effective from March 13, 2016 to April 9, 2016
	percent
British Columbia	
50. Southern Interior British Columbia	9.1
51. Abbotsford	7.1
52. Vancouver	6.2
53. Victoria	6.7
54. Southern Coastal British Columbia	9.0
55. Northern British Columbia	11.5
Territories ^{3, 5}	
59. Whitehorse	6.0
60. Yukon ⁶	12.0
61. Yellowknife	5.8
62. Northwest Territories ⁷	13.8
63. Iqaluit	4.0
64. Nunavut ⁸	21.4

1. The boundaries of these regions are determined by Employment and Social Development Canada (ESDC). For geographic descriptions and maps of employment insurance regions, see the ESDC website: <http://srv129.services.gc.ca/eiregions/en/geocont.aspx>.
 2. This region excludes St. John's.
 3. Prince Edward Island as well as the territories are each comprised of two regions effective October 12, 2014.
 4. This region excludes Charlottetown.
 5. The monthly regional unemployment rates for EI purposes in the territories are subject to the greater of a seasonally adjusted 3 month moving average or 12 month moving average.
 6. This region excludes Whitehorse.
 7. This region excludes Yellowknife.
 8. This region excludes Iqaluit.
- Note(s):** All regions are based on the 1996 Census boundaries, with the exception of those in Prince Edward Island and in the territories, which respect the 2011 Census boundaries.

Data quality

Definitions and explanations

The **labour force** is composed of those members of the civilian non-institutional population 15 years of age and over who, during the reference week, were employed or unemployed.

Employed persons are those who, during the reference week:

- (a) did any work at all at a job or business;
- (b) had a job but were not at work.

A person is considered to be **full-time** if his/her usual hours at the main job are 30 or more hours per week. When the number of hours worked at the main job is usually less than 30 hours per week then he/she is considered to be **part-time**.

Unemployed persons are those who, during the reference week:

- (a) were without work, had actively looked for work in the past four weeks (ending with reference week) and were available for work;
- (b) had not actively looked for work in the past four weeks but were on temporary layoff and were available for work;
- (c) had not actively looked for work but had a new job to start within four weeks from the reference week and were available for work.

Persons in the civilian non-institutional population 15 years of age and over who, during the reference week, were neither employed nor unemployed are classified as **not in the labour force**.

The **unemployment rate** represents the number of unemployed persons expressed as a percentage of the labour force (employed and unemployed). The unemployment rate for a particular group (for example, age, sex, or marital status) is the number unemployed in that group expressed as a percentage of the labour force for that group.

The **participation rate** represents the total labour force expressed as a percentage of the population aged 15 years and over. The participation rate for a particular group (for example, women aged 25 years and over) is the labour force in that group expressed as a percentage of the population for that group.

The **employment rate** represents the number of employed persons expressed as a percentage of the population aged 15 years and over. The employment rate for a particular group (for example, age, sex, marital status, or province) is the number employed in that group expressed as a percentage of the population for that group.

The **part-time rate** represents the number of persons employed part-time expressed as a percentage of the employed. The part-time rate for a particular group (for example, age or sex) is the number of persons employed part-time in that group expressed as a percentage of the employed for that group.

All geographic regions are based on the 2011 Census boundaries.

Seasonal adjustment

Fluctuations in economic time series are caused by seasonal, cyclical and irregular movements. A seasonally adjusted series is one from which seasonal movements have been eliminated. Seasonal movements are defined as those which are caused by regular annual events such as climate, holidays, vacation periods and cycles related to crops, production and retail sales associated with Christmas and Easter. The seasonally adjusted series contains irregular as well as longer-term cyclical fluctuations.

The seasonally adjusted series are revised each year to take into account current data and to generate new forecast factors for the next twelve months. The data are therefore subject to slight revisions in future issues of this publication.

For more information on seasonal adjustment, see *Seasonally adjusted data – Frequently asked questions*.

Sampling variability of estimates

Estimates in this publication are based on the Labour Force Survey, a monthly survey of approximately 56,000 households across Canada. Because the entire population is not surveyed, the estimates are subject to sampling error. While the published estimate is the best available indicator of the real value, changes in the level of any estimates between two months can be the result of a true change, or sampling variability. The sampling error can be estimated by calculating the standard error for the published estimate or statistic. These standard errors have been included in the publication tables in order to assist users in interpreting the data. They are based on 12-month averages and are updated twice a year, in February and August.

Interpretation based on standard error

Approximately two-thirds (68%) of the time, a change greater than the sampling error indicates a real change. The larger the change compared to the standard error, the better the chance that we are observing a real change, as opposed to a change due to sampling variability. At the 95% confidence level, the change in the estimate must be greater than twice the standard error in order to ensure that change is real.

Movements in estimates that are smaller than the standard error are less likely to reflect a real change and more likely to be due to sampling variability. While the above is true for monthly movements, one can have more confidence in a series of consecutive movements in the same direction, even though some of the monthly movements may be smaller than the standard error.

Interpretation based on confidence intervals

Confidence intervals provide another way of looking at the variability inherent in estimates of sample surveys. To illustrate how to calculate the confidence interval, let us say that one month the published estimate for total employment rose by 16,000 to reach 18,000,000. The associated standard error for the movement estimate is 29,500. The standard error used to interpret the movement estimate indicates that:

- There are approximately two chances in three (68%) that the real value of the movement between the two months falls within the range -13,500 to +45,500 (16,000 + or – one standard error).
- There are approximately nine chances in ten (90%) that the real value of the movement between the two months falls within the range -31,200 to +63,200 (16,000 + or – 1.6 times the standard error).
- There are approximately nineteen chances in twenty (95%) that the real value of the movement between the two months falls within the range -43,000 to +75,000 (16,000 + or – two standard errors).

For more detailed explanations on the sampling variability of estimates, and in particular for information on how to assess the variability of level estimates, consult the **Data quality** section of the *Guide to the Labour Force Survey (71-543-G)*.

Documentation

For more detailed information about the Labour Force Survey, see the following documents:

- Overview of the Labour Force Survey (LFS) 3701
- *Guide to the Labour Force Survey (71-543-G)*
- *Methodology of the Canadian Labour Force Survey (71-526-X)*
- *LFS geographical maps*