

Catalogue no. 71-001-X

Labour Force Information

Friday, February 5, 2016

January 10 to 16, 2016



 Statistics Canada
Statistique Canada

Canada

How to obtain more information

For information about this product or the wide range of services and data available from Statistics Canada, visit our website, www.statcan.gc.ca.

You can also contact us by

e-mail at STATCAN.infostats-infostats.STATCAN@canada.ca

telephone, from Monday to Friday, 8:30 a.m. to 4:30 p.m., at the following toll-free numbers:

- | | |
|---|----------------|
| • Statistical Information Service | 1-800-263-1136 |
| • National telecommunications device for the hearing impaired | 1-800-363-7629 |
| • Fax line | 1-877-287-4369 |

Depository Services Program

- | | |
|------------------|----------------|
| • Inquiries line | 1-800-635-7943 |
| • Fax line | 1-800-565-7757 |

To access this product

This product, Catalogue no. 71-001-X, is available free in electronic format. To obtain a single issue, visit our website, www.statcan.gc.ca and browse by "Key resource" > "Publications."

Standards of service to the public

Statistics Canada is committed to serving its clients in a prompt, reliable and courteous manner. To this end, this agency has developed standards of service that its employees observe. To obtain a copy of these service standards, please contact Statistics Canada toll-free at 1-800-263-1136. The service standards are also published at www.statcan.gc.ca under "About us" > "The agency" > "Providing services to Canadians."

Statistics Canada
Labour Statistics Division
Labour Force Survey Program

Labour Force Information

Friday, February 5, 2016

January 10 to 16, 2016

Published by authority of the Minister responsible for Statistics Canada

© Minister of Industry, 2016

All rights reserved. Use of this publication is governed by the Statistics Canada
Open License Agreement.

<http://www.statcan.gc.ca/reference/licence-eng.html>

February 2016

Catalogue no. 71-001-X

ISSN 1492-5478

Frequency: Monthly

Ottawa

Cette publication est également disponible en français.

Note of appreciation

Canada owes the success of its statistical system to a long-standing partnership between Statistics Canada, the citizens of Canada, its businesses, governments and other institutions. Accurate and timely statistical information could not be produced without their continued cooperation and goodwill.

User information

Symbols

The following standard symbols are used in Statistics Canada publications:

- . not available for any reference period
- .. not available for a specific reference period
- ... not applicable
- 0 true zero or a value rounded to zero
- 0^s value rounded to 0 (zero) where there is a meaningful distinction between true zero and the value that was rounded
- p preliminary
- r revised
- x suppressed to meet the confidentiality requirements of the *Statistics Act*
- E use with caution
- F too unreliable to be published
- * significantly different from reference category ($p < 0.05$)

Special requests (\$)

Custom tabulations can be arranged on an ad hoc or regular basis. This service enables you to specify tables and time series to meet your own requirements. The cost varies according to the request. For more information, contact us toll-free at 1-866-873-8788 or e-mail us at statcan.labour-travail.statcan@canada.ca.

Schedule of LFS releases

Release date	Reference period
February 5, 2016	January 10 to 16, 2016
March 11, 2016	February 14 to 20, 2016
April 8, 2016	March 13 to 19, 2016
May 6, 2016	April 10 to 16 2016
June 10, 2016	May 15 to 21, 2016
July 8, 2016	June 12 to 18, 2016
August 5, 2016	July 10 to 16, 2016
September 9, 2016	August 14 to 20, 2016
October 7, 2016	September 11 to 17, 2016
November 4, 2016	October 9 to 15, 2016
December 2, 2016	November 6 to 12, 2016
January 6, 2017	December 4 to 10, 2016

Table of contents

Highlights	5
Analysis — January 2016	6
Charts	
1. Employment indexes, Canada, seasonally adjusted	9
2. Unemployment, employment, and participation rates, Canada, seasonally adjusted	10
3. Employment indexes by industry, Canada, seasonally adjusted	11
4. Employment indexes by industry, Canada, seasonally adjusted	12
5. Employment indexes by industry, Canada, seasonally adjusted	13
6. Employment indexes by province, Canada, seasonally adjusted	14
7. Employment indexes by province, Canada, seasonally adjusted	15
8. Unemployment rates in Alberta and Canada	16
Related products	17
Statistical tables	
1 Labour force characteristics by age and sex, Canada, seasonally adjusted	28
2 Employment by class of worker and industry, Canada, seasonally adjusted	30
3 Labour force characteristics by province, seasonally adjusted	31
4 Selected labour force characteristics (seasonally adjusted)	33
4-1 Newfoundland and Labrador	33
4-2 Prince Edward Island	34
4-3 Nova Scotia	35
4-4 New Brunswick	36
4-5 Quebec	37
4-6 Ontario	38
4-7 Manitoba	39
4-8 Saskatchewan	40
4-9 Alberta	41
4-10 British Columbia	42
5 Labour force characteristics by census metropolitan area (seasonally adjusted)	43
5-1 3 month moving average	43
5-2 Monthly	48

Table of contents – continued

6	Labour force characteristics	49
6-1	by province and economic region, unadjusted for seasonality, 3 month moving average ending in January 2015 and January 2016	49
6-2	by territory (seasonally adjusted) - 3 month moving average	54
7	Average usual hours and wages of employees by selected characteristics, Canada, unadjusted for seasonality	55
8	Regional unemployment rates used by the Employment Insurance program, seasonally adjusted, 3 month moving average	56
Data quality, concepts and methodology		
	Data quality	58

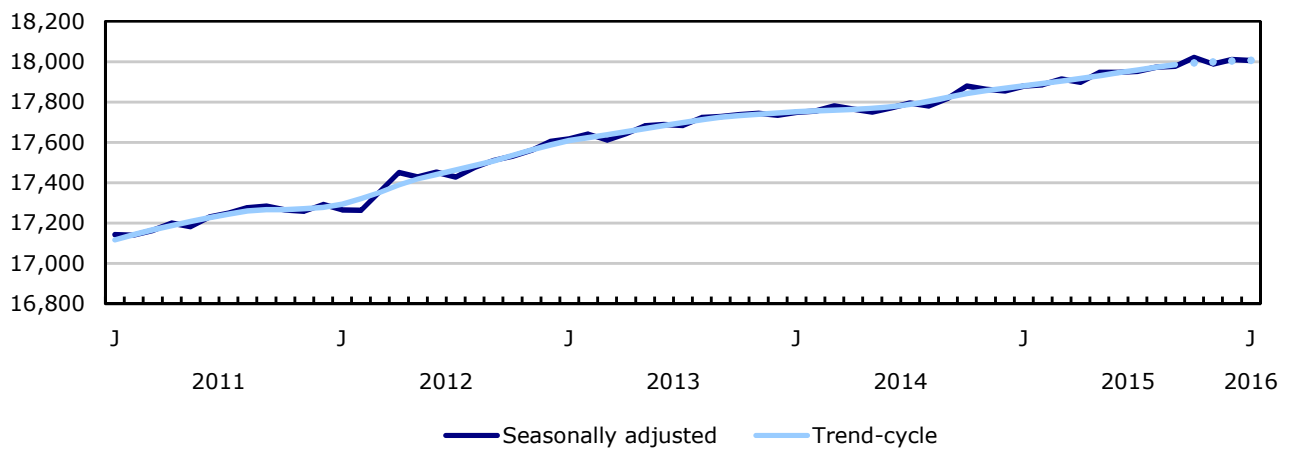
Highlights

Employment was virtually unchanged in January (-5,700 or 0.0%) and the unemployment rate edged up to 7.2%.

Chart 1
Employment and unemployment rate, Canada, seasonally adjusted

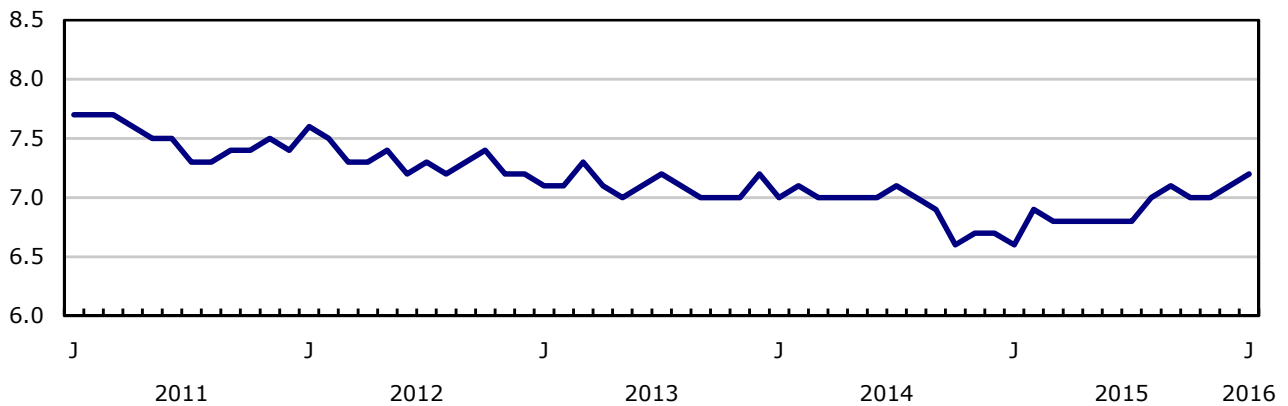
Employment

thousands



Unemployment rate

percent



Analysis — January 2016

Employment was virtually unchanged in January (-5,700 or 0.0%) and the unemployment rate edged up to 7.2%.

In the 12 months to January, employment increased by 0.7% (+126,000). Over the same period, the unemployment rate increased from 6.6% to 7.2%, as the labour force grew at a faster pace than employment.

There was little change in both full-time and part-time employment in January. However, compared with 12 months earlier, full-time work increased by 172,000 (+1.2%) while part time was little changed. Over the same period, the number of hours worked increased by 1.2%.

In January, there were fewer employed people aged 55 and older. At the same time, employment increased among women aged 25 to 54.

There were fewer people working in Alberta, Manitoba as well as Newfoundland and Labrador in January. On the other hand, Ontario was the only province with an employment increase.

Employment declined in agriculture; manufacturing; transportation and warehousing; and in public administration. However, there were more people working in information, culture and recreation as well as in the 'other services' industry.

In January, there was little employment change among public and private sector employees and in the number of self-employed workers.

Fewer people aged 55 and older employed

There were 24,000 fewer people aged 55 and older working in January, the first decline since November 2008, and their unemployment rate rose 0.3 percentage points to 6.1%. Despite the monthly decline, employment for this age group grew by 4.8% (+170,000) in the 12 months to January. Over the same period, the population of people aged 55 and over increased by 3.1% (+310,000).

In January, employment rose by 23,000 among women aged 25 to 54. Their unemployment rate was little changed at 5.6% in January as there was an increase in their labour market participation.

For men aged 25 to 54, employment was little changed on both a month-to-month and a year-over-year basis. However, their unemployment rate increased 1.0 percentage point to 6.7% in the 12 months to January, as more of them searched for work.

For youths aged 15 to 24, employment was virtually unchanged and their unemployment rate remained at 13.0%. However, in the 12 months to January, youth employment fell 48,000, while their population declined by 44,000.

Employment down in Alberta, up in Ontario

Employment in Alberta decreased by 10,000 in January. This brought year-over-year declines to 35,000 (-1.5%), as losses in full-time work (-73,000) were partly offset by gains in part time (+38,000). The employment decrease in January raised the unemployment rate for the province to 7.4%, the highest since February 1996. The unemployment rate in Alberta was higher than the national rate for the first time since December 1988 (see Chart 8).

In Manitoba, employment decreased by 5,300 in January, the second decline in three months. With these recent losses, employment in the province was down 1.0% (-6,600) compared with January 2015. At 6.1% in January, the unemployment rate was little changed from the previous month, as fewer people participated in the labour market.

Employment in Newfoundland and Labrador fell by 2,400 in January, continuing a recent downward trend that began in autumn 2015. In the 12 months to January, employment losses in the province totalled 7,400 (-3.1%). The unemployment rate was unchanged in January at 14.4% as fewer people participated in the labour market.

For a second month, Ontario was the only province with employment growth, up 20,000 in January. However, the unemployment rate was unchanged at 6.7% as more people participated in the labour market. In the 12 months to January, employment in the province increased by 100,000 (+1.5%).

In Quebec, employment was little changed for the sixth consecutive month in January, and was up slightly on a year-over-year basis (+31,000). The number of people looking for work edged down in January, lowering the unemployment rate 0.3 percentage points to 7.6%.

Industry perspective

Employment in agriculture fell for a second month, down 14,000 in January, following a notable increase in November 2015. On a year-over-year basis, losses totalled 19,000 (-6.2%).

In January, there were 11,000 fewer people working in manufacturing, the result of a large decline in Alberta. At the national level, employment in manufacturing was little changed over the 12 months to January.

Employment in transportation and warehousing declined by 10,000 in January but was little changed from 12 months earlier.

In January, employment decreased by 7,200 in public administration, mostly in provincial public administration. On a year-over-year basis, there was little change in employment in public administration.

Employment in information, culture and recreation rose by 16,000 in January, but was little changed compared with January 2015.

In January, there were 9,600 more people employed in 'other services', such as personal and laundry services as well as repair and maintenance. On a year-over-year basis, employment in this industry was virtually unchanged.

Despite little employment change in natural resources for the month, declines in the industry totalled 13,000 (-3.6%) in the 12 months to January, driven by losses in Alberta.

Employment was little changed in January among public and private sector employees, as well as for self-employed workers.

Compared with January 2015, the number of public sector employees increased by 59,000 (+1.7%), driven by gains in health care and social assistance. Over the same period, there was little change in the number of private sector employees and self-employed workers.

Annual revision

A standard revision has been applied to Labour Force Survey (LFS) estimates, as announced in *The Daily* on January 26th and 27th.

Seasonally adjusted estimates from the LFS were revised back to January 2013 using the latest seasonal factors.

Occupation data estimates have been reclassified to the 2011 National Occupational Classification from the 2006 National Occupational Classification for Statistics.

New CANSIM tables have been created for all occupation-related series and are available from the start of each respective series. A list of the *occupation tables* is available.

At the same time, the North American Industry Classification System (NAICS) 2012 replaced the NAICS 2007. This change did not affect the LFS CANSIM tables as there were only minor changes at the four-digit level.

Note to readers

The LFS estimates for January are for the week of January 10 to 16.

The LFS estimates are based on a sample and are therefore subject to sampling variability. As a result, monthly estimates will show more variability than trends observed over longer time periods. For more information, see *Interpreting Monthly Changes in Employment from the Labour Force Survey*. Estimates for smaller geographic areas or industries also have more variability. For an explanation of sampling variability of estimates and how to use standard errors to assess this variability, consult the "Data quality" section of the publication *Labour Force Information (71-001-X)*.

This analysis focuses on differences between estimates that are statistically significant at the 68% confidence level.

The **employment rate** is the number of employed persons as a percentage of the population 15 years of age and over. The rate for a particular group (for example, youths aged 15 to 24) is the number employed in that group as a percentage of the population for that group.

The **unemployment rate** is the number of unemployed as a percentage of the labour force (employed and unemployed).

The **participation rate** is the number of employed and unemployed as a percentage of the population.

For more detailed information, see the *Guide to the Labour Force Survey (71-543-G)*.

Seasonal adjustment

Unless otherwise stated, this release presents seasonally adjusted estimates, which facilitates comparisons by removing the effects of seasonal variations. For more information on seasonal adjustment, see *Seasonally adjusted data – Frequently asked questions*.

Chart 1 shows trend-cycle data on employment. These data represent a smoothed version of the seasonally adjusted time series, which provide information on longer-term movements, including changes in direction underlying the series. These data are available in CANSIM table 282-0087 for the Canada-level employment series. For more information, see the *StatCan Blog* and *Trend-cycle estimates – Frequently asked questions*.

Next release

The next release of the LFS will be on March 11.

Chart 1
Employment indexes, Canada, seasonally adjusted

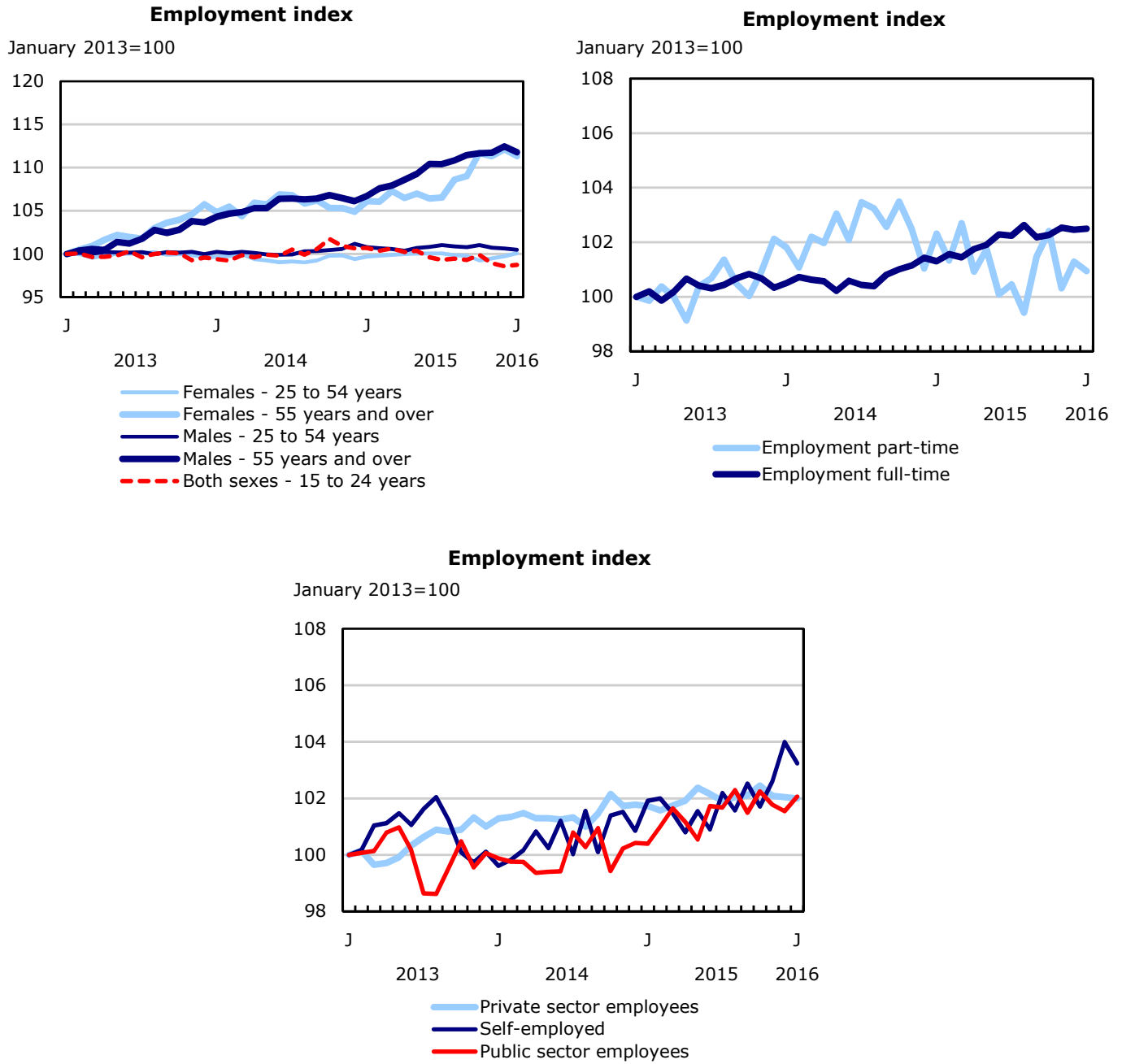


Chart 2
Unemployment, employment, and participation rates, Canada, seasonally adjusted

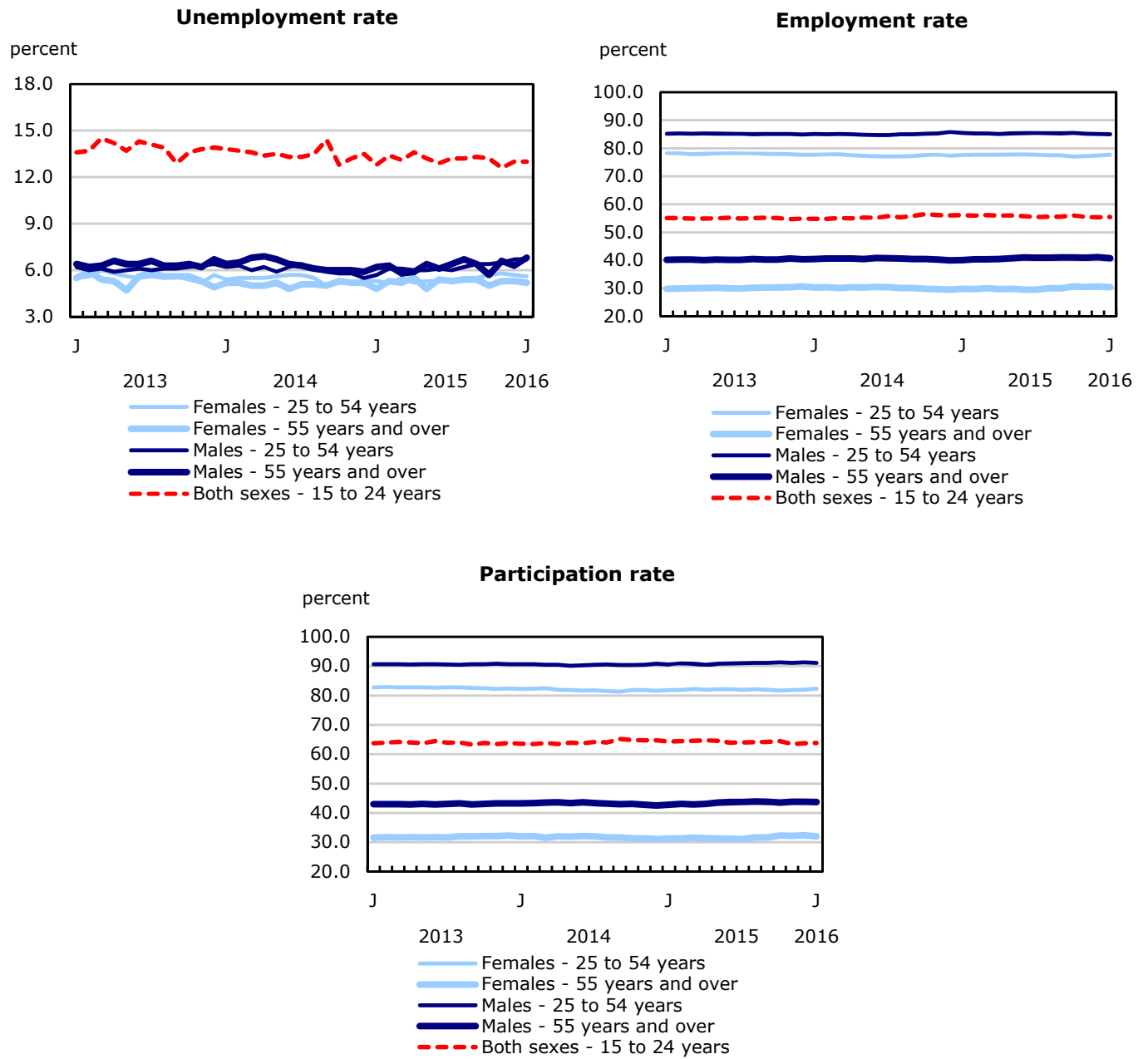


Chart 3
Employment indexes by industry, Canada, seasonally adjusted

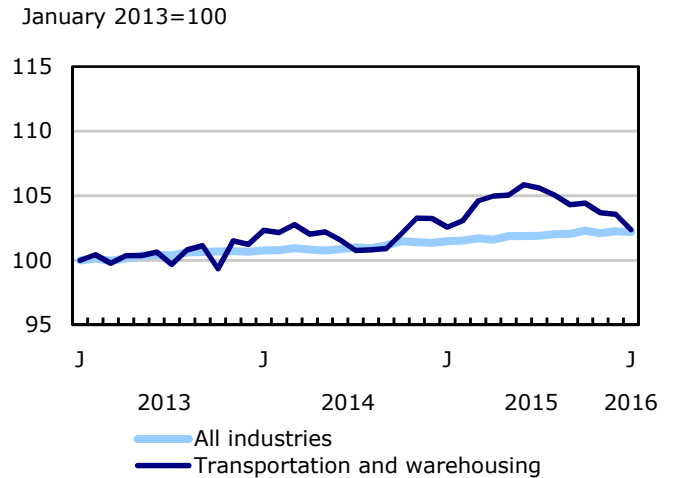
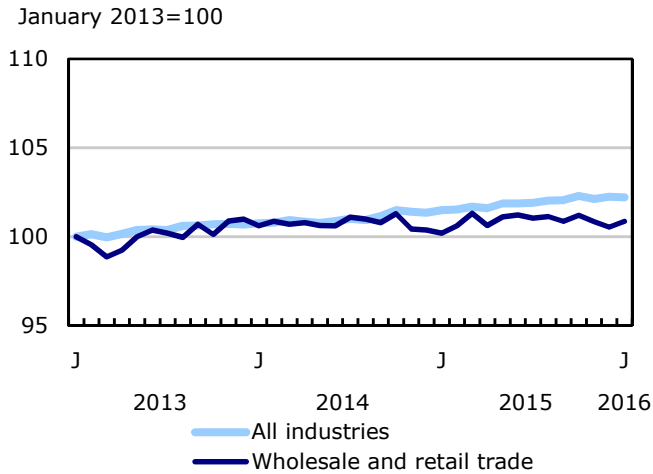
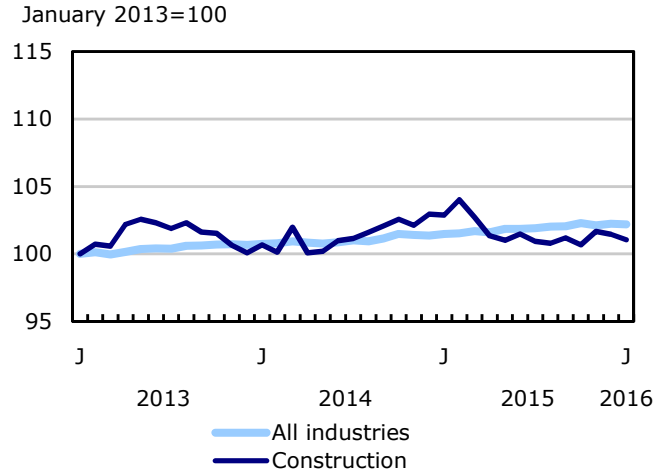
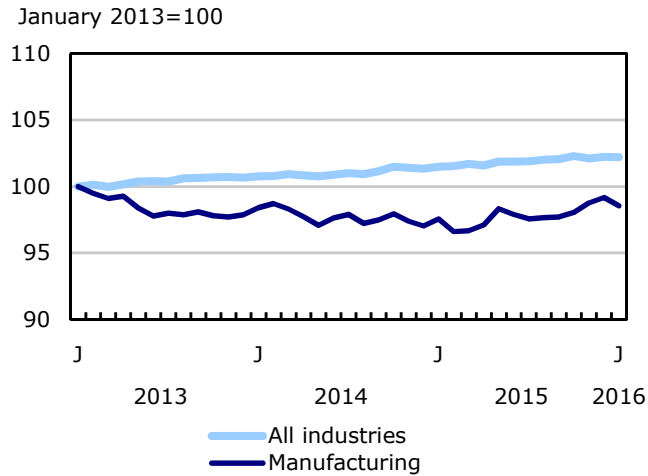
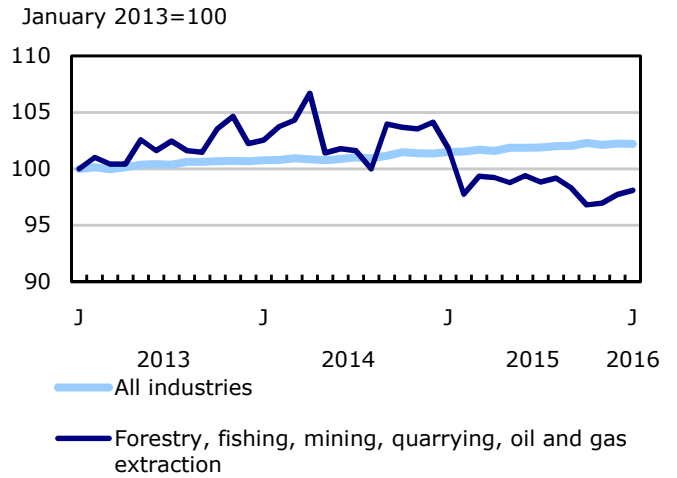
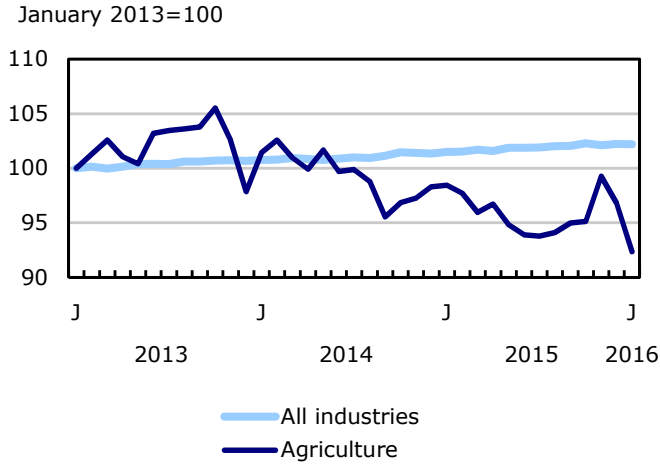


Chart 4
Employment indexes by industry, Canada, seasonally adjusted

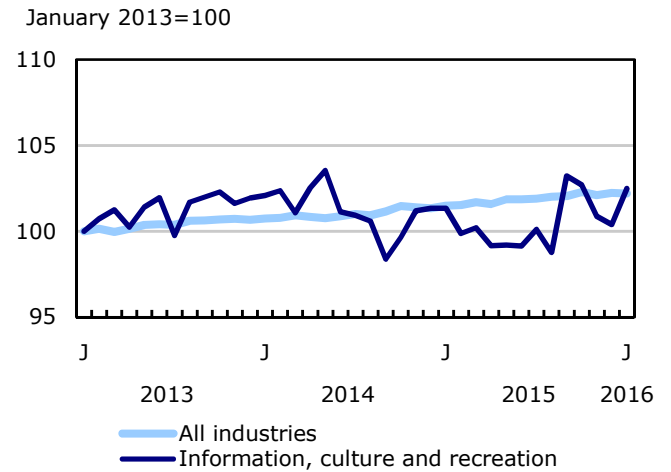
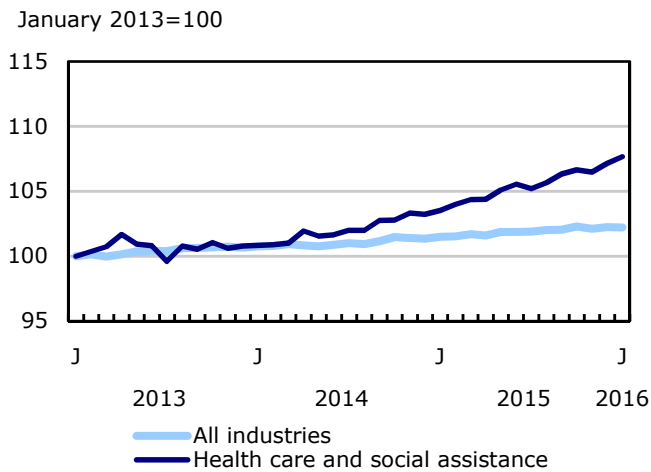
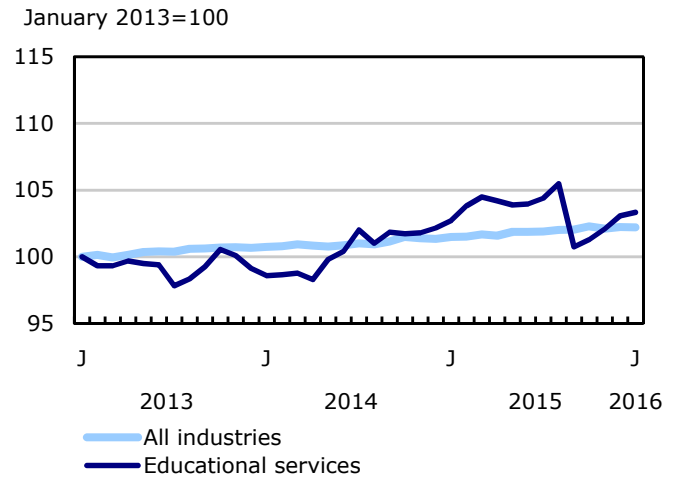
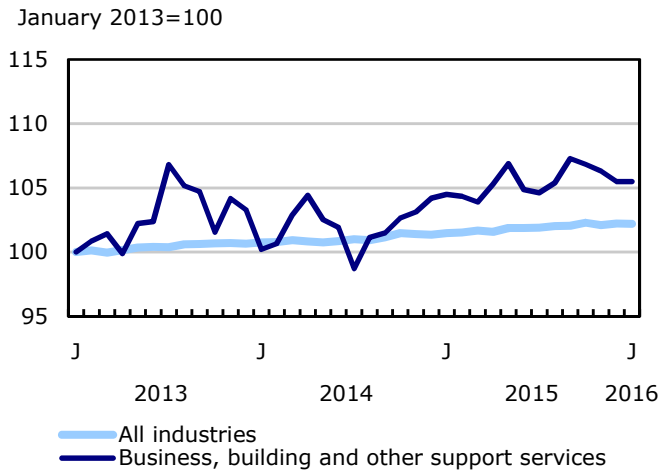
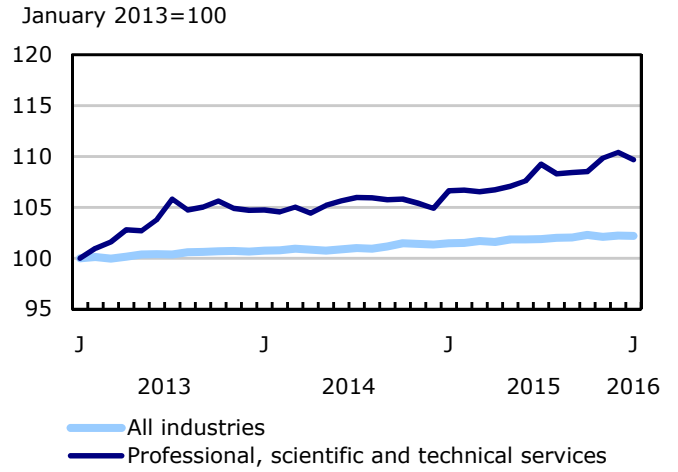
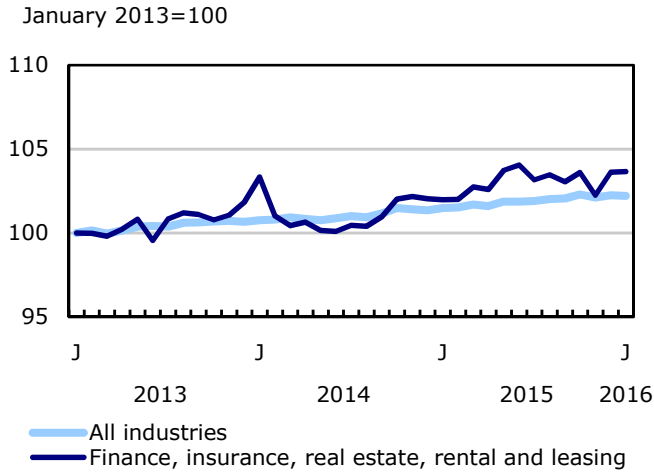


Chart 5
Employment indexes by industry, Canada, seasonally adjusted

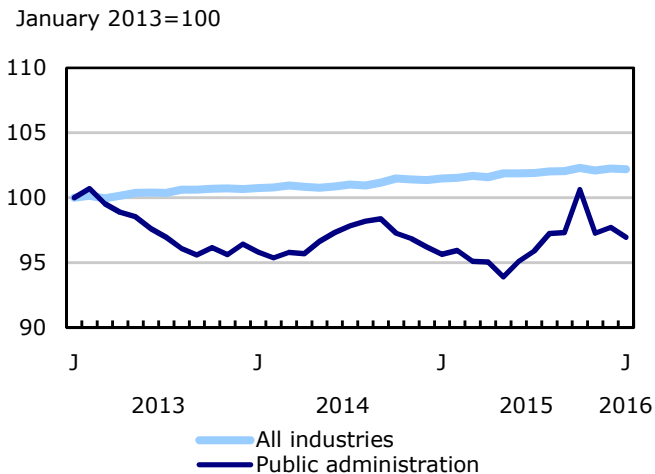
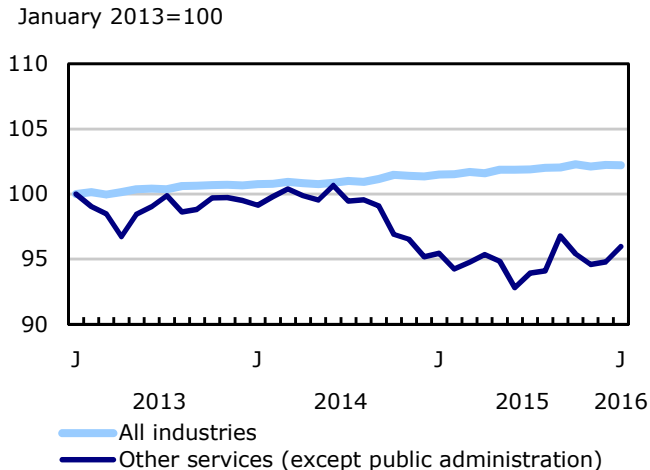
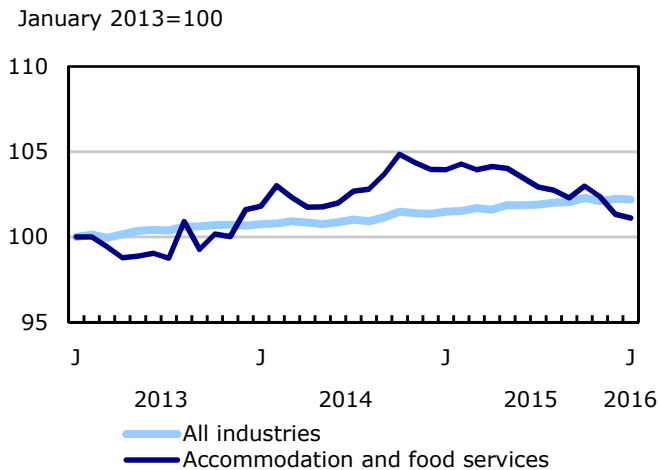


Chart 6
Employment indexes by province, Canada, seasonally adjusted

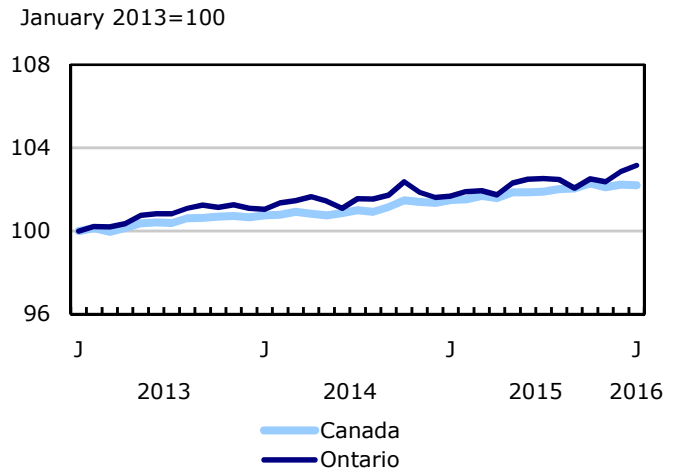
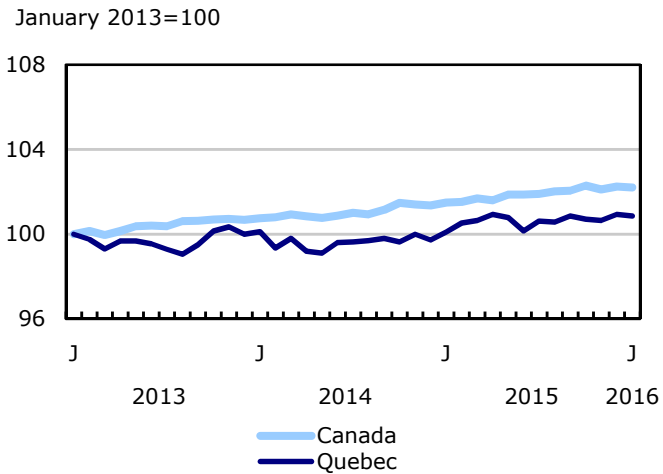
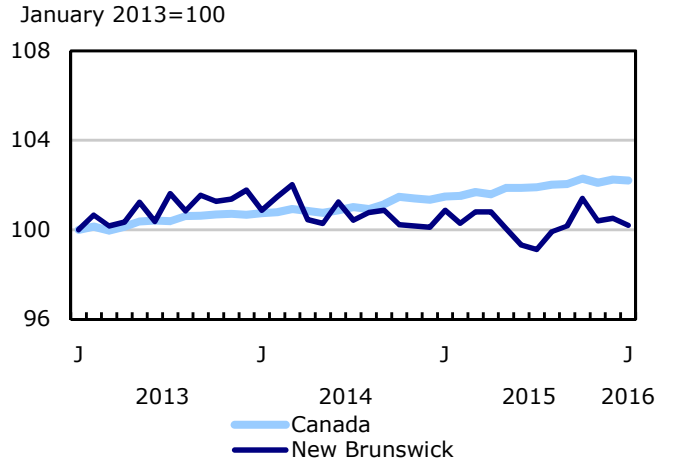
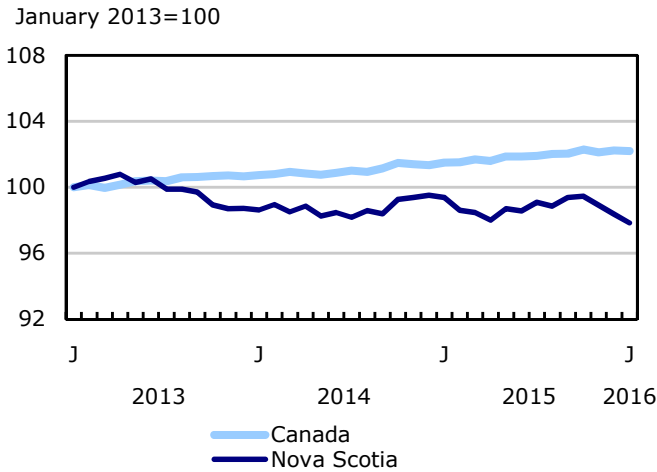
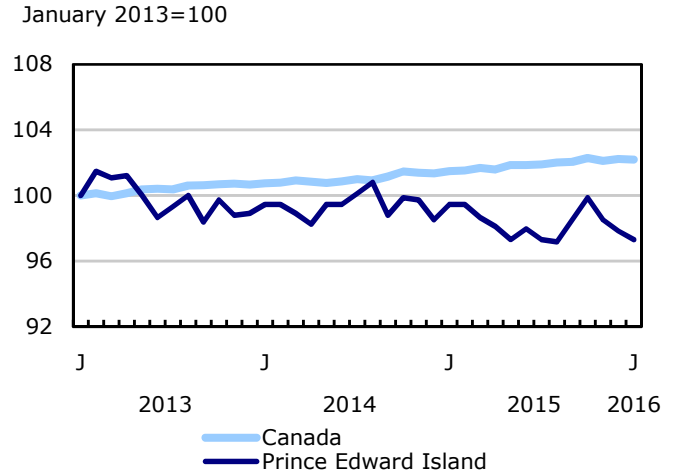
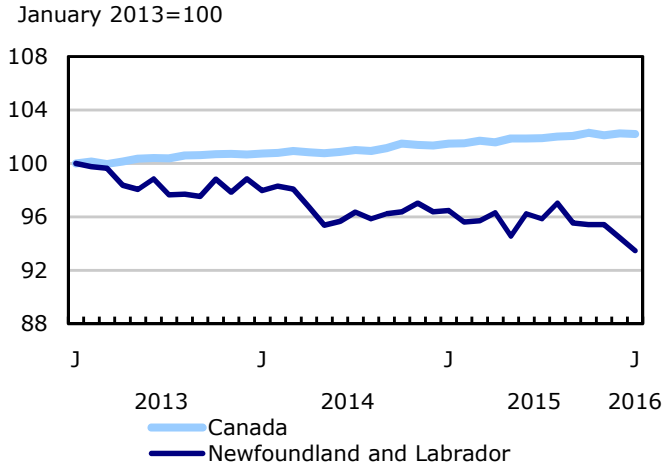


Chart 7
Employment indexes by province, Canada, seasonally adjusted

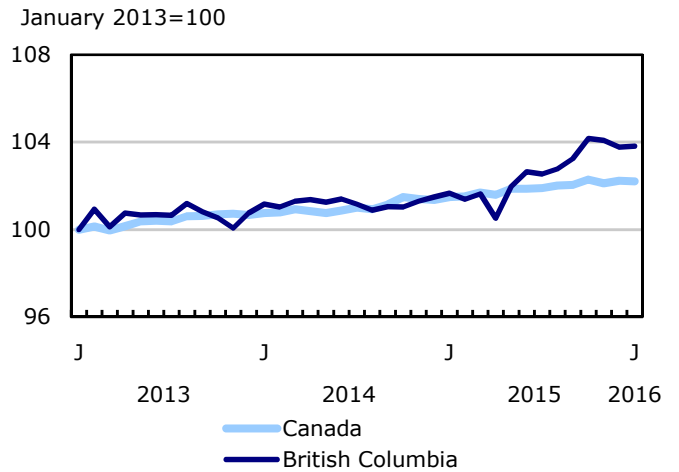
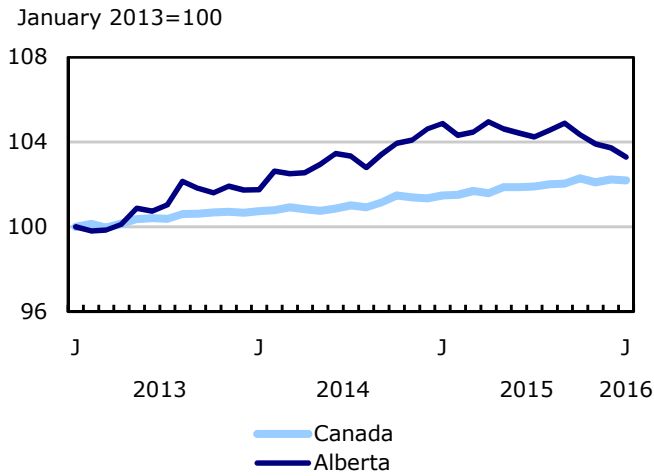
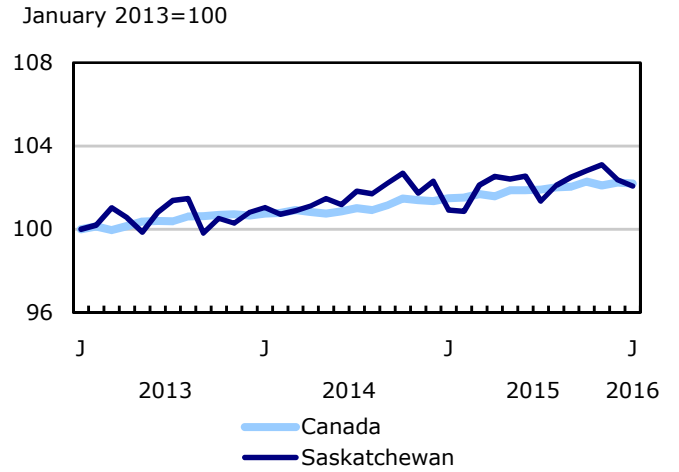
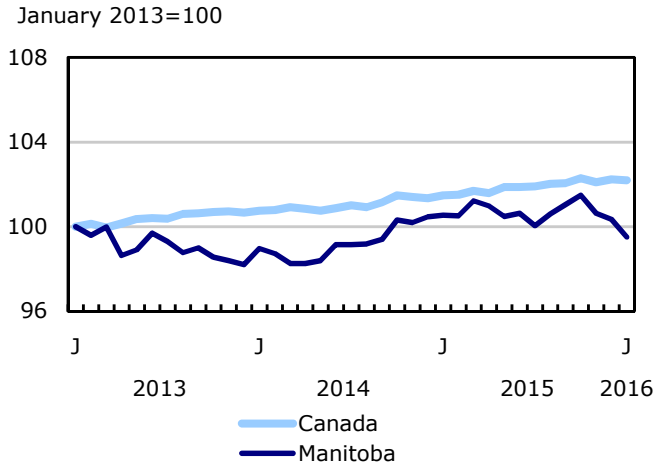
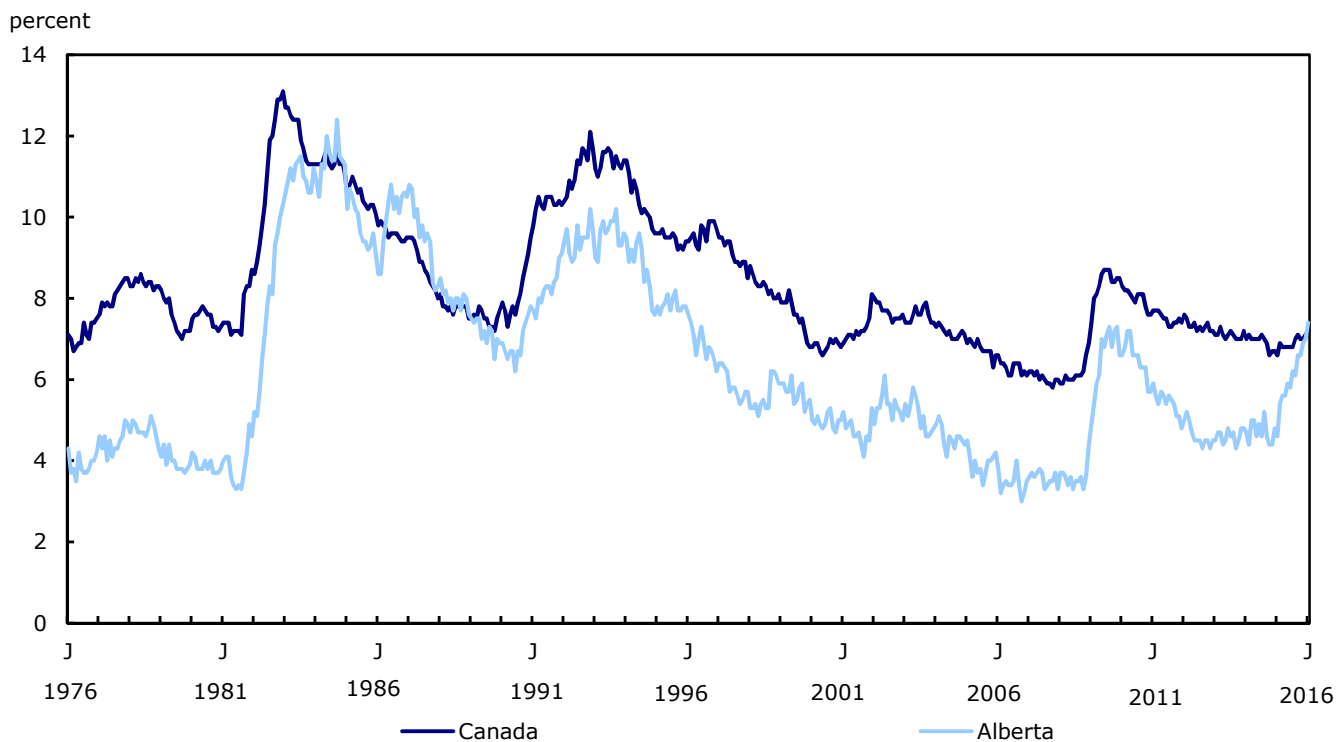


Chart 8
Unemployment rates in Alberta and Canada



Source(s): CANSIM table 282-0087.

Related products

Selected publications from Statistics Canada

71-526-X	Methodology of the Canadian Labour Force Survey
71-543-G	Guide to the Labour Force Survey
71-587-X	Aboriginal Peoples Living Off-reserve in Western Canada: Estimates from the Labour Force Survey
71-588-X	The Aboriginal Labour Force Analysis Series
71-606-X	The Immigrant Labour Force Analysis Series
71F0031X	Improvements to the Labour Force Survey (LFS)
71M0001X	Labour Force Survey Microdata File

Selected CANSIM tables from Statistics Canada

279-0029	Work absence statistics of full-time employees by province, census metropolitan area (CMA) and sex, annual
279-0030	Work absence statistics of full-time employees by sex and North American Industry Classification System (NAICS), annual
279-0032	Work absence statistics of full-time employees by sex and age group, annual
279-0033	Work absence statistics of full-time employees by sex and presence of children, annual
279-0034	Work absence statistics of full-time employees by sex and job tenure, annual
279-0035	Work absence statistics of full-time employees by sex and public and private sector, annual
279-0036	Work absence statistics of full-time employees by sex and educational attainment, annual
279-0037	Work absence statistics of full-time employees by sex and workplace size, annual
279-0038	Work absence statistics of full-time employees by sex and job status, annual
279-0039	Work absence statistics of full-time employees by sex and union coverage, annual
279-0040	Work absence statistics of full-time employees by sex and National Occupational Classification (NOC), annual
282-0001	Labour force survey estimates (LFS), by sex and detailed age group, unadjusted for seasonality, monthly

282-0002	Labour force survey estimates (LFS), by sex and detailed age group, annual
282-0003	Labour force survey estimates (LFS), by educational attainment, sex and age group, unadjusted for seasonality, monthly
282-0004	Labour force survey estimates (LFS), by educational attainment, sex and age group, annual
282-0005	Labour force survey estimates (LFS), by full- and part-time students during school months, sex and age group, unadjusted for seasonality, monthly
282-0006	Labour force survey estimates (LFS), by students during summer months, sex and age group, unadjusted for seasonality, monthly
282-0007	Labour force survey estimates (LFS), by North American Industry Classification System (NAICS), sex and age group, unadjusted for seasonality, monthly
282-0008	Labour force survey estimates (LFS), by North American Industry Classification System (NAICS), sex and age group, annual
282-0011	Labour force survey estimates (LFS), employment by class of worker, North American Industry Classification System (NAICS) and sex, unadjusted for seasonality, monthly
282-0012	Labour force survey estimates (LFS), employment by class of worker, North American Industry Classification System (NAICS) and sex, annual
282-0013	Labour force survey estimates (LFS), part-time employment by reason for part-time work, sex and age group, unadjusted for seasonality, monthly
282-0014	Labour force survey estimates (LFS), part-time employment by reason for part-time work, sex and age group, annual
282-0015	Labour force survey estimates (LFS), by usual hours worked, main or all jobs, sex and age group, unadjusted for seasonality, monthly
282-0016	Labour force survey estimates (LFS), by usual hours worked, main or all jobs, sex and age group, annual
282-0017	Labour force survey estimates (LFS), by actual hours worked, main or all jobs, sex and age group, unadjusted for seasonality, monthly
282-0018	Labour force survey estimates (LFS), by actual hours worked, main or all jobs, sex and age group, annual
282-0019	Labour force survey estimates (LFS), by usual hours worked, class of worker, North American Industry Classification System (NAICS) and sex, unadjusted for seasonality, monthly
282-0020	Labour force survey estimates (LFS), by usual hours worked, class of worker, North American Industry Classification System (NAICS) and sex, annual
282-0021	Labour force survey estimates (LFS), by actual hours worked, class of worker, North American Industry Classification System (NAICS) and sex, unadjusted for seasonality, monthly
282-0022	Labour force survey estimates (LFS), by actual hours worked, class of worker, North American Industry Classification System (NAICS) and sex, annual

282-0027	Labour force survey estimates (LFS), by total and average usual and actual hours worked, main or all jobs, type of work, sex and age group, unadjusted for seasonality, monthly
282-0028	Labour force survey estimates (LFS), by total and average usual and actual hours worked, main or all jobs, type of work, sex and age group, annual
282-0031	Labour force survey estimates (LFS), multiple jobholders by North American Industry Classification System (NAICS), sex and age group, annual
282-0032	Labour force survey estimates (LFS), multiple jobholders by North American Industry Classification System (NAICS), sex and age group, unadjusted for seasonality, monthly
282-0035	Labour force survey estimates (LFS), multiple jobholders by usual hours worked at main and all jobs, unadjusted for seasonality, monthly
282-0036	Labour force survey estimates (LFS), multiple jobholders by usual hours worked at main and all jobs, annual
282-0037	Labour force survey estimates (LFS), job tenure by type of work, sex and age group, unadjusted for seasonality, monthly
282-0038	Labour force survey estimates (LFS), job tenure by type of work, sex and age group, annual
282-0041	Labour force survey estimates (LFS), job tenure by North American Industry Classification System (NAICS) and sex, unadjusted for seasonality, monthly
282-0042	Labour force survey estimates (LFS), job tenure by North American Industry Classification System (NAICS) and sex, annual
282-0047	Labour force survey estimates (LFS), duration of unemployment by sex and age group, unadjusted for seasonality, monthly
282-0048	Labour force survey estimates (LFS), duration of unemployment by sex and age group, annual
282-0049	Labour force survey estimates (LFS), unemployment by type of work sought and search method, sex and age group, unadjusted for seasonality, monthly
282-0050	Labour force survey estimates (LFS), unemployment by type of work sought and search method, sex and age group, annual
282-0051	Labour force survey estimates (LFS), retirement age by class of worker and sex, annual
282-0071	Labour force survey estimates (LFS), wages of employees by type of work, North American Industry Classification System (NAICS), sex and age group, unadjusted for seasonality, monthly
282-0072	Labour force survey estimates (LFS), wages of employees by type of work, North American Industry Classification System (NAICS), sex and age group, annual
282-0073	Labour force survey estimates (LFS), wages of employees by job permanence, union coverage, sex and age group, unadjusted for seasonality, monthly
282-0074	Labour force survey estimates (LFS), wages of employees by job permanence, union coverage, sex and age group, annual
282-0075	Labour force survey estimates (LFS), employees by establishment size, North American Industry Classification System (NAICS), sex and age group, unadjusted for seasonality, monthly

282-0076	Labour force survey estimates (LFS), employees by establishment size, North American Industry Classification System (NAICS), sex and age group, annual
282-0077	Labour force survey estimates (LFS), employees by union coverage, North American Industry Classification System (NAICS), sex and age group, unadjusted for seasonality, monthly
282-0078	Labour force survey estimates (LFS), employees by union coverage, North American Industry Classification System (NAICS), sex and age group, annual
282-0079	Labour force survey estimates (LFS), employees by job permanency, North American Industry Classification System (NAICS), sex and age group, unadjusted for seasonality, monthly
282-0080	Labour force survey estimates (LFS), employees by job permanency, North American Industry Classification System (NAICS), sex and age group, annual
282-0083	Labour force survey estimates (LFS), employees working overtime (weekly) by North American Industry Classification System (NAICS), sex and age group, unadjusted for seasonality, monthly
282-0084	Labour force survey estimates (LFS), employees working overtime (weekly) by North American Industry Classification System (NAICS), sex and age group, annual
282-0085	Labour force survey estimates (LFS), supplementary unemployment rates by sex and age group, unadjusted for seasonality, monthly
282-0086	Labour force survey estimates (LFS), supplementary unemployment rates by sex and age group, annual
282-0087	Labour force survey estimates (LFS), by sex and age group, seasonally adjusted and unadjusted, monthly
282-0088	Labour force survey estimates (LFS), employment by North American Industry Classification System (NAICS), seasonally adjusted and unadjusted, monthly
282-0089	Labour force survey estimates (LFS), employment by class of worker and sex, seasonally adjusted and unadjusted, monthly
282-0092	Labour force survey estimates (LFS), actual hours worked at main job by North American Industry Classification System (NAICS), seasonally adjusted, monthly
282-0094	Labour force survey estimates (LFS), by North American Industry Classification System (NAICS), Canada, seasonally adjusted, monthly
282-0095	Labour force survey estimates (LFS), by full- and part-time students during school months, sex and age group, annual
282-0100	Labour force survey estimates (LFS), by territories, sex and age group, 3-month moving average, seasonally adjusted and unadjusted, monthly
282-0101	Labour force survey estimates (LFS), by immigrant status, age group, Canada, regions, provinces and Montreal, Toronto, Vancouver census metropolitan areas, 3-month moving average, unadjusted for seasonality, monthly
282-0102	Labour force survey estimates (LFS), by immigrant status, age group, Canada, regions, provinces and Montreal, Toronto, Vancouver census metropolitan areas, annual

282-0103	Labour force survey estimates (LFS), by immigrant status, sex and detailed age group, Canada, 3-month moving average, unadjusted for seasonality, monthly
282-0104	Labour force survey estimates (LFS), by immigrant status, sex and detailed age group, Canada, annual
282-0105	Labour force survey estimates (LFS), by immigrant status, educational attainment, sex and age group, Canada, 3-month moving average, unadjusted for seasonality, monthly
282-0106	Labour force survey estimates (LFS), by immigrant status, educational attainment, sex and age group, Canada, annual
282-0107	Labour force survey estimates (LFS), by immigrant status, country of birth, sex and age group, Canada, 3-month moving average, unadjusted for seasonality, monthly
282-0108	Labour force survey estimates (LFS), by immigrant status, country of birth, sex and age group, Canada, annual
282-0122	Labour force survey estimates (LFS), by provinces and economic regions based on 2011 Census boundaries, 3-month moving average, unadjusted for seasonality, monthly
282-0123	Labour force survey estimates (LFS), by provinces, territories and economic regions based on 2011 Census boundaries, annual
282-0124	Labour force survey estimates (LFS), employment by economic region based on 2011 Census boundaries and North American Industry Classification System (NAICS), 3-month moving average, unadjusted for seasonality, monthly
282-0125	Labour force survey estimates (LFS), employment by economic region based on 2011 Census boundaries and North American Industry Classification System (NAICS), annual
282-0128	Labour force survey estimates (LFS), by census metropolitan area based on 2011 Census boundaries, sex and age group, 3-month moving average, unadjusted for seasonality, monthly
282-0129	Labour force survey estimates (LFS), by census metropolitan area based on 2011 Census boundaries, sex and age group, annual
282-0130	Labour force survey estimates (LFS), employment by census metropolitan area based on 2011 Census boundaries and North American Industry Classification System (NAICS), 3-month moving average, unadjusted for seasonality, monthly
282-0131	Labour force survey estimates (LFS), employment by census metropolitan area based on 2011 Census boundaries and North American Industry Classification System (NAICS), annual
282-0134	Labour force survey estimates (LFS), by selected census agglomerations based on 2011 Census boundaries, annual
282-0135	Labour force survey estimates (LFS), by census metropolitan area based on 2011 Census boundaries, 3-month moving average, seasonally adjusted and unadjusted, monthly
282-0136	Labour force survey estimates (LFS), by Montréal, Toronto and Vancouver census metropolitan areas based on 2011 Census boundaries, seasonally adjusted and unadjusted, monthly

282-0137	Labour force survey estimates (LFS), by population centres and rural areas based on 2011 Census boundaries, sex and age group, unadjusted for seasonality, monthly
282-0138	Labour force survey estimates (LFS), by population centres and rural areas based on 2011 Census boundaries, sex and age group, annual
282-0139	Labour force survey estimates (LFS), employment by population centres and rural areas based on 2011 Census boundaries, class of worker and North American Industry Classification System (NAICS), unadjusted for seasonality, monthly
282-0140	Labour force survey estimates (LFS), employment by population centres and rural areas based on 2011 Census boundaries, class of worker and North American Industry Classification System (NAICS), annual
282-0141	Labour force survey estimates (LFS), by National Occupational Classification (NOC) and sex, unadjusted for seasonality, monthly
282-0142	Labour force survey estimates (LFS), by National Occupational Classification (NOC) and sex, annual
282-0143	Labour force survey estimates (LFS), by usual hours worked, National Occupational Classification (NOC) and sex, unadjusted for seasonality, monthly
282-0144	Labour force survey estimates (LFS), by usual hours worked, National Occupational Classification (NOC) and sex, annual
282-0145	Labour force survey estimates (LFS), by actual hours worked, National Occupational Classification (NOC) and sex, unadjusted for seasonality, monthly
282-0146	Labour force survey estimates (LFS), by actual hours worked, National Occupational Classification (NOC) and sex, annual
282-0147	Labour force survey estimates (LFS), multiple jobholders by National Occupational Classification (NOC), sex and age group, unadjusted for seasonality, monthly
282-0148	Labour force survey estimates (LFS), multiple jobholders by National Occupational Classification (NOC), sex and age group, annual
282-0149	Labour force survey estimates (LFS), job tenure by National Occupational Classification (NOC) and sex, unadjusted for seasonality, monthly
282-0150	Labour force survey estimates (LFS), job tenure by National Occupational Classification (NOC) and sex, annual
282-0151	Labour force survey estimates (LFS), wages of employees by type of work, National Occupational Classification (NOC), sex, and age group, unadjusted for seasonality, monthly
282-0152	Labour force survey estimates (LFS), wages of employees by type of work, National Occupational Classification (NOC), sex, and age group, annual
282-0153	Labour force survey estimates (LFS), employees working overtime (weekly) by National Occupational Classification (NOC), sex and age group, unadjusted for seasonality, monthly
282-0154	Labour force survey estimates (LFS), employees working overtime (weekly) by National Occupational Classification (NOC), sex and age group, annual

282-0155	Labour force survey estimates (LFS), employment by National Occupational Classification (NOC), seasonally adjusted, monthly
282-0156	Labour force survey estimates (LFS), employment by economic region based on 2011 Census boundaries and National Occupational Classification (NOC), three-month moving average, unadjusted for seasonality, monthly
282-0157	Labour force survey estimates (LFS), employment by economic region based on 2011 Census boundaries and National Occupational Classification (NOC), annual
282-0158	Labour force survey estimates (LFS), employment by census metropolitan area based on 2011 Census boundaries and National Occupational Classification (NOC), three-month moving average, unadjusted for seasonality, monthly
282-0159	Labour force survey estimates (LFS), employment by census metropolitan area based on 2011 Census boundaries and National Occupational Classification (NOC), annual
282-0160	Labour force survey estimates (LFS), weekly wage distributions of employees by type of work, National Occupational Classification (NOC) and sex, unadjusted for seasonality, monthly
282-0161	Labour force survey estimates (LFS), weekly wage distributions of employees by type of work, National Occupational Classification (NOC) and sex, annual
282-0162	Labour force survey estimates (LFS), hourly wage distribution of employees by type of work, National Occupational Classification (NOC) and sex, unadjusted for seasonality, monthly
282-0163	Labour force survey estimates (LFS), hourly wage distribution of employees by type of work, National Occupational Classification (NOC) and sex, annual
282-0164	Labour force survey estimates (LFS), employees by union status and National Occupational Classification (NOC), Canada, annual
282-0165	Labour force survey estimates (LFS), employment by Aboriginal group, National Occupational Classification (NOC), sex and age group, annual
282-0166	Labour force survey estimates (LFS), employment by Aboriginal group, National Occupational Classification (NOC) and age group, Canada, selected provinces and regions, annual
282-0167	Labour force survey estimates (LFS), average usual hours and wages of employees by age group, sex, union coverage, job permanency, and National Occupational Classification (NOC), unadjusted for seasonality, monthly
282-0200	Labour force survey estimates (LFS), weekly wage distributions of employees by type of work, North American Industry Classification System (NAICS), and sex, unadjusted for seasonality, monthly
282-0201	Labour force survey estimates (LFS), weekly wage distributions of employees by type of work, North American Industry Classification System (NAICS), and sex, annual
282-0204	Labour force survey estimates (LFS), hourly wage distributions of employees by type of work, North American Industry Classification System (NAICS), and sex, unadjusted for seasonality, monthly
282-0205	Labour force survey estimates (LFS), hourly wage distributions of employees by type of work, North American Industry Classification System (NAICS), and sex, annual

282-0208	Labour force survey estimates (LFS), by educational degree, sex and age group, unadjusted for seasonality, monthly
282-0209	Labour force survey estimates (LFS), by educational degree, sex and age group, annual
282-0210	Labour force survey estimates (LFS), by family type and family age composition, unadjusted for seasonality, monthly
282-0211	Labour force survey estimates (LFS), by family type and family age composition, annual
282-0212	Labour force survey estimates (LFS), hours lost by employees by reason of absence, full and part week and sex, unadjusted for seasonality, monthly
282-0213	Labour force survey estimates (LFS), hours lost by employees by reason of absence, full and part week and sex, annual
282-0214	Labour force survey estimates (LFS), activity prior to unemployment by sex and age group, unadjusted for seasonality, monthly
282-0215	Labour force survey estimates (LFS), activity prior to unemployment, by sex and age group, annual
282-0216	Labour force survey estimates (LFS), reason for leaving job during previous year by sex and age group, unadjusted for seasonality, monthly
282-0217	Labour force survey estimates (LFS), reason for leaving job during previous year by sex and age group, annual
282-0218	Labour force survey estimates (LFS), reason for not looking for work, by sex and age group, unadjusted for seasonality, monthly
282-0219	Labour force survey estimates (LFS), reason for not looking for work, by sex and age group, annual
282-0220	Labour Force Survey estimates (LFS), employees by union status, sex and age group, Canada and provinces, annual
282-0221	Labour Force Survey estimates (LFS), employees by union status, sex, age group and education level, Canada, annual
282-0223	Labour Force Survey estimates (LFS), employees by union status, North American Industry Classification System (NAICS) and sex, Canada, annual
282-0224	Labour Force Survey estimates (LFS), employees by union status, establishment size, job tenure, type of work and job permanency, Canada, annual
282-0225	Labour Force Survey estimates (LFS), average weekly earnings, average hourly wage rate and average usual weekly hours by union status and type of work, Canada and provinces, annual
282-0226	Labour force survey estimates (LFS), by Aboriginal group, sex and age group, Canada, selected provinces and regions, annual
282-0227	Labour force survey estimates (LFS), by detailed Aboriginal group, sex and age group, Canada and selected regions, annual

282-0228	Labour force survey estimates (LFS), by Aboriginal group, educational attainment and age group, Canada and selected regions, annual
282-0229	Labour force survey estimates (LFS), employment by Aboriginal group, North American Industry Classification System (NAICS), sex and age group, annual
282-0230	Labour force survey estimates (LFS), employment by Aboriginal group, North American Industry Classification System (NAICS) and age group, Canada and selected regions, annual
282-0233	Labour force survey estimates (LFS), average hourly and weekly wages and average usual weekly hours by Aboriginal group and age group, Canada, selected provinces and regions, annual

Selected surveys from Statistics Canada

3701	Labour Force Survey
------	---------------------

Selected summary tables from Statistics Canada

- *Average hourly wages of employees by selected characteristics and occupation, unadjusted data, by province (monthly)*
- *Days lost per worker by industry and sex*
- *People employed, by educational attainment*
- *Reasons for part-time work by sex and age group*
- *Self-employment, historical summary*
- *Employment by age, sex, type of work, class of worker and province (monthly)*
- *Actual hours worked per week by industry, seasonally adjusted (monthly)*
- *Labour force characteristics, unadjusted, by territory (3 month moving average)*
- *Employment by industry and sex*
- *Full-time and part-time employment by sex and age group*
- *Labour force characteristics by age and sex*
- *Labour force characteristics by immigrant status of population aged 25 to 54, and by educational attainment*
- *Labour force characteristics by immigrant status, by detailed age group*
- *Labour force characteristics by immigrant status of population aged 25 to 54, by country of birth*
- *Days lost per worker due to illness or disability, by sex, by province*

- *Employment by industry*
- *Labour force characteristics, seasonally adjusted, by province (monthly)*
- *Labour force characteristics, unadjusted, by province (monthly)*
- *Labour force, employment and unemployment, levels and rates, by province*
- *Economic indicators, by province and territory (monthly and quarterly)*
- *Days lost per worker by reason, by provinces*
- *Labour force characteristics, seasonally adjusted, by census metropolitan area (3 month moving average)*
- *Labour force characteristics, unadjusted, by economic region (3 month moving average)*
- *Distribution of employed people, by industry, by province*
- *Employment by major industry group, seasonally adjusted, by province (monthly)*
- *Labour force characteristics*
- *Labour force characteristics, unadjusted, by census metropolitan area (3 month moving average)*
- *Labour force characteristics, population 15 years and older, by census metropolitan area*
- *Labour force characteristics, population 15 years and older, by economic region, by province*
- *Canada: Economic and financial data*
- *Labour force characteristics by sex and age group*
- *Labour force characteristics by immigrant status of population aged 25 to 54, by province*
- *Latest statistics (monthly)*

Statistical tables

Table 1
Labour force characteristics by age and sex, Canada, seasonally adjusted

	December 2015	January 2016	S.E. ¹	Change from			Percent change from		
				last month	last December	twelve months ago	last month	last December	twelve months ago
in thousands (except rates)									
15 years and over, both sexes									
Population	29,419.0	29,439.8	...	20.8	20.8	300.6	0.1	0.1	1.0
Labour force	19,397.3	19,395.5	29.8	-1.8	-1.8	248.8	0.0	0.0	1.3
Employment	18,010.9	18,005.2	29.5	-5.7	-5.7	125.5	0.0	0.0	0.7
Employment full-time	14,617.8	14,623.4	42.5	5.6	5.6	171.5	0.0	0.0	1.2
Employment part-time	3,393.1	3,381.8	39.7	-11.3	-11.3	-45.9	-0.3	-0.3	-1.3
Unemployment	1,386.4	1,390.3	25.3	3.9	3.9	123.2	0.3	0.3	9.7
Participation rate	65.9	65.9	0.1	0.0	0.0	0.2
Unemployment rate	7.1	7.2	0.1	0.1	0.1	0.6
Employment rate	61.2	61.2	0.1	0.0	0.0	-0.2
Part-time rate	18.8	18.8	0.2	-0.1	-0.1	-0.4
15 to 24 years, both sexes									
Population	4,412.0	4,407.3	...	-4.7	-4.7	-44.1	-0.1	-0.1	-1.0
Labour force	2,808.3	2,813.0	17.4	4.7	4.7	-49.1	0.2	0.2	-1.7
Employment	2,442.5	2,447.0	16.4	4.5	4.5	-48.3	0.2	0.2	-1.9
Employment full-time	1,288.8	1,309.6	20.6	20.8	20.8	22.5	1.6	1.6	1.7
Employment part-time	1,153.7	1,137.4	21.4	-16.3	-16.3	-70.8	-1.4	-1.4	-5.9
Unemployment	365.8	366.0	14.9	0.2	0.2	-0.8	0.1	0.1	-0.2
Participation rate	63.7	63.8	0.4	0.1	0.1	-0.5
Unemployment rate	13.0	13.0	0.5	0.0	0.0	0.2
Employment rate	55.4	55.5	0.4	0.1	0.1	-0.6
Part-time rate	47.2	46.5	0.8	-0.8	-0.8	-1.9
25 years and over, men									
Population	12,232.6	12,244.7	...	12.1	12.1	169.9	0.1	0.1	1.4
Labour force	8,812.4	8,801.0	16.0	-11.4	-11.4	164.0	-0.1	-0.1	1.9
Employment	8,228.2	8,207.3	16.7	-20.9	-20.9	73.1	-0.3	-0.3	0.9
Employment full-time	7,577.0	7,549.9	23.4	-27.1	-27.1	94.1	-0.4	-0.4	1.3
Employment part-time	651.2	657.3	19.2	6.1	6.1	-21.1	0.9	0.9	-3.1
Unemployment	584.2	593.7	14.9	9.5	9.5	90.9	1.6	1.6	18.1
Participation rate	72.0	71.9	0.1	-0.1	-0.1	0.4
Unemployment rate	6.6	6.7	0.2	0.1	0.1	0.9
Employment rate	67.3	67.0	0.1	-0.3	-0.3	-0.4
Part-time rate	7.9	8.0	0.2	0.1	0.1	-0.3
25 years and over, women									
Population	12,774.4	12,787.9	...	13.5	13.5	174.8	0.1	0.1	1.4
Labour force	7,776.5	7,781.5	17.0	5.0	5.0	133.8	0.1	0.1	1.7
Employment	7,340.2	7,350.9	16.9	10.7	10.7	100.8	0.1	0.1	1.4
Employment full-time	5,752.0	5,763.9	27.9	11.9	11.9	54.9	0.2	0.2	1.0
Employment part-time	1,588.2	1,587.1	26.7	-1.1	-1.1	46.0	-0.1	-0.1	3.0
Unemployment	436.3	430.5	13.5	-5.8	-5.8	32.9	-1.3	-1.3	8.3
Participation rate	60.9	60.9	0.1	0.0	0.0	0.3
Unemployment rate	5.6	5.5	0.2	-0.1	-0.1	0.3
Employment rate	57.5	57.5	0.1	0.0	0.0	0.0
Part-time rate	21.6	21.6	0.4	0.0	0.0	0.3
25 to 54 years, both sexes									
Population	14,604.7	14,603.0	...	-1.7	-1.7	35.3	0.0	0.0	0.2
Labour force	12,652.7	12,662.4	24.6	9.7	9.7	98.8	0.1	0.1	0.8
Employment	11,861.8	11,875.9	26.2	14.1	14.1	4.3	0.1	0.1	0.0
Unemployment	790.9	786.5	19.0	-4.4	-4.4	94.5	-0.6	-0.6	13.7
Participation rate	86.6	86.7	0.2	0.1	0.1	0.5
Unemployment rate	6.3	6.2	0.1	-0.1	-0.1	0.7
Employment rate	81.2	81.3	0.2	0.1	0.1	-0.2
25 to 54 years, men									
Population	7,272.5	7,271.1	...	-1.4	-1.4	15.6	0.0	0.0	0.2
Labour force	6,637.6	6,627.1	15.7	-10.5	-10.5	52.6	-0.2	-0.2	0.8
Employment	6,189.8	6,181.1	17.3	-8.7	-8.7	-19.0	-0.1	-0.1	-0.3
Unemployment	447.8	446.1	13.7	-1.7	-1.7	71.7	-0.4	-0.4	19.2
Participation rate	91.3	91.1	0.2	-0.2	-0.2	0.5
Unemployment rate	6.7	6.7	0.2	0.0	0.0	1.0
Employment rate	85.1	85.0	0.2	-0.1	-0.1	-0.5

See notes at the end of the table.

Table 1 – continued

Labour force characteristics by age and sex, Canada, seasonally adjusted

	December 2015	January 2016	S.E. ¹	Change from			Percent change from		
				last month	last December	twelve months ago	last month	last December	twelve months ago
in thousands (except rates)									
25 to 54 years, women									
Population	7,332.2	7,331.9	...	-0.3	-0.3	19.6	0.0	0.0	0.3
Labour force	6,015.1	6,035.2	17.8	20.1	20.1	46.1	0.3	0.3	0.8
Employment	5,672.1	5,694.8	18.2	22.7	22.7	23.3	0.4	0.4	0.4
Unemployment	343.0	340.4	12.7	-2.6	-2.6	22.8	-0.8	-0.8	7.2
Participation rate	82.0	82.3	0.2	0.3	0.3	0.4
Unemployment rate	5.7	5.6	0.2	-0.1	-0.1	0.3
Employment rate	77.4	77.7	0.2	0.3	0.3	0.1
55 years and over, both sexes									
Population	10,402.3	10,429.6	...	27.3	27.3	309.5	0.3	0.3	3.1
Labour force	3,936.3	3,920.1	20.7	-16.2	-16.2	199.0	-0.4	-0.4	5.3
Employment	3,706.6	3,682.3	20.7	-24.3	-24.3	169.5	-0.7	-0.7	4.8
Unemployment	229.7	237.8	10.5	8.1	8.1	29.5	3.5	3.5	14.2
Participation rate	37.8	37.6	0.2	-0.2	-0.2	0.8
Unemployment rate	5.8	6.1	0.3	0.3	0.3	0.5
Employment rate	35.6	35.3	0.2	-0.3	-0.3	0.6
55 years and over, men									
Population	4,960.1	4,973.6	...	13.5	13.5	154.3	0.3	0.3	3.2
Labour force	2,174.8	2,173.8	13.6	-1.0	-1.0	111.3	0.0	0.0	5.4
Employment	2,038.4	2,026.2	13.9	-12.2	-12.2	92.0	-0.6	-0.6	4.8
Unemployment	136.4	147.6	7.8	11.2	11.2	19.2	8.2	8.2	15.0
Participation rate	43.8	43.7	0.3	-0.1	-0.1	0.9
Unemployment rate	6.3	6.8	0.4	0.5	0.5	0.6
Employment rate	41.1	40.7	0.3	-0.4	-0.4	0.6
55 years and over, women									
Population	5,442.2	5,456.0	...	13.8	13.8	155.2	0.3	0.3	2.9
Labour force	1,761.4	1,746.3	14.2	-15.1	-15.1	87.7	-0.9	-0.9	5.3
Employment	1,668.1	1,656.1	14.2	-12.0	-12.0	77.5	-0.7	-0.7	4.9
Unemployment	93.3	90.1	6.7	-3.2	-3.2	10.1	-3.4	-3.4	12.6
Participation rate	32.4	32.0	0.3	-0.4	-0.4	0.7
Unemployment rate	5.3	5.2	0.4	-0.1	-0.1	0.4
Employment rate	30.7	30.4	0.3	-0.3	-0.3	0.6

1. Average standard error of change in two consecutive months (see "Sampling Errors" in Data Quality for further explanations).

Note(s): Related CANSIM table 282-0087. The sum of individual categories may not always add to the total due to rounding.

Table 2
Employment by class of worker and industry, Canada, seasonally adjusted

	December 2015	January 2016	S.E. ¹	Change from			Percent change from		
				last month	last December	twelve months ago	last month	last December	twelve months ago
in thousands									
Class of worker									
Employees	15,194.0	15,208.5	36.5	14.5	14.5	89.4	0.1	0.1	0.6
Self-employed ²	2,816.9	2,796.7	26.2	-20.2	-20.2	36.2	-0.7	-0.7	1.3
Public/private sector employees									
Public sector employees	3,602.3	3,621.0	21.1	18.7	18.7	59.4	0.5	0.5	1.7
Private sector employees	11,591.6	11,587.5	36.6	-4.1	-4.1	30.0	0.0	0.0	0.3
Industry	18,010.9	18,005.2	29.5	-5.7	-5.7	125.5	0.0	0.0	0.7
Goods-producing sector	3,886.6	3,861.3	17.0	-25.3	-25.3	-43.7	-0.7	-0.7	-1.1
Agriculture	297.4	283.7	5.6	-13.7	-13.7	-18.7	-4.6	-4.6	-6.2
Forestry, fishing, mining, quarrying, oil and gas extraction ³	351.9	353.3	5.5	1.4	1.4	-13.3	0.4	0.4	-3.6
Utilities	132.3	135.6	2.6	3.3	3.3	-4.3	2.5	2.5	-3.1
Construction	1,369.4	1,364.0	11.6	-5.4	-5.4	-24.7	-0.4	-0.4	-1.8
Manufacturing	1,735.6	1,724.6	10.8	-11.0	-11.0	17.1	-0.6	-0.6	1.0
Services-producing sector	14,124.2	14,143.9	28.0	19.7	19.7	169.2	0.1	0.1	1.2
Wholesale and retail trade	2,723.6	2,732.0	14.7	8.4	8.4	17.6	0.3	0.3	0.6
Transportation and warehousing	909.5	899.1	8.4	-10.4	-10.4	-1.7	-1.1	-1.1	-0.2
Finance, insurance, real estate, rental and leasing	1,110.3	1,110.7	8.8	0.4	0.4	18.1	0.0	0.0	1.7
Professional, scientific and technical services	1,397.2	1,388.1	10.9	-9.1	-9.1	38.5	-0.7	-0.7	2.9
Business, building and other support services	760.3	760.3	10.4	0.0	0.0	7.1	0.0	0.0	0.9
Educational services	1,271.5	1,274.7	10.4	3.2	3.2	7.6	0.3	0.3	0.6
Health care and social assistance	2,331.1	2,342.4	11.5	11.3	11.3	90.0	0.5	0.5	4.0
Information, culture and recreation	751.3	767.1	10.0	15.8	15.8	8.7	2.1	2.1	1.1
Accommodation and food services	1,188.1	1,185.6	11.9	-2.5	-2.5	-33.1	-0.2	-0.2	-2.7
Other services (except public administration)	761.8	771.4	8.1	9.6	9.6	4.2	1.3	1.3	0.5
Public administration	919.6	912.4	7.1	-7.2	-7.2	12.2	-0.8	-0.8	1.4

1. Average standard error of change in two consecutive months (see "Sampling Errors" in Data Quality for further explanations).

2. Includes both incorporated and unincorporated working owners, self-employed persons who do not have a business and persons working in a family business without pay.

3. Also referred to as Natural resources.

Note(s): Related CANSIM Tables 282-0088, 282-0089. The sum of individual categories may not always add to the total due to rounding.

Table 3
Labour force characteristics by province, seasonally adjusted

	December 2015	January 2016	S.E. ¹	Change from			Percent change from		
				last month	last December	twelve months ago	last month	last December	twelve months ago
in thousands (except rates)									
Newfoundland and Labrador									
Population	443.0	443.3	...	0.3	0.3	-0.1	0.1	0.1	0.0
Labour force	272.1	269.2	2.0	-2.9	-2.9	0.5	-1.1	-1.1	0.2
Employment	232.8	230.4	2.1	-2.4	-2.4	-7.4	-1.0	-1.0	-3.1
Employment full-time	194.7	193.8	2.7	-0.9	-0.9	-7.6	-0.5	-0.5	-3.8
Employment part-time	38.1	36.7	2.1	-1.4	-1.4	0.3	-3.7	-3.7	0.8
Unemployment	39.3	38.8	2.1	-0.5	-0.5	7.9	-1.3	-1.3	25.6
Participation rate	61.4	60.7	0.5	-0.7	-0.7	0.1
Unemployment rate	14.4	14.4	0.7	0.0	0.0	2.9
Employment rate	52.6	52.0	0.5	-0.6	-0.6	-1.6
Prince Edward Island									
Population	121.2	121.2	...	0.0	0.0	0.4	0.0	0.0	0.3
Labour force	80.6	80.1	0.6	-0.5	-0.5	-2.4	-0.6	-0.6	-2.9
Employment	72.8	72.4	0.6	-0.4	-0.4	-1.6	-0.5	-0.5	-2.2
Employment full-time	60.7	60.6	0.9	-0.1	-0.1	-1.5	-0.2	-0.2	-2.4
Employment part-time	12.1	11.8	0.7	-0.3	-0.3	-0.1	-2.5	-2.5	-0.8
Unemployment	7.9	7.6	0.6	-0.3	-0.3	-0.9	-3.8	-3.8	-10.6
Participation rate	66.5	66.1	0.5	-0.4	-0.4	-2.2
Unemployment rate	9.8	9.5	0.7	-0.3	-0.3	-0.8
Employment rate	60.1	59.7	0.5	-0.4	-0.4	-1.6
Nova Scotia									
Population	787.0	787.1	...	0.1	0.1	3.0	0.0	0.0	0.4
Labour force	488.1	484.8	2.7	-3.3	-3.3	-6.8	-0.7	-0.7	-1.4
Employment	445.9	443.5	2.7	-2.4	-2.4	-7.0	-0.5	-0.5	-1.6
Employment full-time	368.4	365.5	3.8	-2.9	-2.9	-3.3	-0.8	-0.8	-0.9
Employment part-time	77.5	78.0	3.3	0.5	0.5	-3.7	0.6	0.6	-4.5
Unemployment	42.2	41.4	2.5	-0.8	-0.8	0.3	-1.9	-1.9	0.7
Participation rate	62.0	61.6	0.3	-0.4	-0.4	-1.1
Unemployment rate	8.6	8.5	0.5	-0.1	-0.1	0.1
Employment rate	56.7	56.3	0.3	-0.4	-0.4	-1.2
New Brunswick									
Population	621.9	622.2	...	0.3	0.3	0.2	0.0	0.0	0.0
Labour force	387.3	387.5	2.2	0.2	0.2	-6.3	0.1	0.1	-1.6
Employment	352.8	351.7	2.3	-1.1	-1.1	-2.4	-0.3	-0.3	-0.7
Employment full-time	301.3	296.7	3.0	-4.6	-4.6	-2.0	-1.5	-1.5	-0.7
Employment part-time	51.5	55.0	2.6	3.5	3.5	-0.4	6.8	6.8	-0.7
Unemployment	34.5	35.9	2.1	1.4	1.4	-3.8	4.1	4.1	-9.6
Participation rate	62.3	62.3	0.4	0.0	0.0	-1.0
Unemployment rate	8.9	9.3	0.5	0.4	0.4	-0.8
Employment rate	56.7	56.5	0.4	-0.2	-0.2	-0.4
Quebec									
Population	6,862.2	6,865.9	...	3.7	3.7	40.9	0.1	0.1	0.6
Labour force	4,459.8	4,445.2	15.6	-14.6	-14.6	44.0	-0.3	-0.3	1.0
Employment	4,109.6	4,106.4	15.9	-3.2	-3.2	30.5	-0.1	-0.1	0.7
Employment full-time	3,310.5	3,324.4	22.5	13.9	13.9	67.4	0.4	0.4	2.1
Employment part-time	799.1	781.9	20.9	-17.2	-17.2	-37.0	-2.2	-2.2	-4.5
Unemployment	350.2	338.8	13.7	-11.4	-11.4	13.5	-3.3	-3.3	4.2
Participation rate	65.0	64.7	0.2	-0.3	-0.3	0.2
Unemployment rate	7.9	7.6	0.3	-0.3	-0.3	0.2
Employment rate	59.9	59.8	0.2	-0.1	-0.1	0.1
Ontario									
Population	11,444.5	11,454.5	...	10.0	10.0	125.4	0.1	0.1	1.1
Labour force	7,466.2	7,491.4	19.8	25.2	25.2	99.6	0.3	0.3	1.3
Employment	6,966.1	6,985.9	19.3	19.8	19.8	100.2	0.3	0.3	1.5
Employment full-time	5,684.0	5,700.3	28.0	16.3	16.3	180.6	0.3	0.3	3.3
Employment part-time	1,282.0	1,285.6	26.2	3.6	3.6	-80.4	0.3	0.3	-5.9
Unemployment	500.1	505.6	17.0	5.5	5.5	-0.5	1.1	1.1	-0.1
Participation rate	65.2	65.4	0.2	0.2	0.2	0.2
Unemployment rate	6.7	6.7	0.2	0.0	0.0	-0.1
Employment rate	60.9	61.0	0.2	0.1	0.1	0.2

See notes at the end of the table.

Table 3 – continued

Labour force characteristics by province, seasonally adjusted

	December 2015	January 2016	S.E. ¹	Change from			Percent change from		
				last month	last December	twelve months ago	last month	last December	twelve months ago
in thousands (except rates)									
Manitoba									
Population	991.9	992.8	...	0.9	0.9	10.3	0.1	0.1	1.0
Labour force	674.2	669.5	2.5	-4.7	-4.7	-6.2	-0.7	-0.7	-0.9
Employment	634.0	628.7	2.6	-5.3	-5.3	-6.6	-0.8	-0.8	-1.0
Employment full-time	506.5	507.6	3.8	1.1	1.1	-11.1	0.2	0.2	-2.1
Employment part-time	127.6	121.1	3.6	-6.5	-6.5	4.5	-5.1	-5.1	3.9
Unemployment	40.1	40.8	2.1	0.7	0.7	0.5	1.7	1.7	1.2
Participation rate	68.0	67.4	0.3	-0.6	-0.6	-1.4
Unemployment rate	5.9	6.1	0.3	0.2	0.2	0.1
Employment rate	63.9	63.3	0.3	-0.6	-0.6	-1.4
Saskatchewan									
Population	865.0	865.2	...	0.2	0.2	7.4	0.0	0.0	0.9
Labour force	608.6	607.0	2.6	-1.6	-1.6	13.2	-0.3	-0.3	2.2
Employment	575.1	573.3	2.7	-1.8	-1.8	6.4	-0.3	-0.3	1.1
Employment full-time	478.9	472.9	3.8	-6.0	-6.0	5.1	-1.3	-1.3	1.1
Employment part-time	96.2	100.4	3.5	4.2	4.2	1.3	4.4	4.4	1.3
Unemployment	33.6	33.7	2.1	0.1	0.1	6.8	0.3	0.3	25.3
Participation rate	70.4	70.2	0.3	-0.2	-0.2	1.0
Unemployment rate	5.5	5.6	0.3	0.1	0.1	1.1
Employment rate	66.5	66.3	0.3	-0.2	-0.2	0.2
Alberta									
Population	3,379.0	3,381.7	...	2.7	2.7	58.7	0.1	0.1	1.8
Labour force	2,457.1	2,457.8	9.8	0.7	0.7	34.2	0.0	0.0	1.4
Employment	2,286.1	2,276.1	9.8	-10.0	-10.0	-35.0	-0.4	-0.4	-1.5
Employment full-time	1,880.9	1,859.0	14.1	-21.9	-21.9	-73.0	-1.2	-1.2	-3.8
Employment part-time	405.2	417.1	13.1	11.9	11.9	38.0	2.9	2.9	10.0
Unemployment	171.0	181.7	8.1	10.7	10.7	69.2	6.3	6.3	61.5
Participation rate	72.7	72.7	0.3	0.0	0.0	-0.2
Unemployment rate	7.0	7.4	0.3	0.4	0.4	2.8
Employment rate	67.7	67.3	0.3	-0.4	-0.4	-2.2
British Columbia									
Population	3,903.2	3,905.9	...	2.7	2.7	54.3	0.1	0.1	1.4
Labour force	2,503.2	2,503.0	10.5	-0.2	-0.2	78.9	0.0	0.0	3.3
Employment	2,335.7	2,336.9	10.6	1.2	1.2	48.6	0.1	0.1	2.1
Employment full-time	1,831.9	1,842.6	15.6	10.7	10.7	16.8	0.6	0.6	0.9
Employment part-time	503.8	494.3	14.8	-9.5	-9.5	31.8	-1.9	-1.9	6.9
Unemployment	167.5	166.0	8.5	-1.5	-1.5	30.2	-0.9	-0.9	22.2
Participation rate	64.1	64.1	0.3	0.0	0.0	1.2
Unemployment rate	6.7	6.6	0.3	-0.1	-0.1	1.0
Employment rate	59.8	59.8	0.3	0.0	0.0	0.4

1. Average standard error of change in two consecutive months (see "Sampling Errors" in Data Quality for further explanations).

Note(s): Related CANSIM Table 282-0087. The sum of individual categories may not always add to the total due to rounding.

Table 4-1
Selected labour force characteristics (seasonally adjusted) — Newfoundland and Labrador

	December 2015	January 2016	S.E. ¹	Change from			Percent change from		
				last month	last December	twelve months ago	last month	last December	twelve months ago
in thousands (except rates)									
Both sexes, 15 years and over									
Population	443.0	443.3	...	0.3	0.3	-0.1	0.1	0.1	0.0
Labour force	272.1	269.2	2.0	-2.9	-2.9	0.5	-1.1	-1.1	0.2
Employment	232.8	230.4	2.1	-2.4	-2.4	-7.4	-1.0	-1.0	-3.1
Employment full-time	194.7	193.8	2.7	-0.9	-0.9	-7.6	-0.5	-0.5	-3.8
Unemployment	39.3	38.8	2.1	-0.5	-0.5	7.9	-1.3	-1.3	25.6
Participation rate	61.4	60.7	0.5	-0.7	-0.7	0.1
Unemployment rate	14.4	14.4	0.7	0.0	0.0	2.9
Employment rate	52.6	52.0	0.5	-0.6	-0.6	-1.6
Part-time rate	16.4	15.9	0.9	-0.4	-0.4	0.6
Both sexes, 15 to 24 years									
Population	55.7	55.6	...	-0.1	-0.1	-1.6	-0.2	-0.2	-2.8
Labour force	37.5	37.8	1.0	0.3	0.3	1.8	0.8	0.8	5.0
Employment	31.2	30.9	1.0	-0.3	-0.3	-0.4	-1.0	-1.0	-1.3
Unemployment	6.3	6.8	0.9	0.5	0.5	2.1	7.9	7.9	44.7
Participation rate	67.3	68.0	1.7	0.7	0.7	5.1
Unemployment rate	16.8	18.0	2.3	1.2	1.2	4.9
Employment rate	56.0	55.6	1.7	-0.4	-0.4	0.9
Part-time rate	48.7	51.1	3.8	2.4	2.4	5.8
Men, 25 years and over									
Population	188.8	189.0	...	0.2	0.2	0.8	0.1	0.1	0.4
Labour force	123.8	121.7	1.3	-2.1	-2.1	-1.2	-1.7	-1.7	-1.0
Employment	102.4	101.4	1.4	-1.0	-1.0	-5.3	-1.0	-1.0	-5.0
Unemployment	21.4	20.3	1.4	-1.1	-1.1	4.1	-5.1	-5.1	25.3
Participation rate	65.6	64.4	0.7	-1.2	-1.2	-0.9
Unemployment rate	17.3	16.7	1.1	-0.6	-0.6	3.5
Employment rate	54.2	53.7	0.7	-0.5	-0.5	-3.0
Part-time rate	3.2	4.0	0.9	0.8	0.8	-1.8
Women, 25 years and over									
Population	198.6	198.7	...	0.1	0.1	0.7	0.1	0.1	0.4
Labour force	110.8	109.8	1.1	-1.0	-1.0	0.0	-0.9	-0.9	0.0
Employment	99.2	98.1	1.2	-1.1	-1.1	-1.7	-1.1	-1.1	-1.7
Unemployment	11.6	11.7	1.1	0.1	0.1	1.7	0.9	0.9	17.0
Participation rate	55.8	55.3	0.6	-0.5	-0.5	-0.2
Unemployment rate	10.5	10.7	1.0	0.2	0.2	1.6
Employment rate	49.9	49.4	0.6	-0.5	-0.5	-1.0
Part-time rate	19.8	17.0	1.5	-2.7	-2.7	1.0
Industry									
	232.8	230.4	2.1	-2.4	-2.4	-7.4	-1.0	-1.0	-3.1
Goods-producing sector									
Agriculture	51.7	50.2	1.5	-1.5	-1.5	-5.2	-2.9	-2.9	-9.4
Forestry, fishing, mining, quarrying, oil and gas extraction ²	1.2	1.1	0.3	-0.1	-0.1	-0.8	-8.3	-8.3	-42.1
Utilities	15.3	15.1	0.8	-0.2	-0.2	-1.4	-1.3	-1.3	-8.5
Construction	2.3	2.5	0.3	0.2	0.2	0.1	8.7	8.7	4.2
Manufacturing	21.9	20.6	1.1	-1.3	-1.3	-2.0	-5.9	-5.9	-8.8
	11.0	10.9	0.8	-0.1	-0.1	-1.2	-0.9	-0.9	-9.9
Services-producing sector									
	181.1	180.3	1.8	-0.8	-0.8	-2.1	-0.4	-0.4	-1.2
Wholesale and retail trade	43.2	43.5	0.9	0.3	0.3	3.1	0.7	0.7	7.7
Transportation and warehousing	9.1	9.5	0.6	0.4	0.4	-1.6	4.4	4.4	-14.4
Finance, insurance, real estate, rental and leasing	8.8	8.7	0.4	-0.1	-0.1	1.1	-1.1	-1.1	14.5
Professional, scientific and technical services	11.3	10.8	0.5	-0.5	-0.5	-0.1	-4.4	-4.4	-0.9
Business, building and other support services	8.3	7.9	0.5	-0.4	-0.4	0.9	-4.8	-4.8	12.9
Educational services	14.9	14.1	0.7	-0.8	-0.8	-2.4	-5.4	-5.4	-14.5
Health care and social assistance	38.9	38.5	0.8	-0.4	-0.4	1.0	-1.0	-1.0	2.7
Information, culture and recreation	5.9	6.8	0.6	0.9	0.9	-0.4	15.3	15.3	-5.6
Accommodation and food services	14.2	14.6	0.8	0.4	0.4	-1.5	2.8	2.8	-9.3
Other services (except public administration)	12.4	12.5	0.6	0.1	0.1	1.1	0.8	0.8	9.6
Public administration	14.2	13.4	0.6	-0.8	-0.8	-3.2	-5.6	-5.6	-19.3

1. Average standard error of change in two consecutive months (see "Sampling Errors" in Data Quality for further explanations).

2. Also referred to as Natural resources.

Note(s): Related CANSIM Tables 282-0087, 282-0088. The sum of individual categories may not always add to the total due to rounding.

Table 4-2
Selected labour force characteristics (seasonally adjusted) — Prince Edward Island

	December 2015	January 2016	S.E. ¹	Change from			Percent change from		
				last month	last December	twelve months ago	last month	last December	twelve months ago
in thousands (except rates)									
Both sexes, 15 years and over									
Population	121.2	121.2	...	0.0	0.0	0.4	0.0	0.0	0.3
Labour force	80.6	80.1	0.6	-0.5	-0.5	-2.4	-0.6	-0.6	-2.9
Employment	72.8	72.4	0.6	-0.4	-0.4	-1.6	-0.5	-0.5	-2.2
Employment full-time	60.7	60.6	0.9	-0.1	-0.1	-1.5	-0.2	-0.2	-2.4
Unemployment	7.9	7.6	0.6	-0.3	-0.3	-0.9	-3.8	-3.8	-10.6
Participation rate	66.5	66.1	0.5	-0.4	-0.4	-2.2
Unemployment rate	9.8	9.5	0.7	-0.3	-0.3	-0.8
Employment rate	60.1	59.7	0.5	-0.4	-0.4	-1.6
Part-time rate	16.6	16.3	1.0	-0.3	-0.3	0.2
Both sexes, 15 to 24 years									
Population	18.1	18.0	...	-0.1	-0.1	-0.5	-0.6	-0.6	-2.7
Labour force	12.8	12.6	0.3	-0.2	-0.2	0.3	-1.6	-1.6	2.4
Employment	11.1	11.2	0.3	0.1	0.1	0.9	0.9	0.9	8.7
Unemployment	1.8	1.4	0.3	-0.4	-0.4	-0.6	-22.2	-22.2	-30.0
Participation rate	70.2	70.0	1.8	-0.7	-0.7	3.5
Unemployment rate	14.1	11.1	2.2	-3.0	-3.0	-5.2
Employment rate	61.3	62.2	1.8	0.9	0.9	6.5
Part-time rate	42.3	41.1	3.6	-1.3	-1.3	-2.6
Men, 25 years and over									
Population	49.4	49.4	...	0.0	0.0	0.4	0.0	0.0	0.8
Labour force	34.7	34.8	0.3	0.1	0.1	-1.1	0.3	0.3	-3.1
Employment	31.4	31.1	0.4	-0.3	-0.3	-1.2	-1.0	-1.0	-3.7
Unemployment	3.3	3.8	0.4	0.5	0.5	0.3	15.2	15.2	8.6
Participation rate	70.2	70.4	0.7	0.2	0.2	-2.9
Unemployment rate	9.5	10.9	1.0	1.4	1.4	1.2
Employment rate	63.6	63.0	0.8	-0.6	-0.6	-2.9
Part-time rate	7.6	7.1	1.1	-0.6	-0.6	0.9
Women, 25 years and over									
Population	53.7	53.8	...	0.1	0.1	0.5	0.2	0.2	0.9
Labour force	33.1	32.7	0.3	-0.4	-0.4	-1.7	-1.2	-1.2	-4.9
Employment	30.3	30.2	0.4	-0.1	-0.1	-1.1	-0.3	-0.3	-3.5
Unemployment	2.8	2.5	0.4	-0.3	-0.3	-0.5	-10.7	-10.7	-16.7
Participation rate	61.6	60.8	0.6	-0.8	-0.8	-3.7
Unemployment rate	8.5	7.6	1.0	-0.9	-0.9	-1.1
Employment rate	56.4	56.1	0.7	-0.3	-0.3	-2.6
Part-time rate	16.5	16.6	1.6	0.1	0.1	-1.0
Industry	72.8	72.4	0.6	-0.4	-0.4	-1.6	-0.5	-0.5	-2.2
Goods-producing sector	16.8	16.5	0.5	-0.3	-0.3	-1.1	-1.8	-1.8	-6.2
Agriculture	3.0	3.0	0.3	0.0	0.0	-0.2	0.0	0.0	-6.2
Forestry, fishing, mining, quarrying, oil and gas extraction ²	2.4	2.2	0.2	-0.2	-0.2	-0.2	-8.3	-8.3	-8.3
Utilities	0.3	0.4	0.1	0.1	0.1	0.1	33.3	33.3	33.3
Construction	4.9	4.8	0.3	-0.1	-0.1	-0.7	-2.0	-2.0	-12.7
Manufacturing	6.1	6.2	0.2	0.1	0.1	0.0	1.6	1.6	0.0
Services-producing sector	56.0	55.9	0.6	-0.1	-0.1	-0.5	-0.2	-0.2	-0.9
Wholesale and retail trade	10.8	10.6	0.3	-0.2	-0.2	-0.4	-1.9	-1.9	-3.6
Transportation and warehousing	2.4	2.7	0.2	0.3	0.3	-0.2	12.5	12.5	-6.9
Finance, insurance, real estate, rental and leasing	2.7	2.5	0.1	-0.2	-0.2	0.2	-7.4	-7.4	8.7
Professional, scientific and technical services	3.3	3.5	0.1	0.2	0.2	0.5	6.1	6.1	16.7
Business, building and other support services	2.5	2.5	0.2	0.0	0.0	-0.4	0.0	0.0	-13.8
Educational services	5.5	5.4	0.2	-0.1	-0.1	0.1	-1.8	-1.8	1.9
Health care and social assistance	9.6	10.2	0.2	0.6	0.6	0.2	6.2	6.2	2.0
Information, culture and recreation	2.2	2.0	0.2	-0.2	-0.2	-0.5	-9.1	-9.1	-20.0
Accommodation and food services	6.7	6.3	0.3	-0.4	-0.4	0.7	-6.0	-6.0	12.5
Other services (except public administration)	3.4	3.4	0.2	0.0	0.0	-0.1	0.0	0.0	-2.9
Public administration	6.9	6.8	0.2	-0.1	-0.1	-0.6	-1.4	-1.4	-8.1

1. Average standard error of change in two consecutive months (see "Sampling Errors" in Data Quality for further explanations).

2. Also referred to as Natural resources.

Note(s): Related CANSIM Tables 282-0087, 282-0088. The sum of individual categories may not always add to the total due to rounding.

Table 4-3
Selected labour force characteristics (seasonally adjusted) — Nova Scotia

	December 2015	January 2016	S.E. ¹	Change from			Percent change from		
				last month	last December	twelve months ago	last month	last December	twelve months ago
in thousands (except rates)									
Both sexes, 15 years and over									
Population	787.0	787.1	...	0.1	0.1	3.0	0.0	0.0	0.4
Labour force	488.1	484.8	2.7	-3.3	-3.3	-6.8	-0.7	-0.7	-1.4
Employment	445.9	443.5	2.7	-2.4	-2.4	-7.0	-0.5	-0.5	-1.6
Employment full-time	368.4	365.5	3.8	-2.9	-2.9	-3.3	-0.8	-0.8	-0.9
Unemployment	42.2	41.4	2.5	-0.8	-0.8	0.3	-1.9	-1.9	0.7
Participation rate	62.0	61.6	0.3	-0.4	-0.4	-1.1
Unemployment rate	8.6	8.5	0.5	-0.1	-0.1	0.1
Employment rate	56.7	56.3	0.3	-0.4	-0.4	-1.2
Part-time rate	17.4	17.6	0.7	0.2	0.2	-0.5
Both sexes, 15 to 24 years									
Population	110.6	110.4	...	-0.2	-0.2	-2.2	-0.2	-0.2	-2.0
Labour force	70.8	71.3	1.5	0.5	0.5	-2.9	0.7	0.7	-3.9
Employment	60.0	60.6	1.4	0.6	0.6	-3.4	1.0	1.0	-5.3
Unemployment	10.9	10.7	1.4	-0.2	-0.2	0.5	-1.8	-1.8	4.9
Participation rate	64.0	64.6	1.4	0.6	0.6	-1.3
Unemployment rate	15.4	15.0	1.7	-0.4	-0.4	1.3
Employment rate	54.2	54.9	1.3	0.7	0.7	-1.9
Part-time rate	43.5	43.1	2.8	-0.4	-0.4	-2.9
Men, 25 years and over									
Population	323.9	324.0	...	0.1	0.1	2.6	0.0	0.0	0.8
Labour force	211.8	209.5	1.5	-2.3	-2.3	-3.2	-1.1	-1.1	-1.5
Employment	193.3	191.1	1.7	-2.2	-2.2	-4.4	-1.1	-1.1	-2.3
Unemployment	18.5	18.3	1.6	-0.2	-0.2	1.1	-1.1	-1.1	6.4
Participation rate	65.4	64.7	0.5	-0.7	-0.7	-1.5
Unemployment rate	8.7	8.7	0.7	0.0	0.0	0.6
Employment rate	59.7	59.0	0.5	-0.7	-0.7	-1.8
Part-time rate	7.4	7.7	0.8	0.3	0.3	-1.2
Women, 25 years and over									
Population	352.5	352.7	...	0.2	0.2	2.6	0.1	0.1	0.7
Labour force	205.5	204.1	1.5	-1.4	-1.4	-0.6	-0.7	-0.7	-0.3
Employment	192.6	191.7	1.5	-0.9	-0.9	0.6	-0.5	-0.5	0.3
Unemployment	12.9	12.4	1.2	-0.5	-0.5	-1.2	-3.9	-3.9	-8.8
Participation rate	58.3	57.9	0.4	-0.4	-0.4	-0.6
Unemployment rate	6.3	6.1	0.6	-0.2	-0.2	-0.5
Employment rate	54.6	54.4	0.4	-0.2	-0.2	-0.2
Part-time rate	19.3	19.4	1.1	0.1	0.1	1.1
Industry									
Industry	445.9	443.5	2.7	-2.4	-2.4	-7.0	-0.5	-0.5	-1.6
Goods-producing sector									
Goods-producing sector	84.8	82.2	1.7	-2.6	-2.6	-0.8	-3.1	-3.1	-1.0
Agriculture	6.0	3.8	0.6	-2.2	-2.2	-1.2	-36.7	-36.7	-24.0
Forestry, fishing, mining, quarrying, oil and gas extraction ²	10.8	11.8	0.9	1.0	1.0	-0.6	9.3	9.3	-4.8
Utilities	3.8	3.3	0.2	-0.5	-0.5	-0.3	-13.2	-13.2	-8.3
Construction	33.5	32.5	1.2	-1.0	-1.0	-1.5	-3.0	-3.0	-4.4
Manufacturing	30.8	30.9	0.8	0.1	0.1	2.9	0.3	0.3	10.4
Services-producing sector									
Services-producing sector	361.0	361.3	2.6	0.3	0.3	-6.2	0.1	0.1	-1.7
Wholesale and retail trade	71.2	68.8	1.4	-2.4	-2.4	-4.6	-3.4	-3.4	-6.3
Transportation and warehousing	20.5	20.6	0.8	0.1	0.1	-0.9	0.5	0.5	-4.2
Finance, insurance, real estate, rental and leasing	24.6	24.0	0.6	-0.6	-0.6	1.7	-2.4	-2.4	7.6
Professional, scientific and technical services	25.9	26.9	0.8	1.0	1.0	-0.4	3.9	3.9	-1.5
Business, building and other support services	17.9	16.5	0.8	-1.4	-1.4	-3.8	-7.8	-7.8	-18.7
Educational services	36.6	37.8	1.1	1.2	1.2	1.6	3.3	3.3	4.4
Health care and social assistance	72.1	73.1	1.0	1.0	1.0	2.0	1.4	1.4	2.8
Information, culture and recreation	16.1	15.5	0.8	-0.6	-0.6	-3.5	-3.7	-3.7	-18.4
Accommodation and food services	30.0	31.1	1.1	1.1	1.1	-1.7	3.7	3.7	-5.2
Other services (except public administration)	18.7	19.1	0.8	0.4	0.4	2.4	2.1	2.1	14.4
Public administration	27.6	27.7	0.7	0.1	0.1	0.8	0.4	0.4	3.0

1. Average standard error of change in two consecutive months (see "Sampling Errors" in Data Quality for further explanations).

2. Also referred to as Natural resources.

Note(s): Related CANSIM Tables 282-0087, 282-0088. The sum of individual categories may not always add to the total due to rounding.

Table 4-4
Selected labour force characteristics (seasonally adjusted) — New Brunswick

	December 2015	January 2016	S.E. ¹	Change from			Percent change from		
				last month	last December	twelve months ago	last month	last December	twelve months ago
in thousands (except rates)									
Both sexes, 15 years and over									
Population	621.9	622.2	...	0.3	0.3	0.2	0.0	0.0	0.0
Labour force	387.3	387.5	2.2	0.2	0.2	-6.3	0.1	0.1	-1.6
Employment	352.8	351.7	2.3	-1.1	-1.1	-2.4	-0.3	-0.3	-0.7
Employment full-time	301.3	296.7	3.0	-4.6	-4.6	-2.0	-1.5	-1.5	-0.7
Unemployment	34.5	35.9	2.1	1.4	1.4	-3.8	4.1	4.1	-9.6
Participation rate	62.3	62.3	0.4	0.0	0.0	-1.0
Unemployment rate	8.9	9.3	0.5	0.4	0.4	-0.8
Employment rate	56.7	56.5	0.4	-0.2	-0.2	-0.4
Part-time rate	14.6	15.6	0.7	1.0	1.0	0.0
Both sexes, 15 to 24 years									
Population	83.6	83.6	...	0.0	0.0	-1.7	0.0	0.0	-2.0
Labour force	51.8	52.9	1.2	1.1	1.1	-1.6	2.1	2.1	-2.9
Employment	42.9	43.9	1.1	1.0	1.0	-1.4	2.3	2.3	-3.1
Unemployment	8.9	8.9	1.2	0.0	0.0	-0.3	0.0	0.0	-3.3
Participation rate	62.0	63.3	1.4	1.3	1.3	-0.6
Unemployment rate	17.2	16.8	2.0	-0.4	-0.4	-0.1
Employment rate	51.3	52.5	1.3	1.2	1.2	-0.6
Part-time rate	44.3	43.5	3.0	-0.8	-0.8	6.2
Men, 25 years and over									
Population	260.6	260.8	...	0.2	0.2	0.8	0.1	0.1	0.3
Labour force	172.9	173.5	1.2	0.6	0.6	-3.2	0.3	0.3	-1.8
Employment	156.7	155.4	1.5	-1.3	-1.3	-1.5	-0.8	-0.8	-1.0
Unemployment	16.2	18.1	1.4	1.9	1.9	-1.7	11.7	11.7	-8.6
Participation rate	66.3	66.5	0.5	0.2	0.2	-1.5
Unemployment rate	9.4	10.4	0.8	1.0	1.0	-0.8
Employment rate	60.1	59.6	0.6	-0.5	-0.5	-0.7
Part-time rate	5.9	7.5	0.8	1.5	1.5	0.3
Women, 25 years and over									
Population	277.6	277.8	...	0.2	0.2	1.1	0.1	0.1	0.4
Labour force	162.6	161.2	1.2	-1.4	-1.4	-1.4	-0.9	-0.9	-0.9
Employment	153.2	152.4	1.2	-0.8	-0.8	0.5	-0.5	-0.5	0.3
Unemployment	9.4	8.8	1.1	-0.6	-0.6	-1.9	-6.4	-6.4	-17.8
Participation rate	58.6	58.0	0.4	-0.6	-0.6	-0.8
Unemployment rate	5.8	5.5	0.7	-0.3	-0.3	-1.1
Employment rate	55.2	54.9	0.4	-0.3	-0.3	0.0
Part-time rate	15.1	15.9	1.1	0.8	0.8	-2.0
Industry									
Industry	352.8	351.7	2.3	-1.1	-1.1	-2.4	-0.3	-0.3	-0.7
Goods-producing sector									
Goods-producing sector	75.8	75.2	1.5	-0.6	-0.6	2.2	-0.8	-0.8	3.0
Agriculture	4.4	4.0	0.5	-0.4	-0.4	0.0	-9.1	-9.1	0.0
Forestry, fishing, mining, quarrying, oil and gas extraction ²	11.2	11.2	0.8	0.0	0.0	0.8	0.0	0.0	7.7
Utilities	3.7	3.3	0.2	-0.4	-0.4	-0.3	-10.8	-10.8	-8.3
Construction	26.6	26.3	1.0	-0.3	-0.3	1.0	-1.1	-1.1	4.0
Manufacturing	30.0	30.3	0.9	0.3	0.3	0.6	1.0	1.0	2.0
Services-producing sector									
Services-producing sector	277.0	276.5	2.1	-0.5	-0.5	-4.6	-0.2	-0.2	-1.6
Wholesale and retail trade	54.8	56.2	1.1	1.4	1.4	-0.2	2.6	2.6	-0.4
Transportation and warehousing	20.5	20.0	0.6	-0.5	-0.5	2.7	-2.4	-2.4	15.6
Finance, insurance, real estate, rental and leasing	15.4	15.5	0.5	0.1	0.1	0.9	0.6	0.6	6.2
Professional, scientific and technical services	14.6	14.3	0.6	-0.3	-0.3	-3.4	-2.1	-2.1	-19.2
Business, building and other support services	17.8	18.0	0.8	0.2	0.2	-1.9	1.1	1.1	-9.5
Educational services	26.1	24.9	0.8	-1.2	-1.2	-3.2	-4.6	-4.6	-11.4
Health care and social assistance	52.7	52.5	0.9	-0.2	-0.2	0.9	-0.4	-0.4	1.7
Information, culture and recreation	11.8	11.5	0.7	-0.3	-0.3	-0.1	-2.5	-2.5	-0.9
Accommodation and food services	24.0	24.1	0.9	0.1	0.1	0.5	0.4	0.4	2.1
Other services (except public administration)	15.0	16.2	0.6	1.2	1.2	0.4	8.0	8.0	2.5
Public administration	24.3	23.2	0.6	-1.1	-1.1	-1.2	-4.5	-4.5	-4.9

1. Average standard error of change in two consecutive months (see "Sampling Errors" in Data Quality for further explanations).

2. Also referred to as Natural resources.

Note(s): Related CANSIM Tables 282-0087, 282-0088. The sum of individual categories may not always add to the total due to rounding.

Table 4-5
Selected labour force characteristics (seasonally adjusted) — Quebec

	December 2015	January 2016	S.E. ¹	Change from			Percent change from		
				last month	last December	twelve months ago	last month	last December	twelve months ago
in thousands (except rates)									
Both sexes, 15 years and over									
Population	6,862.2	6,865.9	...	3.7	3.7	40.9	0.1	0.1	0.6
Labour force	4,459.8	4,445.2	15.6	-14.6	-14.6	44.0	-0.3	-0.3	1.0
Employment	4,109.6	4,106.4	15.9	-3.2	-3.2	30.5	-0.1	-0.1	0.7
Employment full-time	3,310.5	3,324.4	22.5	13.9	13.9	67.4	0.4	0.4	2.1
Unemployment	350.2	338.8	13.7	-11.4	-11.4	13.5	-3.3	-3.3	4.2
Participation rate	65.0	64.7	0.2	-0.3	-0.3	0.2
Unemployment rate	7.9	7.6	0.3	-0.3	-0.3	0.2
Employment rate	59.9	59.8	0.2	-0.1	-0.1	0.1
Part-time rate	19.4	19.0	0.5	-0.4	-0.4	-1.1
Both sexes, 15 to 24 years									
Population	948.6	946.9	...	-1.7	-1.7	-22.4	-0.2	-0.2	-2.3
Labour force	645.9	641.7	8.7	-4.2	-4.2	-7.8	-0.7	-0.7	-1.2
Employment	562.3	562.0	8.5	-0.3	-0.3	-5.5	-0.1	-0.1	-1.0
Unemployment	83.5	79.7	7.8	-3.8	-3.8	-2.3	-4.6	-4.6	-2.8
Participation rate	68.1	67.8	0.9	-0.3	-0.3	0.8
Unemployment rate	12.9	12.4	1.1	-0.5	-0.5	-0.2
Employment rate	59.3	59.4	0.9	0.1	0.1	0.9
Part-time rate	53.2	50.8	1.8	-2.4	-2.4	-4.9
Men, 25 years and over									
Population	2,916.8	2,919.4	...	2.6	2.6	31.6	0.1	0.1	1.1
Labour force	2,039.0	2,028.1	8.6	-10.9	-10.9	37.7	-0.5	-0.5	1.9
Employment	1,884.3	1,875.9	9.5	-8.4	-8.4	23.9	-0.4	-0.4	1.3
Unemployment	154.8	152.3	8.6	-2.5	-2.5	13.9	-1.6	-1.6	10.0
Participation rate	69.9	69.5	0.3	-0.4	-0.4	0.6
Unemployment rate	7.6	7.5	0.4	-0.1	-0.1	0.5
Employment rate	64.6	64.3	0.3	-0.3	-0.3	0.2
Part-time rate	8.8	8.3	0.6	-0.4	-0.4	-0.8
Women, 25 years and over									
Population	2,996.8	2,999.6	...	2.8	2.8	31.7	0.1	0.1	1.1
Labour force	1,775.0	1,775.3	8.7	0.3	0.3	14.0	0.0	0.0	0.8
Employment	1,663.0	1,668.5	8.6	5.5	5.5	12.0	0.3	0.3	0.7
Unemployment	111.9	106.8	7.4	-5.1	-5.1	1.9	-4.6	-4.6	1.8
Participation rate	59.2	59.2	0.3	0.0	0.0	-0.1
Unemployment rate	6.3	6.0	0.4	-0.3	-0.3	0.0
Employment rate	55.5	55.6	0.3	0.1	0.1	-0.2
Part-time rate	20.1	20.4	0.8	0.3	0.3	0.3
Industry									
Industry	4,109.6	4,106.4	15.9	-3.2	-3.2	30.5	-0.1	-0.1	0.7
Goods-producing sector									
Agriculture	838.2	845.0	8.9	6.8	6.8	-10.7	0.8	0.8	-1.3
Forestry, fishing, mining, quarrying, oil and gas extraction ²	61.3	59.6	2.4	-1.7	-1.7	2.5	-2.8	-2.8	4.4
Utilities	32.3	31.1	1.9	-1.2	-1.2	-0.9	-3.7	-3.7	-2.8
Utilities	26.5	28.7	1.4	2.2	2.2	-0.3	8.3	8.3	-1.0
Construction	227.4	230.1	6.0	2.7	2.7	-27.2	1.2	1.2	-10.6
Manufacturing	490.7	495.4	6.0	4.7	4.7	15.1	1.0	1.0	3.1
Services-producing sector									
Wholesale and retail trade	3,271.4	3,261.4	14.7	-10.0	-10.0	41.1	-0.3	-0.3	1.3
Transportation and warehousing	652.8	647.0	7.6	-5.8	-5.8	-5.0	-0.9	-0.9	-0.8
Finance, insurance, real estate, rental and leasing	196.8	193.7	4.2	-3.1	-3.1	5.1	-1.6	-1.6	2.7
Professional, scientific and technical services	210.1	209.7	4.1	-0.4	-0.4	-9.2	-0.2	-0.2	-4.2
Business, building and other support services	323.9	315.6	5.5	-8.3	-8.3	11.2	-2.6	-2.6	3.7
Educational services	176.7	180.8	5.1	4.1	4.1	19.6	2.3	2.3	12.2
Health care and social assistance	272.4	267.4	5.2	-5.0	-5.0	-13.1	-1.8	-1.8	-4.7
Information, culture and recreation	583.4	585.9	6.3	2.5	2.5	24.1	0.4	0.4	4.3
Accommodation and food services	172.0	175.6	5.5	3.6	3.6	-5.6	2.1	2.1	-3.1
Other services (except public administration)	280.9	279.4	6.2	-1.5	-1.5	-3.3	-0.5	-0.5	-1.2
Public administration	160.7	166.2	4.4	5.5	5.5	6.3	3.4	3.4	3.9
Public administration	241.7	240.0	4.0	-1.7	-1.7	11.1	-0.7	-0.7	4.8

1. Average standard error of change in two consecutive months (see "Sampling Errors" in Data Quality for further explanations).

2. Also referred to as Natural resources.

Note(s): Related CANSIM Tables 282-0087, 282-0088. The sum of individual categories may not always add to the total due to rounding.

Table 4-6
Selected labour force characteristics (seasonally adjusted) — Ontario

	December 2015	January 2016	S.E. ¹	Change from			Percent change from		
				last month	last December	twelve months ago	last month	last December	twelve months ago
in thousands (except rates)									
Both sexes, 15 years and over									
Population	11,444.5	11,454.5	...	10.0	10.0	125.4	0.1	0.1	1.1
Labour force	7,466.2	7,491.4	19.8	25.2	25.2	99.6	0.3	0.3	1.3
Employment	6,966.1	6,985.9	19.3	19.8	19.8	100.2	0.3	0.3	1.5
Employment full-time	5,684.0	5,700.3	28.0	16.3	16.3	180.6	0.3	0.3	3.3
Unemployment	500.1	505.6	17.0	5.5	5.5	-0.5	1.1	1.1	-0.1
Participation rate	65.2	65.4	0.2	0.2	0.2	0.2
Unemployment rate	6.7	6.7	0.2	0.0	0.0	-0.1
Employment rate	60.9	61.0	0.2	0.1	0.1	0.2
Part-time rate	18.4	18.4	0.4	0.0	0.0	-1.4
Both sexes, 15 to 24 years									
Population	1,791.1	1,789.8	...	-1.3	-1.3	-12.2	-0.1	-0.1	-0.7
Labour force	1,068.4	1,075.5	12.4	7.1	7.1	-45.9	0.7	0.7	-4.1
Employment	921.8	929.9	11.2	8.1	8.1	-20.2	0.9	0.9	-2.1
Unemployment	146.6	145.6	10.4	-1.0	-1.0	-25.7	-0.7	-0.7	-15.0
Participation rate	59.7	60.1	0.7	0.4	0.4	-2.1
Unemployment rate	13.7	13.5	0.9	-0.2	-0.2	-1.8
Employment rate	51.5	52.0	0.6	0.5	0.5	-0.7
Part-time rate	48.2	47.7	1.4	-0.5	-0.5	-4.3
Men, 25 years and over									
Population	4,656.4	4,662.0	...	5.6	5.6	66.9	0.1	0.1	1.5
Labour force	3,356.7	3,368.2	10.3	11.5	11.5	78.7	0.3	0.3	2.4
Employment	3,165.2	3,172.5	10.5	7.3	7.3	66.3	0.2	0.2	2.1
Unemployment	191.5	195.7	9.3	4.2	4.2	12.4	2.2	2.2	6.8
Participation rate	72.1	72.2	0.2	0.1	0.1	0.6
Unemployment rate	5.7	5.8	0.3	0.1	0.1	0.2
Employment rate	68.0	68.1	0.2	0.1	0.1	0.5
Part-time rate	7.7	7.7	0.4	0.0	0.0	-0.8
Women, 25 years and over									
Population	4,996.9	5,002.7	...	5.8	5.8	70.7	0.1	0.1	1.4
Labour force	3,041.1	3,047.8	11.2	6.7	6.7	66.9	0.2	0.2	2.2
Employment	2,879.1	2,883.5	11.1	4.4	4.4	54.0	0.2	0.2	1.9
Unemployment	162.0	164.4	8.9	2.4	2.4	12.9	1.5	1.5	8.5
Participation rate	60.9	60.9	0.2	0.0	0.0	0.5
Unemployment rate	5.3	5.4	0.3	0.1	0.1	0.3
Employment rate	57.6	57.6	0.2	0.0	0.0	0.2
Part-time rate	20.6	20.7	0.6	0.1	0.1	-0.8
Industry									
Goods-producing sector	6,966.1	6,985.9	19.3	19.8	19.8	100.2	0.3	0.3	1.5
Agriculture	1,418.3	1,415.5	10.4	-2.8	-2.8	34.1	-0.2	-0.2	2.5
Forestry, fishing, mining, quarrying, oil and gas extraction ²	76.4	79.4	2.8	3.0	3.0	-0.9	3.9	3.9	-1.1
Utilities	43.5	42.3	2.1	-1.2	-1.2	8.9	-2.8	-2.8	26.6
Construction	45.6	47.3	1.4	1.7	1.7	-4.5	3.7	3.7	-8.7
Manufacturing	496.0	492.6	7.0	-3.4	-3.4	15.5	-0.7	-0.7	3.2
Manufacturing	756.9	754.0	7.3	-2.9	-2.9	15.1	-0.4	-0.4	2.0
Services-producing sector	5,547.7	5,570.3	18.6	22.6	22.6	66.0	0.4	0.4	1.2
Wholesale and retail trade	1,032.8	1,041.0	9.5	8.2	8.2	-0.4	0.8	0.8	0.0
Transportation and warehousing	325.5	331.6	5.2	6.1	6.1	18.5	1.9	1.9	5.9
Finance, insurance, real estate, rental and leasing	557.4	553.4	6.4	-4.0	-4.0	30.1	-0.7	-0.7	5.8
Professional, scientific and technical services	596.1	596.5	7.4	0.4	0.4	25.6	0.1	0.1	4.5
Business, building and other support services	325.9	326.4	7.4	0.5	0.5	-20.8	0.2	0.2	-6.0
Educational services	507.4	515.5	7.0	8.1	8.1	0.6	1.6	1.6	0.1
Health care and social assistance	829.1	827.8	7.3	-1.3	-1.3	15.9	-0.2	-0.2	2.0
Information, culture and recreation	299.2	306.3	6.5	7.1	7.1	-10.5	2.4	2.4	-3.3
Accommodation and food services	444.3	453.3	7.6	9.0	9.0	11.2	2.0	2.0	2.5
Other services (except public administration)	280.4	272.3	5.0	-8.1	-8.1	1.2	-2.9	-2.9	0.4
Public administration	349.5	346.2	4.6	-3.3	-3.3	-5.5	-0.9	-0.9	-1.6

1. Average standard error of change in two consecutive months (see "Sampling Errors" in Data Quality for further explanations).

2. Also referred to as Natural resources.

Note(s): Related CANSIM Tables 282-0087, 282-0088. The sum of individual categories may not always add to the total due to rounding.

Table 4-7
Selected labour force characteristics (seasonally adjusted) — Manitoba

	December 2015	January 2016	S.E. ¹	Change from			Percent change from		
				last month	last December	twelve months ago	last month	last December	twelve months ago
in thousands (except rates)									
Both sexes, 15 years and over									
Population	991.9	992.8	...	0.9	0.9	10.3	0.1	0.1	1.0
Labour force	674.2	669.5	2.5	-4.7	-4.7	-6.2	-0.7	-0.7	-0.9
Employment	634.0	628.7	2.6	-5.3	-5.3	-6.6	-0.8	-0.8	-1.0
Employment full-time	506.5	507.6	3.8	1.1	1.1	-11.1	0.2	0.2	-2.1
Unemployment	40.1	40.8	2.1	0.7	0.7	0.5	1.7	1.7	1.2
Participation rate	68.0	67.4	0.3	-0.6	-0.6	-1.4
Unemployment rate	5.9	6.1	0.3	0.2	0.2	0.1
Employment rate	63.9	63.3	0.3	-0.6	-0.6	-1.4
Part-time rate	20.1	19.3	0.5	-0.9	-0.9	0.9
Both sexes, 15 to 24 years									
Population	162.9	162.9	...	0.0	0.0	-0.4	0.0	0.0	-0.2
Labour force	106.9	106.7	1.5	-0.2	-0.2	-6.0	-0.2	-0.2	-5.3
Employment	93.3	92.9	1.4	-0.4	-0.4	-6.6	-0.4	-0.4	-6.6
Unemployment	13.6	13.8	1.3	0.2	0.2	0.6	1.5	1.5	4.5
Participation rate	65.6	65.5	1.0	-0.1	-0.1	-3.5
Unemployment rate	12.7	12.9	1.2	0.2	0.2	1.2
Employment rate	57.3	57.0	0.9	-0.3	-0.3	-3.9
Part-time rate	46.5	44.5	1.9	-2.1	-2.1	2.6
Men, 25 years and over									
Population	406.5	406.8	...	0.3	0.3	5.3	0.1	0.1	1.3
Labour force	300.6	300.6	1.3	0.0	0.0	1.4	0.0	0.0	0.5
Employment	286.7	285.9	1.4	-0.8	-0.8	0.5	-0.3	-0.3	0.2
Unemployment	13.9	14.7	1.2	0.8	0.8	0.9	5.8	5.8	6.5
Participation rate	73.9	73.9	0.3	0.0	0.0	-0.6
Unemployment rate	4.6	4.9	0.4	0.3	0.3	0.3
Employment rate	70.5	70.3	0.3	-0.2	-0.2	-0.8
Part-time rate	7.7	7.3	0.6	-0.4	-0.4	-0.2
Women, 25 years and over									
Population	422.6	423.1	...	0.5	0.5	5.4	0.1	0.1	1.3
Labour force	266.7	262.2	1.5	-4.5	-4.5	-1.6	-1.7	-1.7	-0.6
Employment	254.0	249.9	1.5	-4.1	-4.1	-0.6	-1.6	-1.6	-0.2
Unemployment	12.7	12.3	1.1	-0.4	-0.4	-1.0	-3.1	-3.1	-7.5
Participation rate	63.1	62.0	0.4	-1.1	-1.1	-1.2
Unemployment rate	4.8	4.7	0.4	-0.1	-0.1	-0.3
Employment rate	60.1	59.1	0.4	-1.0	-1.0	-0.9
Part-time rate	24.5	23.6	0.9	-0.9	-0.9	2.3
Industry									
	634.0	628.7	2.6	-5.3	-5.3	-6.6	-0.8	-0.8	-1.0
Goods-producing sector									
Agriculture	150.0	150.4	1.6	0.4	0.4	1.7	0.3	0.3	1.1
Forestry, fishing, mining, quarrying, oil and gas extraction ²	24.6	23.4	0.9	-1.2	-1.2	0.1	-4.9	-4.9	0.4
Utilities	6.2	6.3	0.4	0.1	0.1	-0.2	1.6	1.6	-3.1
Construction	8.7	9.3	0.3	0.6	0.6	1.6	6.9	6.9	20.8
Manufacturing	46.2	46.6	1.0	0.4	0.4	1.0	0.9	0.9	2.2
	64.4	64.8	0.9	0.4	0.4	-0.8	0.6	0.6	-1.2
Services-producing sector									
	484.0	478.2	2.5	-5.8	-5.8	-8.5	-1.2	-1.2	-1.7
Wholesale and retail trade	89.3	87.9	1.2	-1.4	-1.4	-6.9	-1.6	-1.6	-7.3
Transportation and warehousing	36.6	35.8	0.8	-0.8	-0.8	-2.5	-2.2	-2.2	-6.5
Finance, insurance, real estate, rental and leasing	32.0	31.3	0.7	-0.7	-0.7	-2.8	-2.2	-2.2	-8.2
Professional, scientific and technical services	25.7	25.8	0.7	0.1	0.1	3.0	0.4	0.4	13.2
Business, building and other support services	19.7	19.2	0.8	-0.5	-0.5	2.4	-2.5	-2.5	14.3
Educational services	52.3	51.1	1.0	-1.2	-1.2	-0.7	-2.3	-2.3	-1.4
Health care and social assistance	102.1	101.4	1.2	-0.7	-0.7	-0.4	-0.7	-0.7	-0.4
Information, culture and recreation	22.4	22.6	0.8	0.2	0.2	0.0	0.9	0.9	0.0
Accommodation and food services	41.4	39.9	1.0	-1.5	-1.5	-0.3	-3.6	-3.6	-0.7
Other services (except public administration)	28.8	30.0	0.7	1.2	1.2	0.7	4.2	4.2	2.4
Public administration	33.8	33.2	0.7	-0.6	-0.6	-0.9	-1.8	-1.8	-2.6

1. Average standard error of change in two consecutive months (see "Sampling Errors" in Data Quality for further explanations).

2. Also referred to as Natural resources.

Note(s): Related CANSIM Tables 282-0087, 282-0088. The sum of individual categories may not always add to the total due to rounding.

Table 4-8
Selected labour force characteristics (seasonally adjusted) — Saskatchewan

	December 2015	January 2016	S.E. ¹	Change from			Percent change from		
				last month	last December	twelve months ago	last month	last December	twelve months ago
in thousands (except rates)									
Both sexes, 15 years and over									
Population	865.0	865.2	...	0.2	0.2	7.4	0.0	0.0	0.9
Labour force	608.6	607.0	2.6	-1.6	-1.6	13.2	-0.3	-0.3	2.2
Employment	575.1	573.3	2.7	-1.8	-1.8	6.4	-0.3	-0.3	1.1
Employment full-time	478.9	472.9	3.8	-6.0	-6.0	5.1	-1.3	-1.3	1.1
Unemployment	33.6	33.7	2.1	0.1	0.1	6.8	0.3	0.3	25.3
Participation rate	70.4	70.2	0.3	-0.2	-0.2	1.0
Unemployment rate	5.5	5.6	0.3	0.1	0.1	1.1
Employment rate	66.5	66.3	0.3	-0.2	-0.2	0.2
Part-time rate	16.7	17.5	0.6	0.8	0.8	0.0
Both sexes, 15 to 24 years									
Population	135.7	135.4	...	-0.3	-0.3	-2.4	-0.2	-0.2	-1.7
Labour force	92.0	92.4	1.5	0.4	0.4	1.0	0.4	0.4	1.1
Employment	82.7	82.6	1.4	-0.1	-0.1	-0.6	-0.1	-0.1	-0.7
Unemployment	9.3	9.9	1.2	0.6	0.6	1.8	6.5	6.5	22.2
Participation rate	67.8	68.2	1.1	0.4	0.4	1.9
Unemployment rate	10.1	10.7	1.3	0.6	0.6	1.8
Employment rate	60.9	61.0	1.0	0.1	0.1	0.6
Part-time rate	34.2	35.7	2.0	1.5	1.5	-0.8
Men, 25 years and over									
Population	365.2	365.3	...	0.1	0.1	5.2	0.0	0.0	1.4
Labour force	282.8	281.1	1.4	-1.7	-1.7	8.1	-0.6	-0.6	3.0
Employment	267.8	267.1	1.6	-0.7	-0.7	4.6	-0.3	-0.3	1.8
Unemployment	15.0	14.0	1.2	-1.0	-1.0	3.6	-6.7	-6.7	34.6
Participation rate	77.4	77.0	0.4	-0.4	-0.4	1.2
Unemployment rate	5.3	5.0	0.4	-0.3	-0.3	1.2
Employment rate	73.3	73.1	0.4	-0.2	-0.2	0.2
Part-time rate	6.8	7.5	0.6	0.7	0.7	0.3
Women, 25 years and over									
Population	364.2	364.5	...	0.3	0.3	4.7	0.1	0.1	1.3
Labour force	233.9	233.5	1.5	-0.4	-0.4	4.1	-0.2	-0.2	1.8
Employment	224.6	223.7	1.5	-0.9	-0.9	2.6	-0.4	-0.4	1.2
Unemployment	9.3	9.8	1.1	0.5	0.5	1.5	5.4	5.4	18.1
Participation rate	64.2	64.1	0.4	-0.1	-0.1	0.3
Unemployment rate	4.0	4.2	0.5	0.2	0.2	0.6
Employment rate	61.7	61.4	0.4	-0.3	-0.3	-0.1
Part-time rate	22.1	22.8	1.0	0.7	0.7	0.3
Industry									
Industry	575.1	573.3	2.7	-1.8	-1.8	6.4	-0.3	-0.3	1.1
Goods-producing sector									
Goods-producing sector	157.1	154.9	1.9	-2.2	-2.2	-3.6	-1.4	-1.4	-2.3
Agriculture	42.1	41.5	1.2	-0.6	-0.6	0.0	-1.4	-1.4	0.0
Forestry, fishing, mining, quarrying, oil and gas extraction ²	26.3	25.7	0.8	-0.6	-0.6	-1.9	-2.3	-2.3	-6.9
Utilities	6.3	6.5	0.3	0.2	0.2	0.0	3.2	3.2	0.0
Construction	55.8	54.7	1.3	-1.1	-1.1	-1.8	-2.0	-2.0	-3.2
Manufacturing	26.6	26.5	0.8	-0.1	-0.1	0.0	-0.4	-0.4	0.0
Services-producing sector									
Services-producing sector	418.0	418.4	2.4	0.4	0.4	10.0	0.1	0.1	2.4
Wholesale and retail trade	85.4	85.2	1.4	-0.2	-0.2	3.3	-0.2	-0.2	4.0
Transportation and warehousing	30.0	27.7	0.8	-2.3	-2.3	-0.3	-7.7	-7.7	-1.1
Finance, insurance, real estate, rental and leasing	31.1	31.0	0.6	-0.1	-0.1	0.2	-0.3	-0.3	0.6
Professional, scientific and technical services	26.8	27.1	0.7	0.3	0.3	2.2	1.1	1.1	8.8
Business, building and other support services	13.9	14.1	0.8	0.2	0.2	-0.5	1.4	1.4	-3.4
Educational services	41.5	40.7	1.1	-0.8	-0.8	-4.1	-1.9	-1.9	-9.2
Health care and social assistance	78.8	79.6	1.1	0.8	0.8	5.1	1.0	1.0	6.8
Information, culture and recreation	20.6	21.7	0.7	1.1	1.1	5.1	5.3	5.3	30.7
Accommodation and food services	38.2	38.3	1.1	0.1	0.1	1.9	0.3	0.3	5.2
Other services (except public administration)	24.0	25.0	0.8	1.0	1.0	0.1	4.2	4.2	0.4
Public administration	27.5	28.0	0.7	0.5	0.5	-3.0	1.8	1.8	-9.7

1. Average standard error of change in two consecutive months (see "Sampling Errors" in Data Quality for further explanations).

2. Also referred to as Natural resources.

Note(s): Related CANSIM Tables 282-0087, 282-0088. The sum of individual categories may not always add to the total due to rounding.

Table 4-9
Selected labour force characteristics (seasonally adjusted) — Alberta

	December 2015	January 2016	S.E. ¹	Change from			Percent change from		
				last month	last December	twelve months ago	last month	last December	twelve months ago
in thousands (except rates)									
Both sexes, 15 years and over									
Population	3,379.0	3,381.7	...	2.7	2.7	58.7	0.1	0.1	1.8
Labour force	2,457.1	2,457.8	9.8	0.7	0.7	34.2	0.0	0.0	1.4
Employment	2,286.1	2,276.1	9.8	-10.0	-10.0	-35.0	-0.4	-0.4	-1.5
Employment full-time	1,880.9	1,859.0	14.1	-21.9	-21.9	-73.0	-1.2	-1.2	-3.8
Unemployment	171.0	181.7	8.1	10.7	10.7	69.2	6.3	6.3	61.5
Participation rate	72.7	72.7	0.3	0.0	0.0	-0.2
Unemployment rate	7.0	7.4	0.3	0.4	0.4	2.8
Employment rate	67.7	67.3	0.3	-0.4	-0.4	-2.2
Part-time rate	17.7	18.3	0.6	0.6	0.6	1.9
Both sexes, 15 to 24 years									
Population	520.9	520.0	...	-0.9	-0.9	-4.6	-0.2	-0.2	-0.9
Labour force	348.0	348.7	5.5	0.7	0.7	-8.1	0.2	0.2	-2.3
Employment	309.4	306.5	5.3	-2.9	-2.9	-22.0	-0.9	-0.9	-6.7
Unemployment	38.6	42.2	4.6	3.6	3.6	13.9	9.3	9.3	49.1
Participation rate	66.8	67.1	1.1	0.3	0.3	-0.9
Unemployment rate	11.1	12.1	1.2	1.0	1.0	4.2
Employment rate	59.4	58.9	1.0	-0.5	-0.5	-3.7
Part-time rate	42.6	41.1	2.0	-1.4	-1.4	6.3
Men, 25 years and over									
Population	1,445.7	1,447.3	...	1.6	1.6	31.9	0.1	0.1	2.3
Labour force	1,164.9	1,161.6	5.2	-3.3	-3.3	18.7	-0.3	-0.3	1.6
Employment	1,083.6	1,075.7	5.9	-7.9	-7.9	-21.3	-0.7	-0.7	-1.9
Unemployment	81.3	85.9	5.0	4.6	4.6	40.0	5.7	5.7	87.1
Participation rate	80.6	80.3	0.4	-0.3	-0.3	-0.4
Unemployment rate	7.0	7.4	0.4	0.4	0.4	3.4
Employment rate	75.0	74.3	0.4	-0.7	-0.7	-3.2
Part-time rate	6.9	7.7	0.5	0.9	0.9	1.5
Women, 25 years and over									
Population	1,412.3	1,414.5	...	2.2	2.2	31.5	0.2	0.2	2.3
Labour force	944.2	947.5	5.7	3.3	3.3	23.6	0.3	0.3	2.6
Employment	893.1	894.0	6.0	0.9	0.9	8.3	0.1	0.1	0.9
Unemployment	51.1	53.5	4.2	2.4	2.4	15.2	4.7	4.7	39.7
Participation rate	66.9	67.0	0.4	0.1	0.1	0.2
Unemployment rate	5.4	5.6	0.4	0.2	0.2	1.5
Employment rate	63.2	63.2	0.4	0.0	0.0	-0.8
Part-time rate	22.3	23.2	1.0	1.0	1.0	1.1
Industry									
	2,286.1	2,276.1	9.8	-10.0	-10.0	-35.0	-0.4	-0.4	-1.5
Goods-producing sector									
Agriculture	623.1	607.6	6.8	-15.5	-15.5	-57.4	-2.5	-2.5	-8.6
Forestry, fishing, mining, quarrying, oil and gas extraction ²	58.0	50.2	2.8	-7.8	-7.8	-13.8	-13.4	-13.4	-21.6
Utilities	151.8	155.8	3.4	4.0	4.0	-15.1	2.6	2.6	-8.8
Construction	19.4	20.6	1.1	1.2	1.2	1.3	6.2	6.2	6.7
Manufacturing	256.2	255.1	4.8	-1.1	-1.1	-6.2	-0.4	-0.4	-2.4
	137.7	125.9	3.2	-11.8	-11.8	-23.6	-8.6	-8.6	-15.8
Services-producing sector									
	1,663.0	1,668.5	9.2	5.5	5.5	22.4	0.3	0.3	1.4
Wholesale and retail trade	323.9	324.1	5.0	0.2	0.2	13.0	0.1	0.1	4.2
Transportation and warehousing	127.5	129.0	3.1	1.5	1.5	-18.0	1.2	1.2	-12.2
Finance, insurance, real estate, rental and leasing	102.0	103.6	2.4	1.6	1.6	1.6	1.6	1.6	1.6
Professional, scientific and technical services	180.1	175.6	3.5	-4.5	-4.5	0.2	-2.5	-2.5	0.1
Business, building and other support services	82.3	78.4	3.1	-3.9	-3.9	-3.4	-4.7	-4.7	-4.2
Educational services	148.1	148.8	3.3	0.7	0.7	21.9	0.5	0.5	17.3
Health care and social assistance	268.1	273.3	3.7	5.2	5.2	16.6	1.9	1.9	6.5
Information, culture and recreation	83.0	80.1	3.2	-2.9	-2.9	6.4	-3.5	-3.5	8.7
Accommodation and food services	140.8	138.0	3.9	-2.8	-2.8	-19.5	-2.0	-2.0	-12.4
Other services (except public administration)	110.3	120.5	3.0	10.2	10.2	-6.3	9.2	9.2	-5.0
Public administration	96.8	97.2	2.2	0.4	0.4	10.0	0.4	0.4	11.5

1. Average standard error of change in two consecutive months (see "Sampling Errors" in Data Quality for further explanations).

2. Also referred to as Natural resources.

Note(s): Related CANSIM Tables 282-0087, 282-0088. The sum of individual categories may not always add to the total due to rounding.

Table 4-10
Selected labour force characteristics (seasonally adjusted) — British Columbia

	December 2015	January 2016	S.E. ¹	Change from			Percent change from		
				last month	last December	twelve months ago	last month	last December	twelve months ago
in thousands (except rates)									
Both sexes, 15 years and over									
Population	3,903.2	3,905.9	...	2.7	2.7	54.3	0.1	0.1	1.4
Labour force	2,503.2	2,503.0	10.5	-0.2	-0.2	78.9	0.0	0.0	3.3
Employment	2,335.7	2,336.9	10.6	1.2	1.2	48.6	0.1	0.1	2.1
Employment full-time	1,831.9	1,842.6	15.6	10.7	10.7	16.8	0.6	0.6	0.9
Unemployment	167.5	166.0	8.5	-1.5	-1.5	30.2	-0.9	-0.9	22.2
Participation rate	64.1	64.1	0.3	0.0	0.0	1.2
Unemployment rate	6.7	6.6	0.3	-0.1	-0.1	1.0
Employment rate	59.8	59.8	0.3	0.0	0.0	0.4
Part-time rate	21.6	21.2	0.6	-0.4	-0.4	0.9
Both sexes, 15 to 24 years									
Population	584.7	584.6	...	-0.1	-0.1	3.7	0.0	0.0	0.6
Labour force	374.2	373.7	6.1	-0.5	-0.5	20.3	-0.1	-0.1	5.7
Employment	327.8	326.7	5.9	-1.1	-1.1	11.0	-0.3	-0.3	3.5
Unemployment	46.4	47.0	5.2	0.6	0.6	9.3	1.3	1.3	24.7
Participation rate	64.0	63.9	1.0	-0.1	-0.1	3.1
Unemployment rate	12.4	12.6	1.4	0.2	0.2	1.9
Employment rate	56.1	55.9	1.0	-0.2	-0.2	1.6
Part-time rate	43.1	44.7	2.3	1.6	1.6	-1.8
Men, 25 years and over									
Population	1,619.3	1,620.6	...	1.3	1.3	24.3	0.1	0.1	1.5
Labour force	1,125.1	1,122.0	5.6	-3.1	-3.1	28.2	-0.3	-0.3	2.6
Employment	1,056.8	1,051.3	5.9	-5.5	-5.5	11.5	-0.5	-0.5	1.1
Unemployment	68.4	70.7	4.9	2.3	2.3	16.6	3.4	3.4	30.7
Participation rate	69.5	69.2	0.4	-0.3	-0.3	0.7
Unemployment rate	6.1	6.3	0.4	0.2	0.2	1.4
Employment rate	65.3	64.9	0.4	-0.4	-0.4	-0.2
Part-time rate	9.3	9.5	0.7	0.3	0.3	-0.1
Women, 25 years and over									
Population	1,699.1	1,700.7	...	1.6	1.6	26.3	0.1	0.1	1.6
Labour force	1,003.8	1,007.4	6.2	3.6	3.6	30.5	0.4	0.4	3.1
Employment	951.1	959.0	6.1	7.9	7.9	26.1	0.8	0.8	2.8
Unemployment	52.7	48.4	4.7	-4.3	-4.3	4.4	-8.2	-8.2	10.0
Participation rate	59.1	59.2	0.4	0.1	0.1	0.9
Unemployment rate	5.3	4.8	0.5	-0.5	-0.5	0.3
Employment rate	56.0	56.4	0.4	0.4	0.4	0.7
Part-time rate	27.8	25.9	1.0	-1.9	-1.9	2.8
Industry									
	2,335.7	2,336.9	10.6	1.2	1.2	48.6	0.1	0.1	2.1
Goods-producing sector									
Agriculture	470.1	466.5	6.3	-3.6	-3.6	2.1	-0.8	-0.8	0.5
Forestry, fishing, mining, quarrying, oil and gas extraction ²	20.3	18.7	2.5	-1.6	-1.6	-3.1	-7.9	-7.9	-14.2
Utilities	51.3	52.0	2.6	0.7	0.7	-2.5	1.4	1.4	-4.6
Construction	15.5	14.4	0.9	-1.1	-1.1	-1.9	-7.1	-7.1	-11.7
Manufacturing	202.0	202.1	4.4	0.1	0.1	0.6	0.0	0.0	0.3
	181.0	179.4	3.5	-1.6	-1.6	9.1	-0.9	-0.9	5.3
Services-producing sector									
Wholesale and retail trade	1,865.6	1,870.4	10.3	4.8	4.8	46.5	0.3	0.3	2.5
Transportation and warehousing	360.4	365.1	5.6	4.7	4.7	16.4	1.3	1.3	4.7
Finance, insurance, real estate, rental and leasing	140.0	128.4	3.7	-11.6	-11.6	-8.0	-8.3	-8.3	-5.9
Professional, scientific and technical services	123.5	127.5	3.3	4.0	4.0	-5.9	3.2	3.2	-4.4
Business, building and other support services	189.2	187.0	3.9	-2.2	-2.2	-1.9	-1.2	-1.2	-1.0
Educational services	95.2	98.7	3.5	3.5	3.5	13.1	3.7	3.7	15.3
Health care and social assistance	167.1	169.1	3.6	2.0	2.0	7.4	1.2	1.2	4.6
Information, culture and recreation	295.4	299.8	4.2	4.4	4.4	24.1	1.5	1.5	8.7
Accommodation and food services	119.6	124.8	3.7	5.2	5.2	14.5	4.3	4.3	13.1
Other services (except public administration)	169.0	163.7	4.9	-5.3	-5.3	-18.4	-3.1	-3.1	-10.1
Public administration	108.2	108.6	3.1	0.4	0.4	-0.7	0.4	0.4	-0.6
	98.2	97.7	2.2	-0.5	-0.5	5.7	-0.5	-0.5	6.2

1. Average standard error of change in two consecutive months (see "Sampling Errors" in Data Quality for further explanations).

2. Also referred to as Natural resources.

Note(s): Related CANSIM Tables 282-0087, 282-0088. The sum of individual categories may not always add to the total due to rounding.

Table 5-1
Labour force characteristics by census metropolitan area (seasonally adjusted) — 3 month moving average

	December 2015	January 2016	S.E. ¹	Change from			Percent change from		
				last month	last December	twelve months ago	last month	last December	twelve months ago
in thousands (except rates)									
St. John's, Newfoundland and Labrador									
Population	179.5	179.7	...	0.2	0.2	2.1	0.1	0.1	1.2
Labour force	122.3	121.7	1.0	-0.6	-0.6	-4.2	-0.5	-0.5	-3.3
Employment	114.4	113.6	1.0	-0.8	-0.8	-5.1	-0.7	-0.7	-4.3
Unemployment	7.8	8.2	0.5	0.4	0.4	1.0	5.1	5.1	13.9
Participation rate	68.1	67.7	0.5	-0.4	-0.4	-3.2
Unemployment rate	6.4	6.7	0.4	0.3	0.3	1.0
Employment rate	63.7	63.2	0.6	-0.5	-0.5	-3.6
Halifax, Nova Scotia									
Population	350.6	351.0	...	0.4	0.4	5.0	0.1	0.1	1.4
Labour force	238.1	238.8	1.5	0.7	0.7	-3.3	0.3	0.3	-1.4
Employment	223.4	223.3	1.5	-0.1	-0.1	-4.1	0.0	0.0	-1.8
Unemployment	14.7	15.6	0.7	0.9	0.9	0.9	6.1	6.1	6.1
Participation rate	67.9	68.0	0.4	0.1	0.1	-2.0
Unemployment rate	6.2	6.5	0.3	0.3	0.3	0.4
Employment rate	63.7	63.6	0.4	-0.1	-0.1	-2.1
Moncton, New Brunswick									
Population	124.3	124.4	...	0.1	0.1	1.5	0.1	0.1	1.2
Labour force	84.3	83.6	1.0	-0.7	-0.7	1.9	-0.8	-0.8	2.3
Employment	79.1	78.4	1.0	-0.7	-0.7	2.0	-0.9	-0.9	2.6
Unemployment	5.2	5.2	0.4	0.0	0.0	-0.1	0.0	0.0	-1.9
Participation rate	67.8	67.2	0.8	-0.6	-0.6	0.7
Unemployment rate	6.2	6.2	0.5	0.0	0.0	-0.3
Employment rate	63.6	63.0	0.8	-0.6	-0.6	0.8
Saint John, New Brunswick									
Population	105.4	105.4	...	0.0	0.0	-0.2	0.0	0.0	-0.2
Labour force	67.5	67.7	0.9	0.2	0.2	-2.3	0.3	0.3	-3.3
Employment	62.2	62.1	0.9	-0.1	-0.1	-1.6	-0.2	-0.2	-2.5
Unemployment	5.3	5.6	0.4	0.3	0.3	-0.7	5.7	5.7	-11.1
Participation rate	64.0	64.2	0.8	0.2	0.2	-2.1
Unemployment rate	7.9	8.3	0.6	0.4	0.4	-0.7
Employment rate	59.0	58.9	0.8	-0.1	-0.1	-1.4
Saguenay, Quebec									
Population	135.1	135.1	...	0.0	0.0	-0.1	0.0	0.0	-0.1
Labour force	82.2	82.8	1.0	0.6	0.6	-3.2	0.7	0.7	-3.7
Employment	76.1	76.6	1.0	0.5	0.5	-1.8	0.7	0.7	-2.3
Unemployment	6.1	6.3	0.4	0.2	0.2	-1.3	3.3	3.3	-17.1
Participation rate	60.8	61.3	0.8	0.5	0.5	-2.3
Unemployment rate	7.4	7.6	0.5	0.2	0.2	-1.2
Employment rate	56.3	56.7	0.8	0.4	0.4	-1.3
Québec, Quebec									
Population	672.1	672.4	...	0.3	0.3	4.9	0.0	0.0	0.7
Labour force	468.1	466.3	4.1	-1.8	-1.8	13.9	-0.4	-0.4	3.1
Employment	445.3	441.9	4.1	-3.4	-3.4	14.1	-0.8	-0.8	3.3
Unemployment	22.8	24.3	1.5	1.5	1.5	-0.2	6.6	6.6	-0.8
Participation rate	69.6	69.3	0.6	-0.3	-0.3	1.5
Unemployment rate	4.9	5.2	0.3	0.3	0.3	-0.2
Employment rate	66.3	65.7	0.6	-0.6	-0.6	1.6
Sherbrooke, Quebec									
Population	180.1	180.2	...	0.1	0.1	1.9	0.1	0.1	1.1
Labour force	113.0	112.8	1.2	-0.2	-0.2	1.6	-0.2	-0.2	1.4
Employment	105.5	105.3	1.2	-0.2	-0.2	2.6	-0.2	-0.2	2.5
Unemployment	7.5	7.5	0.5	0.0	0.0	-1.0	0.0	0.0	-11.8
Participation rate	62.7	62.6	0.7	-0.1	-0.1	0.2
Unemployment rate	6.6	6.6	0.4	0.0	0.0	-1.0
Employment rate	58.6	58.4	0.6	-0.2	-0.2	0.8

See notes at the end of the table.

Table 5-1 – continued

Labour force characteristics by census metropolitan area (seasonally adjusted) — 3 month moving average

	December 2015	January 2016	S.E. ¹	Change from			Percent change from		
				last month	last December	twelve months ago	last month	last December	twelve months ago
in thousands (except rates)									
Trois-Rivières, Quebec									
Population	132.9	132.9	...	0.0	0.0	0.3	0.0	0.0	0.2
Labour force	80.8	80.6	1.0	-0.2	-0.2	4.2	-0.2	-0.2	5.5
Employment	74.9	74.7	1.0	-0.2	-0.2	3.1	-0.3	-0.3	4.3
Unemployment	5.9	5.9	0.4	0.0	0.0	1.1	0.0	0.0	22.9
Participation rate	60.8	60.6	0.8	-0.2	-0.2	3.0
Unemployment rate	7.3	7.3	0.5	0.0	0.0	1.0
Employment rate	56.4	56.2	0.8	-0.2	-0.2	2.2
Montréal, Quebec									
Population	3,366.4	3,368.8	...	2.4	2.4	31.4	0.1	0.1	0.9
Labour force	2,232.8	2,238.9	8.9	6.1	6.1	36.2	0.3	0.3	1.6
Employment	2,038.8	2,046.2	9.1	7.4	7.4	17.6	0.4	0.4	0.9
Unemployment	194.0	192.6	5.2	-1.4	-1.4	18.5	-0.7	-0.7	10.6
Participation rate	66.3	66.5	0.3	0.2	0.2	0.5
Unemployment rate	8.7	8.6	0.2	-0.1	-0.1	0.7
Employment rate	60.6	60.7	0.3	0.1	0.1	-0.1
Ottawa-Gatineau, Ontario/Quebec									
Population	1,102.4	1,103.3	...	0.9	0.9	12.0	0.1	0.1	1.1
Labour force	758.7	755.9	4.7	-2.8	-2.8	-3.1	-0.4	-0.4	-0.4
Employment	711.7	707.9	4.9	-3.8	-3.8	0.9	-0.5	-0.5	0.1
Unemployment	47.0	47.9	2.1	0.9	0.9	-4.2	1.9	1.9	-8.1
Participation rate	68.8	68.5	0.4	-0.3	-0.3	-1.1
Unemployment rate	6.2	6.3	0.3	0.1	0.1	-0.6
Employment rate	64.6	64.2	0.4	-0.4	-0.4	-0.6
Ottawa-Gatineau, Quebec part, Ontario/Quebec									
Population	273.1	273.2	...	0.1	0.1	1.5	0.0	0.0	0.6
Labour force	192.8	190.3	1.6	-2.5	-2.5	2.5	-1.3	-1.3	1.3
Employment	181.3	178.7	1.7	-2.6	-2.6	5.4	-1.4	-1.4	3.1
Unemployment	11.5	11.7	0.7	0.2	0.2	-2.8	1.7	1.7	-19.3
Participation rate	70.6	69.7	0.6	-0.9	-0.9	0.6
Unemployment rate	6.0	6.1	0.4	0.1	0.1	-1.6
Employment rate	66.4	65.4	0.6	-1.0	-1.0	1.6
Ottawa-Gatineau, Ontario part, Ontario/Quebec									
Population	829.3	830.1	...	0.8	0.8	10.5	0.1	0.1	1.3
Labour force	565.8	565.5	4.4	-0.3	-0.3	-5.7	-0.1	-0.1	-1.0
Employment	530.4	529.3	4.6	-1.1	-1.1	-4.3	-0.2	-0.2	-0.8
Unemployment	35.5	36.3	2.0	0.8	0.8	-1.2	2.3	2.3	-3.2
Participation rate	68.2	68.1	0.5	-0.1	-0.1	-1.6
Unemployment rate	6.3	6.4	0.4	0.1	0.1	-0.2
Employment rate	64.0	63.8	0.6	-0.2	-0.2	-1.3
Kingston, Ontario									
Population	138.7	138.8	...	0.1	0.1	1.1	0.1	0.1	0.8
Labour force	90.2	89.8	0.9	-0.4	-0.4	3.9	-0.4	-0.4	4.5
Employment	84.4	84.1	0.9	-0.3	-0.3	3.8	-0.4	-0.4	4.7
Unemployment	5.8	5.7	0.4	-0.1	-0.1	0.1	-1.7	-1.7	1.8
Participation rate	65.0	64.7	0.6	-0.3	-0.3	2.3
Unemployment rate	6.4	6.3	0.4	-0.1	-0.1	-0.2
Employment rate	60.9	60.6	0.6	-0.3	-0.3	2.3
Peterborough, Ontario									
Population	104.5	104.6	...	0.1	0.1	0.4	0.1	0.1	0.4
Labour force	64.7	64.5	1.2	-0.2	-0.2	-3.1	-0.3	-0.3	-4.6
Employment	59.8	60.2	1.3	0.4	0.4	-2.6	0.7	0.7	-4.1
Unemployment	4.9	4.3	0.6	-0.6	-0.6	-0.5	-12.2	-12.2	-10.4
Participation rate	61.9	61.7	1.2	-0.2	-0.2	-3.2
Unemployment rate	7.6	6.7	0.8	-0.9	-0.9	-0.4
Employment rate	57.2	57.6	1.2	0.4	0.4	-2.7

See notes at the end of the table.

Table 5-1 – continued

Labour force characteristics by census metropolitan area (seasonally adjusted) — 3 month moving average

	December 2015	January 2016	S.E. ¹	Change from			Percent change from		
				last month	last December	twelve months ago	last month	last December	twelve months ago
in thousands (except rates)									
Oshawa, Ontario									
Population	323.5	324.0	...	0.5	0.5	5.3	0.2	0.2	1.7
Labour force	217.9	222.2	2.0	4.3	4.3	1.4	2.0	2.0	0.6
Employment	202.9	207.9	2.2	5.0	5.0	2.3	2.5	2.5	1.1
Unemployment	15.0	14.2	1.0	-0.8	-0.8	-1.0	-5.3	-5.3	-6.6
Participation rate	67.4	68.6	0.6	1.2	1.2	-0.7
Unemployment rate	6.9	6.4	0.5	-0.5	-0.5	-0.5
Employment rate	62.7	64.2	0.7	1.5	1.5	-0.3
Toronto, Ontario									
Population	5,139.6	5,146.3	...	6.7	6.7	86.7	0.1	0.1	1.7
Labour force	3,461.4	3,472.0	11.3	10.6	10.6	141.8	0.3	0.3	4.3
Employment	3,218.5	3,226.1	11.6	7.6	7.6	149.8	0.2	0.2	4.9
Unemployment	243.0	246.0	6.2	3.0	3.0	-7.9	1.2	1.2	-3.1
Participation rate	67.3	67.5	0.2	0.2	0.2	1.7
Unemployment rate	7.0	7.1	0.2	0.1	0.1	-0.5
Employment rate	62.6	62.7	0.2	0.1	0.1	1.9
Hamilton, Ontario									
Population	645.4	645.9	...	0.5	0.5	6.8	0.1	0.1	1.1
Labour force	409.7	410.0	3.9	0.3	0.3	8.2	0.1	0.1	2.0
Employment	385.4	383.8	4.0	-1.6	-1.6	4.3	-0.4	-0.4	1.1
Unemployment	24.3	26.2	1.5	1.9	1.9	3.9	7.8	7.8	17.5
Participation rate	63.5	63.5	0.6	0.0	0.0	0.6
Unemployment rate	5.9	6.4	0.4	0.5	0.5	0.8
Employment rate	59.7	59.4	0.6	-0.3	-0.3	0.0
St. Catharines-Niagara, Ontario									
Population	343.8	343.9	...	0.1	0.1	1.2	0.0	0.0	0.4
Labour force	225.6	225.8	2.3	0.2	0.2	14.7	0.1	0.1	7.0
Employment	207.5	206.3	2.4	-1.2	-1.2	9.1	-0.6	-0.6	4.6
Unemployment	18.1	19.5	1.0	1.4	1.4	5.5	7.7	7.7	39.3
Participation rate	65.6	65.7	0.7	0.1	0.1	4.1
Unemployment rate	8.0	8.6	0.4	0.6	0.6	2.0
Employment rate	60.4	60.0	0.7	-0.4	-0.4	2.5
Kitchener-Cambridge-Waterloo, Ontario									
Population	423.3	423.6	...	0.3	0.3	4.0	0.1	0.1	1.0
Labour force	298.5	299.5	2.8	1.0	1.0	-6.7	0.3	0.3	-2.2
Employment	279.4	280.1	3.0	0.7	0.7	-8.8	0.3	0.3	-3.0
Unemployment	19.1	19.4	1.0	0.3	0.3	2.2	1.6	1.6	12.8
Participation rate	70.5	70.7	0.7	0.2	0.2	-2.3
Unemployment rate	6.4	6.5	0.3	0.1	0.1	0.9
Employment rate	66.0	66.1	0.7	0.1	0.1	-2.8
Brantford, Ontario									
Population	112.2	112.3	...	0.1	0.1	0.9	0.1	0.1	0.8
Labour force	72.0	72.5	0.9	0.5	0.5	-2.8	0.7	0.7	-3.7
Employment	68.5	68.3	1.0	-0.2	-0.2	-2.5	-0.3	-0.3	-3.5
Unemployment	3.5	4.2	0.4	0.7	0.7	-0.3	20.0	20.0	-6.7
Participation rate	64.2	64.6	0.8	0.4	0.4	-3.0
Unemployment rate	4.9	5.8	0.5	0.9	0.9	-0.2
Employment rate	61.1	60.8	0.9	-0.3	-0.3	-2.8
Guelph, Ontario									
Population	129.3	129.5	...	0.2	0.2	1.5	0.2	0.2	1.2
Labour force	97.3	99.0	1.1	1.7	1.7	8.2	1.7	1.7	9.0
Employment	93.2	95.1	1.2	1.9	1.9	8.8	2.0	2.0	10.2
Unemployment	4.1	4.0	0.4	-0.1	-0.1	-0.5	-2.4	-2.4	-11.1
Participation rate	75.3	76.4	0.9	1.1	1.1	5.5
Unemployment rate	4.2	4.0	0.5	-0.2	-0.2	-1.0
Employment rate	72.1	73.4	0.9	1.3	1.3	6.0

See notes at the end of the table.

Table 5-1 – continued

Labour force characteristics by census metropolitan area (seasonally adjusted) — 3 month moving average

	December 2015	January 2016	S.E. ¹	Change from			Percent change from		
				last month	last December	twelve months ago	last month	last December	twelve months ago
in thousands (except rates)									
London, Ontario									
Population	423.7	424.0	...	0.3	0.3	3.7	0.1	0.1	0.9
Labour force	272.2	270.9	2.7	-1.3	-1.3	2.5	-0.5	-0.5	0.9
Employment	255.4	255.3	2.8	-0.1	-0.1	6.0	0.0	0.0	2.4
Unemployment	16.7	15.6	1.1	-1.1	-1.1	-3.5	-6.6	-6.6	-18.3
Participation rate	64.2	63.9	0.6	-0.3	-0.3	0.0
Unemployment rate	6.1	5.8	0.4	-0.3	-0.3	-1.3
Employment rate	60.3	60.2	0.7	-0.1	-0.1	0.9
Windsor, Ontario									
Population	280.5	280.7	...	0.2	0.2	2.0	0.1	0.1	0.7
Labour force	169.5	170.4	1.9	0.9	0.9	-5.5	0.5	0.5	-3.1
Employment	153.1	154.6	1.9	1.5	1.5	-4.8	1.0	1.0	-3.0
Unemployment	16.4	15.8	1.0	-0.6	-0.6	-0.7	-3.7	-3.7	-4.2
Participation rate	60.4	60.7	0.7	0.3	0.3	-2.4
Unemployment rate	9.7	9.3	0.6	-0.4	-0.4	-0.1
Employment rate	54.6	55.1	0.7	0.5	0.5	-2.1
Barrie, Ontario									
Population	168.2	168.5	...	0.3	0.3	2.8	0.2	0.2	1.7
Labour force	111.7	114.3	1.7	2.6	2.6	-7.0	2.3	2.3	-5.8
Employment	104.6	107.0	1.9	2.4	2.4	-7.6	2.3	2.3	-6.6
Unemployment	7.2	7.3	0.8	0.1	0.1	0.6	1.4	1.4	9.0
Participation rate	66.4	67.8	1.0	1.4	1.4	-5.4
Unemployment rate	6.4	6.4	0.7	0.0	0.0	0.9
Employment rate	62.2	63.5	1.1	1.3	1.3	-5.7
Greater Sudbury, Ontario									
Population	140.1	140.1	...	0.0	0.0	0.3	0.0	0.0	0.2
Labour force	86.6	86.1	0.9	-0.5	-0.5	-3.8	-0.6	-0.6	-4.2
Employment	79.3	78.7	0.9	-0.6	-0.6	-5.9	-0.8	-0.8	-7.0
Unemployment	7.3	7.4	0.4	0.1	0.1	2.1	1.4	1.4	39.6
Participation rate	61.8	61.5	0.6	-0.3	-0.3	-2.8
Unemployment rate	8.4	8.6	0.4	0.2	0.2	2.7
Employment rate	56.6	56.2	0.7	-0.4	-0.4	-4.3
Thunder Bay, Ontario									
Population	104.6	104.6	...	0.0	0.0	-0.1	0.0	0.0	-0.1
Labour force	63.4	64.4	0.7	1.0	1.0	1.0	1.6	1.6	1.6
Employment	59.7	60.1	0.7	0.4	0.4	-0.1	0.7	0.7	-0.2
Unemployment	3.7	4.2	0.2	0.5	0.5	1.0	13.5	13.5	31.2
Participation rate	60.6	61.6	0.6	1.0	1.0	1.0
Unemployment rate	5.8	6.5	0.4	0.7	0.7	1.5
Employment rate	57.1	57.5	0.7	0.4	0.4	0.0
Winnipeg, Manitoba									
Population	656.6	657.2	...	0.6	0.6	9.3	0.1	0.1	1.4
Labour force	453.0	451.7	1.4	-1.3	-1.3	7.7	-0.3	-0.3	1.7
Employment	425.1	423.1	1.4	-2.0	-2.0	5.9	-0.5	-0.5	1.4
Unemployment	27.9	28.6	0.8	0.7	0.7	1.8	2.5	2.5	6.7
Participation rate	69.0	68.7	0.2	-0.3	-0.3	0.2
Unemployment rate	6.2	6.3	0.2	0.1	0.1	0.3
Employment rate	64.7	64.4	0.2	-0.3	-0.3	0.0
Regina, Saskatchewan									
Population	199.8	200.0	...	0.2	0.2	3.8	0.1	0.1	1.9
Labour force	145.6	146.1	1.0	0.5	0.5	2.5	0.3	0.3	1.7
Employment	139.5	139.8	1.1	0.3	0.3	2.1	0.2	0.2	1.5
Unemployment	6.1	6.3	0.4	0.2	0.2	0.4	3.3	3.3	6.8
Participation rate	72.9	73.1	0.5	0.2	0.2	-0.1
Unemployment rate	4.2	4.3	0.3	0.1	0.1	0.2
Employment rate	69.8	69.9	0.5	0.1	0.1	-0.3

See notes at the end of the table.

Table 5-1 – continued

Labour force characteristics by census metropolitan area (seasonally adjusted) — 3 month moving average

	December 2015	January 2016	S.E. ¹	Change from			Percent change from		
				last month	last December	twelve months ago	last month	last December	twelve months ago
in thousands (except rates)									
Saskatoon, Saskatchewan									
Population	254.8	255.2	...	0.4	0.4	6.3	0.2	0.2	2.5
Labour force	183.3	181.1	1.2	-2.2	-2.2	2.5	-1.2	-1.2	1.4
Employment	171.5	170.0	1.3	-1.5	-1.5	-0.5	-0.9	-0.9	-0.3
Unemployment	11.8	11.1	0.6	-0.7	-0.7	3.0	-5.9	-5.9	37.0
Participation rate	71.9	71.0	0.5	-0.9	-0.9	-0.8
Unemployment rate	6.4	6.1	0.3	-0.3	-0.3	1.6
Employment rate	67.3	66.6	0.5	-0.7	-0.7	-1.9
Calgary, Alberta									
Population	1,191.8	1,193.4	...	1.6	1.6	30.0	0.1	0.1	2.6
Labour force	862.4	865.2	4.5	2.8	2.8	8.4	0.3	0.3	1.0
Employment	802.2	798.9	4.6	-3.3	-3.3	-18.4	-0.4	-0.4	-2.3
Unemployment	60.1	66.3	2.5	6.2	6.2	26.8	10.3	10.3	67.8
Participation rate	72.4	72.5	0.4	0.1	0.1	-1.1
Unemployment rate	7.0	7.7	0.3	0.7	0.7	3.1
Employment rate	67.3	66.9	0.4	-0.4	-0.4	-3.4
Edmonton, Alberta									
Population	1,111.3	1,112.5	...	1.2	1.2	24.5	0.1	0.1	2.3
Labour force	827.6	830.9	4.4	3.3	3.3	43.3	0.4	0.4	5.5
Employment	775.8	776.8	4.6	1.0	1.0	27.5	0.1	0.1	3.7
Unemployment	51.8	54.1	2.2	2.3	2.3	15.8	4.4	4.4	41.3
Participation rate	74.5	74.7	0.4	0.2	0.2	2.3
Unemployment rate	6.3	6.5	0.3	0.2	0.2	1.6
Employment rate	69.8	69.8	0.4	0.0	0.0	0.9
Kelowna, British Columbia									
Population	153.5	153.7	...	0.2	0.2	2.6	0.1	0.1	1.7
Labour force	97.5	98.8	2.0	1.3	1.3	2.5	1.3	1.3	2.6
Employment	90.9	91.3	2.0	0.4	0.4	-2.1	0.4	0.4	-2.2
Unemployment	6.6	7.5	0.6	0.9	0.9	4.6	13.6	13.6	158.6
Participation rate	63.5	64.3	1.3	0.8	0.8	0.6
Unemployment rate	6.8	7.6	0.6	0.8	0.8	4.6
Employment rate	59.2	59.4	1.3	0.2	0.2	-2.4
Abbotsford-Mission, British Columbia									
Population	146.0	146.2	...	0.2	0.2	2.2	0.1	0.1	1.5
Labour force	97.8	97.5	0.9	-0.3	-0.3	4.5	-0.3	-0.3	4.8
Employment	90.4	90.3	1.0	-0.1	-0.1	2.8	-0.1	-0.1	3.2
Unemployment	7.4	7.1	0.4	-0.3	-0.3	1.6	-4.1	-4.1	29.1
Participation rate	67.0	66.7	0.6	-0.3	-0.3	2.1
Unemployment rate	7.6	7.3	0.4	-0.3	-0.3	1.4
Employment rate	61.9	61.8	0.7	-0.1	-0.1	1.0
Vancouver, British Columbia									
Population	2,146.5	2,149.1	...	2.6	2.6	39.7	0.1	0.1	1.9
Labour force	1,418.2	1,418.3	6.0	0.1	0.1	58.5	0.0	0.0	4.3
Employment	1,337.0	1,337.1	6.1	0.1	0.1	57.3	0.0	0.0	4.5
Unemployment	81.2	81.2	3.1	0.0	0.0	1.2	0.0	0.0	1.5
Participation rate	66.1	66.0	0.3	-0.1	-0.1	1.5
Unemployment rate	5.7	5.7	0.2	0.0	0.0	-0.2
Employment rate	62.3	62.2	0.3	-0.1	-0.1	1.5
Victoria, British Columbia									
Population	305.1	305.3	...	0.2	0.2	3.7	0.1	0.1	1.2
Labour force	194.8	193.8	1.8	-1.0	-1.0	12.7	-0.5	-0.5	7.0
Employment	183.0	182.6	1.9	-0.4	-0.4	10.0	-0.2	-0.2	5.8
Unemployment	11.8	11.2	0.7	-0.6	-0.6	2.7	-5.1	-5.1	31.8
Participation rate	63.8	63.5	0.6	-0.3	-0.3	3.5
Unemployment rate	6.1	5.8	0.4	-0.3	-0.3	1.1
Employment rate	60.0	59.8	0.6	-0.2	-0.2	2.6

1. Average standard error of change in two consecutive months (see "Sampling Errors" in Data Quality for further explanations).

Note(s): Estimates in this table are based on 2011 Census boundaries. Related CANSIM Table 282-0135. The sum of individual categories may not always add to the total due to rounding.

Table 5-2
Labour force characteristics by census metropolitan area (seasonally adjusted) — Monthly

	December 2015	January 2016	S.E. ¹	Change from			Percent change from		
				last month	last December	twelve months ago	last month	last December	twelve months ago
in thousands (except rates)									
Montréal, Quebec									
Population	3,368.7	3,371.3	...	2.6	2.6	32.0	0.1	0.1	1.0
Labour force	2,246.0	2,240.3	19.3	-5.7	-5.7	43.4	-0.3	-0.3	2.0
Employment	2,048.4	2,049.1	19.4	0.7	0.7	18.8	0.0	0.0	0.9
Unemployment	197.6	191.2	12.6	-6.4	-6.4	24.7	-3.2	-3.2	14.8
Participation rate	66.7	66.5	0.6	-0.2	-0.2	0.7
Unemployment rate	8.8	8.5	0.5	-0.3	-0.3	0.9
Employment rate	60.8	60.8	0.6	0.0	0.0	0.0
Toronto, Ontario									
Population	5,145.8	5,153.1	...	7.3	7.3	86.6	0.1	0.1	1.7
Labour force	3,476.8	3,483.5	24.1	6.7	6.7	157.5	0.2	0.2	4.7
Employment	3,230.2	3,235.8	23.9	5.6	5.6	151.1	0.2	0.2	4.9
Unemployment	246.6	247.6	15.1	1.0	1.0	6.2	0.4	0.4	2.6
Participation rate	67.6	67.6	0.5	0.0	0.0	2.0
Unemployment rate	7.1	7.1	0.4	0.0	0.0	-0.2
Employment rate	62.8	62.8	0.5	0.0	0.0	1.9
Vancouver, British Columbia									
Population	2,149.1	2,151.2	...	2.1	2.1	38.6	0.1	0.1	1.8
Labour force	1,420.7	1,420.3	12.8	-0.4	-0.4	57.7	0.0	0.0	4.2
Employment	1,335.6	1,336.5	13.1	0.9	0.9	55.6	0.1	0.1	4.3
Unemployment	85.1	83.8	7.8	-1.3	-1.3	2.1	-1.5	-1.5	2.6
Participation rate	66.1	66.0	0.6	-0.1	-0.1	1.5
Unemployment rate	6.0	5.9	0.6	-0.1	-0.1	-0.1
Employment rate	62.1	62.1	0.6	0.0	0.0	1.5

1. Average standard error of change in two consecutive months (see "Sampling Errors" in Data Quality for further explanations).

Note(s): Estimates in this table are based on 2011 Census boundaries. Related CANSIM Table 282-0136. The sum of individual categories may not always add to the total due to rounding.

Table 6-1

Labour force characteristics by province and economic region, ¹ unadjusted for seasonality, 3 month moving average ending in January 2015 and January 2016

	Population	Labour force			Participation rate	Unemployment rate	Employment rate
		Labour force	Employment	Unemployment			
Canada							
2015	29,116.1	18,950.0	17,725.7	1,224.4	65.1	6.5	60.9
2016	29,420.0	19,188.7	17,856.7	1,332.0	65.2	6.9	60.7
Newfoundland and Labrador							
2015	443.3	263.4	232.0	31.4	59.4	11.9	52.3
2016	443.1	265.8	227.0	38.9	60.0	14.6	51.2
Avalon Peninsula [1010]							
2015	232.2	152.7	140.7	12.1	65.8	7.9	60.6
2016	233.6	147.9	133.4	14.6	63.3	9.9	57.1
South Coast-Burin Peninsula and Notre Dame-Central Bonavista Bay [1020, 1040]							
2015	123.5	61.9	49.9	12.0	50.1	19.4	40.4
2016	122.4	64.8	51.1	13.6	52.9	21.0	41.7
West Coast-Northern Peninsula-Labrador [1030]							
2015	87.5	48.7	41.4	7.3	55.7	15.0	47.3
2016	87.1	53.1	42.5	10.6	61.0	20.0	48.8
Prince Edward Island							
2015	120.7	80.8	70.7	10.1	66.9	12.5	58.6
2016	121.2	78.9	69.7	9.2	65.1	11.7	57.5
Nova Scotia							
2015	784.0	485.7	443.9	41.8	62.0	8.6	56.6
2016	787.0	481.2	439.2	41.9	61.1	8.7	55.8
Cape Breton [1210]							
2015	107.6	58.7	49.8	8.9	54.6	15.2	46.3
2016	106.6	52.7	43.6	9.1	49.4	17.3	40.9
North Shore [1220]							
2015	129.2	71.2	62.9	8.3	55.1	11.7	48.7
2016	128.6	77.0	70.3	6.7	59.9	8.7	54.7
Annapolis Valley [1230]							
2015	102.5	57.3	53.0	4.2	55.9	7.3	51.7
2016	102.7	58.7	54.2	4.5	57.2	7.7	52.8
Southern [1240]							
2015	98.7	56.6	50.9	5.7	57.3	10.1	51.6
2016	98.1	54.0	47.8	6.2	55.0	11.5	48.7
Halifax [1250]							
2015	346.0	241.9	227.2	14.7	69.9	6.1	65.7
2016	351.0	238.8	223.3	15.5	68.0	6.5	63.6
New Brunswick							
2015	621.8	384.9	345.3	39.7	61.9	10.3	55.5
2016	622.0	379.3	344.7	34.6	61.0	9.1	55.4
Campbellton-Miramichi [1310]							
2015	129.6	70.5	57.4	13.0	54.4	18.4	44.3
2016	128.7	71.0	60.4	10.6	55.2	14.9	46.9
Moncton-Richibucto [1320]							
2015	176.1	113.2	104.4	8.8	64.3	7.8	59.3
2016	177.2	110.3	101.9	8.3	62.2	7.5	57.5
Saint John-St. Stephen [1330]							
2015	142.5	90.2	82.7	7.5	63.3	8.3	58.0
2016	141.9	87.6	80.5	7.1	61.7	8.1	56.7
Fredericton-Oromocto [1340]							
2015	109.4	71.1	65.3	5.8	65.0	8.2	59.7
2016	110.4	71.6	66.4	5.2	64.9	7.3	60.1

See notes at the end of the table.

Table 6-1 – continued

Labour force characteristics by province and economic region, ¹ unadjusted for seasonality, 3 month moving average ending in January 2015 and January 2016

	Population	Labour force			Participation rate	Unemployment rate	Employment rate
		Labour force	Employment	Unemployment			
	in thousands			percent			
Edmundston-Woodstock [1350]							
2015	64.3	40.0	35.5	4.5	62.2	11.3	55.2
2016	63.8	38.9	35.6	3.3	61.0	8.5	55.8
Quebec							
2015	6,822.2	4,353.6	4,027.8	325.7	63.8	7.5	59.0
2016	6,862.5	4,395.9	4,061.8	334.1	64.1	7.6	59.2
Gaspésie-Îles-de-la-Madeleine [2410]							
2015	78.6	40.6	32.9	7.7	51.7	19.0	41.9
2016	77.7	42.6	35.2	7.4	54.8	17.4	45.3
Bas-Saint-Laurent [2415]							
2015	170.4	90.4	82.8	7.6	53.1	8.4	48.6
2016	169.6	94.2	85.7	8.6	55.5	9.1	50.5
Capitale-Nationale [2420]							
2015	614.6	400.6	378.1	22.5	65.2	5.6	61.5
2016	619.0	420.8	400.2	20.6	68.0	4.9	64.7
Chaudière-Appalaches [2425]							
2015	349.1	233.5	221.6	11.9	66.9	5.1	63.5
2016	349.4	228.3	215.6	12.8	65.3	5.6	61.7
Estrie [2430]							
2015	268.5	170.7	159.9	10.8	63.6	6.3	59.6
2016	269.9	163.6	153.0	10.6	60.6	6.5	56.7
Centre-du-Québec [2433]							
2015	200.0	117.2	105.2	12.0	58.6	10.2	52.6
2016	200.7	116.5	108.7	7.8	58.0	6.7	54.2
Montérégie [2435]							
2015	1,246.6	821.1	775.0	46.1	65.9	5.6	62.2
2016	1,254.6	834.1	787.3	46.8	66.5	5.6	62.8
Montréal [2440]							
2015	1,656.4	1,047.3	949.7	97.6	63.2	9.3	57.3
2016	1,671.9	1,072.3	957.5	114.8	64.1	10.7	57.3
Laval [2445]							
2015	350.0	240.9	225.8	15.1	68.8	6.3	64.5
2016	353.1	214.8	196.3	18.5	60.8	8.6	55.6
Lanaudière [2450]							
2015	409.7	272.0	252.4	19.7	66.4	7.2	61.6
2016	412.9	269.2	249.7	19.5	65.2	7.2	60.5
Laurentides [2455]							
2015	490.0	314.8	289.4	25.4	64.2	8.1	59.1
2016	495.0	324.8	308.5	16.3	65.6	5.0	62.3
Outaouais [2460]							
2015	317.4	208.3	191.2	17.0	65.6	8.2	60.2
2016	319.1	216.9	201.9	15.0	68.0	6.9	63.3
Abitibi-Témiscamingue [2465]							
2015	120.4	77.6	71.2	6.4	64.5	8.2	59.1
2016	120.5	76.2	71.7	4.6	63.2	6.0	59.5
Mauricie [2470]							
2015	225.9	125.2	117.5	7.7	55.4	6.2	52.0
2016	225.4	128.6	114.6	14.0	57.1	10.9	50.8
Saguenay-Lac-Saint-Jean [2475]							
2015	232.3	139.0	126.5	12.6	59.8	9.1	54.5
2016	231.8	136.0	124.8	11.2	58.7	8.2	53.8

See notes at the end of the table.

Table 6-1 – continued

Labour force characteristics by province and economic region, 1 unadjusted for seasonality, 3 month moving average ending in January 2015 and January 2016

	Population	Labour force			Participation rate	Unemployment rate	Employment rate
		Labour force	Employment	Unemployment			
	in thousands			percent			
Côte-Nord and Nord-du-Québec [2480, 2490]							
2015	92.0	54.3	48.7	5.6	59.0	10.3	52.9
2016	91.9	56.8	51.2	5.6	61.8	9.9	55.7
Ontario							
2015	11,320.2	7,328.1	6,845.1	482.9	64.7	6.6	60.5
2016	11,445.0	7,394.0	6,919.2	474.9	64.6	6.4	60.5
Ottawa [3510]							
2015	1,091.9	738.9	691.9	47.0	67.7	6.4	63.4
2016	1,101.9	724.4	681.7	42.6	65.7	5.9	61.9
Kingston-Pembroke [3515]							
2015	376.7	223.7	206.9	16.9	59.4	7.6	54.9
2016	377.5	209.8	195.7	14.1	55.6	6.7	51.8
Muskoka-Kawartha [3520]							
2015	325.2	200.7	187.3	13.4	61.7	6.7	57.6
2016	327.1	165.2	156.7	8.5	50.5	5.1	47.9
Toronto [3530]							
2015	5,311.7	3,471.3	3,223.6	247.7	65.4	7.1	60.7
2016	5,398.4	3,603.3	3,363.2	240.1	66.7	6.7	62.3
Kitchener-Waterloo-Barrie [3540]							
2015	1,070.1	743.1	705.7	37.5	69.4	5.0	65.9
2016	1,083.2	755.3	715.8	39.5	69.7	5.2	66.1
Hamilton-Niagara Peninsula [3550]							
2015	1,193.1	742.1	699.0	43.2	62.2	5.8	58.6
2016	1,203.4	764.1	711.0	53.1	63.5	6.9	59.1
London [3560]							
2015	551.5	342.7	322.4	20.3	62.1	5.9	58.5
2016	555.4	347.1	329.9	17.2	62.5	5.0	59.4
Windsor-Sarnia [3570]							
2015	524.3	325.0	299.7	25.3	62.0	7.8	57.2
2016	524.5	311.9	286.5	25.3	59.5	8.1	54.6
Stratford-Bruce Peninsula [3580]							
2015	245.7	161.0	152.7	8.2	65.5	5.1	62.1
2016	245.9	148.0	139.6	8.4	60.2	5.7	56.8
Northeast [3590]							
2015	457.9	274.0	257.1	16.9	59.8	6.2	56.1
2016	456.5	259.0	239.5	19.6	56.7	7.6	52.5
Northwest [3595]							
2015	172.1	105.4	98.8	6.5	61.2	6.2	57.4
2016	171.2	106.0	99.5	6.5	61.9	6.1	58.1
Manitoba							
2015	981.5	665.5	630.8	34.7	67.8	5.2	64.3
2016	992.1	667.3	629.0	38.3	67.3	5.7	63.4
Southeast [4610]							
2015	88.1	60.5	57.3	3.2	68.7	5.3	65.0
2016	90.0	60.5	57.1	3.4	67.2	5.6	63.4
South Central and North Central [4620, 4640]							
2015	83.9	59.2	57.4	1.8	70.6	3.0	68.4
2016	85.0	55.3	53.2	2.0	65.1	3.6	62.6
Southwest [4630]							
2015	87.8	59.5	57.5	2.0	67.8	3.4	65.5
2016	88.1	59.1	55.4	3.7	67.1	6.3	62.9

See notes at the end of the table.

Table 6-1 – continued

Labour force characteristics by province and economic region, 1 unadjusted for seasonality, 3 month moving average ending in January 2015 and January 2016

	Population	Labour force			Participation rate	Unemployment rate	Employment rate
		Labour force	Employment	Unemployment			
	in thousands			percent			
Winnipeg [4650]							
2015	590.5	400.7	377.1	23.5	67.9	5.9	63.9
2016	598.1	405.8	380.7	25.1	67.8	6.2	63.7
Interlake [4660]							
2015	74.5	48.6	46.4	2.1	65.2	4.3	62.3
2016	75.2	49.4	47.0	2.4	65.7	4.9	62.5
Parklands and Northern [4670, 4680]							
2015	56.8	37.0	35.1	2.0	65.1	5.4	61.8
2016	55.6	37.3	35.6	1.7	67.1	4.6	64.0
Saskatchewan							
2015	857.0	589.5	566.8	22.6	68.8	3.8	66.1
2016	865.0	603.2	570.7	32.5	69.7	5.4	66.0
Regina-Moose Mountain [4710]							
2015	260.8	187.6	181.2	6.4	71.9	3.4	69.5
2016	264.7	193.1	185.4	7.8	73.0	4.0	70.0
Swift Current-Moose Jaw [4720]							
2015	82.7	54.2	53.0	1.2	65.5	2.2	64.1
2016	82.4	54.4	52.5	1.9	66.0	3.5	63.7
Saskatoon-Biggar [4730]							
2015	292.0	205.6	196.9	8.7	70.4	4.2	67.4
2016	297.7	208.8	196.6	12.1	70.1	5.8	66.0
Yorkton-Melville [4740]							
2015	62.9	40.1	38.7	1.4	63.8	3.5	61.5
2016	62.2	38.4	35.9	2.5	61.7	6.5	57.7
Prince Albert and Northern [4750, 4760]							
2015	158.5	101.9	97.1	4.8	64.3	4.7	61.3
2016	158.0	108.6	100.2	8.3	68.7	7.6	63.4
Alberta							
2015	3,317.4	2,395.9	2,291.6	104.3	72.2	4.4	69.1
2016	3,379.2	2,439.5	2,269.8	169.7	72.2	7.0	67.2
Lethbridge-Medicine Hat [4810]							
2015	229.6	149.9	144.3	5.6	65.3	3.7	62.8
2016	230.3	157.8	148.8	9.1	68.5	5.8	64.6
Camrose-Drumheller [4820]							
2015	161.7	110.9	106.3	4.6	68.6	4.1	65.7
2016	161.9	108.7	101.9	6.7	67.1	6.2	62.9
Calgary [4830]							
2015	1,248.6	910.8	871.1	39.7	72.9	4.4	69.8
2016	1,279.6	921.5	851.7	69.8	72.0	7.6	66.6
Banff-Jasper-Rocky Mountain House and Athabasca-Grande Prairie-Peace River [4840, 4870]							
2015	276.2	206.8	199.2	7.6	74.9	3.7	72.1
2016	277.4	198.1	182.3	15.7	71.4	7.9	65.7
Red Deer [4850]							
2015	168.4	126.9	120.7	6.2	75.4	4.9	71.7
2016	171.5	118.6	110.7	7.9	69.2	6.7	64.5
Edmonton [4860]							
2015	1,116.8	801.0	765.3	35.7	71.7	4.5	68.5
2016	1,140.5	843.6	791.4	52.2	74.0	6.2	69.4
Wood Buffalo-Cold Lake [4880]							
2015	116.1	89.6	84.8	4.8	77.2	5.4	73.0
2016	118.1	91.3	83.0	8.2	77.3	9.0	70.3

See notes at the end of the table.

Table 6-1 – continued

Labour force characteristics by province and economic region, ¹ unadjusted for seasonality, 3 month moving average ending in January 2015 and January 2016

	Population	Labour force			Participation rate	Unemployment rate	Employment rate
		Labour force	Employment	Unemployment			
	in thousands			percent			
British Columbia							
2015	3,848.1	2,402.8	2,271.6	131.1	62.4	5.5	59.0
2016	3,903.0	2,483.6	2,325.7	157.9	63.6	6.4	59.6
Vancouver Island and Coast [5910]							
2015	652.0	372.0	352.6	19.5	57.1	5.2	54.1
2016	657.9	388.0	360.3	27.7	59.0	7.1	54.8
Lower Mainland-Southwest [5920]							
2015	2,395.6	1,522.7	1,437.3	85.4	63.6	5.6	60.0
2016	2,439.5	1,591.6	1,502.2	89.4	65.2	5.6	61.6
Thompson-Okanagan [5930]							
2015	429.7	260.3	245.5	14.8	60.6	5.7	57.1
2016	433.2	263.6	241.6	22.0	60.8	8.3	55.8
Kootenay [5940]							
2015	121.9	73.4	69.6	3.8	60.2	5.2	57.1
2016	122.1	71.0	65.4	5.6	58.1	7.9	53.6
Cariboo [5950]							
2015	127.1	88.3	83.9	4.4	69.5	5.0	66.0
2016	127.6	82.8	76.3	6.5	64.9	7.9	59.8
North Coast and Nechako [5960, 5970]							
2015	66.4	44.5	42.3	2.1	67.0	4.7	63.7
2016	66.6	43.0	40.0	3.0	64.6	7.0	60.1
Northeast [5980]							
2015	55.4	41.6	40.5	x	75.1	x	73.1
2016	56.1	43.7	40.0	3.7	77.9	8.5	71.3

1. For geographic descriptions of economic regions, refer to the Guide to the Labour Force Survey (catalogue number 71-543-GIE).

Note(s): Estimates in this table are based on 2011 Census boundaries. Related CANSIM table 282-0122.

Table 6-2
Labour force characteristics by territory (seasonally adjusted) - 3 month moving average

	December 2015	January 2016	S.E. ¹	Change from			Percent change from		
				last month	last December	twelve months ago	last month	last December	twelve months ago
in thousands (except rates)									
Yukon ²									
Population	28.2	28.2	...	0.0	0.0	0.3	0.0	0.0	1.1
Labour force	20.6	20.6	0.2	0.0	0.0	-0.3	0.0	0.0	-1.4
Employment	19.5	19.3	0.2	-0.2	-0.2	-0.5	-1.0	-1.0	-2.5
Unemployment	1.2	1.3	0.1	0.1	0.1	0.2	8.3	8.3	18.2
Participation rate	73.0	73.0	0.8	0.0	0.0	-1.9
Unemployment rate	5.8	6.3	0.7	0.5	0.5	1.0
Employment rate	69.1	68.4	0.9	-0.7	-0.7	-2.6
Northwest Territories ³									
Population	32.0	32.1	...	0.1	0.1	-0.2	0.3	0.3	-0.6
Labour force	24.2	24.6	0.2	0.4	0.4	1.1	1.7	1.7	4.7
Employment	21.7	22.3	0.3	0.6	0.6	0.6	2.8	2.8	2.8
Unemployment	2.4	2.3	0.2	-0.1	-0.1	0.5	-4.2	-4.2	27.8
Participation rate	75.6	76.6	0.8	1.0	1.0	3.8
Unemployment rate	9.9	9.3	0.7	-0.6	-0.6	1.6
Employment rate	67.8	69.5	0.8	1.7	1.7	2.3
Nunavut ⁴									
Population	24.1	24.1	...	0.0	0.0	0.7	0.0	0.0	3.0
Labour force	15.4	15.6	0.2	0.2	0.2	1.5	1.3	1.3	10.6
Employment	12.8	13.0	0.2	0.2	0.2	0.7	1.6	1.6	5.7
Unemployment	2.7	2.5	0.1	-0.2	-0.2	0.7	-7.4	-7.4	38.9
Participation rate	64.1	64.6	0.9	0.5	0.5	4.4
Unemployment rate	17.2	16.2	0.8	-1.0	-1.0	3.7
Employment rate	53.1	54.1	0.8	1.0	1.0	1.4

1. Average standard error of change in two consecutive months (see "Sampling Errors" in Data Quality for further explanations).
2. Since 1992, the Labour force survey (LFS) has been conducted in the Yukon, using an alternative methodology that accommodates some of the operational difficulties inherent to remote locales. These estimates are not included in the national totals. In 1995, the LFS in the Yukon underwent a sample redesign. One result of the redesign was that the covered population increased from 85% to 92%, which is reflected by the sharp increase in the three month moving averages estimates of January, February and March of 1995 for all the level estimates. Users are therefore warned to be cautious when comparing estimates before January 1995 to estimates for January 1995 and forward.
3. Since 2001, the Labour force survey (LFS) has been administered in the Northwest Territories, using an alternative methodology that accommodates some of the operational difficulties inherent to remote locales. These estimates are not included in national totals.
4. Since 2004, the Labour force survey (LFS) has been administered in Nunavut, using an alternative methodology that accommodates some of the operational difficulties inherent to remote locales. These estimates are 3-month moving averages and are not included in national totals. From January 2004 to December 2007, estimates represent about 70% of all Nunavut residents aged 15 and over. Starting in January 2008, coverage was extended to 92%, so that by March 2008, the 3-month moving average is completely based on the extended coverage. Because of the large difference in coverage, users are recommended not to compare estimates prior to January 2008 with data afterwards. The January and February 2008 3-month moving average estimates are based on a mix of both coverages, since the extended coverage was introduced in January 2008. Estimates from January 2004 to December 2007 are based on the 10 largest communities in Nunavut: Iqaluit, Rankin Inlet, Cambridge Bay, Kugluktuk, Baker Lake, Arviat, Pond Inlet, Cape Dorset, Pangnirtung, Igloolik. Estimates from March 2008 to present cover the above communities as well as: Taloyoak, Gjoa Haven, Kugaaruk, Coral Harbour, Repulse Bay, Qikiqtarjuaq, Arctic Bay, Hall Beach, Clyde River.

Note(s): Related CANSIM table 282-0100.

Table 7
Average usual hours and wages of employees by selected characteristics, Canada, unadjusted for seasonality

	Employees				Full-time			Part-time		
	Number	Average weekly hours	Average weekly wages	Average hourly wages	Number	Average weekly hours	Average weekly wages	Number	Average weekly hours	Average weekly wages
	thousands		current dollars		thousands		current dollars	thousands		current dollars
January 2016										
15 years and over	14,888.5	35.0	934.49	25.66	12,054.9	39.2	1,079.79	2,833.6	17.2	316.34
15 to 24 years	2,195.1	26.2	413.92	14.66	1,045.7	38.5	661.61	1,149.5	15.0	188.60
25 years and over	12,693.4	36.5	1,024.51	27.56	11,009.2	39.3	1,119.51	1,684.2	18.8	403.53
Males	7,427.7	37.4	1,065.11	27.63	6,507.9	40.4	1,176.46	919.8	16.4	277.24
Females	7,460.8	32.6	804.44	23.70	5,547.0	37.8	966.37	1,913.9	17.7	335.13
Union coverage										
Union coverage	4,576.5	35.6	1,057.36	29.29	3,876.7	38.5	1,163.06	699.8	19.2	471.76
No union coverage	10,312.0	34.8	879.95	24.05	8,178.2	39.5	1,040.31	2,133.9	16.6	265.38
Job permanency										
Permanent	13,158.0	36.0	976.90	26.31	11,124.1	39.2	1,093.69	2,033.9	18.3	338.11
Temporary	1,730.5	27.6	612.02	20.68	930.8	38.6	913.65	799.8	14.6	261.00
Occupation										
Management occupations	980.6	39.6	1,563.28	39.51	948.9	40.2	1,597.19	31.7	18.8	547.46
Business, finance and administration occupations	2,559.8	35.3	924.19	25.68	2,202.4	38.2	1,015.67	357.4	17.6	360.54
Natural and applied sciences and related occupations	1,244.5	38.3	1,361.86	35.49	1,204.2	38.9	1,389.25	40.3	18.7	543.51
Health occupations	1,128.7	33.5	990.67	29.31	853.1	37.9	1,128.55	275.6	20.2	563.78
Occupations in education, law and social, community and government services	1,842.0	33.7	1,068.23	30.89	1,465.5	38.0	1,233.08	376.5	16.9	426.58
Occupations in art, culture, recreation and sport	311.4	29.2	728.59	22.88	199.3	38.8	1,022.70	112.1	12.0	205.42
Sales and service occupations	3,852.4	30.4	533.65	16.46	2,410.7	38.4	717.69	1,441.7	17.0	225.89
Trades, transport and equipment operators and related occupations	1,978.6	39.9	1,031.81	25.54	1,837.9	41.6	1,084.86	140.6	17.9	338.53
Natural resources, agriculture and related production occupations	213.6	41.4	1,081.97	24.86	187.5	45.1	1,200.06	26.2	15.3	235.50
Occupations in manufacturing and utilities	777.0	39.5	873.13	21.87	745.3	40.4	896.96	31.7	18.4	312.24
January 2015										
15 years and over	14,806.0	34.9	907.43	24.96	11,938.9	39.2	1,052.78	2,867.1	16.9	302.17
15 to 24 years	2,241.0	25.3	402.46	14.68	1,005.0	38.6	671.53	1,236.0	14.5	183.67
25 years and over	12,565.1	36.6	997.49	26.79	10,933.9	39.2	1,087.83	1,631.1	18.7	391.97
Males	7,408.2	37.3	1,033.26	26.81	6,458.7	40.4	1,145.25	949.5	16.3	271.48
Females	7,397.9	32.4	781.43	23.10	5,480.3	37.7	943.81	1,917.6	17.2	317.37
Union coverage										
Union coverage	4,524.2	35.5	1,022.10	28.33	3,854.6	38.4	1,120.49	669.6	18.9	455.71
No union coverage	10,281.8	34.6	856.98	23.47	8,084.3	39.6	1,020.50	2,197.5	16.3	255.39
Job permanency										
Permanent	12,999.5	35.9	950.22	25.63	10,967.2	39.2	1,066.27	2,032.3	17.9	323.95
Temporary	1,806.5	27.7	599.55	20.11	971.7	38.9	900.55	834.8	14.5	249.15
Occupation										
Management occupations	894.5	39.7	1,564.35	39.33	866.0	40.4	1,599.75	28.6	18.3	491.13
Business, finance and administration occupations	2,637.3	35.3	902.78	24.97	2,260.6	38.3	997.87	376.6	17.1	332.02
Natural and applied sciences and related occupations	1,151.4	38.5	1,330.65	34.52	1,117.9	39.1	1,352.71	33.5	18.8	595.15
Health occupations	1,008.5	33.5	974.06	28.68	773.3	37.7	1,107.73	235.2	19.7	534.56
Occupations in education, law and social, community and government services	1,819.6	33.4	1,028.82	29.99	1,437.2	37.8	1,184.61	382.4	17.0	443.31
Occupations in art, culture, recreation and sport	324.6	28.4	759.82	24.50	201.0	38.8	1,091.68	123.6	11.5	219.90
Sales and service occupations	3,885.8	30.1	526.07	16.34	2,420.3	38.3	713.26	1,465.5	16.6	216.91
Trades, transport and equipment operators and related occupations	2,087.2	39.7	1,000.40	24.81	1,927.2	41.5	1,056.91	160.0	18.3	319.73
Natural resources, agriculture and related production occupations	232.9	41.5	1,014.18	23.43	205.8	45.1	1,119.50	27.1	14.5	213.42
Occupations in manufacturing and utilities	764.3	39.1	855.43	21.63	729.7	40.0	882.19	34.6	18.5	291.49

Note(s): Related CANSIM table 282-0167.

Table 8
Regional unemployment rates used by the Employment Insurance program ¹, seasonally adjusted, 3 month moving average

Region	Effective from February 7, 2016 to March 12, 2016
	percent
Newfoundland and Labrador	
01. St. John's	6.7
02. Newfoundland and Labrador ²	19.8
Prince Edward Island ³	
65. Charlottetown	7.0
66. Prince Edward Island ⁴	12.9
Nova Scotia	
04. Eastern Nova Scotia	16.0
05. Western Nova Scotia	9.0
06. Halifax	6.5
New Brunswick	
07. Fredericton—Moncton—Saint John	7.4
08. Madawaska—Charlotte	8.8
09. Restigouche—Albert	13.2
Quebec	
10. Gaspésie—Îles-de-la-Madeleine	17.2
11. Québec	5.4
12. Trois-Rivières	7.2
13. South Central Quebec	5.0
14. Sherbrooke	7.0
15. Montérégie	6.1
16. Montréal	8.6
17. Central Quebec	7.9
18. North Western Quebec	8.4
19. Bas-Saint-Laurent—Côte-Nord	9.8
20. Hull	6.0
21. Chicoutimi—Jonquière	7.6
Ontario	
22. Ottawa	6.4
23. Eastern Ontario	7.1
24. Kingston	6.4
25. Central Ontario	6.7
26. Oshawa	6.4
27. Toronto	7.1
28. Hamilton	6.4
29. St. Catharines	8.6
30. London	5.7
31. Niagara	8.5
32. Windsor	9.6
33. Kitchener	6.5
34. Huron	8.3
35. South Central Ontario	5.1
36. Sudbury	8.8
37. Thunder Bay	6.3
38. Northern Ontario	12.2
Manitoba	
39. Winnipeg	6.3
40. Southern Manitoba	6.3
41. Northern Manitoba	35.2
Saskatchewan	
42. Regina	4.1
43. Saskatoon	6.1
44. Southern Saskatchewan	7.5
45. Northern Saskatchewan	19.5
Alberta	
46. Calgary	7.9
47. Edmonton	6.5
48. Northern Alberta	12.5
49. Southern Alberta	8.1

See notes at the end of the table.

Table 8 – continued

Regional unemployment rates used by the Employment Insurance program 1, seasonally adjusted, 3 month moving average

Region	Effective from February 7, 2016 to March 12, 2016
	percent
British Columbia	
50. Southern Interior British Columbia	9.0
51. Abbotsford	7.2
52. Vancouver	5.8
53. Victoria	6.7
54. Southern Coastal British Columbia	9.3
55. Northern British Columbia	11.9
Territories ^{3, 5}	
59. Whitehorse	6.2
60. Yukon ⁶	9.4
61. Yellowknife	5.0
62. Northwest Territories ⁷	14.4
63. Iqaluit	4.5
64. Nunavut ⁸	20.9

1. The boundaries of these regions are determined by Employment and Social Development Canada (ESDC). For geographic descriptions and maps of employment insurance regions, see the ESDC website: <http://srv129.services.gc.ca/eiregions/en/geocont.aspx>.
 2. This region excludes St. John's.
 3. Prince Edward Island as well as the territories are each comprised of two regions effective October 12, 2014.
 4. This region excludes Charlottetown.
 5. The monthly regional unemployment rates for EI purposes in the territories are subject to the greater of a seasonally adjusted 3 month moving average or 12 month moving average.
 6. This region excludes Whitehorse.
 7. This region excludes Yellowknife.
 8. This region excludes Iqaluit.
- Note(s):** All regions are based on the 1996 Census boundaries, with the exception of those in Prince Edward Island and in the territories, which respect the 2011 Census boundaries.

Data quality

Definitions and explanations

The **labour force** is composed of those members of the civilian non-institutional population 15 years of age and over who, during the reference week, were employed or unemployed.

Employed persons are those who, during the reference week:

- (a) did any work at all at a job or business;
- (b) had a job but were not at work.

A person is considered to be **full-time** if his/her usual hours at the main job are 30 or more hours per week. When the number of hours worked at the main job is usually less than 30 hours per week then he/she is considered to be **part-time**.

Unemployed persons are those who, during the reference week:

- (a) were without work, had actively looked for work in the past four weeks (ending with reference week) and were available for work;
- (b) had not actively looked for work in the past four weeks but were on temporary layoff and were available for work;
- (c) had not actively looked for work but had a new job to start within four weeks from the reference week and were available for work.

Persons in the civilian non-institutional population 15 years of age and over who, during the reference week, were neither employed nor unemployed are classified as **not in the labour force**.

The **unemployment rate** represents the number of unemployed persons expressed as a percentage of the labour force (employed and unemployed). The unemployment rate for a particular group (for example, age, sex, or marital status) is the number unemployed in that group expressed as a percentage of the labour force for that group.

The **participation rate** represents the total labour force expressed as a percentage of the population aged 15 years and over. The participation rate for a particular group (for example, women aged 25 years and over) is the labour force in that group expressed as a percentage of the population for that group.

The **employment rate** represents the number of employed persons expressed as a percentage of the population aged 15 years and over. The employment rate for a particular group (for example, age, sex, marital status, or province) is the number employed in that group expressed as a percentage of the population for that group.

The **part-time rate** represents the number of persons employed part-time expressed as a percentage of the employed. The part-time rate for a particular group (for example, age or sex) is the number of persons employed part-time in that group expressed as a percentage of the employed for that group.

All geographic regions are based on the 2011 Census boundaries.

Seasonal adjustment

Fluctuations in economic time series are caused by seasonal, cyclical and irregular movements. A seasonally adjusted series is one from which seasonal movements have been eliminated. Seasonal movements are defined as those which are caused by regular annual events such as climate, holidays, vacation periods and cycles related to crops, production and retail sales associated with Christmas and Easter. The seasonally adjusted series contains irregular as well as longer-term cyclical fluctuations.

The seasonally adjusted series are revised each year to take into account current data and to generate new forecast factors for the next twelve months. The data are therefore subject to slight revisions in future issues of this publication.

For more information on seasonal adjustment, see *Seasonally adjusted data – Frequently asked questions*.

Sampling variability of estimates

Estimates in this publication are based on the Labour Force Survey, a monthly survey of approximately 56,000 households across Canada. Because the entire population is not surveyed, the estimates are subject to sampling error. While the published estimate is the best available indicator of the real value, changes in the level of any estimates between two months can be the result of a true change, or sampling variability. The sampling error can be estimated by calculating the standard error for the published estimate or statistic. These standard errors have been included in the publication tables in order to assist users in interpreting the data. They are based on 12-month averages and are updated twice a year, in February and August.

Interpretation based on standard error

Approximately two-thirds (68%) of the time, a change greater than the sampling error indicates a real change. The larger the change compared to the standard error, the better the chance that we are observing a real change, as opposed to a change due to sampling variability. At the 95% confidence level, the change in the estimate must be greater than twice the standard error in order to ensure that change is real.

Movements in estimates that are smaller than the standard error are less likely to reflect a real change and more likely to be due to sampling variability. While the above is true for monthly movements, one can have more confidence in a series of consecutive movements in the same direction, even though some of the monthly movements may be smaller than the standard error.

Interpretation based on confidence intervals

Confidence intervals provide another way of looking at the variability inherent in estimates of sample surveys. To illustrate how to calculate the confidence interval, let us say that one month the published estimate for total employment rose by 16,000 to reach 18,000,000. The associated standard error for the movement estimate is 29,500. The standard error used to interpret the movement estimate indicates that:

- There are approximately two chances in three (68%) that the real value of the movement between the two months falls within the range -13,500 to +45,500 (16,000 + or – one standard error).
- There are approximately nine chances in ten (90%) that the real value of the movement between the two months falls within the range -31,200 to +63,200 (16,000 + or – 1.6 times the standard error).
- There are approximately nineteen chances in twenty (95%) that the real value of the movement between the two months falls within the range -43,000 to +75,000 (16,000 + or – two standard errors).

For more detailed explanations on the sampling variability of estimates, and in particular for information on how to assess the variability of level estimates, consult the **Data quality** section of the *Guide to the Labour Force Survey (71-543-G)*.

Documentation

For more detailed information about the Labour Force Survey, see the following documents:

- Overview of the Labour Force Survey (LFS) 3701
- *Guide to the Labour Force Survey (71-543-G)*
- *Methodology of the Canadian Labour Force Survey (71-526-X)*
- *LFS geographical maps*