

Catalogue no. 71-001-X

Labour Force Information

Friday, December 4, 2015

November 8 to 14, 2015



Statistics
Canada

Statistique
Canada

Canada

How to obtain more information

For information about this product or the wide range of services and data available from Statistics Canada, visit our website, www.statcan.gc.ca.

You can also contact us by

e-mail at STATCAN.infostats-infostats.STATCAN@canada.ca

telephone, from Monday to Friday, 8:30 a.m. to 4:30 p.m., at the following toll-free numbers:

- | | |
|---|----------------|
| • Statistical Information Service | 1-800-263-1136 |
| • National telecommunications device for the hearing impaired | 1-800-363-7629 |
| • Fax line | 1-877-287-4369 |

Depository Services Program

- | | |
|------------------|----------------|
| • Inquiries line | 1-800-635-7943 |
| • Fax line | 1-800-565-7757 |

To access this product

This product, Catalogue no. 71-001-X, is available free in electronic format. To obtain a single issue, visit our website, www.statcan.gc.ca and browse by "Key resource" > "Publications."

Standards of service to the public

Statistics Canada is committed to serving its clients in a prompt, reliable and courteous manner. To this end, this agency has developed standards of service that its employees observe. To obtain a copy of these service standards, please contact Statistics Canada toll-free at 1-800-263-1136. The service standards are also published at www.statcan.gc.ca under "About us" > "The agency" > "Providing services to Canadians."

Statistics Canada
Labour Statistics Division
Labour Force Survey Program

Labour Force Information

Friday, December 4, 2015

November 8 to 14, 2015

Published by authority of the Minister responsible for Statistics Canada

© Minister of Industry, 2015

All rights reserved. Use of this publication is governed by the Statistics Canada
Open License Agreement.

<http://www.statcan.gc.ca/reference/licence-eng.html>

December 2015

Catalogue no. 71-001-X

ISSN 1492-5478

Frequency: Monthly

Ottawa

Cette publication est également disponible en français.

Note of appreciation

Canada owes the success of its statistical system to a long-standing partnership between Statistics Canada, the citizens of Canada, its businesses, governments and other institutions. Accurate and timely statistical information could not be produced without their continued cooperation and goodwill.

User information

Symbols

The following standard symbols are used in Statistics Canada publications:

- . not available for any reference period
- .. not available for a specific reference period
- ... not applicable
- 0 true zero or a value rounded to zero
- 0^s value rounded to 0 (zero) where there is a meaningful distinction between true zero and the value that was rounded
- p preliminary
- r revised
- x suppressed to meet the confidentiality requirements of the *Statistics Act*
- E use with caution
- F too unreliable to be published
- * significantly different from reference category ($p < 0.05$)

Special requests (\$)

Custom tabulations can be arranged on an ad hoc or regular basis. This service enables you to specify tables and time series to meet your own requirements. The cost varies according to the request. For more information, contact us toll-free at 1-866-873-8788 or e-mail us at labour@canada.ca.

Schedule of LFS releases

Release date	Reference period
January 9, 2015	December 7 to 13, 2014
February 6, 2015	February 15 to 21, 2015
March 13, 2015	February 15 to 21, 2015
April 10, 2015	March 15 to 21, 2015
May 8, 2015	April 12 to 18 2015
May 6, 2016	April 10 to 16 2016
June 5, 2015	May 10 to 16, 2015
July 10, 2015	June 14 to 20, 2015
August 7, 2015	July 12 to 18, 2015
September 4, 2015	August 9 to 15, 2015
October 9, 2015	September 13 to 19, 2015
November 6, 2015	October 11 to 17, 2015
December 4, 2015	November 8 to 14, 2015
January 8, 2016	December 6 to 12, 2015

Table of contents

Highlights	5
Analysis — November 2015	6
Charts	
1. Federal public administration, survey interviewers and statistical clerks	8
2. Employment indexes, Canada, seasonally adjusted	10
3. Employment, unemployment, and participation rates, Canada, seasonally adjusted	11
4. Employment indexes by industry, Canada, seasonally adjusted	12
5. Employment indexes by industry, Canada, seasonally adjusted	13
6. Employment indexes by industry, Canada, seasonally adjusted	14
7. Employment indexes by province, Canada, seasonally adjusted	15
8. Employment indexes by province, Canada, seasonally adjusted	16
Related products	17
Statistical tables	
1 Labour force characteristics by age and sex, Canada, seasonally adjusted	28
2 Employment by class of worker and industry, Canada, seasonally adjusted	30
3 Labour force characteristics by province, seasonally adjusted	31
4 Selected labour force characteristics (seasonally adjusted)	33
4-1 Newfoundland and Labrador	33
4-2 Prince Edward Island	34
4-3 Nova Scotia	35
4-4 New Brunswick	36
4-5 Quebec	37
4-6 Ontario	38
4-7 Manitoba	39
4-8 Saskatchewan	40
4-9 Alberta	41
4-10 British Columbia	42
5 Labour force characteristics by census metropolitan area (seasonally adjusted)	43
5-1 3 month moving average	43
5-2 Monthly	48

Table of contents – continued

6	Labour force characteristics	49
6-1	by province and economic region, unadjusted for seasonality, 3 month moving average ending in November 2014 and November 2015	49
6-2	by territory (seasonally adjusted) - 3 month moving average	54
7	Average usual hours and wages of employees by selected characteristics, Canada, unadjusted for seasonality	55
8	Regional unemployment rates used by the Employment Insurance program, seasonally adjusted, 3 month moving average	56
Data quality, concepts and methodology		
	Data quality	58

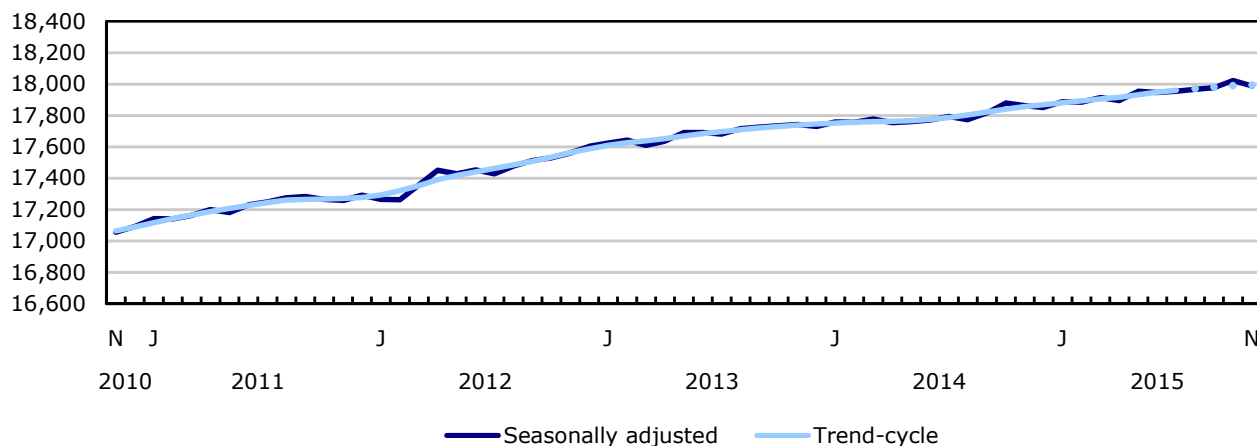
Highlights

Employment decreased by 36,000 (-0.2%) in November, the result of losses in part-time work. The overall employment decline in November followed a similar-sized increase in October. The unemployment rate increased by 0.1 percentage points to 7.1% in November.

Chart 1
Employment and unemployment rate, Canada, seasonally adjusted

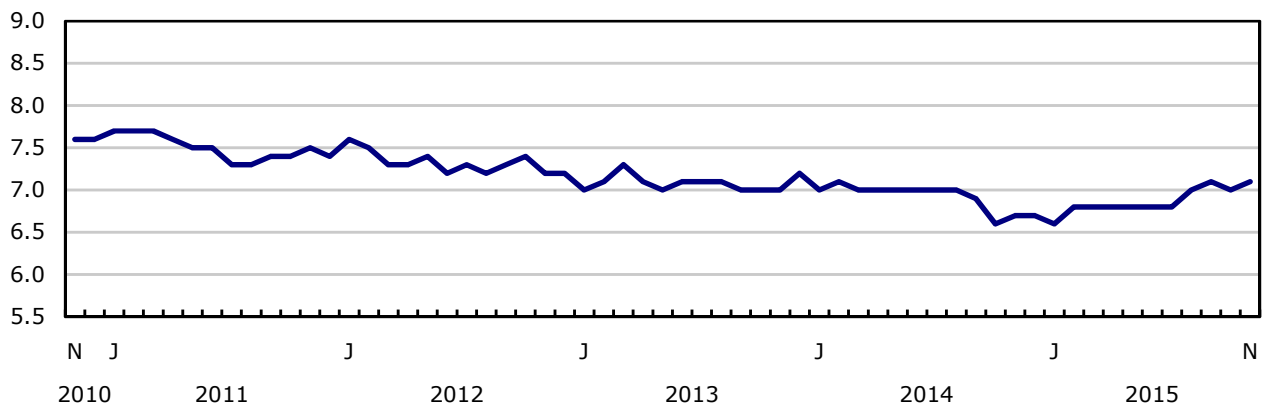
Employment

thousands



Unemployment rate

percent



Analysis — November 2015

Employment decreased by 36,000 (-0.2%) in November, the result of losses in part-time work. The overall employment decline in November followed a similar-sized increase in October. The unemployment rate increased by 0.1 percentage points to 7.1% in November.

Compared with 12 months earlier, employment increased by 124,000 or 0.7%, with all the growth in full-time work. Over the same period, the number of hours worked grew by 1.1%.

In November, employment declined among youths aged 15 to 24, while there was little change among the other demographic groups.

Provincially, employment fell in Alberta, Manitoba, New Brunswick and Prince Edward Island. In the other provinces, employment was virtually unchanged.

There were fewer people employed in public administration; wholesale and retail trade; information, culture and recreation; as well as finance, insurance, real estate and leasing. At the same time, there were more people employed in professional, scientific and technical services, manufacturing, construction, and agriculture.

The number of employees decreased in both the private and public sectors in November, while the number of self-employed increased.

Youth employment down

In November, employment fell by 24,000 among youths aged 15 to 24. However, as fewer youths participated in the labour market, their unemployment rate declined 0.6 percentage points to 12.7%, the lowest rate since 2008. Compared with 12 months earlier, employment for this group decreased by 46,000 (-1.8%), while their population declined by 41,000 (-0.9%).

Among people aged 25 to 54, employment was virtually unchanged in both November and on a year-over-year basis. Compared with November 2014, the unemployment rate for this group increased 0.6 percentage points to 6.1% as more of them searched for work.

Employment among people aged 55 and older was little changed in November. Their unemployment rate increased 0.6 percentage points to 6.0% as more of them were seeking work. In the 12 months to November, employment for this group rose 184,000 (+5.3%). Over the same period, the population of this group increased by 311,000 (+3.1%).

Employment losses in several provinces

In Alberta, employment declined for the second consecutive month, down 15,000 in November. The unemployment rate increased by 0.4 percentage points to 7.0%, the highest rate since April 2010. Compared with 12 months earlier, employment in the province was virtually unchanged.

After three months of increases, employment in Manitoba fell by 5,400 in November. This decline pushed the unemployment rate up 0.8 percentage points to 6.1%. On a year-over-year basis, employment in the province was little changed.

Employment in New Brunswick decreased by 3,000 in November. The unemployment rate was little changed at 8.7% as fewer people participated in the labour market. Compared with November 2014, employment in the province was little changed.

In Quebec, employment was little changed for the fourth consecutive month in November, and the unemployment rate was 7.5%. Compared with 12 months earlier, employment in the province was up 30,000 (+0.7%), the result of gains in full-time work.

In Ontario, employment was also little changed in November, and the unemployment rate was 6.9%. In the 12 months to November, gains in full-time work were offset by declines in part-time work.

Employment in British Columbia was virtually unchanged in November, and the unemployment rate was 6.2%. However, employment has been on an upward trend since the spring, bringing year-over-year gains to 60,000 or 2.6%, the highest employment growth rate among the provinces.

Industry perspective

Employment in public administration declined by 33,000 in November, offsetting an increase of 32,000 in October that coincided with activities related to the federal election. On a year-over-year basis, employment in this industry was virtually unchanged.

The November decline in public administration was seen across all provinces, mainly in federal public administration and temporary work. The decrease was concentrated among survey interviewers and statistical clerks, an occupational group that corresponds with the type of work done during the election. Similar movements in this occupation group have been observed during previous federal elections and censuses (see chart 1).

In November, there were 16,000 fewer people employed in the wholesale and retail trade industry, with most of the decline in the wholesale sector. Employment in this industry was little changed compared with a year earlier.

Employment fell by 12,000 in information, culture and recreation in November, bringing employment back to a level similar to that of 12 months earlier.

The number of workers in finance, insurance, real estate and leasing was down 11,000 in November. Compared with 12 months earlier, however, employment in this industry was virtually unchanged.

In professional, scientific and technical services, employment increased by 18,000 in November. Employment in this industry trended up throughout most of the year, with gains totalling 56,000 (+4.2%) on a year-over-year basis.

In November, there were 17,000 more people employed in manufacturing, the first notable increase since May. In the 12 months to November, employment in this industry was little changed.

In construction, employment rose by 15,000 in November, but was virtually unchanged compared with the same month a year earlier.

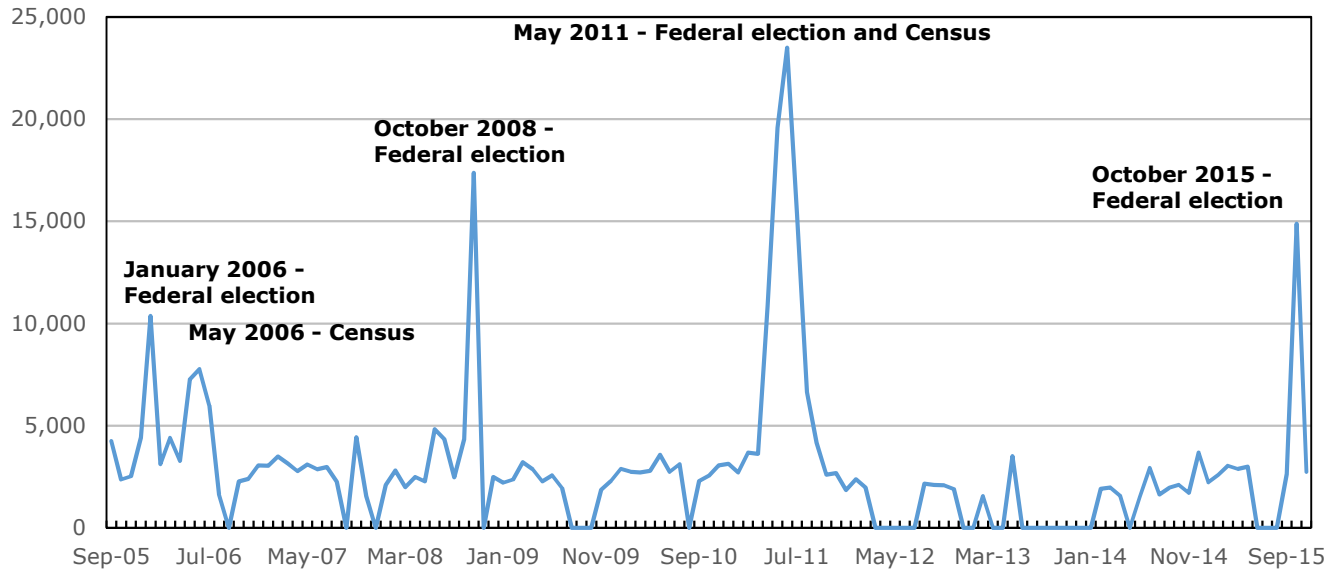
Employment in agriculture was also up 15,000 in November. Before adjusting for seasonal factors, the number of people working in agriculture declined less than usual between October and November, resulting in a seasonally adjusted increase. On a year-over-year basis, employment was little changed in this industry.

In November, the number of employees declined by 41,000 in the private sector, and by 21,000 in the public sector. On the other hand, the number of self-employed increased by 26,000.

Compared with 12 months earlier, public sector employment was up 55,000 (+1.5%), driven by gains in health care and social assistance. Over the same period, the number of private sector employees and the number of self-employed were little changed.

Chart 1
Federal public administration, survey interviewers and statistical clerks

Employment (unadjusted for seasonality)



Note: The "survey interviewers and statistical clerks" group includes occupations such as census clerks, election enumerators and statistical assistants. Estimates below the confidentiality threshold of 1,500 are shown as "0".

Source: Labour Force Survey (3701).

Note to readers

Upcoming revisions

A standard revision to the Labour Force Survey (LFS) data will be released on January 26 and 27, 2016.

Occupation data estimates will be reclassified to the 2011 National Occupational Classification (NOC) from the 2006 National Occupational Classification for Statistics (NOC-S).

New CANSIM tables will be created for all occupation-related series and will be available from the start of each respective series. A list of the *occupation tables* is now available.

At the same time, the North American Industry Classification System (NAICS) 2012 will replace the NAICS 2007. This change will not affect the LFS CANSIM tables as there were only minor changes at the four-digit level.

In addition to updating the classification systems, the LFS seasonally adjusted estimates will be revised back to January 2013 using the latest seasonal factors. The revised estimates will be available in CANSIM on January 26, 2016.

Note to readers

The LFS estimates for November are for the week of November 8 to 14.

The LFS estimates are based on a sample and are therefore subject to sampling variability. As a result, monthly estimates will show more variability than trends observed over longer time periods. For more information, see *Interpreting Monthly Changes in Employment from the Labour Force Survey*. Estimates for smaller geographic areas or industries also have more variability. For an explanation of sampling variability of estimates and how to use standard errors to assess this variability, consult the "Data quality" section of the publication *Labour Force Information (71-001-X)*.

This analysis focuses on differences between estimates that are statistically significant at the 68% confidence level.

The **employment rate** is the number of employed persons as a percentage of the population 15 years of age and over. The rate for a particular group (for example, youths aged 15 to 24) is the number employed in that group as a percentage of the population for that group.

The **unemployment rate** is the number of unemployed as a percentage of the labour force (employed and unemployed).

The **participation rate** is the number of employed and unemployed as a percentage of the population.

For more detailed information, see the *Guide to the Labour Force Survey (71-543-G)*.

Seasonal adjustment

Unless otherwise stated, this release presents seasonally adjusted estimates, which facilitates comparisons by removing the effects of seasonal variations. For more information on seasonal adjustment, see *Seasonally adjusted data – Frequently asked questions*.

Chart 1 shows trend-cycle data on employment. These data represent a smoothed version of the seasonally adjusted time series, which provide information on longer-term movements, including changes in direction underlying the series. These data are available in CANSIM table 282-0087 for the Canada-level employment series. For more information, see the *StatCan Blog* and *Trend-cycle estimates – Frequently asked questions*.

Sample redesign

Every 10 years, the LFS undergoes a sample redesign to reflect changes in population and labour market characteristics, as well as new definitions of geographical boundaries. The redesigned sample was introduced starting in January 2015 and was fully implemented in June 2015.

Next release

The next release of the LFS will be on January 8, 2016.

Chart 2
Employment indexes, Canada, seasonally adjusted

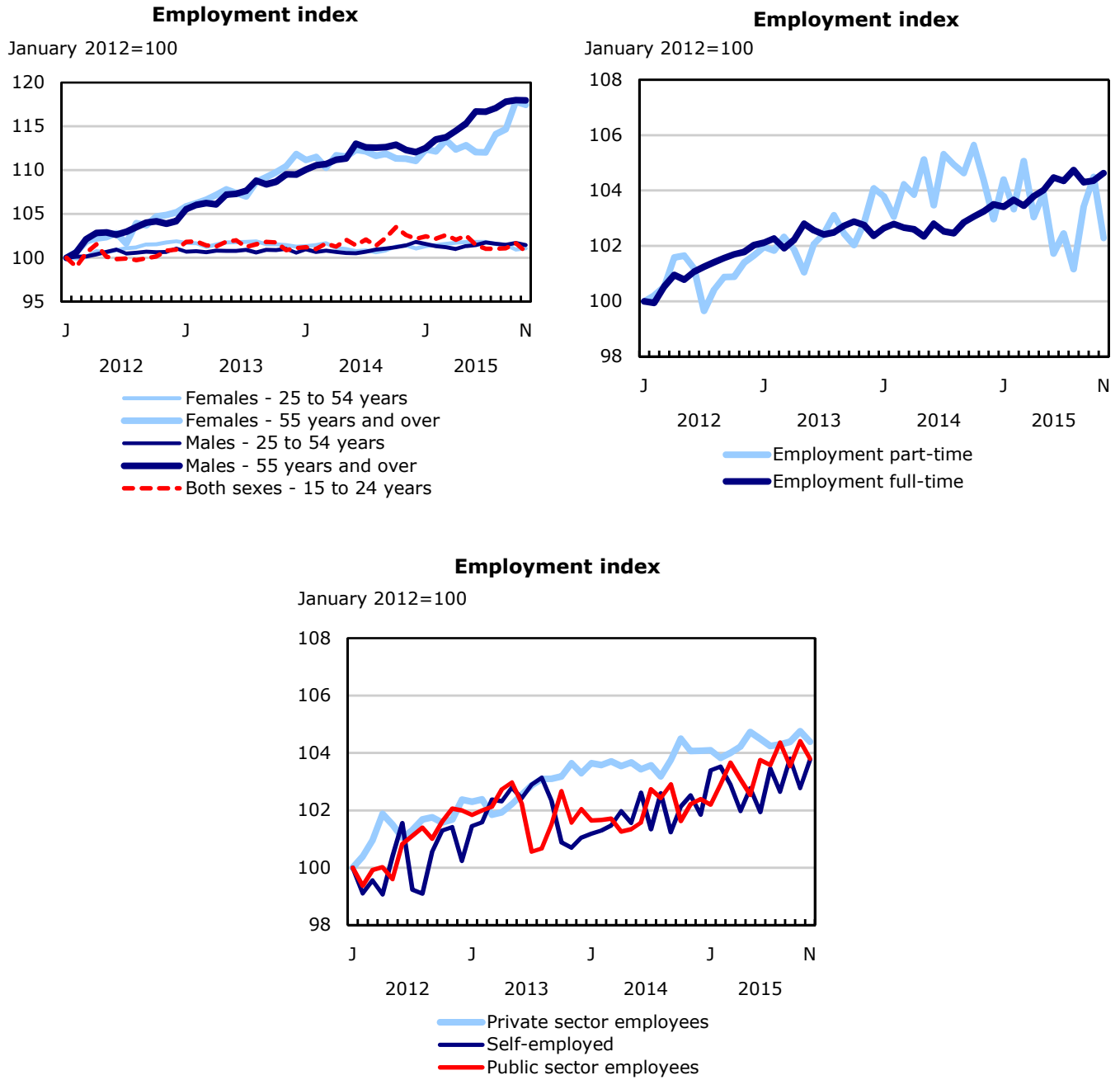


Chart 3
Employment, unemployment, and participation rates, Canada, seasonally adjusted

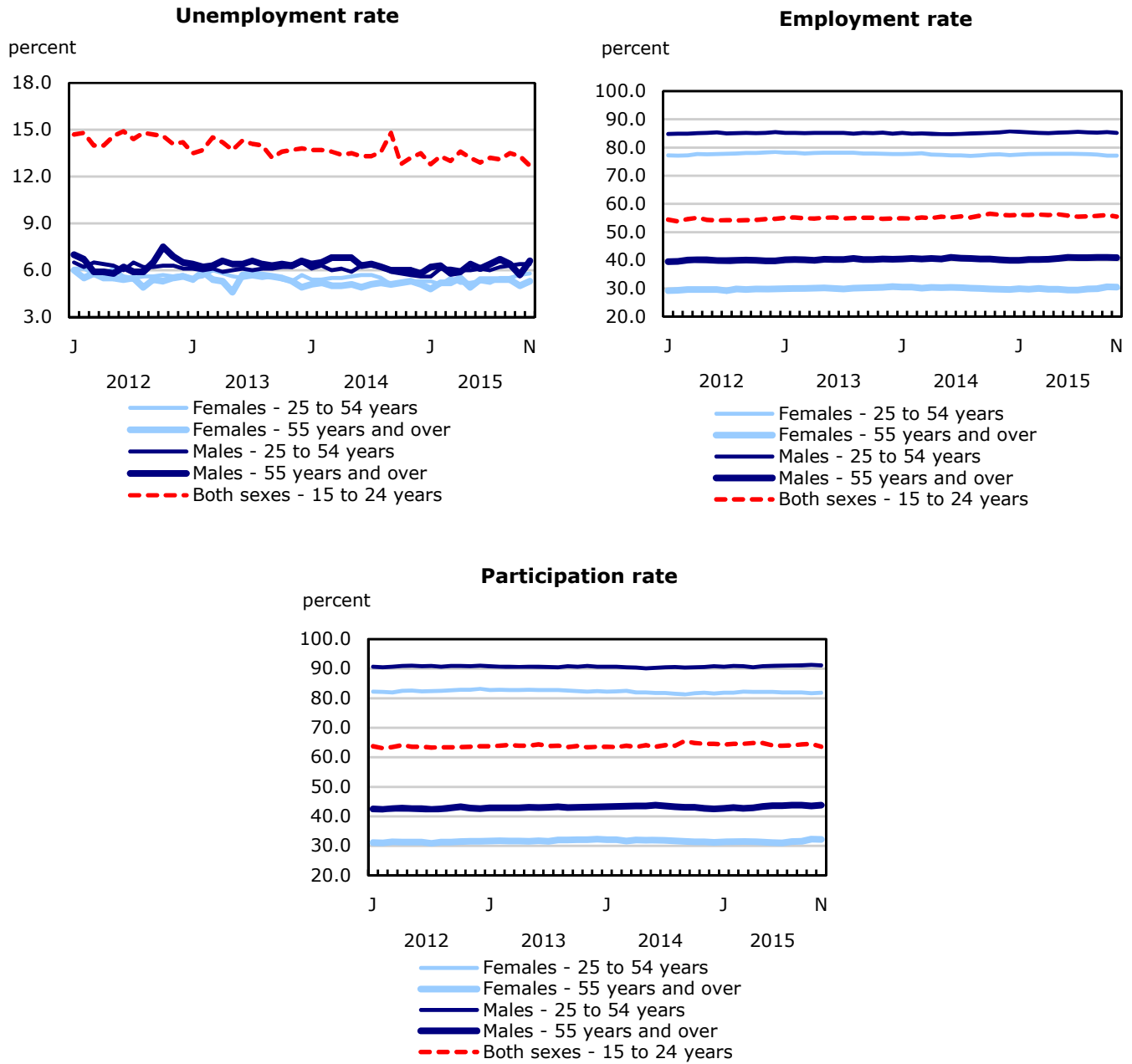


Chart 4
Employment indexes by industry, Canada, seasonally adjusted

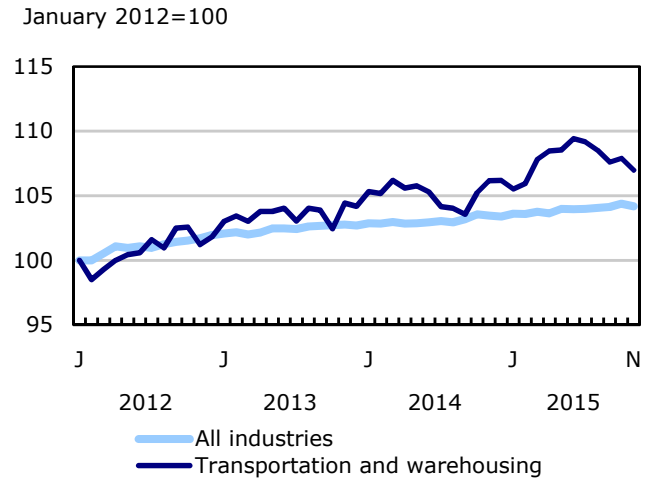
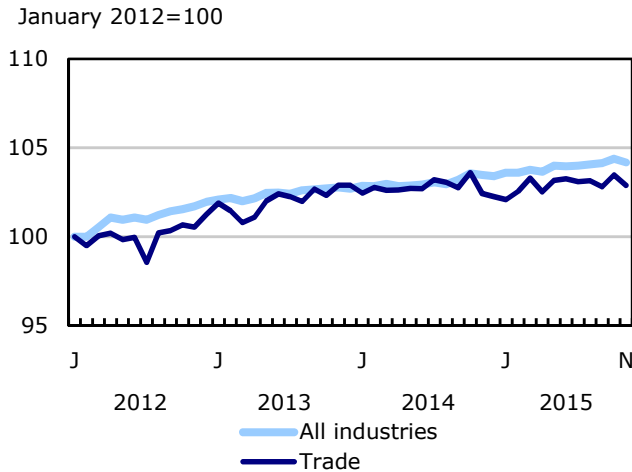
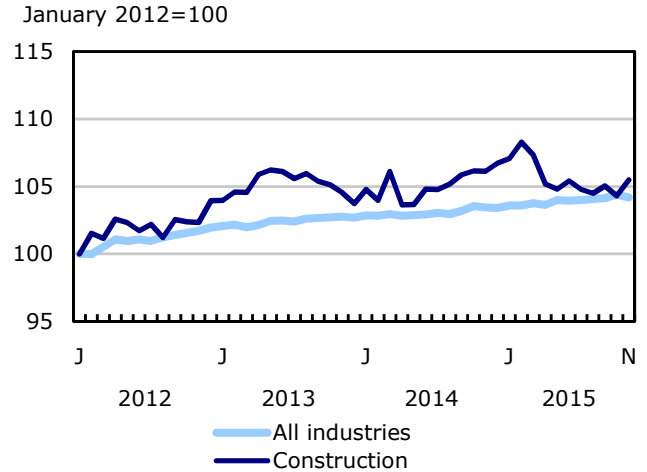
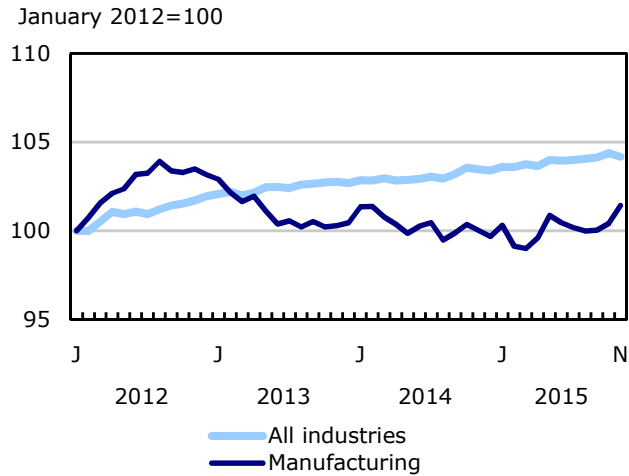
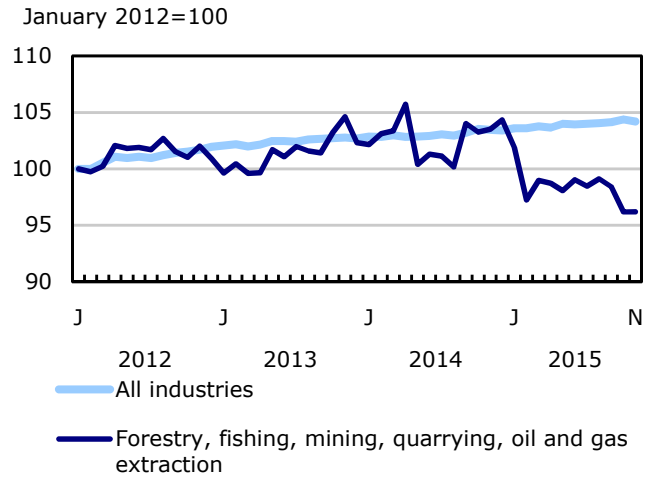
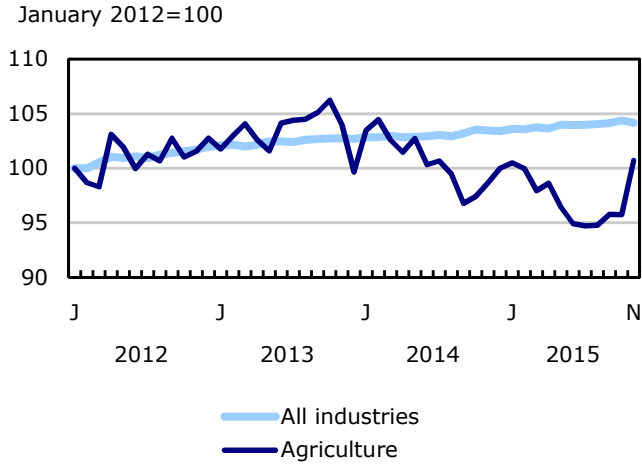


Chart 5
Employment indexes by industry, Canada, seasonally adjusted

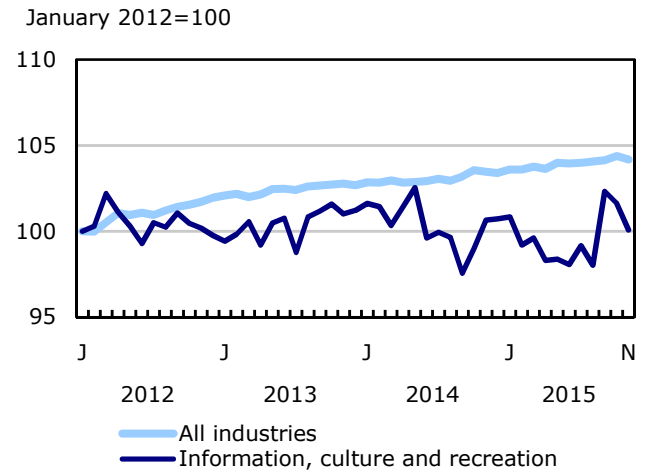
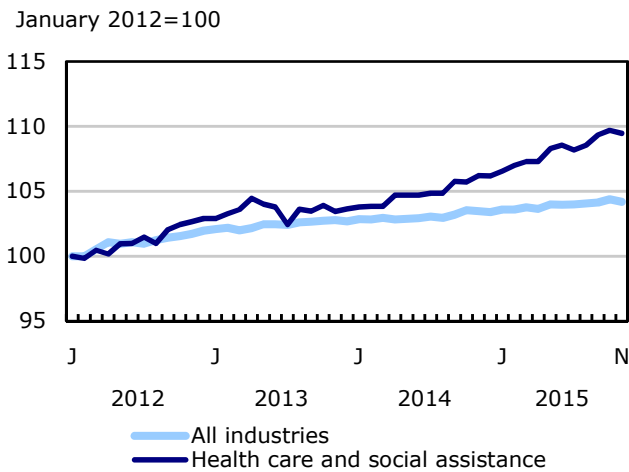
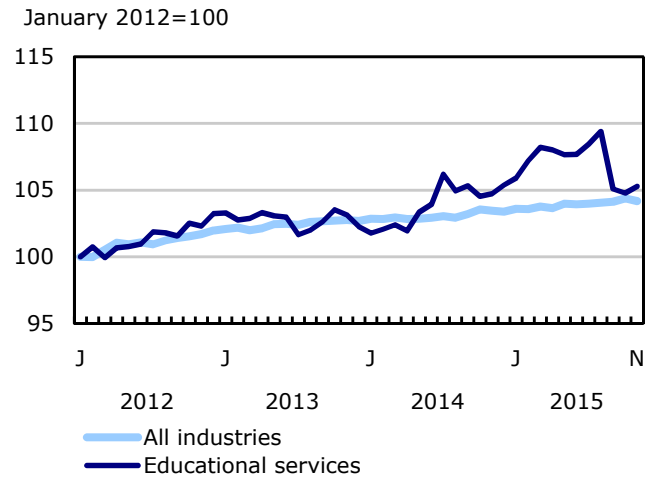
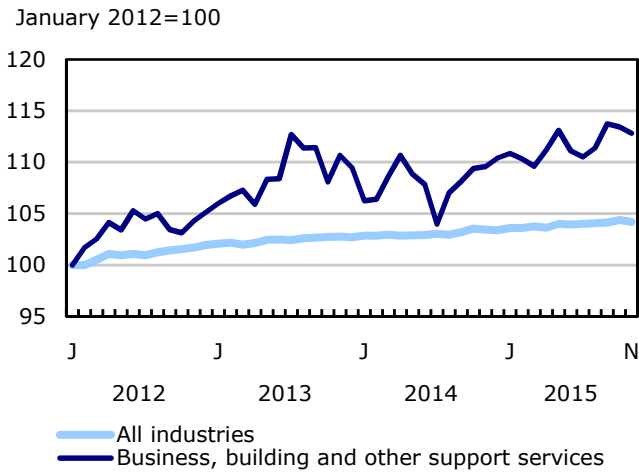
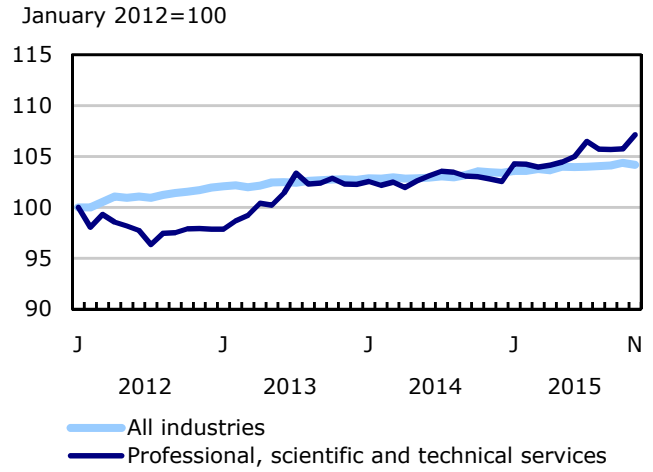
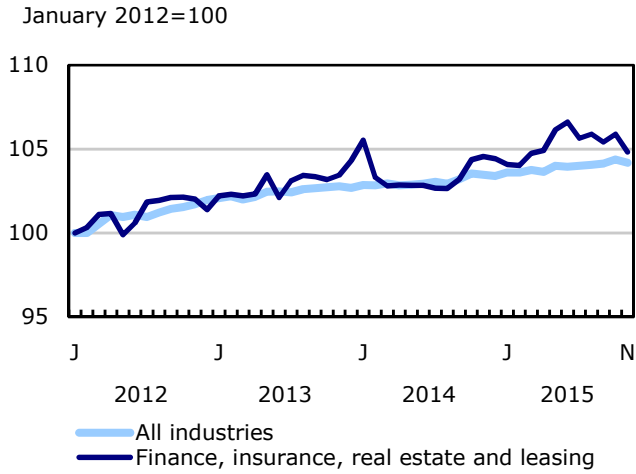


Chart 6
Employment indexes by industry, Canada, seasonally adjusted

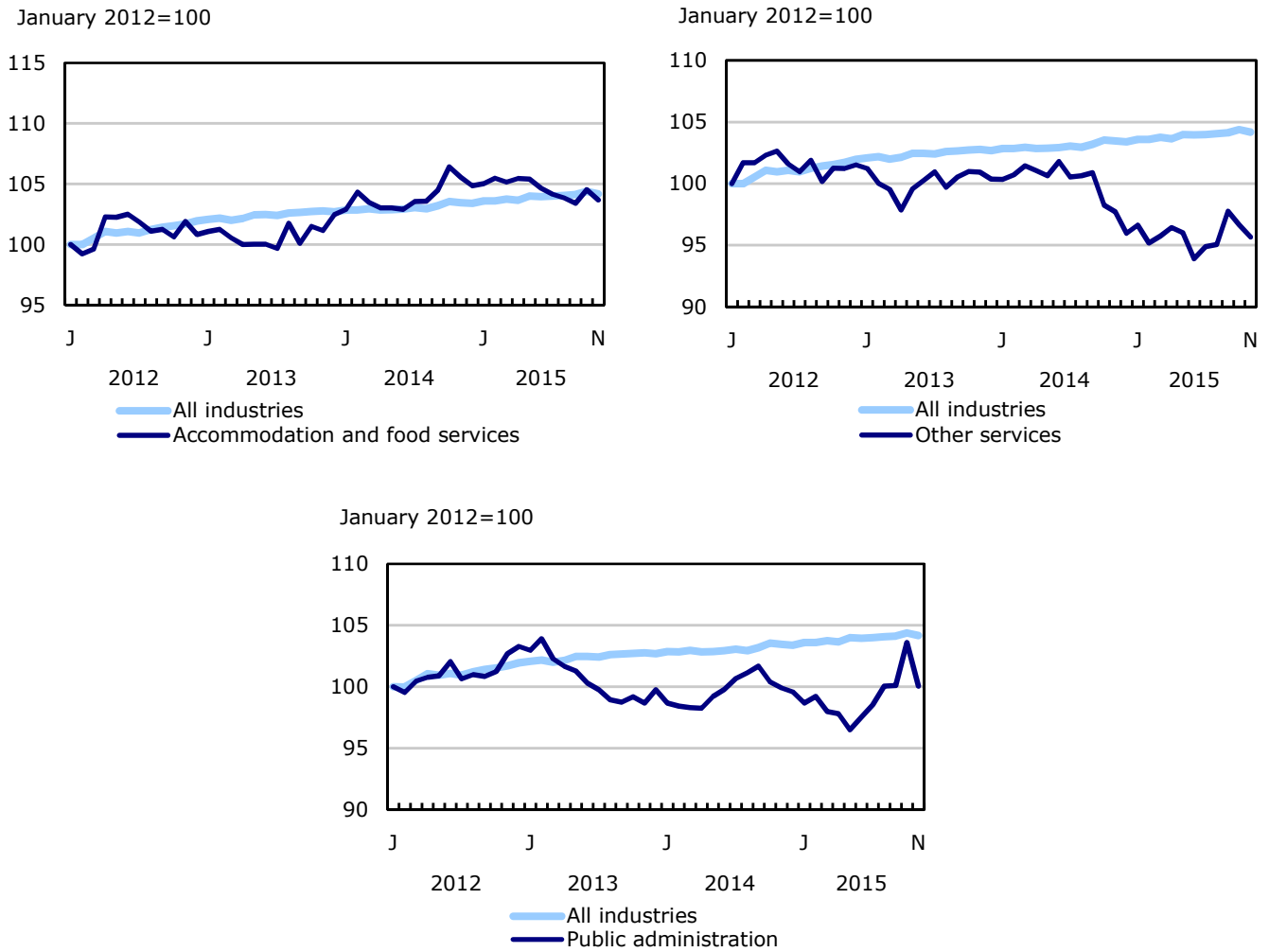


Chart 7
Employment indexes by province, Canada, seasonally adjusted

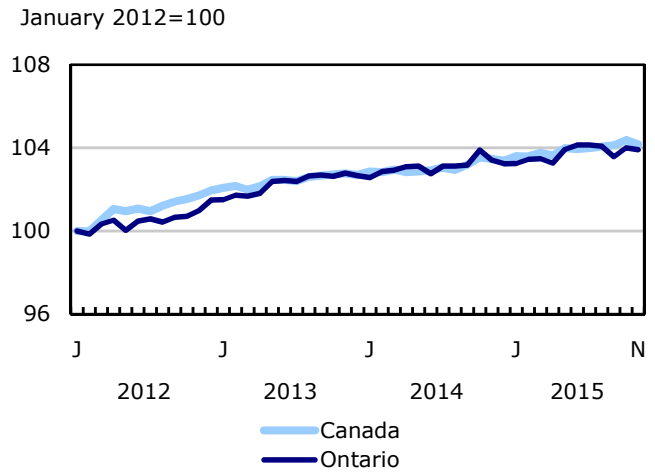
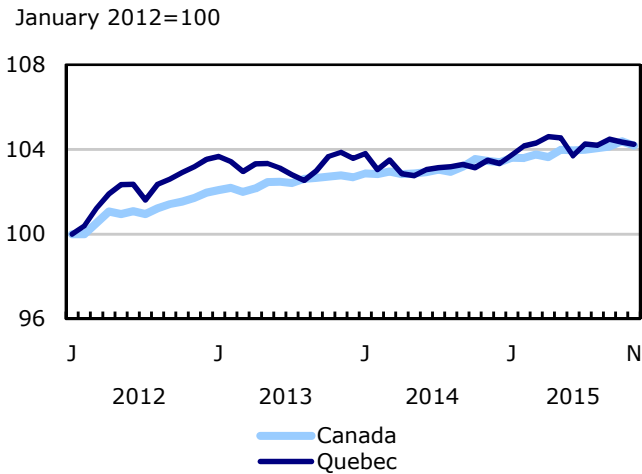
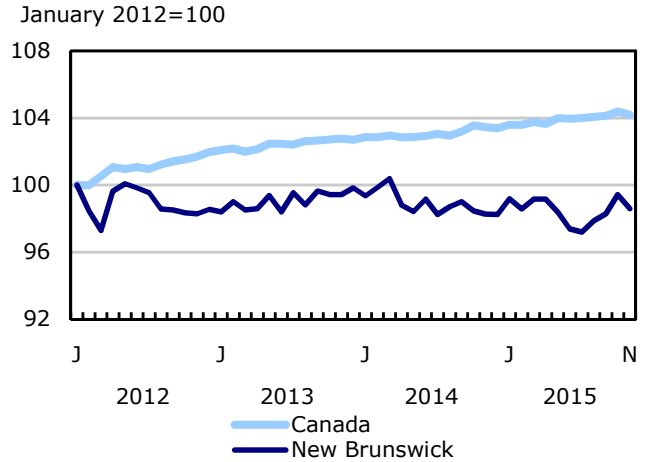
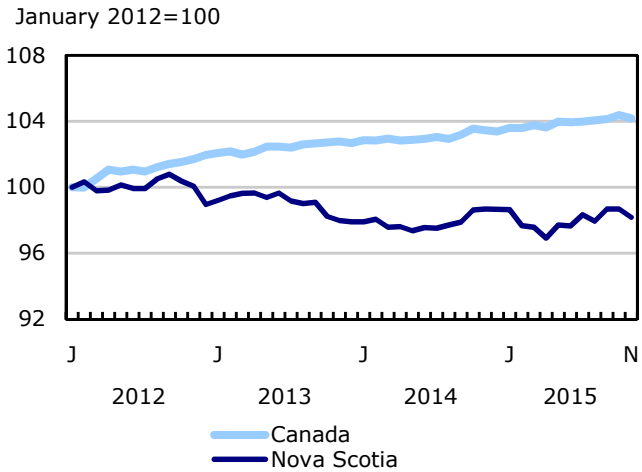
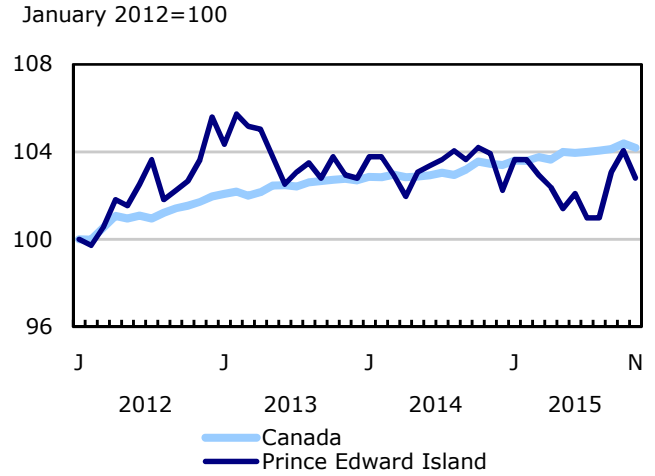
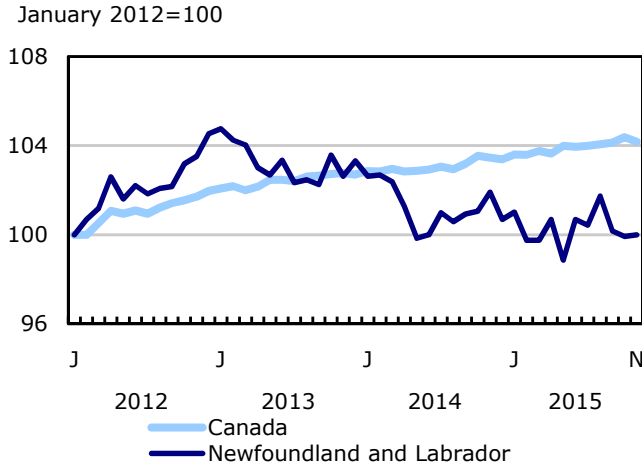
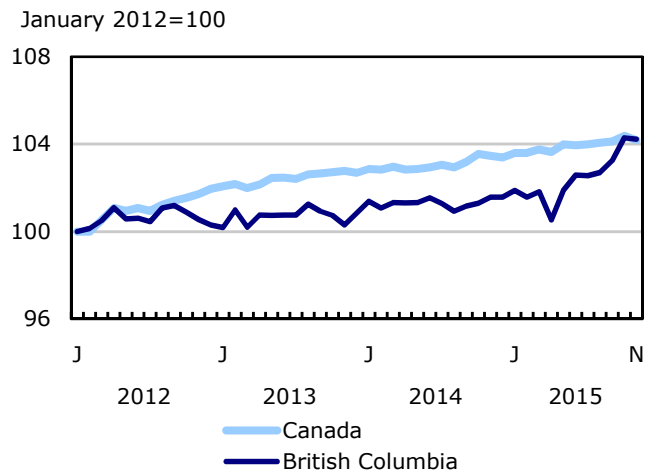
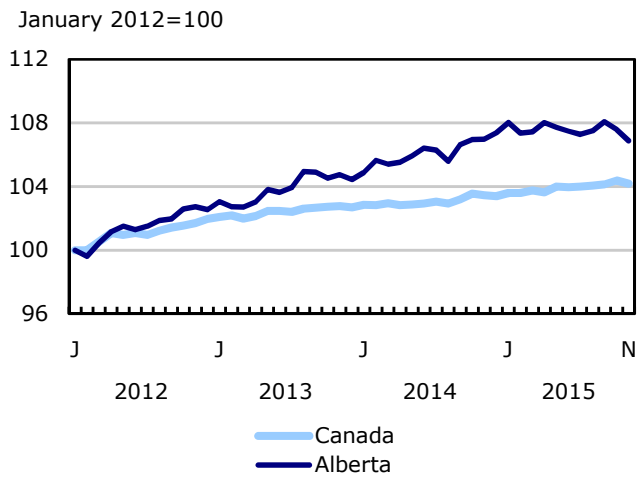
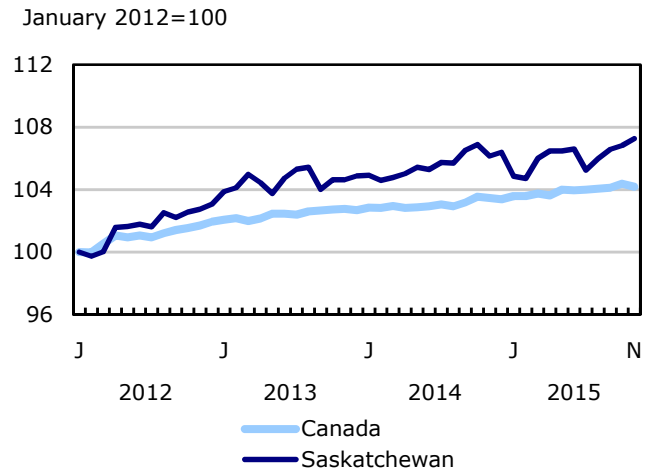
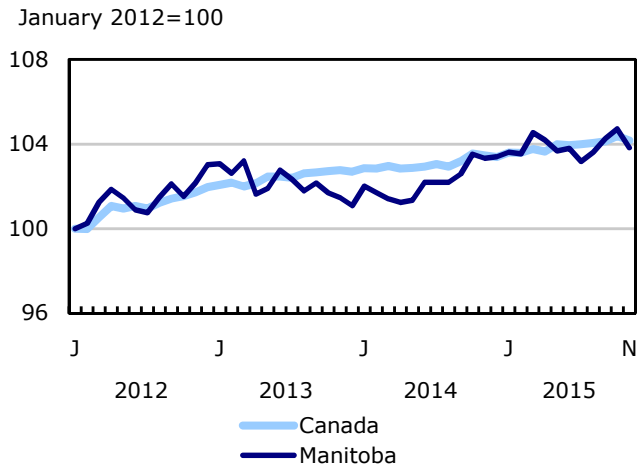


Chart 8
Employment indexes by province, Canada, seasonally adjusted



Related products

Selected publications from Statistics Canada

71-526-X	Methodology of the Canadian Labour Force Survey
71-543-G	Guide to the Labour Force Survey
71-587-X	Aboriginal Peoples Living Off-reserve in Western Canada: Estimates from the Labour Force Survey
71-588-X	The Aboriginal Labour Force Analysis Series
71-606-X	The Immigrant Labour Force Analysis Series
71F0031X	Improvements to the Labour Force Survey (LFS)
71M0001X	Labour Force Survey Microdata File

Selected CANSIM tables from Statistics Canada

279-0029	Work absence statistics of full-time employees, for Canada, provinces and census metropolitan areas (CMA), and by sex, annual
279-0030	Work absence statistics of full-time employees, by sex and North American Industry Classification System (NAICS), Canada, annual
279-0031	Work absence statistics of full-time employees, by sex and National Occupational Classification for Statistics (NOC-S), Canada, annual
279-0032	Work absence statistics of full-time employees, by sex and age group, Canada, annual
279-0033	Work absence statistics of full-time employees, by sex and presence of children, Canada, annual
279-0034	Work absence statistics of full-time employees, by sex and job tenure, Canada, annual
279-0035	Work absence statistics of full-time employees, by sex and public and private sector, Canada, annual
279-0036	Work absence statistics of full-time employees, by sex and education, Canada, annual
279-0037	Work absence statistics of full-time employees, by sex and workplace size, Canada, annual
279-0038	Work absence statistics of full-time employees, by sex and job status, Canada, annual
279-0039	Work absence statistics of full-time employees, by sex and union coverage, Canada, annual

282-0001	Labour force survey estimates (LFS), by sex and detailed age group, unadjusted for seasonality, monthly
282-0002	Labour force survey estimates (LFS), by sex and detailed age group, annual
282-0003	Labour force survey estimates (LFS), by educational attainment, sex and age group, unadjusted for seasonality, monthly
282-0004	Labour force survey estimates (LFS), by educational attainment, sex and age group, annual
282-0005	Labour force survey estimates (LFS), by full- and part-time students during school months, sex and age group, unadjusted for seasonality, monthly
282-0006	Labour force survey estimates (LFS), by students during summer months, sex and age group, unadjusted for seasonality, monthly
282-0007	Labour force survey estimates (LFS), by North American Industry Classification System (NAICS), sex and age group, unadjusted for seasonality, monthly
282-0008	Labour force survey estimates (LFS), by North American Industry Classification System (NAICS), sex and age group, annual
282-0009	Labour force survey estimates (LFS), by National Occupational Classification for Statistics (NOC-S) and sex, unadjusted for seasonality, monthly
282-0010	Labour force survey estimates (LFS), by National Occupational Classification for Statistics (NOC-S) and sex, annual
282-0011	Labour force survey estimates (LFS), employment by class of worker, North American Industry Classification System (NAICS) and sex, unadjusted for seasonality, monthly
282-0012	Labour force survey estimates (LFS), employment by class of worker, North American Industry Classification System (NAICS) and sex, annual
282-0013	Labour force survey estimates (LFS), part-time employment by reason for part-time work, sex and age group, unadjusted for seasonality, monthly
282-0014	Labour force survey estimates (LFS), part-time employment by reason for part-time work, sex and age group, annual
282-0015	Labour force survey estimates (LFS), by usual hours worked, main or all jobs, sex and age group, unadjusted for seasonality, monthly
282-0016	Labour force survey estimates (LFS), by usual hours worked, main or all jobs, sex and age group, annual
282-0017	Labour force survey estimates (LFS), by actual hours worked, main or all jobs, sex and age group, unadjusted for seasonality, monthly
282-0018	Labour force survey estimates (LFS), by actual hours worked, main or all jobs, sex and age group, annual
282-0019	Labour force survey estimates (LFS), by usual hours worked, class of worker, North American Industry Classification System (NAICS) and sex, unadjusted for seasonality, monthly

282-0020	Labour force survey estimates (LFS), by usual hours worked, class of worker, North American Industry Classification System (NAICS) and sex, annual
282-0021	Labour force survey estimates (LFS), by actual hours worked, class of worker, North American Industry Classification System (NAICS) and sex, unadjusted for seasonality, monthly
282-0022	Labour force survey estimates (LFS), by actual hours worked, class of worker, North American Industry Classification System (NAICS) and sex, annual
282-0023	Labour force survey estimates (LFS), by usual hours worked, class of worker, National Occupational Classification for Statistics (NOC-S) and sex, unadjusted for seasonality, monthly
282-0024	Labour force survey estimates (LFS), by usual hours worked, class of worker, National Occupational Classification for Statistics (NOC-S) and sex, annual
282-0025	Labour force survey estimates (LFS), by actual hours worked, class of worker, National Occupational Classification for Statistics (NOC-S) and sex, unadjusted for seasonality, monthly
282-0026	Labour force survey estimates (LFS), by actual hours worked, class of worker, National Occupational Classification for Statistics (NOC-S) and sex, annual
282-0027	Labour force survey estimates (LFS), by total and average usual and actual hours worked, main or all jobs, type of work, sex and age group, unadjusted for seasonality, monthly
282-0028	Labour force survey estimates (LFS), by total and average usual and actual hours worked, main or all jobs, type of work, sex and age group, annual
282-0031	Labour force survey estimates (LFS), multiple jobholders by North American Industry Classification System (NAICS), sex and age group, annual
282-0032	Labour force survey estimates (LFS), multiple jobholders by North American Industry Classification System (NAICS), sex and age group, unadjusted for seasonality, monthly
282-0033	Labour force survey estimates (LFS), multiple jobholders by National Occupational Classification for Statistics (NOC-S), sex and age group, unadjusted for seasonality, monthly
282-0034	Labour force survey estimates (LFS), multiple jobholders by National Occupational Classification for Statistics (NOC-S), sex and age group, annual
282-0035	Labour force survey estimates (LFS), multiple jobholders by usual hours worked at main and all jobs, unadjusted for seasonality, monthly
282-0036	Labour force survey estimates (LFS), multiple jobholders by usual hours worked at main and all jobs, annual
282-0037	Labour force survey estimates (LFS), job tenure by type of work, sex and age group, unadjusted for seasonality, monthly
282-0038	Labour force survey estimates (LFS), job tenure by type of work, sex and age group, annual
282-0039	Labour force survey estimates (LFS), job tenure by National Occupational Classification for Statistics (NOC-S) and sex, unadjusted for seasonality, monthly
282-0040	Labour force survey estimates (LFS), job tenure by National Occupational Classification for Statistics (NOC-S) and sex, annual

282-0041	Labour force survey estimates (LFS), job tenure by North American Industry Classification System (NAICS) and sex, unadjusted for seasonality, monthly
282-0042	Labour force survey estimates (LFS), job tenure by North American Industry Classification System (NAICS) and sex, annual
282-0047	Labour force survey estimates (LFS), duration of unemployment by sex and age group, unadjusted for seasonality, monthly
282-0048	Labour force survey estimates (LFS), duration of unemployment by sex and age group, annual
282-0049	Labour force survey estimates (LFS), unemployment by type of work sought and search method, sex and age group, unadjusted for seasonality, monthly
282-0050	Labour force survey estimates (LFS), unemployment by type of work sought and search method, sex and age group, annual
282-0051	Labour force survey estimates (LFS), retirement age by class of worker and sex, annual
282-0069	Labour force survey estimates (LFS), wages of employees by type of work, National Occupational Classification for Statistics (NOC-S), sex and age group, unadjusted for seasonality, monthly
282-0070	Labour force survey estimates (LFS), wages of employees by type of work, National Occupational Classification for Statistics (NOC-S), sex and age group, annual
282-0071	Labour force survey estimates (LFS), wages of employees by type of work, North American Industry Classification System (NAICS), sex and age group, unadjusted for seasonality, monthly
282-0072	Labour force survey estimates (LFS), wages of employees by type of work, North American Industry Classification System (NAICS), sex and age group, annual
282-0073	Labour force survey estimates (LFS), wages of employees by job permanence, union coverage, sex and age group, unadjusted for seasonality, monthly
282-0074	Labour force survey estimates (LFS), wages of employees by job permanence, union coverage, sex and age group, annual
282-0075	Labour force survey estimates (LFS), employees by establishment size, North American Industry Classification System (NAICS), sex and age group, unadjusted for seasonality, monthly
282-0076	Labour force survey estimates (LFS), employees by establishment size, North American Industry Classification System (NAICS), sex and age group, annual
282-0077	Labour force survey estimates (LFS), employees by union coverage, North American Industry Classification System (NAICS), sex and age group, unadjusted for seasonality, monthly
282-0078	Labour force survey estimates (LFS), employees by union coverage, North American Industry Classification System (NAICS), sex and age group, annual
282-0079	Labour force survey estimates (LFS), employees by job permanency, North American Industry Classification System (NAICS), sex and age group, unadjusted for seasonality, monthly
282-0080	Labour force survey estimates (LFS), employees by job permanency, North American Industry Classification System (NAICS), sex and age group, annual

282-0081	Labour force survey estimates (LFS), employees working overtime (weekly) by National Occupational Classification for Statistics (NOC-S), sex and age group, unadjusted for seasonality, monthly
282-0082	Labour force survey estimates (LFS), employees working overtime (weekly) by National Occupational Classification for Statistics (NOC-S), sex and age group, annual
282-0083	Labour force survey estimates (LFS), employees working overtime (weekly) by North American Industry Classification System (NAICS), sex and age group, unadjusted for seasonality, monthly
282-0084	Labour force survey estimates (LFS), employees working overtime (weekly) by North American Industry Classification System (NAICS), sex and age group, annual
282-0085	Labour force survey estimates (LFS), supplementary unemployment rates by sex and age group, unadjusted for seasonality, monthly
282-0086	Labour force survey estimates (LFS), supplementary unemployment rates by sex and age group, annual
282-0087	Labour force survey estimates (LFS), by sex and age group, seasonally adjusted and unadjusted, monthly
282-0088	Labour force survey estimates (LFS), employment by North American Industry Classification System (NAICS), seasonally adjusted and unadjusted, monthly
282-0089	Labour force survey estimates (LFS), employment by class of worker and sex, seasonally adjusted and unadjusted, monthly
282-0092	Labour force survey estimates (LFS), actual hours worked at main job by North American Industry Classification System (NAICS), seasonally adjusted, monthly
282-0093	Labour force survey estimates (LFS), employment by National Occupational Classification for Statistics (NOC-S), seasonally adjusted, monthly
282-0094	Labour force survey estimates (LFS), by North American Industry Classification System (NAICS), Canada, seasonally adjusted, monthly
282-0095	Labour force survey estimates (LFS), by full- and part-time students during school months, sex and age group, annual
282-0100	Labour force survey estimates (LFS), by territories, sex and age group, 3-month moving average, seasonally adjusted and unadjusted, monthly
282-0101	Labour force survey estimates (LFS), by immigrant status, age group, Canada, regions, provinces and Montreal, Toronto, Vancouver census metropolitan areas, 3-month moving average, unadjusted for seasonality, monthly
282-0102	Labour force survey estimates (LFS), by immigrant status, age group, Canada, regions, provinces and Montreal, Toronto, Vancouver census metropolitan areas, annual
282-0103	Labour force survey estimates (LFS), by immigrant status, sex and detailed age group, Canada, 3-month moving average, unadjusted for seasonality, monthly
282-0104	Labour force survey estimates (LFS), by immigrant status, sex and detailed age group, Canada, annual

282-0105	Labour force survey estimates (LFS), by immigrant status, educational attainment, sex and age group, Canada, 3-month moving average, unadjusted for seasonality, monthly
282-0106	Labour force survey estimates (LFS), by immigrant status, educational attainment, sex and age group, Canada, annual
282-0107	Labour force survey estimates (LFS), by immigrant status, country of birth, sex and age group, Canada, 3-month moving average, unadjusted for seasonality, monthly
282-0108	Labour force survey estimates (LFS), by immigrant status, country of birth, sex and age group, Canada, annual
282-0122	Labour force survey estimates (LFS), by provinces and economic regions based on 2011 Census boundaries, 3-month moving average, unadjusted for seasonality, monthly
282-0123	Labour force survey estimates (LFS), by provinces, territories and economic regions based on 2011 Census boundaries, annual
282-0124	Labour force survey estimates (LFS), employment by economic region based on 2011 Census boundaries and North American Industry Classification System (NAICS), 3-month moving average, unadjusted for seasonality, monthly
282-0125	Labour force survey estimates (LFS), employment by economic region based on 2011 Census boundaries and North American Industry Classification System (NAICS), annual
282-0126	Labour force survey estimates (LFS), employment by economic region based on 2011 Census boundaries and National Occupational Classification for Statistics (NOC-S), 3-month moving average, unadjusted for seasonality, monthly
282-0127	Labour force survey estimates (LFS), employment by economic region based on 2011 Census boundaries and National Occupational Classification for Statistics (NOC-S), annual
282-0128	Labour force survey estimates (LFS), by census metropolitan area based on 2011 Census boundaries, sex and age group, 3-month moving average, unadjusted for seasonality, monthly
282-0129	Labour force survey estimates (LFS), by census metropolitan area based on 2011 Census boundaries, sex and age group, annual
282-0130	Labour force survey estimates (LFS), employment by census metropolitan area based on 2011 Census boundaries and North American Industry Classification System (NAICS), 3-month moving average, unadjusted for seasonality, monthly
282-0131	Labour force survey estimates (LFS), employment by census metropolitan area based on 2011 Census boundaries and North American Industry Classification System (NAICS), annual
282-0132	Labour force survey estimates (LFS), employment by census metropolitan area based on 2011 Census boundaries and National Occupational Classification for Statistics (NOC-S), 3-month moving average, unadjusted for seasonality, monthly
282-0133	Labour force survey estimates (LFS), employment by census metropolitan area based on 2011 Census boundaries and National Occupational Classification for Statistics (NOC-S), annual

282-0134	Labour force survey estimates (LFS), by selected census agglomerations based on 2011 Census boundaries, annual
282-0135	Labour force survey estimates (LFS), by census metropolitan area based on 2011 Census boundaries, 3-month moving average, seasonally adjusted and unadjusted, monthly
282-0136	Labour force survey estimates (LFS), by Montréal, Toronto and Vancouver census metropolitan areas based on 2011 Census boundaries, seasonally adjusted and unadjusted, monthly
282-0137	Labour force survey estimates (LFS), by population centres and rural areas based on 2011 Census boundaries, sex and age group, unadjusted for seasonality, monthly
282-0138	Labour force survey estimates (LFS), by population centres and rural areas based on 2011 Census boundaries, sex and age group, annual
282-0139	Labour force survey estimates (LFS), employment by population centres and rural areas based on 2011 Census boundaries, class of worker and North American Industry Classification System (NAICS), unadjusted for seasonality, monthly
282-0140	Labour force survey estimates (LFS), employment by population centres and rural areas based on 2011 Census boundaries, class of worker and North American Industry Classification System (NAICS), annual
282-0200	Labour force survey estimates (LFS), weekly wage distributions of employees by type of work, North American Industry Classification System (NAICS), and sex, unadjusted for seasonality, monthly
282-0201	Labour force survey estimates (LFS), weekly wage distributions of employees by type of work, North American Industry Classification System (NAICS), and sex, annual
282-0202	Labour force survey estimates (LFS), weekly wage distributions of employees by type of work, National Occupational Classification for Statistics (NOC-S), and sex, unadjusted for seasonality, monthly
282-0203	Labour force survey estimates (LFS), weekly wage distributions of employees by type of work, National Occupational Classification for Statistics (NOC-S), and sex, annual
282-0204	Labour force survey estimates (LFS), hourly wage distributions of employees by type of work, North American Industry Classification System (NAICS), and sex, unadjusted for seasonality, monthly
282-0205	Labour force survey estimates (LFS), hourly wage distributions of employees by type of work, North American Industry Classification System (NAICS), and sex, annual
282-0206	Labour force survey estimates (LFS), hourly wage distribution of employees by type of work, National Occupational Classification for Statistics (NOC-S), and sex, unadjusted for seasonality, monthly
282-0207	Labour force survey estimates (LFS), hourly wage distribution of employees by type of work, National Occupational Classification for Statistics (NOC-S), and sex, annual
282-0208	Labour force survey estimates (LFS), by educational degree, sex and age group, unadjusted for seasonality, monthly
282-0209	Labour force survey estimates (LFS), by educational degree, sex and age group, annual

282-0210	Labour force survey estimates (LFS), by family type and family age composition, unadjusted for seasonality, monthly
282-0211	Labour force survey estimates (LFS), by family type and family age composition, annual
282-0212	Labour force survey estimates (LFS), hours lost by employees by reason absent full and part week and sex, unadjusted for seasonality, monthly
282-0213	Labour force survey estimates (LFS), hours lost by employees by reason absent full and part week and sex, annual
282-0214	Labour force survey estimates (LFS), activity prior to unemployment by sex and age group, unadjusted for seasonality, monthly
282-0215	Labour force survey estimates (LFS), activity prior to unemployment, by sex and age group, annual
282-0216	Labour force survey estimates (LFS), reason for leaving job during previous year by sex and age group, unadjusted for seasonality, monthly
282-0217	Labour force survey estimates (LFS), reason for leaving job during previous year by sex and age group, annual
282-0218	Labour force survey estimates (LFS), reason for not looking for work, by sex and age group, unadjusted for seasonality, monthly
282-0219	Labour force survey estimates (LFS), reason for not looking for work, by sex and age group, annual
282-0220	Labour Force Survey estimates (LFS), employees by union status, sex and age group, Canada and provinces, annual
282-0221	Labour Force Survey estimates (LFS), employees by union status, sex, age group and education level, Canada, annual
282-0222	Labour Force Survey estimates (LFS), employees by union status and National Occupational Classification (NOC-S), Canada, annual
282-0223	Labour Force Survey estimates (LFS), employees by union status, North American Industry Classification System (NAICS) and sex, Canada, annual
282-0224	Labour Force Survey estimates (LFS), employees by union status, establishment size, job tenure, type of work and job permanency, Canada, annual
282-0225	Labour Force Survey estimates (LFS), average weekly earnings, average hourly wage rate and average usual weekly hours by union status and type of work, Canada and provinces, annual
282-0226	Labour force survey estimates (LFS), by Aboriginal group, sex and age group, Canada, selected provinces and regions, annual (Persons), 2007 to 2014
282-0227	Labour force survey estimates (LFS), by detailed Aboriginal group, sex and age group, Canada and selected regions, annual (Persons), 2007 to 2014
282-0228	Labour force survey estimates (LFS), by Aboriginal group, educational attainment and age group, Canada and selected regions, annual (Persons), 2007 to 2014

282-0229	Labour force survey estimates (LFS), employment by Aboriginal group, North American Industry Classification System (NAICS), sex and age group, annual (Persons), 2007 to 2014
282-0230	Labour force survey estimates (LFS), employment by Aboriginal group, North American Industry Classification System (NAICS) and age group, Canada and selected regions, annual (Persons), 2007 to 2014
282-0231	Labour force survey estimates (LFS), employment by Aboriginal group, National Occupational Classification for Statistics (NOC-S), sex and age group, annual (Persons), 2007 to 2014
282-0232	Labour force survey estimates (LFS), employment by Aboriginal group, National Occupational Classification for Statistics (NOC-S) and age group, Canada, selected provinces and regions, annual (Persons), 2007 to 2014
282-0233	Labour force survey estimates (LFS), average hourly and weekly wages and average usual weekly hours by Aboriginal group and age group, Canada, selected provinces and regions, annual (Number), 2007 to 2014

Selected surveys from Statistics Canada

3701	Labour Force Survey
------	---------------------

Selected summary tables from Statistics Canada

- *Average hourly wages of employees by selected characteristics and occupation, unadjusted data, by province (monthly)*
- *Days lost per worker by industry and sex*
- *People employed, by educational attainment*
- *Reasons for part-time work by sex and age group*
- *Self-employment, historical summary*
- *Employment by age, sex, type of work, class of worker and province (monthly)*
- *Actual hours worked per week by industry, seasonally adjusted (monthly)*
- *Labour force characteristics, unadjusted, by territory (3 month moving average)*
- *Employment by industry and sex*
- *Full-time and part-time employment by sex and age group*
- *Labour force characteristics by age and sex*
- *Labour force characteristics by immigrant status of population aged 25 to 54, and by educational attainment*

- *Labour force characteristics by immigrant status, by detailed age group*
- *Labour force characteristics by immigrant status of population aged 25 to 54, by country of birth*
- *Days lost per worker due to illness or disability, by sex, by province*
- *Employment by industry*
- *Labour force characteristics, seasonally adjusted, by province (monthly)*
- *Labour force characteristics, unadjusted, by province (monthly)*
- *Labour force, employment and unemployment, levels and rates, by province*
- *Economic indicators, by province and territory (monthly and quarterly)*
- *Days lost per worker by reason, by provinces*
- *Labour force characteristics, seasonally adjusted, by census metropolitan area (3 month moving average)*
- *Labour force characteristics, unadjusted, by economic region (3 month moving average)*
- *Distribution of employed people, by industry, by province*
- *Employment by major industry group, seasonally adjusted, by province (monthly)*
- *Labour force characteristics*
- *Labour force characteristics, unadjusted, by census metropolitan area (3 month moving average)*
- *Labour force characteristics, population 15 years and older, by census metropolitan area*
- *Labour force characteristics, population 15 years and older, by economic region, by province*
- *Canada: Economic and financial data*
- *Labour force characteristics by sex and age group*
- *Labour force characteristics by immigrant status of population aged 25 to 54, by province*
- *Latest statistics (monthly)*

Statistical tables

Table 1
Labour force characteristics by age and sex, Canada, seasonally adjusted

	October 2015	November 2015	S.E. ¹	Change from			Percent change from		
				last month	last December	twelve months ago	last month	last December	twelve months ago
in thousands (except rates)									
15 years and over, both sexes									
Population	29,377.5	29,401.2	...	23.7	284.6	308.8	0.1	1.0	1.1
Labour force	19,374.8	19,351.7	29.2	-23.1	224.0	209.7	-0.1	1.2	1.1
Employment	18,022.5	17,986.8	29.1	-35.7	135.3	124.0	-0.2	0.8	0.7
Employment full-time	14,586.8	14,623.4	41.8	36.6	157.4	192.4	0.3	1.1	1.3
Employment part-time	3,435.7	3,363.4	38.4	-72.3	-22.1	-68.4	-2.1	-0.7	-2.0
Unemployment	1,352.3	1,364.8	24.9	12.5	88.6	85.6	0.9	6.9	6.7
Participation rate	66.0	65.8	0.1	-0.2	0.1	0.0
Unemployment rate	7.0	7.1	0.1	0.1	0.4	0.4
Employment rate	61.3	61.2	0.1	-0.1	-0.1	-0.2
Part-time rate	19.1	18.7	0.2	-0.4	-0.3	-0.5
15 to 24 years, both sexes									
Population	4,420.6	4,416.6	...	-4.0	-38.4	-40.8	-0.1	-0.9	-0.9
Labour force	2,856.3	2,810.5	17.1	-45.8	-65.3	-67.1	-1.6	-2.3	-2.3
Employment	2,476.5	2,452.9	16.0	-23.6	-36.0	-46.0	-1.0	-1.4	-1.8
Employment full-time	1,286.1	1,295.2	19.8	9.1	5.7	33.7	0.7	0.4	2.7
Employment part-time	1,190.3	1,157.6	20.9	-32.7	-41.7	-79.8	-2.7	-3.5	-6.4
Unemployment	379.9	357.6	14.8	-22.3	-29.4	-21.2	-5.9	-7.6	-5.6
Participation rate	64.6	63.6	0.4	-1.0	-1.0	-1.0
Unemployment rate	13.3	12.7	0.5	-0.6	-0.8	-0.5
Employment rate	56.0	55.5	0.4	-0.5	-0.4	-0.6
Part-time rate	48.1	47.2	0.8	-0.9	-1.0	-2.3
25 years and over, men									
Population	12,208.5	12,221.8	...	13.3	160.2	173.1	0.1	1.3	1.4
Labour force	8,783.5	8,790.6	15.8	7.1	158.9	168.9	0.1	1.8	2.0
Employment	8,237.6	8,223.0	16.9	-14.6	79.5	99.7	-0.2	1.0	1.2
Employment full-time	7,570.9	7,567.9	23.1	-3.0	65.7	69.7	0.0	0.9	0.9
Employment part-time	666.7	655.1	18.9	-11.6	13.8	30.0	-1.7	2.2	4.8
Unemployment	545.9	567.6	14.8	21.7	79.4	69.2	4.0	16.3	13.9
Participation rate	71.9	71.9	0.1	0.0	0.3	0.3
Unemployment rate	6.2	6.5	0.2	0.3	0.8	0.7
Employment rate	67.5	67.3	0.1	-0.2	-0.2	-0.1
Part-time rate	8.1	8.0	0.2	-0.1	0.1	0.3
25 years and over, women									
Population	12,748.3	12,762.7	...	14.4	162.8	176.3	0.1	1.3	1.4
Labour force	7,734.9	7,750.6	16.4	15.7	130.4	108.0	0.2	1.7	1.4
Employment	7,308.4	7,311.0	16.4	2.6	91.8	70.4	0.0	1.3	1.0
Employment full-time	5,729.7	5,760.3	27.4	30.6	86.1	89.0	0.5	1.5	1.6
Employment part-time	1,578.7	1,550.7	25.9	-28.0	5.8	-18.6	-1.8	0.4	-1.2
Unemployment	426.5	439.6	13.1	13.1	38.6	37.5	3.1	9.6	9.3
Participation rate	60.7	60.7	0.1	0.0	0.2	0.0
Unemployment rate	5.5	5.7	0.2	0.2	0.4	0.4
Employment rate	57.3	57.3	0.1	0.0	0.0	-0.2
Part-time rate	21.6	21.2	0.3	-0.4	-0.2	-0.5
25 to 54 years, both sexes									
Population	14,601.7	14,605.3	...	3.6	35.9	38.6	0.0	0.2	0.3
Labour force	12,623.6	12,626.7	23.8	3.1	64.8	66.8	0.0	0.5	0.5
Employment	11,862.3	11,856.2	25.7	-6.1	-20.1	-13.4	-0.1	-0.2	-0.1
Unemployment	761.4	770.5	18.5	9.1	84.9	80.2	1.2	12.4	11.6
Participation rate	86.5	86.5	0.2	0.0	0.3	0.3
Unemployment rate	6.0	6.1	0.1	0.1	0.6	0.6
Employment rate	81.2	81.2	0.2	0.0	-0.3	-0.3
25 to 54 years, men									
Population	7,271.7	7,273.2	...	1.5	16.8	17.9	0.0	0.2	0.2
Labour force	6,637.2	6,624.5	15.5	-12.7	33.1	51.5	-0.2	0.5	0.8
Employment	6,214.5	6,200.4	17.3	-14.1	-21.8	2.7	-0.2	-0.4	0.0
Unemployment	422.7	424.2	13.6	1.5	55.0	48.9	0.4	14.9	13.0
Participation rate	91.3	91.1	0.2	-0.2	0.3	0.5
Unemployment rate	6.4	6.4	0.2	0.0	0.8	0.7
Employment rate	85.5	85.2	0.2	-0.3	-0.5	-0.2

See notes at the end of the table.

Table 1 – continued

Labour force characteristics by age and sex, Canada, seasonally adjusted

	October 2015	November 2015	S.E. ¹	Change from			Percent change from		
				last month	last December	twelve months ago	last month	last December	twelve months ago
in thousands (except rates)									
25 to 54 years, women									
Population	7,330.0	7,332.1	...	2.1	19.1	20.8	0.0	0.3	0.3
Labour force	5,986.4	6,002.2	17.2	15.8	31.7	15.3	0.3	0.5	0.3
Employment	5,647.8	5,655.8	17.8	8.0	1.7	-16.1	0.1	0.0	-0.3
Unemployment	338.7	346.3	12.3	7.6	29.9	31.3	2.2	9.5	9.9
Participation rate	81.7	81.9	0.2	0.2	0.3	0.0
Unemployment rate	5.7	5.8	0.2	0.1	0.5	0.5
Employment rate	77.1	77.1	0.2	0.0	-0.2	-0.5
55 years and over, both sexes									
Population	10,355.1	10,379.3	...	24.2	287.2	310.9	0.2	2.8	3.1
Labour force	3,894.8	3,914.5	20.3	19.7	224.5	210.0	0.5	6.1	5.7
Employment	3,683.7	3,677.8	20.4	-5.9	191.4	183.5	-0.2	5.5	5.3
Unemployment	211.1	236.7	10.1	25.6	33.1	26.5	12.1	16.3	12.6
Participation rate	37.6	37.7	0.2	0.1	1.1	0.9
Unemployment rate	5.4	6.0	0.3	0.6	0.5	0.3
Employment rate	35.6	35.4	0.2	-0.2	0.9	0.7
55 years and over, men									
Population	4,936.8	4,948.7	...	11.9	143.5	155.4	0.2	3.0	3.2
Labour force	2,146.3	2,166.1	13.3	19.8	125.8	117.4	0.9	6.2	5.7
Employment	2,023.1	2,022.6	13.7	-0.5	101.3	97.0	0.0	5.3	5.0
Unemployment	123.2	143.4	7.6	20.2	24.4	20.3	16.4	20.5	16.5
Participation rate	43.5	43.8	0.3	0.3	1.3	1.1
Unemployment rate	5.7	6.6	0.4	0.9	0.8	0.6
Employment rate	41.0	40.9	0.3	-0.1	0.9	0.7
55 years and over, women									
Population	5,418.4	5,430.6	...	12.2	143.7	155.5	0.2	2.7	2.9
Labour force	1,748.5	1,748.5	13.8	0.0	98.8	92.8	0.0	6.0	5.6
Employment	1,660.6	1,655.1	13.7	-5.5	90.0	86.5	-0.3	5.8	5.5
Unemployment	87.8	93.3	6.5	5.5	8.7	6.2	6.3	10.3	7.1
Participation rate	32.3	32.2	0.3	-0.1	1.0	0.8
Unemployment rate	5.0	5.3	0.4	0.3	0.2	0.0
Employment rate	30.6	30.5	0.3	-0.1	0.9	0.8

1. Average standard error of change in two consecutive months (see "Sampling Errors" in Data Quality for further explanations).

Note(s): Related CANSIM table 282-0087. The sum of individual categories may not always add to the total due to rounding.

Table 2
Employment by class of worker and industry, Canada, seasonally adjusted

	October 2015	November 2015	S.E. ¹	Change from			Percent change from		
				last month	last December	twelve months ago	last month	last December	twelve months ago
in thousands									
Class of worker									
Employees	15,272.4	15,210.4	35.6	-62.0	84.1	90.7	-0.4	0.6	0.6
Self-employed ²	2,750.1	2,776.4	25.3	26.3	51.2	33.4	1.0	1.9	1.2
Public/private sector employees									
Public sector employees	3,631.8	3,610.6	20.7	-21.2	49.2	55.1	-0.6	1.4	1.5
Private sector employees	11,640.6	11,599.8	36.0	-40.8	34.9	35.6	-0.4	0.3	0.3
Industry	18,022.5	17,986.8	29.1	-35.7	135.3	124.0	-0.2	0.8	0.7
Goods-producing sector	3,841.0	3,887.3	16.7	46.3	-20.2	-10.0	1.2	-0.5	-0.3
Agriculture	290.4	305.4	5.8	15.0	2.1	6.2	5.2	0.7	2.1
Forestry, fishing, mining, quarrying, oil and gas extraction ³	348.0	348.1	5.5	0.1	-29.4	-26.4	0.0	-7.8	-7.0
Utilities	133.4	131.9	2.4	-1.5	-6.4	-5.2	-1.1	-4.6	-3.8
Construction	1,357.0	1,372.3	11.4	15.3	-16.2	-8.6	1.1	-1.2	-0.6
Manufacturing	1,712.3	1,729.7	10.7	17.4	29.8	24.0	1.0	1.8	1.4
Services-producing sector	14,181.5	14,099.5	27.5	-82.0	155.6	134.0	-0.6	1.1	1.0
Trade	2,748.0	2,732.4	14.3	-15.6	16.9	12.0	-0.6	0.6	0.4
Transportation and warehousing	918.7	910.9	8.2	-7.8	6.7	7.0	-0.8	0.7	0.8
Finance, insurance, real estate and leasing	1,109.3	1,098.1	8.6	-11.2	4.3	2.8	-1.0	0.4	0.3
Professional, scientific and technical services	1,370.5	1,388.3	10.6	17.8	59.5	56.1	1.3	4.5	4.2
Business, building and other support services	771.8	767.5	9.9	-4.3	16.3	21.9	-0.6	2.2	2.9
Educational services	1,249.2	1,255.2	10.4	6.0	-1.2	6.7	0.5	-0.1	0.5
Health care and social assistance	2,319.7	2,314.9	10.8	-4.8	69.7	68.9	-0.2	3.1	3.1
Information, culture and recreation	767.1	755.2	9.7	-11.9	-4.9	-4.5	-1.6	-0.6	-0.6
Accommodation and food services	1,212.4	1,202.6	11.6	-9.8	-13.6	-21.8	-0.8	-1.1	-1.8
Other services	767.9	760.1	8.3	-7.8	-2.5	-16.2	-1.0	-0.3	-2.1
Public administration	946.9	914.4	6.9	-32.5	4.3	1.3	-3.4	0.5	0.1

1. Average standard error of change in two consecutive months (see "Sampling Errors" in Data Quality for further explanations).

2. Includes both incorporated and unincorporated working owners, self-employed persons who do not have a business and persons working in a family business without pay.

3. Also referred to as Natural resources.

Note(s): Related CANSIM Tables 282-0088, 282-0089. The sum of individual categories may not always add to the total due to rounding.

Table 3
Labour force characteristics by province, seasonally adjusted

	October 2015	November 2015	S.E. ¹	Change from			Percent change from		
				last month	last December	twelve months ago	last month	last December	twelve months ago
in thousands (except rates)									
Newfoundland and Labrador									
Population	442.7	442.9	...	0.2	-0.4	-0.4	0.0	-0.1	-0.1
Labour force	270.4	270.7	2.0	0.3	2.0	1.0	0.1	0.7	0.4
Employment	235.3	235.5	2.1	0.2	-1.6	-4.5	0.1	-0.7	-1.9
Employment full-time	200.6	200.5	2.7	-0.1	-3.1	-1.0	0.0	-1.5	-0.5
Employment part-time	34.7	35.0	2.1	0.3	1.5	-3.5	0.9	4.5	-9.1
Unemployment	35.1	35.2	2.0	0.1	3.6	5.5	0.3	11.4	18.5
Participation rate	61.1	61.1	0.5	0.0	0.5	0.3
Unemployment rate	13.0	13.0	0.7	0.0	1.2	2.0
Employment rate	53.2	53.2	0.5	0.0	-0.3	-0.9
Prince Edward Island									
Population	121.1	121.1	...	0.0	0.4	0.4	0.0	0.3	0.3
Labour force	82.6	81.9	0.6	-0.7	-0.3	-1.0	-0.8	-0.4	-1.2
Employment	74.4	73.5	0.6	-0.9	0.4	-0.8	-1.2	0.5	-1.1
Employment full-time	62.0	61.3	0.9	-0.7	-0.7	-1.7	-1.1	-1.1	-2.7
Employment part-time	12.4	12.2	0.7	-0.2	1.1	0.9	-1.6	9.9	8.0
Unemployment	8.2	8.5	0.6	0.3	-0.6	-0.1	3.7	-6.6	-1.2
Participation rate	68.2	67.6	0.5	-0.6	-0.5	-1.1
Unemployment rate	9.9	10.4	0.7	0.5	-0.7	0.0
Employment rate	61.4	60.7	0.5	-0.7	0.1	-0.9
Nova Scotia									
Population	786.6	786.8	...	0.2	2.7	3.0	0.0	0.3	0.4
Labour force	489.5	491.2	2.6	1.7	-0.9	-4.0	0.3	-0.2	-0.8
Employment	451.1	448.8	2.7	-2.3	-2.2	-2.3	-0.5	-0.5	-0.5
Employment full-time	371.4	374.2	3.8	2.8	5.2	3.6	0.8	1.4	1.0
Employment part-time	79.7	74.6	3.3	-5.1	-7.4	-5.8	-6.4	-9.0	-7.2
Unemployment	38.4	42.4	2.4	4.0	1.3	-1.7	10.4	3.2	-3.9
Participation rate	62.2	62.4	0.3	0.2	-0.4	-0.8
Unemployment rate	7.8	8.6	0.5	0.8	0.2	-0.3
Employment rate	57.3	57.0	0.3	-0.3	-0.5	-0.6
New Brunswick									
Population	621.9	621.8	...	-0.1	0.1	0.2	0.0	0.0	0.0
Labour force	390.9	385.8	2.2	-5.1	-4.4	-4.7	-1.3	-1.1	-1.2
Employment	355.5	352.5	2.3	-3.0	1.3	1.2	-0.8	0.4	0.3
Employment full-time	298.5	299.7	3.1	1.2	4.2	4.6	0.4	1.4	1.6
Employment part-time	57.0	52.7	2.7	-4.3	-3.0	-3.5	-7.5	-5.4	-6.2
Unemployment	35.3	33.4	2.1	-1.9	-5.6	-5.8	-5.4	-14.4	-14.8
Participation rate	62.9	62.0	0.4	-0.9	-0.8	-0.8
Unemployment rate	9.0	8.7	0.5	-0.3	-1.3	-1.3
Employment rate	57.2	56.7	0.4	-0.5	0.2	0.2
Quebec									
Population	6,856.3	6,859.4	...	3.1	37.1	40.2	0.0	0.5	0.6
Labour force	4,440.7	4,427.1	14.8	-13.6	37.6	24.5	-0.3	0.9	0.6
Employment	4,100.7	4,096.7	14.8	-4.0	35.6	29.9	-0.1	0.9	0.7
Employment full-time	3,276.5	3,320.2	21.4	43.7	58.5	71.3	1.3	1.8	2.2
Employment part-time	824.1	776.5	19.6	-47.6	-22.9	-41.3	-5.8	-2.9	-5.1
Unemployment	340.0	330.5	13.2	-9.5	2.1	-5.4	-2.8	0.6	-1.6
Participation rate	64.8	64.5	0.2	-0.3	0.2	-0.1
Unemployment rate	7.7	7.5	0.3	-0.2	0.0	-0.1
Employment rate	59.8	59.7	0.2	-0.1	0.2	0.1
Ontario									
Population	11,425.7	11,436.0	...	10.3	115.6	125.0	0.1	1.0	1.1
Labour force	7,441.3	7,444.8	19.7	3.5	37.6	25.1	0.0	0.5	0.3
Employment	6,937.2	6,930.8	19.6	-6.4	45.8	34.1	-0.1	0.7	0.5
Employment full-time	5,634.7	5,640.4	28.3	5.7	100.3	91.0	0.1	1.8	1.6
Employment part-time	1,302.4	1,290.4	25.6	-12.0	-54.5	-56.9	-0.9	-4.1	-4.2
Unemployment	504.2	513.9	16.9	9.7	-8.3	-9.1	1.9	-1.6	-1.7
Participation rate	65.1	65.1	0.2	0.0	-0.3	-0.5
Unemployment rate	6.8	6.9	0.2	0.1	-0.1	-0.1
Employment rate	60.7	60.6	0.2	-0.1	-0.2	-0.4

See notes at the end of the table.

Table 3 – continued

Labour force characteristics by province, seasonally adjusted

	October 2015	November 2015	S.E. ¹	Change from			Percent change from		
				last month	last December	twelve months ago	last month	last December	twelve months ago
in thousands (except rates)									
Manitoba									
Population	990.6	991.5	...	0.9	10.0	11.0	0.1	1.0	1.1
Labour force	678.0	677.4	2.5	-0.6	7.4	10.1	-0.1	1.1	1.5
Employment	641.8	636.4	2.5	-5.4	2.6	3.1	-0.8	0.4	0.5
Employment full-time	519.1	510.6	3.8	-8.5	-4.3	-5.2	-1.6	-0.8	-1.0
Employment part-time	122.7	125.8	3.6	3.1	6.9	8.3	2.5	5.8	7.1
Unemployment	36.2	41.0	2.1	4.8	4.8	6.9	13.3	13.3	20.2
Participation rate	68.4	68.3	0.3	-0.1	0.0	0.2
Unemployment rate	5.3	6.1	0.3	0.8	0.7	1.0
Employment rate	64.8	64.2	0.3	-0.6	-0.4	-0.4
Saskatchewan									
Population	864.0	864.6	...	0.6	7.6	8.5	0.1	0.9	1.0
Labour force	611.9	613.3	2.6	1.4	16.0	19.0	0.2	2.7	3.2
Employment	577.3	579.7	2.7	2.4	4.7	6.0	0.4	0.8	1.0
Employment full-time	473.1	474.3	3.7	1.2	-5.4	1.1	0.3	-1.1	0.2
Employment part-time	104.2	105.4	3.4	1.2	10.1	4.9	1.2	10.6	4.9
Unemployment	34.5	33.6	2.0	-0.9	11.3	13.1	-2.6	50.7	63.9
Participation rate	70.8	70.9	0.3	0.1	1.2	1.5
Unemployment rate	5.6	5.5	0.3	-0.1	1.8	2.1
Employment rate	66.8	67.0	0.3	0.2	-0.1	0.0
Alberta									
Population	3,373.5	3,377.0	...	3.5	59.8	65.2	0.1	1.8	2.0
Labour force	2,466.5	2,461.0	10.0	-5.5	47.6	63.6	-0.2	2.0	2.7
Employment	2,304.4	2,289.5	10.2	-14.9	-10.7	-2.3	-0.6	-0.5	-0.1
Employment full-time	1,893.6	1,903.5	14.2	9.9	-20.8	-14.6	0.5	-1.1	-0.8
Employment part-time	410.8	386.0	12.7	-24.8	10.1	12.3	-6.0	2.7	3.3
Unemployment	162.2	171.5	7.9	9.3	58.3	66.0	5.7	51.5	62.6
Participation rate	73.1	72.9	0.3	-0.2	0.1	0.5
Unemployment rate	6.6	7.0	0.3	0.4	2.3	2.6
Employment rate	68.3	67.8	0.3	-0.5	-1.5	-1.4
British Columbia									
Population	3,895.1	3,899.9	...	4.8	51.5	55.6	0.1	1.3	1.4
Labour force	2,503.0	2,498.4	10.1	-4.6	81.3	75.9	-0.2	3.4	3.1
Employment	2,344.8	2,343.4	10.1	-1.4	59.5	59.6	-0.1	2.6	2.6
Employment full-time	1,857.2	1,838.7	14.9	-18.5	23.6	43.3	-1.0	1.3	2.4
Employment part-time	487.6	504.7	14.4	17.1	35.9	16.3	3.5	7.7	3.3
Unemployment	158.2	154.9	8.2	-3.3	21.7	16.2	-2.1	16.3	11.7
Participation rate	64.3	64.1	0.3	-0.2	1.3	1.1
Unemployment rate	6.3	6.2	0.3	-0.1	0.7	0.5
Employment rate	60.2	60.1	0.3	-0.1	0.8	0.7

1. Average standard error of change in two consecutive months (see "Sampling Errors" in Data Quality for further explanations).

Note(s): Related CANSIM Table 282-0087. The sum of individual categories may not always add to the total due to rounding.

Table 4-1
Selected labour force characteristics (seasonally adjusted) — Newfoundland and Labrador

	October 2015	November 2015	S.E. ¹	Change from			Percent change from		
				last month	last December	twelve months ago	last month	last December	twelve months ago
in thousands (except rates)									
Both sexes, 15 years and over									
Population	442.7	442.9	...	0.2	-0.4	-0.4	0.0	-0.1	-0.1
Labour force	270.4	270.7	2.0	0.3	2.0	1.0	0.1	0.7	0.4
Employment	235.3	235.5	2.1	0.2	-1.6	-4.5	0.1	-0.7	-1.9
Employment full-time	200.6	200.5	2.7	-0.1	-3.1	-1.0	0.0	-1.5	-0.5
Unemployment	35.1	35.2	2.0	0.1	3.6	5.5	0.3	11.4	18.5
Participation rate	61.1	61.1	0.5	0.0	0.5	0.3
Unemployment rate	13.0	13.0	0.7	0.0	1.2	2.0
Employment rate	53.2	53.2	0.5	0.0	-0.3	-0.9
Part-time rate	14.7	14.9	0.9	0.1	0.7	-1.2
Both sexes, 15 to 24 years									
Population	55.7	55.7	...	0.0	-1.6	-1.8	0.0	-2.8	-3.1
Labour force	35.7	36.1	1.0	0.4	0.3	-0.1	1.1	0.8	-0.3
Employment	30.8	31.5	0.9	0.7	1.4	1.4	2.3	4.7	4.7
Unemployment	4.9	4.7	0.9	-0.2	-1.0	-1.4	-4.1	-17.5	-23.0
Participation rate	64.1	64.8	1.8	0.7	2.3	1.8
Unemployment rate	13.7	13.0	2.3	-0.7	-2.9	-3.9
Employment rate	55.3	56.6	1.6	1.3	4.1	4.3
Part-time rate	41.9	42.5	3.6	0.7	1.7	-3.6
Men, 25 years and over									
Population	188.6	188.7	...	0.1	0.6	0.7	0.1	0.3	0.4
Labour force	124.1	123.7	1.2	-0.4	0.3	0.1	-0.3	0.2	0.1
Employment	105.0	104.5	1.4	-0.5	-3.0	-4.9	-0.5	-2.8	-4.5
Unemployment	19.0	19.2	1.4	0.2	3.2	5.0	1.1	20.0	35.2
Participation rate	65.8	65.6	0.6	-0.2	0.0	-0.1
Unemployment rate	15.3	15.5	1.1	0.2	2.5	4.0
Employment rate	55.7	55.4	0.7	-0.3	-1.8	-2.8
Part-time rate	4.7	4.9	0.9	0.2	0.4	-0.5
Women, 25 years and over									
Population	198.3	198.5	...	0.2	0.6	0.7	0.1	0.3	0.4
Labour force	110.7	110.9	1.1	0.2	1.4	1.1	0.2	1.3	1.0
Employment	99.5	99.5	1.1	0.0	0.0	-1.0	0.0	0.0	-1.0
Unemployment	11.2	11.4	1.0	0.2	1.4	2.1	1.8	14.0	22.6
Participation rate	55.8	55.9	0.6	0.1	0.6	0.4
Unemployment rate	10.1	10.3	0.9	0.2	1.2	1.8
Employment rate	50.2	50.1	0.6	-0.1	-0.2	-0.7
Part-time rate	16.9	16.6	1.4	-0.3	0.2	-2.0
Industry									
	235.3	235.5	2.1	0.2	-1.6	-4.5	0.1	-0.7	-1.9
Goods-producing sector									
Agriculture	53.0	52.9	1.5	-0.1	-3.4	-3.1	-0.2	-6.0	-5.5
Forestry, fishing, mining, quarrying, oil and gas extraction ²	1.0	1.1	0.4	0.1	-0.5	-0.4	10.0	-31.2	-26.7
Utilities	15.1	15.0	0.8	-0.1	-2.2	-2.4	-0.7	-12.8	-13.8
Construction	2.3	2.2	0.3	-0.1	-0.8	-0.6	-4.3	-26.7	-21.4
Manufacturing	23.2	23.4	1.0	0.2	-0.2	-0.2	0.9	-0.8	-0.8
	11.4	11.2	0.7	-0.2	0.3	0.5	-1.8	2.8	4.7
Services-producing sector									
Trade	182.3	182.6	1.8	0.3	1.8	-1.4	0.2	1.0	-0.8
Transportation and warehousing	42.6	43.1	1.0	0.5	3.9	3.5	1.2	9.9	8.8
Finance, insurance, real estate and leasing	8.2	8.9	0.6	0.7	-0.9	-1.9	8.5	-9.2	-17.6
Professional, scientific and technical services	9.2	8.6	0.4	-0.6	0.6	0.3	-6.5	7.5	3.6
Business, building and other support services	11.1	11.4	0.5	0.3	0.6	-0.2	2.7	5.6	-1.7
Educational services	7.7	7.7	0.5	0.0	0.8	0.8	0.0	11.6	11.6
Health care and social assistance	14.4	14.6	0.6	0.2	-2.1	-2.2	1.4	-12.6	-13.1
Information, culture and recreation	38.1	38.4	0.8	0.3	0.9	0.9	0.8	2.4	2.4
Accommodation and food services	7.0	7.2	0.6	0.2	-0.2	-0.9	2.9	-2.7	-11.1
Other services	14.4	14.3	0.8	-0.1	-1.6	-2.1	-0.7	-10.1	-12.8
Public administration	12.7	13.0	0.6	0.3	0.9	1.3	2.4	7.4	11.1
	16.8	15.5	0.6	-1.3	-1.0	-0.9	-7.7	-6.1	-5.5

1. Average standard error of change in two consecutive months (see "Sampling Errors" in Data Quality for further explanations).

2. Also referred to as Natural resources.

Note(s): Related CANSIM Tables 282-0087, 282-0088. The sum of individual categories may not always add to the total due to rounding.

Table 4-2
Selected labour force characteristics (seasonally adjusted) — Prince Edward Island

	October 2015	November 2015	S.E. ¹	Change from			Percent change from		
				last month	last December	twelve months ago	last month	last December	twelve months ago
in thousands (except rates)									
Both sexes, 15 years and over									
Population	121.1	121.1	...	0.0	0.4	0.4	0.0	0.3	0.3
Labour force	82.6	81.9	0.6	-0.7	-0.3	-1.0	-0.8	-0.4	-1.2
Employment	74.4	73.5	0.6	-0.9	0.4	-0.8	-1.2	0.5	-1.1
Employment full-time	62.0	61.3	0.9	-0.7	-0.7	-1.7	-1.1	-1.1	-2.7
Unemployment	8.2	8.5	0.6	0.3	-0.6	-0.1	3.7	-6.6	-1.2
Participation rate	68.2	67.6	0.5	-0.6	-0.5	-1.1
Unemployment rate	9.9	10.4	0.7	0.5	-0.7	0.0
Employment rate	61.4	60.7	0.5	-0.7	0.1	-0.9
Part-time rate	16.7	16.6	1.0	-0.1	1.4	1.4
Both sexes, 15 to 24 years									
Population	18.1	18.1	...	0.0	-0.4	-0.4	0.0	-2.2	-2.2
Labour force	13.5	13.3	0.3	-0.2	0.9	0.7	-1.5	7.3	5.6
Employment	11.6	11.2	0.4	-0.4	1.0	0.8	-3.4	9.8	7.7
Unemployment	1.9	2.1	0.3	0.2	-0.2	-0.1	10.5	-8.7	-4.5
Participation rate	74.6	73.5	1.8	-1.1	6.5	5.4
Unemployment rate	14.1	15.8	2.4	1.7	-2.7	-1.7
Employment rate	64.1	61.9	1.9	-2.2	6.8	5.7
Part-time rate	37.9	40.2	3.6	2.2	-4.9	-0.2
Men, 25 years and over									
Population	49.3	49.4	...	0.1	0.4	0.5	0.2	0.8	1.0
Labour force	35.4	35.0	0.3	-0.4	-0.7	-0.8	-1.1	-2.0	-2.2
Employment	31.9	31.5	0.4	-0.4	-0.6	-0.9	-1.3	-1.9	-2.8
Unemployment	3.5	3.5	0.4	0.0	-0.1	0.1	0.0	-2.8	2.9
Participation rate	71.8	70.9	0.7	-0.9	-2.0	-2.3
Unemployment rate	9.9	10.0	1.0	0.1	-0.1	0.5
Employment rate	64.7	63.8	0.8	-0.9	-1.7	-2.5
Part-time rate	8.8	8.6	1.0	-0.2	3.6	3.3
Women, 25 years and over									
Population	53.6	53.7	...	0.1	0.4	0.4	0.2	0.8	0.8
Labour force	33.7	33.7	0.3	0.0	-0.4	-0.8	0.0	-1.2	-2.3
Employment	30.9	30.8	0.4	-0.1	0.0	-0.6	-0.3	0.0	-1.9
Unemployment	2.8	2.9	0.3	0.1	-0.3	-0.2	3.6	-9.4	-6.5
Participation rate	62.9	62.8	0.6	-0.1	-1.2	-1.9
Unemployment rate	8.3	8.6	1.0	0.3	-0.8	-0.4
Employment rate	57.6	57.4	0.7	-0.2	-0.4	-1.5
Part-time rate	16.8	16.2	1.6	-0.6	0.3	-1.0
Industry	74.4	73.5	0.6	-0.9	0.4	-0.8	-1.2	0.5	-1.1
Goods-producing sector	17.5	17.5	0.4	0.0	0.2	-1.2	0.0	1.2	-6.4
Agriculture	3.1	3.5	0.3	0.4	0.6	0.0	12.9	20.7	0.0
Forestry, fishing, mining, quarrying, oil and gas extraction ²	2.4	2.3	0.2	-0.1	0.0	-0.1	-4.2	0.0	-4.2
Utilities	0.4	0.4	0.1	0.0	0.1	0.1	0.0	33.3	33.3
Construction	5.4	5.1	0.3	-0.3	-0.5	-1.3	-5.6	-8.9	-20.3
Manufacturing	6.2	6.2	0.2	0.0	0.0	0.1	0.0	0.0	1.6
Services-producing sector	56.9	55.9	0.6	-1.0	0.1	0.3	-1.8	0.2	0.5
Trade	11.0	11.1	0.3	0.1	0.1	0.3	0.9	0.9	2.8
Transportation and warehousing	2.4	2.1	0.2	-0.3	-1.0	-1.0	-12.5	-32.3	-32.3
Finance, insurance, real estate and leasing	2.4	2.5	0.1	0.1	0.3	0.2	4.2	13.6	8.7
Professional, scientific and technical services	3.1	3.3	0.1	0.2	0.4	0.4	6.5	13.8	13.8
Business, building and other support services	2.5	2.7	0.2	0.2	0.0	0.3	8.0	0.0	12.5
Educational services	5.6	5.4	0.2	-0.2	0.1	-0.1	-3.6	1.9	-1.8
Health care and social assistance	10.3	10.1	0.2	-0.2	0.2	0.4	-1.9	2.0	4.1
Information, culture and recreation	2.2	2.3	0.2	0.1	-0.1	-0.1	4.5	-4.2	-4.2
Accommodation and food services	6.7	6.2	0.3	-0.5	0.6	0.3	-7.5	10.7	5.1
Other services	3.1	3.1	0.2	0.0	-0.5	-0.5	0.0	-13.9	-13.9
Public administration	7.5	7.1	0.2	-0.4	-0.1	0.0	-5.3	-1.4	0.0

1. Average standard error of change in two consecutive months (see "Sampling Errors" in Data Quality for further explanations).

2. Also referred to as Natural resources.

Note(s): Related CANSIM Tables 282-0087, 282-0088. The sum of individual categories may not always add to the total due to rounding.

Table 4-3
Selected labour force characteristics (seasonally adjusted) — Nova Scotia

	October 2015	November 2015	S.E. ¹	Change from			Percent change from		
				last month	last December	twelve months ago	last month	last December	twelve months ago
in thousands (except rates)									
Both sexes, 15 years and over									
Population	786.6	786.8	...	0.2	2.7	3.0	0.0	0.3	0.4
Labour force	489.5	491.2	2.6	1.7	-0.9	-4.0	0.3	-0.2	-0.8
Employment	451.1	448.8	2.7	-2.3	-2.2	-2.3	-0.5	-0.5	-0.5
Employment full-time	371.4	374.2	3.8	2.8	5.2	3.6	0.8	1.4	1.0
Unemployment	38.4	42.4	2.4	4.0	1.3	-1.7	10.4	3.2	-3.9
Participation rate	62.2	62.4	0.3	0.2	-0.4	-0.8
Unemployment rate	7.8	8.6	0.5	0.8	0.2	-0.3
Employment rate	57.3	57.0	0.3	-0.3	-0.5	-0.6
Part-time rate	17.7	16.6	0.7	-1.0	-1.6	-1.2
Both sexes, 15 to 24 years									
Population	110.9	110.7	...	-0.2	-2.1	-2.3	-0.2	-1.9	-2.0
Labour force	71.7	71.3	1.6	-0.4	-2.2	-3.0	-0.6	-3.0	-4.0
Employment	59.5	60.3	1.4	0.8	-2.4	-2.4	1.3	-3.8	-3.8
Unemployment	12.2	11.0	1.5	-1.2	0.2	-0.6	-9.8	1.9	-5.2
Participation rate	64.7	64.4	1.4	-0.3	-0.8	-1.4
Unemployment rate	17.0	15.4	1.8	-1.6	0.7	-0.2
Employment rate	53.7	54.5	1.3	0.8	-1.1	-1.0
Part-time rate	43.4	40.1	2.9	-3.2	-5.6	-4.7
Men, 25 years and over									
Population	323.6	323.7	...	0.1	2.5	2.6	0.0	0.8	0.8
Labour force	212.7	214.0	1.5	1.3	0.4	-2.2	0.6	0.2	-1.0
Employment	197.1	194.9	1.7	-2.2	-2.1	-2.0	-1.1	-1.1	-1.0
Unemployment	15.6	19.1	1.5	3.5	2.5	-0.2	22.4	15.1	-1.0
Participation rate	65.7	66.1	0.5	0.4	-0.4	-1.2
Unemployment rate	7.3	8.9	0.7	1.6	1.1	0.0
Employment rate	60.9	60.2	0.5	-0.7	-1.1	-1.1
Part-time rate	8.1	7.4	0.8	-0.7	-0.7	-0.1
Women, 25 years and over									
Population	352.1	352.3	...	0.2	2.3	2.5	0.1	0.7	0.7
Labour force	205.1	205.9	1.4	0.8	0.9	1.1	0.4	0.4	0.5
Employment	194.5	193.6	1.4	-0.9	2.3	2.1	-0.5	1.2	1.1
Unemployment	10.6	12.3	1.2	1.7	-1.4	-1.0	16.0	-10.2	-7.5
Participation rate	58.3	58.4	0.4	0.1	-0.2	-0.1
Unemployment rate	5.2	6.0	0.6	0.8	-0.7	-0.5
Employment rate	55.2	55.0	0.4	-0.2	0.3	0.3
Part-time rate	19.5	18.6	1.2	-0.9	-0.9	-1.0
Industry									
Industry	451.1	448.8	2.7	-2.3	-2.2	-2.3	-0.5	-0.5	-0.5
Goods-producing sector									
Agriculture	84.7	85.4	1.7	0.7	3.8	-0.6	0.8	4.7	-0.7
Forestry, fishing, mining, quarrying, oil and gas extraction ²	5.5	5.7	0.6	0.2	1.1	1.1	3.6	23.9	23.9
Utilities	11.6	11.4	1.0	-0.2	-1.2	-3.1	-1.7	-9.5	-21.4
Construction	3.7	3.8	0.3	0.1	-0.2	-0.3	2.7	-5.0	-7.3
Manufacturing	33.9	34.1	1.1	0.2	2.5	1.5	0.6	7.9	4.6
Manufacturing	30.0	30.5	0.9	0.5	1.7	0.3	1.7	5.9	1.0
Services-producing sector									
Trade	366.4	363.4	2.5	-3.0	-6.0	-1.7	-0.8	-1.6	-0.5
Transportation and warehousing	70.7	71.3	1.3	0.6	-3.2	-2.2	0.8	-4.3	-3.0
Finance, insurance, real estate and leasing	21.2	20.7	0.8	-0.5	-1.9	-1.8	-2.4	-8.4	-8.0
Professional, scientific and technical services	24.1	24.0	0.7	-0.1	1.0	2.0	-0.4	4.3	9.1
Business, building and other support services	27.6	25.9	0.8	-1.7	-0.3	-1.2	-6.2	-1.1	-4.4
Educational services	19.3	19.2	0.8	-0.1	0.5	0.5	-0.5	2.7	2.7
Health care and social assistance	36.6	35.6	1.1	-1.0	-0.2	1.1	-2.7	-0.6	3.2
Information, culture and recreation	73.7	73.8	1.0	0.1	3.3	3.9	0.1	4.7	5.6
Accommodation and food services	16.7	16.6	0.8	-0.1	-3.4	-3.5	-0.6	-17.0	-17.4
Other services	29.4	29.8	1.1	0.4	-2.9	-2.3	1.4	-8.9	-7.2
Public administration	18.6	18.7	0.8	0.1	0.9	0.9	0.5	5.1	5.1
Public administration	28.6	27.8	0.7	-0.8	0.3	0.9	-2.8	1.1	3.3

1. Average standard error of change in two consecutive months (see "Sampling Errors" in Data Quality for further explanations).

2. Also referred to as Natural resources.

Note(s): Related CANSIM Tables 282-0087, 282-0088. The sum of individual categories may not always add to the total due to rounding.

Table 4-4
Selected labour force characteristics (seasonally adjusted) — New Brunswick

	October 2015	November 2015	S.E. ¹	Change from			Percent change from		
				last month	last December	twelve months ago	last month	last December	twelve months ago
in thousands (except rates)									
Both sexes, 15 years and over									
Population	621.9	621.8	...	-0.1	0.1	0.2	0.0	0.0	0.0
Labour force	390.9	385.8	2.2	-5.1	-4.4	-4.7	-1.3	-1.1	-1.2
Employment	355.5	352.5	2.3	-3.0	1.3	1.2	-0.8	0.4	0.3
Employment full-time	298.5	299.7	3.1	1.2	4.2	4.6	0.4	1.4	1.6
Unemployment	35.3	33.4	2.1	-1.9	-5.6	-5.8	-5.4	-14.4	-14.8
Participation rate	62.9	62.0	0.4	-0.9	-0.8	-0.8
Unemployment rate	9.0	8.7	0.5	-0.3	-1.3	-1.3
Employment rate	57.2	56.7	0.4	-0.5	0.2	0.2
Part-time rate	16.0	15.0	0.8	-1.1	-0.9	-1.0
Both sexes, 15 to 24 years									
Population	83.9	83.8	...	-0.1	-1.6	-1.6	-0.1	-1.9	-1.9
Labour force	54.0	50.4	1.3	-3.6	-2.8	-3.4	-6.7	-5.3	-6.3
Employment	44.6	43.7	1.1	-0.9	0.1	-0.3	-2.0	0.2	-0.7
Unemployment	9.4	6.7	1.1	-2.7	-2.8	-3.0	-28.7	-29.5	-30.9
Participation rate	64.4	60.1	1.5	-4.3	-2.2	-2.9
Unemployment rate	17.4	13.3	1.9	-4.1	-4.6	-4.7
Employment rate	53.2	52.1	1.3	-1.1	1.0	0.6
Part-time rate	43.3	40.3	3.0	-3.0	-3.3	-4.5
Men, 25 years and over									
Population	260.5	260.6	...	0.1	0.8	0.9	0.0	0.3	0.3
Labour force	172.9	173.0	1.3	0.1	-2.8	-2.1	0.1	-1.6	-1.2
Employment	156.0	155.9	1.5	-0.1	-1.2	-0.4	-0.1	-0.8	-0.3
Unemployment	16.8	17.1	1.5	0.3	-1.6	-1.7	1.8	-8.6	-9.0
Participation rate	66.4	66.4	0.5	0.0	-1.3	-1.0
Unemployment rate	9.7	9.9	0.8	0.2	-0.7	-0.8
Employment rate	59.9	59.8	0.6	-0.1	-0.7	-0.4
Part-time rate	7.6	6.9	0.8	-0.8	0.1	0.4
Women, 25 years and over									
Population	277.4	277.5	...	0.1	0.9	1.0	0.0	0.3	0.4
Labour force	164.0	162.4	1.2	-1.6	1.2	0.8	-1.0	0.7	0.5
Employment	154.9	152.8	1.3	-2.1	2.3	1.9	-1.4	1.5	1.3
Unemployment	9.1	9.6	1.1	0.5	-1.1	-1.0	5.5	-10.3	-9.4
Participation rate	59.1	58.5	0.4	-0.6	0.2	0.1
Unemployment rate	5.5	5.9	0.7	0.4	-0.7	-0.7
Employment rate	55.8	55.1	0.5	-0.7	0.7	0.5
Part-time rate	16.7	16.0	1.2	-0.7	-1.4	-1.5
Industry									
	355.5	352.5	2.3	-3.0	1.3	1.2	-0.8	0.4	0.3
Goods-producing sector									
Agriculture	72.8	73.7	1.6	0.9	-0.4	-0.3	1.2	-0.5	-0.4
Forestry, fishing, mining, quarrying, oil and gas extraction ²	4.2	3.9	0.5	-0.3	-0.2	-0.4	-7.1	-4.9	-9.3
Utilities	11.8	11.3	0.8	-0.5	0.3	-0.4	-4.2	2.7	-3.4
Construction	3.6	3.6	0.2	0.0	0.1	0.1	0.0	2.9	2.9
Manufacturing	24.1	26.0	1.1	1.9	-0.5	0.6	7.9	-1.9	2.4
	29.2	28.9	0.8	-0.3	-0.2	-0.2	-1.0	-0.7	-0.7
Services-producing sector									
	282.7	278.8	2.1	-3.9	1.7	1.5	-1.4	0.6	0.5
Trade	57.8	56.0	1.1	-1.8	1.5	-0.2	-3.1	2.8	-0.4
Transportation and warehousing	20.5	20.7	0.6	0.2	3.7	4.3	1.0	21.8	26.2
Finance, insurance, real estate and leasing	14.5	14.9	0.5	0.4	-0.1	0.2	2.8	-0.7	1.4
Professional, scientific and technical services	16.4	15.6	0.6	-0.8	-2.7	-2.5	-4.9	-14.8	-13.8
Business, building and other support services	17.7	18.0	0.9	0.3	-2.3	-2.5	1.7	-11.3	-12.2
Educational services	27.2	26.3	0.8	-0.9	-0.8	-0.7	-3.3	-3.0	-2.6
Health care and social assistance	52.9	53.8	0.9	0.9	3.3	2.9	1.7	6.5	5.7
Information, culture and recreation	12.4	11.1	0.7	-1.3	-0.5	0.0	-10.5	-4.3	0.0
Accommodation and food services	23.5	23.7	0.8	0.2	1.5	1.9	0.9	6.8	8.7
Other services	15.9	15.9	0.6	0.0	-0.4	-0.3	0.0	-2.5	-1.9
Public administration	23.8	22.7	0.7	-1.1	-1.7	-1.5	-4.6	-7.0	-6.2

1. Average standard error of change in two consecutive months (see "Sampling Errors" in Data Quality for further explanations).

2. Also referred to as Natural resources.

Note(s): Related CANSIM Tables 282-0087, 282-0088. The sum of individual categories may not always add to the total due to rounding.

Table 4-5
Selected labour force characteristics (seasonally adjusted) — Quebec

	October 2015	November 2015	S.E. ¹	Change from			Percent change from		
				last month	last December	twelve months ago	last month	last December	twelve months ago
in thousands (except rates)									
Both sexes, 15 years and over									
Population	6,856.3	6,859.4	...	3.1	37.1	40.2	0.0	0.5	0.6
Labour force	4,440.7	4,427.1	14.8	-13.6	37.6	24.5	-0.3	0.9	0.6
Employment	4,100.7	4,096.7	14.8	-4.0	35.6	29.9	-0.1	0.9	0.7
Employment full-time	3,276.5	3,320.2	21.4	43.7	58.5	71.3	1.3	1.8	2.2
Unemployment	340.0	330.5	13.2	-9.5	2.1	-5.4	-2.8	0.6	-1.6
Participation rate	64.8	64.5	0.2	-0.3	0.2	-0.1
Unemployment rate	7.7	7.5	0.3	-0.2	0.0	-0.1
Employment rate	59.8	59.7	0.2	-0.1	0.2	0.1
Part-time rate	20.1	19.0	0.5	-1.1	-0.7	-1.2
Both sexes, 15 to 24 years									
Population	952.3	950.5	...	-1.8	-20.7	-22.1	-0.2	-2.1	-2.3
Labour force	662.9	638.2	8.3	-24.7	-16.6	-22.6	-3.7	-2.5	-3.4
Employment	579.2	565.1	8.0	-14.1	1.7	-7.2	-2.4	0.3	-1.3
Unemployment	83.7	73.1	7.5	-10.6	-18.4	-15.4	-12.7	-20.1	-17.4
Participation rate	69.6	67.1	0.9	-2.5	-0.3	-0.8
Unemployment rate	12.6	11.5	1.1	-1.1	-2.5	-1.9
Employment rate	60.8	59.5	0.8	-1.3	1.5	0.7
Part-time rate	55.5	52.0	1.7	-3.5	-1.8	-2.4
Men, 25 years and over									
Population	2,912.2	2,914.5	...	2.3	29.0	31.3	0.1	1.0	1.1
Labour force	2,012.1	2,030.4	8.3	18.3	47.8	45.7	0.9	2.4	2.3
Employment	1,868.5	1,878.9	9.0	10.4	31.2	42.5	0.6	1.7	2.3
Unemployment	143.7	151.5	8.3	7.8	16.5	3.2	5.4	12.2	2.2
Participation rate	69.1	69.7	0.3	0.6	1.0	0.9
Unemployment rate	7.1	7.5	0.4	0.4	0.7	0.0
Employment rate	64.2	64.5	0.3	0.3	0.5	0.8
Part-time rate	8.9	8.4	0.6	-0.5	0.1	-0.1
Women, 25 years and over									
Population	2,991.8	2,994.4	...	2.6	28.8	31.0	0.1	1.0	1.0
Labour force	1,765.6	1,758.6	8.3	-7.0	6.5	1.5	-0.4	0.4	0.1
Employment	1,653.0	1,652.7	8.1	-0.3	2.6	-5.4	0.0	0.2	-0.3
Unemployment	112.6	105.9	6.9	-6.7	3.9	6.9	-6.0	3.8	7.0
Participation rate	59.0	58.7	0.3	-0.3	-0.4	-0.6
Unemployment rate	6.4	6.0	0.4	-0.4	0.2	0.4
Employment rate	55.3	55.2	0.3	-0.1	-0.4	-0.8
Part-time rate	20.4	19.7	0.8	-0.7	-1.2	-1.4
Industry									
Industry	4,100.7	4,096.7	14.8	-4.0	35.6	29.9	-0.1	0.9	0.7
Goods-producing sector									
Goods-producing sector	821.1	832.2	8.5	11.1	-36.6	-36.7	1.4	-4.2	-4.2
Agriculture	54.2	57.2	2.6	3.0	1.5	3.9	5.5	2.7	7.3
Forestry, fishing, mining, quarrying, oil and gas extraction ²	28.6	31.9	2.0	3.3	-1.4	-2.1	11.5	-4.2	-6.2
Utilities	27.0	26.9	1.3	-0.1	-3.1	-2.7	-0.4	-10.3	-9.1
Construction	223.4	220.7	5.7	-2.7	-50.3	-53.1	-1.2	-18.6	-19.4
Manufacturing	487.9	495.6	5.9	7.7	16.7	17.4	1.6	3.5	3.6
Services-producing sector									
Services-producing sector	3,279.5	3,264.4	13.9	-15.1	72.1	66.5	-0.5	2.3	2.1
Trade	665.4	667.6	7.2	2.2	17.0	21.9	0.3	2.6	3.4
Transportation and warehousing	199.7	192.1	3.9	-7.6	6.3	5.9	-3.8	3.4	3.2
Finance, insurance, real estate and leasing	210.2	211.8	3.9	1.6	-2.6	-3.2	0.8	-1.2	-1.5
Professional, scientific and technical services	320.0	325.5	5.2	5.5	30.8	30.2	1.7	10.5	10.2
Business, building and other support services	171.6	172.5	4.8	0.9	10.7	12.8	0.5	6.6	8.0
Educational services	265.8	268.4	5.1	2.6	-5.8	-6.1	1.0	-2.1	-2.2
Health care and social assistance	577.8	574.6	5.8	-3.2	10.2	8.3	-0.6	1.8	1.5
Information, culture and recreation	175.3	174.5	5.2	-0.8	2.0	-1.2	-0.5	1.2	-0.7
Accommodation and food services	284.2	276.6	5.7	-7.6	-8.4	-7.8	-2.7	-2.9	-2.7
Other services	154.4	161.6	4.2	7.2	-2.8	-10.4	4.7	-1.7	-6.0
Public administration	255.1	239.3	3.5	-15.8	14.8	16.3	-6.2	6.6	7.3

1. Average standard error of change in two consecutive months (see "Sampling Errors" in Data Quality for further explanations).

2. Also referred to as Natural resources.

Note(s): Related CANSIM Tables 282-0087, 282-0088. The sum of individual categories may not always add to the total due to rounding.

Table 4-6
Selected labour force characteristics (seasonally adjusted) — Ontario

	October 2015	November 2015	S.E. ¹	Change from			Percent change from		
				last month	last December	twelve months ago	last month	last December	twelve months ago
in thousands (except rates)									
Both sexes, 15 years and over									
Population	11,425.7	11,436.0	...	10.3	115.6	125.0	0.1	1.0	1.1
Labour force	7,441.3	7,444.8	19.7	3.5	37.6	25.1	0.0	0.5	0.3
Employment	6,937.2	6,930.8	19.6	-6.4	45.8	34.1	-0.1	0.7	0.5
Employment full-time	5,634.7	5,640.4	28.3	5.7	100.3	91.0	0.1	1.8	1.6
Unemployment	504.2	513.9	16.9	9.7	-8.3	-9.1	1.9	-1.6	-1.7
Participation rate	65.1	65.1	0.2	0.0	-0.3	-0.5
Unemployment rate	6.8	6.9	0.2	0.1	-0.1	-0.1
Employment rate	60.7	60.6	0.2	-0.1	-0.2	-0.4
Part-time rate	18.8	18.6	0.4	-0.2	-0.9	-0.9
Both sexes, 15 to 24 years									
Population	1,793.8	1,792.5	...	-1.3	-10.4	-10.9	-0.1	-0.6	-0.6
Labour force	1,085.2	1,077.0	12.3	-8.2	-47.6	-45.5	-0.8	-4.2	-4.1
Employment	922.5	926.1	10.9	3.6	-19.8	-20.8	0.4	-2.1	-2.2
Unemployment	162.7	150.8	10.6	-11.9	-27.9	-24.8	-7.3	-15.6	-14.1
Participation rate	60.5	60.1	0.7	-0.4	-2.3	-2.1
Unemployment rate	15.0	14.0	0.9	-1.0	-1.9	-1.6
Employment rate	51.4	51.7	0.6	0.3	-0.8	-0.8
Part-time rate	49.2	48.9	1.3	-0.3	-3.9	-5.4
Men, 25 years and over									
Population	4,645.9	4,651.7	...	5.8	61.2	65.8	0.1	1.3	1.4
Labour force	3,345.2	3,341.2	10.4	-4.0	31.5	38.6	-0.1	1.0	1.2
Employment	3,166.9	3,155.4	11.1	-11.5	31.2	39.5	-0.4	1.0	1.3
Unemployment	178.3	185.8	9.6	7.5	0.3	-0.9	4.2	0.2	-0.5
Participation rate	72.0	71.8	0.2	-0.2	-0.3	-0.2
Unemployment rate	5.3	5.6	0.3	0.3	0.0	-0.1
Employment rate	68.2	67.8	0.2	-0.4	-0.3	-0.1
Part-time rate	8.0	8.1	0.4	0.1	-0.2	0.3
Women, 25 years and over									
Population	4,986.0	4,991.9	...	5.9	64.9	70.1	0.1	1.3	1.4
Labour force	3,010.9	3,026.6	11.0	15.7	53.7	32.0	0.5	1.8	1.1
Employment	2,847.8	2,849.3	10.9	1.5	34.4	15.4	0.1	1.2	0.5
Unemployment	163.1	177.3	8.8	14.2	19.3	16.6	8.7	12.2	10.3
Participation rate	60.4	60.6	0.2	0.2	0.3	-0.2
Unemployment rate	5.4	5.9	0.3	0.5	0.6	0.5
Employment rate	57.1	57.1	0.2	0.0	0.0	-0.5
Part-time rate	20.9	20.4	0.6	-0.5	-0.4	-0.4
Industry									
	6,937.2	6,930.8	19.6	-6.4	45.8	34.1	-0.1	0.7	0.5
Goods-producing sector									
	1,396.8	1,411.4	10.4	14.6	25.4	25.7	1.0	1.8	1.9
Agriculture	76.8	78.8	2.8	2.0	-3.2	-2.5	2.6	-3.9	-3.1
Forestry, fishing, mining, quarrying, oil and gas extraction ²	44.5	44.1	1.9	-0.4	4.7	6.4	-0.9	11.9	17.0
Utilities	45.2	44.1	1.2	-1.1	-6.8	-6.5	-2.4	-13.4	-12.8
Construction	484.3	499.7	6.9	15.4	31.3	34.0	3.2	6.7	7.3
Manufacturing	746.0	744.7	7.4	-1.3	-0.6	-5.7	-0.2	-0.1	-0.8
Services-producing sector									
	5,540.4	5,519.4	18.7	-21.0	20.4	8.4	-0.4	0.4	0.2
Trade	1,036.5	1,027.4	9.7	-9.1	-15.2	-13.2	-0.9	-1.5	-1.3
Transportation and warehousing	329.0	330.9	5.1	1.9	14.9	15.7	0.6	4.7	5.0
Finance, insurance, real estate and leasing	552.4	549.4	6.3	-3.0	27.0	22.7	-0.5	5.2	4.3
Professional, scientific and technical services	575.5	587.2	7.4	11.7	33.5	30.9	2.0	6.1	5.6
Business, building and other support services	340.5	329.6	7.2	-10.9	-13.2	-12.7	-3.2	-3.9	-3.7
Educational services	501.1	504.6	7.2	3.5	-2.1	1.5	0.7	-0.4	0.3
Health care and social assistance	816.6	818.1	7.0	1.5	8.0	5.3	0.2	1.0	0.7
Information, culture and recreation	313.6	305.0	6.6	-8.6	-23.3	-18.7	-2.7	-7.1	-5.8
Accommodation and food services	440.1	444.6	7.5	4.5	2.5	-5.1	1.0	0.6	-1.1
Other services	288.7	278.5	5.2	-10.2	8.4	3.7	-3.5	3.1	1.3
Public administration	346.3	344.0	4.8	-2.3	-20.2	-21.8	-0.7	-5.5	-6.0

1. Average standard error of change in two consecutive months (see "Sampling Errors" in Data Quality for further explanations).

2. Also referred to as Natural resources.

Note(s): Related CANSIM Tables 282-0087, 282-0088. The sum of individual categories may not always add to the total due to rounding.

Table 4-7
Selected labour force characteristics (seasonally adjusted) — Manitoba

	October 2015	November 2015	S.E. ¹	Change from			Percent change from		
				last month	last December	twelve months ago	last month	last December	twelve months ago
in thousands (except rates)									
Both sexes, 15 years and over									
Population	990.6	991.5	...	0.9	10.0	11.0	0.1	1.0	1.1
Labour force	678.0	677.4	2.5	-0.6	7.4	10.1	-0.1	1.1	1.5
Employment	641.8	636.4	2.5	-5.4	2.6	3.1	-0.8	0.4	0.5
Employment full-time	519.1	510.6	3.8	-8.5	-4.3	-5.2	-1.6	-0.8	-1.0
Unemployment	36.2	41.0	2.1	4.8	4.8	6.9	13.3	13.3	20.2
Participation rate	68.4	68.3	0.3	-0.1	0.0	0.2
Unemployment rate	5.3	6.1	0.3	0.8	0.7	1.0
Employment rate	64.8	64.2	0.3	-0.6	-0.4	-0.4
Part-time rate	19.1	19.8	0.6	0.6	1.0	1.2
Both sexes, 15 to 24 years									
Population	163.0	163.0	...	0.0	-0.3	-0.3	0.0	-0.2	-0.2
Labour force	108.5	107.4	1.6	-1.1	-3.8	-3.7	-1.0	-3.4	-3.3
Employment	96.0	94.4	1.5	-1.6	-4.9	-5.5	-1.7	-4.9	-5.5
Unemployment	12.6	13.0	1.4	0.4	1.1	1.8	3.2	9.2	16.1
Participation rate	66.6	65.9	1.0	-0.7	-2.2	-2.1
Unemployment rate	11.6	12.1	1.2	0.5	1.4	2.0
Employment rate	58.9	57.9	0.9	-1.0	-2.9	-3.3
Part-time rate	41.9	45.8	1.8	3.9	3.8	4.8
Men, 25 years and over									
Population	405.8	406.2	...	0.4	5.3	5.8	0.1	1.3	1.4
Labour force	301.2	302.4	1.3	1.2	2.2	5.2	0.4	0.7	1.7
Employment	288.0	286.9	1.4	-1.1	0.2	1.1	-0.4	0.1	0.4
Unemployment	13.2	15.5	1.2	2.3	2.0	4.1	17.4	14.8	36.0
Participation rate	74.2	74.4	0.3	0.2	-0.5	0.2
Unemployment rate	4.4	5.1	0.4	0.7	0.6	1.3
Employment rate	71.0	70.6	0.3	-0.4	-0.9	-0.8
Part-time rate	7.4	7.7	0.6	0.3	-0.4	0.0
Women, 25 years and over									
Population	421.8	422.3	...	0.5	5.0	5.5	0.1	1.2	1.3
Labour force	268.2	267.6	1.5	-0.6	8.9	8.6	-0.2	3.4	3.3
Employment	257.8	255.2	1.4	-2.6	7.3	7.6	-1.0	2.9	3.1
Unemployment	10.4	12.5	1.1	2.1	1.7	1.0	20.2	15.7	8.7
Participation rate	63.6	63.4	0.3	-0.2	1.4	1.3
Unemployment rate	3.9	4.7	0.4	0.8	0.5	0.3
Employment rate	61.1	60.4	0.3	-0.7	1.0	1.0
Part-time rate	23.7	23.7	0.9	0.0	2.0	1.7
Industry									
Industry	641.8	636.4	2.5	-5.4	2.6	3.1	-0.8	0.4	0.5
Goods-producing sector									
Goods-producing sector	149.3	148.4	1.6	-0.9	-0.8	-1.1	-0.6	-0.5	-0.7
Agriculture	24.0	23.5	0.9	-0.5	1.0	0.3	-2.1	4.4	1.3
Forestry, fishing, mining, quarrying, oil and gas extraction ²	5.5	5.7	0.4	0.2	-0.9	-1.2	3.6	-13.6	-17.4
Utilities	8.6	8.6	0.3	0.0	1.2	0.7	0.0	16.2	8.9
Construction	46.8	45.5	1.0	-1.3	-2.1	-1.8	-2.8	-4.4	-3.8
Manufacturing	64.5	65.2	0.9	0.7	0.1	1.0	1.1	0.2	1.6
Services-producing sector									
Services-producing sector	492.5	488.0	2.4	-4.5	3.4	4.2	-0.9	0.7	0.9
Trade	92.4	90.7	1.3	-1.7	-4.1	-4.3	-1.8	-4.3	-4.5
Transportation and warehousing	36.7	36.9	0.8	0.2	-1.3	-1.2	0.5	-3.4	-3.1
Finance, insurance, real estate and leasing	31.5	32.5	0.7	1.0	-1.6	-1.5	3.2	-4.7	-4.4
Professional, scientific and technical services	25.2	25.5	0.7	0.3	2.8	1.1	1.2	12.3	4.5
Business, building and other support services	20.1	18.9	0.8	-1.2	2.2	2.2	-6.0	13.2	13.2
Educational services	53.6	52.9	1.0	-0.7	2.8	3.4	-1.3	5.6	6.9
Health care and social assistance	103.5	102.8	1.1	-0.7	2.3	1.8	-0.7	2.3	1.8
Information, culture and recreation	23.1	23.3	0.8	0.2	2.3	1.8	0.9	11.0	8.4
Accommodation and food services	41.6	41.3	1.0	-0.3	-0.2	1.6	-0.7	-0.5	4.0
Other services	29.2	28.4	0.7	-0.8	-1.3	-0.4	-2.7	-4.4	-1.4
Public administration	35.6	34.8	0.8	-0.8	-0.4	-0.3	-2.2	-1.1	-0.9

1. Average standard error of change in two consecutive months (see "Sampling Errors" in Data Quality for further explanations).

2. Also referred to as Natural resources.

Note(s): Related CANSIM Tables 282-0087, 282-0088. The sum of individual categories may not always add to the total due to rounding.

Table 4-8
Selected labour force characteristics (seasonally adjusted) — Saskatchewan

	October 2015	November 2015	S.E. ¹	Change from			Percent change from		
				last month	last December	twelve months ago	last month	last December	twelve months ago
in thousands (except rates)									
Both sexes, 15 years and over									
Population	864.0	864.6	...	0.6	7.6	8.5	0.1	0.9	1.0
Labour force	611.9	613.3	2.6	1.4	16.0	19.0	0.2	2.7	3.2
Employment	577.3	579.7	2.7	2.4	4.7	6.0	0.4	0.8	1.0
Employment full-time	473.1	474.3	3.7	1.2	-5.4	1.1	0.3	-1.1	0.2
Unemployment	34.5	33.6	2.0	-0.9	11.3	13.1	-2.6	50.7	63.9
Participation rate	70.8	70.9	0.3	0.1	1.2	1.5
Unemployment rate	5.6	5.5	0.3	-0.1	1.8	2.1
Employment rate	66.8	67.0	0.3	0.2	-0.1	0.0
Part-time rate	18.0	18.2	0.6	0.1	1.6	0.7
Both sexes, 15 to 24 years									
Population	136.0	135.8	...	-0.2	-2.2	-2.4	-0.1	-1.6	-1.7
Labour force	94.0	93.2	1.5	-0.8	0.8	1.5	-0.9	0.9	1.6
Employment	83.6	84.4	1.5	0.8	-1.4	-0.9	1.0	-1.6	-1.1
Unemployment	10.3	8.8	1.2	-1.5	2.1	2.4	-14.6	31.3	37.5
Participation rate	69.1	68.6	1.1	-0.5	1.6	2.2
Unemployment rate	11.0	9.4	1.2	-1.6	2.1	2.4
Employment rate	61.5	62.2	1.1	0.7	0.0	0.5
Part-time rate	37.2	38.4	2.0	1.2	1.4	-0.4
Men, 25 years and over									
Population	364.6	364.9	...	0.3	5.3	5.8	0.1	1.5	1.6
Labour force	283.5	284.2	1.3	0.7	8.1	9.8	0.2	2.9	3.6
Employment	268.4	268.4	1.5	0.0	1.2	1.6	0.0	0.4	0.6
Unemployment	15.1	15.8	1.1	0.7	6.9	8.2	4.6	77.5	107.9
Participation rate	77.8	77.9	0.4	0.1	1.1	1.5
Unemployment rate	5.3	5.6	0.4	0.3	2.4	2.8
Employment rate	73.6	73.6	0.4	0.0	-0.7	-0.7
Part-time rate	7.6	7.6	0.6	0.0	0.9	0.5
Women, 25 years and over									
Population	363.5	363.9	...	0.4	4.6	5.0	0.1	1.3	1.4
Labour force	234.4	235.9	1.5	1.5	7.1	7.7	0.6	3.1	3.4
Employment	225.2	226.9	1.5	1.7	4.8	5.3	0.8	2.2	2.4
Unemployment	9.1	9.0	1.0	-0.1	2.3	2.4	-1.1	34.3	36.4
Participation rate	64.5	64.8	0.4	0.3	1.1	1.2
Unemployment rate	3.9	3.8	0.4	-0.1	0.9	0.9
Employment rate	62.0	62.4	0.4	0.4	0.6	0.7
Part-time rate	23.5	23.2	1.0	-0.3	2.6	1.2
Industry									
Industry	577.3	579.7	2.7	2.4	4.7	6.0	0.4	0.8	1.0
Goods-producing sector									
Goods-producing sector	159.6	159.8	1.9	0.2	-3.9	-4.0	0.1	-2.4	-2.4
Agriculture	41.8	42.7	1.2	0.9	-1.1	-0.4	2.2	-2.5	-0.9
Forestry, fishing, mining, quarrying, oil and gas extraction ²	26.6	26.8	0.8	0.2	-1.9	-2.0	0.8	-6.6	-6.9
Utilities	6.8	7.0	0.3	0.2	0.6	0.8	2.9	9.4	12.9
Construction	57.4	57.0	1.2	-0.4	-0.2	-1.0	-0.7	-0.3	-1.7
Manufacturing	26.9	26.3	0.8	-0.6	-1.2	-1.5	-2.2	-4.4	-5.4
Services-producing sector									
Services-producing sector	417.8	419.9	2.5	2.1	8.6	10.0	0.5	2.1	2.4
Trade	85.9	86.8	1.4	0.9	3.4	3.7	1.0	4.1	4.5
Transportation and warehousing	29.1	28.1	0.8	-1.0	-0.5	-0.7	-3.4	-1.7	-2.4
Finance, insurance, real estate and leasing	30.6	30.8	0.7	0.2	-0.8	-0.5	0.7	-2.5	-1.6
Professional, scientific and technical services	25.9	26.1	0.8	0.2	-0.1	-1.0	0.8	-0.4	-3.7
Business, building and other support services	14.0	13.7	0.7	-0.3	-0.3	-0.2	-2.1	-2.1	-1.4
Educational services	42.0	41.7	1.1	-0.3	-3.0	-1.5	-0.7	-6.7	-3.5
Health care and social assistance	78.6	80.0	1.0	1.4	6.4	5.9	1.8	8.7	8.0
Information, culture and recreation	21.0	21.4	0.7	0.4	4.5	5.1	1.9	26.6	31.3
Accommodation and food services	38.4	39.5	1.1	1.1	2.3	2.9	2.9	6.2	7.9
Other services	24.7	24.9	0.8	0.2	0.7	-0.1	0.8	2.9	-0.4
Public administration	27.5	26.9	0.7	-0.6	-4.0	-3.5	-2.2	-12.9	-11.5

1. Average standard error of change in two consecutive months (see "Sampling Errors" in Data Quality for further explanations).

2. Also referred to as Natural resources.

Note(s): Related CANSIM Tables 282-0087, 282-0088. The sum of individual categories may not always add to the total due to rounding.

Table 4-9
Selected labour force characteristics (seasonally adjusted) — Alberta

	October 2015	November 2015	S.E. ¹	Change from			Percent change from		
				last month	last December	twelve months ago	last month	last December	twelve months ago
in thousands (except rates)									
Both sexes, 15 years and over									
Population	3,373.5	3,377.0	...	3.5	59.8	65.2	0.1	1.8	2.0
Labour force	2,466.5	2,461.0	10.0	-5.5	47.6	63.6	-0.2	2.0	2.7
Employment	2,304.4	2,289.5	10.2	-14.9	-10.7	-2.3	-0.6	-0.5	-0.1
Employment full-time	1,893.6	1,903.5	14.2	9.9	-20.8	-14.6	0.5	-1.1	-0.8
Unemployment	162.2	171.5	7.9	9.3	58.3	66.0	5.7	51.5	62.6
Participation rate	73.1	72.9	0.3	-0.2	0.1	0.5
Unemployment rate	6.6	7.0	0.3	0.4	2.3	2.6
Employment rate	68.3	67.8	0.3	-0.5	-1.5	-1.4
Part-time rate	17.8	16.9	0.5	-1.0	0.5	0.6
Both sexes, 15 to 24 years									
Population	522.3	521.8	...	-0.5	-3.4	-3.7	-0.1	-0.6	-0.7
Labour force	358.9	356.0	5.5	-2.9	-5.4	-4.1	-0.8	-1.5	-1.1
Employment	317.2	309.8	5.4	-7.4	-20.3	-20.8	-2.3	-6.1	-6.3
Unemployment	41.7	46.1	4.5	4.4	14.9	16.6	10.6	47.8	56.3
Participation rate	68.7	68.2	1.0	-0.5	-0.6	-0.3
Unemployment rate	11.6	12.9	1.2	1.3	4.3	4.7
Employment rate	60.7	59.4	1.0	-1.3	-3.5	-3.5
Part-time rate	41.5	39.8	1.9	-1.7	6.7	4.1
Men, 25 years and over									
Population	1,442.5	1,444.5	...	2.0	32.4	35.4	0.1	2.3	2.5
Labour force	1,172.3	1,164.1	5.2	-8.2	32.6	38.4	-0.7	2.9	3.4
Employment	1,098.4	1,087.0	5.8	-11.4	-3.4	-3.5	-1.0	-0.3	-0.3
Unemployment	73.9	77.1	4.7	3.2	36.0	41.8	4.3	87.6	118.4
Participation rate	81.3	80.6	0.4	-0.7	0.5	0.7
Unemployment rate	6.3	6.6	0.4	0.3	3.0	3.5
Employment rate	76.1	75.3	0.4	-0.8	-1.9	-2.1
Part-time rate	7.5	5.7	0.5	-1.8	-0.3	0.6
Women, 25 years and over									
Population	1,408.6	1,410.8	...	2.2	30.9	33.6	0.2	2.2	2.4
Labour force	935.3	941.0	5.8	5.7	20.5	29.5	0.6	2.2	3.2
Employment	888.8	892.7	6.0	3.9	13.1	22.0	0.4	1.5	2.5
Unemployment	46.6	48.3	4.1	1.7	7.4	7.5	3.6	18.1	18.4
Participation rate	66.4	66.7	0.4	0.3	0.0	0.5
Unemployment rate	5.0	5.1	0.4	0.1	0.7	0.6
Employment rate	63.1	63.3	0.4	0.2	-0.4	0.1
Part-time rate	22.2	22.5	1.0	0.3	-0.4	-0.5
Industry									
	2,304.4	2,289.5	10.2	-14.9	-10.7	-2.3	-0.6	-0.5	-0.1
Goods-producing sector									
Agriculture	629.0	633.9	6.9	4.9	-29.3	-21.7	0.8	-4.4	-3.3
Forestry, fishing, mining, quarrying, oil and gas extraction ²	60.7	61.1	3.2	0.4	-1.9	-1.4	0.7	-3.0	-2.2
Utilities	152.9	152.2	3.6	-0.7	-20.7	-16.7	-0.5	-12.0	-9.9
Construction	20.1	19.6	1.0	-0.5	1.5	1.8	-2.5	8.3	10.1
Manufacturing	259.0	261.7	4.8	2.7	-1.8	2.8	1.0	-0.7	1.1
	136.3	139.3	3.1	3.0	-6.3	-8.2	2.2	-4.3	-5.6
Services-producing sector									
Trade	1,675.4	1,655.6	9.3	-19.8	18.6	19.4	-1.2	1.1	1.2
Transportation and warehousing	326.4	327.3	4.8	0.9	15.3	12.5	0.3	4.9	4.0
Finance, insurance, real estate and leasing	135.5	129.3	3.3	-6.2	-12.9	-11.0	-4.6	-9.1	-7.8
Professional, scientific and technical services	104.8	101.4	2.6	-3.4	-2.6	-2.9	-3.2	-2.5	-2.8
Business, building and other support services	173.8	173.4	3.3	-0.4	-9.0	-8.5	-0.2	-4.9	-4.7
Educational services	85.5	84.5	3.1	-1.0	4.4	4.9	-1.2	5.5	6.2
Health care and social assistance	140.6	142.5	3.3	1.9	10.3	11.3	1.4	7.8	8.6
Information, culture and recreation	266.0	265.6	3.7	-0.4	12.8	12.3	-0.2	5.1	4.9
Accommodation and food services	77.5	73.6	2.8	-3.9	1.5	3.4	-5.0	2.1	4.8
Other services	154.3	150.4	4.1	-3.9	-4.4	-5.6	-2.5	-2.8	-3.6
Public administration	112.1	109.1	3.4	-3.0	-11.7	-11.3	-2.7	-9.7	-9.4
	98.9	98.5	2.1	-0.4	15.1	14.2	-0.4	18.1	16.8

1. Average standard error of change in two consecutive months (see "Sampling Errors" in Data Quality for further explanations).

2. Also referred to as Natural resources.

Note(s): Related CANSIM Tables 282-0087, 282-0088. The sum of individual categories may not always add to the total due to rounding.

Table 4-10
Selected labour force characteristics (seasonally adjusted) — British Columbia

	October 2015	November 2015	S.E. ¹	Change from			Percent change from		
				last month	last December	twelve months ago	last month	last December	twelve months ago
in thousands (except rates)									
Both sexes, 15 years and over									
Population	3,895.1	3,899.9	...	4.8	51.5	55.6	0.1	1.3	1.4
Labour force	2,503.0	2,498.4	10.1	-4.6	81.3	75.9	-0.2	3.4	3.1
Employment	2,344.8	2,343.4	10.1	-1.4	59.5	59.6	-0.1	2.6	2.6
Employment full-time	1,857.2	1,838.7	14.9	-18.5	23.6	43.3	-1.0	1.3	2.4
Unemployment	158.2	154.9	8.2	-3.3	21.7	16.2	-2.1	16.3	11.7
Participation rate	64.3	64.1	0.3	-0.2	1.3	1.1
Unemployment rate	6.3	6.2	0.3	-0.1	0.7	0.5
Employment rate	60.2	60.1	0.3	-0.1	0.8	0.7
Part-time rate	20.8	21.5	0.6	0.7	1.0	0.2
Both sexes, 15 to 24 years									
Population	584.5	584.8	...	0.3	4.3	4.7	0.1	0.7	0.8
Labour force	372.0	367.6	5.9	-4.4	11.1	12.9	-1.2	3.1	3.6
Employment	331.5	326.3	5.6	-5.2	8.5	9.6	-1.6	2.7	3.0
Unemployment	40.4	41.3	4.9	0.9	2.5	3.3	2.2	6.4	8.7
Participation rate	63.6	62.9	1.0	-0.7	1.5	1.8
Unemployment rate	10.9	11.2	1.3	0.3	0.3	0.5
Employment rate	56.7	55.8	1.0	-0.9	1.1	1.2
Part-time rate	45.0	46.7	2.2	1.6	-0.3	-1.7
Men, 25 years and over									
Population	1,615.5	1,617.7	...	2.2	22.7	24.4	0.1	1.4	1.5
Labour force	1,124.0	1,122.7	5.4	-1.3	39.5	36.4	-0.1	3.6	3.4
Employment	1,057.3	1,059.6	5.7	2.3	26.0	26.8	0.2	2.5	2.6
Unemployment	66.7	63.1	4.7	-3.6	13.6	9.6	-5.4	27.5	17.9
Participation rate	69.6	69.4	0.3	-0.2	1.5	1.2
Unemployment rate	5.9	5.6	0.4	-0.3	1.0	0.7
Employment rate	65.4	65.5	0.4	0.1	0.7	0.7
Part-time rate	8.4	9.8	0.7	1.4	1.0	0.5
Women, 25 years and over									
Population	1,695.0	1,697.4	...	2.4	24.5	26.5	0.1	1.5	1.6
Labour force	1,007.1	1,008.0	5.9	0.9	30.6	26.5	0.1	3.1	2.7
Employment	956.0	957.5	5.9	1.5	25.1	23.2	0.2	2.7	2.5
Unemployment	51.1	50.5	4.5	-0.6	5.6	3.3	-1.2	12.5	7.0
Participation rate	59.4	59.4	0.4	0.0	1.0	0.7
Unemployment rate	5.1	5.0	0.4	-0.1	0.4	0.2
Employment rate	56.4	56.4	0.4	0.0	0.7	0.5
Part-time rate	26.2	26.0	1.0	-0.2	1.5	0.3
Industry									
Industry	2,344.8	2,343.4	10.1	-1.4	59.5	59.6	-0.1	2.6	2.6
Goods-producing sector									
Goods-producing sector	461.5	471.7	5.9	10.2	22.7	31.5	2.2	5.1	7.2
Agriculture	20.7	26.0	2.4	5.3	3.2	4.3	25.6	14.0	19.8
Forestry, fishing, mining, quarrying, oil and gas extraction ²	49.5	47.4	2.5	-2.1	-4.1	-2.3	-4.2	-8.0	-4.6
Utilities	14.6	14.9	1.0	0.3	0.2	1.2	2.1	1.4	8.8
Construction	202.4	202.5	4.1	0.1	6.2	10.8	0.0	3.2	5.6
Manufacturing	174.3	180.8	3.3	6.5	17.2	17.5	3.7	10.5	10.7
Services-producing sector									
Services-producing sector	1,883.3	1,871.8	9.7	-11.5	36.9	28.1	-0.6	2.0	1.5
Trade	360.9	354.4	5.1	-6.5	0.4	-8.7	-1.8	0.1	-2.4
Transportation and warehousing	138.5	141.7	3.3	3.2	1.3	0.8	2.3	0.9	0.6
Finance, insurance, real estate and leasing	128.8	120.1	3.1	-8.7	-17.1	-17.7	-6.8	-12.5	-12.8
Professional, scientific and technical services	189.6	188.3	3.8	-1.3	1.8	6.0	-0.7	1.0	3.3
Business, building and other support services	94.3	99.0	3.2	4.7	12.6	16.2	5.0	14.6	19.6
Educational services	162.6	165.3	3.7	2.7	1.0	0.6	1.7	0.6	0.4
Health care and social assistance	300.8	297.1	3.8	-3.7	25.8	28.9	-1.2	9.5	10.8
Information, culture and recreation	119.3	121.9	3.6	2.6	11.3	8.3	2.2	10.2	7.3
Accommodation and food services	179.7	176.9	4.9	-2.8	-2.9	-5.9	-1.6	-1.6	-3.2
Other services	107.6	108.1	3.0	0.5	-0.1	0.8	0.5	-0.1	0.7
Public administration	101.2	98.8	2.2	-2.4	2.5	-1.3	-2.4	2.6	-1.3

1. Average standard error of change in two consecutive months (see "Sampling Errors" in Data Quality for further explanations).

2. Also referred to as Natural resources.

Note(s): Related CANSIM Tables 282-0087, 282-0088. The sum of individual categories may not always add to the total due to rounding.

Table 5-1
Labour force characteristics by census metropolitan area (seasonally adjusted) — 3 month moving average

	October 2015	November 2015	S.E. ¹	Change from			Percent change from		
				last month	last December	twelve months ago	last month	last December	twelve months ago
St. John's, Newfoundland and Labrador									
Population	179.0	179.2	...	0.2	1.8	1.9	0.1	1.0	1.1
Labour force	124.0	123.5	0.9	-0.5	-0.9	-0.8	-0.4	-0.7	-0.6
Employment	116.0	115.8	1.0	-0.2	-1.7	-1.0	-0.2	-1.4	-0.9
Unemployment	8.0	7.7	0.5	-0.3	0.7	0.2	-3.8	10.0	2.7
Participation rate	69.3	68.9	0.5	-0.4	-1.2	-1.2
Unemployment rate	6.5	6.2	0.4	-0.3	0.6	0.2
Employment rate	64.8	64.6	0.5	-0.2	-1.6	-1.3
Halifax, Nova Scotia									
Population	349.8	350.3	...	0.5	4.6	5.0	0.1	1.3	1.4
Labour force	239.9	238.9	1.4	-1.0	-4.0	-2.6	-0.4	-1.6	-1.1
Employment	225.6	224.3	1.4	-1.3	-3.5	-2.4	-0.6	-1.5	-1.1
Unemployment	14.2	14.6	0.7	0.4	-0.4	-0.2	2.8	-2.7	-1.4
Participation rate	68.6	68.2	0.4	-0.4	-2.1	-1.7
Unemployment rate	5.9	6.1	0.3	0.2	-0.1	0.0
Employment rate	64.5	64.0	0.4	-0.5	-1.9	-1.7
Moncton, New Brunswick									
Population	124.0	124.2	...	0.2	1.5	1.7	0.2	1.2	1.4
Labour force	84.5	84.3	0.9	-0.2	4.0	3.8	-0.2	5.0	4.7
Employment	79.2	79.4	0.9	0.2	4.7	4.8	0.3	6.3	6.4
Unemployment	5.2	4.9	0.4	-0.3	-0.6	-1.0	-5.8	-10.9	-16.9
Participation rate	68.1	67.9	0.7	-0.2	2.5	2.2
Unemployment rate	6.2	5.8	0.5	-0.4	-1.0	-1.5
Employment rate	63.9	63.9	0.7	0.0	3.0	3.0
Saint John, New Brunswick									
Population	105.4	105.4	...	0.0	-0.2	-0.2	0.0	-0.2	-0.2
Labour force	70.2	68.5	0.8	-1.7	-2.0	-1.7	-2.4	-2.8	-2.4
Employment	64.8	63.5	0.8	-1.3	-1.3	-0.8	-2.0	-2.0	-1.2
Unemployment	5.4	5.0	0.4	-0.4	-0.7	-0.9	-7.4	-12.3	-15.3
Participation rate	66.6	65.0	0.7	-1.6	-1.8	-1.5
Unemployment rate	7.7	7.3	0.6	-0.4	-0.8	-1.1
Employment rate	61.5	60.2	0.8	-1.3	-1.2	-0.7
Saguenay, Quebec									
Population	135.1	135.1	...	0.0	-0.2	-0.2	0.0	-0.1	-0.1
Labour force	80.6	81.1	1.0	0.5	-6.6	-6.1	0.6	-7.5	-7.0
Employment	73.8	74.9	1.0	1.1	-4.2	-3.6	1.5	-5.3	-4.6
Unemployment	6.8	6.2	0.4	-0.6	-2.4	-2.6	-8.8	-27.9	-29.5
Participation rate	59.7	60.0	0.8	0.3	-4.8	-4.4
Unemployment rate	8.4	7.6	0.5	-0.8	-2.2	-2.5
Employment rate	54.6	55.4	0.7	0.8	-3.1	-2.6
Québec, Quebec									
Population	671.2	671.7	...	0.5	4.4	4.6	0.1	0.7	0.7
Labour force	471.5	468.5	4.2	-3.0	18.5	16.5	-0.6	4.1	3.7
Employment	447.7	445.9	4.3	-1.8	20.3	17.9	-0.4	4.8	4.2
Unemployment	23.8	22.6	1.6	-1.2	-1.8	-1.4	-5.0	-7.4	-5.8
Participation rate	70.2	69.7	0.6	-0.5	2.3	1.9
Unemployment rate	5.0	4.8	0.4	-0.2	-0.6	-0.5
Employment rate	66.7	66.4	0.6	-0.3	2.6	2.2
Sherbrooke, Quebec									
Population	179.7	179.9	...	0.2	1.7	1.9	0.1	1.0	1.1
Labour force	113.6	112.9	1.2	-0.7	2.7	2.0	-0.6	2.5	1.8
Employment	106.1	105.8	1.2	-0.3	3.7	2.8	-0.3	3.6	2.7
Unemployment	7.5	7.1	0.5	-0.4	-1.1	-0.8	-5.3	-13.4	-10.1
Participation rate	63.2	62.8	0.7	-0.4	1.0	0.5
Unemployment rate	6.6	6.3	0.4	-0.3	-1.1	-0.8
Employment rate	59.0	58.8	0.7	-0.2	1.5	0.9

See notes at the end of the table.

Table 5-1 – continued

Labour force characteristics by census metropolitan area (seasonally adjusted) — 3 month moving average

	October 2015	November 2015	S.E. ¹	Change from			Percent change from		
				last month	last December	twelve months ago	last month	last December	twelve months ago
in thousands (except rates)									
Trois-Rivières, Quebec									
Population	132.8	132.8	...	0.0	0.2	0.2	0.0	0.2	0.2
Labour force	79.8	80.9	1.0	1.1	4.9	4.4	1.4	6.4	5.8
Employment	74.3	75.3	1.0	1.0	4.2	3.6	1.3	5.9	5.0
Unemployment	5.5	5.6	0.4	0.1	0.6	0.8	1.8	12.0	16.7
Participation rate	60.1	60.9	0.7	0.8	3.6	3.2
Unemployment rate	6.9	6.9	0.5	0.0	0.3	0.6
Employment rate	55.9	56.7	0.7	0.8	3.1	2.6
Montréal, Quebec									
Population	3,361.2	3,364.0	...	2.8	28.5	30.3	0.1	0.9	0.9
Labour force	2,233.5	2,227.9	8.4	-5.6	23.1	20.1	-0.3	1.0	0.9
Employment	2,038.5	2,037.1	8.6	-1.4	10.5	11.6	-0.1	0.5	0.6
Unemployment	195.0	190.8	4.9	-4.2	12.6	8.5	-2.2	7.1	4.7
Participation rate	66.4	66.2	0.3	-0.2	0.1	0.0
Unemployment rate	8.7	8.6	0.2	-0.1	0.5	0.3
Employment rate	60.6	60.6	0.3	0.0	-0.2	-0.2
Ottawa-Gatineau, Ontario/Quebec									
Population	1,100.3	1,101.4	...	1.1	11.1	12.1	0.1	1.0	1.1
Labour force	765.6	761.0	4.6	-4.6	1.2	1.3	-0.6	0.2	0.2
Employment	717.6	712.8	4.8	-4.8	0.3	0.9	-0.7	0.0	0.1
Unemployment	48.0	48.2	2.1	0.2	0.9	0.4	0.4	1.9	0.8
Participation rate	69.6	69.1	0.4	-0.5	-0.6	-0.6
Unemployment rate	6.3	6.3	0.3	0.0	0.1	0.0
Employment rate	65.2	64.7	0.4	-0.5	-0.6	-0.7
Ottawa-Gatineau, Quebec part, Ontario/Quebec									
Population	272.8	273.0	...	0.2	1.5	1.7	0.1	0.6	0.6
Labour force	197.8	195.5	1.6	-2.3	10.5	11.0	-1.2	5.7	6.0
Employment	184.8	182.9	1.6	-1.9	11.1	11.4	-1.0	6.5	6.6
Unemployment	13.0	12.6	0.8	-0.4	-0.6	-0.4	-3.1	-4.5	-3.1
Participation rate	72.5	71.6	0.6	-0.9	3.5	3.6
Unemployment rate	6.6	6.4	0.4	-0.2	-0.7	-0.6
Employment rate	67.7	67.0	0.6	-0.7	3.7	3.8
Ottawa-Gatineau, Ontario part, Ontario/Quebec									
Population	827.4	828.4	...	1.0	9.6	10.4	0.1	1.2	1.3
Labour force	567.8	565.5	4.3	-2.3	-9.3	-9.7	-0.4	-1.6	-1.7
Employment	532.8	529.9	4.5	-2.9	-10.8	-10.5	-0.5	-2.0	-1.9
Unemployment	34.9	35.6	1.9	0.7	1.5	0.8	2.0	4.4	2.3
Participation rate	68.6	68.3	0.5	-0.3	-1.9	-2.0
Unemployment rate	6.1	6.3	0.3	0.2	0.4	0.2
Employment rate	64.4	64.0	0.6	-0.4	-2.0	-2.1
Kingston, Ontario									
Population	138.6	138.6	...	0.0	1.0	1.1	0.0	0.7	0.8
Labour force	91.2	90.8	0.9	-0.4	5.6	5.3	-0.4	6.6	6.2
Employment	85.0	84.7	0.9	-0.3	5.3	5.1	-0.4	6.7	6.4
Unemployment	6.2	6.1	0.4	-0.1	0.4	0.2	-1.6	7.0	3.4
Participation rate	65.8	65.5	0.7	-0.3	3.6	3.3
Unemployment rate	6.8	6.7	0.4	-0.1	0.0	-0.2
Employment rate	61.3	61.1	0.6	-0.2	3.4	3.2
Peterborough, Ontario									
Population	104.5	104.5	...	0.0	0.3	0.3	0.0	0.3	0.3
Labour force	65.5	65.4	1.2	-0.1	-2.7	-1.8	-0.2	-4.0	-2.7
Employment	60.0	59.8	1.2	-0.2	-3.6	-2.4	-0.3	-5.7	-3.9
Unemployment	5.5	5.6	0.6	0.1	0.9	0.6	1.8	19.1	12.0
Participation rate	62.7	62.6	1.1	-0.1	-2.8	-1.9
Unemployment rate	8.4	8.6	0.9	0.2	1.7	1.2
Employment rate	57.4	57.2	1.2	-0.2	-3.6	-2.5

See notes at the end of the table.

Table 5-1 – continued

Labour force characteristics by census metropolitan area (seasonally adjusted) — 3 month moving average

	October 2015	November 2015	S.E. ¹	Change from			Percent change from		
				last month	last December	twelve months ago	last month	last December	twelve months ago
in thousands (except rates)									
Oshawa, Ontario									
Population	322.6	323.1	...	0.5	4.8	5.2	0.2	1.5	1.6
Labour force	207.3	212.2	1.8	4.9	-10.1	-9.4	2.4	-4.5	-4.2
Employment	190.7	195.6	1.9	4.9	-11.4	-10.6	2.6	-5.5	-5.1
Unemployment	16.6	16.6	0.9	0.0	1.3	1.3	0.0	8.5	8.5
Participation rate	64.3	65.7	0.6	1.4	-4.1	-4.0
Unemployment rate	8.0	7.8	0.4	-0.2	0.9	0.9
Employment rate	59.1	60.5	0.6	1.4	-4.5	-4.4
Toronto, Ontario									
Population	5,125.2	5,132.9	...	7.7	79.7	85.4	0.2	1.6	1.7
Labour force	3,457.6	3,448.4	11.5	-9.2	109.8	107.6	-0.3	3.3	3.2
Employment	3,212.3	3,206.6	11.6	-5.7	134.0	132.7	-0.2	4.4	4.3
Unemployment	245.3	241.9	6.5	-3.4	-24.1	-25.0	-1.4	-9.1	-9.4
Participation rate	67.5	67.2	0.2	-0.3	1.1	1.0
Unemployment rate	7.1	7.0	0.2	-0.1	-1.0	-1.0
Employment rate	62.7	62.5	0.2	-0.2	1.7	1.6
Hamilton, Ontario									
Population	644.2	644.9	...	0.7	6.2	6.7	0.1	1.0	1.0
Labour force	409.3	411.5	3.6	2.2	9.4	6.2	0.5	2.3	1.5
Employment	386.6	386.9	3.7	0.3	6.5	3.1	0.1	1.7	0.8
Unemployment	22.7	24.6	1.4	1.9	2.9	3.1	8.4	13.4	14.4
Participation rate	63.5	63.8	0.6	0.3	0.8	0.3
Unemployment rate	5.5	6.0	0.3	0.5	0.6	0.7
Employment rate	60.0	60.0	0.6	0.0	0.4	-0.1
St. Catharines-Niagara, Ontario									
Population	343.5	343.7	...	0.2	1.1	1.1	0.1	0.3	0.3
Labour force	222.9	224.9	2.1	2.0	13.2	13.6	0.9	6.2	6.4
Employment	206.6	207.4	2.1	0.8	10.5	10.4	0.4	5.3	5.3
Unemployment	16.2	17.5	0.8	1.3	2.7	3.2	8.0	18.2	22.4
Participation rate	64.9	65.4	0.6	0.5	3.6	3.7
Unemployment rate	7.3	7.8	0.4	0.5	0.8	1.0
Employment rate	60.1	60.3	0.6	0.2	2.8	2.8
Kitchener-Cambridge-Waterloo, Ontario									
Population	422.6	422.9	...	0.3	3.7	4.0	0.1	0.9	1.0
Labour force	298.0	298.3	2.8	0.3	-9.4	-8.8	0.1	-3.1	-2.9
Employment	280.1	280.6	2.9	0.5	-9.4	-7.9	0.2	-3.2	-2.7
Unemployment	17.9	17.7	1.0	-0.2	-0.1	-0.9	-1.1	-0.6	-4.8
Participation rate	70.5	70.5	0.7	0.0	-2.9	-2.8
Unemployment rate	6.0	5.9	0.3	-0.1	0.1	-0.2
Employment rate	66.3	66.4	0.7	0.1	-2.8	-2.5
Brantford, Ontario									
Population	112.1	112.2	...	0.1	0.9	0.9	0.1	0.8	0.8
Labour force	71.7	71.0	0.9	-0.7	-3.2	-2.5	-1.0	-4.3	-3.4
Employment	67.9	67.2	0.9	-0.7	-2.4	-1.5	-1.0	-3.4	-2.2
Unemployment	3.8	3.8	0.4	0.0	-0.8	-1.0	0.0	-17.4	-20.8
Participation rate	64.0	63.3	0.8	-0.7	-3.4	-2.7
Unemployment rate	5.3	5.4	0.5	0.1	-0.8	-1.1
Employment rate	60.6	59.9	0.8	-0.7	-2.6	-1.8
Guelph, Ontario									
Population	129.1	129.2	...	0.1	1.4	1.5	0.1	1.1	1.2
Labour force	94.6	95.9	1.2	1.3	6.0	6.0	1.4	6.7	6.7
Employment	90.9	91.9	1.2	1.0	6.6	6.9	1.1	7.7	8.1
Unemployment	3.8	4.0	0.4	0.2	-0.6	-0.9	5.3	-13.0	-18.4
Participation rate	73.3	74.2	0.9	0.9	3.9	3.8
Unemployment rate	4.0	4.2	0.5	0.2	-0.9	-1.3
Employment rate	70.4	71.1	0.9	0.7	4.4	4.5

See notes at the end of the table.

Table 5-1 – continued

Labour force characteristics by census metropolitan area (seasonally adjusted) — 3 month moving average

	October 2015	November 2015	S.E. ¹	Change from			Percent change from		
				last month	last December	twelve months ago	last month	last December	twelve months ago
in thousands (except rates)									
London, Ontario									
Population	423.1	423.5	...	0.4	3.5	3.7	0.1	0.8	0.9
Labour force	273.7	272.7	2.4	-1.0	7.0	9.1	-0.4	2.6	3.5
Employment	254.4	254.1	2.4	-0.3	7.9	10.3	-0.1	3.2	4.2
Unemployment	19.4	18.6	1.1	-0.8	-0.9	-1.2	-4.1	-4.6	-6.1
Participation rate	64.7	64.4	0.6	-0.3	1.1	1.6
Unemployment rate	7.1	6.8	0.4	-0.3	-0.5	-0.7
Employment rate	60.1	60.0	0.6	-0.1	1.4	1.9
Windsor, Ontario									
Population	280.2	280.4	...	0.2	1.8	2.0	0.1	0.6	0.7
Labour force	170.7	170.6	1.8	-0.1	-4.6	-2.3	-0.1	-2.6	-1.3
Employment	154.0	153.6	1.8	-0.4	-4.5	-3.0	-0.3	-2.8	-1.9
Unemployment	16.8	17.0	1.0	0.2	0.0	0.7	1.2	0.0	4.3
Participation rate	60.9	60.8	0.6	-0.1	-2.1	-1.3
Unemployment rate	9.8	10.0	0.6	0.2	0.3	0.6
Employment rate	55.0	54.8	0.6	-0.2	-1.9	-1.5
Barrie, Ontario									
Population	167.8	168.0	...	0.2	2.4	2.6	0.1	1.4	1.6
Labour force	114.2	110.9	1.4	-3.3	-10.5	-10.7	-2.9	-8.6	-8.8
Employment	106.7	104.1	1.5	-2.6	-11.0	-11.8	-2.4	-9.6	-10.2
Unemployment	7.5	6.8	0.7	-0.7	0.6	1.0	-9.3	9.7	17.2
Participation rate	68.1	66.0	0.9	-2.1	-7.3	-7.5
Unemployment rate	6.6	6.1	0.6	-0.5	1.0	1.3
Employment rate	63.6	62.0	0.9	-1.6	-7.5	-8.1
Greater Sudbury, Ontario									
Population	140.0	140.0	...	0.0	0.2	0.3	0.0	0.1	0.2
Labour force	87.7	87.4	0.8	-0.3	-2.4	-1.8	-0.3	-2.7	-2.0
Employment	81.2	80.2	0.9	-1.0	-4.1	-3.5	-1.2	-4.9	-4.2
Unemployment	6.5	7.2	0.4	0.7	1.8	1.7	10.8	33.3	30.9
Participation rate	62.6	62.4	0.6	-0.2	-1.8	-1.5
Unemployment rate	7.4	8.2	0.4	0.8	2.2	2.0
Employment rate	58.0	57.3	0.6	-0.7	-3.0	-2.6
Thunder Bay, Ontario									
Population	104.6	104.6	...	0.0	-0.1	-0.1	0.0	-0.1	-0.1
Labour force	61.4	62.2	0.7	0.8	-1.8	-1.4	1.3	-2.8	-2.2
Employment	58.4	58.9	0.7	0.5	-1.6	-1.2	0.9	-2.6	-2.0
Unemployment	3.0	3.3	0.3	0.3	-0.3	-0.2	10.0	-8.3	-5.7
Participation rate	58.7	59.5	0.7	0.8	-1.6	-1.2
Unemployment rate	4.9	5.3	0.4	0.4	-0.3	-0.2
Employment rate	55.8	56.3	0.7	0.5	-1.5	-1.1
Winnipeg, Manitoba									
Population	655.1	655.9	...	0.8	8.8	9.6	0.1	1.4	1.5
Labour force	453.5	452.3	1.4	-1.2	11.9	12.1	-0.3	2.7	2.7
Employment	428.0	426.5	1.4	-1.5	11.4	11.7	-0.4	2.7	2.8
Unemployment	25.5	25.8	0.8	0.3	0.5	0.4	1.2	2.0	1.6
Participation rate	69.2	69.0	0.2	-0.2	0.9	0.9
Unemployment rate	5.6	5.7	0.2	0.1	0.0	-0.1
Employment rate	65.3	65.0	0.2	-0.3	0.9	0.8
Regina, Saskatchewan									
Population	199.2	199.5	...	0.3	3.6	4.0	0.2	1.8	2.0
Labour force	143.3	144.3	1.0	1.0	1.3	1.5	0.7	0.9	1.1
Employment	137.3	138.5	1.0	1.2	0.6	0.6	0.9	0.4	0.4
Unemployment	5.9	5.8	0.4	-0.1	0.7	1.0	-1.7	13.7	20.8
Participation rate	71.9	72.3	0.5	0.4	-0.7	-0.7
Unemployment rate	4.1	4.0	0.3	-0.1	0.4	0.6
Employment rate	68.9	69.4	0.5	0.5	-1.0	-1.1

See notes at the end of the table.

Table 5-1 – continued

Labour force characteristics by census metropolitan area (seasonally adjusted) — 3 month moving average

	October 2015	November 2015	S.E. ¹	Change from			Percent change from		
				last month	last December	twelve months ago	last month	last December	twelve months ago
in thousands (except rates)									
Saskatoon, Saskatchewan									
Population	253.9	254.3	...	0.4	6.0	6.6	0.2	2.4	2.7
Labour force	182.9	184.5	1.2	1.6	5.8	6.2	0.9	3.2	3.5
Employment	171.8	173.2	1.3	1.4	1.5	1.5	0.8	0.9	0.9
Unemployment	11.2	11.3	0.5	0.1	4.3	4.7	0.9	61.4	71.2
Participation rate	72.0	72.6	0.5	0.6	0.6	0.6
Unemployment rate	6.1	6.1	0.3	0.0	2.2	2.4
Employment rate	67.7	68.1	0.5	0.4	-1.1	-1.2
Calgary, Alberta									
Population	1,188.0	1,190.1	...	2.1	29.4	31.9	0.2	2.5	2.8
Labour force	874.5	870.0	4.5	-4.5	19.6	24.9	-0.5	2.3	2.9
Employment	815.7	810.0	4.5	-5.7	0.1	3.9	-0.7	0.0	0.5
Unemployment	58.8	60.0	2.2	1.2	19.5	21.1	2.0	48.1	54.2
Participation rate	73.6	73.1	0.4	-0.5	-0.2	0.1
Unemployment rate	6.7	6.9	0.3	0.2	2.1	2.3
Employment rate	68.7	68.1	0.4	-0.6	-1.7	-1.5
Edmonton, Alberta									
Population	1,108.3	1,109.9	...	1.6	23.9	25.8	0.1	2.2	2.4
Labour force	816.2	824.4	4.5	8.2	38.8	38.2	1.0	4.9	4.9
Employment	767.1	774.0	4.6	6.9	26.2	28.6	0.9	3.5	3.8
Unemployment	49.1	50.4	2.2	1.3	12.6	9.7	2.6	33.3	23.8
Participation rate	73.6	74.3	0.4	0.7	2.0	1.8
Unemployment rate	6.0	6.1	0.3	0.1	1.3	0.9
Employment rate	69.2	69.7	0.4	0.5	0.8	0.9
Kelowna, British Columbia									
Population	153.0	153.3	...	0.3	2.3	2.3	0.2	1.5	1.5
Labour force	95.2	95.8	2.0	0.6	1.3	0.9	0.6	1.4	0.9
Employment	88.3	89.9	2.0	1.6	-1.1	-0.1	1.8	-1.2	-0.1
Unemployment	6.9	5.9	0.6	-1.0	2.4	1.0	-14.5	68.6	20.4
Participation rate	62.2	62.5	1.3	0.3	-0.1	-0.3
Unemployment rate	7.2	6.2	0.7	-1.0	2.5	1.0
Employment rate	57.7	58.6	1.3	0.9	-1.7	-1.0
Abbotsford-Mission, British Columbia									
Population	145.7	145.9	...	0.2	2.0	2.1	0.1	1.4	1.5
Labour force	96.8	97.1	0.9	0.3	4.8	5.2	0.3	5.2	5.7
Employment	90.2	90.1	0.9	-0.1	3.7	4.2	-0.1	4.3	4.9
Unemployment	6.6	7.0	0.4	0.4	1.1	1.0	6.1	18.6	16.7
Participation rate	66.4	66.6	0.7	0.2	2.5	2.7
Unemployment rate	6.8	7.2	0.4	0.4	0.8	0.7
Employment rate	61.9	61.8	0.6	-0.1	1.8	2.1
Vancouver, British Columbia									
Population	2,140.0	2,143.5	...	3.5	37.0	39.6	0.2	1.8	1.9
Labour force	1,395.7	1,410.3	5.6	14.6	45.7	43.5	1.0	3.3	3.2
Employment	1,313.7	1,328.9	5.7	15.2	45.7	46.4	1.2	3.6	3.6
Unemployment	82.0	81.4	2.9	-0.6	-0.1	-2.8	-0.7	-0.1	-3.3
Participation rate	65.2	65.8	0.3	0.6	1.0	0.8
Unemployment rate	5.9	5.8	0.2	-0.1	-0.2	-0.4
Employment rate	61.4	62.0	0.3	0.6	1.1	1.0
Victoria, British Columbia									
Population	304.3	304.7	...	0.4	3.3	3.5	0.1	1.1	1.2
Labour force	192.7	194.3	1.8	1.6	12.3	12.9	0.8	6.8	7.1
Employment	180.9	182.0	1.8	1.1	9.1	9.9	0.6	5.3	5.8
Unemployment	11.8	12.3	0.7	0.5	3.2	3.0	4.2	35.2	32.3
Participation rate	63.3	63.8	0.6	0.5	3.4	3.6
Unemployment rate	6.1	6.3	0.4	0.2	1.3	1.2
Employment rate	59.4	59.7	0.6	0.3	2.3	2.6

1. Average standard error of change in two consecutive months (see "Sampling Errors" in Data Quality for further explanations).

Note(s): Estimates in this table are based on 2011 Census boundaries. Related CANSIM Table 282-0135. The sum of individual categories may not always add to the total due to rounding.

Table 5-2
Labour force characteristics by census metropolitan area (seasonally adjusted) — Monthly

	October 2015	November 2015	S.E. ¹	Change from			Percent change from		
				last month	last December	twelve months ago	last month	last December	twelve months ago
in thousands (except rates)									
Montréal, Quebec									
Population	3,364.0	3,366.5	...	2.5	29.1	31.0	0.1	0.9	0.9
Labour force	2,222.5	2,226.9	18.1	4.4	27.2	20.6	0.2	1.2	0.9
Employment	2,026.7	2,040.2	17.9	13.5	10.0	15.3	0.7	0.5	0.8
Unemployment	195.8	186.7	12.0	-9.1	17.2	5.3	-4.6	10.1	2.9
Participation rate	66.1	66.1	0.5	0.0	0.2	0.0
Unemployment rate	8.8	8.4	0.5	-0.4	0.7	0.2
Employment rate	60.2	60.6	0.5	0.4	-0.2	-0.1
Toronto, Ontario									
Population	5,133.0	5,139.9	...	6.9	80.5	87.1	0.1	1.6	1.7
Labour force	3,447.2	3,452.9	24.5	5.7	129.0	107.6	0.2	3.9	3.2
Employment	3,209.9	3,210.3	24.7	0.4	153.0	134.9	0.0	5.0	4.4
Unemployment	237.3	242.6	15.4	5.3	-24.0	-27.3	2.2	-9.0	-10.1
Participation rate	67.2	67.2	0.5	0.0	1.5	1.0
Unemployment rate	6.9	7.0	0.4	0.1	-1.0	-1.1
Employment rate	62.5	62.5	0.5	0.0	2.1	1.6
Vancouver, British Columbia									
Population	2,143.6	2,146.9	...	3.3	37.4	40.7	0.2	1.8	1.9
Labour force	1,419.9	1,414.6	12.1	-5.3	52.8	50.4	-0.4	3.9	3.7
Employment	1,336.1	1,339.4	12.1	3.3	55.7	54.9	0.2	4.3	4.3
Unemployment	83.7	75.2	7.3	-8.5	-2.8	-4.5	-10.2	-3.6	-5.6
Participation rate	66.2	65.9	0.6	-0.3	1.3	1.1
Unemployment rate	5.9	5.3	0.5	-0.6	-0.4	-0.5
Employment rate	62.3	62.4	0.6	0.1	1.5	1.4

1. Average standard error of change in two consecutive months (see "Sampling Errors" in Data Quality for further explanations).

Note(s): Estimates in this table are based on 2011 Census boundaries. Related CANSIM Table 282-0136. The sum of individual categories may not always add to the total due to rounding.

Table 6-1
Labour force characteristics by province and economic region, ¹ unadjusted for seasonality, 3 month moving average ending in November 2014 and November 2015

	Population	Labour force			Participation rate	Unemployment rate	Employment rate
		Labour force	Employment	Unemployment			
Canada							
2014	29,074.0	19,089.0	17,911.6	1,177.4	65.7	6.2	61.6
2015	29,377.0	19,296.4	18,052.1	1,244.3	65.7	6.4	61.4
Newfoundland and Labrador							
2014	443.4	268.4	239.6	28.7	60.5	10.7	54.0
2015	442.7	269.7	237.3	32.4	60.9	12.0	53.6
Avalon Peninsula [1010]							
2014	232.1	152.3	140.9	11.4	65.6	7.5	60.7
2015	233.2	149.5	136.8	12.7	64.1	8.5	58.7
South Coast-Burin Peninsula and Notre Dame-Central Bonavista Bay [1020, 1040]							
2014	123.7	65.0	53.6	11.3	52.5	17.4	43.3
2015	122.4	67.5	56.7	10.8	55.1	16.0	46.3
West Coast-Northern Peninsula-Labrador [1030]							
2014	87.6	51.1	45.1	6.0	58.3	11.7	51.5
2015	87.1	52.7	43.8	8.9	60.5	16.9	50.3
Prince Edward Island							
2014	120.7	82.0	74.6	7.4	67.9	9.0	61.8
2015	121.1	81.6	74.3	7.3	67.4	8.9	61.4
Nova Scotia							
2014	783.7	491.7	452.4	39.2	62.7	8.0	57.7
2015	786.6	491.6	453.8	37.8	62.5	7.7	57.7
Cape Breton [1210]							
2014	107.8	59.7	50.9	8.8	55.4	14.7	47.2
2015	106.7	55.9	48.1	7.8	52.4	14.0	45.1
North Shore [1220]							
2014	129.3	72.0	65.3	6.7	55.7	9.3	50.5
2015	128.7	81.4	75.0	6.4	63.2	7.9	58.3
Annapolis Valley [1230]							
2014	102.5	61.1	57.2	3.9	59.6	6.4	55.8
2015	102.7	59.8	55.8	4.0	58.2	6.7	54.3
Southern [1240]							
2014	98.8	56.6	51.2	5.4	57.3	9.5	51.8
2015	98.2	54.5	48.8	5.7	55.5	10.5	49.7
Halifax [1250]							
2014	345.3	242.3	227.9	14.4	70.2	5.9	66.0
2015	350.3	240.1	226.2	13.9	68.5	5.8	64.6
New Brunswick							
2014	621.6	390.2	355.4	34.8	62.8	8.9	57.2
2015	621.9	385.4	355.8	29.6	62.0	7.7	57.2
Campbellton-Miramichi [1310]							
2014	129.8	73.4	62.6	10.7	56.5	14.6	48.2
2015	128.8	71.6	63.3	8.3	55.6	11.6	49.1
Moncton-Richibucto [1320]							
2014	175.7	115.0	106.5	8.5	65.5	7.4	60.6
2015	177.0	113.2	105.8	7.4	64.0	6.5	59.8
Saint John-St. Stephen [1330]							
2014	142.5	92.5	85.3	7.2	64.9	7.8	59.9
2015	142.0	89.2	83.3	5.9	62.8	6.6	58.7
Fredericton-Oromocto [1340]							
2014	109.2	69.5	64.8	4.7	63.6	6.8	59.3
2015	110.2	71.4	66.4	5.1	64.8	7.1	60.3

See notes at the end of the table.

Table 6-1 – continued

Labour force characteristics by province and economic region, 1 unadjusted for seasonality, 3 month moving average ending in November 2014 and November 2015

	Population	Labour force			Participation rate	Unemployment rate	Employment rate
		Labour force	Employment	Unemployment			
	in thousands			percent			
Edmundston-Woodstock [1350]							
2014	64.3	39.9	36.3	3.6	62.1	9.0	56.5
2015	63.8	40.0	37.0	3.0	62.7	7.5	58.0
Quebec							
2014	6,816.7	4,386.8	4,086.2	300.6	64.4	6.9	59.9
2015	6,856.3	4,423.3	4,121.3	302.0	64.5	6.8	60.1
Gaspésie-Îles-de-la-Madeleine [2410]							
2014	78.6	43.6	37.3	6.3	55.5	14.4	47.5
2015	77.9	42.5	37.2	5.4	54.6	12.7	47.8
Bas-Saint-Laurent [2415]							
2014	170.5	90.1	85.5	4.5	52.8	5.0	50.1
2015	169.7	91.3	85.7	5.5	53.8	6.0	50.5
Capitale-Nationale [2420]							
2014	614.1	401.8	381.9	19.9	65.4	5.0	62.2
2015	618.3	418.8	403.1	15.6	67.7	3.7	65.2
Chaudière-Appalaches [2425]							
2014	349.0	234.0	224.6	9.4	67.0	4.0	64.4
2015	349.4	228.3	218.5	9.8	65.3	4.3	62.5
Estrie [2430]							
2014	268.4	168.7	159.9	8.8	62.9	5.2	59.6
2015	269.7	161.9	153.5	8.4	60.0	5.2	56.9
Centre-du-Québec [2433]							
2014	199.9	117.6	111.2	6.5	58.8	5.5	55.6
2015	200.6	123.4	117.2	6.2	61.5	5.0	58.4
Montérégie [2435]							
2014	1,245.1	836.2	789.6	46.6	67.2	5.6	63.4
2015	1,253.3	838.3	790.5	47.8	66.9	5.7	63.1
Montréal [2440]							
2014	1,655.3	1,048.9	947.1	101.9	63.4	9.7	57.2
2015	1,669.6	1,083.2	976.8	106.3	64.9	9.8	58.5
Laval [2445]							
2014	349.5	246.5	232.5	14.0	70.5	5.7	66.5
2015	352.7	214.5	194.6	19.9	60.8	9.3	55.2
Lanaudière [2450]							
2014	409.2	271.8	254.4	17.4	66.4	6.4	62.2
2015	412.4	274.9	256.7	18.2	66.7	6.6	62.2
Laurentides [2455]							
2014	489.2	324.5	302.4	22.1	66.3	6.8	61.8
2015	494.2	332.5	317.9	14.6	67.3	4.4	64.3
Outaouais [2460]							
2014	317.1	207.2	191.8	15.4	65.3	7.4	60.5
2015	318.9	217.9	202.9	15.0	68.3	6.9	63.6
Abitibi-Témiscamingue [2465]							
2014	120.4	79.7	75.3	4.4	66.2	5.5	62.5
2015	120.5	72.9	68.7	4.2	60.5	5.8	57.0
Mauricie [2470]							
2014	226.0	121.0	112.6	8.4	53.5	6.9	49.8
2015	225.5	127.9	117.8	10.1	56.7	7.9	52.2
Saguenay-Lac-Saint-Jean [2475]							
2014	232.4	141.7	129.8	12.0	61.0	8.5	55.9
2015	231.8	137.6	127.4	10.1	59.4	7.3	55.0

See notes at the end of the table.

Table 6-1 – continued

Labour force characteristics by province and economic region, ¹ unadjusted for seasonality, 3 month moving average ending in November 2014 and November 2015

	Population	Labour force			Participation rate	Unemployment rate	Employment rate
		Labour force	Employment	Unemployment			
	in thousands			percent			
Côte-Nord and Nord-du-Québec [2480, 2490]							
2014	92.1	53.3	50.1	3.2	57.9	6.0	54.4
2015	91.9	57.6	52.9	4.8	62.7	8.3	57.6
Ontario							
2014	11,304.1	7,392.8	6,914.3	478.5	65.4	6.5	61.2
2015	11,425.5	7,407.3	6,936.9	470.4	64.8	6.4	60.7
Ottawa [3510]							
2014	1,090.6	742.7	700.6	42.1	68.1	5.7	64.2
2015	1,100.3	730.2	687.8	42.4	66.4	5.8	62.5
Kingston-Pembroke [3515]							
2014	376.7	227.9	212.6	15.3	60.5	6.7	56.4
2015	377.4	209.8	198.8	11.0	55.6	5.2	52.7
Muskoka-Kawartha [3520]							
2014	325.0	200.7	191.1	9.5	61.8	4.7	58.8
2015	326.8	167.9	156.9	11.0	51.4	6.6	48.0
Toronto [3530]							
2014	5,299.7	3,506.1	3,240.7	265.4	66.2	7.6	61.1
2015	5,385.0	3,597.3	3,350.5	246.8	66.8	6.9	62.2
Kitchener-Waterloo-Barrie [3540]							
2014	1,068.2	757.6	721.0	36.6	70.9	4.8	67.5
2015	1,081.1	754.6	721.0	33.6	69.8	4.5	66.7
Hamilton-Niagara Peninsula [3550]							
2014	1,192.0	747.8	708.2	39.7	62.7	5.3	59.4
2015	1,201.7	768.6	722.6	46.0	64.0	6.0	60.1
London [3560]							
2014	550.9	345.3	323.6	21.7	62.7	6.3	58.7
2015	554.8	355.9	334.2	21.8	64.1	6.1	60.2
Windsor-Sarnia [3570]							
2014	524.4	324.7	301.4	23.3	61.9	7.2	57.5
2015	524.5	309.6	285.2	24.4	59.0	7.9	54.4
Stratford-Bruce Peninsula [3580]							
2014	245.9	158.1	152.4	5.7	64.3	3.6	62.0
2015	245.9	141.9	133.5	8.4	57.7	5.9	54.3
Northeast [3590]							
2014	458.4	274.9	260.9	14.1	60.0	5.1	56.9
2015	456.7	268.0	248.4	19.6	58.7	7.3	54.4
Northwest [3595]							
2014	172.3	106.9	101.8	5.2	62.0	4.9	59.1
2015	171.3	103.3	97.9	5.4	60.3	5.2	57.2
Manitoba							
2014	979.8	665.2	633.3	31.9	67.9	4.8	64.6
2015	990.6	674.9	640.5	34.3	68.1	5.1	64.7
Southeast [4610]							
2014	87.8	60.3	57.9	2.4	68.7	4.0	65.9
2015	89.7	60.8	58.1	2.7	67.8	4.4	64.8
South Central and North Central [4620, 4640]							
2014	83.8	58.8	57.3	1.4	70.2	2.4	68.4
2015	84.8	56.4	54.0	2.4	66.5	4.3	63.7
Southwest [4630]							
2014	87.7	60.6	58.8	1.8	69.1	3.0	67.0
2015	88.1	61.5	58.8	2.7	69.8	4.4	66.7

See notes at the end of the table.

Table 6-1 – continued

Labour force characteristics by province and economic region, 1 unadjusted for seasonality, 3 month moving average ending in November 2014 and November 2015

	Population	Labour force			Participation rate	Unemployment rate	Employment rate
		Labour force	Employment	Unemployment			
	in thousands			percent			
Winnipeg [4650]							
2014	589.1	397.0	374.7	22.3	67.4	5.6	63.6
2015	597.0	408.1	385.1	23.0	68.4	5.6	64.5
Interlake [4660]							
2014	74.4	51.9	49.8	2.2	69.8	4.2	66.9
2015	75.1	50.1	48.2	1.9	66.7	3.8	64.2
Parklands and Northern [4670, 4680]							
2014	57.0	36.6	34.9	1.8	64.2	4.9	61.2
2015	55.8	38.1	36.4	1.7	68.3	4.5	65.2
Saskatchewan							
2014	855.5	594.2	576.0	18.2	69.5	3.1	67.3
2015	864.0	608.0	579.1	28.9	70.4	4.8	67.0
Regina-Moose Mountain [4710]							
2014	260.1	189.7	183.9	5.8	72.9	3.1	70.7
2015	264.2	193.0	186.0	7.0	73.1	3.6	70.4
Swift Current-Moose Jaw [4720]							
2014	82.7	53.3	52.6	0.7	64.4	1.3	63.6
2015	82.5	54.1	52.5	1.6	65.6	3.0	63.6
Saskatoon-Biggar [4730]							
2014	290.9	205.1	198.9	6.3	70.5	3.1	68.4
2015	296.9	212.8	201.9	10.9	71.7	5.1	68.0
Yorkton-Melville [4740]							
2014	63.1	40.8	39.4	1.4	64.7	3.4	62.4
2015	62.3	40.6	38.6	2.0	65.2	4.9	62.0
Prince Albert and Northern [4750, 4760]							
2014	158.7	105.2	101.2	4.0	66.3	3.8	63.8
2015	158.1	107.4	100.0	7.5	67.9	7.0	63.3
Alberta							
2014	3,306.9	2,392.3	2,294.3	98.0	72.3	4.1	69.4
2015	3,373.4	2,457.5	2,306.7	150.8	72.8	6.1	68.4
Lethbridge-Medicine Hat [4810]							
2014	229.4	151.5	148.7	2.8	66.0	1.8	64.8
2015	230.5	157.8	148.9	8.8	68.5	5.6	64.6
Camrose-Drumheller [4820]							
2014	161.7	113.5	110.6	2.9	70.2	2.6	68.4
2015	162.0	109.5	105.1	4.4	67.6	4.0	64.9
Calgary [4830]							
2014	1,243.3	899.4	861.8	37.6	72.3	4.2	69.3
2015	1,276.1	929.1	867.3	61.8	72.8	6.7	68.0
Banff-Jasper-Rocky Mountain House and Athabasca-Grande Prairie-Peace River [4840, 4870]							
2014	275.9	206.3	197.8	8.5	74.8	4.1	71.7
2015	277.5	200.9	188.3	12.6	72.4	6.3	67.9
Red Deer [4850]							
2014	167.9	125.6	121.2	4.3	74.8	3.4	72.2
2015	171.2	120.9	114.2	6.7	70.6	5.5	66.7
Edmonton [4860]							
2014	1,113.2	807.1	769.1	38.0	72.5	4.7	69.1
2015	1,138.1	846.7	797.8	48.9	74.4	5.8	70.1
Wood Buffalo-Cold Lake [4880]							
2014	115.6	89.1	85.2	3.9	77.1	4.4	73.7
2015	118.0	92.6	85.1	7.5	78.5	8.1	72.1

See notes at the end of the table.

Table 6-1 – continued

Labour force characteristics by province and economic region, ¹ unadjusted for seasonality, 3 month moving average ending in November 2014 and November 2015

	Population	Labour force			Participation rate	Unemployment rate	Employment rate
		Labour force	Employment	Unemployment			
	in thousands			percent			
British Columbia							
2014	3,841.6	2,425.5	2,285.4	140.0	63.1	5.8	59.5
2015	3,894.9	2,497.0	2,346.2	150.8	64.1	6.0	60.2
Vancouver Island and Coast [5910]							
2014	651.3	373.4	353.5	20.0	57.3	5.4	54.3
2015	657.0	387.1	362.8	24.3	58.9	6.3	55.2
Lower Mainland-Southwest [5920]							
2014	2,389.7	1,545.4	1,454.1	91.3	64.7	5.9	60.8
2015	2,433.3	1,597.6	1,504.5	93.1	65.7	5.8	61.8
Thompson-Okanagan [5930]							
2014	429.7	262.3	246.0	16.3	61.0	6.2	57.2
2015	432.6	266.7	249.4	17.2	61.7	6.4	57.7
Kootenay [5940]							
2014	122.1	72.3	67.5	4.8	59.2	6.6	55.3
2015	122.1	73.1	69.0	4.2	59.9	5.7	56.5
Cariboo [5950]							
2014	127.0	89.5	85.2	4.3	70.5	4.8	67.1
2015	127.5	86.2	80.2	6.1	67.6	7.1	62.9
North Coast and Nechako [5960, 5970]							
2014	66.5	42.7	40.4	2.3	64.2	5.4	60.8
2015	66.5	43.6	40.6	3.0	65.6	6.9	61.1
Northeast [5980]							
2014	55.3	39.8	38.8	x	72.0	x	70.2
2015	56.0	42.8	39.8	3.0	76.4	7.0	71.1

1. For geographic descriptions of economic regions, refer to the Guide to the Labour Force Survey (catalogue number 71-543-GIE).

Note(s): Estimates in this table are based on 2011 Census boundaries. Related CANSIM table 282-0122.

Table 6-2
Labour force characteristics by territory (seasonally adjusted) - 3 month moving average

	October 2015	November 2015	S.E. ¹	Change from			Percent change from		
				last month	last December	twelve months ago	last month	last December	twelve months ago
in thousands (except rates)									
Yukon ²									
Population	28.3	28.3	...	0.0	0.4	0.4	0.0	1.4	1.4
Labour force	20.9	21.2	0.2	0.3	0.7	0.7	1.4	3.4	3.4
Employment	20.0	20.3	0.2	0.3	0.7	0.6	1.5	3.6	3.0
Unemployment	1.0	0.9	0.1	-0.1	-0.1	0.0	-10.0	-10.0	0.0
Participation rate	73.9	74.9	0.8	1.0	1.4	1.4
Unemployment rate	4.8	4.2	0.6	-0.6	-0.7	-0.2
Employment rate	70.7	71.7	0.8	1.0	1.4	1.1
Northwest Territories ³									
Population	31.9	31.9	...	0.0	-0.4	-0.4	0.0	-1.2	-1.2
Labour force	24.1	24.2	0.3	0.1	0.7	0.5	0.4	3.0	2.1
Employment	21.9	21.7	0.3	-0.2	-0.1	-0.3	-0.9	-0.5	-1.4
Unemployment	2.2	2.5	0.2	0.3	0.8	0.8	13.6	47.1	47.1
Participation rate	75.5	75.9	0.8	0.4	3.1	2.5
Unemployment rate	9.1	10.3	0.7	1.2	3.1	3.1
Employment rate	68.7	68.0	0.8	-0.7	0.5	-0.1
Nunavut ⁴									
Population	24.1	24.1	...	0.0	0.7	0.7	0.0	3.0	3.0
Labour force	15.6	15.3	0.2	-0.3	1.3	1.1	-1.9	9.3	7.7
Employment	12.9	12.5	0.2	-0.4	0.3	0.0	-3.1	2.5	0.0
Unemployment	2.7	2.8	0.1	0.1	1.0	1.1	3.7	55.6	64.7
Participation rate	64.7	63.3	0.8	-1.4	3.6	2.5
Unemployment rate	17.3	18.1	0.8	0.8	5.2	6.0
Employment rate	53.5	51.9	0.7	-1.6	-0.1	-1.5

1. Average standard error of change in two consecutive months (see "Sampling Errors" in Data Quality for further explanations).
2. Since 1992, the Labour force survey (LFS) has been conducted in the Yukon, using an alternative methodology that accommodates some of the operational difficulties inherent to remote locales. These estimates are not included in the national totals. In 1995, the LFS in the Yukon underwent a sample redesign. One result of the redesign was that the covered population increased from 85% to 92%, which is reflected by the sharp increase in the three month moving averages estimates of January, February and March of 1995 for all the level estimates. Users are therefore warned to be cautious when comparing estimates before January 1995 to estimates for January 1995 and forward.
3. Since 2001, the Labour force survey (LFS) has been administered in the Northwest Territories, using an alternative methodology that accommodates some of the operational difficulties inherent to remote locales. These estimates are not included in national totals.
4. Since 2004, the Labour force survey (LFS) has been administered in Nunavut, using an alternative methodology that accommodates some of the operational difficulties inherent to remote locales. These estimates are 3-month moving averages and are not included in national totals. From January 2004 to December 2007, estimates represent about 70% of all Nunavut residents aged 15 and over. Starting in January 2008, coverage was extended to 92%, so that by March 2008, the 3-month moving average is completely based on the extended coverage. Because of the large difference in coverage, users are recommended not to compare estimates prior to January 2008 with data afterwards. The January and February 2008 3-month moving average estimates are based on a mix of both coverages, since the extended coverage was introduced in January 2008. Estimates from January 2004 to December 2007 are based on the 10 largest communities in Nunavut: Iqaluit, Rankin Inlet, Cambridge Bay, Kugluktuk, Baker Lake, Arviat, Pond Inlet, Cape Dorset, Pangnirtung, Igloodik. Estimates from March 2008 to present cover the above communities as well as: Taloyoak, Gjoa Haven, Kugaaruk, Coral Harbour, Repulse Bay, Qikiqtarjuaq, Arctic Bay, Hall Beach, Clyde River.

Note(s): Related CANSIM table 282-0100.

Table 7
Average usual hours and wages of employees by selected characteristics, Canada, unadjusted for seasonality

	Employees				Full-time			Part-time		
	Number	Average weekly hours	Average weekly wages	Average hourly wages	Number	Average weekly hours	Average weekly wages	Number	Average weekly hours	Average weekly wages
	thousands		current dollars		thousands		current dollars	thousands		current dollars
November 2015										
15 years and over	15,208.9	35.2	931.69	25.53	12,397.0	39.3	1,071.28	2,811.8	17.1	316.25
15 to 24 years	2,288.4	26.5	420.79	14.78	1,119.1	38.8	665.63	1,169.3	14.8	186.44
25 years and over	12,920.5	36.7	1,022.18	27.44	11,277.9	39.3	1,111.53	1,642.6	18.8	408.65
Men	7,680.6	37.5	1,064.26	27.57	6,765.2	40.4	1,170.20	915.4	16.2	281.31
Women	7,528.2	32.8	796.44	23.45	5,631.8	37.9	952.45	1,896.4	17.6	333.11
Union coverage										
Union coverage	4,701.5	35.7	1,055.45	29.22	4,029.4	38.5	1,152.65	672.2	18.8	472.76
No union coverage	10,507.3	34.9	876.31	23.88	8,367.7	39.6	1,032.10	2,139.7	16.6	267.08
Job permanency										
Permanent	13,242.1	36.1	975.20	26.22	11,260.5	39.3	1,087.77	1,981.6	18.1	335.51
Temporary	1,966.7	29.0	638.76	20.93	1,136.5	39.4	907.94	830.2	14.8	270.26
Occupation										
Management	981.8	39.6	1,569.16	39.66	955.4	40.1	1,597.21	26.4	18.7	552.67
Business, finance and administrative	2,807.6	35.4	883.31	24.43	2,413.1	38.3	970.97	394.5	17.9	347.15
Natural and applied sciences	1,270.4	38.3	1,353.76	35.24	1,230.0	39.0	1,381.00	40.5	18.6	525.41
Health	1,097.4	33.2	974.44	29.20	831.7	37.6	1,110.79	265.8	19.3	547.77
Social science, education, government service and religion	1,536.6	33.5	1,086.66	32.11	1,222.5	37.7	1,238.81	314.1	17.0	494.41
Art, culture, recreation and sport	363.8	29.8	798.07	24.81	241.4	38.5	1,081.53	122.4	12.6	238.84
Sales and service	3,921.9	30.3	558.80	17.11	2,468.4	38.3	755.75	1,453.5	16.8	224.34
Trades, transport and equipment operators	2,224.6	40.5	1,043.63	25.51	2,086.1	41.9	1,091.15	138.5	18.3	328.10
Occupations unique to primary industry	266.3	41.4	1,001.14	23.38	236.3	44.8	1,100.30	30.0	14.5	220.92
Occupations unique to processing, manufacturing and utilities	738.4	39.5	839.95	21.01	712.2	40.3	859.36	26.2	19.4	312.52
November 2014										
15 years and over	15,113.7	35.1	901.77	24.70	12,254.0	39.3	1,040.30	2,859.6	17.1	308.18
15 to 24 years	2,336.5	26.0	407.57	14.51	1,084.0	38.9	661.73	1,252.5	14.9	187.60
25 years and over	12,777.2	36.8	992.15	26.56	11,170.0	39.4	1,077.04	1,607.1	18.9	402.15
Men	7,626.1	37.7	1,027.11	26.48	6,715.9	40.5	1,128.43	910.3	16.5	279.60
Women	7,487.5	32.5	774.12	22.88	5,538.2	37.9	933.43	1,949.4	17.4	321.53
Union coverage										
Union coverage	4,621.3	35.6	1,017.52	28.20	3,922.7	38.6	1,116.65	698.6	19.0	460.97
No union coverage	10,492.3	34.9	850.79	23.15	8,331.3	39.7	1,004.35	2,161.0	16.5	258.78
Job permanency										
Permanent	13,163.5	36.1	944.34	25.38	11,156.9	39.3	1,055.24	2,006.6	18.1	327.72
Temporary	1,950.1	28.8	614.43	20.07	1,097.1	39.6	888.30	853.0	14.8	262.21
Occupation										
Management	873.9	39.7	1,579.47	39.78	848.9	40.3	1,606.27	25.0	20.6	667.95
Business, finance and administrative	2,857.2	35.3	858.21	23.74	2,440.9	38.4	949.28	416.3	17.5	324.16
Natural and applied sciences	1,199.8	38.7	1,323.81	34.15	1,165.4	39.3	1,348.27	34.4	18.3	495.13
Health	1,037.7	33.2	949.80	28.28	776.3	37.7	1,089.02	261.4	19.8	536.38
Social science, education, government service and religion	1,509.3	33.5	1,069.62	31.47	1,205.7	37.7	1,219.27	303.6	16.8	475.41
Art, culture, recreation and sport	353.1	30.2	807.00	24.94	240.5	38.6	1,067.30	112.5	12.1	250.68
Sales and service	3,999.9	30.3	541.39	16.67	2,488.1	38.5	733.58	1,511.8	16.8	225.06
Trades, transport and equipment operators	2,233.2	40.4	1,006.24	24.62	2,103.2	41.8	1,048.05	130.0	18.0	329.95
Occupations unique to primary industry	290.9	42.2	1,010.23	23.16	263.2	44.9	1,091.43	27.8	16.8	241.06
Occupations unique to processing, manufacturing and utilities	758.7	39.1	813.31	20.59	721.8	40.2	840.93	36.8	17.2	272.06

Note(s): Related CANSIM Tables 282-0023, 282-0069, 282-0073.

Table 8
Regional unemployment rates used by the Employment Insurance program ¹, seasonally adjusted, 3 month moving average

Region	Effective from December 6, 2015 to January 9, 2016
	percent
Newfoundland and Labrador	
01. St. John's	6.1
02. Newfoundland and Labrador ²	18.6
Prince Edward Island ³	
65. Charlottetown	7.5
66. Prince Edward Island ⁴	12.5
Nova Scotia	
04. Eastern Nova Scotia	14.9
05. Western Nova Scotia	9.7
06. Halifax	6.1
New Brunswick	
07. Fredericton—Moncton—Saint John	6.9
08. Madawaska—Charlotte	8.9
09. Restigouche—Albert	13.6
Quebec	
10. Gaspésie—Îles-de-la-Madeleine	16.8
11. Québec	5.0
12. Trois-Rivières	7.0
13. South Central Quebec	5.1
14. Sherbrooke	6.3
15. Montérégie	6.5
16. Montréal	8.8
17. Central Quebec	7.0
18. North Western Quebec	8.6
19. Bas-Saint-Laurent—Côte-Nord	10.2
20. Hull	6.4
21. Chicoutimi—Jonquière	7.7
Ontario	
22. Ottawa	6.2
23. Eastern Ontario	7.6
24. Kingston	6.7
25. Central Ontario	7.0
26. Oshawa	7.8
27. Toronto	7.1
28. Hamilton	5.9
29. St. Catharines	7.9
30. London	6.9
31. Niagara	8.2
32. Windsor	10.4
33. Kitchener	6.3
34. Huron	7.8
35. South Central Ontario	5.9
36. Sudbury	8.3
37. Thunder Bay	5.1
38. Northern Ontario	12.7
Manitoba	
39. Winnipeg	5.8
40. Southern Manitoba	6.3
41. Northern Manitoba	34.5
Saskatchewan	
42. Regina	4.1
43. Saskatoon	6.1
44. Southern Saskatchewan	7.1
45. Northern Saskatchewan	19.0
Alberta	
46. Calgary	7.0
47. Edmonton	6.2
48. Northern Alberta	11.8
49. Southern Alberta	7.6

See notes at the end of the table.

Table 8 – continued

Regional unemployment rates used by the Employment Insurance program 1, seasonally adjusted, 3 month moving average

Region	Effective from December 6, 2015 to January 9, 2016
	percent
British Columbia	
50. Southern Interior British Columbia	7.9
51. Abbotsford	7.4
52. Vancouver	5.9
53. Victoria	7.2
54. Southern Coastal British Columbia	8.9
55. Northern British Columbia	11.6
Territories ^{3, 5}	
59. Whitehorse	5.9
60. Yukon ⁶	7.1
61. Yellowknife	5.9
62. Northwest Territories ⁷	15.6
63. Iqaluit	6.1
64. Nunavut ⁸	22.5

1. The boundaries of these regions are determined by Employment and Social Development Canada (ESDC). For geographic descriptions and maps of employment insurance regions, see the ESDC website: <http://srv129.services.gc.ca/eiregions/en/geocont.aspx>.
 2. This region excludes St. John's.
 3. Prince Edward Island as well as the territories are each comprised of two regions effective October 12, 2014.
 4. This region excludes Charlottetown.
 5. The monthly regional unemployment rates for EI purposes in the territories are subject to the greater of a seasonally adjusted 3 month moving average or 12 month moving average.
 6. This region excludes Whitehorse.
 7. This region excludes Yellowknife.
 8. This region excludes Iqaluit.
- Note(s):** All regions are based on the 1996 Census boundaries, with the exception of those in Prince Edward Island and in the territories, which respect the 2011 Census boundaries.

Data quality

Definitions and explanations

The **labour force** is composed of those members of the civilian non-institutional population 15 years of age and over who, during the reference week, were employed or unemployed.

Employed persons are those who, during the reference week:

- (a) did any work at all
- (b) had a job but were not at work

A person is considered to be **full-time** if his/her usual hours at the main job are 30 or more hours per week. When the number of hours worked at the main job is usually less than 30 hours per week then he/she is considered to be **part-time**.

Unemployed persons are those who, during the reference week:

- (a) were without work, had actively looked for work in the past four weeks (ending with reference week), and were available for work;
- (b) had not actively looked for work in the past four weeks but were on temporary layoff and were available for work;
- (c) had not actively looked for work in the past four weeks but had a new job to start in four weeks or less from the reference week, and were available for work.

Persons in the civilian non-institutional population 15 years of age and over who, during the reference week, were neither employed nor unemployed are classified as **not in the labour force**.

The **unemployment rate** represents the number of unemployed persons expressed as a percentage of the labour force (employed and unemployed). The unemployment rate for a particular group (age, sex, etc.) is the number unemployed in that group expressed as a percentage of the labour force for that group.

The **participation rate** represents the labour force expressed as a percentage of the population 15 years of age and over. The participation rate for a particular group (age, sex, etc.) is the labour force in that group expressed as a percentage of the population for that group.

The **employment rate** represents the number of persons employed expressed as a percentage of the population 15 years of age and over. The employment rate for a particular group (age, sex, etc.) is the number employed in that group expressed as a percentage of the population for that group.

The **part-time rate** represents the number of persons employed part-time expressed as a percentage of the employed. The part-time rate for a particular group (age, sex, etc.) is the number employed part-time in that group expressed as a percentage of the employed for that group.

All geographic regions are based on the 2011 Census boundaries.

Seasonal adjustment

Fluctuations in economic time series are caused by seasonal, cyclical and irregular movements. A seasonally adjusted series is one from which seasonal movements have been eliminated. Seasonal movements are defined as those which are caused by regular annual events such as climate, holidays, vacation periods and cycles related to crops, production and retail sales associated with Christmas and Easter. The seasonally adjusted series contains irregular as well as longer-term cyclical fluctuations.

The seasonally adjusted series are revised each year to take into account current data and to generate new forecast factors for the next twelve months. The data are therefore subject to slight revisions in future issues of this publication.

For more information on seasonal adjustment, see *Seasonally adjusted data – Frequently asked questions*.

Sampling variability of estimates

Estimates in this publication are based on the Labour Force Survey, a monthly survey of approximately 56,000 households across Canada. Because the entire population is not surveyed, the estimates are subject to sampling error. While the published estimate is the best available indicator of the real value, changes in the level of any estimates between two months can be the result of a true change or sampling variability. The sampling error can be estimated by calculating the standard error for the published estimate or statistic. These standard errors have been included in the publication tables, in order to assist users in interpreting the data. They are based on 12-month averages and are updated twice a year, in February and August.

Interpretation based on standard error

Approximately two thirds of the time (68%), a change greater than the sampling error indicates a real change. The larger the change compared to the standard error, the better the chance that we are observing a real change, as opposed to a change due to sampling variability. At the 95% confidence level, the change in the estimate must be greater than twice the sampling error in order to ensure that change is real.

Movements in estimates that are smaller than the sampling error are less likely to reflect a real change and more likely to be due to sampling variability. While the above is true for monthly movements, one can have more confidence in a series of consecutive movements in the same direction, even though some of the monthly movements may be smaller than the sampling error.

Interpretation based on confidence intervals

Confidence intervals provide another way of looking at the variability inherent in estimates of sample surveys. To illustrate how to calculate the confidence interval, let us say that one month the published estimate for total employment rose by 16,000 to reach 17,800,000. The associated standard error for the movement estimate is 28,800. The standard error used to interpret the movement estimate indicates that:

- There are approximately two chances in three (68%) that the real value of the movement between the two months falls within the range -12,800 to +44,800 (16,000 + or – one standard error).
- There are approximately nine chances in ten (90%) that the real value of the movement between the two months falls within the range -30,100 to +62,100 (16,000 + or – 1.6 times the standard error).
- There are approximately nineteen chances in twenty (95%) that the real value of the movement between the two months falls within the range -41,600 to +73,600 (16,000 + or – two standard errors).

For more detailed explanations on sampling variability of estimates, and in particular for information on how to assess the variability of level estimates, consult the Data quality section of the *Guide to the Labour Force Survey*, (71-543-G).

Documentation

For more detailed information about the Labour Force Survey, see the following documents:

- Overview of the Labour Force Survey 3701
- Guide to the Labour Force Survey (71-543-G)
- Methodology of the Canadian Labour Force Survey (71-526-X)
- LFS *geographical maps*