

Catalogue no. 71-001-X

Labour Force Information

Friday, January 9, 2015

December 7 to 13, 2014



Statistics
Canada

Statistique
Canada

Canada

How to obtain more information

For information about this product or the wide range of services and data available from Statistics Canada, visit our website, www.statcan.gc.ca.

You can also contact us by

e-mail at infostats@statcan.gc.ca

telephone, from Monday to Friday, 8:30 a.m. to 4:30 p.m., at the following toll-free numbers:

- Statistical Information Service 1-800-263-1136
- National telecommunications device for the hearing impaired 1-800-363-7629
- Fax line 1-877-287-4369

Depository Services Program

- Inquiries line 1-800-635-7943
- Fax line 1-800-565-7757

To access this product

This product, Catalogue no. 71-001-X, is available free in electronic format. To obtain a single issue, visit our website, www.statcan.gc.ca and browse by "Key resource" > "Publications."

Standards of service to the public

Statistics Canada is committed to serving its clients in a prompt, reliable and courteous manner. To this end, this agency has developed standards of service that its employees observe. To obtain a copy of these service standards, please contact Statistics Canada toll-free at 1-800-263-1136. The service standards are also published at www.statcan.gc.ca under "About us" > "The agency" > "Providing services to Canadians."

Statistics Canada
Labour Statistics Division
Labour Force Survey Program

Labour Force Information

Friday, January 9, 2015

December 7 to 13, 2014

Published by authority of the Minister responsible for Statistics Canada

© Minister of Industry, 2015

All rights reserved. Use of this publication is governed by the Statistics Canada Open License Agreement.

<http://www.statcan.gc.ca/reference/licence-eng.html>

January 2015

Catalogue no. 71-001-X

ISSN 1492-5478

Frequency: Monthly

Ottawa

Cette publication est également disponible en français.

Note of appreciation

Canada owes the success of its statistical system to a long-standing partnership between Statistics Canada, the citizens of Canada, its businesses, governments and other institutions. Accurate and timely statistical information could not be produced without their continued cooperation and goodwill.

User information

Symbols

The following standard symbols are used in Statistics Canada publications:

- . not available for any reference period
- .. not available for a specific reference period
- ... not applicable
- 0 true zero or a value rounded to zero
- 0^s value rounded to 0 (zero) where there is a meaningful distinction between true zero and the value that was rounded
- p preliminary
- r revised
- x suppressed to meet the confidentiality requirements of the *Statistics Act*
- E use with caution
- F too unreliable to be published
- * significantly different from reference category ($p < 0.05$)

Special requests (\$)

Custom tabulations can be arranged on an ad hoc or regular basis. This service enables you to specify tables and time series to meet your own requirements. The cost varies according to the request. For more information, contact us toll-free at 1-866-873-8788 or e-mail us at labour@statcan.gc.ca.

Schedule of LFS releases

Release date	Reference period
November 7, 2014	October 12 to 18, 2014
December 5, 2014	November 9 to 15, 2014
January 9, 2015	December 7 to 13, 2014
February 6, 2015	January 11 to 17, 2015
March 13, 2015	February 15 to 21, 2015
April 10, 2015	March 15 to 21, 2015
May 8, 2015	April 12 to 18, 2015
June 5, 2015	May 10 to 16, 2015
July 10, 2015	June 14 to 20, 2015
August 7, 2015	July 12 to 18, 2015
September 4, 2015	August 9 to 15, 2015
October 9, 2015	September 13 to 19, 2015
November 6, 2015	October 11 to 17, 2015
December 4, 2015	November 8 to 14, 2015

Table of contents

Highlights	5
Analysis — December 2014	6
Charts	
1. Employment and unemployment indicators, Canada, seasonally adjusted	10
2. Employment and unemployment indicators, Canada, seasonally adjusted	11
3. Index of employment by industry, Canada, seasonally adjusted, January 2011=100	12
4. Index of employment by industry, Canada, seasonally adjusted, January 2011=100	13
5. Index of employment by industry, Canada, seasonally adjusted, January 2011=100	14
6. Index of employment by province, seasonally adjusted, January 2011=100	15
7. Index of employment by province, seasonally adjusted, January 2011=100	16
Related products	17
Statistical tables	
1 Labour force characteristics by age and sex, Canada, seasonally adjusted	28
2 Employment by class of worker and industry, Canada, seasonally adjusted	30
3 Labour force characteristics by province, seasonally adjusted	31
4 Selected labour force characteristics (seasonally adjusted)	33
4-1 Newfoundland and Labrador	33
4-2 Prince Edward Island	34
4-3 Nova Scotia	35
4-4 New Brunswick	36
4-5 Quebec	37
4-6 Ontario	38
4-7 Manitoba	39
4-8 Saskatchewan	40
4-9 Alberta	41
4-10 British Columbia	42
5 Labour force characteristics by census metropolitan area (seasonally adjusted)	43
5-1 3 month moving average	43
5-2 Monthly	48

Table of contents – continued

6	Labour force characteristics	49
6-1	by province and economic region, unadjusted for seasonality, 3 month moving average ending in December 2013 and December 2014	49
6-2	by territories, unadjusted for seasonality, 3 month moving average ending in December 2013 and December 2014	54
7	Average usual hours and wages of employees by selected characteristics, Canada, unadjusted for seasonality	55
8	Regional unemployment rates used by the Employment Insurance program, seasonally adjusted, 3 month moving average	56
Data quality, concepts and methodology		
	Data quality	58

Highlights

Employment in December was virtually unchanged (-4,300), as gains in full-time work were offset by losses in part time. The unemployment rate remained at 6.6%.

Chart 1
Employment and unemployment rates, Canada, seasonally adjusted

Employment

thousands



Unemployment rate

percent



Analysis — December 2014

Employment in December was virtually unchanged (-4,300), as gains in full-time work were offset by losses in part time. The unemployment rate remained at 6.6%.

Employment gains in 2014 amounted to 186,000 (+1.0%), with increases in the second half of the year accounting for most of the growth. Compared with 12 months earlier, the total number of hours worked increased by 0.7%.

A year-end look at the 2014 data from the Labour Force Survey (LFS) will be published in *The Daily*, along with the revised historical LFS estimates, on January 28, 2015. See the note to readers for more details.

In December, employment declined among women aged 25 to 54 and increased among men in this age group.

Employment declined in Prince Edward Island and was little changed in the other provinces.

There were fewer people working in accommodation and food services as well as 'other services' in December. At the same time, employment increased in agriculture, public administration, and natural resources.

Full-time employment rose by 54,000 in December, while there was a decline of 58,000 in part time.

Employment declines among women aged 25 to 54

There were 24,000 fewer women aged 25 to 54 employed in December. Their unemployment rate was unchanged at 5.2%, as fewer of them participated in the labour market.

Employment among men aged 25 to 54 increased by 23,000 in December and their unemployment rate declined 0.2 percentage points to 5.5%, their lowest rate since 2008.

There was little employment change among the other demographic groups in December.

Employment in most provinces holds steady in December

In December, employment in Prince Edward Island declined by 1,000. The unemployment rate for the province was little changed at 11.0%, as fewer people participated in the labour market.

In British Columbia, employment was virtually unchanged in December. However, as fewer people searched for work, the unemployment rate fell 0.4 percentage points to 5.4%—the lowest in the province since 2008.

Employment in New Brunswick was little changed in December. At the same time, the unemployment rate increased 0.6 percentage points to 10.2%, as more people were looking for work.

Employment in the remaining provinces was little changed between November and December.

Industry perspective

Employment fell by 33,000 in accommodation and food services in December.

In December, employment fell by 14,000 in 'other services', such as private household services provided by nannies and home support workers.

Employment in agriculture rose by 15,000 in December, mostly in greenhouse, nursery and floriculture production.

Employment increased by 14,000 in public administration, mainly in both provincial and municipal public administration.

In December, the number of people working in natural resources increased by 10,000.

The number of self-employed people, as well as private and public sector employees was virtually unchanged in December.

Quarterly update for the territories

The Labour Force Survey also collects labour market information about the territories. This information is produced monthly in the form of three-month moving averages. The following data are not seasonally adjusted; therefore, comparisons should only be made on a year-over-year basis.

From the fourth quarter of 2013 to the fourth quarter of 2014, employment in Yukon was little changed and the unemployment rate was also little changed at 4.5%.

Employment in the Northwest Territories declined by 1,200 (-5.4%) in the fourth quarter of 2014 compared with the same period a year earlier. At the same time, the unemployment rate was little changed at 7.4%.

In Nunavut, employment was little changed over this period and the unemployment rate declined 2.3 percentage points to 12.3%.

Upcoming revisions

Following the release of the population estimates from each census of population, a standard revision is applied to the Labour Force Survey (LFS) estimates. Because of revisions, LFS data will not be available in CANSIM starting on Tuesday, January 27, 2015, and will become available again according to the schedule below. The most commonly used tables will be released on January 28, 2015.

January 28, 2015

CANSIM tables 282-0001 to 282-0024, 282-0085 to 282-0089, 282-0092 to 282-0095, 282-0100, 282-0122 to 282-0136.

January 29, 2015

CANSIM tables 282-0027 to 282-0042, 282-0047 to 282-0051, 282-0069 to 282-0078.

January 30, 2015

CANSIM tables 279-0029 to 279-0039, 282-0025 to 282-0026, 282-0101 to 282-0108, 282-0137 to 282-0140, 282-0200 to 282-0225.

February 2, 2015

CANSIM tables 282-0079 to 282-0084.

The revised estimates will include the following changes:

1. LFS data will be adjusted to reflect the estimates from the 2011 Census of Population and will be revised back to 2001. LFS data are currently based on population estimates from the 2006 Census of Population.
2. Geographic boundaries will be updated to the 2011 Standard Geographical Classification (SGC) from the current 2006 SGC. This change will slightly modify the boundaries of some census metropolitan areas and economic regions (ERs).
3. Six ERs will be combined into three for data quality reasons.
4. While the overall imputation strategy will not change, the revisions will include an update to the variables used to create the imputation groups to reflect both current response patterns and relationships between key variables. This change will be implemented historically back to January 2008 data.
5. The seasonal adjustment methodology applied to the actual hours worked series will be improved to better reflect hours lost as a result of holidays in the reference week. This change will affect CANSIM table 282-0092.

New CANSIM tables will be created for all sub-provincial areas based on the 2011 Census boundaries and the data series will be available for 2001 and onwards. Concordance tables for the CANSIM vectors are now available.

Key labour market trends as well as rates of unemployment, employment and participation will be essentially unchanged as a result of these updates, and changes to most estimates will be minor.

Note that these revisions will not include updates to the classification structures of industries and occupations. These updates will take place in January 2016.

More detail on the upcoming revisions will be available on January 28, 2015, in the article "The 2015 revisions of the Labour Force Survey," which will be released as part of the Improvements to the Labour Force Survey (71F0031X) series.

Sample redesign

Every 10 years, the LFS undergoes a sample redesign to reflect changes in population and labour market characteristics, as well as new definitions of geographical boundaries. The redesigned sample will be introduced starting in January 2015 and will be fully implemented by June 2015.

Note to readers

The LFS estimates for December 2014 are for the week of December 7 to 13.

The LFS estimates are based on a sample and are therefore subject to sampling variability. As a result, monthly estimates will show more variability than trends observed over longer time periods. For more information, see "*Interpreting Monthly Changes in Employment from the Labour Force Survey*." Estimates for smaller geographic areas or industries also have more variability. For an explanation of sampling variability of estimates and how to use standard errors to assess this variability, consult the "Data quality" section of the publication Labour Force Information (71-001-X).

This analysis focuses on differences between estimates that are statistically significant at the 68% confidence level.

The **employment rate** is the number of employed persons as a percentage of the population 15 years of age and over. The rate for a particular group (for example, youths aged 15 to 24) is the number employed in that group as a percentage of the population for that group.

The **unemployment rate** is the number unemployed as a percentage of the labour force (employed and unemployed).

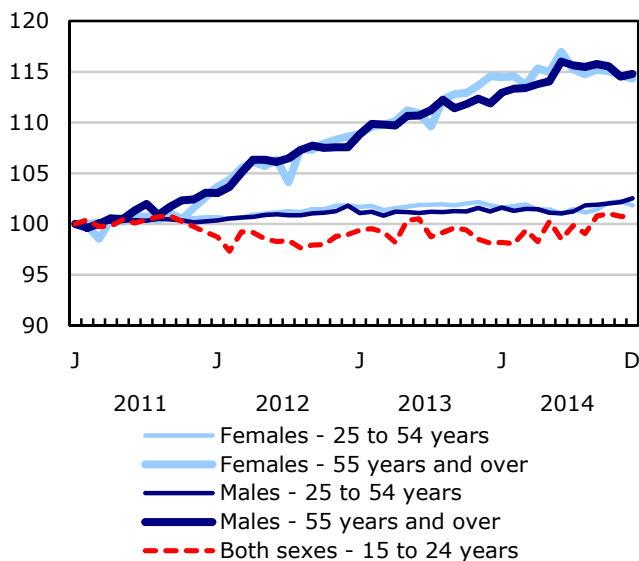
The **participation rate** is the number of employed and unemployed as a percentage of the population. For more detailed information, see the Guide to the Labour Force Survey (71-543-G).

Seasonal adjustment

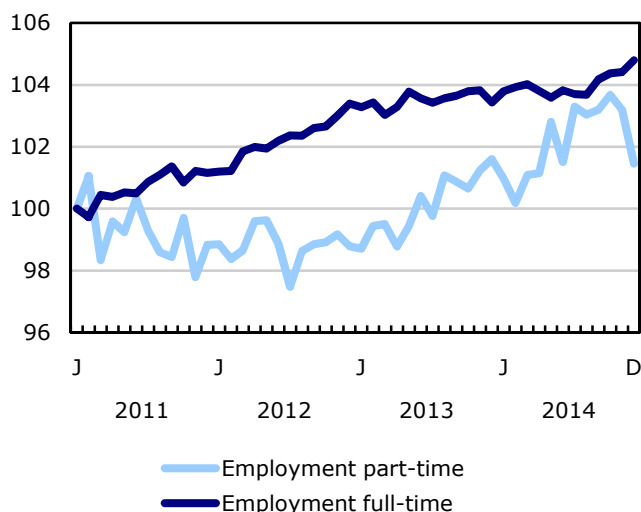
Unless otherwise stated, this release presents seasonally adjusted estimates, which facilitates comparisons by removing the effects of seasonal variations. For more information on seasonal adjustment, see *Seasonally adjusted data – Frequently asked questions*.

Chart 1
Employment and unemployment indicators, Canada, seasonally adjusted

Employment index, January 2011=100



Employment index, January 2011=100



Employment index, January 2011=100

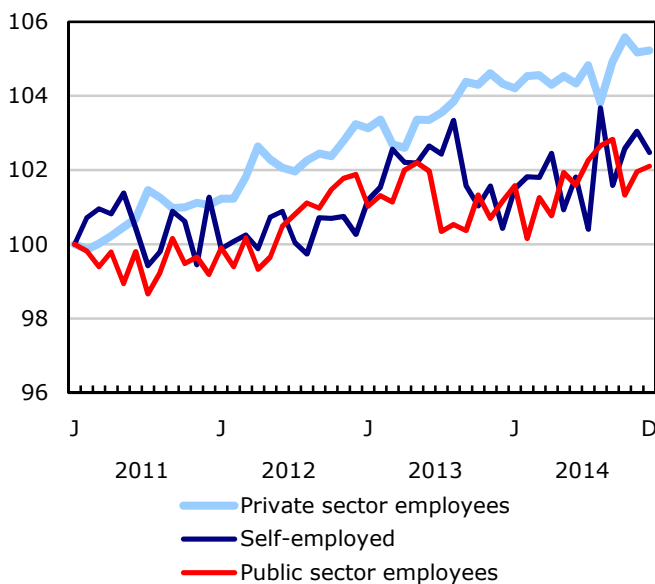
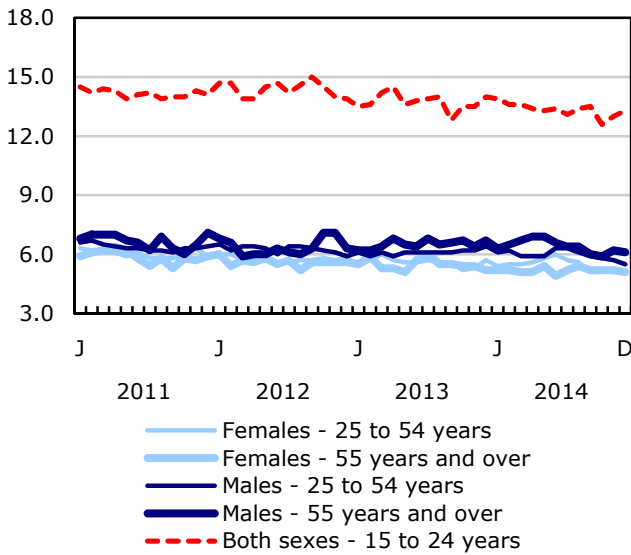
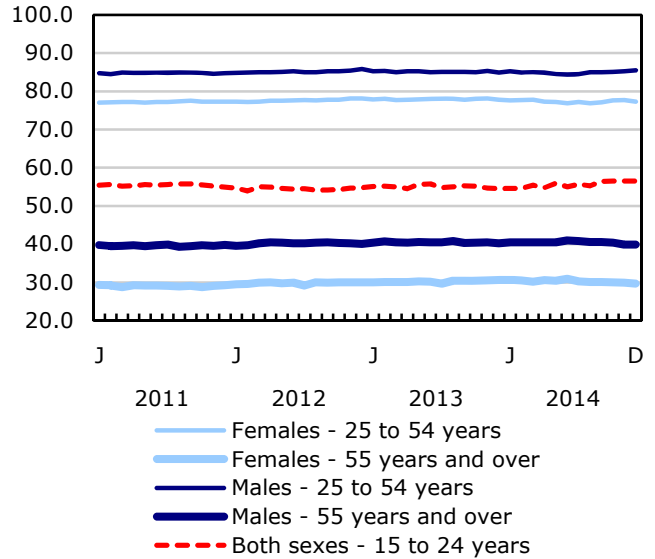


Chart 2
Employment and unemployment indicators, Canada, seasonally adjusted

Unemployment rate (%)



Employment rate (%)



Participation rate (%)

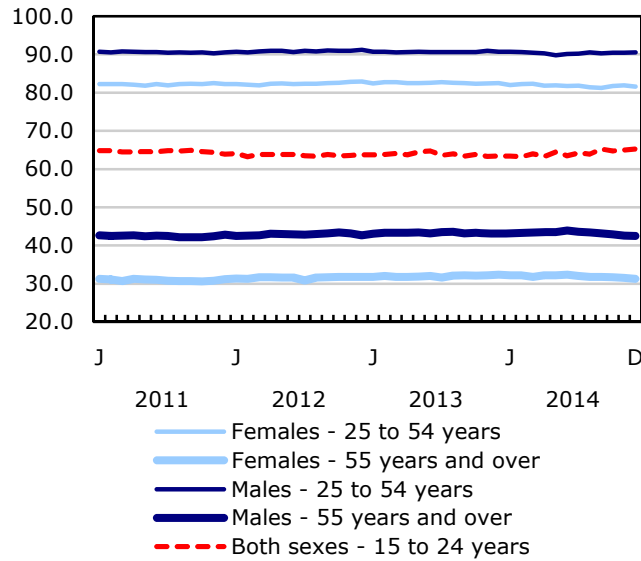


Chart 3
Index of employment by industry, Canada, seasonally adjusted, January 2011=100

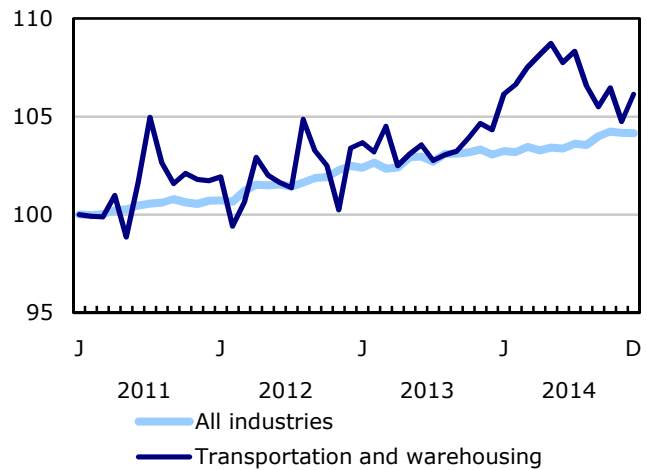
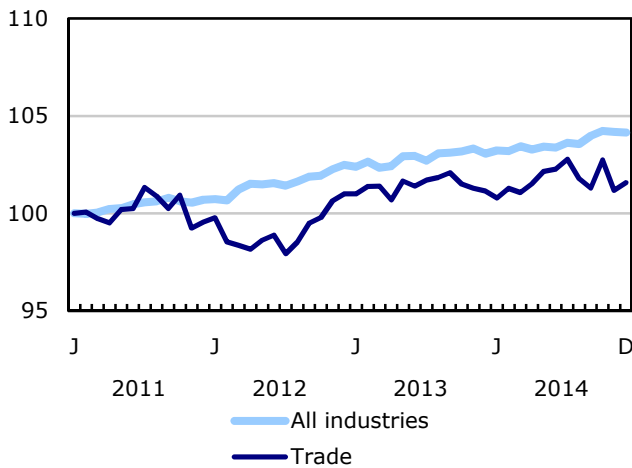
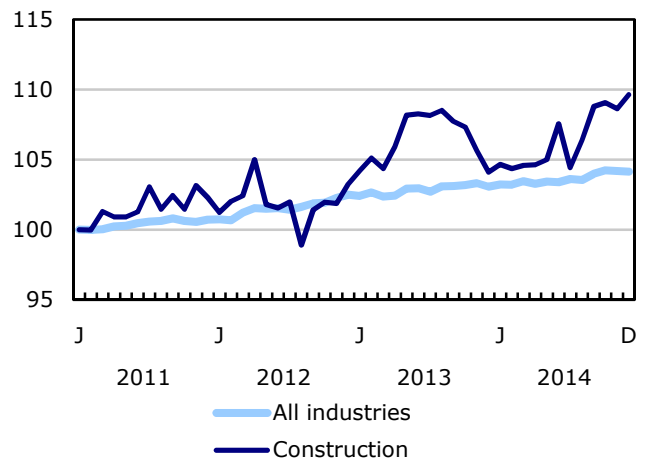
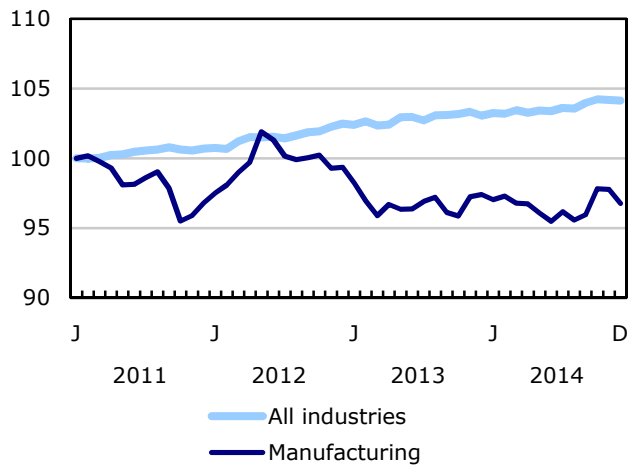
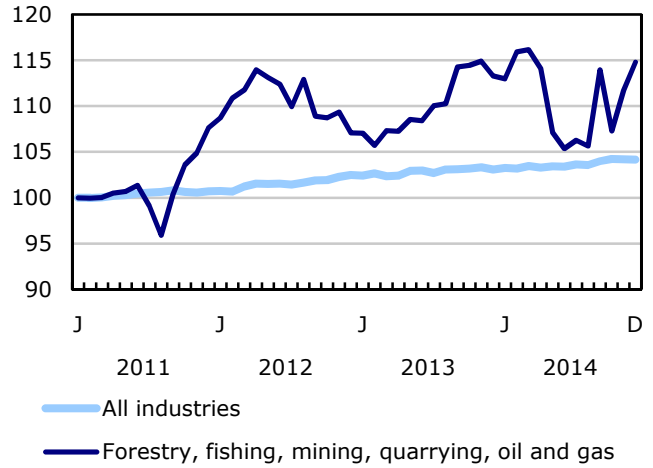
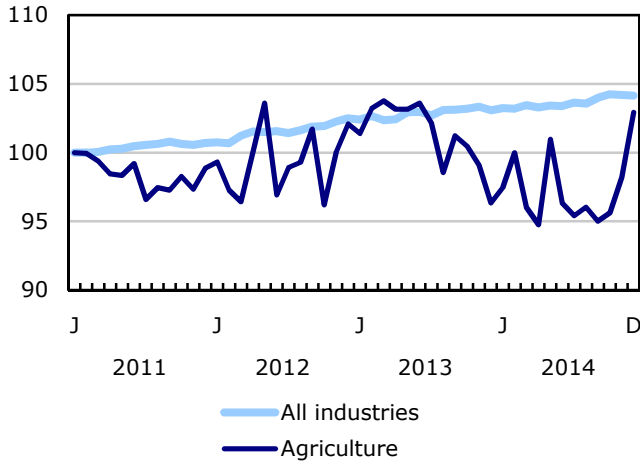


Chart 4
Index of employment by industry, Canada, seasonally adjusted, January 2011=100

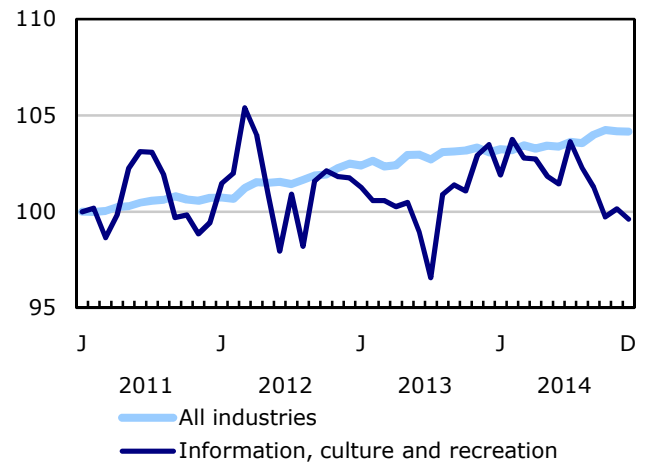
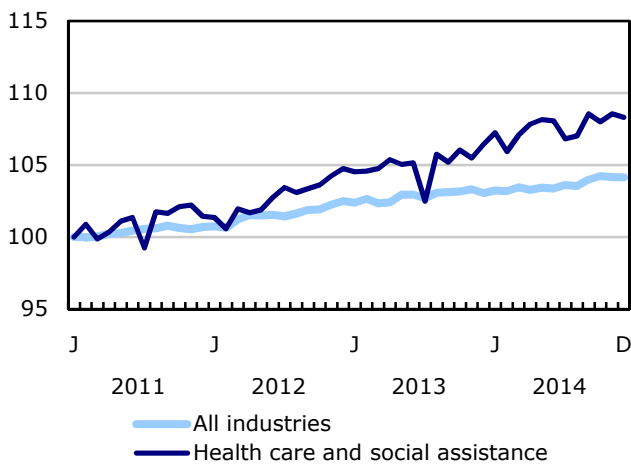
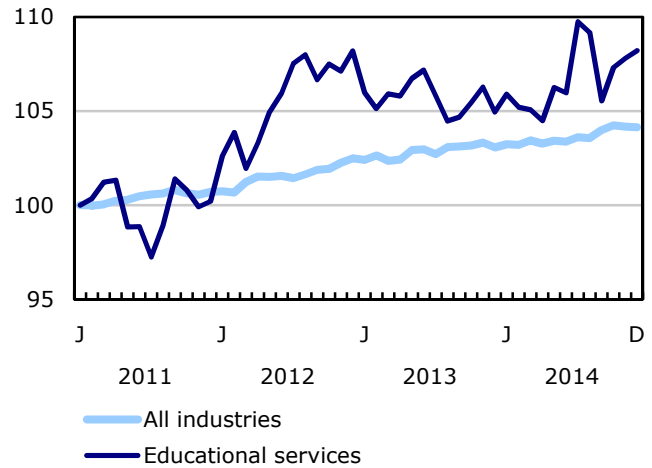
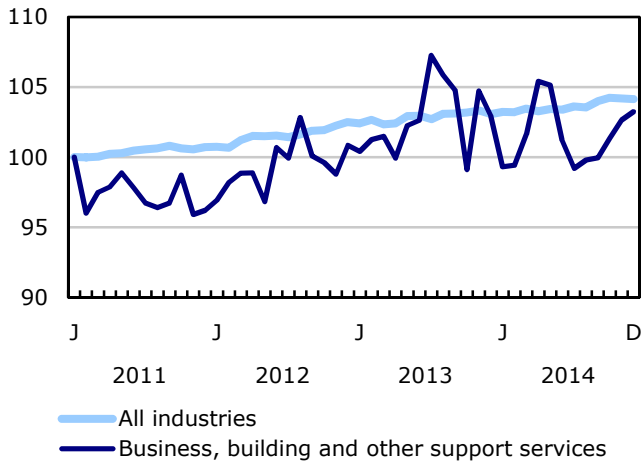
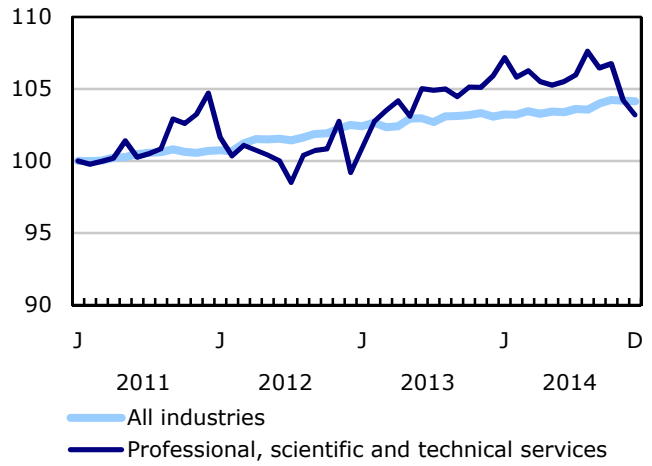
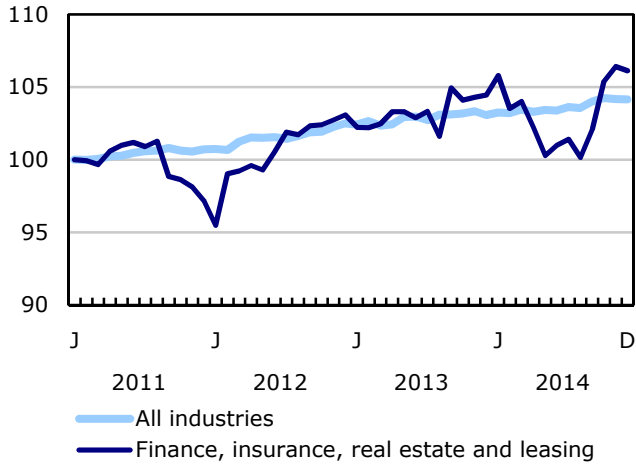


Chart 5
Index of employment by industry, Canada, seasonally adjusted, January 2011=100

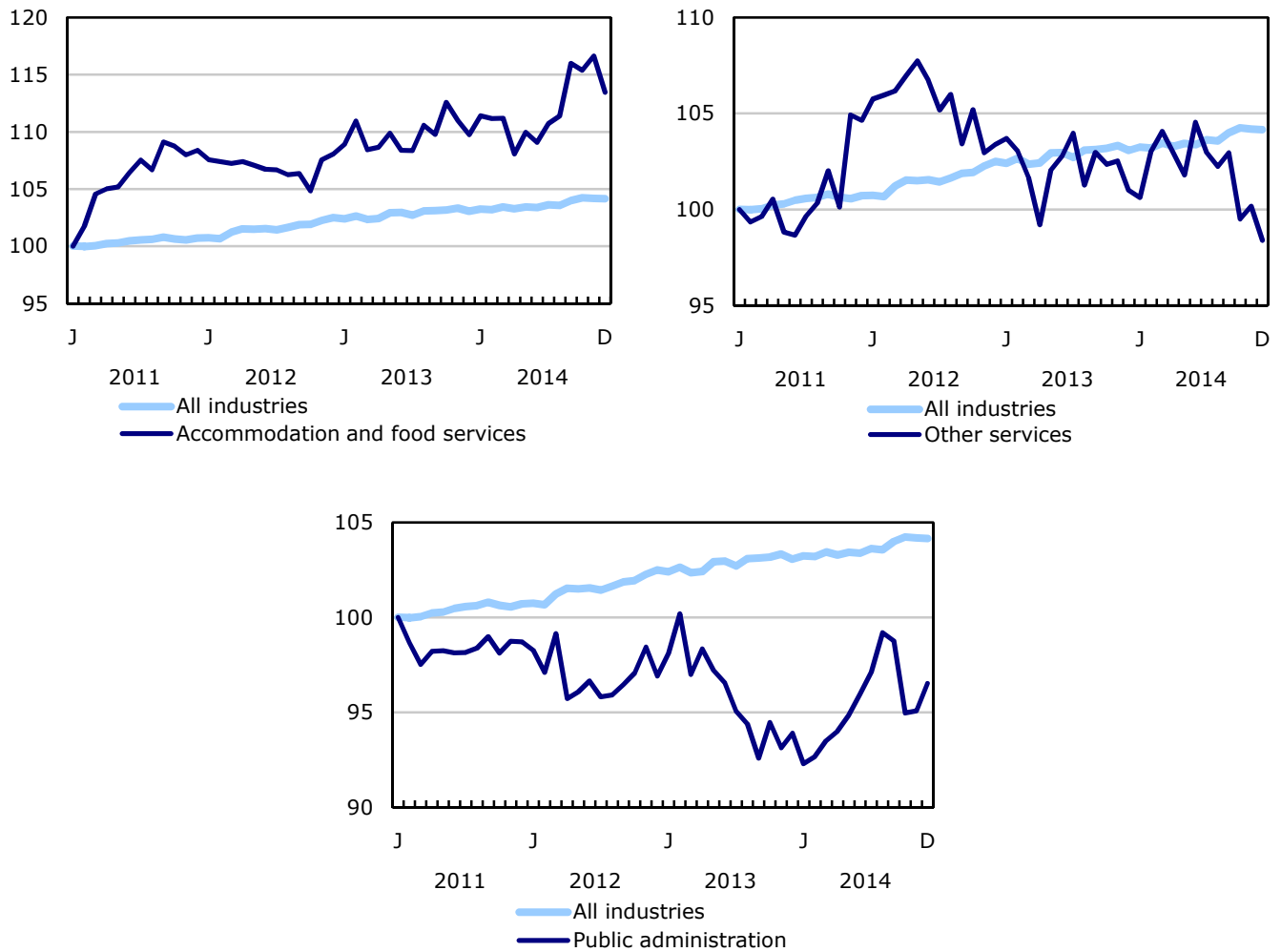


Chart 6
Index of employment by province, seasonally adjusted, January 2011=100

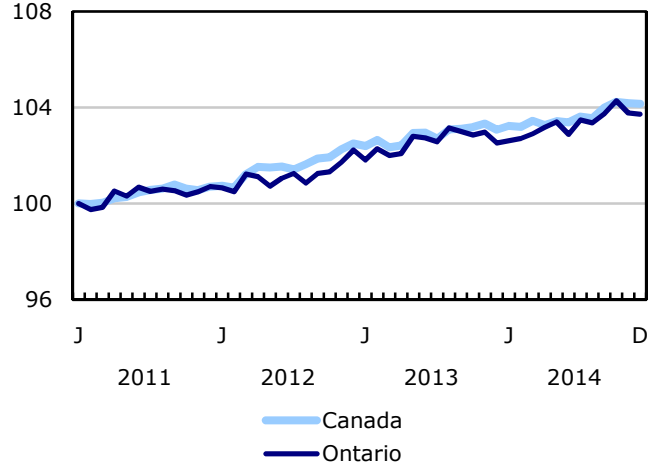
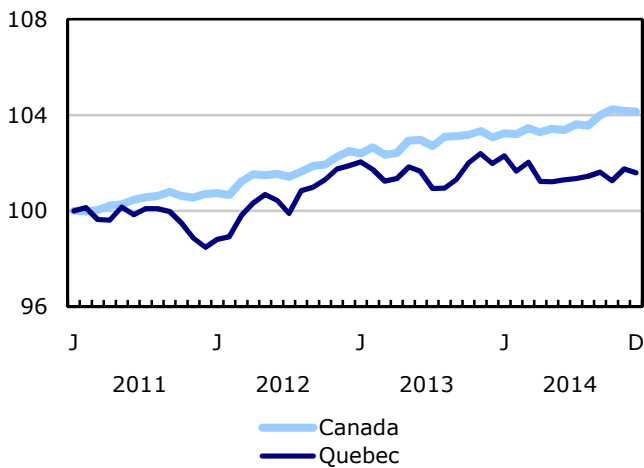
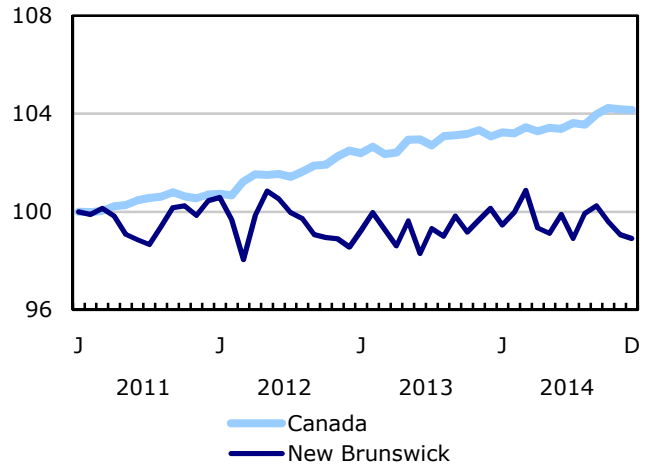
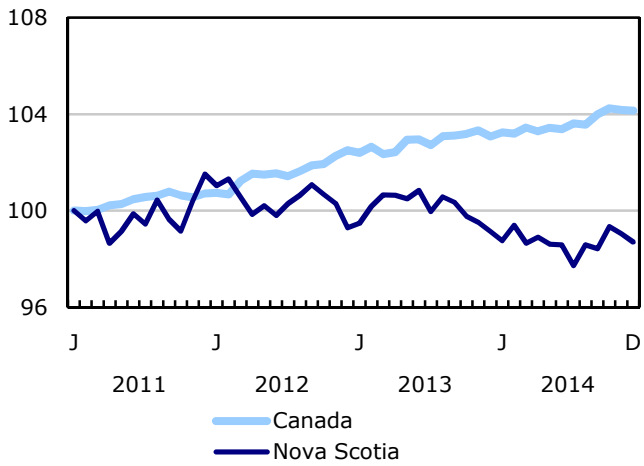
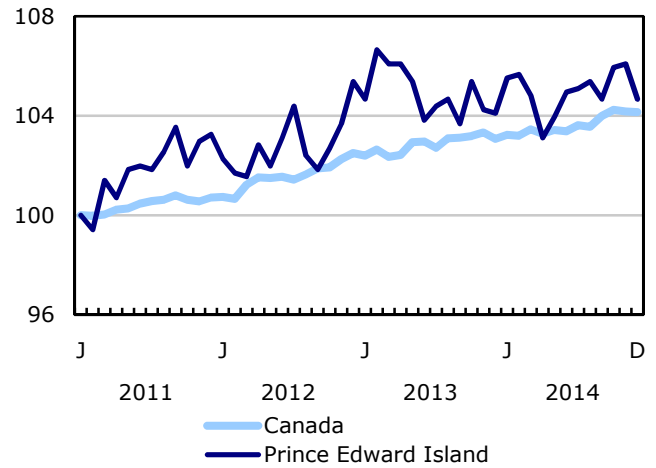
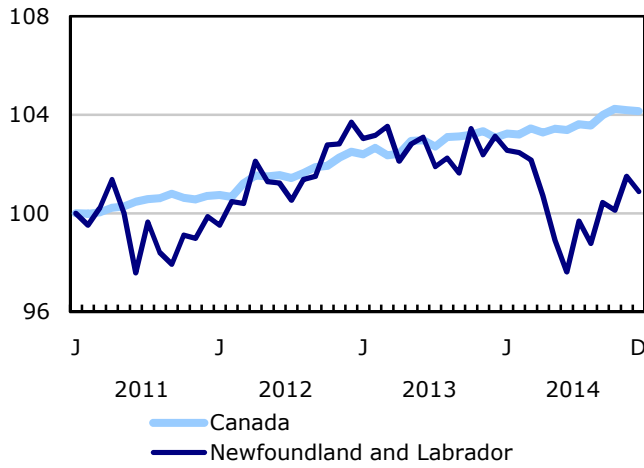
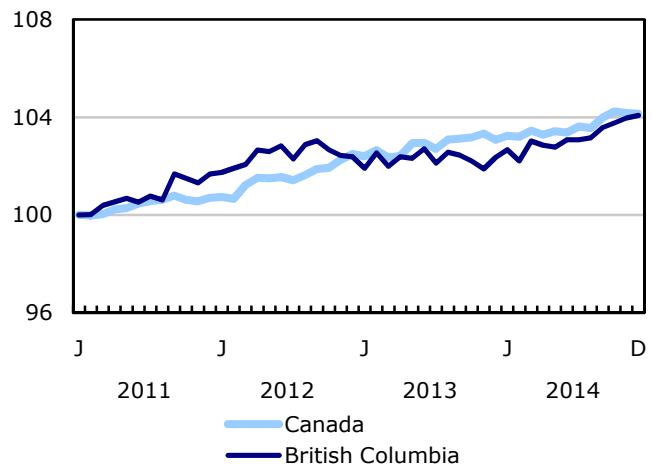
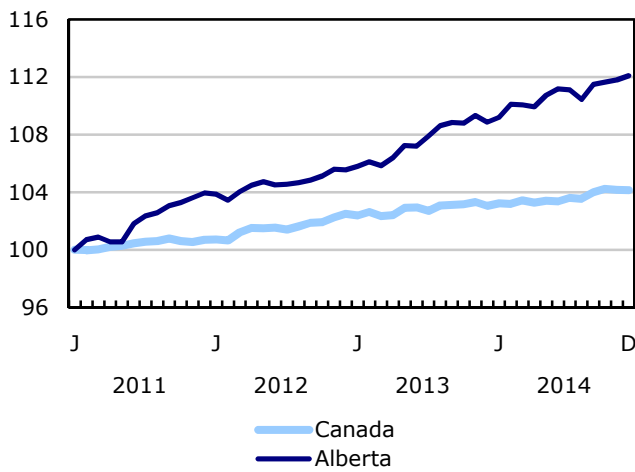
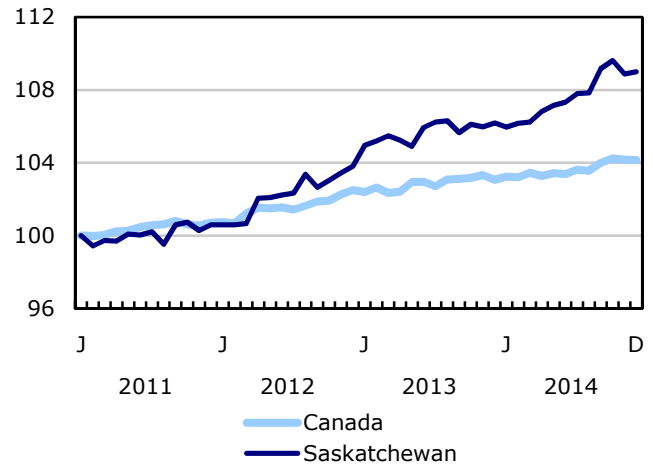
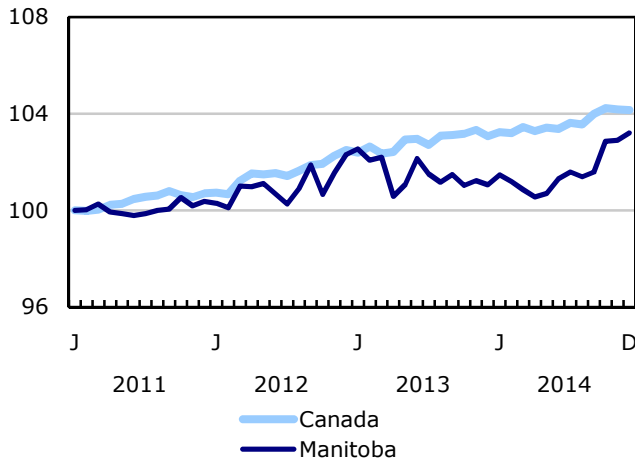


Chart 7
Index of employment by province, seasonally adjusted, January 2011=100



Related products

Selected publications from Statistics Canada

71-222-X	The Canadian Labour Market at a Glance
71-526-X	Methodology of the Canadian Labour Force Survey
71-543-G	Guide to the Labour Force Survey
71-544-X	Labour Force Survey Products and Services
71-587-X	Aboriginal Peoples Living Off-reserve in Western Canada: Estimates from the Labour Force Survey
71-588-X	The Aboriginal Labour Force Analysis Series
71-606-X	The Immigrant Labour Force Analysis Series
71F0031X	Improvements to the Labour Force Survey (LFS)
71M0001X	Labour Force Survey Microdata File
75-001-X	Perspectives on Labour and Income (from 1989 to 2012)
75-004-M	Labour Statistics: Research Papers
75-006-X	Insight on Canadian Society

Selected CANSIM tables from Statistics Canada

282-0001	Labour force survey estimates (LFS), by sex and detailed age group, unadjusted for seasonality, monthly
282-0002	Labour force survey estimates (LFS), by sex and detailed age group, annual
282-0003	Labour force survey estimates (LFS), by educational attainment, sex and age group, unadjusted for seasonality, monthly
282-0004	Labour force survey estimates (LFS), by educational attainment, sex and age group, annual
282-0005	Labour force survey estimates (LFS), by full- and part-time students during school months, sex and age group, unadjusted for seasonality, monthly
282-0006	Labour force survey estimates (LFS), by students during summer months, sex and age group, unadjusted for seasonality, monthly

282-0007	Labour force survey estimates (LFS), by North American Industry Classification System (NAICS), sex and age group, unadjusted for seasonality, monthly
282-0008	Labour force survey estimates (LFS), by North American Industry Classification System (NAICS), sex and age group, annual
282-0009	Labour force survey estimates (LFS), by National Occupational Classification for Statistics (NOC-S) and sex, unadjusted for seasonality, monthly
282-0010	Labour force survey estimates (LFS), by National Occupational Classification for Statistics (NOC-S) and sex, annual
282-0011	Labour force survey estimates (LFS), employment by class of worker, North American Industry Classification System (NAICS) and sex, unadjusted for seasonality, monthly
282-0012	Labour force survey estimates (LFS), employment by class of worker, North American Industry Classification System (NAICS) and sex, annual
282-0013	Labour force survey estimates (LFS), part-time employment by reason for part-time work, sex and age group, unadjusted for seasonality, monthly
282-0014	Labour force survey estimates (LFS), part-time employment by reason for part-time work, sex and age group, annual
282-0015	Labour force survey estimates (LFS), by usual hours worked, main or all jobs, sex and age group, unadjusted for seasonality, monthly
282-0016	Labour force survey estimates (LFS), by usual hours worked, main or all jobs, sex and age group, annual
282-0017	Labour force survey estimates (LFS), by actual hours worked, main or all jobs, sex and age group, unadjusted for seasonality, monthly
282-0018	Labour force survey estimates (LFS), by actual hours worked, main or all jobs, sex and age group, annual
282-0019	Labour force survey estimates (LFS), by usual hours worked, class of worker, North American Industry Classification System (NAICS) and sex, unadjusted for seasonality, monthly
282-0020	Labour force survey estimates (LFS), by usual hours worked, class of worker, North American Industry Classification System (NAICS) and sex, annual
282-0021	Labour force survey estimates (LFS), by actual hours worked, class of worker, North American Industry Classification System (NAICS) and sex, unadjusted for seasonality, monthly
282-0022	Labour force survey estimates (LFS), by actual hours worked, class of worker, North American Industry Classification System (NAICS) and sex, annual
282-0023	Labour force survey estimates (LFS), by usual hours worked, class of worker, National Occupational Classification for Statistics (NOC-S) and sex, unadjusted for seasonality, monthly
282-0024	Labour force survey estimates (LFS), by usual hours worked, class of worker, National Occupational Classification for Statistics (NOC-S) and sex, annual
282-0025	Labour force survey estimates (LFS), by actual hours worked, class of worker, National Occupational Classification for Statistics (NOC-S) and sex, unadjusted for seasonality, monthly

282-0026	Labour force survey estimates (LFS), by actual hours worked, class of worker, National Occupational Classification for Statistics (NOC-S) and sex, annual
282-0027	Labour force survey estimates (LFS), by total and average usual and actual hours worked, main or all jobs, type of work, sex and age group, unadjusted for seasonality, monthly
282-0028	Labour force survey estimates (LFS), by total and average usual and actual hours worked, main or all jobs, type of work, sex and age group, annual
282-0029	Labour force survey estimates (LFS), average days lost for personal reasons per full-time employee by North American Industry Classification System (NAICS), sex and age group, annual
282-0030	Labour force survey estimates (LFS), average days lost for personal reasons per full-time employee by National Occupational Classification for Statistics (NOC-S), sex and age group, annual
282-0031	Labour force survey estimates (LFS), multiple jobholders by North American Industry Classification System (NAICS), sex and age group, annual
282-0032	Labour force survey estimates (LFS), multiple jobholders by North American Industry Classification System (NAICS), sex and age group, unadjusted for seasonality, monthly
282-0033	Labour force survey estimates (LFS), multiple jobholders by National Occupational Classification for Statistics (NOC-S), sex and age group, unadjusted for seasonality, monthly
282-0034	Labour force survey estimates (LFS), multiple jobholders by National Occupational Classification for Statistics (NOC-S), sex and age group, annual
282-0035	Labour force survey estimates (LFS), multiple jobholders by usual hours worked at main and all jobs, unadjusted for seasonality, monthly
282-0036	Labour force survey estimates (LFS), multiple jobholders by usual hours worked at main and all jobs, annual
282-0037	Labour force survey estimates (LFS), job tenure by type of work, sex and age group, unadjusted for seasonality, monthly
282-0038	Labour force survey estimates (LFS), job tenure by type of work, sex and age group, annual
282-0039	Labour force survey estimates (LFS), job tenure by National Occupational Classification for Statistics (NOC-S) and sex, unadjusted for seasonality, monthly
282-0040	Labour force survey estimates (LFS), job tenure by National Occupational Classification for Statistics (NOC-S) and sex, annual
282-0041	Labour force survey estimates (LFS), job tenure by North American Industry Classification System (NAICS) and sex, unadjusted for seasonality, monthly
282-0042	Labour force survey estimates (LFS), job tenure by North American Industry Classification System (NAICS) and sex, annual
282-0047	Labour force survey estimates (LFS), duration of unemployment by sex and age group, unadjusted for seasonality, monthly
282-0048	Labour force survey estimates (LFS), duration of unemployment by sex and age group, annual

282-0049	Labour force survey estimates (LFS), unemployment by type of work sought and search method, sex and age group, unadjusted for seasonality, monthly
282-0050	Labour force survey estimates (LFS), unemployment by type of work sought and search method, sex and age group, annual
282-0051	Labour force survey estimates (LFS), retirement age by class of worker and sex, annual
282-0054	Labour force survey estimates (LFS), by provinces and economic regions based on 2006 Census boundaries, 3-month moving average, unadjusted for seasonality, monthly
282-0055	Labour force survey estimates (LFS), by provinces, territories and economic regions based on 2006 Census boundaries, annual
282-0060	Labour force survey estimates (LFS), employment by economic region and North American Industry Classification System (NAICS), 3-month moving average, unadjusted for seasonality, monthly
282-0061	Labour force survey estimates (LFS), employment by economic region and North American Industry Classification System (NAICS), annual
282-0062	Labour force survey estimates (LFS), employment by economic region and National Occupational Classification for Statistics (NOC-S), 3-month moving average, unadjusted for seasonality, monthly
282-0063	Labour force survey estimates (LFS), employment by economic region and National Occupational Classification for Statistics (NOC-S), annual
282-0069	Labour force survey estimates (LFS), wages of employees by type of work, National Occupational Classification for Statistics (NOC-S), sex and age group, unadjusted for seasonality, monthly
282-0070	Labour force survey estimates (LFS), wages of employees by type of work, National Occupational Classification for Statistics (NOC-S), sex and age group, annual
282-0071	Labour force survey estimates (LFS), wages of employees by type of work, North American Industry Classification System (NAICS), sex and age group, unadjusted for seasonality, monthly
282-0072	Labour force survey estimates (LFS), wages of employees by type of work, North American Industry Classification System (NAICS), sex and age group, annual
282-0073	Labour force survey estimates (LFS), wages of employees by job permanence, union coverage, sex and age group, unadjusted for seasonality, monthly
282-0074	Labour force survey estimates (LFS), wages of employees by job permanence, union coverage, sex and age group, annual
282-0075	Labour force survey estimates (LFS), employees by establishment size, North American Industry Classification System (NAICS), sex and age group, unadjusted for seasonality, monthly
282-0076	Labour force survey estimates (LFS), employees by establishment size, North American Industry Classification System (NAICS), sex and age group, annual
282-0077	Labour force survey estimates (LFS), employees by union coverage, North American Industry Classification System (NAICS), sex and age group, unadjusted for seasonality, monthly

282-0078	Labour force survey estimates (LFS), employees by union coverage, North American Industry Classification System (NAICS), sex and age group, annual
282-0079	Labour force survey estimates (LFS), employees by job permanency, North American Industry Classification System (NAICS), sex and age group, unadjusted for seasonality, monthly
282-0080	Labour force survey estimates (LFS), employees by job permanency, North American Industry Classification System (NAICS), sex and age group, annual
282-0081	Labour force survey estimates (LFS), employees working overtime (weekly) by National Occupational Classification for Statistics (NOC-S), sex and age group, unadjusted for seasonality, monthly
282-0082	Labour force survey estimates (LFS), employees working overtime (weekly) by National Occupational Classification for Statistics (NOC-S), sex and age group, annual
282-0083	Labour force survey estimates (LFS), employees working overtime (weekly) by North American Industry Classification System (NAICS), sex and age group, unadjusted for seasonality, monthly
282-0084	Labour force survey estimates (LFS), employees working overtime (weekly) by North American Industry Classification System (NAICS), sex and age group, annual
282-0085	Labour force survey estimates (LFS), supplementary unemployment rates by sex and age group, unadjusted for seasonality, monthly
282-0086	Labour force survey estimates (LFS), supplementary unemployment rates by sex and age group, annual
282-0087	Labour force survey estimates (LFS), by sex and age group, seasonally adjusted and unadjusted, monthly
282-0088	Labour force survey estimates (LFS), employment by North American Industry Classification System (NAICS), seasonally adjusted and unadjusted, monthly
282-0089	Labour force survey estimates (LFS), employment by class of worker and sex, seasonally adjusted and unadjusted, monthly
282-0092	Labour force survey estimates (LFS), actual hours worked by North American Industry Classification System (NAICS), seasonally adjusted, monthly
282-0093	Labour force survey estimates (LFS), employment by National Occupational Classification for Statistics (NOC-S), seasonally adjusted, monthly
282-0094	Labour force survey estimates (LFS), by North American Industry Classification System (NAICS), Canada, seasonally adjusted, monthly
282-0095	Labour force survey estimates (LFS), by full- and part-time students during school months, sex and age group, annual
282-0100	Labour force survey estimates (LFS), by territories, sex and age group, 3-month moving average, seasonally adjusted and unadjusted, monthly
282-0101	Labour force survey estimates (LFS), by immigrant status, age group, Canada, regions, provinces and Montreal, Toronto, Vancouver census metropolitan areas, 3-month moving average, unadjusted for seasonality, monthly

282-0102	Labour force survey estimates (LFS), by immigrant status, age group, Canada, regions, provinces and Montreal, Toronto, Vancouver census metropolitan areas, annual
282-0103	Labour force survey estimates (LFS), by immigrant status, sex and detailed age group, Canada, 3-month moving average, unadjusted for seasonality, monthly
282-0104	Labour force survey estimates (LFS), by immigrant status, sex and detailed age group, Canada, annual
282-0105	Labour force survey estimates (LFS), by immigrant status, educational attainment, sex and age group, Canada, 3-month moving average, unadjusted for seasonality, monthly
282-0106	Labour force survey estimates (LFS), by immigrant status, educational attainment, sex and age group, Canada, annual
282-0107	Labour force survey estimates (LFS), by immigrant status, country of birth, sex and age group, Canada, 3-month moving average, unadjusted for seasonality, monthly
282-0108	Labour force survey estimates (LFS), by immigrant status, country of birth, sex and age group, Canada, annual
282-0109	Labour force survey estimates (LFS), by census metropolitan area based on 2006 census boundaries, sex and age group, 3-month moving average, unadjusted for seasonality, monthly
282-0110	Labour force survey estimates (LFS), by census metropolitan area based on 2006 census boundaries, sex and age group, annual
282-0111	Labour force survey estimates (LFS), employment by census metropolitan area based on 2006 census boundaries and North American Industry Classification System (NAICS), 3-month moving average, unadjusted for seasonality, monthly
282-0112	Labour force survey estimates (LFS), employment by census metropolitan area based on 2006 census boundaries and North American Industry Classification System (NAICS), annual
282-0113	Labour force survey estimates (LFS), employment by census metropolitan area based on 2006 census boundaries and National Occupational Classification for Statistics (NOC-S), 3-month moving average, unadjusted for seasonality, monthly
282-0114	Labour force survey estimates (LFS), employment by census metropolitan area based on 2006 census boundaries and National Occupational Classification for Statistics (NOC-S), annual
282-0115	Labour force survey estimates (LFS), by selected census agglomerations based on 2006 census boundaries, annual
282-0116	Labour force survey estimates (LFS), by census metropolitan area based on 2006 census boundaries, 3-month moving average, seasonally adjusted and unadjusted, monthly
282-0117	Labour force survey estimates (LFS), by Montréal, Toronto and Vancouver census metropolitan areas based on 2006 census boundaries, seasonally adjusted and unadjusted, monthly
282-0118	Labour force survey estimates (LFS), by urban and rural areas based on 2006 census boundaries, sex and age group, unadjusted for seasonality, monthly

282-0119	Labour force survey estimates (LFS), by urban and rural areas based on 2006 census boundaries, sex and age group, annual
282-0120	Labour force survey estimates (LFS), employment by urban and rural areas based on 2006 census boundaries, class of worker and North American Industry Classification System (NAICS), unadjusted for seasonality, monthly
282-0121	Labour force survey estimates (LFS), employment by urban and rural areas based on 2006 census boundaries, class of worker and North American Industry Classification System (NAICS), annual
282-0200	Labour force survey estimates (LFS), weekly wage distributions of employees by type of work, North American Industry Classification System (NAICS) and sex, unadjusted for seasonality, monthly
282-0201	Labour force survey estimates (LFS), weekly wage distributions of employees by type of work, North American Industry Classification System (NAICS) and sex, annual
282-0202	Labour force survey estimates (LFS), weekly wage distributions of employees by type of work, National Occupational Classification for Statistics (NOC-S) and sex, unadjusted for seasonality, monthly
282-0203	Labour force survey estimates (LFS), weekly wage distributions of employees by type of work, National Occupational Classification for Statistics (NOC-S) and sex, annual
282-0204	Labour force survey estimates (LFS), hourly wage distributions of employees by type of work, North American Industry Classification System (NAICS) and sex, unadjusted for seasonality, monthly
282-0205	Labour force survey estimates (LFS), hourly wage distributions of employees by type of work, North American Industry Classification System (NAICS) and sex, annual
282-0206	Labour force survey estimates (LFS), hourly wage distribution of employees by type of work, National Occupational Classification for Statistics (NOC-S) and sex, unadjusted for seasonality, monthly
282-0207	Labour force survey estimates (LFS), hourly wage distribution of employees by type of work, National Occupational Classification for Statistics (NOC-S) and sex, annual
282-0208	Labour force survey estimates (LFS), by educational degree, sex and age group, unadjusted for seasonality, monthly
282-0209	Labour force survey estimates (LFS), by educational degree, sex and age group, annual
282-0210	Labour force survey estimates (LFS), by family type and family age composition, unadjusted for seasonality, monthly
282-0211	Labour force survey estimates (LFS), by family type and family age composition, annual
282-0212	Labour force survey estimates (LFS), hours lost by employees by reason absent full and part week and sex, unadjusted for seasonality, monthly
282-0213	Labour force survey estimates (LFS), hours lost by employees by reason absent full and part week and sex, annual

282-0214	Labour force survey estimates (LFS), activity prior to unemployment by sex and age group, unadjusted for seasonality, monthly
282-0215	Labour force survey estimates (LFS), activity prior to unemployment by sex and age group, annual
282-0216	Labour force survey estimates (LFS), reason for leaving job during previous year by sex and age group, unadjusted for seasonality, monthly
282-0217	Labour force survey estimates (LFS), reason for leaving job during previous year by sex and age group, annual
282-0218	Labour force survey estimates (LFS), reason for not looking for work, by sex and age group, unadjusted for seasonality, monthly
282-0219	Labour force survey estimates (LFS), reason for not looking for work, by sex and age group, annual
282-0220	Labour Force Survey estimates (LFS), employees by union status, sex and age group, Canada and provinces, annual
282-0221	Labour Force Survey estimates (LFS), employees by union status, sex, age group and education level, Canada, annual
282-0222	Labour Force Survey estimates (LFS), employees by union status and National Occupational Classification (NOC-S), Canada, annual
282-0223	Labour Force Survey estimates (LFS), employees by union status, North American Industry Classification System (NAICS) and sex, Canada, annual
282-0224	Labour Force Survey estimates (LFS), employees by union status, establishment size, job tenure, type of work and job permanency, Canada, annual
282-0225	Labour Force Survey estimates (LFS), average weekly earnings, average hourly wage rate and average usual weekly hours by union status and type of work, Canada and provinces, annual

Selected surveys from Statistics Canada

3701	Labour Force Survey
------	---------------------

Selected summary tables from Statistics Canada

- *Labour force characteristics*
- *Employment by industry*
- *Days lost per worker due to illness or disability, by sex, by province*
- *Economic indicators, by province and territory (monthly and quarterly)*
- *Labour force and participation rates by sex and age group*
- *Labour force, employment and unemployment, levels and rates, by province*
- *Employment by industry and sex*
- *Full-time and part-time employment by sex and age group*
- *Labour force characteristics by age and sex*
- *Distribution of employed people, by industry, by province*
- *Labour force characteristics, population 15 years and older, by census metropolitan area*
- *Labour force characteristics, population 15 years and older, by economic region, by province*
- *Days lost per worker by reason, by provinces*
- *Days lost per worker by industry and sex*
- *People employed, by educational attainment*
- *Reasons for part-time work by sex and age group*
- *Self-employment, historical summary*
- *Employment by age, sex, type of work, class of worker and province (monthly)*
- *Employment by major industry group, seasonally adjusted, by province (monthly)*
- *Actual hours worked per week by industry, seasonally adjusted (monthly)*
- *Average hourly wages of employees by selected characteristics and occupation, unadjusted data, by province (monthly)*
- *Labour force characteristics, seasonally adjusted, by province (monthly)*
- *Labour force characteristics, unadjusted, by province (monthly)*
- *Labour force characteristics, seasonally adjusted, by census metropolitan area (3 month moving average)*
- *Labour force characteristics, unadjusted, by census metropolitan area (3 month moving average)*
- *Labour force characteristics, unadjusted, by economic region (3 month moving average)*

- *Labour force characteristics by immigrant status of population aged 25 to 54, by province*
- *Labour force characteristics by immigrant status of population aged 25 to 54, by educational attainment*
- *Labour force characteristics by immigrant status, by detailed age group*
- *Labour force characteristics by immigrant status of population aged 25 to 54, by country of birth*

Statistical tables

Table 1
Labour force characteristics by age and sex, Canada, seasonally adjusted

	November 2014	December 2014	S.E. ¹	Change from			Percent change from		
				last month	last December	twelve months ago	last month	last December	twelve months ago
in thousands (except rates)									
15 years and over, both sexes									
Population	29,165.9	29,190.0	...	24.1	346.3	346.3	0.1	1.2	1.2
Labour force	19,236.6	19,225.4	29.0	-11.2	74.0	74.0	-0.1	0.4	0.4
Employment	17,957.9	17,953.6	28.5	-4.3	185.7	185.7	0.0	1.0	1.0
Employment full-time	14,511.0	14,564.5	38.8	53.5	190.3	190.3	0.4	1.3	1.3
Employment part-time	3,446.9	3,389.2	36.0	-57.7	-4.5	-4.5	-1.7	-0.1	-0.1
Unemployment	1,278.6	1,271.8	24.6	-6.8	-111.7	-111.7	-0.5	-8.1	-8.1
Participation rate	66.0	65.9	0.1	-0.1	-0.5	-0.5
Unemployment rate	6.6	6.6	0.1	0.0	-0.6	-0.6
Employment rate	61.6	61.5	0.1	-0.1	-0.1	-0.1
Part-time rate	19.2	18.9	0.2	-0.3	-0.2	-0.2
15 to 24 years, both sexes									
Population	4,403.2	4,399.9	...	-3.3	-40.0	-40.0	-0.1	-0.9	-0.9
Labour force	2,860.2	2,866.7	17.0	6.5	50.6	50.6	0.2	1.8	1.8
Employment	2,487.7	2,484.4	15.8	-3.3	62.5	62.5	-0.1	2.6	2.6
Employment full-time	1,258.2	1,293.0	18.7	34.8	43.6	43.6	2.8	3.5	3.5
Employment part-time	1,229.5	1,191.5	19.7	-38.0	19.0	19.0	-3.1	1.6	1.6
Unemployment	372.6	382.3	14.5	9.7	-12.0	-12.0	2.6	-3.0	-3.0
Participation rate	65.0	65.2	0.4	0.2	1.8	1.8
Unemployment rate	13.0	13.3	0.5	0.3	-0.7	-0.7
Employment rate	56.5	56.5	0.4	0.0	2.0	2.0
Part-time rate	49.4	48.0	0.7	-1.5	-0.5	-0.5
25 years and over, men									
Population	12,132.3	12,145.8	...	13.5	194.6	194.6	0.1	1.6	1.6
Labour force	8,688.8	8,702.6	15.3	13.8	64.4	64.4	0.2	0.7	0.7
Employment	8,182.9	8,209.7	16.3	26.8	127.4	127.4	0.3	1.6	1.6
Employment full-time	7,541.9	7,560.0	21.9	18.1	118.9	118.9	0.2	1.6	1.6
Employment part-time	641.0	649.8	18.1	8.8	8.6	8.6	1.4	1.3	1.3
Unemployment	506.0	492.9	14.5	-13.1	-62.9	-62.9	-2.6	-11.3	-11.3
Participation rate	71.6	71.7	0.1	0.1	-0.6	-0.6
Unemployment rate	5.8	5.7	0.2	-0.1	-0.7	-0.7
Employment rate	67.4	67.6	0.1	0.2	0.0	0.0
Part-time rate	7.8	7.9	0.2	0.1	0.0	0.0
25 years and over, women									
Population	12,630.4	12,644.4	...	14.0	191.8	191.8	0.1	1.5	1.5
Labour force	7,687.5	7,656.1	16.8	-31.4	-41.0	-41.0	-0.4	-0.5	-0.5
Employment	7,287.4	7,259.5	16.3	-27.9	-4.3	-4.3	-0.4	-0.1	-0.1
Employment full-time	5,711.0	5,711.6	25.3	0.6	27.9	27.9	0.0	0.5	0.5
Employment part-time	1,576.5	1,547.9	23.9	-28.6	-32.2	-32.2	-1.8	-2.0	-2.0
Unemployment	400.1	396.6	13.5	-3.5	-36.7	-36.7	-0.9	-8.5	-8.5
Participation rate	60.9	60.5	0.1	-0.4	-1.3	-1.3
Unemployment rate	5.2	5.2	0.2	0.0	-0.4	-0.4
Employment rate	57.7	57.4	0.1	-0.3	-0.9	-0.9
Part-time rate	21.6	21.3	0.3	-0.3	-0.4	-0.4
25 to 54 years, both sexes									
Population	14,718.4	14,722.3	...	3.9	81.9	81.9	0.0	0.6	0.6
Labour force	12,682.1	12,670.4	22.1	-11.7	-9.3	-9.3	-0.1	-0.1	-0.1
Employment	11,990.1	11,989.1	23.5	-1.0	77.9	77.9	0.0	0.7	0.7
Unemployment	692.0	681.4	18.5	-10.6	-87.1	-87.1	-1.5	-11.3	-11.3
Participation rate	86.2	86.1	0.2	-0.1	-0.5	-0.5
Unemployment rate	5.5	5.4	0.1	-0.1	-0.7	-0.7
Employment rate	81.5	81.4	0.2	-0.1	0.0	0.0
25 to 54 years, men									
Population	7,368.7	7,370.4	...	1.7	42.8	42.8	0.0	0.6	0.6
Labour force	6,659.2	6,672.3	14.2	13.1	26.8	26.8	0.2	0.4	0.4
Employment	6,280.1	6,302.7	15.9	22.6	79.3	79.3	0.4	1.3	1.3
Unemployment	379.1	369.6	13.4	-9.5	-52.4	-52.4	-2.5	-12.4	-12.4
Participation rate	90.4	90.5	0.2	0.1	-0.2	-0.2
Unemployment rate	5.7	5.5	0.2	-0.2	-0.9	-0.9
Employment rate	85.2	85.5	0.2	0.3	0.6	0.6

See notes at the end of the table.

Table 1 – continued

Labour force characteristics by age and sex, Canada, seasonally adjusted

	November 2014	December 2014	S.E. ¹	Change from			Percent change from		
				last month	last December	twelve months ago	last month	last December	twelve months ago
in thousands (except rates)									
25 to 54 years, women									
Population	7,349.7	7,351.9	...	2.2	39.1	39.1	0.0	0.5	0.5
Labour force	6,022.8	5,998.2	16.2	-24.6	-36.0	-36.0	-0.4	-0.6	-0.6
Employment	5,710.0	5,686.4	16.4	-23.6	-1.3	-1.3	-0.4	0.0	0.0
Unemployment	312.9	311.8	12.5	-1.1	-34.7	-34.7	-0.4	-10.0	-10.0
Participation rate	81.9	81.6	0.2	-0.3	-0.9	-0.9
Unemployment rate	5.2	5.2	0.2	0.0	-0.5	-0.5
Employment rate	77.7	77.3	0.2	-0.4	-0.5	-0.5
55 years and over, both sexes									
Population	10,044.3	10,067.9	...	23.6	304.5	304.5	0.2	3.1	3.1
Labour force	3,694.2	3,688.3	18.0	-5.9	32.8	32.8	-0.2	0.9	0.9
Employment	3,480.2	3,480.1	17.9	-0.1	45.2	45.2	0.0	1.3	1.3
Unemployment	214.0	208.2	9.6	-5.8	-12.4	-12.4	-2.7	-5.6	-5.6
Participation rate	36.8	36.6	0.2	-0.2	-0.8	-0.8
Unemployment rate	5.8	5.6	0.3	-0.2	-0.4	-0.4
Employment rate	34.6	34.6	0.2	0.0	-0.6	-0.6
55 years and over, men									
Population	4,763.6	4,775.4	...	11.8	151.8	151.8	0.2	3.3	3.3
Labour force	2,029.6	2,030.3	11.8	0.7	37.6	37.6	0.0	1.9	1.9
Employment	1,902.7	1,907.0	11.9	4.3	48.1	48.1	0.2	2.6	2.6
Unemployment	126.8	123.4	7.0	-3.4	-10.4	-10.4	-2.7	-7.8	-7.8
Participation rate	42.6	42.5	0.3	-0.1	-0.6	-0.6
Unemployment rate	6.2	6.1	0.3	-0.1	-0.6	-0.6
Employment rate	39.9	39.9	0.3	0.0	-0.3	-0.3
55 years and over, women									
Population	5,280.7	5,292.5	...	11.8	152.7	152.7	0.2	3.0	3.0
Labour force	1,664.7	1,658.0	12.3	-6.7	-4.9	-4.9	-0.4	-0.3	-0.3
Employment	1,577.5	1,573.1	12.2	-4.4	-2.9	-2.9	-0.3	-0.2	-0.2
Unemployment	87.2	84.8	6.3	-2.4	-2.0	-2.0	-2.8	-2.3	-2.3
Participation rate	31.5	31.3	0.2	-0.2	-1.1	-1.1
Unemployment rate	5.2	5.1	0.4	-0.1	-0.1	-0.1
Employment rate	29.9	29.7	0.2	-0.2	-1.0	-1.0

1. Average standard error of change in two consecutive months (see "Sampling Errors" in Data Quality for further explanations).

Note(s): Related CANSIM table 282-0087. The sum of individual categories may not always add to the total due to rounding.

Table 2
Employment by class of worker and industry, Canada, seasonally adjusted

	November 2014	December 2014	S.E. ¹	Change from			Percent change from		
				last month	last December	twelve months ago	last month	last December	twelve months ago
in thousands									
Class of worker									
Employees	15,220.2	15,230.8	35.6	10.6	131.1	131.1	0.1	0.9	0.9
Self-employed ²	2,737.7	2,722.8	25.9	-14.9	54.6	54.6	-0.5	2.0	2.0
Public/private sector employees									
Public sector employees	3,650.8	3,656.3	25.0	5.5	34.0	34.0	0.2	0.9	0.9
Private sector employees	11,569.4	11,574.5	38.2	5.1	97.1	97.1	0.0	0.8	0.8
Industry	17,957.9	17,953.6	28.5	-4.3	185.7	185.7	0.0	1.0	1.0
Goods-producing sector	3,932.8	3,954.9	26.0	22.1	80.8	80.8	0.6	2.1	2.1
Agriculture	305.1	319.8	7.8	14.7	20.5	20.5	4.8	6.8	6.8
Forestry, fishing, mining, quarrying, oil and gas extraction ³	372.5	382.7	7.9	10.2	5.0	5.0	2.7	1.3	1.3
Utilities	152.6	155.4	5.3	2.8	-1.8	-1.8	1.8	-1.1	-1.1
Construction	1,350.5	1,363.1	17.6	12.6	68.7	68.7	0.9	5.3	5.3
Manufacturing	1,752.3	1,734.0	18.9	-18.3	-11.5	-11.5	-1.0	-0.7	-0.7
Services-producing sector	14,025.1	13,998.7	34.4	-26.4	104.9	104.9	-0.2	0.8	0.8
Trade	2,697.3	2,707.8	24.3	10.5	11.5	11.5	0.4	0.4	0.4
Transportation and warehousing	872.4	883.9	14.6	11.5	15.0	15.0	1.3	1.7	1.7
Finance, insurance, real estate and leasing	1,155.6	1,152.5	16.7	-3.1	18.3	18.3	-0.3	1.6	1.6
Professional, scientific and technical services	1,347.2	1,334.0	18.7	-13.2	-34.8	-34.8	-1.0	-2.5	-2.5
Business, building and other support services	713.4	717.5	14.2	4.1	1.8	1.8	0.6	0.3	0.3
Educational services	1,314.5	1,319.4	16.2	4.9	39.7	39.7	0.4	3.1	3.1
Health care and social assistance	2,248.4	2,243.6	19.4	-4.8	39.0	39.0	-0.2	1.8	1.8
Information, culture and recreation	780.1	775.9	14.8	-4.2	-30.1	-30.1	-0.5	-3.7	-3.7
Accommodation and food services	1,203.5	1,170.7	17.1	-32.8	38.3	38.3	-2.7	3.4	3.4
Other services	754.7	741.2	13.5	-13.5	-19.7	-19.7	-1.8	-2.6	-2.6
Public administration	937.9	952.1	12.4	14.2	25.8	25.8	1.5	2.8	2.8

1. Average standard error of change in two consecutive months (see "Sampling Errors" in Data Quality for further explanations).

2. Includes both incorporated and unincorporated working owners, self-employed persons who do not have a business and persons working in a family business without pay.

3. Also referred to as Natural resources.

Note(s): Related CANSIM Tables 282-0088, 282-0089. The sum of individual categories may not always add to the total due to rounding.

Table 3
Labour force characteristics by province, seasonally adjusted

	November 2014	December 2014	S.E. ¹	Change from			Percent change from		
				last	last	twelve	last	last	twelve
				month	December	months ago	month	December	months ago
in thousands (except rates)									
Newfoundland and Labrador									
Population	426.8	426.8	...	0.0	-2.8	-2.8	0.0	-0.7	-0.7
Labour force	257.8	258.0	1.8	0.2	-4.4	-4.4	0.1	-1.7	-1.7
Employment	230.3	228.9	2.0	-1.4	-5.1	-5.1	-0.6	-2.2	-2.2
Employment full-time	193.3	195.0	2.4	1.7	-3.8	-3.8	0.9	-1.9	-1.9
Employment part-time	36.9	33.9	1.9	-3.0	-1.2	-1.2	-8.1	-3.4	-3.4
Unemployment	27.5	29.1	1.8	1.6	0.7	0.7	5.8	2.5	2.5
Participation rate	60.4	60.4	0.4	0.0	-0.7	-0.7
Unemployment rate	10.7	11.3	0.7	0.6	0.5	0.5
Employment rate	54.0	53.6	0.5	-0.4	-0.9	-0.9
Prince Edward Island									
Population	121.8	121.9	...	0.1	0.9	0.9	0.1	0.7	0.7
Labour force	83.8	83.0	0.6	-0.8	-0.3	-0.3	-1.0	-0.4	-0.4
Employment	75.0	74.0	0.7	-1.0	0.4	0.4	-1.3	0.5	0.5
Employment full-time	63.3	62.7	0.9	-0.6	0.9	0.9	-0.9	1.5	1.5
Employment part-time	11.7	11.3	0.7	-0.4	-0.5	-0.5	-3.4	-4.2	-4.2
Unemployment	8.8	9.1	0.7	0.3	-0.6	-0.6	3.4	-6.2	-6.2
Participation rate	68.8	68.1	0.5	-0.7	-0.7	-0.7
Unemployment rate	10.5	11.0	0.8	0.5	-0.6	-0.6
Employment rate	61.6	60.7	0.6	-0.9	-0.1	-0.1
Nova Scotia									
Population	781.1	781.4	...	0.3	-0.1	-0.1	0.0	0.0	0.0
Labour force	492.6	487.8	2.6	-4.8	-7.1	-7.1	-1.0	-1.4	-1.4
Employment	449.1	447.5	2.7	-1.6	-2.0	-2.0	-0.4	-0.4	-0.4
Employment full-time	366.8	365.3	3.5	-1.5	5.4	5.4	-0.4	1.5	1.5
Employment part-time	82.3	82.2	3.3	-0.1	-7.4	-7.4	-0.1	-8.3	-8.3
Unemployment	43.5	40.4	2.3	-3.1	-5.0	-5.0	-7.1	-11.0	-11.0
Participation rate	63.1	62.4	0.3	-0.7	-0.9	-0.9
Unemployment rate	8.8	8.3	0.5	-0.5	-0.9	-0.9
Employment rate	57.5	57.3	0.3	-0.2	-0.2	-0.2
New Brunswick									
Population	620.2	620.5	...	0.3	0.6	0.6	0.0	0.1	0.1
Labour force	387.1	389.0	2.2	1.9	-2.7	-2.7	0.5	-0.7	-0.7
Employment	349.9	349.4	2.3	-0.5	-4.3	-4.3	-0.1	-1.2	-1.2
Employment full-time	294.1	294.5	3.0	0.4	-1.6	-1.6	0.1	-0.5	-0.5
Employment part-time	55.8	55.0	2.5	-0.8	-2.6	-2.6	-1.4	-4.5	-4.5
Unemployment	37.1	39.6	2.2	2.5	1.6	1.6	6.7	4.2	4.2
Participation rate	62.4	62.7	0.4	0.3	-0.5	-0.5
Unemployment rate	9.6	10.2	0.5	0.6	0.5	0.5
Employment rate	56.4	56.3	0.4	-0.1	-0.8	-0.8
Quebec									
Population	6,762.1	6,764.8	...	2.7	50.8	50.8	0.0	0.8	0.8
Labour force	4,369.3	4,354.8	15.0	-14.5	-29.2	-29.2	-0.3	-0.7	-0.7
Employment	4,036.4	4,029.7	14.9	-6.7	-15.8	-15.8	-0.2	-0.4	-0.4
Employment full-time	3,213.3	3,230.2	19.8	16.9	-9.7	-9.7	0.5	-0.3	-0.3
Employment part-time	823.1	799.5	18.5	-23.6	-6.0	-6.0	-2.9	-0.7	-0.7
Unemployment	332.9	325.1	12.9	-7.8	-13.5	-13.5	-2.3	-4.0	-4.0
Participation rate	64.6	64.4	0.2	-0.2	-0.9	-0.9
Unemployment rate	7.6	7.5	0.3	-0.1	-0.2	-0.2
Employment rate	59.7	59.6	0.2	-0.1	-0.7	-0.7
Ontario									
Population	11,384.2	11,395.1	...	10.9	127.5	127.5	0.1	1.1	1.1
Labour force	7,481.2	7,480.6	19.8	-0.6	14.3	14.3	0.0	0.2	0.2
Employment	6,960.2	6,956.7	18.7	-3.5	79.9	79.9	-0.1	1.2	1.2
Employment full-time	5,622.1	5,625.3	26.0	3.2	47.8	47.8	0.1	0.9	0.9
Employment part-time	1,338.0	1,331.4	24.2	-6.6	32.2	32.2	-0.5	2.5	2.5
Unemployment	521.0	523.9	17.1	2.9	-65.6	-65.6	0.6	-11.1	-11.1
Participation rate	65.7	65.6	0.2	-0.1	-0.7	-0.7
Unemployment rate	7.0	7.0	0.2	0.0	-0.9	-0.9
Employment rate	61.1	61.0	0.2	-0.1	0.0	0.0

See notes at the end of the table.

Table 3 – continued

Labour force characteristics by province, seasonally adjusted

	November 2014	December 2014	S.E. ¹	Change from			Percent change from		
				last month	last December	twelve months ago	last month	last December	twelve months ago
in thousands (except rates)									
Manitoba									
Population	990.3	991.7	...	1.4	12.8	12.8	0.1	1.3	1.3
Labour force	676.3	679.2	2.7	2.9	11.7	11.7	0.4	1.8	1.8
Employment	642.0	643.9	2.7	1.9	13.4	13.4	0.3	2.1	2.1
Employment full-time	523.1	522.5	3.8	-0.6	12.2	12.2	-0.1	2.4	2.4
Employment part-time	119.0	121.4	3.5	2.4	1.3	1.3	2.0	1.1	1.1
Unemployment	34.3	35.3	2.1	1.0	-1.7	-1.7	2.9	-4.6	-4.6
Participation rate	68.3	68.5	0.3	0.2	0.3	0.3
Unemployment rate	5.1	5.2	0.3	0.1	-0.3	-0.3
Employment rate	64.8	64.9	0.3	0.1	0.5	0.5
Saskatchewan									
Population	846.8	847.8	...	1.0	13.6	13.6	0.1	1.6	1.6
Labour force	592.5	594.0	2.5	1.5	13.6	13.6	0.3	2.3	2.3
Employment	572.1	572.8	2.6	0.7	14.8	14.8	0.1	2.7	2.7
Employment full-time	472.1	475.3	3.5	3.2	17.8	17.8	0.7	3.9	3.9
Employment part-time	99.9	97.5	3.2	-2.4	-3.0	-3.0	-2.4	-3.0	-3.0
Unemployment	20.4	21.2	1.8	0.8	-1.2	-1.2	3.9	-5.4	-5.4
Participation rate	70.0	70.1	0.3	0.1	0.5	0.5
Unemployment rate	3.4	3.6	0.3	0.2	-0.3	-0.3
Employment rate	67.6	67.6	0.3	0.0	0.7	0.7
Alberta									
Population	3,312.5	3,317.4	...	4.9	95.1	95.1	0.1	3.0	3.0
Labour force	2,404.6	2,416.7	9.4	12.1	67.7	67.7	0.5	2.9	2.9
Employment	2,296.9	2,302.6	10.0	5.7	65.9	65.9	0.2	2.9	2.9
Employment full-time	1,915.3	1,923.7	12.8	8.4	50.1	50.1	0.4	2.7	2.7
Employment part-time	381.7	378.9	11.5	-2.8	15.8	15.8	-0.7	4.4	4.4
Unemployment	107.6	114.0	7.4	6.4	1.8	1.8	5.9	1.6	1.6
Participation rate	72.6	72.8	0.3	0.2	-0.1	-0.1
Unemployment rate	4.5	4.7	0.3	0.2	-0.1	-0.1
Employment rate	69.3	69.4	0.3	0.1	0.0	0.0
British Columbia									
Population	3,920.1	3,922.7	...	2.6	47.9	47.9	0.1	1.2	1.2
Labour force	2,491.5	2,482.4	10.3	-9.1	10.4	10.4	-0.4	0.4	0.4
Employment	2,346.0	2,348.2	10.3	2.2	38.5	38.5	0.1	1.7	1.7
Employment full-time	1,847.7	1,870.0	14.7	22.3	71.4	71.4	1.2	4.0	4.0
Employment part-time	498.4	478.2	13.8	-20.2	-32.9	-32.9	-4.1	-6.4	-6.4
Unemployment	145.5	134.2	8.3	-11.3	-28.1	-28.1	-7.8	-17.3	-17.3
Participation rate	63.6	63.3	0.3	-0.3	-0.5	-0.5
Unemployment rate	5.8	5.4	0.3	-0.4	-1.2	-1.2
Employment rate	59.8	59.9	0.3	0.1	0.3	0.3

1. Average standard error of change in two consecutive months (see "Sampling Errors" in Data Quality for further explanations).

Note(s): Related CANSIM Table 282-0087. The sum of individual categories may not always add to the total due to rounding.

Table 4-1
Selected labour force characteristics (seasonally adjusted) — Newfoundland and Labrador

	November 2014	December 2014	S.E. ¹	Change from			Percent change from		
				last month	last December	twelve months ago	last month	last December	twelve months ago
in thousands (except rates)									
Both sexes, 15 years and over									
Population	426.8	426.8	...	0.0	-2.8	-2.8	0.0	-0.7	-0.7
Labour force	257.8	258.0	1.8	0.2	-4.4	-4.4	0.1	-1.7	-1.7
Employment	230.3	228.9	2.0	-1.4	-5.1	-5.1	-0.6	-2.2	-2.2
Employment full-time	193.3	195.0	2.4	1.7	-3.8	-3.8	0.9	-1.9	-1.9
Unemployment	27.5	29.1	1.8	1.6	0.7	0.7	5.8	2.5	2.5
Participation rate	60.4	60.4	0.4	0.0	-0.7	-0.7
Unemployment rate	10.7	11.3	0.7	0.6	0.5	0.5
Employment rate	54.0	53.6	0.5	-0.4	-0.9	-0.9
Part-time rate	16.0	14.8	0.8	-1.2	-0.2	-0.2
Both sexes, 15 to 24 years									
Population	55.7	55.6	...	-0.1	-2.3	-2.3	-0.2	-4.0	-4.0
Labour force	34.8	35.4	1.0	0.6	1.6	1.6	1.7	4.7	4.7
Employment	29.0	30.1	1.1	1.1	2.3	2.3	3.8	8.3	8.3
Unemployment	5.8	5.3	0.9	-0.5	-0.7	-0.7	-8.6	-11.7	-11.7
Participation rate	62.5	63.7	1.7	1.2	5.3	5.3
Unemployment rate	16.7	15.0	2.6	-1.7	-2.8	-2.8
Employment rate	52.1	54.1	1.8	2.0	6.1	6.1
Part-time rate	45.2	42.9	3.6	-2.3	1.5	1.5
Men, 25 years and over									
Population	179.0	179.0	...	0.0	-0.5	-0.5	0.0	-0.3	-0.3
Labour force	117.5	117.6	1.1	0.1	-1.3	-1.3	0.1	-1.1	-1.1
Employment	104.8	103.1	1.2	-1.7	-2.6	-2.6	-1.6	-2.5	-2.5
Unemployment	12.8	14.5	1.1	1.7	1.3	1.3	13.3	9.8	9.8
Participation rate	65.6	65.7	0.6	0.1	-0.5	-0.5
Unemployment rate	10.9	12.3	0.9	1.4	1.2	1.2
Employment rate	58.5	57.6	0.7	-0.9	-1.3	-1.3
Part-time rate	5.6	4.6	0.8	-1.1	-0.5	-0.5
Women, 25 years and over									
Population	192.1	192.2	...	0.1	0.0	0.0	0.1	0.0	0.0
Labour force	105.4	105.0	1.0	-0.4	-4.7	-4.7	-0.4	-4.3	-4.3
Employment	96.5	95.7	1.1	-0.8	-4.8	-4.8	-0.8	-4.8	-4.8
Unemployment	8.9	9.3	1.0	0.4	0.1	0.1	4.5	1.1	1.1
Participation rate	54.9	54.6	0.5	-0.3	-2.5	-2.5
Unemployment rate	8.4	8.9	0.9	0.5	0.5	0.5
Employment rate	50.2	49.8	0.6	-0.4	-2.5	-2.5
Part-time rate	18.5	16.9	1.4	-1.6	-1.4	-1.4
Industry	230.3	228.9	2.0	-1.4	-5.1	-5.1	-0.6	-2.2	-2.2
Goods-producing sector									
Agriculture	54.4	53.5	1.8	-0.9	-3.4	-3.4	-1.7	-6.0	-6.0
Forestry, fishing, mining, quarrying, oil and gas extraction ²	2.0	1.7	0.4	-0.3	-0.1	-0.1	-15.0	-5.6	-5.6
Utilities	16.2	16.2	1.0	0.0	-1.9	-1.9	0.0	-10.5	-10.5
Construction	2.9	3.0	0.3	0.1	0.7	0.7	3.4	30.4	30.4
Manufacturing	21.7	22.0	1.3	0.3	1.1	1.1	1.4	5.3	5.3
Services-producing sector									
Trade	11.6	10.5	1.0	-1.1	-3.3	-3.3	-9.5	-23.9	-23.9
Transportation and warehousing	175.9	175.4	2.1	-0.5	-1.7	-1.7	-0.3	-1.0	-1.0
Finance, insurance, real estate and leasing	39.6	40.4	1.4	0.8	2.3	2.3	2.0	6.0	6.0
Professional, scientific and technical services	10.4	10.0	0.7	-0.4	-0.4	-0.4	-3.8	-3.8	-3.8
Business, building and other support services	9.2	8.4	0.7	-0.8	-1.0	-1.0	-8.7	-10.6	-10.6
Educational services	11.3	10.8	0.8	-0.5	1.6	1.6	-4.4	17.4	17.4
Health care and social assistance	6.2	6.5	0.6	0.3	1.0	1.0	4.8	18.2	18.2
Information, culture and recreation	14.4	15.1	1.0	0.7	-3.1	-3.1	4.9	-17.0	-17.0
Accommodation and food services	33.6	33.1	1.2	-0.5	-3.5	-3.5	-1.5	-9.6	-9.6
Other services	6.8	6.7	0.7	-0.1	-0.7	-0.7	-1.5	-9.5	-9.5
Public administration	15.8	15.2	1.0	-0.6	1.4	1.4	-3.8	10.1	10.1
Public administration	12.3	12.4	0.8	0.1	1.5	1.5	0.8	13.8	13.8
Public administration	16.4	16.9	0.9	0.5	-0.6	-0.6	3.0	-3.4	-3.4

1. Average standard error of change in two consecutive months (see "Sampling Errors" in Data Quality for further explanations).

2. Also referred to as Natural resources.

Note(s): Related CANSIM Tables 282-0087, 282-0088. The sum of individual categories may not always add to the total due to rounding.

Table 4-2
Selected labour force characteristics (seasonally adjusted) — Prince Edward Island

	November 2014	December 2014	S.E. ¹	Change from			Percent change from		
				last month	last December	twelve months ago	last month	last December	twelve months ago
in thousands (except rates)									
Both sexes, 15 years and over									
Population	121.8	121.9	...	0.1	0.9	0.9	0.1	0.7	0.7
Labour force	83.8	83.0	0.6	-0.8	-0.3	-0.3	-1.0	-0.4	-0.4
Employment	75.0	74.0	0.7	-1.0	0.4	0.4	-1.3	0.5	0.5
Employment full-time	63.3	62.7	0.9	-0.6	0.9	0.9	-0.9	1.5	1.5
Unemployment	8.8	9.1	0.7	0.3	-0.6	-0.6	3.4	-6.2	-6.2
Participation rate	68.8	68.1	0.5	-0.7	-0.7	-0.7
Unemployment rate	10.5	11.0	0.8	0.5	-0.6	-0.6
Employment rate	61.6	60.7	0.6	-0.9	-0.1	-0.1
Part-time rate	15.6	15.3	1.0	-0.3	-0.8	-0.8
Both sexes, 15 to 24 years									
Population	19.2	19.2	...	0.0	-0.4	-0.4	0.0	-2.0	-2.0
Labour force	13.4	13.0	0.4	-0.4	-0.5	-0.5	-3.0	-3.7	-3.7
Employment	10.9	10.6	0.4	-0.3	-0.7	-0.7	-2.8	-6.2	-6.2
Unemployment	2.5	2.4	0.3	-0.1	0.1	0.1	-4.0	4.3	4.3
Participation rate	69.8	67.7	1.9	-2.1	-1.2	-1.2
Unemployment rate	18.7	18.5	2.4	-0.2	1.5	1.5
Employment rate	56.8	55.2	1.8	-1.6	-2.5	-2.5
Part-time rate	41.3	43.4	3.7	2.1	4.5	4.5
Men, 25 years and over									
Population	49.3	49.4	...	0.1	0.8	0.8	0.2	1.6	1.6
Labour force	36.2	36.1	0.3	-0.1	0.4	0.4	-0.3	1.1	1.1
Employment	32.9	32.5	0.4	-0.4	1.0	1.0	-1.2	3.2	3.2
Unemployment	3.3	3.6	0.4	0.3	-0.6	-0.6	9.1	-14.3	-14.3
Participation rate	73.4	73.1	0.7	-0.3	-0.4	-0.4
Unemployment rate	9.1	10.0	1.1	0.9	-1.8	-1.8
Employment rate	66.7	65.8	0.9	-0.9	1.0	1.0
Part-time rate	5.5	5.2	1.0	-0.2	-3.0	-3.0
Women, 25 years and over									
Population	53.3	53.4	...	0.1	0.6	0.6	0.2	1.1	1.1
Labour force	34.1	34.0	0.3	-0.1	0.0	0.0	-0.3	0.0	0.0
Employment	31.1	30.9	0.4	-0.2	0.1	0.1	-0.6	0.3	0.3
Unemployment	3.0	3.1	0.3	0.1	-0.1	-0.1	3.3	-3.1	-3.1
Participation rate	64.0	63.7	0.6	-0.3	-0.7	-0.7
Unemployment rate	8.8	9.1	1.0	0.3	-0.3	-0.3
Employment rate	58.3	57.9	0.7	-0.4	-0.4	-0.4
Part-time rate	17.7	15.9	1.5	-1.8	0.6	0.6
Industry	75.0	74.0	0.7	-1.0	0.4	0.4	-1.3	0.5	0.5
Goods-producing sector	18.3	16.3	0.6	-2.0	-0.1	-0.1	-10.9	-0.6	-0.6
Agriculture	3.7	2.5	0.3	-1.2	-0.5	-0.5	-32.4	-16.7	-16.7
Forestry, fishing, mining, quarrying, oil and gas extraction ²	2.4	2.2	0.3	-0.2	-0.5	-0.5	-8.3	-18.5	-18.5
Utilities	0.3	0.4	0.1	0.1	0.0	0.0	33.3	0.0	0.0
Construction	6.0	5.2	0.3	-0.8	-0.2	-0.2	-13.3	-3.7	-3.7
Manufacturing	5.9	6.0	0.4	0.1	1.1	1.1	1.7	22.4	22.4
Services-producing sector	56.7	57.6	0.7	0.9	0.4	0.4	1.6	0.7	0.7
Trade	11.6	11.7	0.5	0.1	0.7	0.7	0.9	6.4	6.4
Transportation and warehousing	3.0	2.9	0.2	-0.1	0.1	0.1	-3.3	3.6	3.6
Finance, insurance, real estate and leasing	2.6	2.7	0.2	0.1	-0.5	-0.5	3.8	-15.6	-15.6
Professional, scientific and technical services	3.2	3.0	0.3	-0.2	-0.1	-0.1	-6.2	-3.2	-3.2
Business, building and other support services	2.5	3.0	0.3	0.5	0.9	0.9	20.0	42.9	42.9
Educational services	5.5	5.6	0.4	0.1	-0.6	-0.6	1.8	-9.7	-9.7
Health care and social assistance	8.5	9.0	0.4	0.5	-1.0	-1.0	5.9	-10.0	-10.0
Information, culture and recreation	2.4	2.3	0.3	-0.1	-0.3	-0.3	-4.2	-11.5	-11.5
Accommodation and food services	5.5	5.5	0.4	0.0	0.3	0.3	0.0	5.8	5.8
Other services	4.2	4.0	0.3	-0.2	0.2	0.2	-4.8	5.3	5.3
Public administration	7.7	7.9	0.3	0.2	0.7	0.7	2.6	9.7	9.7

1. Average standard error of change in two consecutive months (see "Sampling Errors" in Data Quality for further explanations).

2. Also referred to as Natural resources.

Note(s): Related CANSIM Tables 282-0087, 282-0088. The sum of individual categories may not always add to the total due to rounding.

Table 4-3
Selected labour force characteristics (seasonally adjusted) — Nova Scotia

	November 2014	December 2014	S.E. ¹	Change from			Percent change from		
				last month	last December	twelve months ago	last month	last December	twelve months ago
in thousands (except rates)									
Both sexes, 15 years and over									
Population	781.1	781.4	...	0.3	-0.1	-0.1	0.0	0.0	0.0
Labour force	492.6	487.8	2.6	-4.8	-7.1	-7.1	-1.0	-1.4	-1.4
Employment	449.1	447.5	2.7	-1.6	-2.0	-2.0	-0.4	-0.4	-0.4
Employment full-time	366.8	365.3	3.5	-1.5	5.4	5.4	-0.4	1.5	1.5
Unemployment	43.5	40.4	2.3	-3.1	-5.0	-5.0	-7.1	-11.0	-11.0
Participation rate	63.1	62.4	0.3	-0.7	-0.9	-0.9
Unemployment rate	8.8	8.3	0.5	-0.5	-0.9	-0.9
Employment rate	57.5	57.3	0.3	-0.2	-0.2	-0.2
Part-time rate	18.3	18.4	0.7	0.0	-1.6	-1.6
Both sexes, 15 to 24 years									
Population	112.0	111.9	...	-0.1	-3.1	-3.1	-0.1	-2.7	-2.7
Labour force	73.0	72.7	1.6	-0.3	-2.7	-2.7	-0.4	-3.6	-3.6
Employment	61.8	61.1	1.5	-0.7	0.4	0.4	-1.1	0.7	0.7
Unemployment	11.1	11.6	1.5	0.5	-3.1	-3.1	4.5	-21.1	-21.1
Participation rate	65.2	65.0	1.4	-0.2	-0.6	-0.6
Unemployment rate	15.2	16.0	1.8	0.8	-3.5	-3.5
Employment rate	55.2	54.6	1.3	-0.6	1.8	1.8
Part-time rate	46.0	44.5	2.7	-1.4	-1.3	-1.3
Men, 25 years and over									
Population	316.9	317.1	...	0.2	1.2	1.2	0.1	0.4	0.4
Labour force	211.6	207.2	1.4	-4.4	-5.6	-5.6	-2.1	-2.6	-2.6
Employment	192.6	192.0	1.6	-0.6	-1.5	-1.5	-0.3	-0.8	-0.8
Unemployment	19.0	15.2	1.4	-3.8	-4.1	-4.1	-20.0	-21.2	-21.2
Participation rate	66.8	65.3	0.4	-1.5	-2.1	-2.1
Unemployment rate	9.0	7.3	0.6	-1.7	-1.8	-1.8
Employment rate	60.8	60.5	0.5	-0.3	-0.8	-0.8
Part-time rate	7.8	8.5	0.8	0.8	-1.0	-1.0
Women, 25 years and over									
Population	352.2	352.4	...	0.2	1.7	1.7	0.1	0.5	0.5
Labour force	208.0	207.9	1.5	-0.1	1.2	1.2	0.0	0.6	0.6
Employment	194.7	194.3	1.5	-0.4	-1.0	-1.0	-0.2	-0.5	-0.5
Unemployment	13.3	13.6	1.2	0.3	2.2	2.2	2.3	19.3	19.3
Participation rate	59.1	59.0	0.4	-0.1	0.1	0.1
Unemployment rate	6.4	6.5	0.5	0.1	1.0	1.0
Employment rate	55.3	55.1	0.4	-0.2	-0.6	-0.6
Part-time rate	20.0	19.8	1.1	-0.2	-2.5	-2.5
Industry									
Industry	449.1	447.5	2.7	-1.6	-2.0	-2.0	-0.4	-0.4	-0.4
Goods-producing sector									
Goods-producing sector	79.5	79.5	2.2	0.0	-5.0	-5.0	0.0	-5.9	-5.9
Agriculture	4.2	4.8	0.7	0.6	-0.5	-0.5	14.3	-9.4	-9.4
Forestry, fishing, mining, quarrying, oil and gas extraction ²	13.6	12.6	0.9	-1.0	1.3	1.3	-7.4	11.5	11.5
Utilities	3.7	4.2	0.5	0.5	-0.1	-0.1	13.5	-2.3	-2.3
Construction	28.5	28.9	1.6	0.4	-4.2	-4.2	1.4	-12.7	-12.7
Manufacturing	29.5	29.0	1.3	-0.5	-1.5	-1.5	-1.7	-4.9	-4.9
Services-producing sector									
Services-producing sector	369.6	368.0	2.9	-1.6	3.0	3.0	-0.4	0.8	0.8
Trade	70.5	70.0	1.9	-0.5	-2.6	-2.6	-0.7	-3.6	-3.6
Transportation and warehousing	21.3	20.6	1.1	-0.7	2.2	2.2	-3.3	12.0	12.0
Finance, insurance, real estate and leasing	24.0	25.2	1.1	1.2	2.4	2.4	5.0	10.5	10.5
Professional, scientific and technical services	27.8	28.3	1.3	0.5	2.9	2.9	1.8	11.4	11.4
Business, building and other support services	18.5	18.5	1.3	0.0	-4.7	-4.7	0.0	-20.3	-20.3
Educational services	36.0	35.6	1.5	-0.4	-0.7	-0.7	-1.1	-1.9	-1.9
Health care and social assistance	73.3	72.9	1.7	-0.4	1.6	1.6	-0.5	2.2	2.2
Information, culture and recreation	21.2	19.9	1.2	-1.3	0.0	0.0	-6.1	0.0	0.0
Accommodation and food services	29.8	30.7	1.6	0.9	2.3	2.3	3.0	8.1	8.1
Other services	18.6	16.8	1.0	-1.8	-0.8	-0.8	-9.7	-4.5	-4.5
Public administration	28.6	29.5	1.1	0.9	0.4	0.4	3.1	1.4	1.4

1. Average standard error of change in two consecutive months (see "Sampling Errors" in Data Quality for further explanations).

2. Also referred to as Natural resources.

Note(s): Related CANSIM Tables 282-0087, 282-0088. The sum of individual categories may not always add to the total due to rounding.

Table 4-4
Selected labour force characteristics (seasonally adjusted) — New Brunswick

	November 2014	December 2014	S.E. ¹	Change from			Percent change from		
				last month	last December	twelve months ago	last month	last December	twelve months ago
in thousands (except rates)									
Both sexes, 15 years and over									
Population	620.2	620.5	...	0.3	0.6	0.6	0.0	0.1	0.1
Labour force	387.1	389.0	2.2	1.9	-2.7	-2.7	0.5	-0.7	-0.7
Employment	349.9	349.4	2.3	-0.5	-4.3	-4.3	-0.1	-1.2	-1.2
Employment full-time	294.1	294.5	3.0	0.4	-1.6	-1.6	0.1	-0.5	-0.5
Unemployment	37.1	39.6	2.2	2.5	1.6	1.6	6.7	4.2	4.2
Participation rate	62.4	62.7	0.4	0.3	-0.5	-0.5
Unemployment rate	9.6	10.2	0.5	0.6	0.5	0.5
Employment rate	56.4	56.3	0.4	-0.1	-0.8	-0.8
Part-time rate	15.9	15.7	0.7	-0.2	-0.5	-0.5
Both sexes, 15 to 24 years									
Population	85.2	85.2	...	0.0	-2.3	-2.3	0.0	-2.6	-2.6
Labour force	54.8	54.4	1.3	-0.4	-1.5	-1.5	-0.7	-2.7	-2.7
Employment	45.6	44.2	1.3	-1.4	-3.9	-3.9	-3.1	-8.1	-8.1
Unemployment	9.3	10.2	1.2	0.9	2.3	2.3	9.7	29.1	29.1
Participation rate	64.3	63.8	1.5	-0.5	-0.1	-0.1
Unemployment rate	17.0	18.8	2.0	1.8	4.7	4.7
Employment rate	53.5	51.9	1.5	-1.6	-3.1	-3.1
Part-time rate	43.2	42.8	3.0	-0.4	1.8	1.8
Men, 25 years and over									
Population	256.8	256.9	...	0.1	1.5	1.5	0.0	0.6	0.6
Labour force	170.2	172.5	1.3	2.3	-1.4	-1.4	1.4	-0.8	-0.8
Employment	152.5	153.7	1.4	1.2	-1.7	-1.7	0.8	-1.1	-1.1
Unemployment	17.7	18.9	1.4	1.2	0.3	0.3	6.8	1.6	1.6
Participation rate	66.3	67.1	0.5	0.8	-1.0	-1.0
Unemployment rate	10.4	11.0	0.8	0.6	0.3	0.3
Employment rate	59.4	59.8	0.5	0.4	-1.0	-1.0
Part-time rate	6.4	6.8	0.7	0.4	0.4	0.4
Women, 25 years and over									
Population	278.3	278.4	...	0.1	1.4	1.4	0.0	0.5	0.5
Labour force	162.0	162.0	1.2	0.0	0.2	0.2	0.0	0.1	0.1
Employment	151.9	151.6	1.3	-0.3	1.4	1.4	-0.2	0.9	0.9
Unemployment	10.2	10.5	1.1	0.3	-1.1	-1.1	2.9	-9.5	-9.5
Participation rate	58.2	58.2	0.4	0.0	-0.2	-0.2
Unemployment rate	6.3	6.5	0.7	0.2	-0.7	-0.7
Employment rate	54.6	54.5	0.5	-0.1	0.3	0.3
Part-time rate	17.4	17.0	1.0	-0.4	-1.7	-1.7
Industry									
Industry	349.9	349.4	2.3	-0.5	-4.3	-4.3	-0.1	-1.2	-1.2
Goods-producing sector									
Goods-producing sector	72.6	70.6	1.9	-2.0	-7.3	-7.3	-2.8	-9.4	-9.4
Agriculture	4.1	3.6	0.5	-0.5	-0.3	-0.3	-12.2	-7.7	-7.7
Forestry, fishing, mining, quarrying, oil and gas extraction ²	12.1	10.7	0.8	-1.4	-2.0	-2.0	-11.6	-15.7	-15.7
Utilities	3.5	3.3	0.4	-0.2	-0.8	-0.8	-5.7	-19.5	-19.5
Construction	23.0	23.5	1.3	0.5	-5.6	-5.6	2.2	-19.2	-19.2
Manufacturing	30.0	29.5	1.2	-0.5	1.4	1.4	-1.7	5.0	5.0
Services-producing sector									
Services-producing sector	277.3	278.9	2.3	1.6	3.1	3.1	0.6	1.1	1.1
Trade	54.2	53.0	1.6	-1.2	-6.1	-6.1	-2.2	-10.3	-10.3
Transportation and warehousing	16.4	19.0	0.9	2.6	2.4	2.4	15.9	14.5	14.5
Finance, insurance, real estate and leasing	14.1	14.4	0.8	0.3	-2.7	-2.7	2.1	-15.8	-15.8
Professional, scientific and technical services	19.1	17.9	0.9	-1.2	2.6	2.6	-6.3	17.0	17.0
Business, building and other support services	19.3	19.7	1.1	0.4	3.0	3.0	2.1	18.0	18.0
Educational services	29.3	27.5	1.2	-1.8	0.2	0.2	-6.1	0.7	0.7
Health care and social assistance	52.1	51.4	1.4	-0.7	2.0	2.0	-1.3	4.0	4.0
Information, culture and recreation	11.9	12.6	0.8	0.7	1.3	1.3	5.9	11.5	11.5
Accommodation and food services	20.7	20.3	1.2	-0.4	-3.0	-3.0	-1.9	-12.9	-12.9
Other services	15.7	17.4	0.9	1.7	2.0	2.0	10.8	13.0	13.0
Public administration	24.6	25.7	1.0	1.1	1.3	1.3	4.5	5.3	5.3

1. Average standard error of change in two consecutive months (see "Sampling Errors" in Data Quality for further explanations).

2. Also referred to as Natural resources.

Note(s): Related CANSIM Tables 282-0087, 282-0088. The sum of individual categories may not always add to the total due to rounding.

Table 4-5
Selected labour force characteristics (seasonally adjusted) — Quebec

	November 2014	December 2014	S.E. ¹	Change from			Percent change from		
				last month	last December	twelve months ago	last month	last December	twelve months ago
in thousands (except rates)									
Both sexes, 15 years and over									
Population	6,762.1	6,764.8	...	2.7	50.8	50.8	0.0	0.8	0.8
Labour force	4,369.3	4,354.8	15.0	-14.5	-29.2	-29.2	-0.3	-0.7	-0.7
Employment	4,036.4	4,029.7	14.9	-6.7	-15.8	-15.8	-0.2	-0.4	-0.4
Employment full-time	3,213.3	3,230.2	19.8	16.9	-9.7	-9.7	0.5	-0.3	-0.3
Unemployment	332.9	325.1	12.9	-7.8	-13.5	-13.5	-2.3	-4.0	-4.0
Participation rate	64.6	64.4	0.2	-0.2	-0.9	-0.9
Unemployment rate	7.6	7.5	0.3	-0.1	-0.2	-0.2
Employment rate	59.7	59.6	0.2	-0.1	-0.7	-0.7
Part-time rate	20.4	19.8	0.4	-0.6	-0.1	-0.1
Both sexes, 15 to 24 years									
Population	961.5	960.1	...	-1.4	-14.5	-14.5	-0.1	-1.5	-1.5
Labour force	650.1	647.2	8.5	-2.9	-1.1	-1.1	-0.4	-0.2	-0.2
Employment	564.1	559.0	8.0	-5.1	-5.6	-5.6	-0.9	-1.0	-1.0
Unemployment	86.0	88.2	7.2	2.2	4.5	4.5	2.6	5.4	5.4
Participation rate	67.6	67.4	0.9	-0.2	0.9	0.9
Unemployment rate	13.2	13.6	1.0	0.4	0.7	0.7
Employment rate	58.7	58.2	0.8	-0.5	0.3	0.3
Part-time rate	55.8	54.8	1.6	-1.0	1.1	1.1
Men, 25 years and over									
Population	2,857.7	2,859.7	...	2.0	34.2	34.2	0.1	1.2	1.2
Labour force	1,966.4	1,966.5	8.3	0.1	-12.2	-12.2	0.0	-0.6	-0.6
Employment	1,822.3	1,832.9	8.9	10.6	1.9	1.9	0.6	0.1	0.1
Unemployment	144.1	133.5	7.7	-10.6	-14.2	-14.2	-7.4	-9.6	-9.6
Participation rate	68.8	68.8	0.3	0.0	-1.2	-1.2
Unemployment rate	7.3	6.8	0.4	-0.5	-0.7	-0.7
Employment rate	63.8	64.1	0.3	0.3	-0.7	-0.7
Part-time rate	8.8	8.4	0.5	-0.4	-0.6	-0.6
Women, 25 years and over									
Population	2,943.0	2,944.9	...	1.9	31.0	31.0	0.1	1.1	1.1
Labour force	1,752.9	1,741.2	8.3	-11.7	-15.8	-15.8	-0.7	-0.9	-0.9
Employment	1,650.1	1,637.9	8.4	-12.2	-12.0	-12.0	-0.7	-0.7	-0.7
Unemployment	102.8	103.3	7.1	0.5	-3.8	-3.8	0.5	-3.5	-3.5
Participation rate	59.6	59.1	0.3	-0.5	-1.2	-1.2
Unemployment rate	5.9	5.9	0.4	0.0	-0.2	-0.2
Employment rate	56.1	55.6	0.3	-0.5	-1.0	-1.0
Part-time rate	21.1	20.8	0.7	-0.4	0.3	0.3
Industry									
Industry	4,036.4	4,029.7	14.9	-6.7	-15.8	-15.8	-0.2	-0.4	-0.4
Goods-producing sector									
Goods-producing sector	864.0	877.0	13.0	13.0	17.5	17.5	1.5	2.0	2.0
Agriculture	51.2	56.5	3.5	5.3	3.8	3.8	10.4	7.2	7.2
Forestry, fishing, mining, quarrying, oil and gas extraction ²	36.0	33.3	2.4	-2.7	5.9	5.9	-7.5	21.5	21.5
Utilities	35.5	37.4	2.8	1.9	2.9	2.9	5.4	8.4	8.4
Construction	265.3	275.1	7.9	9.8	23.3	23.3	3.7	9.3	9.3
Manufacturing	475.9	474.8	10.2	-1.1	-18.4	-18.4	-0.2	-3.7	-3.7
Services-producing sector									
Services-producing sector	3,172.5	3,152.7	17.3	-19.8	-33.2	-33.2	-0.6	-1.0	-1.0
Trade	642.6	637.0	12.3	-5.6	3.4	3.4	-0.9	0.5	0.5
Transportation and warehousing	181.4	185.2	6.9	3.8	-7.6	-7.6	2.1	-3.9	-3.9
Finance, insurance, real estate and leasing	216.0	203.8	7.6	-12.2	-25.4	-25.4	-5.6	-11.1	-11.1
Professional, scientific and technical services	283.8	279.8	9.3	-4.0	-29.5	-29.5	-1.4	-9.5	-9.5
Business, building and other support services	153.2	160.2	6.7	7.0	11.3	11.3	4.6	7.6	7.6
Educational services	281.7	281.8	8.3	0.1	-6.2	-6.2	0.0	-2.2	-2.2
Health care and social assistance	552.7	553.9	10.9	1.2	-8.8	-8.8	0.2	-1.6	-1.6
Information, culture and recreation	184.4	180.8	7.8	-3.6	-9.7	-9.7	-2.0	-5.1	-5.1
Accommodation and food services	278.9	270.8	8.8	-8.1	19.7	19.7	-2.9	7.8	7.8
Other services	159.7	155.4	7.0	-4.3	-13.2	-13.2	-2.7	-7.8	-7.8
Public administration	238.0	244.1	6.3	6.1	32.8	32.8	2.6	15.5	15.5

1. Average standard error of change in two consecutive months (see "Sampling Errors" in Data Quality for further explanations).

2. Also referred to as Natural resources.

Note(s): Related CANSIM Tables 282-0087, 282-0088. The sum of individual categories may not always add to the total due to rounding.

Table 4-6
Selected labour force characteristics (seasonally adjusted) — Ontario

	November 2014	December 2014	S.E. ¹	Change from			Percent change from		
				last month	last December	twelve months ago	last month	last December	twelve months ago
in thousands (except rates)									
Both sexes, 15 years and over									
Population	11,384.2	11,395.1	...	10.9	127.5	127.5	0.1	1.1	1.1
Labour force	7,481.2	7,480.6	19.8	-0.6	14.3	14.3	0.0	0.2	0.2
Employment	6,960.2	6,956.7	18.7	-3.5	79.9	79.9	-0.1	1.2	1.2
Employment full-time	5,622.1	5,625.3	26.0	3.2	47.8	47.8	0.1	0.9	0.9
Unemployment	521.0	523.9	17.1	2.9	-65.6	-65.6	0.6	-11.1	-11.1
Participation rate	65.7	65.6	0.2	-0.1	-0.7	-0.7
Unemployment rate	7.0	7.0	0.2	0.0	-0.9	-0.9
Employment rate	61.1	61.0	0.2	-0.1	0.0	0.0
Part-time rate	19.2	19.1	0.3	-0.1	0.2	0.2
Both sexes, 15 to 24 years									
Population	1,767.0	1,766.3	...	-0.7	-15.5	-15.5	0.0	-0.9	-0.9
Labour force	1,106.5	1,115.8	11.9	9.3	39.1	39.1	0.8	3.6	3.6
Employment	934.3	939.0	10.8	4.7	42.5	42.5	0.5	4.7	4.7
Unemployment	172.2	176.8	10.4	4.6	-3.3	-3.3	2.7	-1.8	-1.8
Participation rate	62.6	63.2	0.7	0.6	2.8	2.8
Unemployment rate	15.6	15.8	0.9	0.2	-0.9	-0.9
Employment rate	52.9	53.2	0.6	0.3	2.9	2.9
Part-time rate	53.7	51.7	1.3	-2.0	-0.1	-0.1
Men, 25 years and over									
Population	4,664.2	4,669.8	...	5.6	68.6	68.6	0.1	1.5	1.5
Labour force	3,355.3	3,364.6	10.1	9.3	25.2	25.2	0.3	0.8	0.8
Employment	3,159.1	3,173.9	10.5	14.8	61.4	61.4	0.5	2.0	2.0
Unemployment	196.2	190.7	9.8	-5.5	-36.1	-36.1	-2.8	-15.9	-15.9
Participation rate	71.9	72.1	0.2	0.2	-0.5	-0.5
Unemployment rate	5.8	5.7	0.3	-0.1	-1.1	-1.1
Employment rate	67.7	68.0	0.2	0.3	0.4	0.4
Part-time rate	7.8	8.1	0.4	0.3	0.5	0.5
Women, 25 years and over									
Population	4,953.0	4,958.9	...	5.9	74.3	74.3	0.1	1.5	1.5
Labour force	3,019.3	3,000.2	11.5	-19.1	-50.0	-50.0	-0.6	-1.6	-1.6
Employment	2,866.8	2,843.8	11.0	-23.0	-23.9	-23.9	-0.8	-0.8	-0.8
Unemployment	152.5	156.4	9.5	3.9	-26.1	-26.1	2.6	-14.3	-14.3
Participation rate	61.0	60.5	0.2	-0.5	-1.9	-1.9
Unemployment rate	5.1	5.2	0.3	0.1	-0.8	-0.8
Employment rate	57.9	57.3	0.2	-0.6	-1.4	-1.4
Part-time rate	20.6	20.7	0.5	0.1	-0.2	-0.2
Industry									
	6,960.2	6,956.7	18.7	-3.5	79.9	79.9	-0.1	1.2	1.2
Goods-producing sector									
Agriculture	1,435.2	1,438.3	17.0	3.1	41.5	41.5	0.2	3.0	3.0
Forestry, fishing, mining, quarrying, oil and gas extraction ²	88.7	96.8	4.0	8.1	14.1	14.1	9.1	17.0	17.0
Utilities	40.4	47.9	2.6	7.5	9.7	9.7	18.6	25.4	25.4
Construction	56.6	57.1	3.3	0.5	-3.6	-3.6	0.9	-5.9	-5.9
Manufacturing	465.8	465.2	11.4	-0.6	17.9	17.9	-0.1	4.0	4.0
	783.7	771.3	13.4	-12.4	3.3	3.3	-1.6	0.4	0.4
Services-producing sector									
Trade	5,525.0	5,518.4	22.9	-6.6	38.4	38.4	-0.1	0.7	0.7
Transportation and warehousing	1,011.0	1,041.2	16.4	30.2	16.6	16.6	3.0	1.6	1.6
Finance, insurance, real estate and leasing	299.6	297.1	10.1	-2.5	-16.2	-16.2	-0.8	-5.2	-5.2
Professional, scientific and technical services	558.7	558.4	12.5	-0.3	35.7	35.7	-0.1	6.8	6.8
Business, building and other support services	573.8	564.9	13.1	-8.9	-21.8	-21.8	-1.6	-3.7	-3.7
Educational services	315.0	305.0	10.3	-10.0	-11.1	-11.1	-3.2	-3.5	-3.5
Health care and social assistance	535.9	539.0	11.0	3.1	28.2	28.2	0.6	5.5	5.5
Information, culture and recreation	821.5	823.3	12.5	1.8	29.7	29.7	0.2	3.7	3.7
Accommodation and food services	329.5	331.3	10.3	1.8	-2.5	-2.5	0.5	-0.7	-0.7
Other services	450.8	430.9	11.2	-19.9	17.2	17.2	-4.4	4.2	4.2
Public administration	272.5	259.8	8.8	-12.7	-30.1	-30.1	-4.7	-10.4	-10.4
	356.7	367.4	8.4	10.7	-7.4	-7.4	3.0	-2.0	-2.0

1. Average standard error of change in two consecutive months (see "Sampling Errors" in Data Quality for further explanations).

2. Also referred to as Natural resources.

Note(s): Related CANSIM Tables 282-0087, 282-0088. The sum of individual categories may not always add to the total due to rounding.

Table 4-7
Selected labour force characteristics (seasonally adjusted) — Manitoba

	November 2014	December 2014	S.E. ¹	Change from			Percent change from		
				last month	last December	twelve months ago	last month	last December	twelve months ago
in thousands (except rates)									
Both sexes, 15 years and over									
Population	990.3	991.7	...	1.4	12.8	12.8	0.1	1.3	1.3
Labour force	676.3	679.2	2.7	2.9	11.7	11.7	0.4	1.8	1.8
Employment	642.0	643.9	2.7	1.9	13.4	13.4	0.3	2.1	2.1
Employment full-time	523.1	522.5	3.8	-0.6	12.2	12.2	-0.1	2.4	2.4
Unemployment	34.3	35.3	2.1	1.0	-1.7	-1.7	2.9	-4.6	-4.6
Participation rate	68.3	68.5	0.3	0.2	0.3	0.3
Unemployment rate	5.1	5.2	0.3	0.1	-0.3	-0.3
Employment rate	64.8	64.9	0.3	0.1	0.5	0.5
Part-time rate	18.5	18.9	0.5	0.3	-0.2	-0.2
Both sexes, 15 to 24 years									
Population	164.0	164.0	...	0.0	-0.8	-0.8	0.0	-0.5	-0.5
Labour force	112.4	112.2	1.6	-0.2	0.1	0.1	-0.2	0.1	0.1
Employment	100.5	100.2	1.6	-0.3	0.0	0.0	-0.3	0.0	0.0
Unemployment	11.8	12.0	1.3	0.2	0.1	0.1	1.7	0.8	0.8
Participation rate	68.5	68.4	0.9	-0.1	0.4	0.4
Unemployment rate	10.5	10.7	1.1	0.2	0.1	0.1
Employment rate	61.3	61.1	0.9	-0.2	0.3	0.3
Part-time rate	41.0	42.1	1.9	1.1	0.1	0.1
Men, 25 years and over									
Population	405.8	406.5	...	0.7	7.2	7.2	0.2	1.8	1.8
Labour force	303.1	305.3	1.4	2.2	9.7	9.7	0.7	3.3	3.3
Employment	291.5	292.9	1.5	1.4	10.7	10.7	0.5	3.8	3.8
Unemployment	11.6	12.5	1.2	0.9	-0.9	-0.9	7.8	-6.7	-6.7
Participation rate	74.7	75.1	0.4	0.4	1.1	1.1
Unemployment rate	3.8	4.1	0.4	0.3	-0.4	-0.4
Employment rate	71.8	72.1	0.4	0.3	1.4	1.4
Part-time rate	7.7	8.3	0.6	0.6	1.6	1.6
Women, 25 years and over									
Population	420.5	421.1	...	0.6	6.3	6.3	0.1	1.5	1.5
Labour force	260.9	261.7	1.6	0.8	1.9	1.9	0.3	0.7	0.7
Employment	250.0	250.9	1.6	0.9	2.8	2.8	0.4	1.1	1.1
Unemployment	10.9	10.8	1.1	-0.1	-0.9	-0.9	-0.9	-7.7	-7.7
Participation rate	62.0	62.1	0.4	0.1	-0.5	-0.5
Unemployment rate	4.2	4.1	0.4	-0.1	-0.4	-0.4
Employment rate	59.5	59.6	0.4	0.1	-0.2	-0.2
Part-time rate	22.2	21.9	0.9	-0.3	-1.9	-1.9
Industry									
Industry	642.0	643.9	2.7	1.9	13.4	13.4	0.3	2.1	2.1
Goods-producing sector									
Goods-producing sector	153.0	150.7	2.4	-2.3	5.5	5.5	-1.5	3.8	3.8
Agriculture	22.8	21.1	1.2	-1.7	-1.4	-1.4	-7.5	-6.2	-6.2
Forestry, fishing, mining, quarrying, oil and gas extraction ²	7.1	6.4	0.6	-0.7	-0.6	-0.6	-9.9	-8.6	-8.6
Utilities	9.3	8.0	0.5	-1.3	-0.6	-0.6	-14.0	-7.0	-7.0
Construction	47.8	47.9	1.6	0.1	5.9	5.9	0.2	14.0	14.0
Manufacturing	66.1	67.3	1.7	1.2	2.2	2.2	1.8	3.4	3.4
Services-producing sector									
Services-producing sector	489.0	493.3	3.2	4.3	8.1	8.1	0.9	1.7	1.7
Trade	91.9	93.4	2.0	1.5	-2.6	-2.6	1.6	-2.7	-2.7
Transportation and warehousing	36.1	36.0	1.4	-0.1	-3.0	-3.0	-0.3	-7.7	-7.7
Finance, insurance, real estate and leasing	34.8	35.3	1.2	0.5	1.1	1.1	1.4	3.2	3.2
Professional, scientific and technical services	26.3	24.9	1.1	-1.4	-2.9	-2.9	-5.3	-10.4	-10.4
Business, building and other support services	20.0	20.0	1.2	0.0	0.5	0.5	0.0	2.6	2.6
Educational services	52.0	54.4	1.6	2.4	5.7	5.7	4.6	11.7	11.7
Health care and social assistance	102.3	99.6	1.9	-2.7	3.1	3.1	-2.6	3.2	3.2
Information, culture and recreation	22.1	21.3	1.2	-0.8	-2.4	-2.4	-3.6	-10.1	-10.1
Accommodation and food services	38.7	41.4	1.6	2.7	3.1	3.1	7.0	8.1	8.1
Other services	27.9	29.5	1.2	1.6	3.2	3.2	5.7	12.2	12.2
Public administration	36.9	37.4	1.2	0.5	2.2	2.2	1.4	6.2	6.2

1. Average standard error of change in two consecutive months (see "Sampling Errors" in Data Quality for further explanations).

2. Also referred to as Natural resources.

Note(s): Related CANSIM Tables 282-0087, 282-0088. The sum of individual categories may not always add to the total due to rounding.

Table 4-8
Selected labour force characteristics (seasonally adjusted) — Saskatchewan

	November 2014	December 2014	S.E. ¹	Change from			Percent change from		
				last month	last December	twelve months ago	last month	last December	twelve months ago
in thousands (except rates)									
Both sexes, 15 years and over									
Population	846.8	847.8	...	1.0	13.6	13.6	0.1	1.6	1.6
Labour force	592.5	594.0	2.5	1.5	13.6	13.6	0.3	2.3	2.3
Employment	572.1	572.8	2.6	0.7	14.8	14.8	0.1	2.7	2.7
Employment full-time	472.1	475.3	3.5	3.2	17.8	17.8	0.7	3.9	3.9
Unemployment	20.4	21.2	1.8	0.8	-1.2	-1.2	3.9	-5.4	-5.4
Participation rate	70.0	70.1	0.3	0.1	0.5	0.5
Unemployment rate	3.4	3.6	0.3	0.2	-0.3	-0.3
Employment rate	67.6	67.6	0.3	0.0	0.7	0.7
Part-time rate	17.5	17.0	0.6	-0.4	-1.0	-1.0
Both sexes, 15 to 24 years									
Population	135.9	135.8	...	-0.1	-1.0	-1.0	-0.1	-0.7	-0.7
Labour force	91.6	91.7	1.4	0.1	-0.6	-0.6	0.1	-0.7	-0.7
Employment	85.2	85.5	1.4	0.3	-0.8	-0.8	0.4	-0.9	-0.9
Unemployment	6.4	6.2	1.1	-0.2	0.2	0.2	-3.1	3.3	3.3
Participation rate	67.4	67.5	1.1	0.1	0.0	0.0
Unemployment rate	7.0	6.8	1.1	-0.2	0.3	0.3
Employment rate	62.7	63.0	1.1	0.3	-0.1	-0.1
Part-time rate	38.8	38.8	1.9	0.0	-0.8	-0.8
Men, 25 years and over									
Population	353.2	353.7	...	0.5	8.3	8.3	0.1	2.4	2.4
Labour force	270.2	272.1	1.3	1.9	5.9	5.9	0.7	2.2	2.2
Employment	263.3	263.7	1.4	0.4	5.4	5.4	0.2	2.1	2.1
Unemployment	6.9	8.3	1.0	1.4	0.3	0.3	20.3	3.8	3.8
Participation rate	76.5	76.9	0.4	0.4	-0.2	-0.2
Unemployment rate	2.6	3.1	0.4	0.5	0.1	0.1
Employment rate	74.5	74.6	0.4	0.1	-0.2	-0.2
Part-time rate	6.6	6.7	0.6	0.0	0.2	0.2
Women, 25 years and over									
Population	357.7	358.3	...	0.6	6.2	6.2	0.2	1.8	1.8
Labour force	230.7	230.2	1.5	-0.5	8.4	8.4	-0.2	3.8	3.8
Employment	223.6	223.5	1.5	-0.1	10.0	10.0	0.0	4.7	4.7
Unemployment	7.1	6.7	1.0	-0.4	-1.7	-1.7	-5.6	-20.2	-20.2
Participation rate	64.5	64.2	0.4	-0.3	1.2	1.2
Unemployment rate	3.1	2.9	0.4	-0.2	-0.9	-0.9
Employment rate	62.5	62.4	0.4	-0.1	1.8	1.8
Part-time rate	22.1	20.9	1.0	-1.2	-2.3	-2.3
Industry									
Industry	572.1	572.8	2.6	0.7	14.8	14.8	0.1	2.7	2.7
Goods-producing sector									
Goods-producing sector	159.6	156.8	2.6	-2.8	4.1	4.1	-1.8	2.7	2.7
Agriculture	43.7	43.9	1.7	0.2	-0.3	-0.3	0.5	-0.7	-0.7
Forestry, fishing, mining, quarrying, oil and gas extraction ²	28.9	28.6	1.2	-0.3	5.7	5.7	-1.0	24.9	24.9
Utilities	6.2	6.4	0.5	0.2	-0.3	-0.3	3.2	-4.5	-4.5
Construction	52.1	49.4	1.8	-2.7	0.7	0.7	-5.2	1.4	1.4
Manufacturing	28.7	28.5	1.3	-0.2	-1.7	-1.7	-0.7	-5.6	-5.6
Services-producing sector									
Services-producing sector	412.5	416.0	3.2	3.5	10.7	10.7	0.8	2.6	2.6
Trade	86.3	88.1	2.1	1.8	5.4	5.4	2.1	6.5	6.5
Transportation and warehousing	25.3	24.9	1.2	-0.4	-4.7	-4.7	-1.6	-15.9	-15.9
Finance, insurance, real estate and leasing	33.5	33.6	1.3	0.1	4.0	4.0	0.3	13.5	13.5
Professional, scientific and technical services	27.8	26.4	1.3	-1.4	-3.5	-3.5	-5.0	-11.7	-11.7
Business, building and other support services	15.6	15.7	1.0	0.1	2.2	2.2	0.6	16.3	16.3
Educational services	44.6	46.3	1.4	1.7	1.0	1.0	3.8	2.2	2.2
Health care and social assistance	70.6	73.0	1.7	2.4	1.9	1.9	3.4	2.7	2.7
Information, culture and recreation	16.2	16.9	1.1	0.7	-3.8	-3.8	4.3	-18.4	-18.4
Accommodation and food services	34.6	33.9	1.6	-0.7	2.6	2.6	-2.0	8.3	8.3
Other services	25.9	25.0	1.2	-0.9	2.3	2.3	-3.5	10.1	10.1
Public administration	32.0	32.1	1.2	0.1	3.3	3.3	0.3	11.5	11.5

1. Average standard error of change in two consecutive months (see "Sampling Errors" in Data Quality for further explanations).

2. Also referred to as Natural resources.

Note(s): Related CANSIM Tables 282-0087, 282-0088. The sum of individual categories may not always add to the total due to rounding.

Table 4-9
Selected labour force characteristics (seasonally adjusted) — Alberta

	November 2014	December 2014	S.E. ¹	Change from			Percent change from		
				last month	last December	twelve months ago	last month	last December	twelve months ago
in thousands (except rates)									
Both sexes, 15 years and over									
Population	3,312.5	3,317.4	...	4.9	95.1	95.1	0.1	3.0	3.0
Labour force	2,404.6	2,416.7	9.4	12.1	67.7	67.7	0.5	2.9	2.9
Employment	2,296.9	2,302.6	10.0	5.7	65.9	65.9	0.2	2.9	2.9
Employment full-time	1,915.3	1,923.7	12.8	8.4	50.1	50.1	0.4	2.7	2.7
Unemployment	107.6	114.0	7.4	6.4	1.8	1.8	5.9	1.6	1.6
Participation rate	72.6	72.8	0.3	0.2	-0.1	-0.1
Unemployment rate	4.5	4.7	0.3	0.2	-0.1	-0.1
Employment rate	69.3	69.4	0.3	0.1	0.0	0.0
Part-time rate	16.6	16.5	0.5	-0.2	0.2	0.2
Both sexes, 15 to 24 years									
Population	518.7	518.4	...	-0.3	2.1	2.1	-0.1	0.4	0.4
Labour force	359.6	358.2	5.3	-1.4	10.2	10.2	-0.4	2.9	2.9
Employment	328.5	326.6	5.3	-1.9	9.9	9.9	-0.6	3.1	3.1
Unemployment	31.1	31.6	4.2	0.5	0.4	0.4	1.6	1.3	1.3
Participation rate	69.3	69.1	1.0	-0.2	1.7	1.7
Unemployment rate	8.6	8.8	1.1	0.2	-0.2	-0.2
Employment rate	63.3	63.0	1.0	-0.3	1.7	1.7
Part-time rate	36.7	33.5	1.8	-3.2	-2.9	-2.9
Men, 25 years and over									
Population	1,421.9	1,424.5	...	2.6	49.1	49.1	0.2	3.6	3.6
Labour force	1,138.7	1,142.9	4.9	4.2	34.1	34.1	0.4	3.1	3.1
Employment	1,101.5	1,099.7	5.8	-1.8	40.1	40.1	-0.2	3.8	3.8
Unemployment	37.2	43.2	4.7	6.0	-6.0	-6.0	16.1	-12.2	-12.2
Participation rate	80.1	80.2	0.4	0.1	-0.4	-0.4
Unemployment rate	3.3	3.8	0.4	0.5	-0.6	-0.6
Employment rate	77.5	77.2	0.4	-0.3	0.2	0.2
Part-time rate	5.5	6.1	0.5	0.6	0.2	0.2
Women, 25 years and over									
Population	1,371.8	1,374.5	...	2.7	43.9	43.9	0.2	3.3	3.3
Labour force	906.3	915.6	5.6	9.3	23.4	23.4	1.0	2.6	2.6
Employment	867.0	876.3	5.4	9.3	15.9	15.9	1.1	1.8	1.8
Unemployment	39.4	39.3	3.8	-0.1	7.5	7.5	-0.3	23.6	23.6
Participation rate	66.1	66.6	0.4	0.5	-0.5	-0.5
Unemployment rate	4.3	4.3	0.4	0.0	0.7	0.7
Employment rate	63.2	63.8	0.4	0.6	-0.9	-0.9
Part-time rate	23.1	23.0	0.9	-0.1	1.6	1.6
Industry									
Goods-producing sector	2,296.9	2,302.6	10.0	5.7	65.9	65.9	0.2	2.9	2.9
Agriculture	650.9	652.8	10.2	1.9	16.7	16.7	0.3	2.6	2.6
Forestry, fishing, mining, quarrying, oil and gas extraction ²	64.0	63.2	4.3	-0.8	5.8	5.8	-1.2	10.1	10.1
Utilities	169.7	171.0	5.9	1.3	-14.2	-14.2	0.8	-7.7	-7.7
Construction	20.6	19.8	2.3	-0.8	-2.9	-2.9	-3.9	-12.8	-12.8
Manufacturing	246.1	252.0	7.7	5.9	19.8	19.8	2.4	8.5	8.5
Manufacturing	150.5	146.8	5.3	-3.7	8.2	8.2	-2.5	5.9	5.9
Services-producing sector	1,646.0	1,649.8	12.8	3.8	49.2	49.2	0.2	3.1	3.1
Trade	324.9	319.5	8.5	-5.4	-7.6	-7.6	-1.7	-2.3	-2.3
Transportation and warehousing	136.2	137.7	5.3	1.5	17.9	17.9	1.1	14.9	14.9
Finance, insurance, real estate and leasing	110.3	110.9	4.8	0.6	5.0	5.0	0.5	4.7	4.7
Professional, scientific and technical services	182.3	188.9	6.2	6.6	7.0	7.0	3.6	3.8	3.8
Business, building and other support services	79.6	76.9	4.5	-2.7	1.7	1.7	-3.4	2.3	2.3
Educational services	138.4	143.7	5.2	5.3	15.9	15.9	3.8	12.4	12.4
Health care and social assistance	251.2	240.8	6.5	-10.4	-0.4	-0.4	-4.1	-0.2	-0.2
Information, culture and recreation	71.1	75.7	4.2	4.6	1.9	1.9	6.5	2.6	2.6
Accommodation and food services	154.3	153.4	6.0	-0.9	4.4	4.4	-0.6	3.0	3.0
Other services	113.7	114.6	5.2	0.9	6.8	6.8	0.8	6.3	6.3
Public administration	84.1	87.5	4.2	3.4	-3.5	-3.5	4.0	-3.8	-3.8

1. Average standard error of change in two consecutive months (see "Sampling Errors" in Data Quality for further explanations).

2. Also referred to as Natural resources.

Note(s): Related CANSIM Tables 282-0087, 282-0088. The sum of individual categories may not always add to the total due to rounding.

Table 4-10
Selected labour force characteristics (seasonally adjusted) — British Columbia

	November 2014	December 2014	S.E. ¹	Change from			Percent change from		
				last month	last December	twelve months ago	last month	last December	twelve months ago
in thousands (except rates)									
Both sexes, 15 years and over									
Population	3,920.1	3,922.7	...	2.6	47.9	47.9	0.1	1.2	1.2
Labour force	2,491.5	2,482.4	10.3	-9.1	10.4	10.4	-0.4	0.4	0.4
Employment	2,346.0	2,348.2	10.3	2.2	38.5	38.5	0.1	1.7	1.7
Employment full-time	1,847.7	1,870.0	14.7	22.3	71.4	71.4	1.2	4.0	4.0
Unemployment	145.5	134.2	8.3	-11.3	-28.1	-28.1	-7.8	-17.3	-17.3
Participation rate	63.6	63.3	0.3	-0.3	-0.5	-0.5
Unemployment rate	5.8	5.4	0.3	-0.4	-1.2	-1.2
Employment rate	59.8	59.9	0.3	0.1	0.3	0.3
Part-time rate	21.2	20.4	0.6	-0.9	-1.8	-1.8
Both sexes, 15 to 24 years									
Population	584.0	583.4	...	-0.6	-2.5	-2.5	-0.1	-0.4	-0.4
Labour force	364.2	366.1	6.0	1.9	6.0	6.0	0.5	1.7	1.7
Employment	327.8	328.2	5.6	0.4	18.5	18.5	0.1	6.0	6.0
Unemployment	36.3	37.9	4.8	1.6	-12.6	-12.6	4.4	-25.0	-25.0
Participation rate	62.4	62.8	1.0	0.4	1.3	1.3
Unemployment rate	10.0	10.4	1.2	0.4	-3.6	-3.6
Employment rate	56.1	56.3	0.9	0.2	3.4	3.4
Part-time rate	46.6	46.1	2.1	-0.5	-2.5	-2.5
Men, 25 years and over									
Population	1,627.5	1,629.0	...	1.5	24.0	24.0	0.1	1.5	1.5
Labour force	1,119.6	1,117.9	5.4	-1.7	9.8	9.8	-0.2	0.9	0.9
Employment	1,062.5	1,065.3	5.6	2.8	12.6	12.6	0.3	1.2	1.2
Unemployment	57.1	52.6	4.9	-4.5	-2.8	-2.8	-7.9	-5.1	-5.1
Participation rate	68.8	68.6	0.3	-0.2	-0.4	-0.4
Unemployment rate	5.1	4.7	0.4	-0.4	-0.3	-0.3
Employment rate	65.3	65.4	0.3	0.1	-0.2	-0.2
Part-time rate	9.5	9.0	0.6	-0.6	-1.0	-1.0
Women, 25 years and over									
Population	1,708.6	1,710.4	...	1.8	26.6	26.6	0.1	1.6	1.6
Labour force	1,007.8	998.4	6.1	-9.4	-5.4	-5.4	-0.9	-0.5	-0.5
Employment	955.7	954.7	6.0	-1.0	7.3	7.3	-0.1	0.8	0.8
Unemployment	52.0	43.7	4.7	-8.3	-12.7	-12.7	-16.0	-22.5	-22.5
Participation rate	59.0	58.4	0.4	-0.6	-1.2	-1.2
Unemployment rate	5.2	4.4	0.5	-0.8	-1.2	-1.2
Employment rate	55.9	55.8	0.4	-0.1	-0.5	-0.5
Part-time rate	25.6	24.2	1.0	-1.3	-2.8	-2.8
Industry									
Goods-producing sector	450.1	457.8	9.5	7.7	5.2	5.2	1.7	1.1	1.1
Agriculture	22.5	25.7	2.6	3.2	0.3	0.3	14.2	1.2	1.2
Forestry, fishing, mining, quarrying, oil and gas extraction ²	50.0	52.2	3.4	2.2	1.4	1.4	4.4	2.8	2.8
Utilities	14.8	16.5	1.7	1.7	3.5	3.5	11.5	26.9	26.9
Construction	192.2	193.9	6.8	1.7	1.8	1.8	0.9	0.9	0.9
Manufacturing	170.6	169.6	6.0	-1.0	-1.6	-1.6	-0.6	-0.9	-0.9
Services-producing sector	1,896.0	1,890.3	12.4	-5.7	33.2	33.2	-0.3	1.8	1.8
Trade	361.5	354.2	8.8	-7.3	0.3	0.3	-2.0	0.1	0.1
Transportation and warehousing	146.8	146.9	5.3	0.1	22.5	22.5	0.1	18.1	18.1
Finance, insurance, real estate and leasing	150.6	154.3	5.7	3.7	3.0	3.0	2.5	2.0	2.0
Professional, scientific and technical services	187.4	190.0	6.8	2.6	9.3	9.3	1.4	5.1	5.1
Business, building and other support services	86.4	96.5	4.9	10.1	0.2	0.2	11.7	0.2	0.2
Educational services	178.2	173.0	6.1	-5.2	-0.6	-0.6	-2.9	-0.3	-0.3
Health care and social assistance	279.4	286.5	6.7	7.1	13.3	13.3	2.5	4.9	4.9
Information, culture and recreation	116.3	109.8	5.4	-6.5	-11.8	-11.8	-5.6	-9.7	-9.7
Accommodation and food services	171.5	164.6	6.6	-6.9	-11.4	-11.4	-4.0	-6.5	-6.5
Other services	103.2	106.6	4.7	3.4	9.1	9.1	3.3	9.3	9.3
Public administration	114.6	108.0	4.4	-6.6	-0.6	-0.6	-5.8	-0.6	-0.6

1. Average standard error of change in two consecutive months (see "Sampling Errors" in Data Quality for further explanations).

2. Also referred to as Natural resources.

Note(s): Related CANSIM Tables 282-0087, 282-0088. The sum of individual categories may not always add to the total due to rounding.

Table 5-1
Labour force characteristics by census metropolitan area (seasonally adjusted) — 3 month moving average

	November 2014	December 2014	S.E. ¹	Change from			Percent change from		
				last month	last December	twelve months ago	last month	last December	twelve months ago
in thousands (except rates)									
St. John's, Newfoundland and Labrador									
Population	168.9	169.1	...	0.2	1.6	1.6	0.1	1.0	1.0
Labour force	117.7	118.1	0.8	0.4	1.8	1.8	0.3	1.5	1.5
Employment	110.9	111.7	0.8	0.8	2.2	2.2	0.7	2.0	2.0
Unemployment	6.8	6.4	0.4	-0.4	-0.5	-0.5	-5.9	-7.2	-7.2
Participation rate	69.7	69.8	0.5	0.1	0.4	0.4
Unemployment rate	5.8	5.4	0.3	-0.4	-0.5	-0.5
Employment rate	65.7	66.1	0.5	0.4	0.7	0.7
Halifax, Nova Scotia									
Population	352.1	352.5	...	0.4	3.4	3.4	0.1	1.0	1.0
Labour force	245.5	246.1	1.2	0.6	1.1	1.1	0.2	0.4	0.4
Employment	230.6	231.2	1.2	0.6	3.0	3.0	0.3	1.3	1.3
Unemployment	14.9	14.9	0.7	0.0	-1.9	-1.9	0.0	-11.3	-11.3
Participation rate	69.7	69.8	0.3	0.1	-0.4	-0.4
Unemployment rate	6.1	6.1	0.3	0.0	-0.8	-0.8
Employment rate	65.5	65.6	0.3	0.1	0.2	0.2
Moncton, New Brunswick									
Population	121.3	121.5	...	0.2	2.0	2.0	0.2	1.7	1.7
Labour force	79.5	79.0	0.8	-0.5	-0.8	-0.8	-0.6	-1.0	-1.0
Employment	74.0	73.6	0.8	-0.4	0.0	0.0	-0.5	0.0	0.0
Unemployment	5.5	5.4	0.4	-0.1	-0.7	-0.7	-1.8	-11.5	-11.5
Participation rate	65.5	65.0	0.7	-0.5	-1.8	-1.8
Unemployment rate	6.9	6.8	0.5	-0.1	-0.8	-0.8
Employment rate	61.0	60.6	0.7	-0.4	-1.0	-1.0
Saint John, New Brunswick									
Population	107.0	107.0	...	0.0	0.2	0.2	0.0	0.2	0.2
Labour force	70.7	71.4	0.6	0.7	-0.4	-0.4	1.0	-0.6	-0.6
Employment	64.7	65.7	0.7	1.0	-1.2	-1.2	1.5	-1.8	-1.8
Unemployment	5.9	5.6	0.4	-0.3	0.7	0.7	-5.1	14.3	14.3
Participation rate	66.1	66.7	0.6	0.6	-0.5	-0.5
Unemployment rate	8.3	7.8	0.6	-0.5	1.0	1.0
Employment rate	60.5	61.4	0.7	0.9	-1.2	-1.2
Saguenay, Quebec									
Population	126.3	126.3	...	0.0	-0.2	-0.2	0.0	-0.2	-0.2
Labour force	81.5	82.0	0.8	0.5	3.0	3.0	0.6	3.8	3.8
Employment	73.6	74.1	0.8	0.5	0.9	0.9	0.7	1.2	1.2
Unemployment	8.0	7.9	0.4	-0.1	2.1	2.1	-1.2	36.2	36.2
Participation rate	64.5	64.9	0.6	0.4	2.4	2.4
Unemployment rate	9.8	9.6	0.5	-0.2	2.3	2.3
Employment rate	58.3	58.7	0.7	0.4	0.8	0.8
Québec, Quebec									
Population	655.2	655.6	...	0.4	5.7	5.7	0.1	0.9	0.9
Labour force	444.4	441.2	3.4	-3.2	-5.7	-5.7	-0.7	-1.3	-1.3
Employment	421.3	417.4	3.4	-3.9	-8.5	-8.5	-0.9	-2.0	-2.0
Unemployment	23.1	23.8	1.5	0.7	2.8	2.8	3.0	13.3	13.3
Participation rate	67.8	67.3	0.5	-0.5	-1.5	-1.5
Unemployment rate	5.2	5.4	0.3	0.2	0.7	0.7
Employment rate	64.3	63.7	0.5	-0.6	-1.8	-1.8
Sherbrooke, Quebec									
Population	172.7	172.9	...	0.2	2.7	2.7	0.1	1.6	1.6
Labour force	108.4	108.1	1.2	-0.3	7.0	7.0	-0.3	6.9	6.9
Employment	100.7	99.9	1.2	-0.8	5.9	5.9	-0.8	6.3	6.3
Unemployment	7.7	8.2	0.5	0.5	1.1	1.1	6.5	15.5	15.5
Participation rate	62.8	62.5	0.7	-0.3	3.1	3.1
Unemployment rate	7.1	7.6	0.4	0.5	0.6	0.6
Employment rate	58.3	57.8	0.7	-0.5	2.6	2.6

See notes at the end of the table.

Table 5-1 – continued

Labour force characteristics by census metropolitan area (seasonally adjusted) — 3 month moving average

	November 2014	December 2014	S.E. ¹	Change from			Percent change from		
				last month	last December	twelve months ago	last month	last December	twelve months ago
in thousands (except rates)									
Trois-Rivières, Quebec									
Population	127.8	127.8	...	0.0	0.9	0.9	0.0	0.7	0.7
Labour force	73.9	73.4	0.8	-0.5	0.9	0.9	-0.7	1.2	1.2
Employment	69.2	68.7	0.8	-0.5	2.2	2.2	-0.7	3.3	3.3
Unemployment	4.7	4.8	0.4	0.1	-1.2	-1.2	2.1	-20.0	-20.0
Participation rate	57.8	57.4	0.7	-0.4	0.3	0.3
Unemployment rate	6.4	6.5	0.5	0.1	-1.8	-1.8
Employment rate	54.1	53.8	0.6	-0.3	1.4	1.4
Montréal, Quebec									
Population	3,341.4	3,343.4	...	2.0	36.9	36.9	0.1	1.1	1.1
Labour force	2,217.6	2,213.7	7.7	-3.9	-6.1	-6.1	-0.2	-0.3	-0.3
Employment	2,032.6	2,033.8	7.9	1.2	-8.2	-8.2	0.1	-0.4	-0.4
Unemployment	185.0	179.9	4.8	-5.1	2.2	2.2	-2.8	1.2	1.2
Participation rate	66.4	66.2	0.2	-0.2	-0.9	-0.9
Unemployment rate	8.3	8.1	0.2	-0.2	0.1	0.1
Employment rate	60.8	60.8	0.2	0.0	-1.0	-1.0
Ottawa-Gatineau, Ontario/Quebec									
Population	1,085.5	1,086.6	...	1.1	14.2	14.2	0.1	1.3	1.3
Labour force	757.3	755.0	3.8	-2.3	11.7	11.7	-0.3	1.6	1.6
Employment	710.2	709.2	3.9	-1.0	12.2	12.2	-0.1	1.8	1.8
Unemployment	47.1	45.7	1.8	-1.4	-0.6	-0.6	-3.0	-1.3	-1.3
Participation rate	69.8	69.5	0.4	-0.3	0.2	0.2
Unemployment rate	6.2	6.1	0.2	-0.1	-0.1	-0.1
Employment rate	65.4	65.3	0.4	-0.1	0.3	0.3
Ottawa-Gatineau, Quebec part, Ontario/Quebec									
Population	270.1	270.3	...	0.2	3.5	3.5	0.1	1.3	1.3
Labour force	183.7	184.5	1.4	0.8	1.8	1.8	0.4	1.0	1.0
Employment	170.7	171.2	1.4	0.5	1.2	1.2	0.3	0.7	0.7
Unemployment	13.0	13.4	0.6	0.4	0.7	0.7	3.1	5.5	5.5
Participation rate	68.0	68.3	0.5	0.3	-0.2	-0.2
Unemployment rate	7.1	7.3	0.3	0.2	0.3	0.3
Employment rate	63.2	63.3	0.5	0.1	-0.4	-0.4
Ottawa-Gatineau, Ontario part, Ontario/Quebec									
Population	815.5	816.3	...	0.8	10.7	10.7	0.1	1.3	1.3
Labour force	573.6	570.4	3.5	-3.2	9.8	9.8	-0.6	1.7	1.7
Employment	539.5	538.1	3.7	-1.4	11.1	11.1	-0.3	2.1	2.1
Unemployment	34.1	32.4	1.7	-1.7	-1.2	-1.2	-5.0	-3.6	-3.6
Participation rate	70.3	69.9	0.4	-0.4	0.3	0.3
Unemployment rate	5.9	5.7	0.3	-0.2	-0.3	-0.3
Employment rate	66.2	65.9	0.5	-0.3	0.5	0.5
Kingston, Ontario									
Population	137.1	137.3	...	0.2	1.5	1.5	0.1	1.1	1.1
Labour force	85.6	84.6	0.8	-1.0	-4.6	-4.6	-1.2	-5.2	-5.2
Employment	79.8	79.2	0.8	-0.6	-4.5	-4.5	-0.8	-5.4	-5.4
Unemployment	5.8	5.4	0.3	-0.4	0.0	0.0	-6.9	0.0	0.0
Participation rate	62.4	61.6	0.6	-0.8	-4.1	-4.1
Unemployment rate	6.8	6.4	0.4	-0.4	0.3	0.3
Employment rate	58.2	57.7	0.6	-0.5	-3.9	-3.9
Peterborough, Ontario									
Population	103.7	103.8	...	0.1	0.3	0.3	0.1	0.3	0.3
Labour force	66.0	66.5	1.0	0.5	5.2	5.2	0.8	8.5	8.5
Employment	62.0	62.9	1.1	0.9	5.3	5.3	1.5	9.2	9.2
Unemployment	3.9	3.7	0.5	-0.2	0.0	0.0	-5.1	0.0	0.0
Participation rate	63.6	64.1	1.0	0.5	4.9	4.9
Unemployment rate	5.9	5.6	0.8	-0.3	-0.4	-0.4
Employment rate	59.8	60.6	1.1	0.8	4.9	4.9

See notes at the end of the table.

Table 5-1 – continued

Labour force characteristics by census metropolitan area (seasonally adjusted) — 3 month moving average

	November 2014	December 2014	S.E. ¹	Change from			Percent change from		
				last month	last December	twelve months ago	last month	last December	twelve months ago
in thousands (except rates)									
Oshawa, Ontario									
Population	321.3	321.7	...	0.4	5.2	5.2	0.1	1.6	1.6
Labour force	223.9	224.5	1.6	0.6	11.5	11.5	0.3	5.4	5.4
Employment	208.8	209.8	1.6	1.0	11.7	11.7	0.5	5.9	5.9
Unemployment	15.2	14.7	0.8	-0.5	-0.2	-0.2	-3.3	-1.3	-1.3
Participation rate	69.7	69.8	0.5	0.1	2.5	2.5
Unemployment rate	6.8	6.5	0.4	-0.3	-0.5	-0.5
Employment rate	65.0	65.2	0.5	0.2	2.6	2.6
Toronto, Ontario									
Population	5,095.1	5,101.9	...	6.8	88.1	88.1	0.1	1.8	1.8
Labour force	3,385.2	3,388.1	10.3	2.9	-35.9	-35.9	0.1	-1.0	-1.0
Employment	3,120.2	3,122.8	10.6	2.6	-10.7	-10.7	0.1	-0.3	-0.3
Unemployment	265.0	265.2	6.3	0.2	-25.2	-25.2	0.1	-8.7	-8.7
Participation rate	66.4	66.4	0.2	0.0	-1.9	-1.9
Unemployment rate	7.8	7.8	0.2	0.0	-0.7	-0.7
Employment rate	61.2	61.2	0.2	0.0	-1.3	-1.3
Hamilton, Ontario									
Population	639.7	640.1	...	0.4	6.3	6.3	0.1	1.0	1.0
Labour force	408.2	403.2	3.2	-5.0	4.4	4.4	-1.2	1.1	1.1
Employment	385.5	380.7	3.3	-4.8	8.3	8.3	-1.2	2.2	2.2
Unemployment	22.7	22.5	1.4	-0.2	-4.0	-4.0	-0.9	-15.1	-15.1
Participation rate	63.8	63.0	0.5	-0.8	0.1	0.1
Unemployment rate	5.6	5.6	0.4	0.0	-1.0	-1.0
Employment rate	60.3	59.5	0.5	-0.8	0.7	0.7
St. Catharines-Niagara, Ontario									
Population	342.2	342.2	...	0.0	0.9	0.9	0.0	0.3	0.3
Labour force	210.3	210.4	1.7	0.1	-2.0	-2.0	0.0	-0.9	-0.9
Employment	196.8	196.2	1.8	-0.6	2.7	2.7	-0.3	1.4	1.4
Unemployment	13.4	14.1	0.8	0.7	-4.8	-4.8	5.2	-25.4	-25.4
Participation rate	61.5	61.5	0.5	0.0	-0.7	-0.7
Unemployment rate	6.4	6.7	0.4	0.3	-2.2	-2.2
Employment rate	57.5	57.3	0.5	-0.2	0.6	0.6
Kitchener-Cambridge-Waterloo, Ontario									
Population	425.9	426.3	...	0.4	5.6	5.6	0.1	1.3	1.3
Labour force	311.4	311.7	2.0	0.3	-0.4	-0.4	0.1	-0.1	-0.1
Employment	292.5	294.4	2.1	1.9	1.8	1.8	0.6	0.6	0.6
Unemployment	18.8	17.3	1.1	-1.5	-2.2	-2.2	-8.0	-11.3	-11.3
Participation rate	73.1	73.1	0.5	0.0	-1.1	-1.1
Unemployment rate	6.0	5.6	0.3	-0.4	-0.6	-0.6
Employment rate	68.7	69.1	0.5	0.4	-0.5	-0.5
Brantford, Ontario									
Population	110.1	110.2	...	0.1	0.7	0.7	0.1	0.6	0.6
Labour force	72.9	73.8	0.8	0.9	3.2	3.2	1.2	4.5	4.5
Employment	68.4	69.2	0.8	0.8	2.3	2.3	1.2	3.4	3.4
Unemployment	4.5	4.6	0.3	0.1	1.0	1.0	2.2	27.8	27.8
Participation rate	66.2	67.0	0.8	0.8	2.5	2.5
Unemployment rate	6.2	6.2	0.5	0.0	1.1	1.1
Employment rate	62.1	62.8	0.7	0.7	1.7	1.7
Guelph, Ontario									
Population	119.7	119.8	...	0.1	1.9	1.9	0.1	1.6	1.6
Labour force	85.5	85.8	0.9	0.3	7.6	7.6	0.4	9.7	9.7
Employment	81.1	81.4	0.9	0.3	9.2	9.2	0.4	12.7	12.7
Unemployment	4.4	4.4	0.5	0.0	-1.6	-1.6	0.0	-26.7	-26.7
Participation rate	71.4	71.6	0.8	0.2	5.3	5.3
Unemployment rate	5.1	5.1	0.6	0.0	-2.6	-2.6
Employment rate	67.8	67.9	0.8	0.1	6.7	6.7

See notes at the end of the table.

Table 5-1 – continued

Labour force characteristics by census metropolitan area (seasonally adjusted) — 3 month moving average

	November 2014	December 2014	S.E. ¹	Change from			Percent change from		
				last month	last December	twelve months ago	last month	last December	twelve months ago
in thousands (except rates)									
London, Ontario									
Population	425.0	425.3	...	0.3	3.9	3.9	0.1	0.9	0.9
Labour force	267.7	270.1	2.2	2.4	6.6	6.6	0.9	2.5	2.5
Employment	247.0	249.7	2.1	2.7	6.5	6.5	1.1	2.7	2.7
Unemployment	20.8	20.4	1.0	-0.4	0.1	0.1	-1.9	0.5	0.5
Participation rate	63.0	63.5	0.5	0.5	1.0	1.0
Unemployment rate	7.8	7.6	0.4	-0.2	-0.1	-0.1
Employment rate	58.1	58.7	0.5	0.6	1.0	1.0
Windsor, Ontario									
Population	271.0	271.1	...	0.1	1.3	1.3	0.0	0.5	0.5
Labour force	169.0	170.9	1.6	1.9	3.8	3.8	1.1	2.3	2.3
Employment	153.8	155.0	1.6	1.2	0.7	0.7	0.8	0.5	0.5
Unemployment	15.2	15.9	0.8	0.7	3.1	3.1	4.6	24.2	24.2
Participation rate	62.4	63.0	0.6	0.6	1.1	1.1
Unemployment rate	9.0	9.3	0.5	0.3	1.6	1.6
Employment rate	56.8	57.2	0.6	0.4	0.0	0.0
Barrie, Ontario									
Population	168.3	168.5	...	0.2	2.4	2.4	0.1	1.4	1.4
Labour force	122.8	122.2	1.3	-0.6	5.7	5.7	-0.5	4.9	4.9
Employment	117.3	116.3	1.3	-1.0	5.9	5.9	-0.9	5.3	5.3
Unemployment	5.5	6.0	0.7	0.5	-0.1	-0.1	9.1	-1.6	-1.6
Participation rate	73.0	72.5	0.8	-0.5	2.4	2.4
Unemployment rate	4.5	4.9	0.5	0.4	-0.3	-0.3
Employment rate	69.7	69.0	0.8	-0.7	2.5	2.5
Greater Sudbury, Ontario									
Population	138.1	138.1	...	0.0	-0.1	-0.1	0.0	-0.1	-0.1
Labour force	88.2	88.9	0.8	0.7	-0.3	-0.3	0.8	-0.3	-0.3
Employment	82.8	83.4	0.8	0.6	0.3	0.3	0.7	0.4	0.4
Unemployment	5.4	5.4	0.4	0.0	-0.7	-0.7	0.0	-11.5	-11.5
Participation rate	63.9	64.4	0.6	0.5	-0.1	-0.1
Unemployment rate	6.1	6.1	0.4	0.0	-0.7	-0.7
Employment rate	60.0	60.4	0.6	0.4	0.3	0.3
Thunder Bay, Ontario									
Population	103.6	103.6	...	0.0	0.2	0.2	0.0	0.2	0.2
Labour force	63.3	63.6	0.6	0.3	-2.0	-2.0	0.5	-3.0	-3.0
Employment	59.8	60.0	0.6	0.2	-1.8	-1.8	0.3	-2.9	-2.9
Unemployment	3.4	3.7	0.3	0.3	-0.1	-0.1	8.8	-2.6	-2.6
Participation rate	61.1	61.4	0.6	0.3	-2.0	-2.0
Unemployment rate	5.4	5.8	0.4	0.4	0.0	0.0
Employment rate	57.7	57.9	0.6	0.2	-1.9	-1.9
Winnipeg, Manitoba									
Population	657.8	658.7	...	0.9	11.9	11.9	0.1	1.8	1.8
Labour force	448.1	449.3	1.3	1.2	4.3	4.3	0.3	1.0	1.0
Employment	422.9	424.0	1.4	1.1	4.6	4.6	0.3	1.1	1.1
Unemployment	25.2	25.3	0.8	0.1	-0.4	-0.4	0.4	-1.6	-1.6
Participation rate	68.1	68.2	0.2	0.1	-0.6	-0.6
Unemployment rate	5.6	5.6	0.2	0.0	-0.2	-0.2
Employment rate	64.3	64.4	0.2	0.1	-0.4	-0.4
Regina, Saskatchewan									
Population	191.9	192.2	...	0.3	4.9	4.9	0.2	2.6	2.6
Labour force	140.3	140.9	0.8	0.6	1.5	1.5	0.4	1.1	1.1
Employment	136.0	136.3	0.8	0.3	2.9	2.9	0.2	2.2	2.2
Unemployment	4.3	4.6	0.3	0.3	-1.4	-1.4	7.0	-23.3	-23.3
Participation rate	73.1	73.3	0.4	0.2	-1.1	-1.1
Unemployment rate	3.1	3.3	0.2	0.2	-1.0	-1.0
Employment rate	70.9	70.9	0.4	0.0	-0.3	-0.3

See notes at the end of the table.

Table 5-1 – continued

Labour force characteristics by census metropolitan area (seasonally adjusted) — 3 month moving average

	November 2014	December 2014	S.E. ¹	Change from			Percent change from		
				last month	last December	twelve months ago	last month	last December	twelve months ago
in thousands (except rates)									
Saskatoon, Saskatchewan									
Population	247.5	248.1	...	0.6	8.7	8.7	0.2	3.6	3.6
Labour force	179.0	179.8	1.0	0.8	7.7	7.7	0.4	4.5	4.5
Employment	172.6	173.0	1.0	0.4	8.1	8.1	0.2	4.9	4.9
Unemployment	6.4	6.7	0.5	0.3	-0.5	-0.5	4.7	-6.9	-6.9
Participation rate	72.3	72.5	0.4	0.2	0.6	0.6
Unemployment rate	3.6	3.7	0.3	0.1	-0.5	-0.5
Employment rate	69.7	69.7	0.4	0.0	0.8	0.8
Calgary, Alberta									
Population	1,152.8	1,154.8	...	2.0	40.4	40.4	0.2	3.6	3.6
Labour force	842.1	848.5	3.5	6.4	18.7	18.7	0.8	2.3	2.3
Employment	805.4	808.0	3.8	2.6	17.4	17.4	0.3	2.2	2.2
Unemployment	36.7	40.5	2.0	3.8	1.3	1.3	10.4	3.3	3.3
Participation rate	73.0	73.5	0.3	0.5	-1.0	-1.0
Unemployment rate	4.4	4.8	0.2	0.4	0.1	0.1
Employment rate	69.9	70.0	0.3	0.1	-0.9	-0.9
Edmonton, Alberta									
Population	1,077.5	1,079.4	...	1.9	35.5	35.5	0.2	3.4	3.4
Labour force	784.4	784.9	3.8	0.5	16.9	16.9	0.1	2.2	2.2
Employment	742.7	745.2	3.9	2.5	19.5	19.5	0.3	2.7	2.7
Unemployment	41.8	39.6	2.1	-2.2	-2.7	-2.7	-5.3	-6.4	-6.4
Participation rate	72.8	72.7	0.4	-0.1	-0.9	-0.9
Unemployment rate	5.3	5.0	0.3	-0.3	-0.5	-0.5
Employment rate	68.9	69.0	0.4	0.1	-0.5	-0.5
Kelowna, British Columbia									
Population	153.8	154.0	...	0.2	2.1	2.1	0.1	1.4	1.4
Labour force	100.0	98.6	1.8	-1.4	0.5	0.5	-1.4	0.5	0.5
Employment	94.8	94.8	1.8	0.0	3.6	3.6	0.0	3.9	3.9
Unemployment	5.2	3.8	0.8	-1.4	-3.1	-3.1	-26.9	-44.9	-44.9
Participation rate	65.0	64.0	1.2	-1.0	-0.6	-0.6
Unemployment rate	5.2	3.9	0.8	-1.3	-3.1	-3.1
Employment rate	61.6	61.6	1.2	0.0	1.6	1.6
Abbotsford-Mission, British Columbia									
Population	149.9	150.1	...	0.2	2.2	2.2	0.1	1.5	1.5
Labour force	96.3	96.8	0.8	0.5	-5.4	-5.4	0.5	-5.3	-5.3
Employment	89.8	90.5	0.8	0.7	-3.6	-3.6	0.8	-3.8	-3.8
Unemployment	6.5	6.3	0.4	-0.2	-1.8	-1.8	-3.1	-22.2	-22.2
Participation rate	64.2	64.5	0.6	0.3	-4.6	-4.6
Unemployment rate	6.7	6.5	0.4	-0.2	-1.4	-1.4
Employment rate	59.9	60.3	0.6	0.4	-3.3	-3.3
Vancouver, British Columbia									
Population	2,150.7	2,152.9	...	2.2	40.7	40.7	0.1	1.9	1.9
Labour force	1,410.3	1,409.4	5.1	-0.9	42.8	42.8	-0.1	3.1	3.1
Employment	1,325.7	1,326.6	5.2	0.9	47.2	47.2	0.1	3.7	3.7
Unemployment	84.6	82.9	2.9	-1.7	-4.3	-4.3	-2.0	-4.9	-4.9
Participation rate	65.6	65.5	0.2	-0.1	0.8	0.8
Unemployment rate	6.0	5.9	0.2	-0.1	-0.5	-0.5
Employment rate	61.6	61.6	0.2	0.0	1.0	1.0
Victoria, British Columbia									
Population	308.0	308.1	...	0.1	2.6	2.6	0.0	0.9	0.9
Labour force	187.6	187.4	1.6	-0.2	-3.2	-3.2	-0.1	-1.7	-1.7
Employment	178.4	178.2	1.7	-0.2	-3.9	-3.9	-0.1	-2.1	-2.1
Unemployment	9.2	9.1	0.6	-0.1	0.6	0.6	-1.1	7.1	7.1
Participation rate	60.9	60.8	0.5	-0.1	-1.6	-1.6
Unemployment rate	4.9	4.9	0.3	0.0	0.4	0.4
Employment rate	57.9	57.8	0.5	-0.1	-1.8	-1.8

1. Average standard error of change in two consecutive months (see "Sampling Errors" in Data Quality for further explanations).

Note(s): Estimates in this table are based on 2006 census boundaries. Related CANSIM Table 282-0116. The sum of individual categories may not always add to the total due to rounding.

Table 5-2
Labour force characteristics by census metropolitan area (seasonally adjusted) — Monthly

	November 2014	December 2014	S.E. ¹	Change from			Percent change from		
				last month	last December	twelve months ago	last month	last December	twelve months ago
in thousands (except rates)									
Montréal, Quebec									
Population	3,343.4	3,345.5	...	2.1	36.2	36.2	0.1	1.1	1.1
Labour force	2,216.8	2,208.8	15.5	-8.0	-13.5	-13.5	-0.4	-0.6	-0.6
Employment	2,032.9	2,039.8	15.5	6.9	5.6	5.6	0.3	0.3	0.3
Unemployment	183.9	169.0	11.1	-14.9	-19.1	-19.1	-8.1	-10.2	-10.2
Participation rate	66.3	66.0	0.5	-0.3	-1.2	-1.2
Unemployment rate	8.3	7.7	0.5	-0.6	-0.8	-0.8
Employment rate	60.8	61.0	0.5	0.2	-0.5	-0.5
Toronto, Ontario									
Population	5,101.4	5,109.0	...	7.6	88.1	88.1	0.1	1.8	1.8
Labour force	3,397.8	3,382.3	21.6	-15.5	-51.3	-51.3	-0.5	-1.5	-1.5
Employment	3,125.6	3,114.5	21.0	-11.1	-18.0	-18.0	-0.4	-0.6	-0.6
Unemployment	272.2	267.8	15.2	-4.4	-33.3	-33.3	-1.6	-11.1	-11.1
Participation rate	66.6	66.2	0.4	-0.4	-2.2	-2.2
Unemployment rate	8.0	7.9	0.4	-0.1	-0.9	-0.9
Employment rate	61.3	61.0	0.4	-0.3	-1.4	-1.4
Vancouver, British Columbia									
Population	2,152.8	2,155.0	...	2.2	39.9	39.9	0.1	1.9	1.9
Labour force	1,409.1	1,406.9	10.8	-2.2	23.4	23.4	-0.2	1.7	1.7
Employment	1,327.3	1,326.6	10.7	-0.7	30.4	30.4	-0.1	2.3	2.3
Unemployment	81.8	80.3	7.1	-1.5	-7.0	-7.0	-1.8	-8.0	-8.0
Participation rate	65.5	65.3	0.5	-0.2	-0.1	-0.1
Unemployment rate	5.8	5.7	0.5	-0.1	-0.6	-0.6
Employment rate	61.7	61.6	0.5	-0.1	0.3	0.3

1. Average standard error of change in two consecutive months (see "Sampling Errors" in Data Quality for further explanations).

Note(s): Estimates in this table are based on 2006 census boundaries. Related CANSIM Table 282-0117. The sum of individual categories may not always add to the total due to rounding.

Table 6-1

Labour force characteristics by province and economic region, ¹ unadjusted for seasonality, 3 month moving average ending in December 2013 and December 2014

	Population	Labour force			Participation rate	Unemployment rate	Employment rate
		Labour force	Employment	Unemployment			
in thousands							
Canada							
2013	28,817.3	19,014.4	17,770.2	1,244.2	66.0	6.5	61.7
2014	29,168.0	19,115.8	17,951.3	1,164.6	65.5	6.1	61.5
Newfoundland and Labrador							
2013	429.7	259.3	230.3	29.0	60.3	11.2	53.6
2014	426.8	254.5	226.8	27.7	59.6	10.9	53.1
<i>Avalon Peninsula [1010]</i>							
2013	225.3	146.4	134.7	11.7	65.0	8.0	59.8
2014	225.5	146.7	136.0	10.7	65.1	7.3	60.3
<i>South Coast-Burin Peninsula [1020]</i>							
2013	29.5	17.0	14.7	2.3	57.6	13.5	49.8
2014	28.8	16.1	12.9	3.2	55.9	19.9	44.8
<i>West Coast-Northern Peninsula-Labrador [1030]</i>							
2013	85.6	48.1	41.1	7.0	56.2	14.6	48.0
2014	84.7	48.3	42.3	6.0	57.0	12.4	49.9
<i>Notre Dame-Central Bonavista Bay [1040]</i>							
2013	89.2	47.8	39.9	7.9	53.6	16.5	44.7
2014	87.8	43.4	35.6	7.8	49.4	18.0	40.5
Prince Edward Island							
2013	121.0	82.3	72.4	9.8	68.0	11.9	59.8
2014	121.8	82.0	73.2	8.8	67.3	10.7	60.1
Nova Scotia							
2013	781.6	490.6	449.0	41.6	62.8	8.5	57.4
2014	781.2	486.9	448.0	39.0	62.3	8.0	57.3
<i>Cape Breton [1210]</i>							
2013	109.1	59.5	51.9	7.6	54.5	12.8	47.6
2014	107.6	59.4	50.2	9.2	55.2	15.5	46.7
<i>North Shore [1220]</i>							
2013	128.4	75.5	67.7	7.8	58.8	10.3	52.7
2014	127.7	70.1	63.3	6.8	54.9	9.7	49.6
<i>Annapolis Valley [1230]</i>							
2013	99.1	59.5	54.1	5.4	60.0	9.1	54.6
2014	98.6	56.6	52.5	4.0	57.4	7.1	53.2
<i>Southern [1240]</i>							
2013	95.9	52.3	47.0	5.3	54.5	10.1	49.0
2014	94.8	54.7	49.9	4.8	57.7	8.8	52.6
<i>Halifax [1250]</i>							
2013	349.1	243.8	228.2	15.6	69.8	6.4	65.4
2014	352.5	246.1	232.0	14.0	69.8	5.7	65.8
New Brunswick							
2013	619.9	386.4	351.1	35.4	62.3	9.2	56.6
2014	620.3	383.7	348.7	35.1	61.9	9.1	56.2
<i>Campbellton-Miramichi [1310]</i>							
2013	125.5	69.8	58.1	11.8	55.6	16.9	46.3
2014	124.0	67.2	56.2	11.0	54.2	16.4	45.3
<i>Moncton-Richibucto [1320]</i>							
2013	175.3	113.2	104.4	8.8	64.6	7.8	59.6
2014	176.8	113.3	104.9	8.4	64.1	7.4	59.3
<i>Saint John-St. Stephen [1330]</i>							
2013	144.4	93.0	86.3	6.6	64.4	7.1	59.8
2014	144.3	91.9	85.2	6.7	63.7	7.3	59.0

See notes at the end of the table.

Table 6-1 – continued

Labour force characteristics by province and economic region, 1 unadjusted for seasonality, 3 month moving average ending in December 2013 and December 2014

	Population	Labour force			Participation rate	Unemployment rate	Employment rate
		Labour force	Employment	Unemployment			
in thousands							
Fredericton-Oromocto [1340]							
2013	111.4	71.7	67.1	4.5	64.4	6.3	60.2
2014	112.4	72.8	67.4	5.5	64.8	7.6	60.0
Edmundston-Woodstock [1350]							
2013	63.3	38.8	35.1	3.6	61.3	9.3	55.5
2014	62.7	38.4	35.0	3.4	61.2	8.9	55.8
Quebec							
2013	6,710.3	4,354.1	4,050.1	304.0	64.9	7.0	60.4
2014	6,762.2	4,334.3	4,029.7	304.6	64.1	7.0	59.6
Gaspésie-Îles-de-la-Madeleine [2410]							
2013	78.1	41.0	34.1	6.9	52.5	16.8	43.7
2014	77.6	41.6	34.2	7.4	53.6	17.8	44.1
Bas-Saint-Laurent [2415]							
2013	165.4	92.5	83.4	9.1	55.9	9.8	50.4
2014	164.6	86.6	81.2	5.4	52.6	6.2	49.3
Capitale-Nationale [2420]							
2013	600.7	406.4	388.0	18.4	67.7	4.5	64.6
2014	605.6	392.8	372.3	20.6	64.9	5.2	61.5
Chaudière-Appalaches [2425]							
2013	336.9	226.1	217.6	8.5	67.1	3.8	64.6
2014	337.6	224.2	214.6	9.6	66.4	4.3	63.6
Estrie [2430]							
2013	263.5	164.1	154.6	9.5	62.3	5.8	58.7
2014	265.7	169.5	160.1	9.4	63.8	5.5	60.3
Centre-du-Québec [2433]							
2013	193.5	112.3	103.7	8.7	58.0	7.7	53.6
2014	194.5	114.0	104.9	9.1	58.6	8.0	53.9
Montérégie [2435]							
2013	1,218.2	802.4	752.9	49.5	65.9	6.2	61.8
2014	1,228.8	819.0	777.1	41.8	66.7	5.1	63.2
Montréal [2440]							
2013	1,653.6	1,065.7	972.8	92.9	64.4	8.7	58.8
2014	1,669.1	1,063.1	961.8	101.4	63.7	9.5	57.6
Laval [2445]							
2013	345.8	243.5	230.0	13.5	70.4	5.5	66.5
2014	350.7	244.0	230.2	13.8	69.6	5.7	65.6
Lanaudière [2450]							
2013	404.2	271.6	251.5	20.1	67.2	7.4	62.2
2014	408.8	273.4	255.0	18.3	66.9	6.7	62.4
Laurentides [2455]							
2013	478.8	326.0	300.3	25.7	68.1	7.9	62.7
2014	484.5	312.1	288.5	23.6	64.4	7.6	59.5
Outaouais [2460]							
2013	315.9	210.3	196.0	14.4	66.6	6.8	62.0
2014	319.7	208.5	192.5	16.0	65.2	7.7	60.2
Abitibi-Témiscamingue [2465]							
2013	118.0	80.7	76.5	4.2	68.4	5.2	64.8
2014	118.0	77.1	71.8	5.3	65.3	6.9	60.8
Mauricie [2470]							
2013	222.0	122.7	113.8	8.8	55.3	7.2	51.3
2014	221.9	118.4	111.6	6.9	53.4	5.8	50.3

See notes at the end of the table.

Table 6-1 – continued

Labour force characteristics by province and economic region, ¹ unadjusted for seasonality, 3 month moving average ending in December 2013 and December 2014

	Population	Labour force			Participation rate	Unemployment rate	Employment rate
		Labour force	Employment	Unemployment			
in thousands							
Saguenay-Lac-Saint-Jean [2475]							
2013	224.7	131.9	121.8	10.2	58.7	7.7	54.2
2014	223.9	136.1	124.7	11.4	60.8	8.4	55.7
Côte-Nord and Nord-du-Québec [2480, 2490]							
2013	91.0	56.7	53.0	3.6	62.3	6.3	58.2
2014	91.1	53.9	49.3	4.5	59.2	8.3	54.1
Ontario							
2013	11,257.2	7,408.8	6,892.9	515.9	65.8	7.0	61.2
2014	11,385.3	7,434.7	6,969.0	465.7	65.3	6.3	61.2
Ottawa [3510]							
2013	1,079.5	730.8	689.3	41.6	67.7	5.7	63.9
2014	1,090.5	739.3	698.8	40.5	67.8	5.5	64.1
Kingston-Pembroke [3515]							
2013	373.7	225.8	208.8	17.0	60.4	7.5	55.9
2014	375.1	226.5	210.9	15.6	60.4	6.9	56.2
Muskoka-Kawarthas [3520]							
2013	321.8	176.5	166.8	9.7	54.8	5.5	51.8
2014	323.0	199.4	188.6	10.8	61.7	5.4	58.4
Toronto [3530]							
2013	5,273.7	3,565.6	3,288.1	277.5	67.6	7.8	62.3
2014	5,362.6	3,547.9	3,296.1	251.8	66.2	7.1	61.5
Kitchener-Waterloo-Barrie [3540]							
2013	1,070.6	745.9	704.7	41.3	69.7	5.5	65.8
2014	1,084.9	757.6	721.7	35.9	69.8	4.7	66.5
Hamilton-Niagara Peninsula [3550]							
2013	1,192.3	752.5	702.3	50.1	63.1	6.7	58.9
2014	1,200.9	749.9	708.6	41.3	62.4	5.5	59.0
London [3560]							
2013	551.2	348.5	326.8	21.6	63.2	6.2	59.3
2014	555.7	347.1	327.5	19.6	62.5	5.6	58.9
Windsor-Sarnia [3570]							
2013	519.2	322.3	301.5	20.9	62.1	6.5	58.1
2014	519.2	324.8	301.0	23.8	62.6	7.3	58.0
Stratford-Bruce Peninsula [3580]							
2013	245.6	161.3	151.6	9.7	65.7	6.0	61.7
2014	245.5	161.8	154.9	6.9	65.9	4.3	63.1
Northeast [3590]							
2013	456.7	271.1	252.9	18.2	59.4	6.7	55.4
2014	455.0	273.1	259.8	13.3	60.0	4.9	57.1
Northwest [3595]							
2013	172.9	108.6	100.2	8.4	62.8	7.7	58.0
2014	172.9	107.2	101.0	6.2	62.0	5.8	58.4
Manitoba							
2013	978.0	663.6	628.9	34.7	67.9	5.2	64.3
2014	990.5	674.0	642.2	31.8	68.0	4.7	64.8
Southeast [4610]							
2013	85.8	60.0	56.8	3.1	69.9	5.2	66.2
2014	87.1	60.4	57.5	2.9	69.3	4.8	66.0
South Central [4620]							
2013	49.2	32.6	31.4	1.2	66.3	3.7	63.8
2014	50.0	36.6	35.3	1.3	73.2	3.6	70.6

See notes at the end of the table.

Table 6-1 – continued

Labour force characteristics by province and economic region, 1 unadjusted for seasonality, 3 month moving average ending in December 2013 and December 2014

	Population	Labour force			Participation rate	Unemployment rate	Employment rate
		Labour force	Employment	Unemployment			
in thousands							
Southwest [4630]							
2013	84.4	58.8	56.5	2.3	69.7	3.9	66.9
2014	84.7	58.7	57.3	1.5	69.3	2.6	67.7
North Central [4640]							
2013	37.0	25.5	24.4	1.1	68.9	4.3	65.9
2014	37.3	25.0	24.7	x	67.0	x	66.2
Winnipeg [4650]							
2013	589.9	400.4	378.4	22.1	67.9	5.5	64.1
2014	599.9	404.9	383.5	21.4	67.5	5.3	63.9
Interlake [4660]							
2013	73.8	49.4	46.9	2.5	66.9	5.1	63.6
2014	74.5	51.0	48.5	2.4	68.5	4.7	65.1
Parklands and North [4670, 4680]							
2013	57.8	36.9	34.6	2.4	63.8	6.5	59.9
2014	57.0	37.4	35.4	1.9	65.6	5.1	62.1
Saskatchewan							
2013	832.9	574.1	554.2	20.0	68.9	3.5	66.5
2014	846.9	588.9	570.5	18.4	69.5	3.1	67.4
Regina-Moose Mountain [4710]							
2013	249.7	180.1	174.2	5.9	72.1	3.3	69.8
2014	254.9	185.2	180.3	4.9	72.7	2.6	70.7
Swift Current-Moose Jaw [4720]							
2013	81.5	52.6	51.6	1.0	64.5	1.9	63.3
2014	81.5	53.0	52.4	0.7	65.0	1.3	64.3
Saskatoon-Biggar [4730]							
2013	283.1	200.0	193.2	6.8	70.6	3.4	68.2
2014	291.2	206.3	199.4	6.8	70.8	3.3	68.5
Yorkton-Melville [4740]							
2013	62.4	39.2	37.7	1.4	62.8	3.6	60.4
2014	62.1	40.4	38.9	1.5	65.1	3.7	62.6
Prince Albert and Northern [4750, 4760]							
2013	156.2	102.3	97.5	4.8	65.5	4.7	62.4
2014	157.2	104.0	99.5	4.5	66.2	4.3	63.3
Alberta							
2013	3,215.2	2,339.1	2,238.3	100.8	72.8	4.3	69.6
2014	3,312.6	2,398.5	2,298.5	100.0	72.4	4.2	69.4
Lethbridge-Medicine Hat [4810]							
2013	229.3	142.8	138.7	4.1	62.3	2.9	60.5
2014	233.2	153.9	149.5	4.3	66.0	2.8	64.1
Camrose-Drumheller [4820]							
2013	161.1	110.7	105.7	4.9	68.7	4.4	65.6
2014	163.3	112.7	109.1	3.5	69.0	3.1	66.8
Calgary [4830]							
2013	1,197.6	885.9	846.7	39.2	74.0	4.4	70.7
2014	1,239.7	901.1	862.4	38.7	72.7	4.3	69.6
Banff-Jasper-Rocky Mountain House [4840]							
2013	75.0	54.9	52.8	2.2	73.2	4.0	70.4
2014	77.0	59.6	57.2	2.4	77.4	4.0	74.3

See notes at the end of the table.

Table 6-1 – continued

Labour force characteristics by province and economic region, 1 unadjusted for seasonality, 3 month moving average ending in December 2013 and December 2014

	Population	Labour force			Participation rate	Unemployment rate	Employment rate
		Labour force	Employment	Unemployment			
in thousands							
Red Deer [4850]							
2013	163.7	120.3	117.0	3.2	73.5	2.7	71.5
2014	167.8	126.6	120.9	5.7	75.4	4.5	72.1
Edmonton [4860]							
2013	1,079.8	794.9	756.5	38.4	73.6	4.8	70.1
2014	1,115.2	808.3	772.1	36.1	72.5	4.5	69.2
Athabasca-Grande Prairie-Peace River [4870]							
2013	197.1	142.4	136.9	5.5	72.2	3.9	69.5
2014	200.2	146.2	140.7	5.5	73.0	3.8	70.3
Wood Buffalo-Cold Lake [4880]							
2013	111.7	87.3	83.9	3.3	78.2	3.8	75.1
2014	116.2	90.1	86.4	3.7	77.5	4.1	74.4
British Columbia							
2013	3,871.4	2,456.0	2,303.1	153.0	63.4	6.2	59.5
2014	3,920.3	2,478.4	2,344.7	133.7	63.2	5.4	59.8
Vancouver Island and Coast [5910]							
2013	662.5	387.9	365.9	22.0	58.6	5.7	55.2
2014	666.8	384.5	364.4	20.1	57.7	5.2	54.6
Lower Mainland-Southwest [5920]							
2013	2,405.9	1,542.5	1,446.7	95.8	64.1	6.2	60.1
2014	2,450.6	1,585.1	1,497.5	87.6	64.7	5.5	61.1
Thompson-Okanagan [5930]							
2013	434.4	275.0	253.2	21.7	63.3	7.9	58.3
2014	435.5	263.7	249.6	14.1	60.6	5.3	57.3
Kootenay [5940]							
2013	126.0	79.2	74.4	4.9	62.9	6.2	59.0
2014	125.7	76.4	71.4	5.0	60.8	6.5	56.8
Cariboo [5950]							
2013	125.5	88.0	84.0	4.0	70.1	4.5	66.9
2014	124.9	87.6	83.5	4.0	70.1	4.6	66.9
North Coast and Nechako [5960, 5970]							
2013	64.6	40.9	38.4	2.5	63.3	6.1	59.4
2014	63.6	42.2	40.3	1.9	66.4	4.5	63.4
Northeast [5980]							
2013	52.5	42.4	40.4	2.0	80.8	4.7	77.0
2014	53.1	38.9	38.0	x	73.3	x	71.6

1. For geographic descriptions of economic regions, refer to the Guide to the Labour Force Survey (catalogue number 71-543-GIE).

Note(s): Related CANSIM table 282-0054.

Table 6-2
Labour force characteristics by territories, unadjusted for seasonality, 3 month moving average ending in
December 2013 and December 2014

	Population	Labour force			Participation rate	Unemployment rate	Employment rate
		Labour force	Employment	Unemployment			
		in thousands			percent		
Yukon ¹							
2013	27.7	20.6	19.6	1.0	74.4	4.9	70.8
2014	27.7	20.2	19.3	0.9	72.9	4.5	69.7
Northwest Territories ²							
2013	31.9	24.4	22.4	2.0	76.5	8.2	70.2
2014	31.8	22.9	21.2	1.7	72.0	7.4	66.7
Nunavut ³							
2013	22.1	14.6	12.5	2.1	65.8	14.6	56.2
2014	23.1	14.0	12.2	1.7	60.5	12.3	53.0

1. Since 1992, the Labour force survey (LFS) has been conducted in the Yukon, using an alternative methodology that accommodates some of the operational difficulties inherent to remote locales. These estimates are not included in the national totals. In 1995, the LFS in the Yukon underwent a sample redesign. One result of the redesign was that the covered population increased from 85% to 92%, which is reflected by the sharp increase in the three month moving averages estimates of January, February and March of 1995 for all the level estimates. Users are therefore warned to be cautious when comparing estimates before January 1995 to estimates for January 1995 and forward.
2. Since 2001, the Labour force survey (LFS) has been administered in the Northwest Territories, using an alternative methodology that accommodates some of the operational difficulties inherent to remote locales. These estimates are not included in national totals.
3. Since 2004, the Labour force survey (LFS) has been administered in Nunavut, using an alternative methodology that accommodates some of the operational difficulties inherent to remote locales. These estimates are 3-month moving averages and are not included in national totals. From January 2004 to December 2007, estimates represent about 70% of all Nunavut residents aged 15 and over. Starting in January 2008, coverage was extended to 92%, so that by March 2008, the 3-month moving average is completely based on the extended coverage. Because of the large difference in coverage, users are recommended not to compare estimates prior to January 2008 with data afterwards. The January and February 2008 3-month moving average estimates are based on a mix of both coverages, since the extended coverage was introduced in January 2008. Estimates from January 2004 to December 2007 are based on the 10 largest communities in Nunavut: Iqaluit, Rankin Inlet, Cambridge Bay, Kugluktuk, Baker Lake, Arviat, Pond Inlet, Cape Dorset, Pangnirtung, Igloolik. Estimates from March 2008 to present cover the above communities as well as: Taloyoak, Gjoa Haven, Kugaaruk, Coral Harbour, Repulse Bay, Qikiqtarjuaq, Arctic Bay, Hall Beach, Clyde River.

Note(s): Related CANSIM table 282-0100.

Table 7
Average usual hours and wages of employees by selected characteristics, Canada, unadjusted for seasonality

	Employees				Full-time			Part-time		
	Number	Average weekly hours	Average weekly wages	Average hourly wages	Number	Average weekly hours	Average weekly wages	Number	Average weekly hours	Average weekly wages
	thousands		current dollars		thousands		current dollars	thousands		current dollars
December 2014										
15 years and over	15,178.5	35.1	910.86	24.97	12,322.4	39.3	1,050.95	2,856.0	16.9	306.41
15 to 24 years	2,320.3	25.8	405.49	14.60	1,086.0	38.6	655.47	1,234.4	14.5	185.56
25 years and over	12,858.1	36.7	1,002.05	26.84	11,236.4	39.3	1,089.18	1,621.7	18.7	398.40
Men	7,684.8	37.5	1,034.18	26.79	6,756.3	40.4	1,138.56	928.5	16.3	274.68
Women	7,493.6	32.6	784.38	23.10	5,566.1	37.9	944.61	1,927.5	17.2	321.70
Union coverage										
Union coverage	4,645.4	35.7	1,025.73	28.29	3,966.6	38.5	1,122.87	678.8	19.0	458.04
No union coverage	10,533.1	34.8	860.20	23.50	8,355.9	39.6	1,016.81	2,177.2	16.2	259.14
Job permanency										
Permanent	13,223.0	36.1	955.19	25.68	11,234.8	39.3	1,065.82	1,988.2	18.0	330.07
Temporary	1,955.4	28.3	611.06	20.13	1,087.6	39.3	897.39	867.8	14.5	252.21
Occupation										
Management	879.6	39.6	1,607.03	40.71	855.4	40.2	1,635.16	24.2	18.7	614.77
Business, finance and administrative	2,891.3	35.3	866.95	23.99	2,480.8	38.3	957.13	410.5	17.0	321.99
Natural and applied sciences	1,204.7	38.7	1,329.09	34.38	1,173.9	39.2	1,348.69	30.8	18.7	581.38
Health	1,013.8	33.3	963.25	28.59	766.3	37.7	1,100.19	247.5	19.8	539.22
Social science, education, government service and religion	1,598.5	33.9	1,087.78	31.57	1,289.6	37.9	1,230.12	308.9	17.3	493.46
Art, culture, recreation and sport	372.3	30.0	841.82	26.15	252.0	38.4	1,117.80	120.3	12.4	263.96
Sales and service	3,980.6	30.2	544.65	16.77	2,471.2	38.5	742.24	1,509.3	16.6	221.12
Trades, transport and equipment operators	2,175.2	40.1	1,005.16	24.72	2,036.7	41.7	1,052.45	138.5	17.5	309.58
Occupations unique to primary industry	284.7	41.4	987.97	22.95	253.5	44.7	1,084.12	31.3	14.4	208.69
Occupations unique to processing, manufacturing and utilities	777.8	39.2	822.34	20.73	743.1	40.2	848.14	34.7	17.9	269.97
December 2013										
15 years and over	15,035.8	35.0	892.09	24.51	12,140.7	39.2	1,031.27	2,895.1	17.4	308.42
15 to 24 years	2,267.2	25.8	390.02	14.03	1,041.6	38.6	634.17	1,225.6	15.0	182.51
25 years and over	12,768.6	36.7	981.23	26.37	11,099.1	39.3	1,068.53	1,669.5	19.1	400.85
Men	7,547.7	37.4	1,013.08	26.30	6,610.0	40.4	1,117.97	937.7	16.5	273.69
Women	7,488.1	32.6	770.13	22.71	5,530.7	37.9	927.65	1,957.4	17.8	325.06
Union coverage										
Union coverage	4,709.3	35.6	1,017.36	28.19	4,016.2	38.5	1,113.89	693.2	19.0	458.10
No union coverage	10,326.5	34.8	834.96	22.83	8,124.6	39.6	990.43	2,201.9	16.8	261.31
Job permanency										
Permanent	13,190.8	36.0	933.53	25.13	11,151.4	39.3	1,044.08	2,039.4	18.4	329.05
Temporary	1,845.0	27.9	595.76	20.07	989.3	39.0	886.83	855.7	15.0	259.25
Occupation										
Management	941.0	39.7	1,520.71	38.44	920.1	40.2	1,542.92	20.9	19.5	541.31
Business, finance and administrative	2,860.4	35.4	834.71	23.11	2,442.8	38.3	919.62	417.6	18.5	338.05
Natural and applied sciences	1,199.0	38.2	1,284.89	33.49	1,146.8	39.2	1,321.73	52.2	17.2	475.69
Health	1,050.4	33.2	967.96	28.83	793.5	37.6	1,107.95	256.9	19.5	535.59
Social science, education, government service and religion	1,511.7	33.8	1,082.35	31.62	1,212.9	37.9	1,226.98	298.8	17.5	495.24
Art, culture, recreation and sport	359.2	28.9	757.76	24.24	228.8	38.1	1,043.07	130.4	12.7	256.93
Sales and service	3,942.9	30.2	538.48	16.57	2,424.4	38.4	736.41	1,518.5	17.0	222.47
Trades, transport and equipment operators	2,161.0	40.0	976.83	24.08	2,022.5	41.5	1,022.47	138.6	18.4	310.60
Occupations unique to primary industry	252.2	42.5	1,061.53	24.04	223.2	46.2	1,170.26	29.0	14.4	223.38
Occupations unique to processing, manufacturing and utilities	758.0	39.2	827.35	20.89	725.7	40.1	851.51	32.3	17.9	285.27

Note(s): Related CANSIM Tables 282-0023, 282-0069, 282-0073.

Table 8
Regional unemployment rates used by the Employment Insurance program ¹, seasonally adjusted, 3 month moving average

Region	Effective from January 11, 2015 to February 7, 2015
	percent
Newfoundland and Labrador	
01. St. John's	5.3
02. Newfoundland and Labrador ²	16.5
Prince Edward Island ³	
65. Charlottetown	8.4
66. Prince Edward Island ⁴	12.6
Nova Scotia	
04. Eastern Nova Scotia	15.8
05. Western Nova Scotia	10.2
06. Halifax	6.0
New Brunswick	
07. Fredericton—Moncton—Saint John	7.1
08. Madawaska—Charlotte	10.9
09. Restigouche—Albert	16.7
Quebec	
10. Gaspésie—Îles-de-la-Madeleine	17.8
11. Québec	5.6
12. Trois-Rivières	6.7
13. South Central Quebec	6.3
14. Sherbrooke	7.5
15. Montérégie	6.6
16. Montréal	8.3
17. Central Quebec	7.3
18. North Western Quebec	10.3
19. Bas-Saint-Laurent—Côte-Nord	9.6
20. Hull	7.0
21. Chicoutimi—Jonquière	9.8
Ontario	
22. Ottawa	5.7
23. Eastern Ontario	8.0
24. Kingston	6.3
25. Central Ontario	6.3
26. Oshawa	6.6
27. Toronto	7.8
28. Hamilton	5.5
29. St. Catharines	6.7
30. London	7.7
31. Niagara	9.1
32. Windsor	9.2
33. Kitchener	5.7
34. Huron	7.1
35. South Central Ontario	4.9
36. Sudbury	6.0
37. Thunder Bay	6.0
38. Northern Ontario	10.0
Manitoba	
39. Winnipeg	5.6
40. Southern Manitoba	5.4
41. Northern Manitoba	32.0
Saskatchewan	
42. Regina	3.1
43. Saskatoon	3.8
44. Southern Saskatchewan	6.3
45. Northern Saskatchewan	16.4
Alberta	
46. Calgary	4.8
47. Edmonton	5.1
48. Northern Alberta	7.7
49. Southern Alberta	5.3

See notes at the end of the table.

Table 8 – continued

Regional unemployment rates used by the Employment Insurance program 1, seasonally adjusted, 3 month moving average

Region	Effective from January 11, 2015 to February 7, 2015
	percent
British Columbia	
50. Southern Interior British Columbia	7.0
51. Abbotsford	6.7
52. Vancouver	6.1
53. Victoria	5.8
54. Southern Coastal British Columbia	7.8
55. Northern British Columbia	10.2
Territories ^{3, 5}	
59. Whitehorse	4.3
60. Yukon ⁶	7.8
61. Yellowknife	4.2
62. Northwest Territories ⁷	14.2
63. Iqaluit	3.9
64. Nunavut ⁸	17.1

1. The boundaries of these regions are determined by Employment and Social Development Canada (ESDC). For geographic descriptions and maps of employment insurance regions, see the ESDC website: <http://srv129.services.gc.ca/eiregions/en/geocont.aspx>.
 2. This region excludes St. John's.
 3. Prince Edward Island as well as the territories are each comprised of two regions effective October 12, 2014.
 4. This region excludes Charlottetown.
 5. The monthly regional unemployment rates for EI purposes in the territories are subject to the greater of a seasonally adjusted 3 month moving average or 12 month moving average.
 6. This region excludes Whitehorse.
 7. This region excludes Yellowknife.
 8. This region excludes Iqaluit.
- Note(s):** All regions are based on the 1996 Census boundaries, with the exception of those in Prince Edward Island and in the territories, which respect the 2011 Census boundaries.

Data quality

Definitions and explanations

The **labour force** is composed of those members of the civilian non-institutional population 15 years of age and over who, during the reference week, were employed or unemployed.

Employed persons are those who, during the reference week:

- (a) did any work at all
- (b) had a job but were not at work

A person is considered to be **full-time** if his/her usual hours at the main job are 30 or more hours per week. When the number of hours worked at the main job is usually less than 30 hours per week then he/she is considered to be **part-time**.

Unemployed persons are those who, during the reference week:

- (a) were without work, had actively looked for work in the past four weeks (ending with reference week), and were available for work;
- (b) had not actively looked for work in the past four weeks but were on temporary layoff and were available for work;
- (c) had not actively looked for work in the past four weeks but had a new job to start in four weeks or less from the reference week, and were available for work.

Persons in the civilian non-institutional population 15 years of age and over who, during the reference week, were neither employed nor unemployed are classified as **not in the labour force**.

The **unemployment rate** represents the number of unemployed persons expressed as a percentage of the labour force. The unemployment rate for a particular group (age, sex, etc.) is the number unemployed in that group expressed as a percentage of the labour force for that group.

The **participation rate** represents the labour force expressed as a percentage of the population 15 years of age and over. The participation rate for a particular group (age, sex, etc.) is the labour force in that group expressed as a percentage of the population for that group.

The **employment rate (formerly the employment/population ratio)** represents the number of persons employed expressed as a percentage of the population 15 years of age and over. The employment rate for a particular group (age, sex, etc.) is the number employed in that group expressed as a percentage of the population for that group.

The **part-time rate** represents the number of persons employed part-time expressed as a percentage of the employed. The part-time rate for a particular group (age, sex, etc.) is the number employed part-time in that group expressed as a percentage of the employed for that group.

All geographic regions are based on the 2006 Census boundaries.

Seasonal adjustment

Fluctuations in economic time series are caused by seasonal, cyclical and irregular movements. A seasonally adjusted series is one from which seasonal movements have been eliminated. Seasonal movements are defined as those which are caused by regular annual events such as climate, holidays, vacation periods and cycles related to crops, production and retail sales associated with Christmas and Easter. The seasonally adjusted series contains irregular as well as longer-term cyclical fluctuations.

The seasonally adjusted series are revised each year to take into account current data and to generate new forecast factors for the next twelve months. The data are therefore subject to slight revisions in future issues of this publication.

Sampling variability of estimates

Estimates in this publication are based on the Labour Force Survey, a monthly survey of approximately 56,000 households across Canada. Because the entire population is not surveyed, the estimates are subject to sampling error. While the published estimate is the best available indicator of the real value, changes in the level of any estimates between two months can be the result of a true change or sampling variability. The sampling error can be estimated by calculating the standard error for the published estimate or statistic. These standard errors have been included in the publication tables, in order to assist users in interpreting the data. They are based on 12-month averages and are updated twice a year, in February and August.

Interpretation based on standard error

Two thirds of the time (68%), a change greater than the sampling error indicates a real change. The larger the change compared to the standard error, the better the chance that we are observing a real change, as opposed to a change due to sampling variability. At the 95% level, in order to ensure that change is real, the change in the estimate must be greater than twice the sampling error.

Movements in estimates that are smaller than the sampling error are less likely to reflect a real change and more likely to be due to sampling variability. While the above is true for monthly movements, one can have more confidence in a series of consecutive movements in the same direction, even though some of the monthly movements may be smaller than the sampling error.

Interpretation based on confidence intervals

Confidence intervals provide another way of looking at the variability inherent in estimates of sample surveys. To illustrate how to calculate the confidence interval, let us say that one month the published estimate for total employment rose by 16,000 to reach 16,500,000. The associated standard error for the movement estimate is 27,200. The standard error used to interpret the movement estimate indicates that:

- There are approximately two chances in three (68%) that the real value of the movement between the two months falls within the range -11,200 to +43,200 (16,000 + or – one standard error).
- There are approximately nine chances in ten (90%) that the real value of the movement between the two months falls within the range -27,520 to +59,520 (16,000 + or – 1.6 times the standard error).
- There are approximately nineteen chances in twenty (95%) that the real value of the movement between the two months falls within the range -38,400 to +70,400 (16,000 + or – two standard errors).

For more detailed explanations on sampling variability of estimates, and in particular for information on how to assess the variability of level estimates, consult the Data quality section of the *Guide to the Labour Force Survey*, (71-543-G) on page 27.

Documentation

For more detailed information about the Labour Force Survey, see the following documents:

- Overview of the Labour Force Survey 3701
- Guide to the Labour Force Survey (71-543-G)
- Methodology of the Canadian Labour Force Survey (71-526-X)
- LFS *geographical maps*