

Catalogue no. 71-001-X

Labour Force Information

Friday, May 9, 2014

April 13 to 19 2014



Statistics
Canada

Statistique
Canada

Canada

How to obtain more information

For information about this product or the wide range of services and data available from Statistics Canada, visit our website, www.statcan.gc.ca.

You can also contact us by

e-mail at infostats@statcan.gc.ca

telephone, from Monday to Friday, 8:30 a.m. to 4:30 p.m., at the following toll-free numbers:

- Statistical Information Service 1-800-263-1136
- National telecommunications device for the hearing impaired 1-800-363-7629
- Fax line 1-877-287-4369

Depository Services Program

- Inquiries line 1-800-635-7943
- Fax line 1-800-565-7757

To access this product

This product, Catalogue no. 71-001-X, is available free in electronic format. To obtain a single issue, visit our website, www.statcan.gc.ca and browse by "Key resource" > "Publications."

Standards of service to the public

Statistics Canada is committed to serving its clients in a prompt, reliable and courteous manner. To this end, this agency has developed standards of service that its employees observe. To obtain a copy of these service standards, please contact Statistics Canada toll-free at 1-800-263-1136. The service standards are also published at www.statcan.gc.ca under "About us" > "The agency" > "Providing services to Canadians."

Statistics Canada
Labour Statistics Division
Labour Force Survey Program

Labour Force Information

Friday, May 9, 2014

April 13 to 19 2014

Published by authority of the Minister responsible for Statistics Canada

© Minister of Industry, 2014

All rights reserved. Use of this publication is governed by the Statistics Canada
Open License Agreement.

<http://www.statcan.gc.ca/reference/licence-eng.html>

May 2014

Catalogue no. 71-001-X

ISSN 1492-5478

Frequency: Monthly

Ottawa

Cette publication est également disponible en français.

Note of appreciation

Canada owes the success of its statistical system to a long-standing partnership between Statistics Canada, the citizens of Canada, its businesses, governments and other institutions. Accurate and timely statistical information could not be produced without their continued cooperation and goodwill.

User information

Symbols

The following standard symbols are used in Statistics Canada publications:

- . not available for any reference period
- .. not available for a specific reference period
- ... not applicable
- 0 true zero or a value rounded to zero
- 0^s value rounded to 0 (zero) where there is a meaningful distinction between true zero and the value that was rounded
- p preliminary
- r revised
- x suppressed to meet the confidentiality requirements of the *Statistics Act*
- E use with caution
- F too unreliable to be published
- * significantly different from reference category ($p < 0.05$)

Special requests (\$)

Custom tabulations can be arranged on an ad hoc or regular basis. This service enables you to specify tables and time series to meet your own requirements. The cost varies according to the request. For more information, contact us toll-free at 1-866-873-8788 or e-mail us at labour@statcan.gc.ca.

Schedule of LFS releases

Release date	Reference period
January 10, 2014	December 8 to 14, 2013
February 7, 2014	January 12 to 18, 2014
March 7, 2014	February 9 to 15, 2014
April 4, 2014	March 9 to 15, 2014
May 9, 2014	April 13 to 19, 2014
June 6, 2014	May 11 to 17, 2014
July 11, 2014	June 15 to 21, 2014
August 8, 2014	July 13 to 19, 2014
September 5, 2014	August 10 to 16, 2014
October 10, 2014	September 14 to 20, 2014
November 7, 2014	October 12 to 18, 2014
December 5, 2014	November 9 to 15, 2014

Table of contents

Highlights	5
Analysis — April 2014	6
Charts	
1. Employment and unemployment indicators, Canada, seasonally adjusted	9
2. Employment and unemployment indicators, Canada, seasonally adjusted	10
3. Index of employment by industry, Canada, seasonally adjusted, January 2011=100	11
4. Index of employment by industry, Canada, seasonally adjusted, January 2011=100	12
5. Index of employment by industry, Canada, seasonally adjusted, January 2011=100	13
6. Index of employment by province, seasonally adjusted, January 2011=100	14
7. Index of employment by province, seasonally adjusted, January 2011=100	15
Related products	16
Statistical tables	
1 Labour force characteristics by age and sex, Canada, seasonally adjusted	26
2 Employment by class of worker and industry, Canada, seasonally adjusted	28
3 Labour force characteristics by province, seasonally adjusted	29
4 Selected labour force characteristics (seasonally adjusted)	31
4-1 Newfoundland and Labrador	31
4-2 Prince Edward Island	32
4-3 Nova Scotia	33
4-4 New Brunswick	34
4-5 Quebec	35
4-6 Ontario	36
4-7 Manitoba	37
4-8 Saskatchewan	38
4-9 Alberta	39
4-10 British Columbia	40
5 Labour force characteristics by census metropolitan area (seasonally adjusted)	41
5-1 3 month moving average	41
5-2 Monthly	46

Table of contents – continued

6	Labour force characteristics	47
6-1	by province and economic region, unadjusted for seasonality, 3 month moving average ending in April 2013 and April 2014	47
6-2	by territories, unadjusted for seasonality, 3 month moving average ending in April 2013 and April 2014	52
7	Average usual hours and wages of employees by selected characteristics, Canada, unadjusted for seasonality	53
8	Regional unemployment rates used by the Employment Insurance Program, seasonally adjusted, 3 month moving average	54

Data quality, concepts and methodology

Data quality	56
--------------	----

Charts

1.	Employment and unemployment indicators, Canada, seasonally adjusted	9
2.	Employment and unemployment indicators, Canada, seasonally adjusted	10
3.	Index of employment by industry, Canada, seasonally adjusted, January 2011=100	11
4.	Index of employment by industry, Canada, seasonally adjusted, January 2011=100	12
5.	Index of employment by industry, Canada, seasonally adjusted, January 2011=100	13
6.	Index of employment by province, seasonally adjusted, January 2011=100	14
7.	Index of employment by province, seasonally adjusted, January 2011=100	15

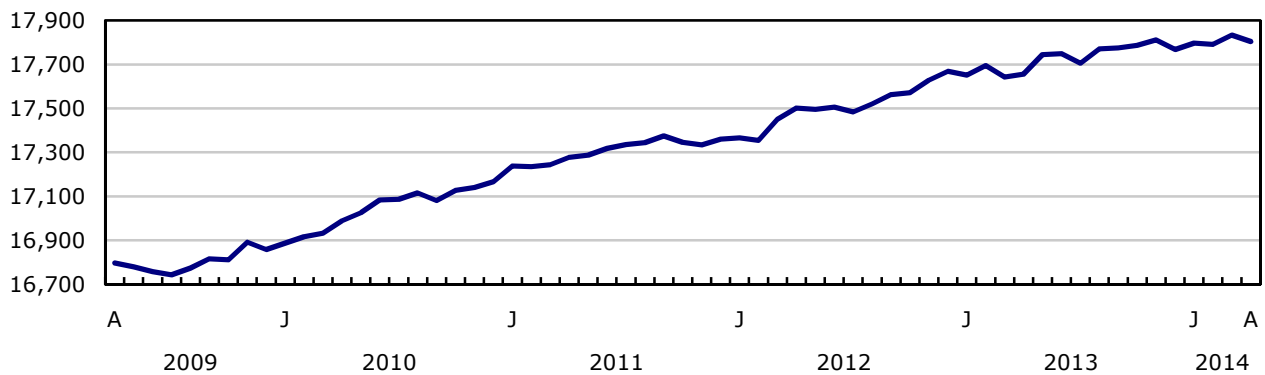
Highlights

Employment decreased by 29,000 in April, and the unemployment rate was unchanged at 6.9% as the number of people participating in the labour market edged down. There has been little overall employment growth in Canada since August 2013.

Chart 1
Employment and unemployment rates, Canada, seasonally adjusted

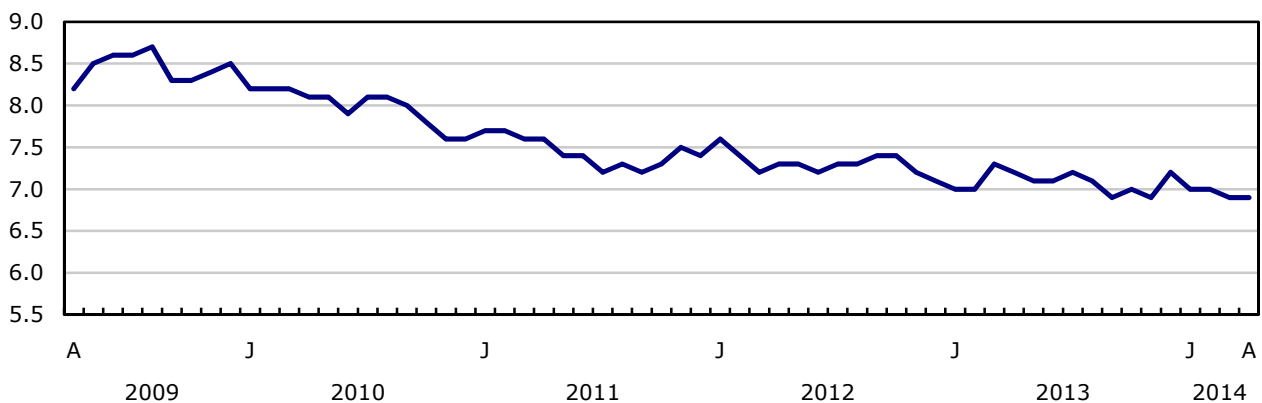
Employment

thousands



Unemployment rate

percent



Analysis — April 2014

Employment decreased by 29,000 in April, and the unemployment rate was unchanged at 6.9% as the number of people participating in the labour market edged down. There has been little overall employment growth in Canada since August 2013.

On a year-over-year basis, the number of people working rose by 0.8% or 149,000, evenly split between part-time and full-time work.

In April, employment was down in Quebec, New Brunswick, Newfoundland and Labrador and in Prince Edward Island, while it increased in Saskatchewan.

Employment declined among women aged 25 to 54 and youths aged 15 to 24, while it increased among women 55 and over.

In April, there were fewer people working in accommodation and food services as well as finance, insurance, real estate and leasing. At the same time, employment increased in business, building and other support services.

The number of hours worked fell 1.1% on a year-over-year basis, driven by a decline in April 2014 as Good Friday fell in the survey reference week and a number of workers took extra vacation time that week.

From April 2013 to April 2014, the participation rate fell from 66.5% to 66.1%, mainly the result of a decline in the participation rate of the population aged 25 to 54, the group most likely to participate in the labour market.

Adjusted to US concepts, the unemployment rate in Canada was 6.0% in April, down 0.2 percentage points from 12 months earlier. In the United States, the rate fell 1.2 percentage points over the same period to 6.3%.

Employment declines in Quebec and most of Atlantic Canada

In Quebec, employment fell by 32,000 in April. Despite this decline, the unemployment rate remained at 7.6% as fewer people participated in the labour market. Compared with a year earlier, employment in this province was virtually unchanged.

In April, there were 5,400 fewer people working in New Brunswick and the unemployment rate increased 0.8 percentage points to 10.5%. On a year-over-year basis, employment in the province was little changed.

Employment in Newfoundland and Labrador declined by 3,300 in April, and the unemployment rate was 12.1%. Compared with 12 months earlier, employment in this province was virtually unchanged.

The number of people working in Prince Edward Island fell by 1,200 and the unemployment rate was 11.7%. On a year-over-year basis, employment in the province was down 2,100 (-2.8%).

In Saskatchewan, there were 3,000 more people employed in April. At the same time, there were fewer people looking for work, pushing the unemployment rate down 1.1 percentage points to 3.4%. This was the lowest rate in the province since comparable data became available in 1976. Compared with 12 months earlier, employment in Saskatchewan was up 8,300 (+1.5%).

In April, employment was little changed in Ontario and the unemployment rate was 7.4%. On a year-over-year basis, employment in the province was up 74,000 (+1.1%), with most of the gains at the beginning of the period.

Fewer women aged 25 to 54 and youths employed

In April, employment among women aged 25 to 54 fell by 29,000, bringing employment for this group to a level similar to that of April 2013. Among men in this age group, there was little change in employment in April compared with both the previous month and one year earlier.

Among youths aged 15 to 24, employment declined by 27,000 in April, but the unemployment rate was little changed at 13.4% as fewer youths participated in the labour market. Compared with 12 months earlier, youth employment was little changed.

Employment increased by 29,000 for people aged 55 and over, mostly women. Compared with 12 months earlier, employment among people in this age group rose by 139,000 (+4.2%). These gains were mainly the result of a 3.3% growth in the population of this age group.

Industry perspective

In April there were 32,000 fewer people working in accommodation and food services, bringing employment in this industry down to a level similar to that of 12 months earlier.

Employment in finance, insurance, real estate and leasing fell by 19,000 in April. Employment in this industry was little changed compared with 12 months earlier.

Employment in business, building and other support services increased for the second consecutive month, up 26,000 in April, bringing employment gains in this industry to 38,000 (+5.5%) compared with 12 months earlier.

In April, there were 46,000 fewer people working as employees. On a year-over-year basis, the number of private sector employees increased by 1.7%, while the number of public sector employees edged down. Over the same period, self-employment was little changed.

Canada-United States comparison

Compared with 12 months earlier, the participation rate (adjusted to US concepts) fell in both Canada and the United States. In Canada, the participation rate declined by 0.4 percentage points to 66.1%, and in the United States the rate fell by 0.6 percentage points to 62.8%.

In April, the unemployment rate in Canada (adjusted to US concepts) was down 0.2 percentage points to 6.0% compared with 12 months earlier. Over the same period, the rate in the United States fell 1.2 percentage points to 6.3%. The decrease in the US unemployment rate was driven by the decline in the participation rate. This was also true in Canada, but to a lesser extent.

In the 12 months to April, the employment rate in Canada (adjusted to US concepts) declined by 0.3 percentage points to 62.1%. This contrasts with the United States, where the employment rate increased 0.3 percentage points to 58.9% over the same period.

Note to readers

The Labour Force Survey (LFS) estimates for April 2014 are for the week of April 13th to 19th.

The LFS estimates are based on a sample and are therefore subject to sampling variability. As a result, monthly estimates will show more variability than trends observed over longer time periods. For more information, see *Interpreting Monthly Changes in Employment from the Labour Force Survey*. Estimates for smaller geographic areas or industries also have more variability. For an explanation of sampling variability of estimates and how to use standard errors to assess this variability, consult the "Data quality" section of the publication Labour Force Information (71-001-X).

This analysis focuses on differences between estimates that are statistically significant at the 68% confidence level.

The **employment rate** is the number of employed persons as a percentage of the population 15 years of age and over. The rate for a particular group (for example, youth aged 15 to 24) is the number employed in that group as a percentage of the population for that group.

The **unemployment rate** is the number unemployed as a percentage of the labour force (employed and unemployed).

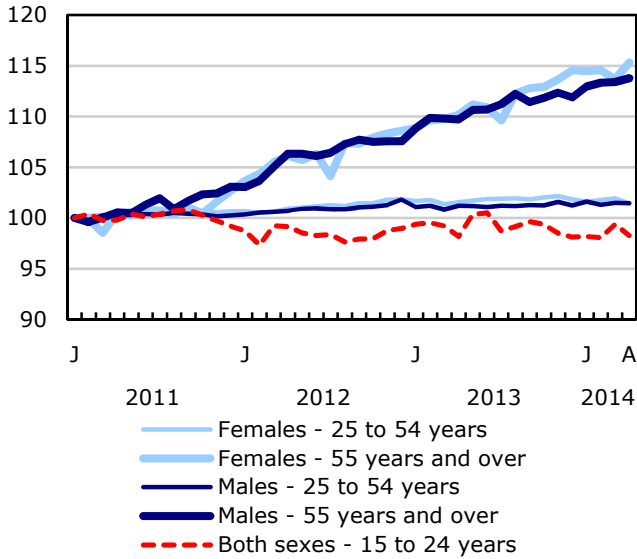
The **participation rate** is the number of employed and unemployed as a percentage of the population. For more detailed information, see the Guide to the Labour Force Survey (71-543-G).

Unless otherwise stated, this release presents seasonally adjusted estimates, which facilitates comparisons by removing the effects of seasonal variations. For more information on seasonal adjustment, see *Seasonal adjustment and identifying economic trends*.

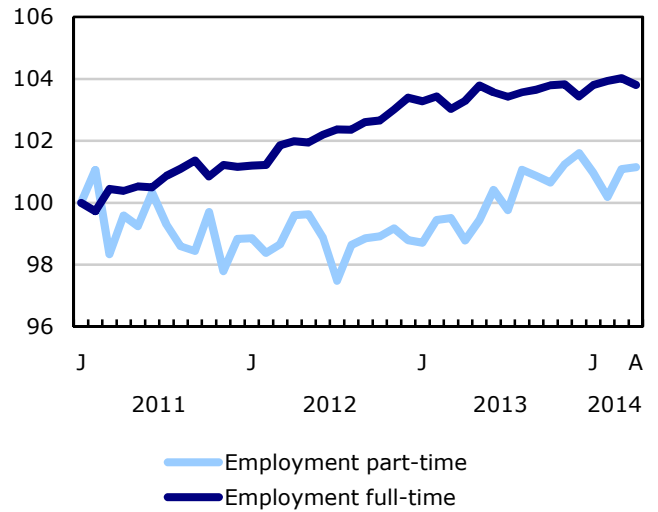
Each year, the LFS revises its estimates for the previous three years, using the latest seasonal factors.

Chart 1
Employment and unemployment indicators, Canada, seasonally adjusted

Employment index, January 2011=100



Employment index, January 2011=100



Employment index, January 2011=100

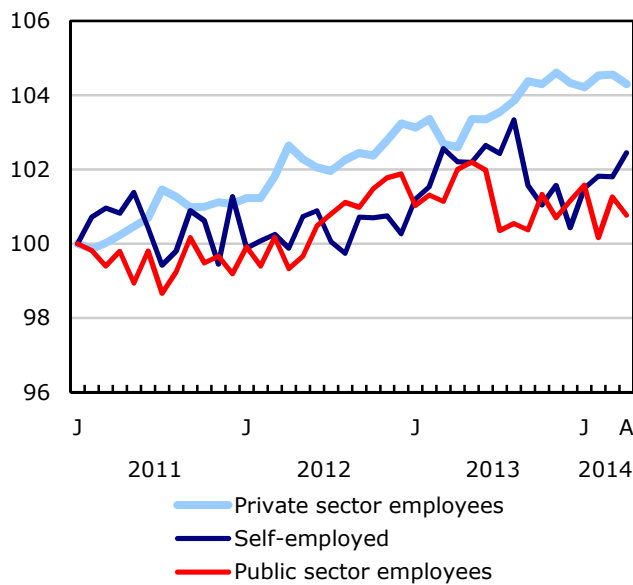
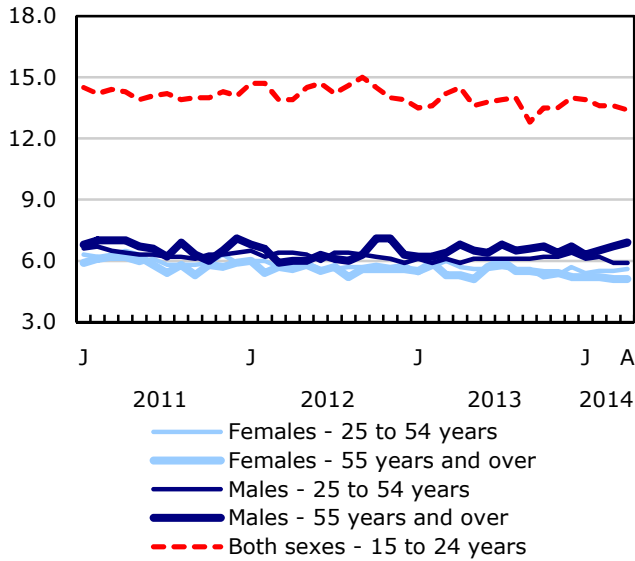
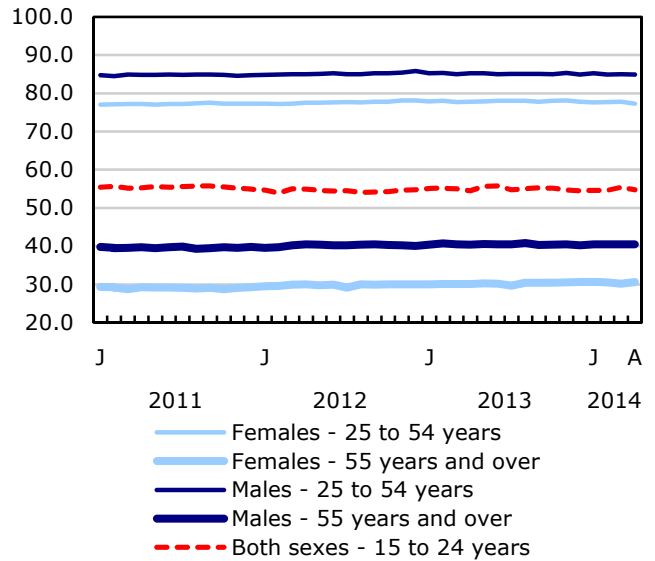


Chart 2
Employment and unemployment indicators, Canada, seasonally adjusted

Unemployment rate (%)



Employment rate (%)



Participation rate (%)

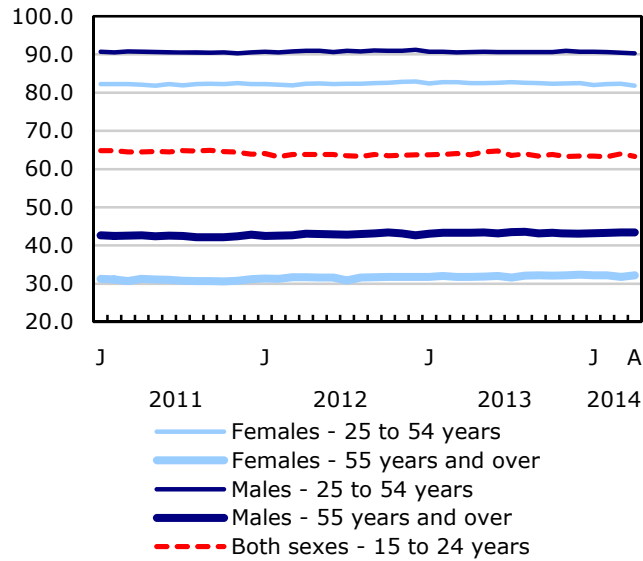


Chart 3
Index of employment by industry, Canada, seasonally adjusted, January 2011=100

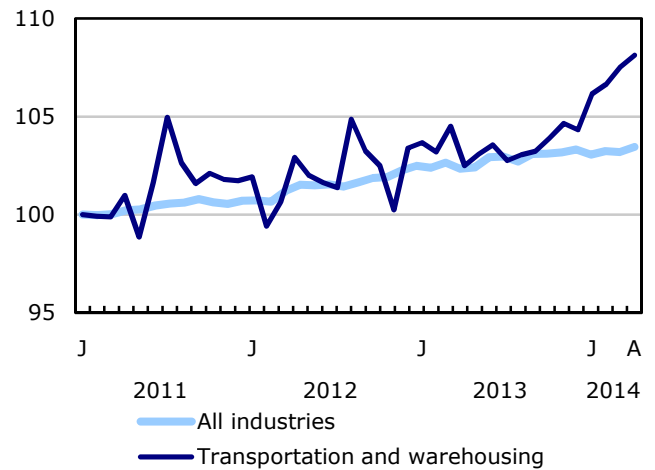
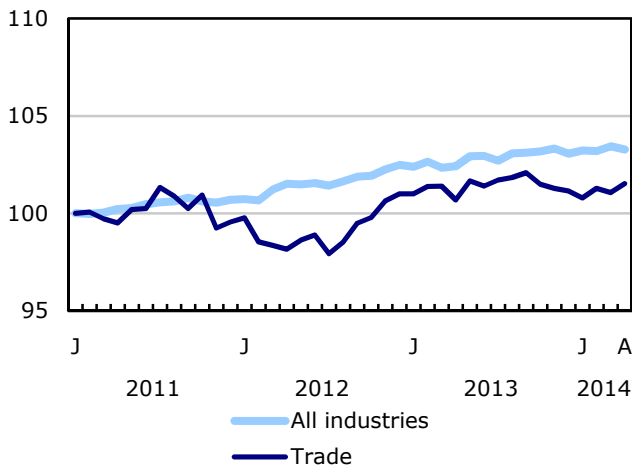
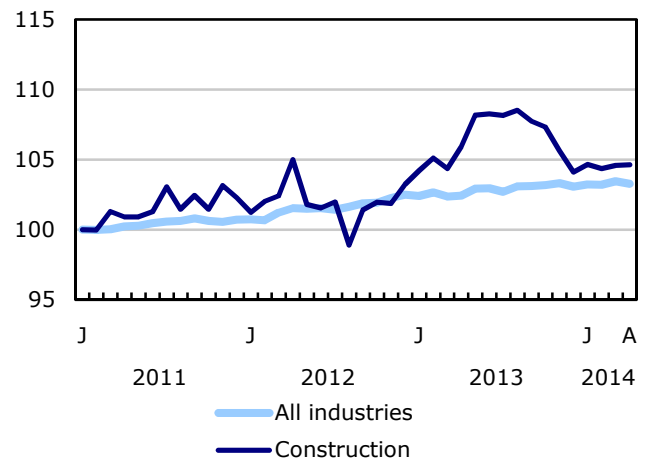
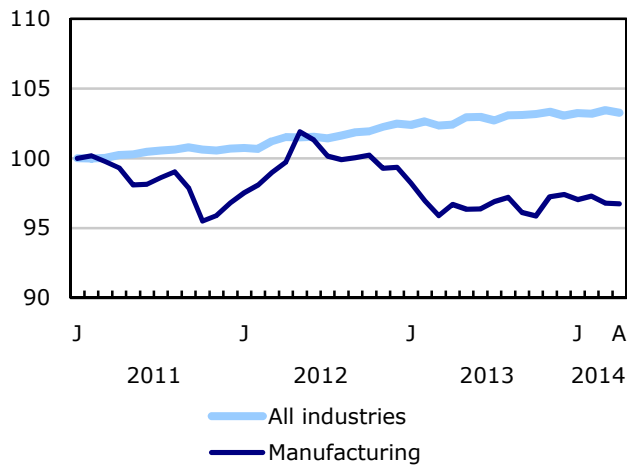
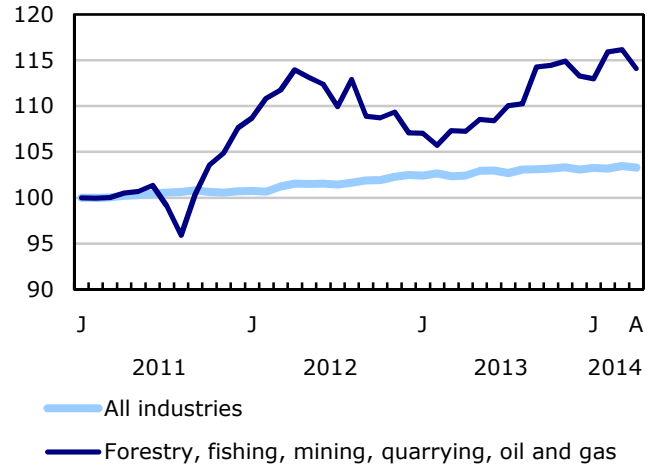
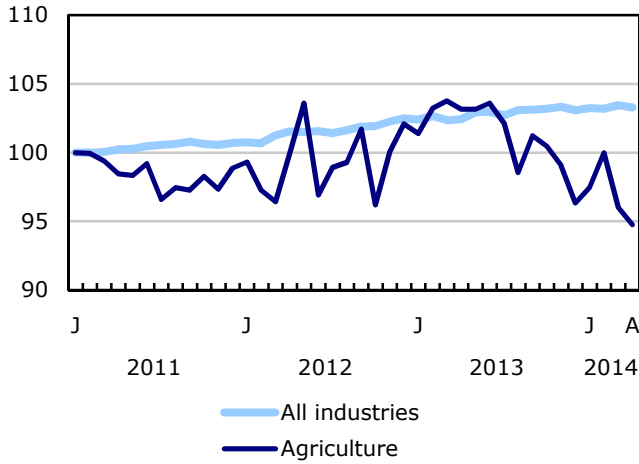


Chart 4
Index of employment by industry, Canada, seasonally adjusted, January 2011=100

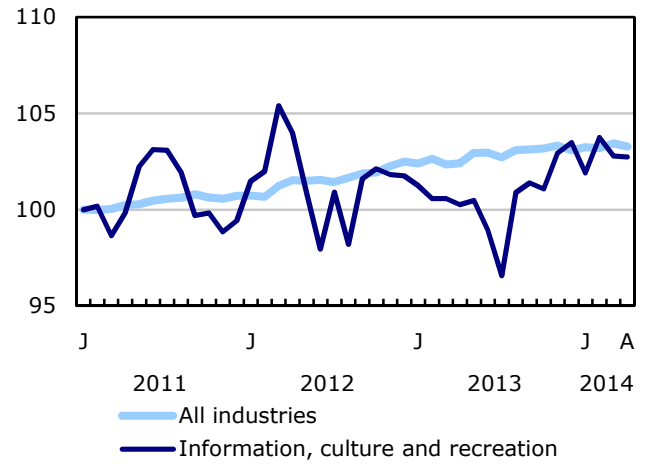
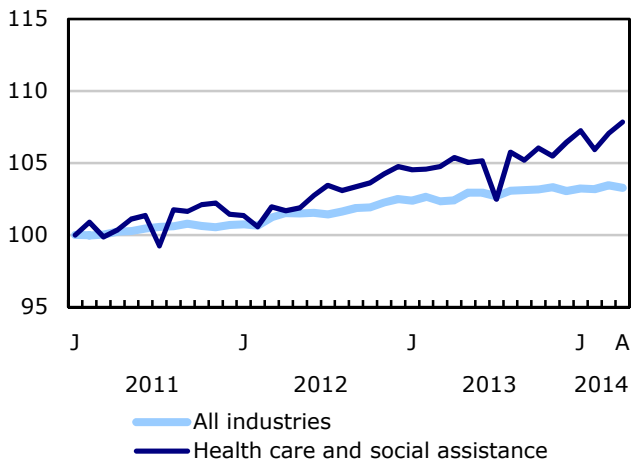
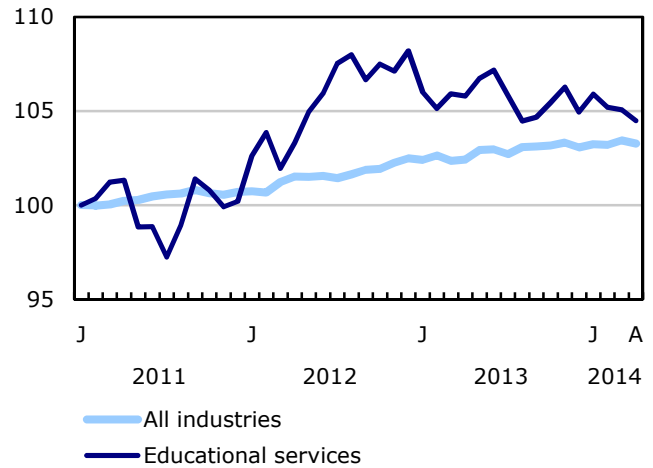
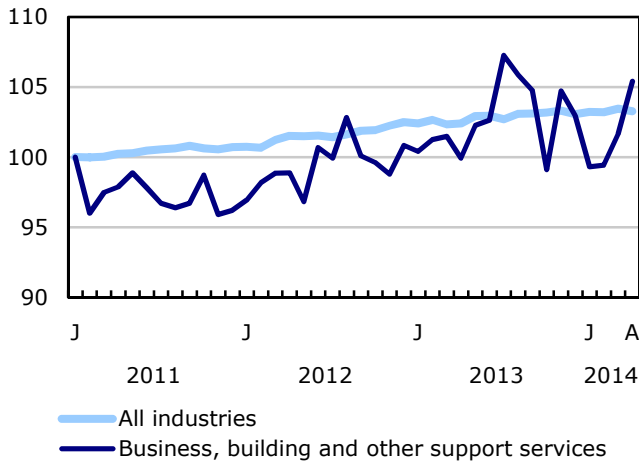
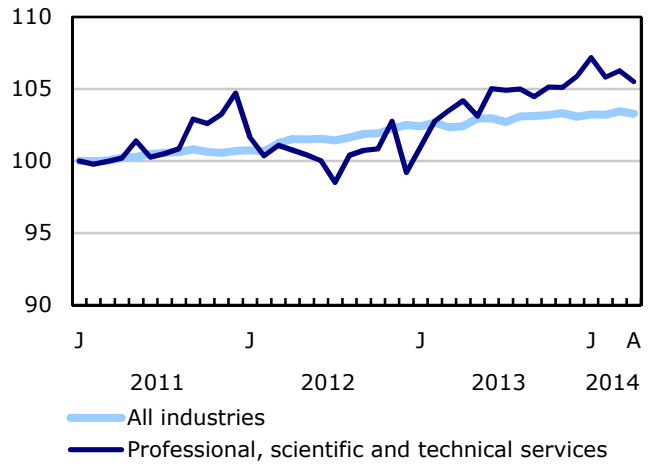


Chart 5
Index of employment by industry, Canada, seasonally adjusted, January 2011=100

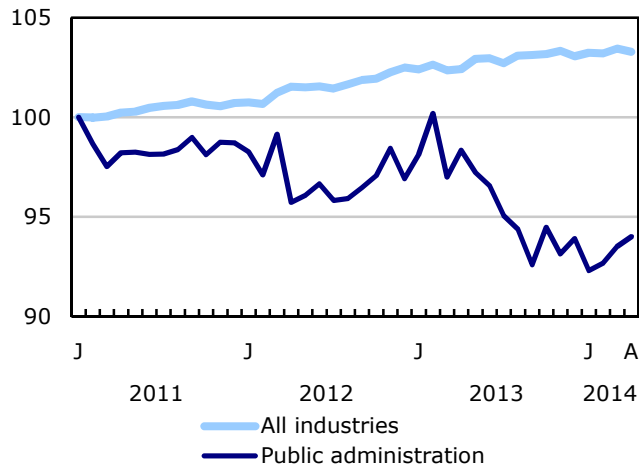
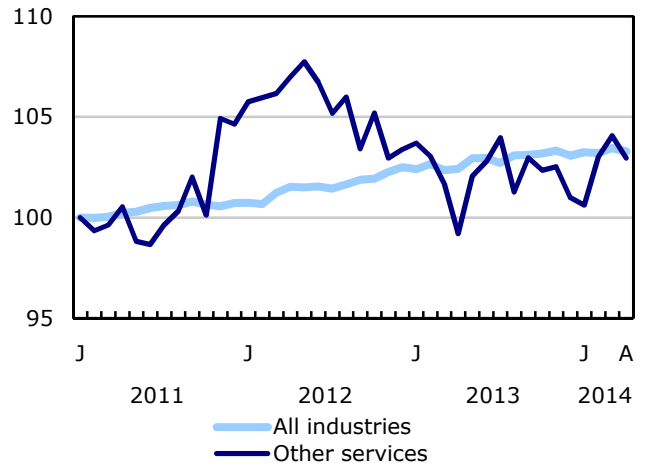
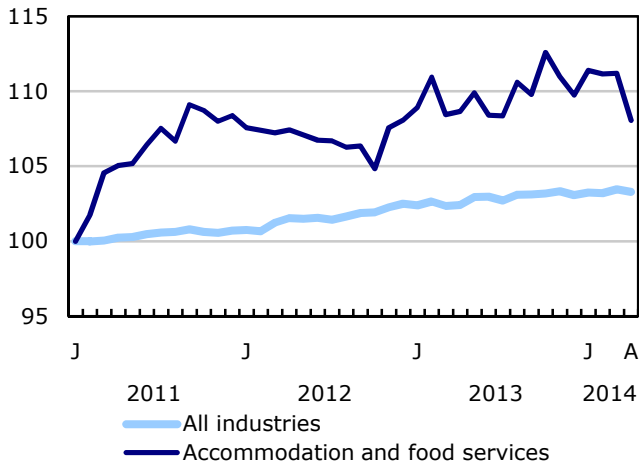


Chart 6
Index of employment by province, seasonally adjusted, January 2011=100

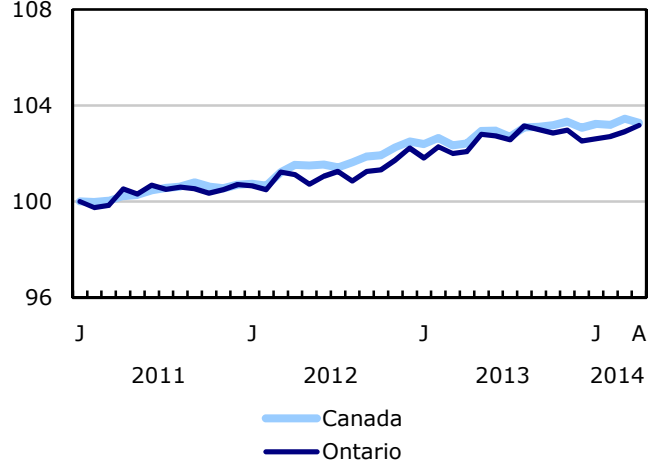
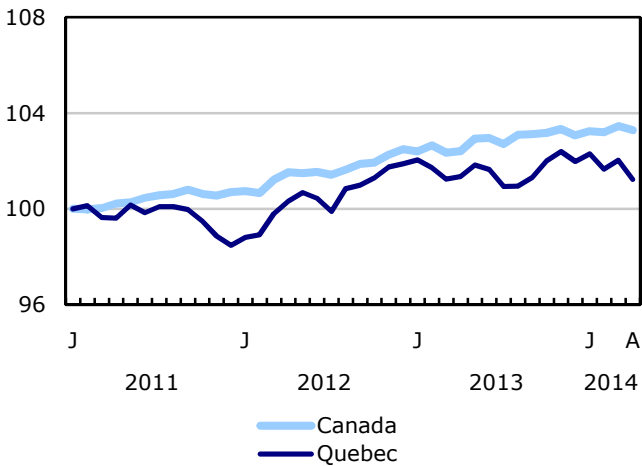
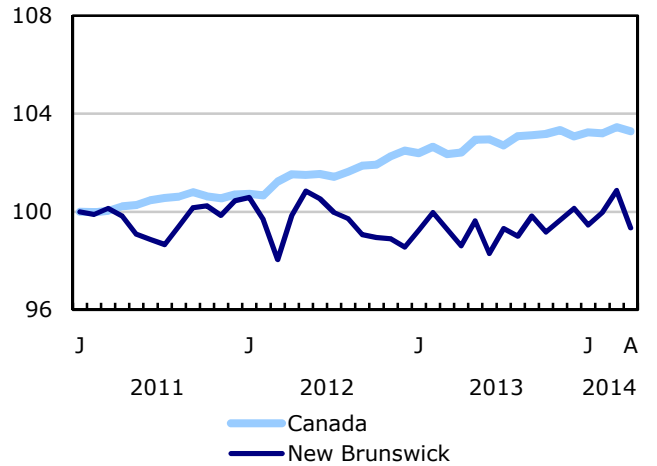
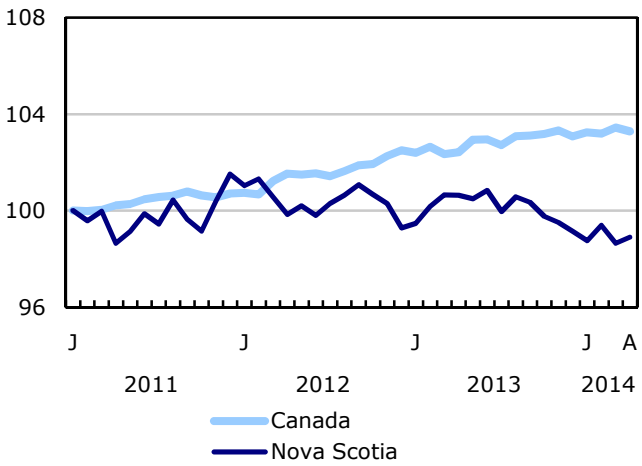
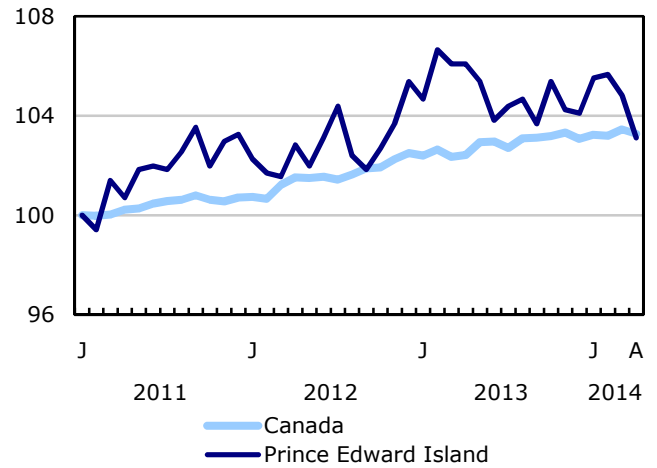
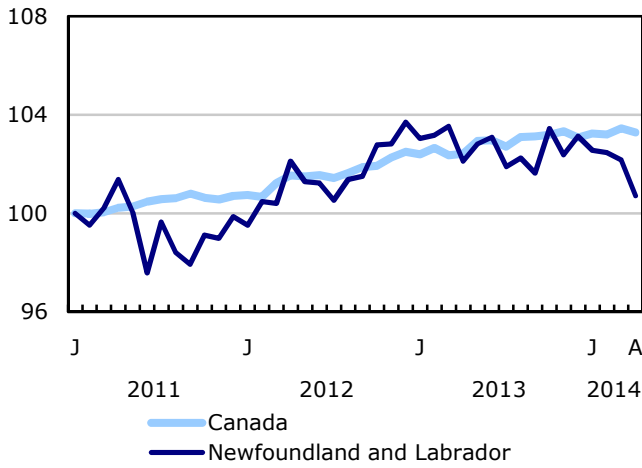
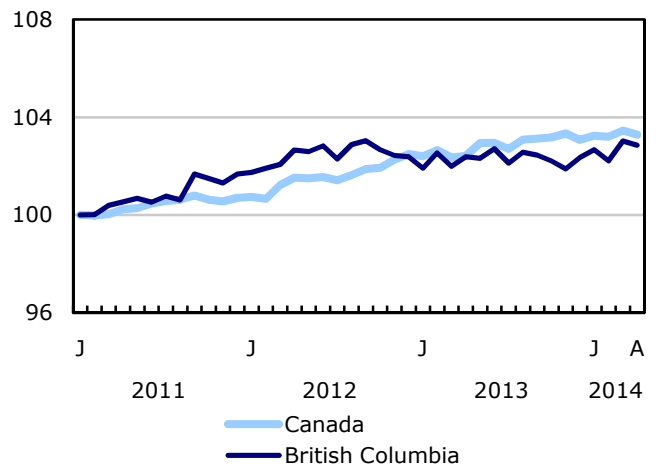
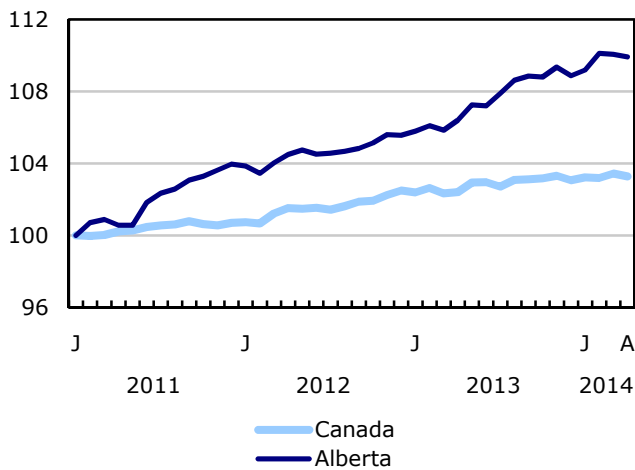
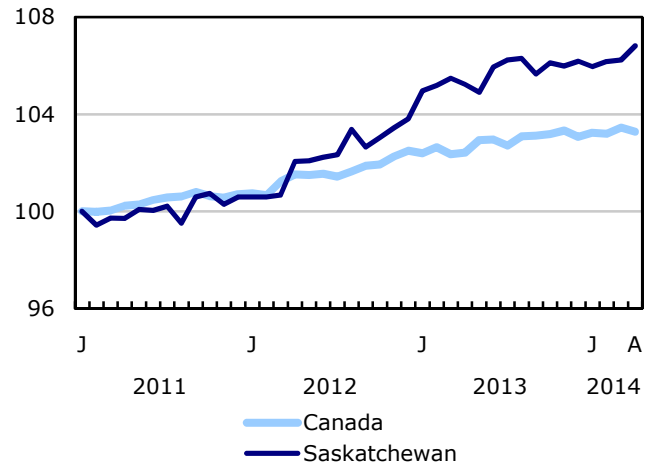
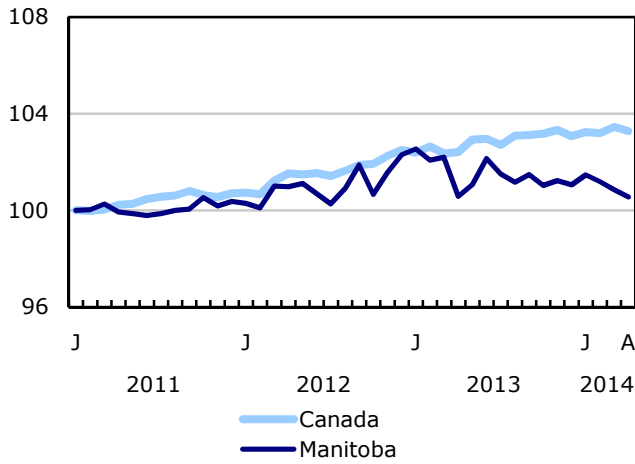


Chart 7
Index of employment by province, seasonally adjusted, January 2011=100



Related products

Selected publications from Statistics Canada

71-222-X	The Canadian Labour Market at a Glance
71-526-X	Methodology of the Canadian Labour Force Survey
71-543-G	Guide to the Labour Force Survey
71-544-X	Labour Force Survey Products and Services
71-587-X	Aboriginal Peoples Living Off-reserve in Western Canada: Estimates from the Labour Force Survey
71-588-X	The Aboriginal Labour Force Analysis Series
71-606-X	The Immigrant Labour Force Analysis Series
71F0031X	Improvements to the Labour Force Survey (LFS)
71M0001X	Labour Force Survey Microdata File
75-001-X	Perspectives on Labour and Income (from 1989 to 2012)
75-004-M	Labour Statistics: Research Papers
75-006-X	Insight on Canadian Society

Selected CANSIM tables from Statistics Canada

282-0001	Labour force survey estimates (LFS), by sex and detailed age group, unadjusted for seasonality, monthly
282-0002	Labour force survey estimates (LFS), by sex and detailed age group, annual
282-0003	Labour force survey estimates (LFS), by educational attainment, sex and age group, unadjusted for seasonality, monthly
282-0004	Labour force survey estimates (LFS), by educational attainment, sex and age group, annual
282-0005	Labour force survey estimates (LFS), by full- and part-time students during school months, sex and age group, unadjusted for seasonality, monthly
282-0006	Labour force survey estimates (LFS), by students during summer months, sex and age group, unadjusted for seasonality, monthly

282-0007	Labour force survey estimates (LFS), by North American Industry Classification System (NAICS), sex and age group, unadjusted for seasonality, monthly
282-0008	Labour force survey estimates (LFS), by North American Industry Classification System (NAICS), sex and age group, annual
282-0009	Labour force survey estimates (LFS), by National Occupational Classification for Statistics (NOC-S) and sex, unadjusted for seasonality, monthly
282-0010	Labour force survey estimates (LFS), by National Occupational Classification for Statistics (NOC-S) and sex, annual
282-0011	Labour force survey estimates (LFS), employment by class of worker, North American Industry Classification System (NAICS) and sex, unadjusted for seasonality, monthly
282-0012	Labour force survey estimates (LFS), employment by class of worker, North American Industry Classification System (NAICS) and sex, annual
282-0013	Labour force survey estimates (LFS), part-time employment by reason for part-time work, sex and age group, unadjusted for seasonality, monthly
282-0014	Labour force survey estimates (LFS), part-time employment by reason for part-time work, sex and age group, annual
282-0015	Labour force survey estimates (LFS), by usual hours worked, main or all jobs, sex and age group, unadjusted for seasonality, monthly
282-0016	Labour force survey estimates (LFS), by usual hours worked, main or all jobs, sex and age group, annual
282-0017	Labour force survey estimates (LFS), by actual hours worked, main or all jobs, sex and age group, unadjusted for seasonality, monthly
282-0018	Labour force survey estimates (LFS), by actual hours worked, main or all jobs, sex and age group, annual
282-0019	Labour force survey estimates (LFS), by usual hours worked, class of worker, North American Industry Classification System (NAICS) and sex, unadjusted for seasonality, monthly
282-0020	Labour force survey estimates (LFS), by usual hours worked, class of worker, North American Industry Classification System (NAICS) and sex, annual
282-0021	Labour force survey estimates (LFS), by actual hours worked, class of worker, North American Industry Classification System (NAICS) and sex, unadjusted for seasonality, monthly
282-0022	Labour force survey estimates (LFS), by actual hours worked, class of worker, North American Industry Classification System (NAICS) and sex, annual
282-0023	Labour force survey estimates (LFS), by usual hours worked, class of worker, National Occupational Classification for Statistics (NOC-S) and sex, unadjusted for seasonality, monthly
282-0024	Labour force survey estimates (LFS), by usual hours worked, class of worker, National Occupational Classification for Statistics (NOC-S) and sex, annual
282-0025	Labour force survey estimates (LFS), by actual hours worked, class of worker, National Occupational Classification for Statistics (NOC-S) and sex, unadjusted for seasonality, monthly

282-0026	Labour force survey estimates (LFS), by actual hours worked, class of worker, National Occupational Classification for Statistics (NOC-S) and sex, annual
282-0027	Labour force survey estimates (LFS), by total and average usual and actual hours worked, main or all jobs, type of work, sex and age group, unadjusted for seasonality, monthly
282-0028	Labour force survey estimates (LFS), by total and average usual and actual hours worked, main or all jobs, type of work, sex and age group, annual
282-0029	Labour force survey estimates (LFS), average days lost for personal reasons per full-time employee by North American Industry Classification System (NAICS), sex and age group, annual
282-0030	Labour force survey estimates (LFS), average days lost for personal reasons per full-time employee by National Occupational Classification for Statistics (NOC-S), sex and age group, annual
282-0031	Labour force survey estimates (LFS), multiple jobholders by North American Industry Classification System (NAICS), sex and age group, annual
282-0032	Labour force survey estimates (LFS), multiple jobholders by North American Industry Classification System (NAICS), sex and age group, unadjusted for seasonality, monthly
282-0033	Labour force survey estimates (LFS), multiple jobholders by National Occupational Classification for Statistics (NOC-S), sex and age group, unadjusted for seasonality, monthly
282-0034	Labour force survey estimates (LFS), multiple jobholders by National Occupational Classification for Statistics (NOC-S), sex and age group, annual
282-0035	Labour force survey estimates (LFS), multiple jobholders by usual hours worked at main and all jobs, unadjusted for seasonality, monthly
282-0036	Labour force survey estimates (LFS), multiple jobholders by usual hours worked at main and all jobs, annual
282-0037	Labour force survey estimates (LFS), job tenure by type of work, sex and age group, unadjusted for seasonality, monthly
282-0038	Labour force survey estimates (LFS), job tenure by type of work, sex and age group, annual
282-0039	Labour force survey estimates (LFS), job tenure by National Occupational Classification for Statistics (NOC-S) and sex, unadjusted for seasonality, monthly
282-0040	Labour force survey estimates (LFS), job tenure by National Occupational Classification for Statistics (NOC-S) and sex, annual
282-0041	Labour force survey estimates (LFS), job tenure by North American Industry Classification System (NAICS) and sex, unadjusted for seasonality, monthly
282-0042	Labour force survey estimates (LFS), job tenure by North American Industry Classification System (NAICS) and sex, annual
282-0047	Labour force survey estimates (LFS), duration of unemployment by sex and age group, unadjusted for seasonality, monthly
282-0048	Labour force survey estimates (LFS), duration of unemployment by sex and age group, annual

282-0049	Labour force survey estimates (LFS), unemployment by type of work sought and search method, sex and age group, unadjusted for seasonality, monthly
282-0050	Labour force survey estimates (LFS), unemployment by type of work sought and search method, sex and age group, annual
282-0051	Labour force survey estimates (LFS), retirement age by class of worker and sex, annual
282-0054	Labour force survey estimates (LFS), by provinces and economic regions based on 2006 Census boundaries, 3-month moving average, unadjusted for seasonality, monthly
282-0055	Labour force survey estimates (LFS), by provinces, territories and economic regions based on 2006 Census boundaries, annual
282-0060	Labour force survey estimates (LFS), employment by economic region and North American Industry Classification System (NAICS), 3-month moving average, unadjusted for seasonality, monthly
282-0061	Labour force survey estimates (LFS), employment by economic region and North American Industry Classification System (NAICS), annual
282-0062	Labour force survey estimates (LFS), employment by economic region and National Occupational Classification for Statistics (NOC-S), 3-month moving average, unadjusted for seasonality, monthly
282-0063	Labour force survey estimates (LFS), employment by economic region and National Occupational Classification for Statistics (NOC-S), annual
282-0069	Labour force survey estimates (LFS), wages of employees by type of work, National Occupational Classification for Statistics (NOC-S), sex and age group, unadjusted for seasonality, monthly
282-0070	Labour force survey estimates (LFS), wages of employees by type of work, National Occupational Classification for Statistics (NOC-S), sex and age group, annual
282-0071	Labour force survey estimates (LFS), wages of employees by type of work, North American Industry Classification System (NAICS), sex and age group, unadjusted for seasonality, monthly
282-0072	Labour force survey estimates (LFS), wages of employees by type of work, North American Industry Classification System (NAICS), sex and age group, annual
282-0073	Labour force survey estimates (LFS), wages of employees by job permanence, union coverage, sex and age group, unadjusted for seasonality, monthly
282-0074	Labour force survey estimates (LFS), wages of employees by job permanence, union coverage, sex and age group, annual
282-0075	Labour force survey estimates (LFS), employees by establishment size, North American Industry Classification System (NAICS), sex and age group, unadjusted for seasonality, monthly
282-0076	Labour force survey estimates (LFS), employees by establishment size, North American Industry Classification System (NAICS), sex and age group, annual
282-0077	Labour force survey estimates (LFS), employees by union coverage, North American Industry Classification System (NAICS), sex and age group, unadjusted for seasonality, monthly

282-0078	Labour force survey estimates (LFS), employees by union coverage, North American Industry Classification System (NAICS), sex and age group, annual
282-0079	Labour force survey estimates (LFS), employees by job permanency, North American Industry Classification System (NAICS), sex and age group, unadjusted for seasonality, monthly
282-0080	Labour force survey estimates (LFS), employees by job permanency, North American Industry Classification System (NAICS), sex and age group, annual
282-0081	Labour force survey estimates (LFS), employees working overtime (weekly) by National Occupational Classification for Statistics (NOC-S), sex and age group, unadjusted for seasonality, monthly
282-0082	Labour force survey estimates (LFS), employees working overtime (weekly) by National Occupational Classification for Statistics (NOC-S), sex and age group, annual
282-0083	Labour force survey estimates (LFS), employees working overtime (weekly) by North American Industry Classification System (NAICS), sex and age group, unadjusted for seasonality, monthly
282-0084	Labour force survey estimates (LFS), employees working overtime (weekly) by North American Industry Classification System (NAICS), sex and age group, annual
282-0085	Labour force survey estimates (LFS), supplementary unemployment rates by sex and age group, unadjusted for seasonality, monthly
282-0086	Labour force survey estimates (LFS), supplementary unemployment rates by sex and age group, annual
282-0087	Labour force survey estimates (LFS), by sex and age group, seasonally adjusted and unadjusted, monthly
282-0088	Labour force survey estimates (LFS), employment by North American Industry Classification System (NAICS), seasonally adjusted and unadjusted, monthly
282-0089	Labour force survey estimates (LFS), employment by class of worker and sex, seasonally adjusted and unadjusted, monthly
282-0092	Labour force survey estimates (LFS), actual hours worked by North American Industry Classification System (NAICS), seasonally adjusted, monthly
282-0093	Labour force survey estimates (LFS), employment by National Occupational Classification for Statistics (NOC-S), seasonally adjusted, monthly
282-0094	Labour force survey estimates (LFS), by North American Industry Classification System (NAICS), Canada, seasonally adjusted, monthly
282-0095	Labour force survey estimates (LFS), by full- and part-time students during school months, sex and age group, annual
282-0100	Labour force survey estimates (LFS), by territories, sex and age group, 3-month moving average, seasonally adjusted and unadjusted, monthly
282-0101	Labour force survey estimates (LFS), by immigrant status, age group, Canada, regions, provinces and Montreal, Toronto, Vancouver census metropolitan areas, 3-month moving average, unadjusted for seasonality, monthly

282-0102	Labour force survey estimates (LFS), by immigrant status, age group, Canada, regions, provinces and Montreal, Toronto, Vancouver census metropolitan areas, annual
282-0103	Labour force survey estimates (LFS), by immigrant status, sex and detailed age group, Canada, 3-month moving average, unadjusted for seasonality, monthly
282-0104	Labour force survey estimates (LFS), by immigrant status, sex and detailed age group, Canada, annual
282-0105	Labour force survey estimates (LFS), by immigrant status, educational attainment, sex and age group, Canada, 3-month moving average, unadjusted for seasonality, monthly
282-0106	Labour force survey estimates (LFS), by immigrant status, educational attainment, sex and age group, Canada, annual
282-0107	Labour force survey estimates (LFS), by immigrant status, country of birth, sex and age group, Canada, 3-month moving average, unadjusted for seasonality, monthly
282-0108	Labour force survey estimates (LFS), by immigrant status, country of birth, sex and age group, Canada, annual
282-0109	Labour force survey estimates (LFS), by census metropolitan area based on 2006 census boundaries, sex and age group, 3-month moving average, unadjusted for seasonality, monthly
282-0110	Labour force survey estimates (LFS), by census metropolitan area based on 2006 census boundaries, sex and age group, annual
282-0111	Labour force survey estimates (LFS), employment by census metropolitan area based on 2006 census boundaries and North American Industry Classification System (NAICS), 3-month moving average, unadjusted for seasonality, monthly
282-0112	Labour force survey estimates (LFS), employment by census metropolitan area based on 2006 census boundaries and North American Industry Classification System (NAICS), annual
282-0113	Labour force survey estimates (LFS), employment by census metropolitan area based on 2006 census boundaries and National Occupational Classification for Statistics (NOC-S), 3-month moving average, unadjusted for seasonality, monthly
282-0114	Labour force survey estimates (LFS), employment by census metropolitan area based on 2006 census boundaries and National Occupational Classification for Statistics (NOC-S), annual
282-0115	Labour force survey estimates (LFS), by selected census agglomerations based on 2006 census boundaries, annual
282-0116	Labour force survey estimates (LFS), by census metropolitan area based on 2006 census boundaries, 3-month moving average, seasonally adjusted and unadjusted, monthly
282-0117	Labour force survey estimates (LFS), by Montréal, Toronto and Vancouver census metropolitan areas based on 2006 census boundaries, seasonally adjusted and unadjusted, monthly
282-0118	Labour force survey estimates (LFS), by urban and rural areas based on 2006 census boundaries, sex and age group, unadjusted for seasonality, monthly

282-0119	Labour force survey estimates (LFS), by urban and rural areas based on 2006 census boundaries, sex and age group, annual
282-0120	Labour force survey estimates (LFS), employment by urban and rural areas based on 2006 census boundaries, class of worker and North American Industry Classification System (NAICS), unadjusted for seasonality, monthly
282-0121	Labour force survey estimates (LFS), employment by urban and rural areas based on 2006 census boundaries, class of worker and North American Industry Classification System (NAICS), annual
282-0200	Labour force survey estimates (LFS), weekly wage distributions of employees by type of work, North American Industry Classification System (NAICS) and sex, unadjusted for seasonality, monthly
282-0201	Labour force survey estimates (LFS), weekly wage distributions of employees by type of work, North American Industry Classification System (NAICS) and sex, annual
282-0202	Labour force survey estimates (LFS), weekly wage distributions of employees by type of work, National Occupational Classification for Statistics (NOC-S) and sex, unadjusted for seasonality, monthly
282-0203	Labour force survey estimates (LFS), weekly wage distributions of employees by type of work, National Occupational Classification for Statistics (NOC-S) and sex, annual
282-0204	Labour force survey estimates (LFS), hourly wage distributions of employees by type of work, North American Industry Classification System (NAICS) and sex, unadjusted for seasonality, monthly
282-0205	Labour force survey estimates (LFS), hourly wage distributions of employees by type of work, North American Industry Classification System (NAICS) and sex, annual
282-0206	Labour force survey estimates (LFS), hourly wage distribution of employees by type of work, National Occupational Classification for Statistics (NOC-S) and sex, unadjusted for seasonality, monthly
282-0207	Labour force survey estimates (LFS), hourly wage distribution of employees by type of work, National Occupational Classification for Statistics (NOC-S) and sex, annual
282-0208	Labour force survey estimates (LFS), by educational degree, sex and age group, unadjusted for seasonality, monthly
282-0209	Labour force survey estimates (LFS), by educational degree, sex and age group, annual
282-0210	Labour force survey estimates (LFS), by family type and family age composition, unadjusted for seasonality, monthly
282-0211	Labour force survey estimates (LFS), by family type and family age composition, annual
282-0212	Labour force survey estimates (LFS), hours lost by employees by reason absent full and part week and sex, unadjusted for seasonality, monthly
282-0213	Labour force survey estimates (LFS), hours lost by employees by reason absent full and part week and sex, annual

282-0214	Labour force survey estimates (LFS), activity prior to unemployment by sex and age group, unadjusted for seasonality, monthly
282-0215	Labour force survey estimates (LFS), activity prior to unemployment by sex and age group, annual
282-0216	Labour force survey estimates (LFS), reason for leaving job during previous year by sex and age group, unadjusted for seasonality, monthly
282-0217	Labour force survey estimates (LFS), reason for leaving job during previous year by sex and age group, annual
282-0218	Labour force survey estimates (LFS), reason for not looking for work, by sex and age group, unadjusted for seasonality, monthly
282-0219	Labour force survey estimates (LFS), reason for not looking for work, by sex and age group, annual
282-0220	Labour Force Survey estimates (LFS), employees by union status, sex and age group, Canada and provinces, annual
282-0221	Labour Force Survey estimates (LFS), employees by union status, sex, age group and education level, Canada, annual
282-0222	Labour Force Survey estimates (LFS), employees by union status and National Occupational Classification (NOC-S), Canada, annual
282-0223	Labour Force Survey estimates (LFS), employees by union status, North American Industry Classification System (NAICS) and sex, Canada, annual
282-0224	Labour Force Survey estimates (LFS), employees by union status, establishment size, job tenure, type of work and job permanency, Canada, annual
282-0225	Labour Force Survey estimates (LFS), average weekly earnings, average hourly wage rate and average usual weekly hours by union status and type of work, Canada and provinces, annual

Selected surveys from Statistics Canada

3701	Labour Force Survey
------	---------------------

Selected summary tables from Statistics Canada

-
- *Labour force characteristics*
 - *Employment by industry*
 - *Days lost per worker due to illness or disability, by sex, by province*

- *Economic indicators, by province and territory (monthly and quarterly)*
- *Labour force and participation rates by sex and age group*
- *Labour force, employment and unemployment, levels and rates, by province*
- *Employment by industry and sex*
- *Full-time and part-time employment by sex and age group*
- *Labour force characteristics by age and sex*
- *Distribution of employed people, by industry, by province*
- *Labour force characteristics, population 15 years and older, by census metropolitan area*
- *Labour force characteristics, population 15 years and older, by economic region, by province*
- *Days lost per worker by reason, by provinces*
- *Days lost per worker by industry and sex*
- *People employed, by educational attainment*
- *Reasons for part-time work by sex and age group*
- *Self-employment, historical summary*
- *Employment by age, sex, type of work, class of worker and province (monthly)*
- *Employment by major industry group, seasonally adjusted, by province (monthly)*
- *Actual hours worked per week by industry, seasonally adjusted (monthly)*
- *Average hourly wages of employees by selected characteristics and occupation, unadjusted data, by province (monthly)*
- *Labour force characteristics, seasonally adjusted, by province (monthly)*
- *Labour force characteristics, unadjusted, by province (monthly)*
- *Labour force characteristics, seasonally adjusted, by census metropolitan area (3 month moving average)*
- *Labour force characteristics, unadjusted, by census metropolitan area (3 month moving average)*
- *Labour force characteristics, unadjusted, by economic region (3 month moving average)*
- *Labour force characteristics by immigrant status of population aged 25 to 54, by province*
- *Labour force characteristics by immigrant status of population aged 25 to 54, by educational attainment*
- *Labour force characteristics by immigrant status, by detailed age group*
- *Labour force characteristics by immigrant status of population aged 25 to 54, by country of birth*

Statistical tables

Table 1
Labour force characteristics by age and sex, Canada, seasonally adjusted

	March 2014	April 2014	S.E. ¹	Change from			Percent change from		
				last month	last December	twelve months ago	last month	last December	twelve months ago
in thousands (except rates)									
15 years and over, both sexes									
Population	28,924.1	28,965.1	...	41.0	121.4	376.4	0.1	0.4	1.3
Labour force	19,158.6	19,133.0	29.1	-25.6	-18.4	118.0	-0.1	-0.1	0.6
Employment	17,833.2	17,804.3	28.9	-28.9	36.4	149.2	-0.2	0.2	0.8
Employment full-time	14,456.4	14,425.5	39.2	-30.9	51.3	70.0	-0.2	0.4	0.5
Employment part-time	3,376.8	3,378.8	36.1	2.0	-14.9	79.2	0.1	-0.4	2.4
Unemployment	1,325.4	1,328.6	24.9	3.2	-54.9	-31.3	0.2	-4.0	-2.3
Participation rate	66.2	66.1	0.1	-0.1	-0.3	-0.4
Unemployment rate	6.9	6.9	0.1	0.0	-0.3	-0.3
Employment rate	61.7	61.5	0.1	-0.2	-0.1	-0.3
Part-time rate	18.9	19.0	0.2	0.0	-0.1	0.3
15 to 24 years, both sexes									
Population	4,432.0	4,429.5	...	-2.5	-10.4	-21.7	-0.1	-0.2	-0.5
Labour force	2,838.5	2,802.8	17.2	-35.7	-13.3	-31.0	-1.3	-0.5	-1.1
Employment	2,453.2	2,426.1	15.8	-27.1	4.2	2.1	-1.1	0.2	0.1
Employment full-time	1,282.0	1,248.3	18.6	-33.7	-1.1	-41.5	-2.6	-0.1	-3.2
Employment part-time	1,171.2	1,177.8	19.7	6.6	5.3	43.6	0.6	0.5	3.8
Unemployment	385.3	376.7	14.6	-8.6	-17.6	-33.1	-2.2	-4.5	-8.1
Participation rate	64.0	63.3	0.4	-0.7	-0.1	-0.4
Unemployment rate	13.6	13.4	0.5	-0.2	-0.6	-1.1
Employment rate	55.4	54.8	0.4	-0.6	0.3	0.3
Part-time rate	47.7	48.5	0.7	0.8	0.1	1.8
25 years and over, men									
Population	11,996.4	12,018.3	...	21.9	67.1	202.4	0.2	0.6	1.7
Labour force	8,650.4	8,661.0	15.1	10.6	22.8	91.4	0.1	0.3	1.1
Employment	8,123.0	8,128.1	16.4	5.1	45.8	84.0	0.1	0.6	1.0
Employment full-time	7,448.2	7,482.4	22.0	34.2	41.3	64.9	0.5	0.6	0.9
Employment part-time	674.7	645.6	18.0	-29.1	4.4	19.0	-4.3	0.7	3.0
Unemployment	527.5	532.9	14.5	5.4	-22.9	7.5	1.0	-4.1	1.4
Participation rate	72.1	72.1	0.1	0.0	-0.2	-0.4
Unemployment rate	6.1	6.2	0.2	0.1	-0.2	0.1
Employment rate	67.7	67.6	0.1	-0.1	0.0	-0.5
Part-time rate	8.3	7.9	0.2	-0.4	0.0	0.2
25 years and over, women									
Population	12,495.7	12,517.3	...	21.6	64.7	195.8	0.2	0.5	1.6
Labour force	7,669.6	7,669.2	16.6	-0.4	-27.9	57.6	0.0	-0.4	0.8
Employment	7,257.0	7,250.2	16.4	-6.8	-13.6	63.3	-0.1	-0.2	0.9
Employment full-time	5,726.2	5,694.8	25.7	-31.4	11.1	46.6	-0.5	0.2	0.8
Employment part-time	1,530.8	1,555.4	24.0	24.6	-24.7	16.7	1.6	-1.6	1.1
Unemployment	412.6	419.0	13.3	6.4	-14.3	-5.6	1.6	-3.3	-1.3
Participation rate	61.4	61.3	0.1	-0.1	-0.5	-0.5
Unemployment rate	5.4	5.5	0.2	0.1	-0.1	-0.1
Employment rate	58.1	57.9	0.1	-0.2	-0.4	-0.4
Part-time rate	21.1	21.5	0.3	0.4	-0.3	0.0
25 to 54 years, both sexes									
Population	14,660.4	14,674.8	...	14.4	34.4	85.3	0.1	0.2	0.6
Labour force	12,653.1	12,628.1	21.9	-25.0	-51.6	2.1	-0.2	-0.4	0.0
Employment	11,932.0	11,901.7	23.4	-30.3	-9.5	8.5	-0.3	-0.1	0.1
Unemployment	721.1	726.4	18.5	5.3	-42.1	-6.4	0.7	-5.5	-0.9
Participation rate	86.3	86.1	0.1	-0.2	-0.5	-0.4
Unemployment rate	5.7	5.8	0.1	0.1	-0.3	0.0
Employment rate	81.4	81.1	0.2	-0.3	-0.3	-0.4
25 to 54 years, men									
Population	7,338.8	7,346.3	...	7.5	18.7	46.7	0.1	0.3	0.6
Labour force	6,630.7	6,631.1	14.0	0.4	-14.4	16.5	0.0	-0.2	0.2
Employment	6,238.8	6,238.0	15.7	-0.8	14.6	16.2	0.0	0.2	0.3
Unemployment	391.9	393.1	13.3	1.2	-28.9	0.3	0.3	-6.8	0.1
Participation rate	90.4	90.3	0.2	-0.1	-0.4	-0.3
Unemployment rate	5.9	5.9	0.2	0.0	-0.5	0.0
Employment rate	85.0	84.9	0.2	-0.1	0.0	-0.3

See notes at the end of the table.

Table 1 – continued

Labour force characteristics by age and sex, Canada, seasonally adjusted

	March 2014	April 2014	S.E. ¹	Change from			Percent change from		
				last month	last December	twelve months ago	last month	last December	twelve months ago
in thousands (except rates)									
25 to 54 years, women									
Population	7,321.7	7,328.6	...	6.9	15.8	38.7	0.1	0.2	0.5
Labour force	6,022.3	5,997.0	16.2	-25.3	-37.2	-14.4	-0.4	-0.6	-0.2
Employment	5,693.1	5,663.7	16.4	-29.4	-24.0	-7.7	-0.5	-0.4	-0.1
Unemployment	329.2	333.3	12.3	4.1	-13.2	-6.7	1.2	-3.8	-2.0
Participation rate	82.3	81.8	0.2	-0.5	-0.7	-0.7
Unemployment rate	5.5	5.6	0.2	0.1	-0.1	-0.1
Employment rate	77.8	77.3	0.2	-0.5	-0.5	-0.5
55 years and over, both sexes									
Population	9,831.7	9,860.8	...	29.1	97.4	312.9	0.3	1.0	3.3
Labour force	3,667.0	3,702.0	17.5	35.0	46.5	146.8	1.0	1.3	4.1
Employment	3,448.0	3,476.5	17.7	28.5	41.6	138.6	0.8	1.2	4.2
Unemployment	219.0	225.5	9.5	6.5	4.9	8.3	3.0	2.2	3.8
Participation rate	37.3	37.5	0.2	0.2	0.1	0.3
Unemployment rate	6.0	6.1	0.3	0.1	0.1	0.0
Employment rate	35.1	35.3	0.2	0.2	0.1	0.3
55 years and over, men									
Population	4,657.7	4,672.0	...	14.3	48.4	155.7	0.3	1.0	3.4
Labour force	2,019.7	2,029.9	11.5	10.2	37.2	74.9	0.5	1.9	3.8
Employment	1,884.1	1,890.1	11.8	6.0	31.2	67.7	0.3	1.7	3.7
Unemployment	135.6	139.8	7.0	4.2	6.0	7.2	3.1	4.5	5.4
Participation rate	43.4	43.4	0.3	0.0	0.3	0.1
Unemployment rate	6.7	6.9	0.3	0.2	0.2	0.1
Employment rate	40.5	40.5	0.3	0.0	0.3	0.1
55 years and over, women									
Population	5,174.0	5,188.8	...	14.8	49.0	157.2	0.3	1.0	3.1
Labour force	1,647.2	1,672.1	12.1	24.9	9.2	72.0	1.5	0.6	4.5
Employment	1,563.9	1,586.5	12.1	22.6	10.5	71.0	1.4	0.7	4.7
Unemployment	83.4	85.7	6.2	2.3	-1.1	1.1	2.8	-1.3	1.3
Participation rate	31.8	32.2	0.2	0.4	-0.2	0.4
Unemployment rate	5.1	5.1	0.4	0.0	-0.1	-0.2
Employment rate	30.2	30.6	0.2	0.4	-0.1	0.5

1. Average standard error of change in two consecutive months (see "Sampling Errors" in Data Quality for further explanations).

Note(s): Related CANSIM table 282-0087. The sum of individual categories may not always add to the total due to rounding.

Table 2
Employment by class of worker and industry, Canada, seasonally adjusted

	March 2014	April 2014	S.E. ¹	Change from			Percent change from		
				last month	last December	twelve months ago	last month	last December	twelve months ago
in thousands									
Class of worker									
Employees	15,128.5	15,082.5	35.7	-46.0	-17.2	143.1	-0.3	-0.1	1.0
Self-employed ²	2,704.6	2,721.8	25.5	17.2	53.6	6.2	0.6	2.0	0.2
Public/private sector employees									
Public sector employees	3,625.6	3,608.2	25.0	-17.4	-14.1	-44.0	-0.5	-0.4	-1.2
Private sector employees	11,502.9	11,474.3	37.9	-28.6	-3.1	187.0	-0.2	0.0	1.7
Industry	17,833.2	17,804.3	28.9	-28.9	36.4	149.2	-0.2	0.2	0.8
Goods-producing sector	3,881.0	3,864.8	26.3	-16.2	-9.3	2.7	-0.4	-0.2	0.1
Agriculture	298.3	294.4	7.5	-3.9	-4.9	-26.1	-1.3	-1.6	-8.1
Forestry, fishing, mining, quarrying, oil and gas extraction ³	387.2	380.4	7.4	-6.8	2.7	22.8	-1.8	0.7	6.4
Utilities	160.7	155.4	5.4	-5.3	-1.8	20.8	-3.3	-1.1	15.5
Construction	1,300.2	1,300.8	17.7	0.6	6.4	-16.0	0.0	0.5	-1.2
Manufacturing	1,734.5	1,733.7	19.6	-0.8	-11.8	1.1	0.0	-0.7	0.1
Services-producing sector	13,952.2	13,939.6	34.4	-12.6	45.8	146.6	-0.1	0.3	1.1
Trade	2,694.3	2,706.6	24.5	12.3	10.3	22.4	0.5	0.4	0.8
Transportation and warehousing	895.4	900.5	14.2	5.1	31.6	46.8	0.6	3.6	5.5
Finance, insurance, real estate and leasing	1,129.4	1,110.0	16.8	-19.4	-24.2	-11.7	-1.7	-2.1	-1.0
Professional, scientific and technical services	1,373.6	1,363.8	18.6	-9.8	-5.0	17.2	-0.7	-0.4	1.3
Business, building and other support services	706.5	732.6	14.4	26.1	16.9	38.0	3.7	2.4	5.5
Educational services	1,281.1	1,274.1	16.2	-7.0	-5.6	-15.9	-0.5	-0.4	-1.2
Health care and social assistance	2,217.6	2,234.0	19.5	16.4	29.4	51.3	0.7	1.3	2.4
Information, culture and recreation	800.6	800.2	14.8	-0.4	-5.8	19.3	0.0	-0.7	2.5
Accommodation and food services	1,147.3	1,115.1	17.2	-32.2	-17.3	-6.1	-2.8	-1.5	-0.5
Other services	784.0	775.6	13.8	-8.4	14.7	28.3	-1.1	1.9	3.8
Public administration	922.4	927.2	13.0	4.8	0.9	-42.8	0.5	0.1	-4.4

1. Average standard error of change in two consecutive months (see "Sampling Errors" in Data Quality for further explanations).

2. Includes both incorporated and unincorporated working owners, self-employed persons who do not have a business and persons working in a family business without pay.

3. Also referred to as Natural resources.

Note(s): Related CANSIM Tables 282-0088, 282-0089. The sum of individual categories may not always add to the total due to rounding.

Table 3
Labour force characteristics by province, seasonally adjusted

	March 2014	April 2014	S.E. ¹	Change from			Percent change from		
				last month	last December	twelve months ago	last month	last December	twelve months ago
in thousands (except rates)									
Newfoundland and Labrador									
Population	429.1	428.7	...	-0.4	-0.9	-0.8	-0.1	-0.2	-0.2
Labour force	262.1	259.9	1.9	-2.2	-2.5	-4.2	-0.8	-1.0	-1.6
Employment	231.8	228.5	2.0	-3.3	-5.5	-3.2	-1.4	-2.4	-1.4
Employment full-time	197.3	193.2	2.4	-4.1	-5.6	-5.0	-2.1	-2.8	-2.5
Employment part-time	34.5	35.3	1.9	0.8	0.2	1.8	2.3	0.6	5.4
Unemployment	30.3	31.4	1.8	1.1	3.0	-1.0	3.6	10.6	-3.1
Participation rate	61.1	60.6	0.4	-0.5	-0.5	-0.9
Unemployment rate	11.6	12.1	0.6	0.5	1.3	-0.2
Employment rate	54.0	53.3	0.5	-0.7	-1.2	-0.6
Prince Edward Island									
Population	121.3	121.4	...	0.1	0.4	0.7	0.1	0.3	0.6
Labour force	83.9	82.6	0.6	-1.3	-0.7	-2.0	-1.5	-0.8	-2.4
Employment	74.1	72.9	0.7	-1.2	-0.7	-2.1	-1.6	-1.0	-2.8
Employment full-time	62.4	60.9	0.9	-1.5	-0.9	-0.9	-2.4	-1.5	-1.5
Employment part-time	11.7	12.0	0.7	0.3	0.2	-1.2	2.6	1.7	-9.1
Unemployment	9.9	9.7	0.7	-0.2	0.0	0.1	-2.0	0.0	1.0
Participation rate	69.2	68.0	0.5	-1.2	-0.8	-2.1
Unemployment rate	11.8	11.7	0.8	-0.1	0.1	0.4
Employment rate	61.1	60.0	0.6	-1.1	-0.8	-2.1
Nova Scotia									
Population	781.2	780.8	...	-0.4	-0.7	-0.3	-0.1	-0.1	0.0
Labour force	492.9	492.3	2.6	-0.6	-2.6	-9.2	-0.1	-0.5	-1.8
Employment	447.3	448.4	2.6	1.1	-1.1	-7.9	0.2	-0.2	-1.7
Employment full-time	360.1	363.3	3.5	3.2	3.4	-9.3	0.9	0.9	-2.5
Employment part-time	87.2	85.1	3.2	-2.1	-4.5	1.3	-2.4	-5.0	1.6
Unemployment	45.6	43.9	2.4	-1.7	-1.5	-1.3	-3.7	-3.3	-2.9
Participation rate	63.1	63.1	0.3	0.0	-0.2	-1.1
Unemployment rate	9.3	8.9	0.5	-0.4	-0.3	-0.1
Employment rate	57.3	57.4	0.3	0.1	-0.1	-1.0
New Brunswick									
Population	620.3	620.3	...	0.0	0.4	0.4	0.0	0.1	0.1
Labour force	394.8	392.2	2.2	-2.6	0.5	1.3	-0.7	0.1	0.3
Employment	356.3	350.9	2.4	-5.4	-2.8	2.6	-1.5	-0.8	0.7
Employment full-time	296.3	295.7	3.0	-0.6	-0.4	3.2	-0.2	-0.1	1.1
Employment part-time	60.0	55.2	2.6	-4.8	-2.4	-0.6	-8.0	-4.2	-1.1
Unemployment	38.4	41.3	2.3	2.9	3.3	-1.2	7.6	8.7	-2.8
Participation rate	63.6	63.2	0.4	-0.4	0.0	0.1
Unemployment rate	9.7	10.5	0.6	0.8	0.8	-0.4
Employment rate	57.4	56.6	0.4	-0.8	-0.5	0.4
Quebec									
Population	6,724.1	6,730.2	...	6.1	16.2	50.0	0.1	0.2	0.7
Labour force	4,379.1	4,347.4	15.1	-31.7	-36.6	-16.3	-0.7	-0.8	-0.4
Employment	4,047.8	4,015.8	15.2	-32.0	-29.7	-4.8	-0.8	-0.7	-0.1
Employment full-time	3,266.1	3,243.2	20.0	-22.9	3.3	-17.5	-0.7	0.1	-0.5
Employment part-time	781.7	772.6	18.3	-9.1	-32.9	12.7	-1.2	-4.1	1.7
Unemployment	331.3	331.6	13.2	0.3	-7.0	-11.5	0.1	-2.1	-3.4
Participation rate	65.1	64.6	0.2	-0.5	-0.7	-0.7
Unemployment rate	7.6	7.6	0.3	0.0	-0.1	-0.3
Employment rate	60.2	59.7	0.2	-0.5	-0.6	-0.5
Ontario									
Population	11,298.6	11,313.9	...	15.3	46.3	140.1	0.1	0.4	1.3
Labour force	7,449.7	7,475.5	19.8	25.8	9.2	62.1	0.3	0.1	0.8
Employment	6,902.3	6,919.9	19.0	17.6	43.1	73.5	0.3	0.6	1.1
Employment full-time	5,599.4	5,625.2	26.6	25.8	47.7	92.3	0.5	0.9	1.7
Employment part-time	1,302.9	1,294.7	24.6	-8.2	-4.5	-18.8	-0.6	-0.3	-1.4
Unemployment	547.4	555.6	17.2	8.2	-33.9	-11.4	1.5	-5.8	-2.0
Participation rate	65.9	66.1	0.2	0.2	-0.2	-0.2
Unemployment rate	7.3	7.4	0.2	0.1	-0.5	-0.2
Employment rate	61.1	61.2	0.2	0.1	0.2	-0.1

See notes at the end of the table.

Table 3 – continued

Labour force characteristics by province, seasonally adjusted

	March 2014	April 2014	S.E. ¹	Change from			Percent change from		
				last month	last December	twelve months ago	last month	last December	twelve months ago
in thousands (except rates)									
Manitoba									
Population	982.1	983.6	...	1.5	4.7	12.5	0.2	0.5	1.3
Labour force	667.1	666.7	2.7	-0.4	-0.8	1.0	-0.1	-0.1	0.2
Employment	629.3	627.4	2.7	-1.9	-3.1	-0.2	-0.3	-0.5	0.0
Employment full-time	508.9	505.0	3.7	-3.9	-5.3	0.6	-0.8	-1.0	0.1
Employment part-time	120.5	122.3	3.5	1.8	2.2	-0.9	1.5	1.8	-0.7
Unemployment	37.8	39.4	2.1	1.6	2.4	1.3	4.2	6.5	3.4
Participation rate	67.9	67.8	0.3	-0.1	-0.4	-0.8
Unemployment rate	5.7	5.9	0.3	0.2	0.4	0.2
Employment rate	64.1	63.8	0.3	-0.3	-0.6	-0.8
Saskatchewan									
Population	837.9	839.7	...	1.8	5.5	17.8	0.2	0.7	2.2
Labour force	584.4	580.7	2.5	-3.7	0.3	4.9	-0.6	0.1	0.9
Employment	558.3	561.3	2.6	3.0	3.3	8.3	0.5	0.6	1.5
Employment full-time	457.7	459.1	3.4	1.4	1.6	6.5	0.3	0.3	1.4
Employment part-time	100.6	102.2	3.1	1.6	1.7	1.8	1.6	1.7	1.8
Unemployment	26.1	19.5	1.8	-6.6	-2.9	-3.3	-25.3	-12.9	-14.5
Participation rate	69.7	69.2	0.3	-0.5	-0.4	-0.9
Unemployment rate	4.5	3.4	0.3	-1.1	-0.5	-0.6
Employment rate	66.6	66.8	0.3	0.2	-0.1	-0.5
Alberta									
Population	3,243.9	3,254.9	...	11.0	32.6	109.2	0.3	1.0	3.5
Labour force	2,377.7	2,370.7	9.3	-7.0	21.7	84.7	-0.3	0.9	3.7
Employment	2,261.2	2,258.3	9.9	-2.9	21.6	72.3	-0.1	1.0	3.3
Employment full-time	1,895.2	1,871.9	12.6	-23.3	-1.7	10.4	-1.2	-0.1	0.6
Employment part-time	366.0	386.4	11.2	20.4	23.3	62.0	5.6	6.4	19.1
Unemployment	116.5	112.4	7.1	-4.1	0.2	12.3	-3.5	0.2	12.3
Participation rate	73.3	72.8	0.3	-0.5	-0.1	0.1
Unemployment rate	4.9	4.7	0.3	-0.2	-0.1	0.3
Employment rate	69.7	69.4	0.3	-0.3	0.0	-0.1
British Columbia									
Population	3,885.6	3,891.6	...	6.0	16.8	46.9	0.2	0.4	1.2
Labour force	2,466.8	2,464.9	10.5	-1.9	-7.1	-4.3	-0.1	-0.3	-0.2
Employment	2,324.7	2,321.0	10.4	-3.7	11.3	10.9	-0.2	0.5	0.5
Employment full-time	1,813.0	1,808.0	14.6	-5.0	9.4	-10.2	-0.3	0.5	-0.6
Employment part-time	511.7	513.0	13.8	1.3	1.9	21.1	0.3	0.4	4.3
Unemployment	142.1	143.8	8.6	1.7	-18.5	-15.3	1.2	-11.4	-9.6
Participation rate	63.5	63.3	0.3	-0.2	-0.5	-0.9
Unemployment rate	5.8	5.8	0.3	0.0	-0.8	-0.6
Employment rate	59.8	59.6	0.3	-0.2	0.0	-0.5

1. Average standard error of change in two consecutive months (see "Sampling Errors" in Data Quality for further explanations).

Note(s): Related CANSIM Table 282-0087. The sum of individual categories may not always add to the total due to rounding.

Table 4-1
Selected labour force characteristics (seasonally adjusted) — Newfoundland and Labrador

	March 2014	April 2014	S.E. ¹	Change from			Percent change from		
				last month	last December	twelve months ago	last month	last December	twelve months ago
in thousands (except rates)									
Both sexes, 15 years and over									
Population	429.1	428.7	...	-0.4	-0.9	-0.8	-0.1	-0.2	-0.2
Labour force	262.1	259.9	1.9	-2.2	-2.5	-4.2	-0.8	-1.0	-1.6
Employment	231.8	228.5	2.0	-3.3	-5.5	-3.2	-1.4	-2.4	-1.4
Employment full-time	197.3	193.2	2.4	-4.1	-5.6	-5.0	-2.1	-2.8	-2.5
Unemployment	30.3	31.4	1.8	1.1	3.0	-1.0	3.6	10.6	-3.1
Participation rate	61.1	60.6	0.4	-0.5	-0.5	-0.9
Unemployment rate	11.6	12.1	0.6	0.5	1.3	-0.2
Employment rate	54.0	53.3	0.5	-0.7	-1.2	-0.6
Part-time rate	14.9	15.4	0.8	0.6	0.4	1.0
Both sexes, 15 to 24 years									
Population	57.5	57.2	...	-0.3	-0.7	-1.8	-0.5	-1.2	-3.1
Labour force	33.2	32.6	1.0	-0.6	-1.2	-2.3	-1.8	-3.6	-6.6
Employment	27.7	26.8	1.0	-0.9	-1.0	-2.6	-3.2	-3.6	-8.8
Unemployment	5.5	5.8	0.9	0.3	-0.2	0.3	5.5	-3.3	5.5
Participation rate	57.7	57.0	1.7	-0.7	-1.4	-2.2
Unemployment rate	16.6	17.8	2.4	1.2	0.0	2.0
Employment rate	48.2	46.9	1.8	-1.3	-1.1	-2.9
Part-time rate	40.1	39.9	3.6	-0.1	-1.4	-2.9
Men, 25 years and over									
Population	179.5	179.3	...	-0.2	-0.2	0.3	-0.1	-0.1	0.2
Labour force	119.3	119.5	1.1	0.2	0.6	0.3	0.2	0.5	0.3
Employment	105.7	104.9	1.2	-0.8	-0.8	1.4	-0.8	-0.8	1.4
Unemployment	13.7	14.6	1.1	0.9	1.4	-1.1	6.6	10.6	-7.0
Participation rate	66.5	66.6	0.6	0.1	0.4	0.0
Unemployment rate	11.5	12.2	0.9	0.7	1.1	-1.0
Employment rate	58.9	58.5	0.7	-0.4	-0.4	0.7
Part-time rate	4.9	5.4	0.7	0.5	0.4	1.2
Women, 25 years and over									
Population	192.2	192.1	...	-0.1	-0.1	0.6	-0.1	-0.1	0.3
Labour force	109.6	107.8	1.1	-1.8	-1.9	-2.2	-1.6	-1.7	-2.0
Employment	98.4	96.9	1.0	-1.5	-3.6	-2.0	-1.5	-3.6	-2.0
Unemployment	11.2	10.9	1.0	-0.3	1.7	-0.2	-2.7	18.5	-1.8
Participation rate	57.0	56.1	0.6	-0.9	-1.0	-1.3
Unemployment rate	10.2	10.1	0.9	-0.1	1.7	0.0
Employment rate	51.2	50.4	0.5	-0.8	-1.9	-1.2
Part-time rate	18.5	19.5	1.3	1.0	1.2	2.8
Industry									
Population	231.8	228.5	2.0	-3.3	-5.5	-3.2	-1.4	-2.4	-1.4
Goods-producing sector									
Agriculture	54.3	53.3	1.8	-1.0	-3.6	1.3	-1.8	-6.3	2.5
Forestry, fishing, mining, quarrying, oil and gas extraction ²	1.4	0.8	0.4	-0.6	-1.0	-0.4	-42.9	-55.6	-33.3
Utilities	18.9	17.8	1.0	-1.1	-0.3	2.1	-5.8	-1.7	13.4
Construction	2.2	2.9	0.3	0.7	0.6	0.3	31.8	26.1	11.5
Manufacturing	20.4	20.8	1.2	0.4	-0.1	-0.5	2.0	-0.5	-2.3
Services-producing sector									
Trade	11.3	10.9	0.9	-0.4	-2.9	-0.3	-3.5	-21.0	-2.7
Transportation and warehousing	177.5	175.2	2.0	-2.3	-1.9	-4.6	-1.3	-1.1	-2.6
Finance, insurance, real estate and leasing	37.6	37.7	1.4	0.1	-0.4	0.1	0.3	-1.0	0.3
Professional, scientific and technical services	12.1	12.2	0.7	0.1	1.8	2.5	0.8	17.3	25.8
Business, building and other support services	9.2	8.5	0.6	-0.7	-0.9	-0.1	-7.6	-9.6	-1.2
Educational services	10.1	9.7	0.8	-0.4	0.5	0.6	-4.0	5.4	6.6
Health care and social assistance	6.5	6.0	0.6	-0.5	0.5	-0.5	-7.7	9.1	-7.7
Information, culture and recreation	18.0	17.3	1.0	-0.7	-0.9	-2.3	-3.9	-4.9	-11.7
Accommodation and food services	34.9	33.7	1.2	-1.2	-2.9	-4.2	-3.4	-7.9	-11.1
Other services	7.7	7.3	0.7	-0.4	-0.1	1.6	-5.2	-1.4	28.1
Public administration	14.7	15.2	1.0	0.5	1.4	3.0	3.4	10.1	24.6
	11.6	11.2	0.9	-0.4	0.3	-2.9	-3.4	2.8	-20.6
	15.1	16.4	0.9	1.3	-1.1	-2.5	8.6	-6.3	-13.2

1. Average standard error of change in two consecutive months (see "Sampling Errors" in Data Quality for further explanations).

2. Also referred to as Natural resources.

Note(s): Related CANSIM Tables 282-0087, 282-0088. The sum of individual categories may not always add to the total due to rounding.

Table 4-2
Selected labour force characteristics (seasonally adjusted) — Prince Edward Island

	March 2014	April 2014	S.E. ¹	Change from			Percent change from		
				last month	last December	twelve months ago	last month	last December	twelve months ago
in thousands (except rates)									
Both sexes, 15 years and over									
Population	121.3	121.4	...	0.1	0.4	0.7	0.1	0.3	0.6
Labour force	83.9	82.6	0.6	-1.3	-0.7	-2.0	-1.5	-0.8	-2.4
Employment	74.1	72.9	0.7	-1.2	-0.7	-2.1	-1.6	-1.0	-2.8
Employment full-time	62.4	60.9	0.9	-1.5	-0.9	-0.9	-2.4	-1.5	-1.5
Unemployment	9.9	9.7	0.7	-0.2	0.0	0.1	-2.0	0.0	1.0
Participation rate	69.2	68.0	0.5	-1.2	-0.8	-2.1
Unemployment rate	11.8	11.7	0.8	-0.1	0.1	0.4
Employment rate	61.1	60.0	0.6	-1.1	-0.8	-2.1
Part-time rate	15.8	16.5	0.9	0.7	0.4	-1.1
Both sexes, 15 to 24 years									
Population	19.6	19.5	...	-0.1	-0.1	-0.4	-0.5	-0.5	-2.0
Labour force	13.5	13.4	0.4	-0.1	-0.1	-1.1	-0.7	-0.7	-7.6
Employment	11.3	11.2	0.4	-0.1	-0.1	-0.5	-0.9	-0.9	-4.3
Unemployment	2.2	2.2	0.4	0.0	-0.1	-0.5	0.0	-4.3	-18.5
Participation rate	68.9	68.7	1.9	-0.2	-0.2	-4.2
Unemployment rate	16.3	16.4	2.4	0.1	-0.6	-2.2
Employment rate	57.7	57.4	1.8	-0.3	-0.3	-1.4
Part-time rate	44.2	42.9	3.7	-1.4	3.9	-6.7
Men, 25 years and over									
Population	48.8	48.9	...	0.1	0.3	0.5	0.2	0.6	1.0
Labour force	36.0	35.9	0.3	-0.1	0.2	-0.2	-0.3	0.6	-0.6
Employment	31.4	31.4	0.4	0.0	-0.1	-0.7	0.0	-0.3	-2.2
Unemployment	4.6	4.5	0.4	-0.1	0.3	0.6	-2.2	7.1	15.4
Participation rate	73.8	73.4	0.7	-0.4	-0.1	-1.2
Unemployment rate	12.8	12.5	1.1	-0.3	0.7	1.7
Employment rate	64.3	64.2	0.9	-0.1	-0.6	-2.1
Part-time rate	5.7	7.3	1.0	1.6	-0.9	-0.2
Women, 25 years and over									
Population	52.9	53.0	...	0.1	0.2	0.6	0.2	0.4	1.1
Labour force	34.5	33.3	0.3	-1.2	-0.7	-0.8	-3.5	-2.1	-2.3
Employment	31.4	30.4	0.4	-1.0	-0.4	-0.7	-3.2	-1.3	-2.3
Unemployment	3.1	3.0	0.3	-0.1	-0.2	0.1	-3.2	-6.2	3.4
Participation rate	65.2	62.8	0.6	-2.4	-1.6	-2.3
Unemployment rate	9.0	9.0	1.0	0.0	-0.4	0.5
Employment rate	59.4	57.4	0.7	-2.0	-0.9	-2.0
Part-time rate	15.6	16.1	1.5	0.5	0.9	0.4
Industry	74.1	72.9	0.7	-1.2	-0.7	-2.1	-1.6	-1.0	-2.8
Goods-producing sector	17.2	16.4	0.6	-0.8	0.0	-1.0	-4.7	0.0	-5.7
Agriculture	3.5	3.3	0.3	-0.2	0.3	-0.8	-5.7	10.0	-19.5
Forestry, fishing, mining, quarrying, oil and gas extraction ²	2.7	2.4	0.3	-0.3	-0.3	0.2	-11.1	-11.1	9.1
Utilities	0.4	0.4	0.1	0.0	0.0	0.1	0.0	0.0	33.3
Construction	5.6	5.0	0.3	-0.6	-0.4	-0.8	-10.7	-7.4	-13.8
Manufacturing	5.1	5.3	0.4	0.2	0.4	0.4	3.9	8.2	8.2
Services-producing sector	56.9	56.5	0.7	-0.4	-0.7	-1.1	-0.7	-1.2	-1.9
Trade	11.2	10.9	0.5	-0.3	-0.1	-0.5	-2.7	-0.9	-4.4
Transportation and warehousing	2.7	2.7	0.2	0.0	-0.1	0.5	0.0	-3.6	22.7
Finance, insurance, real estate and leasing	3.0	2.8	0.2	-0.2	-0.4	0.1	-6.7	-12.5	3.7
Professional, scientific and technical services	3.4	3.2	0.3	-0.2	0.1	0.2	-5.9	3.2	6.7
Business, building and other support services	2.1	2.3	0.3	0.2	0.2	0.5	9.5	9.5	27.8
Educational services	6.2	5.9	0.4	-0.3	-0.3	-0.7	-4.8	-4.8	-10.6
Health care and social assistance	10.4	10.3	0.4	-0.1	0.3	-0.3	-1.0	3.0	-2.8
Information, culture and recreation	2.9	2.7	0.3	-0.2	0.1	0.0	-6.9	3.8	0.0
Accommodation and food services	4.4	5.2	0.4	0.8	0.0	-0.4	18.2	0.0	-7.1
Other services	3.4	3.7	0.3	0.3	-0.1	0.4	8.8	-2.6	12.1
Public administration	7.1	6.8	0.4	-0.3	-0.4	-1.0	-4.2	-5.6	-12.8

1. Average standard error of change in two consecutive months (see "Sampling Errors" in Data Quality for further explanations).

2. Also referred to as Natural resources.

Note(s): Related CANSIM Tables 282-0087, 282-0088. The sum of individual categories may not always add to the total due to rounding.

Table 4-3
Selected labour force characteristics (seasonally adjusted) — Nova Scotia

	March 2014	April 2014	S.E. ¹	Change from			Percent change from		
				last month	last December	twelve months ago	last month	last December	twelve months ago
in thousands (except rates)									
Both sexes, 15 years and over									
Population	781.2	780.8	...	-0.4	-0.7	-0.3	-0.1	-0.1	0.0
Labour force	492.9	492.3	2.6	-0.6	-2.6	-9.2	-0.1	-0.5	-1.8
Employment	447.3	448.4	2.6	1.1	-1.1	-7.9	0.2	-0.2	-1.7
Employment full-time	360.1	363.3	3.5	3.2	3.4	-9.3	0.9	0.9	-2.5
Unemployment	45.6	43.9	2.4	-1.7	-1.5	-1.3	-3.7	-3.3	-2.9
Participation rate	63.1	63.1	0.3	0.0	-0.2	-1.1
Unemployment rate	9.3	8.9	0.5	-0.4	-0.3	-0.1
Employment rate	57.3	57.4	0.3	0.1	-0.1	-1.0
Part-time rate	19.5	19.0	0.7	-0.5	-1.0	0.6
Both sexes, 15 to 24 years									
Population	114.2	113.9	...	-0.3	-1.1	-2.8	-0.3	-1.0	-2.4
Labour force	75.5	73.5	1.6	-2.0	-1.9	-2.0	-2.6	-2.5	-2.6
Employment	60.5	60.6	1.4	0.1	-0.1	0.5	0.2	-0.2	0.8
Unemployment	15.1	12.9	1.5	-2.2	-1.8	-2.5	-14.6	-12.2	-16.2
Participation rate	66.1	64.5	1.4	-1.6	-1.1	-0.2
Unemployment rate	20.0	17.6	1.8	-2.4	-1.9	-2.8
Employment rate	53.0	53.2	1.2	0.2	0.4	1.7
Part-time rate	46.0	45.7	2.7	-0.2	-0.1	-0.2
Men, 25 years and over									
Population	316.0	316.0	...	0.0	0.1	1.1	0.0	0.0	0.3
Labour force	210.1	210.8	1.3	0.7	-2.0	-4.8	0.3	-0.9	-2.2
Employment	190.8	191.4	1.5	0.6	-2.1	-7.4	0.3	-1.1	-3.7
Unemployment	19.3	19.4	1.4	0.1	0.1	2.5	0.5	0.5	14.8
Participation rate	66.5	66.7	0.4	0.2	-0.7	-1.8
Unemployment rate	9.2	9.2	0.6	0.0	0.1	1.4
Employment rate	60.4	60.6	0.5	0.2	-0.7	-2.5
Part-time rate	9.0	8.7	0.8	-0.3	-0.8	2.1
Women, 25 years and over									
Population	350.9	351.0	...	0.1	0.3	1.4	0.0	0.1	0.4
Labour force	207.3	208.1	1.4	0.8	1.4	-2.3	0.4	0.7	-1.1
Employment	196.1	196.4	1.5	0.3	1.1	-1.1	0.2	0.6	-0.6
Unemployment	11.2	11.7	1.2	0.5	0.3	-1.2	4.5	2.6	-9.3
Participation rate	59.1	59.3	0.4	0.2	0.4	-0.9
Unemployment rate	5.4	5.6	0.6	0.2	0.1	-0.5
Employment rate	55.9	56.0	0.4	0.1	0.3	-0.5
Part-time rate	21.5	20.8	1.1	-0.7	-1.5	-1.0
Industry									
Industry	447.3	448.4	2.6	1.1	-1.1	-7.9	0.2	-0.2	-1.7
Goods-producing sector									
Goods-producing sector	81.1	77.3	2.2	-3.8	-7.2	-9.9	-4.7	-8.5	-11.4
Agriculture	5.0	4.7	0.8	-0.3	-0.6	-1.0	-6.0	-11.3	-17.5
Forestry, fishing, mining, quarrying, oil and gas extraction ²	10.5	9.4	1.0	-1.1	-1.9	-1.7	-10.5	-16.8	-15.3
Utilities	4.0	3.6	0.5	-0.4	-0.7	-1.5	-10.0	-16.3	-29.4
Construction	30.9	29.7	1.6	-1.2	-3.4	-4.8	-3.9	-10.3	-13.9
Manufacturing	30.7	30.0	1.3	-0.7	-0.5	-0.8	-2.3	-1.6	-2.6
Services-producing sector									
Services-producing sector	366.3	371.1	2.9	4.8	6.1	2.0	1.3	1.7	0.5
Trade	71.4	69.7	2.0	-1.7	-2.9	-3.3	-2.4	-4.0	-4.5
Transportation and warehousing	19.9	20.8	1.1	0.9	2.4	0.5	4.5	13.0	2.5
Finance, insurance, real estate and leasing	23.1	21.0	1.0	-2.1	-1.8	-0.7	-9.1	-7.9	-3.2
Professional, scientific and technical services	26.1	27.2	1.4	1.1	1.8	-1.1	4.2	7.1	-3.9
Business, building and other support services	21.3	20.8	1.3	-0.5	-2.4	-0.5	-2.3	-10.3	-2.3
Educational services	35.7	41.0	1.5	5.3	4.7	5.5	14.8	12.9	15.5
Health care and social assistance	70.4	71.6	1.7	1.2	0.3	0.4	1.7	0.4	0.6
Information, culture and recreation	21.6	21.4	1.1	-0.2	1.5	1.3	-0.9	7.5	6.5
Accommodation and food services	29.7	30.5	1.6	0.8	2.1	2.1	2.7	7.4	7.4
Other services	18.9	17.5	1.1	-1.4	-0.1	-1.6	-7.4	-0.6	-8.4
Public administration	28.2	29.4	1.2	1.2	0.3	-0.7	4.3	1.0	-2.3

1. Average standard error of change in two consecutive months (see "Sampling Errors" in Data Quality for further explanations).

2. Also referred to as Natural resources.

Note(s): Related CANSIM Tables 282-0087, 282-0088. The sum of individual categories may not always add to the total due to rounding.

Table 4-4
Selected labour force characteristics (seasonally adjusted) — New Brunswick

	March 2014	April 2014	S.E. ¹	Change from			Percent change from		
				last month	last December	twelve months ago	last month	last December	twelve months ago
in thousands (except rates)									
Both sexes, 15 years and over									
Population	620.3	620.3	...	0.0	0.4	0.4	0.0	0.1	0.1
Labour force	394.8	392.2	2.2	-2.6	0.5	1.3	-0.7	0.1	0.3
Employment	356.3	350.9	2.4	-5.4	-2.8	2.6	-1.5	-0.8	0.7
Employment full-time	296.3	295.7	3.0	-0.6	-0.4	3.2	-0.2	-0.1	1.1
Unemployment	38.4	41.3	2.3	2.9	3.3	-1.2	7.6	8.7	-2.8
Participation rate	63.6	63.2	0.4	-0.4	0.0	0.1
Unemployment rate	9.7	10.5	0.6	0.8	0.8	-0.4
Employment rate	57.4	56.6	0.4	-0.8	-0.5	0.4
Part-time rate	16.8	15.7	0.7	-1.1	-0.6	-0.3
Both sexes, 15 to 24 years									
Population	87.1	86.8	...	-0.3	-0.7	-2.2	-0.3	-0.8	-2.5
Labour force	57.5	55.3	1.3	-2.2	-0.6	0.3	-3.8	-1.1	0.5
Employment	48.6	44.5	1.3	-4.1	-3.6	-0.1	-8.4	-7.5	-0.2
Unemployment	8.9	10.8	1.2	1.9	2.9	0.5	21.3	36.7	4.9
Participation rate	66.0	63.7	1.4	-2.3	-0.2	1.9
Unemployment rate	15.5	19.5	2.0	4.0	5.4	0.8
Employment rate	55.8	51.3	1.4	-4.5	-3.7	1.2
Part-time rate	42.8	36.4	3.0	-6.4	-4.6	-8.7
Men, 25 years and over									
Population	255.8	256.0	...	0.2	0.6	1.4	0.1	0.2	0.5
Labour force	173.9	173.5	1.2	-0.4	-0.4	1.2	-0.2	-0.2	0.7
Employment	156.2	155.2	1.4	-1.0	-0.2	3.7	-0.6	-0.1	2.4
Unemployment	17.7	18.3	1.5	0.6	-0.3	-2.5	3.4	-1.6	-12.0
Participation rate	68.0	67.8	0.5	-0.2	-0.3	0.1
Unemployment rate	10.2	10.5	0.8	0.3	-0.2	-1.6
Employment rate	61.1	60.6	0.6	-0.5	-0.2	1.1
Part-time rate	6.8	5.9	0.7	-0.9	-0.4	0.0
Women, 25 years and over									
Population	277.4	277.5	...	0.1	0.5	1.2	0.0	0.2	0.4
Labour force	163.4	163.4	1.2	0.0	1.6	-0.2	0.0	1.0	-0.1
Employment	151.5	151.2	1.3	-0.3	1.0	-1.0	-0.2	0.7	-0.7
Unemployment	11.8	12.2	1.2	0.4	0.6	0.8	3.4	5.2	7.0
Participation rate	58.9	58.9	0.4	0.0	0.5	-0.3
Unemployment rate	7.2	7.5	0.7	0.3	0.3	0.5
Employment rate	54.6	54.5	0.5	-0.1	0.3	-0.6
Part-time rate	18.9	19.8	1.1	0.8	1.1	2.2
Industry									
Industry	356.3	350.9	2.4	-5.4	-2.8	2.6	-1.5	-0.8	0.7
Goods-producing sector									
Agriculture	75.8	71.7	1.9	-4.1	-6.2	-2.9	-5.4	-8.0	-3.9
Forestry, fishing, mining, quarrying, oil and gas extraction ²	3.2	3.4	0.5	0.2	-0.5	-1.1	6.2	-12.8	-24.4
Utilities	11.6	11.7	0.8	0.1	-1.0	0.1	0.9	-7.9	0.9
Construction	4.2	4.4	0.4	0.2	0.3	0.1	4.8	7.3	2.3
Manufacturing	28.7	24.9	1.3	-3.8	-4.2	-1.6	-13.2	-14.4	-6.0
Manufacturing	28.1	27.3	1.2	-0.8	-0.8	-0.4	-2.8	-2.8	-1.4
Services-producing sector									
Trade	280.5	279.2	2.4	-1.3	3.4	5.5	-0.5	1.2	2.0
Transportation and warehousing	60.9	58.3	1.6	-2.6	-0.8	4.5	-4.3	-1.4	8.4
Finance, insurance, real estate and leasing	16.1	16.2	0.9	0.1	-0.4	-1.7	0.6	-2.4	-9.5
Professional, scientific and technical services	16.8	15.0	0.8	-1.8	-2.1	-0.7	-10.7	-12.3	-4.5
Business, building and other support services	16.1	17.0	0.8	0.9	1.7	3.2	5.6	11.1	23.2
Educational services	18.1	19.1	1.0	1.0	2.4	3.0	5.5	14.4	18.6
Health care and social assistance	26.5	25.9	1.2	-0.6	-1.4	-0.7	-2.3	-5.1	-2.6
Information, culture and recreation	50.1	50.6	1.4	0.5	1.2	-2.9	1.0	2.4	-5.4
Accommodation and food services	12.3	12.3	0.9	0.0	1.0	-1.0	0.0	8.8	-7.5
Other services	23.7	24.0	1.2	0.3	0.7	0.3	1.3	3.0	1.3
Public administration	16.8	17.1	1.0	0.3	1.7	1.1	1.8	11.0	6.9
Public administration	23.1	23.8	1.0	0.7	-0.6	0.3	3.0	-2.5	1.3

1. Average standard error of change in two consecutive months (see "Sampling Errors" in Data Quality for further explanations).

2. Also referred to as Natural resources.

Note(s): Related CANSIM Tables 282-0087, 282-0088. The sum of individual categories may not always add to the total due to rounding.

Table 4-5
Selected labour force characteristics (seasonally adjusted) — Quebec

	March 2014	April 2014	S.E. ¹	Change from			Percent change from		
				last month	last December	twelve months ago	last month	last December	twelve months ago
in thousands (except rates)									
Both sexes, 15 years and over									
Population	6,724.1	6,730.2	...	6.1	16.2	50.0	0.1	0.2	0.7
Labour force	4,379.1	4,347.4	15.1	-31.7	-36.6	-16.3	-0.7	-0.8	-0.4
Employment	4,047.8	4,015.8	15.2	-32.0	-29.7	-4.8	-0.8	-0.7	-0.1
Employment full-time	3,266.1	3,243.2	20.0	-22.9	3.3	-17.5	-0.7	0.1	-0.5
Unemployment	331.3	331.6	13.2	0.3	-7.0	-11.5	0.1	-2.1	-3.4
Participation rate	65.1	64.6	0.2	-0.5	-0.7	-0.7
Unemployment rate	7.6	7.6	0.3	0.0	-0.1	-0.3
Employment rate	60.2	59.7	0.2	-0.5	-0.6	-0.5
Part-time rate	19.3	19.2	0.4	-0.1	-0.7	0.3
Both sexes, 15 to 24 years									
Population	971.7	970.5	...	-1.2	-4.1	-9.9	-0.1	-0.4	-1.0
Labour force	646.9	636.7	8.5	-10.2	-11.6	-30.0	-1.6	-1.8	-4.5
Employment	567.1	553.4	8.1	-13.7	-11.2	-14.6	-2.4	-2.0	-2.6
Unemployment	79.9	83.3	7.3	3.4	-0.4	-15.4	4.3	-0.5	-15.6
Participation rate	66.6	65.6	0.9	-1.0	-0.9	-2.4
Unemployment rate	12.4	13.1	1.0	0.7	0.2	-1.7
Employment rate	58.4	57.0	0.8	-1.4	-0.9	-0.9
Part-time rate	53.6	52.2	1.6	-1.4	-1.5	3.5
Men, 25 years and over									
Population	2,832.5	2,836.3	...	3.8	10.8	31.5	0.1	0.4	1.1
Labour force	1,976.8	1,962.7	8.3	-14.1	-16.0	-6.7	-0.7	-0.8	-0.3
Employment	1,821.6	1,810.7	8.9	-10.9	-20.3	-23.7	-0.6	-1.1	-1.3
Unemployment	155.2	152.0	7.8	-3.2	4.3	16.9	-2.1	2.9	12.5
Participation rate	69.8	69.2	0.3	-0.6	-0.8	-1.0
Unemployment rate	7.9	7.7	0.4	-0.2	0.2	0.8
Employment rate	64.3	63.8	0.3	-0.5	-1.0	-1.6
Part-time rate	8.5	8.2	0.5	-0.3	-0.8	-0.5
Women, 25 years and over									
Population	2,919.9	2,923.3	...	3.4	9.4	28.3	0.1	0.3	1.0
Labour force	1,755.4	1,748.0	8.5	-7.4	-9.0	20.4	-0.4	-0.5	1.2
Employment	1,659.1	1,651.8	8.5	-7.3	1.9	33.6	-0.4	0.1	2.1
Unemployment	96.3	96.2	7.1	-0.1	-10.9	-13.2	-0.1	-10.2	-12.1
Participation rate	60.1	59.8	0.3	-0.3	-0.5	0.1
Unemployment rate	5.5	5.5	0.4	0.0	-0.6	-0.8
Employment rate	56.8	56.5	0.3	-0.3	-0.1	0.6
Part-time rate	19.5	20.3	0.7	0.9	-0.1	0.2
Industry									
Industry	4,047.8	4,015.8	15.2	-32.0	-29.7	-4.8	-0.8	-0.7	-0.1
Goods-producing sector									
Goods-producing sector	853.5	851.3	13.5	-2.2	-8.2	-7.5	-0.3	-1.0	-0.9
Agriculture	54.5	54.3	3.6	-0.2	1.6	-1.1	-0.4	3.0	-2.0
Forestry, fishing, mining, quarrying, oil and gas extraction ²	33.8	33.4	2.4	-0.4	6.0	0.9	-1.2	21.9	2.8
Utilities	36.0	37.1	2.8	1.1	2.6	8.8	3.1	7.5	31.1
Construction	238.7	237.4	8.7	-1.3	-14.4	-20.9	-0.5	-5.7	-8.1
Manufacturing	490.4	489.1	10.6	-1.3	-4.1	4.9	-0.3	-0.8	1.0
Services-producing sector									
Services-producing sector	3,194.3	3,164.5	17.7	-29.8	-21.4	2.7	-0.9	-0.7	0.1
Trade	621.8	621.2	12.9	-0.6	-12.4	-12.0	-0.1	-2.0	-1.9
Transportation and warehousing	203.8	196.0	6.7	-7.8	3.2	22.1	-3.8	1.7	12.7
Finance, insurance, real estate and leasing	228.4	231.7	7.6	3.3	2.5	2.4	1.4	1.1	1.0
Professional, scientific and technical services	296.1	299.8	9.5	3.7	-9.5	4.2	1.2	-3.1	1.4
Business, building and other support services	151.1	146.2	7.3	-4.9	-2.7	0.5	-3.2	-1.8	0.3
Educational services	286.1	283.1	8.2	-3.0	-4.9	7.1	-1.0	-1.7	2.6
Health care and social assistance	575.7	559.9	10.6	-15.8	-2.8	3.1	-2.7	-0.5	0.6
Information, culture and recreation	194.7	196.8	7.8	2.1	6.3	3.9	1.1	3.3	2.0
Accommodation and food services	252.8	241.7	8.9	-11.1	-9.4	-15.2	-4.4	-3.7	-5.9
Other services	175.1	168.2	7.0	-6.9	-0.4	3.1	-3.9	-0.2	1.9
Public administration	208.6	219.8	6.5	11.2	8.5	-16.7	5.4	4.0	-7.1

1. Average standard error of change in two consecutive months (see "Sampling Errors" in Data Quality for further explanations).

2. Also referred to as Natural resources.

Note(s): Related CANSIM Tables 282-0087, 282-0088. The sum of individual categories may not always add to the total due to rounding.

Table 4-6
Selected labour force characteristics (seasonally adjusted) — Ontario

	March 2014	April 2014	S.E. ¹	Change from			Percent change from		
				last month	last December	twelve months ago	last month	last December	twelve months ago
in thousands (except rates)									
Both sexes, 15 years and over									
Population	11,298.6	11,313.9	...	15.3	46.3	140.1	0.1	0.4	1.3
Labour force	7,449.7	7,475.5	19.8	25.8	9.2	62.1	0.3	0.1	0.8
Employment	6,902.3	6,919.9	19.0	17.6	43.1	73.5	0.3	0.6	1.1
Employment full-time	5,599.4	5,625.2	26.6	25.8	47.7	92.3	0.5	0.9	1.7
Unemployment	547.4	555.6	17.2	8.2	-33.9	-11.4	1.5	-5.8	-2.0
Participation rate	65.9	66.1	0.2	0.2	-0.2	-0.2
Unemployment rate	7.3	7.4	0.2	0.1	-0.5	-0.2
Employment rate	61.1	61.2	0.2	0.1	0.2	-0.1
Part-time rate	18.9	18.7	0.3	-0.2	-0.2	-0.5
Both sexes, 15 to 24 years									
Population	1,778.8	1,777.7	...	-1.1	-4.1	-9.4	-0.1	-0.2	-0.5
Labour force	1,087.7	1,088.0	12.1	0.3	11.3	5.2	0.0	1.0	0.5
Employment	917.1	920.6	10.7	3.5	24.1	22.7	0.4	2.7	2.5
Unemployment	170.7	167.4	10.4	-3.3	-12.7	-17.6	-1.9	-7.1	-9.5
Participation rate	61.1	61.2	0.7	0.1	0.8	0.6
Unemployment rate	15.7	15.4	0.9	-0.3	-1.3	-1.7
Employment rate	51.6	51.8	0.6	0.2	1.5	1.6
Part-time rate	50.0	51.1	1.2	1.0	-0.7	-1.5
Men, 25 years and over									
Population	4,617.6	4,625.4	...	7.8	24.2	72.2	0.2	0.5	1.6
Labour force	3,332.1	3,345.5	10.1	13.4	6.1	29.6	0.4	0.2	0.9
Employment	3,133.7	3,139.4	10.9	5.7	26.9	36.2	0.2	0.9	1.2
Unemployment	198.4	206.1	9.8	7.7	-20.7	-6.7	3.9	-9.1	-3.1
Participation rate	72.2	72.3	0.2	0.1	-0.3	-0.5
Unemployment rate	6.0	6.2	0.3	0.2	-0.6	-0.2
Employment rate	67.9	67.9	0.2	0.0	0.3	-0.3
Part-time rate	8.8	8.4	0.4	-0.4	0.8	0.5
Women, 25 years and over									
Population	4,902.1	4,910.9	...	8.8	26.3	77.4	0.2	0.5	1.6
Labour force	3,029.8	3,042.0	11.1	12.2	-8.2	27.4	0.4	-0.3	0.9
Employment	2,851.6	2,859.8	10.9	8.2	-7.9	14.4	0.3	-0.3	0.5
Unemployment	178.2	182.1	9.1	3.9	-0.4	12.8	2.2	-0.2	7.6
Participation rate	61.8	61.9	0.2	0.1	-0.5	-0.5
Unemployment rate	5.9	6.0	0.3	0.1	0.0	0.4
Employment rate	58.2	58.2	0.2	0.0	-0.5	-0.7
Part-time rate	19.9	19.6	0.6	-0.3	-1.2	-1.3
Industry	6,902.3	6,919.9	19.0	17.6	43.1	73.5	0.3	0.6	1.1
Goods-producing sector	1,398.8	1,409.1	17.5	10.3	12.3	-12.8	0.7	0.9	-0.9
Agriculture	80.8	83.7	4.2	2.9	1.0	-2.1	3.6	1.2	-2.4
Forestry, fishing, mining, quarrying, oil and gas extraction ²	38.7	36.9	2.5	-1.8	-1.3	-1.0	-4.7	-3.4	-2.6
Utilities	58.6	56.9	3.4	-1.7	-3.8	5.2	-2.9	-6.3	10.1
Construction	465.2	462.5	11.5	-2.7	15.2	4.8	-0.6	3.4	1.0
Manufacturing	755.4	769.1	14.2	13.7	1.1	-19.6	1.8	0.1	-2.5
Services-producing sector	5,503.6	5,510.7	23.2	7.1	30.7	86.2	0.1	0.6	1.6
Trade	1,019.5	1,048.2	16.4	28.7	23.6	38.7	2.8	2.3	3.8
Transportation and warehousing	326.4	326.1	10.1	-0.3	12.8	-1.6	-0.1	4.1	-0.5
Finance, insurance, real estate and leasing	520.9	519.2	12.6	-1.7	-3.5	-0.4	-0.3	-0.7	-0.1
Professional, scientific and technical services	596.0	593.6	13.0	-2.4	6.9	16.2	-0.4	1.2	2.8
Business, building and other support services	320.4	320.9	10.4	0.5	4.8	13.4	0.2	1.5	4.4
Educational services	507.9	507.7	11.2	-0.2	-3.1	-13.8	0.0	-0.6	-2.6
Health care and social assistance	797.3	802.6	13.1	5.3	9.0	23.4	0.7	1.1	3.0
Information, culture and recreation	334.9	331.6	10.2	-3.3	-2.2	25.7	-1.0	-0.7	8.4
Accommodation and food services	417.5	403.7	11.3	-13.8	-10.0	-28.1	-3.3	-2.4	-6.5
Other services	297.4	295.4	9.1	-2.0	5.5	29.6	-0.7	1.9	11.1
Public administration	365.5	361.7	9.3	-3.8	-13.1	-16.9	-1.0	-3.5	-4.5

1. Average standard error of change in two consecutive months (see "Sampling Errors" in Data Quality for further explanations).

2. Also referred to as Natural resources.

Note(s): Related CANSIM Tables 282-0087, 282-0088. The sum of individual categories may not always add to the total due to rounding.

Table 4-7
Selected labour force characteristics (seasonally adjusted) — Manitoba

	March 2014	April 2014	S.E. ¹	Change from			Percent change from		
				last month	last December	twelve months ago	last month	last December	twelve months ago
in thousands (except rates)									
Both sexes, 15 years and over									
Population	982.1	983.6	...	1.5	4.7	12.5	0.2	0.5	1.3
Labour force	667.1	666.7	2.7	-0.4	-0.8	1.0	-0.1	-0.1	0.2
Employment	629.3	627.4	2.7	-1.9	-3.1	-0.2	-0.3	-0.5	0.0
Employment full-time	508.9	505.0	3.7	-3.9	-5.3	0.6	-0.8	-1.0	0.1
Unemployment	37.8	39.4	2.1	1.6	2.4	1.3	4.2	6.5	3.4
Participation rate	67.9	67.8	0.3	-0.1	-0.4	-0.8
Unemployment rate	5.7	5.9	0.3	0.2	0.4	0.2
Employment rate	64.1	63.8	0.3	-0.3	-0.6	-0.8
Part-time rate	19.1	19.5	0.5	0.3	0.4	-0.1
Both sexes, 15 to 24 years									
Population	164.8	164.7	...	-0.1	-0.1	-0.1	-0.1	-0.1	-0.1
Labour force	110.6	109.6	1.6	-1.0	-2.5	-4.4	-0.9	-2.2	-3.9
Employment	97.9	95.5	1.5	-2.4	-4.7	-6.2	-2.5	-4.7	-6.1
Unemployment	12.8	14.1	1.3	1.3	2.2	1.8	10.2	18.5	14.6
Participation rate	67.1	66.5	0.9	-0.6	-1.5	-2.7
Unemployment rate	11.6	12.9	1.1	1.3	2.3	2.1
Employment rate	59.4	58.0	0.9	-1.4	-2.8	-3.7
Part-time rate	44.5	46.6	1.8	2.1	4.6	2.0
Men, 25 years and over									
Population	401.1	401.8	...	0.7	2.5	6.7	0.2	0.6	1.7
Labour force	296.3	297.7	1.3	1.4	2.1	1.2	0.5	0.7	0.4
Employment	285.3	285.7	1.4	0.4	3.5	3.6	0.1	1.2	1.3
Unemployment	11.1	12.0	1.2	0.9	-1.4	-2.4	8.1	-10.4	-16.7
Participation rate	73.9	74.1	0.3	0.2	0.1	-0.9
Unemployment rate	3.7	4.0	0.4	0.3	-0.5	-0.9
Employment rate	71.1	71.1	0.4	0.0	0.4	-0.3
Part-time rate	6.8	6.6	0.6	-0.2	-0.2	-0.5
Women, 25 years and over									
Population	416.3	417.0	...	0.7	2.2	5.8	0.2	0.5	1.4
Labour force	260.2	259.4	1.6	-0.8	-0.4	4.2	-0.3	-0.2	1.6
Employment	246.2	246.2	1.6	0.0	-1.9	2.4	0.0	-0.8	1.0
Unemployment	14.0	13.3	1.1	-0.7	1.6	2.0	-5.0	13.7	17.7
Participation rate	62.5	62.2	0.4	-0.3	-0.4	0.1
Unemployment rate	5.4	5.1	0.4	-0.3	0.6	0.7
Employment rate	59.1	59.0	0.4	-0.1	-0.8	-0.3
Part-time rate	23.3	24.0	0.9	0.7	0.2	0.3
Industry									
Goods-producing sector	629.3	627.4	2.7	-1.9	-3.1	-0.2	-0.3	-0.5	0.0
Agriculture	141.4	142.6	2.4	1.2	-2.6	-6.8	0.8	-1.8	-4.6
Forestry, fishing, mining, quarrying, oil and gas extraction ²	22.4	21.4	1.2	-1.0	-1.1	-3.0	-4.5	-4.9	-12.3
Utilities	6.4	6.7	0.6	0.3	-0.3	-0.4	4.7	-4.3	-5.6
Construction	9.2	9.1	0.5	-0.1	0.5	0.8	-1.1	5.8	9.6
Manufacturing	40.6	41.2	1.6	0.6	-0.8	-4.1	1.5	-1.9	-9.1
Services-producing sector	62.7	64.3	1.7	1.6	-0.8	0.2	2.6	-1.2	0.3
Trade	487.9	484.7	3.2	-3.2	-0.5	6.4	-0.7	-0.1	1.3
Transportation and warehousing	94.3	92.0	1.9	-2.3	-4.0	3.0	-2.4	-4.2	3.4
Finance, insurance, real estate and leasing	37.9	38.0	1.3	0.1	-1.0	1.8	0.3	-2.6	5.0
Professional, scientific and technical services	34.9	34.7	1.2	-0.2	0.5	3.1	-0.6	1.5	9.8
Business, building and other support services	25.9	24.1	1.1	-1.8	-3.7	-3.0	-6.9	-13.3	-11.1
Educational services	18.7	17.4	1.2	-1.3	-2.1	0.1	-7.0	-10.8	0.6
Health care and social assistance	52.5	51.9	1.5	-0.6	3.2	2.4	-1.1	6.6	4.8
Information, culture and recreation	98.9	99.3	1.9	0.4	2.8	6.8	0.4	2.9	7.4
Accommodation and food services	22.9	22.2	1.3	-0.7	-1.5	-5.1	-3.1	-6.3	-18.7
Other services	37.9	39.9	1.6	2.0	1.6	-0.8	5.3	4.2	-2.0
Public administration	27.6	27.6	1.3	0.0	1.3	-2.4	0.0	4.9	-8.0
Public administration	36.3	37.6	1.2	1.3	2.4	0.5	3.6	6.8	1.3

1. Average standard error of change in two consecutive months (see "Sampling Errors" in Data Quality for further explanations).

2. Also referred to as Natural resources.

Note(s): Related CANSIM Tables 282-0087, 282-0088. The sum of individual categories may not always add to the total due to rounding.

Table 4-8
Selected labour force characteristics (seasonally adjusted) — Saskatchewan

	March 2014	April 2014	S.E. ¹	Change from			Percent change from		
				last month	last December	twelve months ago	last month	last December	twelve months ago
in thousands (except rates)									
Both sexes, 15 years and over									
Population	837.9	839.7	...	1.8	5.5	17.8	0.2	0.7	2.2
Labour force	584.4	580.7	2.5	-3.7	0.3	4.9	-0.6	0.1	0.9
Employment	558.3	561.3	2.6	3.0	3.3	8.3	0.5	0.6	1.5
Employment full-time	457.7	459.1	3.4	1.4	1.6	6.5	0.3	0.3	1.4
Unemployment	26.1	19.5	1.8	-6.6	-2.9	-3.3	-25.3	-12.9	-14.5
Participation rate	69.7	69.2	0.3	-0.5	-0.4	-0.9
Unemployment rate	4.5	3.4	0.3	-1.1	-0.5	-0.6
Employment rate	66.6	66.8	0.3	0.2	-0.1	-0.5
Part-time rate	18.0	18.2	0.5	0.2	0.2	0.1
Both sexes, 15 to 24 years									
Population	136.7	136.7	...	0.0	-0.1	0.1	0.0	-0.1	0.1
Labour force	92.5	88.9	1.4	-3.6	-3.4	-4.0	-3.9	-3.7	-4.3
Employment	83.6	83.6	1.4	0.0	-2.7	-1.9	0.0	-3.1	-2.2
Unemployment	8.9	5.3	1.2	-3.6	-0.7	-2.1	-40.4	-11.7	-28.4
Participation rate	67.7	65.0	1.1	-2.7	-2.5	-3.0
Unemployment rate	9.6	6.0	1.2	-3.6	-0.5	-2.0
Employment rate	61.2	61.2	1.1	0.0	-1.9	-1.4
Part-time rate	38.5	36.7	1.8	-1.8	-2.9	0.3
Men, 25 years and over									
Population	347.6	348.7	...	1.1	3.3	10.4	0.3	1.0	3.1
Labour force	269.6	269.7	1.2	0.1	3.5	8.4	0.0	1.3	3.2
Employment	261.2	261.5	1.3	0.3	3.2	8.4	0.1	1.2	3.3
Unemployment	8.4	8.3	1.0	-0.1	0.3	0.2	-1.2	3.8	2.5
Participation rate	77.6	77.3	0.4	-0.3	0.2	0.1
Unemployment rate	3.1	3.1	0.4	0.0	0.1	0.0
Employment rate	75.1	75.0	0.4	-0.1	0.2	0.2
Part-time rate	6.6	6.7	0.6	0.1	0.3	-0.6
Women, 25 years and over									
Population	353.7	354.4	...	0.7	2.3	7.4	0.2	0.7	2.1
Labour force	222.2	222.1	1.4	-0.1	0.3	0.5	0.0	0.1	0.2
Employment	213.4	216.2	1.5	2.8	2.7	1.8	1.3	1.3	0.8
Unemployment	8.8	5.9	0.9	-2.9	-2.5	-1.3	-33.0	-29.8	-18.1
Participation rate	62.8	62.7	0.4	-0.1	-0.3	-1.2
Unemployment rate	4.0	2.7	0.4	-1.3	-1.1	-0.5
Employment rate	60.3	61.0	0.4	0.7	0.4	-0.8
Part-time rate	24.0	24.9	1.0	0.9	1.7	1.3
Industry									
Industry	558.3	561.3	2.6	3.0	3.3	8.3	0.5	0.6	1.5
Goods-producing sector									
Goods-producing sector	155.1	159.5	2.6	4.4	6.8	16.7	2.8	4.5	11.7
Agriculture	43.8	44.4	1.8	0.6	0.2	3.8	1.4	0.5	9.4
Forestry, fishing, mining, quarrying, oil and gas extraction ²	25.5	26.8	1.2	1.3	3.9	2.4	5.1	17.0	9.8
Utilities	7.6	7.2	0.4	-0.4	0.5	2.0	-5.3	7.5	38.5
Construction	49.4	51.8	1.7	2.4	3.1	4.9	4.9	6.4	10.4
Manufacturing	28.8	29.3	1.2	0.5	-0.9	3.5	1.7	-3.0	13.6
Services-producing sector									
Services-producing sector	403.2	401.8	3.0	-1.4	-3.5	-8.4	-0.3	-0.9	-2.0
Trade	82.5	82.6	2.2	0.1	-0.1	-2.5	0.1	-0.1	-2.9
Transportation and warehousing	29.3	28.3	1.2	-1.0	-1.3	0.4	-3.4	-4.4	1.4
Finance, insurance, real estate and leasing	30.6	29.7	1.2	-0.9	0.1	0.9	-2.9	0.3	3.1
Professional, scientific and technical services	27.6	28.8	1.2	1.2	-1.1	1.7	4.3	-3.7	6.3
Business, building and other support services	12.5	12.6	1.0	0.1	-0.9	1.1	0.8	-6.7	9.6
Educational services	42.7	42.2	1.5	-0.5	-3.1	-4.8	-1.2	-6.8	-10.2
Health care and social assistance	73.1	73.1	1.7	0.0	2.0	-2.0	0.0	2.8	-2.7
Information, culture and recreation	20.0	20.2	1.1	0.2	-0.5	2.6	1.0	-2.4	14.8
Accommodation and food services	32.7	32.1	1.5	-0.6	0.8	-0.2	-1.8	2.6	-0.6
Other services	21.8	22.7	1.2	0.9	0.0	-4.6	4.1	0.0	-16.8
Public administration	30.4	29.5	1.3	-0.9	0.7	-1.1	-3.0	2.4	-3.6

1. Average standard error of change in two consecutive months (see "Sampling Errors" in Data Quality for further explanations).

2. Also referred to as Natural resources.

Note(s): Related CANSIM Tables 282-0087, 282-0088. The sum of individual categories may not always add to the total due to rounding.

Table 4-9
Selected labour force characteristics (seasonally adjusted) — Alberta

	March 2014	April 2014	S.E. ¹	Change from			Percent change from		
				last month	last December	twelve months ago	last month	last December	twelve months ago
in thousands (except rates)									
Both sexes, 15 years and over									
Population	3,243.9	3,254.9	...	11.0	32.6	109.2	0.3	1.0	3.5
Labour force	2,377.7	2,370.7	9.3	-7.0	21.7	84.7	-0.3	0.9	3.7
Employment	2,261.2	2,258.3	9.9	-2.9	21.6	72.3	-0.1	1.0	3.3
Employment full-time	1,895.2	1,871.9	12.6	-23.3	-1.7	10.4	-1.2	-0.1	0.6
Unemployment	116.5	112.4	7.1	-4.1	0.2	12.3	-3.5	0.2	12.3
Participation rate	73.3	72.8	0.3	-0.5	-0.1	0.1
Unemployment rate	4.9	4.7	0.3	-0.2	-0.1	0.3
Employment rate	69.7	69.4	0.3	-0.3	0.0	-0.1
Part-time rate	16.2	17.1	0.5	0.9	0.9	2.3
Both sexes, 15 to 24 years									
Population	516.2	516.6	...	0.4	0.3	6.3	0.1	0.1	1.2
Labour force	357.2	346.3	5.4	-10.9	-1.7	8.8	-3.1	-0.5	2.6
Employment	316.3	312.2	5.4	-4.1	-4.5	4.3	-1.3	-1.4	1.4
Unemployment	40.9	34.1	4.1	-6.8	2.9	4.5	-16.6	9.3	15.2
Participation rate	69.2	67.0	1.1	-2.2	-0.4	0.9
Unemployment rate	11.5	9.8	1.1	-1.7	0.8	1.0
Employment rate	61.3	60.4	1.0	-0.9	-0.9	0.1
Part-time rate	37.3	42.8	1.8	5.4	6.4	11.4
Men, 25 years and over									
Population	1,387.0	1,392.7	...	5.7	17.3	54.5	0.4	1.3	4.1
Labour force	1,124.7	1,127.3	4.6	2.6	18.5	44.4	0.2	1.7	4.1
Employment	1,082.5	1,084.6	5.3	2.1	25.0	41.2	0.2	2.4	3.9
Unemployment	42.1	42.7	4.4	0.6	-6.5	3.2	1.4	-13.2	8.1
Participation rate	81.1	80.9	0.3	-0.2	0.3	0.0
Unemployment rate	3.7	3.8	0.4	0.1	-0.6	0.2
Employment rate	78.0	77.9	0.4	-0.1	0.9	-0.1
Part-time rate	6.1	5.4	0.5	-0.7	-0.5	0.0
Women, 25 years and over									
Population	1,340.7	1,345.7	...	5.0	15.1	48.4	0.4	1.1	3.7
Labour force	895.9	897.1	5.5	1.2	4.9	31.4	0.1	0.5	3.6
Employment	862.4	861.5	5.3	-0.9	1.1	26.8	-0.1	0.1	3.2
Unemployment	33.5	35.6	3.8	2.1	3.8	4.6	6.3	11.9	14.8
Participation rate	66.8	66.7	0.4	-0.1	-0.4	0.0
Unemployment rate	3.7	4.0	0.4	0.3	0.4	0.4
Employment rate	64.3	64.0	0.4	-0.3	-0.7	-0.3
Part-time rate	21.1	22.5	0.9	1.4	1.0	2.0
Industry									
	2,261.2	2,258.3	9.9	-2.9	21.6	72.3	-0.1	1.0	3.3
Goods-producing sector									
Agriculture	650.3	638.7	9.4	-11.6	2.6	14.6	-1.8	0.4	2.3
Forestry, fishing, mining, quarrying, oil and gas extraction ²	61.3	55.8	3.6	-5.5	-1.6	-9.9	-9.0	-2.8	-15.1
Utilities	182.5	182.2	5.2	-0.3	-3.0	10.1	-0.2	-1.6	5.9
Construction	24.2	21.1	2.2	-3.1	-1.6	2.9	-12.8	-7.0	15.9
Manufacturing	238.5	242.4	6.9	3.9	10.2	11.5	1.6	4.4	5.0
	143.8	137.1	5.3	-6.7	-1.5	-0.1	-4.7	-1.1	-0.1
Services-producing sector									
	1,610.9	1,619.6	12.0	8.7	19.0	57.7	0.5	1.2	3.7
Trade	342.0	321.8	8.2	-20.2	-5.3	4.1	-5.9	-1.6	1.3
Transportation and warehousing	113.1	121.6	4.7	8.5	1.8	3.9	7.5	1.5	3.3
Finance, insurance, real estate and leasing	107.1	101.9	4.7	-5.2	-4.0	-9.2	-4.9	-3.8	-8.3
Professional, scientific and technical services	186.9	181.3	6.0	-5.6	-0.6	3.6	-3.0	-0.3	2.0
Business, building and other support services	72.5	89.0	4.2	16.5	13.8	18.8	22.8	18.4	26.8
Educational services	128.5	127.6	4.8	-0.9	-0.2	-4.8	-0.7	-0.2	-3.6
Health care and social assistance	231.7	244.2	5.9	12.5	3.0	3.8	5.4	1.2	1.6
Information, culture and recreation	69.0	74.6	4.1	5.6	0.8	1.9	8.1	1.1	2.6
Accommodation and food services	148.5	148.9	5.8	0.4	-0.1	22.7	0.3	-0.1	18.0
Other services	116.9	113.3	5.3	-3.6	5.5	6.1	-3.1	5.1	5.7
Public administration	94.6	95.4	4.0	0.8	4.4	6.7	0.8	4.8	7.6

1. Average standard error of change in two consecutive months (see "Sampling Errors" in Data Quality for further explanations).

2. Also referred to as Natural resources.

Note(s): Related CANSIM Tables 282-0087, 282-0088. The sum of individual categories may not always add to the total due to rounding.

Table 4-10
Selected labour force characteristics (seasonally adjusted) — British Columbia

	March 2014	April 2014	S.E. ¹	Change from			Percent change from		
				last month	last December	twelve months ago	last month	last December	twelve months ago
in thousands (except rates)									
Both sexes, 15 years and over									
Population	3,885.6	3,891.6	...	6.0	16.8	46.9	0.2	0.4	1.2
Labour force	2,466.8	2,464.9	10.5	-1.9	-7.1	-4.3	-0.1	-0.3	-0.2
Employment	2,324.7	2,321.0	10.4	-3.7	11.3	10.9	-0.2	0.5	0.5
Employment full-time	1,813.0	1,808.0	14.6	-5.0	9.4	-10.2	-0.3	0.5	-0.6
Unemployment	142.1	143.8	8.6	1.7	-18.5	-15.3	1.2	-11.4	-9.6
Participation rate	63.5	63.3	0.3	-0.2	-0.5	-0.9
Unemployment rate	5.8	5.8	0.3	0.0	-0.8	-0.6
Employment rate	59.8	59.6	0.3	-0.2	0.0	-0.5
Part-time rate	22.0	22.1	0.6	0.1	0.0	0.8
Both sexes, 15 to 24 years									
Population	585.6	585.9	...	0.3	0.0	-1.6	0.1	0.0	-0.3
Labour force	363.8	358.6	6.0	-5.2	-1.5	-1.5	-1.4	-0.4	-0.4
Employment	323.3	317.8	5.5	-5.5	8.1	0.6	-1.7	2.6	0.2
Unemployment	40.5	40.8	5.1	0.3	-9.7	-2.2	0.7	-19.2	-5.1
Participation rate	62.1	61.2	1.0	-0.9	-0.3	-0.1
Unemployment rate	11.1	11.4	1.3	0.3	-2.6	-0.5
Employment rate	55.2	54.2	0.9	-1.0	1.3	0.2
Part-time rate	46.2	47.4	2.1	1.1	-1.2	1.1
Men, 25 years and over									
Population	1,610.4	1,613.2	...	2.8	8.2	23.8	0.2	0.5	1.5
Labour force	1,111.6	1,118.3	5.5	6.7	10.2	17.9	0.6	0.9	1.6
Employment	1,054.5	1,063.4	5.7	8.9	10.7	21.2	0.8	1.0	2.0
Unemployment	57.1	54.9	5.0	-2.2	-0.5	-3.3	-3.9	-0.9	-5.7
Participation rate	69.0	69.3	0.3	0.3	0.3	0.1
Unemployment rate	5.1	4.9	0.4	-0.2	-0.1	-0.4
Employment rate	65.5	65.9	0.4	0.4	0.3	0.3
Part-time rate	10.0	9.9	0.6	-0.1	0.0	0.4
Women, 25 years and over									
Population	1,689.6	1,692.5	...	2.9	8.7	24.7	0.2	0.5	1.5
Labour force	991.4	987.9	6.4	-3.5	-15.9	-20.8	-0.4	-1.6	-2.1
Employment	946.9	939.8	6.1	-7.1	-7.6	-10.9	-0.7	-0.8	-1.1
Unemployment	44.5	48.0	4.9	3.5	-8.4	-10.0	7.9	-14.9	-17.2
Participation rate	58.7	58.4	0.4	-0.3	-1.2	-2.1
Unemployment rate	4.5	4.9	0.5	0.4	-0.7	-0.8
Employment rate	56.0	55.5	0.4	-0.5	-0.8	-1.5
Part-time rate	27.1	27.4	1.0	0.3	0.4	1.4
Industry									
	2,324.7	2,321.0	10.4	-3.7	11.3	10.9	-0.2	0.5	0.5
Goods-producing sector									
Agriculture	450.3	436.3	9.3	-14.0	-16.3	3.9	-3.1	-3.6	0.9
Forestry, fishing, mining, quarrying, oil and gas extraction ²	21.4	20.0	2.7	-1.4	-5.4	-9.7	-6.5	-21.3	-32.7
Utilities	58.2	56.7	3.2	-1.5	5.9	9.6	-2.6	11.6	20.4
Construction	14.4	14.7	1.7	0.3	1.7	1.2	2.1	13.1	8.9
Manufacturing	184.7	177.3	6.8	-7.4	-14.8	-5.8	-4.0	-7.7	-3.2
	171.6	167.7	5.8	-3.9	-3.5	8.6	-2.3	-2.0	5.4
Services-producing sector									
Trade	1,874.4	1,884.7	12.2	10.3	27.6	7.0	0.5	1.5	0.4
Transportation and warehousing	353.1	362.8	8.9	9.7	8.9	-11.1	2.7	2.5	-3.0
Finance, insurance, real estate and leasing	136.8	138.4	4.9	1.6	14.0	20.5	1.2	11.3	17.4
Professional, scientific and technical services	150.6	144.4	6.1	-6.2	-6.9	-10.6	-4.1	-4.6	-6.8
Business, building and other support services	186.7	175.9	6.7	-10.8	-4.8	-8.2	-5.8	-2.7	-4.5
Educational services	90.9	104.1	4.7	13.2	7.8	10.7	14.5	8.1	11.5
Health care and social assistance	176.4	173.2	6.0	-3.2	-0.4	-5.0	-1.8	-0.2	-2.8
Information, culture and recreation	276.7	286.3	6.9	9.6	13.1	20.9	3.5	4.8	7.9
Accommodation and food services	111.1	110.5	5.4	-0.6	-11.1	-11.0	-0.5	-9.1	-9.1
Other services	189.0	177.2	6.6	-11.8	1.2	9.8	-6.2	0.7	5.9
Public administration	94.5	101.2	4.8	6.7	3.7	0.6	7.1	3.8	0.6
	108.6	110.6	4.4	2.0	2.0	-9.5	1.8	1.8	-7.9

1. Average standard error of change in two consecutive months (see "Sampling Errors" in Data Quality for further explanations).

2. Also referred to as Natural resources.

Note(s): Related CANSIM Tables 282-0087, 282-0088. The sum of individual categories may not always add to the total due to rounding.

Table 5-1
Labour force characteristics by census metropolitan area (seasonally adjusted) — 3 month moving average

	March 2014	April 2014	S.E. ¹	Change from			Percent change from		
				last month	last December	twelve months ago	last month	last December	twelve months ago
in thousands (except rates)									
St. John's, Newfoundland and Labrador									
Population	168.0	168.2	...	0.2	0.7	2.8	0.1	0.4	1.7
Labour force	116.4	117.4	0.7	1.0	1.1	3.6	0.9	0.9	3.2
Employment	110.4	110.5	0.8	0.1	1.0	3.9	0.1	0.9	3.7
Unemployment	6.0	6.9	0.4	0.9	0.0	-0.2	15.0	0.0	-2.8
Participation rate	69.3	69.8	0.5	0.5	0.4	1.0
Unemployment rate	5.2	5.9	0.3	0.7	0.0	-0.3
Employment rate	65.7	65.7	0.5	0.0	0.3	1.3
Halifax, Nova Scotia									
Population	349.8	350.0	...	0.2	0.9	3.7	0.1	0.3	1.1
Labour force	241.6	241.8	1.2	0.2	-3.2	0.7	0.1	-1.3	0.3
Employment	226.0	227.1	1.2	1.1	-1.1	1.7	0.5	-0.5	0.8
Unemployment	15.5	14.7	0.7	-0.8	-2.1	-1.0	-5.2	-12.5	-6.4
Participation rate	69.1	69.1	0.3	0.0	-1.1	-0.5
Unemployment rate	6.4	6.1	0.3	-0.3	-0.8	-0.4
Employment rate	64.6	64.9	0.3	0.3	-0.5	-0.2
Moncton, New Brunswick									
Population	120.0	120.2	...	0.2	0.7	2.0	0.2	0.6	1.7
Labour force	82.8	83.7	0.7	0.9	3.9	4.9	1.1	4.9	6.2
Employment	77.5	77.9	0.8	0.4	4.3	4.5	0.5	5.8	6.1
Unemployment	5.3	5.7	0.4	0.4	-0.4	0.3	7.5	-6.6	5.6
Participation rate	69.0	69.6	0.6	0.6	2.8	2.9
Unemployment rate	6.4	6.8	0.5	0.4	-0.8	-0.1
Employment rate	64.6	64.8	0.6	0.2	3.2	2.7
Saint John, New Brunswick									
Population	106.8	106.9	...	0.1	0.1	0.2	0.1	0.1	0.2
Labour force	69.4	69.7	0.7	0.3	-2.1	0.4	0.4	-2.9	0.6
Employment	64.7	64.7	0.7	0.0	-2.2	1.7	0.0	-3.3	2.7
Unemployment	4.7	5.1	0.4	0.4	0.2	-1.2	8.5	4.1	-19.0
Participation rate	65.0	65.2	0.6	0.2	-2.0	0.3
Unemployment rate	6.8	7.3	0.6	0.5	0.5	-1.8
Employment rate	60.6	60.5	0.7	-0.1	-2.1	1.5
Saguenay, Quebec									
Population	126.4	126.3	...	-0.1	-0.2	-0.3	-0.1	-0.2	-0.2
Labour force	75.5	75.4	0.8	-0.1	-3.6	-2.2	-0.1	-4.6	-2.8
Employment	68.4	67.9	0.8	-0.5	-5.3	-3.9	-0.7	-7.2	-5.4
Unemployment	7.1	7.6	0.4	0.5	1.8	1.8	7.0	31.0	31.0
Participation rate	59.7	59.7	0.7	0.0	-2.8	-1.6
Unemployment rate	9.4	10.1	0.5	0.7	2.8	2.6
Employment rate	54.1	53.8	0.7	-0.3	-4.1	-2.9
Québec, Quebec									
Population	650.9	651.4	...	0.5	1.5	5.2	0.1	0.2	0.8
Labour force	457.5	453.2	3.5	-4.3	6.3	7.4	-0.9	1.4	1.7
Employment	438.7	432.7	3.5	-6.0	6.8	7.2	-1.4	1.6	1.7
Unemployment	18.8	20.5	1.5	1.7	-0.5	0.2	9.0	-2.4	1.0
Participation rate	70.3	69.6	0.5	-0.7	0.8	0.6
Unemployment rate	4.1	4.5	0.3	0.4	-0.2	-0.1
Employment rate	67.4	66.4	0.5	-1.0	0.9	0.6
Sherbrooke, Quebec									
Population	170.8	171.0	...	0.2	0.8	2.5	0.1	0.5	1.5
Labour force	104.4	105.2	1.1	0.8	4.1	4.4	0.8	4.1	4.4
Employment	96.3	96.5	1.1	0.2	2.5	2.3	0.2	2.7	2.4
Unemployment	8.1	8.7	0.4	0.6	1.6	2.2	7.4	22.5	33.8
Participation rate	61.1	61.5	0.7	0.4	2.1	1.7
Unemployment rate	7.8	8.3	0.4	0.5	1.3	1.9
Employment rate	56.4	56.4	0.7	0.0	1.2	0.5

See notes at the end of the table.

Table 5-1 – continued

Labour force characteristics by census metropolitan area (seasonally adjusted) — 3 month moving average

	March 2014	April 2014	S.E. ¹	Change from			Percent change from		
				last month	last December	twelve months ago	last month	last December	twelve months ago
in thousands (except rates)									
Trois-Rivières, Quebec									
Population	127.1	127.2	...	0.1	0.3	0.8	0.1	0.2	0.6
Labour force	72.9	72.6	0.8	-0.3	0.1	2.1	-0.4	0.1	3.0
Employment	66.8	66.7	0.8	-0.1	0.2	1.9	-0.1	0.3	2.9
Unemployment	6.2	5.9	0.4	-0.3	-0.1	0.2	-4.8	-1.7	3.5
Participation rate	57.4	57.1	0.6	-0.3	0.0	1.3
Unemployment rate	8.5	8.1	0.5	-0.4	-0.2	0.0
Employment rate	52.6	52.4	0.6	-0.2	0.0	1.1
Montréal, Quebec									
Population	3,314.5	3,317.8	...	3.3	11.3	37.2	0.1	0.3	1.1
Labour force	2,205.6	2,201.1	8.0	-4.5	-18.7	12.1	-0.2	-0.8	0.6
Employment	2,030.6	2,027.3	8.1	-3.3	-14.7	13.7	-0.2	-0.7	0.7
Unemployment	175.0	173.8	4.8	-1.2	-3.9	-1.6	-0.7	-2.2	-0.9
Participation rate	66.5	66.3	0.2	-0.2	-0.8	-0.4
Unemployment rate	7.9	7.9	0.2	0.0	-0.1	-0.1
Employment rate	61.3	61.1	0.2	-0.2	-0.7	-0.3
Ottawa-Gatineau, Ontario/Quebec									
Population	1,075.8	1,077.0	...	1.2	4.6	14.6	0.1	0.4	1.4
Labour force	750.6	750.8	3.6	0.2	7.5	5.2	0.0	1.0	0.7
Employment	701.4	699.6	3.7	-1.8	2.6	0.2	-0.3	0.4	0.0
Unemployment	49.2	51.2	1.9	2.0	4.9	5.0	4.1	10.6	10.8
Participation rate	69.8	69.7	0.3	-0.1	0.4	-0.5
Unemployment rate	6.6	6.8	0.2	0.2	0.6	0.6
Employment rate	65.2	65.0	0.3	-0.2	0.0	-0.8
Ottawa-Gatineau, Quebec part, Ontario/Quebec									
Population	267.5	267.8	...	0.3	1.0	3.3	0.1	0.4	1.2
Labour force	186.4	186.3	1.4	-0.1	3.6	2.6	-0.1	2.0	1.4
Employment	174.0	173.7	1.4	-0.3	3.7	1.7	-0.2	2.2	1.0
Unemployment	12.4	12.5	0.6	0.1	-0.2	0.8	0.8	-1.6	6.8
Participation rate	69.7	69.6	0.5	-0.1	1.1	0.1
Unemployment rate	6.7	6.7	0.3	0.0	-0.3	0.3
Employment rate	65.0	64.9	0.5	-0.1	1.2	-0.1
Ottawa-Gatineau, Ontario part, Ontario/Quebec									
Population	808.2	809.2	...	1.0	3.6	11.3	0.1	0.4	1.4
Labour force	564.2	564.5	3.3	0.3	3.9	2.5	0.1	0.7	0.4
Employment	527.4	525.9	3.5	-1.5	-1.1	-1.5	-0.3	-0.2	-0.3
Unemployment	36.8	38.7	1.7	1.9	5.1	4.2	5.2	15.2	12.2
Participation rate	69.8	69.8	0.4	0.0	0.2	-0.6
Unemployment rate	6.5	6.9	0.3	0.4	0.9	0.8
Employment rate	65.3	65.0	0.4	-0.3	-0.4	-1.1
Kingston, Ontario									
Population	136.2	136.3	...	0.1	0.5	1.5	0.1	0.4	1.1
Labour force	87.8	87.9	0.8	0.1	-1.3	1.2	0.1	-1.5	1.4
Employment	82.2	82.3	0.8	0.1	-1.4	0.6	0.1	-1.7	0.7
Unemployment	5.6	5.6	0.4	0.0	0.2	0.6	0.0	3.7	12.0
Participation rate	64.5	64.5	0.6	0.0	-1.2	0.2
Unemployment rate	6.4	6.4	0.4	0.0	0.3	0.6
Employment rate	60.4	60.4	0.6	0.0	-1.2	-0.2
Peterborough, Ontario									
Population	103.6	103.6	...	0.0	0.1	0.3	0.0	0.1	0.3
Labour force	63.3	64.0	1.1	0.7	2.7	7.4	1.1	4.4	13.1
Employment	56.2	56.5	1.1	0.3	-1.1	6.5	0.5	-1.9	13.0
Unemployment	7.1	7.4	0.5	0.3	3.7	0.8	4.2	100.0	12.1
Participation rate	61.1	61.8	1.0	0.7	2.6	7.0
Unemployment rate	11.2	11.6	0.8	0.4	5.6	-0.1
Employment rate	54.2	54.5	1.0	0.3	-1.2	6.1

See notes at the end of the table.

Table 5-1 – continued

Labour force characteristics by census metropolitan area (seasonally adjusted) — 3 month moving average

	March 2014	April 2014	S.E. ¹	Change from			Percent change from		
				last month	last December	twelve months ago	last month	last December	twelve months ago
in thousands (except rates)									
Oshawa, Ontario									
Population	317.8	318.2	...	0.4	1.7	5.2	0.1	0.5	1.7
Labour force	212.2	214.8	1.6	2.6	1.8	-0.2	1.2	0.8	-0.1
Employment	197.1	199.7	1.6	2.6	1.6	2.1	1.3	0.8	1.1
Unemployment	15.1	15.1	0.8	0.0	0.2	-2.3	0.0	1.3	-13.2
Participation rate	66.8	67.5	0.5	0.7	0.2	-1.2
Unemployment rate	7.1	7.0	0.4	-0.1	0.0	-1.1
Employment rate	62.0	62.8	0.5	0.8	0.2	-0.3
Toronto, Ontario									
Population	5,035.3	5,043.1	...	7.8	29.3	94.3	0.2	0.6	1.9
Labour force	3,411.2	3,419.3	10.1	8.1	-4.7	56.8	0.2	-0.1	1.7
Employment	3,140.0	3,153.8	10.4	13.8	20.3	68.9	0.4	0.6	2.2
Unemployment	271.2	265.6	6.4	-5.6	-24.8	-12.1	-2.1	-8.5	-4.4
Participation rate	67.7	67.8	0.2	0.1	-0.5	-0.1
Unemployment rate	8.0	7.8	0.2	-0.2	-0.7	-0.5
Employment rate	62.4	62.5	0.2	0.1	0.0	0.2
Hamilton, Ontario									
Population	635.3	635.9	...	0.6	2.1	6.8	0.1	0.3	1.1
Labour force	407.0	410.6	3.0	3.6	11.8	0.4	0.9	3.0	0.1
Employment	383.4	384.3	3.0	0.9	11.9	1.7	0.2	3.2	0.4
Unemployment	23.5	26.2	1.4	2.7	-0.3	-1.4	11.5	-1.1	-5.1
Participation rate	64.1	64.6	0.5	0.5	1.7	-0.6
Unemployment rate	5.8	6.4	0.3	0.6	-0.2	-0.3
Employment rate	60.3	60.4	0.5	0.1	1.6	-0.4
St. Catharines-Niagara, Ontario									
Population	341.5	341.6	...	0.1	0.3	1.3	0.0	0.1	0.4
Labour force	214.5	216.0	1.8	1.5	3.6	-1.2	0.7	1.7	-0.6
Employment	196.7	198.2	1.8	1.5	4.7	-0.2	0.8	2.4	-0.1
Unemployment	17.8	17.8	0.9	0.0	-1.1	-1.1	0.0	-5.8	-5.8
Participation rate	62.8	63.2	0.5	0.4	1.0	-0.6
Unemployment rate	8.3	8.2	0.4	-0.1	-0.7	-0.5
Employment rate	57.6	58.0	0.5	0.4	1.3	-0.3
Kitchener-Cambridge-Waterloo, Ontario									
Population	422.0	422.5	...	0.5	1.8	6.0	0.1	0.4	1.4
Labour force	303.5	299.1	2.1	-4.4	-13.0	1.0	-1.4	-4.2	0.3
Employment	283.3	278.8	2.0	-4.5	-13.8	1.7	-1.6	-4.7	0.6
Unemployment	20.2	20.3	1.1	0.1	0.8	-0.7	0.5	4.1	-3.3
Participation rate	71.9	70.8	0.5	-1.1	-3.4	-0.8
Unemployment rate	6.7	6.8	0.4	0.1	0.6	-0.2
Employment rate	67.1	66.0	0.5	-1.1	-3.6	-0.5
Brantford, Ontario									
Population	109.7	109.7	...	0.0	0.2	0.6	0.0	0.2	0.5
Labour force	72.0	72.9	0.8	0.9	2.3	-1.2	1.2	3.3	-1.6
Employment	66.7	67.7	0.8	1.0	0.8	-0.8	1.5	1.2	-1.2
Unemployment	5.3	5.1	0.4	-0.2	1.5	-0.5	-3.8	41.7	-8.9
Participation rate	65.6	66.5	0.8	0.9	2.0	-1.4
Unemployment rate	7.4	7.0	0.5	-0.4	1.9	-0.6
Employment rate	60.8	61.7	0.8	0.9	0.6	-1.1
Guelph, Ontario									
Population	118.4	118.5	...	0.1	0.6	1.9	0.1	0.5	1.6
Labour force	78.2	77.9	0.9	-0.3	-0.3	-3.7	-0.4	-0.4	-4.5
Employment	72.8	72.3	0.9	-0.5	0.1	-3.6	-0.7	0.1	-4.7
Unemployment	5.4	5.6	0.4	0.2	-0.4	-0.1	3.7	-6.7	-1.8
Participation rate	66.0	65.7	0.7	-0.3	-0.6	-4.3
Unemployment rate	6.9	7.2	0.5	0.3	-0.5	0.2
Employment rate	61.5	61.0	0.8	-0.5	-0.2	-4.1

See notes at the end of the table.

Table 5-1 – continued

Labour force characteristics by census metropolitan area (seasonally adjusted) — 3 month moving average

	March 2014	April 2014	S.E. ¹	Change from			Percent change from		
				last month	last December	twelve months ago	last month	last December	twelve months ago
in thousands (except rates)									
London, Ontario									
Population	422.3	422.6	...	0.3	1.2	4.1	0.1	0.3	1.0
Labour force	260.7	262.2	2.1	1.5	-1.3	-9.5	0.6	-0.5	-3.5
Employment	239.4	241.3	2.2	1.9	-1.9	-3.9	0.8	-0.8	-1.6
Unemployment	21.4	21.0	1.1	-0.4	0.7	-5.6	-1.9	3.4	-21.1
Participation rate	61.7	62.0	0.5	0.3	-0.5	-2.9
Unemployment rate	8.2	8.0	0.4	-0.2	0.3	-1.8
Employment rate	56.7	57.1	0.5	0.4	-0.6	-1.5
Windsor, Ontario									
Population	270.1	270.2	...	0.1	0.4	1.5	0.0	0.1	0.6
Labour force	164.8	163.9	1.7	-0.9	-3.2	-3.5	-0.5	-1.9	-2.1
Employment	152.7	150.0	1.7	-2.7	-4.3	-1.9	-1.8	-2.8	-1.3
Unemployment	12.0	13.8	0.8	1.8	1.0	-1.7	15.0	7.8	-11.0
Participation rate	61.0	60.7	0.6	-0.3	-1.2	-1.6
Unemployment rate	7.3	8.4	0.5	1.1	0.7	-0.9
Employment rate	56.5	55.5	0.6	-1.0	-1.7	-1.0
Barrie, Ontario									
Population	166.7	166.9	...	0.2	0.8	2.4	0.1	0.5	1.5
Labour force	117.1	117.7	1.4	0.6	1.2	-6.6	0.5	1.0	-5.3
Employment	108.4	109.2	1.3	0.8	-1.2	-5.1	0.7	-1.1	-4.5
Unemployment	8.7	8.5	0.7	-0.2	2.4	-1.6	-2.3	39.3	-15.8
Participation rate	70.2	70.5	0.8	0.3	0.4	-5.1
Unemployment rate	7.4	7.2	0.5	-0.2	2.0	-0.9
Employment rate	65.0	65.4	0.8	0.4	-1.1	-4.1
Greater Sudbury, Ontario									
Population	138.2	138.2	...	0.0	0.0	-0.1	0.0	0.0	-0.1
Labour force	88.1	87.0	0.8	-1.1	-2.2	-2.6	-1.2	-2.5	-2.9
Employment	82.2	81.6	0.8	-0.6	-1.5	-1.0	-0.7	-1.8	-1.2
Unemployment	5.9	5.4	0.4	-0.5	-0.7	-1.6	-8.5	-11.5	-22.9
Participation rate	63.7	63.0	0.6	-0.7	-1.5	-1.8
Unemployment rate	6.7	6.2	0.4	-0.5	-0.6	-1.6
Employment rate	59.5	59.0	0.6	-0.5	-1.1	-0.7
Thunder Bay, Ontario									
Population	103.5	103.5	...	0.0	0.1	0.3	0.0	0.1	0.3
Labour force	64.0	64.0	0.6	0.0	-1.6	-1.7	0.0	-2.4	-2.6
Employment	60.2	60.3	0.6	0.1	-1.5	-1.2	0.2	-2.4	-2.0
Unemployment	3.7	3.7	0.3	0.0	-0.1	-0.5	0.0	-2.6	-11.9
Participation rate	61.8	61.8	0.6	0.0	-1.6	-1.9
Unemployment rate	5.8	5.8	0.4	0.0	0.0	-0.6
Employment rate	58.2	58.3	0.6	0.1	-1.5	-1.3
Winnipeg, Manitoba									
Population	649.7	650.8	...	1.1	4.0	11.7	0.2	0.6	1.8
Labour force	442.5	442.1	1.3	-0.4	-2.9	-2.1	-0.1	-0.7	-0.5
Employment	417.5	416.8	1.4	-0.7	-2.6	-1.6	-0.2	-0.6	-0.4
Unemployment	25.0	25.4	0.8	0.4	-0.3	-0.5	1.6	-1.2	-1.9
Participation rate	68.1	67.9	0.2	-0.2	-0.9	-1.6
Unemployment rate	5.6	5.7	0.2	0.1	-0.1	-0.1
Employment rate	64.3	64.0	0.2	-0.3	-0.8	-1.5
Regina, Saskatchewan									
Population	188.6	189.1	...	0.5	1.8	5.7	0.3	1.0	3.1
Labour force	139.4	138.1	0.8	-1.3	-1.3	0.1	-0.9	-0.9	0.1
Employment	134.2	133.5	0.8	-0.7	0.1	0.3	-0.5	0.1	0.2
Unemployment	5.2	4.7	0.3	-0.5	-1.3	-0.1	-9.6	-21.7	-2.1
Participation rate	73.9	73.0	0.4	-0.9	-1.4	-2.2
Unemployment rate	3.7	3.4	0.2	-0.3	-0.9	-0.1
Employment rate	71.2	70.6	0.4	-0.6	-0.6	-2.0

See notes at the end of the table.

Table 5-1 – continued

Labour force characteristics by census metropolitan area (seasonally adjusted) — 3 month moving average

	March 2014	April 2014	S.E. ¹	Change from			Percent change from		
				last month	last December	twelve months ago	last month	last December	twelve months ago
in thousands (except rates)									
Saskatoon, Saskatchewan									
Population	241.6	242.5	...	0.9	3.1	10.1	0.4	1.3	4.3
Labour force	172.8	173.5	1.0	0.7	1.4	6.7	0.4	0.8	4.0
Employment	164.8	165.8	1.0	1.0	0.9	5.2	0.6	0.5	3.2
Unemployment	8.0	7.7	0.5	-0.3	0.5	1.6	-3.8	6.9	26.2
Participation rate	71.5	71.5	0.4	0.0	-0.4	-0.3
Unemployment rate	4.6	4.4	0.3	-0.2	0.2	0.7
Employment rate	68.2	68.4	0.4	0.2	-0.5	-0.7
Calgary, Alberta									
Population	1,123.7	1,127.2	...	3.5	12.8	44.2	0.3	1.1	4.1
Labour force	832.2	831.9	3.5	-0.3	2.1	31.5	0.0	0.3	3.9
Employment	790.6	788.1	3.8	-2.5	-2.5	25.4	-0.3	-0.3	3.3
Unemployment	41.6	43.7	2.0	2.1	4.5	6.0	5.0	11.5	15.9
Participation rate	74.1	73.8	0.3	-0.3	-0.7	-0.1
Unemployment rate	5.0	5.3	0.2	0.3	0.6	0.6
Employment rate	70.4	69.9	0.3	-0.5	-1.0	-0.5
Edmonton, Alberta									
Population	1,051.8	1,054.8	...	3.0	10.9	39.2	0.3	1.0	3.9
Labour force	774.0	780.3	3.7	6.3	12.3	43.5	0.8	1.6	5.9
Employment	736.9	743.0	4.0	6.1	17.3	39.1	0.8	2.4	5.6
Unemployment	37.1	37.3	2.0	0.2	-5.0	4.4	0.5	-11.8	13.4
Participation rate	73.6	74.0	0.4	0.4	0.4	1.5
Unemployment rate	4.8	4.8	0.3	0.0	-0.7	0.3
Employment rate	70.1	70.4	0.4	0.3	0.9	1.1
Kelowna, British Columbia									
Population	152.3	152.5	...	0.2	0.6	2.0	0.1	0.4	1.3
Labour force	94.2	93.1	1.9	-1.1	-5.0	-0.5	-1.2	-5.1	-0.5
Employment	89.0	88.2	1.8	-0.8	-3.0	1.2	-0.9	-3.3	1.4
Unemployment	5.2	4.9	0.8	-0.3	-2.0	-1.7	-5.8	-29.0	-25.8
Participation rate	61.9	61.0	1.3	-0.9	-3.6	-1.2
Unemployment rate	5.5	5.3	0.8	-0.2	-1.7	-1.8
Employment rate	58.4	57.8	1.2	-0.6	-2.2	0.0
Abbotsford-Mission, British Columbia									
Population	148.4	148.6	...	0.2	0.7	2.0	0.1	0.5	1.4
Labour force	99.3	100.6	0.9	1.3	-1.6	0.8	1.3	-1.6	0.8
Employment	91.3	92.9	0.9	1.6	-1.2	0.9	1.8	-1.3	1.0
Unemployment	8.1	7.8	0.4	-0.3	-0.3	0.0	-3.7	-3.7	0.0
Participation rate	66.9	67.7	0.6	0.8	-1.4	-0.4
Unemployment rate	8.2	7.8	0.4	-0.4	-0.1	0.0
Employment rate	61.5	62.5	0.6	1.0	-1.1	-0.3
Vancouver, British Columbia									
Population	2,121.4	2,125.1	...	3.7	12.9	39.1	0.2	0.6	1.9
Labour force	1,374.8	1,371.8	5.2	-3.0	5.2	1.8	-0.2	0.4	0.1
Employment	1,293.5	1,294.2	5.4	0.7	14.8	18.4	0.1	1.2	1.4
Unemployment	81.4	77.7	3.1	-3.7	-9.5	-16.5	-4.5	-10.9	-17.5
Participation rate	64.8	64.6	0.2	-0.2	-0.1	-1.1
Unemployment rate	5.9	5.7	0.2	-0.2	-0.7	-1.2
Employment rate	61.0	60.9	0.3	-0.1	0.3	-0.3
Victoria, British Columbia									
Population	306.0	306.3	...	0.3	0.8	2.4	0.1	0.3	0.8
Labour force	192.7	189.9	1.6	-2.8	-0.7	-4.2	-1.5	-0.4	-2.2
Employment	182.6	180.2	1.6	-2.4	-1.9	-3.7	-1.3	-1.0	-2.0
Unemployment	10.1	9.7	0.7	-0.4	1.2	-0.6	-4.0	14.1	-5.8
Participation rate	63.0	62.0	0.5	-1.0	-0.4	-1.9
Unemployment rate	5.2	5.1	0.3	-0.1	0.6	-0.2
Employment rate	59.7	58.8	0.5	-0.9	-0.8	-1.7

1. Average standard error of change in two consecutive months (see "Sampling Errors" in Data Quality for further explanations).

Note(s): Estimates in this table are based on 2006 census boundaries. Related CANSIM Table 282-0116. The sum of individual categories may not always add to the total due to rounding.

Table 5-2
Labour force characteristics by census metropolitan area (seasonally adjusted) — Monthly

	March 2014	April 2014	S.E. ¹	Change from			Percent change from		
				last month	last December	twelve months ago	last month	last December	twelve months ago
in thousands (except rates)									
Montréal, Quebec									
Population	3,317.4	3,321.6	...	4.2	12.3	37.4	0.1	0.4	1.1
Labour force	2,205.4	2,190.3	16.3	-15.1	-32.0	-8.0	-0.7	-1.4	-0.4
Employment	2,030.6	2,022.1	16.3	-8.5	-12.1	3.6	-0.4	-0.6	0.2
Unemployment	174.8	168.3	11.4	-6.5	-19.8	-11.6	-3.7	-10.5	-6.4
Participation rate	66.5	65.9	0.5	-0.6	-1.3	-1.0
Unemployment rate	7.9	7.7	0.5	-0.2	-0.8	-0.5
Employment rate	61.2	60.9	0.5	-0.3	-0.6	-0.6
Toronto, Ontario									
Population	5,042.3	5,052.1	...	9.8	31.2	94.8	0.2	0.6	1.9
Labour force	3,404.0	3,421.8	21.5	17.8	-11.8	38.6	0.5	-0.3	1.1
Employment	3,145.5	3,165.3	21.0	19.8	32.8	53.9	0.6	1.0	1.7
Unemployment	258.6	256.5	15.2	-2.1	-44.6	-15.3	-0.8	-14.8	-5.6
Participation rate	67.5	67.7	0.4	0.2	-0.7	-0.5
Unemployment rate	7.6	7.5	0.4	-0.1	-1.3	-0.5
Employment rate	62.4	62.7	0.4	0.3	0.3	-0.1
Vancouver, British Columbia									
Population	2,124.7	2,129.5	...	4.8	14.4	40.1	0.2	0.7	1.9
Labour force	1,377.0	1,370.2	11.0	-6.8	-13.3	4.2	-0.5	-1.0	0.3
Employment	1,300.0	1,299.8	11.0	-0.2	3.6	22.6	0.0	0.3	1.8
Unemployment	77.0	70.4	7.4	-6.6	-16.9	-18.4	-8.6	-19.4	-20.7
Participation rate	64.8	64.3	0.5	-0.5	-1.1	-1.1
Unemployment rate	5.6	5.1	0.5	-0.5	-1.2	-1.4
Employment rate	61.2	61.0	0.5	-0.2	-0.3	-0.1

1. Average standard error of change in two consecutive months (see "Sampling Errors" in Data Quality for further explanations).

Note(s): Estimates in this table are based on 2006 census boundaries. Related CANSIM Table 282-0117. The sum of individual categories may not always add to the total due to rounding.

Table 6-1

Labour force characteristics by province and economic region, ¹ unadjusted for seasonality, 3 month moving average ending in April 2013 and April 2014

	Population	Labour force			Participation rate	Unemployment rate	Employment rate
		Labour force	Employment	Unemployment			
in thousands							
Canada ²							
2013	28,555.4	18,828.8	17,415.8	1,413.0	65.9	7.5	61.0
2014	28,927.6	18,945.7	17,559.9	1,385.8	65.5	7.3	60.7
Newfoundland and Labrador							
2013	429.3	260.0	224.7	35.2	60.6	13.5	52.3
2014	429.0	255.9	221.9	34.0	59.7	13.3	51.7
Avalon Peninsula [1010]							
2013	223.9	144.2	132.2	12.0	64.4	8.3	59.0
2014	225.6	145.4	132.4	12.9	64.5	8.9	58.7
South Coast-Burin Peninsula [1020]							
2013	29.9	16.3	12.7	3.7	54.5	22.7	42.5
2014	29.3	14.9	12.2	2.8	50.9	18.8	41.6
West Coast-Northern Peninsula-Labrador [1030]							
2013	85.8	51.9	42.8	9.0	60.5	17.3	49.9
2014	85.3	48.5	40.6	7.9	56.9	16.3	47.6
Notre Dame-Central Bonavista Bay [1040]							
2013	89.7	47.5	37.1	10.5	53.0	22.1	41.4
2014	88.8	47.1	36.7	10.4	53.0	22.1	41.3
Prince Edward Island							
2013	120.6	82.6	70.9	11.6	68.5	14.0	58.8
2014	121.3	81.5	69.8	11.7	67.2	14.4	57.5
Nova Scotia							
2013	781.1	493.9	444.0	49.9	63.2	10.1	56.8
2014	781.1	484.8	437.2	47.6	62.1	9.8	56.0
Cape Breton [1210]							
2013	110.1	60.5	50.3	10.2	55.0	16.9	45.7
2014	108.6	57.9	48.3	9.6	53.3	16.6	44.5
North Shore [1220]							
2013	128.8	77.1	67.5	9.6	59.9	12.5	52.4
2014	128.1	75.4	66.5	8.8	58.9	11.7	51.9
Annapolis Valley [1230]							
2013	99.4	60.7	54.4	6.3	61.1	10.4	54.7
2014	98.9	58.4	51.5	6.9	59.0	11.8	52.1
Southern [1240]							
2013	96.5	56.9	49.4	7.5	59.0	13.2	51.2
2014	95.5	54.4	46.9	7.5	57.0	13.8	49.1
Halifax [1250]							
2013	346.3	238.7	222.4	16.3	68.9	6.8	64.2
2014	350.0	238.8	224.0	14.8	68.2	6.2	64.0
New Brunswick							
2013	619.9	385.8	339.4	46.4	62.2	12.0	54.8
2014	620.3	386.3	342.2	44.1	62.3	11.4	55.2
Campbellton-Miramichi [1310]							
2013	126.6	72.9	57.6	15.4	57.6	21.1	45.5
2014	125.1	69.0	53.9	15.0	55.2	21.7	43.1
Moncton-Richibucto [1320]							
2013	174.4	112.6	101.9	10.7	64.6	9.5	58.4
2014	175.8	116.7	106.6	10.0	66.4	8.6	60.6
Saint John-St. Stephen [1330]							
2013	144.5	91.2	81.5	9.7	63.1	10.6	56.4
2014	144.4	92.4	84.5	7.8	64.0	8.4	58.5

See notes at the end of the table.

Table 6-1 – continued

Labour force characteristics by province and economic region, ¹ unadjusted for seasonality, 3 month moving average ending in April 2013 and April 2014

	Population	Labour force			Participation rate	Unemployment rate	Employment rate
		Labour force	Employment	Unemployment			
in thousands							
Fredericton-Oromocto [1340]							
2013	110.7	70.3	64.5	5.8	63.5	8.3	58.3
2014	111.8	70.2	63.0	7.2	62.8	10.3	56.4
Edmundston-Woodstock [1350]							
2013	63.7	38.8	33.9	4.9	60.9	12.6	53.2
2014	63.1	38.2	34.1	4.1	60.5	10.7	54.0
Quebec							
2013	6,675.4	4,315.6	3,949.2	366.4	64.6	8.5	59.2
2014	6,724.6	4,326.5	3,954.8	371.8	64.3	8.6	58.8
Gaspésie-Îles-de-la-Madeleine [2410]							
2013	78.4	41.2	33.0	8.2	52.6	19.9	42.1
2014	77.9	43.3	33.9	9.4	55.6	21.7	43.5
Bas-Saint-Laurent [2415]							
2013	166.1	99.7	86.6	13.1	60.0	13.1	52.1
2014	165.1	92.0	81.8	10.2	55.7	11.1	49.5
Capitale-Nationale [2420]							
2013	597.5	402.2	378.7	23.6	67.3	5.9	63.4
2014	602.0	408.5	385.0	23.5	67.9	5.8	64.0
Chaudière-Appalaches [2425]							
2013	336.5	221.6	206.5	15.1	65.9	6.8	61.4
2014	337.0	226.7	215.1	11.6	67.3	5.1	63.8
Estrie [2430]							
2013	262.0	161.5	150.7	10.8	61.6	6.7	57.5
2014	264.1	162.2	147.4	14.8	61.4	9.1	55.8
Centre-du-Québec [2433]							
2013	192.9	119.6	110.1	9.5	62.0	7.9	57.1
2014	193.8	117.5	108.9	8.6	60.6	7.3	56.2
Montérégie [2435]							
2013	1,211.5	802.8	749.3	53.5	66.3	6.7	61.8
2014	1,220.9	824.3	754.8	69.6	67.5	8.4	61.8
Montréal [2440]							
2013	1,641.6	1,054.3	943.9	110.5	64.2	10.5	57.5
2014	1,658.5	1,046.0	951.4	94.5	63.1	9.0	57.4
Laval [2445]							
2013	342.6	232.9	216.6	16.3	68.0	7.0	63.2
2014	347.3	244.8	223.6	21.2	70.5	8.7	64.4
Lanaudière [2450]							
2013	401.2	261.9	234.3	27.6	65.3	10.5	58.4
2014	405.5	260.7	235.6	25.1	64.3	9.6	58.1
Laurentides [2455]							
2013	475.2	326.3	302.5	23.8	68.7	7.3	63.7
2014	480.5	304.4	279.5	25.0	63.4	8.2	58.2
Outaouais [2460]							
2013	313.4	206.1	190.2	16.0	65.8	7.8	60.7
2014	317.0	207.6	192.1	15.5	65.5	7.5	60.6
Abitibi-Témiscamingue [2465]							
2013	118.0	78.5	71.7	6.8	66.5	8.7	60.8
2014	117.9	78.3	71.3	7.0	66.4	8.9	60.5
Mauricie [2470]							
2013	222.2	116.4	103.5	12.9	52.4	11.1	46.6
2014	221.9	126.5	112.5	14.0	57.0	11.1	50.7

See notes at the end of the table.

Table 6-1 – continued

Labour force characteristics by province and economic region, ¹ unadjusted for seasonality, 3 month moving average ending in April 2013 and April 2014

	Population	Labour force			Participation rate	Unemployment rate	Employment rate
		Labour force	Employment	Unemployment			
in thousands							
Saguenay-Lac-Saint-Jean [2475]							
2013	225.1	136.3	121.5	14.8	60.6	10.9	54.0
2014	224.3	132.7	116.0	16.7	59.2	12.6	51.7
Côte-Nord and Nord-du-Québec [2480, 2490]							
2013	90.9	54.1	50.2	4.0	59.5	7.4	55.2
2014	90.9	51.2	46.0	5.2	56.3	10.2	50.6
Ontario							
2013	11,161.1	7,343.4	6,770.9	572.5	65.8	7.8	60.7
2014	11,299.9	7,381.5	6,826.6	554.9	65.3	7.5	60.4
Ottawa [3510]							
2013	1,071.4	727.3	681.7	45.7	67.9	6.3	63.6
2014	1,083.2	736.0	684.2	51.8	67.9	7.0	63.2
Kingston-Pembroke [3515]							
2013	372.6	230.2	215.8	14.5	61.8	6.3	57.9
2014	374.2	226.1	200.1	26.0	60.4	11.5	53.5
Muskoka-Kawarthas [3520]							
2013	320.8	177.4	160.9	16.6	55.3	9.4	50.2
2014	322.2	189.4	173.0	16.4	58.8	8.7	53.7
Toronto [3530]							
2013	5,208.2	3,488.9	3,204.2	284.7	67.0	8.2	61.5
2014	5,303.3	3,545.2	3,277.7	267.5	66.8	7.5	61.8
Kitchener-Waterloo-Barrie [3540]							
2013	1,060.1	748.6	696.9	51.7	70.6	6.9	65.7
2014	1,075.4	736.8	689.7	47.1	68.5	6.4	64.1
Hamilton-Niagara Peninsula [3550]							
2013	1,185.6	760.5	701.4	59.1	64.1	7.8	59.2
2014	1,195.2	762.6	706.8	55.8	63.8	7.3	59.1
London [3560]							
2013	547.8	354.0	322.6	31.4	64.6	8.9	58.9
2014	552.6	347.7	321.1	26.6	62.9	7.7	58.1
Windsor-Sarnia [3570]							
2013	518.6	316.8	288.5	28.4	61.1	9.0	55.6
2014	519.2	314.9	287.8	27.0	60.7	8.6	55.4
Stratford-Bruce Peninsula [3580]							
2013	245.6	155.6	147.8	7.8	63.4	5.0	60.2
2014	245.6	153.7	144.7	9.0	62.6	5.9	58.9
Northeast [3590]							
2013	457.6	274.6	249.6	25.0	60.0	9.1	54.5
2014	456.1	264.8	244.3	20.5	58.1	7.7	53.6
Northwest [3595]							
2013	172.8	109.3	101.6	7.7	63.3	7.0	58.8
2014	172.9	104.3	97.2	7.1	60.3	6.8	56.2
Manitoba							
2013	970.0	663.0	627.4	35.6	68.4	5.4	64.7
2014	982.2	660.4	622.7	37.7	67.2	5.7	63.4
Southeast [4610]							
2013	85.0	59.1	56.6	2.5	69.5	4.2	66.6
2014	86.3	59.1	56.0	3.1	68.5	5.2	64.9
South Central [4620]							
2013	48.7	32.7	31.8	1.0	67.1	3.1	65.3
2014	49.5	31.8	30.7	1.1	64.2	3.5	62.0

See notes at the end of the table.

Table 6-1 – continued

Labour force characteristics by province and economic region, ¹ unadjusted for seasonality, 3 month moving average ending in April 2013 and April 2014

	Population	Labour force			Participation rate	Unemployment rate	Employment rate
		Labour force	Employment	Unemployment			
in thousands							
Southwest [4630]							
2013	84.1	58.8	56.5	2.2	69.9	3.7	67.2
2014	84.5	58.2	55.3	2.9	68.9	5.0	65.4
North Central [4640]							
2013	36.9	25.3	24.7	0.6	68.6	2.4	66.9
2014	37.1	24.1	22.9	1.1	65.0	4.6	61.7
Winnipeg [4650]							
2013	583.4	402.0	377.3	24.7	68.9	6.1	64.7
2014	593.3	400.3	376.0	24.3	67.5	6.1	63.4
Interlake [4660]							
2013	73.5	48.6	46.5	2.1	66.1	4.3	63.3
2014	74.1	50.6	47.6	2.9	68.3	5.7	64.2
Parklands and North [4670, 4680]							
2013	58.5	36.5	34.1	2.4	62.4	6.6	58.3
2014	57.5	36.4	34.1	2.2	63.3	6.0	59.3
Saskatchewan							
2013	820.7	570.6	547.5	23.2	69.5	4.1	66.7
2014	838.0	576.9	553.6	23.2	68.8	4.0	66.1
Regina-Moose Mountain [4710]							
2013	245.4	179.1	172.8	6.4	73.0	3.6	70.4
2014	251.6	180.3	174.8	5.5	71.7	3.1	69.5
Swift Current-Moose Jaw [4720]							
2013	81.2	54.8	53.3	1.5	67.5	2.7	65.6
2014	81.5	53.4	51.3	2.0	65.5	3.7	62.9
Saskatoon-Biggar [4730]							
2013	276.5	194.1	187.1	7.1	70.2	3.7	67.7
2014	286.0	200.9	192.5	8.4	70.2	4.2	67.3
Yorkton-Melville [4740]							
2013	62.5	41.2	38.7	2.5	65.9	6.1	61.9
2014	62.3	41.3	39.0	2.3	66.3	5.6	62.6
Prince Albert and Northern [4750, 4760]							
2013	155.1	101.4	95.6	5.8	65.4	5.7	61.6
2014	156.5	101.1	96.0	5.1	64.6	5.0	61.3
Alberta							
2013	3,136.5	2,260.3	2,154.5	105.9	72.1	4.7	68.7
2014	3,245.0	2,347.2	2,234.4	112.8	72.3	4.8	68.9
Lethbridge-Medicine Hat [4810]							
2013	225.6	146.5	138.4	8.1	64.9	5.5	61.3
2014	230.4	143.7	136.9	6.8	62.4	4.7	59.4
Camrose-Drumheller [4820]							
2013	158.9	112.6	109.6	3.0	70.9	2.7	69.0
2014	161.7	106.2	102.3	3.9	65.7	3.7	63.3
Calgary [4830]							
2013	1,164.7	852.8	812.5	40.3	73.2	4.7	69.8
2014	1,210.8	884.4	837.6	46.8	73.0	5.3	69.2
Banff-Jasper-Rocky Mountain House [4840]							
2013	73.3	54.3	52.0	2.3	74.1	4.2	70.9
2014	75.7	56.9	54.9	2.0	75.2	3.5	72.5

See notes at the end of the table.

Table 6-1 – continued

Labour force characteristics by province and economic region, ¹ unadjusted for seasonality, 3 month moving average ending in April 2013 and April 2014

	Population	Labour force			Participation rate	Unemployment rate	Employment rate
		Labour force	Employment	Unemployment			
in thousands							
Red Deer [4850]							
2013	160.2	119.3	112.0	7.4	74.5	6.2	69.9
2014	164.9	122.8	117.7	5.1	74.5	4.2	71.4
Edmonton [4860]							
2013	1,051.5	748.1	712.9	35.2	71.1	4.7	67.8
2014	1,090.7	796.7	758.5	38.2	73.0	4.8	69.5
Athabasca-Grande Prairie-Peace River [4870]							
2013	194.1	140.5	134.8	5.6	72.4	4.0	69.4
2014	197.9	146.4	140.7	5.7	74.0	3.9	71.1
Wood Buffalo-Cold Lake [4880]							
2013	108.2	86.3	82.2	4.1	79.8	4.8	76.0
2014	113.1	90.1	85.8	4.3	79.7	4.8	75.9
British Columbia							
2013	3,840.8	2,453.5	2,287.3	166.2	63.9	6.8	59.6
2014	3,886.1	2,444.8	2,296.8	148.0	62.9	6.1	59.1
Vancouver Island and Coast [5910]							
2013	660.0	396.6	370.5	26.1	60.1	6.6	56.1
2014	663.6	381.2	359.0	22.3	57.4	5.8	54.1
Lower Mainland-Southwest [5920]							
2013	2,377.2	1,547.4	1,438.9	108.5	65.1	7.0	60.5
2014	2,420.0	1,550.1	1,461.9	88.2	64.1	5.7	60.4
Thompson-Okanagan [5930]							
2013	433.8	259.5	242.1	17.4	59.8	6.7	55.8
2014	434.5	272.0	252.2	19.8	62.6	7.3	58.0
Kootenay [5940]							
2013	126.3	84.8	80.8	4.0	67.1	4.7	64.0
2014	125.9	73.5	67.7	5.8	58.4	7.9	53.8
Cariboo [5950]							
2013	126.0	82.0	77.4	4.6	65.1	5.6	61.4
2014	125.2	87.6	82.1	5.5	70.0	6.3	65.6
North Coast and Nechako [5960, 5970]							
2013	65.3	42.6	39.2	3.4	65.2	8.0	60.0
2014	64.2	39.5	36.5	2.9	61.5	7.3	56.9
Northeast [5980]							
2013	52.1	40.5	38.4	2.1	77.7	5.2	73.7
2014	52.7	40.8	37.4	3.5	77.4	8.6	71.0

1. For geographic descriptions of economic regions, refer to the Guide to the Labour Force Survey (catalogue number 71-543-GIE).

2. Estimates for Canada are a sum of the provincial totals and exclude estimates from Yukon, Northwest Territories and Nunavut.

Note(s): Related CANSIM table 282-0054.

Table 6-2
Labour force characteristics by territories, unadjusted for seasonality, 3 month moving average ending in April 2013 and April 2014

	Population	Labour force			Participation rate	Unemployment rate	Employment rate
		Labour force	Employment	Unemployment			
		in thousands			percent		
Yukon ¹							
2013	27.4	20.1	18.8	1.3	73.4	6.5	68.6
2014	27.5	20.3	19.4	0.9	73.8	4.4	70.5
Northwest Territories ²							
2013	32.1	23.7	21.7	2.0	73.8	8.4	67.6
2014	31.9	23.8	21.7	2.1	74.6	8.8	68.0
Nunavut ³							
2013	21.5	14.1	12.4	1.6	65.6	11.7	58.0
2014	22.5	14.0	12.4	1.7	62.6	12.1	55.0

1. Since 1992, the Labour force survey (LFS) has been conducted in the Yukon, using an alternative methodology that accommodates some of the operational difficulties inherent to remote locales. These estimates are not included in the national totals. In 1995, the LFS in the Yukon underwent a sample redesign. One result of the redesign was that the covered population increased from 85% to 92%, which is reflected by the sharp increase in the three month moving averages estimates of January, February and March of 1995 for all the level estimates. Users are therefore warned to be cautious when comparing estimates before January 1995 to estimates for January 1995 and forward.
2. Since 2001, the Labour force survey (LFS) has been administered in the Northwest Territories, using an alternative methodology that accommodates some of the operational difficulties inherent to remote locales. These estimates are not included in national totals.
3. Since 2004, the Labour force survey (LFS) has been administered in Nunavut, using an alternative methodology that accommodates some of the operational difficulties inherent to remote locales. These estimates are 3-month moving averages and are not included in national totals. From January 2004 to December 2007, estimates represent about 70% of all Nunavut residents aged 15 and over. Starting in January 2008, coverage was extended to 92%, so that by March 2008, the 3-month moving average is completely based on the extended coverage. Because of the large difference in coverage, users are recommended not to compare estimates prior to January 2008 with data afterwards. The January and February 2008 3-month moving average estimates are based on a mix of both coverages, since the extended coverage was introduced in January 2008. Estimates from January 2004 to December 2007 are based on the 10 largest communities in Nunavut: Iqaluit, Rankin Inlet, Cambridge Bay, Kugluktuk, Baker Lake, Arviat, Pond Inlet, Cape Dorset, Pangnirtung, Igloolik. Estimates from March 2008 to present cover the above communities as well as: Taloyoak, Gjoa Haven, Kugaaruk, Coral Harbour, Repulse Bay, Qikiqtarjuaq, Arctic Bay, Hall Beach, Clyde River.

Note(s): Related CANSIM table 282-0100.

Table 7
Average usual hours and wages of employees by selected characteristics, Canada, unadjusted for seasonality

	Employees				Full-time			Part-time		
	Number	Average weekly hours	Average weekly wages	Average hourly wages	Number	Average weekly hours	Average weekly wages	Number	Average weekly hours	Average weekly wages
	thousands		current dollars		thousands		current dollars	thousands		current dollars
April 2014										
15 years and over	14,897.6	35.1	901.11	24.72	12,049.8	39.2	1,040.76	2,847.8	17.4	310.20
15 to 24 years	2,206.9	26.1	399.13	14.10	1,019.0	38.9	646.48	1,187.9	15.1	186.94
25 years and over	12,690.7	36.6	988.40	26.56	11,030.8	39.3	1,077.18	1,659.9	19.0	398.40
Men	7,468.5	37.5	1,026.01	26.57	6,540.7	40.4	1,132.14	927.7	16.6	277.74
Women	7,429.1	32.7	775.54	22.85	5,509.0	37.9	932.26	1,920.1	17.7	325.88
Union coverage										
Union coverage	4,640.8	35.7	1,020.89	28.24	3,937.7	38.6	1,122.66	703.0	19.0	450.90
No union coverage	10,256.8	34.8	846.91	23.12	8,112.0	39.5	1,001.01	2,144.8	16.8	264.08
Job permanency										
Permanent	13,100.5	36.0	940.39	25.32	11,043.5	39.3	1,054.47	2,057.0	18.2	327.98
Temporary	1,797.0	28.6	614.70	20.30	1,006.3	39.1	890.33	790.8	15.2	263.94
Occupation										
Management	942.2	39.6	1,556.70	39.40	922.0	40.1	1,580.32	20.2	17.6	480.67
Business, finance and administrative	2,847.9	35.2	846.85	23.51	2,425.8	38.2	936.40	422.0	18.0	332.12
Natural and applied sciences	1,196.8	38.4	1,332.83	34.55	1,152.6	39.2	1,360.93	44.2	18.8	599.32
Health	1,067.5	33.6	960.32	28.34	823.3	37.8	1,078.06	244.2	19.7	563.42
Social science, education, government service and religion	1,529.6	33.6	1,049.76	30.91	1,214.5	37.9	1,201.41	315.1	17.1	465.21
Art, culture, recreation and sport	354.7	30.3	794.90	24.39	235.3	38.4	1,056.04	119.4	14.3	280.33
Sales and service	3,822.8	30.2	532.46	16.42	2,345.3	38.6	728.36	1,477.5	16.9	221.49
Trades, transport and equipment operators	2,085.6	40.0	1,001.02	24.65	1,944.8	41.5	1,050.24	140.8	19.0	321.00
Occupations unique to primary industry	277.5	42.1	1,014.76	23.18	245.8	45.4	1,113.59	31.8	16.7	249.83
Occupations unique to processing, manufacturing and utilities	773.0	39.1	819.03	20.73	740.3	40.0	842.97	32.6	18.5	275.87
April 2013										
15 years and over	14,767.3	35.1	885.20	24.28	11,974.8	39.3	1,022.02	2,792.5	17.1	298.52
15 to 24 years	2,219.5	26.3	395.74	13.96	1,068.8	38.8	632.02	1,150.7	14.6	176.29
25 years and over	12,547.8	36.6	971.78	26.10	10,906.0	39.3	1,060.24	1,641.8	18.7	384.19
Men	7,362.5	37.5	1,010.59	26.18	6,451.7	40.5	1,114.81	910.8	16.3	272.35
Women	7,404.8	32.7	760.53	22.38	5,523.1	37.9	913.62	1,881.7	17.4	311.18
Union coverage										
Union coverage	4,711.4	35.5	997.25	27.65	3,989.4	38.5	1,099.64	722.0	18.7	431.49
No union coverage	10,055.9	34.9	832.71	22.70	7,985.4	39.6	983.24	2,070.5	16.5	252.15
Job permanency										
Permanent	12,918.3	36.0	925.69	24.91	10,921.9	39.3	1,037.35	1,996.4	18.0	314.82
Temporary	1,849.0	28.7	602.36	19.86	1,052.9	39.3	862.98	796.1	14.7	257.64
Occupation										
Management	991.2	39.6	1,512.23	38.13	962.4	40.3	1,541.88	28.8	18.3	520.72
Business, finance and administrative	2,861.1	35.3	821.19	22.75	2,450.8	38.3	905.39	410.3	17.7	318.26
Natural and applied sciences	1,174.8	38.4	1,302.57	33.82	1,127.9	39.2	1,334.21	46.8	18.3	540.52
Health	1,005.8	33.6	954.66	28.11	766.6	37.9	1,087.02	239.2	20.0	530.50
Social science, education, government service and religion	1,514.8	33.8	1,062.57	31.01	1,212.4	38.0	1,210.76	302.5	17.1	468.57
Art, culture, recreation and sport	347.2	30.8	804.30	24.44	242.5	38.4	1,042.95	104.7	13.1	251.66
Sales and service	3,790.5	30.1	526.26	16.24	2,338.4	38.5	720.53	1,452.1	16.6	213.43
Trades, transport and equipment operators	2,066.3	39.7	971.44	24.10	1,921.3	41.4	1,022.31	145.0	17.4	297.53
Occupations unique to primary industry	262.9	41.7	940.99	21.85	232.7	45.2	1,033.16	30.1	15.1	229.04
Occupations unique to processing, manufacturing and utilities	752.8	39.0	790.38	19.99	720.0	40.0	815.72	32.9	17.2	235.50

Note(s): Related CANSIM Tables 282-0023, 282-0069, 282-0073.

Table 8
Regional unemployment rates used by the Employment Insurance Program, ¹ seasonally adjusted, 3 month moving average

Region	Effective from May 11, 2014 to June 7, 2014
	percent
Newfoundland and Labrador	
01. St. John's	5.8
02. Newfoundland and Labrador	16.6
Prince Edward Island	
03. Prince Edward Island	11.9
Nova Scotia	
04. Eastern Nova Scotia	14.7
05. Western Nova Scotia	11.1
06. Halifax	6.0
New Brunswick	
07. Fredericton-Moncton-Saint John	7.4
08. Madawaska-Charlotte	10.7
09. Restigouche-Albert	16.7
Quebec	
10. Gaspésie-Îles-de-la-Madeleine	17.5
11. Québec	4.7
12. Trois-Rivières	8.2
13. South Central Quebec	5.1
14. Sherbrooke	7.2
15. Montérégie	8.2
16. Montréal	8.0
17. Central Quebec	8.5
18. Northwestern Quebec	10.4
19. Bas-Saint-Laurent-Côte-Nord	10.1
20. Gatineau	6.7
21. Saguenay	10.0
Ontario	
22. Ottawa	6.7
23. Eastern Ontario	7.7
24. Kingston	6.6
25. Central Ontario	8.9
26. Oshawa	7.1
27. Toronto	7.8
28. Hamilton	6.4
29. St. Catharines	8.3
30. London	8.0
31. Niagara	8.8
32. Windsor	9.0
33. Kitchener	6.8
34. Huron	7.7
35. South Central Ontario	5.9
36. Sudbury	5.9
37. Thunder Bay	6.0
38. Northern Ontario	11.9
Manitoba	
39. Winnipeg	5.8
40. Southern Manitoba	6.5
41. Northern Manitoba	31.9
Saskatchewan	
42. Regina	3.7
43. Saskatoon	4.5
44. Southern Saskatchewan	6.5
45. Northern Saskatchewan	16.4
Alberta	
46. Calgary	5.4
47. Edmonton	5.0
48. Northern Alberta	8.9
49. Southern Alberta	4.9

See notes at the end of the table.

Table 8 – continued

Regional unemployment rates used by the Employment Insurance Program, ¹ seasonally adjusted, 3 month moving average

Region	Effective from May 11, 2014 to June 7, 2014
	percent
British Columbia	
50. Southern Interior British Columbia	8.3
51. Abbotsford	7.7
52. Vancouver	5.7
53. Victoria	5.9
54. Southern Coastal British Columbia	7.9
55. Northern British Columbia	11.6
Territories	
56. Yukon ²	25.0
57. Northwest Territories ²	25.0
58. Nunavut ²	25.0

1. The boundaries of these regions are determined by Employment and Social Development Canada (ESDC). For geographic descriptions and maps of employment insurance regions, see the ESDC website: <http://srv129.services.gc.ca/eiregions/en/geocont.aspx>.

2. This rate is provided by Employment and Social Development Canada (ESDC).

Note(s): All geographic regions are based on the 1996 Census boundaries.

Data quality

About the Labour Force Survey

The statistics contained in this report are based on information obtained through a sample survey of 56,000 representative households across the country. The Labour Force Survey, started in November 1945, was taken at quarterly intervals until November 1952. It has been carried out monthly since then. The information generated by the survey has expanded considerably over the years with a major redesign of the survey content in 1976 and again in 1997, and provides a rich and detailed picture of the Canadian labour market.

The sample used in the Labour Force Survey has been designed to represent all persons in the population 15 years of age and over residing in the provinces of Canada, with the exception of the following: persons living on Indian reserves, full-time members of the armed forces and people living in institutions (for example, inmates of penal institutions and patients in hospitals or nursing homes who have resided in the institution for more than six months). Monthly estimates of employment, unemployment and persons not in the labour force refer to the specific week covered by the survey each month, normally the week containing the 15th day.

Definitions and explanations

The **labour force** is composed of those members of the civilian non-institutional population 15 years of age and over who, during the reference week, were employed or unemployed.

Employed persons are those who, during the reference week:

- (a) did any work at all
- (b) had a job but were not at work

A person is considered to be **full-time** if his/her usual hours at the main job are 30 or more hours per week. When the number of hours worked at the main job is usually less than 30 hours per week then he/she is considered to be **part-time**.

Unemployed persons are those who, during the reference week:

- (a) were without work, had actively looked for work in the past four weeks (ending with reference week), and were available for work;
- (b) had not actively looked for work in the past four weeks but were on temporary layoff and were available for work;
- (c) had not actively looked for work in the past four weeks but had a new job to start in four weeks or less from the reference week, and were available for work.

Persons in the civilian non-institutional population 15 years of age and over who, during the reference week, were neither employed nor unemployed are classified as **not in the labour force**.

The **unemployment rate** represents the number of unemployed persons expressed as a percentage of the labour force. The unemployment rate for a particular group (age, sex, etc.) is the number unemployed in that group expressed as a percentage of the labour force for that group.

The **participation rate** represents the labour force expressed as a percentage of the population 15 years of age and over. The participation rate for a particular group (age, sex, etc.) is the labour force in that group expressed as a percentage of the population for that group.

The **employment rate (formerly the employment/population ratio)** represents the number of persons employed expressed as a percentage of the population 15 years of age and over. The employment rate for a particular group (age, sex, etc.) is the number employed in that group expressed as a percentage of the population for that group.

The **part-time rate** represents the number of persons employed part-time expressed as a percentage of the employed. The part-time rate for a particular group (age, sex, etc.) is the number employed part-time in that group expressed as a percentage of the employed for that group.

All geographic regions are based on the 2006 Census boundaries.

Seasonal adjustment

Fluctuations in economic time series are caused by seasonal, cyclical and irregular movements. A seasonally adjusted series is one from which seasonal movements have been eliminated. Seasonal movements are defined as those which are caused by regular annual events such as climate, holidays, vacation periods and cycles related to crops, production and retail sales associated with Christmas and Easter. The seasonally adjusted series contains irregular as well as longer-term cyclical fluctuations.

The seasonally adjusted series are revised each year to take into account current data and to generate new forecast factors for the next twelve months. The data are therefore subject to slight revisions in future issues of this publication.

Sampling variability of estimates

Estimates in this publication are based on the Labour Force Survey, a monthly survey of approximately 56,000 households across Canada. Because the entire population is not surveyed, the estimates are subject to sampling error. While the published estimate is the best available indicator of the real value, changes in the level of any estimates between two months can be the result of a true change or sampling variability. The sampling error can be estimated by calculating the standard error for the published estimate or statistic. These standard errors have been included in the publication tables, in order to assist users in interpreting the data. They are based on 12-month averages and are updated twice a year, in February and August.

Interpretation based on standard error

Two thirds of the time (68%), a change greater than the sampling error indicates a real change. The larger the change compared to the standard error, the better the chance that we are observing a real change, as opposed to a change due to sampling variability. At the 95% level, in order to ensure that change is real, the change in the estimate must be greater than twice the sampling error.

Movements in estimates that are smaller than the sampling error are less likely to reflect a real change and more likely to be due to sampling variability. While the above is true for monthly movements, one can have more confidence in a series of consecutive movements in the same direction, even though some of the monthly movements may be smaller than the sampling error.

Interpretation based on confidence intervals

Confidence intervals provide another way of looking at the variability inherent in estimates of sample surveys. To illustrate how to calculate the confidence interval, let us say that one month the published estimate for total employment rose by 16,000 to reach 16,500,000. The associated standard error for the movement estimate is 27,200. The standard error used to interpret the movement estimate indicates that:

- There are approximately two chances in three (68%) that the real value of the movement between the two months falls within the range -11,200 to +43,200 (16,000 + or – one standard error).
- There are approximately nine chances in ten (90%) that the real value of the movement between the two months falls within the range -27,520 to +59,520 (16,000 + or – 1.6 times the standard error).
- There are approximately nineteen chances in twenty (95%) that the real value of the movement between the two months falls within the range -38,400 to +70,400 (16,000 + or – two standard errors).

For more detailed explanations on sampling variability of estimates, and in particular for information on how to assess the variability of level estimates, consult the Data quality section of the *Guide to the Labour Force Survey*, (71-543-G) on page 27.

Documentation

For more detailed information about the Labour Force Survey, see the following documents:

- Overview of the Labour Force Survey
- Guide to the Labour Force Survey (71-543-G)
- Data quality statement
- Methodology of the Canadian Labour Force Survey (71-526-X)
- LFS *geographical maps*