

Catalogue no. 71-001-X

Labour Force Information

Friday, January 10, 2014

December 8 to 14, 2013



Statistics
Canada

Statistique
Canada

Canada

How to obtain more information

For information about this product or the wide range of services and data available from Statistics Canada, visit our website, www.statcan.gc.ca.

You can also contact us by

e-mail at infostats@statcan.gc.ca

telephone, from Monday to Friday, 8:30 a.m. to 4:30 p.m., at the following toll-free numbers:

- Statistical Information Service 1-800-263-1136
- National telecommunications device for the hearing impaired 1-800-363-7629
- Fax line 1-877-287-4369

Depository Services Program

- Inquiries line 1-800-635-7943
- Fax line 1-800-565-7757

To access this product

This product, Catalogue no. 71-001-X, is available free in electronic format. To obtain a single issue, visit our website, www.statcan.gc.ca and browse by "Key resource" > "Publications."

Standards of service to the public

Statistics Canada is committed to serving its clients in a prompt, reliable and courteous manner. To this end, this agency has developed standards of service that its employees observe. To obtain a copy of these service standards, please contact Statistics Canada toll-free at 1-800-263-1136. The service standards are also published at www.statcan.gc.ca under "About us" > "The agency" > "Providing services to Canadians."

Statistics Canada
Labour Statistics Division
Labour Force Survey Program

Labour Force Information

Friday, January 10, 2014

December 8 to 14, 2013

Published by authority of the Minister responsible for Statistics Canada

© Minister of Industry, 2014

All rights reserved. Use of this publication is governed by the Statistics Canada Open License Agreement.

<http://www.statcan.gc.ca/reference/licence-eng.html>

January 2014

Catalogue no. 71-001-X

ISSN 1492-5478

Frequency: Monthly

Ottawa

Cette publication est également disponible en français.

Note of appreciation

Canada owes the success of its statistical system to a long-standing partnership between Statistics Canada, the citizens of Canada, its businesses, governments and other institutions. Accurate and timely statistical information could not be produced without their continued cooperation and goodwill.

User information

Symbols

The following standard symbols are used in Statistics Canada publications:

- . not available for any reference period
- .. not available for a specific reference period
- ... not applicable
- 0 true zero or a value rounded to zero
- 0^s value rounded to 0 (zero) where there is a meaningful distinction between true zero and the value that was rounded
- p preliminary
- r revised
- x suppressed to meet the confidentiality requirements of the *Statistics Act*
- E use with caution
- F too unreliable to be published
- * significantly different from reference category ($p < 0.05$)

Special requests (\$)

Custom tabulations can be arranged on an ad hoc or regular basis. This service enables you to specify tables and time series to meet your own requirements. The cost varies according to the request. For more information, contact us toll-free at 1-866-873-8788 or e-mail us at labour@statcan.gc.ca.

Schedule of LFS releases

Release date	Reference period
January 10, 2014	December 8 to 14, 2013
February 7, 2014	January 12 to 18, 2014
March 7, 2014	February 9 to 15, 2014
April 4, 2014	March 9 to 15, 2014
May 9, 2014	April 13 to 19, 2014
June 6, 2014	May 11 to 17, 2014
July 11, 2014	June 15 to 21, 2014
August 8, 2014	July 13 to 19, 2014
September 5, 2014	August 10 to 16, 2014
October 10, 2014	September 14 to 20, 2014
November 7, 2014	October 12 to 18, 2014
December 5, 2014	November 9 to 15, 2014

Table of contents

Highlights	5
Analysis — December 2013	6
Charts	
1. Employment and unemployment indicators, Canada, seasonally adjusted	9
2. Employment and unemployment indicators, Canada, seasonally adjusted	10
3. Index of employment by industry, Canada, seasonally adjusted, January 2010=100	11
4. Index of employment by industry, Canada, seasonally adjusted, January 2010=100	12
5. Index of employment by industry, Canada, seasonally adjusted, January 2010=100	13
6. Index of employment by province, seasonally adjusted, January 2010=100	14
7. Index of employment by province, seasonally adjusted, January 2010=100	15
Related products	16
Statistical tables	
1 Labour force characteristics by age and sex, Canada, seasonally adjusted	26
2 Employment by class of worker and industry, Canada, seasonally adjusted	28
3 Labour force characteristics by province, seasonally adjusted	29
4 Selected labour force characteristics (seasonally adjusted)	31
4-1 Newfoundland and Labrador	31
4-2 Prince Edward Island	32
4-3 Nova Scotia	33
4-4 New Brunswick	34
4-5 Quebec	35
4-6 Ontario	36
4-7 Manitoba	37
4-8 Saskatchewan	38
4-9 Alberta	39
4-10 British Columbia	40
5 Labour force characteristics by census metropolitan area (seasonally adjusted)	41
5-1 3 month moving average	41
5-2 Monthly	46

Table of contents – continued

6	Labour force characteristics	47
6-1	by province and economic region, unadjusted for seasonality, 3 month moving average ending in December 2012 and December 2013	47
6-2	by territories, unadjusted for seasonality, 3 month moving average ending in December 2012 and December 2013	52
7	Average usual hours and wages of employees by selected characteristics, Canada, unadjusted for seasonality	53
8	Regional unemployment rates used by the Employment Insurance Program, seasonally adjusted, 3 month moving average	54
Data quality, concepts and methodology		
	Data quality	56

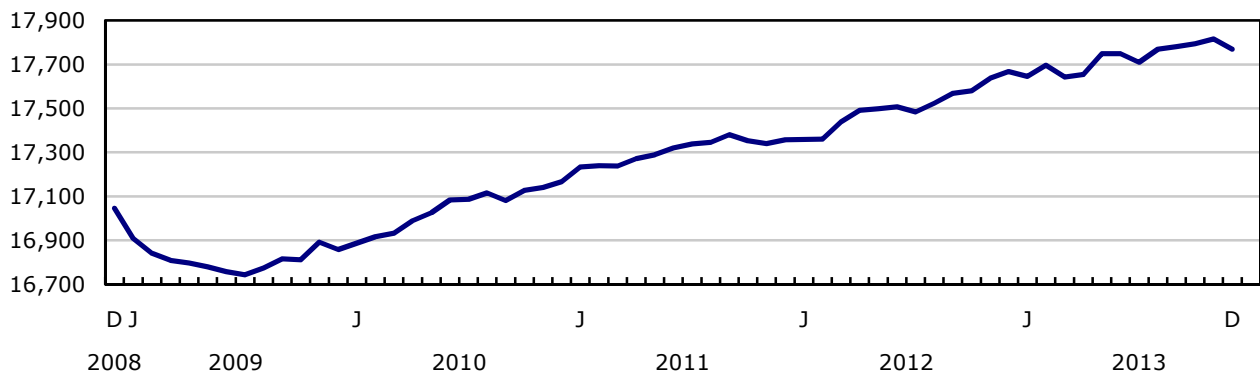
Highlights

Employment fell by 46,000 in December, the result of declines in full-time work. The unemployment rate rose 0.3 percentage points to 7.2% as more people searched for work.

Chart 1
Employment and unemployment rates, Canada, seasonally adjusted

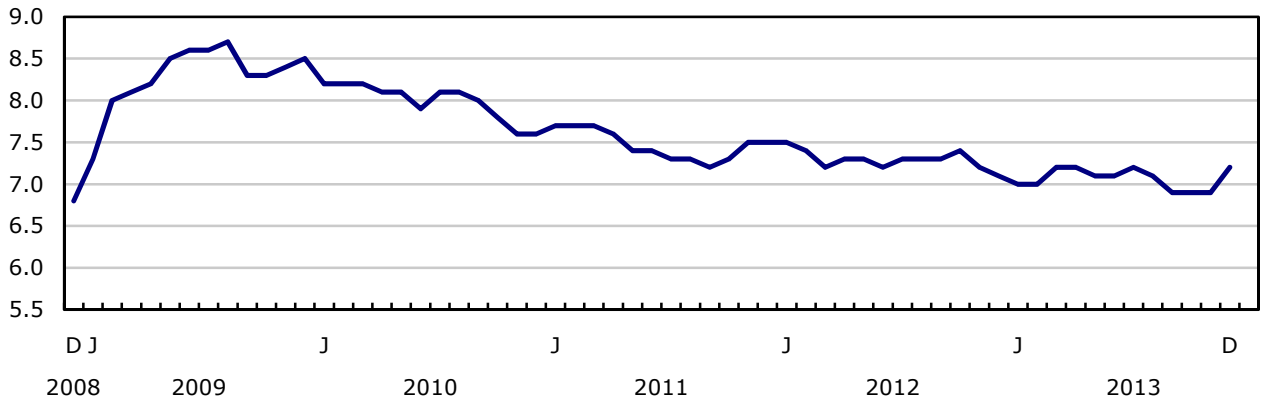
Employment

thousands



Unemployment rate

percent



Analysis — December 2013

Employment fell by 46,000 in December, the result of declines in full-time work. The unemployment rate rose 0.3 percentage points to 7.2% as more people searched for work.

Dampened by the decline in December, employment gains in 2013 amounted to 102,000 or 0.6%. Employment growth averaged 8,500 per month in 2013, compared with 25,900 in 2012.

Provincially, employment in December declined in Ontario and Alberta, while it increased in British Columbia and Newfoundland and Labrador.

Nationally, there were fewer people working in educational services, 'other services', agriculture, and natural resources. At the same time, employment increased in health care and social assistance.

In December, self-employment declined, while there was little change among public sector and private sector employees. Compared with 12 months earlier, all the employment gains were among private sector employees.

Fewer men and women aged 25 to 54 were employed in December, while employment increased among women aged 55 and over.

Employment declines in Ontario and Alberta

In Ontario, employment fell by 39,000 in December, pushing the unemployment rate up 0.7 percentage points to 7.9%.

The number of people working in Alberta declined by 12,000 in December. However, the unemployment rate was little changed at 4.8% as fewer people participated in the labour market.

In December, there were 13,000 more people working in British Columbia. The unemployment rate in the province was virtually unchanged at 6.6% as more people participated in the labour market.

In Newfoundland and Labrador, employment increased by 1,900 in December, and the unemployment rate fell 1.5 percentage points to 10.8%.

Despite little change in employment in Quebec, the unemployment rate increased 0.5 percentage points to 7.7% as more people looked for work.

Declines in several industries

In December, 19,000 fewer people worked in educational services, offsetting an increase over the previous two months.

There were 15,000 fewer people employed in the 'other services' industry, such as personal care services as well as civic and social organizations. Employment also declined in agriculture, down 9,800, and in natural resources, down 8,000.

Health care and social assistance was the only industry with employment gains in December, increasing by 22,000.

Employment losses among 25 to 54 year olds

In December, employment decreased by 38,000 for men and women aged 25 to 54, and their unemployment rate increased 0.4 percentage points to 6.1%.

At the same time, employment rose for women aged 55 and over, up 14,000.

Despite little change in employment among youths aged 15 to 24, the unemployment rate increased 0.6 percentage points to 14.0% as more youths searched for work.

2013: Year-end review

Employment gains in 2013 amounted to 102,000, or 0.6%, the slowest December-to-December growth rate since 2009. In 2012, growth was 310,000 or 1.8% over the 12-month period.

Compared with 12 months earlier, the participation rate declined 0.4 percentage points to 66.4% in December as the labour force grew at a slower pace than the population. Over the same period, the employment rate fell 0.5 percentage points to 61.6%, while the unemployment rate was little changed.

From a provincial perspective, employment growth from December 2012 to December 2013 was fastest in Alberta (+3.3%), with steady gains throughout the year.

Employment rose 2.5% in Saskatchewan, driven by gains in the first six months of the year. Compared with 12 months earlier, the unemployment rate declined 0.7 percentage points to 3.9%, the lowest among all provinces.

Employment also increased in New Brunswick compared to 12 months earlier, up 1.8%. The unemployment rate declined 1.1 percentage points over the year to 9.7%.

Following a peak reached at the beginning of the year, employment in Manitoba fell by 1.2% in 2013.

In Ontario, employment gains in the first half of the year were offset by the decline in December, leaving employment little changed compared with 12 months earlier. After trending down throughout most of the year, the unemployment rate increased to 7.9% in December, the same rate as that of December 2012.

Compared with 12 months earlier, employment was virtually unchanged in Quebec. The unemployment rate was also little changed, at 7.7% in December.

Over the 12-month period, employment in Newfoundland and Labrador was little changed. The unemployment rate in this province has gradually declined over the years, averaging 11.4% in 2013, the lowest annual rate recorded since comparable data became available in 1976.

In 2013, the only industries with employment growth were professional, scientific and technical services (+6.7%) and natural resources (+5.7%). At the same time, there were losses in agriculture (-4.5%), educational services (-3.3%), public administration (-3.1%) and manufacturing (-2.3%).

Compared with 12 months earlier, part-time employment grew by 83,000 or 2.5%, while full-time employment was relatively unchanged. During the same period, the number of hours worked increased by 0.7%.

Among the major demographic groups, only men and women aged 55 and over posted employment growth in 2013, up 4.8%, mostly the result of population aging. This segment of the labour force has seen increases in its labour-market participation rate since the mid-1990s, reaching 37.4% in December 2013.

Following a high in December 2012, employment among men aged 25 to 54 declined by 41,000 in December 2013. There was little change in employment among women in the same age group over the same period.

For people aged 15 to 24, both employment and the unemployment rate were little changed compared with December 2012.

Quarterly update for the territories

The Labour Force Survey also collects labour market information about the territories. This information is produced monthly in the form of three-month moving averages. The following data are not seasonally adjusted; therefore, comparisons should only be made on a year-over-year basis.

From the fourth quarter of 2012 to the fourth quarter of 2013, employment in Yukon increased by 900 and the unemployment rate fell from 6.1% to 4.9%.

Over the same period, both employment and the unemployment rate were little changed in the Northwest Territories. In the fourth quarter of 2013, the unemployment rate was 8.2%.

In Nunavut, employment increased by 1,000 in the fourth quarter of 2013, all in full-time work. The unemployment rate was 14.6%, relatively unchanged from the fourth quarter of 2012.

Note to readers

The Labour Force Survey (LFS) estimates are based on a sample and are therefore subject to sampling variability. As a result, monthly estimates will show more variability than trends observed over longer time periods. Estimates for smaller geographic areas or industries also have more variability. For an explanation of sampling variability of estimates and how to use standard errors to assess this variability, consult the "Data quality" section of the publication Labour Force Information (71-001-X).

This analysis focuses on differences between estimates that are statistically significant at the 68% confidence level.

The employment rate is the number of employed persons as a percentage of the population 15 years of age and over. The rate for a particular group (for example, youth aged 15 to 24) is the number employed in that group as a percentage of the population for that group.

The unemployment rate is the number unemployed as a percentage of the labour force (employed and unemployed).

The participation rate is the number of employed and unemployed as a percentage of the population. For more detailed information, see the Guide to the Labour Force Survey (71-543-G).

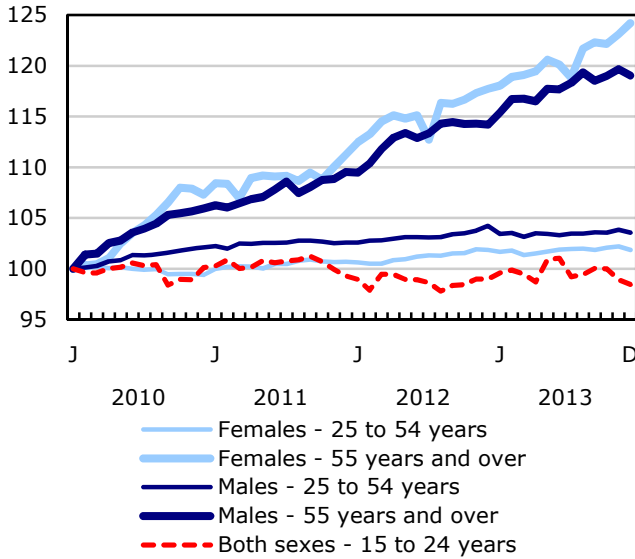
Unless otherwise stated, this release presents seasonally adjusted estimates, which facilitates comparisons by removing the effects of seasonal variations. For more information on seasonal adjustment, see *Seasonal adjustment and identifying economic trends*.

Annual revision

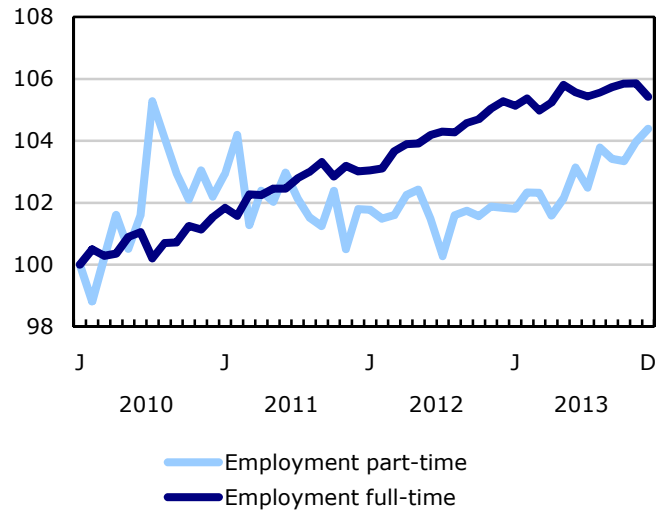
Seasonally adjusted estimates from the LFS will be revised using the latest seasonal factors, going back three years (January 2011 onwards). The revised estimates will be available on CANSIM (tables 282-0087 to 282-0094, 282-0100, 282-0116 and 282-0117) on January 31, 2014.

Chart 1
Employment and unemployment indicators, Canada, seasonally adjusted

Employment index, January 2010=100



Employment index, January 2010=100



Employment index, January 2010=100

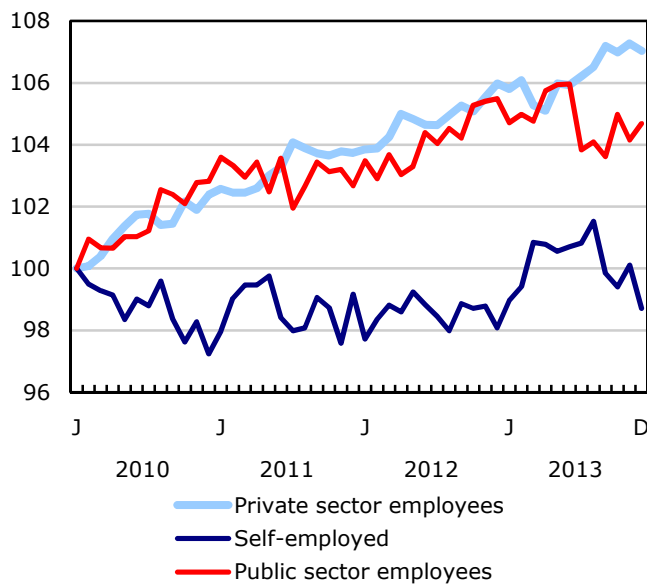
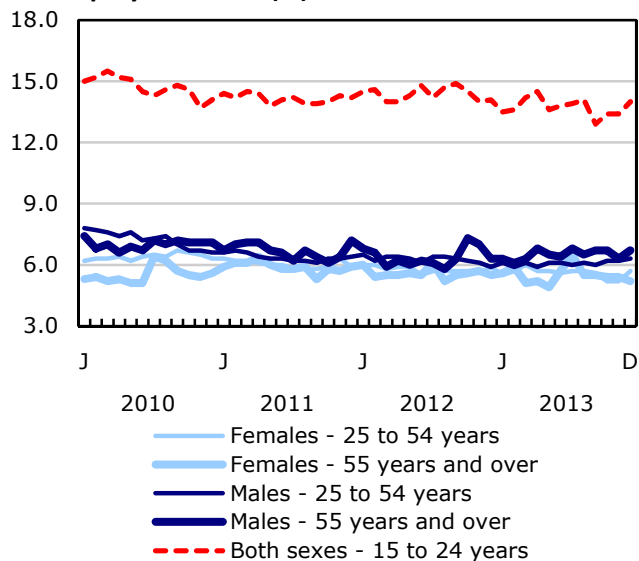
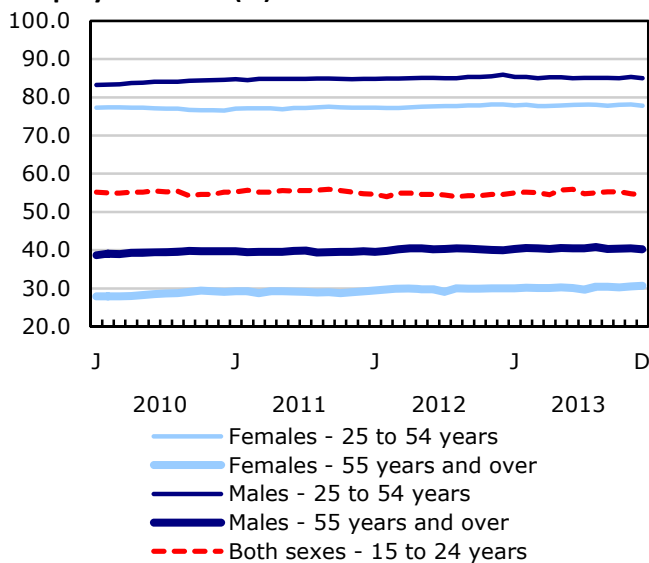


Chart 2
Employment and unemployment indicators, Canada, seasonally adjusted

Unemployment rate (%)



Employment rate (%)



Participation rate (%)

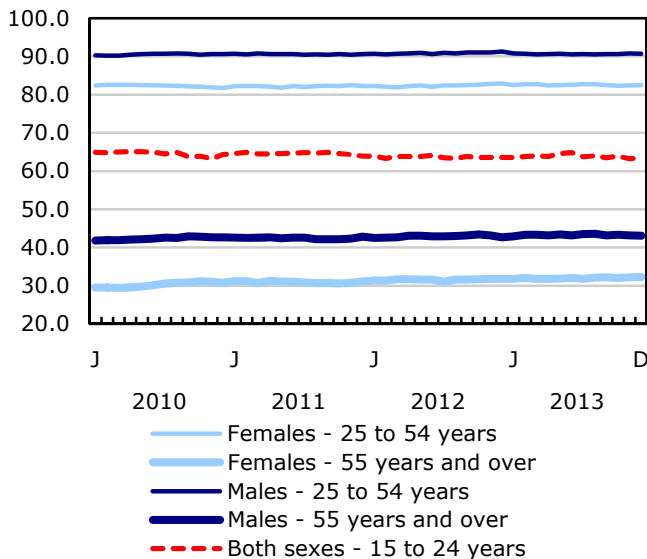


Chart 3
Index of employment by industry, Canada, seasonally adjusted, January 2010=100

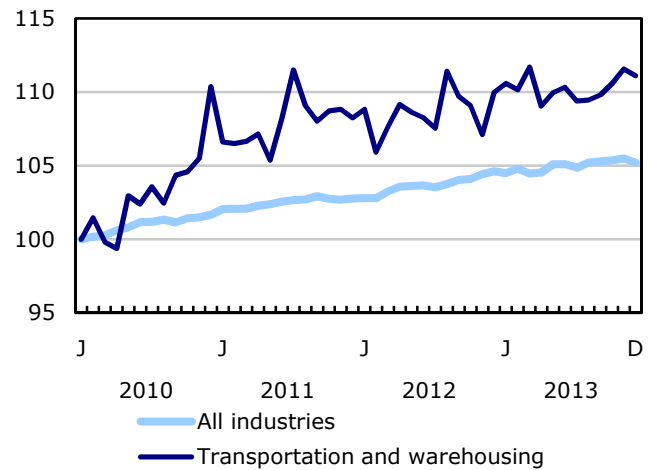
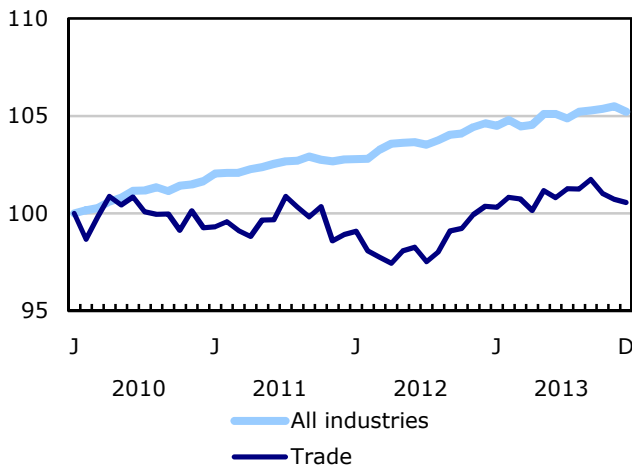
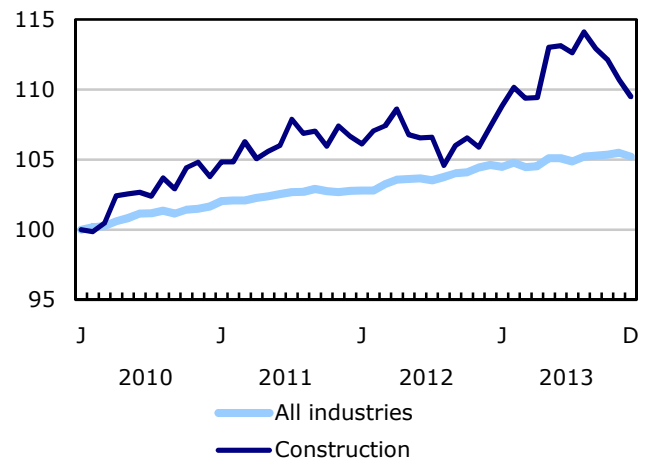
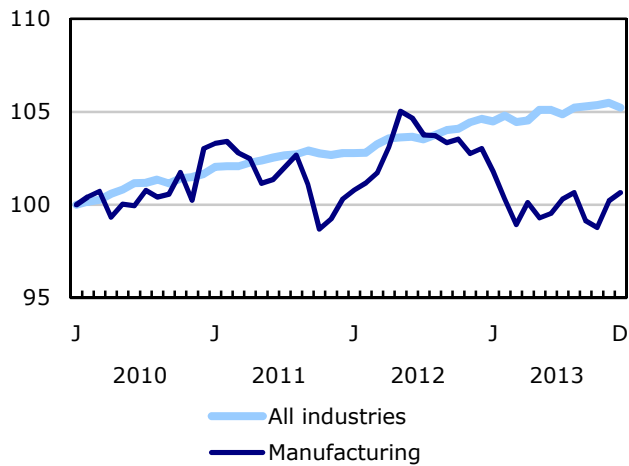
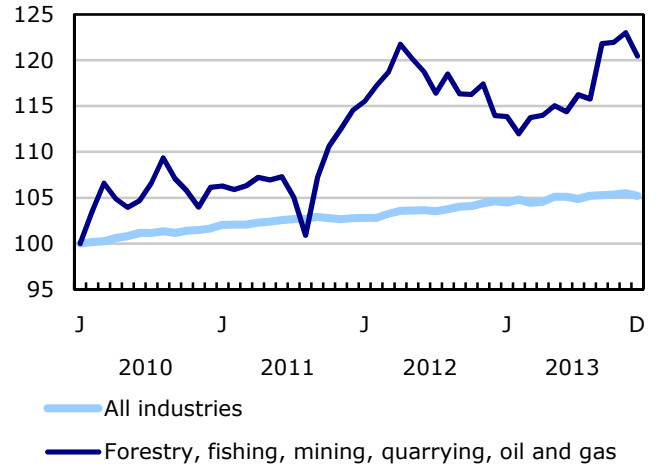
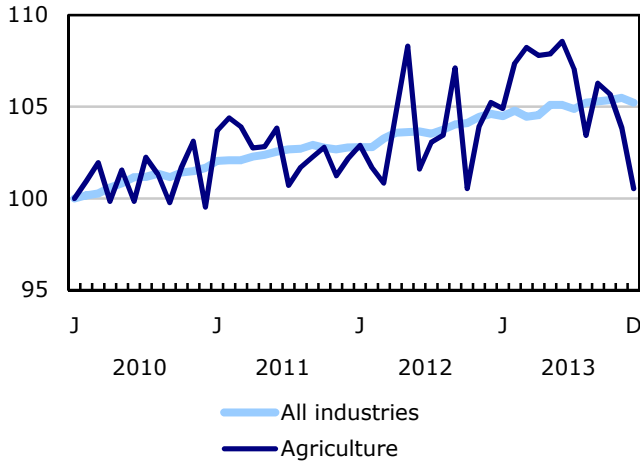


Chart 4
Index of employment by industry, Canada, seasonally adjusted, January 2010=100

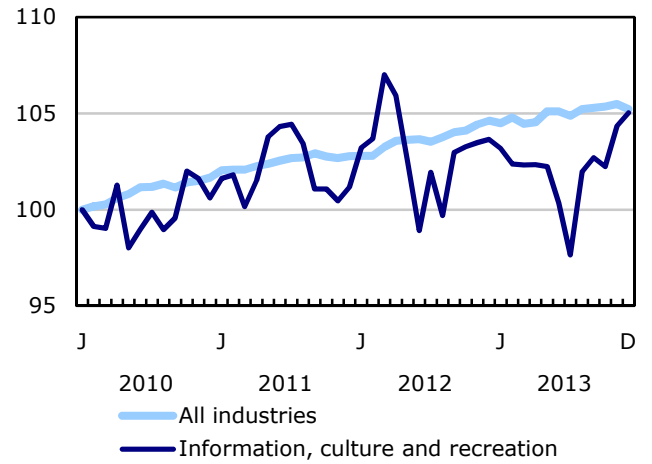
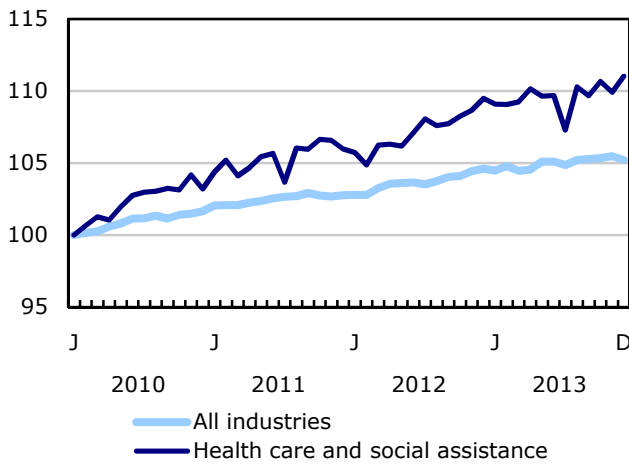
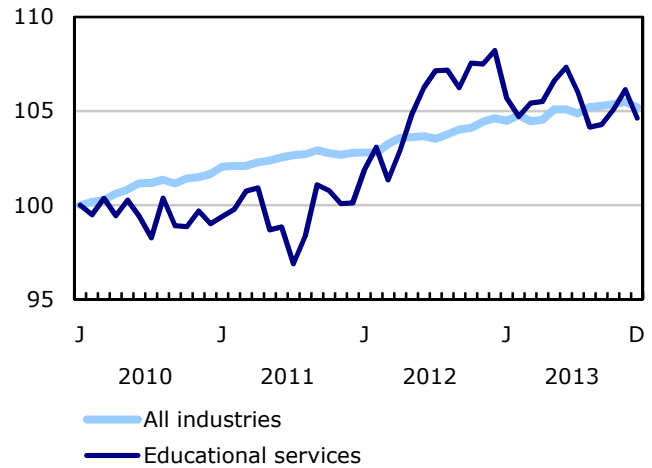
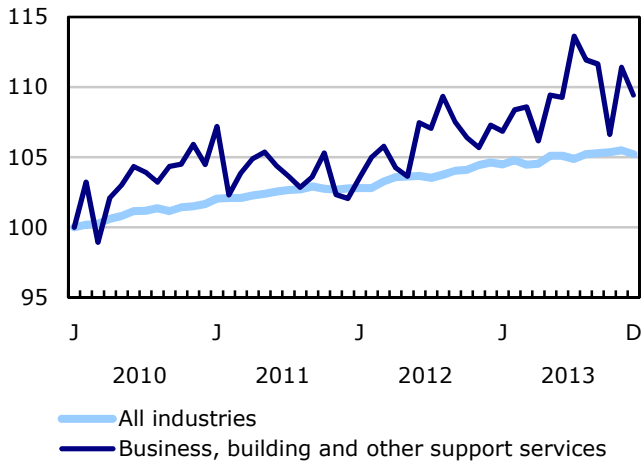
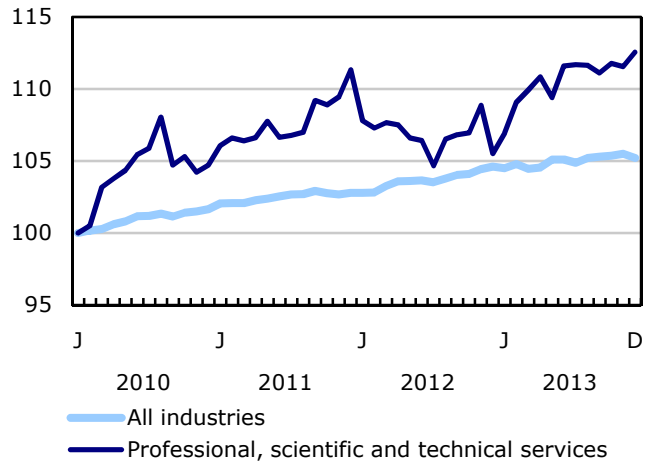
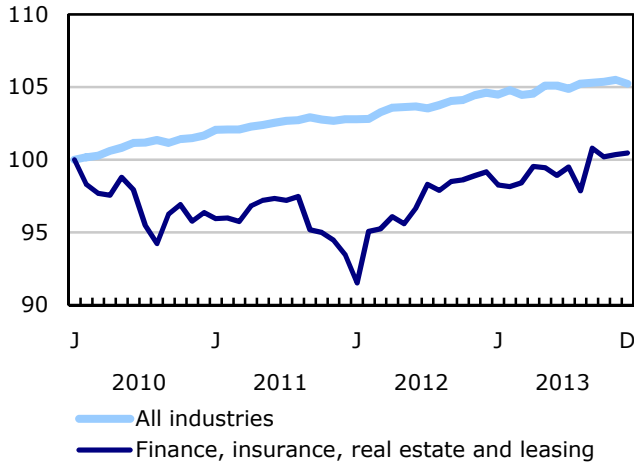


Chart 5
Index of employment by industry, Canada, seasonally adjusted, January 2010=100

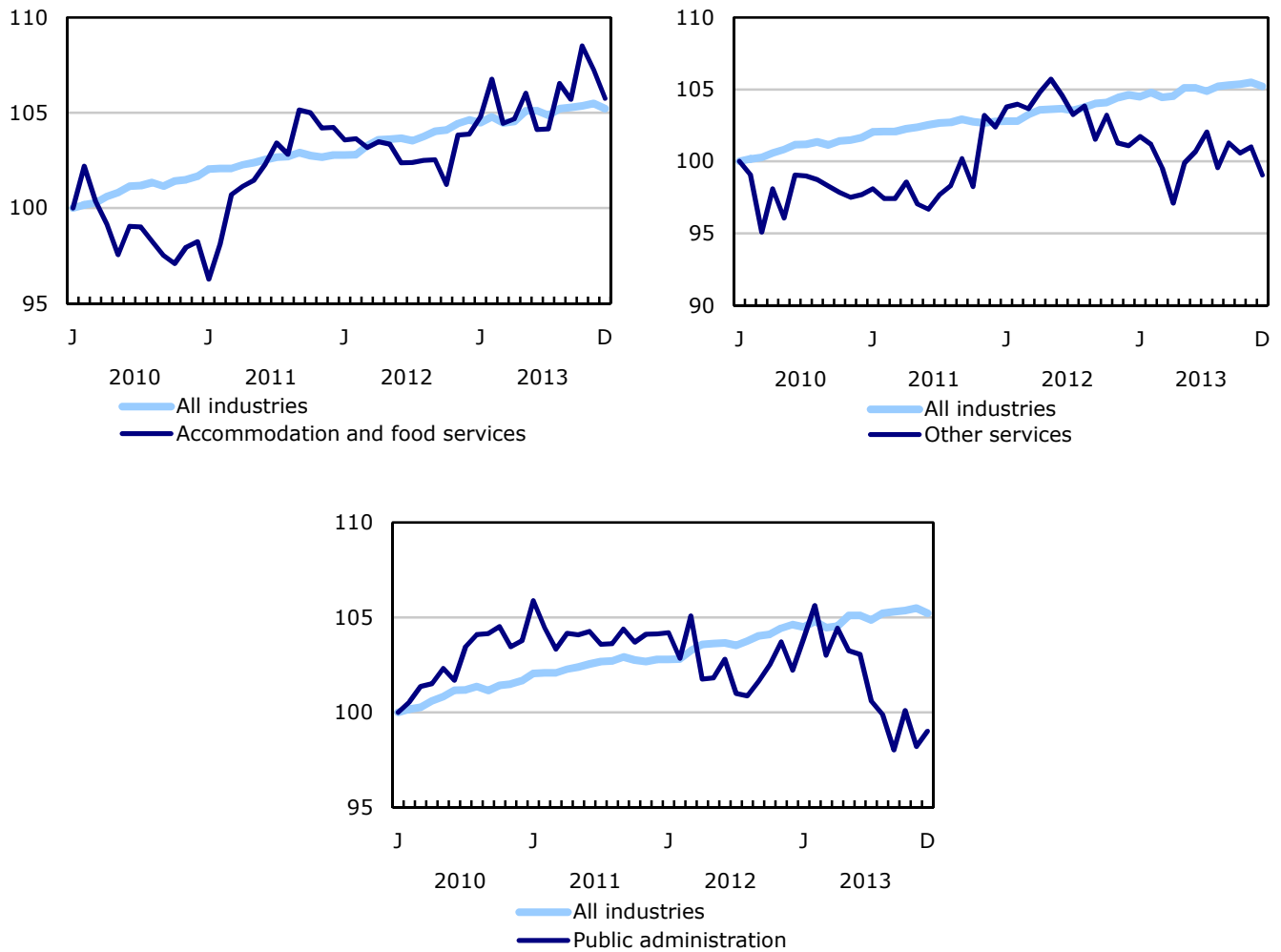


Chart 6
Index of employment by province, seasonally adjusted, January 2010=100

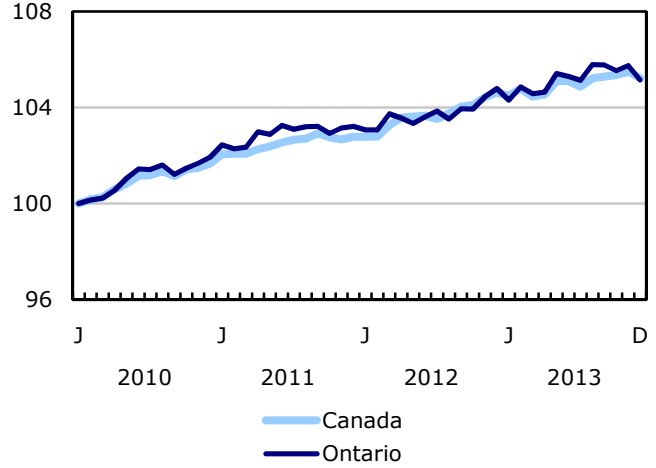
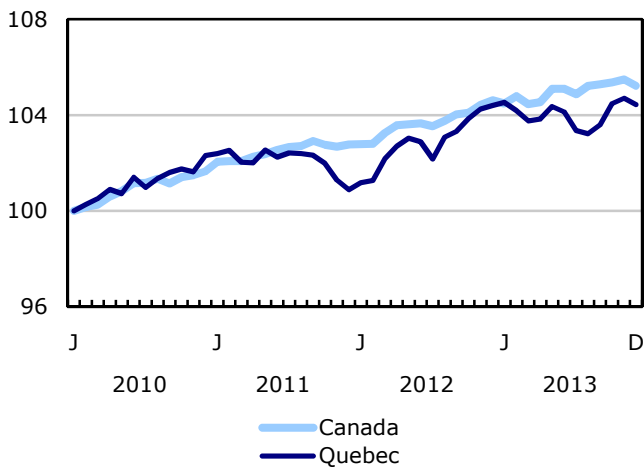
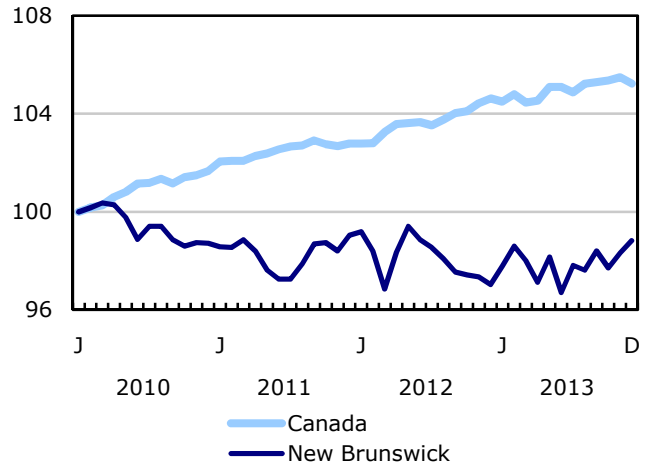
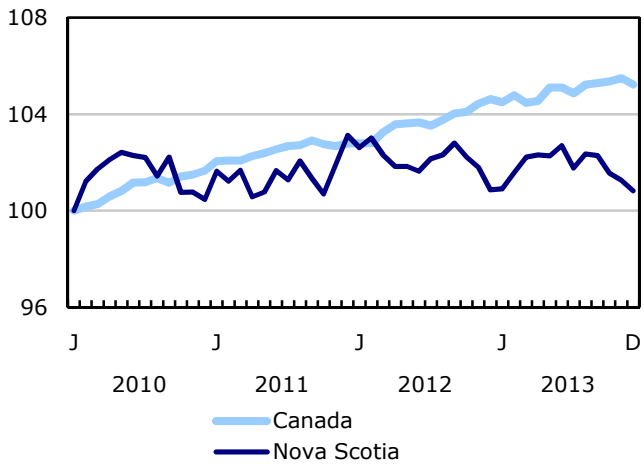
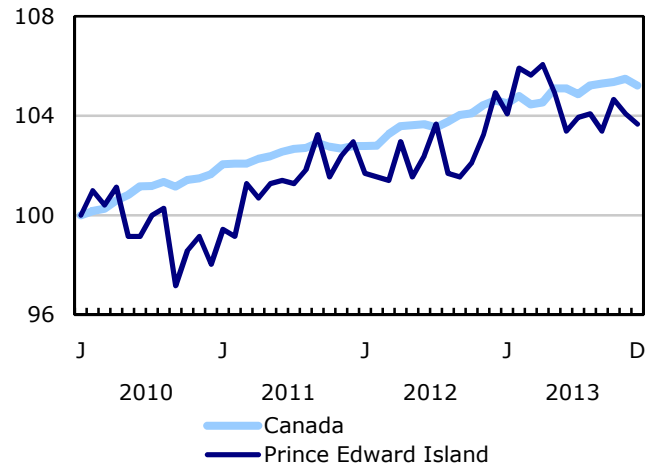
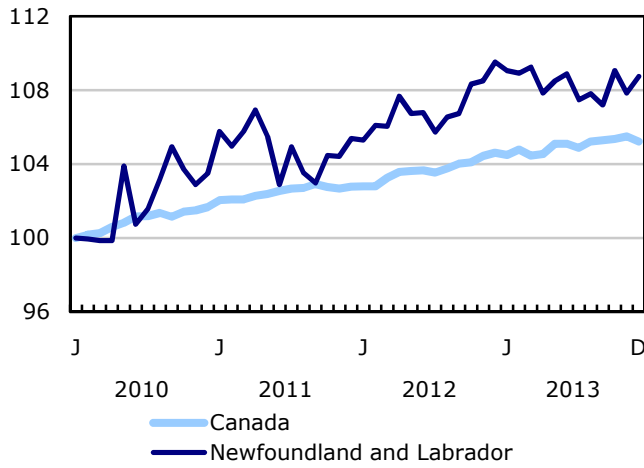
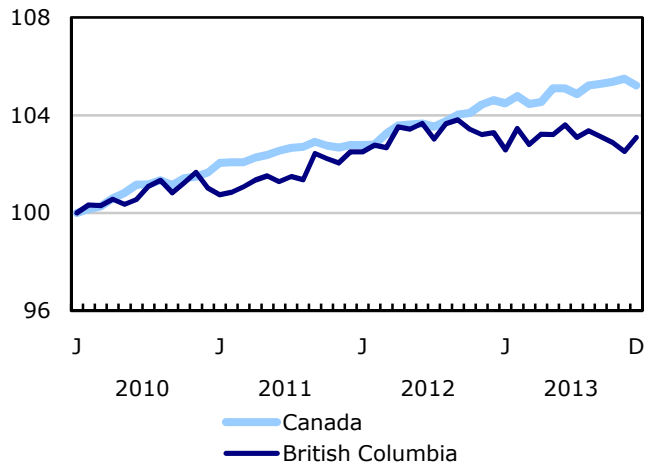
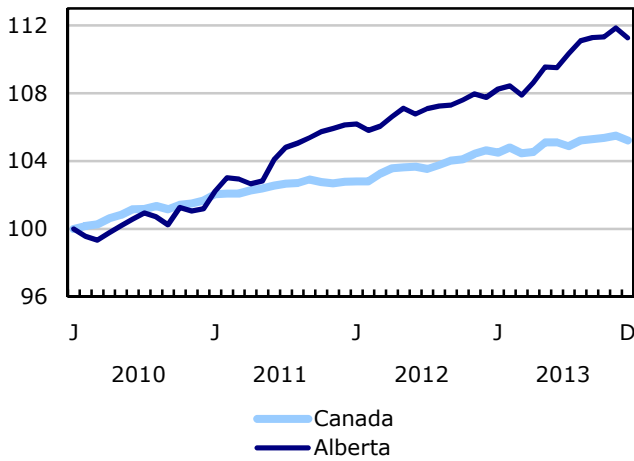
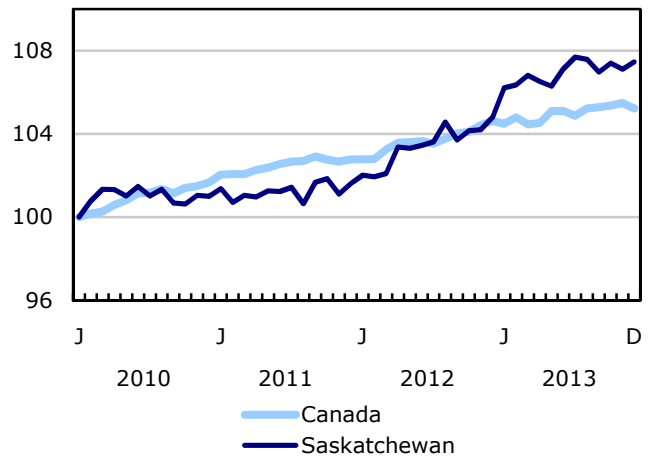
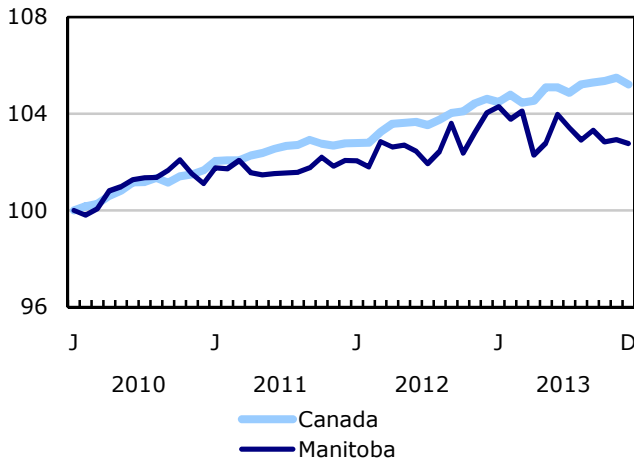


Chart 7
Index of employment by province, seasonally adjusted, January 2010=100



Related products

Selected publications from Statistics Canada

71-222-X	The Canadian Labour Market at a Glance
71-526-X	Methodology of the Canadian Labour Force Survey
71-543-G	Guide to the Labour Force Survey
71-544-X	Labour Force Survey Products and Services
71-587-X	Aboriginal Peoples Living Off-reserve in Western Canada: Estimates from the Labour Force Survey
71-588-X	The Aboriginal Labour Force Analysis Series
71-606-X	The Immigrant Labour Force Analysis Series
71F0031X	Improvements to the Labour Force Survey (LFS)
71M0001X	Labour Force Survey Microdata File
75-001-X	Perspectives on Labour and Income (from 1989 to 2012)
75-004-M	Labour Statistics: Research Papers
75-006-X	Insight on Canadian Society

Selected CANSIM tables from Statistics Canada

282-0001	Labour force survey estimates (LFS), by sex and detailed age group, unadjusted for seasonality, monthly
282-0002	Labour force survey estimates (LFS), by sex and detailed age group, annual
282-0003	Labour force survey estimates (LFS), by educational attainment, sex and age group, unadjusted for seasonality, monthly
282-0004	Labour force survey estimates (LFS), by educational attainment, sex and age group, annual
282-0005	Labour force survey estimates (LFS), by full- and part-time students during school months, sex and age group, unadjusted for seasonality, monthly
282-0006	Labour force survey estimates (LFS), by students during summer months, sex and age group, unadjusted for seasonality, monthly

282-0007	Labour force survey estimates (LFS), by North American Industry Classification System (NAICS), sex and age group, unadjusted for seasonality, monthly
282-0008	Labour force survey estimates (LFS), by North American Industry Classification System (NAICS), sex and age group, annual
282-0009	Labour force survey estimates (LFS), by National Occupational Classification for Statistics (NOC-S) and sex, unadjusted for seasonality, monthly
282-0010	Labour force survey estimates (LFS), by National Occupational Classification for Statistics (NOC-S) and sex, annual
282-0011	Labour force survey estimates (LFS), employment by class of worker, North American Industry Classification System (NAICS) and sex, unadjusted for seasonality, monthly
282-0012	Labour force survey estimates (LFS), employment by class of worker, North American Industry Classification System (NAICS) and sex, annual
282-0013	Labour force survey estimates (LFS), part-time employment by reason for part-time work, sex and age group, unadjusted for seasonality, monthly
282-0014	Labour force survey estimates (LFS), part-time employment by reason for part-time work, sex and age group, annual
282-0015	Labour force survey estimates (LFS), by usual hours worked, main or all jobs, sex and age group, unadjusted for seasonality, monthly
282-0016	Labour force survey estimates (LFS), by usual hours worked, main or all jobs, sex and age group, annual
282-0017	Labour force survey estimates (LFS), by actual hours worked, main or all jobs, sex and age group, unadjusted for seasonality, monthly
282-0018	Labour force survey estimates (LFS), by actual hours worked, main or all jobs, sex and age group, annual
282-0019	Labour force survey estimates (LFS), by usual hours worked, class of worker, North American Industry Classification System (NAICS) and sex, unadjusted for seasonality, monthly
282-0020	Labour force survey estimates (LFS), by usual hours worked, class of worker, North American Industry Classification System (NAICS) and sex, annual
282-0021	Labour force survey estimates (LFS), by actual hours worked, class of worker, North American Industry Classification System (NAICS) and sex, unadjusted for seasonality, monthly
282-0022	Labour force survey estimates (LFS), by actual hours worked, class of worker, North American Industry Classification System (NAICS) and sex, annual
282-0023	Labour force survey estimates (LFS), by usual hours worked, class of worker, National Occupational Classification for Statistics (NOC-S) and sex, unadjusted for seasonality, monthly
282-0024	Labour force survey estimates (LFS), by usual hours worked, class of worker, National Occupational Classification for Statistics (NOC-S) and sex, annual
282-0025	Labour force survey estimates (LFS), by actual hours worked, class of worker, National Occupational Classification for Statistics (NOC-S) and sex, unadjusted for seasonality, monthly

282-0026	Labour force survey estimates (LFS), by actual hours worked, class of worker, National Occupational Classification for Statistics (NOC-S) and sex, annual
282-0027	Labour force survey estimates (LFS), by total and average usual and actual hours worked, main or all jobs, type of work, sex and age group, unadjusted for seasonality, monthly
282-0028	Labour force survey estimates (LFS), by total and average usual and actual hours worked, main or all jobs, type of work, sex and age group, annual
282-0029	Labour force survey estimates (LFS), average days lost for personal reasons per full-time employee by North American Industry Classification System (NAICS), sex and age group, annual
282-0030	Labour force survey estimates (LFS), average days lost for personal reasons per full-time employee by National Occupational Classification for Statistics (NOC-S), sex and age group, annual
282-0031	Labour force survey estimates (LFS), multiple jobholders by North American Industry Classification System (NAICS), sex and age group, annual
282-0032	Labour force survey estimates (LFS), multiple jobholders by North American Industry Classification System (NAICS), sex and age group, unadjusted for seasonality, monthly
282-0033	Labour force survey estimates (LFS), multiple jobholders by National Occupational Classification for Statistics (NOC-S), sex and age group, unadjusted for seasonality, monthly
282-0034	Labour force survey estimates (LFS), multiple jobholders by National Occupational Classification for Statistics (NOC-S), sex and age group, annual
282-0035	Labour force survey estimates (LFS), multiple jobholders by usual hours worked at main and all jobs, unadjusted for seasonality, monthly
282-0036	Labour force survey estimates (LFS), multiple jobholders by usual hours worked at main and all jobs, annual
282-0037	Labour force survey estimates (LFS), job tenure by type of work, sex and age group, unadjusted for seasonality, monthly
282-0038	Labour force survey estimates (LFS), job tenure by type of work, sex and age group, annual
282-0039	Labour force survey estimates (LFS), job tenure by National Occupational Classification for Statistics (NOC-S) and sex, unadjusted for seasonality, monthly
282-0040	Labour force survey estimates (LFS), job tenure by National Occupational Classification for Statistics (NOC-S) and sex, annual
282-0041	Labour force survey estimates (LFS), job tenure by North American Industry Classification System (NAICS) and sex, unadjusted for seasonality, monthly
282-0042	Labour force survey estimates (LFS), job tenure by North American Industry Classification System (NAICS) and sex, annual
282-0047	Labour force survey estimates (LFS), duration of unemployment by sex and age group, unadjusted for seasonality, monthly
282-0048	Labour force survey estimates (LFS), duration of unemployment by sex and age group, annual

282-0049	Labour force survey estimates (LFS), unemployment by type of work sought and search method, sex and age group, unadjusted for seasonality, monthly
282-0050	Labour force survey estimates (LFS), unemployment by type of work sought and search method, sex and age group, annual
282-0051	Labour force survey estimates (LFS), retirement age by class of worker and sex, annual
282-0054	Labour force survey estimates (LFS), by provinces and economic regions based on 2006 Census boundaries, 3-month moving average, unadjusted for seasonality, monthly
282-0055	Labour force survey estimates (LFS), by provinces, territories and economic regions based on 2006 Census boundaries, annual
282-0060	Labour force survey estimates (LFS), employment by economic region and North American Industry Classification System (NAICS), 3-month moving average, unadjusted for seasonality, monthly
282-0061	Labour force survey estimates (LFS), employment by economic region and North American Industry Classification System (NAICS), annual
282-0062	Labour force survey estimates (LFS), employment by economic region and National Occupational Classification for Statistics (NOC-S), 3-month moving average, unadjusted for seasonality, monthly
282-0063	Labour force survey estimates (LFS), employment by economic region and National Occupational Classification for Statistics (NOC-S), annual
282-0069	Labour force survey estimates (LFS), wages of employees by type of work, National Occupational Classification for Statistics (NOC-S), sex and age group, unadjusted for seasonality, monthly
282-0070	Labour force survey estimates (LFS), wages of employees by type of work, National Occupational Classification for Statistics (NOC-S), sex and age group, annual
282-0071	Labour force survey estimates (LFS), wages of employees by type of work, North American Industry Classification System (NAICS), sex and age group, unadjusted for seasonality, monthly
282-0072	Labour force survey estimates (LFS), wages of employees by type of work, North American Industry Classification System (NAICS), sex and age group, annual
282-0073	Labour force survey estimates (LFS), wages of employees by job permanence, union coverage, sex and age group, unadjusted for seasonality, monthly
282-0074	Labour force survey estimates (LFS), wages of employees by job permanence, union coverage, sex and age group, annual
282-0075	Labour force survey estimates (LFS), employees by establishment size, North American Industry Classification System (NAICS), sex and age group, unadjusted for seasonality, monthly
282-0076	Labour force survey estimates (LFS), employees by establishment size, North American Industry Classification System (NAICS), sex and age group, annual
282-0077	Labour force survey estimates (LFS), employees by union coverage, North American Industry Classification System (NAICS), sex and age group, unadjusted for seasonality, monthly

282-0078	Labour force survey estimates (LFS), employees by union coverage, North American Industry Classification System (NAICS), sex and age group, annual
282-0079	Labour force survey estimates (LFS), employees by job permanency, North American Industry Classification System (NAICS), sex and age group, unadjusted for seasonality, monthly
282-0080	Labour force survey estimates (LFS), employees by job permanency, North American Industry Classification System (NAICS), sex and age group, annual
282-0081	Labour force survey estimates (LFS), employees working overtime (weekly) by National Occupational Classification for Statistics (NOC-S), sex and age group, unadjusted for seasonality, monthly
282-0082	Labour force survey estimates (LFS), employees working overtime (weekly) by National Occupational Classification for Statistics (NOC-S), sex and age group, annual
282-0083	Labour force survey estimates (LFS), employees working overtime (weekly) by North American Industry Classification System (NAICS), sex and age group, unadjusted for seasonality, monthly
282-0084	Labour force survey estimates (LFS), employees working overtime (weekly) by North American Industry Classification System (NAICS), sex and age group, annual
282-0085	Labour force survey estimates (LFS), supplementary unemployment rates by sex and age group, unadjusted for seasonality, monthly
282-0086	Labour force survey estimates (LFS), supplementary unemployment rates by sex and age group, annual
282-0087	Labour force survey estimates (LFS), by sex and age group, seasonally adjusted and unadjusted, monthly
282-0088	Labour force survey estimates (LFS), employment by North American Industry Classification System (NAICS), seasonally adjusted and unadjusted, monthly
282-0089	Labour force survey estimates (LFS), employment by class of worker and sex, seasonally adjusted and unadjusted, monthly
282-0092	Labour force survey estimates (LFS), actual hours worked by North American Industry Classification System (NAICS), seasonally adjusted, monthly
282-0093	Labour force survey estimates (LFS), employment by National Occupational Classification for Statistics (NOC-S), seasonally adjusted, monthly
282-0094	Labour force survey estimates (LFS), by North American Industry Classification System (NAICS), Canada, seasonally adjusted, monthly
282-0095	Labour force survey estimates (LFS), by full- and part-time students during school months, sex and age group, annual
282-0100	Labour force survey estimates (LFS), by territories, sex and age group, 3-month moving average, seasonally adjusted and unadjusted, monthly
282-0101	Labour force survey estimates (LFS), by immigrant status, age group, Canada, regions, provinces and Montreal, Toronto, Vancouver census metropolitan areas, 3-month moving average, unadjusted for seasonality, monthly

282-0102	Labour force survey estimates (LFS), by immigrant status, age group, Canada, regions, provinces and Montreal, Toronto, Vancouver census metropolitan areas, annual
282-0103	Labour force survey estimates (LFS), by immigrant status, sex and detailed age group, Canada, 3-month moving average, unadjusted for seasonality, monthly
282-0104	Labour force survey estimates (LFS), by immigrant status, sex and detailed age group, Canada, annual
282-0105	Labour force survey estimates (LFS), by immigrant status, educational attainment, sex and age group, Canada, 3-month moving average, unadjusted for seasonality, monthly
282-0106	Labour force survey estimates (LFS), by immigrant status, educational attainment, sex and age group, Canada, annual
282-0107	Labour force survey estimates (LFS), by immigrant status, country of birth, sex and age group, Canada, 3-month moving average, unadjusted for seasonality, monthly
282-0108	Labour force survey estimates (LFS), by immigrant status, country of birth, sex and age group, Canada, annual
282-0109	Labour force survey estimates (LFS), by census metropolitan area based on 2006 census boundaries, sex and age group, 3-month moving average, unadjusted for seasonality, monthly
282-0110	Labour force survey estimates (LFS), by census metropolitan area based on 2006 census boundaries, sex and age group, annual
282-0111	Labour force survey estimates (LFS), employment by census metropolitan area based on 2006 census boundaries and North American Industry Classification System (NAICS), 3-month moving average, unadjusted for seasonality, monthly
282-0112	Labour force survey estimates (LFS), employment by census metropolitan area based on 2006 census boundaries and North American Industry Classification System (NAICS), annual
282-0113	Labour force survey estimates (LFS), employment by census metropolitan area based on 2006 census boundaries and National Occupational Classification for Statistics (NOC-S), 3-month moving average, unadjusted for seasonality, monthly
282-0114	Labour force survey estimates (LFS), employment by census metropolitan area based on 2006 census boundaries and National Occupational Classification for Statistics (NOC-S), annual
282-0115	Labour force survey estimates (LFS), by selected census agglomerations based on 2006 census boundaries, annual
282-0116	Labour force survey estimates (LFS), by census metropolitan area based on 2006 census boundaries, 3-month moving average, seasonally adjusted and unadjusted, monthly
282-0117	Labour force survey estimates (LFS), by Montréal, Toronto and Vancouver census metropolitan areas based on 2006 census boundaries, seasonally adjusted and unadjusted, monthly
282-0118	Labour force survey estimates (LFS), by urban and rural areas based on 2006 census boundaries, sex and age group, unadjusted for seasonality, monthly

282-0119	Labour force survey estimates (LFS), by urban and rural areas based on 2006 census boundaries, sex and age group, annual
282-0120	Labour force survey estimates (LFS), employment by urban and rural areas based on 2006 census boundaries, class of worker and North American Industry Classification System (NAICS), unadjusted for seasonality, monthly
282-0121	Labour force survey estimates (LFS), employment by urban and rural areas based on 2006 census boundaries, class of worker and North American Industry Classification System (NAICS), annual
282-0200	Labour force survey estimates (LFS), weekly wage distributions of employees by type of work, North American Industry Classification System (NAICS) and sex, unadjusted for seasonality, monthly
282-0201	Labour force survey estimates (LFS), weekly wage distributions of employees by type of work, North American Industry Classification System (NAICS) and sex, annual
282-0202	Labour force survey estimates (LFS), weekly wage distributions of employees by type of work, National Occupational Classification for Statistics (NOC-S) and sex, unadjusted for seasonality, monthly
282-0203	Labour force survey estimates (LFS), weekly wage distributions of employees by type of work, National Occupational Classification for Statistics (NOC-S) and sex, annual
282-0204	Labour force survey estimates (LFS), hourly wage distributions of employees by type of work, North American Industry Classification System (NAICS) and sex, unadjusted for seasonality, monthly
282-0205	Labour force survey estimates (LFS), hourly wage distributions of employees by type of work, North American Industry Classification System (NAICS) and sex, annual
282-0206	Labour force survey estimates (LFS), hourly wage distribution of employees by type of work, National Occupational Classification for Statistics (NOC-S) and sex, unadjusted for seasonality, monthly
282-0207	Labour force survey estimates (LFS), hourly wage distribution of employees by type of work, National Occupational Classification for Statistics (NOC-S) and sex, annual
282-0208	Labour force survey estimates (LFS), by educational degree, sex and age group, unadjusted for seasonality, monthly
282-0209	Labour force survey estimates (LFS), by educational degree, sex and age group, annual
282-0210	Labour force survey estimates (LFS), by family type and family age composition, unadjusted for seasonality, monthly
282-0211	Labour force survey estimates (LFS), by family type and family age composition, annual
282-0212	Labour force survey estimates (LFS), hours lost by employees by reason absent full and part week and sex, unadjusted for seasonality, monthly
282-0213	Labour force survey estimates (LFS), hours lost by employees by reason absent full and part week and sex, annual

282-0214	Labour force survey estimates (LFS), activity prior to unemployment by sex and age group, unadjusted for seasonality, monthly
282-0215	Labour force survey estimates (LFS), activity prior to unemployment by sex and age group, annual
282-0216	Labour force survey estimates (LFS), reason for leaving job during previous year by sex and age group, unadjusted for seasonality, monthly
282-0217	Labour force survey estimates (LFS), reason for leaving job during previous year by sex and age group, annual
282-0218	Labour force survey estimates (LFS), reason for not looking for work, by sex and age group, unadjusted for seasonality, monthly
282-0219	Labour force survey estimates (LFS), reason for not looking for work, by sex and age group, annual
282-0220	Labour Force Survey estimates (LFS), employees by union status, sex and age group, Canada and provinces, annual
282-0221	Labour Force Survey estimates (LFS), employees by union status, sex, age group and education level, Canada, annual
282-0222	Labour Force Survey estimates (LFS), employees by union status and National Occupational Classification (NOC-S), Canada, annual
282-0223	Labour Force Survey estimates (LFS), employees by union status, North American Industry Classification System (NAICS) and sex, Canada, annual
282-0224	Labour Force Survey estimates (LFS), employees by union status, establishment size, job tenure, type of work and job permanency, Canada, annual
282-0225	Labour Force Survey estimates (LFS), average weekly earnings, average hourly wage rate and average usual weekly hours by union status and type of work, Canada and provinces, annual

Selected surveys from Statistics Canada

3701	Labour Force Survey
------	---------------------

Selected summary tables from Statistics Canada

- *Labour force characteristics*
- *Employment by industry*
- *Days lost per worker due to illness or disability, by sex, by province*

- *Economic indicators, by province and territory (monthly and quarterly)*
- *Labour force and participation rates by sex and age group*
- *Labour force, employment and unemployment, levels and rates, by province*
- *Employment by industry and sex*
- *Full-time and part-time employment by sex and age group*
- *Labour force characteristics by age and sex*
- *Distribution of employed people, by industry, by province*
- *Labour force characteristics, population 15 years and older, by census metropolitan area*
- *Labour force characteristics, population 15 years and older, by economic region, by province*
- *Days lost per worker by reason, by provinces*
- *Days lost per worker by industry and sex*
- *People employed, by educational attainment*
- *Reasons for part-time work by sex and age group*
- *Self-employment, historical summary*
- *Employment by age, sex, type of work, class of worker and province (monthly)*
- *Employment by major industry group, seasonally adjusted, by province (monthly)*
- *Actual hours worked per week by industry, seasonally adjusted (monthly)*
- *Average hourly wages of employees by selected characteristics and occupation, unadjusted data, by province (monthly)*
- *Labour force characteristics, seasonally adjusted, by province (monthly)*
- *Labour force characteristics, unadjusted, by province (monthly)*
- *Labour force characteristics, seasonally adjusted, by census metropolitan area (3 month moving average)*
- *Labour force characteristics, unadjusted, by census metropolitan area (3 month moving average)*
- *Labour force characteristics, unadjusted, by economic region (3 month moving average)*
- *Labour force characteristics by immigrant status of population aged 25 to 54, by province*
- *Labour force characteristics by immigrant status of population aged 25 to 54, by educational attainment*
- *Labour force characteristics by immigrant status, by detailed age group*
- *Labour force characteristics by immigrant status of population aged 25 to 54, by country of birth*

Statistical tables

Table 1
Labour force characteristics by age and sex, Canada, seasonally adjusted

	November 2013	December 2013	S.E. ¹	Change from			Percent change from		
				last month	last December	twelve months ago	last month	last December	twelve months ago
in thousands (except rates)									
15 years and over, both sexes									
Population	28,816.7	28,843.7	...	27.0	375.1	375.1	0.1	1.3	1.3
Labour force	19,131.3	19,152.3	29.2	21.0	126.3	126.3	0.1	0.7	0.7
Employment	17,815.5	17,769.6	28.9	-45.9	102.0	102.0	-0.3	0.6	0.6
Employment full-time	14,439.2	14,379.2	39.0	-60.0	19.2	19.2	-0.4	0.1	0.1
Employment part-time	3,376.2	3,390.4	35.7	14.2	82.8	82.8	0.4	2.5	2.5
Unemployment	1,315.8	1,382.7	25.1	66.9	24.3	24.3	5.1	1.8	1.8
Participation rate	66.4	66.4	0.1	0.0	-0.4	-0.4
Unemployment rate	6.9	7.2	0.1	0.3	0.1	0.1
Employment rate	61.8	61.6	0.1	-0.2	-0.5	-0.5
Part-time rate	19.0	19.1	0.2	0.1	0.4	0.4
15 to 24 years, both sexes									
Population	4,442.1	4,439.9	...	-2.2	-16.2	-16.2	0.0	-0.4	-0.4
Labour force	2,809.4	2,815.7	17.3	6.3	-20.3	-20.3	0.2	-0.7	-0.7
Employment	2,433.5	2,421.4	15.8	-12.1	-13.7	-13.7	-0.5	-0.6	-0.6
Employment full-time	1,274.1	1,252.6	18.6	-21.5	-23.5	-23.5	-1.7	-1.8	-1.8
Employment part-time	1,159.5	1,168.9	19.5	9.4	9.9	9.9	0.8	0.9	0.9
Unemployment	375.9	394.3	14.9	18.4	-6.5	-6.5	4.9	-1.6	-1.6
Participation rate	63.2	63.4	0.4	0.2	-0.2	-0.2
Unemployment rate	13.4	14.0	0.5	0.6	-0.1	-0.1
Employment rate	54.8	54.5	0.4	-0.3	-0.1	-0.1
Part-time rate	47.6	48.3	0.7	0.6	0.7	0.7
25 years and over, men									
Population	11,936.1	11,951.2	...	15.1	197.6	197.6	0.1	1.7	1.7
Labour force	8,647.9	8,639.9	15.1	-8.0	73.2	73.2	-0.1	0.9	0.9
Employment	8,112.7	8,084.1	16.3	-28.6	33.7	33.7	-0.4	0.4	0.4
Employment full-time	7,474.7	7,443.5	22.0	-31.2	-0.5	-0.5	-0.4	0.0	0.0
Employment part-time	638.0	640.6	17.7	2.6	34.2	34.2	0.4	5.6	5.6
Unemployment	535.2	555.8	14.5	20.6	39.5	39.5	3.8	7.7	7.7
Participation rate	72.5	72.3	0.1	-0.2	-0.6	-0.6
Unemployment rate	6.2	6.4	0.2	0.2	0.4	0.4
Employment rate	68.0	67.6	0.1	-0.4	-0.9	-0.9
Part-time rate	7.9	7.9	0.2	0.1	0.4	0.4
25 years and over, women									
Population	12,438.5	12,452.6	...	14.1	193.7	193.7	0.1	1.6	1.6
Labour force	7,674.0	7,696.7	16.6	22.7	73.4	73.4	0.3	1.0	1.0
Employment	7,269.2	7,264.1	16.5	-5.1	82.0	82.0	-0.1	1.1	1.1
Employment full-time	5,690.5	5,683.1	25.4	-7.4	43.2	43.2	-0.1	0.8	0.8
Employment part-time	1,578.8	1,581.0	23.8	2.2	38.8	38.8	0.1	2.5	2.5
Unemployment	404.8	432.6	13.4	27.8	-8.6	-8.6	6.9	-1.9	-1.9
Participation rate	61.7	61.8	0.1	0.1	-0.4	-0.4
Unemployment rate	5.3	5.6	0.2	0.3	-0.2	-0.2
Employment rate	58.4	58.3	0.1	-0.1	-0.3	-0.3
Part-time rate	21.7	21.8	0.3	0.0	0.3	0.3
25 to 54 years, both sexes									
Population	14,633.9	14,640.4	...	6.5	61.0	61.0	0.0	0.4	0.4
Labour force	12,675.3	12,681.5	21.8	6.2	-23.0	-23.0	0.0	-0.2	-0.2
Employment	11,950.8	11,913.0	23.3	-37.8	-41.4	-41.4	-0.3	-0.3	-0.3
Unemployment	724.5	768.5	18.3	44.0	18.4	18.4	6.1	2.5	2.5
Participation rate	86.6	86.6	0.1	0.0	-0.5	-0.5
Unemployment rate	5.7	6.1	0.1	0.4	0.2	0.2
Employment rate	81.7	81.4	0.2	-0.3	-0.6	-0.6
25 to 54 years, men									
Population	7,323.8	7,327.6	...	3.8	33.2	33.2	0.1	0.5	0.5
Labour force	6,653.3	6,647.3	13.9	-6.0	-14.8	-14.8	-0.1	-0.2	-0.2
Employment	6,243.7	6,225.2	15.6	-18.5	-41.4	-41.4	-0.3	-0.7	-0.7
Unemployment	409.6	422.0	13.3	12.4	26.5	26.5	3.0	6.7	6.7
Participation rate	90.8	90.7	0.2	-0.1	-0.6	-0.6
Unemployment rate	6.2	6.3	0.2	0.1	0.4	0.4
Employment rate	85.3	85.0	0.2	-0.3	-0.9	-0.9

See notes at the end of the table.

Table 1 – continued

Labour force characteristics by age and sex, Canada, seasonally adjusted

	November 2013	December 2013	S.E. ¹	Change from			Percent change from		
				last month	last December	twelve months ago	last month	last December	twelve months ago
in thousands (except rates)									
25 to 54 years, women									
Population	7,310.0	7,312.8	...	2.8	27.8	27.8	0.0	0.4	0.4
Labour force	6,022.0	6,034.2	16.1	12.2	-8.2	-8.2	0.2	-0.1	-0.1
Employment	5,707.1	5,687.7	16.4	-19.4	-0.1	-0.1	-0.3	0.0	0.0
Unemployment	314.9	346.5	12.2	31.6	-8.1	-8.1	10.0	-2.3	-2.3
Participation rate	82.4	82.5	0.2	0.1	-0.4	-0.4
Unemployment rate	5.2	5.7	0.2	0.5	-0.2	-0.2
Employment rate	78.1	77.8	0.2	-0.3	-0.3	-0.3
55 years and over, both sexes									
Population	9,740.8	9,763.4	...	22.6	330.3	330.3	0.2	3.5	3.5
Labour force	3,646.6	3,655.1	17.4	8.5	169.6	169.6	0.2	4.9	4.9
Employment	3,431.2	3,435.2	17.4	4.0	157.1	157.1	0.1	4.8	4.8
Unemployment	215.5	219.9	9.4	4.4	12.5	12.5	2.0	6.0	6.0
Participation rate	37.4	37.4	0.2	0.0	0.5	0.5
Unemployment rate	5.9	6.0	0.3	0.1	0.0	0.0
Employment rate	35.2	35.2	0.2	0.0	0.4	0.4
55 years and over, men									
Population	4,612.3	4,623.6	...	11.3	164.4	164.4	0.2	3.7	3.7
Labour force	1,994.6	1,992.7	11.4	-1.9	88.1	88.1	-0.1	4.6	4.6
Employment	1,869.0	1,858.9	11.6	-10.1	75.1	75.1	-0.5	4.2	4.2
Unemployment	125.6	133.8	6.9	8.2	13.0	13.0	6.5	10.8	10.8
Participation rate	43.2	43.1	0.3	-0.1	0.4	0.4
Unemployment rate	6.3	6.7	0.4	0.4	0.4	0.4
Employment rate	40.5	40.2	0.3	-0.3	0.2	0.2
55 years and over, women									
Population	5,128.4	5,139.8	...	11.4	165.9	165.9	0.2	3.3	3.3
Labour force	1,652.0	1,662.5	12.0	10.5	81.6	81.6	0.6	5.2	5.2
Employment	1,562.1	1,576.3	11.9	14.2	82.0	82.0	0.9	5.5	5.5
Unemployment	89.9	86.1	6.2	-3.8	-0.5	-0.5	-4.2	-0.6	-0.6
Participation rate	32.2	32.3	0.2	0.1	0.5	0.5
Unemployment rate	5.4	5.2	0.4	-0.2	-0.3	-0.3
Employment rate	30.5	30.7	0.2	0.2	0.7	0.7

1. Average standard error of change in two consecutive months (see "Sampling Errors" in Data Quality for further explanations).

Note(s): Related CANSIM table 282-0087. The sum of individual categories may not always add to the total due to rounding.

Table 2
Employment by class of worker and industry, Canada, seasonally adjusted

	November 2013	December 2013	S.E. ¹	Change from			Percent change from		
				last month	last December	twelve months ago	last month	last December	twelve months ago
in thousands									
Class of worker									
Employees	15,109.1	15,101.1	35.5	-8.0	85.1	85.1	-0.1	0.6	0.6
Self-employed ²	2,706.4	2,668.5	25.2	-37.9	16.9	16.9	-1.4	0.6	0.6
Public/private sector employees									
Public sector employees	3,602.2	3,620.4	25.0	18.2	-28.1	-28.1	0.5	-0.8	-0.8
Private sector employees	11,507.0	11,480.7	37.7	-26.3	113.2	113.2	-0.2	1.0	1.0
Industry	17,815.5	17,769.6	28.9	-45.9	102.0	102.0	-0.3	0.6	0.6
Goods-producing sector	3,905.6	3,881.8	26.6	-23.8	2.4	2.4	-0.6	0.1	0.1
Agriculture	309.1	299.3	7.3	-9.8	-14.0	-14.0	-3.2	-4.5	-4.5
Forestry, fishing, mining, quarrying, oil and gas extraction ³	385.7	377.7	7.2	-8.0	20.3	20.3	-2.1	5.7	5.7
Utilities	157.2	157.9	5.0	0.7	12.9	12.9	0.4	8.9	8.9
Construction	1,315.4	1,301.3	17.2	-14.1	24.8	24.8	-1.1	1.9	1.9
Manufacturing	1,738.1	1,745.6	20.0	7.5	-41.6	-41.6	0.4	-2.3	-2.3
Services-producing sector	13,909.9	13,887.8	34.4	-22.1	99.6	99.6	-0.2	0.7	0.7
Trade	2,700.9	2,696.3	23.7	-4.6	5.5	5.5	-0.2	0.2	0.2
Transportation and warehousing	872.4	868.9	14.1	-3.5	8.8	8.8	-0.4	1.0	1.0
Finance, insurance, real estate and leasing	1,132.8	1,134.2	16.3	1.4	14.7	14.7	0.1	1.3	1.3
Professional, scientific and technical services	1,356.7	1,368.8	18.4	12.1	85.5	85.5	0.9	6.7	6.7
Business, building and other support services	725.8	712.8	14.2	-13.0	13.9	13.9	-1.8	2.0	2.0
Educational services	1,298.3	1,279.8	16.7	-18.5	-44.0	-44.0	-1.4	-3.3	-3.3
Health care and social assistance	2,182.2	2,204.3	19.4	22.1	30.4	30.4	1.0	1.4	1.4
Information, culture and recreation	800.8	806.0	14.5	5.2	10.6	10.6	0.6	1.3	1.3
Accommodation and food services	1,148.5	1,132.5	16.9	-16.0	20.0	20.0	-1.4	1.8	1.8
Other services	775.9	760.9	13.7	-15.0	-15.7	-15.7	-1.9	-2.0	-2.0
Public administration	915.7	923.3	13.1	7.6	-30.0	-30.0	0.8	-3.1	-3.1

1. Average standard error of change in two consecutive months (see "Sampling Errors" in Data Quality for further explanations).

2. Includes both incorporated and unincorporated working owners, self-employed persons who do not have a business and persons working in a family business without pay.

3. Also referred to as Natural resources.

Note(s): Related CANSIM Tables 282-0088, 282-0089. The sum of individual categories may not always add to the total due to rounding.

Table 3
Labour force characteristics by province, seasonally adjusted

	November 2013	December 2013	S.E. ¹	Change from			Percent change from		
				last month	last December	twelve months ago	last month	last December	twelve months ago
in thousands (except rates)									
Newfoundland and Labrador									
Population	429.7	429.6	...	-0.1	1.5	1.5	0.0	0.4	0.4
Labour force	264.8	262.4	1.9	-2.4	-4.4	-4.4	-0.9	-1.6	-1.6
Employment	232.1	234.0	1.9	1.9	-1.7	-1.7	0.8	-0.7	-0.7
Employment full-time	199.2	198.8	2.3	-0.4	-1.7	-1.7	-0.2	-0.8	-0.8
Employment part-time	32.9	35.2	1.8	2.3	0.0	0.0	7.0	0.0	0.0
Unemployment	32.7	28.4	1.7	-4.3	-2.6	-2.6	-13.1	-8.4	-8.4
Participation rate	61.6	61.1	0.4	-0.5	-1.2	-1.2
Unemployment rate	12.3	10.8	0.6	-1.5	-0.8	-0.8
Employment rate	54.0	54.5	0.4	0.5	-0.6	-0.6
Prince Edward Island									
Population	120.9	121.0	...	0.1	0.4	0.4	0.1	0.3	0.3
Labour force	83.4	83.2	0.7	-0.2	-0.6	-0.6	-0.2	-0.7	-0.7
Employment	73.9	73.6	0.7	-0.3	-0.9	-0.9	-0.4	-1.2	-1.2
Employment full-time	61.1	61.8	0.8	0.7	1.1	1.1	1.1	1.8	1.8
Employment part-time	12.8	11.8	0.7	-1.0	-2.0	-2.0	-7.8	-14.5	-14.5
Unemployment	9.5	9.6	0.7	0.1	0.4	0.4	1.1	4.3	4.3
Participation rate	69.0	68.8	0.5	-0.2	-0.7	-0.7
Unemployment rate	11.4	11.5	0.8	0.1	0.5	0.5
Employment rate	61.1	60.8	0.5	-0.3	-1.0	-1.0
Nova Scotia									
Population	781.6	781.5	...	-0.1	0.7	0.7	0.0	0.1	0.1
Labour force	495.2	494.9	2.6	-0.3	-1.0	-1.0	-0.1	-0.2	-0.2
Employment	451.5	449.6	2.7	-1.9	-0.2	-0.2	-0.4	0.0	0.0
Employment full-time	363.3	359.9	3.7	-3.4	-3.3	-3.3	-0.9	-0.9	-0.9
Employment part-time	88.1	89.7	3.2	1.6	3.1	3.1	1.8	3.6	3.6
Unemployment	43.7	45.3	2.5	1.6	-0.8	-0.8	3.7	-1.7	-1.7
Participation rate	63.4	63.3	0.3	-0.1	-0.2	-0.2
Unemployment rate	8.8	9.2	0.5	0.4	-0.1	-0.1
Employment rate	57.8	57.5	0.3	-0.3	-0.1	-0.1
New Brunswick									
Population	619.8	619.9	...	0.1	-0.1	-0.1	0.0	0.0	0.0
Labour force	390.0	392.1	2.2	2.1	2.3	2.3	0.5	0.6	0.6
Employment	352.3	354.1	2.3	1.8	6.4	6.4	0.5	1.8	1.8
Employment full-time	296.1	296.5	2.9	0.4	3.1	3.1	0.1	1.1	1.1
Employment part-time	56.2	57.6	2.5	1.4	3.3	3.3	2.5	6.1	6.1
Unemployment	37.8	38.0	2.2	0.2	-4.1	-4.1	0.5	-9.7	-9.7
Participation rate	62.9	63.3	0.4	0.4	0.4	0.4
Unemployment rate	9.7	9.7	0.5	0.0	-1.1	-1.1
Employment rate	56.8	57.1	0.4	0.3	1.0	1.0
Quebec									
Population	6,710.2	6,714.0	...	3.8	49.7	49.7	0.1	0.7	0.7
Labour force	4,372.2	4,384.3	15.1	12.1	19.8	19.8	0.3	0.5	0.5
Employment	4,056.5	4,046.3	15.4	-10.2	2.1	2.1	-0.3	0.1	0.1
Employment full-time	3,254.5	3,244.4	20.3	-10.1	-43.8	-43.8	-0.3	-1.3	-1.3
Employment part-time	802.0	801.9	18.0	-0.1	45.8	45.8	0.0	6.1	6.1
Unemployment	315.7	338.0	13.2	22.3	17.7	17.7	7.1	5.5	5.5
Participation rate	65.2	65.3	0.2	0.1	-0.2	-0.2
Unemployment rate	7.2	7.7	0.3	0.5	0.4	0.4
Employment rate	60.5	60.3	0.2	-0.2	-0.4	-0.4
Ontario									
Population	11,257.1	11,267.6	...	10.5	139.5	139.5	0.1	1.3	1.3
Labour force	7,457.3	7,466.8	20.1	9.5	24.8	24.8	0.1	0.3	0.3
Employment	6,917.5	6,878.2	19.3	-39.3	24.0	24.0	-0.6	0.4	0.4
Employment full-time	5,603.5	5,576.8	26.3	-26.7	29.6	29.6	-0.5	0.5	0.5
Employment part-time	1,313.9	1,301.4	24.5	-12.5	-5.7	-5.7	-1.0	-0.4	-0.4
Unemployment	539.8	588.5	17.5	48.7	0.8	0.8	9.0	0.1	0.1
Participation rate	66.2	66.3	0.2	0.1	-0.6	-0.6
Unemployment rate	7.2	7.9	0.2	0.7	0.0	0.0
Employment rate	61.5	61.0	0.2	-0.5	-0.6	-0.6

See notes at the end of the table.

Table 3 – continued

Labour force characteristics by province, seasonally adjusted

	November 2013	December 2013	S.E. ¹	Change from			Percent change from		
				last month	last December	twelve months ago	last month	last December	twelve months ago
in thousands (except rates)									
Manitoba									
Population	978.0	978.9	...	0.9	11.6	11.6	0.1	1.2	1.2
Labour force	669.1	667.5	2.6	-1.6	-6.0	-6.0	-0.2	-0.9	-0.9
Employment	631.6	630.6	2.7	-1.0	-7.8	-7.8	-0.2	-1.2	-1.2
Employment full-time	508.8	509.5	3.6	0.7	-6.4	-6.4	0.1	-1.2	-1.2
Employment part-time	122.8	121.1	3.5	-1.7	-1.4	-1.4	-1.4	-1.1	-1.1
Unemployment	37.5	37.0	2.2	-0.5	1.8	1.8	-1.3	5.1	5.1
Participation rate	68.4	68.2	0.3	-0.2	-1.4	-1.4
Unemployment rate	5.6	5.5	0.3	-0.1	0.3	0.3
Employment rate	64.6	64.4	0.3	-0.2	-1.6	-1.6
Saskatchewan									
Population	833.0	834.2	...	1.2	16.6	16.6	0.1	2.0	2.0
Labour force	580.2	580.6	2.5	0.4	10.0	10.0	0.1	1.8	1.8
Employment	556.2	558.1	2.6	1.9	13.8	13.8	0.3	2.5	2.5
Employment full-time	459.7	458.0	3.3	-1.7	10.9	10.9	-0.4	2.4	2.4
Employment part-time	96.5	100.1	3.1	3.6	2.9	2.9	3.7	3.0	3.0
Unemployment	24.0	22.4	1.9	-1.6	-3.9	-3.9	-6.7	-14.8	-14.8
Participation rate	69.7	69.6	0.3	-0.1	-0.2	-0.2
Unemployment rate	4.1	3.9	0.3	-0.2	-0.7	-0.7
Employment rate	66.8	66.9	0.3	0.1	0.3	0.3
Alberta									
Population	3,215.2	3,222.3	...	7.1	110.8	110.8	0.2	3.6	3.6
Labour force	2,359.1	2,348.0	8.8	-11.1	80.4	80.4	-0.5	3.5	3.5
Employment	2,247.7	2,236.0	9.2	-11.7	70.7	70.7	-0.5	3.3	3.3
Employment full-time	1,884.5	1,875.1	12.3	-9.4	48.4	48.4	-0.5	2.6	2.6
Employment part-time	363.3	360.8	11.1	-2.5	22.3	22.3	-0.7	6.6	6.6
Unemployment	111.3	112.0	7.0	0.7	9.7	9.7	0.6	9.5	9.5
Participation rate	73.4	72.9	0.3	-0.5	0.0	0.0
Unemployment rate	4.7	4.8	0.3	0.1	0.3	0.3
Employment rate	69.9	69.4	0.3	-0.5	-0.2	-0.2
British Columbia									
Population	3,871.2	3,874.8	...	3.6	44.5	44.5	0.1	1.2	1.2
Labour force	2,460.0	2,472.5	10.6	12.5	0.9	0.9	0.5	0.0	0.0
Employment	2,296.3	2,309.1	10.4	12.8	-4.4	-4.4	0.6	-0.2	-0.2
Employment full-time	1,808.5	1,798.2	14.5	-10.3	-18.9	-18.9	-0.6	-1.0	-1.0
Employment part-time	487.8	510.9	13.5	23.1	14.5	14.5	4.7	2.9	2.9
Unemployment	163.7	163.4	8.6	-0.3	5.3	5.3	-0.2	3.4	3.4
Participation rate	63.5	63.8	0.3	0.3	-0.7	-0.7
Unemployment rate	6.7	6.6	0.3	-0.1	0.2	0.2
Employment rate	59.3	59.6	0.3	0.3	-0.8	-0.8

1. Average standard error of change in two consecutive months (see "Sampling Errors" in Data Quality for further explanations).

Note(s): Related CANSIM Table 282-0087. The sum of individual categories may not always add to the total due to rounding.

Table 4-1
Selected labour force characteristics (seasonally adjusted) — Newfoundland and Labrador

	November 2013	December 2013	S.E. ¹	Change from			Percent change from		
				last month	last December	twelve months ago	last month	last December	twelve months ago
Both sexes, 15 years and over									
Population	429.7	429.6	...	-0.1	1.5	1.5	0.0	0.4	0.4
Labour force	264.8	262.4	1.9	-2.4	-4.4	-4.4	-0.9	-1.6	-1.6
Employment	232.1	234.0	1.9	1.9	-1.7	-1.7	0.8	-0.7	-0.7
Employment full-time	199.2	198.8	2.3	-0.4	-1.7	-1.7	-0.2	-0.8	-0.8
Unemployment	32.7	28.4	1.7	-4.3	-2.6	-2.6	-13.1	-8.4	-8.4
Participation rate	61.6	61.1	0.4	-0.5	-1.2	-1.2
Unemployment rate	12.3	10.8	0.6	-1.5	-0.8	-0.8
Employment rate	54.0	54.5	0.4	0.5	-0.6	-0.6
Part-time rate	14.2	15.0	0.8	0.9	0.1	0.1
Both sexes, 15 to 24 years									
Population	58.0	57.9	...	-0.1	-1.2	-1.2	-0.2	-2.0	-2.0
Labour force	35.1	33.8	1.0	-1.3	-4.3	-4.3	-3.7	-11.3	-11.3
Employment	26.5	27.8	1.0	1.3	-3.8	-3.8	4.9	-12.0	-12.0
Unemployment	8.6	6.0	0.9	-2.6	-0.5	-0.5	-30.2	-7.7	-7.7
Participation rate	60.5	58.4	1.7	-2.1	-6.1	-6.1
Unemployment rate	24.5	17.8	2.2	-6.7	0.7	0.7
Employment rate	45.7	48.0	1.7	2.3	-5.5	-5.5
Part-time rate	43.0	41.4	3.4	-1.7	3.4	3.4
Men, 25 years and over									
Population	179.6	179.5	...	-0.1	1.2	1.2	-0.1	0.7	0.7
Labour force	119.2	118.8	1.1	-0.4	-0.4	-0.4	-0.3	-0.3	-0.3
Employment	105.2	105.7	1.2	0.5	-0.3	-0.3	0.5	-0.3	-0.3
Unemployment	14.0	13.1	1.1	-0.9	-0.1	-0.1	-6.4	-0.8	-0.8
Participation rate	66.4	66.2	0.6	-0.2	-0.7	-0.7
Unemployment rate	11.7	11.0	0.9	-0.7	-0.1	-0.1
Employment rate	58.6	58.9	0.7	0.3	-0.6	-0.6
Part-time rate	4.0	5.0	0.7	1.0	0.9	0.9
Women, 25 years and over									
Population	192.2	192.2	...	0.0	1.4	1.4	0.0	0.7	0.7
Labour force	110.5	109.8	1.1	-0.7	0.4	0.4	-0.6	0.4	0.4
Employment	100.3	100.6	1.0	0.3	2.5	2.5	0.3	2.5	2.5
Unemployment	10.1	9.2	1.0	-0.9	-2.2	-2.2	-8.9	-19.3	-19.3
Participation rate	57.5	57.1	0.6	-0.4	-0.2	-0.2
Unemployment rate	9.1	8.4	0.8	-0.7	-2.0	-2.0
Employment rate	52.2	52.3	0.5	0.1	0.9	0.9
Part-time rate	17.2	18.3	1.3	1.0	-0.8	-0.8
Industry									
Industry	232.1	234.0	1.9	1.9	-1.7	-1.7	0.8	-0.7	-0.7
Goods-producing sector									
Goods-producing sector	57.3	56.9	1.6	-0.4	6.9	6.9	-0.7	13.8	13.8
Agriculture	1.7	1.8	0.3	0.1	-0.1	-0.1	5.9	-5.3	-5.3
Forestry, fishing, mining, quarrying, oil and gas extraction ²	18.5	18.0	1.0	-0.5	3.4	3.4	-2.7	23.3	23.3
Utilities	2.2	2.3	0.3	0.1	-1.0	-1.0	4.5	-30.3	-30.3
Construction	21.0	20.9	1.2	-0.1	0.9	0.9	-0.5	4.5	4.5
Manufacturing	14.0	13.8	0.9	-0.2	3.6	3.6	-1.4	35.3	35.3
Services-producing sector									
Services-producing sector	174.8	177.1	2.0	2.3	-8.6	-8.6	1.3	-4.6	-4.6
Trade	37.6	38.1	1.3	0.5	4.9	4.9	1.3	14.8	14.8
Transportation and warehousing	10.3	10.4	0.8	0.1	-2.2	-2.2	1.0	-17.5	-17.5
Finance, insurance, real estate and leasing	9.3	9.4	0.7	0.1	-0.7	-0.7	1.1	-6.9	-6.9
Professional, scientific and technical services	9.6	9.2	0.7	-0.4	0.2	0.2	-4.2	2.2	2.2
Business, building and other support services	5.4	5.6	0.7	0.2	-1.3	-1.3	3.7	-18.8	-18.8
Educational services	18.6	18.1	1.0	-0.5	-1.6	-1.6	-2.7	-8.1	-8.1
Health care and social assistance	35.4	36.7	1.3	1.3	-1.0	-1.0	3.7	-2.7	-2.7
Information, culture and recreation	7.8	7.4	0.7	-0.4	0.0	0.0	-5.1	0.0	0.0
Accommodation and food services	12.8	13.8	0.9	1.0	-1.1	-1.1	7.8	-7.4	-7.4
Other services	11.5	10.9	1.0	-0.6	-4.0	-4.0	-5.2	-26.8	-26.8
Public administration	16.5	17.5	0.9	1.0	-1.9	-1.9	6.1	-9.8	-9.8

1. Average standard error of change in two consecutive months (see "Sampling Errors" in Data Quality for further explanations).

2. Also referred to as Natural resources.

Note(s): Related CANSIM Tables 282-0087, 282-0088. The sum of individual categories may not always add to the total due to rounding.

Table 4-2
Selected labour force characteristics (seasonally adjusted) — Prince Edward Island

	November 2013	December 2013	S.E. ¹	Change from			Percent change from		
				last month	last December	twelve months ago	last month	last December	twelve months ago
in thousands (except rates)									
Both sexes, 15 years and over									
Population	120.9	121.0	...	0.1	0.4	0.4	0.1	0.3	0.3
Labour force	83.4	83.2	0.7	-0.2	-0.6	-0.6	-0.2	-0.7	-0.7
Employment	73.9	73.6	0.7	-0.3	-0.9	-0.9	-0.4	-1.2	-1.2
Employment full-time	61.1	61.8	0.8	0.7	1.1	1.1	1.1	1.8	1.8
Unemployment	9.5	9.6	0.7	0.1	0.4	0.4	1.1	4.3	4.3
Participation rate	69.0	68.8	0.5	-0.2	-0.7	-0.7
Unemployment rate	11.4	11.5	0.8	0.1	0.5	0.5
Employment rate	61.1	60.8	0.5	-0.3	-1.0	-1.0
Part-time rate	17.3	16.0	1.0	-1.3	-2.5	-2.5
Both sexes, 15 to 24 years									
Population	19.6	19.6	...	0.0	-0.3	-0.3	0.0	-1.5	-1.5
Labour force	13.3	13.5	0.4	0.2	0.1	0.1	1.5	0.7	0.7
Employment	11.0	11.3	0.4	0.3	0.1	0.1	2.7	0.9	0.9
Unemployment	2.3	2.2	0.4	-0.1	0.0	0.0	-4.3	0.0	0.0
Participation rate	67.9	68.9	2.0	1.0	1.6	1.6
Unemployment rate	17.3	16.3	2.5	-1.0	-0.1	-0.1
Employment rate	56.1	57.7	1.8	1.6	1.4	1.4
Part-time rate	41.8	38.9	3.7	-2.9	-8.4	-8.4
Men, 25 years and over									
Population	48.5	48.6	...	0.1	0.2	0.2	0.2	0.4	0.4
Labour force	36.2	35.7	0.4	-0.5	-0.4	-0.4	-1.4	-1.1	-1.1
Employment	31.9	31.5	0.4	-0.4	-0.3	-0.3	-1.3	-0.9	-0.9
Unemployment	4.3	4.2	0.4	-0.1	-0.1	-0.1	-2.3	-2.3	-2.3
Participation rate	74.6	73.5	0.7	-1.1	-1.1	-1.1
Unemployment rate	11.9	11.8	1.1	-0.1	-0.1	-0.1
Employment rate	65.8	64.8	0.9	-1.0	-0.9	-0.9
Part-time rate	7.8	8.3	1.1	0.4	0.1	0.1
Women, 25 years and over									
Population	52.8	52.8	...	0.0	0.6	0.6	0.0	1.1	1.1
Labour force	34.0	34.0	0.3	0.0	-0.2	-0.2	0.0	-0.6	-0.6
Employment	31.0	30.8	0.4	-0.2	-0.7	-0.7	-0.6	-2.2	-2.2
Unemployment	3.0	3.2	0.3	0.2	0.4	0.4	6.7	14.3	14.3
Participation rate	64.4	64.4	0.6	0.0	-1.1	-1.1
Unemployment rate	8.8	9.4	1.0	0.6	1.2	1.2
Employment rate	58.7	58.3	0.7	-0.4	-2.0	-2.0
Part-time rate	18.4	15.3	1.5	-3.1	-3.2	-3.2
Industry	73.9	73.6	0.7	-0.3	-0.9	-0.9	-0.4	-1.2	-1.2
Goods-producing sector	17.0	16.5	0.6	-0.5	-0.9	-0.9	-2.9	-5.2	-5.2
Agriculture	3.3	3.1	0.3	-0.2	-1.3	-1.3	-6.1	-29.5	-29.5
Forestry, fishing, mining, quarrying, oil and gas extraction ²	2.7	2.7	0.3	0.0	0.3	0.3	0.0	12.5	12.5
Utilities	0.4	0.4	0.1	0.0	0.1	0.1	0.0	33.3	33.3
Construction	5.5	5.4	0.3	-0.1	0.1	0.1	-1.8	1.9	1.9
Manufacturing	5.1	4.9	0.3	-0.2	-0.1	-0.1	-3.9	-2.0	-2.0
Services-producing sector	56.9	57.1	0.7	0.2	0.0	0.0	0.4	0.0	0.0
Trade	10.5	11.0	0.5	0.5	0.5	0.5	4.8	4.8	4.8
Transportation and warehousing	3.2	2.8	0.2	-0.4	0.5	0.5	-12.5	21.7	21.7
Finance, insurance, real estate and leasing	2.9	3.2	0.2	0.3	0.8	0.8	10.3	33.3	33.3
Professional, scientific and technical services	2.7	3.1	0.3	0.4	-0.1	-0.1	14.8	-3.1	-3.1
Business, building and other support services	2.1	2.1	0.3	0.0	-0.1	-0.1	0.0	-4.5	-4.5
Educational services	6.3	6.1	0.4	-0.2	-0.8	-0.8	-3.2	-11.6	-11.6
Health care and social assistance	10.3	10.1	0.4	-0.2	0.5	0.5	-1.9	5.2	5.2
Information, culture and recreation	2.8	2.6	0.3	-0.2	-0.4	-0.4	-7.1	-13.3	-13.3
Accommodation and food services	5.4	5.2	0.4	-0.2	-0.7	-0.7	-3.7	-11.9	-11.9
Other services	3.4	3.8	0.3	0.4	0.6	0.6	11.8	18.8	18.8
Public administration	7.2	7.3	0.4	0.1	-0.5	-0.5	1.4	-6.4	-6.4

1. Average standard error of change in two consecutive months (see "Sampling Errors" in Data Quality for further explanations).

2. Also referred to as Natural resources.

Note(s): Related CANSIM Tables 282-0087, 282-0088. The sum of individual categories may not always add to the total due to rounding.

Table 4-3
Selected labour force characteristics (seasonally adjusted) — Nova Scotia

	November 2013	December 2013	S.E. ¹	Change from			Percent change from		
				last month	last December	twelve months ago	last month	last December	twelve months ago
in thousands (except rates)									
Both sexes, 15 years and over									
Population	781.6	781.5	...	-0.1	0.7	0.7	0.0	0.1	0.1
Labour force	495.2	494.9	2.6	-0.3	-1.0	-1.0	-0.1	-0.2	-0.2
Employment	451.5	449.6	2.7	-1.9	-0.2	-0.2	-0.4	0.0	0.0
Employment full-time	363.3	359.9	3.7	-3.4	-3.3	-3.3	-0.9	-0.9	-0.9
Unemployment	43.7	45.3	2.5	1.6	-0.8	-0.8	3.7	-1.7	-1.7
Participation rate	63.4	63.3	0.3	-0.1	-0.2	-0.2
Unemployment rate	8.8	9.2	0.5	0.4	-0.1	-0.1
Employment rate	57.8	57.5	0.3	-0.3	-0.1	-0.1
Part-time rate	19.5	20.0	0.7	0.4	0.7	0.7
Both sexes, 15 to 24 years									
Population	115.2	115.0	...	-0.2	-2.2	-2.2	-0.2	-1.9	-1.9
Labour force	74.6	75.4	1.6	0.8	0.7	0.7	1.1	0.9	0.9
Employment	61.4	60.7	1.4	-0.7	-0.7	-0.7	-1.1	-1.1	-1.1
Unemployment	13.2	14.7	1.5	1.5	1.4	1.4	11.4	10.5	10.5
Participation rate	64.8	65.6	1.4	0.8	1.9	1.9
Unemployment rate	17.7	19.5	1.8	1.8	1.7	1.7
Employment rate	53.3	52.8	1.2	-0.5	0.4	0.4
Part-time rate	47.7	45.8	2.7	-1.9	-3.7	-3.7
Men, 25 years and over									
Population	315.8	315.9	...	0.1	1.4	1.4	0.0	0.4	0.4
Labour force	213.0	212.8	1.3	-0.2	0.4	0.4	-0.1	0.2	0.2
Employment	194.4	193.5	1.6	-0.9	-0.5	-0.5	-0.5	-0.3	-0.3
Unemployment	18.6	19.2	1.4	0.6	0.8	0.8	3.2	4.3	4.3
Participation rate	67.4	67.4	0.4	0.0	-0.1	-0.1
Unemployment rate	8.7	9.0	0.7	0.3	0.3	0.3
Employment rate	61.6	61.3	0.5	-0.3	-0.4	-0.4
Part-time rate	8.9	9.5	0.8	0.6	1.3	1.3
Women, 25 years and over									
Population	350.5	350.7	...	0.2	1.6	1.6	0.1	0.5	0.5
Labour force	207.6	206.8	1.4	-0.8	-2.0	-2.0	-0.4	-1.0	-1.0
Employment	195.6	195.4	1.5	-0.2	1.0	1.0	-0.1	0.5	0.5
Unemployment	12.0	11.4	1.3	-0.6	-3.0	-3.0	-5.0	-20.8	-20.8
Participation rate	59.2	59.0	0.4	-0.2	-0.8	-0.8
Unemployment rate	5.8	5.5	0.6	-0.3	-1.4	-1.4
Employment rate	55.8	55.7	0.4	-0.1	0.0	0.0
Part-time rate	21.3	22.3	1.1	1.0	1.6	1.6
Industry									
Industry	451.5	449.6	2.7	-1.9	-0.2	-0.2	-0.4	0.0	0.0
Goods-producing sector									
Goods-producing sector	86.2	84.3	2.3	-1.9	3.1	3.1	-2.2	3.8	3.8
Agriculture	6.1	5.1	0.8	-1.0	-1.0	-1.0	-16.4	-16.4	-16.4
Forestry, fishing, mining, quarrying, oil and gas extraction ²	11.2	11.3	1.0	0.1	0.6	0.6	0.9	5.6	5.6
Utilities	4.2	4.3	0.4	0.1	-0.1	-0.1	2.4	-2.3	-2.3
Construction	34.3	33.1	1.6	-1.2	3.8	3.8	-3.5	13.0	13.0
Manufacturing	30.4	30.5	1.4	0.1	-0.2	-0.2	0.3	-0.7	-0.7
Services-producing sector									
Services-producing sector	365.2	365.3	2.9	0.1	-3.2	-3.2	0.0	-0.9	-0.9
Trade	72.1	72.6	2.0	0.5	2.9	2.9	0.7	4.2	4.2
Transportation and warehousing	18.1	18.5	1.2	0.4	-1.9	-1.9	2.2	-9.3	-9.3
Finance, insurance, real estate and leasing	22.3	22.8	1.0	0.5	0.6	0.6	2.2	2.7	2.7
Professional, scientific and technical services	26.4	25.4	1.4	-1.0	-3.3	-3.3	-3.8	-11.5	-11.5
Business, building and other support services	23.6	23.3	1.3	-0.3	1.9	1.9	-1.3	8.9	8.9
Educational services	36.1	36.3	1.5	0.2	-0.3	-0.3	0.6	-0.8	-0.8
Health care and social assistance	69.3	71.4	1.7	2.1	3.7	3.7	3.0	5.5	5.5
Information, culture and recreation	18.7	19.9	1.1	1.2	1.3	1.3	6.4	7.0	7.0
Accommodation and food services	30.2	28.5	1.5	-1.7	-6.0	-6.0	-5.6	-17.4	-17.4
Other services	17.8	17.6	1.2	-0.2	-2.6	-2.6	-1.1	-12.9	-12.9
Public administration	30.6	29.0	1.3	-1.6	0.5	0.5	-5.2	1.8	1.8

1. Average standard error of change in two consecutive months (see "Sampling Errors" in Data Quality for further explanations).

2. Also referred to as Natural resources.

Note(s): Related CANSIM Tables 282-0087, 282-0088. The sum of individual categories may not always add to the total due to rounding.

Table 4-4
Selected labour force characteristics (seasonally adjusted) — New Brunswick

	November 2013	December 2013	S.E. ¹	Change from			Percent change from		
				last month	last December	twelve months ago	last month	last December	twelve months ago
in thousands (except rates)									
Both sexes, 15 years and over									
Population	619.8	619.9	...	0.1	-0.1	-0.1	0.0	0.0	0.0
Labour force	390.0	392.1	2.2	2.1	2.3	2.3	0.5	0.6	0.6
Employment	352.3	354.1	2.3	1.8	6.4	6.4	0.5	1.8	1.8
Employment full-time	296.1	296.5	2.9	0.4	3.1	3.1	0.1	1.1	1.1
Unemployment	37.8	38.0	2.2	0.2	-4.1	-4.1	0.5	-9.7	-9.7
Participation rate	62.9	63.3	0.4	0.4	0.4	0.4
Unemployment rate	9.7	9.7	0.5	0.0	-1.1	-1.1
Employment rate	56.8	57.1	0.4	0.3	1.0	1.0
Part-time rate	16.0	16.3	0.7	0.3	0.6	0.6
Both sexes, 15 to 24 years									
Population	87.7	87.5	...	-0.2	-2.0	-2.0	-0.2	-2.2	-2.2
Labour force	54.7	56.0	1.3	1.3	0.8	0.8	2.4	1.4	1.4
Employment	45.6	48.1	1.2	2.5	2.9	2.9	5.5	6.4	6.4
Unemployment	9.1	7.9	1.2	-1.2	-2.1	-2.1	-13.2	-21.0	-21.0
Participation rate	62.4	64.0	1.4	1.6	2.3	2.3
Unemployment rate	16.6	14.1	1.9	-2.5	-4.0	-4.0
Employment rate	52.0	55.0	1.4	3.0	4.5	4.5
Part-time rate	39.5	41.0	2.9	1.5	4.5	4.5
Men, 25 years and over									
Population	255.2	255.4	...	0.2	1.0	1.0	0.1	0.4	0.4
Labour force	173.3	174.2	1.2	0.9	2.6	2.6	0.5	1.5	1.5
Employment	156.3	155.7	1.5	-0.6	3.2	3.2	-0.4	2.1	2.1
Unemployment	17.1	18.5	1.5	1.4	-0.6	-0.6	8.2	-3.1	-3.1
Participation rate	67.9	68.2	0.5	0.3	0.7	0.7
Unemployment rate	9.9	10.6	0.8	0.7	-0.5	-0.5
Employment rate	61.2	61.0	0.6	-0.2	1.1	1.1
Part-time rate	5.6	6.3	0.7	0.7	-0.3	-0.3
Women, 25 years and over									
Population	276.9	277.0	...	0.1	0.9	0.9	0.0	0.3	0.3
Labour force	162.0	161.8	1.2	-0.2	-1.3	-1.3	-0.1	-0.8	-0.8
Employment	150.4	150.3	1.3	-0.1	0.2	0.2	-0.1	0.1	0.1
Unemployment	11.6	11.6	1.1	0.0	-1.4	-1.4	0.0	-10.8	-10.8
Participation rate	58.5	58.4	0.4	-0.1	-0.7	-0.7
Unemployment rate	7.2	7.2	0.7	0.0	-0.8	-0.8
Employment rate	54.3	54.3	0.5	0.0	-0.1	-0.1
Part-time rate	19.5	18.7	1.1	-0.9	0.2	0.2
Industry									
	352.3	354.1	2.3	1.8	6.4	6.4	0.5	1.8	1.8
Goods-producing sector									
Agriculture	80.3	78.0	2.0	-2.3	5.1	5.1	-2.9	7.0	7.0
Forestry, fishing, mining, quarrying, oil and gas extraction ²	4.5	3.9	0.5	-0.6	-1.0	-1.0	-13.3	-20.4	-20.4
Utilities	12.2	12.7	0.9	0.5	-0.1	-0.1	4.1	-0.8	-0.8
Construction	4.0	4.2	0.4	0.2	0.4	0.4	5.0	10.5	10.5
Manufacturing	30.8	29.1	1.3	-1.7	6.0	6.0	-5.5	26.0	26.0
	28.7	28.1	1.3	-0.6	-0.2	-0.2	-2.1	-0.7	-0.7
Services-producing sector									
Trade	272.0	276.1	2.4	4.1	1.2	1.2	1.5	0.4	0.4
Transportation and warehousing	55.2	59.2	1.6	4.0	3.2	3.2	7.2	5.7	5.7
Finance, insurance, real estate and leasing	17.1	16.6	0.9	-0.5	0.1	0.1	-2.9	0.6	0.6
Professional, scientific and technical services	17.5	17.2	0.9	-0.3	0.2	0.2	-1.7	1.2	1.2
Business, building and other support services	14.2	15.2	0.8	1.0	0.6	0.6	7.0	4.1	4.1
Educational services	14.6	16.7	1.0	2.1	-0.8	-0.8	14.4	-4.6	-4.6
Health care and social assistance	27.9	27.4	1.2	-0.5	0.6	0.6	-1.8	2.2	2.2
Information, culture and recreation	49.3	49.4	1.4	0.1	-5.5	-5.5	0.2	-10.0	-10.0
Accommodation and food services	12.2	11.3	0.9	-0.9	-1.7	-1.7	-7.4	-13.1	-13.1
Other services	24.7	23.3	1.2	-1.4	1.4	1.4	-5.7	6.4	6.4
Public administration	15.1	15.4	1.0	0.3	0.5	0.5	2.0	3.4	3.4
	24.4	24.5	1.1	0.1	2.7	2.7	0.4	12.4	12.4

1. Average standard error of change in two consecutive months (see "Sampling Errors" in Data Quality for further explanations).

2. Also referred to as Natural resources.

Note(s): Related CANSIM Tables 282-0087, 282-0088. The sum of individual categories may not always add to the total due to rounding.

Table 4-5
Selected labour force characteristics (seasonally adjusted) — Quebec

	November 2013	December 2013	S.E. ¹	Change from			Percent change from		
				last month	last December	twelve months ago	last month	last December	twelve months ago
in thousands (except rates)									
Both sexes, 15 years and over									
Population	6,710.2	6,714.0	...	3.8	49.7	49.7	0.1	0.7	0.7
Labour force	4,372.2	4,384.3	15.1	12.1	19.8	19.8	0.3	0.5	0.5
Employment	4,056.5	4,046.3	15.4	-10.2	2.1	2.1	-0.3	0.1	0.1
Employment full-time	3,254.5	3,244.4	20.3	-10.1	-43.8	-43.8	-0.3	-1.3	-1.3
Unemployment	315.7	338.0	13.2	22.3	17.7	17.7	7.1	5.5	5.5
Participation rate	65.2	65.3	0.2	0.1	-0.2	-0.2
Unemployment rate	7.2	7.7	0.3	0.5	0.4	0.4
Employment rate	60.5	60.3	0.2	-0.2	-0.4	-0.4
Part-time rate	19.8	19.8	0.4	0.0	1.1	1.1
Both sexes, 15 to 24 years									
Population	975.2	974.6	...	-0.6	-7.8	-7.8	-0.1	-0.8	-0.8
Labour force	639.9	648.2	8.6	8.3	-8.5	-8.5	1.3	-1.3	-1.3
Employment	556.2	564.6	8.1	8.4	-10.4	-10.4	1.5	-1.8	-1.8
Unemployment	83.7	83.6	7.4	-0.1	1.8	1.8	-0.1	2.2	2.2
Participation rate	65.6	66.5	0.9	0.9	-0.3	-0.3
Unemployment rate	13.1	12.9	1.1	-0.2	0.4	0.4
Employment rate	57.0	57.9	0.8	0.9	-0.6	-0.6
Part-time rate	52.8	53.0	1.6	0.3	2.9	2.9
Men, 25 years and over									
Population	2,823.1	2,825.5	...	2.4	30.0	30.0	0.1	1.1	1.1
Labour force	1,976.7	1,978.8	8.3	2.1	0.0	0.0	0.1	0.0	0.0
Employment	1,843.1	1,831.3	8.9	-11.8	-7.0	-7.0	-0.6	-0.4	-0.4
Unemployment	133.6	147.5	7.8	13.9	7.0	7.0	10.4	5.0	5.0
Participation rate	70.0	70.0	0.3	0.0	-0.8	-0.8
Unemployment rate	6.8	7.5	0.4	0.7	0.4	0.4
Employment rate	65.3	64.8	0.3	-0.5	-1.0	-1.0
Part-time rate	9.0	9.0	0.5	-0.1	1.8	1.8
Women, 25 years and over									
Population	2,911.8	2,913.9	...	2.1	27.5	27.5	0.1	1.0	1.0
Labour force	1,755.6	1,757.3	8.4	1.7	28.2	28.2	0.1	1.6	1.6
Employment	1,657.3	1,650.4	8.6	-6.9	19.4	19.4	-0.4	1.2	1.2
Unemployment	98.4	106.9	7.0	8.5	8.9	8.9	8.6	9.1	9.1
Participation rate	60.3	60.3	0.3	0.0	0.4	0.4
Unemployment rate	5.6	6.1	0.4	0.5	0.4	0.4
Employment rate	56.9	56.6	0.3	-0.3	0.1	0.1
Part-time rate	20.6	20.5	0.7	-0.1	-0.1	-0.1
Industry									
	4,056.5	4,046.3	15.4	-10.2	2.1	2.1	-0.3	0.1	0.1
Goods-producing sector									
Agriculture	866.5	859.9	13.7	-6.6	-13.0	-13.0	-0.8	-1.5	-1.5
Forestry, fishing, mining, quarrying, oil and gas extraction ²	54.4	52.7	3.4	-1.7	-3.7	-3.7	-3.1	-6.6	-6.6
Utilities	32.2	27.4	2.4	-4.8	-6.7	-6.7	-14.9	-19.6	-19.6
Construction	35.0	34.6	2.3	-0.4	9.3	9.3	-1.1	36.8	36.8
Manufacturing	256.3	251.8	8.6	-4.5	1.5	1.5	-1.8	0.6	0.6
	488.7	493.5	10.8	4.8	-13.3	-13.3	1.0	-2.6	-2.6
Services-producing sector									
Trade	3,190.0	3,186.4	17.7	-3.6	15.1	15.1	-0.1	0.5	0.5
Transportation and warehousing	632.6	634.9	12.4	2.3	5.1	5.1	0.4	0.8	0.8
Finance, insurance, real estate and leasing	192.6	192.9	6.5	0.3	28.4	28.4	0.2	17.3	17.3
Professional, scientific and technical services	229.0	229.3	7.5	0.3	-1.8	-1.8	0.1	-0.8	-0.8
Business, building and other support services	313.1	309.4	9.3	-3.7	12.8	12.8	-1.2	4.3	4.3
Educational services	152.2	147.9	7.3	-4.3	-5.2	-5.2	-2.8	-3.4	-3.4
Health care and social assistance	292.3	287.1	8.7	-5.2	-16.1	-16.1	-1.8	-5.3	-5.3
Information, culture and recreation	554.9	562.9	10.3	8.0	-8.3	-8.3	1.4	-1.5	-1.5
Accommodation and food services	189.7	190.6	7.6	0.9	3.9	3.9	0.5	2.1	2.1
Other services	250.3	251.2	8.5	0.9	22.4	22.4	0.4	9.8	9.8
Public administration	166.8	168.7	6.5	1.9	-10.8	-10.8	1.1	-6.0	-6.0
	216.3	211.5	6.5	-4.8	-15.2	-15.2	-2.2	-6.7	-6.7

1. Average standard error of change in two consecutive months (see "Sampling Errors" in Data Quality for further explanations).

2. Also referred to as Natural resources.

Note(s): Related CANSIM Tables 282-0087, 282-0088. The sum of individual categories may not always add to the total due to rounding.

Table 4-6
Selected labour force characteristics (seasonally adjusted) — Ontario

	November 2013	December 2013	S.E. ¹	Change from			Percent change from		
				last month	last December	twelve months ago	last month	last December	twelve months ago
in thousands (except rates)									
Both sexes, 15 years and over									
Population	11,257.1	11,267.6	...	10.5	139.5	139.5	0.1	1.3	1.3
Labour force	7,457.3	7,466.8	20.1	9.5	24.8	24.8	0.1	0.3	0.3
Employment	6,917.5	6,878.2	19.3	-39.3	24.0	24.0	-0.6	0.4	0.4
Employment full-time	5,603.5	5,576.8	26.3	-26.7	29.6	29.6	-0.5	0.5	0.5
Unemployment	539.8	588.5	17.5	48.7	0.8	0.8	9.0	0.1	0.1
Participation rate	66.2	66.3	0.2	0.1	-0.6	-0.6
Unemployment rate	7.2	7.9	0.2	0.7	0.0	0.0
Employment rate	61.5	61.0	0.2	-0.5	-0.6	-0.6
Part-time rate	19.0	18.9	0.3	-0.1	-0.1	-0.1
Both sexes, 15 to 24 years									
Population	1,782.6	1,781.8	...	-0.8	-6.8	-6.8	0.0	-0.4	-0.4
Labour force	1,081.6	1,076.4	12.3	-5.2	-20.8	-20.8	-0.5	-1.9	-1.9
Employment	916.2	896.6	10.7	-19.6	-13.2	-13.2	-2.1	-1.5	-1.5
Unemployment	165.3	179.9	10.7	14.6	-7.4	-7.4	8.8	-4.0	-4.0
Participation rate	60.7	60.4	0.7	-0.3	-0.9	-0.9
Unemployment rate	15.3	16.7	0.9	1.4	-0.4	-0.4
Employment rate	51.4	50.3	0.6	-1.1	-0.6	-0.6
Part-time rate	51.9	51.9	1.2	0.0	-2.4	-2.4
Men, 25 years and over									
Population	4,595.6	4,601.2	...	5.6	70.6	70.6	0.1	1.6	1.6
Labour force	3,349.7	3,339.6	10.1	-10.1	21.9	21.9	-0.3	0.7	0.7
Employment	3,129.9	3,113.1	10.9	-16.8	6.1	6.1	-0.5	0.2	0.2
Unemployment	219.8	226.4	9.9	6.6	15.7	15.7	3.0	7.5	7.5
Participation rate	72.9	72.6	0.2	-0.3	-0.6	-0.6
Unemployment rate	6.6	6.8	0.3	0.2	0.4	0.4
Employment rate	68.1	67.7	0.2	-0.4	-0.9	-0.9
Part-time rate	7.7	7.6	0.4	-0.1	-0.3	-0.3
Women, 25 years and over									
Population	4,878.9	4,884.6	...	5.7	75.7	75.7	0.1	1.6	1.6
Labour force	3,026.0	3,050.8	11.2	24.8	23.7	23.7	0.8	0.8	0.8
Employment	2,871.3	2,868.5	11.1	-2.8	31.1	31.1	-0.1	1.1	1.1
Unemployment	154.7	182.2	9.2	27.5	-7.5	-7.5	17.8	-4.0	-4.0
Participation rate	62.0	62.5	0.2	0.5	-0.4	-0.4
Unemployment rate	5.1	6.0	0.3	0.9	-0.3	-0.3
Employment rate	58.9	58.7	0.2	-0.2	-0.3	-0.3
Part-time rate	20.8	20.9	0.6	0.1	0.8	0.8
Industry									
	6,917.5	6,878.2	19.3	-39.3	24.0	24.0	-0.6	0.4	0.4
Goods-producing sector									
Agriculture	1,413.6	1,393.9	18.1	-19.7	-12.3	-12.3	-1.4	-0.9	-0.9
Forestry, fishing, mining, quarrying, oil and gas extraction ²	87.6	82.7	4.2	-4.9	-2.4	-2.4	-5.6	-2.8	-2.8
Utilities	40.6	38.1	2.4	-2.5	3.9	3.9	-6.2	11.4	11.4
Construction	60.4	60.2	3.3	-0.2	4.8	4.8	-0.3	8.7	8.7
Manufacturing	452.6	446.1	11.2	-6.5	16.7	16.7	-1.4	3.9	3.9
	772.5	766.8	14.5	-5.7	-35.3	-35.3	-0.7	-4.4	-4.4
Services-producing sector									
Trade	5,503.8	5,484.3	23.8	-19.5	36.2	36.2	-0.4	0.7	0.7
Transportation and warehousing	1,023.1	1,025.0	16.3	1.9	-9.9	-9.9	0.2	-1.0	-1.0
Finance, insurance, real estate and leasing	319.3	313.4	10.1	-5.9	-15.8	-15.8	-1.8	-4.8	-4.8
Professional, scientific and technical services	532.5	524.8	12.2	-7.7	0.0	0.0	-1.4	0.0	0.0
Business, building and other support services	567.8	587.9	13.3	20.1	41.1	41.1	3.5	7.5	7.5
Educational services	328.6	316.2	10.2	-12.4	22.5	22.5	-3.8	7.7	7.7
Health care and social assistance	515.6	511.2	11.7	-4.4	-12.4	-12.4	-0.9	-2.4	-2.4
Information, culture and recreation	798.4	793.2	13.1	-5.2	23.7	23.7	-0.7	3.1	3.1
Accommodation and food services	331.3	333.9	10.3	2.6	7.2	7.2	0.8	2.2	2.2
Other services	423.5	413.8	11.5	-9.7	-14.6	-14.6	-2.3	-3.4	-3.4
Public administration	300.1	290.0	9.5	-10.1	3.6	3.6	-3.4	1.3	1.3
	363.7	374.8	9.3	11.1	-9.3	-9.3	3.1	-2.4	-2.4

1. Average standard error of change in two consecutive months (see "Sampling Errors" in Data Quality for further explanations).

2. Also referred to as Natural resources.

Note(s): Related CANSIM Tables 282-0087, 282-0088. The sum of individual categories may not always add to the total due to rounding.

Table 4-7
Selected labour force characteristics (seasonally adjusted) — Manitoba

	November 2013	December 2013	S.E. ¹	Change from			Percent change from		
				last month	last December	twelve months ago	last month	last December	twelve months ago
in thousands (except rates)									
Both sexes, 15 years and over									
Population	978.0	978.9	...	0.9	11.6	11.6	0.1	1.2	1.2
Labour force	669.1	667.5	2.6	-1.6	-6.0	-6.0	-0.2	-0.9	-0.9
Employment	631.6	630.6	2.7	-1.0	-7.8	-7.8	-0.2	-1.2	-1.2
Employment full-time	508.8	509.5	3.6	0.7	-6.4	-6.4	0.1	-1.2	-1.2
Unemployment	37.5	37.0	2.2	-0.5	1.8	1.8	-1.3	5.1	5.1
Participation rate	68.4	68.2	0.3	-0.2	-1.4	-1.4
Unemployment rate	5.6	5.5	0.3	-0.1	0.3	0.3
Employment rate	64.6	64.4	0.3	-0.2	-1.6	-1.6
Part-time rate	19.4	19.2	0.5	-0.2	0.0	0.0
Both sexes, 15 to 24 years									
Population	164.8	164.8	...	0.0	0.0	0.0	0.0	0.0	0.0
Labour force	111.8	112.1	1.6	0.3	-3.3	-3.3	0.3	-2.9	-2.9
Employment	101.6	100.2	1.5	-1.4	-3.5	-3.5	-1.4	-3.4	-3.4
Unemployment	10.2	11.9	1.3	1.7	0.3	0.3	16.7	2.6	2.6
Participation rate	67.8	68.0	1.0	0.2	-2.0	-2.0
Unemployment rate	9.1	10.6	1.1	1.5	0.5	0.5
Employment rate	61.7	60.8	0.9	-0.9	-2.1	-2.1
Part-time rate	42.6	42.0	1.7	-0.6	1.2	1.2
Men, 25 years and over									
Population	398.8	399.3	...	0.5	6.0	6.0	0.1	1.5	1.5
Labour force	297.9	295.6	1.3	-2.3	-6.0	-6.0	-0.8	-2.0	-2.0
Employment	283.8	282.2	1.4	-1.6	-7.2	-7.2	-0.6	-2.5	-2.5
Unemployment	14.0	13.4	1.2	-0.6	1.3	1.3	-4.3	10.7	10.7
Participation rate	74.7	74.0	0.3	-0.7	-2.7	-2.7
Unemployment rate	4.7	4.5	0.4	-0.2	0.5	0.5
Employment rate	71.2	70.7	0.4	-0.5	-2.9	-2.9
Part-time rate	6.9	7.0	0.6	0.1	-1.0	-1.0
Women, 25 years and over									
Population	414.4	414.8	...	0.4	5.6	5.6	0.1	1.4	1.4
Labour force	259.5	259.8	1.5	0.3	3.2	3.2	0.1	1.2	1.2
Employment	246.2	248.2	1.5	2.0	3.0	3.0	0.8	1.2	1.2
Unemployment	13.3	11.7	1.1	-1.6	0.3	0.3	-12.0	2.6	2.6
Participation rate	62.6	62.6	0.4	0.0	-0.1	-0.1
Unemployment rate	5.1	4.5	0.4	-0.6	0.1	0.1
Employment rate	59.4	59.8	0.4	0.4	-0.1	-0.1
Part-time rate	24.4	23.8	0.9	-0.6	0.6	0.6
Industry									
Goods-producing sector	631.6	630.6	2.7	-1.0	-7.7	-7.7	-0.2	-1.2	-1.2
Agriculture	145.9	145.1	2.4	-0.8	-4.2	-4.2	-0.5	-2.8	-2.8
Forestry, fishing, mining, quarrying, oil and gas extraction ²	22.9	22.3	1.2	-0.6	-1.3	-1.3	-2.6	-5.5	-5.5
Utilities	6.8	7.0	0.5	0.2	-0.5	-0.5	2.9	-6.7	-6.7
Construction	8.5	8.6	0.5	0.1	0.6	0.6	1.2	7.5	7.5
Manufacturing	42.0	42.0	1.6	0.0	-6.7	-6.7	0.0	-13.8	-13.8
Services-producing sector	65.6	65.1	1.6	-0.5	3.7	3.7	-0.8	6.0	6.0
Trade	485.7	485.5	3.2	-0.2	-3.6	-3.6	0.0	-0.7	-0.7
Transportation and warehousing	91.5	96.0	2.0	4.5	3.4	3.4	4.9	3.7	3.7
Finance, insurance, real estate and leasing	39.2	39.1	1.3	-0.1	2.7	2.7	-0.3	7.4	7.4
Professional, scientific and technical services	33.8	34.2	1.2	0.4	-0.9	-0.9	1.2	-2.6	-2.6
Business, building and other support services	27.5	27.8	1.1	0.3	-1.6	-1.6	1.1	-5.4	-5.4
Educational services	20.6	19.6	1.2	-1.0	-0.9	-0.9	-4.9	-4.4	-4.4
Health care and social assistance	49.4	48.8	1.5	-0.6	-1.3	-1.3	-1.2	-2.6	-2.6
Information, culture and recreation	96.2	96.6	1.8	0.4	2.4	2.4	0.4	2.5	2.5
Accommodation and food services	23.7	23.7	1.2	0.0	-1.9	-1.9	0.0	-7.4	-7.4
Other services	39.1	38.4	1.4	-0.7	-2.6	-2.6	-1.8	-6.3	-6.3
Public administration	28.3	26.3	1.2	-2.0	-2.1	-2.1	-7.1	-7.4	-7.4
	36.3	35.2	1.2	-1.1	-0.7	-0.7	-3.0	-1.9	-1.9

1. Average standard error of change in two consecutive months (see "Sampling Errors" in Data Quality for further explanations).

2. Also referred to as Natural resources.

Note(s): Related CANSIM Tables 282-0087, 282-0088. The sum of individual categories may not always add to the total due to rounding.

Table 4-8
Selected labour force characteristics (seasonally adjusted) — Saskatchewan

	November 2013	December 2013	S.E. ¹	Change from			Percent change from		
				last month	last December	twelve months ago	last month	last December	twelve months ago
in thousands (except rates)									
Both sexes, 15 years and over									
Population	833.0	834.2	...	1.2	16.6	16.6	0.1	2.0	2.0
Labour force	580.2	580.6	2.5	0.4	10.0	10.0	0.1	1.8	1.8
Employment	556.2	558.1	2.6	1.9	13.8	13.8	0.3	2.5	2.5
Employment full-time	459.7	458.0	3.3	-1.7	10.9	10.9	-0.4	2.4	2.4
Unemployment	24.0	22.4	1.9	-1.6	-3.9	-3.9	-6.7	-14.8	-14.8
Participation rate	69.7	69.6	0.3	-0.1	-0.2	-0.2
Unemployment rate	4.1	3.9	0.3	-0.2	-0.7	-0.7
Employment rate	66.8	66.9	0.3	0.1	0.3	0.3
Part-time rate	17.3	17.9	0.5	0.6	0.1	0.1
Both sexes, 15 to 24 years									
Population	136.8	136.8	...	0.0	0.1	0.1	0.0	0.1	0.1
Labour force	93.0	92.4	1.4	-0.6	-1.8	-1.8	-0.6	-1.9	-1.9
Employment	87.3	86.3	1.5	-1.0	1.4	1.4	-1.1	1.6	1.6
Unemployment	5.7	6.1	1.2	0.4	-3.2	-3.2	7.0	-34.4	-34.4
Participation rate	68.0	67.5	1.0	-0.5	-1.4	-1.4
Unemployment rate	6.1	6.6	1.2	0.5	-3.3	-3.3
Employment rate	63.8	63.1	1.1	-0.7	1.0	1.0
Part-time rate	37.3	39.5	1.7	2.2	3.1	3.1
Men, 25 years and over									
Population	344.7	345.4	...	0.7	9.4	9.4	0.2	2.8	2.8
Labour force	266.2	266.3	1.2	0.1	8.9	8.9	0.0	3.5	3.5
Employment	256.9	258.3	1.3	1.4	9.4	9.4	0.5	3.8	3.8
Unemployment	9.4	8.0	1.0	-1.4	-0.5	-0.5	-14.9	-5.9	-5.9
Participation rate	77.2	77.1	0.3	-0.1	0.5	0.5
Unemployment rate	3.5	3.0	0.4	-0.5	-0.3	-0.3
Employment rate	74.5	74.8	0.4	0.3	0.7	0.7
Part-time rate	6.3	6.3	0.5	0.0	-0.1	-0.1
Women, 25 years and over									
Population	351.6	352.1	...	0.5	7.2	7.2	0.1	2.1	2.1
Labour force	220.9	221.9	1.5	1.0	3.0	3.0	0.5	1.4	1.4
Employment	212.0	213.5	1.5	1.5	3.0	3.0	0.7	1.4	1.4
Unemployment	8.9	8.4	0.9	-0.5	-0.1	-0.1	-5.6	-1.2	-1.2
Participation rate	62.8	63.0	0.4	0.2	-0.5	-0.5
Unemployment rate	4.0	3.8	0.4	-0.2	-0.1	-0.1
Employment rate	60.3	60.6	0.4	0.3	-0.4	-0.4
Part-time rate	22.5	23.3	1.0	0.7	-0.6	-0.6
Industry									
Industry	556.2	558.1	2.6	1.9	13.8	13.8	0.3	2.5	2.5
Goods-producing sector									
Goods-producing sector	150.8	152.6	2.6	1.8	2.5	2.5	1.2	1.7	1.7
Agriculture	43.2	44.2	1.7	1.0	2.3	2.3	2.3	5.5	5.5
Forestry, fishing, mining, quarrying, oil and gas extraction ²	24.3	22.9	1.2	-1.4	-3.1	-3.1	-5.8	-11.9	-11.9
Utilities	6.2	6.7	0.4	0.5	1.9	1.9	8.1	39.6	39.6
Construction	48.5	48.8	1.7	0.3	1.5	1.5	0.6	3.2	3.2
Manufacturing	28.7	30.0	1.1	1.3	-0.1	-0.1	4.5	-0.3	-0.3
Services-producing sector									
Services-producing sector	405.3	405.5	3.1	0.2	11.3	11.3	0.0	2.9	2.9
Trade	80.4	82.8	2.0	2.4	0.9	0.9	3.0	1.1	1.1
Transportation and warehousing	30.9	29.6	1.2	-1.3	4.1	4.1	-4.2	16.1	16.1
Finance, insurance, real estate and leasing	28.9	29.6	1.0	0.7	1.4	1.4	2.4	5.0	5.0
Professional, scientific and technical services	28.4	29.9	1.1	1.5	5.0	5.0	5.3	20.1	20.1
Business, building and other support services	13.4	13.5	0.9	0.1	0.6	0.6	0.7	4.7	4.7
Educational services	46.5	45.3	1.5	-1.2	1.7	1.7	-2.6	3.9	3.9
Health care and social assistance	71.7	71.1	1.7	-0.6	-1.1	-1.1	-0.8	-1.5	-1.5
Information, culture and recreation	21.1	20.8	1.0	-0.3	1.5	1.5	-1.4	7.8	7.8
Accommodation and food services	33.2	31.3	1.5	-1.9	3.0	3.0	-5.7	10.6	10.6
Other services	21.6	22.7	1.2	1.1	-1.8	-1.8	5.1	-7.3	-7.3
Public administration	29.2	28.8	1.2	-0.4	-4.1	-4.1	-1.4	-12.5	-12.5

1. Average standard error of change in two consecutive months (see "Sampling Errors" in Data Quality for further explanations).

2. Also referred to as Natural resources.

Note(s): Related CANSIM Tables 282-0087, 282-0088. The sum of individual categories may not always add to the total due to rounding.

Table 4-9
Selected labour force characteristics (seasonally adjusted) — Alberta

	November 2013	December 2013	S.E. ¹	Change from			Percent change from		
				last month	last December	twelve months ago	last month	last December	twelve months ago
in thousands (except rates)									
Both sexes, 15 years and over									
Population	3,215.2	3,222.3	...	7.1	110.8	110.8	0.2	3.6	3.6
Labour force	2,359.1	2,348.0	8.8	-11.1	80.4	80.4	-0.5	3.5	3.5
Employment	2,247.7	2,236.0	9.2	-11.7	70.7	70.7	-0.5	3.3	3.3
Employment full-time	1,884.5	1,875.1	12.3	-9.4	48.4	48.4	-0.5	2.6	2.6
Unemployment	111.3	112.0	7.0	0.7	9.7	9.7	0.6	9.5	9.5
Participation rate	73.4	72.9	0.3	-0.5	0.0	0.0
Unemployment rate	4.7	4.8	0.3	0.1	0.3	0.3
Employment rate	69.9	69.4	0.3	-0.5	-0.2	-0.2
Part-time rate	16.2	16.1	0.5	0.0	0.5	0.5
Both sexes, 15 to 24 years									
Population	516.2	516.3	...	0.1	6.9	6.9	0.0	1.4	1.4
Labour force	352.7	347.8	5.3	-4.9	15.6	15.6	-1.4	4.7	4.7
Employment	321.3	316.6	5.4	-4.7	13.8	13.8	-1.5	4.6	4.6
Unemployment	31.4	31.2	4.2	-0.2	1.8	1.8	-0.6	6.1	6.1
Participation rate	68.3	67.4	1.0	-0.9	2.2	2.2
Unemployment rate	8.9	9.0	1.2	0.1	0.1	0.1
Employment rate	62.2	61.3	1.1	-0.9	1.9	1.9
Part-time rate	36.7	35.9	1.8	-0.8	3.5	3.5
Men, 25 years and over									
Population	1,371.6	1,375.4	...	3.8	54.6	54.6	0.3	4.1	4.1
Labour force	1,110.2	1,108.9	4.2	-1.3	34.6	34.6	-0.1	3.2	3.2
Employment	1,063.5	1,059.8	4.8	-3.7	22.9	22.9	-0.3	2.2	2.2
Unemployment	46.7	49.1	4.0	2.4	11.7	11.7	5.1	31.3	31.3
Participation rate	80.9	80.6	0.3	-0.3	-0.7	-0.7
Unemployment rate	4.2	4.4	0.4	0.2	0.9	0.9
Employment rate	77.5	77.1	0.4	-0.4	-1.4	-1.4
Part-time rate	6.3	5.9	0.5	-0.4	0.6	0.6
Women, 25 years and over									
Population	1,327.5	1,330.6	...	3.1	49.4	49.4	0.2	3.9	3.9
Labour force	896.2	891.3	5.3	-4.9	30.2	30.2	-0.5	3.5	3.5
Employment	862.9	859.5	5.2	-3.4	34.0	34.0	-0.4	4.1	4.1
Unemployment	33.3	31.8	3.8	-1.5	-3.7	-3.7	-4.5	-10.4	-10.4
Participation rate	67.5	67.0	0.4	-0.5	-0.2	-0.2
Unemployment rate	3.7	3.6	0.4	-0.1	-0.5	-0.5
Employment rate	65.0	64.6	0.4	-0.4	0.2	0.2
Part-time rate	20.7	21.4	0.9	0.8	-1.0	-1.0
Industry	2,247.7	2,236.0	9.2	-11.7	70.7	70.7	-0.5	3.3	3.3
Goods-producing sector									
Agriculture	638.9	635.6	9.4	-3.3	13.7	13.7	-0.5	2.2	2.2
Forestry, fishing, mining, quarrying, oil and gas extraction ²	59.7	57.4	3.3	-2.3	-4.2	-4.2	-3.9	-6.8	-6.8
Utilities	186.5	185.1	5.1	-1.4	20.1	20.1	-0.8	12.2	12.2
Construction	22.6	22.7	2.2	0.1	-0.1	-0.1	0.4	-0.4	-0.4
Manufacturing	233.8	232.0	6.6	-1.8	9.5	9.5	-0.8	4.3	4.3
	136.4	138.5	5.4	2.1	-11.5	-11.5	1.5	-7.7	-7.7
Services-producing sector									
Trade	1,608.9	1,600.3	11.1	-8.6	56.9	56.9	-0.5	3.7	3.7
Transportation and warehousing	334.2	326.9	7.5	-7.3	1.6	1.6	-2.2	0.5	0.5
Finance, insurance, real estate and leasing	116.2	122.2	4.7	6.0	-3.8	-3.8	5.2	-3.0	-3.0
Professional, scientific and technical services	104.6	105.9	4.5	1.3	-2.5	-2.5	1.2	-2.3	-2.3
Business, building and other support services	183.7	181.6	5.5	-2.1	23.0	23.0	-1.1	14.5	14.5
Educational services	74.5	75.2	4.0	0.7	3.0	3.0	0.9	4.2	4.2
Health care and social assistance	131.0	126.4	4.6	-4.6	0.8	0.8	-3.5	0.6	0.6
Information, culture and recreation	231.5	239.6	5.8	8.1	8.8	8.8	3.5	3.8	3.8
Accommodation and food services	74.9	73.7	3.9	-1.2	1.7	1.7	-1.6	2.4	2.4
Other services	146.4	148.9	5.6	2.5	16.8	16.8	1.7	12.7	12.7
Public administration	118.8	107.8	4.9	-11.0	6.0	6.0	-9.3	5.9	5.9
	93.0	92.1	3.9	-0.9	1.4	1.4	-1.0	1.5	1.5

1. Average standard error of change in two consecutive months (see "Sampling Errors" in Data Quality for further explanations).

2. Also referred to as Natural resources.

Note(s): Related CANSIM Tables 282-0087, 282-0088. The sum of individual categories may not always add to the total due to rounding.

Table 4-10
Selected labour force characteristics (seasonally adjusted) — British Columbia

	November 2013	December 2013	S.E. ¹	Change from			Percent change from		
				last month	last December	twelve months ago	last month	last December	twelve months ago
in thousands (except rates)									
Both sexes, 15 years and over									
Population	3,871.2	3,874.8	...	3.6	44.5	44.5	0.1	1.2	1.2
Labour force	2,460.0	2,472.5	10.6	12.5	0.9	0.9	0.5	0.0	0.0
Employment	2,296.3	2,309.1	10.4	12.8	-4.4	-4.4	0.6	-0.2	-0.2
Employment full-time	1,808.5	1,798.2	14.5	-10.3	-18.9	-18.9	-0.6	-1.0	-1.0
Unemployment	163.7	163.4	8.6	-0.3	5.3	5.3	-0.2	3.4	3.4
Participation rate	63.5	63.8	0.3	0.3	-0.7	-0.7
Unemployment rate	6.7	6.6	0.3	-0.1	0.2	0.2
Employment rate	59.3	59.6	0.3	0.3	-0.8	-0.8
Part-time rate	21.2	22.1	0.6	0.9	0.7	0.7
Both sexes, 15 to 24 years									
Population	586.0	585.9	...	-0.1	-2.6	-2.6	0.0	-0.4	-0.4
Labour force	352.7	360.0	5.9	7.3	1.2	1.2	2.1	0.3	0.3
Employment	306.4	309.3	5.4	2.9	-0.2	-0.2	0.9	-0.1	-0.1
Unemployment	46.4	50.7	5.0	4.3	1.4	1.4	9.3	2.8	2.8
Participation rate	60.2	61.4	1.0	1.2	0.4	0.4
Unemployment rate	13.2	14.1	1.3	0.9	0.4	0.4
Employment rate	52.3	52.8	0.9	0.5	0.2	0.2
Part-time rate	43.5	48.6	2.1	5.2	3.2	3.2
Men, 25 years and over									
Population	1,603.2	1,605.0	...	1.8	23.3	23.3	0.1	1.5	1.5
Labour force	1,105.7	1,109.3	5.5	3.6	11.7	11.7	0.3	1.1	1.1
Employment	1,047.8	1,052.9	5.8	5.1	7.4	7.4	0.5	0.7	0.7
Unemployment	57.9	56.4	4.9	-1.5	4.2	4.2	-2.6	8.0	8.0
Participation rate	69.0	69.1	0.3	0.1	-0.3	-0.3
Unemployment rate	5.2	5.1	0.4	-0.1	0.3	0.3
Employment rate	65.4	65.6	0.4	0.2	-0.5	-0.5
Part-time rate	9.2	9.9	0.6	0.8	0.1	0.1
Women, 25 years and over									
Population	1,681.9	1,683.8	...	1.9	23.7	23.7	0.1	1.4	1.4
Labour force	1,001.6	1,003.3	6.4	1.7	-11.8	-11.8	0.2	-1.2	-1.2
Employment	942.1	946.9	6.2	4.8	-11.6	-11.6	0.5	-1.2	-1.2
Unemployment	59.5	56.3	4.9	-3.2	-0.3	-0.3	-5.4	-0.5	-0.5
Participation rate	59.6	59.6	0.4	0.0	-1.5	-1.5
Unemployment rate	5.9	5.6	0.5	-0.3	0.0	0.0
Employment rate	56.0	56.2	0.4	0.2	-1.5	-1.5
Part-time rate	27.5	27.0	0.9	-0.4	0.6	0.6
Industry									
Industry	2,296.3	2,309.1	10.4	12.8	-4.4	-4.4	0.6	-0.2	-0.2
Goods-producing sector									
Goods-producing sector	447.2	452.0	8.9	4.8	-12.1	-12.1	1.1	-2.6	-2.6
Agriculture	25.4	25.4	2.7	0.0	-2.4	-2.4	0.0	-8.6	-8.6
Forestry, fishing, mining, quarrying, oil and gas extraction ²	51.3	50.8	3.1	-0.5	2.1	2.1	-1.0	4.3	4.3
Utilities	12.9	12.5	1.7	-0.4	-3.8	-3.8	-3.1	-23.3	-23.3
Construction	188.7	192.0	6.4	3.3	-14.3	-14.3	1.7	-6.9	-6.9
Manufacturing	168.8	171.2	5.7	2.4	6.3	6.3	1.4	3.8	3.8
Services-producing sector									
Services-producing sector	1,849.1	1,857.1	11.8	8.0	7.7	7.7	0.4	0.4	0.4
Trade	361.8	353.8	8.2	-8.0	-8.3	-8.3	-2.2	-2.3	-2.3
Transportation and warehousing	128.1	124.4	5.0	-3.7	5.3	5.3	-2.9	4.5	4.5
Finance, insurance, real estate and leasing	152.7	151.3	5.7	-1.4	15.7	15.7	-0.9	11.6	11.6
Professional, scientific and technical services	178.7	180.7	6.1	2.0	6.3	6.3	1.1	3.6	3.6
Business, building and other support services	93.0	96.2	4.6	3.2	1.5	1.5	3.4	1.6	1.6
Educational services	175.9	173.4	6.0	-2.5	-13.0	-13.0	-1.4	-7.0	-7.0
Health care and social assistance	265.4	273.2	7.0	7.8	8.0	8.0	2.9	3.0	3.0
Information, culture and recreation	119.2	121.6	5.3	2.4	0.0	0.0	2.0	0.0	0.0
Accommodation and food services	178.7	176.0	6.4	-2.7	-0.1	-0.1	-1.5	-0.1	-0.1
Other services	91.9	98.0	4.8	6.1	-7.4	-7.4	6.6	-7.0	-7.0
Public administration	103.8	108.6	4.4	4.8	-0.2	-0.2	4.6	-0.2	-0.2

1. Average standard error of change in two consecutive months (see "Sampling Errors" in Data Quality for further explanations).

2. Also referred to as Natural resources.

Note(s): Related CANSIM Tables 282-0087, 282-0088. The sum of individual categories may not always add to the total due to rounding.

Table 5-1
Labour force characteristics by census metropolitan area (seasonally adjusted) — 3 month moving average

	November 2013	December 2013	S.E. ¹	Change from			Percent change from		
				last month	last December	twelve months ago	last month	last December	twelve months ago
in thousands (except rates)									
St. John's, Newfoundland and Labrador									
Population	167.3	167.5	...	0.2	3.7	3.7	0.1	2.3	2.3
Labour force	116.1	116.3	0.8	0.2	-2.6	-2.6	0.2	-2.2	-2.2
Employment	109.2	109.4	0.8	0.2	-1.1	-1.1	0.2	-1.0	-1.0
Unemployment	6.9	6.9	0.4	0.0	-1.4	-1.4	0.0	-16.9	-16.9
Participation rate	69.4	69.4	0.5	0.0	-3.2	-3.2
Unemployment rate	5.9	5.9	0.3	0.0	-1.1	-1.1
Employment rate	65.3	65.3	0.5	0.0	-2.2	-2.2
Halifax, Nova Scotia									
Population	348.8	349.1	...	0.3	4.2	4.2	0.1	1.2	1.2
Labour force	245.2	245.3	1.2	0.1	5.4	5.4	0.0	2.3	2.3
Employment	229.2	228.6	1.2	-0.6	3.9	3.9	-0.3	1.7	1.7
Unemployment	16.0	16.7	0.7	0.7	1.5	1.5	4.4	9.9	9.9
Participation rate	70.3	70.3	0.3	0.0	0.7	0.7
Unemployment rate	6.5	6.8	0.3	0.3	0.5	0.5
Employment rate	65.7	65.5	0.3	-0.2	0.4	0.4
Moncton, New Brunswick									
Population	119.4	119.5	...	0.1	1.9	1.9	0.1	1.6	1.6
Labour force	79.7	79.6	0.7	-0.1	0.2	0.2	-0.1	0.3	0.3
Employment	73.5	73.6	0.7	0.1	-0.6	-0.6	0.1	-0.8	-0.8
Unemployment	6.1	6.1	0.4	0.0	0.9	0.9	0.0	17.3	17.3
Participation rate	66.8	66.6	0.6	-0.2	-0.9	-0.9
Unemployment rate	7.7	7.7	0.5	0.0	1.2	1.2
Employment rate	61.6	61.6	0.6	0.0	-1.5	-1.5
Saint John, New Brunswick									
Population	106.8	106.8	...	0.0	0.1	0.1	0.0	0.1	0.1
Labour force	71.1	71.6	0.7	0.5	3.2	3.2	0.7	4.7	4.7
Employment	65.5	66.6	0.7	1.1	5.0	5.0	1.7	8.1	8.1
Unemployment	5.7	5.0	0.4	-0.7	-1.8	-1.8	-12.3	-26.5	-26.5
Participation rate	66.6	67.0	0.7	0.4	2.9	2.9
Unemployment rate	8.0	7.0	0.6	-1.0	-2.9	-2.9
Employment rate	61.3	62.4	0.7	1.1	4.7	4.7
Saguenay, Quebec									
Population	126.5	126.5	...	0.0	-0.2	-0.2	0.0	-0.2	-0.2
Labour force	79.7	79.2	0.8	-0.5	1.7	1.7	-0.6	2.2	2.2
Employment	73.5	73.3	0.9	-0.2	3.5	3.5	-0.3	5.0	5.0
Unemployment	6.2	5.9	0.4	-0.3	-1.7	-1.7	-4.8	-22.4	-22.4
Participation rate	63.0	62.6	0.7	-0.4	1.4	1.4
Unemployment rate	7.8	7.4	0.5	-0.4	-2.4	-2.4
Employment rate	58.1	57.9	0.7	-0.2	2.8	2.8
Québec, Quebec									
Population	649.5	649.9	...	0.4	5.0	5.0	0.1	0.8	0.8
Labour force	442.3	446.7	3.4	4.4	7.1	7.1	1.0	1.6	1.6
Employment	420.8	425.5	3.5	4.7	6.8	6.8	1.1	1.6	1.6
Unemployment	21.5	21.2	1.5	-0.3	0.2	0.2	-1.4	1.0	1.0
Participation rate	68.1	68.7	0.5	0.6	0.5	0.5
Unemployment rate	4.9	4.7	0.3	-0.2	-0.1	-0.1
Employment rate	64.8	65.5	0.5	0.7	0.6	0.6
Sherbrooke, Quebec									
Population	170.0	170.2	...	0.2	2.4	2.4	0.1	1.4	1.4
Labour force	100.4	101.0	1.1	0.6	-5.6	-5.6	0.6	-5.3	-5.3
Employment	93.3	93.9	1.1	0.6	-5.5	-5.5	0.6	-5.5	-5.5
Unemployment	7.1	7.1	0.4	0.0	-0.2	-0.2	0.0	-2.7	-2.7
Participation rate	59.1	59.3	0.6	0.2	-4.2	-4.2
Unemployment rate	7.1	7.0	0.4	-0.1	0.2	0.2
Employment rate	54.9	55.2	0.6	0.3	-4.0	-4.0

See notes at the end of the table.

Table 5-1 – continued

Labour force characteristics by census metropolitan area (seasonally adjusted) — 3 month moving average

	November 2013	December 2013	S.E. ¹	Change from			Percent change from		
				last month	last December	twelve months ago	last month	last December	twelve months ago
in thousands (except rates)									
Trois-Rivières, Quebec									
Population	126.9	126.9	...	0.0	0.7	0.7	0.0	0.6	0.6
Labour force	72.1	72.4	0.8	0.3	2.6	2.6	0.4	3.7	3.7
Employment	66.2	66.4	0.8	0.2	2.3	2.3	0.3	3.6	3.6
Unemployment	5.9	6.0	0.4	0.1	0.3	0.3	1.7	5.3	5.3
Participation rate	56.8	57.1	0.6	0.3	1.8	1.8
Unemployment rate	8.2	8.3	0.5	0.1	0.1	0.1
Employment rate	52.2	52.3	0.6	0.1	1.5	1.5
Montréal, Quebec									
Population	3,303.8	3,306.5	...	2.7	36.9	36.9	0.1	1.1	1.1
Labour force	2,218.8	2,222.3	8.0	3.5	31.3	31.3	0.2	1.4	1.4
Employment	2,044.4	2,045.1	8.1	0.7	28.1	28.1	0.0	1.4	1.4
Unemployment	174.4	177.2	4.7	2.8	3.2	3.2	1.6	1.8	1.8
Participation rate	67.2	67.2	0.2	0.0	0.2	0.2
Unemployment rate	7.9	8.0	0.2	0.1	0.1	0.1
Employment rate	61.9	61.9	0.2	0.0	0.2	0.2
Ottawa-Gatineau, Ontario/Quebec									
Population	1,071.3	1,072.4	...	1.1	14.9	14.9	0.1	1.4	1.4
Labour force	737.5	742.6	3.7	5.1	-24.6	-24.6	0.7	-3.2	-3.2
Employment	694.3	696.8	3.7	2.5	-19.7	-19.7	0.4	-2.7	-2.7
Unemployment	43.2	45.8	2.0	2.6	-4.8	-4.8	6.0	-9.5	-9.5
Participation rate	68.8	69.2	0.3	0.4	-3.3	-3.3
Unemployment rate	5.9	6.2	0.3	0.3	-0.4	-0.4
Employment rate	64.8	65.0	0.4	0.2	-2.8	-2.8
Ottawa-Gatineau, Quebec part, Ontario/Quebec									
Population	266.5	266.8	...	0.3	3.3	3.3	0.1	1.3	1.3
Labour force	180.4	182.5	1.4	2.1	-1.2	-1.2	1.2	-0.7	-0.7
Employment	168.7	169.9	1.4	1.2	-1.7	-1.7	0.7	-1.0	-1.0
Unemployment	11.6	12.6	0.6	1.0	0.5	0.5	8.6	4.1	4.1
Participation rate	67.7	68.4	0.5	0.7	-1.3	-1.3
Unemployment rate	6.4	6.9	0.3	0.5	0.3	0.3
Employment rate	63.3	63.7	0.5	0.4	-1.4	-1.4
Ottawa-Gatineau, Ontario part, Ontario/Quebec									
Population	804.7	805.6	...	0.9	11.6	11.6	0.1	1.5	1.5
Labour force	557.1	560.1	3.4	3.0	-23.4	-23.4	0.5	-4.0	-4.0
Employment	525.6	526.9	3.4	1.3	-18.0	-18.0	0.2	-3.3	-3.3
Unemployment	31.6	33.2	1.9	1.6	-5.3	-5.3	5.1	-13.8	-13.8
Participation rate	69.2	69.5	0.4	0.3	-4.0	-4.0
Unemployment rate	5.7	5.9	0.3	0.2	-0.7	-0.7
Employment rate	65.3	65.4	0.4	0.1	-3.2	-3.2
Kingston, Ontario									
Population	135.7	135.8	...	0.1	1.5	1.5	0.1	1.1	1.1
Labour force	90.8	89.5	0.8	-1.3	3.5	3.5	-1.4	4.1	4.1
Employment	85.3	84.1	0.8	-1.2	4.4	4.4	-1.4	5.5	5.5
Unemployment	5.4	5.4	0.4	0.0	-0.9	-0.9	0.0	-14.3	-14.3
Participation rate	66.9	65.9	0.6	-1.0	1.9	1.9
Unemployment rate	5.9	6.0	0.4	0.1	-1.3	-1.3
Employment rate	62.9	61.9	0.6	-1.0	2.6	2.6
Peterborough, Ontario									
Population	103.5	103.5	...	0.0	0.3	0.3	0.0	0.3	0.3
Labour force	61.6	61.3	1.1	-0.3	4.9	4.9	-0.5	8.7	8.7
Employment	58.1	57.6	1.1	-0.5	6.0	6.0	-0.9	11.6	11.6
Unemployment	3.5	3.7	0.5	0.2	-1.1	-1.1	5.7	-22.9	-22.9
Participation rate	59.5	59.2	1.1	-0.3	4.5	4.5
Unemployment rate	5.7	6.0	0.9	0.3	-2.5	-2.5
Employment rate	56.1	55.7	1.1	-0.4	5.7	5.7

See notes at the end of the table.

Table 5-1 – continued

Labour force characteristics by census metropolitan area (seasonally adjusted) — 3 month moving average

	November 2013	December 2013	S.E. ¹	Change from			Percent change from		
				last month	last December	twelve months ago	last month	last December	twelve months ago
in thousands (except rates)									
Oshawa, Ontario									
Population	316.1	316.5	...	0.4	5.1	5.1	0.1	1.6	1.6
Labour force	212.1	212.8	1.6	0.7	-0.9	-0.9	0.3	-0.4	-0.4
Employment	198.0	198.0	1.6	0.0	5.0	5.0	0.0	2.6	2.6
Unemployment	14.0	14.7	0.9	0.7	-5.9	-5.9	5.0	-28.6	-28.6
Participation rate	67.1	67.2	0.5	0.1	-1.4	-1.4
Unemployment rate	6.6	6.9	0.4	0.3	-2.7	-2.7
Employment rate	62.6	62.6	0.5	0.0	0.6	0.6
Toronto, Ontario									
Population	5,006.7	5,013.8	...	7.1	96.0	96.0	0.1	2.0	2.0
Labour force	3,423.7	3,422.2	10.5	-1.5	69.9	69.9	0.0	2.1	2.1
Employment	3,143.6	3,133.7	10.6	-9.9	59.1	59.1	-0.3	1.9	1.9
Unemployment	280.1	288.5	6.5	8.4	10.7	10.7	3.0	3.9	3.9
Participation rate	68.4	68.3	0.2	-0.1	0.1	0.1
Unemployment rate	8.2	8.4	0.2	0.2	0.1	0.1
Employment rate	62.8	62.5	0.2	-0.3	0.0	0.0
Hamilton, Ontario									
Population	633.3	633.8	...	0.5	6.7	6.7	0.1	1.1	1.1
Labour force	395.3	398.5	2.9	3.2	-8.0	-8.0	0.8	-2.0	-2.0
Employment	368.4	371.8	3.0	3.4	-10.7	-10.7	0.9	-2.8	-2.8
Unemployment	26.9	26.7	1.4	-0.2	2.8	2.8	-0.7	11.7	11.7
Participation rate	62.4	62.9	0.5	0.5	-1.9	-1.9
Unemployment rate	6.8	6.7	0.3	-0.1	0.8	0.8
Employment rate	58.2	58.7	0.5	0.5	-2.3	-2.3
St. Catharines-Niagara, Ontario									
Population	341.2	341.3	...	0.1	1.2	1.2	0.0	0.4	0.4
Labour force	209.5	212.1	1.7	2.6	-6.1	-6.1	1.2	-2.8	-2.8
Employment	191.5	193.3	1.8	1.8	-7.8	-7.8	0.9	-3.9	-3.9
Unemployment	18.0	18.7	0.9	0.7	1.6	1.6	3.9	9.4	9.4
Participation rate	61.4	62.1	0.5	0.7	-2.1	-2.1
Unemployment rate	8.6	8.8	0.4	0.2	1.0	1.0
Employment rate	56.1	56.6	0.5	0.5	-2.5	-2.5
Kitchener-Cambridge-Waterloo, Ontario									
Population	420.2	420.7	...	0.5	5.7	5.7	0.1	1.4	1.4
Labour force	313.7	312.7	2.3	-1.0	19.6	19.6	-0.3	6.7	6.7
Employment	295.0	293.5	2.2	-1.5	20.6	20.6	-0.5	7.5	7.5
Unemployment	18.7	19.2	1.0	0.5	-1.0	-1.0	2.7	-5.0	-5.0
Participation rate	74.7	74.3	0.6	-0.4	3.7	3.7
Unemployment rate	6.0	6.1	0.3	0.1	-0.8	-0.8
Employment rate	70.2	69.8	0.5	-0.4	4.0	4.0
Brantford, Ontario									
Population	109.5	109.5	...	0.0	0.6	0.6	0.0	0.6	0.6
Labour force	71.6	70.8	0.9	-0.8	-1.3	-1.3	-1.1	-1.8	-1.8
Employment	68.7	67.2	0.8	-1.5	1.0	1.0	-2.2	1.5	1.5
Unemployment	2.9	3.6	0.4	0.7	-2.3	-2.3	24.1	-39.0	-39.0
Participation rate	65.4	64.7	0.8	-0.7	-1.5	-1.5
Unemployment rate	4.1	5.1	0.5	1.0	-3.1	-3.1
Employment rate	62.7	61.4	0.8	-1.3	0.6	0.6
Guelph, Ontario									
Population	117.7	117.9	...	0.2	2.0	2.0	0.2	1.7	1.7
Labour force	78.9	78.4	0.8	-0.5	-3.9	-3.9	-0.6	-4.7	-4.7
Employment	73.2	72.5	0.8	-0.7	-4.6	-4.6	-1.0	-6.0	-6.0
Unemployment	5.8	5.9	0.4	0.1	0.7	0.7	1.7	13.5	13.5
Participation rate	67.0	66.5	0.7	-0.5	-4.5	-4.5
Unemployment rate	7.4	7.5	0.5	0.1	1.2	1.2
Employment rate	62.2	61.5	0.7	-0.7	-5.0	-5.0

See notes at the end of the table.

Table 5-1 – continued

Labour force characteristics by census metropolitan area (seasonally adjusted) — 3 month moving average

	November 2013	December 2013	S.E. ¹	Change from			Percent change from		
				last month	last December	twelve months ago	last month	last December	twelve months ago
in thousands (except rates)									
London, Ontario									
Population	421.1	421.4	...	0.3	4.0	4.0	0.1	1.0	1.0
Labour force	263.3	263.8	2.0	0.5	-5.0	-5.0	0.2	-1.9	-1.9
Employment	243.5	243.3	2.2	-0.2	-2.8	-2.8	-0.1	-1.1	-1.1
Unemployment	19.8	20.5	1.1	0.7	-2.1	-2.1	3.5	-9.3	-9.3
Participation rate	62.5	62.6	0.5	0.1	-1.8	-1.8
Unemployment rate	7.5	7.8	0.4	0.3	-0.6	-0.6
Employment rate	57.8	57.7	0.5	-0.1	-1.3	-1.3
Windsor, Ontario									
Population	269.7	269.8	...	0.1	1.5	1.5	0.0	0.6	0.6
Labour force	166.0	167.1	1.6	1.1	-1.9	-1.9	0.7	-1.1	-1.1
Employment	151.9	154.0	1.6	2.1	2.6	2.6	1.4	1.7	1.7
Unemployment	14.1	13.0	0.8	-1.1	-4.6	-4.6	-7.8	-26.1	-26.1
Participation rate	61.5	61.9	0.6	0.4	-1.1	-1.1
Unemployment rate	8.5	7.8	0.5	-0.7	-2.6	-2.6
Employment rate	56.3	57.1	0.6	0.8	0.7	0.7
Barrie, Ontario									
Population	166.0	166.1	...	0.1	2.2	2.2	0.1	1.3	1.3
Labour force	118.4	117.0	1.5	-1.4	0.3	0.3	-1.2	0.3	0.3
Employment	112.4	110.9	1.4	-1.5	2.8	2.8	-1.3	2.6	2.6
Unemployment	6.0	6.1	0.7	0.1	-2.5	-2.5	1.7	-29.1	-29.1
Participation rate	71.3	70.4	0.9	-0.9	-0.8	-0.8
Unemployment rate	5.1	5.2	0.6	0.1	-2.2	-2.2
Employment rate	67.7	66.8	0.9	-0.9	0.8	0.8
Greater Sudbury, Ontario									
Population	138.2	138.2	...	0.0	-0.4	-0.4	0.0	-0.3	-0.3
Labour force	89.6	89.4	0.8	-0.2	1.3	1.3	-0.2	1.5	1.5
Employment	83.4	83.2	0.8	-0.2	1.1	1.1	-0.2	1.3	1.3
Unemployment	6.2	6.1	0.4	-0.1	0.1	0.1	-1.6	1.7	1.7
Participation rate	64.8	64.7	0.6	-0.1	1.1	1.1
Unemployment rate	6.9	6.8	0.4	-0.1	0.0	0.0
Employment rate	60.3	60.2	0.6	-0.1	1.0	1.0
Thunder Bay, Ontario									
Population	103.4	103.4	...	0.0	0.3	0.3	0.0	0.3	0.3
Labour force	66.6	65.7	0.7	-0.9	2.3	2.3	-1.4	3.6	3.6
Employment	62.4	61.9	0.7	-0.5	1.6	1.6	-0.8	2.7	2.7
Unemployment	4.2	3.9	0.3	-0.3	0.8	0.8	-7.1	25.8	25.8
Participation rate	64.4	63.5	0.6	-0.9	2.0	2.0
Unemployment rate	6.3	5.9	0.4	-0.4	1.0	1.0
Employment rate	60.3	59.9	0.7	-0.4	1.4	1.4
Winnipeg, Manitoba									
Population	645.9	646.8	...	0.9	11.1	11.1	0.1	1.7	1.7
Labour force	446.5	445.2	1.3	-1.3	4.5	4.5	-0.3	1.0	1.0
Employment	420.2	419.4	1.3	-0.8	3.2	3.2	-0.2	0.8	0.8
Unemployment	26.3	25.8	0.8	-0.5	1.4	1.4	-1.9	5.7	5.7
Participation rate	69.1	68.8	0.2	-0.3	-0.5	-0.5
Unemployment rate	5.9	5.8	0.2	-0.1	0.3	0.3
Employment rate	65.1	64.8	0.2	-0.3	-0.7	-0.7
Regina, Saskatchewan									
Population	186.9	187.3	...	0.4	5.4	5.4	0.2	3.0	3.0
Labour force	138.8	139.2	0.8	0.4	5.7	5.7	0.3	4.3	4.3
Employment	133.4	133.3	0.8	-0.1	5.5	5.5	-0.1	4.3	4.3
Unemployment	5.4	5.9	0.3	0.5	0.2	0.2	9.3	3.5	3.5
Participation rate	74.3	74.3	0.4	0.0	0.9	0.9
Unemployment rate	3.9	4.2	0.2	0.3	-0.1	-0.1
Employment rate	71.4	71.2	0.4	-0.2	0.9	0.9

See notes at the end of the table.

Table 5-1 – continued

Labour force characteristics by census metropolitan area (seasonally adjusted) — 3 month moving average

	November 2013	December 2013	S.E. ¹	Change from			Percent change from		
				last month	last December	twelve months ago	last month	last December	twelve months ago
in thousands (except rates)									
Saskatoon, Saskatchewan									
Population	238.6	239.4	...	0.8	9.7	9.7	0.3	4.2	4.2
Labour force	171.8	172.1	1.0	0.3	8.4	8.4	0.2	5.1	5.1
Employment	164.6	164.9	1.0	0.3	10.3	10.3	0.2	6.7	6.7
Unemployment	7.3	7.2	0.5	-0.1	-1.8	-1.8	-1.4	-20.0	-20.0
Participation rate	72.0	71.9	0.4	-0.1	0.6	0.6
Unemployment rate	4.2	4.2	0.3	0.0	-1.3	-1.3
Employment rate	69.0	68.9	0.4	-0.1	1.6	1.6
Calgary, Alberta									
Population	1,111.3	1,114.4	...	3.1	44.1	44.1	0.3	4.1	4.1
Labour force	825.2	829.6	3.6	4.4	31.6	31.6	0.5	4.0	4.0
Employment	787.7	790.6	3.8	2.9	29.6	29.6	0.4	3.9	3.9
Unemployment	37.6	39.0	1.9	1.4	2.0	2.0	3.7	5.4	5.4
Participation rate	74.3	74.4	0.3	0.1	-0.2	-0.2
Unemployment rate	4.6	4.7	0.2	0.1	0.1	0.1
Employment rate	70.9	70.9	0.4	0.0	-0.2	-0.2
Edmonton, Alberta									
Population	1,041.1	1,043.9	...	2.8	40.7	40.7	0.3	4.1	4.1
Labour force	764.0	767.4	3.6	3.4	28.9	28.9	0.4	3.9	3.9
Employment	725.0	725.5	3.8	0.5	20.2	20.2	0.1	2.9	2.9
Unemployment	39.0	41.9	1.8	2.9	8.8	8.8	7.4	26.6	26.6
Participation rate	73.4	73.5	0.4	0.1	-0.1	-0.1
Unemployment rate	5.1	5.5	0.2	0.4	1.0	1.0
Employment rate	69.6	69.5	0.4	-0.1	-0.8	-0.8
Kelowna, British Columbia									
Population	151.7	151.9	...	0.2	1.7	1.7	0.1	1.1	1.1
Labour force	102.1	98.0	2.0	-4.1	-2.3	-2.3	-4.0	-2.3	-2.3
Employment	95.8	91.2	1.8	-4.6	-1.7	-1.7	-4.8	-1.8	-1.8
Unemployment	6.3	6.8	0.8	0.5	-0.6	-0.6	7.9	-8.1	-8.1
Participation rate	67.3	64.5	1.3	-2.8	-2.3	-2.3
Unemployment rate	6.2	6.9	0.8	0.7	-0.5	-0.5
Employment rate	63.2	60.0	1.2	-3.2	-1.9	-1.9
Abbotsford-Mission, British Columbia									
Population	147.8	147.9	...	0.1	1.8	1.8	0.1	1.2	1.2
Labour force	102.2	102.3	0.9	0.1	2.7	2.7	0.1	2.7	2.7
Employment	94.4	94.1	0.9	-0.3	2.1	2.1	-0.3	2.3	2.3
Unemployment	7.7	8.2	0.4	0.5	0.6	0.6	6.5	7.9	7.9
Participation rate	69.1	69.2	0.6	0.1	1.0	1.0
Unemployment rate	7.5	8.0	0.4	0.5	0.4	0.4
Employment rate	63.9	63.6	0.6	-0.3	0.6	0.6
Vancouver, British Columbia									
Population	2,109.3	2,112.2	...	2.9	39.1	39.1	0.1	1.9	1.9
Labour force	1,356.5	1,364.9	5.2	8.4	2.3	2.3	0.6	0.2	0.2
Employment	1,267.5	1,277.5	5.3	10.0	6.2	6.2	0.8	0.5	0.5
Unemployment	89.0	87.4	3.0	-1.6	-4.0	-4.0	-1.8	-4.4	-4.4
Participation rate	64.3	64.6	0.3	0.3	-1.1	-1.1
Unemployment rate	6.6	6.4	0.2	-0.2	-0.3	-0.3
Employment rate	60.1	60.5	0.3	0.4	-0.8	-0.8
Victoria, British Columbia									
Population	305.4	305.5	...	0.1	2.2	2.2	0.0	0.7	0.7
Labour force	193.6	191.4	1.5	-2.2	-6.9	-6.9	-1.1	-3.5	-3.5
Employment	185.2	182.9	1.6	-2.3	-4.6	-4.6	-1.2	-2.5	-2.5
Unemployment	8.4	8.6	0.7	0.2	-2.2	-2.2	2.4	-20.4	-20.4
Participation rate	63.4	62.7	0.5	-0.7	-2.7	-2.7
Unemployment rate	4.3	4.5	0.3	0.2	-0.9	-0.9
Employment rate	60.6	59.9	0.5	-0.7	-1.9	-1.9

1. Average standard error of change in two consecutive months (see "Sampling Errors" in Data Quality for further explanations).

Note(s): Estimates in this table are based on 2006 census boundaries. Related CANSIM Table 282-0116. The sum of individual categories may not always add to the total due to rounding.

Table 5-2
Labour force characteristics by census metropolitan area (seasonally adjusted) — Monthly

	November 2013	December 2013	S.E. ¹	Change from			Percent change from		
				last month	last December	twelve months ago	last month	last December	twelve months ago
in thousands (except rates)									
Montréal, Quebec									
Population	3,306.5	3,309.3	...	2.8	37.1	37.1	0.1	1.1	1.1
Labour force	2,221.3	2,222.3	16.3	1.0	21.9	21.9	0.0	1.0	1.0
Employment	2,053.8	2,034.2	16.3	-19.6	-1.1	-1.1	-1.0	-0.1	-0.1
Unemployment	167.5	188.1	11.5	20.6	23.0	23.0	12.3	13.9	13.9
Participation rate	67.2	67.2	0.5	0.0	0.0	0.0
Unemployment rate	7.5	8.5	0.5	1.0	1.0	1.0
Employment rate	62.1	61.5	0.5	-0.6	-0.7	-0.7
Toronto, Ontario									
Population	5,013.8	5,020.9	...	7.1	96.2	96.2	0.1	2.0	2.0
Labour force	3,423.5	3,433.6	21.8	10.1	77.1	77.1	0.3	2.3	2.3
Employment	3,142.1	3,132.5	21.3	-9.6	52.8	52.8	-0.3	1.7	1.7
Unemployment	281.5	301.1	15.5	19.6	24.3	24.3	7.0	8.8	8.8
Participation rate	68.3	68.4	0.4	0.1	0.2	0.2
Unemployment rate	8.2	8.8	0.4	0.6	0.6	0.6
Employment rate	62.7	62.4	0.4	-0.3	-0.1	-0.1
Vancouver, British Columbia									
Population	2,112.0	2,115.1	...	3.1	39.1	39.1	0.1	1.9	1.9
Labour force	1,361.7	1,383.4	11.1	21.7	26.6	26.6	1.6	2.0	2.0
Employment	1,271.2	1,296.2	11.0	25.0	23.4	23.4	2.0	1.8	1.8
Unemployment	90.5	87.2	7.2	-3.3	3.2	3.2	-3.6	3.8	3.8
Participation rate	64.5	65.4	0.5	0.9	0.0	0.0
Unemployment rate	6.6	6.3	0.5	-0.3	0.1	0.1
Employment rate	60.2	61.3	0.5	1.1	0.0	0.0

1. Average standard error of change in two consecutive months (see "Sampling Errors" in Data Quality for further explanations).

Note(s): Estimates in this table are based on 2006 census boundaries. Related CANSIM Table 282-0117. The sum of individual categories may not always add to the total due to rounding.

Table 6-1

Labour force characteristics by province and economic region, ¹ unadjusted for seasonality, 3 month moving average ending in December 2012 and December 2013

	Population	Labour force			Participation rate	Unemployment rate	Employment rate
		Labour force	Employment	Unemployment			
in thousands							
Canada ²							
2012	28,442.1	18,855.2	17,602.4	1,252.9	66.3	6.6	61.9
2013	28,817.3	19,014.4	17,770.2	1,244.2	66.0	6.5	61.7
Newfoundland and Labrador							
2012	427.8	262.7	232.5	30.2	61.4	11.5	54.3
2013	429.7	259.3	230.3	29.0	60.3	11.2	53.6
<i>Avalon Peninsula [1010]</i>							
2012	222.5	149.8	138.0	11.8	67.3	7.9	62.0
2013	225.3	146.4	134.7	11.7	65.0	8.0	59.8
<i>South Coast-Burin Peninsula [1020]</i>							
2012	29.9	15.7	13.1	2.6	52.5	16.6	43.8
2013	29.5	17.0	14.7	2.3	57.6	13.5	49.8
<i>West Coast-Northern Peninsula-Labrador [1030]</i>							
2012	85.7	50.4	42.3	8.1	58.8	16.1	49.4
2013	85.6	48.1	41.1	7.0	56.2	14.6	48.0
<i>Notre Dame-Central Bonavista Bay [1040]</i>							
2012	89.7	46.8	39.1	7.7	52.2	16.5	43.6
2013	89.2	47.8	39.9	7.9	53.6	16.5	44.7
Prince Edward Island							
2012	120.6	81.8	72.5	9.3	67.8	11.4	60.1
2013	121.0	82.3	72.4	9.8	68.0	11.9	59.8
Nova Scotia							
2012	780.6	496.3	453.5	42.8	63.6	8.6	58.1
2013	781.6	490.6	449.0	41.6	62.8	8.5	57.4
<i>Cape Breton [1210]</i>							
2012	110.5	59.9	50.7	9.3	54.2	15.5	45.9
2013	109.1	59.5	51.9	7.6	54.5	12.8	47.6
<i>North Shore [1220]</i>							
2012	129.0	79.4	70.4	9.0	61.6	11.3	54.6
2013	128.4	75.5	67.7	7.8	58.8	10.3	52.7
<i>Annapolis Valley [1230]</i>							
2012	99.5	61.6	57.0	4.7	61.9	7.6	57.3
2013	99.1	59.5	54.1	5.4	60.0	9.1	54.6
<i>Southern [1240]</i>							
2012	96.8	57.0	50.0	7.0	58.9	12.3	51.7
2013	95.9	52.3	47.0	5.3	54.5	10.1	49.0
<i>Halifax [1250]</i>							
2012	344.9	238.4	225.4	12.9	69.1	5.4	65.4
2013	349.1	243.8	228.2	15.6	69.8	6.4	65.4
New Brunswick							
2012	620.2	386.7	347.0	39.7	62.4	10.3	55.9
2013	619.9	386.4	351.1	35.4	62.3	9.2	56.6
<i>Campbellton-Miramichi [1310]</i>							
2012	127.2	72.0	59.2	12.7	56.6	17.6	46.5
2013	125.5	69.8	58.1	11.8	55.6	16.9	46.3
<i>Moncton-Richibucto [1320]</i>							
2012	174.0	112.1	103.8	8.4	64.4	7.5	59.7
2013	175.3	113.2	104.4	8.8	64.6	7.8	59.6
<i>Saint John-St. Stephen [1330]</i>							
2012	144.6	91.7	82.5	9.3	63.4	10.1	57.1
2013	144.4	93.0	86.3	6.6	64.4	7.1	59.8

See notes at the end of the table.

Table 6-1 – continued

Labour force characteristics by province and economic region, ¹ unadjusted for seasonality, 3 month moving average ending in December 2012 and December 2013

	Population	Labour force			Participation rate	Unemployment rate	Employment rate
		Labour force	Employment	Unemployment			
in thousands							
Fredericton-Oromocto [1340]							
2012	110.4	70.8	65.3	5.6	64.1	7.9	59.1
2013	111.4	71.7	67.1	4.5	64.4	6.3	60.2
Edmundston-Woodstock [1350]							
2012	64.0	40.0	36.3	3.7	62.5	9.3	56.7
2013	63.3	38.8	35.1	3.6	61.3	9.3	55.5
Quebec							
2012	6,659.9	4,330.5	4,022.1	308.4	65.0	7.1	60.4
2013	6,710.3	4,354.1	4,050.1	304.0	64.9	7.0	60.4
Gaspésie-Îles-de-la-Madeleine [2410]							
2012	78.6	40.5	34.4	6.1	51.5	15.1	43.8
2013	78.1	41.0	34.1	6.9	52.5	16.8	43.7
Bas-Saint-Laurent [2415]							
2012	166.4	99.1	92.8	6.3	59.6	6.4	55.8
2013	165.4	92.5	83.4	9.1	55.9	9.8	50.4
Capitale-Nationale [2420]							
2012	596.3	396.8	379.1	17.8	66.5	4.5	63.6
2013	600.7	406.4	388.0	18.4	67.7	4.5	64.6
Chaudière-Appalaches [2425]							
2012	336.3	230.6	221.7	8.9	68.6	3.9	65.9
2013	336.9	226.1	217.6	8.5	67.1	3.8	64.6
Estrie [2430]							
2012	261.4	167.4	156.6	10.8	64.0	6.5	59.9
2013	263.5	164.1	154.6	9.5	62.3	5.8	58.7
Centre-du-Québec [2433]							
2012	192.6	117.6	110.2	7.4	61.1	6.3	57.2
2013	193.5	112.3	103.7	8.7	58.0	7.7	53.6
Montérégie [2435]							
2012	1,208.1	832.2	783.7	48.5	68.9	5.8	64.9
2013	1,218.2	802.4	752.9	49.5	65.9	6.2	61.8
Montréal [2440]							
2012	1,637.2	1,053.2	949.4	103.8	64.3	9.9	58.0
2013	1,653.6	1,065.7	972.8	92.9	64.4	8.7	58.8
Laval [2445]							
2012	341.0	228.8	211.9	16.9	67.1	7.4	62.1
2013	345.8	243.5	230.0	13.5	70.4	5.5	66.5
Lanaudière [2450]							
2012	399.7	252.7	234.9	17.8	63.2	7.0	58.8
2013	404.2	271.6	251.5	20.1	67.2	7.4	62.2
Laurentides [2455]							
2012	473.3	315.4	296.1	19.4	66.6	6.2	62.6
2013	478.8	326.0	300.3	25.7	68.1	7.9	62.7
Outaouais [2460]							
2012	312.2	209.8	196.1	13.7	67.2	6.5	62.8
2013	315.9	210.3	196.0	14.4	66.6	6.8	62.0
Abitibi-Témiscamingue [2465]							
2012	118.0	78.0	73.0	5.0	66.1	6.4	61.9
2013	118.0	80.7	76.5	4.2	68.4	5.2	64.8
Mauricie [2470]							
2012	222.3	116.7	105.5	11.2	52.5	9.6	47.5
2013	222.0	122.7	113.8	8.8	55.3	7.2	51.3

See notes at the end of the table.

Table 6-1 – continued

Labour force characteristics by province and economic region, ¹ unadjusted for seasonality, 3 month moving average ending in December 2012 and December 2013

	Population	Labour force			Participation rate	Unemployment rate	Employment rate
		Labour force	Employment	Unemployment			
in thousands							
Saguenay-Lac-Saint-Jean [2475]							
2012	225.4	137.2	125.4	11.7	60.9	8.5	55.6
2013	224.7	131.9	121.8	10.2	58.7	7.7	54.2
Côte-Nord and Nord-du-Québec [2480, 2490]							
2012	90.9	54.7	51.5	3.3	60.2	6.0	56.7
2013	91.0	56.7	53.0	3.6	62.3	6.3	58.2
Ontario							
2012	11,118.9	7,353.7	6,826.8	526.9	66.1	7.2	61.4
2013	11,257.2	7,408.8	6,892.9	515.9	65.8	7.0	61.2
Ottawa [3510]							
2012	1,067.5	738.9	694.8	44.1	69.2	6.0	65.1
2013	1,079.5	730.8	689.3	41.6	67.7	5.7	63.9
Kingston-Pembroke [3515]							
2012	372.5	229.9	211.7	18.2	61.7	7.9	56.8
2013	373.7	225.8	208.8	17.0	60.4	7.5	55.9
Muskoka-Kawarthas [3520]							
2012	320.6	173.3	160.8	12.5	54.1	7.2	50.2
2013	321.8	176.5	166.8	9.7	54.8	5.5	51.8
Toronto [3530]							
2012	5,177.2	3,509.7	3,237.6	272.0	67.8	7.7	62.5
2013	5,273.7	3,565.6	3,288.1	277.5	67.6	7.8	62.3
Kitchener-Waterloo-Barrie [3540]							
2012	1,055.7	737.1	693.7	43.4	69.8	5.9	65.7
2013	1,070.6	745.9	704.7	41.3	69.7	5.5	65.8
Hamilton-Niagara Peninsula [3550]							
2012	1,182.7	761.1	712.7	48.4	64.4	6.4	60.3
2013	1,192.3	752.5	702.3	50.1	63.1	6.7	58.9
London [3560]							
2012	546.4	350.6	325.2	25.5	64.2	7.3	59.5
2013	551.2	348.5	326.8	21.6	63.2	6.2	59.3
Windsor-Sarnia [3570]							
2012	518.8	325.0	297.3	27.7	62.6	8.5	57.3
2013	519.2	322.3	301.5	20.9	62.1	6.5	58.1
Stratford-Bruce Peninsula [3580]							
2012	245.8	151.5	144.5	7.0	61.6	4.6	58.8
2013	245.6	161.3	151.6	9.7	65.7	6.0	61.7
Northeast [3590]							
2012	458.7	270.0	247.5	22.5	58.9	8.3	54.0
2013	456.7	271.1	252.9	18.2	59.4	6.7	55.4
Northwest [3595]							
2012	173.0	106.6	101.1	5.5	61.6	5.2	58.4
2013	172.9	108.6	100.2	8.4	62.8	7.7	58.0
Manitoba							
2012	966.3	664.5	632.7	31.8	68.8	4.8	65.5
2013	978.0	663.6	628.9	34.7	67.9	5.2	64.3
Southeast [4610]							
2012	84.6	58.8	56.0	2.8	69.5	4.8	66.2
2013	85.8	60.0	56.8	3.1	69.9	5.2	66.2
South Central [4620]							
2012	48.4	31.7	30.9	0.8	65.5	2.5	63.8
2013	49.2	32.6	31.4	1.2	66.3	3.7	63.8

See notes at the end of the table.

Table 6-1 – continued

Labour force characteristics by province and economic region, 1 unadjusted for seasonality, 3 month moving average ending in December 2012 and December 2013

	Population	Labour force			Participation rate	Unemployment rate	Employment rate
		Labour force	Employment	Unemployment			
in thousands							
Southwest [4630]							
2012	84.0	60.7	59.0	1.6	72.3	2.6	70.2
2013	84.4	58.8	56.5	2.3	69.7	3.9	66.9
North Central [4640]							
2012	36.8	23.7	23.0	0.8	64.4	3.4	62.5
2013	37.0	25.5	24.4	1.1	68.9	4.3	65.9
Winnipeg [4650]							
2012	580.5	400.9	379.9	21.0	69.1	5.2	65.4
2013	589.9	400.4	378.4	22.1	67.9	5.5	64.1
Interlake [4660]							
2012	73.3	50.2	48.4	1.8	68.5	3.6	66.0
2013	73.8	49.4	46.9	2.5	66.9	5.1	63.6
Parklands and North [4670, 4680]							
2012	58.8	38.5	35.5	3.0	65.5	7.8	60.4
2013	57.8	36.9	34.6	2.4	63.8	6.5	59.9
Saskatchewan							
2012	816.4	563.7	540.5	23.2	69.0	4.1	66.2
2013	832.9	574.1	554.2	20.0	68.9	3.5	66.5
Regina-Moose Mountain [4710]							
2012	243.8	177.9	172.2	5.7	73.0	3.2	70.6
2013	249.7	180.1	174.2	5.9	72.1	3.3	69.8
Swift Current-Moose Jaw [4720]							
2012	81.2	51.7	50.4	1.3	63.7	2.5	62.1
2013	81.5	52.6	51.6	1.0	64.5	1.9	63.3
Saskatoon-Biggar [4730]							
2012	273.9	190.8	182.1	8.7	69.7	4.6	66.5
2013	283.1	200.0	193.2	6.8	70.6	3.4	68.2
Yorkton-Melville [4740]							
2012	62.6	40.6	39.3	1.3	64.9	3.2	62.8
2013	62.4	39.2	37.7	1.4	62.8	3.6	60.4
Prince Albert and Northern [4750, 4760]							
2012	154.9	102.7	96.5	6.2	66.3	6.0	62.3
2013	156.2	102.3	97.5	4.8	65.5	4.7	62.4
Alberta							
2012	3,103.7	2,253.7	2,161.9	91.8	72.6	4.1	69.7
2013	3,215.2	2,339.1	2,238.3	100.8	72.8	4.3	69.6
Lethbridge-Medicine Hat [4810]							
2012	224.0	147.2	141.1	6.1	65.7	4.1	63.0
2013	229.3	142.8	138.7	4.1	62.3	2.9	60.5
Camrose-Drumheller [4820]							
2012	158.1	104.7	101.6	3.1	66.2	3.0	64.3
2013	161.1	110.7	105.7	4.9	68.7	4.4	65.6
Calgary [4830]							
2012	1,151.1	851.8	815.5	36.3	74.0	4.3	70.8
2013	1,197.6	885.9	846.7	39.2	74.0	4.4	70.7
Banff-Jasper-Rocky Mountain House [4840]							
2012	72.7	53.7	51.1	2.6	73.9	4.8	70.3
2013	75.0	54.9	52.8	2.2	73.2	4.0	70.4

See notes at the end of the table.

Table 6-1 – continued

Labour force characteristics by province and economic region, ¹ unadjusted for seasonality, 3 month moving average ending in December 2012 and December 2013

	Population	Labour force			Participation rate	Unemployment rate	Employment rate
		Labour force	Employment	Unemployment			
in thousands							
Red Deer [4850]							
2012	158.8	113.9	109.7	4.2	71.7	3.7	69.1
2013	163.7	120.3	117.0	3.2	73.5	2.7	71.5
Edmonton [4860]							
2012	1,039.1	759.1	727.9	31.2	73.1	4.1	70.1
2013	1,079.8	794.9	756.5	38.4	73.6	4.8	70.1
Athabasca-Grande Prairie-Peace River [4870]							
2012	193.0	137.6	132.3	5.3	71.3	3.9	68.5
2013	197.1	142.4	136.9	5.5	72.2	3.9	69.5
Wood Buffalo-Cold Lake [4880]							
2012	106.9	85.7	82.7	3.0	80.2	3.5	77.4
2013	111.7	87.3	83.9	3.3	78.2	3.8	75.1
British Columbia							
2012	3,827.6	2,461.6	2,312.9	148.7	64.3	6.0	60.4
2013	3,871.4	2,456.0	2,303.1	153.0	63.4	6.2	59.5
Vancouver Island and Coast [5910]							
2012	659.2	393.0	370.1	22.9	59.6	5.8	56.1
2013	662.5	387.9	365.9	22.0	58.6	5.7	55.2
Lower Mainland-Southwest [5920]							
2012	2,363.3	1,544.4	1,448.5	95.9	65.3	6.2	61.3
2013	2,405.9	1,542.5	1,446.7	95.8	64.1	6.2	60.1
Thompson-Okanagan [5930]							
2012	434.5	267.1	251.8	15.2	61.5	5.7	58.0
2013	434.4	275.0	253.2	21.7	63.3	7.9	58.3
Kootenay [5940]							
2012	126.6	83.2	77.3	5.8	65.7	7.0	61.1
2013	126.0	79.2	74.4	4.9	62.9	6.2	59.0
Cariboo [5950]							
2012	126.3	89.2	85.3	3.9	70.6	4.4	67.5
2013	125.5	88.0	84.0	4.0	70.1	4.5	66.9
North Coast and Nechako [5960, 5970]							
2012	65.7	42.7	39.2	3.5	65.0	8.2	59.7
2013	64.6	40.9	38.4	2.5	63.3	6.1	59.4
Northeast [5980]							
2012	52.0	42.0	40.6	x	80.8	x	78.1
2013	52.5	42.4	40.4	2.0	80.8	4.7	77.0

1. For geographic descriptions of economic regions, refer to the Guide to the Labour Force Survey (catalogue number 71-543-GIE).

2. Estimates for Canada are a sum of the provincial totals and exclude estimates from Yukon, Northwest Territories and Nunavut.

Note(s): Related CANSIM table 282-0054.

Table 6-2
Labour force characteristics by territories, unadjusted for seasonality, 3 month moving average ending in
December 2012 and December 2013

	Population	Labour force			Participation rate	Unemployment rate	Employment rate
		Labour force	Employment	Unemployment			
		in thousands			percent		
Yukon ¹							
2012	27.2	19.8	18.7	1.2	72.8	6.1	68.8
2013	27.7	20.6	19.6	1.0	74.4	4.9	70.8
Northwest Territories ²							
2012	32.1	24.4	22.6	1.8	76.0	7.4	70.4
2013	31.9	24.4	22.4	2.0	76.5	8.2	70.2
Nunavut ³							
2012	21.3	13.4	11.5	1.9	62.9	14.2	54.0
2013	22.1	14.6	12.5	2.1	65.8	14.6	56.2

1. Since 1992, the Labour force survey (LFS) has been conducted in the Yukon, using an alternative methodology that accommodates some of the operational difficulties inherent to remote locales. These estimates are not included in the national totals. In 1995, the LFS in the Yukon underwent a sample redesign. One result of the redesign was that the covered population increased from 85% to 92%, which is reflected by the sharp increase in the three month moving averages estimates of January, February and March of 1995 for all the level estimates. Users are therefore warned to be cautious when comparing estimates before January 1995 to estimates for January 1995 and forward.
2. Since 2001, the Labour force survey (LFS) has been administered in the Northwest Territories, using an alternative methodology that accommodates some of the operational difficulties inherent to remote locales. These estimates are not included in national totals.
3. Since 2004, the Labour force survey (LFS) has been administered in Nunavut, using an alternative methodology that accommodates some of the operational difficulties inherent to remote locales. These estimates are 3-month moving averages and are not included in national totals. From January 2004 to December 2007, estimates represent about 70% of all Nunavut residents aged 15 and over. Starting in January 2008, coverage was extended to 92%, so that by March 2008, the 3-month moving average is completely based on the extended coverage. Because of the large difference in coverage, users are recommended not to compare estimates prior to January 2008 with data afterwards. The January and February 2008 3-month moving average estimates are based on a mix of both coverages, since the extended coverage was introduced in January 2008. Estimates from January 2004 to December 2007 are based on the 10 largest communities in Nunavut: Iqaluit, Rankin Inlet, Cambridge Bay, Kugluktuk, Baker Lake, Arviat, Pond Inlet, Cape Dorset, Pangnirtung, Igloolik. Estimates from March 2008 to present cover the above communities as well as: Taloyoak, Gjoa Haven, Kugaaruk, Coral Harbour, Repulse Bay, Qikiqtarjuaq, Arctic Bay, Hall Beach, Clyde River.

Note(s): Related CANSIM table 282-0100.

Table 7
Average usual hours and wages of employees by selected characteristics, Canada, unadjusted for seasonality

	Employees				Full-time			Part-time		
	Number	Average weekly hours	Average weekly wages	Average hourly wages	Number	Average weekly hours	Average weekly wages	Number	Average weekly hours	Average weekly wages
	thousands		current dollars		thousands		current dollars	thousands		current dollars
December 2013										
15 years and over	15,035.8	35.0	892.09	24.51	12,140.7	39.2	1,031.27	2,895.1	17.4	308.42
15 to 24 years	2,267.2	25.8	390.02	14.03	1,041.6	38.6	634.17	1,225.6	15.0	182.51
25 years and over	12,768.6	36.7	981.23	26.37	11,099.1	39.3	1,068.53	1,669.5	19.1	400.85
Men	7,547.7	37.4	1,013.08	26.30	6,610.0	40.4	1,117.97	937.7	16.5	273.69
Women	7,488.1	32.6	770.13	22.71	5,530.7	37.9	927.65	1,957.4	17.8	325.06
Union coverage										
Union coverage	4,709.3	35.6	1,017.36	28.19	4,016.2	38.5	1,113.89	693.2	19.0	458.10
No union coverage	10,326.5	34.8	834.96	22.83	8,124.6	39.6	990.43	2,201.9	16.8	261.31
Job permanency										
Permanent	13,190.8	36.0	933.53	25.13	11,151.4	39.3	1,044.08	2,039.4	18.4	329.05
Temporary	1,845.0	27.9	595.76	20.07	989.3	39.0	886.83	855.7	15.0	259.25
Occupation										
Management	941.0	39.7	1,520.71	38.44	920.1	40.2	1,542.92	20.9	19.5	541.31
Business, finance and administrative	2,860.4	35.4	834.71	23.11	2,442.8	38.3	919.62	417.6	18.5	338.05
Natural and applied sciences	1,199.0	38.2	1,284.89	33.49	1,146.8	39.2	1,321.73	52.2	17.2	475.69
Health	1,050.4	33.2	967.96	28.83	793.5	37.6	1,107.95	256.9	19.5	535.59
Social science, education, government service and religion	1,511.7	33.8	1,082.35	31.62	1,212.9	37.9	1,226.98	298.8	17.5	495.24
Art, culture, recreation and sport	359.2	28.9	757.76	24.24	228.8	38.1	1,043.07	130.4	12.7	256.93
Sales and service	3,942.9	30.2	538.48	16.57	2,424.4	38.4	736.41	1,518.5	17.0	222.47
Trades, transport and equipment operators	2,161.0	40.0	976.83	24.08	2,022.5	41.5	1,022.47	138.6	18.4	310.60
Occupations unique to primary industry	252.2	42.5	1,061.53	24.04	223.2	46.2	1,170.26	29.0	14.4	223.38
Occupations unique to processing, manufacturing and utilities	758.0	39.2	827.35	20.89	725.7	40.1	851.51	32.3	17.9	285.27
December 2012										
15 years and over	14,929.9	35.1	873.15	23.94	12,115.4	39.3	1,008.97	2,814.5	17.0	288.50
15 to 24 years	2,290.1	26.0	385.11	13.76	1,074.6	38.8	623.98	1,215.5	14.6	173.94
25 years and over	12,639.8	36.7	961.58	25.78	11,040.8	39.4	1,046.44	1,599.0	18.7	375.59
Men	7,457.3	37.7	999.20	25.80	6,578.6	40.5	1,098.93	878.7	16.2	252.60
Women	7,472.5	32.5	747.36	22.09	5,536.7	37.8	902.09	1,935.8	17.3	304.79
Union coverage										
Union coverage	4,752.6	35.6	990.27	27.35	4,060.0	38.6	1,087.29	692.6	18.5	421.49
No union coverage	10,177.2	34.8	818.46	22.34	8,055.4	39.7	969.50	2,121.9	16.4	245.09
Job permanency										
Permanent	12,987.9	36.1	917.31	24.64	11,037.4	39.3	1,024.37	1,950.5	18.1	311.48
Temporary	1,941.9	28.0	577.82	19.28	1,077.9	39.0	851.31	864.0	14.4	236.61
Occupation										
Management	1,054.7	39.8	1,475.92	37.22	1,032.3	40.3	1,498.08	22.5	17.4	458.34
Business, finance and administrative	2,791.3	35.2	813.57	22.63	2,394.6	38.1	896.01	396.7	17.6	315.93
Natural and applied sciences	1,161.0	38.4	1,277.24	33.21	1,123.4	39.0	1,302.10	37.6	18.7	534.93
Health	1,023.9	33.6	934.38	27.72	788.9	37.7	1,051.60	235.0	19.7	540.79
Social science, education, government service and religion	1,534.0	33.7	1,037.57	30.14	1,234.6	37.8	1,186.72	299.4	16.8	422.50
Art, culture, recreation and sport	357.5	28.3	696.00	22.52	222.8	38.3	990.62	134.7	11.7	208.90
Sales and service	3,802.0	30.1	516.95	16.01	2,321.7	38.6	709.77	1,480.4	16.7	214.54
Trades, transport and equipment operators	2,188.7	40.1	965.81	23.75	2,037.3	41.7	1,016.21	151.4	17.9	287.41
Occupations unique to primary industry	250.9	42.5	964.48	22.07	223.6	46.0	1,056.63	27.3	14.4	209.80
Occupations unique to processing, manufacturing and utilities	765.9	39.3	792.82	20.04	736.3	40.1	814.20	29.5	18.0	259.79

Note(s): Related CANSIM Tables 282-0023, 282-0069, 282-0073.

Table 8
Regional unemployment rates used by the Employment Insurance Program, ¹ seasonally adjusted, 3 month moving average

Region	Effective from January 12, 2014 to February 8, 2014
	percent
Newfoundland and Labrador	
01. St. John's	6.0
02. Newfoundland and Labrador	15.4
Prince Edward Island	
03. Prince Edward Island	11.8
Nova Scotia	
04. Eastern Nova Scotia	14.2
05. Western Nova Scotia	10.7
06. Halifax	6.9
New Brunswick	
07. Fredericton-Moncton-Saint John	7.2
08. Madawaska-Charlotte	11.9
09. Restigouche-Albert	16.2
Quebec	
10. Gaspésie-Îles-de-la-Madeleine	16.8
11. Québec	5.1
12. Trois-Rivières	8.3
13. South Central Quebec	5.0
14. Sherbrooke	7.3
15. Montérégie	7.1
16. Montréal	8.2
17. Central Quebec	7.7
18. Northwestern Quebec	8.5
19. Bas-Saint-Laurent-Côte-Nord	9.6
20. Gatineau	6.7
21. Saguenay	7.5
Ontario	
22. Ottawa	6.0
23. Eastern Ontario	7.0
24. Kingston	6.1
25. Central Ontario	7.3
26. Oshawa	7.1
27. Toronto	8.4
28. Hamilton	6.6
29. St. Catharines	8.6
30. London	7.8
31. Niagara	8.3
32. Windsor	7.6
33. Kitchener	6.7
34. Huron	7.7
35. South Central Ontario	6.4
36. Sudbury	6.9
37. Thunder Bay	6.3
38. Northern Ontario	12.3
Manitoba	
39. Winnipeg	5.8
40. Southern Manitoba	5.9
41. Northern Manitoba	32.1
Saskatchewan	
42. Regina	4.0
43. Saskatoon	4.2
44. Southern Saskatchewan	5.8
45. Northern Saskatchewan	17.0
Alberta	
46. Calgary	4.7
47. Edmonton	5.5
48. Northern Alberta	8.1
49. Southern Alberta	5.1

See notes at the end of the table.

Table 8 – continued

Regional unemployment rates used by the Employment Insurance Program, ¹ seasonally adjusted, 3 month moving average

Region	Effective from January 12, 2014 to February 8, 2014
	percent
British Columbia	
50. Southern Interior British Columbia	8.8
51. Abbotsford	8.1
52. Vancouver	6.7
53. Victoria	5.4
54. Southern Coastal British Columbia	9.7
55. Northern British Columbia	10.5
Territories	
56. Yukon ²	25.0
57. Northwest Territories ²	25.0
58. Nunavut ²	25.0

1. The boundaries of these regions are determined by Human Resources and Social Development Canada (HRSDC). For geographic descriptions and maps of employment insurance regions, see the HRSDC website: <http://srv129.services.gc.ca/eiregions/en/geocont.aspx>.

2. This rate is provided by Human Resources and Skills Development Canada.

Note(s): All geographic regions are based on the 1996 Census boundaries.

Data quality

About the Labour Force Survey

The statistics contained in this report are based on information obtained through a sample survey of 56,000 representative households across the country. The Labour Force Survey, started in November 1945, was taken at quarterly intervals until November 1952. It has been carried out monthly since then. The information generated by the survey has expanded considerably over the years with a major redesign of the survey content in 1976 and again in 1997, and provides a rich and detailed picture of the Canadian labour market.

The sample used in the Labour Force Survey has been designed to represent all persons in the population 15 years of age and over residing in the provinces of Canada, with the exception of the following: persons living on Indian reserves, full-time members of the armed forces and people living in institutions (for example, inmates of penal institutions and patients in hospitals or nursing homes who have resided in the institution for more than six months). Monthly estimates of employment, unemployment and persons not in the labour force refer to the specific week covered by the survey each month, normally the week containing the 15th day.

Definitions and explanations

The **labour force** is composed of those members of the civilian non-institutional population 15 years of age and over who, during the reference week, were employed or unemployed.

Employed persons are those who, during the reference week:

- (a) did any work at all
- (b) had a job but were not at work

A person is considered to be **full-time** if his/her usual hours at the main job are 30 or more hours per week. When the number of hours worked at the main job is usually less than 30 hours per week then he/she is considered to be **part-time**.

Unemployed persons are those who, during the reference week:

- (a) were without work, had actively looked for work in the past four weeks (ending with reference week), and were available for work;
- (b) had not actively looked for work in the past four weeks but were on temporary layoff and were available for work;
- (c) had not actively looked for work in the past four weeks but had a new job to start in four weeks or less from the reference week, and were available for work.

Persons in the civilian non-institutional population 15 years of age and over who, during the reference week, were neither employed nor unemployed are classified as **not in the labour force**.

The **unemployment rate** represents the number of unemployed persons expressed as a percentage of the labour force. The unemployment rate for a particular group (age, sex, etc.) is the number unemployed in that group expressed as a percentage of the labour force for that group.

The **participation rate** represents the labour force expressed as a percentage of the population 15 years of age and over. The participation rate for a particular group (age, sex, etc.) is the labour force in that group expressed as a percentage of the population for that group.

The **employment rate (formerly the employment/population ratio)** represents the number of persons employed expressed as a percentage of the population 15 years of age and over. The employment rate for a particular group (age, sex, etc.) is the number employed in that group expressed as a percentage of the population for that group.

The **part-time rate** represents the number of persons employed part-time expressed as a percentage of the employed. The part-time rate for a particular group (age, sex, etc.) is the number employed part-time in that group expressed as a percentage of the employed for that group.

All geographic regions are based on the 2006 Census boundaries.

Seasonal adjustment

Fluctuations in economic time series are caused by seasonal, cyclical and irregular movements. A seasonally adjusted series is one from which seasonal movements have been eliminated. Seasonal movements are defined as those which are caused by regular annual events such as climate, holidays, vacation periods and cycles related to crops, production and retail sales associated with Christmas and Easter. The seasonally adjusted series contains irregular as well as longer-term cyclical fluctuations.

The seasonally adjusted series are revised each year to take into account current data and to generate new forecast factors for the next twelve months. The data are therefore subject to slight revisions in future issues of this publication.

Sampling variability of estimates

Estimates in this publication are based on the Labour Force Survey, a monthly survey of approximately 56,000 households across Canada. Because the entire population is not surveyed, the estimates are subject to sampling error. While the published estimate is the best available indicator of the real value, changes in the level of any estimates between two months can be the result of a true change or sampling variability. The sampling error can be estimated by calculating the standard error for the published estimate or statistic. These standard errors have been included in the publication tables, in order to assist users in interpreting the data. They are based on 12-month averages and are updated twice a year, in February and August.

Interpretation based on standard error

Two thirds of the time (68%), a change greater than the sampling error indicates a real change. The larger the change compared to the standard error, the better the chance that we are observing a real change, as opposed to a change due to sampling variability. At the 95% level, in order to ensure that change is real, the change in the estimate must be greater than twice the sampling error.

Movements in estimates that are smaller than the sampling error are less likely to reflect a real change and more likely to be due to sampling variability. While the above is true for monthly movements, one can have more confidence in a series of consecutive movements in the same direction, even though some of the monthly movements may be smaller than the sampling error.

Interpretation based on confidence intervals

Confidence intervals provide another way of looking at the variability inherent in estimates of sample surveys. To illustrate how to calculate the confidence interval, let us say that one month the published estimate for total employment rose by 16,000 to reach 16,500,000. The associated standard error for the movement estimate is 27,200. The standard error used to interpret the movement estimate indicates that:

- There are approximately two chances in three (68%) that the real value of the movement between the two months falls within the range -11,200 to +43,200 (16,000 + or – one standard error).
- There are approximately nine chances in ten (90%) that the real value of the movement between the two months falls within the range -27,520 to +59,520 (16,000 + or – 1.6 times the standard error).
- There are approximately nineteen chances in twenty (95%) that the real value of the movement between the two months falls within the range -38,400 to +70,400 (16,000 + or – two standard errors).

For more detailed explanations on sampling variability of estimates, and in particular for information on how to assess the variability of level estimates, consult the Data quality section of the *Guide to the Labour Force Survey*, (71-543-G) on page 27.

Documentation

For more detailed information about the Labour Force Survey, see the following documents:

- Overview of the Labour Force Survey
- Guide to the Labour Force Survey (71-543-G)
- Data quality statement
- Methodology of the Canadian Labour Force Survey (71-526-X)
- LFS *geographical maps*