

Catalogue no. 71-001-X

Labour Force Information

Friday, December 6, 2013

November 10 to 16, 2013



Statistics
Canada

Statistique
Canada

Canada

How to obtain more information

For information about this product or the wide range of services and data available from Statistics Canada, visit our website, www.statcan.gc.ca.

You can also contact us by

e-mail at infostats@statcan.gc.ca

telephone, from Monday to Friday, 8:30 a.m. to 4:30 p.m., at the following toll-free numbers:

- Statistical Information Service 1-800-263-1136
- National telecommunications device for the hearing impaired 1-800-363-7629
- Fax line 1-877-287-4369

Depository Services Program

- Inquiries line 1-800-635-7943
- Fax line 1-800-565-7757

To access this product

This product, Catalogue no. 71-001-X, is available free in electronic format. To obtain a single issue, visit our website, www.statcan.gc.ca and browse by "Key resource" > "Publications."

Standards of service to the public

Statistics Canada is committed to serving its clients in a prompt, reliable and courteous manner. To this end, this agency has developed standards of service that its employees observe. To obtain a copy of these service standards, please contact Statistics Canada toll-free at 1-800-263-1136. The service standards are also published at www.statcan.gc.ca under "About us" > "The agency" > "Providing services to Canadians."

Statistics Canada
Labour Statistics Division
Labour Force Survey Program

Labour Force Information

Friday, December 6, 2013

November 10 to 16, 2013

Published by authority of the Minister responsible for Statistics Canada

© Minister of Industry, 2013

All rights reserved. Use of this publication is governed by the Statistics Canada
Open License Agreement.

<http://www.statcan.gc.ca/reference/licence-eng.html>

December 2013

Catalogue no. 71-001-X

ISSN 1492-5478

Frequency: Monthly

Ottawa

Cette publication est également disponible en français.

Note of appreciation

Canada owes the success of its statistical system to a long-standing partnership between Statistics Canada, the citizens of Canada, its businesses, governments and other institutions. Accurate and timely statistical information could not be produced without their continued cooperation and goodwill.

User information

Symbols

The following standard symbols are used in Statistics Canada publications:

- . not available for any reference period
- .. not available for a specific reference period
- ... not applicable
- 0 true zero or a value rounded to zero
- 0^s value rounded to 0 (zero) where there is a meaningful distinction between true zero and the value that was rounded
- p preliminary
- r revised
- x suppressed to meet the confidentiality requirements of the *Statistics Act*
- E use with caution
- F too unreliable to be published
- * significantly different from reference category ($p < 0.05$)

Special requests (\$)

Custom tabulations can be arranged on an ad hoc or regular basis. This service enables you to specify tables and time series to meet your own requirements. The cost varies according to the request. For more information, contact us toll-free at 1-866-873-8788 or e-mail us at labour@statcan.gc.ca.

Schedule of LFS releases

Reference period - Week ending	Release date
December 8, 2012	January 4, 2013
January 19, 2013	February 8, 2013
February 16, 2013	March 8, 2013
March 16, 2013	April 5, 2013
April 20, 2013	May 10, 2013
May 18, 2013	June 7, 2013
June 15, 2013	July 5, 2013
July 20, 2013	August 9, 2013
August 17, 2013	September 6, 2013
September 21, 2013	October 11, 2013
October 19, 2013	November 8, 2013
November 16, 2013	December 6, 2013
December 14, 2013	January 10, 2014

Table of contents

Highlights	5
Analysis — November 2013	6
Charts	
1. Employment and unemployment indicators, Canada, seasonally adjusted	8
2. Employment and unemployment indicators, Canada, seasonally adjusted	9
3. Index of employment by industry, Canada, seasonally adjusted, January 2010=100	10
4. Index of employment by industry, Canada, seasonally adjusted, January 2010=100	11
5. Index of employment by industry, Canada, seasonally adjusted, January 2010=100	12
6. Index of employment by province, seasonally adjusted, January 2010=100	13
7. Index of employment by province, seasonally adjusted, January 2010=100	14
Related products	15
Statistical tables	
1 Labour force characteristics by age and sex, Canada, seasonally adjusted	25
2 Employment by class of worker and industry, Canada, seasonally adjusted	27
3 Labour force characteristics by province, seasonally adjusted	28
4 Selected labour force characteristics (seasonally adjusted)	30
4-1 Newfoundland and Labrador	30
4-2 Prince Edward Island	31
4-3 Nova Scotia	32
4-4 New Brunswick	33
4-5 Quebec	34
4-6 Ontario	35
4-7 Manitoba	36
4-8 Saskatchewan	37
4-9 Alberta	38
4-10 British Columbia	39
5 Labour force characteristics by census metropolitan area (seasonally adjusted)	40
5-1 3 month moving average	40
5-2 Monthly	45

Table of contents – continued

6	Labour force characteristics	46
6-1	by province and economic region, unadjusted for seasonality, 3 month moving average ending in November 2012 and November 2013	46
6-2	by territories, unadjusted for seasonality, 3 month moving average ending in November 2012 and November 2013	51
7	Average usual hours and wages of employees by selected characteristics, Canada, unadjusted for seasonality	52
8	Regional unemployment rates used by the Employment Insurance Program, seasonally adjusted, 3 month moving average	53
Data quality, concepts and methodology		
	Data quality	55

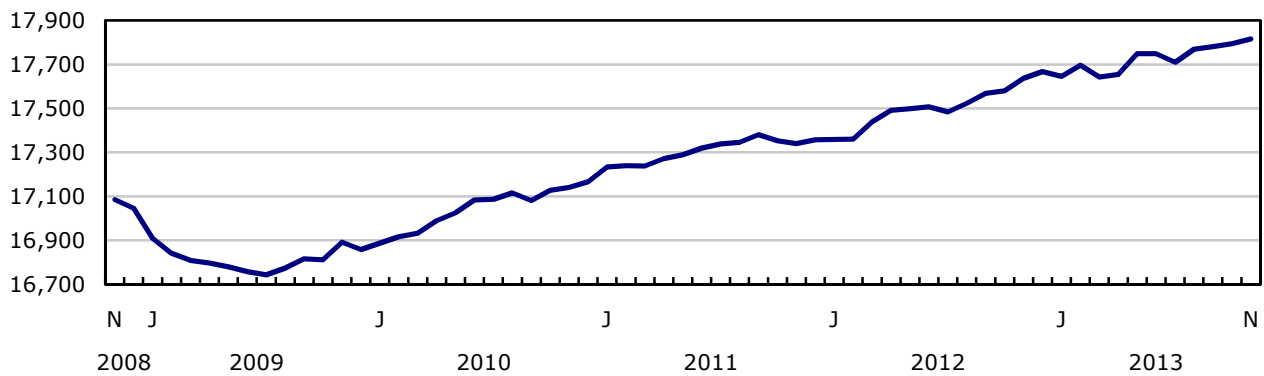
Highlights

Employment continued on a slight upward trend for the third consecutive month, edging up 22,000 in November. The unemployment rate held steady at 6.9% for the third month in a row.

Chart 1
Employment and unemployment rates, Canada, seasonally adjusted

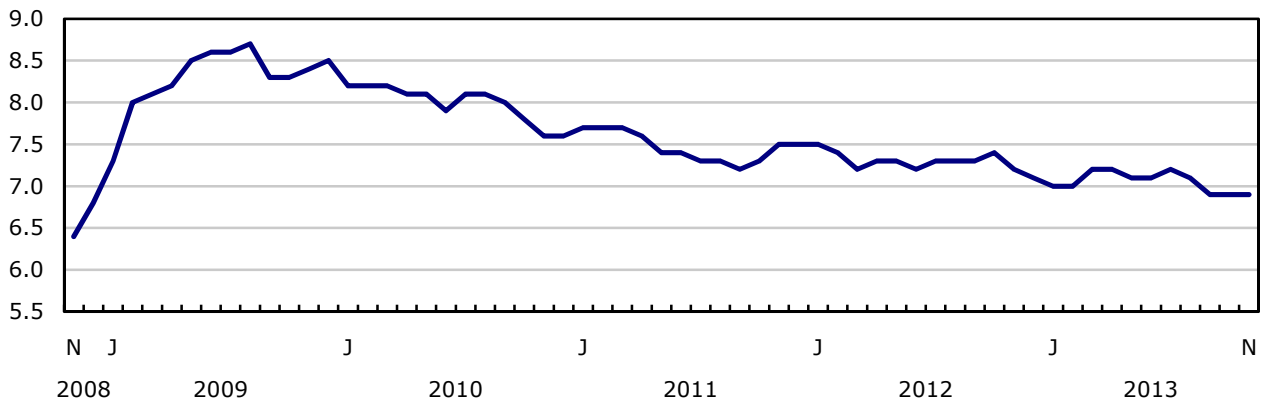
Employment

thousands



Unemployment rate

percent



Analysis — November 2013

Employment continued on a slight upward trend for the third consecutive month, edging up 22,000 in November. The unemployment rate held steady at 6.9% for the third month in a row.

So far this year, employment growth has averaged 13,400 per month, compared with an average of 25,400 over the same period in 2012.

Provincially, employment rose in Alberta and declined in Newfoundland and Labrador, while it was little changed in the other provinces.

In November, there were more people working in business, building and other support services; manufacturing; and information, culture and recreation. At the same time, employment decreased in public administration and construction.

Overall, employment increases in the private sector were partially offset by declines in the public sector.

More people aged 25 and over were employed in November, while youth employment declined.

From November 2012 to November 2013, the unemployment rate declined 0.3 percentage points. Over the same period, the participation rate fell 0.4 percentage points to 66.4%, as the labour force grew at a slower pace than the population.

Fastest year-over-year growth in Alberta

After two months of little change, the number of people working in Alberta rose by 11,000 in November. However, the unemployment rate increased 0.3 percentage points to 4.7%, as more people were seeking work. Compared with 12 months earlier, employment in Alberta was up 78,000 or 3.6%, the fastest pace of year-over-year growth among the provinces.

There were 2,600 fewer people working in Newfoundland and Labrador in November, leaving employment in the province at about the same level as 12 months earlier. The unemployment rate rose 1.3 percentage points in November to 12.3%.

Following a notable increase in October, employment in Quebec was little changed in November. Nevertheless, the unemployment rate fell 0.3 percentage points to 7.2%, the result of fewer people searching for work. On a year-over-year basis, employment in the province was little changed.

The number of people working in Ontario was also little changed in November, and the unemployment rate decreased 0.2 percentage points to 7.2%. Compared with November 2012, employment in the province was up 86,000 or 1.3%.

Industry perspective

In November, 31,000 more people worked in business, building and other support services, offsetting a decline the previous month. On a year-over-year basis, employment in this industry was up 37,000 or 5.4%, with most of the growth in the first half of 2013.

There were 25,000 more people employed in manufacturing in November. Despite this increase, employment in this sector was down 44,000 or 2.5% compared with a year earlier.

Employment in information, culture and recreation also increased, up 16,000 in November. On a year-over-year basis, however, employment in this industry was little changed.

The number of employees in public administration fell by 18,000 in November. Employment in this sector has been on a downward trend since February, declining by 69,000 or 7.0% over this nine-month period.

Employment in construction also declined by 18,000. Despite this decline, the number of people working in construction was up 57,000 or 4.5% on a year-over-year basis.

In November, a total of 51,000 more people were working in the private sector as employees or self-employed—an increase that was partially offset by a decline of 29,000 in the public sector. On a year-over-year basis, all of the gains were among private sector employees, up 187,000 or 1.6%, as there was little change in self-employment and the public sector.

Demographic overview

Employment increased by 26,000 for people aged 25 to 54, predominantly among men. Despite these gains, the employment level for this age group was similar to that of November 2012.

Employment also increased for men and women aged 55 and over, up 22,000 in November, bringing total gains over the past 12 months to 157,000 (+4.8%)—partly the result of population aging.

In contrast, employment for people aged 15 to 24 fell by 26,000, leaving youth employment at about the same level as 12 months earlier. As for their unemployment rate, it was unchanged at 13.4% in November, as fewer youth participated in the labour market.

Note to readers

The Labour Force Survey (LFS) estimates are based on a sample and are therefore subject to sampling variability. As a result, monthly estimates will show more variability than trends observed over longer time periods. Estimates for smaller geographic areas or industries also have more variability. For an explanation of sampling variability of estimates and how to use standard errors to assess this variability, consult the "Data quality" section of the publication *Labour Force Information (71-001-X)*.

The employment rate is the number of employed persons as a percentage of the population 15 years of age and over. The rate for a particular group (for example, youth aged 15 to 24) is the number employed in that group as a percentage of the population for that group.

The unemployment rate is the number unemployed as a percentage of the labour force (employed and unemployed).

The participation rate is the number of employed and unemployed as a percentage of the population. For more detailed information, see the *Guide to the Labour Force Survey (71-543-G)*.

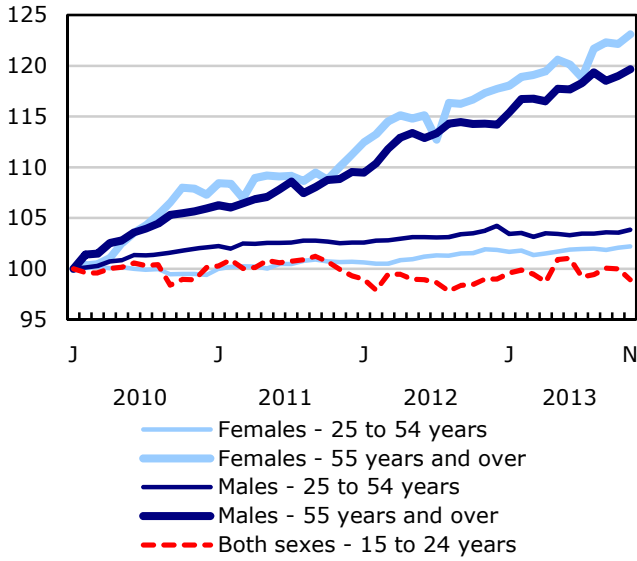
Unless otherwise stated, this release presents seasonally adjusted estimates, which facilitates comparisons by removing the effects of seasonal variations. For more information on seasonal adjustment, see *Seasonal adjustment and identifying economic trends*.

Annual revision

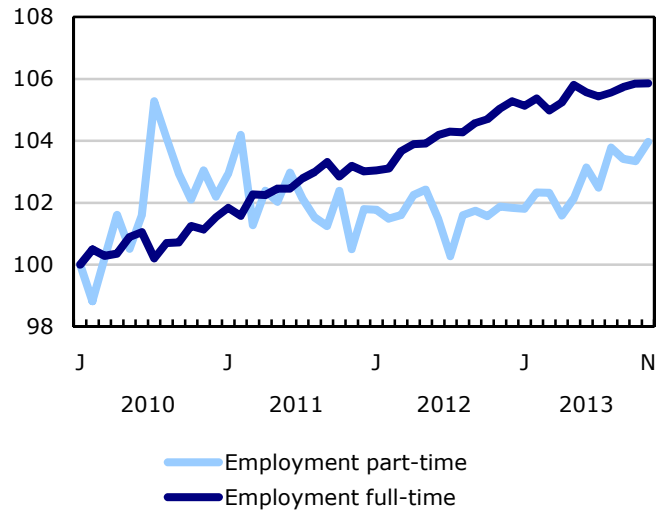
Seasonally adjusted estimates from the LFS will be revised using the latest seasonal factors, going back three years (January 2011 onwards). The revised estimates will be available on CANSIM (tables 282-0087 to 282-0094, 282-0100, 282-0116 and 282-0117) on January 31, 2014.

Chart 1
Employment and unemployment indicators, Canada, seasonally adjusted

Employment index, January 2010=100



Employment index, January 2010=100



Employment index, January 2010=100

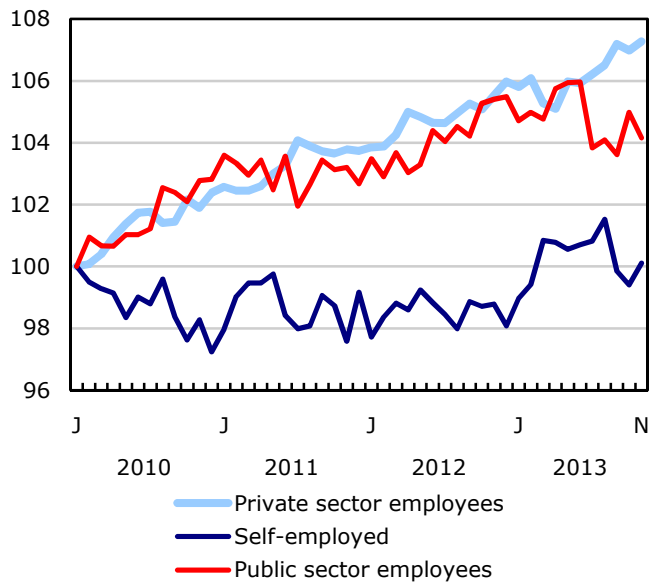
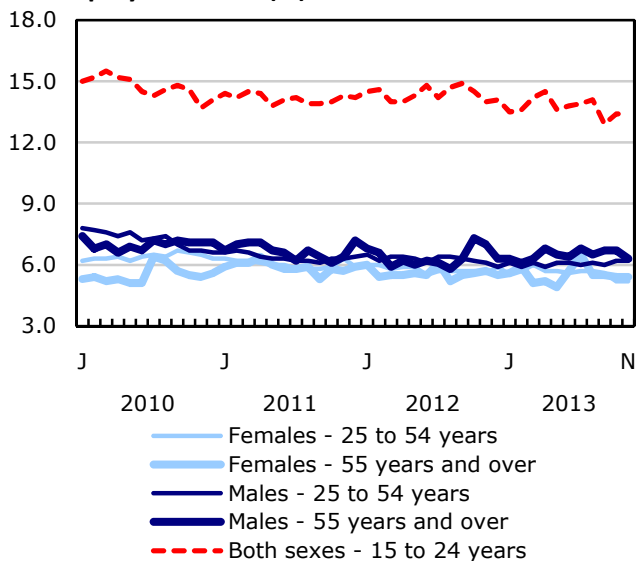
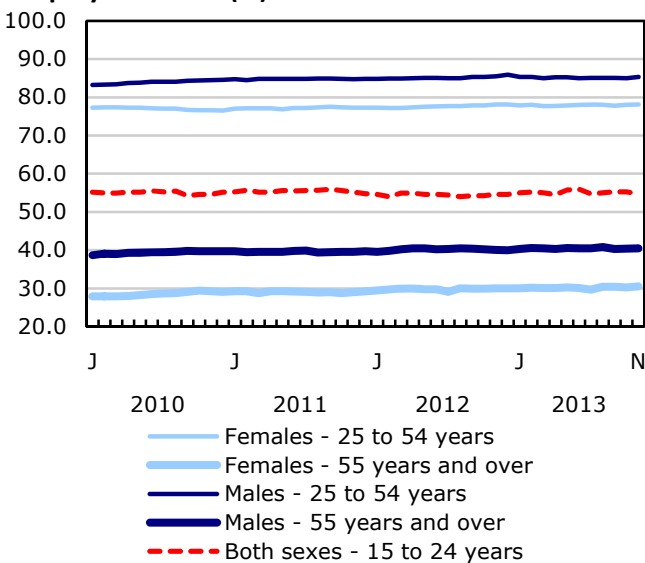


Chart 2
Employment and unemployment indicators, Canada, seasonally adjusted

Unemployment rate (%)



Employment rate (%)



Participation rate (%)

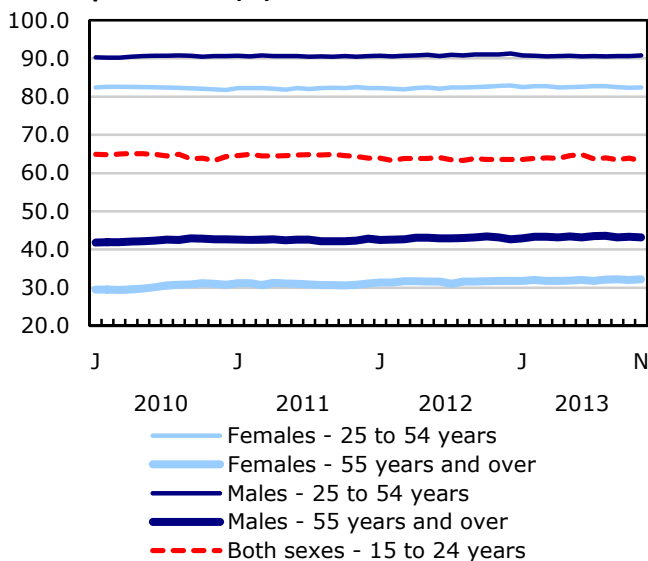


Chart 3
Index of employment by industry, Canada, seasonally adjusted, January 2010=100

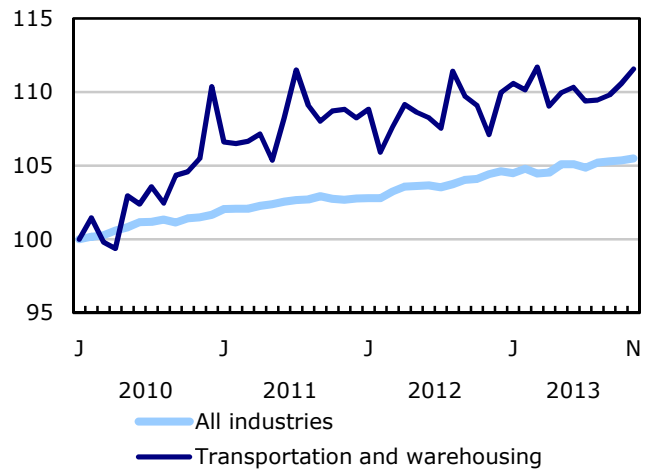
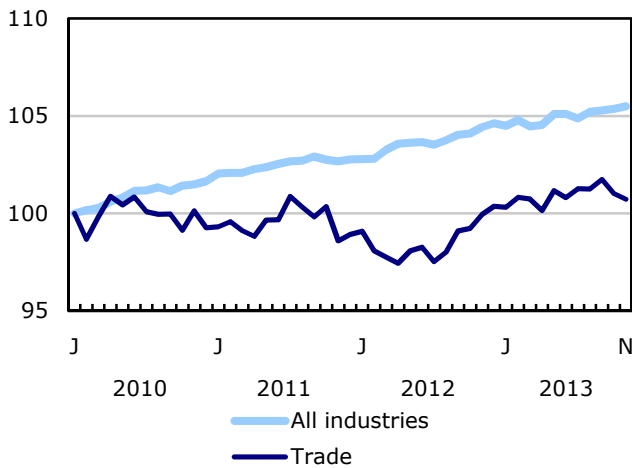
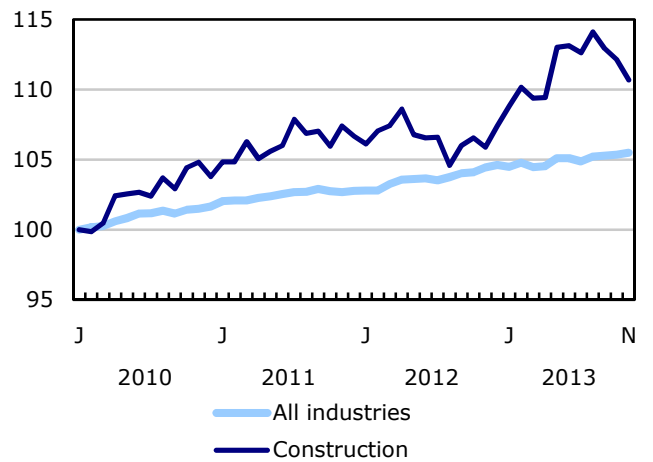
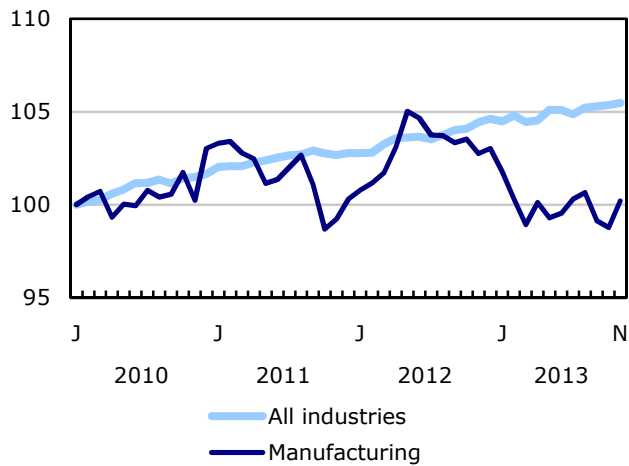
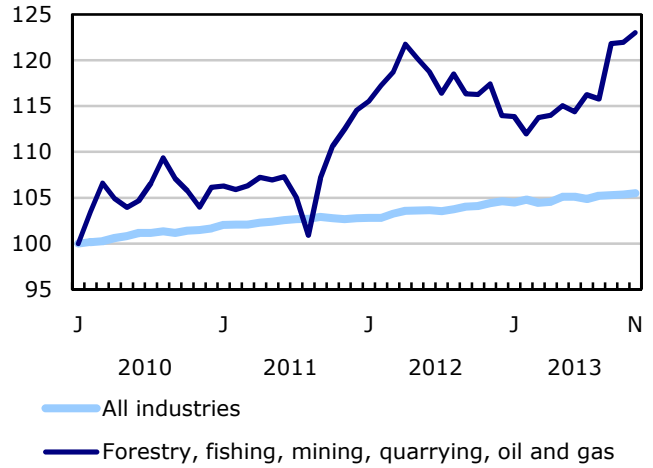
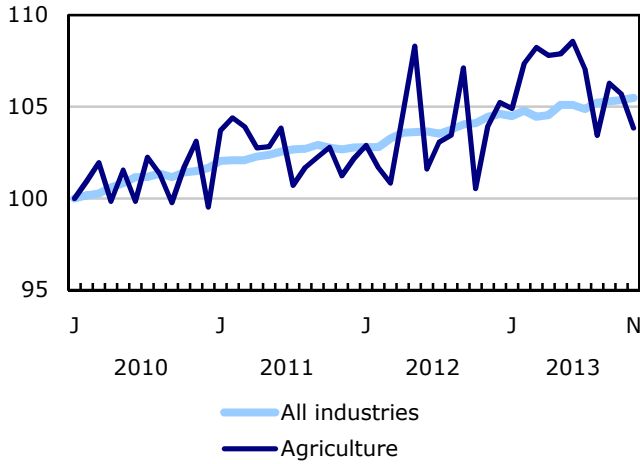


Chart 4
Index of employment by industry, Canada, seasonally adjusted, January 2010=100

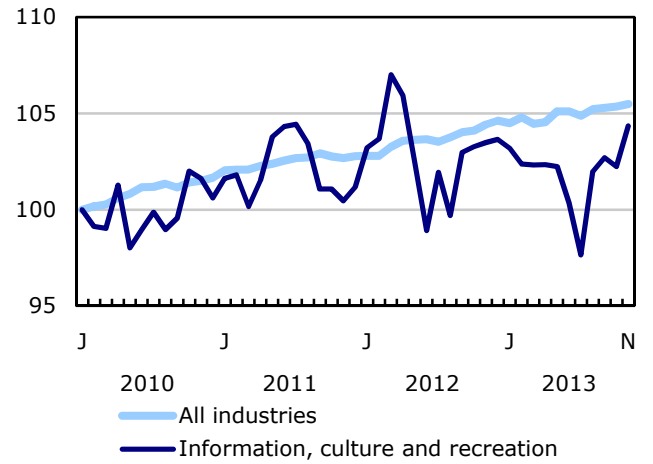
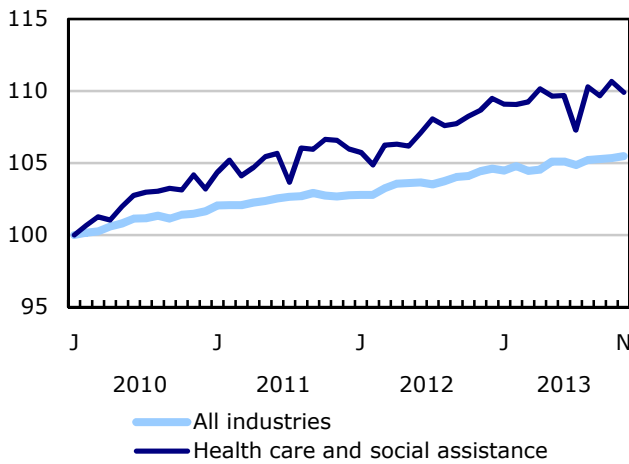
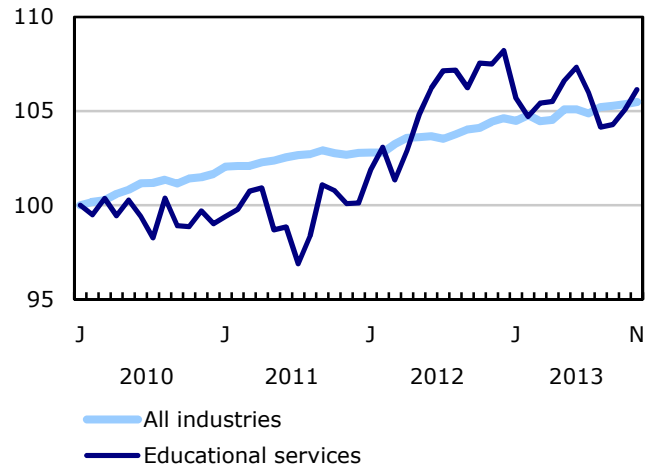
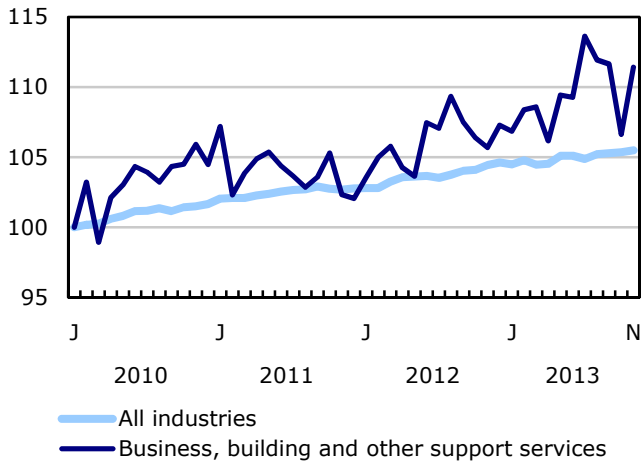
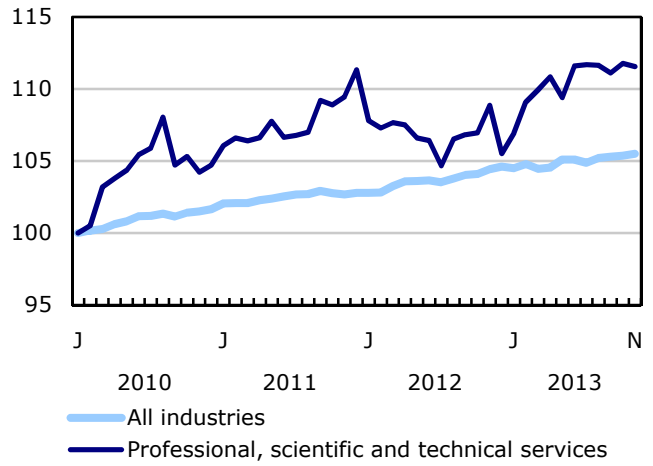
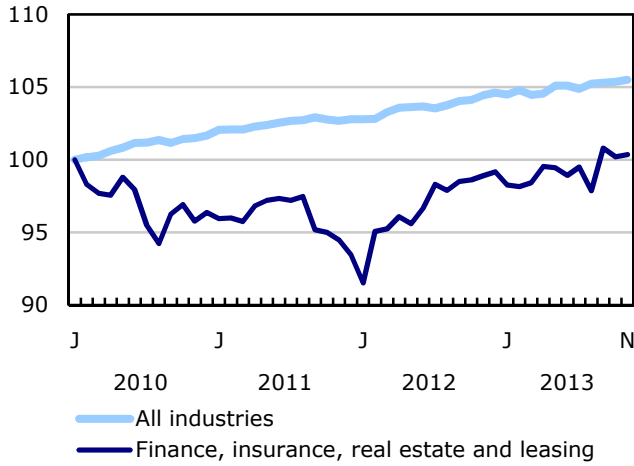


Chart 5
Index of employment by industry, Canada, seasonally adjusted, January 2010=100

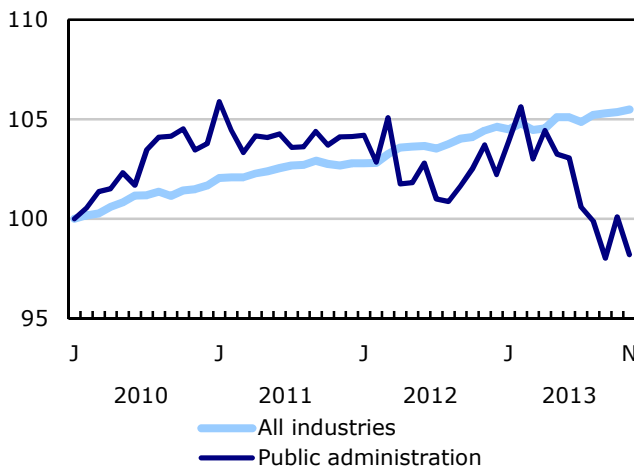
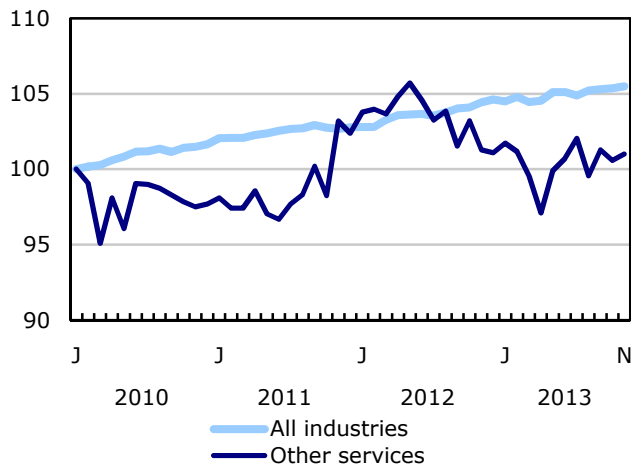
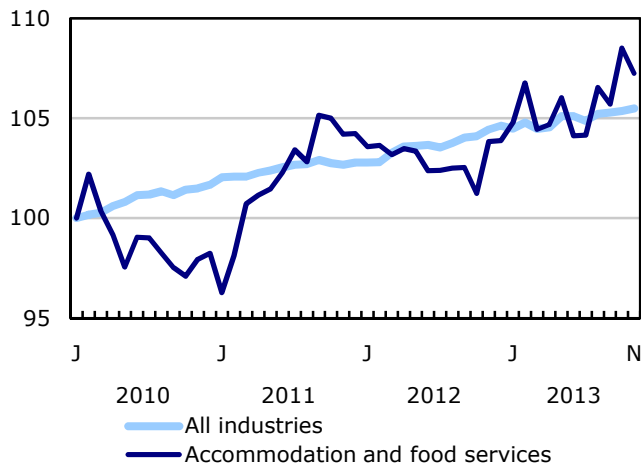


Chart 6
Index of employment by province, seasonally adjusted, January 2010=100

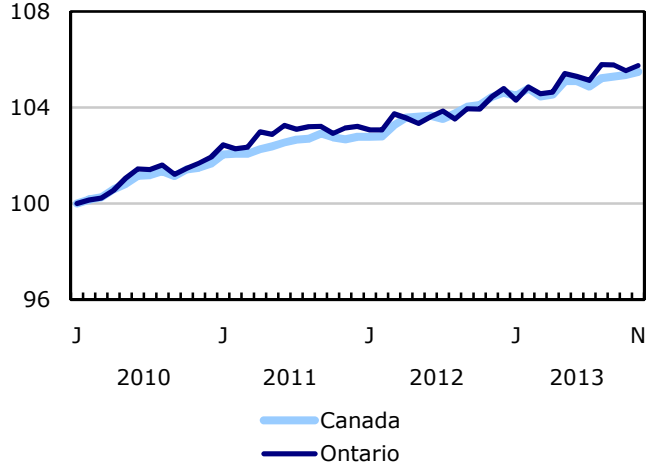
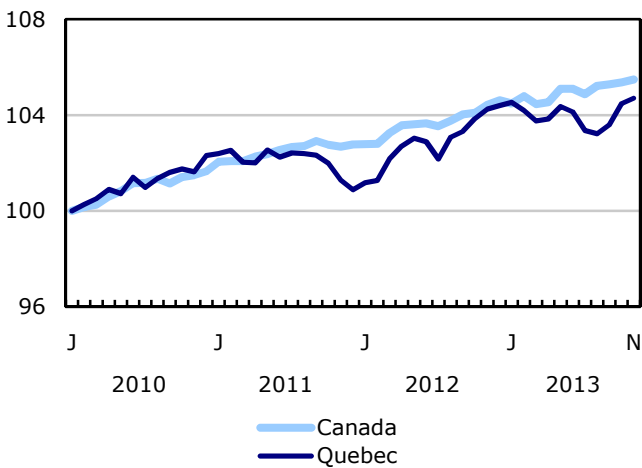
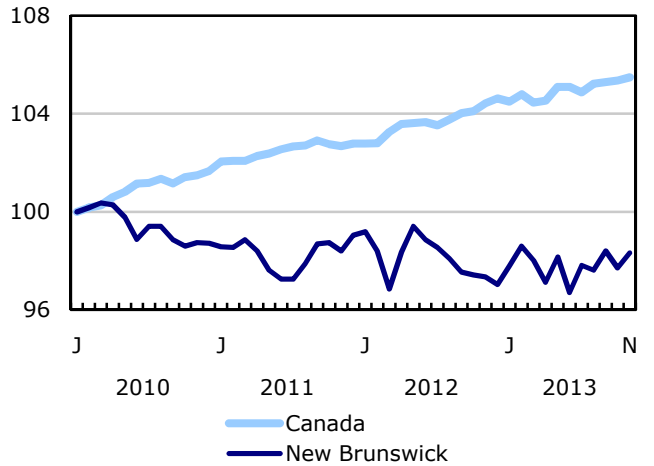
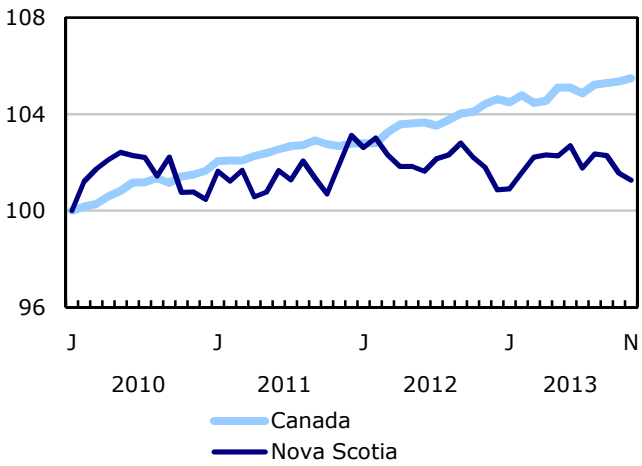
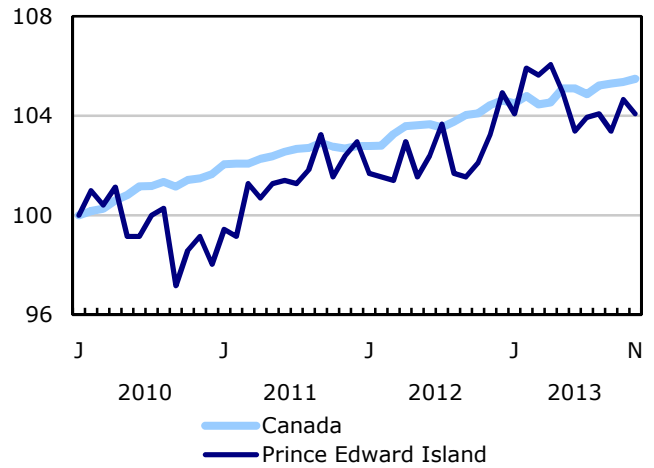
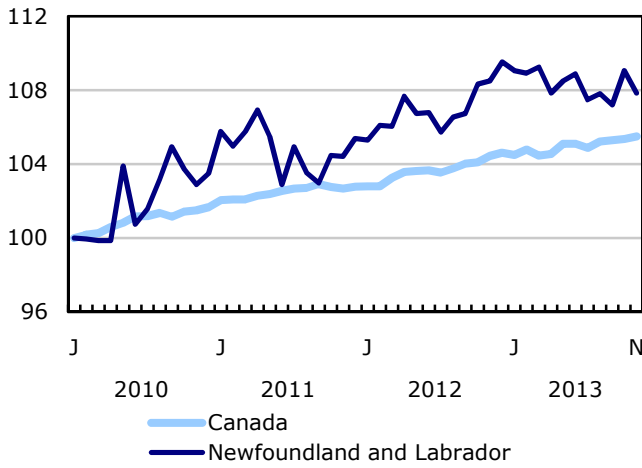
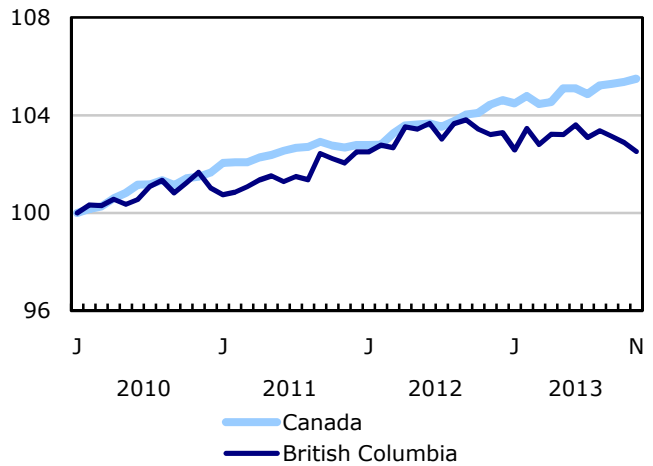
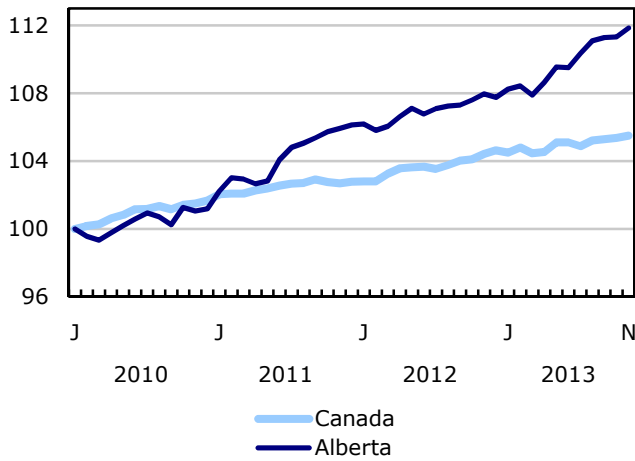
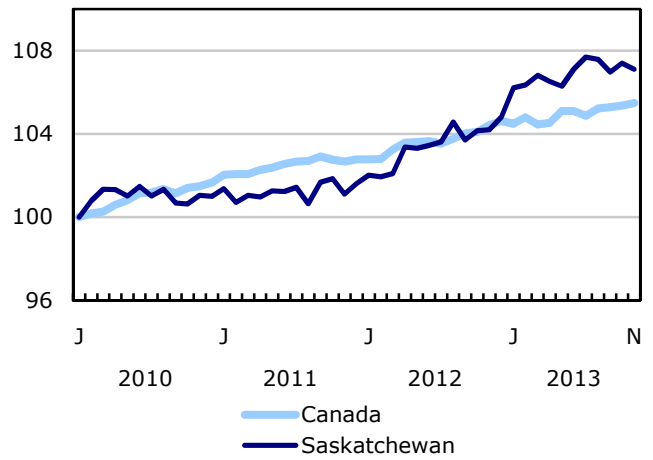
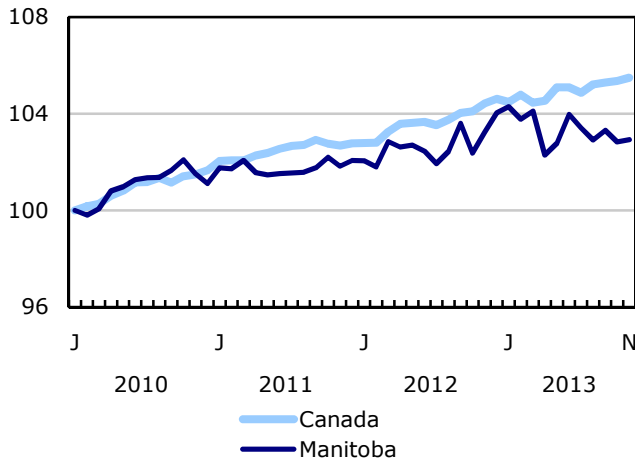


Chart 7
Index of employment by province, seasonally adjusted, January 2010=100



Related products

Selected publications from Statistics Canada

71-222-X	The Canadian Labour Market at a Glance
71-526-X	Methodology of the Canadian Labour Force Survey
71-543-G	Guide to the Labour Force Survey
71-544-X	Labour Force Survey Products and Services
71-587-X	Aboriginal Peoples Living Off-reserve in Western Canada: Estimates from the Labour Force Survey
71-588-X	The Aboriginal Labour Force Analysis Series
71-606-X	The Immigrant Labour Force Analysis Series
71F0031X	Improvements to the Labour Force Survey (LFS)
71M0001X	Labour Force Survey Microdata File
75-001-X	Perspectives on Labour and Income (from 1989 to 2012)
75-004-M	Labour Statistics: Research Papers
75-006-X	Insight on Canadian Society

Selected CANSIM tables from Statistics Canada

282-0001	Labour force survey estimates (LFS), by sex and detailed age group, unadjusted for seasonality, monthly
282-0002	Labour force survey estimates (LFS), by sex and detailed age group, annual
282-0003	Labour force survey estimates (LFS), by educational attainment, sex and age group, unadjusted for seasonality, monthly
282-0004	Labour force survey estimates (LFS), by educational attainment, sex and age group, annual
282-0005	Labour force survey estimates (LFS), by full- and part-time students during school months, sex and age group, unadjusted for seasonality, monthly
282-0006	Labour force survey estimates (LFS), by students during summer months, sex and age group, unadjusted for seasonality, monthly

282-0007	Labour force survey estimates (LFS), by North American Industry Classification System (NAICS), sex and age group, unadjusted for seasonality, monthly
282-0008	Labour force survey estimates (LFS), by North American Industry Classification System (NAICS), sex and age group, annual
282-0009	Labour force survey estimates (LFS), by National Occupational Classification for Statistics (NOC-S) and sex, unadjusted for seasonality, monthly
282-0010	Labour force survey estimates (LFS), by National Occupational Classification for Statistics (NOC-S) and sex, annual
282-0011	Labour force survey estimates (LFS), employment by class of worker, North American Industry Classification System (NAICS) and sex, unadjusted for seasonality, monthly
282-0012	Labour force survey estimates (LFS), employment by class of worker, North American Industry Classification System (NAICS) and sex, annual
282-0013	Labour force survey estimates (LFS), part-time employment by reason for part-time work, sex and age group, unadjusted for seasonality, monthly
282-0014	Labour force survey estimates (LFS), part-time employment by reason for part-time work, sex and age group, annual
282-0015	Labour force survey estimates (LFS), by usual hours worked, main or all jobs, sex and age group, unadjusted for seasonality, monthly
282-0016	Labour force survey estimates (LFS), by usual hours worked, main or all jobs, sex and age group, annual
282-0017	Labour force survey estimates (LFS), by actual hours worked, main or all jobs, sex and age group, unadjusted for seasonality, monthly
282-0018	Labour force survey estimates (LFS), by actual hours worked, main or all jobs, sex and age group, annual
282-0019	Labour force survey estimates (LFS), by usual hours worked, class of worker, North American Industry Classification System (NAICS) and sex, unadjusted for seasonality, monthly
282-0020	Labour force survey estimates (LFS), by usual hours worked, class of worker, North American Industry Classification System (NAICS) and sex, annual
282-0021	Labour force survey estimates (LFS), by actual hours worked, class of worker, North American Industry Classification System (NAICS) and sex, unadjusted for seasonality, monthly
282-0022	Labour force survey estimates (LFS), by actual hours worked, class of worker, North American Industry Classification System (NAICS) and sex, annual
282-0023	Labour force survey estimates (LFS), by usual hours worked, class of worker, National Occupational Classification for Statistics (NOC-S) and sex, unadjusted for seasonality, monthly
282-0024	Labour force survey estimates (LFS), by usual hours worked, class of worker, National Occupational Classification for Statistics (NOC-S) and sex, annual
282-0025	Labour force survey estimates (LFS), by actual hours worked, class of worker, National Occupational Classification for Statistics (NOC-S) and sex, unadjusted for seasonality, monthly

282-0026	Labour force survey estimates (LFS), by actual hours worked, class of worker, National Occupational Classification for Statistics (NOC-S) and sex, annual
282-0027	Labour force survey estimates (LFS), by total and average usual and actual hours worked, main or all jobs, type of work, sex and age group, unadjusted for seasonality, monthly
282-0028	Labour force survey estimates (LFS), by total and average usual and actual hours worked, main or all jobs, type of work, sex and age group, annual
282-0029	Labour force survey estimates (LFS), average days lost for personal reasons per full-time employee by North American Industry Classification System (NAICS), sex and age group, annual
282-0030	Labour force survey estimates (LFS), average days lost for personal reasons per full-time employee by National Occupational Classification for Statistics (NOC-S), sex and age group, annual
282-0031	Labour force survey estimates (LFS), multiple jobholders by North American Industry Classification System (NAICS), sex and age group, annual
282-0032	Labour force survey estimates (LFS), multiple jobholders by North American Industry Classification System (NAICS), sex and age group, unadjusted for seasonality, monthly
282-0033	Labour force survey estimates (LFS), multiple jobholders by National Occupational Classification for Statistics (NOC-S), sex and age group, unadjusted for seasonality, monthly
282-0034	Labour force survey estimates (LFS), multiple jobholders by National Occupational Classification for Statistics (NOC-S), sex and age group, annual
282-0035	Labour force survey estimates (LFS), multiple jobholders by usual hours worked at main and all jobs, unadjusted for seasonality, monthly
282-0036	Labour force survey estimates (LFS), multiple jobholders by usual hours worked at main and all jobs, annual
282-0037	Labour force survey estimates (LFS), job tenure by type of work, sex and age group, unadjusted for seasonality, monthly
282-0038	Labour force survey estimates (LFS), job tenure by type of work, sex and age group, annual
282-0039	Labour force survey estimates (LFS), job tenure by National Occupational Classification for Statistics (NOC-S) and sex, unadjusted for seasonality, monthly
282-0040	Labour force survey estimates (LFS), job tenure by National Occupational Classification for Statistics (NOC-S) and sex, annual
282-0041	Labour force survey estimates (LFS), job tenure by North American Industry Classification System (NAICS) and sex, unadjusted for seasonality, monthly
282-0042	Labour force survey estimates (LFS), job tenure by North American Industry Classification System (NAICS) and sex, annual
282-0047	Labour force survey estimates (LFS), duration of unemployment by sex and age group, unadjusted for seasonality, monthly
282-0048	Labour force survey estimates (LFS), duration of unemployment by sex and age group, annual

282-0049	Labour force survey estimates (LFS), unemployment by type of work sought and search method, sex and age group, unadjusted for seasonality, monthly
282-0050	Labour force survey estimates (LFS), unemployment by type of work sought and search method, sex and age group, annual
282-0051	Labour force survey estimates (LFS), retirement age by class of worker and sex, annual
282-0054	Labour force survey estimates (LFS), by provinces and economic regions based on 2006 Census boundaries, 3-month moving average, unadjusted for seasonality, monthly
282-0055	Labour force survey estimates (LFS), by provinces, territories and economic regions based on 2006 Census boundaries, annual
282-0060	Labour force survey estimates (LFS), employment by economic region and North American Industry Classification System (NAICS), 3-month moving average, unadjusted for seasonality, monthly
282-0061	Labour force survey estimates (LFS), employment by economic region and North American Industry Classification System (NAICS), annual
282-0062	Labour force survey estimates (LFS), employment by economic region and National Occupational Classification for Statistics (NOC-S), 3-month moving average, unadjusted for seasonality, monthly
282-0063	Labour force survey estimates (LFS), employment by economic region and National Occupational Classification for Statistics (NOC-S), annual
282-0069	Labour force survey estimates (LFS), wages of employees by type of work, National Occupational Classification for Statistics (NOC-S), sex and age group, unadjusted for seasonality, monthly
282-0070	Labour force survey estimates (LFS), wages of employees by type of work, National Occupational Classification for Statistics (NOC-S), sex and age group, annual
282-0071	Labour force survey estimates (LFS), wages of employees by type of work, North American Industry Classification System (NAICS), sex and age group, unadjusted for seasonality, monthly
282-0072	Labour force survey estimates (LFS), wages of employees by type of work, North American Industry Classification System (NAICS), sex and age group, annual
282-0073	Labour force survey estimates (LFS), wages of employees by job permanence, union coverage, sex and age group, unadjusted for seasonality, monthly
282-0074	Labour force survey estimates (LFS), wages of employees by job permanence, union coverage, sex and age group, annual
282-0075	Labour force survey estimates (LFS), employees by establishment size, North American Industry Classification System (NAICS), sex and age group, unadjusted for seasonality, monthly
282-0076	Labour force survey estimates (LFS), employees by establishment size, North American Industry Classification System (NAICS), sex and age group, annual
282-0077	Labour force survey estimates (LFS), employees by union coverage, North American Industry Classification System (NAICS), sex and age group, unadjusted for seasonality, monthly

282-0078	Labour force survey estimates (LFS), employees by union coverage, North American Industry Classification System (NAICS), sex and age group, annual
282-0079	Labour force survey estimates (LFS), employees by job permanency, North American Industry Classification System (NAICS), sex and age group, unadjusted for seasonality, monthly
282-0080	Labour force survey estimates (LFS), employees by job permanency, North American Industry Classification System (NAICS), sex and age group, annual
282-0081	Labour force survey estimates (LFS), employees working overtime (weekly) by National Occupational Classification for Statistics (NOC-S), sex and age group, unadjusted for seasonality, monthly
282-0082	Labour force survey estimates (LFS), employees working overtime (weekly) by National Occupational Classification for Statistics (NOC-S), sex and age group, annual
282-0083	Labour force survey estimates (LFS), employees working overtime (weekly) by North American Industry Classification System (NAICS), sex and age group, unadjusted for seasonality, monthly
282-0084	Labour force survey estimates (LFS), employees working overtime (weekly) by North American Industry Classification System (NAICS), sex and age group, annual
282-0085	Labour force survey estimates (LFS), supplementary unemployment rates by sex and age group, unadjusted for seasonality, monthly
282-0086	Labour force survey estimates (LFS), supplementary unemployment rates by sex and age group, annual
282-0087	Labour force survey estimates (LFS), by sex and age group, seasonally adjusted and unadjusted, monthly
282-0088	Labour force survey estimates (LFS), employment by North American Industry Classification System (NAICS), seasonally adjusted and unadjusted, monthly
282-0089	Labour force survey estimates (LFS), employment by class of worker and sex, seasonally adjusted and unadjusted, monthly
282-0092	Labour force survey estimates (LFS), actual hours worked by North American Industry Classification System (NAICS), seasonally adjusted, monthly
282-0093	Labour force survey estimates (LFS), employment by National Occupational Classification for Statistics (NOC-S), seasonally adjusted, monthly
282-0094	Labour force survey estimates (LFS), by North American Industry Classification System (NAICS), Canada, seasonally adjusted, monthly
282-0095	Labour force survey estimates (LFS), by full- and part-time students during school months, sex and age group, annual
282-0100	Labour force survey estimates (LFS), by territories, sex and age group, 3-month moving average, seasonally adjusted and unadjusted, monthly
282-0101	Labour force survey estimates (LFS), by immigrant status, age group, Canada, regions, provinces and Montreal, Toronto, Vancouver census metropolitan areas, 3-month moving average, unadjusted for seasonality, monthly

282-0102	Labour force survey estimates (LFS), by immigrant status, age group, Canada, regions, provinces and Montreal, Toronto, Vancouver census metropolitan areas, annual
282-0103	Labour force survey estimates (LFS), by immigrant status, sex and detailed age group, Canada, 3-month moving average, unadjusted for seasonality, monthly
282-0104	Labour force survey estimates (LFS), by immigrant status, sex and detailed age group, Canada, annual
282-0105	Labour force survey estimates (LFS), by immigrant status, educational attainment, sex and age group, Canada, 3-month moving average, unadjusted for seasonality, monthly
282-0106	Labour force survey estimates (LFS), by immigrant status, educational attainment, sex and age group, Canada, annual
282-0107	Labour force survey estimates (LFS), by immigrant status, country of birth, sex and age group, Canada, 3-month moving average, unadjusted for seasonality, monthly
282-0108	Labour force survey estimates (LFS), by immigrant status, country of birth, sex and age group, Canada, annual
282-0109	Labour force survey estimates (LFS), by census metropolitan area based on 2006 census boundaries, sex and age group, 3-month moving average, unadjusted for seasonality, monthly
282-0110	Labour force survey estimates (LFS), by census metropolitan area based on 2006 census boundaries, sex and age group, annual
282-0111	Labour force survey estimates (LFS), employment by census metropolitan area based on 2006 census boundaries and North American Industry Classification System (NAICS), 3-month moving average, unadjusted for seasonality, monthly
282-0112	Labour force survey estimates (LFS), employment by census metropolitan area based on 2006 census boundaries and North American Industry Classification System (NAICS), annual
282-0113	Labour force survey estimates (LFS), employment by census metropolitan area based on 2006 census boundaries and National Occupational Classification for Statistics (NOC-S), 3-month moving average, unadjusted for seasonality, monthly
282-0114	Labour force survey estimates (LFS), employment by census metropolitan area based on 2006 census boundaries and National Occupational Classification for Statistics (NOC-S), annual
282-0115	Labour force survey estimates (LFS), by selected census agglomerations based on 2006 census boundaries, annual
282-0116	Labour force survey estimates (LFS), by census metropolitan area based on 2006 census boundaries, 3-month moving average, seasonally adjusted and unadjusted, monthly
282-0117	Labour force survey estimates (LFS), by Montréal, Toronto and Vancouver census metropolitan areas based on 2006 census boundaries, seasonally adjusted and unadjusted, monthly
282-0118	Labour force survey estimates (LFS), by urban and rural areas based on 2006 census boundaries, sex and age group, unadjusted for seasonality, monthly

282-0119	Labour force survey estimates (LFS), by urban and rural areas based on 2006 census boundaries, sex and age group, annual
282-0120	Labour force survey estimates (LFS), employment by urban and rural areas based on 2006 census boundaries, class of worker and North American Industry Classification System (NAICS), unadjusted for seasonality, monthly
282-0121	Labour force survey estimates (LFS), employment by urban and rural areas based on 2006 census boundaries, class of worker and North American Industry Classification System (NAICS), annual
282-0200	Labour force survey estimates (LFS), weekly wage distributions of employees by type of work, North American Industry Classification System (NAICS) and sex, unadjusted for seasonality, monthly
282-0201	Labour force survey estimates (LFS), weekly wage distributions of employees by type of work, North American Industry Classification System (NAICS) and sex, annual
282-0202	Labour force survey estimates (LFS), weekly wage distributions of employees by type of work, National Occupational Classification for Statistics (NOC-S) and sex, unadjusted for seasonality, monthly
282-0203	Labour force survey estimates (LFS), weekly wage distributions of employees by type of work, National Occupational Classification for Statistics (NOC-S) and sex, annual
282-0204	Labour force survey estimates (LFS), hourly wage distributions of employees by type of work, North American Industry Classification System (NAICS) and sex, unadjusted for seasonality, monthly
282-0205	Labour force survey estimates (LFS), hourly wage distributions of employees by type of work, North American Industry Classification System (NAICS) and sex, annual
282-0206	Labour force survey estimates (LFS), hourly wage distribution of employees by type of work, National Occupational Classification for Statistics (NOC-S) and sex, unadjusted for seasonality, monthly
282-0207	Labour force survey estimates (LFS), hourly wage distribution of employees by type of work, National Occupational Classification for Statistics (NOC-S) and sex, annual
282-0208	Labour force survey estimates (LFS), by educational degree, sex and age group, unadjusted for seasonality, monthly
282-0209	Labour force survey estimates (LFS), by educational degree, sex and age group, annual
282-0210	Labour force survey estimates (LFS), by family type and family age composition, unadjusted for seasonality, monthly
282-0211	Labour force survey estimates (LFS), by family type and family age composition, annual
282-0212	Labour force survey estimates (LFS), hours lost by employees by reason absent full and part week and sex, unadjusted for seasonality, monthly
282-0213	Labour force survey estimates (LFS), hours lost by employees by reason absent full and part week and sex, annual

282-0214	Labour force survey estimates (LFS), activity prior to unemployment by sex and age group, unadjusted for seasonality, monthly
282-0215	Labour force survey estimates (LFS), activity prior to unemployment by sex and age group, annual
282-0216	Labour force survey estimates (LFS), reason for leaving job during previous year by sex and age group, unadjusted for seasonality, monthly
282-0217	Labour force survey estimates (LFS), reason for leaving job during previous year by sex and age group, annual
282-0218	Labour force survey estimates (LFS), reason for not looking for work, by sex and age group, unadjusted for seasonality, monthly
282-0219	Labour force survey estimates (LFS), reason for not looking for work, by sex and age group, annual

Selected surveys from Statistics Canada

3701	Labour Force Survey
------	---------------------

Selected summary tables from Statistics Canada

- *Labour force characteristics*
- *Employment by industry*
- *Days lost per worker due to illness or disability, by sex, by province*
- *Economic indicators, by province and territory (monthly and quarterly)*
- *Labour force and participation rates by sex and age group*
- *Labour force, employment and unemployment, levels and rates, by province*
- *Employment by industry and sex*
- *Full-time and part-time employment by sex and age group*
- *Labour force characteristics by age and sex*
- *Distribution of employed people, by industry, by province*
- *Labour force characteristics, population 15 years and older, by census metropolitan area*
- *Labour force characteristics, population 15 years and older, by economic region, by province*
- *Days lost per worker by reason, by provinces*

- *Days lost per worker by industry and sex*
- *People employed, by educational attainment*
- *Reasons for part-time work by sex and age group*
- *Self-employment, historical summary*
- *Employment by age, sex, type of work, class of worker and province (monthly)*
- *Employment by major industry group, seasonally adjusted, by province (monthly)*
- *Actual hours worked per week by industry, seasonally adjusted (monthly)*
- *Average hourly wages of employees by selected characteristics and occupation, unadjusted data, by province (monthly)*
- *Labour force characteristics, seasonally adjusted, by province (monthly)*
- *Labour force characteristics, unadjusted, by province (monthly)*
- *Labour force characteristics, seasonally adjusted, by census metropolitan area (3 month moving average)*
- *Labour force characteristics, unadjusted, by census metropolitan area (3 month moving average)*
- *Labour force characteristics, unadjusted, by economic region (3 month moving average)*
- *Labour force characteristics by immigrant status of population aged 25 to 54, by province*
- *Labour force characteristics by immigrant status of population aged 25 to 54, by educational attainment*
- *Labour force characteristics by immigrant status, by detailed age group*
- *Labour force characteristics by immigrant status of population aged 25 to 54, by country of birth*

Statistical tables

Table 1
Labour force characteristics by age and sex, Canada, seasonally adjusted

	October 2013	November 2013	S.E. ¹	Change from			Percent change from		
				last month	last December	twelve months ago	last month	last December	twelve months ago
in thousands (except rates)									
15 years and over, both sexes									
Population	28,791.6	28,816.7	...	25.1	348.1	373.8	0.1	1.2	1.3
Labour force	19,118.9	19,131.3	29.2	12.4	105.3	130.9	0.1	0.6	0.7
Employment	17,793.9	17,815.5	28.9	21.6	147.9	179.1	0.1	0.8	1.0
Employment full-time	14,437.8	14,439.2	39.0	1.4	79.2	111.4	0.0	0.6	0.8
Employment part-time	3,356.2	3,376.2	35.7	20.0	68.6	67.6	0.6	2.1	2.0
Unemployment	1,325.0	1,315.8	25.1	-9.2	-42.6	-48.3	-0.7	-3.1	-3.5
Participation rate	66.4	66.4	0.1	0.0	-0.4	-0.4
Unemployment rate	6.9	6.9	0.1	0.0	-0.2	-0.3
Employment rate	61.8	61.8	0.1	0.0	-0.3	-0.2
Part-time rate	18.9	19.0	0.2	0.1	0.2	0.2
15 to 24 years, both sexes									
Population	4,445.0	4,442.1	...	-2.9	-14.0	-14.4	-0.1	-0.3	-0.3
Labour force	2,840.2	2,809.4	17.3	-30.8	-26.6	-23.7	-1.1	-0.9	-0.8
Employment	2,459.9	2,433.5	15.8	-26.4	-1.6	-1.8	-1.1	-0.1	-0.1
Employment full-time	1,284.7	1,274.1	18.6	-10.6	-2.0	-3.2	-0.8	-0.2	-0.3
Employment part-time	1,175.2	1,159.5	19.5	-15.7	0.5	1.5	-1.3	0.0	0.1
Unemployment	380.3	375.9	14.9	-4.4	-24.9	-21.9	-1.2	-6.2	-5.5
Participation rate	63.9	63.2	0.4	-0.7	-0.4	-0.4
Unemployment rate	13.4	13.4	0.5	0.0	-0.7	-0.6
Employment rate	55.3	54.8	0.4	-0.5	0.2	0.2
Part-time rate	47.8	47.6	0.7	-0.1	0.1	0.1
25 years and over, men									
Population	11,921.5	11,936.1	...	14.6	182.5	195.5	0.1	1.6	1.7
Labour force	8,627.1	8,647.9	15.1	20.8	81.2	89.0	0.2	0.9	1.0
Employment	8,083.8	8,112.7	16.3	28.9	62.3	90.6	0.4	0.8	1.1
Employment full-time	7,460.4	7,474.7	22.0	14.3	30.7	63.8	0.2	0.4	0.9
Employment part-time	623.4	638.0	17.7	14.6	31.6	26.8	2.3	5.2	4.4
Unemployment	543.4	535.2	14.5	-8.2	18.9	-1.6	-1.5	3.7	-0.3
Participation rate	72.4	72.5	0.1	0.1	-0.4	-0.4
Unemployment rate	6.3	6.2	0.2	-0.1	0.2	-0.1
Employment rate	67.8	68.0	0.1	0.2	-0.5	-0.3
Part-time rate	7.7	7.9	0.2	0.2	0.3	0.2
25 years and over, women									
Population	12,425.1	12,438.5	...	13.4	179.6	192.7	0.1	1.5	1.6
Labour force	7,651.6	7,674.0	16.6	22.4	50.7	65.5	0.3	0.7	0.9
Employment	7,250.3	7,269.2	16.5	18.9	87.1	90.2	0.3	1.2	1.3
Employment full-time	5,692.7	5,690.5	25.4	-2.2	50.6	50.9	0.0	0.9	0.9
Employment part-time	1,557.6	1,578.8	23.8	21.2	36.6	39.4	1.4	2.4	2.6
Unemployment	401.3	404.8	13.4	3.5	-36.4	-24.7	0.9	-8.3	-5.8
Participation rate	61.6	61.7	0.1	0.1	-0.5	-0.4
Unemployment rate	5.2	5.3	0.2	0.1	-0.5	-0.3
Employment rate	58.4	58.4	0.1	0.0	-0.2	-0.2
Part-time rate	21.5	21.7	0.3	0.2	0.2	0.3
25 to 54 years, both sexes									
Population	14,629.4	14,633.9	...	4.5	54.5	56.3	0.0	0.4	0.4
Labour force	12,647.1	12,675.3	21.8	28.2	-29.2	5.5	0.2	-0.2	0.0
Employment	11,925.2	11,950.8	23.3	25.6	-3.6	24.0	0.2	0.0	0.2
Employment full-time	721.9	724.5	18.3	2.6	-25.6	-18.5	0.4	-3.4	-2.5
Employment part-time	86.4	86.6	0.1	0.2	-0.5	-0.3
Unemployment	86.4	86.6	0.1	0.2	-0.5	-0.3
Participation rate	86.4	86.6	0.1	0.2	-0.5	-0.3
Unemployment rate	5.7	5.7	0.1	0.0	-0.2	-0.2
Employment rate	81.5	81.7	0.2	0.2	-0.3	-0.1
25 to 54 years, men									
Population	7,320.9	7,323.8	...	2.9	29.4	30.3	0.0	0.4	0.4
Labour force	6,634.4	6,653.3	13.9	18.9	-8.8	13.8	0.3	-0.1	0.2
Employment	6,225.2	6,243.7	15.6	18.5	-22.9	7.0	0.3	-0.4	0.1
Employment full-time	409.2	409.6	13.3	0.4	14.1	6.8	0.1	3.6	1.7
Employment part-time	90.6	90.8	0.2	0.2	-0.5	-0.2
Unemployment	409.2	409.6	13.3	0.4	14.1	6.8	0.1	3.6	1.7
Participation rate	90.6	90.8	0.2	0.2	-0.5	-0.2
Unemployment rate	6.2	6.2	0.2	0.0	0.3	0.1
Employment rate	85.0	85.3	0.2	0.3	-0.6	-0.2

See notes at the end of the table.

Table 1 – continued

Labour force characteristics by age and sex, Canada, seasonally adjusted

	October 2013	November 2013	S.E. ¹	Change from			Percent change from		
				last month	last December	twelve months ago	last month	last December	twelve months ago
in thousands (except rates)									
25 to 54 years, women									
Population	7,308.5	7,310.0	...	1.5	25.0	25.9	0.0	0.3	0.4
Labour force	6,012.6	6,022.0	16.1	9.4	-20.4	-8.3	0.2	-0.3	-0.1
Employment	5,700.0	5,707.1	16.4	7.1	19.3	17.0	0.1	0.3	0.3
Unemployment	312.7	314.9	12.2	2.2	-39.7	-25.3	0.7	-11.2	-7.4
Participation rate	82.3	82.4	0.2	0.1	-0.5	-0.4
Unemployment rate	5.2	5.2	0.2	0.0	-0.7	-0.4
Employment rate	78.0	78.1	0.2	0.1	0.0	0.0
55 years and over, both sexes									
Population	9,717.2	9,740.8	...	23.6	307.7	332.0	0.2	3.3	3.5
Labour force	3,631.7	3,646.6	17.4	14.9	161.1	149.0	0.4	4.6	4.3
Employment	3,408.9	3,431.2	17.4	22.3	153.1	157.0	0.7	4.7	4.8
Unemployment	222.8	215.5	9.4	-7.3	8.1	-7.8	-3.3	3.9	-3.5
Participation rate	37.4	37.4	0.2	0.0	0.5	0.2
Unemployment rate	6.1	5.9	0.3	-0.2	-0.1	-0.5
Employment rate	35.1	35.2	0.2	0.1	0.4	0.4
55 years and over, men									
Population	4,600.6	4,612.3	...	11.7	153.1	165.2	0.3	3.4	3.7
Labour force	1,992.7	1,994.6	11.4	1.9	90.0	75.2	0.1	4.7	3.9
Employment	1,858.6	1,869.0	11.6	10.4	85.2	83.6	0.6	4.8	4.7
Unemployment	134.1	125.6	6.9	-8.5	4.8	-8.4	-6.3	4.0	-6.3
Participation rate	43.3	43.2	0.3	-0.1	0.5	0.0
Unemployment rate	6.7	6.3	0.4	-0.4	0.0	-0.7
Employment rate	40.4	40.5	0.3	0.1	0.5	0.4
55 years and over, women									
Population	5,116.6	5,128.4	...	11.8	154.5	166.7	0.2	3.1	3.4
Labour force	1,639.0	1,652.0	12.0	13.0	71.1	73.8	0.8	4.5	4.7
Employment	1,550.3	1,562.1	11.9	11.8	67.8	73.3	0.8	4.5	4.9
Unemployment	88.6	89.9	6.2	1.3	3.3	0.6	1.5	3.8	0.7
Participation rate	32.0	32.2	0.2	0.2	0.4	0.4
Unemployment rate	5.4	5.4	0.4	0.0	-0.1	-0.3
Employment rate	30.3	30.5	0.2	0.2	0.5	0.5

1. Average standard error of change in two consecutive months (see "Sampling Errors" in Data Quality for further explanations).

Note(s): Related CANSIM table 282-0087. The sum of individual categories may not always add to the total due to rounding.

Table 2
Employment by class of worker and industry, Canada, seasonally adjusted

	October 2013	November 2013	S.E. ¹	Change from			Percent change from		
				last month	last December	twelve months ago	last month	last December	twelve months ago
in thousands									
Class of worker									
Employees	15,106.6	15,109.1	35.5	2.5	93.1	143.2	0.0	0.6	1.0
Self-employed ²	2,687.3	2,706.4	25.2	19.1	54.8	35.9	0.7	2.1	1.3
Public/private sector employees									
Public sector employees	3,631.0	3,602.2	25.0	-28.8	-46.3	-43.4	-0.8	-1.3	-1.2
Private sector employees	11,475.6	11,507.0	37.7	31.4	139.5	186.7	0.3	1.2	1.6
Industry	17,793.9	17,815.5	28.9	21.6	147.9	179.1	0.1	0.8	1.0
Goods-producing sector	3,899.7	3,905.6	26.6	5.9	26.2	39.9	0.2	0.7	1.0
Agriculture	314.6	309.1	7.3	-5.5	-4.2	-0.3	-1.7	-1.3	-0.1
Forestry, fishing, mining, quarrying, oil and gas extraction ³	382.5	385.7	7.2	3.2	28.3	17.5	0.8	7.9	4.8
Utilities	156.4	157.2	5.0	0.8	12.2	9.8	0.5	8.4	6.6
Construction	1,332.9	1,315.4	17.2	-17.5	38.9	56.9	-1.3	3.0	4.5
Manufacturing	1,713.2	1,738.1	20.0	24.9	-49.1	-44.2	1.5	-2.7	-2.5
Services-producing sector	13,894.2	13,909.9	34.4	15.7	121.7	139.2	0.1	0.9	1.0
Trade	2,708.5	2,700.9	23.7	-7.6	10.1	21.2	-0.3	0.4	0.8
Transportation and warehousing	864.8	872.4	14.1	7.6	12.3	34.8	0.9	1.4	4.2
Finance, insurance, real estate and leasing	1,131.2	1,132.8	16.3	1.6	13.3	16.3	0.1	1.2	1.5
Professional, scientific and technical services	1,359.4	1,356.7	18.4	-2.7	73.4	32.6	-0.2	5.7	2.5
Business, building and other support services	694.6	725.8	14.2	31.2	26.9	37.4	4.5	3.8	5.4
Educational services	1,285.4	1,298.3	16.7	12.9	-25.5	-16.8	1.0	-1.9	-1.3
Health care and social assistance	2,197.6	2,182.2	19.4	-15.4	8.3	24.5	-0.7	0.4	1.1
Information, culture and recreation	784.6	800.8	14.5	16.2	5.4	6.6	2.1	0.7	0.8
Accommodation and food services	1,162.0	1,148.5	16.9	-13.5	36.0	36.5	-1.2	3.2	3.3
Other services	772.7	775.9	13.7	3.2	-0.7	-2.2	0.4	-0.1	-0.3
Public administration	933.4	915.7	13.1	-17.7	-37.6	-51.6	-1.9	-3.9	-5.3

1. Average standard error of change in two consecutive months (see "Sampling Errors" in Data Quality for further explanations).

2. Includes both incorporated and unincorporated working owners, self-employed persons who do not have a business and persons working in a family business without pay.

3. Also referred to as Natural resources.

Note(s): Related CANSIM Tables 282-0088, 282-0089. The sum of individual categories may not always add to the total due to rounding.

Table 3
Labour force characteristics by province, seasonally adjusted

	October 2013	November 2013	S.E. ¹	Change from			Percent change from		
				last month	last December	twelve months ago	last month	last December	twelve months ago
in thousands (except rates)									
Newfoundland and Labrador									
Population	429.8	429.7	...	-0.1	1.6	1.9	0.0	0.4	0.4
Labour force	263.7	264.8	1.9	1.1	-2.0	-3.2	0.4	-0.7	-1.2
Employment	234.7	232.1	1.9	-2.6	-3.6	-1.4	-1.1	-1.5	-0.6
Employment full-time	199.8	199.2	2.3	-0.6	-1.3	-3.1	-0.3	-0.6	-1.5
Employment part-time	34.8	32.9	1.8	-1.9	-2.3	1.7	-5.5	-6.5	5.4
Unemployment	29.1	32.7	1.7	3.6	1.7	-1.8	12.4	5.5	-5.2
Participation rate	61.4	61.6	0.4	0.2	-0.7	-1.0
Unemployment rate	11.0	12.3	0.6	1.3	0.7	-0.6
Employment rate	54.6	54.0	0.4	-0.6	-1.1	-0.6
Prince Edward Island									
Population	121.0	120.9	...	-0.1	0.3	0.3	-0.1	0.2	0.2
Labour force	83.3	83.4	0.7	0.1	-0.4	0.7	0.1	-0.5	0.8
Employment	74.3	73.9	0.7	-0.4	-0.6	0.6	-0.5	-0.8	0.8
Employment full-time	60.4	61.1	0.8	0.7	0.4	0.5	1.2	0.7	0.8
Employment part-time	13.9	12.8	0.7	-1.1	-1.0	0.1	-7.9	-7.2	0.8
Unemployment	8.9	9.5	0.7	0.6	0.3	0.1	6.7	3.3	1.1
Participation rate	68.8	69.0	0.5	0.2	-0.5	0.4
Unemployment rate	10.7	11.4	0.8	0.7	0.4	0.0
Employment rate	61.4	61.1	0.5	-0.3	-0.7	0.3
Nova Scotia									
Population	781.7	781.6	...	-0.1	0.8	0.9	0.0	0.1	0.1
Labour force	498.1	495.2	2.6	-2.9	-0.7	-2.6	-0.6	-0.1	-0.5
Employment	452.8	451.5	2.7	-1.3	1.7	-2.4	-0.3	0.4	-0.5
Employment full-time	361.6	363.3	3.7	1.7	0.1	-2.6	0.5	0.0	-0.7
Employment part-time	91.2	88.1	3.2	-3.1	1.5	0.1	-3.4	1.7	0.1
Unemployment	45.3	43.7	2.5	-1.6	-2.4	-0.2	-3.5	-5.2	-0.5
Participation rate	63.7	63.4	0.3	-0.3	-0.1	-0.4
Unemployment rate	9.1	8.8	0.5	-0.3	-0.5	0.0
Employment rate	57.9	57.8	0.3	-0.1	0.2	-0.3
New Brunswick									
Population	620.1	619.8	...	-0.3	-0.2	-0.4	0.0	0.0	-0.1
Labour force	389.6	390.0	2.2	0.4	0.2	-2.8	0.1	0.1	-0.7
Employment	350.1	352.3	2.3	2.2	4.6	3.5	0.6	1.3	1.0
Employment full-time	295.0	296.1	2.9	1.1	2.7	2.4	0.4	0.9	0.8
Employment part-time	55.1	56.2	2.5	1.1	1.9	1.1	2.0	3.5	2.0
Unemployment	39.5	37.8	2.2	-1.7	-4.3	-6.1	-4.3	-10.2	-13.9
Participation rate	62.8	62.9	0.4	0.1	0.0	-0.4
Unemployment rate	10.1	9.7	0.5	-0.4	-1.1	-1.5
Employment rate	56.5	56.8	0.4	0.3	0.7	0.6
Quebec									
Population	6,706.9	6,710.2	...	3.3	45.9	50.3	0.0	0.7	0.8
Labour force	4,377.4	4,372.2	15.1	-5.2	7.7	3.1	-0.1	0.2	0.1
Employment	4,047.9	4,056.5	15.4	8.6	12.3	17.5	0.2	0.3	0.4
Employment full-time	3,286.2	3,254.5	20.3	-31.7	-33.7	-22.0	-1.0	-1.0	-0.7
Employment part-time	761.7	802.0	18.0	40.3	45.9	39.5	5.3	6.1	5.2
Unemployment	329.5	315.7	13.2	-13.8	-4.6	-14.4	-4.2	-1.4	-4.4
Participation rate	65.3	65.2	0.2	-0.1	-0.3	-0.4
Unemployment rate	7.5	7.2	0.3	-0.3	-0.1	-0.4
Employment rate	60.4	60.5	0.2	0.1	-0.2	-0.1
Ontario									
Population	11,247.0	11,257.1	...	10.1	129.0	138.0	0.1	1.2	1.2
Labour force	7,453.1	7,457.3	20.1	4.2	15.3	44.6	0.1	0.2	0.6
Employment	6,903.7	6,917.5	19.3	13.8	63.3	85.7	0.2	0.9	1.3
Employment full-time	5,600.4	5,603.5	26.3	3.1	56.3	57.1	0.1	1.0	1.0
Employment part-time	1,303.2	1,313.9	24.5	10.7	6.8	28.5	0.8	0.5	2.2
Unemployment	549.4	539.8	17.5	-9.6	-47.9	-41.1	-1.7	-8.2	-7.1
Participation rate	66.3	66.2	0.2	-0.1	-0.7	-0.5
Unemployment rate	7.4	7.2	0.2	-0.2	-0.7	-0.6
Employment rate	61.4	61.5	0.2	0.1	-0.1	0.1

See notes at the end of the table.

Table 3 – continued

Labour force characteristics by province, seasonally adjusted

	October 2013	November 2013	S.E. ¹	Change from			Percent change from		
				last month	last December	twelve months ago	last month	last December	twelve months ago
in thousands (except rates)									
Manitoba									
Population	977.1	978.0	...	0.9	10.7	11.7	0.1	1.1	1.2
Labour force	667.7	669.1	2.6	1.4	-4.4	0.6	0.2	-0.7	0.1
Employment	631.0	631.6	2.7	0.6	-6.8	-1.9	0.1	-1.1	-0.3
Employment full-time	505.5	508.8	3.6	3.3	-7.1	-4.4	0.7	-1.4	-0.9
Employment part-time	125.6	122.8	3.5	-2.8	0.3	2.5	-2.2	0.2	2.1
Unemployment	36.7	37.5	2.2	0.8	2.3	2.5	2.2	6.5	7.1
Participation rate	68.3	68.4	0.3	0.1	-1.2	-0.8
Unemployment rate	5.5	5.6	0.3	0.1	0.4	0.4
Employment rate	64.6	64.6	0.3	0.0	-1.4	-1.0
Saskatchewan									
Population	831.4	833.0	...	1.6	15.4	16.5	0.2	1.9	2.0
Labour force	578.9	580.2	2.5	1.3	9.6	13.7	0.2	1.7	2.4
Employment	557.8	556.2	2.6	-1.6	11.9	15.1	-0.3	2.2	2.8
Employment full-time	461.3	459.7	3.3	-1.6	12.6	14.3	-0.3	2.8	3.2
Employment part-time	96.5	96.5	3.1	0.0	-0.7	0.8	0.0	-0.7	0.8
Unemployment	21.1	24.0	1.9	2.9	-2.3	-1.4	13.7	-8.7	-5.5
Participation rate	69.6	69.7	0.3	0.1	-0.1	0.3
Unemployment rate	3.6	4.1	0.3	0.5	-0.5	-0.4
Employment rate	67.1	66.8	0.3	-0.3	0.2	0.5
Alberta									
Population	3,208.2	3,215.2	...	7.0	103.7	111.2	0.2	3.3	3.6
Labour force	2,341.1	2,359.1	8.8	18.0	91.5	93.8	0.8	4.0	4.1
Employment	2,237.1	2,247.7	9.2	10.6	82.4	78.1	0.5	3.8	3.6
Employment full-time	1,854.4	1,884.5	12.3	30.1	57.8	74.0	1.6	3.2	4.1
Employment part-time	382.7	363.3	11.1	-19.4	24.8	4.2	-5.1	7.3	1.2
Unemployment	104.0	111.3	7.0	7.3	9.0	15.6	7.0	8.8	16.3
Participation rate	73.0	73.4	0.3	0.4	0.5	0.4
Unemployment rate	4.4	4.7	0.3	0.3	0.2	0.5
Employment rate	69.7	69.9	0.3	0.2	0.3	0.0
British Columbia									
Population	3,868.4	3,871.2	...	2.8	40.9	43.4	0.1	1.1	1.1
Labour force	2,465.9	2,460.0	10.6	-5.9	-11.6	-16.9	-0.2	-0.5	-0.7
Employment	2,304.5	2,296.3	10.4	-8.2	-17.2	-15.5	-0.4	-0.7	-0.7
Employment full-time	1,813.0	1,808.5	14.5	-4.5	-8.6	-4.7	-0.2	-0.5	-0.3
Employment part-time	491.5	487.8	13.5	-3.7	-8.6	-10.8	-0.8	-1.7	-2.2
Unemployment	161.4	163.7	8.6	2.3	5.6	-1.4	1.4	3.5	-0.8
Participation rate	63.7	63.5	0.3	-0.2	-1.0	-1.2
Unemployment rate	6.5	6.7	0.3	0.2	0.3	0.0
Employment rate	59.6	59.3	0.3	-0.3	-1.1	-1.1

1. Average standard error of change in two consecutive months (see "Sampling Errors" in Data Quality for further explanations).

Note(s): Related CANSIM Table 282-0087. The sum of individual categories may not always add to the total due to rounding.

Table 4-1
Selected labour force characteristics (seasonally adjusted) — Newfoundland and Labrador

	October 2013	November 2013	S.E. ¹	Change from			Percent change from		
				last month	last December	twelve months ago	last month	last December	twelve months ago
in thousands (except rates)									
Both sexes, 15 years and over									
Population	429.8	429.7	...	-0.1	1.6	1.9	0.0	0.4	0.4
Labour force	263.7	264.8	1.9	1.1	-2.0	-3.2	0.4	-0.7	-1.2
Employment	234.7	232.1	1.9	-2.6	-3.6	-1.4	-1.1	-1.5	-0.6
Employment full-time	199.8	199.2	2.3	-0.6	-1.3	-3.1	-0.3	-0.6	-1.5
Unemployment	29.1	32.7	1.7	3.6	1.7	-1.8	12.4	5.5	-5.2
Participation rate	61.4	61.6	0.4	0.2	-0.7	-1.0
Unemployment rate	11.0	12.3	0.6	1.3	0.7	-0.6
Employment rate	54.6	54.0	0.4	-0.6	-1.1	-0.6
Part-time rate	14.8	14.2	0.8	-0.7	-0.8	0.8
Both sexes, 15 to 24 years									
Population	58.2	58.0	...	-0.2	-1.1	-1.1	-0.3	-1.9	-1.9
Labour force	35.7	35.1	1.0	-0.6	-3.0	-2.7	-1.7	-7.9	-7.1
Employment	29.9	26.5	1.0	-3.4	-5.1	-4.5	-11.4	-16.1	-14.5
Unemployment	5.8	8.6	0.9	2.8	2.1	1.8	48.3	32.3	26.5
Participation rate	61.3	60.5	1.7	-0.8	-4.0	-3.5
Unemployment rate	16.2	24.5	2.2	8.3	7.4	6.5
Employment rate	51.4	45.7	1.7	-5.7	-7.8	-6.8
Part-time rate	44.5	43.0	3.4	-1.5	5.0	4.3
Men, 25 years and over									
Population	179.5	179.6	...	0.1	1.3	1.4	0.1	0.7	0.8
Labour force	118.7	119.2	1.1	0.5	0.0	-1.5	0.4	0.0	-1.2
Employment	106.3	105.2	1.2	-1.1	-0.8	1.0	-1.0	-0.8	1.0
Unemployment	12.4	14.0	1.1	1.6	0.8	-2.5	12.9	6.1	-15.2
Participation rate	66.1	66.4	0.6	0.3	-0.5	-1.3
Unemployment rate	10.4	11.7	0.9	1.3	0.6	-2.0
Employment rate	59.2	58.6	0.7	-0.6	-0.9	0.1
Part-time rate	4.3	4.0	0.7	-0.3	-0.2	0.5
Women, 25 years and over									
Population	192.2	192.2	...	0.0	1.4	1.6	0.0	0.7	0.8
Labour force	109.4	110.5	1.1	1.1	1.1	1.0	1.0	1.0	0.9
Employment	98.5	100.3	1.0	1.8	2.2	2.0	1.8	2.2	2.0
Unemployment	10.9	10.1	1.0	-0.8	-1.3	-1.1	-7.3	-11.4	-9.8
Participation rate	56.9	57.5	0.6	0.6	0.2	0.0
Unemployment rate	10.0	9.1	0.8	-0.9	-1.3	-1.1
Employment rate	51.2	52.2	0.5	1.0	0.8	0.6
Part-time rate	17.2	17.2	1.3	0.1	-1.8	1.4
Industry									
	234.7	232.1	1.9	-2.6	-3.6	-1.4	-1.1	-1.5	-0.6
Goods-producing sector									
Agriculture	57.2	57.3	1.6	0.1	7.3	8.1	0.2	14.6	16.5
Forestry, fishing, mining, quarrying, oil and gas extraction ²	1.3	1.7	0.3	0.4	-0.2	0.4	30.8	-10.5	30.8
Utilities	18.0	18.5	1.0	0.5	3.9	4.7	2.8	26.7	34.1
Construction	17.7	22.0	0.3	0.5	-1.1	-1.2	29.4	-33.3	-35.3
Manufacturing	22.7	21.0	1.2	-1.7	1.0	0.2	-7.5	5.0	1.0
	13.5	14.0	0.9	0.5	3.8	4.0	3.7	37.3	40.0
Services-producing sector									
	177.4	174.8	2.0	-2.6	-10.9	-9.5	-1.5	-5.9	-5.2
Trade	38.7	37.6	1.3	-1.1	4.4	4.6	-2.8	13.3	13.9
Transportation and warehousing	10.5	10.3	0.8	-0.2	-2.3	-2.0	-1.9	-18.3	-16.3
Finance, insurance, real estate and leasing	9.1	9.3	0.7	0.2	-0.8	0.2	2.2	-7.9	2.2
Professional, scientific and technical services	9.6	9.6	0.7	0.0	0.6	0.8	0.0	6.7	9.1
Business, building and other support services	6.0	5.4	0.7	-0.6	-1.5	-1.8	-10.0	-21.7	-25.0
Educational services	17.5	18.6	1.0	1.1	-1.1	-0.5	6.3	-5.6	-2.6
Health care and social assistance	37.2	35.4	1.3	-1.8	-2.3	-2.9	-4.8	-6.1	-7.6
Information, culture and recreation	6.8	7.8	0.7	1.0	0.4	0.8	14.7	5.4	11.4
Accommodation and food services	13.7	12.8	0.9	-0.9	-2.1	-1.4	-6.6	-14.1	-9.9
Other services	11.4	11.5	1.0	0.1	-3.4	-3.7	0.9	-22.8	-24.3
Public administration	17.0	16.5	0.9	-0.5	-2.9	-3.5	-2.9	-14.9	-17.5

1. Average standard error of change in two consecutive months (see "Sampling Errors" in Data Quality for further explanations).

2. Also referred to as Natural resources.

Note(s): Related CANSIM Tables 282-0087, 282-0088. The sum of individual categories may not always add to the total due to rounding.

Table 4-2
Selected labour force characteristics (seasonally adjusted) — Prince Edward Island

	October 2013	November 2013	S.E. ¹	Change from			Percent change from		
				last month	last December	twelve months ago	last month	last December	twelve months ago
in thousands (except rates)									
Both sexes, 15 years and over									
Population	121.0	120.9	...	-0.1	0.3	0.3	-0.1	0.2	0.2
Labour force	83.3	83.4	0.7	0.1	-0.4	0.7	0.1	-0.5	0.8
Employment	74.3	73.9	0.7	-0.4	-0.6	0.6	-0.5	-0.8	0.8
Employment full-time	60.4	61.1	0.8	0.7	0.4	0.5	1.2	0.7	0.8
Unemployment	8.9	9.5	0.7	0.6	0.3	0.1	6.7	3.3	1.1
Participation rate	68.8	69.0	0.5	0.2	-0.5	0.4
Unemployment rate	10.7	11.4	0.8	0.7	0.4	0.0
Employment rate	61.4	61.1	0.5	-0.3	-0.7	0.3
Part-time rate	18.7	17.3	1.0	-1.4	-1.2	0.0
Both sexes, 15 to 24 years									
Population	19.7	19.6	...	-0.1	-0.3	-0.4	-0.5	-1.5	-2.0
Labour force	13.6	13.3	0.4	-0.3	-0.1	0.3	-2.2	-0.7	2.3
Employment	11.2	11.0	0.4	-0.2	-0.2	0.3	-1.8	-1.8	2.8
Unemployment	2.4	2.3	0.4	-0.1	0.1	0.0	-4.2	4.5	0.0
Participation rate	69.0	67.9	2.0	-1.1	0.6	2.9
Unemployment rate	17.6	17.3	2.5	-0.3	0.9	-0.4
Employment rate	56.9	56.1	1.8	-0.8	-0.2	2.6
Part-time rate	46.4	41.8	3.7	-4.6	-5.5	-4.9
Men, 25 years and over									
Population	48.5	48.5	...	0.0	0.1	0.0	0.0	0.2	0.0
Labour force	35.8	36.2	0.4	0.4	0.1	0.5	1.1	0.3	1.4
Employment	31.6	31.9	0.4	0.3	0.1	0.4	0.9	0.3	1.3
Unemployment	4.2	4.3	0.4	0.1	0.0	0.1	2.4	0.0	2.4
Participation rate	73.8	74.6	0.7	0.8	0.0	1.0
Unemployment rate	11.7	11.9	1.1	0.2	0.0	0.1
Employment rate	65.2	65.8	0.9	0.6	0.1	0.9
Part-time rate	9.2	7.8	1.1	-1.3	-0.3	0.2
Women, 25 years and over									
Population	52.8	52.8	...	0.0	0.6	0.6	0.0	1.1	1.1
Labour force	33.9	34.0	0.3	0.1	-0.2	0.0	0.3	-0.6	0.0
Employment	31.6	31.0	0.4	-0.6	-0.5	-0.1	-1.9	-1.6	-0.3
Unemployment	2.4	3.0	0.3	0.6	0.2	0.1	25.0	7.1	3.4
Participation rate	64.2	64.4	0.6	0.2	-1.1	-0.7
Unemployment rate	7.1	8.8	1.0	1.7	0.6	0.3
Employment rate	59.8	58.7	0.7	-1.1	-1.6	-0.9
Part-time rate	18.7	18.4	1.5	-0.3	0.0	1.3
Industry	74.3	73.9	0.7	-0.4	-0.6	0.6	-0.5	-0.8	0.8
Goods-producing sector	17.1	17.0	0.6	-0.1	-0.4	-0.2	-0.6	-2.3	-1.2
Agriculture	3.5	3.3	0.3	-0.2	-1.1	-0.8	-5.7	-25.0	-19.5
Forestry, fishing, mining, quarrying, oil and gas extraction ²	3.0	2.7	0.3	-0.3	0.3	-0.2	-10.0	12.5	-6.9
Utilities	0.3	0.4	0.1	0.1	0.1	0.0	33.3	33.3	0.0
Construction	5.2	5.5	0.3	0.3	0.2	0.3	5.8	3.8	5.8
Manufacturing	5.0	5.1	0.3	0.1	0.1	0.5	2.0	2.0	10.9
Services-producing sector	57.2	56.9	0.7	-0.3	-0.2	0.8	-0.5	-0.4	1.4
Trade	11.2	10.5	0.5	-0.7	0.0	0.2	-6.2	0.0	1.9
Transportation and warehousing	2.7	3.2	0.2	0.5	0.9	0.9	18.5	39.1	39.1
Finance, insurance, real estate and leasing	3.0	2.9	0.2	-0.1	0.5	0.5	-3.3	20.8	20.8
Professional, scientific and technical services	2.9	2.7	0.3	-0.2	-0.5	-0.7	-6.9	-15.6	-20.6
Business, building and other support services	2.2	2.1	0.3	-0.1	-0.1	-0.1	-4.5	-4.5	-4.5
Educational services	6.2	6.3	0.4	0.1	-0.6	-0.1	1.6	-8.7	-1.6
Health care and social assistance	10.3	10.3	0.4	0.0	0.7	0.4	0.0	7.3	4.0
Information, culture and recreation	3.0	2.8	0.3	-0.2	-0.2	-0.1	-6.7	-6.7	-3.4
Accommodation and food services	5.6	5.4	0.4	-0.2	-0.5	0.0	-3.6	-8.5	0.0
Other services	3.3	3.4	0.3	0.1	0.2	0.0	3.0	6.2	0.0
Public administration	6.8	7.2	0.4	0.4	-0.6	-0.5	5.9	-7.7	-6.5

1. Average standard error of change in two consecutive months (see "Sampling Errors" in Data Quality for further explanations).

2. Also referred to as Natural resources.

Note(s): Related CANSIM Tables 282-0087, 282-0088. The sum of individual categories may not always add to the total due to rounding.

Table 4-3
Selected labour force characteristics (seasonally adjusted) — Nova Scotia

	October 2013	November 2013	S.E. ¹	Change from			Percent change from		
				last month	last December	twelve months ago	last month	last December	twelve months ago
in thousands (except rates)									
Both sexes, 15 years and over									
Population	781.7	781.6	...	-0.1	0.8	0.9	0.0	0.1	0.1
Labour force	498.1	495.2	2.6	-2.9	-0.7	-2.6	-0.6	-0.1	-0.5
Employment	452.8	451.5	2.7	-1.3	1.7	-2.4	-0.3	0.4	-0.5
Employment full-time	361.6	363.3	3.7	1.7	0.1	-2.6	0.5	0.0	-0.7
Unemployment	45.3	43.7	2.5	-1.6	-2.4	-0.2	-3.5	-5.2	-0.5
Participation rate	63.7	63.4	0.3	-0.3	-0.1	-0.4
Unemployment rate	9.1	8.8	0.5	-0.3	-0.5	0.0
Employment rate	57.9	57.8	0.3	-0.1	0.2	-0.3
Part-time rate	20.1	19.5	0.7	-0.6	0.3	0.1
Both sexes, 15 to 24 years									
Population	115.5	115.2	...	-0.3	-2.0	-2.0	-0.3	-1.7	-1.7
Labour force	76.5	74.6	1.6	-1.9	-0.1	-1.2	-2.5	-0.1	-1.6
Employment	62.7	61.4	1.4	-1.3	0.0	-1.0	-2.1	0.0	-1.6
Unemployment	13.9	13.2	1.5	-0.7	-0.1	-0.1	-5.0	-0.8	-0.8
Participation rate	66.2	64.8	1.4	-1.4	1.1	0.1
Unemployment rate	18.2	17.7	1.8	-0.5	-0.1	0.2
Employment rate	54.3	53.3	1.2	-1.0	0.9	0.1
Part-time rate	45.8	47.7	2.7	1.9	-1.8	-0.2
Men, 25 years and over									
Population	315.8	315.8	...	0.0	1.3	1.4	0.0	0.4	0.4
Labour force	213.9	213.0	1.3	-0.9	0.6	-0.1	-0.4	0.3	0.0
Employment	194.1	194.4	1.6	0.3	0.4	-1.9	0.2	0.2	-1.0
Unemployment	19.7	18.6	1.4	-1.1	0.2	1.9	-5.6	1.1	11.4
Participation rate	67.7	67.4	0.4	-0.3	-0.1	-0.4
Unemployment rate	9.2	8.7	0.7	-0.5	0.0	0.9
Employment rate	61.5	61.6	0.5	0.1	-0.1	-0.8
Part-time rate	9.3	8.9	0.8	-0.4	0.7	0.6
Women, 25 years and over									
Population	350.4	350.5	...	0.1	1.4	1.5	0.0	0.4	0.4
Labour force	207.7	207.6	1.4	-0.1	-1.2	-1.4	0.0	-0.6	-0.7
Employment	196.0	195.6	1.5	-0.4	1.2	0.4	-0.2	0.6	0.2
Unemployment	11.8	12.0	1.3	0.2	-2.4	-1.8	1.7	-16.7	-13.0
Participation rate	59.3	59.2	0.4	-0.1	-0.6	-0.7
Unemployment rate	5.7	5.8	0.6	0.1	-1.1	-0.8
Employment rate	55.9	55.8	0.4	-0.1	0.1	-0.1
Part-time rate	22.7	21.3	1.1	-1.4	0.5	-0.1
Industry									
Industry	452.8	451.5	2.7	-1.3	1.7	-2.4	-0.3	0.4	-0.5
Goods-producing sector									
Goods-producing sector	87.8	86.2	2.3	-1.6	5.0	3.3	-1.8	6.2	4.0
Agriculture	6.0	6.1	0.8	0.1	0.0	-0.7	1.7	0.0	-10.3
Forestry, fishing, mining, quarrying, oil and gas extraction ²	12.1	11.2	1.0	-0.9	0.5	-0.2	-7.4	4.7	-1.8
Utilities	4.8	4.2	0.4	-0.6	-0.2	-0.1	-12.5	-4.5	-2.3
Construction	34.0	34.3	1.6	0.3	5.0	3.8	0.9	17.1	12.5
Manufacturing	30.8	30.4	1.4	-0.4	-0.3	0.5	-1.3	-1.0	1.7
Services-producing sector									
Services-producing sector	365.0	365.2	2.9	0.2	-3.3	-5.8	0.1	-0.9	-1.6
Trade	72.6	72.1	2.0	-0.5	2.4	2.6	-0.7	3.4	3.7
Transportation and warehousing	18.4	18.1	1.2	-0.3	-2.3	-3.8	-1.6	-11.3	-17.4
Finance, insurance, real estate and leasing	22.4	22.3	1.0	-0.1	0.1	-0.7	-0.4	0.5	-3.0
Professional, scientific and technical services	25.0	26.4	1.4	1.4	-2.3	-0.8	5.6	-8.0	-2.9
Business, building and other support services	26.4	23.6	1.3	-2.8	2.2	2.5	-10.6	10.3	11.8
Educational services	36.8	36.1	1.5	-0.7	-0.5	0.3	-1.9	-1.4	0.8
Health care and social assistance	69.6	69.3	1.7	-0.3	1.6	0.6	-0.4	2.4	0.9
Information, culture and recreation	18.4	18.7	1.1	0.3	0.1	-0.8	1.6	0.5	-4.1
Accommodation and food services	28.8	30.2	1.5	1.4	-4.3	-5.3	4.9	-12.5	-14.9
Other services	17.3	17.8	1.2	0.5	-2.4	-1.5	2.9	-11.9	-7.8
Public administration	29.1	30.6	1.3	1.5	2.1	1.0	5.2	7.4	3.4

1. Average standard error of change in two consecutive months (see "Sampling Errors" in Data Quality for further explanations).

2. Also referred to as Natural resources.

Note(s): Related CANSIM Tables 282-0087, 282-0088. The sum of individual categories may not always add to the total due to rounding.

Table 4-4
Selected labour force characteristics (seasonally adjusted) — New Brunswick

	October 2013	November 2013	S.E. ¹	Change from			Percent change from		
				last month	last December	twelve months ago	last month	last December	twelve months ago
in thousands (except rates)									
Both sexes, 15 years and over									
Population	620.1	619.8	...	-0.3	-0.2	-0.4	0.0	0.0	-0.1
Labour force	389.6	390.0	2.2	0.4	0.2	-2.8	0.1	0.1	-0.7
Employment	350.1	352.3	2.3	2.2	4.6	3.5	0.6	1.3	1.0
Employment full-time	295.0	296.1	2.9	1.1	2.7	2.4	0.4	0.9	0.8
Unemployment	39.5	37.8	2.2	-1.7	-4.3	-6.1	-4.3	-10.2	-13.9
Participation rate	62.8	62.9	0.4	0.1	0.0	-0.4
Unemployment rate	10.1	9.7	0.5	-0.4	-1.1	-1.5
Employment rate	56.5	56.8	0.4	0.3	0.7	0.6
Part-time rate	15.7	16.0	0.7	0.2	0.3	0.2
Both sexes, 15 to 24 years									
Population	88.0	87.7	...	-0.3	-1.8	-2.0	-0.3	-2.0	-2.2
Labour force	55.6	54.7	1.3	-0.9	-0.5	-2.2	-1.6	-0.9	-3.9
Employment	46.2	45.6	1.2	-0.6	0.4	0.5	-1.3	0.9	1.1
Unemployment	9.4	9.1	1.2	-0.3	-0.9	-2.7	-3.2	-9.0	-22.9
Participation rate	63.2	62.4	1.4	-0.8	0.7	-1.0
Unemployment rate	16.9	16.6	1.9	-0.3	-1.5	-4.1
Employment rate	52.5	52.0	1.4	-0.5	1.5	1.7
Part-time rate	39.6	39.5	2.9	-0.1	3.0	0.9
Men, 25 years and over									
Population	255.2	255.2	...	0.0	0.8	0.7	0.0	0.3	0.3
Labour force	172.6	173.3	1.2	0.7	1.7	1.1	0.4	1.0	0.6
Employment	154.7	156.3	1.5	1.6	3.8	2.6	1.0	2.5	1.7
Unemployment	17.9	17.1	1.5	-0.8	-2.0	-1.3	-4.5	-10.5	-7.1
Participation rate	67.6	67.9	0.5	0.3	0.4	0.2
Unemployment rate	10.4	9.9	0.8	-0.5	-1.2	-0.8
Employment rate	60.6	61.2	0.6	0.6	1.3	0.8
Part-time rate	5.8	5.6	0.7	-0.3	-1.0	-1.7
Women, 25 years and over									
Population	276.9	276.9	...	0.0	0.8	0.9	0.0	0.3	0.3
Labour force	161.4	162.0	1.2	0.6	-1.1	-1.7	0.4	-0.7	-1.0
Employment	149.2	150.4	1.3	1.2	0.3	0.4	0.8	0.2	0.3
Unemployment	12.2	11.6	1.1	-0.6	-1.4	-2.1	-4.9	-10.8	-15.3
Participation rate	58.3	58.5	0.4	0.2	-0.6	-0.8
Unemployment rate	7.6	7.2	0.7	-0.4	-0.8	-1.2
Employment rate	53.9	54.3	0.5	0.4	-0.1	0.0
Part-time rate	18.6	19.5	1.1	0.9	1.0	1.7
Industry									
	350.1	352.3	2.3	2.2	4.6	3.5	0.6	1.3	1.0
Goods-producing sector									
Agriculture	79.9	80.3	2.0	0.4	7.4	8.2	0.5	10.2	11.4
Forestry, fishing, mining, quarrying, oil and gas extraction ²	4.3	4.5	0.5	0.2	-0.4	0.1	4.7	-8.2	2.3
Utilities	12.1	12.2	0.9	0.1	-0.6	-0.9	0.8	-4.7	-6.9
Construction	4.2	4.0	0.4	-0.2	0.2	-0.2	-4.8	5.3	-4.8
Manufacturing	31.2	30.8	1.3	-0.4	7.7	8.3	-1.3	33.3	36.9
	28.0	28.7	1.3	0.7	0.4	0.9	2.5	1.4	3.2
Services-producing sector									
Trade	270.2	272.0	2.4	1.8	-2.9	-4.8	0.7	-1.1	-1.7
Transportation and warehousing	55.4	55.2	1.6	-0.2	-0.8	-1.6	-0.4	-1.4	-2.8
Finance, insurance, real estate and leasing	16.9	17.1	0.9	0.2	0.6	0.3	1.2	3.6	1.8
Professional, scientific and technical services	17.2	17.5	0.9	0.3	0.5	0.5	1.7	2.9	2.9
Business, building and other support services	13.6	14.2	0.8	0.6	-0.4	-1.2	4.4	-2.7	-7.8
Educational services	16.0	14.6	1.0	-1.4	-2.9	-2.4	-8.8	-16.6	-14.1
Health care and social assistance	28.2	27.9	1.2	-0.3	1.1	1.1	-1.1	4.1	4.1
Information, culture and recreation	49.3	49.3	1.4	0.0	-5.6	-6.2	0.0	-10.2	-11.2
Accommodation and food services	12.2	12.2	0.9	0.0	-0.8	-1.3	0.0	-6.2	-9.6
Other services	23.2	24.7	1.2	1.5	2.8	2.5	6.5	12.8	11.3
Public administration	14.6	15.1	1.0	0.5	0.2	1.2	3.4	1.3	8.6
	23.5	24.4	1.1	0.9	2.6	2.3	3.8	11.9	10.4

1. Average standard error of change in two consecutive months (see "Sampling Errors" in Data Quality for further explanations).

2. Also referred to as Natural resources.

Note(s): Related CANSIM Tables 282-0087, 282-0088. The sum of individual categories may not always add to the total due to rounding.

Table 4-5
Selected labour force characteristics (seasonally adjusted) — Quebec

	October 2013	November 2013	S.E. ¹	Change from			Percent change from		
				last month	last December	twelve months ago	last month	last December	twelve months ago
in thousands (except rates)									
Both sexes, 15 years and over									
Population	6,706.9	6,710.2	...	3.3	45.9	50.3	0.0	0.7	0.8
Labour force	4,377.4	4,372.2	15.1	-5.2	7.7	3.1	-0.1	0.2	0.1
Employment	4,047.9	4,056.5	15.4	8.6	12.3	17.5	0.2	0.3	0.4
Employment full-time	3,286.2	3,254.5	20.3	-31.7	-33.7	-22.0	-1.0	-1.0	-0.7
Unemployment	329.5	315.7	13.2	-13.8	-4.6	-14.4	-4.2	-1.4	-4.4
Participation rate	65.3	65.2	0.2	-0.1	-0.3	-0.4
Unemployment rate	7.5	7.2	0.3	-0.3	-0.1	-0.4
Employment rate	60.4	60.5	0.2	0.1	-0.2	-0.1
Part-time rate	18.8	19.8	0.4	1.0	1.1	0.9
Both sexes, 15 to 24 years									
Population	976.2	975.2	...	-1.0	-7.2	-7.1	-0.1	-0.7	-0.7
Labour force	649.0	639.9	8.6	-9.1	-16.8	-24.8	-1.4	-2.6	-3.7
Employment	568.2	556.2	8.1	-12.0	-18.8	-23.7	-2.1	-3.3	-4.1
Unemployment	80.7	83.7	7.4	3.0	1.9	-1.1	3.7	2.3	-1.3
Participation rate	66.5	65.6	0.9	-0.9	-1.2	-2.1
Unemployment rate	12.4	13.1	1.1	0.7	0.6	0.3
Employment rate	58.2	57.0	0.8	-1.2	-1.5	-2.0
Part-time rate	52.0	52.8	1.6	0.8	2.6	1.8
Men, 25 years and over									
Population	2,820.8	2,823.1	...	2.3	27.6	29.9	0.1	1.0	1.1
Labour force	1,976.9	1,976.7	8.3	-0.2	-2.1	5.9	0.0	-0.1	0.3
Employment	1,828.3	1,843.1	8.9	14.8	4.8	17.2	0.8	0.3	0.9
Unemployment	148.5	133.6	7.8	-14.9	-6.9	-11.4	-10.0	-4.9	-7.9
Participation rate	70.1	70.0	0.3	-0.1	-0.8	-0.6
Unemployment rate	7.5	6.8	0.4	-0.7	-0.3	-0.6
Employment rate	64.8	65.3	0.3	0.5	-0.5	-0.1
Part-time rate	7.8	9.0	0.5	1.2	1.9	1.7
Women, 25 years and over									
Population	2,909.8	2,911.8	...	2.0	25.4	27.4	0.1	0.9	0.9
Labour force	1,751.6	1,755.6	8.4	4.0	26.5	22.0	0.2	1.5	1.3
Employment	1,651.4	1,657.3	8.6	5.9	26.3	24.1	0.4	1.6	1.5
Unemployment	100.2	98.4	7.0	-1.8	0.4	-2.0	-1.8	0.4	-2.0
Participation rate	60.2	60.3	0.3	0.1	0.4	0.2
Unemployment rate	5.7	5.6	0.4	-0.1	-0.1	-0.2
Employment rate	56.8	56.9	0.3	0.1	0.4	0.3
Part-time rate	19.6	20.6	0.7	1.0	0.1	0.3
Industry									
Industry	4,047.9	4,056.5	15.4	8.6	12.3	17.5	0.2	0.3	0.4
Goods-producing sector									
Goods-producing sector	865.5	866.5	13.7	1.0	-6.4	-9.5	0.1	-0.7	-1.1
Agriculture	58.1	54.4	3.4	-3.7	-2.0	-3.1	-6.4	-3.5	-5.4
Forestry, fishing, mining, quarrying, oil and gas extraction ²	31.7	32.2	2.4	0.5	-1.9	-3.1	1.6	-5.6	-8.8
Utilities	35.5	35.0	2.3	-0.5	9.7	7.9	-1.4	38.3	29.2
Construction	251.6	256.3	8.6	4.7	6.0	4.1	1.9	2.4	1.6
Manufacturing	488.6	488.7	10.8	0.1	-18.1	-15.3	0.0	-3.6	-3.0
Services-producing sector									
Services-producing sector	3,182.4	3,190.0	17.7	7.6	18.7	27.1	0.2	0.6	0.9
Trade	641.1	632.6	12.4	-8.5	2.8	-13.0	-1.3	0.4	-2.0
Transportation and warehousing	190.5	192.6	6.5	2.1	28.1	34.6	1.1	17.1	21.9
Finance, insurance, real estate and leasing	229.4	229.0	7.5	-0.4	-2.1	-4.5	-0.2	-0.9	-1.9
Professional, scientific and technical services	299.0	313.1	9.3	14.1	16.5	13.0	4.7	5.6	4.3
Business, building and other support services	140.2	152.2	7.3	12.0	-0.9	15.1	8.6	-0.6	11.0
Educational services	285.0	292.3	8.7	7.3	-10.9	-12.0	2.6	-3.6	-3.9
Health care and social assistance	557.9	554.9	10.3	-3.0	-16.3	-6.0	-0.5	-2.9	-1.1
Information, culture and recreation	174.7	189.7	7.6	15.0	3.0	4.6	8.6	1.6	2.5
Accommodation and food services	267.2	250.3	8.5	-16.9	21.5	33.6	-6.3	9.4	15.5
Other services	172.3	166.8	6.5	-5.5	-12.7	-9.8	-3.2	-7.1	-5.5
Public administration	225.1	216.3	6.5	-8.8	-10.4	-28.7	-3.9	-4.6	-11.7

1. Average standard error of change in two consecutive months (see "Sampling Errors" in Data Quality for further explanations).

2. Also referred to as Natural resources.

Note(s): Related CANSIM Tables 282-0087, 282-0088. The sum of individual categories may not always add to the total due to rounding.

Table 4-6
Selected labour force characteristics (seasonally adjusted) — Ontario

	October 2013	November 2013	S.E. ¹	Change from			Percent change from		
				last month	last December	twelve months ago	last month	last December	twelve months ago
in thousands (except rates)									
Both sexes, 15 years and over									
Population	11,247.0	11,257.1	...	10.1	129.0	138.0	0.1	1.2	1.2
Labour force	7,453.1	7,457.3	20.1	4.2	15.3	44.6	0.1	0.2	0.6
Employment	6,903.7	6,917.5	19.3	13.8	63.3	85.7	0.2	0.9	1.3
Employment full-time	5,600.4	5,603.5	26.3	3.1	56.3	57.1	0.1	1.0	1.0
Unemployment	549.4	539.8	17.5	-9.6	-47.9	-41.1	-1.7	-8.2	-7.1
Participation rate	66.3	66.2	0.2	-0.1	-0.7	-0.5
Unemployment rate	7.4	7.2	0.2	-0.2	-0.7	-0.6
Employment rate	61.4	61.5	0.2	0.1	-0.1	0.1
Part-time rate	18.9	19.0	0.3	0.1	-0.1	0.2
Both sexes, 15 to 24 years									
Population	1,783.6	1,782.6	...	-1.0	-6.0	-6.4	-0.1	-0.3	-0.4
Labour force	1,085.8	1,081.6	12.3	-4.2	-15.6	1.7	-0.4	-1.4	0.2
Employment	912.1	916.2	10.7	4.1	6.4	17.3	0.4	0.7	1.9
Unemployment	173.7	165.3	10.7	-8.4	-22.0	-15.7	-4.8	-11.7	-8.7
Participation rate	60.9	60.7	0.7	-0.2	-0.6	0.3
Unemployment rate	16.0	15.3	0.9	-0.7	-1.8	-1.5
Employment rate	51.1	51.4	0.6	0.3	0.5	1.2
Part-time rate	52.6	51.9	1.2	-0.7	-2.4	-1.1
Men, 25 years and over									
Population	4,590.1	4,595.6	...	5.5	65.0	69.5	0.1	1.4	1.5
Labour force	3,342.2	3,349.7	10.1	7.5	32.0	36.2	0.2	1.0	1.1
Employment	3,126.8	3,129.9	10.9	3.1	22.9	34.9	0.1	0.7	1.1
Unemployment	215.5	219.8	9.9	4.3	9.1	1.3	2.0	4.3	0.6
Participation rate	72.8	72.9	0.2	0.1	-0.3	-0.3
Unemployment rate	6.4	6.6	0.3	0.2	0.2	0.0
Employment rate	68.1	68.1	0.2	0.0	-0.5	-0.3
Part-time rate	7.6	7.7	0.4	0.1	-0.2	-0.1
Women, 25 years and over									
Population	4,873.3	4,878.9	...	5.6	70.0	74.9	0.1	1.5	1.6
Labour force	3,025.0	3,026.0	11.2	1.0	-1.1	6.6	0.0	0.0	0.2
Employment	2,864.8	2,871.3	11.1	6.5	33.9	33.4	0.2	1.2	1.2
Unemployment	160.2	154.7	9.2	-5.5	-35.0	-26.8	-3.4	-18.5	-14.8
Participation rate	62.1	62.0	0.2	-0.1	-0.9	-0.9
Unemployment rate	5.3	5.1	0.3	-0.2	-1.2	-0.9
Employment rate	58.8	58.9	0.2	0.1	-0.1	-0.2
Part-time rate	20.5	20.8	0.6	0.3	0.8	0.8
Industry	6,903.7	6,917.5	19.3	13.8	63.3	85.7	0.2	0.9	1.3
Goods-producing sector	1,422.7	1,413.6	18.1	-9.1	7.4	6.0	-0.6	0.5	0.4
Agriculture	92.5	87.6	4.2	-4.9	2.5	0.5	-5.3	2.9	0.6
Forestry, fishing, mining, quarrying, oil and gas extraction ²	37.8	40.6	2.4	2.8	6.4	6.5	7.4	18.7	19.1
Utilities	58.2	60.4	3.3	2.2	5.0	4.8	3.8	9.0	8.6
Construction	474.1	452.6	11.2	-21.5	23.2	27.3	-4.5	5.4	6.4
Manufacturing	760.1	772.5	14.5	12.4	-29.6	-33.1	1.6	-3.7	-4.1
Services-producing sector	5,481.0	5,503.8	23.8	22.8	55.7	79.6	0.4	1.0	1.5
Trade	1,017.2	1,023.1	16.3	5.9	-11.8	8.7	0.6	-1.1	0.9
Transportation and warehousing	317.0	319.3	10.1	2.3	-9.9	-1.9	0.7	-3.0	-0.6
Finance, insurance, real estate and leasing	522.2	532.5	12.2	10.3	7.7	17.4	2.0	1.5	3.4
Professional, scientific and technical services	591.4	567.8	13.3	-23.6	21.0	0.4	-4.0	3.8	0.1
Business, building and other support services	313.0	328.6	10.2	15.6	34.9	38.7	5.0	11.9	13.3
Educational services	503.8	515.6	11.7	11.8	-8.0	-3.7	2.3	-1.5	-0.7
Health care and social assistance	796.0	798.4	13.1	2.4	28.9	33.4	0.3	3.8	4.4
Information, culture and recreation	331.8	331.3	10.3	-0.5	4.6	2.0	-0.2	1.4	0.6
Accommodation and food services	430.2	423.5	11.5	-6.7	-4.9	-11.6	-1.6	-1.1	-2.7
Other services	290.3	300.1	9.5	9.8	13.7	16.2	3.4	4.8	5.7
Public administration	368.1	363.7	9.3	-4.4	-20.4	-19.9	-1.2	-5.3	-5.2

1. Average standard error of change in two consecutive months (see "Sampling Errors" in Data Quality for further explanations).

2. Also referred to as Natural resources.

Note(s): Related CANSIM Tables 282-0087, 282-0088. The sum of individual categories may not always add to the total due to rounding.

Table 4-7
Selected labour force characteristics (seasonally adjusted) — Manitoba

	October 2013	November 2013	S.E. ¹	Change from			Percent change from		
				last month	last December	twelve months ago	last month	last December	twelve months ago
in thousands (except rates)									
Both sexes, 15 years and over									
Population	977.1	978.0	...	0.9	10.7	11.7	0.1	1.1	1.2
Labour force	667.7	669.1	2.6	1.4	-4.4	0.6	0.2	-0.7	0.1
Employment	631.0	631.6	2.7	0.6	-6.8	-1.9	0.1	-1.1	-0.3
Employment full-time	505.5	508.8	3.6	3.3	-7.1	-4.4	0.7	-1.4	-0.9
Unemployment	36.7	37.5	2.2	0.8	2.3	2.5	2.2	6.5	7.1
Participation rate	68.3	68.4	0.3	0.1	-1.2	-0.8
Unemployment rate	5.5	5.6	0.3	0.1	0.4	0.4
Employment rate	64.6	64.6	0.3	0.0	-1.4	-1.0
Part-time rate	19.9	19.4	0.5	-0.5	0.3	0.5
Both sexes, 15 to 24 years									
Population	164.8	164.8	...	0.0	0.0	0.0	0.0	0.0	0.0
Labour force	112.6	111.8	1.6	-0.8	-3.6	-0.8	-0.7	-3.1	-0.7
Employment	101.0	101.6	1.5	0.6	-2.1	1.2	0.6	-2.0	1.2
Unemployment	11.6	10.2	1.3	-1.4	-1.4	-2.0	-12.1	-12.1	-16.4
Participation rate	68.3	67.8	1.0	-0.5	-2.2	-0.5
Unemployment rate	10.3	9.1	1.1	-1.2	-1.0	-1.7
Employment rate	61.3	61.7	0.9	0.4	-1.2	0.8
Part-time rate	41.6	42.6	1.7	1.0	1.8	1.2
Men, 25 years and over									
Population	398.3	398.8	...	0.5	5.5	6.0	0.1	1.4	1.5
Labour force	297.5	297.9	1.3	0.4	-3.7	-2.9	0.1	-1.2	-1.0
Employment	284.4	283.8	1.4	-0.6	-5.6	-5.0	-0.2	-1.9	-1.7
Unemployment	13.1	14.0	1.2	0.9	1.9	2.0	6.9	15.7	16.7
Participation rate	74.7	74.7	0.3	0.0	-2.0	-1.9
Unemployment rate	4.4	4.7	0.4	0.3	0.7	0.7
Employment rate	71.4	71.2	0.4	-0.2	-2.4	-2.3
Part-time rate	8.5	6.9	0.6	-1.6	-1.2	-0.8
Women, 25 years and over									
Population	414.0	414.4	...	0.4	5.2	5.7	0.1	1.3	1.4
Labour force	257.6	259.5	1.5	1.9	2.9	4.3	0.7	1.1	1.7
Employment	245.6	246.2	1.5	0.6	1.0	1.9	0.2	0.4	0.8
Unemployment	12.0	13.3	1.1	1.3	1.9	2.4	10.8	16.7	22.0
Participation rate	62.2	62.6	0.4	0.4	-0.1	0.2
Unemployment rate	4.7	5.1	0.4	0.4	0.7	0.8
Employment rate	59.3	59.4	0.4	0.1	-0.5	-0.4
Part-time rate	24.2	24.4	0.9	0.1	1.2	1.3
Industry									
	631.0	631.6	2.7	0.6	-6.7	-1.9	0.1	-1.0	-0.3
Goods-producing sector									
	143.2	145.9	2.4	2.7	-3.4	-2.0	1.9	-2.3	-1.4
Agriculture	23.8	22.9	1.2	-0.9	-0.7	-0.4	-3.8	-3.0	-1.7
Forestry, fishing, mining, quarrying, oil and gas extraction ²	6.7	6.8	0.5	0.1	-0.7	-0.7	1.5	-9.3	-9.3
Utilities	8.0	8.5	0.5	0.5	0.5	0.0	6.2	6.2	0.0
Construction	40.1	42.0	1.6	1.9	-6.7	-4.1	4.7	-13.8	-8.9
Manufacturing	64.6	65.6	1.6	1.0	4.2	3.1	1.5	6.8	5.0
Services-producing sector									
	487.8	485.7	3.2	-2.1	-3.4	0.1	-0.4	-0.7	0.0
Trade	90.3	91.5	2.0	1.2	-1.1	-1.4	1.3	-1.2	-1.5
Transportation and warehousing	39.9	39.2	1.3	-0.7	2.8	3.2	-1.8	7.7	8.9
Finance, insurance, real estate and leasing	33.7	33.8	1.2	0.1	-1.3	-1.1	0.3	-3.7	-3.2
Professional, scientific and technical services	29.4	27.5	1.1	-1.9	-1.9	-0.6	-6.5	-6.5	-2.1
Business, building and other support services	21.7	20.6	1.2	-1.1	0.1	-1.1	-5.1	0.5	-5.1
Educational services	48.5	49.4	1.5	0.9	-0.7	0.5	1.9	-1.4	1.0
Health care and social assistance	94.9	96.2	1.8	1.3	2.0	3.0	1.4	2.1	3.2
Information, culture and recreation	23.6	23.7	1.2	0.1	-1.9	-2.6	0.4	-7.4	-9.9
Accommodation and food services	41.3	39.1	1.4	-2.2	-1.9	0.1	-5.3	-4.6	0.3
Other services	29.0	28.3	1.2	-0.7	-0.1	-0.2	-2.4	-0.4	-0.7
Public administration	35.6	36.3	1.2	0.7	0.4	0.2	2.0	1.1	0.6

1. Average standard error of change in two consecutive months (see "Sampling Errors" in Data Quality for further explanations).

2. Also referred to as Natural resources.

Note(s): Related CANSIM Tables 282-0087, 282-0088. The sum of individual categories may not always add to the total due to rounding.

Table 4-8
Selected labour force characteristics (seasonally adjusted) — Saskatchewan

	October 2013	November 2013	S.E. ¹	Change from			Percent change from		
				last month	last December	twelve months ago	last month	last December	twelve months ago
in thousands (except rates)									
Both sexes, 15 years and over									
Population	831.4	833.0	...	1.6	15.4	16.5	0.2	1.9	2.0
Labour force	578.9	580.2	2.5	1.3	9.6	13.7	0.2	1.7	2.4
Employment	557.8	556.2	2.6	-1.6	11.9	15.1	-0.3	2.2	2.8
Employment full-time	461.3	459.7	3.3	-1.6	12.6	14.3	-0.3	2.8	3.2
Unemployment	21.1	24.0	1.9	2.9	-2.3	-1.4	13.7	-8.7	-5.5
Participation rate	69.6	69.7	0.3	0.1	-0.1	0.3
Unemployment rate	3.6	4.1	0.3	0.5	-0.5	-0.4
Employment rate	67.1	66.8	0.3	-0.3	0.2	0.5
Part-time rate	17.3	17.3	0.5	0.0	-0.5	-0.3
Both sexes, 15 to 24 years									
Population	136.8	136.8	...	0.0	0.1	0.1	0.0	0.1	0.1
Labour force	92.3	93.0	1.4	0.7	-1.2	-0.4	0.8	-1.3	-0.4
Employment	86.5	87.3	1.5	0.8	2.4	3.4	0.9	2.8	4.1
Unemployment	5.8	5.7	1.2	-0.1	-3.6	-3.8	-1.7	-38.7	-40.0
Participation rate	67.5	68.0	1.0	0.5	-0.9	-0.3
Unemployment rate	6.3	6.1	1.2	-0.2	-3.8	-4.1
Employment rate	63.2	63.8	1.1	0.6	1.7	2.4
Part-time rate	34.5	37.3	1.7	2.9	0.9	1.0
Men, 25 years and over									
Population	343.7	344.7	...	1.0	8.7	9.3	0.3	2.6	2.8
Labour force	265.5	266.2	1.2	0.7	8.8	9.7	0.3	3.4	3.8
Employment	257.6	256.9	1.3	-0.7	8.0	8.4	-0.3	3.2	3.4
Unemployment	7.9	9.4	1.0	1.5	0.9	1.4	19.0	10.6	17.5
Participation rate	77.2	77.2	0.3	0.0	0.6	0.7
Unemployment rate	3.0	3.5	0.4	0.5	0.2	0.4
Employment rate	74.9	74.5	0.4	-0.4	0.4	0.4
Part-time rate	6.8	6.3	0.5	-0.6	-0.2	-0.2
Women, 25 years and over									
Population	351.0	351.6	...	0.6	6.7	7.2	0.2	1.9	2.1
Labour force	221.2	220.9	1.5	-0.3	2.0	4.3	-0.1	0.9	2.0
Employment	213.7	212.0	1.5	-1.7	1.5	3.3	-0.8	0.7	1.6
Unemployment	7.5	8.9	0.9	1.4	0.4	1.0	18.7	4.7	12.7
Participation rate	63.0	62.8	0.4	-0.2	-0.7	-0.1
Unemployment rate	3.4	4.0	0.4	0.6	0.1	0.4
Employment rate	60.9	60.3	0.4	-0.6	-0.7	-0.3
Part-time rate	23.0	22.5	1.0	-0.4	-1.3	-1.0
Industry									
Industry	557.8	556.2	2.6	-1.6	11.9	15.1	-0.3	2.2	2.8
Goods-producing sector									
Goods-producing sector	153.6	150.8	2.6	-2.8	0.7	3.0	-1.8	0.5	2.0
Agriculture	44.0	43.2	1.7	-0.8	1.3	2.6	-1.8	3.1	6.4
Forestry, fishing, mining, quarrying, oil and gas extraction ²	24.5	24.3	1.2	-0.2	-1.7	-2.2	-0.8	-6.5	-8.3
Utilities	6.5	6.2	0.4	-0.3	1.4	0.3	-4.6	29.2	5.1
Construction	50.1	48.5	1.7	-1.6	1.2	1.0	-3.2	2.5	2.1
Manufacturing	28.6	28.7	1.1	0.1	-1.4	1.4	0.3	-4.7	5.1
Services-producing sector									
Services-producing sector	404.2	405.3	3.1	1.1	11.1	12.0	0.3	2.8	3.1
Trade	81.4	80.4	2.0	-1.0	-1.5	-0.2	-1.2	-1.8	-0.2
Transportation and warehousing	28.3	30.9	1.2	2.6	5.4	6.6	9.2	21.2	27.2
Finance, insurance, real estate and leasing	29.8	28.9	1.0	-0.9	0.7	-0.9	-3.0	2.5	-3.0
Professional, scientific and technical services	27.3	28.4	1.1	1.1	3.5	3.7	4.0	14.1	15.0
Business, building and other support services	13.4	13.4	0.9	0.0	0.5	-0.4	0.0	3.9	-2.9
Educational services	47.1	46.5	1.5	-0.6	2.9	2.0	-1.3	6.7	4.5
Health care and social assistance	72.2	71.7	1.7	-0.5	-0.5	2.3	-0.7	-0.7	3.3
Information, culture and recreation	19.1	21.1	1.0	2.0	1.8	1.7	10.5	9.3	8.8
Accommodation and food services	31.8	33.2	1.5	1.4	4.9	5.5	4.4	17.3	19.9
Other services	23.4	21.6	1.2	-1.8	-2.9	-5.0	-7.7	-11.8	-18.8
Public administration	30.4	29.2	1.2	-1.2	-3.7	-3.3	-3.9	-11.2	-10.2

1. Average standard error of change in two consecutive months (see "Sampling Errors" in Data Quality for further explanations).

2. Also referred to as Natural resources.

Note(s): Related CANSIM Tables 282-0087, 282-0088. The sum of individual categories may not always add to the total due to rounding.

Table 4-9
Selected labour force characteristics (seasonally adjusted) — Alberta

	October 2013	November 2013	S.E. ¹	Change from			Percent change from		
				last month	last December	twelve months ago	last month	last December	twelve months ago
in thousands (except rates)									
Both sexes, 15 years and over									
Population	3,208.2	3,215.2	...	7.0	103.7	111.2	0.2	3.3	3.6
Labour force	2,341.1	2,359.1	8.8	18.0	91.5	93.8	0.8	4.0	4.1
Employment	2,237.1	2,247.7	9.2	10.6	82.4	78.1	0.5	3.8	3.6
Employment full-time	1,854.4	1,884.5	12.3	30.1	57.8	74.0	1.6	3.2	4.1
Unemployment	104.0	111.3	7.0	7.3	9.0	15.6	7.0	8.8	16.3
Participation rate	73.0	73.4	0.3	0.4	0.5	0.4
Unemployment rate	4.4	4.7	0.3	0.3	0.2	0.5
Employment rate	69.7	69.9	0.3	0.2	0.3	0.0
Part-time rate	17.1	16.2	0.5	-0.9	0.5	-0.4
Both sexes, 15 to 24 years									
Population	515.8	516.2	...	0.4	6.8	7.1	0.1	1.3	1.4
Labour force	346.7	352.7	5.3	6.0	20.5	17.9	1.7	6.2	5.3
Employment	320.3	321.3	5.4	1.0	18.5	14.8	0.3	6.1	4.8
Unemployment	26.4	31.4	4.2	5.0	2.0	3.1	18.9	6.8	11.0
Participation rate	67.2	68.3	1.0	1.1	3.1	2.5
Unemployment rate	7.6	8.9	1.2	1.3	0.0	0.4
Employment rate	62.1	62.2	1.1	0.1	2.8	2.0
Part-time rate	36.1	36.7	1.8	0.6	4.3	3.2
Men, 25 years and over									
Population	1,368.0	1,371.6	...	3.6	50.8	54.5	0.3	3.8	4.1
Labour force	1,103.3	1,110.2	4.2	6.9	35.9	35.4	0.6	3.3	3.3
Employment	1,056.7	1,063.5	4.8	6.8	26.6	25.3	0.6	2.6	2.4
Unemployment	46.7	46.7	4.0	0.0	9.3	10.2	0.0	24.9	27.9
Participation rate	80.7	80.9	0.3	0.2	-0.4	-0.7
Unemployment rate	4.2	4.2	0.4	0.0	0.7	0.8
Employment rate	77.2	77.5	0.4	0.3	-1.0	-1.3
Part-time rate	6.5	6.3	0.5	-0.2	0.9	0.4
Women, 25 years and over									
Population	1,324.4	1,327.5	...	3.1	46.3	49.7	0.2	3.6	3.9
Labour force	891.1	896.2	5.3	5.1	35.1	40.5	0.6	4.1	4.7
Employment	860.1	862.9	5.2	2.8	37.4	38.0	0.3	4.5	4.6
Unemployment	30.9	33.3	3.8	2.4	-2.2	2.4	7.8	-6.2	7.8
Participation rate	67.3	67.5	0.4	0.2	0.3	0.5
Unemployment rate	3.5	3.7	0.4	0.2	-0.4	0.1
Employment rate	64.9	65.0	0.4	0.1	0.6	0.4
Part-time rate	23.0	20.7	0.9	-2.3	-1.7	-3.0
Industry	2,237.1	2,247.7	9.2	10.6	82.4	78.1	0.5	3.8	3.6
Goods-producing sector	639.8	638.9	9.4	-0.9	17.0	24.6	-0.1	2.7	4.0
Agriculture	62.7	59.7	3.3	-3.0	-1.9	6.3	-4.8	-3.1	11.8
Forestry, fishing, mining, quarrying, oil and gas extraction ²	181.6	186.5	5.1	4.9	21.5	14.7	2.7	13.0	8.6
Utilities	20.3	22.6	2.2	2.3	-0.2	0.8	11.3	-0.9	3.7
Construction	238.0	233.8	6.6	-4.2	11.3	14.6	-1.8	5.1	6.7
Manufacturing	137.1	136.4	5.4	-0.7	-13.6	-11.7	-0.5	-9.1	-7.9
Services-producing sector	1,597.3	1,608.9	11.1	11.6	65.5	53.7	0.7	4.2	3.5
Trade	327.4	334.2	7.5	6.8	8.9	11.0	2.1	2.7	3.4
Transportation and warehousing	116.0	116.2	4.7	0.2	-9.8	-3.2	0.2	-7.8	-2.7
Finance, insurance, real estate and leasing	107.6	104.6	4.5	-3.0	-3.8	-6.6	-2.8	-3.5	-5.9
Professional, scientific and technical services	176.2	183.7	5.5	7.5	25.1	21.2	4.3	15.8	13.0
Business, building and other support services	69.2	74.5	4.0	5.3	2.3	0.4	7.7	3.2	0.5
Educational services	129.6	131.0	4.6	1.4	5.4	-1.7	1.1	4.3	-1.3
Health care and social assistance	238.2	231.5	5.8	-6.7	0.7	1.9	-2.8	0.3	0.8
Information, culture and recreation	78.0	74.9	3.9	-3.1	2.9	4.9	-4.0	4.0	7.0
Accommodation and food services	144.6	146.4	5.6	1.8	14.3	8.7	1.2	10.8	6.3
Other services	121.0	118.8	4.9	-2.2	17.0	11.5	-1.8	16.7	10.7
Public administration	89.5	93.0	3.9	3.5	2.3	5.5	3.9	2.5	6.3

1. Average standard error of change in two consecutive months (see "Sampling Errors" in Data Quality for further explanations).

2. Also referred to as Natural resources.

Note(s): Related CANSIM Tables 282-0087, 282-0088. The sum of individual categories may not always add to the total due to rounding.

Table 4-10
Selected labour force characteristics (seasonally adjusted) — British Columbia

	October 2013	November 2013	S.E. ¹	Change from			Percent change from		
				last month	last December	twelve months ago	last month	last December	twelve months ago
in thousands (except rates)									
Both sexes, 15 years and over									
Population	3,868.4	3,871.2	...	2.8	40.9	43.4	0.1	1.1	1.1
Labour force	2,465.9	2,460.0	10.6	-5.9	-11.6	-16.9	-0.2	-0.5	-0.7
Employment	2,304.5	2,296.3	10.4	-8.2	-17.2	-15.5	-0.4	-0.7	-0.7
Employment full-time	1,813.0	1,808.5	14.5	-4.5	-8.6	-4.7	-0.2	-0.5	-0.3
Unemployment	161.4	163.7	8.6	2.3	5.6	-1.4	1.4	3.5	-0.8
Participation rate	63.7	63.5	0.3	-0.2	-1.0	-1.2
Unemployment rate	6.5	6.7	0.3	0.2	0.3	0.0
Employment rate	59.6	59.3	0.3	-0.3	-1.1	-1.1
Part-time rate	21.3	21.2	0.6	-0.1	-0.2	-0.3
Both sexes, 15 to 24 years									
Population	586.4	586.0	...	-0.4	-2.5	-2.8	-0.1	-0.4	-0.5
Labour force	372.4	352.7	5.9	-19.7	-6.1	-11.5	-5.3	-1.7	-3.2
Employment	321.8	306.4	5.4	-15.4	-3.1	-10.0	-4.8	-1.0	-3.2
Unemployment	50.6	46.4	5.0	-4.2	-2.9	-1.4	-8.3	-5.9	-2.9
Participation rate	63.5	60.2	1.0	-3.3	-0.8	-1.7
Unemployment rate	13.6	13.2	1.3	-0.4	-0.5	0.1
Employment rate	54.9	52.3	0.9	-2.6	-0.3	-1.4
Part-time rate	45.9	43.5	2.1	-2.4	-2.0	-3.0
Men, 25 years and over									
Population	1,601.6	1,603.2	...	1.6	21.5	22.9	0.1	1.4	1.4
Labour force	1,100.9	1,105.7	5.5	4.8	8.1	4.8	0.4	0.7	0.4
Employment	1,043.4	1,047.8	5.8	4.4	2.3	7.8	0.4	0.2	0.8
Unemployment	57.5	57.9	4.9	0.4	5.7	-3.0	0.7	10.9	-4.9
Participation rate	68.7	69.0	0.3	0.3	-0.4	-0.7
Unemployment rate	5.2	5.2	0.4	0.0	0.4	-0.3
Employment rate	65.1	65.4	0.4	0.3	-0.7	-0.4
Part-time rate	9.5	9.2	0.6	-0.3	-0.6	-0.8
Women, 25 years and over									
Population	1,680.3	1,681.9	...	1.6	21.8	23.2	0.1	1.3	1.4
Labour force	992.7	1,001.6	6.4	8.9	-13.5	-10.2	0.9	-1.3	-1.0
Employment	939.4	942.1	6.2	2.7	-16.4	-13.3	0.3	-1.7	-1.4
Unemployment	53.3	59.5	4.9	6.2	2.9	3.1	11.6	5.1	5.5
Participation rate	59.1	59.6	0.4	0.5	-1.5	-1.4
Unemployment rate	5.4	5.9	0.5	0.5	0.3	0.3
Employment rate	55.9	56.0	0.4	0.1	-1.7	-1.6
Part-time rate	26.0	27.5	0.9	1.4	1.0	1.6
Industry									
	2,304.5	2,296.3	10.4	-8.2	-17.2	-15.5	-0.4	-0.7	-0.7
Goods-producing sector									
Agriculture	446.7	447.2	8.9	0.5	-16.9	-13.7	0.1	-3.6	-3.0
Forestry, fishing, mining, quarrying, oil and gas extraction ²	24.8	25.4	2.7	0.6	-2.4	-3.6	2.4	-8.6	-12.4
Utilities	52.5	51.3	3.1	-1.2	2.6	-2.4	-2.3	5.3	-4.5
Construction	15.1	12.9	1.7	-2.2	-3.4	-5.0	-14.6	-20.9	-27.9
Manufacturing	194.3	188.7	6.4	-5.6	-17.6	-3.9	-2.9	-8.5	-2.0
	160.1	168.8	5.7	8.7	3.9	1.1	5.4	2.4	0.7
Services-producing sector									
Trade	1,857.9	1,849.1	11.8	-8.8	-0.3	-1.8	-0.5	0.0	-0.1
Transportation and warehousing	364.9	361.8	8.2	-3.1	-0.3	6.4	-0.8	-0.1	1.8
Finance, insurance, real estate and leasing	124.4	128.1	5.0	3.7	9.0	-1.2	3.0	7.6	-0.9
Professional, scientific and technical services	156.8	152.7	5.7	-4.1	17.1	10.3	-2.6	12.6	7.2
Business, building and other support services	186.0	178.7	6.1	-7.3	4.3	-2.8	-3.9	2.5	-1.5
Educational services	88.8	93.0	4.6	4.2	-1.7	-3.8	4.7	-1.8	-3.9
Health care and social assistance	185.1	175.9	6.0	-9.2	-10.5	0.5	-5.0	-5.6	0.3
Information, culture and recreation	269.5	265.4	7.0	-4.1	0.2	2.3	-1.5	0.1	0.9
Accommodation and food services	116.2	119.2	5.3	3.0	-2.4	-0.7	2.6	-2.0	-0.6
Other services	172.2	178.7	6.4	6.5	2.6	4.5	3.8	1.5	2.6
Public administration	86.9	91.9	4.8	5.0	-13.5	-14.6	5.8	-12.8	-13.7
	107.1	103.8	4.4	-3.3	-5.0	-2.6	-3.1	-4.6	-2.4

1. Average standard error of change in two consecutive months (see "Sampling Errors" in Data Quality for further explanations).

2. Also referred to as Natural resources.

Note(s): Related CANSIM Tables 282-0087, 282-0088. The sum of individual categories may not always add to the total due to rounding.

Table 5-1
Labour force characteristics by census metropolitan area (seasonally adjusted) — 3 month moving average

	October 2013	November 2013	S.E. ¹	Change from			Percent change from		
				last month	last December	twelve months ago	last month	last December	twelve months ago
in thousands (except rates)									
St. John's, Newfoundland and Labrador									
Population	167.0	167.3	...	0.3	3.5	3.8	0.2	2.1	2.3
Labour force	115.9	116.1	0.8	0.2	-2.8	-2.7	0.2	-2.4	-2.3
Employment	109.3	109.2	0.8	-0.1	-1.3	-1.3	-0.1	-1.2	-1.2
Unemployment	6.6	6.9	0.4	0.3	-1.4	-1.3	4.5	-16.9	-15.9
Participation rate	69.4	69.4	0.5	0.0	-3.2	-3.3
Unemployment rate	5.7	5.9	0.3	0.2	-1.1	-1.0
Employment rate	65.4	65.3	0.5	-0.1	-2.2	-2.3
Halifax, Nova Scotia									
Population	348.5	348.8	...	0.3	3.9	4.3	0.1	1.1	1.2
Labour force	244.7	245.2	1.2	0.5	5.3	5.9	0.2	2.2	2.5
Employment	229.3	229.2	1.2	-0.1	4.5	3.7	0.0	2.0	1.6
Unemployment	15.4	16.0	0.7	0.6	0.8	2.2	3.9	5.3	15.9
Participation rate	70.2	70.3	0.3	0.1	0.7	0.8
Unemployment rate	6.3	6.5	0.3	0.2	0.2	0.7
Employment rate	65.8	65.7	0.3	-0.1	0.6	0.2
Moncton, New Brunswick									
Population	119.2	119.4	...	0.2	1.8	1.9	0.2	1.5	1.6
Labour force	79.7	79.7	0.7	0.0	0.3	0.3	0.0	0.4	0.4
Employment	73.3	73.5	0.7	0.2	-0.7	-0.4	0.3	-0.9	-0.5
Unemployment	6.4	6.1	0.4	-0.3	0.9	0.6	-4.7	17.3	10.9
Participation rate	66.9	66.8	0.6	-0.1	-0.7	-0.8
Unemployment rate	8.0	7.7	0.5	-0.3	1.2	0.8
Employment rate	61.5	61.6	0.6	0.1	-1.5	-1.3
Saint John, New Brunswick									
Population	106.8	106.8	...	0.0	0.1	0.1	0.0	0.1	0.1
Labour force	70.3	71.1	0.7	0.8	2.7	1.7	1.1	3.9	2.4
Employment	63.7	65.5	0.7	1.8	3.9	2.6	2.8	6.3	4.1
Unemployment	6.6	5.7	0.4	-0.9	-1.1	-0.8	-13.6	-16.2	-12.3
Participation rate	65.8	66.6	0.7	0.8	2.5	1.6
Unemployment rate	9.4	8.0	0.6	-1.4	-1.9	-1.4
Employment rate	59.6	61.3	0.7	1.7	3.6	2.3
Saguenay, Quebec									
Population	126.5	126.5	...	0.0	-0.2	-0.2	0.0	-0.2	-0.2
Labour force	79.8	79.7	0.8	-0.1	2.2	2.3	-0.1	2.8	3.0
Employment	73.4	73.5	0.9	0.1	3.7	2.6	0.1	5.3	3.7
Unemployment	6.3	6.2	0.4	-0.1	-1.4	-0.2	-1.6	-18.4	-3.1
Participation rate	63.1	63.0	0.7	-0.1	1.8	1.9
Unemployment rate	7.9	7.8	0.5	-0.1	-2.0	-0.5
Employment rate	58.0	58.1	0.7	0.1	3.0	2.1
Québec, Quebec									
Population	649.1	649.5	...	0.4	4.6	5.1	0.1	0.7	0.8
Labour force	436.0	442.3	3.4	6.3	2.7	1.0	1.4	0.6	0.2
Employment	415.0	420.8	3.5	5.8	2.1	1.3	1.4	0.5	0.3
Unemployment	21.0	21.5	1.5	0.5	0.5	-0.3	2.4	2.4	-1.4
Participation rate	67.2	68.1	0.5	0.9	-0.1	-0.4
Unemployment rate	4.8	4.9	0.3	0.1	0.1	0.0
Employment rate	63.9	64.8	0.5	0.9	-0.1	-0.3
Sherbrooke, Quebec									
Population	169.8	170.0	...	0.2	2.2	2.4	0.1	1.3	1.4
Labour force	100.5	100.4	1.1	-0.1	-6.2	-7.2	-0.1	-5.8	-6.7
Employment	93.5	93.3	1.1	-0.2	-6.1	-6.5	-0.2	-6.1	-6.5
Unemployment	7.1	7.1	0.4	0.0	-0.2	-0.7	0.0	-2.7	-9.0
Participation rate	59.2	59.1	0.6	-0.1	-4.4	-5.1
Unemployment rate	7.1	7.1	0.4	0.0	0.3	-0.1
Employment rate	55.1	54.9	0.6	-0.2	-4.3	-4.6

See notes at the end of the table.

Table 5-1 – continued

Labour force characteristics by census metropolitan area (seasonally adjusted) — 3 month moving average

	October 2013	November 2013	S.E. ¹	Change from			Percent change from		
				last month	last December	twelve months ago	last month	last December	twelve months ago
in thousands (except rates)									
Trois-Rivières, Quebec									
Population	126.8	126.9	...	0.1	0.7	0.8	0.1	0.6	0.6
Labour force	72.2	72.1	0.8	-0.1	2.3	1.6	-0.1	3.3	2.3
Employment	66.3	66.2	0.8	-0.1	2.1	1.4	-0.2	3.3	2.2
Unemployment	6.0	5.9	0.4	-0.1	0.2	0.2	-1.7	3.5	3.5
Participation rate	56.9	56.8	0.6	-0.1	1.5	0.9
Unemployment rate	8.3	8.2	0.5	-0.1	0.0	0.1
Employment rate	52.3	52.2	0.6	-0.1	1.4	0.8
Montréal, Quebec									
Population	3,300.7	3,303.8	...	3.1	34.2	36.9	0.1	1.0	1.1
Labour force	2,215.8	2,218.8	8.0	3.0	27.8	36.8	0.1	1.3	1.7
Employment	2,033.4	2,044.4	8.1	11.0	27.4	40.7	0.5	1.4	2.0
Unemployment	182.4	174.4	4.7	-8.0	0.4	-3.9	-4.4	0.2	-2.2
Participation rate	67.1	67.2	0.2	0.1	0.2	0.4
Unemployment rate	8.2	7.9	0.2	-0.3	0.0	-0.3
Employment rate	61.6	61.9	0.2	0.3	0.2	0.6
Ottawa-Gatineau, Ontario/Quebec									
Population	1,069.9	1,071.3	...	1.4	13.8	14.9	0.1	1.3	1.4
Labour force	737.4	737.5	3.7	0.1	-29.7	-26.6	0.0	-3.9	-3.5
Employment	691.7	694.3	3.7	2.6	-22.2	-19.3	0.4	-3.1	-2.7
Unemployment	45.6	43.2	2.0	-2.4	-7.4	-7.3	-5.3	-14.6	-14.5
Participation rate	68.9	68.8	0.3	-0.1	-3.7	-3.5
Unemployment rate	6.2	5.9	0.3	-0.3	-0.7	-0.7
Employment rate	64.7	64.8	0.4	0.1	-3.0	-2.8
Ottawa-Gatineau, Quebec part, Ontario/Quebec									
Population	266.2	266.5	...	0.3	3.0	3.2	0.1	1.1	1.2
Labour force	178.1	180.4	1.4	2.3	-3.3	-3.2	1.3	-1.8	-1.7
Employment	167.7	168.7	1.4	1.0	-2.9	-3.2	0.6	-1.7	-1.9
Unemployment	10.4	11.6	0.6	1.2	-0.5	-0.2	11.5	-4.1	-1.7
Participation rate	66.9	67.7	0.5	0.8	-2.0	-2.0
Unemployment rate	5.8	6.4	0.3	0.6	-0.2	0.0
Employment rate	63.0	63.3	0.5	0.3	-1.8	-2.0
Ottawa-Gatineau, Ontario part, Ontario/Quebec									
Population	803.7	804.7	...	1.0	10.7	11.6	0.1	1.3	1.5
Labour force	559.3	557.1	3.4	-2.2	-26.4	-23.4	-0.4	-4.5	-4.0
Employment	524.1	525.6	3.4	1.5	-19.3	-16.1	0.3	-3.5	-3.0
Unemployment	35.2	31.6	1.9	-3.6	-6.9	-7.2	-10.2	-17.9	-18.6
Participation rate	69.6	69.2	0.4	-0.4	-4.3	-4.0
Unemployment rate	6.3	5.7	0.3	-0.6	-0.9	-1.0
Employment rate	65.2	65.3	0.4	0.1	-3.3	-3.0
Kingston, Ontario									
Population	135.7	135.7	...	0.0	1.4	1.5	0.0	1.0	1.1
Labour force	90.5	90.8	0.8	0.3	4.8	5.1	0.3	5.6	6.0
Employment	84.9	85.3	0.8	0.4	5.6	5.6	0.5	7.0	7.0
Unemployment	5.6	5.4	0.4	-0.2	-0.9	-0.6	-3.6	-14.3	-10.0
Participation rate	66.7	66.9	0.6	0.2	2.9	3.0
Unemployment rate	6.2	5.9	0.4	-0.3	-1.4	-1.1
Employment rate	62.6	62.9	0.6	0.3	3.6	3.5
Peterborough, Ontario									
Population	103.5	103.5	...	0.0	0.3	0.3	0.0	0.3	0.3
Labour force	63.4	61.6	1.1	-1.8	5.2	4.6	-2.8	9.2	8.1
Employment	59.6	58.1	1.1	-1.5	6.5	5.1	-2.5	12.6	9.6
Unemployment	3.8	3.5	0.5	-0.3	-1.3	-0.5	-7.9	-27.1	-12.5
Participation rate	61.3	59.5	1.1	-1.8	4.8	4.3
Unemployment rate	6.0	5.7	0.9	-0.3	-2.8	-1.3
Employment rate	57.6	56.1	1.1	-1.5	6.1	4.7

See notes at the end of the table.

Table 5-1 – continued

Labour force characteristics by census metropolitan area (seasonally adjusted) — 3 month moving average

	October 2013	November 2013	S.E. ¹	Change from			Percent change from		
				last month	last December	twelve months ago	last month	last December	twelve months ago
in thousands (except rates)									
Oshawa, Ontario									
Population	315.6	316.1	...	0.5	4.7	5.1	0.2	1.5	1.6
Labour force	213.0	212.1	1.6	-0.9	-1.6	0.9	-0.4	-0.7	0.4
Employment	199.0	198.0	1.6	-1.0	5.0	6.2	-0.5	2.6	3.2
Unemployment	14.0	14.0	0.9	0.0	-6.6	-5.4	0.0	-32.0	-27.8
Participation rate	67.5	67.1	0.5	-0.4	-1.5	-0.8
Unemployment rate	6.6	6.6	0.4	0.0	-3.0	-2.6
Employment rate	63.1	62.6	0.5	-0.5	0.6	0.9
Toronto, Ontario									
Population	4,998.8	5,006.7	...	7.9	88.9	95.9	0.2	1.8	2.0
Labour force	3,427.6	3,423.7	10.5	-3.9	71.4	76.0	-0.1	2.1	2.3
Employment	3,154.5	3,143.6	10.6	-10.9	69.0	75.8	-0.3	2.2	2.5
Unemployment	273.1	280.1	6.5	7.0	2.3	0.3	2.6	0.8	0.1
Participation rate	68.6	68.4	0.2	-0.2	0.2	0.2
Unemployment rate	8.0	8.2	0.2	0.2	-0.1	-0.2
Employment rate	63.1	62.8	0.2	-0.3	0.3	0.3
Hamilton, Ontario									
Population	632.7	633.3	...	0.6	6.2	6.6	0.1	1.0	1.1
Labour force	394.1	395.3	2.9	1.2	-11.2	-10.2	0.3	-2.8	-2.5
Employment	366.2	368.4	3.0	2.2	-14.1	-12.5	0.6	-3.7	-3.3
Unemployment	27.9	26.9	1.4	-1.0	3.0	2.3	-3.6	12.6	9.3
Participation rate	62.3	62.4	0.5	0.1	-2.4	-2.3
Unemployment rate	7.1	6.8	0.3	-0.3	0.9	0.7
Employment rate	57.9	58.2	0.5	0.3	-2.8	-2.6
St. Catharines-Niagara, Ontario									
Population	341.1	341.2	...	0.1	1.1	1.1	0.0	0.3	0.3
Labour force	208.0	209.5	1.7	1.5	-8.7	-10.6	0.7	-4.0	-4.8
Employment	190.6	191.5	1.8	0.9	-9.6	-10.5	0.5	-4.8	-5.2
Unemployment	17.3	18.0	0.9	0.7	0.9	-0.1	4.0	5.3	-0.6
Participation rate	61.0	61.4	0.5	0.4	-2.8	-3.3
Unemployment rate	8.3	8.6	0.4	0.3	0.8	0.4
Employment rate	55.9	56.1	0.5	0.2	-3.0	-3.3
Kitchener-Cambridge-Waterloo, Ontario									
Population	419.7	420.2	...	0.5	5.2	5.5	0.1	1.3	1.3
Labour force	311.7	313.7	2.3	2.0	20.6	22.2	0.6	7.0	7.6
Employment	290.6	295.0	2.2	4.4	22.1	22.4	1.5	8.1	8.2
Unemployment	21.1	18.7	1.0	-2.4	-1.5	-0.2	-11.4	-7.4	-1.1
Participation rate	74.3	74.7	0.6	0.4	4.1	4.4
Unemployment rate	6.8	6.0	0.3	-0.8	-0.9	-0.5
Employment rate	69.2	70.2	0.5	1.0	4.4	4.5
Brantford, Ontario									
Population	109.4	109.5	...	0.1	0.6	0.7	0.1	0.6	0.6
Labour force	72.9	71.6	0.9	-1.3	-0.5	-0.7	-1.8	-0.7	-1.0
Employment	69.4	68.7	0.8	-0.7	2.5	2.3	-1.0	3.8	3.5
Unemployment	3.5	2.9	0.4	-0.6	-3.0	-3.0	-17.1	-50.8	-50.8
Participation rate	66.6	65.4	0.8	-1.2	-0.8	-1.1
Unemployment rate	4.8	4.1	0.5	-0.7	-4.1	-4.1
Employment rate	63.4	62.7	0.8	-0.7	1.9	1.7
Guelph, Ontario									
Population	117.6	117.7	...	0.1	1.8	1.9	0.1	1.6	1.6
Labour force	78.2	78.9	0.8	0.7	-3.4	-3.9	0.9	-4.1	-4.7
Employment	72.6	73.2	0.8	0.6	-3.9	-4.3	0.8	-5.1	-5.5
Unemployment	5.6	5.8	0.4	0.2	0.6	0.5	3.6	11.5	9.4
Participation rate	66.5	67.0	0.7	0.5	-4.0	-4.5
Unemployment rate	7.2	7.4	0.5	0.2	1.1	1.0
Employment rate	61.7	62.2	0.7	0.5	-4.3	-4.7

See notes at the end of the table.

Table 5-1 – continued

Labour force characteristics by census metropolitan area (seasonally adjusted) — 3 month moving average

	October 2013	November 2013	S.E. ¹	Change from			Percent change from		
				last month	last December	twelve months ago	last month	last December	twelve months ago
in thousands (except rates)									
London, Ontario									
Population	420.8	421.1	...	0.3	3.7	3.9	0.1	0.9	0.9
Labour force	265.7	263.3	2.0	-2.4	-5.5	-7.6	-0.9	-2.0	-2.8
Employment	244.8	243.5	2.2	-1.3	-2.6	-4.7	-0.5	-1.1	-1.9
Unemployment	20.9	19.8	1.1	-1.1	-2.8	-2.9	-5.3	-12.4	-12.8
Participation rate	63.1	62.5	0.5	-0.6	-1.9	-2.4
Unemployment rate	7.9	7.5	0.4	-0.4	-0.9	-0.9
Employment rate	58.2	57.8	0.5	-0.4	-1.2	-1.7
Windsor, Ontario									
Population	269.6	269.7	...	0.1	1.4	1.5	0.0	0.5	0.6
Labour force	166.2	166.0	1.6	-0.2	-3.0	-2.8	-0.1	-1.8	-1.7
Employment	151.2	151.9	1.6	0.7	0.5	0.0	0.5	0.3	0.0
Unemployment	15.0	14.1	0.8	-0.9	-3.5	-2.9	-6.0	-19.9	-17.1
Participation rate	61.6	61.5	0.6	-0.1	-1.5	-1.4
Unemployment rate	9.0	8.5	0.5	-0.5	-1.9	-1.6
Employment rate	56.1	56.3	0.6	0.2	-0.1	-0.3
Barrie, Ontario									
Population	165.7	166.0	...	0.3	2.1	2.2	0.2	1.3	1.3
Labour force	119.0	118.4	1.5	-0.6	1.7	6.6	-0.5	1.5	5.9
Employment	112.5	112.4	1.4	-0.1	4.3	8.8	-0.1	4.0	8.5
Unemployment	6.5	6.0	0.7	-0.5	-2.6	-2.3	-7.7	-30.2	-27.7
Participation rate	71.8	71.3	0.9	-0.5	0.1	3.0
Unemployment rate	5.5	5.1	0.6	-0.4	-2.3	-2.3
Employment rate	67.9	67.7	0.9	-0.2	1.7	4.5
Greater Sudbury, Ontario									
Population	138.2	138.2	...	0.0	-0.4	-0.5	0.0	-0.3	-0.4
Labour force	89.8	89.6	0.8	-0.2	1.5	3.1	-0.2	1.7	3.6
Employment	83.2	83.4	0.8	0.2	1.3	2.5	0.2	1.6	3.1
Unemployment	6.5	6.2	0.4	-0.3	0.2	0.6	-4.6	3.3	10.7
Participation rate	65.0	64.8	0.6	-0.2	1.2	2.4
Unemployment rate	7.2	6.9	0.4	-0.3	0.1	0.4
Employment rate	60.2	60.3	0.6	0.1	1.1	2.0
Thunder Bay, Ontario									
Population	103.3	103.4	...	0.1	0.3	0.3	0.1	0.3	0.3
Labour force	66.9	66.6	0.7	-0.3	3.2	2.7	-0.4	5.0	4.2
Employment	62.6	62.4	0.7	-0.2	2.1	1.9	-0.3	3.5	3.1
Unemployment	4.2	4.2	0.3	0.0	1.1	0.8	0.0	35.5	23.5
Participation rate	64.8	64.4	0.6	-0.4	2.9	2.4
Unemployment rate	6.3	6.3	0.4	0.0	1.4	1.0
Employment rate	60.6	60.3	0.7	-0.3	1.8	1.6
Winnipeg, Manitoba									
Population	644.9	645.9	...	1.0	10.2	11.0	0.2	1.6	1.7
Labour force	446.2	446.5	1.3	0.3	5.8	6.6	0.1	1.3	1.5
Employment	419.9	420.2	1.3	0.3	4.0	3.9	0.1	1.0	0.9
Unemployment	26.3	26.3	0.8	0.0	1.9	2.7	0.0	7.8	11.4
Participation rate	69.2	69.1	0.2	-0.1	-0.2	-0.2
Unemployment rate	5.9	5.9	0.2	0.0	0.4	0.5
Employment rate	65.1	65.1	0.2	0.0	-0.4	-0.5
Regina, Saskatchewan									
Population	186.4	186.9	...	0.5	5.0	5.3	0.3	2.7	2.9
Labour force	139.0	138.8	0.8	-0.2	5.3	6.6	-0.1	4.0	5.0
Employment	134.5	133.4	0.8	-1.1	5.6	6.5	-0.8	4.4	5.1
Unemployment	4.5	5.4	0.3	0.9	-0.3	0.0	20.0	-5.3	0.0
Participation rate	74.6	74.3	0.4	-0.3	0.9	1.5
Unemployment rate	3.2	3.9	0.2	0.7	-0.4	-0.2
Employment rate	72.2	71.4	0.4	-0.8	1.1	1.5

See notes at the end of the table.

Table 5-1 – continued

Labour force characteristics by census metropolitan area (seasonally adjusted) — 3 month moving average

	October 2013	November 2013	S.E. ¹	Change from			Percent change from		
				last month	last December	twelve months ago	last month	last December	twelve months ago
in thousands (except rates)									
Saskatoon, Saskatchewan									
Population	237.7	238.6	...	0.9	8.9	9.6	0.4	3.9	4.2
Labour force	172.6	171.8	1.0	-0.8	8.1	9.1	-0.5	4.9	5.6
Employment	164.6	164.6	1.0	0.0	10.0	10.9	0.0	6.5	7.1
Unemployment	8.0	7.3	0.5	-0.7	-1.7	-1.6	-8.8	-18.9	-18.0
Participation rate	72.6	72.0	0.4	-0.6	0.7	1.0
Unemployment rate	4.6	4.2	0.3	-0.4	-1.3	-1.3
Employment rate	69.2	69.0	0.4	-0.2	1.7	1.9
Calgary, Alberta									
Population	1,107.6	1,111.3	...	3.7	41.0	44.0	0.3	3.8	4.1
Labour force	821.6	825.2	3.6	3.6	27.2	32.6	0.4	3.4	4.1
Employment	784.1	787.7	3.8	3.6	26.7	32.1	0.5	3.5	4.2
Unemployment	37.5	37.6	1.9	0.1	0.6	0.6	0.3	1.6	1.6
Participation rate	74.2	74.3	0.3	0.1	-0.3	0.0
Unemployment rate	4.6	4.6	0.2	0.0	0.0	-0.1
Employment rate	70.8	70.9	0.4	0.1	-0.2	0.1
Edmonton, Alberta									
Population	1,037.8	1,041.1	...	3.3	37.9	41.0	0.3	3.8	4.1
Labour force	762.9	764.0	3.6	1.1	25.5	25.8	0.1	3.5	3.5
Employment	722.3	725.0	3.8	2.7	19.7	17.6	0.4	2.8	2.5
Unemployment	40.6	39.0	1.8	-1.6	5.9	8.2	-3.9	17.8	26.6
Participation rate	73.5	73.4	0.4	-0.1	-0.2	-0.4
Unemployment rate	5.3	5.1	0.2	-0.2	0.6	0.9
Employment rate	69.6	69.6	0.4	0.0	-0.7	-1.1
Kelowna, British Columbia									
Population	151.6	151.7	...	0.1	1.5	1.5	0.1	1.0	1.0
Labour force	104.2	102.1	2.0	-2.1	1.8	2.1	-2.0	1.8	2.1
Employment	98.5	95.8	1.8	-2.7	2.9	3.5	-2.7	3.1	3.8
Unemployment	5.7	6.3	0.8	0.6	-1.1	-1.4	10.5	-14.9	-18.2
Participation rate	68.7	67.3	1.3	-1.4	0.5	0.7
Unemployment rate	5.5	6.2	0.8	0.7	-1.2	-1.5
Employment rate	65.0	63.2	1.2	-1.8	1.3	1.7
Abbotsford-Mission, British Columbia									
Population	147.6	147.8	...	0.2	1.7	1.8	0.1	1.2	1.2
Labour force	103.0	102.2	0.9	-0.8	2.6	1.5	-0.8	2.6	1.5
Employment	94.8	94.4	0.9	-0.4	2.4	1.2	-0.4	2.6	1.3
Unemployment	8.1	7.7	0.4	-0.4	0.1	0.2	-4.9	1.3	2.7
Participation rate	69.8	69.1	0.6	-0.7	0.9	0.1
Unemployment rate	7.9	7.5	0.4	-0.4	-0.1	0.1
Employment rate	64.2	63.9	0.6	-0.3	0.9	0.1
Vancouver, British Columbia									
Population	2,106.4	2,109.3	...	2.9	36.2	39.0	0.1	1.7	1.9
Labour force	1,357.2	1,356.5	5.2	-0.7	-6.1	-13.0	-0.1	-0.4	-0.9
Employment	1,266.4	1,267.5	5.3	1.1	-3.8	-5.7	0.1	-0.3	-0.4
Unemployment	90.9	89.0	3.0	-1.9	-2.4	-7.2	-2.1	-2.6	-7.5
Participation rate	64.4	64.3	0.3	-0.1	-1.4	-1.8
Unemployment rate	6.7	6.6	0.2	-0.1	-0.1	-0.4
Employment rate	60.1	60.1	0.3	0.0	-1.2	-1.4
Victoria, British Columbia									
Population	305.2	305.4	...	0.2	2.1	2.3	0.1	0.7	0.8
Labour force	194.1	193.6	1.5	-0.5	-4.7	-3.0	-0.3	-2.4	-1.5
Employment	184.4	185.2	1.6	0.8	-2.3	-0.8	0.4	-1.2	-0.4
Unemployment	9.7	8.4	0.7	-1.3	-2.4	-2.3	-13.4	-22.2	-21.5
Participation rate	63.6	63.4	0.5	-0.2	-2.0	-1.5
Unemployment rate	5.0	4.3	0.3	-0.7	-1.1	-1.1
Employment rate	60.4	60.6	0.5	0.2	-1.2	-0.8

1. Average standard error of change in two consecutive months (see "Sampling Errors" in Data Quality for further explanations).

Note(s): Estimates in this table are based on 2006 census boundaries. Related CANSIM Table 282-0116. The sum of individual categories may not always add to the total due to rounding.

Table 5-2
Labour force characteristics by census metropolitan area (seasonally adjusted) — Monthly

	October 2013	November 2013	S.E. ¹	Change from			Percent change from		
				last month	last December	twelve months ago	last month	last December	twelve months ago
in thousands (except rates)									
Montréal, Quebec									
Population	3,303.8	3,306.5	...	2.7	34.3	36.8	0.1	1.0	1.1
Labour force	2,223.5	2,221.3	16.3	-2.2	20.9	31.6	-0.1	0.9	1.4
Employment	2,047.3	2,053.8	16.3	6.5	18.5	44.9	0.3	0.9	2.2
Unemployment	176.2	167.5	11.5	-8.7	2.4	-13.3	-4.9	1.5	-7.4
Participation rate	67.3	67.2	0.5	-0.1	0.0	0.2
Unemployment rate	7.9	7.5	0.5	-0.4	0.0	-0.8
Employment rate	62.0	62.1	0.5	0.1	-0.1	0.7
Toronto, Ontario									
Population	5,006.8	5,013.8	...	7.0	89.1	95.9	0.1	1.8	2.0
Labour force	3,409.5	3,423.5	21.8	14.0	67.0	69.6	0.4	2.0	2.1
Employment	3,126.4	3,142.1	21.3	15.7	62.4	62.0	0.5	2.0	2.0
Unemployment	283.1	281.5	15.5	-1.6	4.7	7.7	-0.6	1.7	2.8
Participation rate	68.1	68.3	0.4	0.2	0.1	0.1
Unemployment rate	8.3	8.2	0.4	-0.1	0.0	0.0
Employment rate	62.4	62.7	0.4	0.3	0.2	0.1
Vancouver, British Columbia									
Population	2,109.5	2,112.0	...	2.5	36.0	38.8	0.1	1.7	1.9
Labour force	1,349.5	1,361.7	11.1	12.2	4.9	2.6	0.9	0.4	0.2
Employment	1,265.0	1,271.2	11.0	6.2	-1.6	5.1	0.5	-0.1	0.4
Unemployment	84.5	90.5	7.2	6.0	6.5	-2.5	7.1	7.7	-2.7
Participation rate	64.0	64.5	0.5	0.5	-0.9	-1.1
Unemployment rate	6.3	6.6	0.5	0.3	0.4	-0.2
Employment rate	60.0	60.2	0.5	0.2	-1.1	-0.9

1. Average standard error of change in two consecutive months (see "Sampling Errors" in Data Quality for further explanations).

Note(s): Estimates in this table are based on 2006 census boundaries. Related CANSIM Table 282-0117. The sum of individual categories may not always add to the total due to rounding.

Table 6-1
Labour force characteristics by province and economic region, ¹ unadjusted for seasonality, 3 month moving average ending in November 2012 and November 2013

	Population	Labour force			Participation rate	Unemployment rate	Employment rate
		Labour force	Employment	Unemployment			
in thousands							
Canada ²							
2012	28,415.3	18,892.1	17,626.0	1,266.1	66.5	6.7	62.0
2013	28,790.4	19,053.1	17,825.8	1,227.3	66.2	6.4	61.9
Newfoundland and Labrador							
2012	427.5	263.2	233.6	29.6	61.6	11.2	54.6
2013	429.8	260.1	233.0	27.0	60.5	10.4	54.2
Avalon Peninsula [1010]							
2012	222.2	150.1	138.3	11.8	67.6	7.9	62.2
2013	225.2	146.8	135.6	11.1	65.2	7.6	60.2
South Coast-Burin Peninsula [1020]							
2012	30.0	15.9	13.3	2.6	53.0	16.4	44.3
2013	29.6	16.6	14.3	2.3	56.1	13.9	48.3
West Coast-Northern Peninsula-Labrador [1030]							
2012	85.7	49.7	41.8	7.9	58.0	15.9	48.8
2013	85.7	49.0	42.0	7.0	57.2	14.3	49.0
Notre Dame-Central Bonavista Bay [1040]							
2012	89.6	47.5	40.1	7.3	53.0	15.4	44.8
2013	89.3	47.7	41.1	6.6	53.4	13.8	46.0
Prince Edward Island							
2012	120.7	82.0	73.5	8.6	67.9	10.5	60.9
2013	121.0	82.9	74.1	8.9	68.5	10.7	61.2
Nova Scotia							
2012	780.5	499.5	458.2	41.2	64.0	8.2	58.7
2013	781.7	494.0	453.5	40.5	63.2	8.2	58.0
Cape Breton [1210]							
2012	110.6	61.4	51.9	9.5	55.5	15.5	46.9
2013	109.3	60.7	53.7	7.0	55.5	11.5	49.1
North Shore [1220]							
2012	129.0	80.5	72.3	8.2	62.4	10.2	56.0
2013	128.4	76.8	69.2	7.6	59.8	9.9	53.9
Annapolis Valley [1230]							
2012	99.5	62.4	58.0	4.4	62.7	7.1	58.3
2013	99.2	59.3	53.9	5.3	59.8	8.9	54.3
Southern [1240]							
2012	96.9	57.4	50.1	7.3	59.2	12.7	51.7
2013	96.0	52.8	47.8	5.0	55.0	9.5	49.8
Halifax [1250]							
2012	344.5	237.8	225.9	11.9	69.0	5.0	65.6
2013	348.8	244.5	228.9	15.6	70.1	6.4	65.6
New Brunswick							
2012	620.4	389.9	350.8	39.2	62.8	10.1	56.5
2013	620.1	390.1	354.5	35.6	62.9	9.1	57.2
Campbellton-Miramichi [1310]							
2012	127.4	72.3	60.3	12.0	56.8	16.6	47.3
2013	125.7	70.8	59.6	11.2	56.3	15.8	47.4
Moncton-Richibucto [1320]							
2012	173.9	112.9	103.8	9.0	64.9	8.0	59.7
2013	175.2	114.1	105.0	9.1	65.1	8.0	59.9
Saint John-St. Stephen [1330]							
2012	144.6	93.1	84.5	8.6	64.4	9.2	58.4
2013	144.4	93.0	86.0	7.0	64.4	7.5	59.6

See notes at the end of the table.

Table 6-1 – continued

Labour force characteristics by province and economic region, ¹ unadjusted for seasonality, 3 month moving average ending in November 2012 and November 2013

	Population	Labour force			Participation rate	Unemployment rate	Employment rate
		Labour force	Employment	Unemployment			
in thousands							
Fredericton-Oromocto [1340]							
2012	110.4	70.7	65.1	5.7	64.0	8.1	59.0
2013	111.4	72.4	67.7	4.7	65.0	6.5	60.8
Edmundston-Woodstock [1350]							
2012	64.0	40.9	37.1	3.8	63.9	9.3	58.0
2013	63.4	39.8	36.2	3.5	62.8	8.8	57.1
Quebec							
2012	6,655.4	4,343.1	4,038.3	304.8	65.3	7.0	60.7
2013	6,706.7	4,357.4	4,063.6	293.8	65.0	6.7	60.6
Gaspésie-Îles-de-la-Madeleine [2410]							
2012	78.6	41.3	36.2	5.1	52.5	12.3	46.1
2013	78.1	41.8	35.6	6.2	53.5	14.8	45.6
Bas-Saint-Laurent [2415]							
2012	166.4	99.7	94.3	5.4	59.9	5.4	56.7
2013	165.5	93.2	85.2	7.9	56.3	8.5	51.5
Capitale-Nationale [2420]							
2012	595.9	399.8	382.0	17.8	67.1	4.5	64.1
2013	600.4	400.8	383.7	17.2	66.8	4.3	63.9
Chaudière-Appalaches [2425]							
2012	336.1	232.0	223.5	8.5	69.0	3.7	66.5
2013	336.9	226.7	218.0	8.7	67.3	3.8	64.7
Estrie [2430]							
2012	261.2	167.6	155.9	11.6	64.2	6.9	59.7
2013	263.3	165.4	156.2	9.1	62.8	5.5	59.3
Centre-du-Québec [2433]							
2012	192.5	118.9	111.2	7.6	61.8	6.4	57.8
2013	193.5	114.9	106.5	8.4	59.4	7.3	55.0
Montérégie [2435]							
2012	1,207.2	827.5	778.4	49.1	68.5	5.9	64.5
2013	1,217.5	801.5	755.6	45.9	65.8	5.7	62.1
Montréal [2440]							
2012	1,636.2	1,049.4	947.7	101.7	64.1	9.7	57.9
2013	1,652.4	1,067.3	976.8	90.5	64.6	8.5	59.1
Laval [2445]							
2012	340.6	231.9	214.9	17.1	68.1	7.4	63.1
2013	345.5	238.6	224.7	13.9	69.1	5.8	65.0
Lanaudière [2450]							
2012	399.3	251.0	233.8	17.3	62.9	6.9	58.6
2013	403.8	273.5	253.3	20.1	67.7	7.3	62.7
Laurentides [2455]							
2012	472.8	323.6	303.2	20.4	68.4	6.3	64.1
2013	478.4	333.0	307.6	25.4	69.6	7.6	64.3
Outaouais [2460]							
2012	311.9	210.4	197.0	13.4	67.5	6.4	63.2
2013	315.6	208.7	195.3	13.4	66.1	6.4	61.9
Abitibi-Témiscamingue [2465]							
2012	118.0	77.6	72.7	4.9	65.8	6.3	61.6
2013	118.0	79.6	75.4	4.2	67.5	5.3	63.9
Mauricie [2470]							
2012	222.3	118.8	107.5	11.3	53.4	9.5	48.4
2013	222.1	120.6	111.4	9.1	54.3	7.5	50.2

See notes at the end of the table.

Table 6-1 – continued

Labour force characteristics by province and economic region, 1 unadjusted for seasonality, 3 month moving average ending in November 2012 and November 2013

	Population	Labour force			Participation rate	Unemployment rate	Employment rate
		Labour force	Employment	Unemployment			
in thousands							
Saguenay-Lac-Saint-Jean [2475]							
2012	225.4	137.6	126.8	10.8	61.0	7.8	56.3
2013	224.7	133.6	123.8	9.8	59.5	7.3	55.1
Côte-Nord and Nord-du-Québec [2480, 2490]							
2012	90.9	56.2	53.3	2.8	61.8	5.0	58.6
2013	91.0	58.2	54.4	3.9	64.0	6.7	59.8
Ontario							
2012	11,109.5	7,351.0	6,810.2	540.8	66.2	7.4	61.3
2013	11,246.8	7,423.2	6,910.3	512.9	66.0	6.9	61.4
Ottawa [3510]							
2012	1,066.5	738.5	691.9	46.6	69.2	6.3	64.9
2013	1,078.6	727.2	687.2	40.0	67.4	5.5	63.7
Kingston-Pembroke [3515]							
2012	372.5	227.6	208.2	19.4	61.1	8.5	55.9
2013	373.6	227.8	213.5	14.3	61.0	6.3	57.1
Muskoka-Kawarthas [3520]							
2012	320.5	176.5	164.5	12.0	55.1	6.8	51.3
2013	321.7	181.0	171.6	9.4	56.3	5.2	53.3
Toronto [3530]							
2012	5,170.3	3,509.6	3,224.7	284.9	67.9	8.1	62.4
2013	5,266.6	3,578.0	3,295.1	282.9	67.9	7.9	62.6
Kitchener-Waterloo-Barrie [3540]							
2012	1,054.8	728.8	686.5	42.3	69.1	5.8	65.1
2013	1,069.4	751.3	710.9	40.4	70.3	5.4	66.5
Hamilton-Niagara Peninsula [3550]							
2012	1,182.1	765.2	715.3	49.9	64.7	6.5	60.5
2013	1,191.6	747.0	699.4	47.6	62.7	6.4	58.7
London [3560]							
2012	546.2	354.7	327.8	26.9	64.9	7.6	60.0
2013	550.8	348.8	327.5	21.3	63.3	6.1	59.5
Windsor-Sarnia [3570]							
2012	518.9	324.8	299.2	25.6	62.6	7.9	57.7
2013	519.2	321.5	299.3	22.1	61.9	6.9	57.6
Stratford-Bruce Peninsula [3580]							
2012	245.8	152.9	145.8	7.1	62.2	4.6	59.3
2013	245.6	162.9	153.5	9.3	66.3	5.7	62.5
Northeast [3590]							
2012	459.0	266.4	246.0	20.4	58.0	7.7	53.6
2013	456.8	268.6	251.4	17.2	58.8	6.4	55.0
Northwest [3595]							
2012	173.1	106.1	100.3	5.8	61.3	5.5	57.9
2013	172.9	109.1	100.8	8.2	63.1	7.5	58.3
Manitoba							
2012	965.5	665.6	633.7	31.9	68.9	4.8	65.6
2013	977.0	666.7	631.8	34.9	68.2	5.2	64.7
Southeast [4610]							
2012	84.5	60.0	57.3	2.7	71.0	4.5	67.8
2013	85.7	60.9	58.2	2.8	71.1	4.6	67.9
South Central [4620]							
2012	48.4	31.9	31.1	0.8	65.9	2.5	64.3
2013	49.2	32.9	32.0	0.9	66.9	2.7	65.0

See notes at the end of the table.

Table 6-1 – continued

Labour force characteristics by province and economic region, 1 unadjusted for seasonality, 3 month moving average ending in November 2012 and November 2013

	Population	Labour force			Participation rate	Unemployment rate	Employment rate
		Labour force	Employment	Unemployment			
in thousands							
Southwest [4630]							
2012	84.0	60.9	59.2	1.7	72.5	2.8	70.5
2013	84.3	58.9	56.8	2.1	69.9	3.6	67.4
North Central [4640]							
2012	36.8	23.9	22.9	0.9	64.9	3.8	62.2
2013	37.0	25.4	24.6	0.8	68.6	3.1	66.5
Winnipeg [4650]							
2012	579.8	400.9	380.2	20.7	69.1	5.2	65.6
2013	589.1	401.0	377.4	23.6	68.1	5.9	64.1
Interlake [4660]							
2012	73.2	49.4	47.3	2.1	67.5	4.3	64.6
2013	73.8	50.0	47.3	2.6	67.8	5.2	64.1
Parklands and North [4670, 4680]							
2012	58.8	38.7	35.6	3.1	65.8	8.0	60.5
2013	57.9	37.6	35.4	2.2	64.9	5.9	61.1
Saskatchewan							
2012	815.2	563.5	540.8	22.7	69.1	4.0	66.3
2013	831.5	575.3	554.8	20.5	69.2	3.6	66.7
Regina-Moose Mountain [4710]							
2012	243.3	177.6	172.1	5.6	73.0	3.2	70.7
2013	249.2	181.4	175.3	6.2	72.8	3.4	70.3
Swift Current-Moose Jaw [4720]							
2012	81.2	51.0	49.5	1.5	62.8	2.9	61.0
2013	81.5	52.4	51.3	1.1	64.3	2.1	62.9
Saskatoon-Biggar [4730]							
2012	273.3	190.2	181.8	8.4	69.6	4.4	66.5
2013	282.4	199.9	193.1	6.9	70.8	3.5	68.4
Yorkton-Melville [4740]							
2012	62.6	40.7	39.3	1.4	65.0	3.4	62.8
2013	62.4	38.4	37.0	1.4	61.5	3.6	59.3
Prince Albert and Northern [4750, 4760]							
2012	154.8	104.0	98.1	5.9	67.2	5.7	63.4
2013	156.0	103.1	98.1	5.0	66.1	4.8	62.9
Alberta							
2012	3,095.7	2,254.1	2,161.7	92.3	72.8	4.1	69.8
2013	3,207.6	2,339.6	2,241.0	98.6	72.9	4.2	69.9
Lethbridge-Medicine Hat [4810]							
2012	223.6	148.5	142.2	6.3	66.4	4.2	63.6
2013	228.9	145.5	142.2	3.2	63.6	2.2	62.1
Camrose-Drumheller [4820]							
2012	157.9	106.5	103.1	3.4	67.4	3.2	65.3
2013	160.9	111.8	107.0	4.7	69.5	4.2	66.5
Calgary [4830]							
2012	1,147.9	847.5	810.6	36.9	73.8	4.4	70.6
2013	1,194.4	885.8	846.4	39.4	74.2	4.4	70.9
Banff-Jasper-Rocky Mountain House [4840]							
2012	72.6	53.9	51.8	2.1	74.2	3.9	71.3
2013	74.8	54.9	53.0	1.9	73.4	3.5	70.9

See notes at the end of the table.

Table 6-1 – continued

Labour force characteristics by province and economic region, ¹ unadjusted for seasonality, 3 month moving average ending in November 2012 and November 2013

	Population	Labour force			Participation rate	Unemployment rate	Employment rate
		Labour force	Employment	Unemployment			
in thousands							
Red Deer [4850]							
2012	158.4	112.1	107.4	4.7	70.8	4.2	67.8
2013	163.4	121.0	116.3	4.7	74.1	3.9	71.2
Edmonton [4860]							
2012	1,036.0	760.7	731.1	29.6	73.4	3.9	70.6
2013	1,077.1	791.4	755.2	36.2	73.5	4.6	70.1
Athabasca-Grande Prairie-Peace River [4870]							
2012	192.8	139.8	133.9	5.9	72.5	4.2	69.5
2013	196.8	141.8	136.4	5.4	72.1	3.8	69.3
Wood Buffalo-Cold Lake [4880]							
2012	106.5	85.0	81.6	3.4	79.8	4.0	76.6
2013	111.3	87.5	84.4	3.2	78.6	3.7	75.8
British Columbia							
2012	3,824.9	2,480.2	2,325.3	154.9	64.8	6.2	60.8
2013	3,868.2	2,463.9	2,309.3	154.6	63.7	6.3	59.7
Vancouver Island and Coast [5910]							
2012	659.1	387.7	366.8	20.9	58.8	5.4	55.7
2013	662.3	389.7	367.9	21.7	58.8	5.6	55.5
Lower Mainland-Southwest [5920]							
2012	2,360.3	1,560.7	1,457.6	103.2	66.1	6.6	61.8
2013	2,402.8	1,545.4	1,444.7	100.7	64.3	6.5	60.1
Thompson-Okanagan [5930]							
2012	434.8	273.6	258.0	15.6	62.9	5.7	59.3
2013	434.3	277.2	256.3	20.9	63.8	7.5	59.0
Kootenay [5940]							
2012	126.7	82.2	76.5	5.7	64.9	6.9	60.4
2013	126.1	80.0	76.2	3.8	63.4	4.8	60.4
Cariboo [5950]							
2012	126.4	92.1	87.4	4.7	72.9	5.1	69.1
2013	125.6	88.2	84.3	3.9	70.2	4.4	67.1
North Coast and Nechako [5960, 5970]							
2012	65.8	42.4	38.8	3.6	64.4	8.5	59.0
2013	64.7	42.1	40.0	2.1	65.1	5.0	61.8
Northeast [5980]							
2012	51.9	41.5	40.3	x	80.0	x	77.6
2013	52.4	41.3	39.7	1.5	78.8	3.6	75.8

1. For geographic descriptions of economic regions, refer to the Guide to the Labour Force Survey (catalogue number 71-543-GIE).

2. Estimates for Canada are a sum of the provincial totals and exclude estimates from Yukon, Northwest Territories and Nunavut.

Note(s): Related CANSIM table 282-0054.

Table 6-2
Labour force characteristics by territories, unadjusted for seasonality, 3 month moving average ending in
November 2012 and November 2013

	Population	Labour force			Participation rate	Unemployment rate	Employment rate
		Labour force	Employment	Unemployment			
		in thousands			percent		
Yukon ¹							
2012	27.1	19.9	18.9	1.1	73.4	5.5	69.7
2013	27.7	20.2	19.2	1.0	72.9	5.0	69.3
Northwest Territories ²							
2012	32.1	24.7	23.0	1.7	76.9	6.9	71.7
2013	31.9	24.2	22.1	2.1	75.9	8.7	69.3
Nunavut ³							
2012	21.3	13.7	11.9	1.8	64.6	13.4	55.9
2013	22.1	14.7	12.4	2.3	66.6	15.5	56.3

1. Since 1992, the Labour force survey (LFS) has been conducted in the Yukon, using an alternative methodology that accommodates some of the operational difficulties inherent to remote locales. These estimates are not included in the national totals. In 1995, the LFS in the Yukon underwent a sample redesign. One result of the redesign was that the covered population increased from 85% to 92%, which is reflected by the sharp increase in the three month moving averages estimates of January, February and March of 1995 for all the level estimates. Users are therefore warned to be cautious when comparing estimates before January 1995 to estimates for January 1995 and forward.
2. Since 2001, the Labour force survey (LFS) has been administered in the Northwest Territories, using an alternative methodology that accommodates some of the operational difficulties inherent to remote locales. These estimates are not included in national totals.
3. Since 2004, the Labour force survey (LFS) has been administered in Nunavut, using an alternative methodology that accommodates some of the operational difficulties inherent to remote locales. These estimates are 3-month moving averages and are not included in national totals. From January 2004 to December 2007, estimates represent about 70% of all Nunavut residents aged 15 and over. Starting in January 2008, coverage was extended to 92%, so that by March 2008, the 3-month moving average is completely based on the extended coverage. Because of the large difference in coverage, users are recommended not to compare estimates prior to January 2008 with data afterwards. The January and February 2008 3-month moving average estimates are based on a mix of both coverages, since the extended coverage was introduced in January 2008. Estimates from January 2004 to December 2007 are based on the 10 largest communities in Nunavut: Iqaluit, Rankin Inlet, Cambridge Bay, Kugluktuk, Baker Lake, Arviat, Pond Inlet, Cape Dorset, Pangnirtung, Igloolik. Estimates from March 2008 to present cover the above communities as well as: Taloyoak, Gjoa Haven, Kugaaruk, Coral Harbour, Repulse Bay, Qikiqtarjuaq, Arctic Bay, Hall Beach, Clyde River.

Note(s): Related CANSIM table 282-0100.

Table 7
Average usual hours and wages of employees by selected characteristics, Canada, unadjusted for seasonality

	Employees				Full-time			Part-time		
	Number	Average weekly hours	Average weekly wages	Average hourly wages	Number	Average weekly hours	Average weekly wages	Number	Average weekly hours	Average weekly wages
	thousands		current dollars		thousands		current dollars	thousands		current dollars
November 2013										
15 years and over	15,100.0	35.1	893.75	24.47	12,236.9	39.3	1,032.23	2,863.1	17.1	301.87
15 to 24 years	2,271.5	26.3	403.02	14.19	1,098.1	38.9	643.48	1,173.4	14.6	178.00
25 years and over	12,828.5	36.7	980.64	26.29	11,138.8	39.4	1,070.55	1,689.7	18.9	387.89
Men	7,620.0	37.6	1,018.60	26.31	6,688.3	40.6	1,122.50	931.7	16.2	272.71
Women	7,480.0	32.6	766.56	22.58	5,548.6	37.8	923.41	1,931.4	17.6	315.93
Union coverage										
Union coverage	4,684.3	35.8	1,017.17	28.06	4,009.7	38.6	1,113.92	674.6	18.8	442.13
No union coverage	10,415.7	34.8	838.24	22.85	8,227.2	39.7	992.42	2,188.5	16.6	258.63
Job permanency										
Permanent	13,176.3	36.1	934.54	25.11	11,151.4	39.3	1,045.96	2,024.9	18.1	320.95
Temporary	1,923.7	28.7	614.31	20.08	1,085.6	39.6	891.15	838.2	14.7	255.76
Occupation										
Management	944.2	40.0	1,537.76	38.56	922.5	40.5	1,560.44	21.6	20.3	570.05
Business, finance and administrative	2,857.0	35.3	844.22	23.41	2,447.3	38.3	932.02	409.8	17.6	319.85
Natural and applied sciences	1,209.5	38.6	1,297.57	33.66	1,170.6	39.2	1,321.26	38.8	18.5	583.55
Health	1,027.4	33.1	934.85	27.99	785.1	37.4	1,063.04	242.3	19.2	519.39
Social science, education, government service and religion	1,518.9	33.9	1,083.96	31.44	1,220.0	37.9	1,231.22	298.9	17.4	482.92
Art, culture, recreation and sport	361.6	29.3	780.93	24.41	236.3	38.4	1,067.13	125.3	12.2	241.39
Sales and service	3,921.5	30.2	534.87	16.50	2,421.8	38.4	728.56	1,499.7	16.9	222.08
Trades, transport and equipment operators	2,226.7	40.1	975.53	23.96	2,068.4	41.8	1,027.19	158.4	17.9	301.00
Occupations unique to primary industry	278.5	42.8	1,013.07	22.81	248.5	46.3	1,109.12	30.0	13.7	216.71
Occupations unique to processing, manufacturing and utilities	754.7	39.1	823.08	20.80	716.4	40.2	852.33	38.3	17.7	275.93
November 2012										
15 years and over	14,927.6	35.2	874.04	23.89	12,171.4	39.4	1,005.32	2,756.2	16.9	294.29
15 to 24 years	2,285.8	26.2	390.93	13.85	1,104.0	38.7	623.29	1,181.7	14.5	173.85
25 years and over	12,641.8	36.9	961.39	25.70	11,067.4	39.5	1,043.43	1,574.4	18.6	384.69
Men	7,498.4	37.7	998.08	25.70	6,615.6	40.6	1,096.93	882.7	16.1	257.22
Women	7,429.2	32.7	748.85	22.06	5,555.8	37.9	896.24	1,873.4	17.2	311.76
Union coverage										
Union coverage	4,784.5	35.8	991.09	27.36	4,102.4	38.7	1,083.95	682.1	18.4	432.65
No union coverage	10,143.1	35.0	818.83	22.25	8,069.0	39.8	965.35	2,074.0	16.4	248.78
Job permanency										
Permanent	13,006.3	36.3	916.63	24.54	11,094.1	39.4	1,019.97	1,912.2	18.0	317.06
Temporary	1,921.3	28.3	585.75	19.43	1,077.2	39.2	854.53	844.0	14.3	242.69
Occupation										
Management	1,037.8	39.8	1,479.25	37.20	1,009.0	40.4	1,508.03	28.8	17.5	471.02
Business, finance and administrative	2,816.2	35.4	807.89	22.40	2,414.2	38.3	888.78	402.0	17.6	322.09
Natural and applied sciences	1,145.2	38.6	1,267.29	32.76	1,103.0	39.3	1,297.48	42.3	18.8	479.63
Health	1,015.6	33.6	923.11	27.33	776.8	37.8	1,041.98	238.9	19.8	536.58
Social science, education, government service and religion	1,527.5	33.8	1,041.28	30.41	1,235.6	37.9	1,180.42	291.8	16.6	452.20
Art, culture, recreation and sport	351.5	28.5	717.85	23.02	220.6	38.2	1,009.60	130.9	12.1	226.27
Sales and service	3,729.8	30.2	524.47	16.15	2,315.5	38.6	716.27	1,414.4	16.5	210.48
Trades, transport and equipment operators	2,258.2	40.2	964.09	23.66	2,107.5	41.8	1,010.90	150.7	18.1	309.57
Occupations unique to primary industry	266.1	42.0	979.49	22.43	237.6	45.3	1,069.87	28.5	14.8	225.30
Occupations unique to processing, manufacturing and utilities	779.7	39.3	784.09	19.78	751.7	40.1	803.59	28.0	17.7	259.91

Note(s): Related CANSIM Tables 282-0023, 282-0069, 282-0073.

Table 8
Regional unemployment rates used by the Employment Insurance Program, ¹ seasonally adjusted, 3 month moving average

Region	Effective from December 8, 2013 to January 11, 2014
	percent
Newfoundland and Labrador	
01. St. John's	5.8
02. Newfoundland and Labrador	15.3
Prince Edward Island	
03. Prince Edward Island	11.5
Nova Scotia	
04. Eastern Nova Scotia	13.5
05. Western Nova Scotia	10.7
06. Halifax	6.6
New Brunswick	
07. Fredericton-Moncton-Saint John	7.9
08. Madawaska-Charlotte	11.7
09. Restigouche-Albert	16.3
Quebec	
10. Gaspésie-Îles-de-la-Madeleine	17.0
11. Québec	5.2
12. Trois-Rivières	8.2
13. South Central Quebec	4.6
14. Sherbrooke	7.8
15. Montérégie	7.3
16. Montréal	8.1
17. Central Quebec	7.8
18. Northwestern Quebec	8.4
19. Bas-Saint-Laurent-Côte-Nord	10.1
20. Gatineau	6.3
21. Saguenay	7.9
Ontario	
22. Ottawa	5.7
23. Eastern Ontario	7.1
24. Kingston	6.0
25. Central Ontario	6.8
26. Oshawa	6.8
27. Toronto	8.2
28. Hamilton	6.7
29. St. Catharines	8.5
30. London	7.4
31. Niagara	7.7
32. Windsor	8.3
33. Kitchener	6.5
34. Huron	8.1
35. South Central Ontario	6.5
36. Sudbury	7.2
37. Thunder Bay	6.7
38. Northern Ontario	11.8
Manitoba	
39. Winnipeg	5.9
40. Southern Manitoba	5.4
41. Northern Manitoba	31.8
Saskatchewan	
42. Regina	3.7
43. Saskatoon	4.1
44. Southern Saskatchewan	6.0
45. Northern Saskatchewan	17.6
Alberta	
46. Calgary	4.5
47. Edmonton	5.2
48. Northern Alberta	7.7
49. Southern Alberta	5.0

See notes at the end of the table.

Table 8 – continued

Regional unemployment rates used by the Employment Insurance Program, ¹ seasonally adjusted, 3 month moving average

Region	Effective from December 8, 2013 to January 11, 2014
	percent
British Columbia	
50. Southern Interior British Columbia	8.2
51. Abbotsford	7.6
52. Vancouver	6.8
53. Victoria	5.2
54. Southern Coastal British Columbia	9.9
55. Northern British Columbia	10.1
Territories	
56. Yukon ²	25.0
57. Northwest Territories ²	25.0
58. Nunavut ²	25.0

1. The boundaries of these regions are determined by Human Resources and Social Development Canada (HRSDC). For geographic descriptions and maps of employment insurance regions, see the HRSDC website: <http://srv129.services.gc.ca/eiregions/en/geocont.aspx>.

2. This rate is provided by Human Resources and Skills Development Canada.

Note(s): All geographic regions are based on the 1996 Census boundaries.

Data quality

About the Labour Force Survey

The statistics contained in this report are based on information obtained through a sample survey of 56,000 representative households across the country. The Labour Force Survey, started in November 1945, was taken at quarterly intervals until November 1952. It has been carried out monthly since then. The information generated by the survey has expanded considerably over the years with a major redesign of the survey content in 1976 and again in 1997, and provides a rich and detailed picture of the Canadian labour market.

The sample used in the Labour Force Survey has been designed to represent all persons in the population 15 years of age and over residing in the provinces of Canada, with the exception of the following: persons living on Indian reserves, full-time members of the armed forces and people living in institutions (for example, inmates of penal institutions and patients in hospitals or nursing homes who have resided in the institution for more than six months). Monthly estimates of employment, unemployment and persons not in the labour force refer to the specific week covered by the survey each month, normally the week containing the 15th day.

Definitions and explanations

The **labour force** is composed of those members of the civilian non-institutional population 15 years of age and over who, during the reference week, were employed or unemployed.

Employed persons are those who, during the reference week:

- (a) did any work at all
- (b) had a job but were not at work

A person is considered to be **full-time** if his/her usual hours at the main job are 30 or more hours per week. When the number of hours worked at the main job is usually less than 30 hours per week then he/she is considered to be **part-time**.

Unemployed persons are those who, during the reference week:

- (a) were without work, had actively looked for work in the past four weeks (ending with reference week), and were available for work;
- (b) had not actively looked for work in the past four weeks but were on temporary layoff and were available for work;
- (c) had not actively looked for work in the past four weeks but had a new job to start in four weeks or less from the reference week, and were available for work.

Persons in the civilian non-institutional population 15 years of age and over who, during the reference week, were neither employed nor unemployed are classified as **not in the labour force**.

The **unemployment rate** represents the number of unemployed persons expressed as a percentage of the labour force. The unemployment rate for a particular group (age, sex, etc.) is the number unemployed in that group expressed as a percentage of the labour force for that group.

The **participation rate** represents the labour force expressed as a percentage of the population 15 years of age and over. The participation rate for a particular group (age, sex, etc.) is the labour force in that group expressed as a percentage of the population for that group.

The **employment rate (formerly the employment/population ratio)** represents the number of persons employed expressed as a percentage of the population 15 years of age and over. The employment rate for a particular group (age, sex, etc.) is the number employed in that group expressed as a percentage of the population for that group.

The **part-time rate** represents the number of persons employed part-time expressed as a percentage of the employed. The part-time rate for a particular group (age, sex, etc.) is the number employed part-time in that group expressed as a percentage of the employed for that group.

All geographic regions are based on the 2006 Census boundaries.

Seasonal adjustment

Fluctuations in economic time series are caused by seasonal, cyclical and irregular movements. A seasonally adjusted series is one from which seasonal movements have been eliminated. Seasonal movements are defined as those which are caused by regular annual events such as climate, holidays, vacation periods and cycles related to crops, production and retail sales associated with Christmas and Easter. The seasonally adjusted series contains irregular as well as longer-term cyclical fluctuations.

The seasonally adjusted series are revised each year to take into account current data and to generate new forecast factors for the next twelve months. The data are therefore subject to slight revisions in future issues of this publication.

Sampling variability of estimates

Estimates in this publication are based on the Labour Force Survey, a monthly survey of approximately 56,000 households across Canada. Because the entire population is not surveyed, the estimates are subject to sampling error. While the published estimate is the best available indicator of the real value, changes in the level of any estimates between two months can be the result of a true change or sampling variability. The sampling error can be estimated by calculating the standard error for the published estimate or statistic. These standard errors have been included in the publication tables, in order to assist users in interpreting the data. They are based on 12-month averages and are updated twice a year, in February and August.

Interpretation based on standard error

Two thirds of the time (68%), a change greater than the sampling error indicates a real change. The larger the change compared to the standard error, the better the chance that we are observing a real change, as opposed to a change due to sampling variability. At the 95% level, in order to ensure that change is real, the change in the estimate must be greater than twice the sampling error.

Movements in estimates that are smaller than the sampling error are less likely to reflect a real change and more likely to be due to sampling variability. While the above is true for monthly movements, one can have more confidence in a series of consecutive movements in the same direction, even though some of the monthly movements may be smaller than the sampling error.

Interpretation based on confidence intervals

Confidence intervals provide another way of looking at the variability inherent in estimates of sample surveys. To illustrate how to calculate the confidence interval, let us say that one month the published estimate for total employment rose by 16,000 to reach 16,500,000. The associated standard error for the movement estimate is 27,200. The standard error used to interpret the movement estimate indicates that:

- There are approximately two chances in three (68%) that the real value of the movement between the two months falls within the range -11,200 to +43,200 (16,000 + or – one standard error).
- There are approximately nine chances in ten (90%) that the real value of the movement between the two months falls within the range -27,520 to +59,520 (16,000 + or – 1.6 times the standard error).
- There are approximately nineteen chances in twenty (95%) that the real value of the movement between the two months falls within the range -38,400 to +70,400 (16,000 + or – two standard errors).

For more detailed explanations on sampling variability of estimates, and in particular for information on how to assess the variability of level estimates, consult the Data quality section of the *Guide to the Labour Force Survey*, (71-543-G) on page 27.

Documentation

For more detailed information about the Labour Force Survey, see the following documents:

- Overview of the Labour Force Survey
- Guide to the Labour Force Survey (71-543-G)
- Data quality statement
- Methodology of the Canadian Labour Force Survey (71-526-X)
- LFS *geographical maps*