

Catalogue no. 71-001-X

Labour Force Information

Friday, May 10, 2013

April 14 to 20, 2013



Statistics
Canada

Statistique
Canada

Canada

How to obtain more information

For information about this product or the wide range of services and data available from Statistics Canada, visit our website, www.statcan.gc.ca.

You can also contact us by

e-mail at infostats@statcan.gc.ca

telephone, from Monday to Friday, 8:30 a.m. to 4:30 p.m., at the following toll-free numbers:

- Statistical Information Service 1-800-263-1136
- National telecommunications device for the hearing impaired 1-800-363-7629
- Fax line 1-877-287-4369

Depository Services Program

- Inquiries line 1-800-635-7943
- Fax line 1-800-565-7757

To access this product

This product, Catalogue no. 71-001-X, is available free in electronic format. To obtain a single issue, visit our website, www.statcan.gc.ca and browse by "Key resource" > "Publications."

Standards of service to the public

Statistics Canada is committed to serving its clients in a prompt, reliable and courteous manner. To this end, this agency has developed standards of service that its employees observe. To obtain a copy of these service standards, please contact Statistics Canada toll-free at 1-800-263-1136. The service standards are also published at www.statcan.gc.ca under "About us" > "The agency" > "Providing services to Canadians."

Statistics Canada
Labour Statistics Division
Labour Force Survey Program

Labour Force Information

Friday, May 10, 2013

April 14 to 20, 2013

Published by authority of the Minister responsible for Statistics Canada

© Minister of Industry, 2013

All rights reserved. Use of this publication is governed by the Statistics Canada
Open License Agreement.

<http://www.statcan.gc.ca/reference/licence-eng.html>

May 2013

Catalogue no. 71-001-X

ISSN 1492-5478

Frequency: Monthly

Ottawa

Cette publication est également disponible en français.

Note of appreciation

Canada owes the success of its statistical system to a long-standing partnership between Statistics Canada, the citizens of Canada, its businesses, governments and other institutions. Accurate and timely statistical information could not be produced without their continued cooperation and goodwill.

User information

Symbols

The following standard symbols are used in Statistics Canada publications:

- . not available for any reference period
- .. not available for a specific reference period
- ... not applicable
- 0 true zero or a value rounded to zero
- 0^s value rounded to 0 (zero) where there is a meaningful distinction between true zero and the value that was rounded
- P preliminary
- r revised
- x suppressed to meet the confidentiality requirements of the *Statistics Act*
- E use with caution
- F too unreliable to be published
- * significantly different from reference category ($p < 0.05$)

Special requests (\$)

Custom tabulations can be arranged on an ad hoc or regular basis. This service enables you to specify tables and time series to meet your own requirements. The cost varies according to the request. For more information, contact us toll-free at 1-866-873-8788 or e-mail us at labour@statcan.gc.ca.

Schedule of LFS releases

Reference period - Week ending	Release date
December 8, 2012	January 4, 2013
January 19, 2013	February 8, 2013
February 16, 2013	March 8, 2013
March 16, 2013	April 5, 2013
April 20, 2013	May 10, 2013
May 18, 2013	June 7, 2013
June 15, 2013	July 5, 2013
July 20, 2013	August 9, 2013
August 17, 2013	September 6, 2013
September 21, 2013	October 11, 2013
October 19, 2013	November 8, 2013
November 16, 2013	December 6, 2013
December 14, 2013	January 10, 2014

Latest LFS release in *The Daily* (free)

Table of contents

Highlights	5
Analysis — April 2013	6
Charts	
1. Employment and unemployment indicators, Canada, seasonally adjusted	8
2. Employment and unemployment indicators, Canada, seasonally adjusted	9
3. Index of employment by industry, Canada, seasonally adjusted, January 2010=100	10
4. Index of employment by industry, Canada, seasonally adjusted, January 2010=100	11
5. Index of employment by industry, Canada, seasonally adjusted, January 2010=100	12
6. Index of employment by province, seasonally adjusted, January 2010=100	13
7. Index of employment by province, seasonally adjusted, January 2010=100	14
Related products	15
Statistical tables	
1 Labour force characteristics by age and sex, Canada, seasonally adjusted	25
2 Employment by class of worker and industry, Canada, seasonally adjusted	27
3 Labour force characteristics by province, seasonally adjusted	28
4 Selected labour force characteristics (seasonally adjusted)	30
4-1 Newfoundland and Labrador	30
4-2 Prince Edward Island	31
4-3 Nova Scotia	32
4-4 New Brunswick	33
4-5 Quebec	34
4-6 Ontario	35
4-7 Manitoba	36
4-8 Saskatchewan	37
4-9 Alberta	38
4-10 British Columbia	39
5 Labour force characteristics by census metropolitan area (seasonally adjusted)	40
5-1 3 month moving average	40
5-2 Monthly	45

Table of contents – continued

6	Labour force characteristics	46
6-1	by province and economic region, unadjusted for seasonality, 3 month moving average ending in April 2012 and April 2013	46
6-2	by territories, unadjusted for seasonality, 3 month moving average ending in April 2012 and April 2013	51
7	Average usual hours and wages of employees by selected characteristics, Canada, unadjusted for seasonality	52
8	Regional unemployment rates used by the Employment Insurance Program, seasonally adjusted, 3 month moving average	53
Data quality, concepts and methodology		
	Data quality	55

Highlights

Following a decline the previous month, employment was little changed in April, and the unemployment rate remained at 7.2%.

Chart 1
Employment and unemployment rates, Canada, seasonally adjusted

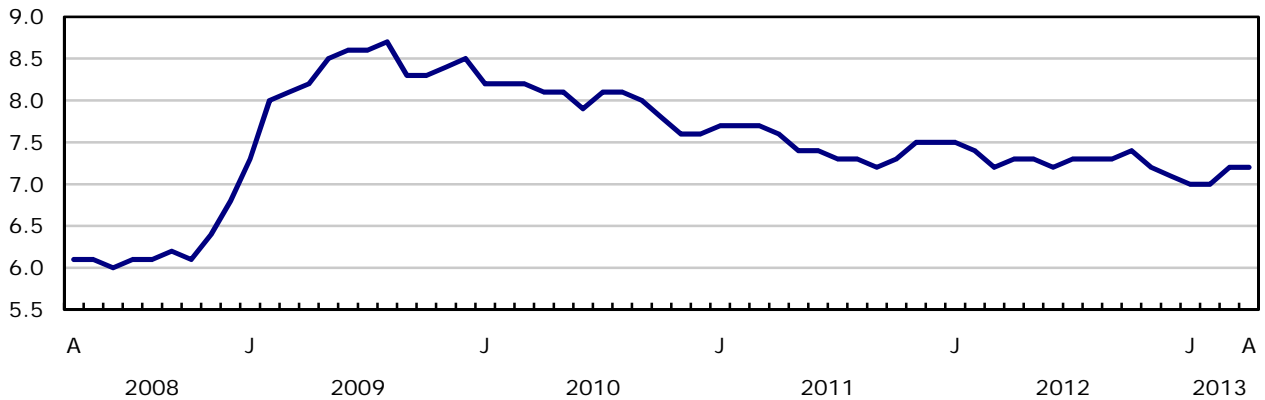
Employment

thousands



Unemployment rate

percent



Analysis — April 2013

Following a decline the previous month, employment was little changed in April, and the unemployment rate remained at 7.2%.

Compared with 12 months earlier, employment increased 0.9% or 163,000, all in full time. The total number of hours worked rose by 1.5% over the same period.

Provincially, employment grew in Alberta, while it fell in Manitoba, New Brunswick, as well as Newfoundland and Labrador.

In April, there were employment gains in manufacturing and public administration. These gains were offset by losses in transportation and warehousing; 'other services'; and business, building and other support services.

There were 34,000 more people working in the public sector in April, while there was little change in the number of private sector employees and the self-employed.

Over the previous 12 months, public sector employment increased 2.6% or 94,000, while growth in self-employment was 2.2% (+59,000), the bulk of which was in the first quarter of 2013. The number of private sector employees was little changed compared with 12 months earlier, as gains in the second half of 2012 were offset by losses in 2013.

Employment in April increased among people aged 25 to 54 and declined among youths. For people aged 55 and over, employment was little changed.

Employment up in Alberta

Employment in Alberta increased by 15,000 in April, offsetting the loss in the previous month and pushing the unemployment rate down 0.4 percentage points to 4.4%. Compared with 12 months earlier, employment in Alberta grew by 1.9%.

In Manitoba, employment declined by 11,000 in April, pushing the unemployment rate up 0.8 percentage points to 5.8%. With this decline, employment returned to a level similar to that of 12 months earlier.

Employment in New Brunswick fell by 3,200 and the unemployment rate was 10.9%. Compared with 12 months earlier, employment in the province was little changed.

Following three months of little change, employment in Newfoundland and Labrador declined by 3,000 in April and the unemployment rate was 12.4%. This decline brought employment back to its level of 12 months earlier.

Employment in Ontario was little changed in April, and the unemployment rate remained at 7.7%. On a year-over-year basis, employment growth in this province was 1.0%, with the bulk of the gains in the fall of 2012.

After the previous month's decline, employment in Quebec was little changed in April and the unemployment rate was 7.8%. Compared with 12 months earlier, employment in the province rose 1.1%, with most of the growth from August to November 2012.

Industry perspective

Employment in manufacturing increased by 21,000 in April, the first monthly gain following a downward trend that began in June 2012. Employment in this industry was down 2.9% or 52,000 from 12 months earlier.

In April, the number of employees in public administration grew by 13,000. Compared with 12 months earlier, employment in this industry was up 2.6% or 25,000, all in provincial and local public administration.

There were 21,000 fewer people working in transportation and warehousing, bringing employment in this industry back to its level of 12 months earlier.

Employment in 'other services', such as repair and maintenance or personal and household services, continued its year-long downward trend, declining by 19,000 in April. On a year-over-year basis, total employment fell 7.3% in this industry.

The number of workers in business, building and other support services decreased by 16,000 in April, bringing employment back to a level similar to that of 12 months earlier.

Employment increases among people aged 25 to 54

In April, there were 31,000 more people aged 25 to 54 working, mostly men. With this gain, the unemployment rate for this age group fell 0.3 percentage points to 5.8%. On a year-over-year basis, total employment gains were 69,000 (+0.6%).

Among youths aged 15 to 24, employment declined by 19,000 in April, and the unemployment rate was 14.5%. Compared with 12 months earlier, youth employment was little changed.

Employment among people aged 55 and over was little changed in April. However, with more people in this age group searching for work, the unemployment rate rose 0.3 percentage points to 6.1%. Over the 12 months to April, employment for this group was up 111,000 (+3.5%), primarily a result of population ageing.

Note to Readers

The Labour Force Survey (LFS) estimates are based on a sample and are therefore subject to sampling variability. As a result, monthly estimates will show more variability than trends observed over longer time periods. Estimates for smaller geographic areas or industries also have more variability. For an explanation of sampling variability of estimates and how to use standard errors to assess this variability, consult the 'Estimates quality' section of the publication *Labour Force Information (71-001-X)*.

The employment rate is the number of employed persons as a percentage of the population 15 years of age and over. The rate for a particular group (for example, youth aged 15 to 24) is the number employed in that group as a percentage of the population for that group.

The unemployment rate is the number unemployed as a percentage of the labour force (employed and unemployed).

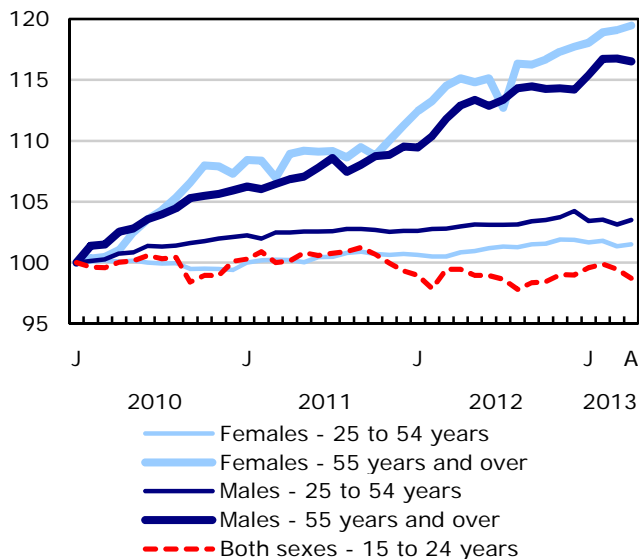
The participation rate is the number of employed and unemployed as a percentage of the population. For more detailed information, see the *Guide to the Labour Force Survey (71-543-G)*.

Unless otherwise stated, this release presents seasonally adjusted estimates, which facilitates comparisons by removing the effects of seasonal variations. For more information on seasonal adjustment, see *Seasonal adjustment and identifying economic trends*.

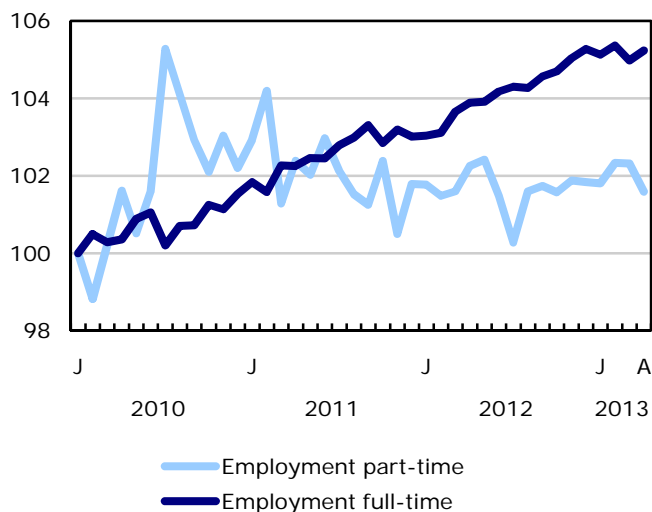
Each year, the LFS revises its estimates for the previous three years, using the latest seasonal factors.

Chart 1
Employment and unemployment indicators, Canada, seasonally adjusted

Employment index, January 2010=100



Employment index, January 2010=100



Employment index, January 2010=100

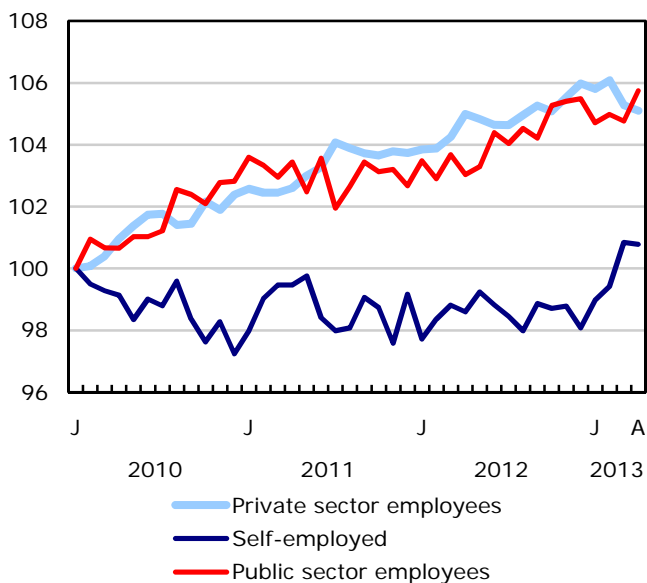
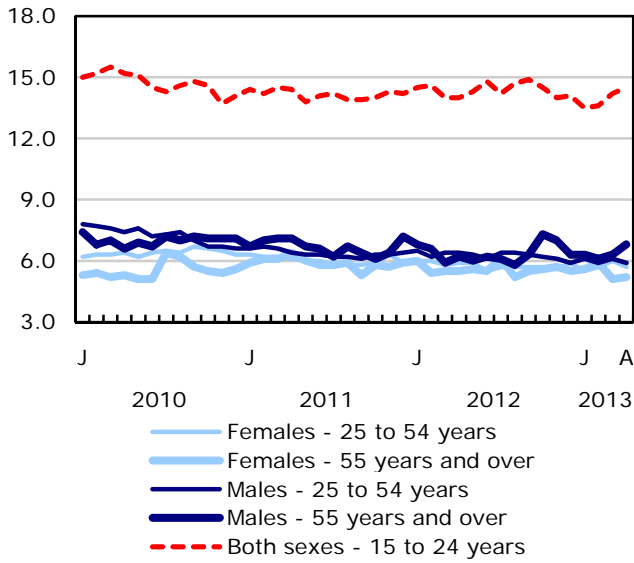
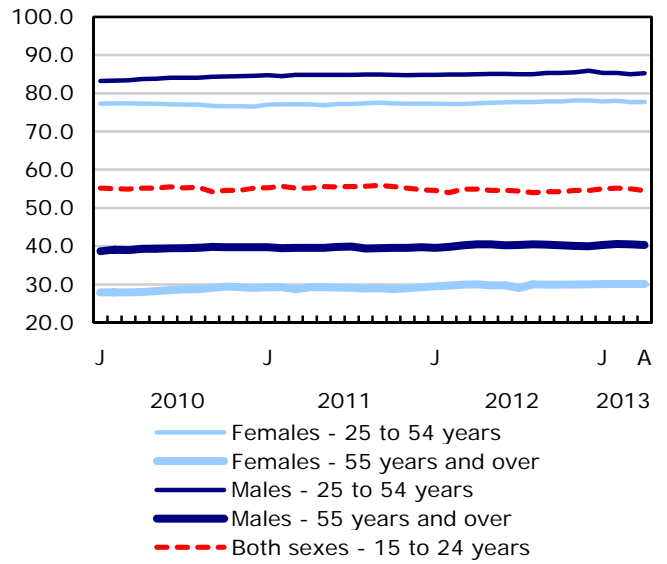


Chart 2
Employment and unemployment indicators, Canada, seasonally adjusted

Unemployment rate (%)



Employment rate (%)



Participation rate (%)

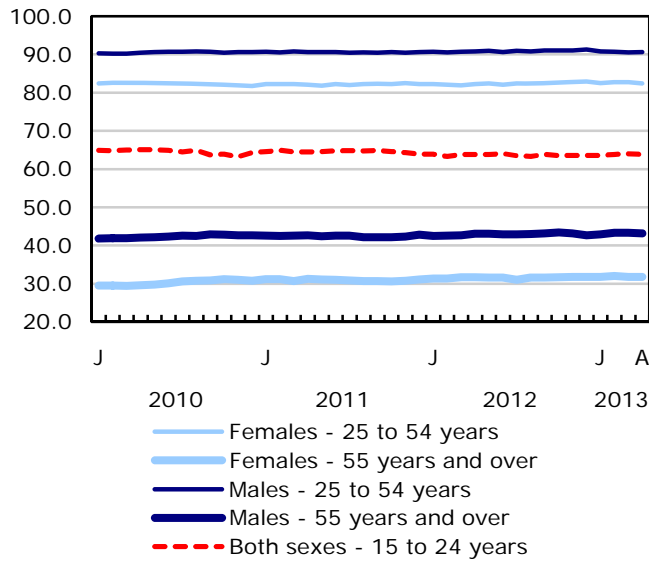


Chart 3
Index of employment by industry, Canada, seasonally adjusted, January 2010=100

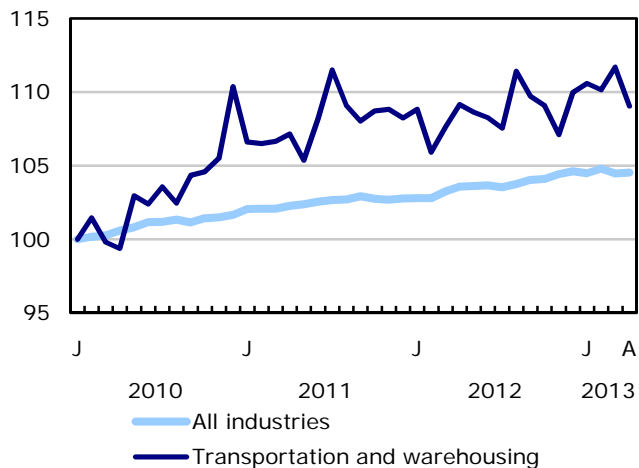
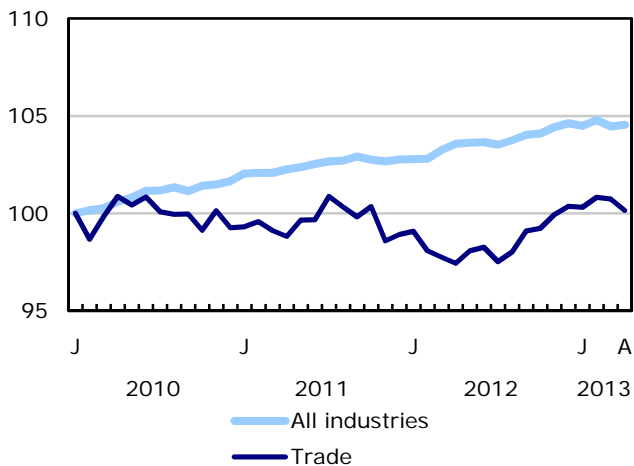
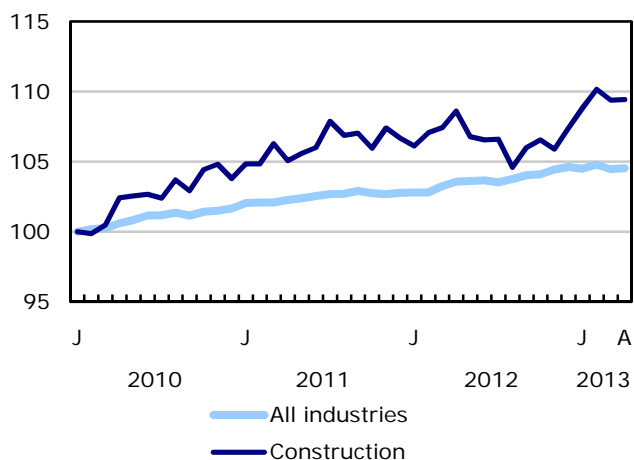
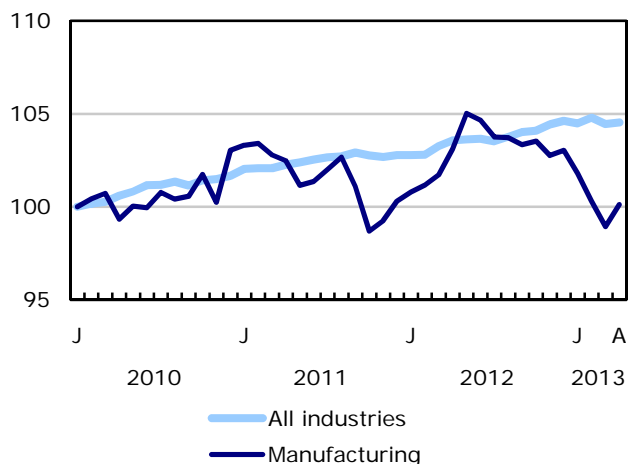
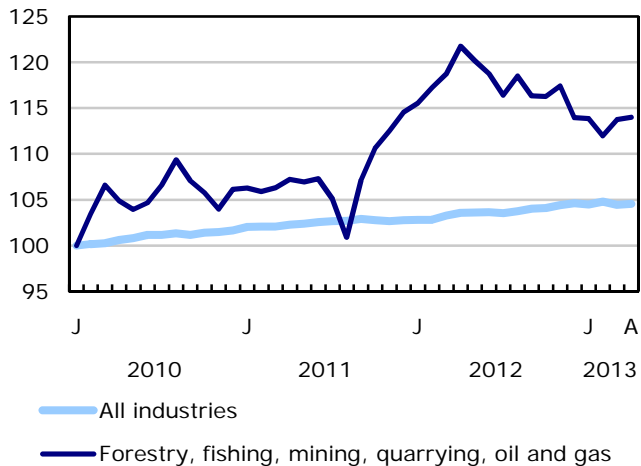
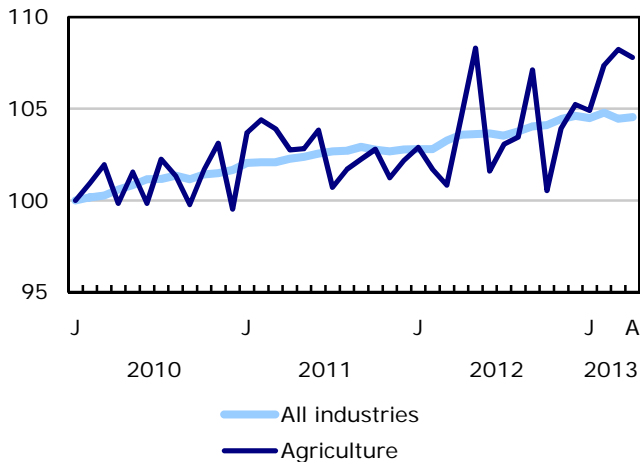


Chart 4
Index of employment by industry, Canada, seasonally adjusted, January 2010=100

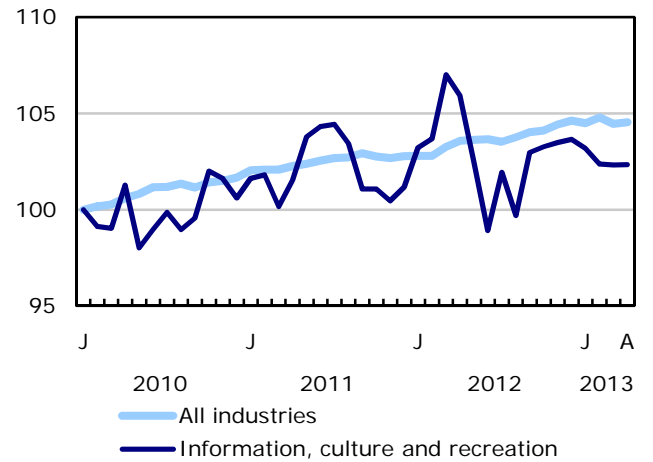
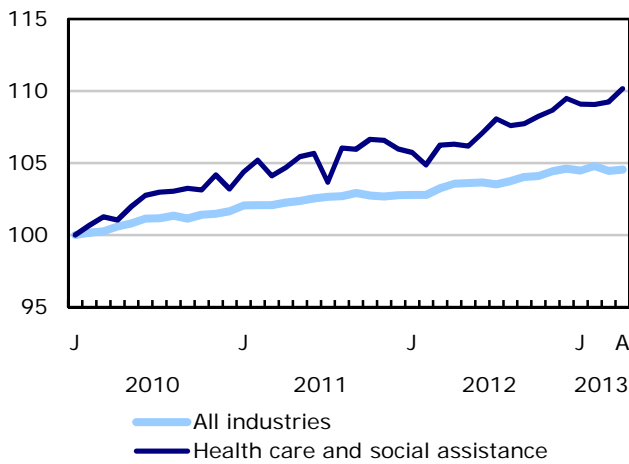
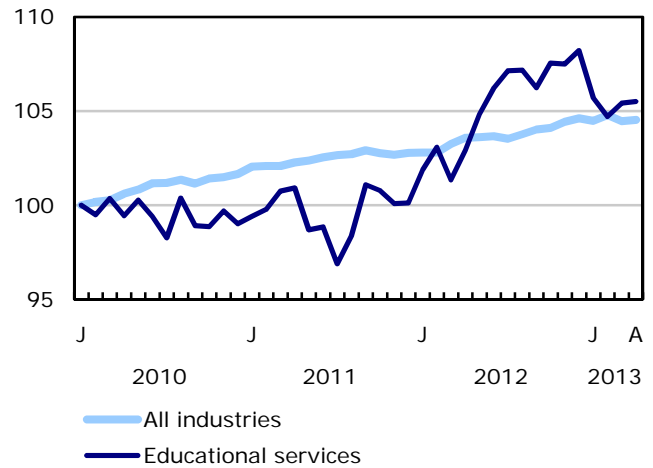
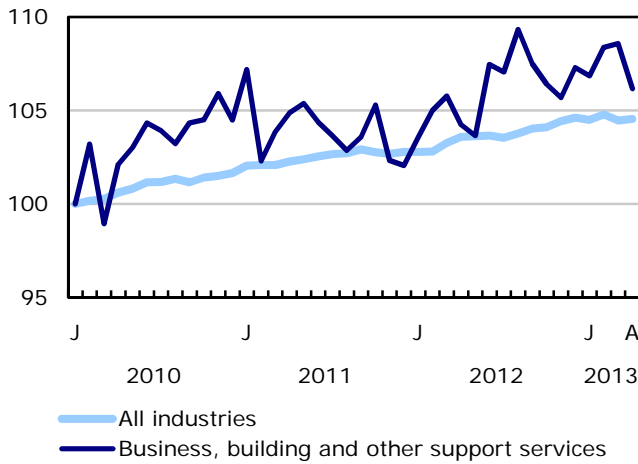
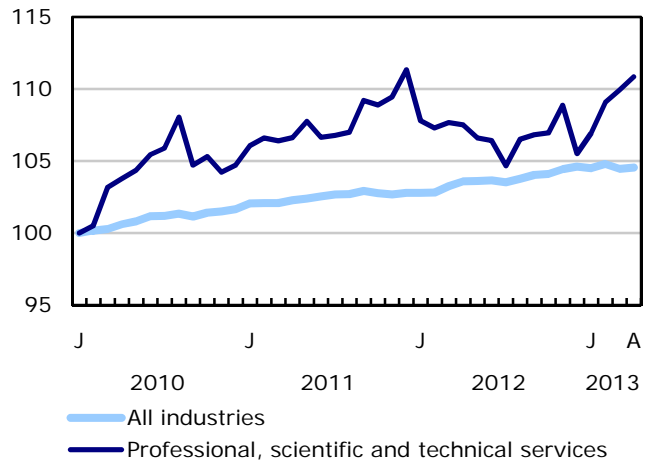
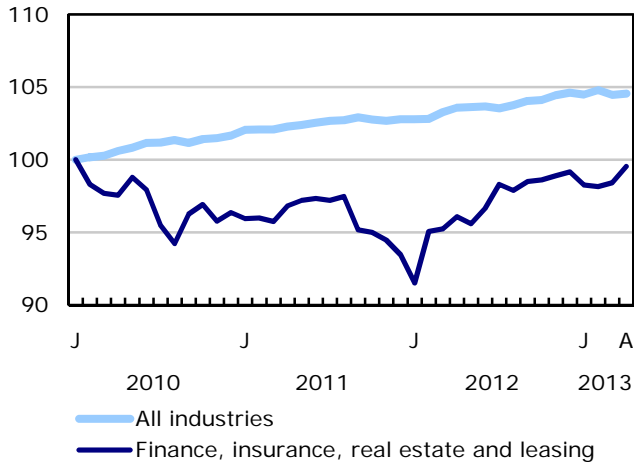


Chart 5
Index of employment by industry, Canada, seasonally adjusted, January 2010=100

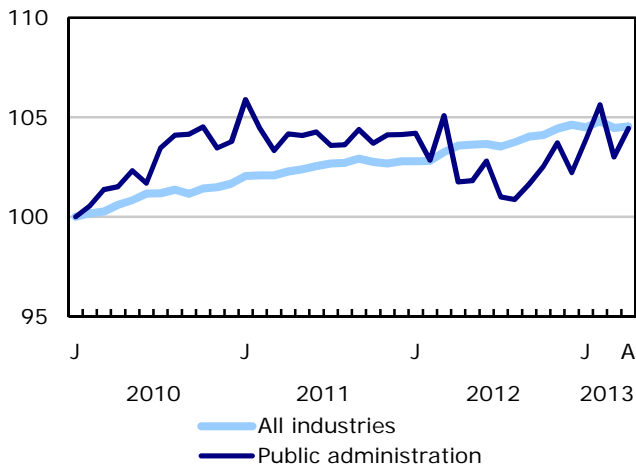
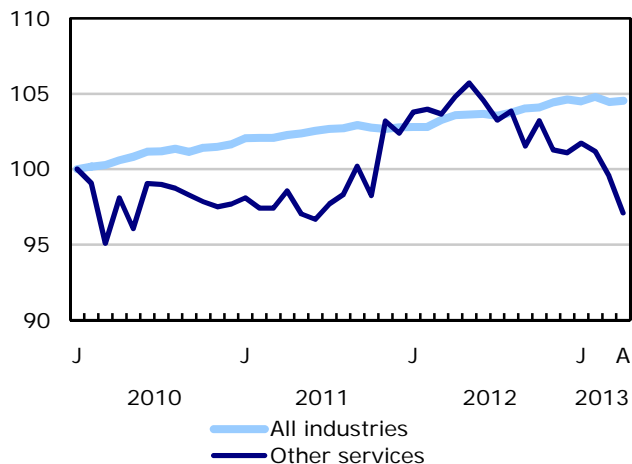
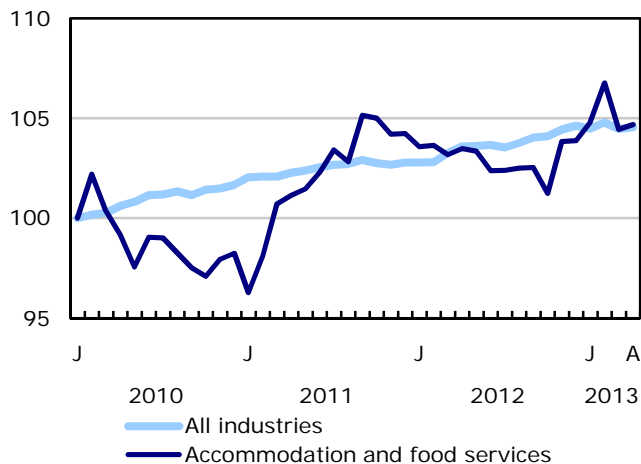


Chart 6
Index of employment by province, seasonally adjusted, January 2010=100

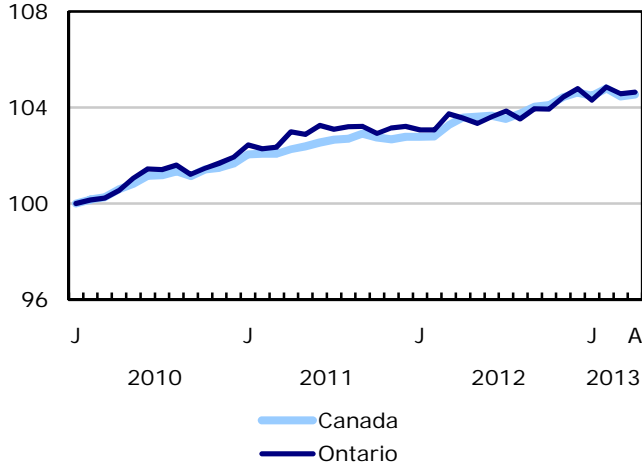
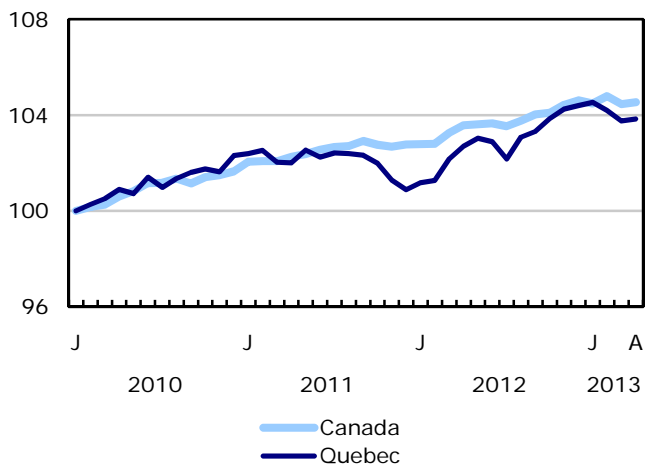
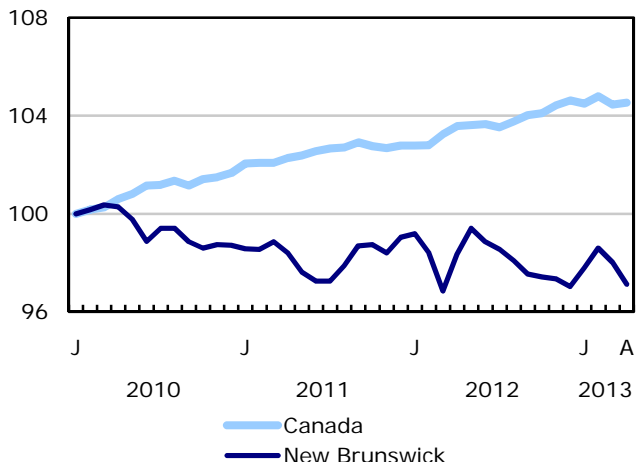
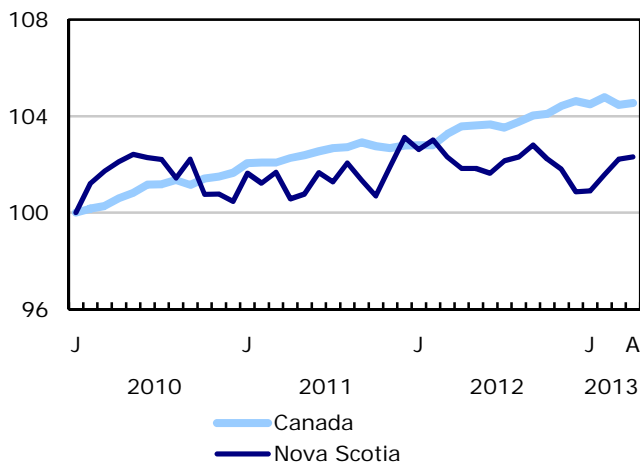
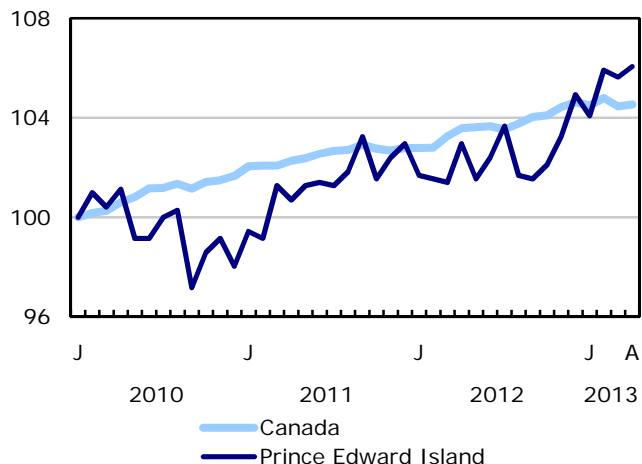
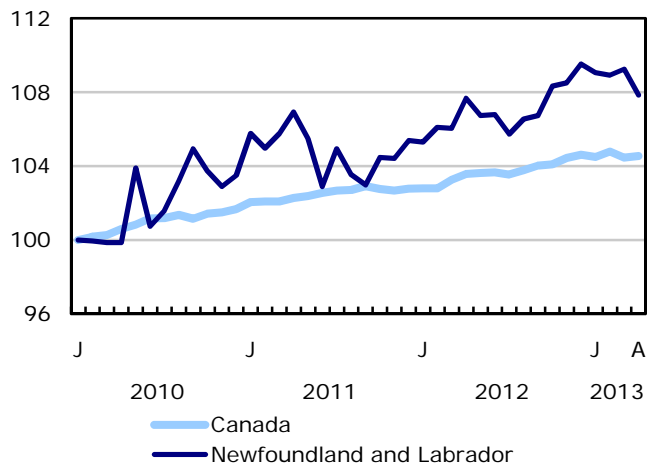
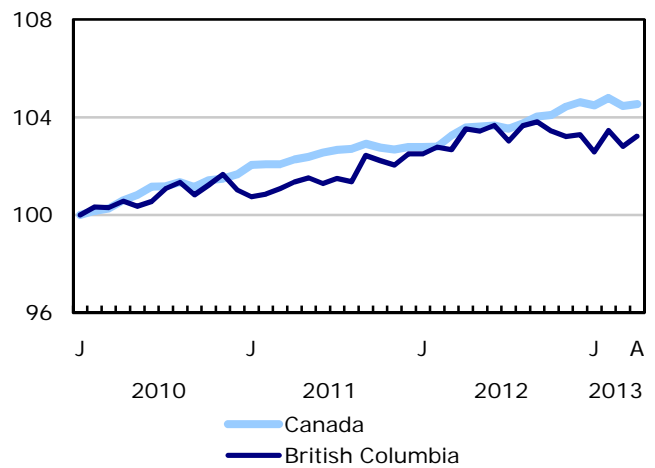
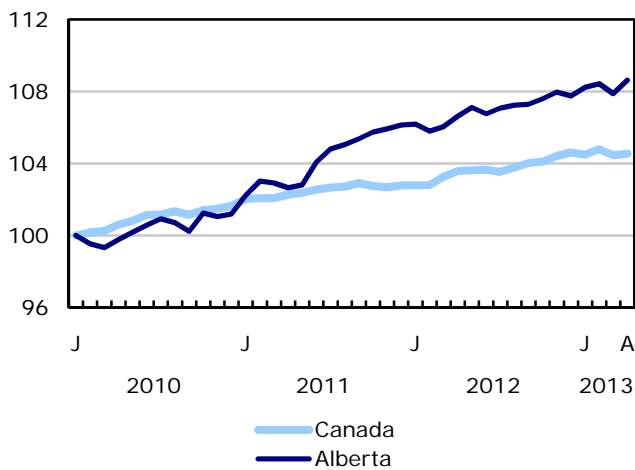
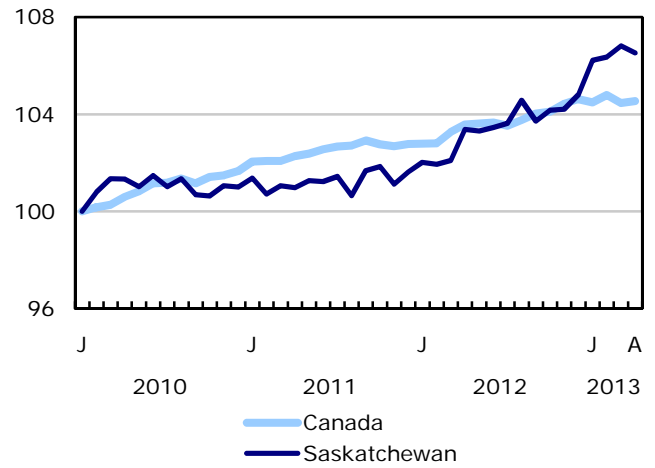
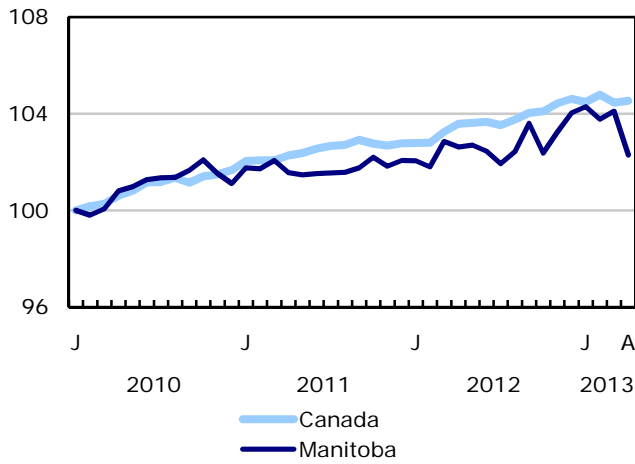


Chart 7
Index of employment by province, seasonally adjusted, January 2010=100



Related products

Selected publications from Statistics Canada

71-222-X	The Canadian Labour Market at a Glance
71-526-X	Methodology of the Canadian Labour Force Survey
71-543-G	Guide to the Labour Force Survey
71-544-X	Labour Force Survey Products and Services
71-587-X	Aboriginal Peoples Living Off-reserve in Western Canada: Estimates from the Labour Force Survey
71-588-X	The Aboriginal Labour Force Analysis Series
71-606-X	The Immigrant Labour Force Analysis Series
71F0031X	Improvements to the Labour Force Survey (LFS)
71M0001X	Labour Force Survey Microdata File

Selected CANSIM tables from Statistics Canada

282-0001	Labour force survey estimates (LFS), by sex and detailed age group, unadjusted for seasonality, monthly
282-0002	Labour force survey estimates (LFS), by sex and detailed age group, annual
282-0003	Labour force survey estimates (LFS), by educational attainment, sex and age group, unadjusted for seasonality, monthly
282-0004	Labour force survey estimates (LFS), by educational attainment, sex and age group, annual
282-0005	Labour force survey estimates (LFS), by full- and part-time students during school months, sex and age group, unadjusted for seasonality, monthly
282-0006	Labour force survey estimates (LFS), by students during summer months, sex and age group, unadjusted for seasonality, monthly
282-0007	Labour force survey estimates (LFS), by North American Industry Classification System (NAICS), sex and age group, unadjusted for seasonality, monthly
282-0008	Labour force survey estimates (LFS), by North American Industry Classification System (NAICS), sex and age group, annual

282-0009	Labour force survey estimates (LFS), by National Occupational Classification for Statistics (NOC-S) and sex, unadjusted for seasonality, monthly
282-0010	Labour force survey estimates (LFS), by National Occupational Classification for Statistics (NOC-S) and sex, annual
282-0011	Labour force survey estimates (LFS), employment by class of worker, North American Industry Classification System (NAICS) and sex, unadjusted for seasonality, monthly
282-0012	Labour force survey estimates (LFS), employment by class of worker, North American Industry Classification System (NAICS) and sex, annual
282-0013	Labour force survey estimates (LFS), part-time employment by reason for part-time work, sex and age group, unadjusted for seasonality, monthly
282-0014	Labour force survey estimates (LFS), part-time employment by reason for part-time work, sex and age group, annual
282-0015	Labour force survey estimates (LFS), by usual hours worked, main or all jobs, sex and age group, unadjusted for seasonality, monthly
282-0016	Labour force survey estimates (LFS), by usual hours worked, main or all jobs, sex and age group, annual
282-0017	Labour force survey estimates (LFS), by actual hours worked, main or all jobs, sex and age group, unadjusted for seasonality, monthly
282-0018	Labour force survey estimates (LFS), by actual hours worked, main or all jobs, sex and age group, annual
282-0019	Labour force survey estimates (LFS), by usual hours worked, class of worker, North American Industry Classification System (NAICS) and sex, unadjusted for seasonality, monthly
282-0020	Labour force survey estimates (LFS), by usual hours worked, class of worker, North American Industry Classification System (NAICS) and sex, annual
282-0021	Labour force survey estimates (LFS), by actual hours worked, class of worker, North American Industry Classification System (NAICS) and sex, unadjusted for seasonality, monthly
282-0022	Labour force survey estimates (LFS), by actual hours worked, class of worker, North American Industry Classification System (NAICS) and sex, annual
282-0023	Labour force survey estimates (LFS), by usual hours worked, class of worker, National Occupational Classification for Statistics (NOC-S) and sex, unadjusted for seasonality, monthly
282-0024	Labour force survey estimates (LFS), by usual hours worked, class of worker, National Occupational Classification for Statistics (NOC-S) and sex, annual
282-0025	Labour force survey estimates (LFS), by actual hours worked, class of worker, National Occupational Classification for Statistics (NOC-S) and sex, unadjusted for seasonality, monthly
282-0026	Labour force survey estimates (LFS), by actual hours worked, class of worker, National Occupational Classification for Statistics (NOC-S) and sex, annual
282-0027	Labour force survey estimates (LFS), by total and average usual and actual hours worked, main or all jobs, type of work, sex and age group, unadjusted for seasonality, monthly

282-0028	Labour force survey estimates (LFS), by total and average usual and actual hours worked, main or all jobs, type of work, sex and age group, annual
282-0029	Labour force survey estimates (LFS), average days lost for personal reasons per full-time employee by North American Industry Classification System (NAICS), sex and age group, annual
282-0030	Labour force survey estimates (LFS), average days lost for personal reasons per full-time employee by National Occupational Classification for Statistics (NOC-S), sex and age group, annual
282-0031	Labour force survey estimates (LFS), multiple jobholders by North American Industry Classification System (NAICS), sex and age group, annual
282-0032	Labour force survey estimates (LFS), multiple jobholders by North American Industry Classification System (NAICS), sex and age group, unadjusted for seasonality, monthly
282-0033	Labour force survey estimates (LFS), multiple jobholders by National Occupational Classification for Statistics (NOC-S), sex and age group, unadjusted for seasonality, monthly
282-0034	Labour force survey estimates (LFS), multiple jobholders by National Occupational Classification for Statistics (NOC-S), sex and age group, annual
282-0035	Labour force survey estimates (LFS), multiple jobholders by usual hours worked at main and all jobs, unadjusted for seasonality, monthly
282-0036	Labour force survey estimates (LFS), multiple jobholders by usual hours worked at main and all jobs, annual
282-0037	Labour force survey estimates (LFS), job tenure by type of work, sex and age group, unadjusted for seasonality, monthly
282-0038	Labour force survey estimates (LFS), job tenure by type of work, sex and age group, annual
282-0039	Labour force survey estimates (LFS), job tenure by National Occupational Classification for Statistics (NOC-S) and sex, unadjusted for seasonality, monthly
282-0040	Labour force survey estimates (LFS), job tenure by National Occupational Classification for Statistics (NOC-S) and sex, annual
282-0041	Labour force survey estimates (LFS), job tenure by North American Industry Classification System (NAICS) and sex, unadjusted for seasonality, monthly
282-0042	Labour force survey estimates (LFS), job tenure by North American Industry Classification System (NAICS) and sex, annual
282-0047	Labour force survey estimates (LFS), duration of unemployment by sex and age group, unadjusted for seasonality, monthly
282-0048	Labour force survey estimates (LFS), duration of unemployment by sex and age group, annual
282-0049	Labour force survey estimates (LFS), unemployment by type of work sought and search method, sex and age group, unadjusted for seasonality, monthly
282-0050	Labour force survey estimates (LFS), unemployment by type of work sought and search method, sex and age group, annual

282-0051	Labour force survey estimates (LFS), retirement age by class of worker and sex, annual
282-0054	Labour force survey estimates (LFS), by provinces and economic regions based on 2006 Census boundaries, 3-month moving average, unadjusted for seasonality, monthly
282-0055	Labour force survey estimates (LFS), by provinces, territories and economic regions based on 2006 Census boundaries, annual
282-0060	Labour force survey estimates (LFS), employment by economic region and North American Industry Classification System (NAICS), 3-month moving average, unadjusted for seasonality, monthly
282-0061	Labour force survey estimates (LFS), employment by economic region and North American Industry Classification System (NAICS), annual
282-0062	Labour force survey estimates (LFS), employment by economic region and National Occupational Classification for Statistics (NOC-S), 3-month moving average, unadjusted for seasonality, monthly
282-0063	Labour force survey estimates (LFS), employment by economic region and National Occupational Classification for Statistics (NOC-S), annual
282-0069	Labour force survey estimates (LFS), wages of employees by type of work, National Occupational Classification for Statistics (NOC-S), sex and age group, unadjusted for seasonality, monthly (current dollars)
282-0070	Labour force survey estimates (LFS), wages of employees by type of work, National Occupational Classification for Statistics (NOC-S), sex and age group, annual (current dollars)
282-0071	Labour force survey estimates (LFS), wages of employees by type of work, North American Industry Classification System (NAICS), sex and age group, unadjusted for seasonality, monthly (current dollars)
282-0072	Labour force survey estimates (LFS), wages of employees by type of work, North American Industry Classification System (NAICS), sex and age group, annual (current dollars)
282-0073	Labour force survey estimates (LFS), wages of employees by job permanence, union coverage, sex and age group, unadjusted for seasonality, monthly (current dollars)
282-0074	Labour force survey estimates (LFS), wages of employees by job permanence, union coverage, sex and age group, annual (current dollars)
282-0075	Labour force survey estimates (LFS), employees by establishment size, North American Industry Classification System (NAICS), sex and age group, unadjusted for seasonality, monthly
282-0076	Labour force survey estimates (LFS), employees by establishment size, North American Industry Classification System (NAICS), sex and age group, annual
282-0077	Labour force survey estimates (LFS), employees by union coverage, North American Industry Classification System (NAICS), sex and age group, unadjusted for seasonality, monthly
282-0078	Labour force survey estimates (LFS), employees by union coverage, North American Industry Classification System (NAICS), sex and age group, annual

282-0079	Labour force survey estimates (LFS), employees by job permanency, North American Industry Classification System (NAICS), sex and age group, unadjusted for seasonality, monthly
282-0080	Labour force survey estimates (LFS), employees by job permanency, North American Industry Classification System (NAICS), sex and age group, annual
282-0081	Labour force survey estimates (LFS), employees working overtime (weekly) by National Occupational Classification for Statistics (NOC-S), sex and age group, unadjusted for seasonality, monthly
282-0082	Labour force survey estimates (LFS), employees working overtime (weekly) by National Occupational Classification for Statistics (NOC-S), sex and age group, annual
282-0083	Labour force survey estimates (LFS), employees working overtime (weekly) by North American Industry Classification System (NAICS), sex and age group, unadjusted for seasonality, monthly
282-0084	Labour force survey estimates (LFS), employees working overtime (weekly) by North American Industry Classification System (NAICS), sex and age group, annual
282-0085	Labour force survey estimates (LFS), supplementary unemployment rates by sex and age group, unadjusted for seasonality, monthly
282-0086	Labour force survey estimates (LFS), supplementary unemployment rates by sex and age group, annual
282-0087	Labour force survey estimates (LFS), by sex and age group, seasonally adjusted and unadjusted, monthly
282-0088	Labour force survey estimates (LFS), employment by North American Industry Classification System (NAICS), seasonally adjusted and unadjusted, monthly
282-0089	Labour force survey estimates (LFS), employment by class of worker and sex, seasonally adjusted and unadjusted, monthly
282-0092	Labour force survey estimates (LFS), actual hours worked at main job by North American Industry Classification System (NAICS), seasonally adjusted, monthly
282-0093	Labour force survey estimates (LFS), employment by National Occupational Classification for Statistics (NOC-S), seasonally adjusted, monthly
282-0094	Labour force survey estimates (LFS), by North American Industry Classification System (NAICS), Canada, seasonally adjusted, monthly
282-0095	Labour force survey estimates (LFS), by full- and part-time students during school months, sex and age group, annual
282-0100	Labour force survey estimates (LFS), by territories, sex and age group, 3-month moving average, seasonally adjusted and unadjusted, monthly
282-0101	Labour force survey estimates (LFS), by immigrant status, age group, Canada, regions, provinces and Montreal, Toronto, Vancouver census metropolitan areas, 3-month moving average, unadjusted for seasonality, monthly
282-0102	Labour force survey estimates (LFS), by immigrant status, age group, Canada, regions, provinces and Montreal, Toronto, Vancouver census metropolitan areas, annual

282-0103	Labour force survey estimates (LFS), by immigrant status, sex and detailed age group, Canada, 3-month moving average, unadjusted for seasonality, monthly
282-0104	Labour force survey estimates (LFS), by immigrant status, sex and detailed age group, Canada, annual
282-0105	Labour force survey estimates (LFS), by immigrant status, educational attainment, sex and age group, Canada, 3-month moving average, unadjusted for seasonality, monthly
282-0106	Labour force survey estimates (LFS), by immigrant status, educational attainment, sex and age group, Canada, annual
282-0107	Labour force survey estimates (LFS), by immigrant status, country of birth, sex and age group, Canada, 3-month moving average, unadjusted for seasonality, monthly
282-0108	Labour force survey estimates (LFS), by immigrant status, country of birth, sex and age group, Canada, annual
282-0109	Labour force survey estimates (LFS), by census metropolitan area based on 2006 census boundaries, sex and age group, 3-month moving average, unadjusted for seasonality, monthly
282-0110	Labour force survey estimates (LFS), by census metropolitan area based on 2006 census boundaries, sex and age group, annual
282-0111	Labour force survey estimates (LFS), employment by census metropolitan area based on 2006 census boundaries and North American Industry Classification System (NAICS), 3-month moving average, unadjusted for seasonality, monthly
282-0112	Labour force survey estimates (LFS), employment by census metropolitan area based on 2006 census boundaries and North American Industry Classification System (NAICS), annual
282-0113	Labour force survey estimates (LFS), employment by census metropolitan area based on 2006 census boundaries and National Occupational Classification for Statistics (NOC-S), 3-month moving average, unadjusted for seasonality, monthly
282-0114	Labour force survey estimates (LFS), employment by census metropolitan area based on 2006 census boundaries and National Occupational Classification for Statistics (NOC-S), annual
282-0115	Labour force survey estimates (LFS), by selected census agglomerations based on 2006 census boundaries, annual
282-0116	Labour force survey estimates (LFS), by census metropolitan area based on 2006 census boundaries, 3-month moving average, seasonally adjusted and unadjusted, monthly
282-0117	Labour force survey estimates (LFS), by Montréal, Toronto and Vancouver census metropolitan areas based on 2006 census boundaries, seasonally adjusted and unadjusted, monthly
282-0118	Labour force survey estimates (LFS), by urban and rural areas based on 2006 census boundaries, sex and age group, unadjusted for seasonality, monthly
282-0119	Labour force survey estimates (LFS), by urban and rural areas based on 2006 census boundaries, sex and age group, annual

282-0120	Labour force survey estimates (LFS), employment by urban and rural areas based on 2006 census boundaries, class of worker and North American Industry Classification System (NAICS), unadjusted for seasonality, monthly
282-0121	Labour force survey estimates (LFS), employment by urban and rural areas based on 2006 census boundaries, class of worker and North American Industry Classification System (NAICS), annual
282-0200	Labour force survey estimates (LFS), weekly wage distributions of employees by type of work, North American Industry Classification System (NAICS) and by sex, unadjusted for seasonality, monthly
282-0201	Labour force survey estimates (LFS), weekly wage distributions of employees by type of work, North American Industry Classification System (NAICS) and by sex, annual
282-0202	Labour force survey estimates (LFS), weekly wage distributions of employees by type of work, National Occupational Classification for Statistics (NOC-S) and by sex, unadjusted for seasonality, monthly
282-0203	Labour force survey estimates (LFS), weekly wage distributions of employees by type of work, National Occupational Classification for Statistics (NOC-S) and by sex, annual
282-0204	Labour force survey estimates (LFS), hourly wage distributions of employees by type of work, North American Industry Classification System (NAICS) and by sex, unadjusted for seasonality, monthly
282-0205	Labour force survey estimates (LFS), hourly wage distributions of employees by type of work, North American Industry Classification System (NAICS) and by sex, annual
282-0206	Labour force survey estimates (LFS), hourly wage distribution of employees by type of work, National Occupational Classification for Statistics (NOC-S) and by sex, unadjusted for seasonality, monthly
282-0207	Labour force survey estimates (LFS), hourly wage distribution of employees by type of work, National Occupational Classification for Statistics (NOC-S) and by sex, annual
282-0208	Labour force survey estimates (LFS), by educational degree, sex and age group, unadjusted for seasonality, monthly
282-0209	Labour force survey estimates (LFS), by educational degree, sex and age group, annual
282-0210	Labour force survey estimates (LFS), by family type and family age composition, unadjusted for seasonality, monthly
282-0211	Labour force survey estimates (LFS), by family type and family age composition, annual
282-0212	Labour force survey estimates (LFS), hours lost by employees by reason absent full and part week and sex, unadjusted for seasonality, monthly
282-0213	Labour force survey estimates (LFS), hours lost by employees by reason absent full and part week and sex, annual
282-0214	Labour force survey estimates (LFS), activity prior to unemployment by sex and age group, unadjusted for seasonality, monthly

282-0215	Labour force survey estimates (LFS), activity prior to unemployment by sex and age group, annual
282-0216	Labour force survey estimates (LFS), reason for leaving job during previous year by sex and age group, unadjusted for seasonality, monthly
282-0217	Labour force survey estimates (LFS), reason for leaving job during previous year by sex and age group, annual
282-0218	Labour force survey estimates (LFS), reason for not looking for work, by sex and age group, unadjusted for seasonality, monthly
282-0219	Labour force survey estimates (LFS), reason for not looking for work, by sex and age group, annual

Selected surveys from Statistics Canada

3701	Labour Force Survey
------	---------------------

Selected summary tables from Statistics Canada

- *Labour force characteristics*
- *Employment by industry*
- *Days lost per worker due to illness or disability, by sex, by province*
- *Economic indicators, by province and territory (monthly and quarterly)*
- *Labour force and participation rates by sex and age group*
- *Labour force, employed and unemployed, numbers and rates, by province*
- *Employment by industry and sex*
- *Full-time and part-time employment by sex and age group*
- *Labour force characteristics by age and sex*
- *Distribution of employed people, by industry, by province*
- *Labour force characteristics, population 15 years and older, by census metropolitan area*
- *Labour force characteristics, population 15 years and older, by economic region, by province*
- *Days lost per worker by cause, by provinces*
- *Days lost per worker by industry and sex*

- *People employed, by educational attainment*
- *Reasons for part-time work by sex and age group*
- *Self-employment, historical summary*
- *Employment by age, sex, type of work, class of worker and province (monthly)*
- *Employment by major industry groups, seasonally adjusted, by province (monthly)*
- *Actual hours worked per week by industry, seasonally adjusted (monthly)*
- *Average hourly wages of employees by selected characteristics and profession, unadjusted data, by province (monthly)*
- *Labour force characteristics, seasonally adjusted, by province (monthly)*
- *Labour force characteristics, unadjusted, by province (monthly)*
- *Labour force characteristics, seasonally adjusted, by census metropolitan area (3 month moving average)*
- *Labour force characteristics, unadjusted, by census metropolitan area (3 month moving average)*
- *Labour force characteristics, unadjusted, by economic region (3 month moving average)*
- *Labour force characteristics by immigrant status of population aged 25 to 54, by province*
- *Labour force characteristics by immigrant status of population aged 25 to 54, by educational attainment*
- *Labour force characteristics by immigrant status, by detailed age group*
- *Labour force characteristics by immigrant status of population aged 25 to 54, by country of birth*

Statistical tables

Table 1
Labour force characteristics by age and sex, Canada, seasonally adjusted

	March 2013	April 2013	S.E. ¹	Change from			Percent change from		
				last month	last December	twelve months ago	last month	last December	twelve months ago
in thousands (except rates)									
15 years and over, both sexes									
Population	28,551.2	28,588.7	...	37.5	120.1	346.7	0.1	0.4	1.2
Labour force	19,016.6	19,016.1	29.1	-0.5	-9.9	150.7	0.0	-0.1	0.8
Employment	17,641.9	17,654.4	28.7	12.5	-13.2	162.5	0.1	-0.1	0.9
Employment full-time	14,319.0	14,355.0	38.2	36.0	-5.0	183.9	0.3	0.0	1.3
Employment part-time	3,323.0	3,299.4	35.1	-23.6	-8.2	-21.5	-0.7	-0.2	-0.6
Unemployment	1,374.7	1,361.7	25.2	-13.0	3.3	-11.7	-0.9	0.2	-0.9
Participation rate	66.6	66.5	0.1	-0.1	-0.3	-0.3
Unemployment rate	7.2	7.2	0.1	0.0	0.1	-0.1
Employment rate	61.8	61.8	0.1	0.0	-0.3	-0.1
Part-time rate	18.8	18.7	0.2	-0.1	0.0	-0.3
15 to 24 years, both sexes									
Population	4,452.5	4,451.2	...	-1.3	-4.9	-6.0	0.0	-0.1	-0.1
Labour force	2,851.2	2,839.5	17.2	-11.7	3.5	-4.9	-0.4	0.1	-0.2
Employment	2,446.9	2,428.1	15.9	-18.8	-7.0	-18.2	-0.8	-0.3	-0.7
Employment full-time	1,285.7	1,292.0	18.5	6.3	15.9	2.0	0.5	1.2	0.2
Employment part-time	1,161.1	1,136.2	19.4	-24.9	-22.8	-20.1	-2.1	-2.0	-1.7
Unemployment	404.4	411.4	15.1	7.0	10.6	13.2	1.7	2.6	3.3
Participation rate	64.0	63.8	0.4	-0.2	0.2	0.0
Unemployment rate	14.2	14.5	0.5	0.3	0.4	0.5
Employment rate	55.0	54.5	0.4	-0.5	-0.1	-0.4
Part-time rate	47.5	46.8	0.7	-0.7	-0.8	-0.5
25 years and over, men									
Population	11,796.8	11,815.9	...	19.1	62.3	176.8	0.2	0.5	1.5
Labour force	8,549.5	8,567.0	15.1	17.5	0.3	72.8	0.2	0.0	0.9
Employment	8,024.7	8,042.6	16.3	17.9	-7.8	88.6	0.2	-0.1	1.1
Employment full-time	7,414.7	7,416.7	21.6	2.0	-27.3	72.3	0.0	-0.4	1.0
Employment part-time	609.9	625.9	17.4	16.0	19.5	16.4	2.6	3.2	2.7
Unemployment	524.8	524.4	14.7	-0.4	8.1	-15.8	-0.1	1.6	-2.9
Participation rate	72.5	72.5	0.1	0.0	-0.4	-0.5
Unemployment rate	6.1	6.1	0.2	0.0	0.1	-0.3
Employment rate	68.0	68.1	0.1	0.1	-0.4	-0.2
Part-time rate	7.6	7.8	0.2	0.2	0.2	0.1
25 years and over, women									
Population	12,302.0	12,321.5	...	19.5	62.6	175.8	0.2	0.5	1.4
Labour force	7,615.9	7,609.6	16.5	-6.3	-13.7	82.9	-0.1	-0.2	1.1
Employment	7,170.4	7,183.7	16.4	13.3	1.6	92.0	0.2	0.0	1.3
Employment full-time	5,618.5	5,646.4	25.0	27.9	6.5	109.8	0.5	0.1	2.0
Employment part-time	1,551.9	1,537.4	23.6	-14.5	-4.8	-17.7	-0.9	-0.3	-1.1
Unemployment	445.5	425.9	13.4	-19.6	-15.3	-9.1	-4.4	-3.5	-2.1
Participation rate	61.9	61.8	0.1	-0.1	-0.4	-0.2
Unemployment rate	5.8	5.6	0.2	-0.2	-0.2	-0.2
Employment rate	58.3	58.3	0.1	0.0	-0.3	-0.1
Part-time rate	21.6	21.4	0.3	-0.2	-0.1	-0.5
25 to 54 years, both sexes									
Population	14,582.9	14,589.5	...	6.6	10.1	34.5	0.0	0.1	0.2
Labour force	12,625.5	12,623.6	21.7	-1.9	-80.9	28.4	0.0	-0.6	0.2
Employment	11,859.9	11,890.5	23.3	30.6	-63.9	69.2	0.3	-0.5	0.6
Employment full-time	765.7	733.0	18.4	-32.7	-17.1	-40.9	-4.3	-2.3	-5.3
Employment part-time	86.6	86.5	0.1	-0.1	-0.6	0.0
Unemployment	6.1	5.8	0.1	-0.3	-0.1	-0.3
Participation rate	81.3	81.5	0.2	0.2	-0.5	0.3
25 to 54 years, men									
Population	7,296.3	7,299.6	...	3.3	5.2	18.4	0.0	0.1	0.3
Labour force	6,602.8	6,613.9	13.9	11.1	-48.2	-0.1	0.2	-0.7	0.0
Employment	6,200.9	6,222.8	15.7	21.9	-43.8	32.2	0.4	-0.7	0.5
Employment full-time	401.9	391.1	13.5	-10.8	-4.4	-32.3	-2.7	-1.1	-7.6
Employment part-time	90.5	90.6	0.2	0.1	-0.7	-0.2
Unemployment	6.1	5.9	0.2	-0.2	0.0	-0.5
Participation rate	85.0	85.2	0.2	0.2	-0.7	0.2

See notes at the end of the table.

Table 1 – continued

Labour force characteristics by age and sex, Canada, seasonally adjusted

	March 2013	April 2013	S.E. ¹	Change from			Percent change from		
				last month	last December	twelve months ago	last month	last December	twelve months ago
in thousands (except rates)									
25 to 54 years, women									
Population	7,286.6	7,289.9	...	3.3	4.9	16.1	0.0	0.1	0.2
Labour force	6,022.7	6,009.6	15.9	-13.1	-32.8	28.4	-0.2	-0.5	0.5
Employment	5,658.9	5,667.7	16.3	8.8	-20.1	37.0	0.2	-0.4	0.7
Unemployment	363.8	342.0	12.3	-21.8	-12.6	-8.4	-6.0	-3.6	-2.4
Participation rate	82.7	82.4	0.2	-0.3	-0.5	0.2
Unemployment rate	6.0	5.7	0.2	-0.3	-0.2	-0.2
Employment rate	77.7	77.7	0.2	0.0	-0.4	0.3
55 years and over, both sexes									
Population	9,515.9	9,547.9	...	32.0	114.8	318.1	0.3	1.2	3.4
Labour force	3,539.8	3,553.0	17.3	13.2	67.5	127.2	0.4	1.9	3.7
Employment	3,335.2	3,335.8	17.3	0.6	57.7	111.4	0.0	1.8	3.5
Unemployment	204.6	217.2	9.4	12.6	9.8	15.8	6.2	4.7	7.8
Participation rate	37.2	37.2	0.2	0.0	0.3	0.1
Unemployment rate	5.8	6.1	0.3	0.3	0.1	0.2
Employment rate	35.0	34.9	0.2	-0.1	0.1	0.0
55 years and over, men									
Population	4,500.5	4,516.3	...	15.8	57.1	158.4	0.4	1.3	3.6
Labour force	1,946.7	1,953.1	11.3	6.4	48.5	72.9	0.3	2.5	3.9
Employment	1,823.7	1,819.7	11.4	-4.0	35.9	56.3	-0.2	2.0	3.2
Unemployment	122.9	133.3	6.9	10.4	12.5	16.5	8.5	10.3	14.1
Participation rate	43.3	43.2	0.3	-0.1	0.5	0.1
Unemployment rate	6.3	6.8	0.4	0.5	0.5	0.6
Employment rate	40.5	40.3	0.3	-0.2	0.3	-0.2
55 years and over, women									
Population	5,015.4	5,031.6	...	16.2	57.7	159.7	0.3	1.2	3.3
Labour force	1,593.2	1,599.9	11.9	6.7	19.0	54.3	0.4	1.2	3.5
Employment	1,511.5	1,516.0	11.8	4.5	21.7	55.0	0.3	1.5	3.8
Unemployment	81.7	83.9	6.4	2.2	-2.7	-0.7	2.7	-3.1	-0.8
Participation rate	31.8	31.8	0.2	0.0	0.0	0.1
Unemployment rate	5.1	5.2	0.4	0.1	-0.3	-0.3
Employment rate	30.1	30.1	0.2	0.0	0.1	0.1

1. Average standard error of change in two consecutive months (see "Sampling Errors" in Data Quality for further explanations).

Note(s): Related CANSIM table 282-0087.

Table 2
Employment by class of worker and industry, Canada, seasonally adjusted

	March 2013	April 2013	S.E. ¹	Change from			Percent change from		
				last month	last December	twelve months ago	last month	last December	twelve months ago
in thousands									
Class of worker									
Employees	14,915.7	14,929.9	35.7	14.2	-86.1	103.6	0.1	-0.6	0.7
Self-employed ²	2,726.2	2,724.5	25.5	-1.7	72.9	58.9	-0.1	2.7	2.2
Public/private sector employees									
Public sector employees	3,623.2	3,657.4	25.0	34.2	8.9	93.5	0.9	0.2	2.6
Private sector employees	11,292.5	11,272.5	37.9	-20.0	-95.0	10.0	-0.2	-0.8	0.1
Industry	17,641.9	17,654.4	28.7	12.5	-13.2	162.4	0.1	-0.1	0.9
Goods-producing sector	3,824.5	3,849.0	26.6	24.5	-30.4	-60.7	0.6	-0.8	-1.6
Agriculture	322.2	320.9	7.2	-1.3	7.6	9.7	-0.4	2.4	3.1
Forestry, fishing, mining, quarrying, oil and gas extraction ³	356.7	357.5	7.3	0.8	0.1	-24.3	0.2	0.0	-6.4
Utilities	129.6	133.6	4.9	4.0	-11.4	-4.1	3.1	-7.9	-3.0
Construction	1,300.1	1,300.6	17.1	0.5	24.1	9.8	0.0	1.9	0.8
Manufacturing	1,715.8	1,736.4	19.9	20.6	-50.8	-51.8	1.2	-2.8	-2.9
Services-producing sector	13,817.4	13,805.4	34.3	-12.0	17.2	223.1	-0.1	0.1	1.6
Trade	2,701.1	2,685.3	23.6	-15.8	-5.5	72.6	-0.6	-0.2	2.8
Transportation and warehousing	873.5	852.8	14.1	-20.7	-7.3	-0.8	-2.4	-0.8	-0.1
Finance, insurance, real estate and leasing	1,110.9	1,123.7	16.0	12.8	4.2	39.0	1.2	0.4	3.6
Professional, scientific and technical services	1,337.0	1,348.0	18.4	11.0	64.7	40.4	0.8	5.0	3.1
Business, building and other support services	707.3	691.6	14.3	-15.7	-7.3	12.6	-2.2	-1.0	1.9
Educational services	1,289.6	1,290.6	17.2	1.0	-33.2	31.8	0.1	-2.5	2.5
Health care and social assistance	2,169.0	2,187.2	19.3	18.2	13.3	76.5	0.8	0.6	3.6
Information, culture and recreation	785.2	785.3	14.5	0.1	-10.1	-27.6	0.0	-1.3	-3.4
Accommodation and food services	1,118.4	1,121.1	16.8	2.7	8.6	12.9	0.2	0.8	1.2
Other services	764.7	746.0	13.8	-18.7	-30.6	-59.1	-2.4	-3.9	-7.3
Public administration	960.7	973.9	12.6	13.2	20.6	25.0	1.4	2.2	2.6

1. Average standard error of change in two consecutive months (see "Sampling Errors" in Data Quality for further explanations).

2. Includes both incorporated and unincorporated working owners, self-employed persons who do not have a business and persons working in a family business without pay.

3. Also referred to as Natural resources.

Note(s): Related CANSIM Tables 282-0088, 282-0089.

Table 3
Labour force characteristics by province, seasonally adjusted

	March 2013	April 2013	S.E. ¹	Change from			Percent change from		
				last month	last December	twelve months ago	last month	last December	twelve months ago
in thousands (except rates)									
Newfoundland and Labrador									
Population	429.4	429.5	...	0.1	1.4	1.5	0.0	0.3	0.4
Labour force	268.0	265.0	2.0	-3.0	-1.8	0.8	-1.1	-0.7	0.3
Employment	235.1	232.1	2.1	-3.0	-3.6	0.4	-1.3	-1.5	0.2
Employment full-time	202.2	198.8	2.4	-3.4	-1.7	-2.5	-1.7	-0.8	-1.2
Employment part-time	32.9	33.3	1.9	0.4	-1.9	3.0	1.2	-5.4	9.9
Unemployment	32.9	32.9	1.8	0.0	1.9	0.4	0.0	6.1	1.2
Participation rate	62.4	61.7	0.5	-0.7	-0.6	0.0
Unemployment rate	12.3	12.4	0.7	0.1	0.8	0.1
Employment rate	54.8	54.0	0.5	-0.8	-1.1	-0.1
Prince Edward Island									
Population	120.6	120.7	...	0.1	0.1	0.2	0.1	0.1	0.2
Labour force	85.4	85.2	0.6	-0.2	1.4	2.9	-0.2	1.7	3.5
Employment	75.0	75.3	0.7	0.3	0.8	2.2	0.4	1.1	3.0
Employment full-time	62.0	62.2	0.8	0.2	1.5	2.1	0.3	2.5	3.5
Employment part-time	13.0	13.1	0.8	0.1	-0.7	0.1	0.8	-5.1	0.8
Unemployment	10.3	9.9	0.7	-0.4	0.7	0.7	-3.9	7.6	7.6
Participation rate	70.8	70.6	0.5	-0.2	1.1	2.3
Unemployment rate	12.1	11.6	0.8	-0.5	0.6	0.4
Employment rate	62.2	62.4	0.5	0.2	0.6	1.7
Nova Scotia									
Population	781.0	781.1	...	0.1	0.3	1.1	0.0	0.0	0.1
Labour force	503.4	501.7	2.6	-1.7	5.8	1.9	-0.3	1.2	0.4
Employment	455.8	456.2	2.8	0.4	6.4	2.1	0.1	1.4	0.5
Employment full-time	368.4	372.0	3.6	3.6	8.8	2.7	1.0	2.4	0.7
Employment part-time	87.4	84.3	3.2	-3.1	-2.3	-0.5	-3.5	-2.7	-0.6
Unemployment	47.6	45.4	2.4	-2.2	-0.7	-0.3	-4.6	-1.5	-0.7
Participation rate	64.5	64.2	0.3	-0.3	0.7	0.1
Unemployment rate	9.5	9.0	0.5	-0.5	-0.3	-0.1
Employment rate	58.4	58.4	0.4	0.0	0.8	0.2
New Brunswick									
Population	619.8	619.9	...	0.1	-0.1	-0.5	0.0	0.0	-0.1
Labour force	392.6	390.7	2.2	-1.9	0.9	0.1	-0.5	0.2	0.0
Employment	351.2	348.0	2.3	-3.2	0.3	-4.4	-0.9	0.1	-1.2
Employment full-time	294.9	292.3	2.8	-2.6	-1.1	-6.5	-0.9	-0.4	-2.2
Employment part-time	56.4	55.7	2.3	-0.7	1.4	2.1	-1.2	2.6	3.9
Unemployment	41.3	42.7	2.2	1.4	0.6	4.5	3.4	1.4	11.8
Participation rate	63.3	63.0	0.4	-0.3	0.1	0.0
Unemployment rate	10.5	10.9	0.5	0.4	0.1	1.1
Employment rate	56.7	56.1	0.4	-0.6	0.0	-0.7
Quebec									
Population	6,674.7	6,680.2	...	5.5	15.9	56.1	0.1	0.2	0.8
Labour force	4,354.2	4,363.4	15.0	9.2	-1.1	41.7	0.2	0.0	1.0
Employment	4,019.8	4,022.5	15.3	2.7	-21.7	43.6	0.1	-0.5	1.1
Employment full-time	3,268.2	3,265.0	20.0	-3.2	-23.2	65.1	-0.1	-0.7	2.0
Employment part-time	751.6	757.5	18.1	5.9	1.4	-21.5	0.8	0.2	-2.8
Unemployment	334.4	340.9	13.5	6.5	20.6	-1.8	1.9	6.4	-0.5
Participation rate	65.2	65.3	0.2	0.1	-0.2	0.1
Unemployment rate	7.7	7.8	0.3	0.1	0.5	-0.1
Employment rate	60.2	60.2	0.2	0.0	-0.5	0.1
Ontario									
Population	11,159.5	11,173.8	...	14.3	45.7	131.9	0.1	0.4	1.2
Labour force	7,410.2	7,414.6	20.0	4.4	-27.4	63.3	0.1	-0.4	0.9
Employment	6,840.9	6,844.7	19.3	3.8	-9.5	70.7	0.1	-0.1	1.0
Employment full-time	5,508.3	5,525.9	25.6	17.6	-21.3	23.1	0.3	-0.4	0.4
Employment part-time	1,332.6	1,318.8	23.6	-13.8	11.7	47.6	-1.0	0.9	3.7
Unemployment	569.3	569.9	17.6	0.6	-17.8	-7.4	0.1	-3.0	-1.3
Participation rate	66.4	66.4	0.2	0.0	-0.5	-0.2
Unemployment rate	7.7	7.7	0.2	0.0	-0.2	-0.2
Employment rate	61.3	61.3	0.2	0.0	-0.3	0.0

See notes at the end of the table.

Table 3 – continued

Labour force characteristics by province, seasonally adjusted

	March 2013	April 2013	S.E. ¹	Change from			Percent change from		
				last month	last December	twelve months ago	last month	last December	twelve months ago
in thousands (except rates)									
Manitoba									
Population	969.8	971.1	...	1.3	3.8	9.4	0.1	0.4	1.0
Labour force	672.3	666.2	2.6	-6.1	-7.3	1.1	-0.9	-1.1	0.2
Employment	638.8	627.7	2.7	-11.1	-10.7	-2.0	-1.7	-1.7	-0.3
Employment full-time	511.1	503.7	3.6	-7.4	-12.2	-3.7	-1.4	-2.4	-0.7
Employment part-time	127.7	124.0	3.5	-3.7	1.5	1.8	-2.9	1.2	1.5
Unemployment	33.5	38.5	2.2	5.0	3.3	3.1	14.9	9.4	8.8
Participation rate	69.3	68.6	0.3	-0.7	-1.0	-0.6
Unemployment rate	5.0	5.8	0.3	0.8	0.6	0.5
Employment rate	65.9	64.6	0.3	-1.3	-1.4	-0.9
Saskatchewan									
Population	820.6	821.9	...	1.3	4.3	14.2	0.2	0.5	1.8
Labour force	577.3	576.4	2.5	-0.9	5.8	12.0	-0.2	1.0	2.1
Employment	554.7	553.2	2.6	-1.5	8.9	16.4	-0.3	1.6	3.1
Employment full-time	458.1	453.9	3.3	-4.2	6.8	10.1	-0.9	1.5	2.3
Employment part-time	96.6	99.2	3.1	2.6	2.0	6.3	2.7	2.1	6.8
Unemployment	22.6	23.2	1.9	0.6	-3.1	-4.5	2.7	-11.8	-16.2
Participation rate	70.4	70.1	0.3	-0.3	0.3	0.2
Unemployment rate	3.9	4.0	0.3	0.1	-0.6	-0.9
Employment rate	67.6	67.3	0.3	-0.3	0.7	0.8
Alberta									
Population	3,135.3	3,145.7	...	10.4	34.2	95.2	0.3	1.1	3.1
Labour force	2,277.5	2,282.1	8.7	4.6	14.5	30.1	0.2	0.6	1.3
Employment	2,167.9	2,182.7	8.9	14.8	17.4	40.1	0.7	0.8	1.9
Employment full-time	1,843.4	1,862.4	11.8	19.0	35.7	83.0	1.0	2.0	4.7
Employment part-time	324.5	320.3	10.9	-4.2	-18.2	-42.9	-1.3	-5.4	-11.8
Unemployment	109.6	99.4	6.8	-10.2	-2.9	-10.0	-9.3	-2.8	-9.1
Participation rate	72.6	72.5	0.3	-0.1	-0.4	-1.3
Unemployment rate	4.8	4.4	0.3	-0.4	-0.1	-0.5
Employment rate	69.1	69.4	0.3	0.3	-0.2	-0.8
British Columbia									
Population	3,840.5	3,844.7	...	4.2	14.4	37.5	0.1	0.4	1.0
Labour force	2,475.7	2,471.0	10.7	-4.7	-0.6	-3.1	-0.2	0.0	-0.1
Employment	2,302.6	2,312.1	10.3	9.5	-1.4	-6.6	0.4	-0.1	-0.3
Employment full-time	1,802.4	1,818.9	14.5	16.5	1.8	10.8	0.9	0.1	0.6
Employment part-time	500.2	493.2	13.6	-7.0	-3.2	-17.4	-1.4	-0.6	-3.4
Unemployment	173.1	158.8	8.6	-14.3	0.7	3.4	-8.3	0.4	2.2
Participation rate	64.5	64.3	0.3	-0.2	-0.2	-0.7
Unemployment rate	7.0	6.4	0.3	-0.6	0.0	0.1
Employment rate	60.0	60.1	0.3	0.1	-0.3	-0.8

1. Average standard error of change in two consecutive months (see "Sampling Errors" in Data Quality for further explanations).

Note(s): Related CANSIM Table 282-0087.

Table 4-1
Selected labour force characteristics (seasonally adjusted) — Newfoundland and Labrador

	March 2013	April 2013	S.E. ¹	Change from			Percent change from		
				last month	last December	twelve months ago	last month	last December	twelve months ago
in thousands (except rates)									
Both sexes, 15 years and over									
Population	429.4	429.5	...	0.1	1.4	1.5	0.0	0.3	0.4
Labour force	268.0	265.0	2.0	-3.0	-1.8	0.8	-1.1	-0.7	0.3
Employment	235.1	232.1	2.1	-3.0	-3.6	0.4	-1.3	-1.5	0.2
Employment full-time	202.2	198.8	2.4	-3.4	-1.7	-2.5	-1.7	-0.8	-1.2
Unemployment	32.9	32.9	1.8	0.0	1.9	0.4	0.0	6.1	1.2
Participation rate	62.4	61.7	0.5	-0.7	-0.6	0.0
Unemployment rate	12.3	12.4	0.7	0.1	0.8	0.1
Employment rate	54.8	54.0	0.5	-0.8	-1.1	-0.1
Part-time rate	14.0	14.3	0.8	0.4	-0.6	1.3
Both sexes, 15 to 24 years									
Population	59.1	59.0	...	-0.1	-0.1	-0.9	-0.2	-0.2	-1.5
Labour force	35.7	34.9	1.1	-0.8	-3.2	-1.7	-2.2	-8.4	-4.6
Employment	30.1	29.6	1.0	-0.5	-2.0	0.3	-1.7	-6.3	1.0
Unemployment	5.6	5.4	1.0	-0.2	-1.1	-1.9	-3.6	-16.9	-26.0
Participation rate	60.4	59.2	1.8	-1.2	-5.3	-1.9
Unemployment rate	15.7	15.5	2.5	-0.2	-1.6	-4.4
Employment rate	50.9	50.2	1.7	-0.7	-3.3	1.3
Part-time rate	40.9	42.6	3.5	1.7	4.6	2.3
Men, 25 years and over									
Population	178.9	179.0	...	0.1	0.7	1.3	0.1	0.4	0.7
Labour force	119.9	119.3	1.1	-0.6	0.1	0.2	-0.5	0.1	0.2
Employment	104.3	103.3	1.2	-1.0	-2.7	-1.0	-1.0	-2.5	-1.0
Unemployment	15.6	16.0	1.2	0.4	2.8	1.3	2.6	21.2	8.8
Participation rate	67.0	66.6	0.6	-0.4	-0.3	-0.4
Unemployment rate	13.0	13.4	1.0	0.4	2.3	1.1
Employment rate	58.3	57.7	0.7	-0.6	-1.8	-1.0
Part-time rate	4.3	4.3	0.7	-0.1	0.1	0.1
Women, 25 years and over									
Population	191.4	191.5	...	0.1	0.7	1.2	0.1	0.4	0.6
Labour force	112.4	110.7	1.1	-1.7	1.3	2.2	-1.5	1.2	2.0
Employment	100.7	99.2	1.1	-1.5	1.1	1.2	-1.5	1.1	1.2
Unemployment	11.7	11.5	1.0	-0.2	0.1	1.0	-1.7	0.9	9.5
Participation rate	58.7	57.8	0.6	-0.9	0.5	0.8
Unemployment rate	10.4	10.4	0.9	0.0	0.0	0.7
Employment rate	52.6	51.8	0.6	-0.8	0.4	0.3
Part-time rate	16.0	16.4	1.2	0.4	-2.6	1.9
Industry									
	235.1	232.1	2.1	-3.0	-3.6	0.4	-1.3	-1.5	0.2
Goods-producing sector									
Agriculture	53.0	52.1	1.6	-0.9	2.1	-1.2	-1.7	4.2	-2.3
Forestry, fishing, mining, quarrying, oil and gas extraction ²	1.2	1.2	0.3	0.0	-0.7	-0.4	0.0	-36.8	-25.0
Utilities	15.5	15.3	0.9	-0.2	0.7	1.2	-1.3	4.8	8.5
Construction	2.8	2.6	0.4	-0.2	-0.7	0.1	-7.1	-21.2	4.0
Manufacturing	21.1	21.1	1.1	0.0	1.1	0.6	0.0	5.5	2.9
	12.5	11.7	0.9	-0.8	1.5	-2.8	-6.4	14.7	-19.3
Services-producing sector									
Trade	182.0	180.0	2.0	-2.0	-5.7	1.6	-1.1	-3.1	0.9
Transportation and warehousing	36.4	37.5	1.3	1.1	4.3	1.2	3.0	13.0	3.3
Finance, insurance, real estate and leasing	10.7	9.7	0.8	-1.0	-2.9	-0.6	-9.3	-23.0	-5.8
Professional, scientific and technical services	8.9	8.6	0.6	-0.3	-1.5	-0.1	-3.4	-14.9	-1.1
Business, building and other support services	8.4	9.1	0.8	0.7	0.1	-0.8	8.3	1.1	-8.1
Educational services	6.7	6.6	0.7	-0.1	-0.3	-0.3	-1.5	-4.3	-4.3
Health care and social assistance	17.4	19.2	1.0	1.8	-0.5	1.3	10.3	-2.5	7.3
Information, culture and recreation	37.9	38.1	1.2	0.2	0.4	1.5	0.5	1.1	4.1
Accommodation and food services	6.4	5.7	0.6	-0.7	-1.7	-1.1	-10.9	-23.0	-16.2
Other services	14.6	12.3	0.9	-2.3	-2.6	-1.7	-15.8	-17.4	-12.1
Public administration	15.2	14.2	0.9	-1.0	-0.7	2.1	-6.6	-4.7	17.4
	19.3	19.0	0.9	-0.3	-0.4	0.2	-1.6	-2.1	1.1

1. Average standard error of change in two consecutive months (see "Sampling Errors" in Data Quality for further explanations).

2. Also referred to as Natural resources.

Note(s): Related CANSIM Tables 282-0087, 282-0088.

Table 4-2
Selected labour force characteristics (seasonally adjusted) — Prince Edward Island

	March 2013	April 2013	S.E. ¹	Change from			Percent change from		
				last month	last December	twelve months ago	last month	last December	twelve months ago
in thousands (except rates)									
Both sexes, 15 years and over									
Population	120.6	120.7	...	0.1	0.1	0.2	0.1	0.1	0.2
Labour force	85.4	85.2	0.6	-0.2	1.4	2.9	-0.2	1.7	3.5
Employment	75.0	75.3	0.7	0.3	0.8	2.2	0.4	1.1	3.0
Employment full-time	62.0	62.2	0.8	0.2	1.5	2.1	0.3	2.5	3.5
Unemployment	10.3	9.9	0.7	-0.4	0.7	0.7	-3.9	7.6	7.6
Participation rate	70.8	70.6	0.5	-0.2	1.1	2.3
Unemployment rate	12.1	11.6	0.8	-0.5	0.6	0.4
Employment rate	62.2	62.4	0.5	0.2	0.6	1.7
Part-time rate	17.3	17.4	1.0	0.1	-1.1	-0.4
Both sexes, 15 to 24 years									
Population	19.9	19.9	...	0.0	0.0	-0.2	0.0	0.0	-1.0
Labour force	14.3	14.7	0.4	0.4	1.3	0.8	2.8	9.7	5.8
Employment	11.5	11.7	0.4	0.2	0.5	0.6	1.7	4.5	5.4
Unemployment	2.8	3.0	0.4	0.2	0.8	0.2	7.1	36.4	7.1
Participation rate	71.9	73.9	2.0	2.0	6.6	4.7
Unemployment rate	19.6	20.4	2.6	0.8	4.0	0.3
Employment rate	57.8	58.8	1.8	1.0	2.5	3.6
Part-time rate	47.8	49.6	3.9	1.7	2.3	5.4
Men, 25 years and over									
Population	48.4	48.4	...	0.0	0.0	0.0	0.0	0.0	0.0
Labour force	36.7	36.3	0.3	-0.4	0.2	1.2	-1.1	0.6	3.4
Employment	32.4	32.4	0.4	0.0	0.6	0.6	0.0	1.9	1.9
Unemployment	4.3	3.9	0.4	-0.4	-0.4	0.6	-9.3	-9.3	18.2
Participation rate	75.8	75.0	0.7	-0.8	0.4	2.5
Unemployment rate	11.7	10.7	1.1	-1.0	-1.2	1.3
Employment rate	66.9	66.9	0.9	0.0	1.2	1.2
Part-time rate	6.8	7.4	1.1	0.6	-0.8	-0.1
Women, 25 years and over									
Population	52.3	52.4	...	0.1	0.2	0.4	0.2	0.4	0.8
Labour force	34.3	34.2	0.3	-0.1	0.0	0.9	-0.3	0.0	2.7
Employment	31.2	31.2	0.4	0.0	-0.3	1.0	0.0	-1.0	3.3
Unemployment	3.2	3.0	0.3	-0.2	0.2	-0.1	-6.2	7.1	-3.2
Participation rate	65.6	65.3	0.6	-0.3	-0.2	1.3
Unemployment rate	9.3	8.8	0.9	-0.5	0.6	-0.5
Employment rate	59.7	59.5	0.7	-0.2	-0.8	1.4
Part-time rate	17.0	15.7	1.4	-1.3	-2.7	-3.2
Industry									
Goods-producing sector	75.0	75.3	0.7	0.3	0.8	2.2	0.4	1.1	3.0
Agriculture	17.6	17.3	0.6	-0.3	-0.1	-0.4	-1.7	-0.6	-2.3
Forestry, fishing, mining, quarrying, oil and gas extraction ²	4.7	4.1	0.4	-0.6	-0.3	0.2	-12.8	-6.8	5.1
Utilities	2.1	2.2	0.3	0.1	-0.2	-0.8	4.8	-8.3	-26.7
Utilities	0.3	0.3	0.1	0.0	0.0	-0.1	0.0	0.0	-25.0
Construction	5.3	5.8	0.3	0.5	0.5	0.8	9.4	9.4	16.0
Manufacturing	5.2	5.0	0.3	-0.2	0.0	-0.5	-3.8	0.0	-9.1
Services-producing sector	57.4	57.9	0.7	0.5	0.8	2.5	0.9	1.4	4.5
Trade	11.4	11.5	0.4	0.1	1.0	1.9	0.9	9.5	19.8
Transportation and warehousing	2.0	2.2	0.2	0.2	-0.1	-0.8	10.0	-4.3	-26.7
Finance, insurance, real estate and leasing	2.8	2.7	0.2	-0.1	0.3	-0.2	-3.6	12.5	-6.9
Professional, scientific and technical services	3.2	3.0	0.3	-0.2	-0.2	-0.4	-6.2	-6.2	-11.8
Business, building and other support services	2.1	1.8	0.3	-0.3	-0.4	-0.8	-14.3	-18.2	-30.8
Educational services	6.1	6.6	0.3	0.5	-0.3	1.5	8.2	-4.3	29.4
Health care and social assistance	9.8	10.6	0.4	0.8	1.0	0.8	8.2	10.4	8.2
Information, culture and recreation	2.3	2.7	0.3	0.4	-0.3	0.2	17.4	-10.0	8.0
Accommodation and food services	5.7	5.6	0.4	-0.1	-0.3	0.4	-1.8	-5.1	7.7
Other services	3.4	3.3	0.3	-0.1	0.1	-0.3	-2.9	3.1	-8.3
Public administration	8.6	7.9	0.4	-0.7	0.1	0.2	-8.1	1.3	2.6

1. Average standard error of change in two consecutive months (see "Sampling Errors" in Data Quality for further explanations).

2. Also referred to as Natural resources.

Note(s): Related CANSIM Tables 282-0087, 282-0088.

Table 4-3
Selected labour force characteristics (seasonally adjusted) — Nova Scotia

	March 2013	April 2013	S.E. ¹	Change from			Percent change from		
				last month	last December	twelve months ago	last month	last December	twelve months ago
in thousands (except rates)									
Both sexes, 15 years and over									
Population	781.0	781.1	...	0.1	0.3	1.1	0.0	0.0	0.1
Labour force	503.4	501.7	2.6	-1.7	5.8	1.9	-0.3	1.2	0.4
Employment	455.8	456.2	2.8	0.4	6.4	2.1	0.1	1.4	0.5
Employment full-time	368.4	372.0	3.6	3.6	8.8	2.7	1.0	2.4	0.7
Unemployment	47.6	45.4	2.4	-2.2	-0.7	-0.3	-4.6	-1.5	-0.7
Participation rate	64.5	64.2	0.3	-0.3	0.7	0.1
Unemployment rate	9.5	9.0	0.5	-0.5	-0.3	-0.1
Employment rate	58.4	58.4	0.4	0.0	0.8	0.2
Part-time rate	19.2	18.5	0.7	-0.7	-0.8	-0.2
Both sexes, 15 to 24 years									
Population	116.9	116.7	...	-0.2	-0.5	-1.8	-0.2	-0.4	-1.5
Labour force	77.6	75.8	1.6	-1.8	1.1	-1.9	-2.3	1.5	-2.4
Employment	63.8	60.2	1.5	-3.6	-1.2	-2.0	-5.6	-2.0	-3.2
Unemployment	13.8	15.6	1.5	1.8	2.3	0.2	13.0	17.3	1.3
Participation rate	66.4	65.0	1.4	-1.4	1.3	-0.6
Unemployment rate	17.8	20.6	1.8	2.8	2.8	0.8
Employment rate	54.6	51.6	1.3	-3.0	-0.8	-0.9
Part-time rate	49.8	47.3	2.6	-2.5	-2.2	-1.9
Men, 25 years and over									
Population	314.8	314.9	...	0.1	0.4	1.5	0.0	0.1	0.5
Labour force	216.4	215.6	1.4	-0.8	3.2	1.1	-0.4	1.5	0.5
Employment	197.7	198.7	1.7	1.0	4.7	0.1	0.5	2.4	0.1
Unemployment	18.6	16.8	1.5	-1.8	-1.6	0.9	-9.7	-8.7	5.7
Participation rate	68.7	68.5	0.5	-0.2	1.0	0.1
Unemployment rate	8.6	7.8	0.7	-0.8	-0.9	0.4
Employment rate	62.8	63.1	0.5	0.3	1.4	-0.3
Part-time rate	7.3	6.6	0.8	-0.7	-1.6	-1.5
Women, 25 years and over									
Population	349.4	349.6	...	0.2	0.5	1.5	0.1	0.1	0.4
Labour force	209.5	210.3	1.4	0.8	1.5	2.7	0.4	0.7	1.3
Employment	194.3	197.2	1.5	2.9	2.8	3.9	1.5	1.4	2.0
Unemployment	15.1	13.0	1.2	-2.1	-1.4	-1.3	-13.9	-9.7	-9.1
Participation rate	60.0	60.2	0.4	0.2	0.4	0.6
Unemployment rate	7.2	6.2	0.6	-1.0	-0.7	-0.7
Employment rate	55.6	56.4	0.4	0.8	0.7	0.9
Part-time rate	21.2	21.6	1.0	0.4	0.9	1.8
Industry									
Goods-producing sector	455.8	456.2	2.8	0.4	6.4	2.1	0.1	1.4	0.5
Agriculture	83.6	87.0	2.2	3.4	5.8	2.4	4.1	7.1	2.8
Forestry, fishing, mining, quarrying, oil and gas extraction ²	5.0	5.6	0.7	0.6	-0.5	0.0	12.0	-8.2	0.0
Utilities	10.7	11.1	1.0	0.4	0.4	0.4	3.7	3.7	3.7
Construction	4.4	5.1	0.4	0.7	0.7	1.4	15.9	15.9	37.8
Manufacturing	32.9	34.4	1.5	1.5	5.1	2.9	4.6	17.4	9.2
Other manufacturing	30.6	30.8	1.4	0.2	0.1	-2.3	0.7	0.3	-6.9
Services-producing sector	372.2	369.2	2.9	-3.0	0.7	-0.3	-0.8	0.2	-0.1
Trade	75.7	73.2	1.9	-2.5	3.5	1.7	-3.3	5.0	2.4
Transportation and warehousing	22.1	20.4	1.1	-1.7	0.0	0.2	-7.7	0.0	1.0
Finance, insurance, real estate and leasing	21.4	22.1	1.1	0.7	-0.1	-3.7	3.3	-0.5	-14.3
Professional, scientific and technical services	30.2	28.3	1.2	-1.9	-0.4	3.3	-6.3	-1.4	13.2
Business, building and other support services	22.0	21.4	1.3	-0.6	0.0	1.6	-2.7	0.0	8.1
Educational services	35.5	35.2	1.5	-0.3	-1.4	-3.8	-0.8	-3.8	-9.7
Health care and social assistance	69.9	71.3	1.7	1.4	3.6	-0.1	2.0	5.3	-0.1
Information, culture and recreation	19.6	20.2	1.2	0.6	1.6	2.4	3.1	8.6	13.5
Accommodation and food services	28.2	28.1	1.5	-0.1	-6.4	-1.0	-0.4	-18.6	-3.4
Other services	17.6	19.2	1.2	1.6	-1.0	-3.3	9.1	-5.0	-14.7
Public administration	30.0	29.9	1.2	-0.1	1.4	2.6	-0.3	4.9	9.5

1. Average standard error of change in two consecutive months (see "Sampling Errors" in Data Quality for further explanations).

2. Also referred to as Natural resources.

Note(s): Related CANSIM Tables 282-0087, 282-0088.

Table 4-4
Selected labour force characteristics (seasonally adjusted) — New Brunswick

	March 2013	April 2013	S.E. ¹	Change from			Percent change from		
				last month	last December	twelve months ago	last month	last December	twelve months ago
in thousands (except rates)									
Both sexes, 15 years and over									
Population	619.8	619.9	...	0.1	-0.1	-0.5	0.0	0.0	-0.1
Labour force	392.6	390.7	2.2	-1.9	0.9	0.1	-0.5	0.2	0.0
Employment	351.2	348.0	2.3	-3.2	0.3	-4.4	-0.9	0.1	-1.2
Employment full-time	294.9	292.3	2.8	-2.6	-1.1	-6.5	-0.9	-0.4	-2.2
Unemployment	41.3	42.7	2.2	1.4	0.6	4.5	3.4	1.4	11.8
Participation rate	63.3	63.0	0.4	-0.3	0.1	0.0
Unemployment rate	10.5	10.9	0.5	0.4	0.1	1.1
Employment rate	56.7	56.1	0.4	-0.6	0.0	-0.7
Part-time rate	16.1	16.0	0.6	-0.1	0.4	0.8
Both sexes, 15 to 24 years									
Population	89.1	89.0	...	-0.1	-0.5	-1.6	-0.1	-0.6	-1.8
Labour force	54.3	54.8	1.3	0.5	-0.4	-4.5	0.9	-0.7	-7.6
Employment	44.8	44.7	1.2	-0.1	-0.5	-4.1	-0.2	-1.1	-8.4
Unemployment	9.5	10.1	1.2	0.6	0.1	-0.4	6.3	1.0	-3.8
Participation rate	60.9	61.6	1.5	0.7	-0.1	-3.9
Unemployment rate	17.5	18.4	1.9	0.9	0.3	0.7
Employment rate	50.3	50.2	1.4	-0.1	-0.3	-3.7
Part-time rate	41.7	45.0	2.6	3.2	8.5	6.6
Men, 25 years and over									
Population	254.5	254.6	...	0.1	0.2	0.4	0.0	0.1	0.2
Labour force	172.2	172.4	1.3	0.2	0.8	1.4	0.1	0.5	0.8
Employment	152.5	151.3	1.4	-1.2	-1.2	-3.0	-0.8	-0.8	-1.9
Unemployment	19.7	21.1	1.4	1.4	2.0	4.5	7.1	10.5	27.1
Participation rate	67.7	67.7	0.5	0.0	0.2	0.4
Unemployment rate	11.4	12.2	0.8	0.8	1.1	2.5
Employment rate	59.9	59.4	0.6	-0.5	-0.5	-1.3
Part-time rate	6.3	6.0	0.7	-0.3	-0.5	0.4
Women, 25 years and over									
Population	276.2	276.3	...	0.1	0.2	0.7	0.0	0.1	0.3
Labour force	166.0	163.5	1.2	-2.5	0.4	3.2	-1.5	0.2	2.0
Employment	154.0	152.0	1.2	-2.0	1.9	2.8	-1.3	1.3	1.9
Unemployment	12.1	11.5	1.1	-0.6	-1.5	0.4	-5.0	-11.5	3.6
Participation rate	60.1	59.2	0.4	-0.9	0.1	1.0
Unemployment rate	7.3	7.0	0.7	-0.3	-1.0	0.1
Employment rate	55.8	55.0	0.4	-0.8	0.6	0.9
Part-time rate	18.2	17.4	1.0	-0.8	-1.2	-0.3
Industry	351.2	348.0	2.3	-3.2	0.3	-4.4	-0.9	0.1	-1.2
Goods-producing sector	75.8	73.8	1.9	-2.0	0.9	-2.1	-2.6	1.2	-2.8
Agriculture	4.9	4.5	0.5	-0.4	-0.4	1.0	-8.2	-8.2	28.6
Forestry, fishing, mining, quarrying, oil and gas extraction ²	13.4	11.4	0.9	-2.0	-1.4	-0.8	-14.9	-10.9	-6.6
Utilities	4.1	4.3	0.4	0.2	0.5	0.4	4.9	13.2	10.3
Construction	25.0	26.0	1.3	1.0	2.9	-0.4	4.0	12.6	-1.5
Manufacturing	28.4	27.6	1.3	-0.8	-0.7	-2.4	-2.8	-2.5	-8.0
Services-producing sector	275.4	274.2	2.4	-1.2	-0.7	-2.3	-0.4	-0.3	-0.8
Trade	54.2	54.1	1.6	-0.1	-1.9	1.2	-0.2	-3.4	2.3
Transportation and warehousing	18.4	17.8	0.9	-0.6	1.3	0.2	-3.3	7.9	1.1
Finance, insurance, real estate and leasing	15.4	15.7	0.8	0.3	-1.3	-2.4	1.9	-7.6	-13.3
Professional, scientific and technical services	13.5	13.9	0.9	0.4	-0.7	-0.9	3.0	-4.8	-6.1
Business, building and other support services	14.7	16.0	1.0	1.3	-1.5	0.2	8.8	-8.6	1.3
Educational services	27.1	26.2	1.2	-0.9	-0.6	-1.1	-3.3	-2.2	-4.0
Health care and social assistance	55.8	53.9	1.3	-1.9	-1.0	2.1	-3.4	-1.8	4.1
Information, culture and recreation	14.1	13.2	0.9	-0.9	0.2	0.5	-6.4	1.5	3.9
Accommodation and food services	23.5	23.8	1.2	0.3	1.9	1.6	1.3	8.7	7.2
Other services	15.7	16.1	0.9	0.4	1.2	-1.0	2.5	8.1	-5.8
Public administration	23.1	23.5	1.0	0.4	1.7	-2.6	1.7	7.8	-10.0

1. Average standard error of change in two consecutive months (see "Sampling Errors" in Data Quality for further explanations).

2. Also referred to as Natural resources.

Note(s): Related CANSIM Tables 282-0087, 282-0088.

Table 4-5
Selected labour force characteristics (seasonally adjusted) — Quebec

	March 2013	April 2013	S.E. ¹	Change from			Percent change from		
				last month	last December	twelve months ago	last month	last December	twelve months ago
in thousands (except rates)									
Both sexes, 15 years and over									
Population	6,674.7	6,680.2	...	5.5	15.9	56.1	0.1	0.2	0.8
Labour force	4,354.2	4,363.4	15.0	9.2	-1.1	41.7	0.2	0.0	1.0
Employment	4,019.8	4,022.5	15.3	2.7	-21.7	43.6	0.1	-0.5	1.1
Employment full-time	3,268.2	3,265.0	20.0	-3.2	-23.2	65.1	-0.1	-0.7	2.0
Unemployment	334.4	340.9	13.5	6.5	20.6	-1.8	1.9	6.4	-0.5
Participation rate	65.2	65.3	0.2	0.1	-0.2	0.1
Unemployment rate	7.7	7.8	0.3	0.1	0.5	-0.1
Employment rate	60.2	60.2	0.2	0.0	-0.5	0.1
Part-time rate	18.7	18.8	0.4	0.1	0.1	-0.7
Both sexes, 15 to 24 years									
Population	980.9	980.4	...	-0.5	-2.0	-2.5	-0.1	-0.2	-0.3
Labour force	663.7	669.6	8.7	5.9	12.9	7.4	0.9	2.0	1.1
Employment	574.1	571.1	8.3	-3.0	-3.9	1.4	-0.5	-0.7	0.2
Unemployment	89.6	98.5	7.8	8.9	16.7	6.0	9.9	20.4	6.5
Participation rate	67.7	68.3	0.9	0.6	1.5	0.9
Unemployment rate	13.5	14.7	1.1	1.2	2.2	0.7
Employment rate	58.5	58.3	0.8	-0.2	-0.2	0.3
Part-time rate	50.4	48.4	1.6	-2.0	-1.8	-4.9
Men, 25 years and over									
Population	2,801.8	2,804.8	...	3.0	9.3	30.6	0.1	0.3	1.1
Labour force	1,965.9	1,967.8	8.3	1.9	-11.0	29.2	0.1	-0.6	1.5
Employment	1,833.2	1,834.9	9.0	1.7	-3.4	40.3	0.1	-0.2	2.2
Unemployment	132.7	132.9	8.1	0.2	-7.6	-11.2	0.2	-5.4	-7.8
Participation rate	70.2	70.2	0.3	0.0	-0.6	0.3
Unemployment rate	6.8	6.8	0.4	0.0	-0.3	-0.6
Employment rate	65.4	65.4	0.3	0.0	-0.4	0.7
Part-time rate	7.5	8.6	0.5	1.1	1.4	0.5
Women, 25 years and over									
Population	2,892.0	2,895.0	...	3.0	8.6	28.1	0.1	0.3	1.0
Labour force	1,724.6	1,726.0	8.3	1.4	-3.1	5.1	0.1	-0.2	0.3
Employment	1,612.5	1,616.5	8.5	4.0	-14.5	1.8	0.2	-0.9	0.1
Unemployment	112.1	109.5	7.1	-2.6	11.5	3.3	-2.3	11.7	3.1
Participation rate	59.6	59.6	0.3	0.0	-0.3	-0.4
Unemployment rate	6.5	6.3	0.4	-0.2	0.6	0.1
Employment rate	55.8	55.8	0.3	0.0	-0.7	-0.5
Part-time rate	20.1	20.0	0.7	-0.1	-0.6	-0.5
Industry									
Industry	4,019.8	4,022.5	15.3	2.7	-21.7	43.6	0.1	-0.5	1.1
Goods-producing sector									
Goods-producing sector	846.0	861.2	13.6	15.2	-11.7	-7.7	1.8	-1.3	-0.9
Agriculture	57.4	55.9	3.2	-1.5	-0.5	-2.9	-2.6	-0.9	-4.9
Forestry, fishing, mining, quarrying, oil and gas extraction ²	34.2	32.6	2.5	-1.6	-1.5	-3.8	-4.7	-4.4	-10.4
Utilities	28.6	27.9	2.2	-0.7	2.6	3.9	-2.4	10.3	16.2
Construction	257.9	259.9	8.3	2.0	9.6	7.7	0.8	3.8	3.1
Manufacturing	467.9	485.0	10.7	17.1	-21.8	-12.6	3.7	-4.3	-2.5
Services-producing sector									
Services-producing sector	3,173.9	3,161.3	17.8	-12.6	-10.0	51.3	-0.4	-0.3	1.6
Trade	641.0	633.8	12.7	-7.2	4.0	15.7	-1.1	0.6	2.5
Transportation and warehousing	172.6	173.7	7.0	1.1	9.2	-8.4	0.6	5.6	-4.6
Finance, insurance, real estate and leasing	229.4	229.4	7.5	0.0	-1.7	19.1	0.0	-0.7	9.1
Professional, scientific and technical services	317.7	293.8	9.0	-23.9	-2.8	-3.6	-7.5	-0.9	-1.2
Business, building and other support services	138.4	146.5	7.2	8.1	-6.6	-1.7	5.9	-4.3	-1.1
Educational services	280.6	272.1	9.5	-8.5	-31.1	-24.7	-3.0	-10.3	-8.3
Health care and social assistance	556.6	556.2	10.0	-0.4	-15.0	48.2	-0.1	-2.6	9.5
Information, culture and recreation	194.9	193.9	7.4	-1.0	7.2	5.1	-0.5	3.9	2.7
Accommodation and food services	246.0	261.9	8.5	15.9	33.1	5.0	6.5	14.5	1.9
Other services	169.8	165.3	6.8	-4.5	-14.2	-7.8	-2.7	-7.9	-4.5
Public administration	226.8	234.7	6.3	7.9	8.0	4.2	3.5	3.5	1.8

1. Average standard error of change in two consecutive months (see "Sampling Errors" in Data Quality for further explanations).

2. Also referred to as Natural resources.

Note(s): Related CANSIM Tables 282-0087, 282-0088.

Table 4-6
Selected labour force characteristics (seasonally adjusted) — Ontario

	March 2013	April 2013	S.E. ¹	Change from			Percent change from		
				last month	last December	twelve months ago	last month	last December	twelve months ago
in thousands (except rates)									
Both sexes, 15 years and over									
Population	11,159.5	11,173.8	...	14.3	45.7	131.9	0.1	0.4	1.2
Labour force	7,410.2	7,414.6	20.0	4.4	-27.4	63.3	0.1	-0.4	0.9
Employment	6,840.9	6,844.7	19.3	3.8	-9.5	70.7	0.1	-0.1	1.0
Employment full-time	5,508.3	5,525.9	25.6	17.6	-21.3	23.1	0.3	-0.4	0.4
Unemployment	569.3	569.9	17.6	0.6	-17.8	-7.4	0.1	-3.0	-1.3
Participation rate	66.4	66.4	0.2	0.0	-0.5	-0.2
Unemployment rate	7.7	7.7	0.2	0.0	-0.2	-0.2
Employment rate	61.3	61.3	0.2	0.0	-0.3	0.0
Part-time rate	19.5	19.3	0.3	-0.2	0.2	0.5
Both sexes, 15 to 24 years									
Population	1,787.6	1,787.1	...	-0.5	-1.5	-1.2	0.0	-0.1	-0.1
Labour force	1,082.4	1,083.5	12.2	1.1	-13.7	9.8	0.1	-1.2	0.9
Employment	904.0	898.0	10.7	-6.0	-11.8	3.6	-0.7	-1.3	0.4
Unemployment	178.3	185.5	10.8	7.2	-1.8	6.3	4.0	-1.0	3.5
Participation rate	60.6	60.6	0.7	0.0	-0.7	0.6
Unemployment rate	16.5	17.1	0.9	0.6	0.0	0.4
Employment rate	50.6	50.2	0.6	-0.4	-0.7	0.2
Part-time rate	53.3	52.9	1.3	-0.5	-1.4	4.0
Men, 25 years and over									
Population	4,546.0	4,553.2	...	7.2	22.6	64.9	0.2	0.5	1.4
Labour force	3,297.0	3,317.1	10.1	20.1	-0.6	23.3	0.6	0.0	0.7
Employment	3,083.0	3,102.5	10.8	19.5	-4.5	29.2	0.6	-0.1	1.0
Unemployment	214.0	214.6	10.0	0.6	3.9	-6.0	0.3	1.9	-2.7
Participation rate	72.5	72.9	0.2	0.4	-0.3	-0.5
Unemployment rate	6.5	6.5	0.3	0.0	0.1	-0.2
Employment rate	67.8	68.1	0.2	0.3	-0.5	-0.4
Part-time rate	8.0	7.9	0.4	0.0	0.1	0.1
Women, 25 years and over									
Population	4,825.9	4,833.5	...	7.6	24.6	68.1	0.2	0.5	1.4
Labour force	3,030.9	3,014.0	11.3	-16.9	-13.1	30.2	-0.6	-0.4	1.0
Employment	2,853.9	2,844.2	11.1	-9.7	6.8	37.9	-0.3	0.2	1.4
Unemployment	177.0	169.9	9.3	-7.1	-19.8	-7.6	-4.0	-10.4	-4.3
Participation rate	62.8	62.4	0.2	-0.4	-0.5	-0.2
Unemployment rate	5.8	5.6	0.3	-0.2	-0.7	-0.3
Employment rate	59.1	58.8	0.2	-0.3	-0.2	-0.1
Part-time rate	21.2	21.0	0.5	-0.2	1.0	-0.1
Industry	6,840.9	6,844.7	19.3	3.8	-9.5	70.7	0.1	-0.1	1.0
Goods-producing sector	1,389.9	1,420.3	18.2	30.4	14.1	-29.8	2.2	1.0	-2.1
Agriculture	85.9	85.3	4.5	-0.6	0.2	-11.0	-0.7	0.2	-11.4
Forestry, fishing, mining, quarrying, oil and gas extraction ²	35.6	37.8	2.5	2.2	3.6	-2.6	6.2	10.5	-6.4
Utilities	50.0	51.1	3.2	1.1	-4.3	-9.6	2.2	-7.8	-15.8
Construction	438.7	457.2	11.2	18.5	27.8	-1.4	4.2	6.5	-0.3
Manufacturing	779.8	788.8	14.5	9.0	-13.3	-5.3	1.2	-1.7	-0.7
Services-producing sector	5,451.0	5,424.4	23.6	-26.6	-23.7	100.5	-0.5	-0.4	1.9
Trade	1,009.7	1,008.6	16.0	-1.1	-26.3	38.1	-0.1	-2.5	3.9
Transportation and warehousing	345.1	327.7	9.7	-17.4	-1.5	15.5	-5.0	-0.5	5.0
Finance, insurance, real estate and leasing	513.6	517.8	12.1	4.2	-7.0	9.6	0.8	-1.3	1.9
Professional, scientific and technical services	553.1	578.1	13.6	25.0	31.3	7.3	4.5	5.7	1.3
Business, building and other support services	330.1	306.9	10.3	-23.2	13.2	19.7	-7.0	4.5	6.9
Educational services	521.8	520.8	11.9	-1.0	-2.8	40.0	-0.2	-0.5	8.3
Health care and social assistance	783.2	780.0	13.3	-3.2	10.5	18.1	-0.4	1.4	2.4
Information, culture and recreation	305.2	305.0	10.3	-0.2	-21.7	-35.3	-0.1	-6.6	-10.4
Accommodation and food services	440.2	431.7	11.4	-8.5	3.3	21.4	-1.9	0.8	5.2
Other services	275.0	267.2	9.5	-7.8	-19.2	-30.8	-2.8	-6.7	-10.3
Public administration	374.0	380.6	9.1	6.6	-3.5	-3.2	1.8	-0.9	-0.8

1. Average standard error of change in two consecutive months (see "Sampling Errors" in Data Quality for further explanations).

2. Also referred to as Natural resources.

Note(s): Related CANSIM Tables 282-0087, 282-0088.

Table 4-7
Selected labour force characteristics (seasonally adjusted) — Manitoba

	March 2013	April 2013	S.E. ¹	Change from			Percent change from		
				last month	last December	twelve months ago	last month	last December	twelve months ago
in thousands (except rates)									
Both sexes, 15 years and over									
Population	969.8	971.1	...	1.3	3.8	9.4	0.1	0.4	1.0
Labour force	672.3	666.2	2.6	-6.1	-7.3	1.1	-0.9	-1.1	0.2
Employment	638.8	627.7	2.7	-11.1	-10.7	-2.0	-1.7	-1.7	-0.3
Employment full-time	511.1	503.7	3.6	-7.4	-12.2	-3.7	-1.4	-2.4	-0.7
Unemployment	33.5	38.5	2.2	5.0	3.3	3.1	14.9	9.4	8.8
Participation rate	69.3	68.6	0.3	-0.7	-1.0	-0.6
Unemployment rate	5.0	5.8	0.3	0.8	0.6	0.5
Employment rate	65.9	64.6	0.3	-1.3	-1.4	-0.9
Part-time rate	20.0	19.8	0.5	-0.2	0.6	0.3
Both sexes, 15 to 24 years									
Population	164.8	164.8	...	0.0	0.0	-0.2	0.0	0.0	-0.1
Labour force	114.0	114.5	1.6	0.5	-0.9	-0.4	0.4	-0.8	-0.3
Employment	103.2	101.9	1.5	-1.3	-1.8	0.4	-1.3	-1.7	0.4
Unemployment	10.7	12.6	1.4	1.9	1.0	-0.8	17.8	8.6	-6.0
Participation rate	69.2	69.5	0.9	0.3	-0.5	-0.1
Unemployment rate	9.4	11.0	1.2	1.6	0.9	-0.7
Employment rate	62.6	61.8	0.9	-0.8	-1.1	0.3
Part-time rate	44.9	44.7	1.8	-0.2	3.9	1.7
Men, 25 years and over									
Population	394.5	395.1	...	0.6	1.8	4.7	0.2	0.5	1.2
Labour force	300.2	296.5	1.3	-3.7	-5.1	-0.5	-1.2	-1.7	-0.2
Employment	288.6	281.9	1.4	-6.7	-7.5	-4.2	-2.3	-2.6	-1.5
Unemployment	11.6	14.6	1.2	3.0	2.5	3.6	25.9	20.7	32.7
Participation rate	76.1	75.0	0.3	-1.1	-1.7	-1.1
Unemployment rate	3.9	4.9	0.4	1.0	0.9	1.2
Employment rate	73.2	71.3	0.4	-1.9	-2.3	-2.0
Part-time rate	6.9	7.4	0.6	0.5	-0.7	0.4
Women, 25 years and over									
Population	410.5	411.2	...	0.7	2.0	5.0	0.2	0.5	1.2
Labour force	258.1	255.1	1.5	-3.0	-1.5	2.0	-1.2	-0.6	0.8
Employment	246.9	243.9	1.6	-3.0	-1.3	1.8	-1.2	-0.5	0.7
Unemployment	11.2	11.2	1.1	0.0	-0.2	0.2	0.0	-1.8	1.8
Participation rate	62.9	62.0	0.4	-0.9	-0.7	-0.3
Unemployment rate	4.3	4.4	0.4	0.1	0.0	0.1
Employment rate	60.1	59.3	0.4	-0.8	-0.6	-0.3
Part-time rate	24.9	23.7	0.9	-1.3	0.5	-0.6
Industry									
	638.8	627.7	2.7	-11.1	-10.6	-2.0	-1.7	-1.7	-0.3
Goods-producing sector									
Agriculture	154.3	148.2	2.4	-6.1	-1.1	7.2	-4.0	-0.7	5.1
Forestry, fishing, mining, quarrying, oil and gas extraction ²	25.8	24.1	1.2	-1.7	0.5	4.1	-6.6	2.1	20.5
Utilities	7.0	7.1	0.5	0.1	-0.4	0.4	1.4	-5.3	6.0
Construction	8.1	8.4	0.5	0.3	0.4	0.8	3.7	5.0	10.5
Manufacturing	51.8	44.8	1.5	-7.0	-3.9	1.0	-13.5	-8.0	2.3
	61.6	63.8	1.7	2.2	2.4	0.8	3.6	3.9	1.3
Services-producing sector									
	484.5	479.4	3.2	-5.1	-9.7	-9.2	-1.1	-2.0	-1.9
Trade	91.0	88.7	2.1	-2.3	-3.9	-6.5	-2.5	-4.2	-6.8
Transportation and warehousing	33.9	36.0	1.3	2.1	-0.4	-0.7	6.2	-1.1	-1.9
Finance, insurance, real estate and leasing	34.3	32.2	1.2	-2.1	-2.9	-2.7	-6.1	-8.3	-7.7
Professional, scientific and technical services	28.2	27.0	1.2	-1.2	-2.4	-1.6	-4.3	-8.2	-5.6
Business, building and other support services	18.6	17.0	1.2	-1.6	-3.5	-2.8	-8.6	-17.1	-14.1
Educational services	48.1	49.8	1.6	1.7	-0.3	3.2	3.5	-0.6	6.9
Health care and social assistance	94.8	92.8	1.8	-2.0	-1.4	-2.9	-2.1	-1.5	-3.0
Information, culture and recreation	25.9	27.6	1.2	1.7	2.0	4.4	6.6	7.8	19.0
Accommodation and food services	40.8	40.7	1.5	-0.1	-0.3	-0.4	-0.2	-0.7	-1.0
Other services	30.9	30.2	1.2	-0.7	1.8	1.4	-2.3	6.3	4.9
Public administration	37.8	37.3	1.3	-0.5	1.4	-0.8	-1.3	3.9	-2.1

1. Average standard error of change in two consecutive months (see "Sampling Errors" in Data Quality for further explanations).

2. Also referred to as Natural resources.

Note(s): Related CANSIM Tables 282-0087, 282-0088.

Table 4-8
Selected labour force characteristics (seasonally adjusted) — Saskatchewan

	March 2013	April 2013	S.E. ¹	Change from			Percent change from		
				last month	last December	twelve months ago	last month	last December	twelve months ago
in thousands (except rates)									
Both sexes, 15 years and over									
Population	820.6	821.9	...	1.3	4.3	14.2	0.2	0.5	1.8
Labour force	577.3	576.4	2.5	-0.9	5.8	12.0	-0.2	1.0	2.1
Employment	554.7	553.2	2.6	-1.5	8.9	16.4	-0.3	1.6	3.1
Employment full-time	458.1	453.9	3.3	-4.2	6.8	10.1	-0.9	1.5	2.3
Unemployment	22.6	23.2	1.9	0.6	-3.1	-4.5	2.7	-11.8	-16.2
Participation rate	70.4	70.1	0.3	-0.3	0.3	0.2
Unemployment rate	3.9	4.0	0.3	0.1	-0.6	-0.9
Employment rate	67.6	67.3	0.3	-0.3	0.7	0.8
Part-time rate	17.4	17.9	0.6	0.5	0.1	0.6
Both sexes, 15 to 24 years									
Population	136.6	136.6	...	0.0	-0.1	0.2	0.0	-0.1	0.1
Labour force	95.5	93.4	1.4	-2.1	-0.8	-1.5	-2.2	-0.8	-1.6
Employment	86.5	85.7	1.5	-0.8	0.8	-0.2	-0.9	0.9	-0.2
Unemployment	9.0	7.7	1.2	-1.3	-1.6	-1.4	-14.4	-17.2	-15.4
Participation rate	69.9	68.4	1.0	-1.5	-0.5	-1.2
Unemployment rate	9.4	8.2	1.2	-1.2	-1.7	-1.4
Employment rate	63.3	62.7	1.1	-0.6	0.6	-0.3
Part-time rate	33.9	36.1	1.8	2.2	-0.3	1.0
Men, 25 years and over									
Population	337.6	338.3	...	0.7	2.3	7.7	0.2	0.7	2.3
Labour force	260.0	261.1	1.2	1.1	3.7	5.7	0.4	1.4	2.2
Employment	253.3	252.8	1.3	-0.5	3.9	6.3	-0.2	1.6	2.6
Unemployment	6.6	8.3	1.0	1.7	-0.2	-0.6	25.8	-2.4	-6.7
Participation rate	77.0	77.2	0.4	0.2	0.6	-0.1
Unemployment rate	2.5	3.2	0.4	0.7	-0.1	-0.3
Employment rate	75.0	74.7	0.4	-0.3	0.6	0.1
Part-time rate	7.1	7.0	0.6	-0.1	0.6	0.6
Women, 25 years and over									
Population	346.3	347.0	...	0.7	2.1	6.3	0.2	0.6	1.8
Labour force	221.9	221.9	1.6	0.0	3.0	7.8	0.0	1.4	3.6
Employment	214.9	214.7	1.5	-0.2	4.2	10.3	-0.1	2.0	5.0
Unemployment	7.0	7.2	1.0	0.2	-1.3	-2.4	2.9	-15.3	-25.0
Participation rate	64.1	63.9	0.5	-0.2	0.4	1.1
Unemployment rate	3.2	3.2	0.5	0.0	-0.7	-1.3
Employment rate	62.1	61.9	0.4	-0.2	0.9	1.9
Part-time rate	22.9	23.5	1.0	0.6	-0.4	0.5
Industry									
Industry	554.7	553.2	2.6	-1.5	8.9	16.4	-0.3	1.6	3.1
Goods-producing sector									
Goods-producing sector	150.8	142.4	2.4	-8.4	-7.7	-0.2	-5.6	-5.1	-0.1
Agriculture	44.7	40.3	1.6	-4.4	-1.6	2.9	-9.8	-3.8	7.8
Forestry, fishing, mining, quarrying, oil and gas extraction ²	24.6	24.5	1.2	-0.1	-1.5	-3.0	-0.4	-5.8	-10.9
Utilities	5.1	5.1	0.4	0.0	0.3	-0.7	0.0	6.2	-12.1
Construction	49.2	46.9	1.6	-2.3	-0.4	1.9	-4.7	-0.8	4.2
Manufacturing	27.1	25.5	1.1	-1.6	-4.6	-1.4	-5.9	-15.3	-5.2
Services-producing sector									
Services-producing sector	403.9	410.7	3.0	6.8	16.5	16.5	1.7	4.2	4.2
Trade	85.9	85.7	1.9	-0.2	3.8	5.3	-0.2	4.6	6.6
Transportation and warehousing	26.1	27.8	1.1	1.7	2.3	0.5	6.5	9.0	1.8
Finance, insurance, real estate and leasing	28.1	28.7	1.0	0.6	0.5	-1.3	2.1	1.8	-4.3
Professional, scientific and technical services	26.8	26.9	1.2	0.1	2.0	3.2	0.4	8.0	13.5
Business, building and other support services	11.5	11.3	0.9	-0.2	-1.6	-1.0	-1.7	-12.4	-8.1
Educational services	44.5	47.3	1.4	2.8	3.7	4.1	6.3	8.5	9.5
Health care and social assistance	75.4	75.4	1.7	0.0	3.2	5.3	0.0	4.4	7.6
Information, culture and recreation	18.0	17.2	1.1	-0.8	-2.1	-3.1	-4.4	-10.9	-15.3
Accommodation and food services	30.3	32.2	1.5	1.9	3.9	-0.9	6.3	13.8	-2.7
Other services	27.3	27.6	1.2	0.3	3.1	3.9	1.1	12.7	16.5
Public administration	29.9	30.7	1.1	0.8	-2.2	0.6	2.7	-6.7	2.0

1. Average standard error of change in two consecutive months (see "Sampling Errors" in Data Quality for further explanations).

2. Also referred to as Natural resources.

Note(s): Related CANSIM Tables 282-0087, 282-0088.

Table 4-9
Selected labour force characteristics (seasonally adjusted) — Alberta

	March 2013	April 2013	S.E. ¹	Change from			Percent change from		
				last month	last December	twelve months ago	last month	last December	twelve months ago
in thousands (except rates)									
Both sexes, 15 years and over									
Population	3,135.3	3,145.7	...	10.4	34.2	95.2	0.3	1.1	3.1
Labour force	2,277.5	2,282.1	8.7	4.6	14.5	30.1	0.2	0.6	1.3
Employment	2,167.9	2,182.7	8.9	14.8	17.4	40.1	0.7	0.8	1.9
Employment full-time	1,843.4	1,862.4	11.8	19.0	35.7	83.0	1.0	2.0	4.7
Unemployment	109.6	99.4	6.8	-10.2	-2.9	-10.0	-9.3	-2.8	-9.1
Participation rate	72.6	72.5	0.3	-0.1	-0.4	-1.3
Unemployment rate	4.8	4.4	0.3	-0.4	-0.1	-0.5
Employment rate	69.1	69.4	0.3	0.3	-0.2	-0.8
Part-time rate	15.0	14.7	0.5	-0.3	-1.0	-2.3
Both sexes, 15 to 24 years									
Population	509.8	510.3	...	0.5	0.9	5.1	0.1	0.2	1.0
Labour force	345.6	338.5	5.1	-7.1	6.3	-14.9	-2.1	1.9	-4.2
Employment	314.0	308.2	5.2	-5.8	5.4	-14.3	-1.8	1.8	-4.4
Unemployment	31.5	30.3	4.1	-1.2	0.9	-0.7	-3.8	3.1	-2.3
Participation rate	67.8	66.3	1.0	-1.5	1.1	-3.7
Unemployment rate	9.1	9.0	1.1	-0.1	0.1	0.2
Employment rate	61.6	60.4	1.0	-1.2	1.0	-3.4
Part-time rate	31.1	30.5	1.7	-0.6	-1.9	-6.2
Men, 25 years and over									
Population	1,333.0	1,338.2	...	5.2	17.4	45.7	0.4	1.3	3.5
Labour force	1,076.6	1,080.3	4.3	3.7	6.0	21.1	0.3	0.6	2.0
Employment	1,036.7	1,041.8	4.7	5.1	4.9	26.4	0.5	0.5	2.6
Unemployment	39.9	38.5	3.9	-1.4	1.1	-5.2	-3.5	2.9	-11.9
Participation rate	80.8	80.7	0.3	-0.1	-0.6	-1.2
Unemployment rate	3.7	3.6	0.4	-0.1	0.1	-0.5
Employment rate	77.8	77.9	0.4	0.1	-0.6	-0.7
Part-time rate	5.0	5.3	0.5	0.2	-0.1	-0.7
Women, 25 years and over									
Population	1,292.5	1,297.3	...	4.8	16.1	44.5	0.4	1.3	3.6
Labour force	855.3	863.2	5.2	7.9	2.1	23.8	0.9	0.2	2.8
Employment	817.2	832.6	5.2	15.4	7.1	27.8	1.9	0.9	3.5
Unemployment	38.1	30.6	3.8	-7.5	-4.9	-4.0	-19.7	-13.8	-11.6
Participation rate	66.2	66.5	0.4	0.3	-0.7	-0.5
Unemployment rate	4.5	3.5	0.4	-1.0	-0.6	-0.6
Employment rate	63.2	64.2	0.4	1.0	-0.2	0.0
Part-time rate	21.4	20.6	0.9	-0.8	-1.8	-2.3
Industry									
	2,167.9	2,182.7	8.9	14.8	17.4	40.1	0.7	0.8	1.9
Goods-producing sector									
Agriculture	610.0	623.0	9.2	13.0	1.1	0.2	2.1	0.2	0.0
Forestry, fishing, mining, quarrying, oil and gas extraction ²	63.5	65.5	3.1	2.0	3.9	10.4	3.1	6.3	18.9
Utilities	166.9	171.2	5.2	4.3	6.2	-14.5	2.6	3.8	-7.8
Construction	15.3	18.3	1.9	3.0	-4.5	-0.5	19.6	-19.7	-2.7
Manufacturing	223.6	230.0	6.6	6.4	7.5	3.8	2.9	3.4	1.7
	140.7	138.0	5.2	-2.7	-12.0	1.0	-1.9	-8.0	0.7
Services-producing sector									
	1,557.9	1,559.7	10.9	1.8	16.3	39.9	0.1	1.1	2.6
Trade	321.5	317.7	7.7	-3.8	-7.6	-5.7	-1.2	-2.3	-1.8
Transportation and warehousing	122.6	117.4	4.9	-5.2	-8.6	3.8	-4.2	-6.8	3.3
Finance, insurance, real estate and leasing	115.1	112.2	4.1	-2.9	3.8	11.1	-2.5	3.5	11.0
Professional, scientific and technical services	169.7	176.5	5.4	6.8	17.9	22.1	4.0	11.3	14.3
Business, building and other support services	71.3	70.1	3.9	-1.2	-2.1	-0.4	-1.7	-2.9	-0.6
Educational services	133.3	134.0	4.7	0.7	8.4	5.8	0.5	6.7	4.5
Health care and social assistance	237.1	240.6	5.9	3.5	9.8	12.5	1.5	4.2	5.5
Information, culture and recreation	75.2	72.5	4.1	-2.7	0.5	0.3	-3.6	0.7	0.4
Accommodation and food services	119.1	124.2	5.6	5.1	-7.9	-8.5	4.3	-6.0	-6.4
Other services	108.2	106.3	4.7	-1.9	4.5	-1.1	-1.8	4.4	-1.0
Public administration	84.8	88.1	3.8	3.3	-2.6	-0.1	3.9	-2.9	-0.1

1. Average standard error of change in two consecutive months (see "Sampling Errors" in Data Quality for further explanations).

2. Also referred to as Natural resources.

Note(s): Related CANSIM Tables 282-0087, 282-0088.

Table 4-10
Selected labour force characteristics (seasonally adjusted) — British Columbia

	March 2013	April 2013	S.E. ¹	Change from			Percent change from		
				last month	last December	twelve months ago	last month	last December	twelve months ago
in thousands (except rates)									
Both sexes, 15 years and over									
Population	3,840.5	3,844.7	...	4.2	14.4	37.5	0.1	0.4	1.0
Labour force	2,475.7	2,471.0	10.7	-4.7	-0.6	-3.1	-0.2	0.0	-0.1
Employment	2,302.6	2,312.1	10.3	9.5	-1.4	-6.6	0.4	-0.1	-0.3
Employment full-time	1,802.4	1,818.9	14.5	16.5	1.8	10.8	0.9	0.1	0.6
Unemployment	173.1	158.8	8.6	-14.3	0.7	3.4	-8.3	0.4	2.2
Participation rate	64.5	64.3	0.3	-0.2	-0.2	-0.7
Unemployment rate	7.0	6.4	0.3	-0.6	0.0	0.1
Employment rate	60.0	60.1	0.3	0.1	-0.3	-0.8
Part-time rate	21.7	21.3	0.6	-0.4	-0.1	-0.7
Both sexes, 15 to 24 years									
Population	587.7	587.5	...	-0.2	-1.0	-2.7	0.0	-0.2	-0.5
Labour force	368.2	359.8	6.0	-8.4	1.0	2.0	-2.3	0.3	0.6
Employment	314.8	317.0	5.6	2.2	7.5	-3.8	0.7	2.4	-1.2
Unemployment	53.4	42.8	5.0	-10.6	-6.5	5.8	-19.9	-13.2	15.7
Participation rate	62.7	61.2	1.0	-1.5	0.2	0.6
Unemployment rate	14.5	11.9	1.3	-2.6	-1.8	1.6
Employment rate	53.6	54.0	0.9	0.4	1.4	-0.4
Part-time rate	46.9	46.5	2.1	-0.4	1.1	-2.5
Men, 25 years and over									
Population	1,587.2	1,589.4	...	2.2	7.7	20.1	0.1	0.5	1.3
Labour force	1,104.6	1,100.5	5.5	-4.1	2.9	-10.0	-0.4	0.3	-0.9
Employment	1,043.0	1,043.0	5.7	0.0	-2.5	-6.2	0.0	-0.2	-0.6
Unemployment	61.6	57.5	4.9	-4.1	5.3	-3.9	-6.7	10.2	-6.4
Participation rate	69.6	69.2	0.3	-0.4	-0.2	-1.6
Unemployment rate	5.6	5.2	0.4	-0.4	0.4	-0.3
Employment rate	65.7	65.6	0.4	-0.1	-0.5	-1.3
Part-time rate	10.1	9.5	0.6	-0.5	-0.3	0.3
Women, 25 years and over									
Population	1,665.6	1,667.8	...	2.2	7.7	20.1	0.1	0.5	1.2
Labour force	1,002.9	1,010.7	6.2	7.8	-4.4	5.0	0.8	-0.4	0.5
Employment	944.9	952.2	6.1	7.3	-6.3	3.5	0.8	-0.7	0.4
Unemployment	58.0	58.5	4.8	0.5	1.9	1.5	0.9	3.4	2.6
Participation rate	60.2	60.6	0.4	0.4	-0.5	-0.4
Unemployment rate	5.8	5.8	0.5	0.0	0.2	0.1
Employment rate	56.7	57.1	0.4	0.4	-0.6	-0.5
Part-time rate	26.2	25.9	1.0	-0.3	-0.6	-1.2
Industry	2,302.6	2,312.1	10.3	9.5	-1.4	-6.6	0.4	-0.1	-0.3
Goods-producing sector									
Agriculture	440.8	432.4	9.1	-8.4	-31.7	-35.9	-1.9	-6.8	-7.7
Forestry, fishing, mining, quarrying, oil and gas extraction ²	28.0	29.8	2.5	1.8	2.0	3.5	6.4	7.2	13.3
Utilities	47.1	47.5	3.0	0.4	-1.2	-0.9	0.8	-2.5	-1.9
Construction	12.4	13.6	1.8	1.2	-2.7	0.5	9.7	-16.6	3.8
Manufacturing	189.3	182.5	6.5	-6.8	-23.8	-11.9	-3.6	-11.5	-6.1
	164.0	159.1	6.0	-4.9	-5.8	-27.0	-3.0	-3.5	-14.5
Services-producing sector									
Trade	1,861.8	1,879.7	12.0	17.9	30.3	29.3	1.0	1.6	1.6
Transportation and warehousing	377.0	372.9	8.1	-4.1	10.8	19.5	-1.1	3.0	5.5
Finance, insurance, real estate and leasing	119.2	117.7	5.2	-1.5	-1.4	-11.4	-1.3	-1.2	-8.8
Professional, scientific and technical services	139.6	155.0	5.4	15.4	19.4	12.9	11.0	14.3	9.1
Business, building and other support services	184.2	184.1	5.9	-0.1	9.7	10.6	-0.1	5.6	6.1
Educational services	97.1	94.6	4.9	-2.5	-0.1	-2.5	-2.6	-0.1	-2.6
Health care and social assistance	176.7	179.2	5.9	2.5	-7.2	4.8	1.4	-3.9	2.8
Information, culture and recreation	251.2	264.7	6.8	13.5	-0.5	-9.8	5.4	-0.2	-3.6
Accommodation and food services	118.6	121.5	5.1	2.9	-0.1	-0.9	2.4	-0.1	-0.7
Other services	176.5	167.9	6.2	-8.6	-8.2	-0.2	-4.9	-4.7	-0.1
Public administration	104.1	100.8	4.9	-3.3	-4.6	-16.5	-3.2	-4.4	-14.1
	117.6	121.3	3.9	3.7	12.5	22.7	3.1	11.5	23.0

1. Average standard error of change in two consecutive months (see "Sampling Errors" in Data Quality for further explanations).

2. Also referred to as Natural resources.

Note(s): Related CANSIM Tables 282-0087, 282-0088.

Table 5-1
Labour force characteristics by census metropolitan area (seasonally adjusted) — 3 month moving average

	March 2013	April 2013	S.E. ¹	Change from			Percent change from		
				last month	last December	twelve months ago	last month	last December	twelve months ago
in thousands (except rates)									
St. John's, Newfoundland and Labrador									
Population	165.0	165.4	...	0.4	1.6	3.1	0.2	1.0	1.9
Labour force	114.8	114.1	0.8	-0.7	-4.8	-2.5	-0.6	-4.0	-2.1
Employment	107.1	106.6	0.8	-0.5	-3.9	-1.2	-0.5	-3.5	-1.1
Unemployment	7.8	7.5	0.4	-0.3	-0.8	-1.3	-3.8	-9.6	-14.8
Participation rate	69.6	69.0	0.5	-0.6	-3.6	-2.8
Unemployment rate	6.8	6.6	0.3	-0.2	-0.4	-0.9
Employment rate	64.9	64.4	0.5	-0.5	-3.1	-2.0
Halifax, Nova Scotia									
Population	345.9	346.3	...	0.4	1.4	4.0	0.1	0.4	1.2
Labour force	241.4	240.8	1.1	-0.6	0.9	0.8	-0.2	0.4	0.3
Employment	226.2	225.2	1.2	-1.0	0.5	0.1	-0.4	0.2	0.0
Unemployment	15.2	15.6	0.6	0.4	0.4	0.8	2.6	2.6	5.4
Participation rate	69.8	69.5	0.3	-0.3	-0.1	-0.6
Unemployment rate	6.3	6.5	0.3	0.2	0.2	0.3
Employment rate	65.4	65.0	0.3	-0.4	-0.1	-0.8
Moncton, New Brunswick									
Population	118.1	118.2	...	0.1	0.6	1.7	0.1	0.5	1.5
Labour force	78.9	78.9	0.7	0.0	-0.5	-1.4	0.0	-0.6	-1.7
Employment	73.7	73.6	0.7	-0.1	-0.6	-1.2	-0.1	-0.8	-1.6
Unemployment	5.2	5.3	0.4	0.1	0.1	-0.2	1.9	1.9	-3.6
Participation rate	66.8	66.8	0.6	0.0	-0.7	-2.1
Unemployment rate	6.6	6.7	0.5	0.1	0.2	-0.1
Employment rate	62.4	62.3	0.6	-0.1	-0.8	-1.9
Saint John, New Brunswick									
Population	106.7	106.7	...	0.0	0.0	0.1	0.0	0.0	0.1
Labour force	69.5	69.7	0.7	0.2	1.3	1.9	0.3	1.9	2.8
Employment	63.2	63.3	0.7	0.1	1.7	1.2	0.2	2.8	1.9
Unemployment	6.3	6.4	0.4	0.1	-0.4	0.7	1.6	-5.9	12.3
Participation rate	65.1	65.3	0.7	0.2	1.2	1.7
Unemployment rate	9.1	9.2	0.6	0.1	-0.7	0.8
Employment rate	59.2	59.3	0.7	0.1	1.6	1.0
Saguenay, Quebec									
Population	126.6	126.6	...	0.0	-0.1	-0.1	0.0	-0.1	-0.1
Labour force	76.6	77.3	0.9	0.7	-0.2	0.3	0.9	-0.3	0.4
Employment	70.6	71.5	0.9	0.9	1.7	-0.7	1.3	2.4	-1.0
Unemployment	6.0	5.8	0.4	-0.2	-1.8	1.1	-3.3	-23.7	23.4
Participation rate	60.5	61.1	0.7	0.6	-0.1	0.3
Unemployment rate	7.8	7.5	0.5	-0.3	-2.3	1.4
Employment rate	55.8	56.5	0.7	0.7	1.4	-0.5
Québec, Quebec									
Population	645.8	646.2	...	0.4	1.3	5.2	0.1	0.2	0.8
Labour force	447.9	448.3	3.3	0.4	8.7	-6.8	0.1	2.0	-1.5
Employment	428.1	428.0	3.5	-0.1	9.3	-4.3	0.0	2.2	-1.0
Unemployment	19.7	20.2	1.5	0.5	-0.8	-2.6	2.5	-3.8	-11.4
Participation rate	69.4	69.4	0.5	0.0	1.2	-1.6
Unemployment rate	4.4	4.5	0.3	0.1	-0.3	-0.5
Employment rate	66.3	66.2	0.5	-0.1	1.3	-1.2
Sherbrooke, Quebec									
Population	168.2	168.5	...	0.3	0.7	2.1	0.2	0.4	1.3
Labour force	101.8	100.9	1.1	-0.9	-5.7	-6.5	-0.9	-5.3	-6.1
Employment	95.4	94.6	1.1	-0.8	-4.8	-5.1	-0.8	-4.8	-5.1
Unemployment	6.4	6.4	0.5	0.0	-0.9	-1.3	0.0	-12.3	-16.9
Participation rate	60.5	59.9	0.7	-0.6	-3.6	-4.6
Unemployment rate	6.3	6.3	0.5	0.0	-0.5	-0.9
Employment rate	56.7	56.1	0.7	-0.6	-3.1	-3.8

See notes at the end of the table.

Table 5-1 – continued

Labour force characteristics by census metropolitan area (seasonally adjusted) — 3 month moving average

	March 2013	April 2013	S.E. ¹	Change from			Percent change from		
				last month	last December	twelve months ago	last month	last December	twelve months ago
in thousands (except rates)									
Trois-Rivières, Quebec									
Population	126.3	126.4	...	0.1	0.2	1.0	0.1	0.2	0.8
Labour force	70.4	70.4	0.7	0.0	0.6	-7.3	0.0	0.9	-9.4
Employment	65.0	64.8	0.7	-0.2	0.7	-6.6	-0.3	1.1	-9.2
Unemployment	5.4	5.5	0.4	0.1	-0.2	-0.8	1.9	-3.5	-12.7
Participation rate	55.7	55.7	0.6	0.0	0.4	-6.3
Unemployment rate	7.7	7.8	0.5	0.1	-0.4	-0.3
Employment rate	51.5	51.3	0.6	-0.2	0.5	-5.6
Montréal, Quebec									
Population	3,277.5	3,280.6	...	3.1	11.0	35.3	0.1	0.3	1.1
Labour force	2,189.4	2,185.2	7.7	-4.2	-5.8	39.7	-0.2	-0.3	1.9
Employment	2,017.7	2,010.9	8.0	-6.8	-6.1	61.2	-0.3	-0.3	3.1
Unemployment	171.6	174.3	4.9	2.7	0.3	-21.5	1.6	0.2	-11.0
Participation rate	66.8	66.6	0.2	-0.2	-0.4	0.5
Unemployment rate	7.8	8.0	0.2	0.2	0.1	-1.1
Employment rate	61.6	61.3	0.2	-0.3	-0.4	1.2
Ottawa-Gatineau, Ontario/Quebec									
Population	1,061.2	1,062.4	...	1.2	4.9	15.4	0.1	0.5	1.5
Labour force	754.3	747.1	3.8	-7.2	-20.1	-14.2	-1.0	-2.6	-1.9
Employment	707.3	701.0	3.8	-6.3	-15.5	-13.9	-0.9	-2.2	-1.9
Unemployment	47.0	46.1	1.9	-0.9	-4.5	-0.2	-1.9	-8.9	-0.4
Participation rate	71.1	70.3	0.4	-0.8	-2.2	-2.4
Unemployment rate	6.2	6.2	0.2	0.0	-0.4	0.1
Employment rate	66.7	66.0	0.4	-0.7	-1.8	-2.3
Ottawa-Gatineau, Quebec part, Ontario/Quebec									
Population	264.2	264.5	...	0.3	1.0	3.2	0.1	0.4	1.2
Labour force	184.2	184.3	1.3	0.1	0.6	-0.7	0.1	0.3	-0.4
Employment	171.8	172.5	1.3	0.7	0.9	-2.2	0.4	0.5	-1.3
Unemployment	12.4	11.8	0.6	-0.6	-0.3	1.5	-4.8	-2.5	14.6
Participation rate	69.7	69.7	0.5	0.0	0.0	-1.1
Unemployment rate	6.7	6.4	0.3	-0.3	-0.2	0.8
Employment rate	65.0	65.2	0.5	0.2	0.1	-1.7
Ottawa-Gatineau, Ontario part, Ontario/Quebec									
Population	797.0	797.9	...	0.9	3.9	12.2	0.1	0.5	1.6
Labour force	570.1	562.8	3.6	-7.3	-20.7	-13.4	-1.3	-3.5	-2.3
Employment	535.4	528.5	3.6	-6.9	-16.4	-11.7	-1.3	-3.0	-2.2
Unemployment	34.7	34.3	1.8	-0.4	-4.2	-1.7	-1.2	-10.9	-4.7
Participation rate	71.5	70.5	0.5	-1.0	-3.0	-2.8
Unemployment rate	6.1	6.1	0.3	0.0	-0.5	-0.1
Employment rate	67.2	66.2	0.5	-1.0	-2.4	-2.6
Kingston, Ontario									
Population	134.6	134.8	...	0.2	0.5	1.5	0.1	0.4	1.1
Labour force	87.0	86.8	0.8	-0.2	0.8	-1.7	-0.2	0.9	-1.9
Employment	81.4	81.7	0.8	0.3	2.0	-0.6	0.4	2.5	-0.7
Unemployment	5.5	5.1	0.3	-0.4	-1.2	-1.1	-7.3	-19.0	-17.7
Participation rate	64.6	64.4	0.6	-0.2	0.4	-2.0
Unemployment rate	6.3	5.9	0.4	-0.4	-1.4	-1.1
Employment rate	60.5	60.6	0.6	0.1	1.3	-1.1
Peterborough, Ontario									
Population	103.3	103.3	...	0.0	0.1	0.5	0.0	0.1	0.5
Labour force	54.7	56.6	1.0	1.9	0.2	-15.0	3.5	0.4	-20.9
Employment	49.1	50.0	1.0	0.9	-1.6	-14.6	1.8	-3.1	-22.6
Unemployment	5.6	6.6	0.5	1.0	1.8	-0.3	17.9	37.5	-4.3
Participation rate	53.0	54.8	1.0	1.8	0.1	-14.8
Unemployment rate	10.2	11.7	0.8	1.5	3.2	2.1
Employment rate	47.5	48.4	1.0	0.9	-1.6	-14.4

See notes at the end of the table.

Table 5-1 – continued

Labour force characteristics by census metropolitan area (seasonally adjusted) — 3 month moving average

	March 2013	April 2013	S.E. ¹	Change from			Percent change from		
				last month	last December	twelve months ago	last month	last December	twelve months ago
in thousands (except rates)									
Oshawa, Ontario									
Population	312.6	313.0	...	0.4	1.6	4.9	0.1	0.5	1.6
Labour force	215.3	214.8	1.6	-0.5	1.1	-0.7	-0.2	0.5	-0.3
Employment	196.8	197.0	1.6	0.2	4.0	-0.8	0.1	2.1	-0.4
Unemployment	18.5	17.9	0.9	-0.6	-2.7	0.1	-3.2	-13.1	0.6
Participation rate	68.9	68.6	0.5	-0.3	0.0	-1.3
Unemployment rate	8.6	8.3	0.4	-0.3	-1.3	0.0
Employment rate	63.0	62.9	0.5	-0.1	0.9	-1.3
Toronto, Ontario									
Population	4,941.1	4,948.8	...	7.7	31.0	94.8	0.2	0.6	2.0
Labour force	3,349.8	3,361.3	10.6	11.5	9.0	132.3	0.3	0.3	4.1
Employment	3,067.0	3,080.1	10.7	13.1	5.5	124.6	0.4	0.2	4.2
Unemployment	282.8	281.2	6.5	-1.6	3.4	7.7	-0.6	1.2	2.8
Participation rate	67.8	67.9	0.2	0.1	-0.3	1.4
Unemployment rate	8.4	8.4	0.2	0.0	0.1	-0.1
Employment rate	62.1	62.2	0.2	0.1	-0.3	1.3
Hamilton, Ontario									
Population	628.5	629.1	...	0.6	2.0	6.1	0.1	0.3	1.0
Labour force	413.2	411.6	2.9	-1.6	5.1	-4.3	-0.4	1.3	-1.0
Employment	387.8	383.8	3.0	-4.0	1.3	-5.2	-1.0	0.3	-1.3
Unemployment	25.4	27.8	1.4	2.4	3.9	0.9	9.4	16.3	3.3
Participation rate	65.7	65.4	0.5	-0.3	0.6	-1.4
Unemployment rate	6.1	6.8	0.3	0.7	0.9	0.3
Employment rate	61.7	61.0	0.5	-0.7	0.0	-1.4
St. Catharines-Niagara, Ontario									
Population	340.2	340.3	...	0.1	0.2	0.9	0.0	0.1	0.3
Labour force	219.2	218.1	1.7	-1.1	-0.1	1.0	-0.5	0.0	0.5
Employment	201.9	199.3	1.8	-2.6	-1.8	-0.8	-1.3	-0.9	-0.4
Unemployment	17.3	18.8	0.8	1.5	1.7	1.7	8.7	9.9	9.9
Participation rate	64.4	64.1	0.5	-0.3	-0.1	0.1
Unemployment rate	7.9	8.6	0.4	0.7	0.8	0.7
Employment rate	59.3	58.6	0.5	-0.7	-0.5	-0.4
Kitchener-Cambridge-Waterloo, Ontario									
Population	416.1	416.5	...	0.4	1.5	4.4	0.1	0.4	1.1
Labour force	298.6	298.4	2.2	-0.2	5.3	-4.7	-0.1	1.8	-1.6
Employment	277.1	277.3	2.2	0.2	4.4	-5.9	0.1	1.6	-2.1
Unemployment	21.5	21.1	1.0	-0.4	0.9	1.2	-1.9	4.5	6.0
Participation rate	71.8	71.6	0.5	-0.2	1.0	-2.0
Unemployment rate	7.2	7.1	0.3	-0.1	0.2	0.5
Employment rate	66.6	66.6	0.5	0.0	0.8	-2.1
Brantford, Ontario									
Population	109.0	109.1	...	0.1	0.2	0.7	0.1	0.2	0.6
Labour force	74.4	74.0	0.8	-0.4	1.9	0.9	-0.5	2.6	1.2
Employment	68.7	68.3	0.8	-0.4	2.1	1.4	-0.6	3.2	2.1
Unemployment	5.7	5.6	0.4	-0.1	-0.3	-0.6	-1.8	-5.1	-9.7
Participation rate	68.3	67.8	0.7	-0.5	1.6	0.4
Unemployment rate	7.7	7.6	0.5	-0.1	-0.6	-0.9
Employment rate	63.0	62.6	0.7	-0.4	1.8	0.9
Guelph, Ontario									
Population	116.4	116.6	...	0.2	0.7	2.0	0.2	0.6	1.7
Labour force	81.5	81.7	0.8	0.2	-0.6	-3.5	0.2	-0.7	-4.1
Employment	76.7	76.1	0.8	-0.6	-1.0	-4.6	-0.8	-1.3	-5.7
Unemployment	4.9	5.6	0.4	0.7	0.4	1.0	14.3	7.7	21.7
Participation rate	70.0	70.1	0.7	0.1	-0.9	-4.2
Unemployment rate	6.0	6.9	0.4	0.9	0.6	1.5
Employment rate	65.9	65.3	0.7	-0.6	-1.2	-5.1

See notes at the end of the table.

Table 5-1 – continued

Labour force characteristics by census metropolitan area (seasonally adjusted) — 3 month moving average

	March 2013	April 2013	S.E. ¹	Change from			Percent change from		
				last month	last December	twelve months ago	last month	last December	twelve months ago
in thousands (except rates)									
London, Ontario									
Population	418.2	418.5	...	0.3	1.1	3.5	0.1	0.3	0.8
Labour force	273.3	272.4	2.0	-0.9	3.6	2.3	-0.3	1.3	0.9
Employment	247.0	245.4	2.1	-1.6	-0.7	-1.6	-0.6	-0.3	-0.6
Unemployment	26.2	26.9	1.0	0.7	4.3	3.9	2.7	19.0	17.0
Participation rate	65.4	65.1	0.5	-0.3	0.7	0.0
Unemployment rate	9.6	9.9	0.4	0.3	1.5	1.4
Employment rate	59.1	58.6	0.5	-0.5	-0.4	-0.9
Windsor, Ontario									
Population	268.5	268.7	...	0.2	0.4	1.4	0.1	0.1	0.5
Labour force	165.7	167.1	1.6	1.4	-1.9	-0.2	0.8	-1.1	-0.1
Employment	150.9	151.7	1.6	0.8	0.3	0.7	0.5	0.2	0.5
Unemployment	14.9	15.4	0.7	0.5	-2.2	-0.9	3.4	-12.5	-5.5
Participation rate	61.7	62.2	0.6	0.5	-0.8	-0.4
Unemployment rate	9.0	9.2	0.4	0.2	-1.2	-0.5
Employment rate	56.2	56.5	0.6	0.3	0.1	0.0
Barrie, Ontario									
Population	164.3	164.5	...	0.2	0.6	1.8	0.1	0.4	1.1
Labour force	123.9	124.9	1.4	1.0	8.2	11.1	0.8	7.0	9.8
Employment	114.9	114.9	1.4	0.0	6.8	11.4	0.0	6.3	11.0
Unemployment	9.0	10.1	0.7	1.1	1.5	-0.2	12.2	17.4	-1.9
Participation rate	75.4	75.9	0.9	0.5	4.7	6.0
Unemployment rate	7.3	8.1	0.6	0.8	0.7	-1.0
Employment rate	69.9	69.8	0.9	-0.1	3.8	6.2
Greater Sudbury, Ontario									
Population	138.3	138.3	...	0.0	-0.3	-1.0	0.0	-0.2	-0.7
Labour force	89.4	89.8	0.8	0.4	1.7	0.8	0.4	1.9	0.9
Employment	82.4	82.7	0.8	0.3	0.6	0.0	0.4	0.7	0.0
Unemployment	7.0	7.1	0.3	0.1	1.1	0.8	1.4	18.3	12.7
Participation rate	64.6	64.9	0.6	0.3	1.3	1.0
Unemployment rate	7.8	7.9	0.4	0.1	1.1	0.8
Employment rate	59.6	59.8	0.6	0.2	0.6	0.4
Thunder Bay, Ontario									
Population	103.1	103.2	...	0.1	0.1	0.6	0.1	0.1	0.6
Labour force	65.2	65.4	0.6	0.2	2.0	-0.1	0.3	3.2	-0.2
Employment	61.1	61.3	0.7	0.2	1.0	-0.7	0.3	1.7	-1.1
Unemployment	4.1	4.2	0.3	0.1	1.1	0.7	2.4	35.5	20.0
Participation rate	63.2	63.4	0.6	0.2	1.9	-0.4
Unemployment rate	6.3	6.4	0.4	0.1	1.5	1.1
Employment rate	59.3	59.4	0.6	0.1	0.9	-1.0
Winnipeg, Manitoba									
Population	638.2	639.1	...	0.9	3.4	8.7	0.1	0.5	1.4
Labour force	444.1	444.7	1.3	0.6	4.0	1.2	0.1	0.9	0.3
Employment	420.3	419.1	1.4	-1.2	2.9	0.6	-0.3	0.7	0.1
Unemployment	23.8	25.6	0.8	1.8	1.2	0.6	7.6	4.9	2.4
Participation rate	69.6	69.6	0.2	0.0	0.3	-0.8
Unemployment rate	5.4	5.8	0.2	0.4	0.3	0.2
Employment rate	65.9	65.6	0.2	-0.3	0.1	-0.8
Regina, Saskatchewan									
Population	183.1	183.4	...	0.3	1.5	4.4	0.2	0.8	2.5
Labour force	136.6	137.9	0.8	1.3	4.4	7.7	1.0	3.3	5.9
Employment	131.8	133.1	0.8	1.3	5.3	8.0	1.0	4.1	6.4
Unemployment	4.8	4.8	0.3	0.0	-0.9	-0.2	0.0	-15.8	-4.0
Participation rate	74.6	75.2	0.4	0.6	1.8	2.5
Unemployment rate	3.5	3.5	0.3	0.0	-0.8	-0.3
Employment rate	72.0	72.6	0.4	0.6	2.3	2.7

See notes at the end of the table.

Table 5-1 – continued

Labour force characteristics by census metropolitan area (seasonally adjusted) — 3 month moving average

	March 2013	April 2013	S.E. ¹	Change from			Percent change from		
				last month	last December	twelve months ago	last month	last December	twelve months ago
in thousands (except rates)									
Saskatoon, Saskatchewan									
Population	231.7	232.4	...	0.7	2.7	7.9	0.3	1.2	3.5
Labour force	165.8	166.5	0.9	0.7	2.8	8.4	0.4	1.7	5.3
Employment	159.1	160.3	1.0	1.2	5.7	11.2	0.8	3.7	7.5
Unemployment	6.7	6.1	0.5	-0.6	-2.9	-2.9	-9.0	-32.2	-32.2
Participation rate	71.6	71.6	0.4	0.0	0.3	1.2
Unemployment rate	4.0	3.7	0.3	-0.3	-1.8	-2.0
Employment rate	68.7	69.0	0.4	0.3	1.7	2.6
Calgary, Alberta									
Population	1,079.8	1,083.0	...	3.2	12.7	34.9	0.3	1.2	3.3
Labour force	801.8	798.7	3.5	-3.1	0.7	11.4	-0.4	0.1	1.4
Employment	760.8	761.4	3.7	0.6	0.4	13.8	0.1	0.1	1.8
Unemployment	41.0	37.3	1.8	-3.7	0.3	-2.4	-9.0	0.8	-6.0
Participation rate	74.3	73.7	0.3	-0.6	-0.9	-1.4
Unemployment rate	5.1	4.7	0.2	-0.4	0.1	-0.3
Employment rate	70.5	70.3	0.3	-0.2	-0.8	-1.0
Edmonton, Alberta									
Population	1,012.7	1,015.6	...	2.9	12.4	36.0	0.3	1.2	3.7
Labour force	733.8	732.6	3.3	-1.2	-5.9	18.2	-0.2	-0.8	2.5
Employment	703.1	700.8	3.5	-2.3	-4.5	23.0	-0.3	-0.6	3.4
Unemployment	30.7	31.9	1.7	1.2	-1.2	-4.7	3.9	-3.6	-12.8
Participation rate	72.5	72.1	0.3	-0.4	-1.5	-0.8
Unemployment rate	4.2	4.4	0.2	0.2	-0.1	-0.7
Employment rate	69.4	69.0	0.4	-0.4	-1.3	-0.2
Kelowna, British Columbia									
Population	150.4	150.5	...	0.1	0.3	0.5	0.1	0.2	0.3
Labour force	94.9	93.8	1.9	-1.1	-6.5	-6.3	-1.2	-6.5	-6.3
Employment	88.7	87.0	1.8	-1.7	-5.9	-4.5	-1.9	-6.4	-4.9
Unemployment	6.2	6.7	0.9	0.5	-0.7	-1.9	8.1	-9.5	-22.1
Participation rate	63.1	62.3	1.3	-0.8	-4.5	-4.4
Unemployment rate	6.5	7.1	0.9	0.6	-0.3	-1.5
Employment rate	59.0	57.8	1.2	-1.2	-4.1	-3.2
Abbotsford-Mission, British Columbia									
Population	146.4	146.6	...	0.2	0.5	1.3	0.1	0.3	0.9
Labour force	99.4	99.5	0.8	0.1	-0.1	0.3	0.1	-0.1	0.3
Employment	92.4	91.8	0.9	-0.6	-0.2	1.6	-0.6	-0.2	1.8
Unemployment	7.0	7.7	0.4	0.7	0.1	-1.4	10.0	1.3	-15.4
Participation rate	67.9	67.9	0.6	0.0	-0.3	-0.4
Unemployment rate	7.0	7.7	0.4	0.7	0.1	-1.5
Employment rate	63.1	62.6	0.6	-0.5	-0.4	0.5
Vancouver, British Columbia									
Population	2,083.0	2,086.0	...	3.0	12.9	37.1	0.1	0.6	1.8
Labour force	1,366.9	1,372.0	5.1	5.1	9.4	13.2	0.4	0.7	1.0
Employment	1,273.8	1,278.3	5.1	4.5	7.0	4.7	0.4	0.6	0.4
Unemployment	93.1	93.7	2.9	0.6	2.3	8.6	0.6	2.5	10.1
Participation rate	65.6	65.8	0.2	0.2	0.1	-0.5
Unemployment rate	6.8	6.8	0.2	0.0	0.1	0.5
Employment rate	61.2	61.3	0.2	0.1	0.0	-0.9
Victoria, British Columbia									
Population	303.7	303.9	...	0.2	0.6	2.1	0.1	0.2	0.7
Labour force	195.8	194.3	1.5	-1.5	-4.0	-5.6	-0.8	-2.0	-2.8
Employment	185.0	184.0	1.5	-1.0	-3.5	-5.9	-0.5	-1.9	-3.1
Unemployment	10.8	10.3	0.6	-0.5	-0.5	0.3	-4.6	-4.6	3.0
Participation rate	64.5	63.9	0.5	-0.6	-1.5	-2.3
Unemployment rate	5.5	5.3	0.3	-0.2	-0.1	0.3
Employment rate	60.9	60.5	0.5	-0.4	-1.3	-2.4

1. Average standard error of change in two consecutive months (see "Sampling Errors" in Data Quality for further explanations).

Note(s): Estimates from this table are based on 2006 census population counts. Related CANSIM Table 282-0116.

Table 5-2
Labour force characteristics by census metropolitan area (seasonally adjusted) — Monthly

	March 2013	April 2013	S.E. ¹	Change from			Percent change from		
				last month	last December	twelve months ago	last month	last December	twelve months ago
in thousands (except rates)									
Montréal, Quebec									
Population	3,280.1	3,284.2	...	4.1	12.0	35.8	0.1	0.4	1.1
Labour force	2,176.0	2,192.1	15.8	16.1	-8.3	11.9	0.7	-0.4	0.5
Employment	1,995.9	2,012.4	15.9	16.5	-22.9	26.1	0.8	-1.1	1.3
Unemployment	180.1	179.8	11.8	-0.3	14.7	-14.1	-0.2	8.9	-7.3
Participation rate	66.3	66.7	0.5	0.4	-0.5	-0.4
Unemployment rate	8.3	8.2	0.5	-0.1	0.7	-0.7
Employment rate	60.8	61.3	0.5	0.5	-0.9	0.2
Toronto, Ontario									
Population	4,947.9	4,957.3	...	9.4	32.6	93.8	0.2	0.7	1.9
Labour force	3,334.8	3,380.3	21.6	45.5	23.8	130.5	1.4	0.7	4.0
Employment	3,058.4	3,107.3	21.3	48.9	27.6	141.2	1.6	0.9	4.8
Unemployment	276.4	273.0	15.8	-3.4	-3.8	-10.8	-1.2	-1.4	-3.8
Participation rate	67.4	68.2	0.4	0.8	0.0	1.4
Unemployment rate	8.3	8.1	0.5	-0.2	-0.1	-0.6
Employment rate	61.8	62.7	0.4	0.9	0.2	1.7
Vancouver, British Columbia									
Population	2,085.8	2,089.4	...	3.6	13.4	37.1	0.2	0.6	1.8
Labour force	1,384.1	1,370.1	11.0	-14.0	13.3	11.4	-1.0	1.0	0.8
Employment	1,280.4	1,280.2	10.7	-0.2	7.4	-1.7	0.0	0.6	-0.1
Unemployment	103.7	90.0	7.1	-13.7	6.0	13.2	-13.2	7.1	17.2
Participation rate	66.4	65.6	0.5	-0.8	0.2	-0.6
Unemployment rate	7.5	6.6	0.5	-0.9	0.4	0.9
Employment rate	61.4	61.3	0.5	-0.1	0.0	-1.2

1. Average standard error of change in two consecutive months (see "Sampling Errors" in Data Quality for further explanations).

Note(s): Estimates from this table are based on 2006 census population counts. Related CANSIM Table 282-0117.

Table 6-1

Labour force characteristics by province and economic region, ¹ unadjusted for seasonality, 3 month moving average ending in April 2012 and April 2013

	Population	Labour force			Participation rate	Unemployment rate	Employment rate
		Labour force	Employment	Unemployment			
in thousands							
Canada ²							
2012	28,210.3	18,606.7	17,183.7	1,423.0	66.0	7.6	60.9
2013	28,555.4	18,828.8	17,415.8	1,413.0	65.9	7.5	61.0
Newfoundland and Labrador							
2012	428.4	256.1	220.2	35.8	59.8	14.0	51.4
2013	429.3	260.0	224.7	35.2	60.6	13.5	52.3
<i>Avalon Peninsula [1010]</i>							
2012	221.6	145.9	131.6	14.4	65.8	9.9	59.4
2013	223.9	144.2	132.2	12.0	64.4	8.3	59.0
<i>South Coast-Burin Peninsula [1020]</i>							
2012	30.2	15.5	12.5	3.0	51.3	19.4	41.4
2013	29.9	16.3	12.7	3.7	54.5	22.7	42.5
<i>West Coast-Northern Peninsula-Labrador [1030]</i>							
2012	86.3	48.8	40.0	8.8	56.5	18.0	46.3
2013	85.8	51.9	42.8	9.0	60.5	17.3	49.9
<i>Notre Dame-Central Bonavista Bay [1040]</i>							
2012	90.2	45.9	36.2	9.7	50.9	21.1	40.1
2013	89.7	47.5	37.1	10.5	53.0	22.1	41.4
Prince Edward Island							
2012	120.3	78.6	68.1	10.6	65.3	13.5	56.6
2013	120.6	82.6	70.9	11.6	68.5	14.0	58.8
Nova Scotia							
2012	779.9	490.6	444.2	46.3	62.9	9.4	57.0
2013	781.1	493.9	444.0	49.9	63.2	10.1	56.8
<i>Cape Breton [1210]</i>							
2012	111.2	61.3	52.7	8.7	55.1	14.2	47.4
2013	110.1	60.5	50.3	10.2	55.0	16.9	45.7
<i>North Shore [1220]</i>							
2012	129.4	79.7	70.3	9.4	61.6	11.8	54.3
2013	128.8	77.1	67.5	9.6	59.9	12.5	52.4
<i>Annapolis Valley [1230]</i>							
2012	99.5	56.3	50.6	5.7	56.6	10.1	50.9
2013	99.4	60.7	54.4	6.3	61.1	10.4	54.7
<i>Southern [1240]</i>							
2012	97.5	55.2	47.9	7.4	56.6	13.4	49.1
2013	96.5	56.9	49.4	7.5	59.0	13.2	51.2
<i>Halifax [1250]</i>							
2012	342.3	238.1	222.8	15.2	69.6	6.4	65.1
2013	346.3	238.7	222.4	16.3	68.9	6.8	64.2
New Brunswick							
2012	620.4	382.4	339.2	43.2	61.6	11.3	54.7
2013	619.9	385.8	339.4	46.4	62.2	12.0	54.8
<i>Campbellton-Miramichi [1310]</i>							
2012	128.2	68.3	54.9	13.4	53.3	19.6	42.8
2013	126.6	72.9	57.6	15.4	57.6	21.1	45.5
<i>Moncton-Richibucto [1320]</i>							
2012	173.2	114.2	103.9	10.3	65.9	9.0	60.0
2013	174.4	112.6	101.9	10.7	64.6	9.5	58.4
<i>Saint John-St. Stephen [1330]</i>							
2012	144.6	91.2	82.2	9.0	63.1	9.9	56.8
2013	144.5	91.2	81.5	9.7	63.1	10.6	56.4

See notes at the end of the table.

Table 6-1 – continued

Labour force characteristics by province and economic region, ¹ unadjusted for seasonality, 3 month moving average ending in April 2012 and April 2013

	Population	Labour force			Participation rate	Unemployment rate	Employment rate
		Labour force	Employment	Unemployment			
in thousands							
Fredericton-Oromocto [1340]							
2012	109.9	69.9	64.6	5.3	63.6	7.6	58.8
2013	110.7	70.3	64.5	5.8	63.5	8.3	58.3
Edmundston-Woodstock [1350]							
2012	64.5	38.7	33.6	5.2	60.0	13.4	52.1
2013	63.7	38.8	33.9	4.9	60.9	12.6	53.2
Quebec							
2012	6,618.9	4,256.1	3,878.7	377.4	64.3	8.9	58.6
2013	6,675.4	4,315.6	3,949.2	366.4	64.6	8.5	59.2
Gaspésie-Îles-de-la-Madeleine [2410]							
2012	78.6	40.6	34.4	6.2	51.7	15.3	43.8
2013	78.4	41.2	33.0	8.2	52.6	19.9	42.1
Bas-Saint-Laurent [2415]							
2012	166.6	102.1	91.2	10.9	61.3	10.7	54.7
2013	166.1	99.7	86.6	13.1	60.0	13.1	52.1
Capitale-Nationale [2420]							
2012	592.5	411.8	384.5	27.3	69.5	6.6	64.9
2013	597.5	402.2	378.7	23.6	67.3	5.9	63.4
Chaudière-Appalaches [2425]							
2012	334.8	218.0	206.4	11.6	65.1	5.3	61.6
2013	336.5	221.6	206.5	15.1	65.9	6.8	61.4
Estrie [2430]							
2012	259.9	150.4	137.3	13.1	57.9	8.7	52.8
2013	262.0	161.5	150.7	10.8	61.6	6.7	57.5
Centre-du-Québec [2433]							
2012	191.6	105.9	94.5	11.5	55.3	10.9	49.3
2013	192.9	119.6	110.1	9.5	62.0	7.9	57.1
Montréal [2435]							
2012	1,199.6	782.9	722.0	60.9	65.3	7.8	60.2
2013	1,211.5	802.8	749.3	53.5	66.3	6.7	61.8
Montréal [2440]							
2012	1,628.1	1,038.1	920.7	117.5	63.8	11.3	56.6
2013	1,641.6	1,054.3	943.9	110.5	64.2	10.5	57.5
Laval [2445]							
2012	337.2	230.7	211.6	19.1	68.4	8.3	62.8
2013	342.6	232.9	216.6	16.3	68.0	7.0	63.2
Lanaudière [2450]							
2012	395.9	267.7	241.3	26.4	67.6	9.9	60.9
2013	401.2	261.9	234.3	27.6	65.3	10.5	58.4
Laurentides [2455]							
2012	468.7	313.4	289.9	23.5	66.9	7.5	61.9
2013	475.2	326.3	302.5	23.8	68.7	7.3	63.7
Outaouais [2460]							
2012	309.4	209.1	194.6	14.5	67.6	6.9	62.9
2013	313.4	206.1	190.2	16.0	65.8	7.8	60.7
Abitibi-Témiscamingue [2465]							
2012	117.8	71.2	66.0	5.1	60.4	7.2	56.0
2013	118.0	78.5	71.7	6.8	66.5	8.7	60.8
Mauricie [2470]							
2012	222.0	129.6	116.6	13.0	58.4	10.0	52.5
2013	222.2	116.4	103.5	12.9	52.4	11.1	46.6

See notes at the end of the table.

Table 6-1 – continued

Labour force characteristics by province and economic region, ¹ unadjusted for seasonality, 3 month moving average ending in April 2012 and April 2013

	Population	Labour force			Participation rate	Unemployment rate	Employment rate
		Labour force	Employment	Unemployment			
in thousands							
Saguenay-Lac-Saint-Jean [2475]							
2012	225.3	131.0	120.2	10.9	58.1	8.3	53.4
2013	225.1	136.3	121.5	14.8	60.6	10.9	54.0
Côte-Nord and Nord-du-Québec [2480, 2490]							
2012	90.7	53.4	47.6	5.8	58.9	10.9	52.5
2013	90.9	54.1	50.2	4.0	59.5	7.4	55.2
Ontario							
2012	11,028.0	7,251.6	6,690.9	560.8	65.8	7.7	60.7
2013	11,161.1	7,343.4	6,770.9	572.5	65.8	7.8	60.7
Ottawa [3510]							
2012	1,058.5	749.5	699.1	50.4	70.8	6.7	66.0
2013	1,071.4	727.3	681.7	45.7	67.9	6.3	63.6
Kingston-Pembroke [3515]							
2012	371.6	228.4	213.1	15.3	61.5	6.7	57.3
2013	372.6	230.2	215.8	14.5	61.8	6.3	57.9
Muskoka-Kawarthas [3520]							
2012	319.6	190.8	173.7	17.1	59.7	9.0	54.3
2013	320.8	177.4	160.9	16.6	55.3	9.4	50.2
Toronto [3530]							
2012	5,113.4	3,367.0	3,088.8	278.2	65.8	8.3	60.4
2013	5,208.2	3,488.9	3,204.2	284.7	67.0	8.2	61.5
Kitchener-Waterloo-Barrie [3540]							
2012	1,047.2	733.5	682.9	50.7	70.0	6.9	65.2
2013	1,060.1	748.6	696.9	51.7	70.6	6.9	65.7
Hamilton-Niagara Peninsula [3550]							
2012	1,176.0	760.4	704.9	55.5	64.7	7.3	59.9
2013	1,185.6	760.5	701.4	59.1	64.1	7.8	59.2
London [3560]							
2012	543.5	350.9	323.3	27.5	64.6	7.8	59.5
2013	547.8	354.0	322.6	31.4	64.6	8.9	58.9
Windsor-Sarnia [3570]							
2012	519.0	324.3	293.1	31.2	62.5	9.6	56.5
2013	518.6	316.8	288.5	28.4	61.1	9.0	55.6
Stratford-Bruce Peninsula [3580]							
2012	245.7	162.8	155.4	7.4	66.3	4.5	63.2
2013	245.6	155.6	147.8	7.8	63.4	5.0	60.2
Northeast [3590]							
2012	460.4	275.3	255.7	19.6	59.8	7.1	55.5
2013	457.6	274.6	249.6	25.0	60.0	9.1	54.5
Northwest [3595]							
2012	173.1	108.7	100.8	7.9	62.8	7.3	58.2
2013	172.8	109.3	101.6	7.7	63.3	7.0	58.8
Manitoba							
2012	960.6	658.1	621.6	36.4	68.5	5.5	64.7
2013	970.0	663.0	627.4	35.6	68.4	5.4	64.7
Southeast [4610]							
2012	83.8	57.9	54.9	3.0	69.1	5.2	65.5
2013	85.0	59.1	56.6	2.5	69.5	4.2	66.6
South Central [4620]							
2012	48.1	30.5	29.6	0.8	63.4	2.6	61.5
2013	48.7	32.7	31.8	1.0	67.1	3.1	65.3

See notes at the end of the table.

Table 6-1 – continued

Labour force characteristics by province and economic region, ¹ unadjusted for seasonality, 3 month moving average ending in April 2012 and April 2013

	Population	Labour force			Participation rate	Unemployment rate	Employment rate
		Labour force	Employment	Unemployment			
in thousands							
Southwest [4630]							
2012	83.8	56.9	54.2	2.7	67.9	4.7	64.7
2013	84.1	58.8	56.5	2.2	69.9	3.7	67.2
North Central [4640]							
2012	36.7	24.2	23.2	1.0	65.9	4.1	63.2
2013	36.9	25.3	24.7	0.6	68.6	2.4	66.9
Winnipeg [4650]							
2012	576.0	398.6	374.6	24.0	69.2	6.0	65.0
2013	583.4	402.0	377.3	24.7	68.9	6.1	64.7
Interlake [4660]							
2012	72.9	51.7	49.5	2.3	70.9	4.4	67.9
2013	73.5	48.6	46.5	2.1	66.1	4.3	63.3
Parklands and North [4670, 4680]							
2012	59.3	38.2	35.6	2.6	64.4	6.8	60.0
2013	58.5	36.5	34.1	2.4	62.4	6.6	58.3
Saskatchewan							
2012	806.7	554.5	525.2	29.3	68.7	5.3	65.1
2013	820.7	570.6	547.5	23.2	69.5	4.1	66.7
Regina-Moose Mountain [4710]							
2012	240.2	173.1	166.4	6.7	72.1	3.9	69.3
2013	245.4	179.1	172.8	6.4	73.0	3.6	70.4
Swift Current-Moose Jaw [4720]							
2012	81.0	50.9	48.4	2.6	62.8	5.1	59.8
2013	81.2	54.8	53.3	1.5	67.5	2.7	65.6
Saskatoon-Biggar [4730]							
2012	268.9	185.1	174.7	10.4	68.8	5.6	65.0
2013	276.5	194.1	187.1	7.1	70.2	3.7	67.7
Yorkton-Melville [4740]							
2012	62.7	41.0	39.1	1.8	65.4	4.4	62.4
2013	62.5	41.2	38.7	2.5	65.9	6.1	61.9
Prince Albert and Northern [4750, 4760]							
2012	153.9	104.4	96.6	7.7	67.8	7.4	62.8
2013	155.1	101.4	95.6	5.8	65.4	5.7	61.6
Alberta							
2012	3,043.3	2,224.5	2,111.4	113.1	73.1	5.1	69.4
2013	3,136.5	2,260.3	2,154.5	105.9	72.1	4.7	68.7
Lethbridge-Medicine Hat [4810]							
2012	220.8	152.1	144.8	7.3	68.9	4.8	65.6
2013	225.6	146.5	138.4	8.1	64.9	5.5	61.3
Camrose-Drumheller [4820]							
2012	156.5	113.7	109.2	4.6	72.7	4.0	69.8
2013	158.9	112.6	109.6	3.0	70.9	2.7	69.0
Calgary [4830]							
2012	1,126.8	839.3	795.4	43.9	74.5	5.2	70.6
2013	1,164.7	852.8	812.5	40.3	73.2	4.7	69.8
Banff-Jasper-Rocky Mountain House [4840]							
2012	71.9	55.2	53.3	1.9	76.8	3.4	74.1
2013	73.3	54.3	52.0	2.3	74.1	4.2	70.9

See notes at the end of the table.

Table 6-1 – continued

Labour force characteristics by province and economic region, ¹ unadjusted for seasonality, 3 month moving average ending in April 2012 and April 2013

	Population	Labour force			Participation rate	Unemployment rate	Employment rate
		Labour force	Employment	Unemployment			
in thousands							
Red Deer [4850]							
2012	156.0	114.3	108.6	5.7	73.3	5.0	69.6
2013	160.2	119.3	112.0	7.4	74.5	6.2	69.9
Edmonton [4860]							
2012	1,015.5	732.9	693.5	39.4	72.2	5.4	68.3
2013	1,051.5	748.1	712.9	35.2	71.1	4.7	67.8
Athabasca-Grande Prairie-Peace River [4870]							
2012	191.2	133.1	126.4	6.8	69.6	5.1	66.1
2013	194.1	140.5	134.8	5.6	72.4	4.0	69.4
Wood Buffalo-Cold Lake [4880]							
2012	104.6	83.9	80.2	3.7	80.2	4.4	76.7
2013	108.2	86.3	82.2	4.1	79.8	4.8	76.0
British Columbia							
2012	3,803.9	2,454.3	2,284.2	170.1	64.5	6.9	60.0
2013	3,840.8	2,453.5	2,287.3	166.2	63.9	6.8	59.6
Vancouver Island and Coast [5910]							
2012	657.7	398.6	374.6	24.0	60.6	6.0	57.0
2013	660.0	396.6	370.5	26.1	60.1	6.6	56.1
Lower Mainland-Southwest [5920]							
2012	2,337.5	1,526.2	1,425.0	101.2	65.3	6.6	61.0
2013	2,377.2	1,547.4	1,438.9	108.5	65.1	7.0	60.5
Thompson-Okanagan [5930]							
2012	436.7	275.0	249.7	25.3	63.0	9.2	57.2
2013	433.8	259.5	242.1	17.4	59.8	6.7	55.8
Kootenay [5940]							
2012	127.1	79.0	73.3	5.7	62.2	7.2	57.7
2013	126.3	84.8	80.8	4.0	67.1	4.7	64.0
Cariboo [5950]							
2012	127.0	89.4	82.4	6.9	70.4	7.7	64.9
2013	126.0	82.0	77.4	4.6	65.1	5.6	61.4
North Coast and Nechako [5960, 5970]							
2012	66.3	45.2	40.0	5.1	68.2	11.3	60.3
2013	65.3	42.6	39.2	3.4	65.2	8.0	60.0
Northeast [5980]							
2012	51.6	40.9	39.2	1.7	79.3	4.2	76.0
2013	52.1	40.5	38.4	2.1	77.7	5.2	73.7

1. For geographic descriptions of economic regions, refer to the Guide to the Labour Force Survey (catalogue number 71-543-GIE).

2. Estimates for Canada are a sum of the provincial totals and exclude estimates from Yukon, Northwest Territories and Nunavut.

Note(s): Related CANSIM table 282-0054.

Table 6-2
Labour force characteristics by territories, unadjusted for seasonality, 3 month moving average ending in April 2012 and April 2013

	Population	Labour force			Participation rate	Unemployment rate	Employment rate
		Labour force	Employment	Unemployment			
		in thousands			percent		
Yukon ¹							
2012	26.9	19.9	18.1	1.9	74.0	9.5	67.3
2013	27.4	20.1	18.8	1.3	73.4	6.5	68.6
Northwest Territories ²							
2012	32.1	24.3	22.1	2.2	75.7	9.1	68.8
2013	32.1	23.7	21.7	2.0	73.8	8.4	67.6
Nunavut ³							
2012	21.0	13.7	11.7	2.0	65.4	14.8	55.7
2013	21.5	14.1	12.4	1.6	65.6	11.7	58.0

1. Since 1992, the Labour force survey (LFS) has been conducted in the Yukon, using an alternative methodology that accommodates some of the operational difficulties inherent to remote locales. These estimates are not included in the national totals. In 1995, the LFS in the Yukon underwent a sample redesign. One result of the redesign was that the covered population increased from 85% to 92%, which is reflected by the sharp increase in the three month moving averages estimates of January, February and March of 1995 for all the level estimates. Users are therefore warned to be cautious when comparing estimates before January 1995 to estimates for January 1995 and forward.
2. Since 2001, the Labour force survey (LFS) has been administered in the Northwest Territories, using an alternative methodology that accommodates some of the operational difficulties inherent to remote locales. These estimates are not included in national totals.
3. Since 2004, the Labour force survey (LFS) has been administered in Nunavut, using an alternative methodology that accommodates some of the operational difficulties inherent to remote locales. These estimates are 3-month moving averages and are not included in national totals. From January 2004 to December 2007, estimates represent about 70% of all Nunavut residents aged 15 and over. Starting in January 2008, coverage was extended to 92%, so that by March 2008, the 3-month moving average is completely based on the extended coverage. Because of the large difference in coverage, users are recommended not to compare estimates prior to January 2008 with data afterwards. The January and February 2008 3-month moving average estimates are based on a mix of both coverages, since the extended coverage was introduced in January 2008. Estimates from January 2004 to December 2007 are based on the 10 largest communities in Nunavut: Iqaluit, Rankin Inlet, Cambridge Bay, Kugluktuk, Baker Lake, Arviat, Pond Inlet, Cape Dorset, Pangnirtung, Igloolik. Estimates from March 2008 to present cover the above communities as well as: Taloyoak, Gjoa Haven, Kugaaruk, Coral Harbour, Repulse Bay, Qikiqtarjuaq, Arctic Bay, Hall Beach, Clyde River.

Note(s): Related CANSIM table 282-0100.

Table 7
Average usual hours and wages of employees by selected characteristics, Canada, unadjusted for seasonality

	Employees				Full-time			Part-time		
	Number	Average weekly hours	Average weekly wages	Average hourly wages	Number	Average weekly hours	Average weekly wages	Number	Average weekly hours	Average weekly wages
	thousands		current dollars		thousands		current dollars	thousands		current dollars
April 2013										
15 years and over	14,767.3	35.1	885.20	24.28	11,974.8	39.3	1,022.02	2,792.5	17.1	298.52
15 to 24 years	2,219.5	26.3	395.74	13.96	1,068.8	38.8	632.02	1,150.7	14.6	176.29
25 years and over	12,547.8	36.6	971.78	26.10	10,906.0	39.3	1,060.24	1,641.8	18.7	384.19
Men	7,362.5	37.5	1,010.59	26.18	6,451.7	40.5	1,114.81	910.8	16.3	272.35
Women	7,404.8	32.7	760.53	22.38	5,523.1	37.9	913.62	1,881.7	17.4	311.18
Union coverage										
Union coverage	4,711.4	35.5	997.25	27.65	3,989.4	38.5	1,099.64	722.0	18.7	431.49
No union coverage	10,055.9	34.9	832.71	22.70	7,985.4	39.6	983.24	2,070.5	16.5	252.15
Job permanency										
Permanent	12,918.3	36.0	925.69	24.91	10,921.9	39.3	1,037.35	1,996.4	18.0	314.82
Temporary	1,849.0	28.7	602.36	19.86	1,052.9	39.3	862.98	796.1	14.7	257.64
Occupation										
Management	991.2	39.6	1,512.23	38.13	962.4	40.3	1,541.88	28.8	18.3	520.72
Business, finance and administrative	2,861.1	35.3	821.19	22.75	2,450.8	38.3	905.39	410.3	17.7	318.26
Natural and applied sciences	1,174.8	38.4	1,302.57	33.82	1,127.9	39.2	1,334.21	46.8	18.3	540.52
Health	1,005.8	33.6	954.66	28.11	766.6	37.9	1,087.02	239.2	20.0	530.50
Social science, education, government service and religion	1,514.8	33.8	1,062.57	31.01	1,212.4	38.0	1,210.76	302.5	17.1	468.57
Art, culture, recreation and sport	347.2	30.8	804.30	24.44	242.5	38.4	1,042.95	104.7	13.1	251.66
Sales and service	3,790.5	30.1	526.26	16.24	2,338.4	38.5	720.53	1,452.1	16.6	213.43
Trades, transport and equipment operators	2,066.3	39.7	971.44	24.10	1,921.3	41.4	1,022.31	145.0	17.4	297.53
Occupations unique to primary industry	262.9	41.7	940.99	21.85	232.7	45.2	1,033.16	30.1	15.1	229.04
Occupations unique to processing, manufacturing and utilities	752.8	39.0	790.38	19.99	720.0	40.0	815.72	32.9	17.2	235.50
April 2012										
15 years and over	14,677.8	35.0	859.11	23.59	11,864.7	39.3	993.74	2,813.1	17.1	291.29
15 to 24 years	2,244.4	26.3	386.35	13.61	1,063.4	38.9	621.13	1,181.0	14.8	174.94
25 years and over	12,433.4	36.6	944.45	25.39	10,801.3	39.3	1,030.43	1,632.1	18.8	375.48
Men	7,344.6	37.6	982.31	25.40	6,464.7	40.5	1,081.15	879.9	16.3	256.16
Women	7,333.2	32.5	735.73	21.77	5,400.1	37.8	889.11	1,933.2	17.5	307.28
Union coverage										
Union coverage	4,660.3	35.5	973.66	27.02	3,941.8	38.5	1,072.86	718.5	19.0	429.50
No union coverage	10,017.5	34.8	805.82	21.99	7,923.0	39.6	954.38	2,094.5	16.5	243.88
Job permanency										
Permanent	12,793.6	36.0	899.94	24.22	10,796.4	39.3	1,009.60	1,997.2	18.1	307.16
Temporary	1,884.2	28.6	581.92	19.31	1,068.3	39.1	833.53	815.9	14.8	252.45
Occupation										
Management	963.1	39.6	1,485.77	37.55	937.2	40.1	1,512.39	25.9	19.5	521.82
Business, finance and administrative	2,785.3	35.2	802.77	22.29	2,380.2	38.2	886.44	405.1	17.7	311.16
Natural and applied sciences	1,098.1	38.8	1,301.87	33.53	1,063.7	39.4	1,327.47	34.4	19.3	509.17
Health	1,029.1	33.7	913.56	26.94	779.0	38.0	1,043.15	250.2	20.2	510.07
Social science, education, government service and religion	1,442.9	33.7	1,046.97	30.70	1,151.5	37.8	1,190.02	291.4	17.4	481.76
Art, culture, recreation and sport	347.1	30.0	760.98	23.78	234.8	38.2	1,002.11	112.3	12.8	256.58
Sales and service	3,829.7	30.0	506.40	15.69	2,346.7	38.5	695.97	1,483.0	16.6	206.41
Trades, transport and equipment operators	2,156.0	39.8	936.11	23.25	2,006.2	41.4	983.41	149.9	17.9	303.01
Occupations unique to primary industry	261.6	41.6	935.69	21.59	228.6	45.6	1,043.63	33.0	14.2	189.00
Occupations unique to processing, manufacturing and utilities	764.9	39.4	779.31	19.64	737.0	40.2	798.31	28.0	18.9	279.06

Note(s): Related CANSIM Tables 282-0023, 282-0069, 282-0073.

Table 8
Regional unemployment rates used by the Employment Insurance Program, ¹ seasonally adjusted, 3 month moving average

Region	Effective from May 12, 2013 to June 8, 2013
	percent
Newfoundland and Labrador	
01. St. John's	6.3
02. Newfoundland and Labrador	16.6
Prince Edward Island	
03. Prince Edward Island	11.8
Nova Scotia	
04. Eastern Nova Scotia	14.6
05. Western Nova Scotia	11.0
06. Halifax	6.6
New Brunswick	
07. Fredericton-Moncton-Saint John	7.8
08. Madawaska-Charlotte	12.1
09. Restigouche-Albert	16.7
Quebec	
10. Gaspésie-Îles-de-la-Madeleine	17.0
11. Québec	4.6
12. Trois-Rivières	8.0
13. South Central Quebec	3.8
14. Sherbrooke	6.5
15. Montérégie	6.9
16. Montréal	8.1
17. Central Quebec	8.1
18. Northwestern Quebec	10.7
19. Bas-Saint-Laurent-Côte-Nord	11.7
20. Gatineau	6.6
21. Saguenay	7.5
Ontario	
22. Ottawa	6.0
23. Eastern Ontario	7.2
24. Kingston	6.2
25. Central Ontario	7.1
26. Oshawa	8.2
27. Toronto	8.4
28. Hamilton	6.7
29. St. Catharines	8.8
30. London	10.0
31. Niagara	9.9
32. Windsor	9.8
33. Kitchener	7.0
34. Huron	7.7
35. South Central Ontario	6.4
36. Sudbury	7.5
37. Thunder Bay	6.5
38. Northern Ontario	12.4
Manitoba	
39. Winnipeg	5.9
40. Southern Manitoba	5.1
41. Northern Manitoba	31.8
Saskatchewan	
42. Regina	3.8
43. Saskatoon	3.8
44. Southern Saskatchewan	6.3
45. Northern Saskatchewan	16.7
Alberta	
46. Calgary	5.0
47. Edmonton	4.6
48. Northern Alberta	8.2
49. Southern Alberta	5.8

See notes at the end of the table.

Table 8 – continued

Regional unemployment rates used by the Employment Insurance Program, ¹ seasonally adjusted, 3 month moving average

Region	Effective from May 12, 2013 to June 8, 2013
	percent
British Columbia	
50. Southern Interior British Columbia	7.0
51. Abbotsford	7.6
52. Vancouver	6.9
53. Victoria	6.1
54. Southern Coastal British Columbia	8.6
55. Northern British Columbia	10.8
Territories	
56. Yukon ²	25.0
57. Northwest Territories ²	25.0
58. Nunavut ²	25.0

1. The boundaries of these regions are determined by Human Resources and Social Development Canada (HRSDC). For geographic descriptions and maps of employment insurance regions, see the HRSDC website: <http://srv129.services.gc.ca/eiregions/en/geocont.aspx>.

2. This rate is provided by Human Resources and Skills Development Canada.

Note(s): All geographic regions are based on the 1996 Census boundaries.

Data quality

About the Labour Force Survey

The statistics contained in this report are based on information obtained through a sample survey of 56,000 representative households across the country. The Labour Force Survey, started in November 1945, was taken at quarterly intervals until November 1952. It has been carried out monthly since then. The information generated by the survey has expanded considerably over the years with a major redesign of the survey content in 1976 and again in 1997, and provides a rich and detailed picture of the Canadian labour market.

The sample used in the Labour Force Survey has been designed to represent all persons in the population 15 years of age and over residing in the provinces of Canada, with the exception of the following: persons living on Indian reserves, full-time members of the armed forces and people living in institutions (for example, inmates of penal institutions and patients in hospitals or nursing homes who have resided in the institution for more than six months). Monthly estimates of employment, unemployment and persons not in the labour force refer to the specific week covered by the survey each month, normally the week containing the 15th day.

Definitions and explanations

The **labour force** is composed of those members of the civilian non-institutional population 15 years of age and over who, during the reference week, were employed or unemployed.

Employed persons are those who, during the reference week:

- (a) did any work at all
- (b) had a job but were not at work

A person is considered to be **full-time** if his/her usual hours at the main job are 30 or more hours per week. When the number of hours worked at the main job is usually less than 30 hours per week then he/she is considered to be **part-time**.

Unemployed persons are those who, during the reference week:

- (a) were without work, had actively looked for work in the past four weeks (ending with reference week), and were available for work;
- (b) had not actively looked for work in the past four weeks but were on temporary layoff and were available for work;
- (c) had not actively looked for work in the past four weeks but had a new job to start in four weeks or less from the reference week, and were available for work.

Persons in the civilian non-institutional population 15 years of age and over who, during the reference week, were neither employed nor unemployed are classified as **not in the labour force**.

The **unemployment rate** represents the number of unemployed persons expressed as a percentage of the labour force. The unemployment rate for a particular group (age, sex, etc.) is the number unemployed in that group expressed as a percentage of the labour force for that group.

The **participation rate** represents the labour force expressed as a percentage of the population 15 years of age and over. The participation rate for a particular group (age, sex, etc.) is the labour force in that group expressed as a percentage of the population for that group.

The **employment rate (formerly the employment/population ratio)** represents the number of persons employed expressed as a percentage of the population 15 years of age and over. The employment rate for a particular group (age, sex, etc.) is the number employed in that group expressed as a percentage of the population for that group.

The **part-time rate** represents the number of persons employed part-time expressed as a percentage of the employed. The part-time rate for a particular group (age, sex, etc.) is the number employed part-time in that group expressed as a percentage of the employed for that group.

All geographic regions are based on the 2006 Census boundaries.

Seasonal adjustment

Fluctuations in economic time series are caused by seasonal, cyclical and irregular movements. A seasonally adjusted series is one from which seasonal movements have been eliminated. Seasonal movements are defined as those which are caused by regular annual events such as climate, holidays, vacation periods and cycles related to crops, production and retail sales associated with Christmas and Easter. The seasonally adjusted series contains irregular as well as longer-term cyclical fluctuations.

The seasonally adjusted series are revised each year to take into account current data and to generate new forecast factors for the next twelve months. The data are therefore subject to slight revisions in future issues of this publication.

Sampling variability of estimates

Estimates in this publication are based on the Labour Force Survey, a monthly survey of approximately 56,000 households across Canada. Because the entire population is not surveyed, the estimates are subject to sampling error. While the published estimate is the best available indicator of the real value, changes in the level of any estimates between two months can be the result of a true change or sampling variability. The sampling error can be estimated by calculating the standard error for the published estimate or statistic. These standard errors have been included in the publication tables, in order to assist users in interpreting the data.

Interpretation based on standard error

Two thirds of the time (68%), a change greater than the sampling error indicates a real change. The larger the change compared to the standard error, the better the chance that we are observing a real change, as opposed to a change due to sampling variability. At the 95% level, in order to ensure that change is real, the change in the estimate must be greater than twice the sampling error.

Movements in estimates that are smaller than the sampling error are less likely to reflect a real change and more likely to be due to sampling variability. While the above is true for monthly movements, one can have more confidence in a series of consecutive movements in the same direction, even though some of the monthly movements may be smaller than the sampling error.

Interpretation based on confidence intervals

Confidence intervals provide another way of looking at the variability inherent in estimates of sample surveys. To illustrate how to calculate the confidence interval, let us say that one month the published estimate for total employment rose by 16,000 to reach 16,500,000. The associated standard error for the movement estimate is 27,200. The standard error used to interpret the movement estimate indicates that:

- There are approximately two chances in three (68%) that the real value of the movement between the two months falls within the range -11,200 to +43,200 (16,000 + or – one standard error).
- There are approximately nine chances in ten (90%) that the real value of the movement between the two months falls within the range -27,520 to +59,520 (16,000 + or – 1.6 times the standard error).
- There are approximately nineteen chances in twenty (95%) that the real value of the movement between the two months falls within the range -38,400 to +70,400 (16,000 + or – two standard errors).

For more detailed explanations on sampling variability of estimates, and in particular for information on how to assess the variability of level estimates, consult the Data quality section of the *Guide to the Labour Force Survey*, (71-543-G) on page 27.

Documentation

For more detailed information about the Labour Force Survey, see the following documents:

- Overview of the Labour Force Survey
- Guide to the Labour Force Survey (71-543-G)
- Data quality statement
- Methodology of the Canadian Labour Force Survey (71-526-X)
- LFS *geographical maps*