

Catalogue no. 71-001-X

Labour Force Information

Not for release before 7 A.M. EDT
Friday, April 8, 2011

March 13 to 19, 2011



Statistics
Canada

Statistique
Canada

Canada

How to obtain more information

For information about this product or the wide range of services and data available from Statistics Canada, visit our website at www.statcan.gc.ca, e-mail us at infostats@statcan.gc.ca, or telephone us, Monday to Friday from 8:30 a.m. to 4:30 p.m., at the following numbers:

Statistics Canada's National Contact Centre

Toll-free telephone (Canada and the United States):

Inquiries line	1-800-263-1136
National telecommunications device for the hearing impaired	1-800-363-7629
Fax line	1-877-287-4369

Local or international calls:

Inquiries line	1-613-951-8116
Fax line	1-613-951-0581

Depository Services Program

Inquiries line	1-800-635-7943
Fax line	1-800-565-7757

To access this product

This product, Catalogue no. 71-001-X, is available free in electronic format. To obtain a single issue, visit our website at www.statcan.gc.ca and browse by "Key resource" > "Publications."

Standards of service to the public

Statistics Canada is committed to serving its clients in a prompt, reliable and courteous manner. To this end, Statistics Canada has developed *standards of service* that its employees observe. To obtain a copy of these service standards, please contact Statistics Canada toll-free at 1-800-263-1136. The service standards are also published on www.statcan.gc.ca under "About us" > "The agency" > "Providing services to Canadians."

Statistics Canada
Labour Statistics Division
Labour Force Survey Program

Labour Force Information

Not for release before 7 A.M. EDT
Friday, April 8, 2011

March 13 to 19, 2011

Published by authority of the Minister responsible for Statistics Canada

© Minister of Industry, 2011

All rights reserved. The content of this electronic publication may be reproduced, in whole or in part, and by any means, without further permission from Statistics Canada, subject to the following conditions: that it be done solely for the purposes of private study, research, criticism, review or newspaper summary, and/or for non-commercial purposes; and that Statistics Canada be fully acknowledged as follows: Source (or "Adapted from", if appropriate): Statistics Canada, year of publication, name of product, catalogue number, volume and issue numbers, reference period and page(s). Otherwise, no part of this publication may be reproduced, stored in a retrieval system or transmitted in any form, by any means—electronic, mechanical or photocopy—or for any purposes without prior written permission of Licensing Services, Client Services Division, Statistics Canada, Ottawa, Ontario, Canada K1A 0T6.

April 2011

Catalogue no. 71-001-X

ISSN 1492-5478

Frequency: Monthly

Ottawa

Cette publication est également disponible en français.

Note of appreciation

Canada owes the success of its statistical system to a long-standing partnership between Statistics Canada, the citizens of Canada, its businesses, governments and other institutions. Accurate and timely statistical information could not be produced without their continued cooperation and goodwill.

User information

Symbols

The following standard symbols are used in Statistics Canada publications:

- . not available for any reference period
- .. not available for a specific reference period
- ... not applicable
- 0 true zero or a value rounded to zero
- 0^s value rounded to 0 (zero) where there is a meaningful distinction between true zero and the value that was rounded
- p preliminary
- r revised
- x suppressed to meet the confidentiality requirements of the *Statistics Act*
- E use with caution
- F too unreliable to be published

Special requests (\$)

Custom tabulations can be arranged on an ad hoc or regular basis. This service enables you to specify tables and time series to meet your own requirements. The cost varies according to the request. For more information, contact us toll-free at 1-866-873-8788 or e-mail us at labour@statcan.gc.ca.

Schedule of LFS releases

Reference period - Week ending	Release date
December 11, 2010	January 7, 2011
January 15, 2011	February 4, 2011
February 19, 2011	March 11, 2011
March 19, 2011	April 8, 2011
April 16, 2011	May 6, 2011
May 21, 2011	June 10, 2011
June 18, 2011	July 8, 2011
July 16, 2011	August 5, 2011
August 20, 2011	September 9, 2011
September 17, 2011	October 7, 2011
October 15, 2011	November 4, 2011
November 12, 2011	December 2, 2011
December 10, 2011	January 6, 2012

Latest LFS release in *The Daily* (free)

Table of contents

Highlights	5
Analysis— March 2011	6
Gains in accommodation and food services as well as construction	6
Little employment change across provinces	6
Gains among adult men offset by losses among youths, women 55 and over	7
Quarterly update for the territories	7
Charts	
1. Employment and unemployment indicators, Canada, seasonally adjusted	8
2. Employment and unemployment indicators, Canada, seasonally adjusted	9
3. Index of employment by industry, Canada, seasonally adjusted, January 2008=100	10
4. Index of employment by industry, Canada, seasonally adjusted, January 2008=100	11
5. Index of employment by industry, Canada, seasonally adjusted, January 2008=100	12
6. Index of employment by province, seasonally adjusted, January 2008=100	13
7. Index of employment by province, seasonally adjusted, January 2008=100	14
Related products	15
Statistical tables	
1 Labour force characteristics by age and sex, Canada, seasonally adjusted	25
2 Employment by class of worker and industry, Canada, seasonally adjusted	27
3 Labour force characteristics by province, seasonally adjusted	28
4 Selected labour force characteristics (seasonally adjusted)	30
4-1 Newfoundland and Labrador	30
4-2 Prince Edward Island	31
4-3 Nova Scotia	32
4-4 New Brunswick	33
4-5 Quebec	34
4-6 Ontario	35
4-7 Manitoba	36
4-8 Saskatchewan	37
4-9 Alberta	38
4-10 British Columbia	39

Table of contents – continued

5	Labour force characteristics by census metropolitan area (seasonally adjusted)	40
5-1	3 month moving average	40
5-2	Monthly	45
6	Labour force characteristics	46
6-1	by province and economic region, unadjusted for seasonality, 3 month moving average ending in March 2010 and March 2011	46
6-2	by territories, unadjusted for seasonality, 3 month moving average ending in March 2010 and March 2011	51
7	Average usual hours and wages of employees by selected characteristics, Canada, unadjusted for seasonality	52
8	Regional unemployment rates used by the Employment Insurance Program, seasonally adjusted, 3 month moving average	53
Data quality, concepts and methodology		
	Data quality	55

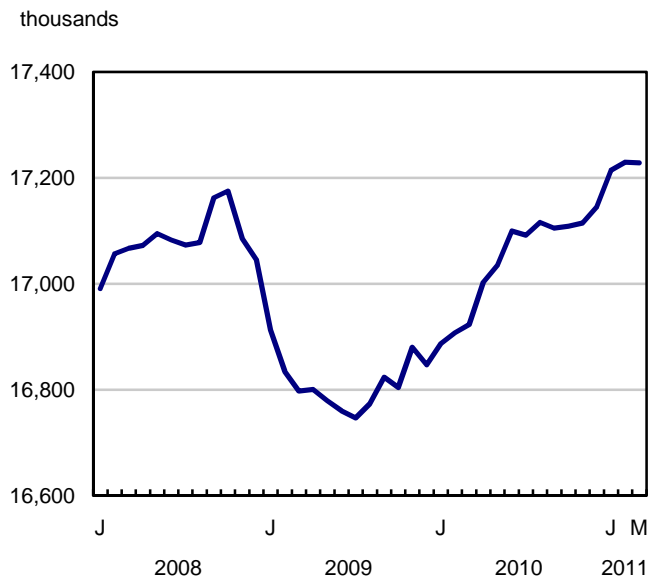
Highlights

March 2011

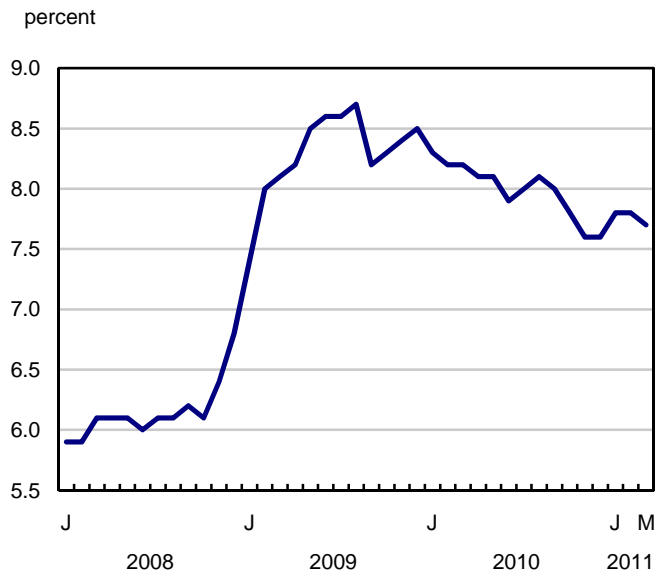
Overall employment was unchanged in March, as gains in full-time work were offset by declines in part time. The unemployment rate edged down 0.1 percentage points to 7.7%. Over the past 12 months, employment has risen by 1.8% (+305,000).

Chart 1
Employment and unemployment rates, Canada, seasonally adjusted

Employment



Unemployment rate



Analysis— March 2011

Overall employment was unchanged in March, as gains in full-time work were offset by declines in part time. The unemployment rate edged down 0.1 percentage points to 7.7%. Over the past 12 months, employment has risen by 1.8% (+305,000).

Full-time employment rose by 91,000 in March, and was offset by a decline of 92,000 in part time. This large full-time increase in March brought gains in full-time employment to 251,000 (+1.8%) over the past 12 months, while part time increased by 54,000 (+1.7%).

In March, there were employment gains in accommodation and food services as well as construction, and losses in health care and social assistance and in public administration.

The number of public sector employees fell in March. Compared with 12 months earlier, public sector growth (+2.4%) was slightly faster than that of private sector employees (+2.1%), while self-employment was unchanged.

In March, employment declined in Quebec and increased in Prince Edward Island. There were no notable changes in overall employment in the other provinces.

Employment increased for men aged 25 and over in March, while it declined among youths aged 15 to 24 and women 55 and over.

Gains in accommodation and food services as well as construction

In March, the number of workers in accommodation and food services increased by 36,000. This monthly gain brought employment in this industry to roughly the same level as 12 months earlier.

Employment in construction rose by 24,000 in March, continuing an upward trend that began in July 2009. Over the past 12 months, employment in this industry has increased by 5.3% (+64,000), one of the highest rates of growth among all industries.

There were small losses in health care and social assistance (-17,000) and in public administration (-13,000). Over the past 12 months, employment in these industries increased by 2.9% and 2.1% respectively.

Little employment change across provinces

Employment in Quebec edged down 15,000 in March, and the unemployment rate held steady at 7.7%. Over the past 12 months, employment growth in the province was 1.6% (+62,000).

In March, employment in Prince Edward Island increased by 1,400 and the unemployment rate was 11.2%. This increase brought employment just above levels of one year earlier.

In Ontario, total employment was little changed, as full-time gains of 63,000 were offset by part-time losses of 58,000. The unemployment rate was 8.1%. Over the past 12 months, employment grew by 2.1% in this province.

While there was little change in employment in British Columbia, the unemployment rate fell from 8.8% to 8.1% as fewer people looked for work.

Gains among adult men offset by losses among youths, women 55 and over

In March, employment for men aged 25 and over was up 32,000, with increases in full time. This month's gains were shared between men 25 to 54 and 55 and over. Employment growth over the past 12 months among core-age men was 2.1%, while that of men 55 and over was 4.9%.

Employment in March was unchanged for core-age women and fell by 17,000 for women aged 55 and over. Compared with 12 months earlier, employment was unchanged for core-age women, while it increased by 6.6% for women 55 and over.

The number of employed 15- to 24- year-olds fell by 17,000 in March, with losses in part-time work. The unemployment rate was little changed at 14.4%. Compared with 12 months earlier, youth employment increased by 0.5%.

Quarterly update for the territories

The Labour Force Survey also collects labour market information about the territories. This information is produced monthly in the form of three-month moving averages. Not all estimates are seasonally adjusted; therefore, comparisons should only be made on a year-over-year basis.

All three territories saw employment gains in the first quarter of 2011 compared with the same quarter of 2010.

In Yukon, employment increased by 2,500 in the three months ending in March 2011 compared with the same period in 2010. In the first quarter of 2011, the unemployment rate was 5.1%.

Employment in the Northwest Territories rose by 1,700 from the first quarter of 2010 to the same period in 2011, pushing the unemployment rate down to 6.3%.

In Nunavut, employment increased by 500 in the first quarter of 2011 compared with the first quarter of 2010. However, the number of people searching for work also increased, bringing the unemployment rate up to 17.3%.

Note to readers

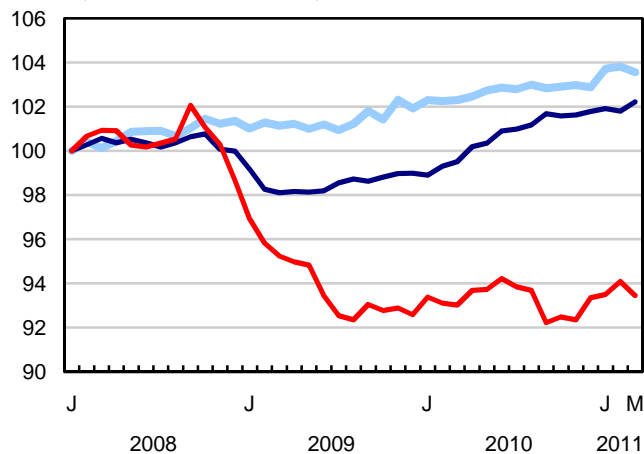
LFS estimates are based on a sample, and are therefore subject to sampling variability. Estimates for smaller geographic areas or industries will have more variability. For an explanation of sampling variability of estimates, and how to use standard errors to assess this variability, consult the "Data quality" section of the publication Labour Force Information (71-001-X, free).

Unless otherwise stated, this release presents seasonally adjusted data, which facilitates comparisons by removing the effects of seasonal variations.

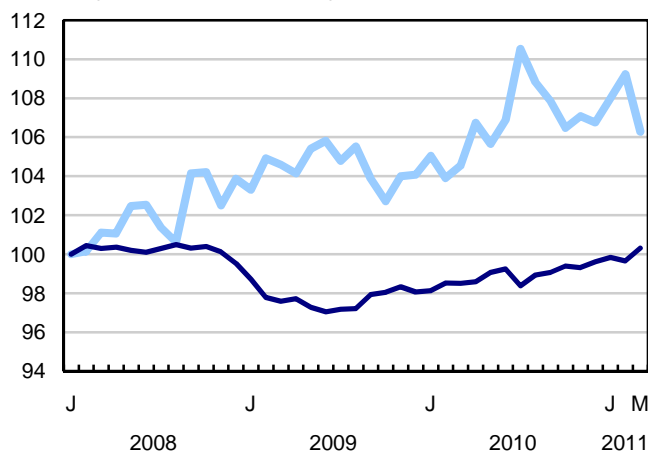
The 2010 *Labour Force Historical Review* on DVD-ROM (71F0004X, \$209) will be available on April 11, 2011.

Chart 1
Employment and unemployment indicators, Canada, seasonally adjusted

Employment index, January 2008=100

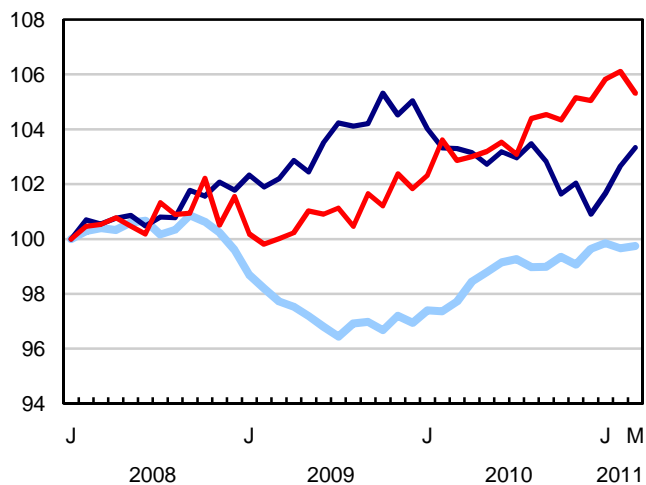


Employment index, January 2008=100



- Females - 25 years and over
- Employment part-time
- Males - 25 years and over
- Employment full-time
- Both sexes - 15 to 24 years

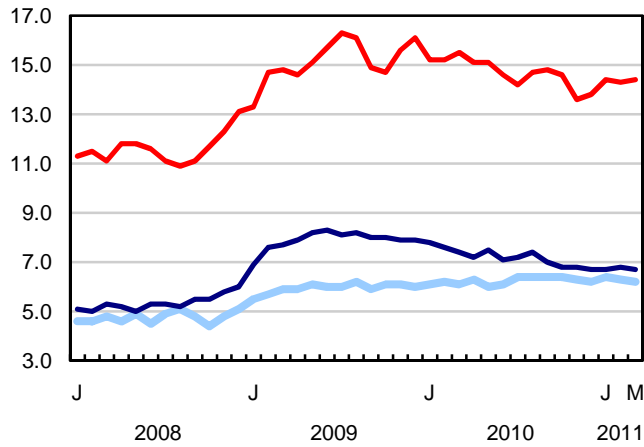
Employment index, January 2008=100



- Private sector employees
- Self-employed
- Public sector employees

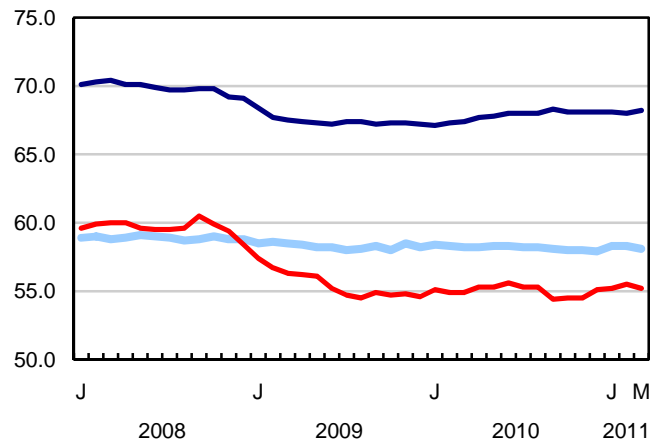
Chart 2
Employment and unemployment indicators, Canada, seasonally adjusted

Unemployment rate (%)



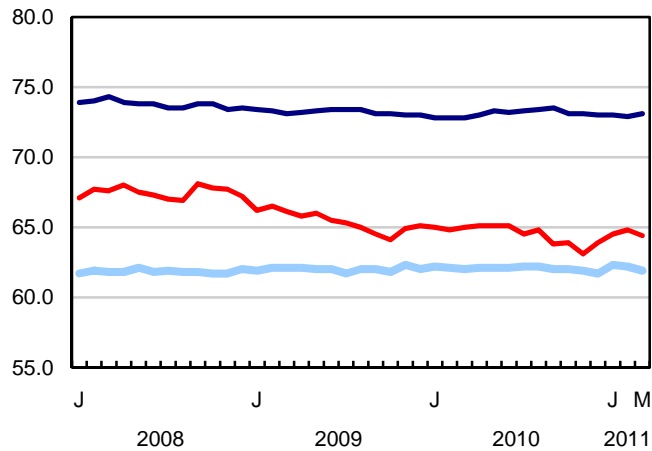
— Females - 25 years and over
 — Males - 25 years and over
 — Both sexes - 15 to 24 years

Employment rate (%)



— Females - 25 years and over
 — Males - 25 years and over
 — Both sexes - 15 to 24 years

Participation rate (%)



— Females - 25 years and over
 — Males - 25 years and over
 — Both sexes - 15 to 24 years

Chart 3
Index of employment by industry, Canada, seasonally adjusted, January 2008=100

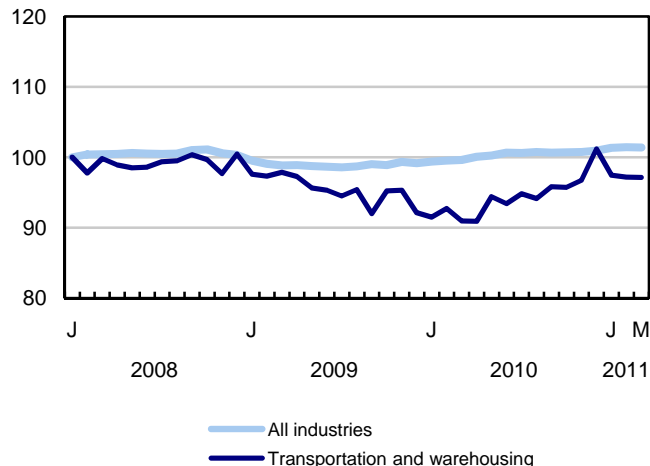
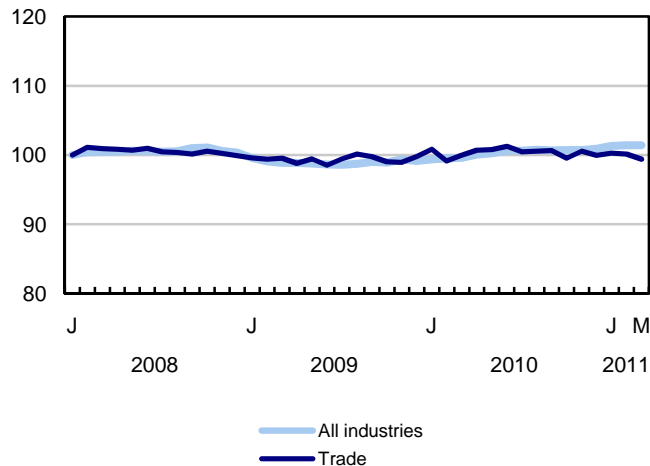
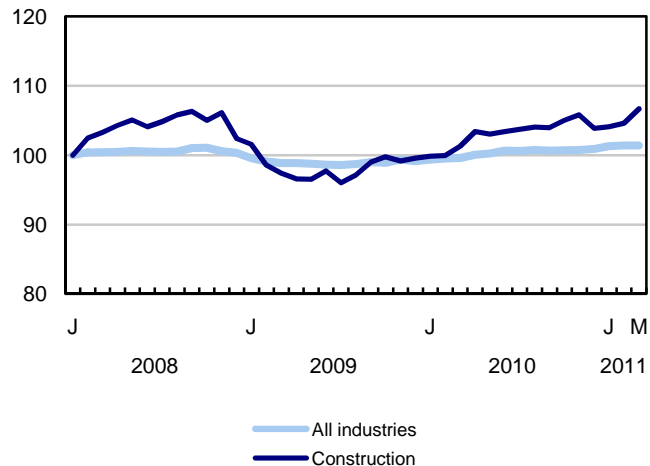
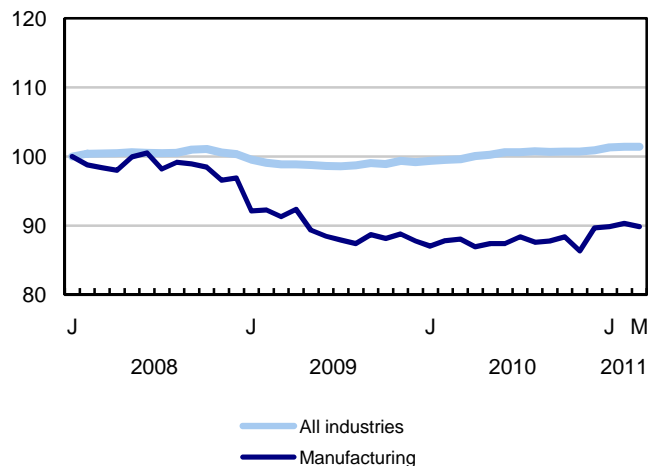
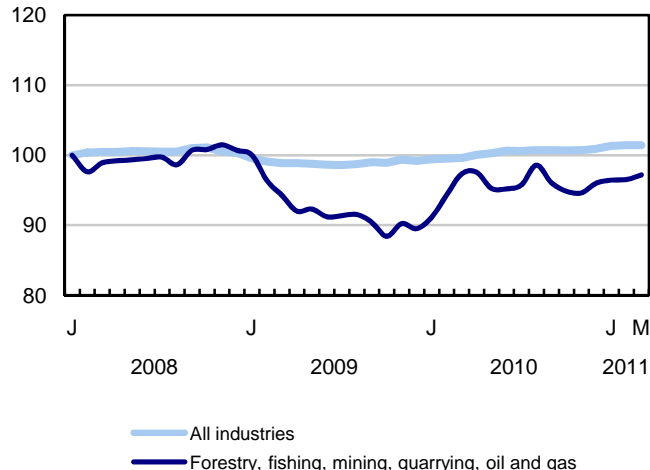
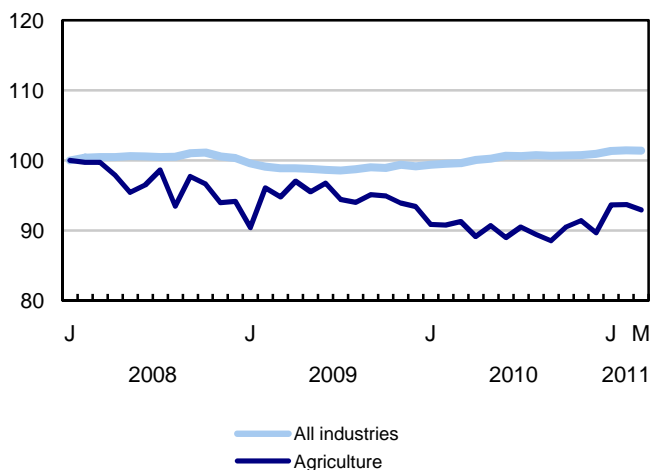


Chart 4
Index of employment by industry, Canada, seasonally adjusted, January 2008=100

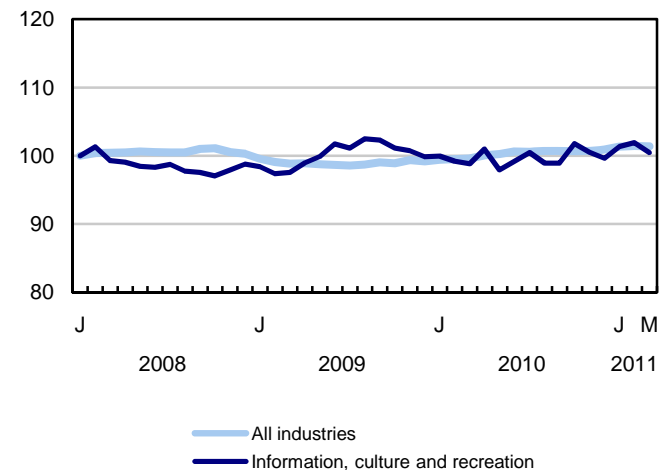
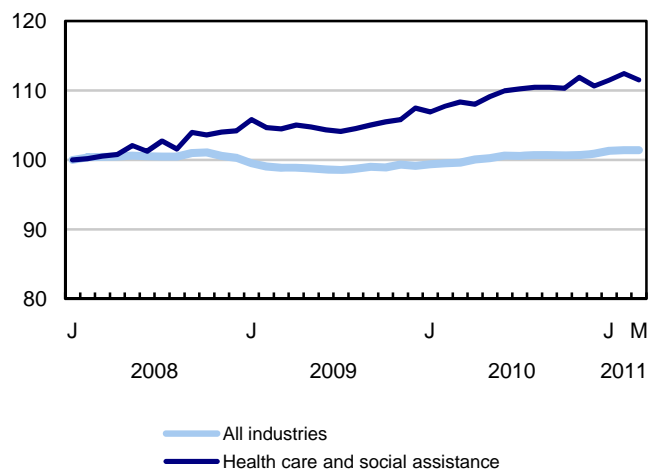
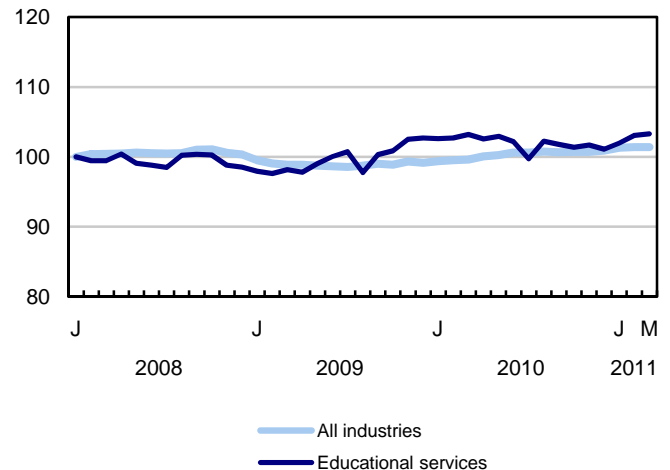
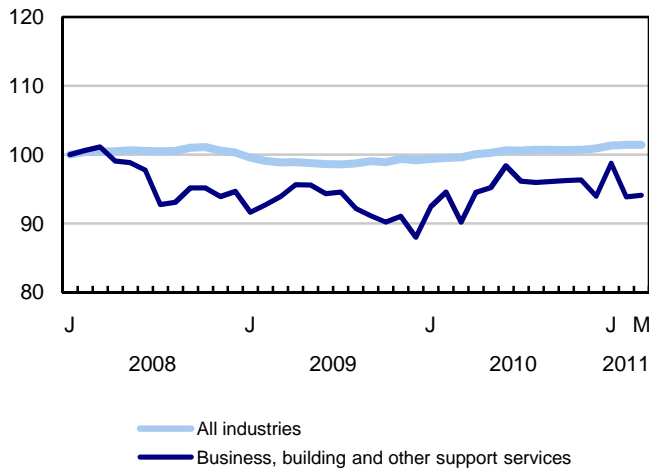
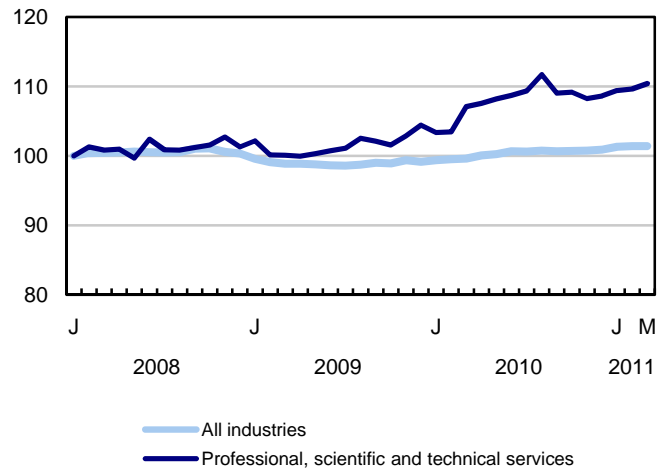
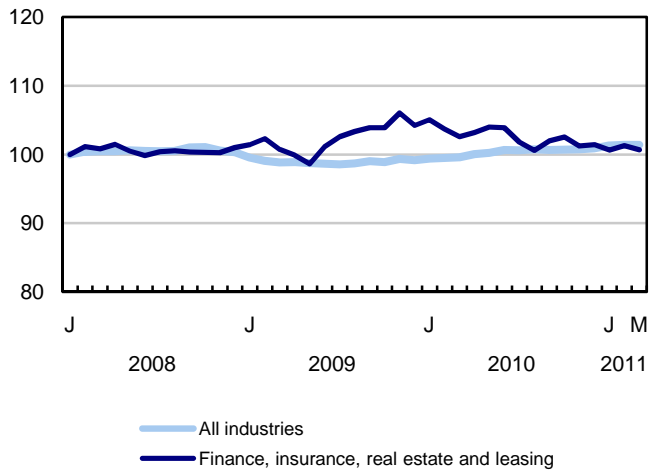


Chart 5
Index of employment by industry, Canada, seasonally adjusted, January 2008=100

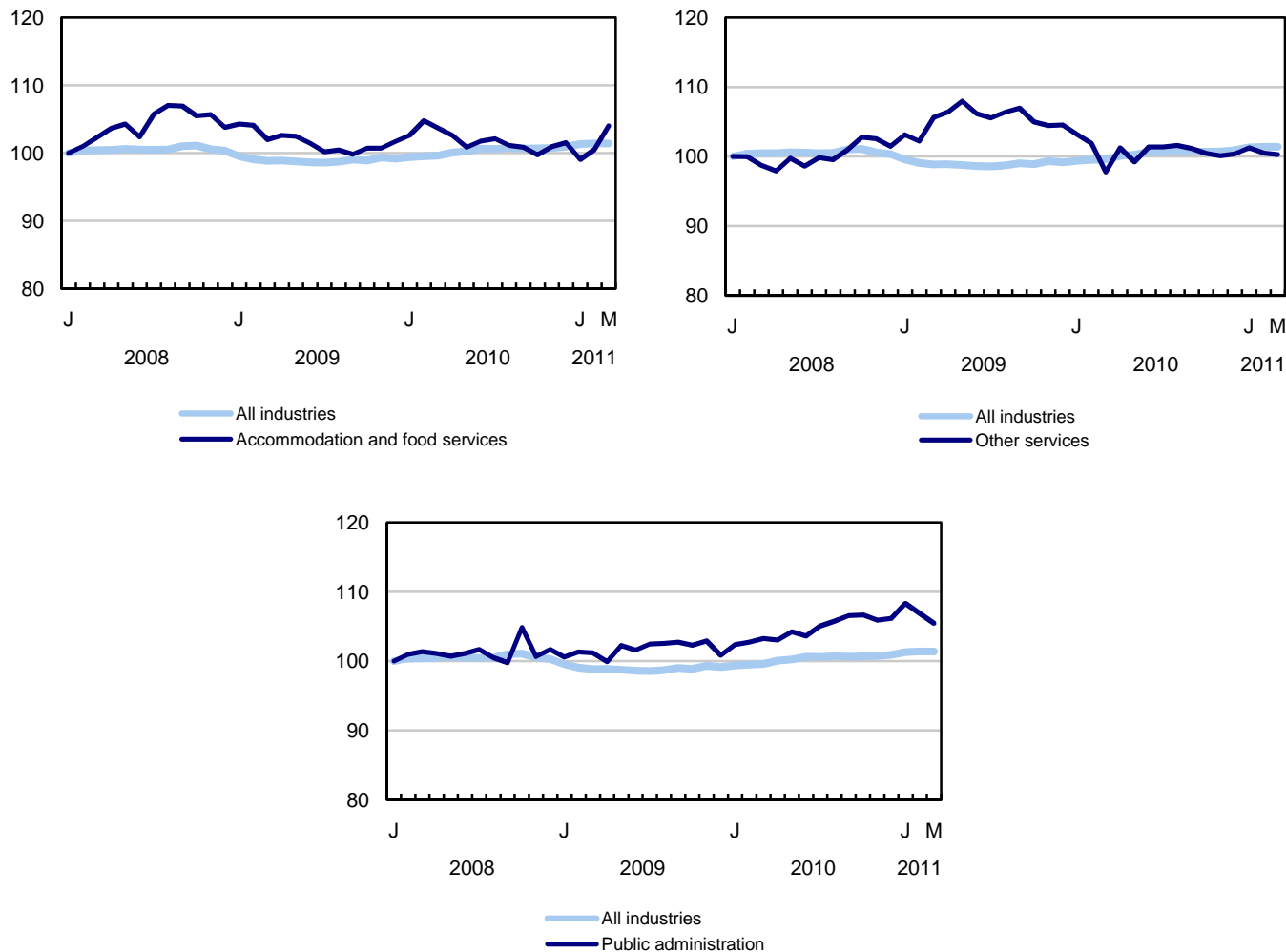


Chart 6
Index of employment by province, seasonally adjusted, January 2008=100

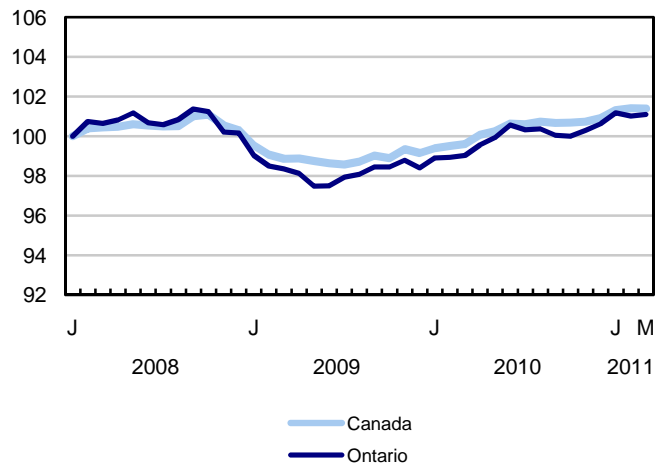
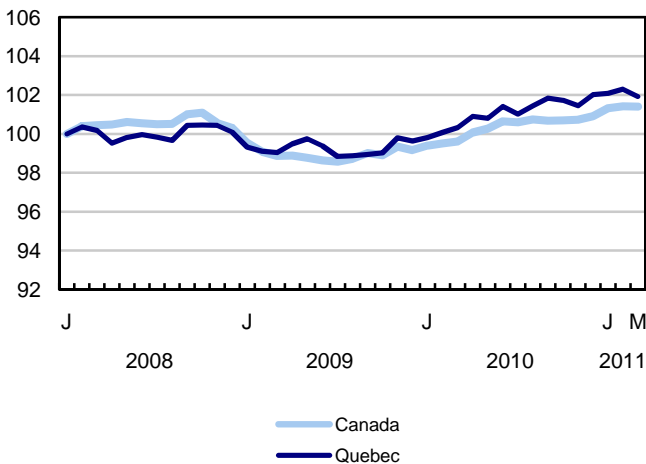
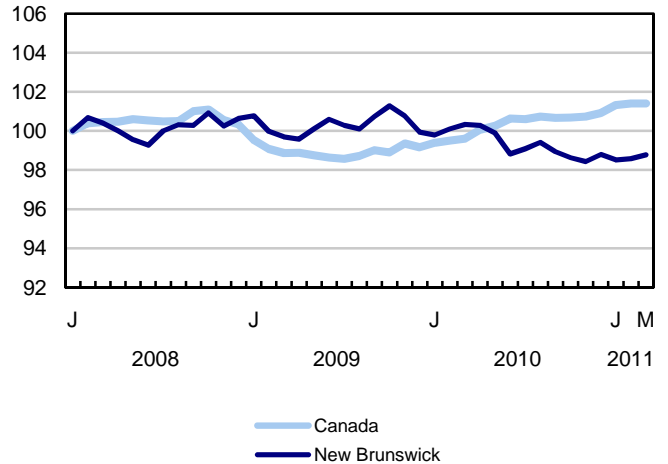
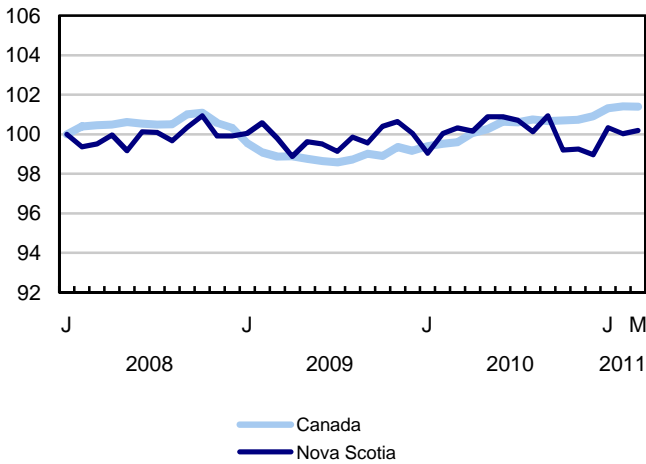
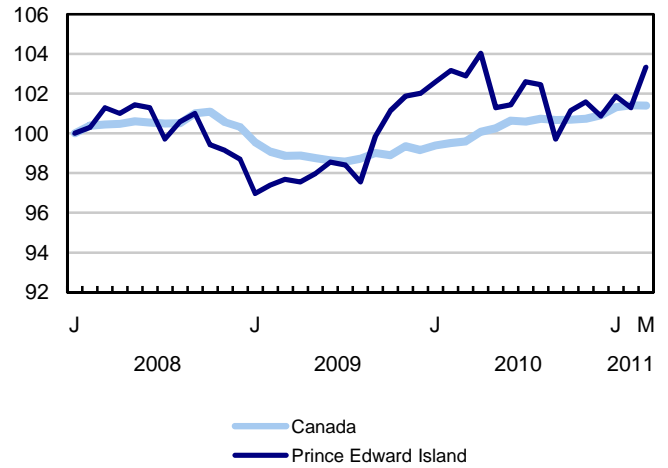
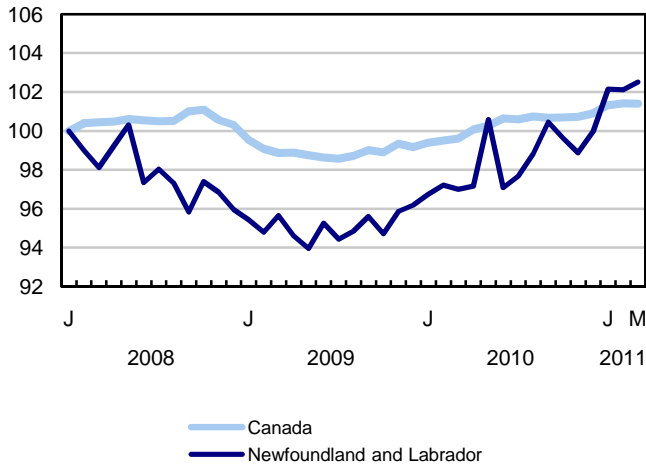
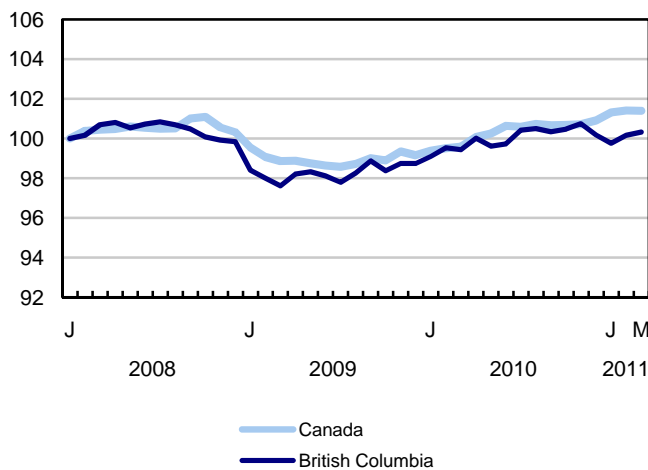
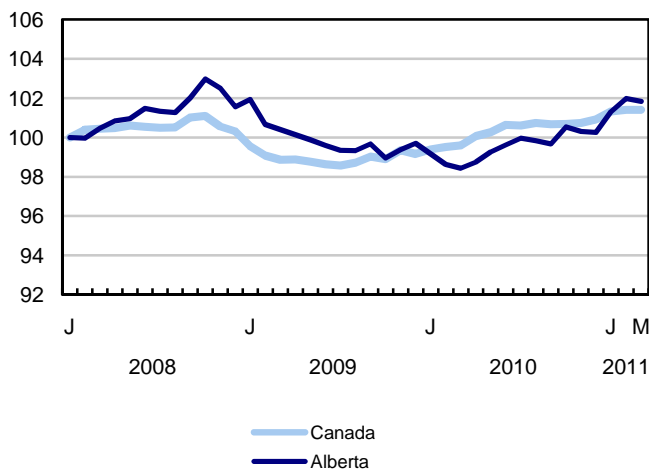
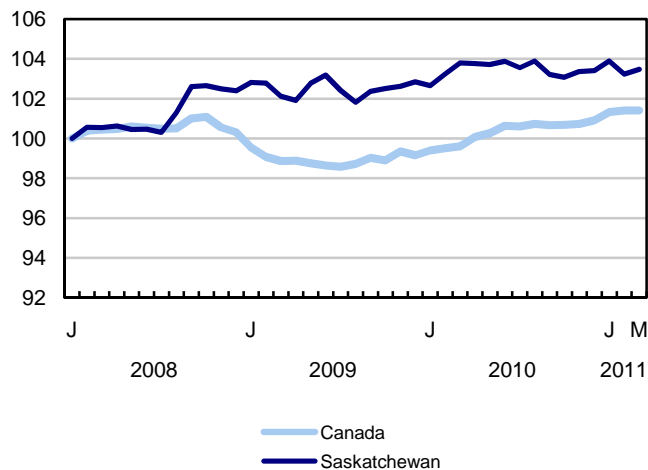
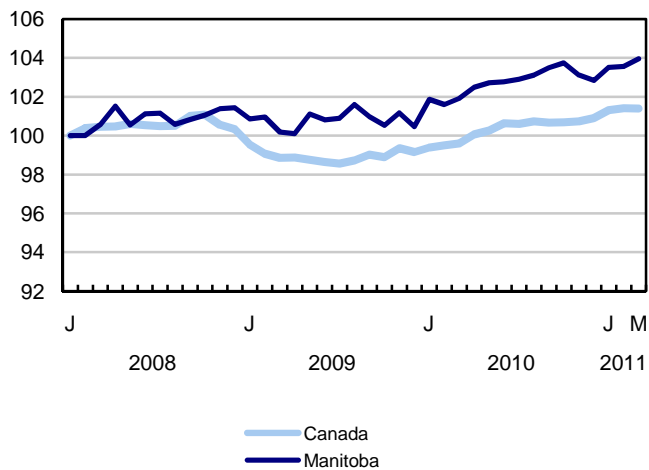


Chart 7
Index of employment by province, seasonally adjusted, January 2008=100



Related products

Selected publications from Statistics Canada

71-222-X	The Canadian Labour Market at a Glance
71-526-X	Methodology of the Canadian Labour Force Survey
71-543-G	Guide to the Labour Force Survey
71-544-X	Labour Force Survey Products and Services
71-587-X	Aboriginal Peoples Living Off-reserve in Western Canada: Estimates from the Labour Force Survey
71-588-X	The Aboriginal Labour Force Analysis Series
71-606-X	The Immigrant Labour Force Analysis Series
71F0004X	Labour Force Historical Review
71F0031X	Improvements to the Labour Force Survey (LFS)
71M0001X	Labour Force Survey Microdata File
75-001-X	Perspectives on Labour and Income

Selected CANSIM tables from Statistics Canada

282-0001	Labour force survey estimates (LFS), by sex and detailed age group, unadjusted for seasonality, monthly
282-0002	Labour force survey estimates (LFS), by sex and detailed age group, annual
282-0003	Labour force survey estimates (LFS), by educational attainment, sex and age group, unadjusted for seasonality, monthly
282-0004	Labour force survey estimates (LFS), by educational attainment, sex and age group, annual
282-0005	Labour force survey estimates (LFS), by full- and part-time students during school months, sex and age group, unadjusted for seasonality, monthly
282-0006	Labour force survey estimates (LFS), by students during summer months, sex and age group, unadjusted for seasonality, monthly
282-0007	Labour force survey estimates (LFS), by North American Industry Classification System (NAICS), sex and age group, unadjusted for seasonality, monthly

282-0008	Labour force survey estimates (LFS), by North American Industry Classification System (NAICS), sex and age group, annual
282-0009	Labour force survey estimates (LFS), by National Occupational Classification for Statistics (NOC-S) and sex, unadjusted for seasonality, monthly
282-0010	Labour force survey estimates (LFS), by National Occupational Classification for Statistics (NOC-S) and sex, annual
282-0011	Labour force survey estimates (LFS), employment by class of worker, North American Industry Classification System (NAICS) and sex, unadjusted for seasonality, monthly
282-0012	Labour force survey estimates (LFS), employment by class of worker, North American Industry Classification System (NAICS) and sex, annual
282-0013	Labour force survey estimates (LFS), part-time employment by reason for part-time work, sex and age group, unadjusted for seasonality, monthly
282-0014	Labour force survey estimates (LFS), part-time employment by reason for part-time work, sex and age group, annual
282-0015	Labour force survey estimates (LFS), by usual hours worked, main or all jobs, sex and age group, unadjusted for seasonality, monthly
282-0016	Labour force survey estimates (LFS), by usual hours worked, main or all jobs, sex and age group, annual
282-0017	Labour force survey estimates (LFS), by actual hours worked, main or all jobs, sex and age group, unadjusted for seasonality, monthly
282-0018	Labour force survey estimates (LFS), by actual hours worked, main or all jobs, sex and age group, annual
282-0019	Labour force survey estimates (LFS), by usual hours worked, class of worker, North American Industry Classification System (NAICS) and sex, unadjusted for seasonality, monthly
282-0020	Labour force survey estimates (LFS), by usual hours worked, class of worker, North American Industry Classification System (NAICS) and sex, annual
282-0021	Labour force survey estimates (LFS), by actual hours worked, class of worker, North American Industry Classification System (NAICS) and sex, unadjusted for seasonality, monthly
282-0022	Labour force survey estimates (LFS), by actual hours worked, class of worker, North American Industry Classification System (NAICS) and sex, annual
282-0023	Labour force survey estimates (LFS), by usual hours worked, class of worker, National Occupational Classification for Statistics (NOC-S) and sex, unadjusted for seasonality, monthly
282-0024	Labour force survey estimates (LFS), by usual hours worked, class of worker, National Occupational Classification for Statistics (NOC-S) and sex, annual
282-0025	Labour force survey estimates (LFS), by actual hours worked, class of worker, National Occupational Classification for Statistics (NOC-S) and sex, unadjusted for seasonality, monthly
282-0026	Labour force survey estimates (LFS), by actual hours worked, class of worker, National Occupational Classification for Statistics (NOC-S) and sex, annual

282-0027	Labour force survey estimates (LFS), by total and average usual and actual hours worked, main or all jobs, type of work, sex and age group, unadjusted for seasonality, monthly
282-0028	Labour force survey estimates (LFS), by total and average usual and actual hours worked, main or all jobs, type of work, sex and age group, annual
282-0029	Labour force survey estimates (LFS), average days lost for personal reasons per full-time employee by North American Industry Classification System (NAICS), sex and age group, annual
282-0030	Labour force survey estimates (LFS), average days lost for personal reasons per full-time employee by National Occupational Classification for Statistics (NOC-S), sex and age group, annual
282-0031	Labour force survey estimates (LFS), multiple jobholders by North American Industry Classification System (NAICS), sex and age group, annual
282-0032	Labour force survey estimates (LFS), multiple jobholders by North American Industry Classification System (NAICS), sex and age group, unadjusted for seasonality, monthly
282-0033	Labour force survey estimates (LFS), multiple jobholders by National Occupational Classification for Statistics (NOC-S), sex and age group, unadjusted for seasonality, monthly
282-0034	Labour force survey estimates (LFS), multiple jobholders by National Occupational Classification for Statistics (NOC-S), sex and age group, annual
282-0035	Labour force survey estimates (LFS), multiple jobholders by usual hours worked at main and all jobs, unadjusted for seasonality, monthly
282-0036	Labour force survey estimates (LFS), multiple jobholders by usual hours worked at main and all jobs, annual
282-0037	Labour force survey estimates (LFS), job tenure by type of work, sex and age group, unadjusted for seasonality, monthly
282-0038	Labour force survey estimates (LFS), job tenure by type of work, sex and age group, annual
282-0039	Labour force survey estimates (LFS), job tenure by National Occupational Classification for Statistics (NOC-S) and sex, unadjusted for seasonality, monthly
282-0040	Labour force survey estimates (LFS), job tenure by National Occupational Classification for Statistics (NOC-S) and sex, annual
282-0041	Labour force survey estimates (LFS), job tenure by North American Industry Classification System (NAICS) and sex, unadjusted for seasonality, monthly
282-0042	Labour force survey estimates (LFS), job tenure by North American Industry Classification System (NAICS) and sex, annual
282-0047	Labour force survey estimates (LFS), duration of unemployment by sex and age group, unadjusted for seasonality, monthly
282-0048	Labour force survey estimates (LFS), duration of unemployment by sex and age group, annual
282-0049	Labour force survey estimates (LFS), unemployment by type of work sought and search method, sex and age group, unadjusted for seasonality, monthly

282-0050	Labour force survey estimates (LFS), unemployment by type of work sought and search method, sex and age group, annual
282-0051	Labour force survey estimates (LFS), retirement age by class of worker and sex, annual
282-0052	Labour force survey estimates (LFS), by census metropolitan area based on 2001 census boundaries, sex and age group, 3-month moving average, unadjusted for seasonality, monthly *Terminated*
282-0053	Labour force survey estimates (LFS), by census metropolitan area based on 2001 census boundaries, sex and age group, annual *Terminated*
282-0054	Labour force survey estimates (LFS), by provinces and economic regions, 3-month moving average, unadjusted for seasonality, monthly
282-0055	Labour force survey estimates (LFS), by provinces, territories and economic regions, annual
282-0056	Labour force survey estimates (LFS), employment by census metropolitan area based on 2001 census boundaries and North American Industry Classification System (NAICS), 3-month moving average, unadjusted for seasonality, monthly *Terminated*
282-0057	Labour force survey estimates (LFS), employment by census metropolitan area based on 2001 census boundaries and North American Industry Classification System (NAICS), annual *Terminated*
282-0058	Labour force survey estimates (LFS), employment by census metropolitan area based on 2001 census boundaries and National Occupational Classification for Statistics (NOC-S), 3-month moving average, unadjusted for seasonality, monthly *Terminated*
282-0059	Labour force survey estimates (LFS), employment by census metropolitan area based on 2001 census boundaries and National Occupational Classification for Statistics (NOC-S), annual *Terminated*
282-0060	Labour force survey estimates (LFS), employment by economic region and North American Industry Classification System (NAICS), 3-month moving average, unadjusted for seasonality, monthly
282-0061	Labour force survey estimates (LFS), employment by economic region and North American Industry Classification System (NAICS), annual
282-0062	Labour force survey estimates (LFS), employment by economic region and National Occupational Classification for Statistics (NOC-S), 3-month moving average, unadjusted for seasonality, monthly
282-0063	Labour force survey estimates (LFS), employment by economic region and National Occupational Classification for Statistics (NOC-S), annual
282-0069	Labour force survey estimates (LFS), wages of employees by type of work, National Occupational Classification for Statistics (NOC-S), sex and age group, unadjusted for seasonality, monthly (current dollars)
282-0070	Labour force survey estimates (LFS), wages of employees by type of work, National Occupational Classification for Statistics (NOC-S), sex and age group, annual (current dollars)

282-0071	Labour force survey estimates (LFS), wages of employees by type of work, North American Industry Classification System (NAICS), sex and age group, unadjusted for seasonality, monthly (current dollars)
282-0072	Labour force survey estimates (LFS), wages of employees by type of work, North American Industry Classification System (NAICS), sex and age group, annual (current dollars)
282-0073	Labour force survey estimates (LFS), wages of employees by job permanence, union coverage, sex and age group, unadjusted for seasonality, monthly (current dollars)
282-0074	Labour force survey estimates (LFS), wages of employees by job permanence, union coverage, sex and age group, annual (current dollars)
282-0075	Labour force survey estimates (LFS), employees by establishment size, North American Industry Classification System (NAICS), sex and age group, unadjusted for seasonality, monthly
282-0076	Labour force survey estimates (LFS), employees by establishment size, North American Industry Classification System (NAICS), sex and age group, annual
282-0077	Labour force survey estimates (LFS), employees by union coverage, North American Industry Classification System (NAICS), sex and age group, unadjusted for seasonality, monthly
282-0078	Labour force survey estimates (LFS), employees by union coverage, North American Industry Classification System (NAICS), sex and age group, annual
282-0079	Labour force survey estimates (LFS), employees by job permanency, North American Industry Classification System (NAICS), sex and age group, unadjusted for seasonality, monthly
282-0080	Labour force survey estimates (LFS), employees by job permanency, North American Industry Classification System (NAICS), sex and age group, annual
282-0081	Labour force survey estimates (LFS), employees working overtime (weekly) by National Occupational Classification for Statistics (NOC-S), sex and age group, unadjusted for seasonality, monthly
282-0082	Labour force survey estimates (LFS), employees working overtime (weekly) by National Occupational Classification for Statistics (NOC-S), sex and age group, annual
282-0083	Labour force survey estimates (LFS), employees working overtime (weekly) by North American Industry Classification System (NAICS), sex and age group, unadjusted for seasonality, monthly
282-0084	Labour force survey estimates (LFS), employees working overtime (weekly) by North American Industry Classification System (NAICS), sex and age group, annual
282-0085	Labour force survey estimates (LFS), supplementary unemployment rates by sex and age group, unadjusted for seasonality, monthly
282-0086	Labour force survey estimates (LFS), supplementary unemployment rates by sex and age group, annual
282-0087	Labour force survey estimates (LFS), by sex and age group, seasonally adjusted and unadjusted, monthly
282-0088	Labour force survey estimates (LFS), employment by North American Industry Classification System (NAICS), seasonally adjusted and unadjusted, monthly

282-0089	Labour force survey estimates (LFS), employment by class of worker and sex, seasonally adjusted and unadjusted, monthly
282-0090	Labour force survey estimates (LFS), by census metropolitan area based on 2001 census boundaries, 3-month moving average, seasonally adjusted and unadjusted, monthly *Terminated*
282-0091	Labour force survey estimates (LFS), by Montréal, Toronto and Vancouver census metropolitan areas based on 2001 census boundaries, seasonally adjusted and unadjusted, monthly *Terminated*
282-0092	Labour force survey estimates (LFS), actual hours worked by North American Industry Classification System (NAICS), seasonally adjusted, monthly
282-0093	Labour force survey estimates (LFS), employment by National Occupational Classification for Statistics (NOC-S), seasonally adjusted, monthly
282-0094	Labour force survey estimates (LFS), by North American Industry Classification System (NAICS), Canada, seasonally adjusted, monthly
282-0095	Labour force survey estimates (LFS), by full- and part-time students during school months, sex and age group, annual
282-0100	Labour force survey estimates (LFS), by territories, sex and age group, 3-month moving average, seasonally adjusted and unadjusted, monthly
282-0101	Labour force survey estimates (LFS), by immigrant status, age group, Canada, regions, provinces and Montreal, Toronto, Vancouver census metropolitan areas, 3-month moving average, unadjusted for seasonality, monthly
282-0102	Labour force survey estimates (LFS), by immigrant status, age group, Canada, regions, provinces and Montreal, Toronto, Vancouver census metropolitan areas, annual
282-0103	Labour force survey estimates (LFS), by immigrant status, sex and detailed age group, Canada, 3-month moving average, unadjusted for seasonality, monthly
282-0104	Labour force survey estimates (LFS), by immigrant status, sex and detailed age group, Canada, annual
282-0105	Labour force survey estimates (LFS), by immigrant status, educational attainment, sex and age group, Canada, 3-month moving average, unadjusted for seasonality, monthly
282-0106	Labour force survey estimates (LFS), by immigrant status, educational attainment, sex and age group, Canada, annual
282-0107	Labour force survey estimates (LFS), by immigrant status, country of birth, sex and age group, Canada, regions and provinces, 3-month moving average, unadjusted for seasonality, monthly
282-0108	Labour force survey estimates (LFS), by immigrant status, country of birth, sex and age group, Canada, regions and provinces, annual
282-0109	Labour force survey estimates (LFS), by census metropolitan area based on 2006 census boundaries, sex and age group, 3-month moving average, unadjusted for seasonality, monthly

282-0110	Labour force survey estimates (LFS), by census metropolitan area based on 2006 census boundaries, sex and age group, annual
282-0111	Labour force survey estimates (LFS), employment by census metropolitan area based on 2006 census boundaries and North American Industry Classification System (NAICS), 3-month moving average, unadjusted for seasonality, monthly
282-0112	Labour force survey estimates (LFS), employment by census metropolitan area based on 2006 census boundaries and North American Industry Classification System (NAICS), annual
282-0113	Labour force survey estimates (LFS), employment by census metropolitan area based on 2006 census boundaries and National Occupational Classification for Statistics (NOC-S), 3-month moving average, unadjusted for seasonality, monthly
282-0114	Labour force survey estimates (LFS), employment by census metropolitan area based on 2006 census boundaries and National Occupational Classification for Statistics (NOC-S), annual
282-0115	Labour force survey estimates (LFS), by selected census agglomerations based on 2006 census boundaries, annual
282-0116	Labour force survey estimates (LFS), by census metropolitan area based on 2006 census boundaries, 3-month moving average, seasonally adjusted and unadjusted, monthly
282-0117	Labour force survey estimates (LFS), by Montréal, Toronto and Vancouver census metropolitan areas based on 2006 census boundaries, seasonally adjusted and unadjusted, monthly
282-0118	Labour force survey estimates (LFS), by urban and rural areas based on 2006 census boundaries, sex and age group, unadjusted for seasonality, monthly
282-0119	Labour force survey estimates (LFS), by urban and rural areas based on 2006 census boundaries, sex and age group, annual
282-0120	Labour force survey estimates (LFS), employment by urban and rural areas based on 2006 census boundaries, class of worker and North American Industry Classification System (NAICS), unadjusted for seasonality, monthly
282-0121	Labour force survey estimates (LFS), employment by urban and rural areas based on 2006 census boundaries, class of worker and North American Industry Classification System (NAICS), annual

Selected surveys from Statistics Canada

3701	Labour Force Survey
------	---------------------

Selected summary tables from Statistics Canada

- *Labour force characteristics*
- *Employment by industry*
- *Days lost per worker due to illness or disability, by sex, by province*
- *Economic indicators, by province and territory (monthly and quarterly)*
- *Labour force and participation rates by sex and age group*
- *Labour force, employed and unemployed, numbers and rates, by province*
- *Employment by industry and sex*
- *Full-time and part-time employment by sex and age group*
- *Labour force characteristics by age and sex*
- *Distribution of employed people, by industry, by province*
- *Labour force characteristics, population 15 years and older, by census metropolitan area*
- *Labour force characteristics, population 15 years and older, by economic region, by province*
- *Days lost per worker by cause, by provinces*
- *Days lost per worker by industry and sex*
- *People employed, by educational attainment*
- *Reasons for part-time work by sex and age group*
- *Self-employment, historical summary*
- *Employment by age, sex, type of work, class of worker and province (monthly)*
- *Employment by major industry groups, seasonally adjusted, by province (monthly)*
- *Actual hours worked per week by industry, seasonally adjusted (monthly)*
- *Average hourly wages of employees by selected characteristics and profession, unadjusted data, by province (monthly)*
- *Labour force characteristics, seasonally adjusted, by province (monthly)*
- *Labour force characteristics, unadjusted, by province (monthly)*
- *Labour force characteristics, seasonally adjusted, by census metropolitan area (3 month moving average)*
- *Labour force characteristics, unadjusted, by census metropolitan area (3 month moving average)*
- *Labour force characteristics, unadjusted, by economic region (3 month moving average)*

- *Labour force characteristics by immigrant status of population aged 25 to 54, by province*
- *Labour force characteristics by immigrant status of population aged 25 to 54, by educational attainment*
- *Labour force characteristics by immigrant status, by detailed age group*
- *Labour force characteristics by immigrant status of population aged 25 to 54, by country of birth*

Statistical tables

Table 1
Labour force characteristics by age and sex, Canada, seasonally adjusted

	February 2011	March 2011	S.E. ¹	Change from			Percent change from		
				last month	last December	twelve months ago	last month	last December	twelve months ago
in thousands (except rates)									
15 years and over, both sexes									
Population	27,866.5	27,889.2	...	22.7	74.4	338.5	0.1	0.3	1.2
Labour force	18,678.0	18,663.1	28.7	-14.9	105.3	231.3	-0.1	0.6	1.3
Employment	17,229.6	17,228.1	28.2	-1.5	82.8	304.6	0.0	0.5	1.8
Employment full-time	13,843.1	13,933.7	37.3	90.6	97.9	250.8	0.7	0.7	1.8
Employment part-time	3,386.5	3,294.4	34.4	-92.1	-15.2	53.8	-2.7	-0.5	1.7
Unemployment	1,448.5	1,435.0	25.3	-13.5	22.5	-73.3	-0.9	1.6	-4.9
Participation rate	67.0	66.9	0.1	-0.1	0.2	0.0
Unemployment rate	7.8	7.7	0.1	-0.1	0.1	-0.5
Employment rate	61.8	61.8	0.1	0.0	0.2	0.4
Part-time rate	19.7	19.1	0.2	-0.5	-0.2	0.0
15 to 24 years, both sexes									
Population	4,458.8	4,458.6	...	-0.2	-1.4	-1.3	0.0	0.0	0.0
Labour force	2,888.5	2,873.5	16.8	-15.0	22.3	-24.7	-0.5	0.8	-0.9
Employment	2,475.8	2,459.2	15.5	-16.6	2.7	11.7	-0.7	0.1	0.5
Employment full-time	1,286.1	1,298.8	18.1	12.7	13.0	22.6	1.0	1.0	1.8
Employment part-time	1,189.7	1,160.4	18.8	-29.3	-10.3	-10.9	-2.5	-0.9	-0.9
Unemployment	412.7	414.3	14.7	1.6	19.6	-36.3	0.4	5.0	-8.1
Participation rate	64.8	64.4	0.4	-0.4	0.5	-0.6
Unemployment rate	14.3	14.4	0.5	0.1	0.6	-1.1
Employment rate	55.5	55.2	0.4	-0.3	0.1	0.3
Part-time rate	48.1	47.2	0.7	-0.9	-0.5	-0.7
25 years and over, men									
Population	11,451.1	11,462.6	...	11.5	38.0	168.4	0.1	0.3	1.5
Labour force	8,351.0	8,377.8	14.9	26.8	34.6	157.6	0.3	0.4	1.9
Employment	7,783.1	7,815.5	16.0	32.4	34.3	207.7	0.4	0.4	2.7
Employment full-time	7,155.0	7,204.9	21.0	49.9	30.7	157.9	0.7	0.4	2.2
Employment part-time	628.2	610.5	17.0	-17.7	3.5	49.7	-2.8	0.6	8.9
Unemployment	567.9	562.3	14.8	-5.6	0.3	-50.1	-1.0	0.1	-8.2
Participation rate	72.9	73.1	0.1	0.2	0.1	0.3
Unemployment rate	6.8	6.7	0.2	-0.1	0.0	-0.7
Employment rate	68.0	68.2	0.1	0.2	0.1	0.8
Part-time rate	8.1	7.8	0.2	-0.3	0.0	0.4
25 years and over, women									
Population	11,956.5	11,968.0	...	11.5	37.7	171.4	0.1	0.3	1.5
Labour force	7,438.6	7,411.8	16.3	-26.8	48.4	98.3	-0.4	0.7	1.3
Employment	6,970.6	6,953.4	16.0	-17.2	45.8	85.2	-0.2	0.7	1.2
Employment full-time	5,402.0	5,429.9	24.3	27.9	54.2	70.2	0.5	1.0	1.3
Employment part-time	1,568.7	1,523.5	22.7	-45.2	-8.4	15.0	-2.9	-0.5	1.0
Unemployment	467.9	458.4	13.1	-9.5	2.6	13.1	-2.0	0.6	2.9
Participation rate	62.2	61.9	0.1	-0.3	0.2	-0.1
Unemployment rate	6.3	6.2	0.2	-0.1	0.0	0.1
Employment rate	58.3	58.1	0.1	-0.2	0.2	-0.1
Part-time rate	22.5	21.9	0.3	-0.6	-0.3	-0.1
25 to 54 years, both sexes									
Population	14,515.5	14,518.5	...	3.0	7.8	59.5	0.0	0.1	0.4
Labour force	12,542.7	12,549.3	21.6	6.6	60.8	67.8	0.1	0.5	0.5
Employment	11,724.7	11,743.8	22.9	19.1	65.4	129.7	0.2	0.6	1.1
Unemployment	818.0	805.5	18.5	-12.5	-4.6	-61.9	-1.5	-0.6	-7.1
Participation rate	86.4	86.4	0.1	0.0	0.3	0.1
Unemployment rate	6.5	6.4	0.1	-0.1	-0.1	-0.5
Employment rate	80.8	80.9	0.2	0.1	0.4	0.6

See notes at the end of the table.

Table 1 – continued

Labour force characteristics by age and sex, Canada, seasonally adjusted

	February 2011	March 2011	S.E. ¹	Change from			Percent change from		
				last month	last December	twelve months ago	last month	last December	twelve months ago
in thousands (except rates)									
25 to 54 years, men									
Population	7,260.4	7,262.1	...	1.7	4.5	30.2	0.0	0.1	0.4
Labour force	6,572.4	6,587.7	13.7	15.3	23.9	71.6	0.2	0.4	1.1
Employment	6,132.9	6,152.8	15.3	19.9	22.4	129.4	0.3	0.4	2.1
Unemployment	439.5	434.9	13.5	-4.6	1.5	-57.8	-1.0	0.3	-11.7
Participation rate	90.5	90.7	0.2	0.2	0.3	0.6
Unemployment rate	6.7	6.6	0.2	-0.1	0.0	-1.0
Employment rate	84.5	84.7	0.2	0.2	0.2	1.4
25 to 54 years, women									
Population	7,255.1	7,256.4	...	1.3	3.3	29.3	0.0	0.0	0.4
Labour force	5,970.3	5,961.6	15.9	-8.7	36.9	-3.8	-0.1	0.6	-0.1
Employment	5,591.8	5,591.1	16.1	-0.7	43.1	0.4	0.0	0.8	0.0
Unemployment	378.5	370.5	12.3	-8.0	-6.2	-4.1	-2.1	-1.6	-1.1
Participation rate	82.3	82.2	0.2	-0.1	0.5	-0.3
Unemployment rate	6.3	6.2	0.2	-0.1	-0.2	-0.1
Employment rate	77.1	77.1	0.2	0.0	0.6	-0.3
55 years and over, both sexes									
Population	8,892.2	8,912.1	...	19.9	67.9	280.3	0.2	0.8	3.2
Labour force	3,246.9	3,240.3	16.7	-6.6	22.2	188.1	-0.2	0.7	6.2
Employment	3,029.1	3,025.1	16.7	-4.0	14.7	163.3	-0.1	0.5	5.7
Unemployment	217.8	215.2	9.2	-2.6	7.5	24.8	-1.2	3.6	13.0
Participation rate	36.5	36.4	0.2	-0.1	0.0	1.0
Unemployment rate	6.7	6.6	0.3	-0.1	0.1	0.4
Employment rate	34.1	33.9	0.2	-0.2	-0.1	0.7
55 years and over, men									
Population	4,190.8	4,200.5	...	9.7	33.5	138.2	0.2	0.8	3.4
Labour force	1,778.6	1,790.1	11.2	11.5	10.7	86.1	0.6	0.6	5.1
Employment	1,650.2	1,662.7	11.3	12.5	11.9	78.3	0.8	0.7	4.9
Unemployment	128.4	127.4	7.1	-1.0	-1.2	7.8	-0.8	-0.9	6.5
Participation rate	42.4	42.6	0.3	0.2	-0.1	0.7
Unemployment rate	7.2	7.1	0.4	-0.1	-0.1	0.1
Employment rate	39.4	39.6	0.3	0.2	0.0	0.6
55 years and over, women									
Population	4,701.5	4,711.6	...	10.1	34.4	142.1	0.2	0.7	3.1
Labour force	1,468.3	1,450.2	11.3	-18.1	11.5	102.0	-1.2	0.8	7.6
Employment	1,378.9	1,362.4	11.3	-16.5	2.8	84.9	-1.2	0.2	6.6
Unemployment	89.4	87.8	5.7	-1.6	8.7	17.1	-1.8	11.0	24.2
Participation rate	31.2	30.8	0.2	-0.4	0.0	1.3
Unemployment rate	6.1	6.1	0.4	0.0	0.6	0.9
Employment rate	29.3	28.9	0.2	-0.4	-0.2	0.9

1. Average standard error of change in two consecutive months (see "Sampling Errors" in Data Quality for further explanations).

Note(s): Related CANSIM table 282-0087.

Table 2
Employment by class of worker and industry, Canada, seasonally adjusted

	February 2011	March 2011	S.E. ¹	Change from			Percent change from		
				last month	last December	twelve months ago	last month	last December	twelve months ago
in thousands									
Class of worker									
Employees	14,563.8	14,544.9	34.0	-18.9	19.8	303.7	-0.1	0.1	2.1
Self-employed ²	2,665.8	2,683.2	24.5	17.4	63.0	0.9	0.7	2.4	0.0
Public/private sector employees									
Public sector employees	3,590.5	3,563.3	23.9	-27.2	8.8	82.9	-0.8	0.2	2.4
Private sector employees	10,973.3	10,981.6	35.8	8.3	11.0	220.8	0.1	0.1	2.1
Industry	17,229.6	17,228.1	28.2	-1.5	82.8	304.6	0.0	0.5	1.8
Goods-producing sector	3,822.4	3,841.5	25.2	19.1	52.7	106.4	0.5	1.4	2.8
Agriculture	312.6	310.0	6.7	-2.6	10.8	5.5	-0.8	3.6	1.8
Forestry, fishing, mining, quarrying, oil and gas extraction	333.3	335.6	6.9	2.3	4.1	-0.4	0.7	1.2	-0.1
Utilities	144.4	148.9	4.7	4.5	1.1	1.8	3.1	0.7	1.2
Construction	1,236.0	1,260.3	16.2	24.3	33.1	63.8	2.0	2.7	5.3
Manufacturing	1,796.1	1,786.7	18.8	-9.4	3.6	35.8	-0.5	0.2	2.0
Services-producing sector	13,407.1	13,386.6	33.2	-20.5	30.0	198.2	-0.2	0.2	1.5
Trade	2,673.1	2,653.2	22.8	-19.9	-15.2	-15.9	-0.7	-0.6	-0.6
Transportation and warehousing	830.7	830.0	12.9	-0.7	-34.8	52.9	-0.1	-4.0	6.8
Finance, insurance, real estate and leasing	1,081.6	1,075.0	15.2	-6.6	-7.9	-20.2	-0.6	-0.7	-1.8
Professional, scientific and technical services	1,287.8	1,296.9	16.9	9.1	20.9	39.1	0.7	1.6	3.1
Business, building and other support services	664.0	665.7	13.8	1.7	0.9	27.8	0.3	0.1	4.4
Educational services	1,229.0	1,231.8	15.7	2.8	26.0	1.1	0.2	2.2	0.1
Health care and social assistance	2,085.3	2,068.0	17.7	-17.3	15.7	58.8	-0.8	0.8	2.9
Information, culture and recreation	783.4	772.2	14.3	-11.2	6.3	12.6	-1.4	0.8	1.7
Accommodation and food services	1,044.4	1,080.6	16.1	36.2	25.6	3.4	3.5	2.4	0.3
Other services	750.6	749.0	13.0	-1.6	-0.8	18.6	-0.2	-0.1	2.5
Public administration	977.2	964.2	12.5	-13.0	-6.6	20.0	-1.3	-0.7	2.1

1. Average standard error of change in two consecutive months (see "Sampling Errors" in Data Quality for further explanations).

2. Includes both incorporated and unincorporated working owners, self-employed persons who do not have a business and persons working in a family business without pay.

Note(s): Related CANSIM Tables 282-0088, 282-0089.

Table 3
Labour force characteristics by province, seasonally adjusted

	February 2011	March 2011	S.E. ¹	Change from			Percent change from		
				last month	last December	twelve months ago	last month	last December	twelve months ago
in thousands (except rates)									
Newfoundland and Labrador									
Population	429.2	429.2	...	0.0	0.2	1.4	0.0	0.0	0.3
Labour force	260.9	260.7	2.1	-0.2	1.5	5.1	-0.1	0.6	2.0
Employment	227.7	228.6	2.2	0.9	5.7	12.3	0.4	2.6	5.7
Employment full-time	195.9	196.9	2.5	1.0	5.8	12.3	0.5	3.0	6.7
Employment part-time	31.8	31.7	1.9	-0.1	-0.1	0.1	-0.3	-0.3	0.3
Unemployment	33.3	32.2	2.0	-1.1	-4.1	-7.2	-3.3	-11.3	-18.3
Participation rate	60.8	60.7	0.5	-0.1	0.3	1.0
Unemployment rate	12.8	12.4	0.7	-0.4	-1.6	-3.0
Employment rate	53.1	53.3	0.5	0.2	1.3	2.7
Prince Edward Island									
Population	118.5	118.6	...	0.1	0.7	2.0	0.1	0.6	1.7
Labour force	79.6	80.6	0.6	1.0	1.2	0.9	1.3	1.5	1.1
Employment	70.2	71.6	0.7	1.4	1.7	0.3	2.0	2.4	0.4
Employment full-time	59.1	59.4	0.9	0.3	1.5	0.9	0.5	2.6	1.5
Employment part-time	11.2	12.2	0.7	1.0	0.2	-0.5	8.9	1.7	-3.9
Unemployment	9.3	9.0	0.6	-0.3	-0.4	0.6	-3.2	-4.3	7.1
Participation rate	67.2	68.0	0.5	0.8	0.7	-0.4
Unemployment rate	11.7	11.2	0.8	-0.5	-0.6	0.7
Employment rate	59.2	60.4	0.6	1.2	1.1	-0.7
Nova Scotia									
Population	779.1	779.0	...	-0.1	0.1	3.1	0.0	0.0	0.4
Labour force	500.0	498.1	2.7	-1.9	-1.3	3.0	-0.4	-0.3	0.6
Employment	452.4	453.1	2.9	0.7	5.5	-0.6	0.2	1.2	-0.1
Employment full-time	369.8	369.2	3.6	-0.6	2.4	-1.6	-0.2	0.7	-0.4
Employment part-time	82.6	83.9	3.2	1.3	3.0	1.0	1.6	3.7	1.2
Unemployment	47.6	45.0	2.6	-2.6	-6.8	3.6	-5.5	-13.1	8.7
Participation rate	64.2	63.9	0.4	-0.3	-0.2	0.1
Unemployment rate	9.5	9.0	0.5	-0.5	-1.4	0.6
Employment rate	58.1	58.2	0.4	0.1	0.7	-0.3
New Brunswick									
Population	618.7	618.9	...	0.2	0.7	3.1	0.0	0.1	0.5
Labour force	391.9	391.5	2.3	-0.4	0.5	-2.0	-0.1	0.1	-0.5
Employment	353.3	354.0	2.4	0.7	-0.1	-5.6	0.2	0.0	-1.6
Employment full-time	295.9	297.5	2.9	1.6	-1.9	-10.4	0.5	-0.6	-3.4
Employment part-time	57.3	56.5	2.4	-0.8	1.8	4.8	-1.4	3.3	9.3
Unemployment	38.6	37.6	2.1	-1.0	0.7	3.6	-2.6	1.9	10.6
Participation rate	63.3	63.3	0.4	0.0	0.1	-0.6
Unemployment rate	9.8	9.6	0.5	-0.2	0.2	1.0
Employment rate	57.1	57.2	0.4	0.1	-0.1	-1.2
Quebec									
Population	6,550.5	6,555.6	...	5.1	16.3	69.9	0.1	0.2	1.1
Labour force	4,293.5	4,281.7	14.5	-11.8	7.7	57.6	-0.3	0.2	1.4
Employment	3,964.8	3,950.1	14.4	-14.7	-3.6	61.8	-0.4	-0.1	1.6
Employment full-time	3,169.0	3,187.3	19.1	18.3	-18.6	43.5	0.6	-0.6	1.4
Employment part-time	795.8	762.9	17.5	-32.9	15.1	18.4	-4.1	2.0	2.5
Unemployment	328.8	331.5	13.0	2.7	11.2	-4.3	0.8	3.5	-1.3
Participation rate	65.5	65.3	0.2	-0.2	-0.1	0.2
Unemployment rate	7.7	7.7	0.3	0.0	0.2	-0.2
Employment rate	60.5	60.3	0.2	-0.2	-0.2	0.3

See notes at the end of the table.

Table 3 – continued

Labour force characteristics by province, seasonally adjusted

	February 2011	March 2011	S.E. ¹	Change from			Percent change from		
				last month	last December	twelve months ago	last month	last December	twelve months ago
in thousands (except rates)									
Ontario									
Population	10,873.9	10,883.6	...	9.7	29.1	137.2	0.1	0.3	1.3
Labour force	7,267.9	7,280.5	19.9	12.6	31.0	92.9	0.2	0.4	1.3
Employment	6,685.2	6,690.8	19.3	5.6	31.2	136.9	0.1	0.5	2.1
Employment full-time	5,389.2	5,452.5	24.9	63.3	78.2	153.2	1.2	1.5	2.9
Employment part-time	1,296.0	1,238.3	23.3	-57.7	-47.0	-16.3	-4.5	-3.7	-1.3
Unemployment	582.7	589.8	17.7	7.1	-0.1	-43.8	1.2	0.0	-6.9
Participation rate	66.8	66.9	0.2	0.1	0.1	0.0
Unemployment rate	8.0	8.1	0.2	0.1	0.0	-0.7
Employment rate	61.5	61.5	0.2	0.0	0.1	0.5
Manitoba									
Population	949.1	949.9	...	0.8	2.9	12.8	0.1	0.3	1.4
Labour force	659.7	664.1	2.6	4.4	9.5	15.1	0.7	1.5	2.3
Employment	624.9	627.3	2.7	2.4	6.8	12.4	0.4	1.1	2.0
Employment full-time	500.9	504.1	3.8	3.2	2.5	11.3	0.6	0.5	2.3
Employment part-time	124.0	123.2	3.5	-0.8	4.3	1.1	-0.6	3.6	0.9
Unemployment	34.8	36.8	2.1	2.0	2.7	2.7	5.7	7.9	7.9
Participation rate	69.5	69.9	0.3	0.4	0.8	0.6
Unemployment rate	5.3	5.5	0.3	0.2	0.3	0.2
Employment rate	65.8	66.0	0.3	0.2	0.5	0.4
Saskatchewan									
Population	796.7	797.2	...	0.5	1.8	9.7	0.1	0.2	1.2
Labour force	554.7	553.3	2.4	-1.4	-1.2	-1.5	-0.3	-0.2	-0.3
Employment	523.2	524.4	2.5	1.2	0.3	-1.6	0.2	0.1	-0.3
Employment full-time	433.4	430.0	3.2	-3.4	-1.1	-0.3	-0.8	-0.3	-0.1
Employment part-time	89.8	94.3	3.0	4.5	1.3	-1.4	5.0	1.4	-1.5
Unemployment	31.5	29.0	1.9	-2.5	-1.5	0.2	-7.9	-4.9	0.7
Participation rate	69.6	69.4	0.3	-0.2	-0.3	-1.1
Unemployment rate	5.7	5.2	0.3	-0.5	-0.3	0.0
Employment rate	65.7	65.8	0.3	0.1	-0.1	-1.0
Alberta									
Population	2,987.2	2,990.1	...	2.9	10.7	43.2	0.1	0.4	1.5
Labour force	2,191.7	2,188.5	9.0	-3.2	37.9	34.1	-0.1	1.8	1.6
Employment	2,067.5	2,064.3	9.2	-3.2	32.1	68.8	-0.2	1.6	3.4
Employment full-time	1,687.1	1,698.0	12.0	10.9	22.7	53.9	0.6	1.4	3.3
Employment part-time	380.4	366.3	10.5	-14.1	9.4	15.0	-3.7	2.6	4.3
Unemployment	124.2	124.2	7.5	0.0	5.8	-34.7	0.0	4.9	-21.8
Participation rate	73.4	73.2	0.3	-0.2	1.0	0.1
Unemployment rate	5.7	5.7	0.3	0.0	0.2	-1.7
Employment rate	69.2	69.0	0.3	-0.2	0.8	1.3
British Columbia									
Population	3,763.8	3,767.2	...	3.4	11.9	56.2	0.1	0.3	1.5
Labour force	2,478.2	2,464.0	10.2	-14.2	18.4	26.0	-0.6	0.8	1.1
Employment	2,260.5	2,264.0	10.1	3.5	3.3	19.9	0.2	0.1	0.9
Employment full-time	1,742.8	1,738.9	14.3	-3.9	6.5	-11.7	-0.2	0.4	-0.7
Employment part-time	517.7	525.1	13.5	7.4	-3.2	31.6	1.4	-0.6	6.4
Unemployment	217.6	200.0	8.9	-17.6	15.1	6.1	-8.1	8.2	3.1
Participation rate	65.8	65.4	0.3	-0.4	0.3	-0.3
Unemployment rate	8.8	8.1	0.3	-0.7	0.5	0.1
Employment rate	60.1	60.1	0.3	0.0	-0.1	-0.4

1. Average standard error of change in two consecutive months (see "Sampling Errors" in Data Quality for further explanations).

Note(s): Related CANSIM Table 282-0087.

Table 4-1
Selected labour force characteristics (seasonally adjusted) — Newfoundland and Labrador

	February 2011	March 2011	S.E. ¹	Change from			Percent change from		
				last month	last December	twelve months ago	last month	last December	twelve months ago
in thousands (except rates)									
Both sexes, 15 years and over									
Population	429.2	429.2	...	0.0	0.2	1.4	0.0	0.0	0.3
Labour force	260.9	260.7	2.1	-0.2	1.5	5.1	-0.1	0.6	2.0
Employment	227.7	228.6	2.2	0.9	5.7	12.3	0.4	2.6	5.7
Employment full-time	195.9	196.9	2.5	1.0	5.8	12.3	0.5	3.0	6.7
Unemployment	33.3	32.2	2.0	-1.1	-4.1	-7.2	-3.3	-11.3	-18.3
Participation rate	60.8	60.7	0.5	-0.1	0.3	1.0
Unemployment rate	12.8	12.4	0.7	-0.4	-1.6	-3.0
Employment rate	53.1	53.3	0.5	0.2	1.3	2.7
Part-time rate	14.0	13.9	0.8	-0.1	-0.4	-0.7
Both sexes, 15 to 24 years									
Population	61.5	61.4	...	-0.1	-0.2	-1.0	-0.2	-0.3	-1.6
Labour force	35.4	36.5	1.0	1.1	0.9	0.1	3.1	2.5	0.3
Employment	28.5	29.0	1.0	0.5	0.1	1.9	1.8	0.3	7.0
Unemployment	6.8	7.5	0.9	0.7	0.8	-1.8	10.3	11.9	-19.4
Participation rate	57.6	59.4	1.7	1.8	1.6	1.1
Unemployment rate	19.2	20.5	2.4	1.3	1.7	-5.0
Employment rate	46.3	47.2	1.7	0.9	0.3	3.8
Part-time rate	39.3	40.7	3.5	1.4	4.0	1.6
Men, 25 years and over									
Population	177.6	177.6	...	0.0	0.1	0.9	0.0	0.1	0.5
Labour force	117.8	117.8	1.2	0.0	2.0	3.5	0.0	1.7	3.1
Employment	102.2	103.1	1.3	0.9	5.0	6.5	0.9	5.1	6.7
Unemployment	15.7	14.7	1.3	-1.0	-2.9	-3.0	-6.4	-16.5	-16.9
Participation rate	66.3	66.3	0.7	0.0	1.1	1.6
Unemployment rate	13.3	12.5	1.1	-0.8	-2.7	-3.0
Employment rate	57.5	58.1	0.8	0.6	2.8	3.4
Part-time rate	4.9	4.5	0.9	-0.4	-0.7	-1.3
Women, 25 years and over									
Population	190.1	190.1	...	0.0	0.2	1.4	0.0	0.1	0.7
Labour force	107.8	106.5	1.2	-1.3	-1.3	1.6	-1.2	-1.2	1.5
Employment	97.0	96.5	1.2	-0.5	0.6	3.9	-0.5	0.6	4.2
Unemployment	10.8	10.0	1.0	-0.8	-2.0	-2.3	-7.4	-16.7	-18.7
Participation rate	56.7	56.0	0.6	-0.7	-0.8	0.4
Unemployment rate	10.0	9.4	0.9	-0.6	-1.7	-2.3
Employment rate	51.0	50.8	0.6	-0.2	0.3	1.7
Part-time rate	16.1	15.9	1.3	-0.2	-1.0	-0.9
Industry									
	227.7	228.6	2.2	0.9	5.7	12.3	0.4	2.6	5.7
Goods-producing sector									
Agriculture	48.8	49.1	1.7	0.3	2.9	4.9	0.6	6.3	11.1
Forestry, fishing, mining, quarrying, oil and gas extraction	2.0	1.6	0.3	-0.4	-0.7	0.5	-20.0	-30.4	45.5
Utilities	15.2	16.5	1.0	1.3	0.1	0.6	8.6	0.6	3.8
Construction	2.2	2.2	0.3	0.0	0.4	0.3	0.0	22.2	15.8
Manufacturing	17.9	18.2	1.1	0.3	1.6	3.4	1.7	9.6	23.0
	11.5	10.5	0.9	-1.0	1.4	0.1	-8.7	15.4	1.0
Services-producing sector									
Trade	178.9	179.5	2.1	0.6	2.8	7.4	0.3	1.6	4.3
Transportation and warehousing	40.4	39.3	1.4	-1.1	1.1	3.5	-2.7	2.9	9.8
Finance, insurance, real estate and leasing	11.4	11.4	0.7	0.0	0.7	-1.0	0.0	6.5	-8.1
Professional, scientific and technical services	6.2	7.0	0.6	0.8	0.9	-1.0	12.9	14.8	-12.5
Business, building and other support services	8.4	8.7	0.5	0.3	0.8	1.6	3.6	10.1	22.5
Educational services	5.8	6.2	0.6	0.4	0.1	0.7	6.9	1.6	12.7
Health care and social assistance	18.0	18.4	0.9	0.4	0.2	1.0	2.2	1.1	5.7
Information, culture and recreation	36.3	36.3	1.1	0.0	0.2	0.5	0.0	0.6	1.4
Accommodation and food services	8.1	8.3	0.7	0.2	0.0	0.8	2.5	0.0	10.7
Other services	12.4	12.2	0.9	-0.2	-1.6	-2.0	-1.6	-11.6	-14.1
Public administration	11.8	11.4	0.8	-0.4	0.2	0.8	-3.4	1.8	7.5
	20.1	20.5	0.9	0.4	0.3	2.6	2.0	1.5	14.5

1. Average standard error of change in two consecutive months (see "Sampling Errors" in Data Quality for further explanations).

Note(s): Related CANSIM Tables 282-0087, 282-0088.

Table 4-2
Selected labour force characteristics (seasonally adjusted) — Prince Edward Island

	February 2011	March 2011	S.E. ¹	Change from			Percent change from		
				last month	last December	twelve months ago	last month	last December	twelve months ago
in thousands (except rates)									
Both sexes, 15 years and over									
Population	118.5	118.6	...	0.1	0.7	2.0	0.1	0.6	1.7
Labour force	79.6	80.6	0.6	1.0	1.2	0.9	1.3	1.5	1.1
Employment	70.2	71.6	0.7	1.4	1.7	0.3	2.0	2.4	0.4
Employment full-time	59.1	59.4	0.9	0.3	1.5	0.9	0.5	2.6	1.5
Unemployment	9.3	9.0	0.6	-0.3	-0.4	0.6	-3.2	-4.3	7.1
Participation rate	67.2	68.0	0.5	0.8	0.7	-0.4
Unemployment rate	11.7	11.2	0.8	-0.5	-0.6	0.7
Employment rate	59.2	60.4	0.6	1.2	1.1	-0.7
Part-time rate	16.0	17.0	1.0	1.1	-0.1	-0.8
Both sexes, 15 to 24 years									
Population	19.7	19.8	...	0.1	0.2	0.3	0.5	1.0	1.5
Labour force	13.9	13.9	0.4	0.0	0.6	0.1	0.0	4.5	0.7
Employment	11.8	11.7	0.4	-0.1	0.8	0.2	-0.8	7.3	1.7
Unemployment	2.1	2.1	0.3	0.0	-0.3	-0.2	0.0	-12.5	-8.7
Participation rate	70.6	70.2	2.0	-0.4	2.3	-0.6
Unemployment rate	15.1	15.1	2.4	0.0	-2.9	-1.6
Employment rate	59.9	59.1	2.0	-0.8	3.5	0.1
Part-time rate	38.1	39.3	3.4	1.2	0.8	-2.4
Men, 25 years and over									
Population	47.7	47.7	...	0.0	0.3	0.9	0.0	0.6	1.9
Labour force	34.5	35.0	0.3	0.5	0.8	1.1	1.4	2.3	3.2
Employment	30.0	31.1	0.4	1.1	1.1	0.8	3.7	3.7	2.6
Unemployment	4.5	3.9	0.4	-0.6	-0.2	0.3	-13.3	-4.9	8.3
Participation rate	72.3	73.4	0.7	1.1	1.2	1.0
Unemployment rate	13.0	11.1	1.1	-1.9	-0.9	0.5
Employment rate	62.9	65.2	0.8	2.3	1.9	0.5
Part-time rate	9.7	9.3	1.1	-0.3	0.3	2.1
Women, 25 years and over									
Population	51.1	51.1	...	0.0	0.3	0.9	0.0	0.6	1.8
Labour force	31.1	31.8	0.3	0.7	-0.1	-0.2	2.3	-0.3	-0.6
Employment	28.4	28.8	0.4	0.4	-0.2	-0.7	1.4	-0.7	-2.4
Unemployment	2.7	3.0	0.3	0.3	0.1	0.5	11.1	3.4	20.0
Participation rate	60.9	62.2	0.7	1.3	-0.6	-1.5
Unemployment rate	8.7	9.4	1.0	0.7	0.3	1.6
Employment rate	55.6	56.4	0.8	0.8	-0.7	-2.4
Part-time rate	13.0	16.7	1.5	3.6	-0.9	-3.0
Industry	70.2	71.6	0.7	1.4	1.7	0.3	2.0	2.4	0.4
Goods-producing sector	16.9	17.5	0.6	0.6	0.6	0.5	3.6	3.6	2.9
Agriculture	3.6	3.6	0.3	0.0	0.3	0.1	0.0	9.1	2.9
Forestry, fishing, mining, quarrying, oil and gas extraction	2.8	3.1	0.3	0.3	0.1	0.5	10.7	3.3	19.2
Utilities	0.4	0.3	0.0	-0.1	-0.1	0.0	-25.0	-25.0	0.0
Construction	5.0	5.3	0.3	0.3	0.5	-0.1	6.0	10.4	-1.9
Manufacturing	5.2	5.2	0.3	0.0	-0.2	0.1	0.0	-3.7	2.0
Services-producing sector	53.3	54.1	0.7	0.8	1.0	-0.2	1.5	1.9	-0.4
Trade	9.7	10.3	0.4	0.6	0.7	-0.5	6.2	7.3	-4.6
Transportation and warehousing	2.0	2.1	0.2	0.1	0.2	-0.1	5.0	10.5	-4.5
Finance, insurance, real estate and leasing	2.4	2.4	0.2	0.0	0.4	-0.1	0.0	20.0	-4.0
Professional, scientific and technical services	2.7	3.3	0.2	0.6	0.4	0.7	22.2	13.8	26.9
Business, building and other support services	2.7	2.5	0.3	-0.2	-0.5	0.2	-7.4	-16.7	8.7
Educational services	6.3	6.1	0.3	-0.2	0.0	0.0	-3.2	0.0	0.0
Health care and social assistance	8.7	8.7	0.3	0.0	0.1	0.0	0.0	1.2	0.0
Information, culture and recreation	2.9	2.9	0.2	0.0	0.0	0.6	0.0	0.0	26.1
Accommodation and food services	5.0	5.8	0.4	0.8	0.5	0.5	16.0	9.4	9.4
Other services	2.9	2.6	0.3	-0.3	-0.3	-0.9	-10.3	-10.3	-25.7
Public administration	7.9	7.5	0.3	-0.4	-0.4	-0.4	-5.1	-5.1	-5.1

1. Average standard error of change in two consecutive months (see "Sampling Errors" in Data Quality for further explanations).

Note(s): Related CANSIM Tables 282-0087, 282-0088.

Table 4-3
Selected labour force characteristics (seasonally adjusted) — Nova Scotia

	February 2011	March 2011	S.E. ¹	Change from			Percent change from		
				last month	last December	twelve months ago	last month	last December	twelve months ago
in thousands (except rates)									
Both sexes, 15 years and over									
Population	779.1	779.0	...	-0.1	0.1	3.1	0.0	0.0	0.4
Labour force	500.0	498.1	2.7	-1.9	-1.3	3.0	-0.4	-0.3	0.6
Employment	452.4	453.1	2.9	0.7	5.5	-0.6	0.2	1.2	-0.1
Employment full-time	369.8	369.2	3.6	-0.6	2.4	-1.6	-0.2	0.7	-0.4
Unemployment	47.6	45.0	2.6	-2.6	-6.8	3.6	-5.5	-13.1	8.7
Participation rate	64.2	63.9	0.4	-0.3	-0.2	0.1
Unemployment rate	9.5	9.0	0.5	-0.5	-1.4	0.6
Employment rate	58.1	58.2	0.4	0.1	0.7	-0.3
Part-time rate	18.3	18.5	0.7	0.3	0.4	0.2
Both sexes, 15 to 24 years									
Population	120.5	120.4	...	-0.1	-0.1	-0.7	-0.1	-0.1	-0.6
Labour force	81.0	77.2	1.5	-3.8	-3.4	-3.1	-4.7	-4.2	-3.9
Employment	68.0	64.4	1.5	-3.6	-1.4	-4.0	-5.3	-2.1	-5.8
Unemployment	13.0	12.8	1.4	-0.2	-2.0	0.8	-1.5	-13.5	6.7
Participation rate	67.2	64.1	1.3	-3.1	-2.8	-2.2
Unemployment rate	16.0	16.6	1.7	0.6	-1.8	1.7
Employment rate	56.4	53.5	1.3	-2.9	-1.1	-3.0
Part-time rate	41.8	43.5	2.4	1.7	0.9	-0.8
Men, 25 years and over									
Population	311.9	311.9	...	0.0	0.1	1.5	0.0	0.0	0.5
Labour force	214.1	216.4	1.5	2.3	3.9	4.8	1.1	1.8	2.3
Employment	195.4	199.4	1.7	4.0	7.6	3.0	2.0	4.0	1.5
Unemployment	18.7	17.0	1.6	-1.7	-3.7	1.9	-9.1	-17.9	12.6
Participation rate	68.6	69.4	0.5	0.8	1.2	1.2
Unemployment rate	8.7	7.9	0.7	-0.8	-1.8	0.8
Employment rate	62.6	63.9	0.5	1.3	2.4	0.6
Part-time rate	8.2	8.9	0.7	0.7	0.9	2.1
Women, 25 years and over									
Population	346.7	346.7	...	0.0	0.2	2.3	0.0	0.1	0.7
Labour force	204.8	204.5	1.5	-0.3	-1.8	1.3	-0.1	-0.9	0.6
Employment	188.9	189.3	1.6	0.4	-0.8	0.4	0.2	-0.4	0.2
Unemployment	15.9	15.2	1.3	-0.7	-1.0	0.9	-4.4	-6.2	6.3
Participation rate	59.1	59.0	0.4	-0.1	-0.5	0.0
Unemployment rate	7.8	7.4	0.6	-0.4	-0.5	0.4
Employment rate	54.5	54.6	0.5	0.1	-0.3	-0.2
Part-time rate	20.2	20.2	1.1	0.0	0.4	-0.6
Industry									
Goods-producing sector	85.9	88.1	2.2	2.2	2.5	-1.7	2.6	2.9	-1.9
Agriculture	6.0	6.5	0.6	0.5	1.0	-0.2	8.3	18.2	-3.0
Forestry, fishing, mining, quarrying, oil and gas extraction	11.7	11.9	1.1	0.2	0.3	-0.4	1.7	2.6	-3.3
Utilities	3.9	4.4	0.4	0.5	0.5	0.1	12.8	12.8	2.3
Construction	31.3	32.1	1.4	0.8	0.0	-1.0	2.6	0.0	-3.0
Manufacturing	33.0	33.1	1.3	0.1	0.6	-0.2	0.3	1.8	-0.6
Services-producing sector	366.5	365.1	2.9	-1.4	3.1	1.2	-0.4	0.9	0.3
Trade	78.4	77.9	1.9	-0.5	2.4	3.5	-0.6	3.2	4.7
Transportation and warehousing	18.3	20.1	1.0	1.8	2.4	1.0	9.8	13.6	5.2
Finance, insurance, real estate and leasing	23.0	22.1	1.1	-0.9	-1.7	-2.2	-3.9	-7.1	-9.1
Professional, scientific and technical services	23.3	22.9	1.1	-0.4	1.0	-1.8	-1.7	4.6	-7.3
Business, building and other support services	22.9	22.0	1.2	-0.9	-1.4	-1.7	-3.9	-6.0	-7.2
Educational services	33.7	33.7	1.3	0.0	0.6	-1.6	0.0	1.8	-4.5
Health care and social assistance	66.5	68.1	1.6	1.6	0.0	0.5	2.4	0.0	0.7
Information, culture and recreation	20.4	19.9	1.2	-0.5	0.5	0.9	-2.5	2.6	4.7
Accommodation and food services	30.4	28.2	1.3	-2.2	-0.5	0.4	-7.2	-1.7	1.4
Other services	18.0	18.9	1.1	0.9	0.3	1.0	5.0	1.6	5.6
Public administration	31.7	31.1	1.1	-0.6	-0.6	1.0	-1.9	-1.9	3.3

1. Average standard error of change in two consecutive months (see "Sampling Errors" in Data Quality for further explanations).

Note(s): Related CANSIM Tables 282-0087, 282-0088.

Table 4-4
Selected labour force characteristics (seasonally adjusted) — New Brunswick

	February 2011	March 2011	S.E. ¹	Change from			Percent change from		
				last month	last December	twelve months ago	last month	last December	twelve months ago
in thousands (except rates)									
Both sexes, 15 years and over									
Population	618.7	618.9	...	0.2	0.7	3.1	0.0	0.1	0.5
Labour force	391.9	391.5	2.3	-0.4	0.5	-2.0	-0.1	0.1	-0.5
Employment	353.3	354.0	2.4	0.7	-0.1	-5.6	0.2	0.0	-1.6
Employment full-time	295.9	297.5	2.9	1.6	-1.9	-10.4	0.5	-0.6	-3.4
Unemployment	38.6	37.6	2.1	-1.0	0.7	3.6	-2.6	1.9	10.6
Participation rate	63.3	63.3	0.4	0.0	0.1	-0.6
Unemployment rate	9.8	9.6	0.5	-0.2	0.2	1.0
Employment rate	57.1	57.2	0.4	0.1	-0.1	-1.2
Part-time rate	16.2	16.0	0.7	-0.3	0.5	1.6
Both sexes, 15 to 24 years									
Population	91.6	91.5	...	-0.1	-0.2	-0.7	-0.1	-0.2	-0.8
Labour force	58.3	58.7	1.3	0.4	3.1	-0.9	0.7	5.6	-1.5
Employment	48.5	48.5	1.3	0.0	1.7	-1.6	0.0	3.6	-3.2
Unemployment	9.8	10.2	1.2	0.4	1.4	0.7	4.1	15.9	7.4
Participation rate	63.6	64.2	1.4	0.6	3.6	-0.4
Unemployment rate	16.8	17.4	1.9	0.6	1.6	1.5
Employment rate	52.9	53.0	1.4	0.1	2.0	-1.3
Part-time rate	39.4	36.1	2.6	-3.3	-3.2	-0.8
Men, 25 years and over									
Population	252.8	252.9	...	0.1	0.3	1.8	0.0	0.1	0.7
Labour force	172.1	172.1	1.3	0.0	-2.2	0.1	0.0	-1.3	0.1
Employment	154.5	155.5	1.4	1.0	-1.7	-2.0	0.6	-1.1	-1.3
Unemployment	17.5	16.6	1.3	-0.9	-0.5	2.1	-5.1	-2.9	14.5
Participation rate	68.1	68.1	0.5	0.0	-0.9	-0.4
Unemployment rate	10.2	9.6	0.7	-0.6	-0.2	1.2
Employment rate	61.1	61.5	0.5	0.4	-0.7	-1.2
Part-time rate	7.1	7.0	0.7	-0.1	0.6	1.1
Women, 25 years and over									
Population	274.3	274.4	...	0.1	0.4	1.9	0.0	0.1	0.7
Labour force	161.6	160.8	1.3	-0.8	-0.2	-1.1	-0.5	-0.1	-0.7
Employment	150.2	150.0	1.3	-0.2	-0.1	-1.9	-0.1	-0.1	-1.3
Unemployment	11.3	10.8	1.1	-0.5	-0.1	0.8	-4.4	-0.9	8.0
Participation rate	58.9	58.6	0.5	-0.3	-0.2	-0.8
Unemployment rate	7.0	6.7	0.7	-0.3	-0.1	0.5
Employment rate	54.8	54.7	0.5	-0.1	-0.1	-1.0
Part-time rate	18.2	18.8	1.0	0.6	1.3	3.1
Industry									
	353.3	354.0	2.4	0.7	-0.1	-5.6	0.2	0.0	-1.6
Goods-producing sector									
Agriculture	83.0	84.2	1.9	1.2	0.1	4.2	1.4	0.1	5.2
Forestry, fishing, mining, quarrying, oil and gas extraction	6.0	6.0	0.6	0.0	0.8	-0.1	0.0	15.4	-1.6
Utilities	11.1	10.8	0.8	-0.3	-1.1	1.4	-2.7	-9.2	14.9
Construction	4.4	4.1	0.4	-0.3	-0.1	-0.3	-6.8	-2.4	-6.8
Manufacturing	29.4	29.6	1.3	0.2	0.3	1.5	0.7	1.0	5.3
	32.0	33.6	1.2	1.6	0.1	1.6	5.0	0.3	5.0
Services-producing sector									
	270.3	269.8	2.4	-0.5	-0.2	-9.7	-0.2	-0.1	-3.5
Trade	50.3	51.9	1.6	1.6	-1.8	-5.7	3.2	-3.4	-9.9
Transportation and warehousing	18.1	17.1	0.9	-1.0	-1.2	-2.4	-5.5	-6.6	-12.3
Finance, insurance, real estate and leasing	18.0	18.3	0.8	0.3	1.5	2.7	1.7	8.9	17.3
Professional, scientific and technical services	16.7	16.4	0.9	-0.3	0.5	1.1	-1.8	3.1	7.2
Business, building and other support services	15.8	16.3	1.1	0.5	0.8	-3.5	3.2	5.2	-17.7
Educational services	24.3	25.5	1.1	1.2	-0.5	-2.1	4.9	-1.9	-7.6
Health care and social assistance	50.9	49.7	1.3	-1.2	-0.5	0.7	-2.4	-1.0	1.4
Information, culture and recreation	12.2	11.6	0.9	-0.6	1.3	-2.0	-4.9	12.6	-14.7
Accommodation and food services	19.7	19.6	1.1	-0.1	-0.7	-0.8	-0.5	-3.4	-3.9
Other services	16.4	16.3	0.9	-0.1	-0.3	-1.0	-0.6	-1.8	-5.8
Public administration	28.0	27.1	1.0	-0.9	0.6	3.3	-3.2	2.3	13.9

1. Average standard error of change in two consecutive months (see "Sampling Errors" in Data Quality for further explanations).

Note(s): Related CANSIM Tables 282-0087, 282-0088.

Table 4-5
Selected labour force characteristics (seasonally adjusted) — Quebec

	February 2011	March 2011	S.E. ¹	Change from			Percent change from		
				last month	last December	twelve months ago	last month	last December	twelve months ago
in thousands (except rates)									
Both sexes, 15 years and over									
Population	6,550.5	6,555.6	...	5.1	16.3	69.9	0.1	0.2	1.1
Labour force	4,293.5	4,281.7	14.5	-11.8	7.7	57.6	-0.3	0.2	1.4
Employment	3,964.8	3,950.1	14.4	-14.7	-3.6	61.8	-0.4	-0.1	1.6
Employment full-time	3,169.0	3,187.3	19.1	18.3	-18.6	43.5	0.6	-0.6	1.4
Unemployment	328.8	331.5	13.0	2.7	11.2	-4.3	0.8	3.5	-1.3
Participation rate	65.5	65.3	0.2	-0.2	-0.1	0.2
Unemployment rate	7.7	7.7	0.3	0.0	0.2	-0.2
Employment rate	60.5	60.3	0.2	-0.2	-0.2	0.3
Part-time rate	20.1	19.3	0.4	-0.8	0.4	0.2
Both sexes, 15 to 24 years									
Population	980.1	980.3	...	0.2	0.3	1.3	0.0	0.0	0.1
Labour force	666.0	656.4	8.3	-9.6	-17.3	3.9	-1.4	-2.6	0.6
Employment	581.0	570.2	7.7	-10.8	-16.9	16.9	-1.9	-2.9	3.1
Unemployment	84.9	86.2	7.5	1.3	-0.4	-13.0	1.5	-0.5	-13.1
Participation rate	68.0	67.0	0.8	-1.0	-1.7	0.4
Unemployment rate	12.7	13.1	1.1	0.4	0.2	-2.1
Employment rate	59.3	58.2	0.8	-1.1	-1.7	1.7
Part-time rate	51.2	48.5	1.5	-2.7	-0.9	-2.7
Men, 25 years and over									
Population	2,737.0	2,739.7	...	2.7	8.6	35.9	0.1	0.3	1.3
Labour force	1,916.4	1,927.7	8.1	11.3	14.8	34.5	0.6	0.8	1.8
Employment	1,780.6	1,786.5	8.4	5.9	7.1	38.0	0.3	0.4	2.2
Unemployment	135.8	141.3	8.0	5.5	7.9	-3.4	4.1	5.9	-2.3
Participation rate	70.0	70.4	0.3	0.4	0.4	0.4
Unemployment rate	7.1	7.3	0.4	0.2	0.3	-0.3
Employment rate	65.1	65.2	0.3	0.1	0.0	0.5
Part-time rate	9.4	9.0	0.5	-0.4	0.6	1.4
Women, 25 years and over									
Population	2,833.3	2,835.6	...	2.3	7.5	32.7	0.1	0.3	1.2
Labour force	1,711.1	1,697.5	8.0	-13.6	10.0	19.0	-0.8	0.6	1.1
Employment	1,603.1	1,593.5	8.1	-9.6	6.3	7.0	-0.6	0.4	0.4
Unemployment	108.0	104.0	6.5	-4.0	3.7	12.1	-3.7	3.7	13.2
Participation rate	60.4	59.9	0.3	-0.5	0.2	0.0
Unemployment rate	6.3	6.1	0.4	-0.2	0.2	0.6
Employment rate	56.6	56.2	0.3	-0.4	0.1	-0.4
Part-time rate	20.6	20.4	0.7	-0.2	0.9	-0.2
Industry									
	3,964.8	3,950.1	14.4	-14.7	-3.6	61.8	-0.4	-0.1	1.6
Goods-producing sector									
Agriculture	855.0	860.3	12.8	5.3	5.1	3.7	0.6	0.6	0.4
Forestry, fishing, mining, quarrying, oil and gas extraction	57.1	57.1	3.1	0.0	-2.8	5.1	0.0	-4.7	9.8
Utilities	30.0	30.4	2.3	0.4	1.4	-0.5	1.3	4.8	-1.6
Construction	32.3	36.3	2.2	4.0	3.0	2.7	12.4	9.0	8.0
Manufacturing	237.7	236.9	7.5	-0.8	-3.5	7.4	-0.3	-1.5	3.2
	497.7	499.7	10.5	2.0	7.0	-10.9	0.4	1.4	-2.1
Services-producing sector									
Trade	3,109.8	3,089.8	16.7	-20.0	-8.7	58.1	-0.6	-0.3	1.9
Transportation and warehousing	632.2	623.6	11.6	-8.6	-2.0	-19.6	-1.4	-0.3	-3.0
Finance, insurance, real estate and leasing	180.2	174.8	6.0	-5.4	-11.6	19.7	-3.0	-6.2	12.7
Professional, scientific and technical services	228.2	224.5	7.0	-3.7	-9.3	-10.6	-1.6	-4.0	-4.5
Business, building and other support services	303.4	296.9	8.2	-6.5	-8.8	6.1	-2.1	-2.9	2.1
Educational services	144.8	146.8	6.7	2.0	5.0	8.7	1.4	3.5	6.3
Health care and social assistance	274.9	276.4	7.9	1.5	12.4	16.0	0.5	4.7	6.1
Information, culture and recreation	526.4	518.1	9.4	-8.3	8.1	19.4	-1.6	1.6	3.9
Accommodation and food services	169.3	169.7	7.2	0.4	1.6	-8.5	0.2	1.0	-4.8
Other services	237.9	242.6	8.2	4.7	-4.9	6.6	2.0	-2.0	2.8
Public administration	168.4	166.8	6.3	-1.6	-3.4	8.0	-1.0	-2.0	5.0
	243.9	249.6	6.5	5.7	4.0	12.4	2.3	1.6	5.2

1. Average standard error of change in two consecutive months (see "Sampling Errors" in Data Quality for further explanations).

Note(s): Related CANSIM Tables 282-0087, 282-0088.

Table 4-6
Selected labour force characteristics (seasonally adjusted) — Ontario

	February 2011	March 2011	S.E. ¹	Change from			Percent change from		
				last month	last December	twelve months ago	last month	last December	twelve months ago
in thousands (except rates)									
Both sexes, 15 years and over									
Population	10,873.9	10,883.6	...	9.7	29.1	137.2	0.1	0.3	1.3
Labour force	7,267.9	7,280.5	19.9	12.6	31.0	92.9	0.2	0.4	1.3
Employment	6,685.2	6,690.8	19.3	5.6	31.2	136.9	0.1	0.5	2.1
Employment full-time	5,389.2	5,452.5	24.9	63.3	78.2	153.2	1.2	1.5	2.9
Unemployment	582.7	589.8	17.7	7.1	-0.1	-43.8	1.2	0.0	-6.9
Participation rate	66.8	66.9	0.2	0.1	0.1	0.0
Unemployment rate	8.0	8.1	0.2	0.1	0.0	-0.7
Employment rate	61.5	61.5	0.2	0.0	0.1	0.5
Part-time rate	19.4	18.5	0.3	-0.9	-0.8	-0.6
Both sexes, 15 to 24 years									
Population	1,781.3	1,781.7	...	0.4	0.7	4.2	0.0	0.0	0.2
Labour force	1,100.8	1,102.3	11.8	1.5	26.0	-10.0	0.1	2.4	-0.9
Employment	924.0	924.0	10.8	0.0	23.9	7.7	0.0	2.7	0.8
Unemployment	176.8	178.3	10.3	1.5	2.0	-17.7	0.8	1.1	-9.0
Participation rate	61.8	61.9	0.7	0.1	1.5	-0.7
Unemployment rate	16.1	16.2	0.9	0.1	-0.2	-1.4
Employment rate	51.9	51.9	0.6	0.0	1.4	0.4
Part-time rate	51.6	51.1	1.2	-0.5	-0.6	-1.7
Men, 25 years and over									
Population	4,409.3	4,413.9	...	4.6	14.0	63.1	0.1	0.3	1.5
Labour force	3,224.5	3,235.4	9.9	10.9	-10.1	63.0	0.3	-0.3	2.0
Employment	3,011.0	3,018.1	10.6	7.1	-6.2	97.1	0.2	-0.2	3.3
Unemployment	213.5	217.3	9.9	3.8	-3.9	-34.0	1.8	-1.8	-13.5
Participation rate	73.1	73.3	0.2	0.2	-0.5	0.4
Unemployment rate	6.6	6.7	0.3	0.1	-0.1	-1.2
Employment rate	68.3	68.4	0.2	0.1	-0.3	1.3
Part-time rate	7.6	6.9	0.4	-0.7	-0.7	-0.3
Women, 25 years and over									
Population	4,683.2	4,688.0	...	4.8	14.4	69.8	0.1	0.3	1.5
Labour force	2,942.5	2,942.9	11.4	0.4	15.3	40.0	0.0	0.5	1.4
Employment	2,750.2	2,748.6	10.9	-1.6	13.4	31.9	-0.1	0.5	1.2
Unemployment	192.3	194.2	9.3	1.9	1.8	7.9	1.0	0.9	4.2
Participation rate	62.8	62.8	0.2	0.0	0.2	-0.1
Unemployment rate	6.5	6.6	0.3	0.1	0.0	0.2
Employment rate	58.7	58.6	0.2	-0.1	0.1	-0.2
Part-time rate	21.5	20.3	0.5	-1.2	-1.3	-0.3
Industry	6,685.2	6,690.8	19.3	5.6	31.2	136.9	0.1	0.5	2.1
Goods-producing sector	1,431.8	1,427.6	17.1	-4.2	19.0	32.8	-0.3	1.3	2.4
Agriculture	95.9	89.2	3.8	-6.7	5.9	1.0	-7.0	7.1	1.1
Forestry, fishing, mining, quarrying, oil and gas extraction	42.8	39.7	2.8	-3.1	2.5	-0.5	-7.2	6.7	-1.2
Utilities	50.2	52.8	3.2	2.6	-3.7	-5.2	5.2	-6.5	-9.0
Construction	426.6	439.4	10.5	12.8	14.5	26.3	3.0	3.4	6.4
Manufacturing	816.4	806.5	13.4	-9.9	-0.3	11.1	-1.2	0.0	1.4
Services-producing sector	5,253.4	5,263.2	22.8	9.8	12.2	104.1	0.2	0.2	2.0
Trade	1,013.6	992.3	15.8	-21.3	-21.7	-15.2	-2.1	-2.1	-1.5
Transportation and warehousing	324.9	323.5	8.9	-1.4	-0.7	30.4	-0.4	-0.2	10.4
Finance, insurance, real estate and leasing	500.9	501.1	11.2	0.2	-2.6	1.3	0.0	-0.5	0.3
Professional, scientific and technical services	548.2	557.8	12.2	9.6	23.4	6.0	1.8	4.4	1.1
Business, building and other support services	270.5	280.1	10.0	9.6	-8.5	21.1	3.5	-2.9	8.1
Educational services	472.3	485.7	10.8	13.4	6.1	-11.1	2.8	1.3	-2.2
Health care and social assistance	746.9	751.7	11.7	4.8	18.3	41.9	0.6	2.5	5.9
Information, culture and recreation	349.8	334.6	10.2	-15.2	-3.1	35.5	-4.3	-0.9	11.9
Accommodation and food services	371.0	388.7	10.7	17.7	4.6	-20.3	4.8	1.2	-5.0
Other services	273.6	277.5	9.1	3.9	9.6	7.3	1.4	3.6	2.7
Public administration	381.7	370.2	8.7	-11.5	-13.1	7.2	-3.0	-3.4	2.0

1. Average standard error of change in two consecutive months (see "Sampling Errors" in Data Quality for further explanations).

Note(s): Related CANSIM Tables 282-0087, 282-0088.

Table 4-7
Selected labour force characteristics (seasonally adjusted) — Manitoba

	February 2011	March 2011	S.E. ¹	Change from			Percent change from		
				last month	last December	twelve months ago	last month	last December	twelve months ago
in thousands (except rates)									
Both sexes, 15 years and over									
Population	949.1	949.9	...	0.8	2.9	12.8	0.1	0.3	1.4
Labour force	659.7	664.1	2.6	4.4	9.5	15.1	0.7	1.5	2.3
Employment	624.9	627.3	2.7	2.4	6.8	12.4	0.4	1.1	2.0
Employment full-time	500.9	504.1	3.8	3.2	2.5	11.3	0.6	0.5	2.3
Unemployment	34.8	36.8	2.1	2.0	2.7	2.7	5.7	7.9	7.9
Participation rate	69.5	69.9	0.3	0.4	0.8	0.6
Unemployment rate	5.3	5.5	0.3	0.2	0.3	0.2
Employment rate	65.8	66.0	0.3	0.2	0.5	0.4
Part-time rate	19.8	19.6	0.6	-0.2	0.5	-0.2
Both sexes, 15 to 24 years									
Population	164.7	164.7	...	0.0	0.3	1.4	0.0	0.2	0.9
Labour force	113.9	115.1	1.6	1.2	2.5	4.4	1.1	2.2	4.0
Employment	100.3	102.0	1.6	1.7	1.6	3.1	1.7	1.6	3.1
Unemployment	13.6	13.0	1.4	-0.6	0.8	1.3	-4.4	6.6	11.1
Participation rate	69.2	69.9	1.0	0.7	1.4	2.1
Unemployment rate	11.9	11.3	1.2	-0.6	0.5	0.7
Employment rate	60.9	61.9	1.0	1.0	0.8	1.3
Part-time rate	42.2	43.2	1.8	1.1	-1.1	0.8
Men, 25 years and over									
Population	384.3	384.7	...	0.4	1.3	5.8	0.1	0.3	1.5
Labour force	292.9	294.4	1.3	1.5	2.7	6.5	0.5	0.9	2.3
Employment	281.6	279.9	1.5	-1.7	0.5	3.5	-0.6	0.2	1.3
Unemployment	11.4	14.5	1.2	3.1	2.3	3.0	27.2	18.9	26.1
Participation rate	76.2	76.5	0.3	0.3	0.4	0.5
Unemployment rate	3.9	4.9	0.4	1.0	0.7	0.9
Employment rate	73.3	72.8	0.4	-0.5	-0.1	-0.1
Part-time rate	7.9	8.4	0.6	0.5	1.3	0.2
Women, 25 years and over									
Population	400.1	400.5	...	0.4	1.4	5.6	0.1	0.4	1.4
Labour force	252.9	254.6	1.5	1.7	4.2	4.1	0.7	1.7	1.6
Employment	243.0	245.3	1.5	2.3	4.6	5.7	0.9	1.9	2.4
Unemployment	9.9	9.3	1.1	-0.6	-0.4	-1.6	-6.1	-4.1	-14.7
Participation rate	63.2	63.6	0.4	0.4	0.9	0.2
Unemployment rate	3.9	3.7	0.4	-0.2	-0.2	-0.7
Employment rate	60.7	61.2	0.4	0.5	0.9	0.5
Part-time rate	24.4	22.7	0.9	-1.7	0.0	-1.3
Industry									
	624.9	627.3	2.7	2.4	6.8	12.4	0.4	1.1	2.0
Goods-producing sector									
Agriculture	153.3	151.6	2.4	-1.7	0.1	12.8	-1.1	0.1	9.2
Forestry, fishing, mining, quarrying, oil and gas extraction	24.2	22.7	1.2	-1.5	-2.5	-2.3	-6.2	-9.9	-9.2
Utilities	6.3	6.5	0.6	0.2	-0.8	-0.7	3.2	-11.0	-9.7
Construction	8.8	8.7	0.6	-0.1	-0.3	0.9	-1.1	-3.3	11.5
Manufacturing	40.8	46.2	1.5	5.4	4.3	9.1	13.2	10.3	24.5
	73.3	67.5	1.6	-5.8	-0.7	5.8	-7.9	-1.0	9.4
Services-producing sector									
Trade	471.5	475.7	3.1	4.2	6.7	-0.4	0.9	1.4	-0.1
Transportation and warehousing	94.2	95.1	2.1	0.9	1.4	2.3	1.0	1.5	2.5
Finance, insurance, real estate and leasing	33.5	33.1	1.3	-0.4	-1.6	-3.5	-1.2	-4.6	-9.6
Professional, scientific and technical services	34.3	34.6	1.3	0.3	0.3	-0.2	0.9	0.9	-0.6
Business, building and other support services	26.6	26.9	1.3	0.3	-0.3	1.0	1.1	-1.1	3.9
Educational services	17.8	18.2	1.2	0.4	1.9	-2.6	2.2	11.7	-12.5
Health care and social assistance	49.5	47.4	1.5	-2.1	-1.9	-3.2	-4.2	-3.9	-6.3
Information, culture and recreation	95.2	96.9	1.9	1.7	1.8	10.3	1.8	1.9	11.9
Accommodation and food services	22.6	25.0	1.2	2.4	1.9	2.2	10.6	8.2	9.6
Other services	37.8	39.3	1.6	1.5	2.5	-1.9	4.0	6.8	-4.6
Public administration	25.5	24.5	1.2	-1.0	1.4	-3.7	-3.9	6.1	-13.1
	34.6	34.8	1.2	0.2	-0.7	-1.1	0.6	-2.0	-3.1

1. Average standard error of change in two consecutive months (see "Sampling Errors" in Data Quality for further explanations).

Note(s): Related CANSIM Tables 282-0087, 282-0088.

Table 4-8
Selected labour force characteristics (seasonally adjusted) — Saskatchewan

	February 2011	March 2011	S.E. ¹	Change from			Percent change from		
				last month	last December	twelve months ago	last month	last December	twelve months ago
in thousands (except rates)									
Both sexes, 15 years and over									
Population	796.7	797.2	...	0.5	1.8	9.7	0.1	0.2	1.2
Labour force	554.7	553.3	2.4	-1.4	-1.2	-1.5	-0.3	-0.2	-0.3
Employment	523.2	524.4	2.5	1.2	0.3	-1.6	0.2	0.1	-0.3
Employment full-time	433.4	430.0	3.2	-3.4	-1.1	-0.3	-0.8	-0.3	-0.1
Unemployment	31.5	29.0	1.9	-2.5	-1.5	0.2	-7.9	-4.9	0.7
Participation rate	69.6	69.4	0.3	-0.2	-0.3	-1.1
Unemployment rate	5.7	5.2	0.3	-0.5	-0.3	0.0
Employment rate	65.7	65.8	0.3	0.1	-0.1	-1.0
Part-time rate	17.2	18.0	0.5	0.8	0.2	-0.2
Both sexes, 15 to 24 years									
Population	137.4	137.3	...	-0.1	-0.4	-0.9	-0.1	-0.3	-0.7
Labour force	93.5	92.6	1.4	-0.9	-0.1	-5.4	-1.0	-0.1	-5.5
Employment	81.8	82.1	1.5	0.3	-1.0	-6.6	0.4	-1.2	-7.4
Unemployment	11.7	10.5	1.1	-1.2	1.0	1.2	-10.3	10.5	12.9
Participation rate	68.0	67.4	1.0	-0.6	0.1	-3.5
Unemployment rate	12.5	11.3	1.2	-1.2	1.1	1.8
Employment rate	59.5	59.8	1.1	0.3	-0.5	-4.4
Part-time rate	36.1	37.3	1.8	1.2	0.9	0.1
Men, 25 years and over									
Population	323.9	324.2	...	0.3	1.1	5.8	0.1	0.3	1.8
Labour force	248.2	248.1	1.1	-0.1	-0.9	3.2	0.0	-0.4	1.3
Employment	236.8	238.1	1.3	1.3	1.2	4.4	0.5	0.5	1.9
Unemployment	11.4	10.1	1.1	-1.3	-2.1	-1.1	-11.4	-17.2	-9.8
Participation rate	76.6	76.5	0.4	-0.1	-0.6	-0.4
Unemployment rate	4.6	4.1	0.4	-0.5	-0.8	-0.5
Employment rate	73.1	73.4	0.4	0.3	0.1	0.0
Part-time rate	5.6	6.4	0.6	0.8	0.1	-0.4
Women, 25 years and over									
Population	335.3	335.7	...	0.4	1.1	4.8	0.1	0.3	1.5
Labour force	213.0	212.5	1.4	-0.5	-0.3	0.5	-0.2	-0.1	0.2
Employment	204.5	204.2	1.5	-0.3	0.1	0.6	-0.1	0.0	0.3
Unemployment	8.5	8.4	1.0	-0.1	-0.4	0.0	-1.2	-4.5	0.0
Participation rate	63.5	63.3	0.4	-0.2	-0.3	-0.8
Unemployment rate	4.0	4.0	0.5	0.0	-0.1	0.0
Employment rate	61.0	60.8	0.4	-0.2	-0.2	-0.7
Part-time rate	23.0	23.8	1.0	0.8	0.3	0.8
Industry									
Industry	523.2	524.3	2.5	1.1	0.2	-1.7	0.2	0.0	-0.3
Goods-producing sector									
Goods-producing sector	140.4	142.6	2.3	2.2	4.9	-2.7	1.6	3.6	-1.9
Agriculture	39.6	42.6	1.4	3.0	3.8	-1.2	7.6	9.8	-2.7
Forestry, fishing, mining, quarrying, oil and gas extraction	23.9	23.6	1.2	-0.3	-0.2	-3.8	-1.3	-0.8	-13.9
Utilities	6.0	6.3	0.5	0.3	0.6	1.2	5.0	10.5	23.5
Construction	41.6	41.2	1.5	-0.4	2.2	1.9	-1.0	5.6	4.8
Manufacturing	29.2	28.8	1.2	-0.4	-1.6	-0.9	-1.4	-5.3	-3.0
Services-producing sector									
Services-producing sector	382.8	381.7	2.9	-1.1	-4.7	1.0	-0.3	-1.2	0.3
Trade	81.9	79.8	1.9	-2.1	-2.0	0.4	-2.6	-2.4	0.5
Transportation and warehousing	25.3	25.4	1.1	0.1	-1.6	-0.6	0.4	-5.9	-2.3
Finance, insurance, real estate and leasing	31.6	30.9	1.1	-0.7	0.8	0.0	-2.2	2.7	0.0
Professional, scientific and technical services	22.1	23.3	1.1	1.2	1.9	-0.9	5.4	8.9	-3.7
Business, building and other support services	11.3	11.2	0.8	-0.1	0.7	-1.7	-0.9	6.7	-13.2
Educational services	39.0	39.3	1.4	0.3	0.3	0.8	0.8	0.8	2.1
Health care and social assistance	65.1	65.3	1.6	0.2	-2.1	-2.5	0.3	-3.1	-3.7
Information, culture and recreation	20.3	19.4	1.0	-0.9	-1.6	1.1	-4.4	-7.6	6.0
Accommodation and food services	30.0	31.1	1.3	1.1	-1.1	1.0	3.7	-3.4	3.3
Other services	26.0	25.8	1.1	-0.2	-1.4	2.6	-0.8	-5.1	11.2
Public administration	30.2	30.2	1.0	0.0	1.3	0.7	0.0	4.5	2.4

1. Average standard error of change in two consecutive months (see "Sampling Errors" in Data Quality for further explanations).

Note(s): Related CANSIM Tables 282-0087, 282-0088.

Table 4-9
Selected labour force characteristics (seasonally adjusted) — Alberta

	February 2011	March 2011	S.E. ¹	Change from			Percent change from		
				last month	last December	twelve months ago	last month	last December	twelve months ago
in thousands (except rates)									
Both sexes, 15 years and over									
Population	2,987.2	2,990.1	...	2.9	10.7	43.2	0.1	0.4	1.5
Labour force	2,191.7	2,188.5	9.0	-3.2	37.9	34.1	-0.1	1.8	1.6
Employment	2,067.5	2,064.3	9.2	-3.2	32.1	68.8	-0.2	1.6	3.4
Employment full-time	1,687.1	1,698.0	12.0	10.9	22.7	53.9	0.6	1.4	3.3
Unemployment	124.2	124.2	7.5	0.0	5.8	-34.7	0.0	4.9	-21.8
Participation rate	73.4	73.2	0.3	-0.2	1.0	0.1
Unemployment rate	5.7	5.7	0.3	0.0	0.2	-1.7
Employment rate	69.2	69.0	0.3	-0.2	0.8	1.3
Part-time rate	18.4	17.7	0.5	-0.7	0.2	0.1
Both sexes, 15 to 24 years									
Population	509.9	509.2	...	-0.7	-2.2	-6.2	-0.1	-0.4	-1.2
Labour force	349.9	350.1	5.2	0.2	3.5	-8.4	0.1	1.0	-2.3
Employment	310.4	312.7	5.1	2.3	-0.9	3.0	0.7	-0.3	1.0
Unemployment	39.5	37.3	4.4	-2.2	4.3	-11.6	-5.6	13.0	-23.7
Participation rate	68.6	68.8	1.0	0.2	1.0	-0.8
Unemployment rate	11.3	10.7	1.2	-0.6	1.2	-2.9
Employment rate	60.9	61.4	1.0	0.5	0.1	1.3
Part-time rate	39.3	38.8	1.7	-0.5	0.9	2.5
Men, 25 years and over									
Population	1,259.4	1,261.2	...	1.8	6.4	25.5	0.1	0.5	2.1
Labour force	1,018.2	1,023.7	4.6	5.5	13.1	32.6	0.5	1.3	3.3
Employment	968.2	973.2	5.3	5.0	11.7	39.7	0.5	1.2	4.3
Unemployment	50.0	50.5	4.6	0.5	1.4	-7.1	1.0	2.9	-12.3
Participation rate	80.8	81.2	0.4	0.4	0.7	1.0
Unemployment rate	4.9	4.9	0.5	0.0	0.0	-0.9
Employment rate	76.9	77.2	0.4	0.3	0.6	1.7
Part-time rate	6.2	6.0	0.5	-0.2	-0.1	0.2
Women, 25 years and over									
Population	1,217.9	1,219.7	...	1.8	6.4	23.8	0.1	0.5	2.0
Labour force	823.7	814.8	5.2	-8.9	21.4	10.0	-1.1	2.7	1.2
Employment	788.9	778.4	5.1	-10.5	21.3	26.1	-1.3	2.8	3.5
Unemployment	34.8	36.3	3.7	1.5	0.0	-16.1	4.3	0.0	-30.7
Participation rate	67.6	66.8	0.4	-0.8	1.4	-0.5
Unemployment rate	4.2	4.5	0.5	0.3	-0.1	-2.0
Employment rate	64.8	63.8	0.4	-1.0	1.4	0.9
Part-time rate	25.1	23.9	0.9	-1.2	0.3	-0.6
Industry									
	2,067.5	2,064.3	9.2	-3.2	32.1	68.8	-0.2	1.6	3.4
Goods-producing sector									
Agriculture	573.3	580.1	8.8	6.8	23.7	49.4	1.2	4.3	9.3
Forestry, fishing, mining, quarrying, oil and gas extraction	51.7	52.5	3.1	0.8	8.9	6.8	1.5	20.4	14.9
Utilities	150.5	153.3	4.6	2.8	0.3	8.4	1.9	0.2	5.8
Construction	19.4	18.3	1.7	-1.1	-0.8	1.0	-5.7	-4.2	5.8
Manufacturing	208.1	207.3	6.4	-0.8	-8.1	9.4	-0.4	-3.8	4.7
	143.5	148.8	4.9	5.3	23.5	23.8	3.7	18.8	19.0
Services-producing sector									
	1,494.2	1,484.2	10.9	-10.0	8.4	19.4	-0.7	0.6	1.3
Trade	311.5	323.0	7.3	11.5	9.9	26.2	3.7	3.2	8.8
Transportation and warehousing	98.7	100.7	4.2	2.0	-6.8	-3.7	2.0	-6.3	-3.5
Finance, insurance, real estate and leasing	91.3	90.1	4.5	-1.2	-8.7	-12.4	-1.3	-8.8	-12.1
Professional, scientific and technical services	160.5	164.4	5.1	3.9	5.7	17.4	2.4	3.6	11.8
Business, building and other support services	74.8	74.7	4.2	-0.1	1.4	5.7	-0.1	1.9	8.3
Educational services	135.9	126.8	5.0	-9.1	5.4	0.8	-6.7	4.4	0.6
Health care and social assistance	226.7	210.3	5.6	-16.4	-9.7	-9.4	-7.2	-4.4	-4.3
Information, culture and recreation	73.3	74.6	4.1	1.3	3.3	-8.1	1.8	4.6	-9.8
Accommodation and food services	126.2	134.0	5.6	7.8	15.2	1.2	6.2	12.8	0.9
Other services	108.0	107.7	4.2	-0.3	3.0	9.7	-0.3	2.9	9.9
Public administration	87.4	77.9	3.6	-9.5	-10.2	-7.9	-10.9	-11.6	-9.2

1. Average standard error of change in two consecutive months (see "Sampling Errors" in Data Quality for further explanations).

Note(s): Related CANSIM Tables 282-0087, 282-0088.

Table 4-10
Selected labour force characteristics (seasonally adjusted) — British Columbia

	February 2011	March 2011	S.E. ¹	Change from			Percent change from		
				last month	last December	twelve months ago	last month	last December	twelve months ago
in thousands (except rates)									
Both sexes, 15 years and over									
Population	3,763.8	3,767.2	...	3.4	11.9	56.2	0.1	0.3	1.5
Labour force	2,478.2	2,464.0	10.2	-14.2	18.4	26.0	-0.6	0.8	1.1
Employment	2,260.5	2,264.0	10.1	3.5	3.3	19.9	0.2	0.1	0.9
Employment full-time	1,742.8	1,738.9	14.3	-3.9	6.5	-11.7	-0.2	0.4	-0.7
Unemployment	217.6	200.0	8.9	-17.6	15.1	6.1	-8.1	8.2	3.1
Participation rate	65.8	65.4	0.3	-0.4	0.3	-0.3
Unemployment rate	8.8	8.1	0.3	-0.7	0.5	0.1
Employment rate	60.1	60.1	0.3	0.0	-0.1	-0.4
Part-time rate	22.9	23.2	0.6	0.3	-0.2	1.2
Both sexes, 15 to 24 years									
Population	592.2	592.2	...	0.0	0.2	1.0	0.0	0.0	0.2
Labour force	375.9	370.8	6.0	-5.1	6.6	-5.3	-1.4	1.8	-1.4
Employment	321.3	314.5	5.5	-6.8	-5.4	-9.2	-2.1	-1.7	-2.8
Unemployment	54.5	56.3	5.1	1.8	11.9	3.9	3.3	26.8	7.4
Participation rate	63.5	62.6	1.0	-0.9	1.1	-1.0
Unemployment rate	14.5	15.2	1.3	0.7	3.0	1.3
Employment rate	54.3	53.1	0.9	-1.2	-0.9	-1.7
Part-time rate	49.3	49.1	2.0	-0.2	-1.3	1.8
Men, 25 years and over									
Population	1,547.1	1,548.8	...	1.7	5.7	27.1	0.1	0.4	1.8
Labour force	1,112.2	1,107.2	5.3	-5.0	10.4	8.3	-0.4	0.9	0.8
Employment	1,022.8	1,030.7	5.7	7.9	8.2	16.8	0.8	0.8	1.7
Unemployment	89.4	76.5	5.1	-12.9	2.3	-8.6	-14.4	3.1	-10.1
Participation rate	71.9	71.5	0.3	-0.4	0.4	-0.7
Unemployment rate	8.0	6.9	0.4	-1.1	0.1	-0.8
Employment rate	66.1	66.5	0.4	0.4	0.2	-0.1
Part-time rate	9.9	10.5	0.6	0.6	0.6	1.3
Women, 25 years and over									
Population	1,624.5	1,626.2	...	1.7	6.0	28.1	0.1	0.4	1.8
Labour force	990.1	986.0	5.9	-4.1	1.4	23.1	-0.4	0.1	2.4
Employment	916.4	918.8	5.8	2.4	0.5	12.3	0.3	0.1	1.4
Unemployment	73.7	67.2	4.6	-6.5	0.9	10.8	-8.8	1.4	19.1
Participation rate	60.9	60.6	0.4	-0.3	-0.2	0.3
Unemployment rate	7.4	6.8	0.5	-0.6	0.1	0.9
Employment rate	56.4	56.5	0.4	0.1	-0.2	-0.2
Part-time rate	28.2	28.6	1.0	0.4	-0.3	1.3
Industry									
Industry	2,260.5	2,264.0	10.1	3.5	3.3	19.9	0.2	0.1	0.9
Goods-producing sector									
Agriculture	443.1	449.4	8.9	6.3	4.4	6.1	1.4	1.0	1.4
Forestry, fishing, mining, quarrying, oil and gas extraction	27.6	28.1	2.6	0.5	-4.2	-3.8	1.8	-13.0	-11.9
Utilities	38.1	38.1	2.7	0.0	0.5	-5.4	0.0	1.3	-12.4
Construction	15.3	16.9	1.7	1.6	3.0	1.5	10.5	21.6	9.7
Manufacturing	197.3	201.2	6.6	3.9	18.9	5.9	2.0	10.4	3.0
Manufacturing	164.7	165.2	5.8	0.5	-13.8	8.0	0.3	-7.7	5.1
Services-producing sector									
Trade	1,817.5	1,814.5	11.9	-3.0	-1.2	13.7	-0.2	-0.1	0.8
Transportation and warehousing	359.8	360.8	8.2	1.0	-4.7	-11.9	0.3	-1.3	-3.2
Finance, insurance, real estate and leasing	122.2	121.8	5.2	-0.4	-7.8	14.8	-0.3	-6.0	13.8
Professional, scientific and technical services	145.7	142.4	5.3	-3.3	6.9	5.1	-2.3	5.1	3.7
Business, building and other support services	172.6	175.5	6.2	2.9	0.4	5.8	1.7	0.2	3.4
Educational services	92.6	90.0	4.8	-2.6	-3.0	7.2	-2.8	-3.2	8.7
Health care and social assistance	170.8	169.9	5.8	-0.9	-0.8	-0.6	-0.5	-0.5	-0.4
Information, culture and recreation	260.8	260.0	6.8	-0.8	2.4	-6.4	-0.3	0.9	-2.4
Accommodation and food services	105.2	106.0	5.1	0.8	0.5	-7.9	0.8	0.5	-6.9
Other services	169.5	173.8	6.1	4.3	10.9	11.7	2.5	6.7	7.2
Public administration	102.9	100.6	4.7	-2.3	-6.6	-4.9	-2.2	-6.2	-4.6
Public administration	115.4	113.6	4.5	-1.8	0.5	0.7	-1.6	0.4	0.6

1. Average standard error of change in two consecutive months (see "Sampling Errors" in Data Quality for further explanations).

Note(s): Related CANSIM Tables 282-0087, 282-0088.

Table 5-1
Labour force characteristics by census metropolitan area (seasonally adjusted) — 3 month moving average

	February 2011	March 2011	S.E. ¹	Change from			Percent change from		
				last month	last December	twelve months ago	last month	last December	twelve months ago
in thousands (except rates)									
St. John's, Newfoundland and Labrador									
Population	160.5	160.6	...	0.1	0.4	1.7	0.1	0.2	1.1
Labour force	111.2	112.1	0.8	0.9	2.8	3.1	0.8	2.6	2.8
Employment	103.7	104.8	0.8	1.1	3.2	4.5	1.1	3.1	4.5
Unemployment	7.5	7.3	0.4	-0.2	-0.5	-1.5	-2.7	-6.4	-17.0
Participation rate	69.3	69.8	0.5	0.5	1.6	1.2
Unemployment rate	6.7	6.5	0.4	-0.2	-0.6	-1.6
Employment rate	64.6	65.3	0.5	0.7	1.9	2.2
Halifax, Nova Scotia									
Population	337.2	337.6	...	0.4	1.3	5.2	0.1	0.4	1.6
Labour force	237.2	238.0	1.1	0.8	4.1	1.0	0.3	1.8	0.4
Employment	221.3	222.3	1.2	1.0	4.5	0.2	0.5	2.1	0.1
Unemployment	15.9	15.7	0.6	-0.2	-0.3	0.7	-1.3	-1.9	4.7
Participation rate	70.3	70.5	0.3	0.2	0.9	-0.8
Unemployment rate	6.7	6.6	0.3	-0.1	-0.2	0.3
Employment rate	65.6	65.8	0.4	0.2	1.0	-1.0
Moncton, New Brunswick									
Population	114.3	114.5	...	0.2	0.5	1.8	0.2	0.4	1.6
Labour force	76.1	76.5	0.7	0.4	0.1	1.6	0.5	0.1	2.1
Employment	69.9	70.3	0.7	0.4	0.0	0.5	0.6	0.0	0.7
Unemployment	6.2	6.2	0.3	0.0	0.0	1.1	0.0	0.0	21.6
Participation rate	66.6	66.8	0.6	0.2	-0.2	0.3
Unemployment rate	8.1	8.1	0.4	0.0	0.0	1.3
Employment rate	61.2	61.4	0.6	0.2	-0.3	-0.5
Saint John, New Brunswick									
Population	105.9	105.9	...	0.0	0.2	0.8	0.0	0.2	0.8
Labour force	68.3	68.3	0.8	0.0	-0.5	-1.8	0.0	-0.7	-2.6
Employment	63.8	63.9	0.8	0.1	-0.5	-0.7	0.2	-0.8	-1.1
Unemployment	4.5	4.4	0.4	-0.1	0.0	-1.0	-2.2	0.0	-18.5
Participation rate	64.5	64.5	0.7	0.0	-0.6	-2.2
Unemployment rate	6.6	6.4	0.5	-0.2	0.0	-1.3
Employment rate	60.2	60.3	0.7	0.1	-0.6	-1.2
Saguenay, Quebec									
Population	126.5	126.5	...	0.0	0.0	0.1	0.0	0.0	0.1
Labour force	75.9	76.1	0.8	0.2	2.4	-0.7	0.3	3.3	-0.9
Employment	69.7	70.2	0.8	0.5	2.2	-0.6	0.7	3.2	-0.8
Unemployment	6.2	5.9	0.4	-0.3	0.1	-0.1	-4.8	1.7	-1.7
Participation rate	60.0	60.2	0.6	0.2	1.9	-0.6
Unemployment rate	8.2	7.8	0.5	-0.4	-0.1	0.0
Employment rate	55.1	55.5	0.7	0.4	1.7	-0.5
Québec, Quebec									
Population	633.1	633.7	...	0.6	1.9	7.9	0.1	0.3	1.3
Labour force	439.4	438.9	3.3	-0.5	-6.5	24.3	-0.1	-1.5	5.9
Employment	416.7	411.1	3.4	-5.6	-12.7	15.0	-1.3	-3.0	3.8
Unemployment	22.7	27.8	1.4	5.1	6.2	9.2	22.5	28.7	49.5
Participation rate	69.4	69.3	0.5	-0.1	-1.2	3.0
Unemployment rate	5.2	6.3	0.3	1.1	1.5	1.8
Employment rate	65.8	64.9	0.5	-0.9	-2.2	1.6
Sherbrooke, Quebec									
Population	164.1	164.3	...	0.2	0.5	2.2	0.1	0.3	1.4
Labour force	106.3	106.3	0.8	0.0	2.3	9.9	0.0	2.2	10.3
Employment	98.6	98.5	0.8	-0.1	2.3	9.5	-0.1	2.4	10.7
Unemployment	7.7	7.8	0.4	0.1	0.1	0.4	1.3	1.3	5.4
Participation rate	64.8	64.7	0.5	-0.1	1.2	5.2
Unemployment rate	7.2	7.3	0.4	0.1	-0.1	-0.4
Employment rate	60.1	60.0	0.5	-0.1	1.3	5.1

See notes at the end of the table.

Table 5-1 – continued

Labour force characteristics by census metropolitan area (seasonally adjusted) — 3 month moving average

	February 2011	March 2011	S.E. ¹	Change from			Percent change from		
				last month	last December	twelve months ago	last month	last December	twelve months ago
in thousands (except rates)									
Trois-Rivières, Quebec									
Population	124.2	124.3	...	0.1	0.3	1.2	0.1	0.2	1.0
Labour force	75.4	75.6	0.8	0.2	1.9	4.9	0.3	2.6	6.9
Employment	69.1	69.2	0.8	0.1	1.7	5.6	0.1	2.5	8.8
Unemployment	6.3	6.4	0.4	0.1	0.2	-0.7	1.6	3.2	-9.9
Participation rate	60.7	60.8	0.6	0.1	1.4	3.4
Unemployment rate	8.4	8.5	0.5	0.1	0.1	-1.5
Employment rate	55.6	55.7	0.6	0.1	1.3	4.0
Montréal, Quebec									
Population	3,204.8	3,208.2	...	3.4	10.3	41.3	0.1	0.3	1.3
Labour force	2,126.3	2,134.7	7.4	8.4	19.5	-12.5	0.4	0.9	-0.6
Employment	1,953.5	1,962.2	7.6	8.7	26.1	9.7	0.4	1.3	0.5
Unemployment	172.8	172.5	4.7	-0.3	-6.6	-22.2	-0.2	-3.7	-11.4
Participation rate	66.3	66.5	0.2	0.2	0.4	-1.3
Unemployment rate	8.1	8.1	0.2	0.0	-0.4	-1.0
Employment rate	61.0	61.2	0.2	0.2	0.7	-0.5
Ottawa-Gatineau, Ontario/Quebec									
Population	1,025.9	1,027.4	...	1.5	4.4	18.8	0.1	0.4	1.9
Labour force	733.7	738.3	3.6	4.6	6.4	7.6	0.6	0.9	1.0
Employment	685.4	689.9	3.7	4.5	6.0	4.5	0.7	0.9	0.7
Unemployment	48.2	48.5	1.8	0.3	0.4	3.3	0.6	0.8	7.3
Participation rate	71.5	71.9	0.4	0.4	0.4	-0.5
Unemployment rate	6.6	6.6	0.3	0.0	0.0	0.4
Employment rate	66.8	67.2	0.4	0.4	0.3	-0.8
Ottawa-Gatineau, Quebec part, Ontario/Quebec									
Population	256.0	256.4	...	0.4	1.3	5.5	0.2	0.5	2.2
Labour force	181.1	181.9	1.5	0.8	4.7	-1.1	0.4	2.7	-0.6
Employment	169.6	169.6	1.5	0.0	3.5	-2.0	0.0	2.1	-1.2
Unemployment	11.5	12.3	0.6	0.8	1.2	0.9	7.0	10.8	7.9
Participation rate	70.7	70.9	0.6	0.2	1.4	-2.0
Unemployment rate	6.4	6.8	0.3	0.4	0.5	0.6
Employment rate	66.3	66.1	0.6	-0.2	1.0	-2.3
Ottawa-Gatineau, Ontario part, Ontario/Quebec									
Population	769.9	770.9	...	1.0	3.0	13.1	0.1	0.4	1.7
Labour force	552.5	556.4	3.3	3.9	1.7	8.8	0.7	0.3	1.6
Employment	515.8	520.2	3.4	4.4	2.4	6.4	0.9	0.5	1.2
Unemployment	36.8	36.2	1.7	-0.6	-0.7	2.4	-1.6	-1.9	7.1
Participation rate	71.8	72.2	0.4	0.4	0.0	-0.1
Unemployment rate	6.7	6.5	0.3	-0.2	-0.2	0.3
Employment rate	67.0	67.5	0.4	0.5	0.1	-0.3
Kingston, Ontario									
Population	131.4	131.5	...	0.1	0.3	1.0	0.1	0.2	0.8
Labour force	82.8	83.4	0.8	0.6	2.0	-0.4	0.7	2.5	-0.5
Employment	77.6	77.7	0.8	0.1	1.8	-1.0	0.1	2.4	-1.3
Unemployment	5.2	5.7	0.3	0.5	0.2	0.6	9.6	3.6	11.8
Participation rate	63.0	63.4	0.6	0.4	1.4	-0.8
Unemployment rate	6.3	6.8	0.4	0.5	0.0	0.7
Employment rate	59.1	59.1	0.6	0.0	1.2	-1.2
Peterborough, Ontario									
Population	102.3	102.3	...	0.0	0.1	0.5	0.0	0.1	0.5
Labour force	62.9	63.9	1.2	1.0	2.6	-0.1	1.6	4.2	-0.2
Employment	57.1	57.7	1.2	0.6	1.6	0.6	1.1	2.9	1.1
Unemployment	5.8	6.2	0.5	0.4	1.0	-0.7	6.9	19.2	-10.1
Participation rate	61.5	62.5	1.3	1.0	2.5	-0.4
Unemployment rate	9.2	9.7	0.9	0.5	1.2	-1.1
Employment rate	55.8	56.4	1.3	0.6	1.5	0.3

See notes at the end of the table.

Table 5-1 – continued

Labour force characteristics by census metropolitan area (seasonally adjusted) — 3 month moving average

	February 2011	March 2011	S.E. ¹	Change from			Percent change from		
				last month	last December	twelve months ago	last month	last December	twelve months ago
in thousands (except rates)									
Oshawa, Ontario									
Population	301.5	302.0	...	0.5	1.4	6.3	0.2	0.5	2.1
Labour force	206.9	205.4	1.4	-1.5	-5.6	1.6	-0.7	-2.7	0.8
Employment	188.5	187.2	1.5	-1.3	-4.0	4.1	-0.7	-2.1	2.2
Unemployment	18.4	18.2	0.9	-0.2	-1.6	-2.5	-1.1	-8.1	-12.1
Participation rate	68.6	68.0	0.5	-0.6	-2.2	-0.9
Unemployment rate	8.9	8.9	0.4	0.0	-0.5	-1.3
Employment rate	62.5	62.0	0.5	-0.5	-1.6	0.1
Toronto, Ontario									
Population	4,743.5	4,750.4	...	6.9	20.2	87.3	0.1	0.4	1.9
Labour force	3,245.4	3,235.6	10.0	-9.8	7.8	57.6	-0.3	0.2	1.8
Employment	2,976.2	2,959.6	10.1	-16.6	0.2	81.0	-0.6	0.0	2.8
Unemployment	269.1	276.0	6.4	6.9	7.6	-23.4	2.6	2.8	-7.8
Participation rate	68.4	68.1	0.2	-0.3	-0.1	-0.1
Unemployment rate	8.3	8.5	0.2	0.2	0.2	-0.9
Employment rate	62.7	62.3	0.2	-0.4	-0.3	0.6
Hamilton, Ontario									
Population	615.4	615.9	...	0.5	1.4	7.3	0.1	0.2	1.2
Labour force	404.1	401.2	3.3	-2.9	-2.3	-2.6	-0.7	-0.6	-0.6
Employment	377.1	377.2	3.4	0.1	1.6	5.2	0.0	0.4	1.4
Unemployment	26.9	24.0	1.6	-2.9	-3.9	-7.8	-10.8	-14.0	-24.5
Participation rate	65.7	65.1	0.5	-0.6	-0.6	-1.2
Unemployment rate	6.7	6.0	0.4	-0.7	-0.9	-1.9
Employment rate	61.3	61.2	0.6	-0.1	0.1	0.1
St. Catharines-Niagara, Ontario									
Population	338.3	338.3	...	0.0	0.0	1.1	0.0	0.0	0.3
Labour force	215.2	216.4	1.6	1.2	4.4	2.3	0.6	2.1	1.1
Employment	194.5	195.8	1.7	1.3	3.9	3.8	0.7	2.0	2.0
Unemployment	20.7	20.6	0.9	-0.1	0.6	-1.4	-0.5	3.0	-6.4
Participation rate	63.6	64.0	0.5	0.4	1.3	0.5
Unemployment rate	9.6	9.5	0.4	-0.1	0.1	-0.8
Employment rate	57.5	57.9	0.5	0.4	1.2	1.0
Kitchener-Cambridge-Waterloo, Ontario									
Population	405.7	406.1	...	0.4	1.3	6.1	0.1	0.3	1.5
Labour force	290.4	295.8	1.9	5.4	13.5	13.0	1.9	4.8	4.6
Employment	271.3	276.0	2.1	4.7	14.5	20.2	1.7	5.5	7.9
Unemployment	19.1	19.9	1.1	0.8	-0.8	-7.1	4.2	-3.9	-26.3
Participation rate	71.6	72.8	0.5	1.2	3.1	2.1
Unemployment rate	6.6	6.7	0.4	0.1	-0.6	-2.8
Employment rate	66.9	68.0	0.5	1.1	3.4	4.0
Brantford, Ontario									
Population	107.5	107.5	...	0.0	0.1	0.8	0.0	0.1	0.7
Labour force	74.8	74.7	0.6	-0.1	-0.2	-0.4	-0.1	-0.3	-0.5
Employment	67.8	67.8	0.6	0.0	-0.6	-0.1	0.0	-0.9	-0.1
Unemployment	6.9	6.9	0.3	0.0	0.4	-0.3	0.0	6.2	-4.2
Participation rate	69.6	69.5	0.7	-0.1	-0.2	-0.9
Unemployment rate	9.2	9.2	0.6	0.0	0.5	-0.4
Employment rate	63.1	63.1	0.7	0.0	-0.6	-0.5
Guelph, Ontario									
Population	112.7	112.8	...	0.1	0.3	1.4	0.1	0.3	1.3
Labour force	77.6	79.1	0.9	1.5	2.1	-6.1	1.9	2.7	-7.2
Employment	72.3	73.3	1.0	1.0	2.1	-4.6	1.4	2.9	-5.9
Unemployment	5.2	5.8	0.5	0.6	0.0	-1.5	11.5	0.0	-20.5
Participation rate	68.9	70.1	0.8	1.2	1.7	-6.4
Unemployment rate	6.7	7.3	0.6	0.6	-0.2	-1.3
Employment rate	64.2	65.0	0.9	0.8	1.7	-4.9

See notes at the end of the table.

Table 5-1 – continued

Labour force characteristics by census metropolitan area (seasonally adjusted) — 3 month moving average

	February 2011	March 2011	S.E. ¹	Change from			Percent change from		
				last month	last December	twelve months ago	last month	last December	twelve months ago
in thousands (except rates)									
London, Ontario									
Population	410.3	410.6	...	0.3	0.9	4.6	0.1	0.2	1.1
Labour force	264.4	267.3	2.0	2.9	4.6	-6.1	1.1	1.8	-2.2
Employment	242.3	245.2	2.0	2.9	4.8	-3.2	1.2	2.0	-1.3
Unemployment	22.1	22.1	1.1	0.0	-0.1	-2.9	0.0	-0.5	-11.6
Participation rate	64.4	65.1	0.5	0.7	1.0	-2.2
Unemployment rate	8.4	8.3	0.4	-0.1	-0.2	-0.8
Employment rate	59.1	59.7	0.5	0.6	1.0	-1.5
Windsor, Ontario									
Population	267.8	267.6	...	-0.2	-0.5	-1.1	-0.1	-0.2	-0.4
Labour force	165.9	167.0	1.5	1.1	3.0	-2.9	0.7	1.8	-1.7
Employment	150.1	150.9	1.4	0.8	4.6	2.0	0.5	3.1	1.3
Unemployment	15.9	16.2	0.9	0.3	-1.6	-4.8	1.9	-9.0	-22.9
Participation rate	61.9	62.4	0.5	0.5	1.2	-0.8
Unemployment rate	9.6	9.7	0.5	0.1	-1.2	-2.7
Employment rate	56.0	56.4	0.5	0.4	1.8	1.0
Barrie, Ontario									
Population	160.1	160.3	...	0.2	0.6	2.7	0.1	0.4	1.7
Labour force	110.9	115.1	1.4	4.2	3.3	2.2	3.8	3.0	1.9
Employment	101.7	104.8	1.4	3.1	2.4	4.0	3.0	2.3	4.0
Unemployment	9.2	10.3	0.7	1.1	0.9	-1.8	12.0	9.6	-14.9
Participation rate	69.3	71.8	1.0	2.5	1.8	0.2
Unemployment rate	8.3	8.9	0.7	0.6	0.5	-1.8
Employment rate	63.5	65.4	0.9	1.9	1.3	1.4
Greater Sudbury, Ontario									
Population	139.1	139.1	...	0.0	0.1	0.9	0.0	0.1	0.7
Labour force	89.6	89.8	0.8	0.2	0.1	2.6	0.2	0.1	3.0
Employment	83.0	83.0	0.8	0.0	0.8	4.9	0.0	1.0	6.3
Unemployment	6.6	6.8	0.4	0.2	-0.7	-2.3	3.0	-9.3	-25.3
Participation rate	64.4	64.6	0.6	0.2	0.1	1.5
Unemployment rate	7.4	7.6	0.5	0.2	-0.8	-2.8
Employment rate	59.7	59.7	0.6	0.0	0.6	3.2
Thunder Bay, Ontario									
Population	102.5	102.5	...	0.0	-0.1	-0.2	0.0	-0.1	-0.2
Labour force	64.5	64.0	0.6	-0.5	-1.4	0.5	-0.8	-2.1	0.8
Employment	60.3	59.5	0.6	-0.8	-1.4	0.3	-1.3	-2.3	0.5
Unemployment	4.2	4.5	0.3	0.3	0.1	0.2	7.1	2.3	4.7
Participation rate	62.9	62.4	0.6	-0.5	-1.3	0.6
Unemployment rate	6.5	7.0	0.4	0.5	0.3	0.2
Employment rate	58.8	58.0	0.6	-0.8	-1.4	0.4
Winnipeg, Manitoba									
Population	619.8	620.5	...	0.7	2.5	10.2	0.1	0.4	1.7
Labour force	433.2	435.1	1.3	1.9	2.4	7.3	0.4	0.6	1.7
Employment	409.1	410.3	1.3	1.2	0.8	6.9	0.3	0.2	1.7
Unemployment	24.2	24.8	0.7	0.6	1.6	0.4	2.5	6.9	1.6
Participation rate	69.9	70.1	0.2	0.2	0.1	0.0
Unemployment rate	5.6	5.7	0.2	0.1	0.3	0.0
Employment rate	66.0	66.1	0.2	0.1	-0.2	0.0
Regina, Saskatchewan									
Population	175.4	175.6	...	0.2	0.6	2.8	0.1	0.3	1.6
Labour force	125.8	125.7	0.8	-0.1	-1.4	4.4	-0.1	-1.1	3.6
Employment	119.4	118.7	0.8	-0.7	-2.5	3.8	-0.6	-2.1	3.3
Unemployment	6.4	7.0	0.3	0.6	1.1	0.6	9.4	18.6	9.4
Participation rate	71.7	71.6	0.4	-0.1	-1.0	1.4
Unemployment rate	5.1	5.6	0.3	0.5	1.0	0.3
Employment rate	68.1	67.6	0.5	-0.5	-1.7	1.1

See notes at the end of the table.

Table 5-1 – continued

Labour force characteristics by census metropolitan area (seasonally adjusted) — 3 month moving average

	February 2011	March 2011	S.E. ¹	Change from			Percent change from		
				last month	last December	twelve months ago	last month	last December	twelve months ago
in thousands (except rates)									
Saskatoon, Saskatchewan									
Population	218.0	218.4	...	0.4	1.3	5.4	0.2	0.6	2.5
Labour force	152.9	153.4	1.0	0.5	2.2	-2.7	0.3	1.5	-1.7
Employment	144.5	144.6	1.0	0.1	1.8	-4.3	0.1	1.3	-2.9
Unemployment	8.4	8.8	0.5	0.4	0.4	1.7	4.8	4.8	23.9
Participation rate	70.1	70.2	0.5	0.1	0.6	-3.1
Unemployment rate	5.5	5.7	0.3	0.2	0.1	1.2
Employment rate	66.3	66.2	0.5	-0.1	0.4	-3.7
Calgary, Alberta									
Population	1,024.0	1,025.6	...	1.6	4.7	19.2	0.2	0.5	1.9
Labour force	758.3	763.5	3.5	5.2	15.3	1.4	0.7	2.0	0.2
Employment	710.9	716.8	3.7	5.9	13.5	9.9	0.8	1.9	1.4
Unemployment	47.4	46.7	2.1	-0.7	1.8	-8.6	-1.5	4.0	-15.6
Participation rate	74.1	74.4	0.3	0.3	1.1	-1.3
Unemployment rate	6.3	6.1	0.3	-0.2	0.1	-1.2
Employment rate	69.4	69.9	0.4	0.5	1.0	-0.3
Edmonton, Alberta									
Population	956.8	958.0	...	1.2	3.5	14.4	0.1	0.4	1.5
Labour force	697.4	699.3	3.3	1.9	14.2	28.3	0.3	2.1	4.2
Employment	656.9	658.9	3.6	2.0	13.3	36.9	0.3	2.1	5.9
Unemployment	40.5	40.4	1.9	-0.1	0.9	-8.6	-0.2	2.3	-17.6
Participation rate	72.9	73.0	0.4	0.1	1.2	1.9
Unemployment rate	5.8	5.8	0.3	0.0	0.0	-1.5
Employment rate	68.7	68.8	0.4	0.1	1.2	2.9
Kelowna, British Columbia									
Population	148.7	148.9	...	0.2	0.7	3.3	0.1	0.5	2.3
Labour force	101.2	101.1	1.6	-0.1	-3.4	-0.7	-0.1	-3.3	-0.7
Employment	93.4	93.2	1.5	-0.2	-3.5	-1.0	-0.2	-3.6	-1.1
Unemployment	7.8	7.9	0.8	0.1	0.1	0.3	1.3	1.3	3.9
Participation rate	68.1	67.9	1.0	-0.2	-2.6	-2.0
Unemployment rate	7.7	7.8	0.7	0.1	0.3	0.3	...	0.1	...
Employment rate	62.8	62.6	0.9	-0.2	-2.6	-2.1
Abbotsford-Mission, British Columbia									
Population	143.4	143.6	...	0.2	0.7	2.8	0.1	0.5	2.0
Labour force	94.3	94.9	0.8	0.6	-1.0	-2.3	0.6	-1.0	-2.4
Employment	84.9	85.2	0.8	0.3	-1.0	-6.0	0.4	-1.2	-6.6
Unemployment	9.5	9.7	0.4	0.2	0.0	3.7	2.1	0.0	61.7
Participation rate	65.8	66.1	0.6	0.3	-1.0	-2.9
Unemployment rate	10.1	10.2	0.4	0.1	0.1	4.0
Employment rate	59.2	59.3	0.6	0.1	-1.0	-5.5
Vancouver, British Columbia									
Population	2,011.9	2,014.8	...	2.9	8.8	37.4	0.1	0.4	1.9
Labour force	1,334.2	1,335.7	5.1	1.5	8.2	28.5	0.1	0.6	2.2
Employment	1,225.7	1,226.0	5.2	0.3	-5.2	20.9	0.0	-0.4	1.7
Unemployment	108.5	109.7	3.0	1.2	13.4	7.6	1.1	13.9	7.4
Participation rate	66.3	66.3	0.3	0.0	0.1	0.2
Unemployment rate	8.1	8.2	0.2	0.1	0.9	0.4	...	0.1	...
Employment rate	60.9	60.8	0.3	-0.1	-0.6	-0.1
Victoria, British Columbia									
Population	299.7	299.9	...	0.2	0.7	3.5	0.1	0.2	1.2
Labour force	193.9	194.5	1.5	0.6	1.3	-7.9	0.3	0.7	-3.9
Employment	181.8	182.4	1.5	0.6	0.5	-6.1	0.3	0.3	-3.2
Unemployment	12.1	12.2	0.6	0.1	0.9	-1.7	0.8	8.0	-12.2
Participation rate	64.7	64.9	0.5	0.2	0.3	-3.4
Unemployment rate	6.2	6.3	0.3	0.1	0.5	-0.6
Employment rate	60.7	60.8	0.5	0.1	0.0	-2.8

1. Average standard error of change in two consecutive months (see "Sampling Errors" in Data Quality for further explanations).

Notes(s): Estimates from this table are based on 2006 census population counts. Related CANSIM Table 282-0116.

Table 5-2
Labour force characteristics by census metropolitan area (seasonally adjusted) — Monthly

	February 2011	March 2011	S.E. ¹	Change from			Percent change from		
				last month	last December	twelve months ago	last month	last December	twelve months ago
in thousands (except rates)									
Montréal, Quebec									
Population	3,208.3	3,211.4	...	3.1	10.3	41.4	0.1	0.3	1.3
Labour force	2,135.1	2,136.8	15.5	1.7	25.2	-15.2	0.1	1.2	-0.7
Employment	1,963.5	1,970.4	15.3	6.9	26.3	11.7	0.4	1.4	0.6
Unemployment	171.6	166.5	11.2	-5.1	-1.0	-26.8	-3.0	-0.6	-13.9
Participation rate	66.5	66.5	0.5	0.0	0.5	-1.4
Unemployment rate	8.0	7.8	0.5	-0.2	-0.1	-1.2
Employment rate	61.2	61.4	0.5	0.2	0.7	-0.4
Toronto, Ontario									
Population	4,750.6	4,757.1	...	6.5	20.6	87.1	0.1	0.4	1.9
Labour force	3,222.9	3,214.9	20.9	-8.0	-29.2	41.9	-0.2	-0.9	1.3
Employment	2,961.3	2,931.2	20.5	-30.1	-49.8	54.6	-1.0	-1.7	1.9
Unemployment	261.6	283.7	15.7	22.1	20.6	-12.7	8.4	7.8	-4.3
Participation rate	67.8	67.6	0.4	-0.2	-0.9	-0.3
Unemployment rate	8.1	8.8	0.5	0.7	0.7	-0.5
Employment rate	62.3	61.6	0.4	-0.7	-1.3	0.0
Vancouver, British Columbia									
Population	2,015.1	2,017.4	...	2.3	8.6	36.8	0.1	0.4	1.9
Labour force	1,346.9	1,334.4	10.7	-12.5	4.6	33.9	-0.9	0.3	2.6
Employment	1,223.4	1,229.2	10.5	5.8	0.8	30.2	0.5	0.1	2.5
Unemployment	123.5	105.1	7.6	-18.4	3.7	3.6	-14.9	3.6	3.5
Participation rate	66.8	66.1	0.5	-0.7	-0.1	0.4
Unemployment rate	9.2	7.9	0.5	-1.3	0.3	0.1
Employment rate	60.7	60.9	0.5	0.2	-0.3	0.4

1. Average standard error of change in two consecutive months (see "Sampling Errors" in Data Quality for further explanations).

Note(s): Estimates from this table are based on 2006 census population counts. Related CANSIM Table 282-0117.

Table 6-1

Labour force characteristics by province and economic region, ¹ unadjusted for seasonality, 3 month moving average ending in March 2010 and March 2011

	Population	Labour force			Participation rate	Unemployment rate	Employment rate
		Labour force	Employment	Unemployment			
in thousands							
Canada ²							
2010	27,523.9	18,176.8	16,596.4	1,580.4	66.0	8.7	60.3
2011	27,865.5	18,413.3	16,917.4	1,495.9	66.1	8.1	60.7
Newfoundland and Labrador							
2010	427.8	245.2	202.7	42.4	57.3	17.3	47.4
2011	429.2	249.3	214.5	34.8	58.1	14.0	50.0
Avalon Peninsula [1010]							
2010	217.9	136.2	119.1	17.1	62.5	12.6	54.7
2011	220.3	140.6	127.9	12.7	63.8	9.0	58.1
South Coast-Burin Peninsula [1020]							
2010	31.2	14.7	11.4	3.3	47.1	22.4	36.5
2011	30.8	17.4	13.6	3.9	56.5	22.4	44.2
West Coast-Northern Peninsula-Labrador [1030]							
2010	87.4	48.2	38.8	9.4	55.1	19.5	44.4
2011	87.1	47.6	38.3	9.3	54.6	19.5	44.0
Notre Dame-Central Bonavista Bay [1040]							
2010	91.4	46.0	33.4	12.6	50.3	27.4	36.5
2011	91.0	43.7	34.8	8.9	48.0	20.4	38.2
Prince Edward Island							
2010	116.5	76.3	66.6	9.6	65.5	12.6	57.2
2011	118.4	76.9	66.2	10.7	64.9	13.9	55.9
Nova Scotia							
2010	775.9	485.1	436.0	49.1	62.5	10.1	56.2
2011	779.0	488.8	438.7	50.1	62.7	10.2	56.3
Cape Breton [1210]							
2010	113.6	58.6	49.2	9.4	51.6	16.0	43.3
2011	112.6	60.6	49.8	10.9	53.8	18.0	44.2
North Shore [1220]							
2010	130.3	75.2	65.6	9.6	57.7	12.8	50.3
2011	130.1	76.5	67.7	8.9	58.8	11.6	52.0
Annapolis Valley [1230]							
2010	100.1	59.8	54.4	5.4	59.7	9.0	54.3
2011	99.9	60.2	52.7	7.5	60.3	12.5	52.8
Southern [1240]							
2010	99.4	57.4	47.5	9.8	57.7	17.1	47.8
2011	98.7	56.0	48.9	7.1	56.7	12.7	49.5
Halifax [1250]							
2010	332.4	234.2	219.2	14.9	70.5	6.4	65.9
2011	337.6	235.5	219.7	15.8	69.8	6.7	65.1
New Brunswick							
2010	615.6	383.0	344.9	38.2	62.2	10.0	56.0
2011	618.7	379.7	339.4	40.3	61.4	10.6	54.9
Campbellton-Miramichi [1310]							
2010	131.2	68.7	57.8	10.9	52.4	15.9	44.1
2011	129.9	68.2	56.6	11.6	52.5	17.0	43.6
Moncton-Richibucto [1320]							
2010	168.8	108.2	99.7	8.5	64.1	7.9	59.1
2011	171.2	109.8	98.2	11.6	64.1	10.6	57.4
Saint John-St. Stephen [1330]							
2010	143.0	90.8	82.3	8.6	63.5	9.5	57.6
2011	144.0	92.6	85.2	7.4	64.3	8.0	59.2

See notes at the end of the table.

Table 6-1 – continued

Labour force characteristics by province and economic region, ¹ unadjusted for seasonality, 3 month moving average ending in March 2010 and March 2011

	Population	Labour force			Participation rate	Unemployment rate	Employment rate
		Labour force	Employment	Unemployment			
in thousands							
Fredericton-Oromocto [1340]							
2010	107.1	75.4	69.8	5.6	70.4	7.4	65.2
2011	108.5	71.7	66.2	5.5	66.1	7.7	61.0
Edmundston-Woodstock [1350]							
2010	65.6	39.9	35.4	4.5	60.8	11.3	54.0
2011	65.2	37.4	33.3	4.1	57.4	11.0	51.1
Quebec							
2010	6,480.9	4,157.6	3,785.1	372.5	64.2	9.0	58.4
2011	6,550.5	4,224.2	3,862.9	361.3	64.5	8.6	59.0
Gaspésie-Îles-de-la-Madeleine [2410]							
2010	78.7	39.2	32.8	6.4	49.8	16.3	41.7
2011	78.6	42.4	35.9	6.5	53.9	15.3	45.7
Bas-Saint-Laurent [2415]							
2010	167.0	95.5	85.5	10.1	57.2	10.6	51.2
2011	166.8	97.5	86.9	10.6	58.5	10.9	52.1
Capitale-Nationale [2420]							
2010	578.8	368.7	347.9	20.8	63.7	5.6	60.1
2011	585.8	386.4	355.3	31.0	66.0	8.0	60.7
Chaudière-Appalaches [2425]							
2010	331.4	220.0	204.5	15.5	66.4	7.0	61.7
2011	332.8	219.7	207.7	12.0	66.0	5.5	62.4
Estrie [2430]							
2010	255.1	147.8	133.7	14.1	57.9	9.5	52.4
2011	257.4	165.0	151.6	13.4	64.1	8.1	58.9
Centre-du-Québec [2433]							
2010	188.4	113.3	102.5	10.8	60.1	9.5	54.4
2011	189.9	112.6	105.0	7.6	59.3	6.7	55.3
Montérégie [2435]							
2010	1,167.0	783.5	715.0	68.4	67.1	8.7	61.3
2011	1,183.3	777.9	718.3	59.6	65.7	7.7	60.7
Montréal [2440]							
2010	1,607.7	1,030.0	924.0	106.0	64.1	10.3	57.5
2011	1,619.1	1,025.8	925.3	100.5	63.4	9.8	57.1
Laval [2445]							
2010	324.5	225.7	204.8	20.9	69.6	9.3	63.1
2011	330.7	223.5	207.4	16.0	67.6	7.2	62.7
Lanaudière [2450]							
2010	380.3	252.3	229.5	22.8	66.3	9.0	60.3
2011	388.1	246.4	226.0	20.4	63.5	8.3	58.2
Laurentides [2455]							
2010	450.4	298.9	274.5	24.4	66.4	8.2	60.9
2011	459.6	313.1	285.1	28.0	68.1	8.9	62.0
Outaouais [2460]							
2010	298.4	208.1	191.9	16.2	69.7	7.8	64.3
2011	304.0	203.5	186.7	16.9	66.9	8.3	61.4
Abitibi-Témiscamingue [2465]							
2010	116.9	71.2	65.0	6.2	60.9	8.7	55.6
2011	117.4	75.8	69.1	6.7	64.6	8.8	58.9
Mauricie [2470]							
2010	220.0	116.5	104.4	12.2	53.0	10.5	47.5
2011	221.1	136.3	124.9	11.4	61.6	8.4	56.5

See notes at the end of the table.

Table 6-1 – continued

Labour force characteristics by province and economic region, ¹ unadjusted for seasonality, 3 month moving average ending in March 2010 and March 2011

	Population	Labour force			Participation rate	Unemployment rate	Employment rate
		Labour force	Employment	Unemployment			
in thousands							
Saguenay-Lac-Saint-Jean [2475]							
2010	225.3	131.0	118.2	12.8	58.1	9.8	52.5
2011	225.2	139.2	124.5	14.6	61.8	10.5	55.3
Côte-Nord and Nord-du-Québec [2480, 2490]							
2010	90.9	55.8	50.9	5.0	61.4	9.0	56.0
2011	90.7	59.2	53.2	6.0	65.3	10.1	58.7
Ontario							
2010	10,735.5	7,103.8	6,448.9	654.9	66.2	9.2	60.1
2011	10,873.8	7,184.9	6,593.3	591.7	66.1	8.2	60.6
Ottawa [3510]							
2010	1,029.3	717.9	669.6	48.2	69.7	6.7	65.1
2011	1,043.1	715.3	668.0	47.3	68.6	6.6	64.0
Kingston-Pembroke [3515]							
2010	368.0	217.0	196.4	20.6	59.0	9.5	53.4
2011	369.4	224.7	207.0	17.7	60.8	7.9	56.0
Muskoka-Kawarthas [3520]							
2010	316.3	195.7	175.4	20.4	61.9	10.4	55.5
2011	318.2	186.2	166.4	19.8	58.5	10.6	52.3
Toronto [3530]							
2010	4,913.2	3,304.3	3,000.4	303.8	67.3	9.2	61.1
2011	5,006.3	3,364.8	3,083.6	281.2	67.2	8.4	61.6
Kitchener-Waterloo-Barrie [3540]							
2010	1,015.3	708.4	639.5	68.9	69.8	9.7	63.0
2011	1,031.1	731.9	671.2	60.7	71.0	8.3	65.1
Hamilton-Niagara Peninsula [3550]							
2010	1,155.9	744.8	672.4	72.3	64.4	9.7	58.2
2011	1,165.5	745.0	684.6	60.4	63.9	8.1	58.7
London [3560]							
2010	533.3	350.6	318.1	32.5	65.7	9.3	59.6
2011	538.6	349.8	321.1	28.7	64.9	8.2	59.6
Windsor-Sarnia [3570]							
2010	522.0	323.3	285.9	37.5	61.9	11.6	54.8
2011	520.2	323.0	291.7	31.3	62.1	9.7	56.1
Stratford-Bruce Peninsula [3580]							
2010	245.6	161.6	146.9	14.8	65.8	9.2	59.8
2011	245.7	162.4	150.6	11.8	66.1	7.3	61.3
Northeast [3590]							
2010	462.0	270.1	242.3	27.8	58.5	10.3	52.4
2011	461.9	279.7	257.0	22.8	60.6	8.2	55.6
Northwest [3595]							
2010	174.6	110.1	102.0	8.1	63.1	7.4	58.4
2011	173.7	102.2	92.2	10.0	58.8	9.8	53.1
Manitoba							
2010	936.0	640.1	604.1	35.9	68.4	5.6	64.5
2011	949.0	651.6	615.7	35.9	68.7	5.5	64.9
Southeast [4610]							
2010	80.2	57.4	53.6	3.8	71.6	6.6	66.8
2011	82.1	57.3	54.3	3.1	69.8	5.4	66.1
South Central [4620]							
2010	45.7	31.6	30.4	1.1	69.1	3.5	66.5
2011	46.9	32.0	30.4	1.6	68.2	5.0	64.8

See notes at the end of the table.

Table 6-1 – continued

Labour force characteristics by province and economic region, 1 unadjusted for seasonality, 3 month moving average ending in March 2010 and March 2011

	Population	Labour force			Participation rate	Unemployment rate	Employment rate
		Labour force	Employment	Unemployment			
in thousands							
Southwest [4630]							
2010	83.3	54.5	52.3	2.2	65.4	4.0	62.8
2011	83.6	56.6	54.6	2.0	67.7	3.5	65.3
North Central [4640]							
2010	35.8	25.1	23.6	1.5	70.1	6.0	65.9
2011	36.4	24.2	22.7	1.5	66.5	6.2	62.4
Winnipeg [4650]							
2010	558.7	382.6	360.1	22.5	68.5	5.9	64.5
2011	567.5	390.2	367.3	22.9	68.8	5.9	64.7
Interlake [4660]							
2010	71.6	48.7	46.3	2.4	68.0	4.9	64.7
2011	72.3	49.2	46.4	2.8	68.0	5.7	64.2
Parklands and North [4670, 4680]							
2010	60.6	40.2	37.8	2.4	66.3	6.0	62.4
2011	60.2	42.0	40.0	2.1	69.8	5.0	66.4
Saskatchewan							
2010	786.6	542.9	514.7	28.2	69.0	5.2	65.4
2011	796.6	548.3	516.6	31.7	68.8	5.8	64.9
Regina-Moose Mountain [4710]							
2010	233.0	162.1	154.3	7.7	69.6	4.8	66.2
2011	236.4	166.5	157.8	8.6	70.4	5.2	66.8
Swift Current-Moose Jaw [4720]							
2010	81.0	53.1	50.3	2.8	65.6	5.3	62.1
2011	81.1	53.1	50.7	2.3	65.5	4.3	62.5
Saskatoon-Biggar [4730]							
2010	257.2	184.1	175.9	8.1	71.6	4.4	68.4
2011	262.8	181.8	171.8	10.0	69.2	5.5	65.4
Yorkton-Melville [4740]							
2010	63.3	41.7	39.8	1.9	65.9	4.6	62.9
2011	63.1	40.9	38.6	2.3	64.8	5.6	61.2
Prince Albert and Northern [4750, 4760]							
2010	152.1	102.0	94.4	7.6	67.1	7.5	62.1
2011	153.2	106.0	97.7	8.3	69.2	7.8	63.8
Alberta							
2010	2,943.0	2,131.9	1,980.2	151.6	72.4	7.1	67.3
2011	2,986.9	2,170.2	2,042.3	127.9	72.7	5.9	68.4
Lethbridge-Medicine Hat [4810]							
2010	216.4	140.3	129.9	10.4	64.8	7.4	60.0
2011	218.3	142.6	134.6	8.1	65.3	5.7	61.7
Camrose-Drumheller [4820]							
2010	155.2	110.7	105.2	5.5	71.3	5.0	67.8
2011	155.7	112.6	107.2	5.4	72.3	4.8	68.9
Calgary [4830]							
2010	1,081.5	802.6	743.6	59.0	74.2	7.4	68.8
2011	1,102.2	804.9	755.7	49.2	73.0	6.1	68.6
Banff-Jasper-Rocky Mountain House [4840]							
2010	71.4	55.1	52.5	2.6	77.2	4.7	73.5
2011	71.7	56.5	53.9	2.6	78.8	4.6	75.2
Red Deer [4850]							
2010	151.6	109.0	101.4	7.6	71.9	7.0	66.9
2011	153.4	112.4	105.4	7.0	73.3	6.2	68.7

See notes at the end of the table.

Table 6-1 – continued

Labour force characteristics by province and economic region, ¹ unadjusted for seasonality, 3 month moving average ending in March 2010 and March 2011

	Population	Labour force			Participation rate	Unemployment rate	Employment rate
		Labour force	Employment	Unemployment			
in thousands							
Edmonton [4860]							
2010	978.8	691.6	640.6	50.9	70.7	7.4	65.4
2011	993.7	721.1	677.6	43.5	72.6	6.0	68.2
Athabasca-Grande Prairie-Peace River [4870]							
2010	189.4	144.0	131.9	12.1	76.0	8.4	69.6
2011	190.1	139.5	131.3	8.2	73.4	5.9	69.1
Wood Buffalo-Cold Lake [4880]							
2010	98.7	78.5	75.0	3.5	79.5	4.5	76.0
2011	101.8	80.7	76.7	4.0	79.3	5.0	75.3
British Columbia							
2010	3,706.0	2,411.2	2,213.2	198.0	65.1	8.2	59.7
2011	3,763.4	2,439.2	2,227.7	211.5	64.8	8.7	59.2
Vancouver Island and Coast [5910]							
2010	646.0	411.3	380.4	30.9	63.7	7.5	58.9
2011	654.0	407.8	370.9	37.0	62.4	9.1	56.7
Lower Mainland-Southwest [5920]							
2010	2,256.5	1,474.2	1,357.3	116.9	65.3	7.9	60.2
2011	2,299.6	1,503.0	1,375.6	127.4	65.4	8.5	59.8
Thompson-Okanagan [5930]							
2010	430.9	280.3	254.0	26.2	65.0	9.3	58.9
2011	436.9	279.4	253.3	26.0	64.0	9.3	58.0
Kootenay [5940]							
2010	126.0	79.1	70.6	8.5	62.8	10.7	56.0
2011	127.1	77.5	70.2	7.3	61.0	9.4	55.2
Cariboo [5950]							
2010	127.7	83.7	75.0	8.7	65.5	10.4	58.7
2011	127.5	85.9	79.4	6.5	67.4	7.6	62.3
North Coast and Nechako [5960, 5970]							
2010	67.1	43.6	38.5	5.0	65.0	11.5	57.4
2011	66.8	45.1	41.0	4.1	67.5	9.1	61.4
Northeast [5980]							
2010	51.7	39.0	37.3	1.8	75.4	4.6	72.1
2011	51.4	40.6	37.2	3.3	79.0	8.1	72.4

1. For geographic descriptions of economic regions, refer to the Guide to the Labour Force Survey (catalogue number 71-543-GIE).

2. Estimates for Canada are a sum of the provincial totals and exclude estimates from Yukon, Northwest Territories and Nunavut.

Note(s): Related CANSIM table 282-0054.

Table 6-2
Labour force characteristics by territories, unadjusted for seasonality, 3 month moving average ending in March 2010 and March 2011

	Population	Labour force			Participation rate	Unemployment rate	Employment rate
		Labour force	Employment	Unemployment			
	in thousands			percent			
Yukon ¹							
2010	25.7	17.9	16.0	1.8	69.6	10.1	62.3
2011	26.1	19.5	18.5	1.0	74.7	5.1	70.9
Northwest Territories ²							
2010	32.2	22.2	20.5	1.8	68.9	8.1	63.7
2011	32.1	23.8	22.2	1.5	74.1	6.3	69.2
Nunavut ³							
2010	20.6	13.0	11.4	1.6	63.2	11.9	55.7
2011	21.2	14.4	11.9	2.5	67.7	17.3	56.0

1. Since 1992, the Labour force survey (LFS) has been conducted in the Yukon, using an alternative methodology that accommodates some of the operational difficulties inherent to remote locales. These estimates are not included in the national totals. In 1995, the LFS in the Yukon underwent a sample redesign. One result of the redesign was that the covered population increased from 85% to 92%, which is reflected by the sharp increase in the three month moving averages estimates of January, February and March of 1995 for all the level estimates. Users are therefore warned to be cautious when comparing estimates before January 1995 to estimates for January 1995 and forward.
2. Since 2001, the Labour force survey (LFS) has been administered in the Northwest Territories, using an alternative methodology that accommodates some of the operational difficulties inherent to remote locales. These estimates are not included in national totals.
3. Since 2004, the Labour force survey (LFS) has been administered in Nunavut, using an alternative methodology that accommodates some of the operational difficulties inherent to remote locales. These estimates are 3-month moving averages and are not included in national totals. From January 2004 to December 2007, estimates represent about 70% of all Nunavut residents aged 15 and over. Starting in January 2008, coverage was extended to 92%, so that by March 2008, the 3-month moving average is completely based on the extended coverage. Because of the large difference in coverage, users are recommended not to compare estimates prior to January 2008 with data afterwards. The January and February 2008 3-month moving average estimates are based on a mix of both coverages, since the extended coverage was introduced in January 2008. Estimates from January 2004 to December 2007 are based on the 10 largest communities in Nunavut: Iqaluit, Rankin Inlet, Cambridge Bay, Kugluktuk, Baker Lake, Arviat, Pond Inlet, Cape Dorset, Pangnirtung, Igloolik. Estimates from March 2008 to present cover the above communities as well as: Taloyoak, Gjoa Haven, Kugaaruk, Coral Harbour, Repulse Bay, Qikiqtarjuaq, Arctic Bay, Hall Beach, Clyde River.

Note(s): Related CANSIM table 282-0100.

Table 7
Average usual hours and wages of employees by selected characteristics, Canada, unadjusted for seasonality

	Employees				Full-time			Part-time		
	Number	Average weekly hours	Average weekly wages	Average hourly wages	Number	Average weekly hours	Average weekly wages	Number	Average weekly hours	Average weekly wages
	thousands		current dollars		thousands		current dollars	thousands		current dollars
March 2011										
15 years and over	14,283.5	34.8	836.77	23.06	11,478.3	39.2	972.04	2,805.2	16.8	283.29
15 to 24 years	2,230.4	25.7	371.09	13.40	1,038.7	38.6	605.07	1,191.6	14.4	167.13
25 years and over	12,053.1	36.5	922.95	24.84	10,439.5	39.3	1,008.55	1,613.6	18.7	369.07
Men	7,076.7	37.4	960.70	24.89	6,197.7	40.4	1,061.78	879.0	16.3	248.04
Women	7,206.8	32.3	715.08	21.26	5,280.6	37.8	866.72	1,926.2	17.1	299.37
Union coverage										
Union coverage	4,545.0	35.4	950.51	26.45	3,830.6	38.5	1,051.18	714.4	18.6	410.68
No union coverage	9,738.5	34.6	783.69	21.47	7,647.7	39.6	932.40	2,090.8	16.2	239.76
Job permanency										
Permanent	12,541.6	35.8	874.08	23.63	10,511.4	39.2	984.98	2,030.2	17.8	299.95
Temporary	1,741.9	28.2	568.11	18.97	966.9	39.2	831.39	775.0	14.4	239.62
Occupation										
Management	956.8	39.9	1,421.27	35.64	933.5	40.4	1,444.40	23.3	19.9	494.61
Business, finance and administrative	2,795.3	35.1	780.10	21.70	2,376.3	38.3	863.91	419.0	17.4	304.81
Natural and applied sciences	1,101.6	38.6	1,248.30	32.23	1,068.2	39.3	1,273.49	33.3	18.6	440.94
Health	987.7	33.0	894.58	26.94	725.6	37.8	1,031.49	262.1	19.8	515.61
Social science, education, government service and religion	1,434.7	33.1	1,001.68	29.61	1,122.6	37.8	1,159.55	312.2	16.5	433.94
Art, culture, recreation and sport	328.5	30.1	730.02	22.92	223.8	38.1	947.40	104.7	13.1	265.37
Sales and service	3,734.6	29.9	499.92	15.50	2,284.1	38.5	690.95	1,450.5	16.4	199.08
Trades, transport and equipment operators	1,991.7	39.8	923.72	22.91	1,856.9	41.4	969.85	134.8	17.5	288.33
Occupations unique to primary industry	208.9	41.7	945.14	21.27	175.9	46.7	1,084.17	33.0	15.2	203.35
Occupations unique to processing, manufacturing and utilities	743.7	39.0	768.73	19.50	711.4	40.0	792.42	32.3	17.2	247.61
March 2010										
15 years and over	13,982.5	34.7	813.06	22.46	11,205.4	39.2	946.75	2,777.2	16.8	273.64
15 to 24 years	2,211.4	25.5	351.06	12.81	1,009.8	38.7	576.04	1,201.6	14.4	162.00
25 years and over	11,771.2	36.4	899.85	24.27	10,195.6	39.2	983.47	1,575.6	18.6	358.77
Men	6,868.0	37.3	938.48	24.40	6,013.1	40.3	1,037.42	854.9	15.9	242.61
Women	7,114.6	32.2	691.98	20.58	5,192.3	37.8	841.76	1,922.3	17.2	287.43
Union coverage										
Union coverage	4,446.2	35.3	927.22	25.84	3,749.8	38.5	1,025.64	696.4	18.3	397.32
No union coverage	9,536.3	34.4	759.83	20.89	7,455.6	39.5	907.08	2,080.8	16.2	232.24
Job permanency										
Permanent	12,300.8	35.7	849.89	23.03	10,279.9	39.2	959.64	2,020.8	17.7	291.61
Temporary	1,681.8	27.8	543.65	18.29	925.4	38.9	803.59	756.4	14.2	225.60
Occupation										
Management	1,014.2	39.9	1,357.02	34.02	977.7	40.6	1,390.31	36.5	21.2	464.80
Business, finance and administrative	2,689.9	35.0	752.17	21.02	2,265.4	38.2	837.56	424.5	17.6	296.47
Natural and applied sciences	1,103.0	38.3	1,191.68	31.10	1,055.3	39.1	1,222.59	47.7	19.6	507.61
Health	957.1	33.0	862.99	25.90	709.5	37.7	992.08	247.6	19.6	493.14
Social science, education, government service and religion	1,425.7	33.6	984.55	28.83	1,138.8	38.0	1,129.20	286.9	16.3	410.51
Art, culture, recreation and sport	322.3	29.5	707.70	22.15	212.7	38.1	959.98	109.5	12.8	217.68
Sales and service	3,655.9	29.8	486.83	15.06	2,233.5	38.4	674.63	1,422.3	16.2	191.94
Trades, transport and equipment operators	1,892.8	39.2	893.73	22.46	1,750.2	41.0	943.06	142.6	17.2	288.26
Occupations unique to primary industry	194.7	41.4	904.42	21.09	166.3	45.9	1,021.90	28.4	15.1	216.30
Occupations unique to processing, manufacturing and utilities	727.0	38.9	755.72	19.23	695.9	39.8	776.66	31.1	18.5	287.21

Note(s): Related CANSIM Tables 282-0023, 282-0069, 282-0073.

Table 8
Regional unemployment rates used by the Employment Insurance Program, ¹ seasonally adjusted, 3 month moving average

Region	Effective from April 10, 2011 to May 7, 2011
	percent
Newfoundland and Labrador	
01. St. John's	6.6
02. Newfoundland and Labrador	17.0
Prince Edward Island	
03. Prince Edward Island	11.5
Nova Scotia	
04. Eastern Nova Scotia	16.6
05. Western Nova Scotia	10.3
06. Halifax	6.7
New Brunswick	
07. Fredericton-Moncton-Saint John	7.0
08. Madawaska-Charlotte ²	11.6
09. Restigouche-Albert	15.0
Quebec	
10. Gaspésie-Îles-de-la-Madeleine	14.4
11. Québec	6.5
12. Trois-Rivières	8.4
13. South Central Quebec	4.7
14. Sherbrooke	7.6
15. Montérégie	7.7
16. Montréal	8.2
17. Central Quebec	7.7
18. Northwestern Quebec	9.9
19. Bas-Saint-Laurent-Côte-Nord ³	11.0
20. Gatineau	6.9
21. Saguenay	7.8
Ontario	
22. Ottawa	6.4
23. Eastern Ontario	7.6
24. Kingston	6.7
25. Central Ontario	9.5
26. Oshawa	8.9
27. Toronto	8.5
28. Hamilton	6.1
29. St. Catharines	9.6
30. London	8.2
31. Niagara	9.8
32. Windsor	9.8
33. Kitchener	6.7
34. Huron	9.1
35. South Central Ontario	7.0
36. Sudbury	7.6
37. Thunder Bay	7.3
38. Northern Ontario	12.1
Manitoba	
39. Winnipeg	5.7
40. Southern Manitoba	5.6
41. Northern Manitoba	26.3
Saskatchewan	
42. Regina	5.5
43. Saskatoon	5.9
44. Southern Saskatchewan	6.5
45. Northern Saskatchewan	18.7

See notes at the end of the table.

Table 8 – continued

Regional unemployment rates used by the Employment Insurance Program, ¹ seasonally adjusted, 3 month moving average

Region	Effective from April 10, 2011 to May 7, 2011
	percent
Alberta	
46. Calgary	5.9
47. Edmonton	6.2
48. Northern Alberta	8.6
49. Southern Alberta	6.9
British Columbia	
50. Southern Interior British Columbia	9.2
51. Abbotsford	10.5
52. Vancouver	8.3
53. Victoria	6.8
54. Southern Coastal British Columbia	10.6
55. Northern British Columbia	11.6
Territories	
56. Yukon ⁴	25.0
57. Northwest Territories ⁴	25.0
58. Nunavut ⁴	25.0

1. The boundaries of these regions are determined by Human Resources and Social Development Canada (HRSDC). For geographic descriptions and maps of employment insurance regions, see the HRSDC website: <http://srv129.services.gc.ca/eiregions/en/geocont.aspx>.

2. This unemployment rate has been determined using a transition formula prescribed in the EI Regulations. For further information, see: http://www.hrsdc.gc.ca/en/cs/comm/news/2000/000913a_e.shtml.

3. This unemployment rate has been determined using a transition formula prescribed in the EI Regulations. For further information, see: http://www.hrsdc.gc.ca/en/cs/comm/news/2000/000913b_e.shtml.

4. This rate is provided by Human Resources and Skills Development Canada.

Note(s): All geographic regions are based on the 1996 Census boundaries.

Data quality

About the Labour Force Survey

The statistics contained in this report are based on information obtained through a sample survey of 56,000 representative households across the country. The Labour Force Survey, started in November 1945, was taken at quarterly intervals until November 1952. It has been carried out monthly since then. The information generated by the survey has expanded considerably over the years with a major redesign of the survey content in 1976 and again in 1997, and provides a rich and detailed picture of the Canadian labour market.

The sample used in the Labour Force Survey has been designed to represent all persons in the population 15 years of age and over residing in the provinces of Canada, with the exception of the following: persons living on Indian reserves, full-time members of the armed forces and people living in institutions (for example, inmates of penal institutions and patients in hospitals or nursing homes who have resided in the institution for more than six months). Monthly estimates of employment, unemployment and persons not in the labour force refer to the specific week covered by the survey each month, normally the week containing the 15th day.

Definitions and explanations

The **labour force** is composed of those members of the civilian non-institutional population 15 years of age and over who, during the reference week, were employed or unemployed.

Employed persons are those who, during the reference week:

- (a) did any work at all
- (b) had a job but were not at work

A person is considered to be **full-time** if his/her usual hours at the main job are 30 or more hours per week. When the number of hours worked at the main job is usually less than 30 hours per week then he/she is considered to be **part-time**.

Unemployed persons are those who, during the reference week:

- (a) were without work, had actively looked for work in the past four weeks (ending with reference week), and were available for work;
- (b) had not actively looked for work in the past four weeks but were on temporary layoff and were available for work;
- (c) had not actively looked for work in the past four weeks but had a new job to start in four weeks or less from the reference week, and were available for work.

Persons in the civilian non-institutional population 15 years of age and over who, during the reference week, were neither employed nor unemployed are classified as **not in the labour force**.

The **unemployment rate** represents the number of unemployed persons expressed as a percentage of the labour force. The unemployment rate for a particular group (age, sex, etc.) is the number unemployed in that group expressed as a percentage of the labour force for that group.

The **participation rate** represents the labour force expressed as a percentage of the population 15 years of age and over. The participation rate for a particular group (age, sex, etc.) is the labour force in that group expressed as a percentage of the population for that group.

The **employment rate (formerly the employment/population ratio)** represents the number of persons employed expressed as a percentage of the population 15 years of age and over. The employment rate for a particular group (age, sex, etc.) is the number employed in that group expressed as a percentage of the population for that group.

The **part-time rate** represents the number of persons employed part-time expressed as a percentage of the employed. The part-time rate for a particular group (age, sex, etc.) is the number employed part-time in that group expressed as a percentage of the employed for that group.

All geographic regions are based on the 2006 Census boundaries.

Seasonal adjustment

Fluctuations in economic time series are caused by seasonal, cyclical and irregular movements. A seasonally adjusted series is one from which seasonal movements have been eliminated. Seasonal movements are defined as those which are caused by regular annual events such as climate, holidays, vacation periods and cycles related to crops, production and retail sales associated with Christmas and Easter. The seasonally adjusted series contains irregular as well as longer-term cyclical fluctuations.

The seasonally adjusted series are revised each year to take into account current data and to generate new forecast factors for the next twelve months. The data are therefore subject to slight revisions in future issues of this publication.

Sampling variability of estimates

Estimates in this publication are based on the Labour Force Survey, a monthly survey of approximately 56,000 households across Canada. Because the entire population is not surveyed, the estimates are subject to sampling error. While the published estimate is the best available indicator of the real value, changes in the level of any estimates between two months can be the result of a true change or sampling variability. The sampling error can be estimated by calculating the standard error for the published estimate or statistic. These standard errors have been included in the publication tables, in order to assist users in interpreting the data.

Interpretation based on standard error

Two thirds of the time (68%), a change greater than the sampling error indicates a real change. The larger the change compared to the standard error, the better the chance that we are observing a real change, as opposed to a change due to sampling variability. At the 95% level, in order to ensure that change is real, the change in the estimate must be greater than twice the sampling error.

Movements in estimates that are smaller than the sampling error are less likely to reflect a real change and more likely to be due to sampling variability. While the above is true for monthly movements, one can have more confidence in a series of consecutive movements in the same direction, even though some of the monthly movements may be smaller than the sampling error.

Interpretation based on confidence intervals

Confidence intervals provide another way of looking at the variability inherent in estimates of sample surveys. To illustrate how to calculate the confidence interval, let us say that one month the published estimate for total employment rose by 16,000 to reach 16,500,000. The associated standard error for the movement estimate is 27,200. The standard error used to interpret the movement estimate indicates that:

- There are approximately two chances in three (68%) that the real value of the movement between the two months falls within the range -11,200 to +43,200 (16,000 + or – one standard error).
- There are approximately nine chances in ten (90%) that the real value of the movement between the two months falls within the range -27,520 to +59,520 (16,000 + or – 1.6 times the standard error).
- There are approximately nineteen chances in twenty (95%) that the real value of the movement between the two months falls within the range -38,400 to +70,400 (16,000 + or – two standard errors).

For more detailed explanations on sampling variability of estimates, and in particular for information on how to assess the variability of level estimates, consult the Data quality section of the *Guide to the Labour Force Survey*, (71-543-G) on page 27.

Documentation

For more detailed information about the Labour Force Survey, see the following documents:

- Overview of the Labour Force Survey
- Guide to the Labour Force Survey (71-543-G)
- Data quality statement
- Methodology of the Canadian Labour Force Survey (71-526-X)
- LFS *geographical maps*