

Catalogue no. 71-001-X

Labour Force Information

Not for release before 7 A.M. EST
Friday, February 4, 2011

January 9 to 15, 2011



Statistics
Canada

Statistique
Canada

Canada

How to obtain more information

Specific inquiries about this product and related statistics or services should be directed to: Labour Force Survey Program, Labour Statistics Division, Statistics Canada, Ottawa, Ontario, K1A 0T6 (telephone: 613-951-4090, toll free number: 1-866-873-8788, fax: 613-951-2869 or by e-mail address: labour@statcan.gc.ca).

For information about this product or the wide range of services and data available from Statistics Canada, visit our website at www.statcan.gc.ca, e-mail us at infostats@statcan.gc.ca, or telephone us, Monday to Friday from 8:30 a.m. to 4:30 p.m., at the following numbers:

Statistics Canada's National Contact Centre

Toll-free telephone (Canada and the United States):

Inquiries line	1-800-263-1136
National telecommunications device for the hearing impaired	1-800-363-7629
Fax line	1-877-287-4369

Local or international calls:

Inquiries line	1-613-951-8116
Fax line	1-613-951-0581

Depository Services Program

Inquiries line	1-800-635-7943
Fax line	1-800-565-7757

To access this product

This product, Catalogue no. 71-001-X, is available free in electronic format. To obtain a single issue, visit our website at www.statcan.gc.ca and browse by "Key resource" > "Publications."

Standards of service to the public

Statistics Canada is committed to serving its clients in a prompt, reliable and courteous manner. To this end, Statistics Canada has developed *standards of service* that its employees observe. To obtain a copy of these service standards, please contact Statistics Canada toll-free at 1-800-263-1136. The service standards are also published on www.statcan.gc.ca under "About us" > "The agency" > "Providing services to Canadians."

Statistics Canada
Labour Statistics Division
Labour Force Survey Program

Labour Force Information

Not for release before 7 A.M. EST
Friday, February 4, 2011

January 9 to 15, 2011

Published by authority of the Minister responsible for Statistics Canada

© Minister of Industry, 2011

All rights reserved. The content of this electronic publication may be reproduced, in whole or in part, and by any means, without further permission from Statistics Canada, subject to the following conditions: that it be done solely for the purposes of private study, research, criticism, review or newspaper summary, and/or for non-commercial purposes; and that Statistics Canada be fully acknowledged as follows: Source (or "Adapted from", if appropriate): Statistics Canada, year of publication, name of product, catalogue number, volume and issue numbers, reference period and page(s). Otherwise, no part of this publication may be reproduced, stored in a retrieval system or transmitted in any form, by any means—electronic, mechanical or photocopy—or for any purposes without prior written permission of Licensing Services, Client Services Division, Statistics Canada, Ottawa, Ontario, Canada K1A 0T6.

February 2011

Catalogue no. 71-001-X

ISSN 1492-5478

Frequency: Monthly

Ottawa

Cette publication est également disponible en français.

Note of appreciation

Canada owes the success of its statistical system to a long-standing partnership between Statistics Canada, the citizens of Canada, its businesses, governments and other institutions. Accurate and timely statistical information could not be produced without their continued cooperation and goodwill.

User information

Symbols

The following standard symbols are used in Statistics Canada publications:

- . not available for any reference period
- .. not available for a specific reference period
- ... not applicable
- 0 true zero or a value rounded to zero
- 0^s value rounded to 0 (zero) where there is a meaningful distinction between true zero and the value that was rounded
- p preliminary
- r revised
- x suppressed to meet the confidentiality requirements of the *Statistics Act*
- E use with caution
- F too unreliable to be published

Special requests (\$)

Custom tabulations can be arranged on an ad hoc or regular basis. This service enables you to specify tables and time series to meet your own requirements. The cost varies according to the request. For more information, contact us toll-free at 1-866-873-8788 or e-mail us at labour@statcan.gc.ca.

Schedule of LFS releases

Reference period - Week ending	Release date
December 11, 2010	January 7, 2011
January 15, 2011	February 4, 2011
February 19, 2011	March 11, 2011
March 19, 2011	April 8, 2011
April 16, 2011	May 6, 2011
May 21, 2011	June 10, 2011
June 18, 2011	July 8, 2011
July 16, 2011	August 5, 2011
August 20, 2011	September 9, 2011
September 17, 2011	October 7, 2011
October 15, 2011	November 4, 2011
November 12, 2011	December 2, 2011
December 10, 2011	January 6, 2012

Latest LFS release in *The Daily* (free)

Table of contents

Highlights	5
Analyse — January 2011	6
Charts	
1. Employment and unemployment indicators, Canada, seasonally adjusted	8
2. Employment and unemployment indicators, Canada, seasonally adjusted	9
3. Index of employment by industry, Canada, seasonally adjusted, January 2008=100	10
4. Index of employment by industry, Canada, seasonally adjusted, January 2008=100	11
5. Index of employment by industry, Canada, seasonally adjusted, January 2008=100	12
6. Index of employment by province, seasonally adjusted, January 2008=100	13
7. Index of employment by province, seasonally adjusted, January 2008=100	14
Related products	15
Statistical tables	
1 Labour force characteristics by age and sex, Canada, seasonally adjusted	25
2 Employment by class of worker and industry, Canada, seasonally adjusted	27
3 Labour force characteristics by province, seasonally adjusted	28
4 Selected labour force characteristics (seasonally adjusted)	30
4-1 Newfoundland and Labrador	30
4-2 Prince Edward Island	31
4-3 Nova Scotia	32
4-4 New Brunswick	33
4-5 Quebec	34
4-6 Ontario	35
4-7 Manitoba	36
4-8 Saskatchewan	37
4-9 Alberta	38
4-10 British Columbia	39
5 Labour force characteristics by census metropolitan area (seasonally adjusted)	40
5-1 3 month moving average	40
5-2 Monthly	46

Table of contents – continued

6	Labour force characteristics	47
6-1	by province and economic region, unadjusted for seasonality, 3 month moving average ending in January 2010 and January 2011	47
6-2	by territories, unadjusted for seasonality, 3 month moving average ending in January 2010 and January 2011	52
7	Average usual hours and wages of employees by selected characteristics, Canada, unadjusted for seasonality	53
8	Regional unemployment rates used by the Employment Insurance Program, seasonally adjusted, 3 month moving average	54
Data quality, concepts and methodology		
	Data quality	56

Highlights

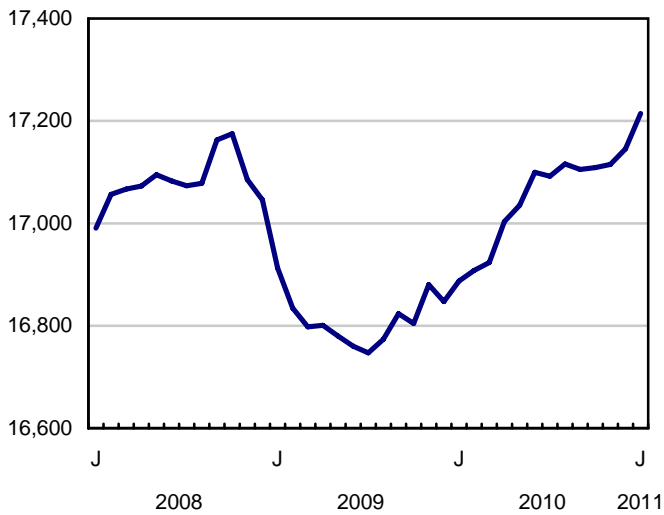
January 2011

Employment rose for the second consecutive month in January, with a gain of 69,000. At the same time, the unemployment rate increased by 0.2 percentage points to 7.8%, as more people searched for work. Compared with January 2010, employment was up 1.9% (+327,000).

Chart 1
Employment and unemployment rates, Canada, seasonally adjusted

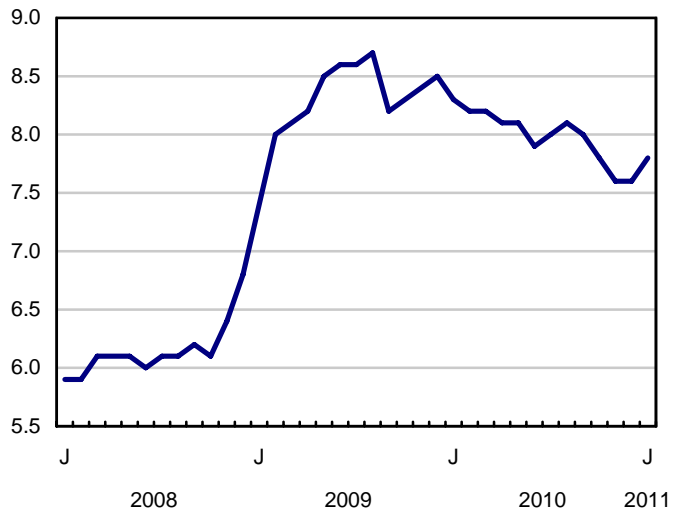
Employment

thousands



Unemployment rate

percent



Analyse — January 2011

Employment rose for the second consecutive month in January, with a gain of 69,000. At the same time, the unemployment rate increased by 0.2 percentage points to 7.8%, as more people searched for work. Compared with January 2010, employment was up 1.9% (+327,000).

January's employment increase was evenly split between full and part time. Compared with a year earlier, part-time employment grew by 2.8% (+91,000), while full time increased by 1.7% (+236,000).

Increases in employment in January occurred in business, building and other support services; public administration; and agriculture. Transportation and warehousing as well as accommodation and food services posted declines.

Employment gains in January were spread across six provinces: Ontario, Alberta, Nova Scotia, Newfoundland and Labrador, Manitoba and Prince Edward Island.

In January, employment gains were shared among private sector employees, public sector employees and the self-employed. Over the past 12 months, there was growth among employees in both the public sector (+3.4%) and private sector (+2.5%), while self-employment declined by 2.3%.

The bulk of the employment gains in January were among women aged 25 and over.

Starting with this release, historical comparisons are based on revised estimates (see Note to Readers).

Most of the employment increases in the service sector

Following losses in December, business, building and other support services had notable gains in January (+34,000). There were also gains in public administration (+20,000) and agriculture (+13,000).

Manufacturing employment was little changed in January, following a sizeable increase of 66,000 the previous month. Employment in this industry was up 3.3% (+57,000) from a year earlier.

Following notable gains in the previous month, transportation and warehousing employment declined by 32,000 in January. Nonetheless, employment in this industry remained 6.5% (+51,000) higher than 12 months earlier.

Employment in accommodation and food services fell by 26,000 in January, bringing total losses to 3.5% (-37,000) over the past 12 months.

Employment gains spread across several provinces

In Ontario, employment increased for the third consecutive month, up 36,000 in January. The unemployment rate held steady at 8.1%, as there were more people participating in the labour market. With January's increase, the number of workers in Ontario grew by 2.3% (+151,000) from a year earlier, above the national growth rate of 1.9%.

Alberta posted a notable employment increase of 22,000 in January, bringing total growth over the past 12 months to 44,000 (+2.2%). However, the unemployment rate rose by 0.4 percentage points to 5.9% in January as a result of an increase in the number of people seeking work.

Employment rose by 6,200 in Nova Scotia in January, pushing the unemployment rate down 0.9 percentage points to 9.5%.

In Newfoundland and Labrador, employment increased for the second month in a row, up 4,900 in January. This increase brings total gains in the province to 5.6% (+12,000) compared to a year earlier, the fastest rate of growth in the country.

Employment rose by 4,100 in Manitoba in January, bringing total employment gains over the previous 12 months to 10,000 (+1.6%).

In British Columbia, employment edged down in January and the unemployment rate increased 0.6 percentage points to 8.2%. Compared to a year earlier, employment was up 0.7% (+15,000).

Employment in Quebec was unchanged in January, and the unemployment rate rose to 7.9%, as more people searched for work. Over the past 12 months, Quebec's employment has increased by 2.3% (+88,000).

More women employed in January

Employment among women aged 25 and over increased in January (+55,000), with gains for both the 25 to 54 and 55 and over age groups.

Over the past 12 months, however, employment growth for women was concentrated among those aged 55 and over. Their rate of employment (the proportion of women employed) rose by 1.4 percentage points to 29.4%. Over the same period, the rate of employment for women aged 25 to 54 declined 0.5 percentage points to 77.0%.

In January, employment was little changed for men aged 25 and over. Over the past 12 months, the rate of employment increased by 1.5 percentage points to 84.6% for men aged 25 to 54, while it increased by 1.0 percentage points to 39.5% for men aged 55 and over.

The number of 15- to 24-year-olds employed was little changed in January and their unemployment rate increased by 0.6 percentage points to 14.4%, as more youths searched for work. Compared to 12 months earlier, employment and the rate of employment for youth were virtually unchanged.

Note to readers

A standard revision has been applied to Labour Force Survey (LFS) estimates, as announced in *TheDaily* on January 28, 2011. Beginning with this release, historical comparisons of estimates produced by the LFS must be made with revised historical data.

All estimates have been adjusted to reflect the 2006 Census population data. Industry estimates have been reclassified from the 2002 to the 2007 North American Industry Classification System (NAICS). Occupation estimates have been reclassified from the 2001 to the 2006 National Occupational Classification: Statistics 2001 (NOC-S). Geography boundaries have been updated from the 2001 to the 2006 Standard Geographical Classification (SGC), which mainly affects boundaries of census metropolitan areas and census agglomerations. There was also an update of seasonal adjustment. For an overview of the effect of these changes on the estimates, see "*The 2011 revisions of the Labour Force Survey*", which is available as part of the *Improvements to the Labour Force Survey* series (71F0031X, free).

Revised historical data are available on CANSIM. To facilitate access to these revised estimates, LFS data on CANSIM will be free of charge until February 11.

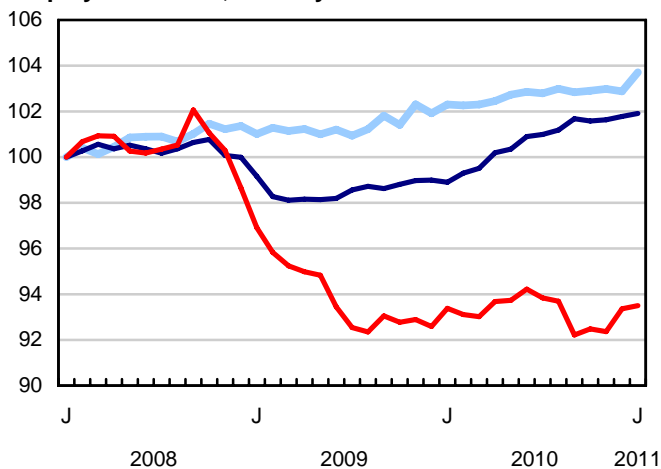
LFS estimates are based on a sample, and are therefore subject to sampling variability. Estimates for smaller geographic areas or industries will have more variability. For an explanation of sampling variability of estimates, and how to use standard errors to assess this variability, consult the "Data quality" section of the publication *Labour Force Information* (71-001-X, free).

Unless otherwise stated, this release presents seasonally adjusted data, which facilitates comparisons by removing the effects of seasonal variations.

The 2009 Labour Force Historical Review on DVD-ROM (71F0004X, \$209) is now available.

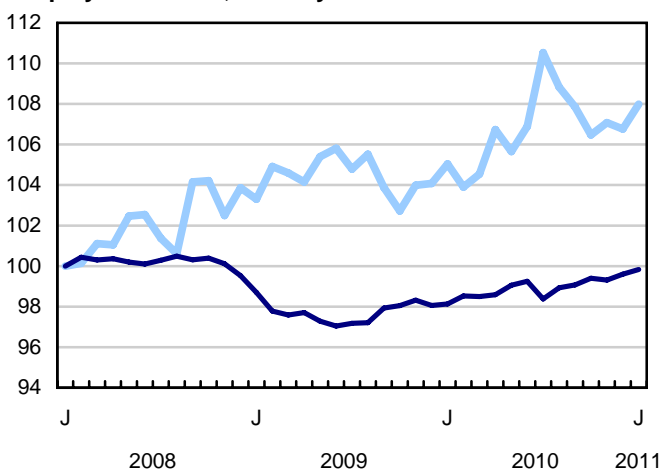
Chart 1
Employment and unemployment indicators, Canada, seasonally adjusted

Employment index, January 2008=100



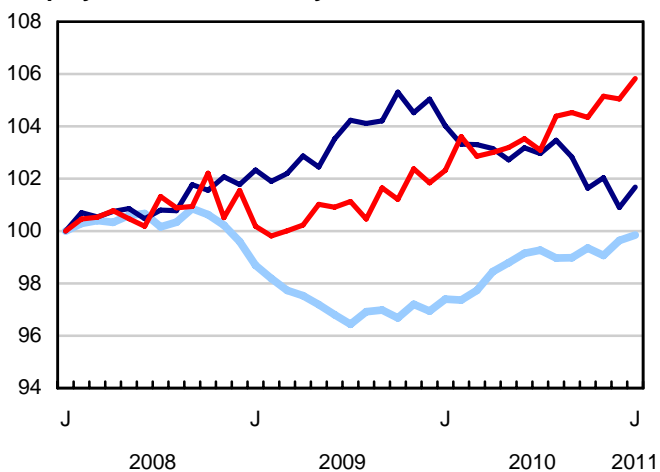
— Females - 25 years and over
 — Males - 25 years and over
 — Both sexes - 15 to 24 years

Employment index, January 2008=100



— Employment part-time
 — Employment full-time

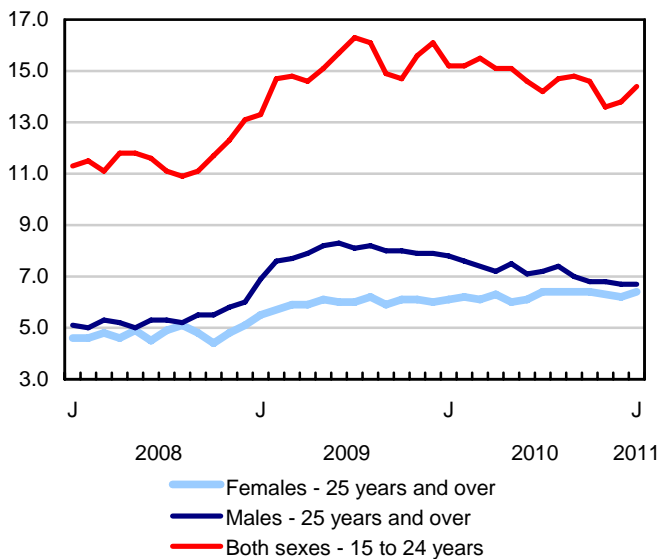
Employment index, January 2008=100



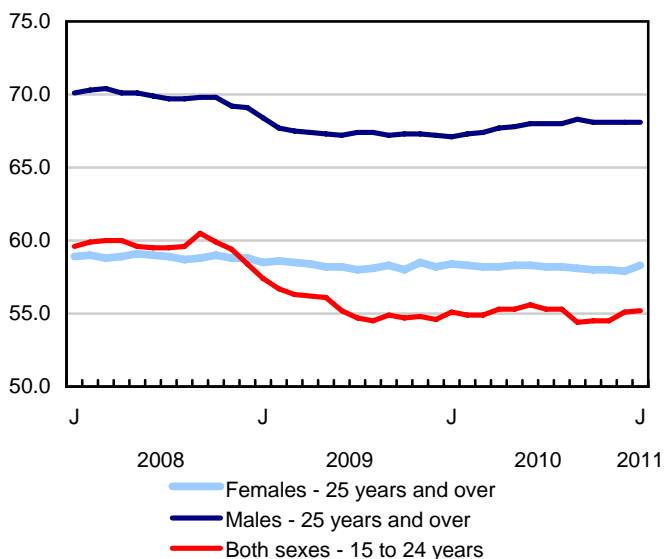
— Private sector employees
 — Self-employed
 — Public sector employees

Chart 2
Employment and unemployment indicators, Canada, seasonally adjusted

Unemployment rate (%)



Employment rate (%)



Participation rate (%)

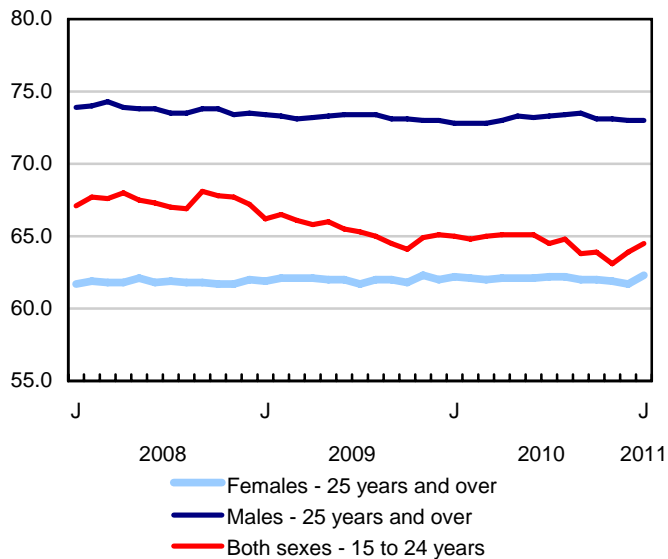


Chart 3
Index of employment by industry, Canada, seasonally adjusted, January 2008=100

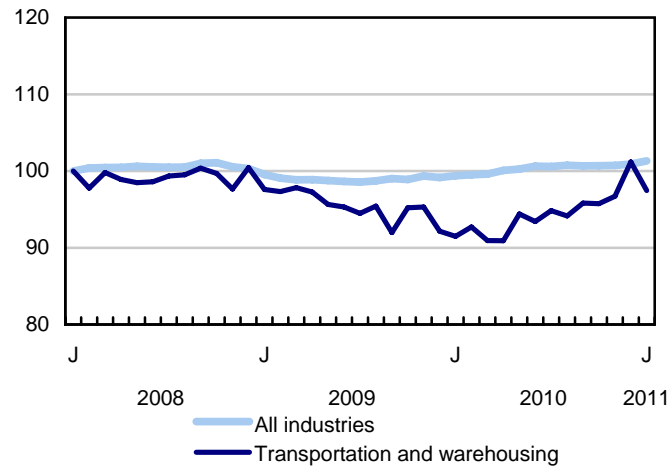
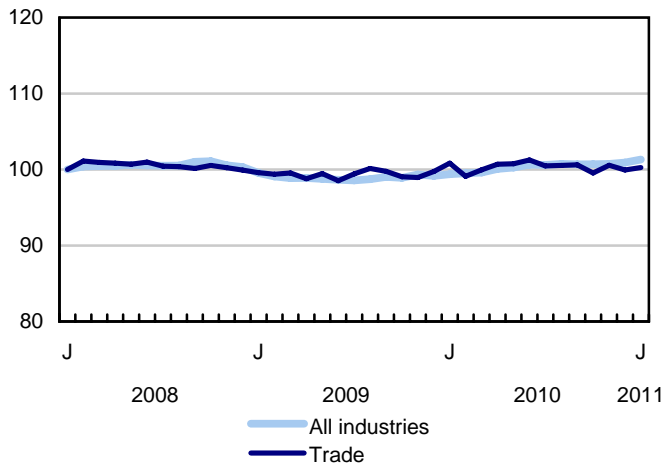
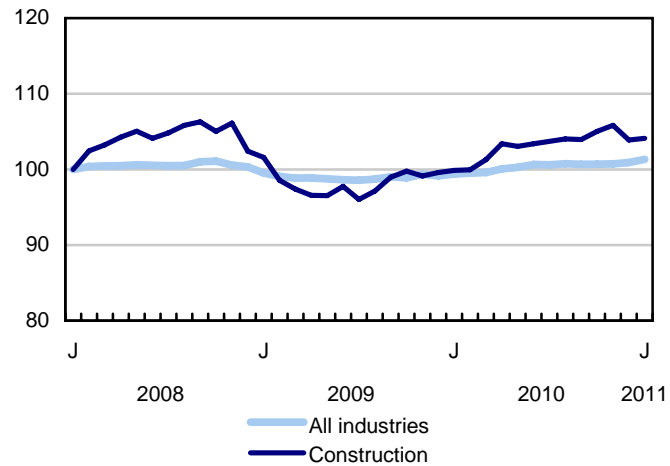
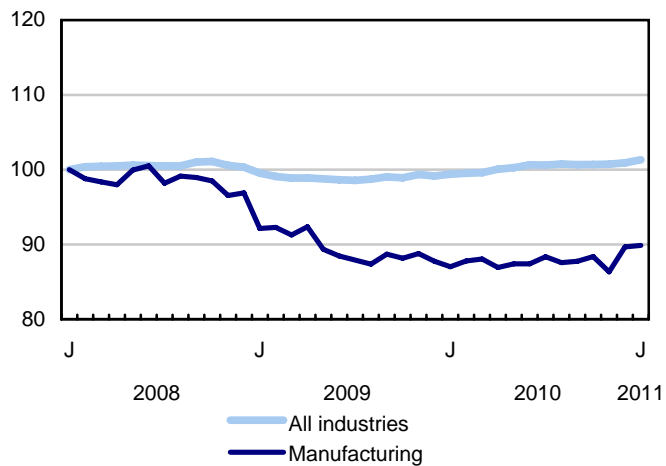
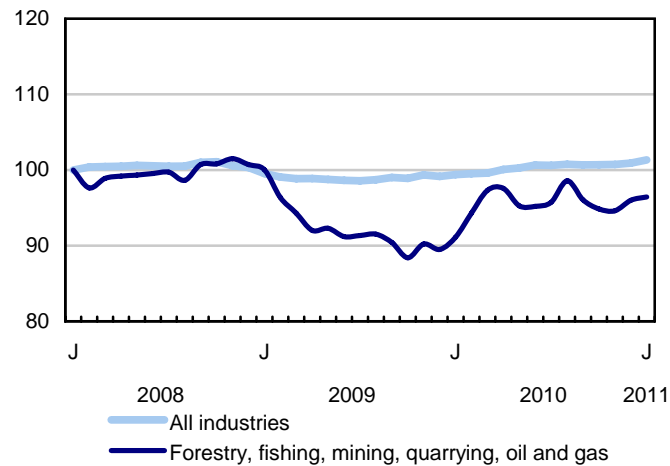
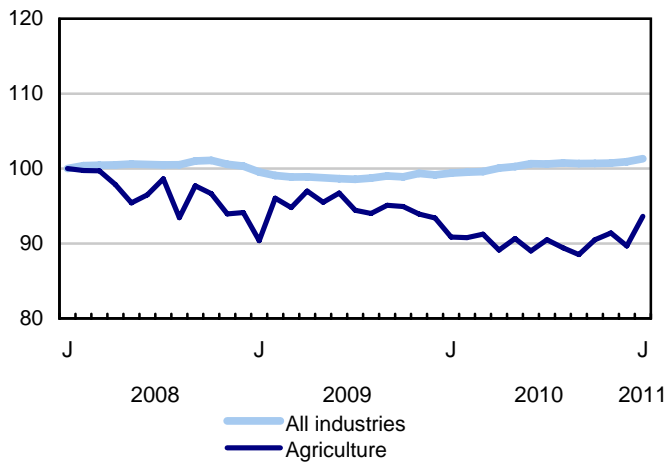


Chart 4
Index of employment by industry, Canada, seasonally adjusted, January 2008=100

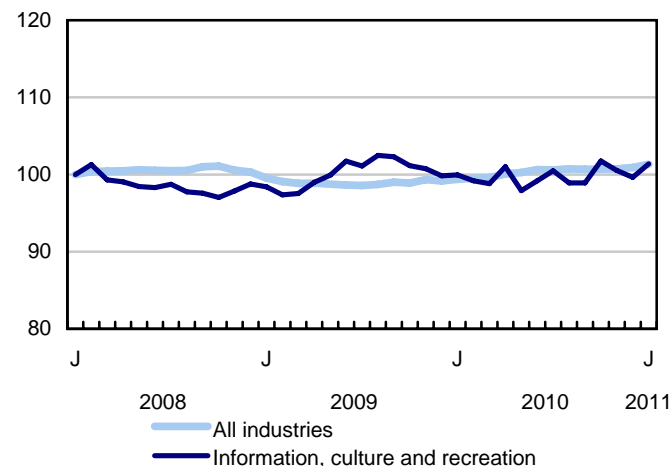
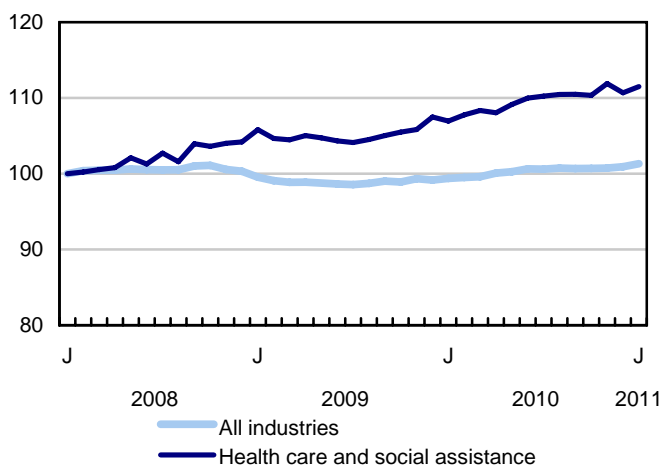
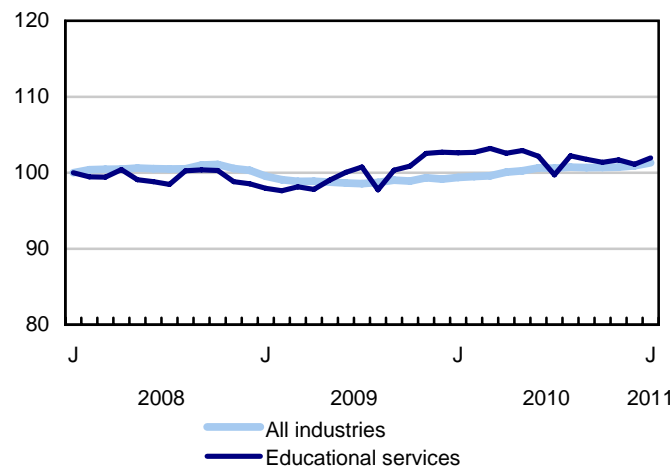
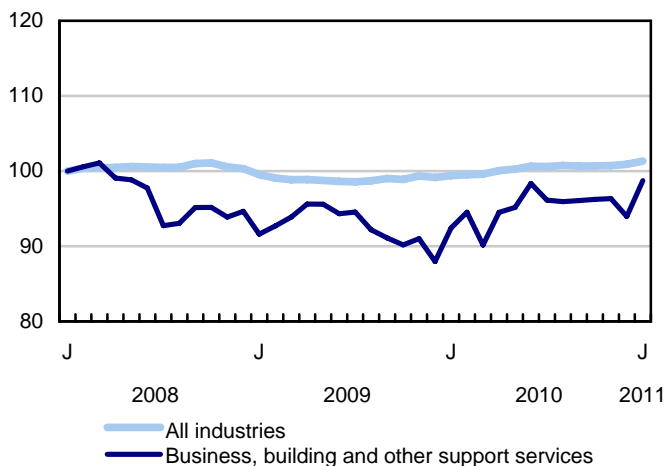
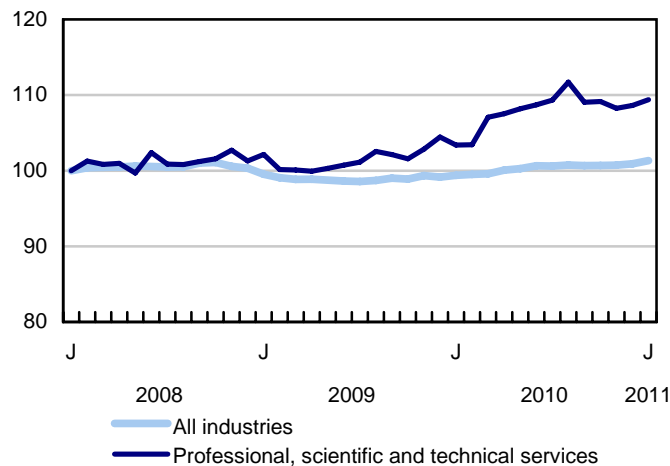
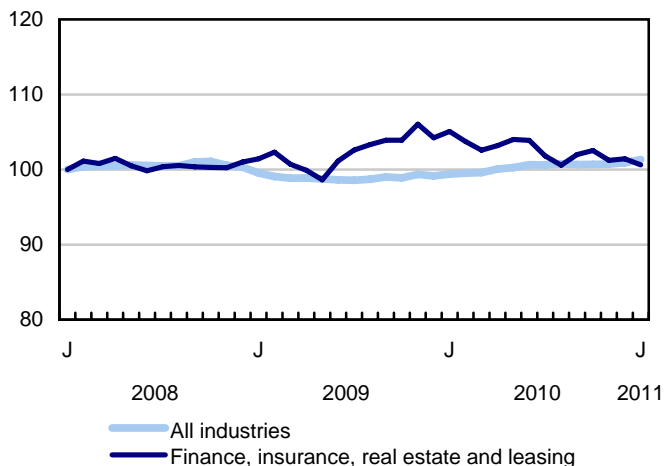


Chart 5
Index of employment by industry, Canada, seasonally adjusted, January 2008=100

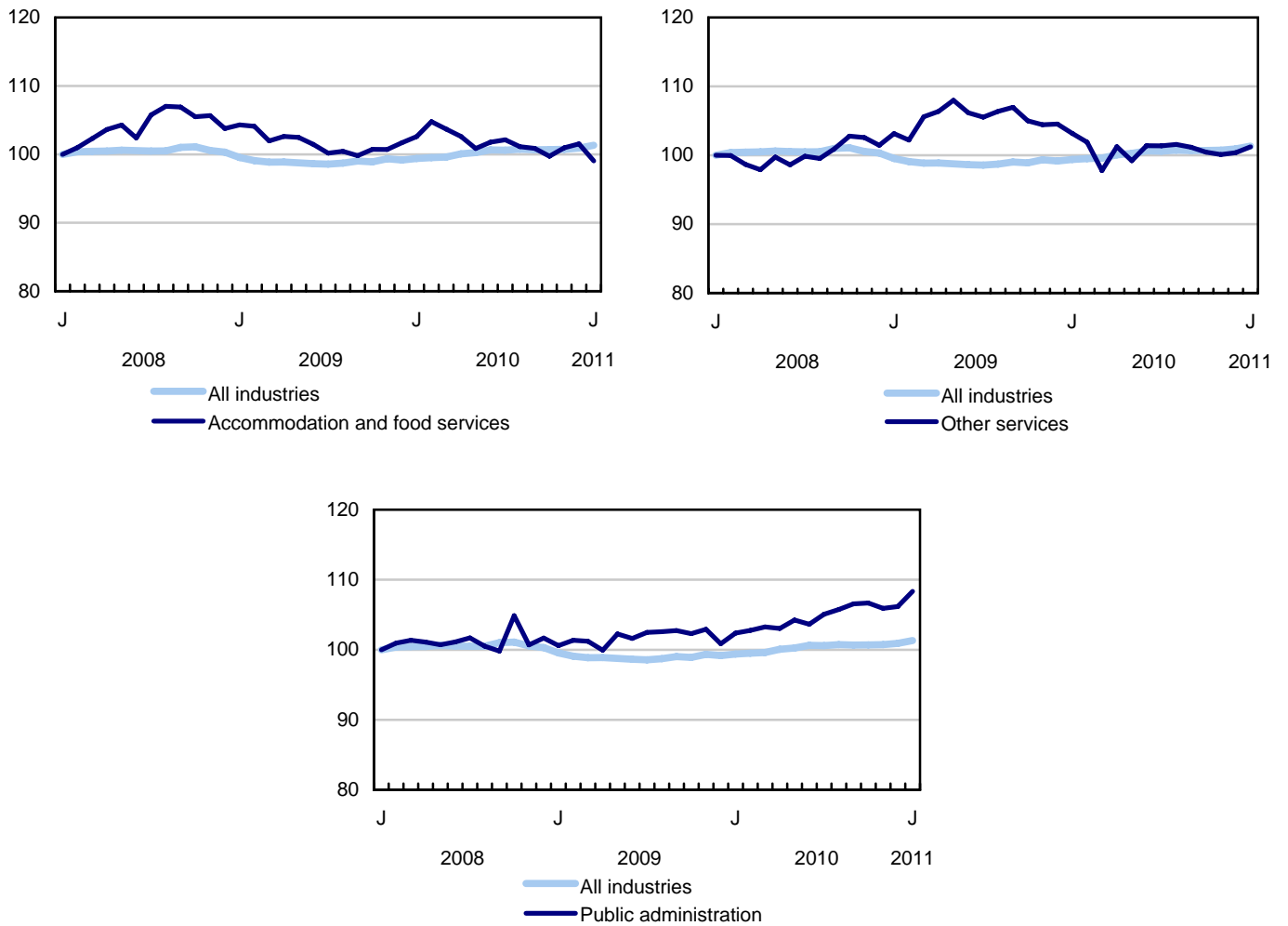


Chart 6
Index of employment by province, seasonally adjusted, January 2008=100

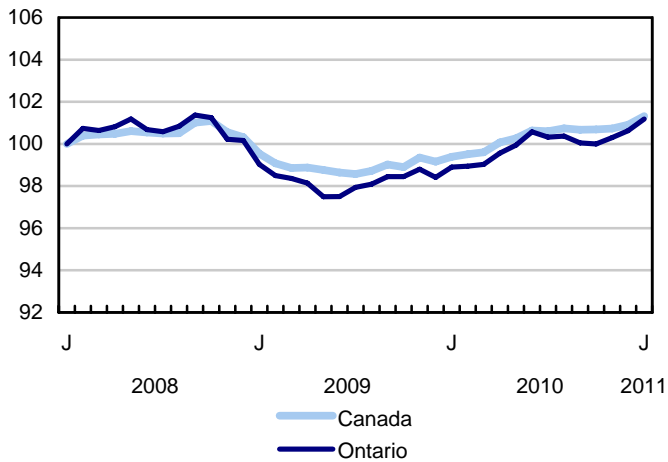
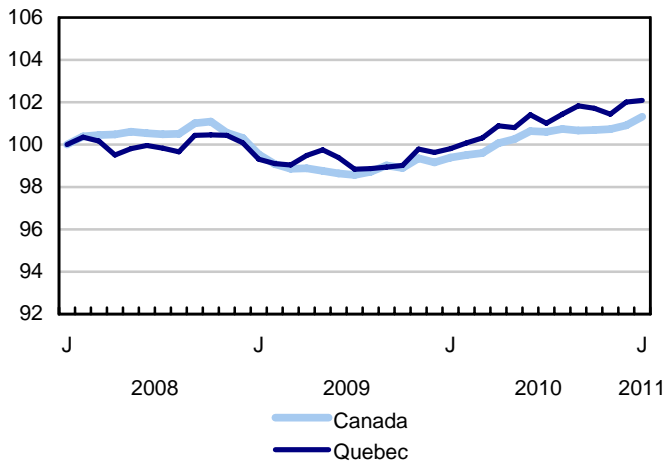
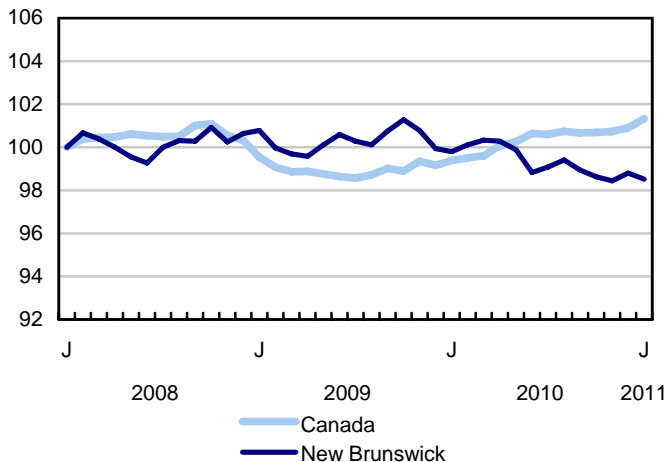
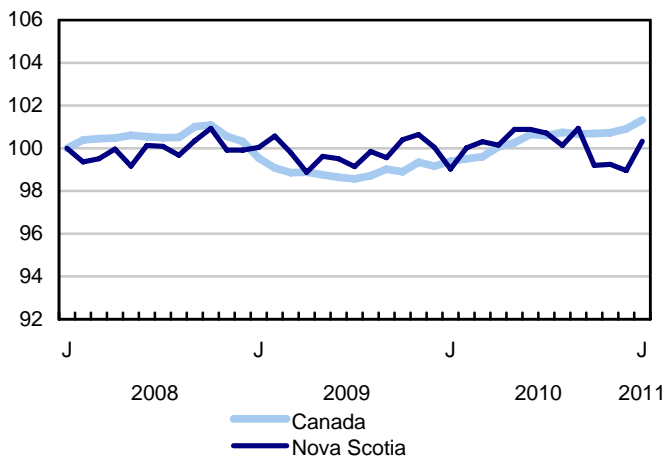
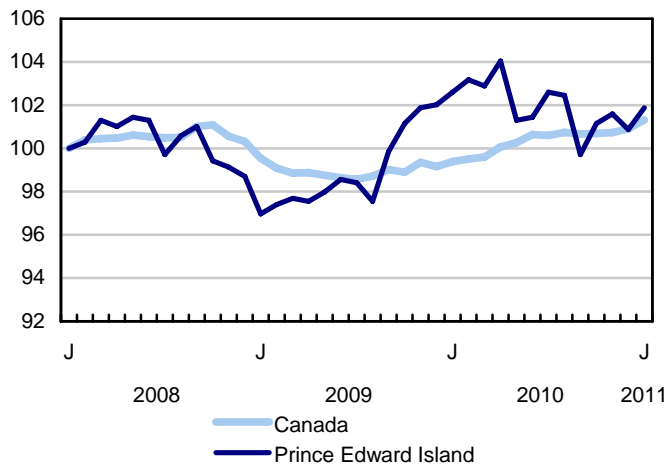
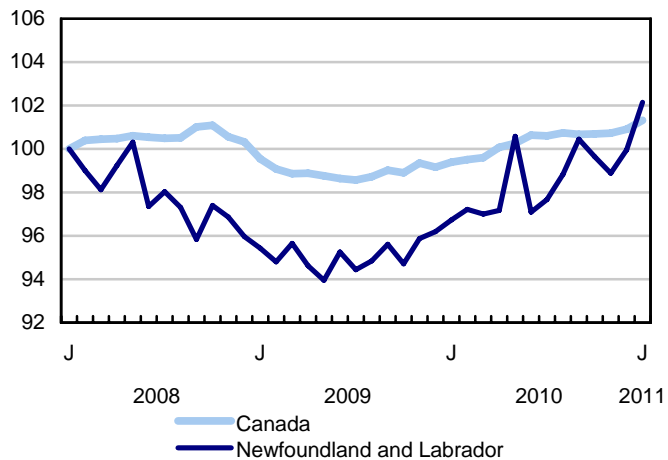
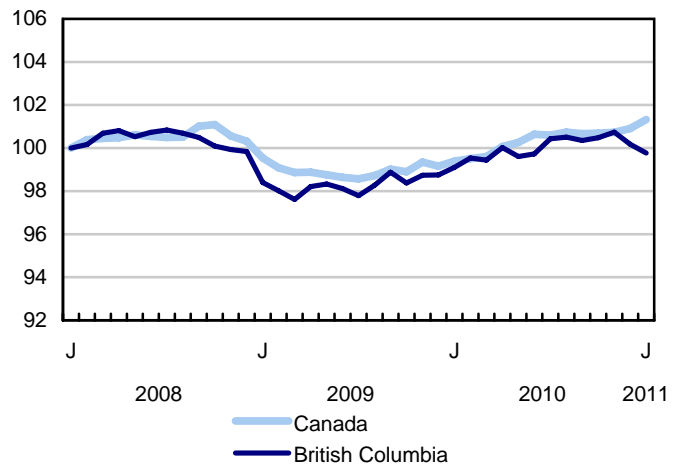
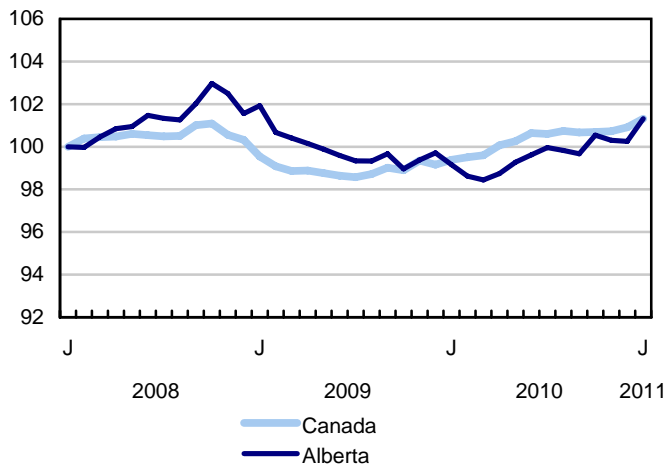
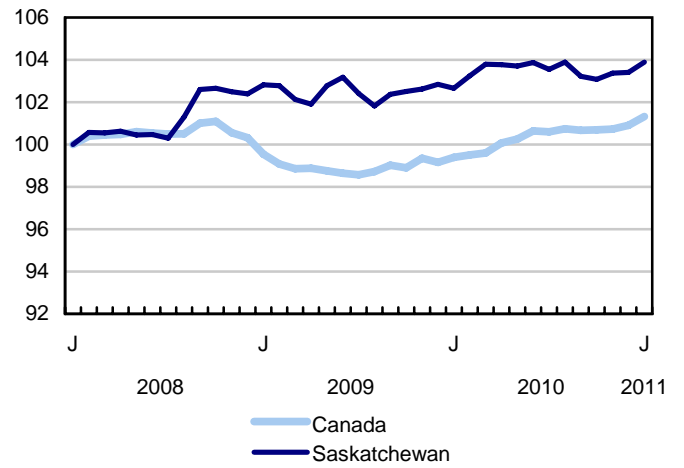
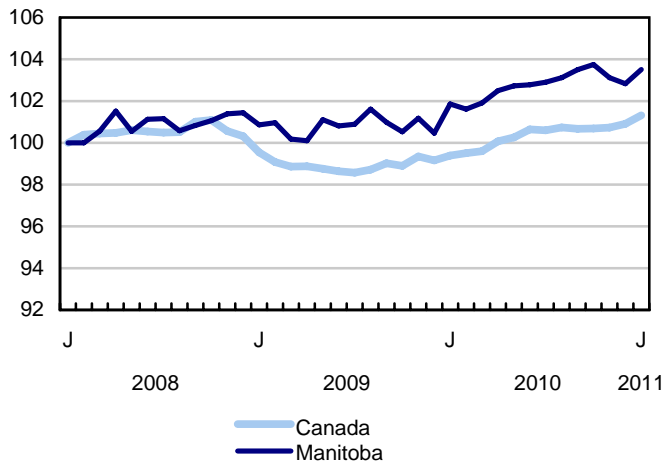


Chart 7
Index of employment by province, seasonally adjusted, January 2008=100



Related products

Selected publications from Statistics Canada

71-222-X	The Canadian Labour Market at a Glance
71-526-X	Methodology of the Canadian Labour Force Survey
71-543-G	Guide to the Labour Force Survey
71-544-X	Labour Force Survey Products and Services
71-587-X	Aboriginal Peoples Living Off-reserve in Western Canada: Estimates from the Labour Force Survey
71-588-X	The Aboriginal Labour Force Analysis Series
71-606-X	The Immigrant Labour Force Analysis Series
71F0004X	Labour Force Historical Review
71F0031X	Improvements to the Labour Force Survey (LFS)
71M0001X	Labour Force Survey Microdata File
75-001-X	Perspectives on Labour and Income

Selected CANSIM tables from Statistics Canada

282-0001	Labour force survey estimates (LFS), by sex and detailed age group, unadjusted for seasonality, monthly
282-0002	Labour force survey estimates (LFS), by sex and detailed age group, annual
282-0003	Labour force survey estimates (LFS), by educational attainment, sex and age group, unadjusted for seasonality, monthly
282-0004	Labour force survey estimates (LFS), by educational attainment, sex and age group, annual
282-0005	Labour force survey estimates (LFS), by full- and part-time students during school months, sex and age group, unadjusted for seasonality, monthly
282-0006	Labour force survey estimates (LFS), by students during summer months, sex and age group, unadjusted for seasonality, monthly
282-0007	Labour force survey estimates (LFS), by North American Industry Classification System (NAICS), sex and age group, unadjusted for seasonality, monthly

282-0008	Labour force survey estimates (LFS), by North American Industry Classification System (NAICS), sex and age group, annual
282-0009	Labour force survey estimates (LFS), by National Occupational Classification for Statistics (NOC-S) and sex, unadjusted for seasonality, monthly
282-0010	Labour force survey estimates (LFS), by National Occupational Classification for Statistics (NOC-S) and sex, annual
282-0011	Labour force survey estimates (LFS), employment by class of worker, North American Industry Classification System (NAICS) and sex, unadjusted for seasonality, monthly
282-0012	Labour force survey estimates (LFS), employment by class of worker, North American Industry Classification System (NAICS) and sex, annual
282-0013	Labour force survey estimates (LFS), part-time employment by reason for part-time work, sex and age group, unadjusted for seasonality, monthly
282-0014	Labour force survey estimates (LFS), part-time employment by reason for part-time work, sex and age group, annual
282-0015	Labour force survey estimates (LFS), by usual hours worked, main or all jobs, sex and age group, unadjusted for seasonality, monthly
282-0016	Labour force survey estimates (LFS), by usual hours worked, main or all jobs, sex and age group, annual
282-0017	Labour force survey estimates (LFS), by actual hours worked, main or all jobs, sex and age group, unadjusted for seasonality, monthly
282-0018	Labour force survey estimates (LFS), by actual hours worked, main or all jobs, sex and age group, annual
282-0019	Labour force survey estimates (LFS), by usual hours worked, class of worker, North American Industry Classification System (NAICS) and sex, unadjusted for seasonality, monthly
282-0020	Labour force survey estimates (LFS), by usual hours worked, class of worker, North American Industry Classification System (NAICS) and sex, annual
282-0021	Labour force survey estimates (LFS), by actual hours worked, class of worker, North American Industry Classification System (NAICS) and sex, unadjusted for seasonality, monthly
282-0022	Labour force survey estimates (LFS), by actual hours worked, class of worker, North American Industry Classification System (NAICS) and sex, annual
282-0023	Labour force survey estimates (LFS), by usual hours worked, class of worker, National Occupational Classification for Statistics (NOC-S) and sex, unadjusted for seasonality, monthly
282-0024	Labour force survey estimates (LFS), by usual hours worked, class of worker, National Occupational Classification for Statistics (NOC-S) and sex, annual
282-0025	Labour force survey estimates (LFS), by actual hours worked, class of worker, National Occupational Classification for Statistics (NOC-S) and sex, unadjusted for seasonality, monthly
282-0026	Labour force survey estimates (LFS), by actual hours worked, class of worker, National Occupational Classification for Statistics (NOC-S) and sex, annual

282-0027	Labour force survey estimates (LFS), by total and average usual and actual hours worked, main or all jobs, type of work, sex and age group, unadjusted for seasonality, monthly
282-0028	Labour force survey estimates (LFS), by total and average usual and actual hours worked, main or all jobs, type of work, sex and age group, annual
282-0029	Labour force survey estimates (LFS), average days lost for personal reasons per full-time employee by North American Industry Classification System (NAICS), sex and age group, annual
282-0030	Labour force survey estimates (LFS), average days lost for personal reasons per full-time employee by National Occupational Classification for Statistics (NOC-S), sex and age group, annual
282-0031	Labour force survey estimates (LFS), multiple jobholders by North American Industry Classification System (NAICS), sex and age group, annual
282-0032	Labour force survey estimates (LFS), multiple jobholders by North American Industry Classification System (NAICS), sex and age group, unadjusted for seasonality, monthly
282-0033	Labour force survey estimates (LFS), multiple jobholders by National Occupational Classification for Statistics (NOC-S), sex and age group, unadjusted for seasonality, monthly
282-0034	Labour force survey estimates (LFS), multiple jobholders by National Occupational Classification for Statistics (NOC-S), sex and age group, annual
282-0035	Labour force survey estimates (LFS), multiple jobholders by usual hours worked at main and all jobs, unadjusted for seasonality, monthly
282-0036	Labour force survey estimates (LFS), multiple jobholders by usual hours worked at main and all jobs, annual
282-0037	Labour force survey estimates (LFS), job tenure by type of work, sex and age group, unadjusted for seasonality, monthly
282-0038	Labour force survey estimates (LFS), job tenure by type of work, sex and age group, annual
282-0039	Labour force survey estimates (LFS), job tenure by National Occupational Classification for Statistics (NOC-S) and sex, unadjusted for seasonality, monthly
282-0040	Labour force survey estimates (LFS), job tenure by National Occupational Classification for Statistics (NOC-S) and sex, annual
282-0041	Labour force survey estimates (LFS), job tenure by North American Industry Classification System (NAICS) and sex, unadjusted for seasonality, monthly
282-0042	Labour force survey estimates (LFS), job tenure by North American Industry Classification System (NAICS) and sex, annual
282-0047	Labour force survey estimates (LFS), duration of unemployment by sex and age group, unadjusted for seasonality, monthly
282-0048	Labour force survey estimates (LFS), duration of unemployment by sex and age group, annual
282-0049	Labour force survey estimates (LFS), unemployment by type of work sought and search method, sex and age group, unadjusted for seasonality, monthly

282-0050	Labour force survey estimates (LFS), unemployment by type of work sought and search method, sex and age group, annual
282-0051	Labour force survey estimates (LFS), retirement age by class of worker and sex, annual
282-0052	Labour force survey estimates (LFS), by census metropolitan area based on 2001 census boundaries, sex and age group, 3-month moving average, unadjusted for seasonality, monthly *Terminated*
282-0053	Labour force survey estimates (LFS), by census metropolitan area based on 2001 census boundaries, sex and age group, annual *Terminated*
282-0054	Labour force survey estimates (LFS), by provinces and economic regions, 3-month moving average, unadjusted for seasonality, monthly
282-0055	Labour force survey estimates (LFS), by provinces, territories and economic regions, annual
282-0056	Labour force survey estimates (LFS), employment by census metropolitan area based on 2001 census boundaries and North American Industry Classification System (NAICS), 3-month moving average, unadjusted for seasonality, monthly *Terminated*
282-0057	Labour force survey estimates (LFS), employment by census metropolitan area based on 2001 census boundaries and North American Industry Classification System (NAICS), annual *Terminated*
282-0058	Labour force survey estimates (LFS), employment by census metropolitan area based on 2001 census boundaries and National Occupational Classification for Statistics (NOC-S), 3-month moving average, unadjusted for seasonality, monthly *Terminated*
282-0059	Labour force survey estimates (LFS), employment by census metropolitan area based on 2001 census boundaries and National Occupational Classification for Statistics (NOC-S), annual *Terminated*
282-0060	Labour force survey estimates (LFS), employment by economic region and North American Industry Classification System (NAICS), 3-month moving average, unadjusted for seasonality, monthly
282-0061	Labour force survey estimates (LFS), employment by economic region and North American Industry Classification System (NAICS), annual
282-0062	Labour force survey estimates (LFS), employment by economic region and National Occupational Classification for Statistics (NOC-S), 3-month moving average, unadjusted for seasonality, monthly
282-0063	Labour force survey estimates (LFS), employment by economic region and National Occupational Classification for Statistics (NOC-S), annual
282-0069	Labour force survey estimates (LFS), wages of employees by type of work, National Occupational Classification for Statistics (NOC-S), sex and age group, unadjusted for seasonality, monthly (current dollars)
282-0070	Labour force survey estimates (LFS), wages of employees by type of work, National Occupational Classification for Statistics (NOC-S), sex and age group, annual (current dollars)

282-0071	Labour force survey estimates (LFS), wages of employees by type of work, North American Industry Classification System (NAICS), sex and age group, unadjusted for seasonality, monthly (current dollars)
282-0072	Labour force survey estimates (LFS), wages of employees by type of work, North American Industry Classification System (NAICS), sex and age group, annual (current dollars)
282-0073	Labour force survey estimates (LFS), wages of employees by job permanence, union coverage, sex and age group, unadjusted for seasonality, monthly (current dollars)
282-0074	Labour force survey estimates (LFS), wages of employees by job permanence, union coverage, sex and age group, annual (current dollars)
282-0075	Labour force survey estimates (LFS), employees by establishment size, North American Industry Classification System (NAICS), sex and age group, unadjusted for seasonality, monthly
282-0076	Labour force survey estimates (LFS), employees by establishment size, North American Industry Classification System (NAICS), sex and age group, annual
282-0077	Labour force survey estimates (LFS), employees by union coverage, North American Industry Classification System (NAICS), sex and age group, unadjusted for seasonality, monthly
282-0078	Labour force survey estimates (LFS), employees by union coverage, North American Industry Classification System (NAICS), sex and age group, annual
282-0079	Labour force survey estimates (LFS), employees by job permanency, North American Industry Classification System (NAICS), sex and age group, unadjusted for seasonality, monthly
282-0080	Labour force survey estimates (LFS), employees by job permanency, North American Industry Classification System (NAICS), sex and age group, annual
282-0081	Labour force survey estimates (LFS), employees working overtime (weekly) by National Occupational Classification for Statistics (NOC-S), sex and age group, unadjusted for seasonality, monthly
282-0082	Labour force survey estimates (LFS), employees working overtime (weekly) by National Occupational Classification for Statistics (NOC-S), sex and age group, annual
282-0083	Labour force survey estimates (LFS), employees working overtime (weekly) by North American Industry Classification System (NAICS), sex and age group, unadjusted for seasonality, monthly
282-0084	Labour force survey estimates (LFS), employees working overtime (weekly) by North American Industry Classification System (NAICS), sex and age group, annual
282-0085	Labour force survey estimates (LFS), supplementary unemployment rates by sex and age group, unadjusted for seasonality, monthly
282-0086	Labour force survey estimates (LFS), supplementary unemployment rates by sex and age group, annual
282-0087	Labour force survey estimates (LFS), by sex and age group, seasonally adjusted and unadjusted, monthly
282-0088	Labour force survey estimates (LFS), employment by North American Industry Classification System (NAICS), seasonally adjusted and unadjusted, monthly

282-0089	Labour force survey estimates (LFS), employment by class of worker and sex, seasonally adjusted and unadjusted, monthly
282-0090	Labour force survey estimates (LFS), by census metropolitan area based on 2001 census boundaries, 3-month moving average, seasonally adjusted and unadjusted, monthly *Terminated*
282-0091	Labour force survey estimates (LFS), by Montréal, Toronto and Vancouver census metropolitan areas based on 2001 census boundaries, seasonally adjusted and unadjusted, monthly *Terminated*
282-0092	Labour force survey estimates (LFS), actual hours worked by North American Industry Classification System (NAICS), seasonally adjusted, monthly
282-0093	Labour force survey estimates (LFS), employment by National Occupational Classification for Statistics (NOC-S), seasonally adjusted, monthly
282-0094	Labour force survey estimates (LFS), by North American Industry Classification System (NAICS), Canada, seasonally adjusted, monthly
282-0095	Labour force survey estimates (LFS), by full- and part-time students during school months, sex and age group, annual
282-0100	Labour force survey estimates (LFS), by territories, sex and age group, 3-month moving average, seasonally adjusted and unadjusted, monthly
282-0101	Labour force survey estimates (LFS), by immigrant status, age group, Canada, regions, provinces and Montreal, Toronto, Vancouver census metropolitan areas, 3-month moving average, unadjusted for seasonality, monthly
282-0102	Labour force survey estimates (LFS), by immigrant status, age group, Canada, regions, provinces and Montreal, Toronto, Vancouver census metropolitan areas, annual
282-0103	Labour force survey estimates (LFS), by immigrant status, sex and detailed age group, Canada, 3-month moving average, unadjusted for seasonality, monthly
282-0104	Labour force survey estimates (LFS), by immigrant status, sex and detailed age group, Canada, annual
282-0105	Labour force survey estimates (LFS), by immigrant status, educational attainment, sex and age group, Canada, 3-month moving average, unadjusted for seasonality, monthly
282-0106	Labour force survey estimates (LFS), by immigrant status, educational attainment, sex and age group, Canada, annual
282-0107	Labour force survey estimates (LFS), by immigrant status, country of birth, sex and age group, Canada, regions and provinces, 3-month moving average, unadjusted for seasonality, monthly
282-0108	Labour force survey estimates (LFS), by immigrant status, country of birth, sex and age group, Canada, regions and provinces, annual
282-0109	Labour force survey estimates (LFS), by census metropolitan area based on 2006 census boundaries, sex and age group, 3-month moving average, unadjusted for seasonality, monthly

282-0110	Labour force survey estimates (LFS), by census metropolitan area based on 2006 census boundaries, sex and age group, annual
282-0111	Labour force survey estimates (LFS), employment by census metropolitan area based on 2006 census boundaries and North American Industry Classification System (NAICS), 3-month moving average, unadjusted for seasonality, monthly
282-0112	Labour force survey estimates (LFS), employment by census metropolitan area based on 2006 census boundaries and North American Industry Classification System (NAICS), annual
282-0113	Labour force survey estimates (LFS), employment by census metropolitan area based on 2006 census boundaries and National Occupational Classification for Statistics (NOC-S), 3-month moving average, unadjusted for seasonality, monthly
282-0114	Labour force survey estimates (LFS), employment by census metropolitan area based on 2006 census boundaries and National Occupational Classification for Statistics (NOC-S), annual
282-0115	Labour force survey estimates (LFS), by selected census agglomerations based on 2006 census boundaries, annual
282-0116	Labour force survey estimates (LFS), by census metropolitan area based on 2006 census boundaries, 3-month moving average, seasonally adjusted and unadjusted, monthly
282-0117	Labour force survey estimates (LFS), by Montréal, Toronto and Vancouver census metropolitan areas based on 2006 census boundaries, seasonally adjusted and unadjusted, monthly
282-0118	Labour force survey estimates (LFS), by urban and rural areas based on 2006 census boundaries, sex and age group, unadjusted for seasonality, monthly
282-0119	Labour force survey estimates (LFS), by urban and rural areas based on 2006 census boundaries, sex and age group, annual
282-0120	Labour force survey estimates (LFS), employment by urban and rural areas based on 2006 census boundaries, class of worker and North American Industry Classification System (NAICS), unadjusted for seasonality, monthly
282-0121	Labour force survey estimates (LFS), employment by urban and rural areas based on 2006 census boundaries, class of worker and North American Industry Classification System (NAICS), annual

Selected surveys from Statistics Canada

3701 Labour Force Survey

Selected summary tables from Statistics Canada

- *Labour force characteristics*
- *Employment by industry*
- *Days lost per worker due to illness or disability, by sex, by province*
- *Economic indicators, by province and territory (monthly and quarterly)*
- *Labour force and participation rates by sex and age group*
- *Labour force, employed and unemployed, numbers and rates, by province*
- *Employment by industry and sex*
- *Full-time and part-time employment by sex and age group*
- *Labour force characteristics by age and sex*
- *Distribution of employed people, by industry, by province*
- *Labour force characteristics, population 15 years and older, by census metropolitan area*
- *Labour force characteristics, population 15 years and older, by economic region, by province*
- *Days lost per worker by cause, by provinces*
- *Days lost per worker by industry and sex*
- *People employed, by educational attainment*
- *Reasons for part-time work by sex and age group*
- *Self-employment, historical summary*
- *Employment by age, sex, type of work, class of worker and province (monthly)*
- *Employment by major industry groups, seasonally adjusted, by province (monthly)*
- *Actual hours worked per week by industry, seasonally adjusted (monthly)*
- *Average hourly wages of employees by selected characteristics and profession, unadjusted data, by province (monthly)*
- *Labour force characteristics, seasonally adjusted, by province (monthly)*

- *Labour force characteristics, unadjusted, by province (monthly)*
- *Labour force characteristics, seasonally adjusted, by census metropolitan area (3 month moving average)*
- *Labour force characteristics, unadjusted, by census metropolitan area (3 month moving average)*
- *Labour force characteristics, unadjusted, by economic region (3 month moving average)*
- *Labour force characteristics by immigrant status of population aged 25 to 54, by province*
- *Labour force characteristics by immigrant status of population aged 25 to 54, by educational attainment*
- *Labour force characteristics by immigrant status, by detailed age group*
- *Labour force characteristics by immigrant status of population aged 25 to 54, by country of birth*

Statistical tables

Table 1
Labour force characteristics by age and sex, Canada, seasonally adjusted

	December 2010	January 2011	S.E. ¹	Change from			Percent change from		
				last month	last December	twelve months ago	last month	last December	twelve months ago
in thousands (except rates)									
15 years and over, both sexes									
Population	27,814.8	27,840.8	...	26.0	26.0	344.5	0.1	0.1	1.3
Labour force	18,557.8	18,664.2	28.7	106.4	106.4	248.9	0.6	0.6	1.4
Employment	17,145.3	17,214.5	28.3	69.2	69.2	327.3	0.4	0.4	1.9
Employment full-time	13,835.8	13,866.9	37.4	31.1	31.1	236.0	0.2	0.2	1.7
Employment part-time	3,309.6	3,347.6	34.5	38.0	38.0	91.3	1.1	1.1	2.8
Unemployment	1,412.5	1,449.6	25.4	37.1	37.1	-78.6	2.6	2.6	-5.1
Participation rate	66.7	67.0	0.1	0.3	0.3	0.0
Unemployment rate	7.6	7.8	0.1	0.2	0.2	-0.5
Employment rate	61.6	61.8	0.1	0.2	0.2	0.4
Part-time rate	19.3	19.4	0.2	0.1	0.1	0.2
15 to 24 years, both sexes									
Population	4,460.0	4,459.3	...	-0.7	-0.7	-0.9	0.0	0.0	0.0
Labour force	2,851.2	2,875.2	16.7	24.0	24.0	-21.8	0.8	0.8	-0.8
Employment	2,456.5	2,460.3	15.5	3.8	3.8	3.3	0.2	0.2	0.1
Employment full-time	1,285.8	1,286.9	18.0	1.1	1.1	-4.6	0.1	0.1	-0.4
Employment part-time	1,170.7	1,173.4	18.7	2.7	2.7	7.9	0.2	0.2	0.7
Unemployment	394.7	414.9	14.6	20.2	20.2	-25.2	5.1	5.1	-5.7
Participation rate	63.9	64.5	0.4	0.6	0.6	-0.5
Unemployment rate	13.8	14.4	0.5	0.6	0.6	-0.8
Employment rate	55.1	55.2	0.4	0.1	0.1	0.1
Part-time rate	47.7	47.7	0.7	0.0	0.0	0.3
25 years and over, men									
Population	11,424.6	11,437.9	...	13.3	13.3	170.9	0.1	0.1	1.5
Labour force	8,343.2	8,352.3	15.0	9.1	9.1	149.9	0.1	0.1	1.8
Employment	7,781.2	7,791.2	16.1	10.0	10.0	229.6	0.1	0.1	3.0
Employment full-time	7,174.2	7,171.0	21.1	-3.2	-3.2	192.7	0.0	0.0	2.8
Employment part-time	607.0	620.2	17.1	13.2	13.2	36.8	2.2	2.2	6.3
Unemployment	562.0	561.0	14.9	-1.0	-1.0	-79.8	-0.2	-0.2	-12.5
Participation rate	73.0	73.0	0.1	0.0	0.0	0.2
Unemployment rate	6.7	6.7	0.2	0.0	0.0	-1.1
Employment rate	68.1	68.1	0.1	0.0	0.0	1.0
Part-time rate	7.8	8.0	0.2	0.2	0.2	0.2
25 years and over, women									
Population	11,930.3	11,943.6	...	13.3	13.3	174.5	0.1	0.1	1.5
Labour force	7,363.4	7,436.7	16.4	73.3	73.3	120.8	1.0	1.0	1.7
Employment	6,907.6	6,963.0	16.1	55.4	55.4	94.4	0.8	0.8	1.4
Employment full-time	5,375.7	5,408.9	24.5	33.2	33.2	47.8	0.6	0.6	0.9
Employment part-time	1,531.9	1,554.1	22.9	22.2	22.2	46.6	1.4	1.4	3.1
Unemployment	455.8	473.7	13.2	17.9	17.9	26.4	3.9	3.9	5.9
Participation rate	61.7	62.3	0.1	0.6	0.6	0.1
Unemployment rate	6.2	6.4	0.2	0.2	0.2	0.3
Employment rate	57.9	58.3	0.1	0.4	0.4	-0.1
Part-time rate	22.2	22.3	0.3	0.1	0.1	0.4
25 to 54 years, both sexes									
Population	14,510.7	14,513.2	...	2.5	2.5	63.2	0.0	0.0	0.4
Labour force	12,488.5	12,546.4	21.8	57.9	57.9	55.6	0.5	0.5	0.4
Employment	11,678.4	11,724.1	23.1	45.7	45.7	121.3	0.4	0.4	1.0
Unemployment	810.1	822.3	18.7	12.2	12.2	-65.6	1.5	1.5	-7.4
Participation rate	86.1	86.4	0.1	0.3	0.3	0.0
Unemployment rate	6.5	6.6	0.1	0.1	0.1	-0.5
Employment rate	80.5	80.8	0.2	0.3	0.3	0.5

See notes at the end of the table.

Table 1 – continued

Labour force characteristics by age and sex, Canada, seasonally adjusted

	December 2010	January 2011	S.E. ¹	Change from			Percent change from		
				last month	last December	twelve months ago	last month	last December	twelve months ago
in thousands (except rates)									
25 to 54 years, men									
Population	7,257.6	7,259.0	...	1.4	1.4	31.6	0.0	0.0	0.4
Labour force	6,563.8	6,576.7	13.9	12.9	12.9	56.0	0.2	0.2	0.9
Employment	6,130.4	6,139.4	15.4	9.0	9.0	132.7	0.1	0.1	2.2
Unemployment	433.4	437.3	13.6	3.9	3.9	-76.6	0.9	0.9	-14.9
Participation rate	90.4	90.6	0.2	0.2	0.2	0.4
Unemployment rate	6.6	6.6	0.2	0.0	0.0	-1.3
Employment rate	84.5	84.6	0.2	0.1	0.1	1.5
25 to 54 years, women									
Population	7,253.1	7,254.2	...	1.1	1.1	31.6	0.0	0.0	0.4
Labour force	5,924.7	5,969.7	16.0	45.0	45.0	-0.4	0.8	0.8	0.0
Employment	5,548.0	5,584.7	16.2	36.7	36.7	-11.4	0.7	0.7	-0.2
Unemployment	376.7	385.0	12.4	8.3	8.3	11.0	2.2	2.2	2.9
Participation rate	81.7	82.3	0.2	0.6	0.6	-0.4
Unemployment rate	6.4	6.4	0.2	0.0	0.0	0.1
Employment rate	76.5	77.0	0.2	0.5	0.5	-0.5
55 years and over, both sexes									
Population	8,844.2	8,868.3	...	24.1	24.1	282.2	0.3	0.3	3.3
Labour force	3,218.1	3,242.6	16.7	24.5	24.5	215.1	0.8	0.8	7.1
Employment	3,010.4	3,030.1	16.8	19.7	19.7	202.8	0.7	0.7	7.2
Unemployment	207.7	212.4	9.3	4.7	4.7	12.2	2.3	2.3	6.1
Participation rate	36.4	36.6	0.2	0.2	0.2	1.3
Unemployment rate	6.5	6.6	0.3	0.1	0.1	0.0
Employment rate	34.0	34.2	0.2	0.2	0.2	1.3
55 years and over, men									
Population	4,167.0	4,178.9	...	11.9	11.9	139.2	0.3	0.3	3.4
Labour force	1,779.4	1,775.6	11.2	-3.8	-3.8	93.8	-0.2	-0.2	5.6
Employment	1,650.8	1,651.8	11.3	1.0	1.0	96.9	0.1	0.1	6.2
Unemployment	128.6	123.7	7.1	-4.9	-4.9	-3.2	-3.8	-3.8	-2.5
Participation rate	42.7	42.5	0.3	-0.2	-0.2	0.9
Unemployment rate	7.2	7.0	0.4	-0.2	-0.2	-0.5
Employment rate	39.6	39.5	0.3	-0.1	-0.1	1.0
55 years and over, women									
Population	4,677.2	4,689.4	...	12.2	12.2	143.0	0.3	0.3	3.1
Labour force	1,438.7	1,467.0	11.3	28.3	28.3	121.2	2.0	2.0	9.0
Employment	1,359.6	1,378.3	11.4	18.7	18.7	105.8	1.4	1.4	8.3
Unemployment	79.1	88.7	5.7	9.6	9.6	15.4	12.1	12.1	21.0
Participation rate	30.8	31.3	0.2	0.5	0.5	1.7
Unemployment rate	5.5	6.0	0.4	0.5	0.5	0.6
Employment rate	29.1	29.4	0.2	0.3	0.3	1.4

1. Average standard error of change in two consecutive months (see "Sampling Errors" in Data Quality for further explanations).

Note(s): Related CANSIM table 282-0087.

Table 2
Employment by class of worker and industry, Canada, seasonally adjusted

	December 2010	January 2011	S.E. ¹	Change from			Percent change from		
				last month	last December	twelve months ago	last month	last December	twelve months ago
in thousands									
Class of worker									
Employees	14,525.1	14,574.2	34.2	49.1	49.1	388.2	0.3	0.3	2.7
Self-employed ²	2,620.2	2,640.3	24.7	20.1	20.1	-60.8	0.8	0.8	-2.3
Public/private sector employees									
Public sector employees	3,554.5	3,580.9	24.0	26.4	26.4	118.7	0.7	0.7	3.4
Private sector employees	10,970.6	10,993.3	36.0	22.7	22.7	269.5	0.2	0.2	2.5
Industry	17,145.3	17,214.5	28.3	69.2	69.2	327.3	0.4	0.4	1.9
Goods-producing sector	3,788.8	3,808.5	25.4	19.7	19.7	134.0	0.5	0.5	3.6
Agriculture	299.2	312.4	6.8	13.2	13.2	9.2	4.4	4.4	3.0
Forestry, fishing, mining, quarrying, oil and gas extraction	331.5	333.0	6.9	1.5	1.5	18.4	0.5	0.5	5.8
Utilities	147.8	146.1	4.8	-1.7	-1.7	-0.1	-1.2	-1.2	-0.1
Construction	1,227.2	1,229.9	16.3	2.7	2.7	50.0	0.2	0.2	4.2
Manufacturing	1,783.1	1,787.1	19.0	4.0	4.0	56.5	0.2	0.2	3.3
Services-producing sector	13,356.6	13,406.0	33.3	49.4	49.4	193.3	0.4	0.4	1.5
Trade	2,668.4	2,676.7	22.9	8.3	8.3	-15.7	0.3	0.3	-0.6
Transportation and warehousing	864.8	832.9	13.0	-31.9	-31.9	51.0	-3.7	-3.7	6.5
Finance, insurance, real estate and leasing	1,082.9	1,074.4	15.3	-8.5	-8.5	-47.4	-0.8	-0.8	-4.2
Professional, scientific and technical services	1,276.0	1,284.9	17.1	8.9	8.9	70.5	0.7	0.7	5.8
Business, building and other support services	664.8	698.5	13.9	33.7	33.7	44.5	5.1	5.1	6.8
Educational services	1,205.8	1,215.9	15.8	10.1	10.1	-7.8	0.8	0.8	-0.6
Health care and social assistance	2,052.3	2,067.5	17.9	15.2	15.2	84.4	0.7	0.7	4.3
Information, culture and recreation	765.9	779.3	14.4	13.4	13.4	10.9	1.7	1.7	1.4
Accommodation and food services	1,055.0	1,029.1	16.2	-25.9	-25.9	-36.9	-2.5	-2.5	-3.5
Other services	749.8	756.1	13.1	6.3	6.3	-14.5	0.8	0.8	-1.9
Public administration	970.8	990.7	12.6	19.9	19.9	54.5	2.0	2.0	5.8

1. Average standard error of change in two consecutive months (see "Sampling Errors" in Data Quality for further explanations).

2. Includes both incorporated and unincorporated working owners, self-employed persons who do not have a business and persons working in a family business without pay.

Note(s): Related CANSIM Tables 282-0088, 282-0089.

Table 3
Labour force characteristics by province, seasonally adjusted

	December 2010	January 2011	S.E. ¹	Change from			Percent change from		
				last month	last December	twelve months ago	last month	last December	twelve months ago
in thousands (except rates)									
Newfoundland and Labrador									
Population	429.0	429.1	...	0.1	0.1	1.3	0.0	0.0	0.3
Labour force	259.2	259.9	2.1	0.7	0.7	6.4	0.3	0.3	2.5
Employment	222.9	227.8	2.2	4.9	4.9	12.1	2.2	2.2	5.6
Employment full-time	191.1	194.1	2.5	3.0	3.0	9.8	1.6	1.6	5.3
Employment part-time	31.8	33.6	1.9	1.8	1.8	2.2	5.7	5.7	7.0
Unemployment	36.3	32.1	2.0	-4.2	-4.2	-5.7	-11.6	-11.6	-15.1
Participation rate	60.4	60.6	0.5	0.2	0.2	1.3
Unemployment rate	14.0	12.4	0.7	-1.6	-1.6	-2.5
Employment rate	52.0	53.1	0.5	1.1	1.1	2.7
Prince Edward Island									
Population	117.9	118.2	...	0.3	0.3	1.8	0.3	0.3	1.5
Labour force	79.4	79.6	0.6	0.2	0.2	0.8	0.3	0.3	1.0
Employment	69.9	70.6	0.7	0.7	0.7	-0.5	1.0	1.0	-0.7
Employment full-time	57.9	58.6	0.9	0.7	0.7	1.1	1.2	1.2	1.9
Employment part-time	12.0	12.0	0.7	0.0	0.0	-1.6	0.0	0.0	-11.8
Unemployment	9.4	9.0	0.7	-0.4	-0.4	1.2	-4.3	-4.3	15.4
Participation rate	67.3	67.3	0.5	0.0	0.0	-0.4
Unemployment rate	11.8	11.3	0.8	-0.5	-0.5	1.4
Employment rate	59.3	59.7	0.6	0.4	0.4	-1.4
Nova Scotia									
Population	778.9	778.9	...	0.0	0.0	3.0	0.0	0.0	0.4
Labour force	499.4	501.3	2.7	1.9	1.9	5.5	0.4	0.4	1.1
Employment	447.6	453.8	2.9	6.2	6.2	5.9	1.4	1.4	1.3
Employment full-time	366.8	366.3	3.6	-0.5	-0.5	6.5	-0.1	-0.1	1.8
Employment part-time	80.9	87.5	3.2	6.6	6.6	-0.6	8.2	8.2	-0.7
Unemployment	51.8	47.5	2.6	-4.3	-4.3	-0.4	-8.3	-8.3	-0.8
Participation rate	64.1	64.4	0.4	0.3	0.3	0.5
Unemployment rate	10.4	9.5	0.5	-0.9	-0.9	-0.2
Employment rate	57.5	58.3	0.4	0.8	0.8	0.6
New Brunswick									
Population	618.2	618.5	...	0.3	0.3	3.1	0.0	0.0	0.5
Labour force	391.0	388.4	2.3	-2.6	-2.6	-5.2	-0.7	-0.7	-1.3
Employment	354.1	353.1	2.4	-1.0	-1.0	-4.6	-0.3	-0.3	-1.3
Employment full-time	299.4	297.8	2.9	-1.6	-1.6	-6.7	-0.5	-0.5	-2.2
Employment part-time	54.7	55.4	2.4	0.7	0.7	2.2	1.3	1.3	4.1
Unemployment	36.9	35.3	2.1	-1.6	-1.6	-0.7	-4.3	-4.3	-1.9
Participation rate	63.2	62.8	0.4	-0.4	-0.4	-1.2
Unemployment rate	9.4	9.1	0.5	-0.3	-0.3	0.0
Employment rate	57.3	57.1	0.4	-0.2	-0.2	-1.0
Quebec									
Population	6,539.3	6,545.4	...	6.1	6.1	69.6	0.1	0.1	1.1
Labour force	4,274.0	4,296.2	14.5	22.2	22.2	88.1	0.5	0.5	2.1
Employment	3,953.7	3,956.8	14.3	3.1	3.1	88.4	0.1	0.1	2.3
Employment full-time	3,205.9	3,194.2	19.1	-11.7	-11.7	76.3	-0.4	-0.4	2.4
Employment part-time	747.8	762.6	17.5	14.8	14.8	12.0	2.0	2.0	1.6
Unemployment	320.3	339.4	12.9	19.1	19.1	-0.2	6.0	6.0	-0.1
Participation rate	65.4	65.6	0.2	0.2	0.2	0.6
Unemployment rate	7.5	7.9	0.3	0.4	0.4	-0.2
Employment rate	60.5	60.5	0.2	0.0	0.0	0.8

See notes at the end of the table.

Table 3 – continued

Labour force characteristics by province, seasonally adjusted

	December 2010	January 2011	S.E. ¹	Change from			Percent change from		
				last month	last December	twelve months ago	last month	last December	twelve months ago
in thousands (except rates)									
Ontario									
Population	10,854.5	10,863.8	...	9.3	9.3	139.2	0.1	0.1	1.3
Labour force	7,249.5	7,290.1	20.0	40.6	40.6	87.2	0.6	0.6	1.2
Employment	6,659.6	6,695.9	19.3	36.3	36.3	150.8	0.5	0.5	2.3
Employment full-time	5,374.3	5,394.6	25.1	20.3	20.3	98.0	0.4	0.4	1.9
Employment part-time	1,285.3	1,301.4	23.4	16.1	16.1	52.9	1.3	1.3	4.2
Unemployment	589.9	594.1	17.8	4.2	4.2	-63.7	0.7	0.7	-9.7
Participation rate	66.8	67.1	0.2	0.3	0.3	-0.1
Unemployment rate	8.1	8.1	0.2	0.0	0.0	-1.0
Employment rate	61.4	61.6	0.2	0.2	0.2	0.6
Manitoba									
Population	947.0	948.1	...	1.1	1.1	13.2	0.1	0.1	1.4
Labour force	654.6	657.1	2.6	2.5	2.5	7.0	0.4	0.4	1.1
Employment	620.5	624.6	2.7	4.1	4.1	10.0	0.7	0.7	1.6
Employment full-time	501.6	503.8	3.8	2.2	2.2	13.5	0.4	0.4	2.8
Employment part-time	118.9	120.7	3.5	1.8	1.8	-3.6	1.5	1.5	-2.9
Unemployment	34.1	32.6	2.1	-1.5	-1.5	-2.9	-4.4	-4.4	-8.2
Participation rate	69.1	69.3	0.3	0.2	0.2	-0.2
Unemployment rate	5.2	5.0	0.3	-0.2	-0.2	-0.5
Employment rate	65.5	65.9	0.3	0.4	0.4	0.2
Saskatchewan									
Population	795.4	796.0	...	0.6	0.6	10.3	0.1	0.1	1.3
Labour force	554.5	556.4	2.4	1.9	1.9	10.2	0.3	0.3	1.9
Employment	524.1	526.5	2.5	2.4	2.4	6.2	0.5	0.5	1.2
Employment full-time	431.1	432.4	3.2	1.3	1.3	4.0	0.3	0.3	0.9
Employment part-time	93.0	94.1	3.0	1.1	1.1	2.2	1.2	1.2	2.4
Unemployment	30.5	29.9	1.9	-0.6	-0.6	4.0	-2.0	-2.0	15.4
Participation rate	69.7	69.9	0.3	0.2	0.2	0.4
Unemployment rate	5.5	5.4	0.3	-0.1	-0.1	0.7
Employment rate	65.9	66.1	0.3	0.2	0.2	-0.1
Alberta									
Population	2,979.4	2,983.5	...	4.1	4.1	44.2	0.1	0.1	1.5
Labour force	2,150.6	2,183.1	9.0	32.5	32.5	30.3	1.5	1.5	1.4
Employment	2,032.2	2,053.8	9.2	21.6	21.6	43.7	1.1	1.1	2.2
Employment full-time	1,675.3	1,680.5	12.0	5.2	5.2	22.9	0.3	0.3	1.4
Employment part-time	356.9	373.3	10.4	16.4	16.4	20.8	4.6	4.6	5.9
Unemployment	118.4	129.3	7.4	10.9	10.9	-13.5	9.2	9.2	-9.5
Participation rate	72.2	73.2	0.3	1.0	1.0	0.0
Unemployment rate	5.5	5.9	0.3	0.4	0.4	-0.7
Employment rate	68.2	68.8	0.3	0.6	0.6	0.4
British Columbia									
Population	3,755.3	3,759.4	...	4.1	4.1	58.7	0.1	0.1	1.6
Labour force	2,445.6	2,452.0	10.3	6.4	6.4	18.6	0.3	0.3	0.8
Employment	2,260.7	2,251.6	10.2	-9.1	-9.1	15.3	-0.4	-0.4	0.7
Employment full-time	1,732.4	1,744.6	14.5	12.2	12.2	10.5	0.7	0.7	0.6
Employment part-time	528.3	507.0	13.7	-21.3	-21.3	4.7	-4.0	-4.0	0.9
Unemployment	184.9	200.4	9.0	15.5	15.5	3.3	8.4	8.4	1.7
Participation rate	65.1	65.2	0.3	0.1	0.1	-0.6
Unemployment rate	7.6	8.2	0.3	0.6	0.6	0.1
Employment rate	60.2	59.9	0.3	-0.3	-0.3	-0.5

1. Average standard error of change in two consecutive months (see "Sampling Errors" in Data Quality for further explanations).

Note(s): Related CANSIM Table 282-0087.

Table 4-1
Selected labour force characteristics (seasonally adjusted) — Newfoundland and Labrador

	December 2010	January 2011	S.E. ¹	Change from			Percent change from		
				last month	last December	twelve months ago	last month	last December	twelve months ago
in thousands (except rates)									
Both sexes, 15 years and over									
Population	429.0	429.1	...	0.1	0.1	1.3	0.0	0.0	0.3
Labour force	259.2	259.9	2.1	0.7	0.7	6.4	0.3	0.3	2.5
Employment	222.9	227.8	2.2	4.9	4.9	12.1	2.2	2.2	5.6
Employment full-time	191.1	194.1	2.5	3.0	3.0	9.8	1.6	1.6	5.3
Unemployment	36.3	32.1	2.0	-4.2	-4.2	-5.7	-11.6	-11.6	-15.1
Participation rate	60.4	60.6	0.5	0.2	0.2	1.3
Unemployment rate	14.0	12.4	0.7	-1.6	-1.6	-2.5
Employment rate	52.0	53.1	0.5	1.1	1.1	2.7
Part-time rate	14.3	14.7	0.8	0.5	0.5	0.2
Both sexes, 15 to 24 years									
Population	61.6	61.5	...	-0.1	-0.1	-1.2	-0.2	-0.2	-1.9
Labour force	35.6	35.6	1.0	0.0	0.0	-0.5	0.0	0.0	-1.4
Employment	28.9	29.1	1.0	0.2	0.2	1.4	0.7	0.7	5.1
Unemployment	6.7	6.4	0.9	-0.3	-0.3	-2.0	-4.5	-4.5	-23.8
Participation rate	57.8	57.9	1.7	0.1	0.1	0.3
Unemployment rate	18.8	18.0	2.4	-0.8	-0.8	-5.3
Employment rate	46.9	47.3	1.7	0.4	0.4	3.1
Part-time rate	36.7	39.5	3.5	2.8	2.8	1.6
Men, 25 years and over									
Population	177.5	177.6	...	0.1	0.1	1.0	0.1	0.1	0.6
Labour force	115.8	117.2	1.2	1.4	1.4	3.9	1.2	1.2	3.4
Employment	98.1	102.8	1.4	4.7	4.7	8.1	4.8	4.8	8.6
Unemployment	17.6	14.4	1.3	-3.2	-3.2	-4.2	-18.2	-18.2	-22.6
Participation rate	65.2	66.0	0.7	0.8	0.8	1.8
Unemployment rate	15.2	12.3	1.1	-2.9	-2.9	-4.1
Employment rate	55.3	57.9	0.8	2.6	2.6	4.3
Part-time rate	5.2	5.5	0.9	0.3	0.3	0.9
Women, 25 years and over									
Population	189.9	190.0	...	0.1	0.1	1.4	0.1	0.1	0.7
Labour force	107.8	107.0	1.2	-0.8	-0.8	2.9	-0.7	-0.7	2.8
Employment	95.9	95.8	1.2	-0.1	-0.1	2.5	-0.1	-0.1	2.7
Unemployment	12.0	11.2	1.0	-0.8	-0.8	0.4	-6.7	-6.7	3.7
Participation rate	56.8	56.3	0.6	-0.5	-0.5	1.1
Unemployment rate	11.1	10.5	0.9	-0.6	-0.6	0.1
Employment rate	50.5	50.4	0.6	-0.1	-0.1	0.9
Part-time rate	16.9	17.2	1.3	0.3	0.3	-0.5
Industry									
	222.9	227.8	2.2	4.9	4.9	12.1	2.2	2.2	5.6
Goods-producing sector									
Agriculture	46.2	49.4	1.7	3.2	3.2	3.2	6.9	6.9	6.9
Forestry, fishing, mining, quarrying, oil and gas extraction	2.3	2.3	0.3	0.0	0.0	1.7	0.0	0.0	283.3
Utilities	16.4	17.1	1.0	0.7	0.7	1.9	4.3	4.3	12.5
Construction	1.8	2.3	0.3	0.5	0.5	0.3	27.8	27.8	15.0
Manufacturing	16.6	17.1	1.1	0.5	0.5	1.4	3.0	3.0	8.9
	9.1	10.5	0.9	1.4	1.4	-2.2	15.4	15.4	-17.3
Services-producing sector									
	176.7	178.4	2.1	1.7	1.7	8.9	1.0	1.0	5.3
Trade	38.2	38.0	1.4	-0.2	-0.2	2.4	-0.5	-0.5	6.7
Transportation and warehousing	10.7	11.2	0.7	0.5	0.5	-0.9	4.7	4.7	-7.4
Finance, insurance, real estate and leasing	6.1	6.4	0.6	0.3	0.3	-0.1	4.9	4.9	-1.5
Professional, scientific and technical services	7.9	8.2	0.5	0.3	0.3	1.0	3.8	3.8	13.9
Business, building and other support services	6.1	6.0	0.6	-0.1	-0.1	0.1	-1.6	-1.6	1.7
Educational services	18.2	17.4	0.9	-0.8	-0.8	1.1	-4.4	-4.4	6.7
Health care and social assistance	36.1	38.0	1.1	1.9	1.9	2.3	5.3	5.3	6.4
Information, culture and recreation	8.3	8.7	0.7	0.4	0.4	1.3	4.8	4.8	17.6
Accommodation and food services	13.8	12.7	0.9	-1.1	-1.1	-0.9	-8.0	-8.0	-6.6
Other services	11.2	11.3	0.8	0.1	0.1	0.1	0.9	0.9	0.9
Public administration	20.2	20.5	0.9	0.3	0.3	2.6	1.5	1.5	14.5

1. Average standard error of change in two consecutive months (see "Sampling Errors" in Data Quality for further explanations).

Note(s): Related CANSIM Tables 282-0087, 282-0088.

Table 4-2
Selected labour force characteristics (seasonally adjusted) — Prince Edward Island

	December 2010	January 2011	S.E. ¹	Change from			Percent change from		
				last month	last December	twelve months ago	last month	last December	twelve months ago
in thousands (except rates)									
Both sexes, 15 years and over									
Population	117.9	118.2	...	0.3	0.3	1.8	0.3	0.3	1.5
Labour force	79.4	79.6	0.6	0.2	0.2	0.8	0.3	0.3	1.0
Employment	69.9	70.6	0.7	0.7	0.7	-0.5	1.0	1.0	-0.7
Employment full-time	57.9	58.6	0.9	0.7	0.7	1.1	1.2	1.2	1.9
Unemployment	9.4	9.0	0.7	-0.4	-0.4	1.2	-4.3	-4.3	15.4
Participation rate	67.3	67.3	0.5	0.0	0.0	-0.4
Unemployment rate	11.8	11.3	0.8	-0.5	-0.5	1.4
Employment rate	59.3	59.7	0.6	0.4	0.4	-1.4
Part-time rate	17.2	17.0	1.0	-0.2	-0.2	-2.1
Both sexes, 15 to 24 years									
Population	19.6	19.7	...	0.1	0.1	0.2	0.5	0.5	1.0
Labour force	13.3	13.6	0.4	0.3	0.3	0.2	2.3	2.3	1.5
Employment	10.9	11.5	0.4	0.6	0.6	0.1	5.5	5.5	0.9
Unemployment	2.4	2.0	0.4	-0.4	-0.4	0.0	-16.7	-16.7	0.0
Participation rate	67.9	69.0	2.0	1.1	1.1	0.3
Unemployment rate	18.0	14.7	2.4	-3.3	-3.3	-0.2
Employment rate	55.6	58.4	2.0	2.8	2.8	-0.1
Part-time rate	38.5	39.1	3.4	0.6	0.6	-3.9
Men, 25 years and over									
Population	47.4	47.6	...	0.2	0.2	0.9	0.4	0.4	1.9
Labour force	34.2	34.4	0.3	0.2	0.2	0.4	0.6	0.6	1.2
Employment	30.0	30.2	0.4	0.2	0.2	-0.2	0.7	0.7	-0.7
Unemployment	4.1	4.1	0.4	0.0	0.0	0.6	0.0	0.0	17.1
Participation rate	72.2	72.3	0.7	0.1	0.1	-0.5
Unemployment rate	12.0	11.9	1.1	-0.1	-0.1	1.6
Employment rate	63.3	63.4	0.8	0.1	0.1	-1.7
Part-time rate	9.0	9.3	1.1	0.3	0.3	1.0
Women, 25 years and over									
Population	50.8	50.9	...	0.1	0.1	0.8	0.2	0.2	1.6
Labour force	31.9	31.7	0.3	-0.2	-0.2	0.2	-0.6	-0.6	0.6
Employment	29.0	28.8	0.4	-0.2	-0.2	-0.4	-0.7	-0.7	-1.4
Unemployment	2.9	2.9	0.3	0.0	0.0	0.6	0.0	0.0	26.1
Participation rate	62.8	62.3	0.7	-0.5	-0.5	-0.6
Unemployment rate	9.1	9.1	1.0	0.0	0.0	1.8
Employment rate	57.1	56.6	0.8	-0.5	-0.5	-1.7
Part-time rate	17.6	16.3	1.5	-1.3	-1.3	-5.3
Industry									
Goods-producing sector	69.9	70.6	0.7	0.7	0.7	-0.5	1.0	1.0	-0.7
Agriculture	16.9	17.2	0.6	0.3	0.3	-0.5	1.8	1.8	-2.8
Forestry, fishing, mining, quarrying, oil and gas extraction	3.3	3.7	0.3	0.4	0.4	-0.1	12.1	12.1	-2.6
Utilities	3.0	3.0	0.3	0.0	0.0	0.5	0.0	0.0	20.0
Construction	4.8	5.1	0.3	0.3	0.3	-0.8	6.2	6.2	-13.6
Manufacturing	5.4	5.1	0.4	-0.3	-0.3	-0.1	-5.6	-5.6	-1.9
Services-producing sector	53.1	53.4	0.7	0.3	0.3	0.1	0.6	0.6	0.2
Trade	9.6	9.6	0.4	0.0	0.0	-1.6	0.0	0.0	-14.3
Transportation and warehousing	1.9	1.8	0.2	-0.1	-0.1	-0.1	-5.3	-5.3	-5.3
Finance, insurance, real estate and leasing	2.0	2.3	0.2	0.3	0.3	-0.2	15.0	15.0	-8.0
Professional, scientific and technical services	2.9	2.8	0.2	-0.1	-0.1	0.5	-3.4	-3.4	21.7
Business, building and other support services	3.0	2.8	0.3	-0.2	-0.2	0.2	-6.7	-6.7	7.7
Educational services	6.1	6.1	0.3	0.0	0.0	0.4	0.0	0.0	7.0
Health care and social assistance	8.6	8.7	0.4	0.1	0.1	0.2	1.2	1.2	2.4
Information, culture and recreation	2.9	3.0	0.2	0.1	0.1	0.8	3.4	3.4	36.4
Accommodation and food services	5.3	5.3	0.4	0.0	0.0	0.0	0.0	0.0	0.0
Other services	2.9	2.7	0.3	-0.2	-0.2	-0.7	-6.9	-6.9	-20.6
Public administration	7.9	8.2	0.3	0.3	0.3	0.6	3.8	3.8	7.9

1. Average standard error of change in two consecutive months (see "Sampling Errors" in Data Quality for further explanations).

Note(s): Related CANSIM Tables 282-0087, 282-0088.

Table 4-3
Selected labour force characteristics (seasonally adjusted) — Nova Scotia

	December 2010	January 2011	S.E. ¹	Change from			Percent change from		
				last month	last December	twelve months ago	last month	last December	twelve months ago
in thousands (except rates)									
Both sexes, 15 years and over									
Population	778.9	778.9	...	0.0	0.0	3.0	0.0	0.0	0.4
Labour force	499.4	501.3	2.7	1.9	1.9	5.5	0.4	0.4	1.1
Employment	447.6	453.8	2.9	6.2	6.2	5.9	1.4	1.4	1.3
Employment full-time	366.8	366.3	3.6	-0.5	-0.5	6.5	-0.1	-0.1	1.8
Unemployment	51.8	47.5	2.6	-4.3	-4.3	-0.4	-8.3	-8.3	-0.8
Participation rate	64.1	64.4	0.4	0.3	0.3	0.5
Unemployment rate	10.4	9.5	0.5	-0.9	-0.9	-0.2
Employment rate	57.5	58.3	0.4	0.8	0.8	0.6
Part-time rate	18.1	19.3	0.7	1.2	1.2	-0.4
Both sexes, 15 to 24 years									
Population	120.5	120.5	...	0.0	0.0	-0.8	0.0	0.0	-0.7
Labour force	80.6	81.3	1.5	0.7	0.7	0.0	0.9	0.9	0.0
Employment	65.8	68.1	1.5	2.3	2.3	-1.0	3.5	3.5	-1.4
Unemployment	14.8	13.3	1.4	-1.5	-1.5	1.1	-10.1	-10.1	9.0
Participation rate	66.9	67.5	1.3	0.6	0.6	0.5
Unemployment rate	18.4	16.4	1.7	-2.0	-2.0	1.4
Employment rate	54.6	56.5	1.3	1.9	1.9	-0.5
Part-time rate	42.6	41.0	2.4	-1.6	-1.6	-8.8
Men, 25 years and over									
Population	311.8	311.8	...	0.0	0.0	1.4	0.0	0.0	0.5
Labour force	212.5	213.5	1.5	1.0	1.0	2.5	0.5	0.5	1.2
Employment	191.8	195.4	1.7	3.6	3.6	5.9	1.9	1.9	3.1
Unemployment	20.7	18.1	1.6	-2.6	-2.6	-3.4	-12.6	-12.6	-15.8
Participation rate	68.2	68.5	0.5	0.3	0.3	0.5
Unemployment rate	9.7	8.5	0.7	-1.2	-1.2	-1.7
Employment rate	61.5	62.7	0.5	1.2	1.2	1.6
Part-time rate	8.0	10.0	0.7	2.1	2.1	3.2
Women, 25 years and over									
Population	346.5	346.6	...	0.1	0.1	2.4	0.0	0.0	0.7
Labour force	206.3	206.5	1.5	0.2	0.2	3.0	0.1	0.1	1.5
Employment	190.1	190.3	1.6	0.2	0.2	1.0	0.1	0.1	0.5
Unemployment	16.2	16.2	1.3	0.0	0.0	2.0	0.0	0.0	14.1
Participation rate	59.5	59.6	0.4	0.1	0.1	0.5
Unemployment rate	7.9	7.8	0.6	-0.1	-0.1	0.8
Employment rate	54.9	54.9	0.5	0.0	0.0	-0.1
Part-time rate	19.8	21.0	1.1	1.2	1.2	-0.5
Industry									
Goods-producing sector	447.6	453.8	2.9	6.2	6.2	5.9	1.4	1.4	1.3
Agriculture	85.6	84.4	2.2	-1.2	-1.2	2.3	-1.4	-1.4	2.8
Forestry, fishing, mining, quarrying, oil and gas extraction	5.5	6.1	0.6	0.6	0.6	0.8	10.9	10.9	15.1
Utilities	11.6	11.6	1.1	0.0	0.0	-0.2	0.0	0.0	-1.7
Construction	32.1	32.7	1.5	0.6	0.6	2.4	1.9	1.9	7.9
Manufacturing	32.5	30.6	1.3	-1.9	-1.9	0.5	-5.8	-5.8	1.7
Services-producing sector	362.0	369.4	2.9	7.4	7.4	3.6	2.0	2.0	1.0
Trade	75.5	79.7	1.9	4.2	4.2	4.4	5.6	5.6	5.8
Transportation and warehousing	17.7	18.4	1.0	0.7	0.7	-0.9	4.0	4.0	-4.7
Finance, insurance, real estate and leasing	23.8	25.0	1.1	1.2	1.2	1.2	5.0	5.0	5.0
Professional, scientific and technical services	21.9	22.5	1.1	0.6	0.6	-0.1	2.7	2.7	-0.4
Business, building and other support services	23.4	24.1	1.2	0.7	0.7	1.9	3.0	3.0	8.6
Educational services	33.1	34.3	1.4	1.2	1.2	-2.9	3.6	3.6	-7.8
Health care and social assistance	68.1	67.2	1.6	-0.9	-0.9	-0.3	-1.3	-1.3	-0.4
Information, culture and recreation	19.4	19.6	1.2	0.2	0.2	1.4	1.0	1.0	7.7
Accommodation and food services	28.7	29.6	1.3	0.9	0.9	0.1	3.1	3.1	0.3
Other services	18.6	18.6	1.1	0.0	0.0	-0.9	0.0	0.0	-4.6
Public administration	31.7	30.4	1.1	-1.3	-1.3	-0.1	-4.1	-4.1	-0.3

1. Average standard error of change in two consecutive months (see "Sampling Errors" in Data Quality for further explanations).

Note(s): Related CANSIM Tables 282-0087, 282-0088.

Table 4-4
Selected labour force characteristics (seasonally adjusted) — New Brunswick

	December 2010	January 2011	S.E. ¹	Change from			Percent change from		
				last month	last December	twelve months ago	last month	last December	twelve months ago
in thousands (except rates)									
Both sexes, 15 years and over									
Population	618.2	618.5	...	0.3	0.3	3.1	0.0	0.0	0.5
Labour force	391.0	388.4	2.3	-2.6	-2.6	-5.2	-0.7	-0.7	-1.3
Employment	354.1	353.1	2.4	-1.0	-1.0	-4.6	-0.3	-0.3	-1.3
Employment full-time	299.4	297.8	2.9	-1.6	-1.6	-6.7	-0.5	-0.5	-2.2
Unemployment	36.9	35.3	2.1	-1.6	-1.6	-0.7	-4.3	-4.3	-1.9
Participation rate	63.2	62.8	0.4	-0.4	-0.4	-1.2
Unemployment rate	9.4	9.1	0.5	-0.3	-0.3	0.0
Employment rate	57.3	57.1	0.4	-0.2	-0.2	-1.0
Part-time rate	15.4	15.7	0.7	0.2	0.2	0.8
Both sexes, 15 to 24 years									
Population	91.7	91.6	...	-0.1	-0.1	-0.8	-0.1	-0.1	-0.9
Labour force	55.6	55.2	1.3	-0.4	-0.4	-4.9	-0.7	-0.7	-8.2
Employment	46.8	47.5	1.3	0.7	0.7	-2.2	1.5	1.5	-4.4
Unemployment	8.8	7.7	1.2	-1.1	-1.1	-2.6	-12.5	-12.5	-25.2
Participation rate	60.6	60.3	1.4	-0.3	-0.3	-4.7
Unemployment rate	15.8	13.9	1.9	-1.9	-1.9	-3.2
Employment rate	51.0	51.9	1.4	0.9	0.9	-1.9
Part-time rate	39.3	37.9	2.6	-1.4	-1.4	-2.5
Men, 25 years and over									
Population	252.6	252.7	...	0.1	0.1	1.8	0.0	0.0	0.7
Labour force	174.3	172.4	1.3	-1.9	-1.9	1.5	-1.1	-1.1	0.9
Employment	157.2	155.9	1.4	-1.3	-1.3	-0.1	-0.8	-0.8	-0.1
Unemployment	17.1	16.5	1.3	-0.6	-0.6	1.6	-3.5	-3.5	10.7
Participation rate	69.0	68.2	0.5	-0.8	-0.8	0.1
Unemployment rate	9.8	9.6	0.7	-0.2	-0.2	0.9
Employment rate	62.2	61.7	0.5	-0.5	-0.5	-0.5
Part-time rate	6.4	6.7	0.7	0.3	0.3	1.5
Women, 25 years and over									
Population	274.0	274.2	...	0.2	0.2	2.1	0.1	0.1	0.8
Labour force	161.0	160.8	1.3	-0.2	-0.2	-1.9	-0.1	-0.1	-1.2
Employment	150.1	149.8	1.3	-0.3	-0.3	-2.2	-0.2	-0.2	-1.4
Unemployment	10.9	11.0	1.1	0.1	0.1	0.3	0.9	0.9	2.8
Participation rate	58.8	58.6	0.5	-0.2	-0.2	-1.2
Unemployment rate	6.8	6.8	0.7	0.0	0.0	0.2
Employment rate	54.8	54.6	0.5	-0.2	-0.2	-1.3
Part-time rate	17.5	18.0	1.0	0.5	0.5	1.5
Industry									
	354.1	353.1	2.4	-1.0	-1.0	-4.6	-0.3	-0.3	-1.3
Goods-producing sector									
	84.1	83.8	2.0	-0.3	-0.3	5.2	-0.4	-0.4	6.6
Agriculture	5.2	5.8	0.6	0.6	0.6	-0.4	11.5	11.5	-6.5
Forestry, fishing, mining, quarrying, oil and gas extraction	11.9	12.3	0.8	0.4	0.4	2.7	3.4	3.4	28.1
Utilities	4.2	3.8	0.4	-0.4	-0.4	-0.7	-9.5	-9.5	-15.6
Construction	29.3	29.7	1.3	0.4	0.4	4.2	1.4	1.4	16.5
Manufacturing	33.5	32.3	1.3	-1.2	-1.2	-0.5	-3.6	-3.6	-1.5
Services-producing sector									
	270.0	269.3	2.5	-0.7	-0.7	-9.8	-0.3	-0.3	-3.5
Trade	53.7	52.0	1.6	-1.7	-1.7	-3.3	-3.2	-3.2	-6.0
Transportation and warehousing	18.3	18.8	0.9	0.5	0.5	-0.2	2.7	2.7	-1.1
Finance, insurance, real estate and leasing	16.8	17.6	0.8	0.8	0.8	1.9	4.8	4.8	12.1
Professional, scientific and technical services	15.9	16.3	0.9	0.4	0.4	1.7	2.5	2.5	11.6
Business, building and other support services	15.5	15.8	1.1	0.3	0.3	-3.4	1.9	1.9	-17.7
Educational services	26.0	23.8	1.1	-2.2	-2.2	-3.7	-8.5	-8.5	-13.5
Health care and social assistance	50.2	50.1	1.4	-0.1	-0.1	1.7	-0.2	-0.2	3.5
Information, culture and recreation	10.3	11.6	0.9	1.3	1.3	-1.6	12.6	12.6	-12.1
Accommodation and food services	20.3	20.3	1.2	0.0	0.0	-2.6	0.0	0.0	-11.4
Other services	16.6	15.9	0.9	-0.7	-0.7	-1.6	-4.2	-4.2	-9.1
Public administration	26.5	27.1	1.0	0.6	0.6	1.5	2.3	2.3	5.9

1. Average standard error of change in two consecutive months (see "Sampling Errors" in Data Quality for further explanations).

Note(s): Related CANSIM Tables 282-0087, 282-0088.

Table 4-5
Selected labour force characteristics (seasonally adjusted) — Quebec

	December 2010	January 2011	S.E. ¹	Change from			Percent change from		
				last month	last December	twelve months ago	last month	last December	twelve months ago
in thousands (except rates)									
Both sexes, 15 years and over									
Population	6,539.3	6,545.4	...	6.1	6.1	69.6	0.1	0.1	1.1
Labour force	4,274.0	4,296.2	14.5	22.2	22.2	88.1	0.5	0.5	2.1
Employment	3,953.7	3,956.8	14.3	3.1	3.1	88.4	0.1	0.1	2.3
Employment full-time	3,205.9	3,194.2	19.1	-11.7	-11.7	76.3	-0.4	-0.4	2.4
Unemployment	320.3	339.4	12.9	19.1	19.1	-0.2	6.0	6.0	-0.1
Participation rate	65.4	65.6	0.2	0.2	0.2	0.6
Unemployment rate	7.5	7.9	0.3	0.4	0.4	-0.2
Employment rate	60.5	60.5	0.2	0.0	0.0	0.8
Part-time rate	18.9	19.3	0.4	0.4	0.4	-0.1
Both sexes, 15 to 24 years									
Population	980.0	980.2	...	0.2	0.2	1.1	0.0	0.0	0.1
Labour force	673.7	670.5	8.2	-3.2	-3.2	23.6	-0.5	-0.5	3.6
Employment	587.1	580.5	7.6	-6.6	-6.6	25.3	-1.1	-1.1	4.6
Unemployment	86.6	90.1	7.4	3.5	3.5	-1.5	4.0	4.0	-1.6
Participation rate	68.7	68.4	0.8	-0.3	-0.3	2.3
Unemployment rate	12.9	13.4	1.1	0.5	0.5	-0.8
Employment rate	59.9	59.2	0.8	-0.7	-0.7	2.5
Part-time rate	49.3	50.4	1.5	1.0	1.0	-0.5
Men, 25 years and over									
Population	2,731.1	2,734.2	...	3.1	3.1	35.7	0.1	0.1	1.3
Labour force	1,912.9	1,919.3	8.1	6.4	6.4	36.6	0.3	0.3	1.9
Employment	1,779.4	1,781.0	8.4	1.6	1.6	49.4	0.1	0.1	2.9
Unemployment	133.4	138.3	8.0	4.9	4.9	-12.7	3.7	3.7	-8.4
Participation rate	70.0	70.2	0.3	0.2	0.2	0.4
Unemployment rate	7.0	7.2	0.4	0.2	0.2	-0.8
Employment rate	65.2	65.1	0.3	-0.1	-0.1	0.9
Part-time rate	8.4	8.6	0.5	0.2	0.2	0.4
Women, 25 years and over									
Population	2,828.1	2,830.9	...	2.8	2.8	32.7	0.1	0.1	1.2
Labour force	1,687.5	1,706.4	8.1	18.9	18.9	27.9	1.1	1.1	1.7
Employment	1,587.2	1,595.4	8.2	8.2	8.2	13.8	0.5	0.5	0.9
Unemployment	100.3	111.0	6.6	10.7	10.7	14.0	10.7	10.7	14.4
Participation rate	59.7	60.3	0.3	0.6	0.6	0.3
Unemployment rate	5.9	6.5	0.4	0.6	0.6	0.7
Employment rate	56.1	56.4	0.3	0.3	0.3	-0.1
Part-time rate	19.5	19.9	0.7	0.4	0.4	-0.7
Industry									
	3,953.7	3,956.8	14.3	3.1	3.1	88.4	0.1	0.1	2.3
Goods-producing sector									
Agriculture	855.2	863.2	12.8	8.0	8.0	14.3	0.9	0.9	1.7
Forestry, fishing, mining, quarrying, oil and gas extraction	59.9	60.2	3.1	0.3	0.3	6.8	0.5	0.5	12.7
Utilities	29.0	31.8	2.3	2.8	2.8	2.3	9.7	9.7	7.8
Construction	33.3	33.4	2.2	0.1	0.1	1.0	0.3	0.3	3.1
Manufacturing	240.4	238.7	7.5	-1.7	-1.7	21.9	-0.7	-0.7	10.1
Services-producing sector									
Trade	492.7	499.1	10.5	6.4	6.4	-17.7	1.3	1.3	-3.4
Transportation and warehousing	3,098.5	3,093.6	16.7	-4.9	-4.9	74.0	-0.2	-0.2	2.5
Finance, insurance, real estate and leasing	625.6	629.0	11.5	3.4	3.4	-11.7	0.5	0.5	-1.8
Professional, scientific and technical services	186.4	172.6	6.1	-13.8	-13.8	16.4	-7.4	-7.4	10.5
Business, building and other support services	233.8	225.7	7.1	-8.1	-8.1	-12.0	-3.5	-3.5	-5.0
Educational services	305.7	309.2	8.2	3.5	3.5	23.6	1.1	1.1	8.3
Health care and social assistance	141.8	147.3	6.7	5.5	5.5	9.1	3.9	3.9	6.6
Information, culture and recreation	264.0	271.4	7.9	7.4	7.4	16.9	2.8	2.8	6.6
Accommodation and food services	510.0	515.2	9.4	5.2	5.2	29.3	1.0	1.0	6.0
Other services	168.1	167.4	7.2	-0.7	-0.7	-15.7	-0.4	-0.4	-8.6
Public administration	247.5	236.0	8.3	-11.5	-11.5	4.4	-4.6	-4.6	1.9
	170.2	173.1	6.4	2.9	2.9	4.4	1.7	1.7	2.6
	245.6	246.5	6.5	0.9	0.9	9.1	0.4	0.4	3.8

1. Average standard error of change in two consecutive months (see "Sampling Errors" in Data Quality for further explanations).

Note(s): Related CANSIM Tables 282-0087, 282-0088.

Table 4-6
Selected labour force characteristics (seasonally adjusted) — Ontario

	December 2010	January 2011	S.E. ¹	Change from			Percent change from		
				last month	last December	twelve months ago	last month	last December	twelve months ago
in thousands (except rates)									
Both sexes, 15 years and over									
Population	10,854.5	10,863.8	...	9.3	9.3	139.2	0.1	0.1	1.3
Labour force	7,249.5	7,290.1	20.0	40.6	40.6	87.2	0.6	0.6	1.2
Employment	6,659.6	6,695.9	19.3	36.3	36.3	150.8	0.5	0.5	2.3
Employment full-time	5,374.3	5,394.6	25.1	20.3	20.3	98.0	0.4	0.4	1.9
Unemployment	589.9	594.1	17.8	4.2	4.2	-63.7	0.7	0.7	-9.7
Participation rate	66.8	67.1	0.2	0.3	0.3	-0.1
Unemployment rate	8.1	8.1	0.2	0.0	0.0	-1.0
Employment rate	61.4	61.6	0.2	0.2	0.2	0.6
Part-time rate	19.3	19.4	0.3	0.1	0.1	0.4
Both sexes, 15 to 24 years									
Population	1,781.0	1,781.0	...	0.0	0.0	4.3	0.0	0.0	0.2
Labour force	1,076.3	1,092.3	11.8	16.0	16.0	-24.0	1.5	1.5	-2.1
Employment	900.1	910.6	10.7	10.5	10.5	-3.3	1.2	1.2	-0.4
Unemployment	176.3	181.7	10.3	5.4	5.4	-20.7	3.1	3.1	-10.2
Participation rate	60.4	61.3	0.7	0.9	0.9	-1.5
Unemployment rate	16.4	16.6	0.9	0.2	0.2	-1.5
Employment rate	50.5	51.1	0.6	0.6	0.6	-0.3
Part-time rate	51.7	51.5	1.2	-0.2	-0.2	-0.4
Men, 25 years and over									
Population	4,399.9	4,404.4	...	4.5	4.5	63.4	0.1	0.1	1.5
Labour force	3,245.5	3,233.0	10.0	-12.5	-12.5	59.0	-0.4	-0.4	1.9
Employment	3,024.3	3,028.1	10.7	3.8	3.8	117.1	0.1	0.1	4.0
Unemployment	221.2	204.9	9.9	-16.3	-16.3	-58.1	-7.4	-7.4	-22.1
Participation rate	73.8	73.4	0.2	-0.4	-0.4	0.3
Unemployment rate	6.8	6.3	0.3	-0.5	-0.5	-2.0
Employment rate	68.7	68.8	0.2	0.1	0.1	1.7
Part-time rate	7.6	7.9	0.4	0.3	0.3	0.4
Women, 25 years and over									
Population	4,673.6	4,678.4	...	4.8	4.8	71.5	0.1	0.1	1.6
Labour force	2,927.6	2,964.8	11.4	37.2	37.2	52.2	1.3	1.3	1.8
Employment	2,735.2	2,757.2	11.0	22.0	22.0	37.1	0.8	0.8	1.4
Unemployment	192.4	207.6	9.4	15.2	15.2	15.1	7.9	7.9	7.8
Participation rate	62.6	63.4	0.2	0.8	0.8	0.2
Unemployment rate	6.6	7.0	0.3	0.4	0.4	0.4
Employment rate	58.5	58.9	0.2	0.4	0.4	-0.1
Part-time rate	21.6	21.5	0.5	-0.1	-0.1	1.1
Industry									
	6,659.6	6,695.9	19.3	36.3	36.3	150.8	0.5	0.5	2.3
Goods-producing sector									
Agriculture	1,408.6	1,435.8	17.2	27.2	27.2	64.8	1.9	1.9	4.7
Forestry, fishing, mining, quarrying, oil and gas extraction	83.3	97.2	3.9	13.9	13.9	14.5	16.7	16.7	17.5
Utilities	37.2	35.7	2.8	-1.5	-1.5	-1.2	-4.0	-4.0	-3.3
Construction	56.5	57.0	3.3	0.5	0.5	-1.0	0.9	0.9	-1.7
Manufacturing	424.9	432.7	10.6	7.8	7.8	26.3	1.8	1.8	6.5
	806.8	813.3	13.5	6.5	6.5	26.2	0.8	0.8	3.3
Services-producing sector									
Trade	5,251.0	5,260.1	23.0	9.1	9.1	86.0	0.2	0.2	1.7
Transportation and warehousing	1,014.0	1,004.0	15.9	-10.0	-10.0	-10.2	-1.0	-1.0	-1.0
Finance, insurance, real estate and leasing	324.2	319.7	9.0	-4.5	-4.5	25.3	-1.4	-1.4	8.6
Professional, scientific and technical services	503.7	499.9	11.4	-3.8	-3.8	-23.0	-0.8	-0.8	-4.4
Business, building and other support services	534.4	545.6	12.3	11.2	11.2	17.7	2.1	2.1	3.4
Educational services	288.6	298.1	10.1	9.5	9.5	20.0	3.3	3.3	7.2
Health care and social assistance	479.6	483.8	10.9	4.2	4.2	2.7	0.9	0.9	0.6
Information, culture and recreation	733.4	737.1	11.8	3.7	3.7	28.4	0.5	0.5	4.0
Accommodation and food services	337.7	348.4	10.3	10.7	10.7	40.8	3.2	3.2	13.3
Other services	384.1	364.1	10.8	-20.0	-20.0	-27.7	-5.2	-5.2	-7.1
Public administration	267.9	269.9	9.2	2.0	2.0	-20.3	0.7	0.7	-7.0
	383.3	389.6	8.8	6.3	6.3	32.6	1.6	1.6	9.1

1. Average standard error of change in two consecutive months (see "Sampling Errors" in Data Quality for further explanations).

Note(s): Related CANSIM Tables 282-0087, 282-0088.

Table 4-7
Selected labour force characteristics (seasonally adjusted) — Manitoba

	December 2010	January 2011	S.E. ¹	Change from			Percent change from		
				last month	last December	twelve months ago	last month	last December	twelve months ago
in thousands (except rates)									
Both sexes, 15 years and over									
Population	947.0	948.1	...	1.1	1.1	13.2	0.1	0.1	1.4
Labour force	654.6	657.1	2.6	2.5	2.5	7.0	0.4	0.4	1.1
Employment	620.5	624.6	2.7	4.1	4.1	10.0	0.7	0.7	1.6
Employment full-time	501.6	503.8	3.8	2.2	2.2	13.5	0.4	0.4	2.8
Unemployment	34.1	32.6	2.1	-1.5	-1.5	-2.9	-4.4	-4.4	-8.2
Participation rate	69.1	69.3	0.3	0.2	0.2	-0.2
Unemployment rate	5.2	5.0	0.3	-0.2	-0.2	-0.5
Employment rate	65.5	65.9	0.3	0.4	0.4	0.2
Part-time rate	19.2	19.3	0.5	0.2	0.2	-0.9
Both sexes, 15 to 24 years									
Population	164.4	164.6	...	0.2	0.2	1.6	0.1	0.1	1.0
Labour force	112.6	112.3	1.6	-0.3	-0.3	1.0	-0.3	-0.3	0.9
Employment	100.4	98.2	1.6	-2.2	-2.2	-1.7	-2.2	-2.2	-1.7
Unemployment	12.2	14.2	1.4	2.0	2.0	2.8	16.4	16.4	24.6
Participation rate	68.5	68.2	1.0	-0.3	-0.3	-0.1
Unemployment rate	10.8	12.6	1.2	1.8	1.8	2.4
Employment rate	61.1	59.7	1.0	-1.4	-1.4	-1.6
Part-time rate	44.3	44.1	1.8	-0.2	-0.2	2.0
Men, 25 years and over									
Population	383.4	383.9	...	0.5	0.5	6.0	0.1	0.1	1.6
Labour force	291.7	293.1	1.3	1.4	1.4	5.5	0.5	0.5	1.9
Employment	279.4	282.2	1.5	2.8	2.8	7.5	1.0	1.0	2.7
Unemployment	12.2	10.9	1.2	-1.3	-1.3	-2.0	-10.7	-10.7	-15.5
Participation rate	76.1	76.3	0.3	0.2	0.2	0.2
Unemployment rate	4.2	3.7	0.4	-0.5	-0.5	-0.8
Employment rate	72.9	73.5	0.4	0.6	0.6	0.8
Part-time rate	7.1	8.0	0.6	1.0	1.0	-0.6
Women, 25 years and over									
Population	399.1	399.6	...	0.5	0.5	5.6	0.1	0.1	1.4
Labour force	250.4	251.7	1.5	1.3	1.3	0.5	0.5	0.5	0.2
Employment	240.7	244.2	1.5	3.5	3.5	4.2	1.5	1.5	1.8
Unemployment	9.7	7.5	1.1	-2.2	-2.2	-3.7	-22.7	-22.7	-33.0
Participation rate	62.7	63.0	0.4	0.3	0.3	-0.8
Unemployment rate	3.9	3.0	0.4	-0.9	-0.9	-1.5
Employment rate	60.3	61.1	0.4	0.8	0.8	0.2
Part-time rate	22.7	22.4	0.9	-0.3	-0.3	-1.9
Industry									
Population	620.5	624.6	2.7	4.1	4.1	10.0	0.7	0.7	1.6
Goods-producing sector									
Agriculture	151.5	152.6	2.4	1.1	1.1	17.4	0.7	0.7	12.9
Forestry, fishing, mining, quarrying, oil and gas extraction	25.2	24.8	1.2	-0.4	-0.4	-0.4	-1.6	-1.6	-1.6
Utilities	7.3	7.0	0.6	-0.3	-0.3	0.3	-4.1	-4.1	4.5
Utilities	9.0	9.0	0.6	0.0	0.0	1.0	0.0	0.0	12.5
Construction	41.9	42.0	1.5	0.1	0.1	4.8	0.2	0.2	12.9
Manufacturing	68.2	69.9	1.6	1.7	1.7	11.7	2.5	2.5	20.1
Services-producing sector									
Trade	469.0	471.9	3.1	2.9	2.9	-7.5	0.6	0.6	-1.6
Trade	93.7	93.2	2.1	-0.5	-0.5	1.8	-0.5	-0.5	2.0
Transportation and warehousing	34.7	33.2	1.3	-1.5	-1.5	-3.4	-4.3	-4.3	-9.3
Finance, insurance, real estate and leasing	34.3	34.9	1.3	0.6	0.6	-0.2	1.7	1.7	-0.6
Professional, scientific and technical services	27.2	27.0	1.3	-0.2	-0.2	-0.4	-0.7	-0.7	-1.5
Business, building and other support services	16.3	17.0	1.2	0.7	0.7	-3.9	4.3	4.3	-18.7
Educational services	49.3	51.2	1.5	1.9	1.9	-0.8	3.9	3.9	-1.5
Health care and social assistance	95.1	94.7	1.9	-0.4	-0.4	8.2	-0.4	-0.4	9.5
Information, culture and recreation	23.1	22.8	1.2	-0.3	-0.3	-1.6	-1.3	-1.3	-6.6
Accommodation and food services	36.8	36.6	1.6	-0.2	-0.2	-3.3	-0.5	-0.5	-8.3
Other services	23.1	25.8	1.2	2.7	2.7	-3.2	11.7	11.7	-11.0
Public administration	35.5	35.5	1.2	0.0	0.0	-0.7	0.0	0.0	-1.9

1. Average standard error of change in two consecutive months (see "Sampling Errors" in Data Quality for further explanations).

Note(s): Related CANSIM Tables 282-0087, 282-0088.

Table 4-8
Selected labour force characteristics (seasonally adjusted) — Saskatchewan

	December 2010	January 2011	S.E. ¹	Change from			Percent change from		
				last month	last December	twelve months ago	last month	last December	twelve months ago
in thousands (except rates)									
Both sexes, 15 years and over									
Population	795.4	796.0	...	0.6	0.6	10.3	0.1	0.1	1.3
Labour force	554.5	556.4	2.4	1.9	1.9	10.2	0.3	0.3	1.9
Employment	524.1	526.5	2.5	2.4	2.4	6.2	0.5	0.5	1.2
Employment full-time	431.1	432.4	3.2	1.3	1.3	4.0	0.3	0.3	0.9
Unemployment	30.5	29.9	1.9	-0.6	-0.6	4.0	-2.0	-2.0	15.4
Participation rate	69.7	69.9	0.3	0.2	0.2	0.4
Unemployment rate	5.5	5.4	0.3	-0.1	-0.1	0.7
Employment rate	65.9	66.1	0.3	0.2	0.2	-0.1
Part-time rate	17.7	17.9	0.5	0.1	0.1	0.2
Both sexes, 15 to 24 years									
Population	137.7	137.5	...	-0.2	-0.2	-0.8	-0.1	-0.1	-0.6
Labour force	92.7	93.0	1.4	0.3	0.3	-1.9	0.3	0.3	-2.0
Employment	83.1	83.4	1.5	0.3	0.3	-3.4	0.4	0.4	-3.9
Unemployment	9.5	9.6	1.1	0.1	0.1	1.5	1.1	1.1	18.5
Participation rate	67.3	67.6	1.0	0.3	0.3	-1.0
Unemployment rate	10.2	10.3	1.2	0.1	0.1	1.8
Employment rate	60.3	60.7	1.1	0.4	0.4	-2.1
Part-time rate	36.3	38.7	1.8	2.4	2.4	3.4
Men, 25 years and over									
Population	323.1	323.5	...	0.4	0.4	6.2	0.1	0.1	2.0
Labour force	249.0	248.8	1.1	-0.2	-0.2	8.7	-0.1	-0.1	3.6
Employment	236.9	237.9	1.3	1.0	1.0	7.9	0.4	0.4	3.4
Unemployment	12.2	10.9	1.1	-1.3	-1.3	0.8	-10.7	-10.7	7.9
Participation rate	77.1	76.9	0.4	-0.2	-0.2	1.2
Unemployment rate	4.9	4.4	0.5	-0.5	-0.5	0.2
Employment rate	73.3	73.5	0.4	0.2	0.2	1.0
Part-time rate	6.3	5.9	0.6	-0.4	-0.4	-0.9
Women, 25 years and over									
Population	334.6	335.0	...	0.4	0.4	4.9	0.1	0.1	1.5
Labour force	212.8	214.6	1.4	1.8	1.8	3.4	0.8	0.8	1.6
Employment	204.1	205.2	1.5	1.1	1.1	1.7	0.5	0.5	0.8
Unemployment	8.8	9.4	1.0	0.6	0.6	1.7	6.8	6.8	22.1
Participation rate	63.6	64.1	0.4	0.5	0.5	0.1
Unemployment rate	4.1	4.4	0.4	0.3	0.3	0.8
Employment rate	61.0	61.3	0.4	0.3	0.3	-0.3
Part-time rate	23.5	23.2	1.0	-0.2	-0.2	0.9
Industry									
Industry	524.1	526.5	2.5	2.4	2.4	6.2	0.5	0.5	1.2
Goods-producing sector									
Goods-producing sector	137.7	137.3	2.3	-0.4	-0.4	-3.4	-0.3	-0.3	-2.4
Agriculture	38.8	40.1	1.4	1.3	1.3	-2.2	3.4	3.4	-5.2
Forestry, fishing, mining, quarrying, oil and gas extraction	23.8	24.1	1.2	0.3	0.3	-1.6	1.3	1.3	-6.2
Utilities	5.7	5.4	0.5	-0.3	-0.3	0.3	-5.3	-5.3	5.9
Construction	39.0	40.5	1.5	1.5	1.5	0.9	3.8	3.8	2.3
Manufacturing	30.4	27.2	1.2	-3.2	-3.2	-0.8	-10.5	-10.5	-2.9
Services-producing sector									
Services-producing sector	386.4	389.2	2.9	2.8	2.8	9.6	0.7	0.7	2.5
Trade	81.8	82.4	1.9	0.6	0.6	4.4	0.7	0.7	5.6
Transportation and warehousing	27.0	26.8	1.1	-0.2	-0.2	1.3	-0.7	-0.7	5.1
Finance, insurance, real estate and leasing	30.1	30.8	1.1	0.7	0.7	0.0	2.3	2.3	0.0
Professional, scientific and technical services	21.4	23.0	1.1	1.6	1.6	-0.4	7.5	7.5	-1.7
Business, building and other support services	10.5	11.1	0.8	0.6	0.6	-1.6	5.7	5.7	-12.6
Educational services	39.0	38.5	1.4	-0.5	-0.5	-1.9	-1.3	-1.3	-4.7
Health care and social assistance	67.4	68.4	1.6	1.0	1.0	-0.1	1.5	1.5	-0.1
Information, culture and recreation	21.0	21.4	1.0	0.4	0.4	4.3	1.9	1.9	25.1
Accommodation and food services	32.2	31.0	1.3	-1.2	-1.2	-0.5	-3.7	-3.7	-1.6
Other services	27.2	26.0	1.1	-1.2	-1.2	3.6	-4.4	-4.4	16.1
Public administration	28.9	29.7	1.0	0.8	0.8	0.4	2.8	2.8	1.4

1. Average standard error of change in two consecutive months (see "Sampling Errors" in Data Quality for further explanations).

Note(s): Related CANSIM Tables 282-0087, 282-0088.

Table 4-9
Selected labour force characteristics (seasonally adjusted) — Alberta

	December 2010	January 2011	S.E. ¹	Change from			Percent change from		
				last month	last December	twelve months ago	last month	last December	twelve months ago
in thousands (except rates)									
Both sexes, 15 years and over									
Population	2,979.4	2,983.5	...	4.1	4.1	44.2	0.1	0.1	1.5
Labour force	2,150.6	2,183.1	9.0	32.5	32.5	30.3	1.5	1.5	1.4
Employment	2,032.2	2,053.8	9.2	21.6	21.6	43.7	1.1	1.1	2.2
Employment full-time	1,675.3	1,680.5	12.0	5.2	5.2	22.9	0.3	0.3	1.4
Unemployment	118.4	129.3	7.4	10.9	10.9	-13.5	9.2	9.2	-9.5
Participation rate	72.2	73.2	0.3	1.0	1.0	0.0
Unemployment rate	5.5	5.9	0.3	0.4	0.4	-0.7
Employment rate	68.2	68.8	0.3	0.6	0.6	0.4
Part-time rate	17.6	18.2	0.5	0.6	0.6	0.6
Both sexes, 15 to 24 years									
Population	511.4	510.7	...	-0.7	-0.7	-5.6	-0.1	-0.1	-1.1
Labour force	346.6	354.6	5.1	8.0	8.0	-2.3	2.3	2.3	-0.6
Employment	313.6	313.3	5.0	-0.3	-0.3	-4.1	-0.1	-0.1	-1.3
Unemployment	33.0	41.3	4.3	8.3	8.3	1.8	25.2	25.2	4.6
Participation rate	67.8	69.4	1.0	1.6	1.6	0.3
Unemployment rate	9.5	11.6	1.2	2.1	2.1	0.5
Employment rate	61.3	61.3	1.0	0.0	0.0	-0.2
Part-time rate	37.9	40.4	1.7	2.5	2.5	5.0
Men, 25 years and over									
Population	1,254.8	1,257.2	...	2.4	2.4	26.0	0.2	0.2	2.1
Labour force	1,010.6	1,016.0	4.6	5.4	5.4	19.6	0.5	0.5	2.0
Employment	961.5	967.0	5.3	5.5	5.5	32.8	0.6	0.6	3.5
Unemployment	49.1	49.1	4.6	0.0	0.0	-13.2	0.0	0.0	-21.2
Participation rate	80.5	80.8	0.4	0.3	0.3	-0.1
Unemployment rate	4.9	4.8	0.5	-0.1	-0.1	-1.5
Employment rate	76.6	76.9	0.4	0.3	0.3	1.0
Part-time rate	6.2	6.2	0.5	0.0	0.0	0.1
Women, 25 years and over									
Population	1,213.3	1,215.7	...	2.4	2.4	23.9	0.2	0.2	2.0
Labour force	793.4	812.4	5.2	19.0	19.0	12.9	2.4	2.4	1.6
Employment	757.1	773.5	5.1	16.4	16.4	15.0	2.2	2.2	2.0
Unemployment	36.3	39.0	3.7	2.7	2.7	-2.0	7.4	7.4	-4.9
Participation rate	65.4	66.8	0.4	1.4	1.4	-0.3
Unemployment rate	4.6	4.8	0.5	0.2	0.2	-0.3
Employment rate	62.4	63.6	0.4	1.2	1.2	0.0
Part-time rate	23.6	24.2	0.9	0.5	0.5	0.0
Industry	2,032.2	2,053.8	9.2	21.6	21.6	43.7	1.1	1.1	2.2
Goods-producing sector									
Agriculture	556.4	555.6	8.9	-0.8	-0.8	40.9	-0.1	-0.1	7.9
Forestry, fishing, mining, quarrying, oil and gas extraction	43.6	47.7	3.2	4.1	4.1	-6.3	9.4	9.4	-11.7
Utilities	153.0	152.0	4.6	-1.0	-1.0	19.5	-0.7	-0.7	14.7
Construction	19.1	19.8	1.7	0.7	0.7	2.0	3.7	3.7	11.2
Manufacturing	215.4	205.2	6.4	-10.2	-10.2	4.7	-4.7	-4.7	2.3
Services-producing sector									
Trade	125.3	130.8	5.0	5.5	5.5	20.8	4.4	4.4	18.9
Transportation and warehousing	1,475.8	1,498.2	10.8	22.4	22.4	2.8	1.5	1.5	0.2
Finance, insurance, real estate and leasing	313.1	317.2	7.2	4.1	4.1	13.2	1.3	1.3	4.3
Professional, scientific and technical services	107.5	109.4	4.2	1.9	1.9	7.2	1.8	1.8	7.0
Business, building and other support services	98.8	98.1	4.5	-0.7	-0.7	-10.3	-0.7	-0.7	-9.5
Educational services	158.7	161.6	5.1	2.9	2.9	11.9	1.8	1.8	7.9
Health care and social assistance	73.3	79.9	4.2	6.6	6.6	12.1	9.0	9.0	17.8
Information, culture and recreation	121.4	123.1	5.0	1.7	1.7	-21.0	1.4	1.4	-14.6
Accommodation and food services	220.0	221.6	5.5	1.6	1.6	4.6	0.7	0.7	2.1
Other services	71.3	71.1	4.1	-0.2	-0.2	-13.1	-0.3	-0.3	-15.6
Public administration	118.8	123.1	5.5	4.3	4.3	-10.4	3.6	3.6	-7.8
	104.7	104.8	4.2	0.1	0.1	3.7	0.1	0.1	3.7
	88.1	88.4	3.6	0.3	0.3	4.9	0.3	0.3	5.9

1. Average standard error of change in two consecutive months (see "Sampling Errors" in Data Quality for further explanations).

Note(s): Related CANSIM Tables 282-0087, 282-0088.

Table 4-10
Selected labour force characteristics (seasonally adjusted) — British Columbia

	December 2010	January 2011	S.E. ¹	Change from			Percent change from		
				last month	last December	twelve months ago	last month	last December	twelve months ago
in thousands (except rates)									
Both sexes, 15 years and over									
Population	3,755.3	3,759.4	...	4.1	4.1	58.7	0.1	0.1	1.6
Labour force	2,445.6	2,452.0	10.3	6.4	6.4	18.6	0.3	0.3	0.8
Employment	2,260.7	2,251.6	10.2	-9.1	-9.1	15.3	-0.4	-0.4	0.7
Employment full-time	1,732.4	1,744.6	14.5	12.2	12.2	10.5	0.7	0.7	0.6
Unemployment	184.9	200.4	9.0	15.5	15.5	3.3	8.4	8.4	1.7
Participation rate	65.1	65.2	0.3	0.1	0.1	-0.6
Unemployment rate	7.6	8.2	0.3	0.6	0.6	0.1
Employment rate	60.2	59.9	0.3	-0.3	-0.3	-0.5
Part-time rate	23.4	22.5	0.6	-0.9	-0.9	0.1
Both sexes, 15 to 24 years									
Population	592.0	592.1	...	0.1	0.1	1.1	0.0	0.0	0.2
Labour force	364.2	366.7	6.0	2.5	2.5	-13.2	0.7	0.7	-3.5
Employment	319.9	318.1	5.5	-1.8	-1.8	-7.6	-0.6	-0.6	-2.3
Unemployment	44.4	48.7	5.1	4.3	4.3	-5.5	9.7	9.7	-10.1
Participation rate	61.5	61.9	1.0	0.4	0.4	-2.4
Unemployment rate	12.2	13.3	1.3	1.1	1.1	-1.0
Employment rate	54.0	53.7	0.9	-0.3	-0.3	-1.4
Part-time rate	50.4	46.6	2.1	-3.8	-3.8	-0.6
Men, 25 years and over									
Population	1,543.1	1,545.0	...	1.9	1.9	28.4	0.1	0.1	1.9
Labour force	1,096.8	1,104.5	5.4	7.7	7.7	12.1	0.7	0.7	1.1
Employment	1,022.5	1,010.7	5.9	-11.8	-11.8	1.2	-1.2	-1.2	0.1
Unemployment	74.2	93.8	5.2	19.6	19.6	10.8	26.4	26.4	13.0
Participation rate	71.1	71.5	0.3	0.4	0.4	-0.5
Unemployment rate	6.8	8.5	0.5	1.7	1.7	0.9
Employment rate	66.3	65.4	0.4	-0.9	-0.9	-1.2
Part-time rate	9.9	9.3	0.6	-0.6	-0.6	-0.5
Women, 25 years and over									
Population	1,620.2	1,622.3	...	2.1	2.1	29.3	0.1	0.1	1.8
Labour force	984.6	980.8	6.0	-3.8	-3.8	19.7	-0.4	-0.4	2.0
Employment	918.3	922.9	5.9	4.6	4.6	21.7	0.5	0.5	2.4
Unemployment	66.3	57.9	4.7	-8.4	-8.4	-2.0	-12.7	-12.7	-3.3
Participation rate	60.8	60.5	0.4	-0.3	-0.3	0.2
Unemployment rate	6.7	5.9	0.5	-0.8	-0.8	-0.3
Employment rate	56.7	56.9	0.4	0.2	0.2	0.3
Part-time rate	28.9	28.7	1.0	-0.2	-0.2	1.0
Industry									
Industry	2,260.7	2,251.6	10.2	-9.1	-9.1	15.3	-0.4	-0.4	0.7
Goods-producing sector									
Goods-producing sector	445.0	427.9	9.1	-17.1	-17.1	-11.2	-3.8	-3.8	-2.6
Agriculture	32.3	29.1	2.6	-3.2	-3.2	-4.2	-9.9	-9.9	-12.6
Forestry, fishing, mining, quarrying, oil and gas extraction	37.6	37.7	2.7	0.1	0.1	-4.4	0.3	0.3	-10.5
Utilities	13.9	12.9	1.7	-1.0	-1.0	-1.4	-7.2	-7.2	-9.8
Construction	182.3	182.3	6.7	0.0	0.0	-12.4	0.0	0.0	-6.4
Manufacturing	179.0	165.8	5.9	-13.2	-13.2	11.0	-7.4	-7.4	7.1
Services-producing sector									
Services-producing sector	1,815.7	1,823.8	12.1	8.1	8.1	26.6	0.4	0.4	1.5
Trade	365.5	370.2	8.3	4.7	4.7	-14.7	1.3	1.3	-3.8
Transportation and warehousing	129.6	123.2	5.2	-6.4	-6.4	12.1	-4.9	-4.9	10.9
Finance, insurance, real estate and leasing	135.5	145.6	5.4	10.1	10.1	-3.1	7.5	7.5	-2.1
Professional, scientific and technical services	175.1	163.5	6.3	-11.6	-11.6	9.7	-6.6	-6.6	6.3
Business, building and other support services	93.0	94.1	4.9	1.1	1.1	7.9	1.2	1.2	9.2
Educational services	170.7	168.5	5.8	-2.2	-2.2	0.7	-1.3	-1.3	0.4
Health care and social assistance	257.6	262.5	6.9	4.9	4.9	9.1	1.9	1.9	3.6
Information, culture and recreation	105.5	105.3	5.2	-0.2	-0.2	-4.5	-0.2	-0.2	-4.1
Accommodation and food services	162.9	169.9	6.2	7.0	7.0	3.4	4.3	4.3	2.0
Other services	107.2	109.2	4.8	2.0	2.0	1.2	1.9	1.9	1.1
Public administration	113.1	111.7	4.5	-1.4	-1.4	4.7	-1.2	-1.2	4.4

1. Average standard error of change in two consecutive months (see "Sampling Errors" in Data Quality for further explanations).

Note(s): Related CANSIM Tables 282-0087, 282-0088.

Table 5-1
Labour force characteristics by census metropolitan area (seasonally adjusted) — 3 month moving average

	December 2010	January 2011	S.E. ¹	Change from			Percent change from		
				last month	last December	twelve months ago	last month	last December	twelve months ago
in thousands (except rates)									
St. John's, Newfoundland and Labrador									
Population	160.2	160.3	...	0.1	0.1	1.7	0.1	0.1	1.1
Labour force	109.3	110.0	0.8	0.7	0.7	1.2	0.6	0.6	1.1
Employment	101.6	102.2	0.8	0.6	0.6	2.7	0.6	0.6	2.7
Unemployment	7.8	7.8	0.4	0.0	0.0	-1.5	0.0	0.0	-16.1
Participation rate	68.2	68.6	0.5	0.4	0.4	0.0
Unemployment rate	7.1	7.1	0.4	0.0	0.0	-1.4
Employment rate	63.4	63.8	0.5	0.4	0.4	1.1
Halifax, Nova Scotia									
Population	336.3	336.8	...	0.5	0.5	5.2	0.1	0.1	1.6
Labour force	233.9	236.0	1.1	2.1	2.1	0.3	0.9	0.9	0.1
Employment	217.8	220.3	1.2	2.5	2.5	-0.3	1.1	1.1	-0.1
Unemployment	16.0	15.7	0.6	-0.3	-0.3	0.6	-1.9	-1.9	4.0
Participation rate	69.6	70.1	0.3	0.5	0.5	-1.0
Unemployment rate	6.8	6.7	0.3	-0.1	-0.1	0.3
Employment rate	64.8	65.4	0.4	0.6	0.6	-1.1
Moncton, New Brunswick									
Population	114.0	114.1	...	0.1	0.1	1.7	0.1	0.1	1.5
Labour force	76.4	76.5	0.7	0.1	0.1	2.5	0.1	0.1	3.4
Employment	70.3	70.1	0.7	-0.2	-0.2	0.7	-0.3	-0.3	1.0
Unemployment	6.2	6.4	0.3	0.2	0.2	1.7	3.2	3.2	36.2
Participation rate	67.0	67.0	0.6	0.0	0.0	1.2
Unemployment rate	8.1	8.4	0.4	0.3	0.3	2.0
Employment rate	61.7	61.4	0.6	-0.3	-0.3	-0.3
Saint John, New Brunswick									
Population	105.7	105.8	...	0.1	0.1	0.8	0.1	0.1	0.8
Labour force	68.8	68.6	0.8	-0.2	-0.2	-2.7	-0.3	-0.3	-3.8
Employment	64.4	64.4	0.8	0.0	0.0	-1.0	0.0	0.0	-1.5
Unemployment	4.4	4.2	0.4	-0.2	-0.2	-1.7	-4.5	-4.5	-28.8
Participation rate	65.1	64.8	0.7	-0.3	-0.3	-3.1
Unemployment rate	6.4	6.1	0.5	-0.3	-0.3	-2.2
Employment rate	60.9	60.9	0.7	0.0	0.0	-1.4
Saguenay, Quebec									
Population	126.5	126.5	...	0.0	0.0	0.1	0.0	0.0	0.1
Labour force	73.7	74.2	0.8	0.5	0.5	-3.6	0.7	0.7	-4.6
Employment	68.0	68.3	0.8	0.3	0.3	-3.4	0.4	0.4	-4.7
Unemployment	5.8	6.0	0.4	0.2	0.2	-0.1	3.4	3.4	-1.6
Participation rate	58.3	58.7	0.6	0.4	0.4	-2.9
Unemployment rate	7.9	8.1	0.5	0.2	0.2	0.3
Employment rate	53.8	54.0	0.7	0.2	0.2	-2.7
Québec, Quebec									
Population	631.8	632.4	...	0.6	0.6	7.8	0.1	0.1	1.2
Labour force	445.4	444.0	3.3	-1.4	-1.4	29.0	-0.3	-0.3	7.0
Employment	423.8	421.9	3.4	-1.9	-1.9	25.8	-0.4	-0.4	6.5
Unemployment	21.6	22.0	1.4	0.4	0.4	3.1	1.9	1.9	16.4
Participation rate	70.5	70.2	0.5	-0.3	-0.3	3.8
Unemployment rate	4.8	5.0	0.3	0.2	0.2	0.4
Employment rate	67.1	66.7	0.5	-0.4	-0.4	3.3

See notes at the end of the table.

Table 5-1 – continued

Labour force characteristics by census metropolitan area (seasonally adjusted) — 3 month moving average

	December 2010	January 2011	S.E. ¹	Change from			Percent change from		
				last month	last December	twelve months ago	last month	last December	twelve months ago
in thousands (except rates)									
Sherbrooke, Quebec									
Population	163.8	164.0	...	0.2	0.2	2.2	0.1	0.1	1.4
Labour force	104.0	105.7	0.8	1.7	1.7	4.8	1.6	1.6	4.8
Employment	96.2	97.9	0.8	1.7	1.7	2.6	1.8	1.8	2.7
Unemployment	7.7	7.8	0.4	0.1	0.1	2.1	1.3	1.3	36.8
Participation rate	63.5	64.5	0.5	1.0	1.0	2.1
Unemployment rate	7.4	7.4	0.4	0.0	0.0	1.8
Employment rate	58.7	59.7	0.5	1.0	1.0	0.8
Trois-Rivières, Quebec									
Population	124.0	124.1	...	0.1	0.1	1.2	0.1	0.1	1.0
Labour force	73.7	74.6	0.8	0.9	0.9	1.1	1.2	1.2	1.5
Employment	67.5	67.9	0.8	0.4	0.4	1.6	0.6	0.6	2.4
Unemployment	6.2	6.7	0.4	0.5	0.5	-0.5	8.1	8.1	-6.9
Participation rate	59.4	60.1	0.6	0.7	0.7	0.3
Unemployment rate	8.4	9.0	0.5	0.6	0.6	-0.8
Employment rate	54.4	54.7	0.6	0.3	0.3	0.8
Montréal, Quebec									
Population	3,197.9	3,201.3	...	3.4	3.4	41.3	0.1	0.1	1.3
Labour force	2,115.2	2,112.7	7.4	-2.5	-2.5	-18.1	-0.1	-0.1	-0.8
Employment	1,936.1	1,936.8	7.6	0.7	0.7	1.5	0.0	0.0	0.1
Unemployment	179.1	175.9	4.7	-3.2	-3.2	-19.6	-1.8	-1.8	-10.0
Participation rate	66.1	66.0	0.2	-0.1	-0.1	-1.4
Unemployment rate	8.5	8.3	0.2	-0.2	-0.2	-0.9
Employment rate	60.5	60.5	0.2	0.0	0.0	-0.7
Ottawa-Gatineau, Ontario/Quebec									
Population	1,023.0	1,024.4	...	1.4	1.4	18.8	0.1	0.1	1.9
Labour force	731.9	732.7	3.6	0.8	0.8	7.0	0.1	0.1	1.0
Employment	683.9	685.0	3.7	1.1	1.1	4.3	0.2	0.2	0.6
Unemployment	48.1	47.7	1.8	-0.4	-0.4	2.7	-0.8	-0.8	6.0
Participation rate	71.5	71.5	0.4	0.0	0.0	-0.7
Unemployment rate	6.6	6.5	0.3	-0.1	-0.1	0.3
Employment rate	66.9	66.9	0.4	0.0	0.0	-0.8
Ottawa-Gatineau, Quebec part, Ontario/Quebec									
Population	255.1	255.5	...	0.4	0.4	5.6	0.2	0.2	2.2
Labour force	177.2	180.3	1.5	3.1	3.1	-4.5	1.7	1.7	-2.4
Employment	166.1	169.2	1.5	3.1	3.1	-3.5	1.9	1.9	-2.0
Unemployment	11.1	11.0	0.6	-0.1	-0.1	-1.1	-0.9	-0.9	-9.1
Participation rate	69.5	70.6	0.6	1.1	1.1	-3.3
Unemployment rate	6.3	6.1	0.3	-0.2	-0.2	-0.4
Employment rate	65.1	66.2	0.6	1.1	1.1	-2.9
Ottawa-Gatineau, Ontario part, Ontario/Quebec									
Population	767.9	768.9	...	1.0	1.0	13.3	0.1	0.1	1.8
Labour force	554.7	552.4	3.3	-2.3	-2.3	11.5	-0.4	-0.4	2.1
Employment	517.8	515.8	3.4	-2.0	-2.0	7.8	-0.4	-0.4	1.5
Unemployment	36.9	36.6	1.7	-0.3	-0.3	3.7	-0.8	-0.8	11.2
Participation rate	72.2	71.8	0.4	-0.4	-0.4	0.2
Unemployment rate	6.7	6.6	0.3	-0.1	-0.1	0.5
Employment rate	67.4	67.1	0.4	-0.3	-0.3	-0.1

See notes at the end of the table.

Table 5-1 – continued

Labour force characteristics by census metropolitan area (seasonally adjusted) — 3 month moving average

	December 2010	January 2011	S.E. ¹	Change from			Percent change from		
				last month	last December	twelve months ago	last month	last December	twelve months ago
in thousands (except rates)									
Kingston, Ontario									
Population	131.2	131.3	...	0.1	0.1	1.0	0.1	0.1	0.8
Labour force	81.4	82.5	0.8	1.1	1.1	-4.2	1.4	1.4	-4.8
Employment	75.9	77.4	0.8	1.5	1.5	-4.2	2.0	2.0	-5.1
Unemployment	5.5	5.1	0.3	-0.4	-0.4	0.0	-7.3	-7.3	0.0
Participation rate	62.0	62.8	0.6	0.8	0.8	-3.7
Unemployment rate	6.8	6.2	0.4	-0.6	-0.6	0.3
Employment rate	57.9	58.9	0.6	1.0	1.0	-3.7
Peterborough, Ontario									
Population	102.2	102.3	...	0.1	0.1	0.6	0.1	0.1	0.6
Labour force	61.3	62.5	1.2	1.2	1.2	-1.3	2.0	2.0	-2.0
Employment	56.1	57.2	1.2	1.1	1.1	-1.4	2.0	2.0	-2.4
Unemployment	5.2	5.3	0.5	0.1	0.1	0.1	1.9	1.9	1.9
Participation rate	60.0	61.1	1.3	1.1	1.1	-1.6
Unemployment rate	8.5	8.5	0.9	0.0	0.0	0.3
Employment rate	54.9	55.9	1.3	1.0	1.0	-1.7
Oshawa, Ontario									
Population	300.6	301.1	...	0.5	0.5	6.4	0.2	0.2	2.2
Labour force	211.0	209.8	1.4	-1.2	-1.2	10.4	-0.6	-0.6	5.2
Employment	191.2	191.2	1.5	0.0	0.0	12.5	0.0	0.0	7.0
Unemployment	19.8	18.6	0.9	-1.2	-1.2	-2.1	-6.1	-6.1	-10.1
Participation rate	70.2	69.7	0.5	-0.5	-0.5	2.0
Unemployment rate	9.4	8.9	0.4	-0.5	-0.5	-1.5
Employment rate	63.6	63.5	0.5	-0.1	-0.1	2.9
Toronto, Ontario									
Population	4,730.2	4,736.7	...	6.5	6.5	88.0	0.1	0.1	1.9
Labour force	3,227.8	3,240.9	10.0	13.1	13.1	64.1	0.4	0.4	2.0
Employment	2,959.4	2,971.4	10.1	12.0	12.0	97.2	0.4	0.4	3.4
Unemployment	268.4	269.5	6.4	1.1	1.1	-33.1	0.4	0.4	-10.9
Participation rate	68.2	68.4	0.2	0.2	0.2	0.1
Unemployment rate	8.3	8.3	0.2	0.0	0.0	-1.2
Employment rate	62.6	62.7	0.2	0.1	0.1	0.9
Hamilton, Ontario									
Population	614.5	615.0	...	0.5	0.5	7.5	0.1	0.1	1.2
Labour force	403.5	405.1	3.3	1.6	1.6	-5.0	0.4	0.4	-1.2
Employment	375.6	378.2	3.4	2.6	2.6	4.1	0.7	0.7	1.1
Unemployment	27.9	26.9	1.6	-1.0	-1.0	-9.1	-3.6	-3.6	-25.3
Participation rate	65.7	65.9	0.5	0.2	0.2	-1.6
Unemployment rate	6.9	6.6	0.4	-0.3	-0.3	-2.2
Employment rate	61.1	61.5	0.6	0.4	0.4	-0.1
St. Catharines-Niagara, Ontario									
Population	338.3	338.3	...	0.0	0.0	1.2	0.0	0.0	0.4
Labour force	212.0	214.4	1.6	2.4	2.4	1.7	1.1	1.1	0.8
Employment	191.9	193.7	1.7	1.8	1.8	4.2	0.9	0.9	2.2
Unemployment	20.0	20.7	0.9	0.7	0.7	-2.4	3.5	3.5	-10.4
Participation rate	62.7	63.4	0.5	0.7	0.7	0.3
Unemployment rate	9.4	9.7	0.4	0.3	0.3	-1.2
Employment rate	56.7	57.3	0.5	0.6	0.6	1.1

See notes at the end of the table.

Table 5-1 – continued

Labour force characteristics by census metropolitan area (seasonally adjusted) — 3 month moving average

	December 2010	January 2011	S.E. ¹	Change from			Percent change from		
				last month	last December	twelve months ago	last month	last December	twelve months ago
in thousands (except rates)									
Kitchener-Cambridge-Waterloo, Ontario									
Population	404.8	405.3	...	0.5	0.5	6.3	0.1	0.1	1.6
Labour force	282.3	285.8	1.9	3.5	3.5	7.5	1.2	1.2	2.7
Employment	261.5	265.9	2.1	4.4	4.4	14.5	1.7	1.7	5.8
Unemployment	20.7	19.9	1.1	-0.8	-0.8	-7.0	-3.9	-3.9	-26.0
Participation rate	69.7	70.5	0.5	0.8	0.8	0.8
Unemployment rate	7.3	7.0	0.4	-0.3	-0.3	-2.7
Employment rate	64.6	65.6	0.5	1.0	1.0	2.6
Brantford, Ontario									
Population	107.4	107.5	...	0.1	0.1	0.9	0.1	0.1	0.8
Labour force	74.9	75.1	0.6	0.2	0.2	-1.8	0.3	0.3	-2.3
Employment	68.4	68.2	0.6	-0.2	-0.2	-1.3	-0.3	-0.3	-1.9
Unemployment	6.5	6.9	0.3	0.4	0.4	-0.6	6.2	6.2	-8.0
Participation rate	69.7	69.9	0.7	0.2	0.2	-2.2
Unemployment rate	8.7	9.2	0.6	0.5	0.5	-0.6
Employment rate	63.7	63.4	0.7	-0.3	-0.3	-1.8
Guelph, Ontario									
Population	112.5	112.6	...	0.1	0.1	1.4	0.1	0.1	1.3
Labour force	77.0	77.0	0.9	0.0	0.0	-7.2	0.0	0.0	-8.6
Employment	71.2	71.3	1.0	0.1	0.1	-5.7	0.1	0.1	-7.4
Unemployment	5.8	5.8	0.5	0.0	0.0	-1.3	0.0	0.0	-18.3
Participation rate	68.4	68.4	0.8	0.0	0.0	-7.3
Unemployment rate	7.5	7.5	0.6	0.0	0.0	-0.9
Employment rate	63.3	63.3	0.9	0.0	0.0	-5.9
London, Ontario									
Population	409.7	410.0	...	0.3	0.3	4.7	0.1	0.1	1.2
Labour force	262.7	264.0	2.0	1.3	1.3	-9.5	0.5	0.5	-3.5
Employment	240.4	242.0	2.0	1.6	1.6	-7.6	0.7	0.7	-3.0
Unemployment	22.2	22.0	1.1	-0.2	-0.2	-1.9	-0.9	-0.9	-7.9
Participation rate	64.1	64.4	0.5	0.3	0.3	-3.1
Unemployment rate	8.5	8.3	0.4	-0.2	-0.2	-0.4
Employment rate	58.7	59.0	0.5	0.3	0.3	-2.6
Windsor, Ontario									
Population	268.1	267.9	...	-0.2	-0.2	-1.1	-0.1	-0.1	-0.4
Labour force	164.0	166.4	1.5	2.4	2.4	-2.8	1.5	1.5	-1.7
Employment	146.3	150.3	1.4	4.0	4.0	2.9	2.7	2.7	2.0
Unemployment	17.8	16.1	0.9	-1.7	-1.7	-5.7	-9.6	-9.6	-26.1
Participation rate	61.2	62.1	0.5	0.9	0.9	-0.8
Unemployment rate	10.9	9.7	0.5	-1.2	-1.2	-3.2
Employment rate	54.6	56.1	0.5	1.5	1.5	1.3
Barrie, Ontario									
Population	159.7	159.9	...	0.2	0.2	2.7	0.1	0.1	1.7
Labour force	111.8	110.4	1.4	-1.4	-1.4	2.3	-1.3	-1.3	2.1
Employment	102.4	101.5	1.4	-0.9	-0.9	1.8	-0.9	-0.9	1.8
Unemployment	9.4	8.9	0.7	-0.5	-0.5	0.5	-5.3	-5.3	6.0
Participation rate	70.0	69.0	1.0	-1.0	-1.0	0.2
Unemployment rate	8.4	8.1	0.7	-0.3	-0.3	0.3
Employment rate	64.1	63.5	0.9	-0.6	-0.6	0.1

See notes at the end of the table.

Table 5-1 – continued

Labour force characteristics by census metropolitan area (seasonally adjusted) — 3 month moving average

	December 2010	January 2011	S.E. ¹	Change from			Percent change from		
				last month	last December	twelve months ago	last month	last December	twelve months ago
in thousands (except rates)									
Greater Sudbury, Ontario									
Population	139.0	139.1	...	0.1	0.1	1.0	0.1	0.1	0.7
Labour force	89.7	89.4	0.8	-0.3	-0.3	2.6	-0.3	-0.3	3.0
Employment	82.2	82.4	0.8	0.2	0.2	4.6	0.2	0.2	5.9
Unemployment	7.5	7.0	0.4	-0.5	-0.5	-2.1	-6.7	-6.7	-23.1
Participation rate	64.5	64.3	0.6	-0.2	-0.2	1.4
Unemployment rate	8.4	7.8	0.5	-0.6	-0.6	-2.7
Employment rate	59.1	59.2	0.6	0.1	0.1	2.9
Thunder Bay, Ontario									
Population	102.6	102.6	...	0.0	0.0	-0.2	0.0	0.0	-0.2
Labour force	65.4	64.9	0.6	-0.5	-0.5	0.0	-0.8	-0.8	0.0
Employment	60.9	60.5	0.6	-0.4	-0.4	0.4	-0.7	-0.7	0.7
Unemployment	4.4	4.4	0.3	0.0	0.0	-0.4	0.0	0.0	-8.3
Participation rate	63.7	63.3	0.6	-0.4	-0.4	0.2
Unemployment rate	6.7	6.8	0.4	0.1	0.1	-0.6
Employment rate	59.4	59.0	0.6	-0.4	-0.4	0.5
Winnipeg, Manitoba									
Population	618.0	618.9	...	0.9	0.9	10.1	0.1	0.1	1.7
Labour force	432.7	430.8	1.3	-1.9	-1.9	4.7	-0.4	-0.4	1.1
Employment	409.5	407.4	1.3	-2.1	-2.1	5.8	-0.5	-0.5	1.4
Unemployment	23.2	23.4	0.7	0.2	0.2	-1.1	0.9	0.9	-4.5
Participation rate	70.0	69.6	0.2	-0.4	-0.4	-0.4
Unemployment rate	5.4	5.4	0.2	0.0	0.0	-0.3
Employment rate	66.3	65.8	0.2	-0.5	-0.5	-0.2
Regina, Saskatchewan									
Population	175.0	175.2	...	0.2	0.2	3.0	0.1	0.1	1.7
Labour force	127.1	126.3	0.8	-0.8	-0.8	6.6	-0.6	-0.6	5.5
Employment	121.2	120.6	0.8	-0.6	-0.6	6.8	-0.5	-0.5	6.0
Unemployment	5.9	5.7	0.3	-0.2	-0.2	-0.2	-3.4	-3.4	-3.4
Participation rate	72.6	72.1	0.4	-0.5	-0.5	2.6
Unemployment rate	4.6	4.5	0.3	-0.1	-0.1	-0.4
Employment rate	69.3	68.8	0.5	-0.5	-0.5	2.7
Saskatoon, Saskatchewan									
Population	217.1	217.5	...	0.4	0.4	5.5	0.2	0.2	2.6
Labour force	151.2	152.3	1.0	1.1	1.1	-3.2	0.7	0.7	-2.1
Employment	142.8	144.2	1.0	1.4	1.4	-4.0	1.0	1.0	-2.7
Unemployment	8.4	8.1	0.5	-0.3	-0.3	0.8	-3.6	-3.6	11.0
Participation rate	69.6	70.0	0.5	0.4	0.4	-3.3
Unemployment rate	5.6	5.3	0.3	-0.3	-0.3	0.6
Employment rate	65.8	66.3	0.5	0.5	0.5	-3.6
Calgary, Alberta									
Population	1,020.9	1,022.4	...	1.5	1.5	19.0	0.1	0.1	1.9
Labour force	748.2	752.1	3.5	3.9	3.9	-14.7	0.5	0.5	-1.9
Employment	703.3	706.5	3.7	3.2	3.2	-4.0	0.5	0.5	-0.6
Unemployment	44.9	45.5	2.1	0.6	0.6	-10.8	1.3	1.3	-19.2
Participation rate	73.3	73.6	0.3	0.3	0.3	-2.8
Unemployment rate	6.0	6.0	0.3	0.0	0.0	-1.3
Employment rate	68.9	69.1	0.4	0.2	0.2	-1.7

See notes at the end of the table.

Table 5-1 – continued

Labour force characteristics by census metropolitan area (seasonally adjusted) — 3 month moving average

	December 2010	January 2011	S.E. ¹	Change from			Percent change from		
				last month	last December	twelve months ago	last month	last December	twelve months ago
in thousands (except rates)									
Edmonton, Alberta									
Population	954.5	955.6	...	1.1	1.1	14.0	0.1	0.1	1.5
Labour force	685.1	690.8	3.3	5.7	5.7	6.3	0.8	0.8	0.9
Employment	645.6	650.4	3.6	4.8	4.8	14.6	0.7	0.7	2.3
Unemployment	39.5	40.4	1.9	0.9	0.9	-8.3	2.3	2.3	-17.0
Participation rate	71.8	72.3	0.4	0.5	0.5	-0.4
Unemployment rate	5.8	5.8	0.3	0.0	0.0	-1.3
Employment rate	67.6	68.1	0.4	0.5	0.5	0.6
Kelowna, British Columbia									
Population	148.2	148.5	...	0.3	0.3	3.5	0.2	0.2	2.4
Labour force	104.5	102.5	1.6	-2.0	-2.0	0.4	-1.9	-1.9	0.4
Employment	96.7	94.7	1.5	-2.0	-2.0	1.6	-2.1	-2.1	1.7
Unemployment	7.8	7.8	0.8	0.0	0.0	-1.2	0.0	0.0	-13.3
Participation rate	70.5	69.0	1.0	-1.5	-1.5	-1.4
Unemployment rate	7.5	7.6	0.7	0.1	0.1	-1.2
Employment rate	65.2	63.8	0.9	-1.4	-1.4	-0.4
Abbotsford-Mission, British Columbia									
Population	142.9	143.1	...	0.2	0.2	2.8	0.1	0.1	2.0
Labour force	95.9	95.0	0.8	-0.9	-0.9	-2.9	-0.9	-0.9	-3.0
Employment	86.2	85.8	0.8	-0.4	-0.4	-5.1	-0.5	-0.5	-5.6
Unemployment	9.7	9.2	0.4	-0.5	-0.5	2.2	-5.2	-5.2	31.4
Participation rate	67.1	66.4	0.6	-0.7	-0.7	-3.4
Unemployment rate	10.1	9.7	0.4	-0.4	-0.4	2.5
Employment rate	60.3	60.0	0.6	-0.3	-0.3	-4.8
Vancouver, British Columbia									
Population	2,006.0	2,008.9	...	2.9	2.9	38.4	0.1	0.1	1.9
Labour force	1,327.5	1,324.6	5.1	-2.9	-2.9	13.4	-0.2	-0.2	1.0
Employment	1,231.2	1,227.1	5.2	-4.1	-4.1	19.4	-0.3	-0.3	1.6
Unemployment	96.3	97.5	3.0	1.2	1.2	-6.0	1.2	1.2	-5.8
Participation rate	66.2	65.9	0.3	-0.3	-0.3	-0.6
Unemployment rate	7.3	7.4	0.2	0.1	0.1	-0.5
Employment rate	61.4	61.1	0.3	-0.3	-0.3	-0.2
Victoria, British Columbia									
Population	299.2	299.5	...	0.3	0.3	3.7	0.1	0.1	1.3
Labour force	193.2	194.0	1.5	0.8	0.8	-7.0	0.4	0.4	-3.5
Employment	181.9	181.9	1.5	0.0	0.0	-3.9	0.0	0.0	-2.1
Unemployment	11.3	12.1	0.6	0.8	0.8	-3.1	7.1	7.1	-20.4
Participation rate	64.6	64.8	0.5	0.2	0.2	-3.2
Unemployment rate	5.8	6.2	0.3	0.4	0.4	-1.4
Employment rate	60.8	60.7	0.5	-0.1	-0.1	-2.1

1. Average standard error of change in two consecutive months (see "Sampling Errors" in Data Quality for further explanations).

Note(s): Estimates from this table are based on 2006 census population counts. Related CANSIM Table 282-0116.

Table 5-2
Labour force characteristics by census metropolitan area (seasonally adjusted) — Monthly

	December 2010	January 2011	S.E. ¹	Change from			Percent change from		
				last month	last December	twelve months ago	last month	last December	twelve months ago
in thousands (except rates)									
Montréal, Quebec									
Population	3,201.1	3,204.9	...	3.8	3.8	41.3	0.1	0.1	1.3
Labour force	2,111.6	2,132.2	15.4	20.6	20.6	-10.1	1.0	1.0	-0.5
Employment	1,944.1	1,952.8	15.2	8.7	8.7	5.6	0.4	0.4	0.3
Unemployment	167.5	179.4	11.1	11.9	11.9	-15.7	7.1	7.1	-8.0
Participation rate	66.0	66.5	0.5	0.5	0.5	-1.2
Unemployment rate	7.9	8.4	0.5	0.5	0.5	-0.7
Employment rate	60.7	60.9	0.5	0.2	0.2	-0.7
Toronto, Ontario									
Population	4,736.5	4,743.5	...	7.0	7.0	87.6	0.1	0.1	1.9
Labour force	3,244.1	3,269.2	21.0	25.1	25.1	89.1	0.8	0.8	2.8
Employment	2,981.0	2,986.4	20.7	5.4	5.4	104.3	0.2	0.2	3.6
Unemployment	263.1	282.8	15.8	19.7	19.7	-15.2	7.5	7.5	-5.1
Participation rate	68.5	68.9	0.4	0.4	0.4	0.6
Unemployment rate	8.1	8.7	0.5	0.6	0.6	-0.7
Employment rate	62.9	63.0	0.4	0.1	0.1	1.1
Vancouver, British Columbia									
Population	2,008.8	2,011.8	...	3.0	3.0	38.0	0.1	0.1	1.9
Labour force	1,329.8	1,325.9	10.8	-3.9	-3.9	14.1	-0.3	-0.3	1.1
Employment	1,228.4	1,225.4	10.6	-3.0	-3.0	19.7	-0.2	-0.2	1.6
Unemployment	101.4	100.5	7.7	-0.9	-0.9	-5.6	-0.9	-0.9	-5.3
Participation rate	66.2	65.9	0.5	-0.3	-0.3	-0.6
Unemployment rate	7.6	7.6	0.5	0.0	0.0	-0.5
Employment rate	61.2	60.9	0.5	-0.3	-0.3	-0.2

1. Average standard error of change in two consecutive months (see "Sampling Errors" in Data Quality for further explanations).

Note(s): Estimates from this table are based on 2006 census population counts. Related CANSIM Table 282-0117.

Table 6-1
Labour force characteristics by province and economic region, ¹ unadjusted for seasonality, 3 month moving average ending in January 2010 and January 2011

	Population	Labour force			Participation rate	Unemployment rate	Employment rate
		Labour force	Employment	Unemployment			
in thousands							
Canada ²							
2010	27,470.4	18,228.4	16,740.8	1,487.7	66.4	8.2	60.9
2011	27,815.4	18,398.7	17,030.7	1,368.0	66.1	7.4	61.2
Newfoundland and Labrador							
2010	427.6	246.1	206.8	39.3	57.6	16.0	48.4
2011	428.9	250.8	216.1	34.7	58.5	13.8	50.4
Avalon Peninsula [1010]							
2010	217.5	135.6	119.6	16.0	62.3	11.8	55.0
2011	219.9	138.9	126.2	12.8	63.2	9.2	57.4
South Coast-Burin Peninsula [1020]							
2010	31.3	14.3	11.4	2.9	45.7	20.3	36.4
2011	30.8	17.9	13.8	4.1	58.1	22.9	44.8
West Coast-Northern Peninsula-Labrador [1030]							
2010	87.4	49.1	40.4	8.7	56.2	17.7	46.2
2011	87.2	49.7	40.9	8.8	57.0	17.7	46.9
Notre Dame-Central Bonavista Bay [1040]							
2010	91.4	47.1	35.5	11.6	51.5	24.6	38.8
2011	91.0	44.2	35.2	9.0	48.6	20.4	38.7
Prince Edward Island							
2010	116.2	76.6	67.3	9.2	65.9	12.0	57.9
2011	117.9	77.5	67.0	10.5	65.7	13.5	56.8
Nova Scotia							
2010	775.8	492.2	446.0	46.2	63.4	9.4	57.5
2011	778.8	492.9	444.8	48.2	63.3	9.8	57.1
Cape Breton [1210]							
2010	113.9	60.7	51.7	9.0	53.3	14.8	45.4
2011	112.9	61.7	51.7	10.0	54.7	16.2	45.8
North Shore [1220]							
2010	130.4	78.4	69.3	9.1	60.1	11.6	53.1
2011	130.2	77.9	68.2	9.7	59.8	12.5	52.4
Annapolis Valley [1230]							
2010	100.2	61.1	55.6	5.4	61.0	8.8	55.5
2011	100.0	61.1	54.0	7.0	61.1	11.5	54.0
Southern [1240]							
2010	99.6	57.9	49.6	8.3	58.1	14.3	49.8
2011	98.9	57.7	51.0	6.7	58.3	11.6	51.6
Halifax [1250]							
2010	331.6	234.1	219.8	14.3	70.6	6.1	66.3
2011	336.8	234.5	219.8	14.8	69.6	6.3	65.3
New Brunswick							
2010	615.3	386.2	351.7	34.5	62.8	8.9	57.2
2011	618.2	382.4	345.9	36.4	61.9	9.5	56.0
Campbellton-Miramichi [1310]							
2010	131.4	70.9	60.3	10.6	54.0	15.0	45.9
2011	130.1	68.7	56.2	12.5	52.8	18.2	43.2
Moncton-Richibucto [1320]							
2010	168.4	108.4	101.5	6.8	64.4	6.3	60.3
2011	170.7	110.2	99.8	10.3	64.6	9.3	58.5
Saint John-St. Stephen [1330]							
2010	142.8	92.3	84.4	7.9	64.6	8.6	59.1
2011	143.8	91.5	86.1	5.4	63.6	5.9	59.9

See notes at the end of the table.

Table 6-1 – continued

Labour force characteristics by province and economic region, ¹ unadjusted for seasonality, 3 month moving average ending in January 2010 and January 2011

	Population	Labour force			Participation rate	Unemployment rate	Employment rate
		Labour force	Employment	Unemployment			
in thousands							
Fredericton-Oromocto [1340]							
2010	106.9	73.7	68.5	5.1	68.9	6.9	64.1
2011	108.3	73.9	69.1	4.8	68.2	6.5	63.8
Edmundston-Woodstock [1350]							
2010	65.7	41.0	36.9	4.1	62.4	10.0	56.2
2011	65.3	38.2	34.8	3.4	58.5	8.9	53.3
Quebec							
2010	6,470.0	4,163.8	3,820.6	343.3	64.4	8.2	59.1
2011	6,539.5	4,230.5	3,901.6	329.0	64.7	7.8	59.7
Gaspésie-Îles-de-la-Madeleine [2410]							
2010	78.8	39.8	33.7	6.1	50.5	15.3	42.8
2011	78.7	42.0	36.0	6.0	53.4	14.3	45.7
Bas-Saint-Laurent [2415]							
2010	167.1	92.3	82.8	9.5	55.2	10.3	49.6
2011	166.9	96.9	85.8	11.1	58.1	11.5	51.4
Capitale-Nationale [2420]							
2010	577.7	372.7	352.5	20.2	64.5	5.4	61.0
2011	584.7	391.5	368.5	23.0	67.0	5.9	63.0
Chaudière-Appalaches [2425]							
2010	331.2	213.5	202.5	11.0	64.5	5.2	61.1
2011	332.6	224.1	214.2	9.8	67.4	4.4	64.4
Etrie [2430]							
2010	254.7	152.9	142.5	10.4	60.0	6.8	55.9
2011	257.1	168.2	156.8	11.4	65.4	6.8	61.0
Centre-du-Québec [2433]							
2010	188.2	113.2	104.0	9.2	60.1	8.1	55.3
2011	189.7	114.2	107.9	6.3	60.2	5.5	56.9
Montérégie [2435]							
2010	1,164.5	782.6	725.2	57.4	67.2	7.3	62.3
2011	1,180.6	783.3	728.1	55.2	66.3	7.0	61.7
Montréal [2440]							
2010	1,605.6	1,031.9	924.0	107.9	64.3	10.5	57.5
2011	1,617.0	1,023.2	926.1	97.1	63.3	9.5	57.3
Laval [2445]							
2010	323.5	227.2	209.1	18.1	70.2	8.0	64.6
2011	329.7	212.6	196.0	16.6	64.5	7.8	59.4
Lanaudière [2450]							
2010	379.1	251.5	229.6	21.9	66.3	8.7	60.6
2011	386.8	251.4	232.3	19.0	65.0	7.6	60.1
Laurentides [2455]							
2010	448.9	301.4	277.6	23.8	67.1	7.9	61.8
2011	458.1	313.0	285.8	27.2	68.3	8.7	62.4
Outaouais [2460]							
2010	297.5	206.9	193.3	13.5	69.5	6.5	65.0
2011	303.1	201.8	188.8	13.0	66.6	6.4	62.3
Abitibi-Témiscamingue [2465]							
2010	116.8	69.9	63.6	6.4	59.8	9.2	54.5
2011	117.3	77.0	71.8	5.3	65.6	6.9	61.2
Mauricie [2470]							
2010	219.9	118.5	107.6	10.8	53.9	9.1	48.9
2011	221.0	137.6	126.3	11.3	62.3	8.2	57.1

See notes at the end of the table.

Table 6-1 – continued

Labour force characteristics by province and economic region, ¹ unadjusted for seasonality, 3 month moving average ending in January 2010 and January 2011

	Population	Labour force			Participation rate	Unemployment rate	Employment rate
		Labour force	Employment	Unemployment			
in thousands							
Saguenay-Lac-Saint-Jean [2475]							
2010	225.4	131.9	119.7	12.2	58.5	9.2	53.1
2011	225.3	133.3	121.3	12.0	59.2	9.0	53.8
Côte-Nord and Nord-du-Québec [2480, 2490]							
2010	91.0	57.6	52.8	4.8	63.3	8.3	58.0
2011	90.8	60.5	55.6	4.8	66.6	7.9	61.2
Ontario							
2010	10,714.1	7,118.2	6,502.5	615.7	66.4	8.6	60.7
2011	10,854.5	7,184.2	6,637.6	546.7	66.2	7.6	61.2
Ottawa [3510]							
2010	1,027.1	716.7	672.5	44.2	69.8	6.2	65.5
2011	1,041.1	714.8	668.4	46.5	68.7	6.5	64.2
Kingston-Pembroke [3515]							
2010	367.9	219.7	200.4	19.3	59.7	8.8	54.5
2011	369.3	222.7	208.0	14.7	60.3	6.6	56.3
Muskoka-Kawarthas [3520]							
2010	316.0	193.7	175.4	18.3	61.3	9.4	55.5
2011	318.0	183.9	163.7	20.2	57.8	11.0	51.5
Toronto [3530]							
2010	4,898.0	3,303.3	3,010.3	293.0	67.4	8.9	61.5
2011	4,991.8	3,382.6	3,122.3	260.3	67.8	7.7	62.5
Kitchener-Waterloo-Barrie [3540]							
2010	1,012.8	706.1	646.0	60.1	69.7	8.5	63.8
2011	1,028.8	716.3	663.9	52.4	69.6	7.3	64.5
Hamilton-Niagara Peninsula [3550]							
2010	1,154.5	756.6	683.8	72.9	65.5	9.6	59.2
2011	1,164.4	751.3	692.1	59.3	64.5	7.9	59.4
London [3560]							
2010	532.5	353.3	323.9	29.4	66.3	8.3	60.8
2011	537.9	348.9	321.7	27.2	64.9	7.8	59.8
Windsor-Sarnia [3570]							
2010	522.5	325.1	290.1	35.0	62.2	10.8	55.5
2011	520.8	326.0	296.5	29.5	62.6	9.0	56.9
Stratford-Bruce Peninsula [3580]							
2010	245.7	161.4	149.6	11.8	65.7	7.3	60.9
2011	245.9	157.3	146.4	10.8	64.0	6.9	59.5
Northeast [3590]							
2010	462.2	271.8	246.9	24.8	58.8	9.1	53.4
2011	462.3	277.1	259.3	17.7	59.9	6.4	56.1
Northwest [3595]							
2010	174.8	110.6	103.6	7.0	63.3	6.3	59.3
2011	174.0	103.4	95.3	8.1	59.4	7.8	54.8
Manitoba							
2010	934.1	640.1	605.3	34.8	68.5	5.4	64.8
2011	947.0	649.3	617.5	31.8	68.6	4.9	65.2
Southeast [4610]							
2010	79.9	57.4	53.9	3.4	71.8	5.9	67.5
2011	81.8	56.5	53.5	2.9	69.1	5.1	65.4
South Central [4620]							
2010	45.5	31.3	30.1	1.3	68.8	4.2	66.2
2011	46.7	31.4	30.1	1.3	67.2	4.1	64.5

See notes at the end of the table.

Table 6-1 – continued

Labour force characteristics by province and economic region, 1 unadjusted for seasonality, 3 month moving average ending in January 2010 and January 2011

	Population	Labour force			Participation rate	Unemployment rate	Employment rate
		Labour force	Employment	Unemployment			
in thousands							
Southwest [4630]							
2010	83.3	56.0	53.5	2.4	67.2	4.3	64.2
2011	83.6	55.4	53.6	1.8	66.3	3.2	64.1
North Central [4640]							
2010	35.7	24.0	22.8	1.2	67.2	5.0	63.9
2011	36.3	23.5	22.4	1.1	64.7	4.7	61.7
Winnipeg [4650]							
2010	557.4	383.7	361.9	21.7	68.8	5.7	64.9
2011	566.1	390.3	369.7	20.6	68.9	5.3	65.3
Interlake [4660]							
2010	71.5	46.9	44.4	2.5	65.6	5.3	62.1
2011	72.2	49.1	47.1	2.1	68.0	4.3	65.2
Parklands and North [4670, 4680]							
2010	60.7	40.8	38.6	2.2	67.2	5.4	63.6
2011	60.3	43.0	41.0	2.0	71.3	4.7	68.0
Saskatchewan							
2010	784.6	540.9	515.9	25.0	68.9	4.6	65.8
2011	795.4	548.9	520.7	28.2	69.0	5.1	65.5
Regina-Moose Mountain [4710]							
2010	232.4	160.6	154.0	6.6	69.1	4.1	66.3
2011	235.9	168.3	162.2	6.1	71.3	3.6	68.8
Swift Current-Moose Jaw [4720]							
2010	81.0	53.1	50.5	2.6	65.6	4.9	62.3
2011	81.2	53.2	50.4	2.7	65.5	5.1	62.1
Saskatoon-Biggar [4730]							
2010	256.1	184.4	176.5	8.0	72.0	4.3	68.9
2011	262.0	180.8	172.0	8.9	69.0	4.9	65.6
Yorkton-Melville [4740]							
2010	63.3	41.0	39.5	1.5	64.8	3.7	62.4
2011	63.1	40.6	38.2	2.4	64.3	5.9	60.5
Prince Albert and Northern [4750, 4760]							
2010	151.9	101.8	95.5	6.3	67.0	6.2	62.9
2011	153.2	106.0	98.0	8.0	69.2	7.5	64.0
Alberta							
2010	2,936.8	2,150.6	2,004.8	145.8	73.2	6.8	68.3
2011	2,979.8	2,150.2	2,029.6	120.6	72.2	5.6	68.1
Lethbridge-Medicine Hat [4810]							
2010	216.2	145.2	136.4	8.8	67.2	6.1	63.1
2011	218.0	140.9	134.9	6.0	64.6	4.3	61.9
Camrose-Drumheller [4820]							
2010	155.3	111.3	106.0	5.3	71.7	4.8	68.3
2011	155.7	111.2	105.7	5.6	71.4	5.0	67.9
Calgary [4830]							
2010	1,078.4	808.6	749.9	58.7	75.0	7.3	69.5
2011	1,098.8	801.7	754.2	47.6	73.0	5.9	68.6
Banff-Jasper-Rocky Mountain House [4840]							
2010	71.3	54.3	51.0	3.3	76.2	6.1	71.5
2011	71.7	56.1	52.8	3.3	78.2	5.9	73.6
Red Deer [4850]							
2010	151.3	106.4	98.6	7.8	70.3	7.3	65.2
2011	153.1	112.2	106.4	5.8	73.3	5.2	69.5

See notes at the end of the table.

Table 6-1 – continued

Labour force characteristics by province and economic region, ¹ unadjusted for seasonality, 3 month moving average ending in January 2010 and January 2011

	Population	Labour force			Participation rate	Unemployment rate	Employment rate
		Labour force	Employment	Unemployment			
in thousands							
Edmonton [4860]							
2010	976.7	704.6	657.3	47.3	72.1	6.7	67.3
2011	991.2	712.2	671.8	40.4	71.9	5.7	67.8
Athabasca-Grande Prairie-Peace River [4870]							
2010	189.4	142.5	131.2	11.3	75.2	7.9	69.3
2011	190.0	135.2	126.9	8.3	71.2	6.1	66.8
Wood Buffalo-Cold Lake [4880]							
2010	98.3	77.6	74.4	3.3	78.9	4.3	75.7
2011	101.3	80.7	77.1	3.6	79.7	4.5	76.1
British Columbia							
2010	3,695.9	2,413.8	2,219.8	193.9	65.3	8.0	60.1
2011	3,755.4	2,431.9	2,250.0	182.0	64.8	7.5	59.9
Vancouver Island and Coast [5910]							
2010	644.7	409.6	375.6	34.0	63.5	8.3	58.3
2011	653.0	402.6	374.7	27.9	61.7	6.9	57.4
Lower Mainland-Southwest [5920]							
2010	2,248.7	1,477.5	1,366.3	111.2	65.7	7.5	60.8
2011	2,292.9	1,500.5	1,391.4	109.0	65.4	7.3	60.7
Thompson-Okanagan [5930]							
2010	429.9	279.7	255.4	24.3	65.1	8.7	59.4
2011	436.3	280.9	255.5	25.4	64.4	9.0	58.6
Kootenay [5940]							
2010	125.9	79.2	71.6	7.6	62.9	9.6	56.9
2011	127.0	75.6	69.3	6.3	59.5	8.3	54.6
Cariboo [5950]							
2010	127.8	85.0	74.7	10.3	66.5	12.1	58.5
2011	127.7	86.9	80.6	6.3	68.1	7.2	63.1
North Coast and Nechako [5960, 5970]							
2010	67.1	43.9	39.3	4.7	65.4	10.7	58.6
2011	66.9	45.4	42.0	3.4	67.9	7.5	62.8
Northeast [5980]							
2010	51.8	38.8	36.9	1.9	74.9	4.9	71.2
2011	51.5	40.1	36.5	3.6	77.9	9.0	70.9

1. For geographic descriptions of economic regions, refer to the Guide to the Labour Force Survey (catalogue number 71-543-GIE).

2. Estimates for Canada are a sum of the provincial totals and exclude estimates from Yukon, Northwest Territories and Nunavut.

Note(s): Related CANSIM table 282-0054.

Table 6-2
Labour force characteristics by territories, unadjusted for seasonality, 3 month moving average ending in
January 2010 and January 2011

	Population	Labour force			Participation rate	Unemployment rate	Employment rate
		Labour force	Employment	Unemployment			
		in thousands			percent		
Yukon ¹							
2010	25.6	18.1	16.6	1.5	70.7	8.3	64.8
2011	26.1	19.0	18.3	0.8	72.8	4.2	70.1
Northwest Territories ²							
2010	32.1	22.3	20.9	1.4	69.5	6.3	65.1
2011	32.2	23.5	21.8	1.8	73.0	7.7	67.7
Nunavut ³							
2010	20.4	12.5	11.0	1.4	61.0	11.5	54.0
2011	21.3	14.2	11.8	2.4	66.8	17.1	55.4

1. Since 1992, the Labour force survey (LFS) has been conducted in the Yukon, using an alternative methodology that accommodates some of the operational difficulties inherent to remote locales. These estimates are not included in the national totals. In 1995, the LFS in the Yukon underwent a sample redesign. One result of the redesign was that the covered population increased from 85% to 92%, which is reflected by the sharp increase in the three month moving averages estimates of January, February and March of 1995 for all the level estimates. Users are therefore warned to be cautious when comparing estimates before January 1995 to estimates for January 1995 and forward.
2. Since 2001, the Labour force survey (LFS) has been administered in the Northwest Territories, using an alternative methodology that accommodates some of the operational difficulties inherent to remote locales. These estimates are not included in national totals.
3. Since 2004, the Labour force survey (LFS) has been administered in Nunavut, using an alternative methodology that accommodates some of the operational difficulties inherent to remote locales. These estimates are 3-month moving averages and are not included in national totals. From January 2004 to December 2007, estimates represent about 70% of all Nunavut residents aged 15 and over. Starting in January 2008, coverage was extended to 92%, so that by March 2008, the 3-month moving average is completely based on the extended coverage. Because of the large difference in coverage, users are recommended not to compare estimates prior to January 2008 with data afterwards. The January and February 2008 3-month moving average estimates are based on a mix of both coverages, since the extended coverage was introduced in January 2008. Estimates from January 2004 to December 2007 are based on the 10 largest communities in Nunavut: Iqaluit, Rankin Inlet, Cambridge Bay, Kugluktuk, Baker Lake, Arviat, Pond Inlet, Cape Dorset, Pangnirtung, Igloolik. Estimates from March 2008 to present cover the above communities as well as: Taloyoak, Gjoa Haven, Kugaaruk, Coral Harbour, Repulse Bay, Qikiqtarjuaq, Arctic Bay, Hall Beach, Clyde River.

Note(s): Related CANSIM table 282-0100.

Table 7
Average usual hours and wages of employees by selected characteristics, Canada, unadjusted for seasonality

	Employees				Full-time			Part-time		
	Number	Average weekly hours	Average weekly wages	Average hourly wages	Number	Average weekly hours	Average weekly wages	Number	Average weekly hours	Average weekly wages
	thousands		current dollars		thousands		current dollars	thousands		current dollars
January 2011										
15 years and over	14,254.1	34.8	835.31	23.09	11,415.9	39.2	972.33	2,838.2	16.9	284.16
15 to 24 years	2,207.0	25.4	363.43	13.28	1,016.8	38.3	594.65	1,190.2	14.4	165.88
25 years and over	12,047.1	36.5	921.75	24.89	10,399.1	39.3	1,009.26	1,648.0	18.6	369.58
Men	7,075.3	37.4	958.12	24.91	6,189.0	40.4	1,059.27	886.3	16.1	251.80
Women	7,178.8	32.2	714.26	21.30	5,226.9	37.8	869.39	1,951.9	17.2	298.86
Union coverage										
Union coverage	4,540.3	35.4	950.68	26.56	3,826.0	38.5	1,049.10	714.2	18.6	423.48
No union coverage	9,713.8	34.5	781.38	21.47	7,589.9	39.6	933.63	2,123.9	16.3	237.31
Job permanency										
Permanent	12,618.4	35.7	872.49	23.63	10,553.6	39.2	984.49	2,064.8	17.8	300.03
Temporary	1,635.7	27.4	548.47	18.93	862.4	39.1	823.49	773.4	14.3	241.81
Occupation										
Management	992.3	39.7	1,409.69	35.50	968.1	40.2	1,432.61	24.2	19.9	493.23
Business, finance and administrative	2,801.6	35.0	782.22	21.82	2,376.1	38.2	868.87	425.6	17.4	298.40
Natural and applied sciences	1,071.9	38.4	1,217.44	31.62	1,036.4	39.1	1,245.54	35.4	16.7	395.12
Health	985.2	33.2	884.29	26.67	735.0	37.7	1,004.92	250.2	19.8	529.89
Social science, education, government service and religion	1,440.0	33.7	1,018.20	29.97	1,137.0	38.1	1,164.89	303.0	17.1	467.75
Art, culture, recreation and sport	323.2	29.3	734.95	23.33	212.5	38.1	991.96	110.7	12.5	241.64
Sales and service	3,697.2	29.6	496.57	15.53	2,208.4	38.4	696.37	1,488.8	16.4	200.18
Trades, transport and equipment operators	1,965.4	39.9	920.66	22.84	1,836.8	41.4	965.25	128.6	17.5	283.97
Occupations unique to primary industry	228.4	41.4	947.05	21.70	197.2	45.6	1,062.53	31.2	15.1	217.27
Occupations unique to processing, manufacturing and utilities	749.0	38.9	767.34	19.54	708.5	40.1	795.42	40.5	17.9	276.36
January 2010										
15 years and over	13,860.4	34.7	813.85	22.51	11,106.8	39.1	947.28	2,753.5	16.8	275.61
15 to 24 years	2,200.5	25.5	357.93	12.94	1,018.5	38.5	587.52	1,182.0	14.3	160.09
25 years and over	11,659.9	36.4	899.89	24.32	10,088.3	39.2	983.61	1,571.6	18.7	362.49
Men	6,810.2	37.2	940.35	24.49	5,954.3	40.2	1,041.20	855.9	15.8	238.76
Women	7,050.2	32.2	691.66	20.60	5,152.6	37.8	838.76	1,897.6	17.3	292.23
Union coverage										
Union coverage	4,388.9	35.4	921.92	25.66	3,707.1	38.4	1,015.83	681.8	18.7	411.28
No union coverage	9,471.4	34.3	763.77	21.05	7,399.7	39.4	912.94	2,071.8	16.2	230.96
Job permanency										
Permanent	12,274.2	35.7	851.36	23.10	10,273.1	39.1	959.72	2,001.1	17.8	295.07
Temporary	1,586.2	27.1	523.60	17.99	833.8	38.6	794.09	752.4	14.3	223.86
Occupation										
Management	999.0	39.5	1,361.95	34.50	964.3	40.2	1,393.03	34.7	20.0	498.86
Business, finance and administrative	2,708.5	35.0	751.24	21.01	2,292.1	38.2	832.75	416.4	17.7	302.58
Natural and applied sciences	1,071.1	38.1	1,212.46	31.68	1,024.6	39.0	1,244.82	46.5	18.7	499.17
Health	925.3	33.3	881.72	26.30	697.6	37.5	1,001.40	227.6	20.2	514.92
Social science, education, government service and religion	1,428.1	33.6	984.49	28.82	1,134.0	38.0	1,129.10	294.1	16.8	426.93
Art, culture, recreation and sport	332.3	29.6	710.02	22.13	218.4	38.3	966.36	113.9	12.8	218.58
Sales and service	3,650.1	29.8	485.73	15.04	2,234.2	38.5	673.07	1,415.9	16.1	190.11
Trades, transport and equipment operators	1,841.7	39.4	892.61	22.35	1,701.4	41.1	942.73	140.4	18.0	285.17
Occupations unique to primary industry	193.7	41.3	889.03	20.94	169.9	45.1	985.36	23.8	14.2	202.28
Occupations unique to processing, manufacturing and utilities	710.4	38.6	759.03	19.38	670.3	39.9	788.59	40.2	17.8	265.70

Note(s): Related CANSIM Tables 282-0023, 282-0069, 282-0073.

Table 8
Regional unemployment rates used by the Employment Insurance Program, ¹ seasonally adjusted, 3 month moving average

Region	Effective from February 6, 2011 to March 12, 2011
	percent
Newfoundland and Labrador	
01. St. John's	7.1
02. Newfoundland and Labrador	18.2
Prince Edward Island	
03. Prince Edward Island	11.9
Nova Scotia	
04. Eastern Nova Scotia	16.2
05. Western Nova Scotia	11.6
06. Halifax	6.7
New Brunswick	
07. Fredericton-Moncton-Saint John	6.9
08. Madawaska-Charlotte ²	11.0
09. Restigouche-Albert	15.9
Quebec	
10. Gaspésie-Îles-de-la-Madeleine	14.8
11. Québec	5.1
12. Trois-Rivières	9.0
13. South Central Quebec	4.4
14. Sherbrooke	7.5
15. Montérégie	7.8
16. Montréal	8.3
17. Central Quebec	8.2
18. Northwestern Quebec	9.6
19. Bas-Saint-Laurent-Côte-Nord ³	11.1
20. Gatineau	6.2
21. Saguenay	8.1
Ontario	
22. Ottawa	6.6
23. Eastern Ontario	8.1
24. Kingston	6.1
25. Central Ontario	9.7
26. Oshawa	8.9
27. Toronto	8.3
28. Hamilton	6.7
29. St. Catharines	9.6
30. London	8.2
31. Niagara	10.6
32. Windsor	9.9
33. Kitchener	7.4
34. Huron	10.2
35. South Central Ontario	7.3
36. Sudbury	7.9
37. Thunder Bay	7.1
38. Northern Ontario	11.3
Manitoba	
39. Winnipeg	5.5
40. Southern Manitoba	5.6
41. Northern Manitoba	26.8
Saskatchewan	
42. Regina	4.3
43. Saskatoon	5.4
44. Southern Saskatchewan	7.2
45. Northern Saskatchewan	18.8

See notes at the end of the table.

Table 8 – continued

Regional unemployment rates used by the Employment Insurance Program, ¹ seasonally adjusted, 3 month moving average

Region	Effective from February 6, 2011 to March 12, 2011
	percent
Alberta	
46. Calgary	5.9
47. Edmonton	6.2
48. Northern Alberta	9.6
49. Southern Alberta	6.7
British Columbia	
50. Southern Interior British Columbia	9.5
51. Abbotsford	9.9
52. Vancouver	7.5
53. Victoria	6.8
54. Southern Coastal British Columbia	8.7
55. Northern British Columbia	11.9
Territories	
56. Yukon ⁴	25.0
57. Northwest Territories ⁴	25.0
58. Nunavut ⁴	25.0

1. The boundaries of these regions are determined by Human Resources and Social Development Canada (HRSDC). For geographic descriptions and maps of employment insurance regions, see the HRSDC website: <http://srv129.services.gc.ca/eiregions/en/geocont.aspx>.

2. This unemployment rate has been determined using a transition formula prescribed in the EI Regulations. For further information, see: http://www.hrsdc.gc.ca/en/cs/comm/news/2000/000913a_e.shtml.

3. This unemployment rate has been determined using a transition formula prescribed in the EI Regulations. For further information, see: http://www.hrsdc.gc.ca/en/cs/comm/news/2000/000913b_e.shtml.

4. This rate is provided by Human Resources and Skills Development Canada.

Note(s): All geographic regions are based on the 1996 Census boundaries.

Data quality

About the Labour Force Survey

The statistics contained in this report are based on information obtained through a sample survey of 53,000 representative households across the country. The Labour Force Survey, started in November 1945, was taken at quarterly intervals until November 1952. It has been carried out monthly since then. The information generated by the survey has expanded considerably over the years with a major redesign of the survey content in 1976 and again in 1997, and provides a rich and detailed picture of the Canadian labour market.

The sample used in the Labour Force Survey has been designed to represent all persons in the population 15 years of age and over residing in the provinces of Canada, with the exception of the following: persons living on Indian reserves, full-time members of the armed forces and people living in institutions (for example, inmates of penal institutions and patients in hospitals or nursing homes who have resided in the institution for more than six months). Monthly estimates of employment, unemployment and persons not in the labour force refer to the specific week covered by the survey each month, normally the week containing the 15th day.

Definitions and explanations

The **labour force** is composed of those members of the civilian non-institutional population 15 years of age and over who, during the reference week, were employed or unemployed.

Employed persons are those who, during the reference week:

- (a) did any work at all
- (b) had a job but were not at work

A person is considered to be **full-time** if his/her usual hours at the main job are 30 or more hours per week. When the number of hours worked at the main job is usually less than 30 hours per week then he/she is considered to be **part-time**.

Unemployed persons are those who, during the reference week:

- (a) were without work, had actively looked for work in the past four weeks (ending with reference week), and were available for work;
- (b) had not actively looked for work in the past four weeks but were on temporary layoff and were available for work;
- (c) had not actively looked for work in the past four weeks but had a new job to start in four weeks or less from the reference week, and were available for work.

Persons in the civilian non-institutional population 15 years of age and over who, during the reference week, were neither employed nor unemployed are classified as **not in the labour force**.

The **unemployment rate** represents the number of unemployed persons expressed as a percentage of the labour force. The unemployment rate for a particular group (age, sex, etc.) is the number unemployed in that group expressed as a percentage of the labour force for that group.

The **participation rate** represents the labour force expressed as a percentage of the population 15 years of age and over. The participation rate for a particular group (age, sex, etc.) is the labour force in that group expressed as a percentage of the population for that group.

The **employment rate (formerly the employment/population ratio)** represents the number of persons employed expressed as a percentage of the population 15 years of age and over. The employment rate for a particular group (age, sex, etc.) is the number employed in that group expressed as a percentage of the population for that group.

The **part-time rate** represents the number of persons employed part-time expressed as a percentage of the employed. The part-time rate for a particular group (age, sex, etc.) is the number employed part-time in that group expressed as a percentage of the employed for that group.

All geographic regions are based on the 2001 Census boundaries.

Seasonal adjustment

Fluctuations in economic time series are caused by seasonal, cyclical and irregular movements. A seasonally adjusted series is one from which seasonal movements have been eliminated. Seasonal movements are defined as those which are caused by regular annual events such as climate, holidays, vacation periods and cycles related to crops, production and retail sales associated with Christmas and Easter. The seasonally adjusted series contains irregular as well as longer-term cyclical fluctuations.

The seasonally adjusted series are revised each year to take into account current data and to generate new forecast factors for the next twelve months. The data are therefore subject to slight revisions in future issues of this publication.

Sampling variability of estimates

Estimates in this publication are based on the Labour Force Survey, a monthly survey of approximately 53,000 households across Canada. Because the entire population is not surveyed, the estimates are subject to sampling error. While the published estimate is the best available indicator of the real value, changes in the level of any estimates between two months can be the result of a true change or sampling variability. The sampling error can be estimated by calculating the standard error for the published estimate or statistic. These standard errors have been included in the publication tables, in order to assist users in interpreting the data.

Interpretation based on standard error

Two thirds of the time (68%), a change greater than the sampling error indicates a real change. The larger the change compared to the standard error, the better the chance that we are observing a real change, as opposed to a change due to sampling variability. At the 95% level, in order to ensure that change is real, the change in the estimate must be greater than twice the sampling error.

Movements in estimates that are smaller than the sampling error are less likely to reflect a real change and more likely to be due to sampling variability. While the above is true for monthly movements, one can have more confidence in a series of consecutive movements in the same direction, even though some of the monthly movements may be smaller than the sampling error.

Interpretation based on confidence intervals

Confidence intervals provide another way of looking at the variability inherent in estimates of sample surveys. To illustrate how to calculate the confidence interval, let us say that one month the published estimate for total employment rose by 16,000 to reach 16,500,000. The associated standard error for the movement estimate is 27,200. The standard error used to interpret the movement estimate indicates that:

- There are approximately two chances in three (68%) that the real value of the movement between the two months falls within the range -11,200 to +43,200 (16,000 + or – one standard error).
- There are approximately nine chances in ten (90%) that the real value of the movement between the two months falls within the range -27,520 to +59,520 (16,000 + or – 1.6 times the standard error).
- There are approximately nineteen chances in twenty (95%) that the real value of the movement between the two months falls within the range -38,400 to +70,400 (16,000 + or – two standard errors).

For more detailed explanations on sampling variability of estimates, and in particular for information on how to assess the variability of level estimates, consult the Data quality section of the *Guide to the Labour Force Survey*, (71-543-G) on page 27.

Documentation

For more detailed information about the Labour Force Survey, see the following documents:

- Overview of the Labour Force Survey
- Guide to the Labour Force Survey (71-543-G)
- Data quality statement
- Methodology of the Canadian Labour Force Survey (71-526-X)
- LFS *geographical maps*