

Catalogue no. 71-001-X

Labour Force Information

Not for release before 7 A.M. EDT

Friday, November 5, 2010



October 10 to 16, 2010



Statistics
Canada

Statistique
Canada

Canada

How to obtain more information

Specific inquiries about this product and related statistics or services should be directed to: Labour Force Survey Program, Labour Statistics Division, Statistics Canada, Ottawa, Ontario, K1A 0T6 (telephone: 613-951-4090, toll free number: 1-866-873-8788, fax: 613-951-2869 or by e-mail address: labour@statcan.gc.ca).

For information about this product or the wide range of services and data available from Statistics Canada, visit our website at www.statcan.gc.ca, e-mail us at infostats@statcan.gc.ca, or telephone us, Monday to Friday from 8:30 a.m. to 4:30 p.m., at the following numbers:

Statistics Canada's National Contact Centre

Toll-free telephone (Canada and the United States):

Inquiries line	1-800-263-1136
National telecommunications device for the hearing impaired	1-800-363-7629
Fax line	1-877-287-4369

Local or international calls:

Inquiries line	1-613-951-8116
Fax line	1-613-951-0581

Depository Services Program

Inquiries line	1-800-635-7943
Fax line	1-800-565-7757

To access this product

This product, Catalogue no. 71-001-X, is available free in electronic format. To obtain a single issue, visit our website at www.statcan.gc.ca and browse by "Key resource" > "Publications."

Standards of service to the public

Statistics Canada is committed to serving its clients in a prompt, reliable and courteous manner. To this end, Statistics Canada has developed *standards of service* that its employees observe. To obtain a copy of these service standards, please contact Statistics Canada toll-free at 1-800-263-1136. The service standards are also published on www.statcan.gc.ca under "About us" > "The agency" > "Providing services to Canadians."

Statistics Canada
Labour Statistics Division
Labour Force Survey Program

Labour Force Information

Not for release before 7 A.M. EDT

Friday, November 5, 2010

October 10 to 16, 2010

Published by authority of the Minister responsible for Statistics Canada

© Minister of Industry, 2010

All rights reserved. The content of this electronic publication may be reproduced, in whole or in part, and by any means, without further permission from Statistics Canada, subject to the following conditions: that it be done solely for the purposes of private study, research, criticism, review or newspaper summary, and/or for non-commercial purposes; and that Statistics Canada be fully acknowledged as follows: Source (or "Adapted from", if appropriate): Statistics Canada, year of publication, name of product, catalogue number, volume and issue numbers, reference period and page(s). Otherwise, no part of this publication may be reproduced, stored in a retrieval system or transmitted in any form, by any means—electronic, mechanical or photocopy—or for any purposes without prior written permission of Licensing Services, Client Services Division, Statistics Canada, Ottawa, Ontario, Canada K1A 0T6.

November 2010

Catalogue no. 71-001-X

ISSN 1492-5478

Frequency: Monthly

Ottawa

Cette publication est également disponible en français.

Note of appreciation

Canada owes the success of its statistical system to a long-standing partnership between Statistics Canada, the citizens of Canada, its businesses, governments and other institutions. Accurate and timely statistical information could not be produced without their continued cooperation and goodwill.

User information

Symbols

The following standard symbols are used in Statistics Canada publications:

- . not available for any reference period
- .. not available for a specific reference period
- ... not applicable
- 0 true zero or a value rounded to zero
- 0^s value rounded to 0 (zero) where there is a meaningful distinction between true zero and the value that was rounded
- p preliminary
- r revised
- x suppressed to meet the confidentiality requirements of the *Statistics Act*
- E use with caution
- F too unreliable to be published

Special requests (\$)

Custom tabulations can be arranged on an ad hoc or regular basis. This service enables you to specify tables and time series to meet your own requirements. The cost varies according to the request. For more information, contact us toll-free at 1-866-873-8788 or e-mail us at labour@statcan.gc.ca.

Schedule of LFS releases

Reference period - Week ending	Release date
January 16, 2010	February 5, 2010
February 20, 2010	March 12, 2010
March 20, 2010	April 9, 2010
April 17, 2010	May 7, 2010
May 15, 2010	June 4, 2010
June 19, 2010	July 9, 2010
July 17, 2010	August 6, 2010
August 21, 2010	September 10, 2010
September 18, 2010	October 8, 2010
October 16, 2010	November 5, 2010
November 13, 2010	December 3, 2010
December 11, 2010	January 7, 2011

Latest LFS release in *The Daily* (free)

Table of contents

Highlights	5
Analysis — October 2010	6
Charts	
1. Growth in hours worked lags employment growth	8
2. Employment and unemployment indicators, Canada, seasonally adjusted	9
3. Employment and unemployment indicators, Canada, seasonally adjusted	10
4. Index of employment by industry, Canada, seasonally adjusted, January, 2007=100	11
5. Index of employment by industry, Canada, seasonally adjusted, January 2007=100	12
6. Index of employment by industry, Canada, seasonally adjusted, January 2007=100	13
7. Index of employment by province, seasonally adjusted, January 2007=100	14
8. Index of employment by province, seasonally adjusted, January 2007=100	15
Related products	16
Statistical tables	
1 Labour force characteristics by age and sex, Canada, seasonally adjusted	25
2 Employment by class of worker and industry, Canada, seasonally adjusted	27
3 Labour force characteristics by province, seasonally adjusted	28
4 Selected labour force characteristics (seasonally adjusted)	30
4-1 Newfoundland and Labrador	30
4-2 Prince Edward Island	31
4-3 Nova Scotia	32
4-4 New Brunswick	33
4-5 Quebec	34
4-6 Ontario	35
4-7 Manitoba	36
4-8 Saskatchewan	37
4-9 Alberta	38
4-10 British Columbia	39
5 Labour force characteristics by census metropolitan area (seasonally adjusted)	40
5-1 3 month moving average	40
5-2 Monthly	45

Table of contents – continued

6	Labour force characteristics	46
6-1	by province and economic region, unadjusted for seasonality, 3 month moving average ending in October 2009 and October 2010	46
6-2	by territories, unadjusted for seasonality, 3 month moving average ending in October 2009 and October 2010	51
7	Average usual hours and wages of employees by selected characteristics, Canada, unadjusted for seasonality	52
8	Regional unemployment rates used by the Employment Insurance Program, seasonally adjusted, 3 month moving average	53
Data quality, concepts and methodology		
	Data quality	55

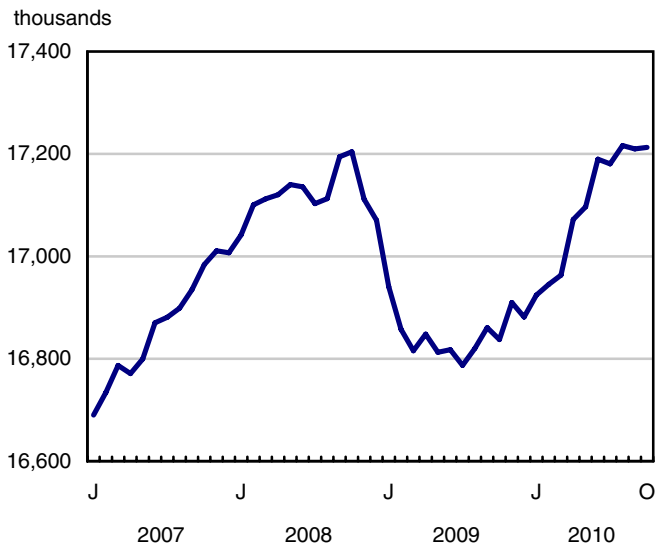
Highlights

October 2010

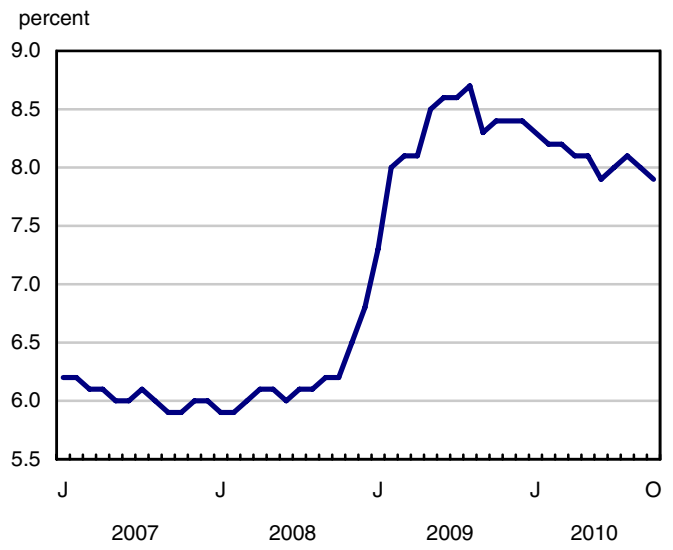
In October, employment remained virtually unchanged for the second consecutive month, as full-time gains offset part-time losses. The unemployment rate edged down to 7.9% and has been around 8% for the past seven months.

Chart 1
Employment and unemployment rates, Canada, seasonally adjusted

Employment



Unemployment rate



Analysis — October 2010

In October, employment remained virtually unchanged for the second consecutive month, as full-time gains offset part-time losses. The unemployment rate edged down to 7.9% and has been around 8% for the past seven months.

Since October 2009, total employment has risen by 375,000 (+2.2%), mostly the result of strength over the first half of 2010, when employment growth averaged 51,000 per month. In the last four months, however, monthly gains averaged 5,700.

The number of private sector employees increased in October, while self-employment declined. Public sector employment was unchanged.

Full-time employment rose by 47,000 in October, while part-time fell by 44,000. Over the past three months, losses in part time have been offset by full-time gains.

Employment increased among people aged 55 and over, nearly all among women. At the same time, there was an offsetting decline in employment for those aged 25 to 54.

Alberta posted employment gains in October, while Nova Scotia registered a notable loss. There was little change in other provinces.

Losses in retail and wholesale trade were offset by gains in information, culture and recreation; construction; and agriculture. The construction industry continued its upward trend that started in July 2009.

Average hourly wages for employees increased by 2.1% in October compared with 12 months earlier.

Additional hiring in the private sector

The number of private sector employees increased by 38,000 in October, while self-employment declined by 24,000. At the same time, public sector employment was virtually unchanged.

Over the past year, 337,000 employees have been added to the private sector and 134,000 to the public sector. The number of self-employed has fallen by 96,000 over the same period.

Full-time employment continues to gain

The number of people working full-time continued to rise in October, up 47,000, bringing gains to 164,000 over the past three months. At the same time, the total number of hours worked has edged up.

Part-time employment fell by 44,000 in October, with losses totalling 132,000 over the past three months.

Construction up

In October, employment in the goods-producing sector rose by 36,000, led by a gain of 21,000 in construction. Since October of last year, employment in construction has risen by 6.0% (+72,000), one of the fastest growth rates of all major industries.

Within the goods sector, employment also increased in agriculture in October, up 9,000, while it edged up in manufacturing.

The number of workers in the service sector declined by 33,000 in October, with losses concentrated in retail and wholesale trade (-29,000). The only service industry with a notable increase was information, culture and recreation, up 22,000.

More women aged 55 and over employed

In October, employment among women aged 55 and over increased by 16,000, while there was little change for men in this age group. At the same time, the number of 25 to 54 year-old workers dipped by 16,000. Youth employment was little changed in October, following a notable decline the previous month.

Between October 2009 and October 2010, the fastest rate of employment growth was among workers aged 55 and over, up 7.7% for men and 7.4% for women.

Over this year-long period, there were also employment gains for men aged 25 to 54, up 117,000 or 1.9%. Among women in this age group, employment grew much slower (+27,000 or +0.5%).

Employment gains in Alberta

Employment in Alberta rose by 17,000 in October, following two months of little change. This increase brings total gains over the past 12 months to 46,000 or 2.3%, slightly above the national growth rate of 2.2%.

Employment also increased in Prince Edward Island in October, up 1,200. Despite this increase, employment in the province remained similar to the level of 12 months earlier.

In Quebec, employment was little changed in October. The unemployment rate rose by 0.3 percentage points to 8.0%, as more people were looking for work.

While employment in Ontario was also little changed in October, the unemployment rate edged down 0.2 percentage points to 8.6%, the result of fewer men aged 25 and over participating in the labour market.

In Nova Scotia, employment fell by 8,600 in October, following an increase the month before. This decline pushed the unemployment rate in the province up 0.8 percentage points to 9.8%.

Employment in Newfoundland and Labrador declined by 2,300 in October. A decrease in the number of people in the labour force pushed the unemployment rate down to 13.0%, its lowest level since June 2008.

Canada's labour market downturn two years later

Employment in Canada reached a high in the fall of 2008, then declined steeply over a period of nine months. Since the summer of 2009, employment has increased, particularly in the first half of 2010.

Although employment has returned to its pre-recession level of October 2008, the unemployment rate remains around 8%, well above its pre-recession level of 6.2%. Over this two-year period, the working-age population (15 years and over) grew by 2.9%, and the labour force – those working or looking for work – rose by 1.9%.

Across the provinces, Newfoundland and Labrador (+3.1%), Manitoba (+2.9%), Prince Edward Island (+2.3%), Quebec (+1.5%), Saskatchewan (+0.9%) and British Columbia (+0.6%) added employment compared with October 2008, while New Brunswick (-1.8%), Nova Scotia (-1.7%), Alberta (-1.1%) and Ontario (-0.9%) experienced losses.

These provincial differences are partly driven by industrial composition. Over the two years, employment in the manufacturing sector dropped 10.8%, with significant declines in Ontario and Alberta. Transportation and warehousing went down by 5.4%, with notable losses in Ontario, Quebec, Alberta and New Brunswick. Natural resources remained 2.6% below its October 2008 level, with Quebec, British Columbia and Nova Scotia most affected.

Gains in construction were widespread across the country, as employment in that sector has now returned to its pre-recession level. British Columbia was the only exception, as construction employment dropped 13.6% below its October 2008 level.

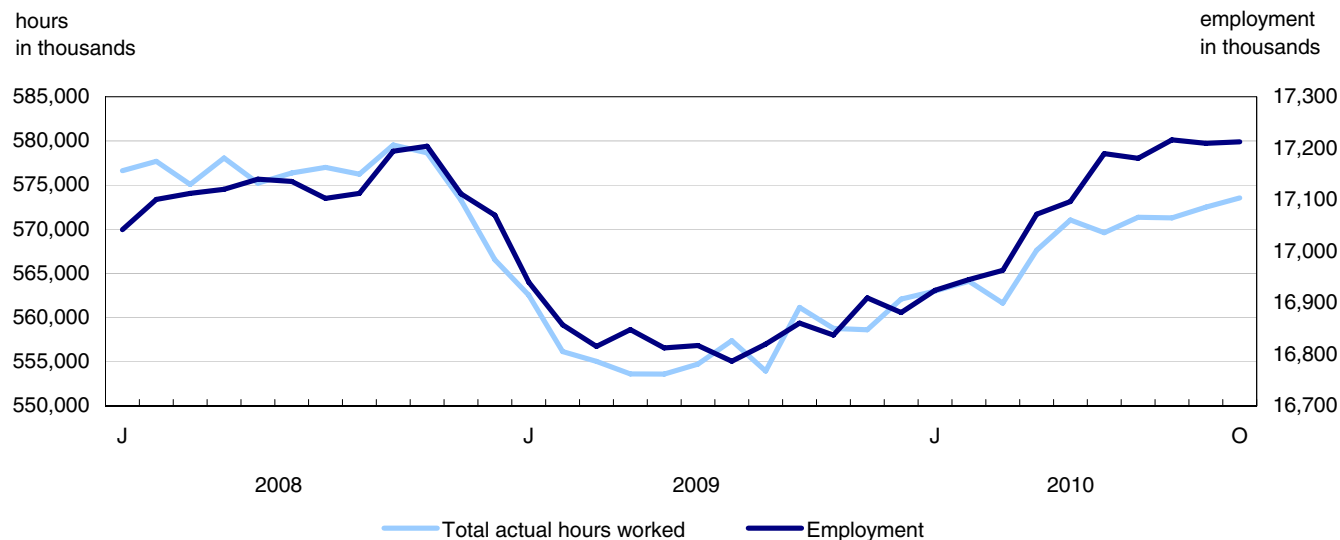
Compared with October 2008, employment increased notably in health care and social assistance (+6.7%), as well as in professional, scientific and technical services (+6.7%). All provinces shared in the gains observed in health care and social assistance, but growth was particularly strong in Alberta, Nova Scotia and Newfoundland and Labrador. Increases in professional, scientific and technical services occurred mostly in Quebec, Ontario, British Columbia and Manitoba.

Employment fell steeply during the downturn for youths (15 to 24) and men aged 25 to 54. In October 2010, employment among youths remained 7.8% below its October 2008 level, while the number of workers aged 25 to 54 was just below its pre-recession level (-1.0% for men and -0.7% for women). Workers aged 55 and over, however, experienced employment growth between October 2008 and October 2010, up 13.5% for women and 10.0% for men.

During the downturn, full-time employment saw large declines, while part-time increased. Although overall employment has returned to its pre-recession level, full-time employment remains 102,000 or 0.7% below its peak, while there are 110,000 (+3.5%) more workers employed part time.

Total hours worked in the labour market fell steeply during the downturn (-3.7%) and have since picked up, increasing by 2.9%. However, unlike total employment, the number of hours worked in October 2010 is still 0.9% below the October 2008 level.

Chart 1
Growth in hours worked lags employment growth



Note to readers

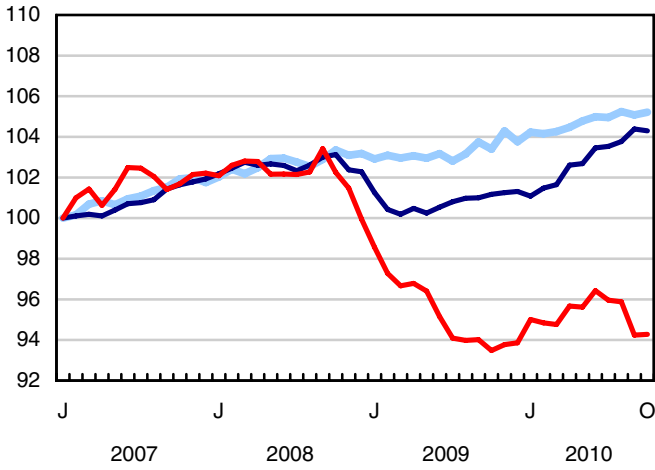
The Labour Force Survey (LFS) estimates are based on a sample, and are therefore subject to sampling variability. Estimates for smaller geographic areas or industries will have more variability. For an explanation of sampling variability of estimates, and how to use standard errors to assess this variability, consult the "Data quality" section of the publication Labour Force Information (71-001-X, free).

Unless otherwise stated, this release presents seasonally adjusted data, which facilitates comparisons by removing the effects of seasonal variations.

The 2009 Labour Force Historical Review on DVD-ROM (71F0004XVB, \$209) is now available.

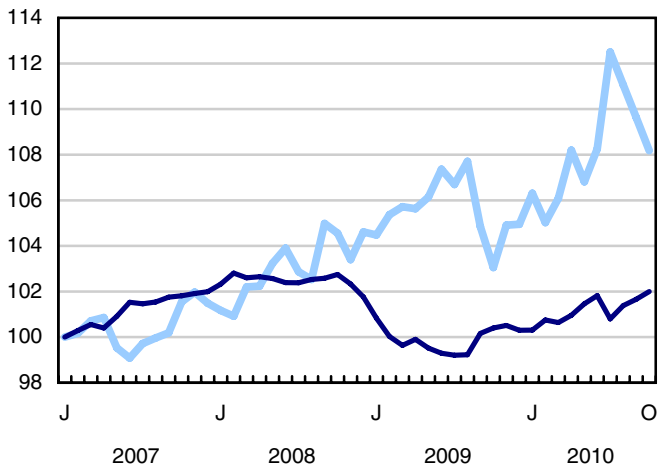
Chart 2
Employment and unemployment indicators, Canada, seasonally adjusted

Employment index, January 2007=100



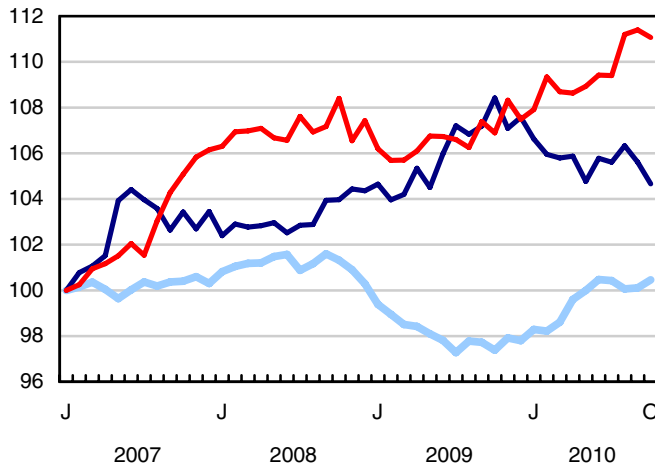
— Females - 25 years and over
 — Males - 25 years and over
 — Both sexes - 15 to 24 years

Employment index, January 2007=100



— Employment part-time
 — Employment full-time

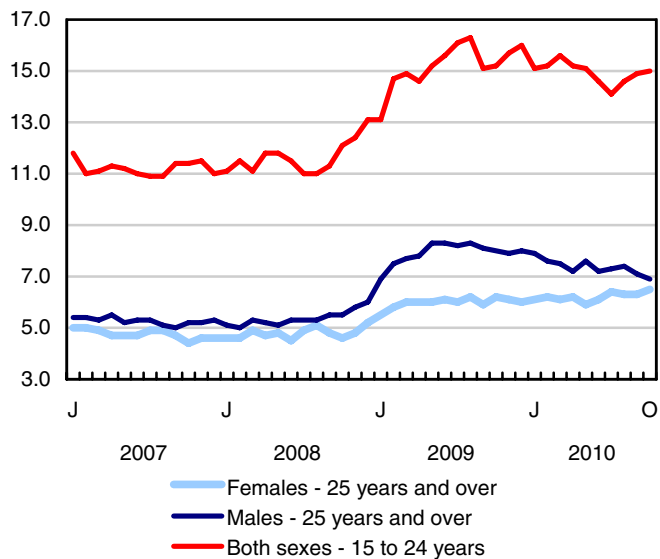
Employment index, January 2007=100



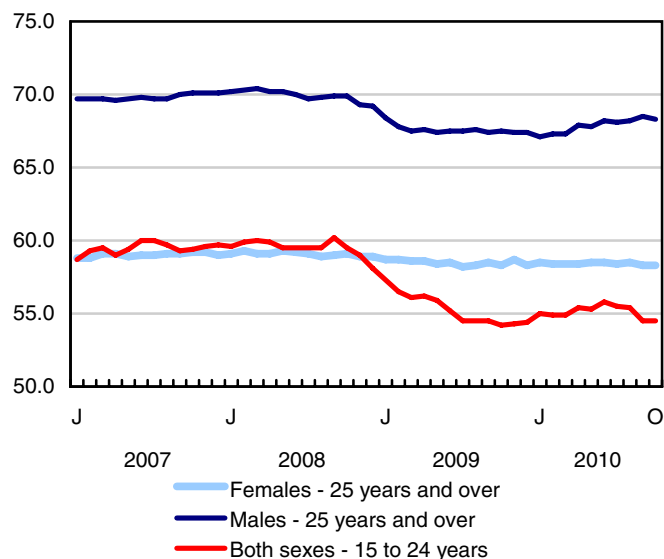
— Private sector employees
 — Self-employed
 — Public sector employees

Chart 3
Employment and unemployment indicators, Canada, seasonally adjusted

Unemployment rate (%)



Employment rate (%)



Participation rate (%)

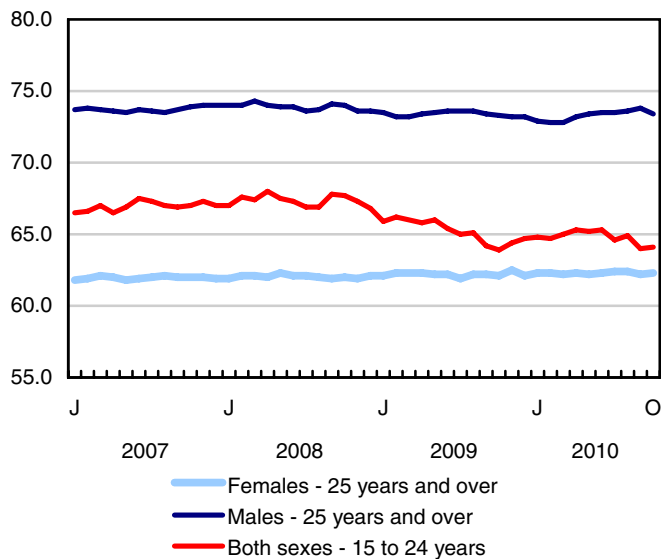


Chart 4
Index of employment by industry, Canada, seasonally adjusted, January, 2007=100

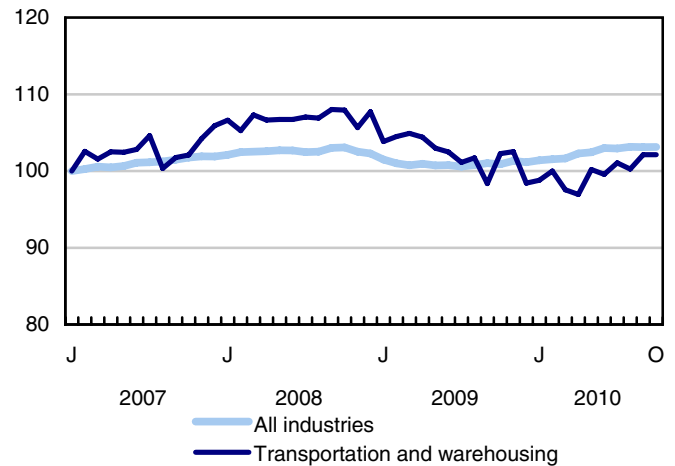
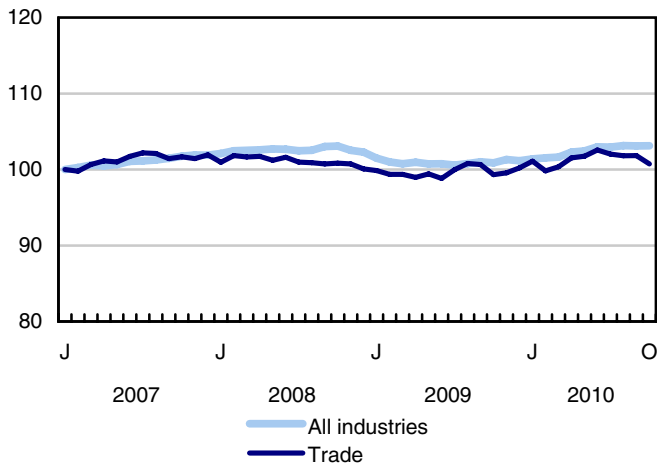
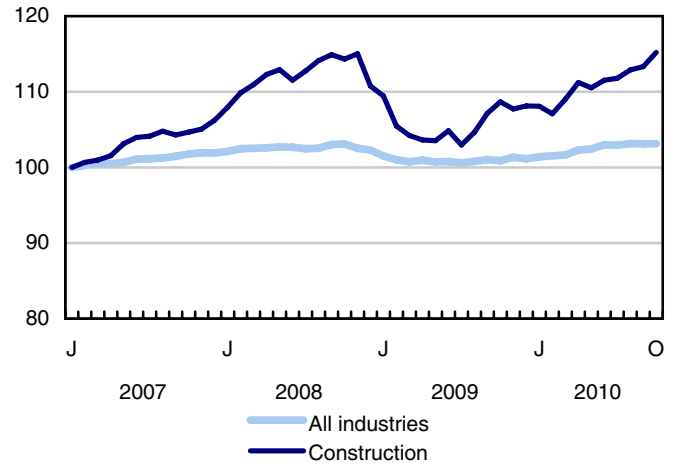
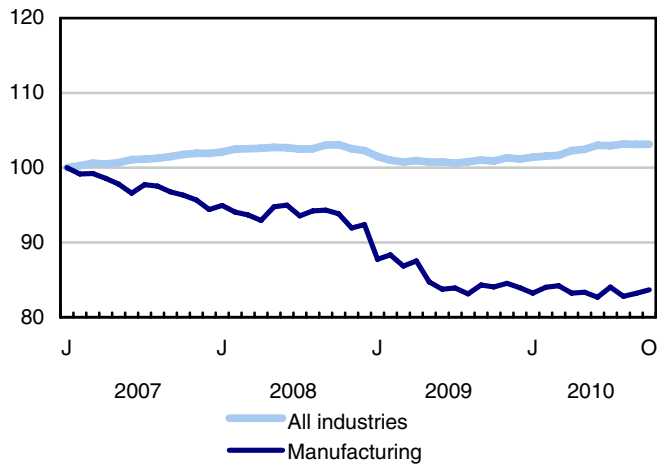
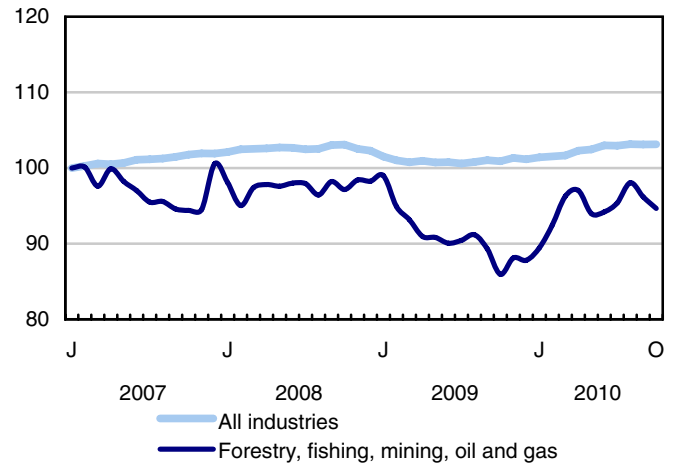
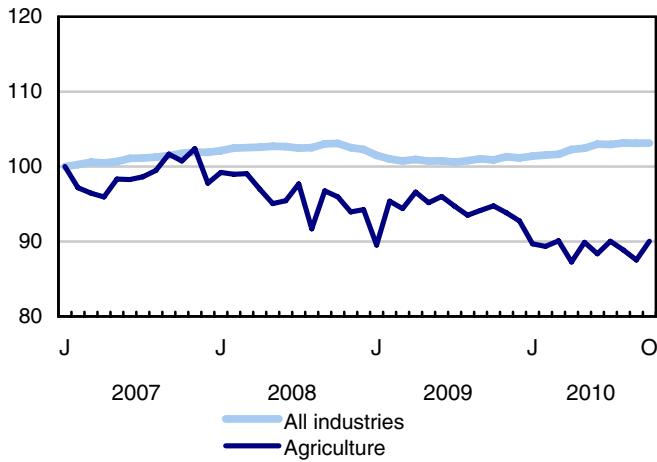


Chart 5
Index of employment by industry, Canada, seasonally adjusted, January 2007=100

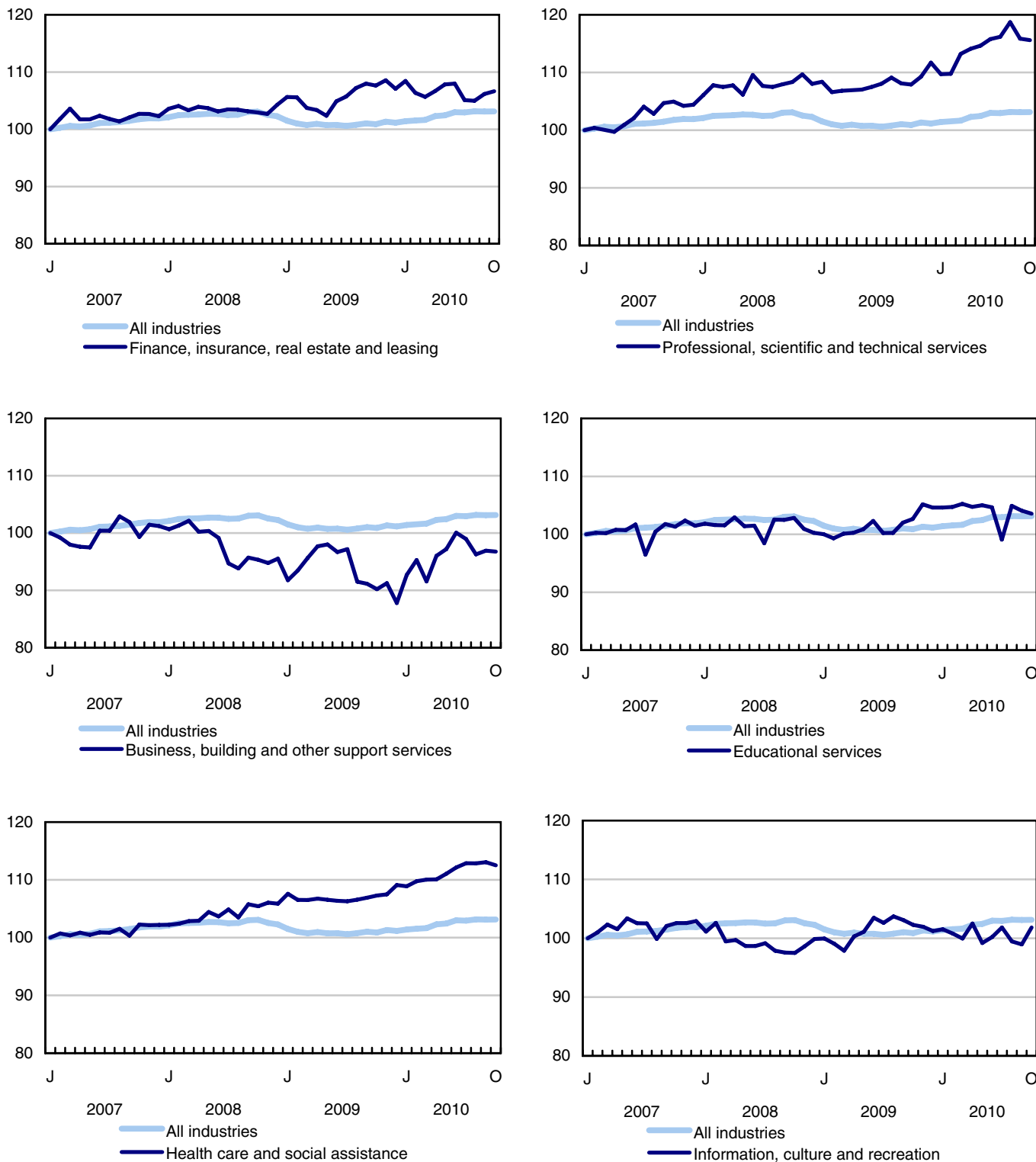


Chart 6
Index of employment by industry, Canada, seasonally adjusted, January 2007=100

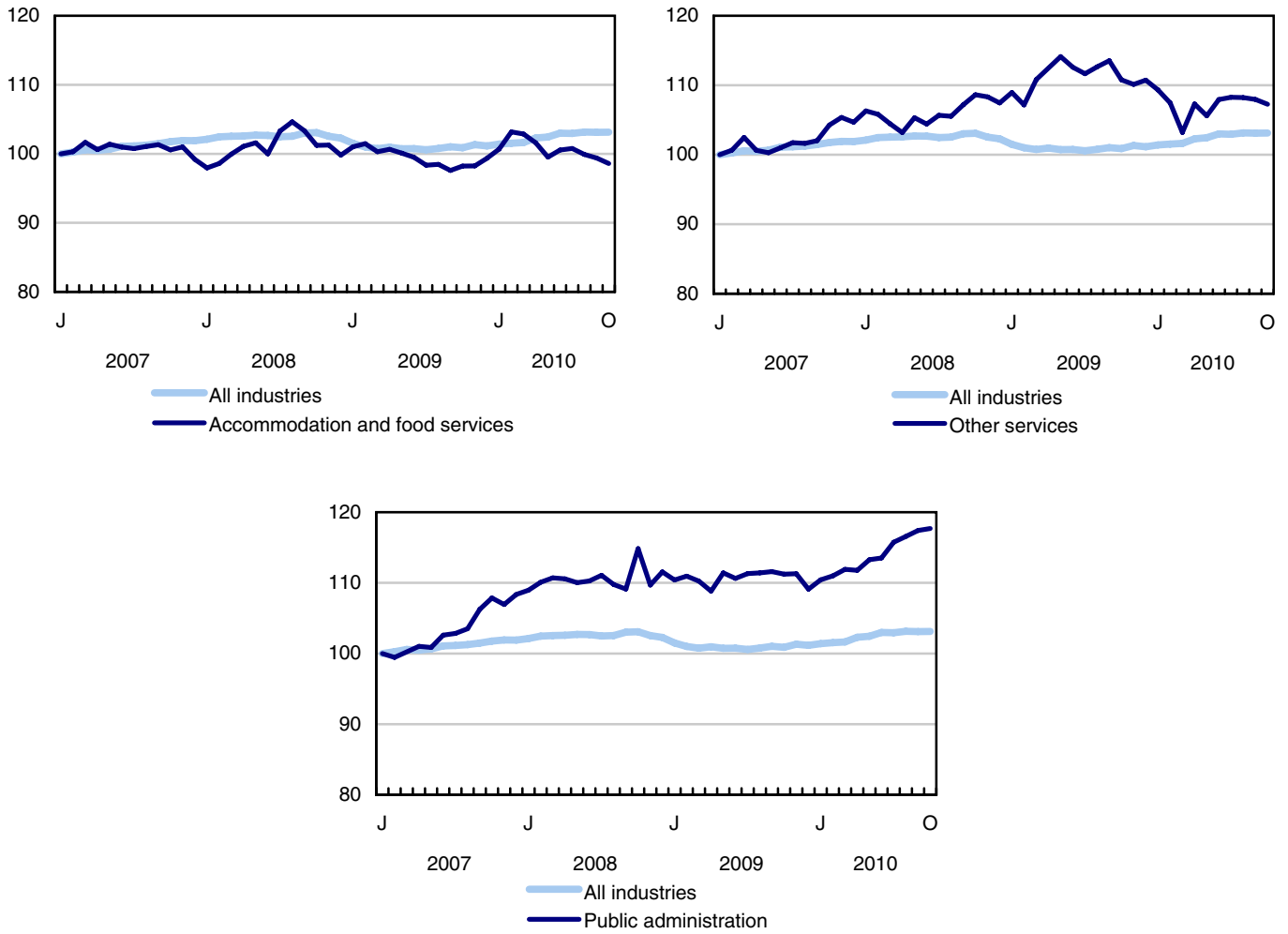


Chart 7
Index of employment by province, seasonally adjusted, January 2007=100

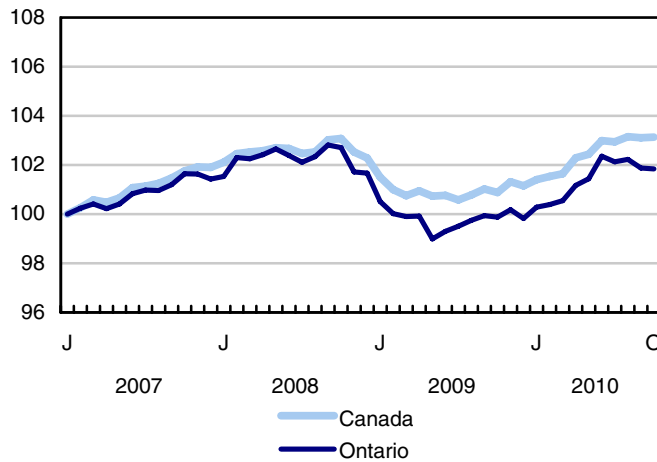
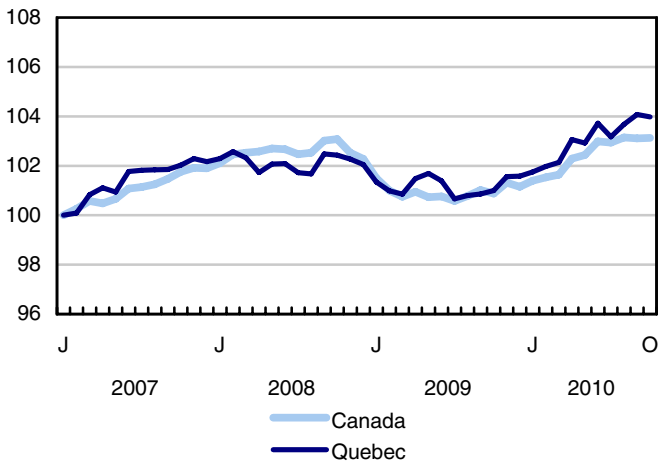
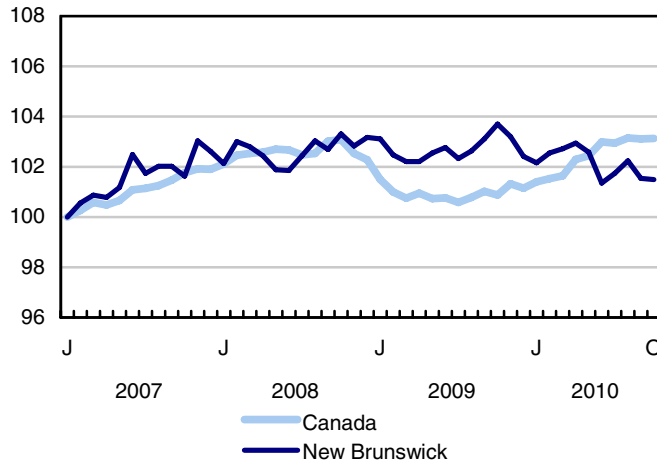
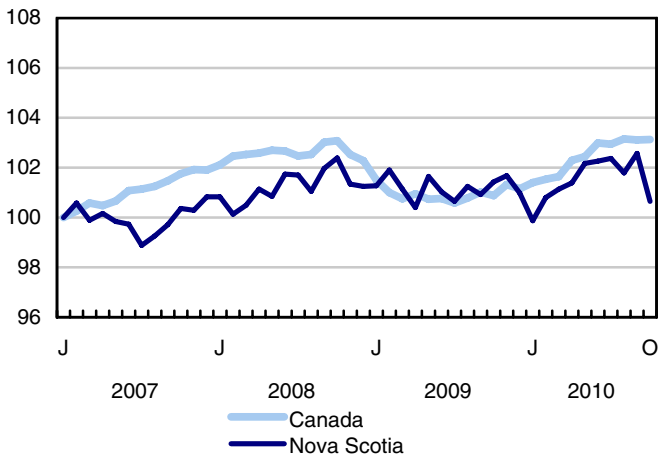
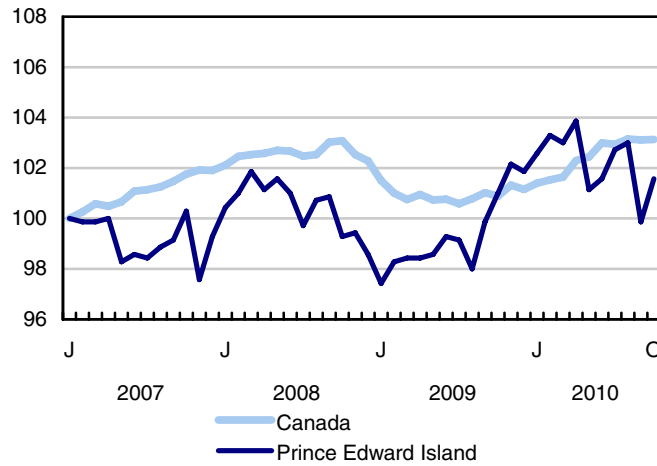
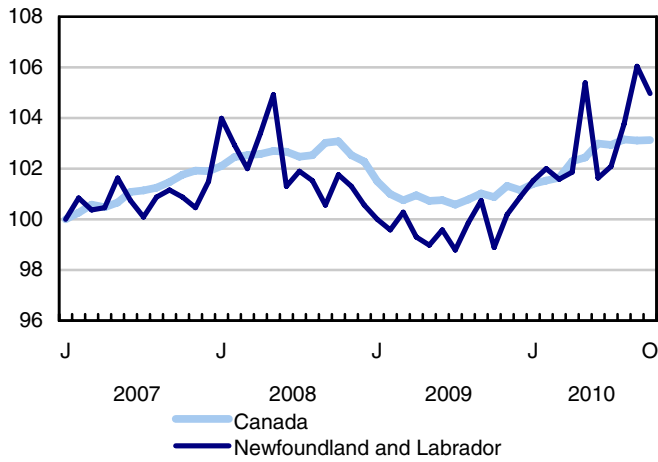
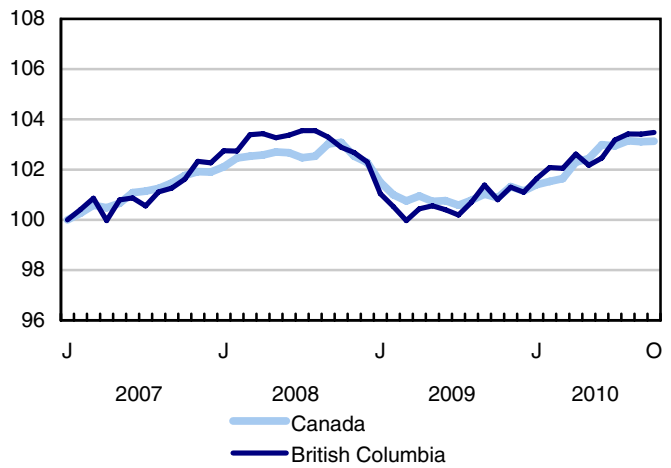
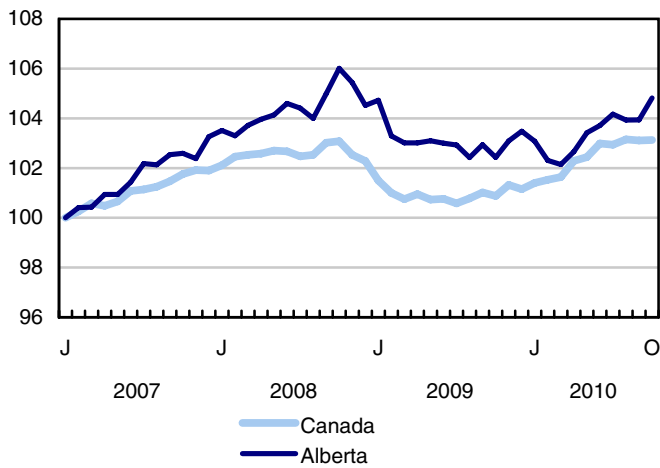
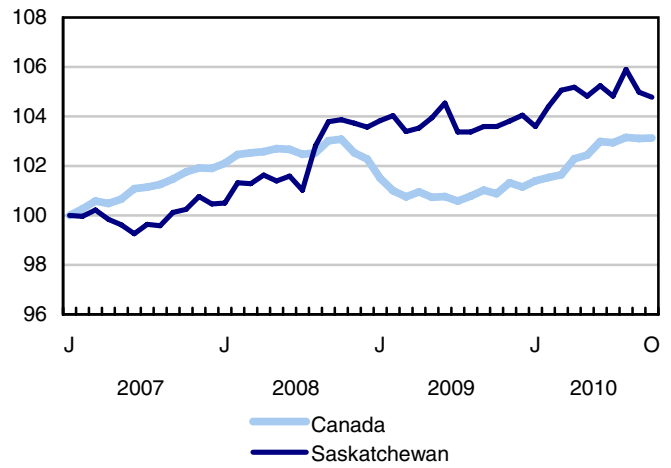
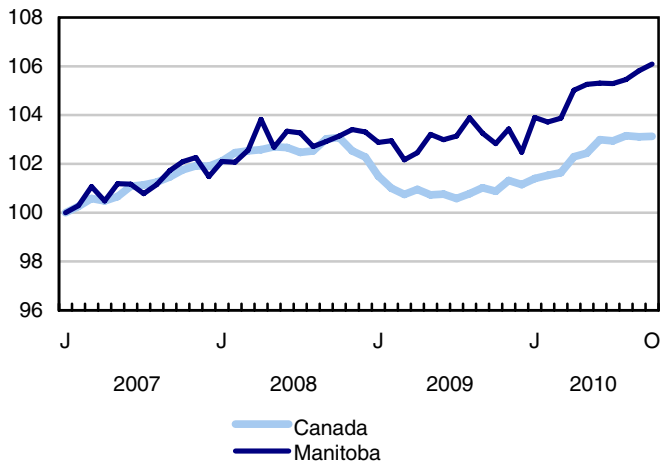


Chart 8
Index of employment by province, seasonally adjusted, January 2007=100



Related products

Selected publications from Statistics Canada

71-222-X	The Canadian Labour Market at a Glance
71-526-X	Methodology of the Canadian Labour Force Survey
71-543-G	Guide to the Labour Force Survey
71-544-X	Labour Force Survey Products and Services
71-587-X	Aboriginal Peoples Living Off-reserve in Western Canada: Estimates from the Labour Force Survey
71-588-X	The Aboriginal Labour Force Analysis Series
71-606-X	The Immigrant Labour Force Analysis Series
71F0004X	Labour Force Historical Review
71F0031X	Improvements to the Labour Force Survey (LFS)
71M0001X	Labour Force Survey Microdata File
75-001-X	Perspectives on Labour and Income

Selected CANSIM tables from Statistics Canada

282-0001	Labour force survey estimates (LFS), by sex and detailed age group, unadjusted for seasonality, monthly
282-0002	Labour force survey estimates (LFS), by sex and detailed age group, annual
282-0003	Labour force survey estimates (LFS), by educational attainment, sex and age group, unadjusted for seasonality, monthly
282-0004	Labour force survey estimates (LFS), by educational attainment, sex and age group, annual
282-0005	Labour force survey estimates (LFS), by full- and part-time students during school months, sex and age group, unadjusted for seasonality, monthly
282-0006	Labour force survey estimates (LFS), by students during summer months, sex and age group, unadjusted for seasonality, monthly
282-0007	Labour force survey estimates (LFS), by North American Industry Classification System (NAICS), sex and age group, unadjusted for seasonality, monthly

282-0008	Labour force survey estimates (LFS), by North American Industry Classification System (NAICS), sex and age group, annual
282-0009	Labour force survey estimates (LFS), by National Occupational Classification for Statistics (NOC-S) and sex, unadjusted for seasonality, monthly
282-0010	Labour force survey estimates (LFS), by National Occupational Classification for Statistics (NOC-S) and sex, annual
282-0011	Labour force survey estimates (LFS), employment by class of worker, North American Industry Classification System (NAICS) and sex, unadjusted for seasonality, monthly
282-0012	Labour force survey estimates (LFS), employment by class of worker, North American Industry Classification System (NAICS) and sex, annual
282-0013	Labour force survey estimates (LFS), part-time employment by reason for part-time work, sex and age group, unadjusted for seasonality, monthly
282-0014	Labour force survey estimates (LFS), part-time employment by reason for part-time work, sex and age group, annual
282-0015	Labour force survey estimates (LFS), by usual hours worked, main or all jobs, sex and age group, unadjusted for seasonality, monthly
282-0016	Labour force survey estimates (LFS), by usual hours worked, main or all jobs, sex and age group, annual
282-0017	Labour force survey estimates (LFS), by actual hours worked, main or all jobs, sex and age group, unadjusted for seasonality, monthly
282-0018	Labour force survey estimates (LFS), by actual hours worked, main or all jobs, sex and age group, annual
282-0019	Labour force survey estimates (LFS), by usual hours worked, class of worker, North American Industry Classification System (NAICS) and sex, unadjusted for seasonality, monthly
282-0020	Labour force survey estimates (LFS), by usual hours worked, class of worker, North American Industry Classification System (NAICS) and sex, annual
282-0021	Labour force survey estimates (LFS), by actual hours worked, class of worker, North American Industry Classification System (NAICS) and sex, unadjusted for seasonality, monthly
282-0022	Labour force survey estimates (LFS), by actual hours worked, class of worker, North American Industry Classification System (NAICS) and sex, annual
282-0023	Labour force survey estimates (LFS), by usual hours worked, class of worker, National Occupational Classification for Statistics (NOC-S) and sex, unadjusted for seasonality, monthly
282-0024	Labour force survey estimates (LFS), by usual hours worked, class of worker, National Occupational Classification for Statistics (NOC-S) and sex, annual
282-0025	Labour force survey estimates (LFS), by actual hours worked, class of worker, National Occupational Classification for Statistics (NOC-S) and sex, unadjusted for seasonality, monthly
282-0026	Labour force survey estimates (LFS), by actual hours worked, class of worker, National Occupational Classification for Statistics (NOC-S) and sex, annual

282-0027	Labour force survey estimates (LFS), by total and average usual and actual hours worked, main or all jobs, type of work, sex and age group, unadjusted for seasonality, monthly
282-0028	Labour force survey estimates (LFS), by total and average usual and actual hours worked, main or all jobs, type of work, sex and age group, annual
282-0029	Labour force survey estimates (LFS), average days lost for personal reasons per full-time employee by North American Industry Classification System (NAICS), sex and age group, annual
282-0030	Labour force survey estimates (LFS), average days lost for personal reasons per full-time employee by National Occupational Classification for Statistics (NOC-S), sex and age group, annual
282-0031	Labour force survey estimates (LFS), multiple jobholders by North American Industry Classification System (NAICS), sex and age group, annual
282-0032	Labour force survey estimates (LFS), multiple jobholders by North American Industry Classification System (NAICS), sex and age group, unadjusted for seasonality, monthly
282-0033	Labour force survey estimates (LFS), multiple jobholders by National Occupational Classification for Statistics (NOC-S), sex and age group, unadjusted for seasonality, monthly
282-0034	Labour force survey estimates (LFS), multiple jobholders by National Occupational Classification for Statistics (NOC-S), sex and age group, annual
282-0035	Labour force survey estimates (LFS), multiple jobholders by usual hours worked at main and all jobs, unadjusted for seasonality, monthly
282-0036	Labour force survey estimates (LFS), multiple jobholders by usual hours worked at main and all jobs, annual
282-0037	Labour force survey estimates (LFS), job tenure by type of work, sex and age group, unadjusted for seasonality, monthly
282-0038	Labour force survey estimates (LFS), job tenure by type of work, sex and age group, annual
282-0039	Labour force survey estimates (LFS), job tenure by National Occupational Classification for Statistics (NOC-S) and sex, unadjusted for seasonality, monthly
282-0040	Labour force survey estimates (LFS), job tenure by National Occupational Classification for Statistics (NOC-S) and sex, annual
282-0041	Labour force survey estimates (LFS), job tenure by North American Industry Classification System (NAICS) and sex, unadjusted for seasonality, monthly
282-0042	Labour force survey estimates (LFS), job tenure by North American Industry Classification System (NAICS) and sex, annual
282-0047	Labour force survey estimates (LFS), duration of unemployment by sex and age group, unadjusted for seasonality, monthly
282-0048	Labour force survey estimates (LFS), duration of unemployment by sex and age group, annual
282-0049	Labour force survey estimates (LFS), unemployment by type of work sought and search method, sex and age group, unadjusted for seasonality, monthly

282-0050	Labour force survey estimates (LFS), unemployment by type of work sought and search method, sex and age group, annual
282-0051	Labour force survey estimates (LFS), retirement age by class of worker and sex, annual
282-0052	Labour force survey estimates (LFS), by census metropolitan area, sex and age group, 3-month moving average, unadjusted for seasonality, monthly
282-0053	Labour force survey estimates (LFS), by census metropolitan area, sex and age group, annual
282-0054	Labour force survey estimates (LFS), by provinces and economic regions, 3-month moving average, unadjusted for seasonality, monthly
282-0055	Labour force survey estimates (LFS), by provinces, territories and economic regions, annual
282-0056	Labour force survey estimates (LFS), employment by census metropolitan area and North American Industry Classification System (NAICS), 3-month moving average, unadjusted for seasonality, monthly
282-0057	Labour force survey estimates (LFS), employment by census metropolitan area and North American Industry Classification System (NAICS), annual
282-0058	Labour force survey estimates (LFS), employment by census metropolitan area and National Occupational Classification for Statistics (NOC-S), 3-month moving average, unadjusted for seasonality, monthly
282-0059	Labour force survey estimates (LFS), employment by census metropolitan area and National Occupational Classification for Statistics (NOC-S), annual
282-0060	Labour force survey estimates (LFS), employment by economic region and North American Industry Classification System (NAICS), 3-month moving average, unadjusted for seasonality, monthly
282-0061	Labour force survey estimates (LFS), employment by economic region and North American Industry Classification System (NAICS), annual
282-0062	Labour force survey estimates (LFS), employment by economic region and National Occupational Classification for Statistics (NOC-S), 3-month moving average, unadjusted for seasonality, monthly
282-0063	Labour force survey estimates (LFS), employment by economic region and National Occupational Classification for Statistics (NOC-S), annual
282-0064	Labour force survey estimates (LFS), by selected medium-sized cities, annual
282-0069	Labour force survey estimates (LFS), wages of employees by type of work, National Occupational Classification for Statistics (NOC-S), sex and age group, unadjusted for seasonality, monthly (current dollars)
282-0070	Labour force survey estimates (LFS), wages of employees by type of work, National Occupational Classification for Statistics (NOC-S), sex and age group, annual (current dollars)
282-0071	Labour force survey estimates (LFS), wages of employees by type of work, North American Industry Classification System (NAICS), sex and age group, unadjusted for seasonality, monthly (current dollars)

282-0072	Labour force survey estimates (LFS), wages of employees by type of work, North American Industry Classification System (NAICS), sex and age group, annual (current dollars)
282-0073	Labour force survey estimates (LFS), wages of employees by job permanence, union coverage, sex and age group, unadjusted for seasonality, monthly (current dollars)
282-0074	Labour force survey estimates (LFS), wages of employees by job permanence, union coverage, sex and age group, annual (current dollars)
282-0075	Labour force survey estimates (LFS), employees by establishment size, North American Industry Classification System (NAICS), sex and age group, unadjusted for seasonality, monthly
282-0076	Labour force survey estimates (LFS), employees by establishment size, North American Industry Classification System (NAICS), sex and age group, annual
282-0077	Labour force survey estimates (LFS), employees by union coverage, North American Industry Classification System (NAICS), sex and age group, unadjusted for seasonality, monthly
282-0078	Labour force survey estimates (LFS), employees by union coverage, North American Industry Classification System (NAICS), sex and age group, annual
282-0079	Labour force survey estimates (LFS), employees by job permanency, North American Industry Classification System (NAICS), sex and age group, unadjusted for seasonality, monthly
282-0080	Labour force survey estimates (LFS), employees by job permanency, North American Industry Classification System (NAICS), sex and age group, annual
282-0081	Labour force survey estimates (LFS), employees working overtime (weekly) by National Occupational Classification for Statistics (NOC-S), sex and age group, unadjusted for seasonality, monthly
282-0082	Labour force survey estimates (LFS), employees working overtime (weekly) by National Occupational Classification for Statistics (NOC-S), sex and age group, annual
282-0083	Labour force survey estimates (LFS), employees working overtime (weekly) by North American Industry Classification System (NAICS), sex and age group, unadjusted for seasonality, monthly
282-0084	Labour force survey estimates (LFS), employees working overtime (weekly) by North American Industry Classification System (NAICS), sex and age group, annual
282-0085	Labour force survey estimates (LFS), supplementary unemployment rates by sex and age group, unadjusted for seasonality, monthly
282-0086	Labour force survey estimates (LFS), supplementary unemployment rates by sex and age group, annual
282-0087	Labour force survey estimates (LFS), by sex and age group, seasonally adjusted and unadjusted, monthly
282-0088	Labour force survey estimates (LFS), employment by North American Industry Classification System (NAICS), seasonally adjusted and unadjusted, monthly
282-0089	Labour force survey estimates (LFS), employment by class of worker and sex, seasonally adjusted and unadjusted, monthly

282-0090	Labour force survey estimates (LFS), by census metropolitan area, 3-month moving average, seasonally adjusted and unadjusted, monthly
282-0091	Labour force survey estimates (LFS), by Montréal, Toronto and Vancouver census metropolitan areas, seasonally adjusted and unadjusted, monthly
282-0092	Labour force survey estimates (LFS), actual hours worked by North American Industry Classification System (NAICS), seasonally adjusted, monthly
282-0093	Labour force survey estimates (LFS), employment by National Occupational Classification for Statistics (NOC-S), seasonally adjusted, monthly
282-0094	Labour force survey estimates (LFS), by North American Industry Classification System (NAICS), Canada, seasonally adjusted, monthly
282-0095	Labour force survey estimates (LFS), by full- and part-time students during school months, sex and age group, annual
282-0096	Labour force survey estimates (LFS), by urban and rural areas based on 2001 census boundaries, sex and age group, unadjusted for seasonality, monthly
282-0097	Labour force survey estimates (LFS), by urban and rural areas based on 2001 census boundaries, sex and age group, annual
282-0098	Labour force survey estimates (LFS), employment by urban and rural areas based on 2001 census boundaries, class of worker and North American Industry Classification System (NAICS), unadjusted for seasonality, monthly
282-0099	Labour force survey estimates (LFS), employment by urban and rural areas based on 2001 census boundaries, class of worker and North American Industry Classification System (NAICS), annual
282-0100	Labour force survey estimates (LFS), by territories, sex and age group, 3-month moving average, seasonally adjusted and unadjusted, monthly
282-0101	Labour force survey estimates (LFS), by immigrant status, age group, Canada, regions, provinces and Montreal, Toronto, Vancouver census metropolitan areas, 3-month moving average, unadjusted for seasonality, monthly
282-0102	Labour force survey estimates (LFS), by immigrant status, age group, Canada, regions, provinces and Montreal, Toronto, Vancouver census metropolitan areas, annual
282-0103	Labour force survey estimates (LFS), by immigrant status, sex and detailed age group, Canada, 3-month moving average, unadjusted for seasonality, monthly
282-0104	Labour force survey estimates (LFS), by immigrant status, sex and detailed age group, Canada, annual
282-0105	Labour force survey estimates (LFS), by immigrant status, educational attainment, sex and age group, Canada, 3-month moving average, unadjusted for seasonality, monthly
282-0106	Labour force survey estimates (LFS), by immigrant status, educational attainment, sex and age group, Canada, annual

282-0107	Labour force survey estimates (LFS), by immigrant status, country of birth, sex and age group, Canada, regions and provinces, 3-month moving average, unadjusted for seasonality, monthly
282-0108	Labour force survey estimates (LFS), by immigrant status, country of birth, sex and age group, Canada, regions and provinces, annual

Selected surveys from Statistics Canada

3701	Labour Force Survey
------	---------------------

Selected summary tables from Statistics Canada

- *Labour force characteristics*
- *Employment by industry*
- *Days lost per worker due to illness or disability, by sex, by province*
- *Economic indicators, by province and territory (monthly and quarterly)*
- *Labour force and participation rates by sex and age group*
- *Labour force, employed and unemployed, numbers and rates, by province*
- *Employment by industry and sex*
- *Full-time and part-time employment by sex and age group*
- *Labour force characteristics by age and sex*
- *Distribution of employed people, by industry, by province*
- *Labour force characteristics, population 15 years and older, by census metropolitan area*
- *Labour force characteristics, population 15 years and older, by economic region, by province*
- *Days lost per worker by cause, by provinces*
- *Days lost per worker by industry and sex*
- *People employed, by educational attainment*
- *Reasons for part-time work by sex and age group*
- *Self-employment, historical summary*
- *Employment by age, sex, type of work, class of worker and province (monthly)*
- *Employment by major industry groups, seasonally adjusted, by province (monthly)*

- *Actual hours worked per week by industry, seasonally adjusted (monthly)*
- *Average hourly wages of employees by selected characteristics and profession, unadjusted data, by province (monthly)*
- *Labour force characteristics, seasonally adjusted, by province (monthly)*
- *Labour force characteristics, unadjusted, by province (monthly)*
- *Labour force characteristics, seasonally adjusted, by census metropolitan area (3 month moving average)*
- *Labour force characteristics, unadjusted, by census metropolitan area (3 month moving average)*
- *Labour force characteristics, unadjusted, by economic region (3 month moving average)*
- *Labour force characteristics by immigrant status of population aged 25 to 54, by province*
- *Labour force characteristics by immigrant status of population aged 25 to 54, by educational attainment*
- *Labour force characteristics by immigrant status, by detailed age group*
- *Labour force characteristics by immigrant status of population aged 25 to 54, by country of birth*

Statistical tables

Table 1
Labour force characteristics by age and sex, Canada, seasonally adjusted

	September 2010	October 2010	S.E. ¹	Change from			Percent change from		
				last month	last December	twelve months ago	last month	last December	twelve months ago
in thousands (except rates)									
15 years and over, both sexes									
Population	27,809.6	27,840.4	...	30.8	349.7	407.3	0.1	1.3	1.5
Labour force	18,702.7	18,698.4	28.1	-4.3	261.2	319.1	0.0	1.4	1.7
Employment	17,209.7	17,212.7	27.9	3.0	331.3	375.2	0.0	2.0	2.2
Employment full-time	13,862.6	13,909.8	36.8	47.2	232.6	218.6	0.3	1.7	1.6
Employment part-time	3,347.1	3,302.9	33.7	-44.2	98.6	156.5	-1.3	3.1	5.0
Unemployment	1,493.0	1,485.7	24.9	-7.3	-70.1	-56.0	-0.5	-4.5	-3.6
Participation rate	67.3	67.2	0.1	-0.1	0.1	0.2
Unemployment rate	8.0	7.9	0.1	-0.1	-0.5	-0.5
Employment rate	61.9	61.8	0.1	-0.1	0.4	0.4
Part-time rate	19.4	19.2	0.2	-0.3	0.2	0.5
15 to 24 years, both sexes									
Population	4,409.3	4,409.8	...	0.5	9.5	10.7	0.0	0.2	0.2
Labour force	2,821.0	2,827.4	16.5	6.4	-20.4	17.0	0.2	-0.7	0.6
Employment	2,401.6	2,402.7	15.1	1.1	10.7	20.3	0.0	0.4	0.9
Employment full-time	1,250.1	1,251.1	17.7	1.0	-21.2	-44.6	0.1	-1.7	-3.4
Employment part-time	1,151.6	1,151.5	18.3	-0.1	31.9	64.8	0.0	2.8	6.0
Unemployment	419.4	424.7	14.3	5.3	-31.2	-3.3	1.3	-6.8	-0.8
Participation rate	64.0	64.1	0.4	0.1	-0.6	0.2
Unemployment rate	14.9	15.0	0.5	0.1	-1.0	-0.2
Employment rate	54.5	54.5	0.3	0.0	0.1	0.3
Part-time rate	48.0	47.9	0.7	0.0	1.1	2.3
25 years and over, men									
Population	11,447.7	11,462.5	...	14.8	168.7	196.6	0.1	1.5	1.7
Labour force	8,443.1	8,411.5	14.8	-31.6	143.5	150.6	-0.4	1.7	1.8
Employment	7,841.1	7,834.5	16.2	-6.6	224.9	235.2	-0.1	3.0	3.1
Employment full-time	7,213.3	7,220.3	20.8	7.0	209.9	191.1	0.1	3.0	2.7
Employment part-time	627.8	614.3	16.6	-13.5	15.1	44.2	-2.2	2.5	7.8
Unemployment	602.1	576.9	15.0	-25.2	-81.4	-84.7	-4.2	-12.4	-12.8
Participation rate	73.8	73.4	0.1	-0.4	0.2	0.1
Unemployment rate	7.1	6.9	0.2	-0.2	-1.1	-1.1
Employment rate	68.5	68.3	0.1	-0.2	0.9	0.8
Part-time rate	8.0	7.8	0.2	-0.2	0.0	0.3
25 years and over, women									
Population	11,952.7	11,968.0	...	15.3	171.4	199.9	0.1	1.5	1.7
Labour force	7,438.5	7,459.5	15.9	21.0	138.1	151.5	0.3	1.9	2.1
Employment	6,967.0	6,975.5	15.8	8.5	95.7	119.7	0.1	1.4	1.7
Employment full-time	5,399.2	5,438.4	23.6	39.2	44.0	72.2	0.7	0.8	1.3
Employment part-time	1,567.7	1,537.1	22.1	-30.6	51.7	47.6	-2.0	3.5	3.2
Unemployment	471.6	484.1	12.9	12.5	42.5	31.9	2.7	9.6	7.1
Participation rate	62.2	62.3	0.1	0.1	0.2	0.2
Unemployment rate	6.3	6.5	0.2	0.2	0.5	0.3
Employment rate	58.3	58.3	0.1	0.0	0.0	0.0
Part-time rate	22.5	22.0	0.3	-0.5	0.4	0.3
25 to 54 years, both sexes									
Population	14,658.9	14,666.8	...	7.9	102.0	115.6	0.1	0.7	0.8
Labour force	12,694.7	12,659.1	21.3	-35.6	90.6	91.8	-0.3	0.7	0.7
Employment	11,820.4	11,804.3	22.9	-16.1	132.3	143.6	-0.1	1.1	1.2
Unemployment	874.3	854.8	18.6	-19.5	-41.8	-51.8	-2.2	-4.7	-5.7
Participation rate	86.6	86.3	0.1	-0.3	0.0	-0.1
Unemployment rate	6.9	6.8	0.1	-0.1	-0.3	-0.4
Employment rate	80.6	80.5	0.2	-0.1	0.4	0.4

See notes at the end of the table.

Table 1 – continued

Labour force characteristics by age and sex, Canada, seasonally adjusted

	September 2010	October 2010	S.E. ¹	Change from			Percent change from		
				last month	last December	twelve months ago	last month	last December	twelve months ago
in thousands (except rates)									
25 to 54 years, men									
Population	7,329.2	7,333.0	...	3.8	51.4	58.3	0.1	0.7	0.8
Labour force	6,668.7	6,635.7	13.7	-33.0	43.6	37.0	-0.5	0.7	0.6
Employment	6,195.0	6,186.0	15.6	-9.0	124.7	117.2	-0.1	2.1	1.9
Unemployment	473.7	449.7	13.8	-24.0	-81.1	-80.2	-5.1	-15.3	-15.1
Participation rate	91.0	90.5	0.2	-0.5	0.0	-0.2
Unemployment rate	7.1	6.8	0.2	-0.3	-1.3	-1.2
Employment rate	84.5	84.4	0.2	-0.1	1.2	1.0
25 to 54 years, women									
Population	7,329.7	7,333.8	...	4.1	50.6	57.3	0.1	0.7	0.8
Labour force	6,026.0	6,023.4	15.5	-2.6	47.0	54.9	0.0	0.8	0.9
Employment	5,625.4	5,618.3	15.8	-7.1	7.6	26.5	-0.1	0.1	0.5
Unemployment	400.6	405.1	12.0	4.5	39.4	28.4	1.1	10.8	7.5
Participation rate	82.2	82.1	0.2	-0.1	0.0	0.1
Unemployment rate	6.6	6.7	0.2	0.1	0.6	0.4
Employment rate	76.7	76.6	0.2	-0.1	-0.4	-0.2
55 years and over, both sexes									
Population	8,741.4	8,763.8	...	22.4	238.2	281.0	0.3	2.8	3.3
Labour force	3,187.0	3,211.9	16.5	24.9	191.1	210.3	0.8	6.3	7.0
Employment	2,987.7	3,005.7	16.5	18.0	188.2	211.3	0.6	6.7	7.6
Unemployment	199.3	206.2	9.1	6.9	2.9	-1.0	3.5	1.4	-0.5
Participation rate	36.5	36.6	0.2	0.1	1.2	1.2
Unemployment rate	6.3	6.4	0.3	0.1	-0.3	-0.5
Employment rate	34.2	34.3	0.2	0.1	1.3	1.4
55 years and over, men									
Population	4,118.5	4,129.5	...	11.0	117.3	138.3	0.3	2.9	3.5
Labour force	1,774.4	1,775.8	11.1	1.4	99.9	113.6	0.1	6.0	6.8
Employment	1,646.1	1,648.6	11.2	2.5	100.2	118.1	0.2	6.5	7.7
Unemployment	128.3	127.2	7.0	-1.1	-0.3	-4.5	-0.9	-0.2	-3.4
Participation rate	43.1	43.0	0.3	-0.1	1.2	1.4
Unemployment rate	7.2	7.2	0.4	0.0	-0.4	-0.7
Employment rate	40.0	39.9	0.3	-0.1	1.3	1.6
55 years and over, women									
Population	4,623.0	4,634.2	...	11.2	120.8	142.6	0.2	2.7	3.2
Labour force	1,412.6	1,436.1	11.1	23.5	91.2	96.7	1.7	6.8	7.2
Employment	1,341.6	1,357.2	11.1	15.6	88.1	93.3	1.2	6.9	7.4
Unemployment	71.0	79.0	5.6	8.0	3.1	3.5	11.3	4.1	4.6
Participation rate	30.6	31.0	0.2	0.4	1.2	1.2
Unemployment rate	5.0	5.5	0.4	0.5	-0.1	-0.1
Employment rate	29.0	29.3	0.2	0.3	1.2	1.2

1. Average standard error of change in two consecutive months (see "Sampling Errors" in Data Quality for further explanations).

Note(s): Related CANSIM table 282-0087.

Table 2
Employment by class of worker and industry, Canada, seasonally adjusted

	September 2010	October 2010	S.E. ¹	Change from			Percent change from		
				last month	last December	twelve months ago	last month	last December	twelve months ago
in thousands									
Class of worker									
Employees	14,519.4	14,546.4	33.4	27.0	405.3	470.8	0.2	2.9	3.3
Self-employed ²	2,690.3	2,666.2	24.1	-24.1	-74.1	-95.7	-0.9	-2.7	-3.5
Public/private sector employees									
Public sector employees	3,562.2	3,551.5	22.7	-10.7	114.4	133.6	-0.3	3.3	3.9
Private sector employees	10,957.2	10,995.0	35.0	37.8	291.0	337.3	0.3	2.7	3.2
Industry	17,209.7	17,212.7	27.9	3.0	331.3	375.2	0.0	2.0	2.2
Goods-producing sector	3,772.6	3,808.4	24.5	35.8	91.8	80.9	0.9	2.5	2.2
Agriculture	297.6	306.1	6.8	8.5	-9.2	-16.1	2.9	-2.9	-5.0
Forestry, fishing, mining, oil and gas	334.9	329.6	6.7	-5.3	23.9	30.4	-1.6	7.8	10.2
Utilities	150.3	151.9	4.7	1.6	5.4	2.5	1.1	3.7	1.7
Construction	1,243.3	1,264.1	15.4	20.8	77.7	71.9	1.7	6.5	6.0
Manufacturing	1,746.6	1,756.5	18.1	9.9	-6.1	-8.0	0.6	-0.3	-0.5
Services-producing sector	13,437.0	13,404.3	32.2	-32.7	239.5	294.3	-0.2	1.8	2.2
Trade	2,697.0	2,668.1	22.1	-28.9	14.1	37.4	-1.1	0.5	1.4
Transportation and warehousing	819.1	819.1	12.5	0.0	29.7	-1.0	0.0	3.8	-0.1
Finance, insurance, real estate and leasing	1,103.4	1,108.4	15.0	5.0	-4.3	-10.3	0.5	-0.4	-0.9
Professional, scientific and technical services	1,288.0	1,285.1	16.1	-2.9	43.2	85.5	-0.2	3.5	7.1
Business, building and other support services	680.3	679.2	13.1	-1.1	63.1	46.1	-0.2	10.2	7.3
Educational services	1,222.3	1,216.3	15.1	-6.0	-12.4	10.9	-0.5	-1.0	0.9
Health care and social assistance	2,066.0	2,056.2	16.9	-9.8	62.2	95.7	-0.5	3.1	4.9
Information, culture and recreation	757.9	780.0	13.4	22.1	4.7	-3.3	2.9	0.6	-0.4
Accommodation and food services	1,055.5	1,046.9	15.6	-8.6	-8.2	3.8	-0.8	-0.8	0.4
Other services	764.7	759.7	12.8	-5.0	-24.6	-24.9	-0.7	-3.1	-3.2
Public administration	982.9	985.3	11.9	2.4	71.9	54.3	0.2	7.9	5.8

1. Average standard error of change in two consecutive months (see "Sampling Errors" in Data Quality for further explanations).

2. Includes both incorporated and unincorporated working owners, self-employed persons who do not have a business and persons working in a family business without pay.

Note(s): Related CANSIM Tables 282-0088, 282-0089.

Table 3
Labour force characteristics by province, seasonally adjusted

	September 2010	October 2010	S.E. ¹	Change from			Percent change from		
				last month	last December	twelve months ago	last month	last December	twelve months ago
in thousands (except rates)									
Newfoundland and Labrador									
Population	432.0	432.0	...	0.0	1.5	2.1	0.0	0.3	0.5
Labour force	263.8	259.8	2.1	-4.0	3.8	3.4	-1.5	1.5	1.3
Employment	228.3	226.0	2.2	-2.3	8.8	13.1	-1.0	4.1	6.2
Employment full-time	195.2	194.2	2.6	-1.0	7.3	12.9	-0.5	3.9	7.1
Employment part-time	33.1	31.8	1.8	-1.3	1.5	0.2	-3.9	5.0	0.6
Unemployment	35.5	33.8	2.0	-1.7	-5.0	-9.8	-4.8	-12.9	-22.5
Participation rate	61.1	60.1	0.5	-1.0	0.6	0.5
Unemployment rate	13.5	13.0	0.7	-0.5	-2.2	-4.0
Employment rate	52.8	52.3	0.5	-0.5	1.8	2.8
Prince Edward Island									
Population	117.9	118.2	...	0.3	1.8	1.8	0.3	1.5	1.5
Labour force	80.8	81.5	0.6	0.7	1.7	1.8	0.9	2.1	2.3
Employment	69.8	71.0	0.7	1.2	-0.2	0.4	1.7	-0.3	0.6
Employment full-time	57.0	58.1	0.8	1.1	-0.1	0.9	1.9	-0.2	1.6
Employment part-time	12.7	12.9	0.7	0.2	-0.1	-0.5	1.6	-0.8	-3.7
Unemployment	11.0	10.5	0.6	-0.5	1.9	1.4	-4.5	22.1	15.4
Participation rate	68.5	69.0	0.5	0.5	0.4	0.5
Unemployment rate	13.6	12.9	0.8	-0.7	2.1	1.5
Employment rate	59.2	60.1	0.6	0.9	-1.1	-0.6
Nova Scotia									
Population	777.2	777.4	...	0.2	2.9	3.7	0.0	0.4	0.5
Labour force	504.5	499.4	2.7	-5.1	-0.5	-0.3	-1.0	-0.1	-0.1
Employment	459.1	450.5	2.8	-8.6	-1.5	-3.5	-1.9	-0.3	-0.8
Employment full-time	368.8	365.2	3.6	-3.6	-3.6	-8.5	-1.0	-1.0	-2.3
Employment part-time	90.3	85.3	3.2	-5.0	2.0	5.0	-5.5	2.4	6.2
Unemployment	45.5	48.9	2.6	3.4	1.1	3.2	7.5	2.3	7.0
Participation rate	64.9	64.2	0.4	-0.7	-0.3	-0.4
Unemployment rate	9.0	9.8	0.5	0.8	0.2	0.7
Employment rate	59.1	57.9	0.4	-1.2	-0.5	-0.8
New Brunswick									
Population	625.5	625.9	...	0.4	3.1	3.6	0.1	0.5	0.6
Labour force	401.7	401.6	2.2	-0.1	0.4	-2.1	0.0	0.1	-0.5
Employment	362.3	362.1	2.4	-0.2	-3.3	-7.9	-0.1	-0.9	-2.1
Employment full-time	305.5	306.7	2.8	1.2	-2.8	-5.8	0.4	-0.9	-1.9
Employment part-time	56.9	55.5	2.4	-1.4	-0.4	-2.0	-2.5	-0.7	-3.5
Unemployment	39.4	39.5	2.1	0.1	3.7	5.8	0.3	10.3	17.2
Participation rate	64.2	64.2	0.4	0.0	-0.2	-0.7
Unemployment rate	9.8	9.8	0.5	0.0	0.9	1.5
Employment rate	57.9	57.9	0.4	0.0	-0.8	-1.6
Quebec									
Population	6,533.4	6,540.3	...	6.9	68.6	81.6	0.1	1.1	1.3
Labour force	4,283.8	4,293.7	14.1	9.9	81.5	110.6	0.2	1.9	2.6
Employment	3,953.4	3,949.6	14.3	-3.8	91.2	113.5	-0.1	2.4	3.0
Employment full-time	3,191.8	3,189.8	18.6	-2.0	51.9	46.3	-0.1	1.7	1.5
Employment part-time	761.6	759.8	16.8	-1.8	39.3	67.2	-0.2	5.5	9.7
Unemployment	330.4	344.1	12.9	13.7	-9.7	-2.9	4.1	-2.7	-0.8
Participation rate	65.6	65.6	0.2	0.0	0.5	0.8
Unemployment rate	7.7	8.0	0.3	0.3	-0.4	-0.3
Employment rate	60.5	60.4	0.2	-0.1	0.8	1.0

See notes at the end of the table.

Table 3 – continued

Labour force characteristics by province, seasonally adjusted

	September 2010	October 2010	S.E. ¹	Change from			Percent change from		
				last month	last December	twelve months ago	last month	last December	twelve months ago
in thousands (except rates)									
Ontario									
Population	10,853.6	10,866.8	...	13.2	139.2	159.2	0.1	1.3	1.5
Labour force	7,307.3	7,287.3	19.4	-20.0	97.1	107.2	-0.3	1.4	1.5
Employment	6,662.0	6,659.2	18.9	-2.8	131.8	127.9	0.0	2.0	2.0
Employment full-time	5,356.4	5,385.8	24.6	29.4	84.4	89.5	0.5	1.6	1.7
Employment part-time	1,305.5	1,273.4	22.8	-32.1	47.5	38.5	-2.5	3.9	3.1
Unemployment	645.3	628.1	17.2	-17.2	-34.7	-20.7	-2.7	-5.2	-3.2
Participation rate	67.3	67.1	0.2	-0.2	0.1	0.0
Unemployment rate	8.8	8.6	0.2	-0.2	-0.6	-0.4
Employment rate	61.4	61.3	0.2	-0.1	0.5	0.3
Manitoba									
Population	939.8	940.9	...	1.1	12.3	14.0	0.1	1.3	1.5
Labour force	659.0	659.6	2.6	0.6	18.7	16.7	0.1	2.9	2.6
Employment	623.7	625.3	2.8	1.6	21.3	19.2	0.3	3.5	3.2
Employment full-time	502.4	504.6	3.7	2.2	19.9	15.1	0.4	4.1	3.1
Employment part-time	121.2	120.7	3.5	-0.5	1.5	4.1	-0.4	1.3	3.5
Unemployment	35.4	34.3	2.1	-1.1	-2.7	-2.5	-3.1	-7.3	-6.8
Participation rate	70.1	70.1	0.3	0.0	1.1	0.7
Unemployment rate	5.4	5.2	0.3	-0.2	-0.6	-0.5
Employment rate	66.4	66.5	0.3	0.1	1.5	1.1
Saskatchewan									
Population	794.1	794.8	...	0.7	10.5	11.8	0.1	1.3	1.5
Labour force	557.8	557.7	2.4	-0.1	9.2	9.8	0.0	1.7	1.8
Employment	526.8	525.8	2.5	-1.0	3.7	6.0	-0.2	0.7	1.2
Employment full-time	426.1	435.6	3.3	9.5	10.0	10.5	2.2	2.3	2.5
Employment part-time	100.7	90.1	3.0	-10.6	-6.4	-4.6	-10.5	-6.6	-4.9
Unemployment	30.9	32.0	1.9	1.1	5.7	3.9	3.6	21.7	13.9
Participation rate	70.2	70.2	0.3	0.0	0.3	0.2
Unemployment rate	5.5	5.7	0.3	0.2	0.9	0.6
Employment rate	66.3	66.2	0.3	-0.1	-0.4	-0.2
Alberta									
Population	2,939.7	2,943.4	...	3.7	48.1	56.3	0.1	1.7	2.0
Labour force	2,135.8	2,150.8	8.6	15.0	14.9	23.3	0.7	0.7	1.1
Employment	2,004.2	2,021.2	8.8	17.0	25.9	46.1	0.8	1.3	2.3
Employment full-time	1,652.2	1,655.2	11.8	3.0	23.4	26.7	0.2	1.4	1.6
Employment part-time	352.0	366.0	10.5	14.0	2.5	19.5	4.0	0.7	5.6
Unemployment	131.6	129.5	7.5	-2.1	-11.1	-22.9	-1.6	-7.9	-15.0
Participation rate	72.7	73.1	0.3	0.4	-0.7	-0.6
Unemployment rate	6.2	6.0	0.3	-0.2	-0.6	-1.2
Employment rate	68.2	68.7	0.3	0.5	-0.2	0.3
British Columbia									
Population	3,796.4	3,800.7	...	4.3	61.8	73.2	0.1	1.7	2.0
Labour force	2,508.2	2,507.0	10.5	-1.2	34.3	48.6	0.0	1.4	2.0
Employment	2,320.3	2,321.8	10.3	1.5	53.3	60.1	0.1	2.3	2.7
Employment full-time	1,807.1	1,814.5	14.5	7.4	42.1	31.0	0.4	2.4	1.7
Employment part-time	513.1	507.3	13.4	-5.8	11.2	29.1	-1.1	2.3	6.1
Unemployment	187.9	185.1	8.8	-2.8	-19.1	-11.6	-1.5	-9.4	-5.9
Participation rate	66.1	66.0	0.3	-0.1	-0.1	0.0
Unemployment rate	7.5	7.4	0.3	-0.1	-0.9	-0.6
Employment rate	61.1	61.1	0.3	0.0	0.4	0.4

1. Average standard error of change in two consecutive months (see "Sampling Errors" in Data Quality for further explanations).

Note(s): Related CANSIM Table 282-0087.

Table 4-1
Selected labour force characteristics (seasonally adjusted) — Newfoundland and Labrador

	September 2010	October 2010	S.E. ¹	Change from			Percent change from		
				last month	last December	twelve months ago	last month	last December	twelve months ago
in thousands (except rates)									
Both sexes, 15 years and over									
Population	432.0	432.0	...	0.0	1.5	2.1	0.0	0.3	0.5
Labour force	263.8	259.8	2.1	-4.0	3.8	3.4	-1.5	1.5	1.3
Employment	228.3	226.0	2.2	-2.3	8.8	13.1	-1.0	4.1	6.2
Employment full-time	195.2	194.2	2.6	-1.0	7.3	12.9	-0.5	3.9	7.1
Unemployment	35.5	33.8	2.0	-1.7	-5.0	-9.8	-4.8	-12.9	-22.5
Participation rate	61.1	60.1	0.5	-1.0	0.6	0.5
Unemployment rate	13.5	13.0	0.7	-0.5	-2.2	-4.0
Employment rate	52.8	52.3	0.5	-0.5	1.8	2.8
Part-time rate	14.5	14.1	0.8	-0.4	0.1	-0.8
Both sexes, 15 to 24 years									
Population	60.3	60.2	...	-0.1	-0.6	-0.7	-0.2	-1.0	-1.1
Labour force	36.5	33.8	1.0	-2.7	0.3	-0.1	-7.4	0.9	-0.3
Employment	29.1	28.1	1.0	-1.0	1.9	2.1	-3.4	7.3	8.1
Unemployment	7.5	5.7	0.9	-1.8	-1.6	-2.2	-24.0	-21.9	-27.8
Participation rate	60.5	56.1	1.7	-4.4	1.0	0.4
Unemployment rate	20.5	16.9	2.4	-3.6	-4.9	-6.4
Employment rate	48.3	46.7	1.6	-1.6	3.6	4.0
Part-time rate	41.9	37.4	3.5	-4.6	-1.9	-6.5
Men, 25 years and over									
Population	179.0	179.0	...	0.0	0.9	1.2	0.0	0.5	0.7
Labour force	117.3	116.6	1.2	-0.7	0.5	0.4	-0.6	0.4	0.3
Employment	100.0	99.8	1.4	-0.2	3.0	3.5	-0.2	3.1	3.6
Unemployment	17.3	16.8	1.3	-0.5	-2.6	-3.1	-2.9	-13.4	-15.6
Participation rate	65.5	65.1	0.7	-0.4	-0.1	-0.3
Unemployment rate	14.7	14.4	1.1	-0.3	-2.3	-2.7
Employment rate	55.9	55.8	0.8	-0.1	1.4	1.6
Part-time rate	5.5	5.5	0.8	0.0	1.2	0.8
Women, 25 years and over									
Population	192.7	192.7	...	0.0	1.2	1.5	0.0	0.6	0.8
Labour force	110.0	109.5	1.1	-0.5	3.2	3.2	-0.5	3.0	3.0
Employment	99.2	98.1	1.1	-1.1	3.9	7.5	-1.1	4.1	8.3
Unemployment	10.8	11.3	1.1	0.5	-0.9	-4.4	4.6	-7.4	-28.0
Participation rate	57.1	56.8	0.6	-0.3	1.3	1.2
Unemployment rate	9.8	10.3	1.0	0.5	-1.2	-4.5
Employment rate	51.5	50.9	0.6	-0.6	1.7	3.5
Part-time rate	15.5	16.2	1.3	0.7	-0.6	-1.0
Industry	228.2	226.0	2.2	-2.2	8.8	13.1	-1.0	4.1	6.2
Goods-producing sector	45.2	45.8	1.7	0.6	0.2	0.0	1.3	0.4	0.0
Agriculture	2.4	2.2	0.3	-0.2	1.5	1.5	-8.3	214.3	214.3
Forestry, fishing, mining, oil and gas	15.7	16.6	1.0	0.9	1.9	2.2	5.7	12.9	15.3
Utilities	1.7	1.7	0.3	0.0	-0.3	-0.4	0.0	-15.0	-19.0
Construction	16.1	16.1	1.1	0.0	-0.2	-1.8	0.0	-1.2	-10.1
Manufacturing	9.3	9.2	1.0	-0.1	-2.7	-1.6	-1.1	-22.7	-14.8
Services-producing sector	183.0	180.2	2.0	-2.8	8.7	13.1	-1.5	5.1	7.8
Trade	41.9	40.5	1.3	-1.4	5.7	4.8	-3.3	16.4	13.4
Transportation and warehousing	12.0	11.0	0.7	-1.0	-1.5	-1.3	-8.3	-12.0	-10.6
Finance, insurance, real estate and leasing	7.4	7.2	0.6	-0.2	0.1	-0.2	-2.7	1.4	-2.7
Professional, scientific and technical services	7.5	7.8	0.6	0.3	-0.4	0.2	4.0	-4.9	2.6
Business, building and other support services	5.6	5.6	0.7	0.0	0.6	-0.2	0.0	12.0	-3.4
Educational services	16.9	17.2	0.8	0.3	-0.5	-0.5	1.8	-2.8	-2.8
Health care and social assistance	38.7	37.8	1.1	-0.9	2.1	4.1	-2.3	5.9	12.2
Information, culture and recreation	9.6	8.7	0.7	-0.9	0.7	0.8	-9.4	8.8	10.1
Accommodation and food services	13.1	12.8	0.9	-0.3	-1.4	0.2	-2.3	-9.9	1.6
Other services	11.4	12.4	0.8	1.0	1.5	2.8	8.8	13.8	29.2
Public administration	18.9	19.2	0.8	0.3	1.7	2.4	1.6	9.7	14.3

1. Average standard error of change in two consecutive months (see "Sampling Errors" in Data Quality for further explanations).

Note(s): Related CANSIM Tables 282-0087, 282-0088.

Table 4-2
Selected labour force characteristics (seasonally adjusted) — Prince Edward Island

	September 2010	October 2010	S.E. ¹	Change from			Percent change from		
				last month	last December	twelve months ago	last month	last December	twelve months ago
in thousands (except rates)									
Both sexes, 15 years and over									
Population	117.9	118.2	...	0.3	1.8	1.8	0.3	1.5	1.5
Labour force	80.8	81.5	0.6	0.7	1.7	1.8	0.9	2.1	2.3
Employment	69.8	71.0	0.7	1.2	-0.2	0.4	1.7	-0.3	0.6
Employment full-time	57.0	58.1	0.8	1.1	-0.1	0.9	1.9	-0.2	1.6
Unemployment	11.0	10.5	0.6	-0.5	1.9	1.4	-4.5	22.1	15.4
Participation rate	68.5	69.0	0.5	0.5	0.4	0.5
Unemployment rate	13.6	12.9	0.8	-0.7	2.1	1.5
Employment rate	59.2	60.1	0.6	0.9	-1.1	-0.6
Part-time rate	18.2	18.2	0.9	0.0	-0.1	-0.8
Both sexes, 15 to 24 years									
Population	19.8	19.8	...	0.0	0.0	0.0	0.0	0.0	0.0
Labour force	13.5	13.8	0.4	0.3	0.1	0.0	2.2	0.7	0.0
Employment	11.1	11.6	0.4	0.5	0.2	0.2	4.5	1.8	1.8
Unemployment	2.4	2.2	0.3	-0.2	-0.1	-0.2	-8.3	-4.3	-8.3
Participation rate	68.2	69.7	1.9	1.5	0.5	0.0
Unemployment rate	17.8	15.9	2.2	-1.9	-0.9	-1.5
Employment rate	56.1	58.6	1.9	2.5	1.0	1.0
Part-time rate	45.9	43.1	3.0	-2.8	3.6	5.4
Men, 25 years and over									
Population	47.1	47.2	...	0.1	0.8	0.8	0.2	1.7	1.7
Labour force	34.9	35.3	0.3	0.4	1.0	1.4	1.1	2.9	4.1
Employment	30.4	30.4	0.4	0.0	0.0	0.5	0.0	0.0	1.7
Unemployment	4.4	4.9	0.4	0.5	1.1	0.9	11.4	28.9	22.5
Participation rate	74.1	74.8	0.7	0.7	0.9	1.7
Unemployment rate	12.6	13.9	1.1	1.3	2.8	2.1
Employment rate	64.5	64.4	0.8	-0.1	-1.1	0.0
Part-time rate	8.6	8.9	1.0	0.3	1.6	0.2
Women, 25 years and over									
Population	51.0	51.2	...	0.2	0.9	1.0	0.4	1.8	2.0
Labour force	32.5	32.4	0.3	-0.1	0.6	0.4	-0.3	1.9	1.2
Employment	28.3	29.0	0.4	0.7	-0.4	-0.4	2.5	-1.4	-1.4
Unemployment	4.2	3.4	0.3	-0.8	1.0	0.8	-19.0	41.7	30.8
Participation rate	63.7	63.3	0.7	-0.4	0.1	-0.4
Unemployment rate	12.9	10.5	1.0	-2.4	3.0	2.4
Employment rate	55.5	56.6	0.8	1.1	-1.8	-2.0
Part-time rate	18.0	17.9	1.5	-0.1	-3.5	-3.8
Industry									
Industry	69.8	71.0	0.7	1.2	-0.2	0.4	1.7	-0.3	0.6
Goods-producing sector									
Goods-producing sector	15.8	16.5	0.6	0.7	-1.6	-1.0	4.4	-8.8	-5.7
Agriculture	2.9	3.5	0.3	0.6	-0.5	-0.6	20.7	-12.5	-14.6
Forestry, fishing, mining, oil and gas	2.9	2.9	0.3	0.0	0.4	0.7	0.0	16.0	31.8
Utilities	0.3	0.3	0.1	0.0	-0.2	0.0	0.0	-40.0	0.0
Construction	4.5	4.7	0.4	0.2	-1.2	-0.9	4.4	-20.3	-16.1
Manufacturing	5.2	5.1	0.3	-0.1	-0.1	-0.2	-1.9	-1.9	-3.8
Services-producing sector									
Services-producing sector	54.0	54.5	0.7	0.5	1.5	1.3	0.9	2.8	2.4
Trade	9.6	9.6	0.4	0.0	-1.6	-1.7	0.0	-14.3	-15.0
Transportation and warehousing	1.9	2.1	0.2	0.2	0.2	0.1	10.5	10.5	5.0
Finance, insurance, real estate and leasing	2.6	2.4	0.2	-0.2	-0.2	-0.2	-7.7	-7.7	-7.7
Professional, scientific and technical services	2.8	2.8	0.2	0.0	0.7	0.6	0.0	33.3	27.3
Business, building and other support services	2.8	2.6	0.3	-0.2	-0.3	-0.1	-7.1	-10.3	-3.7
Educational services	5.9	5.9	0.3	0.0	0.3	0.1	0.0	5.4	1.7
Health care and social assistance	9.3	8.7	0.3	-0.6	0.3	0.4	-6.5	3.6	4.8
Information, culture and recreation	3.0	3.1	0.2	0.1	0.7	0.9	3.3	29.2	40.9
Accommodation and food services	5.1	5.5	0.4	0.4	0.5	0.2	7.8	10.0	3.8
Other services	3.1	3.0	0.3	-0.1	-0.3	-0.1	-3.2	-9.1	-3.2
Public administration	7.9	8.8	0.3	0.9	1.2	1.1	11.4	15.8	14.3

1. Average standard error of change in two consecutive months (see "Sampling Errors" in Data Quality for further explanations).

Note(s): Related CANSIM Tables 282-0087, 282-0088.

Table 4-3
Selected labour force characteristics (seasonally adjusted) — Nova Scotia

	September 2010	October 2010	S.E. ¹	Change from			Percent change from		
				last month	last December	twelve months ago	last month	last December	twelve months ago
in thousands (except rates)									
Both sexes, 15 years and over									
Population	777.2	777.4	...	0.2	2.9	3.7	0.0	0.4	0.5
Labour force	504.5	499.4	2.7	-5.1	-0.5	-0.3	-1.0	-0.1	-0.1
Employment	459.1	450.5	2.8	-8.6	-1.5	-3.5	-1.9	-0.3	-0.8
Employment full-time	368.8	365.2	3.6	-3.6	-3.6	-8.5	-1.0	-1.0	-2.3
Unemployment	45.5	48.9	2.6	3.4	1.1	3.2	7.5	2.3	7.0
Participation rate	64.9	64.2	0.4	-0.7	-0.3	-0.4
Unemployment rate	9.0	9.8	0.5	0.8	0.2	0.7
Employment rate	59.1	57.9	0.4	-1.2	-0.5	-0.8
Part-time rate	19.7	18.9	0.7	-0.7	0.5	1.2
Both sexes, 15 to 24 years									
Population	119.0	118.8	...	-0.2	-1.0	-1.0	-0.2	-0.8	-0.8
Labour force	79.3	78.1	1.6	-1.2	-3.9	-2.0	-1.5	-4.8	-2.5
Employment	66.9	65.7	1.6	-1.2	-2.6	-2.6	-1.8	-3.8	-3.8
Unemployment	12.4	12.4	1.5	0.0	-1.2	0.6	0.0	-8.8	5.1
Participation rate	66.6	65.7	1.3	-0.9	-2.7	-1.2
Unemployment rate	15.6	15.9	1.7	0.3	-0.7	1.2
Employment rate	56.2	55.3	1.3	-0.9	-1.7	-1.7
Part-time rate	44.2	44.6	2.4	0.4	-1.4	1.4
Men, 25 years and over									
Population	313.8	314.0	...	0.2	1.9	2.4	0.1	0.6	0.8
Labour force	217.4	215.1	1.5	-2.3	1.1	1.2	-1.1	0.5	0.6
Employment	197.8	193.6	1.7	-4.2	-1.2	-0.7	-2.1	-0.6	-0.4
Unemployment	19.5	21.5	1.6	2.0	2.3	1.9	10.3	12.0	9.7
Participation rate	69.3	68.5	0.5	-0.8	-0.1	-0.1
Unemployment rate	9.0	10.0	0.7	1.0	1.0	0.8
Employment rate	63.0	61.7	0.6	-1.3	-0.7	-0.7
Part-time rate	8.8	7.8	0.7	-1.0	1.3	1.7
Women, 25 years and over									
Population	344.4	344.6	...	0.2	1.9	2.3	0.1	0.6	0.7
Labour force	207.8	206.2	1.5	-1.6	2.3	0.6	-0.8	1.1	0.3
Employment	194.3	191.1	1.5	-3.2	2.2	-0.3	-1.6	1.2	-0.2
Unemployment	13.5	15.0	1.3	1.5	0.0	0.8	11.1	0.0	5.6
Participation rate	60.3	59.8	0.4	-0.5	0.3	-0.3
Unemployment rate	6.5	7.3	0.6	0.8	-0.1	0.4
Employment rate	56.4	55.5	0.4	-0.9	0.4	-0.4
Part-time rate	22.2	21.4	1.1	-0.8	0.7	1.1
Industry									
Goods-producing sector	459.1	450.5	2.8	-8.6	-1.5	-3.5	-1.9	-0.3	-0.8
Agriculture	89.1	89.1	2.2	0.0	3.6	1.8	0.0	4.2	2.1
Forestry, fishing, mining, oil and gas	6.6	6.1	0.7	-0.5	0.8	-1.2	-7.6	15.1	-16.4
Utilities	12.2	10.9	1.1	-1.3	-1.2	-1.7	-10.7	-9.9	-13.5
Construction	4.1	4.0	0.4	-0.1	0.1	0.4	-2.4	2.6	11.1
Manufacturing	32.1	34.7	1.5	2.6	2.6	4.2	8.1	8.1	13.8
Manufacturing	34.0	33.4	1.3	-0.6	1.3	0.2	-1.8	4.0	0.6
Services-producing sector	370.0	361.4	2.9	-8.6	-5.1	-5.4	-2.3	-1.4	-1.5
Trade	76.3	78.1	2.1	1.8	2.5	2.7	2.4	3.3	3.6
Transportation and warehousing	18.4	18.4	1.1	0.0	-0.8	-2.3	0.0	-4.2	-11.1
Finance, insurance, real estate and leasing	24.8	23.3	1.1	-1.5	-0.6	-1.4	-6.0	-2.5	-5.7
Professional, scientific and technical services	24.4	22.0	1.1	-2.4	-1.1	0.3	-9.8	-4.8	1.4
Business, building and other support services	25.9	24.1	1.2	-1.8	1.5	2.1	-6.9	6.6	9.5
Educational services	32.5	31.7	1.4	-0.8	-5.5	-7.1	-2.5	-14.8	-18.3
Health care and social assistance	69.4	69.1	1.7	-0.3	1.5	2.7	-0.4	2.2	4.1
Information, culture and recreation	19.8	19.1	1.2	-0.7	1.3	0.1	-3.5	7.3	0.5
Accommodation and food services	26.7	26.9	1.3	0.2	-1.5	-1.2	0.7	-5.3	-4.3
Other services	19.7	18.3	1.1	-1.4	-2.2	0.7	-7.1	-10.7	4.0
Public administration	32.0	30.4	1.2	-1.6	-0.2	-1.9	-5.0	-0.7	-5.9

1. Average standard error of change in two consecutive months (see "Sampling Errors" in Data Quality for further explanations).

Note(s): Related CANSIM Tables 282-0087, 282-0088.

Table 4-4
Selected labour force characteristics (seasonally adjusted) — New Brunswick

	September 2010	October 2010	S.E. ¹	Change from			Percent change from		
				last month	last December	twelve months ago	last month	last December	twelve months ago
in thousands (except rates)									
Both sexes, 15 years and over									
Population	625.5	625.9	...	0.4	3.1	3.6	0.1	0.5	0.6
Labour force	401.7	401.6	2.2	-0.1	0.4	-2.1	0.0	0.1	-0.5
Employment	362.3	362.1	2.4	-0.2	-3.3	-7.9	-0.1	-0.9	-2.1
Employment full-time	305.5	306.7	2.8	1.2	-2.8	-5.8	0.4	-0.9	-1.9
Unemployment	39.4	39.5	2.1	0.1	3.7	5.8	0.3	10.3	17.2
Participation rate	64.2	64.2	0.4	0.0	-0.2	-0.7
Unemployment rate	9.8	9.8	0.5	0.0	0.9	1.5
Employment rate	57.9	57.9	0.4	0.0	-0.8	-1.6
Part-time rate	15.7	15.3	0.6	-0.4	0.0	-0.2
Both sexes, 15 to 24 years									
Population	92.1	92.1	...	0.0	-0.9	-1.1	0.0	-1.0	-1.2
Labour force	57.4	57.9	1.3	0.5	-2.7	-3.4	0.9	-4.5	-5.5
Employment	48.3	47.8	1.3	-0.5	-2.4	-5.0	-1.0	-4.8	-9.5
Unemployment	9.1	10.1	1.2	1.0	-0.3	1.6	11.0	-2.9	18.8
Participation rate	62.3	62.9	1.4	0.6	-2.3	-2.9
Unemployment rate	15.9	17.4	1.8	1.5	0.2	3.5
Employment rate	52.4	51.9	1.4	-0.5	-2.1	-4.8
Part-time rate	39.1	42.3	2.4	3.1	0.8	3.8
Men, 25 years and over									
Population	257.6	257.8	...	0.2	2.2	2.5	0.1	0.9	1.0
Labour force	181.2	179.9	1.3	-1.3	2.0	1.2	-0.7	1.1	0.7
Employment	162.5	161.8	1.4	-0.7	-0.8	-1.6	-0.4	-0.5	-1.0
Unemployment	18.7	18.1	1.3	-0.6	2.8	2.7	-3.2	18.3	17.5
Participation rate	70.3	69.8	0.5	-0.5	0.2	-0.2
Unemployment rate	10.3	10.1	0.7	-0.2	1.5	1.5
Employment rate	63.1	62.8	0.5	-0.3	-0.8	-1.2
Part-time rate	6.3	6.3	0.7	0.0	1.0	0.0
Women, 25 years and over									
Population	275.8	276.0	...	0.2	1.8	2.2	0.1	0.7	0.8
Labour force	163.1	163.8	1.2	0.7	1.1	0.2	0.4	0.7	0.1
Employment	151.5	152.6	1.3	1.1	0.0	-1.2	0.7	0.0	-0.8
Unemployment	11.6	11.3	1.1	-0.3	1.2	1.5	-2.6	11.9	15.3
Participation rate	59.1	59.3	0.4	0.2	0.0	-0.5
Unemployment rate	7.1	6.9	0.6	-0.2	0.7	0.9
Employment rate	54.9	55.3	0.5	0.4	-0.4	-0.9
Part-time rate	18.3	16.4	1.0	-1.8	-1.0	-1.0
Industry	362.3	362.1	2.4	-0.2	-3.3	-7.9	-0.1	-0.9	-2.1
Goods-producing sector	80.3	81.8	2.0	1.5	-0.1	-3.2	1.9	-0.1	-3.8
Agriculture	5.5	6.3	0.6	0.8	-0.5	-0.5	14.5	-7.4	-7.4
Forestry, fishing, mining, oil and gas	11.2	11.6	0.8	0.4	0.9	0.5	3.6	8.4	4.5
Utilities	4.5	4.5	0.4	0.0	-0.2	0.1	0.0	-4.3	2.3
Construction	29.0	29.1	1.3	0.1	3.1	-0.6	0.3	11.9	-2.0
Manufacturing	30.0	30.2	1.2	0.2	-3.5	-2.7	0.7	-10.4	-8.2
Services-producing sector	282.1	280.4	2.5	-1.7	-3.1	-4.6	-0.6	-1.1	-1.6
Trade	56.9	55.3	1.6	-1.6	0.3	0.4	-2.8	0.5	0.7
Transportation and warehousing	18.9	18.8	0.8	-0.1	-1.4	0.1	-0.5	-6.9	0.5
Finance, insurance, real estate and leasing	15.7	15.1	0.8	-0.6	-0.9	-3.3	-3.8	-5.6	-17.9
Professional, scientific and technical services	16.3	16.8	0.9	0.5	1.2	0.4	3.1	7.7	2.4
Business, building and other support services	18.3	16.7	1.1	-1.6	-2.5	-1.6	-8.7	-13.0	-8.7
Educational services	25.7	27.0	1.1	1.3	-0.6	-0.9	5.1	-2.2	-3.2
Health care and social assistance	50.2	51.6	1.4	1.4	2.5	2.7	2.8	5.1	5.5
Information, culture and recreation	13.1	12.7	0.9	-0.4	0.5	1.0	-3.1	4.1	8.5
Accommodation and food services	22.3	21.8	1.2	-0.5	-3.1	-4.0	-2.2	-12.4	-15.5
Other services	17.2	17.2	0.9	0.0	0.1	0.4	0.0	0.6	2.4
Public administration	27.5	27.5	1.1	0.0	0.8	0.3	0.0	3.0	1.1

1. Average standard error of change in two consecutive months (see "Sampling Errors" in Data Quality for further explanations).

Note(s): Related CANSIM Tables 282-0087, 282-0088.

Table 4-5
Selected labour force characteristics (seasonally adjusted) — Quebec

	September 2010	October 2010	S.E. ¹	Change from			Percent change from		
				last month	last December	twelve months ago	last month	last December	twelve months ago
in thousands (except rates)									
Both sexes, 15 years and over									
Population	6,533.4	6,540.3	...	6.9	68.6	81.6	0.1	1.1	1.3
Labour force	4,283.8	4,293.7	14.1	9.9	81.5	110.6	0.2	1.9	2.6
Employment	3,953.4	3,949.6	14.3	-3.8	91.2	113.5	-0.1	2.4	3.0
Employment full-time	3,191.8	3,189.8	18.6	-2.0	51.9	46.3	-0.1	1.7	1.5
Unemployment	330.4	344.1	12.9	13.7	-9.7	-2.9	4.1	-2.7	-0.8
Participation rate	65.6	65.6	0.2	0.0	0.5	0.8
Unemployment rate	7.7	8.0	0.3	0.3	-0.4	-0.3
Employment rate	60.5	60.4	0.2	-0.1	0.8	1.0
Part-time rate	19.3	19.2	0.4	0.0	0.6	1.2
Both sexes, 15 to 24 years									
Population	967.7	968.1	...	0.4	3.7	4.5	0.0	0.4	0.5
Labour force	659.5	662.2	8.0	2.7	20.8	42.5	0.4	3.2	6.9
Employment	572.9	575.8	7.6	2.9	39.8	41.4	0.5	7.4	7.7
Unemployment	86.6	86.3	7.3	-0.3	-19.1	1.0	-0.3	-18.1	1.2
Participation rate	68.2	68.4	0.8	0.2	1.9	4.1
Unemployment rate	13.1	13.0	1.1	-0.1	-3.4	-0.8
Employment rate	59.2	59.5	0.8	0.3	3.9	4.0
Part-time rate	48.0	49.4	1.5	1.4	0.0	1.9
Men, 25 years and over									
Population	2,723.8	2,727.2	...	3.4	34.0	40.3	0.1	1.3	1.5
Labour force	1,925.9	1,920.3	8.1	-5.6	32.0	32.6	-0.3	1.7	1.7
Employment	1,787.4	1,778.0	8.6	-9.4	42.3	52.8	-0.5	2.4	3.1
Unemployment	138.5	142.3	8.2	3.8	-10.3	-20.2	2.7	-6.7	-12.4
Participation rate	70.7	70.4	0.3	-0.3	0.3	0.1
Unemployment rate	7.2	7.4	0.4	0.2	-0.7	-1.2
Employment rate	65.6	65.2	0.3	-0.4	0.8	1.0
Part-time rate	8.6	8.4	0.5	-0.2	0.2	0.8
Women, 25 years and over									
Population	2,841.8	2,845.1	...	3.3	31.0	36.8	0.1	1.1	1.3
Labour force	1,698.4	1,711.3	7.8	12.9	28.8	35.6	0.8	1.7	2.1
Employment	1,593.1	1,595.8	7.8	2.7	9.1	19.4	0.2	0.6	1.2
Unemployment	105.3	115.5	6.4	10.2	19.6	16.3	9.7	20.4	16.4
Participation rate	59.8	60.1	0.3	0.3	0.3	0.4
Unemployment rate	6.2	6.7	0.4	0.5	1.0	0.8
Employment rate	56.1	56.1	0.3	0.0	-0.3	0.0
Part-time rate	20.9	20.4	0.7	-0.5	0.7	0.9
Industry									
Goods-producing sector	3,953.4	3,949.6	14.3	-3.8	91.2	113.5	-0.1	2.4	3.0
Agriculture	859.9	858.8	11.9	-1.1	-9.9	-12.1	-0.1	-1.1	-1.4
Forestry, fishing, mining, oil and gas	54.4	56.0	3.1	1.6	0.7	-2.4	2.9	1.3	-4.1
Utilities	29.8	27.8	2.0	-2.0	-3.3	2.4	-6.7	-10.6	9.4
Construction	33.0	34.9	2.2	1.9	1.6	1.6	5.8	4.8	4.8
Manufacturing	237.1	231.4	7.1	-5.7	11.9	16.0	-2.4	5.4	7.4
	505.7	508.8	9.6	3.1	-20.7	-29.6	0.6	-3.9	-5.5
Services-producing sector	3,093.4	3,090.8	16.0	-2.6	101.1	125.6	-0.1	3.4	4.2
Trade	637.8	639.4	10.9	1.6	-0.1	15.4	0.3	0.0	2.5
Transportation and warehousing	176.8	167.6	5.5	-9.2	4.4	-2.0	-5.2	2.7	-1.2
Finance, insurance, real estate and leasing	225.8	232.6	6.7	6.8	0.9	3.9	3.0	0.4	1.7
Professional, scientific and technical services	296.8	310.9	7.8	14.1	21.2	31.0	4.8	7.3	11.1
Business, building and other support services	153.9	146.5	6.2	-7.4	17.6	17.4	-4.8	13.7	13.5
Educational services	259.0	263.8	7.4	4.8	-4.1	-3.0	1.9	-1.5	-1.1
Health care and social assistance	516.8	511.6	9.0	-5.2	31.2	42.4	-1.0	6.5	9.0
Information, culture and recreation	168.9	175.3	6.5	6.4	-1.8	1.7	3.8	-1.0	1.0
Accommodation and food services	248.4	241.4	7.9	-7.0	16.9	7.6	-2.8	7.5	3.3
Other services	167.0	160.0	5.9	-7.0	-0.5	-5.0	-4.2	-0.3	-3.0
Public administration	242.1	241.8	6.1	-0.3	15.5	16.1	-0.1	6.8	7.1

1. Average standard error of change in two consecutive months (see "Sampling Errors" in Data Quality for further explanations).

Note(s): Related CANSIM Tables 282-0087, 282-0088.

Table 4-6
Selected labour force characteristics (seasonally adjusted) — Ontario

	September 2010	October 2010	S.E. ¹	Change from			Percent change from		
				last month	last December	twelve months ago	last month	last December	twelve months ago
in thousands (except rates)									
Both sexes, 15 years and over									
Population	10,853.6	10,866.8	...	13.2	139.2	159.2	0.1	1.3	1.5
Labour force	7,307.3	7,287.3	19.4	-20.0	97.1	107.2	-0.3	1.4	1.5
Employment	6,662.0	6,659.2	18.9	-2.8	131.8	127.9	0.0	2.0	2.0
Employment full-time	5,356.4	5,385.8	24.6	29.4	84.4	89.5	0.5	1.6	1.7
Unemployment	645.3	628.1	17.2	-17.2	-34.7	-20.7	-2.7	-5.2	-3.2
Participation rate	67.3	67.1	0.2	-0.2	0.1	0.0
Unemployment rate	8.8	8.6	0.2	-0.2	-0.6	-0.4
Employment rate	61.4	61.3	0.2	-0.1	0.5	0.3
Part-time rate	19.6	19.1	0.3	-0.5	0.3	0.2
Both sexes, 15 to 24 years									
Population	1,757.4	1,758.3	...	0.9	9.5	10.5	0.1	0.5	0.6
Labour force	1,051.2	1,055.2	11.7	4.0	-26.9	-9.1	0.4	-2.5	-0.9
Employment	863.5	861.3	10.3	-2.2	-20.8	-17.0	-0.3	-2.4	-1.9
Unemployment	187.7	193.9	10.0	6.2	-6.1	7.9	3.3	-3.0	4.2
Participation rate	59.8	60.0	0.7	0.2	-1.9	-0.9
Unemployment rate	17.9	18.4	0.8	0.5	-0.1	0.9
Employment rate	49.1	49.0	0.6	-0.1	-1.4	-1.3
Part-time rate	53.1	51.5	1.2	-1.6	1.1	-0.3
Men, 25 years and over									
Population	4,415.9	4,421.7	...	5.8	60.3	69.0	0.1	1.4	1.6
Labour force	3,288.8	3,264.6	9.8	-24.2	62.3	55.6	-0.7	1.9	1.7
Employment	3,039.7	3,044.4	10.8	4.7	119.7	108.9	0.2	4.1	3.7
Unemployment	249.1	220.3	10.0	-28.8	-57.3	-53.2	-11.6	-20.6	-19.5
Participation rate	74.5	73.8	0.2	-0.7	0.4	0.1
Unemployment rate	7.6	6.7	0.3	-0.9	-2.0	-1.8
Employment rate	68.8	68.9	0.2	0.1	1.8	1.5
Part-time rate	7.9	7.7	0.4	-0.3	-0.3	0.2
Women, 25 years and over									
Population	4,680.3	4,686.8	...	6.5	69.3	79.7	0.1	1.5	1.7
Labour force	2,967.3	2,967.5	11.0	0.2	61.7	60.8	0.0	2.1	2.1
Employment	2,758.7	2,753.5	10.8	-5.2	32.9	36.0	-0.2	1.2	1.3
Unemployment	208.6	214.0	9.1	5.4	28.8	24.8	2.6	15.6	13.1
Participation rate	63.4	63.3	0.2	-0.1	0.4	0.2
Unemployment rate	7.0	7.2	0.3	0.2	0.8	0.7
Employment rate	58.9	58.8	0.2	-0.1	-0.1	-0.2
Part-time rate	21.9	21.6	0.5	-0.3	1.5	1.0
Industry									
	6,662.0	6,659.2	18.9	-2.8	131.8	127.9	0.0	2.0	2.0
Goods-producing sector									
Agriculture	79.9	85.8	3.7	5.9	2.2	3.5	7.4	3.2	3.0
Forestry, fishing, mining, oil and gas	41.6	41.5	2.6	-0.1	2.5	5.2	-0.2	6.4	14.3
Utilities	61.4	62.5	3.2	1.1	7.0	4.3	1.8	12.6	7.4
Construction	436.8	453.9	9.8	17.1	39.9	32.0	3.9	9.6	7.6
Manufacturing	784.5	777.9	13.1	-6.6	-7.5	-3.6	-0.8	-1.0	-0.5
Services-producing sector									
	5,257.8	5,237.7	22.2	-20.1	87.8	86.5	-0.4	1.7	1.7
Trade	1,008.1	990.8	15.2	-17.3	5.9	3.0	-1.7	0.6	0.3
Transportation and warehousing	307.8	313.8	8.7	6.0	12.7	1.2	1.9	4.2	0.4
Finance, insurance, real estate and leasing	508.6	504.7	11.2	-3.9	-11.5	-13.8	-0.8	-2.2	-2.7
Professional, scientific and technical services	548.3	532.5	11.6	-15.8	7.2	13.2	-2.9	1.4	2.5
Business, building and other support services	286.4	290.2	9.4	3.8	29.3	20.5	1.3	11.2	7.6
Educational services	500.5	478.2	10.4	-22.3	-1.3	17.1	-4.5	-0.3	3.7
Health care and social assistance	721.4	722.6	11.1	1.2	-3.2	8.4	0.2	-0.4	1.2
Information, culture and recreation	322.5	338.7	9.5	16.2	16.7	10.1	5.0	5.2	3.1
Accommodation and food services	382.2	384.6	10.2	2.4	-3.0	7.3	0.6	-0.8	1.9
Other services	286.9	286.8	9.1	-0.1	-14.6	-21.7	0.0	-4.8	-7.0
Public administration	385.1	394.9	8.1	9.8	49.5	41.4	2.5	14.3	11.7

1. Average standard error of change in two consecutive months (see "Sampling Errors" in Data Quality for further explanations).

Note(s): Related CANSIM Tables 282-0087, 282-0088.

Table 4-7
Selected labour force characteristics (seasonally adjusted) — Manitoba

	September 2010	October 2010	S.E. ¹	Change from			Percent change from		
				last month	last December	twelve months ago	last month	last December	twelve months ago
in thousands (except rates)									
Both sexes, 15 years and over									
Population	939.8	940.9	...	1.1	12.3	14.0	0.1	1.3	1.5
Labour force	659.0	659.6	2.6	0.6	18.7	16.7	0.1	2.9	2.6
Employment	623.7	625.3	2.8	1.6	21.3	19.2	0.3	3.5	3.2
Employment full-time	502.4	504.6	3.7	2.2	19.9	15.1	0.4	4.1	3.1
Unemployment	35.4	34.3	2.1	-1.1	-2.7	-2.5	-3.1	-7.3	-6.8
Participation rate	70.1	70.1	0.3	0.0	1.1	0.7
Unemployment rate	5.4	5.2	0.3	-0.2	-0.6	-0.5
Employment rate	66.4	66.5	0.3	0.1	1.5	1.1
Part-time rate	19.4	19.3	0.5	-0.1	-0.4	0.1
Both sexes, 15 to 24 years									
Population	161.5	161.6	...	0.1	1.0	1.1	0.1	0.6	0.7
Labour force	111.9	109.3	1.6	-2.6	0.3	-1.2	-2.3	0.3	-1.1
Employment	100.2	99.2	1.6	-1.0	1.8	0.8	-1.0	1.8	0.8
Unemployment	11.7	10.1	1.4	-1.6	-1.5	-2.0	-13.7	-12.9	-16.5
Participation rate	69.3	67.6	1.0	-1.7	-0.3	-1.2
Unemployment rate	10.5	9.2	1.2	-1.3	-1.4	-1.8
Employment rate	62.0	61.4	1.0	-0.6	0.8	0.1
Part-time rate	44.0	45.1	1.8	1.0	4.4	4.4
Men, 25 years and over									
Population	380.8	381.3	...	0.5	5.7	6.5	0.1	1.5	1.7
Labour force	293.6	296.0	1.3	2.4	10.8	9.4	0.8	3.8	3.3
Employment	279.3	282.1	1.5	2.8	12.4	8.2	1.0	4.6	3.0
Unemployment	14.3	13.9	1.2	-0.4	-1.6	1.2	-2.8	-10.3	9.4
Participation rate	77.1	77.6	0.3	0.5	1.7	1.1
Unemployment rate	4.9	4.7	0.4	-0.2	-0.7	0.3
Employment rate	73.3	74.0	0.4	0.7	2.2	0.9
Part-time rate	7.8	7.2	0.6	-0.7	-1.6	-0.2
Women, 25 years and over									
Population	397.5	398.0	...	0.5	5.6	6.3	0.1	1.4	1.6
Labour force	253.5	254.3	1.5	0.8	7.6	8.6	0.3	3.1	3.5
Employment	244.1	244.0	1.5	-0.1	7.2	10.2	0.0	3.0	4.4
Unemployment	9.4	10.3	1.1	0.9	0.4	-1.7	9.6	4.0	-14.2
Participation rate	63.8	63.9	0.4	0.1	1.0	1.2
Unemployment rate	3.7	4.1	0.4	0.4	0.1	-0.8
Employment rate	61.4	61.3	0.4	-0.1	1.0	1.6
Part-time rate	22.7	22.8	0.9	0.2	-0.9	-1.3
Industry									
Goods-producing sector	623.7	625.3	2.8	1.6	21.3	19.2	0.3	3.5	3.2
Agriculture	144.0	146.1	2.3	2.1	13.5	7.6	1.5	10.2	5.5
Forestry, fishing, mining, oil and gas	26.0	26.0	1.3	0.0	0.6	-0.6	0.0	2.4	-2.3
Utilities	7.2	7.2	0.6	0.0	1.5	1.3	0.0	26.3	22.0
Construction	8.0	8.4	0.6	0.4	0.1	0.2	5.0	1.2	2.4
Manufacturing	40.7	41.4	1.4	0.7	5.9	5.0	1.7	16.6	13.7
Manufacturing	62.1	63.0	1.5	0.9	5.2	1.7	1.4	9.0	2.8
Services-producing sector	479.7	479.2	3.1	-0.5	7.8	11.6	-0.1	1.7	2.5
Trade	95.5	95.7	2.0	0.2	5.3	7.1	0.2	5.9	8.0
Transportation and warehousing	34.5	34.3	1.3	-0.2	-3.6	-4.7	-0.6	-9.5	-12.1
Finance, insurance, real estate and leasing	34.1	34.6	1.2	0.5	-0.7	-1.7	1.5	-2.0	-4.7
Professional, scientific and technical services	28.4	28.8	1.2	0.4	3.6	5.1	1.4	14.3	21.5
Business, building and other support services	19.0	18.7	1.2	-0.3	-0.1	-0.8	-1.6	-0.5	-4.1
Educational services	52.8	52.9	1.5	0.1	1.4	0.2	0.2	2.7	0.4
Health care and social assistance	93.7	92.6	1.8	-1.1	8.0	10.2	-1.2	9.5	12.4
Information, culture and recreation	21.0	21.5	1.2	0.5	-1.3	-1.9	2.4	-5.7	-8.1
Accommodation and food services	39.3	40.6	1.5	1.3	3.6	2.9	3.3	9.7	7.7
Other services	26.1	23.8	1.2	-2.3	-5.4	-5.3	-8.8	-18.5	-18.2
Public administration	35.2	35.7	1.2	0.5	-3.0	0.4	1.4	-7.8	1.1

1. Average standard error of change in two consecutive months (see "Sampling Errors" in Data Quality for further explanations).

Note(s): Related CANSIM Tables 282-0087, 282-0088.

Table 4-8
Selected labour force characteristics (seasonally adjusted) — Saskatchewan

	September 2010	October 2010	S.E. ¹	Change from			Percent change from		
				last month	last December	twelve months ago	last month	last December	twelve months ago
in thousands (except rates)									
Both sexes, 15 years and over									
Population	794.1	794.8	...	0.7	10.5	11.8	0.1	1.3	1.5
Labour force	557.8	557.7	2.4	-0.1	9.2	9.8	0.0	1.7	1.8
Employment	526.8	525.8	2.5	-1.0	3.7	6.0	-0.2	0.7	1.2
Employment full-time	426.1	435.6	3.3	9.5	10.0	10.5	2.2	2.3	2.5
Unemployment	30.9	32.0	1.9	1.1	5.7	3.9	3.6	21.7	13.9
Participation rate	70.2	70.2	0.3	0.0	0.3	0.2
Unemployment rate	5.5	5.7	0.3	0.2	0.9	0.6
Employment rate	66.3	66.2	0.3	-0.1	-0.4	-0.2
Part-time rate	19.1	17.1	0.6	-2.0	-1.3	-1.1
Both sexes, 15 to 24 years									
Population	137.6	137.4	...	-0.2	-1.1	-1.4	-0.1	-0.8	-1.0
Labour force	91.4	92.5	1.4	1.1	-2.6	-4.2	1.2	-2.7	-4.3
Employment	82.4	82.8	1.4	0.4	-4.3	-4.1	0.5	-4.9	-4.7
Unemployment	9.1	9.8	1.2	0.7	1.8	0.0	7.7	22.5	0.0
Participation rate	66.4	67.3	1.0	0.9	-1.4	-2.4
Unemployment rate	10.0	10.6	1.1	0.6	2.2	0.5
Employment rate	59.9	60.3	1.0	0.4	-2.6	-2.3
Part-time rate	37.7	36.6	1.8	-1.1	-0.7	-0.8
Men, 25 years and over									
Population	322.2	322.7	...	0.5	6.8	7.8	0.2	2.2	2.5
Labour force	249.6	250.3	1.2	0.7	8.5	9.1	0.3	3.5	3.8
Employment	236.8	237.4	1.3	0.6	7.5	7.3	0.3	3.3	3.2
Unemployment	12.8	12.9	1.1	0.1	1.0	1.8	0.8	8.4	16.2
Participation rate	77.5	77.6	0.4	0.1	1.1	1.0
Unemployment rate	5.1	5.2	0.5	0.1	0.3	0.6
Employment rate	73.5	73.6	0.4	0.1	0.8	0.5
Part-time rate	7.1	6.7	0.6	-0.5	-0.3	-0.3
Women, 25 years and over									
Population	334.3	334.8	...	0.5	5.0	5.6	0.1	1.5	1.7
Labour force	216.7	214.9	1.4	-1.8	3.3	5.0	-0.8	1.6	2.4
Employment	207.7	205.6	1.4	-2.1	0.5	2.8	-1.0	0.2	1.4
Unemployment	9.1	9.3	0.9	0.2	2.8	2.1	2.2	43.1	29.2
Participation rate	64.8	64.2	0.4	-0.6	0.0	0.4
Unemployment rate	4.2	4.3	0.4	0.1	1.2	0.9
Employment rate	62.1	61.4	0.4	-0.7	-0.8	-0.2
Part-time rate	25.4	21.4	1.0	-4.0	-2.1	-1.4
Industry									
Industry	526.8	525.8	2.5	-1.0	3.7	6.0	-0.2	0.7	1.2
Goods-producing sector									
Goods-producing sector	142.1	144.7	2.3	2.6	3.3	3.3	1.8	2.3	2.3
Agriculture	40.2	42.8	1.5	2.6	-2.7	-3.4	6.5	-5.9	-7.4
Forestry, fishing, mining, oil and gas	26.1	24.7	1.2	-1.4	-2.3	-0.7	-5.4	-8.5	-2.8
Utilities	5.2	5.4	0.4	0.2	0.7	0.9	3.8	14.9	20.0
Construction	38.8	38.7	1.4	-0.1	1.2	0.7	-0.3	3.2	1.8
Manufacturing	31.7	33.1	1.1	1.4	6.3	5.7	4.4	23.5	20.8
Services-producing sector									
Services-producing sector	384.8	381.1	2.8	-3.7	0.4	2.7	-1.0	0.1	0.7
Trade	80.1	82.0	1.8	1.9	2.5	3.2	2.4	3.1	4.1
Transportation and warehousing	25.6	26.3	1.1	0.7	0.9	0.5	2.7	3.5	1.9
Finance, insurance, real estate and leasing	32.0	30.8	1.1	-1.2	-0.4	2.5	-3.8	-1.3	8.8
Professional, scientific and technical services	20.9	20.9	1.0	0.0	-2.6	-0.4	0.0	-11.1	-1.9
Business, building and other support services	10.3	10.3	0.9	0.0	-2.5	-2.0	0.0	-19.5	-16.3
Educational services	39.6	38.2	1.4	-1.4	-2.5	-1.0	-3.5	-6.1	-2.6
Health care and social assistance	70.2	67.9	1.5	-2.3	1.5	-0.5	-3.3	2.3	-0.7
Information, culture and recreation	18.9	20.0	0.9	1.1	1.2	-0.4	5.8	6.4	-2.0
Accommodation and food services	30.6	30.0	1.3	-0.6	1.1	0.5	-2.0	3.8	1.7
Other services	27.2	27.0	1.1	-0.2	3.6	3.0	-0.7	15.4	12.5
Public administration	29.3	27.6	1.0	-1.7	-2.6	-2.7	-5.8	-8.6	-8.9

1. Average standard error of change in two consecutive months (see "Sampling Errors" in Data Quality for further explanations).

Note(s): Related CANSIM Tables 282-0087, 282-0088.

Table 4-9
Selected labour force characteristics (seasonally adjusted) — Alberta

	September 2010	October 2010	S.E. ¹	Change from			Percent change from		
				last month	last December	twelve months ago	last month	last December	twelve months ago
in thousands (except rates)									
Both sexes, 15 years and over									
Population	2,939.7	2,943.4	...	3.7	48.1	56.3	0.1	1.7	2.0
Labour force	2,135.8	2,150.8	8.6	15.0	14.9	23.3	0.7	0.7	1.1
Employment	2,004.2	2,021.2	8.8	17.0	25.9	46.1	0.8	1.3	2.3
Employment full-time	1,652.2	1,655.2	11.8	3.0	23.4	26.7	0.2	1.4	1.6
Unemployment	131.6	129.5	7.5	-2.1	-11.1	-22.9	-1.6	-7.9	-15.0
Participation rate	72.7	73.1	0.3	0.4	-0.7	-0.6
Unemployment rate	6.2	6.0	0.3	-0.2	-0.6	-1.2
Employment rate	68.2	68.7	0.3	0.5	-0.2	0.3
Part-time rate	17.6	18.1	0.5	0.5	-0.1	0.6
Both sexes, 15 to 24 years									
Population	504.8	504.6	...	-0.2	-3.0	-3.6	0.0	-0.6	-0.7
Labour force	340.8	345.1	5.1	4.3	-11.8	-9.0	1.3	-3.3	-2.5
Employment	302.7	307.0	4.8	4.3	-5.0	-0.7	1.4	-1.6	-0.2
Unemployment	38.1	38.2	4.4	0.1	-6.7	-8.2	0.3	-14.9	-17.7
Participation rate	67.5	68.4	1.0	0.9	-1.9	-1.3
Unemployment rate	11.2	11.1	1.2	-0.1	-1.5	-2.0
Employment rate	60.0	60.8	0.9	0.8	-0.7	0.3
Part-time rate	37.7	37.8	1.7	0.1	0.2	2.8
Men, 25 years and over									
Population	1,236.1	1,238.1	...	2.0	26.3	30.8	0.2	2.2	2.6
Labour force	1,004.3	1,001.6	4.4	-2.7	17.9	18.5	-0.3	1.8	1.9
Employment	951.4	948.5	5.1	-2.9	22.4	28.2	-0.3	2.4	3.1
Unemployment	52.9	53.1	4.5	0.2	-4.5	-9.7	0.4	-7.8	-15.4
Participation rate	81.2	80.9	0.4	-0.3	-0.3	-0.5
Unemployment rate	5.3	5.3	0.4	0.0	-0.6	-1.1
Employment rate	77.0	76.6	0.4	-0.4	0.2	0.4
Part-time rate	6.5	6.6	0.5	0.1	0.2	0.4
Women, 25 years and over									
Population	1,198.8	1,200.8	...	2.0	24.9	29.2	0.2	2.1	2.5
Labour force	790.6	804.1	4.9	13.5	8.8	13.9	1.7	1.1	1.8
Employment	750.0	765.8	4.9	15.8	8.5	18.7	2.1	1.1	2.5
Unemployment	40.6	38.2	3.6	-2.4	0.2	-5.0	-5.9	0.5	-11.6
Participation rate	65.9	67.0	0.4	1.1	-0.6	-0.4
Unemployment rate	5.1	4.8	0.4	-0.3	0.0	-0.7
Employment rate	62.6	63.8	0.4	1.2	-0.6	0.0
Part-time rate	23.5	24.4	0.9	1.0	-0.2	0.1
Industry									
Industry	2,004.2	2,021.2	8.8	17.0	25.9	46.1	0.8	1.3	2.3
Goods-producing sector									
Goods-producing sector	542.7	551.5	9.0	8.8	38.3	34.6	1.6	7.5	6.7
Agriculture	46.5	46.5	3.2	0.0	-7.1	-5.8	0.0	-13.2	-11.1
Forestry, fishing, mining, oil and gas	146.2	150.4	4.6	4.2	24.8	21.3	2.9	19.7	16.5
Utilities	19.5	17.4	1.9	-2.1	-1.6	-4.5	-10.8	-8.4	-20.5
Construction	207.2	215.3	6.1	8.1	16.3	20.1	3.9	8.2	10.3
Manufacturing	123.4	121.9	4.7	-1.5	5.9	3.5	-1.2	5.1	3.0
Services-producing sector									
Services-producing sector	1,461.5	1,469.8	10.5	8.3	-12.4	11.6	0.6	-0.8	0.8
Trade	313.7	307.3	7.4	-6.4	2.9	9.1	-2.0	1.0	3.1
Transportation and warehousing	106.2	97.2	4.6	-9.0	-3.4	-6.9	-8.5	-3.4	-6.6
Finance, insurance, real estate and leasing	105.7	108.6	4.3	2.9	4.0	2.9	2.7	3.8	2.7
Professional, scientific and technical services	147.5	147.1	4.9	-0.4	1.5	1.4	-0.3	1.0	1.0
Business, building and other support services	71.5	80.3	4.1	8.8	15.0	15.9	12.3	23.0	24.7
Educational services	129.6	129.1	5.0	-0.5	-10.6	-8.6	-0.4	-7.6	-6.2
Health care and social assistance	214.7	224.7	5.4	10.0	15.9	18.0	4.7	7.6	8.7
Information, culture and recreation	73.0	71.5	3.9	-1.5	-10.7	-11.7	-2.1	-13.0	-14.1
Accommodation and food services	119.3	120.3	5.4	1.0	-13.0	2.0	0.8	-9.8	1.7
Other services	93.4	97.9	4.4	4.5	-9.6	-5.7	4.8	-8.9	-5.5
Public administration	86.9	85.8	3.7	-1.1	-4.5	-4.7	-1.3	-5.0	-5.2

1. Average standard error of change in two consecutive months (see "Sampling Errors" in Data Quality for further explanations).

Note(s): Related CANSIM Tables 282-0087, 282-0088.

Table 4-10
Selected labour force characteristics (seasonally adjusted) — British Columbia

	September 2010	October 2010	S.E. ¹	Change from			Percent change from		
				last month	last December	twelve months ago	last month	last December	twelve months ago
in thousands (except rates)									
Both sexes, 15 years and over									
Population	3,796.4	3,800.7	...	4.3	61.8	73.2	0.1	1.7	2.0
Labour force	2,508.2	2,507.0	10.5	-1.2	34.3	48.6	0.0	1.4	2.0
Employment	2,320.3	2,321.8	10.3	1.5	53.3	60.1	0.1	2.3	2.7
Employment full-time	1,807.1	1,814.5	14.5	7.4	42.1	31.0	0.4	2.4	1.7
Unemployment	187.9	185.1	8.8	-2.8	-19.1	-11.6	-1.5	-9.4	-5.9
Participation rate	66.1	66.0	0.3	-0.1	-0.1	0.0
Unemployment rate	7.5	7.4	0.3	-0.1	-0.9	-0.6
Employment rate	61.1	61.1	0.3	0.0	0.4	0.4
Part-time rate	22.1	21.8	0.6	-0.3	0.0	0.7
Both sexes, 15 to 24 years									
Population	589.1	589.0	...	-0.1	1.9	2.5	0.0	0.3	0.4
Labour force	379.4	379.5	6.0	0.1	5.9	3.6	0.0	1.6	1.0
Employment	324.6	323.3	5.4	-1.3	2.1	5.0	-0.4	0.7	1.6
Unemployment	54.8	56.2	4.9	1.4	3.8	-1.4	2.6	7.3	-2.4
Participation rate	64.4	64.4	1.0	0.0	0.8	0.3
Unemployment rate	14.4	14.8	1.2	0.4	0.8	-0.5
Employment rate	55.1	54.9	0.9	-0.2	0.2	0.6
Part-time rate	50.2	51.7	2.0	1.5	3.9	10.1
Men, 25 years and over									
Population	1,571.5	1,573.7	...	2.2	30.1	35.5	0.1	1.9	2.3
Labour force	1,130.2	1,131.8	5.4	1.6	7.5	21.4	0.1	0.7	1.9
Employment	1,055.6	1,058.5	5.8	2.9	19.6	28.1	0.3	1.9	2.7
Unemployment	74.6	73.3	5.2	-1.3	-12.1	-6.8	-1.7	-14.2	-8.5
Participation rate	71.9	71.9	0.4	0.0	-0.9	-0.3
Unemployment rate	6.6	6.5	0.5	-0.1	-1.1	-0.7
Employment rate	67.2	67.3	0.4	0.1	0.0	0.3
Part-time rate	9.1	9.3	0.6	0.2	0.0	0.0
Women, 25 years and over									
Population	1,635.9	1,638.1	...	2.2	29.9	35.3	0.1	1.9	2.2
Labour force	998.6	995.7	6.2	-2.9	21.0	23.6	-0.3	2.2	2.4
Employment	940.1	940.0	6.1	-0.1	31.6	27.0	0.0	3.5	3.0
Unemployment	58.5	55.7	4.7	-2.8	-10.7	-3.4	-4.8	-16.1	-5.8
Participation rate	61.0	60.8	0.4	-0.2	0.2	0.1
Unemployment rate	5.9	5.6	0.5	-0.3	-1.2	-0.5
Employment rate	57.5	57.4	0.4	-0.1	0.9	0.4
Part-time rate	27.0	25.7	0.9	-1.3	-1.4	-1.7
Industry	2,320.3	2,321.8	10.3	1.5	53.3	60.1	0.1	2.3	2.7
Goods-producing sector									
Agriculture	455.4	458.8	9.0	3.4	23.3	9.8	0.7	5.4	2.2
Forestry, fishing, mining, oil and gas	32.2	31.8	2.7	-0.4	-1.9	-7.3	-1.2	-5.6	-18.7
Utilities	42.6	38.1	2.7	-4.5	0.6	-1.3	-10.6	1.6	-3.3
Construction	11.9	12.9	1.6	1.0	-1.5	-0.3	8.4	-10.4	-2.3
Manufacturing	200.3	195.2	6.6	-5.1	1.4	-2.6	-2.5	0.7	-1.3
Services-producing sector	168.5	180.8	5.6	12.3	24.7	21.2	7.3	15.8	13.3
Services-producing sector									
Trade	1,864.9	1,863.0	11.9	-1.9	30.0	50.3	-0.1	1.6	2.8
Transportation and warehousing	371.8	367.1	8.2	-4.7	-6.5	-10.5	-1.3	-1.7	-2.8
Finance, insurance, real estate and leasing	125.6	132.8	4.8	7.2	20.0	17.9	5.7	17.7	15.6
Professional, scientific and technical services	144.3	147.6	5.4	3.3	-1.2	0.5	2.3	-0.8	0.3
Business, building and other support services	191.7	192.8	5.8	1.1	16.3	32.5	0.6	9.2	20.3
Educational services	92.4	91.5	4.7	-0.9	3.2	1.2	-1.0	3.6	1.3
Health care and social assistance	159.4	171.8	5.7	12.4	6.9	8.8	7.8	4.2	5.4
Information, culture and recreation	285.2	270.0	6.4	-15.2	6.6	9.1	-5.3	2.5	3.5
Accommodation and food services	107.6	106.1	5.1	-1.5	-9.6	-4.3	-1.4	-8.3	-3.9
Other services	163.6	159.2	6.2	-4.4	-11.4	-11.4	-2.7	-6.7	-6.7
Public administration	107.6	110.3	4.7	2.7	0.8	3.8	2.5	0.7	3.6
Public administration	115.8	113.8	4.4	-2.0	5.0	2.7	-1.7	4.6	2.4

1. Average standard error of change in two consecutive months (see "Sampling Errors" in Data Quality for further explanations).

Note(s): Related CANSIM Tables 282-0087, 282-0088.

Table 5-1
Labour force characteristics by census metropolitan area (seasonally adjusted) — 3 month moving average

	September 2010	October 2010	S.E. ¹	Change from			Percent change from		
				last month	last December	twelve months ago	last month	last December	twelve months ago
in thousands (except rates)									
St. John's, Newfoundland and Labrador									
Population	161.1	161.4	...	0.3	2.5	3.1	0.2	1.6	2.0
Labour force	110.8	111.6	0.8	0.8	2.3	3.6	0.7	2.1	3.3
Employment	101.7	102.7	0.8	1.0	3.2	4.2	1.0	3.2	4.3
Unemployment	9.0	8.9	0.4	-0.1	-0.9	-0.6	-1.1	-9.2	-6.3
Participation rate	68.8	69.1	0.5	0.3	0.3	0.9
Unemployment rate	8.1	8.0	0.4	-0.1	-1.0	-0.8
Employment rate	63.1	63.6	0.5	0.5	1.0	1.4
Halifax, Nova Scotia									
Population	326.0	326.3	...	0.3	3.5	4.2	0.1	1.1	1.3
Labour force	230.7	230.1	1.1	-0.6	-0.5	0.5	-0.3	-0.2	0.2
Employment	216.2	214.6	1.2	-1.6	-0.7	0.6	-0.7	-0.3	0.3
Unemployment	14.5	15.4	0.7	0.9	0.1	-0.1	6.2	0.7	-0.6
Participation rate	70.8	70.5	0.4	-0.3	-0.9	-0.8
Unemployment rate	6.3	6.7	0.3	0.4	0.1	-0.1
Employment rate	66.3	65.8	0.4	-0.5	-0.9	-0.6
Saint John, New Brunswick									
Population	106.4	106.4	...	0.0	0.6	0.8	0.0	0.6	0.8
Labour force	70.2	70.4	0.8	0.2	-1.2	-0.4	0.3	-1.7	-0.6
Employment	64.2	64.9	0.8	0.7	-1.9	-2.1	1.1	-2.8	-3.1
Unemployment	6.0	5.5	0.4	-0.5	0.7	1.7	-8.3	14.6	44.7
Participation rate	66.0	66.2	0.8	0.2	-1.5	-0.8
Unemployment rate	8.5	7.8	0.5	-0.7	1.1	2.4
Employment rate	60.3	61.0	0.7	0.7	-2.1	-2.4
Saguenay, Quebec									
Population	124.7	124.7	...	0.0	0.0	0.0	0.0	0.0	0.0
Labour force	75.2	74.1	0.8	-1.1	-2.3	-2.5	-1.5	-3.0	-3.3
Employment	68.8	67.8	0.7	-1.0	-3.0	-3.0	-1.5	-4.2	-4.2
Unemployment	6.4	6.3	0.4	-0.1	0.7	0.5	-1.6	12.5	8.6
Participation rate	60.3	59.4	0.6	-0.9	-1.9	-2.0
Unemployment rate	8.5	8.5	0.5	0.0	1.2	0.9
Employment rate	55.2	54.4	0.6	-0.8	-2.4	-2.4
Québec, Quebec									
Population	625.6	626.4	...	0.8	6.5	7.8	0.1	1.0	1.3
Labour force	433.9	439.4	3.3	5.5	26.7	33.7	1.3	6.5	8.3
Employment	413.4	419.1	3.3	5.7	26.7	35.6	1.4	6.8	9.3
Unemployment	20.5	20.3	1.4	-0.2	0.0	-1.8	-1.0	0.0	-8.1
Participation rate	69.4	70.1	0.5	0.7	3.5	4.5
Unemployment rate	4.7	4.6	0.3	-0.1	-0.3	-0.8
Employment rate	66.1	66.9	0.5	0.8	3.6	4.9
Trois-Rivières, Quebec									
Population	124.2	124.3	...	0.1	1.1	1.4	0.1	0.9	1.1
Labour force	74.3	74.1	0.8	-0.2	-1.4	-2.2	-0.3	-1.9	-2.9
Employment	67.2	67.4	0.8	0.2	-0.8	-1.8	0.3	-1.2	-2.6
Unemployment	7.1	6.7	0.4	-0.4	-0.5	-0.4	-5.6	-6.9	-5.6
Participation rate	59.8	59.6	0.6	-0.2	-1.7	-2.5
Unemployment rate	9.6	9.0	0.5	-0.6	-0.5	-0.3
Employment rate	54.1	54.2	0.6	0.1	-1.2	-2.1

See notes at the end of the table.

Table 5-1 – continued

Labour force characteristics by census metropolitan area (seasonally adjusted) — 3 month moving average

	September 2010	October 2010	S.E. ¹	Change from			Percent change from		
				last month	last December	twelve months ago	last month	last December	twelve months ago
in thousands (except rates)									
Sherbrooke, Quebec									
Population	142.6	142.8	...	0.2	1.8	2.2	0.1	1.3	1.6
Labour force	92.1	92.6	0.8	0.5	2.2	2.1	0.5	2.4	2.3
Employment	84.8	85.6	0.8	0.8	0.2	0.6	0.9	0.2	0.7
Unemployment	7.3	7.0	0.3	-0.3	2.0	1.4	-4.1	40.0	25.0
Participation rate	64.6	64.8	0.6	0.2	0.7	0.4
Unemployment rate	7.9	7.6	0.4	-0.3	2.1	1.4
Employment rate	59.5	59.9	0.6	0.4	-0.7	-0.6
Montréal, Quebec									
Population	3,150.8	3,154.7	...	3.9	36.5	43.9	0.1	1.2	1.4
Labour force	2,119.5	2,116.2	7.0	-3.3	33.0	44.8	-0.2	1.6	2.2
Employment	1,939.1	1,934.7	7.2	-4.4	41.0	54.5	-0.2	2.2	2.9
Unemployment	180.4	181.4	4.8	1.0	-8.1	-9.8	0.6	-4.3	-5.1
Participation rate	67.3	67.1	0.2	-0.2	0.3	0.5
Unemployment rate	8.5	8.6	0.2	0.1	-0.5	-0.6
Employment rate	61.5	61.3	0.2	-0.2	0.6	0.9
Ottawa-Gatineau, Ontario/Quebec									
Population	992.3	993.6	...	1.3	12.1	14.4	0.1	1.2	1.5
Labour force	725.8	721.8	3.5	-4.0	17.1	13.6	-0.6	2.4	1.9
Employment	673.9	671.9	3.6	-2.0	9.2	2.9	-0.3	1.4	0.4
Unemployment	52.0	49.9	1.6	-2.1	7.9	10.7	-4.0	18.8	27.3
Participation rate	73.1	72.6	0.4	-0.5	0.8	0.3
Unemployment rate	7.2	6.9	0.2	-0.3	0.9	1.4
Employment rate	67.9	67.6	0.4	-0.3	0.1	-0.7
Ottawa-Gatineau, Quebec part, Ontario/Quebec									
Population	253.0	253.4	...	0.4	3.8	4.5	0.2	1.5	1.8
Labour force	182.1	179.1	1.4	-3.0	-4.6	-2.9	-1.6	-2.5	-1.6
Employment	169.4	166.6	1.4	-2.8	-6.2	-4.6	-1.7	-3.6	-2.7
Unemployment	12.7	12.6	0.6	-0.1	1.7	1.7	-0.8	15.6	15.6
Participation rate	72.0	70.7	0.6	-1.3	-2.9	-2.4
Unemployment rate	7.0	7.0	0.3	0.0	1.1	1.0
Employment rate	67.0	65.7	0.6	-1.3	-3.5	-3.1
Ottawa-Gatineau, Ontario part, Ontario/Quebec									
Population	739.3	740.2	...	0.9	8.3	9.9	0.1	1.1	1.4
Labour force	543.8	542.7	3.3	-1.1	21.7	16.5	-0.2	4.2	3.1
Employment	504.5	505.4	3.3	0.9	15.6	7.5	0.2	3.2	1.5
Unemployment	39.3	37.3	1.5	-2.0	6.2	9.0	-5.1	19.9	31.8
Participation rate	73.6	73.3	0.4	-0.3	2.1	1.2
Unemployment rate	7.2	6.9	0.3	-0.3	0.9	1.5
Employment rate	68.2	68.3	0.5	0.1	1.4	0.1
Kingston, Ontario									
Population	126.4	126.3	...	-0.1	-0.1	-0.2	-0.1	-0.1	-0.2
Labour force	79.3	78.8	0.7	-0.5	-6.5	-5.5	-0.6	-7.6	-6.5
Employment	74.9	73.6	0.7	-1.3	-6.5	-5.3	-1.7	-8.1	-6.7
Unemployment	4.4	5.2	0.3	0.8	0.1	-0.1	18.2	2.0	-1.9
Participation rate	62.7	62.4	0.6	-0.3	-5.1	-4.2
Unemployment rate	5.5	6.6	0.4	1.1	0.6	0.3
Employment rate	59.3	58.3	0.6	-1.0	-5.1	-4.1

See notes at the end of the table.

Table 5-1 – continued

Labour force characteristics by census metropolitan area (seasonally adjusted) — 3 month moving average

	September 2010	October 2010	S.E. ¹	Change from			Percent change from		
				last month	last December	twelve months ago	last month	last December	twelve months ago
in thousands (except rates)									
Toronto, Ontario									
Population	4,783.3	4,793.2	...	9.9	95.1	112.5	0.2	2.0	2.4
Labour force	3,301.6	3,308.7	9.6	7.1	103.9	121.3	0.2	3.2	3.8
Employment	2,996.4	3,003.2	9.9	6.8	98.3	114.7	0.2	3.4	4.0
Unemployment	305.2	305.6	6.4	0.4	5.7	6.7	0.1	1.9	2.2
Participation rate	69.0	69.0	0.2	0.0	0.8	0.9
Unemployment rate	9.2	9.2	0.2	0.0	-0.2	-0.2
Employment rate	62.6	62.7	0.2	0.1	0.9	1.0
Hamilton, Ontario									
Population	607.4	607.9	...	0.5	4.3	5.1	0.1	0.7	0.8
Labour force	405.3	403.5	3.4	-1.8	-6.3	-3.5	-0.4	-1.5	-0.9
Employment	374.0	372.8	3.4	-1.2	-2.1	-0.1	-0.3	-0.6	0.0
Unemployment	31.4	30.7	1.6	-0.7	-4.3	-3.4	-2.2	-12.3	-10.0
Participation rate	66.7	66.4	0.6	-0.3	-1.5	-1.1
Unemployment rate	7.7	7.6	0.4	-0.1	-0.9	-0.8
Employment rate	61.6	61.3	0.6	-0.3	-0.8	-0.6
Kitchener, Ontario									
Population	394.4	395.0	...	0.6	4.8	5.7	0.2	1.2	1.5
Labour force	284.4	278.2	2.0	-6.2	5.1	1.7	-2.2	1.9	0.6
Employment	264.0	257.2	2.1	-6.8	9.6	4.8	-2.6	3.9	1.9
Unemployment	20.5	21.0	1.1	0.5	-4.5	-3.2	2.4	-17.6	-13.2
Participation rate	72.1	70.4	0.5	-1.7	0.4	-0.6
Unemployment rate	7.2	7.5	0.4	0.3	-1.8	-1.3
Employment rate	66.9	65.1	0.5	-1.8	1.6	0.3
London, Ontario									
Population	394.6	395.1	...	0.5	3.9	4.6	0.1	1.0	1.2
Labour force	256.7	255.5	1.9	-1.2	-8.1	-3.1	-0.5	-3.1	-1.2
Employment	234.9	232.8	1.9	-2.1	-7.5	1.1	-0.9	-3.1	0.5
Unemployment	21.8	22.7	1.1	0.9	-0.5	-4.2	4.1	-2.2	-15.6
Participation rate	65.1	64.7	0.5	-0.4	-2.7	-1.5
Unemployment rate	8.5	8.9	0.4	0.4	0.1	-1.5
Employment rate	59.5	58.9	0.5	-0.6	-2.5	-0.4
Oshawa, Ontario									
Population	300.6	301.1	...	0.5	5.1	6.0	0.2	1.7	2.0
Labour force	215.0	215.3	1.5	0.3	17.1	14.4	0.1	8.6	7.2
Employment	192.3	193.0	1.5	0.7	14.5	10.5	0.4	8.1	5.8
Unemployment	22.7	22.2	0.9	-0.5	2.5	3.8	-2.2	12.7	20.7
Participation rate	71.5	71.5	0.5	0.0	4.5	3.4
Unemployment rate	10.6	10.3	0.4	-0.3	0.4	1.1
Employment rate	64.0	64.1	0.5	0.1	3.8	2.3
St. Catharines-Niagara, Ontario									
Population	331.3	331.5	...	0.2	1.0	1.2	0.1	0.3	0.4
Labour force	207.2	206.9	1.6	-0.3	-1.0	0.6	-0.1	-0.5	0.3
Employment	187.1	187.0	1.6	-0.1	1.8	1.8	-0.1	1.0	1.0
Unemployment	20.1	19.8	0.9	-0.3	-3.0	-1.3	-1.5	-13.2	-6.2
Participation rate	62.5	62.4	0.5	-0.1	-0.5	-0.1
Unemployment rate	9.7	9.6	0.4	-0.1	-1.4	-0.6
Employment rate	56.5	56.4	0.5	-0.1	0.4	0.3

See notes at the end of the table.

Table 5-1 – continued

Labour force characteristics by census metropolitan area (seasonally adjusted) — 3 month moving average

	September 2010	October 2010	S.E. ¹	Change from			Percent change from		
				last month	last December	twelve months ago	last month	last December	twelve months ago
in thousands (except rates)									
Greater Sudbury / Grand Sudbury, Ontario									
Population	135.5	135.6	...	0.1	0.8	1.0	0.1	0.6	0.7
Labour force	90.6	90.2	0.8	-0.4	5.2	4.5	-0.4	6.1	5.3
Employment	81.5	81.5	0.8	0.0	5.3	4.5	0.0	7.0	5.8
Unemployment	9.1	8.7	0.4	-0.4	-0.1	0.0	-4.4	-1.1	0.0
Participation rate	66.9	66.5	0.6	-0.4	3.4	2.8
Unemployment rate	10.0	9.6	0.5	-0.4	-0.8	-0.6
Employment rate	60.1	60.1	0.6	0.0	3.6	2.9
Thunder Bay, Ontario									
Population	102.8	102.8	...	0.0	-0.3	-0.4	0.0	-0.3	-0.4
Labour force	63.6	64.2	0.6	0.6	-1.6	-1.6	0.9	-2.4	-2.4
Employment	59.1	59.9	0.7	0.8	-0.6	-0.1	1.4	-1.0	-0.2
Unemployment	4.4	4.4	0.3	0.0	-0.9	-1.4	0.0	-17.0	-24.1
Participation rate	61.9	62.5	0.6	0.6	-1.3	-1.3
Unemployment rate	6.9	6.9	0.5	0.0	-1.2	-1.9
Employment rate	57.5	58.3	0.6	0.8	-0.4	0.2
Windsor, Ontario									
Population	274.2	274.3	...	0.1	0.7	0.8	0.0	0.3	0.3
Labour force	171.4	169.9	1.5	-1.5	-0.5	-1.3	-0.9	-0.3	-0.8
Employment	152.8	151.3	1.5	-1.5	2.5	2.7	-1.0	1.7	1.8
Unemployment	18.6	18.6	1.0	0.0	-3.0	-4.1	0.0	-13.9	-18.1
Participation rate	62.5	61.9	0.6	-0.6	-0.4	-0.7
Unemployment rate	10.9	10.9	0.5	0.0	-1.8	-2.4
Employment rate	55.7	55.2	0.5	-0.5	0.8	0.9
Winnipeg, Manitoba									
Population	604.3	605.0	...	0.7	8.3	9.6	0.1	1.4	1.6
Labour force	431.3	431.3	1.3	0.0	12.7	9.3	0.0	3.0	2.2
Employment	405.9	406.6	1.3	0.7	11.5	9.8	0.2	2.9	2.5
Unemployment	25.4	24.7	0.8	-0.7	1.3	-0.6	-2.8	5.6	-2.4
Participation rate	71.4	71.3	0.2	-0.1	1.1	0.4
Unemployment rate	5.9	5.7	0.2	-0.2	0.1	-0.3
Employment rate	67.2	67.2	0.2	0.0	1.0	0.6
Regina, Saskatchewan									
Population	176.0	176.3	...	0.3	3.3	3.9	0.2	1.9	2.3
Labour force	129.3	129.6	0.7	0.3	9.2	8.4	0.2	7.6	6.9
Employment	123.1	123.3	0.8	0.2	8.8	8.3	0.2	7.7	7.2
Unemployment	6.2	6.3	0.3	0.1	0.4	0.1	1.6	6.8	1.6
Participation rate	73.5	73.5	0.4	0.0	3.9	3.2
Unemployment rate	4.8	4.9	0.3	0.1	0.0	-0.2
Employment rate	69.9	69.9	0.4	0.0	3.7	3.2
Saskatoon, Saskatchewan									
Population	209.7	210.2	...	0.5	5.2	6.1	0.2	2.5	3.0
Labour force	148.5	148.3	0.9	-0.2	-2.7	-2.5	-0.1	-1.8	-1.7
Employment	140.4	140.2	0.9	-0.2	-3.7	-4.1	-0.1	-2.6	-2.8
Unemployment	8.2	8.1	0.5	-0.1	1.0	1.6	-1.2	14.1	24.6
Participation rate	70.8	70.6	0.4	-0.2	-3.1	-3.3
Unemployment rate	5.5	5.5	0.3	0.0	0.8	1.2
Employment rate	67.0	66.7	0.5	-0.3	-3.5	-4.0

See notes at the end of the table.

Table 5-1 – continued

Labour force characteristics by census metropolitan area (seasonally adjusted) — 3 month moving average

	September 2010	October 2010	S.E. ¹	Change from			Percent change from		
				last month	last December	twelve months ago	last month	last December	twelve months ago
in thousands (except rates)									
Calgary, Alberta									
Population	998.5	1,000.1	...	1.6	18.0	21.6	0.2	1.8	2.2
Labour force	747.0	743.3	3.3	-3.7	-13.2	-10.1	-0.5	-1.7	-1.3
Employment	697.9	694.2	3.4	-3.7	-7.7	-8.3	-0.5	-1.1	-1.2
Unemployment	49.1	49.1	2.0	0.0	-5.5	-1.7	0.0	-10.1	-3.3
Participation rate	74.8	74.3	0.3	-0.5	-2.7	-2.7
Unemployment rate	6.6	6.6	0.3	0.0	-0.6	-0.1
Employment rate	69.9	69.4	0.3	-0.5	-2.1	-2.4
Edmonton, Alberta									
Population	926.8	928.4	...	1.6	15.2	18.2	0.2	1.7	2.0
Labour force	660.3	661.0	3.2	0.7	-4.2	-0.3	0.1	-0.6	0.0
Employment	615.6	619.0	3.4	3.4	4.1	9.4	0.6	0.7	1.5
Unemployment	44.8	42.0	1.9	-2.8	-8.3	-9.7	-6.2	-16.5	-18.8
Participation rate	71.2	71.2	0.3	0.0	-1.6	-1.5
Unemployment rate	6.8	6.4	0.3	-0.4	-1.2	-1.4
Employment rate	66.4	66.7	0.4	0.3	-0.6	-0.3
Abbotsford, British Columbia									
Population	138.2	138.4	...	0.2	1.9	2.2	0.1	1.4	1.6
Labour force	95.1	95.7	0.8	0.6	-0.4	0.4	0.6	-0.4	0.4
Employment	87.9	87.3	0.9	-0.6	-1.8	-0.5	-0.7	-2.0	-0.6
Unemployment	7.2	8.4	0.4	1.2	1.4	0.9	16.7	20.0	12.0
Participation rate	68.8	69.1	0.6	0.3	-1.3	-0.9
Unemployment rate	7.6	8.8	0.4	1.2	1.5	0.9
Employment rate	63.6	63.1	0.6	-0.5	-2.2	-1.4
Vancouver, British Columbia									
Population	2,044.1	2,047.9	...	3.8	43.2	51.3	0.2	2.2	2.6
Labour force	1,368.4	1,373.8	5.1	5.4	32.6	36.5	0.4	2.4	2.7
Employment	1,268.1	1,273.2	5.1	5.1	35.4	34.8	0.4	2.9	2.8
Unemployment	100.3	100.7	3.0	0.4	-2.7	1.8	0.4	-2.6	1.8
Participation rate	66.9	67.1	0.3	0.2	0.2	0.1
Unemployment rate	7.3	7.3	0.2	0.0	-0.4	-0.1
Employment rate	62.0	62.2	0.3	0.2	0.5	0.2
Victoria, British Columbia									
Population	291.3	291.5	...	0.2	2.0	2.5	0.1	0.7	0.9
Labour force	188.1	188.3	1.5	0.2	-9.4	-5.4	0.1	-4.8	-2.8
Employment	178.5	178.4	1.5	-0.1	-4.5	-3.2	-0.1	-2.5	-1.8
Unemployment	9.6	9.9	0.7	0.3	-4.9	-2.2	3.1	-33.1	-18.2
Participation rate	64.6	64.6	0.5	0.0	-3.7	-2.4
Unemployment rate	5.1	5.3	0.4	0.2	-2.2	-0.9
Employment rate	61.3	61.2	0.5	-0.1	-2.0	-1.6

1. Average standard error of change in two consecutive months (see "Sampling Errors" in Data Quality for further explanations).

Note(s): All geographic regions are based on the 2001 Census boundaries. Related CANSIM Table 282-0090.

Table 5-2
Labour force characteristics by census metropolitan area (seasonally adjusted) — Monthly

	September 2010	October 2010	S.E. ¹	Change from			Percent change from		
				last month	last December	twelve months ago	last month	last December	twelve months ago
in thousands (except rates)									
Montréal, Quebec									
Population	3,154.5	3,158.2	...	3.7	36.5	43.6	0.1	1.2	1.4
Labour force	2,108.1	2,115.6	14.7	7.5	14.0	49.6	0.4	0.7	2.4
Employment	1,933.1	1,929.0	14.7	-4.1	25.4	47.4	-0.2	1.3	2.5
Unemployment	174.9	186.6	11.1	11.7	-11.4	2.2	6.7	-5.8	1.2
Participation rate	66.8	67.0	0.5	0.2	-0.3	0.7
Unemployment rate	8.3	8.8	0.5	0.5	-0.6	-0.1
Employment rate	61.3	61.1	0.5	-0.2	0.1	0.7
Toronto, Ontario									
Population	4,793.2	4,802.3	...	9.1	96.6	111.9	0.2	2.1	2.4
Labour force	3,295.1	3,295.0	20.5	-0.1	87.4	109.0	0.0	2.7	3.4
Employment	2,985.9	3,004.2	20.2	18.3	99.3	107.7	0.6	3.4	3.7
Unemployment	309.2	290.8	15.2	-18.4	-11.9	1.3	-6.0	-3.9	0.4
Participation rate	68.7	68.6	0.4	-0.1	0.4	0.7
Unemployment rate	9.4	8.8	0.5	-0.6	-0.6	-0.3
Employment rate	62.3	62.6	0.4	0.3	0.9	0.8
Vancouver, British Columbia									
Population	2,048.0	2,051.1	...	3.1	42.5	50.4	0.2	2.1	2.5
Labour force	1,373.4	1,375.6	10.7	2.2	32.2	38.0	0.2	2.4	2.8
Employment	1,270.8	1,276.5	10.5	5.7	35.3	44.1	0.4	2.8	3.6
Unemployment	102.5	99.1	7.5	-3.4	-3.1	-6.1	-3.3	-3.0	-5.8
Participation rate	67.1	67.1	0.5	0.0	0.2	0.2
Unemployment rate	7.5	7.2	0.5	-0.3	-0.4	-0.7
Employment rate	62.1	62.2	0.5	0.1	0.4	0.6

1. Average standard error of change in two consecutive months (see "Sampling Errors" in Data Quality for further explanations).

Note(s): All geographic regions are based on the 2001 Census boundaries. Related CANSIM Table 282-0091.

Table 6-1

Labour force characteristics by province and economic region, ¹ unadjusted for seasonality, 3 month moving average ending in October 2009 and October 2010

	Population	Labour force			Participation rate	Unemployment rate	Employment rate
		Labour force	Employment	Unemployment			
in thousands							
Canada ²							
2009	27,397.7	18,459.0	16,963.7	1,495.2	67.4	8.1	61.9
2010	27,809.8	18,790.7	17,326.7	1,464.0	67.6	7.8	62.3
Newfoundland and Labrador							
2009	429.6	259.3	222.8	36.5	60.4	14.1	51.9
2010	431.9	265.0	233.5	31.5	61.4	11.9	54.1
Avalon Peninsula [1010]							
2009	216.1	139.6	123.7	15.9	64.6	11.4	57.2
2010	219.2	144.3	130.9	13.4	65.8	9.3	59.7
South Coast-Burin Peninsula [1020]							
2009	31.9	15.8	12.8	2.9	49.5	18.4	40.1
2010	31.3	18.2	15.0	3.2	58.1	17.6	47.9
West Coast-Northern Peninsula-Labrador [1030]							
2009	88.2	52.4	44.3	8.1	59.4	15.5	50.2
2010	88.3	51.2	44.1	7.2	58.0	14.1	49.9
Notre Dame-Central Bonavista Bay [1040]							
2009	93.4	51.5	42.0	9.5	55.1	18.4	45.0
2010	93.1	51.2	43.5	7.7	55.0	15.0	46.7
Prince Edward Island							
2009	116.4	80.6	72.8	7.8	69.2	9.7	62.5
2010	118.0	82.3	73.7	8.6	69.7	10.4	62.5
Nova Scotia							
2009	773.3	501.9	458.2	43.7	64.9	8.7	59.3
2010	777.1	506.2	460.5	45.8	65.1	9.0	59.3
Cape Breton [1210]							
2009	114.8	64.6	55.8	8.8	56.3	13.6	48.6
2010	114.1	66.9	56.8	10.1	58.6	15.1	49.8
North Shore [1220]							
2009	131.4	82.1	73.5	8.6	62.5	10.5	55.9
2010	131.4	79.7	72.5	7.2	60.7	9.0	55.2
Annapolis Valley [1230]							
2009	101.8	62.4	57.1	5.3	61.3	8.5	56.1
2010	102.3	63.5	57.5	6.0	62.1	9.4	56.2
Southern [1240]							
2009	103.2	62.6	57.4	5.2	60.7	8.3	55.6
2010	103.0	65.4	58.5	6.9	63.5	10.6	56.8
Halifax [1250]							
2009	322.1	230.2	214.5	15.7	71.5	6.8	66.6
2010	326.3	230.7	215.1	15.6	70.7	6.8	65.9
New Brunswick							
2009	622.1	407.1	375.9	31.2	65.4	7.7	60.4
2010	625.5	406.9	371.4	35.6	65.1	8.7	59.4
Campbellton-Miramichi [1310]							
2009	135.0	75.5	65.7	9.8	55.9	13.0	48.7
2010	134.5	75.4	65.1	10.4	56.1	13.8	48.4
Moncton-Richibucto [1320]							
2009	168.4	117.0	109.1	7.9	69.5	6.8	64.8
2010	170.7	114.1	105.7	8.4	66.8	7.4	61.9
Saint John-St. Stephen [1330]							
2009	143.9	95.5	90.3	5.2	66.4	5.4	62.8
2010	144.7	96.3	89.0	7.2	66.6	7.5	61.5

See notes at the end of the table.

Table 6-1 – continued

Labour force characteristics by province and economic region, ¹ unadjusted for seasonality, 3 month moving average ending in October 2009 and October 2010

	Population	Labour force			Participation rate	Unemployment rate	Employment rate
		Labour force	Employment	Unemployment			
in thousands							
Fredericton-Oromocto [1340]							
2009	106.6	73.7	69.5	4.2	69.1	5.7	65.2
2010	107.6	75.3	70.2	5.1	70.0	6.8	65.2
Edmundston-Woodstock [1350]							
2009	68.2	45.3	41.2	4.1	66.4	9.1	60.4
2010	68.1	45.8	41.3	4.5	67.3	9.8	60.6
Quebec							
2009	6,451.6	4,210.1	3,873.5	336.5	65.3	8.0	60.0
2010	6,533.7	4,304.3	3,980.9	323.4	65.9	7.5	60.9
Gaspésie-Îles-de-la-Madeleine [2410]							
2009	80.8	44.1	38.4	5.7	54.6	12.9	47.5
2010	80.9	45.3	39.8	5.5	56.0	12.1	49.2
Bas-Saint-Laurent [2415]							
2009	167.7	98.2	91.0	7.2	58.6	7.3	54.3
2010	168.2	102.8	92.8	9.9	61.1	9.6	55.2
Capitale-Nationale [2420]							
2009	574.0	367.3	347.6	19.6	64.0	5.3	60.6
2010	580.1	393.1	375.2	17.9	67.8	4.6	64.7
Chaudière-Appalaches [2425]							
2009	332.6	225.2	212.3	12.8	67.7	5.7	63.8
2010	335.6	228.5	219.2	9.3	68.1	4.1	65.3
Estrie [2430]							
2009	254.1	169.5	159.5	10.0	66.7	5.9	62.8
2010	257.1	164.8	152.9	11.9	64.1	7.2	59.5
Centre-du-Québec [2433]							
2009	188.3	121.1	114.5	6.7	64.3	5.5	60.8
2010	190.2	119.4	112.5	6.9	62.8	5.8	59.1
Montérégie [2435]							
2009	1,165.8	774.4	719.2	55.2	66.4	7.1	61.7
2010	1,188.9	807.6	746.8	60.8	67.9	7.5	62.8
Montréal [2440]							
2009	1,597.1	1,039.5	926.3	113.2	65.1	10.9	58.0
2010	1,605.2	1,058.9	958.3	100.6	66.0	9.5	59.7
Laval [2445]							
2009	320.1	220.0	206.1	13.9	68.7	6.3	64.4
2010	325.9	213.1	196.3	16.9	65.4	7.9	60.2
Lanaudière [2450]							
2009	376.2	259.5	235.2	24.3	69.0	9.4	62.5
2010	388.0	255.5	239.3	16.2	65.9	6.3	61.7
Laurentides [2455]							
2009	447.4	304.0	280.8	23.2	67.9	7.6	62.8
2010	458.6	312.7	290.7	22.0	68.2	7.0	63.4
Outaouais [2460]							
2009	300.3	209.7	198.4	11.3	69.8	5.4	66.1
2010	305.5	208.2	194.0	14.2	68.2	6.8	63.5
Abitibi-Témiscamingue [2465]							
2009	116.5	69.4	62.9	6.5	59.6	9.4	54.0
2010	117.3	77.1	70.4	6.7	65.7	8.7	60.0
Mauricie [2470]							
2009	219.2	124.6	113.0	11.6	56.8	9.3	51.6
2010	220.6	131.7	119.3	12.4	59.7	9.4	54.1

See notes at the end of the table.

Table 6-1 – continued

Labour force characteristics by province and economic region, 1 unadjusted for seasonality, 3 month moving average ending in October 2009 and October 2010

	Population	Labour force			Participation rate	Unemployment rate	Employment rate
		Labour force	Employment	Unemployment			
in thousands							
Saguenay-Lac-Saint-Jean [2475]							
2009	223.0	132.2	120.9	11.3	59.3	8.5	54.2
2010	223.2	127.4	118.3	9.1	57.1	7.1	53.0
Côte-Nord and Nord-du-Québec [2480, 2490]							
2009	88.7	51.2	47.4	3.9	57.7	7.6	53.4
2010	88.6	58.5	55.2	3.3	66.0	5.6	62.3
Ontario							
2009	10,693.4	7,210.1	6,571.1	639.0	67.4	8.9	61.5
2010	10,853.5	7,340.7	6,709.0	631.6	67.6	8.6	61.8
Ottawa [3510]							
2009	1,006.6	712.5	672.0	40.5	70.8	5.7	66.8
2010	1,017.7	716.8	665.6	51.2	70.4	7.1	65.4
Kingston-Pembroke [3515]							
2009	361.7	230.8	212.6	18.2	63.8	7.9	58.8
2010	362.3	216.3	199.9	16.4	59.7	7.6	55.2
Muskoka-Kawarthas [3520]							
2009	313.3	186.3	172.1	14.2	59.5	7.6	54.9
2010	315.2	188.4	170.9	17.5	59.8	9.3	54.2
Toronto [3530]							
2009	4,930.7	3,357.4	3,037.9	319.4	68.1	9.5	61.6
2010	5,044.8	3,498.4	3,169.6	328.8	69.3	9.4	62.8
Kitchener-Waterloo-Barrie [3540]							
2009	1,001.7	713.4	653.3	60.1	71.2	8.4	65.2
2010	1,017.4	722.4	667.6	54.8	71.0	7.6	65.6
Hamilton-Niagara Peninsula [3550]							
2009	1,153.6	774.5	707.2	67.3	67.1	8.7	61.3
2010	1,163.6	767.1	706.7	60.4	65.9	7.9	60.7
London [3560]							
2009	522.1	352.2	317.1	35.1	67.5	10.0	60.7
2010	527.6	349.5	319.3	30.2	66.2	8.6	60.5
Windsor-Sarnia [3570]							
2009	527.6	334.9	298.5	36.4	63.5	10.9	56.6
2010	528.9	336.7	302.5	34.2	63.7	10.2	57.2
Stratford-Bruce Peninsula [3580]							
2009	249.0	165.8	153.3	12.5	66.6	7.5	61.6
2010	249.8	161.4	154.4	7.0	64.6	4.3	61.8
Northeast [3590]							
2009	455.0	273.0	246.9	26.1	60.0	9.6	54.3
2010	455.8	279.6	255.5	24.1	61.3	8.6	56.1
Northwest [3595]							
2009	172.2	109.3	100.1	9.2	63.5	8.4	58.1
2010	170.5	104.0	96.9	7.1	61.0	6.8	56.8
Manitoba							
2009	926.0	647.6	611.9	35.7	69.9	5.5	66.1
2010	939.9	662.6	626.7	35.9	70.5	5.4	66.7
Southeast [4610]							
2009	81.5	57.3	53.7	3.6	70.3	6.3	65.9
2010	84.1	60.1	57.0	3.0	71.5	5.0	67.8
South Central [4620]							
2009	45.3	33.2	31.9	1.3	73.3	3.9	70.4
2010	46.5	32.8	31.7	1.1	70.5	3.4	68.2

See notes at the end of the table.

Table 6-1 – continued

Labour force characteristics by province and economic region, 1 unadjusted for seasonality, 3 month moving average ending in October 2009 and October 2010

	Population	Labour force			Participation rate	Unemployment rate	Employment rate
		Labour force	Employment	Unemployment			
in thousands							
Southwest [4630]							
2009	83.2	56.9	54.6	2.3	68.4	4.0	65.6
2010	83.6	56.0	53.7	2.3	67.0	4.1	64.2
North Central [4640]							
2009	36.3	23.8	22.4	1.4	65.6	5.9	61.7
2010	36.8	24.9	23.8	1.1	67.7	4.4	64.7
Winnipeg [4650]							
2009	548.6	387.4	363.8	23.6	70.6	6.1	66.3
2010	556.6	395.7	371.6	24.1	71.1	6.1	66.8
Interlake [4660]							
2009	72.1	49.5	47.4	2.1	68.7	4.2	65.7
2010	73.4	51.2	49.0	2.2	69.8	4.3	66.8
Parklands and North [4670, 4680]							
2009	58.9	39.5	38.0	1.5	67.1	3.8	64.5
2010	58.9	42.0	39.9	2.0	71.3	4.8	67.7
Saskatchewan							
2009	782.0	547.8	521.3	26.5	70.1	4.8	66.7
2010	794.1	559.1	529.7	29.4	70.4	5.3	66.7
Regina-Moose Mountain [4710]							
2009	231.7	163.3	155.2	8.2	70.5	5.0	67.0
2010	236.1	175.0	166.8	8.1	74.1	4.6	70.6
Swift Current-Moose Jaw [4720]							
2009	84.2	55.3	53.5	1.8	65.7	3.3	63.5
2010	84.6	56.3	53.8	2.5	66.5	4.4	63.6
Saskatoon-Biggar [4730]							
2009	247.0	182.4	174.2	8.2	73.8	4.5	70.5
2010	253.0	177.6	169.1	8.5	70.2	4.8	66.8
Yorkton-Melville [4740]							
2009	64.7	43.0	41.1	1.9	66.5	4.4	63.5
2010	64.7	43.9	41.7	2.2	67.9	5.0	64.5
Prince Albert and Northern [4750, 4760]							
2009	154.4	103.7	97.3	6.4	67.2	6.2	63.0
2010	155.7	106.3	98.3	8.0	68.3	7.5	63.1
Alberta							
2009	2,881.8	2,133.7	1,982.7	151.0	74.0	7.1	68.8
2010	2,939.7	2,146.1	2,011.8	134.4	73.0	6.3	68.4
Lethbridge-Medicine Hat [4810]							
2009	213.0	146.1	136.5	9.6	68.6	6.6	64.1
2010	215.3	149.1	140.9	8.2	69.3	5.5	65.4
Camrose-Drumheller [4820]							
2009	156.8	110.7	103.8	6.9	70.6	6.2	66.2
2010	157.9	113.6	107.7	5.9	71.9	5.2	68.2
Calgary [4830]							
2009	1,057.5	806.8	752.0	54.7	76.3	6.8	71.1
2010	1,082.7	808.5	753.2	55.3	74.7	6.8	69.6
Banff-Jasper-Rocky Mountain House [4840]							
2009	70.0	55.2	52.9	2.3	78.9	4.2	75.6
2010	70.8	56.4	52.9	3.5	79.7	6.2	74.7
Red Deer [4850]							
2009	151.8	111.1	103.2	7.8	73.2	7.0	68.0
2010	155.9	111.5	105.2	6.3	71.5	5.7	67.5

See notes at the end of the table.

Table 6-1 – continued

Labour force characteristics by province and economic region, ¹ unadjusted for seasonality, 3 month moving average ending in October 2009 and October 2010

	Population	Labour force			Participation rate	Unemployment rate	Employment rate
		Labour force	Employment	Unemployment			
in thousands							
Edmonton [4860]							
2009	945.6	686.5	633.2	53.3	72.6	7.8	67.0
2010	964.7	686.1	643.7	42.3	71.1	6.2	66.7
Athabasca-Grande Prairie-Peace River [4870]							
2009	191.7	143.0	129.9	13.0	74.6	9.1	67.8
2010	195.3	143.8	135.6	8.1	73.6	5.6	69.4
Wood Buffalo-Cold Lake [4880]							
2009	95.4	74.4	71.1	3.3	78.0	4.4	74.5
2010	97.1	77.1	72.5	4.7	79.4	6.1	74.7
British Columbia							
2009	3,721.5	2,460.9	2,273.5	187.4	66.1	7.6	61.1
2010	3,796.3	2,517.5	2,329.6	187.9	66.3	7.5	61.4
Vancouver Island and Coast [5910]							
2009	641.5	405.2	374.8	30.4	63.2	7.5	58.4
2010	649.4	410.4	385.2	25.2	63.2	6.1	59.3
Lower Mainland-Southwest [5920]							
2009	2,270.8	1,520.9	1,408.4	112.5	67.0	7.4	62.0
2010	2,327.5	1,560.7	1,443.9	116.8	67.1	7.5	62.0
Thompson-Okanagan [5930]							
2009	439.4	284.7	263.9	20.9	64.8	7.3	60.1
2010	446.9	296.6	271.4	25.2	66.4	8.5	60.7
Kootenay [5940]							
2009	123.4	76.4	70.3	6.1	61.9	8.0	57.0
2010	124.0	72.6	65.9	6.8	58.5	9.4	53.1
Cariboo [5950]							
2009	127.7	86.1	76.2	9.9	67.4	11.5	59.7
2010	129.0	90.0	83.1	6.8	69.8	7.6	64.4
North Coast and Nechako [5960, 5970]							
2009	65.1	47.1	42.4	4.7	72.4	10.0	65.1
2010	64.7	45.0	41.2	3.9	69.6	8.7	63.7
Northeast [5980]							
2009	53.6	40.4	37.5	2.9	75.4	7.2	70.0
2010	54.7	42.2	39.0	3.2	77.1	7.6	71.3

1. For geographic descriptions of economic regions, refer to the Guide to the Labour Force Survey (catalogue number 71-543-GIE).

2. Estimates for Canada are a sum of the provincial totals and exclude estimates from Yukon, Northwest Territories and Nunavut.

Note(s): All geographic regions are based on the 2001 Census boundaries. Related CANSIM table 282-0054.

Table 6-2
Labour force characteristics by territories, unadjusted for seasonality, 3 month moving average ending in
October 2009 and October 2010

	Population	Labour force			Participation rate	Unemployment rate	Employment rate
		Labour force	Employment	Unemployment			
		in thousands			percent		
Yukon ¹							
2009	24.3	17.7	16.7	1.0	72.8	5.6	68.7
2010	24.9	18.3	17.4	0.9	73.5	4.9	69.9
Northwest Territories ²							
2009	31.5	22.3	20.5	1.7	70.8	7.6	65.1
2010	31.9	23.0	21.7	1.3	72.1	5.7	68.0
Nunavut ³							
2009	18.6	11.3	9.8	1.5	60.7	12.9	52.8
2010	19.4	12.4	10.7	1.7	63.8	13.7	55.1

1. Since 1992, the Labour force survey (LFS) has been conducted in the Yukon, using an alternative methodology that accommodates some of the operational difficulties inherent to remote locales. These estimates are not included in the national totals. In 1995, the LFS in the Yukon underwent a sample redesign. One result of the redesign was that the covered population increased from 85% to 92%, which is reflected by the sharp increase in the three month moving averages estimates of January, February and March of 1995 for all the level estimates. Users are therefore warned to be cautious when comparing estimates before January 1995 to estimates for January 1995 and forward.
2. Since 2001, the Labour force survey (LFS) has been administered in the Northwest Territories, using an alternative methodology that accommodates some of the operational difficulties inherent to remote locales. These estimates are not included in national totals.
3. Since 2004, the Labour force survey (LFS) has been administered in Nunavut, using an alternative methodology that accommodates some of the operational difficulties inherent to remote locales. These estimates are 3-month moving averages and are not included in national totals. From January 2004 to December 2007, estimates represent about 70% of all Nunavut residents aged 15 and over. Starting in January 2008, coverage was extended to 92%, so that by March 2008, the 3-month moving average is completely based on the extended coverage. Because of the large difference in coverage, users are recommended not to compare estimates prior to January 2008 with data afterwards. The January and February 2008 3-month moving average estimates are based on a mix of both coverages, since the extended coverage was introduced in January 2008. Estimates from January 2004 to December 2007 are based on the 10 largest communities in Nunavut: Iqaluit, Rankin Inlet, Cambridge Bay, Kugluktuk, Baker Lake, Arviat, Pond Inlet, Cape Dorset, Pangnirtung, Igloolik. Estimates from March 2008 to present cover the above communities as well as: Taloyoak, Gjoa Haven, Kugaaruk, Coral Harbour, Repulse Bay, Qikiqtarjuaq, Arctic Bay, Hall Beach, Clyde River.

Note(s): Related CANSIM table 282-0100.

Table 7
Average usual hours and wages of employees by selected characteristics, Canada, unadjusted for seasonality

	Employees				Full-time			Part-time		
	Number	Average weekly hours	Average weekly wages	Average hourly wages	Number	Average weekly hours	Average weekly wages	Number	Average weekly hours	Average weekly wages
	thousands		current dollars		thousands		current dollars	thousands		current dollars
October 2010										
15 years and over	14,609.7	35.1	830.61	22.81	11,886.7	39.3	955.35	2,723.0	17.0	286.07
15 to 24 years	2,236.2	26.5	380.65	13.32	1,102.8	38.7	600.09	1,133.4	14.7	167.12
25 years and over	12,373.5	36.7	911.93	24.52	10,783.9	39.3	991.68	1,589.6	18.6	370.88
Men	7,318.8	37.8	951.50	24.52	6,492.0	40.5	1,040.10	826.8	16.5	255.82
Women	7,291.0	32.4	709.25	21.09	5,394.7	37.8	853.36	1,896.2	17.3	299.26
Union coverage										
Union coverage	4,644.2	35.7	956.50	26.46	3,982.7	38.5	1,044.29	661.5	18.7	428.03
No union coverage	9,965.5	34.9	771.94	21.10	7,904.1	39.7	910.54	2,061.5	16.5	240.52
Job permanency										
Permanent	12,734.1	35.9	866.97	23.40	10,767.1	39.2	969.92	1,967.0	17.9	303.44
Temporary	1,875.7	29.6	583.77	18.81	1,119.7	39.5	815.30	756.0	14.8	240.88
Occupation										
Management	1,001.1	39.7	1,409.95	35.64	974.9	40.2	1,433.37	26.1	18.8	536.95
Business, finance and administrative	2,770.6	34.9	764.17	21.41	2,342.1	38.1	849.37	428.5	17.4	298.54
Natural and applied sciences	1,093.4	38.3	1,207.49	31.47	1,048.2	39.1	1,238.71	45.2	19.5	482.97
Health	948.1	33.2	886.23	26.71	712.0	37.5	1,002.75	236.1	20.0	534.87
Social science, education, government service and religion	1,474.3	33.8	992.26	29.01	1,191.4	37.9	1,120.34	282.9	16.8	452.83
Art, culture, recreation and sport	337.6	31.3	785.71	23.62	242.8	38.3	997.04	94.8	13.6	244.47
Sales and service	3,733.8	30.1	503.47	15.50	2,318.4	38.4	687.84	1,415.5	16.5	201.49
Trades, transport and equipment operators	2,151.4	40.2	919.01	22.63	2,025.6	41.6	958.40	125.8	17.7	284.82
Occupations unique to primary industry	313.8	41.6	857.85	19.87	275.6	45.2	947.96	38.1	15.3	206.63
Occupations unique to processing, manufacturing and utilities	785.7	39.2	752.88	19.05	755.8	40.0	771.17	29.9	19.0	290.87
October 2009										
15 years and over	14,138.9	35.2	815.58	22.35	11,530.7	39.3	936.35	2,608.2	17.1	281.66
15 to 24 years	2,224.3	27.0	376.55	13.04	1,137.2	38.6	577.32	1,087.2	14.9	166.54
25 years and over	11,914.6	36.7	897.54	24.09	10,393.5	39.3	975.63	1,521.0	18.7	363.94
Men	7,060.5	37.8	935.68	24.14	6,279.5	40.5	1,020.47	781.0	16.4	253.91
Women	7,078.4	32.6	695.77	20.56	5,251.2	37.8	835.74	1,827.2	17.5	293.52
Union coverage										
Union coverage	4,471.3	35.6	919.69	25.47	3,797.5	38.6	1,010.15	673.8	18.8	409.88
No union coverage	9,667.6	35.0	767.42	20.90	7,733.2	39.6	900.10	1,934.4	16.5	237.00
Job permanency										
Permanent	12,318.9	36.0	852.79	22.95	10,446.2	39.3	952.05	1,872.8	18.1	299.10
Temporary	1,820.0	29.4	563.69	18.25	1,084.6	39.4	785.05	735.4	14.6	237.23
Occupation										
Management	1,048.8	39.6	1,353.18	34.15	1,017.7	40.2	1,380.18	31.1	19.3	468.77
Business, finance and administrative	2,707.5	35.1	758.22	21.14	2,297.3	38.1	838.90	410.2	18.0	306.36
Natural and applied sciences	1,035.9	38.6	1,203.71	31.18	999.4	39.3	1,229.85	36.5	18.3	487.51
Health	931.0	33.6	903.58	26.60	701.0	37.9	1,030.21	230.0	20.5	517.72
Social science, education, government service and religion	1,416.4	33.8	974.11	28.42	1,140.6	38.0	1,104.37	275.8	16.6	435.35
Art, culture, recreation and sport	341.2	30.2	736.76	22.78	228.8	38.4	976.51	112.4	13.5	248.97
Sales and service	3,555.2	30.4	492.06	15.05	2,255.3	38.4	663.32	1,299.9	16.6	194.93
Trades, transport and equipment operators	2,084.8	39.9	871.56	21.60	1,945.7	41.5	913.95	139.1	17.5	278.73
Occupations unique to primary industry	258.8	41.7	795.88	18.56	227.3	45.5	881.16	31.5	14.3	180.97
Occupations unique to processing, manufacturing and utilities	759.2	38.7	747.55	19.13	717.6	39.9	774.78	41.6	18.6	278.16

Note(s): Related CANSIM Tables 282-0023, 282-0069, 282-0073.

Table 8
Regional unemployment rates used by the Employment Insurance Program, ¹ seasonally adjusted, 3 month moving average

Region	Effective from November 7, 2010 to December 4, 2010
	percent
Newfoundland and Labrador	
01. St. John's	7.8
02. Newfoundland and Labrador	17.9
Prince Edward Island	
03. Prince Edward Island	12.9
Nova Scotia	
04. Eastern Nova Scotia	16.1
05. Western Nova Scotia	10.8
06. Halifax	6.6
New Brunswick	
07. Fredericton-Moncton-Saint John	7.7
08. Madawaska-Charlotte ²	11.9
09. Restigouche-Albert	14.5
Quebec	
10. Gaspésie-Îles-de-la-Madeleine	15.9
11. Québec	4.7
12. Trois-Rivières	9.1
13. South Central Quebec	5.4
14. Sherbrooke	7.7
15. Montérégie	7.3
16. Montréal	8.7
17. Central Quebec	8.5
18. Northwestern Quebec	11.5
19. Bas-Saint-Laurent-Côte-Nord ³	11.0
20. Gatineau	6.9
21. Saguenay	8.4
Ontario	
22. Ottawa	6.7
23. Eastern Ontario	8.8
24. Kingston	6.6
25. Central Ontario	9.0
26. Oshawa	10.1
27. Toronto	9.3
28. Hamilton	7.6
29. St. Catharines	9.6
30. London	8.8
31. Niagara	10.4
32. Windsor	11.5
33. Kitchener	7.2
34. Huron	10.5
35. South Central Ontario	7.6
36. Sudbury	9.9
37. Thunder Bay	7.0
38. Northern Ontario	12.4
Manitoba	
39. Winnipeg	5.6
40. Southern Manitoba	5.8
41. Northern Manitoba	29.7
Saskatchewan	
42. Regina	5.0
43. Saskatoon	5.5
44. Southern Saskatchewan	6.9
45. Northern Saskatchewan	17.9

See notes at the end of the table.

Table 8 – continued

Regional unemployment rates used by the Employment Insurance Program, ¹ seasonally adjusted, 3 month moving average

Region	Effective from November 7, 2010 to December 4, 2010
	percent
Alberta	
46. Calgary	6.7
47. Edmonton	6.2
48. Northern Alberta	9.6
49. Southern Alberta	7.0
British Columbia	
50. Southern Interior British Columbia	10.8
51. Abbotsford	8.7
52. Vancouver	7.4
53. Victoria	6.1
54. Southern Coastal British Columbia	8.2
55. Northern British Columbia	11.4
Territories	
56. Yukon ⁴	25.0
57. Northwest Territories ⁴	25.0
58. Nunavut ⁴	25.0

1. The boundaries of these regions are determined by Human Resources and Social Development Canada (HRSDC). For geographic descriptions and maps of employment insurance regions, see the HRSDC website: <http://srv129.services.gc.ca/eiregions/en/geocont.aspx>.

2. This unemployment rate has been determined using a transition formula prescribed in the EI Regulations. For further information, see: http://www.hrsdc.gc.ca/en/cs/comm/news/2000/000913a_e.shtml.

3. This unemployment rate has been determined using a transition formula prescribed in the EI Regulations. For further information, see: http://www.hrsdc.gc.ca/en/cs/comm/news/2000/000913b_e.shtml.

4. This rate is provided by Human Resources and Skills Development Canada.

Note(s): All geographic regions are based on the 1996 Census boundaries.

Data quality

About the Labour Force Survey

The statistics contained in this report are based on information obtained through a sample survey of 53,000 representative households across the country. The Labour Force Survey, started in November 1945, was taken at quarterly intervals until November 1952. It has been carried out monthly since then. The information generated by the survey has expanded considerably over the years with a major redesign of the survey content in 1976 and again in 1997, and provides a rich and detailed picture of the Canadian labour market.

The sample used in the Labour Force Survey has been designed to represent all persons in the population 15 years of age and over residing in the provinces of Canada, with the exception of the following: persons living on Indian reserves, full-time members of the armed forces and people living in institutions (for example, inmates of penal institutions and patients in hospitals or nursing homes who have resided in the institution for more than six months). Monthly estimates of employment, unemployment and persons not in the labour force refer to the specific week covered by the survey each month, normally the week containing the 15th day.

Definitions and explanations

The **labour force** is composed of those members of the civilian non-institutional population 15 years of age and over who, during the reference week, were employed or unemployed.

Employed persons are those who, during the reference week:

- (a) did any work at all
- (b) had a job but were not at work

A person is considered to be **full-time** if his/her usual hours at the main job are 30 or more hours per week. When the number of hours worked at the main job is usually less than 30 hours per week then he/she is considered to be **part-time**.

Unemployed persons are those who, during the reference week:

- (a) were without work, had actively looked for work in the past four weeks (ending with reference week), and were available for work;
- (b) had not actively looked for work in the past four weeks but were on temporary layoff and were available for work;
- (c) had not actively looked for work in the past four weeks but had a new job to start in four weeks or less from the reference week, and were available for work.

Persons in the civilian non-institutional population 15 years of age and over who, during the reference week, were neither employed nor unemployed are classified as **not in the labour force**.

The **unemployment rate** represents the number of unemployed persons expressed as a percentage of the labour force. The unemployment rate for a particular group (age, sex, etc.) is the number unemployed in that group expressed as a percentage of the labour force for that group.

The **participation rate** represents the labour force expressed as a percentage of the population 15 years of age and over. The participation rate for a particular group (age, sex, etc.) is the labour force in that group expressed as a percentage of the population for that group.

The **employment rate (formerly the employment/population ratio)** represents the number of persons employed expressed as a percentage of the population 15 years of age and over. The employment rate for a particular group (age, sex, etc.) is the number employed in that group expressed as a percentage of the population for that group.

The **part-time rate** represents the number of persons employed part-time expressed as a percentage of the employed. The part-time rate for a particular group (age, sex, etc.) is the number employed part-time in that group expressed as a percentage of the employed for that group.

All geographic regions are based on the 2001 Census boundaries.

Seasonal adjustment

Fluctuations in economic time series are caused by seasonal, cyclical and irregular movements. A seasonally adjusted series is one from which seasonal movements have been eliminated. Seasonal movements are defined as those which are caused by regular annual events such as climate, holidays, vacation periods and cycles related to crops, production and retail sales associated with Christmas and Easter. The seasonally adjusted series contains irregular as well as longer-term cyclical fluctuations.

The seasonally adjusted series are revised each year to take into account current data and to generate new forecast factors for the next twelve months. The data are therefore subject to slight revisions in future issues of this publication.

Sampling variability of estimates

Estimates in this publication are based on the Labour Force Survey, a monthly survey of approximately 53,000 households across Canada. Because the entire population is not surveyed, the estimates are subject to sampling error. While the published estimate is the best available indicator of the real value, changes in the level of any estimates between two months can be the result of a true change or sampling variability. The sampling error can be estimated by calculating the standard error for the published estimate or statistic. These standard errors have been included in the publication tables, in order to assist users in interpreting the data.

Interpretation based on standard error

Two thirds of the time (68%), a change greater than the sampling error indicates a real change. The larger the change compared to the standard error, the better the chance that we are observing a real change, as opposed to a change due to sampling variability. At the 95% level, in order to ensure that change is real, the change in the estimate must be greater than twice the sampling error.

Movements in estimates that are smaller than the sampling error are less likely to reflect a real change and more likely to be due to sampling variability. While the above is true for monthly movements, one can have more confidence in a series of consecutive movements in the same direction, even though some of the monthly movements may be smaller than the sampling error.

Interpretation based on confidence intervals

Confidence intervals provide another way of looking at the variability inherent in estimates of sample surveys. To illustrate how to calculate the confidence interval, let us say that one month the published estimate for total employment rose by 16,000 to reach 16,500,000. The associated standard error for the movement estimate is 27,200. The standard error used to interpret the movement estimate indicates that:

- There are approximately two chances in three (68%) that the real value of the movement between the two months falls within the range -11,200 to +43,200 (16,000 + or – one standard error).
- There are approximately nine chances in ten (90%) that the real value of the movement between the two months falls within the range -27,520 to +59,520 (16,000 + or – 1.6 times the standard error).
- There are approximately nineteen chances in twenty (95%) that the real value of the movement between the two months falls within the range -38,400 to +70,400 (16,000 + or – two standard errors).

For more detailed explanations on sampling variability of estimates, and in particular for information on how to assess the variability of level estimates, consult the Data quality section of the *Guide to the Labour Force Survey*, (71-543-G) on page 27.

Documentation

For more detailed information about the Labour Force Survey, see the following documents:

- Overview of the Labour Force Survey
- Guide to the Labour Force Survey (71-543-G)
- Data quality statement
- Methodology of the Canadian Labour Force Survey (71-526-X)
- LFS *geographical maps*