

Catalogue no. 71-001-X

Labour Force Information

Not for release before 7 A.M. EDT

Friday, June 4, 2010

May 9 to 15, 2010



Statistics
Canada

Statistique
Canada

Canada

How to obtain more information

Specific inquiries about this product and related statistics or services should be directed to: Labour Force Survey Program, Labour Statistics Division, Statistics Canada, Ottawa, Ontario, K1A 0T6 (telephone: 613-951-4090, toll free number: 1-866-873-8788, fax: 613-951-2869 or by e-mail address: labour@statcan.gc.ca).

For information about this product or the wide range of services and data available from Statistics Canada, visit our website at www.statcan.gc.ca, e-mail us at infostats@statcan.gc.ca, or telephone us, Monday to Friday from 8:30 a.m. to 4:30 p.m., at the following numbers:

Statistics Canada's National Contact Centre

Toll-free telephone (Canada and the United States):

Inquiries line	1-800-263-1136
National telecommunications device for the hearing impaired	1-800-363-7629
Fax line	1-877-287-4369

Local or international calls:

Inquiries line	1-613-951-8116
Fax line	1-613-951-0581

Depository Services Program

Inquiries line	1-800-635-7943
Fax line	1-800-565-7757

To access this product

This product, Catalogue no. 71-001-X, is available free in electronic format. To obtain a single issue, visit our website at www.statcan.gc.ca and browse by "Key resource" > "Publications."

Standards of service to the public

Statistics Canada is committed to serving its clients in a prompt, reliable and courteous manner. To this end, Statistics Canada has developed *standards of service* that its employees observe. To obtain a copy of these service standards, please contact Statistics Canada toll-free at 1-800-263-1136. The service standards are also published on www.statcan.gc.ca under "About us" > "Providing services to Canadians."

Statistics Canada
Labour Statistics Division
Labour Force Survey Program

Labour Force Information

Not for release before 7 A.M. EDT

Friday, June 4, 2010

May 9 to 15, 2010

Published by authority of the Minister responsible for Statistics Canada

© Minister of Industry, 2010

All rights reserved. The content of this electronic publication may be reproduced, in whole or in part, and by any means, without further permission from Statistics Canada, subject to the following conditions: that it be done solely for the purposes of private study, research, criticism, review or newspaper summary, and/or for non-commercial purposes; and that Statistics Canada be fully acknowledged as follows: Source (or "Adapted from", if appropriate): Statistics Canada, year of publication, name of product, catalogue number, volume and issue numbers, reference period and page(s). Otherwise, no part of this publication may be reproduced, stored in a retrieval system or transmitted in any form, by any means—electronic, mechanical or photocopy—or for any purposes without prior written permission of Licensing Services, Client Services Division, Statistics Canada, Ottawa, Ontario, Canada K1A 0T6.

June 2010

Catalogue no. 71-001-X

ISSN 1492-5478

Frequency: Monthly

Ottawa

Cette publication est également disponible en français.

Note of appreciation

Canada owes the success of its statistical system to a long-standing partnership between Statistics Canada, the citizens of Canada, its businesses, governments and other institutions. Accurate and timely statistical information could not be produced without their continued cooperation and goodwill.

User information

Symbols

The following standard symbols are used in Statistics Canada publications:

- . not available for any reference period
- .. not available for a specific reference period
- ... not applicable
- 0 true zero or a value rounded to zero
- 0^s value rounded to 0 (zero) where there is a meaningful distinction between true zero and the value that was rounded
- p preliminary
- r revised
- x suppressed to meet the confidentiality requirements of the *Statistics Act*
- E use with caution
- F too unreliable to be published

Special requests (\$)

Custom tabulations can be arranged on an ad hoc or regular basis. This service enables you to specify tables and time series to meet your own requirements. The cost varies according to the request. For more information, contact us toll-free at 1-866-873-8788 or e-mail us at labour@statcan.gc.ca.

Schedule of LFS releases

Reference period - Week ending	Release date
January 16, 2010	February 5, 2010
February 20, 2010	March 12, 2010
March 20, 2010	April 9, 2010
April 17, 2010	May 7, 2010
May 15, 2010	June 4, 2010
June 19, 2010	July 9, 2010
July 17, 2010	August 6, 2010
August 21, 2010	September 10, 2010
September 18, 2010	October 8, 2010
October 16, 2010	November 5, 2010
November 13, 2010	December 3, 2010
December 11, 2010	January 7, 2011

Latest LFS release in *The Daily* (free)

Table of contents

Highlights	5
Analysis — May 2010	6
Charts	
1. Employment and unemployment indicators, Canada, seasonally adjusted	8
2. Employment and unemployment indicators, Canada, seasonally adjusted	9
3. Index of employment by industry, Canada, seasonally adjusted, January, 2007=100	10
4. Index of employment by industry, Canada, seasonally adjusted, January 2007=100	11
5. Index of employment by industry, Canada, seasonally adjusted, January 2007=100	12
6. Index of employment by province, seasonally adjusted, January 2007=100	13
7. Index of employment by province, seasonally adjusted, January 2007=100	14
Related products	15
Statistical tables	
1 Labour force characteristics by age and sex, Canada, seasonally adjusted	23
2 Employment by class of worker and industry, Canada, seasonally adjusted	25
3 Labour force characteristics by province, seasonally adjusted	26
4 Selected labour force characteristics (seasonally adjusted)	28
4-1 Newfoundland and Labrador	28
4-2 Prince Edward Island	29
4-3 Nova Scotia	30
4-4 New Brunswick	31
4-5 Quebec	32
4-6 Ontario	33
4-7 Manitoba	34
4-8 Saskatchewan	35
4-9 Alberta	36
4-10 British Columbia	37
5 Labour force characteristics by census metropolitan area (seasonally adjusted)	38
5-1 3 month moving average	38
5-2 Monthly	43

Table of contents – continued

6	Labour force characteristics	44
6-1	by province and economic region, unadjusted for seasonality, 3 month moving average ending in May 2009 and May 2010	44
6-2	by territories, unadjusted for seasonality, 3 month moving average ending in May 2009 and May 2010	49
7	Average usual hours and wages of employees by selected characteristics, Canada, unadjusted for seasonality	50
8	Regional unemployment rates used by the Employment Insurance Program, seasonally adjusted, 3 month moving average	51
9	Students and other persons aged 15 to 24 (unadjusted)	53
9-1	by detailed age groups	53
9-2	by province	54
Data quality, concepts and methodology		
	Data quality	56

Highlights

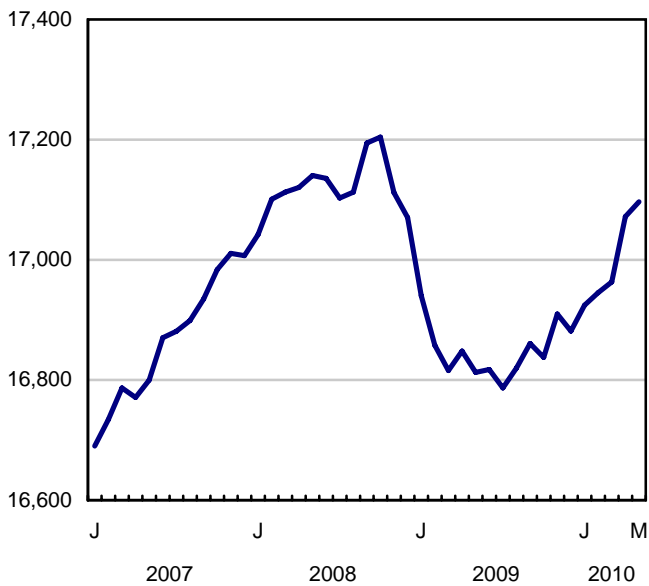
May 2010

Following large gains in April, employment rose by 25,000 in May, the fifth consecutive monthly increase. The unemployment rate was unchanged at 8.1%. Since the start of the upward trend in July 2009, employment is up 1.8% or 310,000.

Chart 1
Employment and unemployment rates, Canada, seasonally adjusted

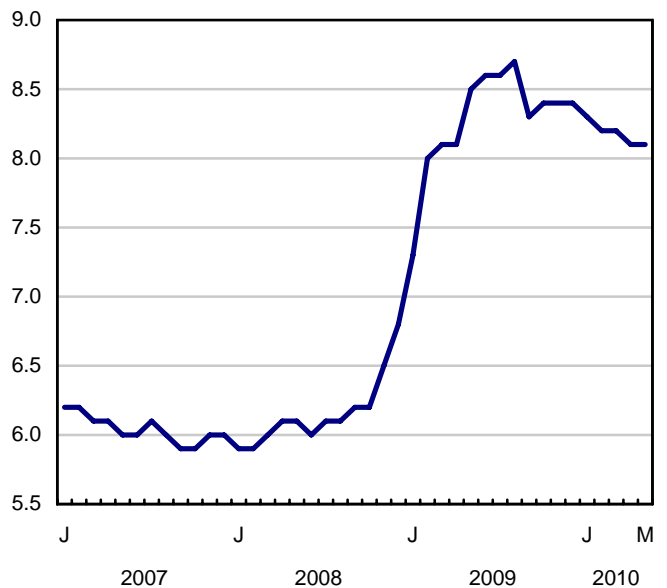
Employment

thousands



Unemployment rate

percent



Analysis — May 2010

Following large gains in April, employment rose by 25,000 in May, the fifth consecutive monthly increase. The unemployment rate was unchanged at 8.1%. Since the start of the upward trend in July 2009, employment is up 1.8% or 310,000.

Full-time employment increased by 67,000 in May, partly offset by losses of 43,000 in part-time. Since July 2009, virtually all employment gains have been in full time.

The number of private sector employees increased by 43,000 in May, while there were 28,000 fewer self-employed workers. Since July 2009, the number of employees in the private sector has risen by 2.8%, with most of the gains in recent months. Since July 2009, the public sector has increased by 2.2%, while self-employment has fallen by 2.3%.

Industries with notable employment increases in May were transportation and warehousing; health care and social assistance; public administration; and agriculture. Declines were observed in information, culture and recreation; accommodation and food services; and natural resources. Employment was little changed in manufacturing and construction in May.

In May, employment was up in Ontario, Alberta, Newfoundland and Labrador as well as Nova Scotia. At the same time, employment declined in British Columbia and Prince Edward Island. There was little employment change in the other provinces in May.

May's overall employment growth was mainly among women aged 55 and over.

Average hourly wages rose by 2.4% in May compared with the same month last year, an increase similar to those observed in recent months.

Gains mostly in service industries

In May, employment gains were found in a number of industries.

Employment in transportation and warehousing increased by 26,000 in May, offsetting the declines of the past two months.

Health care and social assistance continued its long-term upward trend in May, with an increase of 18,000. There were also more people working in public administration (+13,000) and agriculture (+9,000) in May.

These gains were partly offset by employment declines in information, culture and recreation (-25,000); accommodation and food services (-22,000); and natural resources (-11,000).

There was little change in construction and manufacturing in May. Since July 2009, there has been solid employment growth in construction (+83,000 or 7.3%), while employment in manufacturing has been stable.

Notable employment gains in four provinces

Ontario's employment was up 18,000 in May, all in full-time work. This month's increase brings employment gains in that province to 127,000 (+1.9%) since July 2009, a rate of growth similar to the national average (+1.8%). In May, the unemployment rate inched up 0.1 percentage points to 8.9% as more people entered the labour market.

Employment in Alberta increased for the second straight month, up 15,000 in May, lowering the unemployment rate by 0.8 percentage points to 6.6%. With these recent gains, employment in the province is up slightly compared to July 2009 (+0.5%).

Strong employment gains in Newfoundland and Labrador in May (+7,600) pushed the unemployment rate down 1.2 percentage points to 13.8%. Recent employment increases bring total growth since July 2009 to 6.7%, the fastest of all provinces.

There were more people working in Nova Scotia in May, as employment increased by 3,500, bringing growth since July 2009 to 1.5%. The unemployment rate was 8.7% in May.

In May, employment was little changed in Quebec and the unemployment rate was 8.0%. Since July 2009, employment growth in Quebec has been among the fastest of all provinces at 2.3%.

Employment edged down in May in both British Columbia (-10,000) and Prince Edward Island (-1,900). Compared to July 2009, employment is up 2.0% in both provinces.

Employment up for women aged 55 and over

May's employment increase was mainly among women aged 55 and over (+17,000). Since July 2009, employment has grown the fastest among men aged 55 and over (+5.0%), followed by women aged 55 and over (+3.1%).

Among core-aged workers (25 to 54), since July 2009, employment has risen by 1.7% for women and 1.0% for men. Over the same period, youth employment has grown by 1.6%.

Good start for student summer employment

From May to August, the Labour Force Survey collects labour market information about young people aged 15 to 24 who were attending school full-time in March and who intend to return to school in the fall. The May survey results provide the first indicators of the summer job market, especially for students aged 20 to 24, as students aged 15 to 19 are not yet out of school for the summer. The data for June, July and August will provide further insight into the summer job market. The published estimates are not seasonally adjusted, and therefore comparisons can only be made from one year to another.

There were 54,000 more students aged 20 to 24 employed in May 2010, bringing their employment rate up 3.1 percentage points to 59.2% compared with May 2009. In May 2009, students were especially impacted by the labour market downturn.

Despite the increase compared to 2009, the student employment rate remains below that of May 2008 (63.6%), a year when student employment was particularly strong.

Note to readers

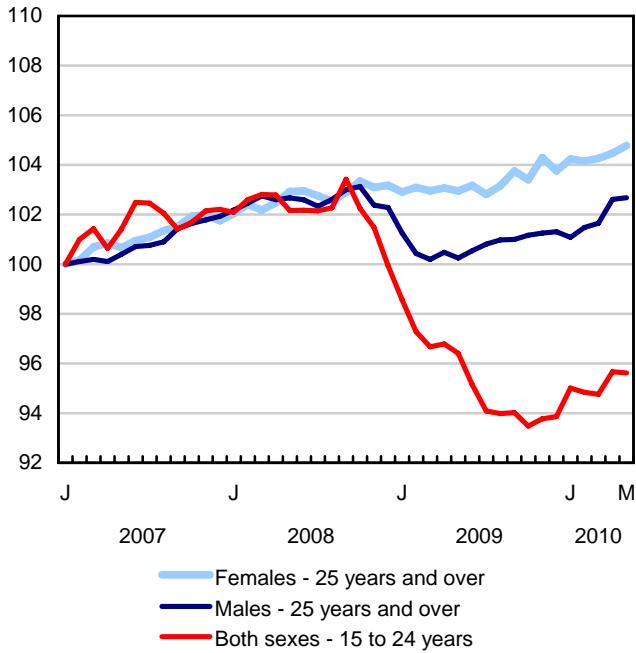
The Labour Force Survey (LFS) estimates are based on a sample, and are therefore subject to sampling variability. Estimates for smaller geographic areas or industries will have more variability. For an explanation of sampling variability of estimates, and how to use standard errors to assess this variability, consult the "Data quality" section of the publication Labour Force Information (71-001-X, free).

Unless otherwise stated, this release presents seasonally adjusted data, which eases comparisons by removing the effects of seasonal variations.

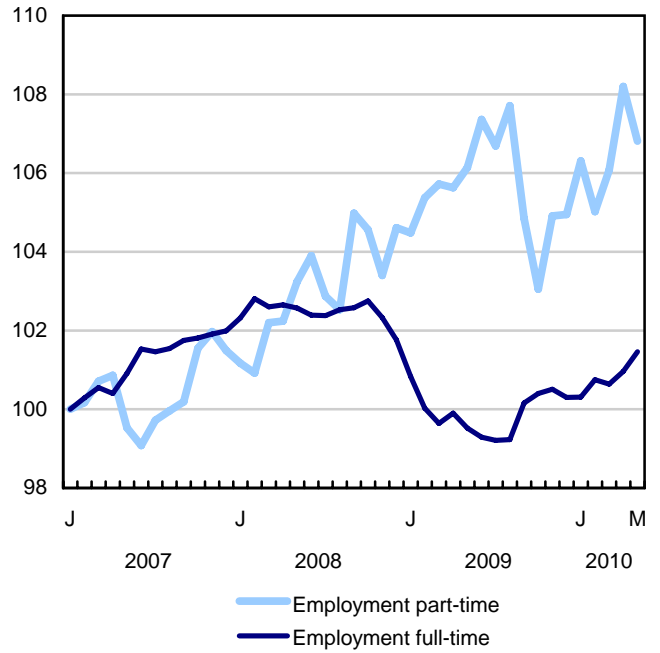
The 2009 Labour Force Historical Review on DVD-ROM (71F0004XVB, \$209) is now available.

Chart 1
Employment and unemployment indicators, Canada, seasonally adjusted

Employment index, January 2007=100



Employment index, January 2007=100



Employment index, January 2007=100

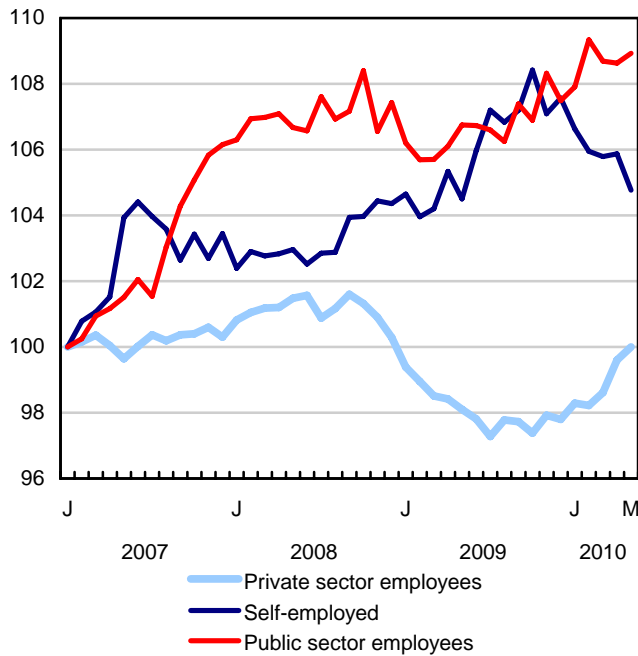
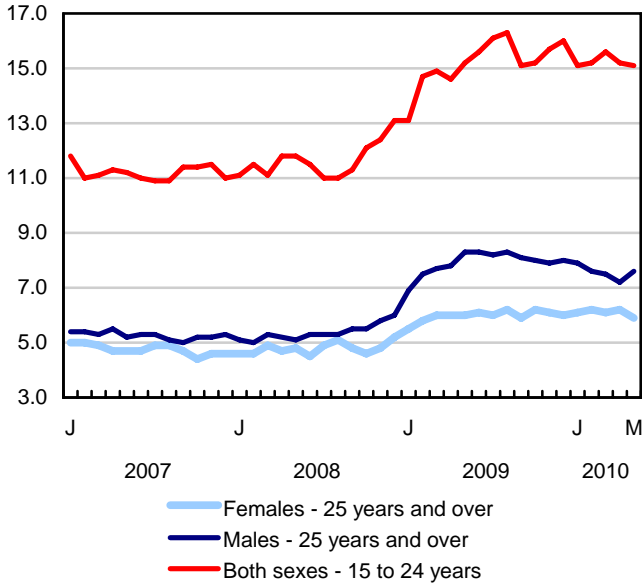
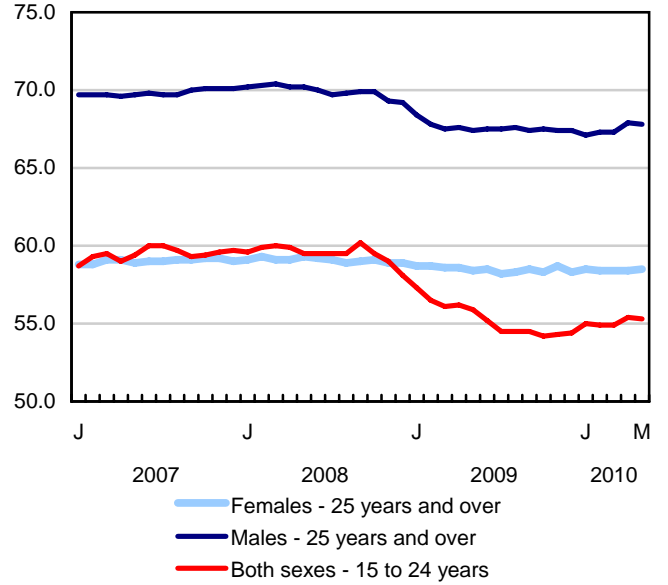


Chart 2
Employment and unemployment indicators, Canada, seasonally adjusted

Unemployment rate (%)



Employment rate (%)



Participation rate (%)

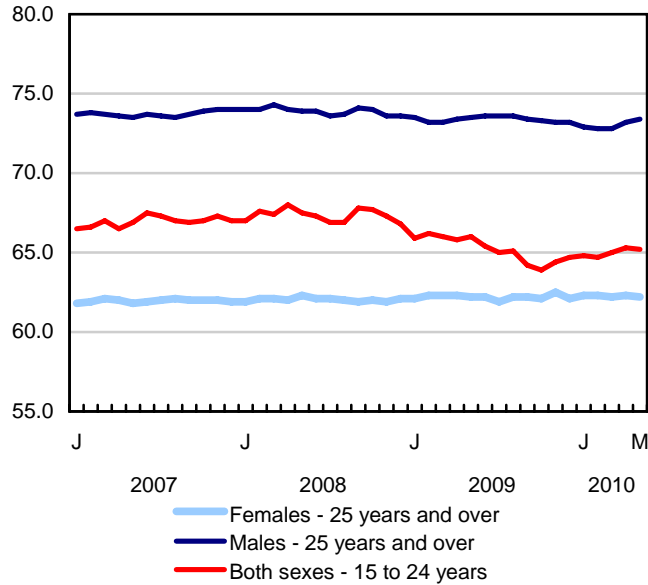


Chart 3
Index of employment by industry, Canada, seasonally adjusted, January, 2007=100

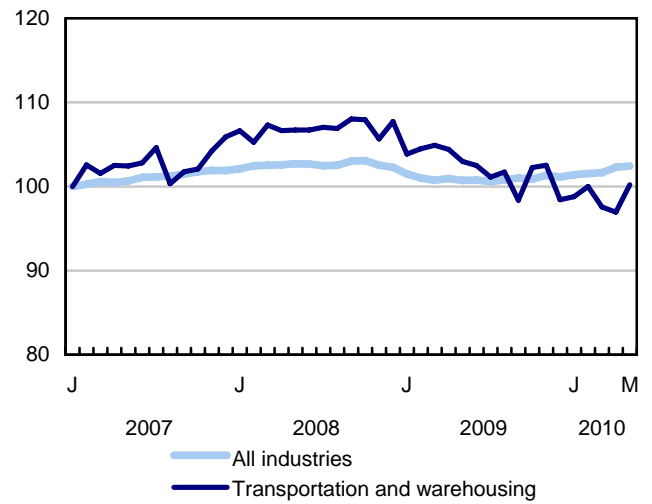
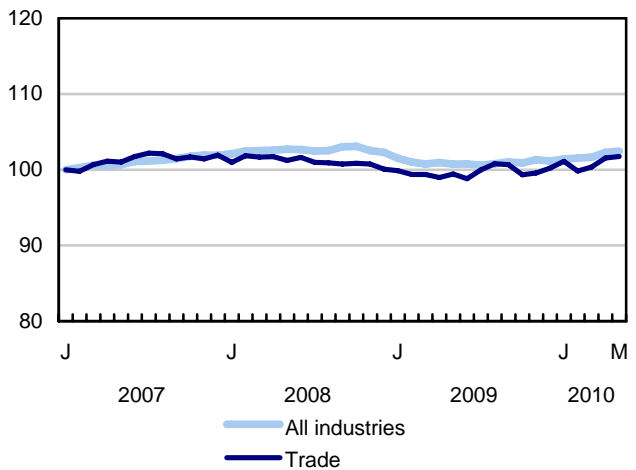
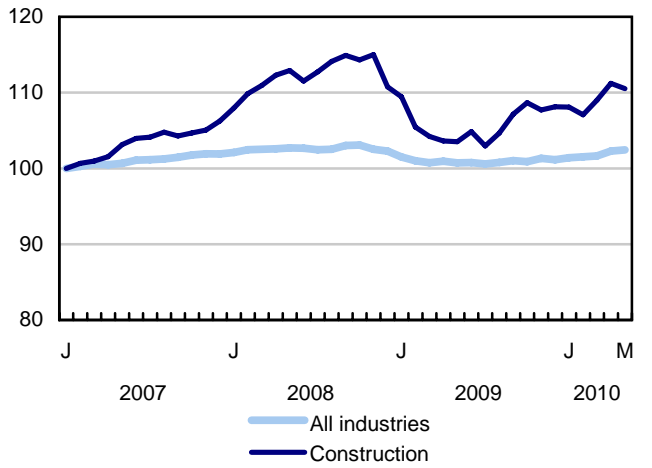
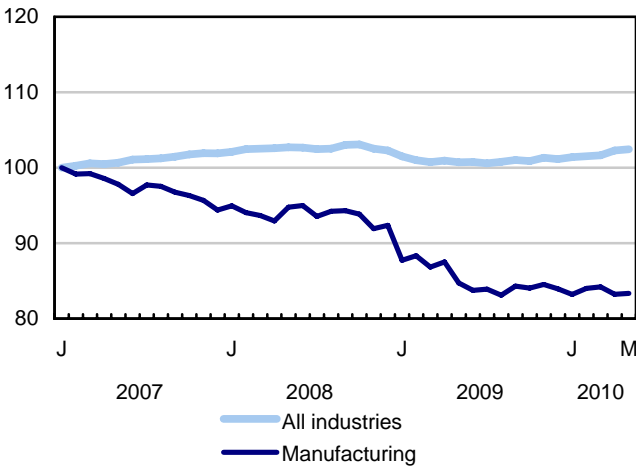
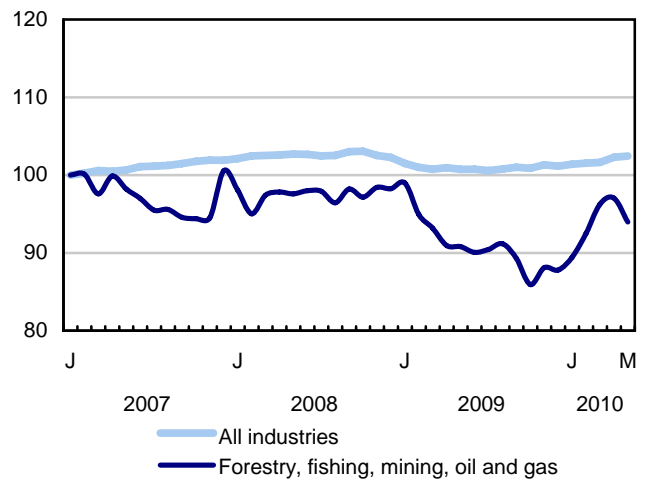
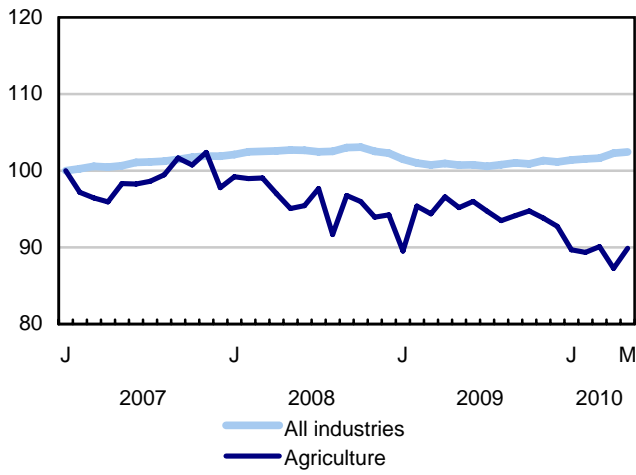


Chart 4
Index of employment by industry, Canada, seasonally adjusted, January 2007=100

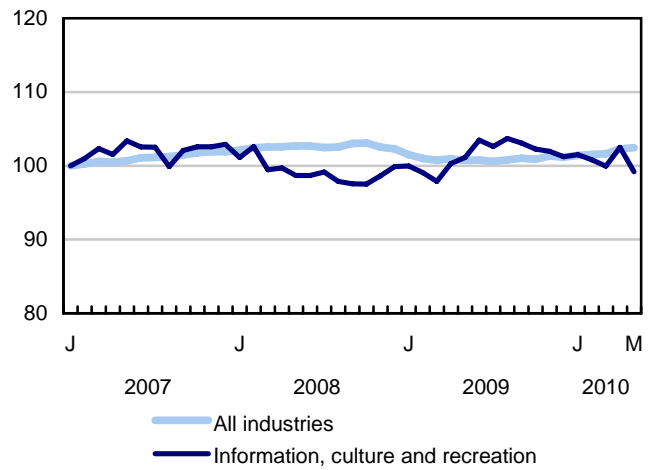
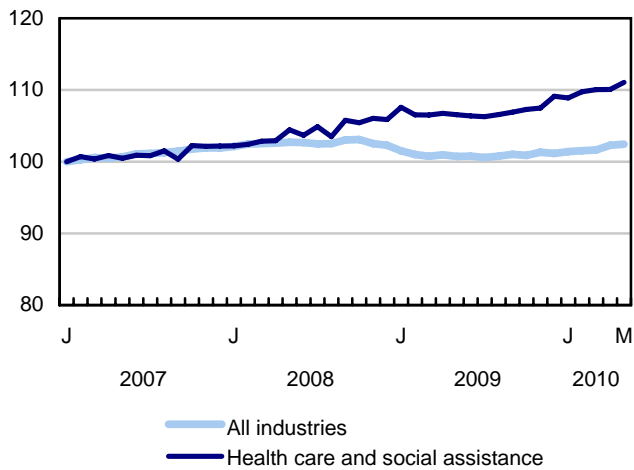
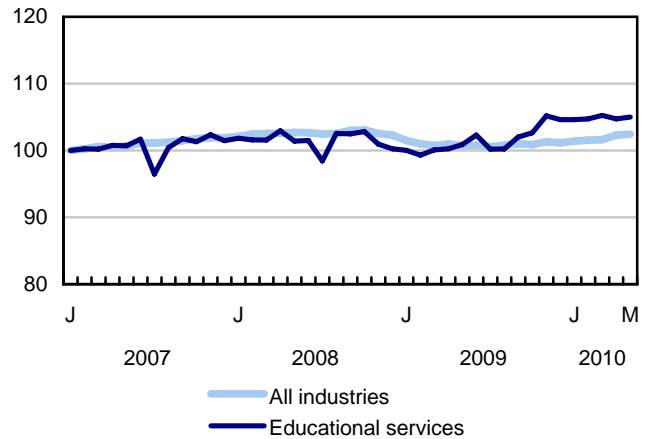
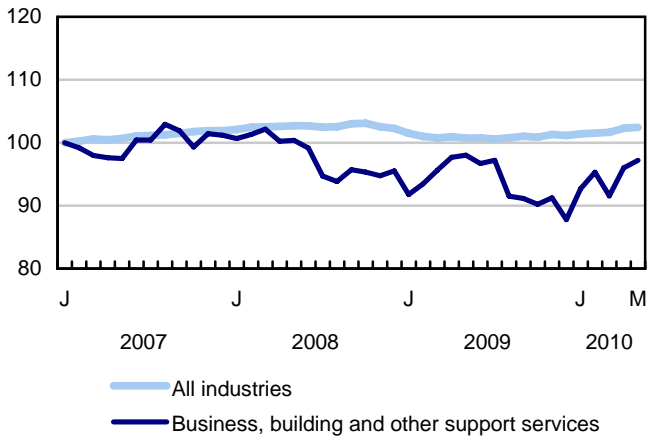
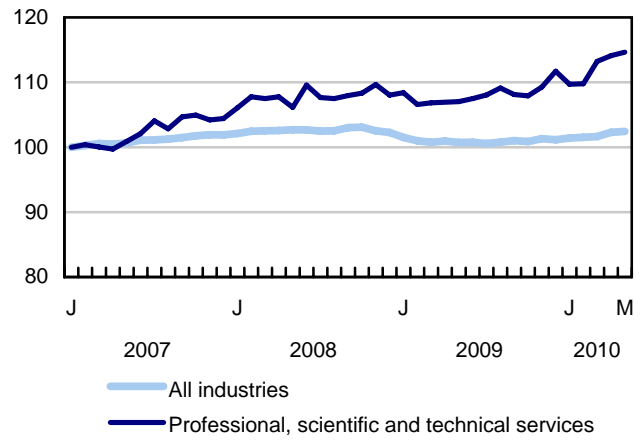
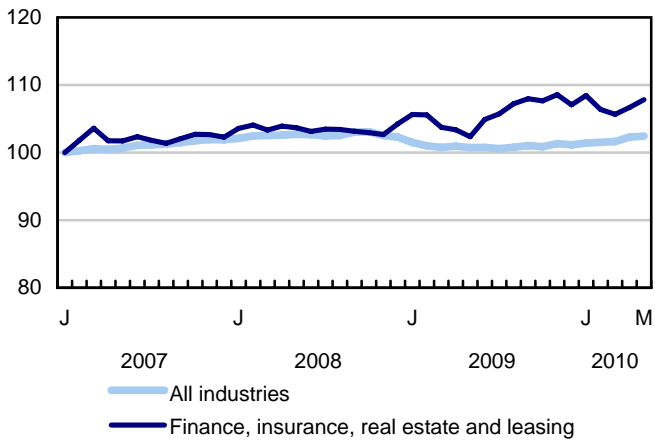


Chart 5
Index of employment by industry, Canada, seasonally adjusted, January 2007=100

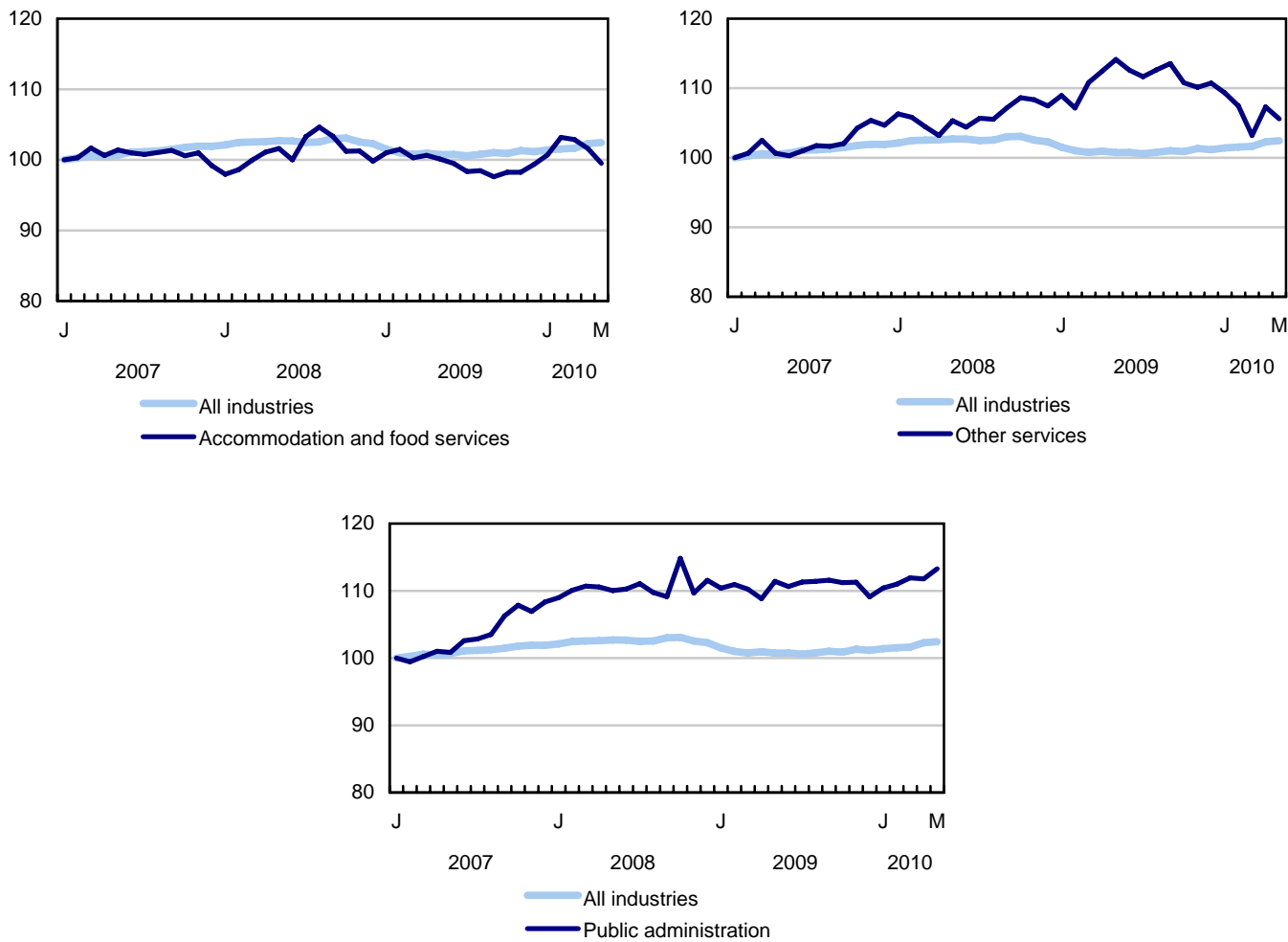


Chart 6
Index of employment by province, seasonally adjusted, January 2007=100

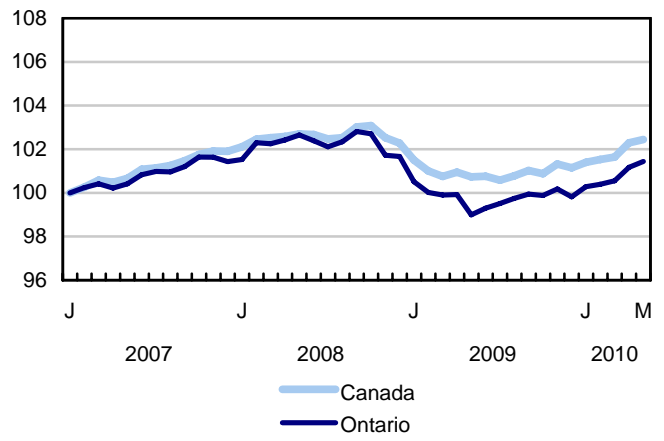
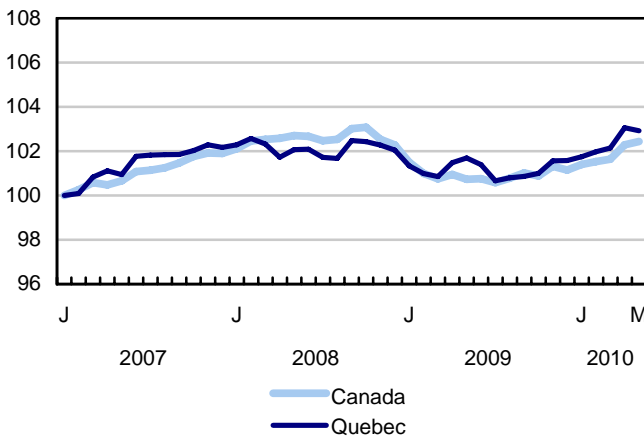
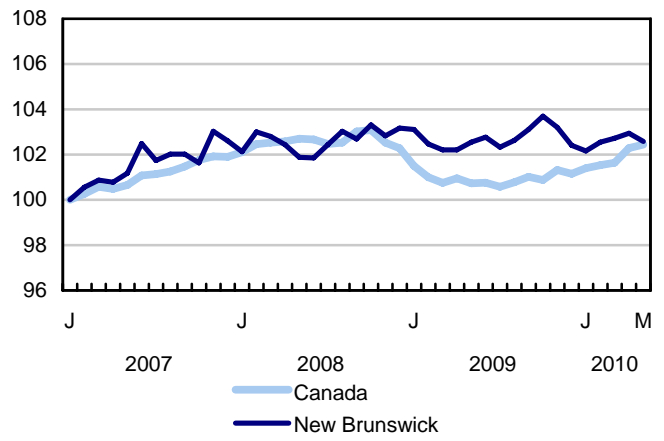
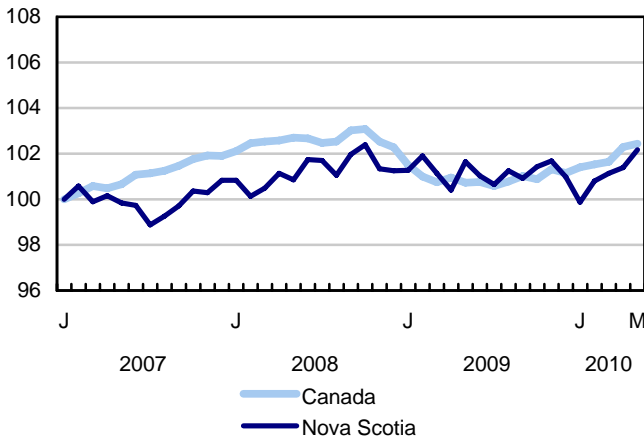
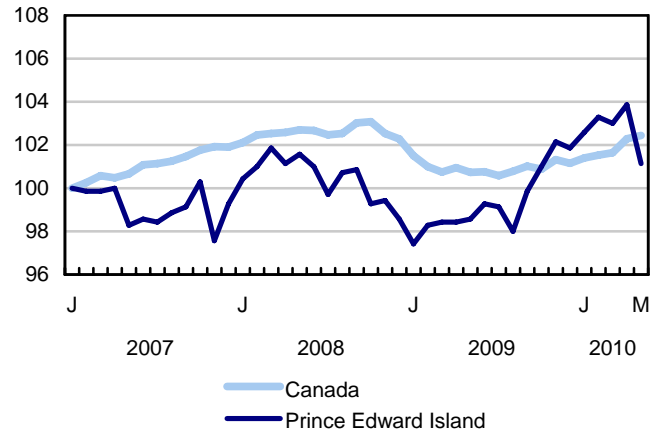
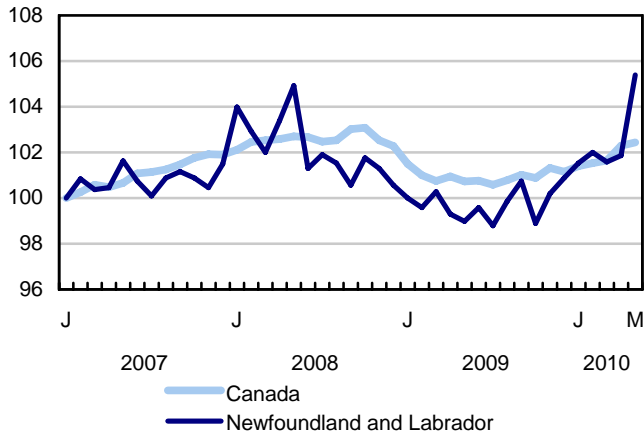
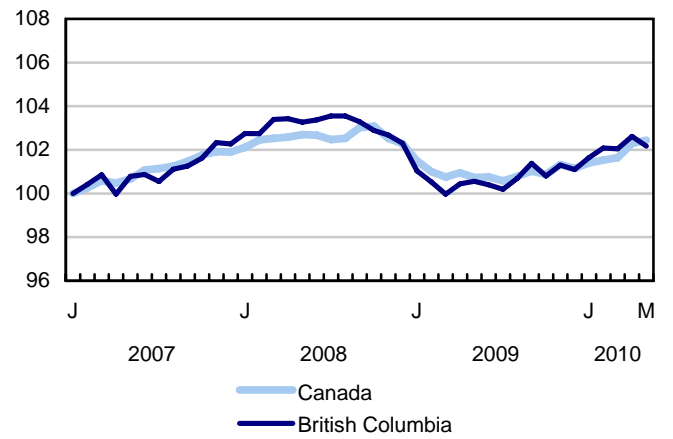
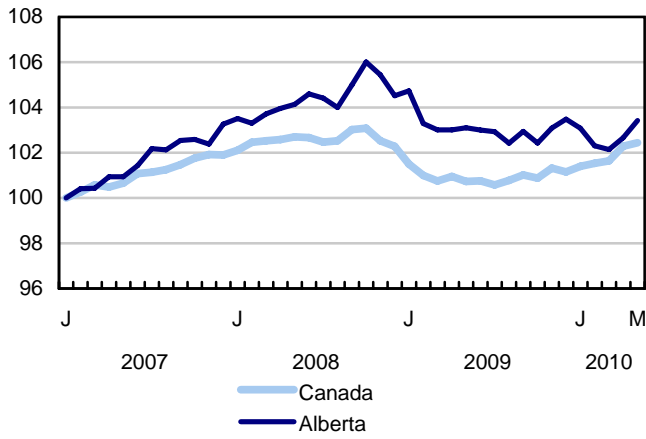
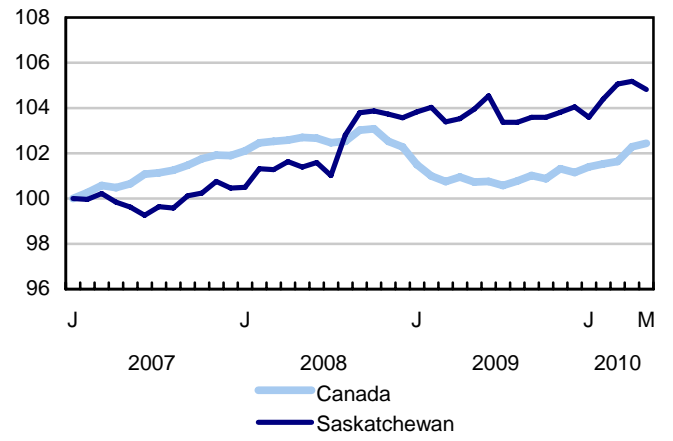
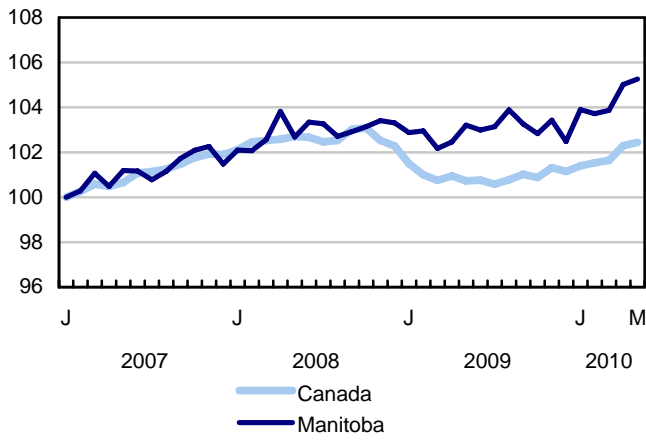


Chart 7
Index of employment by province, seasonally adjusted, January 2007=100



Related products

Selected publications from Statistics Canada

71-222-X	The Canadian Labour Market at a Glance
71-526-X	Methodology of the Canadian Labour Force Survey
71-543-G	Guide to the Labour Force Survey
71-544-X	Labour Force Survey Products and Services
71-587-X	Aboriginal Peoples Living Off-reserve in Western Canada: Estimates from the Labour Force Survey
71-588-X	The Aboriginal Labour Force Analysis Series
71-606-X	The Immigrant Labour Force Analysis Series
71F0004X	Labour Force Historical Review
71F0031X	Improvements to the Labour Force Survey (LFS)
71M0001X	Labour Force Survey Microdata File
75-001-X	Perspectives on Labour and Income

Selected CANSIM tables from Statistics Canada

282-0001	Labour force survey estimates (LFS), by sex and detailed age group, unadjusted for seasonality, monthly
282-0002	Labour force survey estimates (LFS), by sex and detailed age group, annual
282-0003	Labour force survey estimates (LFS), by educational attainment, sex and age group, unadjusted for seasonality, monthly
282-0004	Labour force survey estimates (LFS), by educational attainment, sex and age group, annual
282-0005	Labour force survey estimates (LFS), by full- and part-time students during school months, sex and age group, unadjusted for seasonality, monthly
282-0006	Labour force survey estimates (LFS), by students during summer months, sex and age group, unadjusted for seasonality, monthly
282-0007	Labour force survey estimates (LFS), by North American Industry Classification System (NAICS), sex and age group, unadjusted for seasonality, monthly

282-0008	Labour force survey estimates (LFS), by North American Industry Classification System (NAICS), sex and age group, annual
282-0009	Labour force survey estimates (LFS), by National Occupational Classification for Statistics (NOC-S) and sex, unadjusted for seasonality, monthly
282-0010	Labour force survey estimates (LFS), by National Occupational Classification for Statistics (NOC-S) and sex, annual
282-0011	Labour force survey estimates (LFS), employment by class of worker, North American Industry Classification System (NAICS) and sex, unadjusted for seasonality, monthly
282-0012	Labour force survey estimates (LFS), employment by class of worker, North American Industry Classification System (NAICS) and sex, annual
282-0013	Labour force survey estimates (LFS), part-time employment by reason for part-time work, sex and age group, unadjusted for seasonality, monthly
282-0014	Labour force survey estimates (LFS), part-time employment by reason for part-time work, sex and age group, annual
282-0015	Labour force survey estimates (LFS), by usual hours worked, main or all jobs, sex and age group, unadjusted for seasonality, monthly
282-0016	Labour force survey estimates (LFS), by usual hours worked, main or all jobs, sex and age group, annual
282-0017	Labour force survey estimates (LFS), by actual hours worked, main or all jobs, sex and age group, unadjusted for seasonality, monthly
282-0018	Labour force survey estimates (LFS), by actual hours worked, main or all jobs, sex and age group, annual
282-0019	Labour force survey estimates (LFS), by usual hours worked, class of worker, North American Industry Classification System (NAICS) and sex, unadjusted for seasonality, monthly
282-0020	Labour force survey estimates (LFS), by usual hours worked, class of worker, North American Industry Classification System (NAICS) and sex, annual
282-0021	Labour force survey estimates (LFS), by actual hours worked, class of worker, North American Industry Classification System (NAICS) and sex, unadjusted for seasonality, monthly
282-0022	Labour force survey estimates (LFS), by actual hours worked, class of worker, North American Industry Classification System (NAICS) and sex, annual
282-0023	Labour force survey estimates (LFS), by usual hours worked, class of worker, National Occupational Classification for Statistics (NOC-S) and sex, unadjusted for seasonality, monthly
282-0024	Labour force survey estimates (LFS), by usual hours worked, class of worker, National Occupational Classification for Statistics (NOC-S) and sex, annual
282-0025	Labour force survey estimates (LFS), by actual hours worked, class of worker, National Occupational Classification for Statistics (NOC-S) and sex, unadjusted for seasonality, monthly
282-0026	Labour force survey estimates (LFS), by actual hours worked, class of worker, National Occupational Classification for Statistics (NOC-S) and sex, annual

282-0027	Labour force survey estimates (LFS), by total and average usual and actual hours worked, main or all jobs, type of work, sex and age group, unadjusted for seasonality, monthly
282-0028	Labour force survey estimates (LFS), by total and average usual and actual hours worked, main or all jobs, type of work, sex and age group, annual
282-0029	Labour force survey estimates (LFS), average days lost for personal reasons per full-time employee by North American Industry Classification System (NAICS), sex and age group, annual
282-0030	Labour force survey estimates (LFS), average days lost for personal reasons per full-time employee by National Occupational Classification for Statistics (NOC-S), sex and age group, annual
282-0031	Labour force survey estimates (LFS), multiple jobholders by North American Industry Classification System (NAICS), sex and age group, annual
282-0032	Labour force survey estimates (LFS), multiple jobholders by North American Industry Classification System (NAICS), sex and age group, unadjusted for seasonality, monthly
282-0033	Labour force survey estimates (LFS), multiple jobholders by National Occupational Classification for Statistics (NOC-S), sex and age group, unadjusted for seasonality, monthly
282-0034	Labour force survey estimates (LFS), multiple jobholders by National Occupational Classification for Statistics (NOC-S), sex and age group, annual
282-0035	Labour force survey estimates (LFS), multiple jobholders by usual hours worked at main and all jobs, unadjusted for seasonality, monthly
282-0036	Labour force survey estimates (LFS), multiple jobholders by usual hours worked at main and all jobs, annual
282-0037	Labour force survey estimates (LFS), job tenure by type of work, sex and age group, unadjusted for seasonality, monthly
282-0038	Labour force survey estimates (LFS), job tenure by type of work, sex and age group, annual
282-0039	Labour force survey estimates (LFS), job tenure by National Occupational Classification for Statistics (NOC-S) and sex, unadjusted for seasonality, monthly
282-0040	Labour force survey estimates (LFS), job tenure by National Occupational Classification for Statistics (NOC-S) and sex, annual
282-0041	Labour force survey estimates (LFS), job tenure by North American Industry Classification System (NAICS) and sex, unadjusted for seasonality, monthly
282-0042	Labour force survey estimates (LFS), job tenure by North American Industry Classification System (NAICS) and sex, annual
282-0047	Labour force survey estimates (LFS), duration of unemployment by sex and age group, unadjusted for seasonality, monthly
282-0048	Labour force survey estimates (LFS), duration of unemployment by sex and age group, annual
282-0049	Labour force survey estimates (LFS), unemployment by type of work sought and search method, sex and age group, unadjusted for seasonality, monthly

282-0050	Labour force survey estimates (LFS), unemployment by type of work sought and search method, sex and age group, annual
282-0051	Labour force survey estimates (LFS), retirement age by class of worker and sex, annual
282-0052	Labour force survey estimates (LFS), by census metropolitan area, sex and age group, 3-month moving average, unadjusted for seasonality, monthly
282-0053	Labour force survey estimates (LFS), by census metropolitan area, sex and age group, annual
282-0054	Labour force survey estimates (LFS), by provinces and economic regions, 3-month moving average, unadjusted for seasonality, monthly
282-0055	Labour force survey estimates (LFS), by provinces, territories and economic regions, annual
282-0056	Labour force survey estimates (LFS), employment by census metropolitan area and North American Industry Classification System (NAICS), 3-month moving average, unadjusted for seasonality, monthly
282-0057	Labour force survey estimates (LFS), employment by census metropolitan area and North American Industry Classification System (NAICS), annual
282-0058	Labour force survey estimates (LFS), employment by census metropolitan area and National Occupational Classification for Statistics (NOC-S), 3-month moving average, unadjusted for seasonality, monthly
282-0059	Labour force survey estimates (LFS), employment by census metropolitan area and National Occupational Classification for Statistics (NOC-S), annual
282-0060	Labour force survey estimates (LFS), employment by economic region and North American Industry Classification System (NAICS), 3-month moving average, unadjusted for seasonality, monthly
282-0061	Labour force survey estimates (LFS), employment by economic region and North American Industry Classification System (NAICS), annual
282-0062	Labour force survey estimates (LFS), employment by economic region and National Occupational Classification for Statistics (NOC-S), 3-month moving average, unadjusted for seasonality, monthly
282-0063	Labour force survey estimates (LFS), employment by economic region and National Occupational Classification for Statistics (NOC-S), annual
282-0064	Labour force survey estimates (LFS), by selected medium-sized cities, annual
282-0069	Labour force survey estimates (LFS), wages of employees by type of work, National Occupational Classification for Statistics (NOC-S), sex and age group, unadjusted for seasonality, monthly (current dollars)
282-0070	Labour force survey estimates (LFS), wages of employees by type of work, National Occupational Classification for Statistics (NOC-S), sex and age group, annual (current dollars)
282-0071	Labour force survey estimates (LFS), wages of employees by type of work, North American Industry Classification System (NAICS), sex and age group, unadjusted for seasonality, monthly (current dollars)

282-0072	Labour force survey estimates (LFS), wages of employees by type of work, North American Industry Classification System (NAICS), sex and age group, annual (current dollars)
282-0073	Labour force survey estimates (LFS), wages of employees by job permanence, union coverage, sex and age group, unadjusted for seasonality, monthly (current dollars)
282-0074	Labour force survey estimates (LFS), wages of employees by job permanence, union coverage, sex and age group, annual (current dollars)
282-0075	Labour force survey estimates (LFS), employees by establishment size, North American Industry Classification System (NAICS), sex and age group, unadjusted for seasonality, monthly
282-0076	Labour force survey estimates (LFS), employees by establishment size, North American Industry Classification System (NAICS), sex and age group, annual
282-0077	Labour force survey estimates (LFS), employees by union coverage, North American Industry Classification System (NAICS), sex and age group, unadjusted for seasonality, monthly
282-0078	Labour force survey estimates (LFS), employees by union coverage, North American Industry Classification System (NAICS), sex and age group, annual
282-0079	Labour force survey estimates (LFS), employees by job permanency, North American Industry Classification System (NAICS), sex and age group, unadjusted for seasonality, monthly
282-0080	Labour force survey estimates (LFS), employees by job permanency, North American Industry Classification System (NAICS), sex and age group, annual
282-0081	Labour force survey estimates (LFS), employees working overtime (weekly) by National Occupational Classification for Statistics (NOC-S), sex and age group, unadjusted for seasonality, monthly
282-0082	Labour force survey estimates (LFS), employees working overtime (weekly) by National Occupational Classification for Statistics (NOC-S), sex and age group, annual
282-0083	Labour force survey estimates (LFS), employees working overtime (weekly) by North American Industry Classification System (NAICS), sex and age group, unadjusted for seasonality, monthly
282-0084	Labour force survey estimates (LFS), employees working overtime (weekly) by North American Industry Classification System (NAICS), sex and age group, annual
282-0085	Labour force survey estimates (LFS), supplementary unemployment rates by sex and age group, unadjusted for seasonality, monthly
282-0086	Labour force survey estimates (LFS), supplementary unemployment rates by sex and age group, annual
282-0087	Labour force survey estimates (LFS), by sex and age group, seasonally adjusted and unadjusted, monthly
282-0088	Labour force survey estimates (LFS), employment by North American Industry Classification System (NAICS), seasonally adjusted and unadjusted, monthly
282-0089	Labour force survey estimates (LFS), employment by class of worker and sex, seasonally adjusted and unadjusted, monthly

282-0090	Labour force survey estimates (LFS), by census metropolitan area, 3-month moving average, seasonally adjusted and unadjusted, monthly
282-0091	Labour force survey estimates (LFS), by Montréal, Toronto and Vancouver census metropolitan areas, seasonally adjusted and unadjusted, monthly
282-0092	Labour force survey estimates (LFS), actual hours worked by North American Industry Classification System (NAICS), seasonally adjusted, monthly
282-0093	Labour force survey estimates (LFS), employment by National Occupational Classification for Statistics (NOC-S), seasonally adjusted, monthly
282-0094	Labour force survey estimates (LFS), by North American Industry Classification System (NAICS), Canada, seasonally adjusted, monthly
282-0095	Labour force survey estimates (LFS), by full- and part-time students during school months, sex and age group, annual
282-0096	Labour force survey estimates (LFS), by urban and rural areas based on 2001 census boundaries, sex and age group, unadjusted for seasonality, monthly
282-0097	Labour force survey estimates (LFS), by urban and rural areas based on 2001 census boundaries, sex and age group, annual
282-0098	Labour force survey estimates (LFS), employment by urban and rural areas based on 2001 census boundaries, class of worker and North American Industry Classification System (NAICS), unadjusted for seasonality, monthly
282-0099	Labour force survey estimates (LFS), employment by urban and rural areas based on 2001 census boundaries, class of worker and North American Industry Classification System (NAICS), annual
282-0100	Labour force survey estimates (LFS), by territories, sex and age group, 3-month moving average, seasonally adjusted and unadjusted, monthly

Selected surveys from Statistics Canada

3701	Labour Force Survey
------	---------------------

Selected summary tables from Statistics Canada

- *Labour force characteristics*
- *Employment by industry*
- *Selected economic indicators, Canada and United States (monthly and quarterly)*
- *Days lost per worker due to illness or disability, by sex, by province*

- *Economic indicators, by province and territory (monthly and quarterly)*
- *Labour force and participation rates by sex and age group*
- *Labour force, employed and unemployed, numbers and rates, by province*
- *Employment by industry and sex*
- *Full-time and part-time employment by sex and age group*
- *Labour force characteristics by age and sex*
- *Distribution of employed people, by industry, by province*
- *Labour force characteristics, population 15 years and older, by census metropolitan area*
- *Labour force characteristics, population 15 years and older, by economic region, by province*
- *Days lost per worker by cause, by provinces*
- *Days lost per worker by industry and sex*
- *People employed, by educational attainment*
- *Reasons for part-time work by sex and age group*
- *Self-employment, historical summary*
- *Employment by age, sex, type of work, class of worker and province (monthly)*
- *Employment by major industry groups, seasonally adjusted, by province (monthly)*
- *Actual hours worked per week by industry, seasonally adjusted (monthly)*
- *Average hourly wages of employees by selected characteristics and profession, unadjusted data, by province (monthly)*
- *Labour force characteristics, seasonally adjusted, by province (monthly)*
- *Labour force characteristics, unadjusted, by province (monthly)*
- *Labour force characteristics, seasonally adjusted, by census metropolitan area (3 month moving average)*
- *Labour force characteristics, unadjusted, by census metropolitan area (3 month moving average)*
- *Labour force characteristics, unadjusted, by economic region (3 month moving average)*

Statistical tables

Table 1
Labour force characteristics by age and sex, Canada, seasonally adjusted

	April 2010	May 2010	S.E. ¹	Change from			Percent change from		
				last month	last December	twelve months ago	last month	last December	twelve months ago
in thousands (except rates)									
15 years and over, both sexes									
Population	27,618.4	27,651.8	...	33.4	161.1	401.8	0.1	0.6	1.5
Labour force	18,570.3	18,603.0	28.2	32.7	165.8	226.9	0.2	0.9	1.2
Employment	17,071.9	17,096.6	28.2	24.7	215.2	284.0	0.1	1.3	1.7
Employment full-time	13,768.4	13,835.7	36.8	67.3	158.5	263.8	0.5	1.2	1.9
Employment part-time	3,303.5	3,261.0	33.5	-42.5	56.7	20.3	-1.3	1.8	0.6
Unemployment	1,498.3	1,506.4	25.1	8.1	-49.4	-57.0	0.5	-3.2	-3.6
Participation rate	67.2	67.3	0.1	0.1	0.2	-0.1
Unemployment rate	8.1	8.1	0.1	0.0	-0.3	-0.4
Employment rate	61.8	61.8	0.1	0.0	0.4	0.1
Part-time rate	19.4	19.1	0.2	-0.3	0.1	-0.2
15 to 24 years, both sexes									
Population	4,403.5	4,404.2	...	0.7	3.9	12.0	0.0	0.1	0.3
Labour force	2,874.6	2,871.8	16.8	-2.8	24.0	-27.1	-0.1	0.8	-0.9
Employment	2,438.1	2,436.8	15.5	-1.3	44.8	-20.1	-0.1	1.9	-0.8
Employment full-time	1,249.9	1,271.5	18.0	21.6	-0.8	-23.0	1.7	-0.1	-1.8
Employment part-time	1,188.1	1,165.3	18.5	-22.8	45.7	2.9	-1.9	4.1	0.2
Unemployment	436.5	435.0	14.6	-1.5	-20.9	-7.0	-0.3	-4.6	-1.6
Participation rate	65.3	65.2	0.4	-0.1	0.5	-0.8
Unemployment rate	15.2	15.1	0.5	-0.1	-0.9	-0.1
Employment rate	55.4	55.3	0.4	-0.1	0.9	-0.6
Part-time rate	48.7	47.8	0.7	-0.9	1.0	0.5
25 years and over, men									
Population	11,355.8	11,372.0	...	16.2	78.2	197.1	0.1	0.7	1.8
Labour force	8,308.7	8,346.5	14.8	37.8	78.5	130.8	0.5	0.9	1.6
Employment	7,707.3	7,712.5	16.1	5.2	102.9	182.5	0.1	1.4	2.4
Employment full-time	7,107.4	7,117.3	20.8	9.9	106.9	172.9	0.1	1.5	2.5
Employment part-time	599.9	595.2	16.5	-4.7	-4.0	9.6	-0.8	-0.7	1.6
Unemployment	601.4	634.0	15.0	32.6	-24.3	-51.7	5.4	-3.7	-7.5
Participation rate	73.2	73.4	0.1	0.2	0.2	-0.1
Unemployment rate	7.2	7.6	0.2	0.4	-0.4	-0.7
Employment rate	67.9	67.8	0.1	-0.1	0.4	0.4
Part-time rate	7.8	7.7	0.2	-0.1	-0.2	-0.1
25 years and over, women									
Population	11,859.1	11,875.6	...	16.5	79.0	192.7	0.1	0.7	1.6
Labour force	7,386.9	7,384.8	16.1	-2.1	63.4	123.3	0.0	0.9	1.7
Employment	6,926.6	6,947.4	15.8	20.8	67.6	121.6	0.3	1.0	1.8
Employment full-time	5,411.0	5,446.9	23.5	35.9	52.5	113.9	0.7	1.0	2.1
Employment part-time	1,515.5	1,500.5	22.0	-15.0	15.1	7.7	-1.0	1.0	0.5
Unemployment	460.4	437.4	13.0	-23.0	-4.2	1.6	-5.0	-1.0	0.4
Participation rate	62.3	62.2	0.1	-0.1	0.1	0.0
Unemployment rate	6.2	5.9	0.2	-0.3	-0.1	-0.1
Employment rate	58.4	58.5	0.1	0.1	0.2	0.1
Part-time rate	21.9	21.6	0.3	-0.3	0.0	-0.3
25 to 54 years, both sexes									
Population	14,597.4	14,608.7	...	11.3	43.9	107.6	0.1	0.3	0.7
Labour force	12,633.0	12,649.4	21.3	16.4	80.9	102.2	0.1	0.6	0.8
Employment	11,759.0	11,765.0	22.9	6.0	93.0	150.4	0.1	0.8	1.3
Unemployment	874.1	884.4	18.8	10.3	-12.2	-48.2	1.2	-1.4	-5.2
Participation rate	86.5	86.6	0.1	0.1	0.3	0.1
Unemployment rate	6.9	7.0	0.1	0.1	-0.1	-0.4
Employment rate	80.6	80.5	0.2	-0.1	0.4	0.4

See notes at the end of the table.

Table 1 – continued

Labour force characteristics by age and sex, Canada, seasonally adjusted

	April 2010	May 2010	S.E. ¹	Change from			Percent change from		
				last month	last December	twelve months ago	last month	last December	twelve months ago
in thousands (except rates)									
25 to 54 years, men									
Population	7,298.4	7,304.2	...	5.8	22.6	58.0	0.1	0.3	0.8
Labour force	6,597.7	6,629.2	13.7	31.5	37.1	41.5	0.5	0.6	0.6
Employment	6,110.1	6,111.7	15.8	1.6	50.4	87.7	0.0	0.8	1.5
Unemployment	487.7	517.5	14.0	29.8	-13.3	-46.2	6.1	-2.5	-8.2
Participation rate	90.4	90.8	0.2	0.4	0.3	-0.1
Unemployment rate	7.4	7.8	0.2	0.4	-0.3	-0.8
Employment rate	83.7	83.7	0.2	0.0	0.5	0.6
25 to 54 years, women									
Population	7,299.0	7,304.6	...	5.6	21.4	49.7	0.1	0.3	0.7
Labour force	6,035.3	6,020.1	15.6	-15.2	43.7	60.7	-0.3	0.7	1.0
Employment	5,648.9	5,653.2	15.7	4.3	42.5	62.6	0.1	0.8	1.1
Unemployment	386.4	366.9	12.1	-19.5	1.2	-2.0	-5.0	0.3	-0.5
Participation rate	82.7	82.4	0.2	-0.3	0.3	0.3
Unemployment rate	6.4	6.1	0.2	-0.3	0.0	-0.1
Employment rate	77.4	77.4	0.2	0.0	0.4	0.3
55 years and over, both sexes									
Population	8,617.4	8,638.9	...	21.5	113.3	282.2	0.2	1.3	3.4
Labour force	3,062.6	3,081.9	16.2	19.3	61.1	151.9	0.6	2.0	5.2
Employment	2,874.9	2,894.9	16.1	20.0	77.4	153.7	0.7	2.7	5.6
Unemployment	187.8	187.0	8.9	-0.8	-16.3	-1.8	-0.4	-8.0	-1.0
Participation rate	35.5	35.7	0.2	0.2	0.3	0.6
Unemployment rate	6.1	6.1	0.3	0.0	-0.6	-0.3
Employment rate	33.4	33.5	0.2	0.1	0.5	0.7
55 years and over, men									
Population	4,057.4	4,067.9	...	10.5	55.7	139.2	0.3	1.4	3.5
Labour force	1,711.0	1,717.3	10.9	6.3	41.4	89.4	0.4	2.5	5.5
Employment	1,597.2	1,600.7	10.9	3.5	52.3	94.7	0.2	3.4	6.3
Unemployment	113.8	116.5	6.7	2.7	-11.0	-5.4	2.4	-8.6	-4.4
Participation rate	42.2	42.2	0.3	0.0	0.4	0.8
Unemployment rate	6.7	6.8	0.4	0.1	-0.8	-0.7
Employment rate	39.4	39.3	0.3	-0.1	0.7	1.0
55 years and over, women									
Population	4,560.1	4,571.0	...	10.9	57.6	143.0	0.2	1.3	3.2
Labour force	1,351.7	1,364.6	11.1	12.9	19.7	62.5	1.0	1.5	4.8
Employment	1,277.7	1,294.2	10.9	16.5	25.1	59.0	1.3	2.0	4.8
Unemployment	74.0	70.5	5.7	-3.5	-5.4	3.6	-4.7	-7.1	5.4
Participation rate	29.6	29.9	0.2	0.3	0.1	0.5
Unemployment rate	5.5	5.2	0.4	-0.3	-0.4	0.1
Employment rate	28.0	28.3	0.2	0.3	0.2	0.4

1. Average standard error of change in two consecutive months (see "Sampling Errors" in Data Quality for further explanations).

Note(s): Related CANSIM table 282-0087.

Table 2
Employment by class of worker and industry, Canada, seasonally adjusted

	April 2010	May 2010	S.E. ¹	Change from			Percent change from		
				last month	last December	twelve months ago	last month	last December	twelve months ago
in thousands									
Class of worker									
Employees	14,374.8	14,427.6	33.7	52.8	286.5	277.0	0.4	2.0	2.0
Self-employed ²	2,697.1	2,669.1	23.6	-28.0	-71.2	7.0	-1.0	-2.6	0.3
Public/private sector employees									
Public sector employees	3,473.7	3,483.1	22.2	9.4	46.0	69.8	0.3	1.3	2.0
Private sector employees	10,901.1	10,944.5	34.6	43.4	240.5	207.2	0.4	2.2	1.9
Industry	17,071.9	17,096.6	28.2	24.7	215.2	284.0	0.1	1.3	1.7
Goods-producing sector	3,753.2	3,745.5	24.3	-7.7	28.9	43.3	-0.2	0.8	1.2
Agriculture	296.7	305.6	7.0	8.9	-9.7	-18.0	3.0	-3.1	-5.6
Forestry, fishing, mining, oil and gas	337.9	327.2	6.6	-10.7	21.5	11.0	-3.2	7.0	3.5
Utilities	151.2	150.2	4.7	-1.0	3.7	2.4	-0.7	2.5	1.6
Construction	1,220.3	1,212.7	15.2	-7.6	26.3	76.9	-0.6	2.2	6.8
Manufacturing	1,747.1	1,749.8	17.9	2.7	-12.8	-28.9	0.2	-0.7	-1.6
Services-producing sector	13,318.7	13,351.1	32.0	32.4	186.3	240.6	0.2	1.4	1.8
Trade	2,689.2	2,694.8	21.2	5.6	40.8	61.6	0.2	1.5	2.3
Transportation and warehousing	777.5	803.6	12.3	26.1	14.2	-22.2	3.4	1.8	-2.7
Finance, insurance, real estate and leasing	1,108.6	1,120.8	14.7	12.2	8.1	57.0	1.1	0.7	5.4
Professional, scientific and technical services	1,268.6	1,274.4	15.7	5.8	32.5	84.6	0.5	2.6	7.1
Business, building and other support services	673.9	682.3	12.8	8.4	66.2	-5.6	1.2	10.7	-0.8
Educational services	1,229.9	1,233.2	14.5	3.3	4.5	48.5	0.3	0.4	4.1
Health care and social assistance	2,011.6	2,029.4	16.2	17.8	35.4	82.3	0.9	1.8	4.2
Information, culture and recreation	785.0	759.7	13.0	-25.3	-15.6	-14.7	-3.2	-2.0	-1.9
Accommodation and food services	1,078.8	1,056.7	15.1	-22.1	1.6	-6.3	-2.0	0.2	-0.6
Other services	760.0	748.0	12.6	-12.0	-36.3	-60.3	-1.6	-4.6	-7.5
Public administration	935.6	948.3	11.5	12.7	34.9	15.7	1.4	3.8	1.7

1. Average standard error of change in two consecutive months (see "Sampling Errors" in Data Quality for further explanations).

2. Includes both incorporated and unincorporated working owners, self-employed persons who do not have a business and persons working in a family business without pay.

Note(s): Related CANSIM Tables 282-0088, 282-0089.

Table 3
Labour force characteristics by province, seasonally adjusted

	April 2010	May 2010	S.E. ¹	Change from			Percent change from		
				last month	last December	twelve months ago	last month	last December	twelve months ago
in thousands (except rates)									
Newfoundland and Labrador									
Population	431.5	431.6	...	0.1	1.1	3.4	0.0	0.3	0.8
Labour force	258.1	263.1	2.1	5.0	7.1	12.1	1.9	2.8	4.8
Employment	219.3	226.9	2.2	7.6	9.7	13.8	3.5	4.5	6.5
Employment full-time	187.3	193.8	2.5	6.5	6.9	10.3	3.5	3.7	5.6
Employment part-time	32.0	33.1	1.8	1.1	2.8	3.5	3.4	9.2	11.8
Unemployment	38.8	36.2	2.1	-2.6	-2.6	-1.7	-6.7	-6.7	-4.5
Participation rate	59.8	61.0	0.5	1.2	1.5	2.4
Unemployment rate	15.0	13.8	0.8	-1.2	-1.4	-1.3
Employment rate	50.8	52.6	0.5	1.8	2.1	2.8
Prince Edward Island									
Population	116.8	116.9	...	0.1	0.5	1.1	0.1	0.4	0.9
Labour force	80.2	79.2	0.6	-1.0	-0.6	0.2	-1.2	-0.8	0.3
Employment	72.6	70.7	0.7	-1.9	-0.5	1.8	-2.6	-0.7	2.6
Employment full-time	60.2	58.3	0.8	-1.9	0.1	0.4	-3.2	0.2	0.7
Employment part-time	12.3	12.5	0.7	0.2	-0.5	1.5	1.6	-3.8	13.6
Unemployment	7.6	8.5	0.7	0.9	-0.1	-1.6	11.8	-1.2	-15.8
Participation rate	68.7	67.8	0.6	-0.9	-0.8	-0.4
Unemployment rate	9.5	10.7	0.8	1.2	-0.1	-2.1
Employment rate	62.2	60.5	0.6	-1.7	-0.7	1.0
Nova Scotia									
Population	775.3	775.3	...	0.0	0.8	3.2	0.0	0.1	0.4
Labour force	496.6	501.1	2.7	4.5	1.2	2.0	0.9	0.2	0.4
Employment	453.8	457.3	2.9	3.5	5.3	2.3	0.8	1.2	0.5
Employment full-time	368.5	371.3	3.6	2.8	2.5	-4.2	0.8	0.7	-1.1
Employment part-time	85.3	86.0	3.1	0.7	2.7	6.5	0.8	3.2	8.2
Unemployment	42.8	43.8	2.6	1.0	-4.0	-0.2	2.3	-8.4	-0.5
Participation rate	64.1	64.6	0.4	0.5	0.1	0.0
Unemployment rate	8.6	8.7	0.5	0.1	-0.9	-0.1
Employment rate	58.5	59.0	0.4	0.5	0.6	0.1
New Brunswick									
Population	623.5	623.8	...	0.3	1.0	2.7	0.0	0.2	0.4
Labour force	401.5	401.5	2.4	0.0	0.3	1.3	0.0	0.1	0.3
Employment	367.3	366.0	2.5	-1.3	0.6	0.1	-0.4	0.2	0.0
Employment full-time	316.0	314.0	2.9	-2.0	4.5	6.0	-0.6	1.5	1.9
Employment part-time	51.3	52.1	2.5	0.8	-3.8	-5.8	1.6	-6.8	-10.0
Unemployment	34.2	35.5	2.2	1.3	-0.3	1.1	3.8	-0.8	3.2
Participation rate	64.4	64.4	0.4	0.0	0.0	0.0
Unemployment rate	8.5	8.8	0.5	0.3	-0.1	0.2
Employment rate	58.9	58.7	0.4	-0.2	0.0	-0.2
Quebec									
Population	6,496.8	6,502.5	...	5.7	30.8	76.0	0.1	0.5	1.2
Labour force	4,252.2	4,251.0	14.2	-1.2	38.8	17.0	0.0	0.9	0.4
Employment	3,914.6	3,909.3	14.5	-5.3	50.9	46.9	-0.1	1.3	1.2
Employment full-time	3,154.7	3,162.1	18.8	7.4	24.2	33.5	0.2	0.8	1.1
Employment part-time	760.0	747.2	16.7	-12.8	26.7	13.4	-1.7	3.7	1.8
Unemployment	337.6	341.7	13.3	4.1	-12.1	-29.9	1.2	-3.4	-8.0
Participation rate	65.5	65.4	0.2	-0.1	0.3	-0.5
Unemployment rate	7.9	8.0	0.3	0.1	-0.4	-0.8
Employment rate	60.3	60.1	0.2	-0.2	0.5	0.0

See notes at the end of the table.

Table 3 – continued

Labour force characteristics by province, seasonally adjusted

	April 2010	May 2010	S.E. ¹	Change from			Percent change from		
				last month	last December	twelve months ago	last month	last December	twelve months ago
in thousands (except rates)									
Ontario									
Population	10,777.6	10,791.0	...	13.4	63.4	154.2	0.1	0.6	1.4
Labour force	7,252.6	7,280.7	19.5	28.1	90.5	130.0	0.4	1.3	1.8
Employment	6,615.6	6,633.3	19.0	17.7	105.9	160.2	0.3	1.6	2.5
Employment full-time	5,337.8	5,363.3	24.6	25.5	61.9	147.3	0.5	1.2	2.8
Employment part-time	1,277.8	1,270.1	22.5	-7.7	44.2	13.0	-0.6	3.6	1.0
Unemployment	636.9	647.3	17.4	10.4	-15.5	-30.3	1.6	-2.3	-4.5
Participation rate	67.3	67.5	0.2	0.2	0.5	0.3
Unemployment rate	8.8	8.9	0.2	0.1	-0.3	-0.6
Employment rate	61.4	61.5	0.2	0.1	0.7	0.6
Manitoba									
Population	933.0	934.4	...	1.4	5.8	13.7	0.2	0.6	1.5
Labour force	651.1	658.2	2.6	7.1	17.3	18.8	1.1	2.7	2.9
Employment	619.0	620.4	2.8	1.4	16.4	12.1	0.2	2.7	2.0
Employment full-time	497.7	501.9	3.7	4.2	17.2	7.3	0.8	3.5	1.5
Employment part-time	121.2	118.5	3.3	-2.7	-0.7	4.8	-2.2	-0.6	4.2
Unemployment	32.2	37.8	2.2	5.6	0.8	6.7	17.4	2.2	21.5
Participation rate	69.8	70.4	0.3	0.6	1.4	1.0
Unemployment rate	4.9	5.7	0.3	0.8	-0.1	0.8
Employment rate	66.3	66.4	0.3	0.1	1.4	0.3
Saskatchewan									
Population	788.6	789.5	...	0.9	5.2	11.5	0.1	0.7	1.5
Labour force	556.8	553.4	2.4	-3.4	4.9	4.8	-0.6	0.9	0.9
Employment	527.8	526.0	2.5	-1.8	3.9	4.4	-0.3	0.7	0.8
Employment full-time	432.5	429.7	3.4	-2.8	4.1	6.7	-0.6	1.0	1.6
Employment part-time	95.3	96.3	3.2	1.0	-0.2	-2.2	1.0	-0.2	-2.2
Unemployment	29.0	27.4	1.9	-1.6	1.1	0.4	-5.5	4.2	1.5
Participation rate	70.6	70.1	0.3	-0.5	0.2	-0.4
Unemployment rate	5.2	5.0	0.3	-0.2	0.2	0.1
Employment rate	66.9	66.6	0.3	-0.3	0.0	-0.4
Alberta									
Population	2,912.6	2,917.8	...	5.2	22.5	62.6	0.2	0.8	2.2
Labour force	2,137.8	2,135.7	8.4	-2.1	-0.2	4.5	-0.1	0.0	0.2
Employment	1,979.4	1,994.1	8.8	14.7	-1.2	6.1	0.7	-0.1	0.3
Employment full-time	1,627.9	1,657.9	11.7	30.0	26.1	21.4	1.8	1.6	1.3
Employment part-time	351.4	336.2	10.9	-15.2	-27.3	-15.3	-4.3	-7.5	-4.4
Unemployment	158.5	141.6	7.2	-16.9	1.0	-1.6	-10.7	0.7	-1.1
Participation rate	73.4	73.2	0.3	-0.2	-0.6	-1.4
Unemployment rate	7.4	6.6	0.3	-0.8	0.0	-0.1
Employment rate	68.0	68.3	0.3	0.3	-0.6	-1.3
British Columbia									
Population	3,762.6	3,769.1	...	6.5	30.2	73.4	0.2	0.8	2.0
Labour force	2,483.3	2,479.1	10.6	-4.2	6.4	36.3	-0.2	0.3	1.5
Employment	2,302.6	2,292.5	10.5	-10.1	24.0	36.1	-0.4	1.1	1.6
Employment full-time	1,785.8	1,783.5	14.3	-2.3	11.1	35.2	-0.1	0.6	2.0
Employment part-time	516.8	509.0	13.3	-7.8	12.9	0.8	-1.5	2.6	0.2
Unemployment	180.7	186.6	8.5	5.9	-17.6	0.2	3.3	-8.6	0.1
Participation rate	66.0	65.8	0.3	-0.2	-0.3	-0.3
Unemployment rate	7.3	7.5	0.3	0.2	-0.8	-0.1
Employment rate	61.2	60.8	0.3	-0.4	0.1	-0.3

1. Average standard error of change in two consecutive months (see "Sampling Errors" in Data Quality for further explanations).

Note(s): Related CANSIM Table 282-0087.

Table 4-1
Selected labour force characteristics (seasonally adjusted) — Newfoundland and Labrador

	April 2010	May 2010	S.E. ¹	Change from			Percent change from		
				last month	last December	twelve months ago	last month	last December	twelve months ago
in thousands (except rates)									
Both sexes, 15 years and over									
Population	431.5	431.6	...	0.1	1.1	3.4	0.0	0.3	0.8
Labour force	258.1	263.1	2.1	5.0	7.1	12.1	1.9	2.8	4.8
Employment	219.3	226.9	2.2	7.6	9.7	13.8	3.5	4.5	6.5
Employment full-time	187.3	193.8	2.5	6.5	6.9	10.3	3.5	3.7	5.6
Unemployment	38.8	36.2	2.1	-2.6	-2.6	-1.7	-6.7	-6.7	-4.5
Participation rate	59.8	61.0	0.5	1.2	1.5	2.4
Unemployment rate	15.0	13.8	0.8	-1.2	-1.4	-1.3
Employment rate	50.8	52.6	0.5	1.8	2.1	2.8
Part-time rate	14.6	14.6	0.8	0.0	0.6	0.7
Both sexes, 15 to 24 years									
Population	60.8	60.7	...	-0.1	-0.1	-0.5	-0.2	-0.2	-0.8
Labour force	34.5	34.2	1.0	-0.3	0.7	0.5	-0.9	2.1	1.5
Employment	26.8	26.9	1.0	0.1	0.7	0.5	0.4	2.7	1.9
Unemployment	7.7	7.3	1.0	-0.4	0.0	0.1	-5.2	0.0	1.4
Participation rate	56.7	56.3	1.7	-0.4	1.2	1.2
Unemployment rate	22.3	21.3	2.5	-1.0	-0.5	-0.1
Employment rate	44.1	44.3	1.6	0.2	1.2	1.2
Part-time rate	41.4	41.6	3.5	0.2	2.3	0.3
Men, 25 years and over									
Population	178.6	178.7	...	0.1	0.6	1.7	0.1	0.3	1.0
Labour force	115.3	119.8	1.2	4.5	3.7	6.7	3.9	3.2	5.9
Employment	97.3	102.7	1.4	5.4	5.9	8.0	5.5	6.1	8.4
Unemployment	18.0	17.1	1.4	-0.9	-2.3	-1.4	-5.0	-11.9	-7.6
Participation rate	64.6	67.0	0.7	2.4	1.8	3.1
Unemployment rate	15.6	14.3	1.2	-1.3	-2.4	-2.1
Employment rate	54.5	57.5	0.8	3.0	3.1	4.0
Part-time rate	5.3	5.0	0.8	-0.4	0.6	0.5
Women, 25 years and over									
Population	192.1	192.2	...	0.1	0.7	2.2	0.1	0.4	1.2
Labour force	108.3	109.1	1.1	0.8	2.8	4.9	0.7	2.6	4.7
Employment	95.2	97.4	1.1	2.2	3.2	5.4	2.3	3.4	5.9
Unemployment	13.1	11.7	1.1	-1.4	-0.5	-0.5	-10.7	-4.1	-4.1
Participation rate	56.4	56.8	0.6	0.4	1.3	2.0
Unemployment rate	12.1	10.7	1.0	-1.4	-0.8	-1.0
Employment rate	49.6	50.7	0.6	1.1	1.5	2.3
Part-time rate	16.5	17.2	1.3	0.8	0.5	1.4
Industry	219.3	226.9	2.2	7.6	9.7	13.8	3.5	4.5	6.5
Goods-producing sector									
Agriculture	44.1	46.6	1.7	2.5	1.0	1.6	5.7	2.2	3.6
Forestry, fishing, mining, oil and gas	1.3	1.7	0.2	0.4	1.0	0.8	30.8	142.9	88.9
Utilities	15.9	16.7	1.0	0.8	2.0	2.7	5.0	13.6	19.3
Construction	2.0	2.1	0.3	0.1	0.1	0.2	5.0	5.0	10.5
Manufacturing	15.4	15.5	1.1	0.1	-0.8	-0.5	0.6	-4.9	-3.1
	9.5	10.6	1.0	1.1	-1.3	-1.5	11.6	-10.9	-12.4
Services-producing sector									
Trade	175.3	180.4	2.1	5.1	8.9	12.3	2.9	5.2	7.3
Transportation and warehousing	37.4	36.8	1.2	-0.6	2.0	2.7	-1.6	5.7	7.9
Finance, insurance, real estate and leasing	12.1	12.7	0.8	0.6	0.2	1.3	5.0	1.6	11.4
Professional, scientific and technical services	7.9	8.3	0.6	0.4	1.2	0.5	5.1	16.9	6.4
Business, building and other support services	6.6	6.7	0.6	0.1	-1.5	-1.4	1.5	-18.3	-17.3
Educational services	5.5	5.5	0.7	0.0	0.5	-2.0	0.0	10.0	-26.7
Health care and social assistance	17.8	17.5	0.9	-0.3	-0.2	1.3	-1.7	-1.1	8.0
Information, culture and recreation	37.1	38.6	1.1	1.5	2.9	4.5	4.0	8.1	13.2
Accommodation and food services	7.0	7.5	0.7	0.5	-0.5	-1.7	7.1	-6.2	-18.5
Other services	15.9	16.7	0.9	0.8	2.5	3.7	5.0	17.6	28.5
Public administration	10.0	11.4	0.8	1.4	0.5	1.5	14.0	4.6	15.2
	17.9	18.6	0.9	0.7	1.1	1.9	3.9	6.3	11.4

1. Average standard error of change in two consecutive months (see "Sampling Errors" in Data Quality for further explanations).

Note(s): Related CANSIM Tables 282-0087, 282-0088.

Table 4-2
Selected labour force characteristics (seasonally adjusted) — Prince Edward Island

	April 2010	May 2010	S.E. ¹	Change from			Percent change from		
				last month	last December	twelve months ago	last month	last December	twelve months ago
in thousands (except rates)									
Both sexes, 15 years and over									
Population	116.8	116.9	...	0.1	0.5	1.1	0.1	0.4	0.9
Labour force	80.2	79.2	0.6	-1.0	-0.6	0.2	-1.2	-0.8	0.3
Employment	72.6	70.7	0.7	-1.9	-0.5	1.8	-2.6	-0.7	2.6
Employment full-time	60.2	58.3	0.8	-1.9	0.1	0.4	-3.2	0.2	0.7
Unemployment	7.6	8.5	0.7	0.9	-0.1	-1.6	11.8	-1.2	-15.8
Participation rate	68.7	67.8	0.6	-0.9	-0.8	-0.4
Unemployment rate	9.5	10.7	0.8	1.2	-0.1	-2.1
Employment rate	62.2	60.5	0.6	-1.7	-0.7	1.0
Part-time rate	16.9	17.7	1.0	0.7	-0.6	1.7
Both sexes, 15 to 24 years									
Population	19.7	19.7	...	0.0	-0.1	-0.1	0.0	-0.5	-0.5
Labour force	13.5	13.4	0.4	-0.1	-0.3	-0.3	-0.7	-2.2	-2.2
Employment	11.6	11.6	0.4	0.0	0.2	0.4	0.0	1.8	3.6
Unemployment	1.9	1.8	0.4	-0.1	-0.5	-0.7	-5.3	-21.7	-28.0
Participation rate	68.5	68.0	1.9	-0.5	-1.2	-1.2
Unemployment rate	14.1	13.4	2.4	-0.7	-3.4	-4.8
Employment rate	58.9	58.9	1.9	0.0	1.3	2.3
Part-time rate	34.5	38.8	3.2	4.3	-0.7	-1.4
Men, 25 years and over									
Population	46.6	46.7	...	0.1	0.3	0.5	0.2	0.6	1.1
Labour force	34.2	33.6	0.4	-0.6	-0.7	-0.1	-1.8	-2.0	-0.3
Employment	31.0	29.7	0.4	-1.3	-0.7	0.6	-4.2	-2.3	2.1
Unemployment	3.2	3.9	0.4	0.7	0.1	-0.7	21.9	2.6	-15.2
Participation rate	73.4	71.9	0.8	-1.5	-2.0	-1.0
Unemployment rate	9.4	11.6	1.2	2.2	0.5	-2.0
Employment rate	66.5	63.6	0.9	-2.9	-1.9	0.6
Part-time rate	7.7	7.7	1.0	0.0	0.5	0.9
Women, 25 years and over									
Population	50.4	50.5	...	0.1	0.2	0.7	0.2	0.4	1.4
Labour force	32.5	32.1	0.3	-0.4	0.3	0.4	-1.2	0.9	1.3
Employment	29.9	29.4	0.4	-0.5	0.0	0.8	-1.7	0.0	2.8
Unemployment	2.6	2.7	0.4	0.1	0.3	-0.4	3.8	12.5	-12.9
Participation rate	64.5	63.6	0.7	-0.9	0.4	-0.1
Unemployment rate	8.0	8.4	1.1	0.4	0.9	-1.4
Employment rate	59.3	58.2	0.8	-1.1	-0.2	0.8
Part-time rate	19.4	19.0	1.5	-0.4	-2.4	3.3
Industry									
Industry	72.6	70.7	0.7	-1.9	-0.5	1.8	-2.6	-0.7	2.6
Goods-producing sector									
Goods-producing sector	17.2	16.3	0.6	-0.9	-1.8	-0.2	-5.2	-9.9	-1.2
Agriculture	3.5	3.5	0.3	0.0	-0.5	-0.1	0.0	-12.5	-2.8
Forestry, fishing, mining, oil and gas	2.8	2.6	0.3	-0.2	0.1	0.4	-7.1	4.0	18.2
Utilities	0.3	0.4	0.1	0.1	-0.1	0.2	33.3	-20.0	100.0
Construction	5.3	5.0	0.3	-0.3	-0.9	0.3	-5.7	-15.3	6.4
Manufacturing	5.3	5.0	0.3	-0.3	-0.2	-0.8	-5.7	-3.8	-13.8
Services-producing sector									
Services-producing sector	55.3	54.4	0.7	-0.9	1.4	2.0	-1.6	2.6	3.8
Trade	11.4	11.3	0.4	-0.1	0.1	1.6	-0.9	0.9	16.5
Transportation and warehousing	2.3	2.1	0.2	-0.2	0.2	0.0	-8.7	10.5	0.0
Finance, insurance, real estate and leasing	2.4	2.6	0.2	0.2	0.0	0.2	8.3	0.0	8.3
Professional, scientific and technical services	2.7	2.6	0.2	-0.1	0.5	0.6	-3.7	23.8	30.0
Business, building and other support services	2.8	2.6	0.3	-0.2	-0.3	-0.1	-7.1	-10.3	-3.7
Educational services	6.1	6.1	0.3	0.0	0.5	1.0	0.0	8.9	19.6
Health care and social assistance	8.6	8.3	0.3	-0.3	-0.1	0.3	-3.5	-1.2	3.8
Information, culture and recreation	2.4	2.2	0.2	-0.2	-0.2	-0.3	-8.3	-8.3	-12.0
Accommodation and food services	5.4	5.3	0.4	-0.1	0.3	-1.4	-1.9	6.0	-20.9
Other services	3.3	3.3	0.3	0.0	0.0	0.2	0.0	0.0	6.5
Public administration	7.9	7.9	0.3	0.0	0.3	-0.4	0.0	3.9	-4.8

1. Average standard error of change in two consecutive months (see "Sampling Errors" in Data Quality for further explanations).

Note(s): Related CANSIM Tables 282-0087, 282-0088.

Table 4-3
Selected labour force characteristics (seasonally adjusted) — Nova Scotia

	April 2010	May 2010	S.E. ¹	Change from			Percent change from		
				last month	last December	twelve months ago	last month	last December	twelve months ago
in thousands (except rates)									
Both sexes, 15 years and over									
Population	775.3	775.3	...	0.0	0.8	3.2	0.0	0.1	0.4
Labour force	496.6	501.1	2.7	4.5	1.2	2.0	0.9	0.2	0.4
Employment	453.8	457.3	2.9	3.5	5.3	2.3	0.8	1.2	0.5
Employment full-time	368.5	371.3	3.6	2.8	2.5	-4.2	0.8	0.7	-1.1
Unemployment	42.8	43.8	2.6	1.0	-4.0	-0.2	2.3	-8.4	-0.5
Participation rate	64.1	64.6	0.4	0.5	0.1	0.0
Unemployment rate	8.6	8.7	0.5	0.1	-0.9	-0.1
Employment rate	58.5	59.0	0.4	0.5	0.6	0.1
Part-time rate	18.8	18.8	0.7	0.0	0.4	1.3
Both sexes, 15 to 24 years									
Population	119.4	119.3	...	-0.1	-0.5	-1.0	-0.1	-0.4	-0.8
Labour force	78.9	78.6	1.6	-0.3	-3.4	-2.3	-0.4	-4.1	-2.8
Employment	68.3	67.2	1.6	-1.1	-1.1	-0.3	-1.6	-1.6	-0.4
Unemployment	10.6	11.4	1.5	0.8	-2.2	-2.1	7.5	-16.2	-15.6
Participation rate	66.1	65.9	1.3	-0.2	-2.5	-1.3
Unemployment rate	13.4	14.5	1.7	1.1	-2.1	-2.2
Employment rate	57.2	56.3	1.3	-0.9	-0.7	0.2
Part-time rate	44.5	46.3	2.5	1.8	0.3	2.0
Men, 25 years and over									
Population	312.6	312.7	...	0.1	0.6	2.1	0.0	0.2	0.7
Labour force	214.3	216.4	1.5	2.1	2.4	-0.1	1.0	1.1	0.0
Employment	197.3	198.4	1.7	1.1	3.6	0.8	0.6	1.8	0.4
Unemployment	17.0	18.0	1.6	1.0	-1.2	-0.9	5.9	-6.2	-4.8
Participation rate	68.6	69.2	0.5	0.6	0.6	-0.5
Unemployment rate	7.9	8.3	0.7	0.4	-0.7	-0.4
Employment rate	63.1	63.4	0.5	0.3	1.0	-0.2
Part-time rate	7.5	7.7	0.7	0.3	1.2	0.4
Women, 25 years and over									
Population	343.3	343.3	...	0.0	0.6	2.2	0.0	0.2	0.6
Labour force	203.4	206.1	1.5	2.7	2.2	4.5	1.3	1.1	2.2
Employment	188.2	191.7	1.5	3.5	2.8	1.7	1.9	1.5	0.9
Unemployment	15.2	14.5	1.3	-0.7	-0.5	2.9	-4.6	-3.3	25.0
Participation rate	59.2	60.0	0.4	0.8	0.5	0.9
Unemployment rate	7.5	7.0	0.6	-0.5	-0.4	1.2
Employment rate	54.8	55.8	0.4	1.0	0.7	0.1
Part-time rate	21.4	20.7	1.1	-0.7	-0.1	2.2
Industry									
Industry	453.8	457.3	2.9	3.5	5.3	2.3	0.8	1.2	0.5
Goods-producing sector									
Goods-producing sector	87.7	89.6	2.4	1.9	4.1	5.6	2.2	4.8	6.7
Agriculture	5.8	6.2	0.7	0.4	0.9	0.1	6.9	17.0	1.6
Forestry, fishing, mining, oil and gas	12.7	12.9	1.1	0.2	0.8	-0.1	1.6	6.6	-0.8
Utilities	3.9	3.7	0.4	-0.2	-0.2	0.9	-5.1	-5.1	32.1
Construction	32.0	32.5	1.5	0.5	0.4	2.8	1.6	1.2	9.4
Manufacturing	33.3	34.3	1.4	1.0	2.2	1.8	3.0	6.9	5.5
Services-producing sector									
Services-producing sector	366.0	367.7	3.0	1.7	1.2	-3.4	0.5	0.3	-0.9
Trade	74.2	75.3	2.1	1.1	-0.3	-0.1	1.5	-0.4	-0.1
Transportation and warehousing	18.3	18.4	1.1	0.1	-0.8	-3.3	0.5	-4.2	-15.2
Finance, insurance, real estate and leasing	25.6	24.7	1.0	-0.9	0.8	2.1	-3.5	3.3	9.3
Professional, scientific and technical services	24.7	25.9	1.1	1.2	2.8	3.6	4.9	12.1	16.1
Business, building and other support services	24.4	23.8	1.3	-0.6	1.2	-1.1	-2.5	5.3	-4.4
Educational services	34.2	33.7	1.4	-0.5	-3.5	-4.7	-1.5	-9.4	-12.2
Health care and social assistance	68.3	68.3	1.6	0.0	0.7	7.1	0.0	1.0	11.6
Information, culture and recreation	19.2	20.5	1.1	1.3	2.7	0.3	6.8	15.2	1.5
Accommodation and food services	29.2	30.8	1.4	1.6	2.4	-1.2	5.5	8.5	-3.8
Other services	17.8	17.6	1.2	-0.2	-2.9	-1.6	-1.1	-14.1	-8.3
Public administration	30.2	28.8	1.2	-1.4	-1.8	-4.4	-4.6	-5.9	-13.3

1. Average standard error of change in two consecutive months (see "Sampling Errors" in Data Quality for further explanations).

Note(s): Related CANSIM Tables 282-0087, 282-0088.

Table 4-4
Selected labour force characteristics (seasonally adjusted) — New Brunswick

	April 2010	May 2010	S.E. ¹	Change from			Percent change from		
				last month	last December	twelve months ago	last month	last December	twelve months ago
in thousands (except rates)									
Both sexes, 15 years and over									
Population	623.5	623.8	...	0.3	1.0	2.7	0.0	0.2	0.4
Labour force	401.5	401.5	2.4	0.0	0.3	1.3	0.0	0.1	0.3
Employment	367.3	366.0	2.5	-1.3	0.6	0.1	-0.4	0.2	0.0
Employment full-time	316.0	314.0	2.9	-2.0	4.5	6.0	-0.6	1.5	1.9
Unemployment	34.2	35.5	2.2	1.3	-0.3	1.1	3.8	-0.8	3.2
Participation rate	64.4	64.4	0.4	0.0	0.0	0.0
Unemployment rate	8.5	8.8	0.5	0.3	-0.1	0.2
Employment rate	58.9	58.7	0.4	-0.2	0.0	-0.2
Part-time rate	14.0	14.2	0.6	0.3	-1.1	-1.6
Both sexes, 15 to 24 years									
Population	92.5	92.4	...	-0.1	-0.6	-1.6	-0.1	-0.6	-1.7
Labour force	60.0	59.9	1.3	-0.1	-0.7	-1.3	-0.2	-1.2	-2.1
Employment	51.1	50.3	1.3	-0.8	0.1	-2.7	-1.6	0.2	-5.1
Unemployment	8.9	9.5	1.2	0.6	-0.9	1.3	6.7	-8.7	15.9
Participation rate	64.9	64.8	1.4	-0.1	-0.4	-0.3
Unemployment rate	14.8	15.9	1.7	1.1	-1.3	2.5
Employment rate	55.2	54.4	1.4	-0.8	0.4	-2.0
Part-time rate	35.6	35.8	2.3	0.2	-5.6	-4.6
Men, 25 years and over									
Population	256.3	256.5	...	0.2	0.9	2.1	0.1	0.4	0.8
Labour force	177.2	176.8	1.4	-0.4	-1.1	0.4	-0.2	-0.6	0.2
Employment	162.4	161.6	1.5	-0.8	-1.0	1.5	-0.5	-0.6	0.9
Unemployment	14.8	15.2	1.4	0.4	-0.1	-1.1	2.7	-0.7	-6.7
Participation rate	69.1	68.9	0.5	-0.2	-0.7	-0.4
Unemployment rate	8.4	8.6	0.8	0.2	0.0	-0.6
Employment rate	63.4	63.0	0.6	-0.4	-0.6	0.1
Part-time rate	6.0	5.8	0.7	-0.2	0.5	-0.2
Women, 25 years and over									
Population	274.7	274.9	...	0.2	0.7	2.2	0.1	0.3	0.8
Labour force	164.3	164.9	1.3	0.6	2.2	2.3	0.4	1.4	1.4
Employment	153.8	154.1	1.3	0.3	1.5	1.3	0.2	1.0	0.9
Unemployment	10.5	10.8	1.1	0.3	0.7	1.0	2.9	6.9	10.2
Participation rate	59.8	60.0	0.5	0.2	0.7	0.4
Unemployment rate	6.4	6.5	0.7	0.1	0.3	0.5
Employment rate	56.0	56.1	0.5	0.1	0.4	0.1
Part-time rate	15.1	16.0	1.0	0.9	-1.4	-1.5
Industry									
Goods-producing sector	367.3	366.0	2.5	-1.3	0.6	0.1	-0.4	0.2	0.0
Agriculture	85.0	81.3	2.1	-3.7	-0.6	-1.8	-4.4	-0.7	-2.2
Forestry, fishing, mining, oil and gas	6.8	7.1	0.6	0.3	0.3	0.1	4.4	4.4	1.4
Utilities	11.5	10.4	0.8	-1.1	-0.3	-0.2	-9.6	-2.8	-1.9
Construction	4.1	4.0	0.5	-0.1	-0.7	-0.1	-2.4	-14.9	-2.4
Manufacturing	28.4	29.9	1.3	1.5	3.9	3.6	5.3	15.0	13.7
Services-producing sector	34.1	29.9	1.3	-4.2	-3.8	-5.3	-12.3	-11.3	-15.1
Trade	282.3	284.8	2.5	2.5	1.3	2.1	0.9	0.5	0.7
Transportation and warehousing	57.8	58.3	1.6	0.5	3.3	3.8	0.9	6.0	7.0
Finance, insurance, real estate and leasing	20.5	20.1	0.9	-0.4	-0.1	1.5	-2.0	-0.5	8.1
Professional, scientific and technical services	15.7	15.9	0.9	0.2	-0.1	-0.3	1.3	-0.6	-1.9
Business, building and other support services	15.0	15.7	0.9	0.7	0.1	-2.2	4.7	0.6	-12.3
Educational services	19.1	17.6	1.1	-1.5	-1.6	-2.7	-7.9	-8.3	-13.3
Health care and social assistance	27.1	26.7	1.2	-0.4	-0.9	-1.2	-1.5	-3.3	-4.3
Information, culture and recreation	49.8	52.9	1.4	3.1	3.8	3.2	6.2	7.7	6.4
Accommodation and food services	13.3	13.1	0.8	-0.2	0.9	1.7	-1.5	7.4	14.9
Other services	21.0	21.7	1.1	0.7	-3.2	0.1	3.3	-12.9	0.5
Public administration	17.7	17.8	0.9	0.1	0.7	0.7	0.6	4.1	4.1
	25.1	24.9	1.1	-0.2	-1.8	-2.7	-0.8	-6.7	-9.8

1. Average standard error of change in two consecutive months (see "Sampling Errors" in Data Quality for further explanations).

Note(s): Related CANSIM Tables 282-0087, 282-0088.

Table 4-5
Selected labour force characteristics (seasonally adjusted) — Quebec

	April 2010	May 2010	S.E. ¹	Change from			Percent change from		
				last month	last December	twelve months ago	last month	last December	twelve months ago
in thousands (except rates)									
Both sexes, 15 years and over									
Population	6,496.8	6,502.5	...	5.7	30.8	76.0	0.1	0.5	1.2
Labour force	4,252.2	4,251.0	14.2	-1.2	38.8	17.0	0.0	0.9	0.4
Employment	3,914.6	3,909.3	14.5	-5.3	50.9	46.9	-0.1	1.3	1.2
Employment full-time	3,154.7	3,162.1	18.8	7.4	24.2	33.5	0.2	0.8	1.1
Unemployment	337.6	341.7	13.3	4.1	-12.1	-29.9	1.2	-3.4	-8.0
Participation rate	65.5	65.4	0.2	-0.1	0.3	-0.5
Unemployment rate	7.9	8.0	0.3	0.1	-0.4	-0.8
Employment rate	60.3	60.1	0.2	-0.2	0.5	0.0
Part-time rate	19.4	19.1	0.4	-0.3	0.4	0.1
Both sexes, 15 to 24 years									
Population	965.9	966.1	...	0.2	1.7	3.7	0.0	0.2	0.4
Labour force	653.8	656.4	8.3	2.6	15.0	-4.4	0.4	2.3	-0.7
Employment	553.9	560.0	8.1	6.1	24.0	9.2	1.1	4.5	1.7
Unemployment	99.9	96.4	7.5	-3.5	-9.0	-13.5	-3.5	-8.5	-12.3
Participation rate	67.7	67.9	0.9	0.2	1.4	-0.8
Unemployment rate	15.3	14.7	1.1	-0.6	-1.7	-1.9
Employment rate	57.3	58.0	0.8	0.7	2.4	0.8
Part-time rate	51.9	50.8	1.5	-1.2	1.3	0.3
Men, 25 years and over									
Population	2,705.6	2,708.6	...	3.0	15.4	37.8	0.1	0.6	1.4
Labour force	1,906.0	1,907.5	7.9	1.5	19.2	20.0	0.1	1.0	1.1
Employment	1,760.4	1,749.3	8.4	-11.1	13.6	26.0	-0.6	0.8	1.5
Unemployment	145.6	158.2	8.1	12.6	5.6	-6.0	8.7	3.7	-3.7
Participation rate	70.4	70.4	0.3	0.0	0.3	-0.3
Unemployment rate	7.6	8.3	0.4	0.7	0.2	-0.4
Employment rate	65.1	64.6	0.3	-0.5	0.2	0.1
Part-time rate	8.4	8.0	0.5	-0.4	-0.2	0.4
Women, 25 years and over									
Population	2,825.3	2,827.8	...	2.5	13.7	34.5	0.1	0.5	1.2
Labour force	1,692.4	1,687.1	8.0	-5.3	4.6	1.4	-0.3	0.3	0.1
Employment	1,600.4	1,600.0	8.0	-0.4	13.3	11.7	0.0	0.8	0.7
Unemployment	92.0	87.1	6.7	-4.9	-8.8	-10.4	-5.3	-9.2	-10.7
Participation rate	59.9	59.7	0.3	-0.2	-0.1	-0.6
Unemployment rate	5.4	5.2	0.4	-0.2	-0.5	-0.6
Employment rate	56.6	56.6	0.3	0.0	0.2	-0.3
Part-time rate	20.2	20.2	0.7	-0.1	0.5	-0.3
Industry	3,914.6	3,909.3	14.5	-5.3	50.9	46.9	-0.1	1.3	1.2
Goods-producing sector									
Agriculture	853.5	842.3	11.7	-11.2	-26.4	-29.1	-1.3	-3.0	-3.3
Forestry, fishing, mining, oil and gas	49.0	50.5	3.2	1.5	-4.8	-9.5	3.1	-8.7	-15.8
Utilities	33.1	31.4	1.9	-1.7	0.3	0.9	-5.1	1.0	3.0
Construction	38.3	35.1	2.3	-3.2	1.8	-1.7	-8.4	5.4	-4.6
Manufacturing	237.6	228.9	6.8	-8.7	9.4	24.5	-3.7	4.3	12.0
	495.6	496.4	9.4	0.8	-33.1	-43.3	0.2	-6.3	-8.0
Services-producing sector									
Trade	3,061.2	3,067.0	16.0	5.8	77.3	76.0	0.2	2.6	2.5
Transportation and warehousing	650.5	656.2	10.3	5.7	16.7	33.1	0.9	2.6	5.3
Finance, insurance, real estate and leasing	151.0	157.7	5.5	6.7	-5.5	-16.3	4.4	-3.4	-9.4
Professional, scientific and technical services	241.2	249.2	6.4	8.0	17.5	32.6	3.3	7.6	15.1
Business, building and other support services	292.4	288.3	7.6	-4.1	-1.4	14.3	-1.4	-0.5	5.2
Educational services	137.1	137.5	6.2	0.4	8.6	-11.9	0.3	6.7	-8.0
Health care and social assistance	259.1	261.1	7.1	2.0	-6.8	-0.4	0.8	-2.5	-0.2
Information, culture and recreation	504.1	498.8	8.6	-5.3	18.4	11.8	-1.1	3.8	2.4
Accommodation and food services	177.7	172.3	6.3	-5.4	-4.8	0.4	-3.0	-2.7	0.2
Other services	237.3	240.5	7.7	3.2	16.0	15.4	1.3	7.1	6.8
Public administration	171.1	164.7	5.9	-6.4	4.2	-25.4	-3.7	2.6	-13.4
	239.7	240.8	5.9	1.1	14.5	22.3	0.5	6.4	10.2

1. Average standard error of change in two consecutive months (see "Sampling Errors" in Data Quality for further explanations).

Note(s): Related CANSIM Tables 282-0087, 282-0088.

Table 4-6
Selected labour force characteristics (seasonally adjusted) — Ontario

	April 2010	May 2010	S.E. ¹	Change from			Percent change from		
				last month	last December	twelve months ago	last month	last December	twelve months ago
in thousands (except rates)									
Both sexes, 15 years and over									
Population	10,777.6	10,791.0	...	13.4	63.4	154.2	0.1	0.6	1.4
Labour force	7,252.6	7,280.7	19.5	28.1	90.5	130.0	0.4	1.3	1.8
Employment	6,615.6	6,633.3	19.0	17.7	105.9	160.2	0.3	1.6	2.5
Employment full-time	5,337.8	5,363.3	24.6	25.5	61.9	147.3	0.5	1.2	2.8
Unemployment	636.9	647.3	17.4	10.4	-15.5	-30.3	1.6	-2.3	-4.5
Participation rate	67.3	67.5	0.2	0.2	0.5	0.3
Unemployment rate	8.8	8.9	0.2	0.1	-0.3	-0.6
Employment rate	61.4	61.5	0.2	0.1	0.7	0.6
Part-time rate	19.3	19.1	0.3	-0.2	0.4	-0.3
Both sexes, 15 to 24 years									
Population	1,752.2	1,753.0	...	0.8	4.2	9.4	0.0	0.2	0.5
Labour force	1,098.4	1,093.5	11.8	-4.9	11.4	5.7	-0.4	1.1	0.5
Employment	907.8	908.0	10.4	0.2	25.9	8.7	0.0	2.9	1.0
Unemployment	190.6	185.5	10.2	-5.1	-14.5	-3.0	-2.7	-7.2	-1.6
Participation rate	62.7	62.4	0.7	-0.3	0.5	0.0
Unemployment rate	17.4	17.0	0.8	-0.4	-1.5	-0.3
Employment rate	51.8	51.8	0.6	0.0	1.4	0.2
Part-time rate	53.1	52.6	1.2	-0.6	2.2	1.5
Men, 25 years and over									
Population	4,383.0	4,388.8	...	5.8	27.4	68.6	0.1	0.6	1.6
Labour force	3,216.0	3,246.7	9.9	30.7	44.4	55.7	1.0	1.4	1.7
Employment	2,968.9	2,984.4	11.0	15.5	59.7	91.8	0.5	2.0	3.2
Unemployment	247.1	262.3	10.3	15.2	-15.3	-36.1	6.2	-5.5	-12.1
Participation rate	73.4	74.0	0.2	0.6	0.6	0.1
Unemployment rate	7.7	8.1	0.3	0.4	-0.6	-1.3
Employment rate	67.7	68.0	0.3	0.3	0.9	1.0
Part-time rate	7.9	7.9	0.4	0.1	-0.1	-0.2
Women, 25 years and over									
Population	4,642.4	4,649.1	...	6.7	31.6	76.1	0.1	0.7	1.7
Labour force	2,938.1	2,940.5	11.2	2.4	34.7	68.6	0.1	1.2	2.4
Employment	2,738.9	2,741.0	10.7	2.1	20.4	59.9	0.1	0.7	2.2
Unemployment	199.2	199.5	9.2	0.3	14.3	8.7	0.2	7.7	4.6
Participation rate	63.3	63.2	0.2	-0.1	0.3	0.4
Unemployment rate	6.8	6.8	0.3	0.0	0.4	0.2
Employment rate	59.0	59.0	0.2	0.0	0.1	0.4
Part-time rate	20.5	20.3	0.5	-0.2	0.2	-0.7
Industry	6,615.6	6,633.4	19.0	17.8	106.0	160.3	0.3	1.6	2.5
Goods-producing sector	1,398.6	1,393.8	16.2	-4.8	16.3	46.7	-0.3	1.2	3.5
Agriculture	83.2	84.8	3.6	1.6	1.2	3.1	1.9	1.4	3.8
Forestry, fishing, mining, oil and gas	40.8	39.5	2.2	-1.3	0.5	3.9	-3.2	1.3	11.0
Utilities	57.9	58.9	3.2	1.0	3.4	2.6	1.7	6.1	4.6
Construction	433.1	427.2	9.8	-5.9	13.2	27.4	-1.4	3.2	6.9
Manufacturing	783.6	783.5	12.9	-0.1	-1.9	9.8	0.0	-0.2	1.3
Services-producing sector	5,217.0	5,239.5	21.8	22.5	89.6	113.5	0.4	1.7	2.2
Trade	1,023.6	1,016.8	14.3	-6.8	31.9	26.3	-0.7	3.2	2.7
Transportation and warehousing	296.2	306.4	8.6	10.2	5.3	-8.6	3.4	1.8	-2.7
Finance, insurance, real estate and leasing	499.4	507.0	11.3	7.6	-9.2	10.0	1.5	-1.8	2.0
Professional, scientific and technical services	558.8	558.9	11.2	0.1	33.6	53.9	0.0	6.4	10.7
Business, building and other support services	271.9	284.8	8.9	12.9	23.9	11.5	4.7	9.2	4.2
Educational services	499.5	497.1	9.9	-2.4	17.6	43.2	-0.5	3.7	9.5
Health care and social assistance	708.2	718.1	10.6	9.9	-7.7	17.4	1.4	-1.1	2.5
Information, culture and recreation	315.6	313.4	9.2	-2.2	-8.6	-3.2	-0.7	-2.7	-1.0
Accommodation and food services	398.6	380.8	9.7	-17.8	-6.8	-19.2	-4.5	-1.8	-4.8
Other services	285.7	288.7	8.8	3.0	-12.7	-25.4	1.1	-4.2	-8.1
Public administration	359.5	367.4	7.7	7.9	22.0	7.6	2.2	6.4	2.1

1. Average standard error of change in two consecutive months (see "Sampling Errors" in Data Quality for further explanations).

Note(s): Related CANSIM Tables 282-0087, 282-0088.

Table 4-7
Selected labour force characteristics (seasonally adjusted) — Manitoba

	April 2010	May 2010	S.E. ¹	Change from			Percent change from		
				last month	last December	twelve months ago	last month	last December	twelve months ago
in thousands (except rates)									
Both sexes, 15 years and over									
Population	933.0	934.4	...	1.4	5.8	13.7	0.2	0.6	1.5
Labour force	651.1	658.2	2.6	7.1	17.3	18.8	1.1	2.7	2.9
Employment	619.0	620.4	2.8	1.4	16.4	12.1	0.2	2.7	2.0
Employment full-time	497.7	501.9	3.7	4.2	17.2	7.3	0.8	3.5	1.5
Unemployment	32.2	37.8	2.2	5.6	0.8	6.7	17.4	2.2	21.5
Participation rate	69.8	70.4	0.3	0.6	1.4	1.0
Unemployment rate	4.9	5.7	0.3	0.8	-0.1	0.8
Employment rate	66.3	66.4	0.3	0.1	1.4	0.3
Part-time rate	19.6	19.1	0.5	-0.5	-0.6	0.4
Both sexes, 15 to 24 years									
Population	161.1	161.2	...	0.1	0.6	1.2	0.1	0.4	0.8
Labour force	109.3	111.9	1.6	2.6	2.9	-2.0	2.4	2.7	-1.8
Employment	98.0	97.5	1.6	-0.5	0.1	-6.0	-0.5	0.1	-5.8
Unemployment	11.3	14.4	1.3	3.1	2.8	3.9	27.4	24.1	37.1
Participation rate	67.8	69.4	1.0	1.6	1.5	-1.8
Unemployment rate	10.3	12.9	1.1	2.6	2.3	3.7
Employment rate	60.8	60.5	1.0	-0.3	-0.1	-4.2
Part-time rate	43.3	40.7	1.8	-2.5	0.1	0.2
Men, 25 years and over									
Population	377.6	378.2	...	0.6	2.6	6.2	0.2	0.7	1.7
Labour force	287.9	290.6	1.3	2.7	5.4	8.1	0.9	1.9	2.9
Employment	277.8	278.8	1.5	1.0	9.1	7.5	0.4	3.4	2.8
Unemployment	10.2	11.8	1.2	1.6	-3.7	0.6	15.7	-23.9	5.4
Participation rate	76.2	76.8	0.4	0.6	0.9	0.9
Unemployment rate	3.5	4.1	0.4	0.6	-1.3	0.1
Employment rate	73.6	73.7	0.4	0.1	1.9	0.8
Part-time rate	7.8	8.3	0.6	0.5	-0.4	1.4
Women, 25 years and over									
Population	394.3	394.9	...	0.6	2.5	6.1	0.2	0.6	1.6
Labour force	253.9	255.7	1.5	1.8	9.0	12.7	0.7	3.6	5.2
Employment	243.2	244.1	1.6	0.9	7.3	10.5	0.4	3.1	4.5
Unemployment	10.7	11.6	1.2	0.9	1.7	2.2	8.4	17.2	23.4
Participation rate	64.4	64.8	0.4	0.4	1.9	2.3
Unemployment rate	4.2	4.5	0.5	0.3	0.5	0.6
Employment rate	61.7	61.8	0.4	0.1	1.5	1.7
Part-time rate	23.4	22.8	0.9	-0.6	-0.9	0.1
Industry									
Population	619.0	620.4	2.8	1.4	16.4	12.1	0.2	2.7	2.0
Goods-producing sector									
Agriculture	139.6	139.6	2.3	0.0	7.0	0.8	0.0	5.3	0.6
Forestry, fishing, mining, oil and gas	25.5	24.6	1.3	-0.9	-0.8	-0.8	-3.5	-3.1	-3.1
Utilities	6.9	7.2	0.6	0.3	1.5	0.2	4.3	26.3	2.9
Construction	7.6	7.8	0.5	0.2	-0.5	0.7	2.6	-6.0	9.9
Manufacturing	38.3	37.4	1.4	-0.9	1.9	-0.8	-2.3	5.4	-2.1
	61.2	62.6	1.6	1.4	4.8	1.6	2.3	8.3	2.6
Services-producing sector									
Trade	479.4	480.7	3.1	1.3	9.3	11.2	0.3	2.0	2.4
Transportation and warehousing	92.1	93.8	2.0	1.7	3.4	5.0	1.8	3.8	5.6
Finance, insurance, real estate and leasing	34.6	36.0	1.3	1.4	-1.9	-3.6	4.0	-5.0	-9.1
Professional, scientific and technical services	36.3	35.1	1.2	-1.2	-0.2	0.5	-3.3	-0.6	1.4
Business, building and other support services	26.1	27.0	1.1	0.9	1.8	0.6	3.4	7.1	2.3
Educational services	22.3	23.2	1.2	0.9	4.4	0.7	4.0	23.4	3.1
Health care and social assistance	52.6	52.5	1.5	-0.1	1.0	6.1	-0.2	1.9	13.1
Information, culture and recreation	89.0	90.3	1.8	1.3	5.7	4.8	1.5	6.7	5.6
Accommodation and food services	23.3	22.6	1.1	-0.7	-0.2	-3.1	-3.0	-0.9	-12.1
Other services	41.9	40.8	1.4	-1.1	3.8	6.4	-2.6	10.3	18.6
Public administration	25.6	25.5	1.2	-0.1	-3.7	-3.2	-0.4	-12.7	-11.1
	35.7	33.9	1.1	-1.8	-4.8	-3.0	-5.0	-12.4	-8.1

1. Average standard error of change in two consecutive months (see "Sampling Errors" in Data Quality for further explanations).

Note(s): Related CANSIM Tables 282-0087, 282-0088.

Table 4-8
Selected labour force characteristics (seasonally adjusted) — Saskatchewan

	April 2010	May 2010	S.E. ¹	Change from			Percent change from		
				last month	last December	twelve months ago	last month	last December	twelve months ago
in thousands (except rates)									
Both sexes, 15 years and over									
Population	788.6	789.5	...	0.9	5.2	11.5	0.1	0.7	1.5
Labour force	556.8	553.4	2.4	-3.4	4.9	4.8	-0.6	0.9	0.9
Employment	527.8	526.0	2.5	-1.8	3.9	4.4	-0.3	0.7	0.8
Employment full-time	432.5	429.7	3.4	-2.8	4.1	6.7	-0.6	1.0	1.6
Unemployment	29.0	27.4	1.9	-1.6	1.1	0.4	-5.5	4.2	1.5
Participation rate	70.6	70.1	0.3	-0.5	0.2	-0.4
Unemployment rate	5.2	5.0	0.3	-0.2	0.2	0.1
Employment rate	66.9	66.6	0.3	-0.3	0.0	-0.4
Part-time rate	18.1	18.3	0.6	0.3	-0.2	-0.6
Both sexes, 15 to 24 years									
Population	138.3	138.2	...	-0.1	-0.3	-1.2	-0.1	-0.2	-0.9
Labour force	96.5	96.3	1.5	-0.2	1.2	-4.1	-0.2	1.3	-4.1
Employment	87.6	88.5	1.5	0.9	1.4	-1.7	1.0	1.6	-1.9
Unemployment	8.9	7.8	1.2	-1.1	-0.2	-2.5	-12.4	-2.5	-24.3
Participation rate	69.8	69.7	1.1	-0.1	1.0	-2.3
Unemployment rate	9.2	8.1	1.2	-1.1	-0.3	-2.2
Employment rate	63.3	64.0	1.1	0.7	1.1	-0.7
Part-time rate	37.9	37.9	1.8	0.0	0.5	-2.1
Men, 25 years and over									
Population	318.6	319.2	...	0.6	3.3	7.1	0.2	1.0	2.3
Labour force	245.6	245.3	1.2	-0.3	3.5	6.6	-0.1	1.4	2.8
Employment	234.5	234.1	1.3	-0.4	4.2	5.3	-0.2	1.8	2.3
Unemployment	11.2	11.1	1.1	-0.1	-0.8	1.2	-0.9	-6.7	12.1
Participation rate	77.1	76.8	0.4	-0.3	0.3	0.3
Unemployment rate	4.6	4.5	0.4	-0.1	-0.4	0.4
Employment rate	73.6	73.3	0.4	-0.3	0.5	0.0
Part-time rate	6.2	6.5	0.6	0.4	-0.4	-0.2
Women, 25 years and over									
Population	331.7	332.2	...	0.5	2.4	5.7	0.2	0.7	1.7
Labour force	214.6	211.9	1.3	-2.7	0.3	2.5	-1.3	0.1	1.2
Employment	205.7	203.4	1.4	-2.3	-1.7	0.8	-1.1	-0.8	0.4
Unemployment	8.9	8.4	0.9	-0.5	1.9	1.6	-5.6	29.2	23.5
Participation rate	64.7	63.8	0.4	-0.9	-0.4	-0.3
Unemployment rate	4.1	4.0	0.4	-0.1	0.9	0.8
Employment rate	62.0	61.2	0.4	-0.8	-1.0	-0.9
Part-time rate	23.2	23.4	1.0	0.2	0.0	0.2
Industry	527.8	526.0	2.5	-1.8	3.9	4.4	-0.3	0.7	0.8
Goods-producing sector	144.8	146.6	2.3	1.8	5.2	9.0	1.2	3.7	6.5
Agriculture	43.0	41.6	1.5	-1.4	-3.9	-0.3	-3.3	-8.6	-0.7
Forestry, fishing, mining, oil and gas	26.9	27.4	1.1	0.5	0.4	4.6	1.9	1.5	20.2
Utilities	4.9	4.6	0.4	-0.3	-0.1	-0.1	-6.1	-2.1	-2.1
Construction	39.9	42.4	1.3	2.5	4.9	3.0	6.3	13.1	7.6
Manufacturing	30.1	30.7	1.0	0.6	3.9	1.8	2.0	14.6	6.2
Services-producing sector	383.0	379.4	2.8	-3.6	-1.3	-4.6	-0.9	-0.3	-1.2
Trade	78.3	77.9	1.8	-0.4	-1.6	-3.4	-0.5	-2.0	-4.2
Transportation and warehousing	25.9	25.7	1.0	-0.2	0.3	1.8	-0.8	1.2	7.5
Finance, insurance, real estate and leasing	29.8	30.6	1.0	0.8	-0.6	0.8	2.7	-1.9	2.7
Professional, scientific and technical services	26.2	24.3	0.9	-1.9	0.8	2.2	-7.3	3.4	10.0
Business, building and other support services	12.9	13.1	0.8	0.2	0.3	1.3	1.6	2.3	11.0
Educational services	39.8	40.2	1.3	0.4	-0.5	-0.2	1.0	-1.2	-0.5
Health care and social assistance	67.7	66.6	1.4	-1.1	0.2	2.2	-1.6	0.3	3.4
Information, culture and recreation	18.9	18.4	1.0	-0.5	-0.4	-2.5	-2.6	-2.1	-12.0
Accommodation and food services	32.2	29.7	1.3	-2.5	0.8	-2.5	-7.8	2.8	-7.8
Other services	22.6	23.1	1.1	0.5	-0.3	-1.6	2.2	-1.3	-6.5
Public administration	28.8	29.6	1.0	0.8	-0.6	-2.8	2.8	-2.0	-8.6

1. Average standard error of change in two consecutive months (see "Sampling Errors" in Data Quality for further explanations).

Note(s): Related CANSIM Tables 282-0087, 282-0088.

Table 4-9
Selected labour force characteristics (seasonally adjusted) — Alberta

	April 2010	May 2010	S.E. ¹	Change from			Percent change from		
				last month	last December	twelve months ago	last month	last December	twelve months ago
in thousands (except rates)									
Both sexes, 15 years and over									
Population	2,912.6	2,917.8	...	5.2	22.5	62.6	0.2	0.8	2.2
Labour force	2,137.8	2,135.7	8.4	-2.1	-0.2	4.5	-0.1	0.0	0.2
Employment	1,979.4	1,994.1	8.8	14.7	-1.2	6.1	0.7	-0.1	0.3
Employment full-time	1,627.9	1,657.9	11.7	30.0	26.1	21.4	1.8	1.6	1.3
Unemployment	158.5	141.6	7.2	-16.9	1.0	-1.6	-10.7	0.7	-1.1
Participation rate	73.4	73.2	0.3	-0.2	-0.6	-1.4
Unemployment rate	7.4	6.6	0.3	-0.8	0.0	-0.1
Employment rate	68.0	68.3	0.3	0.3	-0.6	-1.3
Part-time rate	17.8	16.9	0.5	-0.9	-1.4	-0.8
Both sexes, 15 to 24 years									
Population	505.6	505.5	...	-0.1	-2.1	-1.4	0.0	-0.4	-0.3
Labour force	357.7	354.9	5.2	-2.8	-2.0	-9.3	-0.8	-0.6	-2.6
Employment	312.5	310.4	4.9	-2.1	-1.6	-8.9	-0.7	-0.5	-2.8
Unemployment	45.2	44.5	4.4	-0.7	-0.4	-0.4	-1.5	-0.9	-0.9
Participation rate	70.7	70.2	1.0	-0.5	-0.1	-1.6
Unemployment rate	12.6	12.5	1.1	-0.1	-0.1	0.2
Employment rate	61.8	61.4	1.0	-0.4	-0.1	-1.6
Part-time rate	37.8	36.2	1.7	-1.6	-1.4	-1.5
Men, 25 years and over									
Population	1,221.7	1,224.4	...	2.7	12.6	35.6	0.2	1.0	3.0
Labour force	980.7	985.2	4.3	4.5	1.5	6.1	0.5	0.2	0.6
Employment	921.3	928.4	5.0	7.1	2.3	10.4	0.8	0.2	1.1
Unemployment	59.4	56.8	4.3	-2.6	-0.8	-4.3	-4.4	-1.4	-7.0
Participation rate	80.3	80.5	0.4	0.2	-0.7	-1.9
Unemployment rate	6.1	5.8	0.4	-0.3	-0.1	-0.4
Employment rate	75.4	75.8	0.4	0.4	-0.6	-1.4
Part-time rate	5.4	4.9	0.5	-0.6	-1.5	-1.7
Women, 25 years and over									
Population	1,185.3	1,187.9	...	2.6	12.0	28.5	0.2	1.0	2.5
Labour force	799.5	795.6	4.7	-3.9	0.3	7.7	-0.5	0.0	1.0
Employment	745.6	755.3	4.8	9.7	-2.0	4.6	1.3	-0.3	0.6
Unemployment	53.9	40.2	3.5	-13.7	2.2	3.0	-25.4	5.8	8.1
Participation rate	67.5	67.0	0.4	-0.5	-0.6	-1.0
Unemployment rate	6.7	5.1	0.4	-1.6	0.3	0.4
Employment rate	62.9	63.6	0.4	0.7	-0.8	-1.1
Part-time rate	24.6	23.6	1.0	-0.9	-1.1	0.9
Industry	1,979.4	1,994.1	8.8	14.7	-1.2	6.1	0.7	-0.1	0.3
Goods-producing sector	526.5	539.3	9.1	12.8	26.1	6.7	2.4	5.1	1.3
Agriculture	45.9	53.6	3.3	7.7	0.0	-6.2	16.8	0.0	-10.4
Forestry, fishing, mining, oil and gas	140.8	136.6	4.7	-4.2	11.0	-4.3	-3.0	8.8	-3.1
Utilities	17.1	18.1	1.8	1.0	-0.9	-2.9	5.8	-4.7	-13.8
Construction	196.8	202.3	6.1	5.5	3.3	15.5	2.8	1.7	8.3
Manufacturing	125.8	128.8	4.8	3.0	12.8	4.7	2.4	11.0	3.8
Services-producing sector	1,452.9	1,454.8	10.6	1.9	-27.4	-0.7	0.1	-1.8	0.0
Trade	294.7	296.2	7.4	1.5	-8.2	-6.7	0.5	-2.7	-2.2
Transportation and warehousing	98.5	103.1	4.5	4.6	2.5	-0.8	4.7	2.5	-0.8
Finance, insurance, real estate and leasing	102.6	108.6	4.1	6.0	4.0	-0.4	5.8	3.8	-0.4
Professional, scientific and technical services	150.8	153.0	5.1	2.2	7.4	2.8	1.5	5.1	1.9
Business, building and other support services	70.4	67.3	3.9	-3.1	2.0	-2.2	-4.4	3.1	-3.2
Educational services	124.0	126.7	4.6	2.7	-13.0	-5.3	2.2	-9.3	-4.0
Health care and social assistance	214.5	215.7	5.2	1.2	6.9	21.4	0.6	3.3	11.0
Information, culture and recreation	86.8	77.0	3.9	-9.8	-5.2	-2.6	-11.3	-6.3	-3.3
Accommodation and food services	129.0	127.7	5.1	-1.3	-5.6	1.5	-1.0	-4.2	1.2
Other services	97.8	94.6	4.3	-3.2	-12.9	-2.5	-3.3	-12.0	-2.6
Public administration	83.8	84.8	3.6	1.0	-5.5	-5.8	1.2	-6.1	-6.4

1. Average standard error of change in two consecutive months (see "Sampling Errors" in Data Quality for further explanations).

Note(s): Related CANSIM Tables 282-0087, 282-0088.

Table 4-10
Selected labour force characteristics (seasonally adjusted) — British Columbia

	April 2010	May 2010	S.E. ¹	Change from			Percent change from		
				last month	last December	twelve months ago	last month	last December	twelve months ago
in thousands (except rates)									
Both sexes, 15 years and over									
Population	3,762.6	3,769.1	...	6.5	30.2	73.4	0.2	0.8	2.0
Labour force	2,483.3	2,479.1	10.6	-4.2	6.4	36.3	-0.2	0.3	1.5
Employment	2,302.6	2,292.5	10.5	-10.1	24.0	36.1	-0.4	1.1	1.6
Employment full-time	1,785.8	1,783.5	14.3	-2.3	11.1	35.2	-0.1	0.6	2.0
Unemployment	180.7	186.6	8.5	5.9	-17.6	0.2	3.3	-8.6	0.1
Participation rate	66.0	65.8	0.3	-0.2	-0.3	-0.3
Unemployment rate	7.3	7.5	0.3	0.2	-0.8	-0.1
Employment rate	61.2	60.8	0.3	-0.4	0.1	-0.3
Part-time rate	22.4	22.2	0.6	-0.2	0.3	-0.3
Both sexes, 15 to 24 years									
Population	587.9	588.1	...	0.2	1.0	3.5	0.0	0.2	0.6
Labour force	371.9	372.7	6.0	0.8	-0.9	-9.7	0.2	-0.2	-2.5
Employment	320.5	316.4	5.8	-4.1	-4.8	-19.4	-1.3	-1.5	-5.8
Unemployment	51.4	56.3	4.8	4.9	3.9	9.8	9.5	7.4	21.1
Participation rate	63.3	63.4	1.0	0.1	-0.2	-2.0
Unemployment rate	13.8	15.1	1.2	1.3	1.1	2.9
Employment rate	54.5	53.8	1.0	-0.7	-0.9	-3.6
Part-time rate	50.2	48.5	2.0	-1.7	0.7	0.7
Men, 25 years and over									
Population	1,555.1	1,558.2	...	3.1	14.6	35.4	0.2	0.9	2.3
Labour force	1,131.5	1,124.6	5.4	-6.9	0.3	27.6	-0.6	0.0	2.5
Employment	1,056.5	1,045.0	5.8	-11.5	6.1	30.5	-1.1	0.6	3.0
Unemployment	75.0	79.6	5.2	4.6	-5.8	-2.9	6.1	-6.8	-3.5
Participation rate	72.8	72.2	0.4	-0.6	-0.6	0.2
Unemployment rate	6.6	7.1	0.5	0.5	-0.5	-0.4
Employment rate	67.9	67.1	0.4	-0.8	-0.2	0.5
Part-time rate	9.4	9.8	0.6	0.4	0.6	0.4
Women, 25 years and over									
Population	1,619.6	1,622.7	...	3.1	14.5	34.4	0.2	0.9	2.2
Labour force	979.9	981.8	6.2	1.9	7.1	18.3	0.2	0.7	1.9
Employment	925.6	931.1	6.1	5.5	22.7	25.0	0.6	2.5	2.8
Unemployment	54.3	50.7	4.7	-3.6	-15.7	-6.7	-6.6	-23.6	-11.7
Participation rate	60.5	60.5	0.4	0.0	-0.1	-0.2
Unemployment rate	5.5	5.2	0.5	-0.3	-1.6	-0.8
Employment rate	57.1	57.4	0.4	0.3	0.9	0.4
Part-time rate	27.7	27.2	0.9	-0.5	0.0	-0.7
Industry	2,302.6	2,292.5	10.5	-10.1	24.0	36.1	-0.4	1.1	1.6
Goods-producing sector									
Agriculture	455.3	449.6	9.1	-5.7	14.1	5.2	-1.3	3.2	1.2
Forestry, fishing, mining, oil and gas	32.6	30.1	2.8	-2.5	-3.6	-4.2	-7.7	-10.7	-12.2
Utilities	46.6	41.9	2.9	-4.7	4.4	3.0	-10.1	11.7	7.7
Construction	16.2	16.1	1.5	-0.1	1.7	2.9	-0.6	11.8	22.0
Manufacturing	197.0	198.0	6.4	1.0	4.2	3.4	0.5	2.2	1.7
	162.9	163.6	5.7	0.7	7.5	0.2	0.4	4.8	0.1
Services-producing sector									
Trade	1,847.3	1,842.9	11.8	-4.4	9.9	30.9	-0.2	0.5	1.7
Transportation and warehousing	376.2	373.8	8.2	-2.4	0.2	-1.9	-0.6	0.1	-0.5
Finance, insurance, real estate and leasing	118.5	121.1	4.6	2.6	8.3	6.4	2.2	7.4	5.6
Professional, scientific and technical services	142.8	141.2	5.1	-1.6	-7.6	9.1	-1.1	-5.1	6.9
Business, building and other support services	162.2	175.6	5.9	13.4	-0.9	6.4	8.3	-0.5	3.8
Educational services	96.3	97.5	4.9	1.2	9.2	-1.9	1.2	10.4	-1.9
Health care and social assistance	170.3	169.2	5.6	-1.1	4.3	10.4	-0.6	2.6	6.5
Information, culture and recreation	266.4	268.3	6.2	1.9	4.9	10.5	0.7	1.9	4.1
Accommodation and food services	117.7	111.8	5.0	-5.9	-3.9	-4.2	-5.0	-3.4	-3.6
Other services	174.8	168.3	6.2	-6.5	-2.3	-6.5	-3.7	-1.3	-3.7
Public administration	109.3	102.7	4.5	-6.6	-6.8	0.3	-6.0	-6.2	0.3
	112.8	113.6	4.3	0.8	4.8	2.5	0.7	4.4	2.3

1. Average standard error of change in two consecutive months (see "Sampling Errors" in Data Quality for further explanations).

Note(s): Related CANSIM Tables 282-0087, 282-0088.

Table 5-1
Labour force characteristics by census metropolitan area (seasonally adjusted) — 3 month moving average

	April 2010	May 2010	S.E. ¹	Change from			Percent change from		
				last month	last December	twelve months ago	last month	last December	twelve months ago
in thousands (except rates)									
St. John's, Newfoundland and Labrador									
Population	160.0	160.2	...	0.2	1.3	3.4	0.1	0.8	2.2
Labour force	110.7	110.9	0.8	0.2	1.6	3.4	0.2	1.5	3.2
Employment	102.3	102.8	0.8	0.5	3.3	3.1	0.5	3.3	3.1
Unemployment	8.4	8.1	0.4	-0.3	-1.7	0.3	-3.6	-17.3	3.8
Participation rate	69.2	69.2	0.5	0.0	0.4	0.6
Unemployment rate	7.6	7.3	0.4	-0.3	-1.7	0.0
Employment rate	63.9	64.2	0.5	0.3	1.6	0.6
Halifax, Nova Scotia									
Population	324.2	324.4	...	0.2	1.6	4.0	0.1	0.5	1.2
Labour force	233.1	233.3	1.1	0.2	2.7	3.2	0.1	1.2	1.4
Employment	218.9	219.8	1.2	0.9	4.5	3.5	0.4	2.1	1.6
Unemployment	14.2	13.5	0.7	-0.7	-1.8	-0.3	-4.9	-11.8	-2.2
Participation rate	71.9	71.9	0.3	0.0	0.5	0.1
Unemployment rate	6.1	5.8	0.3	-0.3	-0.8	-0.2
Employment rate	67.5	67.8	0.4	0.3	1.1	0.3
Saint John, New Brunswick									
Population	106.0	106.0	...	0.0	0.2	0.7	0.0	0.2	0.7
Labour force	70.8	70.8	0.8	0.0	-0.8	-0.6	0.0	-1.1	-0.8
Employment	65.9	65.9	0.7	0.0	-0.9	-1.7	0.0	-1.3	-2.5
Unemployment	4.9	5.0	0.3	0.1	0.2	1.2	2.0	4.2	31.6
Participation rate	66.8	66.8	0.7	0.0	-0.9	-1.0
Unemployment rate	6.9	7.1	0.5	0.2	0.4	1.8
Employment rate	62.2	62.2	0.7	0.0	-0.9	-2.0
Saguenay, Quebec									
Population	124.6	124.6	...	0.0	-0.1	-0.2	0.0	-0.1	-0.2
Labour force	75.8	76.3	0.7	0.5	-0.1	1.0	0.7	-0.1	1.3
Employment	70.0	70.4	0.7	0.4	-0.4	2.2	0.6	-0.6	3.2
Unemployment	5.9	5.9	0.4	0.0	0.3	-1.2	0.0	5.4	-16.9
Participation rate	60.8	61.2	0.6	0.4	-0.1	0.9
Unemployment rate	7.8	7.7	0.5	-0.1	0.4	-1.7
Employment rate	56.2	56.5	0.6	0.3	-0.3	1.9
Québec, Quebec									
Population	622.2	622.7	...	0.5	2.8	7.1	0.1	0.5	1.2
Labour force	413.6	417.6	3.3	4.0	4.9	4.0	1.0	1.2	1.0
Employment	394.3	394.7	3.2	0.4	2.3	-0.3	0.1	0.6	-0.1
Unemployment	19.4	22.9	1.4	3.5	2.6	4.3	18.0	12.8	23.1
Participation rate	66.5	67.1	0.5	0.6	0.5	-0.1
Unemployment rate	4.7	5.5	0.3	0.8	0.6	1.0
Employment rate	63.4	63.4	0.5	0.0	0.1	-0.8
Trois-Rivières, Quebec									
Population	123.6	123.7	...	0.1	0.5	1.3	0.1	0.4	1.1
Labour force	70.9	71.7	0.7	0.8	-3.8	-0.6	1.1	-5.0	-0.8
Employment	64.1	65.1	0.8	1.0	-3.1	-1.3	1.6	-4.5	-2.0
Unemployment	6.7	6.5	0.4	-0.2	-0.7	0.6	-3.0	-9.7	10.2
Participation rate	57.4	58.0	0.6	0.6	-3.3	-1.1
Unemployment rate	9.4	9.1	0.5	-0.3	-0.4	0.9
Employment rate	51.9	52.6	0.6	0.7	-2.8	-1.6

See notes at the end of the table.

Table 5-1 – continued

Labour force characteristics by census metropolitan area (seasonally adjusted) — 3 month moving average

	April 2010	May 2010	S.E. ¹	Change from			Percent change from		
				last month	last December	twelve months ago	last month	last December	twelve months ago
in thousands (except rates)									
Sherbrooke, Quebec									
Population	141.7	141.8	...	0.1	0.8	2.0	0.1	0.6	1.4
Labour force	89.0	89.9	0.8	0.9	-0.5	0.4	1.0	-0.6	0.4
Employment	81.4	82.3	0.8	0.9	-3.1	0.7	1.1	-3.6	0.9
Unemployment	7.6	7.6	0.3	0.0	2.6	-0.3	0.0	52.0	-3.8
Participation rate	62.8	63.4	0.6	0.6	-0.7	-0.6
Unemployment rate	8.5	8.5	0.4	0.0	3.0	-0.3
Employment rate	57.4	58.0	0.6	0.6	-2.6	-0.4
Montréal, Quebec									
Population	3,132.2	3,135.3	...	3.1	17.1	41.3	0.1	0.5	1.3
Labour force	2,124.3	2,130.5	6.9	6.2	47.3	56.9	0.3	2.3	2.7
Employment	1,933.2	1,942.3	7.2	9.1	48.6	65.1	0.5	2.6	3.5
Unemployment	191.2	188.2	4.8	-3.0	-1.3	-8.2	-1.6	-0.7	-4.2
Participation rate	67.8	68.0	0.2	0.2	1.2	1.0
Unemployment rate	9.0	8.8	0.2	-0.2	-0.3	-0.7
Employment rate	61.7	61.9	0.2	0.2	1.2	1.2
Ottawa-Gatineau, Ontario/Quebec									
Population	985.9	987.1	...	1.2	5.6	13.6	0.1	0.6	1.4
Labour force	716.4	719.3	3.4	2.9	14.6	28.4	0.4	2.1	4.1
Employment	673.4	676.0	3.6	2.6	13.3	26.3	0.4	2.0	4.0
Unemployment	43.0	43.3	1.6	0.3	1.3	2.1	0.7	3.1	5.1
Participation rate	72.7	72.9	0.3	0.2	1.1	1.9
Unemployment rate	6.0	6.0	0.2	0.0	0.0	0.0
Employment rate	68.3	68.5	0.4	0.2	1.0	1.8
Ottawa-Gatineau, Quebec part, Ontario/Quebec									
Population	251.1	251.4	...	0.3	1.8	4.2	0.1	0.7	1.7
Labour force	182.8	180.2	1.3	-2.6	-3.5	5.5	-1.4	-1.9	3.1
Employment	172.1	168.9	1.4	-3.2	-3.9	3.7	-1.9	-2.3	2.2
Unemployment	10.7	11.3	0.6	0.6	0.4	1.8	5.6	3.7	18.9
Participation rate	72.8	71.7	0.5	-1.1	-1.9	1.0
Unemployment rate	5.9	6.3	0.3	0.4	0.4	0.9
Employment rate	68.5	67.2	0.6	-1.3	-2.0	0.4
Ottawa-Gatineau, Ontario part, Ontario/Quebec									
Population	734.9	735.7	...	0.8	3.8	9.4	0.1	0.5	1.3
Labour force	533.6	539.2	3.1	5.6	18.2	23.0	1.0	3.5	4.5
Employment	501.3	507.1	3.3	5.8	17.3	22.6	1.2	3.5	4.7
Unemployment	32.2	32.1	1.5	-0.1	1.0	0.5	-0.3	3.2	1.6
Participation rate	72.6	73.3	0.4	0.7	2.1	2.2
Unemployment rate	6.0	6.0	0.3	0.0	0.0	-0.1
Employment rate	68.2	68.9	0.5	0.7	2.0	2.2
Kingston, Ontario									
Population	126.4	126.4	...	0.0	0.0	0.1	0.0	0.0	0.1
Labour force	80.8	81.1	0.7	0.3	-4.2	-0.8	0.4	-4.9	-1.0
Employment	76.0	76.6	0.7	0.6	-3.5	-0.1	0.8	-4.4	-0.1
Unemployment	4.8	4.5	0.3	-0.3	-0.6	-0.7	-6.2	-11.8	-13.5
Participation rate	63.9	64.2	0.5	0.3	-3.3	-0.6
Unemployment rate	5.9	5.5	0.4	-0.4	-0.5	-0.8
Employment rate	60.1	60.6	0.6	0.5	-2.8	-0.1

See notes at the end of the table.

Table 5-1 – continued

Labour force characteristics by census metropolitan area (seasonally adjusted) — 3 month moving average

	April 2010	May 2010	S.E. ¹	Change from			Percent change from		
				last month	last December	twelve months ago	last month	last December	twelve months ago
in thousands (except rates)									
Toronto, Ontario									
Population	4,733.3	4,742.1	...	8.8	44.0	108.4	0.2	0.9	2.3
Labour force	3,220.4	3,225.9	9.4	5.5	21.1	31.3	0.2	0.7	1.0
Employment	2,915.7	2,919.8	9.7	4.1	14.9	22.8	0.1	0.5	0.8
Unemployment	304.7	306.2	6.4	1.5	6.3	8.6	0.5	2.1	2.9
Participation rate	68.0	68.0	0.2	0.0	-0.2	-0.9
Unemployment rate	9.5	9.5	0.2	0.0	0.1	0.2
Employment rate	61.6	61.6	0.2	0.0	-0.2	-0.9
Hamilton, Ontario									
Population	604.9	605.3	...	0.4	1.7	4.7	0.1	0.3	0.8
Labour force	398.2	396.0	3.1	-2.2	-13.8	-13.3	-0.6	-3.4	-3.2
Employment	367.5	365.1	3.2	-2.4	-9.8	-14.0	-0.7	-2.6	-3.7
Unemployment	30.7	30.9	1.6	0.2	-4.1	0.8	0.7	-11.7	2.7
Participation rate	65.8	65.4	0.5	-0.4	-2.5	-2.7
Unemployment rate	7.7	7.8	0.4	0.1	-0.7	0.4
Employment rate	60.8	60.3	0.5	-0.5	-1.8	-2.8
Kitchener, Ontario									
Population	391.8	392.3	...	0.5	2.1	5.4	0.1	0.5	1.4
Labour force	279.3	283.9	1.9	4.6	10.8	6.4	1.6	4.0	2.3
Employment	254.1	260.5	2.0	6.4	12.9	10.2	2.5	5.2	4.1
Unemployment	25.2	23.4	1.2	-1.8	-2.1	-3.8	-7.1	-8.2	-14.0
Participation rate	71.3	72.4	0.5	1.1	2.4	0.7
Unemployment rate	9.0	8.2	0.4	-0.8	-1.1	-1.6
Employment rate	64.9	66.4	0.5	1.5	2.9	1.7
London, Ontario									
Population	392.5	392.8	...	0.3	1.6	4.3	0.1	0.4	1.1
Labour force	266.1	266.9	1.8	0.8	3.3	4.1	0.3	1.3	1.6
Employment	242.7	244.0	1.9	1.3	3.7	8.7	0.5	1.5	3.7
Unemployment	23.4	23.0	1.1	-0.4	-0.2	-4.5	-1.7	-0.9	-16.4
Participation rate	67.8	67.9	0.5	0.1	0.5	0.3
Unemployment rate	8.8	8.6	0.4	-0.2	-0.2	-1.9
Employment rate	61.8	62.1	0.5	0.3	0.7	1.5
Oshawa, Ontario									
Population	297.9	298.4	...	0.5	2.4	5.8	0.2	0.8	2.0
Labour force	204.8	206.0	1.6	1.2	7.8	13.2	0.6	3.9	6.8
Employment	185.2	186.2	1.6	1.0	7.7	8.7	0.5	4.3	4.9
Unemployment	19.6	19.7	0.9	0.1	0.0	4.3	0.5	0.0	27.9
Participation rate	68.7	69.0	0.5	0.3	2.0	3.1
Unemployment rate	9.6	9.6	0.4	0.0	-0.3	1.6
Employment rate	62.2	62.4	0.5	0.2	2.1	1.7
St. Catharines-Niagara, Ontario									
Population	330.6	330.7	...	0.1	0.2	0.9	0.0	0.1	0.3
Labour force	210.0	210.2	1.6	0.2	2.3	7.2	0.1	1.1	3.5
Employment	190.3	191.7	1.7	1.4	6.5	10.0	0.7	3.5	5.5
Unemployment	19.6	18.5	0.9	-1.1	-4.3	-2.8	-5.6	-18.9	-13.1
Participation rate	63.5	63.6	0.5	0.1	0.7	2.0
Unemployment rate	9.3	8.8	0.4	-0.5	-2.2	-1.7
Employment rate	57.6	58.0	0.5	0.4	2.0	2.9

See notes at the end of the table.

Table 5-1 – continued

Labour force characteristics by census metropolitan area (seasonally adjusted) — 3 month moving average

	April 2010	May 2010	S.E. ¹	Change from			Percent change from		
				last month	last December	twelve months ago	last month	last December	twelve months ago
in thousands (except rates)									
Greater Sudbury / Grand Sudbury, Ontario									
Population	135.0	135.1	...	0.1	0.3	0.9	0.1	0.2	0.7
Labour force	85.8	87.4	0.7	1.6	2.4	-0.6	1.9	2.8	-0.7
Employment	77.5	79.6	0.7	2.1	3.4	-1.1	2.7	4.5	-1.4
Unemployment	8.3	7.8	0.4	-0.5	-1.0	0.5	-6.0	-11.4	6.8
Participation rate	63.6	64.7	0.6	1.1	1.6	-0.9
Unemployment rate	9.7	8.9	0.4	-0.8	-1.5	0.6
Employment rate	57.4	58.9	0.6	1.5	2.4	-1.2
Thunder Bay, Ontario									
Population	102.9	102.9	...	0.0	-0.2	-0.5	0.0	-0.2	-0.5
Labour force	63.7	63.4	0.6	-0.3	-2.4	-1.8	-0.5	-3.6	-2.8
Employment	59.7	60.0	0.7	0.3	-0.5	0.3	0.5	-0.8	0.5
Unemployment	3.9	3.4	0.3	-0.5	-1.9	-2.1	-12.8	-35.8	-38.2
Participation rate	61.9	61.6	0.6	-0.3	-2.2	-1.5
Unemployment rate	6.1	5.4	0.5	-0.7	-2.7	-3.0
Employment rate	58.0	58.3	0.6	0.3	-0.4	0.6
Windsor, Ontario									
Population	273.7	273.7	...	0.0	0.1	0.6	0.0	0.0	0.2
Labour force	174.9	175.8	1.5	0.9	5.4	-2.5	0.5	3.2	-1.4
Employment	152.9	153.5	1.6	0.6	4.7	0.5	0.4	3.2	0.3
Unemployment	22.0	22.4	1.0	0.4	0.8	-2.9	1.8	3.7	-11.5
Participation rate	63.9	64.2	0.5	0.3	1.9	-1.1
Unemployment rate	12.6	12.7	0.6	0.1	0.0	-1.5
Employment rate	55.9	56.1	0.6	0.2	1.7	0.1
Winnipeg, Manitoba									
Population	599.5	600.3	...	0.8	3.6	9.4	0.1	0.6	1.6
Labour force	420.8	424.2	1.3	3.4	5.6	9.5	0.8	1.3	2.3
Employment	398.0	400.1	1.3	2.1	5.0	5.8	0.5	1.3	1.5
Unemployment	22.8	24.1	0.8	1.3	0.7	3.7	5.7	3.0	18.1
Participation rate	70.2	70.7	0.2	0.5	0.5	0.5
Unemployment rate	5.4	5.7	0.2	0.3	0.1	0.8
Employment rate	66.4	66.7	0.2	0.3	0.5	0.0
Regina, Saskatchewan									
Population	174.2	174.6	...	0.4	1.6	3.8	0.2	0.9	2.2
Labour force	122.8	123.9	0.7	1.1	3.5	1.7	0.9	2.9	1.4
Employment	116.8	118.0	0.7	1.2	3.5	0.6	1.0	3.1	0.5
Unemployment	6.0	5.9	0.3	-0.1	0.0	1.1	-1.7	0.0	22.9
Participation rate	70.5	71.0	0.4	0.5	1.4	-0.5
Unemployment rate	4.9	4.8	0.3	-0.1	-0.1	0.9
Employment rate	67.0	67.6	0.4	0.6	1.4	-1.1
Saskatoon, Saskatchewan									
Population	207.0	207.5	...	0.5	2.5	5.8	0.2	1.2	2.9
Labour force	153.1	153.4	0.9	0.3	2.4	4.7	0.2	1.6	3.2
Employment	145.4	145.3	0.9	-0.1	1.4	3.5	-0.1	1.0	2.5
Unemployment	7.7	8.1	0.4	0.4	1.0	1.2	5.2	14.1	17.4
Participation rate	74.0	73.9	0.4	-0.1	0.2	0.2
Unemployment rate	5.0	5.3	0.3	0.3	0.6	0.7
Employment rate	70.2	70.0	0.4	-0.2	-0.2	-0.3

See notes at the end of the table.

Table 5-1 – continued

Labour force characteristics by census metropolitan area (seasonally adjusted) — 3 month moving average

	April 2010	May 2010	S.E. ¹	Change from			Percent change from		
				last month	last December	twelve months ago	last month	last December	twelve months ago
in thousands (except rates)									
Calgary, Alberta									
Population	988.7	990.4	...	1.7	8.3	24.2	0.2	0.8	2.5
Labour force	746.5	745.8	3.0	-0.7	-10.7	3.9	-0.1	-1.4	0.5
Employment	689.8	688.8	3.2	-1.0	-13.1	-3.0	-0.1	-1.9	-0.4
Unemployment	56.6	57.1	1.8	0.5	2.5	7.0	0.9	4.6	14.0
Participation rate	75.5	75.3	0.3	-0.2	-1.7	-1.5
Unemployment rate	7.6	7.7	0.2	0.1	0.5	0.9
Employment rate	69.8	69.5	0.3	-0.3	-2.0	-2.1
Edmonton, Alberta									
Population	918.6	920.0	...	1.4	6.8	20.4	0.2	0.7	2.3
Labour force	658.8	665.2	3.0	6.4	0.0	4.5	1.0	0.0	0.7
Employment	608.6	615.9	3.3	7.3	1.0	-4.9	1.2	0.2	-0.8
Unemployment	50.2	49.3	1.7	-0.9	-1.0	9.4	-1.8	-2.0	23.6
Participation rate	71.7	72.3	0.3	0.6	-0.5	-1.1
Unemployment rate	7.6	7.4	0.3	-0.2	-0.2	1.4
Employment rate	66.3	66.9	0.4	0.6	-0.4	-2.1
Abbotsford-Mission, British Columbia									
Population	137.2	137.4	...	0.2	0.9	2.2	0.1	0.7	1.6
Labour force	95.9	96.8	0.9	0.9	0.7	6.9	0.9	0.7	7.7
Employment	89.3	89.1	0.8	-0.2	0.0	6.1	-0.2	0.0	7.3
Unemployment	6.6	7.6	0.4	1.0	0.6	0.7	15.2	8.6	10.1
Participation rate	69.9	70.5	0.6	0.6	0.1	4.0
Unemployment rate	6.9	7.9	0.4	1.0	0.6	0.2
Employment rate	65.1	64.8	0.6	-0.3	-0.5	3.4
Vancouver, British Columbia									
Population	2,021.2	2,025.2	...	4.0	20.5	49.5	0.2	1.0	2.5
Labour force	1,338.3	1,339.7	5.0	1.4	-1.5	17.1	0.1	-0.1	1.3
Employment	1,237.9	1,239.0	5.1	1.1	1.2	7.4	0.1	0.1	0.6
Unemployment	100.4	100.7	2.8	0.3	-2.7	9.7	0.3	-2.6	10.7
Participation rate	66.2	66.2	0.3	0.0	-0.7	-0.7
Unemployment rate	7.5	7.5	0.2	0.0	-0.2	0.6
Employment rate	61.2	61.2	0.3	0.0	-0.5	-1.1
Victoria, British Columbia									
Population	290.2	290.4	...	0.2	0.9	2.5	0.1	0.3	0.9
Labour force	198.4	194.5	1.4	-3.9	-3.2	2.1	-2.0	-1.6	1.1
Employment	185.6	183.0	1.4	-2.6	0.1	3.0	-1.4	0.1	1.7
Unemployment	12.8	11.5	0.7	-1.3	-3.3	-0.9	-10.2	-22.3	-7.3
Participation rate	68.4	67.0	0.5	-1.4	-1.3	0.2
Unemployment rate	6.5	5.9	0.3	-0.6	-1.6	-0.5
Employment rate	64.0	63.0	0.5	-1.0	-0.2	0.5

1. Average standard error of change in two consecutive months (see "Sampling Errors" in Data Quality for further explanations).

Note(s): All geographic regions are based on the 2001 Census boundaries. Related CANSIM Table 282-0090.

Table 5-2
Labour force characteristics by census metropolitan area (seasonally adjusted) — Monthly

	April 2010	May 2010	S.E. ¹	Change from			Percent change from		
				last month	last December	twelve months ago	last month	last December	twelve months ago
in thousands (except rates)									
Montréal, Quebec									
Population	3,135.3	3,138.4	...	3.1	16.7	41.4	0.1	0.5	1.3
Labour force	2,132.5	2,134.2	14.6	1.7	32.6	42.5	0.1	1.6	2.0
Employment	1,941.3	1,950.8	14.8	9.5	47.2	67.3	0.5	2.5	3.6
Unemployment	191.3	183.5	11.5	-7.8	-14.5	-24.7	-4.1	-7.3	-11.9
Participation rate	68.0	68.0	0.5	0.0	0.7	0.5
Unemployment rate	9.0	8.6	0.5	-0.4	-0.8	-1.4
Employment rate	61.9	62.2	0.5	0.3	1.2	1.4
Toronto, Ontario									
Population	4,742.0	4,751.1	...	9.1	45.4	109.3	0.2	1.0	2.4
Labour force	3,225.3	3,239.6	20.1	14.3	32.0	58.1	0.4	1.0	1.8
Employment	2,916.5	2,928.4	19.7	11.9	23.5	57.4	0.4	0.8	2.0
Unemployment	308.8	311.2	15.4	2.4	8.5	0.7	0.8	2.8	0.2
Participation rate	68.0	68.2	0.4	0.2	0.0	-0.3
Unemployment rate	9.6	9.6	0.5	0.0	0.2	-0.2
Employment rate	61.5	61.6	0.4	0.1	-0.1	-0.3
Vancouver, British Columbia									
Population	2,025.2	2,029.4	...	4.2	20.8	50.3	0.2	1.0	2.5
Labour force	1,338.5	1,347.5	10.6	9.0	4.1	16.4	0.7	0.3	1.2
Employment	1,241.9	1,245.1	10.5	3.2	3.9	6.4	0.3	0.3	0.5
Unemployment	96.6	102.4	7.0	5.8	0.2	10.0	6.0	0.2	10.8
Participation rate	66.1	66.4	0.5	0.3	-0.5	-0.9
Unemployment rate	7.2	7.6	0.5	0.4	0.0	0.7
Employment rate	61.3	61.4	0.5	0.1	-0.4	-1.2

1. Average standard error of change in two consecutive months (see "Sampling Errors" in Data Quality for further explanations).

Note(s): All geographic regions are based on the 2001 Census boundaries. Related CANSIM Table 282-0091.

Table 6-1
Labour force characteristics by province and economic region 1, unadjusted for seasonality, 3 month moving average ending in May 2009 and May 2010

	Population	Labour force			Participation rate	Unemployment rate	Employment rate
		Labour force	Employment	Unemployment			
in thousands							
Canada ²							
2009	27,218.4	18,301.1	16,712.1	1,589.1	67.2	8.7	61.4
2010	27,618.5	18,510.5	16,937.6	1,572.8	67.0	8.5	61.3
Newfoundland and Labrador							
2009	428.1	250.3	208.0	42.3	58.5	16.9	48.6
2010	431.4	258.6	215.8	42.8	59.9	16.6	50.0
Avalon Peninsula [1010]							
2009	214.6	134.4	119.2	15.2	62.6	11.3	55.5
2010	218.1	143.3	125.8	17.5	65.7	12.2	57.7
South Coast-Burin Peninsula [1020]							
2009	32.0	16.1	12.0	4.1	50.3	25.5	37.5
2010	31.6	16.3	12.9	3.5	51.6	21.5	40.8
West Coast-Northern Peninsula-Labrador [1030]							
2009	88.0	49.3	38.3	11.0	56.0	22.3	43.5
2010	88.4	49.9	40.2	9.7	56.4	19.4	45.5
Notre Dame-Central Bonavista Bay [1040]							
2009	93.4	50.5	38.5	12.0	54.1	23.8	41.2
2010	93.4	49.1	36.9	12.1	52.6	24.6	39.5
Prince Edward Island							
2009	115.6	78.1	66.9	11.1	67.6	14.2	57.9
2010	116.8	79.2	69.9	9.3	67.8	11.7	59.8
Nova Scotia							
2009	771.9	497.0	447.6	49.4	64.4	9.9	58.0
2010	775.2	497.0	450.0	47.0	64.1	9.5	58.0
Cape Breton [1210]							
2009	115.2	62.6	51.8	10.8	54.3	17.3	45.0
2010	114.3	64.0	53.0	11.0	56.0	17.2	46.4
North Shore [1220]							
2009	131.4	77.6	67.6	10.0	59.1	12.9	51.4
2010	131.4	77.0	69.7	7.4	58.6	9.6	53.0
Annapolis Valley [1230]							
2009	101.6	63.2	57.6	5.7	62.2	9.0	56.7
2010	102.0	60.9	54.9	6.1	59.7	10.0	53.8
Southern [1240]							
2009	103.4	63.8	55.3	8.4	61.7	13.2	53.5
2010	103.1	62.4	53.6	8.7	60.5	13.9	52.0
Halifax [1250]							
2009	320.4	229.8	215.3	14.5	71.7	6.3	67.2
2010	324.4	232.6	218.8	13.8	71.7	5.9	67.4
New Brunswick							
2009	620.8	398.8	357.9	40.9	64.2	10.3	57.7
2010	623.5	398.2	358.8	39.4	63.9	9.9	57.5
Campbellton-Miramichi [1310]							
2009	135.3	74.7	62.1	12.6	55.2	16.9	45.9
2010	134.6	72.3	59.2	13.2	53.7	18.3	44.0
Moncton-Richibucto [1320]							
2009	167.5	113.1	103.5	9.6	67.5	8.5	61.8
2010	169.6	113.6	105.5	8.0	67.0	7.0	62.2
Saint John-St. Stephen [1330]							
2009	143.6	97.0	90.2	6.8	67.5	7.0	62.8
2010	144.3	94.3	85.4	8.9	65.3	9.4	59.2

See notes at the end of the table.

Table 6-1 – continued

Labour force characteristics by province and economic region 1, unadjusted for seasonality, 3 month moving average ending in May 2009 and May 2010

	Population	Labour force			Participation rate	Unemployment rate	Employment rate
		Labour force	Employment	Unemployment			
in thousands							
Fredericton-Oromocto [1340]							
2009	106.2	70.7	63.9	6.8	66.6	9.6	60.2
2010	106.9	74.8	69.7	5.1	70.0	6.8	65.2
Edmundston-Woodstock [1350]							
2009	68.2	43.4	38.2	5.2	63.6	12.0	56.0
2010	68.1	43.2	39.0	4.2	63.4	9.7	57.3
Quebec							
2009	6,421.2	4,198.1	3,812.2	385.9	65.4	9.2	59.4
2010	6,496.6	4,228.1	3,867.6	360.4	65.1	8.5	59.5
Gaspésie-Îles-de-la-Madeleine [2410]							
2009	80.8	39.7	32.2	7.6	49.1	19.1	39.9
2010	80.8	43.2	35.3	7.9	53.5	18.3	43.7
Bas-Saint-Laurent [2415]							
2009	167.6	102.7	92.3	10.4	61.3	10.1	55.1
2010	167.9	96.9	87.3	9.6	57.7	9.9	52.0
Capitale-Nationale [2420]							
2009	571.7	382.1	362.5	19.5	66.8	5.1	63.4
2010	577.2	376.1	354.2	22.0	65.2	5.8	61.4
Chaudière-Appalaches [2425]							
2009	331.5	220.4	206.2	14.2	66.5	6.4	62.2
2010	334.2	233.6	218.5	15.1	69.9	6.5	65.4
Estrie [2430]							
2009	252.9	164.8	149.8	15.0	65.2	9.1	59.2
2010	255.7	151.4	137.8	13.7	59.2	9.0	53.9
Centre-du-Québec [2433]							
2009	187.6	129.1	117.6	11.5	68.8	8.9	62.7
2010	189.3	117.1	109.7	7.3	61.9	6.2	58.0
Montérégie [2435]							
2009	1,157.3	789.0	724.0	65.0	68.2	8.2	62.6
2010	1,178.6	790.1	722.9	67.2	67.0	8.5	61.3
Montréal [2440]							
2009	1,594.5	1,029.5	904.0	125.5	64.6	12.2	56.7
2010	1,601.4	1,042.3	935.2	107.1	65.1	10.3	58.4
Laval [2445]							
2009	317.8	205.9	187.7	18.2	64.8	8.8	59.1
2010	323.3	224.0	208.1	15.9	69.3	7.1	64.4
Lanaudière [2450]							
2009	371.6	251.6	231.5	20.2	67.7	8.0	62.3
2010	382.8	261.3	242.4	18.9	68.3	7.2	63.3
Laurentides [2455]							
2009	443.0	289.8	268.4	21.3	65.4	7.3	60.6
2010	453.7	303.9	277.3	26.5	67.0	8.7	61.1
Outaouais [2460]							
2009	298.2	202.4	188.3	14.1	67.9	7.0	63.1
2010	303.2	211.1	195.1	16.0	69.6	7.6	64.3
Abitibi-Témiscamingue [2465]							
2009	116.2	74.7	66.9	7.8	64.3	10.4	57.6
2010	116.9	71.6	65.6	6.0	61.2	8.4	56.1
Mauricie [2470]							
2009	218.8	129.4	115.9	13.5	59.1	10.4	53.0
2010	219.9	120.9	109.0	11.9	55.0	9.8	49.6

See notes at the end of the table.

Table 6-1 – continued

Labour force characteristics by province and economic region 1, unadjusted for seasonality, 3 month moving average ending in May 2009 and May 2010

	Population	Labour force			Participation rate	Unemployment rate	Employment rate
		Labour force	Employment	Unemployment			
in thousands							
Saguenay-Lac-Saint-Jean [2475]							
2009	223.0	134.4	118.4	16.0	60.3	11.9	53.1
2010	223.0	129.5	118.6	10.9	58.1	8.4	53.2
Côte-Nord and Nord-du-Québec [2480, 2490]							
2009	88.7	52.7	46.5	6.2	59.4	11.8	52.4
2010	88.6	55.1	50.7	4.4	62.2	8.0	57.2
Ontario							
2009	10,625.5	7,149.5	6,477.8	671.8	67.3	9.4	61.0
2010	10,777.8	7,237.2	6,577.4	659.9	67.1	9.1	61.0
Ottawa [3510]							
2009	1,002.0	692.8	643.7	49.1	69.1	7.1	64.2
2010	1,012.5	719.3	668.5	50.8	71.0	7.1	66.0
Kingston-Pembroke [3515]							
2009	360.9	231.5	210.4	21.1	64.1	9.1	58.3
2010	361.8	218.4	197.9	20.5	60.4	9.4	54.7
Muskoka-Kawarthas [3520]							
2009	312.5	189.4	172.0	17.4	60.6	9.2	55.0
2010	314.1	196.6	179.7	16.9	62.6	8.6	57.2
Toronto [3530]							
2009	4,883.0	3,353.8	3,043.4	310.5	68.7	9.3	62.3
2010	4,992.8	3,397.8	3,072.8	325.0	68.1	9.6	61.5
Kitchener-Waterloo-Barrie [3540]							
2009	995.3	701.2	629.1	72.1	70.5	10.3	63.2
2010	1,009.9	712.5	650.1	62.4	70.6	8.8	64.4
Hamilton-Niagara Peninsula [3550]							
2009	1,149.3	761.3	691.7	69.6	66.2	9.1	60.2
2010	1,158.5	753.1	686.2	67.0	65.0	8.9	59.2
London [3560]							
2009	519.7	350.3	312.9	37.5	67.4	10.7	60.2
2010	524.9	352.6	321.7	30.9	67.2	8.8	61.3
Windsor-Sarnia [3570]							
2009	526.9	334.3	293.0	41.3	63.4	12.4	55.6
2010	527.9	333.8	297.0	36.8	63.2	11.0	56.3
Stratford-Bruce Peninsula [3580]							
2009	248.5	155.6	141.6	14.0	62.6	9.0	57.0
2010	249.2	167.1	154.3	12.8	67.1	7.7	61.9
Northeast [3590]							
2009	454.5	269.7	243.9	25.8	59.3	9.6	53.7
2010	455.1	276.7	248.3	28.4	60.8	10.3	54.6
Northwest [3595]							
2009	172.9	109.6	96.1	13.5	63.4	12.3	55.6
2010	171.1	109.3	100.9	8.4	63.9	7.7	59.0
Manitoba							
2009	919.3	634.0	602.3	31.7	69.0	5.0	65.5
2010	933.0	650.2	615.3	35.0	69.7	5.4	65.9
Southeast [4610]							
2009	80.4	52.7	50.1	2.7	65.5	5.1	62.3
2010	82.9	60.4	57.5	2.9	72.9	4.8	69.4
South Central [4620]							
2009	44.8	29.9	28.6	1.3	66.7	4.3	63.8
2010	45.9	31.6	30.7	1.0	68.8	3.2	66.9

See notes at the end of the table.

Table 6-1 – continued

Labour force characteristics by province and economic region 1, unadjusted for seasonality, 3 month moving average ending in May 2009 and May 2010

	Population	Labour force			Participation rate	Unemployment rate	Employment rate
		Labour force	Employment	Unemployment			
in thousands							
Southwest [4630]							
2009	82.9	59.5	57.1	2.4	71.8	4.0	68.9
2010	83.4	54.6	52.5	2.1	65.5	3.8	62.9
North Central [4640]							
2009	36.1	24.1	23.2	0.9	66.8	3.7	64.3
2010	36.5	26.1	24.8	1.3	71.5	5.0	67.9
Winnipeg [4650]							
2009	544.7	380.5	360.9	19.6	69.9	5.2	66.3
2010	552.6	386.7	363.7	22.9	70.0	5.9	65.8
Interlake [4660]							
2009	71.6	48.4	46.3	2.0	67.6	4.1	64.7
2010	72.7	50.9	48.6	2.3	70.0	4.5	66.9
Parklands and North [4670, 4680]							
2009	58.7	39.0	36.2	2.8	66.4	7.2	61.7
2010	58.8	40.0	37.5	2.5	68.0	6.3	63.8
Saskatchewan							
2009	777.1	546.3	518.0	28.3	70.3	5.2	66.7
2010	788.5	556.1	525.3	30.9	70.5	5.6	66.6
Regina-Moose Mountain [4710]							
2009	230.0	163.1	156.0	7.1	70.9	4.4	67.8
2010	234.1	167.3	159.8	7.5	71.5	4.5	68.3
Swift Current-Moose Jaw [4720]							
2009	84.1	56.8	54.3	2.5	67.5	4.4	64.6
2010	84.4	57.1	53.9	3.2	67.7	5.6	63.9
Saskatoon-Biggar [4730]							
2009	244.6	178.3	169.4	9.0	72.9	5.0	69.3
2010	250.3	181.6	171.8	9.8	72.6	5.4	68.6
Yorkton-Melville [4740]							
2009	64.7	41.2	39.3	2.0	63.7	4.9	60.7
2010	64.7	43.9	42.1	1.8	67.9	4.1	65.1
Prince Albert and Northern [4750, 4760]							
2009	153.9	106.8	99.0	7.7	69.4	7.2	64.3
2010	155.1	106.2	97.7	8.5	68.5	8.0	63.0
Alberta							
2009	2,848.3	2,116.6	1,978.4	138.2	74.3	6.5	69.5
2010	2,912.8	2,128.7	1,970.9	157.8	73.1	7.4	67.7
Lethbridge-Medicine Hat [4810]							
2009	211.4	145.3	137.8	7.5	68.7	5.2	65.2
2010	214.1	144.9	134.0	10.9	67.7	7.5	62.6
Camrose-Drumheller [4820]							
2009	156.0	112.2	105.9	6.3	71.9	5.6	67.9
2010	157.2	114.8	108.8	6.1	73.0	5.3	69.2
Calgary [4830]							
2009	1,043.5	796.2	744.0	52.2	76.3	6.6	71.3
2010	1,071.4	798.5	736.8	61.7	74.5	7.7	68.8
Banff-Jasper-Rocky Mountain House [4840]							
2009	69.3	55.7	52.3	3.4	80.4	6.1	75.5
2010	70.4	54.4	51.4	3.0	77.3	5.5	73.0
Red Deer [4850]							
2009	149.7	113.4	105.3	8.1	75.8	7.1	70.3
2010	154.0	112.4	103.0	9.4	73.0	8.4	66.9

See notes at the end of the table.

Table 6-1 – continued

Labour force characteristics by province and economic region 1, unadjusted for seasonality, 3 month moving average ending in May 2009 and May 2010

	Population	Labour force			Participation rate	Unemployment rate	Employment rate
		Labour force	Employment	Unemployment			
in thousands							
Edmonton [4860]							
2009	934.5	679.7	635.6	44.1	72.7	6.5	68.0
2010	955.9	684.1	632.1	52.0	71.6	7.6	66.1
Athabasca-Grande Prairie-Peace River [4870]							
2009	189.6	142.9	130.9	11.9	75.4	8.3	69.0
2010	193.5	144.0	132.7	11.3	74.4	7.8	68.6
Wood Buffalo-Cold Lake [4880]							
2009	94.3	71.3	66.6	4.7	75.6	6.6	70.6
2010	96.2	75.6	72.1	3.5	78.6	4.6	74.9
British Columbia							
2009	3,690.6	2,432.4	2,243.1	189.3	65.9	7.8	60.8
2010	3,762.8	2,477.1	2,286.7	190.4	65.8	7.7	60.8
Vancouver Island and Coast [5910]							
2009	638.0	410.9	382.5	28.4	64.4	6.9	60.0
2010	645.8	415.1	391.1	24.0	64.3	5.8	60.6
Lower Mainland-Southwest [5920]							
2009	2,247.7	1,500.0	1,392.2	107.8	66.7	7.2	61.9
2010	2,302.3	1,525.3	1,405.6	119.7	66.3	7.8	61.1
Thompson-Okanagan [5930]							
2009	436.3	277.2	249.8	27.4	63.5	9.9	57.3
2010	443.5	289.5	263.7	25.8	65.3	8.9	59.5
Kootenay [5940]							
2009	123.2	78.6	71.5	7.1	63.8	9.0	58.0
2010	123.7	76.5	70.3	6.3	61.8	8.2	56.8
Cariboo [5950]							
2009	127.1	84.3	73.4	10.9	66.3	12.9	57.7
2010	128.4	85.8	79.3	6.4	66.8	7.5	61.8
North Coast and Nechako [5960, 5970]							
2009	65.2	44.5	39.8	4.7	68.3	10.6	61.0
2010	64.8	42.7	37.4	5.3	65.9	12.4	57.7
Northeast [5980]							
2009	53.1	36.8	33.7	3.1	69.3	8.4	63.5
2010	54.2	42.2	39.3	2.9	77.9	6.9	72.5

1. For geographic descriptions of economic regions, refer to the Guide to the Labour Force Survey (catalogue number 71-543-GIE).

2. Estimates for Canada are a sum of the provincial totals and exclude estimates from Yukon, Northwest Territories and Nunavut.

Note(s): All geographic regions are based on the 2001 Census boundaries. Related CANSIM table 282-0054.

Table 6-2
Labour force characteristics by territories, unadjusted for seasonality, 3 month moving average ending in
May 2009 and May 2010

	Population	Labour force			Participation rate	Unemployment rate	Employment rate
		Labour force	Employment	Unemployment			
		in thousands			percent		
Yukon ¹							
2009	24.1	18.0	16.5	1.4	74.7	7.8	68.5
2010	24.6	17.3	15.5	1.8	70.3	10.4	63.0
Northwest Territories ²							
2009	31.4	22.3	20.7	1.6	71.0	7.2	65.9
2010	31.6	22.0	20.4	1.6	69.6	7.3	64.6
Nunavut ³							
2009	18.5	11.2	9.7	1.4	60.5	12.9	52.7
2010	19.0	12.5	10.3	2.2	65.8	17.5	54.3

1. Since 1992, the Labour force survey (LFS) has been conducted in the Yukon, using an alternative methodology that accommodates some of the operational difficulties inherent to remote locales. These estimates are not included in the national totals. In 1995, the LFS in the Yukon underwent a sample redesign. One result of the redesign was that the covered population increased from 85% to 92%, which is reflected by the sharp increase in the three month moving averages estimates of January, February and March of 1995 for all the level estimates. Users are therefore warned to be cautious when comparing estimates before January 1995 to estimates for January 1995 and forward.
2. Since 2001, the Labour force survey (LFS) has been administered in the Northwest Territories, using an alternative methodology that accommodates some of the operational difficulties inherent to remote locales. These estimates are not included in national totals.
3. Since 2004, the Labour force survey (LFS) has been administered in Nunavut, using an alternative methodology that accommodates some of the operational difficulties inherent to remote locales. These estimates are 3-month moving averages and are not included in national totals. From January 2004 to December 2007, estimates represent about 70% of all Nunavut residents aged 15 and over. Starting in January 2008, coverage was extended to 92%, so that by March 2008, the 3-month moving average is completely based on the extended coverage. Because of the large difference in coverage, users are recommended not to compare estimates prior to January 2008 with data afterwards. The January and February 2008 3-month moving average estimates are based on a mix of both coverages, since the extended coverage was introduced in January 2008. Estimates from January 2004 to December 2007 are based on the 10 largest communities in Nunavut: Iqaluit, Rankin Inlet, Cambridge Bay, Kugluktuk, Baker Lake, Arviat, Pond Inlet, Cape Dorset, Pangnirtung, Igloolik. Estimates from March 2008 to present cover the above communities as well as: Taloyoak, Gjoa Haven, Kugaaruk, Coral Harbour, Repulse Bay, Qikiqtarjuaq, Arctic Bay, Hall Beach, Clyde River.

Note(s): Related CANSIM table 282-0100.

Table 7
Average usual hours and wages of employees by selected characteristics, Canada, unadjusted for seasonality

	Employees				Full-time			Part-time		
	Number	Average weekly hours	Average weekly wages	Average hourly wages	Number	Average weekly hours	Average weekly wages	Number	Average weekly hours	Average weekly wages
	thousands		current dollars		thousands		current dollars	thousands		current dollars
May 2010										
15 years and over	14,577.8	35.2	815.69	22.40	11,884.5	39.2	935.71	2,693.3	17.4	286.12
15 to 24 years	2,383.5	27.6	382.16	12.95	1,260.8	38.6	570.93	1,122.6	15.3	170.14
25 years and over	12,194.3	36.6	900.43	24.25	10,623.6	39.3	979.00	1,570.7	18.9	369.01
Men	7,253.1	37.7	934.92	24.21	6,435.4	40.4	1,021.11	817.8	16.5	256.63
Women	7,324.7	32.6	697.63	20.61	5,449.1	37.7	834.85	1,875.6	17.8	298.97
Union coverage										
Union coverage	4,574.5	35.5	930.60	25.89	3,901.9	38.3	1,018.81	672.6	19.0	418.90
No union coverage	10,003.3	35.0	763.14	20.80	7,982.5	39.6	895.09	2,020.7	16.9	241.92
Job permanency										
Permanent	12,575.0	35.9	856.47	23.15	10,631.9	39.1	957.36	1,943.1	18.2	304.44
Temporary	2,002.8	30.4	559.67	17.66	1,252.5	39.5	751.94	750.2	15.2	238.66
Occupation										
Management	1,033.5	39.7	1,386.81	34.99	1,003.5	40.3	1,413.02	30.0	19.2	509.58
Business, finance and administrative	2,824.6	35.1	750.61	20.98	2,397.9	38.1	829.02	426.8	17.8	310.02
Natural and applied sciences	1,099.3	38.4	1,184.54	30.75	1,059.0	39.2	1,210.84	40.3	19.6	492.99
Health	957.5	33.4	876.69	26.03	727.5	37.6	992.32	230.0	20.4	510.97
Social science, education, government service and religion	1,435.9	34.3	995.29	29.03	1,183.1	37.9	1,106.28	252.8	17.3	475.85
Art, culture, recreation and sport	347.6	31.6	784.89	23.32	255.0	38.2	985.99	92.6	13.4	231.21
Sales and service	3,773.1	30.3	495.41	15.21	2,353.2	38.3	670.19	1,419.9	17.0	205.75
Trades, transport and equipment operators	2,058.6	39.8	890.14	22.15	1,931.0	41.3	930.72	127.7	17.5	276.52
Occupations unique to primary industry	303.0	41.5	777.84	18.27	264.1	45.3	861.07	38.9	15.1	212.55
Occupations unique to processing, manufacturing and utilities	744.6	39.1	747.48	18.88	710.2	40.2	772.11	34.4	18.0	238.47
May 2009										
15 years and over	14,288.0	35.1	795.49	21.87	11,619.5	39.2	913.56	2,668.6	17.3	281.41
15 to 24 years	2,422.4	27.7	379.96	12.74	1,296.2	38.6	567.80	1,126.1	15.1	163.74
25 years and over	11,865.6	36.6	880.33	23.73	10,323.2	39.2	956.98	1,542.4	18.9	367.32
Men	7,102.5	37.5	910.22	23.61	6,278.1	40.3	997.49	824.4	16.3	245.64
Women	7,185.5	32.7	682.09	20.14	5,341.3	37.8	814.91	1,844.2	17.7	297.40
Union coverage										
Union coverage	4,478.0	35.5	900.05	25.02	3,796.0	38.4	986.77	682.0	19.4	417.35
No union coverage	9,810.0	34.9	747.77	20.43	7,823.5	39.5	878.04	1,986.6	16.6	234.74
Job permanency										
Permanent	12,474.6	35.8	832.73	22.55	10,502.9	39.1	932.96	1,971.7	18.1	298.84
Temporary	1,813.4	30.1	539.37	17.17	1,116.6	39.5	731.14	696.8	15.1	232.08
Occupation										
Management	1,006.7	39.6	1,344.96	33.98	976.8	40.3	1,370.60	29.8	19.1	505.54
Business, finance and administrative	2,814.9	35.2	751.65	20.92	2,390.7	38.2	829.99	424.1	18.0	310.05
Natural and applied sciences	1,026.8	38.3	1,155.09	30.11	987.4	39.0	1,180.50	39.4	20.1	517.87
Health	923.5	33.3	851.40	25.48	693.4	37.7	968.85	230.1	19.9	497.46
Social science, education, government service and religion	1,388.6	34.1	974.48	28.31	1,127.4	37.8	1,088.99	261.2	18.0	480.30
Art, culture, recreation and sport	326.3	31.4	712.05	21.44	233.6	38.5	900.33	92.7	13.3	237.68
Sales and service	3,751.3	30.3	486.42	14.89	2,367.2	38.3	657.56	1,384.2	16.6	193.74
Trades, transport and equipment operators	1,997.5	39.7	871.47	21.76	1,867.0	41.2	912.00	130.6	17.8	291.93
Occupations unique to primary industry	311.7	41.8	754.11	17.79	274.4	45.6	834.08	37.3	14.1	166.54
Occupations unique to processing, manufacturing and utilities	740.7	38.6	726.22	18.57	701.6	39.8	753.14	39.1	18.6	243.13

Note(s): Related CANSIM Tables 282-0023, 282-0069, 282-0073.

Table 8
Regional unemployment rates used by the Employment Insurance Program ¹, seasonally adjusted, 3 month moving average

Region	Effective from June 6, 2010 to July 10, 2010
	percent
Newfoundland and Labrador	
01. St. John's	7.4
02. Newfoundland and Labrador	20.6
Prince Edward Island	
03. Prince Edward Island	10.3
Nova Scotia	
04. Eastern Nova Scotia	14.8
05. Western Nova Scotia	10.7
06. Halifax	5.7
New Brunswick	
07. Fredericton-Moncton-Saint John	6.7
08. Madawaska-Charlotte ²	10.4
09. Restigouche-Albert	13.0
Quebec	
10. Gaspésie-Îles-de-la-Madeleine	16.7
11. Québec	5.8
12. Trois-Rivières	9.1
13. South Central Quebec	6.0
14. Sherbrooke	8.6
15. Montérégie	7.2
16. Montréal	9.0
17. Central Quebec	8.0
18. Northwestern Quebec	9.6
19. Bas-Saint-Laurent-Côte-Nord ³	10.6
20. Gatineau	6.1
21. Saguenay	7.6
Ontario	
22. Ottawa	5.8
23. Eastern Ontario	9.6
24. Kingston	5.6
25. Central Ontario	8.9
26. Oshawa	9.8
27. Toronto	9.4
28. Hamilton	8.0
29. St. Catharines	8.8
30. London	8.5
31. Niagara	11.3
32. Windsor	12.5
33. Kitchener	8.0
34. Huron	9.2
35. South Central Ontario	7.7
36. Sudbury	9.1
37. Thunder Bay	5.3
38. Northern Ontario	12.7
Manitoba	
39. Winnipeg	5.9
40. Southern Manitoba	5.5
41. Northern Manitoba	28.5
Saskatchewan	
42. Regina	4.6
43. Saskatoon	5.3
44. Southern Saskatchewan	6.6
45. Northern Saskatchewan	17.5

See notes at the end of the table.

Table 8 – continued

Regional unemployment rates used by the Employment Insurance Program 1, seasonally adjusted, 3 month moving average

Region	Effective from June 6, 2010 to July 10, 2010
	percent
Alberta	
46. Calgary	7.7
47. Edmonton	7.8
48. Northern Alberta	9.5
49. Southern Alberta	7.8
British Columbia	
50. Southern Interior British Columbia	9.5
51. Abbotsford	7.9
52. Vancouver	7.6
53. Victoria	6.8
54. Southern Coastal British Columbia	7.9
55. Northern British Columbia	10.6
Territories	
56. Yukon 4	25.0
57. Northwest Territories 4	25.0
58. Nunavut 4	25.0

1. The boundaries of these regions are determined by Human Resources and Social Development Canada (HRSDC). For geographic descriptions and maps of employment insurance regions, see the HRSDC website: <http://srv129.services.gc.ca/eiregions/en/geocont.aspx>.

2. This unemployment rate has been determined using a transition formula prescribed in the EI Regulations. For further information, see: http://www.hrsdc.gc.ca/en/cs/comm/news/2000/000913a_e.shtml.

3. This unemployment rate has been determined using a transition formula prescribed in the EI Regulations. For further information, see: http://www.hrsdc.gc.ca/en/cs/comm/news/2000/000913b_e.shtml.

4. This rate is provided by Human Resources and Skills Development Canada.

Note(s): All geographic regions are based on the 1996 Census boundaries.

Table 9-1
Students and other persons aged 15 to 24 (unadjusted) by detailed age groups

	May 2008	May 2009	May 2010	S.E. ¹	Change from		Percent change from	
					last year	two years ago	last year	two years ago
in thousands								
Students 15 to 24 years²								
Population	2,292.3	2,300.5	2,346.8	28.8	46.3	54.5	2.0	2.4
Labour force	1,302.8	1,255.2	1,287.3	29.9	32.1	-15.5	2.6	-1.2
Employment	1,080.3	989.9	1,027.5	28.9	37.6	-52.8	3.8	-4.9
Full-time employment	290.4	214.0	234.9	20.3	20.9	-55.5	9.8	-19.1
Part-time employment	789.9	775.8	792.6	23.5	16.8	2.7	2.2	0.3
Unemployment	222.5	265.4	259.7	14.7	-5.7	37.2	-2.1	16.7
Participation rate	56.8	54.6	54.9	1.0	0.3	-1.9
Unemployment rate	17.1	21.1	20.2	1.0	-0.9	3.1
Employment rate	47.1	43.0	43.8	1.0	0.8	-3.3
Part-time rate	73.1	78.4	77.1	1.4	-1.2	4.0
Students 15 to 16 years²								
Population	805.1	800.8	793.7	5.2	-7.1	-11.4	-0.9	-1.4
Labour force	304.1	286.2	277.2	12.3	-9.0	-26.9	-3.1	-8.8
Employment	233.8	204.0	193.7	11.5	-10.3	-40.1	-5.0	-17.2
Full-time employment	5.2	4.3	2.9	5.0	-1.4	-2.3	-32.6	-44.2
Part-time employment	228.6	199.7	190.9	10.9	-8.8	-37.7	-4.4	-16.5
Unemployment	70.2	82.3	83.5	7.9	1.2	13.3	1.5	18.9
Participation rate	37.8	35.7	34.9	1.5	-0.8	-2.9
Unemployment rate	23.1	28.8	30.1	2.1	1.3	7.0
Employment rate	29.0	25.5	24.4	1.4	-1.1	-4.6
Part-time rate	97.8	97.9	98.6	1.7	0.7	0.8
Students 17 to 19 years²								
Population	836.1	865.0	859.7	15.5	-5.3	23.6	-0.6	2.8
Labour force	509.0	533.5	518.8	17.1	-14.7	9.8	-2.8	1.9
Employment	432.1	430.0	423.5	16.9	-6.5	-8.6	-1.5	-2.0
Full-time employment	85.1	69.8	76.7	11.0	6.9	-8.4	9.9	-9.9
Part-time employment	346.9	360.2	346.8	14.7	-13.4	-0.1	-3.7	0.0
Unemployment	77.0	103.5	95.3	9.2	-8.2	18.3	-7.9	23.8
Participation rate	60.9	61.7	60.3	1.6	-1.4	-0.6
Unemployment rate	15.1	19.4	18.4	1.5	-1.0	3.3
Employment rate	51.7	49.7	49.3	1.6	-0.4	-2.4
Part-time rate	80.3	83.8	81.9	1.8	-1.9	1.6
Students 20 to 24 years²								
Population	651.1	634.7	693.4	22.9	58.7	42.3	9.2	6.5
Labour force	489.7	435.6	491.3	20.6	55.7	1.6	12.8	0.3
Employment	414.4	355.9	410.3	19.8	54.4	-4.1	15.3	-1.0
Full-time employment	200.0	139.9	155.4	15.7	15.5	-44.6	11.1	-22.3
Part-time employment	214.4	216.0	254.9	13.8	38.9	40.5	18.0	18.9
Unemployment	75.3	79.7	81.0	7.9	1.3	5.7	1.6	7.6
Participation rate	75.2	68.6	70.9	1.8	2.3	-4.3
Unemployment rate	15.4	18.3	16.5	1.5	-1.8	1.1
Employment rate	63.6	56.1	59.2	2.0	3.1	-4.4
Part-time rate	51.7	60.7	62.1	2.5	1.4	10.4
Other persons aged 15 to 24³								
Population	2,080.6	2,091.7	2,057.4	28.8	-34.3	-23.2	-1.6	-1.1
Labour force	1,761.3	1,767.4	1,709.5	27.9	-57.9	-51.8	-3.3	-2.9
Employment	1,571.4	1,507.5	1,450.8	27.1	-56.7	-120.6	-3.8	-7.7
Full-time employment	1,210.2	1,123.9	1,073.2	25.8	-50.7	-137.0	-4.5	-11.3
Part-time employment	361.2	383.6	377.7	17.0	-5.9	16.5	-1.5	4.6
Unemployment	190.0	259.9	258.6	13.9	-1.3	68.6	-0.5	36.1
Participation rate	84.7	84.5	83.1	0.7	-1.4	-1.6
Unemployment rate	10.8	14.7	15.1	0.8	0.4	4.3
Employment rate	75.5	72.1	70.5	0.9	-1.6	-5.0
Part-time rate	23.0	25.4	26.0	1.0	0.6	3.0

1. Average standard error of change over the year (see "Sampling Errors" in Data Quality for further explanations).

2. Students are persons aged 15 to 24 who attended school full-time in March and who are planning to return to school in the fall.

3. Other persons are all other youths aged 15 to 24 who are not included in the student population.

Note(s): Related CANSIM Table 282-0006.

Table 9-2
Students and other persons aged 15 to 24 (unadjusted) by province

	Population		Labour force				Participation rate	Unemployment rate	Employment rate
	Labour force	Employment	Full-time employment	Part-time employment	Unemployment				
in thousands									
Students¹									
Newfoundland and Labrador									
May 2009	31.8	13.0	9.8	2.3	7.6	3.1	40.9	23.8	30.8
May 2010	29.1	11.4	8.5	1.4	7.1	2.9	39.2	25.4	29.2
Prince Edward Island									
May 2009	10.1	6.0	4.4	1.3	3.1	1.5	59.4	25.0	43.6
May 2010	9.8	5.9	5.0	1.7	3.3	0.9	60.2	15.3	51.0
Nova Scotia									
May 2009	56.4	31.8	25.3	6.4	18.9	6.5	56.4	20.4	44.9
May 2010	61.5	34.2	27.7	6.1	21.6	6.5	55.6	19.0	45.0
New Brunswick									
May 2009	47.2	26.8	20.4	5.8	14.7	6.4	56.8	23.9	43.2
May 2010	47.7	28.1	20.7	7.7	13.0	7.4	58.9	26.3	43.4
Quebec									
May 2009	522.7	291.8	228.4	30.4	198.0	63.4	55.8	21.7	43.7
May 2010	546.4	307.8	252.2	34.5	217.7	55.6	56.3	18.1	46.2
Ontario									
May 2009	1,003.5	537.8	402.4	88.1	314.3	135.4	53.6	25.2	40.1
May 2010	1,011.7	558.6	435.4	110.8	324.6	123.2	55.2	22.1	43.0
Manitoba									
May 2009	70.7	40.8	35.7	9.5	26.2	5.1	57.7	12.5	50.5
May 2010	70.0	39.5	31.7	9.6	22.1	7.8	56.4	19.7	45.3
Saskatchewan									
May 2009	58.2	35.5	31.0	8.2	22.8	4.5	61.0	12.7	53.3
May 2010	64.4	38.9	34.3	10.3	24.0	4.6	60.4	11.8	53.3
Alberta									
May 2009	221.2	129.6	111.0	31.7	79.3	18.6	58.6	14.4	50.2
May 2010	223.5	125.9	101.8	30.2	71.6	24.1	56.3	19.1	45.5
British Columbia									
May 2009	278.7	142.2	121.3	30.3	91.0	20.9	51.0	14.7	43.5
May 2010	282.7	137.0	110.2	22.6	87.6	26.8	48.5	19.6	39.0
Other persons aged 15-24²									
Newfoundland and Labrador									
May 2009	29.4	21.6	16.1	12.6	3.6	5.5	73.5	25.5	54.8
May 2010	31.7	23.6	18.0	13.5	4.5	5.6	74.4	23.7	56.8
Prince Edward Island									
May 2009	9.7	8.7	7.2	5.9	1.3	x	89.7	x	74.2
May 2010	9.9	8.4	7.2	6.0	1.2	1.1	84.8	13.1	72.7
Nova Scotia									
May 2009	63.9	53.2	42.8	31.8	11.0	10.4	83.3	19.5	67.0
May 2010	57.9	47.7	40.0	29.8	10.3	7.7	82.4	16.1	69.1
New Brunswick									
May 2009	46.8	37.9	33.5	25.3	8.2	x	81.0	x	71.6
May 2010	44.7	35.1	30.1	23.9	6.2	5.1	78.5	14.5	67.3
Quebec									
May 2009	439.7	370.7	318.1	237.4	80.7	52.5	84.3	14.2	72.3
May 2010	419.7	356.4	308.5	237.5	70.9	48.0	84.9	13.5	73.5
Ontario									
May 2009	740.1	628.8	523.7	383.4	140.4	105.1	85.0	16.7	70.8
May 2010	741.3	610.1	500.1	348.3	151.7	110.1	82.3	18.0	67.5
Manitoba									
May 2009	89.3	76.6	70.6	54.2	16.4	6.0	85.8	7.8	79.1
May 2010	91.1	76.3	67.9	50.0	17.9	8.4	83.8	11.0	74.5
Saskatchewan									
May 2009	81.2	70.8	62.9	49.7	13.3	7.7	87.2	10.9	77.5
May 2010	73.7	63.3	58.2	48.2	10.1	5.1	85.9	8.1	79.0
Alberta									
May 2009	285.6	247.8	212.2	174.2	38.0	35.6	86.8	14.4	74.3
May 2010	282.0	242.1	210.9	173.3	37.6	31.3	85.9	12.9	74.8

See notes at the end of the table.

Table 9-2 – continued

Students and other persons aged 15 to 24 (unadjusted) by province

	Population	Labour force				Unemployment	Participation rate	Unemployment rate	Employment rate
		Labour force	Employment	Full-time employment	Part-time employment				
in thousands									
British Columbia									
May 2009	305.9	251.4	220.2	149.4	70.9	31.2	82.2	12.4	72.0
May 2010	305.4	246.4	210.1	142.7	67.3	36.3	80.7	14.7	68.8

1. Students are persons aged 15 to 24 who attended school full-time in March and who are planning to return to school in the fall.

2. Other persons are all other youths aged 15 to 24 who are not included in the student population.

Note(s): Related CANSIM Table 282-0006.

Data quality

About the Labour Force Survey

The statistics contained in this report are based on information obtained through a sample survey of 53,000 representative households across the country. The Labour Force Survey, started in November 1945, was taken at quarterly intervals until November 1952. It has been carried out monthly since then. The information generated by the survey has expanded considerably over the years with a major redesign of the survey content in 1976 and again in 1997, and provides a rich and detailed picture of the Canadian labour market.

The sample used in the Labour Force Survey has been designed to represent all persons in the population 15 years of age and over residing in the provinces of Canada, with the exception of the following: persons living on Indian reserves, full-time members of the armed forces and people living in institutions (for example, inmates of penal institutions and patients in hospitals or nursing homes who have resided in the institution for more than six months). Monthly estimates of employment, unemployment and persons not in the labour force refer to the specific week covered by the survey each month, normally the week containing the 15th day.

Definitions and explanations

The **labour force** is composed of those members of the civilian non-institutional population 15 years of age and over who, during the reference week, were employed or unemployed.

Employed persons are those who, during the reference week:

- (a) did any work at all
- (b) had a job but were not at work

A person is considered to be **full-time** if his/her usual hours at the main job are 30 or more hours per week. When the number of hours worked at the main job is usually less than 30 hours per week then he/she is considered to be **part-time**.

Unemployed persons are those who, during the reference week:

- (a) were without work, had actively looked for work in the past four weeks (ending with reference week), and were available for work;
- (b) had not actively looked for work in the past four weeks but were on temporary layoff and were available for work;
- (c) had not actively looked for work in the past four weeks but had a new job to start in four weeks or less from the reference week, and were available for work.

Persons in the civilian non-institutional population 15 years of age and over who, during the reference week, were neither employed nor unemployed are classified as **not in the labour force**.

The **unemployment rate** represents the number of unemployed persons expressed as a percentage of the labour force. The unemployment rate for a particular group (age, sex, etc.) is the number unemployed in that group expressed as a percentage of the labour force for that group.

The **participation rate** represents the labour force expressed as a percentage of the population 15 years of age and over. The participation rate for a particular group (age, sex, etc.) is the labour force in that group expressed as a percentage of the population for that group.

The **employment rate (formerly the employment/population ratio)** represents the number of persons employed expressed as a percentage of the population 15 years of age and over. The employment rate for a particular group (age, sex, etc.) is the number employed in that group expressed as a percentage of the population for that group.

The **part-time rate** represents the number of persons employed part-time expressed as a percentage of the employed. The part-time rate for a particular group (age, sex, etc.) is the number employed part-time in that group expressed as a percentage of the employed for that group.

All geographic regions are based on the 2001 Census boundaries.

Seasonal adjustment

Fluctuations in economic time series are caused by seasonal, cyclical and irregular movements. A seasonally adjusted series is one from which seasonal movements have been eliminated. Seasonal movements are defined as those which are caused by regular annual events such as climate, holidays, vacation periods and cycles related to crops, production and retail sales associated with Christmas and Easter. The seasonally adjusted series contains irregular as well as longer-term cyclical fluctuations.

The seasonally adjusted series are revised each year to take into account current data and to generate new forecast factors for the next twelve months. The data are therefore subject to slight revisions in future issues of this publication.

Sampling variability of estimates

Estimates in this publication are based on the Labour Force Survey, a monthly survey of approximately 53,000 households across Canada. Because the entire population is not surveyed, the estimates are subject to sampling error. While the published estimate is the best available indicator of the real value, changes in the level of any estimates between two months can be the result of a true change or sampling variability. The sampling error can be estimated by calculating the standard error for the published estimate or statistic. These standard errors have been included in the publication tables, in order to assist users in interpreting the data.

Interpretation based on standard error

Two thirds of the time (68%), a change greater than the sampling error indicates a real change. The larger the change compared to the standard error, the better the chance that we are observing a real change, as opposed to a change due to sampling variability. At the 95% level, in order to ensure that change is real, the change in the estimate must be greater than twice the sampling error.

Movements in estimates that are smaller than the sampling error are less likely to reflect a real change and more likely to be due to sampling variability. While the above is true for monthly movements, one can have more confidence in a series of consecutive movements in the same direction, even though some of the monthly movements may be smaller than the sampling error.

Interpretation based on confidence intervals

Confidence intervals provide another way of looking at the variability inherent in estimates of sample surveys. To illustrate how to calculate the confidence interval, let us say that one month the published estimate for total employment rose by 16,000 to reach 16,500,000. The associated standard error for the movement estimate is 27,200. The standard error used to interpret the movement estimate indicates that:

- There are approximately two chances in three (68%) that the real value of the movement between the two months falls within the range -11,200 to +43,200 (16,000 + or – one standard error).
- There are approximately nine chances in ten (90%) that the real value of the movement between the two months falls within the range -27,520 to +59,520 (16,000 + or – 1.6 times the standard error).
- There are approximately nineteen chances in twenty (95%) that the real value of the movement between the two months falls within the range -38,400 to +70,400 (16,000 + or – two standard errors).

For more detailed explanations on sampling variability of estimates, and in particular for information on how to assess the variability of level estimates, consult the Data quality section of the *Guide to the Labour Force Survey*, (71-543-G) on page 27.

Documentation

For more detailed information about the Labour Force Survey, see the following documents:

- Overview of the Labour Force Survey
- Guide to the Labour Force Survey (71-543-G)
- Data quality statement
- Methodology of the Canadian Labour Force Survey (71-526-X)
- LFS *geographical maps*