

Catalogue no. 71-001-X

Labour Force Information

Not for release before 7 A.M. E.D.T.

Friday, July 11, 2008

June 15 to 21, 2008



Statistics
Canada

Statistique
Canada

Canada

How to obtain more information

Specific inquiries about this product and related statistics or services should be directed to: Labour Force Survey Program, Labour Statistics Division, Statistics Canada, Ottawa, Ontario, K1A 0T6 (telephone: 613-951-4090, toll free number: 1-866-873-8788, fax: 613-951-2869 or by e-mail address: labour@statcan.ca).

Statistics Canada's National Contact Centre

Toll-free telephone (Canada and the United States):

Inquiries line	1-800-263-1136
National telecommunications device for the hearing impaired	1-800-363-7629
Fax line	1-877-287-4369

Local or international calls:

Inquiries line	1-613-951-8116
Fax line	1-613-951-0581

Depository Services Program

Inquiries line	1-800-635-7943
Fax line	1-800-565-7757

To access this product

This product, Catalogue no. 71-001-X, is available free in electronic format. To obtain a single issue, visit our website at www.statcan.ca and select "Publications" > "Free Internet publications."

Standards of service to the public

Statistics Canada is committed to serving its clients in a prompt, reliable and courteous manner. To this end, Statistics Canada has developed *standards of service* that its employees observe. To obtain a copy of these service standards, please contact Statistics Canada toll-free at 1-800-263-1136. The service standards are also published on www.statcan.ca under "About us" > "Providing services to Canadians."

Statistics Canada
Labour Statistics Division
Labour Force Survey Program

Labour Force Information

Not for release before 7 A.M. E.D.T.

Friday, July 11, 2008

June 15 to 21, 2008

Published by authority of the Minister responsible for Statistics Canada

© Minister of Industry, 2008

All rights reserved. The content of this electronic publication may be reproduced, in whole or in part, and by any means, without further permission from Statistics Canada, subject to the following conditions: that it be done solely for the purposes of private study, research, criticism, review or newspaper summary, and/or for non-commercial purposes; and that Statistics Canada be fully acknowledged as follows: Source (or "Adapted from", if appropriate): Statistics Canada, year of publication, name of product, catalogue number, volume and issue numbers, reference period and page(s). Otherwise, no part of this publication may be reproduced, stored in a retrieval system or transmitted in any form, by any means—electronic, mechanical or photocopy—or for any purposes without prior written permission of Licensing Services, Client Services Division, Statistics Canada, Ottawa, Ontario, Canada K1A 0T6.

July 2008

Catalogue no. 71-001-X

ISSN 1492-5478

Frequency: Monthly

Ottawa

La version française de cette publication est disponible sur demande (n° 71-001-X au catalogue).

Note of appreciation

Canada owes the success of its statistical system to a long standing partnership between Statistics Canada, the citizens of Canada, its businesses, governments and other institutions. Accurate and timely statistical information could not be produced without their continued cooperation and goodwill.

User information

Symbols

The following standard symbols are used in Statistics Canada publications:

- . not available for any reference period
- .. not available for a specific reference period
- ... not applicable
- 0 true zero or a value rounded to zero
- 0^s value rounded to 0 (zero) where there is a meaningful distinction between true zero and the value that was rounded
- p preliminary
- r revised
- x suppressed to meet the confidentiality requirements of the *Statistics Act*
- E use with caution
- F too unreliable to be published

Special requests (\$)

Custom tabulations can be arranged on an ad hoc or regular basis. This service enables you to specify tables and time series to meet your own requirements. The cost varies according to the request. For more information, contact us toll-free at 1-866-873-8788 or e-mail us at labour@statcan.ca.

Schedule of LFS releases

Reference period - Week ending	Release date
January 19, 2008	February 8, 2008
February 16, 2008	March 7, 2008
March 15, 2008	April 4, 2008
April 19, 2008	May 9 2008
May 17, 2008	June 6, 2008
June 21, 2008	July 11, 2008
July 19, 2008	August 8, 2008
August 16, 2008	September 5, 2008
September 20, 2008	October 10, 2008
October 18, 2008	November 7, 2008
November 15, 2008	December 5, 2008
December 13, 2008	January 9, 2009

Latest LFS release in *The Daily* (free)

Table of contents

Highlights	5
Analysis — June 2008	6
Charts	
1. Employment and unemployment indicators, Canada, seasonally adjusted	9
2. Employment and unemployment indicators, Canada, seasonally adjusted	10
3. Index of employment by industry, Canada, seasonally adjusted, January, 2005=100	11
4. Index of employment by industry, Canada, seasonally adjusted, January 2005=100	12
5. Index of employment by industry, Canada, seasonally adjusted, January 2005=100	13
6. Index of employment by province, seasonally adjusted, January 2005=100	14
7. Index of employment by province, seasonally adjusted, January 2005=100	15
Related products	16
Statistical tables	
1 Labour force characteristics by age and sex, Canada, seasonally adjusted	24
2 Employment by class of worker and industry, Canada, seasonally adjusted	26
3 Labour force characteristics by province, seasonally adjusted	27
4 Selected labour force characteristics (seasonally adjusted)	29
4-1 Newfoundland and Labrador	29
4-2 Prince Edward Island	30
4-3 Nova Scotia	31
4-4 New Brunswick	32
4-5 Quebec	33
4-6 Ontario	34
4-7 Manitoba	35
4-8 Saskatchewan	36
4-9 Alberta	37
4-10 British Columbia	38
5 Labour force characteristics by census metropolitan area (seasonally adjusted)	39
5-1 3 month moving average	39
5-2 Monthly	44

Table of contents – continued

6	Labour force characteristics	45
6-1	by province and economic region, unadjusted for seasonality, 3 month moving average ending in June 2007 and June 2008	45
6-2	by territories, unadjusted for seasonality, 3 month moving average ending in June 2007 and June 2008	50
7	Average usual hours and wages of employees by selected characteristics, Canada, unadjusted for seasonality	51
8	Regional unemployment rates used by the Employment Insurance Program, seasonally adjusted, 3 month moving average	52
9	Students and other persons aged 15 to 24 (unadjusted)	54
9-1	by detailed age groups	54
9-2	by province	55
Data quality, concepts and methodology		
	Data quality	57

Highlights

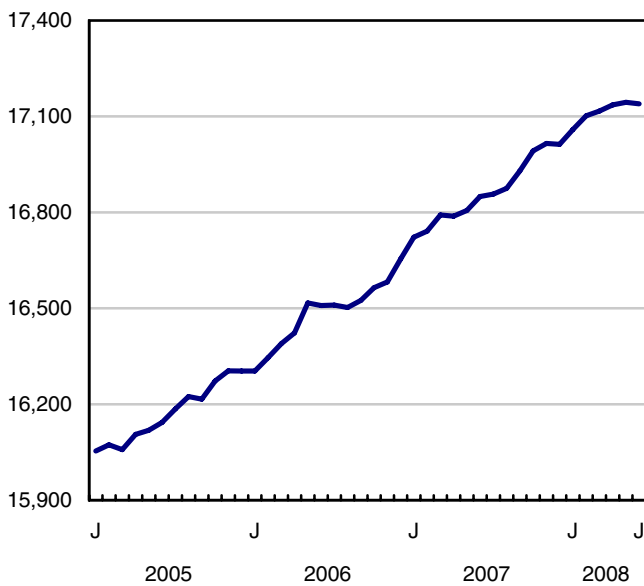
June 2008

Employment was unchanged in June for the second consecutive month. The unemployment rate edged up 0.1 percentage points to 6.2%, still among the lowest in 30 years. Over the past 12 months, employment in Canada has grown by 1.7% or 290,000.

Chart 1
Employment and unemployment rates, Canada, seasonally adjusted

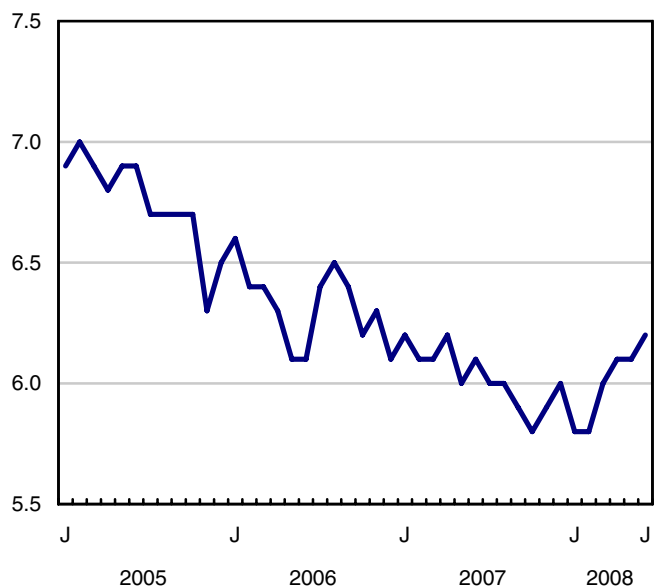
Employment

thousands



Unemployment rate

percentage



Analysis — June 2008

Employment was unchanged in June for the second consecutive month. The unemployment rate edged up 0.1 percentage points to 6.2%, still among the lowest in 30 years. Over the past 12 months, employment in Canada has grown by 1.7% or 290,000.

Part-time employment gains largely offset declines in full time in June. In the past 12 months, employment growth in part-time work has been faster than that of full time.

The only industry with a notable employment increase in June was professional, scientific and technical services, where monthly gains totalled 37,000. This industry has been among the top industries for employment growth since June 2007, along with construction; public administration; and health care and social assistance.

Industries with declines in June included: business, building and other support services; health care and social assistance; as well as construction. While manufacturing was unchanged in June, it was down 1.6% (-33,000) from a year ago.

Both Alberta and Nova Scotia experienced employment gains in June, pushing their employment rates to new record highs. Employment also rose in Manitoba.

In June, employment declined by 24,000 in Ontario. Despite this loss, employment in the province has grown 1.7% over the past 12 months, spurred by increases in construction and several service industries.

Over the past year, average hourly wages have risen by 4.4% to \$21.15. This rate of growth is double that of the most recent increase in the Consumer Price Index (2.2%).

Continued growth in professional, scientific and technical services

Employment continued to grow in professional, scientific and technical services in June (+37,000). From a year ago, employment in the industry has grown by 7.5%, an increase of 86,000 workers. The biggest contributors to this year-over-year increase have been computer design services and legal services.

Business, building and other support services had the largest decline in employment in June, down 18,000, bringing employment in this industry to a level similar to that of a year ago.

Construction employment decreased by 16,000 in June, the first significant monthly decline in the industry in two years. Over the last 12 months, however, employment growth in the industry has been strong, up 7.2%.

Employment in health care and social assistance also decreased in June (-17,000). Despite this decline, employment in the industry has grown 2.8% from 12 months ago.

Record high employment rates in Alberta and Nova Scotia

Alberta saw employment increases of 10,000 in June. These gains pushed the employment rate in the province up to 72.2%, a new record high. Employment growth over the past year has been the fastest of the provinces at 3.1%, largely driven by gains in professional, scientific and technical services; trade; agriculture; and finance, insurance, real estate and leasing.

Nova Scotia also experienced a new record-high employment rate of 59.3%, pushed by monthly gains of 6,200. Over the past 12 months, employment in the province has grown by 2.2%.

Manitoba was the only other province to report monthly gains in June, with an increase of 4,000. Since June of last year, employment growth in the province has been 1.9%.

In June, employment declined by 24,000 in Ontario, pushing the unemployment rate up 0.3 percentage points to 6.7%. The overall decline in employment was the result of a drop in full-time work (-46,000), which was tempered by gains in part time (+22,000). Since June 2007, part-time work in the province has been on the rise, growing by 10.3%. Overall, annual employment growth in Ontario has kept pace with the national average.

Employment declined in Newfoundland and Labrador in June. Over the last 12 months, however, employment grew by 1.8%, with strong gains in construction; public administration; as well as transportation and warehousing.

In June, the unemployment rate in Quebec decreased by 0.3 percentage points to 7.2%, due to a decline in labour force participation. Over the past 12 months, employment in the province has grown by 0.5%, well below the national average. Declines in trade and education offset growth in professional, scientific and technical services and construction as well as some other service industries.

More 17 to 19 year-old students working this summer

From May to August, the Labour Force Survey collects labour market information about young people aged 15 to 24 who were attending school full-time in March and intend to return to school in the fall. Survey results for May and June give an early indication of the summer job market for older students, however, many younger students were not yet out of school for the summer. Survey results for July and August will provide further insight into the summer job market for younger students. The published estimates are not seasonally adjusted; therefore comparisons can only be made on a year-over-year basis.

There were 37,000 more students between the ages of 17 to 19 working in June 2008 compared to June 2007. These gains, which were evenly split between full- and part-time work, pushed their employment rate up 2.0 percentage points to 59.3%.

In June, the employment rate for students in the 20 to 24 age group was 70.8%, slightly lower than a year earlier.

Quarterly update on Territories as well as Aboriginal people living off-reserve in the western provinces

The Labour Force Survey also collects labour market information about the Territories, and Aboriginal people living off-reserve in the four western provinces. This information is not seasonally adjusted and is produced monthly in the form of three-month moving averages. Comparisons should only be made on a year-over-year basis.

The Territories

The Yukon continued to enjoy a strong labour market in the second quarter of 2008, with an employment rate of 72.2%, up 2.2 percentage points from the same quarter last year.

Both the Northwest Territories and Nunavut saw declines in their employment rates in the second quarter of 2008 compared to the same quarter in 2007.

In the Northwest Territories, the employment rate fell 3.3 percentage points over the period to 70.0%. Despite this decline, the employment rate remained among the highest in Canada.

In the 10 largest communities of Nunavut, employment declined between the second quarters of 2007 and 2008, bringing the employment rate down 6.3 percentage points to 59.3%. At the same time, the unemployment rate increased 0.5 percentage points to 10.8%.

Aboriginal people

Amongst Aboriginal people living off reserve in the four Western provinces, the employment rate in the second quarter of 2008 was 62.4%, up 0.7 percentage points from the same period of 2007. The employment rate among non-Aboriginal people rose 0.5 percentage points over this period to 67.9%.

Aboriginal people living off reserve in British Columbia saw a large increase in their employment rate between the second quarters of 2007 and 2008, jumping 5.8 percentage points to 62.9%. Over the same period, the employment rate of non-Aboriginal people living in the province edged up slightly to 64.2%.

In contrast, the employment rate of Aboriginal people living off reserve in Alberta declined 1.3 percentage points to 68.0% between the second quarters of 2007 and 2008. At the same time, non-Aboriginal people saw an increase of 0.8 percentage points in their employment rate, which rose to 72.7%. Aboriginal people living in Alberta continued to have the highest employment rate of their counterparts in the West.

In Saskatchewan, Aboriginal people living off reserve saw a more pronounced decline in their employment rate, which fell from 57.1% to 52.9% between the second quarters of 2007 and 2008. Over the same period, the employment rate among non-Aboriginal people in the province edged up 0.2 percentage points to 68.2%. Saskatchewan has the lowest employment rate among its off reserve Aboriginal population of the western provinces.

In Manitoba the employment rate among Aboriginal people (61.9%) was little changed between the second quarters of 2007 and 2008. For non-Aboriginal people the employment rate rose by 0.8 percentage points to 68.1%.

Note to readers

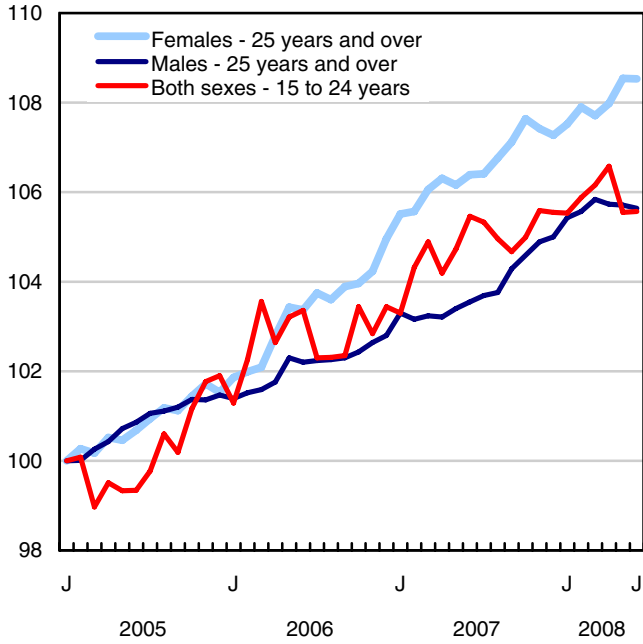
Please note that Table 1 in this publication has been extended to include labour force characteristics for men and women aged 25 to 54 years and 55 years and over at the Canada level.

The Labour Force Survey estimates are based on a sample, and are therefore subject to sampling variability. Estimates for smaller geographic areas or industries will have more variability. For an explanation of sampling variability of estimates, and how to use standard errors to assess this variability, consult the Data Quality section in this publication.

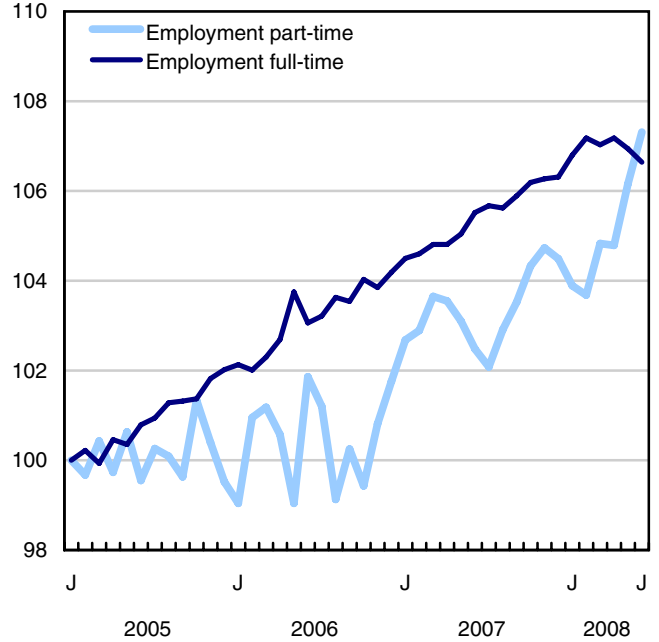
The 2007 Labour Force Historical Review on CD-ROM (71F0004XCB, \$209) is now available.

Chart 1
Employment and unemployment indicators, Canada, seasonally adjusted

Employment index, January 2005=100



Employment index, January 2005=100



Employment index, January 2005=100

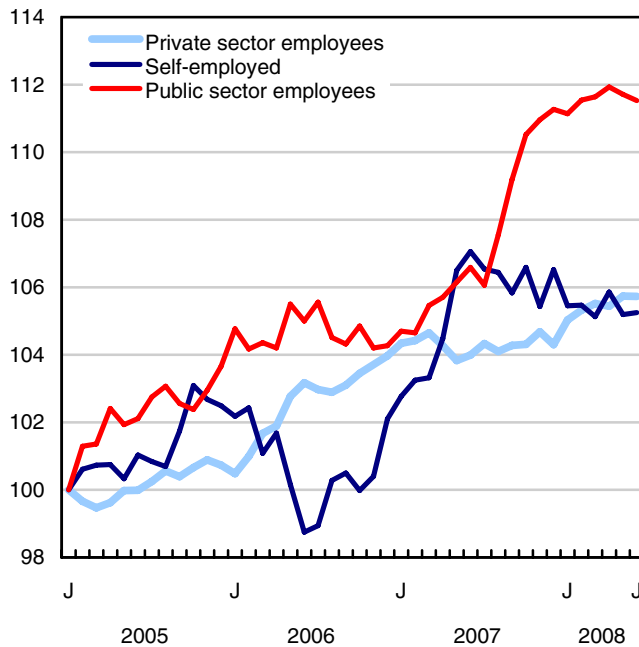
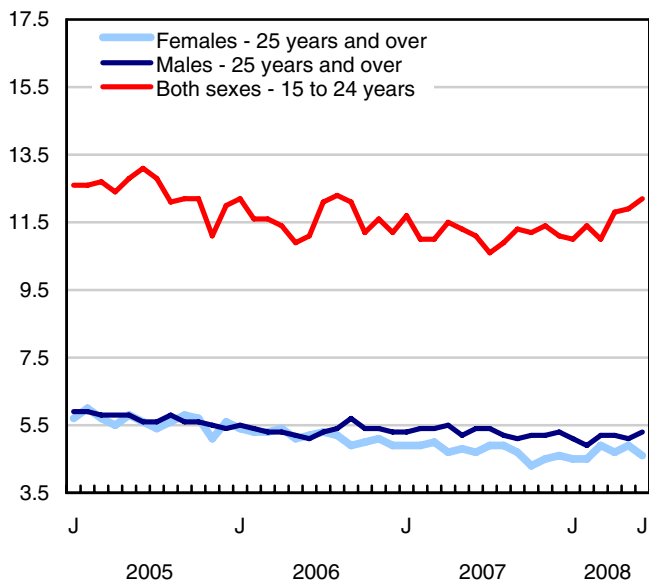
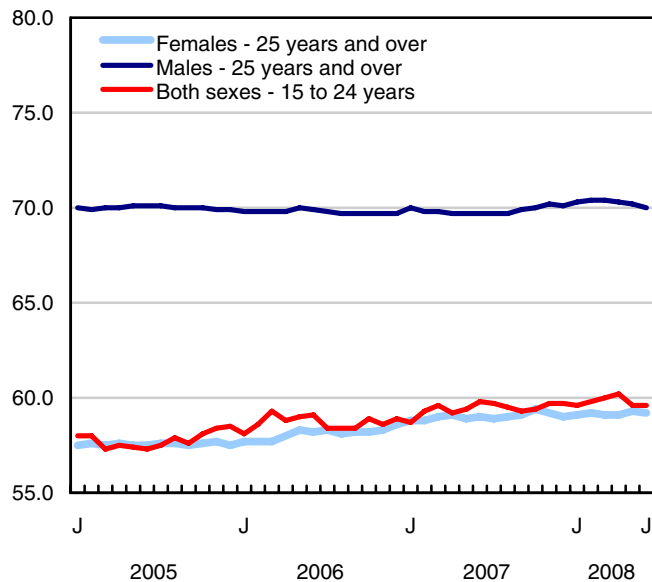


Chart 2
Employment and unemployment indicators, Canada, seasonally adjusted

Unemployment rate (%)



Employment rate (%)



Participation rate (%)

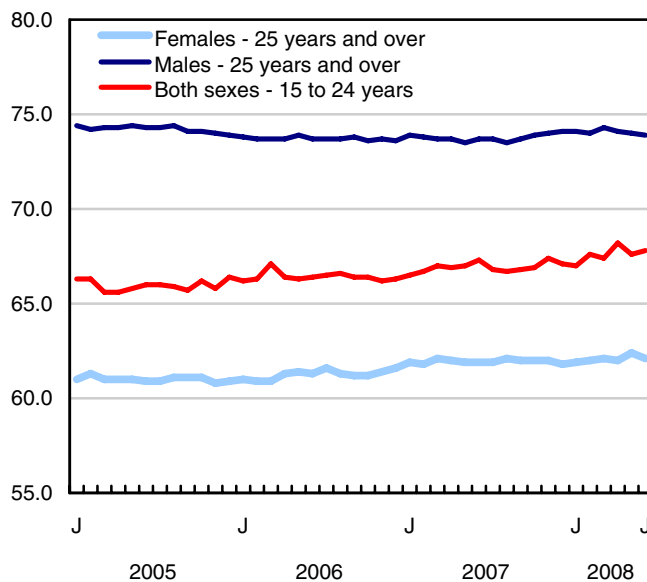


Chart 3
Index of employment by industry, Canada, seasonally adjusted, January, 2005=100

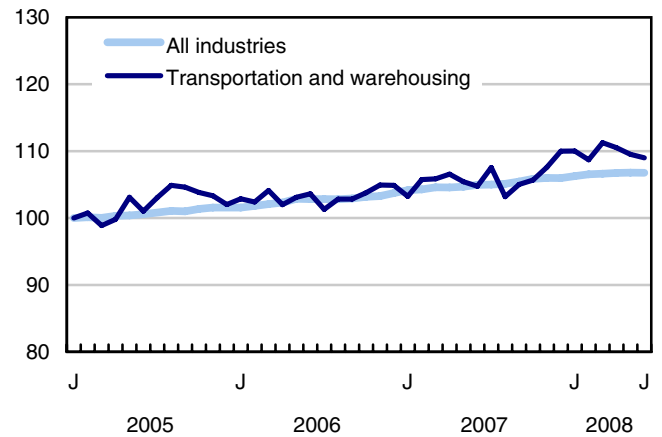
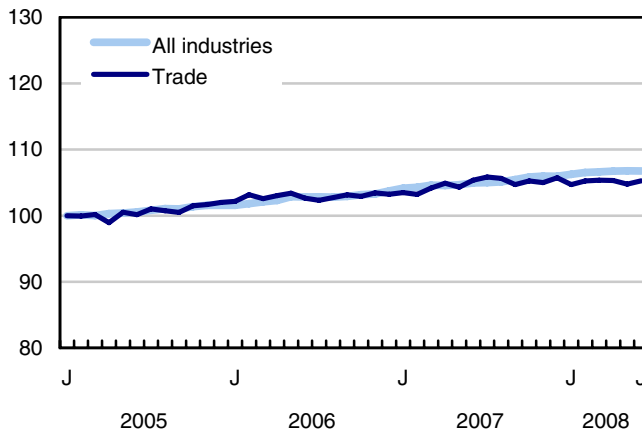
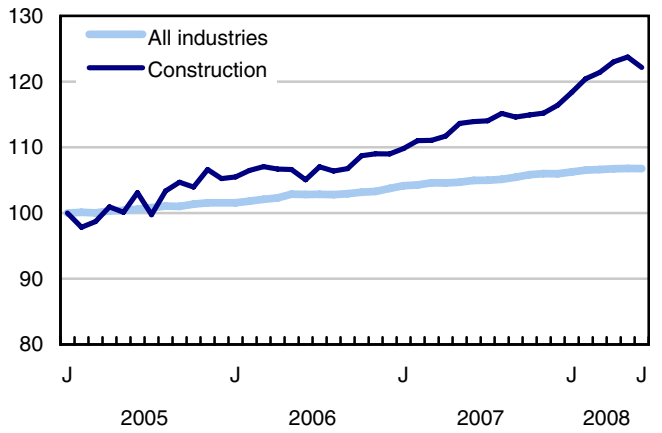
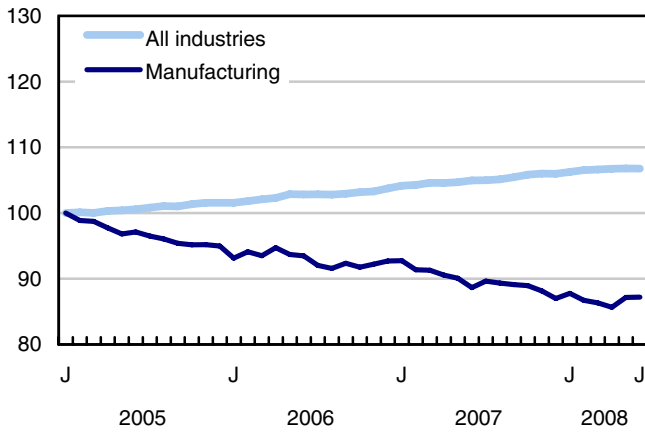
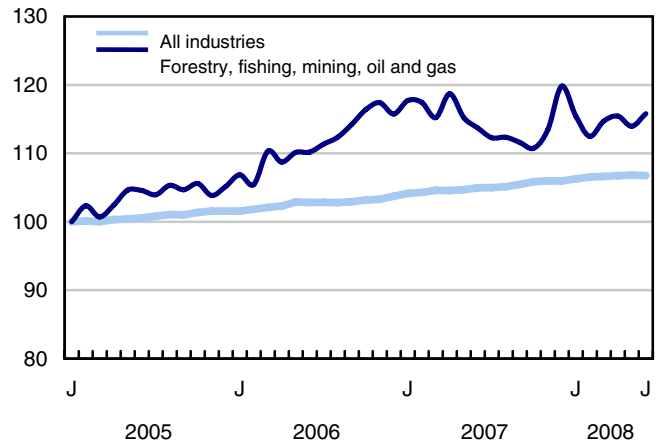
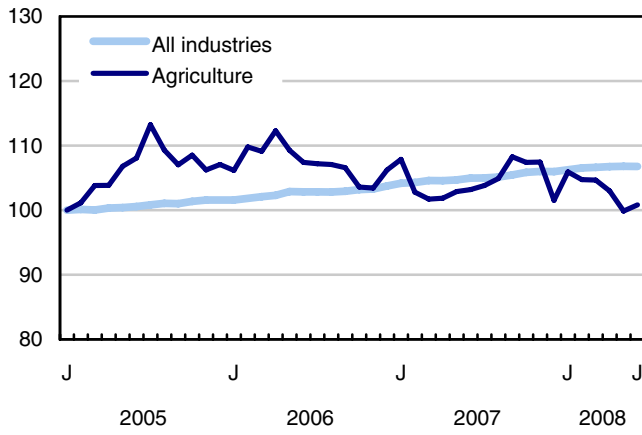


Chart 4
Index of employment by industry, Canada, seasonally adjusted, January 2005=100

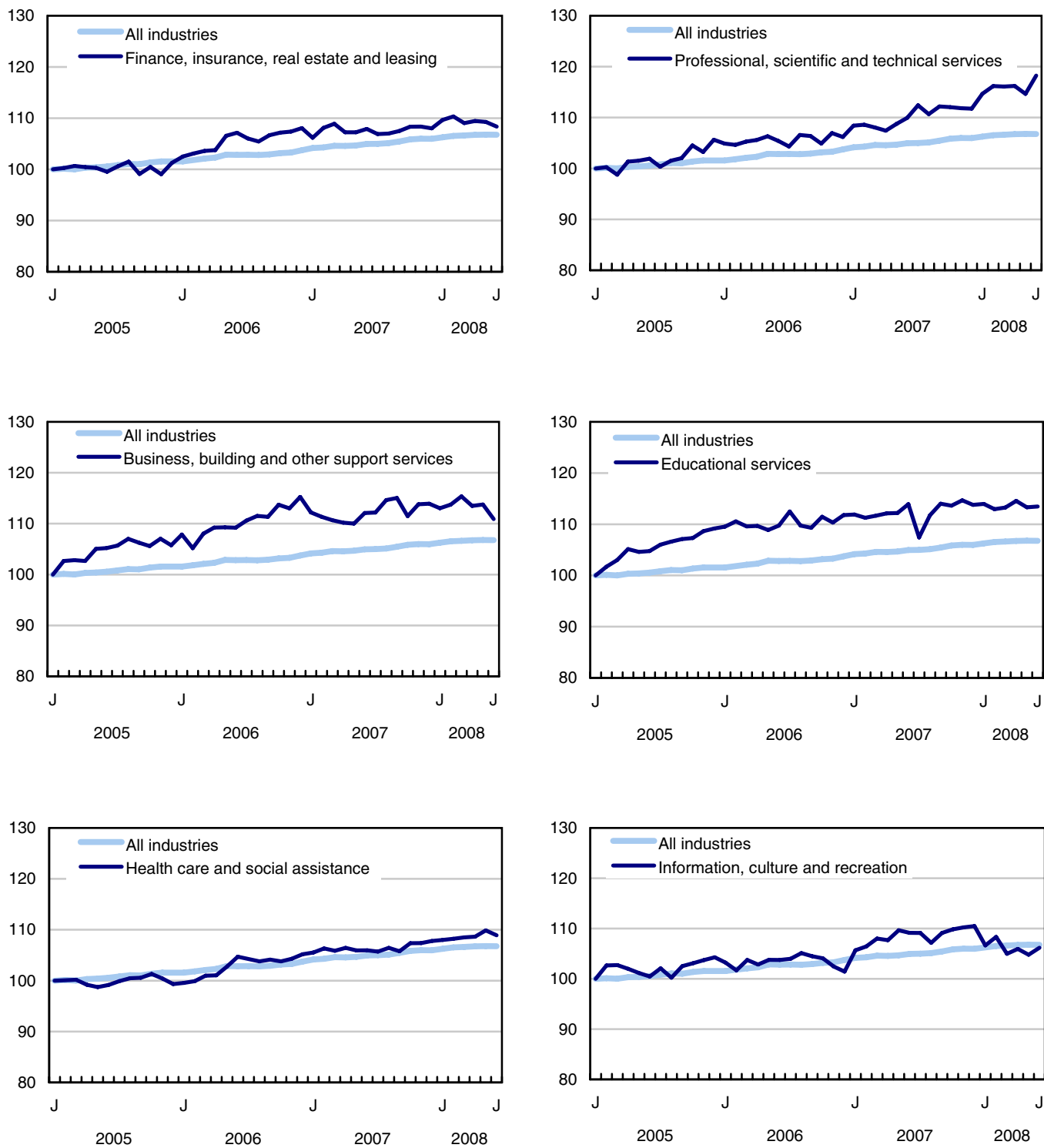


Chart 5
Index of employment by industry, Canada, seasonally adjusted, January 2005=100

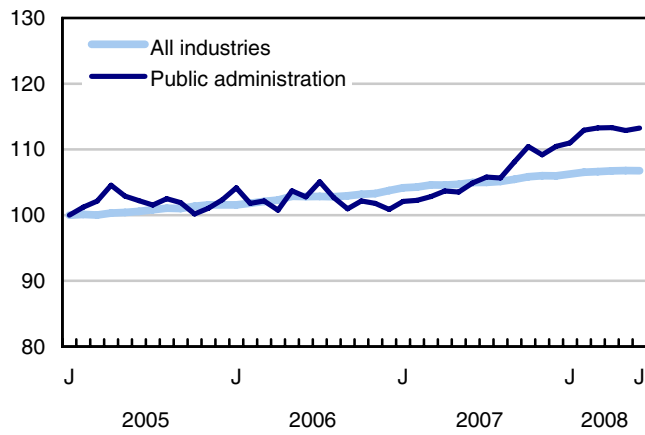
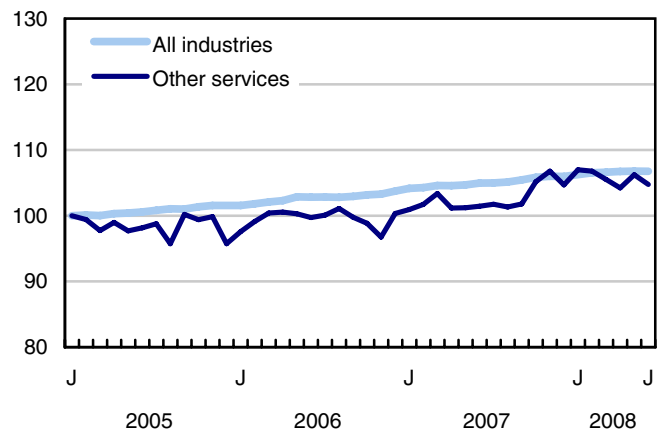
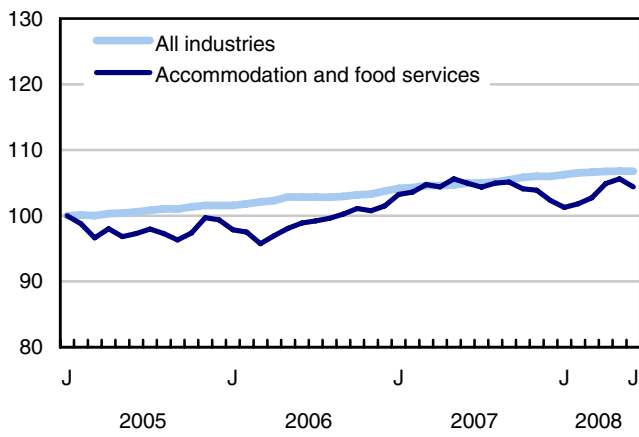


Chart 6
Index of employment by province, seasonally adjusted, January 2005=100

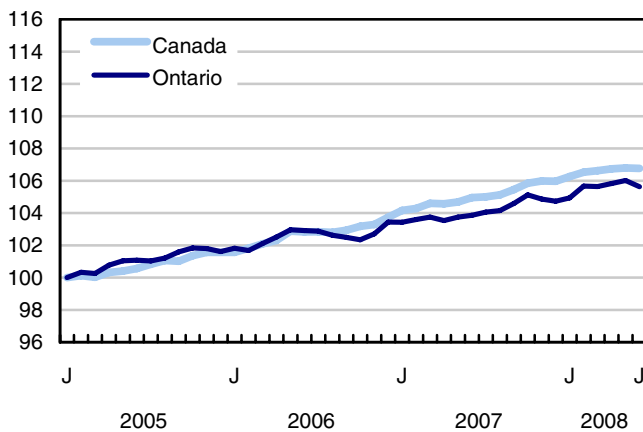
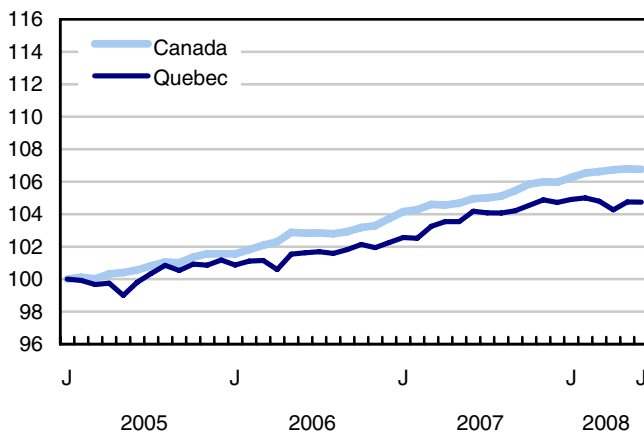
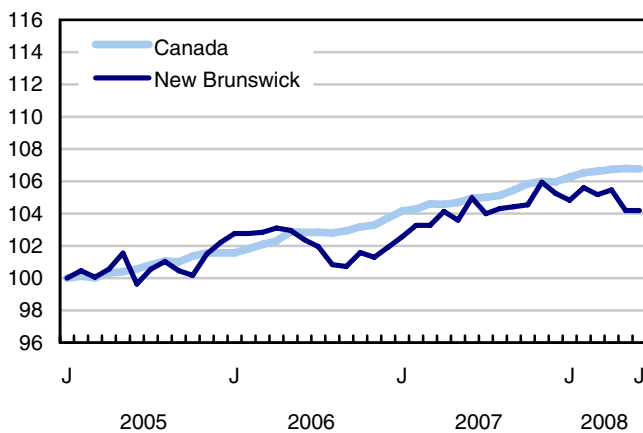
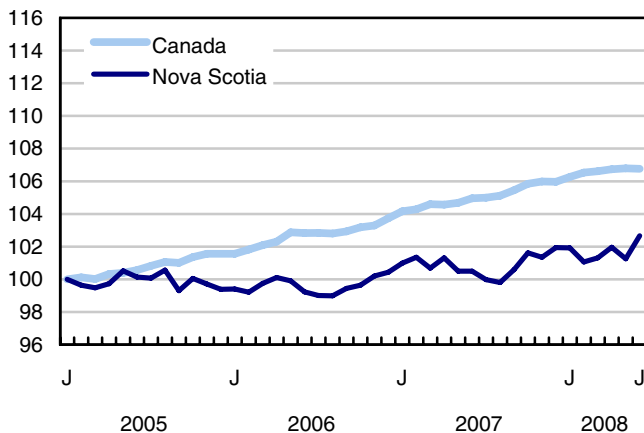
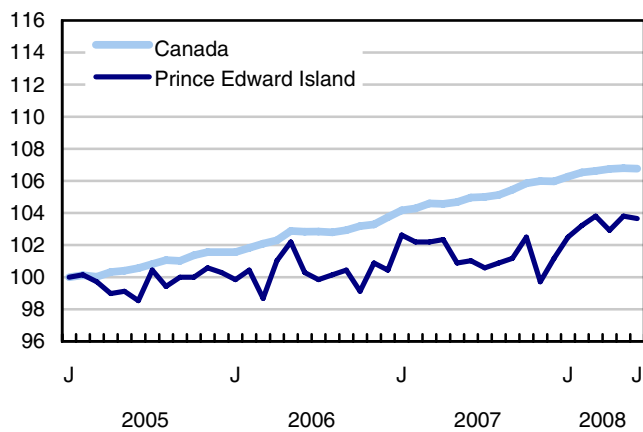
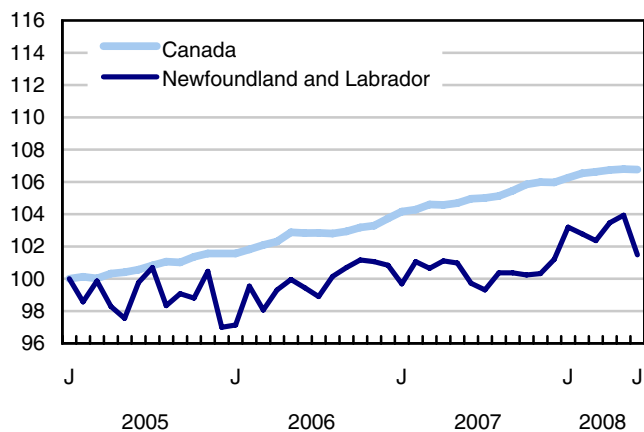
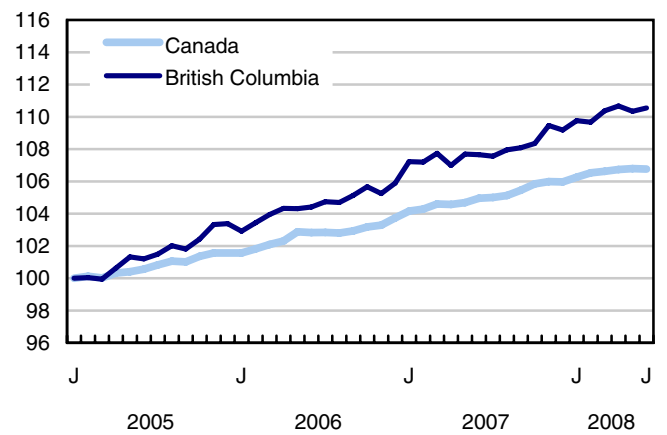
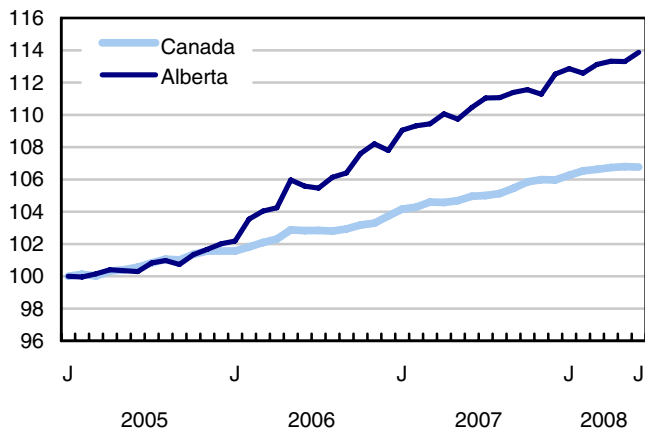
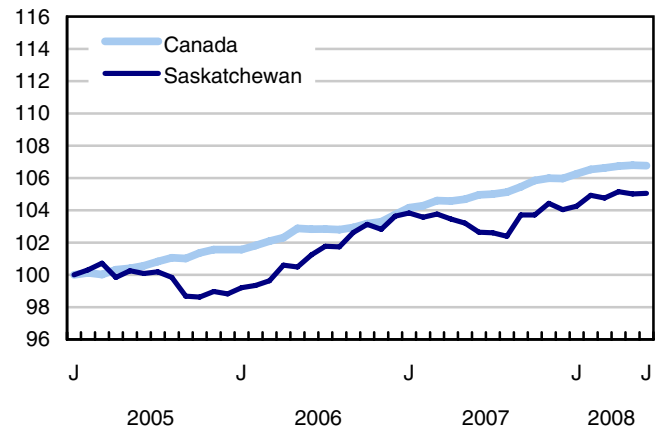
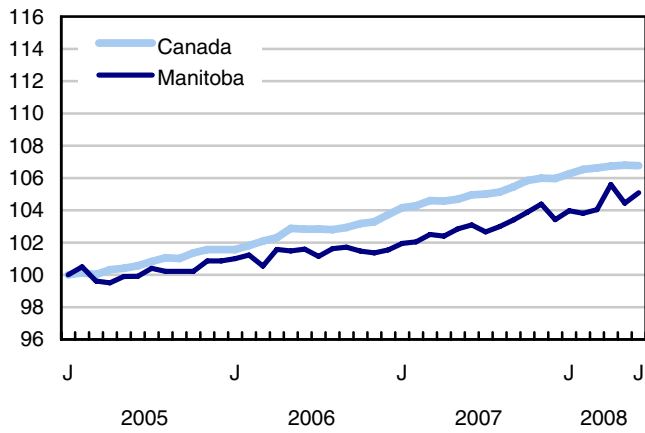


Chart 7
Index of employment by province, seasonally adjusted, January 2005=100



Related products

Selected publications from Statistics Canada

71-222-X	The Canadian Labour Market at a Glance
71-526-X	Methodology of the Canadian Labour Force Survey
71-543-G	Guide to the Labour Force Survey
71-544-X	Labour Force Survey Products and Services
71-587-X	Aboriginal Peoples Living Off-reserve in Western Canada: Estimates from the Labour Force Survey
71-606-X	The Immigrant Labour Force Analysis Series
71F0004X	Labour Force Historical Review
71F0031X	Improvements to the Labour Force Survey (LFS)
71M0001X	Labour Force Survey Microdata File
75-001-X	Perspectives on Labour and Income

Selected CANSIM tables from Statistics Canada

282-0001	Labour force survey estimates (LFS), by sex and detailed age group
282-0002	Labour force survey estimates (LFS), by sex and detailed age group
282-0003	Labour force survey estimates (LFS), by educational attainment, sex and age group
282-0004	Labour force survey estimates (LFS), by educational attainment, sex and age group
282-0005	Labour force survey estimates (LFS), by full- and part-time students during school months, sex and age group
282-0006	Labour force survey estimates (LFS), by students during summer months, sex and age group
282-0007	Labour force survey estimates (LFS), by North American Industry Classification System (NAICS), sex and age group
282-0008	Labour force survey estimates (LFS), by North American Industry Classification System (NAICS), sex and age group
282-0009	Labour force survey estimates (LFS), by National Occupational Classification for Statistics (NOC-S) and sex

282-0010	Labour force survey estimates (LFS), by National Occupational Classification for Statistics (NOC-S) and sex
282-0011	Labour force survey estimates (LFS), employment by class of worker, North American Industry Classification System (NAICS) and sex
282-0012	Labour force survey estimates (LFS), employment by class of worker, North American Industry Classification System (NAICS) and sex
282-0013	Labour force survey estimates (LFS), part-time employment by reason for part-time work, sex and age group
282-0014	Labour force survey estimates (LFS), part-time employment by reason for part-time work, sex and age group
282-0015	Labour force survey estimates (LFS), by usual hours worked, main or all jobs, sex and age group
282-0016	Labour force survey estimates (LFS), by usual hours worked, main or all jobs, sex and age group
282-0017	Labour force survey estimates (LFS), by actual hours worked, main or all jobs, sex and age group
282-0018	Labour force survey estimates (LFS), by actual hours worked, main or all jobs, sex and age group
282-0019	Labour force survey estimates (LFS), by usual hours worked, class of worker, North American Industry Classification System (NAICS) and sex
282-0020	Labour force survey estimates (LFS), by usual hours worked, class of worker, North American Industry Classification System (NAICS) and sex
282-0021	Labour force survey estimates (LFS), by actual hours worked, class of worker, North American Industry Classification System (NAICS) and sex
282-0022	Labour force survey estimates (LFS), by actual hours worked, class of worker, North American Industry Classification System (NAICS) and sex
282-0023	Labour force survey estimates (LFS), by usual hours worked, class of worker, National Occupational Classification for Statistics (NOC-S) and sex
282-0024	Labour force survey estimates (LFS), by usual hours worked, class of worker, National Occupational Classification for Statistics (NOC-S) and sex
282-0025	Labour force survey estimates (LFS), by actual hours worked, class of worker, National Occupational Classification for Statistics (NOC-S) and sex
282-0026	Labour force survey estimates (LFS), by actual hours worked, class of worker, National Occupational Classification for Statistics (NOC-S) and sex
282-0027	Labour force survey estimates (LFS), by total and average usual and actual hours worked, main or all jobs, type of work, sex and age group
282-0028	Labour force survey estimates (LFS), by total and average usual and actual hours worked, main or all jobs, type of work, sex and age group

282-0029	Labour force survey estimates (LFS), average days lost for personal reasons per full-time employee by North American Industry Classification System (NAICS), sex and age group
282-0030	Labour force survey estimates (LFS), average days lost for personal reasons per full-time employee by National Occupational Classification for Statistics (NOC-S), sex and age group
282-0031	Labour force survey estimates (LFS), multiple jobholders by North American Industry Classification System (NAICS), sex and age group
282-0032	Labour force survey estimates (LFS), multiple jobholders by North American Industry Classification System (NAICS), sex and age group
282-0033	Labour force survey estimates (LFS), multiple jobholders by National Occupational Classification for Statistics (NOC-S), sex and age group
282-0034	Labour force survey estimates (LFS), multiple jobholders by National Occupational Classification for Statistics (NOC-S), sex and age group
282-0035	Labour force survey estimates (LFS), multiple jobholders by usual hours worked at main and all jobs
282-0036	Labour force survey estimates (LFS), multiple jobholders by usual hours worked at main and all jobs
282-0037	Labour force survey estimates (LFS), job tenure by type of work, sex and age group
282-0038	Labour force survey estimates (LFS), job tenure by type of work, sex and age group
282-0039	Labour force survey estimates (LFS), job tenure by National Occupational Classification for Statistics (NOC-S) and sex
282-0040	Labour force survey estimates (LFS), job tenure by National Occupational Classification for Statistics (NOC-S) and sex
282-0041	Labour force survey estimates (LFS), job tenure by North American Industry Classification System (NAICS) and sex
282-0042	Labour force survey estimates (LFS), job tenure by North American Industry Classification System (NAICS) and sex
282-0047	Labour force survey estimates (LFS), duration of unemployment by sex and age group
282-0048	Labour force survey estimates (LFS), duration of unemployment by sex and age group
282-0049	Labour force survey estimates (LFS), unemployment by type of work sought and search method, sex and age group
282-0050	Labour force survey estimates (LFS), unemployment by type of work sought and search method, sex and age group
282-0051	Labour force survey estimates (LFS), retirement age by class of worker and sex
282-0052	Labour force survey estimates (LFS), by census metropolitan area, sex and age group, 3-month moving average
282-0053	Labour force survey estimates (LFS), by census metropolitan area, sex and age group

282-0054	Labour force survey estimates (LFS), by provinces, territories and economic regions, 3-month moving average
282-0055	Labour force survey estimates (LFS), by provinces, territories and economic regions
282-0056	Labour force survey estimates (LFS), employment by census metropolitan area and North American Industry Classification System (NAICS), 3-month moving average
282-0057	Labour force survey estimates (LFS), employment by census metropolitan area and North American Industry Classification System (NAICS)
282-0058	Labour force survey estimates (LFS), employment by census metropolitan area and National Occupational Classification for Statistics (NOC-S), 3-month moving average
282-0059	Labour force survey estimates (LFS), employment by census metropolitan area and National Occupational Classification for Statistics (NOC-S)
282-0060	Labour force survey estimates (LFS), employment by economic region and North American Industry Classification System (NAICS), 3-month moving average
282-0061	Labour force survey estimates (LFS), employment by economic region and North American Industry Classification System (NAICS)
282-0062	Labour force survey estimates (LFS), employment by economic region and National Occupational Classification for Statistics (NOC-S), 3-month moving average
282-0063	Labour force survey estimates (LFS), employment by economic region and National Occupational Classification for Statistics (NOC-S)
282-0064	Labour force survey estimates (LFS), by selected medium-sized cities
282-0069	Labour force survey estimates (LFS), wages of employees by type of work, National Occupational Classification for Statistics (NOC-S), sex and age group
282-0070	Labour force survey estimates (LFS), wages of employees by type of work, National Occupational Classification for Statistics (NOC-S), sex and age group
282-0071	Labour force survey estimates (LFS), wages of employees by type of work, North American Industry Classification System (NAICS), sex and age group
282-0072	Labour force survey estimates (LFS), wages of employees by type of work, North American Industry Classification System (NAICS), sex and age group
282-0073	Labour force survey estimates (LFS), wages of employees by job permanence, union coverage, sex and age group
282-0074	Labour force survey estimates (LFS), wages of employees by job permanence, union coverage, sex and age group
282-0075	Labour force survey estimates (LFS), employees by establishment size, North American Industry Classification System (NAICS), sex and age group
282-0076	Labour force survey estimates (LFS), employees by establishment size, North American Industry Classification System (NAICS), sex and age group

282-0077	Labour force survey estimates (LFS), employees by union coverage, North American Industry Classification System (NAICS), sex and age group
282-0078	Labour force survey estimates (LFS), employees by union coverage, North American Industry Classification System (NAICS), sex and age group
282-0079	Labour force survey estimates (LFS), employees by job permanency, North American Industry Classification System (NAICS), sex and age group
282-0080	Labour force survey estimates (LFS), employees by job permanency, North American Industry Classification System (NAICS), sex and age group
282-0081	Labour force survey estimates (LFS), employees working overtime (weekly) by National Occupational Classification for Statistics (NOC-S), sex and age group
282-0082	Labour force survey estimates (LFS), employees working overtime (weekly) by National Occupational Classification for Statistics (NOC-S), sex and age group
282-0083	Labour force survey estimates (LFS), employees working overtime (weekly) by North American Industry Classification System (NAICS), sex and age group
282-0084	Labour force survey estimates (LFS), employees working overtime (weekly) by North American Industry Classification System (NAICS), sex and age group
282-0085	Labour force survey estimates (LFS), supplementary unemployment rates by sex and age group
282-0086	Labour force survey estimates (LFS), supplementary unemployment rates by sex and age group
282-0087	Labour force survey estimates (LFS), by sex and age group, seasonally adjusted and unadjusted
282-0088	Labour force survey estimates (LFS), employment by North American Industry Classification System (NAICS), seasonally adjusted and unadjusted
282-0089	Labour force survey estimates (LFS), employment by class of worker and sex, seasonally adjusted and unadjusted
282-0090	Labour force survey estimates (LFS), by census metropolitan area, 3-month moving average, seasonally adjusted and unadjusted
282-0091	Labour force survey estimates (LFS), by Montréal, Toronto and Vancouver census metropolitan areas, seasonally adjusted and unadjusted
282-0092	Labour force survey estimates (LFS), actual hours worked by North American Industry Classification System (NAICS), seasonally adjusted
282-0093	Labour force survey estimates (LFS), employment by National Occupational Classification for Statistics (NOC-S), seasonally adjusted
282-0094	Labour force survey estimates (LFS), by North American Industry Classification System (NAICS), Canada, seasonally adjusted
282-0095	Labour force survey estimates (LFS), by full- and part-time students during school months, sex and age group
282-0096	Labour force survey estimates (LFS), by urban and rural areas based on 2001 census boundaries, sex and age group

282-0097	Labour force survey estimates (LFS), by urban and rural areas based on 2001 census boundaries, sex and age group
282-0098	Labour force survey estimates (LFS), employment by urban and rural areas based on 2001 census boundaries, class of worker and North American Industry Classification System (NAICS)
282-0099	Labour force survey estimates (LFS), employment by urban and rural areas based on 2001 census boundaries, class of worker and North American Industry Classification System (NAICS)

Selected surveys from Statistics Canada

3701	Labour Force Survey
------	---------------------

Selected summary tables from Statistics Canada

- *Labour force characteristics*
- *Employment by industry*
- *Selected economic indicators, Canada and United States (monthly and quarterly)*
- *Days lost per worker due to illness or disability, by sex, by provinces*
- *Economic indicators, by province and territory (monthly and quarterly)*
- *Labour force and participation rates by sex and age group*
- *Labour force, employed and unemployed, numbers and rates, by provinces*
- *Employment by industry and sex*
- *Full-time and part-time employment by sex and age group*
- *Labour force characteristics by age and sex*
- *Distribution of employed people, by industry, by province*
- *Labour force characteristics, population 15 years and older, by census metropolitan area*
- *Labour force characteristics, population 15 years and older, by economic region, by province*
- *Days lost per worker by cause, by provinces*
- *Days lost per worker by industry and sex*
- *People employed, by educational attainment*

- *Reasons for part-time work by sex and age group*
- *Self-employment, historical summary*
- *Employment by age, sex, type of work, class of worker and provinces (monthly)*
- *Employment by major industry groups, seasonally adjusted, by provinces (monthly)*
- *Actual hours worked per week by industry, seasonally adjusted (monthly)*
- *Average hourly wages of employees by selected characteristics and profession, unadjusted data, by provinces (monthly)*
- *Labour force characteristics, seasonally adjusted, by province (monthly)*
- *Labour force characteristics, unadjusted, by province (monthly)*
- *Labour force characteristics, seasonally adjusted, by census metropolitan area (3 month moving average)*
- *Labour force characteristics, unadjusted, by census metropolitan area (3 month moving average)*
- *Labour force characteristics, unadjusted, by economic region (3 month moving average)*

Statistical tables

Table 1
Labour force characteristics by age and sex, Canada, seasonally adjusted

	May 2008	June 2008	S.E. ¹	Change from			Percent change from		
				last month	last December	twelve months ago	last month	last December	twelve months ago
in thousands (except rates)									
15 years and over, both sexes									
Population	26,870.6	26,910.7	...	40.1	191.2	376.8	0.1	0.7	1.4
Labour force	18,261.6	18,263.5	27.0	1.9	173.3	328.8	0.0	1.0	1.8
Employment	17,144.4	17,139.4	27.4	-5.0	126.9	290.0	0.0	0.7	1.7
Employment full-time	13,997.2	13,958.0	35.7	-39.2	43.4	146.7	-0.3	0.3	1.1
Employment part-time	3,147.2	3,181.4	32.4	34.2	83.5	143.3	1.1	2.7	4.7
Unemployment	1,117.2	1,124.1	22.8	6.9	46.5	38.8	0.6	4.3	3.6
Participation rate	68.0	67.9	0.1	-0.1	0.2	0.3
Unemployment rate	6.1	6.2	0.1	0.1	0.2	0.1
Employment rate	63.8	63.7	0.1	-0.1	0.0	0.2
Part-time rate	18.4	18.6	0.2	0.2	0.4	0.5
15 to 24 years, both sexes									
Population	4,372.9	4,374.8	...	1.9	8.0	23.7	0.0	0.2	0.5
Labour force	2,956.5	2,968.1	16.2	11.6	36.5	39.3	0.4	1.2	1.3
Employment	2,605.7	2,606.2	15.8	0.5	0.7	2.8	0.0	0.0	0.1
Employment full-time	1,446.6	1,440.1	17.9	-6.5	18.2	-15.5	-0.4	1.3	-1.1
Employment part-time	1,159.1	1,166.1	18.5	7.0	-17.6	18.3	0.6	-1.5	1.6
Unemployment	350.8	362.0	13.5	11.2	36.0	36.6	3.2	11.0	11.2
Participation rate	67.6	67.8	0.4	0.2	0.7	0.5
Unemployment rate	11.9	12.2	0.4	0.3	1.1	1.1
Employment rate	59.6	59.6	0.4	0.0	-0.1	-0.2
Part-time rate	44.5	44.7	0.6	0.3	-0.7	0.7
25 years and over, men									
Population	10,993.5	11,012.9	...	19.4	92.2	176.9	0.2	0.8	1.6
Labour force	8,130.7	8,141.8	13.9	11.1	53.7	156.3	0.1	0.7	2.0
Employment	7,712.5	7,707.5	15.0	-5.0	47.3	152.9	-0.1	0.6	2.0
Employment full-time	7,197.0	7,176.7	19.2	-20.3	11.4	105.9	-0.3	0.2	1.5
Employment part-time	515.4	530.8	15.1	15.4	35.9	47.0	3.0	7.3	9.7
Unemployment	418.2	434.3	13.4	16.1	6.4	3.4	3.8	1.5	0.8
Participation rate	74.0	73.9	0.1	-0.1	-0.2	0.2
Unemployment rate	5.1	5.3	0.2	0.2	0.0	-0.1
Employment rate	70.2	70.0	0.1	-0.2	-0.1	0.3
Part-time rate	6.7	6.9	0.2	0.2	0.4	0.5
25 years and over, women									
Population	11,504.2	11,523.0	...	18.8	91.0	176.3	0.2	0.8	1.6
Labour force	7,174.4	7,153.6	15.5	-20.8	83.1	133.1	-0.3	1.2	1.9
Employment	6,826.3	6,825.7	15.5	-0.6	78.9	134.2	0.0	1.2	2.0
Employment full-time	5,353.6	5,341.2	23.0	-12.4	13.8	56.3	-0.2	0.3	1.1
Employment part-time	1,472.7	1,484.5	21.1	11.8	65.1	77.9	0.8	4.6	5.5
Unemployment	348.1	327.9	12.1	-20.2	4.2	-1.1	-5.8	1.3	-0.3
Participation rate	62.4	62.1	0.1	-0.3	0.3	0.2
Unemployment rate	4.9	4.6	0.2	-0.3	0.0	-0.1
Employment rate	59.3	59.2	0.1	-0.1	0.2	0.2
Part-time rate	21.6	21.7	0.3	0.2	0.7	0.7
25 to 54 years, both sexes									
Population	14,409.4	14,421.6	...	12.2	49.9	98.0	0.1	0.3	0.7
Labour force	12,512.0	12,494.8	20.4	-17.2	42.6	95.1	-0.1	0.3	0.8
Employment	11,890.6	11,873.1	21.9	-17.5	46.0	104.8	-0.1	0.4	0.9
Unemployment	621.4	621.7	16.9	0.3	-3.4	-9.8	0.0	-0.5	-1.6
Participation rate	86.8	86.6	0.0	-0.2	0.0	0.0
Unemployment rate	5.0	5.0	0.0	0.0	0.0	-0.1
Employment rate	82.5	82.3	0.0	-0.2	0.0	0.1

See footnotes at the end of the table.

Table 1 – continued

Labour force characteristics by age and sex, Canada, seasonally adjusted

	May 2008	June 2008	S.E. ¹	Change from			Percent change from		
				last month	last December	twelve months ago	last month	last December	twelve months ago
in thousands (except rates)									
25 to 54 years, men									
Population	7,197.2	7,203.7	...	6.5	26.1	50.8	0.1	0.4	0.7
Labour force	6,592.7	6,596.1	13.0	3.4	29.6	82.7	0.1	0.5	1.3
Employment	6,257.6	6,247.9	14.7	-9.7	36.8	89.4	-0.2	0.6	1.5
Unemployment	335.0	348.2	12.5	13.2	-7.2	-6.8	3.9	-2.0	-1.9
Participation rate	91.6	91.6	0.2	0.0	0.1	0.5
Unemployment rate	5.1	5.3	0.2	0.2	-0.1	-0.2
Employment rate	86.9	86.7	0.2	-0.2	0.2	0.6
25 to 54 years, women									
Population	7,212.2	7,217.9	...	5.7	23.8	47.2	0.1	0.3	0.7
Labour force	5,919.3	5,898.7	15.0	-20.6	13.0	12.4	-0.3	0.2	0.2
Employment	5,633.0	5,625.2	15.3	-7.8	9.1	15.4	-0.1	0.2	0.3
Unemployment	286.4	273.5	11.2	-12.9	3.8	-3.0	-4.5	1.4	-1.1
Participation rate	82.1	81.7	0.2	-0.4	-0.1	-0.4
Unemployment rate	4.8	4.6	0.2	-0.2	0.0	-0.1
Employment rate	78.1	77.9	0.2	-0.2	-0.2	-0.3
55 years and over, both sexes									
Population	8,088.4	8,114.3	...	25.9	133.3	255.2	0.3	1.7	3.2
Labour force	2,793.1	2,800.6	15.2	7.5	94.2	194.4	0.3	3.5	7.5
Employment	2,648.1	2,660.1	15.1	12.0	80.2	182.3	0.5	3.1	7.4
Unemployment	145.0	140.5	7.7	-4.5	14.0	12.1	-3.1	11.1	9.4
Participation rate	34.5	34.5	0.2	0.0	0.6	1.3
Unemployment rate	5.2	5.0	0.3	-0.2	0.3	0.1
Employment rate	32.7	32.8	0.2	0.1	0.5	1.3
55 years and over, men									
Population	3,796.3	3,809.2	...	12.9	66.1	126.1	0.3	1.8	3.4
Labour force	1,538.0	1,545.7	10.1	7.7	24.1	73.7	0.5	1.6	5.0
Employment	1,454.8	1,459.6	10.1	4.8	10.5	63.5	0.3	0.7	4.5
Unemployment	83.2	86.1	5.6	2.9	13.6	10.2	3.5	18.8	13.4
Participation rate	40.5	40.6	0.3	0.1	-0.1	0.6
Unemployment rate	5.4	5.6	0.4	0.2	0.8	0.4
Employment rate	38.3	38.3	0.3	0.0	-0.4	0.4
55 years and over, women									
Population	4,292.1	4,305.1	...	13.0	67.1	129.2	0.3	1.6	3.1
Labour force	1,255.1	1,254.9	10.4	-0.2	70.1	120.7	0.0	5.9	10.6
Employment	1,193.3	1,200.5	10.3	7.2	69.8	118.8	0.6	6.2	11.0
Unemployment	61.8	54.4	5.2	-7.4	0.4	1.9	-12.0	0.7	3.6
Participation rate	29.2	29.1	0.2	-0.1	1.1	1.9
Unemployment rate	4.9	4.3	0.4	-0.6	-0.3	-0.3
Employment rate	27.8	27.9	0.2	0.1	1.2	2.0

1. Average standard error of change in two consecutive months (see "Sampling Errors" in Data Quality for further explanations).

Note(s): Related CANSIM table 282-0087

Table 2
Employment by class of worker and industry, Canada, seasonally adjusted

	May 2008	June 2008	S.E. ¹	Change from			Percent change from		
				last month	last December	twelve months ago	last month	last December	twelve months ago
in thousands									
Class of worker									
Employees	14,534.6	14,528.2	32.1	-6.4	158.4	334.9	0.0	1.1	2.4
Self-employed ²	2,609.8	2,611.2	21.1	1.4	-31.5	-45.0	0.1	-1.2	-1.7
Public/private sector employees									
Public sector employees	3,413.9	3,408.6	20.3	-5.3	8.1	151.2	-0.2	0.2	4.6
Private sector employees	11,120.7	11,119.6	33.1	-1.1	150.3	183.7	0.0	1.4	1.7
Industry	17,144.4	17,139.4	27.4	-5.0	126.9	290.0	0.0	0.7	1.7
Goods-producing sector	4,033.0	4,033.3	23.3	0.3	64.6	65.1	0.0	1.6	1.6
Agriculture	322.2	325.3	6.9	3.1	-2.3	-7.7	1.0	-0.7	-2.3
Forestry, fishing, mining, oil and gas	337.1	342.5	6.5	5.4	-11.9	6.2	1.6	-3.4	1.8
Utilities	150.7	157.5	4.1	6.8	16.7	17.6	4.5	11.9	12.6
Construction	1,236.9	1,221.0	14.3	-15.9	57.6	82.4	-1.3	5.0	7.2
Manufacturing	1,986.2	1,987.0	17.9	0.8	4.5	-33.3	0.0	0.2	-1.6
Services-producing sector	13,111.4	13,106.0	31.1	-5.4	62.2	224.7	0.0	0.5	1.7
Trade	2,681.9	2,694.8	20.4	12.9	-11.6	-1.9	0.5	-0.4	-0.1
Transportation and warehousing	851.2	847.1	11.8	-4.1	-7.8	32.9	-0.5	-0.9	4.0
Finance, insurance, real estate and leasing	1,076.6	1,067.6	13.0	-9.0	3.3	4.6	-0.8	0.3	0.4
Professional, scientific and technical services	1,183.3	1,220.4	14.8	37.1	67.1	85.6	3.1	5.8	7.5
Business, building and other support services	711.1	693.3	12.7	-17.8	-18.9	-7.3	-2.5	-2.7	-1.0
Educational services	1,191.2	1,193.1	13.8	1.9	-3.2	-4.8	0.2	-0.3	-0.4
Health care and social assistance	1,907.1	1,890.2	15.0	-16.9	19.6	51.0	-0.9	1.0	2.8
Information, culture and recreation	754.9	765.0	12.5	10.1	-30.9	-21.3	1.3	-3.9	-2.7
Accommodation and food services	1,083.0	1,070.7	14.3	-12.3	21.3	-5.7	-1.1	2.0	-0.5
Other services	748.1	737.8	11.0	-10.3	0.5	23.3	-1.4	0.1	3.3
Public administration	923.0	926.1	10.2	3.1	22.9	68.4	0.3	2.5	8.0

1. Average standard error of change in two consecutive months (see "Sampling Errors" in Data Quality for further explanations).

2. Includes both incorporated and unincorporated working owners, self-employed persons who do not have a business and persons working in a family business without pay.

Note(s): Related CANSIM tables 282-0088, 282-0089

Table 3
Labour force characteristics by province, seasonally adjusted

	May 2008	June 2008	S.E. ¹	Change from			Percent change from		
				last month	last December	twelve months ago	last month	last December	twelve months ago
in thousands (except rates)									
Newfoundland and Labrador									
Population	425.7	426.0	...	0.3	1.5	2.7	0.1	0.4	0.6
Labour force	256.9	252.4	2.2	-4.5	2.2	4.2	-1.8	0.9	1.7
Employment	224.7	219.4	2.2	-5.3	0.6	3.8	-2.4	0.3	1.8
Employment full-time	192.3	188.7	2.6	-3.6	0.1	7.2	-1.9	0.1	4.0
Employment part-time	32.5	30.7	1.8	-1.8	0.5	-3.4	-5.5	1.7	-10.0
Unemployment	32.2	33.1	2.1	0.9	1.7	0.6	2.8	5.4	1.8
Participation rate	60.3	59.2	0.5	-1.1	0.3	0.6
Unemployment rate	12.5	13.1	0.8	0.6	0.6	0.0
Employment rate	52.8	51.5	0.5	-1.3	0.0	0.6
Prince Edward Island									
Population	114.1	114.3	...	0.2	0.5	1.1	0.2	0.4	1.0
Labour force	78.5	78.9	0.6	0.4	1.4	1.8	0.5	1.8	2.3
Employment	71.0	70.9	0.7	-0.1	1.7	1.8	-0.1	2.5	2.6
Employment full-time	59.2	60.2	0.8	1.0	2.3	2.5	1.7	4.0	4.3
Employment part-time	11.8	10.7	0.6	-1.1	-0.6	-0.7	-9.3	-5.3	-6.1
Unemployment	7.5	8.0	0.6	0.5	-0.3	-0.1	6.7	-3.6	-1.2
Participation rate	68.8	69.0	0.5	0.2	0.9	0.9
Unemployment rate	9.6	10.1	0.8	0.5	-0.6	-0.4
Employment rate	62.2	62.0	0.6	-0.2	1.2	1.0
Nova Scotia									
Population	768.0	768.6	...	0.6	2.8	4.6	0.1	0.4	0.6
Labour force	489.7	493.0	2.8	3.3	2.8	7.7	0.7	0.6	1.6
Employment	449.3	455.5	2.9	6.2	3.2	9.6	1.4	0.7	2.2
Employment full-time	365.4	372.9	3.6	7.5	6.2	8.5	2.1	1.7	2.3
Employment part-time	83.9	82.6	3.1	-1.3	-3.0	1.1	-1.5	-3.5	1.3
Unemployment	40.4	37.5	2.6	-2.9	-0.5	-1.9	-7.2	-1.3	-4.8
Participation rate	63.8	64.1	0.4	0.3	0.1	0.6
Unemployment rate	8.2	7.6	0.5	-0.6	-0.2	-0.5
Employment rate	58.5	59.3	0.4	0.8	0.2	0.9
New Brunswick									
Population	617.6	618.0	...	0.4	2.7	5.3	0.1	0.4	0.9
Labour force	398.3	402.1	2.3	3.8	4.3	9.4	1.0	1.1	2.4
Employment	362.9	362.9	2.4	0.0	-3.7	-2.7	0.0	-1.0	-0.7
Employment full-time	305.5	306.7	2.8	1.2	-4.4	1.9	0.4	-1.4	0.6
Employment part-time	57.4	56.2	2.4	-1.2	0.7	-4.6	-2.1	1.3	-7.6
Unemployment	35.4	39.2	2.1	3.8	8.0	12.1	10.7	25.6	44.6
Participation rate	64.5	65.1	0.4	0.6	0.4	1.0
Unemployment rate	8.9	9.7	0.5	0.8	1.9	2.8
Employment rate	58.8	58.7	0.4	-0.1	-0.9	-1.0
Quebec									
Population	6,363.7	6,369.6	...	5.9	29.4	57.2	0.1	0.5	0.9
Labour force	4,198.6	4,186.9	14.2	-11.7	12.1	37.9	-0.3	0.3	0.9
Employment	3,885.4	3,885.0	14.5	-0.4	0.7	20.9	0.0	0.0	0.5
Employment full-time	3,166.0	3,164.6	19.1	-1.4	15.4	2.1	0.0	0.5	0.1
Employment part-time	719.4	720.5	17.5	1.1	-14.6	18.9	0.2	-2.0	2.7
Unemployment	313.2	301.9	12.7	-11.3	11.4	17.0	-3.6	3.9	6.0
Participation rate	66.0	65.7	0.2	-0.3	-0.1	0.0
Unemployment rate	7.5	7.2	0.3	-0.3	0.2	0.3
Employment rate	61.1	61.0	0.2	-0.1	-0.3	-0.2

See footnotes at the end of the table.

Table 3 – continued

Labour force characteristics by province, seasonally adjusted

	May 2008	June 2008	S.E. ¹	Change from			Percent change from		
				last month	last December	twelve months ago	last month	last December	twelve months ago
in thousands (except rates)									
Ontario									
Population	10,487.2	10,503.4	...	16.2	77.0	150.3	0.2	0.7	1.5
Labour force	7,167.5	7,166.2	18.4	-1.3	71.0	129.1	0.0	1.0	1.8
Employment	6,711.6	6,687.7	18.5	-23.9	56.8	111.9	-0.4	0.9	1.7
Employment full-time	5,464.8	5,419.3	23.4	-45.5	-26.3	-6.5	-0.8	-0.5	-0.1
Employment part-time	1,246.8	1,268.4	20.9	21.6	83.1	118.4	1.7	7.0	10.3
Unemployment	456.0	478.5	15.9	22.5	14.2	17.3	4.9	3.1	3.8
Participation rate	68.3	68.2	0.2	-0.1	0.1	0.2
Unemployment rate	6.4	6.7	0.2	0.3	0.2	0.1
Employment rate	64.0	63.7	0.2	-0.3	0.1	0.2
Manitoba									
Population	908.2	909.4	...	1.2	6.2	11.0	0.1	0.7	1.2
Labour force	631.6	635.0	2.7	3.4	9.7	9.6	0.5	1.6	1.5
Employment	605.0	608.8	2.7	3.8	9.7	11.6	0.6	1.6	1.9
Employment full-time	494.1	490.5	3.9	-3.6	2.5	9.0	-0.7	0.5	1.9
Employment part-time	110.9	118.3	3.6	7.4	7.2	2.6	6.7	6.5	2.2
Unemployment	26.6	26.2	2.1	-0.4	0.0	-2.0	-1.5	0.0	-7.1
Participation rate	69.5	69.8	0.3	0.3	0.6	0.2
Unemployment rate	4.2	4.1	0.3	-0.1	-0.1	-0.4
Employment rate	66.6	66.9	0.3	0.3	0.6	0.4
Saskatchewan									
Population	765.2	766.8	...	1.6	8.8	16.8	0.2	1.2	2.2
Labour force	531.2	530.9	2.3	-0.3	5.0	10.0	-0.1	1.0	1.9
Employment	509.4	509.6	2.4	0.2	4.9	11.7	0.0	1.0	2.3
Employment full-time	416.6	417.5	3.1	0.9	4.8	12.0	0.2	1.2	3.0
Employment part-time	92.7	92.1	2.9	-0.6	0.2	-0.3	-0.6	0.2	-0.3
Unemployment	21.8	21.2	1.8	-0.6	0.0	-1.8	-2.8	0.0	-7.8
Participation rate	69.4	69.2	0.3	-0.2	-0.2	-0.3
Unemployment rate	4.1	4.0	0.3	-0.1	0.0	-0.4
Employment rate	66.6	66.5	0.3	-0.1	-0.1	0.1
Alberta									
Population	2,788.5	2,795.1	...	6.6	25.6	55.0	0.2	0.9	2.0
Labour force	2,083.6	2,086.4	7.9	2.8	26.6	53.0	0.1	1.3	2.6
Employment	2,007.7	2,017.7	8.2	10.0	23.9	60.5	0.5	1.2	3.1
Employment full-time	1,682.8	1,682.5	11.2	-0.3	4.6	37.4	0.0	0.3	2.3
Employment part-time	325.0	335.3	10.0	10.3	19.4	23.1	3.2	6.1	7.4
Unemployment	75.9	68.6	5.8	-7.3	2.6	-7.6	-9.6	3.9	-10.0
Participation rate	74.7	74.6	0.3	-0.1	0.2	0.4
Unemployment rate	3.6	3.3	0.3	-0.3	0.1	-0.4
Employment rate	72.0	72.2	0.3	0.2	0.2	0.8
British Columbia									
Population	3,632.4	3,639.6	...	7.2	36.9	72.8	0.2	1.0	2.0
Labour force	2,425.7	2,431.9	9.8	6.2	38.4	66.4	0.3	1.6	2.8
Employment	2,317.4	2,321.8	9.8	4.4	28.9	60.9	0.2	1.3	2.7
Employment full-time	1,850.9	1,855.5	13.5	4.6	39.0	72.5	0.2	2.1	4.1
Employment part-time	466.5	466.3	12.7	-0.2	-10.2	-11.6	0.0	-2.1	-2.4
Unemployment	108.2	110.0	7.0	1.8	9.4	5.4	1.7	9.3	5.2
Participation rate	66.8	66.8	0.3	0.0	0.4	0.5
Unemployment rate	4.5	4.5	0.3	0.0	0.3	0.1
Employment rate	63.8	63.8	0.3	0.0	0.2	0.4

1. Average standard error of change in two consecutive months (see "Sampling Errors" in Data Quality for further explanations).

Note(s): Related CANSIM table 282-0087

Table 4-1
Selected labour force characteristics (seasonally adjusted) — Newfoundland and Labrador

	May 2008	June 2008	S.E. ¹	Change from			Percent change from		
				last month	last December	twelve months ago	last month	last December	twelve months ago
in thousands (except rates)									
Both sexes, 15 years and over									
Population	425.7	426.0	...	0.3	1.5	2.7	0.1	0.4	0.6
Labour force	256.9	252.4	2.2	-4.5	2.2	4.2	-1.8	0.9	1.7
Employment	224.7	219.4	2.2	-5.3	0.6	3.8	-2.4	0.3	1.8
Employment full-time	192.3	188.7	2.6	-3.6	0.1	7.2	-1.9	0.1	4.0
Unemployment	32.2	33.1	2.1	0.9	1.7	0.6	2.8	5.4	1.8
Participation rate	60.3	59.2	0.5	-1.1	0.3	0.6
Unemployment rate	12.5	13.1	0.8	0.6	0.6	0.0
Employment rate	52.8	51.5	0.5	-1.3	0.0	0.6
Part-time rate	14.5	14.0	0.8	-0.5	0.2	-1.8
Both sexes, 15 to 24 years									
Population	62.6	62.5	...	-0.1	-0.4	-1.1	-0.2	-0.6	-1.7
Labour force	34.8	34.4	1.1	-0.4	1.0	-0.2	-1.1	3.0	-0.6
Employment	28.0	27.7	1.1	-0.3	0.5	0.1	-1.1	1.8	0.4
Unemployment	6.8	6.7	1.0	-0.1	0.5	-0.3	-1.5	8.1	-4.3
Participation rate	55.6	55.0	1.7	-0.6	1.9	0.6
Unemployment rate	19.5	19.5	2.7	0.0	0.9	-0.7
Employment rate	44.7	44.3	1.7	-0.4	1.1	0.9
Part-time rate	42.5	45.5	3.5	3.0	5.8	-0.5
Men, 25 years and over									
Population	175.3	175.5	...	0.2	0.7	1.6	0.1	0.4	0.9
Labour force	116.6	114.4	1.3	-2.2	0.0	2.2	-1.9	0.0	2.0
Employment	104.7	100.4	1.4	-4.3	-1.1	2.9	-4.1	-1.1	3.0
Unemployment	11.9	14.0	1.3	2.1	1.1	-0.7	17.6	8.5	-4.8
Participation rate	66.5	65.2	0.7	-1.3	-0.2	0.7
Unemployment rate	10.2	12.2	1.1	2.0	0.9	-0.9
Employment rate	59.7	57.2	0.8	-2.5	-0.9	1.1
Part-time rate	4.9	3.1	0.9	-1.8	-1.2	-1.6
Women, 25 years and over									
Population	187.8	188.0	...	0.2	1.3	2.2	0.1	0.7	1.2
Labour force	105.5	103.6	1.2	-1.9	1.2	2.2	-1.8	1.2	2.2
Employment	92.1	91.2	1.2	-0.9	1.1	0.6	-1.0	1.2	0.7
Unemployment	13.4	12.4	1.2	-1.0	0.1	1.6	-7.5	0.8	14.8
Participation rate	56.2	55.1	0.6	-1.1	0.3	0.5
Unemployment rate	12.7	12.0	1.1	-0.7	0.0	1.3
Employment rate	49.0	48.5	0.6	-0.5	0.2	-0.3
Part-time rate	16.8	16.4	1.3	-0.4	-0.2	-2.2
Industry									
	224.7	219.4	2.2	-5.3	0.6	3.8	-2.4	0.3	1.8
Goods-producing sector									
Agriculture	1.1	0.9	0.3	-0.2	-0.5	-0.4	-18.2	-35.7	-30.8
Forestry, fishing, mining, oil and gas	15.5	14.8	1.0	-0.7	-2.2	0.7	-4.5	-12.9	5.0
Utilities	1.6	1.5	0.2	-0.1	-0.4	0.0	-6.2	-21.1	0.0
Construction	17.7	17.7	1.0	0.0	3.5	4.4	0.0	24.6	33.1
Manufacturing	16.2	14.6	1.1	-1.6	-0.6	-1.3	-9.9	-3.9	-8.2
Services-producing sector									
	172.8	170.0	2.0	-2.8	0.8	0.5	-1.6	0.5	0.3
Trade	37.8	35.3	1.2	-2.5	-1.2	-1.5	-6.6	-3.3	-4.1
Transportation and warehousing	11.2	11.1	0.8	-0.1	1.0	1.7	-0.9	9.9	18.1
Finance, insurance, real estate and leasing	8.3	7.6	0.5	-0.7	-0.7	0.3	-8.4	-8.4	4.1
Professional, scientific and technical services	8.7	8.8	0.6	0.1	0.9	-0.4	1.1	11.4	-4.3
Business, building and other support services	7.9	8.0	0.8	0.1	-1.0	-0.4	1.3	-11.1	-4.8
Educational services	16.4	16.1	0.8	-0.3	0.8	-1.6	-1.8	5.2	-9.0
Health care and social assistance	32.2	32.2	1.0	0.0	-0.2	1.0	0.0	-0.6	3.2
Information, culture and recreation	7.9	7.9	0.7	0.0	-1.4	-1.3	0.0	-15.1	-14.1
Accommodation and food services	12.8	13.3	0.9	0.5	-1.9	-1.4	3.9	-12.5	-9.5
Other services	11.0	10.5	0.7	-0.5	1.6	1.4	-4.5	18.0	15.4
Public administration	18.8	19.1	0.9	0.3	2.9	2.7	1.6	17.9	16.5

1. Average standard error of change in two consecutive months (see "Sampling Errors" in Data Quality for further explanations).

Note(s): Related CANSIM tables 282-0087, 282-0088

Table 4-2
Selected labour force characteristics (seasonally adjusted) — Prince Edward Island

	May 2008	June 2008	S.E. ¹	Change from			Percent change from		
				last month	last December	twelve months ago	last month	last December	twelve months ago
in thousands (except rates)									
Both sexes, 15 years and over									
Population	114.1	114.3	...	0.2	0.5	1.1	0.2	0.4	1.0
Labour force	78.5	78.9	0.6	0.4	1.4	1.8	0.5	1.8	2.3
Employment	71.0	70.9	0.7	-0.1	1.7	1.8	-0.1	2.5	2.6
Employment full-time	59.2	60.2	0.8	1.0	2.3	2.5	1.7	4.0	4.3
Unemployment	7.5	8.0	0.6	0.5	-0.3	-0.1	6.7	-3.6	-1.2
Participation rate	68.8	69.0	0.5	0.2	0.9	0.9
Unemployment rate	9.6	10.1	0.8	0.5	-0.6	-0.4
Employment rate	62.2	62.0	0.6	-0.2	1.2	1.0
Part-time rate	16.6	15.1	0.9	-1.5	-1.2	-1.4
Both sexes, 15 to 24 years									
Population	19.7	19.7	...	0.0	0.1	0.0	0.0	0.5	0.0
Labour force	13.7	14.2	0.3	0.5	0.2	0.2	3.6	1.4	1.4
Employment	11.9	11.7	0.4	-0.2	0.1	-0.2	-1.7	0.9	-1.7
Unemployment	1.8	2.5	0.3	0.7	0.1	0.4	38.9	4.2	19.0
Participation rate	69.5	72.1	1.8	2.6	0.7	1.0
Unemployment rate	13.1	17.6	2.2	4.5	0.5	2.6
Employment rate	60.4	59.4	1.8	-1.0	0.2	-1.0
Part-time rate	36.1	34.2	3.2	-1.9	-6.3	-6.1
Men, 25 years and over									
Population	45.3	45.4	...	0.1	0.3	0.7	0.2	0.7	1.6
Labour force	32.8	33.1	0.3	0.3	0.9	0.9	0.9	2.8	2.8
Employment	29.8	29.6	0.4	-0.2	0.5	0.8	-0.7	1.7	2.8
Unemployment	3.0	3.5	0.4	0.5	0.4	0.2	16.7	12.9	6.1
Participation rate	72.4	72.9	0.7	0.5	1.5	0.9
Unemployment rate	9.1	10.6	1.1	1.5	1.0	0.4
Employment rate	65.8	65.2	0.8	-0.6	0.7	0.8
Part-time rate	6.7	6.1	1.0	-0.6	0.2	0.2
Women, 25 years and over									
Population	49.1	49.2	...	0.1	0.1	0.5	0.2	0.2	1.0
Labour force	32.0	31.7	0.3	-0.3	0.4	0.7	-0.9	1.3	2.3
Employment	29.3	29.6	0.4	0.3	1.1	1.3	1.0	3.9	4.6
Unemployment	2.7	2.1	0.3	-0.6	-0.7	-0.6	-22.2	-25.0	-22.2
Participation rate	65.2	64.4	0.7	-0.8	0.7	0.7
Unemployment rate	8.4	6.6	1.1	-1.8	-2.3	-2.1
Employment rate	59.7	60.2	0.8	0.5	2.2	2.1
Part-time rate	18.8	16.9	1.4	-1.9	0.0	-0.1
Industry									
Population	71.0	70.9	0.7	-0.1	1.7	1.8	-0.1	2.5	2.6
Goods-producing sector									
Agriculture	2.9	2.8	0.3	-0.1	-0.4	-0.9	-0.6	-2.3	-5.1
Forestry, fishing, mining, oil and gas	2.9	3.1	0.3	0.2	0.7	0.6	6.9	29.2	24.0
Utilities	0.3	0.2	0.1	-0.1	-0.1	0.0	-33.3	-33.3	0.0
Construction	5.0	4.8	0.3	-0.2	0.2	-0.1	-4.0	4.3	-2.0
Manufacturing	5.8	5.9	0.3	0.1	-0.8	-0.8	1.7	-11.9	-11.9
Services-producing sector									
Trade	10.5	10.7	0.4	0.2	0.0	0.0	1.9	0.0	0.0
Transportation and warehousing	2.9	2.6	0.2	-0.3	0.2	0.5	-10.3	8.3	23.8
Finance, insurance, real estate and leasing	2.8	2.8	0.2	0.0	-0.1	0.0	0.0	-3.4	0.0
Professional, scientific and technical services	2.7	2.4	0.2	-0.3	0.1	0.4	-11.1	4.3	20.0
Business, building and other support services	3.0	2.8	0.2	-0.2	0.0	-0.1	-6.7	0.0	-3.4
Educational services	5.4	5.3	0.3	-0.1	0.6	0.6	-1.9	12.8	12.8
Health care and social assistance	8.2	8.1	0.3	-0.1	-0.1	-0.5	-1.2	-1.2	-5.8
Information, culture and recreation	2.5	3.1	0.2	0.6	0.5	0.4	24.0	19.2	14.8
Accommodation and food services	5.0	5.2	0.3	0.2	-0.2	-0.7	4.0	-3.7	-11.9
Other services	3.3	3.0	0.2	-0.3	0.0	0.4	-9.1	0.0	15.4
Public administration	7.8	8.1	0.3	0.3	1.1	1.7	3.8	15.7	26.6

1. Average standard error of change in two consecutive months (see "Sampling Errors" in Data Quality for further explanations).

Note(s): Related CANSIM tables 282-0087, 282-0088

Table 4-3
Selected labour force characteristics (seasonally adjusted) — Nova Scotia

	May 2008	June 2008	S.E. ¹	Change from			Percent change from		
				last month	last December	twelve months ago	last month	last December	twelve months ago
in thousands (except rates)									
Both sexes, 15 years and over									
Population	768.0	768.6	...	0.6	2.8	4.6	0.1	0.4	0.6
Labour force	489.7	493.0	2.8	3.3	2.8	7.7	0.7	0.6	1.6
Employment	449.3	455.5	2.9	6.2	3.2	9.6	1.4	0.7	2.2
Employment full-time	365.4	372.9	3.6	7.5	6.2	8.5	2.1	1.7	2.3
Unemployment	40.4	37.5	2.6	-2.9	-0.5	-1.9	-7.2	-1.3	-4.8
Participation rate	63.8	64.1	0.4	0.3	0.1	0.6
Unemployment rate	8.2	7.6	0.5	-0.6	-0.2	-0.5
Employment rate	58.5	59.3	0.4	0.8	0.2	0.9
Part-time rate	18.7	18.1	0.7	-0.5	-0.8	-0.1
Both sexes, 15 to 24 years									
Population	121.6	121.5	...	-0.1	-0.5	-1.0	-0.1	-0.4	-0.8
Labour force	83.0	82.9	1.6	-0.1	-0.4	3.7	-0.1	-0.5	4.7
Employment	72.2	72.3	1.6	0.1	1.4	3.5	0.1	2.0	5.1
Unemployment	10.8	10.6	1.5	-0.2	-1.8	0.3	-1.9	-14.5	2.9
Participation rate	68.3	68.2	1.3	-0.1	-0.1	3.5
Unemployment rate	13.0	12.8	1.7	-0.2	-2.1	-0.2
Employment rate	59.4	59.5	1.3	0.1	1.4	3.3
Part-time rate	46.3	44.0	2.4	-2.3	-1.4	-0.5
Men, 25 years and over									
Population	308.2	308.5	...	0.3	1.3	2.4	0.1	0.4	0.8
Labour force	210.0	213.4	1.5	3.4	2.7	4.6	1.6	1.3	2.2
Employment	193.2	197.6	1.7	4.4	1.6	6.2	2.3	0.8	3.2
Unemployment	16.8	15.8	1.6	-1.0	1.1	-1.6	-6.0	7.5	-9.2
Participation rate	68.1	69.2	0.5	1.1	0.6	1.0
Unemployment rate	8.0	7.4	0.7	-0.6	0.4	-0.9
Employment rate	62.7	64.1	0.6	1.4	0.3	1.6
Part-time rate	6.3	6.9	0.7	0.6	-0.3	-0.2
Women, 25 years and over									
Population	338.2	338.6	...	0.4	1.9	3.2	0.1	0.6	1.0
Labour force	196.7	196.6	1.5	-0.1	0.4	-0.8	-0.1	0.2	-0.4
Employment	184.0	185.6	1.5	1.6	0.2	-0.1	0.9	0.1	-0.1
Unemployment	12.8	11.0	1.3	-1.8	0.1	-0.7	-14.1	0.9	-6.0
Participation rate	58.2	58.1	0.4	-0.1	-0.2	-0.8
Unemployment rate	6.5	5.6	0.6	-0.9	0.0	-0.3
Employment rate	54.4	54.8	0.4	0.4	-0.3	-0.6
Part-time rate	20.8	20.0	1.0	-0.8	-1.1	-0.1
Industry									
Industry	449.3	455.5	2.9	6.2	3.2	9.6	1.4	0.7	2.2
Goods-producing sector									
Goods-producing sector	94.2	95.7	2.3	1.5	3.7	8.9	1.6	4.0	10.3
Agriculture	6.3	6.6	0.7	0.3	0.9	0.4	4.8	15.8	6.5
Forestry, fishing, mining, oil and gas	12.1	12.2	1.0	0.1	-1.5	-1.6	0.8	-10.9	-11.6
Utilities	3.5	3.9	0.3	0.4	1.3	2.5	11.4	50.0	178.6
Construction	34.2	33.1	1.4	-1.1	5.1	5.9	-3.2	18.2	21.7
Manufacturing	38.1	39.9	1.5	1.8	-2.1	1.8	4.7	-5.0	4.7
Services-producing sector									
Services-producing sector	355.1	359.8	3.0	4.7	-0.5	0.7	1.3	-0.1	0.2
Trade	77.8	75.5	1.9	-2.3	0.6	-3.4	-3.0	0.8	-4.3
Transportation and warehousing	17.6	18.5	0.9	0.9	-0.9	0.7	5.1	-4.6	3.9
Finance, insurance, real estate and leasing	22.4	22.8	1.0	0.4	1.3	-0.5	1.8	6.0	-2.1
Professional, scientific and technical services	18.5	21.7	1.0	3.2	2.9	5.6	17.3	15.4	34.8
Business, building and other support services	28.1	26.7	1.4	-1.4	-4.4	0.8	-5.0	-14.1	3.1
Educational services	31.9	32.7	1.3	0.8	-1.7	-6.3	2.5	-4.9	-16.2
Health care and social assistance	60.9	60.5	1.5	-0.4	-0.9	0.5	-0.7	-1.5	0.8
Information, culture and recreation	20.4	20.6	1.0	0.2	-0.6	1.0	1.0	-2.8	5.1
Accommodation and food services	28.1	31.1	1.5	3.0	2.2	1.4	10.7	7.6	4.7
Other services	19.5	20.0	1.1	0.5	0.9	-1.0	2.6	4.7	-4.8
Public administration	30.0	29.9	1.1	-0.1	0.2	2.1	-0.3	0.7	7.6

1. Average standard error of change in two consecutive months (see "Sampling Errors" in Data Quality for further explanations).

Note(s): Related CANSIM tables 282-0087, 282-0088

Table 4-4
Selected labour force characteristics (seasonally adjusted) — New Brunswick

	May 2008	June 2008	S.E. ¹	Change from			Percent change from		
				last month	last December	twelve months ago	last month	last December	twelve months ago
in thousands (except rates)									
Both sexes, 15 years and over									
Population	617.6	618.0	...	0.4	2.7	5.3	0.1	0.4	0.9
Labour force	398.3	402.1	2.3	3.8	4.3	9.4	1.0	1.1	2.4
Employment	362.9	362.9	2.4	0.0	-3.7	-2.7	0.0	-1.0	-0.7
Employment full-time	305.5	306.7	2.8	1.2	-4.4	1.9	0.4	-1.4	0.6
Unemployment	35.4	39.2	2.1	3.8	8.0	12.1	10.7	25.6	44.6
Participation rate	64.5	65.1	0.4	0.6	0.4	1.0
Unemployment rate	8.9	9.7	0.5	0.8	1.9	2.8
Employment rate	58.8	58.7	0.4	-0.1	-0.9	-1.0
Part-time rate	15.8	15.5	0.6	-0.3	0.3	-1.1
Both sexes, 15 to 24 years									
Population	94.9	94.9	...	0.0	0.1	0.1	0.0	0.1	0.1
Labour force	63.7	65.8	1.3	2.1	3.3	2.0	3.3	5.3	3.1
Employment	54.8	53.1	1.3	-1.7	-2.0	-4.4	-3.1	-3.6	-7.7
Unemployment	8.9	12.7	1.1	3.8	5.3	6.4	42.7	71.6	101.6
Participation rate	67.1	69.3	1.4	2.2	3.4	2.0
Unemployment rate	14.0	19.3	1.7	5.3	7.5	9.4
Employment rate	57.7	56.0	1.4	-1.7	-2.1	-4.7
Part-time rate	43.2	40.5	2.4	-2.8	0.6	-0.4
Men, 25 years and over									
Population	252.5	252.6	...	0.1	1.0	2.2	0.0	0.4	0.9
Labour force	172.5	174.9	1.3	2.4	-1.3	4.8	1.4	-0.7	2.8
Employment	155.6	157.7	1.4	2.1	-3.6	-0.1	1.3	-2.2	-0.1
Unemployment	16.9	17.2	1.4	0.3	2.3	4.9	1.8	15.4	39.8
Participation rate	68.3	69.2	0.5	0.9	-0.8	1.3
Unemployment rate	9.8	9.8	0.8	0.0	1.3	2.6
Employment rate	61.6	62.4	0.6	0.8	-1.7	-0.6
Part-time rate	4.8	4.9	0.7	0.1	0.1	0.0
Women, 25 years and over									
Population	270.2	270.4	...	0.2	1.5	2.9	0.1	0.6	1.1
Labour force	162.0	161.4	1.3	-0.6	2.4	2.6	-0.4	1.5	1.6
Employment	152.4	152.0	1.3	-0.4	1.8	1.7	-0.3	1.2	1.1
Unemployment	9.6	9.4	1.1	-0.2	0.5	0.9	-2.1	5.6	10.6
Participation rate	60.0	59.7	0.5	-0.3	0.6	0.3
Unemployment rate	5.9	5.8	0.7	-0.1	0.2	0.4
Employment rate	56.4	56.2	0.5	-0.2	0.3	0.0
Part-time rate	17.3	17.7	1.0	0.4	0.6	-2.0
Industry									
Goods-producing sector	362.9	362.9	2.4	0.0	-3.7	-2.7	0.0	-1.0	-0.7
Agriculture	80.4	80.3	1.9	-0.1	-3.4	-2.6	-0.1	-4.1	-3.1
Forestry, fishing, mining, oil and gas	5.3	5.3	0.6	0.0	-0.8	-1.2	0.0	-13.1	-18.5
Utilities	12.2	12.0	0.8	-0.2	0.4	0.5	-1.6	3.4	4.3
Construction	5.1	5.6	0.4	0.5	1.6	0.9	9.8	40.0	19.1
Manufacturing	23.0	22.9	1.1	-0.1	-2.4	-0.1	-0.4	-9.5	-0.4
Services-producing sector	34.8	34.5	1.3	-0.3	-2.2	-2.8	-0.9	-6.0	-7.5
Trade	282.5	282.6	2.4	0.1	-0.3	-0.2	0.0	-0.1	-0.1
Transportation and warehousing	57.3	58.6	1.5	1.3	1.7	0.3	2.3	3.0	0.5
Finance, insurance, real estate and leasing	19.2	18.9	0.9	-0.3	-1.1	0.5	-1.6	-5.5	2.7
Professional, scientific and technical services	15.6	15.0	0.8	-0.6	-2.1	-1.8	-3.8	-12.3	-10.7
Business, building and other support services	17.2	16.4	0.8	-0.8	-1.7	1.0	-4.7	-9.4	6.5
Educational services	19.5	19.0	1.2	-0.5	-0.4	-1.3	-2.6	-2.1	-6.4
Health care and social assistance	23.9	24.9	1.1	1.0	-0.8	-4.2	4.2	-3.1	-14.4
Information, culture and recreation	49.6	51.8	1.2	2.2	2.0	3.8	4.4	4.0	7.9
Accommodation and food services	13.9	12.2	0.8	-1.7	0.2	-2.3	-12.2	1.7	-15.9
Other services	26.0	25.2	1.1	-0.8	2.0	0.2	-3.1	8.6	0.8
Public administration	15.8	15.5	0.9	-0.3	-2.1	-1.0	-1.9	-11.9	-6.1
	24.6	25.2	0.9	0.6	1.9	4.6	2.4	8.2	22.3

1. Average standard error of change in two consecutive months (see "Sampling Errors" in Data Quality for further explanations).

Note(s): Related CANSIM tables 282-0087, 282-0088

Table 4-5
Selected labour force characteristics (seasonally adjusted) — Quebec

	May 2008	June 2008	S.E. ¹	Change from			Percent change from		
				last month	last December	twelve months ago	last month	last December	twelve months ago
in thousands (except rates)									
Both sexes, 15 years and over									
Population	6,363.7	6,369.6	...	5.9	29.4	57.2	0.1	0.5	0.9
Labour force	4,198.6	4,186.9	14.2	-11.7	12.1	37.9	-0.3	0.3	0.9
Employment	3,885.4	3,885.0	14.5	-0.4	0.7	20.9	0.0	0.0	0.5
Employment full-time	3,166.0	3,164.6	19.1	-1.4	15.4	2.1	0.0	0.5	0.1
Unemployment	313.2	301.9	12.7	-11.3	11.4	17.0	-3.6	3.9	6.0
Participation rate	66.0	65.7	0.2	-0.3	-0.1	0.0
Unemployment rate	7.5	7.2	0.3	-0.3	0.2	0.3
Employment rate	61.1	61.0	0.2	-0.1	-0.3	-0.2
Part-time rate	18.5	18.5	0.4	0.0	-0.4	0.4
Both sexes, 15 to 24 years									
Population	959.0	959.3	...	0.3	2.4	4.7	0.0	0.3	0.5
Labour force	654.9	651.5	8.3	-3.4	11.5	12.6	-0.5	1.8	2.0
Employment	567.5	563.5	8.2	-4.0	-1.3	-0.9	-0.7	-0.2	-0.2
Unemployment	87.3	88.0	7.3	0.7	12.8	13.4	0.8	17.0	18.0
Participation rate	68.3	67.9	0.9	-0.4	1.0	1.0
Unemployment rate	13.3	13.5	1.1	0.2	1.7	1.8
Employment rate	59.2	58.7	0.9	-0.5	-0.3	-0.4
Part-time rate	48.0	47.1	1.5	-0.9	-0.8	1.1
Men, 25 years and over									
Population	2,640.6	2,643.3	...	2.7	13.5	26.2	0.1	0.5	1.0
Labour force	1,880.6	1,871.0	7.9	-9.6	-11.7	11.0	-0.5	-0.6	0.6
Employment	1,749.6	1,743.6	8.2	-6.0	-6.1	2.2	-0.3	-0.3	0.1
Unemployment	130.9	127.4	7.9	-3.5	-5.6	8.8	-2.7	-4.2	7.4
Participation rate	71.2	70.8	0.3	-0.4	-0.8	-0.3
Unemployment rate	7.0	6.8	0.4	-0.2	-0.3	0.4
Employment rate	66.3	66.0	0.3	-0.3	-0.5	-0.5
Part-time rate	6.7	7.2	0.5	0.5	0.0	-0.2
Women, 25 years and over									
Population	2,764.2	2,766.9	...	2.7	13.4	26.1	0.1	0.5	1.0
Labour force	1,663.2	1,664.4	7.9	1.2	12.3	14.3	0.1	0.7	0.9
Employment	1,568.2	1,577.9	8.1	9.7	8.1	19.5	0.6	0.5	1.3
Unemployment	94.9	86.5	6.5	-8.4	4.2	-5.3	-8.9	5.1	-5.8
Participation rate	60.2	60.2	0.3	0.0	0.2	0.0
Unemployment rate	5.7	5.2	0.4	-0.5	0.2	-0.4
Employment rate	56.7	57.0	0.3	0.3	0.0	0.1
Part-time rate	21.0	20.9	0.7	-0.1	-0.7	0.8
Industry									
	3,885.4	3,885.0	14.5	-0.4	0.7	20.9	0.0	0.0	0.5
Goods-producing sector									
Agriculture	891.4	892.3	12.0	0.9	12.7	29.6	0.1	1.4	3.4
Forestry, fishing, mining, oil and gas	62.0	60.5	3.4	-1.5	-10.4	-0.9	-2.4	-14.7	-1.5
Utilities	34.2	34.4	2.2	0.2	-0.6	-1.7	0.6	-1.7	-4.7
Construction	34.7	38.0	2.0	3.3	6.3	5.9	9.5	19.9	18.4
Manufacturing	214.0	212.6	6.5	-1.4	3.0	17.2	-0.7	1.4	8.8
	546.6	546.8	9.8	0.2	14.5	9.1	0.0	2.7	1.7
Services-producing sector									
	2,993.9	2,992.7	16.1	-1.2	-12.0	-8.7	0.0	-0.4	-0.3
Trade	629.1	620.8	10.9	-8.3	-20.6	-36.3	-1.3	-3.2	-5.5
Transportation and warehousing	192.2	182.2	6.0	-10.0	-6.4	11.9	-5.2	-3.4	7.0
Finance, insurance, real estate and leasing	231.1	232.0	6.3	0.9	-1.5	0.3	0.4	-0.6	0.1
Professional, scientific and technical services	268.8	269.3	7.6	0.5	2.4	17.5	0.2	0.9	6.9
Business, building and other support services	139.0	147.9	6.3	8.9	13.0	-1.0	6.4	9.6	-0.7
Educational services	265.9	264.0	6.8	-1.9	1.3	-10.5	-0.7	0.5	-3.8
Health care and social assistance	465.2	460.3	7.9	-4.9	-0.7	10.5	-1.1	-0.2	2.3
Information, culture and recreation	163.7	178.0	6.6	14.3	13.4	2.2	8.7	8.1	1.3
Accommodation and food services	239.2	236.8	7.5	-2.4	-9.2	-6.6	-1.0	-3.7	-2.7
Other services	178.5	177.7	5.8	-0.8	-4.8	2.5	-0.4	-2.6	1.4
Public administration	221.1	223.8	5.5	2.7	1.3	1.0	1.2	0.6	0.4

1. Average standard error of change in two consecutive months (see "Sampling Errors" in Data Quality for further explanations).

Note(s): Related CANSIM tables 282-0087, 282-0088

Table 4-6
Selected labour force characteristics (seasonally adjusted) — Ontario

	May 2008	June 2008	S.E. ¹	Change from			Percent change from		
				last month	last December	twelve months ago	last month	last December	twelve months ago
in thousands (except rates)									
Both sexes, 15 years and over									
Population	10,487.2	10,503.4	...	16.2	77.0	150.3	0.2	0.7	1.5
Labour force	7,167.5	7,166.2	18.4	-1.3	71.0	129.1	0.0	1.0	1.8
Employment	6,711.6	6,687.7	18.5	-23.9	56.8	111.9	-0.4	0.9	1.7
Employment full-time	5,464.8	5,419.3	23.4	-45.5	-26.3	-6.5	-0.8	-0.5	-0.1
Unemployment	456.0	478.5	15.9	22.5	14.2	17.3	4.9	3.1	3.8
Participation rate	68.3	68.2	0.2	-0.1	0.1	0.2
Unemployment rate	6.4	6.7	0.2	0.3	0.2	0.1
Employment rate	64.0	63.7	0.2	-0.3	0.1	0.2
Part-time rate	18.6	19.0	0.3	0.4	1.1	1.5
Both sexes, 15 to 24 years									
Population	1,731.4	1,732.5	...	1.1	4.3	12.8	0.1	0.2	0.7
Labour force	1,124.9	1,131.4	11.3	6.5	9.8	11.1	0.6	0.9	1.0
Employment	970.5	966.2	10.8	-4.3	-3.3	-10.6	-0.4	-0.3	-1.1
Unemployment	154.5	165.2	9.5	10.7	13.1	21.7	6.9	8.6	15.1
Participation rate	65.0	65.3	0.7	0.3	0.4	0.2
Unemployment rate	13.7	14.6	0.8	0.9	1.0	1.8
Employment rate	56.1	55.8	0.6	-0.3	-0.3	-1.0
Part-time rate	49.4	50.1	1.1	0.7	0.1	2.6
Men, 25 years and over									
Population	4,255.3	4,262.4	...	7.1	33.7	64.1	0.2	0.8	1.5
Labour force	3,170.9	3,176.0	9.1	5.1	28.2	49.2	0.2	0.9	1.6
Employment	3,012.1	2,999.8	9.9	-12.3	24.3	56.0	-0.4	0.8	1.9
Unemployment	158.7	176.3	9.0	17.6	4.0	-6.8	11.1	2.3	-3.7
Participation rate	74.5	74.5	0.2	0.0	0.1	0.0
Unemployment rate	5.0	5.6	0.3	0.6	0.1	-0.3
Employment rate	70.8	70.4	0.2	-0.4	0.0	0.3
Part-time rate	6.8	7.0	0.3	0.1	0.8	1.1
Women, 25 years and over									
Population	4,500.5	4,508.4	...	7.9	38.9	73.3	0.2	0.9	1.7
Labour force	2,871.7	2,858.7	10.5	-13.0	32.9	68.8	-0.5	1.2	2.5
Employment	2,729.0	2,721.8	10.3	-7.2	35.8	66.5	-0.3	1.3	2.5
Unemployment	142.8	137.0	8.4	-5.8	-2.8	2.4	-4.1	-2.0	1.8
Participation rate	63.8	63.4	0.2	-0.4	0.2	0.5
Unemployment rate	5.0	4.8	0.3	-0.2	-0.1	0.0
Employment rate	60.6	60.4	0.2	-0.2	0.3	0.5
Part-time rate	20.6	21.2	0.5	0.6	1.9	1.8
Industry									
	6,711.6	6,687.7	18.5	-23.9	56.8	111.9	-0.4	0.9	1.7
Goods-producing sector									
	1,544.3	1,552.2	15.4	7.9	44.1	8.7	0.5	2.9	0.6
Agriculture	83.6	84.6	4.0	1.0	-3.4	-11.3	1.2	-3.9	-11.8
Forestry, fishing, mining, oil and gas	37.6	39.1	2.2	1.5	4.5	5.4	4.0	13.0	16.0
Utilities	63.8	64.1	2.7	0.3	4.4	1.8	0.5	7.4	2.9
Construction	443.8	443.6	9.5	-0.2	38.4	26.8	0.0	9.5	6.4
Manufacturing	915.5	920.8	12.6	5.3	0.3	-14.0	0.6	0.0	-1.5
Services-producing sector									
	5,167.3	5,135.5	21.0	-31.8	12.6	103.1	-0.6	0.2	2.0
Trade	1,023.8	1,038.0	13.4	14.2	-2.5	17.3	1.4	-0.2	1.7
Transportation and warehousing	320.1	322.2	7.7	2.1	15.3	14.5	0.7	5.0	4.7
Finance, insurance, real estate and leasing	464.6	464.8	9.2	0.2	-5.8	-11.9	0.0	-1.2	-2.5
Professional, scientific and technical services	489.2	507.8	10.2	18.6	27.6	29.2	3.8	5.7	6.1
Business, building and other support services	320.3	299.9	9.0	-20.4	-3.2	3.7	-6.4	-1.1	1.2
Educational services	480.4	470.6	9.5	-9.8	-24.0	8.5	-2.0	-4.9	1.8
Health care and social assistance	707.4	690.5	9.8	-16.9	7.9	15.4	-2.4	1.2	2.3
Information, culture and recreation	311.6	313.1	8.4	1.5	-26.0	-15.6	0.5	-7.7	-4.7
Accommodation and food services	399.3	393.7	9.1	-5.6	15.1	-8.0	-1.4	4.0	-2.0
Other services	278.9	272.6	7.2	-6.3	-4.7	16.9	-2.3	-1.7	6.6
Public administration	371.6	362.3	6.8	-9.3	12.9	33.4	-2.5	3.7	10.2

1. Average standard error of change in two consecutive months (see "Sampling Errors" in Data Quality for further explanations).

Note(s): Related CANSIM tables 282-0087, 282-0088

Table 4-7
Selected labour force characteristics (seasonally adjusted) — Manitoba

	May 2008	June 2008	S.E. ¹	Change from			Percent change from		
				last month	last December	twelve months ago	last month	last December	twelve months ago
in thousands (except rates)									
Both sexes, 15 years and over									
Population	908.2	909.4	...	1.2	6.2	11.0	0.1	0.7	1.2
Labour force	631.6	635.0	2.7	3.4	9.7	9.6	0.5	1.6	1.5
Employment	605.0	608.8	2.7	3.8	9.7	11.6	0.6	1.6	1.9
Employment full-time	494.1	490.5	3.9	-3.6	2.5	9.0	-0.7	0.5	1.9
Unemployment	26.6	26.2	2.1	-0.4	0.0	-2.0	-1.5	0.0	-7.1
Participation rate	69.5	69.8	0.3	0.3	0.6	0.2
Unemployment rate	4.2	4.1	0.3	-0.1	-0.1	-0.4
Employment rate	66.6	66.9	0.3	0.3	0.6	0.4
Part-time rate	18.3	19.4	0.6	1.1	0.9	0.1
Both sexes, 15 to 24 years									
Population	158.2	158.4	...	0.2	0.9	1.8	0.1	0.6	1.1
Labour force	113.7	115.7	1.7	2.0	1.9	0.8	1.8	1.7	0.7
Employment	102.3	104.9	1.6	2.6	1.7	-0.1	2.5	1.6	-0.1
Unemployment	11.4	10.9	1.4	-0.5	0.4	0.9	-4.4	3.8	9.0
Participation rate	71.9	73.0	1.1	1.1	0.7	-0.4
Unemployment rate	10.0	9.4	1.2	-0.6	0.2	0.7
Employment rate	64.7	66.2	1.0	1.5	0.7	-0.8
Part-time rate	40.6	41.8	2.0	1.2	-0.8	-3.3
Men, 25 years and over									
Population	366.6	367.1	...	0.5	2.5	4.5	0.1	0.7	1.2
Labour force	279.4	279.0	1.4	-0.4	3.4	5.2	-0.1	1.2	1.9
Employment	271.6	271.4	1.5	-0.2	3.5	7.7	-0.1	1.3	2.9
Unemployment	7.8	7.6	1.1	-0.2	-0.1	-2.5	-2.6	-1.3	-24.8
Participation rate	76.2	76.0	0.4	-0.2	0.4	0.5
Unemployment rate	2.8	2.7	0.4	-0.1	-0.1	-1.0
Employment rate	74.1	73.9	0.4	-0.2	0.4	1.2
Part-time rate	6.7	7.2	0.6	0.5	2.1	1.2
Women, 25 years and over									
Population	383.3	383.9	...	0.6	2.8	4.7	0.2	0.7	1.2
Labour force	238.5	240.3	1.6	1.8	4.4	3.6	0.8	1.9	1.5
Employment	231.1	232.6	1.6	1.5	4.7	4.0	0.6	2.1	1.7
Unemployment	7.4	7.7	1.2	0.3	-0.2	-0.4	4.1	-2.5	-4.9
Participation rate	62.2	62.6	0.4	0.4	0.7	0.2
Unemployment rate	3.1	3.2	0.5	0.1	-0.1	-0.2
Employment rate	60.3	60.6	0.4	0.3	0.8	0.3
Part-time rate	22.1	23.6	1.0	1.5	0.3	0.6
Industry									
Goods-producing sector	605.0	608.8	2.7	3.8	9.7	11.6	0.6	1.6	1.9
Agriculture	148.3	147.2	2.5	-1.1	0.1	3.1	-0.7	0.1	2.2
Forestry, fishing, mining, oil and gas	29.0	28.2	1.2	-0.8	1.7	-1.8	-2.8	6.4	-6.0
Utilities	5.9	6.5	0.5	0.6	-0.2	0.0	10.2	-3.0	0.0
Construction	6.9	6.8	0.5	-0.1	1.7	1.4	-1.4	33.3	25.9
Manufacturing	36.3	37.5	1.5	1.2	1.3	4.6	3.3	3.6	14.0
Manufacturing	70.2	68.1	1.8	-2.1	-4.5	-1.2	-3.0	-6.2	-1.7
Services-producing sector	456.7	461.6	3.2	4.9	9.6	8.5	1.1	2.1	1.9
Trade	94.6	94.9	2.1	0.3	7.2	3.3	0.3	8.2	3.6
Transportation and warehousing	34.2	32.9	1.2	-1.3	-1.6	-1.2	-3.8	-4.6	-3.5
Finance, insurance, real estate and leasing	37.7	37.3	1.3	-0.4	-1.6	2.1	-1.1	-4.1	6.0
Professional, scientific and technical services	27.8	25.2	1.2	-2.6	-0.7	-0.3	-9.4	-2.7	-1.2
Business, building and other support services	17.9	19.0	1.1	1.1	-0.2	4.0	6.1	-1.0	26.7
Educational services	46.2	48.0	1.5	1.8	2.5	1.8	3.9	5.5	3.9
Health care and social assistance	79.2	83.3	1.9	4.1	7.7	2.6	5.2	10.2	3.2
Information, culture and recreation	22.6	22.3	1.2	-0.3	-2.1	-2.0	-1.3	-8.6	-8.2
Accommodation and food services	34.3	35.7	1.6	1.4	-2.9	-3.3	4.1	-7.5	-8.5
Other services	27.3	28.5	1.2	1.2	3.0	3.1	4.4	11.8	12.2
Public administration	35.0	34.6	1.3	-0.4	-1.6	-1.6	-1.1	-4.4	-4.4

1. Average standard error of change in two consecutive months (see "Sampling Errors" in Data Quality for further explanations).

Note(s): Related CANSIM tables 282-0087, 282-0088

Table 4-8
Selected labour force characteristics (seasonally adjusted) — Saskatchewan

	May 2008	June 2008	S.E. ¹	Change from			Percent change from		
				last month	last December	twelve months ago	last month	last December	twelve months ago
in thousands (except rates)									
Both sexes, 15 years and over									
Population	765.2	766.8	...	1.6	8.8	16.8	0.2	1.2	2.2
Labour force	531.2	530.9	2.3	-0.3	5.0	10.0	-0.1	1.0	1.9
Employment	509.4	509.6	2.4	0.2	4.9	11.7	0.0	1.0	2.3
Employment full-time	416.6	417.5	3.1	0.9	4.8	12.0	0.2	1.2	3.0
Unemployment	21.8	21.2	1.8	-0.6	0.0	-1.8	-2.8	0.0	-7.8
Participation rate	69.4	69.2	0.3	-0.2	-0.2	-0.3
Unemployment rate	4.1	4.0	0.3	-0.1	0.0	-0.4
Employment rate	66.6	66.5	0.3	-0.1	-0.1	0.1
Part-time rate	18.2	18.1	0.6	-0.1	-0.1	-0.5
Both sexes, 15 to 24 years									
Population	139.4	139.4	...	0.0	0.8	1.9	0.0	0.6	1.4
Labour force	100.6	100.4	1.4	-0.2	1.8	3.1	-0.2	1.8	3.2
Employment	92.3	93.2	1.5	0.9	2.3	3.7	1.0	2.5	4.1
Unemployment	8.3	7.2	1.2	-1.1	-0.5	-0.6	-13.3	-6.5	-7.7
Participation rate	72.2	72.0	1.0	-0.2	0.9	1.2
Unemployment rate	8.3	7.2	1.2	-1.1	-0.6	-0.8
Employment rate	66.2	66.9	1.1	0.7	1.3	1.8
Part-time rate	33.6	35.1	1.7	1.5	-4.3	-1.9
Men, 25 years and over									
Population	305.8	306.6	...	0.8	3.8	7.4	0.3	1.3	2.5
Labour force	231.7	232.2	1.1	0.5	0.7	3.1	0.2	0.3	1.4
Employment	225.1	224.6	1.2	-0.5	0.5	4.0	-0.2	0.2	1.8
Unemployment	6.6	7.6	1.0	1.0	0.1	-1.0	15.2	1.3	-11.6
Participation rate	75.8	75.7	0.4	-0.1	-0.8	-0.9
Unemployment rate	2.8	3.3	0.4	0.5	0.1	-0.5
Employment rate	73.6	73.3	0.4	-0.3	-0.7	-0.4
Part-time rate	6.7	6.9	0.6	0.3	0.7	0.6
Women, 25 years and over									
Population	320.0	320.9	...	0.9	4.3	7.6	0.3	1.4	2.4
Labour force	198.8	198.3	1.3	-0.5	2.6	3.8	-0.3	1.3	2.0
Employment	191.9	191.8	1.4	-0.1	2.2	4.1	-0.1	1.2	2.2
Unemployment	6.9	6.4	0.9	-0.5	0.3	-0.3	-7.2	4.9	-4.5
Participation rate	62.1	61.8	0.4	-0.3	0.0	-0.3
Unemployment rate	3.5	3.2	0.5	-0.3	0.1	-0.2
Employment rate	60.0	59.8	0.4	-0.2	-0.1	-0.1
Part-time rate	24.4	22.9	1.0	-1.5	0.7	-1.2
Industry									
Industry	509.4	509.6	2.4	0.2	4.9	11.7	0.0	1.0	2.3
Goods-producing sector									
Goods-producing sector	137.2	136.5	2.2	-0.7	4.2	4.8	-0.5	3.2	3.6
Agriculture	40.9	40.6	1.5	-0.3	-0.6	-2.8	-0.7	-1.5	-6.5
Forestry, fishing, mining, oil and gas	25.0	26.2	1.0	1.2	3.6	4.5	4.8	15.9	20.7
Utilities	6.1	5.5	0.4	-0.6	0.4	1.6	-9.8	7.8	41.0
Construction	34.2	34.0	1.3	-0.2	1.6	2.4	-0.6	4.9	7.6
Manufacturing	30.9	30.2	1.2	-0.7	-0.8	-0.9	-2.3	-2.6	-2.9
Services-producing sector									
Services-producing sector	372.2	373.1	2.8	0.9	0.7	6.9	0.2	0.2	1.9
Trade	83.3	83.7	1.9	0.4	0.3	1.6	0.5	0.4	1.9
Transportation and warehousing	25.2	24.0	1.0	-1.2	-1.0	0.3	-4.8	-4.0	1.3
Finance, insurance, real estate and leasing	28.5	28.4	1.0	-0.1	0.9	2.3	-0.4	3.3	8.8
Professional, scientific and technical services	20.0	20.4	0.9	0.4	-0.9	-1.8	2.0	-4.2	-8.1
Business, building and other support services	11.1	11.2	0.8	0.1	-0.1	-0.4	0.9	-0.9	-3.4
Educational services	35.9	36.4	1.3	0.5	-2.9	-3.6	1.4	-7.4	-9.0
Health care and social assistance	64.7	65.5	1.4	0.8	3.6	3.8	1.2	5.8	6.2
Information, culture and recreation	21.1	20.8	1.0	-0.3	-0.3	0.8	-1.4	-1.4	4.0
Accommodation and food services	31.4	31.8	1.3	0.4	0.9	1.5	1.3	2.9	5.0
Other services	22.8	22.4	1.0	-0.4	0.5	0.7	-1.8	2.3	3.2
Public administration	28.3	28.5	1.0	0.2	-0.2	1.7	0.7	-0.7	6.3

1. Average standard error of change in two consecutive months (see "Sampling Errors" in Data Quality for further explanations).

Note(s): Related CANSIM tables 282-0087, 282-0088

Table 4-9
Selected labour force characteristics (seasonally adjusted) — Alberta

	May 2008	June 2008	S.E. ¹	Change from			Percent change from		
				last month	last December	twelve months ago	last month	last December	twelve months ago
in thousands (except rates)									
Both sexes, 15 years and over									
Population	2,788.5	2,795.1	...	6.6	25.6	55.0	0.2	0.9	2.0
Labour force	2,083.6	2,086.4	7.9	2.8	26.6	53.0	0.1	1.3	2.6
Employment	2,007.7	2,017.7	8.2	10.0	23.9	60.5	0.5	1.2	3.1
Employment full-time	1,682.8	1,682.5	11.2	-0.3	4.6	37.4	0.0	0.3	2.3
Unemployment	75.9	68.6	5.8	-7.3	2.6	-7.6	-9.6	3.9	-10.0
Participation rate	74.7	74.6	0.3	-0.1	0.2	0.4
Unemployment rate	3.6	3.3	0.3	-0.3	0.1	-0.4
Employment rate	72.0	72.2	0.3	0.2	0.2	0.8
Part-time rate	16.2	16.6	0.5	0.4	0.8	0.7
Both sexes, 15 to 24 years									
Population	503.5	503.7	...	0.2	-1.6	-0.2	0.0	-0.3	0.0
Labour force	368.0	372.9	4.9	4.9	6.4	2.5	1.3	1.7	0.7
Employment	342.1	347.8	5.0	5.7	2.1	9.9	1.7	0.6	2.9
Unemployment	25.9	25.1	3.7	-0.8	4.3	-7.4	-3.1	20.7	-22.8
Participation rate	73.1	74.0	1.0	0.9	1.5	0.5
Unemployment rate	7.0	6.7	1.0	-0.3	1.0	-2.1
Employment rate	67.9	69.0	1.0	1.1	0.6	1.9
Part-time rate	31.9	33.6	1.6	1.7	1.2	0.6
Men, 25 years and over									
Population	1,151.7	1,155.7	...	4.0	17.7	33.2	0.3	1.6	3.0
Labour force	952.1	956.7	3.8	4.6	17.0	40.8	0.5	1.8	4.5
Employment	926.5	934.3	4.3	7.8	18.0	42.1	0.8	2.0	4.7
Unemployment	25.6	22.4	3.3	-3.2	-1.0	-1.3	-12.5	-4.3	-5.5
Participation rate	82.7	82.8	0.3	0.1	0.2	1.2
Unemployment rate	2.7	2.3	0.4	-0.4	-0.2	-0.3
Employment rate	80.4	80.8	0.4	0.4	0.3	1.3
Part-time rate	5.5	5.8	0.5	0.4	0.7	0.6
Women, 25 years and over									
Population	1,133.3	1,135.7	...	2.4	9.5	22.0	0.2	0.8	2.0
Labour force	763.5	756.8	4.6	-6.7	3.2	9.7	-0.9	0.4	1.3
Employment	739.1	735.6	4.8	-3.5	3.9	8.5	-0.5	0.5	1.2
Unemployment	24.4	21.1	3.1	-3.3	-0.8	1.1	-13.5	-3.7	5.5
Participation rate	67.4	66.6	0.4	-0.8	-0.3	-0.5
Unemployment rate	3.2	2.8	0.4	-0.4	-0.1	0.1
Employment rate	65.2	64.8	0.4	-0.4	-0.2	-0.5
Part-time rate	22.3	22.3	0.9	-0.1	0.9	1.1
Industry									
Goods-producing sector	2,007.7	2,017.7	8.2	10.0	23.9	60.5	0.5	1.2	3.1
Agriculture	561.9	569.4	7.9	7.5	11.1	15.0	1.3	2.0	2.7
Forestry, fishing, mining, oil and gas	59.7	61.4	2.8	1.7	9.4	14.9	2.8	18.1	32.0
Utilities	146.8	150.6	4.5	3.8	-5.5	-1.2	2.6	-3.5	-0.8
Construction	15.9	18.5	1.7	2.6	1.3	-0.5	16.4	7.6	-2.6
Manufacturing	203.4	203.1	5.3	-0.3	4.5	10.5	-0.1	2.3	5.5
Manufacturing	136.1	135.8	4.8	-0.3	1.4	-8.8	-0.2	1.0	-6.1
Services-producing sector	1,445.8	1,448.3	9.9	2.5	12.8	45.5	0.2	0.9	3.2
Trade	314.5	315.6	6.6	1.1	5.5	24.2	0.3	1.8	8.3
Transportation and warehousing	100.3	99.7	3.8	-0.6	-10.6	-5.1	-0.6	-9.6	-4.9
Finance, insurance, real estate and leasing	116.6	109.2	3.9	-7.4	5.2	14.1	-6.3	5.0	14.8
Professional, scientific and technical services	163.1	173.1	4.7	10.0	27.5	28.0	6.1	18.9	19.3
Business, building and other support services	62.8	62.2	3.8	-0.6	-14.1	-19.2	-1.0	-18.5	-23.6
Educational services	124.7	124.9	4.2	0.2	3.0	-6.1	0.2	2.5	-4.7
Health care and social assistance	197.1	195.3	4.8	-1.8	-0.7	7.4	-0.9	-0.4	3.9
Information, culture and recreation	70.4	71.1	3.6	0.7	-8.5	-5.4	1.0	-10.7	-7.1
Accommodation and food services	119.7	121.0	4.7	1.3	8.8	6.4	1.1	7.8	5.6
Other services	96.2	91.6	3.9	-4.6	1.1	-9.5	-4.8	1.2	-9.4
Public administration	80.3	84.8	3.2	4.5	-4.2	10.9	5.6	-4.7	14.7

1. Average standard error of change in two consecutive months (see "Sampling Errors" in Data Quality for further explanations).

Note(s): Related CANSIM tables 282-0087, 282-0088

Table 4-10
Selected labour force characteristics (seasonally adjusted) — British Columbia

	May 2008	June 2008	S.E. ¹	Change from			Percent change from		
				last month	last December	twelve months ago	last month	last December	twelve months ago
in thousands (except rates)									
Both sexes, 15 years and over									
Population	3,632.4	3,639.6	...	7.2	36.9	72.8	0.2	1.0	2.0
Labour force	2,425.7	2,431.9	9.8	6.2	38.4	66.4	0.3	1.6	2.8
Employment	2,317.4	2,321.8	9.8	4.4	28.9	60.9	0.2	1.3	2.7
Employment full-time	1,850.9	1,855.5	13.5	4.6	39.0	72.5	0.2	2.1	4.1
Unemployment	108.2	110.0	7.0	1.8	9.4	5.4	1.7	9.3	5.2
Participation rate	66.8	66.8	0.3	0.0	0.4	0.5
Unemployment rate	4.5	4.5	0.3	0.0	0.3	0.1
Employment rate	63.8	63.8	0.3	0.0	0.2	0.4
Part-time rate	20.1	20.1	0.5	0.0	-0.7	-1.1
Both sexes, 15 to 24 years									
Population	582.6	582.8	...	0.2	1.8	4.6	0.0	0.3	0.8
Labour force	399.1	398.9	5.7	-0.2	1.0	3.6	-0.1	0.3	0.9
Employment	364.1	365.8	5.6	1.7	-0.7	1.9	0.5	-0.2	0.5
Unemployment	35.0	33.1	4.1	-1.9	1.7	1.8	-5.4	5.4	5.8
Participation rate	68.5	68.4	1.0	-0.1	-0.1	0.0
Unemployment rate	8.8	8.3	1.0	-0.5	0.4	0.4
Employment rate	62.5	62.8	1.0	0.3	-0.3	-0.1
Part-time rate	41.8	41.9	1.8	0.1	-3.6	-2.2
Men, 25 years and over									
Population	1,492.2	1,495.7	...	3.5	17.6	34.3	0.2	1.2	2.3
Labour force	1,084.1	1,091.1	5.0	7.0	14.0	34.5	0.6	1.3	3.3
Employment	1,044.2	1,048.5	5.2	4.3	9.7	31.0	0.4	0.9	3.0
Unemployment	39.9	42.6	3.8	2.7	4.2	3.5	6.8	10.9	9.0
Participation rate	72.7	72.9	0.3	0.2	0.0	0.6
Unemployment rate	3.7	3.9	0.4	0.2	0.3	0.2
Employment rate	70.0	70.1	0.4	0.1	-0.2	0.5
Part-time rate	7.9	7.7	0.6	-0.2	-0.2	0.0
Women, 25 years and over									
Population	1,557.6	1,561.1	...	3.5	17.5	33.8	0.2	1.1	2.2
Labour force	942.4	941.8	6.0	-0.6	23.4	28.2	-0.1	2.5	3.1
Employment	909.1	907.5	5.9	-1.6	19.9	28.1	-0.2	2.2	3.2
Unemployment	33.3	34.3	4.0	1.0	3.5	0.2	3.0	11.4	0.6
Participation rate	60.5	60.3	0.4	-0.2	0.8	0.5
Unemployment rate	3.5	3.6	0.4	0.1	0.2	-0.1
Employment rate	58.4	58.1	0.4	-0.3	0.6	0.5
Part-time rate	25.5	25.5	0.9	0.0	0.0	-1.6
Industry									
	2,317.4	2,321.8	9.8	4.4	28.9	60.9	0.2	1.3	2.7
Goods-producing sector									
Agriculture	496.5	495.2	8.6	-1.3	-8.3	-1.6	-0.3	-1.6	-0.3
Forestry, fishing, mining, oil and gas	29.5	32.7	2.6	3.2	-7.0	-2.4	10.8	-17.6	-6.8
Utilities	46.2	43.3	2.7	-2.9	-7.3	-2.7	-6.3	-14.4	-5.9
Construction	12.8	13.4	1.2	0.6	0.2	4.1	4.7	1.5	44.1
Manufacturing	221.1	216.4	5.9	-4.7	6.4	18.7	-2.1	3.0	9.5
	187.0	189.4	5.9	2.4	-0.8	-19.4	1.3	-0.4	-9.3
Services-producing sector									
	1,820.9	1,826.7	11.5	5.8	37.3	62.7	0.3	2.1	3.6
Trade	350.3	358.3	7.5	8.0	-7.4	-9.2	2.3	-2.0	-2.5
Transportation and warehousing	126.4	131.7	4.8	5.3	-4.3	8.2	4.2	-3.2	6.6
Finance, insurance, real estate and leasing	150.8	144.9	4.8	-5.9	3.0	-3.1	-3.9	2.1	-2.1
Professional, scientific and technical services	175.5	179.6	5.4	4.1	19.5	8.3	2.3	12.2	4.8
Business, building and other support services	102.4	98.3	4.5	-4.1	-7.5	6.9	-4.0	-7.1	7.5
Educational services	164.6	168.8	5.3	4.2	9.4	17.0	2.6	5.9	11.2
Health care and social assistance	239.5	244.6	5.6	5.1	8.7	2.6	2.1	3.7	1.1
Information, culture and recreation	122.6	116.1	4.8	-6.5	-7.6	3.5	-5.3	-6.1	3.1
Accommodation and food services	185.1	177.8	5.8	-7.3	8.6	4.0	-3.9	5.1	2.3
Other services	97.0	101.8	4.0	4.8	13.6	15.1	4.9	15.4	17.4
Public administration	106.8	104.9	3.4	-1.9	1.4	9.5	-1.8	1.4	10.0

1. Average standard error of change in two consecutive months (see "Sampling Errors" in Data Quality for further explanations).

Note(s): Related CANSIM tables 282-0087, 282-0088

Table 5-1
Labour force characteristics by census metropolitan area (seasonally adjusted) — 3 month moving average

	May 2008	June 2008	S.E. ¹	Change from			Percent change from		
				last month	last December	twelve months ago	last month	last December	twelve months ago
in thousands (except rates)									
St. John's, Newfoundland and Labrador									
Population	153.8	154.0	...	0.2	1.6	2.3	0.1	1.0	1.5
Labour force	104.6	105.5	0.7	0.9	3.1	4.4	0.9	3.0	4.4
Employment	95.8	97.3	0.7	1.5	2.0	3.0	1.6	2.1	3.2
Unemployment	8.7	8.2	0.4	-0.5	1.1	1.5	-5.7	15.5	22.4
Participation rate	68.0	68.5	0.5	0.5	1.3	1.9
Unemployment rate	8.3	7.8	0.4	-0.5	0.9	1.2
Employment rate	62.3	63.2	0.5	0.9	0.7	1.0
Halifax, Nova Scotia									
Population	316.1	316.6	...	0.5	2.3	3.7	0.2	0.7	1.2
Labour force	218.6	219.8	1.1	1.2	-1.4	1.0	0.5	-0.6	0.5
Employment	207.6	207.9	1.2	0.3	-3.4	1.9	0.1	-1.6	0.9
Unemployment	11.1	11.8	0.6	0.7	1.9	-0.9	6.3	19.2	-7.1
Participation rate	69.2	69.4	0.3	0.2	-1.0	-0.5
Unemployment rate	5.1	5.4	0.3	0.3	0.9	-0.4
Employment rate	65.7	65.7	0.4	0.0	-1.5	-0.1
Saint John, New Brunswick									
Population	104.6	104.7	...	0.1	0.6	0.9	0.1	0.6	0.9
Labour force	69.0	69.2	0.7	0.2	-2.0	0.6	0.3	-2.8	0.9
Employment	64.7	64.9	0.7	0.2	-2.8	-0.4	0.3	-4.1	-0.6
Unemployment	4.3	4.2	0.3	-0.1	0.7	0.9	-2.3	20.0	27.3
Participation rate	66.0	66.1	0.6	0.1	-2.3	0.0
Unemployment rate	6.2	6.1	0.4	-0.1	1.2	1.3
Employment rate	61.9	62.0	0.6	0.1	-3.0	-0.9
Saguenay, Quebec									
Population	125.1	125.1	...	0.0	-0.2	-0.6	0.0	-0.2	-0.5
Labour force	75.1	74.3	0.8	-0.8	-1.6	-4.0	-1.1	-2.1	-5.1
Employment	68.0	67.3	0.8	-0.7	-2.6	-4.1	-1.0	-3.7	-5.7
Unemployment	7.0	7.0	0.4	0.0	1.0	0.1	0.0	16.7	1.4
Participation rate	60.0	59.4	0.6	-0.6	-1.2	-2.9
Unemployment rate	9.3	9.4	0.5	0.1	1.5	0.6
Employment rate	54.4	53.8	0.6	-0.6	-2.0	-3.0
Québec, Quebec									
Population	609.3	609.8	...	0.5	2.8	4.9	0.1	0.5	0.8
Labour force	409.2	410.8	3.4	1.6	-4.5	10.9	0.4	-1.1	2.7
Employment	388.9	390.6	3.4	1.7	-2.0	10.3	0.4	-0.5	2.7
Unemployment	20.3	20.2	1.4	-0.1	-2.6	0.6	-0.5	-11.4	3.1
Participation rate	67.2	67.4	0.6	0.2	-1.0	1.3
Unemployment rate	5.0	4.9	0.4	-0.1	-0.6	0.0
Employment rate	63.8	64.1	0.6	0.3	-0.6	1.2
Trois-Rivières, Quebec									
Population	121.3	121.4	...	0.1	0.5	1.0	0.1	0.4	0.8
Labour force	78.0	77.9	0.7	-0.1	0.3	1.8	-0.1	0.4	2.4
Employment	70.7	71.2	0.7	0.5	-0.9	0.9	0.7	-1.2	1.3
Unemployment	7.4	6.7	0.3	-0.7	1.3	0.9	-9.5	24.1	15.5
Participation rate	64.3	64.2	0.6	-0.1	0.0	1.0
Unemployment rate	9.5	8.6	0.4	-0.9	1.6	1.0
Employment rate	58.3	58.6	0.6	0.3	-1.0	0.2

See footnotes at the end of the table.

Table 5-1 – continued

Labour force characteristics by census metropolitan area (seasonally adjusted) — 3 month moving average

	May 2008	June 2008	S.E. ¹	Change from			Percent change from		
				last month	last December	twelve months ago	last month	last December	twelve months ago
in thousands (except rates)									
Sherbrooke, Quebec									
Population	138.1	138.2	...	0.1	0.8	1.6	0.1	0.6	1.2
Labour force	87.4	86.3	0.8	-1.1	-5.2	-3.2	-1.3	-5.7	-3.6
Employment	82.1	81.5	0.8	-0.6	-4.1	-2.6	-0.7	-4.8	-3.1
Unemployment	5.2	4.8	0.3	-0.4	-1.2	-0.6	-0.7	-20.0	-11.1
Participation rate	63.3	62.4	0.6	-0.9	-4.2	-3.1
Unemployment rate	5.9	5.6	0.4	-0.3	-1.0	-0.4
Employment rate	59.4	59.0	0.6	-0.4	-3.3	-2.6
Montréal, Quebec									
Population	3,059.6	3,062.5	...	2.9	15.3	29.8	0.1	0.5	1.0
Labour force	2,051.9	2,046.0	7.2	-5.9	-13.0	14.6	-0.3	-0.6	0.7
Employment	1,896.6	1,891.0	7.5	-5.6	-24.9	-7.4	-0.3	-1.3	-0.4
Unemployment	155.3	154.9	4.5	-0.4	11.8	21.9	-0.3	8.2	16.5
Participation rate	67.1	66.8	0.2	-0.3	-0.8	-0.2
Unemployment rate	7.6	7.6	0.2	0.0	0.7	1.1
Employment rate	62.0	61.7	0.2	-0.3	-1.2	-0.9
Ottawa-Gatineau, Ontario/Quebec									
Population	960.1	961.4	...	1.3	6.3	11.4	0.1	0.7	1.2
Labour force	699.0	706.8	3.4	7.8	9.5	23.5	1.1	1.4	3.4
Employment	663.8	668.6	3.5	4.8	2.5	23.9	0.7	0.4	3.7
Unemployment	35.2	38.2	1.7	3.0	7.0	-0.3	8.5	22.4	-0.8
Participation rate	72.8	73.5	0.4	0.7	0.5	1.6
Unemployment rate	5.0	5.4	0.2	0.4	0.9	-0.2
Employment rate	69.1	69.5	0.4	0.4	-0.2	1.6
Ottawa-Gatineau, Quebec part, Ontario/Quebec									
Population	243.4	243.7	...	0.3	1.9	4.3	0.1	0.8	1.8
Labour force	182.8	184.6	1.2	1.8	9.1	13.3	1.0	5.2	7.8
Employment	173.2	174.6	1.2	1.4	6.9	12.9	0.8	4.1	8.0
Unemployment	9.6	10.1	0.6	0.5	2.3	0.5	5.2	29.5	5.2
Participation rate	75.1	75.7	0.5	0.6	3.1	4.1
Unemployment rate	5.3	5.5	0.3	0.2	1.1	-0.1
Employment rate	71.2	71.6	0.5	0.4	2.2	4.1
Ottawa-Gatineau, Ontario part, Ontario/Quebec									
Population	716.7	717.6	...	0.9	4.3	7.0	0.1	0.6	1.0
Labour force	516.2	522.1	3.2	5.9	0.4	10.1	1.1	0.1	2.0
Employment	490.7	494.0	3.2	3.3	-4.3	11.0	0.7	-0.9	2.3
Unemployment	25.6	28.1	1.6	2.5	4.7	-0.8	9.8	20.1	-2.8
Participation rate	72.0	72.8	0.5	0.8	-0.3	0.7
Unemployment rate	5.0	5.4	0.3	0.4	0.9	-0.2
Employment rate	68.5	68.8	0.5	0.3	-1.1	0.8
Kingston, Ontario									
Population	125.9	126.0	...	0.1	0.1	0.1	0.1	0.1	0.1
Labour force	84.2	83.7	0.8	-0.5	2.8	0.7	-0.6	3.5	0.8
Employment	79.3	78.7	0.8	-0.6	1.9	0.4	-0.8	2.5	0.5
Unemployment	4.9	5.0	0.3	0.1	0.9	0.2	2.0	22.0	4.2
Participation rate	66.9	66.4	0.6	-0.5	2.1	0.5
Unemployment rate	5.8	6.0	0.4	0.2	0.9	0.2
Employment rate	63.0	62.5	0.6	-0.5	1.5	0.3

See footnotes at the end of the table.

Table 5-1 – continued

Labour force characteristics by census metropolitan area (seasonally adjusted) — 3 month moving average

	May 2008	June 2008	S.E. ¹	Change from			Percent change from		
				last month	last December	twelve months ago	last month	last December	twelve months ago
in thousands (except rates)									
Toronto, Ontario									
Population	4,526.2	4,536.0	...	9.8	51.1	96.0	0.2	1.1	2.2
Labour force	3,152.8	3,146.8	9.2	-6.0	53.8	83.5	-0.2	1.7	2.7
Employment	2,946.6	2,935.3	9.5	-11.3	50.1	81.8	-0.4	1.7	2.9
Unemployment	206.2	211.5	5.6	5.3	3.7	1.7	2.6	1.8	0.8
Participation rate	69.7	69.4	0.2	-0.3	0.4	0.4
Unemployment rate	6.5	6.7	0.2	0.2	0.0	-0.1
Employment rate	65.1	64.7	0.2	-0.4	0.4	0.4
Hamilton, Ontario									
Population	595.9	596.3	...	0.4	2.1	4.6	0.1	0.4	0.8
Labour force	402.1	403.1	2.9	1.0	6.6	4.3	0.2	1.7	1.1
Employment	377.6	379.0	2.9	1.4	6.0	4.3	0.4	1.6	1.1
Unemployment	24.5	24.1	1.4	-0.4	0.7	0.0	-1.6	3.0	0.0
Participation rate	67.5	67.6	0.5	0.1	0.9	0.2
Unemployment rate	6.1	6.0	0.3	-0.1	0.1	0.0
Employment rate	63.4	63.6	0.5	0.2	0.8	0.3
Kitchener, Ontario									
Population	381.6	382.1	...	0.5	2.7	5.8	0.1	0.7	1.5
Labour force	266.6	267.8	2.2	1.2	-2.0	7.3	0.5	-0.7	2.8
Employment	251.8	252.7	2.2	0.9	-2.7	7.1	0.4	-1.1	2.9
Unemployment	14.8	15.0	0.9	0.2	0.7	0.0	1.4	4.9	0.0
Participation rate	69.9	70.1	0.6	0.2	-1.0	0.9
Unemployment rate	5.6	5.6	0.3	0.0	0.3	-0.2
Employment rate	66.0	66.1	0.6	0.1	-1.2	0.8
London, Ontario									
Population	384.1	384.6	...	0.5	2.1	3.8	0.1	0.5	1.0
Labour force	262.7	263.5	1.9	0.8	-0.5	3.9	0.3	-0.2	1.5
Employment	243.9	244.1	1.9	0.2	-2.7	0.0	0.1	-1.1	0.0
Unemployment	18.9	19.4	0.9	0.5	2.2	3.9	2.6	12.8	25.2
Participation rate	68.4	68.5	0.5	0.1	-0.5	0.3
Unemployment rate	7.2	7.4	0.3	0.2	0.9	1.4
Employment rate	63.5	63.5	0.5	0.0	-1.0	-0.6
Oshawa, Ontario									
Population	287.0	287.5	...	0.5	2.9	6.3	0.2	1.0	2.2
Labour force	197.8	200.1	1.4	2.3	4.1	6.2	1.2	2.1	3.2
Employment	182.1	185.3	1.5	3.2	1.1	3.3	1.8	0.6	1.8
Unemployment	15.7	14.8	0.7	-0.9	3.1	2.9	-5.7	26.5	24.4
Participation rate	68.9	69.6	0.5	0.7	0.7	0.6
Unemployment rate	7.9	7.4	0.3	-0.5	1.4	1.3
Employment rate	63.4	64.5	0.5	1.1	-0.2	-0.2
St. Catharines-Niagara, Ontario									
Population	328.9	329.1	...	0.2	0.5	1.2	0.1	0.2	0.4
Labour force	214.4	214.9	1.6	0.5	3.2	7.2	0.2	1.5	3.5
Employment	199.0	199.1	1.6	0.1	1.1	4.6	0.1	0.6	2.4
Unemployment	15.4	15.7	0.8	0.3	1.9	2.5	1.9	13.8	18.9
Participation rate	65.2	65.3	0.5	0.1	0.9	2.0
Unemployment rate	7.2	7.3	0.4	0.1	0.8	0.9
Employment rate	60.5	60.5	0.5	0.0	0.2	1.2

See footnotes at the end of the table.

Table 5-1 – continued

Labour force characteristics by census metropolitan area (seasonally adjusted) — 3 month moving average

	May 2008	June 2008	S.E. ¹	Change from			Percent change from		
				last month	last December	twelve months ago	last month	last December	twelve months ago
in thousands (except rates)									
Greater Sudbury / Grand Sudbury, Ontario									
Population	133.4	133.5	...	0.1	0.4	0.8	0.1	0.3	0.6
Labour force	84.2	84.3	0.7	0.1	-0.5	-1.8	0.1	-0.6	-2.1
Employment	79.4	79.6	0.7	0.2	-1.2	-1.5	0.3	-1.5	-1.8
Unemployment	4.8	4.7	0.3	-0.1	0.7	-0.3	-2.1	17.5	-6.0
Participation rate	63.1	63.1	0.6	0.0	-0.6	-1.8
Unemployment rate	5.7	5.6	0.4	-0.1	0.9	-0.2
Employment rate	59.5	59.6	0.6	0.1	-1.1	-1.5
Thunder Bay, Ontario									
Population	103.9	103.9	...	0.0	-0.2	-0.3	0.0	-0.2	-0.3
Labour force	68.1	67.3	0.6	-0.8	-1.7	-0.2	-1.2	-2.5	-0.3
Employment	63.9	62.9	0.6	-1.0	-1.4	-0.2	-1.6	-2.2	-0.3
Unemployment	4.1	4.4	0.3	0.3	-0.3	0.0	7.3	-6.4	0.0
Participation rate	65.5	64.8	0.6	-0.7	-1.5	0.0
Unemployment rate	6.0	6.5	0.4	0.5	-0.3	0.0
Employment rate	61.5	60.5	0.6	-1.0	-1.3	-0.1
Windsor, Ontario									
Population	272.4	272.5	...	0.1	0.2	1.0	0.0	0.1	0.4
Labour force	174.9	171.8	1.5	-3.1	-5.4	-2.6	-1.8	-3.0	-1.5
Employment	160.5	157.5	1.6	-3.0	-4.5	-0.5	-1.9	-2.8	-0.3
Unemployment	14.4	14.3	0.8	-0.1	-1.0	-2.1	-0.7	-6.5	-12.8
Participation rate	64.2	63.0	0.6	-1.2	-2.1	-1.2
Unemployment rate	8.2	8.3	0.5	0.1	-0.3	-1.1
Employment rate	58.9	57.8	0.6	-1.1	-1.7	-0.4
Winnipeg, Manitoba									
Population	582.2	583.0	...	0.8	4.1	7.4	0.1	0.7	1.3
Labour force	415.6	416.4	1.4	0.8	2.9	6.0	0.2	0.7	1.5
Employment	398.4	399.3	1.4	0.9	5.3	9.3	0.2	1.3	2.4
Unemployment	17.2	17.1	0.8	-0.1	-2.4	-3.4	-0.6	-12.3	-16.6
Participation rate	71.4	71.4	0.2	0.0	0.0	0.1
Unemployment rate	4.1	4.1	0.2	0.0	-0.6	-0.9
Employment rate	68.4	68.5	0.2	0.1	0.4	0.7
Regina, Saskatchewan									
Population	166.6	167.1	...	0.5	2.5	4.6	0.3	1.5	2.8
Labour force	117.5	116.9	0.7	-0.6	1.7	1.4	-0.5	1.5	1.2
Employment	112.5	112.1	0.7	-0.4	2.0	2.4	-0.4	1.8	2.2
Unemployment	5.0	4.8	0.3	-0.2	-0.2	-1.0	-4.0	-4.0	-17.2
Participation rate	70.5	70.0	0.4	-0.5	0.0	-1.1
Unemployment rate	4.3	4.1	0.3	-0.2	-0.2	-0.9
Employment rate	67.5	67.1	0.4	-0.4	0.2	-0.4
Saskatoon, Saskatchewan									
Population	195.6	196.2	...	0.6	3.4	5.9	0.3	1.8	3.1
Labour force	142.9	142.9	0.8	0.0	-0.5	2.9	0.0	-0.3	2.1
Employment	137.3	137.2	0.9	-0.1	-0.8	3.5	-0.1	-0.6	2.6
Unemployment	5.5	5.6	0.4	0.1	0.2	-0.7	1.8	3.7	-11.1
Participation rate	73.1	72.8	0.4	-0.3	-1.6	-0.8
Unemployment rate	3.8	3.9	0.3	0.1	0.1	-0.6
Employment rate	70.2	69.9	0.4	-0.3	-1.7	-0.4

See footnotes at the end of the table.

Table 5-1 – continued

Labour force characteristics by census metropolitan area (seasonally adjusted) — 3 month moving average

	May 2008	June 2008	S.E. ¹	Change from			Percent change from		
				last month	last December	twelve months ago	last month	last December	twelve months ago
in thousands (except rates)									
Calgary, Alberta									
Population	941.5	943.5	...	2.0	9.0	23.2	0.2	1.0	2.5
Labour force	718.1	723.2	3.1	5.1	18.0	19.4	0.7	2.6	2.8
Employment	695.8	699.9	3.3	4.1	15.4	20.4	0.6	2.2	3.0
Unemployment	22.3	23.2	1.4	0.9	2.4	-1.1	4.0	11.5	-4.5
Participation rate	76.3	76.7	0.3	0.4	1.2	0.2
Unemployment rate	3.1	3.2	0.2	0.1	0.3	-0.3
Employment rate	73.9	74.2	0.4	0.3	1.0	0.4
Edmonton, Alberta									
Population	879.3	880.9	...	1.6	6.9	16.6	0.2	0.8	1.9
Labour force	644.6	642.2	3.1	-2.4	4.8	25.5	-0.4	0.8	4.1
Employment	619.6	618.2	3.1	-1.4	5.1	25.1	-0.2	0.8	4.2
Unemployment	25.0	24.0	1.4	-1.0	-0.3	0.4	-4.0	-1.2	1.7
Participation rate	73.3	72.9	0.4	-0.4	0.0	1.5
Unemployment rate	3.9	3.7	0.2	-0.2	-0.1	-0.1
Employment rate	70.5	70.2	0.4	-0.3	0.1	1.6
Abbotsford, British Columbia									
Population	133.2	133.4	...	0.2	1.1	2.2	0.2	0.8	1.7
Labour force	92.4	92.7	0.7	0.3	4.5	3.1	0.3	5.1	3.5
Employment	88.0	88.7	0.7	0.7	3.8	3.0	0.8	4.5	3.5
Unemployment	4.3	4.0	0.3	-0.3	0.7	0.1	-7.0	21.2	2.6
Participation rate	69.4	69.5	0.5	0.1	2.8	1.2
Unemployment rate	4.7	4.3	0.3	-0.4	0.6	-0.1
Employment rate	66.1	66.5	0.5	0.4	2.3	1.2
Vancouver, British Columbia									
Population	1,933.1	1,937.3	...	4.2	23.2	45.1	0.2	1.2	2.4
Labour force	1,297.1	1,296.4	4.7	-0.7	2.6	29.0	-0.1	0.2	2.3
Employment	1,244.6	1,242.7	4.7	-1.9	3.5	31.3	-0.2	0.3	2.6
Unemployment	52.5	53.8	2.2	1.3	-0.8	-2.2	2.5	-1.5	-3.9
Participation rate	67.1	66.9	0.2	-0.2	-0.7	-0.1
Unemployment rate	4.0	4.1	0.2	0.1	-0.1	-0.3
Employment rate	64.4	64.1	0.2	-0.3	-0.6	0.1
Victoria, British Columbia									
Population	285.7	286.0	...	0.3	1.5	3.4	0.1	0.5	1.2
Labour force	198.7	198.7	1.5	0.0	5.4	9.9	0.0	2.8	5.2
Employment	192.7	192.7	1.5	0.0	5.0	10.1	0.0	2.7	5.5
Unemployment	5.9	6.0	0.5	0.1	0.4	-0.2	1.7	7.1	-3.2
Participation rate	69.5	69.5	0.5	0.0	1.6	2.7
Unemployment rate	3.0	3.0	0.3	0.0	0.1	-0.3
Employment rate	67.4	67.4	0.5	0.0	1.4	2.8

1. Average standard error of change in two consecutive months (see "Sampling Errors" in Data Quality for further explanations).

Note(s): Related CANSIM table 282-0090

Table 5-2
Labour force characteristics by census metropolitan area (seasonally adjusted) — Monthly

	May 2008	June 2008	S.E. ¹	Change from			Percent change from		
				last month	last December	twelve months ago	last month	last December	twelve months ago
in thousands (except rates)									
Montréal, Quebec									
Population	3,062.2	3,065.4	...	3.2	15.7	30.6	0.1	0.5	1.0
Labour force	2,053.4	2,040.6	14.7	-12.8	-22.7	0.5	-0.6	-1.1	0.0
Employment	1,898.0	1,889.0	15.0	-9.0	-26.4	-12.9	-0.5	-1.4	-0.7
Unemployment	155.4	151.6	10.9	-3.8	3.7	13.4	-2.4	2.5	9.7
Participation rate	67.1	66.6	0.5	-0.5	-1.1	-0.6
Unemployment rate	7.6	7.4	0.5	-0.2	0.2	0.6
Employment rate	62.0	61.6	0.5	-0.4	-1.2	-1.1
Toronto, Ontario									
Population	4,535.2	4,546.0	...	10.8	54.2	100.0	0.2	1.2	2.2
Labour force	3,170.5	3,130.3	19.2	-40.2	29.5	64.9	-1.3	1.0	2.1
Employment	2,958.4	2,907.1	19.4	-51.3	16.8	51.0	-1.7	0.6	1.8
Unemployment	212.1	223.2	13.7	11.1	12.6	13.9	5.2	6.0	6.6
Participation rate	69.9	68.9	0.4	-1.0	-0.1	0.0
Unemployment rate	6.7	7.1	0.4	0.4	0.3	0.3
Employment rate	65.2	63.9	0.4	-1.3	-0.4	-0.3
Vancouver, British Columbia									
Population	1,937.0	1,941.6	...	4.6	24.1	46.3	0.2	1.3	2.4
Labour force	1,290.7	1,294.8	10.0	4.1	1.8	24.5	0.3	0.1	1.9
Employment	1,240.2	1,240.2	9.7	0.0	1.5	24.0	0.0	0.1	2.0
Unemployment	50.5	54.6	5.6	4.1	0.2	0.5	8.1	0.4	0.9
Participation rate	66.6	66.7	0.5	0.1	-0.7	-0.3
Unemployment rate	3.9	4.2	0.4	0.3	0.0	-0.1
Employment rate	64.0	63.9	0.5	-0.1	-0.7	-0.3

1. Average standard error of change in two consecutive months (see "Sampling Errors" in Data Quality for further explanations).

Note(s): Related CANSIM table 282-0091

Table 6-1

Labour force characteristics by province and economic region ¹, unadjusted for seasonality, 3 month moving average ending in June 2007 and June 2008

	Population	Labour force			Participation rate	Unemployment rate	Employment rate
		Labour force	Employment	Unemployment			
	in thousands						
Canada ²							
2007	26,504.7	17,991.8	16,911.7	1,080.0	67.9	6.0	63.8
2008	26,873.5	18,342.9	17,234.9	1,108.0	68.3	6.0	64.1
Newfoundland and Labrador							
2007	424.1	254.7	220.2	34.5	60.1	13.5	51.9
2008	425.7	261.3	226.3	35.0	61.4	13.4	53.2
<i>Avalon Peninsula [1010]</i>							
2007	209.6	134.1	120.5	13.6	64.0	10.1	57.5
2008	211.8	139.7	125.0	14.6	66.0	10.5	59.0
<i>South Coast-Burin Peninsula [1020]</i>							
2007	32.9	17.5	13.6	3.9	53.2	22.3	41.3
2008	32.5	17.7	13.8	3.9	54.5	22.0	42.5
<i>West Coast-Northern Peninsula-Labrador [1030]</i>							
2007	87.5	52.3	44.3	8.0	59.8	15.3	50.6
2008	87.8	49.9	42.2	7.7	56.8	15.4	48.1
<i>Notre Dame-Central Bonavista Bay [1040]</i>							
2007	94.1	50.7	41.8	9.0	53.9	17.8	44.4
2008	93.7	54.0	45.3	8.7	57.6	16.1	48.3
Prince Edward Island							
2007	113.0	78.1	70.7	7.5	69.1	9.6	62.6
2008	114.1	80.6	72.6	8.0	70.6	9.9	63.6
Nova Scotia							
2007	763.7	491.9	452.0	39.9	64.4	8.1	59.2
2008	768.1	497.0	458.1	39.0	64.7	7.8	59.6
<i>Cape Breton [1210]</i>							
2007	116.4	62.9	54.4	8.5	54.0	13.5	46.7
2008	115.7	66.6	58.1	8.5	57.6	12.8	50.2
<i>North Shore [1220]</i>							
2007	130.9	79.2	70.7	8.5	60.5	10.7	54.0
2008	131.3	81.0	73.2	7.8	61.7	9.6	55.8
<i>Annapolis Valley [1230]</i>							
2007	100.1	65.2	61.1	4.1	65.1	6.3	61.0
2008	101.0	63.6	58.9	4.7	63.0	7.4	58.3
<i>Southern [1240]</i>							
2007	103.5	64.0	58.3	5.7	61.8	8.9	56.3
2008	103.6	64.5	58.9	5.5	62.3	8.5	56.9
<i>Halifax [1250]</i>							
2007	312.9	220.6	207.5	13.1	70.5	5.9	66.3
2008	316.6	221.4	209.0	12.4	69.9	5.6	66.0
New Brunswick							
2007	612.6	396.7	366.7	30.1	64.8	7.6	59.9
2008	617.5	405.2	368.2	37.0	65.6	9.1	59.6
<i>Campbellton-Miramichi [1310]</i>							
2007	135.8	83.5	73.1	10.3	61.5	12.3	53.8
2008	135.8	83.5	71.1	12.4	61.5	14.9	52.4
<i>Moncton-Richibucto [1320]</i>							
2007	162.9	106.9	99.7	7.2	65.6	6.7	61.2
2008	165.4	111.4	102.5	8.9	67.4	8.0	62.0
<i>Saint John-St. Stephen [1330]</i>							
2007	141.8	90.6	85.6	5.0	63.9	5.5	60.4
2008	142.9	94.9	88.1	6.8	66.4	7.2	61.7

See footnotes at the end of the table.

Table 6-1 – continued

Labour force characteristics by province and economic region 1, unadjusted for seasonality, 3 month moving average ending in June 2007 and June 2008

	Population	Labour force			Participation rate	Unemployment rate	Employment rate
		Labour force	Employment	Unemployment			
in thousands							
Fredericton-Oromocto [1340]							
2007	104.0	73.4	69.8	3.6	70.6	4.9	67.1
2008	105.1	72.5	68.3	4.3	69.0	5.9	65.0
Edmundston-Woodstock [1350]							
2007	68.0	42.3	38.4	3.9	62.2	9.2	56.5
2008	68.2	42.8	38.3	4.5	62.8	10.5	56.2
Quebec							
2007	6,308.0	4,152.9	3,867.3	285.6	65.8	6.9	61.3
2008	6,364.1	4,199.1	3,897.7	301.4	66.0	7.2	61.2
Gaspésie-Îles-de-la-Madeleine [2410]							
2007	80.9	44.3	36.4	7.9	54.8	17.8	45.0
2008	80.8	46.7	38.6	8.1	57.8	17.3	47.8
Bas-Saint-Laurent [2415]							
2007	167.3	103.8	93.9	9.8	62.0	9.4	56.1
2008	167.5	105.4	95.6	9.8	62.9	9.3	57.1
Capitale-Nationale [2420]							
2007	563.8	375.5	358.2	17.3	66.6	4.6	63.5
2008	567.3	386.6	367.5	19.2	68.1	5.0	64.8
Chaudière-Appalaches [2425]							
2007	327.3	217.7	205.5	12.2	66.5	5.6	62.8
2008	329.4	215.6	206.2	9.4	65.5	4.4	62.6
Estrie [2430]							
2007	248.4	162.2	150.2	12.0	65.3	7.4	60.5
2008	250.8	158.2	149.2	9.1	63.1	5.8	59.5
Centre-du-Québec [2433]							
2007	185.2	124.7	116.5	8.2	67.3	6.6	62.9
2008	186.4	124.9	115.5	9.4	67.0	7.5	62.0
Montréal [2435]							
2007	1,123.0	761.8	721.7	40.1	67.8	5.3	64.3
2008	1,140.4	767.1	714.3	52.8	67.3	6.9	62.6
Montréal [2440]							
2007	1,592.4	1,027.7	946.0	81.7	64.5	7.9	59.4
2008	1,591.8	1,044.6	959.4	85.3	65.6	8.2	60.3
Laval [2445]							
2007	308.5	210.1	201.8	8.4	68.1	4.0	65.4
2008	313.3	214.9	202.8	12.1	68.6	5.6	64.7
Lanaudière [2450]							
2007	351.6	232.0	217.6	14.3	66.0	6.2	61.9
2008	362.1	228.4	212.0	16.4	63.1	7.2	58.5
Laurentides [2455]							
2007	424.1	287.7	266.5	21.2	67.8	7.4	62.8
2008	434.1	295.7	274.0	21.7	68.1	7.3	63.1
Outaouais [2460]							
2007	289.4	197.7	185.0	12.7	68.3	6.4	63.9
2008	294.2	215.0	201.6	13.4	73.1	6.2	68.5
Abitibi-Témiscamingue [2465]							
2007	115.6	73.8	65.7	8.1	63.8	11.0	56.8
2008	115.8	72.5	67.5	5.0	62.6	6.9	58.3
Mauricie [2470]							
2007	217.3	134.3	121.7	12.6	61.8	9.4	56.0
2008	218.0	131.2	119.6	11.6	60.2	8.8	54.9

See footnotes at the end of the table.

Table 6-1 – continued

Labour force characteristics by province and economic region 1, unadjusted for seasonality, 3 month moving average ending in June 2007 and June 2008

	Population	Labour force			Participation rate	Unemployment rate	Employment rate
		Labour force	Employment	Unemployment			
in thousands							
Saguenay-Lac-Saint-Jean [2475]							
2007	223.9	143.7	129.9	13.9	64.2	9.7	58.0
2008	223.2	134.6	123.4	11.2	60.3	8.3	55.3
Côte-Nord and Nord-du-Québec [2480, 2490]							
2007	89.4	55.9	50.8	5.1	62.5	9.1	56.8
2008	89.0	57.4	50.6	6.9	64.5	12.0	56.9
Ontario							
2007	10,342.3	7,059.3	6,603.0	456.3	68.3	6.5	63.8
2008	10,488.3	7,199.2	6,733.7	465.5	68.6	6.5	64.2
Ottawa [3510]							
2007	983.5	695.1	654.6	40.5	70.7	5.8	66.6
2008	992.5	711.2	672.2	39.0	71.7	5.5	67.7
Kingston-Pembroke [3515]							
2007	358.8	222.5	211.0	11.6	62.0	5.2	58.8
2008	359.9	230.5	218.0	12.6	64.0	5.5	60.6
Muskoka-Kawarthas [3520]							
2007	308.6	197.1	185.7	11.4	63.9	5.8	60.2
2008	311.0	199.4	186.6	12.8	64.1	6.4	60.0
Toronto [3530]							
2007	4,684.1	3,244.5	3,023.0	221.5	69.3	6.8	64.5
2008	4,783.8	3,343.9	3,115.5	228.4	69.9	6.8	65.1
Kitchener-Waterloo-Barrie [3540]							
2007	965.2	689.6	650.1	39.6	71.4	5.7	67.4
2008	982.2	692.6	654.2	38.4	70.5	5.5	66.6
Hamilton-Niagara Peninsula [3550]							
2007	1,131.2	756.6	711.2	45.4	66.9	6.0	62.9
2008	1,141.1	772.2	723.2	49.0	67.7	6.3	63.4
London [3560]							
2007	509.9	349.8	329.0	20.8	68.6	5.9	64.5
2008	515.0	354.1	329.8	24.3	68.8	6.9	64.0
Windsor-Sarnia [3570]							
2007	524.2	341.6	310.2	31.4	65.2	9.2	59.2
2008	525.9	341.0	313.2	27.9	64.8	8.2	59.6
Stratford-Bruce Peninsula [3580]							
2007	247.3	164.4	157.6	6.8	66.5	4.1	63.7
2008	248.0	164.0	156.7	7.3	66.1	4.5	63.2
Northeast [3590]							
2007	453.3	282.9	263.7	19.2	62.4	6.8	58.2
2008	454.2	279.5	263.5	16.0	61.5	5.7	58.0
Northwest [3595]							
2007	176.2	115.3	107.1	8.2	65.4	7.1	60.8
2008	174.7	110.7	100.8	9.9	63.4	8.9	57.7
Manitoba							
2007	897.6	628.9	599.9	29.0	70.1	4.6	66.8
2008	908.3	638.1	613.4	24.7	70.3	3.9	67.5
Southeast [4610]							
2007	76.2	53.9	51.7	2.2	70.7	4.1	67.8
2008	78.4	53.4	51.8	1.6	68.1	3.0	66.1
South Central [4620]							
2007	42.9	30.0	28.8	1.2	69.9	4.0	67.1
2008	43.9	31.0	29.9	1.1	70.6	3.5	68.1

See footnotes at the end of the table.

Table 6-1 – continued

Labour force characteristics by province and economic region 1, unadjusted for seasonality, 3 month moving average ending in June 2007 and June 2008

	Population	Labour force			Participation rate	Unemployment rate	Employment rate
		Labour force	Employment	Unemployment			
in thousands							
Southwest [4630]							
2007	81.9	54.2	51.6	2.5	66.2	4.6	63.0
2008	82.6	56.7	54.7	2.1	68.6	3.7	66.2
North Central [4640]							
2007	35.7	23.8	23.4	x	66.7	x	65.5
2008	35.8	24.7	24.1	0.6	69.0	2.4	67.3
Winnipeg [4650]							
2007	532.1	379.8	360.7	19.0	71.4	5.0	67.8
2008	538.1	384.5	368.4	16.1	71.5	4.2	68.5
Interlake [4660]							
2007	69.5	46.6	44.8	1.8	67.1	3.9	64.5
2008	70.6	47.0	45.3	1.7	66.6	3.6	64.2
Parklands and North [4670, 4680]							
2007	59.3	40.6	38.8	1.7	68.5	4.2	65.4
2008	58.9	40.7	39.2	1.5	69.1	3.7	66.6
Saskatchewan							
2007	749.2	526.3	504.4	21.8	70.2	4.1	67.3
2008	765.3	535.0	513.9	21.1	69.9	3.9	67.2
Regina-Moose Mountain [4710]							
2007	220.3	155.2	148.9	6.3	70.4	4.1	67.6
2008	225.8	160.0	154.6	5.3	70.9	3.3	68.5
Swift Current-Moose Jaw [4720]							
2007	82.5	56.6	54.5	2.0	68.6	3.5	66.1
2008	83.5	56.6	54.2	2.4	67.8	4.2	64.9
Saskatoon-Biggar [4730]							
2007	232.7	171.1	164.3	6.8	73.5	4.0	70.6
2008	239.1	174.5	168.4	6.0	73.0	3.4	70.4
Yorkton-Melville [4740]							
2007	64.0	44.0	42.4	1.6	68.8	3.6	66.3
2008	64.5	40.1	38.5	1.6	62.2	4.0	59.7
Prince Albert and Northern [4750, 4760]							
2007	149.6	99.5	94.3	5.1	66.5	5.1	63.0
2008	152.4	103.9	98.2	5.7	68.2	5.5	64.4
Alberta							
2007	2,732.3	2,034.7	1,962.4	72.3	74.5	3.6	71.8
2008	2,789.1	2,089.9	2,021.2	68.7	74.9	3.3	72.5
Lethbridge-Medicine Hat [4810]							
2007	206.3	136.4	131.3	5.1	66.1	3.7	63.6
2008	208.7	149.0	145.7	3.2	71.4	2.1	69.8
Camrose-Drumheller [4820]							
2007	154.5	114.4	109.9	4.5	74.0	3.9	71.1
2008	155.4	115.4	112.9	2.6	74.3	2.3	72.7
Calgary [4830]							
2007	991.2	768.4	743.6	24.8	77.5	3.2	75.0
2008	1,017.6	784.2	760.8	23.4	77.1	3.0	74.8
Banff-Jasper-Rocky Mountain House [4840]							
2007	67.7	54.4	52.9	1.5	80.4	2.8	78.1
2008	68.4	54.6	52.6	2.0	79.8	3.7	76.9
Red Deer [4850]							
2007	141.6	107.8	104.0	3.9	76.1	3.6	73.4
2008	145.7	106.4	102.3	4.1	73.0	3.9	70.2

See footnotes at the end of the table.

Table 6-1 – continued

Labour force characteristics by province and economic region 1, unadjusted for seasonality, 3 month moving average ending in June 2007 and June 2008

	Population	Labour force			Participation rate	Unemployment rate	Employment rate
		Labour force	Employment	Unemployment			
in thousands							
Edmonton [4860]							
2007	897.6	642.5	617.8	24.7	71.6	3.8	68.8
2008	914.9	668.6	644.1	24.5	73.1	3.7	70.4
Athabasca-Grande Prairie-Peace River [4870]							
2007	182.7	141.8	136.1	5.7	77.6	4.0	74.5
2008	185.9	139.0	132.5	6.5	74.8	4.7	71.3
Wood Buffalo-Cold Lake [4880]							
2007	90.7	69.1	66.9	2.2	76.2	3.2	73.8
2008	92.5	72.7	70.3	2.4	78.6	3.3	76.0
British Columbia							
2007	3,561.9	2,368.2	2,265.1	103.1	66.5	4.4	63.6
2008	3,633.0	2,437.5	2,329.8	107.7	67.1	4.4	64.1
Vancouver Island and Coast [5910]							
2007	621.3	396.0	380.3	15.6	63.7	3.9	61.2
2008	631.5	411.9	395.9	16.0	65.2	3.9	62.7
Lower Mainland-Southwest [5920]							
2007	2,154.5	1,449.6	1,385.9	63.7	67.3	4.4	64.3
2008	2,204.9	1,487.8	1,425.2	62.6	67.5	4.2	64.6
Thompson-Okanagan [5930]							
2007	422.0	271.8	260.1	11.7	64.4	4.3	61.6
2008	430.0	286.0	271.5	14.5	66.5	5.1	63.1
Kootenay [5940]							
2007	121.9	83.2	79.4	3.8	68.3	4.6	65.1
2008	122.7	73.1	71.3	1.8	59.6	2.5	58.1
Cariboo [5950]							
2007	124.8	84.7	80.8	3.9	67.9	4.6	64.7
2008	126.1	89.8	83.5	6.3	71.2	7.0	66.2
North Coast and Nechako [5960, 5970]							
2007	66.1	44.5	41.1	3.4	67.3	7.6	62.2
2008	65.7	49.5	45.4	4.2	75.3	8.5	69.1
Northeast [5980]							
2007	51.2	38.4	37.4	x	75.0	x	73.0
2008	52.1	39.3	37.0	2.3	75.4	5.9	71.0

1. For geographic descriptions of economic regions, refer to the Guide to the Labour Force Survey (catalogue number 71-543-GIE).

2. Estimates for Canada are a sum of the provincial totals and exclude estimates from Yukon Territory, Northwest Territories and Nunavut.

Note(s): Related CANSIM table 282-0054.

Table 6-2
Labour force characteristics by territories, unadjusted for seasonality, 3 month moving average ending in June 2007 and June 2008

	Population	Labour force			Participation rate	Unemployment rate	Employment rate
		Labour force	Employment	Unemployment			
in thousands							
Yukon Territory ¹							
2007	23.3	17.3	16.3	0.9	74.2	5.2	70.0
2008	23.7	17.9	17.1	0.9	75.5	5.0	72.2
Northwest Territories ²							
2007	30.7	24.1	22.5	1.6	78.5	6.6	73.3
2008	31.3	23.5	21.9	1.6	75.1	6.8	70.0
Nunavut - 10 largest communities ³							
2007	14.1	10.3	9.3	1.1	73.1	10.3	65.6
2008	14.2	9.4	8.4	1.0	66.5	10.8	59.3

1. Since 1992, the Labour Force Survey (LFS) has been conducted in the Yukon Territory, using an alternative methodology that accommodates some of the operational difficulties inherent to remote locales. These estimates are not included in the national totals. In 1995, the LFS in the Yukon underwent a sample redesign. One result of the redesign was that the covered population increased from 85% to 92%, which is reflected by the sharp increase in the three month moving averages estimates of January, February and March of 1995 for all the level estimates. Users are therefore warned to be cautious when comparing estimates before January 1995 to estimates for January 1995 and forward.
 2. Since 2001, the Labour force survey has been administered in the Northwest Territories, using an alternative methodology that accommodates some of the operational difficulties inherent to remote locales. These estimates are not included in national totals.
 3. Since 2004, the Labour force survey has been administered in Nunavut, using an alternative methodology that accommodates some of the operational difficulties inherent to remote locales. These estimates are not included in national totals. The 10 largest communities are Iqaluit, Cambridge Bay, Baker Lake, Arviat, Rankin Inlet, Kugluktuk, Pond Inlet, Cape Dorset, Pangnirtung, Igloolik.
- Note(s):** Related CANSIM table 282-0054.

Table 7
Average usual hours and wages of employees by selected characteristics, Canada, unadjusted for seasonality

	Employees				Full-time			Part-time		
	Number	Average weekly hours	Average weekly wages	Average hourly wages	Number	Average weekly hours	Average weekly wages	Number	Average weekly hours	Average weekly wages
	thousands		dollars		thousands		dollars	thousands		dollars
June 2008										
15 years and over	14,879.6	35.9	781.94	21.15	12,377.6	39.5	884.16	2,502.0	17.9	276.25
15 to 24 years	2,723.3	30.3	397.48	12.38	1,673.7	39.0	540.11	1,049.6	16.4	170.04
25 years and over	12,156.3	37.1	868.07	23.11	10,703.9	39.6	937.96	1,452.4	19.0	353.00
Men	7,527.7	38.4	901.59	23.00	6,783.8	40.8	974.06	743.9	17.0	240.69
Women	7,351.9	33.2	659.42	19.25	5,593.7	37.9	775.13	1,758.1	18.2	291.29
Union coverage										
Union coverage	4,637.6	36.1	887.49	24.33	4,001.0	38.7	963.38	636.5	19.8	410.46
No union coverage	10,242.0	35.7	734.15	19.71	8,376.6	39.9	846.32	1,865.4	17.2	230.45
Job permanency										
Permanent	12,863.3	36.5	823.89	21.97	11,059.9	39.5	910.55	1,803.4	18.5	292.41
Temporary	2,016.3	31.5	514.30	15.89	1,317.7	39.7	662.63	698.6	16.2	234.51
Occupation										
Management	1,094.8	39.9	1,325.41	33.24	1,059.1	40.5	1,354.69	35.7	19.9	457.61
Business, finance and administrative	2,895.7	35.5	724.69	20.06	2,506.7	38.2	789.32	389.0	18.3	308.25
Natural and applied sciences	1,111.8	38.6	1,123.55	29.26	1,075.7	39.2	1,143.38	36.1	19.8	532.45
Health	909.0	33.6	829.71	24.67	689.9	37.8	939.68	219.0	20.3	483.29
Social science, education, government service and religion	1,331.7	34.9	965.05	27.53	1,104.6	38.3	1,068.15	227.1	18.2	463.61
Art, culture, recreation and sport	331.9	32.9	717.51	20.69	252.1	38.7	867.72	79.8	14.6	242.84
Sales and service	3,688.4	31.2	472.15	14.19	2,397.6	38.5	621.49	1,290.7	17.5	194.73
Trades, transport and equipment operators	2,249.4	40.3	842.58	20.73	2,109.3	41.8	880.72	140.1	18.1	268.47
Occupations unique to primary industry	355.9	42.5	751.86	17.19	317.7	45.9	821.60	38.2	14.7	171.68
Occupations unique to processing, manufacturing and utilities	911.0	38.9	718.29	18.22	864.8	40.1	745.48	46.1	17.0	208.75
June 2007										
15 years and over	14,527.3	35.9	749.92	20.25	12,085.2	39.5	847.52	2,442.2	17.8	266.99
15 to 24 years	2,685.9	30.1	378.43	11.82	1,650.1	38.9	516.93	1,035.8	16.1	157.78
25 years and over	11,841.4	37.2	834.19	22.17	10,435.0	39.6	899.79	1,406.4	19.1	347.41
Men	7,353.1	38.4	860.86	21.92	6,613.9	40.8	931.08	739.2	17.0	232.51
Women	7,174.2	33.3	636.22	18.55	5,471.2	38.0	746.50	1,703.0	18.2	281.95
Union coverage										
Union coverage	4,547.9	36.3	862.33	23.54	3,950.6	38.8	932.41	597.3	19.4	398.82
No union coverage	9,979.4	35.7	698.70	18.75	8,134.5	39.9	806.29	1,844.9	17.3	224.31
Job permanency										
Permanent	12,371.1	36.6	791.19	21.07	10,668.1	39.5	871.69	1,703.0	18.6	286.91
Temporary	2,156.2	31.7	513.15	15.60	1,417.0	39.9	665.50	739.1	15.9	221.08
Occupation										
Management	976.7	40.2	1,282.51	32.03	956.1	40.7	1,296.88	20.6	19.0	615.83
Business, finance and administrative	2,758.8	35.6	700.61	19.36	2,387.9	38.3	763.99	370.9	18.4	292.57
Natural and applied sciences	1,071.7	38.8	1,091.01	28.12	1,042.8	39.4	1,109.01	29.0	19.3	442.78
Health	851.6	33.7	829.75	24.57	642.3	38.0	931.92	209.3	20.6	516.28
Social science, education, government service and religion	1,305.6	34.6	912.37	26.12	1,073.2	38.2	1,014.00	232.4	18.4	443.11
Art, culture, recreation and sport	323.2	32.2	690.21	20.44	236.5	38.7	853.32	86.7	14.5	245.53
Sales and service	3,773.5	31.4	454.97	13.61	2,491.1	38.6	594.33	1,282.3	17.4	184.24
Trades, transport and equipment operators	2,136.5	40.3	826.77	20.35	2,005.9	41.8	863.24	130.6	18.1	266.51
Occupations unique to primary industry	362.4	42.0	718.47	16.57	320.6	45.5	789.49	41.8	15.1	173.96
Occupations unique to processing, manufacturing and utilities	967.2	39.4	698.00	17.51	928.8	40.4	719.02	38.4	16.5	189.72

Note(s): Related CANSIM tables 282-0023, 282-0069, 282-0073

Table 8
Regional unemployment rates used by the Employment Insurance Program, ¹ seasonally adjusted, 3 month moving average

Region	Effective from July 13, 2008 to August 9, 2008
	percent
Newfoundland and Labrador	
01. St. John's	7.8
02. Newfoundland and Labrador	16.1
Prince Edward Island	
03. Prince Edward Island	10.4
Nova Scotia	
04. Eastern Nova Scotia	14.7
05. Western Nova Scotia	8.5
06. Halifax	5.3
New Brunswick	
07. Fredericton-Moncton-Saint John	5.7
08. Madawaska-Charlotte ²	11.1
09. Restigouche-Albert	14.7
Quebec	
10. Gaspésie-Îles-de-la-Madeleine	18.3
11. Québec	5.0
12. Trois-Rivières	8.7
13. South Central Quebec	5.0
14. Sherbrooke	5.6
15. Montérégie	7.5
16. Montréal	7.7
17. Central Quebec	8.0
18. Northwestern Quebec	9.5
19. Bas-Saint-Laurent-Côte-Nord ³	11.3
20. Gatineau	5.5
21. Saguenay	9.5
Ontario	
22. Ottawa	5.3
23. Eastern Ontario	6.1
24. Kingston	5.6
25. Central Ontario	6.7
26. Oshawa	7.4
27. Toronto	6.7
28. Hamilton	6.0
29. St. Catharines	7.3
30. London	7.4
31. Niagara	8.8
32. Windsor	8.2
33. Kitchener	5.7
34. Huron	8.2
35. South Central Ontario	4.8
36. Sudbury	6.1
37. Thunder Bay	6.5
38. Northern Ontario	10.1
Manitoba	
39. Winnipeg	4.2
40. Southern Manitoba	4.9
41. Northern Manitoba	26.0
Saskatchewan	
42. Regina	4.2
43. Saskatoon	3.9
44. Southern Saskatchewan	6.1
45. Northern Saskatchewan	15.0

See footnotes at the end of the table.

Table 8 – continued

Regional unemployment rates used by the Employment Insurance Program, ¹ seasonally adjusted, 3 month moving average

Region	Effective from July 13, 2008 to August 9, 2008
	percent
Alberta	
46. Calgary	3.2
47. Edmonton	3.9
48. Northern Alberta	8.4
49. Southern Alberta	4.0
British Columbia	
50. Southern Interior British Columbia	6.2
51. Abbotsford	4.4
52. Vancouver	4.3
53. Victoria	3.9
54. Southern Coastal British Columbia	6.0
55. Northern British Columbia	9.7
Territories	
56. Yukon Territory ⁴	25.0
57. Northwest Territories ⁴	25.0
58. Nunavut ⁴	25.0

1. The boundaries of these regions are determined by Human Resources and Social Development Canada (HRSDC). For geographic descriptions and maps of employment insurance regions, see the HRSDC website: <http://srv129.services.gc.ca/eiregions/en/geocont.aspx>.

2. This unemployment rate has been determined using a transition formula prescribed in the EI Regulations. For further information, see: http://www.hrsdc.gc.ca/en/cs/comm/news/2000/000913a_e.shtml.

3. This unemployment rate has been determined using a transition formula prescribed in the EI Regulations. For further information, see: http://www.hrsdc.gc.ca/en/cs/comm/news/2000/000913b_e.shtml.

4. This rate is provided by Human Resources and Skills Development Canada.

Table 9-1
Students and other persons aged 15 to 24 (unadjusted) by detailed age groups

	June 2006	June 2007	June 2008	S.E. ¹	Change from		Percent change from	
					last year	two years ago	last year	two years ago
in thousands								
Students 15 to 24 years²								
Population	2,293.0	2,312.6	2,308.8	27.8	-3.8	15.8	-0.2	0.7
Labour force	1,319.5	1,375.1	1,410.5	29.3	35.4	91.0	2.6	6.9
Employment	1,167.4	1,211.4	1,231.3	28.1	19.9	63.9	1.6	5.5
Full-time employment	428.6	463.8	464.6	20.5	0.8	36.0	0.2	8.4
Part-time employment	738.8	747.6	766.7	22.5	19.1	27.9	2.6	3.8
Unemployment	152.2	163.7	179.3	13.2	15.6	27.1	9.5	17.8
Participation rate	57.5	59.5	61.1	1.0	1.6	3.6
Unemployment rate	11.5	11.9	12.7	0.9	0.8	1.2
Employment rate	50.9	52.4	53.3	1.0	0.9	2.4
Part-time rate	63.3	61.7	62.3	1.3	0.6	-1.0
Students 15 to 16 years²								
Population	820.5	821.5	803.9	5.2	-17.6	-16.6	-2.1	-2.0
Labour force	290.1	311.4	331.5	13.4	20.1	41.4	6.5	14.3
Employment	234.1	259.2	265.7	12.4	6.5	31.6	2.5	13.5
Full-time employment	12.6	11.9	26.0	5.3	14.1	13.4	118.5	106.3
Part-time employment	221.5	247.3	239.7	11.6	-7.6	18.2	-3.1	8.2
Unemployment	56.0	52.2	65.8	7.8	13.6	9.8	26.1	17.5
Participation rate	35.4	37.9	41.2	1.6	3.3	5.8
Unemployment rate	19.3	16.8	19.8	2.0	3.0	0.5
Employment rate	28.5	31.6	33.1	1.5	1.5	4.6
Part-time rate	94.6	95.4	90.2	1.7	-5.2	-4.4
Students 17 to 19 years²								
Population	810.6	829.5	864.1	15.1	34.6	53.5	4.2	6.6
Labour force	525.8	542.0	579.6	16.5	37.6	53.8	6.9	10.2
Employment	471.8	475.2	512.0	16.3	36.8	40.2	7.7	8.5
Full-time employment	127.9	146.2	164.5	11.5	18.3	36.6	12.5	28.6
Part-time employment	343.8	329.0	347.5	14.3	18.5	3.7	5.6	1.1
Unemployment	54.0	66.9	67.6	8.2	0.7	13.6	1.0	25.2
Participation rate	64.9	65.3	67.1	1.5	1.8	2.2
Unemployment rate	10.3	12.3	11.7	1.4	-0.6	1.4
Employment rate	58.2	57.3	59.3	1.6	2.0	1.1
Part-time rate	72.9	69.2	67.9	1.9	-1.4	-5.0
Students 20 to 24 years²								
Population	661.9	661.6	640.9	22.2	-20.7	-21.0	-3.1	-3.2
Labour force	503.7	521.6	499.4	19.8	-22.2	-4.3	-4.3	-0.9
Employment	461.5	477.0	453.5	19.3	-23.5	-8.0	-4.9	-1.7
Full-time employment	288.1	305.7	274.0	15.5	-31.7	-14.1	-10.4	-4.9
Part-time employment	173.4	171.3	179.5	12.5	8.2	6.1	4.8	3.5
Unemployment	42.2	44.6	45.9	6.0	1.3	3.7	2.9	8.8
Participation rate	76.1	78.8	77.9	1.8	-0.9	1.8
Unemployment rate	8.4	8.6	9.2	1.2	0.6	0.8
Employment rate	69.7	72.1	70.8	1.9	-1.3	1.1
Part-time rate	37.6	35.9	39.6	2.2	3.7	2.0
Other persons aged 15 to 24³								
Population	2,025.3	2,038.6	2,066.0	27.8	27.4	40.7	1.3	2.0
Labour force	1,730.3	1,735.7	1,761.5	26.9	25.8	31.2	1.5	1.8
Employment	1,568.6	1,576.8	1,580.0	26.8	3.2	11.4	0.7	0.7
Full-time employment	1,232.1	1,241.1	1,255.8	26.1	14.7	23.7	1.2	1.9
Part-time employment	336.5	335.7	324.1	15.6	-11.6	-12.4	-3.5	-3.7
Unemployment	161.8	158.9	181.6	12.5	22.7	19.8	14.3	12.2
Participation rate	85.4	85.1	85.3	0.7	0.1	-0.2
Unemployment rate	9.4	9.2	10.3	0.7	1.2	1.0
Employment rate	77.5	77.3	76.5	0.9	-0.9	-1.0
Part-time rate	21.5	21.3	20.5	0.9	-0.8	-0.9

1. Average standard error of change over the year (see "Sampling Errors" in Data Quality for further explanations).

2. Students are persons aged 15 to 24 who attended school full-time in March and who are planning to return to school in the fall.

3. Other persons are all other youths aged 15 to 24 who are not included in the student population.

Note(s): Related CANSIM table 282-0006

Table 9-2
Students and other persons aged 15 to 24 (unadjusted) by province

	Population		Labour force				Participation rate	Unemployment rate	Employment rate
	Labour force	Employment	Full-time employment	Part-time employment	Unemployment				
in thousands									
Students¹									
Newfoundland and Labrador									
June 2007	35.5	17.2	14.1	6.4	7.7	3.0	48.5	17.4	39.7
June 2008	34.3	18.0	15.3	7.5	7.8	2.6	52.5	14.4	44.6
Prince Edward Island									
June 2007	10.0	6.8	6.1	2.4	3.6	0.7	68.0	10.3	61.0
June 2008	9.4	6.8	5.7	3.2	2.5	1.1	72.3	16.2	60.6
Nova Scotia									
June 2007	66.6	38.9	33.8	12.7	21.1	5.1	58.4	13.1	50.8
June 2008	64.7	41.5	37.1	14.5	22.5	4.5	64.1	10.8	57.3
New Brunswick									
June 2007	48.8	30.5	27.3	11.0	16.3	3.2	62.5	10.5	55.9
June 2008	46.7	34.6	28.8	13.3	15.6	5.8	74.1	16.8	61.7
Quebec									
June 2007	543.6	334.0	287.0	116.1	170.9	47.0	61.4	14.1	52.8
June 2008	536.5	338.0	292.9	120.1	172.8	45.1	63.0	13.3	54.6
Ontario									
June 2007	968.7	564.2	493.5	185.8	307.7	70.7	58.2	12.5	50.9
June 2008	995.6	595.0	502.2	176.8	325.4	92.8	59.8	15.6	50.4
Manitoba									
June 2007	78.1	52.0	47.1	16.9	30.2	5.0	66.6	9.6	60.3
June 2008	74.2	50.4	45.4	17.0	28.4	5.0	67.9	9.9	61.2
Saskatchewan									
June 2007	63.5	39.3	36.8	12.9	23.8	2.5	61.9	6.4	58.0
June 2008	62.1	39.7	37.0	16.3	20.7	2.7	63.9	6.8	59.6
Alberta									
June 2007	215.1	132.3	119.6	54.9	64.8	12.6	61.5	9.5	55.6
June 2008	216.2	143.1	132.8	52.5	80.3	10.3	66.2	7.2	61.4
British Columbia									
June 2007	282.7	159.9	146.1	44.7	101.4	13.8	56.6	8.6	51.7
June 2008	269.1	143.4	134.0	43.3	90.7	9.4	53.3	6.6	49.8
Other persons aged 15-24²									
Newfoundland and Labrador									
June 2007	28.2	21.3	16.2	11.3	4.9	5.0	75.5	23.5	57.4
June 2008	28.2	21.5	16.9	12.3	4.7	4.6	76.2	21.4	59.9
Prince Edward Island									
June 2007	9.7	8.7	7.7	6.4	1.3	x	89.7	x	79.4
June 2008	10.3	9.1	8.2	7.0	1.2	1.0	88.3	11.0	79.6
Nova Scotia									
June 2007	55.9	45.7	40.4	31.8	8.6	5.3	81.8	11.6	72.3
June 2008	56.9	46.8	41.4	33.1	8.2	5.4	82.2	11.5	72.8
New Brunswick									
June 2007	46.1	40.0	36.4	29.5	6.9	3.6	86.8	9.0	79.0
June 2008	48.2	39.3	32.5	27.2	5.4	6.8	81.5	17.3	67.4
Quebec									
June 2007	411.0	345.7	320.3	255.4	64.9	25.6	84.1	7.4	77.9
June 2008	422.9	364.7	321.5	252.9	68.5	43.3	86.2	11.9	76.0
Ontario									
June 2007	751.0	633.7	559.6	432.6	126.9	74.1	84.4	11.7	74.5
June 2008	737.0	623.0	545.8	421.7	124.2	77.2	84.5	12.4	74.1
Manitoba									
June 2007	78.5	68.6	64.3	49.1	15.1	4.3	87.4	6.3	81.9
June 2008	84.2	71.2	66.4	54.1	12.4	4.8	84.6	6.7	78.9
Saskatchewan									
June 2007	73.9	64.4	59.7	49.4	10.3	4.7	87.1	7.3	80.8
June 2008	77.3	66.7	63.1	52.6	10.3	x	86.3	x	81.6
Alberta									
June 2007	288.8	254.4	237.7	197.4	40.3	16.7	88.1	6.6	82.3
June 2008	287.5	247.4	235.4	203.1	32.3	11.9	86.1	4.8	81.9

See footnotes at the end of the table.

Table 9-2 – continued

Students and other persons aged 15 to 24 (unadjusted) by province

	Population	Labour force				Unemployment	Participation rate	Unemployment rate	Employment rate
		Labour force	Employment	Full-time employment	Part-time employment				
in thousands									
British Columbia									
June 2007	295.5	252.9	234.5	178.3	56.2	18.4	85.6	7.3	79.4
June 2008	313.7	271.7	248.7	191.9	56.8	23.0	86.6	8.5	79.3

1. Students are persons aged 15 to 24 who attended school full-time in March and who are planning to return to school in the fall.

2. Other persons are all other youths aged 15 to 24 who are not included in the student population.

Note(s): Related CANSIM table 282-0006

Data quality

About the Labour Force Survey

The statistics contained in this report are based on information obtained through a sample survey of 53,000 representative households across the country. The Labour Force Survey, started in November 1945, was taken at quarterly intervals until November 1952. It has been carried out monthly since then. The information generated by the survey has expanded considerably over the years with a major redesign of the survey content in 1976 and again in 1997, and provides a rich and detailed picture of the Canadian labour market.

The sample used in the Labour Force Survey has been designed to represent all persons in the population 15 years of age and over residing in the provinces of Canada, with the exception of the following: persons living on Indian reserves, full-time members of the armed forces and people living in institutions (for example, inmates of penal institutions and patients in hospitals or nursing homes who have resided in the institution for more than six months). Monthly estimates of employment, unemployment and persons not in the labour force refer to the specific week covered by the survey each month, normally the week containing the 15th day.

Definitions and explanations

The **labour force** is composed of those members of the civilian non-institutional population 15 years of age and over who, during the reference week, were employed or unemployed.

Employed persons are those who, during the reference week:

- (a) did any work at all
- (b) had a job but were not at work

A person is considered to be **full-time** if his/her usual hours at the main job are 30 or more hours per week. When the number of hours worked at the main job is usually less than 30 hours per week then he/she is considered to be **part-time**.

Unemployed persons are those who, during the reference week:

- (a) were without work, had actively looked for work in the past four weeks (ending with reference week), and were available for work;
- (b) had not actively looked for work in the past four weeks but were on temporary layoff and were available for work;
- (c) had not actively looked for work in the past four weeks but had a new job to start in four weeks or less from the reference week, and were available for work.

Persons in the civilian non-institutional population 15 years of age and over who, during the reference week, were neither employed nor unemployed are classified as **not in the labour force**.

The **unemployment rate** represents the number of unemployed persons expressed as a percentage of the labour force. The unemployment rate for a particular group (age, sex, etc.) is the number unemployed in that group expressed as a percentage of the labour force for that group.

The **participation rate** represents the labour force expressed as a percentage of the population 15 years of age and over. The participation rate for a particular group (age, sex, etc.) is the labour force in that group expressed as a percentage of the population for that group.

The **employment rate (formerly the employment/population ratio)** represents the number of persons employed expressed as a percentage of the population 15 years of age and over. The employment rate for a particular group (age, sex, etc.) is the number employed in that group expressed as a percentage of the population for that group.

The **part-time rate** represents the number of persons employed part-time expressed as a percentage of the employed. The part-time rate for a particular group (age, sex, etc.) is the number employed part-time in that group expressed as a percentage of the employed for that group.

All geographic regions are based on the 2001 Census boundaries.

Seasonal adjustment

Fluctuations in economic time series are caused by seasonal, cyclical and irregular movements. A seasonally adjusted series is one from which seasonal movements have been eliminated. Seasonal movements are defined as those which are caused by regular annual events such as climate, holidays, vacation periods and cycles related to crops, production and retail sales associated with Christmas and Easter. The seasonally adjusted series contains irregular as well as longer-term cyclical fluctuations.

The seasonally adjusted series are revised each year to take into account current data and to generate new forecast factors for the next twelve months. The data are therefore subject to slight revisions in future issues of this publication.

Sampling variability of estimates

Estimates in this publication are based on the Labour Force Survey, a monthly survey of approximately 53,000 households across Canada. Because the entire population is not surveyed, the estimates are subject to sampling error. While the published estimate is the best available indicator of the real value, changes in the level of any estimates between two months can be the result of a true change or sampling variability. The sampling error can be estimated by calculating the standard error for the published estimate or statistic. These standard errors have been included in the publication tables, in order to assist users in interpreting the data.

Interpretation based on standard error

Two thirds of the time (68%), a change greater than the sampling error indicates a real change. The larger the change compared to the standard error, the better the chance that we are observing a real change, as opposed to a change due to sampling variability. At the 95% level, in order to ensure that change is real, the change in the estimate must be greater than twice the sampling error.

Movements in estimates that are smaller than the sampling error are less likely to reflect a real change and more likely to be due to sampling variability. While the above is true for monthly movements, one can have more confidence in a series of consecutive movements in the same direction, even though some of the monthly movements may be smaller than the sampling error.

Interpretation based on confidence intervals

Confidence intervals provide another way of looking at the variability inherent in estimates of sample surveys. To illustrate how to calculate the confidence interval, let us say that one month the published estimate for total employment rose by 16,000 to reach 16,500,000. The associated standard error for the movement estimate is 27,200. The standard error used to interpret the movement estimate indicates that:

- There are approximately two chances in three (68%) that the real value of the movement between the two months falls within the range -11,200 to +43,200 (16,000 + or – one standard error).
- There are approximately nine chances in ten (90%) that the real value of the movement between the two months falls within the range -27,520 to +59,520 (16,000 + or – 1.6 times the standard error).
- There are approximately nineteen chances in twenty (95%) that the real value of the movement between the two months falls within the range -38,400 to +70,400 (16,000 + or – two standard errors).

For more detailed explanations on sampling variability of estimates, and in particular for information on how to assess the variability of level estimates, consult the Data quality section of the *Guide to the Labour Force Survey*, (71-543-G) on page 27.

Documentation

For more detailed information about the Labour Force Survey, see the following documents:

- Overview of the Labour Force Survey
- Guide to the Labour Force Survey (71-543-G)
- Data quality statement
- Methodology of the Canadian Labour Force Survey (71-526-X)
- LFS *geographical maps*