



Catalogue no. 71-001-XIE

Labour Force Information

Not for release before 7 A.M. E.D.T.

Friday May 11, 2007



April 15 to 21, 2007



Statistics
Canada

Statistique
Canada

Canada

How to obtain more information

Specific inquiries about this product and related statistics or services should be directed to: Labour Force Survey Program, Labour Statistics Division, Statistics Canada, Ottawa, Ontario, K1A 0T6 (telephone: 613-951-4090, toll free number: 1-866-873-8788, fax: 613-951-2869 or by e-mail address: labour@statcan.ca).

For information on the wide range of data available from Statistics Canada, you can contact us by calling one of our toll free numbers. You can also contact us by e-mail or by visiting our website at www.statcan.ca.

National inquiries line **1-800-263-1136**

National telecommunications device for the hearing impaired **1-800-363-7629**

Depository Services Program inquiries **1-800-700-1033**

Fax line for Depository Services Program **1-800-889-9734**

E-mail inquiries **infostats@statcan.ca**

Website **www.statcan.ca**

Information to access the product

This product, catalogue no. 71-001-XIE, is available for free in electronic format. To obtain a single issue, visit our website at www.statcan.ca and select Publications.

Standards of service to the public

Statistics Canada is committed to serving its clients in a prompt, reliable and courteous manner. To this end, the Agency has developed *standards of service* which its employees observe in serving its clients.

To obtain a copy of these service standards, please contact Statistics Canada toll free at 1-800-263-1136. The service standards are also published on www.statcan.ca under About us > Providing services to Canadians.



Statistics Canada
Labour Statistics Division
Labour Force Survey Program

Labour Force Information

Not for release before 7 A.M. E.D.T.

Friday May 11, 2007

April 15 to 21, 2007

Published by authority of the Minister responsible for Statistics Canada

© Minister of Industry, 2007

All rights reserved. The content of this electronic publication may be reproduced, in whole or in part, and by any means, without further permission from Statistics Canada, subject to the following conditions: that it be done solely for the purposes of private study, research, criticism, review or newspaper summary, and/or for non-commercial purposes; and that Statistics Canada be fully acknowledged as follows: Source (or "Adapted from", if appropriate): Statistics Canada, year of publication, name of product, catalogue number, volume and issue numbers, reference period and page(s). Otherwise, no part of this publication may be reproduced, stored in a retrieval system or transmitted in any form, by any means—electronic, mechanical or photocopy—or for any purposes without prior written permission of Licensing Services, Client Services Division, Statistics Canada, Ottawa, Ontario, Canada K1A 0T6.

May 2007

Catalogue no. 71-001-XIE

ISSN 1492-5478

Frequency: Monthly

Ottawa

La version française de cette publication est disponible sur demande (n° 71-001-XIF au catalogue).

Note of appreciation

Canada owes the success of its statistical system to a long standing partnership between Statistics Canada, the citizens of Canada, its businesses, governments and other institutions. Accurate and timely statistical information could not be produced without their continued cooperation and goodwill.

User information

Symbols

The following standard symbols are used in Statistics Canada publications:

- . not available for any reference period
- .. not available for a specific reference period
- ... not applicable
- 0 true zero or a value rounded to zero
- 0^s value rounded to 0 (zero) where there is a meaningful distinction between true zero and the value that was rounded
- P preliminary
- r revised
- x suppressed to meet the confidentiality requirements of the *Statistics Act*
- E use with caution
- F too unreliable to be published

Special requests (\$)

Custom tabulations can be arranged on an ad hoc or regular basis. This service enables you to specify tables and time series to meet your own requirements. The cost varies according to the request. For more information, contact us toll-free at 1-866-873-8788 or e-mail us at labour@statcan.ca.

Schedule of LFS releases

Reference period - Week ending	Release date
January 20, 2007	February 9, 2007
February 17, 2007	March 9, 2007
March 17, 2007	April 5, 2007
April 21, 2007	May 11, 2007
May 19, 2007	June 8, 2007
June 16, 2007	July 6, 2007
July 21, 2007	August 10, 2007
August 18, 2007	September 7, 2007
September 15, 2007	October 5, 2007
October 13, 2007	November 2, 2007
November 10, 2007	December 7, 2007
December 8, 2007	January 11, 2008

Latest LFS release in *The Daily*(free)

Table of contents

Highlights	5
Analysis — April 2007	6
Charts	
1. Employment and unemployment indicators, Canada, seasonally adjusted	8
2. Employment and unemployment indicators, Canada, seasonally adjusted	9
3. Index of employment by industry, Canada, seasonally adjusted, January, 2004=100	10
4. Index of employment by industry, Canada, seasonally adjusted, January 2004 = 100	11
5. Index of employment by industry, Canada, seasonally adjusted, January 2004 = 100	12
6. Index of employment by province, seasonally adjusted, January 2004 = 100	13
7. Index of employment by province, seasonally adjusted, January 2004 = 100	14
Related products	15
Statistical tables	
1 Labour force characteristics by age and sex, Canada, seasonally adjusted	23
2 Employment by class of worker and industry, Canada, seasonally adjusted	24
3 Labour force characteristics by province, seasonally adjusted	25
4 Selected labour force characteristics (seasonally adjusted)	27
4-1 Newfoundland and Labrador	27
4-2 Prince Edward Island	28
4-3 Nova Scotia	29
4-4 New Brunswick	30
4-5 Quebec	31
4-6 Ontario	32
4-7 Manitoba	33
4-8 Saskatchewan	34
4-9 Alberta	35
4-10 British Columbia	36
5 Labour force characteristics by census metropolitan area (seasonally adjusted)	37
5-1 3 month moving average	37
5-2 Monthly	42

Table of contents – continued

6	Labour force characteristics	43
6-1	by province and economic region, unadjusted for seasonality, 3 month moving average ending in April 2006 and April 2007	43
6-2	by territories, unadjusted for seasonality, 3 month moving average ending in April 2006 and April 2007	48
7	Average usual hours and wages of employees by selected characteristics, Canada, unadjusted for seasonality	49
8	Regional unemployment rates used by the Employment Insurance Program, seasonally adjusted, 3 month moving average	50
Data quality, concepts and methodology		
	Data quality	52

Highlights

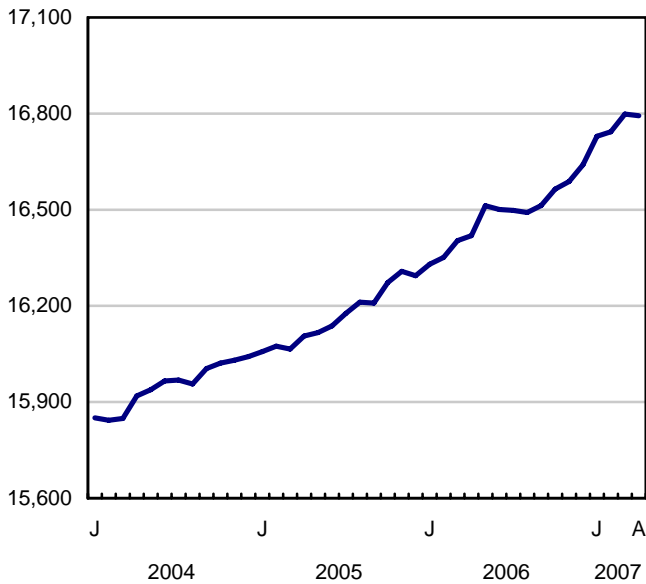
April 2007

Estimates from Statistics Canada's Labour Force Survey showed little overall change in employment in April. This follows strong employment gains since September 2006. Meanwhile, the unemployment rate remained at an historic 33-year low of 6.1%.

Chart 1
Employment and unemployment rates, Canada, seasonally adjusted

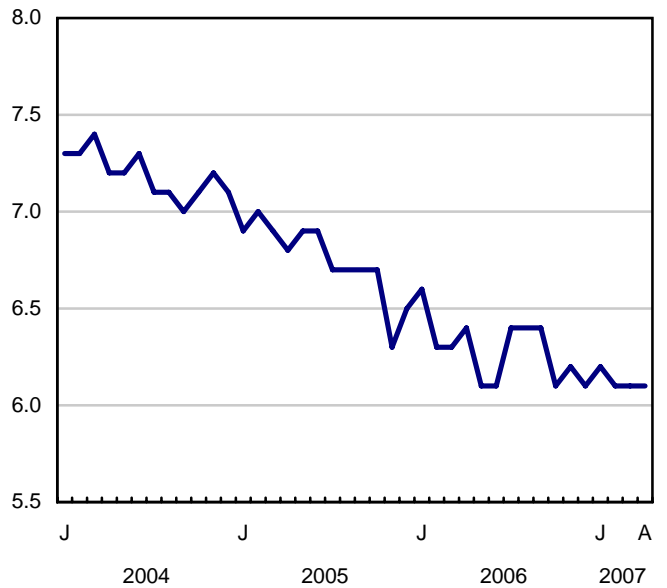
Employment

thousands



Unemployment rate

percentage



Analysis — April 2007

Estimates from Statistics Canada's Labour Force Survey showed little overall change in employment in April. This follows strong employment gains since September 2006. Meanwhile, the unemployment rate remained at an historic 33-year low of 6.1%.

When adjusted for comparability to US definitions, employment growth for the first four months of the year was stronger in Canada compared to the United States.

While employment growth in the service sector paused in April, it has added an estimated 182,000 workers (+1.4%) since the start of the year.

In April, natural resource industries saw a large influx of workers. However, this was not enough to offset losses in manufacturing. Overall employment in the goods-producing sector has seen a decline of 0.7% so far this year.

After a two-month stall, employment growth in Alberta resumed in April, mainly in the service sector.

The Atlantic provinces of Newfoundland and Labrador, Prince Edward Island and New Brunswick all set new record employment rates in April.

Quebec saw more of its working-age population employed in April. At the same time, the unemployment rate fell to its lowest level (7.2%) in over three decades.

On the other hand, Ontario suffered employment losses in manufacturing in April, continuing the weakness in this sector. Overall employment in British Columbia declined in April following strong first-quarter gains.

Continuing the upward trend, employment increased for adult women in April, bringing them to their highest employment rate and lowest unemployment rate in over 30 years.

So far this year, workers 55 years and older experienced a faster pace of growth compared with core-aged workers (25 to 54). In fact, despite their lower labour force participation rates, half of the overall employment growth this year has come from older workers.

Service sector pauses

Employment growth in the service sector was halted in April by losses in finance, insurance, real estate and leasing (-17,000) as well as in "other services" (-17,000). Trade maintained momentum in April, with the addition of 20,000 workers, mainly in wholesale trade.

The service sector added an estimated 406,000 workers (+3.3%) over the past 12 months, in contrast to the goods sector, which saw a loss of 31,000 (-0.8%) over the same period.

On the goods-producing side, even though natural resources had an estimated increase of 11,000 in April, it was not enough to offset the losses in manufacturing (-19,000).

Quebec unemployment rate tumbles

In Quebec, the unemployment rate dropped to a 33-year low of 7.2% in April, while the employment rate reached a record high (60.9%) with 108,000 more workers compared to a year ago. Trade and construction employment boosted growth in April while manufacturing edged down.

Alberta's economy added an estimated 12,000 workers in April bringing the unemployment rate down to 3.4% and the employment rate back to its all-time high of 71.6%. Employment strength in retail and wholesale trade bolstered the

services sector and made up for the lacklustre growth in the goods-producing industries. Over the past 12 months, Alberta's employment growth was more than double the national average (5.6% vs. 2.3%).

Large full-time losses (-38,000) in Ontario in April, were partially offset by increases in part time. Declines were primarily in finance, insurance, real estate and leasing, "other services" and manufacturing. Ontario's manufacturing sector shed 13,000 workers in April, continuing the downward trend of the past two years. Manufacturing losses in April were mainly in transportation equipment and food. At the same time, natural resource employment increased by 5,000, mainly in forestry and mining.

Employment in British Columbia declined by an estimated 16,000 in April, all in part time. The unemployment rate increased to 4.4% with fewer workers in health care and social assistance as well as in accommodation and food services. Following on the heels of strong first-quarter growth, employment remains up 2.6% compared to the previous year.

In April, the Atlantic provinces of Newfoundland and Labrador (51.7%), Prince Edward Island (62.4%) and New Brunswick (59.2%) all reached their highest employment rates in over 30 years.

Women continue to set labour market records

With an estimated employment increase of 13,000, the employment rate among adult women (25 and over) reached a record high in April of 59.1%. They also attained their lowest unemployment rate to date (4.7%). In particular, women 55 years and older saw the largest employment increase in April and were the driving force behind employment gains among adult women for the month.

Meanwhile, youths and adult men both saw employment declines for the month. Over the past 12 months, women's employment growth (3.4%) was more than double the pace of men (1.4%).

Older workers drive employment growth

Overall employment growth for core-aged adults 25 to 54 pales in comparison to older workers 55 and over. While labour force participation among older workers is generally lower than that of core-age workers, employment grew 7.9% over the past 12 months for this group, versus 1.2 % for core-aged workers. From a year ago, employment gains for women 55 years and older were higher than for men, 9.7% versus 6.5%.

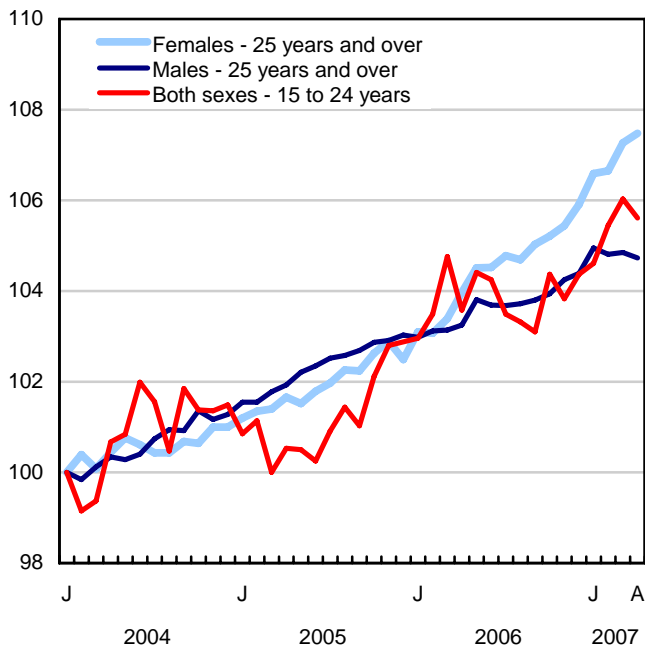
Note to readers

The Labour Force Survey estimates are based on a sample, and are therefore subject to sampling variability. Estimates for smaller geographic areas or industries will have more variability. For an explanation of sampling variability of estimates, and how to use standard errors to assess this variability, consult the Data Quality section in this publication.

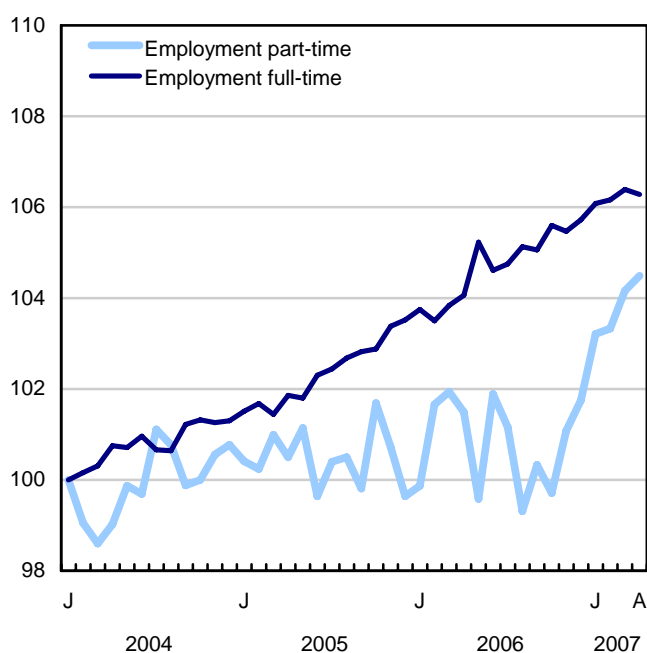
The 2006 Labour Force Historical Review on CD-ROM (71F0004XCB, \$209) is now available.

Chart 1
Employment and unemployment indicators, Canada, seasonally adjusted

Employment index, January 2004=100



Employment index, January 2004=100



Employment index, January 2004=100

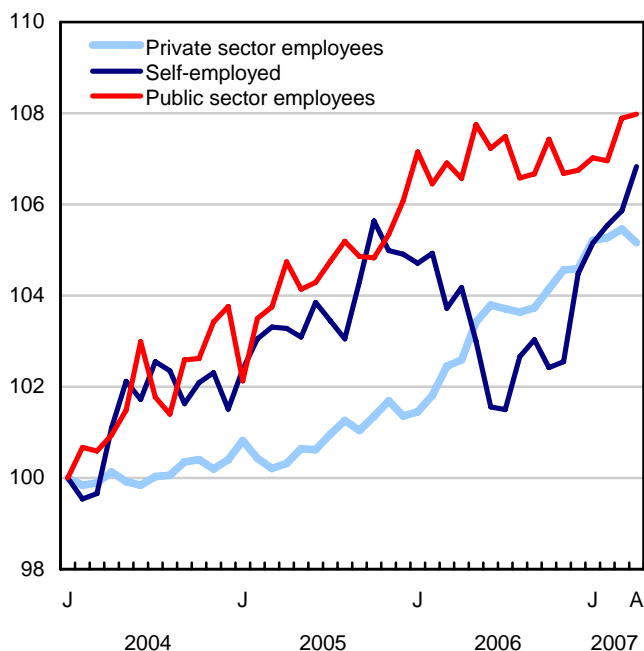
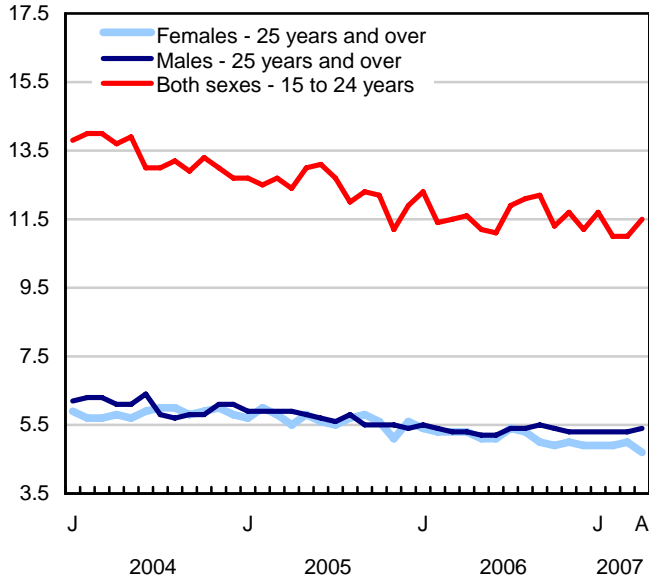
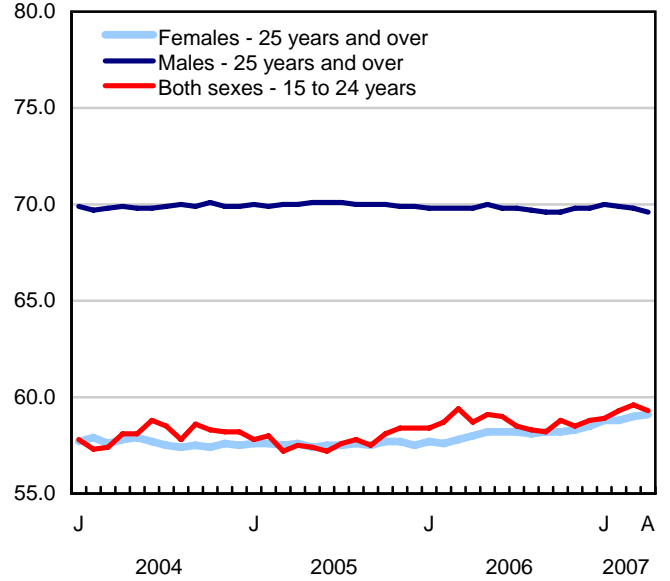


Chart 2
Employment and unemployment indicators, Canada, seasonally adjusted

Unemployment rate (%)



Employment rate (%)



Participation rate (%)

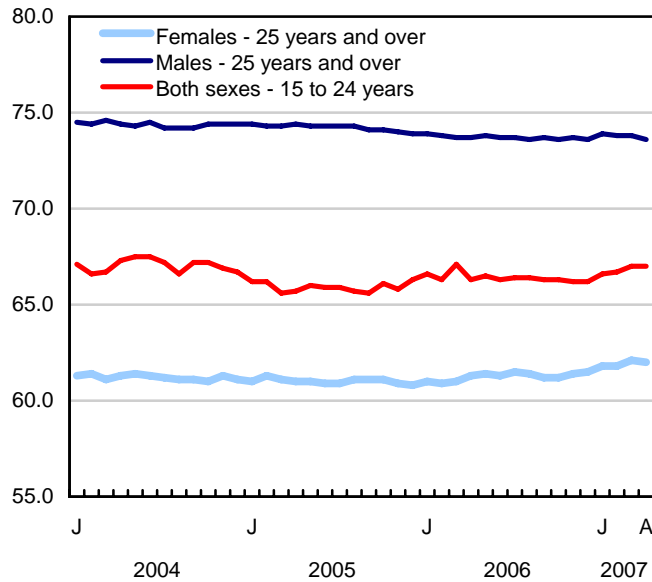


Chart 3
Index of employment by industry, Canada, seasonally adjusted, January, 2004=100

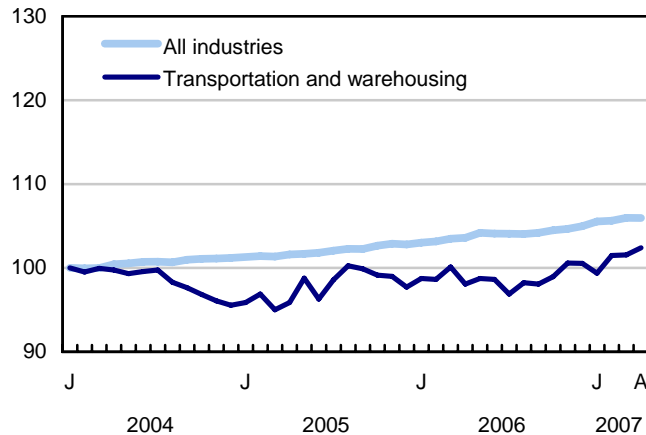
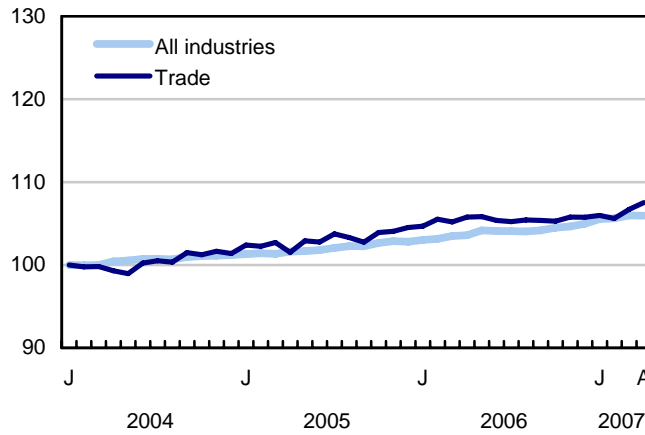
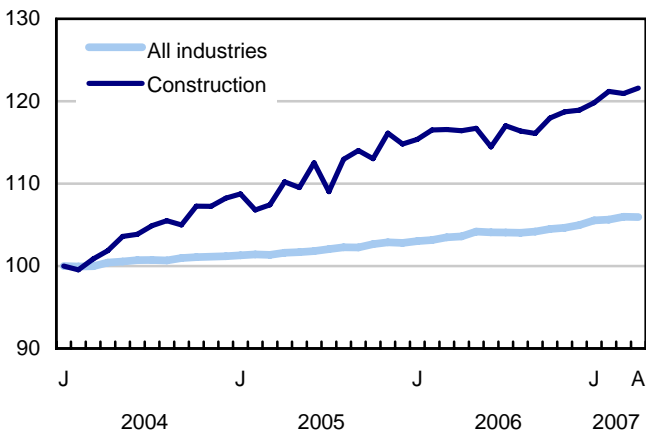
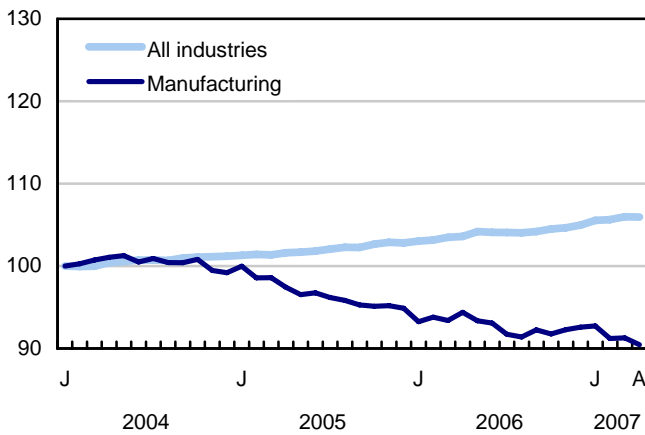
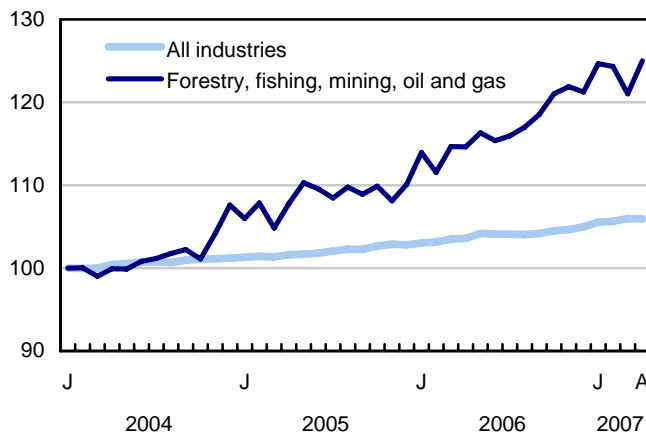
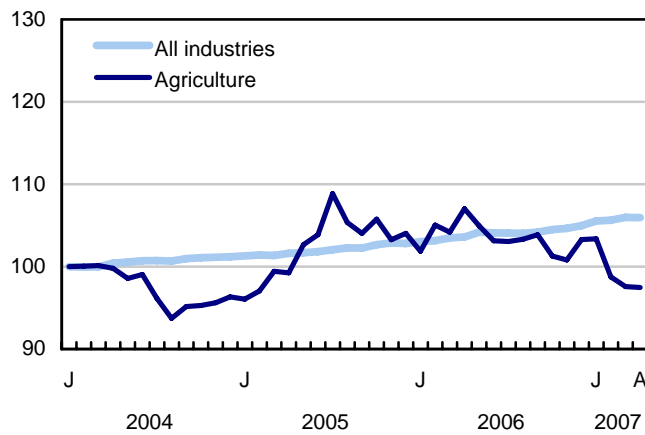


Chart 4
Index of employment by industry, Canada, seasonally adjusted, January 2004 = 100

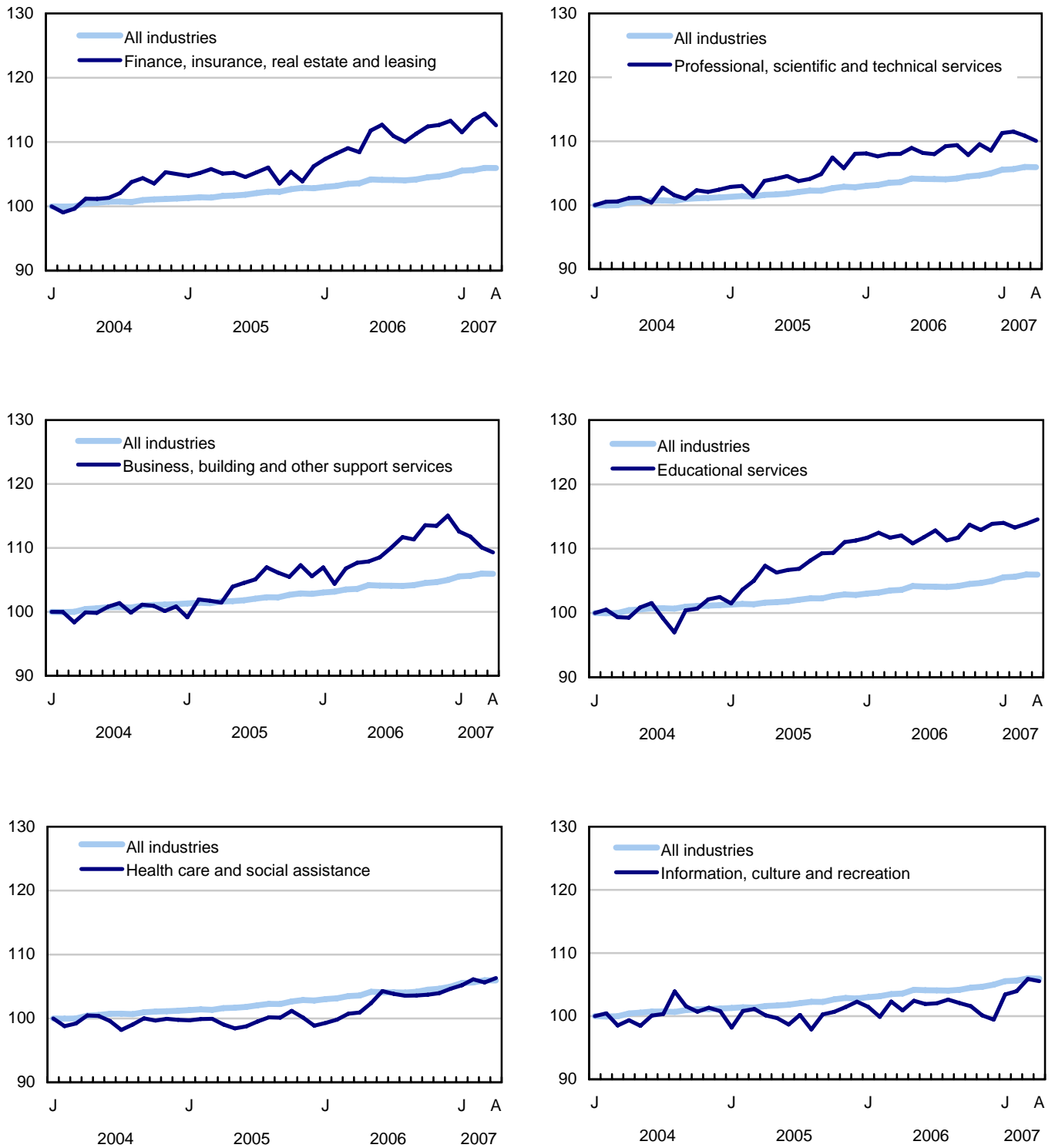


Chart 5
Index of employment by industry, Canada, seasonally adjusted, January 2004 = 100

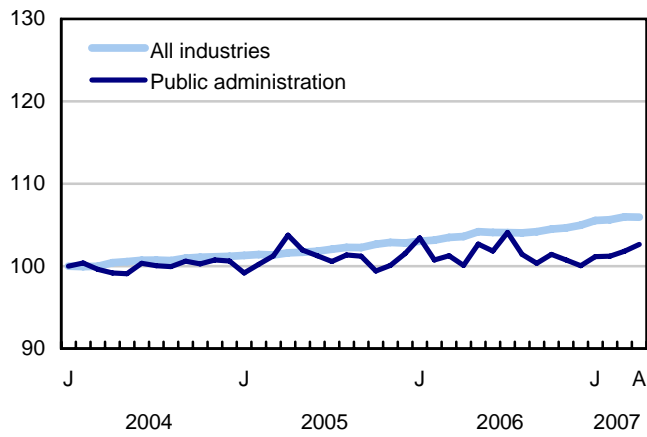
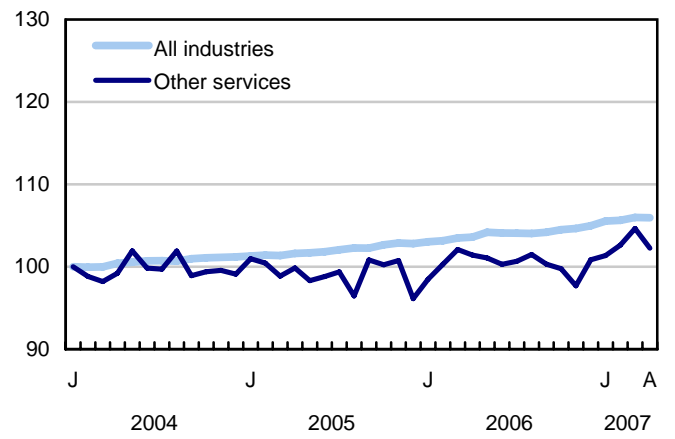
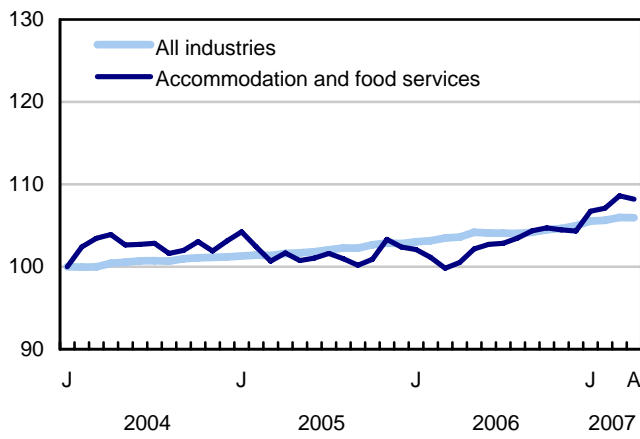


Chart 6
Index of employment by province, seasonally adjusted, January 2004 = 100

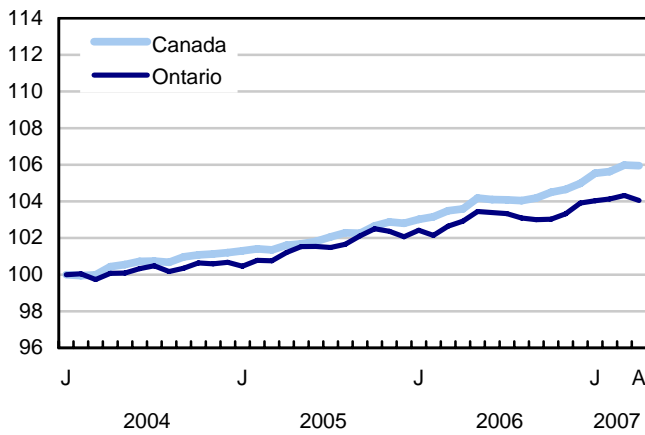
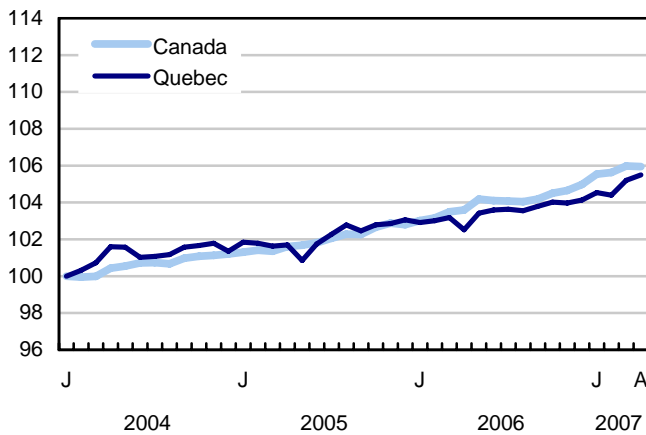
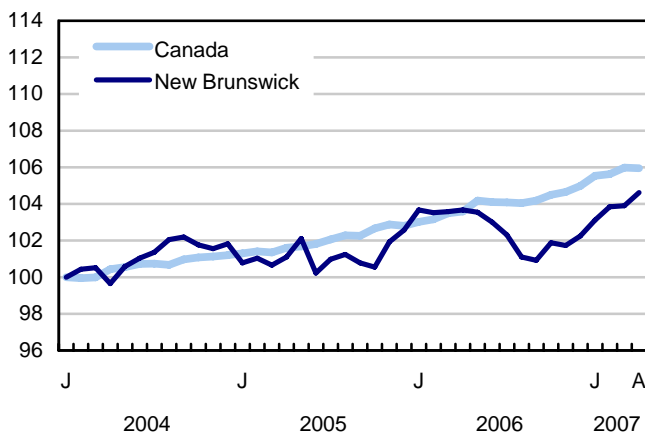
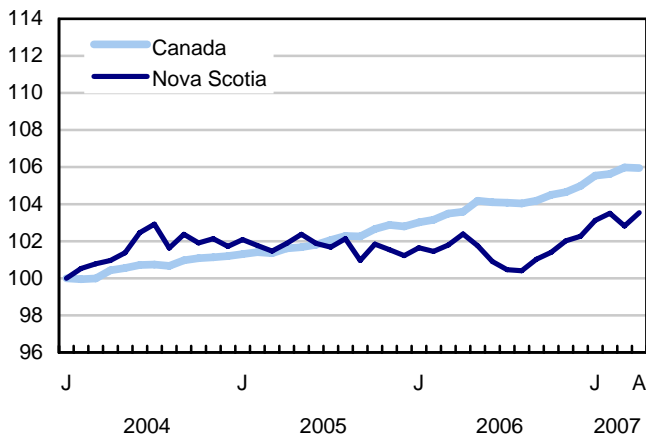
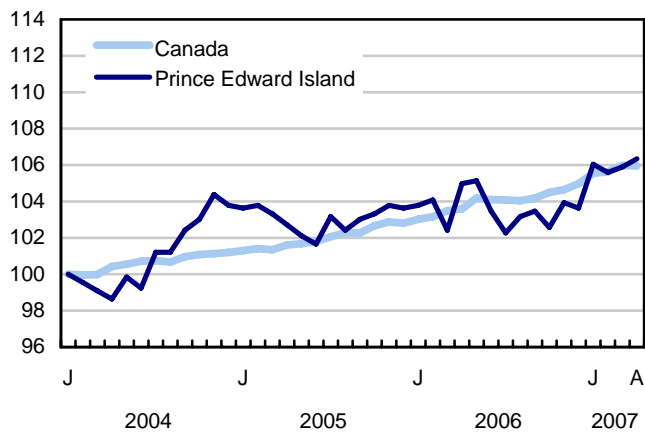
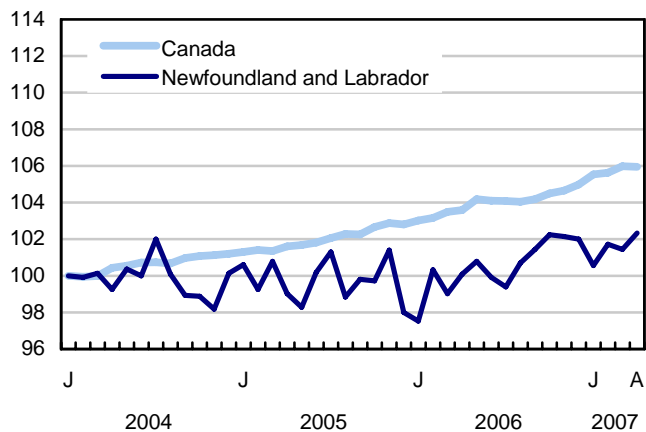
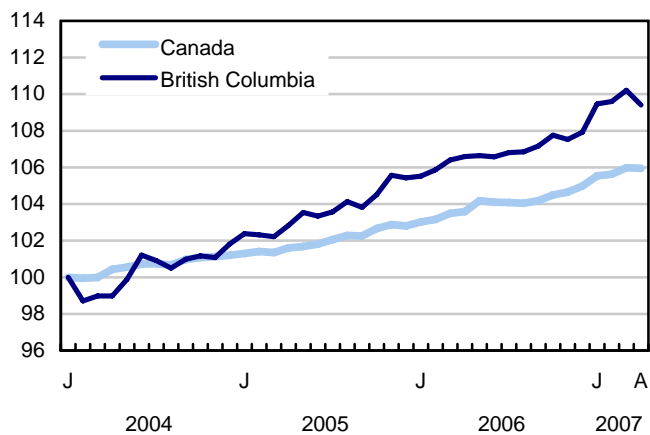
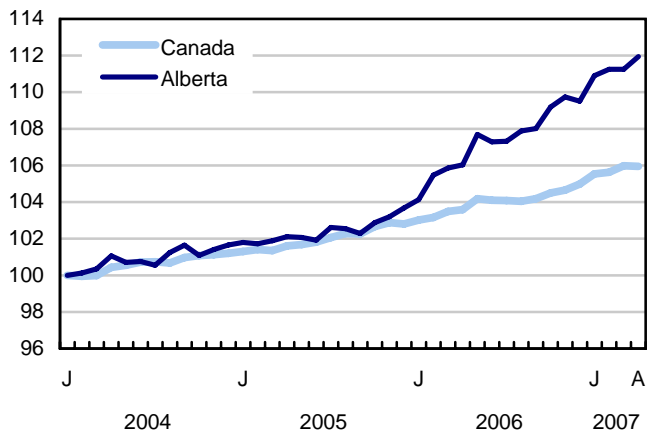
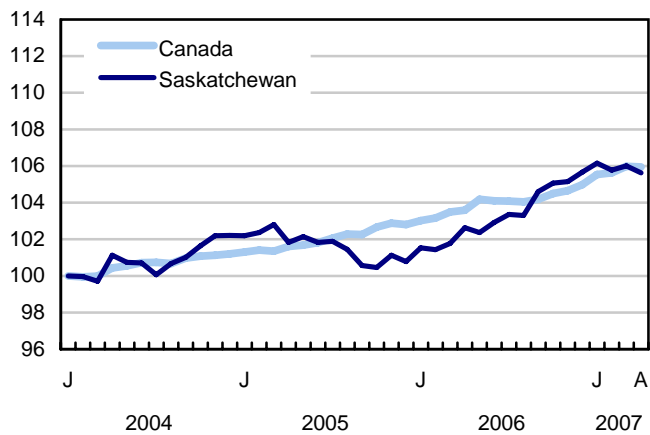
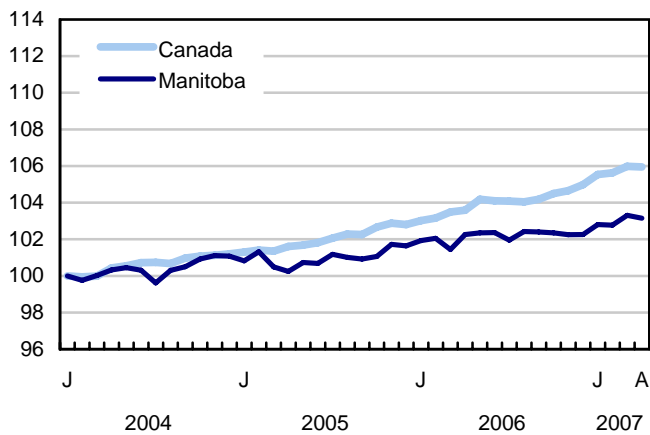


Chart 7
Index of employment by province, seasonally adjusted, January 2004 = 100



Related products

Selected publications from Statistics Canada

71-222-X	The Canadian Labour Market at a Glance
71-526-X	Methodology of the Canadian Labour Force Survey
71-543-G	Guide to the Labour Force Survey
71-544-X	Labour Force Survey Products and Services
71-587-X	Aboriginal Peoples Living Off-reserve in Western Canada: Estimates from the Labour Force Survey
71F0004X	Labour Force Historical Review
71F0031X	Improvements to the Labour Force Survey (LFS)
71M0001X	Labour Force Survey Microdata File
75-001-X	Perspectives on Labour and Income

Selected CANSIM tables from Statistics Canada

282-0001	Labour force survey estimates (LFS), by sex and detailed age group
282-0002	Labour force survey estimates (LFS), by sex and detailed age group
282-0003	Labour force survey estimates (LFS), by educational attainment, sex and age group
282-0004	Labour force survey estimates (LFS), by educational attainment, sex and age group
282-0005	Labour force survey estimates (LFS), by full- and part-time students during school months, sex and age group
282-0006	Labour force survey estimates (LFS), by students during summer months, sex and age group
282-0007	Labour force survey estimates (LFS), by North American Industry Classification System (NAICS), sex and age group
282-0008	Labour force survey estimates (LFS), by North American Industry Classification System (NAICS), sex and age group
282-0009	Labour force survey estimates (LFS), by National Occupational Classification for Statistics (NOC-S) and sex

282-0010	Labour force survey estimates (LFS), by National Occupational Classification for Statistics (NOC-S) and sex
282-0011	Labour force survey estimates (LFS), employment by class of worker, North American Industry Classification System (NAICS) and sex
282-0012	Labour force survey estimates (LFS), employment by class of worker, North American Industry Classification System (NAICS) and sex
282-0013	Labour force survey estimates (LFS), part-time employment by reason for part-time work, sex and age group
282-0014	Labour force survey estimates (LFS), part-time employment by reason for part-time work, sex and age group
282-0015	Labour force survey estimates (LFS), by usual hours worked, main or all jobs, sex and age group
282-0016	Labour force survey estimates (LFS), by usual hours worked, main or all jobs, sex and age group
282-0017	Labour force survey estimates (LFS), by actual hours worked, main or all jobs, sex and age group
282-0018	Labour force survey estimates (LFS), by actual hours worked, main or all jobs, sex and age group
282-0019	Labour force survey estimates (LFS), by usual hours worked, class of worker, North American Industry Classification System (NAICS) and sex
282-0020	Labour force survey estimates (LFS), by usual hours worked, class of worker, North American Industry Classification System (NAICS) and sex
282-0021	Labour force survey estimates (LFS), by actual hours worked, class of worker, North American Industry Classification System (NAICS) and sex
282-0022	Labour force survey estimates (LFS), by actual hours worked, class of worker, North American Industry Classification System (NAICS) and sex
282-0023	Labour force survey estimates (LFS), by usual hours worked, class of worker, National Occupational Classification for Statistics (NOC-S) and sex
282-0024	Labour force survey estimates (LFS), by usual hours worked, class of worker, National Occupational Classification for Statistics (NOC-S) and sex
282-0025	Labour force survey estimates (LFS), by actual hours worked, class of worker, National Occupational Classification for Statistics (NOC-S) and sex
282-0026	Labour force survey estimates (LFS), by actual hours worked, class of worker, National Occupational Classification for Statistics (NOC-S) and sex
282-0027	Labour force survey estimates (LFS), by total and average usual and actual hours worked, main or all jobs, type of work, sex and age group
282-0028	Labour force survey estimates (LFS), by total and average usual and actual hours worked, main or all jobs, type of work, sex and age group

282-0029	Labour force survey estimates (LFS), average days lost for personal reasons per full-time employee by North American Industry Classification System (NAICS), sex and age group
282-0030	Labour force survey estimates (LFS), average days lost for personal reasons per full-time employee by National Occupational Classification for Statistics (NOC-S), sex and age group
282-0031	Labour force survey estimates (LFS), multiple jobholders by North American Industry Classification System (NAICS), sex and age group
282-0032	Labour force survey estimates (LFS), multiple jobholders by North American Industry Classification System (NAICS), sex and age group
282-0033	Labour force survey estimates (LFS), multiple jobholders by National Occupational Classification for Statistics (NOC-S), sex and age group
282-0034	Labour force survey estimates (LFS), multiple jobholders by National Occupational Classification for Statistics (NOC-S), sex and age group
282-0035	Labour force survey estimates (LFS), multiple jobholders by usual hours worked at main and all jobs
282-0036	Labour force survey estimates (LFS), multiple jobholders by usual hours worked at main and all jobs
282-0037	Labour force survey estimates (LFS), job tenure by type of work, sex and age group
282-0038	Labour force survey estimates (LFS), job tenure by type of work, sex and age group
282-0039	Labour force survey estimates (LFS), job tenure by National Occupational Classification for Statistics (NOC-S) and sex
282-0040	Labour force survey estimates (LFS), job tenure by National Occupational Classification for Statistics (NOC-S) and sex
282-0041	Labour force survey estimates (LFS), job tenure by North American Industry Classification System (NAICS) and sex
282-0042	Labour force survey estimates (LFS), job tenure by North American Industry Classification System (NAICS) and sex
282-0047	Labour force survey estimates (LFS), duration of unemployment by sex and age group
282-0048	Labour force survey estimates (LFS), duration of unemployment by sex and age group
282-0049	Labour force survey estimates (LFS), unemployment by type of work sought and search method, sex and age group
282-0050	Labour force survey estimates (LFS), unemployment by type of work sought and search method, sex and age group
282-0051	Labour force survey estimates (LFS), retirement age by class of worker and sex
282-0052	Labour force survey estimates (LFS), by census metropolitan area, sex and age group, 3-month moving average
282-0053	Labour force survey estimates (LFS), by census metropolitan area, sex and age group

282-0054	Labour force survey estimates (LFS), by provinces, territories and economic regions, 3-month moving average
282-0055	Labour force survey estimates (LFS), by economic region and Yukon Territory and Northwest Territories
282-0056	Labour force survey estimates (LFS), employment by census metropolitan area and North American Industry Classification System (NAICS), 3-month moving average
282-0057	Labour force survey estimates (LFS), employment by census metropolitan area and North American Industry Classification System (NAICS)
282-0058	Labour force survey estimates (LFS), employment by census metropolitan area and National Occupational Classification for Statistics (NOC-S), 3-month moving average
282-0059	Labour force survey estimates (LFS), employment by census metropolitan area and National Occupational Classification for Statistics (NOC-S)
282-0060	Labour force survey estimates (LFS), employment by economic region and North American Industry Classification System (NAICS), 3-month moving average
282-0061	Labour force survey estimates (LFS), employment by economic region and North American Industry Classification System (NAICS)
282-0062	Labour force survey estimates (LFS), employment by economic region and National Occupational Classification for Statistics (NOC-S), 3-month moving average
282-0063	Labour force survey estimates (LFS), employment by economic region and National Occupational Classification for Statistics (NOC-S)
282-0064	Labour force survey estimates (LFS), by selected medium-sized cities
282-0069	Labour force survey estimates (LFS), wages of employees by type of work, National Occupational Classification for Statistics (NOC-S), sex and age group
282-0070	Labour force survey estimates (LFS), wages of employees by type of work, National Occupational Classification for Statistics (NOC-S), sex and age group
282-0071	Labour force survey estimates (LFS), wages of employees by type of work, North American Industry Classification System (NAICS), sex and age group
282-0072	Labour force survey estimates (LFS), wages of employees by type of work, North American Industry Classification System (NAICS), sex and age group
282-0073	Labour force survey estimates (LFS), wages of employees by job permanence, union coverage, sex and age group
282-0074	Labour force survey estimates (LFS), wages of employees by job permanence, union coverage, sex and age group
282-0075	Labour force survey estimates (LFS), employees by establishment size, North American Industry Classification System (NAICS), sex and age group
282-0076	Labour force survey estimates (LFS), employees by establishment size, North American Industry Classification System (NAICS), sex and age group

282-0077	Labour force survey estimates (LFS), employees by union coverage, North American Industry Classification System (NAICS), sex and age group
282-0078	Labour force survey estimates (LFS), employees by union coverage, North American Industry Classification System (NAICS), sex and age group
282-0079	Labour force survey estimates (LFS), employees by job permanency, North American Industry Classification System (NAICS), sex and age group
282-0080	Labour force survey estimates (LFS), employees by job permanency, North American Industry Classification System (NAICS), sex and age group
282-0081	Labour force survey estimates (LFS), employees working overtime (weekly) by National Occupational Classification for Statistics (NOC-S), sex and age group
282-0082	Labour force survey estimates (LFS), employees working overtime (weekly) by National Occupational Classification for Statistics (NOC-S), sex and age group
282-0083	Labour force survey estimates (LFS), employees working overtime (weekly) by North American Industry Classification System (NAICS), sex and age group
282-0084	Labour force survey estimates (LFS), employees working overtime (weekly) by North American Industry Classification System (NAICS), sex and age group
282-0085	Labour force survey estimates (LFS), supplementary unemployment rates by sex and age group
282-0086	Labour force survey estimates (LFS), supplementary unemployment rates by sex and age group
282-0087	Labour force survey estimates (LFS), by sex and age group, seasonally adjusted and unadjusted
282-0088	Labour force survey estimates (LFS), employment by North American Industry Classification System (NAICS), seasonally adjusted and unadjusted
282-0089	Labour force survey estimates (LFS), employment by class of worker and sex, seasonally adjusted and unadjusted
282-0090	Labour force survey estimates (LFS), by census metropolitan area, 3-month moving average, seasonally adjusted and unadjusted
282-0091	Labour force survey estimates (LFS), by Montréal, Toronto and Vancouver census metropolitan areas, seasonally adjusted and unadjusted
282-0092	Labour force survey estimates (LFS), actual hours worked by North American Industry Classification System (NAICS), seasonally adjusted
282-0093	Labour force survey estimates (LFS), employment by National Occupational Classification for Statistics (NOC-S), seasonally adjusted
282-0094	Labour force survey estimates (LFS), by North American Industry Classification System (NAICS), Canada, seasonally adjusted
282-0095	Labour force survey estimates (LFS), by full- and part-time students during school months, sex and age group
282-0096	Labour force survey estimates (LFS), by urban and rural areas based on 2001 census boundaries, sex and age group

282-0097	Labour force survey estimates (LFS), by urban and rural areas based on 2001 census boundaries, sex and age group
282-0098	Labour force survey estimates (LFS), employment by urban and rural areas based on 2001 census boundaries, class of worker and North American Industry Classification System (NAICS)
282-0099	Labour force survey estimates (LFS), employment by urban and rural areas based on 2001 census boundaries, class of worker and North American Industry Classification System (NAICS)

Selected surveys from Statistics Canada

3701	Labour Force Survey
------	---------------------

Selected summary tables from Statistics Canada

- *Labour force characteristics*
- *Employment by industry*
- *Selected economic indicators, Canada and United States (monthly and quarterly)*
- *Days lost per worker due to illness or disability, by sex, by provinces*
- *Economic indicators, by province and territory (monthly and quarterly)*
- *Labour force and participation rates by sex and age group*
- *Labour force, employed and unemployed, numbers and rates, by provinces*
- *Employment by industry and sex*
- *Full-time and part-time employment by sex and age group*
- *Labour force characteristics by age and sex*
- *Distribution of employed people, by industry, by province*
- *Labour force characteristics, population 15 years and older, by census metropolitan area*
- *Labour force characteristics, population 15 years and older, by economic region, by province*
- *Days lost per worker by cause, by provinces*
- *Days lost per worker by industry and sex*
- *People employed, by educational attainment*

- *Reasons for part-time work by sex and age group*
- *Self-employment, historical summary*
- *Employment by age, sex, type of work, class of worker and provinces (monthly)*
- *Employment by major industry groups, seasonally adjusted, by provinces (monthly)*
- *Actual hours worked per week by industry, seasonally adjusted (monthly)*
- *Average hourly wages of employees by selected characteristics and profession, unadjusted data, by provinces (monthly)*
- *Labour force characteristics, seasonally adjusted, by province (monthly)*
- *Labour force characteristics, unadjusted, by province (monthly)*
- *Labour force characteristics, seasonally adjusted, by census metropolitan area (3 month moving average)*
- *Labour force characteristics, unadjusted, by census metropolitan area (3 month moving average)*
- *Labour force characteristics, unadjusted, by economic region (3 month moving average)*

Statistical tables

Table 1
Labour force characteristics by age and sex, Canada, seasonally adjusted

	March 2007	April 2007	S.E. ¹	Change from			Percent change from		
				last month	last December	twelve months ago	last month	last December	twelve months ago
in thousands (except rates)									
Both sexes, 15 years and over									
Population	26,441.5	26,475.9	...	34.4	118.3	375.7	0.1	0.4	1.4
Labour force	17,892.8	17,890.2	27.4	-2.6	174.5	357.5	0.0	1.0	2.0
Employment	16,798.4	16,793.2	27.5	-5.2	152.8	374.2	0.0	0.9	2.3
Employment full-time	13,724.1	13,709.2	35.5	-14.9	72.0	285.7	-0.1	0.5	2.1
Employment part-time	3,074.3	3,084.0	32.5	9.7	80.8	88.5	0.3	2.7	3.0
Unemployment	1,094.4	1,097.0	23.1	2.6	21.7	-16.8	0.2	2.0	-1.5
Participation rate	67.7	67.6	0.1	-0.1	0.4	0.4
Unemployment rate	6.1	6.1	0.1	0.0	0.0	-0.3
Employment rate	63.5	63.4	0.1	-0.1	0.3	0.5
Part-time rate	18.3	18.4	0.2	0.1	0.3	0.1
Both sexes, 15 to 24 years									
Population	4,344.5	4,347.0	...	2.5	9.0	34.9	0.1	0.2	0.8
Labour force	2,908.9	2,914.5	16.7	5.6	44.1	54.4	0.2	1.5	1.9
Employment	2,589.4	2,579.3	15.9	-10.1	30.4	49.6	-0.4	1.2	2.0
Employment full-time	1,432.5	1,417.8	17.8	-14.7	-9.0	9.7	-1.0	-0.6	0.7
Employment part-time	1,156.9	1,161.6	18.6	4.7	39.5	40.0	0.4	3.5	3.6
Unemployment	319.4	335.2	13.8	15.8	13.7	4.8	4.9	4.3	1.5
Participation rate	67.0	67.0	0.4	0.0	0.8	0.7
Unemployment rate	11.0	11.5	0.5	0.5	0.3	-0.1
Employment rate	59.6	59.3	0.4	-0.3	0.5	0.6
Part-time rate	44.7	45.0	0.6	0.4	1.0	0.7
Men, 25 years and over									
Population	10,793.3	10,809.1	...	15.8	54.1	169.8	0.1	0.5	1.6
Labour force	7,960.4	7,960.3	13.9	-0.1	40.6	119.7	0.0	0.5	1.5
Employment	7,536.3	7,528.2	14.9	-8.1	24.5	106.5	-0.1	0.3	1.4
Employment full-time	7,034.9	7,032.9	19.4	-2.0	15.4	84.3	0.0	0.2	1.2
Employment part-time	501.3	495.3	15.1	-6.0	9.1	22.2	-1.2	1.9	4.7
Unemployment	424.1	432.1	13.1	8.0	16.0	13.1	1.9	3.8	3.1
Participation rate	73.8	73.6	0.1	-0.2	0.0	-0.1
Unemployment rate	5.3	5.4	0.2	0.1	0.1	0.1
Employment rate	69.8	69.6	0.1	-0.2	-0.2	-0.2
Part-time rate	6.7	6.6	0.2	-0.1	0.1	0.2
Women, 25 years and over									
Population	11,303.7	11,319.8	...	16.1	55.2	171.0	0.1	0.5	1.5
Labour force	7,023.5	7,015.4	15.4	-8.1	89.8	183.4	-0.1	1.3	2.7
Employment	6,672.7	6,685.6	15.3	12.9	97.7	218.0	0.2	1.5	3.4
Employment full-time	5,256.6	5,258.5	22.6	1.9	65.6	191.7	0.0	1.3	3.8
Employment part-time	1,416.1	1,427.2	21.0	11.1	32.3	26.4	0.8	2.3	1.9
Unemployment	350.8	329.7	12.3	-21.1	-8.0	-34.7	-6.0	-2.4	-9.5
Participation rate	62.1	62.0	0.1	-0.1	0.5	0.7
Unemployment rate	5.0	4.7	0.2	-0.3	-0.2	-0.6
Employment rate	59.0	59.1	0.1	0.1	0.6	1.1
Part-time rate	21.2	21.3	0.3	0.1	0.2	-0.3
Both sexes, 25 to 54 years									
Population	14,298.8	14,307.9	...	9.1	26.8	99.0	0.1	0.2	0.7
Labour force	12,405.6	12,377.3	20.4	-28.3	48.8	117.5	-0.2	0.4	1.0
Employment	11,761.9	11,743.2	21.7	-18.7	47.4	144.4	-0.2	0.4	1.2
Unemployment	643.7	634.1	16.9	-9.6	1.4	-26.9	-1.5	0.2	-4.1
Participation rate	86.8	86.5	0.1	-0.3	0.2	0.2
Unemployment rate	5.2	5.1	0.1	-0.1	0.0	-0.3
Employment rate	82.3	82.1	0.2	-0.2	0.2	0.5

1. Average standard error of change in two consecutive months (see "Sampling Errors" in Data Quality for further explanations).

Note(s): Related CANSIM table 282-0087

Table 2
Employment by class of worker and industry, Canada, seasonally adjusted

	March 2007	April 2007	S.E. ¹	Change from			Percent change from		
				last month	last December	twelve months ago	last month	last December	twelve months ago
in thousands									
Class of worker									
Employees	14,236.4	14,208.0	31.8	-28.4	96.1	310.4	-0.2	0.7	2.2
Self-employed ²	2,562.0	2,585.3	21.1	23.3	56.8	64.0	0.9	2.2	2.5
Public/private sector employees									
Public sector employees	3,225.4	3,228.1	19.9	2.7	36.6	42.1	0.1	1.1	1.3
Private sector employees	11,011.0	10,979.8	33.0	-31.2	59.3	268.2	-0.3	0.5	2.5
Industry	16,798.4	16,793.2	27.5	-5.2	152.8	374.2	0.0	0.9	2.3
Goods-producing sector	3,991.5	3,986.4	22.7	-5.1	-29.3	-31.2	-0.1	-0.7	-0.8
Agriculture	326.7	326.3	6.7	-0.4	-19.5	-32.0	-0.1	-5.6	-8.9
Forestry, fishing, mining, oil and gas	341.8	353.0	6.3	11.2	10.6	29.3	3.3	3.1	9.1
Utilities	131.1	127.8	3.6	-3.3	3.2	13.4	-2.5	2.6	11.7
Construction	1,107.9	1,114.0	13.7	6.1	24.7	47.4	0.6	2.3	4.4
Manufacturing	2,083.9	2,065.3	17.7	-18.6	-48.3	-89.4	-0.9	-2.3	-4.1
Services-producing sector	12,806.9	12,806.9	30.3	0.0	182.2	405.5	0.0	1.4	3.3
Trade	2,665.6	2,685.7	20.0	20.1	43.9	43.4	0.8	1.7	1.6
Transportation and warehousing	824.1	831.0	11.5	6.9	15.1	35.2	0.8	1.9	4.4
Finance, insurance, real estate and leasing	1,075.8	1,058.6	12.9	-17.2	-6.6	39.1	-1.6	-0.6	3.8
Professional, scientific and technical services	1,114.3	1,106.3	14.0	-8.0	15.4	20.5	-0.7	1.4	1.9
Business, building and other support services	691.9	687.0	12.4	-4.9	-36.2	10.2	-0.7	-5.0	1.5
Educational services	1,175.4	1,182.6	13.3	7.2	7.1	26.0	0.6	0.6	2.2
Health care and social assistance	1,838.8	1,850.6	14.4	11.8	29.0	94.0	0.6	1.6	5.4
Information, culture and recreation	777.7	775.1	12.1	-2.6	44.7	34.0	-0.3	6.1	4.6
Accommodation and food services	1,072.9	1,069.0	13.4	-3.9	38.3	76.0	-0.4	3.7	7.7
Other services	730.8	714.0	11.3	-16.8	9.8	5.8	-2.3	1.4	0.8
Public administration	839.8	846.8	10.3	7.0	21.4	21.1	0.8	2.6	2.6

1. Average standard error of change in two consecutive months (see "Sampling Errors" in Data Quality for further explanations).

2. Includes both incorporated and unincorporated working owners, self-employed persons who do not have a business and persons working in a family business without pay.

Note(s): Related CANSIM tables 282-0088, 282-0089

Table 3
Labour force characteristics by province, seasonally adjusted

	March 2007	April 2007	S.E. ¹	Change from			Percent change from		
				last month	last December	twelve months ago	last month	last December	twelve months ago
in thousands (except rates)									
Newfoundland and Labrador									
Population	425.7	424.9	...	-0.8	-1.5	-3.4	-0.2	-0.4	-0.8
Labour force	254.0	252.1	2.2	-1.9	-1.8	-2.9	-0.7	-0.7	-1.1
Employment	217.7	219.6	2.3	1.9	0.7	4.8	0.9	0.3	2.2
Employment full-time	187.6	188.9	2.6	1.3	4.2	7.7	0.7	2.3	4.2
Employment part-time	30.1	30.7	1.9	0.6	-3.5	-3.0	2.0	-10.2	-8.9
Unemployment	36.3	32.5	2.2	-3.8	-2.5	-7.7	-10.5	-7.1	-19.2
Participation rate	59.7	59.3	0.5	-0.4	-0.2	-0.2
Unemployment rate	14.3	12.9	0.8	-1.4	-0.9	-2.9
Employment rate	51.1	51.7	0.5	0.6	0.4	1.5
Prince Edward Island									
Population	112.8	112.9	...	0.1	0.2	0.9	0.1	0.2	0.8
Labour force	78.3	77.7	0.6	-0.6	-0.6	0.0	-0.8	-0.8	0.0
Employment	70.1	70.4	0.7	0.3	1.8	0.9	0.4	2.6	1.3
Employment full-time	57.3	58.4	0.8	1.1	1.8	0.1	1.9	3.2	0.2
Employment part-time	12.9	12.0	0.6	-0.9	0.0	0.9	-7.0	0.0	8.1
Unemployment	8.1	7.3	0.6	-0.8	-2.4	-1.0	-9.9	-24.7	-12.0
Participation rate	69.4	68.8	0.5	-0.6	-0.7	-0.6
Unemployment rate	10.3	9.4	0.7	-0.9	-3.0	-1.3
Employment rate	62.1	62.4	0.6	0.3	1.5	0.3
Nova Scotia									
Population	763.7	763.6	...	-0.1	0.1	1.1	0.0	0.0	0.1
Labour force	486.1	490.3	2.7	4.2	9.8	5.4	0.9	2.0	1.1
Employment	447.8	450.9	3.0	3.1	5.5	5.0	0.7	1.2	1.1
Employment full-time	365.2	367.5	3.7	2.3	3.5	9.0	0.6	1.0	2.5
Employment part-time	82.6	83.4	3.1	0.8	2.0	-3.9	1.0	2.5	-4.5
Unemployment	38.3	39.4	2.6	1.1	4.3	0.4	2.9	12.3	1.0
Participation rate	63.7	64.2	0.4	0.5	1.3	0.6
Unemployment rate	7.9	8.0	0.5	0.1	0.7	0.0
Employment rate	58.6	59.0	0.4	0.4	0.7	0.5
New Brunswick									
Population	612.1	612.5	...	0.4	1.3	1.1	0.1	0.2	0.2
Labour force	388.8	391.2	2.3	2.4	4.1	-3.6	0.6	1.1	-0.9
Employment	360.0	362.5	2.5	2.5	8.2	3.3	0.7	2.3	0.9
Employment full-time	302.8	305.2	2.9	2.4	7.4	4.2	0.8	2.5	1.4
Employment part-time	57.2	57.4	2.4	0.2	0.9	-0.8	0.3	1.6	-1.4
Unemployment	28.8	28.7	2.1	-0.1	-4.1	-6.9	-0.3	-12.5	-19.4
Participation rate	63.5	63.9	0.4	0.4	0.6	-0.7
Unemployment rate	7.4	7.3	0.5	-0.1	-1.2	-1.7
Employment rate	58.8	59.2	0.4	0.4	1.2	0.4
Quebec									
Population	6,297.3	6,303.5	...	6.2	20.7	67.9	0.1	0.3	1.1
Labour force	4,143.7	4,138.5	14.5	-5.2	42.8	71.9	-0.1	1.0	1.8
Employment	3,828.2	3,839.1	14.8	10.9	49.7	108.3	0.3	1.3	2.9
Employment full-time	3,115.8	3,127.8	19.3	12.0	17.3	83.6	0.4	0.6	2.7
Employment part-time	712.5	711.2	17.6	-1.3	32.3	24.6	-0.2	4.8	3.6
Unemployment	315.5	299.4	13.6	-16.1	-6.9	-36.4	-5.1	-2.3	-10.8
Participation rate	65.8	65.7	0.2	-0.1	0.5	0.5
Unemployment rate	7.6	7.2	0.3	-0.4	-0.3	-1.1
Employment rate	60.8	60.9	0.2	0.1	0.6	1.1

See footnotes at the end of the table.

Table 3 – continued

Labour force characteristics by province, seasonally adjusted

	March 2007	April 2007	S.E. ¹	Change from			Percent change from		
				last month	last December	twelve months ago	last month	last December	twelve months ago
in thousands (except rates)									
Ontario									
Population	10,318.6	10,331.7	...	13.1	40.8	134.3	0.1	0.4	1.3
Labour force	7,030.2	7,022.5	18.4	-7.7	53.9	108.4	-0.1	0.8	1.6
Employment	6,572.5	6,555.7	18.1	-16.8	9.1	71.4	-0.3	0.1	1.1
Employment full-time	5,391.6	5,353.7	23.0	-37.9	-0.9	39.0	-0.7	0.0	0.7
Employment part-time	1,181.0	1,202.0	21.2	21.0	10.1	32.4	1.8	0.8	2.8
Unemployment	457.7	466.7	15.3	9.0	44.7	36.8	2.0	10.6	8.6
Participation rate	68.1	68.0	0.2	-0.1	0.3	0.2
Unemployment rate	6.5	6.6	0.2	0.1	0.5	0.4
Employment rate	63.7	63.5	0.2	-0.2	-0.1	-0.1
Manitoba									
Population	895.6	896.8	...	1.2	3.0	5.6	0.1	0.3	0.6
Labour force	620.0	622.2	2.8	2.2	9.6	5.7	0.4	1.6	0.9
Employment	593.6	592.7	2.8	-0.9	5.1	5.1	-0.2	0.9	0.9
Employment full-time	472.9	472.7	3.9	-0.2	0.3	1.0	0.0	0.1	0.2
Employment part-time	120.7	120.0	3.6	-0.7	4.8	4.1	-0.6	4.2	3.5
Unemployment	26.5	29.6	2.1	3.1	4.6	0.7	11.7	18.4	2.4
Participation rate	69.2	69.4	0.3	0.2	0.9	0.2
Unemployment rate	4.3	4.8	0.3	0.5	0.7	0.1
Employment rate	66.3	66.1	0.3	-0.2	0.4	0.2
Saskatchewan									
Population	748.2	748.6	...	0.4	2.3	2.0	0.1	0.3	0.3
Labour force	524.3	523.3	2.4	-1.0	-0.7	10.8	-0.2	-0.1	2.1
Employment	504.4	502.6	2.5	-1.8	-0.2	14.3	-0.4	0.0	2.9
Employment full-time	405.5	402.2	3.3	-3.3	-5.5	5.8	-0.8	-1.3	1.5
Employment part-time	98.9	100.4	2.9	1.5	5.3	8.5	1.5	5.6	9.2
Unemployment	19.9	20.6	1.9	0.7	-0.6	-3.6	3.5	-2.8	-14.9
Participation rate	70.1	69.9	0.3	-0.2	-0.3	1.3
Unemployment rate	3.8	3.9	0.4	0.1	-0.1	-0.8
Employment rate	67.4	67.1	0.3	-0.3	-0.3	1.7
Alberta									
Population	2,715.9	2,724.5	...	8.6	32.4	106.5	0.3	1.2	4.1
Labour force	2,010.1	2,018.6	8.0	8.5	44.2	103.0	0.4	2.2	5.4
Employment	1,938.6	1,950.7	8.3	12.1	42.3	103.1	0.6	2.2	5.6
Employment full-time	1,631.2	1,637.8	10.8	6.6	22.3	88.6	0.4	1.4	5.7
Employment part-time	307.4	312.8	9.8	5.4	19.9	14.5	1.8	6.8	4.9
Unemployment	71.5	67.9	5.6	-3.6	1.9	-0.1	-5.0	2.9	-0.1
Participation rate	74.0	74.1	0.3	0.1	0.8	0.9
Unemployment rate	3.6	3.4	0.3	-0.2	0.1	-0.1
Employment rate	71.4	71.6	0.3	0.2	0.7	1.0
British Columbia									
Population	3,551.7	3,557.1	...	5.4	19.1	59.9	0.2	0.5	1.7
Labour force	2,357.3	2,353.8	10.0	-3.5	13.1	58.9	-0.1	0.6	2.6
Employment	2,265.4	2,249.1	10.1	-16.3	30.6	58.0	-0.7	1.4	2.6
Employment full-time	1,794.3	1,794.8	13.5	0.5	21.6	46.8	0.0	1.2	2.7
Employment part-time	471.1	454.2	12.5	-16.9	8.9	11.1	-3.6	2.0	2.5
Unemployment	91.9	104.7	7.3	12.8	-17.5	0.9	13.9	-14.3	0.9
Participation rate	66.4	66.2	0.3	-0.2	0.0	0.6
Unemployment rate	3.9	4.4	0.3	0.5	-0.8	-0.1
Employment rate	63.8	63.2	0.3	-0.6	0.5	0.5

1. Average standard error of change in two consecutive months (see "Sampling Errors" in Data Quality for further explanations).

Note(s): Related CANSIM table 282-0087

Table 4-1
Selected labour force characteristics (seasonally adjusted) — Newfoundland and Labrador

	March 2007	April 2007	S.E. ¹	Change from			Percent change from		
				last month	last December	twelve months ago	last month	last December	twelve months ago
in thousands (except rates)									
Both sexes, 15 years and over									
Population	425.7	424.9	...	-0.8	-1.5	-3.4	-0.2	-0.4	-0.8
Labour force	254.0	252.1	2.2	-1.9	-1.8	-2.9	-0.7	-0.7	-1.1
Employment	217.7	219.6	2.3	1.9	0.7	4.8	0.9	0.3	2.2
Employment full-time	187.6	188.9	2.6	1.3	4.2	7.7	0.7	2.3	4.2
Unemployment	36.3	32.5	2.2	-3.8	-2.5	-7.7	-10.5	-7.1	-19.2
Participation rate	59.7	59.3	0.5	-0.4	-0.2	-0.2
Unemployment rate	14.3	12.9	0.8	-1.4	-0.9	-2.9
Employment rate	51.1	51.7	0.5	0.6	0.4	1.5
Part-time rate	13.8	14.0	0.9	0.2	-1.6	-1.7
Both sexes, 15 to 24 years									
Population	64.8	64.4	...	-0.4	-1.0	-3.0	-0.6	-1.5	-4.5
Labour force	35.7	34.8	1.2	-0.9	-1.6	-1.3	-2.5	-4.4	-3.6
Employment	28.6	27.4	1.1	-1.2	-1.0	0.0	-4.2	-3.5	0.0
Unemployment	7.1	7.4	1.1	0.3	-0.5	-1.3	4.2	-6.3	-14.9
Participation rate	55.1	54.0	1.8	-1.1	-1.7	0.4
Unemployment rate	19.9	21.3	2.8	1.4	-0.4	-2.8
Employment rate	44.1	42.5	1.6	-1.6	-0.9	1.8
Part-time rate	41.6	38.7	3.6	-2.9	-2.9	-8.4
Men, 25 years and over									
Population	174.5	174.3	...	-0.2	-0.4	-0.5	-0.1	-0.2	-0.3
Labour force	114.2	113.4	1.2	-0.8	-1.6	-2.0	-0.7	-1.4	-1.7
Employment	96.9	98.4	1.4	1.5	-0.4	1.9	1.5	-0.4	2.0
Unemployment	17.4	15.0	1.4	-2.4	-1.2	-3.9	-13.8	-7.4	-20.6
Participation rate	65.4	65.1	0.7	-0.3	-0.7	-0.9
Unemployment rate	15.2	13.2	1.1	-2.0	-0.9	-3.2
Employment rate	55.5	56.5	0.8	1.0	-0.1	1.3
Part-time rate	5.1	4.7	0.8	-0.4	-0.5	-0.5
Women, 25 years and over									
Population	186.3	186.2	...	-0.1	-0.1	0.0	-0.1	-0.1	0.0
Labour force	104.0	104.0	1.3	0.0	1.5	0.5	0.0	1.5	0.5
Employment	92.2	93.8	1.3	1.6	2.1	2.8	1.7	2.3	3.1
Unemployment	11.9	10.2	1.2	-1.7	-0.7	-2.3	-14.3	-6.4	-18.4
Participation rate	55.8	55.9	0.7	0.1	0.9	0.3
Unemployment rate	11.4	9.8	1.1	-1.6	-0.8	-2.3
Employment rate	49.5	50.4	0.7	0.9	1.2	1.5
Part-time rate	14.4	16.4	1.4	2.0	-2.3	-1.1
Industry									
	217.7	219.6	2.3	1.9	0.7	4.8	0.9	0.3	2.2
Goods-producing sector									
Agriculture	1.3	1.2	0.4	-0.1	-0.5	-1.0	-7.7	-29.4	-45.5
Forestry, fishing, mining, oil and gas	16.9	18.4	1.1	1.5	0.5	1.7	8.9	2.8	10.2
Utilities	1.6	1.6	0.3	0.0	0.2	-0.9	0.0	14.3	-36.0
Construction	13.0	13.2	1.0	0.2	-0.4	1.1	1.5	-2.9	9.1
Manufacturing	15.2	17.8	1.1	2.6	2.0	1.3	17.1	12.7	7.9
Services-producing sector									
	169.7	167.5	2.0	-2.2	-1.0	2.6	-1.3	-0.6	1.6
Trade	38.8	37.8	1.2	-1.0	-0.3	0.2	-2.6	-0.8	0.5
Transportation and warehousing	10.6	10.3	0.7	-0.3	-1.0	-1.2	-2.8	-8.8	-10.4
Finance, insurance, real estate and leasing	7.3	7.3	0.5	0.0	0.9	0.4	0.0	14.1	5.8
Professional, scientific and technical services	7.6	7.8	0.5	0.2	2.0	0.8	2.6	34.5	11.4
Business, building and other support services	8.6	7.8	0.7	-0.8	-1.5	-0.2	-9.3	-16.1	-2.5
Educational services	18.4	17.7	0.8	-0.7	-0.9	2.1	-3.8	-4.8	13.5
Health care and social assistance	30.2	31.5	1.0	1.3	1.8	1.0	4.3	6.1	3.3
Information, culture and recreation	8.2	7.8	0.6	-0.4	-1.3	-0.9	-4.9	-14.3	-10.3
Accommodation and food services	13.6	12.9	1.0	-0.7	0.5	-0.4	-5.1	4.0	-3.0
Other services	10.0	10.3	0.7	0.3	-1.1	-1.3	3.0	-9.6	-11.2
Public administration	16.5	16.2	0.8	-0.3	-0.1	1.9	-1.8	-0.6	13.3

1. Average standard error of change in two consecutive months (see "Sampling Errors" in Data Quality for further explanations).

Note(s): Related CANSIM tables 282-0087, 282-0088

Table 4-2
Selected labour force characteristics (seasonally adjusted) — Prince Edward Island

	March 2007	April 2007	S.E. ¹	Change from			Percent change from		
				last month	last December	twelve months ago	last month	last December	twelve months ago
in thousands (except rates)									
Both sexes, 15 years and over									
Population	112.8	112.9	...	0.1	0.2	0.9	0.1	0.2	0.8
Labour force	78.3	77.7	0.6	-0.6	-0.6	0.0	-0.8	-0.8	0.0
Employment	70.1	70.4	0.7	0.3	1.8	0.9	0.4	2.6	1.3
Employment full-time	57.3	58.4	0.8	1.1	1.8	0.1	1.9	3.2	0.2
Unemployment	8.1	7.3	0.6	-0.8	-2.4	-1.0	-9.9	-24.7	-12.0
Participation rate	69.4	68.8	0.5	-0.6	-0.7	-0.6
Unemployment rate	10.3	9.4	0.7	-0.9	-3.0	-1.3
Employment rate	62.1	62.4	0.6	0.3	1.5	0.3
Part-time rate	18.4	17.0	0.9	-1.4	-0.4	1.1
Both sexes, 15 to 24 years									
Population	19.8	19.7	...	-0.1	-0.1	-0.1	-0.5	-0.5	-0.5
Labour force	14.3	14.5	0.4	0.2	0.2	0.2	1.4	1.4	1.4
Employment	12.7	12.6	0.4	-0.1	0.8	0.2	-0.8	6.8	1.6
Unemployment	1.6	1.8	0.3	0.2	-0.7	-0.1	12.5	-28.0	-5.3
Participation rate	72.2	73.6	1.8	1.4	1.4	1.4
Unemployment rate	11.2	12.4	2.2	1.2	-5.1	-0.9
Employment rate	64.1	64.0	1.8	-0.1	4.4	1.4
Part-time rate	41.7	42.1	3.1	0.3	0.5	4.2
Men, 25 years and over									
Population	44.6	44.6	...	0.0	0.1	0.4	0.0	0.2	0.9
Labour force	33.0	32.6	0.3	-0.4	-0.5	-0.2	-1.2	-1.5	-0.6
Employment	29.3	29.5	0.4	0.2	0.8	0.5	0.7	2.8	1.7
Unemployment	3.7	3.1	0.4	-0.6	-1.2	-0.7	-16.2	-27.9	-18.4
Participation rate	74.0	73.1	0.8	-0.9	-1.3	-1.1
Unemployment rate	11.2	9.5	1.1	-1.7	-3.5	-2.1
Employment rate	65.7	66.1	0.9	0.4	1.6	0.5
Part-time rate	6.5	5.4	0.9	-1.1	-0.5	0.6
Women, 25 years and over									
Population	48.5	48.6	...	0.1	0.2	0.6	0.2	0.4	1.2
Labour force	30.9	30.7	0.3	-0.2	-0.3	0.0	-0.6	-1.0	0.0
Employment	28.1	28.2	0.4	0.1	0.1	0.1	0.4	0.4	0.4
Unemployment	2.8	2.5	0.3	-0.3	-0.4	-0.1	-10.7	-13.8	-3.8
Participation rate	63.7	63.2	0.7	-0.5	-0.8	-0.8
Unemployment rate	9.1	8.1	1.0	-1.0	-1.3	-0.4
Employment rate	57.9	58.0	0.8	0.1	-0.1	-0.5
Part-time rate	20.3	17.7	1.6	-2.6	-1.5	-0.1
Industry									
Goods-producing sector	19.0	19.1	0.5	0.1	0.6	0.0	0.5	3.2	0.0
Agriculture	4.1	3.9	0.3	-0.2	-0.1	-0.1	-4.9	-2.5	-2.5
Forestry, fishing, mining, oil and gas	2.4	2.6	0.2	0.2	0.4	0.4	8.3	18.2	18.2
Utilities	0.2	0.2	0.1	0.0	0.0	-0.1	0.0	0.0	-33.3
Construction	5.6	5.5	0.3	-0.1	-0.2	-0.3	-1.8	-3.5	-5.2
Manufacturing	6.7	6.9	0.3	0.2	0.4	0.2	3.0	6.2	3.0
Services-producing sector	51.2	51.3	0.6	0.1	1.2	0.9	0.2	2.4	1.8
Trade	10.2	10.6	0.3	0.4	0.8	0.3	3.9	8.2	2.9
Transportation and warehousing	2.3	2.0	0.2	-0.3	-0.4	-0.2	-13.0	-16.7	-9.1
Finance, insurance, real estate and leasing	2.4	2.4	0.1	0.0	0.0	0.6	0.0	0.0	33.3
Professional, scientific and technical services	2.3	1.9	0.2	-0.4	-0.6	-0.9	-17.4	-24.0	-32.1
Business, building and other support services	3.0	2.9	0.3	-0.1	0.3	0.1	-3.3	11.5	3.6
Educational services	4.8	4.4	0.3	-0.4	-0.4	-0.5	-8.3	-8.3	-10.2
Health care and social assistance	8.3	8.5	0.3	0.2	0.6	0.4	2.4	7.6	4.9
Information, culture and recreation	2.8	2.8	0.2	0.0	0.3	0.0	0.0	12.0	0.0
Accommodation and food services	6.1	6.3	0.3	0.2	0.5	0.6	3.3	8.6	10.5
Other services	2.6	2.9	0.2	0.3	0.3	-0.1	11.5	11.5	-3.3
Public administration	6.6	6.7	0.3	0.1	-0.1	0.7	1.5	-1.5	11.7

1. Average standard error of change in two consecutive months (see "Sampling Errors" in Data Quality for further explanations).

Note(s): Related CANSIM tables 282-0087, 282-0088

Table 4-3
Selected labour force characteristics (seasonally adjusted) — Nova Scotia

	March 2007	April 2007	S.E. ¹	Change from			Percent change from		
				last month	last December	twelve months ago	last month	last December	twelve months ago
in thousands (except rates)									
Both sexes, 15 years and over									
Population	763.7	763.6	...	-0.1	0.1	1.1	0.0	0.0	0.1
Labour force	486.1	490.3	2.7	4.2	9.8	5.4	0.9	2.0	1.1
Employment	447.8	450.9	3.0	3.1	5.5	5.0	0.7	1.2	1.1
Employment full-time	365.2	367.5	3.7	2.3	3.5	9.0	0.6	1.0	2.5
Unemployment	38.3	39.4	2.6	1.1	4.3	0.4	2.9	12.3	1.0
Participation rate	63.7	64.2	0.4	0.5	1.3	0.6
Unemployment rate	7.9	8.0	0.5	0.1	0.7	0.0
Employment rate	58.6	59.0	0.4	0.4	0.7	0.5
Part-time rate	18.4	18.5	0.7	0.1	0.2	-1.1
Both sexes, 15 to 24 years									
Population	122.6	122.5	...	-0.1	-0.3	-0.9	-0.1	-0.2	-0.7
Labour force	80.2	83.1	1.7	2.9	2.1	-1.0	3.6	2.6	-1.2
Employment	69.5	71.8	1.7	2.3	0.8	0.0	3.3	1.1	0.0
Unemployment	10.7	11.3	1.5	0.6	1.3	-0.9	5.6	13.0	-7.4
Participation rate	65.4	67.8	1.4	2.4	1.8	-0.4
Unemployment rate	13.3	13.6	1.7	0.3	1.3	-0.9
Employment rate	56.7	58.6	1.3	1.9	0.8	0.4
Part-time rate	45.3	41.1	2.4	-4.2	-4.8	-5.2
Men, 25 years and over									
Population	306.0	305.9	...	-0.1	0.1	0.7	0.0	0.0	0.2
Labour force	209.5	210.7	1.5	1.2	3.8	3.3	0.6	1.8	1.6
Employment	192.7	193.1	1.7	0.4	2.2	2.3	0.2	1.2	1.2
Unemployment	16.7	17.6	1.5	0.9	1.6	1.1	5.4	10.0	6.7
Participation rate	68.5	68.9	0.5	0.4	1.2	0.9
Unemployment rate	8.0	8.4	0.7	0.4	0.7	0.4
Employment rate	63.0	63.1	0.5	0.1	0.7	0.6
Part-time rate	7.8	8.0	0.7	0.2	1.0	0.5
Women, 25 years and over									
Population	335.1	335.1	...	0.0	0.2	1.2	0.0	0.1	0.4
Labour force	196.5	196.5	1.4	0.0	3.9	3.0	0.0	2.0	1.6
Employment	185.6	185.9	1.5	0.3	2.3	2.7	0.2	1.3	1.5
Unemployment	10.8	10.6	1.3	-0.2	1.5	0.3	-1.9	16.5	2.9
Participation rate	58.6	58.6	0.4	0.0	1.1	0.6
Unemployment rate	5.5	5.4	0.6	-0.1	0.7	0.1
Employment rate	55.4	55.5	0.4	0.1	0.7	0.6
Part-time rate	19.5	20.7	1.1	1.2	1.4	-1.1
Industry									
Goods-producing sector	447.8	450.9	3.0	3.1	5.5	5.0	0.7	1.2	1.1
Agriculture	87.2	90.3	2.2	3.1	4.0	4.9	3.6	4.6	5.7
Forestry, fishing, mining, oil and gas	5.4	5.5	0.6	0.1	1.0	1.2	1.9	22.2	27.9
Utilities	13.0	14.0	1.0	1.0	2.3	0.9	7.7	19.7	6.9
Construction	1.6	1.9	0.2	0.3	-0.3	0.3	18.8	-13.6	18.8
Manufacturing	25.4	26.0	1.4	0.6	-1.9	-0.7	2.4	-6.8	-2.6
Manufacturing	41.7	42.9	1.4	1.2	2.9	3.3	2.9	7.2	8.3
Services-producing sector	360.6	360.6	2.9	0.0	1.5	0.2	0.0	0.4	0.1
Trade	79.4	78.9	1.9	-0.5	0.1	-0.3	-0.6	0.1	-0.4
Transportation and warehousing	18.5	18.4	1.0	-0.1	0.3	-2.0	-0.5	1.7	-9.8
Finance, insurance, real estate and leasing	24.1	24.2	1.0	0.1	-0.3	2.3	0.4	-1.2	10.5
Professional, scientific and technical services	15.7	15.6	1.0	-0.1	-1.2	-4.5	-0.6	-7.1	-22.4
Business, building and other support services	25.2	25.1	1.3	-0.1	-3.9	-3.8	-0.4	-13.4	-13.1
Educational services	35.0	38.7	1.4	3.7	3.8	2.6	10.6	10.9	7.2
Health care and social assistance	62.7	60.3	1.3	-2.4	-0.5	0.3	-3.8	-0.8	0.5
Information, culture and recreation	17.8	17.9	1.0	0.1	1.6	1.9	0.6	9.8	11.9
Accommodation and food services	32.4	32.1	1.4	-0.3	0.6	5.0	-0.9	1.9	18.5
Other services	21.4	21.4	1.1	0.0	1.4	0.4	0.0	7.0	1.9
Public administration	28.3	28.0	1.1	-0.3	-0.6	-1.7	-1.1	-2.1	-5.7

1. Average standard error of change in two consecutive months (see "Sampling Errors" in Data Quality for further explanations).

Note(s): Related CANSIM tables 282-0087, 282-0088

Table 4-4
Selected labour force characteristics (seasonally adjusted) — New Brunswick

	March 2007	April 2007	S.E. ¹	Change from			Percent change from		
				last month	last December	twelve months ago	last month	last December	twelve months ago
in thousands (except rates)									
Both sexes, 15 years and over									
Population	612.1	612.5	...	0.4	1.3	1.1	0.1	0.2	0.2
Labour force	388.8	391.2	2.3	2.4	4.1	-3.6	0.6	1.1	-0.9
Employment	360.0	362.5	2.5	2.5	8.2	3.3	0.7	2.3	0.9
Employment full-time	302.8	305.2	2.9	2.4	7.4	4.2	0.8	2.5	1.4
Unemployment	28.8	28.7	2.1	-0.1	-4.1	-6.9	-0.3	-12.5	-19.4
Participation rate	63.5	63.9	0.4	0.4	0.6	-0.7
Unemployment rate	7.4	7.3	0.5	-0.1	-1.2	-1.7
Employment rate	58.8	59.2	0.4	0.4	1.2	0.4
Part-time rate	15.9	15.8	0.7	-0.1	-0.1	-0.4
Both sexes, 15 to 24 years									
Population	95.1	95.1	...	0.0	-0.1	-1.0	0.0	-0.1	-1.0
Labour force	62.1	61.5	1.4	-0.6	0.6	-4.6	-1.0	1.0	-7.0
Employment	54.9	55.0	1.4	0.1	2.1	-1.7	0.2	4.0	-3.0
Unemployment	7.2	6.5	1.1	-0.7	-1.5	-2.9	-0.7	-18.8	-30.9
Participation rate	65.3	64.7	1.4	-0.6	0.7	-4.1
Unemployment rate	11.6	10.6	1.6	-1.0	-2.5	-3.6
Employment rate	57.7	57.8	1.4	0.1	2.2	-1.2
Part-time rate	39.3	42.7	2.3	3.4	7.4	1.6
Men, 25 years and over									
Population	250.0	250.2	...	0.2	0.7	1.3	0.1	0.3	0.5
Labour force	171.7	174.6	1.3	2.9	5.0	2.5	1.7	2.9	1.5
Employment	157.7	160.9	1.5	3.2	6.0	5.3	2.0	3.9	3.4
Unemployment	14.0	13.7	1.4	-0.3	-1.0	-2.7	-2.1	-6.8	-16.5
Participation rate	68.7	69.8	0.5	1.1	1.8	0.7
Unemployment rate	8.2	7.8	0.8	-0.4	-0.9	-1.7
Employment rate	63.1	64.3	0.6	1.2	2.2	1.8
Part-time rate	5.1	5.0	0.7	-0.1	-0.8	0.1
Women, 25 years and over									
Population	267.0	267.2	...	0.2	0.7	0.9	0.1	0.3	0.3
Labour force	155.0	155.1	1.2	0.1	-1.5	-1.5	0.1	-1.0	-1.0
Employment	147.3	146.6	1.3	-0.7	0.1	-0.2	-0.5	0.1	-0.1
Unemployment	7.6	8.5	1.1	0.9	-1.6	-1.3	11.8	-15.8	-13.3
Participation rate	58.1	58.0	0.5	-0.1	-0.8	-0.8
Unemployment rate	4.9	5.5	0.7	0.6	-0.9	-0.8
Employment rate	55.2	54.9	0.5	-0.3	-0.1	-0.2
Part-time rate	18.7	17.5	1.1	-1.1	-2.0	-1.1
Industry									
Industry	360.0	362.5	2.5	2.5	8.2	3.3	0.7	2.3	0.9
Goods-producing sector									
Goods-producing sector	85.3	85.6	1.9	0.3	5.5	9.1	0.4	6.9	11.9
Agriculture	6.8	6.3	0.6	-0.5	0.3	-0.3	-7.4	5.0	-4.5
Forestry, fishing, mining, oil and gas	11.2	11.7	0.8	0.5	1.7	1.5	4.5	17.0	14.7
Utilities	4.0	4.0	0.3	0.0	0.9	0.8	0.0	29.0	25.0
Construction	23.8	23.1	1.2	-0.7	0.4	2.2	-2.9	1.8	10.5
Manufacturing	39.5	40.6	1.3	1.1	2.3	5.0	2.8	6.0	14.0
Services-producing sector									
Services-producing sector	274.6	276.9	2.4	2.3	2.7	-5.8	0.8	1.0	-2.1
Trade	56.2	56.0	1.4	-0.2	-2.0	-1.9	-0.4	-3.4	-3.3
Transportation and warehousing	19.4	19.2	0.9	-0.2	-1.0	-1.4	-1.0	-5.0	-6.8
Finance, insurance, real estate and leasing	16.2	16.6	0.8	0.4	-1.1	1.6	2.5	-6.2	10.7
Professional, scientific and technical services	13.4	14.7	0.8	1.3	0.8	0.3	9.7	5.8	2.1
Business, building and other support services	19.7	19.4	1.1	-0.3	-0.3	-2.3	-1.5	-1.5	-10.6
Educational services	26.8	27.3	1.0	0.5	1.3	0.1	1.9	5.0	0.4
Health care and social assistance	47.3	47.3	1.1	0.0	1.1	2.4	0.0	2.4	5.3
Information, culture and recreation	12.4	12.3	0.8	-0.1	0.9	-0.5	-0.8	7.9	-3.9
Accommodation and food services	26.1	26.8	1.1	0.7	3.6	-0.4	2.7	15.5	-1.5
Other services	16.3	16.2	1.0	-0.1	-1.2	-3.5	-0.6	-6.9	-17.8
Public administration	20.7	21.1	0.9	0.4	0.7	-0.4	1.9	3.4	-1.9

1. Average standard error of change in two consecutive months (see "Sampling Errors" in Data Quality for further explanations).

Note(s): Related CANSIM tables 282-0087, 282-0088

Table 4-5
Selected labour force characteristics (seasonally adjusted) — Quebec

	March 2007	April 2007	S.E. ¹	Change from			Percent change from		
				last month	last December	twelve months ago	last month	last December	twelve months ago
in thousands (except rates)									
Both sexes, 15 years and over									
Population	6,297.3	6,303.5	...	6.2	20.7	67.9	0.1	0.3	1.1
Labour force	4,143.7	4,138.5	14.5	-5.2	42.8	71.9	-0.1	1.0	1.8
Employment	3,828.2	3,839.1	14.8	10.9	49.7	108.3	0.3	1.3	2.9
Employment full-time	3,115.8	3,127.8	19.3	12.0	17.3	83.6	0.4	0.6	2.7
Unemployment	315.5	299.4	13.6	-16.1	-6.9	-36.4	-5.1	-2.3	-10.8
Participation rate	65.8	65.7	0.2	-0.1	0.5	0.5
Unemployment rate	7.6	7.2	0.3	-0.4	-0.3	-1.1
Employment rate	60.8	60.9	0.2	0.1	0.6	1.1
Part-time rate	18.6	18.5	0.5	-0.1	0.6	0.1
Both sexes, 15 to 24 years									
Population	953.4	953.9	...	0.5	1.6	3.8	0.1	0.2	0.4
Labour force	637.5	639.5	8.5	2.0	12.5	18.5	0.3	2.0	3.0
Employment	561.0	560.0	8.2	-1.0	9.9	23.4	-0.2	1.8	4.4
Unemployment	76.6	79.5	7.6	2.9	2.6	-5.0	3.8	3.4	-5.9
Participation rate	66.9	67.0	0.9	0.1	1.2	1.6
Unemployment rate	12.0	12.4	1.1	0.4	0.1	-1.2
Employment rate	58.8	58.7	0.9	-0.1	0.9	2.2
Part-time rate	48.3	49.1	1.6	0.9	2.0	4.5
Men, 25 years and over									
Population	2,610.0	2,612.9	...	2.9	9.7	32.6	0.1	0.4	1.3
Labour force	1,864.5	1,864.2	7.9	-0.3	4.0	23.9	0.0	0.2	1.3
Employment	1,725.3	1,728.1	8.4	2.8	6.9	25.2	0.2	0.4	1.5
Unemployment	139.2	136.1	8.1	-3.1	-2.9	-1.3	-2.2	-2.1	-0.9
Participation rate	71.4	71.3	0.3	-0.1	-0.2	0.0
Unemployment rate	7.5	7.3	0.4	-0.2	-0.2	-0.2
Employment rate	66.1	66.1	0.3	0.0	0.0	0.1
Part-time rate	7.3	6.7	0.5	-0.6	-0.1	-0.6
Women, 25 years and over									
Population	2,733.9	2,736.8	...	2.9	9.5	31.6	0.1	0.3	1.2
Labour force	1,641.7	1,634.8	8.1	-6.9	26.3	29.5	-0.4	1.6	1.8
Employment	1,542.0	1,551.0	8.2	9.0	32.8	59.7	0.6	2.2	4.0
Unemployment	99.7	83.8	7.3	-15.9	-6.5	-30.2	-15.9	-7.2	-26.5
Participation rate	60.0	59.7	0.3	-0.3	0.7	0.4
Unemployment rate	6.1	5.1	0.4	-1.0	-0.5	-2.0
Employment rate	56.4	56.7	0.3	0.3	1.0	1.6
Part-time rate	20.5	20.7	0.7	0.2	0.7	-1.0
Industry									
	3,828.2	3,839.1	14.8	10.9	49.7	108.3	0.3	1.3	2.9
Goods-producing sector									
Agriculture	59.8	60.8	3.6	1.0	-5.7	-6.4	1.7	-8.6	-9.5
Forestry, fishing, mining, oil and gas	36.8	38.0	2.3	1.2	3.4	-2.3	3.3	9.8	-5.7
Utilities	30.5	29.3	1.9	-1.2	3.8	-0.2	-3.9	14.9	-0.7
Construction	184.4	194.1	6.4	9.7	15.9	9.0	5.3	8.9	4.9
Manufacturing	554.4	544.8	10.0	-9.6	-30.5	-49.3	-1.7	-5.3	-8.3
Services-producing sector									
	2,962.4	2,972.1	15.9	9.7	62.8	157.6	0.3	2.2	5.6
Trade	644.6	654.8	10.7	10.2	18.5	29.1	1.6	2.9	4.7
Transportation and warehousing	172.1	176.3	6.0	4.2	2.4	10.1	2.4	1.4	6.1
Finance, insurance, real estate and leasing	236.4	236.1	6.3	-0.3	5.2	23.7	-0.1	2.3	11.2
Professional, scientific and technical services	253.2	248.2	7.5	-5.0	-6.2	14.2	-2.0	-2.4	6.1
Business, building and other support services	160.9	159.4	6.3	-1.5	9.4	27.1	-0.9	6.3	20.5
Educational services	259.3	258.8	7.2	-0.5	1.8	0.1	-0.2	0.7	0.0
Health care and social assistance	457.0	459.6	7.9	2.6	5.3	8.7	0.6	1.2	1.9
Information, culture and recreation	172.1	170.9	6.2	-1.2	10.6	19.4	-0.7	6.6	12.8
Accommodation and food services	225.4	225.8	6.9	0.4	5.7	15.0	0.2	2.6	7.1
Other services	166.9	169.5	5.9	2.6	10.2	12.5	1.6	6.4	8.0
Public administration	214.7	212.8	5.7	-1.9	0.1	-2.3	-0.9	0.0	-1.1

1. Average standard error of change in two consecutive months (see "Sampling Errors" in Data Quality for further explanations).

Note(s): Related CANSIM tables 282-0087, 282-0088

Table 4-6
Selected labour force characteristics (seasonally adjusted) — Ontario

	March 2007	April 2007	S.E. ¹	Change from			Percent change from		
				last month	last December	twelve months ago	last month	last December	twelve months ago
in thousands (except rates)									
Both sexes, 15 years and over									
Population	10,318.6	10,331.7	...	13.1	40.8	134.3	0.1	0.4	1.3
Labour force	7,030.2	7,022.5	18.4	-7.7	53.9	108.4	-0.1	0.8	1.6
Employment	6,572.5	6,555.7	18.1	-16.8	9.1	71.4	-0.3	0.1	1.1
Employment full-time	5,391.6	5,353.7	23.0	-37.9	-0.9	39.0	-0.7	0.0	0.7
Unemployment	457.7	466.7	15.3	9.0	44.7	36.8	2.0	10.6	8.6
Participation rate	68.1	68.0	0.2	-0.1	0.3	0.2
Unemployment rate	6.5	6.6	0.2	0.1	0.5	0.4
Employment rate	63.7	63.5	0.2	-0.2	-0.1	-0.1
Part-time rate	18.0	18.3	0.3	0.4	0.1	0.3
Both sexes, 15 to 24 years									
Population	1,715.6	1,717.3	...	1.7	4.8	17.5	0.1	0.3	1.0
Labour force	1,119.8	1,122.3	11.6	2.5	24.3	30.6	0.2	2.2	2.8
Employment	976.8	971.5	10.7	-5.3	13.6	20.3	-0.5	1.4	2.1
Unemployment	143.1	150.8	9.6	7.7	10.7	10.3	5.4	7.6	7.3
Participation rate	65.3	65.4	0.7	0.1	1.3	1.2
Unemployment rate	12.8	13.4	0.8	0.6	0.6	0.5
Employment rate	56.9	56.6	0.6	-0.3	0.7	0.6
Part-time rate	48.6	48.9	1.1	0.3	-1.0	0.6
Men, 25 years and over									
Population	4,184.0	4,189.3	...	5.3	16.4	53.9	0.1	0.4	1.3
Labour force	3,104.9	3,097.9	9.1	-7.0	-3.8	-3.8	-0.2	-0.1	-0.1
Employment	2,940.0	2,926.8	9.8	-13.2	-25.7	-23.1	-0.4	-0.9	-0.8
Unemployment	165.0	171.0	8.4	6.0	21.7	19.2	3.6	14.5	12.6
Participation rate	74.2	73.9	0.2	-0.3	-0.4	-1.1
Unemployment rate	5.3	5.5	0.3	0.2	0.7	0.6
Employment rate	70.3	69.9	0.2	-0.4	-0.9	-1.4
Part-time rate	6.3	6.6	0.3	0.3	0.5	0.3
Women, 25 years and over									
Population	4,419.0	4,425.1	...	6.1	19.6	63.0	0.1	0.4	1.4
Labour force	2,805.5	2,802.3	10.2	-3.2	33.4	81.5	-0.1	1.2	3.0
Employment	2,655.8	2,657.4	10.0	1.6	21.1	74.2	0.1	0.8	2.9
Unemployment	149.6	144.9	8.0	-4.7	12.2	7.3	-3.1	9.2	5.3
Participation rate	63.5	63.3	0.2	-0.2	0.4	0.9
Unemployment rate	5.3	5.2	0.3	-0.1	0.4	0.1
Employment rate	60.1	60.1	0.2	0.0	0.3	0.9
Part-time rate	19.7	20.1	0.5	0.4	-0.1	-0.3
Industry									
	6,572.5	6,555.7	18.1	-16.8	9.1	71.4	-0.3	0.1	1.1
Goods-producing sector									
Agriculture	1,572.4	1,556.2	15.0	-16.2	-41.8	-62.6	-1.0	-2.6	-3.9
Forestry, fishing, mining, oil and gas	101.4	98.7	3.6	-2.7	-6.1	-1.7	-2.7	-5.8	-1.7
Utilities	33.7	39.1	2.3	5.4	-3.7	4.9	16.0	-8.6	14.3
Construction	57.4	56.4	2.3	-1.0	3.6	11.3	-1.7	6.8	25.1
Manufacturing	411.3	406.8	8.9	-4.5	-5.1	-4.7	-1.1	-1.2	-1.1
	968.6	955.3	12.6	-13.3	-30.4	-72.3	-1.4	-3.1	-7.0
Services-producing sector									
	5,000.2	4,999.5	20.5	-0.7	50.9	134.1	0.0	1.0	2.8
Trade	1,026.7	1,037.1	13.4	10.4	10.5	19.2	1.0	1.0	1.9
Transportation and warehousing	310.8	312.2	7.8	1.4	6.9	31.6	0.5	2.3	11.3
Finance, insurance, real estate and leasing	485.6	463.0	9.6	-22.6	-11.7	-10.7	-4.7	-2.5	-2.3
Professional, scientific and technical services	468.7	464.4	9.5	-4.3	14.6	13.1	-0.9	3.2	2.9
Business, building and other support services	276.0	281.4	8.8	5.4	-22.3	-18.5	2.0	-7.3	-6.2
Educational services	444.5	450.5	8.8	6.0	0.0	-1.7	1.3	0.0	-0.4
Health care and social assistance	659.9	671.1	9.3	11.2	12.3	43.9	1.7	1.9	7.0
Information, culture and recreation	320.6	322.6	8.4	2.0	6.2	3.7	0.6	2.0	1.2
Accommodation and food services	403.5	407.2	8.7	3.7	24.1	40.7	0.9	6.3	11.1
Other services	283.2	264.0	7.6	-19.2	-2.7	-6.3	-6.8	-1.0	-2.3
Public administration	320.7	326.0	6.8	5.3	12.9	19.2	1.7	4.1	6.3

1. Average standard error of change in two consecutive months (see "Sampling Errors" in Data Quality for further explanations).

Note(s): Related CANSIM tables 282-0087, 282-0088

Table 4-7
Selected labour force characteristics (seasonally adjusted) — Manitoba

	March 2007	April 2007	S.E. ¹	Change from			Percent change from		
				last month	last December	twelve months ago	last month	last December	twelve months ago
in thousands (except rates)									
Both sexes, 15 years and over									
Population	895.6	896.8	...	1.2	3.0	5.6	0.1	0.3	0.6
Labour force	620.0	622.2	2.8	2.2	9.6	5.7	0.4	1.6	0.9
Employment	593.6	592.7	2.8	-0.9	5.1	5.1	-0.2	0.9	0.9
Employment full-time	472.9	472.7	3.9	-0.2	0.3	1.0	0.0	0.1	0.2
Unemployment	26.5	29.6	2.1	3.1	4.6	0.7	11.7	18.4	2.4
Participation rate	69.2	69.4	0.3	0.2	0.9	0.2
Unemployment rate	4.3	4.8	0.3	0.5	0.7	0.1
Employment rate	66.3	66.1	0.3	-0.2	0.4	0.2
Part-time rate	20.3	20.2	0.6	-0.1	0.6	0.5
Both sexes, 15 to 24 years									
Population	156.2	156.4	...	0.2	0.6	0.7	0.1	0.4	0.4
Labour force	112.0	115.4	1.8	3.4	5.8	-0.3	3.0	5.3	-0.3
Employment	103.0	104.1	1.7	1.1	2.7	0.1	1.1	2.7	0.1
Unemployment	9.0	11.3	1.4	2.3	3.1	-0.4	25.6	37.8	-3.4
Participation rate	71.7	73.8	1.1	2.1	3.5	-0.5
Unemployment rate	8.0	9.8	1.2	1.8	2.3	-0.3
Employment rate	65.9	66.6	1.1	0.7	1.5	-0.2
Part-time rate	45.2	45.9	1.9	0.7	3.9	1.6
Men, 25 years and over									
Population	361.2	361.8	...	0.6	1.4	3.0	0.2	0.4	0.8
Labour force	273.3	272.8	1.4	-0.5	2.5	5.2	-0.2	0.9	1.9
Employment	263.9	262.4	1.4	-1.5	0.8	3.2	-0.6	0.3	1.2
Unemployment	9.4	10.4	1.2	1.0	1.8	1.9	10.6	20.9	22.4
Participation rate	75.7	75.4	0.4	-0.3	0.4	0.8
Unemployment rate	3.4	3.8	0.4	0.4	0.6	0.6
Employment rate	73.1	72.5	0.4	-0.6	-0.1	0.3
Part-time rate	6.4	6.6	0.6	0.1	0.2	-0.5
Women, 25 years and over									
Population	378.2	378.6	...	0.4	1.0	1.9	0.1	0.3	0.5
Labour force	234.7	234.0	1.6	-0.7	1.2	0.8	-0.3	0.5	0.3
Employment	226.7	226.2	1.6	-0.5	1.6	1.8	-0.2	0.7	0.8
Unemployment	8.1	7.8	1.1	-0.3	-0.4	-1.0	-3.7	-4.9	-11.4
Participation rate	62.1	61.8	0.4	-0.3	0.1	-0.1
Unemployment rate	3.5	3.3	0.5	-0.2	-0.2	-0.5
Employment rate	59.9	59.7	0.4	-0.2	0.2	0.1
Part-time rate	25.2	24.3	1.0	-0.9	-0.5	1.3
Industry									
Industry	593.6	592.7	2.8	-0.9	5.1	5.1	-0.2	0.9	0.9
Goods-producing sector									
Goods-producing sector	145.7	142.8	2.3	-2.9	1.5	6.0	-2.0	1.1	4.4
Agriculture	29.7	29.9	1.3	0.2	0.4	0.4	0.7	1.4	1.4
Forestry, fishing, mining, oil and gas	6.7	6.4	0.5	-0.3	-0.3	-0.2	-4.5	-4.5	-3.0
Utilities	6.6	5.0	0.4	-1.6	0.0	-0.7	-24.2	0.0	-12.3
Construction	32.0	32.0	1.4	0.0	1.5	1.3	0.0	4.9	4.2
Manufacturing	70.8	69.5	1.7	-1.3	-0.1	5.3	-1.8	-0.1	8.3
Services-producing sector									
Services-producing sector	447.8	449.9	3.2	2.1	3.6	-1.0	0.5	0.8	-0.2
Trade	89.4	90.3	2.1	0.9	-2.5	-1.5	1.0	-2.7	-1.6
Transportation and warehousing	34.1	33.9	1.2	-0.2	-1.2	-2.0	-0.6	-3.4	-5.6
Finance, insurance, real estate and leasing	31.2	33.1	1.2	1.9	0.7	-2.1	6.1	2.2	-6.0
Professional, scientific and technical services	23.4	24.9	1.1	1.5	3.8	1.7	6.4	18.0	7.3
Business, building and other support services	16.7	16.9	1.2	0.2	-1.6	-3.3	1.2	-8.6	-16.3
Educational services	46.2	46.6	1.5	0.4	-0.9	1.5	0.9	-1.9	3.3
Health care and social assistance	83.8	81.0	1.7	-2.8	-1.1	3.0	-3.3	-1.3	3.8
Information, culture and recreation	23.4	22.4	1.1	-1.0	0.0	0.6	-4.3	0.0	2.8
Accommodation and food services	38.7	37.7	1.6	-1.0	2.7	-1.6	-2.6	7.7	-4.1
Other services	24.1	25.1	1.2	1.0	0.2	-1.4	4.1	0.8	-5.3
Public administration	36.7	37.9	1.2	1.2	3.4	4.0	3.3	9.9	11.8

1. Average standard error of change in two consecutive months (see "Sampling Errors" in Data Quality for further explanations).

Note(s): Related CANSIM tables 282-0087, 282-0088

Table 4-8
Selected labour force characteristics (seasonally adjusted) — Saskatchewan

	March 2007	April 2007	S.E. ¹	Change from			Percent change from		
				last month	last December	twelve months ago	last month	last December	twelve months ago
in thousands (except rates)									
Both sexes, 15 years and over									
Population	748.2	748.6	...	0.4	2.3	2.0	0.1	0.3	0.3
Labour force	524.3	523.3	2.4	-1.0	-0.7	10.8	-0.2	-0.1	2.1
Employment	504.4	502.6	2.5	-1.8	-0.2	14.3	-0.4	0.0	2.9
Employment full-time	405.5	402.2	3.3	-3.3	-5.5	5.8	-0.8	-1.3	1.5
Unemployment	19.9	20.6	1.9	0.7	-0.6	-3.6	3.5	-2.8	-14.9
Participation rate	70.1	69.9	0.3	-0.2	-0.3	1.3
Unemployment rate	3.8	3.9	0.4	0.1	-0.1	-0.8
Employment rate	67.4	67.1	0.3	-0.3	-0.3	1.7
Part-time rate	19.6	20.0	0.6	0.4	1.1	1.2
Both sexes, 15 to 24 years									
Population	137.4	137.3	...	-0.1	0.0	-0.7	-0.1	0.0	-0.5
Labour force	101.1	100.2	1.5	-0.9	-2.1	4.6	-0.9	-2.1	4.8
Employment	94.5	92.6	1.5	-1.9	-1.6	5.6	-2.0	-1.7	6.4
Unemployment	6.6	7.6	1.2	1.0	-0.5	-1.0	15.2	-6.2	-11.6
Participation rate	73.6	73.0	1.1	-0.6	-1.5	3.7
Unemployment rate	6.5	7.6	1.2	1.1	-0.3	-1.4
Employment rate	68.8	67.4	1.1	-1.4	-1.2	4.4
Part-time rate	40.4	40.6	1.8	0.2	3.2	0.0
Men, 25 years and over									
Population	298.2	298.5	...	0.3	1.3	1.8	0.1	0.4	0.6
Labour force	227.5	228.0	1.2	0.5	0.3	3.6	0.2	0.1	1.6
Employment	220.2	220.1	1.3	-0.1	-0.4	6.1	0.0	-0.2	2.9
Unemployment	7.3	7.9	1.1	0.6	0.6	-2.5	8.2	8.2	-24.0
Participation rate	76.3	76.4	0.4	0.1	-0.2	0.8
Unemployment rate	3.2	3.5	0.5	0.3	0.3	-1.1
Employment rate	73.8	73.7	0.5	-0.1	-0.5	1.6
Part-time rate	6.4	6.8	0.6	0.4	-0.2	0.6
Women, 25 years and over									
Population	312.6	312.7	...	0.1	0.9	0.8	0.0	0.3	0.3
Labour force	195.6	195.1	1.3	-0.5	1.2	2.7	-0.3	0.6	1.4
Employment	189.7	190.0	1.4	0.3	1.9	2.8	0.2	1.0	1.5
Unemployment	6.0	5.1	0.9	-0.9	-0.7	-0.1	-15.0	-12.1	-1.9
Participation rate	62.6	62.4	0.4	-0.2	0.2	0.7
Unemployment rate	3.1	2.6	0.5	-0.5	-0.4	-0.1
Employment rate	60.7	60.8	0.4	0.1	0.5	0.8
Part-time rate	24.6	25.2	1.0	0.6	1.6	2.0
Industry									
Goods-producing sector	504.4	502.6	2.5	-1.8	-0.2	14.3	-0.4	0.0	2.9
Agriculture	131.2	132.3	2.3	1.1	-1.1	-0.1	0.8	-0.8	-0.1
Forestry, fishing, mining, oil and gas	43.2	44.9	1.6	1.7	-2.6	-3.0	3.9	-5.5	-6.3
Utilities	22.8	22.4	1.0	-0.4	-0.1	1.3	-1.8	-0.4	6.2
Construction	3.7	3.5	0.4	-0.2	-0.5	-1.2	-5.4	-12.5	-25.5
Manufacturing	31.8	31.0	1.3	-0.8	0.3	1.5	-2.5	1.0	5.1
Services-producing sector	29.7	30.4	1.1	0.7	1.8	1.2	2.4	6.3	4.1
Trade	373.2	370.3	2.8	-2.9	0.9	14.5	-0.8	0.2	4.1
Transportation and warehousing	86.5	85.3	1.8	-1.2	-0.6	4.8	-1.4	-0.7	6.0
Finance, insurance, real estate and leasing	24.8	24.5	1.0	-0.3	-0.7	-2.7	-1.2	-2.8	-9.9
Professional, scientific and technical services	25.8	26.0	0.9	0.2	-1.1	0.5	0.8	-4.1	2.0
Business, building and other support services	20.4	21.0	0.8	0.6	1.1	2.8	2.9	5.5	15.4
Educational services	10.5	9.5	0.8	-1.0	-2.3	-3.3	-9.5	-19.5	-25.8
Health care and social assistance	43.5	40.6	1.2	-2.9	1.8	2.6	-6.7	4.6	6.8
Information, culture and recreation	60.6	61.8	1.4	1.2	0.7	3.0	2.0	1.1	5.1
Accommodation and food services	19.9	19.6	1.0	-0.3	-0.8	-0.8	-1.5	-3.9	-3.9
Other services	30.9	30.4	1.3	-0.5	-0.4	2.7	-1.6	-1.3	9.7
Public administration	22.8	23.0	1.1	0.2	1.3	3.1	0.9	6.0	15.6
	27.5	28.6	1.0	1.1	1.9	1.9	4.0	7.1	7.1

1. Average standard error of change in two consecutive months (see "Sampling Errors" in Data Quality for further explanations).

Note(s): Related CANSIM tables 282-0087, 282-0088

Table 4-9
Selected labour force characteristics (seasonally adjusted) — Alberta

	March 2007	April 2007	S.E. ¹	Change from			Percent change from		
				last month	last December	twelve months ago	last month	last December	twelve months ago
in thousands (except rates)									
Both sexes, 15 years and over									
Population	2,715.9	2,724.5	...	8.6	32.4	106.5	0.3	1.2	4.1
Labour force	2,010.1	2,018.6	8.0	8.5	44.2	103.0	0.4	2.2	5.4
Employment	1,938.6	1,950.7	8.3	12.1	42.3	103.1	0.6	2.2	5.6
Employment full-time	1,631.2	1,637.8	10.8	6.6	22.3	88.6	0.4	1.4	5.7
Unemployment	71.5	67.9	5.6	-3.6	1.9	-0.1	-5.0	2.9	-0.1
Participation rate	74.0	74.1	0.3	0.1	0.8	0.9
Unemployment rate	3.6	3.4	0.3	-0.2	0.1	-0.1
Employment rate	71.4	71.6	0.3	0.2	0.7	1.0
Part-time rate	15.9	16.0	0.5	0.2	0.7	-0.1
Both sexes, 15 to 24 years									
Population	501.8	502.4	...	0.6	2.9	16.2	0.1	0.6	3.3
Labour force	358.4	363.2	5.1	4.8	6.9	12.2	1.3	1.9	3.5
Employment	329.2	333.0	5.1	3.8	-0.7	5.2	1.2	-0.2	1.6
Unemployment	29.2	30.2	3.6	1.0	7.6	7.0	3.4	33.6	30.2
Participation rate	71.4	72.3	1.0	0.9	1.0	0.1
Unemployment rate	8.1	8.3	1.0	0.2	2.0	1.7
Employment rate	65.6	66.3	1.0	0.7	-0.5	-1.1
Part-time rate	31.4	33.2	1.6	1.7	1.2	-2.0
Men, 25 years and over									
Population	1,111.0	1,115.2	...	4.2	15.4	47.4	0.4	1.4	4.4
Labour force	912.2	911.2	3.5	-1.0	18.8	47.4	-0.1	2.1	5.5
Employment	892.9	892.5	3.9	-0.4	22.1	50.1	0.0	2.5	5.9
Unemployment	19.3	18.7	3.0	-0.6	-3.3	-2.8	-3.1	-15.0	-13.0
Participation rate	82.1	81.7	0.3	-0.4	0.6	0.8
Unemployment rate	2.1	2.1	0.3	0.0	-0.4	-0.4
Employment rate	80.4	80.0	0.4	-0.4	0.9	1.1
Part-time rate	5.5	4.9	0.5	-0.6	0.6	1.2
Women, 25 years and over									
Population	1,103.1	1,106.9	...	3.8	14.1	42.9	0.3	1.3	4.0
Labour force	739.6	744.2	4.7	4.6	18.5	43.4	0.6	2.5	6.2
Employment	716.5	725.1	4.7	8.6	20.7	47.7	1.2	2.9	7.0
Unemployment	23.1	19.0	3.0	-4.1	-2.4	-4.4	-17.7	-11.2	-18.8
Participation rate	67.0	67.2	0.4	0.2	0.8	1.3
Unemployment rate	3.1	2.6	0.4	-0.5	-0.3	-0.7
Employment rate	65.0	65.5	0.4	0.5	1.0	1.8
Part-time rate	21.6	21.8	0.9	0.3	0.7	-0.5
Industry									
	1,938.6	1,950.7	8.3	12.1	42.3	103.1	0.6	2.2	5.6
Goods-producing sector									
Agriculture	548.3	547.0	7.2	-1.3	3.7	30.7	-0.2	0.7	5.9
Forestry, fishing, mining, oil and gas	43.9	43.3	2.6	-0.6	-4.6	-16.4	-1.4	-9.6	-27.5
Utilities	149.3	150.8	4.0	1.5	7.4	11.4	1.0	5.2	8.2
Construction	17.3	17.3	1.3	0.0	-3.7	2.2	0.0	-17.6	14.6
Manufacturing	190.5	189.3	5.0	-1.2	7.6	25.4	-0.6	4.2	15.5
	147.3	146.3	4.2	-1.0	-3.1	8.1	-0.7	-2.1	5.9
Services-producing sector									
	1,390.4	1,403.6	9.4	13.2	38.5	72.3	0.9	2.8	5.4
Trade	279.8	288.6	6.1	8.8	17.3	4.8	3.1	6.4	1.7
Transportation and warehousing	105.5	108.5	3.7	3.0	2.4	0.8	2.8	2.3	0.7
Finance, insurance, real estate and leasing	96.9	97.8	3.4	0.9	-6.6	3.0	0.9	-6.3	3.2
Professional, scientific and technical services	145.8	144.2	4.3	-1.6	1.6	1.6	-1.1	1.1	1.1
Business, building and other support services	72.3	69.9	3.4	-2.4	-0.4	9.2	-3.3	-0.6	15.2
Educational services	138.0	138.2	4.0	0.2	-0.7	13.1	0.1	-0.5	10.5
Health care and social assistance	181.9	184.8	4.4	2.9	3.9	13.5	1.6	2.2	7.9
Information, culture and recreation	76.2	74.4	3.4	-1.8	7.7	8.7	-2.4	11.5	13.2
Accommodation and food services	120.5	122.9	4.3	2.4	4.7	12.4	2.0	4.0	11.2
Other services	97.6	95.5	3.5	-2.1	6.5	9.0	-2.2	7.3	10.4
Public administration	75.9	78.7	3.0	2.8	2.0	-3.8	3.7	2.6	-4.6

1. Average standard error of change in two consecutive months (see "Sampling Errors" in Data Quality for further explanations).

Note(s): Related CANSIM tables 282-0087, 282-0088

Table 4-10
Selected labour force characteristics (seasonally adjusted) — British Columbia

	March 2007	April 2007	S.E. ¹	Change from			Percent change from		
				last month	last December	twelve months ago	last month	last December	twelve months ago
in thousands (except rates)									
Both sexes, 15 years and over									
Population	3,551.7	3,557.1	...	5.4	19.1	59.9	0.2	0.5	1.7
Labour force	2,357.3	2,353.8	10.0	-3.5	13.1	58.9	-0.1	0.6	2.6
Employment	2,265.4	2,249.1	10.1	-16.3	30.6	58.0	-0.7	1.4	2.6
Employment full-time	1,794.3	1,794.8	13.5	0.5	21.6	46.8	0.0	1.2	2.7
Unemployment	91.9	104.7	7.3	12.8	-17.5	0.9	13.9	-14.3	0.9
Participation rate	66.4	66.2	0.3	-0.2	0.0	0.6
Unemployment rate	3.9	4.4	0.3	0.5	-0.8	-0.1
Employment rate	63.8	63.2	0.3	-0.6	0.5	0.5
Part-time rate	20.8	20.2	0.5	-0.6	0.1	0.0
Both sexes, 15 to 24 years									
Population	577.9	577.9	...	0.0	0.5	2.4	0.0	0.1	0.4
Labour force	387.7	380.1	5.8	-7.6	-4.5	-4.5	-2.0	-1.2	-1.2
Employment	359.3	351.3	5.8	-8.0	3.7	-3.5	-2.2	1.1	-1.0
Unemployment	28.4	28.8	4.2	0.4	-8.2	-0.9	1.4	-22.2	-3.0
Participation rate	67.1	65.8	1.0	-1.3	-0.8	-1.0
Unemployment rate	7.3	7.6	1.1	0.3	-2.0	-0.1
Employment rate	62.2	60.8	1.0	-1.4	0.6	-0.9
Part-time rate	42.5	41.6	1.8	-0.9	3.4	-1.3
Men, 25 years and over									
Population	1,453.8	1,456.5	...	2.7	9.4	29.3	0.2	0.6	2.1
Labour force	1,049.6	1,055.0	5.2	5.4	12.0	40.0	0.5	1.2	3.9
Employment	1,017.4	1,016.4	5.4	-1.0	12.0	35.1	-0.1	1.2	3.6
Unemployment	32.2	38.6	4.2	6.4	0.0	4.8	19.9	0.0	14.2
Participation rate	72.2	72.4	0.4	0.2	0.3	1.3
Unemployment rate	3.1	3.7	0.4	0.6	0.0	0.4
Employment rate	70.0	69.8	0.4	-0.2	0.4	1.0
Part-time rate	8.0	8.0	0.6	0.0	-1.0	0.4
Women, 25 years and over									
Population	1,520.0	1,522.6	...	2.6	9.1	28.1	0.2	0.6	1.9
Labour force	920.0	918.7	6.0	-1.3	5.6	23.4	-0.1	0.6	2.6
Employment	888.7	881.4	5.8	-7.3	14.9	26.4	-0.8	1.7	3.1
Unemployment	31.2	37.3	4.2	6.1	-9.3	-3.0	19.6	-20.0	-7.4
Participation rate	60.5	60.3	0.4	-0.2	0.0	0.4
Unemployment rate	3.4	4.1	0.5	0.7	-1.0	-0.4
Employment rate	58.5	57.9	0.4	-0.6	0.6	0.7
Part-time rate	26.7	25.7	0.9	-1.0	0.1	0.5
Industry									
	2,265.4	2,249.1	10.1	-16.3	30.6	58.0	-0.7	1.4	2.6
Goods-producing sector									
Agriculture	493.2	495.7	8.1	2.5	12.4	35.5	0.5	2.6	7.7
Forestry, fishing, mining, oil and gas	33.5	31.9	2.6	-1.6	-4.1	-3.8	-4.8	-11.4	-10.6
Utilities	45.2	49.1	2.8	3.9	0.9	9.5	8.6	1.9	24.0
Construction	8.2	8.7	1.0	0.5	-0.6	2.1	6.1	-6.5	31.8
Manufacturing	190.9	194.0	5.7	3.1	7.5	16.3	1.6	4.0	9.2
	215.3	211.9	5.3	-3.4	8.7	11.2	-1.6	4.3	5.6
Services-producing sector									
	1,772.2	1,753.4	11.1	-18.8	18.1	22.5	-1.1	1.0	1.3
Trade	355.0	351.5	7.3	-3.5	11.1	-13.3	-1.0	3.3	-3.6
Transportation and warehousing	125.6	124.5	4.3	-1.1	7.3	1.3	-0.9	6.2	1.1
Finance, insurance, real estate and leasing	149.2	145.2	4.5	-4.0	-2.5	15.7	-2.7	-1.7	12.1
Professional, scientific and technical services	161.1	163.0	5.1	1.9	-1.5	-8.4	1.2	-0.9	-4.9
Business, building and other support services	95.4	96.2	4.3	0.8	-12.3	4.5	0.8	-11.3	4.9
Educational services	162.9	158.7	4.8	-4.2	-3.6	5.7	-2.6	-2.2	3.7
Health care and social assistance	248.5	241.6	5.4	-6.9	2.4	17.5	-2.8	1.0	7.8
Information, culture and recreation	123.5	123.3	4.6	-0.2	17.7	2.1	-0.2	16.8	1.7
Accommodation and food services	173.5	167.4	5.5	-6.1	-3.4	0.4	-3.5	-2.0	0.2
Other services	85.3	87.2	4.1	1.9	-1.8	-3.9	2.2	-2.0	-4.3
Public administration	92.2	94.8	3.5	2.6	4.8	0.8	2.8	5.3	0.9

1. Average standard error of change in two consecutive months (see "Sampling Errors" in Data Quality for further explanations).

Note(s): Related CANSIM tables 282-0087, 282-0088

Table 5-1
Labour force characteristics by census metropolitan area (seasonally adjusted) — 3 month moving average

	March 2007	April 2007	S.E. ¹	Change from			Percent change from		
				last month	last December	twelve months ago	last month	last December	twelve months ago
in thousands (except rates)									
St. John's, Newfoundland and Labrador									
Population	152.0	152.0	...	0.0	0.2	0.7	0.0	0.1	0.5
Labour force	98.9	98.8	0.8	-0.1	-3.5	-2.0	-0.1	-3.4	-2.0
Employment	91.3	91.6	0.8	0.3	-3.0	-0.2	0.3	-3.2	-0.2
Unemployment	7.6	7.2	0.5	-0.4	-0.5	-1.8	-5.3	-6.5	-20.0
Participation rate	65.1	65.0	0.5	-0.1	-2.4	-1.6
Unemployment rate	7.7	7.3	0.4	-0.4	-0.2	-1.6
Employment rate	60.1	60.3	0.5	0.2	-2.0	-0.4
Halifax, Nova Scotia									
Population	312.5	312.6	...	0.1	0.6	1.8	0.0	0.2	0.6
Labour force	217.3	217.9	1.1	0.6	0.5	3.3	0.3	0.2	1.5
Employment	207.8	207.6	1.1	-0.2	0.0	4.1	-0.1	0.0	2.0
Unemployment	9.5	10.3	0.6	0.8	0.4	-0.8	8.4	4.0	-7.2
Participation rate	69.5	69.7	0.4	0.2	0.0	0.7
Unemployment rate	4.4	4.7	0.3	0.3	0.1	-0.5
Employment rate	66.5	66.4	0.4	-0.1	-0.1	0.9
Saint John, New Brunswick									
Population	103.6	103.7	...	0.1	0.3	0.3	0.1	0.3	0.3
Labour force	66.3	66.1	0.7	-0.2	0.6	-0.4	-0.3	0.9	-0.6
Employment	62.9	63.1	0.7	0.2	1.3	0.8	0.3	2.1	1.3
Unemployment	3.3	2.9	0.3	-0.4	-0.8	-1.3	-12.1	-21.6	-31.0
Participation rate	64.0	63.7	0.6	-0.3	0.4	-0.6
Unemployment rate	5.0	4.4	0.5	-0.6	-1.2	-1.9
Employment rate	60.7	60.8	0.7	0.1	1.0	0.5
Saguenay, Quebec									
Population	125.8	125.8	...	0.0	-0.2	-0.3	0.0	-0.2	-0.2
Labour force	76.6	77.7	0.8	1.1	3.3	-1.9	1.4	4.4	-2.4
Employment	68.8	69.8	0.8	1.0	1.9	-3.0	1.5	2.8	-4.1
Unemployment	7.8	7.8	0.4	0.0	1.2	0.9	0.0	18.2	13.0
Participation rate	60.9	61.8	0.6	0.9	2.8	-1.3
Unemployment rate	10.2	10.0	0.5	-0.2	1.1	1.3
Employment rate	54.7	55.5	0.6	0.8	1.6	-2.2
Québec, Quebec									
Population	603.8	604.2	...	0.4	2.0	7.0	0.1	0.3	1.2
Labour force	395.5	394.7	3.2	-0.8	-0.8	-4.3	-0.2	-0.2	-1.1
Employment	376.5	376.6	3.3	0.1	4.7	-3.3	0.0	1.3	-0.9
Unemployment	19.0	18.1	1.5	-0.9	-5.5	-1.0	-4.7	-23.3	-5.2
Participation rate	65.5	65.3	0.5	-0.2	-0.4	-1.5
Unemployment rate	4.8	4.6	0.4	-0.2	-1.4	-0.2
Employment rate	62.4	62.3	0.6	-0.1	0.5	-1.3
Trois-Rivières, Quebec									
Population	120.2	120.2	...	0.0	0.3	1.3	0.0	0.3	1.1
Labour force	76.5	76.7	0.7	0.2	4.1	1.5	0.3	5.6	2.0
Employment	70.0	70.0	0.7	0.0	2.4	1.7	0.0	3.6	2.5
Unemployment	6.5	6.7	0.3	0.2	1.8	-0.2	3.1	36.7	-2.9
Participation rate	63.6	63.8	0.6	0.2	3.2	0.6
Unemployment rate	8.5	8.7	0.4	0.2	2.0	-0.5
Employment rate	58.2	58.2	0.6	0.0	1.8	0.8

See footnotes at the end of the table.

Table 5-1 – continued

Labour force characteristics by census metropolitan area (seasonally adjusted) — 3 month moving average

	March 2007	April 2007	S.E. ¹	Change from			Percent change from		
				last month	last December	twelve months ago	last month	last December	twelve months ago
in thousands (except rates)									
Sherbrooke, Quebec									
Population	136.2	136.3	...	0.1	0.5	1.6	0.1	0.4	1.2
Labour force	89.0	88.8	0.7	-0.2	-0.1	-1.1	-0.2	-0.1	-1.2
Employment	83.0	82.9	0.8	-0.1	0.7	0.1	-0.1	0.9	0.1
Unemployment	6.0	5.9	0.3	-0.1	-0.8	-1.2	-1.7	-11.9	-16.9
Participation rate	65.3	65.2	0.5	-0.1	-0.3	-1.5
Unemployment rate	6.7	6.6	0.4	-0.1	-0.9	-1.3
Employment rate	60.9	60.8	0.6	-0.1	0.3	-0.7
Montréal, Quebec									
Population	3,026.3	3,028.6	...	2.3	10.4	36.7	0.1	0.3	1.2
Labour force	2,029.3	2,029.3	7.3	0.0	-11.3	12.6	0.0	-0.6	0.6
Employment	1,878.2	1,886.5	7.5	8.3	1.1	55.1	0.4	0.1	3.0
Unemployment	151.1	142.8	4.9	-8.3	-12.4	-42.5	-5.5	-8.0	-22.9
Participation rate	67.1	67.0	0.2	-0.1	-0.6	-0.4
Unemployment rate	7.4	7.0	0.2	-0.4	-0.6	-2.2
Employment rate	62.1	62.3	0.3	0.2	-0.2	1.1
Ottawa-Gatineau, Ontario/Quebec									
Population	948.5	948.9	...	0.4	2.0	8.2	0.0	0.2	0.9
Labour force	672.5	677.2	3.2	4.7	11.3	-8.7	0.7	1.7	-1.3
Employment	635.4	640.5	3.4	5.1	12.3	-10.2	0.8	2.0	-1.6
Unemployment	37.1	36.7	1.6	-0.4	-1.0	1.4	-1.1	-2.7	4.0
Participation rate	70.9	71.4	0.3	0.5	1.1	-1.5
Unemployment rate	5.5	5.4	0.2	-0.1	-0.3	0.3
Employment rate	67.0	67.5	0.4	0.5	1.2	-1.7
Ottawa-Gatineau, Quebec part, Ontario/Quebec									
Population	238.3	238.7	...	0.4	1.5	4.4	0.2	0.6	1.9
Labour force	174.4	172.9	1.2	-1.5	0.6	3.5	-0.9	0.3	2.1
Employment	163.2	162.9	1.2	-0.3	1.4	3.6	-0.2	0.9	2.3
Unemployment	11.2	10.0	0.6	-1.2	-0.8	-0.1	-10.7	-7.4	-1.0
Participation rate	73.2	72.4	0.5	-0.8	-0.2	0.1
Unemployment rate	6.4	5.8	0.3	-0.6	-0.5	-0.2
Employment rate	68.5	68.2	0.5	-0.3	0.1	0.2
Ottawa-Gatineau, Ontario part, Ontario/Quebec									
Population	710.2	710.3	...	0.1	0.7	4.0	0.0	0.1	0.6
Labour force	498.1	504.3	3.0	6.2	10.6	-12.3	1.2	2.1	-2.4
Employment	472.2	477.6	3.2	5.4	10.9	-13.8	1.1	2.3	-2.8
Unemployment	25.9	26.7	1.5	0.8	-0.3	1.6	3.1	-1.1	6.4
Participation rate	70.1	71.0	0.4	0.9	1.4	-2.1
Unemployment rate	5.2	5.3	0.3	0.1	-0.2	0.4
Employment rate	66.5	67.2	0.5	0.7	1.4	-2.4
Kingston, Ontario									
Population	125.9	125.9	...	0.0	0.0	0.4	0.0	0.0	0.3
Labour force	84.5	84.7	0.8	0.2	3.7	2.4	0.2	4.6	2.9
Employment	80.8	81.0	0.8	0.2	4.2	3.5	0.2	5.5	4.5
Unemployment	3.7	3.7	0.3	0.0	-0.5	-1.1	0.0	-11.9	-22.9
Participation rate	67.1	67.3	0.6	0.2	3.0	1.7
Unemployment rate	4.4	4.4	0.4	0.0	-0.8	-1.4
Employment rate	64.2	64.3	0.6	0.1	3.3	2.5

See footnotes at the end of the table.

Table 5-1 – continued

Labour force characteristics by census metropolitan area (seasonally adjusted) — 3 month moving average

	March 2007	April 2007	S.E. ¹	Change from			Percent change from		
				last month	last December	twelve months ago	last month	last December	twelve months ago
in thousands (except rates)									
Toronto, Ontario									
Population	4,424.0	4,429.1	...	5.1	23.6	80.4	0.1	0.5	1.8
Labour force	3,073.0	3,071.1	9.0	-1.9	47.6	92.1	-0.1	1.6	3.1
Employment	2,865.9	2,860.3	9.2	-5.6	37.8	76.9	-0.2	1.3	2.8
Unemployment	207.1	210.8	5.4	3.7	9.8	15.2	1.8	4.9	7.8
Participation rate	69.5	69.3	0.2	-0.2	0.7	0.8
Unemployment rate	6.7	6.9	0.2	0.2	0.3	0.3
Employment rate	64.8	64.6	0.2	-0.2	0.5	0.6
Hamilton, Ontario									
Population	591.1	591.3	...	0.2	1.2	5.1	0.0	0.2	0.9
Labour force	394.1	396.1	2.9	2.0	7.0	-2.1	0.5	1.8	-0.5
Employment	368.2	371.9	3.0	3.7	6.5	-4.1	1.0	1.8	-1.1
Unemployment	25.9	24.1	1.3	-1.8	0.3	1.9	-6.9	1.3	8.6
Participation rate	66.7	67.0	0.5	0.3	1.1	-0.9
Unemployment rate	6.6	6.1	0.3	-0.5	0.0	0.5
Employment rate	62.3	62.9	0.5	0.6	1.0	-1.2
Kitchener, Ontario									
Population	375.0	375.4	...	0.4	1.8	6.2	0.1	0.5	1.7
Labour force	266.7	264.8	1.9	-1.9	-7.2	2.4	-0.7	-2.6	0.9
Employment	251.6	249.7	2.0	-1.9	-7.6	0.3	-0.8	-3.0	0.1
Unemployment	15.0	15.2	0.9	0.2	0.5	2.3	1.3	3.4	17.8
Participation rate	71.1	70.5	0.5	-0.6	-2.3	-0.6
Unemployment rate	5.6	5.7	0.3	0.1	0.3	0.8
Employment rate	67.1	66.5	0.5	-0.6	-2.4	-1.1
London, Ontario									
Population	380.3	380.4	...	0.1	0.8	3.6	0.0	0.2	1.0
Labour force	264.4	261.9	1.7	-2.5	-5.7	1.6	-0.9	-2.1	0.6
Employment	249.2	247.3	1.8	-1.9	-3.7	2.8	-0.8	-1.5	1.1
Unemployment	15.2	14.6	0.9	-0.6	-2.0	-1.2	-3.9	-12.0	-7.6
Participation rate	69.5	68.8	0.5	-0.7	-1.7	-0.3
Unemployment rate	5.7	5.6	0.3	-0.1	-0.6	-0.5
Employment rate	65.5	65.0	0.5	-0.5	-1.1	0.1
Oshawa, Ontario									
Population	279.5	280.1	...	0.6	2.6	8.0	0.2	0.9	2.9
Labour force	189.5	190.4	1.3	0.9	0.3	3.9	0.5	0.2	2.1
Employment	177.9	178.6	1.4	0.7	1.2	3.4	0.4	0.7	1.9
Unemployment	11.6	11.8	0.7	0.2	-0.9	0.6	1.7	-7.1	5.4
Participation rate	67.8	68.0	0.5	0.2	-0.5	-0.5
Unemployment rate	6.1	6.2	0.4	0.1	-0.5	0.2
Employment rate	63.6	63.8	0.5	0.2	-0.1	-0.6
St. Catharines-Niagara, Ontario									
Population	327.8	327.8	...	0.0	0.2	1.4	0.0	0.1	0.4
Labour force	202.9	206.6	1.7	3.7	5.7	6.8	1.8	2.8	3.4
Employment	190.1	193.5	1.7	3.4	5.4	6.1	1.8	2.9	3.3
Unemployment	12.8	13.1	0.7	0.3	0.4	0.7	2.3	3.1	5.6
Participation rate	61.9	63.0	0.5	1.1	1.7	1.8
Unemployment rate	6.3	6.3	0.3	0.0	0.0	0.1
Employment rate	58.0	59.0	0.5	1.0	1.6	1.6

See footnotes at the end of the table.

Table 5-1 – continued

Labour force characteristics by census metropolitan area (seasonally adjusted) — 3 month moving average

	March 2007	April 2007	S.E. ¹	Change from			Percent change from		
				last month	last December	twelve months ago	last month	last December	twelve months ago
in thousands (except rates)									
Greater Sudbury / Grand Sudbury, Ontario									
Population	132.7	132.7	...	0.0	0.0	0.3	0.0	0.0	0.2
Labour force	84.6	84.9	0.7	0.3	0.6	1.6	0.4	0.7	1.9
Employment	79.7	80.3	0.7	0.6	1.2	3.7	0.8	1.5	4.8
Unemployment	4.9	4.6	0.3	-0.3	-0.6	-2.0	-6.1	-11.5	-30.3
Participation rate	63.8	64.0	0.5	0.2	0.5	1.1
Unemployment rate	5.8	5.4	0.4	-0.4	-0.8	-2.5
Employment rate	60.1	60.5	0.6	0.4	0.9	2.6
Thunder Bay, Ontario									
Population	104.2	104.2	...	0.0	-0.1	0.0	0.0	-0.1	0.0
Labour force	66.1	66.7	0.6	0.6	1.4	-0.1	0.9	2.1	-0.1
Employment	61.5	62.3	0.7	0.8	1.5	0.8	1.3	2.5	1.3
Unemployment	4.6	4.4	0.3	-0.2	0.0	-0.9	-4.3	0.0	-17.0
Participation rate	63.4	64.0	0.6	0.6	1.4	-0.1
Unemployment rate	7.0	6.6	0.5	-0.4	-0.1	-1.3
Employment rate	59.0	59.8	0.6	0.8	1.5	0.8
Windsor, Ontario									
Population	271.4	271.4	...	0.0	0.2	1.5	0.0	0.1	0.6
Labour force	173.4	173.0	1.4	-0.4	-6.8	-5.4	-0.2	-3.8	-3.0
Employment	156.7	156.8	1.4	0.1	-6.8	-6.0	0.1	-4.2	-3.7
Unemployment	16.8	16.3	0.8	-0.5	0.1	0.8	-3.0	0.6	5.2
Participation rate	63.9	63.7	0.5	-0.2	-2.6	-2.4
Unemployment rate	9.7	9.4	0.4	-0.3	0.4	0.7
Employment rate	57.7	57.8	0.5	0.1	-2.5	-2.5
Winnipeg, Manitoba									
Population	573.8	574.4	...	0.6	1.8	4.0	0.1	0.3	0.7
Labour force	406.2	408.1	1.4	1.9	6.4	8.6	0.5	1.6	2.2
Employment	386.7	388.4	1.4	1.7	5.8	8.5	0.4	1.5	2.2
Unemployment	19.5	19.7	0.7	0.2	0.6	0.1	1.0	3.1	0.5
Participation rate	70.8	71.0	0.2	0.2	0.8	1.0
Unemployment rate	4.8	4.8	0.2	0.0	0.0	-0.1
Employment rate	67.4	67.6	0.2	0.2	0.8	1.0
Regina, Saskatchewan									
Population	161.9	162.1	...	0.2	0.8	1.3	0.1	0.5	0.8
Labour force	116.9	116.7	0.7	-0.2	-0.7	4.2	-0.2	-0.6	3.7
Employment	112.3	111.9	0.7	-0.4	-0.3	5.3	-0.4	-0.3	5.0
Unemployment	4.7	4.8	0.3	0.1	-0.4	-1.1	2.1	-7.7	-18.6
Participation rate	72.2	72.0	0.4	-0.2	-0.8	2.0
Unemployment rate	4.0	4.1	0.3	0.1	-0.3	-1.1
Employment rate	69.4	69.0	0.5	-0.4	-0.6	2.7
Saskatoon, Saskatchewan									
Population	189.5	189.7	...	0.2	0.9	1.8	0.1	0.5	1.0
Labour force	140.0	140.2	0.8	0.2	2.0	8.5	0.1	1.4	6.5
Employment	134.9	134.7	0.9	-0.2	1.1	9.5	-0.1	0.8	7.6
Unemployment	5.1	5.4	0.4	0.3	0.9	-1.1	5.9	20.0	-16.9
Participation rate	73.9	73.9	0.4	0.0	0.7	3.8
Unemployment rate	3.6	3.9	0.3	0.3	0.6	-1.0
Employment rate	71.2	71.0	0.5	-0.2	0.2	4.4

See footnotes at the end of the table.

Table 5-1 – continued

Labour force characteristics by census metropolitan area (seasonally adjusted) — 3 month moving average

	March 2007	April 2007	S.E. ¹	Change from			Percent change from		
				last month	last December	twelve months ago	last month	last December	twelve months ago
in thousands (except rates)									
Calgary, Alberta									
Population	912.0	914.6	...	2.6	12.2	38.3	0.3	1.4	4.4
Labour force	695.0	697.0	3.1	2.0	4.1	32.4	0.3	0.6	4.9
Employment	672.0	672.8	3.2	0.8	-2.1	28.9	0.1	-0.3	4.5
Unemployment	23.0	24.1	1.4	1.1	6.1	3.4	4.8	33.9	16.4
Participation rate	76.2	76.2	0.4	0.0	-0.6	0.4
Unemployment rate	3.3	3.5	0.2	0.2	0.9	0.4
Employment rate	73.7	73.6	0.4	-0.1	-1.2	0.1
Edmonton, Alberta									
Population	858.0	859.9	...	1.9	9.5	31.2	0.2	1.1	3.8
Labour force	613.8	613.0	3.1	-0.8	16.1	41.9	-0.1	2.7	7.3
Employment	592.6	592.8	3.2	0.2	18.1	43.7	0.0	3.1	8.0
Unemployment	21.2	20.2	1.4	-1.0	-2.0	-1.7	-4.7	-9.0	-7.8
Participation rate	71.5	71.3	0.4	-0.2	1.1	2.4
Unemployment rate	3.5	3.3	0.2	-0.2	-0.4	-0.5
Employment rate	69.1	68.9	0.4	-0.2	1.3	2.6
Abbotsford, British Columbia									
Population	130.6	130.8	...	0.2	1.2	3.8	0.2	0.9	3.0
Labour force	88.1	87.9	0.7	-0.2	-0.3	2.6	-0.2	-0.3	3.0
Employment	84.2	83.8	0.8	-0.4	-0.5	2.5	-0.5	-0.6	3.1
Unemployment	3.8	4.1	0.3	0.3	0.2	0.1	7.9	5.1	2.5
Participation rate	67.5	67.2	0.6	-0.3	-0.9	0.0
Unemployment rate	4.3	4.7	0.3	0.4	0.3	0.0
Employment rate	64.5	64.1	0.6	-0.4	-0.9	0.1
Vancouver, British Columbia									
Population	1,883.4	1,886.0	...	2.6	10.8	34.3	0.1	0.6	1.9
Labour force	1,266.8	1,266.9	4.8	0.1	8.1	41.0	0.0	0.6	3.3
Employment	1,220.8	1,219.7	4.8	-1.1	19.5	46.1	-0.1	1.6	3.9
Unemployment	45.9	47.2	2.3	1.3	-11.4	-5.1	2.8	-19.5	-9.8
Participation rate	67.3	67.2	0.3	-0.1	0.1	1.0
Unemployment rate	3.6	3.7	0.2	0.1	-1.0	-0.6
Employment rate	64.8	64.7	0.3	-0.1	0.7	1.3
Victoria, British Columbia									
Population	281.8	282.1	...	0.3	1.6	5.5	0.1	0.6	2.0
Labour force	182.8	183.3	1.4	0.5	-2.1	2.5	0.3	-1.1	1.4
Employment	177.0	176.9	1.4	-0.1	-1.9	3.1	-0.1	-1.1	1.8
Unemployment	5.9	6.4	0.6	0.5	-0.2	-0.7	8.5	-3.0	-9.9
Participation rate	64.9	65.0	0.5	0.1	-1.1	-0.4
Unemployment rate	3.2	3.5	0.3	0.3	-0.1	-0.4
Employment rate	62.8	62.7	0.5	-0.1	-1.0	-0.1

1. Average standard error of change in two consecutive months (see "Sampling Errors" in Data Quality for further explanations).

Note(s): Related CANSIM table 282-0090

Table 5-2
Labour force characteristics by census metropolitan area (seasonally adjusted) — Monthly

	March 2007	April 2007	S.E. ¹	Change from			Percent change from		
				last month	last December	twelve months ago	last month	last December	twelve months ago
in thousands (except rates)									
Montréal, Quebec									
Population	3,028.3	3,030.9	...	2.6	9.9	36.0	0.1	0.3	1.2
Labour force	2,037.4	2,026.2	15.4	-11.2	-1.1	21.0	-0.5	-0.1	1.0
Employment	1,889.6	1,901.4	15.5	11.8	21.6	80.3	0.6	1.1	4.4
Unemployment	147.8	124.8	11.8	-23.0	-22.6	-59.3	-15.6	-15.3	-32.2
Participation rate	67.3	66.9	0.5	-0.4	-0.2	-0.1
Unemployment rate	7.3	6.2	0.6	-1.1	-1.1	-3.0
Employment rate	62.4	62.7	0.5	0.3	0.5	1.9
Toronto, Ontario									
Population	4,428.5	4,434.5	...	6.0	22.8	79.2	0.1	0.5	1.8
Labour force	3,071.9	3,066.7	19.3	-5.2	17.5	80.6	-0.2	0.6	2.7
Employment	2,853.5	2,856.8	19.1	3.3	0.2	65.2	0.1	0.0	2.3
Unemployment	218.4	210.0	13.2	-8.4	17.4	15.6	-3.8	9.0	8.0
Participation rate	69.4	69.2	0.4	-0.2	0.1	0.6
Unemployment rate	7.1	6.8	0.4	-0.3	0.5	0.3
Employment rate	64.4	64.4	0.4	0.0	-0.4	0.3
Vancouver, British Columbia									
Population	1,885.8	1,889.1	...	3.3	11.4	34.7	0.2	0.6	1.9
Labour force	1,267.6	1,265.2	10.0	-2.4	7.9	31.5	-0.2	0.6	2.6
Employment	1,225.4	1,204.6	10.2	-20.8	12.5	21.5	-1.7	1.0	1.8
Unemployment	42.1	60.5	5.8	18.4	-4.6	9.9	43.7	-7.1	19.6
Participation rate	67.2	67.0	0.5	-0.2	0.0	0.5
Unemployment rate	3.3	4.8	0.5	1.5	-0.4	0.7
Employment rate	65.0	63.8	0.5	-1.2	0.3	0.0

1. Average standard error of change in two consecutive months (see "Sampling Errors" in Data Quality for further explanations).

Note(s): Related CANSIM table 282-0091

Table 6-1

Labour force characteristics by province and economic region¹, unadjusted for seasonality, 3 month moving average ending in April 2006 and April 2007

	Population	Labour force			Participation rate	Unemployment rate	Employment rate
		Labour force	Employment	Unemployment			
in thousands							
Canada²							
2006	26,071.9	17,268.4	16,114.8	1,153.7	66.2	6.7	61.8
2007	26,444.1	17,645.7	16,509.2	1,136.5	66.7	6.4	62.4
Newfoundland and Labrador							
2006	428.7	243.3	200.3	43.0	56.8	17.7	46.7
2007	425.5	243.2	204.8	38.4	57.2	15.8	48.1
<i>Avalon Peninsula [1010]</i>							
2006	209.9	128.8	113.0	15.8	61.4	12.3	53.8
2007	210.1	128.4	112.8	15.6	61.1	12.1	53.7
<i>South Coast-Burin Peninsula [1020]</i>							
2006	34.0	17.5	13.1	4.4	51.5	25.1	38.5
2007	33.1	17.2	12.7	4.5	52.0	26.2	38.4
<i>West Coast-Northern Peninsula-Labrador [1030]</i>							
2006	88.8	48.9	38.1	10.8	55.1	22.1	42.9
2007	87.8	49.6	40.7	8.9	56.5	17.9	46.4
<i>Notre Dame-Central Bonavista Bay [1040]</i>							
2006	96.1	48.0	36.0	12.0	49.9	25.0	37.5
2007	94.5	48.0	38.6	9.4	50.8	19.6	40.8
Prince Edward Island							
2006	112.0	74.8	63.9	10.9	66.8	14.6	57.1
2007	112.8	75.0	65.3	9.7	66.5	12.9	57.9
Nova Scotia							
2006	762.5	472.5	429.6	42.9	62.0	9.1	56.3
2007	763.6	478.7	436.5	42.2	62.7	8.8	57.2
<i>Cape Breton [1210]</i>							
2006	117.1	60.8	51.7	9.1	51.9	15.0	44.2
2007	116.5	62.4	52.5	10.0	53.6	16.0	45.1
<i>North Shore [1220]</i>							
2006	131.2	79.8	71.3	8.6	60.8	10.8	54.3
2007	130.9	76.5	67.3	9.2	58.4	12.0	51.4
<i>Annapolis Valley [1230]</i>							
2006	99.6	60.1	54.4	5.7	60.3	9.5	54.6
2007	100.0	63.1	58.1	4.9	63.1	7.8	58.1
<i>Southern [1240]</i>							
2006	103.8	59.2	51.5	7.8	57.0	13.2	49.6
2007	103.6	60.6	53.7	6.9	58.5	11.4	51.8
<i>Halifax [1250]</i>							
2006	310.8	212.6	200.7	11.8	68.4	5.6	64.6
2007	312.6	216.1	204.9	11.2	69.1	5.2	65.5
New Brunswick							
2006	611.4	384.2	343.8	40.5	62.8	10.5	56.2
2007	612.1	377.5	346.6	30.9	61.7	8.2	56.6
<i>Campbellton-Miramichi [1310]</i>							
2006	137.1	77.0	65.0	12.0	56.2	15.6	47.4
2007	135.8	77.3	67.2	10.1	56.9	13.1	49.5
<i>Moncton-Richibucto [1320]</i>							
2006	161.1	104.7	94.0	10.7	65.0	10.2	58.3
2007	162.5	101.4	92.4	9.0	62.4	8.9	56.9
<i>Saint John-St. Stephen [1330]</i>							
2006	141.3	91.2	83.4	7.9	64.5	8.7	59.0
2007	141.7	86.7	82.4	4.4	61.2	5.1	58.2

See footnotes at the end of the table.

Table 6-1 – continued

Labour force characteristics by province and economic region¹, unadjusted for seasonality, 3 month moving average ending in April 2006 and April 2007

	Population	Labour force			Participation rate	Unemployment rate	Employment rate
		Labour force	Employment	Unemployment			
in thousands							
Fredericton-Oromocto [1340]							
2006	103.5	67.1	61.2	5.9	64.8	8.8	59.1
2007	104.1	69.9	66.1	3.8	67.1	5.4	63.5
Edmundston-Woodstock [1350]							
2006	68.4	44.2	40.2	4.0	64.6	9.0	58.8
2007	68.0	42.1	38.5	3.6	61.9	8.6	56.6
Quebec							
2006	6,230.3	4,030.9	3,672.4	358.5	64.7	8.9	58.9
2007	6,297.9	4,086.5	3,753.1	333.4	64.9	8.2	59.6
Gaspésie-Îles-de-la-Madeleine [2410]							
2006	80.6	38.0	29.0	9.0	47.1	23.7	36.0
2007	80.9	41.5	33.0	8.4	51.3	20.2	40.8
Bas-Saint-Laurent [2415]							
2006	167.0	97.1	85.3	11.8	58.1	12.2	51.1
2007	167.3	98.2	86.9	11.3	58.7	11.5	51.9
Capitale-Nationale [2420]							
2006	558.2	368.6	347.3	21.3	66.0	5.8	62.2
2007	563.2	362.5	342.1	20.5	64.4	5.7	60.7
Chaudière-Appalaches [2425]							
2006	324.0	214.4	201.0	13.4	66.2	6.3	62.0
2007	326.9	218.8	201.4	17.4	66.9	8.0	61.6
Estrie [2430]							
2006	245.7	157.7	144.4	13.4	64.2	8.5	58.8
2007	247.9	160.7	147.1	13.6	64.8	8.5	59.3
Centre-du-Québec [2433]							
2006	183.2	122.4	111.8	10.6	66.8	8.7	61.0
2007	184.9	129.2	116.7	12.4	69.9	9.6	63.1
Montérégie [2435]							
2006	1,106.2	737.6	683.6	53.9	66.7	7.3	61.8
2007	1,120.0	745.0	700.0	45.1	66.5	6.1	62.5
Montréal [2440]							
2006	1,578.6	1,032.1	914.8	117.3	65.4	11.4	58.0
2007	1,592.1	1,018.2	929.7	88.4	64.0	8.7	58.4
Laval [2445]							
2006	303.0	197.1	182.5	14.6	65.0	7.4	60.2
2007	307.7	205.1	193.3	11.8	66.7	5.8	62.8
Lanaudière [2450]							
2006	341.5	218.5	203.5	15.0	64.0	6.9	59.6
2007	349.9	231.9	216.5	15.4	66.3	6.6	61.9
Laurentides [2455]							
2006	413.2	268.6	241.5	27.1	65.0	10.1	58.4
2007	422.4	281.2	253.8	27.5	66.6	9.8	60.1
Outaouais [2460]							
2006	283.7	196.6	182.7	13.9	69.3	7.1	64.4
2007	288.5	196.0	181.2	14.8	67.9	7.6	62.8
Abitibi-Témiscamingue [2465]							
2006	115.3	72.0	65.4	6.6	62.4	9.2	56.7
2007	115.6	74.6	67.1	7.5	64.5	10.1	58.0
Mauricie [2470]							
2006	216.1	119.5	108.6	10.9	55.3	9.1	50.3
2007	217.2	131.2	115.5	15.7	60.4	12.0	53.2

See footnotes at the end of the table.

Table 6-1 – continued

Labour force characteristics by province and economic region¹, unadjusted for seasonality, 3 month moving average ending in April 2006 and April 2007

	Population	Labour force			Participation rate	Unemployment rate	Employment rate
		Labour force	Employment	Unemployment			
in thousands							
Saguenay-Lac-Saint-Jean [2475]							
2006	224.4	136.0	121.5	14.5	60.6	10.7	54.1
2007	224.1	139.2	121.7	17.5	62.1	12.6	54.3
Côte-Nord and Nord-du-Québec [2480, 2490]							
2006	89.6	54.6	49.3	5.3	60.9	9.7	55.0
2007	89.5	53.1	47.1	6.0	59.3	11.3	52.6
Ontario							
2006	10,186.3	6,803.4	6,373.3	430.1	66.8	6.3	62.6
2007	10,319.8	6,931.9	6,471.0	460.9	67.2	6.6	62.7
Ottawa [3510]							
2006	976.3	679.4	645.0	34.4	69.6	5.1	66.1
2007	982.4	676.5	636.7	39.8	68.9	5.9	64.8
Kingston-Pembroke [3515]							
2006	357.1	210.8	197.9	12.9	59.0	6.1	55.4
2007	358.6	214.4	201.7	12.7	59.8	5.9	56.2
Muskoka-Kawarthas [3520]							
2006	305.1	185.0	171.5	13.5	60.6	7.3	56.2
2007	308.1	192.9	177.3	15.6	62.6	8.1	57.5
Toronto [3530]							
2006	4,582.3	3,098.4	2,900.7	197.8	67.6	6.4	63.3
2007	4,669.3	3,191.9	2,976.9	214.9	68.4	6.7	63.8
Kitchener-Waterloo-Barrie [3540]							
2006	943.8	675.3	640.0	35.3	71.6	5.2	67.8
2007	962.1	684.9	644.9	40.0	71.2	5.8	67.0
Hamilton-Niagara Peninsula [3550]							
2006	1,118.9	724.8	678.2	46.6	64.8	6.4	60.6
2007	1,129.6	733.3	684.7	48.7	64.9	6.6	60.6
London [3560]							
2006	504.4	346.1	323.1	23.1	68.6	6.7	64.1
2007	509.1	349.5	328.3	21.2	68.7	6.1	64.5
Windsor-Sarnia [3570]							
2006	521.9	343.6	316.6	27.0	65.8	7.9	60.7
2007	523.9	335.6	305.4	30.1	64.1	9.0	58.3
Stratford-Bruce Peninsula [3580]							
2006	246.1	159.9	151.1	8.8	65.0	5.5	61.4
2007	247.2	157.3	149.3	8.0	63.6	5.1	60.4
Northeast [3590]							
2006	453.0	268.5	248.8	19.7	59.3	7.3	54.9
2007	453.2	278.3	257.4	20.9	61.4	7.5	56.8
Northwest [3595]							
2006	177.4	111.5	100.5	10.9	62.9	9.8	56.7
2007	176.4	117.5	108.5	9.0	66.6	7.7	61.5
Manitoba							
2006	890.6	606.5	578.0	28.5	68.1	4.7	64.9
2007	895.7	614.5	585.1	29.4	68.6	4.8	65.3
Southeast [4610]							
2006	74.2	53.8	51.4	2.4	72.5	4.5	69.3
2007	75.8	50.1	47.6	2.5	66.1	5.0	62.8
South Central [4620]							
2006	42.3	26.6	25.9	0.7	62.9	2.6	61.2
2007	42.8	28.7	27.3	1.3	67.1	4.5	63.8

See footnotes at the end of the table.

Table 6-1 – continued

 Labour force characteristics by province and economic region¹, unadjusted for seasonality, 3 month moving average ending in April 2006 and April 2007

	Population	Labour force			Participation rate	Unemployment rate	Employment rate
		Labour force	Employment	Unemployment			
in thousands							
Southwest [4630]							
2006	81.7	54.4	51.8	2.6	66.6	4.8	63.4
2007	81.8	54.6	52.2	2.4	66.7	4.4	63.8
North Central [4640]							
2006	35.4	22.9	22.4	0.6	64.7	2.6	63.3
2007	35.6	22.9	22.4	0.5	64.3	2.2	62.9
Winnipeg [4650]							
2006	528.1	361.8	342.8	19.1	68.5	5.3	64.9
2007	531.1	373.3	354.3	19.0	70.3	5.1	66.7
Interlake [4660]							
2006	68.4	46.5	44.9	1.6	68.0	3.4	65.6
2007	69.2	45.2	43.8	1.4	65.3	3.1	63.3
Parklands and North [4670, 4680]							
2006	60.5	40.4	38.7	1.7	66.8	4.2	64.0
2007	59.4	39.7	37.6	2.1	66.8	5.3	63.3
Saskatchewan							
2006	747.0	503.2	475.4	27.8	67.4	5.5	63.6
2007	748.0	515.8	493.9	21.9	69.0	4.2	66.0
Regina-Moose Mountain [4710]							
2006	219.1	148.7	141.8	7.0	67.9	4.7	64.7
2007	219.9	154.9	149.2	5.7	70.4	3.7	67.8
Swift Current-Moose Jaw [4720]							
2006	82.7	56.7	53.6	3.2	68.6	5.6	64.8
2007	82.5	56.4	54.3	2.1	68.4	3.7	65.8
Saskatoon-Biggar [4730]							
2006	230.7	158.1	150.0	8.1	68.5	5.1	65.0
2007	232.2	166.8	160.3	6.5	71.8	3.9	69.0
Yorkton-Melville [4740]							
2006	65.0	42.6	40.4	2.2	65.5	5.2	62.2
2007	64.1	42.6	40.2	2.4	66.5	5.6	62.7
Prince Albert and Northern [4750, 4760]							
2006	149.5	97.0	89.6	7.4	64.9	7.6	59.9
2007	149.4	95.1	89.9	5.2	63.7	5.5	60.2
Alberta							
2006	2,610.6	1,882.6	1,819.6	63.0	72.1	3.3	69.7
2007	2,716.5	1,991.4	1,922.0	69.4	73.3	3.5	70.8
Lethbridge-Medicine Hat [4810]							
2006	198.3	137.7	134.1	3.6	69.4	2.6	67.6
2007	205.3	139.7	133.4	6.3	68.0	4.5	65.0
Camrose-Drumheller [4820]							
2006	149.5	106.1	102.8	3.3	71.0	3.1	68.8
2007	153.9	111.8	107.6	4.2	72.6	3.8	69.9
Calgary [4830]							
2006	942.0	708.5	687.3	21.1	75.2	3.0	73.0
2007	984.5	748.3	724.0	24.3	76.0	3.2	73.5
Banff-Jasper-Rocky Mountain House [4840]							
2006	65.4	49.5	48.7	x	75.7	x	74.5
2007	67.4	54.6	52.9	1.7	81.0	3.1	78.5
Red Deer [4850]							
2006	134.2	99.8	95.5	4.4	74.4	4.4	71.2
2007	140.6	106.1	102.6	3.5	75.5	3.3	73.0

See footnotes at the end of the table.

Table 6-1 – continued

Labour force characteristics by province and economic region¹, unadjusted for seasonality, 3 month moving average ending in April 2006 and April 2007

	Population	Labour force			Participation rate	Unemployment rate	Employment rate
		Labour force	Employment	Unemployment			
in thousands							
Edmonton [4860]							
2006	860.1	584.1	561.4	22.7	67.9	3.9	65.3
2007	892.8	625.4	604.7	20.8	70.0	3.3	67.7
Athabasca-Grande Prairie-Peace River [4870]							
2006	175.3	131.2	127.4	3.8	74.8	2.9	72.7
2007	181.8	137.0	131.5	5.6	75.4	4.1	72.3
Wood Buffalo-Cold Lake [4880]							
2006	85.8	65.6	62.3	3.3	76.5	5.0	72.6
2007	90.2	68.3	65.4	2.9	75.7	4.2	72.5
British Columbia							
2006	3,492.5	2,267.0	2,158.6	108.5	64.9	4.8	61.8
2007	3,552.1	2,331.3	2,231.0	100.4	65.6	4.3	62.8
Vancouver Island and Coast [5910]							
2006	608.6	386.1	366.9	19.1	63.4	4.9	60.3
2007	619.8	388.9	368.4	20.5	62.7	5.3	59.4
Lower Mainland-Southwest [5920]							
2006	2,106.6	1,377.8	1,318.2	59.6	65.4	4.3	62.6
2007	2,147.5	1,428.8	1,375.1	53.7	66.5	3.8	64.0
Thompson-Okanagan [5930]							
2006	410.7	264.5	248.6	15.9	64.4	6.0	60.5
2007	420.7	266.7	254.8	11.9	63.4	4.5	60.6
Kootenay [5940]							
2006	122.2	70.7	66.7	4.0	57.9	5.7	54.6
2007	121.9	81.1	76.5	4.6	66.5	5.7	62.8
Cariboo [5950]							
2006	126.1	88.1	82.9	5.2	69.9	5.9	65.7
2007	124.7	84.1	79.7	4.4	67.4	5.2	63.9
North Coast and Nechako [5960, 5970]							
2006	67.9	45.6	42.1	3.5	67.2	7.7	62.0
2007	66.3	44.2	40.4	3.8	66.7	8.6	60.9
Northeast [5980]							
2006	50.3	34.3	33.2	x	68.2	x	66.0
2007	51.1	37.5	36.1	x	73.4	x	70.6

1. For geographic descriptions of economic regions, refer to the Guide to the Labour Force Survey (catalogue number 71-543-GIE).

2. Estimates for Canada are a sum of the provincial totals and exclude estimates from Yukon Territory, Northwest Territories and Nunavut.

Note(s): Related CANSIM table 282-0054.

Table 6-2
Labour force characteristics by territories, unadjusted for seasonality, 3 month moving average ending in April 2006 and April 2007

	Population	Labour force			Participation rate	Unemployment rate	Employment rate
		Labour force	Employment	Unemployment			
in thousands							
Yukon Territory ¹							
2006	21.6	16.1	15.2	0.8	74.5	5.0	70.4
2007	21.4	15.2	14.4	0.7	71.0	4.6	67.3
Northwest Territories ²							
2006	31.3	23.8	22.7	1.1	76.0	4.6	72.5
2007	30.8	23.9	22.7	1.3	77.6	5.4	73.7
Nunavut - 10 largest communities ³							
2006	13.8	8.7	8.0	0.7	63.1	8.6	57.7
2007	14.0	9.8	9.0	0.7	69.8	7.7	64.5

1. Since 1992, the Labour force survey has been administered in the Yukon Territory, using an alternative methodology that accommodates some of the operational difficulties inherent to remote locales. These estimates are not included in national totals.
2. Since 2001, the Labour force survey has been administered in the Northwest Territories, using an alternative methodology that accommodates some of the operational difficulties inherent to remote locales. These estimates are not included in national totals.
3. Since 2004, the Labour force survey has been administered in Nunavut, using an alternative methodology that accommodates some of the operational difficulties inherent to remote locales. These estimates are not included in national totals. The 10 largest communities are Iqaluit, Cambridge Bay, Baker Lake, Arviat, Rankin Inlet, Kugluktuk, Pond Inlet, Cape Dorset, Pangnirtung, Igloolik.

Note(s): Related CANSIM table 282-0054.

Table 7
Average usual hours and wages of employees by selected characteristics, Canada, unadjusted for seasonality

	Employees				Full-time			Part-time		
	Number	Average weekly hours	Average weekly wages	Average hourly wages	Number	Average weekly hours	Average weekly wages	Number	Average weekly hours	Average weekly wages
	thousands		dollars		thousands		dollars	thousands		dollars
April 2007										
15 years and over	13,988.6	35.2	740.73	20.26	11,354.0	39.4	854.52	2,634.6	17.1	250.34
15 to 24 years	2,322.7	27.0	341.46	11.68	1,162.9	38.9	533.58	1,159.8	15.1	148.83
25 years and over	11,665.9	36.8	820.22	21.97	10,191.1	39.4	891.14	1,474.7	18.7	330.17
Men	6,980.8	37.7	854.12	22.00	6,172.3	40.6	938.25	808.5	16.1	211.83
Women	7,007.8	32.6	627.77	18.53	5,181.7	37.9	754.78	1,826.1	17.6	267.39
Union coverage										
Union coverage	4,487.4	35.8	845.27	23.34	3,826.0	38.7	926.27	661.4	18.9	376.78
No union coverage	9,501.2	34.9	691.35	18.81	7,528.0	39.7	818.05	1,973.2	16.5	207.96
Job permanency										
Permanent	12,314.2	36.1	773.84	20.77	10,425.0	39.4	865.49	1,889.2	18.1	268.10
Temporary	1,674.4	28.2	497.17	16.52	929.0	39.2	731.35	745.4	14.5	205.32
Occupation										
Management	993.4	39.9	1,258.81	31.63	969.9	40.4	1,278.62	23.5	18.9	439.35
Business, finance and administrative	2,719.0	35.2	695.16	19.30	2,308.7	38.4	769.29	410.4	17.8	278.13
Natural and applied sciences	992.2	38.8	1,106.01	28.48	964.1	39.4	1,127.27	28.0	17.6	375.24
Health	873.2	33.2	802.46	24.16	653.7	37.6	912.13	219.5	19.8	475.75
Social science, education, government service and religion	1,288.3	33.7	896.15	26.26	1,021.1	38.1	1,022.27	267.3	17.0	414.32
Art, culture, recreation and sport	291.5	31.3	698.90	21.11	207.5	38.6	888.72	84.0	13.3	230.08
Sales and service	3,650.0	30.2	437.57	13.43	2,252.9	38.5	599.93	1,397.1	16.7	175.75
Trades, transport and equipment operators	1,989.1	39.8	814.41	20.23	1,851.3	41.4	857.72	137.9	17.6	232.93
Occupations unique to primary industry	257.3	41.4	766.71	17.70	222.0	45.7	861.69	35.3	14.4	169.64
Occupations unique to processing, manufacturing and utilities	934.5	39.3	695.91	17.53	902.8	40.1	713.20	31.7	16.4	203.83
April 2006										
15 years and over	13,680.2	35.4	724.06	19.69	11,144.7	39.5	833.34	2,535.5	17.3	243.75
15 to 24 years	2,270.2	27.4	331.97	11.20	1,162.8	39.3	513.26	1,107.4	15.0	141.61
25 years and over	11,409.9	37.0	802.08	21.38	9,981.9	39.6	870.62	1,428.0	19.0	322.97
Men	6,908.8	38.0	838.96	21.47	6,127.5	40.8	919.28	781.3	16.4	209.04
Women	6,771.4	32.7	606.83	17.88	5,017.2	38.0	728.37	1,754.2	17.7	259.21
Union coverage										
Union coverage	4,423.2	35.9	823.32	22.63	3,786.8	38.8	899.99	636.3	19.0	367.04
No union coverage	9,257.0	35.2	676.64	18.29	7,357.9	39.9	799.03	1,899.1	16.7	202.44
Job permanency										
Permanent	12,082.3	36.3	756.83	20.24	10,253.8	39.5	845.04	1,828.6	18.3	262.18
Temporary	1,597.8	28.6	476.27	15.59	890.9	39.6	698.59	706.9	14.8	196.08
Occupation										
Management	1,007.9	40.2	1,227.34	30.65	981.7	40.7	1,248.44	26.2	20.8	437.58
Business, finance and administrative	2,675.4	35.2	672.63	18.69	2,272.7	38.3	745.28	402.7	17.7	262.60
Natural and applied sciences	979.6	38.7	1,078.08	27.82	948.1	39.4	1,102.79	31.5	17.2	333.57
Health	863.8	33.4	778.04	23.14	652.6	37.8	885.25	211.2	20.0	446.82
Social science, education, government service and religion	1,240.5	34.0	883.82	25.61	989.8	38.3	1,004.20	250.7	17.2	408.66
Art, culture, recreation and sport	307.2	30.8	648.08	19.54	207.5	38.6	851.98	99.7	14.6	223.73
Sales and service	3,408.5	30.5	425.69	12.97	2,111.4	38.7	581.02	1,297.1	17.0	172.84
Trades, transport and equipment operators	1,973.2	40.0	784.57	19.40	1,832.2	41.8	826.91	140.9	17.5	234.17
Occupations unique to primary industry	256.6	41.4	715.77	16.72	221.4	45.7	803.43	35.2	14.3	163.73
Occupations unique to processing, manufacturing and utilities	967.6	39.2	684.62	17.30	927.3	40.2	705.48	40.3	16.4	204.04

Note(s): Related CANSIM tables 282-0023, 282-0069, 282-0073

Table 8
Regional unemployment rates used by the Employment Insurance Program,¹ seasonally adjusted, 3 month moving average

Region	Effective from May 13, 2007 to June 9, 2007
	Percent
Newfoundland and Labrador	
01. St. John's	7.2
02. Newfoundland and Labrador	17.7
Prince Edward Island	
03. Prince Edward Island	10.1
Nova Scotia	
04. Eastern Nova Scotia	14.6
05. Western Nova Scotia	8.8
06. Halifax	4.7
New Brunswick	
07. Fredericton-Moncton-Saint John	4.6
08. Madawaska-Charlotte ²	9.0
09. Restigouche-Albert	12.4
Quebec	
10. Gaspésie-Îles-de-la-Madeleine	17.2
11. Québec	4.6
12. Trois-Rivières	8.0
13. South Central Quebec	5.6
14. Sherbrooke	6.7
15. Montérégie	6.9
16. Montréal	7.1
17. Central Quebec	10.1
18. Northwestern Quebec	12.1
19. Bas-Saint-Laurent-Côte-Nord ³	12.6
20. Gatineau	5.8
21. Saguenay	10.1
Ontario	
22. Ottawa	5.4
23. Eastern Ontario	7.7
24. Kingston	4.5
25. Central Ontario	6.0
26. Oshawa	6.2
27. Toronto	6.9
28. Hamilton	6.1
29. St. Catharines	6.4
30. London	5.6
31. Niagara	8.1
32. Windsor	9.3
33. Kitchener	5.7
34. Huron	8.0
35. South Central Ontario	5.7
36. Sudbury	5.7
37. Thunder Bay	6.7
38. Northern Ontario	10.8
Manitoba	
39. Winnipeg	4.9
40. Southern Manitoba	4.7
41. Northern Manitoba	26.6
Saskatchewan	
42. Regina	4.2
43. Saskatoon	3.9
44. Southern Saskatchewan	5.6
45. Northern Saskatchewan	13.9

See footnotes at the end of the table.

Table 8 – continued

Regional unemployment rates used by the Employment Insurance Program,¹ seasonally adjusted, 3 month moving average

Region	Effective from May 13, 2007 to June 9, 2007
	Percent
Alberta	
46. Calgary	3.4
47. Edmonton	3.4
48. Northern Alberta	8.1
49. Southern Alberta	4.8
British Columbia	
50. Southern Interior British Columbia	5.7
51. Abbotsford	4.7
52. Vancouver	3.8
53. Victoria	4.1
54. Southern Coastal British Columbia	6.5
55. Northern British Columbia	8.2
Territories	
56. Yukon Territory ⁴	25.0
57. Northwest Territories ⁴	25.0
58. Nunavut ⁴	25.0

1. The boundaries of these regions are determined by Human Resources and Social Development Canada (HRSDC). For geographic descriptions and maps of employment insurance regions, see the HRSDC website: http://www.hrsdc.gc.ca/asp/gateway.asp?hr=en/ei/region/economic_region_information.shtml&hs=eza.
2. This unemployment rate has been determined using a transition formula prescribed in the EI Regulations. For further information, see: http://www.hrsdc.gc.ca/en/cs/comm/news/2000/000913a_e.shtml.
3. This unemployment rate has been determined using a transition formula prescribed in the EI Regulations. For further information, see: http://www.hrsdc.gc.ca/en/cs/comm/news/2000/000913b_e.shtml.
4. This rate is provided by Human Resources and Skills Development Canada.

Data quality

About the Labour Force Survey

The statistics contained in this report are based on information obtained through a sample survey of 53,000 representative households across the country. The Labour Force Survey, started in November 1945, was taken at quarterly intervals until November 1952. It has been carried out monthly since then. The information generated by the survey has expanded considerably over the years with a major redesign of the survey content in 1976 and again in 1997, and provides a rich and detailed picture of the Canadian labour market.

The sample used in the Labour Force Survey has been designed to represent all persons in the population 15 years of age and over residing in the provinces of Canada, with the exception of the following: persons living on Indian reserves, full-time members of the armed forces and people living in institutions (for example, inmates of penal institutions and patients in hospitals or nursing homes who have resided in the institution for more than six months). Monthly estimates of employment, unemployment and persons not in the labour force refer to the specific week covered by the survey each month, normally the week containing the 15th day.

Definitions and explanations

The **labour force** is composed of those members of the civilian non-institutional population 15 years of age and over who, during the reference week, were employed or unemployed.

Employed persons are those who, during the reference week:

- (a) did any work at all
- (b) had a job but were not at work

A person is considered to be **full-time** if his/her usual hours at the main job are 30 or more hours per week. When the number of hours worked at the main job is usually less than 30 hours per week then he/she is considered to be **part-time**.

Unemployed persons are those who, during the reference week:

- (a) were without work, had actively looked for work in the past four weeks (ending with reference week), and were available for work;
- (b) had not actively looked for work in the past four weeks but were on temporary layoff and were available for work;
- (c) had not actively looked for work in the past four weeks but had a new job to start in four weeks or less from the reference week, and were available for work.

Persons in the civilian non-institutional population 15 years of age and over who, during the reference week, were neither employed nor unemployed are classified as **not in the labour force**.

The **unemployment rate** represents the number of unemployed persons expressed as a percentage of the labour force. The unemployment rate for a particular group (age, sex, etc.) is the number unemployed in that group expressed as a percentage of the labour force for that group.

The **participation rate** represents the labour force expressed as a percentage of the population 15 years of age and over. The participation rate for a particular group (age, sex, etc.) is the labour force in that group expressed as a percentage of the population for that group.

The **employment rate (formerly the employment/population ratio)** represents the number of persons employed expressed as a percentage of the population 15 years of age and over. The employment rate for a particular group (age, sex, etc.) is the number employed in that group expressed as a percentage of the population for that group.

The **part-time rate** represents the number of persons employed part-time expressed as a percentage of the employed. The part-time rate for a particular group (age, sex, etc.) is the number employed part-time in that group expressed as a percentage of the employed for that group.

All geographic regions are based on the 2001 Census boundaries.

Seasonal adjustment

Fluctuations in economic time series are caused by seasonal, cyclical and irregular movements. A seasonally adjusted series is one from which seasonal movements have been eliminated. Seasonal movements are defined as those which are caused by regular annual events such as climate, holidays, vacation periods and cycles related to crops, production and retail sales associated with Christmas and Easter. The seasonally adjusted series contains irregular as well as longer-term cyclical fluctuations.

The seasonally adjusted series are revised each year to take into account current data and to generate new forecast factors for the next twelve months. The data are therefore subject to slight revisions in future issues of this publication.

Sampling variability of estimates

Estimates in this publication are based on the Labour Force Survey, a monthly survey of approximately 53,000 households across Canada. Because the entire population is not surveyed, the estimates are subject to sampling error. While the published estimate is the best available indicator of the real value, changes in the level of any estimates between two months can be the result of a true change or sampling variability. The sampling error can be estimated by calculating the standard error for the published estimate or statistic. These standard errors have been included in the publication tables, in order to assist users in interpreting the data.

Interpretation based on standard error

Two thirds of the time (68%), a change greater than the sampling error indicates a real change. The larger the change compared to the standard error, the better the chance that we are observing a real change, as opposed to a change due to sampling variability. At the 95% level, in order to ensure that change is real, the change in the estimate must be greater than twice the sampling error.

Movements in estimates that are smaller than the sampling error are less likely to reflect a real change and more likely to be due to sampling variability. While the above is true for monthly movements, one can have more confidence in a series of consecutive movements in the same direction, even though some of the monthly movements may be smaller than the sampling error.

Interpretation based on confidence intervals

Confidence intervals provide another way of looking at the variability inherent in estimates of sample surveys. To illustrate how to calculate the confidence interval, let us say that one month the published estimate for total employment rose by 16,000 to reach 16,500,000. The associated standard error for the movement estimate is 27,200. The standard error used to interpret the movement estimate indicates that:

- There are approximately two chances in three (68%) that the real value of the movement between the two months falls within the range -11,200 to +43,200 (16,000 + or – one standard error).
- There are approximately nine chances in ten (90%) that the real value of the movement between the two months falls within the range -27,520 to +59,520 (16,000 + or – 1.6 times the standard error).
- There are approximately nineteen chances in twenty (95%) that the real value of the movement between the two months falls within the range -38,400 to +70,400 (16,000 + or – two standard errors).

For more detailed explanations on sampling variability of estimates, and in particular for information on how to assess the variability of level estimates, consult the Data quality section of the *Guide to the Labour Force Survey*, (71-543-G) on page 27.

Documentation

For more detailed information about the Labour Force Survey, see the following documents:

- Overview of the Labour Force Survey
- Guide to the Labour Force Survey (71-543-G)
- Data quality statement
- Methodology of the Canadian Labour Force Survey (71-526-X)
- LFS *geographical maps*