



Catalogue no. 71-001-XIE

# Labour Force Information

Not for release before 7 A.M. E.D.T.

Thursday, April 5, 2007

March 11 to 17, 2007



Statistics  
Canada Statistique  
Canada

Canada

## How to obtain more information

Specific inquiries about this product and related statistics or services should be directed to: Labour Force Survey Program, Labour Statistics Division, Statistics Canada, Ottawa, Ontario, K1A 0T6 (telephone: 613-951-4090, toll free number: 1-866-873-8788, fax: 613-951-2869 or by e-mail address: [labour@statcan.ca](mailto:labour@statcan.ca)).

For information on the wide range of data available from Statistics Canada, you can contact us by calling one of our toll free numbers. You can also contact us by e-mail or by visiting our website at [www.statcan.ca](http://www.statcan.ca).

National inquiries line **1-800-263-1136**

National telecommunications device for the hearing impaired **1-800-363-7629**

Depository Services Program inquiries **1-800-700-1033**

Fax line for Depository Services Program **1-800-889-9734**

E-mail inquiries [infostats@statcan.ca](mailto:infostats@statcan.ca)

Website [www.statcan.ca](http://www.statcan.ca)

## Information to access the product

This product, catalogue no. 71-001-XIE, is available for free in electronic format. To obtain a single issue, visit our website at [www.statcan.ca](http://www.statcan.ca) and select Publications.

## Standards of service to the public

Statistics Canada is committed to serving its clients in a prompt, reliable, courteous, and fair manner. To this end, the Agency has developed standards of service that its employees observe in serving its clients. To obtain a copy of these service standards, please contact Statistics Canada toll free at 1-800-263-1136. The service standards are also published on [www.statcan.ca](http://www.statcan.ca) under About us > Providing services to Canadians.



Statistics Canada  
Labour Statistics Division  
Labour Force Survey Program

# Labour Force Information

Not for release before 7 A.M. E.D.T.

Thursday, April 5, 2007

March 11 to 17, 2007

Published by authority of the Minister responsible for Statistics Canada

© Minister of Industry, 2007

All rights reserved. The content of this electronic publication may be reproduced, in whole or in part, and by any means, without further permission from Statistics Canada, subject to the following conditions: that it be done solely for the purposes of private study, research, criticism, review or newspaper summary, and/or for non-commercial purposes; and that Statistics Canada be fully acknowledged as follows: Source (or "Adapted from", if appropriate): Statistics Canada, year of publication, name of product, catalogue number, volume and issue numbers, reference period and page(s). Otherwise, no part of this publication may be reproduced, stored in a retrieval system or transmitted in any form, by any means—electronic, mechanical or photocopy—or for any purposes without prior written permission of Licensing Services, Client Services Division, Statistics Canada, Ottawa, Ontario, Canada K1A 0T6.

April 2007

Catalogue no. 71-001-XIE

ISSN 1492-5478

Frequency: Monthly

Ottawa

La version française de cette publication est disponible sur demande (n° 71-001-XIF au catalogue).

---

## **Note of appreciation**

*Canada owes the success of its statistical system to a long standing partnership between Statistics Canada, the citizens of Canada, its businesses, governments and other institutions. Accurate and timely statistical information could not be produced without their continued cooperation and goodwill.*

# User information

---

## Symbols

The following standard symbols are used in Statistics Canada publications:

- . not available for any reference period
- .. not available for a specific reference period
- ... not applicable
- 0 true zero or a value rounded to zero
- 0<sup>s</sup> value rounded to 0 (zero) where there is a meaningful distinction between true zero and the value that was rounded
- p preliminary
- r revised
- x suppressed to meet the confidentiality requirements of the *Statistics Act*
- E use with caution
- F too unreliable to be published

## Special requests (\$)

Custom tabulations can be arranged on an ad hoc or regular basis. This service enables you to specify tables and time series to meet your own requirements. The cost varies according to the request. For more information, contact us toll-free at 1-866-873-8788 or e-mail us at [labour@statcan.ca](mailto:labour@statcan.ca).

## Schedule of LFS releases

Reference period - Week ending	Release date
January 20, 2007	February 9, 2007
February 17, 2007	March 9, 2007
March 17, 2007	April 5, 2007
April 21, 2007	May 11, 2007
May 19, 2007	June 8, 2007
June 16, 2007	July 6, 2007
July 21, 2007	August 10, 2007
August 18, 2007	September 7, 2007
September 15, 2007	October 5, 2007
October 13, 2007	November 2, 2007
November 10, 2007	December 7, 2007
December 8, 2007	January 11, 2008

## Latest LFS release in *The Daily* (free)

# Table of contents

---

<b>Highlights</b>	<b>5</b>
<b>Analysis — March 2007</b>	<b>6</b>
<b>Charts</b>	
1. Employment and unemployment rates, Canada, seasonally adjusted	5
2. Employment and unemployment indicators, Canada, seasonally adjusted	8
3. Employment and unemployment indicators, Canada, seasonally adjusted	9
4. Index of employment by industry, Canada, seasonally adjusted, January, 2004=100	10
5. Index of employment by industry, Canada, seasonally adjusted, January 2004 = 100	11
6. Index of employment by industry, Canada, seasonally adjusted, January 2004 = 100	12
7. Index of employment by province, seasonally adjusted, January 2004 = 100	13
8. Index of employment by province, seasonally adjusted, January 2004 = 100	14
<b>Related products</b>	<b>15</b>
<b>Statistical tables</b>	
1 Labour force characteristics by age and sex, Canada, seasonally adjusted	23
2 Employment by class of worker and industry, Canada, seasonally adjusted	24
3 Labour force characteristics by province, seasonally adjusted	25
4 Selected labour force characteristics (seasonally adjusted)	27
4-1 Newfoundland and Labrador	27
4-2 Prince Edward Island	28
4-3 Nova Scotia	29
4-4 New Brunswick	30
4-5 Quebec	31
4-6 Ontario	32
4-7 Manitoba	33
4-8 Saskatchewan	34
4-9 Alberta	35
4-10 British Columbia	36
5 Labour force characteristics by census metropolitan area (seasonally adjusted)	37
5-1 3 month moving average	37
5-2 Monthly	42

**Table of contents – continued**

6	Labour force characteristics	43
6-1	by province and economic region, unadjusted for seasonality, 3 month moving average ending in March 2006 and March 2007	43
6-2	by territories, unadjusted for seasonality, 3 month moving average ending in March 2006 and March 2007	48
7	Average usual hours and wages of employees by selected characteristics, Canada, unadjusted for seasonality	49
8	Regional unemployment rates used by the Employment Insurance Program, seasonally adjusted, 3 month moving average	50
<b>Data quality, concepts and methodology</b>		
	Data quality	52

# Highlights

---

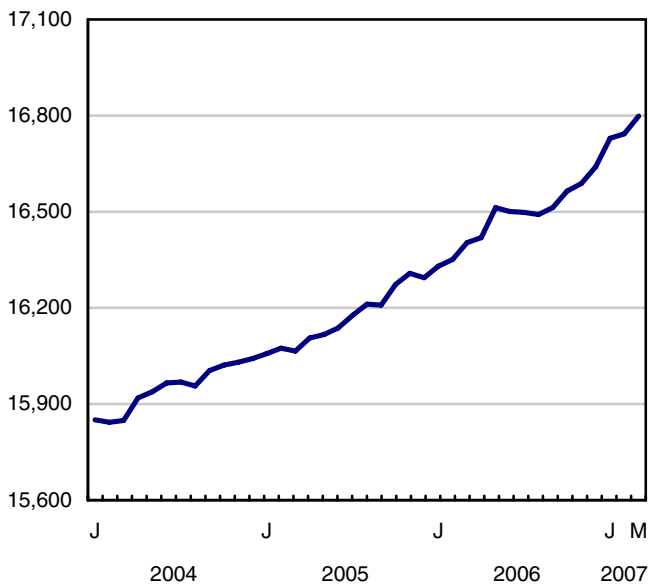
## March 2007

Employment jumped by an estimated 55,000 in March, continuing the upward trend that began in September 2006. Despite this growth in employment, the unemployment rate remained unchanged at 6.1%, as more people entered the labour market.

**Chart 1**  
Employment and unemployment rates, Canada, seasonally adjusted

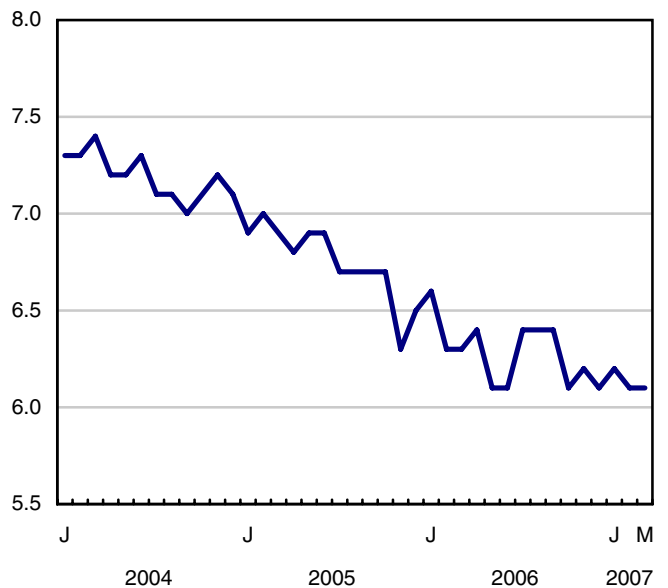
### Employment

thousands



### Unemployment rate

percentage



## Analysis — March 2007

---

Employment jumped by an estimated 55,000 in March, continuing the upward trend that began in September 2006. Despite this growth in employment, the unemployment rate remained unchanged at 6.1%, as more people entered the labour market.

In the first quarter of 2007, employment grew by an estimated 158,000, the strongest first quarter growth since 2002. Provincial growth rates for the first quarter were particularly strong in British Columbia, Alberta and New Brunswick.

The employment rate in March reached 63.5%, its highest level in 31 years. March's employment increase is largely attributable to strength in Quebec and British Columbia. These two provinces, along with Manitoba, boosted their employment rates to record levels.

British Columbia's unemployment rate dipped to a record low of 3.9% in March.

The employment rate for adult women reached an all-time high of 59.0% in March, as women continue to be the main beneficiaries of employment growth.

Gains in March were based in the service sector, especially in trade, accommodation and food services, information, culture and recreation, and other services.

### **Women capture the lion's share of March growth**

Women aged 25 and over captured most of the employment increases in March (+39,000). Steady employment growth since the start of 2006 has led to a series of record employment rates for adult women, reaching a new high of 59.0% in March. Over the past twelve months, employment growth for adult women (+3.8%) was more than double that of adult men (+1.7%). Employment growth among youths remained more modest at 1.2%.

Canada's labour force participation rate — the proportion of the working-age population that has a job or is looking for one — has jumped 0.6 percentage points since October 2006, reaching 67.7% in March. This strong increase is primarily the result of more women participating in the labour force.

Women aged 55 and over attained a record high employment rate of 25.8% in March. While the employment rate for women aged 25 to 54 has been increasing for several decades, the upward trend in the employment rate for older women began in 1997. Older men have also seen their employment rate rise over the same period.

### **Service sector powers growth**

Employment growth in the service sector in March (+66,000) more than offset the weakness of the goods-producing sector. The largest increases in the service sector were in Ontario (+26,000), Quebec (+19,000) and Alberta (+19,000).

Employment in trade grew by an estimated 27,000 in March, with nearly half the increase in Alberta (+12,000). This month's strength was driven mainly by gains in wholesale trade potentially a result of increased activity following the strike by Canadian National Railway workers that ended in February.

Accommodation and food services employment grew by 15,000 in March, a result of an increase in accommodation services. Over the past year, employment in accommodation and food services has risen by 8.8%. This represents the largest increase among the different service-producing industries, with Ontario accounting for more than half of the growth.



## Record low unemployment rate in British Columbia

For a third straight month, British Columbia's unemployment rate reached a record low. In March, the unemployment rate dipped to 3.9%. The British Columbia economy added 13,000 workers in March, bringing total gains for the first quarter to 47,000 (+2.1%). The March employment rate, at 63.8%, was the highest in three decades.

The manufacturing sector continued to show strength in British Columbia, up 11,000 in March and 25,000 since August 2006. The provincial economy also benefited from strong gains in information, culture and recreation, up 18,000 (+17%) in the first three months of the year.

Quebec's employment rose by an estimated 29,000 in March, the largest monthly gain since May 2006. As a result, Quebec's employment rate increased to 60.8%, its highest level in three decades. Gains in March were spread across a number of industries. The unemployment rate in Quebec edged down to 7.6%, hovering near its 31-year low.

For the second consecutive month, employment was little changed in Alberta in March. Employment losses in the goods sector (-19,000) were offset by similar increases in the service sector. This was the first sizable monthly decline in the goods-producing sector since March 2005. The unemployment rate in Alberta remains the lowest in the country, at 3.6%.

Employment in Manitoba grew by an estimated 3,100 in March, primarily in accommodation and food services as well as in utilities. The province reached a new record high employment rate of 66.3%. For the first quarter of 2007, employment rose by 6,000 or 1.0%, mostly in the goods sector.

Overall employment in Ontario was little changed in March, as growth in the service sector was partly offset by weakness in the goods sector. So far this year employment is up only 0.4%, well below the national growth rate of 0.9%.

In the North, the proportion of people aged 15 and over working remains high. In Nunavut, the employment rate increased to 63.1% in March, up from 55.6% from one year ago (3-month moving average). Employment rates in the Northwest Territories at 75.0% and in the Yukon at 67.3% were virtually unchanged compared to March of last year.

## Wages increase in several provinces

During the first three months of 2007, the average hourly wage in Canada rose an estimated 2.4% compared to the same period last year. This exceeds the most recent comparable Consumer Price Index, which increased by 1.6%.

Alberta's booming labour market continued to exert pressure on the province's wages, which rose 5.4% for the first quarter of 2007 compared to the same period last year. This increase was tempered by a 4.5% rise in consumer prices. Similarly, wage growth of 3.6% in British Columbia was dampened by a 2.2% increase in prices.

New Brunswick and Manitoba also benefited from sizeable wage increases in the first quarter of 2007. In New Brunswick, the average wage increase was 3.8%, well above the 0.6% increase in consumer prices. Manitoba also experienced a notable rise in the average hourly wage (4.4%) compared to an increase in prices of 1.8%.

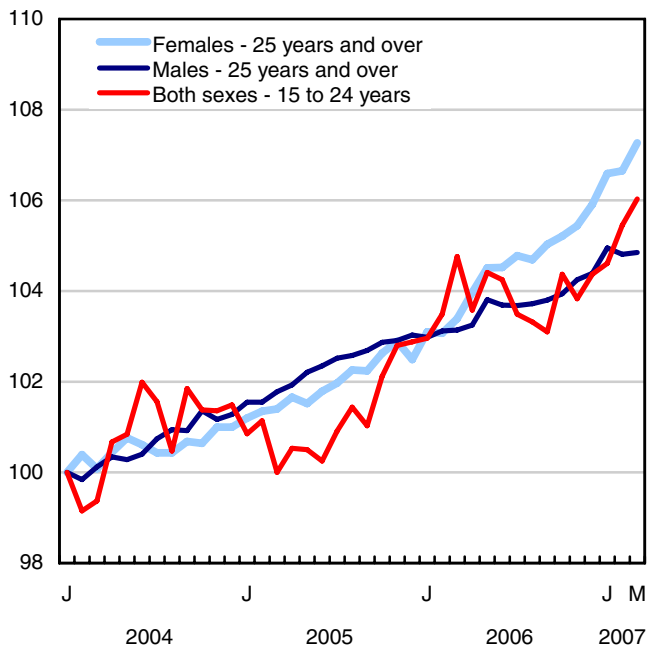
### Note to readers

The Labour Force Survey estimates are based on a sample, and are therefore subject to sampling variability. Estimates for smaller geographic areas or industries will have more variability. For an explanation of sampling variability of estimates, and how to use standard errors to assess this variability, consult the Data Quality section in this publication.

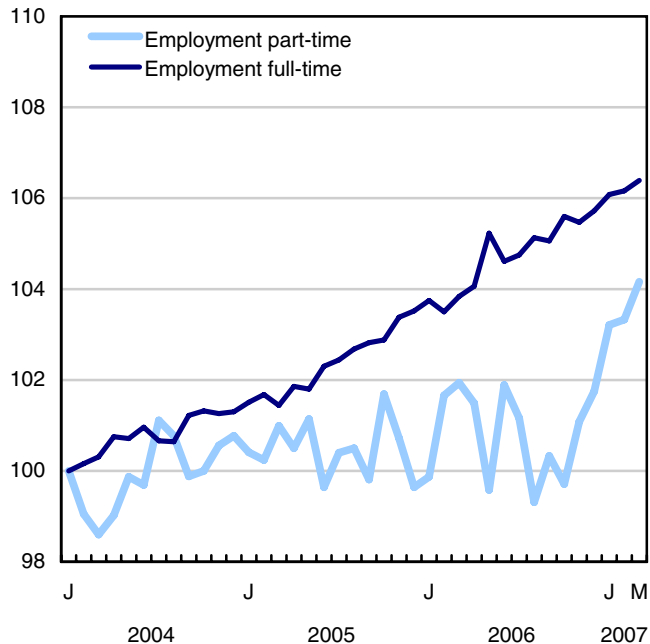
The 2006 Labour Force Historical Review on CD-ROM (71F0004XCB, \$209) is now available.

**Chart 2**  
**Employment and unemployment indicators, Canada, seasonally adjusted**

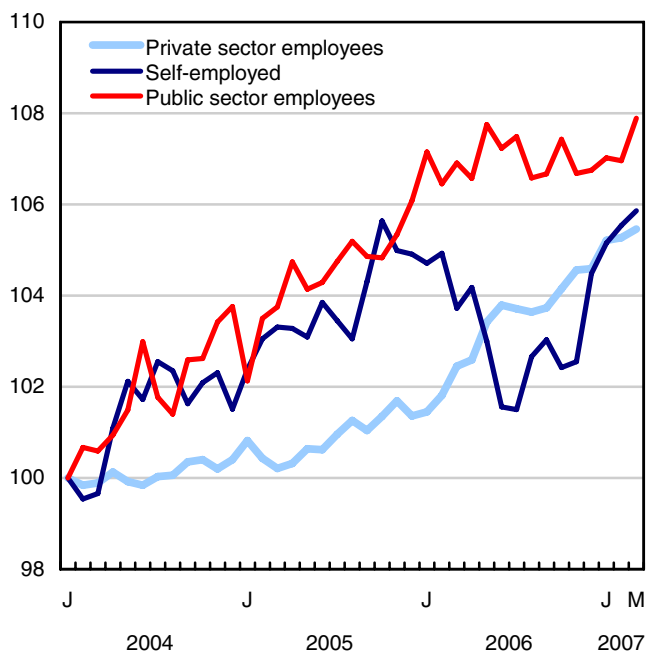
**Employment index, January 2004=100**



**Employment index, January 2004=100**

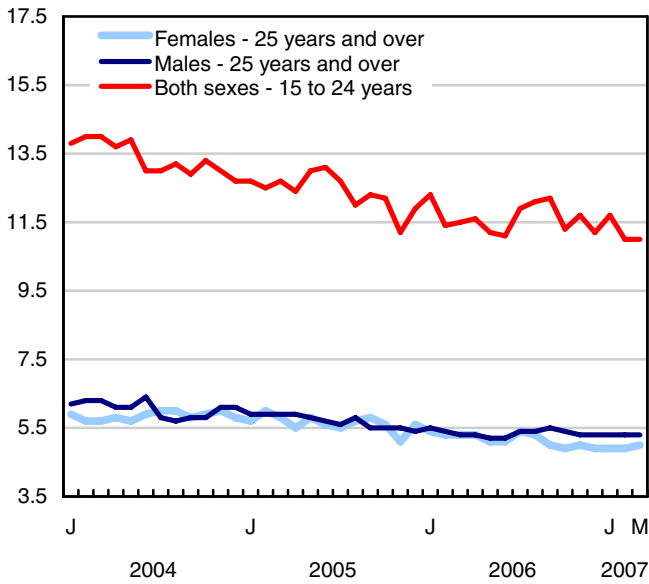


**Employment index, January 2004=100**

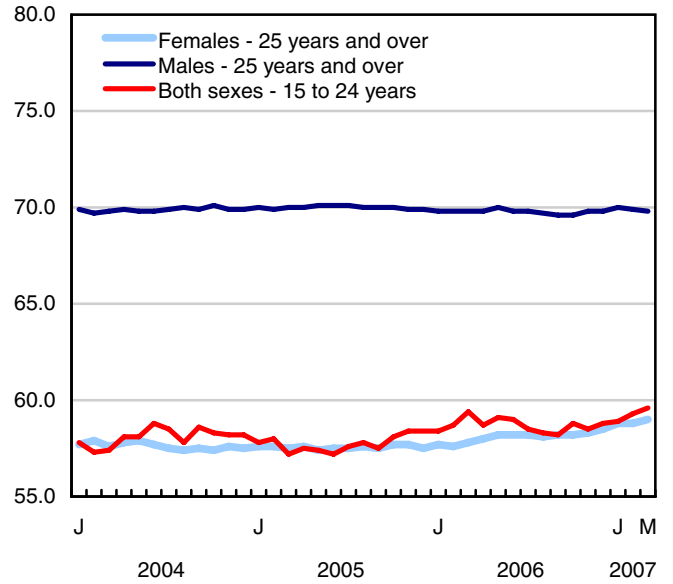


**Chart 3**  
**Employment and unemployment indicators, Canada, seasonally adjusted**

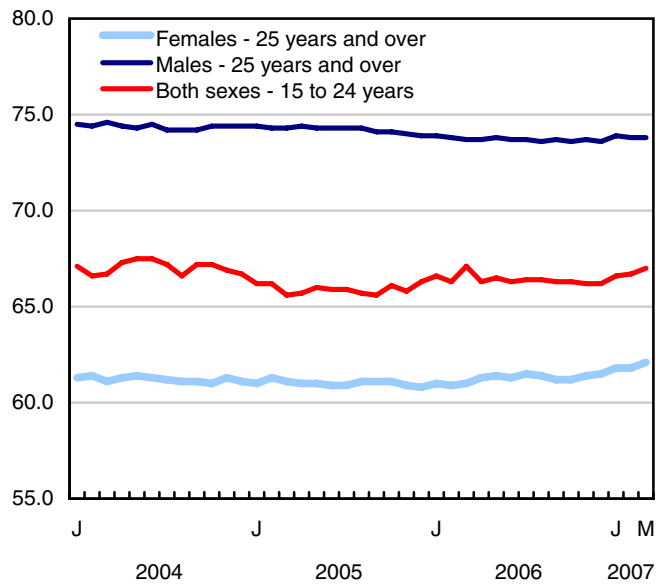
**Unemployment rate (%)**



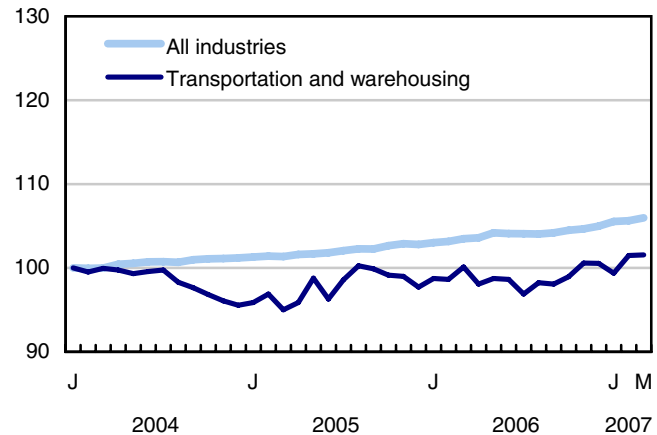
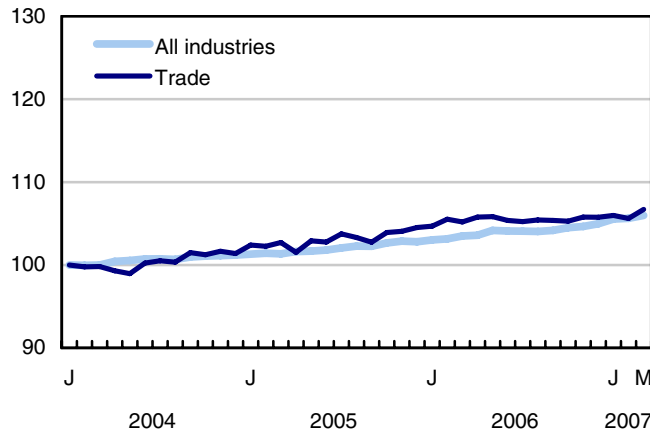
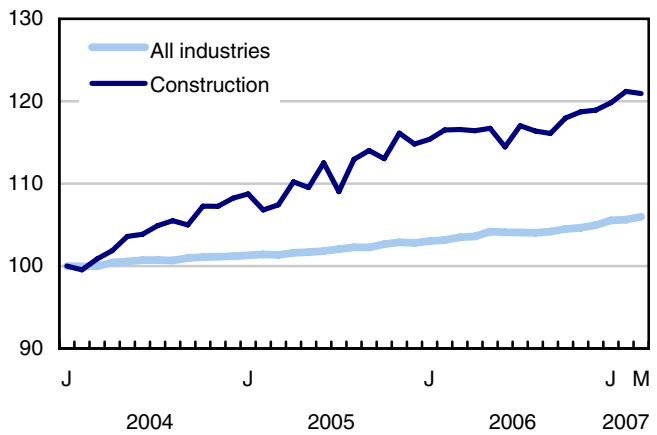
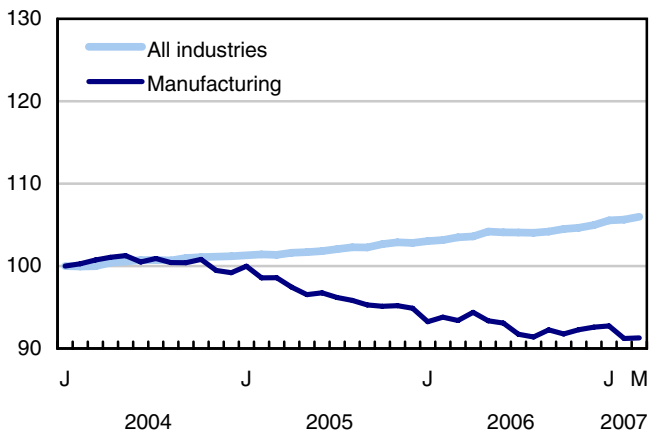
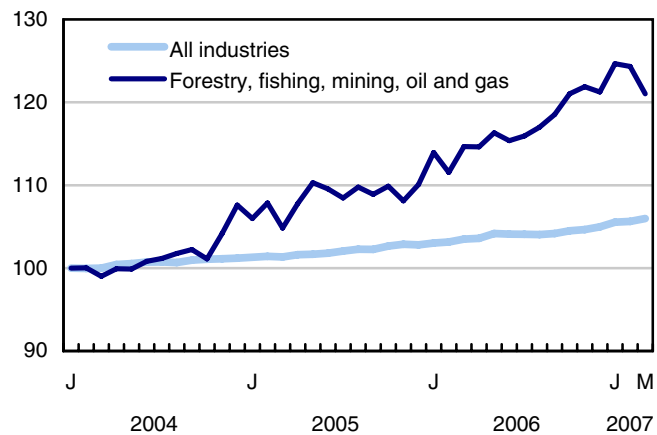
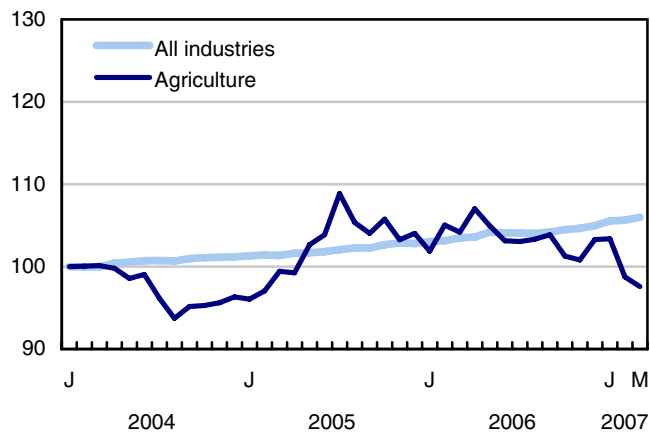
**Employment rate (%)**



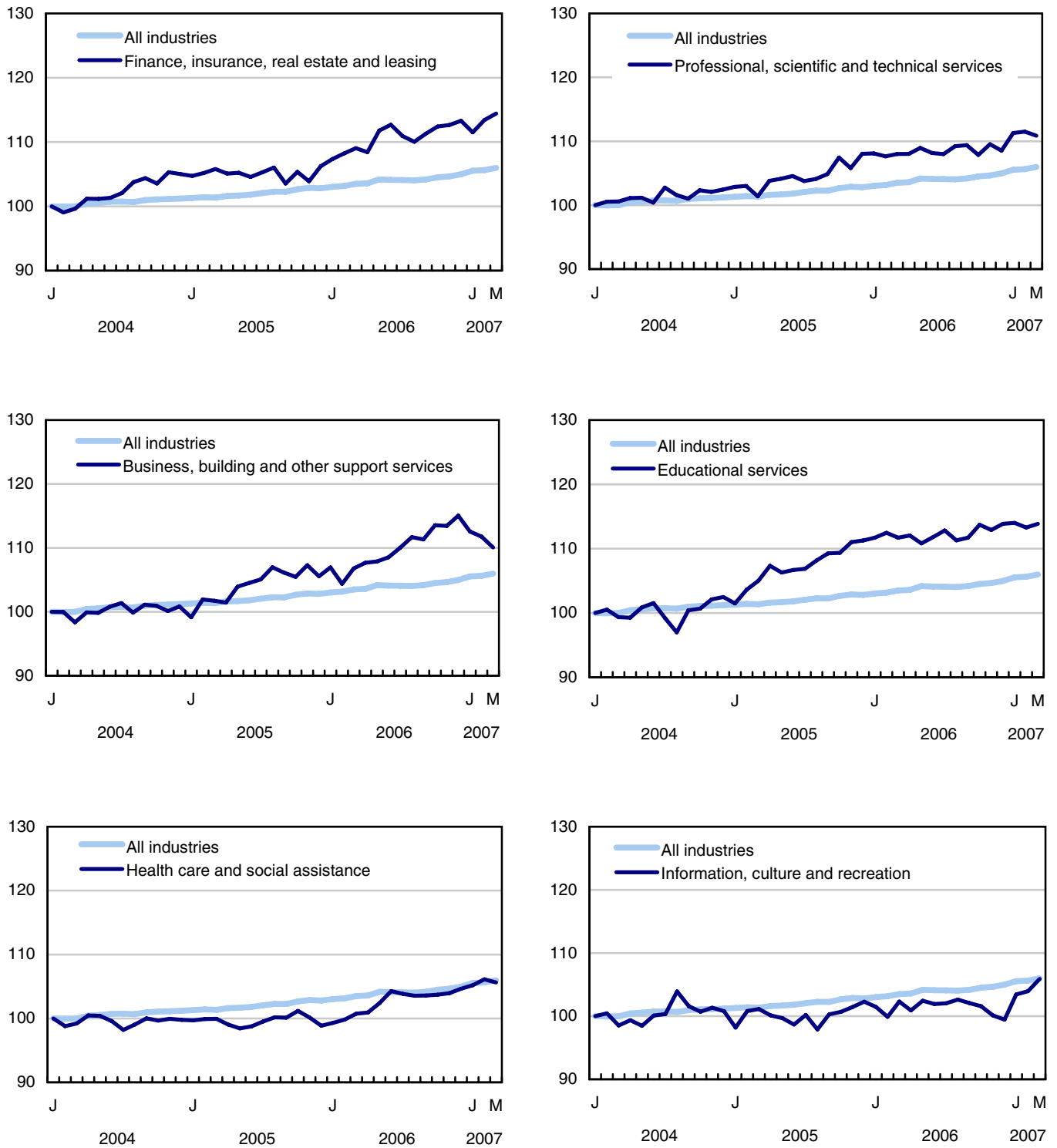
**Participation rate (%)**



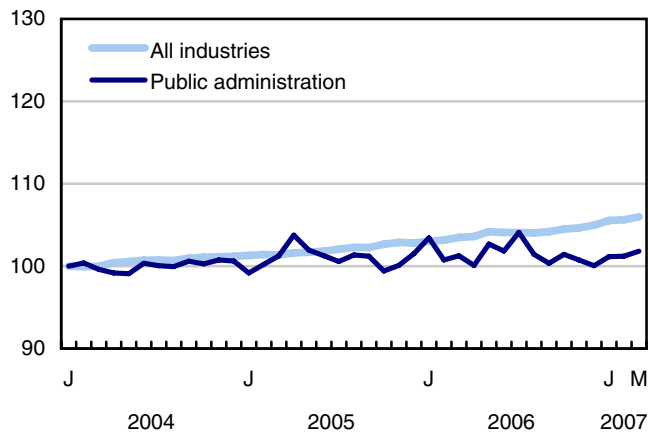
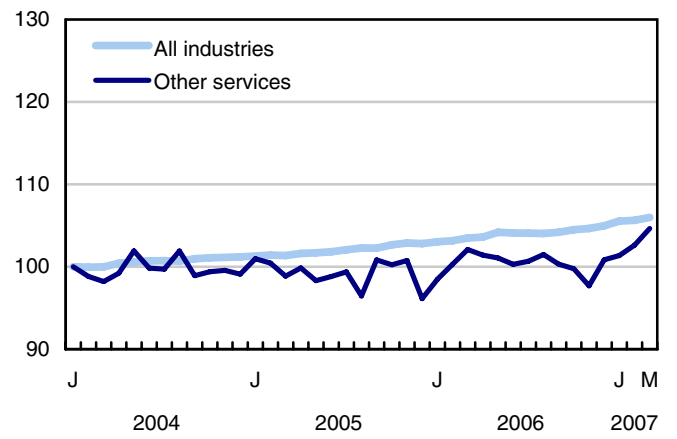
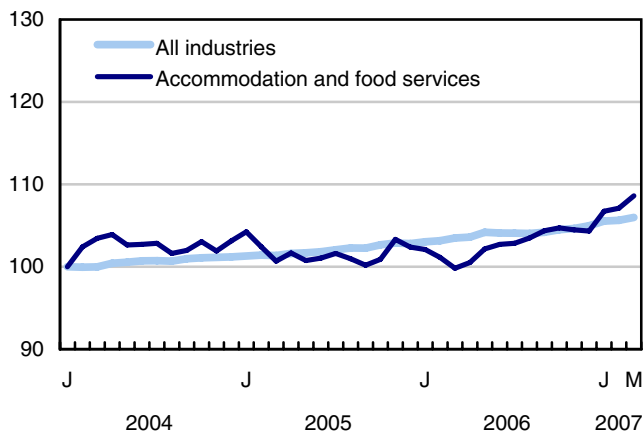
**Chart 4**  
**Index of employment by industry, Canada, seasonally adjusted, January, 2004=100**



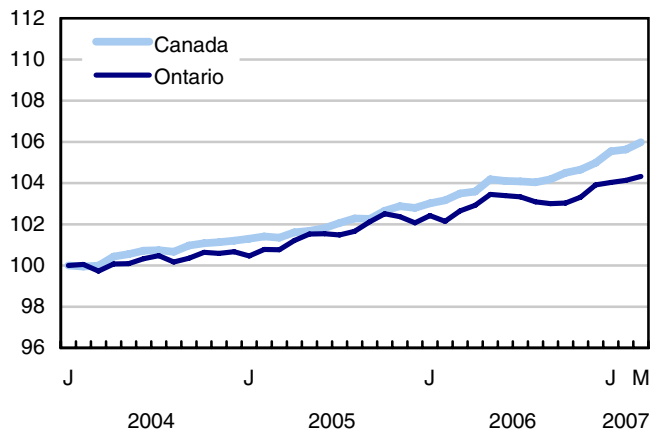
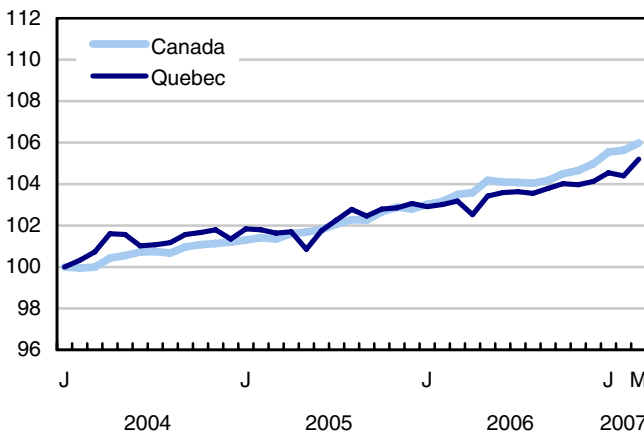
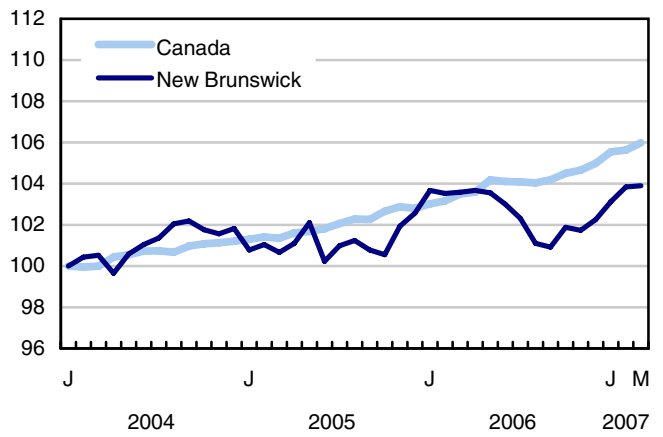
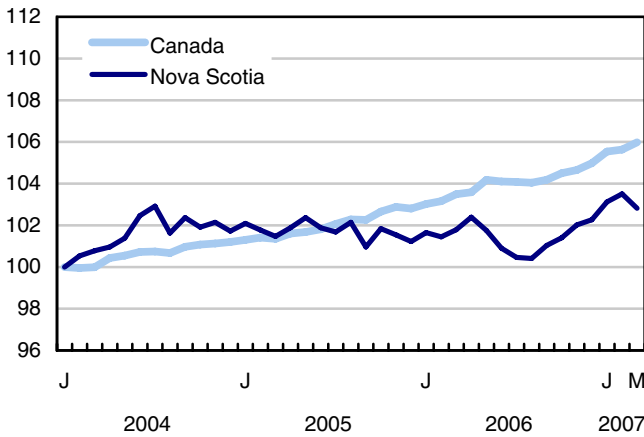
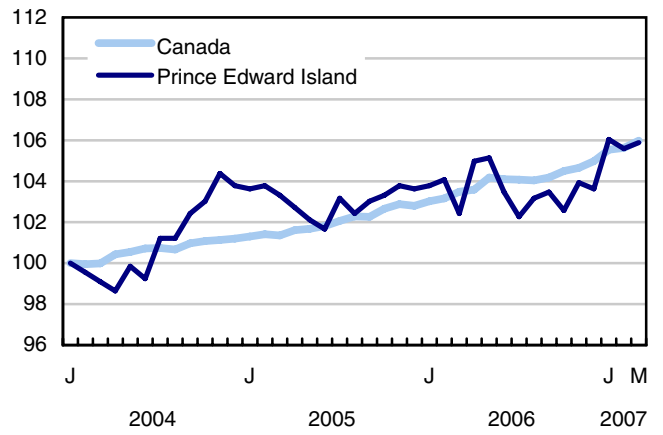
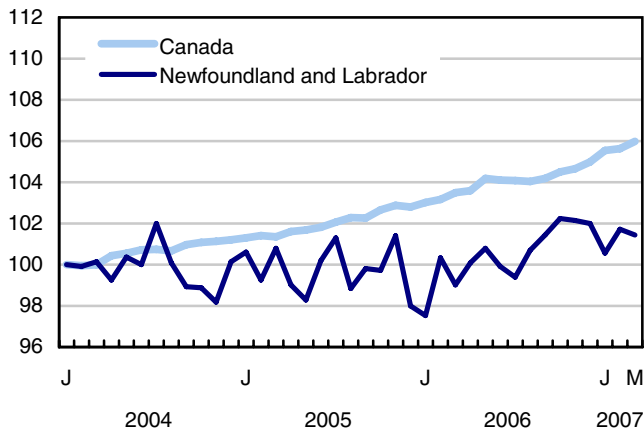
**Chart 5**  
**Index of employment by industry, Canada, seasonally adjusted, January 2004 = 100**



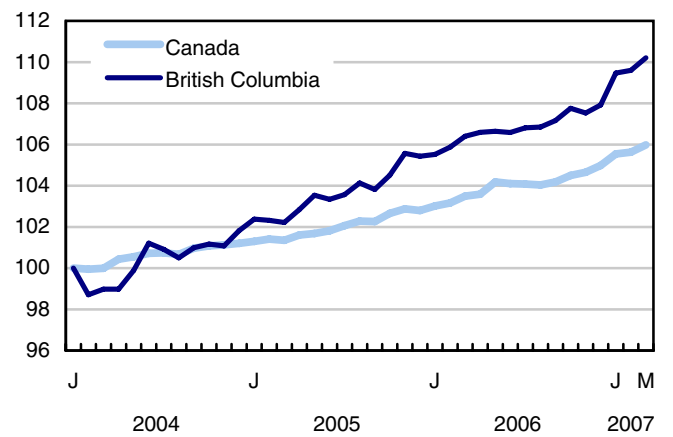
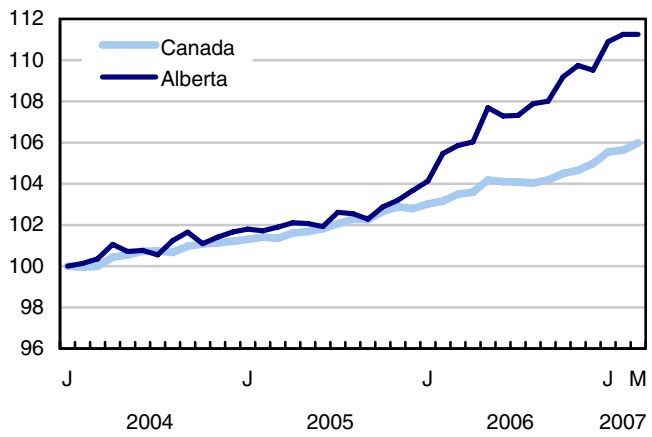
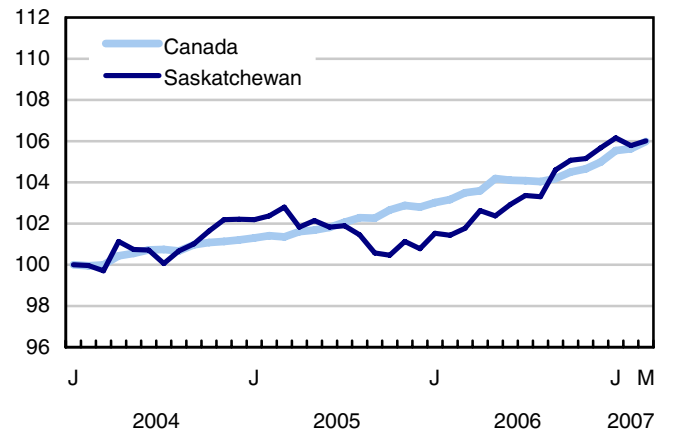
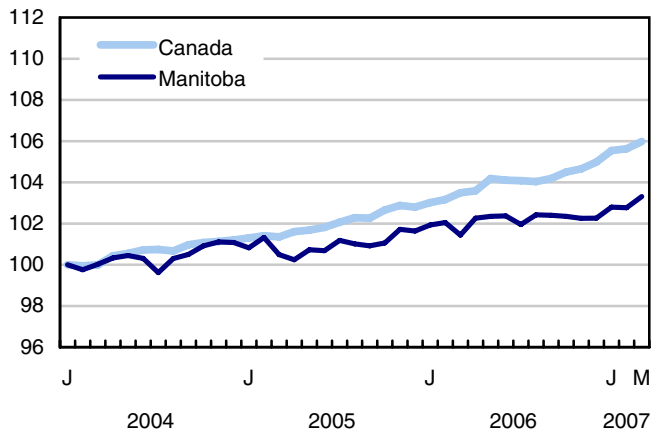
**Chart 6**  
**Index of employment by industry, Canada, seasonally adjusted, January 2004 = 100**



**Chart 7**  
**Index of employment by province, seasonally adjusted, January 2004 = 100**



**Chart 8**  
**Index of employment by province, seasonally adjusted, January 2004 = 100**





## Related products

---

### Selected publications from Statistics Canada

---

71-222-X	The Canadian Labour Market at a Glance
71-526-X	Methodology of the Canadian Labour Force Survey
71-543-G	Guide to the Labour Force Survey
71-544-X	Labour Force Survey Products and Services
71-587-X	Aboriginal Peoples Living Off-reserve in Western Canada: Estimates from the Labour Force Survey
71F0004X	Labour Force Historical Review
71F0031X	Improvements to the Labour Force Survey (LFS)
71M0001X	Labour Force Survey Microdata File
75-001-X	Perspectives on Labour and Income

---

### Selected CANSIM tables from Statistics Canada

---

282-0001	Labour force survey estimates (LFS), by sex and detailed age group
282-0002	Labour force survey estimates (LFS), by sex and detailed age group
282-0003	Labour force survey estimates (LFS), by educational attainment, sex and age group
282-0004	Labour force survey estimates (LFS), by educational attainment, sex and age group
282-0005	Labour force survey estimates (LFS), by full- and part-time students during school months, sex and age group
282-0006	Labour force survey estimates (LFS), by students during summer months, sex and age group
282-0007	Labour force survey estimates (LFS), by North American Industry Classification System (NAICS), sex and age group
282-0008	Labour force survey estimates (LFS), by North American Industry Classification System (NAICS), sex and age group
282-0009	Labour force survey estimates (LFS), by National Occupational Classification for Statistics (NOC-S) and sex

282-0010	Labour force survey estimates (LFS), by National Occupational Classification for Statistics (NOC-S) and sex
282-0011	Labour force survey estimates (LFS), employment by class of worker, North American Industry Classification System (NAICS) and sex
282-0012	Labour force survey estimates (LFS), employment by class of worker, North American Industry Classification System (NAICS) and sex
282-0013	Labour force survey estimates (LFS), part-time employment by reason for part-time work, sex and age group
282-0014	Labour force survey estimates (LFS), part-time employment by reason for part-time work, sex and age group
282-0015	Labour force survey estimates (LFS), by usual hours worked, main or all jobs, sex and age group
282-0016	Labour force survey estimates (LFS), by usual hours worked, main or all jobs, sex and age group
282-0017	Labour force survey estimates (LFS), by actual hours worked, main or all jobs, sex and age group
282-0018	Labour force survey estimates (LFS), by actual hours worked, main or all jobs, sex and age group
282-0019	Labour force survey estimates (LFS), by usual hours worked, class of worker, North American Industry Classification System (NAICS) and sex
282-0020	Labour force survey estimates (LFS), by usual hours worked, class of worker, North American Industry Classification System (NAICS) and sex
282-0021	Labour force survey estimates (LFS), by actual hours worked, class of worker, North American Industry Classification System (NAICS) and sex
282-0022	Labour force survey estimates (LFS), by actual hours worked, class of worker, North American Industry Classification System (NAICS) and sex
282-0023	Labour force survey estimates (LFS), by usual hours worked, class of worker, National Occupational Classification for Statistics (NOC-S) and sex
282-0024	Labour force survey estimates (LFS), by usual hours worked, class of worker, National Occupational Classification for Statistics (NOC-S) and sex
282-0025	Labour force survey estimates (LFS), by actual hours worked, class of worker, National Occupational Classification for Statistics (NOC-S) and sex
282-0026	Labour force survey estimates (LFS), by actual hours worked, class of worker, National Occupational Classification for Statistics (NOC-S) and sex
282-0027	Labour force survey estimates (LFS), by total and average usual and actual hours worked, main or all jobs, type of work, sex and age group
282-0028	Labour force survey estimates (LFS), by total and average usual and actual hours worked, main or all jobs, type of work, sex and age group

282-0029	Labour force survey estimates (LFS), average days lost for personal reasons per full-time employee by North American Industry Classification System (NAICS), sex and age group
282-0030	Labour force survey estimates (LFS), average days lost for personal reasons per full-time employee by National Occupational Classification for Statistics (NOC-S), sex and age group
282-0031	Labour force survey estimates (LFS), multiple jobholders by North American Industry Classification System (NAICS), sex and age group
282-0032	Labour force survey estimates (LFS), multiple jobholders by North American Industry Classification System (NAICS), sex and age group
282-0033	Labour force survey estimates (LFS), multiple jobholders by National Occupational Classification for Statistics (NOC-S), sex and age group
282-0034	Labour force survey estimates (LFS), multiple jobholders by National Occupational Classification for Statistics (NOC-S), sex and age group
282-0035	Labour force survey estimates (LFS), multiple jobholders by usual hours worked at main and all jobs
282-0036	Labour force survey estimates (LFS), multiple jobholders by usual hours worked at main and all jobs
282-0037	Labour force survey estimates (LFS), job tenure by type of work, sex and age group
282-0038	Labour force survey estimates (LFS), job tenure by type of work, sex and age group
282-0039	Labour force survey estimates (LFS), job tenure by National Occupational Classification for Statistics (NOC-S) and sex
282-0040	Labour force survey estimates (LFS), job tenure by National Occupational Classification for Statistics (NOC-S) and sex
282-0041	Labour force survey estimates (LFS), job tenure by North American Industry Classification System (NAICS) and sex
282-0042	Labour force survey estimates (LFS), job tenure by North American Industry Classification System (NAICS) and sex
282-0047	Labour force survey estimates (LFS), duration of unemployment by sex and age group
282-0048	Labour force survey estimates (LFS), duration of unemployment by sex and age group
282-0049	Labour force survey estimates (LFS), unemployment by type of work sought and search method, sex and age group
282-0050	Labour force survey estimates (LFS), unemployment by type of work sought and search method, sex and age group
282-0051	Labour force survey estimates (LFS), retirement age by class of worker and sex
282-0052	Labour force survey estimates (LFS), by census metropolitan area, sex and age group, 3-month moving average
282-0053	Labour force survey estimates (LFS), by census metropolitan area, sex and age group

282-0054	Labour force survey estimates (LFS), by provinces, territories and economic regions, 3-month moving average
282-0055	Labour force survey estimates (LFS), by economic region and Yukon Territory and Northwest Territories
282-0056	Labour force survey estimates (LFS), employment by census metropolitan area and North American Industry Classification System (NAICS), 3-month moving average
282-0057	Labour force survey estimates (LFS), employment by census metropolitan area and North American Industry Classification System (NAICS)
282-0058	Labour force survey estimates (LFS), employment by census metropolitan area and National Occupational Classification for Statistics (NOC-S), 3-month moving average
282-0059	Labour force survey estimates (LFS), employment by census metropolitan area and National Occupational Classification for Statistics (NOC-S)
282-0060	Labour force survey estimates (LFS), employment by economic region and North American Industry Classification System (NAICS), 3-month moving average
282-0061	Labour force survey estimates (LFS), employment by economic region and North American Industry Classification System (NAICS)
282-0062	Labour force survey estimates (LFS), employment by economic region and National Occupational Classification for Statistics (NOC-S), 3-month moving average
282-0063	Labour force survey estimates (LFS), employment by economic region and National Occupational Classification for Statistics (NOC-S)
282-0064	Labour force survey estimates (LFS), by selected medium-sized cities
282-0069	Labour force survey estimates (LFS), wages of employees by type of work, National Occupational Classification for Statistics (NOC-S), sex and age group
282-0070	Labour force survey estimates (LFS), wages of employees by type of work, National Occupational Classification for Statistics (NOC-S), sex and age group
282-0071	Labour force survey estimates (LFS), wages of employees by type of work, North American Industry Classification System (NAICS), sex and age group
282-0072	Labour force survey estimates (LFS), wages of employees by type of work, North American Industry Classification System (NAICS), sex and age group
282-0073	Labour force survey estimates (LFS), wages of employees by job permanence, union coverage, sex and age group
282-0074	Labour force survey estimates (LFS), wages of employees by job permanence, union coverage, sex and age group
282-0075	Labour force survey estimates (LFS), employees by establishment size, North American Industry Classification System (NAICS), sex and age group
282-0076	Labour force survey estimates (LFS), employees by establishment size, North American Industry Classification System (NAICS), sex and age group

---

282-0077	Labour force survey estimates (LFS), employees by union coverage, North American Industry Classification System (NAICS), sex and age group
282-0078	Labour force survey estimates (LFS), employees by union coverage, North American Industry Classification System (NAICS), sex and age group
282-0079	Labour force survey estimates (LFS), employees by job permanency, North American Industry Classification System (NAICS), sex and age group
282-0080	Labour force survey estimates (LFS), employees by job permanency, North American Industry Classification System (NAICS), sex and age group
282-0081	Labour force survey estimates (LFS), employees working overtime (weekly) by National Occupational Classification for Statistics (NOC-S), sex and age group
282-0082	Labour force survey estimates (LFS), employees working overtime (weekly) by National Occupational Classification for Statistics (NOC-S), sex and age group
282-0083	Labour force survey estimates (LFS), employees working overtime (weekly) by North American Industry Classification System (NAICS), sex and age group
282-0084	Labour force survey estimates (LFS), employees working overtime (weekly) by North American Industry Classification System (NAICS), sex and age group
282-0085	Labour force survey estimates (LFS), supplementary unemployment rates by sex and age group
282-0086	Labour force survey estimates (LFS), supplementary unemployment rates by sex and age group
282-0087	Labour force survey estimates (LFS), by sex and age group, seasonally adjusted and unadjusted
282-0088	Labour force survey estimates (LFS), employment by North American Industry Classification System (NAICS), seasonally adjusted and unadjusted
282-0089	Labour force survey estimates (LFS), employment by class of worker and sex, seasonally adjusted and unadjusted
282-0090	Labour force survey estimates (LFS), by census metropolitan area, 3-month moving average, seasonally adjusted and unadjusted
282-0091	Labour force survey estimates (LFS), by Montréal, Toronto and Vancouver census metropolitan areas, seasonally adjusted and unadjusted
282-0092	Labour force survey estimates (LFS), actual hours worked by North American Industry Classification System (NAICS), seasonally adjusted
282-0093	Labour force survey estimates (LFS), employment by National Occupational Classification for Statistics (NOC-S), seasonally adjusted
282-0094	Labour force survey estimates (LFS), by North American Industry Classification System (NAICS), Canada, seasonally adjusted
282-0095	Labour force survey estimates (LFS), by full- and part-time students during school months, sex and age group
282-0096	Labour force survey estimates (LFS), by urban and rural areas based on 2001 census boundaries, sex and age group

282-0097	Labour force survey estimates (LFS), by urban and rural areas based on 2001 census boundaries, sex and age group
282-0098	Labour force survey estimates (LFS), employment by urban and rural areas based on 2001 census boundaries, class of worker and North American Industry Classification System (NAICS)
282-0099	Labour force survey estimates (LFS), employment by urban and rural areas based on 2001 census boundaries, class of worker and North American Industry Classification System (NAICS)

---

### **Selected surveys from Statistics Canada**

---

3701	Labour Force Survey
------	---------------------

---

### **Selected summary tables from Statistics Canada**

---

- *Labour force characteristics*
- *Employment by industry*
- *Selected economic indicators, Canada and United States (monthly and quarterly)*
- *Days lost per worker due to illness or disability, by sex, by provinces*
- *Economic indicators, by province and territory (monthly and quarterly)*
- *Labour force and participation rates by sex and age group*
- *Labour force, employed and unemployed, numbers and rates, by provinces*
- *Employment by industry and sex*
- *Full-time and part-time employment by sex and age group*
- *Labour force characteristics by age and sex*
- *Distribution of employed people, by industry, by province*
- *Labour force characteristics, population 15 years and older, by census metropolitan area*
- *Labour force characteristics, population 15 years and older, by economic region, by province*
- *Days lost per worker by cause, by provinces*
- *Days lost per worker by industry and sex*
- *People employed, by educational attainment*

- *Reasons for part-time work by sex and age group*
- *Self-employment, historical summary*
- *Employment by age, sex, type of work, class of worker and provinces (monthly)*
- *Employment by major industry groups, seasonally adjusted, by provinces (monthly)*
- *Actual hours worked per week by industry, seasonally adjusted (monthly)*
- *Average hourly wages of employees by selected characteristics and profession, unadjusted data, by provinces (monthly)*
- *Labour force characteristics, seasonally adjusted, by province (monthly)*
- *Labour force characteristics, unadjusted, by province (monthly)*
- *Labour force characteristics, seasonally adjusted, by census metropolitan area (3 month moving average)*
- *Labour force characteristics, unadjusted, by census metropolitan area (3 month moving average)*
- *Labour force characteristics, unadjusted, by economic region (3 month moving average)*

# Statistical tables

---

---



**Table 1**  
**Labour force characteristics by age and sex, Canada, seasonally adjusted**

	February 2007	March 2007	S.E. <sup>1</sup>	Change from			Percent change from		
				last month	last December	twelve months ago	last month	last December	twelve months ago
in thousands (except rates)									
<b>Both sexes, 15 years and over</b>									
Population	26,415.0	<b>26,441.5</b>	...	<b>26.5</b>	83.9	370.5	<b>0.1</b>	0.3	1.4
Labour force	17,827.5	<b>17,892.8</b>	27.4	<b>65.3</b>	177.1	378.0	<b>0.4</b>	1.0	2.2
Employment	16,743.5	<b>16,798.4</b>	27.5	<b>54.9</b>	158.0	394.9	<b>0.3</b>	0.9	2.4
Employment full-time	13,693.6	<b>13,724.1</b>	35.5	<b>30.5</b>	86.9	329.3	<b>0.2</b>	0.6	2.5
Employment part-time	3,049.8	<b>3,074.3</b>	32.5	<b>24.5</b>	71.1	65.6	<b>0.8</b>	2.4	2.2
Unemployment	1,084.0	<b>1,094.4</b>	23.1	<b>10.4</b>	19.1	-16.9	<b>1.0</b>	1.8	-1.5
Participation rate	67.5	<b>67.7</b>	0.1	<b>0.2</b>	0.5	0.5	...	...	...
Unemployment rate	6.1	<b>6.1</b>	0.1	<b>0.0</b>	0.0	-0.2	...	...	...
Employment rate	63.4	<b>63.5</b>	0.1	<b>0.1</b>	0.4	0.6	...	...	...
Part-time rate	18.2	<b>18.3</b>	0.2	<b>0.1</b>	0.3	0.0	...	...	...
<b>Both sexes, 15 to 24 years</b>									
Population	4,342.6	<b>4,344.5</b>	...	<b>1.9</b>	6.5	34.9	<b>0.0</b>	0.1	0.8
Labour force	2,894.4	<b>2,908.9</b>	16.7	<b>14.5</b>	38.5	17.0	<b>0.5</b>	1.3	0.6
Employment	2,575.4	<b>2,589.4</b>	15.9	<b>14.0</b>	40.5	31.0	<b>0.5</b>	1.6	1.2
Employment full-time	1,432.1	<b>1,432.5</b>	17.8	<b>0.4</b>	5.7	19.1	<b>0.0</b>	0.4	1.4
Employment part-time	1,143.3	<b>1,156.9</b>	18.6	<b>13.6</b>	34.8	12.0	<b>1.2</b>	3.1	1.0
Unemployment	319.1	<b>319.4</b>	13.8	<b>0.3</b>	-2.1	-14.2	<b>0.1</b>	-0.7	-4.3
Participation rate	66.7	<b>67.0</b>	0.4	<b>0.3</b>	0.8	-0.1	...	...	...
Unemployment rate	11.0	<b>11.0</b>	0.5	<b>0.0</b>	-0.2	-0.5	...	...	...
Employment rate	59.3	<b>59.6</b>	0.4	<b>0.3</b>	0.8	0.2	...	...	...
Part-time rate	44.4	<b>44.7</b>	0.6	<b>0.3</b>	0.7	-0.1	...	...	...
<b>Men, 25 years and over</b>									
Population	10,781.0	<b>10,793.3</b>	...	<b>12.3</b>	38.3	167.4	<b>0.1</b>	0.4	1.6
Labour force	7,958.1	<b>7,960.4</b>	13.9	<b>2.3</b>	40.7	130.2	<b>0.0</b>	0.5	1.7
Employment	7,534.0	<b>7,536.3</b>	14.9	<b>2.3</b>	32.6	122.7	<b>0.0</b>	0.4	1.7
Employment full-time	7,025.3	<b>7,034.9</b>	19.4	<b>9.6</b>	17.4	93.7	<b>0.1</b>	0.2	1.3
Employment part-time	508.7	<b>501.3</b>	15.1	<b>-7.4</b>	15.1	28.8	<b>-1.5</b>	3.1	6.1
Unemployment	424.1	<b>424.1</b>	13.1	<b>0.0</b>	8.0	7.5	<b>0.0</b>	1.9	1.8
Participation rate	73.8	<b>73.8</b>	0.1	<b>0.0</b>	0.2	0.1	...	...	...
Unemployment rate	5.3	<b>5.3</b>	0.2	<b>0.0</b>	0.0	0.0	...	...	...
Employment rate	69.9	<b>69.8</b>	0.1	<b>-0.1</b>	0.0	0.0	...	...	...
Part-time rate	6.8	<b>6.7</b>	0.2	<b>-0.1</b>	0.2	0.3	...	...	...
<b>Women, 25 years and over</b>									
Population	11,291.4	<b>11,303.7</b>	...	<b>12.3</b>	39.1	168.1	<b>0.1</b>	0.3	1.5
Labour force	6,975.0	<b>7,023.5</b>	15.4	<b>48.5</b>	97.9	230.8	<b>0.7</b>	1.4	3.4
Employment	6,634.1	<b>6,672.7</b>	15.3	<b>38.6</b>	84.8	241.2	<b>0.6</b>	1.3	3.8
Employment full-time	5,236.3	<b>5,256.6</b>	22.6	<b>20.3</b>	63.7	216.4	<b>0.4</b>	1.2	4.3
Employment part-time	1,397.9	<b>1,416.1</b>	21.0	<b>18.2</b>	21.2	24.8	<b>1.3</b>	1.5	1.8
Unemployment	340.8	<b>350.8</b>	12.3	<b>10.0</b>	13.1	-10.4	<b>2.9</b>	3.9	-2.9
Participation rate	61.8	<b>62.1</b>	0.1	<b>0.3</b>	0.6	1.1	...	...	...
Unemployment rate	4.9	<b>5.0</b>	0.2	<b>0.1</b>	0.1	-0.3	...	...	...
Employment rate	58.8	<b>59.0</b>	0.1	<b>0.2</b>	0.5	1.2	...	...	...
Part-time rate	21.1	<b>21.2</b>	0.3	<b>0.2</b>	0.0	-0.4	...	...	...
<b>Both sexes, 25 to 54 years</b>									
Population	14,292.5	<b>14,298.8</b>	...	<b>6.3</b>	17.7	99.5	<b>0.0</b>	0.1	0.7
Labour force	12,383.3	<b>12,405.6</b>	20.4	<b>22.3</b>	77.1	201.6	<b>0.2</b>	0.6	1.7
Employment	11,743.6	<b>11,761.9</b>	21.7	<b>18.3</b>	66.1	211.7	<b>0.2</b>	0.6	1.8
Unemployment	639.6	<b>643.7</b>	16.9	<b>4.1</b>	11.0	-10.1	<b>0.6</b>	1.7	-1.5
Participation rate	86.6	<b>86.8</b>	0.1	<b>0.2</b>	0.5	0.9	...	...	...
Unemployment rate	5.2	<b>5.2</b>	0.1	<b>0.0</b>	0.1	-0.2	...	...	...
Employment rate	82.2	<b>82.3</b>	0.2	<b>0.1</b>	0.4	1.0	...	...	...

1. Average standard error of change in two consecutive months (see "Sampling Errors" in Data Quality for further explanations).

**Note(s):** Related CANSIM table 282-0087

**Table 2**  
**Employment by class of worker and industry, Canada, seasonally adjusted**

	February 2007	March 2007	S.E. <sup>1</sup>	Change from			Percent change from		
				last month	last December	twelve months ago	last month	last December	twelve months ago
in thousands									
<b>Class of worker</b>									
Employees	14,189.4	<b>14,236.4</b>	31.8	<b>47.0</b>	124.5	343.0	<b>0.3</b>	0.9	2.5
Self-employed <sup>2</sup>	2,554.1	<b>2,562.0</b>	21.1	<b>7.9</b>	33.5	51.9	<b>0.3</b>	1.3	2.1
<b>Public/private sector employees</b>									
Public sector employees	3,197.8	<b>3,225.4</b>	19.9	<b>27.6</b>	33.9	29.3	<b>0.9</b>	1.1	0.9
Private sector employees	10,991.6	<b>11,011.0</b>	33.0	<b>19.4</b>	90.5	313.7	<b>0.2</b>	0.8	2.9
<b>Industry</b>	16,743.5	<b>16,798.4</b>	27.5	<b>54.9</b>	158.0	394.9	<b>0.3</b>	0.9	2.4
<b>Goods-producing sector</b>	4,002.6	<b>3,991.5</b>	22.7	<b>-11.1</b>	-24.2	2.6	<b>-0.3</b>	-0.6	0.1
Agriculture	330.6	<b>326.7</b>	6.7	<b>-3.9</b>	-19.1	-22.1	<b>-1.2</b>	-5.5	-6.3
Forestry, fishing, mining, oil and gas	351.1	<b>341.8</b>	6.3	<b>-9.3</b>	-0.6	18.0	<b>-2.6</b>	-0.2	5.6
Utilities	128.1	<b>131.1</b>	3.6	<b>3.0</b>	6.5	14.8	<b>2.3</b>	5.2	12.7
Construction	1,110.3	<b>1,107.9</b>	13.7	<b>-2.4</b>	18.6	40.0	<b>-0.2</b>	1.7	3.7
Manufacturing	2,082.5	<b>2,083.9</b>	17.7	<b>1.4</b>	-29.7	-48.1	<b>0.1</b>	-1.4	-2.3
<b>Services-producing sector</b>	12,740.9	<b>12,806.9</b>	30.3	<b>66.0</b>	182.2	392.3	<b>0.5</b>	1.4	3.2
Trade	2,638.3	<b>2,665.6</b>	20.0	<b>27.3</b>	23.8	38.0	<b>1.0</b>	0.9	1.4
Transportation and warehousing	823.5	<b>824.1</b>	11.5	<b>0.6</b>	8.2	11.6	<b>0.1</b>	1.0	1.4
Finance, insurance, real estate and leasing	1,066.4	<b>1,075.8</b>	12.9	<b>9.4</b>	10.6	50.7	<b>0.9</b>	1.0	4.9
Professional, scientific and technical services	1,120.7	<b>1,114.3</b>	14.0	<b>-6.4</b>	23.4	28.7	<b>-0.6</b>	2.1	2.6
Business, building and other support services	702.5	<b>691.9</b>	12.4	<b>-10.6</b>	-31.3	20.7	<b>-1.5</b>	-4.3	3.1
Educational services	1,169.4	<b>1,175.4</b>	13.3	<b>6.0</b>	-0.1	22.2	<b>0.5</b>	0.0	1.9
Health care and social assistance	1,847.1	<b>1,838.8</b>	14.4	<b>-8.3</b>	17.2	85.1	<b>-0.4</b>	0.9	4.9
Information, culture and recreation	763.5	<b>777.7</b>	12.1	<b>14.2</b>	47.3	26.3	<b>1.9</b>	6.5	3.5
Accommodation and food services	1,058.0	<b>1,072.9</b>	13.4	<b>14.9</b>	42.2	86.8	<b>1.4</b>	4.1	8.8
Other services	716.6	<b>730.8</b>	11.3	<b>14.2</b>	26.6	17.9	<b>2.0</b>	3.8	2.5
Public administration	834.9	<b>839.8</b>	10.3	<b>4.9</b>	14.4	4.5	<b>0.6</b>	1.7	0.5

1. Average standard error of change in two consecutive months (see "Sampling Errors" in Data Quality for further explanations).

2. Includes both incorporated and unincorporated working owners, self-employed persons who do not have a business and persons working in a family business without pay.

**Note(s):** Related CANSIM tables 282-0088, 282-0089

**Table 3**  
**Labour force characteristics by province, seasonally adjusted**

	February 2007	March 2007	S.E. <sup>1</sup>	Change from			Percent change from		
				last month	last December	twelve months ago	last month	last December	twelve months ago
in thousands (except rates)									
<b>Newfoundland and Labrador</b>									
Population	425.9	<b>425.7</b>	...	<b>-0.2</b>	-0.7	-3.1	<b>0.0</b>	-0.2	-0.7
Labour force	254.7	<b>254.0</b>	2.2	<b>-0.7</b>	0.1	2.0	<b>-0.3</b>	0.0	0.8
Employment	218.3	<b>217.7</b>	2.3	<b>-0.6</b>	-1.2	5.2	<b>-0.3</b>	-0.5	2.4
Employment full-time	184.6	<b>187.6</b>	2.6	<b>3.0</b>	2.9	8.3	<b>1.6</b>	1.6	4.6
Employment part-time	33.7	<b>30.1</b>	1.9	<b>-3.6</b>	-4.1	-3.1	<b>-10.7</b>	-12.0	-9.3
Unemployment	36.3	<b>36.3</b>	2.2	<b>0.0</b>	1.3	-3.2	<b>0.0</b>	3.7	-8.1
Participation rate	59.8	<b>59.7</b>	0.5	<b>-0.1</b>	0.2	0.9	...	...	...
Unemployment rate	14.3	<b>14.3</b>	0.8	<b>0.0</b>	0.5	-1.4	...	...	...
Employment rate	51.3	<b>51.1</b>	0.5	<b>-0.2</b>	-0.2	1.5	...	...	...
<b>Prince Edward Island</b>									
Population	112.8	<b>112.8</b>	...	<b>0.0</b>	0.1	0.8	<b>0.0</b>	0.1	0.7
Labour force	77.9	<b>78.3</b>	0.6	<b>0.4</b>	0.0	1.0	<b>0.5</b>	0.0	1.3
Employment	69.9	<b>70.1</b>	0.7	<b>0.2</b>	1.5	2.3	<b>0.3</b>	2.2	3.4
Employment full-time	56.6	<b>57.3</b>	0.8	<b>0.7</b>	0.7	-0.2	<b>1.2</b>	1.2	-0.3
Employment part-time	13.3	<b>12.9</b>	0.6	<b>-0.4</b>	0.9	2.6	<b>-3.0</b>	7.5	25.2
Unemployment	7.9	<b>8.1</b>	0.6	<b>0.2</b>	-1.6	-1.4	<b>2.5</b>	-16.5	-14.7
Participation rate	69.1	<b>69.4</b>	0.5	<b>0.3</b>	-0.1	0.4	...	...	...
Unemployment rate	10.1	<b>10.3</b>	0.7	<b>0.2</b>	-2.1	-2.0	...	...	...
Employment rate	62.0	<b>62.1</b>	0.6	<b>0.1</b>	1.2	1.6	...	...	...
<b>Nova Scotia</b>									
Population	763.5	<b>763.7</b>	...	<b>0.2</b>	0.2	1.1	<b>0.0</b>	0.0	0.1
Labour force	486.8	<b>486.1</b>	2.7	<b>-0.7</b>	5.6	5.0	<b>-0.1</b>	1.2	1.0
Employment	450.8	<b>447.8</b>	3.0	<b>-3.0</b>	2.4	4.5	<b>-0.7</b>	0.5	1.0
Employment full-time	371.1	<b>365.2</b>	3.7	<b>-5.9</b>	1.2	6.3	<b>-1.6</b>	0.3	1.8
Employment part-time	79.8	<b>82.6</b>	3.1	<b>2.8</b>	1.2	-1.8	<b>3.5</b>	1.5	-2.1
Unemployment	36.0	<b>38.3</b>	2.6	<b>2.3</b>	3.2	0.5	<b>6.4</b>	9.1	1.3
Participation rate	63.8	<b>63.7</b>	0.4	<b>-0.1</b>	0.8	0.6	...	...	...
Unemployment rate	7.4	<b>7.9</b>	0.5	<b>0.5</b>	0.6	0.0	...	...	...
Employment rate	59.0	<b>58.6</b>	0.4	<b>-0.4</b>	0.3	0.5	...	...	...
<b>New Brunswick</b>									
Population	611.8	<b>612.1</b>	...	<b>0.3</b>	0.9	0.7	<b>0.0</b>	0.1	0.1
Labour force	386.5	<b>388.8</b>	2.3	<b>2.3</b>	1.7	-6.3	<b>0.6</b>	0.4	-1.6
Employment	359.8	<b>360.0</b>	2.5	<b>0.2</b>	5.7	1.1	<b>0.1</b>	1.6	0.3
Employment full-time	302.7	<b>302.8</b>	2.9	<b>0.1</b>	5.0	0.6	<b>0.0</b>	1.7	0.2
Employment part-time	57.1	<b>57.2</b>	2.4	<b>0.1</b>	0.7	0.6	<b>0.2</b>	1.2	1.1
Unemployment	26.7	<b>28.8</b>	2.1	<b>2.1</b>	-4.0	-7.4	<b>7.9</b>	-12.2	-20.4
Participation rate	63.2	<b>63.5</b>	0.4	<b>0.3</b>	0.2	-1.1	...	...	...
Unemployment rate	6.9	<b>7.4</b>	0.5	<b>0.5</b>	-1.1	-1.8	...	...	...
Employment rate	58.8	<b>58.8</b>	0.4	<b>0.0</b>	0.8	0.1	...	...	...
<b>Quebec</b>									
Population	6,293.0	<b>6,297.3</b>	...	<b>4.3</b>	14.5	67.2	<b>0.1</b>	0.2	1.1
Labour force	4,122.2	<b>4,143.7</b>	14.5	<b>21.5</b>	48.0	44.4	<b>0.5</b>	1.2	1.1
Employment	3,799.0	<b>3,828.2</b>	14.8	<b>29.2</b>	38.8	73.4	<b>0.8</b>	1.0	2.0
Employment full-time	3,102.7	<b>3,115.8</b>	19.3	<b>13.1</b>	5.3	60.7	<b>0.4</b>	0.2	2.0
Employment part-time	696.3	<b>712.5</b>	17.6	<b>16.2</b>	33.6	12.8	<b>2.3</b>	4.9	1.8
Unemployment	323.2	<b>315.5</b>	13.6	<b>-7.7</b>	9.2	-29.0	<b>-2.4</b>	3.0	-8.4
Participation rate	65.5	<b>65.8</b>	0.2	<b>0.3</b>	0.6	0.0	...	...	...
Unemployment rate	7.8	<b>7.6</b>	0.3	<b>-0.2</b>	0.1	-0.8	...	...	...
Employment rate	60.4	<b>60.8</b>	0.2	<b>0.4</b>	0.5	0.5	...	...	...

See footnotes at the end of the table.

Table 3 – continued

## Labour force characteristics by province, seasonally adjusted

	February 2007	March 2007	S.E. <sup>1</sup>	Change from			Percent change from		
				last month	last December	twelve months ago	last month	last December	twelve months ago
in thousands (except rates)									
<b>Ontario</b>									
Population	10,309.2	<b>10,318.6</b>	...	<b>9.4</b>	27.7	132.7	<b>0.1</b>	0.3	1.3
Labour force	7,002.7	<b>7,030.2</b>	18.4	<b>27.5</b>	61.6	137.9	<b>0.4</b>	0.9	2.0
Employment	6,560.2	<b>6,572.5</b>	18.1	<b>12.3</b>	25.9	105.2	<b>0.2</b>	0.4	1.6
Employment full-time	5,354.9	<b>5,391.6</b>	23.0	<b>36.7</b>	37.0	73.6	<b>0.7</b>	0.7	1.4
Employment part-time	1,205.3	<b>1,181.0</b>	21.2	<b>-24.3</b>	-10.9	31.7	<b>-2.0</b>	-0.9	2.8
Unemployment	442.5	<b>457.7</b>	15.3	<b>15.2</b>	35.7	32.7	<b>3.4</b>	8.5	7.7
Participation rate	67.9	<b>68.1</b>	0.2	<b>0.2</b>	0.4	0.4	...	...	...
Unemployment rate	6.3	<b>6.5</b>	0.2	<b>0.2</b>	0.4	0.3	...	...	...
Employment rate	63.6	<b>63.7</b>	0.2	<b>0.1</b>	0.1	0.2	...	...	...
<b>Manitoba</b>									
Population	894.7	<b>895.6</b>	...	<b>0.9</b>	1.8	5.1	<b>0.1</b>	0.2	0.6
Labour force	617.2	<b>620.0</b>	2.8	<b>2.8</b>	7.4	11.7	<b>0.5</b>	1.2	1.9
Employment	590.5	<b>593.6</b>	2.8	<b>3.1</b>	6.0	10.7	<b>0.5</b>	1.0	1.8
Employment full-time	478.4	<b>472.9</b>	3.9	<b>-5.5</b>	0.5	3.7	<b>-1.1</b>	0.1	0.8
Employment part-time	112.1	<b>120.7</b>	3.6	<b>8.6</b>	5.5	7.0	<b>7.7</b>	4.8	6.2
Unemployment	26.7	<b>26.5</b>	2.1	<b>-0.2</b>	1.5	1.1	<b>-0.7</b>	6.0	4.3
Participation rate	69.0	<b>69.2</b>	0.3	<b>0.2</b>	0.7	0.9	...	...	...
Unemployment rate	4.3	<b>4.3</b>	0.3	<b>0.0</b>	0.2	0.1	...	...	...
Employment rate	66.0	<b>66.3</b>	0.3	<b>0.3</b>	0.6	0.8	...	...	...
<b>Saskatchewan</b>									
Population	747.4	<b>748.2</b>	...	<b>0.8</b>	1.9	1.2	<b>0.1</b>	0.3	0.2
Labour force	524.0	<b>524.3</b>	2.4	<b>0.3</b>	0.3	14.7	<b>0.1</b>	0.1	2.9
Employment	503.3	<b>504.4</b>	2.5	<b>1.1</b>	1.6	20.2	<b>0.2</b>	0.3	4.2
Employment full-time	406.1	<b>405.5</b>	3.3	<b>-0.6</b>	-2.2	13.5	<b>-0.1</b>	-0.5	3.4
Employment part-time	97.2	<b>98.9</b>	2.9	<b>1.7</b>	3.8	6.8	<b>1.7</b>	4.0	7.4
Unemployment	20.7	<b>19.9</b>	1.9	<b>-0.8</b>	-1.3	-5.5	<b>-3.9</b>	-6.1	-21.7
Participation rate	70.1	<b>70.1</b>	0.3	<b>0.0</b>	-0.1	1.9	...	...	...
Unemployment rate	4.0	<b>3.8</b>	0.4	<b>-0.2</b>	-0.2	-1.2	...	...	...
Employment rate	67.3	<b>67.4</b>	0.3	<b>0.1</b>	0.0	2.6	...	...	...
<b>Alberta</b>									
Population	2,709.2	<b>2,715.9</b>	...	<b>6.7</b>	23.8	105.5	<b>0.2</b>	0.9	4.0
Labour force	2,008.1	<b>2,010.1</b>	8.0	<b>2.0</b>	35.7	99.8	<b>0.1</b>	1.8	5.2
Employment	1,938.7	<b>1,938.6</b>	8.3	<b>-0.1</b>	30.2	93.9	<b>0.0</b>	1.6	5.1
Employment full-time	1,639.0	<b>1,631.2</b>	10.8	<b>-7.8</b>	15.7	97.8	<b>-0.5</b>	1.0	6.4
Employment part-time	299.7	<b>307.4</b>	9.8	<b>7.7</b>	14.5	-3.9	<b>2.6</b>	5.0	-1.3
Unemployment	69.4	<b>71.5</b>	5.6	<b>2.1</b>	5.5	5.9	<b>3.0</b>	8.3	9.0
Participation rate	74.1	<b>74.0</b>	0.3	<b>-0.1</b>	0.7	0.8	...	...	...
Unemployment rate	3.5	<b>3.6</b>	0.3	<b>0.1</b>	0.3	0.2	...	...	...
Employment rate	71.6	<b>71.4</b>	0.3	<b>-0.2</b>	0.5	0.7	...	...	...
<b>British Columbia</b>									
Population	3,547.4	<b>3,551.7</b>	...	<b>4.3</b>	13.7	59.3	<b>0.1</b>	0.4	1.7
Labour force	2,347.4	<b>2,357.3</b>	10.0	<b>9.9</b>	16.6	67.8	<b>0.4</b>	0.7	3.0
Employment	2,252.9	<b>2,265.4</b>	10.1	<b>12.5</b>	46.9	78.3	<b>0.6</b>	2.1	3.6
Employment full-time	1,797.5	<b>1,794.3</b>	13.5	<b>-3.2</b>	21.1	66.1	<b>-0.2</b>	1.2	3.8
Employment part-time	455.3	<b>471.1</b>	12.5	<b>15.8</b>	25.8	12.2	<b>3.5</b>	5.8	2.7
Unemployment	94.6	<b>91.9</b>	7.3	<b>-2.7</b>	-30.3	-10.5	<b>-2.9</b>	-24.8	-10.3
Participation rate	66.2	<b>66.4</b>	0.3	<b>0.2</b>	0.2	0.8	...	...	...
Unemployment rate	4.0	<b>3.9</b>	0.3	<b>-0.1</b>	-1.3	-0.6	...	...	...
Employment rate	63.5	<b>63.8</b>	0.3	<b>0.3</b>	1.1	1.2	...	...	...

1. Average standard error of change in two consecutive months (see "Sampling Errors" in Data Quality for further explanations).

Note(s): Related CANSIM table 282-0087

**Table 4-1**  
**Selected labour force characteristics (seasonally adjusted) — Newfoundland and Labrador**

	February 2007	March 2007	S.E. <sup>1</sup>	Change from			Percent change from		
				last month	last December	twelve months ago	last month	last December	twelve months ago
in thousands (except rates)									
<b>Both sexes, 15 years and over</b>									
Population	425.9	<b>425.7</b>	...	<b>-0.2</b>	-0.7	-3.1	<b>0.0</b>	-0.2	-0.7
Labour force	254.7	<b>254.0</b>	2.2	<b>-0.7</b>	0.1	2.0	<b>-0.3</b>	0.0	0.8
Employment	218.3	<b>217.7</b>	2.3	<b>-0.6</b>	-1.2	5.2	<b>-0.3</b>	-0.5	2.4
Employment full-time	184.6	<b>187.6</b>	2.6	<b>3.0</b>	2.9	8.3	<b>1.6</b>	1.6	4.6
Unemployment	36.3	<b>36.3</b>	2.2	<b>0.0</b>	1.3	-3.2	<b>0.0</b>	3.7	-8.1
Participation rate	59.8	<b>59.7</b>	0.5	<b>-0.1</b>	0.2	0.9	...	...	...
Unemployment rate	14.3	<b>14.3</b>	0.8	<b>0.0</b>	0.5	-1.4	...	...	...
Employment rate	51.3	<b>51.1</b>	0.5	<b>-0.2</b>	-0.2	1.5	...	...	...
Part-time rate	15.4	<b>13.8</b>	0.9	<b>-1.6</b>	-1.8	-1.8	...	...	...
<b>Both sexes, 15 to 24 years</b>									
Population	65.0	<b>64.8</b>	...	<b>-0.2</b>	-0.6	-2.8	<b>-0.3</b>	-0.9	-4.1
Labour force	36.5	<b>35.7</b>	1.2	<b>-0.8</b>	-0.7	-1.2	<b>-2.2</b>	-1.9	-3.3
Employment	29.5	<b>28.6</b>	1.1	<b>-0.9</b>	0.2	1.7	<b>-3.1</b>	0.7	6.3
Unemployment	7.0	<b>7.1</b>	1.1	<b>0.1</b>	-0.8	-2.9	<b>1.4</b>	-10.1	-29.0
Participation rate	56.2	<b>55.1</b>	1.8	<b>-1.1</b>	-0.6	0.5	...	...	...
Unemployment rate	19.2	<b>19.9</b>	2.8	<b>0.7</b>	-1.8	-7.2	...	...	...
Employment rate	45.4	<b>44.1</b>	1.6	<b>-1.3</b>	0.7	4.3	...	...	...
Part-time rate	44.1	<b>41.6</b>	3.6	<b>-2.5</b>	0.1	-6.7	...	...	...
<b>Men, 25 years and over</b>									
Population	174.6	<b>174.5</b>	...	<b>-0.1</b>	-0.2	-0.4	<b>-0.1</b>	-0.1	-0.2
Labour force	114.3	<b>114.2</b>	1.2	<b>-0.1</b>	-0.8	1.2	<b>-0.1</b>	-0.7	1.1
Employment	96.8	<b>96.9</b>	1.4	<b>0.1</b>	-1.9	1.0	<b>0.1</b>	-1.9	1.0
Unemployment	17.5	<b>17.4</b>	1.4	<b>-0.1</b>	1.2	0.3	<b>-0.6</b>	7.4	1.8
Participation rate	65.5	<b>65.4</b>	0.7	<b>-0.1</b>	-0.4	0.8	...	...	...
Unemployment rate	15.3	<b>15.2</b>	1.1	<b>-0.1</b>	1.1	0.1	...	...	...
Employment rate	55.4	<b>55.5</b>	0.8	<b>0.1</b>	-1.1	0.7	...	...	...
Part-time rate	5.3	<b>5.1</b>	0.8	<b>-0.2</b>	-0.1	0.1	...	...	...
<b>Women, 25 years and over</b>									
Population	186.3	<b>186.3</b>	...	<b>0.0</b>	0.0	0.1	<b>0.0</b>	0.0	0.1
Labour force	103.9	<b>104.0</b>	1.3	<b>0.1</b>	1.5	1.9	<b>0.1</b>	1.5	1.9
Employment	92.0	<b>92.2</b>	1.3	<b>0.2</b>	0.5	2.5	<b>0.2</b>	0.5	2.8
Unemployment	11.9	<b>11.9</b>	1.2	<b>0.0</b>	1.0	-0.5	<b>0.0</b>	9.2	-4.0
Participation rate	55.8	<b>55.8</b>	0.7	<b>0.0</b>	0.8	1.0	...	...	...
Unemployment rate	11.5	<b>11.4</b>	1.1	<b>-0.1</b>	0.8	-0.7	...	...	...
Employment rate	49.4	<b>49.5</b>	0.7	<b>0.1</b>	0.3	1.3	...	...	...
Part-time rate	17.0	<b>14.4</b>	1.4	<b>-2.5</b>	-4.3	-2.9	...	...	...
<b>Industry</b>									
Industry	218.3	<b>217.7</b>	2.3	<b>-0.6</b>	-1.2	5.2	<b>-0.3</b>	-0.5	2.4
<b>Goods-producing sector</b>									
Goods-producing sector	47.5	<b>48.0</b>	1.9	<b>0.5</b>	-2.4	-1.1	<b>1.1</b>	-4.8	-2.2
Agriculture	1.5	<b>1.3</b>	0.4	<b>-0.2</b>	-0.4	-0.5	<b>-13.3</b>	-23.5	-27.8
Forestry, fishing, mining, oil and gas	17.6	<b>16.9</b>	1.1	<b>-0.7</b>	-1.0	0.7	<b>-4.0</b>	-5.6	4.3
Utilities	1.5	<b>1.6</b>	0.3	<b>0.1</b>	0.2	-1.0	<b>6.7</b>	14.3	-38.5
Construction	12.3	<b>13.0</b>	1.0	<b>0.7</b>	-0.6	0.4	<b>5.7</b>	-4.4	3.2
Manufacturing	14.6	<b>15.2</b>	1.1	<b>0.6</b>	-0.6	-0.7	<b>4.1</b>	-3.8	-4.4
<b>Services-producing sector</b>									
Services-producing sector	170.8	<b>169.7</b>	2.0	<b>-1.1</b>	1.2	6.2	<b>-0.6</b>	0.7	3.8
Trade	39.6	<b>38.8</b>	1.2	<b>-0.8</b>	0.7	2.4	<b>-2.0</b>	1.8	6.6
Transportation and warehousing	10.6	<b>10.6</b>	0.7	<b>0.0</b>	-0.7	-1.1	<b>0.0</b>	-6.2	-9.4
Finance, insurance, real estate and leasing	6.6	<b>7.3</b>	0.5	<b>0.7</b>	0.9	-0.1	<b>10.6</b>	14.1	-1.4
Professional, scientific and technical services	7.5	<b>7.6</b>	0.5	<b>0.1</b>	1.8	1.3	<b>1.3</b>	31.0	20.6
Business, building and other support services	8.2	<b>8.6</b>	0.7	<b>0.4</b>	-0.7	1.2	<b>4.9</b>	-7.5	16.2
Educational services	20.0	<b>18.4</b>	0.8	<b>-1.6</b>	-0.2	2.7	<b>-8.0</b>	-1.1	17.2
Health care and social assistance	29.8	<b>30.2</b>	1.0	<b>0.4</b>	0.5	-1.2	<b>1.3</b>	1.7	-3.8
Information, culture and recreation	8.5	<b>8.2</b>	0.6	<b>-0.3</b>	-0.9	0.4	<b>-3.5</b>	-9.9	5.1
Accommodation and food services	13.3	<b>13.6</b>	1.0	<b>0.3</b>	1.2	0.6	<b>2.3</b>	9.7	4.6
Other services	9.8	<b>10.0</b>	0.7	<b>0.2</b>	-1.4	-1.7	<b>2.0</b>	-12.3	-14.5
Public administration	16.9	<b>16.5</b>	0.8	<b>-0.4</b>	0.2	1.9	<b>-2.4</b>	1.2	13.0

1. Average standard error of change in two consecutive months (see "Sampling Errors" in Data Quality for further explanations).

**Note(s):** Related CANSIM tables 282-0087, 282-0088

**Table 4-2**  
**Selected labour force characteristics (seasonally adjusted) — Prince Edward Island**

	February 2007	March 2007	S.E. <sup>1</sup>	Change from			Percent change from		
				last month	last December	twelve months ago	last month	last December	twelve months ago
in thousands (except rates)									
<b>Both sexes, 15 years and over</b>									
Population	112.8	<b>112.8</b>	...	<b>0.0</b>	0.1	0.8	<b>0.0</b>	0.1	0.7
Labour force	77.9	<b>78.3</b>	0.6	<b>0.4</b>	0.0	1.0	<b>0.5</b>	0.0	1.3
Employment	69.9	<b>70.1</b>	0.7	<b>0.2</b>	1.5	2.3	<b>0.3</b>	2.2	3.4
Employment full-time	56.6	<b>57.3</b>	0.8	<b>0.7</b>	0.7	-0.2	<b>1.2</b>	1.2	-0.3
Unemployment	7.9	<b>8.1</b>	0.6	<b>0.2</b>	-1.6	-1.4	<b>2.5</b>	-16.5	-14.7
Participation rate	69.1	<b>69.4</b>	0.5	<b>0.3</b>	-0.1	0.4	...	...	...
Unemployment rate	10.1	<b>10.3</b>	0.7	<b>0.2</b>	-2.1	-2.0	...	...	...
Employment rate	62.0	<b>62.1</b>	0.6	<b>0.1</b>	1.2	1.6	...	...	...
Part-time rate	19.0	<b>18.4</b>	0.9	<b>-0.6</b>	0.9	3.2	...	...	...
<b>Both sexes, 15 to 24 years</b>									
Population	19.8	<b>19.8</b>	...	<b>0.0</b>	0.0	0.0	<b>0.0</b>	0.0	0.0
Labour force	14.1	<b>14.3</b>	0.4	<b>0.2</b>	0.0	0.2	<b>1.4</b>	0.0	1.4
Employment	12.5	<b>12.7</b>	0.4	<b>0.2</b>	0.9	1.0	<b>1.6</b>	7.6	8.5
Unemployment	1.6	<b>1.6</b>	0.3	<b>0.0</b>	-0.9	-0.8	<b>0.0</b>	-36.0	-33.3
Participation rate	71.2	<b>72.2</b>	1.8	<b>1.0</b>	0.0	1.0	...	...	...
Unemployment rate	11.3	<b>11.2</b>	2.2	<b>-0.1</b>	-6.3	-5.8	...	...	...
Employment rate	63.1	<b>64.1</b>	1.8	<b>1.0</b>	4.5	5.0	...	...	...
Part-time rate	42.4	<b>41.7</b>	3.1	<b>-0.7</b>	0.2	6.7	...	...	...
<b>Men, 25 years and over</b>									
Population	44.6	<b>44.6</b>	...	<b>0.0</b>	0.1	0.4	<b>0.0</b>	0.2	0.9
Labour force	32.8	<b>33.0</b>	0.3	<b>0.2</b>	-0.1	0.3	<b>0.6</b>	-0.3	0.9
Employment	29.3	<b>29.3</b>	0.4	<b>0.0</b>	0.6	1.2	<b>0.0</b>	2.1	4.3
Unemployment	3.6	<b>3.7</b>	0.4	<b>0.1</b>	-0.6	-0.9	<b>2.8</b>	-14.0	-19.6
Participation rate	73.5	<b>74.0</b>	0.8	<b>0.5</b>	-0.4	0.0	...	...	...
Unemployment rate	11.0	<b>11.2</b>	1.1	<b>0.2</b>	-1.8	-2.9	...	...	...
Employment rate	65.7	<b>65.7</b>	0.9	<b>0.0</b>	1.2	2.1	...	...	...
Part-time rate	8.9	<b>6.5</b>	0.9	<b>-2.4</b>	0.6	1.5	...	...	...
<b>Women, 25 years and over</b>									
Population	48.5	<b>48.5</b>	...	<b>0.0</b>	0.1	0.5	<b>0.0</b>	0.2	1.0
Labour force	31.0	<b>30.9</b>	0.3	<b>-0.1</b>	-0.1	0.4	<b>-0.3</b>	-0.3	1.3
Employment	28.2	<b>28.1</b>	0.4	<b>-0.1</b>	0.0	0.1	<b>-0.4</b>	0.0	0.4
Unemployment	2.8	<b>2.8</b>	0.3	<b>0.0</b>	-0.1	0.3	<b>0.0</b>	-3.4	12.0
Participation rate	63.9	<b>63.7</b>	0.7	<b>-0.2</b>	-0.3	0.2	...	...	...
Unemployment rate	9.0	<b>9.1</b>	1.0	<b>0.1</b>	-0.3	0.9	...	...	...
Employment rate	58.1	<b>57.9</b>	0.8	<b>-0.2</b>	-0.2	-0.4	...	...	...
Part-time rate	19.1	<b>20.3</b>	1.6	<b>1.1</b>	1.1	3.1	...	...	...
<b>Industry</b>									
<b>Goods-producing sector</b>	69.9	<b>70.1</b>	0.7	<b>0.2</b>	1.5	2.3	<b>0.3</b>	2.2	3.4
Agriculture	18.9	<b>19.0</b>	0.5	<b>0.1</b>	0.5	0.4	<b>0.5</b>	2.7	2.2
Forestry, fishing, mining, oil and gas	4.0	<b>4.1</b>	0.3	<b>0.1</b>	0.1	0.2	<b>2.5</b>	2.5	5.1
Utilities	2.6	<b>2.4</b>	0.2	<b>-0.2</b>	0.2	0.2	<b>-7.7</b>	9.1	9.1
Construction	0.2	<b>0.2</b>	0.1	<b>0.0</b>	0.0	-0.3	<b>0.0</b>	0.0	-60.0
Manufacturing	5.3	<b>5.6</b>	0.3	<b>0.3</b>	-0.1	0.1	<b>5.7</b>	-1.8	1.8
Manufacturing	6.8	<b>6.7</b>	0.3	<b>-0.1</b>	0.2	0.1	<b>-1.5</b>	3.1	1.5
<b>Services-producing sector</b>	51.0	<b>51.2</b>	0.6	<b>0.2</b>	1.1	2.0	<b>0.4</b>	2.2	4.1
Trade	9.9	<b>10.2</b>	0.3	<b>0.3</b>	0.4	0.5	<b>3.0</b>	4.1	5.2
Transportation and warehousing	2.4	<b>2.3</b>	0.2	<b>-0.1</b>	-0.1	0.5	<b>-4.2</b>	-4.2	27.8
Finance, insurance, real estate and leasing	2.3	<b>2.4</b>	0.1	<b>0.1</b>	0.0	0.7	<b>4.3</b>	0.0	41.2
Professional, scientific and technical services	2.6	<b>2.3</b>	0.2	<b>-0.3</b>	-0.2	-0.5	<b>-11.5</b>	-8.0	-17.9
Business, building and other support services	2.6	<b>3.0</b>	0.3	<b>0.4</b>	0.4	0.4	<b>15.4</b>	15.4	15.4
Educational services	4.9	<b>4.8</b>	0.3	<b>-0.1</b>	0.0	0.3	<b>-2.0</b>	0.0	6.7
Health care and social assistance	8.3	<b>8.3</b>	0.3	<b>0.0</b>	0.4	0.1	<b>0.0</b>	5.1	1.2
Information, culture and recreation	2.7	<b>2.8</b>	0.2	<b>0.1</b>	0.3	0.2	<b>3.7</b>	12.0	7.7
Accommodation and food services	6.1	<b>6.1</b>	0.3	<b>0.0</b>	0.3	0.2	<b>0.0</b>	5.2	3.4
Other services	2.6	<b>2.6</b>	0.2	<b>0.0</b>	0.0	-0.7	<b>0.0</b>	0.0	-21.2
Public administration	6.6	<b>6.6</b>	0.3	<b>0.0</b>	-0.2	0.4	<b>0.0</b>	-2.9	6.5

1. Average standard error of change in two consecutive months (see "Sampling Errors" in Data Quality for further explanations).

**Note(s):** Related CANSIM tables 282-0087, 282-0088

**Table 4-3**  
**Selected labour force characteristics (seasonally adjusted) — Nova Scotia**

	February 2007	March 2007	S.E. <sup>1</sup>	Change from			Percent change from		
				last month	last December	twelve months ago	last month	last December	twelve months ago
in thousands (except rates)									
<b>Both sexes, 15 years and over</b>									
Population	763.5	<b>763.7</b>	...	<b>0.2</b>	0.2	1.1	<b>0.0</b>	0.0	0.1
Labour force	486.8	<b>486.1</b>	2.7	<b>-0.7</b>	5.6	5.0	<b>-0.1</b>	1.2	1.0
Employment	450.8	<b>447.8</b>	3.0	<b>-3.0</b>	2.4	4.5	<b>-0.7</b>	0.5	1.0
Employment full-time	371.1	<b>365.2</b>	3.7	<b>-5.9</b>	1.2	6.3	<b>-1.6</b>	0.3	1.8
Unemployment	36.0	<b>38.3</b>	2.6	<b>2.3</b>	3.2	0.5	<b>6.4</b>	9.1	1.3
Participation rate	63.8	<b>63.7</b>	0.4	<b>-0.1</b>	0.8	0.6	...	...	...
Unemployment rate	7.4	<b>7.9</b>	0.5	<b>0.5</b>	0.6	0.0	...	...	...
Employment rate	59.0	<b>58.6</b>	0.4	<b>-0.4</b>	0.3	0.5	...	...	...
Part-time rate	17.7	<b>18.4</b>	0.7	<b>0.7</b>	0.2	-0.6	...	...	...
<b>Both sexes, 15 to 24 years</b>									
Population	122.6	<b>122.6</b>	...	<b>0.0</b>	-0.2	-0.9	<b>0.0</b>	-0.2	-0.7
Labour force	81.0	<b>80.2</b>	1.7	<b>-0.8</b>	-0.8	-4.5	<b>-1.0</b>	-1.0	-5.3
Employment	70.2	<b>69.5</b>	1.7	<b>-0.7</b>	-1.5	-3.9	<b>-1.0</b>	-2.1	-5.3
Unemployment	10.8	<b>10.7</b>	1.5	<b>-0.1</b>	0.7	-0.6	<b>-0.9</b>	7.0	-5.3
Participation rate	66.1	<b>65.4</b>	1.4	<b>-0.7</b>	-0.6	-3.2	...	...	...
Unemployment rate	13.3	<b>13.3</b>	1.7	<b>0.0</b>	1.0	0.0	...	...	...
Employment rate	57.3	<b>56.7</b>	1.3	<b>-0.6</b>	-1.1	-2.7	...	...	...
Part-time rate	44.6	<b>45.3</b>	2.4	<b>0.7</b>	-0.6	-3.3	...	...	...
<b>Men, 25 years and over</b>									
Population	305.9	<b>306.0</b>	...	<b>0.1</b>	0.2	0.7	<b>0.0</b>	0.1	0.2
Labour force	210.0	<b>209.5</b>	1.5	<b>-0.5</b>	2.6	4.5	<b>-0.2</b>	1.3	2.2
Employment	194.6	<b>192.7</b>	1.7	<b>-1.9</b>	1.8	3.8	<b>-1.0</b>	0.9	2.0
Unemployment	15.3	<b>16.7</b>	1.5	<b>1.4</b>	0.7	0.7	<b>9.2</b>	4.4	4.4
Participation rate	68.6	<b>68.5</b>	0.5	<b>-0.1</b>	0.8	1.4	...	...	...
Unemployment rate	7.3	<b>8.0</b>	0.7	<b>0.7</b>	0.3	0.2	...	...	...
Employment rate	63.6	<b>63.0</b>	0.5	<b>-0.6</b>	0.6	1.1	...	...	...
Part-time rate	7.3	<b>7.8</b>	0.7	<b>0.5</b>	0.7	0.9	...	...	...
<b>Women, 25 years and over</b>									
Population	335.0	<b>335.1</b>	...	<b>0.1</b>	0.2	1.3	<b>0.0</b>	0.1	0.4
Labour force	195.9	<b>196.5</b>	1.4	<b>0.6</b>	3.9	5.1	<b>0.3</b>	2.0	2.7
Employment	185.9	<b>185.6</b>	1.5	<b>-0.3</b>	2.0	4.6	<b>-0.2</b>	1.1	2.5
Unemployment	9.9	<b>10.8</b>	1.3	<b>0.9</b>	1.7	0.3	<b>9.1</b>	18.7	2.9
Participation rate	58.5	<b>58.6</b>	0.4	<b>0.1</b>	1.1	1.3	...	...	...
Unemployment rate	5.1	<b>5.5</b>	0.6	<b>0.4</b>	0.8	0.0	...	...	...
Employment rate	55.5	<b>55.4</b>	0.4	<b>-0.1</b>	0.6	1.2	...	...	...
Part-time rate	18.5	<b>19.5</b>	1.1	<b>1.1</b>	0.2	-0.2	...	...	...
<b>Industry</b>									
<b>Goods-producing sector</b>	450.8	<b>447.8</b>	3.0	<b>-3.0</b>	2.4	4.5	<b>-0.7</b>	0.5	1.0
Agriculture	86.6	<b>87.2</b>	2.2	<b>0.6</b>	0.9	0.4	<b>0.7</b>	1.0	0.5
Forestry, fishing, mining, oil and gas	4.6	<b>5.4</b>	0.6	<b>0.8</b>	0.9	0.8	<b>17.4</b>	20.0	17.4
Utilities	12.7	<b>13.0</b>	1.0	<b>0.3</b>	1.3	-0.9	<b>2.4</b>	11.1	-6.5
Construction	1.6	<b>1.6</b>	0.2	<b>0.0</b>	-0.6	-0.1	<b>0.0</b>	-27.3	-5.9
Manufacturing	26.3	<b>25.4</b>	1.4	<b>-0.9</b>	-2.5	-1.2	<b>-3.4</b>	-9.0	-4.5
Professional, scientific and technical services	41.5	<b>41.7</b>	1.4	<b>0.2</b>	1.7	1.7	<b>0.5</b>	4.2	4.2
<b>Services-producing sector</b>	364.2	<b>360.6</b>	2.9	<b>-3.6</b>	1.5	4.0	<b>-1.0</b>	0.4	1.1
Trade	76.9	<b>79.4</b>	1.9	<b>2.5</b>	0.6	0.4	<b>3.3</b>	0.8	0.5
Transportation and warehousing	18.5	<b>18.5</b>	1.0	<b>0.0</b>	0.4	0.1	<b>0.0</b>	2.2	0.5
Finance, insurance, real estate and leasing	24.6	<b>24.1</b>	1.0	<b>-0.5</b>	-0.4	2.1	<b>-2.0</b>	-1.6	9.5
Business, building and other support services	16.9	<b>15.7</b>	1.0	<b>-1.2</b>	-1.1	-3.8	<b>-7.1</b>	-6.5	-19.5
Educational services	27.9	<b>25.2</b>	1.3	<b>-2.7</b>	-3.8	-4.0	<b>-9.7</b>	-13.1	-13.7
Health care and social assistance	35.5	<b>35.0</b>	1.4	<b>-0.5</b>	0.1	-2.1	<b>-1.4</b>	0.3	-5.7
Information, culture and recreation	62.2	<b>62.7</b>	1.3	<b>0.5</b>	1.9	3.5	<b>0.8</b>	3.1	5.9
Accommodation and food services	18.0	<b>17.8</b>	1.0	<b>-0.2</b>	1.5	2.3	<b>-1.1</b>	9.2	14.8
Other services	33.5	<b>32.4</b>	1.4	<b>-1.1</b>	0.9	5.8	<b>-3.3</b>	2.9	21.8
Public administration	21.5	<b>21.4</b>	1.1	<b>-0.1</b>	1.4	0.1	<b>-0.5</b>	7.0	0.5
Public administration	28.7	<b>28.3</b>	1.1	<b>-0.4</b>	-0.3	-0.5	<b>-1.4</b>	-1.0	-1.7

1. Average standard error of change in two consecutive months (see "Sampling Errors" in Data Quality for further explanations).

**Note(s):** Related CANSIM tables 282-0087, 282-0088



**Table 4-4**  
**Selected labour force characteristics (seasonally adjusted) — New Brunswick**

	February 2007	March 2007	S.E. <sup>1</sup>	Change from			Percent change from		
				last month	last December	twelve months ago	last month	last December	twelve months ago
in thousands (except rates)									
<b>Both sexes, 15 years and over</b>									
Population	611.8	<b>612.1</b>	...	<b>0.3</b>	0.9	0.7	<b>0.0</b>	0.1	0.1
Labour force	386.5	<b>388.8</b>	2.3	<b>2.3</b>	1.7	-6.3	<b>0.6</b>	0.4	-1.6
Employment	359.8	<b>360.0</b>	2.5	<b>0.2</b>	5.7	1.1	<b>0.1</b>	1.6	0.3
Employment full-time	302.7	<b>302.8</b>	2.9	<b>0.1</b>	5.0	0.6	<b>0.0</b>	1.7	0.2
Unemployment	26.7	<b>28.8</b>	2.1	<b>2.1</b>	-4.0	-7.4	<b>7.9</b>	-12.2	-20.4
Participation rate	63.2	<b>63.5</b>	0.4	<b>0.3</b>	0.2	-1.1	...	...	...
Unemployment rate	6.9	<b>7.4</b>	0.5	<b>0.5</b>	-1.1	-1.8	...	...	...
Employment rate	58.8	<b>58.8</b>	0.4	<b>0.0</b>	0.8	0.1	...	...	...
Part-time rate	15.9	<b>15.9</b>	0.7	<b>0.0</b>	-0.1	0.1	...	...	...
<b>Both sexes, 15 to 24 years</b>									
Population	95.2	<b>95.1</b>	...	<b>-0.1</b>	-0.1	-1.0	<b>-0.1</b>	-0.1	-1.0
Labour force	62.3	<b>62.1</b>	1.4	<b>-0.2</b>	1.2	-2.6	<b>-0.3</b>	2.0	-4.0
Employment	54.8	<b>54.9</b>	1.4	<b>0.1</b>	2.0	-1.0	<b>0.2</b>	3.8	-1.8
Unemployment	7.6	<b>7.2</b>	1.1	<b>-0.4</b>	-0.8	-1.5	<b>-5.3</b>	-10.0	-17.2
Participation rate	65.4	<b>65.3</b>	1.4	<b>-0.1</b>	1.3	-2.0	...	...	...
Unemployment rate	12.2	<b>11.6</b>	1.6	<b>-0.6</b>	-1.5	-1.8	...	...	...
Employment rate	57.6	<b>57.7</b>	1.4	<b>0.1</b>	2.1	-0.5	...	...	...
Part-time rate	41.6	<b>39.3</b>	2.3	<b>-2.3</b>	4.0	0.7	...	...	...
<b>Men, 25 years and over</b>									
Population	249.8	<b>250.0</b>	...	<b>0.2</b>	0.5	1.1	<b>0.1</b>	0.2	0.4
Labour force	169.9	<b>171.7</b>	1.3	<b>1.8</b>	2.1	-2.0	<b>1.1</b>	1.2	-1.2
Employment	158.6	<b>157.7</b>	1.5	<b>-0.9</b>	2.8	1.1	<b>-0.6</b>	1.8	0.7
Unemployment	11.3	<b>14.0</b>	1.4	<b>2.7</b>	-0.7	-3.1	<b>23.9</b>	-4.8	-18.1
Participation rate	68.0	<b>68.7</b>	0.5	<b>0.7</b>	0.7	-1.1	...	...	...
Unemployment rate	6.7	<b>8.2</b>	0.8	<b>1.5</b>	-0.5	-1.6	...	...	...
Employment rate	63.5	<b>63.1</b>	0.6	<b>-0.4</b>	1.0	0.2	...	...	...
Part-time rate	4.7	<b>5.1</b>	0.7	<b>0.4</b>	-0.7	-0.1	...	...	...
<b>Women, 25 years and over</b>									
Population	266.8	<b>267.0</b>	...	<b>0.2</b>	0.5	0.7	<b>0.1</b>	0.2	0.3
Labour force	154.2	<b>155.0</b>	1.2	<b>0.8</b>	-1.6	-1.7	<b>0.5</b>	-1.0	-1.1
Employment	146.4	<b>147.3</b>	1.3	<b>0.9</b>	0.8	0.9	<b>0.6</b>	0.5	0.6
Unemployment	7.8	<b>7.6</b>	1.1	<b>-0.2</b>	-2.5	-2.8	<b>-2.6</b>	-24.8	-26.9
Participation rate	57.8	<b>58.1</b>	0.5	<b>0.3</b>	-0.7	-0.7	...	...	...
Unemployment rate	5.1	<b>4.9</b>	0.7	<b>-0.2</b>	-1.5	-1.7	...	...	...
Employment rate	54.9	<b>55.2</b>	0.5	<b>0.3</b>	0.2	0.2	...	...	...
Part-time rate	18.3	<b>18.7</b>	1.1	<b>0.4</b>	-0.9	0.4	...	...	...
<b>Industry</b>									
	359.8	<b>360.0</b>	2.5	<b>0.2</b>	5.7	1.1	<b>0.1</b>	1.6	0.3
<b>Goods-producing sector</b>									
Agriculture	6.7	<b>6.8</b>	0.6	<b>0.1</b>	0.8	0.5	<b>1.5</b>	13.3	7.9
Forestry, fishing, mining, oil and gas	11.3	<b>11.2</b>	0.8	<b>-0.1</b>	1.2	0.2	<b>-0.9</b>	12.0	1.8
Utilities	3.7	<b>4.0</b>	0.3	<b>0.3</b>	0.9	1.2	<b>8.1</b>	29.0	42.9
Construction	23.2	<b>23.8</b>	1.2	<b>0.6</b>	1.1	2.5	<b>2.6</b>	4.8	11.7
Manufacturing	40.0	<b>39.5</b>	1.3	<b>-0.5</b>	1.2	3.4	<b>-1.2</b>	3.1	9.4
<b>Services-producing sector</b>									
	274.8	<b>274.6</b>	2.4	<b>-0.2</b>	0.4	-6.8	<b>-0.1</b>	0.1	-2.4
Trade	55.7	<b>56.2</b>	1.4	<b>0.5</b>	-1.8	-1.9	<b>0.9</b>	-3.1	-3.3
Transportation and warehousing	19.5	<b>19.4</b>	0.9	<b>-0.1</b>	-0.8	-1.5	<b>-0.5</b>	-4.0	-7.2
Finance, insurance, real estate and leasing	15.3	<b>16.2</b>	0.8	<b>0.9</b>	-1.5	0.6	<b>5.9</b>	-8.5	3.8
Professional, scientific and technical services	13.6	<b>13.4</b>	0.8	<b>-0.2</b>	-0.5	0.2	<b>-1.5</b>	-3.6	1.5
Business, building and other support services	20.7	<b>19.7</b>	1.1	<b>-1.0</b>	0.0	-2.5	<b>-4.8</b>	0.0	-11.3
Educational services	26.7	<b>26.8</b>	1.0	<b>0.1</b>	0.8	-0.8	<b>0.4</b>	3.1	-2.9
Health care and social assistance	47.7	<b>47.3</b>	1.1	<b>-0.4</b>	1.1	1.8	<b>-0.8</b>	2.4	4.0
Information, culture and recreation	11.7	<b>12.4</b>	0.8	<b>0.7</b>	1.0	-0.4	<b>6.0</b>	8.8	-3.1
Accommodation and food services	25.7	<b>26.1</b>	1.1	<b>0.4</b>	2.9	1.7	<b>1.6</b>	12.5	7.0
Other services	17.1	<b>16.3</b>	1.0	<b>-0.8</b>	-1.1	-2.9	<b>-4.7</b>	-6.3	-15.1
Public administration	21.0	<b>20.7</b>	0.9	<b>-0.3</b>	0.3	-1.0	<b>-1.4</b>	1.5	-4.6

1. Average standard error of change in two consecutive months (see "Sampling Errors" in Data Quality for further explanations).

**Note(s):** Related CANSIM tables 282-0087, 282-0088



**Table 4-5**  
**Selected labour force characteristics (seasonally adjusted) — Quebec**

	February 2007	March 2007	S.E. <sup>1</sup>	Change from			Percent change from		
				last month	last December	twelve months ago	last month	last December	twelve months ago
in thousands (except rates)									
<b>Both sexes, 15 years and over</b>									
Population	6,293.0	<b>6,297.3</b>	...	<b>4.3</b>	14.5	67.2	<b>0.1</b>	0.2	1.1
Labour force	4,122.2	<b>4,143.7</b>	14.5	<b>21.5</b>	48.0	44.4	<b>0.5</b>	1.2	1.1
Employment	3,799.0	<b>3,828.2</b>	14.8	<b>29.2</b>	38.8	73.4	<b>0.8</b>	1.0	2.0
Employment full-time	3,102.7	<b>3,115.8</b>	19.3	<b>13.1</b>	5.3	60.7	<b>0.4</b>	0.2	2.0
Unemployment	323.2	<b>315.5</b>	13.6	<b>-7.7</b>	9.2	-29.0	<b>-2.4</b>	3.0	-8.4
Participation rate	65.5	<b>65.8</b>	0.2	<b>0.3</b>	0.6	0.0	...	...	...
Unemployment rate	7.8	<b>7.6</b>	0.3	<b>-0.2</b>	0.1	-0.8	...	...	...
Employment rate	60.4	<b>60.8</b>	0.2	<b>0.4</b>	0.5	0.5	...	...	...
Part-time rate	18.3	<b>18.6</b>	0.5	<b>0.3</b>	0.7	0.0	...	...	...
<b>Both sexes, 15 to 24 years</b>									
Population	953.1	<b>953.4</b>	...	<b>0.3</b>	1.1	3.3	<b>0.0</b>	0.1	0.3
Labour force	627.2	<b>637.5</b>	8.5	<b>10.3</b>	10.5	-5.9	<b>1.6</b>	1.7	-0.9
Employment	547.9	<b>561.0</b>	8.2	<b>13.1</b>	10.9	7.9	<b>2.4</b>	2.0	1.4
Unemployment	79.3	<b>76.6</b>	7.6	<b>-2.7</b>	-0.3	-13.7	<b>-3.4</b>	-0.4	-15.2
Participation rate	65.8	<b>66.9</b>	0.9	<b>1.1</b>	1.1	-0.8	...	...	...
Unemployment rate	12.6	<b>12.0</b>	1.1	<b>-0.6</b>	-0.3	-2.0	...	...	...
Employment rate	57.5	<b>58.8</b>	0.9	<b>1.3</b>	1.0	0.6	...	...	...
Part-time rate	48.3	<b>48.3</b>	1.6	<b>-0.1</b>	1.2	1.0	...	...	...
<b>Men, 25 years and over</b>									
Population	2,607.9	<b>2,610.0</b>	...	<b>2.1</b>	6.8	32.5	<b>0.1</b>	0.3	1.3
Labour force	1,862.1	<b>1,864.5</b>	7.9	<b>2.4</b>	4.3	12.9	<b>0.1</b>	0.2	0.7
Employment	1,725.2	<b>1,725.3</b>	8.4	<b>0.1</b>	4.1	12.6	<b>0.0</b>	0.2	0.7
Unemployment	136.9	<b>139.2</b>	8.1	<b>2.3</b>	0.2	0.3	<b>1.7</b>	0.1	0.2
Participation rate	71.4	<b>71.4</b>	0.3	<b>0.0</b>	-0.1	-0.4	...	...	...
Unemployment rate	7.4	<b>7.5</b>	0.4	<b>0.1</b>	0.0	0.0	...	...	...
Employment rate	66.2	<b>66.1</b>	0.3	<b>-0.1</b>	0.0	-0.3	...	...	...
Part-time rate	7.4	<b>7.3</b>	0.5	<b>0.0</b>	0.6	0.3	...	...	...
<b>Women, 25 years and over</b>									
Population	2,732.0	<b>2,733.9</b>	...	<b>1.9</b>	6.6	31.4	<b>0.1</b>	0.2	1.2
Labour force	1,632.9	<b>1,641.7</b>	8.1	<b>8.8</b>	33.2	37.4	<b>0.5</b>	2.1	2.3
Employment	1,525.9	<b>1,542.0</b>	8.2	<b>16.1</b>	23.8	53.1	<b>1.1</b>	1.6	3.6
Unemployment	107.0	<b>99.7</b>	7.3	<b>-7.3</b>	9.4	-15.6	<b>-6.8</b>	10.4	-13.5
Participation rate	59.8	<b>60.0</b>	0.3	<b>0.2</b>	1.0	0.6	...	...	...
Unemployment rate	6.6	<b>6.1</b>	0.4	<b>-0.5</b>	0.5	-1.1	...	...	...
Employment rate	55.9	<b>56.4</b>	0.3	<b>0.5</b>	0.7	1.3	...	...	...
Part-time rate	20.0	<b>20.5</b>	0.7	<b>0.5</b>	0.5	-0.9	...	...	...
<b>Industry</b>									
	3,799.0	<b>3,828.2</b>	14.8	<b>29.2</b>	38.8	73.4	<b>0.8</b>	1.0	2.0
<b>Goods-producing sector</b>									
Agriculture	60.5	<b>59.8</b>	3.6	<b>-0.7</b>	-6.7	-4.5	<b>-1.2</b>	-10.1	-7.0
Forestry, fishing, mining, oil and gas	36.4	<b>36.8</b>	2.3	<b>0.4</b>	2.2	-7.3	<b>1.1</b>	6.4	-16.6
Utilities	25.4	<b>30.5</b>	1.9	<b>5.1</b>	5.0	0.0	<b>20.1</b>	19.6	0.0
Construction	186.5	<b>184.4</b>	6.4	<b>-2.1</b>	6.2	-4.9	<b>-1.1</b>	3.5	-2.6
Manufacturing	546.6	<b>554.4</b>	10.0	<b>7.8</b>	-20.9	-27.7	<b>1.4</b>	-3.6	-4.8
<b>Services-producing sector</b>									
	2,943.6	<b>2,962.4</b>	15.9	<b>18.8</b>	53.1	117.9	<b>0.6</b>	1.8	4.1
Trade	640.8	<b>644.6</b>	10.7	<b>3.8</b>	8.3	12.5	<b>0.6</b>	1.3	2.0
Transportation and warehousing	170.6	<b>172.1</b>	6.0	<b>1.5</b>	-1.8	-0.5	<b>0.9</b>	-1.0	-0.3
Finance, insurance, real estate and leasing	234.8	<b>236.4</b>	6.3	<b>1.6</b>	5.5	19.5	<b>0.7</b>	2.4	9.0
Professional, scientific and technical services	256.0	<b>253.2</b>	7.5	<b>-2.8</b>	-1.2	18.9	<b>-1.1</b>	-0.5	8.1
Business, building and other support services	158.3	<b>160.9</b>	6.3	<b>2.6</b>	10.9	27.6	<b>1.6</b>	7.3	20.7
Educational services	257.6	<b>259.3</b>	7.2	<b>1.7</b>	2.3	-2.8	<b>0.7</b>	0.9	-1.1
Health care and social assistance	457.8	<b>457.0</b>	7.9	<b>-0.8</b>	2.7	8.8	<b>-0.2</b>	0.6	2.0
Information, culture and recreation	174.2	<b>172.1</b>	6.2	<b>-2.1</b>	11.8	16.0	<b>-1.2</b>	7.4	10.2
Accommodation and food services	219.9	<b>225.4</b>	6.9	<b>5.5</b>	5.3	13.5	<b>2.5</b>	2.4	6.4
Other services	162.0	<b>166.9</b>	5.9	<b>4.9</b>	7.6	5.8	<b>3.0</b>	4.8	3.6
Public administration	211.6	<b>214.7</b>	5.7	<b>3.1</b>	2.0	-1.3	<b>1.5</b>	0.9	-0.6

1. Average standard error of change in two consecutive months (see "Sampling Errors" in Data Quality for further explanations).

**Note(s):** Related CANSIM tables 282-0087, 282-0088

**Table 4-6**  
**Selected labour force characteristics (seasonally adjusted) — Ontario**

	February 2007	March 2007	S.E. <sup>1</sup>	Change from			Percent change from		
				last month	last December	twelve months ago	last month	last December	twelve months ago
in thousands (except rates)									
<b>Both sexes, 15 years and over</b>									
Population	10,309.2	<b>10,318.6</b>	...	<b>9.4</b>	27.7	132.7	<b>0.1</b>	0.3	1.3
Labour force	7,002.7	<b>7,030.2</b>	18.4	<b>27.5</b>	61.6	137.9	<b>0.4</b>	0.9	2.0
Employment	6,560.2	<b>6,572.5</b>	18.1	<b>12.3</b>	25.9	105.2	<b>0.2</b>	0.4	1.6
Employment full-time	5,354.9	<b>5,391.6</b>	23.0	<b>36.7</b>	37.0	73.6	<b>0.7</b>	0.7	1.4
Unemployment	442.5	<b>457.7</b>	15.3	<b>15.2</b>	35.7	32.7	<b>3.4</b>	8.5	7.7
Participation rate	67.9	<b>68.1</b>	0.2	<b>0.2</b>	0.4	0.4	...	...	...
Unemployment rate	6.3	<b>6.5</b>	0.2	<b>0.2</b>	0.4	0.3	...	...	...
Employment rate	63.6	<b>63.7</b>	0.2	<b>0.1</b>	0.1	0.2	...	...	...
Part-time rate	18.4	<b>18.0</b>	0.3	<b>-0.4</b>	-0.2	0.2	...	...	...
<b>Both sexes, 15 to 24 years</b>									
Population	1,714.7	<b>1,715.6</b>	...	<b>0.9</b>	3.1	17.2	<b>0.1</b>	0.2	1.0
Labour force	1,106.7	<b>1,119.8</b>	11.6	<b>13.1</b>	21.8	14.4	<b>1.2</b>	2.0	1.3
Employment	966.8	<b>976.8</b>	10.7	<b>10.0</b>	18.9	11.6	<b>1.0</b>	2.0	1.2
Unemployment	139.9	<b>143.1</b>	9.6	<b>3.2</b>	3.0	2.9	<b>2.3</b>	2.1	2.1
Participation rate	64.5	<b>65.3</b>	0.7	<b>0.8</b>	1.2	0.2	...	...	...
Unemployment rate	12.6	<b>12.8</b>	0.8	<b>0.2</b>	0.0	0.1	...	...	...
Employment rate	56.4	<b>56.9</b>	0.6	<b>0.5</b>	1.0	0.1	...	...	...
Part-time rate	49.4	<b>48.6</b>	1.1	<b>-0.8</b>	-1.3	1.4	...	...	...
<b>Men, 25 years and over</b>									
Population	4,180.1	<b>4,184.0</b>	...	<b>3.9</b>	11.1	53.3	<b>0.1</b>	0.3	1.3
Labour force	3,113.7	<b>3,104.9</b>	9.1	<b>-8.8</b>	3.2	13.7	<b>-0.3</b>	0.1	0.4
Employment	2,939.9	<b>2,940.0</b>	9.8	<b>0.1</b>	-12.5	-3.4	<b>0.0</b>	-0.4	-0.1
Unemployment	173.8	<b>165.0</b>	8.4	<b>-8.8</b>	15.7	17.2	<b>-5.1</b>	10.5	11.6
Participation rate	74.5	<b>74.2</b>	0.2	<b>-0.3</b>	-0.1	-0.6	...	...	...
Unemployment rate	5.6	<b>5.3</b>	0.3	<b>-0.3</b>	0.5	0.5	...	...	...
Employment rate	70.3	<b>70.3</b>	0.2	<b>0.0</b>	-0.5	-1.0	...	...	...
Part-time rate	6.5	<b>6.3</b>	0.3	<b>-0.3</b>	0.1	0.2	...	...	...
<b>Women, 25 years and over</b>									
Population	4,414.4	<b>4,419.0</b>	...	<b>4.6</b>	13.5	62.2	<b>0.1</b>	0.3	1.4
Labour force	2,782.3	<b>2,805.5</b>	10.2	<b>23.2</b>	36.6	109.9	<b>0.8</b>	1.3	4.1
Employment	2,653.5	<b>2,655.8</b>	10.0	<b>2.3</b>	19.5	97.1	<b>0.1</b>	0.7	3.8
Unemployment	128.9	<b>149.6</b>	8.0	<b>20.7</b>	16.9	12.6	<b>16.1</b>	12.7	9.2
Participation rate	63.0	<b>63.5</b>	0.2	<b>0.5</b>	0.6	1.6	...	...	...
Unemployment rate	4.6	<b>5.3</b>	0.3	<b>0.7</b>	0.5	0.2	...	...	...
Employment rate	60.1	<b>60.1</b>	0.2	<b>0.0</b>	0.3	1.4	...	...	...
Part-time rate	20.2	<b>19.7</b>	0.5	<b>-0.5</b>	-0.6	-0.4	...	...	...
<b>Industry</b>									
	6,560.2	<b>6,572.5</b>	18.1	<b>12.3</b>	25.9	105.2	<b>0.2</b>	0.4	1.6
<b>Goods-producing sector</b>									
Agriculture	100.2	<b>101.4</b>	3.6	<b>1.2</b>	-3.4	2.3	<b>1.2</b>	-3.2	2.3
Forestry, fishing, mining, oil and gas	40.8	<b>33.7</b>	2.3	<b>-7.1</b>	-9.1	2.0	<b>-17.4</b>	-21.3	6.3
Utilities	57.2	<b>57.4</b>	2.3	<b>0.2</b>	4.6	11.6	<b>0.3</b>	8.7	25.3
Construction	413.6	<b>411.3</b>	8.9	<b>-2.3</b>	-0.6	6.9	<b>-0.6</b>	-0.1	1.7
Manufacturing	973.7	<b>968.6</b>	12.6	<b>-5.1</b>	-17.1	-51.8	<b>-0.5</b>	-1.7	-5.1
<b>Services-producing sector</b>									
	4,974.6	<b>5,000.2</b>	20.5	<b>25.6</b>	51.6	134.3	<b>0.5</b>	1.0	2.8
Trade	1,014.3	<b>1,026.7</b>	13.4	<b>12.4</b>	0.1	31.6	<b>1.2</b>	0.0	3.2
Transportation and warehousing	307.2	<b>310.8</b>	7.8	<b>3.6</b>	5.5	20.0	<b>1.2</b>	1.8	6.9
Finance, insurance, real estate and leasing	483.7	<b>485.6</b>	9.6	<b>1.9</b>	10.9	8.8	<b>0.4</b>	2.3	1.8
Professional, scientific and technical services	463.1	<b>468.7</b>	9.5	<b>5.6</b>	18.9	7.3	<b>1.2</b>	4.2	1.6
Business, building and other support services	291.5	<b>276.0</b>	8.8	<b>-15.5</b>	-27.7	-20.3	<b>-5.3</b>	-9.1	-6.9
Educational services	446.5	<b>444.5</b>	8.8	<b>-2.0</b>	-6.0	-8.4	<b>-0.4</b>	-1.3	-1.9
Health care and social assistance	662.2	<b>659.9</b>	9.3	<b>-2.3</b>	1.1	35.8	<b>-0.3</b>	0.2	5.7
Information, culture and recreation	315.3	<b>320.6</b>	8.4	<b>5.3</b>	4.2	-8.8	<b>1.7</b>	1.3	-2.7
Accommodation and food services	396.3	<b>403.5</b>	8.7	<b>7.2</b>	20.4	45.8	<b>1.8</b>	5.3	12.8
Other services	272.8	<b>283.2</b>	7.6	<b>10.4</b>	16.5	10.2	<b>3.8</b>	6.2	3.7
Public administration	321.8	<b>320.7</b>	6.8	<b>-1.1</b>	7.6	12.4	<b>-0.3</b>	2.4	4.0

1. Average standard error of change in two consecutive months (see "Sampling Errors" in Data Quality for further explanations).

**Note(s):** Related CANSIM tables 282-0087, 282-0088

**Table 4-7**  
**Selected labour force characteristics (seasonally adjusted) — Manitoba**

	February 2007	March 2007	S.E. <sup>1</sup>	Change from			Percent change from		
				last month	last December	twelve months ago	last month	last December	twelve months ago
in thousands (except rates)									
<b>Both sexes, 15 years and over</b>									
Population	894.7	<b>895.6</b>	...	<b>0.9</b>	1.8	5.1	<b>0.1</b>	0.2	0.6
Labour force	617.2	<b>620.0</b>	2.8	<b>2.8</b>	7.4	11.7	<b>0.5</b>	1.2	1.9
Employment	590.5	<b>593.6</b>	2.8	<b>3.1</b>	6.0	10.7	<b>0.5</b>	1.0	1.8
Employment full-time	478.4	<b>472.9</b>	3.9	<b>-5.5</b>	0.5	3.7	<b>-1.1</b>	0.1	0.8
Unemployment	26.7	<b>26.5</b>	2.1	<b>-0.2</b>	1.5	1.1	<b>-0.7</b>	6.0	4.3
Participation rate	69.0	<b>69.2</b>	0.3	<b>0.2</b>	0.7	0.9	...	...	...
Unemployment rate	4.3	<b>4.3</b>	0.3	<b>0.0</b>	0.2	0.1	...	...	...
Employment rate	66.0	<b>66.3</b>	0.3	<b>0.3</b>	0.6	0.8	...	...	...
Part-time rate	19.0	<b>20.3</b>	0.6	<b>1.3</b>	0.7	0.8	...	...	...
<b>Both sexes, 15 to 24 years</b>									
Population	156.0	<b>156.2</b>	...	<b>0.2</b>	0.4	0.6	<b>0.1</b>	0.3	0.4
Labour force	110.9	<b>112.0</b>	1.8	<b>1.1</b>	2.4	-0.5	<b>1.0</b>	2.2	-0.4
Employment	101.9	<b>103.0</b>	1.7	<b>1.1</b>	1.6	0.0	<b>1.1</b>	1.6	0.0
Unemployment	9.0	<b>9.0</b>	1.4	<b>0.0</b>	0.8	-0.5	<b>0.0</b>	9.8	-5.3
Participation rate	71.1	<b>71.7</b>	1.1	<b>0.6</b>	1.4	-0.6	...	...	...
Unemployment rate	8.1	<b>8.0</b>	1.2	<b>-0.1</b>	0.5	-0.4	...	...	...
Employment rate	65.3	<b>65.9</b>	1.1	<b>0.6</b>	0.8	-0.3	...	...	...
Part-time rate	41.6	<b>45.2</b>	1.9	<b>3.6</b>	3.2	0.3	...	...	...
<b>Men, 25 years and over</b>									
Population	360.9	<b>361.2</b>	...	<b>0.3</b>	0.8	2.7	<b>0.1</b>	0.2	0.8
Labour force	270.8	<b>273.3</b>	1.4	<b>2.5</b>	3.0	8.8	<b>0.9</b>	1.1	3.3
Employment	261.5	<b>263.9</b>	1.4	<b>2.4</b>	2.3	8.6	<b>0.9</b>	0.9	3.4
Unemployment	9.4	<b>9.4</b>	1.2	<b>0.0</b>	0.8	0.3	<b>0.0</b>	9.3	3.3
Participation rate	75.0	<b>75.7</b>	0.4	<b>0.7</b>	0.7	1.9	...	...	...
Unemployment rate	3.5	<b>3.4</b>	0.4	<b>-0.1</b>	0.2	0.0	...	...	...
Employment rate	72.5	<b>73.1</b>	0.4	<b>0.6</b>	0.5	1.9	...	...	...
Part-time rate	5.7	<b>6.4</b>	0.6	<b>0.7</b>	0.1	0.1	...	...	...
<b>Women, 25 years and over</b>									
Population	377.9	<b>378.2</b>	...	<b>0.3</b>	0.6	1.8	<b>0.1</b>	0.2	0.5
Labour force	235.5	<b>234.7</b>	1.6	<b>-0.8</b>	1.9	3.4	<b>-0.3</b>	0.8	1.5
Employment	227.1	<b>226.7</b>	1.6	<b>-0.4</b>	2.1	2.2	<b>-0.2</b>	0.9	1.0
Unemployment	8.4	<b>8.1</b>	1.1	<b>-0.3</b>	-0.1	1.3	<b>-3.6</b>	-1.2	19.1
Participation rate	62.3	<b>62.1</b>	0.4	<b>-0.2</b>	0.4	0.6	...	...	...
Unemployment rate	3.6	<b>3.5</b>	0.5	<b>-0.1</b>	0.0	0.6	...	...	...
Employment rate	60.1	<b>59.9</b>	0.4	<b>-0.2</b>	0.4	0.3	...	...	...
Part-time rate	24.1	<b>25.2</b>	1.0	<b>1.1</b>	0.3	2.4	...	...	...
<b>Industry</b>									
Goods-producing sector	144.4	<b>145.7</b>	2.3	<b>1.3</b>	4.4	9.5	<b>0.9</b>	3.1	7.0
Agriculture	28.6	<b>29.7</b>	1.3	<b>1.1</b>	0.2	-0.2	<b>3.8</b>	0.7	-0.7
Forestry, fishing, mining, oil and gas	6.5	<b>6.7</b>	0.5	<b>0.2</b>	0.0	-0.1	<b>3.1</b>	0.0	-1.5
Utilities	4.6	<b>6.6</b>	0.4	<b>2.0</b>	1.6	1.0	<b>43.5</b>	32.0	17.9
Construction	31.2	<b>32.0</b>	1.4	<b>0.8</b>	1.5	2.7	<b>2.6</b>	4.9	9.2
Manufacturing	73.5	<b>70.8</b>	1.7	<b>-2.7</b>	1.2	6.2	<b>-3.7</b>	1.7	9.6
Services-producing sector	446.1	<b>447.8</b>	3.2	<b>1.7</b>	1.5	1.1	<b>0.4</b>	0.3	0.2
Trade	90.9	<b>89.4</b>	2.1	<b>-1.5</b>	-3.4	-1.8	<b>-1.7</b>	-3.7	-2.0
Transportation and warehousing	34.2	<b>34.1</b>	1.2	<b>-0.1</b>	-1.0	-1.7	<b>-0.3</b>	-2.8	-4.7
Finance, insurance, real estate and leasing	31.2	<b>31.2</b>	1.2	<b>0.0</b>	-1.2	-0.9	<b>0.0</b>	-3.7	-2.8
Professional, scientific and technical services	23.9	<b>23.4</b>	1.1	<b>-0.5</b>	2.3	-1.3	<b>-2.1</b>	10.9	-5.3
Business, building and other support services	17.5	<b>16.7</b>	1.2	<b>-0.8</b>	-1.8	-1.7	<b>-4.6</b>	-9.7	-9.2
Educational services	47.3	<b>46.2</b>	1.5	<b>-1.1</b>	-1.3	0.9	<b>-2.3</b>	-2.7	2.0
Health care and social assistance	82.0	<b>83.8</b>	1.7	<b>1.8</b>	1.7	5.5	<b>2.2</b>	2.1	7.0
Information, culture and recreation	22.0	<b>23.4</b>	1.1	<b>1.4</b>	1.0	-0.4	<b>6.4</b>	4.5	-1.7
Accommodation and food services	35.9	<b>38.7</b>	1.6	<b>2.8</b>	3.7	0.4	<b>7.8</b>	10.6	1.0
Other services	25.4	<b>24.1</b>	1.2	<b>-1.3</b>	-0.8	-0.2	<b>-5.1</b>	-3.2	-0.8
Public administration	36.0	<b>36.7</b>	1.2	<b>0.7</b>	2.2	2.2	<b>1.9</b>	6.4	6.4

1. Average standard error of change in two consecutive months (see "Sampling Errors" in Data Quality for further explanations).

**Note(s):** Related CANSIM tables 282-0087, 282-0088

**Table 4-8**  
**Selected labour force characteristics (seasonally adjusted) — Saskatchewan**

	February 2007	March 2007	S.E. <sup>1</sup>	Change from			Percent change from		
				last month	last December	twelve months ago	last month	last December	twelve months ago
in thousands (except rates)									
<b>Both sexes, 15 years and over</b>									
Population	747.4	<b>748.2</b>	...	<b>0.8</b>	1.9	1.2	<b>0.1</b>	0.3	0.2
Labour force	524.0	<b>524.3</b>	2.4	<b>0.3</b>	0.3	14.7	<b>0.1</b>	0.1	2.9
Employment	503.3	<b>504.4</b>	2.5	<b>1.1</b>	1.6	20.2	<b>0.2</b>	0.3	4.2
Employment full-time	406.1	<b>405.5</b>	3.3	<b>-0.6</b>	-2.2	13.5	<b>-0.1</b>	-0.5	3.4
Unemployment	20.7	<b>19.9</b>	1.9	<b>-0.8</b>	-1.3	-5.5	<b>-3.9</b>	-6.1	-21.7
Participation rate	70.1	<b>70.1</b>	0.3	<b>0.0</b>	-0.1	1.9	...	...	...
Unemployment rate	4.0	<b>3.8</b>	0.4	<b>-0.2</b>	-0.2	-1.2	...	...	...
Employment rate	67.3	<b>67.4</b>	0.3	<b>0.1</b>	0.0	2.6	...	...	...
Part-time rate	19.3	<b>19.6</b>	0.6	<b>0.3</b>	0.7	0.6	...	...	...
<b>Both sexes, 15 to 24 years</b>									
Population	137.3	<b>137.4</b>	...	<b>0.1</b>	0.1	-0.7	<b>0.1</b>	0.1	-0.5
Labour force	103.2	<b>101.1</b>	1.5	<b>-2.1</b>	-1.2	5.6	<b>-2.0</b>	-1.2	5.9
Employment	95.0	<b>94.5</b>	1.5	<b>-0.5</b>	0.3	9.1	<b>-0.5</b>	0.3	10.7
Unemployment	8.2	<b>6.6</b>	1.2	<b>-1.6</b>	-1.5	-3.4	<b>-19.5</b>	-18.5	-34.0
Participation rate	75.2	<b>73.6</b>	1.1	<b>-1.6</b>	-0.9	4.4	...	...	...
Unemployment rate	7.9	<b>6.5</b>	1.2	<b>-1.4</b>	-1.4	-4.0	...	...	...
Employment rate	69.2	<b>68.8</b>	1.1	<b>-0.4</b>	0.2	7.0	...	...	...
Part-time rate	40.6	<b>40.4</b>	1.8	<b>-0.2</b>	3.1	-0.4	...	...	...
<b>Men, 25 years and over</b>									
Population	297.8	<b>298.2</b>	...	<b>0.4</b>	1.0	1.4	<b>0.1</b>	0.3	0.5
Labour force	227.9	<b>227.5</b>	1.2	<b>-0.4</b>	-0.2	6.6	<b>-0.2</b>	-0.1	3.0
Employment	221.2	<b>220.2</b>	1.3	<b>-1.0</b>	-0.3	7.5	<b>-0.5</b>	-0.1	3.5
Unemployment	6.7	<b>7.3</b>	1.1	<b>0.6</b>	0.0	-0.9	<b>9.0</b>	0.0	-11.0
Participation rate	76.5	<b>76.3</b>	0.4	<b>-0.2</b>	-0.3	1.9	...	...	...
Unemployment rate	2.9	<b>3.2</b>	0.5	<b>0.3</b>	0.0	-0.5	...	...	...
Employment rate	74.3	<b>73.8</b>	0.5	<b>-0.5</b>	-0.4	2.1	...	...	...
Part-time rate	6.4	<b>6.4</b>	0.6	<b>0.0</b>	-0.6	0.3	...	...	...
<b>Women, 25 years and over</b>									
Population	312.2	<b>312.6</b>	...	<b>0.4</b>	0.8	0.5	<b>0.1</b>	0.3	0.2
Labour force	192.9	<b>195.6</b>	1.3	<b>2.7</b>	1.7	2.3	<b>1.4</b>	0.9	1.2
Employment	187.1	<b>189.7</b>	1.4	<b>2.6</b>	1.6	3.6	<b>1.4</b>	0.9	1.9
Unemployment	5.8	<b>6.0</b>	0.9	<b>0.2</b>	0.2	-1.2	<b>3.4</b>	3.4	-16.7
Participation rate	61.8	<b>62.6</b>	0.4	<b>0.8</b>	0.4	0.7	...	...	...
Unemployment rate	3.0	<b>3.1</b>	0.5	<b>0.1</b>	0.1	-0.6	...	...	...
Employment rate	59.9	<b>60.7</b>	0.4	<b>0.8</b>	0.4	1.1	...	...	...
Part-time rate	23.8	<b>24.6</b>	1.0	<b>0.8</b>	1.0	0.8	...	...	...
<b>Industry</b>									
<b>Goods-producing sector</b>	130.4	<b>131.2</b>	2.3	<b>0.8</b>	-2.2	-1.5	<b>0.6</b>	-1.6	-1.1
Agriculture	44.4	<b>43.2</b>	1.6	<b>-1.2</b>	-4.3	-4.4	<b>-2.7</b>	-9.1	-9.2
Forestry, fishing, mining, oil and gas	22.7	<b>22.8</b>	1.0	<b>0.1</b>	0.3	1.6	<b>0.4</b>	1.3	7.5
Utilities	3.4	<b>3.7</b>	0.4	<b>0.3</b>	-0.3	-0.9	<b>8.8</b>	-7.5	-19.6
Construction	30.6	<b>31.8</b>	1.3	<b>1.2</b>	1.1	2.7	<b>3.9</b>	3.6	9.3
Manufacturing	29.3	<b>29.7</b>	1.1	<b>0.4</b>	1.1	-0.6	<b>1.4</b>	3.8	-2.0
<b>Services-producing sector</b>	372.9	<b>373.2</b>	2.8	<b>0.3</b>	3.8	21.8	<b>0.1</b>	1.0	6.2
Trade	85.0	<b>86.5</b>	1.8	<b>1.5</b>	0.6	9.2	<b>1.8</b>	0.7	11.9
Transportation and warehousing	24.8	<b>24.8</b>	1.0	<b>0.0</b>	-0.4	-2.0	<b>0.0</b>	-1.6	-7.5
Finance, insurance, real estate and leasing	26.3	<b>25.8</b>	0.9	<b>-0.5</b>	-1.3	0.1	<b>-1.9</b>	-4.8	0.4
Professional, scientific and technical services	19.7	<b>20.4</b>	0.8	<b>0.7</b>	0.5	3.3	<b>3.6</b>	2.5	19.3
Business, building and other support services	10.5	<b>10.5</b>	0.8	<b>0.0</b>	-1.3	-1.3	<b>0.0</b>	-11.0	-11.0
Educational services	40.5	<b>43.5</b>	1.2	<b>3.0</b>	4.7	7.3	<b>7.4</b>	12.1	20.2
Health care and social assistance	62.4	<b>60.6</b>	1.4	<b>-1.8</b>	-0.5	2.0	<b>-2.9</b>	-0.8	3.4
Information, culture and recreation	19.3	<b>19.9</b>	1.0	<b>0.6</b>	-0.5	1.0	<b>3.1</b>	-2.5	5.3
Accommodation and food services	32.1	<b>30.9</b>	1.3	<b>-1.2</b>	0.1	1.7	<b>-3.7</b>	0.3	5.8
Other services	24.9	<b>22.8</b>	1.1	<b>-2.1</b>	1.1	1.0	<b>-8.4</b>	5.1	4.6
Public administration	27.4	<b>27.5</b>	1.0	<b>0.1</b>	0.8	-0.5	<b>0.4</b>	3.0	-1.8

1. Average standard error of change in two consecutive months (see "Sampling Errors" in Data Quality for further explanations).

**Note(s):** Related CANSIM tables 282-0087, 282-0088

**Table 4-9**  
**Selected labour force characteristics (seasonally adjusted) — Alberta**

	February 2007	March 2007	S.E. <sup>1</sup>	Change from			Percent change from		
				last month	last December	twelve months ago	last month	last December	twelve months ago
in thousands (except rates)									
<b>Both sexes, 15 years and over</b>									
Population	2,709.2	<b>2,715.9</b>	...	<b>6.7</b>	23.8	105.5	<b>0.2</b>	0.9	4.0
Labour force	2,008.1	<b>2,010.1</b>	8.0	<b>2.0</b>	35.7	99.8	<b>0.1</b>	1.8	5.2
Employment	1,938.7	<b>1,938.6</b>	8.3	<b>-0.1</b>	30.2	93.9	<b>0.0</b>	1.6	5.1
Employment full-time	1,639.0	<b>1,631.2</b>	10.8	<b>-7.8</b>	15.7	97.8	<b>-0.5</b>	1.0	6.4
Unemployment	69.4	<b>71.5</b>	5.6	<b>2.1</b>	5.5	5.9	<b>3.0</b>	8.3	9.0
Participation rate	74.1	<b>74.0</b>	0.3	<b>-0.1</b>	0.7	0.8	...	...	...
Unemployment rate	3.5	<b>3.6</b>	0.3	<b>0.1</b>	0.3	0.2	...	...	...
Employment rate	71.6	<b>71.4</b>	0.3	<b>-0.2</b>	0.5	0.7	...	...	...
Part-time rate	15.5	<b>15.9</b>	0.5	<b>0.4</b>	0.5	-1.0	...	...	...
<b>Both sexes, 15 to 24 years</b>									
Population	501.3	<b>501.8</b>	...	<b>0.5</b>	2.3	16.7	<b>0.1</b>	0.5	3.4
Labour force	367.0	<b>358.4</b>	5.1	<b>-8.6</b>	2.1	5.7	<b>-2.3</b>	0.6	1.6
Employment	341.3	<b>329.2</b>	5.1	<b>-12.1</b>	-4.5	-1.5	<b>-3.5</b>	-1.3	-0.5
Unemployment	25.7	<b>29.2</b>	3.6	<b>3.5</b>	6.6	7.2	<b>13.6</b>	29.2	32.7
Participation rate	73.2	<b>71.4</b>	1.0	<b>-1.8</b>	0.1	-1.3	...	...	...
Unemployment rate	7.0	<b>8.1</b>	1.0	<b>1.1</b>	1.8	1.9	...	...	...
Employment rate	68.1	<b>65.6</b>	1.0	<b>-2.5</b>	-1.2	-2.6	...	...	...
Part-time rate	31.3	<b>31.4</b>	1.6	<b>0.1</b>	-0.5	-4.7	...	...	...
<b>Men, 25 years and over</b>									
Population	1,107.8	<b>1,111.0</b>	...	<b>3.2</b>	11.2	46.7	<b>0.3</b>	1.0	4.4
Labour force	905.8	<b>912.2</b>	3.5	<b>6.4</b>	19.8	52.3	<b>0.7</b>	2.2	6.1
Employment	886.0	<b>892.9</b>	3.9	<b>6.9</b>	22.5	56.1	<b>0.8</b>	2.6	6.7
Unemployment	19.8	<b>19.3</b>	3.0	<b>-0.5</b>	-2.7	-3.7	<b>-2.5</b>	-12.3	-16.1
Participation rate	81.8	<b>82.1</b>	0.3	<b>0.3</b>	1.0	1.3	...	...	...
Unemployment rate	2.2	<b>2.1</b>	0.3	<b>-0.1</b>	-0.4	-0.6	...	...	...
Employment rate	80.0	<b>80.4</b>	0.4	<b>0.4</b>	1.3	1.8	...	...	...
Part-time rate	4.7	<b>5.5</b>	0.5	<b>0.8</b>	1.2	1.2	...	...	...
<b>Women, 25 years and over</b>									
Population	1,100.2	<b>1,103.1</b>	...	<b>2.9</b>	10.3	42.1	<b>0.3</b>	0.9	4.0
Labour force	735.2	<b>739.6</b>	4.7	<b>4.4</b>	13.9	41.8	<b>0.6</b>	1.9	6.0
Employment	711.4	<b>716.5</b>	4.7	<b>5.1</b>	12.1	39.3	<b>0.7</b>	1.7	5.8
Unemployment	23.9	<b>23.1</b>	3.0	<b>-0.8</b>	1.7	2.5	<b>-3.3</b>	7.9	12.1
Participation rate	66.8	<b>67.0</b>	0.4	<b>0.2</b>	0.6	1.2	...	...	...
Unemployment rate	3.3	<b>3.1</b>	0.4	<b>-0.2</b>	0.2	0.1	...	...	...
Employment rate	64.7	<b>65.0</b>	0.4	<b>0.3</b>	0.5	1.2	...	...	...
Part-time rate	21.2	<b>21.6</b>	0.9	<b>0.4</b>	0.4	-1.5	...	...	...
<b>Industry</b>									
<b>Goods-producing sector</b>	1,938.7	<b>1,938.6</b>	8.3	<b>-0.1</b>	30.2	93.9	<b>0.0</b>	1.6	5.1
Agriculture	567.0	<b>548.3</b>	7.2	<b>-18.7</b>	5.0	36.3	<b>-3.3</b>	0.9	7.1
Forestry, fishing, mining, oil and gas	48.7	<b>43.9</b>	2.6	<b>-4.8</b>	-4.0	-12.0	<b>-9.9</b>	-8.4	-21.5
Utilities	151.3	<b>149.3</b>	4.0	<b>-2.0</b>	5.9	13.1	<b>-1.3</b>	4.1	9.6
Construction	21.1	<b>17.3</b>	1.3	<b>-3.8</b>	-3.7	2.3	<b>-18.0</b>	-17.6	15.3
Manufacturing	195.8	<b>190.5</b>	5.0	<b>-5.3</b>	8.8	16.9	<b>-2.7</b>	4.8	9.7
Manufacturing	150.1	<b>147.3</b>	4.2	<b>-2.8</b>	-2.1	16.1	<b>-1.9</b>	-1.4	12.3
<b>Services-producing sector</b>	1,371.7	<b>1,390.4</b>	9.4	<b>18.7</b>	25.3	57.7	<b>1.4</b>	1.9	4.3
Trade	267.6	<b>279.8</b>	6.1	<b>12.2</b>	8.5	-10.7	<b>4.6</b>	3.1	-3.7
Transportation and warehousing	106.0	<b>105.5</b>	3.7	<b>-0.5</b>	-0.6	-1.3	<b>-0.5</b>	-0.6	-1.2
Finance, insurance, real estate and leasing	97.0	<b>96.9</b>	3.4	<b>-0.1</b>	-7.5	3.4	<b>-0.1</b>	-7.2	3.6
Professional, scientific and technical services	151.7	<b>145.8</b>	4.3	<b>-5.9</b>	3.2	6.2	<b>-3.9</b>	2.2	4.4
Business, building and other support services	64.7	<b>72.3</b>	3.4	<b>7.6</b>	2.0	12.9	<b>11.7</b>	2.8	21.7
Educational services	137.6	<b>138.0</b>	4.0	<b>0.4</b>	-0.9	14.9	<b>0.3</b>	-0.6	12.1
Health care and social assistance	183.0	<b>181.9</b>	4.4	<b>-1.1</b>	1.0	5.9	<b>-0.6</b>	0.6	3.4
Information, culture and recreation	74.7	<b>76.2</b>	3.4	<b>1.5</b>	9.5	10.3	<b>2.0</b>	14.2	15.6
Accommodation and food services	123.9	<b>120.5</b>	4.3	<b>-3.4</b>	2.3	9.4	<b>-2.7</b>	1.9	8.5
Other services	91.7	<b>97.6</b>	3.5	<b>5.9</b>	8.6	15.4	<b>6.4</b>	9.7	18.7
Public administration	73.8	<b>75.9</b>	3.0	<b>2.1</b>	-0.8	-8.6	<b>2.8</b>	-1.0	-10.2

1. Average standard error of change in two consecutive months (see "Sampling Errors" in Data Quality for further explanations).

**Note(s):** Related CANSIM tables 282-0087, 282-0088

**Table 4-10**  
**Selected labour force characteristics (seasonally adjusted) — British Columbia**

	February 2007	March 2007	S.E. <sup>1</sup>	Change from			Percent change from		
				last month	last December	twelve months ago	last month	last December	twelve months ago
in thousands (except rates)									
<b>Both sexes, 15 years and over</b>									
Population	3,547.4	<b>3,551.7</b>	...	<b>4.3</b>	13.7	59.3	<b>0.1</b>	0.4	1.7
Labour force	2,347.4	<b>2,357.3</b>	10.0	<b>9.9</b>	16.6	67.8	<b>0.4</b>	0.7	3.0
Employment	2,252.9	<b>2,265.4</b>	10.1	<b>12.5</b>	46.9	78.3	<b>0.6</b>	2.1	3.6
Employment full-time	1,797.5	<b>1,794.3</b>	13.5	<b>-3.2</b>	21.1	66.1	<b>-0.2</b>	1.2	3.8
Unemployment	94.6	<b>91.9</b>	7.3	<b>-2.7</b>	-30.3	-10.5	<b>-2.9</b>	-24.8	-10.3
Participation rate	66.2	<b>66.4</b>	0.3	<b>0.2</b>	0.2	0.8	...	...	...
Unemployment rate	4.0	<b>3.9</b>	0.3	<b>-0.1</b>	-1.3	-0.6	...	...	...
Employment rate	63.5	<b>63.8</b>	0.3	<b>0.3</b>	1.1	1.2	...	...	...
Part-time rate	20.2	<b>20.8</b>	0.5	<b>0.6</b>	0.7	-0.2	...	...	...
<b>Both sexes, 15 to 24 years</b>									
Population	577.7	<b>577.9</b>	...	<b>0.2</b>	0.5	2.6	<b>0.0</b>	0.1	0.5
Labour force	385.6	<b>387.7</b>	5.8	<b>2.1</b>	3.1	5.6	<b>0.5</b>	0.8	1.5
Employment	355.5	<b>359.3</b>	5.8	<b>3.8</b>	11.7	6.4	<b>1.1</b>	3.4	1.8
Unemployment	30.1	<b>28.4</b>	4.2	<b>-1.7</b>	-8.6	-0.7	<b>-5.6</b>	-23.2	-2.4
Participation rate	66.7	<b>67.1</b>	1.0	<b>0.4</b>	0.5	0.7	...	...	...
Unemployment rate	7.8	<b>7.3</b>	1.1	<b>-0.5</b>	-2.3	-0.3	...	...	...
Employment rate	61.5	<b>62.2</b>	1.0	<b>0.7</b>	2.0	0.9	...	...	...
Part-time rate	39.5	<b>42.5</b>	1.8	<b>3.0</b>	4.3	-0.9	...	...	...
<b>Men, 25 years and over</b>									
Population	1,451.7	<b>1,453.8</b>	...	<b>2.1</b>	6.7	29.1	<b>0.1</b>	0.5	2.0
Labour force	1,050.7	<b>1,049.6</b>	5.2	<b>-1.1</b>	6.6	31.8	<b>-0.1</b>	0.6	3.1
Employment	1,020.8	<b>1,017.4</b>	5.4	<b>-3.4</b>	13.0	34.2	<b>-0.3</b>	1.3	3.5
Unemployment	29.9	<b>32.2</b>	4.2	<b>2.3</b>	-6.4	-2.5	<b>7.7</b>	-16.6	-7.2
Participation rate	72.4	<b>72.2</b>	0.4	<b>-0.2</b>	0.1	0.8	...	...	...
Unemployment rate	2.8	<b>3.1</b>	0.4	<b>0.3</b>	-0.6	-0.3	...	...	...
Employment rate	70.3	<b>70.0</b>	0.4	<b>-0.3</b>	0.6	1.0	...	...	...
Part-time rate	8.8	<b>8.0</b>	0.6	<b>-0.8</b>	-1.0	-0.2	...	...	...
<b>Women, 25 years and over</b>									
Population	1,518.1	<b>1,520.0</b>	...	<b>1.9</b>	6.5	27.6	<b>0.1</b>	0.4	1.8
Labour force	911.2	<b>920.0</b>	6.0	<b>8.8</b>	6.9	30.3	<b>1.0</b>	0.8	3.4
Employment	876.6	<b>888.7</b>	5.8	<b>12.1</b>	22.2	37.7	<b>1.4</b>	2.6	4.4
Unemployment	34.6	<b>31.2</b>	4.2	<b>-3.4</b>	-15.4	-7.4	<b>-9.8</b>	-33.0	-19.2
Participation rate	60.0	<b>60.5</b>	0.4	<b>0.5</b>	0.2	0.9	...	...	...
Unemployment rate	3.8	<b>3.4</b>	0.5	<b>-0.4</b>	-1.7	-0.9	...	...	...
Employment rate	57.7	<b>58.5</b>	0.4	<b>0.8</b>	1.2	1.5	...	...	...
Part-time rate	25.7	<b>26.7</b>	0.9	<b>1.0</b>	1.1	0.3	...	...	...
<b>Industry</b>									
	2,252.9	<b>2,265.4</b>	10.1	<b>12.5</b>	46.9	78.3	<b>0.6</b>	2.1	3.6
<b>Goods-producing sector</b>									
Agriculture	484.2	<b>493.2</b>	8.1	<b>9.0</b>	9.9	25.9	<b>1.9</b>	2.0	5.5
Forestry, fishing, mining, oil and gas	35.7	<b>33.5</b>	2.6	<b>-2.2</b>	-2.5	-2.7	<b>-6.2</b>	-6.9	-7.5
Utilities	48.3	<b>45.2</b>	2.8	<b>-3.1</b>	-3.0	5.4	<b>-6.4</b>	-6.2	13.6
Construction	9.3	<b>8.2</b>	1.0	<b>-1.1</b>	-1.1	1.0	<b>-11.8</b>	-11.8	13.9
Manufacturing	186.5	<b>190.9</b>	5.7	<b>4.4</b>	4.4	13.6	<b>2.4</b>	2.4	7.7
	204.5	<b>215.3</b>	5.3	<b>10.8</b>	12.1	8.5	<b>5.3</b>	6.0	4.1
<b>Services-producing sector</b>									
	1,768.7	<b>1,772.2</b>	11.1	<b>3.5</b>	36.9	52.4	<b>0.2</b>	2.1	3.0
Trade	359.1	<b>355.0</b>	7.3	<b>-4.1</b>	14.6	-3.8	<b>-1.1</b>	4.3	-1.1
Transportation and warehousing	131.3	<b>125.6</b>	4.3	<b>-5.7</b>	8.4	0.7	<b>-4.3</b>	7.2	0.6
Finance, insurance, real estate and leasing	139.9	<b>149.2</b>	4.5	<b>9.3</b>	1.5	16.5	<b>6.6</b>	1.0	12.4
Professional, scientific and technical services	168.9	<b>161.1</b>	5.1	<b>-7.8</b>	-3.4	-5.0	<b>-4.6</b>	-2.1	-3.0
Business, building and other support services	96.7	<b>95.4</b>	4.3	<b>-1.3</b>	-13.1	5.0	<b>-1.3</b>	-12.1	5.5
Educational services	159.9	<b>162.9</b>	4.8	<b>3.0</b>	0.6	9.4	<b>1.9</b>	0.4	6.1
Health care and social assistance	243.2	<b>248.5</b>	5.4	<b>5.3</b>	9.3	24.2	<b>2.2</b>	3.9	10.8
Information, culture and recreation	116.2	<b>123.5</b>	4.6	<b>7.3</b>	17.9	3.9	<b>6.3</b>	17.0	3.3
Accommodation and food services	173.1	<b>173.5</b>	5.5	<b>0.4</b>	2.7	11.1	<b>0.2</b>	1.6	6.8
Other services	89.0	<b>85.3</b>	4.1	<b>-3.7</b>	-3.7	-8.4	<b>-4.2</b>	-4.2	-9.0
Public administration	91.4	<b>92.2</b>	3.5	<b>0.8</b>	2.2	-1.3	<b>0.9</b>	2.4	-1.4

1. Average standard error of change in two consecutive months (see "Sampling Errors" in Data Quality for further explanations).

**Note(s):** Related CANSIM tables 282-0087, 282-0088



**Table 5-1**  
**Labour force characteristics by census metropolitan area (seasonally adjusted) — 3 month moving average**

	February 2007	March 2007	S.E. <sup>1</sup>	Change from			Percent change from		
				last month	last December	twelve months ago	last month	last December	twelve months ago
in thousands (except rates)									
<b>St. John's, Newfoundland and Labrador</b>									
Population	151.9	<b>152.0</b>	...	<b>0.1</b>	0.2	0.8	<b>0.1</b>	0.1	0.5
Labour force	99.3	<b>98.9</b>	0.8	<b>-0.4</b>	-3.4	-0.9	<b>-0.4</b>	-3.3	-0.9
Employment	92.0	<b>91.3</b>	0.8	<b>-0.7</b>	-3.3	0.2	<b>-0.8</b>	-3.5	0.2
Unemployment	7.3	<b>7.6</b>	0.5	<b>0.3</b>	-0.1	-1.1	<b>4.1</b>	-1.3	-12.6
Participation rate	65.4	<b>65.1</b>	0.5	<b>-0.3</b>	-2.3	-0.9	...	...	...
Unemployment rate	7.4	<b>7.7</b>	0.4	<b>0.3</b>	0.2	-1.0	...	...	...
Employment rate	60.6	<b>60.1</b>	0.5	<b>-0.5</b>	-2.2	-0.2	...	...	...
<b>Halifax, Nova Scotia</b>									
Population	312.4	<b>312.5</b>	...	<b>0.1</b>	0.5	1.9	<b>0.0</b>	0.2	0.6
Labour force	217.9	<b>217.3</b>	1.1	<b>-0.6</b>	-0.1	4.1	<b>-0.3</b>	0.0	1.9
Employment	208.6	<b>207.8</b>	1.1	<b>-0.8</b>	0.2	5.3	<b>-0.4</b>	0.1	2.6
Unemployment	9.4	<b>9.5</b>	0.6	<b>0.1</b>	-0.4	-1.2	<b>1.1</b>	-4.0	-11.2
Participation rate	69.8	<b>69.5</b>	0.4	<b>-0.3</b>	-0.2	0.9	...	...	...
Unemployment rate	4.3	<b>4.4</b>	0.3	<b>0.1</b>	-0.2	-0.6	...	...	...
Employment rate	66.8	<b>66.5</b>	0.4	<b>-0.3</b>	0.0	1.3	...	...	...
<b>Saint John, New Brunswick</b>									
Population	103.5	<b>103.6</b>	...	<b>0.1</b>	0.2	0.2	<b>0.1</b>	0.2	0.2
Labour force	66.2	<b>66.3</b>	0.7	<b>0.1</b>	0.8	-0.6	<b>0.2</b>	1.2	-0.9
Employment	62.6	<b>62.9</b>	0.7	<b>0.3</b>	1.1	-0.1	<b>0.5</b>	1.8	-0.2
Unemployment	3.7	<b>3.3</b>	0.3	<b>-0.4</b>	-0.4	-0.6	<b>-10.8</b>	-10.8	-15.4
Participation rate	64.0	<b>64.0</b>	0.6	<b>0.0</b>	0.7	-0.7	...	...	...
Unemployment rate	5.6	<b>5.0</b>	0.5	<b>-0.6</b>	-0.6	-0.8	...	...	...
Employment rate	60.5	<b>60.7</b>	0.7	<b>0.2</b>	0.9	-0.2	...	...	...
<b>Saguenay, Quebec</b>									
Population	125.9	<b>125.8</b>	...	<b>-0.1</b>	-0.2	-0.4	<b>-0.1</b>	-0.2	-0.3
Labour force	75.6	<b>76.6</b>	0.8	<b>1.0</b>	2.2	-2.3	<b>1.3</b>	3.0	-2.9
Employment	68.2	<b>68.8</b>	0.8	<b>0.6</b>	0.9	-3.9	<b>0.9</b>	1.3	-5.4
Unemployment	7.4	<b>7.8</b>	0.4	<b>0.4</b>	1.2	1.5	<b>5.4</b>	18.2	23.8
Participation rate	60.0	<b>60.9</b>	0.6	<b>0.9</b>	1.9	-1.6	...	...	...
Unemployment rate	9.8	<b>10.2</b>	0.5	<b>0.4</b>	1.3	2.2	...	...	...
Employment rate	54.2	<b>54.7</b>	0.6	<b>0.5</b>	0.8	-2.9	...	...	...
<b>Québec, Quebec</b>									
Population	603.3	<b>603.8</b>	...	<b>0.5</b>	1.6	7.1	<b>0.1</b>	0.3	1.2
Labour force	396.5	<b>395.5</b>	3.2	<b>-1.0</b>	0.0	-5.3	<b>-0.3</b>	0.0	-1.3
Employment	374.7	<b>376.5</b>	3.3	<b>1.8</b>	4.6	-2.8	<b>0.5</b>	1.2	-0.7
Unemployment	21.8	<b>19.0</b>	1.5	<b>-2.8</b>	-4.6	-2.4	<b>-12.8</b>	-19.5	-11.2
Participation rate	65.7	<b>65.5</b>	0.5	<b>-0.2</b>	-0.2	-1.7	...	...	...
Unemployment rate	5.5	<b>4.8</b>	0.4	<b>-0.7</b>	-1.2	-0.5	...	...	...
Employment rate	62.1	<b>62.4</b>	0.6	<b>0.3</b>	0.6	-1.2	...	...	...
<b>Trois-Rivières, Quebec</b>									
Population	120.1	<b>120.2</b>	...	<b>0.1</b>	0.3	1.4	<b>0.1</b>	0.3	1.2
Labour force	75.0	<b>76.5</b>	0.7	<b>1.5</b>	3.9	1.0	<b>2.0</b>	5.4	1.3
Employment	68.9	<b>70.0</b>	0.7	<b>1.1</b>	2.4	1.4	<b>1.6</b>	3.6	2.0
Unemployment	6.1	<b>6.5</b>	0.3	<b>0.4</b>	1.6	-0.4	<b>6.6</b>	32.7	-5.8
Participation rate	62.4	<b>63.6</b>	0.6	<b>1.2</b>	3.0	0.0	...	...	...
Unemployment rate	8.1	<b>8.5</b>	0.4	<b>0.4</b>	1.8	-0.6	...	...	...
Employment rate	57.4	<b>58.2</b>	0.6	<b>0.8</b>	1.8	0.5	...	...	...

See footnotes at the end of the table.

Table 5-1 – continued

## Labour force characteristics by census metropolitan area (seasonally adjusted) — 3 month moving average

	February 2007	March 2007	S.E. <sup>1</sup>	Change from			Percent change from		
				last month	last December	twelve months ago	last month	last December	twelve months ago
in thousands (except rates)									
<b>Sherbrooke, Quebec</b>									
Population	136.1	<b>136.2</b>	...	<b>0.1</b>	0.4	1.7	<b>0.1</b>	0.3	1.3
Labour force	89.2	<b>89.0</b>	0.7	<b>-0.2</b>	0.1	-0.7	<b>-0.2</b>	0.1	-0.8
Employment	83.0	<b>83.0</b>	0.8	<b>0.0</b>	0.8	0.7	<b>0.0</b>	1.0	0.9
Unemployment	6.2	<b>6.0</b>	0.3	<b>-0.2</b>	-0.7	-1.4	<b>-3.2</b>	-10.4	-18.9
Participation rate	65.5	<b>65.3</b>	0.5	<b>-0.2</b>	-0.2	-1.4	...	...	...
Unemployment rate	7.0	<b>6.7</b>	0.4	<b>-0.3</b>	-0.8	-1.5	...	...	...
Employment rate	61.0	<b>60.9</b>	0.6	<b>-0.1</b>	0.4	-0.3	...	...	...
<b>Montréal, Quebec</b>									
Population	3,023.9	<b>3,026.3</b>	...	<b>2.4</b>	8.1	36.8	<b>0.1</b>	0.3	1.2
Labour force	2,025.9	<b>2,029.3</b>	7.3	<b>3.4</b>	-11.3	9.5	<b>0.2</b>	-0.6	0.5
Employment	1,875.0	<b>1,878.2</b>	7.5	<b>3.2</b>	-7.2	46.8	<b>0.2</b>	-0.4	2.6
Unemployment	151.0	<b>151.1</b>	4.9	<b>0.1</b>	-4.1	-37.3	<b>0.1</b>	-2.6	-19.8
Participation rate	67.0	<b>67.1</b>	0.2	<b>0.1</b>	-0.5	-0.5	...	...	...
Unemployment rate	7.5	<b>7.4</b>	0.2	<b>-0.1</b>	-0.2	-1.9	...	...	...
Employment rate	62.0	<b>62.1</b>	0.3	<b>0.1</b>	-0.4	0.8	...	...	...
<b>Ottawa-Gatineau, Ontario/Quebec</b>									
Population	948.0	<b>948.5</b>	...	<b>0.5</b>	1.6	8.5	<b>0.1</b>	0.2	0.9
Labour force	668.6	<b>672.5</b>	3.2	<b>3.9</b>	6.6	-13.9	<b>0.6</b>	1.0	-2.0
Employment	631.0	<b>635.4</b>	3.4	<b>4.4</b>	7.2	-15.3	<b>0.7</b>	1.1	-2.4
Unemployment	37.6	<b>37.1</b>	1.6	<b>-0.5</b>	-0.6	1.4	<b>-1.3</b>	-1.6	3.9
Participation rate	70.5	<b>70.9</b>	0.3	<b>0.4</b>	0.6	-2.1	...	...	...
Unemployment rate	5.6	<b>5.5</b>	0.2	<b>-0.1</b>	-0.2	0.3	...	...	...
Employment rate	66.6	<b>67.0</b>	0.4	<b>0.4</b>	0.7	-2.2	...	...	...
<b>Ottawa-Gatineau, Quebec part, Ontario/Quebec</b>									
Population	238.0	<b>238.3</b>	...	<b>0.3</b>	1.1	4.3	<b>0.1</b>	0.5	1.8
Labour force	174.4	<b>174.4</b>	1.2	<b>0.0</b>	2.1	2.7	<b>0.0</b>	1.2	1.6
Employment	163.2	<b>163.2</b>	1.2	<b>0.0</b>	1.7	1.1	<b>0.0</b>	1.1	0.7
Unemployment	11.3	<b>11.2</b>	0.6	<b>-0.1</b>	0.4	1.6	<b>-0.9</b>	3.7	16.7
Participation rate	73.3	<b>73.2</b>	0.5	<b>-0.1</b>	0.6	-0.2	...	...	...
Unemployment rate	6.5	<b>6.4</b>	0.3	<b>-0.1</b>	0.1	0.8	...	...	...
Employment rate	68.6	<b>68.5</b>	0.5	<b>-0.1</b>	0.4	-0.8	...	...	...
<b>Ottawa-Gatineau, Ontario part, Ontario/Quebec</b>									
Population	710.1	<b>710.2</b>	...	<b>0.1</b>	0.6	4.2	<b>0.0</b>	0.1	0.6
Labour force	494.2	<b>498.1</b>	3.0	<b>3.9</b>	4.4	-16.5	<b>0.8</b>	0.9	-3.2
Employment	467.9	<b>472.2</b>	3.2	<b>4.3</b>	5.5	-16.4	<b>0.9</b>	1.2	-3.4
Unemployment	26.4	<b>25.9</b>	1.5	<b>-0.5</b>	-1.1	-0.2	<b>-1.9</b>	-4.1	-0.8
Participation rate	69.6	<b>70.1</b>	0.4	<b>0.5</b>	0.5	-2.8	...	...	...
Unemployment rate	5.3	<b>5.2</b>	0.3	<b>-0.1</b>	-0.3	0.1	...	...	...
Employment rate	65.9	<b>66.5</b>	0.5	<b>0.6</b>	0.7	-2.7	...	...	...
<b>Kingston, Ontario</b>									
Population	126.0	<b>125.9</b>	...	<b>-0.1</b>	0.0	0.5	<b>-0.1</b>	0.0	0.4
Labour force	82.7	<b>84.5</b>	0.8	<b>1.8</b>	3.5	2.4	<b>2.2</b>	4.3	2.9
Employment	78.6	<b>80.8</b>	0.8	<b>2.2</b>	4.0	3.7	<b>2.8</b>	5.2	4.8
Unemployment	4.1	<b>3.7</b>	0.3	<b>-0.4</b>	-0.5	-1.3	<b>-9.8</b>	-11.9	-26.0
Participation rate	65.6	<b>67.1</b>	0.6	<b>1.5</b>	2.8	1.6	...	...	...
Unemployment rate	5.0	<b>4.4</b>	0.4	<b>-0.6</b>	-0.8	-1.7	...	...	...
Employment rate	62.4	<b>64.2</b>	0.6	<b>1.8</b>	3.2	2.7	...	...	...

See footnotes at the end of the table.



Table 5-1 – continued

## Labour force characteristics by census metropolitan area (seasonally adjusted) — 3 month moving average

	February 2007	March 2007	S.E. <sup>1</sup>	Change from			Percent change from		
				last month	last December	twelve months ago	last month	last December	twelve months ago
in thousands (except rates)									
<b>Toronto, Ontario</b>									
Population	4,418.4	<b>4,424.0</b>	...	<b>5.6</b>	18.5	81.6	<b>0.1</b>	0.4	1.9
Labour force	3,065.4	<b>3,073.0</b>	9.0	<b>7.6</b>	49.5	93.8	<b>0.2</b>	1.6	3.1
Employment	2,867.0	<b>2,865.9</b>	9.2	<b>-1.1</b>	43.4	85.8	<b>0.0</b>	1.5	3.1
Unemployment	198.4	<b>207.1</b>	5.4	<b>8.7</b>	6.1	8.0	<b>4.4</b>	3.0	4.0
Participation rate	69.4	<b>69.5</b>	0.2	<b>0.1</b>	0.9	0.9	...	...	...
Unemployment rate	6.5	<b>6.7</b>	0.2	<b>0.2</b>	0.1	0.0	...	...	...
Employment rate	64.9	<b>64.8</b>	0.2	<b>-0.1</b>	0.7	0.8	...	...	...
<b>Hamilton, Ontario</b>									
Population	590.8	<b>591.1</b>	...	<b>0.3</b>	1.0	5.4	<b>0.1</b>	0.2	0.9
Labour force	390.4	<b>394.1</b>	2.9	<b>3.7</b>	5.0	-5.3	<b>0.9</b>	1.3	-1.3
Employment	365.9	<b>368.2</b>	3.0	<b>2.3</b>	2.8	-8.9	<b>0.6</b>	0.8	-2.4
Unemployment	24.5	<b>25.9</b>	1.3	<b>1.4</b>	2.1	3.6	<b>5.7</b>	8.8	16.1
Participation rate	66.1	<b>66.7</b>	0.5	<b>0.6</b>	0.8	-1.5	...	...	...
Unemployment rate	6.3	<b>6.6</b>	0.3	<b>0.3</b>	0.5	1.0	...	...	...
Employment rate	61.9	<b>62.3</b>	0.5	<b>0.4</b>	0.4	-2.1	...	...	...
<b>Kitchener, Ontario</b>									
Population	374.5	<b>375.0</b>	...	<b>0.5</b>	1.4	6.3	<b>0.1</b>	0.4	1.7
Labour force	267.9	<b>266.7</b>	1.9	<b>-1.2</b>	-5.3	2.0	<b>-0.4</b>	-1.9	0.8
Employment	252.1	<b>251.6</b>	2.0	<b>-0.5</b>	-5.7	0.6	<b>-0.2</b>	-2.2	0.2
Unemployment	15.8	<b>15.0</b>	0.9	<b>-0.8</b>	0.3	1.3	<b>-5.1</b>	2.0	9.5
Participation rate	71.5	<b>71.1</b>	0.5	<b>-0.4</b>	-1.7	-0.7	...	...	...
Unemployment rate	5.9	<b>5.6</b>	0.3	<b>-0.3</b>	0.2	0.4	...	...	...
Employment rate	67.3	<b>67.1</b>	0.5	<b>-0.2</b>	-1.8	-1.0	...	...	...
<b>London, Ontario</b>									
Population	380.1	<b>380.3</b>	...	<b>0.2</b>	0.7	3.8	<b>0.1</b>	0.2	1.0
Labour force	265.4	<b>264.4</b>	1.7	<b>-1.0</b>	-3.2	7.8	<b>-0.4</b>	-1.2	3.0
Employment	250.4	<b>249.2</b>	1.8	<b>-1.2</b>	-1.8	7.9	<b>-0.5</b>	-0.7	3.3
Unemployment	15.0	<b>15.2</b>	0.9	<b>0.2</b>	-1.4	-0.1	<b>1.3</b>	-8.4	-0.7
Participation rate	69.8	<b>69.5</b>	0.5	<b>-0.3</b>	-1.0	1.3	...	...	...
Unemployment rate	5.7	<b>5.7</b>	0.3	<b>0.0</b>	-0.5	-0.3	...	...	...
Employment rate	65.9	<b>65.5</b>	0.5	<b>-0.4</b>	-0.6	1.4	...	...	...
<b>Oshawa, Ontario</b>									
Population	278.9	<b>279.5</b>	...	<b>0.6</b>	2.0	8.1	<b>0.2</b>	0.7	3.0
Labour force	189.4	<b>189.5</b>	1.3	<b>0.1</b>	-0.6	2.9	<b>0.1</b>	-0.3	1.6
Employment	177.3	<b>177.9</b>	1.4	<b>0.6</b>	0.5	3.2	<b>0.3</b>	0.3	1.8
Unemployment	12.1	<b>11.6</b>	0.7	<b>-0.5</b>	-1.1	-0.3	<b>-4.1</b>	-8.7	-2.5
Participation rate	67.9	<b>67.8</b>	0.5	<b>-0.1</b>	-0.7	-1.0	...	...	...
Unemployment rate	6.4	<b>6.1</b>	0.4	<b>-0.3</b>	-0.6	-0.3	...	...	...
Employment rate	63.6	<b>63.6</b>	0.5	<b>0.0</b>	-0.3	-0.8	...	...	...
<b>St. Catharines-Niagara, Ontario</b>									
Population	327.7	<b>327.8</b>	...	<b>0.1</b>	0.2	1.6	<b>0.0</b>	0.1	0.5
Labour force	201.2	<b>202.9</b>	1.7	<b>1.7</b>	2.0	4.5	<b>0.8</b>	1.0	2.3
Employment	188.2	<b>190.1</b>	1.7	<b>1.9</b>	2.0	4.8	<b>1.0</b>	1.1	2.6
Unemployment	13.0	<b>12.8</b>	0.7	<b>-0.2</b>	0.1	-0.4	<b>-1.5</b>	0.8	-3.0
Participation rate	61.4	<b>61.9</b>	0.5	<b>0.5</b>	0.6	1.1	...	...	...
Unemployment rate	6.5	<b>6.3</b>	0.3	<b>-0.2</b>	0.0	-0.4	...	...	...
Employment rate	57.4	<b>58.0</b>	0.5	<b>0.6</b>	0.6	1.2	...	...	...

See footnotes at the end of the table.

Table 5-1 – continued

## Labour force characteristics by census metropolitan area (seasonally adjusted) — 3 month moving average

	February 2007	March 2007	S.E. <sup>1</sup>	Change from			Percent change from		
				last month	last December	twelve months ago	last month	last December	twelve months ago
in thousands (except rates)									
<b>Greater Sudbury / Grand Sudbury, Ontario</b>									
Population	132.7	<b>132.7</b>	...	<b>0.0</b>	0.0	0.3	<b>0.0</b>	0.0	0.2
Labour force	83.7	<b>84.6</b>	0.7	<b>0.9</b>	0.3	1.6	<b>1.1</b>	0.4	1.9
Employment	78.9	<b>79.7</b>	0.7	<b>0.8</b>	0.6	3.5	<b>1.0</b>	0.8	4.6
Unemployment	4.8	<b>4.9</b>	0.3	<b>0.1</b>	-0.3	-1.9	<b>2.1</b>	-5.8	-27.9
Participation rate	63.1	<b>63.8</b>	0.5	<b>0.7</b>	0.3	1.1	...	...	...
Unemployment rate	5.7	<b>5.8</b>	0.4	<b>0.1</b>	-0.4	-2.4	...	...	...
Employment rate	59.5	<b>60.1</b>	0.6	<b>0.6</b>	0.5	2.5	...	...	...
<b>Thunder Bay, Ontario</b>									
Population	104.2	<b>104.2</b>	...	<b>0.0</b>	-0.1	0.0	<b>0.0</b>	-0.1	0.0
Labour force	65.9	<b>66.1</b>	0.6	<b>0.2</b>	0.8	-0.1	<b>0.3</b>	1.2	-0.2
Employment	61.5	<b>61.5</b>	0.7	<b>0.0</b>	0.7	0.3	<b>0.0</b>	1.2	0.5
Unemployment	4.4	<b>4.6</b>	0.3	<b>0.2</b>	0.2	-0.4	<b>4.5</b>	4.5	-8.0
Participation rate	63.2	<b>63.4</b>	0.6	<b>0.2</b>	0.8	-0.1	...	...	...
Unemployment rate	6.7	<b>7.0</b>	0.5	<b>0.3</b>	0.3	-0.6	...	...	...
Employment rate	59.0	<b>59.0</b>	0.6	<b>0.0</b>	0.7	0.3	...	...	...
<b>Windsor, Ontario</b>									
Population	271.4	<b>271.4</b>	...	<b>0.0</b>	0.2	1.7	<b>0.0</b>	0.1	0.6
Labour force	175.0	<b>173.4</b>	1.4	<b>-1.6</b>	-6.4	-7.4	<b>-0.9</b>	-3.6	-4.1
Employment	157.8	<b>156.7</b>	1.4	<b>-1.1</b>	-6.9	-7.2	<b>-0.7</b>	-4.2	-4.4
Unemployment	17.1	<b>16.8</b>	0.8	<b>-0.3</b>	0.6	-0.1	<b>-1.8</b>	3.7	-0.6
Participation rate	64.5	<b>63.9</b>	0.5	<b>-0.6</b>	-2.4	-3.1	...	...	...
Unemployment rate	9.8	<b>9.7</b>	0.4	<b>-0.1</b>	0.7	0.4	...	...	...
Employment rate	58.1	<b>57.7</b>	0.5	<b>-0.4</b>	-2.6	-3.1	...	...	...
<b>Winnipeg, Manitoba</b>									
Population	573.4	<b>573.8</b>	...	<b>0.4</b>	1.2	3.8	<b>0.1</b>	0.2	0.7
Labour force	403.0	<b>406.2</b>	1.4	<b>3.2</b>	4.5	8.0	<b>0.8</b>	1.1	2.0
Employment	382.9	<b>386.7</b>	1.4	<b>3.8</b>	4.1	6.8	<b>1.0</b>	1.1	1.8
Unemployment	20.1	<b>19.5</b>	0.7	<b>-0.6</b>	0.4	1.1	<b>-3.0</b>	2.1	6.0
Participation rate	70.3	<b>70.8</b>	0.2	<b>0.5</b>	0.6	0.9	...	...	...
Unemployment rate	5.0	<b>4.8</b>	0.2	<b>-0.2</b>	0.0	0.2	...	...	...
Employment rate	66.8	<b>67.4</b>	0.2	<b>0.6</b>	0.6	0.8	...	...	...
<b>Regina, Saskatchewan</b>									
Population	161.7	<b>161.9</b>	...	<b>0.2</b>	0.6	1.1	<b>0.1</b>	0.4	0.7
Labour force	116.7	<b>116.9</b>	0.7	<b>0.2</b>	-0.5	5.1	<b>0.2</b>	-0.4	4.6
Employment	112.0	<b>112.3</b>	0.7	<b>0.3</b>	0.1	6.0	<b>0.3</b>	0.1	5.6
Unemployment	4.7	<b>4.7</b>	0.3	<b>0.0</b>	-0.5	-0.9	<b>0.0</b>	-9.6	-16.1
Participation rate	72.2	<b>72.2</b>	0.4	<b>0.0</b>	-0.6	2.7	...	...	...
Unemployment rate	4.0	<b>4.0</b>	0.3	<b>0.0</b>	-0.4	-1.0	...	...	...
Employment rate	69.3	<b>69.4</b>	0.5	<b>0.1</b>	-0.2	3.3	...	...	...
<b>Saskatoon, Saskatchewan</b>									
Population	189.2	<b>189.5</b>	...	<b>0.3</b>	0.7	1.6	<b>0.2</b>	0.4	0.9
Labour force	140.1	<b>140.0</b>	0.8	<b>-0.1</b>	1.8	8.8	<b>-0.1</b>	1.3	6.7
Employment	134.9	<b>134.9</b>	0.9	<b>0.0</b>	1.3	10.7	<b>0.0</b>	1.0	8.6
Unemployment	5.1	<b>5.1</b>	0.4	<b>0.0</b>	0.6	-1.9	<b>0.0</b>	13.3	-27.1
Participation rate	74.0	<b>73.9</b>	0.4	<b>-0.1</b>	0.7	4.1	...	...	...
Unemployment rate	3.6	<b>3.6</b>	0.3	<b>0.0</b>	0.3	-1.7	...	...	...
Employment rate	71.3	<b>71.2</b>	0.5	<b>-0.1</b>	0.4	5.1	...	...	...

See footnotes at the end of the table.

Table 5-1 – continued

## Labour force characteristics by census metropolitan area (seasonally adjusted) — 3 month moving average

	February 2007	March 2007	S.E. <sup>1</sup>	Change from			Percent change from		
				last month	last December	twelve months ago	last month	last December	twelve months ago
in thousands (except rates)									
<b>Calgary, Alberta</b>									
Population	909.0	<b>912.0</b>	...	<b>3.0</b>	9.6	38.3	<b>0.3</b>	1.1	4.4
Labour force	693.3	<b>695.0</b>	3.1	<b>1.7</b>	2.1	34.2	<b>0.2</b>	0.3	5.2
Employment	671.8	<b>672.0</b>	3.2	<b>0.2</b>	-2.9	33.3	<b>0.0</b>	-0.4	5.2
Unemployment	21.5	<b>23.0</b>	1.4	<b>1.5</b>	5.0	0.8	<b>7.0</b>	27.8	3.6
Participation rate	76.3	<b>76.2</b>	0.4	<b>-0.1</b>	-0.6	0.6	...	...	...
Unemployment rate	3.1	<b>3.3</b>	0.2	<b>0.2</b>	0.7	-0.1	...	...	...
Employment rate	73.9	<b>73.7</b>	0.4	<b>-0.2</b>	-1.1	0.6	...	...	...
<b>Edmonton, Alberta</b>									
Population	855.7	<b>858.0</b>	...	<b>2.3</b>	7.6	31.4	<b>0.3</b>	0.9	3.8
Labour force	610.1	<b>613.8</b>	3.1	<b>3.7</b>	16.9	44.0	<b>0.6</b>	2.8	7.7
Employment	587.7	<b>592.6</b>	3.2	<b>4.9</b>	17.9	44.3	<b>0.8</b>	3.1	8.1
Unemployment	22.3	<b>21.2</b>	1.4	<b>-1.1</b>	-1.0	-0.3	<b>-4.9</b>	-4.5	-1.4
Participation rate	71.3	<b>71.5</b>	0.4	<b>0.2</b>	1.3	2.6	...	...	...
Unemployment rate	3.7	<b>3.5</b>	0.2	<b>-0.2</b>	-0.2	-0.3	...	...	...
Employment rate	68.7	<b>69.1</b>	0.4	<b>0.4</b>	1.5	2.8	...	...	...
<b>Abbotsford, British Columbia</b>									
Population	130.3	<b>130.6</b>	...	<b>0.3</b>	1.0	3.9	<b>0.2</b>	0.8	3.1
Labour force	88.9	<b>88.1</b>	0.7	<b>-0.8</b>	-0.1	1.4	<b>-0.9</b>	-0.1	1.6
Employment	85.1	<b>84.2</b>	0.8	<b>-0.9</b>	-0.1	1.4	<b>-1.1</b>	-0.1	1.7
Unemployment	3.8	<b>3.8</b>	0.3	<b>0.0</b>	-0.1	-0.1	<b>0.0</b>	-2.6	-2.6
Participation rate	68.2	<b>67.5</b>	0.6	<b>-0.7</b>	-0.6	-0.9	...	...	...
Unemployment rate	4.3	<b>4.3</b>	0.3	<b>0.0</b>	-0.1	-0.2	...	...	...
Employment rate	65.3	<b>64.5</b>	0.6	<b>-0.8</b>	-0.5	-0.9	...	...	...
<b>Vancouver, British Columbia</b>									
Population	1,880.7	<b>1,883.4</b>	...	<b>2.7</b>	8.2	34.3	<b>0.1</b>	0.4	1.9
Labour force	1,263.3	<b>1,266.8</b>	4.8	<b>3.5</b>	8.0	47.7	<b>0.3</b>	0.6	3.9
Employment	1,209.7	<b>1,220.8</b>	4.8	<b>11.1</b>	20.6	58.8	<b>0.9</b>	1.7	5.1
Unemployment	53.6	<b>45.9</b>	2.3	<b>-7.7</b>	-12.7	-11.2	<b>-14.4</b>	-21.7	-19.6
Participation rate	67.2	<b>67.3</b>	0.3	<b>0.1</b>	0.2	1.4	...	...	...
Unemployment rate	4.2	<b>3.6</b>	0.2	<b>-0.6</b>	-1.1	-1.1	...	...	...
Employment rate	64.3	<b>64.8</b>	0.3	<b>0.5</b>	0.8	2.0	...	...	...
<b>Victoria, British Columbia</b>									
Population	281.4	<b>281.8</b>	...	<b>0.4</b>	1.3	5.6	<b>0.1</b>	0.5	2.0
Labour force	183.3	<b>182.8</b>	1.4	<b>-0.5</b>	-2.6	3.5	<b>-0.3</b>	-1.4	2.0
Employment	177.7	<b>177.0</b>	1.4	<b>-0.7</b>	-1.8	4.5	<b>-0.4</b>	-1.0	2.6
Unemployment	5.6	<b>5.9</b>	0.6	<b>0.3</b>	-0.7	-0.9	<b>5.4</b>	-10.6	-13.2
Participation rate	65.1	<b>64.9</b>	0.5	<b>-0.2</b>	-1.2	0.0	...	...	...
Unemployment rate	3.1	<b>3.2</b>	0.3	<b>0.1</b>	-0.4	-0.6	...	...	...
Employment rate	63.1	<b>62.8</b>	0.5	<b>-0.3</b>	-0.9	0.3	...	...	...

1. Average standard error of change in two consecutive months (see "Sampling Errors" in Data Quality for further explanations).

Note(s): Related CANSIM table 282-0090

**Table 5-2**  
**Labour force characteristics by census metropolitan area (seasonally adjusted) — Monthly**

	February 2007	March 2007	S.E. <sup>1</sup>	Change from			Percent change from		
				last month	last December	twelve months ago	last month	last December	twelve months ago
in thousands (except rates)									
<b>Montréal, Quebec</b>									
Population	3,026.6	<b>3,028.3</b>	...	<b>1.7</b>	7.3	36.7	<b>0.1</b>	0.2	1.2
Labour force	2,024.3	<b>2,037.4</b>	15.4	<b>13.1</b>	10.1	19.5	<b>0.6</b>	0.5	1.0
Employment	1,868.5	<b>1,889.6</b>	15.5	<b>21.1</b>	9.8	56.9	<b>1.1</b>	0.5	3.1
Unemployment	155.8	<b>147.8</b>	11.8	<b>-8.0</b>	0.4	-37.4	<b>-5.1</b>	0.3	-20.2
Participation rate	66.9	<b>67.3</b>	0.5	<b>0.4</b>	0.2	-0.2	...	...	...
Unemployment rate	7.7	<b>7.3</b>	0.6	<b>-0.4</b>	0.0	-1.9	...	...	...
Employment rate	61.7	<b>62.4</b>	0.5	<b>0.7</b>	0.2	1.1	...	...	...
<b>Toronto, Ontario</b>									
Population	4,424.3	<b>4,428.5</b>	...	<b>4.2</b>	16.8	80.0	<b>0.1</b>	0.4	1.8
Labour force	3,074.7	<b>3,071.9</b>	19.3	<b>-2.8</b>	22.7	91.4	<b>-0.1</b>	0.7	3.1
Employment	2,870.6	<b>2,853.5</b>	19.1	<b>-17.1</b>	-3.1	65.4	<b>-0.6</b>	-0.1	2.3
Unemployment	204.1	<b>218.4</b>	13.2	<b>14.3</b>	25.8	26.1	<b>7.0</b>	13.4	13.6
Participation rate	69.5	<b>69.4</b>	0.4	<b>-0.1</b>	0.3	0.9	...	...	...
Unemployment rate	6.6	<b>7.1</b>	0.4	<b>0.5</b>	0.8	0.6	...	...	...
Employment rate	64.9	<b>64.4</b>	0.4	<b>-0.5</b>	-0.4	0.3	...	...	...
<b>Vancouver, British Columbia</b>									
Population	1,883.2	<b>1,885.8</b>	...	<b>2.6</b>	8.1	34.1	<b>0.1</b>	0.4	1.8
Labour force	1,268.0	<b>1,267.6</b>	10.0	<b>-0.4</b>	10.3	41.8	<b>0.0</b>	0.8	3.4
Employment	1,229.0	<b>1,225.4</b>	10.2	<b>-3.6</b>	33.3	52.1	<b>-0.3</b>	2.8	4.4
Unemployment	39.0	<b>42.1</b>	5.8	<b>3.1</b>	-23.0	-10.4	<b>7.9</b>	-35.3	-19.8
Participation rate	67.3	<b>67.2</b>	0.5	<b>-0.1</b>	0.2	1.0	...	...	...
Unemployment rate	3.1	<b>3.3</b>	0.5	<b>0.2</b>	-1.9	-1.0	...	...	...
Employment rate	65.3	<b>65.0</b>	0.5	<b>-0.3</b>	1.5	1.6	...	...	...

1. Average standard error of change in two consecutive months (see "Sampling Errors" in Data Quality for further explanations).

**Note(s):** Related CANSIM table 282-0091

Table 6-1

Labour force characteristics by province and economic region<sup>1</sup>, unadjusted for seasonality, 3 month moving average ending in March 2006 and March 2007

	Population	Labour force			Participation rate	Unemployment rate	Employment rate
		Labour force	Employment	Unemployment			
in thousands							
<b>Canada <sup>2</sup></b>							
2006	26,045.1	17,216.6	16,032.5	1,184.1	66.1	6.9	61.6
2007	26,416.2	17,595.0	16,438.9	1,156.0	66.6	6.6	62.2
<b>Newfoundland and Labrador</b>							
2006	429.0	239.7	197.4	42.2	55.9	17.6	46.0
2007	425.9	242.2	201.8	40.4	56.9	16.7	47.4
<b>Avalon Peninsula [1010]</b>							
2006	209.8	127.3	111.1	16.2	60.7	12.7	53.0
2007	210.1	126.8	110.2	16.6	60.4	13.1	52.5
<b>South Coast-Burin Peninsula [1020]</b>							
2006	34.0	16.3	12.1	4.2	47.9	25.8	35.6
2007	33.2	16.8	12.4	4.4	50.6	26.2	37.3
<b>West Coast-Northern Peninsula-Labrador [1030]</b>							
2006	88.9	48.3	38.7	9.6	54.3	19.9	43.5
2007	87.8	50.3	40.6	9.7	57.3	19.3	46.2
<b>Notre Dame-Central Bonavista Bay [1040]</b>							
2006	96.3	47.8	35.5	12.3	49.6	25.7	36.9
2007	94.7	48.3	38.6	9.7	51.0	20.1	40.8
<b>Prince Edward Island</b>							
2006	111.9	74.0	63.3	10.8	66.1	14.6	56.6
2007	112.8	74.9	65.0	9.9	66.4	13.2	57.6
<b>Nova Scotia</b>							
2006	762.4	468.7	425.8	42.9	61.5	9.2	55.8
2007	763.6	475.0	433.1	42.0	62.2	8.8	56.7
<b>Cape Breton [1210]</b>							
2006	117.2	60.4	51.7	8.7	51.5	14.4	44.1
2007	116.6	62.4	52.3	10.1	53.5	16.2	44.9
<b>North Shore [1220]</b>							
2006	131.2	79.6	71.2	8.5	60.7	10.7	54.3
2007	130.9	76.3	67.4	8.9	58.3	11.7	51.5
<b>Annapolis Valley [1230]</b>							
2006	99.6	60.1	54.1	6.1	60.3	10.1	54.3
2007	100.0	62.9	57.7	5.2	62.9	8.3	57.7
<b>Southern [1240]</b>							
2006	103.8	58.2	50.5	7.7	56.1	13.2	48.7
2007	103.6	59.2	52.0	7.2	57.1	12.2	50.2
<b>Halifax [1250]</b>							
2006	310.6	210.3	198.4	11.9	67.7	5.7	63.9
2007	312.5	214.3	203.7	10.6	68.6	4.9	65.2
<b>New Brunswick</b>							
2006	611.4	381.9	342.9	39.0	62.5	10.2	56.1
2007	611.8	374.7	344.1	30.6	61.2	8.2	56.2
<b>Campbellton-Miramichi [1310]</b>							
2006	137.2	75.2	63.5	11.7	54.8	15.6	46.3
2007	135.8	75.6	65.7	9.9	55.7	13.1	48.4
<b>Moncton-Richibucto [1320]</b>							
2006	161.0	104.2	93.6	10.6	64.7	10.2	58.1
2007	162.3	100.0	91.3	8.8	61.6	8.8	56.3
<b>Saint John-St. Stephen [1330]</b>							
2006	141.3	90.8	83.5	7.3	64.3	8.0	59.1
2007	141.6	86.3	81.6	4.7	60.9	5.4	57.6

See footnotes at the end of the table.

Table 6-1 – continued

Labour force characteristics by province and economic region<sup>1</sup>, unadjusted for seasonality, 3 month moving average ending in March 2006 and March 2007

	Population	Labour force			Participation rate	Unemployment rate	Employment rate
		Labour force	Employment	Unemployment			
in thousands							
Fredericton-Oromocto [1340]							
2006	103.5	67.3	61.7	5.6	65.0	8.3	59.6
2007	104.0	69.8	65.9	3.8	67.1	5.4	63.4
Edmundston-Woodstock [1350]							
2006	68.4	44.4	40.6	3.8	64.9	8.6	59.4
2007	68.0	43.0	39.6	3.4	63.2	7.9	58.2
<b>Quebec</b>							
2006	6,225.7	4,030.2	3,660.6	369.6	64.7	9.2	58.8
2007	6,293.1	4,073.1	3,725.0	348.1	64.7	8.5	59.2
Gaspésie-Îles-de-la-Madeleine [2410]							
2006	80.6	37.4	29.0	8.5	46.4	22.7	36.0
2007	80.9	40.3	31.9	8.4	49.8	20.8	39.4
Bas-Saint-Laurent [2415]							
2006	167.0	95.8	84.9	10.9	57.4	11.4	50.8
2007	167.3	96.3	85.1	11.2	57.6	11.6	50.9
Capitale-Nationale [2420]							
2006	557.9	364.3	339.5	24.9	65.3	6.8	60.9
2007	562.9	356.0	332.6	23.4	63.2	6.6	59.1
Chaudière-Appalaches [2425]							
2006	323.8	215.9	201.3	14.7	66.7	6.8	62.2
2007	326.7	222.5	204.6	17.8	68.1	8.0	62.6
Estrie [2430]							
2006	245.5	156.4	141.8	14.7	63.7	9.4	57.8
2007	247.8	159.6	145.4	14.2	64.4	8.9	58.7
Centre-du-Québec [2433]							
2006	183.1	123.7	112.8	10.9	67.6	8.8	61.6
2007	184.8	131.4	118.8	12.5	71.1	9.5	64.3
Montérégie [2435]							
2006	1,105.2	742.2	683.9	58.3	67.2	7.9	61.9
2007	1,118.8	743.4	692.9	50.5	66.4	6.8	61.9
Montréal [2440]							
2006	1,577.8	1,031.8	910.1	121.7	65.4	11.8	57.7
2007	1,591.5	1,014.3	919.6	94.7	63.7	9.3	57.8
Laval [2445]							
2006	302.7	195.1	181.6	13.4	64.5	6.9	60.0
2007	307.3	206.4	191.8	14.6	67.2	7.1	62.4
Lanaudière [2450]							
2006	340.9	219.6	204.0	15.6	64.4	7.1	59.8
2007	349.1	235.0	220.9	14.1	67.3	6.0	63.3
Laurentides [2455]							
2006	412.6	268.2	241.5	26.7	65.0	10.0	58.5
2007	421.7	278.3	252.0	26.3	66.0	9.5	59.8
Outaouais [2460]							
2006	283.3	197.8	185.0	12.8	69.8	6.5	65.3
2007	288.1	196.8	180.9	15.9	68.3	8.1	62.8
Abitibi-Témiscamingue [2465]							
2006	115.2	72.1	65.7	6.4	62.6	8.9	57.0
2007	115.5	75.2	68.1	7.1	65.1	9.4	59.0
Mauricie [2470]							
2006	216.0	120.0	109.0	11.0	55.6	9.2	50.5
2007	217.1	128.8	114.2	14.7	59.3	11.4	52.6

See footnotes at the end of the table.

Table 6-1 – continued

Labour force characteristics by province and economic region<sup>1</sup>, unadjusted for seasonality, 3 month moving average ending in March 2006 and March 2007

	Population	Labour force			Participation rate	Unemployment rate	Employment rate
		Labour force	Employment	Unemployment			
in thousands							
Saguenay-Lac-Saint-Jean [2475]							
2006	224.5	134.8	120.9	13.9	60.0	10.3	53.9
2007	224.2	136.2	119.5	16.7	60.7	12.3	53.3
Côte-Nord and Nord-du-Québec [2480, 2490]							
2006	89.6	55.1	49.8	5.3	61.5	9.6	55.6
2007	89.5	52.5	46.5	5.9	58.7	11.2	52.0
<b>Ontario</b>							
2006	10,175.8	6,786.6	6,345.9	440.7	66.7	6.5	62.4
2007	10,309.8	6,914.4	6,453.7	460.8	67.1	6.7	62.6
Ottawa [3510]							
2006	975.8	678.3	640.9	37.5	69.5	5.5	65.7
2007	981.9	666.6	627.1	39.5	67.9	5.9	63.9
Kingston-Pembroke [3515]							
2006	356.9	209.6	196.9	12.8	58.7	6.1	55.2
2007	358.5	213.8	201.8	11.9	59.6	5.6	56.3
Muskoka-Kawarthas [3520]							
2006	304.8	184.0	171.3	12.7	60.4	6.9	56.2
2007	307.9	192.3	176.2	16.1	62.5	8.4	57.2
Toronto [3530]							
2006	4,575.6	3,094.0	2,889.2	204.8	67.6	6.6	63.1
2007	4,662.4	3,189.5	2,975.7	213.9	68.4	6.7	63.8
Kitchener-Waterloo-Barrie [3540]							
2006	942.4	671.3	636.9	34.4	71.2	5.1	67.6
2007	960.7	686.4	649.2	37.1	71.4	5.4	67.6
Hamilton-Niagara Peninsula [3550]							
2006	1,118.1	724.4	677.1	47.3	64.8	6.5	60.6
2007	1,128.9	727.3	675.9	51.4	64.4	7.1	59.9
London [3560]							
2006	504.0	342.0	318.3	23.8	67.9	7.0	63.2
2007	508.8	350.7	330.0	20.7	68.9	5.9	64.9
Windsor-Sarnia [3570]							
2006	521.7	346.0	316.1	29.9	66.3	8.6	60.6
2007	523.8	335.9	303.6	32.3	64.1	9.6	58.0
Stratford-Bruce Peninsula [3580]							
2006	246.0	157.3	148.9	8.4	63.9	5.3	60.5
2007	247.2	157.6	150.1	7.5	63.8	4.8	60.7
Northeast [3590]							
2006	453.0	269.8	249.8	20.0	59.6	7.4	55.1
2007	453.2	277.3	256.2	21.0	61.2	7.6	56.5
Northwest [3595]							
2006	177.4	109.8	100.7	9.1	61.9	8.3	56.8
2007	176.5	117.2	107.8	9.3	66.4	7.9	61.1
<b>Manitoba</b>							
2006	890.1	603.5	575.3	28.2	67.8	4.7	64.6
2007	894.9	611.9	582.7	29.1	68.4	4.8	65.1
Southeast [4610]							
2006	74.1	53.6	50.8	2.8	72.3	5.2	68.6
2007	75.7	49.2	46.4	2.8	65.0	5.7	61.3
South Central [4620]							
2006	42.2	26.7	26.1	0.6	63.3	2.2	61.8
2007	42.7	28.4	27.1	1.3	66.5	4.6	63.5

See footnotes at the end of the table.

Table 6-1 – continued

Labour force characteristics by province and economic region<sup>1</sup>, unadjusted for seasonality, 3 month moving average ending in March 2006 and March 2007

	Population	Labour force			Participation rate	Unemployment rate	Employment rate
		Labour force	Employment	Unemployment			
in thousands							
<b>Southwest [4630]</b>							
2006	81.7	54.8	51.6	3.1	67.1	5.7	63.2
2007	81.8	54.7	52.6	2.1	66.9	3.8	64.3
<b>North Central [4640]</b>							
2006	35.4	22.4	21.7	0.7	63.3	3.1	61.3
2007	35.6	22.4	21.7	0.7	62.9	3.1	61.0
<b>Winnipeg [4650]</b>							
2006	527.9	359.5	341.4	18.1	68.1	5.0	64.7
2007	530.6	371.0	352.5	18.5	69.9	5.0	66.4
<b>Interlake [4660]</b>							
2006	68.4	46.5	45.3	1.3	68.0	2.8	66.2
2007	69.1	45.7	44.3	1.4	66.1	3.1	64.1
<b>Parklands and North [4670, 4680]</b>							
2006	60.5	39.9	38.4	1.5	66.0	3.8	63.5
2007	59.4	40.4	38.2	2.2	68.0	5.4	64.3
<b>Saskatchewan</b>							
2006	747.4	501.1	472.4	28.8	67.0	5.7	63.2
2007	747.5	516.0	493.5	22.5	69.0	4.4	66.0
<b>Regina-Moose Mountain [4710]</b>							
2006	219.2	148.3	141.2	7.1	67.7	4.8	64.4
2007	219.7	155.7	149.3	6.4	70.9	4.1	68.0
<b>Swift Current-Moose Jaw [4720]</b>							
2006	82.8	55.5	52.4	3.1	67.0	5.6	63.3
2007	82.4	56.6	54.4	2.2	68.7	3.9	66.0
<b>Saskatoon-Biggar [4730]</b>							
2006	230.7	156.5	147.9	8.7	67.8	5.6	64.1
2007	231.9	166.4	160.2	6.2	71.8	3.7	69.1
<b>Yorkton-Melville [4740]</b>							
2006	65.1	42.5	40.7	1.9	65.3	4.5	62.5
2007	64.1	41.8	39.4	2.4	65.2	5.7	61.5
<b>Prince Albert and Northern [4750, 4760]</b>							
2006	149.6	98.3	90.3	8.0	65.7	8.1	60.4
2007	149.3	95.6	90.4	5.2	64.0	5.4	60.5
<b>Alberta</b>							
2006	2,603.4	1,870.8	1,805.8	64.9	71.9	3.5	69.4
2007	2,709.4	1,984.1	1,913.3	70.8	73.2	3.6	70.6
<b>Lethbridge-Medicine Hat [4810]</b>							
2006	197.8	137.6	133.8	3.8	69.6	2.8	67.6
2007	204.9	140.1	133.5	6.6	68.4	4.7	65.2
<b>Camrose-Drumheller [4820]</b>							
2006	149.2	103.2	100.6	2.5	69.2	2.4	67.4
2007	153.7	110.7	106.8	3.8	72.0	3.4	69.5
<b>Calgary [4830]</b>							
2006	939.1	703.6	679.3	24.4	74.9	3.5	72.3
2007	981.5	744.2	719.0	25.2	75.8	3.4	73.3
<b>Banff-Jasper-Rocky Mountain House [4840]</b>							
2006	65.3	49.5	48.6	x	75.8	x	74.4
2007	67.3	54.7	53.0	1.7	81.3	3.1	78.8
<b>Red Deer [4850]</b>							
2006	133.7	98.0	93.7	4.3	73.3	4.4	70.1
2007	140.1	104.2	101.0	3.2	74.4	3.1	72.1

See footnotes at the end of the table.



Table 6-1 – continued

Labour force characteristics by province and economic region<sup>1</sup>, unadjusted for seasonality, 3 month moving average ending in March 2006 and March 2007

	Population	Labour force			Participation rate	Unemployment rate	Employment rate
		Labour force	Employment	Unemployment			
in thousands							
Edmonton [4860]							
2006	857.9	583.3	560.3	23.0	68.0	3.9	65.3
2007	890.6	626.8	604.2	22.6	70.4	3.6	67.8
Athabasca-Grande Prairie-Peace River [4870]							
2006	174.8	130.5	127.2	3.3	74.7	2.5	72.8
2007	181.4	135.7	130.8	4.9	74.8	3.6	72.1
Wood Buffalo-Cold Lake [4880]							
2006	85.5	65.1	62.3	2.8	76.1	4.3	72.9
2007	89.9	67.7	64.9	2.8	75.3	4.1	72.2
<b>British Columbia</b>							
2006	3,488.0	2,260.2	2,143.1	117.1	64.8	5.2	61.4
2007	3,547.6	2,328.7	2,226.8	101.9	65.6	4.4	62.8
Vancouver Island and Coast [5910]							
2006	607.7	384.3	364.1	20.2	63.2	5.3	59.9
2007	619.0	388.7	367.7	21.0	62.8	5.4	59.4
Lower Mainland-Southwest [5920]							
2006	2,103.6	1,371.3	1,304.2	67.1	65.2	4.9	62.0
2007	2,144.4	1,426.2	1,372.6	53.6	66.5	3.8	64.0
Thompson-Okanagan [5930]							
2006	409.9	263.7	249.1	14.6	64.3	5.5	60.8
2007	420.0	266.2	252.9	13.3	63.4	5.0	60.2
Kootenay [5940]							
2006	122.3	70.8	66.3	4.6	57.9	6.5	54.2
2007	121.9	80.7	75.9	4.8	66.2	5.9	62.3
Cariboo [5950]							
2006	126.3	89.0	83.5	5.4	70.5	6.1	66.1
2007	124.8	85.3	80.9	4.4	68.3	5.2	64.8
North Coast and Nechako [5960, 5970]							
2006	68.0	46.0	41.7	4.2	67.6	9.1	61.3
2007	66.4	44.7	41.1	3.7	67.3	8.3	61.9
Northeast [5980]							
2006	50.3	35.1	34.1	x	69.8	x	67.8
2007	51.1	37.0	35.8	x	72.4	x	70.1

1. For geographic descriptions of economic regions, refer to the Guide to the Labour Force Survey (catalogue number 71-543-GIE).

2. Estimates for Canada are a sum of the provincial totals and exclude estimates from Yukon Territory, Northwest Territories and Nunavut.

**Note(s):** Related CANSIM table 282-0054.

**Table 6-2**  
**Labour force characteristics by territories, unadjusted for seasonality, 3 month moving average ending in March 2006 and March 2007**

	Population	Labour force			Participation rate	Unemployment rate	Employment rate
		Labour force	Employment	Unemployment			
in thousands							
<b>Yukon Territory</b> <sup>1</sup>							
2006	21.6	15.9	15.0	0.9	73.6	5.7	69.4
2007	21.4	15.1	14.4	0.7	70.6	4.6	67.3
<b>Northwest Territories</b> <sup>2</sup>							
2006	31.4	24.2	23.1	1.1	77.1	4.5	73.6
2007	30.8	24.1	23.1	1.0	78.2	4.1	75.0
<b>Nunavut - 10 largest communities</b> <sup>3</sup>							
2006	13.8	8.3	7.7	0.6	60.1	7.5	55.6
2007	14.0	9.6	8.8	0.8	68.7	8.3	63.1

1. Since 1992, the Labour force survey has been administered in the Yukon Territory, using an alternative methodology that accommodates some of the operational difficulties inherent to remote locales. These estimates are not included in national totals.
2. Since 2001, the Labour force survey has been administered in the Northwest Territories, using an alternative methodology that accommodates some of the operational difficulties inherent to remote locales. These estimates are not included in national totals.
3. Since 2004, the Labour force survey has been administered in Nunavut, using an alternative methodology that accommodates some of the operational difficulties inherent to remote locales. These estimates are not included in national totals. The 10 largest communities are Iqaluit, Cambridge Bay, Baker Lake, Arviat, Rankin Inlet, Kugluktuk, Pond Inlet, Cape Dorset, Pangnirtung, Igloolik.

**Note(s):** Related CANSIM table 282-0054.

**Table 7**  
**Average usual hours and wages of employees by selected characteristics, Canada, unadjusted for seasonality**

	Employees				Full-time			Part-time		
	Number	Average weekly hours	Average weekly wages	Average hourly wages	Number	Average weekly hours	Average weekly wages	Number	Average weekly hours	Average weekly wages
	thousands		dollars		thousands		dollars	thousands		dollars
<b>March 2007</b>										
15 years and over	13,961.4	35.1	735.11	20.14	11,274.6	39.5	850.55	2,686.8	17.1	250.65
15 to 24 years	2,334.1	26.6	333.25	11.58	1,149.4	38.8	526.19	1,184.7	14.8	146.06
25 years and over	11,627.2	36.9	815.78	21.86	10,125.2	39.5	887.37	1,502.1	18.8	333.14
Men	6,937.9	37.8	850.91	21.91	6,113.7	40.7	935.68	824.3	16.2	222.18
Women	7,023.4	32.6	620.71	18.39	5,160.9	38.0	749.71	1,862.5	17.4	263.24
<b>Union coverage</b>										
Union coverage	4,491.8	35.8	837.18	23.11	3,831.2	38.7	916.41	660.6	18.9	377.65
No union coverage	9,469.5	34.8	686.69	18.73	7,443.4	39.9	816.65	2,026.1	16.4	209.24
<b>Job permanency</b>										
Permanent	12,336.9	36.1	767.87	20.62	10,405.9	39.5	860.66	1,930.9	18.1	267.83
Temporary	1,624.5	27.7	486.27	16.48	868.7	39.2	729.48	755.8	14.5	206.75
<b>Occupation</b>										
Management	977.4	39.8	1,250.23	31.46	956.1	40.3	1,269.61	21.3	18.2	379.48
Business, finance and administrative	2,696.2	35.3	692.26	19.15	2,289.3	38.4	767.30	406.9	17.9	270.03
Natural and applied sciences	1,019.0	38.6	1,092.82	28.29	985.9	39.3	1,112.66	33.0	18.1	500.68
Health	870.1	33.4	798.39	23.93	654.8	37.8	904.44	215.3	20.0	475.90
Social science, education, government service and religion	1,292.2	33.6	880.58	25.98	1,012.5	38.2	1,008.06	279.7	16.7	419.15
Art, culture, recreation and sport	301.8	30.0	643.44	20.23	202.6	38.5	859.62	99.2	12.6	202.15
Sales and service	3,687.7	30.3	434.73	13.36	2,256.5	38.8	597.97	1,431.2	16.8	177.37
Trades, transport and equipment operators	1,950.1	40.0	815.91	20.20	1,820.9	41.6	856.91	129.3	17.1	238.39
Occupations unique to primary industry	224.2	41.0	817.79	18.75	190.2	45.7	932.68	34.0	14.4	175.63
Occupations unique to processing, manufacturing and utilities	942.6	39.3	696.62	17.60	905.9	40.2	715.47	36.7	16.9	231.60
<b>March 2006</b>										
15 years and over	13,611.5	35.2	721.41	19.71	11,014.2	39.5	834.57	2,597.3	17.1	241.54
15 to 24 years	2,294.3	26.7	326.54	11.28	1,127.6	39.0	517.00	1,166.7	14.9	142.46
25 years and over	11,317.2	36.9	801.46	21.42	9,886.6	39.6	870.79	1,430.6	18.8	322.33
Men	6,872.9	37.7	834.09	21.50	6,047.2	40.7	919.15	825.7	16.1	211.16
Women	6,738.6	32.6	606.49	17.89	4,967.0	38.0	731.60	1,771.6	17.5	255.70
<b>Union coverage</b>										
Union coverage	4,349.2	35.7	820.96	22.73	3,704.2	38.7	898.97	645.0	18.9	372.97
No union coverage	9,262.3	35.0	674.66	18.29	7,310.0	39.9	801.94	1,952.3	16.5	198.11
<b>Job permanency</b>										
Permanent	12,035.3	36.2	754.47	20.20	10,182.4	39.5	844.44	1,852.9	18.1	260.03
Temporary	1,576.2	27.4	468.99	15.95	831.8	38.9	713.75	744.4	14.5	195.50
<b>Occupation</b>										
Management	1,019.0	39.9	1,212.04	30.46	989.4	40.5	1,235.93	29.6	19.5	413.91
Business, finance and administrative	2,665.7	35.1	673.17	18.76	2,251.4	38.3	748.80	414.3	17.6	262.18
Natural and applied sciences	941.9	38.6	1,072.40	27.75	908.5	39.4	1,098.32	33.4	17.1	366.96
Health	845.7	33.7	784.12	23.14	647.1	37.8	888.06	198.7	20.3	445.59
Social science, education, government service and religion	1,259.7	33.7	874.44	25.72	982.0	38.4	1,006.03	277.7	17.2	409.01
Art, culture, recreation and sport	342.6	29.6	609.28	18.89	224.4	38.2	825.64	118.1	13.3	198.26
Sales and service	3,392.9	30.1	423.84	12.99	2,073.5	38.7	586.25	1,319.4	16.6	168.60
Trades, transport and equipment operators	1,966.2	39.9	786.00	19.48	1,828.7	41.6	827.19	137.5	17.4	238.18
Occupations unique to primary industry	225.8	42.4	784.74	17.76	197.7	46.1	870.10	28.2	16.0	186.21
Occupations unique to processing, manufacturing and utilities	951.9	39.4	678.31	17.11	911.5	40.4	699.35	40.4	16.6	204.08

**Note(s):** Related CANSIM tables 282-0023, 282-0069, 282-0073

**Table 8**  
**Regional unemployment rates used by the Employment Insurance Program,<sup>1</sup> seasonally adjusted, 3 month moving average**

Region	Effective from April 8, 2007 to May 12, 2007
	Percent
<b>Newfoundland and Labrador</b>	
01. St. John's	7.6
02. Newfoundland and Labrador	19.0
<b>Prince Edward Island</b>	
03. Prince Edward Island	10.5
<b>Nova Scotia</b>	
04. Eastern Nova Scotia	14.4
05. Western Nova Scotia	9.0
06. Halifax	4.4
<b>New Brunswick</b>	
07. Fredericton-Moncton-Saint John	5.0
08. Madawaska-Charlotte <sup>2</sup>	8.9
09. Restigouche-Albert	12.6
<b>Quebec</b>	
10. Gaspésie-Îles-de-la-Madeleine	17.2
11. Québec	4.9
12. Trois-Rivières	7.9
13. South Central Quebec	5.4
14. Sherbrooke	6.7
15. Montérégie	7.0
16. Montréal	7.5
17. Central Quebec	9.7
18. Northwestern Quebec	11.2
19. Bas-Saint-Laurent-Côte-Nord <sup>3</sup>	12.6
20. Gatineau	6.4
21. Saguenay	10.2
<b>Ontario</b>	
22. Ottawa	5.4
23. Eastern Ontario	7.4
24. Kingston	4.4
25. Central Ontario	5.3
26. Oshawa	6.1
27. Toronto	6.7
28. Hamilton	6.6
29. St. Catharines	6.3
30. London	5.7
31. Niagara	8.1
32. Windsor	9.8
33. Kitchener	5.6
34. Huron	8.1
35. South Central Ontario	5.5
36. Sudbury	5.6
37. Thunder Bay	6.9
38. Northern Ontario	11.0
<b>Manitoba</b>	
39. Winnipeg	4.7
40. Southern Manitoba	4.6
41. Northern Manitoba	27.0
<b>Saskatchewan</b>	
42. Regina	4.0
43. Saskatoon	3.7
44. Southern Saskatchewan	5.9
45. Northern Saskatchewan	13.9

See footnotes at the end of the table.

Table 8 – continued

**Regional unemployment rates used by the Employment Insurance Program,<sup>1</sup> seasonally adjusted, 3 month moving average**

Region	Effective from April 8, 2007 to May 12, 2007
	Percent
<b>Alberta</b>	
46. Calgary	3.3
47. Edmonton	3.6
48. Northern Alberta	8.1
49. Southern Alberta	4.7
<b>British Columbia</b>	
50. Southern Interior British Columbia	6.1
51. Abbotsford	4.3
52. Vancouver	3.7
53. Victoria	3.8
54. Southern Coastal British Columbia	6.2
55. Northern British Columbia	7.8
<b>Territories</b>	
56. Yukon Territory <sup>4</sup>	25.0
57. Northwest Territories <sup>4</sup>	25.0
58. Nunavut <sup>4</sup>	25.0

1. The boundaries of these regions are determined by Human Resources and Social Development Canada (HRSDC). For geographic descriptions and maps of employment insurance regions, see the HRSDC website: [http://www.hrsdc.gc.ca/asp/gateway.asp?hr=en/ei/region/economic\\_region\\_information.shtml&hs=eza](http://www.hrsdc.gc.ca/asp/gateway.asp?hr=en/ei/region/economic_region_information.shtml&hs=eza).
2. This unemployment rate has been determined using a transition formula prescribed in the EI Regulations. For further information, see: [http://www.hrsdc.gc.ca/en/cs/comm/news/2000/000913a\\_e.shtml](http://www.hrsdc.gc.ca/en/cs/comm/news/2000/000913a_e.shtml).
3. This unemployment rate has been determined using a transition formula prescribed in the EI Regulations. For further information, see: [http://www.hrsdc.gc.ca/en/cs/comm/news/2000/000913b\\_e.shtml](http://www.hrsdc.gc.ca/en/cs/comm/news/2000/000913b_e.shtml).
4. This rate is provided by Human Resources and Skills Development Canada.

# Data quality

---

## About the Labour Force Survey

The statistics contained in this report are based on information obtained through a sample survey of 53,000 representative households across the country. The Labour Force Survey, started in November 1945, was taken at quarterly intervals until November 1952. It has been carried out monthly since then. The information generated by the survey has expanded considerably over the years with a major redesign of the survey content in 1976 and again in 1997, and provides a rich and detailed picture of the Canadian labour market.

The sample used in the Labour Force Survey has been designed to represent all persons in the population 15 years of age and over residing in the provinces of Canada, with the exception of the following: persons living on Indian reserves, full-time members of the armed forces and people living in institutions (for example, inmates of penal institutions and patients in hospitals or nursing homes who have resided in the institution for more than six months). Monthly estimates of employment, unemployment and persons not in the labour force refer to the specific week covered by the survey each month, normally the week containing the 15th day.

## Definitions and explanations

The **labour force** is composed of those members of the civilian non-institutional population 15 years of age and over who, during the reference week, were employed or unemployed.

Employed persons are those who, during the reference week:

- (a) did any work at all
- (b) had a job but were not at work

A person is considered to be **full-time** if his/her usual hours at the main job are 30 or more hours per week. When the number of hours worked at the main job is usually less than 30 hours per week then he/she is considered to be **part-time**.

**Unemployed** persons are those who, during the reference week:

- (a) were without work, had actively looked for work in the past four weeks (ending with reference week), and were available for work;
- (b) had not actively looked for work in the past four weeks but were on temporary layoff and were available for work;
- (c) had not actively looked for work in the past four weeks but had a new job to start in four weeks or less from the reference week, and were available for work.

Persons in the civilian non-institutional population 15 years of age and over who, during the reference week, were neither employed nor unemployed are classified as **not in the labour force**.

The **unemployment rate** represents the number of unemployed persons expressed as a percentage of the labour force. The unemployment rate for a particular group (age, sex, etc.) is the number unemployed in that group expressed as a percentage of the labour force for that group.

The **participation rate** represents the labour force expressed as a percentage of the population 15 years of age and over. The participation rate for a particular group (age, sex, etc.) is the labour force in that group expressed as a percentage of the population for that group.

The **employment rate (formerly the employment/population ratio)** represents the number of persons employed expressed as a percentage of the population 15 years of age and over. The employment rate for a particular group (age, sex, etc.) is the number employed in that group expressed as a percentage of the population for that group.

The **part-time rate** represents the number of persons employed part-time expressed as a percentage of the employed. The part-time rate for a particular group (age, sex, etc.) is the number employed part-time in that group expressed as a percentage of the employed for that group.

All geographic regions are based on the 2001 Census boundaries.

## Seasonal adjustment

Fluctuations in economic time series are caused by seasonal, cyclical and irregular movements. A seasonally adjusted series is one from which seasonal movements have been eliminated. Seasonal movements are defined as those which are caused by regular annual events such as climate, holidays, vacation periods and cycles related to crops, production and retail sales associated with Christmas and Easter. The seasonally adjusted series contains irregular as well as longer-term cyclical fluctuations.

The seasonally adjusted series are revised each year to take into account current data and to generate new forecast factors for the next twelve months. The data are therefore subject to slight revisions in future issues of this publication.

## Sampling variability of estimates

Estimates in this publication are based on the Labour Force Survey, a monthly survey of approximately 53,000 households across Canada. Because the entire population is not surveyed, the estimates are subject to sampling error. While the published estimate is the best available indicator of the real value, changes in the level of any estimates between two months can be the result of a true change or sampling variability. The sampling error can be estimated by calculating the standard error for the published estimate or statistic. These standard errors have been included in the publication tables, in order to assist users in interpreting the data.

### Interpretation based on standard error

Two thirds of the time (68%), a change greater than the sampling error indicates a real change. The larger the change compared to the standard error, the better the chance that we are observing a real change, as opposed to a change due to sampling variability. At the 95% level, in order to ensure that change is real, the change in the estimate must be greater than twice the sampling error.

Movements in estimates that are smaller than the sampling error are less likely to reflect a real change and more likely to be due to sampling variability. While the above is true for monthly movements, one can have more confidence in a series of consecutive movements in the same direction, even though some of the monthly movements may be smaller than the sampling error.

### Interpretation based on confidence intervals

Confidence intervals provide another way of looking at the variability inherent in estimates of sample surveys. To illustrate how to calculate the confidence interval, let us say that one month the published estimate for total employment rose by 16,000 to reach 16,500,000. The associated standard error for the movement estimate is 27,200. The standard error used to interpret the movement estimate indicates that:

- There are approximately two chances in three (68%) that the real value of the movement between the two months falls within the range -11,200 to +43,200 (16,000 + or – one standard error).
- There are approximately nine chances in ten (90%) that the real value of the movement between the two months falls within the range -27,520 to +59,520 (16,000 + or – 1.6 times the standard error).
- There are approximately nineteen chances in twenty (95%) that the real value of the movement between the two months falls within the range -38,400 to +70,400 (16,000 + or – two standard errors).

For more detailed explanations on sampling variability of estimates, and in particular for information on how to assess the variability of level estimates, consult the Data quality section of the *Guide to the Labour Force Survey*, (71-543-G) on page 27.

## Documentation

For more detailed information about the Labour Force Survey, see the following documents:

- Overview of the Labour Force Survey
- Guide to the Labour Force Survey (71-543-G)
- Data quality statement
- Methodology of the Canadian Labour Force Survey (71-526-X)
- LFS *geographical maps*