



Catalogue no. 71-001-XIE

Labour Force Information

Not for release before 7 A.M. E.D.T.

Friday, September 8, 2006



August 13 to 19, 2006



Statistics
Canada

Statistique
Canada

Canada

How to obtain more information

Specific inquiries about this product and related statistics or services should be directed to: Labour Force Survey Program, Labour Statistics Division, Statistics Canada, Ottawa, Ontario, K1A 0T6 (telephone: (613) 951-4090, toll free number: 1 866 873-8788, fax: (613) 951-2869 or by e-mail address: labour@statcan.ca).

For information on the wide range of data available from Statistics Canada, you can contact us by calling one of our toll free numbers. You can also contact us by e-mail or by visiting our website at www.statcan.ca.

National inquiries line **1 800 263-1136**

National telecommunications device for the hearing impaired **1 800 363-7629**

Depository Services Program inquiries **1 800 700-1033**

Fax line for Depository Services Program **1 800 889-9734**

E-mail inquiries infostats@statcan.ca

Website www.statcan.ca

Information to access the product

This product, Catalogue no. 71-001-XIE, is available for free in electronic format. To obtain a single issue, visit our website at www.statcan.ca and select Publications.

Standards of service to the public

Statistics Canada is committed to serving its clients in a prompt, reliable and courteous manner and in the official language of their choice. To this end, the Agency has developed *standards of service* which its employees observe in serving its clients. To obtain a copy of these service standards, please contact Statistics Canada toll free at 1 800 263-1136. The service standards are also published on www.statcan.ca under About us > Providing services to Canadians.



Statistics Canada
Labour Statistics Division
Labour Force Survey Program

Labour Force Information

Not for release before 7 A.M. E.D.T.

Friday, September 8, 2006

August 13 to 19, 2006

Published by authority of the Minister responsible for Statistics Canada

© Minister of Industry, 2006

All rights reserved. The content of this electronic publication may be reproduced, in whole or in part, and by any means, without further permission from Statistics Canada, subject to the following conditions: that it be done solely for the purposes of private study, research, criticism, review or newspaper summary, and/or for non-commercial purposes; and that Statistics Canada be fully acknowledged as follows: Source (or "Adapted from", if appropriate): Statistics Canada, year of publication, name of product, catalogue number, volume and issue numbers, reference period and page(s). Otherwise, no part of this publication may be reproduced, stored in a retrieval system or transmitted in any form, by any means—electronic, mechanical or photocopy—or for any purposes without prior written permission of Licensing Services, Client Services Division, Statistics Canada, Ottawa, Ontario, Canada K1A 0T6.

September 2006

Catalogue no. 71-001-XIE

ISSN 1492-5478

Frequency: Monthly

Ottawa

La version française de cette publication est disponible sur demande (n° 71-001-XIF au catalogue).

Note of appreciation

Canada owes the success of its statistical system to a long standing partnership between Statistics Canada, the citizens of Canada, its businesses, governments and other institutions. Accurate and timely statistical information could not be produced without their continued cooperation and goodwill.

User information

Symbols

The following standard symbols are used in Statistics Canada publications:

- . not available for any reference period
- .. not available for a specific reference period
- ... not applicable
- 0 true zero or a value rounded to zero
- 0^s value rounded to 0 (zero) where there is a meaningful distinction between true zero and the value that was rounded
- P preliminary
- r revised
- x suppressed to meet the confidentiality requirements of the *Statistics Act*
- E use with caution
- F too unreliable to be published

Special requests (\$)

Custom tabulations can be arranged on an ad hoc or regular basis. This service enables you to specify tables and time series to meet your own requirements. The cost varies according to the request. For more information, contact us toll-free at 1-866-873-8788 or e-mail us at labour@statcan.ca.

Schedule of LFS releases

Reference period - Week ending	Release date
January 21, 2006	February 10, 2006
February 18, 2006	March 10, 2006
March 18, 2006	April 7, 2006
April 15, 2006	May 5, 2006
May 20, 2006	June 9, 2006
June 17, 2006	July 7, 2006
July 15, 2006	August 4, 2006
August 19, 2006	September 8, 2006
September 16, 2006	October 6, 2006
October 14, 2006	November 3, 2006
November 11, 2006	December 1, 2006
December 9, 2006	January 5, 2007

Latest LFS release in *The Daily* (free)

Table of contents

Highlights	5
Analysis — August 2006	6
Charts	
1. Employment and unemployment rates, Canada, seasonally adjusted	5
2. Employment and unemployment indicators, Canada, seasonally adjusted	8
3. Employment and unemployment indicators, Canada, seasonally adjusted	9
4. Index of employment by industry, Canada, seasonally adjusted, January, 2003=100	10
5. Index of employment by industry, Canada, seasonally adjusted, January 2003 = 100	11
6. Index of employment by industry, Canada, seasonally adjusted, January 2003 = 100	12
7. Index of employment by province, seasonally adjusted, January 2003 = 100	13
8. Index of employment by province, seasonally adjusted, January 2003 = 100	14
Related products	15
Statistical tables	
1 Labour force characteristics by age and sex, Canada, seasonally adjusted	23
2 Employment by class of worker and industry, Canada, seasonally adjusted	24
3 Labour force characteristics by province, seasonally adjusted	25
4 Selected labour force characteristics (seasonally adjusted)	27
4-1 Newfoundland and Labrador	27
4-2 Prince Edward Island	28
4-3 Nova Scotia	29
4-4 New Brunswick	30
4-5 Quebec	31
4-6 Ontario	32
4-7 Manitoba	33
4-8 Saskatchewan	34
4-9 Alberta	35
4-10 British Columbia	36
5 Labour force characteristics by census metropolitan area (seasonally adjusted)	37
5-1 3 month moving average	37
5-2 Monthly	42

Table of contents – continued

6	Labour force characteristics	43
6-1	by province and economic region, unadjusted for seasonality, 3 month moving average ending in August 2005 and August 2006	43
6-2	by territories, unadjusted for seasonality, 3 month moving average ending in August 2005 and August 2006	48
7	Average usual hours and wages of employees by selected characteristics, Canada, unadjusted for seasonality	49
8	Regional unemployment rates used by the Employment Insurance Program, seasonally adjusted, 3 month moving average	50
9	Students and other persons aged 15 to 24 (unadjusted)	52
9-1	by detailed age groups	52
9-2	by province	53
	Data quality	55

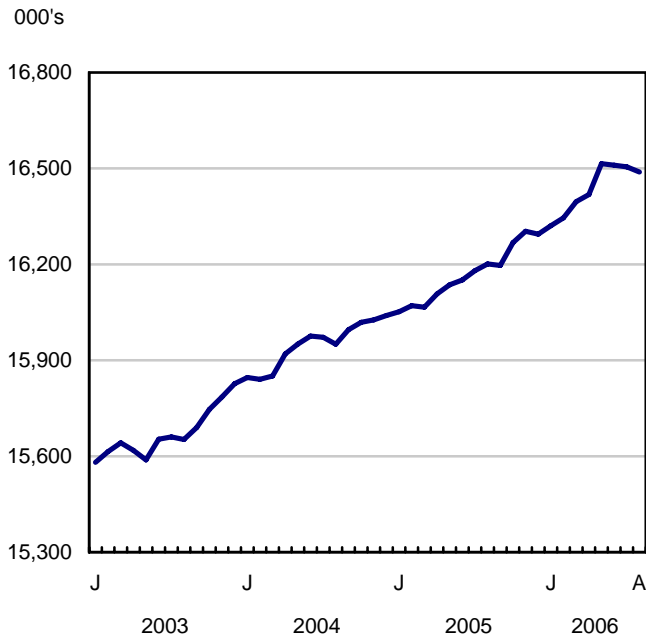
Highlights

August 2006

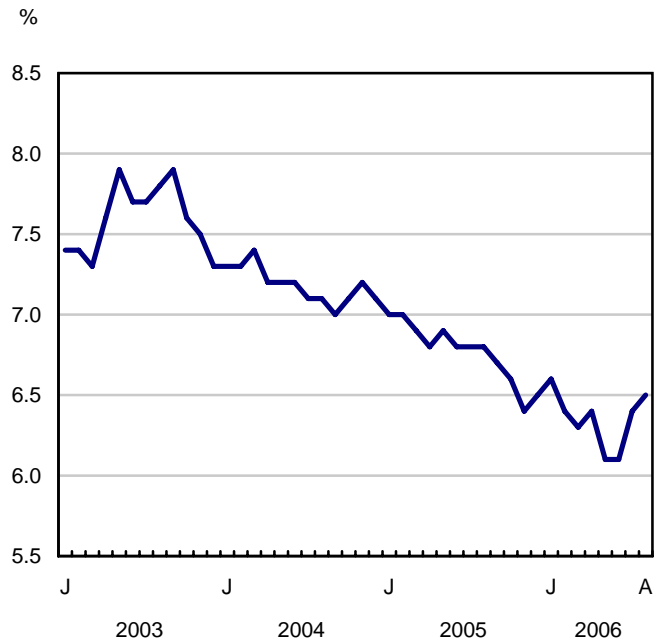
Employment was little changed for the third consecutive month in August, marking the longest stretch without gains since the end of 2001. The unemployment rate edged up 0.1 percentage points to 6.5%—still among the lowest in 30 years.

Chart 1
Employment and unemployment rates, Canada, seasonally adjusted

Employment



Unemployment rate



Analysis — August 2006

Employment was little changed for the third consecutive month in August, marking the longest stretch without gains since the end of 2001. The unemployment rate edged up 0.1 percentage points to 6.5%—still among the lowest in 30 years.

The pause in employment growth over the last three months follows a period of very strong gains. So far this year, employment is up 194,000 (+1.2%), due entirely to increases in full time.

In August, full-time work jumped 47,000, but was more than offset by losses in part time (-63,000), especially for adult women and youth aged 15 to 24 years. Employment gains among adult women so far this year (+2.1%) have exceeded that for adult men (+0.6%).

The goods-producing industries have continued to be affected by waning foreign demand. Manufacturing employment declined in August, bringing losses to 87,000 for the first eight months of 2006.

The service-producing side of the economy has fared much better in recent months. However, in August there were losses in education, and public administration. Only professional, scientific and technical services posted a large employment increase.

Average hourly wages increased 3.7% from August of last year, remaining above the most recent year-over-year gain of 2.4% in the Consumer Price Index. Hourly earnings in Alberta were up 8.3% over the previous 12 months.

When adjusted for comparability to U.S. definitions, employment growth in Canada paralleled that of the United States over the first eight months of the year (+1.3%). The unemployment rate also declined by a similar amount during this period.

Employment in goods-producing industries weakens

Manufacturing has been shedding workers since 2002, with August marking the lowest level of employment this industry has seen since March 1998. Since the start of 2006, manufacturing declines have been widespread, with the largest decreases in food and motor vehicle and parts manufacturing.

While manufacturing losses have impacted men and women equally, women have fared better with the expansion of the service sector so far this year. The latest GDP estimates for the second quarter of 2006 indicate continued strength in the service industries and weakening in the goods industries.

Employment in educational services declined by 20,000 in August, mainly in primary and secondary schools. The trend since the start of the year has been flat, after showing strong growth in 2005.

Employment also fell in public administration in August (-21,000), offsetting an increase of similar magnitude in the previous month; part of the decline may be attributed to a winding down of Census 2006 activities. The industry has been keeping pace with overall employment since 2003.

Professional, scientific and technical services posted a large increase in employment for August (+19,000); more workers were added in architectural, engineering and design services. Despite August's growth, this industry has remained virtually flat since the start of 2006.

Alberta responsible for hefty share of country's employment gains

Alberta was responsible for 78,000 or 40% of all employment added in Canada since the start of 2006; this eclipses even Ontario's gain (+68,000 and 35%) during the first eight months of the year. This share is considerable, especially coming from a province that accounts for only 10% of the country's working-age population.

In August, employment edged up in Alberta (+8,000), but an increase in the number of people searching for work boosted the unemployment rate to 4.2%, an increase of 0.6 percentage points from July.

Although employment was little changed in Ontario for August, so far this year, its 1.1% gain closely follows the national rate of growth. In comparison, Quebec's employment growth has been much slower over the first eight months of the year (+0.3%). Setbacks in manufacturing have hindered employment growth in both provinces, although for Ontario, strong gains in the service sector have more than counterbalanced the declines.

A large jump in full-time employment in Newfoundland and Labrador pushed the employment rate to a near-record high of 50.5% in August. The gains were spread across several industries.

New Brunswick posted an employment decline in August of 5,000, bringing employment to about the same level as twelve months ago.

Self-employment rallies

Following large declines early in the year, self-employment rebounded in August (+27,000), mainly due to gains in construction, trade, as well as business, building and other support services.

Students have best August in three summers

Older students (aged 20 to 24) experienced their best August for summer employment in three years. Their employment rate was 72.0%, up 2.6 percentage points from the previous year. Among those who were employed, nearly seventy percent had full-time work. Their unemployment rate was a low 5.5%, compared to 6.6% in the same month of last year.

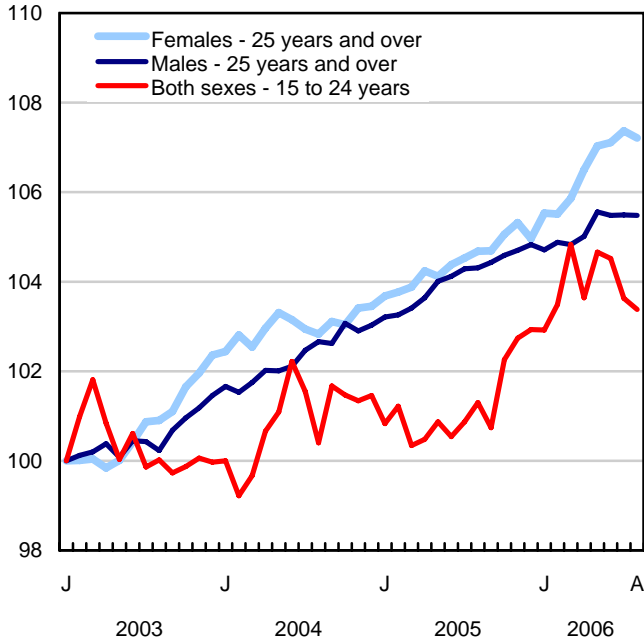
Teens 17-to-19 years also fared well this August with 62.7% employed, the highest rate in three years. About half of these working teens were employed full time.

For the summer as a whole (average of May to August), students 17-to-19 years had the largest employment increase from the previous summer. Their employment rate increase of 2.3 percentage points was nearly twice that for students in their early twenties.

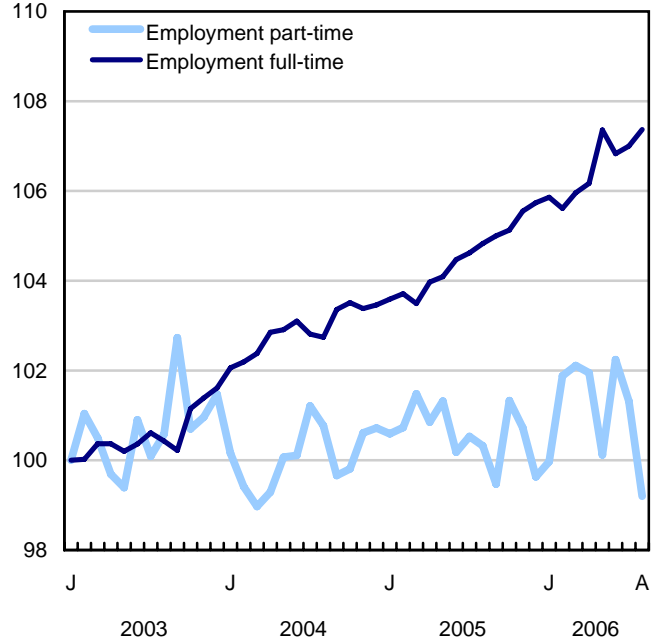
(Note: From May to August, the Labour Force Survey collects labour market information about young people aged 15 to 24 who were attending school full-time in March and intend to return to school in the fall. The published estimates are not seasonally adjusted. Therefore, comparisons can only be made on a year-over-year basis.)

Chart 2
Employment and unemployment indicators, Canada, seasonally adjusted

Employment index, January 2003=100



Employment index, January 2003=100



Employment index, January 2003=100

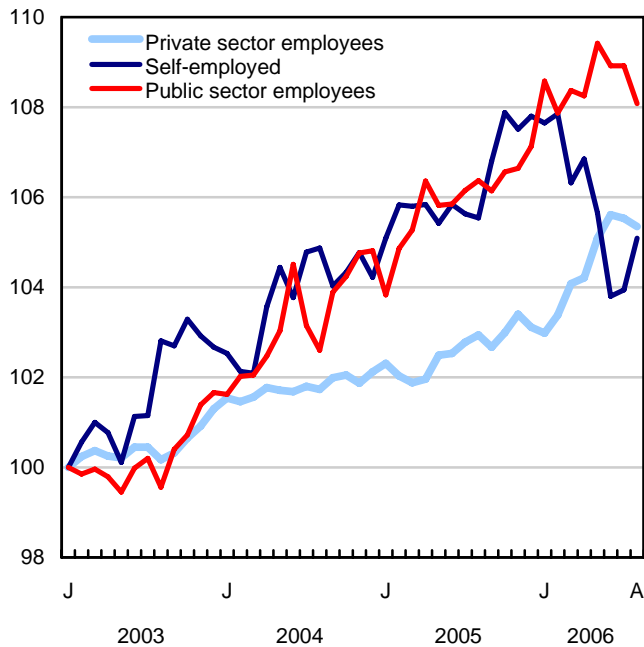
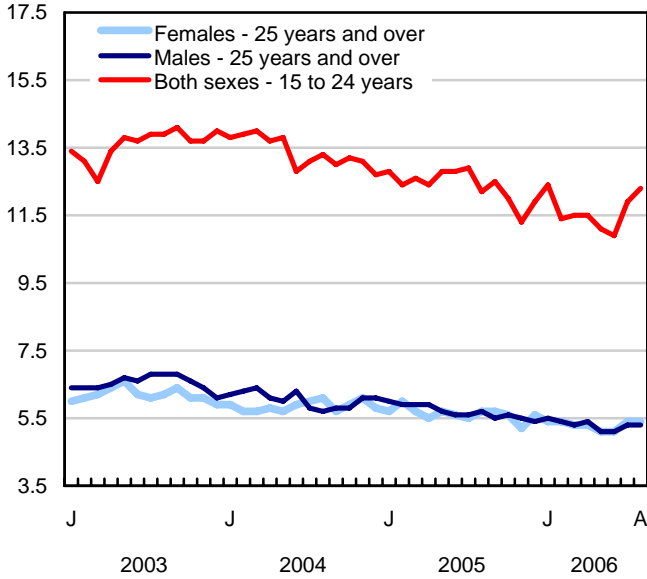
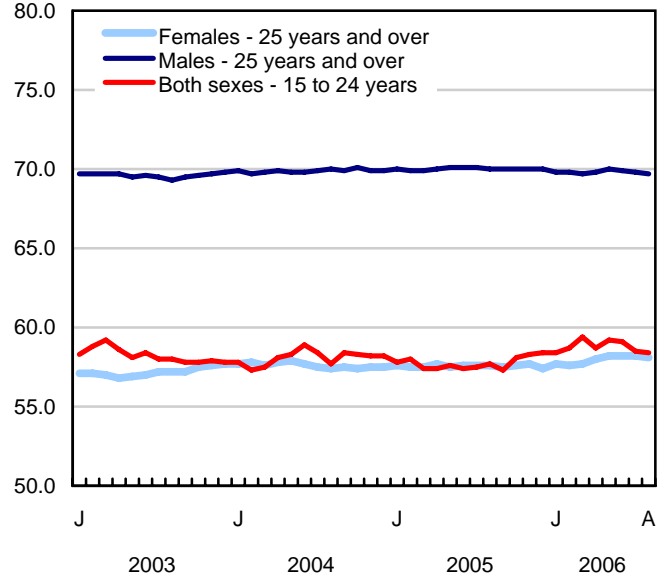


Chart 3
Employment and unemployment indicators, Canada, seasonally adjusted

Unemployment rate (%)



Employment rate (%)



Participation rate (%)

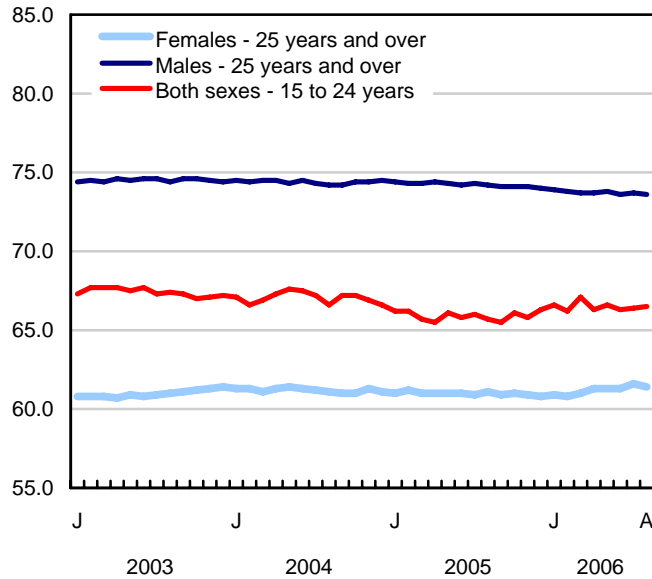


Chart 4
Index of employment by industry, Canada, seasonally adjusted, January, 2003=100

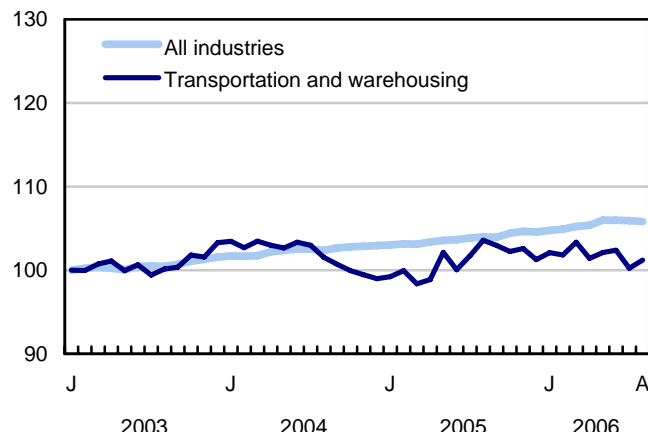
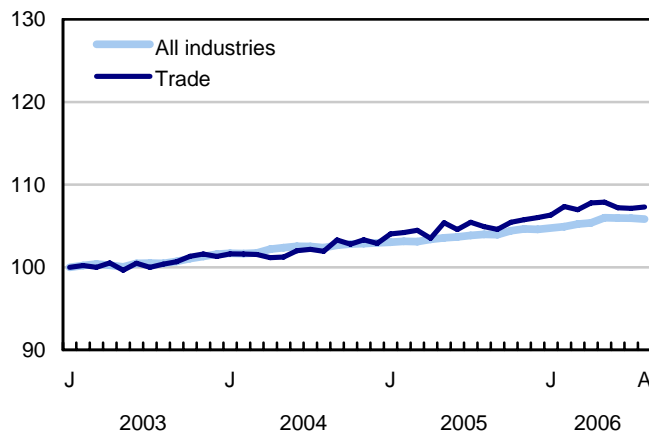
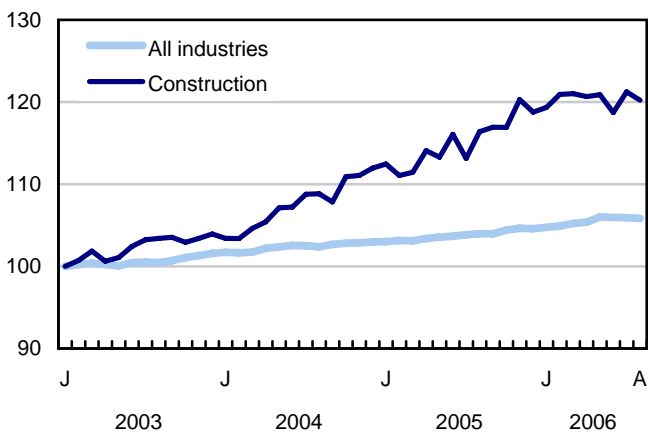
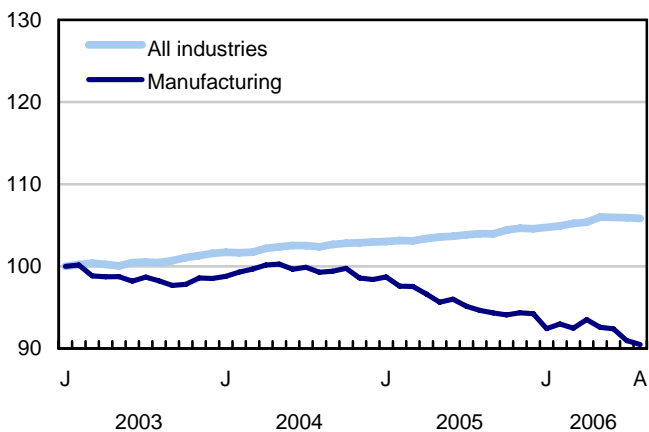
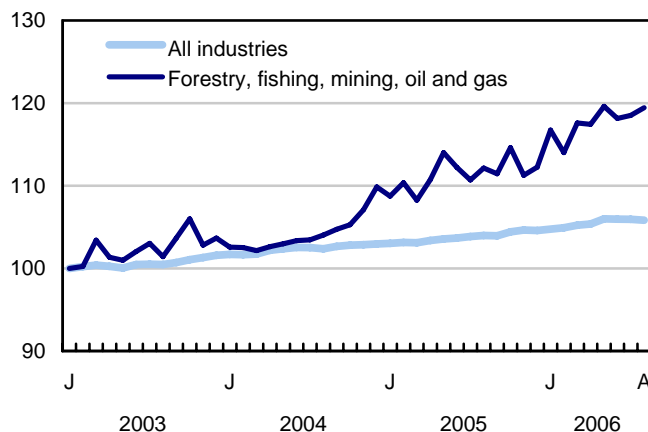
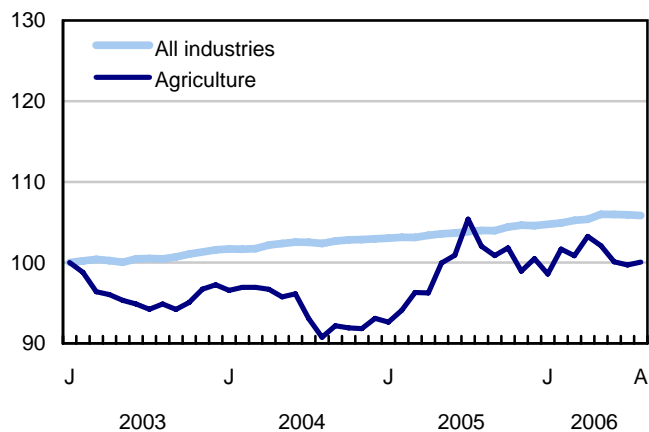


Chart 5
Index of employment by industry, Canada, seasonally adjusted, January 2003 = 100

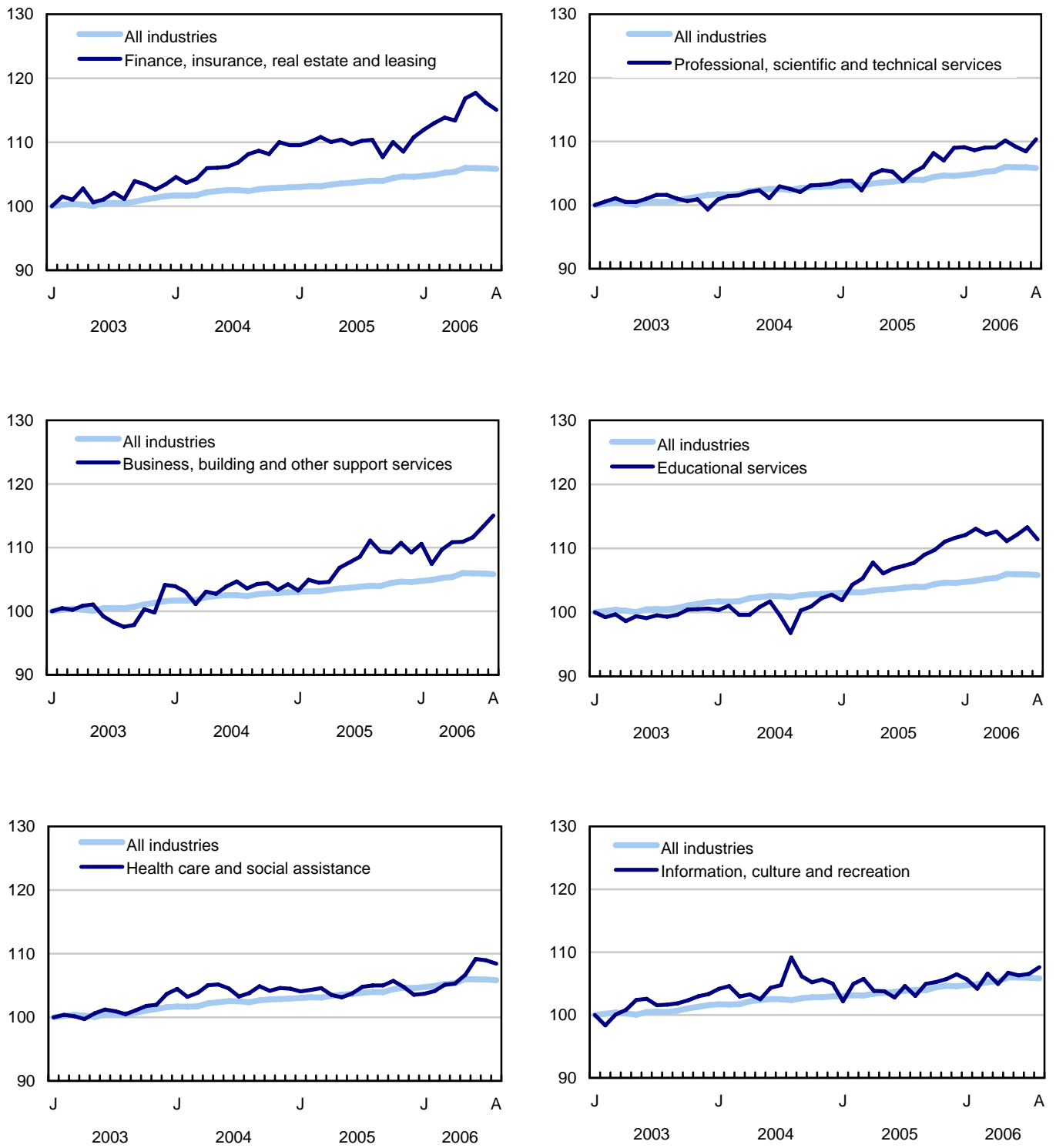


Chart 6
Index of employment by industry, Canada, seasonally adjusted, January 2003 = 100

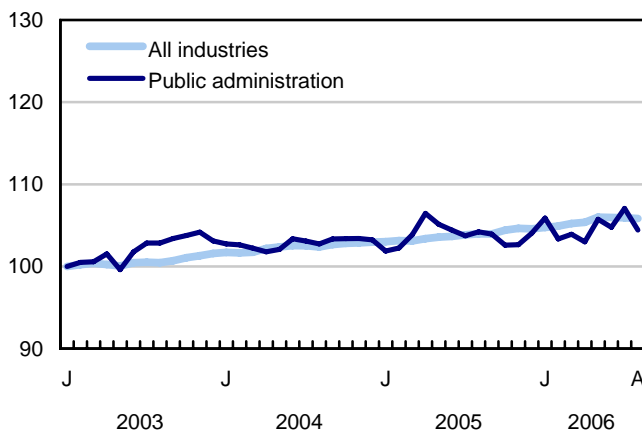
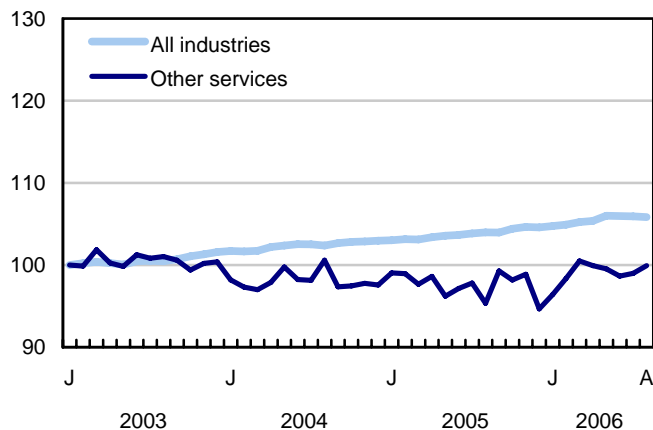
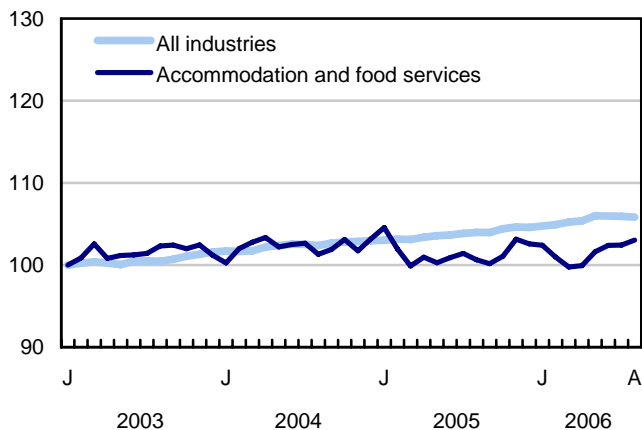


Chart 7
Index of employment by province, seasonally adjusted, January 2003 = 100

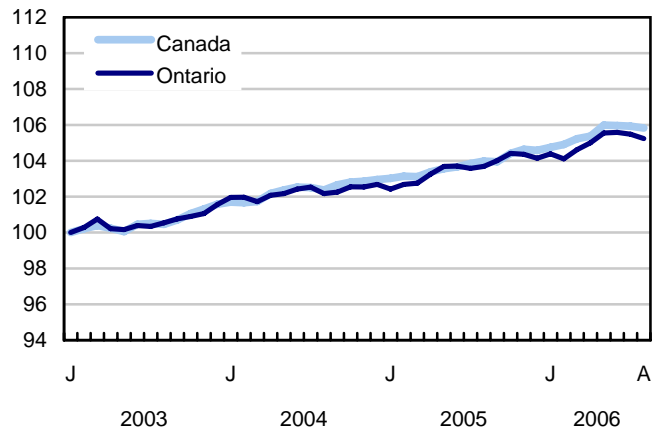
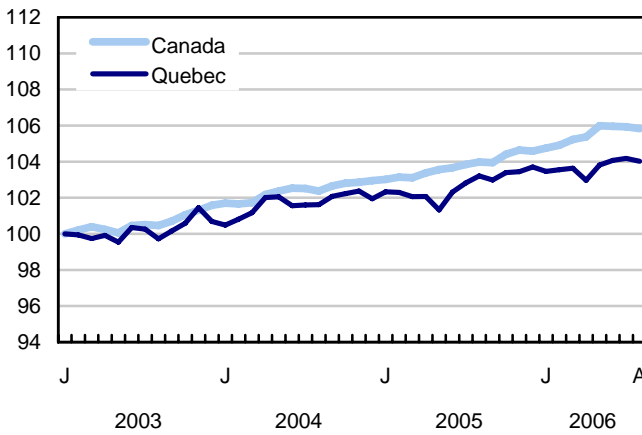
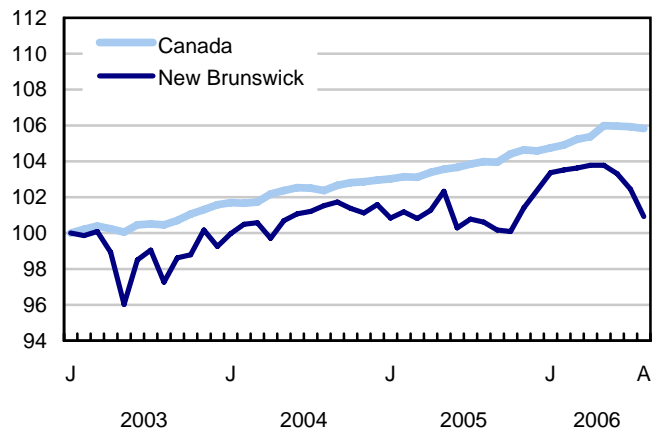
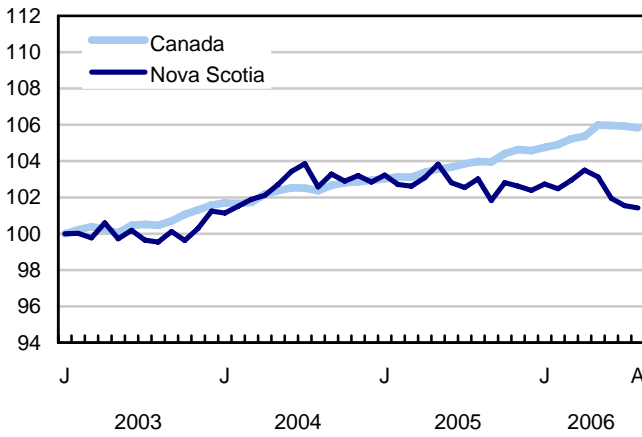
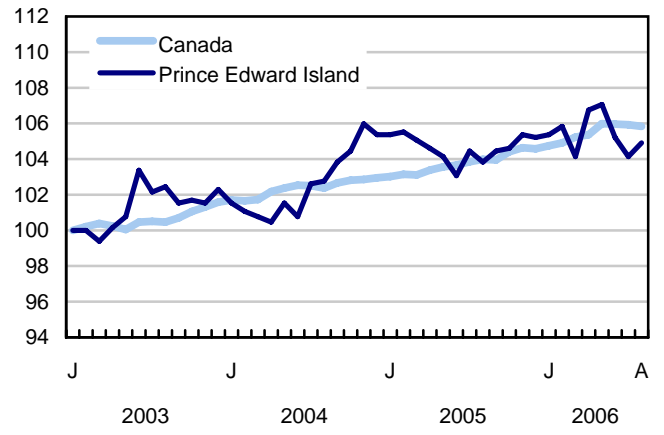
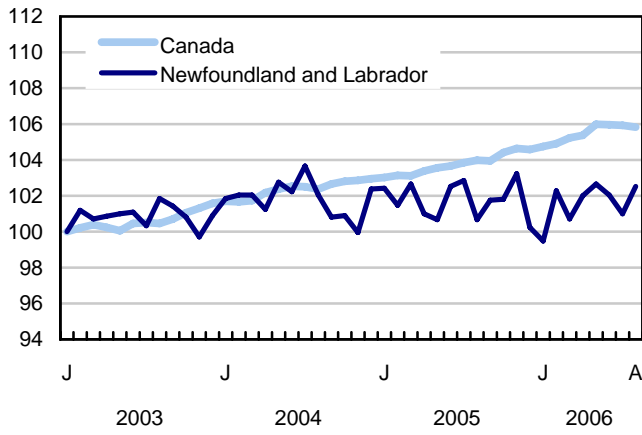
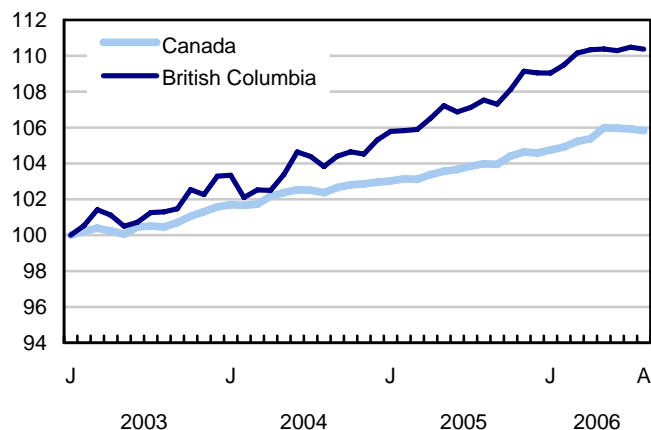
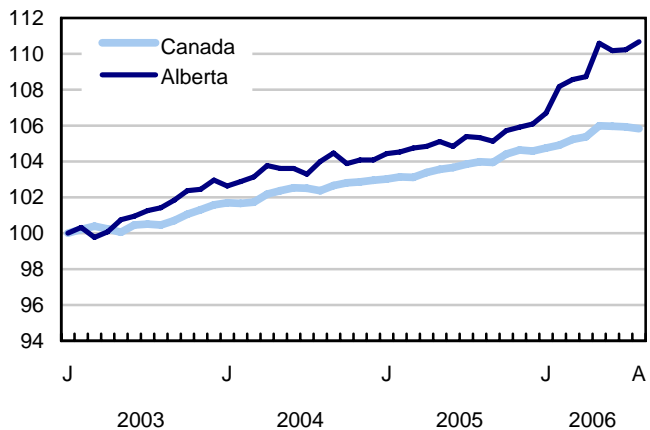
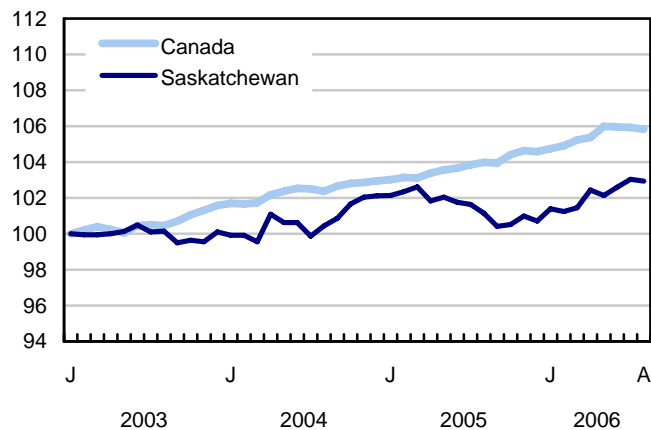
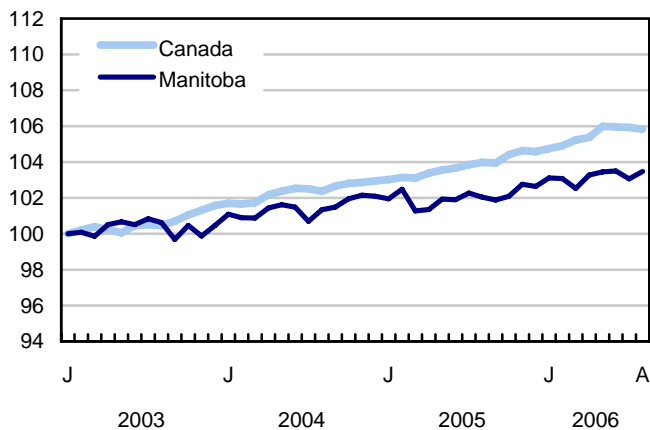


Chart 8
Index of employment by province, seasonally adjusted, January 2003 = 100



Related products

Selected publications from Statistics Canada

71-222-X	The Canadian labour market at a glance
71-526-X	Methodology of the Canadian Labour Force Survey
71-543-G	Guide to the Labour Force Survey
71-544-X	Labour Force Survey products and services.
71-587-X	Aboriginal peoples living off-reserve in Western Canada: estimates from the Labour Force Survey
71F0004X	Labour force historical review
71F0031X	Improvements to the Labour Force Survey (LFS)
71M0001X	Labour Force Survey microdata file
75-001-X	Perspectives on labour and income

Selected CANSIM tables from Statistics Canada

282-0001	Labour force survey estimates (LFS), by sex and detailed age group
282-0002	Labour force survey estimates (LFS), by sex and detailed age group
282-0003	Labour force survey estimates (LFS), by educational attainment, sex and age group
282-0004	Labour force survey estimates (LFS), by educational attainment, sex and age group
282-0005	Labour force survey estimates (LFS), by full- and part-time students during school months, sex and age group
282-0006	Labour force survey estimates (LFS), by students during summer months, sex and age group
282-0007	Labour force survey estimates (LFS), by North American Industry Classification System (NAICS), sex and age group
282-0008	Labour force survey estimates (LFS), by North American Industry Classification System (NAICS), sex and age group
282-0009	Labour force survey estimates (LFS), by National Occupational Classification for Statistics (NOC-S) and sex

282-0010	Labour force survey estimates (LFS), by National Occupational Classification for Statistics (NOC-S) and sex
282-0011	Labour force survey estimates (LFS), employment by class of worker, North American Industry Classification System (NAICS) and sex
282-0012	Labour force survey estimates (LFS), employment by class of worker, North American Industry Classification System (NAICS) and sex
282-0013	Labour force survey estimates (LFS), part-time employment by reason for part-time work, sex and age group
282-0014	Labour force survey estimates (LFS), part-time employment by reason for part-time work, sex and age group
282-0015	Labour force survey estimates (LFS), by usual hours worked, main or all jobs, sex and age group
282-0016	Labour force survey estimates (LFS), by usual hours worked, main or all jobs, sex and age group
282-0017	Labour force survey estimates (LFS), by actual hours worked, main or all jobs, sex and age group
282-0018	Labour force survey estimates (LFS), by actual hours worked, main or all jobs, sex and age group
282-0019	Labour force survey estimates (LFS), by usual hours worked, class of worker, North American Industry Classification System (NAICS) and sex
282-0020	Labour force survey estimates (LFS), by usual hours worked, class of worker, North American Industry Classification System (NAICS) and sex
282-0021	Labour force survey estimates (LFS), by actual hours worked, class of worker, North American Industry Classification System (NAICS) and sex
282-0022	Labour force survey estimates (LFS), by actual hours worked, class of worker, North American Industry Classification System (NAICS) and sex
282-0023	Labour force survey estimates (LFS), by usual hours worked, class of worker, National Occupational Classification for Statistics (NOC-S) and sex
282-0024	Labour force survey estimates (LFS), by usual hours worked, class of worker, National Occupational Classification for Statistics (NOC-S) and sex
282-0025	Labour force survey estimates (LFS), by actual hours worked, class of worker, National Occupational Classification for Statistics (NOC-S) and sex
282-0026	Labour force survey estimates (LFS), by actual hours worked, class of worker, National Occupational Classification for Statistics (NOC-S) and sex
282-0027	Labour force survey estimates (LFS), by total and average usual and actual hours worked, main or all jobs, type of work, sex and age group
282-0028	Labour force survey estimates (LFS), by total and average usual and actual hours worked, main or all jobs, type of work, sex and age group
282-0029	Labour force survey estimates (LFS), average days lost for personal reasons per full-time employee by North American Industry Classification System (NAICS), sex and age group

282-0030	Labour force survey estimates (LFS), average days lost for personal reasons per full-time employee by National Occupational Classification for Statistics (NOC-S), sex and age group
282-0031	Labour force survey estimates (LFS), multiple jobholders by North American Industry Classification System (NAICS), sex and age group
282-0032	Labour force survey estimates (LFS), multiple jobholders by North American Industry Classification System (NAICS), sex and age group
282-0033	Labour force survey estimates (LFS), multiple jobholders by National Occupational Classification for Statistics (NOC-S), sex and age group
282-0034	Labour force survey estimates (LFS), multiple jobholders by National Occupational Classification for Statistics (NOC-S), sex and age group
282-0035	Labour force survey estimates (LFS), multiple jobholders by usual hours worked at main and all jobs
282-0036	Labour force survey estimates (LFS), multiple jobholders by usual hours worked at main and all jobs
282-0037	Labour force survey estimates (LFS), job tenure by type of work, sex and age group
282-0038	Labour force survey estimates (LFS), job tenure by type of work, sex and age group
282-0039	Labour force survey estimates (LFS), job tenure by National Occupational Classification for Statistics (NOC-S) and sex
282-0040	Labour force survey estimates (LFS), job tenure by National Occupational Classification for Statistics (NOC-S) and sex
282-0041	Labour force survey estimates (LFS), job tenure by North American Industry Classification System (NAICS) and sex
282-0042	Labour force survey estimates (LFS), job tenure by North American Industry Classification System (NAICS) and sex
282-0047	Labour force survey estimates (LFS), duration of unemployment by sex and age group
282-0048	Labour force survey estimates (LFS), duration of unemployment by sex and age group
282-0049	Labour force survey estimates (LFS), unemployment by type of work sought and search method, sex and age group
282-0050	Labour force survey estimates (LFS), unemployment by type of work sought and search method, sex and age group
282-0051	Labour force survey estimates (LFS), retirement age by class of worker and sex
282-0052	Labour force survey estimates (LFS), by census metropolitan area, sex and age group, 3-month moving average
282-0053	Labour force survey estimates (LFS), by census metropolitan area, sex and age group
282-0054	Labour force survey estimates (LFS), by economic region and Yukon Territory and Northwest Territories, 3-month moving average
282-0055	Labour force survey estimates (LFS), by economic region and Yukon Territory and Northwest Territories

282-0056	Labour force survey estimates (LFS), employment by census metropolitan area and North American Industry Classification System (NAICS), 3-month moving average
282-0057	Labour force survey estimates (LFS), employment by census metropolitan area and North American Industry Classification System (NAICS)
282-0058	Labour force survey estimates (LFS), employment by census metropolitan area and National Occupational Classification for Statistics (NOC-S), 3-month moving average
282-0059	Labour force survey estimates (LFS), employment by census metropolitan area and National Occupational Classification for Statistics (NOC-S)
282-0060	Labour force survey estimates (LFS), employment by economic region and North American Industry Classification System (NAICS), 3-month moving average
282-0061	Labour force survey estimates (LFS), employment by economic region and North American Industry Classification System (NAICS)
282-0062	Labour force survey estimates (LFS), employment by economic region and National Occupational Classification for Statistics (NOC-S), 3-month moving average
282-0063	Labour force survey estimates (LFS), employment by economic region and National Occupational Classification for Statistics (NOC-S)
282-0064	Labour force survey estimates (LFS), by selected medium-sized cities
282-0069	Labour force survey estimates (LFS), wages of employees by type of work, National Occupational Classification for Statistics (NOC-S), sex and age group
282-0070	Labour force survey estimates (LFS), wages of employees by type of work, National Occupational Classification for Statistics (NOC-S), sex and age group
282-0071	Labour force survey estimates (LFS), wages of employees by type of work, North American Industry Classification System (NAICS), sex and age group
282-0072	Labour force survey estimates (LFS), wages of employees by type of work, North American Industry Classification System (NAICS), sex and age group
282-0073	Labour force survey estimates (LFS), wages of employees by job permanence, union coverage, sex and age group
282-0074	Labour force survey estimates (LFS), wages of employees by job permanence, union coverage, sex and age group
282-0075	Labour force survey estimates (LFS), employees by establishment size, North American Industry Classification System (NAICS), sex and age group
282-0076	Labour force survey estimates (LFS), employees by establishment size, North American Industry Classification System (NAICS), sex and age group
282-0077	Labour force survey estimates (LFS), employees by union coverage, North American Industry Classification System (NAICS), sex and age group
282-0078	Labour force survey estimates (LFS), employees by union coverage, North American Industry Classification System (NAICS), sex and age group
282-0079	Labour force survey estimates (LFS), employees by job permanency, North American Industry Classification System (NAICS), sex and age group

282-0080	Labour force survey estimates (LFS), employees by job permanency, North American Industry Classification System (NAICS), sex and age group
282-0081	Labour force survey estimates (LFS), employees working overtime (weekly) by National Occupational Classification for Statistics (NOC-S), sex and age group
282-0082	Labour force survey estimates (LFS), employees working overtime (weekly) by National Occupational Classification for Statistics (NOC-S), sex and age group
282-0083	Labour force survey estimates (LFS), employees working overtime (weekly) by North American Industry Classification System (NAICS), sex and age group
282-0084	Labour force survey estimates (LFS), employees working overtime (weekly) by North American Industry Classification System (NAICS), sex and age group
282-0085	Labour force survey estimates (LFS), supplementary unemployment rates by sex and age group
282-0086	Labour force survey estimates (LFS), supplementary unemployment rates by sex and age group
282-0087	Labour force survey estimates (LFS), by sex and age group, seasonally adjusted and unadjusted
282-0088	Labour force survey estimates (LFS), employment by North American Industry Classification System (NAICS), seasonally adjusted and unadjusted
282-0089	Labour force survey estimates (LFS), employment by class of worker and sex, seasonally adjusted and unadjusted
282-0090	Labour force survey estimates (LFS), by census metropolitan area, 3-month moving average, seasonally adjusted and unadjusted
282-0091	Labour force survey estimates (LFS), by Montréal, Toronto and Vancouver census metropolitan areas, seasonally adjusted and unadjusted
282-0092	Labour force survey estimates (LFS), actual hours worked by North American Industry Classification System (NAICS), seasonally adjusted
282-0093	Labour force survey estimates (LFS), employment by National Occupational Classification for Statistics (NOC-S), seasonally adjusted
282-0094	Labour force survey estimates (LFS), by North American Industry Classification System (NAICS), Canada, seasonally adjusted
282-0095	Labour force survey estimates (LFS), by full- and part-time students during school months, sex and age group
282-0096	Labour force survey estimates (LFS), by urban and rural areas based on 2001 census boundaries, sex and age group
282-0097	Labour force survey estimates (LFS), by urban and rural areas based on 2001 census boundaries, sex and age group
282-0098	Labour force survey estimates (LFS), employment by urban and rural areas based on 2001 census boundaries, class of worker and North American Industry Classification System (NAICS)
282-0099	Labour force survey estimates (LFS), employment by urban and rural areas based on 2001 census boundaries, class of worker and North American Industry Classification System (NAICS)

Selected surveys from Statistics Canada

3701 Labour Force Survey

Selected tables of Canadian statistics from Statistics Canada

- *Labour force characteristics*
- *Employment by industry*
- *Selected economic indicators, Canada and United States (monthly and quarterly)*
- *Days lost per worker due to illness or disability, by sex, by provinces*
- *Economic indicators, by province and territory (monthly and quarterly)*
- *Labour force and participation rates by sex and age group*
- *Labour force, employed and unemployed, numbers and rates, by provinces*
- *Employment by industry and sex*
- *Full-time and part-time employment by sex and age group*
- *Labour force characteristics by age and sex*
- *Distribution of employed people, by industry, by province*
- *Labour force characteristics, population 15 years and older, by census metropolitan areas*
- *Labour force characteristics, population 15 years and older, by economic regions, by province*
- *Days lost per worker by cause, by provinces*
- *Days lost per worker by industry and sex*
- *People employed, by educational attainment*
- *Reasons for part-time work by sex and age group*
- *Self-employment, historical summary*
- *Employment by age, sex, type of work, class of worker and provinces (monthly)*
- *Employment by major industry groups, seasonally adjusted, by provinces (monthly)*
- *Actual hours worked per week by industry, seasonally adjusted (monthly)*
- *Average hourly wages of employees by selected characteristics and profession, unadjusted data, by provinces (monthly)*

- *Labour force characteristics, seasonally adjusted, by province (monthly)*
- *Labour force characteristics, unadjusted, by province (monthly)*
- *Labour force characteristics, seasonally adjusted, by census metropolitan areas (3 month moving average)*
- *Labour force characteristics, unadjusted, by census metropolitan areas (3 month moving average)*
- *Labour force characteristics, unadjusted, by economic regions (3 month moving average)*

Statistical tables

Table 1
Labour force characteristics by age and sex, Canada, seasonally adjusted

	July 2006	August 2006	S.E. ¹	Change from			Percent change from		
				last month	last December	twelve months ago	last month	last December	twelve months ago
in thousands (except rates)									
Both sexes, 15 years and over									
Population	26,196.9	26,232.5	...	35.6	245.6	373.7	0.1	0.9	1.4
Labour force	17,641.5	17,629.7	27.4	-11.8	199.8	250.9	-0.1	1.1	1.4
Employment	16,504.8	16,488.8	27.2	-16.0	194.1	287.7	-0.1	1.2	1.8
Employment full-time	13,518.5	13,565.1	36.0	46.6	206.8	320.7	0.3	1.5	2.4
Employment part-time	2,986.3	2,923.7	32.5	-62.6	-12.7	-33.0	-2.1	-0.4	-1.1
Unemployment	1,136.7	1,140.9	23.0	4.2	5.7	-36.8	0.4	0.5	-3.1
Participation rate	67.3	67.2	0.1	-0.1	0.1	0.0
Unemployment rate	6.4	6.5	0.1	0.1	0.0	-0.3
Employment rate	63.0	62.9	0.1	-0.1	0.2	0.2
Part-time rate	18.1	17.7	0.2	-0.4	-0.3	-0.5
Both sexes, 15 to 24 years									
Population	4,320.9	4,324.6	...	3.7	22.6	38.5	0.1	0.5	0.9
Labour force	2,871.0	2,876.8	16.5	5.8	26.2	59.8	0.2	0.9	2.1
Employment	2,529.5	2,523.6	15.7	-5.9	11.1	50.9	-0.2	0.4	2.1
Employment full-time	1,416.6	1,435.0	18.0	18.4	28.6	54.0	1.3	2.0	3.9
Employment part-time	1,112.8	1,088.7	18.7	-24.1	-17.4	-2.9	-2.2	-1.6	-0.3
Unemployment	341.6	353.1	13.6	11.5	14.9	8.7	3.4	4.4	2.5
Participation rate	66.4	66.5	0.4	0.1	0.2	0.8
Unemployment rate	11.9	12.3	0.4	0.4	0.4	0.1
Employment rate	58.5	58.4	0.4	-0.1	0.0	0.7
Part-time rate	44.0	43.1	0.7	-0.9	-0.9	-1.0
Men, 25 years and over									
Population	10,683.3	10,699.1	...	15.8	111.2	167.3	0.1	1.1	1.6
Labour force	7,877.0	7,872.2	14.0	-4.8	41.5	53.8	-0.1	0.5	0.7
Employment	7,455.9	7,455.7	15.2	-0.2	46.2	83.0	0.0	0.6	1.1
Employment full-time	6,981.5	6,972.6	19.6	-8.9	43.8	65.9	-0.1	0.6	1.0
Employment part-time	474.4	483.1	15.3	8.7	2.4	17.1	1.8	0.5	3.7
Unemployment	421.2	416.5	13.0	-4.7	-4.7	-29.2	-1.1	-1.1	-6.6
Participation rate	73.7	73.6	0.1	-0.1	-0.4	-0.6
Unemployment rate	5.3	5.3	0.2	0.0	-0.1	-0.4
Employment rate	69.8	69.7	0.1	-0.1	-0.3	-0.3
Part-time rate	6.4	6.5	0.2	0.1	0.0	0.2
Women, 25 years and over									
Population	11,192.6	11,208.8	...	16.2	111.9	167.8	0.1	1.0	1.5
Labour force	6,893.4	6,880.7	15.9	-12.7	132.2	137.4	-0.2	2.0	2.0
Employment	6,519.4	6,509.5	15.4	-9.9	136.8	153.7	-0.2	2.1	2.4
Employment full-time	5,120.4	5,157.6	23.0	37.2	134.5	200.9	0.7	2.7	4.1
Employment part-time	1,399.0	1,351.9	21.3	-47.1	2.3	-47.2	-3.4	0.2	-3.4
Unemployment	374.0	371.2	12.6	-2.8	-4.7	-16.4	-0.7	-1.3	-4.2
Participation rate	61.6	61.4	0.1	-0.2	0.6	0.3
Unemployment rate	5.4	5.4	0.2	0.0	-0.2	-0.3
Employment rate	58.2	58.1	0.1	-0.1	0.7	0.5
Part-time rate	21.5	20.8	0.3	-0.7	-0.4	-1.2
Both sexes, 25 to 54 years									
Population	14,236.6	14,244.6	...	8.0	64.6	104.4	0.1	0.5	0.7
Labour force	12,283.6	12,269.7	20.9	-13.9	52.4	70.5	-0.1	0.4	0.6
Employment	11,629.4	11,629.8	21.9	0.4	91.3	146.3	0.0	0.8	1.3
Unemployment	654.1	639.9	17.3	-14.2	-38.9	-75.8	-2.2	-5.7	-10.6
Participation rate	86.3	86.1	0.1	-0.2	-0.1	-0.2
Unemployment rate	5.3	5.2	0.1	-0.1	-0.4	-0.7
Employment rate	81.7	81.6	0.2	-0.1	0.2	0.4

1. Average standard error of change in two consecutive months (see "Sampling Errors" in Data Quality for further explanations).

Note(s): Related CANSIM table 282-0087

Table 2
Employment by class of worker and industry, Canada, seasonally adjusted

	July 2006	August 2006	S.E. ¹	Change from			Percent change from		
				last month	last December	twelve months ago	last month	last December	twelve months ago
in thousands									
Class of worker									
Employees	14,048.0	14,004.8	32.0	-43.2	258.1	298.3	-0.3	1.9	2.2
Self-employed ²	2,456.8	2,484.0	22.0	27.2	-64.0	-10.6	1.1	-2.5	-0.4
Public/private sector employees									
Public sector employees	3,211.5	3,186.9	20.8	-24.6	28.2	50.6	-0.8	0.9	1.6
Private sector employees	10,836.5	10,817.8	33.2	-18.7	229.9	247.6	-0.2	2.2	2.3
Industry	16,504.8	16,488.8	27.2	-16.0	194.1	287.7	-0.1	1.2	1.8
Goods-producing sector	3,967.8	3,949.9	24.0	-17.9	-56.0	-54.9	-0.5	-1.4	-1.4
Agriculture	345.0	346.2	7.1	1.2	-1.5	-6.8	0.3	-0.4	-1.9
Forestry, fishing, mining, oil and gas	325.9	328.5	6.2	2.6	19.8	20.1	0.8	6.4	6.5
Utilities	125.6	124.0	3.8	-1.6	-0.6	-6.0	-1.3	-0.5	-4.6
Construction	1,073.9	1,065.0	14.3	-8.9	12.9	33.9	-0.8	1.2	3.3
Manufacturing	2,097.4	2,086.1	19.0	-11.3	-86.7	-96.1	-0.5	-4.0	-4.4
Services-producing sector	12,536.9	12,538.9	31.1	2.0	250.1	342.5	0.0	2.0	2.8
Trade	2,630.3	2,634.3	21.0	4.0	31.4	58.4	0.2	1.2	2.3
Transportation and warehousing	786.8	794.5	12.0	7.7	-0.5	-18.6	1.0	-0.1	-2.3
Finance, insurance, real estate and leasing	1,044.8	1,034.7	13.8	-10.1	38.5	42.1	-1.0	3.9	4.2
Professional, scientific and technical services	1,080.7	1,099.5	14.6	18.8	13.4	51.8	1.7	1.2	4.9
Business, building and other support services	689.7	700.3	12.8	10.6	35.4	23.9	1.5	5.3	3.5
Educational services	1,167.1	1,147.6	13.8	-19.5	-2.7	37.6	-1.7	-0.2	3.4
Health care and social assistance	1,811.3	1,802.5	15.4	-8.8	81.4	57.0	-0.5	4.7	3.3
Information, culture and recreation	750.0	757.6	12.6	7.6	8.0	32.3	1.0	1.1	4.5
Accommodation and food services	1,014.3	1,020.3	14.1	6.0	4.7	23.8	0.6	0.5	2.4
Other services	702.6	709.2	11.6	6.6	37.3	32.5	0.9	5.6	4.8
Public administration	859.5	838.4	11.0	-21.1	3.2	1.8	-2.5	0.4	0.2

1. Average standard error of change in two consecutive months (see "Sampling Errors" in Data Quality for further explanations).

2. Includes both incorporated and unincorporated working owners, self-employed persons who do not have a business and persons working in a family business without pay.

Note(s): Related CANSIM tables 282-0088, 282-0089

Table 3
Labour force characteristics by province, seasonally adjusted

	July 2006	August 2006	S.E. ¹	Change from			Percent change from		
				last month	last December	twelve months ago	last month	last December	twelve months ago
in thousands (except rates)									
Newfoundland and Labrador									
Population	427.4	427.3	...	-0.1	-1.9	-2.0	0.0	-0.4	-0.5
Labour force	248.7	254.1	2.4	5.4	4.7	0.0	2.2	1.9	0.0
Employment	212.5	215.7	2.4	3.2	4.8	3.9	1.5	2.3	1.8
Employment full-time	178.6	188.5	2.5	9.9	12.4	6.4	5.5	7.0	3.5
Employment part-time	34.0	27.2	1.9	-6.8	-7.6	-2.5	-20.0	-21.8	-8.4
Unemployment	36.2	38.4	2.2	2.2	-0.1	-3.9	6.1	-0.3	-9.2
Participation rate	58.2	59.5	0.6	1.3	1.4	0.3
Unemployment rate	14.6	15.1	0.8	0.5	-0.3	-1.5
Employment rate	49.7	50.5	0.6	0.8	1.4	1.2
Prince Edward Island									
Population	112.4	112.4	...	0.0	0.4	0.7	0.0	0.4	0.6
Labour force	76.6	76.8	0.6	0.2	-0.4	0.5	0.3	-0.5	0.7
Employment	67.9	68.4	0.7	0.5	-0.2	0.7	0.7	-0.3	1.0
Employment full-time	58.2	57.8	0.8	-0.4	-0.4	1.6	-0.7	-0.7	2.8
Employment part-time	9.7	10.6	0.7	0.9	0.2	-0.9	9.3	1.9	-7.8
Unemployment	8.6	8.4	0.6	-0.2	-0.2	-0.2	-2.3	-2.3	-2.3
Participation rate	68.1	68.3	0.5	0.2	-0.6	0.0
Unemployment rate	11.2	10.9	0.8	-0.3	-0.2	-0.4
Employment rate	60.4	60.9	0.6	0.5	-0.4	0.3
Nova Scotia									
Population	762.7	763.1	...	0.4	1.1	1.9	0.1	0.1	0.2
Labour force	477.4	477.2	2.8	-0.2	-5.1	-2.8	0.0	-1.1	-0.6
Employment	437.7	437.1	3.0	-0.6	-4.2	-6.9	-0.1	-1.0	-1.6
Employment full-time	354.9	356.3	3.6	1.4	-4.6	-3.5	0.4	-1.3	-1.0
Employment part-time	82.8	80.8	3.2	-2.0	0.4	-3.4	-2.4	0.5	-4.0
Unemployment	39.7	40.0	2.5	0.3	-1.0	4.0	0.8	-2.4	11.1
Participation rate	62.6	62.5	0.4	-0.1	-0.8	-0.6
Unemployment rate	8.3	8.4	0.5	0.1	-0.1	0.9
Employment rate	57.4	57.3	0.4	-0.1	-0.6	-1.0
New Brunswick									
Population	611.4	611.3	...	-0.1	-0.1	0.6	0.0	0.0	0.1
Labour force	390.3	385.2	2.3	-5.1	-7.9	-1.5	-1.3	-2.0	-0.4
Employment	355.5	350.2	2.4	-5.3	-5.1	1.1	-1.5	-1.4	0.3
Employment full-time	299.4	294.6	3.0	-4.8	0.0	2.7	-1.6	0.0	0.9
Employment part-time	56.1	55.7	2.5	-0.4	-5.1	-1.4	-0.7	-8.4	-2.5
Unemployment	34.8	35.0	2.2	0.2	-2.8	-2.6	0.6	-7.4	-6.9
Participation rate	63.8	63.0	0.4	-0.8	-1.3	-0.3
Unemployment rate	8.9	9.1	0.5	0.2	-0.5	-0.6
Employment rate	58.1	57.3	0.4	-0.8	-0.8	0.1
Quebec									
Population	6,254.0	6,260.5	...	6.5	44.6	68.8	0.1	0.7	1.1
Labour force	4,105.3	4,091.4	14.9	-13.9	1.0	14.7	-0.3	0.0	0.4
Employment	3,772.2	3,766.4	14.7	-5.8	11.4	29.2	-0.2	0.3	0.8
Employment full-time	3,070.3	3,089.8	19.8	19.5	15.7	40.5	0.6	0.5	1.3
Employment part-time	701.8	676.6	17.6	-25.2	-4.3	-11.3	-3.6	-0.6	-1.6
Unemployment	333.2	325.0	13.4	-8.2	-10.3	-14.6	-2.5	-3.1	-4.3
Participation rate	65.6	65.4	0.2	-0.2	-0.4	-0.4
Unemployment rate	8.1	7.9	0.3	-0.2	-0.3	-0.4
Employment rate	60.3	60.2	0.2	-0.1	-0.2	-0.2

See footnotes at the end of the table.

Table 3 – continued

Labour force characteristics by province, seasonally adjusted

	July 2006	August 2006	S.E. ¹	Change from			Percent change from		
				last month	last December	twelve months ago	last month	last December	twelve months ago
in thousands (except rates)									
Ontario									
Population	10,235.6	10,248.4	...	12.8	95.6	150.9	0.1	0.9	1.5
Labour force	6,969.0	6,947.8	18.2	-21.2	88.2	85.5	-0.3	1.3	1.2
Employment	6,516.4	6,501.2	18.1	-15.2	67.8	95.8	-0.2	1.1	1.5
Employment full-time	5,371.9	5,363.8	23.4	-8.1	51.2	84.0	-0.2	1.0	1.6
Employment part-time	1,144.5	1,137.3	21.2	-7.2	16.5	11.7	-0.6	1.5	1.0
Unemployment	452.6	446.6	15.5	-6.0	20.4	-10.3	-1.3	4.8	-2.3
Participation rate	68.1	67.8	0.2	-0.3	0.2	-0.2
Unemployment rate	6.5	6.4	0.2	-0.1	0.2	-0.3
Employment rate	63.7	63.4	0.2	-0.3	0.0	0.0
Manitoba									
Population	892.6	892.9	...	0.3	3.0	3.1	0.0	0.3	0.3
Labour force	614.9	616.0	2.8	1.1	6.7	7.9	0.2	1.1	1.3
Employment	586.0	588.4	2.8	2.4	4.8	8.2	0.4	0.8	1.4
Employment full-time	469.7	470.2	4.0	0.5	6.3	3.6	0.1	1.4	0.8
Employment part-time	116.3	118.2	3.7	1.9	-1.5	4.6	1.6	-1.3	4.0
Unemployment	28.9	27.6	2.2	-1.3	1.9	-0.3	-4.5	7.4	-1.1
Participation rate	68.9	69.0	0.3	0.1	0.5	0.7
Unemployment rate	4.7	4.5	0.3	-0.2	0.3	-0.1
Employment rate	65.7	65.9	0.3	0.2	0.3	0.7
Saskatchewan									
Population	745.9	746.1	...	0.2	-2.1	-2.7	0.0	-0.3	-0.4
Labour force	514.8	518.1	2.4	3.3	11.8	9.6	0.6	2.3	1.9
Employment	490.8	490.3	2.4	-0.5	10.6	8.5	-0.1	2.2	1.8
Employment full-time	402.1	405.9	3.3	3.8	16.6	16.5	0.9	4.3	4.2
Employment part-time	88.8	84.4	3.0	-4.4	-6.0	-8.0	-5.0	-6.6	-8.7
Unemployment	24.0	27.8	1.9	3.8	1.2	1.1	15.8	4.5	4.1
Participation rate	69.0	69.4	0.3	0.4	1.7	1.5
Unemployment rate	4.7	5.4	0.4	0.7	0.1	0.1
Employment rate	65.8	65.7	0.3	-0.1	1.6	1.4
Alberta									
Population	2,641.3	2,651.4	...	10.1	64.2	89.3	0.4	2.5	3.5
Labour force	1,940.5	1,959.0	8.3	18.5	79.5	99.5	1.0	4.2	5.4
Employment	1,870.0	1,877.7	8.1	7.7	77.9	90.7	0.4	4.3	5.1
Employment full-time	1,566.9	1,577.6	10.9	10.7	79.0	97.3	0.7	5.3	6.6
Employment part-time	303.1	300.1	9.9	-3.0	-1.2	-6.6	-1.0	-0.4	-2.2
Unemployment	70.4	81.3	5.7	10.9	1.6	8.8	15.5	2.0	12.1
Participation rate	73.5	73.9	0.3	0.4	1.3	1.3
Unemployment rate	3.6	4.2	0.3	0.6	0.0	0.3
Employment rate	70.8	70.8	0.3	0.0	1.2	1.1
British Columbia									
Population	3,513.7	3,519.2	...	5.5	40.9	63.2	0.2	1.2	1.8
Labour force	2,303.9	2,304.1	9.8	0.2	21.2	37.5	0.0	0.9	1.7
Employment	2,195.6	2,193.4	9.9	-2.2	26.3	56.4	-0.1	1.2	2.6
Employment full-time	1,746.8	1,760.6	13.2	13.8	31.0	71.4	0.8	1.8	4.2
Employment part-time	448.8	432.8	12.5	-16.0	-4.7	-15.0	-3.6	-1.1	-3.3
Unemployment	108.3	110.8	7.2	2.5	-5.0	-18.9	2.3	-4.3	-14.6
Participation rate	65.6	65.5	0.3	-0.1	-0.1	-0.1
Unemployment rate	4.7	4.8	0.3	0.1	-0.3	-0.9
Employment rate	62.5	62.3	0.3	-0.2	0.0	0.5

1. Average standard error of change in two consecutive months (see "Sampling Errors" in Data Quality for further explanations).

Note(s): Related CANSIM table 282-0087

Table 4-1
Selected labour force characteristics (seasonally adjusted) — Newfoundland and Labrador

	July 2006	August 2006	S.E. ¹	Change from			Percent change from		
				last month	last December	twelve months ago	last month	last December	twelve months ago
in thousands (except rates)									
Both sexes, 15 years and over									
Population	427.4	427.3	...	-0.1	-1.9	-2.0	0.0	-0.4	-0.5
Labour force	248.7	254.1	2.4	5.4	4.7	0.0	2.2	1.9	0.0
Employment	212.5	215.7	2.4	3.2	4.8	3.9	1.5	2.3	1.8
Employment full-time	178.6	188.5	2.5	9.9	12.4	6.4	5.5	7.0	3.5
Unemployment	36.2	38.4	2.2	2.2	-0.1	-3.9	6.1	-0.3	-9.2
Participation rate	58.2	59.5	0.6	1.3	1.4	0.3
Unemployment rate	14.6	15.1	0.8	0.5	-0.3	-1.5
Employment rate	49.7	50.5	0.6	0.8	1.4	1.2
Part-time rate	16.0	12.6	0.8	-3.4	-3.9	-1.4
Both sexes, 15 to 24 years									
Population	66.7	66.4	...	-0.3	-1.5	-2.2	-0.4	-2.2	-3.2
Labour force	34.4	37.0	1.3	2.6	0.4	0.6	7.6	1.1	1.6
Employment	27.1	28.1	1.2	1.0	-0.5	0.7	3.7	-1.7	2.6
Unemployment	7.3	8.9	1.1	1.6	0.9	-0.1	21.9	11.2	-1.1
Participation rate	51.6	55.7	1.9	4.1	1.8	2.6
Unemployment rate	21.2	24.1	2.8	2.9	2.2	-0.6
Employment rate	40.6	42.3	1.7	1.7	0.2	2.4
Part-time rate	40.2	28.5	3.6	-11.8	-17.7	-6.2
Men, 25 years and over									
Population	174.6	174.7	...	0.1	-0.3	-0.1	0.1	-0.2	-0.1
Labour force	110.7	112.2	1.3	1.5	1.0	-0.6	1.4	0.9	-0.5
Employment	94.1	95.2	1.4	1.1	1.6	-0.7	1.2	1.7	-0.7
Unemployment	16.6	17.0	1.4	0.4	-0.6	0.1	2.4	-3.4	0.6
Participation rate	63.4	64.2	0.8	0.8	0.7	-0.3
Unemployment rate	15.0	15.2	1.1	0.2	-0.6	0.2
Employment rate	53.9	54.5	0.8	0.6	1.0	-0.4
Part-time rate	7.7	5.5	0.8	-2.2	1.3	0.5
Women, 25 years and over									
Population	186.1	186.2	...	0.1	0.0	0.3	0.1	0.0	0.2
Labour force	103.6	104.9	1.3	1.3	3.3	0.1	1.3	3.2	0.1
Employment	91.4	92.4	1.3	1.0	3.7	3.9	1.1	4.2	4.4
Unemployment	12.3	12.5	1.2	0.2	-0.4	-3.8	1.6	-3.1	-23.3
Participation rate	55.7	56.3	0.7	0.6	1.7	-0.1
Unemployment rate	11.9	11.9	1.1	0.0	-0.8	-3.7
Employment rate	49.1	49.6	0.7	0.5	2.0	2.0
Part-time rate	17.4	15.0	1.3	-2.4	-4.9	-2.4
Industry									
	212.5	215.7	2.4	3.2	4.8	3.9	1.5	2.3	1.8
Goods-producing sector									
Agriculture	46.3	47.0	2.0	0.7	-2.8	-3.5	1.5	-5.6	-6.9
Forestry, fishing, mining, oil and gas	1.6	1.7	0.4	0.1	-0.5	-0.9	6.2	-22.7	-34.6
Utilities	15.6	14.9	1.0	-0.7	-0.3	-0.4	-4.5	-2.0	-2.6
Construction	2.0	2.3	0.3	0.3	-0.3	-0.3	15.0	-11.5	-11.5
Manufacturing	12.6	13.0	1.0	0.4	1.1	-0.1	3.2	9.2	-0.8
	14.5	15.1	1.2	0.6	-2.7	-1.8	4.1	-15.2	-10.7
Services-producing sector									
	166.2	168.7	2.1	2.5	7.6	7.4	1.5	4.7	4.6
Trade	39.0	38.3	1.3	-0.7	-0.2	0.3	-1.8	-0.5	0.8
Transportation and warehousing	11.4	11.6	0.8	0.2	-0.1	0.2	1.8	-0.9	1.8
Finance, insurance, real estate and leasing	5.4	5.9	0.6	0.5	-1.2	-1.3	9.3	-16.9	-18.1
Professional, scientific and technical services	7.2	6.7	0.6	-0.5	-0.3	-0.3	-6.9	-4.3	-4.3
Business, building and other support services	8.9	8.8	0.8	-0.1	2.2	1.2	-1.1	33.3	15.8
Educational services	15.2	16.3	0.9	1.1	0.2	-1.7	7.2	1.2	-9.4
Health care and social assistance	29.5	30.3	1.1	0.8	2.5	1.5	2.7	9.0	5.2
Information, culture and recreation	8.9	9.7	0.7	0.8	2.9	4.0	9.0	42.6	70.2
Accommodation and food services	14.1	14.2	1.0	0.1	0.6	2.1	0.7	4.4	17.4
Other services	12.1	11.6	0.9	-0.5	1.1	-0.5	-4.1	10.5	-4.1
Public administration	14.7	15.3	0.9	0.6	0.0	1.8	4.1	0.0	13.3

1. Average standard error of change in two consecutive months (see "Sampling Errors" in Data Quality for further explanations).

Note(s): Related CANSIM tables 282-0087, 282-0088

Table 4-2
Selected labour force characteristics (seasonally adjusted) — Prince Edward Island

	July 2006	August 2006	S.E. ¹	Change from			Percent change from		
				last month	last December	twelve months ago	last month	last December	twelve months ago
in thousands (except rates)									
Both sexes, 15 years and over									
Population	112.4	112.4	...	0.0	0.4	0.7	0.0	0.4	0.6
Labour force	76.6	76.8	0.6	0.2	-0.4	0.5	0.3	-0.5	0.7
Employment	67.9	68.4	0.7	0.5	-0.2	0.7	0.7	-0.3	1.0
Employment full-time	58.2	57.8	0.8	-0.4	-0.4	1.6	-0.7	-0.7	2.8
Unemployment	8.6	8.4	0.6	-0.2	-0.2	-0.2	-2.3	-2.3	-2.3
Participation rate	68.1	68.3	0.5	0.2	-0.6	0.0
Unemployment rate	11.2	10.9	0.8	-0.3	-0.2	-0.4
Employment rate	60.4	60.9	0.6	0.5	-0.4	0.3
Part-time rate	14.3	15.5	0.9	1.2	0.3	-1.5
Both sexes, 15 to 24 years									
Population	19.9	19.9	...	0.0	0.1	0.2	0.0	0.5	1.0
Labour force	13.6	13.5	0.4	-0.1	0.1	-0.3	-0.7	0.7	-2.2
Employment	11.6	11.6	0.4	0.0	0.2	0.0	0.0	1.8	0.0
Unemployment	2.0	1.9	0.3	-0.1	-0.2	-0.3	-5.0	-9.5	-13.6
Participation rate	68.3	67.8	2.0	-0.5	0.1	-2.3
Unemployment rate	14.7	14.1	2.3	-0.6	-1.6	-1.8
Employment rate	58.3	58.3	1.9	0.0	0.7	-0.6
Part-time rate	36.2	39.7	3.3	3.4	3.7	0.9
Men, 25 years and over									
Population	44.4	44.4	...	0.0	0.2	0.3	0.0	0.5	0.7
Labour force	32.3	32.6	0.3	0.3	-0.4	0.5	0.9	-1.2	1.6
Employment	28.8	28.9	0.4	0.1	-0.1	0.6	0.3	-0.3	2.1
Unemployment	3.6	3.7	0.4	0.1	-0.3	0.0	2.8	-7.5	0.0
Participation rate	72.7	73.4	0.8	0.7	-1.3	0.6
Unemployment rate	11.1	11.3	1.1	0.2	-0.8	-0.2
Employment rate	64.9	65.1	0.9	0.2	-0.5	0.9
Part-time rate	4.2	4.8	0.9	0.7	-1.0	-1.2
Women, 25 years and over									
Population	48.1	48.1	...	0.0	0.1	0.2	0.0	0.2	0.4
Labour force	30.6	30.7	0.3	0.1	0.0	0.3	0.3	0.0	1.0
Employment	27.6	27.9	0.4	0.3	-0.4	0.1	1.1	-1.4	0.4
Unemployment	3.0	2.8	0.3	-0.2	0.3	0.2	-6.7	12.0	7.7
Participation rate	63.6	63.8	0.6	0.2	-0.2	0.3
Unemployment rate	9.8	9.1	1.0	-0.7	1.0	0.5
Employment rate	57.4	58.0	0.8	0.6	-1.0	0.0
Part-time rate	15.6	16.1	1.5	0.5	-0.5	-2.6
Industry									
Goods-producing sector	19.2	18.7	0.6	-0.5	-0.1	0.4	-2.6	-0.5	2.2
Agriculture	3.9	3.9	0.3	0.0	0.1	0.1	0.0	2.6	2.6
Forestry, fishing, mining, oil and gas	2.4	2.3	0.2	-0.1	0.1	-0.1	-4.2	4.5	-4.2
Utilities	0.3	0.3	0.1	0.0	-0.1	-0.1	0.0	-25.0	-25.0
Construction	5.9	5.8	0.3	-0.1	0.5	1.0	-1.7	9.4	20.8
Manufacturing	6.7	6.5	0.4	-0.2	-0.6	-0.5	-3.0	-8.5	-7.1
Services-producing sector	48.7	49.7	0.7	1.0	-0.2	0.3	2.1	-0.4	0.6
Trade	10.1	9.9	0.4	-0.2	0.7	0.7	-2.0	7.6	7.6
Transportation and warehousing	1.9	2.0	0.2	0.1	-0.1	-0.4	5.3	-4.8	-16.7
Finance, insurance, real estate and leasing	2.2	2.3	0.2	0.1	0.3	0.2	4.5	15.0	9.5
Professional, scientific and technical services	2.9	2.9	0.2	0.0	0.3	0.5	0.0	11.5	20.8
Business, building and other support services	3.0	3.1	0.3	0.1	0.3	0.2	3.3	10.7	6.9
Educational services	4.3	4.6	0.3	0.3	-0.1	-0.1	7.0	-2.1	-2.1
Health care and social assistance	7.6	7.7	0.3	0.1	0.0	-0.2	1.3	0.0	-2.5
Information, culture and recreation	2.4	2.6	0.3	0.2	-0.3	-0.3	8.3	-10.3	-10.3
Accommodation and food services	5.1	5.5	0.4	0.4	-0.6	0.0	7.8	-9.8	0.0
Other services	2.9	2.6	0.2	-0.3	-0.8	-0.2	-10.3	-23.5	-7.1
Public administration	6.3	6.5	0.3	0.2	0.3	0.0	3.2	4.8	0.0

1. Average standard error of change in two consecutive months (see "Sampling Errors" in Data Quality for further explanations).

Note(s): Related CANSIM tables 282-0087, 282-0088

Table 4-3
Selected labour force characteristics (seasonally adjusted) — Nova Scotia

	July 2006	August 2006	S.E. ¹	Change from			Percent change from		
				last month	last December	twelve months ago	last month	last December	twelve months ago
in thousands (except rates)									
Both sexes, 15 years and over									
Population	762.7	763.1	...	0.4	1.1	1.9	0.1	0.1	0.2
Labour force	477.4	477.2	2.8	-0.2	-5.1	-2.8	0.0	-1.1	-0.6
Employment	437.7	437.1	3.0	-0.6	-4.2	-6.9	-0.1	-1.0	-1.6
Employment full-time	354.9	356.3	3.6	1.4	-4.6	-3.5	0.4	-1.3	-1.0
Unemployment	39.7	40.0	2.5	0.3	-1.0	4.0	0.8	-2.4	11.1
Participation rate	62.6	62.5	0.4	-0.1	-0.8	-0.6
Unemployment rate	8.3	8.4	0.5	0.1	-0.1	0.9
Employment rate	57.4	57.3	0.4	-0.1	-0.6	-1.0
Part-time rate	18.9	18.5	0.7	-0.4	0.3	-0.5
Both sexes, 15 to 24 years									
Population	123.2	123.1	...	-0.1	-0.5	-0.6	-0.1	-0.4	-0.5
Labour force	80.6	80.5	1.8	-0.1	-0.9	1.0	-0.1	-1.1	1.3
Employment	69.1	70.0	1.7	0.9	-0.7	1.5	1.3	-1.0	2.2
Unemployment	11.5	10.5	1.5	-1.0	-0.3	-0.5	-8.7	-2.8	-4.5
Participation rate	65.4	65.4	1.4	0.0	-0.5	1.1
Unemployment rate	14.3	13.0	1.7	-1.3	-0.3	-0.8
Employment rate	56.1	56.9	1.4	0.8	-0.3	1.5
Part-time rate	46.5	41.7	2.3	-4.7	-2.4	-3.1
Men, 25 years and over									
Population	305.4	305.6	...	0.2	0.6	0.9	0.1	0.2	0.3
Labour force	206.2	204.9	1.5	-1.3	-4.7	-4.8	-0.6	-2.2	-2.3
Employment	189.2	189.2	1.7	0.0	-4.0	-7.0	0.0	-2.1	-3.6
Unemployment	16.9	15.8	1.5	-1.1	-0.6	2.3	-6.5	-3.7	17.0
Participation rate	67.5	67.0	0.5	-0.5	-1.7	-1.8
Unemployment rate	8.2	7.7	0.7	-0.5	-0.1	1.3
Employment rate	62.0	61.9	0.5	-0.1	-1.4	-2.5
Part-time rate	6.0	7.1	0.7	1.1	0.9	0.4
Women, 25 years and over									
Population	334.1	334.4	...	0.3	1.0	1.6	0.1	0.3	0.5
Labour force	190.6	191.7	1.5	1.1	0.4	0.9	0.6	0.2	0.5
Employment	179.4	178.0	1.5	-1.4	0.6	-1.3	-0.8	0.3	-0.7
Unemployment	11.3	13.7	1.2	2.4	-0.1	2.2	21.2	-0.7	19.1
Participation rate	57.0	57.3	0.4	0.3	-0.1	0.0
Unemployment rate	5.9	7.1	0.6	1.2	-0.1	1.1
Employment rate	53.7	53.2	0.5	-0.5	0.0	-0.7
Part-time rate	21.9	21.4	1.1	-0.4	0.4	-1.1
Industry									
Industry	437.7	437.1	3.0	-0.6	-4.2	-6.9	-0.1	-1.0	-1.6
Goods-producing sector									
Goods-producing sector	83.5	82.1	2.3	-1.4	-7.0	-10.4	-1.7	-7.9	-11.2
Agriculture	4.5	5.1	0.7	0.6	0.3	-0.5	13.3	6.2	-8.9
Forestry, fishing, mining, oil and gas	12.3	12.4	1.2	0.1	-2.9	-3.7	0.8	-19.0	-23.0
Utilities	1.7	1.8	0.3	0.1	0.5	-0.8	5.9	38.5	-30.8
Construction	27.0	26.3	1.4	-0.7	-1.0	-1.6	-2.6	-3.7	-5.7
Manufacturing	38.0	36.5	1.5	-1.5	-3.9	-3.7	-3.9	-9.7	-9.2
Services-producing sector									
Services-producing sector	354.2	355.0	3.0	0.8	2.7	3.4	0.2	0.8	1.0
Trade	76.5	78.7	1.9	2.2	2.3	0.2	2.9	3.0	0.3
Transportation and warehousing	18.5	18.2	1.1	-0.3	-2.4	-4.2	-1.6	-11.7	-18.8
Finance, insurance, real estate and leasing	20.4	20.7	1.1	0.3	-2.5	0.8	1.5	-10.8	4.0
Professional, scientific and technical services	18.2	17.5	1.1	-0.7	-2.2	-3.6	-3.8	-11.2	-17.1
Business, building and other support services	28.7	29.2	1.4	0.5	5.1	3.3	1.7	21.2	12.7
Educational services	33.2	33.0	1.3	-0.2	-2.2	-0.7	-0.6	-6.2	-2.1
Health care and social assistance	58.7	58.1	1.5	-0.6	-0.1	2.4	-1.0	-0.2	4.3
Information, culture and recreation	19.3	17.6	1.1	-1.7	3.2	2.4	-8.8	22.2	15.8
Accommodation and food services	29.2	31.1	1.5	1.9	0.7	0.4	6.5	2.3	1.3
Other services	20.5	20.2	1.2	-0.3	-0.8	-0.1	-1.5	-3.8	-0.5
Public administration	30.9	30.7	1.1	-0.2	1.7	2.5	-0.6	5.9	8.9

1. Average standard error of change in two consecutive months (see "Sampling Errors" in Data Quality for further explanations).

Note(s): Related CANSIM tables 282-0087, 282-0088

Table 4-4
Selected labour force characteristics (seasonally adjusted) — New Brunswick

	July 2006	August 2006	S.E. ¹	Change from			Percent change from		
				last month	last December	twelve months ago	last month	last December	twelve months ago
in thousands (except rates)									
Both sexes, 15 years and over									
Population	611.4	611.3	...	-0.1	-0.1	0.6	0.0	0.0	0.1
Labour force	390.3	385.2	2.3	-5.1	-7.9	-1.5	-1.3	-2.0	-0.4
Employment	355.5	350.2	2.4	-5.3	-5.1	1.1	-1.5	-1.4	0.3
Employment full-time	299.4	294.6	3.0	-4.8	0.0	2.7	-1.6	0.0	0.9
Unemployment	34.8	35.0	2.2	0.2	-2.8	-2.6	0.6	-7.4	-6.9
Participation rate	63.8	63.0	0.4	-0.8	-1.3	-0.3
Unemployment rate	8.9	9.1	0.5	0.2	-0.5	-0.6
Employment rate	58.1	57.3	0.4	-0.8	-0.8	0.1
Part-time rate	15.8	15.9	0.7	0.1	-1.2	-0.5
Both sexes, 15 to 24 years									
Population	96.0	95.8	...	-0.2	-0.3	-0.5	-0.2	-0.3	-0.5
Labour force	64.5	63.6	1.3	-0.9	0.3	0.9	-1.4	0.5	1.4
Employment	55.4	53.6	1.4	-1.8	-0.7	-0.4	-3.2	-1.3	-0.7
Unemployment	9.0	10.0	1.2	1.0	1.0	1.3	11.1	11.1	14.9
Participation rate	67.2	66.4	1.4	-0.8	0.5	1.3
Unemployment rate	14.0	15.7	1.7	1.7	1.5	1.8
Employment rate	57.7	55.9	1.4	-1.8	-0.6	-0.2
Part-time rate	39.5	38.1	2.5	-1.5	-2.6	-1.8
Men, 25 years and over									
Population	249.1	249.2	...	0.1	0.3	0.8	0.0	0.1	0.3
Labour force	171.1	169.5	1.3	-1.6	-2.5	-0.7	-0.9	-1.5	-0.4
Employment	154.7	153.9	1.5	-0.8	-1.8	1.5	-0.5	-1.2	1.0
Unemployment	16.4	15.5	1.4	-0.9	-0.8	-2.4	-5.5	-4.9	-13.4
Participation rate	68.7	68.0	0.5	-0.7	-1.1	-0.5
Unemployment rate	9.6	9.1	0.8	-0.5	-0.4	-1.4
Employment rate	62.1	61.8	0.6	-0.3	-0.8	0.4
Part-time rate	4.5	4.9	0.7	0.5	-1.0	0.1
Women, 25 years and over									
Population	266.3	266.3	...	0.0	-0.1	0.3	0.0	0.0	0.1
Labour force	154.7	152.1	1.2	-2.6	-5.7	-1.6	-1.7	-3.6	-1.0
Employment	145.3	142.7	1.3	-2.6	-2.7	0.0	-1.8	-1.9	0.0
Unemployment	9.4	9.4	1.1	0.0	-3.0	-1.6	0.0	-24.2	-14.5
Participation rate	58.1	57.1	0.5	-1.0	-2.1	-0.7
Unemployment rate	6.1	6.2	0.7	0.1	-1.7	-1.0
Employment rate	54.6	53.6	0.5	-1.0	-1.0	0.0
Part-time rate	18.7	19.4	1.1	0.7	-0.7	-0.4
Industry									
Goods-producing sector	355.5	350.2	2.4	-5.3	-5.1	1.1	-1.5	-1.4	0.3
Agriculture	75.7	72.4	2.0	-3.3	-5.7	-2.4	-4.4	-7.3	-3.2
Forestry, fishing, mining, oil and gas	5.3	5.3	0.7	0.0	-2.9	-2.2	0.0	-35.4	-29.3
Utilities	9.9	9.5	0.9	-0.4	-1.5	-1.7	-4.0	-13.6	-15.2
Construction	2.9	3.3	0.4	0.4	-0.1	-0.2	13.8	-2.9	-5.7
Manufacturing	21.6	20.3	1.1	-1.3	1.2	2.3	-6.0	6.3	12.8
Services-producing sector	35.9	34.1	1.4	-1.8	-2.4	-0.4	-5.0	-6.6	-1.2
Trade	279.7	277.8	2.4	-1.9	0.6	3.6	-0.7	0.2	1.3
Transportation and warehousing	54.9	54.5	1.6	-0.4	-3.2	-5.7	-0.7	-5.5	-9.5
Finance, insurance, real estate and leasing	19.5	20.3	1.0	0.8	0.2	0.6	4.1	1.0	3.0
Professional, scientific and technical services	16.9	17.8	0.8	0.9	3.5	5.1	5.3	24.5	40.2
Business, building and other support services	15.2	15.1	0.9	-0.1	0.9	-1.3	-0.7	6.3	-7.9
Educational services	22.9	21.0	1.1	-1.9	-0.3	-0.1	-8.3	-1.4	-0.5
Health care and social assistance	27.9	28.6	1.0	0.7	1.7	2.4	2.5	6.3	9.2
Information, culture and recreation	45.0	45.2	1.2	0.2	-0.7	-2.3	0.4	-1.5	-4.8
Accommodation and food services	11.2	12.4	0.8	1.2	-0.3	-0.1	10.7	-2.4	-0.8
Other services	26.0	23.7	1.2	-2.3	-1.2	1.2	-8.8	-4.8	5.3
Public administration	16.8	16.7	1.0	-0.1	-0.2	2.3	-0.6	-1.2	16.0
	23.4	22.4	0.9	-1.0	0.2	1.5	-4.3	0.9	7.2

1. Average standard error of change in two consecutive months (see "Sampling Errors" in Data Quality for further explanations).

Note(s): Related CANSIM tables 282-0087, 282-0088

Table 4-5
Selected labour force characteristics (seasonally adjusted) — Quebec

	July 2006	August 2006	S.E. ¹	Change from			Percent change from		
				last month	last December	twelve months ago	last month	last December	twelve months ago
in thousands (except rates)									
Both sexes, 15 years and over									
Population	6,254.0	6,260.5	...	6.5	44.6	68.8	0.1	0.7	1.1
Labour force	4,105.3	4,091.4	14.9	-13.9	1.0	14.7	-0.3	0.0	0.4
Employment	3,772.2	3,766.4	14.7	-5.8	11.4	29.2	-0.2	0.3	0.8
Employment full-time	3,070.3	3,089.8	19.8	19.5	15.7	40.5	0.6	0.5	1.3
Unemployment	333.2	325.0	13.4	-8.2	-10.3	-14.6	-2.5	-3.1	-4.3
Participation rate	65.6	65.4	0.2	-0.2	-0.4	-0.4
Unemployment rate	8.1	7.9	0.3	-0.2	-0.3	-0.4
Employment rate	60.3	60.2	0.2	-0.1	-0.2	-0.2
Part-time rate	18.6	18.0	0.5	-0.6	-0.2	-0.4
Both sexes, 15 to 24 years									
Population	950.6	950.7	...	0.1	0.5	0.7	0.0	0.1	0.1
Labour force	628.7	630.3	8.5	1.6	-5.0	-2.7	0.3	-0.8	-0.4
Employment	539.2	541.1	8.3	1.9	-9.8	-1.0	0.4	-1.8	-0.2
Unemployment	89.5	89.2	7.5	-0.3	4.8	-1.7	-0.3	5.7	-1.9
Participation rate	66.1	66.3	0.9	0.2	-0.6	-0.3
Unemployment rate	14.2	14.2	1.1	0.0	0.9	-0.2
Employment rate	56.7	56.9	0.9	0.2	-1.1	-0.2
Part-time rate	49.1	47.1	1.6	-1.9	1.9	1.2
Men, 25 years and over									
Population	2,589.5	2,592.8	...	3.3	22.5	34.9	0.1	0.9	1.4
Labour force	1,862.8	1,853.0	8.0	-9.8	-3.2	-10.3	-0.5	-0.2	-0.6
Employment	1,728.3	1,722.9	8.6	-5.4	-4.1	9.3	-0.3	-0.2	0.5
Unemployment	134.5	130.0	8.0	-4.5	0.7	-19.8	-3.3	0.5	-13.2
Participation rate	71.9	71.5	0.3	-0.4	-0.7	-1.3
Unemployment rate	7.2	7.0	0.4	-0.2	0.0	-1.0
Employment rate	66.7	66.4	0.3	-0.3	-0.8	-0.6
Part-time rate	6.6	6.6	0.5	0.0	-0.8	-0.6
Women, 25 years and over									
Population	2,713.9	2,717.0	...	3.1	21.5	33.2	0.1	0.8	1.2
Labour force	1,613.8	1,608.2	8.9	-5.6	9.3	27.8	-0.3	0.6	1.8
Employment	1,504.7	1,502.4	8.3	-2.3	25.3	20.9	-0.2	1.7	1.4
Unemployment	109.2	105.8	7.5	-3.4	-15.9	6.9	-3.1	-13.1	7.0
Participation rate	59.5	59.2	0.3	-0.3	-0.1	0.3
Unemployment rate	6.8	6.6	0.5	-0.2	-1.0	0.3
Employment rate	55.4	55.3	0.3	-0.1	0.5	0.1
Part-time rate	21.5	20.5	0.8	-1.0	-0.1	-0.8
Industry									
	3,772.2	3,766.4	14.7	-5.8	11.4	29.2	-0.2	0.3	0.8
Goods-producing sector									
Agriculture	897.3	891.0	13.0	-6.3	-32.5	-43.7	-0.7	-3.5	-4.7
Forestry, fishing, mining, oil and gas	66.2	66.2	3.8	0.0	1.9	-2.0	0.0	3.0	-2.9
Utilities	38.1	37.9	2.5	-0.2	-2.1	1.5	-0.5	-5.2	4.1
Construction	31.7	29.7	2.0	-2.0	-2.3	-3.6	-6.3	-7.2	-10.8
Manufacturing	190.9	187.2	7.2	-3.7	1.9	-2.1	-1.9	1.0	-1.1
	570.4	569.9	10.8	-0.5	-31.9	-37.6	-0.1	-5.3	-6.2
Services-producing sector									
	2,874.8	2,875.4	16.7	0.6	43.8	72.9	0.0	1.5	2.6
Trade	629.8	623.1	11.8	-6.7	-19.4	8.7	-1.1	-3.0	1.4
Transportation and warehousing	159.0	159.9	6.6	0.9	3.6	-14.3	0.6	2.3	-8.2
Finance, insurance, real estate and leasing	221.2	218.6	6.9	-2.6	14.6	15.0	-1.2	7.2	7.4
Professional, scientific and technical services	238.4	249.4	7.7	11.0	10.6	28.2	4.6	4.4	12.7
Business, building and other support services	137.7	142.8	6.8	5.1	11.4	-2.0	3.7	8.7	-1.4
Educational services	265.3	260.6	7.6	-4.7	4.6	12.2	-1.8	1.8	4.9
Health care and social assistance	462.4	454.3	9.0	-8.1	3.9	2.2	-1.8	0.9	0.5
Information, culture and recreation	157.6	164.9	7.1	7.3	1.9	1.6	4.6	1.2	1.0
Accommodation and food services	222.3	221.9	7.4	-0.4	7.3	5.0	-0.2	3.4	2.3
Other services	161.7	162.8	6.4	1.1	3.1	12.0	0.7	1.9	8.0
Public administration	219.2	216.9	6.2	-2.3	2.0	4.4	-1.0	0.9	2.1

1. Average standard error of change in two consecutive months (see "Sampling Errors" in Data Quality for further explanations).

Note(s): Related CANSIM tables 282-0087, 282-0088

Table 4-6
Selected labour force characteristics (seasonally adjusted) — Ontario

	July 2006	August 2006	S.E. ¹	Change from			Percent change from		
				last month	last December	twelve months ago	last month	last December	twelve months ago
in thousands (except rates)									
Both sexes, 15 years and over									
Population	10,235.6	10,248.4	...	12.8	95.6	150.9	0.1	0.9	1.5
Labour force	6,969.0	6,947.8	18.2	-21.2	88.2	85.5	-0.3	1.3	1.2
Employment	6,516.4	6,501.2	18.1	-15.2	67.8	95.8	-0.2	1.1	1.5
Employment full-time	5,371.9	5,363.8	23.4	-8.1	51.2	84.0	-0.2	1.0	1.6
Unemployment	452.6	446.6	15.5	-6.0	20.4	-10.3	-1.3	4.8	-2.3
Participation rate	68.1	67.8	0.2	-0.3	0.2	-0.2
Unemployment rate	6.5	6.4	0.2	-0.1	0.2	-0.3
Employment rate	63.7	63.4	0.2	-0.3	0.0	0.0
Part-time rate	17.6	17.5	0.3	-0.1	0.1	-0.1
Both sexes, 15 to 24 years									
Population	1,704.8	1,706.6	...	1.8	12.3	21.6	0.1	0.7	1.3
Labour force	1,103.4	1,099.7	11.4	-3.7	2.2	15.3	-0.3	0.2	1.4
Employment	960.3	946.1	10.5	-14.2	-4.3	7.0	-1.5	-0.5	0.7
Unemployment	143.1	153.5	9.6	10.4	6.4	8.1	7.3	4.4	5.6
Participation rate	64.7	64.4	0.7	-0.3	-0.4	0.0
Unemployment rate	13.0	14.0	0.8	1.0	0.6	0.6
Employment rate	56.3	55.4	0.6	-0.9	-0.7	-0.3
Part-time rate	46.5	47.5	1.2	1.0	0.5	-0.4
Men, 25 years and over									
Population	4,150.8	4,155.7	...	4.9	38.1	60.2	0.1	0.9	1.5
Labour force	3,101.7	3,094.0	8.9	-7.7	9.8	8.6	-0.2	0.3	0.3
Employment	2,948.6	2,943.7	10.0	-4.9	7.0	10.0	-0.2	0.2	0.3
Unemployment	153.1	150.3	8.3	-2.8	2.8	-1.4	-1.8	1.9	-0.9
Participation rate	74.7	74.5	0.2	-0.2	-0.4	-0.8
Unemployment rate	4.9	4.9	0.3	0.0	0.1	0.0
Employment rate	71.0	70.8	0.2	-0.2	-0.5	-0.8
Part-time rate	6.4	6.5	0.3	0.1	0.2	0.9
Women, 25 years and over									
Population	4,380.0	4,386.1	...	6.1	45.2	69.1	0.1	1.0	1.6
Labour force	2,763.9	2,754.1	10.2	-9.8	76.2	61.6	-0.4	2.8	2.3
Employment	2,607.5	2,611.3	10.0	3.8	65.0	78.6	0.1	2.6	3.1
Unemployment	156.4	142.8	8.1	-13.6	11.2	-17.0	-8.7	8.5	-10.6
Participation rate	63.1	62.8	0.2	-0.3	1.1	0.4
Unemployment rate	5.7	5.2	0.3	-0.5	0.3	-0.7
Employment rate	59.5	59.5	0.2	0.0	0.8	0.8
Part-time rate	19.5	19.0	0.5	-0.5	-0.2	-1.2
Industry									
	6,516.4	6,501.2	18.1	-15.2	67.8	95.8	-0.2	1.1	1.5
Goods-producing sector									
Agriculture	96.7	101.7	3.9	5.0	2.9	4.6	5.2	2.9	4.7
Forestry, fishing, mining, oil and gas	38.1	39.1	2.2	1.0	3.5	3.0	2.6	9.8	8.3
Utilities	50.0	48.0	2.4	-2.0	-2.5	-1.9	-4.0	-5.0	-3.8
Construction	399.1	403.4	9.4	4.3	-1.8	10.5	1.1	-0.4	2.7
Manufacturing	1,008.1	1,003.6	13.5	-4.5	-41.7	-54.1	-0.4	-4.0	-5.1
Services-producing sector									
	4,924.3	4,905.3	20.9	-19.0	107.3	133.5	-0.4	2.2	2.8
Trade	1,020.9	1,024.6	13.7	3.7	39.0	20.3	0.4	4.0	2.0
Transportation and warehousing	292.1	302.9	7.8	10.8	4.9	11.1	3.7	1.6	3.8
Finance, insurance, real estate and leasing	488.2	475.3	10.2	-12.9	16.6	16.3	-2.6	3.6	3.6
Professional, scientific and technical services	452.2	442.4	10.1	-9.8	-13.6	2.5	-2.2	-3.0	0.6
Business, building and other support services	297.8	296.2	9.0	-1.6	-1.6	6.3	-0.5	-0.5	2.2
Educational services	447.7	428.6	9.3	-19.1	-28.3	13.3	-4.3	-6.2	3.2
Health care and social assistance	641.8	650.4	9.7	8.6	41.5	26.4	1.3	6.8	4.2
Information, culture and recreation	325.1	326.9	8.3	1.8	16.9	27.4	0.6	5.5	9.1
Accommodation and food services	376.4	374.9	9.1	-1.5	6.2	15.0	-0.4	1.7	4.2
Other services	265.8	268.0	7.6	2.2	30.9	10.6	0.8	13.0	4.1
Public administration	316.4	315.3	7.4	-1.1	-5.0	-15.5	-0.3	-1.6	-4.7

1. Average standard error of change in two consecutive months (see "Sampling Errors" in Data Quality for further explanations).

Note(s): Related CANSIM tables 282-0087, 282-0088

Table 4-7
Selected labour force characteristics (seasonally adjusted) — Manitoba

	July 2006	August 2006	S.E. ¹	Change from			Percent change from		
				last month	last December	twelve months ago	last month	last December	twelve months ago
in thousands (except rates)									
Both sexes, 15 years and over									
Population	892.6	892.9	...	0.3	3.0	3.1	0.0	0.3	0.3
Labour force	614.9	616.0	2.8	1.1	6.7	7.9	0.2	1.1	1.3
Employment	586.0	588.4	2.8	2.4	4.8	8.2	0.4	0.8	1.4
Employment full-time	469.7	470.2	4.0	0.5	6.3	3.6	0.1	1.4	0.8
Unemployment	28.9	27.6	2.2	-1.3	1.9	-0.3	-4.5	7.4	-1.1
Participation rate	68.9	69.0	0.3	0.1	0.5	0.7
Unemployment rate	4.7	4.5	0.3	-0.2	0.3	-0.1
Employment rate	65.7	65.9	0.3	0.2	0.3	0.7
Part-time rate	19.8	20.1	0.6	0.2	-0.4	0.5
Both sexes, 15 to 24 years									
Population	155.9	155.9	...	0.0	0.4	0.3	0.0	0.3	0.2
Labour force	110.6	112.4	1.7	1.8	2.9	1.9	1.6	2.6	1.7
Employment	99.4	101.9	1.7	2.5	1.5	1.5	2.5	1.5	1.5
Unemployment	11.2	10.6	1.4	-0.6	1.5	0.5	-5.4	16.5	5.0
Participation rate	70.9	72.1	1.1	1.2	1.7	1.1
Unemployment rate	10.1	9.4	1.2	-0.7	1.1	0.3
Employment rate	63.8	65.4	1.1	1.6	0.8	0.9
Part-time rate	45.2	45.2	2.0	0.1	-0.9	0.1
Men, 25 years and over									
Population	359.6	359.7	...	0.1	1.7	2.0	0.0	0.5	0.6
Labour force	269.8	270.0	1.4	0.2	0.6	2.7	0.1	0.2	1.0
Employment	260.8	260.9	1.5	0.1	1.0	2.3	0.0	0.4	0.9
Unemployment	9.1	9.1	1.2	0.0	-0.4	0.4	0.0	-4.2	4.6
Participation rate	75.0	75.1	0.4	0.1	-0.2	0.4
Unemployment rate	3.4	3.4	0.4	0.0	-0.1	0.1
Employment rate	72.5	72.5	0.4	0.0	-0.1	0.2
Part-time rate	6.3	6.1	0.6	-0.2	-0.4	0.5
Women, 25 years and over									
Population	377.1	377.3	...	0.2	0.9	0.8	0.1	0.2	0.2
Labour force	234.5	233.6	1.6	-0.9	3.1	3.2	-0.4	1.3	1.4
Employment	225.9	225.7	1.6	-0.2	2.4	4.5	-0.1	1.1	2.0
Unemployment	8.6	7.9	1.1	-0.7	0.8	-1.3	-8.1	11.3	-14.1
Participation rate	62.2	61.9	0.4	-0.3	0.7	0.7
Unemployment rate	3.7	3.4	0.5	-0.3	0.3	-0.6
Employment rate	59.9	59.8	0.4	-0.1	0.5	1.0
Part-time rate	24.3	24.9	1.1	0.6	-0.4	0.5
Industry									
Goods-producing sector	586.0	588.4	2.8	2.4	4.8	8.2	0.4	0.8	1.4
Agriculture	137.8	139.7	2.5	1.9	-1.8	0.5	1.4	-1.3	0.4
Forestry, fishing, mining, oil and gas	28.9	29.7	1.3	0.8	-2.5	0.2	2.8	-7.8	0.7
Utilities	6.0	6.2	0.6	0.2	0.0	0.5	3.3	0.0	8.8
Construction	6.1	5.3	0.5	-0.8	-1.3	-1.9	-13.1	-19.7	-26.4
Manufacturing	30.3	30.5	1.4	0.2	0.5	2.4	0.7	1.7	8.5
Services-producing sector	66.5	68.0	1.9	1.5	1.5	-0.8	2.3	2.3	-1.2
Trade	448.2	448.7	3.3	0.5	6.6	7.7	0.1	1.5	1.7
Transportation and warehousing	92.5	90.8	2.2	-1.7	5.1	11.0	-1.8	6.0	13.8
Finance, insurance, real estate and leasing	34.1	33.1	1.3	-1.0	-2.7	-1.4	-2.9	-7.5	-4.1
Professional, scientific and technical services	35.7	33.9	1.4	-1.8	-1.6	-0.8	-5.0	-4.5	-2.3
Business, building and other support services	24.2	24.4	1.3	0.2	2.2	-1.2	0.8	9.9	-4.7
Educational services	17.8	19.1	1.2	1.3	0.5	-0.2	7.3	2.7	-1.0
Health care and social assistance	41.9	43.5	1.6	1.6	-1.9	-7.1	3.8	-4.2	-14.0
Information, culture and recreation	78.7	78.7	1.8	0.0	4.3	6.1	0.0	5.8	8.4
Accommodation and food services	23.6	26.2	1.3	2.6	3.1	0.6	11.0	13.4	2.3
Other services	37.1	36.7	1.7	-0.4	-3.4	-1.0	-1.1	-8.5	-2.7
Public administration	26.0	25.9	1.3	-0.1	-0.1	-2.3	-0.4	-0.4	-8.2
Public administration	36.8	36.3	1.3	-0.5	0.9	3.9	-1.4	2.5	12.0

1. Average standard error of change in two consecutive months (see "Sampling Errors" in Data Quality for further explanations).

Note(s): Related CANSIM tables 282-0087, 282-0088

Table 4-8
Selected labour force characteristics (seasonally adjusted) — Saskatchewan

	July 2006	August 2006	S.E. ¹	Change from			Percent change from		
				last month	last December	twelve months ago	last month	last December	twelve months ago
in thousands (except rates)									
Both sexes, 15 years and over									
Population	745.9	746.1	...	0.2	-2.1	-2.7	0.0	-0.3	-0.4
Labour force	514.8	518.1	2.4	3.3	11.8	9.6	0.6	2.3	1.9
Employment	490.8	490.3	2.4	-0.5	10.6	8.5	-0.1	2.2	1.8
Employment full-time	402.1	405.9	3.3	3.8	16.6	16.5	0.9	4.3	4.2
Unemployment	24.0	27.8	1.9	3.8	1.2	1.1	15.8	4.5	4.1
Participation rate	69.0	69.4	0.3	0.4	1.7	1.5
Unemployment rate	4.7	5.4	0.4	0.7	0.1	0.1
Employment rate	65.8	65.7	0.3	-0.1	1.6	1.4
Part-time rate	18.1	17.2	0.6	-0.9	-1.6	-2.0
Both sexes, 15 to 24 years									
Population	137.9	137.8	...	-0.1	-0.4	-0.9	-0.1	-0.3	-0.6
Labour force	98.7	98.5	1.5	-0.2	3.9	4.5	-0.2	4.1	4.8
Employment	90.7	90.4	1.5	-0.3	7.2	6.6	-0.3	8.7	7.9
Unemployment	8.0	8.1	1.2	0.1	-3.3	-2.1	1.2	-28.9	-20.6
Participation rate	71.6	71.5	1.1	-0.1	3.0	3.7
Unemployment rate	8.1	8.2	1.2	0.1	-3.9	-2.7
Employment rate	65.8	65.6	1.1	-0.2	5.4	5.2
Part-time rate	39.4	35.4	1.8	-4.0	-5.0	-3.5
Men, 25 years and over									
Population	296.5	296.7	...	0.2	-0.6	-0.6	0.1	-0.2	-0.2
Labour force	222.7	223.4	1.2	0.7	2.3	-0.7	0.3	1.0	-0.3
Employment	213.7	213.1	1.3	-0.6	0.2	-1.9	-0.3	0.1	-0.9
Unemployment	9.1	10.3	1.1	1.2	2.1	1.3	13.2	25.6	14.4
Participation rate	75.1	75.3	0.4	0.2	0.9	-0.1
Unemployment rate	4.1	4.6	0.5	0.5	0.9	0.6
Employment rate	72.1	71.8	0.4	-0.3	0.2	-0.5
Part-time rate	5.2	5.6	0.6	0.4	-0.7	-1.3
Women, 25 years and over									
Population	311.5	311.6	...	0.1	-1.1	-1.2	0.0	-0.4	-0.4
Labour force	193.4	196.1	1.3	2.7	5.5	5.7	1.4	2.9	3.0
Employment	186.5	186.7	1.4	0.2	3.1	3.7	0.1	1.7	2.0
Unemployment	7.0	9.4	0.9	2.4	2.4	1.9	34.3	34.3	25.3
Participation rate	62.1	62.9	0.4	0.8	1.9	2.0
Unemployment rate	3.6	4.8	0.5	1.2	1.1	0.9
Employment rate	59.9	59.9	0.4	0.0	1.2	1.4
Part-time rate	22.5	21.6	1.0	-0.9	-2.0	-2.9
Industry									
Goods-producing sector	490.8	490.3	2.4	-0.5	10.6	8.5	-0.1	2.2	1.8
Agriculture	133.6	133.4	2.4	-0.2	6.6	3.9	-0.1	5.2	3.0
Forestry, fishing, mining, oil and gas	47.9	48.5	1.7	0.6	3.9	1.0	1.3	8.7	2.1
Utilities	21.3	21.7	1.0	0.4	1.3	2.5	1.9	6.4	13.0
Construction	4.8	5.0	0.4	0.2	0.4	0.2	4.2	8.7	4.2
Manufacturing	29.9	29.2	1.2	-0.7	2.2	3.0	-2.3	8.1	11.5
Manufacturing	29.7	28.9	1.2	-0.8	-1.2	-3.0	-2.7	-4.0	-9.4
Services-producing sector	357.2	356.9	2.8	-0.3	4.0	4.6	-0.1	1.1	1.3
Trade	78.0	77.0	1.9	-1.0	3.3	-1.0	-1.3	4.5	-1.3
Transportation and warehousing	25.6	24.7	1.1	-0.9	-2.3	-0.7	-3.5	-8.5	-2.8
Finance, insurance, real estate and leasing	24.1	25.1	1.0	1.0	-1.0	-1.9	4.1	-3.8	-7.0
Professional, scientific and technical services	18.9	20.1	0.9	1.2	2.2	2.5	6.3	12.3	14.2
Business, building and other support services	13.1	13.0	0.9	-0.1	0.7	-0.5	-0.8	5.7	-3.7
Educational services	36.5	36.0	1.3	-0.5	-3.2	0.8	-1.4	-8.2	2.3
Health care and social assistance	62.5	59.2	1.4	-3.3	0.8	1.0	-5.3	1.4	1.7
Information, culture and recreation	20.2	21.5	1.0	1.3	1.7	0.9	6.4	8.6	4.4
Accommodation and food services	29.2	29.5	1.3	0.3	0.2	1.4	1.0	0.7	5.0
Other services	21.8	23.5	1.1	1.7	1.9	2.2	7.8	8.8	10.3
Public administration	27.5	27.2	1.1	-0.3	-0.5	-0.3	-1.1	-1.8	-1.1

1. Average standard error of change in two consecutive months (see "Sampling Errors" in Data Quality for further explanations).

Note(s): Related CANSIM tables 282-0087, 282-0088

Table 4-9
Selected labour force characteristics (seasonally adjusted) — Alberta

	July 2006	August 2006	S.E. ¹	Change from			Percent change from		
				last month	last December	twelve months ago	last month	last December	twelve months ago
in thousands (except rates)									
Both sexes, 15 years and over									
Population	2,641.3	2,651.4	...	10.1	64.2	89.3	0.4	2.5	3.5
Labour force	1,940.5	1,959.0	8.3	18.5	79.5	99.5	1.0	4.2	5.4
Employment	1,870.0	1,877.7	8.1	7.7	77.9	90.7	0.4	4.3	5.1
Employment full-time	1,566.9	1,577.6	10.9	10.7	79.0	97.3	0.7	5.3	6.6
Unemployment	70.4	81.3	5.7	10.9	1.6	8.8	15.5	2.0	12.1
Participation rate	73.5	73.9	0.3	0.4	1.3	1.3
Unemployment rate	3.6	4.2	0.3	0.6	0.0	0.3
Employment rate	70.8	70.8	0.3	0.0	1.2	1.1
Part-time rate	16.2	16.0	0.5	-0.2	-0.8	-1.2
Both sexes, 15 to 24 years									
Population	489.6	491.8	...	2.2	9.9	14.6	0.4	2.1	3.1
Labour force	354.3	360.8	5.0	6.5	20.2	30.3	1.8	5.9	9.2
Employment	327.2	330.7	4.9	3.5	16.0	21.6	1.1	5.1	7.0
Unemployment	27.1	30.0	3.4	2.9	4.1	8.6	10.7	15.8	40.2
Participation rate	72.4	73.4	1.0	1.0	2.7	4.1
Unemployment rate	7.6	8.3	1.0	0.7	0.7	1.8
Employment rate	66.8	67.2	1.0	0.4	1.9	2.4
Part-time rate	32.8	32.7	1.7	-0.1	-2.2	-1.8
Men, 25 years and over									
Population	1,078.4	1,082.5	...	4.1	28.9	39.3	0.4	2.7	3.8
Labour force	876.6	883.8	3.8	7.2	31.2	38.2	0.8	3.7	4.5
Employment	852.1	859.3	4.1	7.2	34.3	40.0	0.8	4.2	4.9
Unemployment	24.5	24.6	3.1	0.1	-3.0	-1.8	0.4	-10.9	-6.8
Participation rate	81.3	81.6	0.4	0.3	0.7	0.5
Unemployment rate	2.8	2.8	0.4	0.0	-0.4	-0.3
Employment rate	79.0	79.4	0.4	0.4	1.1	0.9
Part-time rate	4.7	4.8	0.5	0.1	-0.7	-0.6
Women, 25 years and over									
Population	1,073.3	1,077.1	...	3.8	25.4	35.4	0.4	2.4	3.4
Labour force	709.5	714.4	5.0	4.9	28.1	31.0	0.7	4.1	4.5
Employment	690.7	687.7	4.8	-3.0	27.6	29.1	-0.4	4.2	4.4
Unemployment	18.8	26.7	3.2	7.9	0.5	1.9	42.0	1.9	7.7
Participation rate	66.1	66.3	0.5	0.2	1.0	0.7
Unemployment rate	2.6	3.7	0.5	1.1	-0.1	0.1
Employment rate	64.4	63.8	0.5	-0.6	1.0	0.6
Part-time rate	22.6	21.9	1.0	-0.6	-0.2	-1.7
Industry									
Population	1,870.0	1,877.7	8.1	7.7	77.9	90.7	0.4	4.3	5.1
Goods-producing sector									
Agriculture	517.9	511.8	7.2	-6.1	29.3	23.7	-1.2	6.1	4.9
Forestry, fishing, mining, oil and gas	52.8	49.7	2.6	-3.1	-1.4	-4.6	-5.9	-2.7	-8.5
Utilities	142.5	140.3	3.9	-2.2	15.9	11.3	-1.5	12.8	8.8
Construction	16.8	19.2	1.2	2.4	3.3	4.7	14.3	20.8	32.4
Manufacturing	171.8	166.9	4.9	-4.9	5.9	3.5	-2.9	3.7	2.1
	133.9	135.7	4.4	1.8	5.6	8.8	1.3	4.3	6.9
Services-producing sector									
Trade	1,352.2	1,365.9	9.2	13.7	48.6	67.0	1.0	3.7	5.2
Transportation and warehousing	279.4	284.3	6.2	4.9	3.8	12.3	1.8	1.4	4.5
Finance, insurance, real estate and leasing	109.4	108.5	3.7	-0.9	3.5	0.2	-0.8	3.3	0.2
Professional, scientific and technical services	91.9	91.6	3.5	-0.3	-4.2	-2.9	-0.3	-4.4	-3.1
Business, building and other support services	141.6	150.3	4.5	8.7	6.7	14.8	6.1	4.7	10.9
Educational services	58.0	63.2	3.4	5.2	-0.4	4.5	9.0	-0.6	7.7
Health care and social assistance	124.2	131.8	3.9	7.6	4.1	13.3	6.1	3.2	11.2
Information, culture and recreation	193.1	183.0	4.6	-10.1	11.3	1.4	-5.2	6.6	0.8
Accommodation and food services	69.5	66.5	3.3	-3.0	-1.0	-3.5	-4.3	-1.5	-5.0
Other services	112.7	114.1	4.3	1.4	5.2	4.9	1.2	4.8	4.5
Public administration	88.2	90.4	3.3	2.2	6.7	6.7	2.5	8.0	8.0
	84.2	82.2	2.8	-2.0	12.7	15.2	-2.4	18.3	22.7

1. Average standard error of change in two consecutive months (see "Sampling Errors" in Data Quality for further explanations).

Note(s): Related CANSIM tables 282-0087, 282-0088

Table 4-10
Selected labour force characteristics (seasonally adjusted) — British Columbia

	July 2006	August 2006	S.E. ¹	Change from			Percent change from		
				last month	last December	twelve months ago	last month	last December	twelve months ago
in thousands (except rates)									
Both sexes, 15 years and over									
Population	3,513.7	3,519.2	...	5.5	40.9	63.2	0.2	1.2	1.8
Labour force	2,303.9	2,304.1	9.8	0.2	21.2	37.5	0.0	0.9	1.7
Employment	2,195.6	2,193.4	9.9	-2.2	26.3	56.4	-0.1	1.2	2.6
Employment full-time	1,746.8	1,760.6	13.2	13.8	31.0	71.4	0.8	1.8	4.2
Unemployment	108.3	110.8	7.2	2.5	-5.0	-18.9	2.3	-4.3	-14.6
Participation rate	65.6	65.5	0.3	-0.1	-0.1	-0.1
Unemployment rate	4.7	4.8	0.3	0.1	-0.3	-0.9
Employment rate	62.5	62.3	0.3	-0.2	0.0	0.5
Part-time rate	20.4	19.7	0.6	-0.7	-0.5	-1.2
Both sexes, 15 to 24 years									
Population	576.4	576.7	...	0.3	2.2	5.4	0.1	0.4	0.9
Labour force	382.2	380.6	5.7	-1.6	2.2	8.5	-0.4	0.6	2.3
Employment	349.5	350.2	5.7	0.7	2.3	13.6	0.2	0.7	4.0
Unemployment	32.7	30.4	4.1	-2.3	-0.1	-5.1	-7.0	-0.3	-14.4
Participation rate	66.3	66.0	1.0	-0.3	0.1	0.9
Unemployment rate	8.6	8.0	1.0	-0.6	-0.1	-1.5
Employment rate	60.6	60.7	1.0	0.1	0.1	1.8
Part-time rate	41.2	38.7	1.8	-2.5	-4.5	-3.3
Men, 25 years and over									
Population	1,435.1	1,437.8	...	2.7	19.8	29.6	0.2	1.4	2.1
Labour force	1,023.1	1,028.8	5.2	5.7	7.4	20.9	0.6	0.7	2.1
Employment	985.6	988.5	5.3	2.9	11.8	28.8	0.3	1.2	3.0
Unemployment	37.5	40.3	4.3	2.8	-4.4	-7.9	7.5	-9.8	-16.4
Participation rate	71.3	71.6	0.4	0.3	-0.4	0.0
Unemployment rate	3.7	3.9	0.4	0.2	-0.5	-0.9
Employment rate	68.7	68.8	0.4	0.1	-0.1	0.6
Part-time rate	7.9	8.3	0.6	0.4	1.5	0.0
Women, 25 years and over									
Population	1,502.2	1,504.8	...	2.6	19.0	28.3	0.2	1.3	1.9
Labour force	898.7	894.8	5.8	-3.9	11.8	8.2	-0.4	1.3	0.9
Employment	860.6	854.7	5.7	-5.9	12.2	14.1	-0.7	1.4	1.7
Unemployment	38.1	40.1	4.2	2.0	-0.5	-5.9	5.2	-1.2	-12.8
Participation rate	59.8	59.5	0.4	-0.3	0.1	-0.5
Unemployment rate	4.2	4.5	0.5	0.3	-0.1	-0.7
Employment rate	57.3	56.8	0.4	-0.5	0.1	-0.1
Part-time rate	26.4	25.2	1.0	-1.2	-1.0	-1.8
Industry									
	2,195.6	2,193.4	9.9	-2.2	26.3	56.4	-0.1	1.2	2.6
Goods-producing sector									
Agriculture	463.6	459.1	8.5	-4.5	2.1	11.5	-1.0	0.5	2.6
Forestry, fishing, mining, oil and gas	34.1	33.6	2.8	-0.5	-6.0	-4.3	-1.5	-15.2	-11.3
Utilities	40.2	44.6	2.7	4.4	8.2	7.5	10.9	22.5	20.2
Construction	9.2	9.0	1.2	-0.2	1.7	-2.2	-2.2	23.3	-19.6
Manufacturing	183.6	183.5	5.7	-0.1	3.1	14.7	-0.1	1.7	8.7
	196.4	188.4	5.7	-8.0	-5.0	-4.2	-4.1	-2.6	-2.2
Services-producing sector									
	1,732.1	1,734.3	11.1	2.2	24.3	44.9	0.1	1.4	2.7
Trade	349.1	347.9	7.5	-1.2	-3.5	9.5	-0.3	-1.0	2.8
Transportation and warehousing	114.7	115.1	4.5	0.4	-3.3	-7.8	0.3	-2.8	-6.3
Finance, insurance, real estate and leasing	141.7	145.1	4.5	3.4	14.0	8.1	2.4	10.7	5.9
Professional, scientific and technical services	162.3	174.0	5.2	11.7	9.5	9.7	7.2	5.8	5.9
Business, building and other support services	96.9	102.7	4.4	5.8	16.4	12.2	6.0	19.0	13.5
Educational services	160.2	155.5	4.8	-4.7	9.4	6.0	-2.9	6.4	4.0
Health care and social assistance	245.4	242.1	5.5	-3.3	23.9	21.9	-1.3	11.0	9.9
Information, culture and recreation	113.0	108.4	4.7	-4.6	-20.6	1.4	-4.1	-16.0	1.3
Accommodation and food services	165.1	168.7	5.6	3.6	-12.7	-5.6	2.2	-7.0	-3.2
Other services	90.4	92.3	4.3	1.9	2.5	3.2	2.1	2.8	3.6
Public administration	93.3	82.4	3.7	-10.9	-11.4	-13.8	-11.7	-12.2	-14.3

1. Average standard error of change in two consecutive months (see "Sampling Errors" in Data Quality for further explanations).

Note(s): Related CANSIM tables 282-0087, 282-0088

Table 5-1
Labour force characteristics by census metropolitan area (seasonally adjusted) — 3 month moving average

	July 2006	August 2006	S.E. ¹	Change from			Percent change from		
				last month	last December	twelve months ago	last month	last December	twelve months ago
in thousands (except rates)									
St. John's, Newfoundland and Labrador									
Population	151.3	151.4	...	0.1	0.6	1.0	0.1	0.4	0.7
Labour force	101.8	102.4	0.8	0.6	4.5	4.1	0.6	4.6	4.2
Employment	93.8	94.2	0.8	0.4	4.2	4.9	0.4	4.7	5.5
Unemployment	8.0	8.2	0.5	0.2	0.2	-0.8	2.5	2.5	-8.9
Participation rate	67.3	67.6	0.5	0.3	2.7	2.2
Unemployment rate	7.9	8.0	0.5	0.1	-0.2	-1.2
Employment rate	62.0	62.2	0.5	0.2	2.5	2.8
Halifax, Nova Scotia									
Population	311.1	311.3	...	0.2	1.2	2.3	0.1	0.4	0.7
Labour force	216.3	216.4	1.1	0.1	3.3	2.6	0.0	1.5	1.2
Employment	205.0	204.9	1.1	-0.1	3.8	3.0	0.0	1.9	1.5
Unemployment	11.3	11.5	0.6	0.2	-0.5	-0.5	1.8	-4.2	-4.2
Participation rate	69.5	69.5	0.4	0.0	0.8	0.3
Unemployment rate	5.2	5.3	0.3	0.1	-0.3	-0.3
Employment rate	65.9	65.8	0.4	-0.1	0.9	0.5
Saint John, New Brunswick									
Population	103.5	103.5	...	0.0	0.1	0.3	0.0	0.1	0.3
Labour force	65.5	65.4	0.7	-0.1	-0.8	-0.6	-0.2	-1.2	-0.9
Employment	61.4	61.1	0.7	-0.3	-0.6	0.5	-0.5	-1.0	0.8
Unemployment	4.1	4.2	0.3	0.1	-0.3	-1.2	2.4	-6.7	-22.2
Participation rate	63.3	63.2	0.7	-0.1	-0.8	-0.8
Unemployment rate	6.3	6.4	0.5	0.1	-0.4	-1.8
Employment rate	59.3	59.0	0.7	-0.3	-0.7	0.3
Saguenay, Quebec									
Population	126.0	126.0	...	0.0	-0.3	-0.3	0.0	-0.2	-0.2
Labour force	78.9	78.2	0.8	-0.7	2.1	2.1	-0.9	2.8	2.8
Employment	71.6	70.9	0.8	-0.7	2.3	3.1	-1.0	3.4	4.6
Unemployment	7.3	7.3	0.4	0.0	-0.1	-1.0	0.0	-1.4	-12.0
Participation rate	62.6	62.1	0.6	-0.5	1.8	1.8
Unemployment rate	9.3	9.3	0.5	0.0	-0.4	-1.6
Employment rate	56.8	56.3	0.7	-0.5	2.0	2.6
Québec, Quebec									
Population	598.9	599.6	...	0.7	4.5	7.1	0.1	0.8	1.2
Labour force	397.9	395.6	3.2	-2.3	-2.2	-0.6	-0.6	-0.6	-0.2
Employment	380.0	377.5	3.4	-2.5	-1.5	7.8	-0.7	-0.4	2.1
Unemployment	17.8	18.1	1.5	0.3	-0.7	-8.4	1.7	-3.7	-31.7
Participation rate	66.4	66.0	0.5	-0.4	-0.8	-0.9
Unemployment rate	4.5	4.6	0.4	0.1	-0.1	-2.1
Employment rate	63.4	63.0	0.6	-0.4	-0.7	0.6
Trois-Rivières, Quebec									
Population	119.3	119.4	...	0.1	0.9	1.3	0.1	0.8	1.1
Labour force	71.6	71.6	0.6	0.0	-4.0	-5.5	0.0	-5.3	-7.1
Employment	66.0	65.8	0.7	-0.2	-3.2	-5.1	-0.3	-4.6	-7.2
Unemployment	5.7	5.8	0.4	0.1	-0.8	-0.4	1.8	-12.1	-6.5
Participation rate	60.0	60.0	0.5	0.0	-3.8	-5.3
Unemployment rate	8.0	8.1	0.5	0.1	-0.6	0.1
Employment rate	55.3	55.1	0.6	-0.2	-3.1	-4.9

See footnotes at the end of the table.

Table 5-1 – continued

Labour force characteristics by census metropolitan area (seasonally adjusted) — 3 month moving average

	July 2006	August 2006	S.E. ¹	Change from			Percent change from		
				last month	last December	twelve months ago	last month	last December	twelve months ago
in thousands (except rates)									
Sherbrooke, Quebec									
Population	135.1	135.3	...	0.2	1.1	1.8	0.1	0.8	1.3
Labour force	88.5	88.6	0.7	0.1	1.5	2.3	0.1	1.7	2.7
Employment	81.5	81.6	0.7	0.1	0.3	1.3	0.1	0.4	1.6
Unemployment	7.0	7.0	0.4	0.0	1.1	0.9	0.0	18.6	14.8
Participation rate	65.5	65.5	0.5	0.0	0.6	0.9
Unemployment rate	7.9	7.9	0.4	0.0	1.1	0.8
Employment rate	60.3	60.3	0.6	0.0	-0.3	0.2
Montréal, Quebec									
Population	3,002.2	3,005.5	...	3.3	24.0	37.6	0.1	0.8	1.3
Labour force	2,019.1	2,024.9	7.3	5.8	12.4	18.6	0.3	0.6	0.9
Employment	1,853.8	1,857.6	7.5	3.8	32.4	20.9	0.2	1.8	1.1
Unemployment	165.3	167.3	4.9	2.0	-20.0	-2.3	1.2	-10.7	-1.4
Participation rate	67.3	67.4	0.2	0.1	-0.1	-0.2
Unemployment rate	8.2	8.3	0.2	0.1	-1.0	-0.2
Employment rate	61.7	61.8	0.3	0.1	0.6	-0.1
Ottawa-Gatineau, Ontario/Quebec									
Population	943.2	944.0	...	0.8	6.0	11.1	0.1	0.6	1.2
Labour force	684.2	684.4	3.3	0.2	14.0	26.7	0.0	2.1	4.1
Employment	650.9	651.6	3.5	0.7	18.0	40.7	0.1	2.8	6.7
Unemployment	33.3	32.7	1.7	-0.6	-4.1	-14.0	-1.8	-11.1	-30.0
Participation rate	72.5	72.5	0.4	0.0	1.0	2.0
Unemployment rate	4.9	4.8	0.3	-0.1	-0.7	-2.3
Employment rate	69.0	69.0	0.4	0.0	1.5	3.5
Ottawa-Gatineau, Quebec part, Ontario/Quebec									
Population	235.5	235.8	...	0.3	2.8	5.0	0.1	1.2	2.2
Labour force	166.7	167.1	1.1	0.4	-5.3	2.0	0.2	-3.1	1.2
Employment	158.0	159.5	1.2	1.5	-2.8	4.9	0.9	-1.7	3.2
Unemployment	8.7	7.6	0.6	-1.1	-2.6	-2.9	-12.6	-25.5	-27.6
Participation rate	70.8	70.9	0.5	0.1	-3.1	-0.6
Unemployment rate	5.2	4.5	0.3	-0.7	-1.4	-1.9
Employment rate	67.1	67.6	0.5	0.5	-2.1	0.6
Ottawa-Gatineau, Ontario part, Ontario/Quebec									
Population	707.8	708.2	...	0.4	3.2	6.1	0.1	0.5	0.9
Labour force	517.5	517.2	3.1	-0.3	19.3	24.7	-0.1	3.9	5.0
Employment	492.9	492.1	3.3	-0.8	20.8	35.8	-0.2	4.4	7.8
Unemployment	24.6	25.2	1.6	0.6	-1.4	-11.0	2.4	-5.3	-30.4
Participation rate	73.1	73.0	0.4	-0.1	2.4	2.9
Unemployment rate	4.8	4.9	0.3	0.1	-0.4	-2.5
Employment rate	69.6	69.5	0.5	-0.1	2.6	4.5
Kingston, Ontario									
Population	125.8	126.0	...	0.2	0.5	1.1	0.2	0.4	0.9
Labour force	84.6	83.9	0.8	-0.7	4.4	2.5	-0.8	5.5	3.1
Employment	78.4	78.1	0.8	-0.3	2.1	2.7	-0.4	2.8	3.6
Unemployment	6.2	5.8	0.3	-0.4	2.3	-0.3	-6.5	65.7	-4.9
Participation rate	67.2	66.6	0.6	-0.6	3.3	1.4
Unemployment rate	7.3	6.9	0.4	-0.4	2.5	-0.6
Employment rate	62.3	62.0	0.6	-0.3	1.4	1.6

See footnotes at the end of the table.

Table 5-1 – continued

Labour force characteristics by census metropolitan area (seasonally adjusted) — 3 month moving average

	July 2006	August 2006	S.E. ¹	Change from			Percent change from		
				last month	last December	twelve months ago	last month	last December	twelve months ago
in thousands (except rates)									
Toronto, Ontario									
Population	4,370.5	4,377.8	...	7.3	56.6	91.2	0.2	1.3	2.1
Labour force	2,997.2	2,995.3	9.0	-1.9	0.9	7.2	-0.1	0.0	0.2
Employment	2,811.7	2,805.5	9.3	-6.2	0.6	27.7	-0.2	0.0	1.0
Unemployment	185.5	189.8	5.5	4.3	0.3	-20.5	2.3	0.2	-9.7
Participation rate	68.6	68.4	0.2	-0.2	-0.9	-1.3
Unemployment rate	6.2	6.3	0.2	0.1	0.0	-0.7
Employment rate	64.3	64.1	0.2	-0.2	-0.8	-0.7
Hamilton, Ontario									
Population	587.7	588.2	...	0.5	3.9	6.8	0.1	0.7	1.2
Labour force	398.4	396.9	3.0	-1.5	1.9	11.4	-0.4	0.5	3.0
Employment	375.9	372.5	3.0	-3.4	1.2	7.8	-0.9	0.3	2.1
Unemployment	22.5	24.4	1.3	1.9	0.8	3.5	8.4	3.4	16.7
Participation rate	67.8	67.5	0.5	-0.3	-0.1	1.2
Unemployment rate	5.6	6.1	0.3	0.5	0.1	0.7
Employment rate	64.0	63.3	0.5	-0.7	-0.2	0.6
Kitchener, Ontario									
Population	370.9	371.5	...	0.6	4.5	6.8	0.2	1.2	1.9
Labour force	260.4	261.4	1.9	1.0	-3.0	-4.5	0.4	-1.1	-1.7
Employment	248.0	248.5	1.9	0.5	-0.9	-1.8	0.2	-0.4	-0.7
Unemployment	12.5	12.9	0.9	0.4	-2.1	-2.7	3.2	-14.0	-17.3
Participation rate	70.2	70.4	0.5	0.2	-1.6	-2.5
Unemployment rate	4.8	4.9	0.3	0.1	-0.8	-1.0
Employment rate	66.9	66.9	0.5	0.0	-1.1	-1.7
London, Ontario									
Population	378.0	378.3	...	0.3	2.7	4.2	0.1	0.7	1.1
Labour force	259.8	258.4	1.8	-1.4	1.4	-2.0	-0.5	0.5	-0.8
Employment	244.0	240.4	1.9	-3.6	1.1	-2.7	-1.5	0.5	-1.1
Unemployment	15.8	18.0	0.9	2.2	0.3	0.7	13.9	1.7	4.0
Participation rate	68.7	68.3	0.5	-0.4	-0.1	-1.3
Unemployment rate	6.1	7.0	0.3	0.9	0.1	0.4
Employment rate	64.6	63.5	0.5	-1.1	-0.2	-1.5
Oshawa, Ontario									
Population	274.2	274.9	...	0.7	5.6	8.5	0.3	2.1	3.2
Labour force	192.6	193.9	1.5	1.3	5.6	6.3	0.7	3.0	3.4
Employment	180.2	181.4	1.6	1.2	5.6	6.1	0.7	3.2	3.5
Unemployment	12.3	12.5	0.7	0.2	0.0	0.2	1.6	0.0	1.6
Participation rate	70.2	70.5	0.5	0.3	0.6	0.1
Unemployment rate	6.4	6.4	0.4	0.0	-0.2	-0.2
Employment rate	65.7	66.0	0.6	0.3	0.7	0.2
St. Catharines-Niagara, Ontario									
Population	326.9	327.1	...	0.2	1.2	2.1	0.1	0.4	0.6
Labour force	205.8	207.8	1.6	2.0	6.7	-0.6	1.0	3.3	-0.3
Employment	193.8	195.4	1.6	1.6	8.4	3.8	0.8	4.5	2.0
Unemployment	11.9	12.5	0.8	0.6	-1.5	-4.4	5.0	-10.7	-26.0
Participation rate	63.0	63.5	0.5	0.5	1.8	-0.6
Unemployment rate	5.8	6.0	0.4	0.2	-1.0	-2.1
Employment rate	59.3	59.7	0.5	0.4	2.3	0.7

See footnotes at the end of the table.

Table 5-1 – continued

Labour force characteristics by census metropolitan area (seasonally adjusted) — 3 month moving average

	July 2006	August 2006	S.E. ¹	Change from			Percent change from		
				last month	last December	twelve months ago	last month	last December	twelve months ago
in thousands (except rates)									
Greater Sudbury / Grand Sudbury, Ontario									
Population	132.6	132.6	...	0.0	0.3	0.6	0.0	0.2	0.5
Labour force	84.8	86.3	0.8	1.5	5.6	5.2	1.8	6.9	6.4
Employment	79.3	79.9	0.8	0.6	5.1	5.6	0.8	6.8	7.5
Unemployment	5.5	6.4	0.4	0.9	0.5	-0.4	16.4	8.5	-5.9
Participation rate	64.0	65.1	0.6	1.1	4.1	3.7
Unemployment rate	6.5	7.4	0.4	0.9	0.1	-1.0
Employment rate	59.8	60.3	0.6	0.5	3.8	4.0
Thunder Bay, Ontario									
Population	104.3	104.3	...	0.0	0.1	0.4	0.0	0.1	0.4
Labour force	67.5	67.7	0.6	0.2	1.2	-1.6	0.3	1.8	-2.3
Employment	62.2	62.1	0.7	-0.1	-0.2	-2.2	-0.2	-0.3	-3.4
Unemployment	5.3	5.6	0.3	0.3	1.4	0.6	5.7	33.3	12.0
Participation rate	64.7	64.9	0.6	0.2	1.1	-1.8
Unemployment rate	7.9	8.3	0.5	0.4	2.0	1.1
Employment rate	59.6	59.5	0.6	-0.1	-0.3	-2.4
Windsor, Ontario									
Population	270.4	270.6	...	0.2	1.3	2.6	0.1	0.5	1.0
Labour force	183.0	186.3	1.4	3.3	10.6	12.7	1.8	6.0	7.3
Employment	167.3	170.2	1.5	2.9	6.5	10.1	1.7	4.0	6.3
Unemployment	15.7	16.1	0.8	0.4	4.1	2.6	2.5	34.2	19.3
Participation rate	67.7	68.8	0.5	1.1	3.6	4.0
Unemployment rate	8.6	8.6	0.4	0.0	1.8	0.8
Employment rate	61.9	62.9	0.6	1.0	2.1	3.2
Winnipeg, Manitoba									
Population	571.5	571.9	...	0.4	2.1	2.9	0.1	0.4	0.5
Labour force	399.9	400.7	1.4	0.8	8.5	8.0	0.2	2.2	2.0
Employment	383.0	383.6	1.4	0.6	8.3	10.9	0.2	2.2	2.9
Unemployment	16.9	17.1	0.8	0.2	0.2	-2.9	1.2	1.2	-14.5
Participation rate	70.0	70.1	0.2	0.1	1.3	1.1
Unemployment rate	4.2	4.3	0.2	0.1	0.0	-0.8
Employment rate	67.0	67.1	0.2	0.1	1.2	1.6
Regina, Saskatchewan									
Population	160.8	160.9	...	0.1	0.2	0.5	0.1	0.1	0.3
Labour force	114.6	116.2	0.7	1.6	4.3	1.2	1.4	3.8	1.0
Employment	108.8	110.5	0.7	1.7	4.3	1.2	1.6	4.0	1.1
Unemployment	5.8	5.7	0.3	-0.1	0.0	-0.1	-1.7	0.0	-1.7
Participation rate	71.3	72.2	0.4	0.9	2.6	0.5
Unemployment rate	5.1	4.9	0.3	-0.2	-0.2	-0.1
Employment rate	67.7	68.7	0.5	1.0	2.6	0.6
Saskatoon, Saskatchewan									
Population	188.0	188.2	...	0.2	0.4	0.8	0.1	0.2	0.4
Labour force	133.1	132.7	0.8	-0.4	1.0	0.8	-0.3	0.8	0.6
Employment	126.6	126.1	0.8	-0.5	1.7	0.4	-0.4	1.4	0.3
Unemployment	6.5	6.5	0.4	0.0	-0.9	0.3	0.0	-12.2	4.8
Participation rate	70.8	70.5	0.4	-0.3	0.4	0.1
Unemployment rate	4.9	4.9	0.3	0.0	-0.7	0.2
Employment rate	67.3	67.0	0.4	-0.3	0.8	-0.1

See footnotes at the end of the table.

Table 5-1 – continued

Labour force characteristics by census metropolitan area (seasonally adjusted) — 3 month moving average

	July 2006	August 2006	S.E. ¹	Change from			Percent change from		
				last month	last December	twelve months ago	last month	last December	twelve months ago
in thousands (except rates)									
Calgary, Alberta									
Population	885.1	887.9	...	2.8	22.6	31.7	0.3	2.6	3.7
Labour force	673.1	676.2	3.2	3.1	34.4	46.3	0.5	5.4	7.4
Employment	648.5	651.8	3.2	3.3	38.7	43.6	0.5	6.3	7.2
Unemployment	24.6	24.3	1.4	-0.3	-4.4	2.7	-1.2	-15.3	12.5
Participation rate	76.0	76.2	0.4	0.2	2.0	2.6
Unemployment rate	3.7	3.6	0.2	-0.1	-0.9	0.2
Employment rate	73.3	73.4	0.4	0.1	2.5	2.4
Edmonton, Alberta									
Population	835.7	838.0	...	2.3	18.0	24.7	0.3	2.2	3.0
Labour force	584.8	588.6	3.2	3.8	20.2	15.5	0.6	3.6	2.7
Employment	562.5	563.4	3.2	0.9	20.1	17.4	0.2	3.7	3.2
Unemployment	22.4	25.2	1.4	2.8	0.1	-1.9	12.5	0.4	-7.0
Participation rate	70.0	70.2	0.4	0.2	0.9	-0.3
Unemployment rate	3.8	4.3	0.2	0.5	-0.1	-0.4
Employment rate	67.3	67.2	0.4	-0.1	0.9	0.1
Abbotsford, British Columbia									
Population	128.1	128.4	...	0.3	2.6	3.4	0.2	2.1	2.7
Labour force	84.4	84.4	0.8	0.0	-1.0	3.3	0.0	-1.2	4.1
Employment	80.3	81.1	0.8	0.8	0.5	3.7	1.0	0.6	4.8
Unemployment	4.1	3.3	0.3	-0.8	-1.5	-0.4	-19.5	-31.2	-10.8
Participation rate	65.9	65.7	0.6	-0.2	-2.2	0.8
Unemployment rate	4.9	3.9	0.4	-1.0	-1.7	-0.7
Employment rate	62.7	63.2	0.6	0.5	-0.9	1.3
Vancouver, British Columbia									
Population	1,861.0	1,864.0	...	3.0	23.7	38.0	0.2	1.3	2.1
Labour force	1,242.8	1,246.8	4.7	4.0	19.0	26.5	0.3	1.5	2.2
Employment	1,191.8	1,197.6	4.7	5.8	27.8	49.6	0.5	2.4	4.3
Unemployment	51.0	49.2	2.4	-1.8	-8.8	-23.1	-3.5	-15.2	-32.0
Participation rate	66.8	66.9	0.3	0.1	0.2	0.1
Unemployment rate	4.1	3.9	0.2	-0.2	-0.8	-2.0
Employment rate	64.0	64.2	0.3	0.2	0.6	1.3
Victoria, British Columbia									
Population	278.1	278.6	...	0.5	3.7	5.3	0.2	1.3	1.9
Labour force	181.8	181.4	1.4	-0.4	4.4	3.3	-0.2	2.5	1.9
Employment	175.4	176.0	1.5	0.6	6.7	4.3	0.3	4.0	2.5
Unemployment	6.4	5.4	0.6	-1.0	-2.2	-0.9	-15.6	-28.9	-14.3
Participation rate	65.4	65.1	0.5	-0.3	0.7	-0.1
Unemployment rate	3.5	3.0	0.3	-0.5	-1.3	-0.5
Employment rate	63.1	63.2	0.5	0.1	1.6	0.4

1. Average standard error of change in two consecutive months (see "Sampling Errors" in Data Quality for further explanations).

Note(s): Related CANSIM table 282-0090

Table 5-2
Labour force characteristics by census metropolitan area (seasonally adjusted) — Monthly

	July 2006	August 2006	S.E. ¹	Change from			Percent change from		
				last month	last December	twelve months ago	last month	last December	twelve months ago
in thousands (except rates)									
Montréal, Quebec									
Population	3,005.3	3,008.6	...	3.3	24.4	37.1	0.1	0.8	1.2
Labour force	2,033.6	2,012.9	15.3	-20.7	-5.5	-1.0	-1.0	-0.3	0.0
Employment	1,861.6	1,850.4	15.2	-11.2	26.8	11.2	-0.6	1.5	0.6
Unemployment	172.0	162.5	11.6	-9.5	-32.3	-12.2	-5.5	-16.6	-7.0
Participation rate	67.7	66.9	0.5	-0.8	-0.7	-0.9
Unemployment rate	8.5	8.1	0.6	-0.4	-1.6	-0.6
Employment rate	61.9	61.5	0.5	-0.4	0.4	-0.4
Toronto, Ontario									
Population	4,377.3	4,385.1	...	7.8	57.0	88.8	0.2	1.3	2.1
Labour force	3,008.6	2,985.9	18.7	-22.7	14.6	4.3	-0.8	0.5	0.1
Employment	2,814.2	2,792.9	18.9	-21.3	9.1	7.4	-0.8	0.3	0.3
Unemployment	194.4	193.0	13.2	-1.4	5.4	-3.0	-0.7	2.9	-1.5
Participation rate	68.7	68.1	0.4	-0.6	-0.6	-1.3
Unemployment rate	6.5	6.5	0.4	0.0	0.2	-0.1
Employment rate	64.3	63.7	0.4	-0.6	-0.6	-1.1
Vancouver, British Columbia									
Population	1,863.8	1,866.9	...	3.1	23.5	37.3	0.2	1.3	2.0
Labour force	1,252.7	1,251.9	9.9	-0.8	21.2	35.0	-0.1	1.7	2.9
Employment	1,202.3	1,204.0	9.9	1.7	32.8	58.7	0.1	2.8	5.1
Unemployment	50.5	47.8	5.8	-2.7	-11.7	-23.8	-5.3	-19.7	-33.2
Participation rate	67.2	67.1	0.5	-0.1	0.3	0.6
Unemployment rate	4.0	3.8	0.5	-0.2	-1.0	-2.1
Employment rate	64.5	64.5	0.5	0.0	1.0	1.9

1. Average standard error of change in two consecutive months (see "Sampling Errors" in Data Quality for further explanations).

Note(s): Related CANSIM table 282-0091

Table 6-1

Labour force characteristics by province and economic region¹, unadjusted for seasonality, 3 month moving average ending in August 2005 and August 2006

	Population	Labour force			Participation rate	Unemployment rate	Employment rate
		Labour force	Employment	Unemployment			
in thousands							
Canada ²							
2005	25,821.9	17,712.5	16,509.0	1,203.5	68.6	6.8	63.9
2006	26,199.5	17,981.1	16,834.5	1,146.6	68.6	6.4	64.3
Newfoundland and Labrador							
2005	429.4	269.4	233.6	35.8	62.7	13.3	54.4
2006	427.4	267.4	232.8	34.6	62.6	12.9	54.5
<i>Avalon Peninsula [1010]</i>							
2005	209.1	135.4	119.8	15.6	64.8	11.5	57.3
2006	209.8	138.4	123.7	14.6	66.0	10.5	59.0
<i>South Coast-Burin Peninsula [1020]</i>							
2005	34.4	18.8	14.8	4.0	54.7	21.3	43.0
2006	33.6	20.1	16.2	4.0	59.8	19.9	48.2
<i>West Coast-Northern Peninsula-Labrador [1030]</i>							
2005	89.3	56.6	48.9	7.7	63.4	13.6	54.8
2006	88.4	55.6	46.9	8.7	62.9	15.6	53.1
<i>Notre Dame-Central Bonavista Bay [1040]</i>							
2005	96.7	58.7	50.2	8.5	60.7	14.5	51.9
2006	95.5	53.2	45.9	7.3	55.7	13.7	48.1
Prince Edward Island							
2005	111.6	80.6	73.7	6.9	72.2	8.6	66.0
2006	112.3	80.7	74.1	6.7	71.9	8.3	66.0
Nova Scotia							
2005	760.7	496.1	459.0	37.1	65.2	7.5	60.3
2006	762.8	491.2	453.4	37.8	64.4	7.7	59.4
<i>Cape Breton [1210]</i>							
2005	117.5	69.8	61.0	8.7	59.4	12.5	51.9
2006	116.9	65.1	56.9	8.3	55.7	12.7	48.7
<i>North Shore [1220]</i>							
2005	131.2	82.3	77.0	5.3	62.7	6.4	58.7
2006	131.1	83.5	76.4	7.0	63.7	8.4	58.3
<i>Annapolis Valley [1230]</i>							
2005	99.3	61.9	57.4	4.5	62.3	7.3	57.8
2006	99.7	60.3	55.4	4.9	60.5	8.1	55.6
<i>Southern [1240]</i>							
2005	103.8	64.4	57.4	7.0	62.0	10.9	55.3
2006	103.7	61.9	55.3	6.5	59.7	10.5	53.3
<i>Halifax [1250]</i>							
2005	309.0	217.8	206.2	11.5	70.5	5.3	66.7
2006	311.3	220.4	209.4	11.0	70.8	5.0	67.3
New Brunswick							
2005	610.4	403.8	366.7	37.1	66.2	9.2	60.1
2006	611.4	404.2	371.1	33.0	66.1	8.2	60.7
<i>Campbellton-Miramichi [1310]</i>							
2005	137.8	86.0	74.8	11.2	62.4	13.0	54.3
2006	136.6	83.2	73.5	9.7	60.9	11.7	53.8
<i>Moncton-Richibucto [1320]</i>							
2005	160.1	111.3	103.6	7.7	69.5	6.9	64.7
2006	161.6	111.2	103.7	7.5	68.8	6.7	64.2
<i>Saint John-St. Stephen [1330]</i>							
2005	141.0	90.7	83.0	7.8	64.3	8.6	58.9
2006	141.4	91.9	85.4	6.5	65.0	7.1	60.4

See footnotes at the end of the table.

Table 6-1 – continued

Labour force characteristics by province and economic region¹, unadjusted for seasonality, 3 month moving average ending in August 2005 and August 2006

	Population	Labour force			Participation rate	Unemployment rate	Employment rate
		Labour force	Employment	Unemployment			
in thousands							
Fredericton-Oromocto [1340]							
2005	102.9	72.5	66.0	6.5	70.5	9.0	64.1
2006	103.5	72.7	67.3	5.4	70.2	7.4	65.0
Edmundston-Woodstock [1350]							
2005	68.5	43.3	39.4	3.9	63.2	9.0	57.5
2006	68.2	45.2	41.2	3.9	66.3	8.6	60.4
Quebec							
2005	6,185.0	4,141.3	3,816.1	325.2	67.0	7.9	61.7
2006	6,254.4	4,181.8	3,863.7	318.1	66.9	7.6	61.8
Gaspésie-Îles-de-la-Madeleine [2410]							
2005	80.4	44.0	38.0	6.0	54.7	13.6	47.3
2006	80.7	45.4	39.5	5.9	56.3	13.0	48.9
Bas-Saint-Laurent [2415]							
2005	166.7	106.4	98.5	7.9	63.8	7.4	59.1
2006	167.1	105.5	98.0	7.6	63.1	7.2	58.6
Capitale-Nationale [2420]							
2005	554.5	377.9	352.3	25.6	68.2	6.8	63.5
2006	559.9	374.2	356.6	17.6	66.8	4.7	63.7
Chaudière-Appalaches [2425]							
2005	322.3	222.8	210.4	12.3	69.1	5.5	65.3
2006	325.1	224.2	211.0	13.2	69.0	5.9	64.9
Estrie [2430]							
2005	244.1	159.8	149.8	9.9	65.5	6.2	61.4
2006	246.5	163.2	151.7	11.5	66.2	7.0	61.5
Centre-du-Québec [2433]							
2005	182.1	124.0	114.3	9.6	68.1	7.7	62.8
2006	183.9	123.9	115.5	8.4	67.4	6.8	62.8
Montérégie [2435]							
2005	1,096.3	742.5	693.8	48.8	67.7	6.6	63.3
2006	1,110.7	760.7	703.2	57.6	68.5	7.6	63.3
Montréal [2440]							
2005	1,570.0	1,047.9	939.7	108.2	66.7	10.3	59.9
2006	1,584.0	1,060.7	954.4	106.3	67.0	10.0	60.3
Laval [2445]							
2005	300.0	205.4	187.9	17.5	68.5	8.5	62.6
2006	304.7	206.8	194.1	12.7	67.9	6.1	63.7
Lanaudière [2450]							
2005	336.5	233.9	221.2	12.7	69.5	5.4	65.7
2006	344.3	231.9	220.2	11.8	67.4	5.1	64.0
Laurentides [2455]							
2005	407.1	278.3	257.0	21.3	68.4	7.7	63.1
2006	416.4	280.2	261.5	18.6	67.3	6.6	62.8
Outaouais [2460]							
2005	279.9	196.3	183.2	13.0	70.1	6.6	65.5
2006	285.3	198.7	189.1	9.5	69.6	4.8	66.3
Abitibi-Témiscamingue [2465]							
2005	115.1	72.0	66.9	5.0	62.6	6.9	58.1
2006	115.4	74.2	66.9	7.3	64.3	9.8	58.0
Mauricie [2470]							
2005	215.3	133.8	123.8	10.1	62.1	7.5	57.5
2006	216.5	128.9	116.8	12.1	59.5	9.4	53.9

See footnotes at the end of the table.

Table 6-1 – continued

Labour force characteristics by province and economic region¹, unadjusted for seasonality, 3 month moving average ending in August 2005 and August 2006

	Population	Labour force			Participation rate	Unemployment rate	Employment rate
		Labour force	Employment	Unemployment			
in thousands							
Saguenay-Lac-Saint-Jean [2475]							
2005	224.7	137.9	125.6	12.3	61.4	8.9	55.9
2006	224.4	144.2	130.0	14.2	64.3	9.8	57.9
Côte-Nord and Nord-du-Québec [2480, 2490]							
2005	90.0	58.5	53.4	5.1	65.0	8.7	59.3
2006	89.6	58.9	55.2	3.7	65.7	6.3	61.6
Ontario							
2005	10,079.6	6,995.1	6,499.5	495.6	69.4	7.1	64.5
2006	10,236.3	7,086.2	6,610.5	475.6	69.2	6.7	64.6
Ottawa [3510]							
2005	970.1	671.7	620.1	51.6	69.2	7.7	63.9
2006	978.9	696.7	657.4	39.2	71.2	5.6	67.2
Kingston-Pembroke [3515]							
2005	355.2	225.4	212.6	12.8	63.5	5.7	59.9
2006	357.9	222.2	207.5	14.7	62.1	6.6	58.0
Muskoka-Kawarthas [3520]							
2005	302.2	188.0	177.0	11.1	62.2	5.9	58.6
2006	306.3	200.1	189.1	11.0	65.3	5.5	61.7
Toronto [3530]							
2005	4,516.1	3,209.9	2,961.8	248.2	71.1	7.7	65.6
2006	4,613.0	3,221.8	2,990.8	231.0	69.8	7.2	64.8
Kitchener-Waterloo-Barrie [3540]							
2005	930.9	686.4	648.5	38.0	73.7	5.5	69.7
2006	950.5	700.9	663.4	37.5	73.7	5.4	69.8
Hamilton-Niagara Peninsula [3550]							
2005	1,110.1	749.9	702.2	47.7	67.6	6.4	63.3
2006	1,123.1	759.9	712.1	47.8	67.7	6.3	63.4
London [3560]							
2005	500.8	356.1	333.7	22.4	71.1	6.3	66.6
2006	506.3	353.6	330.8	22.8	69.8	6.4	65.3
Windsor-Sarnia [3570]							
2005	519.3	343.6	317.0	26.5	66.2	7.7	61.0
2006	522.9	363.1	331.7	31.4	69.4	8.6	63.4
Stratford-Bruce Peninsula [3580]							
2005	244.8	166.0	159.0	7.1	67.8	4.3	65.0
2006	246.6	171.1	162.4	8.7	69.4	5.1	65.9
Northeast [3590]							
2005	452.6	279.2	257.7	21.5	61.7	7.7	56.9
2006	453.4	281.7	259.7	22.0	62.1	7.8	57.3
Northwest [3595]							
2005	177.6	118.9	110.0	8.8	66.9	7.4	61.9
2006	177.2	115.1	105.6	9.6	65.0	8.3	59.6
Manitoba							
2005	889.3	618.2	588.5	29.7	69.5	4.8	66.2
2006	892.6	623.0	595.8	27.2	69.8	4.4	66.7
Southeast [4610]							
2005	73.4	56.3	53.6	2.7	76.7	4.8	73.0
2006	74.8	54.0	52.0	2.0	72.2	3.7	69.5
South Central [4620]							
2005	42.1	28.7	27.9	0.7	68.2	2.4	66.3
2006	42.4	28.7	27.5	1.2	67.7	4.2	64.9

See footnotes at the end of the table.

Table 6-1 – continued

Labour force characteristics by province and economic region¹, unadjusted for seasonality, 3 month moving average ending in August 2005 and August 2006

	Population	Labour force			Participation rate	Unemployment rate	Employment rate
		Labour force	Employment	Unemployment			
in thousands							
Southwest [4630]							
2005	81.8	51.7	50.0	1.7	63.2	3.3	61.1
2006	81.8	51.3	49.6	1.7	62.7	3.3	60.6
North Central [4640]							
2005	35.3	23.7	23.2	0.5	67.1	2.1	65.7
2006	35.5	23.9	23.2	0.6	67.3	2.5	65.4
Winnipeg [4650]							
2005	527.1	367.0	346.6	20.4	69.6	5.6	65.8
2006	529.2	375.7	357.5	18.2	71.0	4.8	67.6
Interlake [4660]							
2005	68.1	47.0	44.9	2.0	69.0	4.3	65.9
2006	68.7	46.7	45.8	1.0	68.0	2.1	66.7
Parklands and North [4670, 4680]							
2005	61.5	43.9	42.2	1.7	71.4	3.9	68.6
2006	60.1	42.7	40.3	2.4	71.0	5.6	67.1
Saskatchewan							
2005	748.7	521.5	495.9	25.6	69.7	4.9	66.2
2006	745.9	528.8	503.2	25.5	70.9	4.8	67.5
Regina-Moose Mountain [4710]							
2005	219.2	157.8	150.8	7.1	72.0	4.5	68.8
2006	219.0	157.1	150.4	6.7	71.7	4.3	68.7
Swift Current-Moose Jaw [4720]							
2005	83.1	56.2	53.6	2.6	67.6	4.6	64.5
2006	82.5	58.8	55.6	3.2	71.3	5.4	67.4
Saskatoon-Biggar [4730]							
2005	230.6	166.0	158.5	7.5	72.0	4.5	68.7
2006	230.8	168.0	160.0	8.0	72.8	4.8	69.3
Yorkton-Melville [4740]							
2005	65.8	42.5	41.0	1.5	64.6	3.5	62.3
2006	64.6	43.1	41.1	2.0	66.7	4.6	63.6
Prince Albert and Northern [4750, 4760]							
2005	150.1	99.0	92.1	6.9	66.0	7.0	61.4
2006	149.2	101.8	96.1	5.7	68.2	5.6	64.4
Alberta							
2005	2,557.0	1,884.9	1,813.5	71.4	73.7	3.8	70.9
2006	2,642.5	1,979.8	1,904.3	75.6	74.9	3.8	72.1
Lethbridge-Medicine Hat [4810]							
2005	195.0	147.2	141.8	5.4	75.5	3.7	72.7
2006	200.4	145.5	141.1	4.4	72.6	3.0	70.4
Camrose-Drumheller [4820]							
2005	147.3	105.8	102.9	2.9	71.8	2.7	69.9
2006	150.8	117.0	113.5	3.5	77.6	3.0	75.3
Calgary [4830]							
2005	919.7	686.6	664.3	22.3	74.7	3.2	72.2
2006	954.8	737.9	711.3	26.6	77.3	3.6	74.5
Banff-Jasper-Rocky Mountain House [4840]							
2005	64.6	49.7	48.7	x	76.9	x	75.4
2006	66.0	50.4	49.2	x	76.4	x	74.5
Red Deer [4850]							
2005	130.9	97.5	93.8	3.7	74.5	3.8	71.7
2006	136.1	103.7	99.6	4.1	76.2	4.0	73.2

See footnotes at the end of the table.

Table 6-1 – continued

Labour force characteristics by province and economic region¹, unadjusted for seasonality, 3 month moving average ending in August 2005 and August 2006

	Population	Labour force			Participation rate	Unemployment rate	Employment rate
		Labour force	Employment	Unemployment			
in thousands							
Edmonton [4860]							
2005	844.0	605.0	576.4	28.6	71.7	4.7	68.3
2006	869.9	622.4	595.3	27.1	71.5	4.4	68.4
Athabasca-Grande Prairie-Peace River [4870]							
2005	172.2	131.9	127.1	4.7	76.6	3.6	73.8
2006	177.3	137.6	132.2	5.4	77.6	3.9	74.6
Wood Buffalo-Cold Lake [4880]							
2005	83.3	61.3	58.4	2.9	73.6	4.7	70.1
2006	87.1	65.3	62.1	3.2	75.0	4.9	71.3
British Columbia							
2005	3,450.1	2,301.6	2,162.4	139.2	66.7	6.0	62.7
2006	3,514.0	2,338.0	2,225.6	112.4	66.5	4.8	63.3
Vancouver Island and Coast [5910]							
2005	601.3	383.6	361.8	21.9	63.8	5.7	60.2
2006	612.6	390.7	372.9	17.8	63.8	4.6	60.9
Lower Mainland-Southwest [5920]							
2005	2,076.9	1,405.6	1,316.5	89.1	67.7	6.3	63.4
2006	2,121.3	1,429.5	1,364.9	64.6	67.4	4.5	64.3
Thompson-Okanagan [5930]							
2005	404.6	262.7	248.9	13.8	64.9	5.3	61.5
2006	414.3	270.5	254.4	16.1	65.3	6.0	61.4
Kootenay [5940]							
2005	122.2	74.3	70.4	3.9	60.8	5.2	57.6
2006	122.2	76.7	72.0	4.7	62.8	6.1	58.9
Cariboo [5950]							
2005	126.8	86.3	80.3	6.0	68.1	7.0	63.3
2006	125.7	89.2	83.7	5.5	71.0	6.2	66.6
North Coast and Nechako [5960, 5970]							
2005	68.7	52.9	50.0	3.0	77.0	5.7	72.8
2006	67.4	46.8	44.2	2.6	69.4	5.6	65.6
Northeast [5980]							
2005	49.7	36.2	34.6	1.6	72.8	4.4	69.6
2006	50.6	34.7	33.5	x	68.6	x	66.2

1. For geographic descriptions of economic regions, refer to the Guide to the Labour Force Survey (catalogue number 71-543-GIE).

2. Estimates for Canada are a sum of the provincial totals and exclude estimates from Yukon Territory, Northwest Territories and Nunavut.

Note(s): Related CANSIM table 282-0054.

Table 6-2
Labour force characteristics by territories, unadjusted for seasonality, 3 month moving average ending in August 2005 and August 2006

	Population	Labour force			Participation rate	Unemployment rate	Employment rate
		Labour force	Employment	Unemployment			
in thousands							
Yukon Territory ¹							
2005	21.5	17.1	16.2	0.9	79.5	5.3	75.3
2006	21.5	17.2	16.4	0.8	80.0	4.7	76.3
Northwest Territories ²							
2005	31.4	24.9	23.5	1.4	79.3	5.6	74.8
2006	30.9	24.5	23.1	1.4	79.3	5.7	74.8
Nunavut - 10 largest communities ³							
2005	13.7	8.8	7.4	1.4	64.6	16.4	54.0
2006	13.9	9.2	8.1	1.1	66.5	11.5	58.8

1. Since 1992, the Labour force survey has been administered in the Yukon Territory, using an alternative methodology that accommodates some of the operational difficulties inherent to remote locales. These estimates are not included in national totals.
2. Since 2001, the Labour force survey has been administered in the Northwest Territories, using an alternative methodology that accommodates some of the operational difficulties inherent to remote locales. These estimates are not included in national totals.
3. Since 2004, the Labour force survey has been administered in Nunavut, using an alternative methodology that accommodates some of the operational difficulties inherent to remote locales. These estimates are not included in national totals. The 10 largest communities are Iqaluit, Cambridge Bay, Baker Lake, Arviat, Rankin Inlet, Kugluktuk, Pond Inlet, Cape Dorset, Pangnirtung, Igloolik.

Note(s): Related CANSIM table 282-0054.

Table 7
Average usual hours and wages of employees by selected characteristics, Canada, unadjusted for seasonality

	Employees				Full-time			Part-time		
	Number	Average weekly hours	Average weekly wages	Average hourly wages	Number	Average weekly hours	Average weekly wages	Number	Average weekly hours	Average weekly wages
	'000		\$		'000		\$	'000		\$
August 2006										
15 years and over	14,284.5	36.6	734.85	19.58	12,242.6	39.6	812.91	2,041.9	18.8	266.81
15 to 24 years	2,751.9	32.5	382.82	11.28	1,910.1	38.9	477.46	841.9	18.0	168.09
25 years and over	11,532.6	37.6	818.85	21.56	10,332.6	39.8	874.92	1,200.0	19.4	336.07
Men	7,383.2	39.1	839.35	21.17	6,788.7	40.9	892.08	594.5	18.1	237.32
Women	6,901.3	34.1	623.05	17.88	5,454.0	38.0	714.37	1,447.3	19.1	278.93
Union coverage										
Union coverage	4,358.4	36.8	843.71	22.75	3,880.8	38.8	898.82	477.6	20.3	395.90
No union coverage	9,926.1	36.6	687.05	18.19	8,361.9	40.0	773.03	1,564.2	18.4	227.39
Job permanency										
Permanent	12,104.8	37.1	778.84	20.56	10,644.5	39.6	846.10	1,460.3	19.3	288.54
Temporary	2,179.7	33.9	490.54	14.12	1,598.2	39.9	591.80	581.5	17.5	212.25
Occupation										
Management	1,031.6	40.3	1,257.65	31.45	1,005.7	40.8	1,273.74	26.0	20.9	634.15
Business, finance and administrative	2,769.6	35.8	684.28	18.81	2,420.8	38.3	741.90	348.8	18.6	284.36
Natural and applied sciences	1,005.9	39.0	1,084.77	27.90	982.3	39.4	1,098.93	23.6	19.1	495.02
Health	874.4	33.6	769.83	22.88	665.9	37.7	864.85	208.6	20.7	466.46
Social science, education, government service and religion	1,152.2	35.9	909.63	25.40	996.7	38.5	980.34	155.5	19.1	456.43
Art, culture, recreation and sport	348.0	35.6	686.76	18.99	292.6	39.1	771.47	55.4	17.1	239.74
Sales and service	3,535.0	32.5	446.93	13.05	2,472.8	38.5	557.44	1,062.2	18.8	189.65
Trades, transport and equipment operators	2,149.9	41.0	796.31	19.32	2,065.4	41.9	819.54	84.4	17.5	228.08
Occupations unique to primary industry	391.6	42.7	658.22	15.01	348.5	46.0	718.07	43.1	15.9	174.64
Occupations unique to processing, manufacturing and utilities	1,026.3	39.5	685.28	17.19	992.0	40.2	701.22	34.3	18.2	224.32
August 2005										
15 years and over	13,991.1	36.6	708.11	18.89	11,912.7	39.7	786.58	2,078.4	18.9	258.36
15 to 24 years	2,693.8	32.4	366.21	10.85	1,845.0	39.1	459.73	848.8	18.0	162.93
25 years and over	11,297.3	37.6	789.64	20.80	10,067.6	39.8	846.48	1,229.6	19.6	324.23
Men	7,226.1	39.1	811.97	20.45	6,649.0	40.9	863.05	577.1	18.4	223.42
Women	6,765.1	33.9	597.19	17.22	5,263.7	38.1	690.00	1,501.3	19.1	271.79
Union coverage										
Union coverage	4,380.8	36.8	816.99	22.06	3,868.9	39.0	874.20	511.9	20.1	384.61
No union coverage	9,610.3	36.5	658.48	17.44	8,043.8	40.0	744.44	1,566.5	18.5	217.10
Job permanency										
Permanent	11,851.8	37.1	748.52	19.77	10,372.3	39.6	815.46	1,479.5	19.5	279.17
Temporary	2,139.4	33.7	484.29	13.98	1,540.4	40.1	592.13	599.0	17.4	206.96
Occupation										
Management	973.5	40.2	1,180.81	29.52	950.7	40.6	1,198.91	22.7	19.9	424.30
Business, finance and administrative	2,717.0	35.6	656.79	18.10	2,353.4	38.2	716.75	363.7	18.8	268.75
Natural and applied sciences	987.5	38.9	1,044.71	26.89	963.8	39.4	1,060.62	23.7	18.8	398.39
Health	867.3	33.5	751.29	22.36	650.8	37.9	854.99	216.5	20.3	439.64
Social science, education, government service and religion	1,090.6	36.0	903.30	24.99	934.7	38.8	974.80	155.8	19.3	474.41
Art, culture, recreation and sport	359.1	34.6	654.30	18.53	286.8	39.2	749.63	72.3	16.6	276.22
Sales and service	3,452.1	32.6	443.93	12.89	2,400.6	38.6	558.16	1,051.6	18.8	183.16
Trades, transport and equipment operators	2,095.1	41.0	761.11	18.50	1,999.2	42.0	786.37	95.9	19.0	234.60
Occupations unique to primary industry	367.3	43.0	633.09	14.54	333.4	45.5	678.32	33.8	18.5	187.18
Occupations unique to processing, manufacturing and utilities	1,081.7	39.5	656.75	16.53	1,039.3	40.3	674.26	42.4	18.7	227.16

Note(s): Related CANSIM tables 282-0023, 282-0069, 282-0073

Table 8
Regional unemployment rates used by the Employment Insurance Program,¹ seasonally adjusted, 3 month moving average

Region	Effective from September 10, 2006 to October 7, 2006
	Unemployment rate
	Percent
Newfoundland and Labrador	
01. St. John's	8.0
02. Newfoundland and Labrador	19.9
Prince Edward Island	
03. Prince Edward Island	11.0
Nova Scotia	
04. Eastern Nova Scotia	14.4
05. Western Nova Scotia	9.7
06. Halifax	5.3
New Brunswick	
07. Fredericton-Moncton-Saint John	6.2
08. Madawaska-Charlotte ²	10.6
09. Restigouche-Albert	14.2
Quebec	
10. Gaspésie-Îles-de-la-Madeleine	17.6
11. Québec	4.7
12. Trois-Rivières	8.4
13. South Central Quebec	6.2
14. Sherbrooke	7.9
15. Montérégie	8.5
16. Montréal	8.3
17. Central Quebec	9.3
18. Northwestern Quebec	12.2
19. Bas-Saint-Laurent-Côte-Nord ³	11.4
20. Gatineau	4.6
21. Saguenay	9.2
Ontario	
22. Ottawa	4.8
23. Eastern Ontario	6.8
24. Kingston	6.9
25. Central Ontario	6.5
26. Oshawa	6.4
27. Toronto	6.3
28. Hamilton	6.1
29. St. Catharines	6.0
30. London	7.0
31. Niagara	8.0
32. Windsor	9.0
33. Kitchener	5.0
34. Huron	7.5
35. South Central Ontario	4.7
36. Sudbury	6.9
37. Thunder Bay	8.3
38. Northern Ontario	10.7
Manitoba	
39. Winnipeg	4.3
40. Southern Manitoba	4.9
41. Northern Manitoba	25.8

See footnotes at the end of the table.

Table 8 – continued

Regional unemployment rates used by the Employment Insurance Program,¹ seasonally adjusted, 3 month moving average

Region	Effective from September 10, 2006 to October 7, 2006
	Unemployment rate
	Percent
Saskatchewan	
42. Regina	4.8
43. Saskatoon	5.0
44. Southern Saskatchewan	6.9
45. Northern Saskatchewan	13.6
Alberta	
46. Calgary	3.6
47. Edmonton	4.5
48. Northern Alberta	8.6
49. Southern Alberta	4.5
British Columbia	
50. Southern Interior British Columbia	7.2
51. Abbotsford	3.9
52. Vancouver	4.0
53. Victoria	3.8
54. Southern Coastal British Columbia	6.5
55. Northern British Columbia	8.5
Territories	
56. Yukon Territory ⁴	25.0
57. Northwest Territories ⁴	25.0
58. Nunavut ⁴	25.0

1. The boundaries of these regions are determined by Human Resources and Skills Development Canada (HRSDC). For geographic descriptions and maps of employment insurance regions, see the HRSDC website: <http://www14.hrdc-drhc.gc.ca/ei-ae/canadaei.htm>.
2. This unemployment rate has been determined using a transition formula prescribed in the EI Regulations. For further information, see: http://www.hrsdc.gc.ca/en/cs/comm/news/2000/000913a_e.shtml.
3. This unemployment rate has been determined using a transition formula prescribed in the EI Regulations. For further information, see: http://www.hrsdc.gc.ca/en/cs/comm/news/2000/000913b_e.shtml.
4. This rate is provided by Human Resources and Skills Development Canada.

Table 9-1
Students and other persons aged 15 to 24 (unadjusted) by detailed age groups

	August 2004	August 2005	August 2006	S.E. ¹	Change from		Percent change from	
					last year	two years ago	last year	two years ago
in thousands								
Students 15 to 24 years²								
Population	2,294.0	2,324.8	2,325.7	28.6	0.9	31.7	0.0	1.4
Labour force	1,473.1	1,464.4	1,500.5	29.5	36.1	27.4	2.5	1.9
Employment	1,281.0	1,275.8	1,306.6	28.4	30.8	25.6	2.4	2.0
Full-time employment	631.7	652.7	679.4	20.3	26.7	47.7	4.1	7.6
Part-time employment	649.3	623.1	627.2	22.9	4.1	-22.1	0.7	-3.4
Unemployment	192.2	188.6	194.0	13.8	5.4	1.8	2.9	0.9
Participation rate	64.2	63.0	64.5	1.0	1.5	0.3
Unemployment rate	13.0	12.9	12.9	1.0	0.0	-0.1
Employment rate	55.8	54.9	56.2	1.0	1.3	0.4
Part-time rate	50.7	48.8	48.0	1.4	-0.8	-2.7
Students 15 to 16 years²								
Population	783.7	805.3	830.6	5.4	25.3	46.9	3.1	6.0
Labour force	366.5	374.9	399.3	12.8	24.4	32.8	6.5	8.9
Employment	287.9	297.9	308.5	11.7	10.6	20.6	3.6	7.2
Full-time employment	83.1	93.1	94.7	5.2	1.6	11.6	1.7	14.0
Part-time employment	204.8	204.7	213.8	11.1	9.1	9.0	4.4	4.4
Unemployment	78.6	77.0	90.7	7.7	13.7	12.1	17.8	15.4
Participation rate	46.8	46.6	48.1	1.6	1.5	1.3
Unemployment rate	21.4	20.5	22.7	2.1	2.2	1.3
Employment rate	36.7	37.0	37.1	1.5	0.1	0.4
Part-time rate	71.1	68.7	69.3	1.8	0.6	-1.8
Students 17 to 19 years²								
Population	850.1	845.3	842.1	15.6	-3.2	-8.0	-0.4	-0.9
Labour force	608.5	588.5	604.0	16.4	15.5	-4.5	2.6	-0.7
Employment	529.2	510.1	527.9	16.0	17.8	-1.3	3.5	-0.2
Full-time employment	249.6	242.6	257.3	10.9	14.7	7.7	6.1	3.1
Part-time employment	279.6	267.5	270.7	14.1	3.2	-8.9	1.2	-3.2
Unemployment	79.3	78.5	76.1	8.7	-2.4	-3.2	-3.1	-4.0
Participation rate	71.6	69.6	71.7	1.5	2.1	0.1
Unemployment rate	13.0	13.3	12.6	1.5	-0.7	-0.4
Employment rate	62.3	60.3	62.7	1.6	2.4	0.4
Part-time rate	52.8	52.4	51.3	1.9	-1.2	-1.6
Students 20 to 24 years²								
Population	660.2	674.1	653.0	22.5	-21.1	-7.2	-3.1	-1.1
Labour force	498.2	501.0	497.3	20.4	-3.7	-0.9	-0.7	-0.2
Employment	463.9	467.9	470.1	19.7	2.2	6.2	0.5	1.3
Full-time employment	298.9	317.0	327.5	15.8	10.5	28.6	3.3	9.6
Part-time employment	165.0	150.9	142.6	13.6	-8.3	-22.4	-5.5	-13.6
Unemployment	34.3	33.1	27.2	7.2	-5.9	-7.1	-17.8	-20.7
Participation rate	75.5	74.3	76.2	1.8	1.9	0.7
Unemployment rate	6.9	6.6	5.5	1.4	-1.1	-1.4
Employment rate	70.3	69.4	72.0	1.9	2.6	1.7
Part-time rate	35.6	32.3	30.3	2.5	-1.9	-5.2
Other persons aged 15 to 24³								
Population	1,951.2	1,961.3	1,998.9	22.9	37.6	47.7	1.9	2.4
Labour force	1,703.7	1,701.8	1,730.2	27.5	28.4	26.5	1.7	1.6
Employment	1,496.7	1,525.8	1,547.0	28.5	21.2	50.3	1.4	3.4
Full-time employment	1,225.1	1,254.1	1,294.0	28.1	39.9	68.9	3.2	5.6
Part-time employment	271.7	271.6	252.9	21.9	-18.7	-18.8	-6.9	-6.9
Unemployment	207.0	176.0	183.1	16.9	7.1	-23.9	4.0	-11.5
Participation rate	87.3	86.8	86.6	0.6	-0.2	-0.8
Unemployment rate	12.2	10.3	10.6	0.7	0.2	-1.6
Employment rate	76.7	77.8	77.4	0.8	-0.4	0.7
Part-time rate	18.2	17.8	16.3	0.9	-1.5	-1.8

1. Average standard error of change over the year (see "Sampling Errors" in Data Quality for further explanations).

2. Students are persons aged 15 to 24 who attended school full-time in March and who are planning to return to school in the fall.

3. Other persons are all other youths aged 15 to 24 who are not included in the student population.

Note(s): Related CANSIM table 282-0006

Table 9-2
Students and other persons aged 15 to 24 (unadjusted) by province

	Population		Labour force				Participation rate	Unemployment rate	Employment rate
	Labour force	Employment	Full-time employment	Part-time employment	Unemployment				
in thousands									
Students¹									
Newfoundland and Labrador									
August 2005	38.5	20.5	16.9	10.0	6.9	3.5	53.2	17.1	43.9
August 2006	36.6	21.2	18.4	12.1	6.3	2.9	57.9	13.7	50.3
Prince Edward Island									
August 2005	10.7	9.0	8.3	5.9	2.5	0.6	84.1	6.7	77.6
August 2006	10.1	7.9	7.5	5.0	2.4	0.5	78.2	6.3	74.3
Nova Scotia									
August 2005	67.9	44.7	39.7	22.4	17.3	5.0	65.8	11.2	58.5
August 2006	69.5	47.3	42.2	24.1	18.1	5.1	68.1	10.8	60.7
New Brunswick									
August 2005	50.7	34.8	32.2	19.5	12.7	2.6	68.6	7.5	63.5
August 2006	48.2	32.5	27.8	18.0	9.8	4.7	67.4	14.5	57.7
Quebec									
August 2005	516.7	315.8	270.6	134.1	136.5	45.3	61.1	14.3	52.4
August 2006	544.6	348.5	300.1	150.0	150.2	48.3	64.0	13.9	55.1
Ontario									
August 2005	984.9	638.8	549.7	275.6	274.1	89.1	64.9	13.9	55.8
August 2006	986.3	638.7	543.0	272.5	270.5	95.8	64.8	15.0	55.1
Manitoba									
August 2005	75.0	50.3	45.0	21.0	23.9	5.4	67.1	10.7	60.0
August 2006	76.7	55.3	49.8	24.7	25.2	5.5	72.1	9.9	64.9
Saskatchewan									
August 2005	68.2	45.7	41.7	23.1	18.7	4.0	67.0	8.8	61.1
August 2006	64.0	45.1	41.2	24.0	17.2	3.9	70.5	8.6	64.4
Alberta									
August 2005	220.1	135.9	125.3	68.0	57.2	10.6	61.7	7.8	56.9
August 2006	212.7	145.3	132.2	74.9	57.4	13.0	68.3	8.9	62.2
British Columbia									
August 2005	292.2	169.0	146.4	73.1	73.3	22.6	57.8	13.4	50.1
August 2006	276.9	158.7	144.3	74.1	70.2	14.3	57.3	9.0	52.1
Other persons aged 15-24²									
Newfoundland and Labrador									
August 2005	30.1	24.7	18.6	16.0	2.6	6.0	82.1	24.3	61.8
August 2006	29.8	24.5	18.1	16.3	1.7	6.4	82.2	26.1	60.7
Prince Edward Island									
August 2005	9.0	8.4	7.2	6.6	x	x	93.3	x	80.0
August 2006	9.7	9.0	8.1	7.3	0.8	x	92.8	x	83.5
Nova Scotia									
August 2005	55.7	49.5	43.8	35.4	8.4	5.7	88.9	11.5	78.6
August 2006	53.6	46.9	42.4	37.4	4.9	4.5	87.5	9.6	79.1
New Brunswick									
August 2005	45.6	40.3	34.5	30.4	4.2	5.7	88.4	14.1	75.7
August 2006	47.6	42.4	37.5	32.3	5.2	4.9	89.1	11.6	78.8
Quebec									
August 2005	433.3	388.1	339.7	278.0	61.7	48.4	89.6	12.5	78.4
August 2006	406.1	355.1	311.8	258.9	52.9	43.3	87.4	12.2	76.8
Ontario									
August 2005	700.1	594.6	525.9	423.0	102.9	68.6	84.9	11.5	75.1
August 2006	720.2	614.2	536.7	432.1	104.6	77.4	85.3	12.6	74.5
Manitoba									
August 2005	80.6	70.3	66.0	54.7	11.4	4.4	87.2	6.3	81.9
August 2006	79.2	67.4	62.6	52.0	10.7	4.7	85.1	7.0	79.0

See footnotes at the end of the table.

Table 9-2 – continued

Students and other persons aged 15 to 24 (unadjusted) by province

	Population		Labour force				Participation rate	Unemployment rate	Employment rate
	Labour force	Employment	Full-time employment	Part-time employment	Unemployment				
in thousands									
Saskatchewan									
August 2005	70.5	61.2	54.3	46.5	8.0	6.9	86.8	11.3	77.0
August 2006	73.8	66.7	62.3	53.9	8.4	4.4	90.4	6.6	84.4
Alberta									
August 2005	257.1	225.7	215.3	191.6	23.7	10.4	87.8	4.6	83.7
August 2006	279.1	248.1	231.8	208.3	23.5	16.4	88.9	6.6	83.1
British Columbia									
August 2005	279.1	239.0	220.3	172.0	48.3	18.7	85.6	7.8	78.9
August 2006	299.7	255.8	235.7	195.5	40.2	20.2	85.4	7.9	78.6

1. Students are persons aged 15 to 24 who attended school full-time in March and who are planning to return to school in the fall.

2. Other persons are all other youths aged 15 to 24 who are not included in the student population.

Note(s): Related CANSIM table 282-0006

Data quality

About the Labour Force Survey

The statistics contained in this report are based on information obtained through a sample survey of 53,000 representative households across the country. The Labour Force Survey, started in November 1945, was taken at quarterly intervals until November 1952. It has been carried out monthly since then. The information generated by the survey has expanded considerably over the years with a major redesign of the survey content in 1976 and again in 1997, and provides a rich and detailed picture of the Canadian labour market.

The sample used in the Labour Force Survey has been designed to represent all persons in the population 15 years of age and over residing in the provinces of Canada, with the exception of the following: persons living on Indian reserves, full-time members of the armed forces and people living in institutions (for example, inmates of penal institutions and patients in hospitals or nursing homes who have resided in the institution for more than six months). Monthly estimates of employment, unemployment and persons not in the labour force refer to the specific week covered by the survey each month, normally the week containing the 15th day.

Definitions and explanations

The **labour force** is composed of those members of the civilian non-institutional population 15 years of age and over who, during the reference week, were employed or unemployed.

Employed persons are those who, during the reference week:

- (a) did any work at all
- (b) had a job but were not at work

A person is considered to be **full-time** if his/her usual hours at the main job are greater than 29 hours per week. When the number of hours worked at the main job is usually less than 30 hours per week then he/she is considered to be **part-time**.

Unemployed persons are those who, during the reference week:

- (a) were without work, had actively looked for work in the past four weeks (ending with reference week), and were available for work;
- (b) had not actively looked for work in the past four weeks but were on temporary layoff and were available for work;
- (c) had not actively looked for work in the past four weeks but had a new job to start in four weeks or less from the reference week, and were available for work.

Persons in the civilian non-institutional population 15 years of age and over who, during the reference week, were neither employed nor unemployed are classified as **not in the labour force**.

The **unemployment rate** represents the number of unemployed persons expressed as a percentage of the labour force. The unemployment rate for a particular group (age, sex, etc.) is the number unemployed in that group expressed as a percentage of the labour force for that group.

The **participation rate** represents the labour force expressed as a percentage of the population 15 years of age and over. The participation rate for a particular group (age, sex, etc.) is the labour force in that group expressed as a percentage of the population for that group.

The **employment rate (formerly the employment/population ratio)** represents the number of persons employed expressed as a percentage of the population 15 years of age and over. The employment rate for a particular group (age, sex, etc.) is the number employed in that group expressed as a percentage of the population for that group.

The **part-time rate** represents the number of persons employed part-time expressed as a percentage of the employed. The part-time rate for a particular group (age, sex, etc.) is the number employed part-time in that group expressed as a percentage of the employed for that group.

All geographic regions are based on the 2001 Census boundaries.

Seasonal adjustment

Fluctuations in economic time series are caused by seasonal, cyclical and irregular movements. A seasonally adjusted series is one from which seasonal movements have been eliminated. Seasonal movements are defined as those which are caused by regular annual events such as climate, holidays, vacation periods and cycles related to crops, production and retail sales associated with Christmas and Easter. The seasonally adjusted series contains irregular as well as longer-term cyclical fluctuations.

The seasonally adjusted series are revised each year to take into account current data and to generate new forecast factors for the next twelve months. The data are therefore subject to slight revisions in future issues of this publication.

Sampling error

Estimates in this publication are based on the Labour Force Survey, a monthly survey of approximately 53,000 households across Canada. Because they are based on a sample survey, the estimates are subject to sampling error. Changes in the level of any estimates between two months can be the result of a true change or sampling variability. In most tables in this publication an indicator of the sampling error is provided. Two thirds of the time, a change greater than the sampling error indicates a real change. Movements in estimates that are smaller than the sampling error are less likely to reflect a real change and more likely to be due to sampling variability. While the above is true for monthly movements, one can have more confidence in a series of consecutive movements in the same direction, even though some of the monthly movements may be smaller than the sampling error.

For more detailed information about the Labour Force Survey, see the following documents:

- Overview of the Labour Force Survey
- Guide to the Labour Force Survey (71-543-GIE)
- Data quality statement
- Methodology of the Canadian Labour Force Survey (71-526-XPB)