



Catalogue no. 71-001-XIE

Labour Force Information

Not for release before 7 A.M.
E.D.T. Friday, June 9, 2006



Week ending May 20, 2006



Statistics
Canada Statistique
Canada

Canada

How to obtain more information

Specific inquiries about this product and related statistics or services should be directed to: Labour Force Survey Program, Labour Statistics Division, Statistics Canada, Ottawa, Ontario, K1A 0T6 (telephone: (613) 951-4090, toll free number: 1 866 873-8788, fax: (613) 951-2869 or by e-mail address: labour@statcan.ca).

For information on the wide range of data available from Statistics Canada, you can contact us by calling one of our toll free numbers. You can also contact us by e-mail or by visiting our website at www.statcan.ca.

National inquiries line **1 800 263-1136**

National telecommunications device for the hearing impaired **1 800 363-7629**

Depository Services Program inquiries **1 800 700-1033**

Fax line for Depository Services Program **1 800 889-9734**

E-mail inquiries infostats@statcan.ca

Website www.statcan.ca

Information to access the product

This product, Catalogue no. 71-001-XIE, is available for free in electronic format. To obtain a single issue, visit our website at www.statcan.ca and select Our Products and Services.

Standards of service to the public

Statistics Canada is committed to serving its clients in a prompt, reliable and courteous manner and in the official language of their choice. To this end, the Agency has developed *standards of service* which its employees observe in serving its clients. To obtain a copy of these service standards, please contact Statistics Canada toll free at 1 800 263-1136. The service standards are also published on www.statcan.ca under About Statistics Canada > Providing services to Canadians.



Statistics Canada
Labour Statistics Division
Labour Force Survey Program

Labour Force Information

Not for release before 7 A.M.
E.D.T. Friday, June 9, 2006

Week ending May 20, 2006

Published by authority of the Minister responsible for Statistics Canada

© Minister of Industry, 2006

All rights reserved. The content of this electronic publication may be reproduced, in whole or in part, and by any means, without further permission from Statistics Canada, subject to the following conditions: that it be done solely for the purposes of private study, research, criticism, review or newspaper summary, and/or for non-commercial purposes; and that Statistics Canada be fully acknowledged as follows: Source (or "Adapted from", if appropriate): Statistics Canada, year of publication, name of product, catalogue number, volume and issue numbers, reference period and page(s). Otherwise, no part of this publication may be reproduced, stored in a retrieval system or transmitted in any form, by any means—electronic, mechanical or photocopy—or for any purposes without prior written permission of Licensing Services, Client Services Division, Statistics Canada, Ottawa, Ontario, Canada K1A 0T6.

June 2006

Catalogue no. 71-001-XIE

ISSN 1492-5478

Frequency: Monthly

Ottawa

La version française de cette publication est disponible sur demande (n° 71-001-XIF au catalogue).

Note of appreciation

Canada owes the success of its statistical system to a long standing partnership between Statistics Canada, the citizens of Canada, its businesses, governments and other institutions. Accurate and timely statistical information could not be produced without their continued cooperation and goodwill.

User information

Symbols

The following standard symbols are used in Statistics Canada publications:

- . not available for any reference period
- .. not available for a specific reference period
- ... not applicable
- 0 true zero or a value rounded to zero
- 0^s value rounded to 0 (zero) where there is a meaningful distinction between true zero and the value that was rounded
- P preliminary
- r revised
- x suppressed to meet the confidentiality requirements of the *Statistics Act*
- E use with caution
- F too unreliable to be published

Special requests (\$)

Custom tabulations can be arranged on an ad hoc or regular basis. This service enables you to specify tables and time series to meet your own requirements. The cost varies according to the request. For more information, contact us toll-free at 1-866-873-8788 or e-mail us at labour@statcan.ca.

Schedule of LFS releases

Reference period - Week ending	Release date
January 21, 2006	February 10, 2006
February 18, 2006	March 10, 2006
March 18, 2006	April 7, 2006
April 15, 2006	May 5, 2006
May 20, 2006	June 9, 2006
June 17, 2006	July 7, 2006
July 15, 2006	August 4, 2006
August 19, 2006	September 8, 2006
September 16, 2006	October 6, 2006
October 14, 2006	November 3, 2006
November 11, 2006	December 1, 2006
December 9, 2006	January 5, 2007

Latest LFS release in *The Daily* (free)

Table of contents

Highlights	5
Analysis — May 2006	6
Charts	
1. Employment and unemployment rates, Canada, seasonally adjusted	5
2. Employment and unemployment indicators, Canada, seasonally adjusted	9
3. Employment and unemployment indicators, Canada, seasonally adjusted	10
4. Index of employment by industry, Canada, seasonally adjusted, January, 2003=100	11
5. Index of employment by industry, Canada, seasonally adjusted, January 2003 = 100	12
6. Index of employment by industry, Canada, seasonally adjusted, January 2003 = 100	13
7. Index of employment by province, seasonally adjusted, January 2003 = 100	14
8. Index of employment by province, seasonally adjusted, January 2003 = 100	15
Related products	16
Statistical tables	
1 Labour force characteristics by age and sex, Canada, seasonally adjusted	24
2 Employment by class of worker and industry, Canada, seasonally adjusted	25
3 Labour force characteristics by province, seasonally adjusted	26
4 Selected labour force characteristics (seasonally adjusted)	28
4-1 Newfoundland and Labrador	28
4-2 Prince Edward Island	29
4-3 Nova Scotia	30
4-4 New Brunswick	31
4-5 Quebec	32
4-6 Ontario	33
4-7 Manitoba	34
4-8 Saskatchewan	35
4-9 Alberta	36
4-10 British Columbia	37
5 Labour force characteristics by census metropolitan area (seasonally adjusted)	38
5-1 3 month moving average	38
5-2 Monthly	43

Table of contents – continued

6	Labour force characteristics by economic region and territories, unadjusted for seasonality, 3 month moving average ending in May 2005 and May 2006	44
7	Average usual hours and wages of employees by selected characteristics, Canada, unadjusted for seasonality	49
8	Regional unemployment rates used by the Employment Insurance Program, seasonally adjusted, 3 month moving average	50
9	Students and other persons aged 15 to 24 (unadjusted)	52
9-1	by detailed age groups	52
9-2	by province	53
	Data quality	55

Highlights

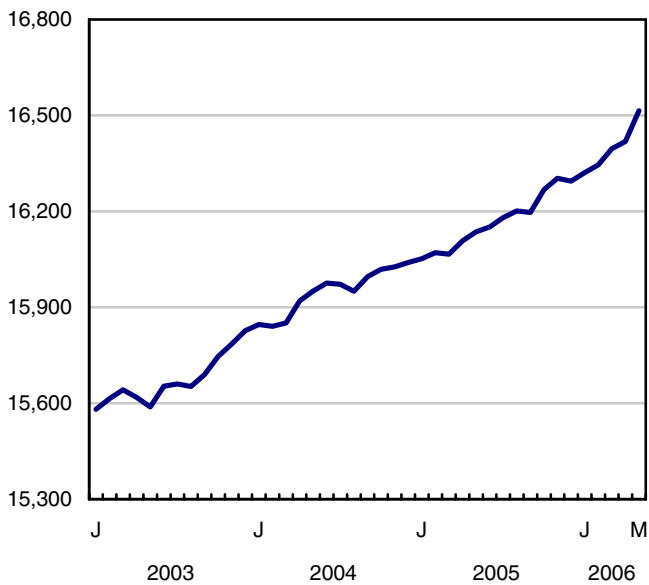
May 2006

Employment increased by an estimated 97,000 in May, matching the high reached in January 2002. This increase drove the unemployment rate down 0.3 percentage points to 6.1%, the lowest since December 1974.

Chart 1
Employment and unemployment rates, Canada, seasonally adjusted

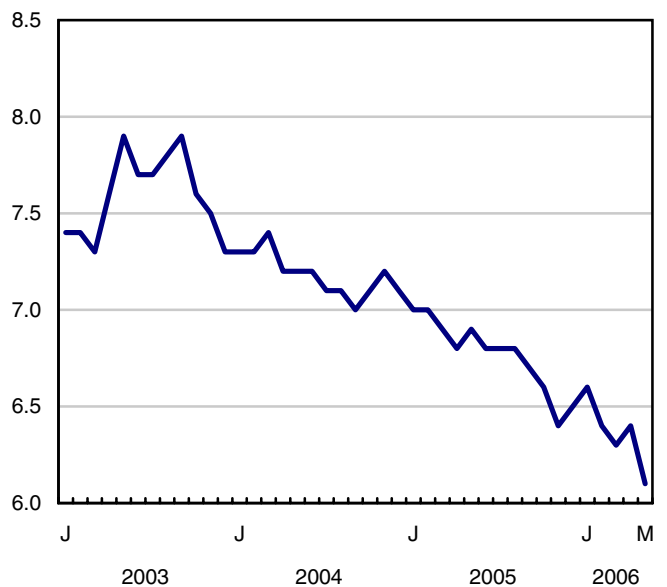
Employment

000's



Unemployment rate

%



Analysis — May 2006

Employment increased by an estimated 97,000 in May, matching the high reached in January 2002. This increase drove the unemployment rate down 0.3 percentage points to 6.1%, the lowest since December 1974.

The sizeable gain in employment pushed the employment rate to an all-time high of 63.2%. Over the first five months of the year, employment has increased by 1.4% (+220,000).

All of May's employment increase was in full time, up 151,000, the largest increase on record. This jump was due to new entrants to the labour market obtaining full-time employment and coincides with fewer people working part time.

While employment growth continued to surge ahead in Alberta, there were also large increases in Ontario and Quebec in May. Strength in the service industries in Ontario and Quebec more than offset continued declines in manufacturing.

At the national level, employment fell in manufacturing as well as in educational services. However, there were large increases in a number of industries. The largest gains in May came in: finance, insurance, real estate and leasing; health care and social assistance; and public administration. Employment is up in almost every industry over the last twelve months.

Men, women and youths shared in May's employment gains. The healthy showing from youths is a continuation of the strong trend that began in September 2005.

With strength in full-time employment and a falling unemployment rate, wages continue to rise. The average hourly wage in May was up 3.8% from 12 months ago, compared to the most recent 2.4% increase in the Consumer Price Index. Average hourly wages jumped by 7.3% in Alberta's tight labour market.

Widespread industry gains

Employment increased sharply in finance, insurance, real estate and leasing in May, up 31,000, bringing gains since the start of the year to 55,000 (+5.5%). The increase this month was concentrated in Quebec.

In May, 23,000 more people were working in health care and social assistance. Compared to 12 months ago, employment in the industry is up 3.4%, with the bulk of the increase in hospitals.

Employment rose by an estimated 22,000 in public administration, all at the municipal and provincial levels. Despite this month's increase, there were declines earlier in the year, leaving employment in the industry little changed from 12 months ago.

In May, there were also more workers in accommodation and food services (+17,000), the first increase so far this year. Most of the gain this month occurred in Alberta.

There was a decline of 22,000 in manufacturing in May, with losses spread between Ontario and Quebec. Since the end of 2002 when the downward trend for the industry began, employment has fallen by 8.0% (-187,000).

Alberta boom continues

In Alberta, employment rose by 32,000 in May pushing the employment rate to a record high of 71.4%. Gains were fuelled by an increase in the population as workers migrated to a province where labour demand is high. In May, the unemployment rate edged down 0.1 percentage points to 3.4%.

Alberta's added employment was primarily in the service industries, particularly in health care and social assistance; finance, insurance, real estate and leasing and in accommodation and food services. Employment also increased in construction. Natural resources was little changed in May, but has jumped by 14.0% since last December. Employment in Alberta has grown by 4.2% so far this year – the fastest rate of growth of all the provinces.

Following moderate growth in the first four months of the year, employment in Ontario increased by 34,000 in May pushing the unemployment rate down 0.3 percentage points to 5.9%.

The manufacturing sector in Ontario continued to shed employees, with a decline of 13,000 in May. Since the start of the year, employment in manufacturing in Ontario has declined by 2.8% (-30,000). Ontario, however, has been able to weather declines in manufacturing thanks to strength from the service sector. Employment in retail and wholesale trade continued its upward trend, increasing by 26,000 in May. Professional, scientific and technical services also contributed to May's employment increases with an additional 21,000 workers. In contrast, employment was down in educational services (-17,000), yet remains 3.4% above the level from 12 months ago.

Employment increased by 31,000 in Quebec in May, pushing the unemployment rate down 0.4 percentage points to 7.9%, the second lowest rate in the last thirty years. As with Alberta and Ontario, the employment increase was spurred by strength in the service sector which more than offset a decline of 12,000 in manufacturing. The largest increases were found in finance, insurance, real estate and leasing, up 20,000 as well as information, culture and recreation (+16,000).

In New Brunswick, the unemployment rate fell to 8.6% in May, a record low for the province. The 0.5 percentage point decline in the unemployment rate, however, was the result of adult women and men leaving the labour force rather than an increase in employment.

Record full-time gains in May

Full-time employment jumped by 151,000 in May, well in excess of the previous record increase. These gains were widespread, but were most pronounced in Ontario where full-time work increased by 80,000.

In both Alberta and Quebec, nearly all of the employment increase in May came from full time (+28,000 and +27,000, respectively). While full-time employment in Alberta has grown by 5.0% since the start of the year, in Quebec, full time remains largely unchanged.

Nationally, full-time employment has grown by 3.1% from 12 months ago. At the same time, part-time employment declined by 1.2%. Overall, total employment has grown by 2.3% over the period suggesting that many part-timers may have switched to full time work and that new labour force entrants are finding full-time employment.

Youths drive employment growth in Ontario

In May, employment among youths (aged 15 to 24) in Canada, increased by 25,000 (+1.0%). The bulk of this increase for youths was in Ontario where they contributed the lion's share of the overall employment increase (+24,000). So far this year, employment growth among youths in Ontario has been strong, up 2.6%. The same is true for Alberta, where youth employment has jumped by 5.4% since the start of the year.

Despite a decline in May for youths in British Columbia, youth employment has been on an upward trend for 22 months. Since August 2004, youth employment in British Columbia has grown by 16.3% (+49,000). At the same time, their participation rate increased by 5.4 percentage points to 66.4% in May.

From May to August, the Labour Force Survey collects labour market information about people aged 15 to 24 years who were attending school full-time in March and intending to return to school in the fall. Survey results for May give an early indication of the summer job market for older students aged 20 to 24, however, many students aged 15 to 19 are not yet out of school for the summer. Survey results for June, July and August will provide further insight into the summer job market. The published estimates are not seasonally adjusted, therefore comparisons can only be made on a year-over-year basis.

Older students aged 20-24 encountered a similar summer job market this May compared to May 2005. The employment rate edged down slightly (0.3 percentage points) to 61.9% from the 15-year high reached last May.

Adult women continue to gain strength

In May, employment for adult women (aged 25 and over) increased by 32,000 with full-time gains more than offsetting declines in part time. So far this year, employment has grown at a faster pace for this group than for adult men. Overall, employment among adult women was up by 2.0% (+126,000), while for adult men, it increased by 0.7% (+52,000).

Following a decline in the participation rate among adult women in 2005, participation has rebounded 0.5 percentage points since February 2006, hitting 61.3% in May.

Note to readers

Comparing current Labour Force Survey estimates to those prior to 1976

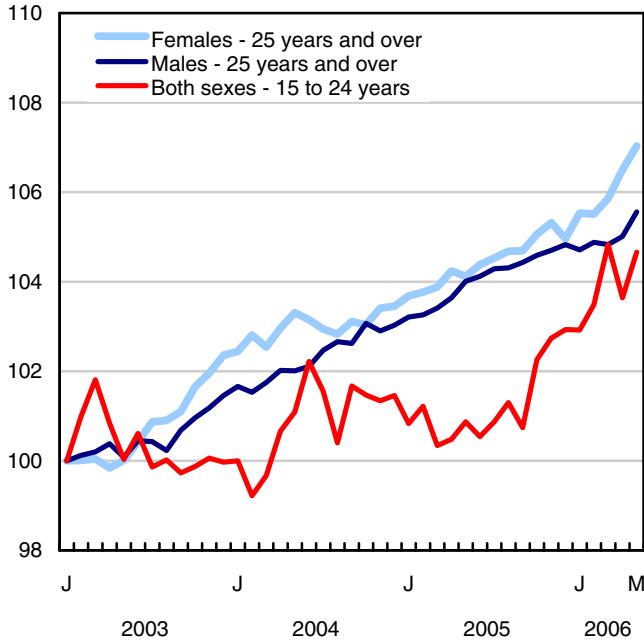
In recent months, the Labour Force Survey (LFS) has been reporting very low unemployment rates. The rates have been so low that some LFS users want to understand the historical context in which these rates are presented. Caution must be stressed when comparing recent LFS employment and unemployment estimates to those prior to 1976 — when the questionnaire underwent significant changes.

The 1976 LFS questionnaire introduced direct questioning to determine labour market status. This replaced the "main activity" style of information previously recorded. In 1975, both the new and old questionnaires were run in parallel. An analysis of the impact on employment and unemployment estimates showed that the new questionnaire measured more employment, especially among youths and women. It also picked up more unemployment, most notably among women.

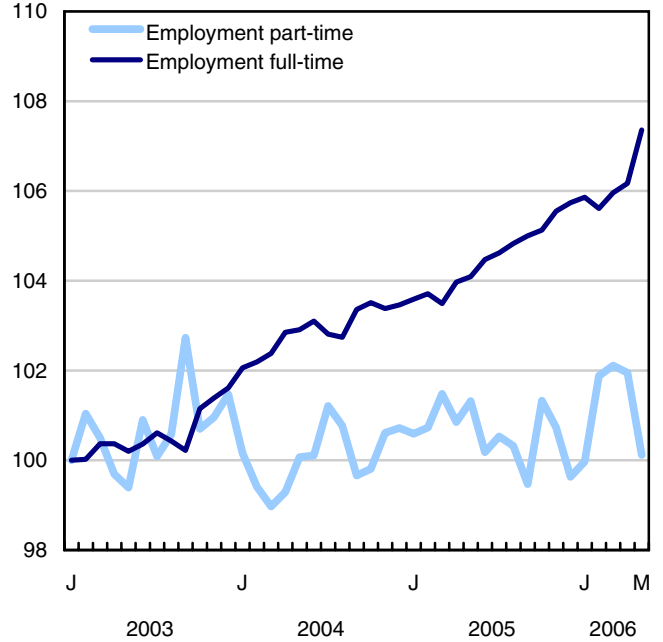
At the time of the conversion to the new questionnaire, a historical series was created by adjusting pre-1976 estimates of employment and unemployment using factors determined from the parallel run. Ratios were applied to the 1966 to 1975 data to make them more (but not strictly) comparable to the new estimates. Although these adjusted 1966 to 1975 data are available, users should still be cautious when comparing the two periods because of the different questionnaires used to measure employment and unemployment. Approaching 1966, further caution should be used.

Chart 2
Employment and unemployment indicators, Canada, seasonally adjusted

Employment index, January 2003=100



Employment index, January 2003=100



Employment index, January 2003=100

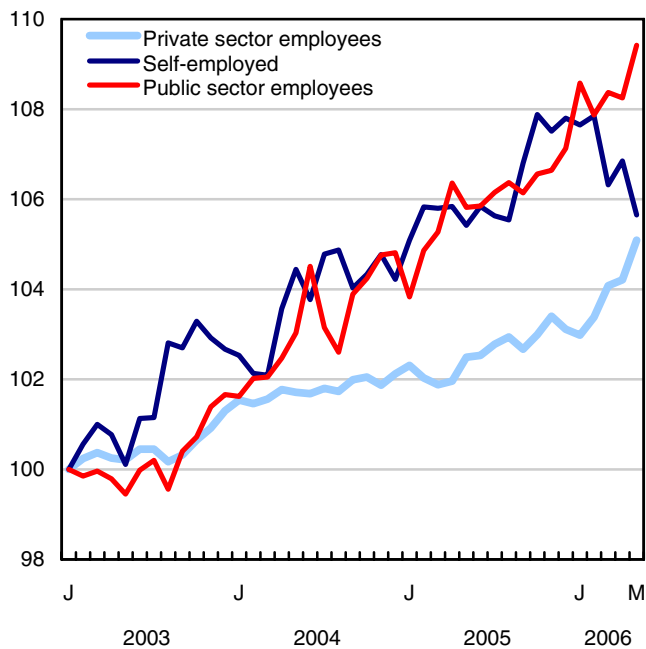
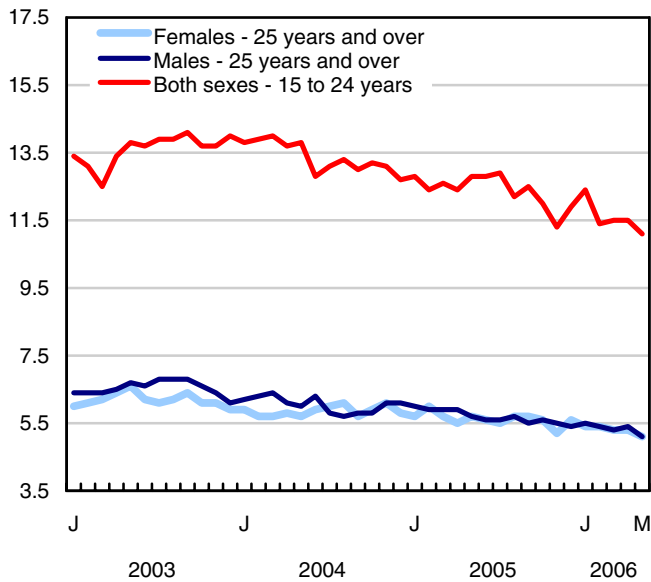
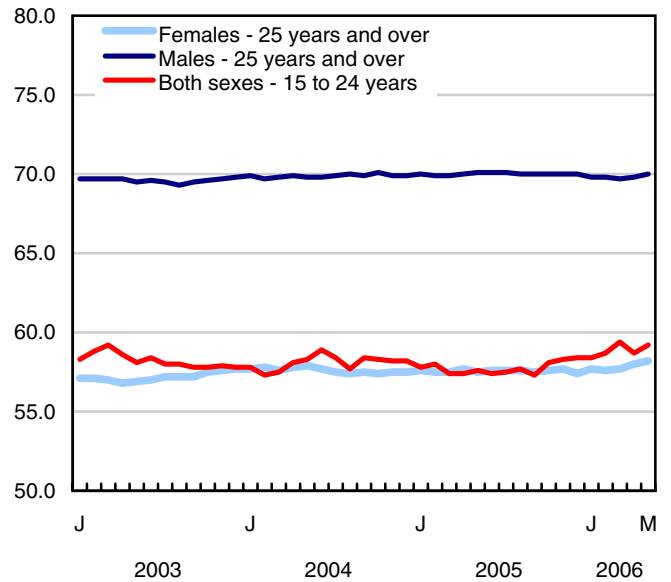


Chart 3
Employment and unemployment indicators, Canada, seasonally adjusted

Unemployment rate (%)



Employment rate (%)



Participation rate (%)

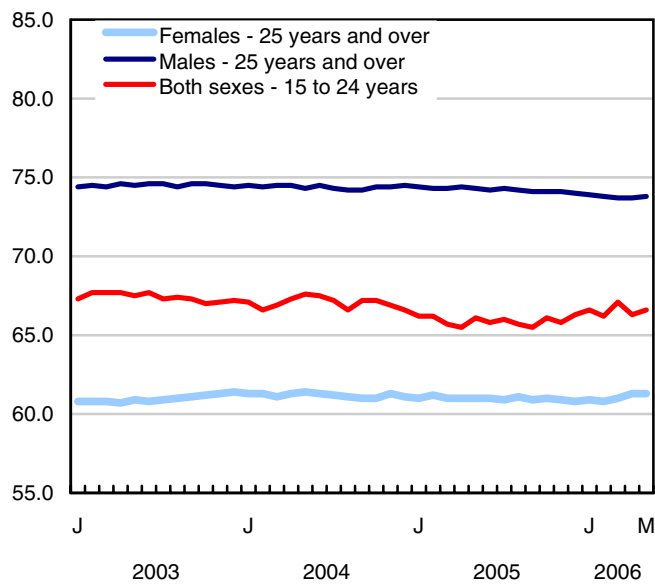


Chart 4
Index of employment by industry, Canada, seasonally adjusted, January, 2003=100

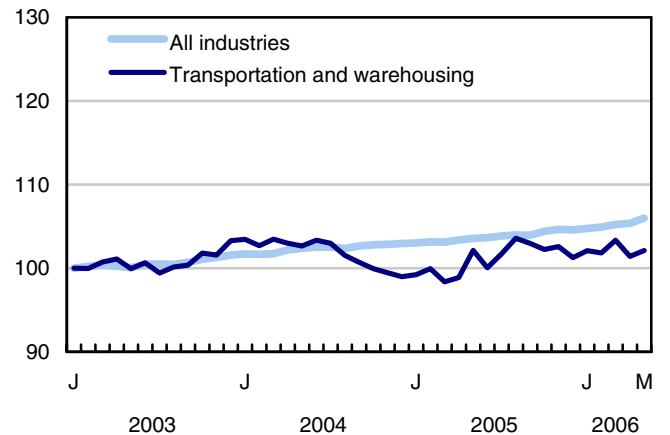
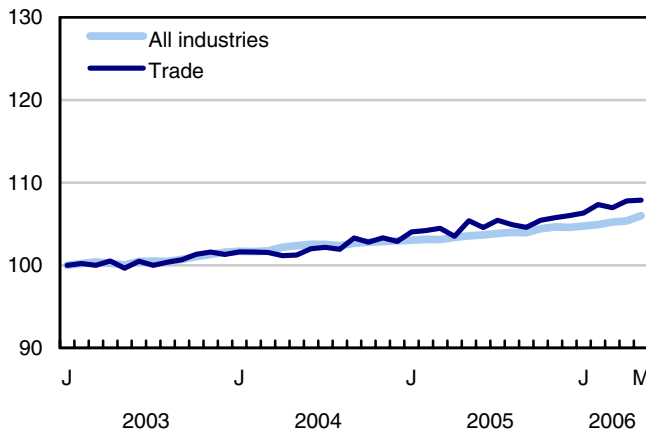
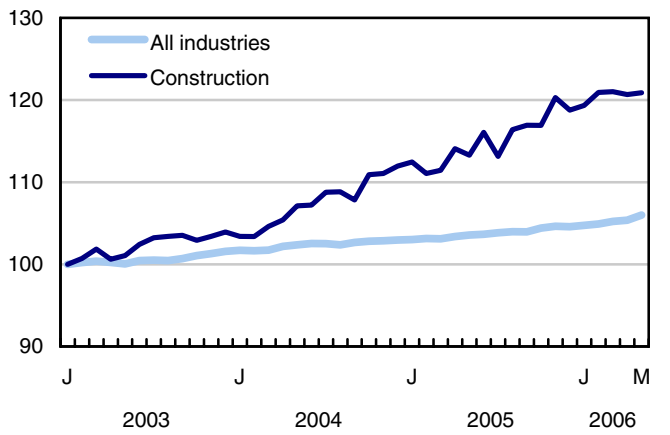
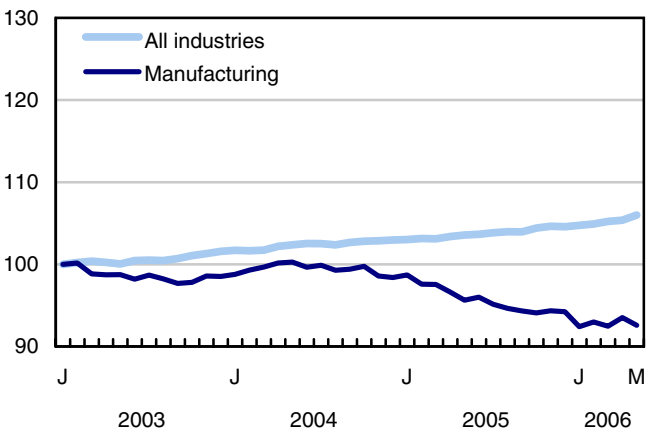
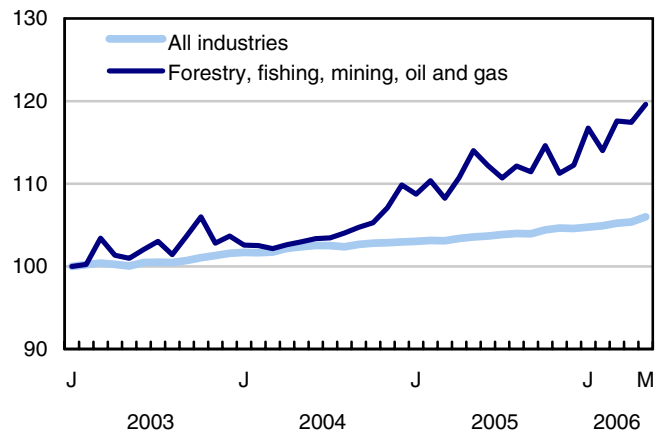
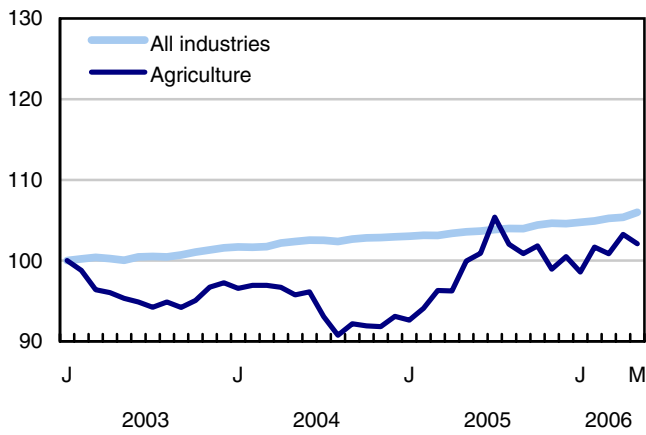


Chart 5
Index of employment by industry, Canada, seasonally adjusted, January 2003 = 100

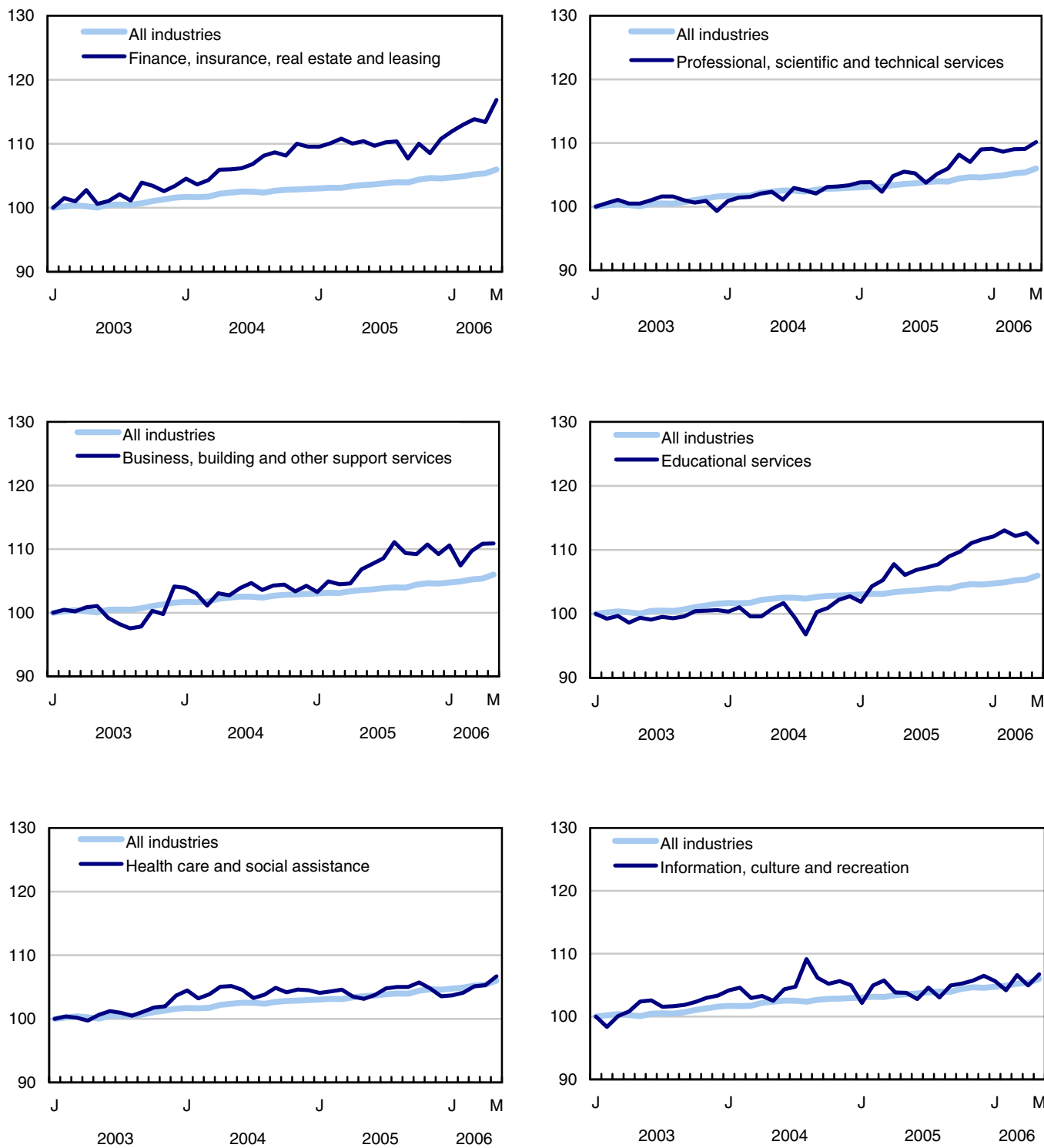


Chart 6
Index of employment by industry, Canada, seasonally adjusted, January 2003 = 100

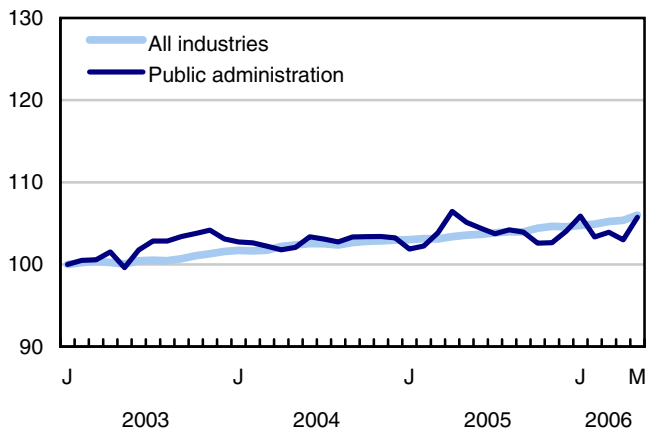
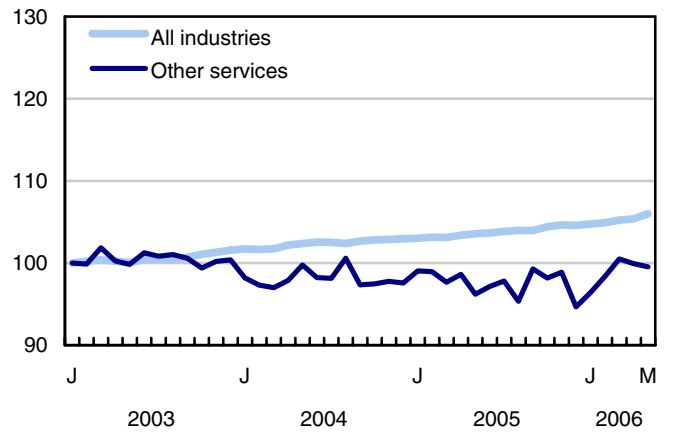
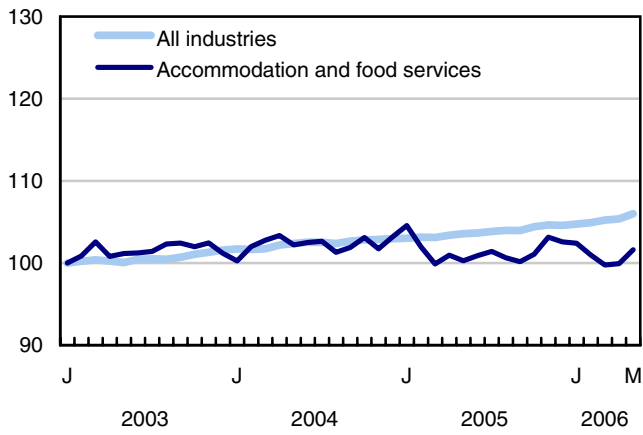


Chart 7
Index of employment by province, seasonally adjusted, January 2003 = 100

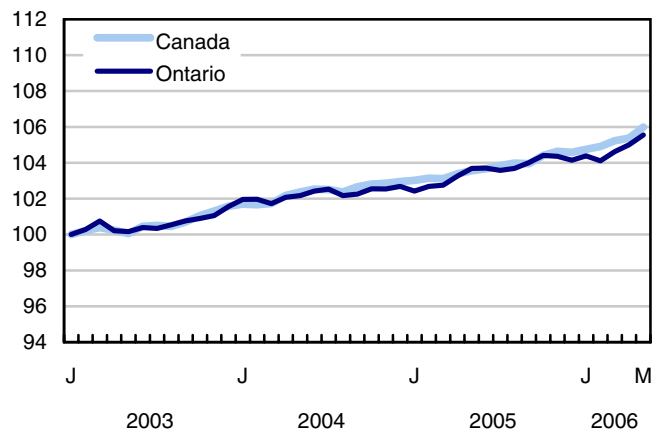
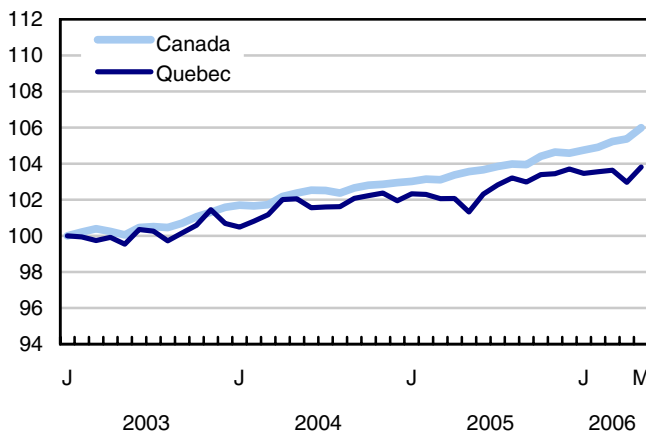
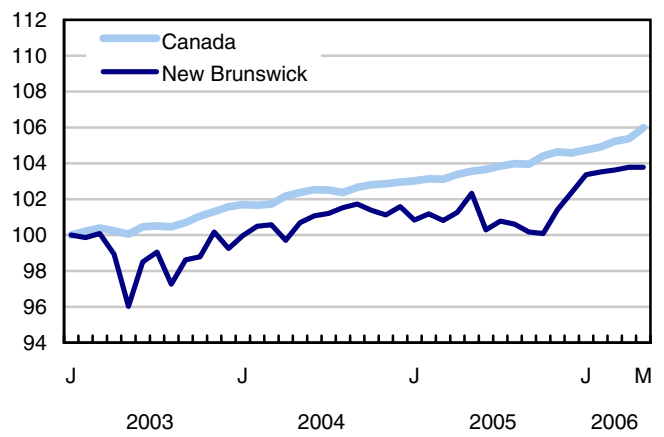
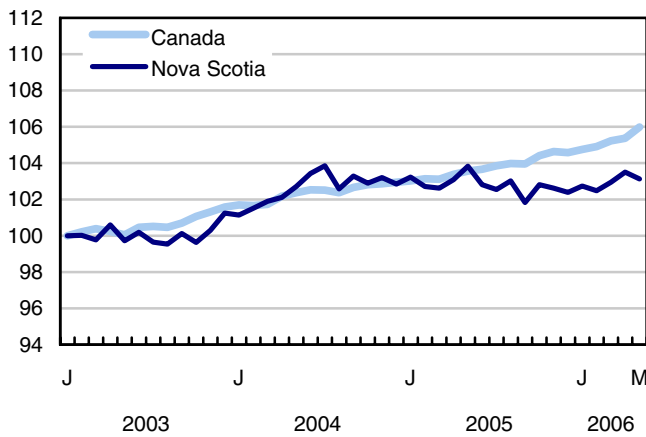
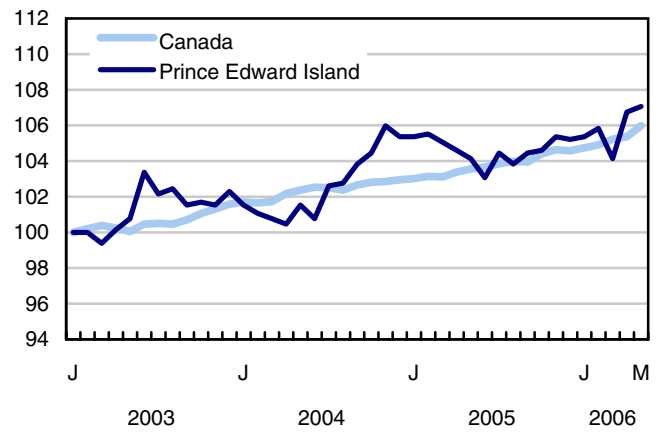
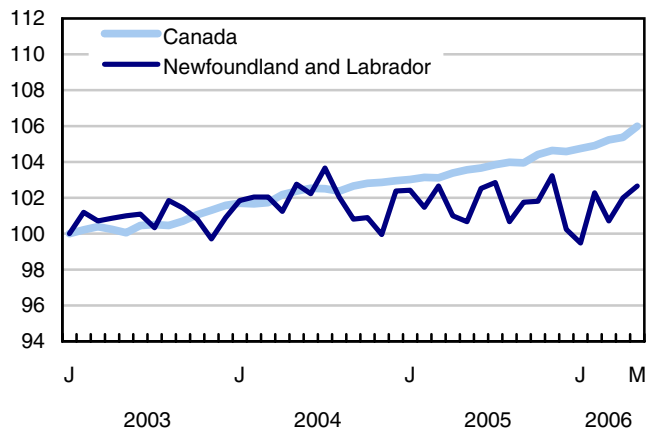
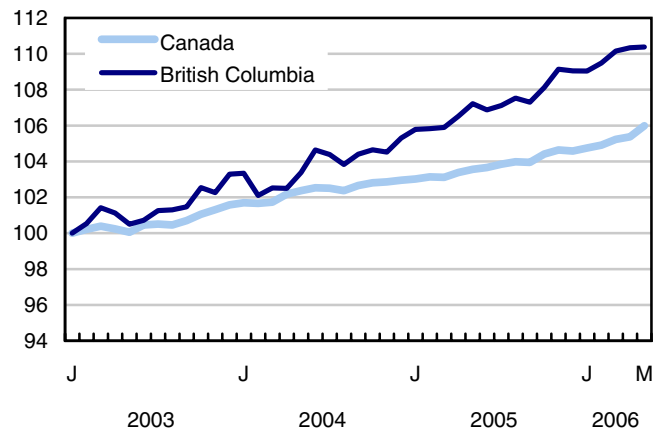
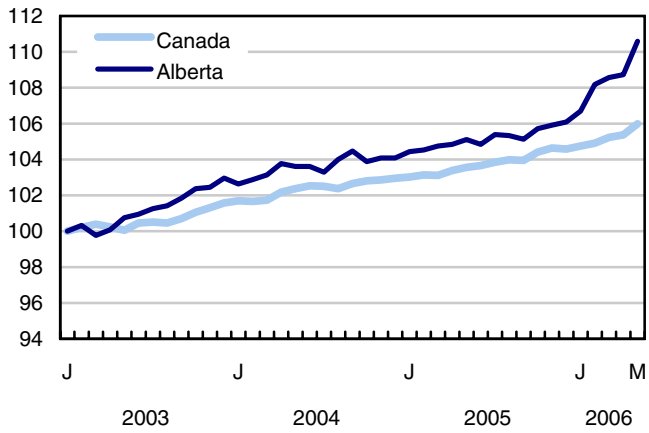
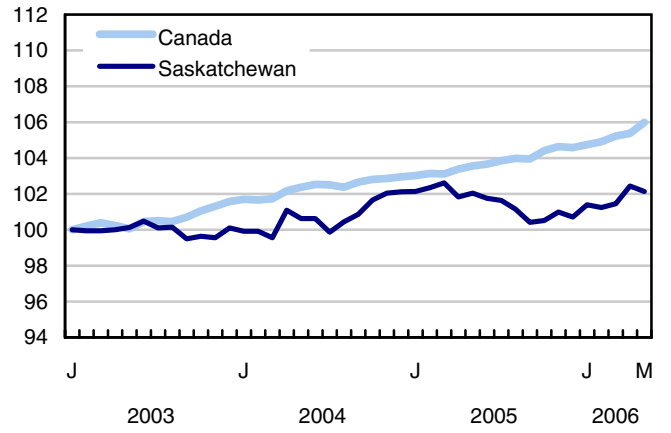
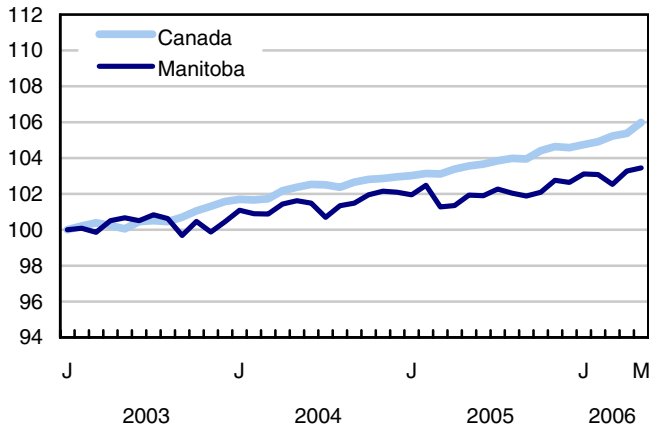


Chart 8
Index of employment by province, seasonally adjusted, January 2003 = 100



Related products

Selected publications from Statistics Canada

71-222-X	The Canadian labour market at a glance
71-526-X	Methodology of the Canadian Labour Force Survey
71-543-G	Guide to the Labour Force Survey
71-544-X	Labour Force Survey products and services.
71-587-X	Aboriginal peoples living off-reserve in Western Canada: estimates from the Labour Force Survey
71F0004X	Labour force historical review
71F0031X	Improvements to the Labour Force Survey (LFS)
71M0001X	Labour Force Survey microdata file
75-001-X	Perspectives on labour and income

Selected CANSIM tables from Statistics Canada

282-0001	Labour force survey estimates (LFS), by sex and detailed age group
282-0002	Labour force survey estimates (LFS), by sex and detailed age group
282-0003	Labour force survey estimates (LFS), by educational attainment, sex and age group
282-0004	Labour force survey estimates (LFS), by educational attainment, sex and age group
282-0005	Labour force survey estimates (LFS), by full- and part-time students during school months, sex and age group
282-0006	Labour force survey estimates (LFS), by students during summer months, sex and age group
282-0007	Labour force survey estimates (LFS), by North American Industry Classification System (NAICS), sex and age group
282-0008	Labour force survey estimates (LFS), by North American Industry Classification System (NAICS), sex and age group
282-0009	Labour force survey estimates (LFS), by National Occupational Classification for Statistics (NOC-S) and sex
282-0010	Labour force survey estimates (LFS), by National Occupational Classification for Statistics (NOC-S) and sex
282-0011	Labour force survey estimates (LFS), employment by class of worker, North American Industry Classification System (NAICS) and sex
282-0012	Labour force survey estimates (LFS), employment by class of worker, North American Industry Classification System (NAICS) and sex
282-0013	Labour force survey estimates (LFS), part-time employment by reason for part-time work, sex and age group
282-0014	Labour force survey estimates (LFS), part-time employment by reason for part-time work, sex and age group
282-0015	Labour force survey estimates (LFS), by usual hours worked, main or all jobs, sex and age group
282-0016	Labour force survey estimates (LFS), by usual hours worked, main or all jobs, sex and age group
282-0017	Labour force survey estimates (LFS), by actual hours worked, main or all jobs, sex and age group
282-0018	Labour force survey estimates (LFS), by actual hours worked, main or all jobs, sex and age group
282-0019	Labour force survey estimates (LFS), by usual hours worked, class of worker, North American Industry Classification System (NAICS) and sex
282-0020	Labour force survey estimates (LFS), by usual hours worked, class of worker, North American Industry Classification System (NAICS) and sex

282-0021	Labour force survey estimates (LFS), by actual hours worked, class of worker, North American Industry Classification System (NAICS) and sex
282-0022	Labour force survey estimates (LFS), by actual hours worked, class of worker, North American Industry Classification System (NAICS) and sex
282-0023	Labour force survey estimates (LFS), by usual hours worked, class of worker, National Occupational Classification for Statistics (NOC-S) and sex
282-0024	Labour force survey estimates (LFS), by usual hours worked, class of worker, National Occupational Classification for Statistics (NOC-S) and sex
282-0025	Labour force survey estimates (LFS), by actual hours worked, class of worker, National Occupational Classification for Statistics (NOC-S) and sex
282-0026	Labour force survey estimates (LFS), by actual hours worked, class of worker, National Occupational Classification for Statistics (NOC-S) and sex
282-0027	Labour force survey estimates (LFS), by total and average usual and actual hours worked, main or all jobs, type of work, sex and age group
282-0028	Labour force survey estimates (LFS), by total and average usual and actual hours worked, main or all jobs, type of work, sex and age group
282-0029	Labour force survey estimates (LFS), average days lost for personal reasons per full-time employee by North American Industry Classification System (NAICS), sex and age group
282-0030	Labour force survey estimates (LFS), average days lost for personal reasons per full-time employee by National Occupational Classification for Statistics (NOC-S), sex and age group
282-0031	Labour force survey estimates (LFS), multiple jobholders by North American Industry Classification System (NAICS), sex and age group
282-0032	Labour force survey estimates (LFS), multiple jobholders by North American Industry Classification System (NAICS), sex and age group
282-0033	Labour force survey estimates (LFS), multiple jobholders by National Occupational Classification for Statistics (NOC-S), sex and age group
282-0034	Labour force survey estimates (LFS), multiple jobholders by National Occupational Classification for Statistics (NOC-S), sex and age group
282-0035	Labour force survey estimates (LFS), multiple jobholders by usual hours worked at main and all jobs
282-0036	Labour force survey estimates (LFS), multiple jobholders by usual hours worked at main and all jobs
282-0037	Labour force survey estimates (LFS), job tenure by type of work, sex and age group
282-0038	Labour force survey estimates (LFS), job tenure by type of work, sex and age group
282-0039	Labour force survey estimates (LFS), job tenure by National Occupational Classification for Statistics (NOC-S) and sex
282-0040	Labour force survey estimates (LFS), job tenure by National Occupational Classification for Statistics (NOC-S) and sex

282-0041	Labour force survey estimates (LFS), job tenure by North American Industry Classification System (NAICS) and sex
282-0042	Labour force survey estimates (LFS), job tenure by North American Industry Classification System (NAICS) and sex
282-0047	Labour force survey estimates (LFS), duration of unemployment by sex and age group
282-0048	Labour force survey estimates (LFS), duration of unemployment by sex and age group
282-0049	Labour force survey estimates (LFS), unemployment by type of work sought and search method, sex and age group
282-0050	Labour force survey estimates (LFS), unemployment by type of work sought and search method, sex and age group
282-0051	Labour force survey estimates (LFS), retirement age by class of worker and sex
282-0052	Labour force survey estimates (LFS), by census metropolitan area, sex and age group, 3-month moving average
282-0053	Labour force survey estimates (LFS), by census metropolitan area, sex and age group
282-0054	Labour force survey estimates (LFS), by economic region and Yukon Territory and Northwest Territories, 3-month moving average
282-0055	Labour force survey estimates (LFS), by economic region and Yukon Territory and Northwest Territories
282-0056	Labour force survey estimates (LFS), employment by census metropolitan area and North American Industry Classification System (NAICS), 3-month moving average
282-0057	Labour force survey estimates (LFS), employment by census metropolitan area and North American Industry Classification System (NAICS)
282-0058	Labour force survey estimates (LFS), employment by census metropolitan area and National Occupational Classification for Statistics (NOC-S), 3-month moving average
282-0059	Labour force survey estimates (LFS), employment by census metropolitan area and National Occupational Classification for Statistics (NOC-S)
282-0060	Labour force survey estimates (LFS), employment by economic region and North American Industry Classification System (NAICS), 3-month moving average
282-0061	Labour force survey estimates (LFS), employment by economic region and North American Industry Classification System (NAICS)
282-0062	Labour force survey estimates (LFS), employment by economic region and National Occupational Classification for Statistics (NOC-S), 3-month moving average
282-0063	Labour force survey estimates (LFS), employment by economic region and National Occupational Classification for Statistics (NOC-S)
282-0064	Labour force survey estimates (LFS), by selected medium-sized cities
282-0069	Labour force survey estimates (LFS), wages of employees by type of work, National Occupational Classification for Statistics (NOC-S), sex and age group

282-0070	Labour force survey estimates (LFS), wages of employees by type of work, National Occupational Classification for Statistics (NOC-S), sex and age group
282-0071	Labour force survey estimates (LFS), wages of employees by type of work, North American Industry Classification System (NAICS), sex and age group
282-0072	Labour force survey estimates (LFS), wages of employees by type of work, North American Industry Classification System (NAICS), sex and age group
282-0073	Labour force survey estimates (LFS), wages of employees by job permanence, union coverage, sex and age group
282-0074	Labour force survey estimates (LFS), wages of employees by job permanence, union coverage, sex and age group
282-0075	Labour force survey estimates (LFS), employees by establishment size, North American Industry Classification System (NAICS), sex and age group
282-0076	Labour force survey estimates (LFS), employees by establishment size, North American Industry Classification System (NAICS), sex and age group
282-0077	Labour force survey estimates (LFS), employees by union coverage, North American Industry Classification System (NAICS), sex and age group
282-0078	Labour force survey estimates (LFS), employees by union coverage, North American Industry Classification System (NAICS), sex and age group
282-0079	Labour force survey estimates (LFS), employees by job permanency, North American Industry Classification System (NAICS), sex and age group
282-0080	Labour force survey estimates (LFS), employees by job permanency, North American Industry Classification System (NAICS), sex and age group
282-0081	Labour force survey estimates (LFS), employees working overtime (weekly) by National Occupational Classification for Statistics (NOC-S), sex and age group
282-0082	Labour force survey estimates (LFS), employees working overtime (weekly) by National Occupational Classification for Statistics (NOC-S), sex and age group
282-0083	Labour force survey estimates (LFS), employees working overtime (weekly) by North American Industry Classification System (NAICS), sex and age group
282-0084	Labour force survey estimates (LFS), employees working overtime (weekly) by North American Industry Classification System (NAICS), sex and age group
282-0085	Labour force survey estimates (LFS), supplementary unemployment rates by sex and age group
282-0086	Labour force survey estimates (LFS), supplementary unemployment rates by sex and age group
282-0087	Labour force survey estimates (LFS), by sex and age group, seasonally adjusted and unadjusted
282-0088	Labour force survey estimates (LFS), employment by North American Industry Classification System (NAICS), seasonally adjusted and unadjusted
282-0089	Labour force survey estimates (LFS), employment by class of worker and sex, seasonally adjusted and unadjusted

282-0090	Labour force survey estimates (LFS), by census metropolitan area, 3-month moving average, seasonally adjusted and unadjusted
282-0091	Labour force survey estimates (LFS), by Montréal, Toronto and Vancouver census metropolitan areas, seasonally adjusted and unadjusted
282-0092	Labour force survey estimates (LFS), actual hours worked by North American Industry Classification System (NAICS), seasonally adjusted
282-0093	Labour force survey estimates (LFS), employment by National Occupational Classification for Statistics (NOC-S), seasonally adjusted
282-0094	Labour force survey estimates (LFS), by North American Industry Classification System (NAICS), Canada, seasonally adjusted
282-0095	Labour force survey estimates (LFS), by full- and part-time students during school months, sex and age group
282-0096	Labour force survey estimates (LFS), by urban and rural areas based on 2001 census boundaries, sex and age group
282-0097	Labour force survey estimates (LFS), by urban and rural areas based on 2001 census boundaries, sex and age group
282-0098	Labour force survey estimates (LFS), employment by urban and rural areas based on 2001 census boundaries, class of worker and North American Industry Classification System (NAICS)
282-0099	Labour force survey estimates (LFS), employment by urban and rural areas based on 2001 census boundaries, class of worker and North American Industry Classification System (NAICS)

Selected surveys from Statistics Canada

3701	Labour Force Survey
------	---------------------

Selected tables of Canadian statistics from Statistics Canada

- *Labour force characteristics*
- *Employment by industry*
- *Selected economic indicators, Canada and United States (monthly and quarterly)*
- *Days lost per worker due to illness or disability, by sex, by provinces*
- *Economic indicators, by province and territory (monthly and quarterly)*

- *Labour force and participation rates by sex and age group*
- *Labour force, employed and unemployed, numbers and rates, by provinces*
- *Employment by industry and sex*
- *Full-time and part-time employment by sex and age group*
- *Labour force characteristics by age and sex*
- *Distribution of employed people, by industry, by province*
- *Labour force characteristics, population 15 years and older, by census metropolitan areas*
- *Labour force characteristics, population 15 years and older, by economic regions, by province*
- *Days lost per worker by cause, by provinces*
- *Days lost per worker by industry and sex*
- *People employed, by educational attainment*
- *Reasons for part-time work by sex and age group*
- *Self-employment, historical summary*
- *Employment by age, sex, type of work, class of worker and provinces (monthly)*
- *Employment by major industry groups, seasonally adjusted, by provinces (monthly)*
- *Actual hours worked per week by industry, seasonally adjusted (monthly)*
- *Average hourly wages of employees by selected characteristics and profession, unadjusted data, by provinces (monthly)*
- *Labour force characteristics, seasonally adjusted, by province (monthly)*
- *Labour force characteristics, unadjusted, by province (monthly)*
- *Labour force characteristics, seasonally adjusted, by census metropolitan areas (3 month moving average)*
- *Labour force characteristics, unadjusted, by census metropolitan areas (3 month moving average)*
- *Labour force characteristics, unadjusted, by economic regions (3 month moving average)*

Statistical tables

Table 1
Labour force characteristics by age and sex, Canada, seasonally adjusted

	April 2006	May 2006	S.E. ¹	Change from			Percent change from		
				last month	last December	twelve months ago	last month	last December	twelve months ago
in thousands (except rates)									
Both sexes, 15 years and over									
Population	26,100.2	26,135.8	...	35.6	148.9	381.2	0.1	0.6	1.5
Labour force	17,532.4	17,588.0	27.6	55.6	158.1	262.9	0.3	0.9	1.5
Employment	16,418.2	16,514.9	27.4	96.7	220.2	378.7	0.6	1.4	2.3
Employment full-time	13,413.2	13,564.0	36.4	150.8	205.7	414.2	1.1	1.5	3.1
Employment part-time	3,005.0	2,950.8	32.7	-54.2	14.4	-35.6	-1.8	0.5	-1.2
Unemployment	1,114.2	1,073.2	23.2	-41.0	-62.0	-115.7	-3.7	-5.5	-9.7
Participation rate	67.2	67.3	0.1	0.1	0.2	0.0
Unemployment rate	6.4	6.1	0.1	-0.3	-0.4	-0.8
Employment rate	62.9	63.2	0.1	0.3	0.5	0.5
Part-time rate	18.3	17.9	0.2	-0.4	-0.2	-0.6
Both sexes, 15 to 24 years									
Population	4,312.1	4,315.1	...	3.0	13.1	41.6	0.1	0.3	1.0
Labour force	2,859.1	2,873.8	16.7	14.7	23.2	50.1	0.5	0.8	1.8
Employment	2,529.9	2,554.8	15.9	24.9	42.3	92.5	1.0	1.7	3.8
Employment full-time	1,403.6	1,438.0	18.6	34.4	31.6	71.8	2.5	2.2	5.3
Employment part-time	1,126.3	1,116.8	18.8	-9.5	10.7	20.7	-0.8	1.0	1.9
Unemployment	329.2	319.0	13.7	-10.2	-19.2	-42.4	-3.1	-5.7	-11.7
Participation rate	66.3	66.6	0.4	0.3	0.3	0.5
Unemployment rate	11.5	11.1	0.5	-0.4	-0.8	-1.7
Employment rate	58.7	59.2	0.4	0.5	0.8	1.6
Part-time rate	44.5	43.7	0.7	-0.8	-0.3	-0.8
Men, 25 years and over									
Population	10,639.3	10,655.7	...	16.4	67.8	169.2	0.2	0.6	1.6
Labour force	7,842.4	7,866.4	13.9	24.0	35.7	70.6	0.3	0.5	0.9
Employment	7,422.1	7,461.5	15.2	39.4	52.0	109.8	0.5	0.7	1.5
Employment full-time	6,948.0	7,009.5	19.4	61.5	80.7	134.4	0.9	1.2	2.0
Employment part-time	474.1	452.1	15.3	-22.0	-28.6	-24.6	-4.6	-5.9	-5.2
Unemployment	420.3	404.9	13.1	-15.4	-16.3	-39.2	-3.7	-3.9	-8.8
Participation rate	73.7	73.8	0.1	0.1	-0.2	-0.5
Unemployment rate	5.4	5.1	0.2	-0.3	-0.3	-0.6
Employment rate	69.8	70.0	0.1	0.2	0.0	-0.1
Part-time rate	6.4	6.1	0.2	-0.3	-0.4	-0.4
Women, 25 years and over									
Population	11,148.8	11,164.9	...	16.1	68.0	170.2	0.1	0.6	1.5
Labour force	6,830.9	6,847.8	16.0	16.9	99.3	142.3	0.2	1.5	2.1
Employment	6,466.2	6,498.5	15.6	32.3	125.8	176.3	0.5	2.0	2.8
Employment full-time	5,061.6	5,116.6	23.4	55.0	93.5	208.0	1.1	1.9	4.2
Employment part-time	1,404.6	1,381.9	21.5	-22.7	32.3	-31.7	-1.6	2.4	-2.2
Unemployment	364.7	349.3	12.8	-15.4	-26.6	-34.1	-4.2	-7.1	-8.9
Participation rate	61.3	61.3	0.1	0.0	0.5	0.3
Unemployment rate	5.3	5.1	0.2	-0.2	-0.5	-0.6
Employment rate	58.0	58.2	0.1	0.2	0.8	0.7
Part-time rate	21.7	21.3	0.3	-0.5	0.1	-1.1
Both sexes, 25 to 54 years									
Population	14,208.9	14,219.5	...	10.6	39.5	113.2	0.1	0.3	0.8
Labour force	12,262.9	12,281.8	20.9	18.9	64.5	119.5	0.2	0.5	1.0
Employment	11,599.4	11,648.9	22.1	49.5	110.4	193.5	0.4	1.0	1.7
Unemployment	663.5	632.9	17.5	-30.6	-45.9	-74.0	-4.6	-6.8	-10.5
Participation rate	86.3	86.4	0.1	0.1	0.2	0.2
Unemployment rate	5.4	5.2	0.1	-0.2	-0.4	-0.6
Employment rate	81.6	81.9	0.2	0.3	0.5	0.7

1. Average standard error of change in two consecutive months (see "Sampling Errors" in Data Quality for further explanations).

Note: Related CANSIM table 282-0087

Table 2
Employment by class of worker and industry, Canada, seasonally adjusted

	April 2006	May 2006	S.E. ¹	Change from			Percent change from		
				last month	last December	twelve months ago	last month	last December	twelve months ago
in thousands									
Class of worker									
Employees	13,892.5	14,017.7	32.4	125.2	271.0	373.4	0.9	2.0	2.7
Self-employed ²	2,525.6	2,497.2	22.4	-28.4	-50.8	5.3	-1.1	-2.0	0.2
Public/private sector employees									
Public sector employees	3,192.0	3,226.5	21.6	34.5	67.8	106.4	1.1	2.1	3.4
Private sector employees	10,700.6	10,791.2	33.8	90.6	203.3	267.1	0.8	1.9	2.5
Industry	16,418.2	16,514.9	27.4	96.7	220.2	378.7	0.6	1.4	2.3
Goods-producing sector	4,019.7	4,009.9	24.8	-9.8	4.0	15.2	-0.2	0.1	0.4
Agriculture	357.2	353.2	7.2	-4.0	5.5	7.4	-1.1	1.6	2.1
Forestry, fishing, mining, oil and gas	322.9	328.9	6.2	6.0	20.2	15.4	1.9	6.5	4.9
Utilities	114.4	122.2	4.1	7.8	-2.4	-4.7	6.8	-1.9	-3.7
Construction	1,068.8	1,070.8	14.3	2.0	18.7	67.4	0.2	1.8	6.7
Manufacturing	2,156.5	2,134.8	19.9	-21.7	-38.0	-70.5	-1.0	-1.7	-3.2
Services-producing sector	12,398.5	12,504.9	31.7	106.4	216.1	363.4	0.9	1.8	3.0
Trade	2,646.2	2,648.8	21.6	2.6	45.9	61.4	0.1	1.8	2.4
Transportation and warehousing	796.1	801.6	12.1	5.5	6.6	-0.1	0.7	0.8	0.0
Finance, insurance, real estate and leasing	1,019.7	1,050.8	14.1	31.1	54.6	57.9	3.0	5.5	5.8
Professional, scientific and technical services	1,086.8	1,097.5	15.1	10.7	11.4	46.2	1.0	1.0	4.4
Business, building and other support services	674.8	675.1	13.0	0.3	10.2	24.8	0.0	1.5	3.8
Educational services	1,160.4	1,144.9	14.2	-15.5	-5.4	52.0	-1.3	-0.5	4.8
Health care and social assistance	1,750.3	1,773.4	16.4	23.1	52.3	59.0	1.3	3.0	3.4
Information, culture and recreation	738.8	751.4	13.0	12.6	1.8	20.8	1.7	0.2	2.8
Accommodation and food services	989.4	1,006.1	14.7	16.7	-9.5	13.2	1.7	-0.9	1.3
Other services	709.3	706.5	11.6	-2.8	34.6	23.6	-0.4	5.1	3.5
Public administration	826.8	848.8	11.1	22.0	13.6	4.7	2.7	1.6	0.6

1. Average standard error of change in two consecutive months (see "Sampling Errors" in Data Quality for further explanations).

2. Includes both incorporated and unincorporated working owners, self-employed persons who do not have a business and persons working in a family business without pay.

Note: Related CANSIM tables 282-0088, 282-0089

Table 3
Labour force characteristics by province, seasonally adjusted

	April 2006	May 2006	S.E. ¹	Change from			Percent change from		
				last month	last December	twelve months ago	last month	last December	twelve months ago
in thousands (except rates)									
Newfoundland and Labrador									
Population	428.3	427.8	...	-0.5	-1.4	-2.1	-0.1	-0.3	-0.5
Labour force	255.3	253.5	2.5	-1.8	4.1	3.5	-0.7	1.6	1.4
Employment	214.6	216.0	2.4	1.4	5.1	4.2	0.7	2.4	2.0
Employment full-time	180.4	183.8	2.6	3.4	7.7	1.6	1.9	4.4	0.9
Employment part-time	34.2	32.2	1.9	-2.0	-2.6	2.6	-5.8	-7.5	8.8
Unemployment	40.7	37.5	2.2	-3.2	-1.0	-0.7	-7.9	-2.6	-1.8
Participation rate	59.6	59.3	0.6	-0.3	1.2	1.1
Unemployment rate	15.9	14.8	0.8	-1.1	-0.6	-0.5
Employment rate	50.1	50.5	0.6	0.4	1.4	1.2
Prince Edward Island									
Population	112.0	112.1	...	0.1	0.1	0.6	0.1	0.1	0.5
Labour force	77.8	77.6	0.6	-0.2	0.4	1.6	-0.3	0.5	2.1
Employment	69.6	69.8	0.7	0.2	1.2	1.9	0.3	1.7	2.8
Employment full-time	58.3	59.3	0.8	1.0	1.1	3.4	1.7	1.9	6.1
Employment part-time	11.2	10.5	0.7	-0.7	0.1	-1.5	-6.2	1.0	-12.5
Unemployment	8.2	7.8	0.6	-0.4	-0.8	-0.4	-4.9	-9.3	-4.9
Participation rate	69.5	69.2	0.6	-0.3	0.3	1.0
Unemployment rate	10.5	10.1	0.8	-0.4	-1.0	-0.7
Employment rate	62.1	62.3	0.6	0.2	1.0	1.4
Nova Scotia									
Population	762.5	762.4	...	-0.1	0.4	2.2	0.0	0.1	0.3
Labour force	485.2	483.3	2.8	-1.9	1.0	-2.2	-0.4	0.2	-0.5
Employment	446.1	444.5	2.9	-1.6	3.2	-3.0	-0.4	0.7	-0.7
Employment full-time	358.7	359.1	3.7	0.4	-1.8	-1.0	0.1	-0.5	-0.3
Employment part-time	87.4	85.4	3.3	-2.0	5.0	-2.0	-2.3	6.2	-2.3
Unemployment	39.1	38.8	2.5	-0.3	-2.2	0.8	-0.8	-5.4	2.1
Participation rate	63.6	63.4	0.4	-0.2	0.1	-0.5
Unemployment rate	8.1	8.0	0.5	-0.1	-0.5	0.2
Employment rate	58.5	58.3	0.4	-0.2	0.4	-0.6
New Brunswick									
Population	611.4	611.3	...	-0.1	-0.1	1.2	0.0	0.0	0.2
Labour force	396.1	394.0	2.3	-2.1	0.9	4.3	-0.5	0.2	1.1
Employment	360.1	360.1	2.5	0.0	4.8	5.0	0.0	1.4	1.4
Employment full-time	301.2	302.4	3.0	1.2	7.8	6.5	0.4	2.6	2.2
Employment part-time	58.8	57.8	2.5	-1.0	-3.0	-1.3	-1.7	-4.9	-2.2
Unemployment	36.0	33.9	2.2	-2.1	-3.9	-0.7	-5.8	-10.3	-2.0
Participation rate	64.8	64.5	0.4	-0.3	0.2	0.6
Unemployment rate	9.1	8.6	0.5	-0.5	-1.0	-0.3
Employment rate	58.9	58.9	0.4	0.0	0.8	0.7
Quebec									
Population	6,235.6	6,242.1	...	6.5	26.2	69.0	0.1	0.4	1.1
Labour force	4,066.9	4,081.2	15.1	14.3	-9.2	65.7	0.4	-0.2	1.6
Employment	3,728.6	3,759.1	15.0	30.5	4.1	90.4	0.8	0.1	2.5
Employment full-time	3,040.1	3,067.0	20.0	26.9	-7.1	63.3	0.9	-0.2	2.1
Employment part-time	688.5	692.2	17.6	3.7	11.3	27.2	0.5	1.7	4.1
Unemployment	338.2	322.0	13.2	-16.2	-13.3	-24.8	-4.8	-4.0	-7.2
Participation rate	65.2	65.4	0.2	0.2	-0.4	0.4
Unemployment rate	8.3	7.9	0.3	-0.4	-0.3	-0.7
Employment rate	59.8	60.2	0.2	0.4	-0.2	0.8

See footnotes at the end of the table.

Table 3 – continued

Labour force characteristics by province, seasonally adjusted

	April 2006	May 2006	S.E. ¹	Change from			Percent change from		
				last month	last December	twelve months ago	last month	last December	twelve months ago
in thousands (except rates)									
Ontario									
Population	10,197.4	10,211.2	...	13.8	58.4	164.4	0.1	0.6	1.6
Labour force	6,915.1	6,929.3	18.5	14.2	69.7	53.5	0.2	1.0	0.8
Employment	6,486.8	6,520.8	18.3	34.0	87.4	114.9	0.5	1.4	1.8
Employment full-time	5,316.0	5,396.3	23.9	80.3	83.7	164.0	1.5	1.6	3.1
Employment part-time	1,170.7	1,124.5	21.5	-46.2	3.7	-49.1	-3.9	0.3	-4.2
Unemployment	428.3	408.5	15.7	-19.8	-17.7	-61.4	-4.6	-4.2	-13.1
Participation rate	67.8	67.9	0.2	0.1	0.3	-0.5
Unemployment rate	6.2	5.9	0.2	-0.3	-0.3	-0.9
Employment rate	63.6	63.9	0.2	0.3	0.5	0.1
Manitoba									
Population	891.2	891.5	...	0.3	1.6	3.3	0.0	0.2	0.4
Labour force	616.1	613.7	2.8	-2.4	4.4	3.0	-0.4	0.7	0.5
Employment	587.2	588.2	2.9	1.0	4.6	8.6	0.2	0.8	1.5
Employment full-time	471.2	475.9	3.9	4.7	12.0	14.0	1.0	2.6	3.0
Employment part-time	116.0	112.3	3.7	-3.7	-7.4	-5.3	-3.2	-6.2	-4.5
Unemployment	29.0	25.5	2.2	-3.5	-0.2	-5.7	-12.1	-0.8	-18.3
Participation rate	69.1	68.8	0.3	-0.3	0.3	0.0
Unemployment rate	4.7	4.2	0.3	-0.5	0.0	-0.9
Employment rate	65.9	66.0	0.3	0.1	0.4	0.7
Saskatchewan									
Population	746.6	745.9	...	-0.7	-2.3	-2.6	-0.1	-0.3	-0.3
Labour force	512.7	511.3	2.4	-1.4	5.0	2.1	-0.3	1.0	0.4
Employment	487.9	486.5	2.5	-1.4	6.8	0.5	-0.3	1.4	0.1
Employment full-time	395.3	397.0	3.2	1.7	7.7	5.8	0.4	2.0	1.5
Employment part-time	92.6	89.4	3.1	-3.2	-1.0	-5.3	-3.5	-1.1	-5.6
Unemployment	24.8	24.9	1.9	0.1	-1.7	1.6	0.4	-6.4	6.9
Participation rate	68.7	68.5	0.3	-0.2	0.8	0.5
Unemployment rate	4.8	4.9	0.4	0.1	-0.4	0.3
Employment rate	65.3	65.2	0.3	-0.1	1.1	0.3
Alberta									
Population	2,618.0	2,628.0	...	10.0	40.8	81.1	0.4	1.6	3.2
Labour force	1,911.5	1,942.1	7.9	30.6	62.6	93.1	1.6	3.3	5.0
Employment	1,844.6	1,876.2	7.9	31.6	76.4	93.0	1.7	4.2	5.2
Employment full-time	1,545.4	1,573.6	10.7	28.2	75.0	109.0	1.8	5.0	7.4
Employment part-time	299.2	302.6	9.7	3.4	1.3	-16.0	1.1	0.4	-5.0
Unemployment	66.9	65.9	5.7	-1.0	-13.8	0.1	-1.5	-17.3	0.2
Participation rate	73.0	73.9	0.3	0.9	1.3	1.3
Unemployment rate	3.5	3.4	0.3	-0.1	-0.8	-0.2
Employment rate	70.5	71.4	0.3	0.9	1.8	1.4
British Columbia									
Population	3,497.2	3,503.5	...	6.3	25.2	64.1	0.2	0.7	1.9
Labour force	2,295.7	2,302.0	10.0	6.3	19.1	38.2	0.3	0.8	1.7
Employment	2,192.8	2,193.6	9.8	0.8	26.5	62.9	0.0	1.2	3.0
Employment full-time	1,746.6	1,749.6	13.1	3.0	20.0	47.4	0.2	1.2	2.8
Employment part-time	446.3	444.0	12.3	-2.3	6.5	15.5	-0.5	1.5	3.6
Unemployment	102.9	108.4	7.7	5.5	-7.4	-24.6	5.3	-6.4	-18.5
Participation rate	65.6	65.7	0.3	0.1	0.1	-0.1
Unemployment rate	4.5	4.7	0.3	0.2	-0.4	-1.2
Employment rate	62.7	62.6	0.3	-0.1	0.3	0.7

1. Average standard error of change in two consecutive months (see "Sampling Errors" in Data Quality for further explanations).

Note: Related CANSIM table 282-0087

Table 4-1
Selected labour force characteristics (seasonally adjusted) — Newfoundland and Labrador

	April 2006	May 2006	S.E. ¹	Change from			Percent change from		
				last month	last December	twelve months ago	last month	last December	twelve months ago
in thousands (except rates)									
Both sexes, 15 years and over									
Population	428.3	427.8	...	-0.5	-1.4	-2.1	-0.1	-0.3	-0.5
Labour force	255.3	253.5	2.5	-1.8	4.1	3.5	-0.7	1.6	1.4
Employment	214.6	216.0	2.4	1.4	5.1	4.2	0.7	2.4	2.0
Employment full-time	180.4	183.8	2.6	3.4	7.7	1.6	1.9	4.4	0.9
Unemployment	40.7	37.5	2.2	-3.2	-1.0	-0.7	-7.9	-2.6	-1.8
Participation rate	59.6	59.3	0.6	-0.3	1.2	1.1
Unemployment rate	15.9	14.8	0.8	-1.1	-0.6	-0.5
Employment rate	50.1	50.5	0.6	0.4	1.4	1.2
Part-time rate	15.9	14.9	0.9	-1.0	-1.6	0.9
Both sexes, 15 to 24 years									
Population	67.4	67.1	...	-0.3	-0.8	-2.4	-0.4	-1.2	-3.5
Labour force	36.3	35.8	1.3	-0.5	-0.8	-2.2	-1.4	-2.2	-5.8
Employment	27.3	28.3	1.2	1.0	-0.3	-2.0	3.7	-1.0	-6.6
Unemployment	9.0	7.5	1.1	-1.5	-0.5	-0.2	-16.7	-6.2	-2.6
Participation rate	53.9	53.4	1.9	-0.5	-0.5	-1.3
Unemployment rate	24.8	20.9	2.6	-3.9	-1.0	0.6
Employment rate	40.5	42.2	1.8	1.7	0.1	-1.4
Part-time rate	47.3	41.0	3.6	-6.3	-5.2	4.0
Men, 25 years and over									
Population	174.8	174.6	...	-0.2	-0.4	-0.1	-0.1	-0.2	-0.1
Labour force	115.7	114.0	1.4	-1.7	2.8	0.9	-1.5	2.5	0.8
Employment	96.5	96.2	1.4	-0.3	2.6	1.1	-0.3	2.8	1.2
Unemployment	19.1	17.8	1.4	-1.3	0.2	-0.2	-6.8	1.1	-1.1
Participation rate	66.2	65.3	0.8	-0.9	1.8	0.6
Unemployment rate	16.5	15.6	1.1	-0.9	-0.2	-0.3
Employment rate	55.2	55.1	0.8	-0.1	1.6	0.7
Part-time rate	5.8	4.4	0.9	-1.4	0.2	-0.5
Women, 25 years and over									
Population	186.2	186.1	...	-0.1	-0.1	0.4	-0.1	-0.1	0.2
Labour force	103.3	103.7	1.3	0.4	2.1	4.8	0.4	2.1	4.9
Employment	90.8	91.5	1.3	0.7	2.8	5.1	0.8	3.2	5.9
Unemployment	12.6	12.2	1.2	-0.4	-0.7	-0.3	-3.2	-5.4	-2.4
Participation rate	55.5	55.7	0.7	0.2	1.1	2.4
Unemployment rate	12.2	11.8	1.1	-0.4	-0.9	-0.8
Employment rate	48.8	49.2	0.7	0.4	1.6	2.7
Part-time rate	17.3	17.9	1.3	0.6	-2.0	2.0
Industry									
Goods-producing sector	214.6	216.0	2.4	1.4	5.1	4.2	0.7	2.4	2.0
Agriculture	50.1	51.8	1.8	1.7	2.0	8.3	3.4	4.0	19.1
Forestry, fishing, mining, oil and gas	2.1	2.6	0.4	0.5	0.4	0.6	23.8	18.2	30.0
Utilities	17.0	17.4	1.1	0.4	2.2	2.1	2.4	14.5	13.7
Construction	2.5	2.4	0.3	-0.1	-0.2	0.3	-4.0	-7.7	14.3
Manufacturing	11.9	12.4	1.0	0.5	0.5	1.1	4.2	4.2	9.7
Manufacturing	16.7	17.0	1.2	0.3	-0.8	4.2	1.8	-4.5	32.8
Services-producing sector	164.4	164.2	2.2	-0.2	3.1	-4.1	-0.1	1.9	-2.4
Trade	37.4	37.5	1.4	0.1	-1.0	-2.1	0.3	-2.6	-5.3
Transportation and warehousing	11.5	12.2	0.8	0.7	0.5	1.3	6.1	4.3	11.9
Finance, insurance, real estate and leasing	7.1	6.6	0.6	-0.5	-0.5	-0.3	-7.0	-7.0	-4.3
Professional, scientific and technical services	7.0	6.4	0.7	-0.6	-0.6	-0.6	-8.6	-8.6	-8.6
Business, building and other support services	7.7	8.2	0.8	0.5	1.6	-0.1	6.5	24.2	-1.2
Educational services	15.4	15.7	0.9	0.3	-0.4	-0.7	1.9	-2.5	-4.3
Health care and social assistance	30.6	30.0	1.1	-0.6	2.2	-1.6	-2.0	7.9	-5.1
Information, culture and recreation	8.7	9.0	0.7	0.3	2.2	2.0	3.4	32.4	28.6
Accommodation and food services	13.1	13.1	1.0	0.0	-0.5	-0.6	0.0	-3.7	-4.4
Other services	11.8	10.8	0.9	-1.0	0.3	-1.0	-8.5	2.9	-8.5
Public administration	14.1	14.7	0.8	0.6	-0.6	-0.4	4.3	-3.9	-2.6

1. Average standard error of change in two consecutive months (see "Sampling Errors" in Data Quality for further explanations).

Note: Related CANSIM tables 282-0087, 282-0088

Table 4-2
Selected labour force characteristics (seasonally adjusted) — Prince Edward Island

	April 2006	May 2006	S.E. ¹	Change from			Percent change from		
				last month	last December	twelve months ago	last month	last December	twelve months ago
in thousands (except rates)									
Both sexes, 15 years and over									
Population	112.0	112.1	...	0.1	0.1	0.6	0.1	0.1	0.5
Labour force	77.8	77.6	0.6	-0.2	0.4	1.6	-0.3	0.5	2.1
Employment	69.6	69.8	0.7	0.2	1.2	1.9	0.3	1.7	2.8
Employment full-time	58.3	59.3	0.8	1.0	1.1	3.4	1.7	1.9	6.1
Unemployment	8.2	7.8	0.6	-0.4	-0.8	-0.4	-4.9	-9.3	-4.9
Participation rate	69.5	69.2	0.6	-0.3	0.3	1.0
Unemployment rate	10.5	10.1	0.8	-0.4	-1.0	-0.7
Employment rate	62.1	62.3	0.6	0.2	1.0	1.4
Part-time rate	16.1	15.0	0.9	-1.0	-0.1	-2.6
Both sexes, 15 to 24 years									
Population	19.8	19.8	...	0.0	0.0	0.1	0.0	0.0	0.5
Labour force	14.2	14.5	0.4	0.3	1.1	1.0	2.1	8.2	7.4
Employment	12.3	12.5	0.4	0.2	1.1	1.4	1.6	9.6	12.6
Unemployment	1.9	2.0	0.3	0.1	-0.1	-0.5	5.3	-4.8	-20.0
Participation rate	71.7	73.2	2.0	1.5	5.5	4.7
Unemployment rate	13.4	13.8	2.4	0.4	-1.9	-4.7
Employment rate	62.1	63.1	2.0	1.0	5.5	6.8
Part-time rate	38.2	36.8	3.2	-1.4	0.8	-8.2
Men, 25 years and over									
Population	44.2	44.3	...	0.1	0.1	0.4	0.2	0.2	0.9
Labour force	32.9	32.5	0.3	-0.4	-0.5	0.6	-1.2	-1.5	1.9
Employment	29.1	29.0	0.4	-0.1	0.0	0.0	-0.3	0.0	0.0
Unemployment	3.8	3.5	0.4	-0.3	-0.5	0.6	-7.9	-12.5	20.7
Participation rate	74.4	73.4	0.8	-1.0	-1.3	0.7
Unemployment rate	11.6	10.8	1.1	-0.8	-1.3	1.7
Employment rate	65.8	65.5	0.9	-0.3	-0.1	-0.6
Part-time rate	4.8	3.4	1.0	-1.4	-2.4	-2.4
Women, 25 years and over									
Population	48.0	48.0	...	0.0	0.0	0.1	0.0	0.0	0.2
Labour force	30.7	30.6	0.3	-0.1	-0.1	0.0	-0.3	-0.3	0.0
Employment	28.1	28.3	0.4	0.2	0.0	0.5	0.7	0.0	1.8
Unemployment	2.5	2.2	0.3	-0.3	-0.3	-0.6	-12.0	-12.0	-21.4
Participation rate	64.0	63.8	0.7	-0.2	-0.2	-0.1
Unemployment rate	8.1	7.2	1.0	-0.9	-0.9	-2.0
Employment rate	58.5	59.0	0.7	0.5	0.0	1.0
Part-time rate	18.1	17.3	1.5	-0.8	0.7	-1.8
Industry									
Goods-producing sector	69.6	69.8	0.7	0.2	1.2	1.9	0.3	1.7	2.8
Agriculture	4.1	4.1	0.3	0.0	0.3	0.6	0.0	7.9	17.1
Forestry, fishing, mining, oil and gas	2.1	2.3	0.3	0.2	0.1	-0.4	9.5	4.5	-14.8
Utilities	0.3	0.4	0.1	0.1	0.0	0.0	33.3	0.0	0.0
Construction	5.8	6.1	0.3	0.3	0.8	1.2	5.2	15.1	24.5
Manufacturing	6.8	6.5	0.4	-0.3	-0.6	0.2	-4.4	-8.5	3.2
Services-producing sector	50.4	50.5	0.7	0.1	0.6	0.5	0.2	1.2	1.0
Trade	10.3	9.9	0.4	-0.4	0.7	0.6	-3.9	7.6	6.5
Transportation and warehousing	2.2	2.0	0.2	-0.2	-0.1	-0.5	-9.1	-4.8	-20.0
Finance, insurance, real estate and leasing	1.8	2.0	0.2	0.2	0.0	-0.2	11.1	0.0	-9.1
Professional, scientific and technical services	2.8	3.2	0.2	0.4	0.6	0.7	14.3	23.1	28.0
Business, building and other support services	2.7	3.1	0.2	0.4	0.3	0.5	14.8	10.7	19.2
Educational services	4.8	4.5	0.3	-0.3	-0.2	-0.7	-6.2	-4.3	-13.5
Health care and social assistance	8.2	8.1	0.3	-0.1	0.4	0.0	-1.2	5.2	0.0
Information, culture and recreation	2.9	2.8	0.3	-0.1	-0.1	0.1	-3.4	-3.4	3.7
Accommodation and food services	5.8	6.1	0.4	0.3	0.0	0.9	5.2	0.0	17.3
Other services	3.0	2.9	0.2	-0.1	-0.5	-0.2	-3.3	-14.7	-6.5
Public administration	5.9	6.0	0.3	0.1	-0.2	-0.7	1.7	-3.2	-10.4

1. Average standard error of change in two consecutive months (see "Sampling Errors" in Data Quality for further explanations).

Note: Related CANSIM tables 282-0087, 282-0088

Table 4-3
Selected labour force characteristics (seasonally adjusted) — Nova Scotia

	April 2006	May 2006	S.E. ¹	Change from			Percent change from		
				last month	last December	twelve months ago	last month	last December	twelve months ago
in thousands (except rates)									
Both sexes, 15 years and over									
Population	762.5	762.4	...	-0.1	0.4	2.2	0.0	0.1	0.3
Labour force	485.2	483.3	2.8	-1.9	1.0	-2.2	-0.4	0.2	-0.5
Employment	446.1	444.5	2.9	-1.6	3.2	-3.0	-0.4	0.7	-0.7
Employment full-time	358.7	359.1	3.7	0.4	-1.8	-1.0	0.1	-0.5	-0.3
Unemployment	39.1	38.8	2.5	-0.3	-2.2	0.8	-0.8	-5.4	2.1
Participation rate	63.6	63.4	0.4	-0.2	0.1	-0.5
Unemployment rate	8.1	8.0	0.5	-0.1	-0.5	0.2
Employment rate	58.5	58.3	0.4	-0.2	0.4	-0.6
Part-time rate	19.6	19.2	0.7	-0.4	1.0	-0.3
Both sexes, 15 to 24 years									
Population	123.4	123.3	...	-0.1	-0.3	-0.1	-0.1	-0.2	-0.1
Labour force	84.4	84.9	1.8	0.5	3.5	2.1	0.6	4.3	2.5
Employment	72.0	72.5	1.7	0.5	1.8	0.3	0.7	2.5	0.4
Unemployment	12.3	12.4	1.5	0.1	1.6	1.8	0.8	14.8	17.0
Participation rate	68.4	68.9	1.5	0.5	3.0	1.8
Unemployment rate	14.6	14.6	1.7	0.0	1.3	1.8
Employment rate	58.3	58.8	1.4	0.5	1.6	0.3
Part-time rate	46.7	44.8	2.5	-1.8	0.7	0.2
Men, 25 years and over									
Population	305.2	305.2	...	0.0	0.2	0.8	0.0	0.1	0.3
Labour force	207.8	205.8	1.5	-2.0	-3.8	-5.6	-1.0	-1.8	-2.6
Employment	191.1	190.2	1.7	-0.9	-3.0	-5.5	-0.5	-1.6	-2.8
Unemployment	16.7	15.6	1.5	-1.1	-0.8	-0.1	-6.6	-4.9	-0.6
Participation rate	68.1	67.4	0.5	-0.7	-1.3	-2.0
Unemployment rate	8.0	7.6	0.7	-0.4	-0.2	0.2
Employment rate	62.6	62.3	0.6	-0.3	-1.0	-2.0
Part-time rate	7.3	7.1	0.7	-0.2	0.9	0.3
Women, 25 years and over									
Population	333.9	333.9	...	0.0	0.5	1.6	0.0	0.1	0.5
Labour force	193.1	192.5	1.5	-0.6	1.2	1.1	-0.3	0.6	0.6
Employment	183.0	181.8	1.5	-1.2	4.4	2.2	-0.7	2.5	1.2
Unemployment	10.1	10.7	1.3	0.6	-3.1	-1.1	5.9	-22.5	-9.3
Participation rate	57.8	57.7	0.4	-0.1	0.3	0.1
Unemployment rate	5.2	5.6	0.7	0.4	-1.6	-0.6
Employment rate	54.8	54.4	0.5	-0.4	1.2	0.4
Part-time rate	21.7	21.7	1.2	-0.1	0.7	-1.7
Industry									
Industry	446.1	444.5	2.9	-1.6	3.2	-3.0	-0.4	0.7	-0.7
Goods-producing sector									
Goods-producing sector	85.6	87.6	2.4	2.0	-1.5	-3.8	2.3	-1.7	-4.2
Agriculture	4.3	4.7	0.8	0.4	-0.1	-2.7	9.3	-2.1	-36.5
Forestry, fishing, mining, oil and gas	13.4	13.2	1.2	-0.2	-2.1	-0.4	-1.5	-13.7	-2.9
Utilities	1.6	1.5	0.4	-0.1	0.2	-0.9	-6.2	15.4	-37.5
Construction	26.7	27.3	1.4	0.6	0.0	-0.1	2.2	0.0	-0.4
Manufacturing	39.5	41.0	1.6	1.5	0.6	0.5	3.8	1.5	1.2
Services-producing sector									
Services-producing sector	360.5	356.9	3.0	-3.6	4.6	0.8	-1.0	1.3	0.2
Trade	79.3	82.3	2.0	3.0	5.9	3.7	3.8	7.7	4.7
Transportation and warehousing	20.2	19.4	1.0	-0.8	-1.2	-4.2	-4.0	-5.8	-17.8
Finance, insurance, real estate and leasing	21.9	21.3	1.1	-0.6	-1.9	-1.0	-2.7	-8.2	-4.5
Professional, scientific and technical services	20.1	18.6	1.1	-1.5	-1.1	-2.5	-7.5	-5.6	-11.8
Business, building and other support services	29.2	29.3	1.4	0.1	5.2	5.8	0.3	21.6	24.7
Educational services	36.6	34.1	1.4	-2.5	-1.1	-0.1	-6.8	-3.1	-0.3
Health care and social assistance	60.2	60.2	1.5	0.0	2.0	5.6	0.0	3.4	10.3
Information, culture and recreation	15.8	15.7	1.1	-0.1	1.3	-0.1	-0.6	9.0	-0.6
Accommodation and food services	26.4	27.2	1.6	0.8	-3.2	-5.9	3.0	-10.5	-17.8
Other services	21.2	20.3	1.2	-0.9	-0.7	-1.3	-4.2	-3.3	-6.0
Public administration	29.6	28.5	1.1	-1.1	-0.5	0.7	-3.7	-1.7	2.5

1. Average standard error of change in two consecutive months (see "Sampling Errors" in Data Quality for further explanations).

Note: Related CANSIM tables 282-0087, 282-0088

Table 4-4
Selected labour force characteristics (seasonally adjusted) — New Brunswick

	April 2006	May 2006	S.E. ¹	Change from			Percent change from		
				last month	last December	twelve months ago	last month	last December	twelve months ago
in thousands (except rates)									
Both sexes, 15 years and over									
Population	611.4	611.3	...	-0.1	-0.1	1.2	0.0	0.0	0.2
Labour force	396.1	394.0	2.3	-2.1	0.9	4.3	-0.5	0.2	1.1
Employment	360.1	360.1	2.5	0.0	4.8	5.0	0.0	1.4	1.4
Employment full-time	301.2	302.4	3.0	1.2	7.8	6.5	0.4	2.6	2.2
Unemployment	36.0	33.9	2.2	-2.1	-3.9	-0.7	-5.8	-10.3	-2.0
Participation rate	64.8	64.5	0.4	-0.3	0.2	0.6
Unemployment rate	9.1	8.6	0.5	-0.5	-1.0	-0.3
Employment rate	58.9	58.9	0.4	0.0	0.8	0.7
Part-time rate	16.3	16.1	0.7	-0.3	-1.1	-0.6
Both sexes, 15 to 24 years									
Population	96.1	96.1	...	0.0	0.0	-0.6	0.0	0.0	-0.6
Labour force	66.6	65.7	1.4	-0.9	2.4	2.5	-1.4	3.8	4.0
Employment	57.1	56.7	1.4	-0.4	2.4	2.4	-0.7	4.4	4.4
Unemployment	9.4	9.0	1.2	-0.4	0.0	0.1	-4.3	0.0	1.1
Participation rate	69.3	68.4	1.4	-0.9	2.5	3.0
Unemployment rate	14.1	13.7	1.8	-0.4	-0.5	-0.4
Employment rate	59.4	59.0	1.5	-0.4	2.5	2.8
Part-time rate	41.5	40.4	2.5	-1.1	-0.3	1.2
Men, 25 years and over									
Population	248.9	249.0	...	0.1	0.1	1.1	0.0	0.0	0.4
Labour force	172.4	173.0	1.3	0.6	1.0	1.2	0.3	0.6	0.7
Employment	155.7	157.5	1.5	1.8	1.8	0.9	1.2	1.2	0.6
Unemployment	16.8	15.6	1.5	-1.2	-0.7	0.4	-7.1	-4.3	2.6
Participation rate	69.3	69.5	0.5	0.2	0.4	0.2
Unemployment rate	9.7	9.0	0.8	-0.7	-0.5	0.2
Employment rate	62.6	63.3	0.6	0.7	0.7	0.1
Part-time rate	4.9	5.3	0.7	0.5	-0.6	0.2
Women, 25 years and over									
Population	266.3	266.3	...	0.0	-0.1	0.8	0.0	0.0	0.3
Labour force	157.1	155.3	1.3	-1.8	-2.5	0.6	-1.1	-1.6	0.4
Employment	147.3	146.0	1.3	-1.3	0.6	1.8	-0.9	0.4	1.2
Unemployment	9.8	9.3	1.1	-0.5	-3.1	-1.2	-5.1	-25.0	-11.4
Participation rate	59.0	58.3	0.5	-0.7	-0.9	0.0
Unemployment rate	6.2	6.0	0.7	-0.2	-1.9	-0.8
Employment rate	55.3	54.8	0.5	-0.5	0.2	0.5
Part-time rate	18.7	18.2	1.1	-0.6	-2.0	-2.6
Industry									
Goods-producing sector	76.7	76.9	1.9	0.2	-1.2	0.6	0.3	-1.5	0.8
Agriculture	6.7	6.5	0.6	-0.2	-1.7	-0.4	-3.0	-20.7	-5.8
Forestry, fishing, mining, oil and gas	10.4	9.7	0.9	-0.7	-1.3	-2.3	-6.7	-11.8	-19.2
Utilities	3.2	2.9	0.4	-0.3	-0.5	-0.1	-9.4	-14.7	-3.3
Construction	20.8	21.4	1.1	0.6	2.3	2.5	2.9	12.0	13.2
Manufacturing	35.5	36.5	1.3	1.0	0.0	1.0	2.8	0.0	2.8
Services-producing sector	283.4	283.2	2.4	-0.2	6.0	4.4	-0.1	2.2	1.6
Trade	58.4	57.7	1.6	-0.7	0.0	-0.6	-1.2	0.0	-1.0
Transportation and warehousing	20.6	20.3	1.0	-0.3	0.2	-1.5	-1.5	1.0	-6.9
Finance, insurance, real estate and leasing	15.0	16.7	0.7	1.7	2.4	2.2	11.3	16.8	15.2
Professional, scientific and technical services	14.4	14.2	0.9	-0.2	0.0	-1.6	-1.4	0.0	-10.1
Business, building and other support services	21.6	21.5	1.1	-0.1	0.2	0.2	-0.5	0.9	0.9
Educational services	27.2	27.8	1.0	0.6	0.9	1.9	2.2	3.3	7.3
Health care and social assistance	44.8	45.2	1.2	0.4	-0.7	-2.8	0.9	-1.5	-5.8
Information, culture and recreation	12.9	11.6	0.9	-1.3	-1.1	-0.6	-10.1	-8.7	-4.9
Accommodation and food services	27.5	28.4	1.1	0.9	3.5	5.9	3.3	14.1	26.2
Other services	19.8	17.7	1.0	-2.1	0.8	1.2	-10.6	4.7	7.3
Public administration	21.2	22.1	0.9	0.9	-0.1	0.2	4.2	-0.5	0.9

1. Average standard error of change in two consecutive months (see "Sampling Errors" in Data Quality for further explanations).

Note: Related CANSIM tables 282-0087, 282-0088

Table 4-5
Selected labour force characteristics (seasonally adjusted) — Quebec

	April 2006	May 2006	S.E. ¹	Change from			Percent change from		
				last month	last December	twelve months ago	last month	last December	twelve months ago
in thousands (except rates)									
Both sexes, 15 years and over									
Population	6,235.6	6,242.1	...	6.5	26.2	69.0	0.1	0.4	1.1
Labour force	4,066.9	4,081.2	15.1	14.3	-9.2	65.7	0.4	-0.2	1.6
Employment	3,728.6	3,759.1	15.0	30.5	4.1	90.4	0.8	0.1	2.5
Employment full-time	3,040.1	3,067.0	20.0	26.9	-7.1	63.3	0.9	-0.2	2.1
Unemployment	338.2	322.0	13.2	-16.2	-13.3	-24.8	-4.8	-4.0	-7.2
Participation rate	65.2	65.4	0.2	0.2	-0.4	0.4
Unemployment rate	8.3	7.9	0.3	-0.4	-0.3	-0.7
Employment rate	59.8	60.2	0.2	0.4	-0.2	0.8
Part-time rate	18.5	18.4	0.5	-0.1	0.3	0.3
Both sexes, 15 to 24 years									
Population	950.1	950.2	...	0.1	0.0	0.0	0.0	0.0	0.0
Labour force	619.7	619.7	8.7	0.0	-15.6	4.9	0.0	-2.5	0.8
Employment	535.4	535.7	8.4	0.3	-15.2	2.3	0.1	-2.8	0.4
Unemployment	84.3	84.0	7.3	-0.3	-0.4	2.7	-0.4	-0.5	3.3
Participation rate	65.2	65.2	0.9	0.0	-1.7	0.5
Unemployment rate	13.6	13.6	1.1	0.0	0.3	0.4
Employment rate	56.4	56.4	0.9	0.0	-1.6	0.3
Part-time rate	44.7	47.1	1.6	2.4	1.9	1.8
Men, 25 years and over									
Population	2,580.3	2,583.5	...	3.2	13.2	35.5	0.1	0.5	1.4
Labour force	1,842.2	1,856.2	8.0	14.0	0.0	23.5	0.8	0.0	1.3
Employment	1,703.5	1,728.8	8.8	25.3	1.8	48.5	1.5	0.1	2.9
Unemployment	138.7	127.4	8.0	-11.3	-1.9	-25.0	-8.1	-1.5	-16.4
Participation rate	71.4	71.8	0.3	0.4	-0.4	-0.1
Unemployment rate	7.5	6.9	0.4	-0.6	-0.1	-1.4
Employment rate	66.0	66.9	0.3	0.9	-0.3	1.0
Part-time rate	7.3	6.8	0.5	-0.6	-0.6	-0.7
Women, 25 years and over									
Population	2,705.2	2,708.3	...	3.1	12.8	33.4	0.1	0.5	1.2
Labour force	1,605.0	1,605.3	8.7	0.3	6.4	37.3	0.0	0.4	2.4
Employment	1,489.7	1,494.6	8.3	4.9	17.5	39.6	0.3	1.2	2.7
Unemployment	115.3	110.7	7.4	-4.6	-11.0	-2.4	-4.0	-9.0	-2.1
Participation rate	59.3	59.3	0.3	0.0	0.0	0.7
Unemployment rate	7.2	6.9	0.5	-0.3	-0.7	-0.3
Employment rate	55.1	55.2	0.3	0.1	0.4	0.8
Part-time rate	21.8	21.6	0.8	-0.2	0.9	1.1
Industry									
	3,728.6	3,759.1	15.0	30.5	4.1	90.4	0.8	0.1	2.5
Goods-producing sector									
Agriculture	918.2	908.4	13.5	-9.8	-15.1	-12.6	-1.1	-1.6	-1.4
Forestry, fishing, mining, oil and gas	67.8	66.4	3.7	-1.4	2.1	6.0	-2.1	3.3	9.9
Utilities	40.6	37.5	2.6	-3.1	-2.5	-3.1	-7.6	-6.2	-7.6
Construction	29.5	31.1	2.3	1.6	-0.9	0.1	5.4	-2.8	0.3
Manufacturing	184.2	189.3	7.2	5.1	4.0	16.3	2.8	2.2	9.4
	596.0	584.2	11.4	-11.8	-17.6	-31.9	-2.0	-2.9	-5.2
Services-producing sector									
	2,810.4	2,850.7	17.1	40.3	19.1	103.0	1.4	0.7	3.7
Trade	628.7	608.6	12.1	-20.1	-33.9	-11.0	-3.2	-5.3	-1.8
Transportation and warehousing	166.6	169.7	6.4	3.1	13.4	4.4	1.9	8.6	2.7
Finance, insurance, real estate and leasing	213.5	233.3	7.1	19.8	29.3	30.8	9.3	14.4	15.2
Professional, scientific and technical services	232.8	234.8	7.8	2.0	-4.0	5.9	0.9	-1.7	2.6
Business, building and other support services	130.8	136.2	6.7	5.4	4.8	7.2	4.1	3.7	5.6
Educational services	258.6	262.0	7.6	3.4	6.0	31.0	1.3	2.3	13.4
Health care and social assistance	448.7	453.8	9.6	5.1	3.4	27.0	1.1	0.8	6.3
Information, culture and recreation	150.0	165.9	7.5	15.9	2.9	1.6	10.6	1.8	1.0
Accommodation and food services	209.9	209.0	7.9	-0.9	-5.6	0.8	-0.4	-2.6	0.4
Other services	156.6	153.6	6.4	-3.0	-6.1	-3.0	-1.9	-3.8	-1.9
Public administration	214.3	223.8	6.4	9.5	8.9	8.3	4.4	4.1	3.9

1. Average standard error of change in two consecutive months (see "Sampling Errors" in Data Quality for further explanations).

Note: Related CANSIM tables 282-0087, 282-0088

Table 4-6
Selected labour force characteristics (seasonally adjusted) — Ontario

	April 2006	May 2006	S.E. ¹	Change from			Percent change from		
				last month	last December	twelve months ago	last month	last December	twelve months ago
in thousands (except rates)									
Both sexes, 15 years and over									
Population	10,197.4	10,211.2	...	13.8	58.4	164.4	0.1	0.6	1.6
Labour force	6,915.1	6,929.3	18.5	14.2	69.7	53.5	0.2	1.0	0.8
Employment	6,486.8	6,520.8	18.3	34.0	87.4	114.9	0.5	1.4	1.8
Employment full-time	5,316.0	5,396.3	23.9	80.3	83.7	164.0	1.5	1.6	3.1
Unemployment	428.3	408.5	15.7	-19.8	-17.7	-61.4	-4.6	-4.2	-13.1
Participation rate	67.8	67.9	0.2	0.1	0.3	-0.5
Unemployment rate	6.2	5.9	0.2	-0.3	-0.3	-0.9
Employment rate	63.6	63.9	0.2	0.3	0.5	0.1
Part-time rate	18.0	17.2	0.3	-0.8	-0.2	-1.1
Both sexes, 15 to 24 years									
Population	1,699.8	1,701.3	...	1.5	7.0	25.3	0.1	0.4	1.5
Labour force	1,089.8	1,105.5	11.5	15.7	8.0	6.5	1.4	0.7	0.6
Employment	950.6	974.8	10.8	24.2	24.4	44.3	2.5	2.6	4.8
Unemployment	139.3	130.7	9.6	-8.6	-16.4	-37.8	-6.2	-11.1	-22.4
Participation rate	64.1	65.0	0.7	0.9	0.2	-0.6
Unemployment rate	12.8	11.8	0.8	-1.0	-1.6	-3.5
Employment rate	55.9	57.3	0.7	1.4	1.2	1.8
Part-time rate	48.4	46.1	1.2	-2.3	-1.0	-2.9
Men, 25 years and over									
Population	4,135.4	4,141.1	...	5.7	23.5	66.0	0.1	0.6	1.6
Labour force	3,104.1	3,100.2	8.9	-3.9	16.0	7.2	-0.1	0.5	0.2
Employment	2,952.0	2,952.3	9.8	0.3	15.6	9.6	0.0	0.5	0.3
Unemployment	152.1	148.0	8.4	-4.1	0.5	-2.3	-2.7	0.3	-1.5
Participation rate	75.1	74.9	0.2	-0.2	0.0	-1.0
Unemployment rate	4.9	4.8	0.3	-0.1	0.0	-0.1
Employment rate	71.4	71.3	0.2	-0.1	0.0	-0.9
Part-time rate	6.2	5.8	0.3	-0.4	-0.5	-0.3
Women, 25 years and over									
Population	4,362.1	4,368.7	...	6.6	27.8	73.0	0.2	0.6	1.7
Labour force	2,721.2	2,723.6	10.5	2.4	45.7	39.8	0.1	1.7	1.5
Employment	2,584.2	2,593.8	10.5	9.6	47.5	61.0	0.4	1.9	2.4
Unemployment	137.0	129.8	8.6	-7.2	-1.8	-21.2	-5.3	-1.4	-14.0
Participation rate	62.4	62.3	0.3	-0.1	0.6	-0.2
Unemployment rate	5.0	4.8	0.3	-0.2	-0.1	-0.8
Employment rate	59.2	59.4	0.2	0.2	0.7	0.4
Part-time rate	20.4	19.4	0.6	-1.0	0.2	-1.9
Industry									
Goods-producing sector	6,486.8	6,520.8	18.3	34.0	87.4	114.9	0.5	1.4	1.8
Agriculture	1,622.2	1,608.8	16.1	-13.4	-26.6	-42.4	-0.8	-1.6	-2.6
Forestry, fishing, mining, oil and gas	100.3	99.2	4.0	-1.1	0.4	2.9	-1.1	0.4	3.0
Utilities	32.7	39.5	2.1	6.8	3.9	4.2	20.8	11.0	11.9
Construction	45.1	47.8	2.5	2.7	-2.7	-4.8	6.0	-5.3	-9.1
Manufacturing	415.0	406.4	9.2	-8.6	1.2	3.7	-2.1	0.3	0.9
Manufacturing	1,029.1	1,015.8	13.5	-13.3	-29.5	-48.6	-1.3	-2.8	-4.6
Services-producing sector	4,864.5	4,912.0	21.1	47.5	114.0	157.3	1.0	2.4	3.3
Trade	1,018.0	1,044.1	13.8	26.1	58.5	40.1	2.6	5.9	4.0
Transportation and warehousing	280.5	280.8	7.5	0.3	-17.2	-9.1	0.1	-5.8	-3.1
Finance, insurance, real estate and leasing	472.0	480.0	10.1	8.0	21.3	23.4	1.7	4.6	5.1
Professional, scientific and technical services	452.6	473.3	10.1	20.7	17.3	40.2	4.6	3.8	9.3
Business, building and other support services	300.7	298.6	8.8	-2.1	0.8	26.4	-0.7	0.3	9.7
Educational services	458.8	441.5	9.3	-17.3	-15.4	14.7	-3.8	-3.4	3.4
Health care and social assistance	623.1	619.5	10.1	-3.6	10.6	-5.4	-0.6	1.7	-0.9
Information, culture and recreation	318.5	320.5	8.2	2.0	10.5	15.4	0.6	3.4	5.0
Accommodation and food services	364.7	369.5	9.2	4.8	0.8	7.6	1.3	0.2	2.1
Other services	270.5	271.6	7.3	1.1	34.5	21.5	0.4	14.6	8.6
Public administration	304.9	312.5	6.9	7.6	-7.8	-17.6	2.5	-2.4	-5.3

1. Average standard error of change in two consecutive months (see "Sampling Errors" in Data Quality for further explanations).

Note: Related CANSIM tables 282-0087, 282-0088

Table 4-7
Selected labour force characteristics (seasonally adjusted) — Manitoba

	April 2006	May 2006	S.E. ¹	Change from			Percent change from		
				last month	last December	twelve months ago	last month	last December	twelve months ago
in thousands (except rates)									
Both sexes, 15 years and over									
Population	891.2	891.5	...	0.3	1.6	3.3	0.0	0.2	0.4
Labour force	616.1	613.7	2.8	-2.4	4.4	3.0	-0.4	0.7	0.5
Employment	587.2	588.2	2.9	1.0	4.6	8.6	0.2	0.8	1.5
Employment full-time	471.2	475.9	3.9	4.7	12.0	14.0	1.0	2.6	3.0
Unemployment	29.0	25.5	2.2	-3.5	-0.2	-5.7	-12.1	-0.8	-18.3
Participation rate	69.1	68.8	0.3	-0.3	0.3	0.0
Unemployment rate	4.7	4.2	0.3	-0.5	0.0	-0.9
Employment rate	65.9	66.0	0.3	0.1	0.4	0.7
Part-time rate	19.8	19.1	0.6	-0.7	-1.4	-1.2
Both sexes, 15 to 24 years									
Population	155.7	155.7	...	0.0	0.2	0.3	0.0	0.1	0.2
Labour force	115.9	114.0	1.7	-1.9	4.5	2.3	-1.6	4.1	2.1
Employment	104.3	104.0	1.7	-0.3	3.6	3.4	-0.3	3.6	3.4
Unemployment	11.6	10.0	1.5	-1.6	0.9	-1.1	-13.8	9.9	-9.9
Participation rate	74.4	73.2	1.1	-1.2	2.8	1.3
Unemployment rate	10.0	8.8	1.3	-1.2	0.5	-1.1
Employment rate	67.0	66.8	1.1	-0.2	2.2	2.1
Part-time rate	44.4	44.9	2.1	0.5	-1.2	-0.5
Men, 25 years and over									
Population	358.8	359.0	...	0.2	1.0	2.0	0.1	0.3	0.6
Labour force	267.2	266.9	1.4	-0.3	-2.5	0.0	-0.1	-0.9	0.0
Employment	258.7	258.9	1.5	0.2	-1.0	2.9	0.1	-0.4	1.1
Unemployment	8.5	8.1	1.2	-0.4	-1.4	-2.8	-4.7	-14.7	-25.7
Participation rate	74.5	74.3	0.4	-0.2	-1.0	-0.5
Unemployment rate	3.2	3.0	0.4	-0.2	-0.5	-1.1
Employment rate	72.1	72.1	0.4	0.0	-0.5	0.4
Part-time rate	7.0	6.6	0.6	-0.5	0.0	-0.3
Women, 25 years and over									
Population	376.7	376.7	...	0.0	0.3	0.9	0.0	0.1	0.2
Labour force	233.0	232.8	1.6	-0.2	2.3	0.6	-0.1	1.0	0.3
Employment	224.2	225.4	1.6	1.2	2.1	2.4	0.5	0.9	1.1
Unemployment	8.9	7.5	1.1	-1.4	0.4	-1.7	-15.7	5.6	-18.5
Participation rate	61.9	61.8	0.4	-0.1	0.6	0.0
Unemployment rate	3.8	3.2	0.5	-0.6	0.1	-0.8
Employment rate	59.5	59.8	0.4	0.3	0.5	0.5
Part-time rate	22.9	21.6	1.1	-1.3	-3.7	-2.8
Industry									
Industry	587.2	588.2	2.9	1.0	4.6	8.6	0.2	0.8	1.5
Goods-producing sector									
Agriculture	136.1	138.9	2.5	2.8	-2.6	0.7	2.1	-1.8	0.5
Forestry, fishing, mining, oil and gas	29.5	29.0	1.3	-0.5	-3.2	1.3	-1.7	-9.9	4.7
Utilities	6.6	6.3	0.6	-0.3	0.1	0.7	-4.5	1.6	12.5
Construction	5.7	6.5	0.6	0.8	-0.1	0.3	14.0	-1.5	4.8
Manufacturing	30.6	32.1	1.4	1.5	2.1	4.6	4.9	7.0	16.7
Manufacturing	63.6	65.0	2.0	1.4	-1.5	-6.1	2.2	-2.3	-8.6
Services-producing sector									
Trade	451.0	449.3	3.4	-1.7	7.2	7.9	-0.4	1.6	1.8
Trade	91.7	90.4	2.2	-1.3	4.7	2.9	-1.4	5.5	3.3
Transportation and warehousing	36.0	36.4	1.3	0.4	0.6	4.1	1.1	1.7	12.7
Finance, insurance, real estate and leasing	35.2	34.3	1.4	-0.9	-1.2	1.7	-2.6	-3.4	5.2
Professional, scientific and technical services	23.2	23.1	1.3	-0.1	0.9	-3.0	-0.4	4.1	-11.5
Business, building and other support services	20.3	18.0	1.2	-2.3	-0.6	-2.5	-11.3	-3.2	-12.2
Educational services	45.3	44.9	1.7	-0.4	-0.5	-1.2	-0.9	-1.1	-2.6
Health care and social assistance	77.7	78.8	1.9	1.1	4.4	5.6	1.4	5.9	7.7
Information, culture and recreation	21.9	23.8	1.5	1.9	0.7	-0.3	8.7	3.0	-1.2
Accommodation and food services	39.5	38.9	1.7	-0.6	-1.2	2.2	-1.5	-3.0	6.0
Other services	26.5	26.3	1.3	-0.2	0.3	-0.5	-0.8	1.2	-1.9
Public administration	33.7	34.3	1.3	0.6	-1.1	-1.2	1.8	-3.1	-3.4

1. Average standard error of change in two consecutive months (see "Sampling Errors" in Data Quality for further explanations).

Note: Related CANSIM tables 282-0087, 282-0088

Table 4-8
Selected labour force characteristics (seasonally adjusted) — Saskatchewan

	April 2006	May 2006	S.E. ¹	Change from			Percent change from		
				last month	last December	twelve months ago	last month	last December	twelve months ago
in thousands (except rates)									
Both sexes, 15 years and over									
Population	746.6	745.9	...	-0.7	-2.3	-2.6	-0.1	-0.3	-0.3
Labour force	512.7	511.3	2.4	-1.4	5.0	2.1	-0.3	1.0	0.4
Employment	487.9	486.5	2.5	-1.4	6.8	0.5	-0.3	1.4	0.1
Employment full-time	395.3	397.0	3.2	1.7	7.7	5.8	0.4	2.0	1.5
Unemployment	24.8	24.9	1.9	0.1	-1.7	1.6	0.4	-6.4	6.9
Participation rate	68.7	68.5	0.3	-0.2	0.8	0.5
Unemployment rate	4.8	4.9	0.4	0.1	-0.4	0.3
Employment rate	65.3	65.2	0.3	-0.1	1.1	0.3
Part-time rate	19.0	18.4	0.6	-0.6	-0.5	-1.1
Both sexes, 15 to 24 years									
Population	138.0	137.9	...	-0.1	-0.3	-1.1	-0.1	-0.2	-0.8
Labour force	95.7	95.9	1.5	0.2	1.3	0.6	0.2	1.4	0.6
Employment	86.6	88.2	1.5	1.6	5.0	2.0	1.8	6.0	2.3
Unemployment	9.1	7.7	1.2	-1.4	-3.7	-1.5	-15.4	-32.5	-16.3
Participation rate	69.3	69.5	1.1	0.2	1.0	0.9
Unemployment rate	9.5	8.0	1.2	-1.5	-4.1	-1.7
Employment rate	62.8	64.0	1.1	1.2	3.8	2.0
Part-time rate	40.8	40.1	1.9	-0.6	-0.2	-0.1
Men, 25 years and over									
Population	296.7	296.4	...	-0.3	-0.9	-0.7	-0.1	-0.3	-0.2
Labour force	224.7	223.0	1.2	-1.7	1.9	-0.4	-0.8	0.9	-0.2
Employment	214.1	212.4	1.3	-1.7	-0.5	-3.2	-0.8	-0.2	-1.5
Unemployment	10.6	10.6	1.0	0.0	2.4	2.8	0.0	29.3	35.9
Participation rate	75.7	75.2	0.4	-0.5	0.8	0.0
Unemployment rate	4.7	4.8	0.5	0.1	1.1	1.3
Employment rate	72.2	71.7	0.4	-0.5	0.1	-0.9
Part-time rate	6.2	5.3	0.6	-0.9	-1.0	-1.7
Women, 25 years and over									
Population	311.9	311.6	...	-0.3	-1.1	-0.8	-0.1	-0.4	-0.3
Labour force	192.3	192.5	1.3	0.2	1.9	2.0	0.1	1.0	1.0
Employment	187.2	185.9	1.3	-1.3	2.3	1.7	-0.7	1.3	0.9
Unemployment	5.1	6.6	0.9	1.5	-0.4	0.3	29.4	-5.7	4.8
Participation rate	61.7	61.8	0.4	0.1	0.8	0.8
Unemployment rate	2.7	3.4	0.5	0.7	-0.3	0.1
Employment rate	60.0	59.7	0.4	-0.3	1.0	0.7
Part-time rate	23.5	23.0	1.0	-0.5	-0.6	-1.4
Industry									
Industry	487.9	486.5	2.5	-1.4	6.8	0.5	-0.3	1.4	0.1
Goods-producing sector									
Goods-producing sector	131.9	132.7	2.3	0.8	5.9	6.9	0.6	4.7	5.5
Agriculture	47.6	48.9	1.6	1.3	4.3	2.9	2.7	9.6	6.3
Forestry, fishing, mining, oil and gas	21.0	21.0	1.0	0.0	0.6	2.8	0.0	2.9	15.4
Utilities	4.7	4.6	0.4	-0.1	0.0	-0.3	-2.1	0.0	-6.1
Construction	29.4	30.1	1.2	0.7	3.1	3.5	2.4	11.5	13.2
Manufacturing	29.2	28.2	1.2	-1.0	-1.9	-1.9	-3.4	-6.3	-6.3
Services-producing sector									
Services-producing sector	356.0	353.7	2.9	-2.3	0.8	-6.4	-0.6	0.2	-1.8
Trade	80.6	77.7	1.9	-2.9	4.0	-3.0	-3.6	5.4	-3.7
Transportation and warehousing	27.2	24.9	1.1	-2.3	-2.1	1.3	-8.5	-7.8	5.5
Finance, insurance, real estate and leasing	26.0	25.1	0.9	-0.9	-1.0	-0.2	-3.5	-3.8	-0.8
Professional, scientific and technical services	18.2	19.2	0.9	1.0	1.3	-0.2	5.5	7.3	-1.0
Business, building and other support services	12.7	13.0	0.9	0.3	0.7	-1.4	2.4	5.7	-9.7
Educational services	37.9	38.3	1.3	0.4	-0.9	-0.7	1.1	-2.3	-1.8
Health care and social assistance	58.8	60.0	1.4	1.2	1.6	1.2	2.0	2.7	2.0
Information, culture and recreation	20.2	20.1	1.1	-0.1	0.3	-0.3	-0.5	1.5	-1.5
Accommodation and food services	27.8	28.1	1.3	0.3	-1.2	-1.1	1.1	-4.1	-3.8
Other services	19.9	19.8	1.1	-0.1	-1.8	-2.3	-0.5	-8.3	-10.4
Public administration	26.7	27.5	1.0	0.8	-0.2	0.3	3.0	-0.7	1.1

1. Average standard error of change in two consecutive months (see "Sampling Errors" in Data Quality for further explanations).

Note: Related CANSIM tables 282-0087, 282-0088

Table 4-9
Selected labour force characteristics (seasonally adjusted) — Alberta

	April 2006	May 2006	S.E. ¹	Change from			Percent change from		
				last month	last December	twelve months ago	last month	last December	twelve months ago
in thousands (except rates)									
Both sexes, 15 years and over									
Population	2,618.0	2,628.0	...	10.0	40.8	81.1	0.4	1.6	3.2
Labour force	1,911.5	1,942.1	7.9	30.6	62.6	93.1	1.6	3.3	5.0
Employment	1,844.6	1,876.2	7.9	31.6	76.4	93.0	1.7	4.2	5.2
Employment full-time	1,545.4	1,573.6	10.7	28.2	75.0	109.0	1.8	5.0	7.4
Unemployment	66.9	65.9	5.7	-1.0	-13.8	0.1	-1.5	-17.3	0.2
Participation rate	73.0	73.9	0.3	0.9	1.3	1.3
Unemployment rate	3.5	3.4	0.3	-0.1	-0.8	-0.2
Employment rate	70.5	71.4	0.3	0.9	1.8	1.4
Part-time rate	16.2	16.1	0.5	-0.1	-0.6	-1.7
Both sexes, 15 to 24 years									
Population	486.2	487.8	...	1.6	5.9	13.0	0.3	1.2	2.7
Labour force	350.0	355.7	4.7	5.7	15.1	20.7	1.6	4.4	6.2
Employment	327.6	331.7	4.8	4.1	17.0	17.1	1.3	5.4	5.4
Unemployment	22.4	24.0	3.5	1.6	-1.9	3.6	7.1	-7.3	17.6
Participation rate	72.0	72.9	1.0	0.9	2.2	2.3
Unemployment rate	6.4	6.7	1.0	0.3	-0.9	0.6
Employment rate	67.4	68.0	1.0	0.6	2.7	1.7
Part-time rate	35.6	32.6	1.7	-3.0	-2.3	-3.9
Men, 25 years and over									
Population	1,067.8	1,072.2	...	4.4	18.6	35.1	0.4	1.8	3.4
Labour force	861.5	874.9	3.8	13.4	22.3	36.7	1.6	2.6	4.4
Employment	840.1	854.9	4.2	14.8	29.9	40.3	1.8	3.6	4.9
Unemployment	21.4	20.0	3.1	-1.4	-7.6	-3.6	-6.5	-27.5	-15.3
Participation rate	80.7	81.6	0.4	0.9	0.7	0.8
Unemployment rate	2.5	2.3	0.4	-0.2	-0.9	-0.5
Employment rate	78.7	79.7	0.4	1.0	1.4	1.2
Part-time rate	3.7	4.1	0.5	0.4	-1.4	-1.2
Women, 25 years and over									
Population	1,064.0	1,067.9	...	3.9	16.2	33.0	0.4	1.5	3.2
Labour force	699.9	711.5	4.9	11.6	25.2	35.7	1.7	3.7	5.3
Employment	676.9	689.6	4.7	12.7	29.5	35.6	1.9	4.5	5.4
Unemployment	23.0	21.9	3.2	-1.1	-4.3	0.1	-4.8	-16.4	0.5
Participation rate	65.8	66.6	0.5	0.8	1.3	1.3
Unemployment rate	3.3	3.1	0.5	-0.2	-0.7	-0.1
Employment rate	63.6	64.6	0.5	1.0	1.8	1.4
Part-time rate	22.4	23.1	0.9	0.7	0.9	-1.4
Industry									
Goods-producing sector	1,844.6	1,876.2	7.9	31.6	76.4	93.0	1.7	4.2	5.2
Agriculture	516.7	520.9	7.1	4.2	38.4	40.3	0.8	8.0	8.4
Forestry, fishing, mining, oil and gas	59.7	55.9	2.7	-3.8	4.8	-2.1	-6.4	9.4	-3.6
Utilities	139.0	141.8	3.7	2.8	17.4	13.1	2.0	14.0	10.2
Construction	15.1	17.0	1.2	1.9	1.1	5.8	12.6	6.9	51.8
Manufacturing	164.6	171.9	4.6	7.3	10.9	21.1	4.4	6.8	14.0
Manufacturing	138.2	134.3	4.2	-3.9	4.2	2.5	-2.8	3.2	1.9
Services-producing sector	1,327.9	1,355.2	9.0	27.3	37.9	52.6	2.1	2.9	4.0
Trade	284.0	283.3	6.0	-0.7	2.8	4.5	-0.2	1.0	1.6
Transportation and warehousing	107.5	109.6	3.5	2.1	4.6	-0.8	2.0	4.4	-0.7
Finance, insurance, real estate and leasing	95.1	101.3	3.3	6.2	5.5	6.2	6.5	5.7	6.5
Professional, scientific and technical services	142.6	141.6	4.3	-1.0	-2.0	9.4	-0.7	-1.4	7.1
Business, building and other support services	60.6	58.0	3.2	-2.6	-5.6	-5.5	-4.3	-8.8	-8.7
Educational services	124.3	124.7	3.8	0.4	-3.0	6.6	0.3	-2.3	5.6
Health care and social assistance	171.3	186.6	4.4	15.3	14.9	8.8	8.9	8.7	4.9
Information, culture and recreation	65.4	63.8	3.2	-1.6	-3.7	-13.4	-2.4	-5.5	-17.4
Accommodation and food services	108.1	114.3	4.2	6.2	5.4	11.0	5.7	5.0	10.6
Other services	86.5	88.4	3.3	1.9	4.7	6.7	2.2	5.6	8.2
Public administration	82.6	83.6	2.6	1.0	14.1	19.1	1.2	20.3	29.6

1. Average standard error of change in two consecutive months (see "Sampling Errors" in Data Quality for further explanations).

Note: Related CANSIM tables 282-0087, 282-0088

Table 4-10
Selected labour force characteristics (seasonally adjusted) — British Columbia

	April 2006	May 2006	S.E. ¹	Change from			Percent change from		
				last month	last December	twelve months ago	last month	last December	twelve months ago
in thousands (except rates)									
Both sexes, 15 years and over									
Population	3,497.2	3,503.5	...	6.3	25.2	64.1	0.2	0.7	1.9
Labour force	2,295.7	2,302.0	10.0	6.3	19.1	38.2	0.3	0.8	1.7
Employment	2,192.8	2,193.6	9.8	0.8	26.5	62.9	0.0	1.2	3.0
Employment full-time	1,746.6	1,749.6	13.1	3.0	20.0	47.4	0.2	1.2	2.8
Unemployment	102.9	108.4	7.7	5.5	-7.4	-24.6	5.3	-6.4	-18.5
Participation rate	65.6	65.7	0.3	0.1	0.1	-0.1
Unemployment rate	4.5	4.7	0.3	0.2	-0.4	-1.2
Employment rate	62.7	62.6	0.3	-0.1	0.3	0.7
Part-time rate	20.4	20.2	0.6	-0.1	0.1	0.1
Both sexes, 15 to 24 years									
Population	575.5	575.9	...	0.4	1.4	7.2	0.1	0.2	1.3
Labour force	386.4	382.2	5.8	-4.2	3.8	11.8	-1.1	1.0	3.2
Employment	356.6	350.5	5.7	-6.1	2.6	21.4	-1.7	0.7	6.5
Unemployment	29.9	31.8	4.4	1.9	1.3	-9.5	6.4	4.3	-23.0
Participation rate	67.1	66.4	1.0	-0.7	0.5	1.3
Unemployment rate	7.7	8.3	1.2	0.6	0.2	-2.9
Employment rate	62.0	60.9	1.0	-1.1	0.3	3.0
Part-time rate	43.3	43.9	1.8	0.5	0.7	3.2
Men, 25 years and over									
Population	1,427.2	1,430.2	...	3.0	12.2	29.0	0.2	0.9	2.1
Labour force	1,013.9	1,019.7	5.1	5.8	-1.7	6.1	0.6	-0.2	0.6
Employment	981.3	981.5	5.4	0.2	4.8	15.3	0.0	0.5	1.6
Unemployment	32.6	38.2	4.5	5.6	-6.5	-9.1	17.2	-14.5	-19.2
Participation rate	71.0	71.3	0.4	0.3	-0.7	-1.0
Unemployment rate	3.2	3.7	0.4	0.5	-0.7	-1.0
Employment rate	68.8	68.6	0.4	-0.2	-0.3	-0.4
Part-time rate	7.6	7.4	0.6	-0.2	0.6	0.2
Women, 25 years and over									
Population	1,494.5	1,497.5	...	3.0	11.7	28.0	0.2	0.8	1.9
Labour force	895.4	900.1	5.9	4.7	17.1	20.3	0.5	1.9	2.3
Employment	854.9	861.7	5.8	6.8	19.2	26.3	0.8	2.3	3.1
Unemployment	40.4	38.4	4.4	-2.0	-2.2	-6.0	-5.0	-5.4	-13.5
Participation rate	59.9	60.1	0.4	0.2	0.7	0.2
Unemployment rate	4.5	4.3	0.5	-0.2	-0.3	-0.7
Employment rate	57.2	57.5	0.4	0.3	0.8	0.7
Part-time rate	25.4	25.2	1.0	-0.2	-1.0	-1.7
Industry									
Goods-producing sector	2,192.8	2,193.6	9.8	0.8	26.5	62.9	0.0	1.2	3.0
Agriculture	459.9	459.9	8.3	0.0	2.9	7.9	0.0	0.6	1.7
Forestry, fishing, mining, oil and gas	35.8	36.0	2.7	0.2	-3.6	-2.6	0.6	-9.1	-6.7
Utilities	39.0	40.2	2.6	1.2	3.8	-1.2	3.1	10.4	-2.9
Construction	6.6	8.1	1.2	1.5	0.8	-4.8	22.7	11.0	-37.2
Manufacturing	177.4	174.1	5.4	-3.3	-6.3	9.2	-1.9	-3.5	5.6
Professional, scientific and technical services	201.0	201.6	5.7	0.6	8.2	7.3	0.3	4.2	3.8
Services-producing sector	1,733.0	1,733.7	11.0	0.7	23.7	55.0	0.0	1.4	3.3
Trade	365.3	364.5	7.4	-0.8	13.1	35.4	-0.2	3.7	10.8
Transportation and warehousing	123.8	122.2	4.6	-1.6	3.8	3.2	-1.3	3.2	2.7
Finance, insurance, real estate and leasing	129.5	132.3	4.4	2.8	1.2	-2.6	2.2	0.9	-1.9
Business, building and other support services	171.4	168.0	5.1	-3.4	3.5	0.7	-2.0	2.1	0.4
Educational services	90.8	89.4	4.6	-1.4	3.1	-5.0	-1.5	3.6	-5.3
Health care and social assistance	152.4	151.4	4.7	-1.0	5.3	2.2	-0.7	3.6	1.5
Information, culture and recreation	224.1	237.3	5.3	13.2	19.1	29.0	5.9	8.8	13.9
Accommodation and food services	123.0	118.4	4.5	-4.6	-10.6	15.5	-3.7	-8.2	15.1
Other services	166.8	167.1	5.7	0.3	-14.3	-10.1	0.2	-7.9	-5.7
Public administration	91.2	90.8	4.1	-0.4	1.0	-2.6	-0.4	1.1	-2.8
Public administration	94.8	92.2	3.7	-2.6	-1.6	-10.9	-2.7	-1.7	-10.6

1. Average standard error of change in two consecutive months (see "Sampling Errors" in Data Quality for further explanations).

Note: Related CANSIM tables 282-0087, 282-0088

Table 5-1
Labour force characteristics by census metropolitan area (seasonally adjusted) — 3 month moving average

	April 2006	May 2006	S.E. ¹	Change from			Percent change from		
				last month	last December	twelve months ago	last month	last December	twelve months ago
in thousands (except rates)									
St. John's, Newfoundland and Labrador									
Population	151.3	151.3	...	0.0	0.5	1.0	0.0	0.3	0.7
Labour force	100.3	100.6	0.8	0.3	2.7	-0.1	0.3	2.8	-0.1
Employment	91.3	91.8	0.8	0.5	1.8	0.6	0.5	2.0	0.7
Unemployment	9.0	8.8	0.5	-0.2	0.8	-0.7	-2.2	10.0	-7.4
Participation rate	66.3	66.5	0.5	0.2	1.6	-0.5
Unemployment rate	9.0	8.7	0.5	-0.3	0.5	-0.7
Employment rate	60.3	60.7	0.6	0.4	1.0	0.0
Halifax, Nova Scotia									
Population	310.8	310.9	...	0.1	0.8	2.7	0.0	0.3	0.9
Labour force	214.6	215.0	1.1	0.4	1.9	-1.3	0.2	0.9	-0.6
Employment	203.5	203.8	1.2	0.3	2.7	0.1	0.1	1.3	0.0
Unemployment	11.1	11.2	0.6	0.1	-0.8	-1.4	0.9	-6.7	-11.1
Participation rate	69.0	69.2	0.4	0.2	0.5	-1.0
Unemployment rate	5.2	5.2	0.3	0.0	-0.4	-0.6
Employment rate	65.5	65.6	0.4	0.1	0.7	-0.5
Saint John, New Brunswick									
Population	103.4	103.5	...	0.1	0.1	0.4	0.1	0.1	0.4
Labour force	66.6	66.5	0.7	-0.1	0.3	-1.3	-0.2	0.5	-1.9
Employment	62.6	62.6	0.7	0.0	0.9	-0.9	0.0	1.5	-1.4
Unemployment	4.1	3.9	0.3	-0.2	-0.6	-0.4	-4.9	-13.3	-9.3
Participation rate	64.4	64.3	0.7	-0.1	0.3	-1.5
Unemployment rate	6.2	5.9	0.5	-0.3	-0.9	-0.4
Employment rate	60.5	60.5	0.7	0.0	0.8	-1.1
Saguenay, Quebec									
Population	126.1	126.1	...	0.0	-0.2	-0.2	0.0	-0.2	-0.2
Labour force	79.7	79.7	0.8	0.0	3.6	4.9	0.0	4.7	6.6
Employment	73.0	72.6	0.9	-0.4	4.0	4.5	-0.5	5.8	6.6
Unemployment	6.7	7.1	0.4	0.4	-0.3	0.4	6.0	-4.1	6.0
Participation rate	63.2	63.2	0.6	0.0	2.9	4.0
Unemployment rate	8.4	8.9	0.6	0.5	-0.8	-0.1
Employment rate	57.9	57.6	0.7	-0.3	3.3	3.7
Québec, Quebec									
Population	597.2	597.7	...	0.5	2.6	7.1	0.1	0.4	1.2
Labour force	399.7	399.4	3.6	-0.3	1.6	-3.6	-0.1	0.4	-0.9
Employment	380.3	382.4	3.6	2.1	3.4	2.4	0.6	0.9	0.6
Unemployment	19.4	17.0	1.5	-2.4	-1.8	-6.0	-12.4	-9.6	-26.1
Participation rate	66.9	66.8	0.6	-0.1	0.0	-1.4
Unemployment rate	4.9	4.3	0.4	-0.6	-0.4	-1.4
Employment rate	63.7	64.0	0.6	0.3	0.3	-0.3
Trois-Rivières, Quebec									
Population	118.9	119.0	...	0.1	0.5	1.2	0.1	0.4	1.0
Labour force	75.6	74.6	0.7	-1.0	-1.0	-3.1	-1.3	-1.3	-4.0
Employment	68.8	68.2	0.7	-0.6	-0.8	-1.3	-0.9	-1.2	-1.9
Unemployment	6.9	6.4	0.4	-0.5	-0.2	-1.8	-7.2	-3.0	-22.0
Participation rate	63.6	62.7	0.6	-0.9	-1.1	-3.3
Unemployment rate	9.1	8.6	0.5	-0.5	-0.1	-2.0
Employment rate	57.9	57.3	0.6	-0.6	-0.9	-1.7

See footnotes at the end of the table.

Table 5-1 – continued

Labour force characteristics by census metropolitan area (seasonally adjusted) — 3 month moving average

	April 2006	May 2006	S.E. ¹	Change from			Percent change from		
				last month	last December	twelve months ago	last month	last December	twelve months ago
in thousands (except rates)									
Sherbrooke, Quebec									
Population	134.7	134.8	...	0.1	0.6	1.9	0.1	0.4	1.4
Labour force	90.1	89.3	0.8	-0.8	2.2	1.0	-0.9	2.5	1.1
Employment	83.0	82.4	0.8	-0.6	1.1	1.0	-0.7	1.4	1.2
Unemployment	7.1	7.0	0.4	-0.1	1.1	0.1	-1.4	18.6	1.4
Participation rate	66.9	66.2	0.6	-0.7	1.3	-0.2
Unemployment rate	7.9	7.8	0.4	-0.1	1.0	0.0
Employment rate	61.6	61.1	0.6	-0.5	0.5	-0.1
Montréal, Quebec									
Population	2,991.9	2,995.1	...	3.2	13.6	37.4	0.1	0.5	1.3
Labour force	2,017.6	2,006.6	7.6	-11.0	-5.9	28.5	-0.5	-0.3	1.4
Employment	1,829.9	1,829.6	8.0	-0.3	4.4	17.5	0.0	0.2	1.0
Unemployment	187.7	177.0	4.9	-10.7	-10.3	11.0	-5.7	-5.5	6.6
Participation rate	67.4	67.0	0.3	-0.4	-0.5	0.1
Unemployment rate	9.3	8.8	0.3	-0.5	-0.5	0.4
Employment rate	61.2	61.1	0.3	-0.1	-0.1	-0.2
Ottawa-Gatineau, Ontario/Quebec									
Population	940.7	941.4	...	0.7	3.4	12.6	0.1	0.4	1.4
Labour force	686.2	684.8	3.7	-1.4	14.4	22.6	-0.2	2.1	3.4
Employment	651.0	650.1	3.8	-0.9	16.5	35.7	-0.1	2.6	5.8
Unemployment	35.2	34.7	1.8	-0.5	-2.1	-13.1	-1.4	-5.7	-27.4
Participation rate	72.9	72.7	0.4	-0.2	1.2	1.4
Unemployment rate	5.1	5.1	0.3	0.0	-0.4	-2.1
Employment rate	69.2	69.1	0.4	-0.1	1.6	3.0
Ottawa-Gatineau, Quebec part, Ontario/Quebec									
Population	234.3	234.7	...	0.4	1.7	5.6	0.2	0.7	2.4
Labour force	169.8	167.5	1.2	-2.3	-4.9	6.5	-1.4	-2.8	4.0
Employment	159.6	157.2	1.2	-2.4	-5.1	8.1	-1.5	-3.1	5.4
Unemployment	10.2	10.3	0.6	0.1	0.1	-1.6	1.0	1.0	-13.4
Participation rate	72.5	71.4	0.5	-1.1	-2.6	1.1
Unemployment rate	6.0	6.1	0.4	0.1	0.2	-1.3
Employment rate	68.1	67.0	0.5	-1.1	-2.7	1.9
Ottawa-Gatineau, Ontario part, Ontario/Quebec									
Population	706.3	706.7	...	0.4	1.7	7.0	0.1	0.2	1.0
Labour force	516.5	517.3	3.5	0.8	19.4	16.1	0.2	3.9	3.2
Employment	491.4	492.9	3.6	1.5	21.6	27.6	0.3	4.6	5.9
Unemployment	25.0	24.4	1.7	-0.6	-2.2	-11.5	-2.4	-8.3	-32.0
Participation rate	73.1	73.2	0.5	0.1	2.6	1.6
Unemployment rate	4.8	4.7	0.3	-0.1	-0.6	-2.5
Employment rate	69.6	69.7	0.5	0.1	2.8	3.2
Kingston, Ontario									
Population	125.5	125.5	...	0.0	0.0	1.2	0.0	0.0	1.0
Labour force	82.2	83.7	0.8	1.5	4.2	4.0	1.8	5.3	5.0
Employment	77.4	77.9	0.8	0.5	1.9	3.1	0.6	2.5	4.1
Unemployment	4.8	5.8	0.3	1.0	2.3	0.9	20.8	65.7	18.4
Participation rate	65.5	66.7	0.7	1.2	3.4	2.6
Unemployment rate	5.8	6.9	0.4	1.1	2.5	0.8
Employment rate	61.7	62.1	0.7	0.4	1.5	1.9

See footnotes at the end of the table.

Table 5-1 – continued

Labour force characteristics by census metropolitan area (seasonally adjusted) — 3 month moving average

	April 2006	May 2006	S.E. ¹	Change from			Percent change from		
				last month	last December	twelve months ago	last month	last December	twelve months ago
in thousands (except rates)									
Toronto, Ontario									
Population	4,348.7	4,355.7	...	7.0	34.5	96.5	0.2	0.8	2.3
Labour force	2,979.3	2,986.6	9.5	7.3	-7.8	27.5	0.2	-0.3	0.9
Employment	2,782.1	2,796.7	9.9	14.6	-8.2	57.7	0.5	-0.3	2.1
Unemployment	197.2	189.9	5.6	-7.3	0.4	-30.2	-3.7	0.2	-13.7
Participation rate	68.5	68.6	0.2	0.1	-0.7	-0.9
Unemployment rate	6.6	6.4	0.2	-0.2	0.1	-1.0
Employment rate	64.0	64.2	0.2	0.2	-0.7	-0.1
Hamilton, Ontario									
Population	586.2	586.7	...	0.5	2.4	7.8	0.1	0.4	1.3
Labour force	398.3	398.4	3.3	0.1	3.4	16.6	0.0	0.9	4.3
Employment	376.5	376.7	3.2	0.2	5.4	14.7	0.1	1.5	4.1
Unemployment	21.8	21.7	1.3	-0.1	-1.9	1.9	-0.5	-8.1	9.6
Participation rate	67.9	67.9	0.6	0.0	0.3	1.9
Unemployment rate	5.5	5.4	0.3	-0.1	-0.6	0.2
Employment rate	64.2	64.2	0.6	0.0	0.7	1.7
Kitchener, Ontario									
Population	369.2	369.7	...	0.5	2.7	6.9	0.1	0.7	1.9
Labour force	263.0	261.9	1.9	-1.1	-2.5	-6.7	-0.4	-0.9	-2.5
Employment	250.0	248.8	1.9	-1.2	-0.6	-2.9	-0.5	-0.2	-1.2
Unemployment	12.9	13.0	0.9	0.1	-2.0	-4.0	0.8	-13.3	-23.5
Participation rate	71.2	70.8	0.5	-0.4	-1.2	-3.2
Unemployment rate	4.9	5.0	0.3	0.1	-0.7	-1.3
Employment rate	67.7	67.3	0.5	-0.4	-0.7	-2.1
London, Ontario									
Population	376.8	377.2	...	0.4	1.6	4.4	0.1	0.4	1.2
Labour force	260.3	262.6	2.0	2.3	5.6	-1.3	0.9	2.2	-0.5
Employment	244.5	248.1	2.1	3.6	8.8	2.2	1.5	3.7	0.9
Unemployment	15.9	14.5	1.0	-1.4	-3.2	-3.5	-8.8	-18.1	-19.4
Participation rate	69.1	69.6	0.5	0.5	1.2	-1.2
Unemployment rate	6.1	5.5	0.4	-0.6	-1.4	-1.3
Employment rate	64.9	65.8	0.6	0.9	2.1	-0.2
Oshawa, Ontario									
Population	272.1	272.8	...	0.7	3.5	8.8	0.3	1.3	3.3
Labour force	185.8	186.9	1.7	1.1	-1.4	-3.0	0.6	-0.7	-1.6
Employment	174.5	175.6	1.7	1.1	-0.2	-1.8	0.6	-0.1	-1.0
Unemployment	11.3	11.3	0.7	0.0	-1.2	-1.2	0.0	-9.6	-9.6
Participation rate	68.3	68.5	0.6	0.2	-1.4	-3.4
Unemployment rate	6.1	6.0	0.4	-0.1	-0.6	-0.6
Employment rate	64.1	64.4	0.7	0.3	-0.9	-2.8
St. Catharines-Niagara, Ontario									
Population	326.4	326.5	...	0.1	0.6	2.4	0.0	0.2	0.7
Labour force	198.8	202.6	1.7	3.8	1.5	-5.2	1.9	0.7	-2.5
Employment	186.5	190.5	1.7	4.0	3.5	-3.2	2.1	1.9	-1.7
Unemployment	12.3	12.1	0.8	-0.2	-1.9	-2.0	-1.6	-13.6	-14.2
Participation rate	60.9	62.1	0.5	1.2	0.4	-2.0
Unemployment rate	6.2	6.0	0.4	-0.2	-1.0	-0.8
Employment rate	57.1	58.3	0.5	1.2	0.9	-1.5

See footnotes at the end of the table.

Table 5-1 – continued

Labour force characteristics by census metropolitan area (seasonally adjusted) — 3 month moving average

	April 2006	May 2006	S.E. ¹	Change from			Percent change from		
				last month	last December	twelve months ago	last month	last December	twelve months ago
in thousands (except rates)									
Greater Sudbury / Grand Sudbury, Ontario									
Population	132.4	132.4	...	0.0	0.1	0.7	0.0	0.1	0.5
Labour force	82.9	82.8	0.8	-0.1	2.1	-0.8	-0.1	2.6	-1.0
Employment	76.3	76.6	0.8	0.3	1.8	-0.8	0.4	2.4	-1.0
Unemployment	6.6	6.1	0.4	-0.5	0.2	-0.1	-7.6	3.4	-1.6
Participation rate	62.6	62.5	0.6	-0.1	1.5	-1.0
Unemployment rate	8.0	7.4	0.5	-0.6	0.1	0.0
Employment rate	57.6	57.9	0.6	0.3	1.4	-0.9
Thunder Bay, Ontario									
Population	104.2	104.2	...	0.0	0.0	0.5	0.0	0.0	0.5
Labour force	66.9	67.0	0.7	0.1	0.5	-2.6	0.1	0.8	-3.7
Employment	61.6	61.7	0.7	0.1	-0.6	-2.8	0.2	-1.0	-4.3
Unemployment	5.4	5.3	0.3	-0.1	1.1	0.2	-1.9	26.2	3.9
Participation rate	64.2	64.3	0.7	0.1	0.5	-2.8
Unemployment rate	8.1	7.9	0.5	-0.2	1.6	0.6
Employment rate	59.1	59.2	0.7	0.1	-0.6	-3.0
Windsor, Ontario									
Population	269.9	270.0	...	0.1	0.7	3.0	0.0	0.3	1.1
Labour force	177.9	175.5	1.5	-2.4	-0.2	-0.3	-1.3	-0.1	-0.2
Employment	162.4	160.5	1.6	-1.9	-3.2	-0.8	-1.2	-2.0	-0.5
Unemployment	15.5	15.0	0.8	-0.5	3.0	0.5	-3.2	25.0	3.4
Participation rate	65.9	65.0	0.6	-0.9	-0.2	-0.8
Unemployment rate	8.7	8.5	0.5	-0.2	1.7	0.3
Employment rate	60.2	59.4	0.6	-0.8	-1.4	-1.0
Winnipeg, Manitoba									
Population	570.4	570.7	...	0.3	0.9	2.9	0.1	0.2	0.5
Labour force	399.0	399.8	1.4	0.8	7.6	5.6	0.2	1.9	1.4
Employment	379.5	380.6	1.5	1.1	5.3	6.6	0.3	1.4	1.8
Unemployment	19.5	19.2	0.8	-0.3	2.3	-1.0	-1.5	13.6	-5.0
Participation rate	70.0	70.1	0.3	0.1	1.3	0.7
Unemployment rate	4.9	4.8	0.2	-0.1	0.5	-0.3
Employment rate	66.5	66.7	0.3	0.2	0.8	0.8
Regina, Saskatchewan									
Population	160.8	160.8	...	0.0	0.1	0.7	0.0	0.1	0.4
Labour force	112.2	112.5	0.7	0.3	0.6	-2.8	0.3	0.5	-2.4
Employment	106.3	106.6	0.8	0.3	0.4	-3.6	0.3	0.4	-3.3
Unemployment	5.9	5.9	0.3	0.0	0.2	0.8	0.0	3.5	15.7
Participation rate	69.8	70.0	0.5	0.2	0.4	-2.0
Unemployment rate	5.3	5.2	0.3	-0.1	0.1	0.8
Employment rate	66.1	66.3	0.5	0.2	0.2	-2.5
Saskatoon, Saskatchewan									
Population	187.9	187.9	...	0.0	0.1	1.0	0.0	0.1	0.5
Labour force	131.5	132.1	0.9	0.6	0.4	-2.2	0.5	0.3	-1.6
Employment	125.0	125.7	0.9	0.7	1.3	-2.5	0.6	1.0	-2.0
Unemployment	6.5	6.4	0.4	-0.1	-1.0	0.3	-1.5	-13.5	4.9
Participation rate	70.0	70.3	0.5	0.3	0.2	-1.6
Unemployment rate	4.9	4.8	0.3	-0.1	-0.8	0.3
Employment rate	66.5	66.9	0.5	0.4	0.7	-1.7

See footnotes at the end of the table.

Table 5-1 – continued

Labour force characteristics by census metropolitan area (seasonally adjusted) — 3 month moving average

	April 2006	May 2006	S.E. ¹	Change from			Percent change from		
				last month	last December	twelve months ago	last month	last December	twelve months ago
in thousands (except rates)									
Calgary, Alberta									
Population	876.3	879.3	...	3.0	14.0	29.2	0.3	1.6	3.4
Labour force	663.4	669.0	3.5	5.6	27.2	42.2	0.8	4.2	6.7
Employment	642.9	647.1	3.6	4.2	34.0	41.7	0.7	5.5	6.9
Unemployment	20.5	21.9	1.4	1.4	-6.8	0.5	6.8	-23.7	2.3
Participation rate	75.7	76.1	0.4	0.4	1.9	2.4
Unemployment rate	3.1	3.3	0.2	0.2	-1.2	-0.1
Employment rate	73.4	73.6	0.4	0.2	2.7	2.4
Edmonton, Alberta									
Population	828.7	831.0	...	2.3	11.0	22.1	0.3	1.3	2.7
Labour force	569.8	573.9	3.3	4.1	5.5	5.4	0.7	1.0	0.9
Employment	548.4	553.2	3.4	4.8	9.9	9.3	0.9	1.8	1.7
Unemployment	21.4	20.7	1.4	-0.7	-4.4	-4.0	-3.3	-17.5	-16.2
Participation rate	68.8	69.1	0.4	0.3	-0.2	-1.2
Unemployment rate	3.8	3.6	0.3	-0.2	-0.8	-0.7
Employment rate	66.2	66.6	0.4	0.4	0.3	-0.6
Abbotsford, British Columbia									
Population	127.0	127.4	...	0.4	1.6	3.0	0.3	1.3	2.4
Labour force	85.6	85.3	0.9	-0.3	-0.1	2.5	-0.4	-0.1	3.0
Employment	81.8	80.3	0.9	-1.5	-0.3	2.6	-1.8	-0.4	3.3
Unemployment	3.9	5.0	0.4	1.1	0.2	-0.1	28.2	4.2	-2.0
Participation rate	67.4	67.0	0.7	-0.4	-0.9	0.4
Unemployment rate	4.6	5.9	0.4	1.3	0.3	-0.3
Employment rate	64.4	63.0	0.7	-1.4	-1.1	0.5
Vancouver, British Columbia									
Population	1,851.7	1,854.7	...	3.0	14.4	38.8	0.2	0.8	2.1
Labour force	1,223.7	1,231.8	4.8	8.1	4.0	0.5	0.7	0.3	0.0
Employment	1,170.9	1,179.6	4.8	8.7	9.8	23.9	0.7	0.8	2.1
Unemployment	52.9	52.1	2.6	-0.8	-5.9	-23.5	-1.5	-10.2	-31.1
Participation rate	66.1	66.4	0.3	0.3	-0.3	-1.4
Unemployment rate	4.3	4.2	0.2	-0.1	-0.5	-1.9
Employment rate	63.2	63.6	0.3	0.4	0.0	0.0
Victoria, British Columbia									
Population	276.6	277.1	...	0.5	2.2	4.7	0.2	0.8	1.7
Labour force	181.0	181.6	1.5	0.6	4.6	5.6	0.3	2.6	3.2
Employment	173.9	173.4	1.6	-0.5	4.1	5.4	-0.3	2.4	3.2
Unemployment	7.1	8.1	0.6	1.0	0.5	0.1	14.1	6.6	1.2
Participation rate	65.4	65.5	0.6	0.1	1.1	0.9
Unemployment rate	3.9	4.5	0.3	0.6	0.2	0.0
Employment rate	62.9	62.6	0.6	-0.3	1.0	0.9

1. Average standard error of change in two consecutive months (see "Sampling Errors" in Data Quality for further explanations).

Note: Related CANSIM table 282-0090

Table 5-2
Labour force characteristics by census metropolitan area (seasonally adjusted) — Monthly

	April 2006	May 2006	S.E. ¹	Change from			Percent change from		
				last month	last December	twelve months ago	last month	last December	twelve months ago
in thousands (except rates)									
Montréal, Quebec									
Population	2,994.9	2,998.7	...	3.8	14.5	37.2	0.1	0.5	1.3
Labour force	2,007.0	1,995.4	15.8	-11.6	-23.0	24.7	-0.6	-1.1	1.3
Employment	1,819.9	1,839.0	15.8	19.1	15.4	38.7	1.0	0.8	2.1
Unemployment	187.1	156.4	11.5	-30.7	-38.4	-14.0	-16.4	-19.7	-8.2
Participation rate	67.0	66.5	0.5	-0.5	-1.1	0.0
Unemployment rate	9.3	7.8	0.6	-1.5	-1.9	-0.8
Employment rate	60.8	61.3	0.6	0.5	0.2	0.5
Toronto, Ontario									
Population	4,355.3	4,363.4	...	8.1	35.3	94.5	0.2	0.8	2.2
Labour force	2,986.2	2,991.7	20.0	5.5	20.4	5.2	0.2	0.7	0.2
Employment	2,791.3	2,811.4	20.2	20.1	27.6	46.6	0.7	1.0	1.7
Unemployment	194.9	180.2	13.5	-14.7	-7.4	-41.4	-7.5	-3.9	-18.7
Participation rate	68.6	68.6	0.5	0.0	-0.1	-1.4
Unemployment rate	6.5	6.0	0.5	-0.5	-0.3	-1.4
Employment rate	64.1	64.4	0.5	0.3	0.1	-0.4
Vancouver, British Columbia									
Population	1,854.4	1,858.0	...	3.6	14.6	38.7	0.2	0.8	2.1
Labour force	1,231.8	1,239.9	10.3	8.1	9.2	8.5	0.7	0.7	0.7
Employment	1,181.4	1,186.8	10.0	5.4	15.6	31.5	0.5	1.3	2.7
Unemployment	50.3	53.1	6.2	2.8	-6.4	-23.0	5.6	-10.8	-30.2
Participation rate	66.4	66.7	0.6	0.3	-0.1	-1.0
Unemployment rate	4.1	4.3	0.5	0.2	-0.5	-1.9
Employment rate	63.7	63.9	0.6	0.2	0.4	0.4

1. Average standard error of change in two consecutive months (see "Sampling Errors" in Data Quality for further explanations).

Note: Related CANSIM table 282-0091

Table 6
Labour force characteristics by economic region¹ and territories, unadjusted for seasonality, 3 month moving average ending in May 2005 and May 2006

	Population	Labour force			Participation rate	Unemployment rate	Employment rate
		Labour force	Employment	Unemployment			
	in thousands						
Canada²							
2005	25,717.5	17,208.3	15,981.0	1,227.3	66.9	7.1	62.1
2006	26,102.3	17,457.4	16,326.2	1,131.2	66.9	6.5	62.5
Newfoundland and Labrador							
2005	430.2	248.7	205.4	43.3	57.8	17.4	47.7
2006	428.3	250.5	207.0	43.5	58.5	17.4	48.3
<i>Avalon Peninsula [1010]</i>							
2005	209.1	129.8	113.3	16.5	62.1	12.7	54.2
2006	209.8	130.4	114.6	15.8	62.2	12.1	54.6
<i>South Coast-Burin Peninsula [1020]</i>							
2005	34.5	16.7	11.7	5.0	48.4	29.9	33.9
2006	33.9	18.7	13.9	4.7	55.2	25.1	41.0
<i>West Coast-Northern Peninsula-Labrador [1030]</i>							
2005	89.6	51.3	40.9	10.4	57.3	20.3	45.6
2006	88.7	50.7	39.3	11.4	57.2	22.5	44.3
<i>Notre Dame-Central Bonavista Bay [1040]</i>							
2005	96.9	50.9	39.5	11.4	52.5	22.4	40.8
2006	96.0	50.8	39.3	11.5	52.9	22.6	40.9
Prince Edward Island							
2005	111.4	75.3	65.9	9.3	67.6	12.4	59.2
2006	112.0	76.8	66.9	9.9	68.6	12.9	59.7
Nova Scotia							
2005	760.0	481.8	438.8	43.0	63.4	8.9	57.7
2006	762.5	480.2	439.0	41.2	63.0	8.6	57.6
<i>Cape Breton [1210]</i>							
2005	117.6	62.7	53.7	8.9	53.3	14.2	45.7
2006	117.1	62.8	54.1	8.8	53.6	14.0	46.2
<i>North Shore [1220]</i>							
2005	131.2	81.1	72.1	9.0	61.8	11.1	55.0
2006	131.2	80.6	72.2	8.5	61.4	10.5	55.0
<i>Annapolis Valley [1230]</i>							
2005	99.2	61.1	56.2	4.9	61.6	8.0	56.7
2006	99.6	60.0	54.9	5.1	60.2	8.5	55.1
<i>Southern [1240]</i>							
2005	103.8	60.6	53.7	6.9	58.4	11.4	51.7
2006	103.8	61.2	54.3	6.8	59.0	11.1	52.3
<i>Halifax [1250]</i>							
2005	308.2	216.3	203.0	13.3	70.2	6.1	65.9
2006	310.9	215.5	203.5	12.0	69.3	5.6	65.5
New Brunswick							
2005	609.9	383.4	343.3	40.0	62.9	10.4	56.3
2006	611.4	390.2	351.3	38.9	63.8	10.0	57.5
<i>Campbellton-Miramichi [1310]</i>							
2005	138.0	77.3	64.6	12.7	56.0	16.4	46.8
2006	136.9	78.2	66.9	11.3	57.1	14.5	48.9
<i>Moncton-Richibucto [1320]</i>							
2005	159.7	106.4	96.1	10.2	66.6	9.6	60.2
2006	161.2	106.6	96.4	10.2	66.1	9.6	59.8
<i>Saint John-St. Stephen [1330]</i>							
2005	140.8	89.9	82.4	7.6	63.8	8.5	58.5
2006	141.3	92.3	84.7	7.5	65.3	8.1	59.9

See footnotes at the end of the table.

Table 6 – continued

Labour force characteristics by economic region¹ and territories, unadjusted for seasonality, 3 month moving average ending in May 2005 and May 2006

	Population	Labour force			Participation rate	Unemployment rate	Employment rate
		Labour force	Employment	Unemployment			
in thousands							
Fredericton-Oromocto [1340]							
2005	102.8	67.7	62.0	5.7	65.9	8.4	60.3
2006	103.5	68.4	62.6	5.8	66.1	8.5	60.5
Edmundston-Woodstock [1350]							
2005	68.5	42.2	38.2	3.9	61.6	9.2	55.8
2006	68.3	44.7	40.6	4.1	65.4	9.2	59.4
Quebec							
2005	6,166.1	4,000.4	3,654.9	345.5	64.9	8.6	59.3
2006	6,235.9	4,056.1	3,713.0	343.1	65.0	8.5	59.5
Gaspésie-Îles-de-la-Madeleine [2410]							
2005	80.2	39.8	30.9	8.9	49.6	22.4	38.5
2006	80.7	40.6	31.6	9.0	50.3	22.2	39.2
Bas-Saint-Laurent [2415]							
2005	166.6	96.1	86.3	9.8	57.7	10.2	51.8
2006	167.0	99.3	87.9	11.4	59.5	11.5	52.6
Capitale-Nationale [2420]							
2005	552.9	375.4	351.8	23.5	67.9	6.3	63.6
2006	558.6	374.7	357.5	17.1	67.1	4.6	64.0
Chaudière-Appalaches [2425]							
2005	321.7	217.2	201.1	16.1	67.5	7.4	62.5
2006	324.3	216.7	203.7	13.0	66.8	6.0	62.8
Estrie [2430]							
2005	243.4	154.3	144.0	10.3	63.4	6.7	59.2
2006	245.9	159.7	147.6	12.1	64.9	7.6	60.0
Centre-du-Québec [2433]							
2005	181.7	119.0	108.9	10.2	65.5	8.6	59.9
2006	183.4	121.5	110.7	10.8	66.2	8.9	60.4
Montérégie [2435]							
2005	1,092.4	709.1	656.1	53.0	64.9	7.5	60.1
2006	1,107.2	738.6	688.0	50.6	66.7	6.9	62.1
Montréal [2440]							
2005	1,565.9	1,028.2	923.1	105.2	65.7	10.2	59.0
2006	1,579.8	1,032.8	920.8	112.0	65.4	10.8	58.3
Laval [2445]							
2005	298.9	188.4	170.9	17.4	63.0	9.2	57.2
2006	303.4	195.3	182.3	13.0	64.4	6.7	60.1
Lanaudière [2450]							
2005	334.7	228.7	214.5	14.2	68.3	6.2	64.1
2006	342.2	218.8	204.4	14.4	63.9	6.6	59.7
Laurentides [2455]							
2005	404.6	266.9	246.9	19.9	66.0	7.5	61.0
2006	414.0	272.7	246.4	26.3	65.9	9.6	59.5
Outaouais [2460]							
2005	278.2	189.4	174.9	14.5	68.1	7.7	62.9
2006	284.1	194.6	181.3	13.4	68.5	6.9	63.8
Abitibi-Témiscamingue [2465]							
2005	115.0	70.6	63.0	7.6	61.4	10.8	54.8
2006	115.3	72.8	65.6	7.1	63.1	9.8	56.9
Mauricie [2470]							
2005	215.0	127.6	112.3	15.3	59.3	12.0	52.2
2006	216.2	122.7	110.9	11.8	56.8	9.6	51.3

See footnotes at the end of the table.

Table 6 – continued

Labour force characteristics by economic region¹ and territories, unadjusted for seasonality, 3 month moving average ending in May 2005 and May 2006

	Population	Labour force			Participation rate	Unemployment rate	Employment rate
		Labour force	Employment	Unemployment			
in thousands							
Saguenay-Lac-Saint-Jean [2475]							
2005	224.7	129.8	114.2	15.7	57.8	12.1	50.8
2006	224.4	139.5	123.7	15.7	62.2	11.3	55.1
Côte-Nord and Nord-du-Québec [2480, 2490]							
2005	90.2	60.0	56.0	4.0	66.5	6.7	62.1
2006	89.6	55.8	50.5	5.3	62.3	9.5	56.4
Ontario							
2005	10,028.6	6,817.4	6,339.4	478.0	68.0	7.0	63.2
2006	10,198.1	6,884.3	6,454.0	430.2	67.5	6.2	63.3
Ottawa [3510]							
2005	966.5	666.9	619.9	47.0	69.0	7.0	64.1
2006	976.8	687.2	651.8	35.3	70.4	5.1	66.7
Kingston-Pembroke [3515]							
2005	354.1	218.0	204.3	13.7	61.6	6.3	57.7
2006	357.3	217.7	203.1	14.7	60.9	6.8	56.8
Muskoka-Kawarthas [3520]							
2005	300.7	184.1	170.2	13.8	61.2	7.5	56.6
2006	305.4	187.9	175.7	12.2	61.5	6.5	57.5
Toronto [3530]							
2005	4,486.7	3,113.5	2,880.3	233.2	69.4	7.5	64.2
2006	4,589.7	3,134.0	2,933.4	200.6	68.3	6.4	63.9
Kitchener-Waterloo-Barrie [3540]							
2005	925.0	670.2	631.4	38.8	72.5	5.8	68.3
2006	945.4	684.1	648.8	35.3	72.4	5.2	68.6
Hamilton-Niagara Peninsula [3550]							
2005	1,105.7	721.5	675.1	46.4	65.3	6.4	61.1
2006	1,119.9	735.5	689.8	45.8	65.7	6.2	61.6
London [3560]							
2005	499.0	350.1	327.5	22.6	70.2	6.5	65.6
2006	504.9	350.0	329.7	20.3	69.3	5.8	65.3
Windsor-Sarnia [3570]							
2005	517.6	342.2	315.3	27.0	66.1	7.9	60.9
2006	522.1	343.0	316.0	27.0	65.7	7.9	60.5
Stratford-Bruce Peninsula [3580]							
2005	243.9	154.1	146.8	7.4	63.2	4.8	60.2
2006	246.2	163.3	154.4	8.9	66.3	5.5	62.7
Northeast [3590]							
2005	452.1	278.6	258.9	19.7	61.6	7.1	57.3
2006	453.1	270.1	250.9	19.3	59.6	7.1	55.4
Northwest [3595]							
2005	177.4	118.2	109.8	8.4	66.6	7.1	61.9
2006	177.3	111.3	100.5	10.8	62.8	9.7	56.7
Manitoba							
2005	887.7	606.7	575.7	30.9	68.3	5.1	64.9
2006	891.0	610.9	584.3	26.6	68.6	4.4	65.6
Southeast [4610]							
2005	73.0	52.4	49.7	2.7	71.8	5.2	68.1
2006	74.4	53.9	52.1	1.8	72.4	3.3	70.0
South Central [4620]							
2005	42.0	30.2	29.2	1.0	71.9	3.3	69.5
2006	42.3	27.0	26.4	0.6	63.8	2.2	62.4

See footnotes at the end of the table.

Table 6 – continued

Labour force characteristics by economic region¹ and territories, unadjusted for seasonality, 3 month moving average ending in May 2005 and May 2006

	Population	Labour force			Participation rate	Unemployment rate	Employment rate
		Labour force	Employment	Unemployment			
in thousands							
Southwest [4630]							
2005	81.8	50.7	47.9	2.8	62.0	5.5	58.6
2006	81.7	53.2	51.1	2.2	65.1	4.1	62.5
North Central [4640]							
2005	35.2	23.1	21.9	1.2	65.6	5.2	62.2
2006	35.4	23.4	22.8	0.6	66.1	2.6	64.4
Winnipeg [4650]							
2005	526.0	361.8	343.0	18.7	68.8	5.2	65.2
2006	528.4	365.8	347.7	18.1	69.2	4.9	65.8
Interlake [4660]							
2005	67.8	45.3	42.8	2.5	66.8	5.5	63.1
2006	68.5	46.8	45.4	1.4	68.3	3.0	66.3
Parklands and North [4670, 4680]							
2005	61.8	43.2	41.2	2.1	69.9	4.9	66.7
2006	60.4	40.8	38.9	1.9	67.5	4.7	64.4
Saskatchewan							
2005	748.4	509.7	483.6	26.1	68.1	5.1	64.6
2006	746.5	509.2	483.5	25.7	68.2	5.0	64.8
Regina-Moose Mountain [4710]							
2005	218.9	154.2	147.7	6.5	70.4	4.2	67.5
2006	219.0	150.2	143.5	6.7	68.6	4.5	65.5
Swift Current-Moose Jaw [4720]							
2005	83.1	56.5	53.6	2.9	68.0	5.1	64.5
2006	82.6	57.8	55.0	2.8	70.0	4.8	66.6
Saskatoon-Biggar [4730]							
2005	230.3	162.2	154.3	7.9	70.4	4.9	67.0
2006	230.6	161.4	153.5	7.8	70.0	4.8	66.6
Yorkton-Melville [4740]							
2005	66.0	40.0	37.6	2.4	60.6	6.0	57.0
2006	64.8	42.7	40.8	1.9	65.9	4.4	63.0
Prince Albert and Northern [4750, 4760]							
2005	150.1	96.9	90.5	6.4	64.6	6.6	60.3
2006	149.4	97.1	90.6	6.5	65.0	6.7	60.6
Alberta							
2005	2,541.4	1,839.8	1,770.1	69.6	72.4	3.8	69.7
2006	2,618.8	1,913.9	1,848.4	65.5	73.1	3.4	70.6
Lethbridge-Medicine Hat [4810]							
2005	194.1	141.5	135.8	5.7	72.9	4.0	70.0
2006	198.8	140.1	136.2	4.0	70.5	2.9	68.5
Camrose-Drumheller [4820]							
2005	146.7	103.6	99.8	3.8	70.6	3.7	68.0
2006	149.8	110.4	107.0	3.4	73.7	3.1	71.4
Calgary [4830]							
2005	913.0	670.4	647.5	22.8	73.4	3.4	70.9
2006	945.3	719.2	695.9	23.3	76.1	3.2	73.6
Banff-Jasper-Rocky Mountain House [4840]							
2005	64.4	51.1	49.9	x	79.3	x	77.5
2006	65.6	49.6	48.8	x	75.6	x	74.4
Red Deer [4850]							
2005	129.9	95.3	92.0	3.3	73.4	3.5	70.8
2006	134.7	102.0	97.4	4.6	75.7	4.5	72.3

See footnotes at the end of the table.

Table 6 – continued

Labour force characteristics by economic region¹ and territories, unadjusted for seasonality, 3 month moving average ending in May 2005 and May 2006

	Population	Labour force			Participation rate	Unemployment rate	Employment rate
		Labour force	Employment	Unemployment			
in thousands							
Edmonton [4860]							
2005	839.5	588.8	561.7	27.1	70.1	4.6	66.9
2006	862.6	592.3	570.2	22.1	68.7	3.7	66.1
Athabasca-Grande Prairie-Peace River [4870]							
2005	171.3	128.1	124.1	4.0	74.8	3.1	72.4
2006	175.8	133.8	129.7	4.2	76.1	3.1	73.8
Wood Buffalo-Cold Lake [4880]							
2005	82.5	61.1	59.2	1.8	74.1	2.9	71.8
2006	86.1	66.4	63.2	3.2	77.1	4.8	73.4
British Columbia							
2005	3,433.9	2,245.2	2,103.8	141.4	65.4	6.3	61.3
2006	3,497.7	2,285.5	2,178.9	106.7	65.3	4.7	62.3
Vancouver Island and Coast [5910]							
2005	598.7	365.4	341.7	23.7	61.0	6.5	57.1
2006	609.5	388.0	368.2	19.8	63.7	5.1	60.4
Lower Mainland-Southwest [5920]							
2005	2,065.5	1,386.2	1,301.8	84.4	67.1	6.1	63.0
2006	2,110.2	1,392.5	1,333.3	59.1	66.0	4.2	63.2
Thompson-Okanagan [5930]							
2005	402.5	248.5	234.3	14.2	61.7	5.7	58.2
2006	411.6	266.0	252.0	14.0	64.6	5.3	61.2
Kootenay [5940]							
2005	122.1	74.2	69.5	4.7	60.8	6.3	56.9
2006	122.2	70.1	66.8	3.3	57.4	4.7	54.7
Cariboo [5950]							
2005	126.8	84.0	76.0	8.0	66.2	9.5	59.9
2006	126.0	88.4	82.3	6.1	70.2	6.9	65.3
North Coast and Nechako [5960, 5970]							
2005	68.9	49.4	45.1	4.3	71.7	8.7	65.5
2006	67.8	46.6	43.5	3.0	68.7	6.4	64.2
Northeast [5980]							
2005	49.5	37.5	35.4	2.1	75.8	5.6	71.5
2006	50.4	34.1	32.7	x	67.7	x	64.9
Yukon Territory ³							
2005	21.5	16.3	15.3	0.9	75.8	5.5	71.2
2006	21.5	16.4	15.6	0.8	76.3	4.9	72.6
Northwest Territories ⁴							
2005	31.3	23.1	22.0	1.0	73.8	4.3	70.3
2006	31.1	24.1	22.9	1.2	77.5	5.0	73.6

1. For geographic descriptions of economic regions, refer to the Guide to the Labour Force Survey (catalogue number 71-543-GIE).

2. Estimates for Canada are a sum of the provincial totals and exclude estimates from Yukon Territory, Northwest Territories and Nunavut.

3. Since 1992, the Labour force survey has been administered in the Yukon Territory, using an alternative methodology that accommodates some of the operational difficulties inherent to remote locales. These estimates are not included in national totals.

4. Since 2001, the Labour force survey has been administered in the Northwest Territories, using an alternative methodology that accommodates some of the operational difficulties inherent to remote locales. These estimates are not included in national totals.

Note: Related CANSIM table 282-0054

Table 7
Average usual hours and wages of employees by selected characteristics, Canada, unadjusted for seasonality

	Employees				Full-time			Part-time		
	Number	Average weekly hours	Average weekly wages	Average hourly wages	Number	Average weekly hours	Average weekly wages	Number	Average weekly hours	Average weekly wages
	'000		\$		'000		\$	'000		\$
May 2006										
15 years and over	14,178.3	35.9	725.85	19.60	11,739.3	39.6	824.66	2,439.0	17.9	250.30
15 to 24 years	2,523.3	29.4	356.14	11.31	1,459.4	39.1	504.51	1,063.8	16.1	152.59
25 years and over	11,655.0	37.3	805.90	21.39	10,279.8	39.7	870.11	1,375.2	19.2	325.89
Men	7,212.9	38.5	838.92	21.34	6,491.4	40.9	907.39	721.5	17.0	222.83
Women	6,965.4	33.1	608.78	17.79	5,247.9	38.0	722.32	1,717.6	18.2	261.84
Union coverage										
Union coverage	4,515.8	36.0	818.24	22.47	3,880.3	38.7	892.44	635.5	19.5	365.13
No union coverage	9,662.5	35.8	682.68	18.25	7,858.9	40.1	791.19	1,803.6	17.3	209.84
Job permanency										
Permanent	12,206.4	36.7	764.67	20.32	10,510.0	39.6	844.78	1,696.4	18.8	268.34
Temporary	1,971.9	30.8	485.57	15.13	1,229.3	39.8	652.60	742.6	15.8	209.08
Occupation										
Management	1,011.2	40.5	1,245.58	30.91	989.5	41.0	1,264.28	21.7	20.3	393.46
Business, finance and administrative	2,755.6	35.5	674.91	18.65	2,371.2	38.3	739.31	384.3	18.4	277.58
Natural and applied sciences	1,033.8	38.9	1,063.64	27.38	1,009.3	39.4	1,079.11	24.4	19.7	424.89
Health	867.4	33.5	777.75	23.12	659.4	37.6	881.34	208.0	20.5	449.39
Social science, education, government service and religion	1,260.1	34.4	876.53	25.33	1,022.7	38.2	982.06	237.4	18.1	421.88
Art, culture, recreation and sport	329.3	30.8	654.19	20.11	228.5	37.9	834.17	100.9	14.7	246.43
Sales and service	3,492.9	31.0	432.37	12.98	2,226.4	38.7	577.76	1,266.5	17.5	176.77
Trades, transport and equipment operators	2,069.4	40.5	793.03	19.43	1,953.3	41.8	825.96	116.1	17.8	239.31
Occupations unique to primary industry	350.3	42.7	675.39	15.44	307.9	46.5	745.71	42.4	15.1	164.65
Occupations unique to processing, manufacturing and utilities	1,008.3	39.5	684.36	17.20	971.0	40.3	702.65	37.3	17.2	207.69
May 2005										
15 years and over	13,775.6	35.7	696.38	18.89	11,336.8	39.6	793.44	2,438.9	17.7	245.20
15 to 24 years	2,419.6	28.9	336.72	10.88	1,389.0	38.9	482.67	1,030.6	15.5	140.01
25 years and over	11,356.0	37.1	773.02	20.59	9,947.8	39.7	836.84	1,408.3	19.3	322.19
Men	7,028.4	38.3	803.25	20.49	6,296.5	40.8	871.88	732.0	16.7	212.81
Women	6,747.2	32.9	585.06	17.21	5,040.3	38.0	695.45	1,706.9	18.1	259.10
Union coverage										
Union coverage	4,402.9	36.2	809.07	22.14	3,806.0	38.8	877.44	596.9	19.3	373.10
No union coverage	9,372.8	35.5	643.45	17.36	7,530.8	39.9	750.99	1,842.0	17.1	203.76
Job permanency										
Permanent	11,863.2	36.5	731.96	19.54	10,146.4	39.5	810.89	1,716.8	18.7	265.47
Temporary	1,912.4	30.6	475.70	14.84	1,190.4	39.9	644.73	722.0	15.3	197.02
Occupation										
Management	914.4	40.3	1,188.25	29.63	890.1	40.8	1,208.69	24.3	18.6	439.85
Business, finance and administrative	2,634.6	35.4	652.51	18.11	2,270.7	38.2	713.45	364.0	18.5	272.33
Natural and applied sciences	986.9	38.6	1,020.23	26.45	957.5	39.3	1,038.89	29.4	17.4	412.38
Health	811.8	33.1	731.75	22.11	598.6	37.7	832.83	213.3	20.2	448.10
Social science, education, government service and religion	1,214.9	34.3	856.48	24.76	970.9	38.6	968.08	244.0	17.3	412.41
Art, culture, recreation and sport	319.9	31.8	668.51	19.78	228.4	38.6	839.17	91.4	14.7	242.19
Sales and service	3,488.9	30.9	421.55	12.71	2,223.0	38.6	565.82	1,265.9	17.3	168.21
Trades, transport and equipment operators	2,030.6	40.5	770.15	18.87	1,911.3	41.9	803.52	119.3	18.3	235.47
Occupations unique to primary industry	326.5	41.9	632.28	14.71	285.2	45.7	700.65	41.3	15.7	159.80
Occupations unique to processing, manufacturing and utilities	1,047.1	39.3	660.01	16.66	1,001.1	40.3	680.22	46.0	16.8	220.15

Note: Related CANSIM tables 282-0023, 282-0069, 282-0073

Table 8
Regional unemployment rates used by the Employment Insurance Program,¹ seasonally adjusted, 3 month moving average

Region	Effective from June 11, 2006 to July 8, 2006 Unemployment rate
	Percent
Newfoundland and Labrador	
01. St. John's	8.8
02. Newfoundland and Labrador	19.5
Prince Edward Island	
03. Prince Edward Island	10.9
Nova Scotia	
04. Eastern Nova Scotia	13.8
05. Western Nova Scotia	9.1
06. Halifax	5.2
New Brunswick	
07. Fredericton-Moncton-Saint John	6.6
08. Madawaska-Charlotte ²	10.0
09. Restigouche-Albert	14.1
Quebec	
10. Gaspésie-Îles-de-la-Madeleine	20.2
11. Québec	4.3
12. Trois-Rivières	8.3
13. South Central Quebec	4.9
14. Sherbrooke	7.7
15. Montérégie	7.0
16. Montréal	8.9
17. Central Quebec	8.9
18. Northwestern Quebec	10.4
19. Bas-Saint-Laurent-Côte-Nord ³	12.0
20. Gatineau	6.1
21. Saguenay	8.9
Ontario	
22. Ottawa	4.7
23. Eastern Ontario	6.3
24. Kingston	6.9
25. Central Ontario	6.7
26. Oshawa	6.0
27. Toronto	6.4
28. Hamilton	5.4
29. St. Catharines	6.0
30. London	5.7
31. Niagara	7.9
32. Windsor	9.0
33. Kitchener	5.0
34. Huron	6.6
35. South Central Ontario	4.9
36. Sudbury	7.7
37. Thunder Bay	7.9
38. Northern Ontario	10.2
Manitoba	
39. Winnipeg	4.8
40. Southern Manitoba	4.4
41. Northern Manitoba	24.9

See footnotes at the end of the table.

Table 8 – continued

Regional unemployment rates used by the Employment Insurance Program,¹ seasonally adjusted, 3 month moving average

Region	Effective from June 11, 2006 to July 8, 2006
	Unemployment rate
	Percent
Saskatchewan	
42. Regina	5.3
43. Saskatoon	5.0
44. Southern Saskatchewan	6.1
45. Northern Saskatchewan	15.0
Alberta	
46. Calgary	3.3
47. Edmonton	3.7
48. Northern Alberta	8.0
49. Southern Alberta	4.2
British Columbia	
50. Southern Interior British Columbia	6.2
51. Abbotsford	5.9
52. Vancouver	4.4
53. Victoria	5.2
54. Southern Coastal British Columbia	5.7
55. Northern British Columbia	8.2
Territories	
56. Yukon Territory ⁴	25.0
57. Northwest Territories ⁴	25.0
58. Nunavut ⁴	25.0

1. The boundaries of these regions are determined by Human Resources and Skills Development Canada (HRSDC). For geographic descriptions and maps of employment insurance regions, see the HRSDC website: <http://www14.hrdc-drhc.gc.ca/ei-ae/canadaei.htm>.
2. This unemployment rate has been determined using a transition formula prescribed in the EI Regulations. For further information, see: http://www.hrsdc.gc.ca/en/cs/comm/news/2000/000913a_e.shtml.
3. This unemployment rate has been determined using a transition formula prescribed in the EI Regulations. For further information, see: http://www.hrsdc.gc.ca/en/cs/comm/news/2000/000913b_e.shtml.
4. This rate is provided by Human Resources and Skills Development Canada.

Table 9-1
Students and other persons aged 15 to 24 (unadjusted) by detailed age groups

	May 2004	May 2005	May 2006	S.E. 1	Change from		Percent change from	
					last year	two years ago	last year	two years ago
in thousands								
Students 15 to 24 years 2								
Population	2,177.7	2,239.3	2,246.3	28.6	7.0	68.6	0.3	3.2
Labour force	1,205.5	1,230.0	1,230.6	29.5	0.6	25.1	0.0	2.1
Employment	966.3	1,013.9	1,032.5	28.4	18.6	66.2	1.8	6.9
Full-time employment	248.9	280.2	282.4	20.3	2.2	33.5	0.8	13.5
Part-time employment	717.5	733.8	750.1	22.9	16.3	32.6	2.2	4.5
Unemployment	239.2	216.1	198.1	13.8	-18.0	-41.1	-8.3	-17.2
Participation rate	55.4	54.9	54.8	1.0	-0.1	-0.6
Unemployment rate	19.8	17.6	16.1	1.0	-1.5	-3.7
Employment rate	44.4	45.3	46.0	1.0	0.7	1.6
Part-time rate	74.3	72.4	72.6	1.4	0.3	-1.6
Students 15 to 16 years 2								
Population	774.3	793.4	821.7	5.4	28.3	47.4	3.6	6.1
Labour force	276.8	274.3	294.2	12.8	19.9	17.4	7.3	6.3
Employment	203.3	208.0	223.4	11.7	15.4	20.1	7.4	9.9
Full-time employment	6.8	5.3	9.3	5.2	4.0	2.5	75.5	36.8
Part-time employment	196.5	202.7	214.1	11.1	11.4	17.6	5.6	9.0
Unemployment	73.5	66.3	70.8	7.7	4.5	-2.7	6.8	-3.7
Participation rate	35.7	34.6	35.8	1.6	1.2	0.1
Unemployment rate	26.6	24.2	24.1	2.1	-0.1	-2.5
Employment rate	26.3	26.2	27.2	1.5	1.0	0.9
Part-time rate	96.7	97.5	95.8	1.8	-1.6	-0.8
Students 17 to 19 years 2								
Population	802.8	807.5	809.4	15.6	1.9	6.6	0.2	0.8
Labour force	497.1	489.4	498.1	16.4	8.7	1.0	1.8	0.2
Employment	404.0	409.1	428.5	16.0	19.4	24.5	4.7	6.1
Full-time employment	66.6	75.1	90.7	10.9	15.6	24.1	20.8	36.2
Part-time employment	337.4	334.0	337.8	14.1	3.8	0.4	1.1	0.1
Unemployment	93.1	80.3	69.6	8.7	-10.7	-23.5	-13.3	-25.2
Participation rate	61.9	60.6	61.5	1.5	0.9	-0.4
Unemployment rate	18.7	16.4	14.0	1.5	-2.4	-4.7
Employment rate	50.3	50.7	52.9	1.6	2.2	2.6
Part-time rate	83.5	81.6	78.8	1.9	-2.8	-4.7
Students 20 to 24 years 2								
Population	600.6	638.3	615.1	22.5	-23.2	14.5	-3.6	2.4
Labour force	431.6	466.4	438.3	20.4	-28.1	6.7	-6.0	1.6
Employment	359.0	396.8	380.6	19.7	-16.2	21.6	-4.1	6.0
Full-time employment	175.5	199.8	182.5	15.8	-17.3	7.0	-8.7	4.0
Part-time employment	183.6	197.0	198.1	13.6	1.1	14.5	0.6	7.9
Unemployment	72.6	69.6	57.7	7.2	-11.9	-14.9	-17.1	-20.5
Participation rate	71.9	73.1	71.3	1.8	-1.8	-0.6
Unemployment rate	16.8	14.9	13.2	1.4	-1.7	-3.6
Employment rate	59.8	62.2	61.9	1.9	-0.3	2.1
Part-time rate	51.1	49.6	52.0	2.5	2.4	0.9
Other persons aged 15 to 24 3								
Population	2,057.6	2,034.2	2,068.9	22.9	34.7	11.3	1.7	0.5
Labour force	1,739.0	1,706.7	1,747.9	27.5	41.2	8.9	2.4	0.5
Employment	1,522.2	1,503.5	1,578.5	28.5	75.0	56.3	5.0	3.7
Full-time employment	1,157.1	1,155.5	1,230.7	28.1	75.2	73.6	6.5	6.4
Part-time employment	365.2	348.0	347.8	21.9	-0.2	-17.4	-0.1	-4.8
Unemployment	216.8	203.2	169.4	16.9	-33.8	-47.4	-16.6	-21.9
Participation rate	84.5	83.9	84.5	0.6	0.6	0.0
Unemployment rate	12.5	11.9	9.7	0.7	-2.2	-2.8
Employment rate	74.0	73.9	76.3	0.8	2.4	2.3
Part-time rate	24.0	23.1	22.0	0.9	-1.1	-2.0

1. Average standard error of change over the year (see "Sampling Errors" in Data Quality for further explanations).

2. Students are persons aged 15 to 24 who attended school full-time in March and who are planning to return to school in the fall.

3. Other persons are all other youths aged 15 to 24 who are not included in the student population.

Note: Related CANSIM table 282-0006

Table 9-2
Students and other persons aged 15 to 24 (unadjusted) by province

	Population		Labour force				Participation rate	Unemployment rate	Employment rate
	Labour force	Employment	Full-time employment	Part-time employment	Unemployment				
in thousands									
Students ¹									
Newfoundland and Labrador									
May 2005	37.9	14.5	11.4	3.8	7.6	3.1	38.3	21.4	30.1
May 2006	35.2	13.4	9.9	3.1	6.8	3.5	38.1	26.1	28.1
Prince Edward Island									
May 2005	10.7	6.3	5.1	1.5	3.6	1.2	58.9	19.0	47.7
May 2006	9.5	5.9	4.7	1.6	3.1	1.2	62.1	20.3	49.5
Nova Scotia									
May 2005	63.0	34.9	27.9	8.9	19.0	7.0	55.4	20.1	44.3
May 2006	66.5	39.2	32.2	8.4	23.8	7.0	58.9	17.9	48.4
New Brunswick									
May 2005	43.4	23.6	19.6	5.7	14.0	4.0	54.4	16.9	45.2
May 2006	46.9	27.8	21.6	6.9	14.7	6.2	59.3	22.3	46.1
Quebec									
May 2005	507.2	249.8	214.0	41.2	172.8	35.8	49.3	14.3	42.2
May 2006	512.2	255.1	216.1	38.8	177.3	39.0	49.8	15.3	42.2
Ontario									
May 2005	944.2	559.4	441.4	127.1	314.3	118.0	59.2	21.1	46.7
May 2006	956.5	536.1	441.9	124.5	317.4	94.2	56.0	17.6	46.2
Manitoba									
May 2005	78.7	48.5	42.6	11.6	31.0	6.0	61.6	12.4	54.1
May 2006	75.3	48.4	42.0	11.7	30.3	6.4	64.3	13.2	55.8
Saskatchewan									
May 2005	65.4	39.4	34.8	13.1	21.7	4.6	60.2	11.7	53.2
May 2006	64.1	38.4	35.0	12.6	22.4	3.5	59.9	9.1	54.6
Alberta									
May 2005	208.5	121.2	109.6	37.6	72.1	11.5	58.1	9.5	52.6
May 2006	208.3	128.1	112.1	41.7	70.3	16.0	61.5	12.5	53.8
British Columbia									
May 2005	280.2	132.4	107.6	29.7	77.9	24.9	47.3	18.8	38.4
May 2006	271.9	138.2	117.1	33.1	84.0	21.0	50.8	15.2	43.1
Other persons aged 15-24 ²									
Newfoundland and Labrador									
May 2005	31.6	24.6	17.8	14.2	3.6	6.9	77.8	28.0	56.3
May 2006	31.9	24.3	18.1	13.2	4.9	6.3	76.2	25.9	56.7
Prince Edward Island									
May 2005	9.0	7.8	6.4	4.9	1.5	x	86.7	x	71.1
May 2006	10.4	9.5	8.4	6.8	1.6	1.1	91.3	11.6	80.8
Nova Scotia									
May 2005	60.4	50.5	45.2	32.7	12.5	5.4	83.6	10.7	74.8
May 2006	56.8	48.4	41.1	33.3	7.8	7.3	85.2	15.1	72.4
New Brunswick									
May 2005	53.4	43.5	36.2	29.2	7.0	7.3	81.5	16.8	67.8
May 2006	49.2	41.3	36.5	28.7	7.8	x	83.9	x	74.2
Quebec									
May 2005	442.9	370.9	323.4	254.7	68.7	47.5	83.7	12.8	73.0
May 2006	438.1	366.0	320.0	244.8	75.0	46.1	83.5	12.6	73.0
Ontario									
May 2005	731.8	605.0	514.9	381.8	133.2	90.1	82.7	14.9	70.4
May 2006	744.8	629.9	562.5	441.3	121.2	67.3	84.6	10.7	75.5
Manitoba									
May 2005	76.7	66.6	61.7	47.2	14.6	x	86.8	x	80.4
May 2006	80.5	69.2	65.9	49.5	16.5	3.3	86.0	4.8	81.9

See footnotes at the end of the table.

Table 9-2 – continued

Students and other persons aged 15 to 24 (unadjusted) by province

	Population		Labour force			Unemployment rate	Participation rate	Unemployment rate	Employment rate
	Labour force	Employment	Full-time employment	Part-time employment	Unemployment				
	in thousands								
Saskatchewan									
May 2005	73.7	61.3	55.2	42.7	12.5	6.2	83.2	10.1	74.9
May 2006	73.7	62.3	57.4	45.1	12.3	4.9	84.5	7.9	77.9
Alberta									
May 2005	266.3	228.8	215.6	173.0	42.5	13.3	85.9	5.8	81.0
May 2006	279.5	243.7	231.4	195.4	36.1	12.3	87.2	5.0	82.8
British Columbia									
May 2005	288.5	247.5	227.0	174.9	52.1	20.4	85.8	8.2	78.7
May 2006	304.0	253.2	237.2	172.5	64.7	16.0	83.3	6.3	78.0

1. Students are persons aged 15 to 24 who attended school full-time in March and who are planning to return to school in the fall.
2. Other persons are all other youths aged 15 to 24 who are not included in the student population.

Note: Related CANSIM table 282-0006

Data quality

About the Labour Force Survey

The statistics contained in this report are based on information obtained through a sample survey of 53,000 representative households across the country. The Labour Force Survey, started in November 1945, was taken at quarterly intervals until November 1952. It has been carried out monthly since then. The information generated by the survey has expanded considerably over the years with a major redesign of the survey content in 1976 and again in 1997, and provides a rich and detailed picture of the Canadian labour market.

The sample used in the Labour Force Survey has been designed to represent all persons in the population 15 years of age and over residing in the provinces of Canada, with the exception of the following: persons living on Indian reserves, full-time members of the armed forces and people living in institutions (for example, inmates of penal institutions and patients in hospitals or nursing homes who have resided in the institution for more than six months). Monthly estimates of employment, unemployment and persons not in the labour force refer to the specific week covered by the survey each month, normally the week containing the 15th day.

Definitions and explanations

The **labour force** is composed of those members of the civilian non-institutional population 15 years of age and over who, during the reference week, were employed or unemployed.

Employed persons are those who, during the reference week:

- (a) did any work at all
- (b) had a job but were not at work

A person is considered to be **full-time** if his/her usual hours at the main job are greater than 29 hours per week. When the number of hours worked at the main job is usually less than 30 hours per week then he/she is considered to be **part-time**.

Unemployed persons are those who, during the reference week:

- (a) were without work, had actively looked for work in the past four weeks (ending with reference week), and were available for work;
- (b) had not actively looked for work in the past four weeks but were on temporary layoff and were available for work;
- (c) had not actively looked for work in the past four weeks but had a new job to start in four weeks or less from the reference week, and were available for work.

Persons in the civilian non-institutional population 15 years of age and over who, during the reference week, were neither employed nor unemployed are classified as **not in the labour force**.

The **unemployment rate** represents the number of unemployed persons expressed as a percentage of the labour force. The unemployment rate for a particular group (age, sex, etc.) is the number unemployed in that group expressed as a percentage of the labour force for that group.

The **participation rate** represents the labour force expressed as a percentage of the population 15 years of age and over. The participation rate for a particular group (age, sex, etc.) is the labour force in that group expressed as a percentage of the population for that group.

The **employment rate (formerly the employment/population ratio)** represents the number of persons employed expressed as a percentage of the population 15 years of age and over. The employment rate for a particular group (age, sex, etc.) is the number employed in that group expressed as a percentage of the population for that group.

The **part-time rate** represents the number of persons employed part-time expressed as a percentage of the employed. The part-time rate for a particular group (age, sex, etc.) is the number employed part-time in that group expressed as a percentage of the employed for that group.

All geographic regions are based on the 2001 Census boundaries.

Seasonal adjustment

Fluctuations in economic time series are caused by seasonal, cyclical and irregular movements. A seasonally adjusted series is one from which seasonal movements have been eliminated. Seasonal movements are defined as those which are caused by regular annual events such as climate, holidays, vacation periods and cycles related to crops, production and retail sales associated with Christmas and Easter. The seasonally adjusted series contains irregular as well as longer-term cyclical fluctuations.

The seasonally adjusted series are revised each year to take into account current data and to generate new forecast factors for the next twelve months. The data are therefore subject to slight revisions in future issues of this publication.

Sampling error

Estimates in this publication are based on the Labour Force Survey, a monthly survey of approximately 53,000 households across Canada. Because they are based on a sample survey, the estimates are subject to sampling error. Changes in the level of any estimates between two months can be the result of a true change or sampling variability. In most tables in this publication an indicator of the sampling error is provided. Two thirds of the time, a change greater than the sampling error indicates a real change. Movements in estimates that are smaller than the sampling error are less likely to reflect a real change and more likely to be due to sampling variability. While the above is true for monthly movements, one can have more confidence in a series of consecutive movements in the same direction, even though some of the monthly movements may be smaller than the sampling error.

For more detailed information about the Labour Force Survey, see the following documents:

- Overview of the Labour Force Survey
- Guide to the Labour Force Survey (71-543-GIE)
- Data quality statement
- Methodology of the Canadian Labour Force Survey (71-526-XPB)