



Catalogue no. 71-001-XIE

Labour force information

Not for release before 7 A.M. E.D.T.

Friday, May 5, 2006



Week ending April 15, 2006



Statistics
Canada Statistique
Canada

Canada

How to obtain more information

Specific inquiries about this product and related statistics or services should be directed to: Labour Force Survey Program, Labour Statistics Division, Statistics Canada, Ottawa, Ontario, K1A 0T6 (telephone: (613) 951-4090, toll free number: 1 866 873-8788, fax: (613) 951-2869 or by e-mail address: labour@statcan.ca).

For information on the wide range of data available from Statistics Canada, you can contact us by calling one of our toll free numbers. You can also contact us by e-mail or by visiting our website at www.statcan.ca.

National inquiries line **1 800 263-1136**

National telecommunications device for the hearing impaired **1 800 363-7629**

Depository Services Program inquiries **1 800 700-1033**

Fax line for Depository Services Program **1 800 889-9734**

E-mail inquiries infostats@statcan.ca

Website www.statcan.ca

Information to access the product

This product, Catalogue no. 71-001-XIE, is available for free in electronic format. To obtain a single issue, visit our website at www.statcan.ca and select Our Products and Services.

Standards of service to the public

Statistics Canada is committed to serving its clients in a prompt, reliable and courteous manner and in the official language of their choice. To this end, the Agency has developed *standards of service* which its employees observe in serving its clients. To obtain a copy of these service standards, please contact Statistics Canada toll free at 1 800 263-1136. The service standards are also published on www.statcan.ca under About Statistics Canada > Providing services to Canadians.



Statistics Canada
Labour Statistics Division
Labour Force Survey Program

Labour force information

Not for release before 7 A.M. E.D.T.

Friday, May 5, 2006

Week ending April 15, 2006

Published by authority of the Minister responsible for Statistics Canada

© Minister of Industry, 2006

All rights reserved. The content of this electronic publication may be reproduced, in whole or in part, and by any means, without further permission from Statistics Canada, subject to the following conditions: that it be done solely for the purposes of private study, research, criticism, review or newspaper summary, and/or for non-commercial purposes; and that Statistics Canada be fully acknowledged as follows: Source (or "Adapted from", if appropriate): Statistics Canada, year of publication, name of product, catalogue number, volume and issue numbers, reference period and page(s). Otherwise, no part of this publication may be reproduced, stored in a retrieval system or transmitted in any form, by any means—electronic, mechanical or photocopy—or for any purposes without prior written permission of Licensing Services, Client Services Division, Statistics Canada, Ottawa, Ontario, Canada K1A 0T6.

May 2006

Catalogue no. 71-001-XIE

ISSN 1492-5478

Frequency: Monthly

Ottawa

La version française de cette publication est disponible sur demande (n° 71-001-XIF au catalogue).

Note of appreciation

Canada owes the success of its statistical system to a long standing partnership between Statistics Canada, the citizens of Canada, its businesses, governments and other institutions. Accurate and timely statistical information could not be produced without their continued cooperation and goodwill.

User information

Symbols

The following standard symbols are used in Statistics Canada publications:

- . not available for any reference period
- .. not available for a specific reference period
- ... not applicable
- 0 true zero or a value rounded to zero
- 0^s value rounded to 0 (zero) where there is a meaningful distinction between true zero and the value that was rounded
- P preliminary
- r revised
- x suppressed to meet the confidentiality requirements of the *Statistics Act*
- E use with caution
- F too unreliable to be published

Special requests (\$)

Custom tabulations can be arranged on an ad hoc or regular basis. This service enables you to specify tables and time series to meet your own requirements. The cost varies according to the request. For more information, contact us toll-free at 1-866-873-8788 or e-mail us at labour@statcan.ca.

Schedule of LFS releases

Reference period - Week ending	Release date
January 21, 2006	February 10, 2006
February 18, 2006	March 10, 2006
March 18, 2006	April 7, 2006
April 15, 2006	May 5, 2006
May 20, 2006	June 9, 2006
June 17, 2006	July 7, 2006
July 15, 2006	August 4, 2006
August 19, 2006	September 8, 2006
September 16, 2006	October 6, 2006
October 14, 2006	November 3, 2006
November 11, 2006	December 1, 2006
December 9, 2006	January 5, 2007

Latest LFS release in *The Daily* (free)

Table of contents

Highlights	5
Analysis — April 2006	6
Charts	
1. Employment and unemployment rates, Canada, seasonally adjusted	5
2. Employment and unemployment indicators, Canada, seasonally adjusted	9
3. Employment and unemployment indicators, Canada, seasonally adjusted	10
4. Index of employment by industry, Canada, seasonally adjusted, January, 2003=100	11
5. Index of employment by industry, Canada, seasonally adjusted, January 2003 = 100	12
6. Index of employment by industry, Canada, seasonally adjusted, January 2003 = 100	13
7. Index of employment by province, seasonally adjusted, January 2003 = 100	14
8. Index of employment by province, seasonally adjusted, January 2003 = 100	15
Related products	16
Statistical tables	
1 Labour force characteristics by age and sex, Canada, seasonally adjusted	24
2 Employment by class of worker and industry, Canada, seasonally adjusted	25
3 Labour force characteristics by province, seasonally adjusted	26
4 Selected labour force characteristics (seasonally adjusted)	28
4-1 Newfoundland and Labrador	28
4-2 Prince Edward Island	29
4-3 Nova Scotia	30
4-4 New Brunswick	31
4-5 Quebec	32
4-6 Ontario	33
4-7 Manitoba	34
4-8 Saskatchewan	35
4-9 Alberta	36
4-10 British Columbia	37

Table of contents – continued

5	Labour force characteristics by census metropolitan area (seasonally adjusted)	38
5-1	3 month moving average	38
5-2	Monthly	43
6	Labour force characteristics by economic region and for Yukon Territory and Northwest Territories, unadjusted, 3 month moving average ending in April 2005 and April 2006	44
7	Average usual hours and wages of employees by selected characteristics, Canada, unadjusted	50
8	Regional unemployment rates used by the Employment Insurance Program, seasonally adjusted, 3 month moving average	51
	Data quality	53

Highlights

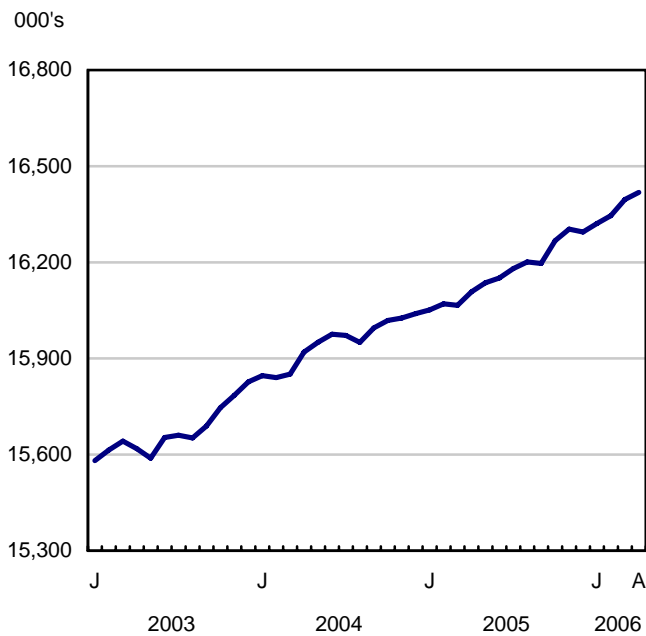
April 2006

Employment rose by an estimated 22,000 in April. At the same time, the unemployment rate edged up to 6.4% (+0.1 percentage points), still hovering around a thirty-year low. So far in 2006, employment is up 124,000 or 0.8%, double the pace of growth observed over the first four months of last year.

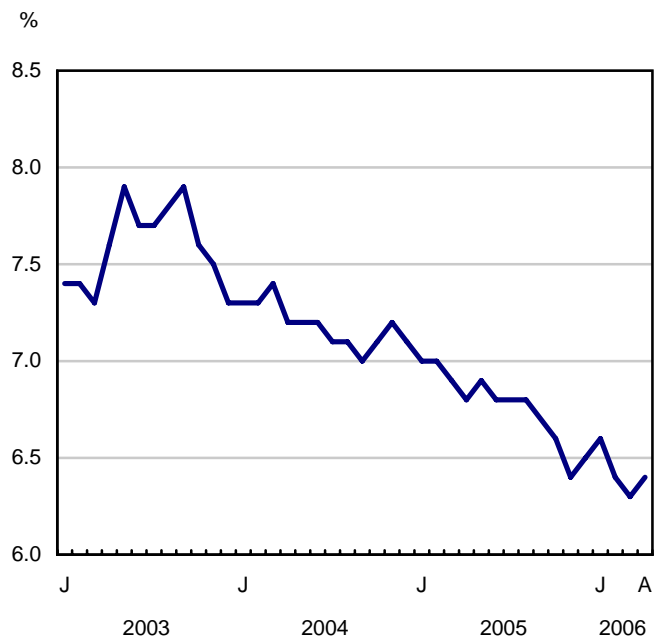
Chart 1

Employment and unemployment rates, Canada, seasonally adjusted

Employment



Unemployment rate



Analysis — April 2006

Employment rose by an estimated 22,000 in April. At the same time, the unemployment rate edged up to 6.4% (+0.1 percentage points), still hovering around a thirty-year low. So far in 2006, employment is up 124,000 or 0.8%, double the pace of growth observed over the first four months of last year.

The employment gain in April was the result of an increase in full-time work, (+26,000). This continues the long-term trend of full-time growth. Part-time employment has remained around the same level over the last three years.

With an employment increase of 39,000 in April, the share of adult women who were employed hit a record high of 58.0%. At 2.2%, the pace of growth for this group over the last 12 months is now well in excess of that for adult men.

After peaking at 61.4% nearly two years ago, the labour force participation rate for adult women began a slow decline. However, with recent strength in employment, the participation rate among these women is again near its record high.

With strong full-time employment growth over the last year and an unemployment rate perched around its record low, wages continue to rise. The average hourly wage in April was up 3.1% from 12 months ago, compared to the most recent 2.2% increase in the Consumer Price Index. Hourly wage rate growth continues to be highest in Alberta's tight labour market (+6.8%).

For the second consecutive month, the bulk of the employment gains were in Ontario. In Canada's two most western provinces, there was a pause in the strong pace of employment growth that has been observed for some time. However, over the first four months of 2006, employment growth in Alberta was well ahead of the rest of the country.

Employment continues to rise in Ontario

Employment in Ontario continued to pick up in April with an increase of 24,000. The gain in April was mostly among adult women. A settlement of the labour dispute affecting Ontario colleges may have contributed to a decline in youth employment. As classes resumed, this may have left less time for college students to work at a paid job in April.

The recent employment growth in Ontario brings increases over the last 12 months to 108,000 (+1.7%). Over this period, increases in several service-based industries such as business, building and other support services (+34,000); educational services (+30,000); as well as retail and wholesale trade (+23,000) have more than offset losses in manufacturing (-56,000). There has also been strength in construction with 31,000 more workers in the industry compared to 12 months ago.

The Atlantic provinces also benefited from employment gains in April with the number of people working in Newfoundland and Labrador as well as in Prince Edward Island, up by 3,000 and 2,000 respectively. Despite more employment in Newfoundland and Labrador, the unemployment rate edged up 0.2 percentage points to 15.9% as more people entered the labour force. In Prince Edward Island, the increase in employment pushed the unemployment rate for the province down to 10.5% (-1.5 percentage points).

On the heels of a strong increase in gross domestic product in 2005, employment in Saskatchewan was up 5,000 in April. This brings employment growth since the start of the year to 1.7%, driven by increases in construction, retail and wholesale trade and a resurgent natural resources sector. The employment gains in April pushed the unemployment rate down 0.5 percentage points to 4.8%.

In Manitoba, employment increased by 4,000 in April, bringing total gains from 12 months ago to 11,000 (+1.9%). Despite more employment in April, the unemployment rate rose by 0.5 percentage points to 4.7% as more people

entered the labour force in search of work. Over the past 12 months, the largest employment increases have been in retail and wholesale trade; finance, insurance, real estate and leasing as well as construction.

Despite little change in April, employment growth in Alberta and British Columbia has outpaced the rest of the country over the last 12 months. In Alberta, the rising price of oil over the past year has caused employment to go up in the oil patch as well as in professional, scientific and technical services. In British Columbia, strength over the same period has come from retail and wholesale trade; information, culture and recreation as well as transportation and warehousing. With these strong employment gains, their respective unemployment rates remained lower in April than in any other province (3.5% in Alberta and 4.5% in British Columbia).

In Quebec, employment fell by an estimated 24,000 in April. This is the first significant decline so far in 2006 and leaves growth since last May, when employment began to pick up, at 1.6% or 60,000. In spite of the decline in employment, the unemployment rate fell 0.2 percentage points to 8.3%, the result of a decline in the number of youths in the labour force.

Adult women gain momentum

So far in 2006, employment growth among adult women aged 25 and over has been brisk, increasing by 39,000 in April and by 94,000 or 1.5% since the start of the year. This contrasts with adult men for whom employment growth has been weak since the start of the year, up only 0.2%. As a result of the recent employment strength among adult women, their unemployment rate now stands at 5.3%, slightly below the rate for adult men.

Despite a decline of 29,000 in April, employment among youths aged 15 to 24 has grown by 71,000 since last September. The youth unemployment rate remained at 11.5% in April as fewer youths were in the labour force, keeping the rate among the lowest in 15 years.

Employment up in manufacturing and trade

Employment in manufacturing rose by an estimated 25,000 in April. Despite this gain, losses since the end of 2002 have totalled 165,000 or 7.1%. Although there are fewer workers, factory output has shown an upward trend over the corresponding period. Furthermore, the recent decline in manufacturing employment pales in comparison to the recession of the early 1990s when employment fell much more sharply over the same span of time, down 329,000 or 15.5%.

Employment in retail and wholesale trade continued its upward trend with an increase of 20,000 in April, bringing gains over the past 12 months to 105,000 (+4.1%). Strength over the last year has been most pronounced in British Columbia with notable growth also in Quebec and Ontario.

The only industry with a significant employment decline in April was transportation and warehousing, down 15,000. This offsets a similar increase the month before and leaves employment in the industry 20,000 (+2.6%) above the level from 12 months ago.

Note to readers

Comparing current LFS estimates to those prior to 1976

In recent months, the Labour Force Survey (LFS) has been reporting very low unemployment rates. The rates have been so low that some LFS users want to understand the historical context in which these rates are presented. Caution must be stressed when comparing recent LFS employment and unemployment estimates to those prior to 1976 – when the questionnaire underwent significant changes.

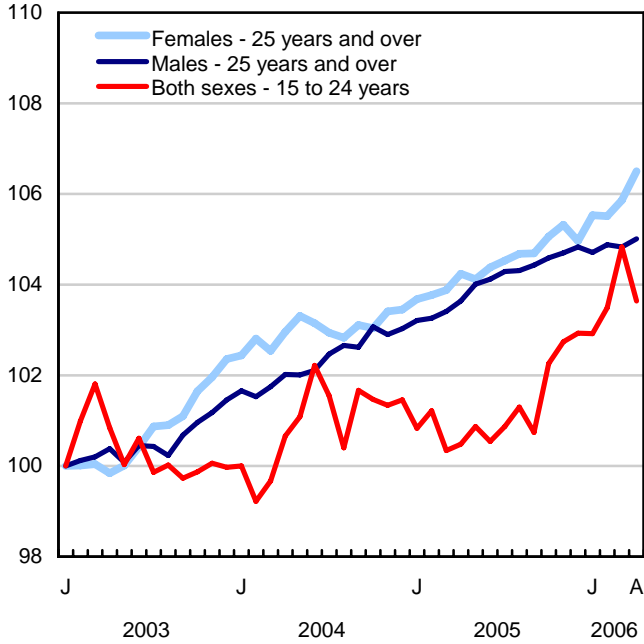
The 1976 LFS questionnaire introduced direct questioning to determine labour market status. This replaced the “main activity” style of information previously recorded. In 1975, both the new and old questionnaires were run in parallel. An analysis of the impact on employment and unemployment estimates showed that the new questionnaire measured more employment, especially among youths and women. It also picked up more unemployment, most notably among women.

At the time of the conversion to the new questionnaire, a historical series was created by adjusting pre-1976 estimates of employment and unemployment using factors determined from the parallel run. Ratios were applied to the 1966 to 1975 data to make them more (but not strictly) comparable to the new estimates. Although these adjusted 1966 to 1975 data are available, users should still be cautious when comparing the two periods because of the different questionnaires used to measure employment and unemployment. Approaching 1966, further caution should be used.

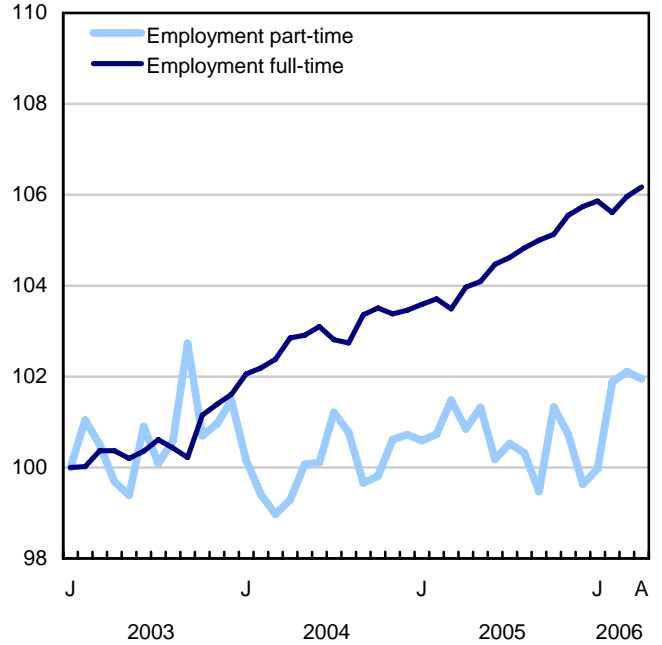
Chart 2

Employment and unemployment indicators, Canada, seasonally adjusted

Employment index, January 2003=100



Employment index, January 2003=100



Employment index, January 2003=100

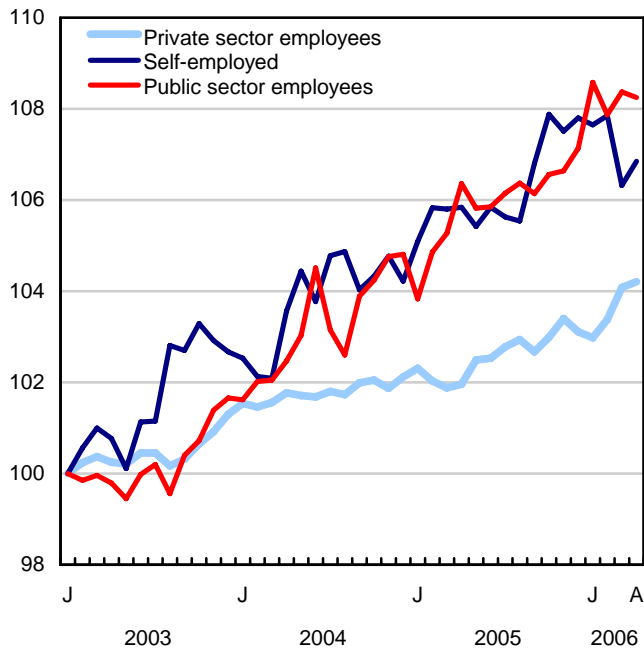
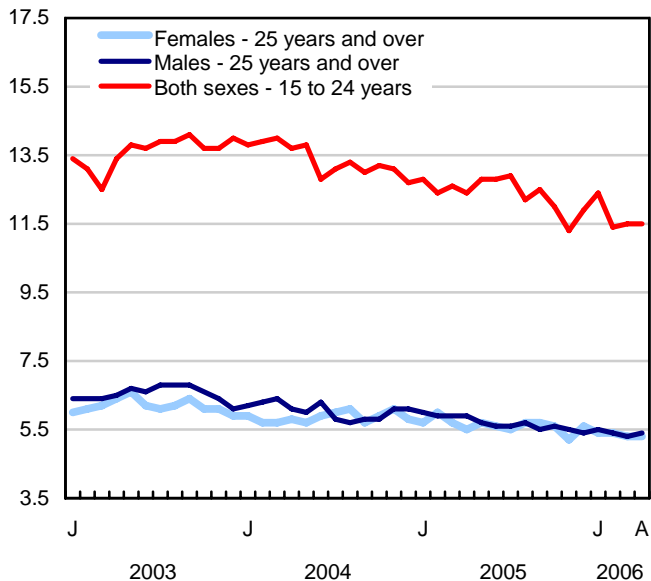


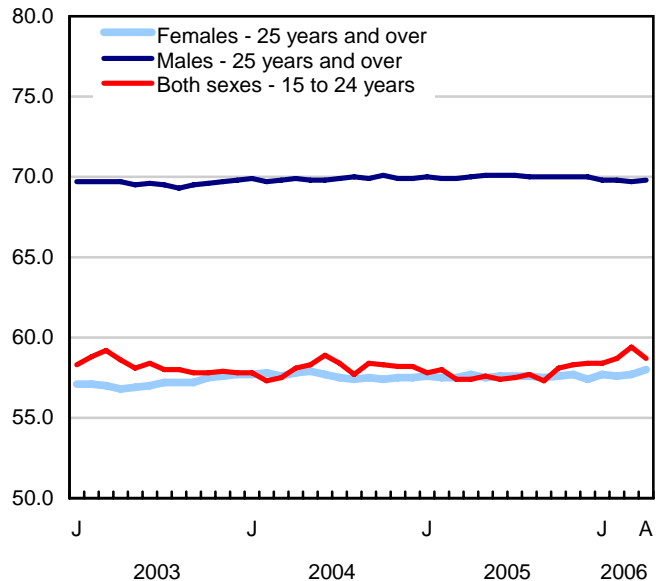
Chart 3

Employment and unemployment indicators, Canada, seasonally adjusted

Unemployment rate (%)



Employment rate (%)



Participation rate (%)

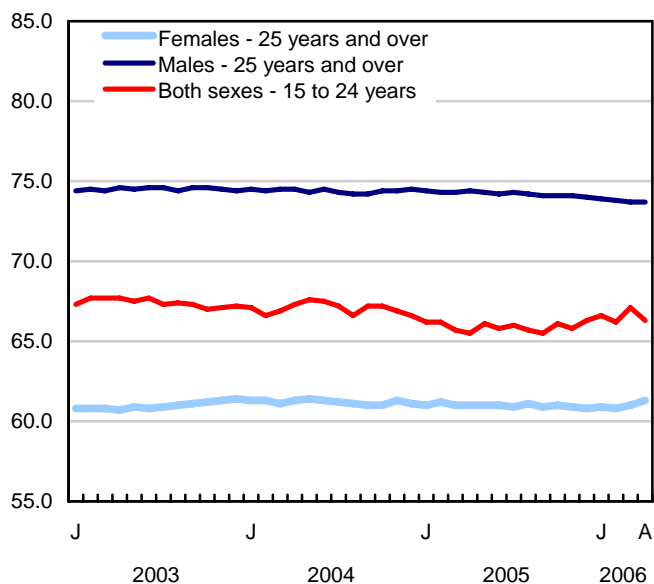


Chart 4

Index of employment by industry, Canada, seasonally adjusted, January, 2003=100

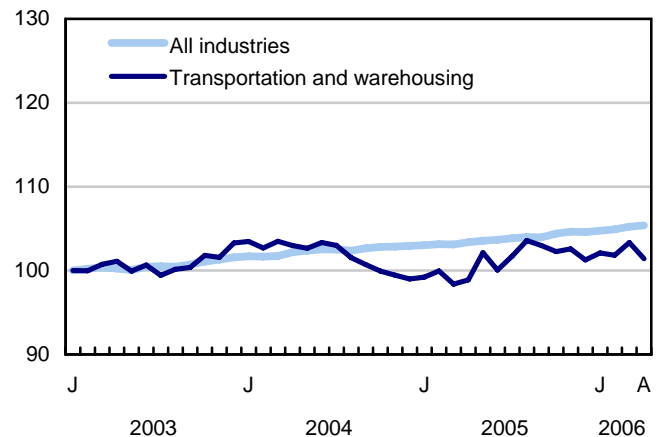
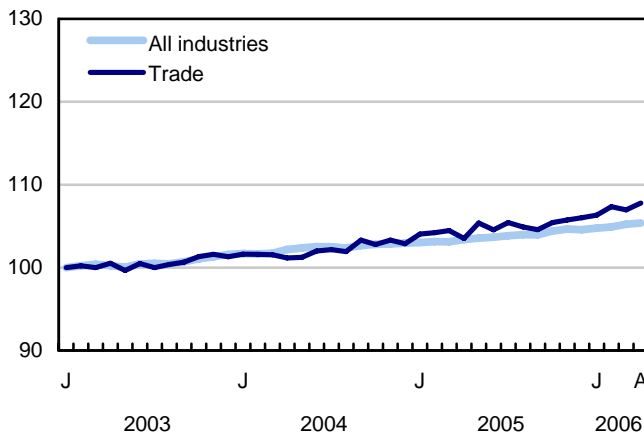
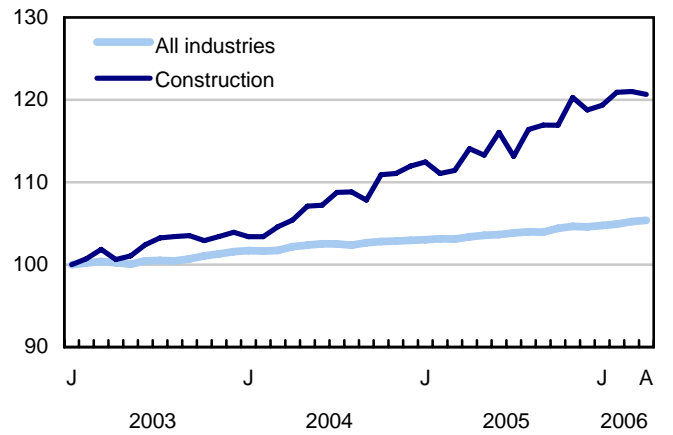
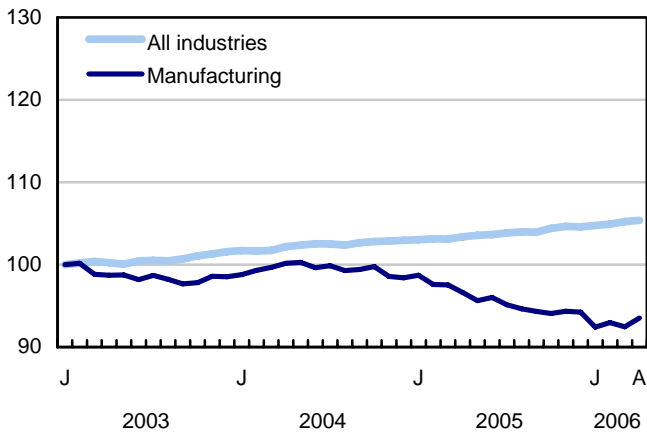
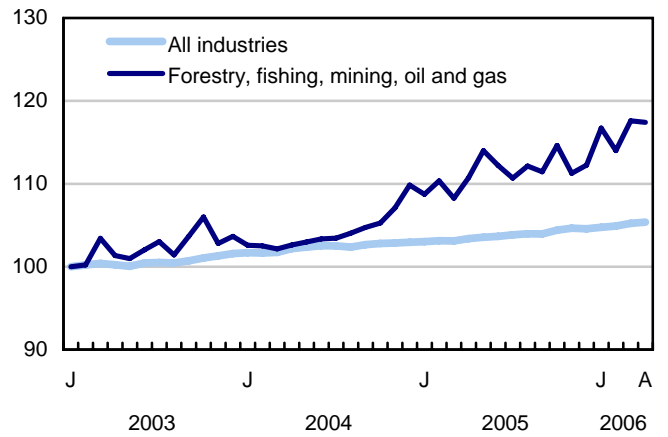
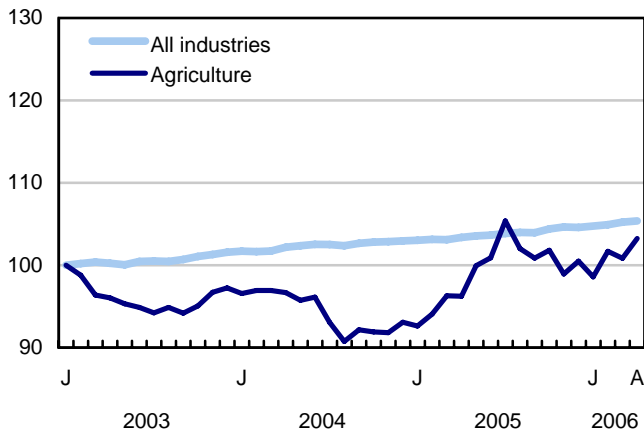


Chart 5

Index of employment by industry, Canada, seasonally adjusted, January 2003 = 100

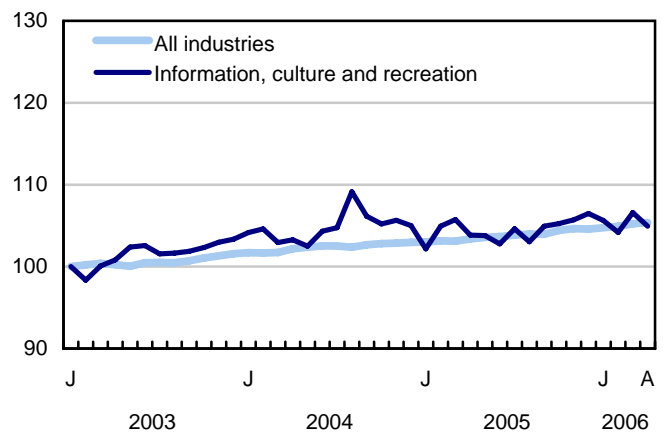
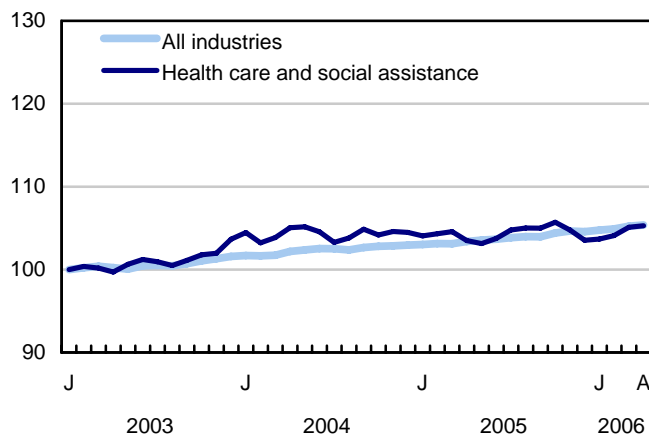
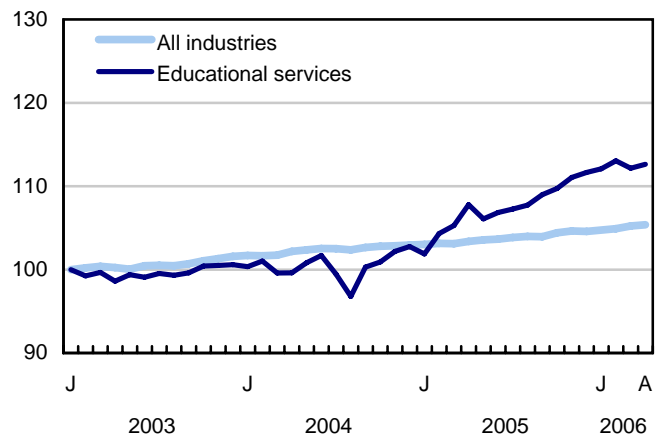
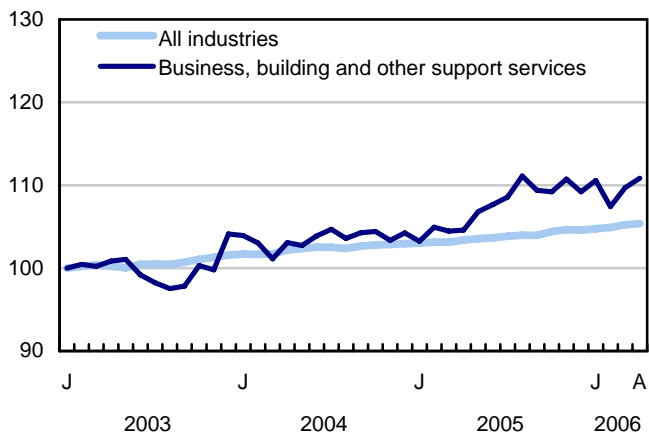
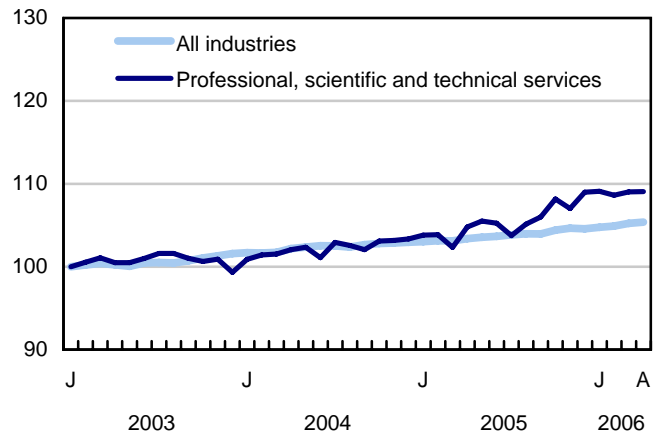
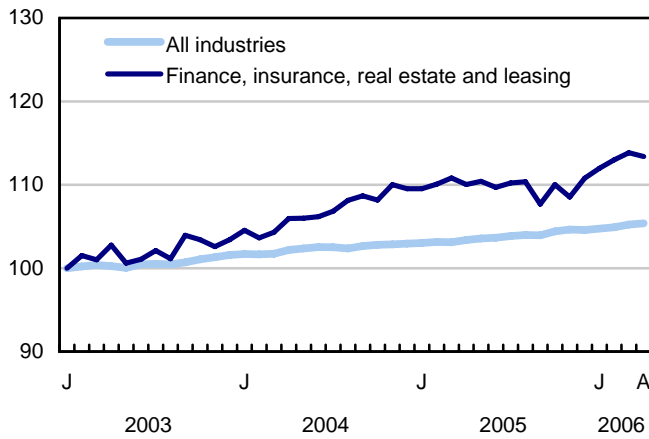


Chart 6

Index of employment by industry, Canada, seasonally adjusted, January 2003 = 100

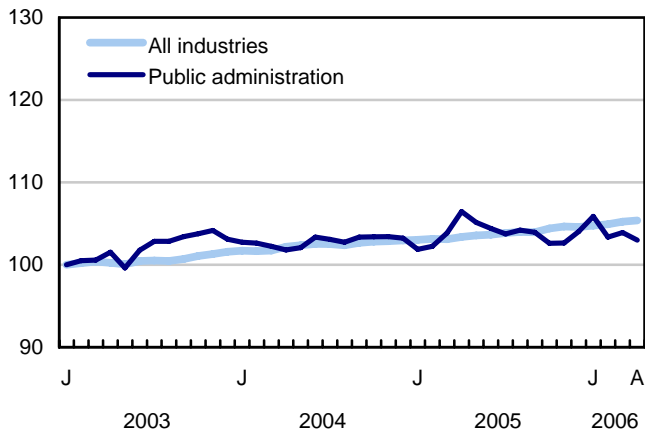
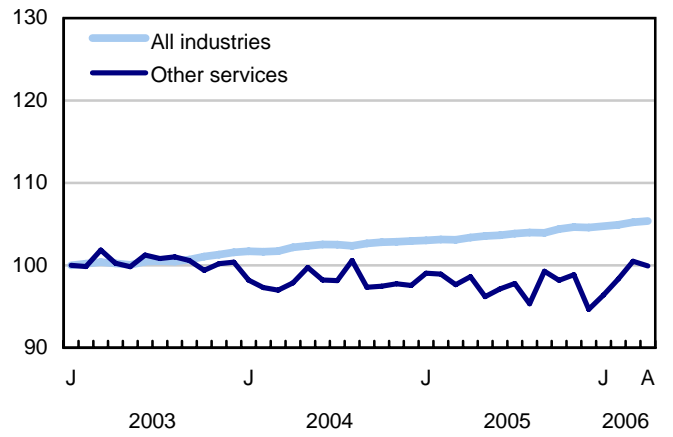
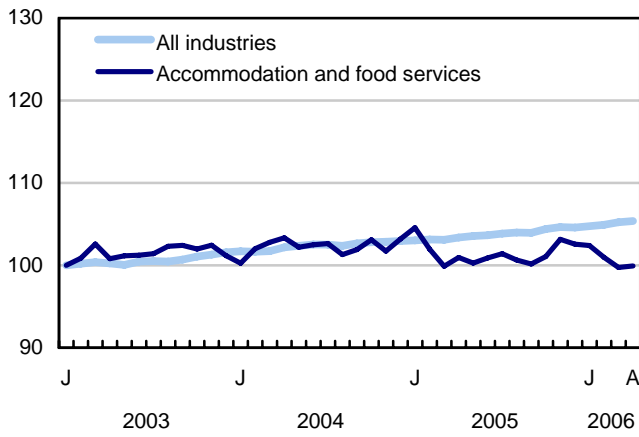


Chart 7

Index of employment by province, seasonally adjusted, January 2003 = 100

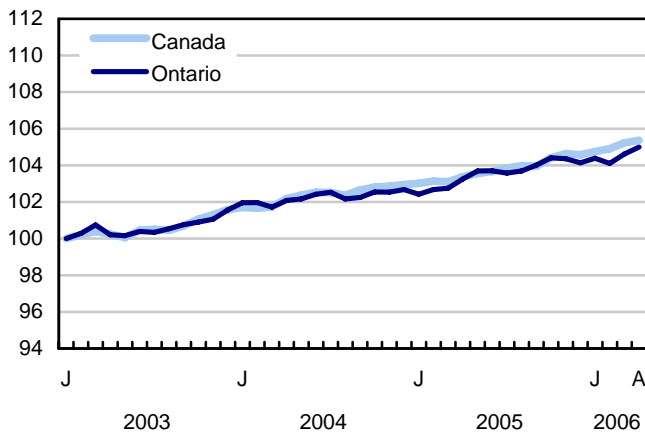
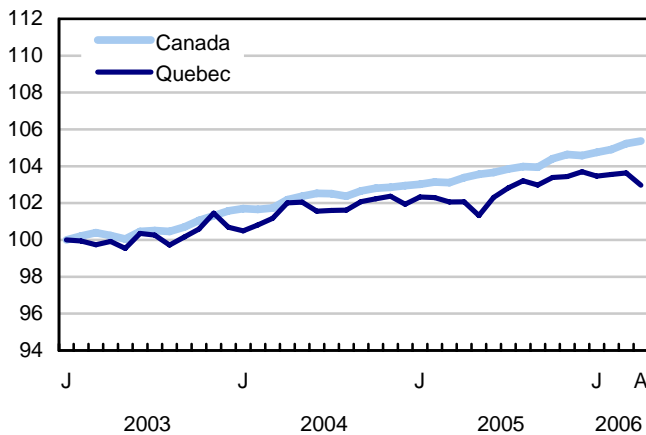
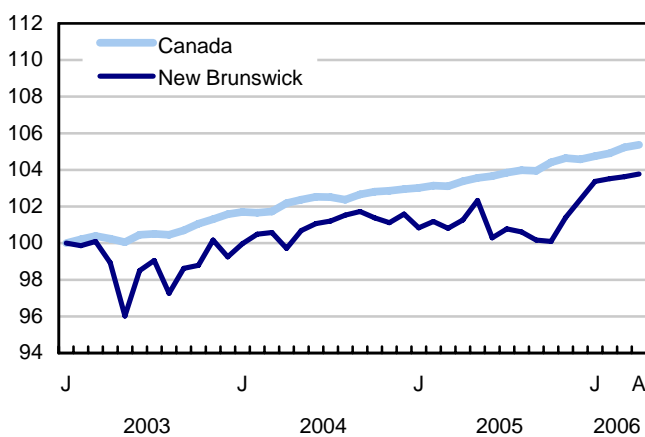
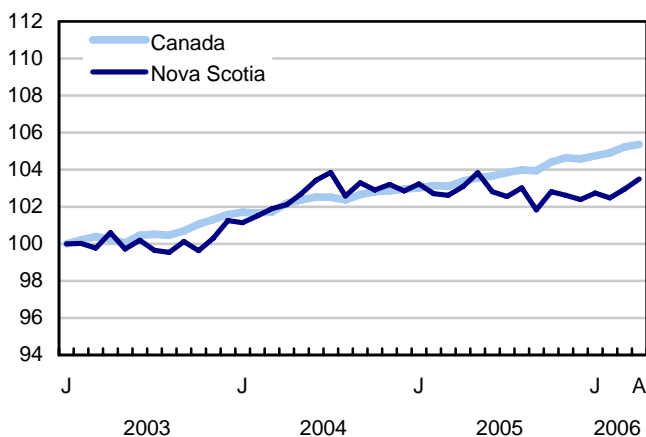
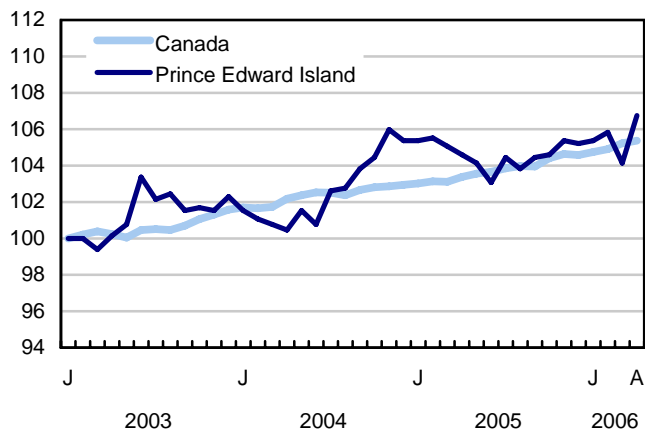
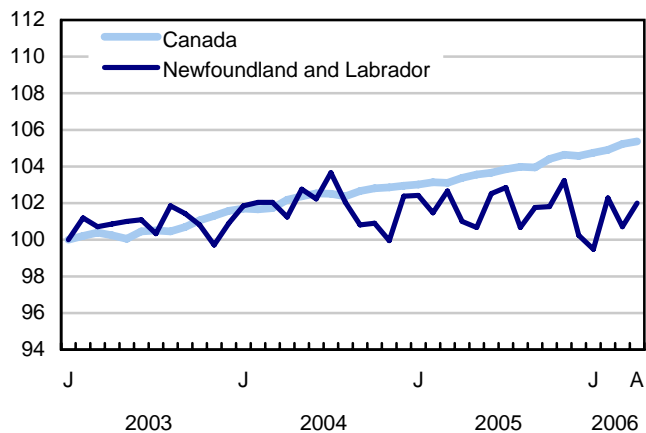
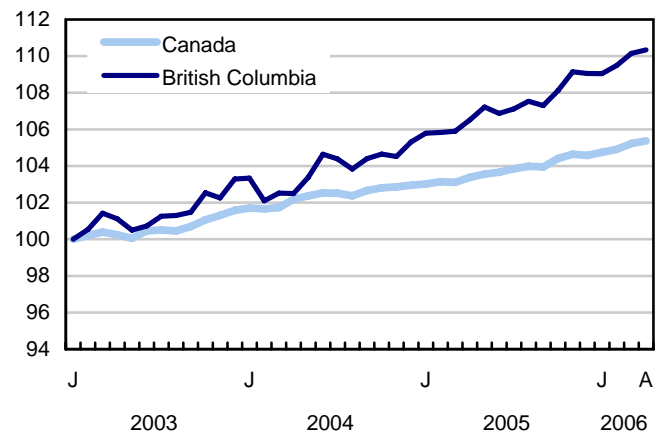
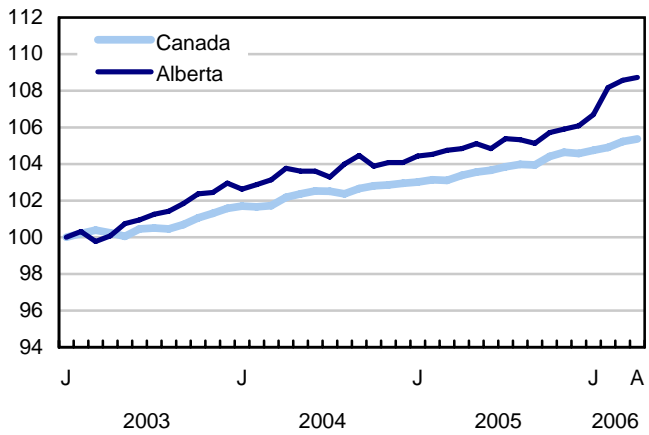
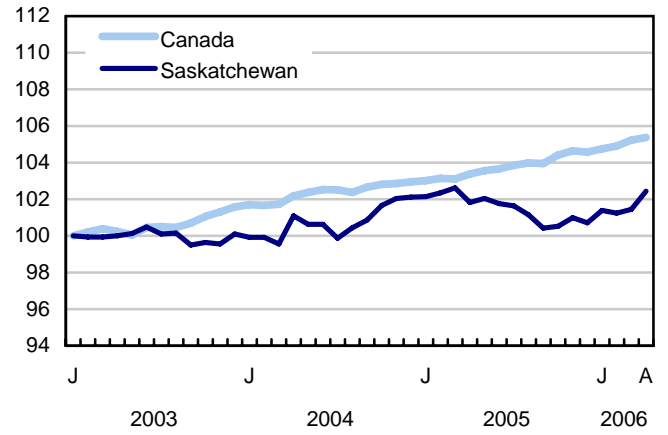
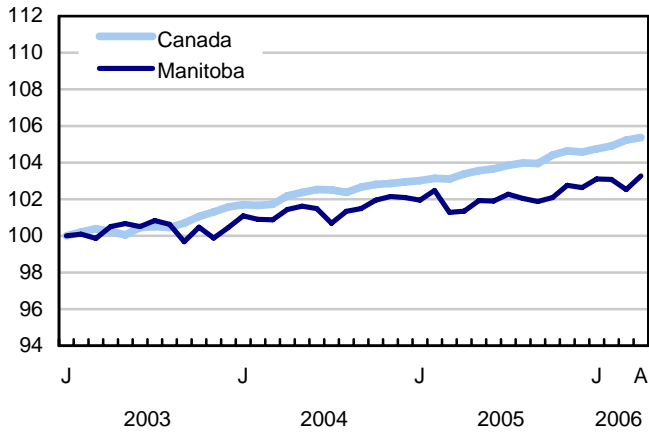


Chart 8

Index of employment by province, seasonally adjusted, January 2003 = 100



Related products

Selected publications from Statistics Canada

71-222-X	The Canadian labour market at a glance
71-526-X	Methodology of the Canadian Labour Force Survey
71-543-G	Guide to the Labour Force Survey
71-544-X	Labour Force Survey products and services.
71-587-X	Aboriginal peoples living off-reserve in Western Canada: estimates from the Labour Force Survey
71F0004X	Labour force historical review
71F0031X	Improvements to the Labour Force Survey (LFS)
71M0001X	Labour Force Survey microdata file
75-001-X	Perspectives on labour and income

Selected CANSIM tables from Statistics Canada

282-0001	Labour force survey estimates (LFS), by sex and detailed age group
282-0002	Labour force survey estimates (LFS), by sex and detailed age group
282-0003	Labour force survey estimates (LFS), by educational attainment, sex and age group
282-0004	Labour force survey estimates (LFS), by educational attainment, sex and age group
282-0005	Labour force survey estimates (LFS), by full- and part-time students during school months, sex and age group
282-0006	Labour force survey estimates (LFS), by students during summer months, sex and age group
282-0007	Labour force survey estimates (LFS), by North American Industry Classification System (NAICS), sex and age group
282-0008	Labour force survey estimates (LFS), by North American Industry Classification System (NAICS), sex and age group
282-0009	Labour force survey estimates (LFS), by National Occupational Classification for Statistics (NOC-S) and sex
282-0010	Labour force survey estimates (LFS), by National Occupational Classification for Statistics (NOC-S) and sex
282-0011	Labour force survey estimates (LFS), employment by class of worker, North American Industry Classification System (NAICS) and sex
282-0012	Labour force survey estimates (LFS), employment by class of worker, North American Industry Classification System (NAICS) and sex
282-0013	Labour force survey estimates (LFS), part-time employment by reason for part-time work, sex and age group
282-0014	Labour force survey estimates (LFS), part-time employment by reason for part-time work, sex and age group
282-0015	Labour force survey estimates (LFS), by usual hours worked, main or all jobs, sex and age group
282-0016	Labour force survey estimates (LFS), by usual hours worked, main or all jobs, sex and age group
282-0017	Labour force survey estimates (LFS), by actual hours worked, main or all jobs, sex and age group
282-0018	Labour force survey estimates (LFS), by actual hours worked, main or all jobs, sex and age group
282-0019	Labour force survey estimates (LFS), by usual hours worked, class of worker, North American Industry Classification System (NAICS) and sex
282-0020	Labour force survey estimates (LFS), by usual hours worked, class of worker, North American Industry Classification System (NAICS) and sex

282-0021	Labour force survey estimates (LFS), by actual hours worked, class of worker, North American Industry Classification System (NAICS) and sex
282-0022	Labour force survey estimates (LFS), by actual hours worked, class of worker, North American Industry Classification System (NAICS) and sex
282-0023	Labour force survey estimates (LFS), by usual hours worked, class of worker, National Occupational Classification for Statistics (NOC-S) and sex
282-0024	Labour force survey estimates (LFS), by usual hours worked, class of worker, National Occupational Classification for Statistics (NOC-S) and sex
282-0025	Labour force survey estimates (LFS), by actual hours worked, class of worker, National Occupational Classification for Statistics (NOC-S) and sex
282-0026	Labour force survey estimates (LFS), by actual hours worked, class of worker, National Occupational Classification for Statistics (NOC-S) and sex
282-0027	Labour force survey estimates (LFS), by total and average usual and actual hours worked, main or all jobs, type of work, sex and age group
282-0028	Labour force survey estimates (LFS), by total and average usual and actual hours worked, main or all jobs, type of work, sex and age group
282-0029	Labour force survey estimates (LFS), average days lost for personal reasons per full-time employee by North American Industry Classification System (NAICS), sex and age group
282-0030	Labour force survey estimates (LFS), average days lost for personal reasons per full-time employee by National Occupational Classification for Statistics (NOC-S), sex and age group
282-0031	Labour force survey estimates (LFS), multiple jobholders by North American Industry Classification System (NAICS), sex and age group
282-0032	Labour force survey estimates (LFS), multiple jobholders by North American Industry Classification System (NAICS), sex and age group
282-0033	Labour force survey estimates (LFS), multiple jobholders by National Occupational Classification for Statistics (NOC-S), sex and age group
282-0034	Labour force survey estimates (LFS), multiple jobholders by National Occupational Classification for Statistics (NOC-S), sex and age group
282-0035	Labour force survey estimates (LFS), multiple jobholders by usual hours worked at main and all jobs
282-0036	Labour force survey estimates (LFS), multiple jobholders by usual hours worked at main and all jobs
282-0037	Labour force survey estimates (LFS), job tenure by type of work, sex and age group
282-0038	Labour force survey estimates (LFS), job tenure by type of work, sex and age group
282-0039	Labour force survey estimates (LFS), job tenure by National Occupational Classification for Statistics (NOC-S) and sex
282-0040	Labour force survey estimates (LFS), job tenure by National Occupational Classification for Statistics (NOC-S) and sex

282-0041	Labour force survey estimates (LFS), job tenure by North American Industry Classification System (NAICS) and sex
282-0042	Labour force survey estimates (LFS), job tenure by North American Industry Classification System (NAICS) and sex
282-0047	Labour force survey estimates (LFS), duration of unemployment by sex and age group
282-0048	Labour force survey estimates (LFS), duration of unemployment by sex and age group
282-0049	Labour force survey estimates (LFS), unemployment by type of work sought and search method, sex and age group
282-0050	Labour force survey estimates (LFS), unemployment by type of work sought and search method, sex and age group
282-0051	Labour force survey estimates (LFS), retirement age by class of worker and sex
282-0052	Labour force survey estimates (LFS), by census metropolitan area, sex and age group, 3-month moving average
282-0053	Labour force survey estimates (LFS), by census metropolitan area, sex and age group
282-0054	Labour force survey estimates (LFS), by economic region and Yukon Territory and Northwest Territories, 3-month moving average
282-0055	Labour force survey estimates (LFS), by economic region and Yukon Territory and Northwest Territories
282-0056	Labour force survey estimates (LFS), employment by census metropolitan area and North American Industry Classification System (NAICS), 3-month moving average
282-0057	Labour force survey estimates (LFS), employment by census metropolitan area and North American Industry Classification System (NAICS)
282-0058	Labour force survey estimates (LFS), employment by census metropolitan area and National Occupational Classification for Statistics (NOC-S), 3-month moving average
282-0059	Labour force survey estimates (LFS), employment by census metropolitan area and National Occupational Classification for Statistics (NOC-S)
282-0060	Labour force survey estimates (LFS), employment by economic region and North American Industry Classification System (NAICS), 3-month moving average
282-0061	Labour force survey estimates (LFS), employment by economic region and North American Industry Classification System (NAICS)
282-0062	Labour force survey estimates (LFS), employment by economic region and National Occupational Classification for Statistics (NOC-S), 3-month moving average
282-0063	Labour force survey estimates (LFS), employment by economic region and National Occupational Classification for Statistics (NOC-S)
282-0064	Labour force survey estimates (LFS), by selected medium-sized cities
282-0069	Labour force survey estimates (LFS), wages of employees by type of work, National Occupational Classification for Statistics (NOC-S), sex and age group

282-0070	Labour force survey estimates (LFS), wages of employees by type of work, National Occupational Classification for Statistics (NOC-S), sex and age group
282-0071	Labour force survey estimates (LFS), wages of employees by type of work, North American Industry Classification System (NAICS), sex and age group
282-0072	Labour force survey estimates (LFS), wages of employees by type of work, North American Industry Classification System (NAICS), sex and age group
282-0073	Labour force survey estimates (LFS), wages of employees by job permanence, union coverage, sex and age group
282-0074	Labour force survey estimates (LFS), wages of employees by job permanence, union coverage, sex and age group
282-0075	Labour force survey estimates (LFS), employees by establishment size, North American Industry Classification System (NAICS), sex and age group
282-0076	Labour force survey estimates (LFS), employees by establishment size, North American Industry Classification System (NAICS), sex and age group
282-0077	Labour force survey estimates (LFS), employees by union coverage, North American Industry Classification System (NAICS), sex and age group
282-0078	Labour force survey estimates (LFS), employees by union coverage, North American Industry Classification System (NAICS), sex and age group
282-0079	Labour force survey estimates (LFS), employees by job permanency, North American Industry Classification System (NAICS), sex and age group
282-0080	Labour force survey estimates (LFS), employees by job permanency, North American Industry Classification System (NAICS), sex and age group
282-0081	Labour force survey estimates (LFS), employees working overtime (weekly) by National Occupational Classification for Statistics (NOC-S), sex and age group
282-0082	Labour force survey estimates (LFS), employees working overtime (weekly) by National Occupational Classification for Statistics (NOC-S), sex and age group
282-0083	Labour force survey estimates (LFS), employees working overtime (weekly) by North American Industry Classification System (NAICS), sex and age group
282-0084	Labour force survey estimates (LFS), employees working overtime (weekly) by North American Industry Classification System (NAICS), sex and age group
282-0085	Labour force survey estimates (LFS), supplementary unemployment rates by sex and age group
282-0086	Labour force survey estimates (LFS), supplementary unemployment rates by sex and age group
282-0087	Labour force survey estimates (LFS), by sex and age group, seasonally adjusted and unadjusted
282-0088	Labour force survey estimates (LFS), employment by North American Industry Classification System (NAICS), seasonally adjusted and unadjusted
282-0089	Labour force survey estimates (LFS), employment by class of worker and sex, seasonally adjusted and unadjusted

282-0090	Labour force survey estimates (LFS), by census metropolitan area, 3-month moving average, seasonally adjusted and unadjusted
282-0091	Labour force survey estimates (LFS), by Montréal, Toronto and Vancouver census metropolitan areas, seasonally adjusted and unadjusted
282-0092	Labour force survey estimates (LFS), actual hours worked by North American Industry Classification System (NAICS), seasonally adjusted
282-0093	Labour force survey estimates (LFS), employment by National Occupational Classification for Statistics (NOC-S), seasonally adjusted
282-0094	Labour force survey estimates (LFS), by North American Industry Classification System (NAICS), Canada, seasonally adjusted
282-0095	Labour force survey estimates (LFS), by full- and part-time students during school months, sex and age group
282-0096	Labour force survey estimates (LFS), by urban and rural areas based on 2001 census boundaries, sex and age group
282-0097	Labour force survey estimates (LFS), by urban and rural areas based on 2001 census boundaries, sex and age group
282-0098	Labour force survey estimates (LFS), employment by urban and rural areas based on 2001 census boundaries, class of worker and North American Industry Classification System (NAICS)
282-0099	Labour force survey estimates (LFS), employment by urban and rural areas based on 2001 census boundaries, class of worker and North American Industry Classification System (NAICS)

Selected surveys from Statistics Canada

3701	Labour Force Survey
------	---------------------

Selected tables of Canadian statistics from Statistics Canada

- *Labour force characteristics*
- *Employment by industry*
- *Selected economic indicators, Canada and United States (monthly and quarterly)*
- *Days lost per worker due to illness or disability, by sex, by provinces*
- *Economic indicators, by province and territory (monthly and quarterly)*

- *Labour force and participation rates by sex and age group*
- *Labour force, employed and unemployed, numbers and rates, by provinces*
- *Employment by industry and sex*
- *Full-time and part-time employment by sex and age group*
- *Labour force characteristics by age and sex*
- *Distribution of employed people, by industry, by province*
- *Labour force characteristics, population 15 years and older, by census metropolitan areas*
- *Labour force characteristics, population 15 years and older, by economic regions, by province*
- *Days lost per worker by cause, by provinces*
- *Days lost per worker by industry and sex*
- *People employed, by educational attainment*
- *Reasons for part-time work by sex and age group*
- *Self-employment, historical summary*
- *Employment by age, sex, type of work, class of worker and provinces (monthly)*
- *Employment by major industry groups, seasonally adjusted, by provinces (monthly)*
- *Actual hours worked per week by industry, seasonally adjusted (monthly)*
- *Average hourly wages of employees by selected characteristics and profession, unadjusted data, by provinces (monthly)*
- *Labour force characteristics, seasonally adjusted, by province (monthly)*
- *Labour force characteristics, unadjusted, by province (monthly)*
- *Labour force characteristics, seasonally adjusted, by census metropolitan areas (3 month moving average)*
- *Labour force characteristics, unadjusted, by census metropolitan areas (3 month moving average)*
- *Labour force characteristics, unadjusted, by economic regions (3 month moving average)*

Statistical tables

Table 1

Labour force characteristics by age and sex, Canada, seasonally adjusted

	March 2006	April 2006	S.E. ¹	Change from			Percent change from		
				last month	last December	twelve months ago	last month	last December	twelve months ago
in thousands (except rates)									
Both sexes, 15 years and over									
Population	26,071.0	26,100.2	...	29.2	113.3	385.8	0.1	0.4	1.5
Labour force	17,507.5	17,532.4	27.6	24.9	102.5	250.6	0.1	0.6	1.5
Employment	16,396.2	16,418.2	27.4	22.0	123.5	310.3	0.1	0.8	1.9
Employment full-time	13,386.8	13,413.2	36.4	26.4	54.9	277.9	0.2	0.4	2.1
Employment part-time	3,009.5	3,005.0	32.7	-4.5	68.6	32.5	-0.1	2.3	1.1
Unemployment	1,111.3	1,114.2	23.2	2.9	-21.0	-59.7	0.3	-1.8	-5.1
Participation rate	67.2	67.2	0.1	0.0	0.1	0.0
Unemployment rate	6.3	6.4	0.1	0.1	-0.1	-0.4
Employment rate	62.9	62.9	0.1	0.0	0.2	0.3
Part-time rate	18.4	18.3	0.2	-0.1	0.3	-0.2
Both sexes, 15 to 24 years									
Population	4,309.6	4,312.1	...	2.5	10.1	42.7	0.1	0.2	1.0
Labour force	2,892.7	2,859.1	16.7	-33.6	8.5	60.6	-1.2	0.3	2.2
Employment	2,559.0	2,529.9	15.9	-29.1	17.4	77.2	-1.1	0.7	3.1
Employment full-time	1,410.8	1,403.6	18.6	-7.2	-2.8	69.1	-0.5	-0.2	5.2
Employment part-time	1,148.1	1,126.3	18.8	-21.8	20.2	8.1	-1.9	1.8	0.7
Unemployment	333.7	329.2	13.7	-4.5	-9.0	-16.6	-1.3	-2.7	-4.8
Participation rate	67.1	66.3	0.4	-0.8	0.0	0.8
Unemployment rate	11.5	11.5	0.5	0.0	-0.4	-0.9
Employment rate	59.4	58.7	0.4	-0.7	0.3	1.3
Part-time rate	44.9	44.5	0.7	-0.3	0.5	-1.1
Men, 25 years and over									
Population	10,625.9	10,639.3	...	13.4	51.4	170.8	0.1	0.5	1.6
Labour force	7,826.5	7,842.4	13.9	15.9	11.7	57.0	0.2	0.1	0.7
Employment	7,409.8	7,422.1	15.2	12.3	12.6	96.4	0.2	0.2	1.3
Employment full-time	6,937.3	6,948.0	19.4	10.7	19.2	100.2	0.2	0.3	1.5
Employment part-time	472.6	474.1	15.3	1.5	-6.6	-3.8	0.3	-1.4	-0.8
Unemployment	416.7	420.3	13.1	3.6	-0.9	-39.4	0.9	-0.2	-8.6
Participation rate	73.7	73.7	0.1	0.0	-0.3	-0.7
Unemployment rate	5.3	5.4	0.2	0.1	0.0	-0.5
Employment rate	69.7	69.8	0.1	0.1	-0.2	-0.2
Part-time rate	6.4	6.4	0.2	0.0	-0.1	-0.1
Women, 25 years and over									
Population	11,135.6	11,148.8	...	13.2	51.9	172.3	0.1	0.5	1.6
Labour force	6,788.4	6,830.9	16.0	42.5	82.4	133.1	0.6	1.2	2.0
Employment	6,427.5	6,466.2	15.6	38.7	93.5	136.8	0.6	1.5	2.2
Employment full-time	5,038.7	5,061.6	23.4	22.9	38.5	108.6	0.5	0.8	2.2
Employment part-time	1,388.8	1,404.6	21.5	15.8	55.0	28.2	1.1	4.1	2.0
Unemployment	360.9	364.7	12.8	3.8	-11.2	-3.7	1.1	-3.0	-1.0
Participation rate	61.0	61.3	0.1	0.3	0.5	0.3
Unemployment rate	5.3	5.3	0.2	0.0	-0.3	-0.2
Employment rate	57.7	58.0	0.1	0.3	0.6	0.3
Part-time rate	21.6	21.7	0.3	0.1	0.5	0.0
Both sexes, 25 to 54 years									
Population	14,199.3	14,208.9	...	9.6	28.9	117.1	0.1	0.2	0.8
Labour force	12,201.6	12,262.9	20.9	61.3	45.6	93.7	0.5	0.4	0.8
Employment	11,546.9	11,599.4	22.1	52.5	60.9	142.2	0.5	0.5	1.2
Unemployment	654.7	663.5	17.5	8.8	-15.3	-48.5	1.3	-2.3	-6.8
Participation rate	85.9	86.3	0.1	0.4	0.1	-0.1
Unemployment rate	5.4	5.4	0.1	0.0	-0.2	-0.5
Employment rate	81.3	81.6	0.2	0.3	0.2	0.3

1. Average standard error of change in two consecutive months (see "Sampling Errors" in Data Quality for further explanations).

Note: Related CANSIM table 282-0087

Table 2

Employment by class of worker and industry, Canada, seasonally adjusted

	March 2006	April 2006	S.E. ¹	Change from			Percent change from		
				last month	last December	twelve months ago	last month	last December	twelve months ago
in thousands									
Class of worker									
Employees	13,883.2	13,892.5	32.4	9.3	145.8	286.5	0.1	1.1	2.1
Self-employed ²	2,513.0	2,525.6	22.4	12.6	-22.4	23.8	0.5	-0.9	1.0
Public/private sector employees									
Public sector employees	3,195.4	3,192.0	21.6	-3.4	33.3	55.9	-0.1	1.1	1.8
Private sector employees	10,687.8	10,700.6	33.8	12.8	112.7	230.7	0.1	1.1	2.2
Industry	16,396.2	16,418.2	27.4	22.0	123.5	310.3	0.1	0.8	1.9
Goods-producing sector	3,992.5	4,019.7	24.8	27.2	13.8	16.5	0.7	0.3	0.4
Agriculture	348.9	357.2	7.2	8.3	9.5	24.2	2.4	2.7	7.3
Forestry, fishing, mining, oil and gas	323.4	322.9	6.2	-0.5	14.2	18.4	-0.2	4.6	6.0
Utilities	116.3	114.4	4.1	-1.9	-10.2	-12.9	-1.6	-8.2	-10.1
Construction	1,071.9	1,068.8	14.3	-3.1	16.7	58.3	-0.3	1.6	5.8
Manufacturing	2,132.0	2,156.5	19.9	24.5	-16.3	-71.5	1.1	-0.8	-3.2
Services-producing sector	12,403.7	12,398.5	31.7	-5.2	109.7	293.8	0.0	0.9	2.4
Trade	2,626.1	2,646.2	21.6	20.1	43.3	104.8	0.8	1.7	4.1
Transportation and warehousing	811.2	796.1	12.1	-15.1	1.1	19.9	-1.9	0.1	2.6
Finance, insurance, real estate and leasing	1,023.8	1,019.7	14.1	-4.1	23.5	30.2	-0.4	2.4	3.1
Professional, scientific and technical services	1,086.5	1,086.8	15.1	0.3	0.7	42.5	0.0	0.1	4.1
Business, building and other support services	667.8	674.8	13.0	7.0	9.9	38.0	1.0	1.5	6.0
Educational services	1,155.5	1,160.4	14.2	4.9	10.1	49.9	0.4	0.9	4.5
Health care and social assistance	1,747.2	1,750.3	16.4	3.1	29.2	29.9	0.2	1.7	1.7
Information, culture and recreation	750.4	738.8	13.0	-11.6	-10.8	7.8	-1.5	-1.4	1.1
Accommodation and food services	987.7	989.4	14.7	1.7	-26.2	-10.3	0.2	-2.6	-1.0
Other services	713.3	709.3	11.6	-4.0	37.4	9.3	-0.6	5.6	1.3
Public administration	834.2	826.8	11.1	-7.4	-8.4	-27.9	-0.9	-1.0	-3.3

1. Average standard error of change in two consecutive months (see "Sampling Errors" in Data Quality for further explanations).

2. Includes both incorporated and unincorporated working owners, self-employed persons who do not have a business and persons working in a family business without pay.

Note: Related CANSIM tables 282-0088, 282-0089

Table 3

Labour force characteristics by province, seasonally adjusted

	March 2006	April 2006	S.E. ¹	Change from			Percent change from		
				last month	last December	twelve months ago	last month	last December	twelve months ago
in thousands (except rates)									
Newfoundland and Labrador									
Population	428.8	428.3	...	-0.5	-0.9	-2.0	-0.1	-0.2	-0.5
Labour force	251.6	255.3	2.5	3.7	5.9	2.2	1.5	2.4	0.9
Employment	211.9	214.6	2.4	2.7	3.7	2.1	1.3	1.8	1.0
Employment full-time	178.6	180.4	2.6	1.8	4.3	0.8	1.0	2.4	0.4
Employment part-time	33.4	34.2	1.9	0.8	-0.6	1.3	2.4	-1.7	4.0
Unemployment	39.6	40.7	2.2	1.1	2.2	0.0	2.8	5.7	0.0
Participation rate	58.7	59.6	0.6	0.9	1.5	0.8
Unemployment rate	15.7	15.9	0.8	0.2	0.5	-0.2
Employment rate	49.4	50.1	0.6	0.7	1.0	0.7
Prince Edward Island									
Population	112.0	112.0	...	0.0	0.0	0.6	0.0	0.0	0.5
Labour force	77.3	77.8	0.6	0.5	0.6	1.5	0.6	0.8	2.0
Employment	67.9	69.6	0.7	1.7	1.0	1.4	2.5	1.5	2.1
Employment full-time	57.6	58.3	0.8	0.7	0.1	2.3	1.2	0.2	4.1
Employment part-time	10.3	11.2	0.7	0.9	0.8	-1.0	8.7	7.7	-8.2
Unemployment	9.3	8.2	0.6	-1.1	-0.4	0.1	-11.8	-4.7	1.2
Participation rate	69.0	69.5	0.6	0.5	0.6	1.0
Unemployment rate	12.0	10.5	0.8	-1.5	-0.6	-0.1
Employment rate	60.6	62.1	0.6	1.5	0.8	0.9
Nova Scotia									
Population	762.6	762.5	...	-0.1	0.5	2.5	0.0	0.1	0.3
Labour force	481.0	485.2	2.8	4.2	2.9	0.1	0.9	0.6	0.0
Employment	443.7	446.1	2.9	2.4	4.8	1.8	0.5	1.1	0.4
Employment full-time	359.3	358.7	3.7	-0.6	-2.2	0.2	-0.2	-0.6	0.1
Employment part-time	84.4	87.4	3.3	3.0	7.0	1.6	3.6	8.7	1.9
Unemployment	37.3	39.1	2.5	1.8	-1.9	-1.8	4.8	-4.6	-4.4
Participation rate	63.1	63.6	0.4	0.5	0.3	-0.2
Unemployment rate	7.8	8.1	0.5	0.3	-0.4	-0.3
Employment rate	58.2	58.5	0.4	0.3	0.6	0.0
New Brunswick									
Population	611.4	611.4	...	0.0	0.0	1.5	0.0	0.0	0.2
Labour force	396.1	396.1	2.3	0.0	3.0	8.7	0.0	0.8	2.2
Employment	359.6	360.1	2.5	0.5	4.8	8.7	0.1	1.4	2.5
Employment full-time	302.5	301.2	3.0	-1.3	6.6	8.8	-0.4	2.2	3.0
Employment part-time	57.1	58.8	2.5	1.7	-2.0	-0.2	3.0	-3.3	-0.3
Unemployment	36.5	36.0	2.2	-0.5	-1.8	0.0	-1.4	-4.8	0.0
Participation rate	64.8	64.8	0.4	0.0	0.5	1.3
Unemployment rate	9.2	9.1	0.5	-0.1	-0.5	-0.2
Employment rate	58.8	58.9	0.4	0.1	0.8	1.3
Quebec									
Population	6,230.1	6,235.6	...	5.5	19.7	69.9	0.1	0.3	1.1
Labour force	4,099.8	4,066.9	15.1	-32.9	-23.5	50.3	-0.8	-0.6	1.3
Employment	3,752.9	3,728.6	15.0	-24.3	-26.4	32.7	-0.6	-0.7	0.9
Employment full-time	3,054.6	3,040.1	20.0	-14.5	-34.0	5.0	-0.5	-1.1	0.2
Employment part-time	698.2	688.5	17.6	-9.7	7.6	27.7	-1.4	1.1	4.2
Unemployment	347.0	338.2	13.2	-8.8	2.9	17.5	-2.5	0.9	5.5
Participation rate	65.8	65.2	0.2	-0.6	-0.6	0.1
Unemployment rate	8.5	8.3	0.3	-0.2	0.1	0.3
Employment rate	60.2	59.8	0.2	-0.4	-0.6	-0.1

See footnotes at the end of the table.

Table 3 – continued

Labour force characteristics by province, seasonally adjusted

	March 2006	April 2006	S.E. ¹	Change from			Percent change from		
				last month	last December	twelve months ago	last month	last December	twelve months ago
in thousands (except rates)									
Ontario									
Population	10,185.9	10,197.4	...	11.5	44.6	170.2	0.1	0.4	1.7
Labour force	6,886.0	6,915.1	18.5	29.1	55.5	76.9	0.4	0.8	1.1
Employment	6,463.0	6,486.8	18.3	23.8	53.4	107.9	0.4	0.8	1.7
Employment full-time	5,313.7	5,316.0	23.9	2.3	3.4	101.9	0.0	0.1	2.0
Employment part-time	1,149.3	1,170.7	21.5	21.4	49.9	5.9	1.9	4.5	0.5
Unemployment	423.0	428.3	15.7	5.3	2.1	-31.0	1.3	0.5	-6.7
Participation rate	67.6	67.8	0.2	0.2	0.2	-0.4
Unemployment rate	6.1	6.2	0.2	0.1	0.0	-0.5
Employment rate	63.5	63.6	0.2	0.1	0.2	0.0
Manitoba									
Population	890.5	891.2	...	0.7	1.3	3.5	0.1	0.1	0.4
Labour force	608.4	616.1	2.8	7.7	6.8	10.1	1.3	1.1	1.7
Employment	583.0	587.2	2.9	4.2	3.6	10.9	0.7	0.6	1.9
Employment full-time	468.8	471.2	3.9	2.4	7.3	8.2	0.5	1.6	1.8
Employment part-time	114.3	116.0	3.7	1.7	-3.7	2.7	1.5	-3.1	2.4
Unemployment	25.3	29.0	2.2	3.7	3.3	-0.7	14.6	12.8	-2.4
Participation rate	68.3	69.1	0.3	0.8	0.6	0.8
Unemployment rate	4.2	4.7	0.3	0.5	0.5	-0.2
Employment rate	65.5	65.9	0.3	0.4	0.3	1.0
Saskatchewan									
Population	747.0	746.6	...	-0.4	-1.6	-1.8	-0.1	-0.2	-0.2
Labour force	510.2	512.7	2.4	2.5	6.4	1.8	0.5	1.3	0.4
Employment	483.2	487.9	2.5	4.7	8.2	2.9	1.0	1.7	0.6
Employment full-time	390.2	395.3	3.2	5.1	6.0	2.8	1.3	1.5	0.7
Employment part-time	93.1	92.6	3.1	-0.5	2.2	0.1	-0.5	2.4	0.1
Unemployment	26.9	24.8	1.9	-2.1	-1.8	-1.0	-7.8	-6.8	-3.9
Participation rate	68.3	68.7	0.3	0.4	1.0	0.4
Unemployment rate	5.3	4.8	0.4	-0.5	-0.5	-0.2
Employment rate	64.7	65.3	0.3	0.6	1.2	0.5
Alberta									
Population	2,610.4	2,618.0	...	7.6	30.8	77.5	0.3	1.2	3.1
Labour force	1,906.4	1,911.5	7.9	5.1	32.0	57.4	0.3	1.7	3.1
Employment	1,841.9	1,844.6	7.9	2.7	44.8	66.0	0.1	2.5	3.7
Employment full-time	1,530.6	1,545.4	10.7	14.8	46.8	83.0	1.0	3.1	5.7
Employment part-time	311.3	299.2	9.7	-12.1	-2.1	-17.0	-3.9	-0.7	-5.4
Unemployment	64.5	66.9	5.7	2.4	-12.8	-8.7	3.7	-16.1	-11.5
Participation rate	73.0	73.0	0.3	0.0	0.4	0.0
Unemployment rate	3.4	3.5	0.3	0.1	-0.7	-0.6
Employment rate	70.6	70.5	0.3	-0.1	0.9	0.5
British Columbia									
Population	3,492.4	3,497.2	...	4.8	18.9	63.9	0.1	0.5	1.9
Labour force	2,290.8	2,295.7	10.0	4.9	12.8	41.6	0.2	0.6	1.8
Employment	2,189.0	2,192.8	9.8	3.8	25.7	75.9	0.2	1.2	3.6
Employment full-time	1,730.3	1,746.6	13.1	16.3	17.0	64.6	0.9	1.0	3.8
Employment part-time	458.7	446.3	12.3	-12.4	8.8	11.3	-2.7	2.0	2.6
Unemployment	101.8	102.9	7.7	1.1	-12.9	-34.2	1.1	-11.1	-24.9
Participation rate	65.6	65.6	0.3	0.0	0.0	-0.1
Unemployment rate	4.4	4.5	0.3	0.1	-0.6	-1.6
Employment rate	62.7	62.7	0.3	0.0	0.4	1.0

1. Average standard error of change in two consecutive months (see "Sampling Errors" in Data Quality for further explanations).

Note: Related CANSIM table 282-0087

Table 4-1

Selected labour force characteristics (seasonally adjusted) — Newfoundland and Labrador

	March 2006	April 2006	S.E. ¹	Change from			Percent change from		
				last month	last December	twelve months ago	last month	last December	twelve months ago
in thousands (except rates)									
Both sexes, 15 years and over									
Population	428.8	428.3	...	-0.5	-0.9	-2.0	-0.1	-0.2	-0.5
Labour force	251.6	255.3	2.5	3.7	5.9	2.2	1.5	2.4	0.9
Employment	211.9	214.6	2.4	2.7	3.7	2.1	1.3	1.8	1.0
Employment full-time	178.6	180.4	2.6	1.8	4.3	0.8	1.0	2.4	0.4
Unemployment	39.6	40.7	2.2	1.1	2.2	0.0	2.8	5.7	0.0
Participation rate	58.7	59.6	0.6	0.9	1.5	0.8
Unemployment rate	15.7	15.9	0.8	0.2	0.5	-0.2
Employment rate	49.4	50.1	0.6	0.7	1.0	0.7
Part-time rate	15.8	15.9	0.9	0.2	-0.6	0.5
Both sexes, 15 to 24 years									
Population	67.6	67.4	...	-0.2	-0.5	-2.5	-0.3	-0.7	-3.6
Labour force	36.4	36.3	1.3	-0.1	-0.3	-2.9	-0.3	-0.8	-7.4
Employment	26.5	27.3	1.2	0.8	-1.3	-3.1	3.0	-4.5	-10.2
Unemployment	9.8	9.0	1.1	-0.8	1.0	0.2	-8.2	12.5	2.3
Participation rate	53.8	53.9	1.9	0.1	0.0	-2.2
Unemployment rate	26.9	24.8	2.6	-2.1	2.9	2.4
Employment rate	39.2	40.5	1.8	1.3	-1.6	-3.0
Part-time rate	49.1	47.3	3.6	-1.8	1.1	5.5
Men, 25 years and over									
Population	174.9	174.8	...	-0.1	-0.2	0.1	-0.1	-0.1	0.1
Labour force	113.3	115.7	1.4	2.4	4.5	1.9	2.1	4.0	1.7
Employment	95.9	96.5	1.4	0.6	2.9	0.2	0.6	3.1	0.2
Unemployment	17.4	19.1	1.4	1.7	1.5	1.6	9.8	8.5	9.1
Participation rate	64.8	66.2	0.8	1.4	2.7	1.1
Unemployment rate	15.4	16.5	1.1	1.1	0.7	1.1
Employment rate	54.8	55.2	0.8	0.4	1.7	0.1
Part-time rate	5.2	5.8	0.9	0.6	1.6	-0.3
Women, 25 years and over									
Population	186.2	186.2	...	0.0	0.0	0.5	0.0	0.0	0.3
Labour force	101.9	103.3	1.3	1.4	1.7	3.1	1.4	1.7	3.1
Employment	89.5	90.8	1.3	1.3	2.1	5.0	1.5	2.4	5.8
Unemployment	12.4	12.6	1.2	0.2	-0.3	-1.8	1.6	-2.3	-12.5
Participation rate	54.7	55.5	0.7	0.8	0.9	1.5
Unemployment rate	12.2	12.2	1.1	0.0	-0.5	-2.2
Employment rate	48.1	48.8	0.7	0.7	1.2	2.6
Part-time rate	17.1	17.3	1.3	0.2	-2.7	0.6
Industry									
	211.9	214.6	2.4	2.7	3.7	2.1	1.3	1.8	1.0
Goods-producing sector									
Agriculture	1.8	2.1	0.4	0.3	-0.1	0.5	16.7	-4.5	31.2
Forestry, fishing, mining, oil and gas	16.3	17.0	1.1	0.7	1.8	1.2	4.3	11.8	7.6
Utilities	2.6	2.5	0.3	-0.1	-0.1	0.6	-3.8	-3.8	31.6
Construction	12.5	11.9	1.0	-0.6	0.0	-0.7	-4.8	0.0	-5.6
Manufacturing	15.9	16.7	1.2	0.8	-1.1	0.4	5.0	-6.2	2.5
Services-producing sector									
Trade	162.8	164.4	2.2	1.6	3.3	0.1	1.0	2.0	0.1
Transportation and warehousing	36.3	37.4	1.4	1.1	-1.1	-1.6	3.0	-2.9	-4.1
Finance, insurance, real estate and leasing	11.7	11.5	0.8	-0.2	-0.2	0.3	-1.7	-1.7	2.7
Professional, scientific and technical services	7.6	7.1	0.6	-0.5	0.0	-0.6	-6.6	0.0	-7.8
Business, building and other support services	6.3	7.0	0.7	0.7	0.0	-0.2	11.1	0.0	-2.8
Educational services	7.2	7.7	0.8	0.5	1.1	-1.1	6.9	16.7	-12.5
Health care and social assistance	15.7	15.4	0.9	-0.3	-0.7	-0.4	-1.9	-4.3	-2.5
Information, culture and recreation	31.4	30.6	1.1	-0.8	2.8	1.5	-2.5	10.1	5.2
Accommodation and food services	7.5	8.7	0.7	1.2	1.9	1.6	16.0	27.9	22.5
Other services	12.8	13.1	1.0	0.3	-0.5	-0.4	2.3	-3.7	-3.0
Public administration	11.8	11.8	0.9	0.0	1.3	1.7	0.0	12.4	16.8
	14.6	14.1	0.8	-0.5	-1.2	-0.7	-3.4	-7.8	-4.7

1. Average standard error of change in two consecutive months (see "Sampling Errors" in Data Quality for further explanations).

Note: Related CANSIM tables 282-0087, 282-0088

Table 4-2

Selected labour force characteristics (seasonally adjusted) — Prince Edward Island

	March 2006	April 2006	S.E. ¹	Change from			Percent change from		
				last month	last December	twelve months ago	last month	last December	twelve months ago
in thousands (except rates)									
Both sexes, 15 years and over									
Population	112.0	112.0	...	0.0	0.0	0.6	0.0	0.0	0.5
Labour force	77.3	77.8	0.6	0.5	0.6	1.5	0.6	0.8	2.0
Employment	67.9	69.6	0.7	1.7	1.0	1.4	2.5	1.5	2.1
Employment full-time	57.6	58.3	0.8	0.7	0.1	2.3	1.2	0.2	4.1
Unemployment	9.3	8.2	0.6	-1.1	-0.4	0.1	-11.8	-4.7	1.2
Participation rate	69.0	69.5	0.6	0.5	0.6	1.0
Unemployment rate	12.0	10.5	0.8	-1.5	-0.6	-0.1
Employment rate	60.6	62.1	0.6	1.5	0.8	0.9
Part-time rate	15.2	16.1	0.9	0.9	0.9	-1.8
Both sexes, 15 to 24 years									
Population	19.8	19.8	...	0.0	0.0	0.2	0.0	0.0	1.0
Labour force	14.1	14.2	0.4	0.1	0.8	1.2	0.7	6.0	9.2
Employment	11.8	12.3	0.4	0.5	0.9	1.4	4.2	7.9	12.8
Unemployment	2.3	1.9	0.3	-0.4	-0.2	-0.2	-17.4	-9.5	-9.5
Participation rate	71.2	71.7	2.0	0.5	4.0	5.4
Unemployment rate	16.3	13.4	2.4	-2.9	-2.3	-2.8
Employment rate	59.6	62.1	2.0	2.5	4.5	6.5
Part-time rate	34.7	38.2	3.2	3.5	2.2	-4.0
Men, 25 years and over									
Population	44.2	44.2	...	0.0	0.0	0.3	0.0	0.0	0.7
Labour force	32.7	32.9	0.3	0.2	-0.1	0.6	0.6	-0.3	1.9
Employment	28.1	29.1	0.4	1.0	0.1	0.2	3.6	0.3	0.7
Unemployment	4.6	3.8	0.4	-0.8	-0.2	0.5	-17.4	-5.0	15.2
Participation rate	74.0	74.4	0.8	0.4	-0.3	0.8
Unemployment rate	14.1	11.6	1.1	-2.5	-0.5	1.4
Employment rate	63.6	65.8	0.9	2.2	0.2	0.0
Part-time rate	5.0	4.8	1.0	-0.2	-1.1	-2.1
Women, 25 years and over									
Population	48.0	48.0	...	0.0	0.0	0.1	0.0	0.0	0.2
Labour force	30.5	30.7	0.3	0.2	0.0	-0.3	0.7	0.0	-1.0
Employment	28.0	28.1	0.4	0.1	-0.2	-0.2	0.4	-0.7	-0.7
Unemployment	2.5	2.5	0.3	0.0	0.0	-0.2	0.0	0.0	-7.4
Participation rate	63.5	64.0	0.7	0.5	0.0	-0.7
Unemployment rate	8.2	8.1	1.0	-0.1	0.0	-0.6
Employment rate	58.3	58.5	0.7	0.2	-0.5	-0.6
Part-time rate	17.1	18.1	1.5	1.0	1.5	-1.6
Industry	67.9	69.6	0.7	1.7	1.0	1.4	2.5	1.5	2.1
Goods-producing sector	18.6	19.2	0.6	0.6	0.4	1.5	3.2	2.1	8.5
Agriculture	3.9	4.1	0.3	0.2	0.3	1.1	5.1	7.9	36.7
Forestry, fishing, mining, oil and gas	2.2	2.1	0.3	-0.1	-0.1	-0.5	-4.5	-4.5	-19.2
Utilities	0.5	0.3	0.1	-0.2	-0.1	-0.1	-40.0	-25.0	-25.0
Construction	5.5	5.8	0.3	0.3	0.5	1.3	5.5	9.4	28.9
Manufacturing	6.7	6.8	0.4	0.1	-0.3	-0.4	1.5	-4.2	-5.6
Services-producing sector	49.3	50.4	0.7	1.1	0.5	-0.1	2.2	1.0	-0.2
Trade	9.6	10.3	0.4	0.7	1.1	0.7	7.3	12.0	7.3
Transportation and warehousing	1.8	2.2	0.2	0.4	0.1	-0.3	22.2	4.8	-12.0
Finance, insurance, real estate and leasing	1.7	1.8	0.2	0.1	-0.2	-0.5	5.9	-10.0	-21.7
Professional, scientific and technical services	2.8	2.8	0.2	0.0	0.2	0.3	0.0	7.7	12.0
Business, building and other support services	2.5	2.7	0.2	0.2	-0.1	0.4	8.0	-3.6	17.4
Educational services	4.5	4.8	0.3	0.3	0.1	-0.5	6.7	2.1	-9.4
Health care and social assistance	8.2	8.2	0.3	0.0	0.5	0.3	0.0	6.5	3.8
Information, culture and recreation	2.6	2.9	0.3	0.3	0.0	0.1	11.5	0.0	3.6
Accommodation and food services	6.0	5.8	0.4	-0.2	-0.3	0.7	-3.3	-4.9	13.7
Other services	3.4	3.0	0.2	-0.4	-0.4	-0.2	-11.8	-11.8	-6.2
Public administration	6.2	5.9	0.3	-0.3	-0.3	-1.1	-4.8	-4.8	-15.7

1. Average standard error of change in two consecutive months (see "Sampling Errors" in Data Quality for further explanations).

Note: Related CANSIM tables 282-0087, 282-0088

Table 4-3

Selected labour force characteristics (seasonally adjusted) — Nova Scotia

	March 2006	April 2006	S.E. ¹	Change from			Percent change from		
				last month	last December	twelve months ago	last month	last December	twelve months ago
in thousands (except rates)									
Both sexes, 15 years and over									
Population	762.6	762.5	...	-0.1	0.5	2.5	0.0	0.1	0.3
Labour force	481.0	485.2	2.8	4.2	2.9	0.1	0.9	0.6	0.0
Employment	443.7	446.1	2.9	2.4	4.8	1.8	0.5	1.1	0.4
Employment full-time	359.3	358.7	3.7	-0.6	-2.2	0.2	-0.2	-0.6	0.1
Unemployment	37.3	39.1	2.5	1.8	-1.9	-1.8	4.8	-4.6	-4.4
Participation rate	63.1	63.6	0.4	0.5	0.3	-0.2
Unemployment rate	7.8	8.1	0.5	0.3	-0.4	-0.3
Employment rate	58.2	58.5	0.4	0.3	0.6	0.0
Part-time rate	19.0	19.6	0.7	0.6	1.4	0.3
Both sexes, 15 to 24 years									
Population	123.5	123.4	...	-0.1	-0.2	0.0	-0.1	-0.2	0.0
Labour force	84.6	84.4	1.8	-0.2	3.0	1.4	-0.2	3.7	1.7
Employment	73.8	72.0	1.7	-1.8	1.3	2.3	-2.4	1.8	3.3
Unemployment	10.9	12.3	1.5	1.4	1.5	-1.0	12.8	13.9	-7.5
Participation rate	68.5	68.4	1.5	-0.1	2.5	1.1
Unemployment rate	12.9	14.6	1.7	1.7	1.3	-1.4
Employment rate	59.8	58.3	1.4	-1.5	1.1	1.8
Part-time rate	48.6	46.7	2.5	-2.0	2.5	-3.0
Men, 25 years and over									
Population	305.3	305.2	...	-0.1	0.2	0.8	0.0	0.1	0.3
Labour force	204.7	207.8	1.5	3.1	-1.8	-4.0	1.5	-0.9	-1.9
Employment	188.7	191.1	1.7	2.4	-2.1	-4.2	1.3	-1.1	-2.2
Unemployment	16.1	16.7	1.5	0.6	0.3	0.2	3.7	1.8	1.2
Participation rate	67.0	68.1	0.5	1.1	-0.6	-1.5
Unemployment rate	7.9	8.0	0.7	0.1	0.2	0.2
Employment rate	61.8	62.6	0.6	0.8	-0.7	-1.6
Part-time rate	6.7	7.3	0.7	0.6	1.1	1.2
Women, 25 years and over									
Population	333.8	333.9	...	0.1	0.5	1.7	0.0	0.1	0.5
Labour force	191.7	193.1	1.5	1.4	1.8	2.8	0.7	0.9	1.5
Employment	181.3	183.0	1.5	1.7	5.6	3.8	0.9	3.2	2.1
Unemployment	10.4	10.1	1.3	-0.3	-3.7	-1.0	-2.9	-26.8	-9.0
Participation rate	57.4	57.8	0.4	0.4	0.4	0.5
Unemployment rate	5.4	5.2	0.7	-0.2	-2.0	-0.6
Employment rate	54.3	54.8	0.5	0.5	1.6	0.9
Part-time rate	19.7	21.7	1.2	2.0	0.8	-0.2
Industry	443.7	446.1	2.9	2.4	4.8	1.8	0.5	1.1	0.4
Goods-producing sector	87.2	85.6	2.4	-1.6	-3.5	-6.1	-1.8	-3.9	-6.7
Agriculture	4.7	4.3	0.8	-0.4	-0.5	-2.4	-8.5	-10.4	-35.8
Forestry, fishing, mining, oil and gas	14.3	13.4	1.2	-0.9	-1.9	1.4	-6.3	-12.4	11.7
Utilities	1.7	1.6	0.4	-0.1	0.3	-1.5	-5.9	23.1	-48.4
Construction	26.5	26.7	1.4	0.2	-0.6	-1.6	0.8	-2.2	-5.7
Manufacturing	40.1	39.5	1.6	-0.6	-0.9	-2.1	-1.5	-2.2	-5.0
Services-producing sector	356.5	360.5	3.0	4.0	8.2	7.9	1.1	2.3	2.2
Trade	79.1	79.3	2.0	0.2	2.9	1.1	0.3	3.8	1.4
Transportation and warehousing	18.4	20.2	1.0	1.8	-0.4	-2.4	9.8	-1.9	-10.6
Finance, insurance, real estate and leasing	22.1	21.9	1.1	-0.2	-1.3	0.2	-0.9	-5.6	0.9
Professional, scientific and technical services	19.5	20.1	1.1	0.6	0.4	1.1	3.1	2.0	5.8
Business, building and other support services	29.1	29.2	1.4	0.1	5.1	5.6	0.3	21.2	23.7
Educational services	37.2	36.6	1.4	-0.6	1.4	1.3	-1.6	4.0	3.7
Health care and social assistance	59.2	60.2	1.5	1.0	2.0	4.2	1.7	3.4	7.5
Information, culture and recreation	15.2	15.8	1.1	0.6	1.4	-0.9	3.9	9.7	-5.4
Accommodation and food services	26.7	26.4	1.6	-0.3	-4.0	-4.9	-1.1	-13.2	-15.7
Other services	21.4	21.2	1.2	-0.2	0.2	-1.1	-0.9	1.0	-4.9
Public administration	28.6	29.6	1.1	1.0	0.6	3.7	3.5	2.1	14.3

1. Average standard error of change in two consecutive months (see "Sampling Errors" in Data Quality for further explanations).

Note: Related CANSIM tables 282-0087, 282-0088

Table 4-4

Selected labour force characteristics (seasonally adjusted) — New Brunswick

	March 2006	April 2006	S.E. ¹	Change from			Percent change from		
				last month	last December	twelve months ago	last month	last December	twelve months ago
in thousands (except rates)									
Both sexes, 15 years and over									
Population	611.4	611.4	...	0.0	0.0	1.5	0.0	0.0	0.2
Labour force	396.1	396.1	2.3	0.0	3.0	8.7	0.0	0.8	2.2
Employment	359.6	360.1	2.5	0.5	4.8	8.7	0.1	1.4	2.5
Employment full-time	302.5	301.2	3.0	-1.3	6.6	8.8	-0.4	2.2	3.0
Unemployment	36.5	36.0	2.2	-0.5	-1.8	0.0	-1.4	-4.8	0.0
Participation rate	64.8	64.8	0.4	0.0	0.5	1.3
Unemployment rate	9.2	9.1	0.5	-0.1	-0.5	-0.2
Employment rate	58.8	58.9	0.4	0.1	0.8	1.3
Part-time rate	15.9	16.3	0.7	0.5	-0.8	-0.5
Both sexes, 15 to 24 years									
Population	96.1	96.1	...	0.0	0.0	-0.8	0.0	0.0	-0.8
Labour force	64.8	66.6	1.4	1.8	3.3	3.2	2.8	5.2	5.0
Employment	56.1	57.1	1.4	1.0	2.8	2.9	1.8	5.2	5.4
Unemployment	8.8	9.4	1.2	0.6	0.4	0.2	6.8	4.4	2.2
Participation rate	67.4	69.3	1.4	1.9	3.4	3.9
Unemployment rate	13.6	14.1	1.8	0.5	-0.1	-0.4
Employment rate	58.4	59.4	1.5	1.0	2.9	3.5
Part-time rate	38.9	41.5	2.5	2.6	0.8	2.4
Men, 25 years and over									
Population	248.9	248.9	...	0.0	0.0	1.1	0.0	0.0	0.4
Labour force	174.0	172.4	1.3	-1.6	0.4	1.9	-0.9	0.2	1.1
Employment	156.7	155.7	1.5	-1.0	0.0	2.4	-0.6	0.0	1.6
Unemployment	17.3	16.8	1.5	-0.5	0.5	-0.4	-2.9	3.1	-2.3
Participation rate	69.9	69.3	0.5	-0.6	0.2	0.5
Unemployment rate	9.9	9.7	0.8	-0.2	0.2	-0.4
Employment rate	63.0	62.6	0.6	-0.4	0.0	0.7
Part-time rate	5.4	4.9	0.7	-0.5	-1.1	-0.1
Women, 25 years and over									
Population	266.3	266.3	...	0.0	-0.1	1.0	0.0	0.0	0.4
Labour force	157.2	157.1	1.3	-0.1	-0.7	3.6	-0.1	-0.4	2.3
Employment	146.8	147.3	1.3	0.5	1.9	3.4	0.3	1.3	2.4
Unemployment	10.4	9.8	1.1	-0.6	-2.6	0.2	-5.8	-21.0	2.1
Participation rate	59.0	59.0	0.5	0.0	-0.2	1.1
Unemployment rate	6.6	6.2	0.7	-0.4	-1.7	-0.1
Employment rate	55.1	55.3	0.5	0.2	0.7	1.1
Part-time rate	18.3	18.7	1.1	0.5	-1.4	-2.2
Industry	359.6	360.1	2.5	0.5	4.8	8.7	0.1	1.4	2.5
Goods-producing sector	77.8	76.7	1.9	-1.1	-1.4	-0.5	-1.4	-1.8	-0.6
Agriculture	6.2	6.7	0.6	0.5	-1.5	0.9	8.1	-18.3	15.5
Forestry, fishing, mining, oil and gas	11.4	10.4	0.9	-1.0	-0.6	-1.4	-8.8	-5.5	-11.9
Utilities	2.8	3.2	0.4	0.4	-0.2	-0.3	14.3	-5.9	-8.6
Construction	21.3	20.8	1.1	-0.5	1.7	1.3	-2.3	8.9	6.7
Manufacturing	36.0	35.5	1.3	-0.5	-1.0	-1.1	-1.4	-2.7	-3.0
Services-producing sector	281.8	283.4	2.4	1.6	6.2	9.3	0.6	2.2	3.4
Trade	58.6	58.4	1.6	-0.2	0.7	0.6	-0.3	1.2	1.0
Transportation and warehousing	20.8	20.6	1.0	-0.2	0.5	-1.4	-1.0	2.5	-6.4
Finance, insurance, real estate and leasing	15.6	15.0	0.7	-0.6	0.7	1.7	-3.8	4.9	12.8
Professional, scientific and technical services	13.2	14.4	0.9	1.2	0.2	-1.8	9.1	1.4	-11.1
Business, building and other support services	22.2	21.6	1.1	-0.6	0.3	1.1	-2.7	1.4	5.4
Educational services	27.6	27.2	1.0	-0.4	0.3	1.7	-1.4	1.1	6.7
Health care and social assistance	45.4	44.8	1.2	-0.6	-1.1	-3.7	-1.3	-2.4	-7.6
Information, culture and recreation	12.9	12.9	0.9	0.0	0.2	-0.2	0.0	1.6	-1.5
Accommodation and food services	24.5	27.5	1.1	3.0	2.6	6.9	12.2	10.4	33.5
Other services	19.4	19.8	1.0	0.4	2.9	3.6	2.1	17.2	22.2
Public administration	21.5	21.2	0.9	-0.3	-1.0	0.9	-1.4	-4.5	4.4

1. Average standard error of change in two consecutive months (see "Sampling Errors" in Data Quality for further explanations).

Note: Related CANSIM tables 282-0087, 282-0088

Table 4-5

Selected labour force characteristics (seasonally adjusted) — Quebec

	March 2006	April 2006	S.E. ¹	Change from			Percent change from		
				last month	last December	twelve months ago	last month	last December	twelve months ago
in thousands (except rates)									
Both sexes, 15 years and over									
Population	6,230.1	6,235.6	...	5.5	19.7	69.9	0.1	0.3	1.1
Labour force	4,099.8	4,066.9	15.1	-32.9	-23.5	50.3	-0.8	-0.6	1.3
Employment	3,752.9	3,728.6	15.0	-24.3	-26.4	32.7	-0.6	-0.7	0.9
Employment full-time	3,054.6	3,040.1	20.0	-14.5	-34.0	5.0	-0.5	-1.1	0.2
Unemployment	347.0	338.2	13.2	-8.8	2.9	17.5	-2.5	0.9	5.5
Participation rate	65.8	65.2	0.2	-0.6	-0.6	0.1
Unemployment rate	8.5	8.3	0.3	-0.2	0.1	0.3
Employment rate	60.2	59.8	0.2	-0.4	-0.6	-0.1
Part-time rate	18.6	18.5	0.5	-0.1	0.3	0.6
Both sexes, 15 to 24 years									
Population	950.1	950.1	...	0.0	-0.1	-0.1	0.0	0.0	0.0
Labour force	643.8	619.7	8.7	-24.1	-15.6	-7.0	-3.7	-2.5	-1.1
Employment	553.4	535.4	8.4	-18.0	-15.5	-9.6	-3.3	-2.8	-1.8
Unemployment	90.5	84.3	7.3	-6.2	-0.1	2.6	-6.9	-0.1	3.2
Participation rate	67.8	65.2	0.9	-2.6	-1.7	-0.8
Unemployment rate	14.1	13.6	1.1	-0.5	0.3	0.6
Employment rate	58.2	56.4	0.9	-1.8	-1.6	-1.0
Part-time rate	47.1	44.7	1.6	-2.4	-0.5	-1.1
Men, 25 years and over									
Population	2,577.5	2,580.3	...	2.8	10.0	36.2	0.1	0.4	1.4
Labour force	1,851.7	1,842.2	8.0	-9.5	-14.0	4.3	-0.5	-0.8	0.2
Employment	1,711.0	1,703.5	8.8	-7.5	-23.5	14.8	-0.4	-1.4	0.9
Unemployment	140.7	138.7	8.0	-2.0	9.4	-10.5	-1.4	7.3	-7.0
Participation rate	71.8	71.4	0.3	-0.4	-0.8	-0.8
Unemployment rate	7.6	7.5	0.4	-0.1	0.5	-0.6
Employment rate	66.4	66.0	0.3	-0.4	-1.2	-0.4
Part-time rate	7.1	7.3	0.5	0.2	0.0	0.0
Women, 25 years and over									
Population	2,702.5	2,705.2	...	2.7	9.7	33.8	0.1	0.4	1.3
Labour force	1,604.3	1,605.0	8.7	0.7	6.1	53.0	0.0	0.4	3.4
Employment	1,488.5	1,489.7	8.3	1.2	12.6	27.5	0.1	0.9	1.9
Unemployment	115.8	115.3	7.4	-0.5	-6.4	25.4	-0.4	-5.3	28.3
Participation rate	59.4	59.3	0.3	-0.1	0.0	1.2
Unemployment rate	7.2	7.2	0.5	0.0	-0.4	1.4
Employment rate	55.1	55.1	0.3	0.0	0.3	0.4
Part-time rate	21.3	21.8	0.8	0.5	1.1	2.1
Industry	3,752.9	3,728.6	15.0	-24.3	-26.4	32.7	-0.6	-0.7	0.9
Goods-producing sector	910.2	918.2	13.5	8.0	-5.3	-12.2	0.9	-0.6	-1.3
Agriculture	64.1	67.8	3.7	3.7	3.5	12.4	5.8	5.4	22.4
Forestry, fishing, mining, oil and gas	44.2	40.6	2.6	-3.6	0.6	-0.7	-8.1	1.5	-1.7
Utilities	30.5	29.5	2.3	-1.0	-2.5	-3.6	-3.3	-7.8	-10.9
Construction	189.0	184.2	7.2	-4.8	-1.1	5.9	-2.5	-0.6	3.3
Manufacturing	582.3	596.0	11.4	13.7	-5.8	-26.3	2.4	-1.0	-4.2
Services-producing sector	2,842.7	2,810.4	17.1	-32.3	-21.2	44.9	-1.1	-0.7	1.6
Trade	634.1	628.7	12.1	-5.4	-13.8	30.6	-0.9	-2.1	5.1
Transportation and warehousing	172.1	166.6	6.4	-5.5	10.3	4.0	-3.2	6.6	2.5
Finance, insurance, real estate and leasing	216.9	213.5	7.1	-3.4	9.5	8.7	-1.6	4.7	4.2
Professional, scientific and technical services	233.9	232.8	7.8	-1.1	-6.0	7.4	-0.5	-2.5	3.3
Business, building and other support services	132.5	130.8	6.7	-1.7	-0.6	7.4	-1.3	-0.5	6.0
Educational services	262.9	258.6	7.6	-4.3	2.6	19.2	-1.6	1.0	8.0
Health care and social assistance	446.1	448.7	9.6	2.6	-1.7	9.0	0.6	-0.4	2.0
Information, culture and recreation	155.3	150.0	7.5	-5.3	-13.0	-18.9	-3.4	-8.0	-11.2
Accommodation and food services	211.9	209.9	7.9	-2.0	-4.7	-4.9	-0.9	-2.2	-2.3
Other services	161.1	156.6	6.4	-4.5	-3.1	-7.3	-2.8	-1.9	-4.5
Public administration	215.8	214.3	6.4	-1.5	-0.6	-10.2	-0.7	-0.3	-4.5

1. Average standard error of change in two consecutive months (see "Sampling Errors" in Data Quality for further explanations).

Note: Related CANSIM tables 282-0087, 282-0088

Table 4-6

Selected labour force characteristics (seasonally adjusted) — Ontario

	March 2006	April 2006	S.E. ¹	Change from			Percent change from		
				last month	last December	twelve months ago	last month	last December	twelve months ago
in thousands (except rates)									
Both sexes, 15 years and over									
Population	10,185.9	10,197.4	...	11.5	44.6	170.2	0.1	0.4	1.7
Labour force	6,886.0	6,915.1	18.5	29.1	55.5	76.9	0.4	0.8	1.1
Employment	6,463.0	6,486.8	18.3	23.8	53.4	107.9	0.4	0.8	1.7
Employment full-time	5,313.7	5,316.0	23.9	2.3	3.4	101.9	0.0	0.1	2.0
Unemployment	423.0	428.3	15.7	5.3	2.1	-31.0	1.3	0.5	-6.7
Participation rate	67.6	67.8	0.2	0.2	0.2	-0.4
Unemployment rate	6.1	6.2	0.2	0.1	0.0	-0.5
Employment rate	63.5	63.6	0.2	0.1	0.2	0.0
Part-time rate	17.8	18.0	0.3	0.3	0.6	-0.2
Both sexes, 15 to 24 years									
Population	1,698.4	1,699.8	...	1.4	5.5	26.9	0.1	0.3	1.6
Labour force	1,104.8	1,089.8	11.5	-15.0	-7.7	17.9	-1.4	-0.7	1.7
Employment	964.3	950.6	10.8	-13.7	0.2	17.7	-1.4	0.0	1.9
Unemployment	140.5	139.3	9.6	-1.2	-7.8	0.3	-0.9	-5.3	0.2
Participation rate	65.0	64.1	0.7	-0.9	-0.7	0.0
Unemployment rate	12.7	12.8	0.8	0.1	-0.6	-0.2
Employment rate	56.8	55.9	0.7	-0.9	-0.2	0.1
Part-time rate	47.4	48.4	1.2	1.0	1.3	-0.9
Men, 25 years and over									
Population	4,130.7	4,135.4	...	4.7	17.8	68.5	0.1	0.4	1.7
Labour force	3,089.6	3,104.1	8.9	14.5	19.9	27.7	0.5	0.6	0.9
Employment	2,943.3	2,952.0	9.8	8.7	15.3	38.9	0.3	0.5	1.3
Unemployment	146.2	152.1	8.4	5.9	4.6	-11.2	4.0	3.1	-6.9
Participation rate	74.8	75.1	0.2	0.3	0.2	-0.5
Unemployment rate	4.7	4.9	0.3	0.2	0.1	-0.4
Employment rate	71.3	71.4	0.2	0.1	0.1	-0.2
Part-time rate	6.1	6.2	0.3	0.1	-0.1	0.0
Women, 25 years and over									
Population	4,356.8	4,362.1	...	5.3	21.2	74.8	0.1	0.5	1.7
Labour force	2,691.7	2,721.2	10.5	29.5	43.3	31.4	1.1	1.6	1.2
Employment	2,555.4	2,584.2	10.5	28.8	37.9	51.3	1.1	1.5	2.0
Unemployment	136.3	137.0	8.6	0.7	5.4	-20.0	0.5	4.1	-12.7
Participation rate	61.8	62.4	0.3	0.6	0.7	-0.3
Unemployment rate	5.1	5.0	0.3	-0.1	0.1	-0.8
Employment rate	58.7	59.2	0.2	0.5	0.5	0.1
Part-time rate	20.1	20.4	0.6	0.3	1.2	-0.3
Industry									
Goods-producing sector	1,600.2	1,622.2	16.1	22.0	-13.2	-19.2	1.4	-0.8	-1.2
Agriculture	98.8	100.3	4.0	1.5	1.5	10.4	1.5	1.5	11.6
Forestry, fishing, mining, oil and gas	31.7	32.7	2.1	1.0	-2.9	1.1	3.2	-8.1	3.5
Utilities	45.8	45.1	2.5	-0.7	-5.4	-5.3	-1.5	-10.7	-10.5
Construction	405.4	415.0	9.2	9.6	9.8	30.8	2.4	2.4	8.0
Manufacturing	1,018.7	1,029.1	13.5	10.4	-16.2	-56.2	1.0	-1.5	-5.2
Services-producing sector	4,862.8	4,864.5	21.1	1.7	66.5	127.1	0.0	1.4	2.7
Trade	989.3	1,018.0	13.8	28.7	32.4	23.0	2.9	3.3	2.3
Transportation and warehousing	290.8	280.5	7.5	-10.3	-17.5	0.2	-3.5	-5.9	0.1
Finance, insurance, real estate and leasing	477.8	472.0	10.1	-5.8	13.3	17.1	-1.2	2.9	3.8
Professional, scientific and technical services	461.8	452.6	10.1	-9.2	-3.4	14.2	-2.0	-0.7	3.2
Business, building and other support services	295.9	300.7	8.8	4.8	2.9	34.3	1.6	1.0	12.9
Educational services	456.5	458.8	9.3	2.3	1.9	30.3	0.5	0.4	7.1
Health care and social assistance	622.1	623.1	10.1	1.0	14.2	2.3	0.2	2.3	0.4
Information, culture and recreation	331.2	318.5	8.2	-12.7	8.5	18.1	-3.8	2.7	6.0
Accommodation and food services	358.0	364.7	9.2	6.7	-4.0	1.6	1.9	-1.1	0.4
Other services	272.2	270.5	7.3	-1.7	33.4	12.7	-0.6	14.1	4.9
Public administration	307.2	304.9	6.9	-2.3	-15.4	-26.7	-0.7	-4.8	-8.1

1. Average standard error of change in two consecutive months (see "Sampling Errors" in Data Quality for further explanations).

Note: Related CANSIM tables 282-0087, 282-0088

Table 4-7

Selected labour force characteristics (seasonally adjusted) — Manitoba

	March 2006	April 2006	S.E. ¹	Change from			Percent change from		
				last month	last December	twelve months ago	last month	last December	twelve months ago
in thousands (except rates)									
Both sexes, 15 years and over									
Population	890.5	891.2	...	0.7	1.3	3.5	0.1	0.1	0.4
Labour force	608.4	616.1	2.8	7.7	6.8	10.1	1.3	1.1	1.7
Employment	583.0	587.2	2.9	4.2	3.6	10.9	0.7	0.6	1.9
Employment full-time	468.8	471.2	3.9	2.4	7.3	8.2	0.5	1.6	1.8
Unemployment	25.3	29.0	2.2	3.7	3.3	-0.7	14.6	12.8	-2.4
Participation rate	68.3	69.1	0.3	0.8	0.6	0.8
Unemployment rate	4.2	4.7	0.3	0.5	0.5	-0.2
Employment rate	65.5	65.9	0.3	0.4	0.3	1.0
Part-time rate	19.6	19.8	0.6	0.1	-0.8	0.1
Both sexes, 15 to 24 years									
Population	155.6	155.7	...	0.1	0.2	0.3	0.1	0.1	0.2
Labour force	112.6	115.9	1.7	3.3	6.4	6.4	2.9	5.8	5.8
Employment	103.2	104.3	1.7	1.1	3.9	5.1	1.1	3.9	5.1
Unemployment	9.4	11.6	1.5	2.2	2.5	1.3	23.4	27.5	12.6
Participation rate	72.4	74.4	1.1	2.0	4.0	3.9
Unemployment rate	8.3	10.0	1.3	1.7	1.7	0.6
Employment rate	66.3	67.0	1.1	0.7	2.4	3.2
Part-time rate	45.3	44.4	2.1	-0.9	-1.7	-1.0
Men, 25 years and over									
Population	358.5	358.8	...	0.3	0.8	2.1	0.1	0.2	0.6
Labour force	264.6	267.2	1.4	2.6	-2.2	1.6	1.0	-0.8	0.6
Employment	255.4	258.7	1.5	3.3	-1.2	4.0	1.3	-0.5	1.6
Unemployment	9.2	8.5	1.2	-0.7	-1.0	-2.3	-7.6	-10.5	-21.3
Participation rate	73.8	74.5	0.4	0.7	-0.8	0.0
Unemployment rate	3.5	3.2	0.4	-0.3	-0.3	-0.9
Employment rate	71.2	72.1	0.4	0.9	-0.5	0.7
Part-time rate	6.3	7.0	0.6	0.7	0.5	1.0
Women, 25 years and over									
Population	376.4	376.7	...	0.3	0.3	1.1	0.1	0.1	0.3
Labour force	231.2	233.0	1.6	1.8	2.5	2.1	0.8	1.1	0.9
Employment	224.5	224.2	1.6	-0.3	0.9	1.9	-0.1	0.4	0.9
Unemployment	6.7	8.9	1.1	2.2	1.8	0.4	32.8	25.4	4.7
Participation rate	61.4	61.9	0.4	0.5	0.7	0.4
Unemployment rate	2.9	3.8	0.5	0.9	0.7	0.1
Employment rate	59.6	59.5	0.4	-0.1	0.2	0.3
Part-time rate	22.9	22.9	1.1	0.0	-2.3	-0.9
Industry	583.0	587.2	2.9	4.2	3.6	10.9	0.7	0.6	1.9
Goods-producing sector	136.0	136.1	2.5	0.1	-5.4	-0.7	0.1	-3.8	-0.5
Agriculture	30.1	29.5	1.3	-0.6	-2.7	0.5	-2.0	-8.4	1.7
Forestry, fishing, mining, oil and gas	6.8	6.6	0.6	-0.2	0.4	1.0	-2.9	6.5	17.9
Utilities	5.6	5.7	0.6	0.1	-0.9	-1.8	1.8	-13.6	-24.0
Construction	29.0	30.6	1.4	1.6	0.6	3.5	5.5	2.0	12.9
Manufacturing	64.3	63.6	2.0	-0.7	-2.9	-4.1	-1.1	-4.4	-6.1
Services-producing sector	447.1	451.0	3.4	3.9	8.9	11.5	0.9	2.0	2.6
Trade	91.4	91.7	2.2	0.3	6.0	6.9	0.3	7.0	8.1
Transportation and warehousing	35.9	36.0	1.3	0.1	0.2	3.2	0.3	0.6	9.8
Finance, insurance, real estate and leasing	32.1	35.2	1.4	3.1	-0.3	4.8	9.7	-0.8	15.8
Professional, scientific and technical services	24.7	23.2	1.3	-1.5	1.0	-2.3	-6.1	4.5	-9.0
Business, building and other support services	18.3	20.3	1.2	2.0	1.7	0.9	10.9	9.1	4.6
Educational services	45.5	45.3	1.7	-0.2	-0.1	-0.9	-0.4	-0.2	-1.9
Health care and social assistance	78.3	77.7	1.9	-0.6	3.3	3.1	-0.8	4.4	4.2
Information, culture and recreation	23.8	21.9	1.5	-1.9	-1.2	-3.4	-8.0	-5.2	-13.4
Accommodation and food services	38.3	39.5	1.7	1.2	-0.6	1.8	3.1	-1.5	4.8
Other services	24.3	26.5	1.3	2.2	0.5	-0.7	9.1	1.9	-2.6
Public administration	34.5	33.7	1.3	-0.8	-1.7	-2.0	-2.3	-4.8	-5.6

1. Average standard error of change in two consecutive months (see "Sampling Errors" in Data Quality for further explanations).

Note: Related CANSIM tables 282-0087, 282-0088

Table 4-8

Selected labour force characteristics (seasonally adjusted) — Saskatchewan

	March 2006	April 2006	S.E. ¹	Change from			Percent change from		
				last month	last December	twelve months ago	last month	last December	twelve months ago
in thousands (except rates)									
Both sexes, 15 years and over									
Population	747.0	746.6	...	-0.4	-1.6	-1.8	-0.1	-0.2	-0.2
Labour force	510.2	512.7	2.4	2.5	6.4	1.8	0.5	1.3	0.4
Employment	483.2	487.9	2.5	4.7	8.2	2.9	1.0	1.7	0.6
Employment full-time	390.2	395.3	3.2	5.1	6.0	2.8	1.3	1.5	0.7
Unemployment	26.9	24.8	1.9	-2.1	-1.8	-1.0	-7.8	-6.8	-3.9
Participation rate	68.3	68.7	0.3	0.4	1.0	0.4
Unemployment rate	5.3	4.8	0.4	-0.5	-0.5	-0.2
Employment rate	64.7	65.3	0.3	0.6	1.2	0.5
Part-time rate	19.3	19.0	0.6	-0.3	0.1	-0.1
Both sexes, 15 to 24 years									
Population	138.1	138.0	...	-0.1	-0.2	-1.2	-0.1	-0.1	-0.9
Labour force	96.2	95.7	1.5	-0.5	1.1	-0.4	-0.5	1.2	-0.4
Employment	85.0	86.6	1.5	1.6	3.4	0.7	1.9	4.1	0.8
Unemployment	11.2	9.1	1.2	-2.1	-2.3	-1.2	-18.8	-20.2	-11.7
Participation rate	69.7	69.3	1.1	-0.4	0.8	0.3
Unemployment rate	11.6	9.5	1.2	-2.1	-2.6	-1.2
Employment rate	61.5	62.8	1.1	1.3	2.6	1.1
Part-time rate	41.3	40.8	1.9	-0.5	0.4	0.2
Men, 25 years and over									
Population	296.8	296.7	...	-0.1	-0.6	-0.3	0.0	-0.2	-0.1
Labour force	220.8	224.7	1.2	3.9	3.6	1.3	1.8	1.6	0.6
Employment	212.5	214.1	1.3	1.6	1.2	-0.1	0.8	0.6	0.0
Unemployment	8.3	10.6	1.0	2.3	2.4	1.4	27.7	29.3	15.2
Participation rate	74.4	75.7	0.4	1.3	1.3	0.5
Unemployment rate	3.8	4.7	0.5	0.9	1.0	0.6
Employment rate	71.6	72.2	0.4	0.6	0.6	0.1
Part-time rate	6.3	6.2	0.6	0.0	-0.1	-0.8
Women, 25 years and over									
Population	312.1	311.9	...	-0.2	-0.8	-0.3	-0.1	-0.3	-0.1
Labour force	193.2	192.3	1.3	-0.9	1.7	0.9	-0.5	0.9	0.5
Employment	185.8	187.2	1.3	1.4	3.6	2.2	0.8	2.0	1.2
Unemployment	7.5	5.1	0.9	-2.4	-1.9	-1.3	-32.0	-27.1	-20.3
Participation rate	61.9	61.7	0.4	-0.2	0.7	0.4
Unemployment rate	3.9	2.7	0.5	-1.2	-1.0	-0.6
Employment rate	59.5	60.0	0.4	0.5	1.3	0.7
Part-time rate	24.1	23.5	1.0	-0.6	-0.1	0.5
Industry									
Industry	483.2	487.9	2.5	4.7	8.2	2.9	1.0	1.7	0.6
Goods-producing sector									
Goods-producing sector	132.2	131.9	2.3	-0.3	5.1	8.5	-0.2	4.0	6.9
Agriculture	47.2	47.6	1.6	0.4	3.0	1.7	0.8	6.7	3.7
Forestry, fishing, mining, oil and gas	21.1	21.0	1.0	-0.1	0.6	3.2	-0.5	2.9	18.0
Utilities	4.6	4.7	0.4	0.1	0.1	0.5	2.2	2.2	11.9
Construction	28.9	29.4	1.2	0.5	2.4	3.9	1.7	8.9	15.3
Manufacturing	30.5	29.2	1.2	-1.3	-0.9	-0.9	-4.3	-3.0	-3.0
Services-producing sector									
Services-producing sector	351.1	356.0	2.9	4.9	3.1	-5.6	1.4	0.9	-1.5
Trade	77.0	80.6	1.9	3.6	6.9	-1.6	4.7	9.4	-1.9
Transportation and warehousing	26.9	27.2	1.1	0.3	0.2	3.4	1.1	0.7	14.3
Finance, insurance, real estate and leasing	26.0	26.0	0.9	0.0	-0.1	1.0	0.0	-0.4	4.0
Professional, scientific and technical services	17.1	18.2	0.9	1.1	0.3	0.8	6.4	1.7	4.6
Business, building and other support services	11.7	12.7	0.9	1.0	0.4	-1.4	8.5	3.3	-9.9
Educational services	36.5	37.9	1.3	1.4	-1.3	-2.4	3.8	-3.3	-6.0
Health care and social assistance	58.6	58.8	1.4	0.2	0.4	-0.2	0.3	0.7	-0.3
Information, culture and recreation	18.4	20.2	1.1	1.8	0.4	1.3	9.8	2.0	6.9
Accommodation and food services	29.0	27.8	1.3	-1.2	-1.5	-3.4	-4.1	-5.1	-10.9
Other services	21.8	19.9	1.1	-1.9	-1.7	-2.0	-8.7	-7.9	-9.1
Public administration	28.0	26.7	1.0	-1.3	-1.0	-0.9	-4.6	-3.6	-3.3

1. Average standard error of change in two consecutive months (see "Sampling Errors" in Data Quality for further explanations).

Note: Related CANSIM tables 282-0087, 282-0088

Table 4-9

Selected labour force characteristics (seasonally adjusted) — Alberta

	March 2006	April 2006	S.E. ¹	Change from			Percent change from		
				last month	last December	twelve months ago	last month	last December	twelve months ago
in thousands (except rates)									
Both sexes, 15 years and over									
Population	2,610.4	2,618.0	...	7.6	30.8	77.5	0.3	1.2	3.1
Labour force	1,906.4	1,911.5	7.9	5.1	32.0	57.4	0.3	1.7	3.1
Employment	1,841.9	1,844.6	7.9	2.7	44.8	66.0	0.1	2.5	3.7
Employment full-time	1,530.6	1,545.4	10.7	14.8	46.8	83.0	1.0	3.1	5.7
Unemployment	64.5	66.9	5.7	2.4	-12.8	-8.7	3.7	-16.1	-11.5
Participation rate	73.0	73.0	0.3	0.0	0.4	0.0
Unemployment rate	3.4	3.5	0.3	0.1	-0.7	-0.6
Employment rate	70.6	70.5	0.3	-0.1	0.9	0.5
Part-time rate	16.9	16.2	0.5	-0.7	-0.5	-1.6
Both sexes, 15 to 24 years									
Population	485.1	486.2	...	1.1	4.3	12.4	0.2	0.9	2.6
Labour force	352.4	350.0	4.7	-2.4	9.4	10.5	-0.7	2.8	3.1
Employment	330.8	327.6	4.8	-3.2	12.9	18.7	-1.0	4.1	6.1
Unemployment	21.6	22.4	3.5	0.8	-3.5	-8.2	3.7	-13.5	-26.8
Participation rate	72.6	72.0	1.0	-0.6	1.3	0.3
Unemployment rate	6.1	6.4	1.0	0.3	-1.2	-2.6
Employment rate	68.2	67.4	1.0	-0.8	2.1	2.2
Part-time rate	36.5	35.6	1.7	-0.9	0.7	-3.7
Men, 25 years and over									
Population	1,064.3	1,067.8	...	3.5	14.2	33.2	0.3	1.3	3.2
Labour force	857.4	861.5	3.8	4.1	8.9	21.5	0.5	1.0	2.6
Employment	834.6	840.1	4.2	5.5	15.1	24.4	0.7	1.8	3.0
Unemployment	22.8	21.4	3.1	-1.4	-6.2	-2.9	-6.1	-22.5	-11.9
Participation rate	80.6	80.7	0.4	0.1	-0.2	-0.5
Unemployment rate	2.7	2.5	0.4	-0.2	-0.7	-0.4
Employment rate	78.4	78.7	0.4	0.3	0.4	-0.1
Part-time rate	4.2	3.7	0.5	-0.5	-1.8	-2.0
Women, 25 years and over									
Population	1,061.0	1,064.0	...	3.0	12.3	31.9	0.3	1.2	3.1
Labour force	696.7	699.9	4.9	3.2	13.6	25.2	0.5	2.0	3.7
Employment	676.5	676.9	4.7	0.4	16.8	22.9	0.1	2.5	3.5
Unemployment	20.1	23.0	3.2	2.9	-3.2	2.4	14.4	-12.2	11.7
Participation rate	65.7	65.8	0.5	0.1	0.5	0.4
Unemployment rate	2.9	3.3	0.5	0.4	-0.5	0.2
Employment rate	63.8	63.6	0.5	-0.2	0.8	0.2
Part-time rate	23.0	22.4	0.9	-0.6	0.2	-0.2
Industry	1,841.9	1,844.6	7.9	2.7	44.8	66.0	0.1	2.5	3.7
Goods-producing sector	509.6	516.7	7.1	7.1	34.2	34.0	1.4	7.1	7.0
Agriculture	55.8	59.7	2.7	3.9	8.6	3.7	7.0	16.8	6.6
Forestry, fishing, mining, oil and gas	134.8	139.0	3.7	4.2	14.6	13.6	3.1	11.7	10.8
Utilities	15.0	15.1	1.2	0.1	-0.8	2.3	0.7	-5.0	18.0
Construction	173.9	164.6	4.6	-9.3	3.6	4.6	-5.3	2.2	2.9
Manufacturing	130.1	138.2	4.2	8.1	8.1	9.7	6.2	6.2	7.5
Services-producing sector	1,332.3	1,327.9	9.0	-4.4	10.6	32.1	-0.3	0.8	2.5
Trade	292.1	284.0	6.0	-8.1	3.5	5.4	-2.8	1.2	1.9
Transportation and warehousing	106.0	107.5	3.5	1.5	2.5	-0.4	1.4	2.4	-0.4
Finance, insurance, real estate and leasing	93.8	95.1	3.3	1.3	-0.7	-0.1	1.4	-0.7	-0.1
Professional, scientific and technical services	139.6	142.6	4.3	3.0	-1.0	19.5	2.1	-0.7	15.8
Business, building and other support services	59.8	60.6	3.2	0.8	-3.0	-3.7	1.3	-4.7	-5.8
Educational services	122.4	124.3	3.8	1.9	-3.4	-1.7	1.6	-2.7	-1.3
Health care and social assistance	176.0	171.3	4.4	-4.7	-0.4	1.3	-2.7	-0.2	0.8
Information, culture and recreation	65.5	65.4	3.2	-0.1	-2.1	-7.7	-0.2	-3.1	-10.5
Accommodation and food services	110.4	108.1	4.2	-2.3	-0.8	4.4	-2.1	-0.7	4.2
Other services	82.2	86.5	3.3	4.3	2.8	4.8	5.2	3.3	5.9
Public administration	84.3	82.6	2.6	-1.7	13.1	10.3	-2.0	18.8	14.2

1. Average standard error of change in two consecutive months (see "Sampling Errors" in Data Quality for further explanations).

Note: Related CANSIM tables 282-0087, 282-0088

Table 4-10

Selected labour force characteristics (seasonally adjusted) — British Columbia

	March 2006	April 2006	S.E. ¹	Change from			Percent change from		
				last month	last December	twelve months ago	last month	last December	twelve months ago
in thousands (except rates)									
Both sexes, 15 years and over									
Population	3,492.4	3,497.2	...	4.8	18.9	63.9	0.1	0.5	1.9
Labour force	2,290.8	2,295.7	10.0	4.9	12.8	41.6	0.2	0.6	1.8
Employment	2,189.0	2,192.8	9.8	3.8	25.7	75.9	0.2	1.2	3.6
Employment full-time	1,730.3	1,746.6	13.1	16.3	17.0	64.6	0.9	1.0	3.8
Unemployment	101.8	102.9	7.7	1.1	-12.9	-34.2	1.1	-11.1	-24.9
Participation rate	65.6	65.6	0.3	0.0	0.0	-0.1
Unemployment rate	4.4	4.5	0.3	0.1	-0.6	-1.6
Employment rate	62.7	62.7	0.3	0.0	0.4	1.0
Part-time rate	21.0	20.4	0.6	-0.6	0.2	-0.2
Both sexes, 15 to 24 years									
Population	575.3	575.5	...	0.2	1.0	7.5	0.0	0.2	1.3
Labour force	383.0	386.4	5.8	3.4	8.0	30.2	0.9	2.1	8.5
Employment	354.1	356.6	5.7	2.5	8.7	40.9	0.7	2.5	13.0
Unemployment	28.9	29.9	4.4	1.0	-0.6	-10.6	3.5	-2.0	-26.2
Participation rate	66.6	67.1	1.0	0.5	1.2	4.4
Unemployment rate	7.5	7.7	1.2	0.2	-0.4	-3.7
Employment rate	61.6	62.0	1.0	0.4	1.4	6.4
Part-time rate	43.4	43.3	1.8	-0.1	0.2	0.5
Men, 25 years and over									
Population	1,424.7	1,427.2	...	2.5	9.2	28.7	0.2	0.6	2.1
Labour force	1,017.9	1,013.9	5.1	-4.0	-7.5	0.1	-0.4	-0.7	0.0
Employment	983.8	981.3	5.4	-2.5	4.6	15.9	-0.3	0.5	1.6
Unemployment	34.1	32.6	4.5	-1.5	-12.1	-15.8	-4.4	-27.1	-32.6
Participation rate	71.4	71.0	0.4	-0.4	-1.0	-1.5
Unemployment rate	3.4	3.2	0.4	-0.2	-1.2	-1.6
Employment rate	69.1	68.8	0.4	-0.3	-0.1	-0.2
Part-time rate	8.2	7.6	0.6	-0.6	0.8	0.4
Women, 25 years and over									
Population	1,492.4	1,494.5	...	2.1	8.7	27.7	0.1	0.6	1.9
Labour force	889.9	895.4	5.9	5.5	12.4	11.3	0.6	1.4	1.3
Employment	851.1	854.9	5.8	3.8	12.4	19.1	0.4	1.5	2.3
Unemployment	38.8	40.4	4.4	1.6	-0.2	-7.9	4.1	-0.5	-16.4
Participation rate	59.6	59.9	0.4	0.3	0.5	-0.4
Unemployment rate	4.4	4.5	0.5	0.1	-0.1	-1.0
Employment rate	57.0	57.2	0.4	0.2	0.5	0.2
Part-time rate	26.3	25.4	1.0	-0.9	-0.8	-2.2
Industry									
Population	2,189.0	2,192.8	9.8	3.8	25.7	75.9	0.2	1.2	3.6
Goods-producing sector									
Agriculture	36.4	35.8	2.7	-0.6	-3.8	-4.9	-1.6	-9.6	-12.0
Forestry, fishing, mining, oil and gas	39.8	39.0	2.6	-0.8	2.6	-1.1	-2.0	7.1	-2.7
Utilities	7.2	6.6	1.2	-0.6	-0.7	-3.8	-8.3	-9.6	-36.5
Construction	177.2	177.4	5.4	0.2	-3.0	9.1	0.1	-1.7	5.4
Manufacturing	207.1	201.0	5.7	-6.1	7.6	4.9	-2.9	3.9	2.5
Services-producing sector									
Trade	1,721.3	1,733.0	11.0	11.7	23.0	71.6	0.7	1.3	4.3
Transportation and warehousing	358.9	365.3	7.4	6.4	13.9	42.1	1.8	4.0	13.0
Finance, insurance, real estate and leasing	126.1	123.8	4.6	-2.3	5.4	13.1	-1.8	4.6	11.8
Professional, scientific and technical services	132.7	129.5	4.4	-3.2	-1.6	-2.2	-2.4	-1.2	-1.7
Business, building and other support services	166.1	171.4	5.1	5.3	6.9	4.2	3.2	4.2	2.5
Educational services	90.1	90.8	4.6	0.7	4.5	-4.3	0.8	5.2	-4.5
Health care and social assistance	153.1	152.4	4.7	-0.7	6.3	3.2	-0.5	4.3	2.1
Information, culture and recreation	224.3	224.1	5.3	-0.2	5.9	10.4	-0.1	2.7	4.9
Accommodation and food services	120.5	123.0	4.5	2.5	-6.0	19.8	2.1	-4.7	19.2
Other services	161.8	166.8	5.7	5.0	-14.6	-11.7	3.1	-8.0	-6.6
Public administration	93.4	91.2	4.1	-2.2	1.4	-2.6	-2.4	1.6	-2.8
Public administration	94.3	94.8	3.7	0.5	1.0	-0.5	0.5	1.1	-0.5

1. Average standard error of change in two consecutive months (see "Sampling Errors" in Data Quality for further explanations).

Note: Related CANSIM tables 282-0087, 282-0088

Table 5-1

Labour force characteristics by census metropolitan area (seasonally adjusted) — 3 month moving average

	March 2006	April 2006	S.E. ¹	Change from			Percent change from		
				last month	last December	twelve months ago	last month	last December	twelve months ago
in thousands (except rates)									
St. John's, Newfoundland and Labrador									
Population	151.2	151.3	...	0.1	0.5	1.1	0.1	0.3	0.7
Labour force	99.2	100.3	0.8	1.1	2.4	-0.8	1.1	2.5	-0.8
Employment	90.6	91.3	0.8	0.7	1.3	-0.4	0.8	1.4	-0.4
Unemployment	8.7	9.0	0.5	0.3	1.0	-0.4	3.4	12.5	-4.3
Participation rate	65.6	66.3	0.5	0.7	1.4	-1.0
Unemployment rate	8.8	9.0	0.5	0.2	0.8	-0.3
Employment rate	59.9	60.3	0.6	0.4	0.6	-0.8
Halifax, Nova Scotia									
Population	310.6	310.8	...	0.2	0.7	2.8	0.1	0.2	0.9
Labour force	213.0	214.6	1.1	1.6	1.5	-2.7	0.8	0.7	-1.2
Employment	202.4	203.5	1.2	1.1	2.4	-0.5	0.5	1.2	-0.2
Unemployment	10.6	11.1	0.6	0.5	-0.9	-2.2	4.7	-7.5	-16.5
Participation rate	68.6	69.0	0.4	0.4	0.3	-1.6
Unemployment rate	5.0	5.2	0.3	0.2	-0.4	-0.9
Employment rate	65.2	65.5	0.4	0.3	0.6	-0.7
Saint John, New Brunswick									
Population	103.4	103.4	...	0.0	0.0	0.4	0.0	0.0	0.4
Labour force	67.1	66.6	0.7	-0.5	0.4	-1.2	-0.7	0.6	-1.8
Employment	63.2	62.6	0.7	-0.6	0.9	-0.9	-0.9	1.5	-1.4
Unemployment	3.8	4.1	0.3	0.3	-0.4	-0.2	7.9	-8.9	-4.7
Participation rate	64.9	64.4	0.7	-0.5	0.4	-1.4
Unemployment rate	5.7	6.2	0.5	0.5	-0.6	-0.1
Employment rate	61.1	60.5	0.7	-0.6	0.8	-1.2
Saguenay, Quebec									
Population	126.2	126.1	...	-0.1	-0.2	-0.2	-0.1	-0.2	-0.2
Labour force	79.0	79.7	0.8	0.7	3.6	4.8	0.9	4.7	6.4
Employment	72.8	73.0	0.9	0.2	4.4	4.6	0.3	6.4	6.7
Unemployment	6.2	6.7	0.4	0.5	-0.7	0.3	8.1	-9.5	4.7
Participation rate	62.6	63.2	0.6	0.6	2.9	3.9
Unemployment rate	7.8	8.4	0.6	0.6	-1.3	-0.1
Employment rate	57.7	57.9	0.7	0.2	3.6	3.7
Québec, Quebec									
Population	596.7	597.2	...	0.5	2.1	7.2	0.1	0.4	1.2
Labour force	401.5	399.7	3.6	-1.8	1.9	-4.1	-0.4	0.5	-1.0
Employment	379.4	380.3	3.6	0.9	1.3	-1.4	0.2	0.3	-0.4
Unemployment	22.1	19.4	1.5	-2.7	0.6	-2.7	-12.2	3.2	-12.2
Participation rate	67.3	66.9	0.6	-0.4	0.1	-1.5
Unemployment rate	5.5	4.9	0.4	-0.6	0.2	-0.6
Employment rate	63.6	63.7	0.6	0.1	0.0	-1.0
Trois-Rivières, Quebec									
Population	118.8	118.9	...	0.1	0.4	1.2	0.1	0.3	1.0
Labour force	76.0	75.6	0.7	-0.4	0.0	-1.4	-0.5	0.0	-1.8
Employment	69.1	68.8	0.7	-0.3	-0.2	0.0	-0.4	-0.3	0.0
Unemployment	6.9	6.9	0.4	0.0	0.3	-1.3	0.0	4.5	-15.9
Participation rate	64.0	63.6	0.6	-0.4	-0.2	-1.8
Unemployment rate	9.1	9.1	0.5	0.0	0.4	-1.5
Employment rate	58.2	57.9	0.6	-0.3	-0.3	-0.6

See footnotes at the end of the table.

Table 5-1 – continued

Labour force characteristics by census metropolitan area (seasonally adjusted) — 3 month moving average

	March 2006	April 2006	S.E. ¹	Change from			Percent change from		
				last month	last December	twelve months ago	last month	last December	twelve months ago
in thousands (except rates)									
Sherbrooke, Quebec									
Population	134.5	134.7	...	0.2	0.5	1.9	0.1	0.4	1.4
Labour force	89.9	90.1	0.8	0.2	3.0	1.8	0.2	3.4	2.0
Employment	82.4	83.0	0.8	0.6	1.7	1.6	0.7	2.1	2.0
Unemployment	7.5	7.1	0.4	-0.4	1.2	0.2	-5.3	20.3	2.9
Participation rate	66.8	66.9	0.6	0.1	2.0	0.4
Unemployment rate	8.3	7.9	0.4	-0.4	1.1	0.1
Employment rate	61.3	61.6	0.6	0.3	1.0	0.3
Montréal, Quebec									
Population	2,989.5	2,991.9	...	2.4	10.4	37.6	0.1	0.3	1.3
Labour force	2,019.0	2,017.6	7.6	-1.4	5.1	36.1	-0.1	0.3	1.8
Employment	1,828.4	1,829.9	8.0	1.5	4.7	11.5	0.1	0.3	0.6
Unemployment	190.5	187.7	4.9	-2.8	0.4	24.6	-1.5	0.2	15.1
Participation rate	67.5	67.4	0.3	-0.1	-0.1	0.3
Unemployment rate	9.4	9.3	0.3	-0.1	0.0	1.1
Employment rate	61.2	61.2	0.3	0.0	0.0	-0.4
Ottawa-Gatineau, Ontario/Quebec									
Population	940.0	940.7	...	0.7	2.7	13.2	0.1	0.3	1.4
Labour force	686.1	686.2	3.7	0.1	15.8	24.6	0.0	2.4	3.7
Employment	650.5	651.0	3.8	0.5	17.4	36.3	0.1	2.7	5.9
Unemployment	35.7	35.2	1.8	-0.5	-1.6	-11.8	-1.4	-4.3	-25.1
Participation rate	73.0	72.9	0.4	-0.1	1.4	1.6
Unemployment rate	5.2	5.1	0.3	-0.1	-0.4	-2.0
Employment rate	69.2	69.2	0.4	0.0	1.7	2.9
Ottawa-Gatineau, Quebec part, Ontario/Quebec									
Population	234.0	234.3	...	0.3	1.3	5.7	0.1	0.6	2.5
Labour force	172.6	169.8	1.2	-2.8	-2.6	9.6	-1.6	-1.5	6.0
Employment	162.9	159.6	1.2	-3.3	-2.7	12.1	-2.0	-1.7	8.2
Unemployment	9.8	10.2	0.6	0.4	0.0	-2.4	4.1	0.0	-19.0
Participation rate	73.8	72.5	0.5	-1.3	-1.5	2.4
Unemployment rate	5.7	6.0	0.4	0.3	0.1	-1.9
Employment rate	69.6	68.1	0.5	-1.5	-1.6	3.6
Ottawa-Gatineau, Ontario part, Ontario/Quebec									
Population	706.0	706.3	...	0.3	1.3	7.4	0.0	0.2	1.1
Labour force	513.5	516.5	3.5	3.0	18.6	15.1	0.6	3.7	3.0
Employment	487.6	491.4	3.6	3.8	20.1	24.3	0.8	4.3	5.2
Unemployment	25.9	25.0	1.7	-0.9	-1.6	-9.3	-3.5	-6.0	-27.1
Participation rate	72.7	73.1	0.5	0.4	2.5	1.4
Unemployment rate	5.0	4.8	0.3	-0.2	-0.5	-2.0
Employment rate	69.1	69.6	0.5	0.5	2.7	2.8
Kingston, Ontario									
Population	125.4	125.5	...	0.1	0.0	1.3	0.1	0.0	1.0
Labour force	81.9	82.2	0.8	0.3	2.7	3.3	0.4	3.4	4.2
Employment	76.8	77.4	0.8	0.6	1.4	3.4	0.8	1.8	4.6
Unemployment	5.0	4.8	0.3	-0.2	1.3	-0.2	-4.0	37.1	-4.0
Participation rate	65.3	65.5	0.7	0.2	2.2	2.0
Unemployment rate	6.1	5.8	0.4	-0.3	1.4	-0.5
Employment rate	61.2	61.7	0.7	0.5	1.1	2.1

See footnotes at the end of the table.

Table 5-1 – continued

Labour force characteristics by census metropolitan area (seasonally adjusted) — 3 month moving average

	March 2006	April 2006	S.E. ¹	Change from			Percent change from		
				last month	last December	twelve months ago	last month	last December	twelve months ago
in thousands (except rates)									
Toronto, Ontario									
Population	4,342.4	4,348.7	...	6.3	27.5	98.2	0.1	0.6	2.3
Labour force	2,980.7	2,979.3	9.5	-1.4	-15.1	42.8	0.0	-0.5	1.5
Employment	2,779.7	2,782.1	9.9	2.4	-22.8	67.9	0.1	-0.8	2.5
Unemployment	201.1	197.2	5.6	-3.9	7.7	-25.2	-1.9	4.1	-11.3
Participation rate	68.6	68.5	0.2	-0.1	-0.8	-0.6
Unemployment rate	6.7	6.6	0.2	-0.1	0.3	-1.0
Employment rate	64.0	64.0	0.2	0.0	-0.9	0.1
Hamilton, Ontario									
Population	585.7	586.2	...	0.5	1.9	8.0	0.1	0.3	1.4
Labour force	399.4	398.3	3.3	-1.1	3.3	18.1	-0.3	0.8	4.8
Employment	377.5	376.5	3.2	-1.0	5.2	15.9	-0.3	1.4	4.4
Unemployment	22.0	21.8	1.3	-0.2	-1.8	2.2	-0.9	-7.6	11.2
Participation rate	68.2	67.9	0.6	-0.3	0.3	2.1
Unemployment rate	5.5	5.5	0.3	0.0	-0.5	0.3
Employment rate	64.5	64.2	0.6	-0.3	0.7	1.8
Kitchener, Ontario									
Population	368.7	369.2	...	0.5	2.2	7.0	0.1	0.6	1.9
Labour force	265.6	263.0	1.9	-2.6	-1.4	-2.8	-1.0	-0.5	-1.1
Employment	251.8	250.0	1.9	-1.8	0.6	0.1	-0.7	0.2	0.0
Unemployment	13.7	12.9	0.9	-0.8	-2.1	-2.9	-5.8	-14.0	-18.4
Participation rate	72.0	71.2	0.5	-0.8	-0.8	-2.2
Unemployment rate	5.2	4.9	0.3	-0.3	-0.8	-1.0
Employment rate	68.3	67.7	0.5	-0.6	-0.3	-1.3
London, Ontario									
Population	376.5	376.8	...	0.3	1.2	4.4	0.1	0.3	1.2
Labour force	256.6	260.3	2.0	3.7	3.3	-3.6	1.4	1.3	-1.4
Employment	241.1	244.5	2.1	3.4	5.2	-1.8	1.4	2.2	-0.7
Unemployment	15.5	15.9	1.0	0.4	-1.8	-1.7	2.6	-10.2	-9.7
Participation rate	68.2	69.1	0.5	0.9	0.7	-1.8
Unemployment rate	6.0	6.1	0.4	0.1	-0.8	-0.6
Employment rate	64.0	64.9	0.6	0.9	1.2	-1.2
Oshawa, Ontario									
Population	271.4	272.1	...	0.7	2.8	8.9	0.3	1.0	3.4
Labour force	186.3	185.8	1.7	-0.5	-2.5	-5.7	-0.3	-1.3	-3.0
Employment	174.1	174.5	1.7	0.4	-1.3	-3.5	0.2	-0.7	-2.0
Unemployment	12.2	11.3	0.7	-0.9	-1.2	-2.2	-7.4	-9.6	-16.3
Participation rate	68.6	68.3	0.6	-0.3	-1.6	-4.5
Unemployment rate	6.5	6.1	0.4	-0.4	-0.5	-0.9
Employment rate	64.1	64.1	0.7	0.0	-1.2	-3.5
St. Catharines-Niagara, Ontario									
Population	326.2	326.4	...	0.2	0.5	2.5	0.1	0.2	0.8
Labour force	197.4	198.8	1.7	1.4	-2.3	-11.1	0.7	-1.1	-5.3
Employment	184.2	186.5	1.7	2.3	-0.5	-8.7	1.2	-0.3	-4.5
Unemployment	13.2	12.3	0.8	-0.9	-1.7	-2.4	-6.8	-12.1	-16.3
Participation rate	60.5	60.9	0.5	0.4	-0.8	-3.9
Unemployment rate	6.7	6.2	0.4	-0.5	-0.8	-0.8
Employment rate	56.5	57.1	0.5	0.6	-0.3	-3.2

See footnotes at the end of the table.

Table 5-1 – continued

Labour force characteristics by census metropolitan area (seasonally adjusted) — 3 month moving average

	March 2006	April 2006	S.E. ¹	Change from			Percent change from		
				last month	last December	twelve months ago	last month	last December	twelve months ago
in thousands (except rates)									
Greater Sudbury / Grand Sudbury, Ontario									
Population	132.4	132.4	...	0.0	0.1	0.7	0.0	0.1	0.5
Labour force	82.8	82.9	0.8	0.1	2.2	-1.8	0.1	2.7	-2.1
Employment	76.0	76.3	0.8	0.3	1.5	-2.1	0.4	2.0	-2.7
Unemployment	6.8	6.6	0.4	-0.2	0.7	0.3	-2.9	11.9	4.8
Participation rate	62.5	62.6	0.6	0.1	1.6	-1.7
Unemployment rate	8.2	8.0	0.5	-0.2	0.7	0.6
Employment rate	57.4	57.6	0.6	0.2	1.1	-1.9
Thunder Bay, Ontario									
Population	104.2	104.2	...	0.0	0.0	0.6	0.0	0.0	0.6
Labour force	66.1	66.9	0.7	0.8	0.4	-2.9	1.2	0.6	-4.2
Employment	61.2	61.6	0.7	0.4	-0.7	-3.0	0.7	-1.1	-4.6
Unemployment	4.9	5.4	0.3	0.5	1.2	0.1	10.2	28.6	1.9
Participation rate	63.4	64.2	0.7	0.8	0.4	-3.2
Unemployment rate	7.4	8.1	0.5	0.7	1.8	0.5
Employment rate	58.7	59.1	0.7	0.4	-0.7	-3.3
Windsor, Ontario									
Population	269.7	269.9	...	0.2	0.6	3.3	0.1	0.2	1.2
Labour force	180.3	177.9	1.5	-2.4	2.2	2.0	-1.3	1.3	1.1
Employment	163.3	162.4	1.6	-0.9	-1.3	0.7	-0.6	-0.8	0.4
Unemployment	17.0	15.5	0.8	-1.5	3.5	1.3	-8.8	29.2	9.2
Participation rate	66.9	65.9	0.6	-1.0	0.7	-0.1
Unemployment rate	9.4	8.7	0.5	-0.7	1.9	0.6
Employment rate	60.5	60.2	0.6	-0.3	-0.6	-0.5
Winnipeg, Manitoba									
Population	570.0	570.4	...	0.4	0.6	3.0	0.1	0.1	0.5
Labour force	397.4	399.0	1.4	1.6	6.8	2.7	0.4	1.7	0.7
Employment	379.5	379.5	1.5	0.0	4.2	3.0	0.0	1.1	0.8
Unemployment	17.8	19.5	0.8	1.7	2.6	-0.3	9.6	15.4	-1.5
Participation rate	69.7	70.0	0.3	0.3	1.2	0.2
Unemployment rate	4.5	4.9	0.2	0.4	0.6	-0.1
Employment rate	66.6	66.5	0.3	-0.1	0.6	0.1
Regina, Saskatchewan									
Population	160.8	160.8	...	0.0	0.1	0.9	0.0	0.1	0.6
Labour force	111.6	112.2	0.7	0.6	0.3	-3.3	0.5	0.3	-2.9
Employment	106.0	106.3	0.8	0.3	0.1	-4.0	0.3	0.1	-3.6
Unemployment	5.5	5.9	0.3	0.4	0.2	0.7	7.3	3.5	13.5
Participation rate	69.4	69.8	0.5	0.4	0.2	-2.4
Unemployment rate	4.9	5.3	0.3	0.4	0.2	0.8
Employment rate	65.9	66.1	0.5	0.2	0.0	-2.9
Saskatoon, Saskatchewan									
Population	187.9	187.9	...	0.0	0.1	1.2	0.0	0.1	0.6
Labour force	131.1	131.5	0.9	0.4	-0.2	-3.9	0.3	-0.2	-2.9
Employment	124.0	125.0	0.9	1.0	0.6	-3.7	0.8	0.5	-2.9
Unemployment	7.1	6.5	0.4	-0.6	-0.9	-0.2	-8.5	-12.2	-3.0
Participation rate	69.8	70.0	0.5	0.2	-0.1	-2.5
Unemployment rate	5.4	4.9	0.3	-0.5	-0.7	0.0
Employment rate	66.0	66.5	0.5	0.5	0.3	-2.4

See footnotes at the end of the table.

Table 5-1 – continued

Labour force characteristics by census metropolitan area (seasonally adjusted) — 3 month moving average

	March 2006	April 2006	S.E. ¹	Change from			Percent change from		
				last month	last December	twelve months ago	last month	last December	twelve months ago
in thousands (except rates)									
Calgary, Alberta									
Population	873.7	876.3	...	2.6	11.0	27.9	0.3	1.3	3.3
Labour force	659.9	663.4	3.5	3.5	21.6	39.4	0.5	3.4	6.3
Employment	637.2	642.9	3.6	5.7	29.8	42.1	0.9	4.9	7.0
Unemployment	22.7	20.5	1.4	-2.2	-8.2	-2.7	-9.7	-28.6	-11.6
Participation rate	75.5	75.7	0.4	0.2	1.5	2.1
Unemployment rate	3.4	3.1	0.2	-0.3	-1.4	-0.6
Employment rate	72.9	73.4	0.4	0.5	2.5	2.6
Edmonton, Alberta									
Population	826.6	828.7	...	2.1	8.7	21.0	0.3	1.1	2.6
Labour force	568.3	569.8	3.3	1.5	1.4	0.2	0.3	0.2	0.0
Employment	547.2	548.4	3.4	1.2	5.1	4.3	0.2	0.9	0.8
Unemployment	21.1	21.4	1.4	0.3	-3.7	-4.1	1.4	-14.7	-16.1
Participation rate	68.8	68.8	0.4	0.0	-0.5	-1.7
Unemployment rate	3.7	3.8	0.3	0.1	-0.6	-0.7
Employment rate	66.2	66.2	0.4	0.0	-0.1	-1.2
Abbotsford, British Columbia									
Population	126.7	127.0	...	0.3	1.2	2.8	0.2	1.0	2.3
Labour force	87.1	85.6	0.9	-1.5	0.2	2.9	-1.7	0.2	3.5
Employment	83.3	81.8	0.9	-1.5	1.2	4.0	-1.8	1.5	5.1
Unemployment	3.8	3.9	0.4	0.1	-0.9	-1.0	2.6	-18.8	-20.4
Participation rate	68.7	67.4	0.7	-1.3	-0.5	0.8
Unemployment rate	4.4	4.6	0.4	0.2	-1.0	-1.3
Employment rate	65.7	64.4	0.7	-1.3	0.3	1.8
Vancouver, British Columbia									
Population	1,849.1	1,851.7	...	2.6	11.4	39.1	0.1	0.6	2.2
Labour force	1,216.7	1,223.7	4.8	7.0	-4.1	-9.2	0.6	-0.3	-0.7
Employment	1,158.8	1,170.9	4.8	12.1	1.1	15.8	1.0	0.1	1.4
Unemployment	57.9	52.9	2.6	-5.0	-5.1	-24.9	-8.6	-8.8	-32.0
Participation rate	65.8	66.1	0.3	0.3	-0.6	-1.9
Unemployment rate	4.8	4.3	0.2	-0.5	-0.4	-2.0
Employment rate	62.7	63.2	0.3	0.5	-0.4	-0.5
Victoria, British Columbia									
Population	276.2	276.6	...	0.4	1.7	4.5	0.1	0.6	1.7
Labour force	179.1	181.0	1.5	1.9	4.0	5.5	1.1	2.3	3.1
Employment	172.3	173.9	1.6	1.6	4.6	7.8	0.9	2.7	4.7
Unemployment	6.8	7.1	0.6	0.3	-0.5	-2.3	4.4	-6.6	-24.5
Participation rate	64.8	65.4	0.6	0.6	1.0	0.9
Unemployment rate	3.8	3.9	0.3	0.1	-0.4	-1.5
Employment rate	62.4	62.9	0.6	0.5	1.3	1.9

1. Average standard error of change in two consecutive months (see "Sampling Errors" in Data Quality for further explanations).

Note: Related CANSIM table 282-0090

Table 5-2

Labour force characteristics by census metropolitan area (seasonally adjusted) — Monthly

	March 2006	April 2006	S.E. ¹	Change from			Percent change from		
				last month	last December	twelve months ago	last month	last December	twelve months ago
in thousands (except rates)									
Montréal, Quebec									
Population	2,991.6	2,994.9	...	3.3	10.7	37.4	0.1	0.4	1.3
Labour force	2,017.2	2,007.0	15.8	-10.2	-11.4	32.3	-0.5	-0.6	1.6
Employment	1,829.7	1,819.9	15.8	-9.8	-3.7	7.4	-0.5	-0.2	0.4
Unemployment	187.5	187.1	11.5	-0.4	-7.7	24.8	-0.2	-4.0	15.3
Participation rate	67.4	67.0	0.5	-0.4	-0.6	0.2
Unemployment rate	9.3	9.3	0.6	0.0	-0.4	1.1
Employment rate	61.2	60.8	0.6	-0.4	-0.3	-0.5
Toronto, Ontario									
Population	4,348.5	4,355.3	...	6.8	27.2	96.9	0.2	0.6	2.3
Labour force	2,982.1	2,986.2	20.0	4.1	14.9	44.0	0.1	0.5	1.5
Employment	2,787.4	2,791.3	20.2	3.9	7.5	64.6	0.1	0.3	2.4
Unemployment	194.6	194.9	13.5	0.3	7.3	-20.6	0.2	3.9	-9.6
Participation rate	68.6	68.6	0.5	0.0	-0.1	-0.5
Unemployment rate	6.5	6.5	0.5	0.0	0.2	-0.8
Employment rate	64.1	64.1	0.5	0.0	-0.2	0.1
Vancouver, British Columbia									
Population	1,851.7	1,854.4	...	2.7	11.0	38.8	0.1	0.6	2.1
Labour force	1,223.7	1,231.8	10.3	8.1	1.1	6.0	0.7	0.1	0.5
Employment	1,170.7	1,181.4	10.0	10.7	10.2	27.6	0.9	0.9	2.4
Unemployment	53.0	50.3	6.2	-2.7	-9.2	-21.7	-5.1	-15.5	-30.1
Participation rate	66.1	66.4	0.6	0.3	-0.4	-1.1
Unemployment rate	4.3	4.1	0.5	-0.2	-0.7	-1.8
Employment rate	63.2	63.7	0.6	0.5	0.2	0.2

1. Average standard error of change in two consecutive months (see "Sampling Errors" in Data Quality for further explanations).

Note: Related CANSIM table 282-0091

Table 6

Labour force characteristics by economic region¹ and for Yukon Territory and Northwest Territories, unadjusted, 3 month moving average ending in April 2005 and April 2006

	Population	Labour force			Participation rate	Unemployment rate	Employment rate
		Labour force	Employment	Unemployment			
in thousands							
Canada ²							
2005	25,684.4	17,055.7	15,811.8	1,243.9	66.4	7.3	61.6
2006	26,071.9	17,268.4	16,114.8	1,153.7	66.2	6.7	61.8
Newfoundland and Labrador							
2005	430.3	242.3	199.6	42.7	56.3	17.6	46.4
2006	428.7	243.3	200.3	43.0	56.8	17.7	46.7
<i>Avalon Peninsula [1010]</i>							
2005	209.1	127.2	111.1	16.0	60.8	12.6	53.1
2006	209.9	128.8	113.0	15.8	61.4	12.3	53.8
<i>South Coast-Burin Peninsula [1020]</i>							
2005	34.6	16.3	11.5	4.8	47.1	29.4	33.2
2006	34.0	17.5	13.1	4.4	51.5	25.1	38.5
<i>West Coast-Northern Peninsula-Labrador [1030]</i>							
2005	89.7	49.5	38.9	10.6	55.2	21.4	43.4
2006	88.8	48.9	38.1	10.8	55.1	22.1	42.9
<i>Notre Dame-Central Bonavista Bay [1040]</i>							
2005	97.0	49.4	38.1	11.2	50.9	22.7	39.3
2006	96.1	48.0	36.0	12.0	49.9	25.0	37.5
Prince Edward Island							
2005	111.4	73.5	63.5	10.0	66.0	13.6	57.0
2006	112.0	74.8	63.9	10.9	66.8	14.6	57.1
Nova Scotia							
2005	759.8	476.2	429.1	47.1	62.7	9.9	56.5
2006	762.5	472.5	429.6	42.9	62.0	9.1	56.3
<i>Cape Breton [1210]</i>							
2005	117.7	60.1	49.9	10.2	51.1	17.0	42.4
2006	117.1	60.8	51.7	9.1	51.9	15.0	44.2
<i>North Shore [1220]</i>							
2005	131.2	79.6	70.0	9.6	60.7	12.1	53.4
2006	131.2	79.8	71.3	8.6	60.8	10.8	54.3
<i>Annapolis Valley [1230]</i>							
2005	99.2	61.4	55.9	5.5	61.9	9.0	56.4
2006	99.6	60.1	54.4	5.7	60.3	9.5	54.6
<i>Southern [1240]</i>							
2005	103.8	60.4	52.5	7.9	58.2	13.1	50.6
2006	103.8	59.2	51.5	7.8	57.0	13.2	49.6
<i>Halifax [1250]</i>							
2005	308.0	214.7	200.7	14.0	69.7	6.5	65.2
2006	310.8	212.6	200.7	11.8	68.4	5.6	64.6
New Brunswick							
2005	609.6	375.1	334.6	40.5	61.5	10.8	54.9
2006	611.4	384.2	343.8	40.5	62.8	10.5	56.2
<i>Campbellton-Miramichi [1310]</i>							
2005	138.1	73.0	60.6	12.4	52.9	17.0	43.9
2006	137.1	77.0	65.0	12.0	56.2	15.6	47.4

See footnotes at the end of the table.

Table 6 – continued

Labour force characteristics by economic region¹ and for Yukon Territory and Northwest Territories, unadjusted, 3 month moving average ending in April 2005 and April 2006

	Population	Labour force			Participation rate	Unemployment rate	Employment rate
		Labour force	Employment	Unemployment			
in thousands							
Moncton-Richibucto [1320]							
2005	159.5	104.5	93.9	10.5	65.5	10.0	58.9
2006	161.1	104.7	94.0	10.7	65.0	10.2	58.3
Saint John-St. Stephen [1330]							
2005	140.8	89.4	81.6	7.7	63.5	8.6	58.0
2006	141.3	91.2	83.4	7.9	64.5	8.7	59.0
Fredericton-Oromocto [1340]							
2005	102.8	66.8	60.8	5.9	65.0	8.8	59.1
2006	103.5	67.1	61.2	5.9	64.8	8.8	59.1
Edmundston-Woodstock [1350]							
2005	68.5	41.4	37.6	3.9	60.4	9.4	54.9
2006	68.4	44.2	40.2	4.0	64.6	9.0	58.8
Quebec							
2005	6,160.0	3,980.2	3,629.6	350.6	64.6	8.8	58.9
2006	6,230.3	4,030.9	3,672.4	358.5	64.7	8.9	58.9
Gaspésie-Îles-de-la-Madeleine [2410]							
2005	80.1	38.7	29.2	9.5	48.3	24.5	36.5
2006	80.6	38.0	29.0	9.0	47.1	23.7	36.0
Bas-Saint-Laurent [2415]							
2005	166.6	92.3	82.7	9.6	55.4	10.4	49.6
2006	167.0	97.1	85.3	11.8	58.1	12.2	51.1
Capitale-Nationale [2420]							
2005	552.4	368.3	345.5	22.9	66.7	6.2	62.5
2006	558.2	368.6	347.3	21.3	66.0	5.8	62.2
Chaudière-Appalaches [2425]							
2005	321.5	219.2	200.0	19.2	68.2	8.8	62.2
2006	324.0	214.4	201.0	13.4	66.2	6.3	62.0
Estrie [2430]							
2005	243.2	153.3	142.1	11.1	63.0	7.2	58.4
2006	245.7	157.7	144.4	13.4	64.2	8.5	58.8
Centre-du-Québec [2433]							
2005	181.5	119.2	108.4	10.7	65.7	9.0	59.7
2006	183.2	122.4	111.8	10.6	66.8	8.7	61.0
Montérégie [2435]							
2005	1,091.1	710.2	655.1	55.2	65.1	7.8	60.0
2006	1,106.2	737.6	683.6	53.9	66.7	7.3	61.8
Montréal [2440]							
2005	1,564.6	1,021.1	919.7	101.4	65.3	9.9	58.8
2006	1,578.6	1,032.1	914.8	117.3	65.4	11.4	58.0
Laval [2445]							
2005	298.5	184.6	168.6	16.0	61.8	8.7	56.5
2006	303.0	197.1	182.5	14.6	65.0	7.4	60.2
Lanaudière [2450]							
2005	334.1	228.4	214.1	14.3	68.4	6.3	64.1
2006	341.5	218.5	203.5	15.0	64.0	6.9	59.6

See footnotes at the end of the table.

Table 6 – continued

Labour force characteristics by economic region¹ and for Yukon Territory and Northwest Territories, unadjusted, 3 month moving average ending in April 2005 and April 2006

	Population	Labour force			Participation rate	Unemployment rate	Employment rate
		Labour force	Employment	Unemployment			
in thousands							
Laurentides [2455]							
2005	403.8	273.2	253.3	19.9	67.7	7.3	62.7
2006	413.2	268.6	241.5	27.1	65.0	10.1	58.4
Outaouais [2460]							
2005	277.6	186.0	170.7	15.4	67.0	8.3	61.5
2006	283.7	196.6	182.7	13.9	69.3	7.1	64.4
Abitibi-Témiscamingue [2465]							
2005	115.0	71.5	62.7	8.8	62.2	12.3	54.5
2006	115.3	72.0	65.4	6.6	62.4	9.2	56.7
Mauricie [2470]							
2005	214.8	126.1	110.2	15.9	58.7	12.6	51.3
2006	216.1	119.5	108.6	10.9	55.3	9.1	50.3
Saguenay-Lac-Saint-Jean [2475]							
2005	224.8	126.8	111.2	15.7	56.4	12.4	49.5
2006	224.4	136.0	121.5	14.5	60.6	10.7	54.1
Côte-Nord and Nord-du-Québec [2480, 2490]							
2005	90.3	61.3	56.3	5.0	67.9	8.2	62.3
2006	89.6	54.6	49.3	5.3	60.9	9.7	55.0
Ontario							
2005	10,012.8	6,740.7	6,273.1	467.6	67.3	6.9	62.7
2006	10,186.3	6,803.4	6,373.3	430.1	66.8	6.3	62.6
Ottawa [3510]							
2005	965.4	662.9	619.3	43.6	68.7	6.6	64.1
2006	976.3	679.4	645.0	34.4	69.6	5.1	66.1
Kingston-Pembroke [3515]							
2005	353.8	217.5	202.3	15.3	61.5	7.0	57.2
2006	357.1	210.8	197.9	12.9	59.0	6.1	55.4
Muskoka-Kawartha [3520]							
2005	300.2	179.1	164.5	14.6	59.7	8.2	54.8
2006	305.1	185.0	171.5	13.5	60.6	7.3	56.2
Toronto [3530]							
2005	4,477.4	3,067.4	2,840.2	227.3	68.5	7.4	63.4
2006	4,582.3	3,098.4	2,900.7	197.8	67.6	6.4	63.3
Kitchener-Waterloo-Barrie [3540]							
2005	923.1	660.6	624.3	36.3	71.6	5.5	67.6
2006	943.8	675.3	640.0	35.3	71.6	5.2	67.8
Hamilton-Niagara Peninsula [3550]							
2005	1,104.4	717.3	670.6	46.6	64.9	6.5	60.7
2006	1,118.9	724.8	678.2	46.6	64.8	6.4	60.6
London [3560]							
2005	498.5	347.8	325.7	22.1	69.8	6.4	65.3
2006	504.4	346.1	323.1	23.1	68.6	6.7	64.1
Windsor-Sarnia [3570]							
2005	517.1	339.2	312.3	26.9	65.6	7.9	60.4
2006	521.9	343.6	316.6	27.0	65.8	7.9	60.7

See footnotes at the end of the table.

Table 6 – continued

Labour force characteristics by economic region¹ and for Yukon Territory and Northwest Territories, unadjusted, 3 month moving average ending in April 2005 and April 2006

	Population	Labour force			Participation rate	Unemployment rate	Employment rate
		Labour force	Employment	Unemployment			
in thousands							
Stratford-Bruce Peninsula [3580]							
2005	243.6	153.7	146.6	7.1	63.1	4.6	60.2
2006	246.1	159.9	151.1	8.8	65.0	5.5	61.4
Northeast [3590]							
2005	452.0	276.1	256.3	19.8	61.1	7.2	56.7
2006	453.0	268.5	248.8	19.7	59.3	7.3	54.9
Northwest [3595]							
2005	177.3	119.0	111.0	8.0	67.1	6.7	62.6
2006	177.4	111.5	100.5	10.9	62.9	9.8	56.7
Manitoba							
2005	887.0	603.6	571.2	32.4	68.0	5.4	64.4
2006	890.6	606.5	578.0	28.5	68.1	4.7	64.9
Southeast [4610]							
2005	72.9	51.3	48.5	2.8	70.4	5.5	66.5
2006	74.2	53.8	51.4	2.4	72.5	4.5	69.3
South Central [4620]							
2005	41.9	30.3	29.1	1.2	72.3	4.0	69.5
2006	42.3	26.6	25.9	0.7	62.9	2.6	61.2
Southwest [4630]							
2005	81.8	50.3	47.4	2.9	61.5	5.8	57.9
2006	81.7	54.4	51.8	2.6	66.6	4.8	63.4
North Central [4640]							
2005	35.2	22.9	21.5	1.4	65.1	6.1	61.1
2006	35.4	22.9	22.4	0.6	64.7	2.6	63.3
Winnipeg [4650]							
2005	525.6	361.7	343.0	18.7	68.8	5.2	65.3
2006	528.1	361.8	342.8	19.1	68.5	5.3	64.9
Interlake [4660]							
2005	67.8	44.3	41.2	3.1	65.3	7.0	60.8
2006	68.4	46.5	44.9	1.6	68.0	3.4	65.6
Parklands and North [4670, 4680]							
2005	61.8	42.7	40.5	2.2	69.1	5.2	65.5
2006	60.5	40.4	38.7	1.7	66.8	4.2	64.0
Saskatchewan							
2005	748.2	505.1	477.4	27.8	67.5	5.5	63.8
2006	747.0	503.2	475.4	27.8	67.4	5.5	63.6
Regina-Moose Mountain [4710]							
2005	218.8	153.7	146.9	6.8	70.2	4.4	67.1
2006	219.1	148.7	141.8	7.0	67.9	4.7	64.7
Swift Current-Moose Jaw [4720]							
2005	83.1	55.6	52.5	3.1	66.9	5.6	63.2
2006	82.7	56.7	53.6	3.2	68.6	5.6	64.8
Saskatoon-Biggar [4730]							
2005	230.2	160.6	151.8	8.8	69.8	5.5	65.9
2006	230.7	158.1	150.0	8.1	68.5	5.1	65.0

See footnotes at the end of the table.

Table 6 – continued

Labour force characteristics by economic region¹ and for Yukon Territory and Northwest Territories, unadjusted, 3 month moving average ending in April 2005 and April 2006

	Population	Labour force			Participation rate	Unemployment rate	Employment rate
		Labour force	Employment	Unemployment			
	in thousands						
Yorkton-Melville [4740]							
2005	66.1	39.9	37.4	2.5	60.4	6.3	56.6
2006	65.0	42.6	40.4	2.2	65.5	5.2	62.2
Prince Albert and Northern [4750, 4760]							
2005	150.0	95.3	88.8	6.5	63.5	6.8	59.2
2006	149.5	97.0	89.6	7.4	64.9	7.6	59.9
Alberta							
2005	2,536.9	1,825.0	1,752.8	72.2	71.9	4.0	69.1
2006	2,610.6	1,882.6	1,819.6	63.0	72.1	3.3	69.7
Lethbridge-Medicine Hat [4810]							
2005	193.8	138.9	133.2	5.7	71.7	4.1	68.7
2006	198.3	137.7	134.1	3.6	69.4	2.6	67.6
Camrose-Drumheller [4820]							
2005	146.6	101.9	98.3	3.5	69.5	3.4	67.1
2006	149.5	106.1	102.8	3.3	71.0	3.1	68.8
Calgary [4830]							
2005	911.0	664.7	639.4	25.3	73.0	3.8	70.2
2006	942.0	708.5	687.3	21.1	75.2	3.0	73.0
Banff-Jasper-Rocky Mountain House [4840]							
2005	64.4	51.5	50.0	x	80.0	x	77.6
2006	65.4	49.5	48.7	x	75.7	x	74.5
Red Deer [4850]							
2005	129.6	95.9	92.9	3.0	74.0	3.1	71.7
2006	134.2	99.8	95.5	4.4	74.4	4.4	71.2
Edmonton [4860]							
2005	838.2	585.2	557.9	27.3	69.8	4.7	66.6
2006	860.1	584.1	561.4	22.7	67.9	3.9	65.3
Athabasca-Grande Prairie-Peace River [4870]							
2005	171.1	126.2	122.0	4.1	73.8	3.2	71.3
2006	175.3	131.2	127.4	3.8	74.8	2.9	72.7
Wood Buffalo-Cold Lake [4880]							
2005	82.3	60.9	59.0	1.9	74.0	3.1	71.7
2006	85.8	65.6	62.3	3.3	76.5	5.0	72.6
British Columbia							
2005	3,428.5	2,233.9	2,080.9	153.0	65.2	6.8	60.7
2006	3,492.5	2,267.0	2,158.6	108.5	64.9	4.8	61.8
Vancouver Island and Coast [5910]							
2005	597.8	363.2	334.6	28.6	60.8	7.9	56.0
2006	608.6	386.1	366.9	19.1	63.4	4.9	60.3
Lower Mainland-Southwest [5920]							
2005	2,061.7	1,379.9	1,292.3	87.6	66.9	6.3	62.7
2006	2,106.6	1,377.8	1,318.2	59.6	65.4	4.3	62.6
Thompson-Okanagan [5930]							
2005	401.8	245.1	229.8	15.4	61.0	6.3	57.2
2006	410.7	264.5	248.6	15.9	64.4	6.0	60.5

See footnotes at the end of the table.

Table 6 – continued

Labour force characteristics by economic region¹ and for Yukon Territory and Northwest Territories, unadjusted, 3 month moving average ending in April 2005 and April 2006

	Population	Labour force			Participation rate	Unemployment rate	Employment rate
		Labour force	Employment	Unemployment			
	in thousands						
Kootenay [5940]							
2005	122.0	74.9	68.8	6.1	61.4	8.1	56.4
2006	122.2	70.7	66.7	4.0	57.9	5.7	54.6
Cariboo [5950]							
2005	126.8	84.9	76.1	8.9	67.0	10.5	60.0
2006	126.1	88.1	82.9	5.2	69.9	5.9	65.7
North Coast and Nechako [5960, 5970]							
2005	68.9	48.9	43.9	5.0	71.0	10.2	63.7
2006	67.9	45.6	42.1	3.5	67.2	7.7	62.0
Northeast [5980]							
2005	49.4	37.0	35.5	1.5	74.9	4.1	71.9
2006	50.3	34.3	33.2	x	68.2	x	66.0
Yukon Territory ³							
2005	21.5	16.2	15.3	0.9	75.3	5.6	71.2
2006	21.6	16.1	15.2	0.8	74.5	5.0	70.4
Northwest Territories ⁴							
2005	31.3	23.3	22.4	0.9	74.4	3.9	71.6
2006	31.3	23.8	22.7	1.1	76.0	4.6	72.5

1. For geographic descriptions of economic regions, refer to the Guide to the Labour Force Survey (catalogue number 71-543-GIE).

2. Estimates for Canada are a sum of the provincial totals and exclude estimates from Yukon Territory, Northwest Territories and Nunavut.

3. Since 1992, the Labour Force Survey has been administered in the Yukon Territory, using an alternative methodology that accommodates some of the operational difficulties inherent to remote locales. These estimates are not included in national totals.

4. Since 2001, the Labour Force Survey has been administered in the Northwest Territories, using an alternative methodology that accommodates some of the operational difficulties inherent to remote locales. These estimates are not included in national totals.

Note: Related CANSIM table 282-0054

Table 7

Average usual hours and wages of employees by selected characteristics, Canada, unadjusted

	Employees				Full-time			Part-time		
	Number	Average weekly hours	Average weekly wages	Average hourly wages	Number	Average weekly hours	Average weekly wages	Number	Average weekly hours	Average weekly wages
	'000		\$		'000		\$	'000		\$
April 2006										
15 years and over	13,680.2	35.4	724.06	19.69	11,144.7	39.5	833.34	2,535.5	17.3	243.75
15 to 24 years	2,270.2	27.4	331.97	11.20	1,162.8	39.3	513.26	1,107.4	15.0	141.61
25 years and over	11,409.9	37.0	802.08	21.38	9,981.9	39.6	870.62	1,428.0	19.0	322.97
Men	6,908.8	38.0	838.96	21.47	6,127.5	40.8	919.28	781.3	16.4	209.04
Women	6,771.4	32.7	606.83	17.88	5,017.2	38.0	728.37	1,754.2	17.7	259.21
Union coverage										
Union coverage	4,423.2	35.9	823.32	22.63	3,786.8	38.8	899.99	636.3	19.0	367.04
No union coverage	9,257.0	35.2	676.64	18.29	7,357.9	39.9	799.03	1,899.1	16.7	202.44
Job permanency										
Permanent	12,082.3	36.3	756.83	20.24	10,253.8	39.5	845.04	1,828.6	18.3	262.18
Temporary	1,597.8	28.6	476.27	15.59	890.9	39.6	698.59	706.9	14.8	196.08
Occupation										
Management	1,007.9	40.2	1,227.34	30.65	981.7	40.7	1,248.44	26.2	20.8	437.58
Business, finance and administrative	2,675.4	35.2	672.63	18.69	2,272.7	38.3	745.28	402.7	17.7	262.60
Natural and applied sciences	979.6	38.7	1,078.08	27.82	948.1	39.4	1,102.79	31.5	17.2	333.57
Health	863.8	33.4	778.04	23.14	652.6	37.8	885.25	211.2	20.0	446.82
Social science, education, government service and religion	1,240.5	34.0	883.82	25.61	989.8	38.3	1,004.20	250.7	17.2	408.66
Art, culture, recreation and sport	307.2	30.8	648.08	19.54	207.5	38.6	851.98	99.7	14.6	223.73
Sales and service	3,408.5	30.5	425.69	12.97	2,111.4	38.7	581.02	1,297.1	17.0	172.84
Trades, transport and equipment operators	1,973.2	40.0	784.57	19.40	1,832.2	41.8	826.91	140.9	17.5	234.17
Occupations unique to primary industry	256.6	41.4	715.77	16.72	221.4	45.7	803.43	35.2	14.3	163.73
Occupations unique to processing, manufacturing and utilities	967.6	39.2	684.62	17.30	927.3	40.2	705.48	40.3	16.4	204.04
April 2005										
15 years and over	13,392.4	35.3	699.73	19.10	10,890.0	39.5	805.82	2,502.3	17.2	238.02
15 to 24 years	2,191.9	27.1	314.77	10.81	1,103.0	39.0	486.86	1,088.9	15.0	140.46
25 years and over	11,200.5	36.9	775.07	20.72	9,787.1	39.5	841.77	1,413.4	18.9	313.18
Men	6,754.7	37.9	812.24	20.88	6,003.3	40.7	887.43	751.4	16.3	211.45
Women	6,637.7	32.6	585.24	17.29	4,886.7	38.0	705.56	1,750.9	17.6	249.42
Union coverage										
Union coverage	4,347.8	35.8	802.48	22.11	3,702.3	38.7	879.38	645.5	18.9	361.40
No union coverage	9,044.6	35.1	650.34	17.65	7,187.8	39.9	767.93	1,856.8	16.6	195.12
Job permanency										
Permanent	11,762.2	36.2	732.14	19.63	9,977.4	39.5	817.39	1,784.8	18.1	255.56
Temporary	1,630.2	28.5	465.92	15.29	912.7	39.2	679.41	717.5	14.9	194.38
Occupation										
Management	918.2	40.2	1,205.17	30.06	894.9	40.7	1,226.89	23.3	18.5	369.79
Business, finance and administrative	2,645.2	35.1	649.50	18.14	2,242.4	38.2	719.36	402.8	17.8	260.55
Natural and applied sciences	953.6	38.6	1,036.66	26.92	918.7	39.4	1,061.83	35.0	17.6	375.88
Health	806.5	33.0	739.02	22.32	599.3	37.5	842.74	207.2	20.1	439.07
Social science, education, government service and religion	1,205.4	34.1	845.84	24.61	952.2	38.6	963.16	253.2	17.3	404.53
Art, culture, recreation and sport	313.0	31.1	673.84	20.14	220.4	38.2	862.99	92.6	14.2	223.63
Sales and service	3,424.5	30.5	422.56	12.82	2,140.9	38.8	577.35	1,283.6	16.7	164.39
Trades, transport and equipment operators	1,864.5	40.0	772.72	19.11	1,735.5	41.6	812.87	129.0	17.8	232.63
Occupations unique to primary industry	242.5	40.5	655.55	15.52	206.9	44.9	743.50	35.6	14.9	144.45
Occupations unique to processing, manufacturing and utilities	1,018.8	39.5	671.82	16.92	978.7	40.4	690.52	40.1	17.3	215.28

Note: Related CANSIM tables 282-0023, 282-0069, 282-0073

Table 8

Regional unemployment rates used by the Employment Insurance Program,¹ seasonally adjusted, 3 month moving average

Region	Effective from May 7, 2006 to June 10, 2006 Unemployment rate
	Percent
Newfoundland and Labrador	
01. St. John's	9.0
02. Newfoundland and Labrador	19.6
Prince Edward Island	
03. Prince Edward Island	11.3
Nova Scotia	
04. Eastern Nova Scotia	14.4
05. Western Nova Scotia	9.1
06. Halifax	5.1
New Brunswick	
07. Fredericton-Moncton-Saint John	7.5
08. Madawaska-Charlotte ²	9.9
09. Restigouche-Albert	13.9
Quebec	
10. Gaspésie-Îles-de-la-Madeleine	20.7
11. Québec	4.9
12. Trois-Rivières	8.7
13. South Central Quebec	4.8
14. Sherbrooke	7.8
15. Montérégie	7.1
16. Montréal	9.4
17. Central Quebec	8.2
18. Northwestern Quebec	9.8
19. Bas-Saint-Laurent-Côte-Nord ³	12.1
20. Gatineau	6.0
21. Saguenay	8.3
Ontario	
22. Ottawa	4.8
23. Eastern Ontario	6.6
24. Kingston	5.9
25. Central Ontario	6.3
26. Oshawa	6.1
27. Toronto	6.6
28. Hamilton	5.5
29. St. Catharines	6.2
30. London	6.2
31. Niagara	8.4
32. Windsor	9.1
33. Kitchener	4.9
34. Huron	6.0
35. South Central Ontario	5.1
36. Sudbury	8.1
37. Thunder Bay	8.0
38. Northern Ontario	10.3
Manitoba	
39. Winnipeg	5.0
40. Southern Manitoba	4.8
41. Northern Manitoba	24.0

See footnotes at the end of the table.

Table 8 – continued

Regional unemployment rates used by the Employment Insurance Program,¹ seasonally adjusted, 3 month moving average

Region	Effective from May 7, 2006 to June 10, 2006 Unemployment rate
	Percent
Saskatchewan	
42. Regina	5.3
43. Saskatoon	5.0
44. Southern Saskatchewan	6.2
45. Northern Saskatchewan	15.5
Alberta	
46. Calgary	3.1
47. Edmonton	3.9
48. Northern Alberta	7.9
49. Southern Alberta	4.1
British Columbia	
50. Southern Interior British Columbia	6.5
51. Abbotsford	4.7
52. Vancouver	4.4
53. Victoria	4.6
54. Southern Coastal British Columbia	5.8
55. Northern British Columbia	8.1
Territories	
56. Yukon Territory ⁴	25.0
57. Northwest Territories ⁴	25.0
58. Nunavut ⁴	25.0

1. The boundaries of these regions are determined by Human Resources and Skills Development Canada (HRSDC). For geographic descriptions and maps of employment insurance regions, see the HRSDC website: <http://www14.hrdc-drhc.gc.ca/ei-ae/canadaei.htm>.
2. This unemployment rate has been determined using a transition formula prescribed in the EI Regulations. For further information, see: http://www.hrsdc.gc.ca/en/cs/comm/news/2000/000913a_e.shtml.
3. This unemployment rate has been determined using a transition formula prescribed in the EI Regulations. For further information, see: http://www.hrsdc.gc.ca/en/cs/comm/news/2000/000913b_e.shtml.
4. This rate is provided by Human Resources and Skills Development Canada.

Data quality

About the Labour Force Survey

The statistics contained in this report are based on information obtained through a sample survey of 53,000 representative households across the country. The Labour Force Survey, started in November 1945, was taken at quarterly intervals until November 1952. It has been carried out monthly since then. The information generated by the survey has expanded considerably over the years with a major redesign of the survey content in 1976 and again in 1997, and provides a rich and detailed picture of the Canadian labour market.

The sample used in the Labour Force Survey has been designed to represent all persons in the population 15 years of age and over residing in the provinces of Canada, with the exception of the following: persons living on Indian reserves, full-time members of the armed forces and people living in institutions (for example, inmates of penal institutions and patients in hospitals or nursing homes who have resided in the institution for more than six months). Monthly estimates of employment, unemployment and persons not in the labour force refer to the specific week covered by the survey each month, normally the week containing the 15th day.

Definitions and explanations

The **labour force** is composed of those members of the civilian non-institutional population 15 years of age and over who, during the reference week, were employed or unemployed.

Employed persons are those who, during the reference week:

- (a) did any work at all
- (b) had a job but were not at work

A person is considered to be **full-time** if his/her usual hours at the main job are greater than 29 hours per week. When the number of hours worked at the main job is usually less than 30 hours per week then he/she is considered to be **part-time**.

Unemployed persons are those who, during the reference week:

- (a) were without work, had actively looked for work in the past four weeks (ending with reference week), and were available for work;
- (b) had not actively looked for work in the past four weeks but were on temporary layoff and were available for work;
- (c) had not actively looked for work in the past four weeks but had a new job to start in four weeks or less from the reference week, and were available for work.

Persons in the civilian non-institutional population 15 years of age and over who, during the reference week, were neither employed nor unemployed are classified as **not in the labour force**.

The **unemployment rate** represents the number of unemployed persons expressed as a percentage of the labour force. The unemployment rate for a particular group (age, sex, etc.) is the number unemployed in that group expressed as a percentage of the labour force for that group.

The **participation rate** represents the labour force expressed as a percentage of the population 15 years of age and over. The participation rate for a particular group (age, sex, etc.) is the labour force in that group expressed as a percentage of the population for that group.

The **employment rate (formerly the employment/population ratio)** represents the number of persons employed expressed as a percentage of the population 15 years of age and over. The employment rate for a particular group (age, sex, etc.) is the number employed in that group expressed as a percentage of the population for that group.

The **part-time rate** represents the number of persons employed part-time expressed as a percentage of the employed. The part-time rate for a particular group (age, sex, etc.) is the number employed part-time in that group expressed as a percentage of the employed for that group.

All geographic regions are based on the 2001 Census boundaries.

Seasonal adjustment

Fluctuations in economic time series are caused by seasonal, cyclical and irregular movements. A seasonally adjusted series is one from which seasonal movements have been eliminated. Seasonal movements are defined as those which are caused by regular annual events such as climate, holidays, vacation periods and cycles related to crops, production and retail sales associated with Christmas and Easter. The seasonally adjusted series contains irregular as well as longer-term cyclical fluctuations.

The seasonally adjusted series are revised each year to take into account current data and to generate new forecast factors for the next twelve months. The data are therefore subject to slight revisions in future issues of this publication.

Sampling error

Estimates in this publication are based on the Labour Force Survey, a monthly survey of approximately 53,000 households across Canada. Because they are based on a sample survey, the estimates are subject to sampling error. Changes in the level of any estimates between two months can be the result of a true change or sampling variability. In most tables in this publication an indicator of the sampling error is provided. Two thirds of the time, a change greater than the sampling error indicates a real change. Movements in estimates that are smaller than the sampling error are less likely to reflect a real change and more likely to be due to sampling variability. While the above is true for monthly movements, one can have more confidence in a series of consecutive movements in the same direction, even though some of the monthly movements may be smaller than the sampling error.

For more detailed information about the Labour Force Survey, see the following documents:

- Overview of the Labour Force Survey
- Guide to the Labour Force Survey (71-543-GIE)
- Data quality statement
- Methodology of the Canadian Labour Force Survey (71-526-XPB)