



Catalogue no. 71-001-XIE

Labour force information

Not for release before 7 A.M. E.D.T.

Friday, April 7, 2006



Week ending March 18, 2006



Statistics
Canada

Statistique
Canada

Canada

How to obtain more information

Specific inquiries about this product and related statistics or services should be directed to: Labour Force Survey Program, Labour Statistics Division, Statistics Canada, Ottawa, Ontario, K1A 0T6 (telephone: (613) 951-4090, toll free number: 1 866 873-8788, fax: (613) 951-2869 or by e-mail address: labour@statcan.ca).

For information on the wide range of data available from Statistics Canada, you can contact us by calling one of our toll free numbers. You can also contact us by e-mail or by visiting our website.

National inquiries line **1 800 263-1136**

National telecommunications device for the hearing impaired **1 800 363-7629**

Depository Services Program inquiries **1 800 700-1033**

Fax line for Depository Services Program **1 800 889-9734**

E-mail inquiries infostats@statcan.ca

Website www.statcan.ca

Ordering and subscription information

This product, Catalogue no. 71-001-XIE, is published monthly in electronic format on the Statistics Canada Internet site at a single price of CAN\$9.00 per issue (PDF) and CAN\$84.00 for a one-year subscription (HTML). To obtain single issues or to subscribe, visit our website at www.statcan.ca, and select Products and Services.

Standards of service to the public

Statistics Canada is committed to serving its clients in a prompt, reliable and courteous manner and in the official language of their choice. To this end, the Agency has developed *standards of service* which its employees observe in serving its clients. To obtain a copy of these service standards, please contact Statistics Canada toll free at 1 800 263-1136. The service standards are also published on www.statcan.ca under About Statistics Canada > Providing services to Canadians.



Statistics Canada
Labour Statistics Division
Labour Force Survey Program

Labour force information

Not for release before 7 A.M. E.D.T.

Friday, April 7, 2006

Week ending March 18, 2006

Published by authority of the Minister responsible for Statistics Canada

© Minister of Industry, 2006

All rights reserved. Use of this product is limited to the licensee and its employees. The product cannot be reproduced and transmitted to any person or organization outside of the licensee's organization.

Reasonable rights of use of the content of this product are granted solely for personal, corporate or public policy research, or educational purposes. This permission includes the use of the content in analyses and the reporting of results and conclusions, including the citation of limited amounts of supporting data extracted from the data product in these documents. These materials are solely for non-commercial purposes. In such cases, the source of the data must be acknowledged as follows: Source (or "Adapted from", if appropriate): Statistics Canada, name of product, catalogue, volume and issue numbers, reference period and page(s). Otherwise, users shall seek prior written permission of Licensing Services, Client Services Division, Statistics Canada, Ottawa, Ontario, Canada, K1A 0T6.

April 2006

Catalogue no. 71-001-XIE

ISSN 1492-5478

Frequency: Monthly

Ottawa

La version française de cette publication est disponible sur demande (n° 71-001-XIF au catalogue).

Note of appreciation

Canada owes the success of its statistical system to a long standing partnership between Statistics Canada, the citizens of Canada, its businesses, governments and other institutions. Accurate and timely statistical information could not be produced without their continued cooperation and goodwill.

User information

Symbols

The following standard symbols are used in Statistics Canada publications:

- . not available for any reference period
- .. not available for a specific reference period
- ... not applicable
- 0 true zero or a value rounded to zero
- 0^s value rounded to 0 (zero) where there is a meaningful distinction between true zero and the value that was rounded
- P preliminary
- r revised
- x suppressed to meet the confidentiality requirements of the *Statistics Act*
- E use with caution
- F too unreliable to be published

Special requests (\$)

Custom tabulations can be arranged on an ad hoc or regular basis. This service enables you to specify tables and time series to meet your own requirements. The cost varies according to the request. For more information, contact us toll-free at 1-866-873-8788 or e-mail us at labour@statcan.ca.

Schedule of LFS releases

Reference period - Week ending	Release date
January 21, 2006	February 10, 2006
February 18, 2006	March 10, 2006
March 18, 2006	April 7, 2006
April 15, 2006	May 5, 2006
May 20, 2006	June 9, 2006
June 17, 2006	July 7, 2006
July 15, 2006	August 4, 2006
August 19, 2006	September 8, 2006
September 16, 2006	October 6, 2006
October 14, 2006	November 3, 2006
November 11, 2006	December 1, 2006
December 9, 2006	January 5, 2007

Latest LFS release in *The Daily* (free)

Table of contents

Highlights	5
Analysis — March 2006	6
Charts	
1. Employment and unemployment rates, Canada, seasonally adjusted	5
2. Employment and unemployment indicators, Canada, seasonally adjusted	9
3. Employment and unemployment indicators, Canada, seasonally adjusted	10
4. Index of employment by industry, Canada, seasonally adjusted, January, 2003=100	11
5. Index of employment by industry, Canada, seasonally adjusted, January 2003 = 100	12
6. Index of employment by industry, Canada, seasonally adjusted, January 2003 = 100	13
7. Index of employment by province, seasonally adjusted, January 2003 = 100	14
8. Index of employment by province, seasonally adjusted, January 2003 = 100	15
Related products	16
Statistical tables	
1 Labour force characteristics by age and sex, Canada, seasonally adjusted	24
2 Employment by class of worker and industry, Canada, seasonally adjusted	25
3 Labour force characteristics by province, seasonally adjusted	26
4 Selected labour force characteristics (seasonally adjusted)	28
4-1 Newfoundland and Labrador	28
4-2 Prince Edward Island	29
4-3 Nova Scotia	30
4-4 New Brunswick	31
4-5 Quebec	32
4-6 Ontario	33
4-7 Manitoba	34
4-8 Saskatchewan	35
4-9 Alberta	36
4-10 British Columbia	37

Table of contents – continued

5	Labour force characteristics by census metropolitan area (seasonally adjusted)	38
5-1	3 month moving average	38
5-2	Monthly	43
6	Labour force characteristics by economic region and for Yukon Territory and Northwest Territories, unadjusted, 3 month moving average ending in March 2005 and March 2006	44
7	Average usual hours and wages of employees by selected characteristics, Canada, unadjusted	50
8	Regional unemployment rates used by the Employment Insurance Program, seasonally adjusted, 3 month moving average	51
	Data quality	53

Highlights

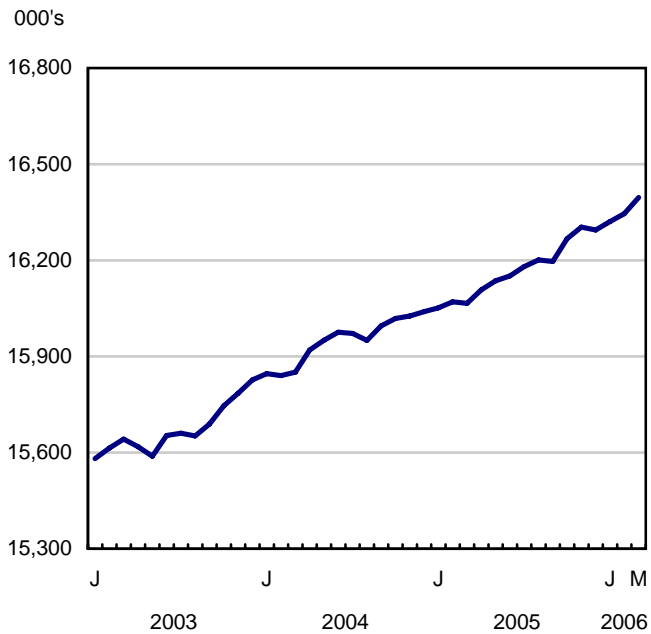
March 2006

Employment increased by 51,000 in March, bringing total gains from 12 months ago to 330,000 or 2.1%. The unemployment rate declined 0.1 percentage points to 6.3%, a 32-year low.

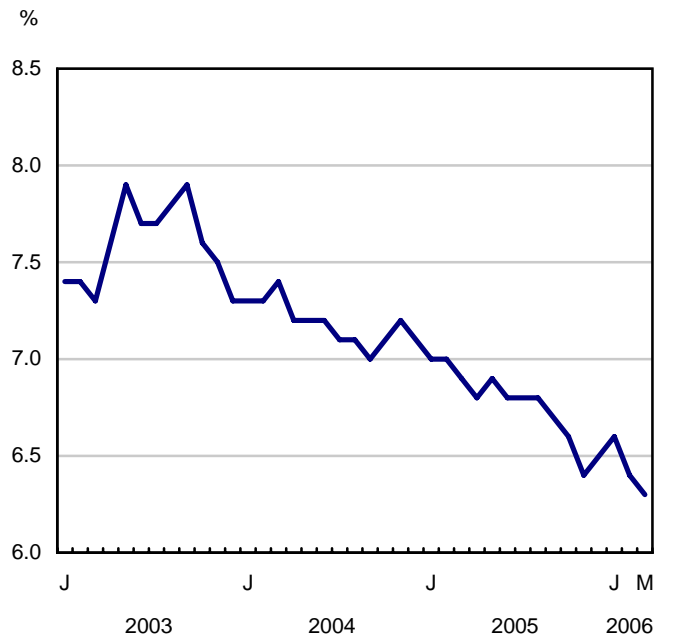
Chart 1

Employment and unemployment rates, Canada, seasonally adjusted

Employment



Unemployment rate



Analysis — March 2006

Employment increased by 51,000 in March, bringing total gains from 12 months ago to 330,000 or 2.1%. The unemployment rate declined 0.1 percentage points to 6.3%, a 32-year low.

The employment increase in March pushed the Canadian employment rate up 0.1 percentage points, to a record 62.9%. The employment rate is the share of the population aged 15 years and over that is employed.

Canada has traditionally had higher employment rates than most other countries in the Organization for Economic Co-operation and Development (OECD). However, with stronger employment growth in this country, the rate in Canada has pulled further ahead of the OECD average in recent years. Canadians aged 16 and over have been more likely than Americans to be employed since November 2002.

Most of the employment gain in March was the result of an upswing of 44,000 in full-time work. This continues the long-term trend toward full-time employment growth in this country. Despite monthly fluctuations, part-time employment has remained around the same level for the last three years.

The youth labour market continues to gain strength. The employment increase in March among young people aged 15 to 24 years brings total gains since September 2005 to an impressive 4.1%. The March employment gain among youth was primarily in Ontario.

Ontario posted the bulk of the employment gains in March, following little growth over the previous four months. Despite continued declines in manufacturing over the past 12 months, employment growth has been strong in construction as well as in several service industries.

Employment also increased in British Columbia, bringing the unemployment rate to 4.4%, breaking the 30-year low set the previous month.

As the labour market tightens, wages continue to rise. The average hourly wage in March was up 3.5% from 12 months ago, well in excess of the most recent 2.2% increase in the Consumer Price Index. Hourly wage rate growth continues to be highest in Alberta, at 7.0%.

Large gains in Ontario

Employment in Ontario increased by 31,000 in March, primarily driven by gains among youth (+22,000) and mostly full-time. The March increase in youth full-time employment in Ontario was concentrated among 18 to 24 year-olds. The strike action that temporarily closed Ontario college facilities may have given many youths more time to work at a paid job.

The March employment gain in Ontario brings employment growth for the last 12 months to 115,000 (+1.8%). Despite a large decline in manufacturing, strength in construction and a number of service-based industries provided overall employment gains for this province. For example, there have been gains of 44,000 in educational services and 30,000 in finance, insurance, real estate and leasing since March 2005.

There were also employment gains in British Columbia (+13,000) in March. This brought the unemployment rate to another record low, as it declined 0.4 percentage points to 4.4%. Over the past year, British Columbia has recorded the fastest rate of employment growth of all provinces at 4.0% (+85,000), with gains primarily in retail and wholesale trade; information, culture and recreation, and construction.

As the economy continues to boom in Alberta, employment edged up in March, bringing gains in the past year to 65,000, (+3.7%). Over the last twelve months, employment gains were in construction; professional, scientific and technical services; public administration as well as natural resources.

There were also a few provinces with declines in March. Employment in Newfoundland and Labrador declined by 3,000 in March, following little growth over the last year. The unemployment rate increased 0.6 percentage points to 15.7% in March.

Although employment in Manitoba declined (-3,000) in March, it was still up 7,000 (+1.2%) compared to one year ago. During this time, much of the employment growth has been concentrated in trade as well as transportation and warehousing.

Employment also declined in Prince Edward Island (-1,000), bringing the unemployment rate to 12.0% in March, a 1.1 percentage point increase.

Youth employment gaining momentum

Employment among youths aged 15 to 24 years increased by 33,000 in March, continuing the upward trend that began in the fall of 2005. This month's increase brings total employment gains for youths up 4.5% (+110,000) over the last twelve months. The youth unemployment rate was at 11.5% in March, among the lowest rates in the last 15 years.

The youth employment increase in March was primarily full time and among 18 to 24 year-olds. Although the majority of the employment gains for youths were in Ontario (+22,000), there were also more youths employed in Quebec (+10,000).

In March, women aged 25 and over also experienced employment increases (+21,000). For adult men, full-time gains offset part-time losses, leaving employment little changed in March. Employment gains in the last year for adult women (+1.9% or +120,000) were somewhat higher than those of adult men (+1.4% or +101,000).

The number of employees increased by 87,000 in March, offsetting losses of 36,000 self-employed. Over the last 12 months, the number of employees has increased by 318,000 (+2.3%), mostly in the private sector.

Growth widespread across several sectors

Employment in information, culture and recreation increased by 17,000 in March, mainly in Ontario and British Columbia. Despite this increase, employment in this sector remains at similar levels to a year ago.

There were more people working in health care and social assistance (+17,000) in March. Over the past year, there has been an increase in hospital employment, offsetting declines in other parts of the sector.

There were 15,000 more employed in 'other services' in March. This sector includes industries such as repair and maintenance services, and personal, laundry and private household services. With this increase, employment is back to levels recorded three years ago.

Employment increased by 14,000 in business, building and other support services in March. This brings employment gains for this industry to 32,000 (+ 5.0%) from one year earlier.

Transportation and warehousing employment increased by 12,000 in March. This sector has picked up strength in the last year (+5.0%), due to gains in transit and ground passenger transportation as well as postal services.

Employment in natural resources continued to climb, with a gain of 10,000 in March. Employment in this sector is up by 26,000 compared to a year ago, primarily the result of strength in the oil and gas sector in Alberta.

Manufacturing employment continued to decline in March (-12,000). Since the end of 2002, employment in manufacturing has fallen by 8.2%, with 189,000 fewer people working in this industry. Although a large decline, it is not as severe as the previous manufacturing contraction over the same span of time during the early 1990s, when employment fell by 15.1%, (-320,000).

Note to readers

Comparing current LFS estimates to those prior to 1976

In recent months, the Labour Force Survey (LFS) has been reporting very low unemployment rates. The rates have been so low that some LFS users want to understand the historical context in which these rates are presented. Caution must be stressed when comparing recent LFS employment and unemployment estimates to those prior to 1976 – when the questionnaire underwent significant changes.

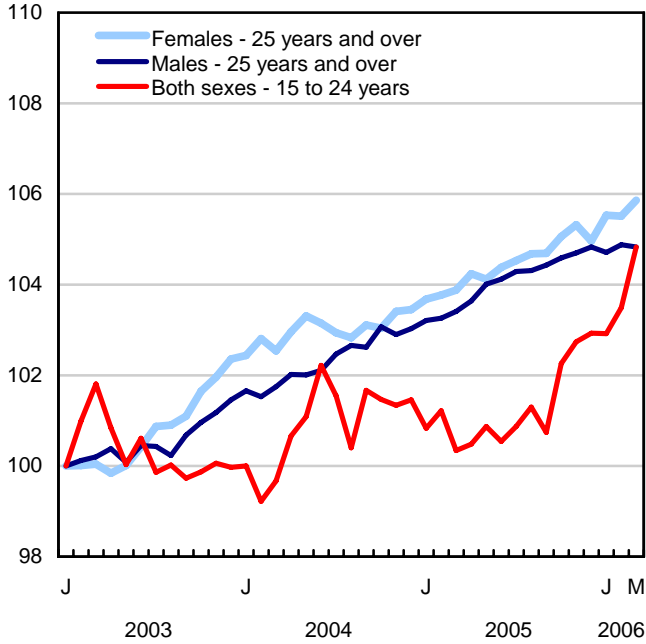
The 1976 LFS questionnaire introduced direct questioning to determine labour market status. This replaced the “main activity” style of information previously recorded. In 1975, both the new and old questionnaires were run in parallel. An analysis of the impact on employment and unemployment estimates showed that the new questionnaire measured more employment, especially among youths and women. It also picked up more unemployment, most notably among women.

At the time of the conversion to the new questionnaire, a historical series was created by adjusting pre-1976 estimates of employment and unemployment using factors determined from the parallel run. Ratios were applied to the 1966 to 1975 data to make them more (but not strictly) comparable to the new estimates. Although these adjusted 1966 to 1975 data are available, users should still be cautious when comparing the two periods because of the different questionnaires used to measure employment and unemployment. Approaching 1966, further caution should be used.

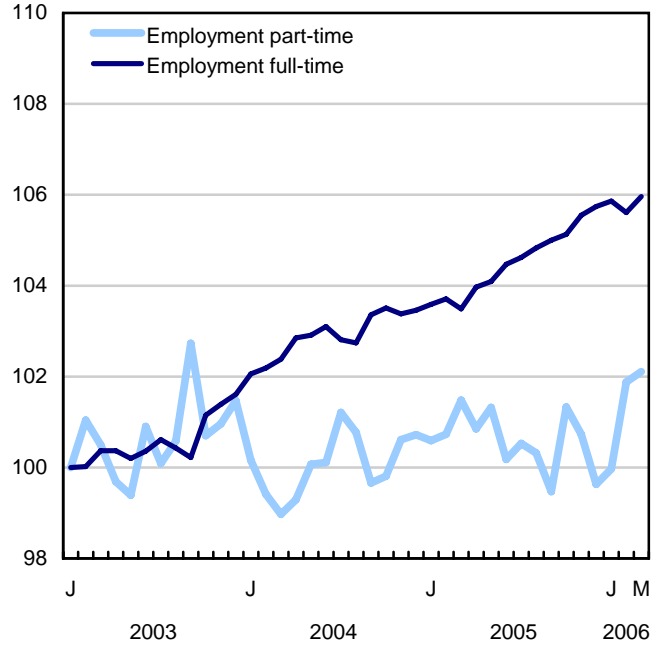
Chart 2

Employment and unemployment indicators, Canada, seasonally adjusted

Employment index, January 2003=100



Employment index, January 2003=100



Employment index, January 2003=100

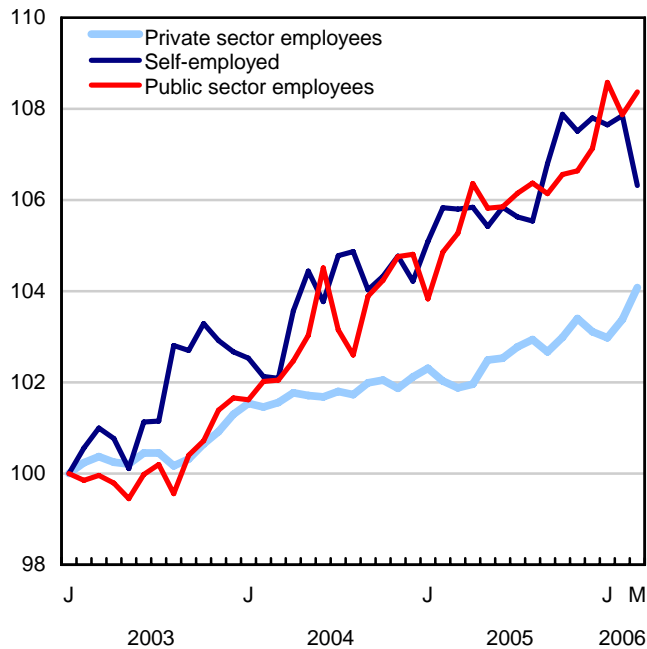
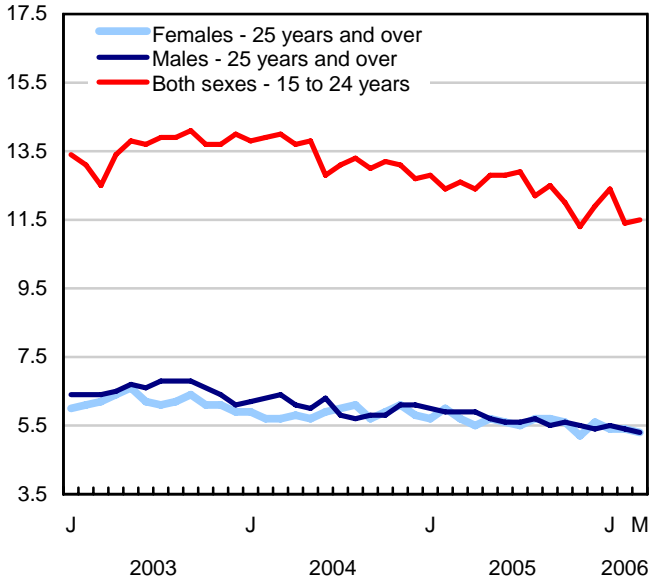


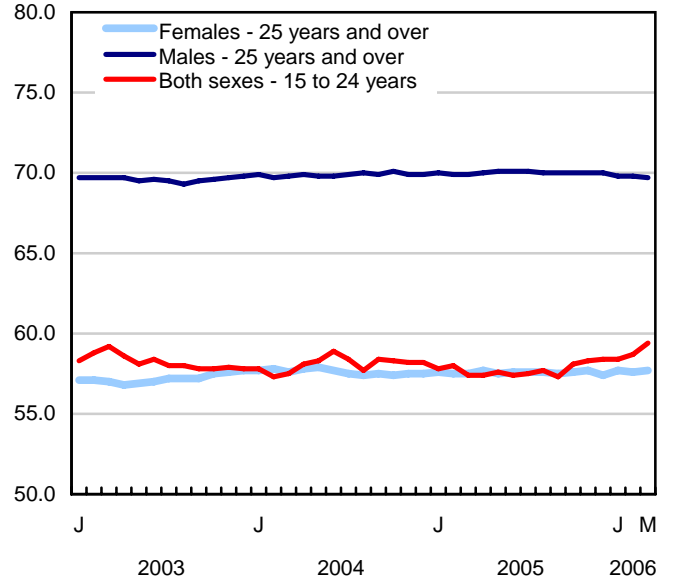
Chart 3

Employment and unemployment indicators, Canada, seasonally adjusted

Unemployment rate (%)



Employment rate (%)



Participation rate (%)

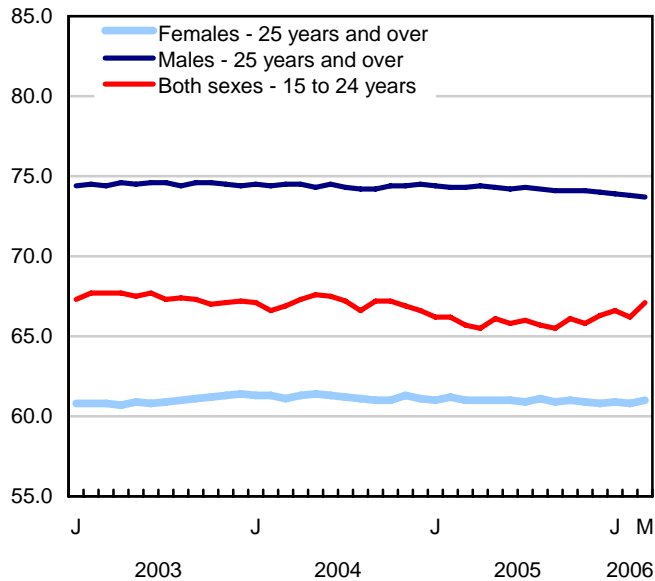


Chart 4

Index of employment by industry, Canada, seasonally adjusted, January, 2003=100

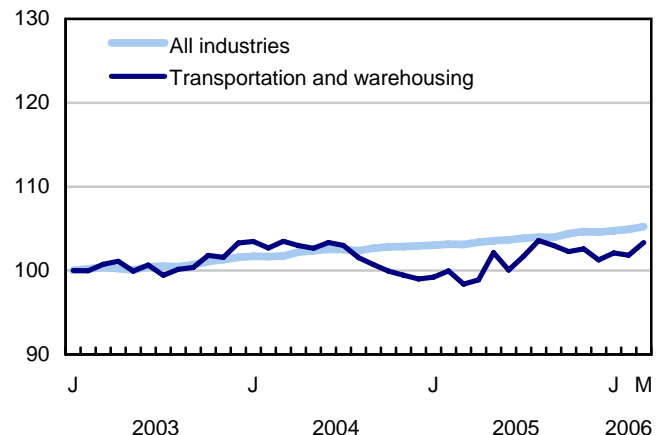
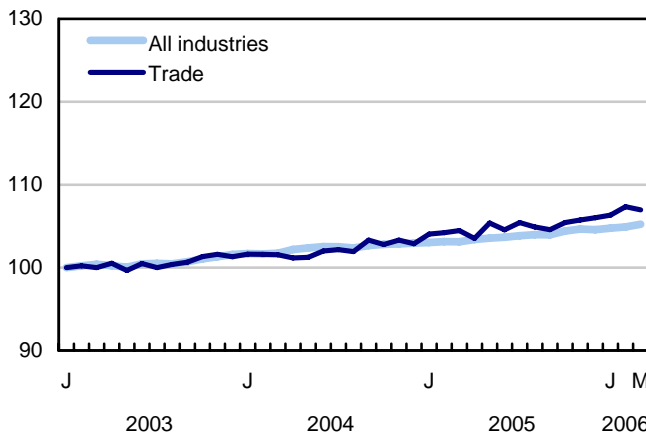
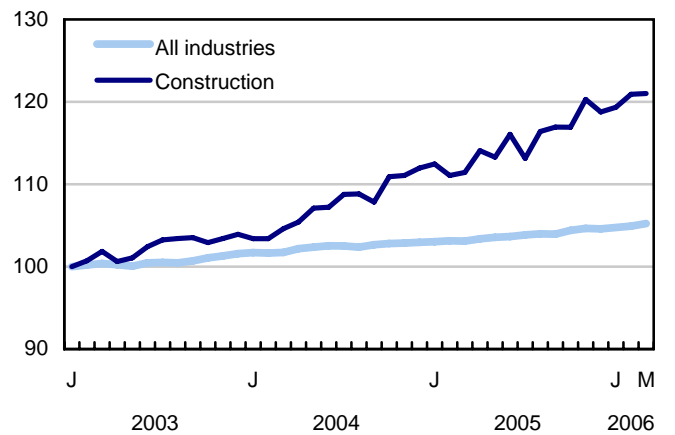
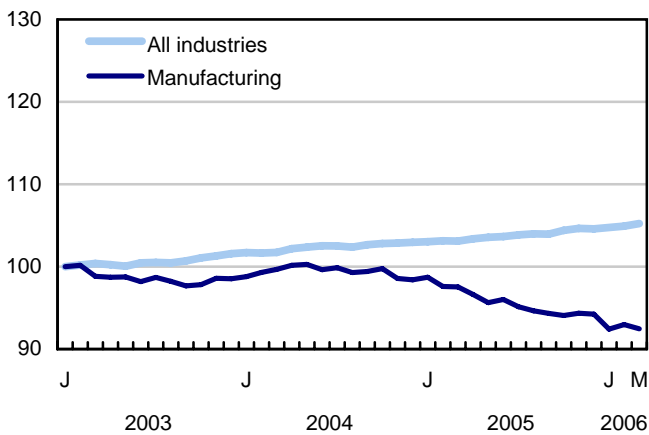
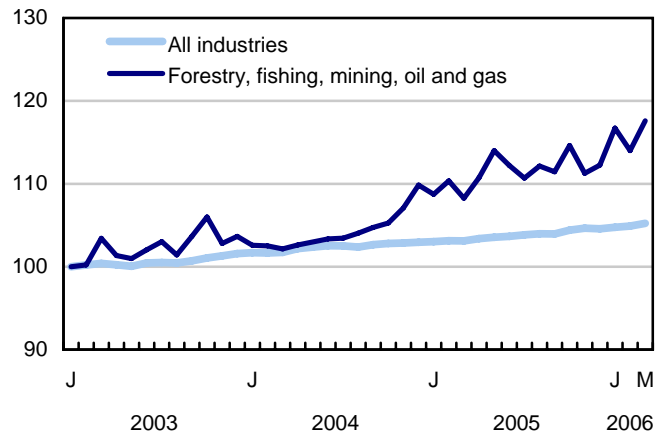
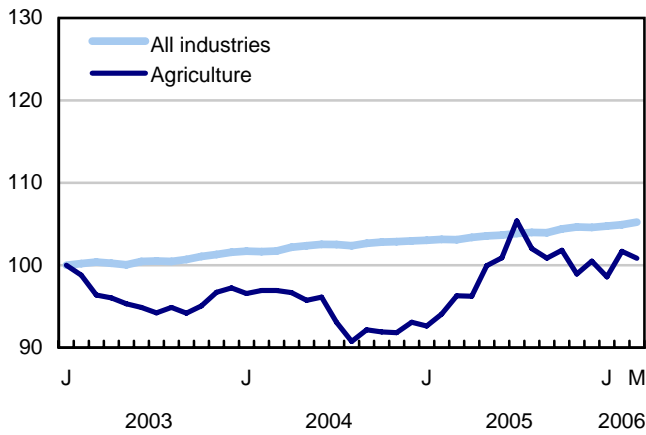


Chart 5

Index of employment by industry, Canada, seasonally adjusted, January 2003 = 100

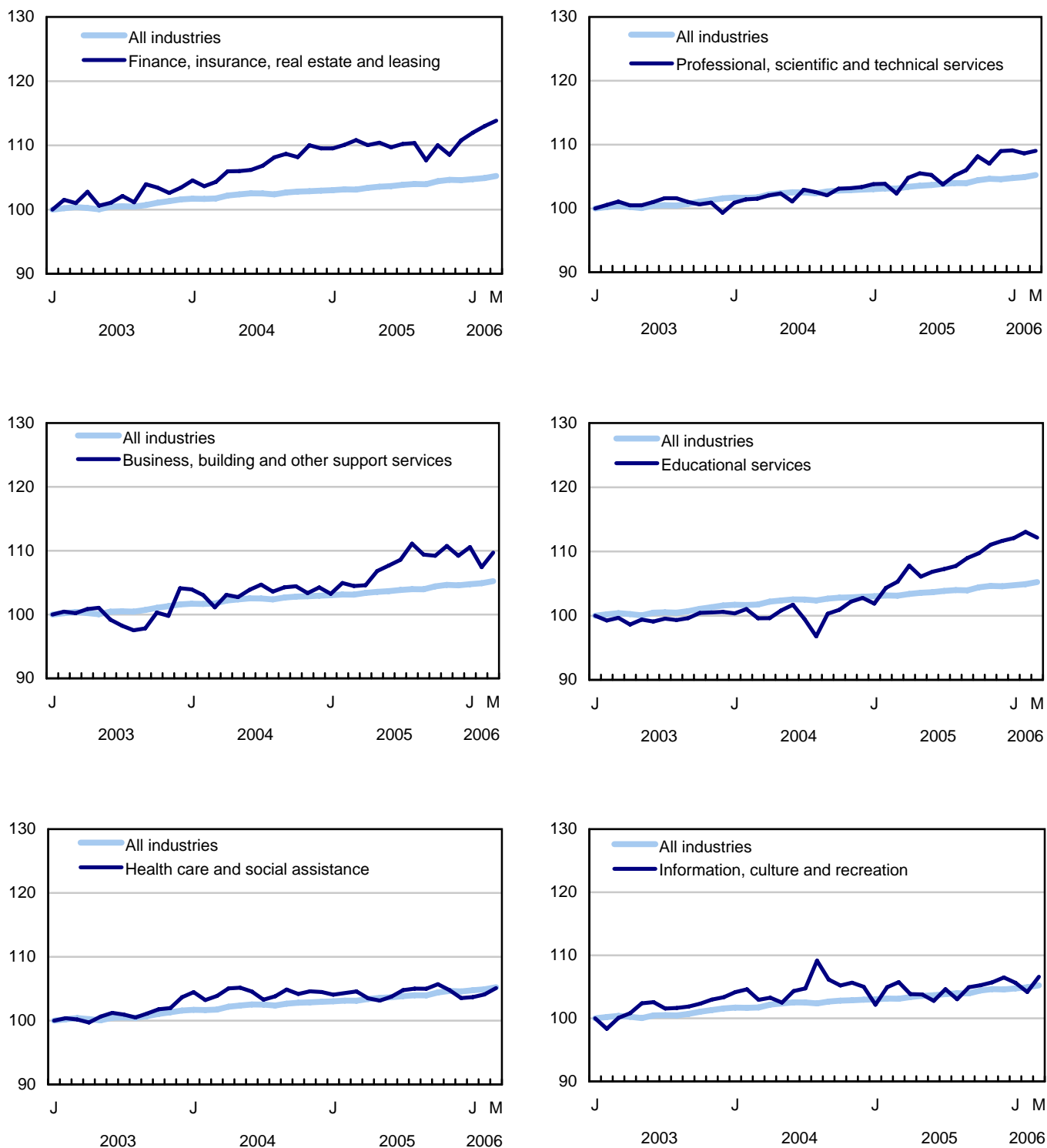


Chart 6

Index of employment by industry, Canada, seasonally adjusted, January 2003 = 100

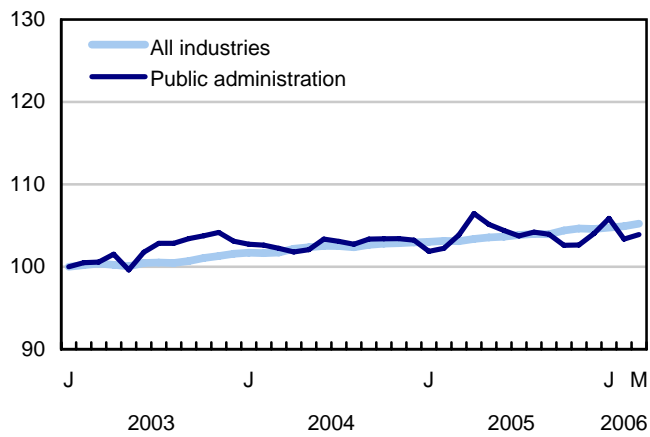
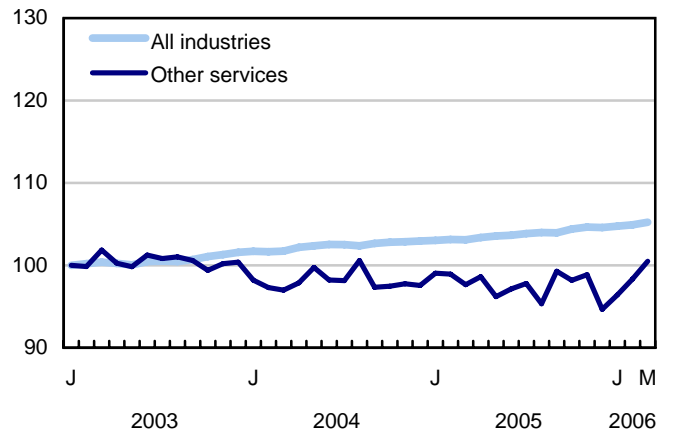
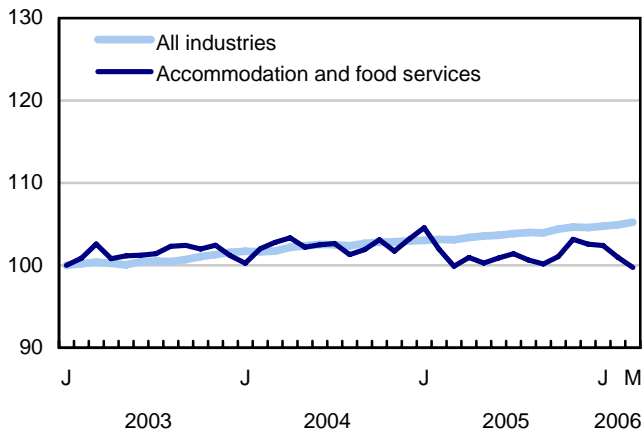


Chart 7

Index of employment by province, seasonally adjusted, January 2003 = 100

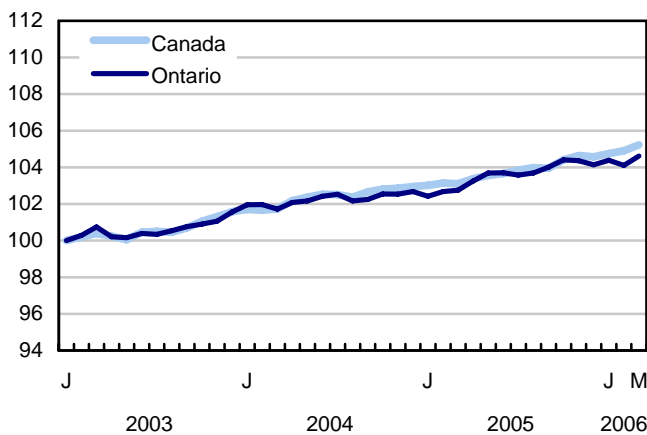
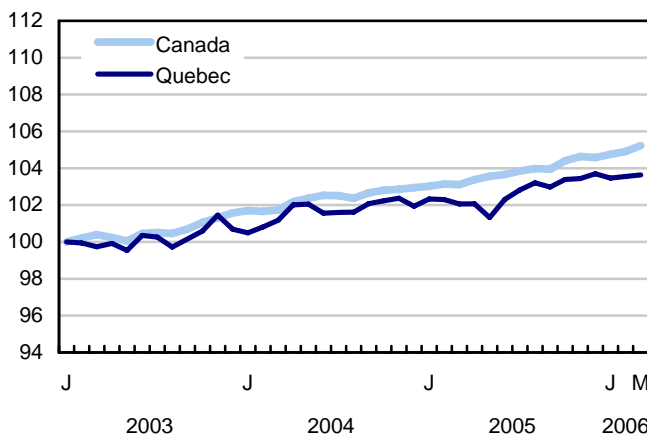
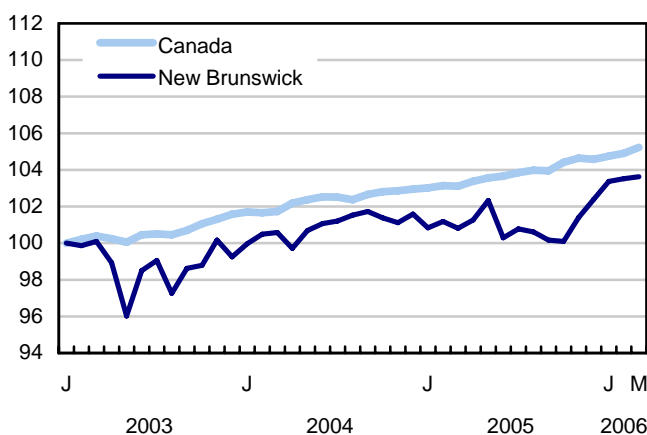
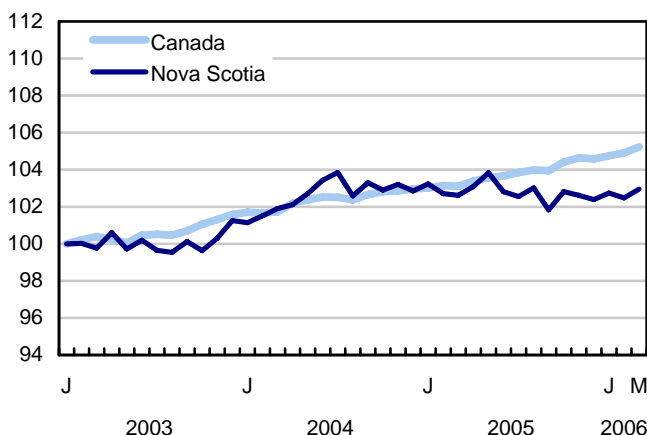
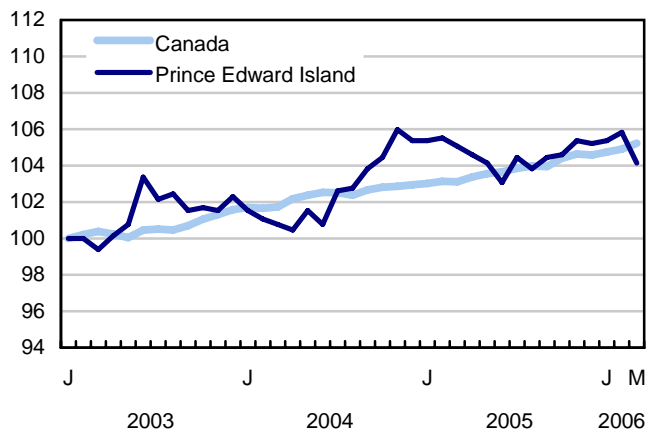
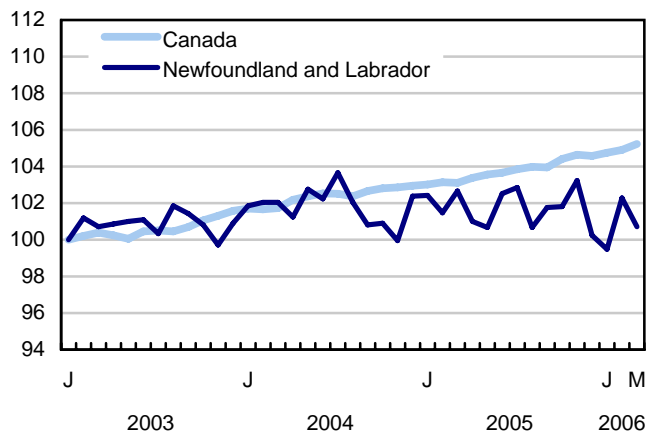
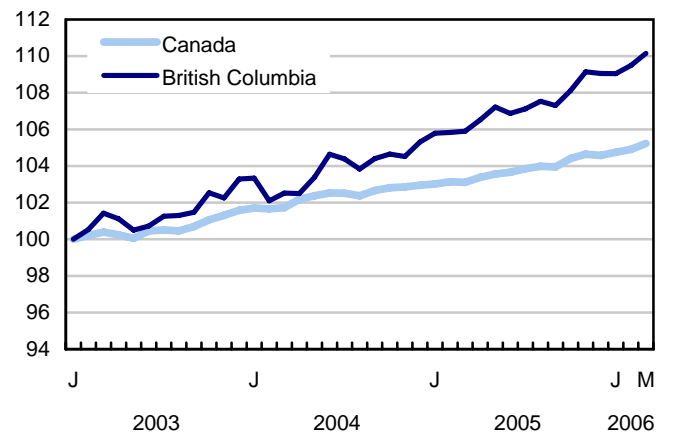
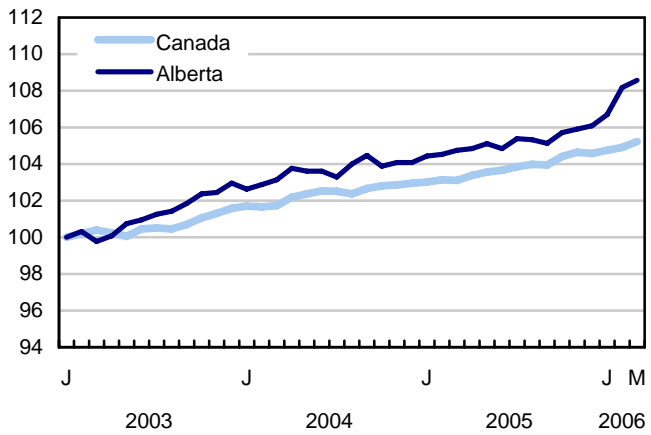
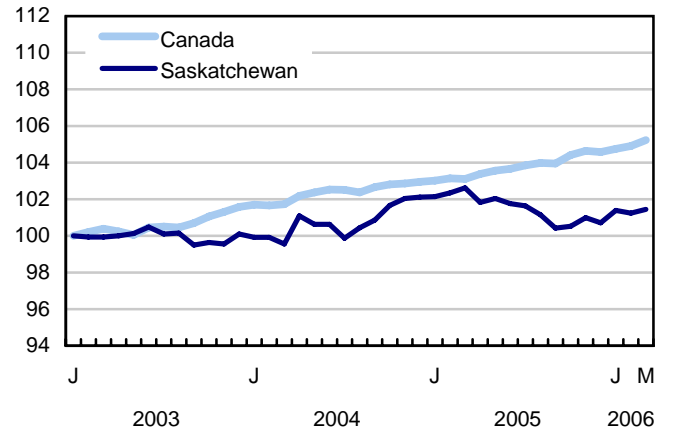
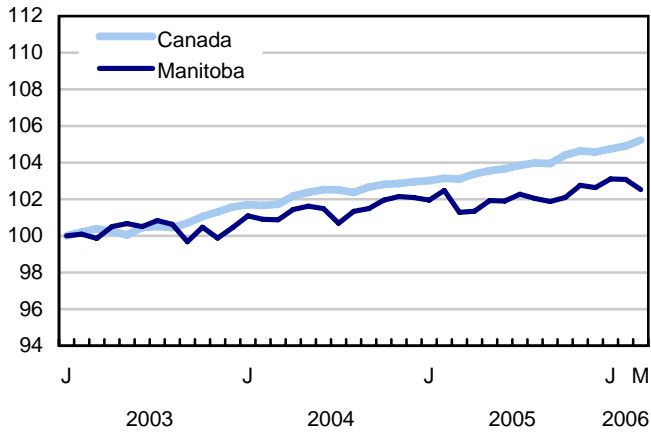


Chart 8

Index of employment by province, seasonally adjusted, January 2003 = 100



Related products

Selected publications from Statistics Canada

71-222-X	The Canadian labour market at a glance
71-526-X	Methodology of the Canadian Labour Force Survey
71-543-G	Guide to the Labour Force Survey
71-544-X	Labour Force Survey products and services.
71-587-X	Aboriginal peoples living off-reserve in Western Canada: estimates from the Labour Force Survey
71F0004X	Labour force historical review
71F0031X	Improvements to the Labour Force Survey (LFS)
71M0001X	Labour Force Survey microdata file
75-001-X	Perspectives on labour and income

Selected CANSIM tables from Statistics Canada

282-0001	Labour force survey estimates (LFS), by sex and detailed age group
282-0002	Labour force survey estimates (LFS), by sex and detailed age group
282-0003	Labour force survey estimates (LFS), by educational attainment, sex and age group
282-0004	Labour force survey estimates (LFS), by educational attainment, sex and age group
282-0005	Labour force survey estimates (LFS), by full- and part-time students during school months, sex and age group
282-0006	Labour force survey estimates (LFS), by students during summer months, sex and age group
282-0007	Labour force survey estimates (LFS), by North American Industry Classification System (NAICS), sex and age group
282-0008	Labour force survey estimates (LFS), by North American Industry Classification System (NAICS), sex and age group
282-0009	Labour force survey estimates (LFS), by National Occupational Classification for Statistics (NOC-S) and sex
282-0010	Labour force survey estimates (LFS), by National Occupational Classification for Statistics (NOC-S) and sex
282-0011	Labour force survey estimates (LFS), employment by class of worker, North American Industry Classification System (NAICS) and sex
282-0012	Labour force survey estimates (LFS), employment by class of worker, North American Industry Classification System (NAICS) and sex
282-0013	Labour force survey estimates (LFS), part-time employment by reason for part-time work, sex and age group
282-0014	Labour force survey estimates (LFS), part-time employment by reason for part-time work, sex and age group
282-0015	Labour force survey estimates (LFS), by usual hours worked, main or all jobs, sex and age group
282-0016	Labour force survey estimates (LFS), by usual hours worked, main or all jobs, sex and age group
282-0017	Labour force survey estimates (LFS), by actual hours worked, main or all jobs, sex and age group
282-0018	Labour force survey estimates (LFS), by actual hours worked, main or all jobs, sex and age group
282-0019	Labour force survey estimates (LFS), by usual hours worked, class of worker, North American Industry Classification System (NAICS) and sex
282-0020	Labour force survey estimates (LFS), by usual hours worked, class of worker, North American Industry Classification System (NAICS) and sex

282-0021	Labour force survey estimates (LFS), by actual hours worked, class of worker, North American Industry Classification System (NAICS) and sex
282-0022	Labour force survey estimates (LFS), by actual hours worked, class of worker, North American Industry Classification System (NAICS) and sex
282-0023	Labour force survey estimates (LFS), by usual hours worked, class of worker, National Occupational Classification for Statistics (NOC-S) and sex
282-0024	Labour force survey estimates (LFS), by usual hours worked, class of worker, National Occupational Classification for Statistics (NOC-S) and sex
282-0025	Labour force survey estimates (LFS), by actual hours worked, class of worker, National Occupational Classification for Statistics (NOC-S) and sex
282-0026	Labour force survey estimates (LFS), by actual hours worked, class of worker, National Occupational Classification for Statistics (NOC-S) and sex
282-0027	Labour force survey estimates (LFS), by total and average usual and actual hours worked, main or all jobs, type of work, sex and age group
282-0028	Labour force survey estimates (LFS), by total and average usual and actual hours worked, main or all jobs, type of work, sex and age group
282-0029	Labour force survey estimates (LFS), average days lost for personal reasons per full-time employee by North American Industry Classification System (NAICS), sex and age group
282-0030	Labour force survey estimates (LFS), average days lost for personal reasons per full-time employee by National Occupational Classification for Statistics (NOC-S), sex and age group
282-0031	Labour force survey estimates (LFS), multiple jobholders by North American Industry Classification System (NAICS), sex and age group
282-0032	Labour force survey estimates (LFS), multiple jobholders by North American Industry Classification System (NAICS), sex and age group
282-0033	Labour force survey estimates (LFS), multiple jobholders by National Occupational Classification for Statistics (NOC-S), sex and age group
282-0034	Labour force survey estimates (LFS), multiple jobholders by National Occupational Classification for Statistics (NOC-S), sex and age group
282-0035	Labour force survey estimates (LFS), multiple jobholders by usual hours worked at main and all jobs
282-0036	Labour force survey estimates (LFS), multiple jobholders by usual hours worked at main and all jobs
282-0037	Labour force survey estimates (LFS), job tenure by type of work, sex and age group
282-0038	Labour force survey estimates (LFS), job tenure by type of work, sex and age group
282-0039	Labour force survey estimates (LFS), job tenure by National Occupational Classification for Statistics (NOC-S) and sex
282-0040	Labour force survey estimates (LFS), job tenure by National Occupational Classification for Statistics (NOC-S) and sex

282-0041	Labour force survey estimates (LFS), job tenure by North American Industry Classification System (NAICS) and sex
282-0042	Labour force survey estimates (LFS), job tenure by North American Industry Classification System (NAICS) and sex
282-0047	Labour force survey estimates (LFS), duration of unemployment by sex and age group
282-0048	Labour force survey estimates (LFS), duration of unemployment by sex and age group
282-0049	Labour force survey estimates (LFS), unemployment by type of work sought and search method, sex and age group
282-0050	Labour force survey estimates (LFS), unemployment by type of work sought and search method, sex and age group
282-0051	Labour force survey estimates (LFS), retirement age by class of worker and sex
282-0052	Labour force survey estimates (LFS), by census metropolitan area, sex and age group, 3-month moving average
282-0053	Labour force survey estimates (LFS), by census metropolitan area, sex and age group
282-0054	Labour force survey estimates (LFS), by economic region and Yukon Territory and Northwest Territories, 3-month moving average
282-0055	Labour force survey estimates (LFS), by economic region and Yukon Territory and Northwest Territories
282-0056	Labour force survey estimates (LFS), employment by census metropolitan area and North American Industry Classification System (NAICS), 3-month moving average
282-0057	Labour force survey estimates (LFS), employment by census metropolitan area and North American Industry Classification System (NAICS)
282-0058	Labour force survey estimates (LFS), employment by census metropolitan area and National Occupational Classification for Statistics (NOC-S), 3-month moving average
282-0059	Labour force survey estimates (LFS), employment by census metropolitan area and National Occupational Classification for Statistics (NOC-S)
282-0060	Labour force survey estimates (LFS), employment by economic region and North American Industry Classification System (NAICS), 3-month moving average
282-0061	Labour force survey estimates (LFS), employment by economic region and North American Industry Classification System (NAICS)
282-0062	Labour force survey estimates (LFS), employment by economic region and National Occupational Classification for Statistics (NOC-S), 3-month moving average
282-0063	Labour force survey estimates (LFS), employment by economic region and National Occupational Classification for Statistics (NOC-S)
282-0064	Labour force survey estimates (LFS), by selected medium-sized cities
282-0069	Labour force survey estimates (LFS), wages of employees by type of work, National Occupational Classification for Statistics (NOC-S), sex and age group

282-0070	Labour force survey estimates (LFS), wages of employees by type of work, National Occupational Classification for Statistics (NOC-S), sex and age group
282-0071	Labour force survey estimates (LFS), wages of employees by type of work, North American Industry Classification System (NAICS), sex and age group
282-0072	Labour force survey estimates (LFS), wages of employees by type of work, North American Industry Classification System (NAICS), sex and age group
282-0073	Labour force survey estimates (LFS), wages of employees by job permanence, union coverage, sex and age group
282-0074	Labour force survey estimates (LFS), wages of employees by job permanence, union coverage, sex and age group
282-0075	Labour force survey estimates (LFS), employees by establishment size, North American Industry Classification System (NAICS), sex and age group
282-0076	Labour force survey estimates (LFS), employees by establishment size, North American Industry Classification System (NAICS), sex and age group
282-0077	Labour force survey estimates (LFS), employees by union coverage, North American Industry Classification System (NAICS), sex and age group
282-0078	Labour force survey estimates (LFS), employees by union coverage, North American Industry Classification System (NAICS), sex and age group
282-0079	Labour force survey estimates (LFS), employees by job permanency, North American Industry Classification System (NAICS), sex and age group
282-0080	Labour force survey estimates (LFS), employees by job permanency, North American Industry Classification System (NAICS), sex and age group
282-0081	Labour force survey estimates (LFS), employees working overtime (weekly) by National Occupational Classification for Statistics (NOC-S), sex and age group
282-0082	Labour force survey estimates (LFS), employees working overtime (weekly) by National Occupational Classification for Statistics (NOC-S), sex and age group
282-0083	Labour force survey estimates (LFS), employees working overtime (weekly) by North American Industry Classification System (NAICS), sex and age group
282-0084	Labour force survey estimates (LFS), employees working overtime (weekly) by North American Industry Classification System (NAICS), sex and age group
282-0085	Labour force survey estimates (LFS), supplementary unemployment rates by sex and age group
282-0086	Labour force survey estimates (LFS), supplementary unemployment rates by sex and age group
282-0087	Labour force survey estimates (LFS), by sex and age group, seasonally adjusted and unadjusted
282-0088	Labour force survey estimates (LFS), employment by North American Industry Classification System (NAICS), seasonally adjusted and unadjusted
282-0089	Labour force survey estimates (LFS), employment by class of worker and sex, seasonally adjusted and unadjusted

282-0090	Labour force survey estimates (LFS), by census metropolitan area, 3-month moving average, seasonally adjusted and unadjusted
282-0091	Labour force survey estimates (LFS), by Montréal, Toronto and Vancouver census metropolitan areas, seasonally adjusted and unadjusted
282-0092	Labour force survey estimates (LFS), actual hours worked by North American Industry Classification System (NAICS), seasonally adjusted
282-0093	Labour force survey estimates (LFS), employment by National Occupational Classification for Statistics (NOC-S), seasonally adjusted
282-0094	Labour force survey estimates (LFS), by North American Industry Classification System (NAICS), Canada, seasonally adjusted
282-0095	Labour force survey estimates (LFS), by full- and part-time students during school months, sex and age group
282-0096	Labour force survey estimates (LFS), by urban and rural areas based on 2001 census boundaries, sex and age group
282-0097	Labour force survey estimates (LFS), by urban and rural areas based on 2001 census boundaries, sex and age group
282-0098	Labour force survey estimates (LFS), employment by urban and rural areas based on 2001 census boundaries, class of worker and North American Industry Classification System (NAICS)
282-0099	Labour force survey estimates (LFS), employment by urban and rural areas based on 2001 census boundaries, class of worker and North American Industry Classification System (NAICS)

Selected surveys from Statistics Canada

3701	Labour Force Survey
------	---------------------

Selected tables of Canadian statistics from Statistics Canada

- *Labour force characteristics*
- *Employment by industry*
- *Selected economic indicators, Canada and United States (monthly and quarterly)*
- *Days lost per worker due to illness or disability, by sex, by provinces*
- *Economic indicators, by province and territory (monthly and quarterly)*

- *Labour force and participation rates by sex and age group*
- *Labour force, employed and unemployed, numbers and rates, by provinces*
- *Employment by industry and sex*
- *Full-time and part-time employment by sex and age group*
- *Labour force characteristics by age and sex*
- *Distribution of employed people, by industry, by province*
- *Labour force characteristics, population 15 years and older, by census metropolitan areas*
- *Labour force characteristics, population 15 years and older, by economic regions, by province*
- *Days lost per worker by cause, by provinces*
- *Days lost per worker by industry and sex*
- *People employed, by educational attainment*
- *Reasons for part-time work by sex and age group*
- *Self-employment, historical summary*
- *Employment by age, sex, type of work, class of worker and provinces (monthly)*
- *Employment by major industry groups, seasonally adjusted, by provinces (monthly)*
- *Actual hours worked per week by industry, seasonally adjusted (monthly)*
- *Average hourly wages of employees by selected characteristics and profession, unadjusted data, by provinces (monthly)*
- *Labour force characteristics, seasonally adjusted, by province (monthly)*
- *Labour force characteristics, unadjusted, by province (monthly)*
- *Labour force characteristics, seasonally adjusted, by census metropolitan areas (3 month moving average)*
- *Labour force characteristics, unadjusted, by census metropolitan areas (3 month moving average)*
- *Labour force characteristics, unadjusted, by economic regions (3 month moving average)*

Statistical tables

Table 1

Labour force characteristics by age and sex, Canada, seasonally adjusted

	February 2006	March 2006	S.E. ¹	Change from			Percent change from		
				last month	last December	twelve months ago	last month	last December	twelve months ago
in thousands (except rates)									
Both sexes, 15 years and over									
Population	26,044.4	26,071.0	...	26.6	84.1	387.4	0.1	0.3	1.5
Labour force	17,455.5	17,507.5	27.6	52.0	77.6	245.8	0.3	0.4	1.4
Employment	16,345.7	16,396.2	27.4	50.5	101.5	330.3	0.3	0.6	2.1
Employment full-time	13,342.8	13,386.8	36.4	44.0	28.5	311.9	0.3	0.2	2.4
Employment part-time	3,002.9	3,009.5	32.7	6.6	73.1	18.4	0.2	2.5	0.6
Unemployment	1,109.8	1,111.3	23.2	1.5	-23.9	-84.4	0.1	-2.1	-7.1
Participation rate	67.0	67.2	0.1	0.2	0.1	0.0
Unemployment rate	6.4	6.3	0.1	-0.1	-0.2	-0.6
Employment rate	62.8	62.9	0.1	0.1	0.2	0.3
Part-time rate	18.4	18.4	0.2	0.0	0.3	-0.3
Both sexes, 15 to 24 years									
Population	4,307.2	4,309.6	...	2.4	7.6	43.7	0.1	0.2	1.0
Labour force	2,850.6	2,892.7	16.7	42.1	42.1	88.9	1.5	1.5	3.2
Employment	2,526.2	2,559.0	15.9	32.8	46.5	109.7	1.3	1.9	4.5
Employment full-time	1,383.2	1,410.8	18.6	27.6	4.4	68.1	2.0	0.3	5.1
Employment part-time	1,143.0	1,148.1	18.8	5.1	42.0	41.5	0.4	3.8	3.8
Unemployment	324.5	333.7	13.7	9.2	-4.5	-20.8	2.8	-1.3	-5.9
Participation rate	66.2	67.1	0.4	0.9	0.8	1.4
Unemployment rate	11.4	11.5	0.5	0.1	-0.4	-1.1
Employment rate	58.7	59.4	0.4	0.7	1.0	2.0
Part-time rate	45.2	44.9	0.7	-0.4	0.8	-0.3
Men, 25 years and over									
Population	10,613.8	10,625.9	...	12.1	38.0	170.9	0.1	0.4	1.6
Labour force	7,836.3	7,826.5	13.9	-9.8	-4.2	59.9	-0.1	-0.1	0.8
Employment	7,413.4	7,409.8	15.2	-3.6	0.3	100.5	0.0	0.0	1.4
Employment full-time	6,926.9	6,937.3	19.4	10.4	8.5	103.1	0.2	0.1	1.5
Employment part-time	486.5	472.6	15.3	-13.9	-8.1	-2.5	-2.9	-1.7	-0.5
Unemployment	422.9	416.7	13.1	-6.2	-4.5	-40.6	-1.5	-1.1	-8.9
Participation rate	73.8	73.7	0.1	-0.1	-0.3	-0.6
Unemployment rate	5.4	5.3	0.2	-0.1	-0.1	-0.6
Employment rate	69.8	69.7	0.1	-0.1	-0.3	-0.2
Part-time rate	6.6	6.4	0.2	-0.2	-0.1	-0.1
Women, 25 years and over									
Population	11,123.4	11,135.6	...	12.2	38.7	172.9	0.1	0.3	1.6
Labour force	6,768.5	6,788.4	16.0	19.9	39.9	97.1	0.3	0.6	1.5
Employment	6,406.1	6,427.5	15.6	21.4	54.8	120.1	0.3	0.9	1.9
Employment full-time	5,032.8	5,038.7	23.4	5.9	15.6	140.7	0.1	0.3	2.9
Employment part-time	1,373.3	1,388.8	21.5	15.5	39.2	-20.6	1.1	2.9	-1.5
Unemployment	362.4	360.9	12.8	-1.5	-15.0	-23.0	-0.4	-4.0	-6.0
Participation rate	60.8	61.0	0.1	0.2	0.2	0.0
Unemployment rate	5.4	5.3	0.2	-0.1	-0.3	-0.4
Employment rate	57.6	57.7	0.1	0.1	0.3	0.2
Part-time rate	21.4	21.6	0.3	0.2	0.4	-0.7
Both sexes, 25 to 54 years									
Population	14,191.1	14,199.3	...	8.2	19.3	118.2	0.1	0.1	0.8
Labour force	12,216.4	12,201.6	20.9	-14.8	-15.7	29.0	-0.1	-0.1	0.2
Employment	11,546.5	11,546.9	22.1	0.4	8.4	99.9	0.0	0.1	0.9
Unemployment	669.8	654.7	17.5	-15.1	-24.1	-70.9	-2.3	-3.6	-9.8
Participation rate	86.1	85.9	0.1	-0.2	-0.3	-0.5
Unemployment rate	5.5	5.4	0.1	-0.1	-0.2	-0.6
Employment rate	81.4	81.3	0.2	-0.1	-0.1	0.0

1. Average standard error of change in two consecutive months (see "Sampling Errors" in Data Quality for further explanations).

Note: Related CANSIM table 282-0087

Table 2

Employment by class of worker and industry, Canada, seasonally adjusted

	February 2006	March 2006	S.E. ¹	Change from			Percent change from		
				last month	last December	twelve months ago	last month	last December	twelve months ago
in thousands									
Class of worker									
Employees	13,796.5	13,883.2	32.4	86.7	136.5	318.0	0.6	1.0	2.3
Self-employed ²	2,549.2	2,513.0	22.4	-36.2	-35.0	12.2	-1.4	-1.4	0.5
Public/private sector employees									
Public sector employees	3,180.8	3,195.4	21.6	14.6	36.7	91.5	0.5	1.2	2.9
Private sector employees	10,615.7	10,687.8	33.8	72.1	99.9	226.5	0.7	0.9	2.2
Industry	16,345.7	16,396.2	27.4	50.5	101.5	330.3	0.3	0.6	2.1
Goods-producing sector	4,002.0	3,992.5	24.8	-9.5	-13.4	-0.3	-0.2	-0.3	0.0
Agriculture	351.8	348.9	7.2	-2.9	1.2	15.7	-0.8	0.3	4.7
Forestry, fishing, mining, oil and gas	313.5	323.4	6.2	9.9	14.7	25.7	3.2	4.8	8.6
Utilities	121.6	116.3	4.1	-5.3	-8.3	-9.3	-4.4	-6.7	-7.4
Construction	1,071.1	1,071.9	14.3	0.8	19.8	84.8	0.1	1.9	8.6
Manufacturing	2,144.0	2,132.0	19.9	-12.0	-40.8	-117.1	-0.6	-1.9	-5.2
Services-producing sector	12,343.7	12,403.7	31.7	60.0	114.9	330.5	0.5	0.9	2.7
Trade	2,635.7	2,626.1	21.6	-9.6	23.2	61.1	-0.4	0.9	2.4
Transportation and warehousing	799.3	811.2	12.1	11.9	16.2	38.9	1.5	2.0	5.0
Finance, insurance, real estate and leasing	1,016.2	1,023.8	14.1	7.6	27.6	27.3	0.7	2.8	2.7
Professional, scientific and technical services	1,082.5	1,086.5	15.1	4.0	0.4	66.8	0.4	0.0	6.6
Business, building and other support services	654.0	667.8	13.0	13.8	2.9	31.8	2.1	0.4	5.0
Educational services	1,164.7	1,155.5	14.2	-9.2	5.2	70.8	-0.8	0.5	6.5
Health care and social assistance	1,730.4	1,747.2	16.4	16.8	26.1	8.7	1.0	1.5	0.5
Information, culture and recreation	733.4	750.4	13.0	17.0	0.8	6.0	2.3	0.1	0.8
Accommodation and food services	999.9	987.7	14.7	-12.2	-27.9	-1.4	-1.2	-2.7	-0.1
Other services	698.1	713.3	11.6	15.2	41.4	20.1	2.2	6.2	2.9
Public administration	829.7	834.2	11.1	4.5	-1.0	0.4	0.5	-0.1	0.0

1. Average standard error of change in two consecutive months (see "Sampling Errors" in Data Quality for further explanations).

2. Includes both incorporated and unincorporated working owners, self-employed persons who do not have a business and persons working in a family business without pay.

Note: Related CANSIM tables 282-0088, 282-0089

Table 3

Labour force characteristics by province, seasonally adjusted

	February 2006	March 2006	S.E. ¹	Change from			Percent change from		
				last month	last December	twelve months ago	last month	last December	twelve months ago
in thousands (except rates)									
Newfoundland and Labrador									
Population	429.1	428.8	...	-0.3	-0.4	-1.5	-0.1	-0.1	-0.3
Labour force	253.5	251.6	2.5	-1.9	2.2	-2.6	-0.7	0.9	-1.0
Employment	215.2	211.9	2.4	-3.3	1.0	-4.1	-1.5	0.5	-1.9
Employment full-time	179.3	178.6	2.6	-0.7	2.5	-3.7	-0.4	1.4	-2.0
Employment part-time	35.9	33.4	1.9	-2.5	-1.4	-0.3	-7.0	-4.0	-0.9
Unemployment	38.4	39.6	2.2	1.2	1.1	1.4	3.1	2.9	3.7
Participation rate	59.1	58.7	0.6	-0.4	0.6	-0.4
Unemployment rate	15.1	15.7	0.8	0.6	0.3	0.7
Employment rate	50.2	49.4	0.6	-0.8	0.3	-0.8
Prince Edward Island									
Population	112.0	112.0	...	0.0	0.0	0.6	0.0	0.0	0.5
Labour force	77.4	77.3	0.6	-0.1	0.1	0.9	-0.1	0.1	1.2
Employment	69.0	67.9	0.7	-1.1	-0.7	-0.6	-1.6	-1.0	-0.9
Employment full-time	57.8	57.6	0.8	-0.2	-0.6	0.0	-0.3	-1.0	0.0
Employment part-time	11.2	10.3	0.7	-0.9	-0.1	-0.6	-8.0	-1.0	-5.5
Unemployment	8.4	9.3	0.6	0.9	0.7	1.4	10.7	8.1	17.7
Participation rate	69.1	69.0	0.6	-0.1	0.1	0.4
Unemployment rate	10.9	12.0	0.8	1.1	0.9	1.7
Employment rate	61.6	60.6	0.6	-1.0	-0.7	-0.9
Nova Scotia									
Population	762.4	762.6	...	0.2	0.6	2.7	0.0	0.1	0.4
Labour force	482.2	481.0	2.8	-1.2	-1.3	-2.1	-0.2	-0.3	-0.4
Employment	441.7	443.7	2.9	2.0	2.4	1.4	0.5	0.5	0.3
Employment full-time	358.6	359.3	3.7	0.7	-1.6	-4.3	0.2	-0.4	-1.2
Employment part-time	83.0	84.4	3.3	1.4	4.0	5.8	1.7	5.0	7.4
Unemployment	40.5	37.3	2.5	-3.2	-3.7	-3.5	-7.9	-9.0	-8.6
Participation rate	63.2	63.1	0.4	-0.1	-0.2	-0.5
Unemployment rate	8.4	7.8	0.5	-0.6	-0.7	-0.6
Employment rate	57.9	58.2	0.4	0.3	0.3	0.0
New Brunswick									
Population	611.4	611.4	...	0.0	0.0	1.8	0.0	0.0	0.3
Labour force	396.5	396.1	2.3	-0.4	3.0	9.7	-0.1	0.8	2.5
Employment	359.2	359.6	2.5	0.4	4.3	9.8	0.1	1.2	2.8
Employment full-time	296.2	302.5	3.0	6.3	7.9	11.1	2.1	2.7	3.8
Employment part-time	63.0	57.1	2.5	-5.9	-3.7	-1.3	-9.4	-6.1	-2.2
Unemployment	37.3	36.5	2.2	-0.8	-1.3	-0.1	-2.1	-3.4	-0.3
Participation rate	64.9	64.8	0.4	-0.1	0.5	1.4
Unemployment rate	9.4	9.2	0.5	-0.2	-0.4	-0.3
Employment rate	58.8	58.8	0.4	0.0	0.7	1.4
Quebec									
Population	6,225.2	6,230.1	...	4.9	14.2	70.6	0.1	0.2	1.1
Labour force	4,085.4	4,099.8	15.1	14.4	9.4	68.3	0.4	0.2	1.7
Employment	3,749.4	3,752.9	15.0	3.5	-2.1	57.3	0.1	-0.1	1.6
Employment full-time	3,070.5	3,054.6	20.0	-15.9	-19.5	13.2	-0.5	-0.6	0.4
Employment part-time	678.9	698.2	17.6	19.3	17.3	44.0	2.8	2.5	6.7
Unemployment	336.0	347.0	13.2	11.0	11.7	11.1	3.3	3.5	3.3
Participation rate	65.6	65.8	0.2	0.2	0.0	0.3
Unemployment rate	8.2	8.5	0.3	0.3	0.3	0.2
Employment rate	60.2	60.2	0.2	0.0	-0.2	0.2

See footnotes at the end of the table.

Table 3 – continued

Labour force characteristics by province, seasonally adjusted

	February 2006	March 2006	S.E. ¹	Change from			Percent change from		
				last month	last December	twelve months ago	last month	last December	twelve months ago
in thousands (except rates)									
Ontario									
Population	10,175.7	10,185.9	...	10.2	33.1	174.2	0.1	0.3	1.7
Labour force	6,858.6	6,886.0	18.5	27.4	26.4	72.4	0.4	0.4	1.1
Employment	6,431.8	6,463.0	18.3	31.2	29.6	115.4	0.5	0.5	1.8
Employment full-time	5,292.0	5,313.7	23.9	21.7	1.1	166.1	0.4	0.0	3.2
Employment part-time	1,139.7	1,149.3	21.5	9.6	28.5	-50.7	0.8	2.5	-4.2
Unemployment	426.9	423.0	15.7	-3.9	-3.2	-42.9	-0.9	-0.8	-9.2
Participation rate	67.4	67.6	0.2	0.2	0.0	-0.5
Unemployment rate	6.2	6.1	0.2	-0.1	-0.1	-0.7
Employment rate	63.2	63.5	0.2	0.3	0.1	0.1
Manitoba									
Population	890.1	890.5	...	0.4	0.6	3.5	0.0	0.1	0.4
Labour force	612.9	608.4	2.8	-4.5	-0.9	0.8	-0.7	-0.1	0.1
Employment	586.1	583.0	2.9	-3.1	-0.6	7.1	-0.5	-0.1	1.2
Employment full-time	470.2	468.8	3.9	-1.4	4.9	7.8	-0.3	1.1	1.7
Employment part-time	115.9	114.3	3.7	-1.6	-5.4	-0.6	-1.4	-4.5	-0.5
Unemployment	26.8	25.3	2.2	-1.5	-0.4	-6.4	-5.6	-1.6	-20.2
Participation rate	68.9	68.3	0.3	-0.6	-0.2	-0.2
Unemployment rate	4.4	4.2	0.3	-0.2	0.0	-1.0
Employment rate	65.8	65.5	0.3	-0.3	-0.1	0.6
Saskatchewan									
Population	747.4	747.0	...	-0.4	-1.2	-1.2	-0.1	-0.2	-0.2
Labour force	509.2	510.2	2.4	1.0	3.9	-5.1	0.2	0.8	-1.0
Employment	482.2	483.2	2.5	1.0	3.5	-5.6	0.2	0.7	-1.1
Employment full-time	387.1	390.2	3.2	3.1	0.9	-3.0	0.8	0.2	-0.8
Employment part-time	95.1	93.1	3.1	-2.0	2.7	-2.6	-2.1	3.0	-2.7
Unemployment	27.0	26.9	1.9	-0.1	0.3	0.4	-0.4	1.1	1.5
Participation rate	68.1	68.3	0.3	0.2	0.6	-0.6
Unemployment rate	5.3	5.3	0.4	0.0	0.0	0.2
Employment rate	64.5	64.7	0.3	0.2	0.6	-0.6
Alberta									
Population	2,603.3	2,610.4	...	7.1	23.2	73.6	0.3	0.9	2.9
Labour force	1,894.6	1,906.4	7.9	11.8	26.9	63.7	0.6	1.4	3.5
Employment	1,835.3	1,841.9	7.9	6.6	42.1	64.9	0.4	2.3	3.7
Employment full-time	1,516.9	1,530.6	10.7	13.7	32.0	66.1	0.9	2.1	4.5
Employment part-time	318.4	311.3	9.7	-7.1	10.0	-1.2	-2.2	3.3	-0.4
Unemployment	59.3	64.5	5.7	5.2	-15.2	-1.2	8.8	-19.1	-1.8
Participation rate	72.8	73.0	0.3	0.2	0.4	0.4
Unemployment rate	3.1	3.4	0.3	0.3	-0.8	-0.2
Employment rate	70.5	70.6	0.3	0.1	1.0	0.6
British Columbia									
Population	3,487.9	3,492.4	...	4.5	14.1	63.3	0.1	0.4	1.8
Labour force	2,285.1	2,290.8	10.0	5.7	7.9	39.9	0.2	0.3	1.8
Employment	2,175.9	2,189.0	9.8	13.1	21.9	84.5	0.6	1.0	4.0
Employment full-time	1,713.4	1,730.3	13.1	16.9	0.7	58.2	1.0	0.0	3.5
Employment part-time	462.5	458.7	12.3	-3.8	21.2	26.3	-0.8	4.8	6.1
Unemployment	109.2	101.8	7.7	-7.4	-14.0	-44.6	-6.8	-12.1	-30.5
Participation rate	65.5	65.6	0.3	0.1	0.0	0.0
Unemployment rate	4.8	4.4	0.3	-0.4	-0.7	-2.1
Employment rate	62.4	62.7	0.3	0.3	0.4	1.3

1. Average standard error of change in two consecutive months (see "Sampling Errors" in Data Quality for further explanations).

Note: Related CANSIM table 282-0087

Table 4-1

Selected labour force characteristics (seasonally adjusted) — Newfoundland and Labrador

	February 2006	March 2006	S.E. ¹	Change from			Percent change from		
				last month	last December	twelve months ago	last month	last December	twelve months ago
in thousands (except rates)									
Both sexes, 15 years and over									
Population	429.1	428.8	...	-0.3	-0.4	-1.5	-0.1	-0.1	-0.3
Labour force	253.5	251.6	2.5	-1.9	2.2	-2.6	-0.7	0.9	-1.0
Employment	215.2	211.9	2.4	-3.3	1.0	-4.1	-1.5	0.5	-1.9
Employment full-time	179.3	178.6	2.6	-0.7	2.5	-3.7	-0.4	1.4	-2.0
Unemployment	38.4	39.6	2.2	1.2	1.1	1.4	3.1	2.9	3.7
Participation rate	59.1	58.7	0.6	-0.4	0.6	-0.4
Unemployment rate	15.1	15.7	0.8	0.6	0.3	0.7
Employment rate	50.2	49.4	0.6	-0.8	0.3	-0.8
Part-time rate	16.7	15.8	0.9	-0.9	-0.7	0.2
Both sexes, 15 to 24 years									
Population	67.7	67.6	...	-0.1	-0.3	-2.4	-0.1	-0.4	-3.4
Labour force	36.1	36.4	1.3	0.3	-0.2	-1.3	0.8	-0.5	-3.4
Employment	27.5	26.5	1.2	-1.0	-2.1	-4.9	-3.6	-7.3	-15.6
Unemployment	8.6	9.8	1.1	1.2	1.8	3.5	14.0	22.5	55.6
Participation rate	53.3	53.8	1.9	0.5	-0.1	-0.1
Unemployment rate	23.8	26.9	2.6	3.1	5.0	10.2
Employment rate	40.6	39.2	1.8	-1.4	-2.9	-5.7
Part-time rate	49.8	49.1	3.6	-0.8	2.9	5.1
Men, 25 years and over									
Population	175.0	174.9	...	-0.1	-0.1	0.2	-0.1	-0.1	0.1
Labour force	114.1	113.3	1.4	-0.8	2.1	-1.5	-0.7	1.9	-1.3
Employment	95.7	95.9	1.4	0.2	2.3	-1.6	0.2	2.5	-1.6
Unemployment	18.3	17.4	1.4	-0.9	-0.2	0.1	-4.9	-1.1	0.6
Participation rate	65.2	64.8	0.8	-0.4	1.3	-0.9
Unemployment rate	16.0	15.4	1.1	-0.6	-0.4	0.3
Employment rate	54.7	54.8	0.8	0.1	1.3	-1.0
Part-time rate	5.5	5.2	0.9	-0.3	1.0	0.5
Women, 25 years and over									
Population	186.3	186.2	...	-0.1	0.0	0.6	-0.1	0.0	0.3
Labour force	103.4	101.9	1.3	-1.5	0.3	0.2	-1.5	0.3	0.2
Employment	91.9	89.5	1.3	-2.4	0.8	2.4	-2.6	0.9	2.8
Unemployment	11.5	12.4	1.2	0.9	-0.5	-2.3	7.8	-3.9	-15.6
Participation rate	55.5	54.7	0.7	-0.8	0.1	-0.1
Unemployment rate	11.1	12.2	1.1	1.1	-0.5	-2.3
Employment rate	49.3	48.1	0.7	-1.2	0.5	1.2
Part-time rate	18.4	17.1	1.3	-1.3	-2.9	-0.5
Industry									
	215.2	211.9	2.4	-3.3	1.0	-4.1	-1.5	0.5	-1.9
Goods-producing sector									
Agriculture	49.5	49.1	1.8	-0.4	-0.7	-0.7	-0.8	-1.4	-1.4
Forestry, fishing, mining, oil and gas	2.0	1.8	0.4	-0.2	-0.4	0.1	-10.0	-18.2	5.9
Utilities	16.7	16.3	1.1	-0.4	1.1	0.0	-2.4	7.2	0.0
Construction	2.3	2.6	0.3	0.3	0.0	0.1	13.0	0.0	4.0
Manufacturing	12.4	12.5	1.0	0.1	0.6	-0.2	0.8	5.0	-1.6
	16.0	15.9	1.2	-0.1	-1.9	-0.7	-0.6	-10.7	-4.2
Services-producing sector									
Trade	165.7	162.8	2.2	-2.9	1.7	-3.4	-1.8	1.1	-2.0
Transportation and warehousing	37.5	36.3	1.4	-1.2	-2.2	-2.7	-3.2	-5.7	-6.9
Finance, insurance, real estate and leasing	11.6	11.7	0.8	0.1	0.0	0.9	0.9	0.0	8.3
Professional, scientific and technical services	8.0	7.6	0.6	-0.4	0.5	-0.4	-5.0	7.0	-5.0
Business, building and other support services	8.3	6.3	0.7	-2.0	-0.7	-0.6	-24.1	-10.0	-8.7
Educational services	7.1	7.2	0.8	0.1	0.6	-1.1	1.4	9.1	-13.3
Health care and social assistance	16.6	15.7	0.9	-0.9	-0.4	0.2	-5.4	-2.5	1.3
Information, culture and recreation	30.9	31.4	1.1	0.5	3.6	2.2	1.6	12.9	7.5
Accommodation and food services	7.0	7.5	0.7	0.5	0.7	-0.4	7.1	10.3	-5.1
Other services	13.0	12.8	1.0	-0.2	-0.8	-1.6	-1.5	-5.9	-11.1
Public administration	11.8	11.8	0.9	0.0	1.3	1.7	0.0	12.4	16.8
	13.9	14.6	0.8	0.7	-0.7	-1.5	5.0	-4.6	-9.3

1. Average standard error of change in two consecutive months (see "Sampling Errors" in Data Quality for further explanations).

Note: Related CANSIM tables 282-0087, 282-0088

Table 4-2

Selected labour force characteristics (seasonally adjusted) — Prince Edward Island

	February 2006	March 2006	S.E. ¹	Change from			Percent change from		
				last month	last December	twelve months ago	last month	last December	twelve months ago
in thousands (except rates)									
Both sexes, 15 years and over									
Population	112.0	112.0	...	0.0	0.0	0.6	0.0	0.0	0.5
Labour force	77.4	77.3	0.6	-0.1	0.1	0.9	-0.1	0.1	1.2
Employment	69.0	67.9	0.7	-1.1	-0.7	-0.6	-1.6	-1.0	-0.9
Employment full-time	57.8	57.6	0.8	-0.2	-0.6	0.0	-0.3	-1.0	0.0
Unemployment	8.4	9.3	0.6	0.9	0.7	1.4	10.7	8.1	17.7
Participation rate	69.1	69.0	0.6	-0.1	0.1	0.4
Unemployment rate	10.9	12.0	0.8	1.1	0.9	1.7
Employment rate	61.6	60.6	0.6	-1.0	-0.7	-0.9
Part-time rate	16.2	15.2	0.9	-1.1	0.0	-0.7
Both sexes, 15 to 24 years									
Population	19.8	19.8	...	0.0	0.0	0.2	0.0	0.0	1.0
Labour force	14.0	14.1	0.4	0.1	0.7	0.8	0.7	5.2	6.0
Employment	12.2	11.8	0.4	-0.4	0.4	0.8	-3.3	3.5	7.3
Unemployment	1.8	2.3	0.3	0.5	0.2	0.0	27.8	9.5	0.0
Participation rate	70.7	71.2	2.0	0.5	3.5	3.3
Unemployment rate	12.9	16.3	2.4	3.4	0.6	-1.0
Employment rate	61.6	59.6	2.0	-2.0	2.0	3.5
Part-time rate	36.9	34.7	3.2	-2.1	-1.2	-5.3
Men, 25 years and over									
Population	44.2	44.2	...	0.0	0.0	0.3	0.0	0.0	0.7
Labour force	32.7	32.7	0.3	0.0	-0.3	0.5	0.0	-0.9	1.6
Employment	28.8	28.1	0.4	-0.7	-0.9	-1.1	-2.4	-3.1	-3.8
Unemployment	3.9	4.6	0.4	0.7	0.6	1.6	17.9	15.0	53.3
Participation rate	74.0	74.0	0.8	0.0	-0.7	0.7
Unemployment rate	11.9	14.1	1.1	2.2	2.0	4.8
Employment rate	65.2	63.6	0.9	-1.6	-2.0	-2.9
Part-time rate	5.9	5.0	1.0	-0.9	-0.9	-0.2
Women, 25 years and over									
Population	48.0	48.0	...	0.0	0.0	0.1	0.0	0.0	0.2
Labour force	30.7	30.5	0.3	-0.2	-0.2	-0.4	-0.7	-0.7	-1.3
Employment	27.9	28.0	0.4	0.1	-0.3	-0.2	0.4	-1.1	-0.7
Unemployment	2.7	2.5	0.3	-0.2	0.0	-0.2	-7.4	0.0	-7.4
Participation rate	64.0	63.5	0.7	-0.5	-0.5	-1.0
Unemployment rate	8.8	8.2	1.0	-0.6	0.1	-0.5
Employment rate	58.1	58.3	0.7	0.2	-0.7	-0.6
Part-time rate	17.9	17.1	1.5	-0.8	0.5	-0.6
Industry									
Population	69.0	67.9	0.7	-1.1	-0.7	-0.6	-1.6	-1.0	-0.9
Goods-producing sector									
Agriculture	4.3	3.9	0.3	-0.4	0.1	0.9	-9.3	2.6	30.0
Forestry, fishing, mining, oil and gas	2.3	2.2	0.3	-0.1	0.0	-0.3	-4.3	0.0	-12.0
Utilities	0.4	0.5	0.1	0.1	0.1	0.0	25.0	25.0	0.0
Construction	5.7	5.5	0.3	-0.2	0.2	1.0	-3.5	3.8	22.2
Manufacturing	6.9	6.7	0.4	-0.2	-0.4	-0.1	-2.9	-5.6	-1.5
Services-producing sector									
Trade	49.4	49.3	0.7	-0.1	-0.6	-1.9	-0.2	-1.2	-3.7
Transportation and warehousing	9.8	9.6	0.4	-0.2	0.4	-0.4	-2.0	4.3	-4.0
Finance, insurance, real estate and leasing	1.8	1.8	0.2	0.0	-0.3	-0.7	0.0	-14.3	-28.0
Professional, scientific and technical services	1.7	1.7	0.2	0.0	-0.3	-0.6	0.0	-15.0	-26.1
Business, building and other support services	2.8	2.8	0.2	0.0	0.2	0.4	0.0	7.7	16.7
Educational services	2.7	2.5	0.2	-0.2	-0.3	0.0	-7.4	-10.7	0.0
Health care and social assistance	4.6	4.5	0.3	-0.1	-0.2	-0.5	-2.2	-4.3	-10.0
Information, culture and recreation	8.1	8.2	0.3	0.1	0.5	0.4	1.2	6.5	5.1
Accommodation and food services	2.6	2.6	0.3	0.0	-0.3	-0.4	0.0	-10.3	-13.3
Other services	5.9	6.0	0.4	0.1	-0.1	0.8	1.7	-1.6	15.4
Public administration	3.5	3.4	0.2	-0.1	0.0	0.5	-2.9	0.0	17.2
Public administration	5.8	6.2	0.3	0.4	0.0	-1.5	6.9	0.0	-19.5

1. Average standard error of change in two consecutive months (see "Sampling Errors" in Data Quality for further explanations).

Note: Related CANSIM tables 282-0087, 282-0088

Table 4-3

Selected labour force characteristics (seasonally adjusted) — Nova Scotia

	February 2006	March 2006	S.E. ¹	Change from			Percent change from		
				last month	last December	twelve months ago	last month	last December	twelve months ago
in thousands (except rates)									
Both sexes, 15 years and over									
Population	762.4	762.6	...	0.2	0.6	2.7	0.0	0.1	0.4
Labour force	482.2	481.0	2.8	-1.2	-1.3	-2.1	-0.2	-0.3	-0.4
Employment	441.7	443.7	2.9	2.0	2.4	1.4	0.5	0.5	0.3
Employment full-time	358.6	359.3	3.7	0.7	-1.6	-4.3	0.2	-0.4	-1.2
Unemployment	40.5	37.3	2.5	-3.2	-3.7	-3.5	-7.9	-9.0	-8.6
Participation rate	63.2	63.1	0.4	-0.1	-0.2	-0.5
Unemployment rate	8.4	7.8	0.5	-0.6	-0.7	-0.6
Employment rate	57.9	58.2	0.4	0.3	0.3	0.0
Part-time rate	18.8	19.0	0.7	0.2	0.8	1.3
Both sexes, 15 to 24 years									
Population	123.5	123.5	...	0.0	-0.1	0.2	0.0	-0.1	0.2
Labour force	83.1	84.6	1.8	1.5	3.2	1.8	1.8	3.9	2.2
Employment	71.8	73.8	1.7	2.0	3.1	3.9	2.8	4.4	5.6
Unemployment	11.3	10.9	1.5	-0.4	0.1	-2.0	-3.5	0.9	-15.5
Participation rate	67.3	68.5	1.5	1.2	2.6	1.3
Unemployment rate	13.6	12.9	1.7	-0.7	-0.4	-2.7
Employment rate	58.1	59.8	1.4	1.7	2.6	3.1
Part-time rate	44.3	48.6	2.5	4.4	4.5	7.0
Men, 25 years and over									
Population	305.2	305.3	...	0.1	0.3	0.9	0.0	0.1	0.3
Labour force	207.3	204.7	1.5	-2.6	-4.9	-6.1	-1.3	-2.3	-2.9
Employment	189.8	188.7	1.7	-1.1	-4.5	-5.6	-0.6	-2.3	-2.9
Unemployment	17.5	16.1	1.5	-1.4	-0.3	-0.4	-8.0	-1.8	-2.4
Participation rate	67.9	67.0	0.5	-0.9	-1.7	-2.3
Unemployment rate	8.4	7.9	0.7	-0.5	0.1	0.1
Employment rate	62.2	61.8	0.6	-0.4	-1.5	-2.0
Part-time rate	6.4	6.7	0.7	0.4	0.5	1.9
Women, 25 years and over									
Population	333.7	333.8	...	0.1	0.4	1.6	0.0	0.1	0.5
Labour force	191.8	191.7	1.5	-0.1	0.4	2.1	-0.1	0.2	1.1
Employment	180.1	181.3	1.5	1.2	3.9	3.2	0.7	2.2	1.8
Unemployment	11.7	10.4	1.3	-1.3	-3.4	-1.1	-11.1	-24.6	-9.6
Participation rate	57.5	57.4	0.4	-0.1	0.0	0.3
Unemployment rate	6.1	5.4	0.7	-0.7	-1.8	-0.7
Employment rate	54.0	54.3	0.5	0.3	1.1	0.7
Part-time rate	21.8	19.7	1.2	-2.0	-1.2	-2.8
Industry									
Industry	441.7	443.7	2.9	2.0	2.4	1.4	0.5	0.5	0.3
Goods-producing sector									
Goods-producing sector	87.4	87.2	2.4	-0.2	-1.9	-6.3	-0.2	-2.1	-6.7
Agriculture	5.4	4.7	0.8	-0.7	-0.1	-1.7	-13.0	-2.1	-26.6
Forestry, fishing, mining, oil and gas	13.9	14.3	1.2	0.4	-1.0	-1.1	2.9	-6.5	-7.1
Utilities	1.9	1.7	0.4	-0.2	0.4	-1.4	-10.5	30.8	-45.2
Construction	26.8	26.5	1.4	-0.3	-0.8	-1.9	-1.1	-2.9	-6.7
Manufacturing	39.5	40.1	1.6	0.6	-0.3	-0.1	1.5	-0.7	-0.2
Services-producing sector									
Services-producing sector	354.2	356.5	3.0	2.3	4.2	7.8	0.6	1.2	2.2
Trade	79.6	79.1	2.0	-0.5	2.7	2.0	-0.6	3.5	2.6
Transportation and warehousing	19.2	18.4	1.0	-0.8	-2.2	-1.0	-4.2	-10.7	-5.2
Finance, insurance, real estate and leasing	21.8	22.1	1.1	0.3	-1.1	-0.5	1.4	-4.7	-2.2
Professional, scientific and technical services	19.7	19.5	1.1	-0.2	-0.2	-0.1	-1.0	-1.0	-0.5
Business, building and other support services	27.0	29.1	1.4	2.1	5.0	7.7	7.8	20.7	36.0
Educational services	35.6	37.2	1.4	1.6	2.0	1.1	4.5	5.7	3.0
Health care and social assistance	58.7	59.2	1.5	0.5	1.0	3.8	0.9	1.7	6.9
Information, culture and recreation	14.7	15.2	1.1	0.5	0.8	-2.1	3.4	5.6	-12.1
Accommodation and food services	28.4	26.7	1.6	-1.7	-3.7	-7.2	-6.0	-12.2	-21.2
Other services	21.9	21.4	1.2	-0.5	0.4	1.3	-2.3	1.9	6.5
Public administration	27.6	28.6	1.1	1.0	-0.4	2.7	3.6	-1.4	10.4

1. Average standard error of change in two consecutive months (see "Sampling Errors" in Data Quality for further explanations).

Note: Related CANSIM tables 282-0087, 282-0088

Table 4-4

Selected labour force characteristics (seasonally adjusted) — New Brunswick

	February 2006	March 2006	S.E. ¹	Change from			Percent change from		
				last month	last December	twelve months ago	last month	last December	twelve months ago
in thousands (except rates)									
Both sexes, 15 years and over									
Population	611.4	611.4	...	0.0	0.0	1.8	0.0	0.0	0.3
Labour force	396.5	396.1	2.3	-0.4	3.0	9.7	-0.1	0.8	2.5
Employment	359.2	359.6	2.5	0.4	4.3	9.8	0.1	1.2	2.8
Employment full-time	296.2	302.5	3.0	6.3	7.9	11.1	2.1	2.7	3.8
Unemployment	37.3	36.5	2.2	-0.8	-1.3	-0.1	-2.1	-3.4	-0.3
Participation rate	64.9	64.8	0.4	-0.1	0.5	1.4
Unemployment rate	9.4	9.2	0.5	-0.2	-0.4	-0.3
Employment rate	58.8	58.8	0.4	0.0	0.7	1.4
Part-time rate	17.5	15.9	0.7	-1.7	-1.2	-0.8
Both sexes, 15 to 24 years									
Population	96.1	96.1	...	0.0	0.0	-0.9	0.0	0.0	-0.9
Labour force	66.5	64.8	1.4	-1.7	1.5	1.1	-2.6	2.4	1.7
Employment	56.4	56.1	1.4	-0.3	1.8	2.5	-0.5	3.3	4.7
Unemployment	10.0	8.8	1.2	-1.2	-0.2	-1.2	-12.0	-2.2	-12.0
Participation rate	69.2	67.4	1.4	-1.8	1.5	1.7
Unemployment rate	15.0	13.6	1.8	-1.4	-0.6	-2.1
Employment rate	58.7	58.4	1.5	-0.3	1.9	3.1
Part-time rate	42.7	38.9	2.5	-3.9	-1.8	-1.3
Men, 25 years and over									
Population	248.9	248.9	...	0.0	0.0	1.3	0.0	0.0	0.5
Labour force	172.2	174.0	1.3	1.8	2.0	3.8	1.0	1.2	2.2
Employment	155.6	156.7	1.5	1.1	1.0	3.3	0.7	0.6	2.2
Unemployment	16.7	17.3	1.5	0.6	1.0	0.5	3.6	6.1	3.0
Participation rate	69.2	69.9	0.5	0.7	0.8	1.2
Unemployment rate	9.7	9.9	0.8	0.2	0.4	0.0
Employment rate	62.5	63.0	0.6	0.5	0.4	1.0
Part-time rate	6.2	5.4	0.7	-0.8	-0.6	0.5
Women, 25 years and over									
Population	266.3	266.3	...	0.0	-0.1	1.3	0.0	0.0	0.5
Labour force	157.8	157.2	1.3	-0.6	-0.6	4.7	-0.4	-0.4	3.1
Employment	147.2	146.8	1.3	-0.4	1.4	4.0	-0.3	1.0	2.8
Unemployment	10.6	10.4	1.1	-0.2	-2.0	0.7	-1.9	-16.1	7.2
Participation rate	59.3	59.0	0.5	-0.3	-0.2	1.5
Unemployment rate	6.7	6.6	0.7	-0.1	-1.3	0.2
Employment rate	55.3	55.1	0.5	-0.2	0.5	1.2
Part-time rate	19.9	18.3	1.1	-1.6	-1.9	-2.4
Industry	359.2	359.6	2.5	0.4	4.3	9.8	0.1	1.2	2.8
Goods-producing sector	79.0	77.8	1.9	-1.2	-0.3	-0.9	-1.5	-0.4	-1.1
Agriculture	7.7	6.2	0.6	-1.5	-2.0	1.0	-19.5	-24.4	19.2
Forestry, fishing, mining, oil and gas	11.1	11.4	0.9	0.3	0.4	-1.4	2.7	3.6	-10.9
Utilities	3.1	2.8	0.4	-0.3	-0.6	-0.9	-9.7	-17.6	-24.3
Construction	20.7	21.3	1.1	0.6	2.2	2.7	2.9	11.5	14.5
Manufacturing	36.4	36.0	1.3	-0.4	-0.5	-2.4	-1.1	-1.4	-6.2
Services-producing sector	280.2	281.8	2.4	1.6	4.6	10.7	0.6	1.7	3.9
Trade	60.3	58.6	1.6	-1.7	0.9	1.2	-2.8	1.6	2.1
Transportation and warehousing	19.3	20.8	1.0	1.5	0.7	-0.3	7.8	3.5	-1.4
Finance, insurance, real estate and leasing	14.3	15.6	0.7	1.3	1.3	1.8	9.1	9.1	13.0
Professional, scientific and technical services	14.6	13.2	0.9	-1.4	-1.0	-2.8	-9.6	-7.0	-17.5
Business, building and other support services	22.2	22.2	1.1	0.0	0.9	1.2	0.0	4.2	5.7
Educational services	28.5	27.6	1.0	-0.9	0.7	2.3	-3.2	2.6	9.1
Health care and social assistance	44.6	45.4	1.2	0.8	-0.5	-1.6	1.8	-1.1	-3.4
Information, culture and recreation	11.9	12.9	0.9	1.0	0.2	0.8	8.4	1.6	6.6
Accommodation and food services	25.1	24.5	1.1	-0.6	-0.4	4.1	-2.4	-1.6	20.1
Other services	18.7	19.4	1.0	0.7	2.5	2.6	3.7	14.8	15.5
Public administration	20.8	21.5	0.9	0.7	-0.7	1.2	3.4	-3.2	5.9

1. Average standard error of change in two consecutive months (see "Sampling Errors" in Data Quality for further explanations).

Note: Related CANSIM tables 282-0087, 282-0088

Table 4-5

Selected labour force characteristics (seasonally adjusted) — Quebec

	February 2006	March 2006	S.E. ¹	Change from			Percent change from		
				last month	last December	twelve months ago	last month	last December	twelve months ago
in thousands (except rates)									
Both sexes, 15 years and over									
Population	6,225.2	6,230.1	...	4.9	14.2	70.6	0.1	0.2	1.1
Labour force	4,085.4	4,099.8	15.1	14.4	9.4	68.3	0.4	0.2	1.7
Employment	3,749.4	3,752.9	15.0	3.5	-2.1	57.3	0.1	-0.1	1.6
Employment full-time	3,070.5	3,054.6	20.0	-15.9	-19.5	13.2	-0.5	-0.6	0.4
Unemployment	336.0	347.0	13.2	11.0	11.7	11.1	3.3	3.5	3.3
Participation rate	65.6	65.8	0.2	0.2	0.0	0.3
Unemployment rate	8.2	8.5	0.3	0.3	0.3	0.2
Employment rate	60.2	60.2	0.2	0.0	-0.2	0.2
Part-time rate	18.1	18.6	0.5	0.5	0.5	0.9
Both sexes, 15 to 24 years									
Population	950.0	950.1	...	0.1	-0.1	-0.2	0.0	0.0	0.0
Labour force	629.6	643.8	8.7	14.2	8.5	7.7	2.3	1.3	1.2
Employment	543.9	553.4	8.4	9.5	2.5	10.0	1.7	0.5	1.8
Unemployment	85.7	90.5	7.3	4.8	6.1	-2.2	5.6	7.2	-2.4
Participation rate	66.3	67.8	0.9	1.5	0.9	0.9
Unemployment rate	13.6	14.1	1.1	0.5	0.8	-0.5
Employment rate	57.3	58.2	0.9	0.9	0.2	1.0
Part-time rate	45.7	47.1	1.6	1.4	1.9	2.9
Men, 25 years and over									
Population	2,575.0	2,577.5	...	2.5	7.2	36.7	0.1	0.3	1.4
Labour force	1,859.1	1,851.7	8.0	-7.4	-4.5	13.4	-0.4	-0.2	0.7
Employment	1,719.1	1,711.0	8.8	-8.1	-16.0	19.5	-0.5	-0.9	1.2
Unemployment	140.0	140.7	8.0	0.7	11.4	-6.1	0.5	8.8	-4.2
Participation rate	72.2	71.8	0.3	-0.4	-0.4	-0.6
Unemployment rate	7.5	7.6	0.4	0.1	0.6	-0.4
Employment rate	66.8	66.4	0.3	-0.4	-0.8	-0.2
Part-time rate	6.8	7.1	0.5	0.3	-0.3	0.1
Women, 25 years and over									
Population	2,700.1	2,702.5	...	2.4	7.0	34.1	0.1	0.3	1.3
Labour force	1,596.7	1,604.3	8.7	7.6	5.4	47.2	0.5	0.3	3.0
Employment	1,486.4	1,488.5	8.3	2.1	11.4	27.8	0.1	0.8	1.9
Unemployment	110.3	115.8	7.4	5.5	-5.9	19.4	5.0	-4.8	20.1
Participation rate	59.1	59.4	0.3	0.3	0.1	1.0
Unemployment rate	6.9	7.2	0.5	0.3	-0.4	1.0
Employment rate	55.0	55.1	0.3	0.1	0.3	0.4
Part-time rate	21.1	21.3	0.8	0.2	0.6	1.0
Industry	3,749.4	3,752.9	15.0	3.5	-2.1	57.3	0.1	-0.1	1.6
Goods-producing sector	925.5	910.2	13.5	-15.3	-13.3	-18.1	-1.7	-1.4	-1.9
Agriculture	68.2	64.1	3.7	-4.1	-0.2	9.2	-6.0	-0.3	16.8
Forestry, fishing, mining, oil and gas	42.1	44.2	2.6	2.1	4.2	6.0	5.0	10.5	15.7
Utilities	31.1	30.5	2.3	-0.6	-1.5	-1.5	-1.9	-4.7	-4.7
Construction	188.4	189.0	7.2	0.6	3.7	23.2	0.3	2.0	14.0
Manufacturing	595.8	582.3	11.4	-13.5	-19.5	-55.0	-2.3	-3.2	-8.6
Services-producing sector	2,823.9	2,842.7	17.1	18.8	11.1	75.4	0.7	0.4	2.7
Trade	651.4	634.1	12.1	-17.3	-8.4	23.6	-2.7	-1.3	3.9
Transportation and warehousing	166.3	172.1	6.4	5.8	15.8	14.6	3.5	10.1	9.3
Finance, insurance, real estate and leasing	217.5	216.9	7.1	-0.6	12.9	5.6	-0.3	6.3	2.7
Professional, scientific and technical services	229.0	233.9	7.8	4.9	-4.9	18.8	2.1	-2.1	8.7
Business, building and other support services	130.2	132.5	6.7	2.3	1.1	13.7	1.8	0.8	11.5
Educational services	264.4	262.9	7.6	-1.5	6.9	16.9	-0.6	2.7	6.9
Health care and social assistance	437.8	446.1	9.6	8.3	-4.3	4.1	1.9	-1.0	0.9
Information, culture and recreation	151.2	155.3	7.5	4.1	-7.7	-20.8	2.7	-4.7	-11.8
Accommodation and food services	204.5	211.9	7.9	7.4	-2.7	8.1	3.6	-1.3	4.0
Other services	154.4	161.1	6.4	6.7	1.4	-0.1	4.3	0.9	-0.1
Public administration	217.2	215.8	6.4	-1.4	0.9	-9.1	-0.6	0.4	-4.0

1. Average standard error of change in two consecutive months (see "Sampling Errors" in Data Quality for further explanations).

Note: Related CANSIM tables 282-0087, 282-0088

Table 4-6

Selected labour force characteristics (seasonally adjusted) — Ontario

	February 2006	March 2006	S.E. ¹	Change from			Percent change from		
				last month	last December	twelve months ago	last month	last December	twelve months ago
in thousands (except rates)									
Both sexes, 15 years and over									
Population	10,175.7	10,185.9	...	10.2	33.1	174.2	0.1	0.3	1.7
Labour force	6,858.6	6,886.0	18.5	27.4	26.4	72.4	0.4	0.4	1.1
Employment	6,431.8	6,463.0	18.3	31.2	29.6	115.4	0.5	0.5	1.8
Employment full-time	5,292.0	5,313.7	23.9	21.7	1.1	166.1	0.4	0.0	3.2
Unemployment	426.9	423.0	15.7	-3.9	-3.2	-42.9	-0.9	-0.8	-9.2
Participation rate	67.4	67.6	0.2	0.2	0.0	-0.5
Unemployment rate	6.2	6.1	0.2	-0.1	-0.1	-0.7
Employment rate	63.2	63.5	0.2	0.3	0.1	0.1
Part-time rate	17.7	17.8	0.3	0.1	0.4	-1.1
Both sexes, 15 to 24 years									
Population	1,697.2	1,698.4	...	1.2	4.1	28.1	0.1	0.2	1.7
Labour force	1,080.9	1,104.8	11.5	23.9	7.3	35.9	2.2	0.7	3.4
Employment	941.9	964.3	10.8	22.4	13.9	37.3	2.4	1.5	4.0
Unemployment	139.0	140.5	9.6	1.5	-6.6	-1.4	1.1	-4.5	-1.0
Participation rate	63.7	65.0	0.7	1.3	0.2	1.0
Unemployment rate	12.9	12.7	0.8	-0.2	-0.7	-0.6
Employment rate	55.5	56.8	0.7	1.3	0.7	1.3
Part-time rate	47.9	47.4	1.2	-0.5	0.3	-2.3
Men, 25 years and over									
Population	4,126.6	4,130.7	...	4.1	13.1	70.2	0.1	0.3	1.7
Labour force	3,093.7	3,089.6	8.9	-4.1	5.4	27.9	-0.1	0.2	0.9
Employment	2,942.6	2,943.3	9.8	0.7	6.6	40.9	0.0	0.2	1.4
Unemployment	151.1	146.2	8.4	-4.9	-1.3	-13.1	-3.2	-0.9	-8.2
Participation rate	75.0	74.8	0.2	-0.2	-0.1	-0.6
Unemployment rate	4.9	4.7	0.3	-0.2	-0.1	-0.5
Employment rate	71.3	71.3	0.2	0.0	0.0	-0.2
Part-time rate	6.3	6.1	0.3	-0.2	-0.2	-0.2
Women, 25 years and over									
Population	4,351.9	4,356.8	...	4.9	15.9	75.9	0.1	0.4	1.8
Labour force	2,684.0	2,691.7	10.5	7.7	13.8	8.7	0.3	0.5	0.3
Employment	2,547.3	2,555.4	10.5	8.1	9.1	37.1	0.3	0.4	1.5
Unemployment	136.8	136.3	8.6	-0.5	4.7	-28.4	-0.4	3.6	-17.2
Participation rate	61.7	61.8	0.3	0.1	0.1	-0.9
Unemployment rate	5.1	5.1	0.3	0.0	0.2	-1.0
Employment rate	58.5	58.7	0.2	0.2	0.0	-0.1
Part-time rate	19.8	20.1	0.6	0.3	0.9	-2.0
Industry	6,431.8	6,463.0	18.3	31.2	29.6	115.4	0.5	0.5	1.8
Goods-producing sector	1,620.3	1,600.2	16.1	-20.1	-35.2	-30.6	-1.2	-2.2	-1.9
Agriculture	96.8	98.8	4.0	2.0	0.0	12.7	2.1	0.0	14.8
Forestry, fishing, mining, oil and gas	30.9	31.7	2.1	0.8	-3.9	-1.3	2.6	-11.0	-3.9
Utilities	50.7	45.8	2.5	-4.9	-4.7	-3.5	-9.7	-9.3	-7.1
Construction	416.6	405.4	9.2	-11.2	0.2	17.0	-2.7	0.0	4.4
Manufacturing	1,025.3	1,018.7	13.5	-6.6	-26.6	-55.3	-0.6	-2.5	-5.1
Services-producing sector	4,811.4	4,862.8	21.1	51.4	64.8	145.9	1.1	1.4	3.1
Trade	975.7	989.3	13.8	13.6	3.7	-0.6	1.4	0.4	-0.1
Transportation and warehousing	286.7	290.8	7.5	4.1	-7.2	6.1	1.4	-2.4	2.1
Finance, insurance, real estate and leasing	462.8	477.8	10.1	15.0	19.1	30.4	3.2	4.2	6.8
Professional, scientific and technical services	455.7	461.8	10.1	6.1	5.8	27.4	1.3	1.3	6.3
Business, building and other support services	283.6	295.9	8.8	12.3	-1.9	27.4	4.3	-0.6	10.2
Educational services	462.6	456.5	9.3	-6.1	-0.4	43.8	-1.3	-0.1	10.6
Health care and social assistance	625.6	622.1	10.1	-3.5	13.2	-18.8	-0.6	2.2	-2.9
Information, culture and recreation	320.7	331.2	8.2	10.5	21.2	21.5	3.3	6.8	6.9
Accommodation and food services	370.1	358.0	9.2	-12.1	-10.7	-3.5	-3.3	-2.9	-1.0
Other services	261.5	272.2	7.3	10.7	35.1	15.5	4.1	14.8	6.0
Public administration	306.5	307.2	6.9	0.7	-13.1	-3.3	0.2	-4.1	-1.1

1. Average standard error of change in two consecutive months (see "Sampling Errors" in Data Quality for further explanations).

Note: Related CANSIM tables 282-0087, 282-0088

Table 4-7

Selected labour force characteristics (seasonally adjusted) — Manitoba

	February 2006	March 2006	S.E. ¹	Change from			Percent change from		
				last month	last December	twelve months ago	last month	last December	twelve months ago
in thousands (except rates)									
Both sexes, 15 years and over									
Population	890.1	890.5	...	0.4	0.6	3.5	0.0	0.1	0.4
Labour force	612.9	608.4	2.8	-4.5	-0.9	0.8	-0.7	-0.1	0.1
Employment	586.1	583.0	2.9	-3.1	-0.6	7.1	-0.5	-0.1	1.2
Employment full-time	470.2	468.8	3.9	-1.4	4.9	7.8	-0.3	1.1	1.7
Unemployment	26.8	25.3	2.2	-1.5	-0.4	-6.4	-5.6	-1.6	-20.2
Participation rate	68.9	68.3	0.3	-0.6	-0.2	-0.2
Unemployment rate	4.4	4.2	0.3	-0.2	0.0	-1.0
Employment rate	65.8	65.5	0.3	-0.3	-0.1	0.6
Part-time rate	19.8	19.6	0.6	-0.2	-0.9	-0.3
Both sexes, 15 to 24 years									
Population	155.6	155.6	...	0.0	0.1	0.4	0.0	0.1	0.3
Labour force	114.5	112.6	1.7	-1.9	3.1	5.3	-1.7	2.8	4.9
Employment	105.2	103.2	1.7	-2.0	2.8	8.3	-1.9	2.8	8.7
Unemployment	9.2	9.4	1.5	0.2	0.3	-3.0	2.2	3.3	-24.2
Participation rate	73.6	72.4	1.1	-1.2	2.0	3.3
Unemployment rate	8.0	8.3	1.3	0.3	0.0	-3.3
Employment rate	67.6	66.3	1.1	-1.3	1.7	5.2
Part-time rate	47.0	45.3	2.1	-1.7	-0.9	0.6
Men, 25 years and over									
Population	358.2	358.5	...	0.3	0.5	2.1	0.1	0.1	0.6
Labour force	266.1	264.6	1.4	-1.5	-4.8	-4.8	-0.6	-1.8	-1.8
Employment	257.6	255.4	1.5	-2.2	-4.5	-2.4	-0.9	-1.7	-0.9
Unemployment	8.6	9.2	1.2	0.6	-0.3	-2.4	7.0	-3.2	-20.7
Participation rate	74.3	73.8	0.4	-0.5	-1.5	-1.8
Unemployment rate	3.2	3.5	0.4	0.3	0.0	-0.8
Employment rate	71.9	71.2	0.4	-0.7	-1.4	-1.1
Part-time rate	5.7	6.3	0.6	0.6	-0.2	-0.5
Women, 25 years and over									
Population	376.3	376.4	...	0.1	0.0	1.1	0.0	0.0	0.3
Labour force	232.3	231.2	1.6	-1.1	0.7	0.3	-0.5	0.3	0.1
Employment	223.3	224.5	1.6	1.2	1.2	1.3	0.5	0.5	0.6
Unemployment	9.0	6.7	1.1	-2.3	-0.4	-1.0	-25.6	-5.6	-13.0
Participation rate	61.7	61.4	0.4	-0.3	0.2	-0.1
Unemployment rate	3.9	2.9	0.5	-1.0	-0.2	-0.4
Employment rate	59.3	59.6	0.4	0.3	0.3	0.1
Part-time rate	23.3	22.9	1.1	-0.3	-2.3	-1.7
Industry	586.1	583.0	2.9	-3.1	-0.6	7.1	-0.5	-0.1	1.2
Goods-producing sector	136.4	136.0	2.5	-0.4	-5.5	0.1	-0.3	-3.9	0.1
Agriculture	31.2	30.1	1.3	-1.1	-2.1	0.8	-3.5	-6.5	2.7
Forestry, fishing, mining, oil and gas	6.7	6.8	0.6	0.1	0.6	1.0	1.5	9.7	17.2
Utilities	5.3	5.6	0.6	0.3	-1.0	-1.3	5.7	-15.2	-18.8
Construction	29.8	29.0	1.4	-0.8	-1.0	2.8	-2.7	-3.3	10.7
Manufacturing	63.4	64.3	2.0	0.9	-2.2	-3.5	1.4	-3.3	-5.2
Services-producing sector	449.7	447.1	3.4	-2.6	5.0	7.1	-0.6	1.1	1.6
Trade	87.6	91.4	2.2	3.8	5.7	6.5	4.3	6.7	7.7
Transportation and warehousing	35.8	35.9	1.3	0.1	0.1	3.1	0.3	0.3	9.5
Finance, insurance, real estate and leasing	34.2	32.1	1.4	-2.1	-3.4	0.8	-6.1	-9.6	2.6
Professional, scientific and technical services	24.3	24.7	1.3	0.4	2.5	-0.3	1.6	11.3	-1.2
Business, building and other support services	18.4	18.3	1.2	-0.1	-0.3	-1.6	-0.5	-1.6	-8.0
Educational services	46.0	45.5	1.7	-0.5	0.1	-0.5	-1.1	0.2	-1.1
Health care and social assistance	77.9	78.3	1.9	0.4	3.9	1.7	0.5	5.2	2.2
Information, culture and recreation	23.7	23.8	1.5	0.1	0.7	-1.3	0.4	3.0	-5.2
Accommodation and food services	41.5	38.3	1.7	-3.2	-1.8	2.7	-7.7	-4.5	7.6
Other services	25.5	24.3	1.3	-1.2	-1.7	-1.7	-4.7	-6.5	-6.5
Public administration	34.7	34.5	1.3	-0.2	-0.9	-2.3	-0.6	-2.5	-6.2

1. Average standard error of change in two consecutive months (see "Sampling Errors" in Data Quality for further explanations).

Note: Related CANSIM tables 282-0087, 282-0088

Table 4-8

Selected labour force characteristics (seasonally adjusted) — Saskatchewan

	February 2006	March 2006	S.E. ¹	Change from			Percent change from		
				last month	last December	twelve months ago	last month	last December	twelve months ago
in thousands (except rates)									
Both sexes, 15 years and over									
Population	747.4	747.0	...	-0.4	-1.2	-1.2	-0.1	-0.2	-0.2
Labour force	509.2	510.2	2.4	1.0	3.9	-5.1	0.2	0.8	-1.0
Employment	482.2	483.2	2.5	1.0	3.5	-5.6	0.2	0.7	-1.1
Employment full-time	387.1	390.2	3.2	3.1	0.9	-3.0	0.8	0.2	-0.8
Unemployment	27.0	26.9	1.9	-0.1	0.3	0.4	-0.4	1.1	1.5
Participation rate	68.1	68.3	0.3	0.2	0.6	-0.6
Unemployment rate	5.3	5.3	0.4	0.0	0.0	0.2
Employment rate	64.5	64.7	0.3	0.2	0.6	-0.6
Part-time rate	19.7	19.3	0.6	-0.5	0.4	-0.3
Both sexes, 15 to 24 years									
Population	138.2	138.1	...	-0.1	-0.1	-1.1	-0.1	-0.1	-0.8
Labour force	94.1	96.2	1.5	2.1	1.6	-0.9	2.2	1.7	-0.9
Employment	84.3	85.0	1.5	0.7	1.8	-1.5	0.8	2.2	-1.7
Unemployment	9.8	11.2	1.2	1.4	-0.2	0.6	14.3	-1.8	5.7
Participation rate	68.1	69.7	1.1	1.6	1.2	-0.1
Unemployment rate	10.4	11.6	1.2	1.2	-0.5	0.7
Employment rate	61.0	61.5	1.1	0.5	1.3	-0.6
Part-time rate	43.5	41.3	1.9	-2.2	0.9	-0.2
Men, 25 years and over									
Population	297.0	296.8	...	-0.2	-0.5	-0.1	-0.1	-0.2	0.0
Labour force	222.2	220.8	1.2	-1.4	-0.3	-2.9	-0.6	-0.1	-1.3
Employment	212.9	212.5	1.3	-0.4	-0.4	-0.8	-0.2	-0.2	-0.4
Unemployment	9.3	8.3	1.0	-1.0	0.1	-2.1	-10.8	1.2	-20.2
Participation rate	74.8	74.4	0.4	-0.4	0.0	-0.9
Unemployment rate	4.2	3.8	0.5	-0.4	0.1	-0.8
Employment rate	71.7	71.6	0.4	-0.1	0.0	-0.2
Part-time rate	6.5	6.3	0.6	-0.3	-0.1	-0.8
Women, 25 years and over									
Population	312.3	312.1	...	-0.2	-0.6	0.0	-0.1	-0.2	0.0
Labour force	192.9	193.2	1.3	0.3	2.6	-1.3	0.2	1.4	-0.7
Employment	185.0	185.8	1.3	0.8	2.2	-3.2	0.4	1.2	-1.7
Unemployment	7.9	7.5	0.9	-0.4	0.5	2.0	-5.1	7.1	36.4
Participation rate	61.8	61.9	0.4	0.1	0.9	-0.4
Unemployment rate	4.1	3.9	0.5	-0.2	0.2	1.1
Employment rate	59.2	59.5	0.4	0.3	0.8	-1.1
Part-time rate	24.1	24.1	1.0	0.0	0.5	0.4
Industry									
	482.2	483.2	2.5	1.0	3.5	-5.6	0.2	0.7	-1.1
Goods-producing sector									
Agriculture	47.0	47.2	1.6	0.2	2.6	0.2	0.4	5.8	0.4
Forestry, fishing, mining, oil and gas	20.6	21.1	1.0	0.5	0.7	3.3	2.4	3.4	18.5
Utilities	4.5	4.6	0.4	0.1	0.0	-0.2	2.2	0.0	-4.2
Construction	28.5	28.9	1.2	0.4	1.9	4.2	1.4	7.0	17.0
Manufacturing	31.2	30.5	1.2	-0.7	0.4	1.4	-2.2	1.3	4.8
Services-producing sector									
	350.4	351.1	2.9	0.7	-1.8	-14.3	0.2	-0.5	-3.9
Trade	77.1	77.0	1.9	-0.1	3.3	-4.0	-0.1	4.5	-4.9
Transportation and warehousing	26.4	26.9	1.1	0.5	-0.1	3.0	1.9	-0.4	12.6
Finance, insurance, real estate and leasing	25.9	26.0	0.9	0.1	-0.1	-0.5	0.4	-0.4	-1.9
Professional, scientific and technical services	17.3	17.1	0.9	-0.2	-0.8	-1.3	-1.2	-4.5	-7.1
Business, building and other support services	13.1	11.7	0.9	-1.4	-0.6	-2.5	-10.7	-4.9	-17.6
Educational services	37.1	36.5	1.3	-0.6	-2.7	-4.3	-1.6	-6.9	-10.5
Health care and social assistance	55.9	58.6	1.4	2.7	0.2	2.8	4.8	0.3	5.0
Information, culture and recreation	18.9	18.4	1.1	-0.5	-1.4	-1.7	-2.6	-7.1	-8.5
Accommodation and food services	29.3	29.0	1.3	-0.3	-0.3	-2.7	-1.0	-1.0	-8.5
Other services	21.3	21.8	1.1	0.5	0.2	-3.1	2.3	0.9	-12.4
Public administration	28.0	28.0	1.0	0.0	0.3	-0.1	0.0	1.1	-0.4

1. Average standard error of change in two consecutive months (see "Sampling Errors" in Data Quality for further explanations).

Note: Related CANSIM tables 282-0087, 282-0088

Table 4-9

Selected labour force characteristics (seasonally adjusted) — Alberta

	February 2006	March 2006	S.E. ¹	Change from			Percent change from		
				last month	last December	twelve months ago	last month	last December	twelve months ago
in thousands (except rates)									
Both sexes, 15 years and over									
Population	2,603.3	2,610.4	...	7.1	23.2	73.6	0.3	0.9	2.9
Labour force	1,894.6	1,906.4	7.9	11.8	26.9	63.7	0.6	1.4	3.5
Employment	1,835.3	1,841.9	7.9	6.6	42.1	64.9	0.4	2.3	3.7
Employment full-time	1,516.9	1,530.6	10.7	13.7	32.0	66.1	0.9	2.1	4.5
Unemployment	59.3	64.5	5.7	5.2	-15.2	-1.2	8.8	-19.1	-1.8
Participation rate	72.8	73.0	0.3	0.2	0.4	0.4
Unemployment rate	3.1	3.4	0.3	0.3	-0.8	-0.2
Employment rate	70.5	70.6	0.3	0.1	1.0	0.6
Part-time rate	17.3	16.9	0.5	-0.4	0.2	-0.7
Both sexes, 15 to 24 years									
Population	484.1	485.1	...	1.0	3.2	11.6	0.2	0.7	2.4
Labour force	352.0	352.4	4.7	0.4	11.8	14.9	0.1	3.5	4.4
Employment	331.6	330.8	4.8	-0.8	16.1	16.0	-0.2	5.1	5.1
Unemployment	20.3	21.6	3.5	1.3	-4.3	-1.0	6.4	-16.6	-4.4
Participation rate	72.7	72.6	1.0	-0.1	1.9	1.3
Unemployment rate	5.8	6.1	1.0	0.3	-1.5	-0.6
Employment rate	68.5	68.2	1.0	-0.3	2.9	1.7
Part-time rate	37.6	36.5	1.7	-1.1	1.7	-2.4
Men, 25 years and over									
Population	1,061.0	1,064.3	...	3.3	10.7	31.2	0.3	1.0	3.0
Labour force	851.9	857.4	3.8	5.5	4.8	26.0	0.6	0.6	3.1
Employment	833.4	834.6	4.2	1.2	9.6	25.7	0.1	1.2	3.2
Unemployment	18.4	22.8	3.1	4.4	-4.8	0.3	23.9	-17.4	1.3
Participation rate	80.3	80.6	0.4	0.3	-0.3	0.1
Unemployment rate	2.2	2.7	0.4	0.5	-0.5	0.0
Employment rate	78.5	78.4	0.4	-0.1	0.1	0.1
Part-time rate	5.1	4.2	0.5	-0.9	-1.3	-1.1
Women, 25 years and over									
Population	1,058.1	1,061.0	...	2.9	9.3	30.7	0.3	0.9	3.0
Labour force	690.8	696.7	4.9	5.9	10.4	22.9	0.9	1.5	3.4
Employment	670.3	676.5	4.7	6.2	16.4	23.3	0.9	2.5	3.6
Unemployment	20.6	20.1	3.2	-0.5	-6.1	-0.5	-2.4	-23.3	-2.4
Participation rate	65.3	65.7	0.5	0.4	0.4	0.3
Unemployment rate	3.0	2.9	0.5	-0.1	-0.9	-0.2
Employment rate	63.3	63.8	0.5	0.5	1.0	0.4
Part-time rate	22.6	23.0	0.9	0.4	0.9	0.5
Industry	1,835.3	1,841.9	7.9	6.6	42.1	64.9	0.4	2.3	3.7
Goods-producing sector	492.2	509.6	7.1	17.4	27.1	28.9	3.5	5.6	6.0
Agriculture	54.2	55.8	2.7	1.6	4.7	-4.4	3.0	9.2	-7.3
Forestry, fishing, mining, oil and gas	130.3	134.8	3.7	4.5	10.4	14.9	3.5	8.4	12.4
Utilities	14.3	15.0	1.2	0.7	-0.9	2.4	4.9	-5.7	19.0
Construction	167.8	173.9	4.6	6.1	12.9	21.3	3.6	8.0	14.0
Manufacturing	125.4	130.1	4.2	4.7	0.0	-5.4	3.7	0.0	-4.0
Services-producing sector	1,343.1	1,332.3	9.0	-10.8	15.0	36.0	-0.8	1.1	2.8
Trade	294.2	292.1	6.0	-2.1	11.6	1.7	-0.7	4.1	0.6
Transportation and warehousing	106.0	106.0	3.5	0.0	1.0	2.5	0.0	1.0	2.4
Finance, insurance, real estate and leasing	97.2	93.8	3.3	-3.4	-2.0	-3.8	-3.5	-2.1	-3.9
Professional, scientific and technical services	139.7	139.6	4.3	-0.1	-4.0	19.9	-0.1	-2.8	16.6
Business, building and other support services	61.7	59.8	3.2	-1.9	-3.8	-7.4	-3.1	-6.0	-11.0
Educational services	124.9	122.4	3.8	-2.5	-5.3	4.4	-2.0	-4.2	3.7
Health care and social assistance	172.2	176.0	4.4	3.8	4.3	7.6	2.2	2.5	4.5
Information, culture and recreation	68.6	65.5	3.2	-3.1	-2.0	-7.3	-4.5	-3.0	-10.0
Accommodation and food services	108.6	110.4	4.2	1.8	1.5	-2.2	1.7	1.4	-2.0
Other services	89.5	82.2	3.3	-7.3	-1.5	2.7	-8.2	-1.8	3.4
Public administration	80.6	84.3	2.6	3.7	14.8	17.8	4.6	21.3	26.8

1. Average standard error of change in two consecutive months (see "Sampling Errors" in Data Quality for further explanations).

Note: Related CANSIM tables 282-0087, 282-0088

Table 4-10

Selected labour force characteristics (seasonally adjusted) — British Columbia

	February 2006	March 2006	S.E. ¹	Change from			Percent change from		
				last month	last December	twelve months ago	last month	last December	twelve months ago
in thousands (except rates)									
Both sexes, 15 years and over									
Population	3,487.9	3,492.4	...	4.5	14.1	63.3	0.1	0.4	1.8
Labour force	2,285.1	2,290.8	10.0	5.7	7.9	39.9	0.2	0.3	1.8
Employment	2,175.9	2,189.0	9.8	13.1	21.9	84.5	0.6	1.0	4.0
Employment full-time	1,713.4	1,730.3	13.1	16.9	0.7	58.2	1.0	0.0	3.5
Unemployment	109.2	101.8	7.7	-7.4	-14.0	-44.6	-6.8	-12.1	-30.5
Participation rate	65.5	65.6	0.3	0.1	0.0	0.0
Unemployment rate	4.8	4.4	0.3	-0.4	-0.7	-2.1
Employment rate	62.4	62.7	0.3	0.3	0.4	1.3
Part-time rate	21.3	21.0	0.6	-0.3	0.8	0.4
Both sexes, 15 to 24 years									
Population	575.1	575.3	...	0.2	0.8	7.8	0.0	0.1	1.4
Labour force	380.0	383.0	5.8	3.0	4.6	23.5	0.8	1.2	6.5
Employment	351.3	354.1	5.7	2.8	6.2	37.3	0.8	1.8	11.8
Unemployment	28.7	28.9	4.4	0.2	-1.6	-13.8	0.7	-5.2	-32.3
Participation rate	66.1	66.6	1.0	0.5	0.7	3.3
Unemployment rate	7.6	7.5	1.2	-0.1	-0.6	-4.4
Employment rate	61.1	61.6	1.0	0.5	1.0	5.8
Part-time rate	45.4	43.4	1.8	-2.0	0.3	0.3
Men, 25 years and over									
Population	1,422.6	1,424.7	...	2.1	6.7	28.0	0.1	0.5	2.0
Labour force	1,017.1	1,017.9	5.1	0.8	-3.5	3.8	0.1	-0.3	0.4
Employment	978.0	983.8	5.4	5.8	7.1	22.9	0.6	0.7	2.4
Unemployment	39.1	34.1	4.5	-5.0	-10.6	-19.0	-12.8	-23.7	-35.8
Participation rate	71.5	71.4	0.4	-0.1	-0.6	-1.2
Unemployment rate	3.8	3.4	0.4	-0.4	-1.0	-1.8
Employment rate	68.7	69.1	0.4	0.4	0.2	0.3
Part-time rate	8.9	8.2	0.6	-0.7	1.4	0.4
Women, 25 years and over									
Population	1,490.2	1,492.4	...	2.2	6.6	27.5	0.1	0.4	1.9
Labour force	888.1	889.9	5.9	1.8	6.9	12.6	0.2	0.8	1.4
Employment	846.7	851.1	5.8	4.4	8.6	24.3	0.5	1.0	2.9
Unemployment	41.3	38.8	4.4	-2.5	-1.8	-11.8	-6.1	-4.4	-23.3
Participation rate	59.6	59.6	0.4	0.0	0.2	-0.3
Unemployment rate	4.7	4.4	0.5	-0.3	-0.2	-1.4
Employment rate	56.8	57.0	0.4	0.2	0.3	0.6
Part-time rate	25.5	26.3	1.0	0.8	0.1	-0.3
Industry	2,175.9	2,189.0	9.8	13.1	21.9	84.5	0.6	1.0	4.0
Goods-producing sector	460.8	467.7	8.3	6.9	10.7	18.5	1.5	2.3	4.1
Agriculture	36.0	36.4	2.7	0.4	-3.2	-3.1	1.1	-8.1	-7.8
Forestry, fishing, mining, oil and gas	39.2	39.8	2.6	0.6	3.4	3.7	1.5	9.3	10.2
Utilities	8.0	7.2	1.2	-0.8	-0.1	-3.0	-10.0	-1.4	-29.4
Construction	173.3	177.2	5.4	3.9	-3.2	13.2	2.3	-1.8	8.0
Manufacturing	204.3	207.1	5.7	2.8	13.7	7.6	1.4	7.1	3.8
Services-producing sector	1,715.2	1,721.3	11.0	6.1	11.3	66.0	0.4	0.7	4.0
Trade	361.1	358.9	7.4	-2.2	7.5	30.9	-0.6	2.1	9.4
Transportation and warehousing	128.7	126.1	4.6	-2.6	7.7	11.9	-2.0	6.5	10.4
Finance, insurance, real estate and leasing	129.4	132.7	4.4	3.3	1.6	-4.6	2.6	1.2	-3.4
Professional, scientific and technical services	171.6	166.1	5.1	-5.5	1.6	3.0	-3.2	1.0	1.8
Business, building and other support services	89.9	90.1	4.6	0.2	3.8	-6.5	0.2	4.4	-6.7
Educational services	150.2	153.1	4.7	2.9	7.0	9.6	1.9	4.8	6.7
Health care and social assistance	213.2	224.3	5.3	11.1	6.1	7.9	5.2	2.8	3.7
Information, culture and recreation	113.2	120.5	4.5	7.3	-8.5	18.8	6.4	-6.6	18.5
Accommodation and food services	174.8	161.8	5.7	-13.0	-19.6	-4.2	-7.4	-10.8	-2.5
Other services	89.3	93.4	4.1	4.1	3.6	-0.4	4.6	4.0	-0.4
Public administration	93.6	94.3	3.7	0.7	0.5	-0.5	0.7	0.5	-0.5

1. Average standard error of change in two consecutive months (see "Sampling Errors" in Data Quality for further explanations).

Note: Related CANSIM tables 282-0087, 282-0088

Table 5-1

Labour force characteristics by census metropolitan area (seasonally adjusted) — 3 month moving average

	February 2006	March 2006	S.E. ¹	Change from			Percent change from		
				last month	last December	twelve months ago	last month	last December	twelve months ago
in thousands (except rates)									
St. John's, Newfoundland and Labrador									
Population	151.1	151.2	...	0.1	0.4	1.2	0.1	0.3	0.8
Labour force	98.1	99.2	0.8	1.1	1.3	-1.8	1.1	1.3	-1.8
Employment	89.6	90.6	0.8	1.0	0.6	-1.7	1.1	0.7	-1.8
Unemployment	8.5	8.7	0.5	0.2	0.7	-0.1	2.4	8.8	-1.1
Participation rate	64.9	65.6	0.5	0.7	0.7	-1.7
Unemployment rate	8.7	8.8	0.5	0.1	0.6	0.1
Employment rate	59.3	59.9	0.6	0.6	0.2	-1.6
Halifax, Nova Scotia									
Population	310.5	310.6	...	0.1	0.5	2.9	0.0	0.2	0.9
Labour force	212.5	213.0	1.1	0.5	-0.1	-4.7	0.2	0.0	-2.2
Employment	201.6	202.4	1.2	0.8	1.3	-1.6	0.4	0.6	-0.8
Unemployment	10.9	10.6	0.6	-0.3	-1.4	-3.1	-2.8	-11.7	-22.6
Participation rate	68.4	68.6	0.4	0.2	-0.1	-2.2
Unemployment rate	5.1	5.0	0.3	-0.1	-0.6	-1.3
Employment rate	64.9	65.2	0.4	0.3	0.3	-1.1
Saint John, New Brunswick									
Population	103.4	103.4	...	0.0	0.0	0.5	0.0	0.0	0.5
Labour force	67.6	67.1	0.7	-0.5	0.9	-0.5	-0.7	1.4	-0.7
Employment	63.7	63.2	0.7	-0.5	1.5	0.1	-0.8	2.4	0.2
Unemployment	3.8	3.8	0.3	0.0	-0.7	-0.7	0.0	-15.6	-15.6
Participation rate	65.4	64.9	0.7	-0.5	0.9	-0.8
Unemployment rate	5.6	5.7	0.5	0.1	-1.1	-1.0
Employment rate	61.6	61.1	0.7	-0.5	1.4	-0.2
Saguenay, Quebec									
Population	126.2	126.2	...	0.0	-0.1	-0.2	0.0	-0.1	-0.2
Labour force	77.7	79.0	0.8	1.3	2.9	3.4	1.7	3.8	4.5
Employment	71.8	72.8	0.9	1.0	4.2	4.2	1.4	6.1	6.1
Unemployment	5.9	6.2	0.4	0.3	-1.2	-0.8	5.1	-16.2	-11.4
Participation rate	61.6	62.6	0.6	1.0	2.3	2.8
Unemployment rate	7.6	7.8	0.6	0.2	-1.9	-1.5
Employment rate	56.9	57.7	0.7	0.8	3.4	3.4
Québec, Quebec									
Population	596.2	596.7	...	0.5	1.6	7.2	0.1	0.3	1.2
Labour force	400.7	401.5	3.6	0.8	3.7	-2.2	0.2	0.9	-0.5
Employment	379.8	379.4	3.6	-0.4	0.4	-2.2	-0.1	0.1	-0.6
Unemployment	20.9	22.1	1.5	1.2	3.3	0.0	5.7	17.6	0.0
Participation rate	67.2	67.3	0.6	0.1	0.5	-1.2
Unemployment rate	5.2	5.5	0.4	0.3	0.8	0.0
Employment rate	63.7	63.6	0.6	-0.1	-0.1	-1.1
Trois-Rivières, Quebec									
Population	118.7	118.8	...	0.1	0.3	1.2	0.1	0.3	1.0
Labour force	75.8	76.0	0.7	0.2	0.4	-0.2	0.3	0.5	-0.3
Employment	69.1	69.1	0.7	0.0	0.1	1.0	0.0	0.1	1.5
Unemployment	6.7	6.9	0.4	0.2	0.3	-1.2	3.0	4.5	-14.8
Participation rate	63.9	64.0	0.6	0.1	0.2	-0.8
Unemployment rate	8.8	9.1	0.5	0.3	0.4	-1.5
Employment rate	58.2	58.2	0.6	0.0	0.0	0.3

See footnotes at the end of the table.

Table 5-1 – continued

Labour force characteristics by census metropolitan area (seasonally adjusted) — 3 month moving average

	February 2006	March 2006	S.E. ¹	Change from			Percent change from		
				last month	last December	twelve months ago	last month	last December	twelve months ago
in thousands (except rates)									
Sherbrooke, Quebec									
Population	134.4	134.5	...	0.1	0.3	1.9	0.1	0.2	1.4
Labour force	88.9	89.9	0.8	1.0	2.8	1.2	1.1	3.2	1.4
Employment	82.0	82.4	0.8	0.4	1.1	0.7	0.5	1.4	0.9
Unemployment	6.8	7.5	0.4	0.7	1.6	0.5	10.3	27.1	7.1
Participation rate	66.1	66.8	0.6	0.7	1.9	-0.1
Unemployment rate	7.6	8.3	0.4	0.7	1.5	0.4
Employment rate	61.0	61.3	0.6	0.3	0.7	-0.3
Montréal, Quebec									
Population	2,987.0	2,989.5	...	2.5	8.0	38.2	0.1	0.3	1.3
Labour force	2,019.4	2,019.0	7.6	-0.4	6.5	32.4	0.0	0.3	1.6
Employment	1,826.4	1,828.4	8.0	2.0	3.2	8.1	0.1	0.2	0.4
Unemployment	193.0	190.5	4.9	-2.5	3.2	24.2	-1.3	1.7	14.6
Participation rate	67.6	67.5	0.3	-0.1	0.0	0.2
Unemployment rate	9.6	9.4	0.3	-0.2	0.1	1.0
Employment rate	61.1	61.2	0.3	0.1	0.0	-0.5
Ottawa-Gatineau, Ontario/Quebec									
Population	939.4	940.0	...	0.6	2.0	13.7	0.1	0.2	1.5
Labour force	683.4	686.1	3.7	2.7	15.7	26.4	0.4	2.3	4.0
Employment	648.6	650.5	3.8	1.9	16.9	36.6	0.3	2.7	6.0
Unemployment	34.8	35.7	1.8	0.9	-1.1	-10.1	2.6	-3.0	-22.1
Participation rate	72.7	73.0	0.4	0.3	1.5	1.8
Unemployment rate	5.1	5.2	0.3	0.1	-0.3	-1.7
Employment rate	69.0	69.2	0.4	0.2	1.7	2.9
Ottawa-Gatineau, Quebec part, Ontario/Quebec									
Population	233.7	234.0	...	0.3	1.0	6.0	0.1	0.4	2.6
Labour force	174.7	172.6	1.2	-2.1	0.2	12.8	-1.2	0.1	8.0
Employment	165.2	162.9	1.2	-2.3	0.6	15.8	-1.4	0.4	10.7
Unemployment	9.6	9.8	0.6	0.2	-0.4	-2.9	2.1	-3.9	-22.8
Participation rate	74.8	73.8	0.5	-1.0	-0.2	3.7
Unemployment rate	5.5	5.7	0.4	0.2	-0.2	-2.2
Employment rate	70.7	69.6	0.5	-1.1	-0.1	5.1
Ottawa-Gatineau, Ontario part, Ontario/Quebec									
Population	705.7	706.0	...	0.3	1.0	7.7	0.0	0.1	1.1
Labour force	508.6	513.5	3.5	4.9	15.6	13.6	1.0	3.1	2.7
Employment	483.4	487.6	3.6	4.2	16.3	20.9	0.9	3.5	4.5
Unemployment	25.2	25.9	1.7	0.7	-0.7	-7.3	2.8	-2.6	-22.0
Participation rate	72.1	72.7	0.5	0.6	2.1	1.1
Unemployment rate	5.0	5.0	0.3	0.0	-0.3	-1.6
Employment rate	68.5	69.1	0.5	0.6	2.2	2.3
Kingston, Ontario									
Population	125.5	125.4	...	-0.1	-0.1	1.4	-0.1	-0.1	1.1
Labour force	80.4	81.9	0.8	1.5	2.4	3.4	1.9	3.0	4.3
Employment	75.9	76.8	0.8	0.9	0.8	3.6	1.2	1.1	4.9
Unemployment	4.5	5.0	0.3	0.5	1.5	-0.4	11.1	42.9	-7.4
Participation rate	64.1	65.3	0.7	1.2	2.0	2.0
Unemployment rate	5.6	6.1	0.4	0.5	1.7	-0.8
Employment rate	60.5	61.2	0.7	0.7	0.6	2.2

See footnotes at the end of the table.

Table 5-1 – continued

Labour force characteristics by census metropolitan area (seasonally adjusted) — 3 month moving average

	February 2006	March 2006	S.E. ¹	Change from			Percent change from		
				last month	last December	twelve months ago	last month	last December	twelve months ago
in thousands (except rates)									
Toronto, Ontario									
Population	4,335.6	4,342.4	...	6.8	21.2	100.0	0.2	0.5	2.4
Labour force	2,977.2	2,980.7	9.5	3.5	-13.7	55.0	0.1	-0.5	1.9
Employment	2,778.5	2,779.7	9.9	1.2	-25.2	72.4	0.0	-0.9	2.7
Unemployment	198.7	201.1	5.6	2.4	11.6	-17.3	1.2	6.1	-7.9
Participation rate	68.7	68.6	0.2	-0.1	-0.7	-0.4
Unemployment rate	6.7	6.7	0.2	0.0	0.4	-0.8
Employment rate	64.1	64.0	0.2	-0.1	-0.9	0.2
Hamilton, Ontario									
Population	585.3	585.7	...	0.4	1.4	8.2	0.1	0.2	1.4
Labour force	400.1	399.4	3.3	-0.7	4.4	22.5	-0.2	1.1	6.0
Employment	376.8	377.5	3.2	0.7	6.2	19.8	0.2	1.7	5.5
Unemployment	23.3	22.0	1.3	-1.3	-1.6	2.8	-5.6	-6.8	14.6
Participation rate	68.4	68.2	0.6	-0.2	0.6	2.9
Unemployment rate	5.8	5.5	0.3	-0.3	-0.5	0.4
Employment rate	64.4	64.5	0.6	0.1	1.0	2.6
Kitchener, Ontario									
Population	368.1	368.7	...	0.6	1.7	7.1	0.2	0.5	2.0
Labour force	266.5	265.6	1.9	-0.9	1.2	2.8	-0.3	0.5	1.1
Employment	252.4	251.8	1.9	-0.6	2.4	3.5	-0.2	1.0	1.4
Unemployment	14.1	13.7	0.9	-0.4	-1.3	-0.7	-2.8	-8.7	-4.9
Participation rate	72.4	72.0	0.5	-0.4	0.0	-0.7
Unemployment rate	5.3	5.2	0.3	-0.1	-0.5	-0.3
Employment rate	68.6	68.3	0.5	-0.3	0.3	-0.4
London, Ontario									
Population	376.2	376.5	...	0.3	0.9	4.5	0.1	0.2	1.2
Labour force	256.0	256.6	2.0	0.6	-0.4	-6.4	0.2	-0.2	-2.4
Employment	240.3	241.1	2.1	0.8	1.8	-4.6	0.3	0.8	-1.9
Unemployment	15.8	15.5	1.0	-0.3	-2.2	-1.8	-1.9	-12.4	-10.4
Participation rate	68.0	68.2	0.5	0.2	-0.2	-2.5
Unemployment rate	6.2	6.0	0.4	-0.2	-0.9	-0.6
Employment rate	63.9	64.0	0.6	0.1	0.3	-2.0
Oshawa, Ontario									
Population	270.7	271.4	...	0.7	2.1	9.0	0.3	0.8	3.4
Labour force	187.1	186.3	1.7	-0.8	-2.0	-3.6	-0.4	-1.1	-1.9
Employment	174.4	174.1	1.7	-0.3	-1.7	-2.2	-0.2	-1.0	-1.2
Unemployment	12.6	12.2	0.7	-0.4	-0.3	-1.4	-3.2	-2.4	-10.3
Participation rate	69.1	68.6	0.6	-0.5	-1.3	-3.8
Unemployment rate	6.7	6.5	0.4	-0.2	-0.1	-0.7
Employment rate	64.4	64.1	0.7	-0.3	-1.2	-3.1
St. Catharines-Niagara, Ontario									
Population	326.1	326.2	...	0.1	0.3	2.5	0.0	0.1	0.8
Labour force	197.4	197.4	1.7	0.0	-3.7	-12.4	0.0	-1.8	-5.9
Employment	183.9	184.2	1.7	0.3	-2.8	-12.6	0.2	-1.5	-6.4
Unemployment	13.5	13.2	0.8	-0.3	-0.8	0.2	-2.2	-5.7	1.5
Participation rate	60.5	60.5	0.5	0.0	-1.2	-4.3
Unemployment rate	6.8	6.7	0.4	-0.1	-0.3	0.5
Employment rate	56.4	56.5	0.5	0.1	-0.9	-4.3

See footnotes at the end of the table.

Table 5-1 – continued

Labour force characteristics by census metropolitan area (seasonally adjusted) — 3 month moving average

	February 2006	March 2006	S.E. ¹	Change from			Percent change from		
				last month	last December	twelve months ago	last month	last December	twelve months ago
in thousands (except rates)									
Greater Sudbury / Grand Sudbury, Ontario									
Population	132.4	132.4	...	0.0	0.1	0.8	0.0	0.1	0.6
Labour force	81.8	82.8	0.8	1.0	2.1	-3.1	1.2	2.6	-3.6
Employment	75.5	76.0	0.8	0.5	1.2	-3.0	0.7	1.6	-3.8
Unemployment	6.3	6.8	0.4	0.5	0.9	-0.1	7.9	15.3	-1.4
Participation rate	61.8	62.5	0.6	0.7	1.5	-2.8
Unemployment rate	7.7	8.2	0.5	0.5	0.9	0.2
Employment rate	57.0	57.4	0.6	0.4	0.9	-2.6
Thunder Bay, Ontario									
Population	104.2	104.2	...	0.0	0.0	0.7	0.0	0.0	0.7
Labour force	66.2	66.1	0.7	-0.1	-0.4	-3.1	-0.2	-0.6	-4.5
Employment	61.6	61.2	0.7	-0.4	-1.1	-2.6	-0.6	-1.8	-4.1
Unemployment	4.6	4.9	0.3	0.3	0.7	-0.4	6.5	16.7	-7.5
Participation rate	63.5	63.4	0.7	-0.1	-0.4	-3.5
Unemployment rate	6.9	7.4	0.5	0.5	1.1	-0.3
Employment rate	59.1	58.7	0.7	-0.4	-1.1	-2.9
Windsor, Ontario									
Population	269.6	269.7	...	0.1	0.4	3.3	0.0	0.1	1.2
Labour force	181.1	180.3	1.5	-0.8	4.6	4.9	-0.4	2.6	2.8
Employment	165.0	163.3	1.6	-1.7	-0.4	3.2	-1.0	-0.2	2.0
Unemployment	16.1	17.0	0.8	0.9	5.0	1.6	5.6	41.7	10.4
Participation rate	67.2	66.9	0.6	-0.3	1.7	1.1
Unemployment rate	8.9	9.4	0.5	0.5	2.6	0.6
Employment rate	61.2	60.5	0.6	-0.7	-0.3	0.4
Winnipeg, Manitoba									
Population	569.9	570.0	...	0.1	0.2	3.2	0.0	0.0	0.6
Labour force	396.7	397.4	1.4	0.7	5.2	0.0	0.2	1.3	0.0
Employment	379.5	379.5	1.5	0.0	4.2	1.7	0.0	1.1	0.4
Unemployment	17.2	17.8	0.8	0.6	0.9	-1.8	3.5	5.3	-9.2
Participation rate	69.6	69.7	0.3	0.1	0.9	-0.4
Unemployment rate	4.3	4.5	0.2	0.2	0.2	-0.4
Employment rate	66.6	66.6	0.3	0.0	0.7	-0.1
Regina, Saskatchewan									
Population	160.8	160.8	...	0.0	0.1	1.0	0.0	0.1	0.6
Labour force	111.6	111.6	0.7	0.0	-0.3	-4.0	0.0	-0.3	-3.5
Employment	106.1	106.0	0.8	-0.1	-0.2	-4.4	-0.1	-0.2	-4.0
Unemployment	5.5	5.5	0.3	0.0	-0.2	0.3	0.0	-3.5	5.8
Participation rate	69.4	69.4	0.5	0.0	-0.2	-2.9
Unemployment rate	4.9	4.9	0.3	0.0	-0.2	0.4
Employment rate	66.0	65.9	0.5	-0.1	-0.2	-3.2
Saskatoon, Saskatchewan									
Population	187.8	187.9	...	0.1	0.1	1.4	0.1	0.1	0.8
Labour force	131.0	131.1	0.9	0.1	-0.6	-4.3	0.1	-0.5	-3.2
Employment	123.7	124.0	0.9	0.3	-0.4	-4.7	0.2	-0.3	-3.7
Unemployment	7.3	7.1	0.4	-0.2	-0.3	0.4	-2.7	-4.1	6.0
Participation rate	69.8	69.8	0.5	0.0	-0.3	-2.8
Unemployment rate	5.6	5.4	0.3	-0.2	-0.2	0.5
Employment rate	65.9	66.0	0.5	0.1	-0.2	-3.0

See footnotes at the end of the table.

Table 5-1 – continued

Labour force characteristics by census metropolitan area (seasonally adjusted) — 3 month moving average

	February 2006	March 2006	S.E. ¹	Change from			Percent change from		
				last month	last December	twelve months ago	last month	last December	twelve months ago
in thousands (except rates)									
Calgary, Alberta									
Population	870.9	873.7	...	2.8	8.4	26.8	0.3	1.0	3.2
Labour force	652.8	659.9	3.5	7.1	18.1	37.1	1.1	2.8	6.0
Employment	626.7	637.2	3.6	10.5	24.1	40.2	1.7	3.9	6.7
Unemployment	26.0	22.7	1.4	-3.3	-6.0	-3.1	-12.7	-20.9	-12.0
Participation rate	75.0	75.5	0.4	0.5	1.3	2.0
Unemployment rate	4.0	3.4	0.2	-0.6	-1.1	-0.7
Employment rate	72.0	72.9	0.4	0.9	2.0	2.4
Edmonton, Alberta									
Population	824.3	826.6	...	2.3	6.6	19.9	0.3	0.8	2.5
Labour force	566.3	568.3	3.3	2.0	-0.1	-5.2	0.4	0.0	-0.9
Employment	543.7	547.2	3.4	3.5	3.9	-0.8	0.6	0.7	-0.1
Unemployment	22.6	21.1	1.4	-1.5	-4.0	-4.4	-6.6	-15.9	-17.3
Participation rate	68.7	68.8	0.4	0.1	-0.5	-2.3
Unemployment rate	4.0	3.7	0.3	-0.3	-0.7	-0.7
Employment rate	66.0	66.2	0.4	0.2	-0.1	-1.7
Abbotsford, British Columbia									
Population	126.4	126.7	...	0.3	0.9	2.7	0.2	0.7	2.2
Labour force	87.3	87.1	0.9	-0.2	1.7	4.5	-0.2	2.0	5.4
Employment	83.3	83.3	0.9	0.0	2.7	5.4	0.0	3.3	6.9
Unemployment	4.0	3.8	0.4	-0.2	-1.0	-1.0	-5.0	-20.8	-20.8
Participation rate	69.1	68.7	0.7	-0.4	0.8	2.1
Unemployment rate	4.6	4.4	0.4	-0.2	-1.2	-1.4
Employment rate	65.9	65.7	0.7	-0.2	1.6	2.9
Vancouver, British Columbia									
Population	1,846.4	1,849.1	...	2.7	8.8	39.7	0.1	0.5	2.2
Labour force	1,219.0	1,216.7	4.8	-2.3	-11.1	-16.4	-0.2	-0.9	-1.3
Employment	1,159.0	1,158.8	4.8	-0.2	-11.0	6.4	0.0	-0.9	0.6
Unemployment	60.1	57.9	2.6	-2.2	-0.1	-22.8	-3.7	-0.2	-28.3
Participation rate	66.0	65.8	0.3	-0.2	-0.9	-2.3
Unemployment rate	4.9	4.8	0.2	-0.1	0.1	-1.7
Employment rate	62.8	62.7	0.3	-0.1	-0.9	-1.0
Victoria, British Columbia									
Population	275.7	276.2	...	0.5	1.3	4.4	0.2	0.5	1.6
Labour force	176.9	179.1	1.5	2.2	2.1	4.5	1.2	1.2	2.6
Employment	169.9	172.3	1.6	2.4	3.0	7.2	1.4	1.8	4.4
Unemployment	7.0	6.8	0.6	-0.2	-0.8	-2.7	-2.9	-10.5	-28.4
Participation rate	64.2	64.8	0.6	0.6	0.4	0.6
Unemployment rate	4.0	3.8	0.3	-0.2	-0.5	-1.6
Employment rate	61.6	62.4	0.6	0.8	0.8	1.7

1. Average standard error of change in two consecutive months (see "Sampling Errors" in Data Quality for further explanations).

Note: Related CANSIM table 282-0090

Table 5-2

Labour force characteristics by census metropolitan area (seasonally adjusted) — Monthly

	February 2006	March 2006	S.E. ¹	Change from			Percent change from		
				last month	last December	twelve months ago	last month	last December	twelve months ago
in thousands (except rates)									
Montréal, Quebec									
Population	2,989.2	2,991.6	...	2.4	7.4	37.6	0.1	0.2	1.3
Labour force	2,028.6	2,017.2	15.8	-11.4	-1.2	28.3	-0.6	-0.1	1.4
Employment	1,840.1	1,829.7	15.8	-10.4	6.1	6.1	-0.6	0.3	0.3
Unemployment	188.5	187.5	11.5	-1.0	-7.3	22.2	-0.5	-3.7	13.4
Participation rate	67.9	67.4	0.5	-0.5	-0.2	0.1
Unemployment rate	9.3	9.3	0.6	0.0	-0.4	1.0
Employment rate	61.6	61.2	0.6	-0.4	0.1	-0.5
Toronto, Ontario									
Population	4,342.4	4,348.5	...	6.1	20.4	98.3	0.1	0.5	2.3
Labour force	2,969.8	2,982.1	20.0	12.3	10.8	33.3	0.4	0.4	1.1
Employment	2,767.6	2,787.4	20.2	19.8	3.6	61.8	0.7	0.1	2.3
Unemployment	202.2	194.6	13.5	-7.6	7.0	-28.6	-3.8	3.7	-12.8
Participation rate	68.4	68.6	0.5	0.2	-0.1	-0.8
Unemployment rate	6.8	6.5	0.5	-0.3	0.2	-1.1
Employment rate	63.7	64.1	0.5	0.4	-0.2	0.0
Vancouver, British Columbia									
Population	1,849.0	1,851.7	...	2.7	8.3	38.8	0.1	0.5	2.1
Labour force	1,215.8	1,223.7	10.3	7.9	-7.0	-13.1	0.6	-0.6	-1.1
Employment	1,160.5	1,170.7	10.0	10.2	-0.5	12.7	0.9	0.0	1.1
Unemployment	55.3	53.0	6.2	-2.3	-6.5	-25.8	-4.2	-10.9	-32.7
Participation rate	65.8	66.1	0.6	0.3	-0.7	-2.1
Unemployment rate	4.5	4.3	0.5	-0.2	-0.5	-2.1
Employment rate	62.8	63.2	0.6	0.4	-0.3	-0.7

1. Average standard error of change in two consecutive months (see "Sampling Errors" in Data Quality for further explanations).

Note: Related CANSIM table 282-0091

Table 6

Labour force characteristics by economic region¹ and for Yukon Territory and Northwest Territories, unadjusted, 3 month moving average ending in March 2005 and March 2006

	Population	Labour force			Participation rate	Unemployment rate	Employment rate
		Labour force	Employment	Unemployment			
in thousands							
Canada ²							
2005	25,654.1	17,010.0	15,742.4	1,267.6	66.3	7.5	61.4
2006	26,045.1	17,216.6	16,032.5	1,184.1	66.1	6.9	61.6
Newfoundland and Labrador							
2005	430.3	239.8	199.4	40.4	55.7	16.8	46.3
2006	429.0	239.7	197.4	42.2	55.9	17.6	46.0
Avalon Peninsula [1010]							
2005	208.9	125.8	110.1	15.7	60.2	12.5	52.7
2006	209.8	127.3	111.1	16.2	60.7	12.7	53.0
South Coast-Burin Peninsula [1020]							
2005	34.6	16.5	12.4	4.0	47.7	24.2	35.8
2006	34.0	16.3	12.1	4.2	47.9	25.8	35.6
West Coast-Northern Peninsula-Labrador [1030]							
2005	89.7	49.0	38.9	10.1	54.6	20.6	43.4
2006	88.9	48.3	38.7	9.6	54.3	19.9	43.5
Notre Dame-Central Bonavista Bay [1040]							
2005	97.0	48.5	37.9	10.6	50.0	21.9	39.1
2006	96.3	47.8	35.5	12.3	49.6	25.7	36.9
Prince Edward Island							
2005	111.3	73.0	63.3	9.8	65.6	13.4	56.9
2006	111.9	74.0	63.3	10.8	66.1	14.6	56.6
Nova Scotia							
2005	759.6	474.6	426.6	48.1	62.5	10.1	56.2
2006	762.4	468.7	425.8	42.9	61.5	9.2	55.8
Cape Breton [1210]							
2005	117.7	58.5	48.6	9.9	49.7	16.9	41.3
2006	117.2	60.4	51.7	8.7	51.5	14.4	44.1
North Shore [1220]							
2005	131.2	79.0	69.6	9.5	60.2	12.0	53.0
2006	131.2	79.6	71.2	8.5	60.7	10.7	54.3
Annapolis Valley [1230]							
2005	99.2	62.0	55.9	6.1	62.5	9.8	56.4
2006	99.6	60.1	54.1	6.1	60.3	10.1	54.3
Southern [1240]							
2005	103.7	60.2	52.7	7.5	58.1	12.5	50.8
2006	103.8	58.2	50.5	7.7	56.1	13.2	48.7
Halifax [1250]							
2005	307.7	214.8	199.8	15.0	69.8	7.0	64.9
2006	310.6	210.3	198.4	11.9	67.7	5.7	63.9
New Brunswick							
2005	609.3	373.7	333.3	40.3	61.3	10.8	54.7
2006	611.4	381.9	342.9	39.0	62.5	10.2	56.1
Campbellton-Miramichi [1310]							
2005	138.1	71.9	60.0	11.9	52.1	16.6	43.4
2006	137.2	75.2	63.5	11.7	54.8	15.6	46.3

See footnotes at the end of the table.

Table 6 – continued

Labour force characteristics by economic region¹ and for Yukon Territory and Northwest Territories, unadjusted, 3 month moving average ending in March 2005 and March 2006

	Population	Labour force			Participation rate	Unemployment rate	Employment rate
		Labour force	Employment	Unemployment			
in thousands							
Moncton-Richibucto [1320]							
2005	159.3	104.1	94.2	9.9	65.3	9.5	59.1
2006	161.0	104.2	93.6	10.6	64.7	10.2	58.1
Saint John-St. Stephen [1330]							
2005	140.7	88.6	80.5	8.1	63.0	9.1	57.2
2006	141.3	90.8	83.5	7.3	64.3	8.0	59.1
Fredericton-Oromocto [1340]							
2005	102.7	67.4	61.0	6.5	65.6	9.6	59.4
2006	103.5	67.3	61.7	5.6	65.0	8.3	59.6
Edmundston-Woodstock [1350]							
2005	68.5	41.5	37.6	4.0	60.6	9.6	54.9
2006	68.4	44.4	40.6	3.8	64.9	8.6	59.4
Quebec							
2005	6,154.5	3,977.2	3,614.2	363.1	64.6	9.1	58.7
2006	6,225.7	4,030.2	3,660.6	369.6	64.7	9.2	58.8
Gaspésie-Îles-de-la-Madeleine [2410]							
2005	80.1	37.6	28.6	9.0	46.9	23.9	35.7
2006	80.6	37.4	29.0	8.5	46.4	22.7	36.0
Bas-Saint-Laurent [2415]							
2005	166.5	91.9	82.6	9.3	55.2	10.1	49.6
2006	167.0	95.8	84.9	10.9	57.4	11.4	50.8
Capitale-Nationale [2420]							
2005	552.0	364.4	341.1	23.3	66.0	6.4	61.8
2006	557.9	364.3	339.5	24.9	65.3	6.8	60.9
Chaudière-Appalaches [2425]							
2005	321.3	217.5	196.8	20.7	67.7	9.5	61.3
2006	323.8	215.9	201.3	14.7	66.7	6.8	62.2
Estrie [2430]							
2005	243.0	154.1	141.8	12.2	63.4	7.9	58.4
2006	245.5	156.4	141.8	14.7	63.7	9.4	57.8
Centre-du-Québec [2433]							
2005	181.4	122.7	112.1	10.6	67.6	8.6	61.8
2006	183.1	123.7	112.8	10.9	67.6	8.8	61.6
Montérégie [2435]							
2005	1,089.9	710.0	655.9	54.1	65.1	7.6	60.2
2006	1,105.2	742.2	683.9	58.3	67.2	7.9	61.9
Montréal [2440]							
2005	1,563.5	1,019.2	910.4	108.9	65.2	10.7	58.2
2006	1,577.8	1,031.8	910.1	121.7	65.4	11.8	57.7
Laval [2445]							
2005	298.1	188.3	172.3	16.0	63.2	8.5	57.8
2006	302.7	195.1	181.6	13.4	64.5	6.9	60.0
Lanaudière [2450]							
2005	333.6	225.4	209.4	16.0	67.6	7.1	62.8
2006	340.9	219.6	204.0	15.6	64.4	7.1	59.8

See footnotes at the end of the table.

Table 6 – continued

Labour force characteristics by economic region¹ and for Yukon Territory and Northwest Territories, unadjusted, 3 month moving average ending in March 2005 and March 2006

	Population	Labour force			Participation rate	Unemployment rate	Employment rate
		Labour force	Employment	Unemployment			
in thousands							
Laurentides [2455]							
2005	403.0	277.8	258.3	19.5	68.9	7.0	64.1
2006	412.6	268.2	241.5	26.7	65.0	10.0	58.5
Outaouais [2460]							
2005	277.1	182.7	167.3	15.4	65.9	8.4	60.4
2006	283.3	197.8	185.0	12.8	69.8	6.5	65.3
Abitibi-Témiscamingue [2465]							
2005	115.0	71.8	62.6	9.2	62.4	12.8	54.4
2006	115.2	72.1	65.7	6.4	62.6	8.9	57.0
Mauricie [2470]							
2005	214.8	124.6	107.3	17.4	58.0	14.0	50.0
2006	216.0	120.0	109.0	11.0	55.6	9.2	50.5
Saguenay-Lac-Saint-Jean [2475]							
2005	224.8	128.0	111.8	16.2	56.9	12.7	49.7
2006	224.5	134.8	120.9	13.9	60.0	10.3	53.9
Côte-Nord and Nord-du-Québec [2480, 2490]							
2005	90.4	61.4	55.9	5.4	67.9	8.8	61.8
2006	89.6	55.1	49.8	5.3	61.5	9.6	55.6
Ontario							
2005	9,998.4	6,710.4	6,241.2	469.3	67.1	7.0	62.4
2006	10,175.8	6,786.6	6,345.9	440.7	66.7	6.5	62.4
Ottawa [3510]							
2005	964.5	663.6	617.9	45.8	68.8	6.9	64.1
2006	975.8	678.3	640.9	37.5	69.5	5.5	65.7
Kingston-Pembroke [3515]							
2005	353.6	219.0	202.7	16.3	61.9	7.4	57.3
2006	356.9	209.6	196.9	12.8	58.7	6.1	55.2
Muskoka-Kawartha [3520]							
2005	299.7	175.7	160.7	15.0	58.6	8.5	53.6
2006	304.8	184.0	171.3	12.7	60.4	6.9	56.2
Toronto [3530]							
2005	4,468.7	3,046.3	2,821.0	225.3	68.2	7.4	63.1
2006	4,575.6	3,094.0	2,889.2	204.8	67.6	6.6	63.1
Kitchener-Waterloo-Barrie [3540]							
2005	921.4	656.1	621.3	34.8	71.2	5.3	67.4
2006	942.4	671.3	636.9	34.4	71.2	5.1	67.6
Hamilton-Niagara Peninsula [3550]							
2005	1,103.2	714.5	669.2	45.3	64.8	6.3	60.7
2006	1,118.1	724.4	677.1	47.3	64.8	6.5	60.6
London [3560]							
2005	498.0	347.4	325.8	21.6	69.8	6.2	65.4
2006	504.0	342.0	318.3	23.8	67.9	7.0	63.2
Windsor-Sarnia [3570]							
2005	516.7	336.3	308.2	28.2	65.1	8.4	59.6
2006	521.7	346.0	316.1	29.9	66.3	8.6	60.6

See footnotes at the end of the table.

Table 6 – continued

Labour force characteristics by economic region¹ and for Yukon Territory and Northwest Territories, unadjusted, 3 month moving average ending in March 2005 and March 2006

	Population	Labour force			Participation rate	Unemployment rate	Employment rate
		Labour force	Employment	Unemployment			
in thousands							
Stratford-Bruce Peninsula [3580]							
2005	243.3	157.0	148.7	8.3	64.5	5.3	61.1
2006	246.0	157.3	148.9	8.4	63.9	5.3	60.5
Northeast [3590]							
2005	451.9	275.3	254.2	21.1	60.9	7.7	56.3
2006	453.0	269.8	249.8	20.0	59.6	7.4	55.1
Northwest [3595]							
2005	177.3	119.2	111.5	7.7	67.2	6.5	62.9
2006	177.4	109.8	100.7	9.1	61.9	8.3	56.8
Manitoba							
2005	886.3	603.6	570.4	33.3	68.1	5.5	64.4
2006	890.1	603.5	575.3	28.2	67.8	4.7	64.6
Southeast [4610]							
2005	72.7	51.0	48.3	2.8	70.2	5.5	66.4
2006	74.1	53.6	50.8	2.8	72.3	5.2	68.6
South Central [4620]							
2005	41.9	30.4	29.3	1.1	72.6	3.6	69.9
2006	42.2	26.7	26.1	0.6	63.3	2.2	61.8
Southwest [4630]							
2005	81.8	51.0	47.6	3.4	62.3	6.7	58.2
2006	81.7	54.8	51.6	3.1	67.1	5.7	63.2
North Central [4640]							
2005	35.2	22.3	21.0	1.3	63.4	5.8	59.7
2006	35.4	22.4	21.7	0.7	63.3	3.1	61.3
Winnipeg [4650]							
2005	525.1	362.8	344.0	18.9	69.1	5.2	65.5
2006	527.9	359.5	341.4	18.1	68.1	5.0	64.7
Interlake [4660]							
2005	67.7	43.7	40.2	3.5	64.5	8.0	59.4
2006	68.4	46.5	45.3	1.3	68.0	2.8	66.2
Parklands and North [4670, 4680]							
2005	61.9	42.3	39.9	2.4	68.3	5.7	64.5
2006	60.5	39.9	38.4	1.5	66.0	3.8	63.5
Saskatchewan							
2005	747.8	504.3	476.4	27.9	67.4	5.5	63.7
2006	747.4	501.1	472.4	28.8	67.0	5.7	63.2
Regina-Moose Mountain [4710]							
2005	218.7	154.3	146.9	7.4	70.6	4.8	67.2
2006	219.2	148.3	141.2	7.1	67.7	4.8	64.4
Swift Current-Moose Jaw [4720]							
2005	83.0	54.5	51.5	3.0	65.7	5.5	62.0
2006	82.8	55.5	52.4	3.1	67.0	5.6	63.3
Saskatoon-Biggar [4730]							
2005	230.0	160.7	152.2	8.5	69.9	5.3	66.2
2006	230.7	156.5	147.9	8.7	67.8	5.6	64.1

See footnotes at the end of the table.

Table 6 – continued

Labour force characteristics by economic region¹ and for Yukon Territory and Northwest Territories, unadjusted, 3 month moving average ending in March 2005 and March 2006

	Population	Labour force			Participation rate	Unemployment rate	Employment rate
		Labour force	Employment	Unemployment			
	in thousands						
Yorkton-Melville [4740]							
2005	66.1	40.7	38.0	2.6	61.6	6.4	57.5
2006	65.1	42.5	40.7	1.9	65.3	4.5	62.5
Prince Albert and Northern [4750, 4760]							
2005	150.0	94.2	87.9	6.4	62.8	6.8	58.6
2006	149.6	98.3	90.3	8.0	65.7	8.1	60.4
Alberta							
2005	2,533.2	1,824.1	1,748.3	75.8	72.0	4.2	69.0
2006	2,603.4	1,870.8	1,805.8	64.9	71.9	3.5	69.4
Lethbridge-Medicine Hat [4810]							
2005	193.6	139.6	133.8	5.8	72.1	4.2	69.1
2006	197.8	137.6	133.8	3.8	69.6	2.8	67.6
Camrose-Drumheller [4820]							
2005	146.5	101.9	98.7	3.2	69.6	3.1	67.4
2006	149.2	103.2	100.6	2.5	69.2	2.4	67.4
Calgary [4830]							
2005	909.3	662.0	632.9	29.0	72.8	4.4	69.6
2006	939.1	703.6	679.3	24.4	74.9	3.5	72.3
Banff-Jasper-Rocky Mountain House [4840]							
2005	64.3	51.0	49.6	x	79.3	x	77.1
2006	65.3	49.5	48.6	x	75.8	x	74.4
Red Deer [4850]							
2005	129.4	95.3	92.7	2.7	73.6	2.8	71.6
2006	133.7	98.0	93.7	4.3	73.3	4.4	70.1
Edmonton [4860]							
2005	837.1	589.3	561.6	27.7	70.4	4.7	67.1
2006	857.9	583.3	560.3	23.0	68.0	3.9	65.3
Athabasca-Grande Prairie-Peace River [4870]							
2005	170.9	124.1	120.1	4.0	72.6	3.2	70.3
2006	174.8	130.5	127.2	3.3	74.7	2.5	72.8
Wood Buffalo-Cold Lake [4880]							
2005	82.0	60.9	59.0	1.9	74.3	3.1	72.0
2006	85.5	65.1	62.3	2.8	76.1	4.3	72.9
British Columbia							
2005	3,423.5	2,229.1	2,069.4	159.7	65.1	7.2	60.4
2006	3,488.0	2,260.2	2,143.1	117.1	64.8	5.2	61.4
Vancouver Island and Coast [5910]							
2005	597.0	362.3	331.3	31.1	60.7	8.6	55.5
2006	607.7	384.3	364.1	20.2	63.2	5.3	59.9
Lower Mainland-Southwest [5920]							
2005	2,058.1	1,374.9	1,284.1	90.7	66.8	6.6	62.4
2006	2,103.6	1,371.3	1,304.2	67.1	65.2	4.9	62.0
Thompson-Okanagan [5930]							
2005	401.1	246.3	229.9	16.3	61.4	6.6	57.3
2006	409.9	263.7	249.1	14.6	64.3	5.5	60.8

See footnotes at the end of the table.

Table 6 – continued

Labour force characteristics by economic region¹ and for Yukon Territory and Northwest Territories, unadjusted, 3 month moving average ending in March 2005 and March 2006

	Population	Labour force			Participation rate	Unemployment rate	Employment rate
		Labour force	Employment	Unemployment			
	in thousands						
Kootenay [5940]							
2005	122.0	73.8	68.0	5.8	60.5	7.9	55.7
2006	122.3	70.8	66.3	4.6	57.9	6.5	54.2
Cariboo [5950]							
2005	126.9	86.3	77.8	8.5	68.0	9.8	61.3
2006	126.3	89.0	83.5	5.4	70.5	6.1	66.1
North Coast and Nechako [5960, 5970]							
2005	69.0	48.9	43.3	5.6	70.9	11.5	62.8
2006	68.0	46.0	41.7	4.2	67.6	9.1	61.3
Northeast [5980]							
2005	49.3	36.8	35.0	1.8	74.6	4.9	71.0
2006	50.3	35.1	34.1	x	69.8	x	67.8
Yukon Territory ³							
2005	21.6	16.1	15.3	0.9	74.5	5.6	70.8
2006	21.6	15.9	15.0	0.9	73.6	5.7	69.4
Northwest Territories ⁴							
2005	31.2	24.0	22.7	1.3	76.9	5.4	72.8
2006	31.4	24.2	23.1	1.1	77.1	4.5	73.6

1. For geographic descriptions of economic regions, refer to the Guide to the Labour Force Survey (catalogue number 71-543-GIE).

2. Estimates for Canada are a sum of the provincial totals and exclude estimates from Yukon Territory, Northwest Territories and Nunavut.

3. Since 1992, the Labour Force Survey has been administered in the Yukon Territory, using an alternative methodology that accommodates some of the operational difficulties inherent to remote locales. These estimates are not included in national totals.

4. Since 2001, the Labour Force Survey has been administered in the Northwest Territories, using an alternative methodology that accommodates some of the operational difficulties inherent to remote locales. These estimates are not included in national totals.

Note: Related CANSIM table 282-0054

Table 7

Average usual hours and wages of employees by selected characteristics, Canada, unadjusted

	Employees				Full-time			Part-time		
	Number	Average weekly hours	Average weekly wages	Average hourly wages	Number	Average weekly hours	Average weekly wages	Number	Average weekly hours	Average weekly wages
	'000		\$		'000		\$	'000		\$
March 2006										
15 years and over	13,611.5	35.2	721.41	19.71	11,014.2	39.5	834.57	2,597.3	17.1	241.54
15 to 24 years	2,294.3	26.7	326.54	11.28	1,127.6	39.0	517.00	1,166.7	14.9	142.46
25 years and over	11,317.2	36.9	801.46	21.42	9,886.6	39.6	870.79	1,430.6	18.8	322.33
Men	6,872.9	37.7	834.09	21.50	6,047.2	40.7	919.15	825.7	16.1	211.16
Women	6,738.6	32.6	606.49	17.89	4,967.0	38.0	731.60	1,771.6	17.5	255.70
Union coverage										
Union coverage	4,349.2	35.7	820.96	22.73	3,704.2	38.7	898.97	645.0	18.9	372.97
No union coverage	9,262.3	35.0	674.66	18.29	7,310.0	39.9	801.94	1,952.3	16.5	198.11
Job permanency										
Permanent	12,035.3	36.2	754.47	20.20	10,182.4	39.5	844.44	1,852.9	18.1	260.03
Temporary	1,576.2	27.4	468.99	15.95	831.8	38.9	713.75	744.4	14.5	195.50
Occupation										
Management	1,019.0	39.9	1,212.04	30.46	989.4	40.5	1,235.93	29.6	19.5	413.91
Business, finance and administrative	2,665.7	35.1	673.17	18.76	2,251.4	38.3	748.80	414.3	17.6	262.18
Natural and applied sciences	941.9	38.6	1,072.40	27.75	908.5	39.4	1,098.32	33.4	17.1	366.96
Health	845.7	33.7	784.12	23.14	647.1	37.8	888.06	198.7	20.3	445.59
Social science, education, government service and religion	1,259.7	33.7	874.44	25.72	982.0	38.4	1,006.03	277.7	17.2	409.01
Art, culture, recreation and sport	342.6	29.6	609.28	18.89	224.4	38.2	825.64	118.1	13.3	198.26
Sales and service	3,392.9	30.1	423.84	12.99	2,073.5	38.7	586.25	1,319.4	16.6	168.60
Trades, transport and equipment operators	1,966.2	39.9	786.00	19.48	1,828.7	41.6	827.19	137.5	17.4	238.18
Occupations unique to primary industry	225.8	42.4	784.74	17.76	197.7	46.1	870.10	28.2	16.0	186.21
Occupations unique to processing, manufacturing and utilities	951.9	39.4	678.31	17.11	911.5	40.4	699.35	40.4	16.6	204.08
March 2005										
15 years and over	13,292.1	35.1	695.40	19.04	10,743.3	39.4	805.19	2,548.9	16.9	232.64
15 to 24 years	2,184.0	26.5	306.80	10.76	1,070.8	39.0	485.81	1,113.2	14.6	134.61
25 years and over	11,108.1	36.8	771.80	20.67	9,672.4	39.5	840.55	1,435.7	18.7	308.65
Men	6,702.8	37.8	808.27	20.81	5,925.2	40.7	887.72	777.6	15.7	202.93
Women	6,589.3	32.4	580.58	17.24	4,818.1	37.9	703.70	1,771.3	17.4	245.68
Union coverage										
Union coverage	4,304.2	35.7	796.21	21.99	3,670.7	38.6	871.58	633.5	19.0	359.45
No union coverage	8,988.0	34.8	647.13	17.63	7,072.6	39.9	770.74	1,915.4	16.2	190.70
Job permanency										
Permanent	11,727.0	36.2	729.39	19.59	9,919.7	39.5	815.97	1,807.4	18.0	254.19
Temporary	1,565.1	27.3	440.75	14.98	823.6	39.0	675.42	741.5	14.3	180.11
Occupation										
Management	884.7	40.0	1,212.44	30.41	860.6	40.5	1,233.54	24.1	19.4	458.61
Business, finance and administrative	2,650.2	35.0	645.55	18.06	2,242.2	38.2	715.82	408.0	17.8	259.32
Natural and applied sciences	928.3	38.3	1,037.71	27.06	891.9	39.2	1,064.07	36.4	17.2	392.21
Health	829.8	32.9	730.78	22.11	610.8	37.5	839.09	218.9	20.1	428.57
Social science, education, government service and religion	1,170.8	34.0	845.95	24.59	924.2	38.6	968.42	246.6	16.9	387.01
Art, culture, recreation and sport	317.6	30.2	656.93	20.00	214.6	38.5	874.39	103.0	13.0	203.88
Sales and service	3,416.7	30.0	414.02	12.75	2,098.8	38.6	572.88	1,317.9	16.4	161.03
Trades, transport and equipment operators	1,855.5	40.2	773.70	19.05	1,735.9	41.8	811.50	119.6	17.2	225.20
Occupations unique to primary industry	222.8	41.5	708.17	16.21	187.3	46.6	813.99	35.5	15.0	149.64
Occupations unique to processing, manufacturing and utilities	1,015.7	39.2	672.54	16.99	976.8	40.2	692.00	38.8	16.0	182.84

Note: Related CANSIM tables 282-0023, 282-0069, 282-0073

Table 8

Regional unemployment rates used by the Employment Insurance Program,¹ seasonally adjusted, 3 month moving average

Region	Effective from April 9, 2006 to May 6, 2006 Unemployment rate
	Percent
Newfoundland and Labrador	
01. St. John's	8.7
02. Newfoundland and Labrador	20.1
Prince Edward Island	
03. Prince Edward Island	11.4
Nova Scotia	
04. Eastern Nova Scotia	14.4
05. Western Nova Scotia	9.3
06. Halifax	4.9
New Brunswick	
07. Fredericton-Moncton-Saint John	7.4
08. Madawaska-Charlotte ²	9.8
09. Restigouche-Albert	14.0
Quebec	
10. Gaspésie-Îles-de-la-Madeleine	20.2
11. Québec	5.6
12. Trois-Rivières	8.9
13. South Central Quebec	5.2
14. Sherbrooke	8.3
15. Montérégie	7.1
16. Montréal	9.5
17. Central Quebec	8.0
18. Northwestern Quebec	9.7
19. Bas-Saint-Laurent-Côte-Nord ³	12.0
20. Gatineau	5.6
21. Saguenay	7.7
Ontario	
22. Ottawa	5.0
23. Eastern Ontario	6.7
24. Kingston	6.1
25. Central Ontario	5.6
26. Oshawa	6.5
27. Toronto	6.8
28. Hamilton	5.5
29. St. Catharines	6.7
30. London	6.0
31. Niagara	8.3
32. Windsor	9.8
33. Kitchener	5.2
34. Huron	6.3
35. South Central Ontario	5.1
36. Sudbury	8.0
37. Thunder Bay	7.4
38. Northern Ontario	9.9
Manitoba	
39. Winnipeg	4.5
40. Southern Manitoba	5.2
41. Northern Manitoba	23.7

See footnotes at the end of the table.

Table 8 – continued

Regional unemployment rates used by the Employment Insurance Program,¹ seasonally adjusted, 3 month moving average

Region	Effective from April 9, 2006 to May 6, 2006 Unemployment rate
	Percent
Saskatchewan	
42. Regina	5.0
43. Saskatoon	5.4
44. Southern Saskatchewan	6.0
45. Northern Saskatchewan	15.8
Alberta	
46. Calgary	3.5
47. Edmonton	3.8
48. Northern Alberta	7.4
49. Southern Alberta	4.1
British Columbia	
50. Southern Interior British Columbia	6.3
51. Abbotsford	4.5
52. Vancouver	4.9
53. Victoria	4.5
54. Southern Coastal British Columbia	5.9
55. Northern British Columbia	8.5
Territories	
56. Yukon Territory ⁴	25.0
57. Northwest Territories ⁴	25.0
58. Nunavut ⁴	25.0

1. The boundaries of these regions are determined by Human Resources and Skills Development Canada (HRSDC). For geographic descriptions and maps of employment insurance regions, see the HRSDC website: <http://www14.hrdc-drhc.gc.ca/ei-ae/canadaei.htm>.
2. This unemployment rate has been determined using a transition formula prescribed in the EI Regulations. For further information, see: http://www.hrsdc.gc.ca/en/cs/comm/news/2000/000913a_e.shtml.
3. This unemployment rate has been determined using a transition formula prescribed in the EI Regulations. For further information, see: http://www.hrsdc.gc.ca/en/cs/comm/news/2000/000913b_e.shtml.
4. This rate is provided by Human Resources and Skills Development Canada.

Data quality

About the Labour Force Survey

The statistics contained in this report are based on information obtained through a sample survey of 53,000 representative households across the country. The Labour Force Survey, started in November 1945, was taken at quarterly intervals until November 1952. It has been carried out monthly since then. The information generated by the survey has expanded considerably over the years with a major redesign of the survey content in 1976 and again in 1997, and provides a rich and detailed picture of the Canadian labour market.

The sample used in the Labour Force Survey has been designed to represent all persons in the population 15 years of age and over residing in the provinces of Canada, with the exception of the following: persons living on Indian reserves, full-time members of the armed forces and people living in institutions (for example, inmates of penal institutions and patients in hospitals or nursing homes who have resided in the institution for more than six months). Monthly estimates of employment, unemployment and persons not in the labour force refer to the specific week covered by the survey each month, normally the week containing the 15th day.

Definitions and explanations

The **labour force** is composed of those members of the civilian non-institutional population 15 years of age and over who, during the reference week, were employed or unemployed.

Employed persons are those who, during the reference week:

- (a) did any work at all
- (b) had a job but were not at work

A person is considered to be **full-time** if his/her usual hours at the main job are greater than 29 hours per week. When the number of hours worked at the main job is usually less than 30 hours per week then he/she is considered to be **part-time**.

Unemployed persons are those who, during the reference week:

- (a) were without work, had actively looked for work in the past four weeks (ending with reference week), and were available for work;
- (b) had not actively looked for work in the past four weeks but were on temporary layoff and were available for work;
- (c) had not actively looked for work in the past four weeks but had a new job to start in four weeks or less from the reference week, and were available for work.

Persons in the civilian non-institutional population 15 years of age and over who, during the reference week, were neither employed nor unemployed are classified as **not in the labour force**.

The **unemployment rate** represents the number of unemployed persons expressed as a percentage of the labour force. The unemployment rate for a particular group (age, sex, etc.) is the number unemployed in that group expressed as a percentage of the labour force for that group.

The **participation rate** represents the labour force expressed as a percentage of the population 15 years of age and over. The participation rate for a particular group (age, sex, etc.) is the labour force in that group expressed as a percentage of the population for that group.

The **employment rate (formerly the employment/population ratio)** represents the number of persons employed expressed as a percentage of the population 15 years of age and over. The employment rate for a particular group (age, sex, etc.) is the number employed in that group expressed as a percentage of the population for that group.

The **part-time rate** represents the number of persons employed part-time expressed as a percentage of the employed. The part-time rate for a particular group (age, sex, etc.) is the number employed part-time in that group expressed as a percentage of the employed for that group.

All geographic regions are based on the 2001 Census boundaries.

Seasonal adjustment

Fluctuations in economic time series are caused by seasonal, cyclical and irregular movements. A seasonally adjusted series is one from which seasonal movements have been eliminated. Seasonal movements are defined as those which are caused by regular annual events such as climate, holidays, vacation periods and cycles related to crops, production and retail sales associated with Christmas and Easter. The seasonally adjusted series contains irregular as well as longer-term cyclical fluctuations.

The seasonally adjusted series are revised each year to take into account current data and to generate new forecast factors for the next twelve months. The data are therefore subject to slight revisions in future issues of this publication.

Sampling error

Estimates in this publication are based on the Labour Force Survey, a monthly survey of approximately 53,000 households across Canada. Because they are based on a sample survey, the estimates are subject to sampling error. Changes in the level of any estimates between two months can be the result of a true change or sampling variability. In most tables in this publication an indicator of the sampling error is provided. Two thirds of the time, a change greater than the sampling error indicates a real change. Movements in estimates that are smaller than the sampling error are less likely to reflect a real change and more likely to be due to sampling variability. While the above is true for monthly movements, one can have more confidence in a series of consecutive movements in the same direction, even though some of the monthly movements may be smaller than the sampling error.

For more detailed information about the Labour Force Survey, see the following documents:

- Overview of the Labour Force Survey
- Guide to the Labour Force Survey (71-543-GIE)
- Data quality statement
- Methodology of the Canadian Labour Force Survey (71-526-XPB)