



Labour Force Information



Not for release before
7 A.M. E.D.T.
Friday, August 6, 2004

**For the week ended
July 17, 2004**

How to obtain more information

Specific inquiries about this product and related statistics or services should be directed to: Labour Force Survey, Statistics Canada, Ottawa, Ontario, K1A 0T6 (telephone: (613) 951-4090, toll free number: 1 (866) 873-8788, fax: (613) 951-2869 or by e-mail address: labour@statcan.ca).

For information on the wide range of data available from Statistics Canada, you can contact us by calling one of our toll-free numbers. You can also contact us by e-mail or by visiting our Web site.

National inquiries line

1 800 263-1136

National telecommunications device for the hearing impaired

1 800 363-7629

Depository Services Program inquiries

1 800 700-1033

Fax line for Depository Services Program

1 800 889-9734

E-mail inquiries

infostats@statcan.ca

Web site

www.statcan.ca

Ordering and subscription information

This product, Catalogue no. 71-001-XIE, is published monthly in electronic format on the Statistics Canada Internet site at a price of CDN \$9.00 per issue and CDN \$84.00 for a one-year subscription. To obtain single issues or to subscribe visit our Web site at www.statcan.ca, and select Products and Services.

This product is also available in print through a Print-on-Demand service, at a price of CDN \$51.00 per issue and CDN \$208.00 for a one-year subscription. The following additional shipping charges apply for delivery outside Canada:

	Single issue	Annual subscription
United States	CDN \$ 6.00	CDN \$72.00
Other countries	CDN \$ 10.00	CDN \$120.00

All prices exclude sales taxes.

The printed version can be ordered by

- Phone (Canada and United States) **1 800 267-6677**
- Fax (Canada and United States) **1 877 287-4369**
- E-mail **infostats@statcan.ca**
- Mail Statistics Canada
Dissemination Division
Circulation Management
120 Parkdale Avenue
Ottawa, Ontario K1A 0T6
- And, in person at the Statistics Canada Regional Centre nearest you.

When notifying us of a change in your address, please provide both old and new addresses.

Standards of service to the public

Statistics Canada is committed to serving its clients in a prompt, reliable and courteous manner and in the official language of their choice. To this end, the Agency has developed standards of service which its employees observe in serving its clients. To obtain a copy of these service standards, please contact Statistics Canada toll free at 1 800 263-1136.



Statistics Canada
Labour Statistics Division
Labour Force Survey Program

Labour Force Information

July 2004

Published by authority of the Minister responsible for Statistics Canada

© Minister of Industry, 2004

All rights reserved. No part of this publication may be reproduced, stored in a retrieval system or transmitted in any form or by any means, electronic, mechanical, photocopying, recording or otherwise without prior written permission from Licence Services, Marketing Division, Statistics Canada, Ottawa, Ontario, Canada K1A 0T6.

August 2004

Catalogue no. 71-001-XIE
ISSN 1492-5478

Frequency: Monthly

Ottawa

La version française de cette publication est disponible sur demande (n° 71-001-XIF au catalogue).

Note of appreciation

Canada owes the success of its statistical system to a long-standing partnership between Statistics Canada, the citizens of Canada, its businesses, governments and other institutions. Accurate and timely statistical information could not be produced without their continued cooperation and goodwill.

Symbols

The following standard symbols are used in Statistics Canada publications:

- . not available for any reference period
- .. not available for a specific reference period
- ... not applicable
- 0 true zero or a value rounded to zero
- 0^s value rounded to 0 (zero) where there is a meaningful distinction between true zero and the value that was rounded
- ^P preliminary
- ^r revised
- x suppressed to meet the confidentiality requirements of the *Statistics Act*
- ^E use with caution
- F too unreliable to be published

Table of Contents

	Page
Commentary	6-7
Charts	
Employment and unemployment indicators	8
Index of employment by industry	9-10
Index of employment by province	11
Products and services	12
Tables	
1 Labour force characteristics by age and sex	13
2 Employment by class of worker and industry	14
3 Labour force characteristics by province	15-16
4-13 Labour force characteristics by age, sex and industry for provinces	17-26
4 Newfoundland and Labrador	17
5 Prince Edward Island	18
6 Nova Scotia	19
7 New Brunswick	20
8 Quebec	21
9 Ontario	22
10 Manitoba	23
11 Saskatchewan	24
12 Alberta	25
13 British Columbia	26
14 Labour force characteristics by metropolitan area, 3 month moving average	27-30
15 Labour force characteristics for Montréal, Toronto and Vancouver, monthly	31
16 Labour force characteristics by economic region	32-35
17 Average usual hours and wages of employees by selected characteristics	36
18 Regional unemployment rates used by the Employment Insurance Program	37
19 Students and other persons aged 15 to 24 by detailed age groups, unadjusted (in thousands)	38
20 Students and other persons aged 15 to 24 by province, unadjusted data (in thousands)	39
Data Quality	40-41

Commentary

Employment was little changed in July (+9,000), following three consecutive monthly gains. The unemployment rate edged down 0.1 percentage points in July to 7.2% as fewer people entered the labour market in search of work. Despite a pause during the first quarter of the year, employment has shown strength over the past 11 months with growth of 2.1% (+325,000) since August 2003 when the recent upward trend began.

Part-time employment up in July

An increase of 48,000 part-time jobs was mostly offset by full-time losses of 39,000. The gain in part-time employment in July is the first significant increase so far this year and leaves the number of persons working part-time down 0.7% (-22,000) since the start of the year. The decline in full-time employment in July follows a string of ten consecutive monthly gains totalling 342,000 (+2.7%) since last August.

Employment among adult men rose by 32,000 in July with gains in full and part-time jobs. This pushed the unemployment rate among this group down 0.3 percentage points to 5.9%, the lowest since February 2001. The increase in employment in July brings overall gains so far this year for adult men to 66,000 (+0.9%), all full-time.

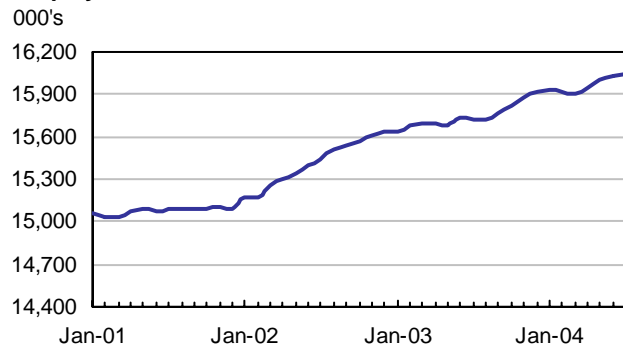
For the second consecutive month, employment among adult women was little changed. However, full-time losses of 57,000 over the last two months leave overall employment growth so far this year up just 35,000 (+0.6%).

Employment among youths edged down in July as a decline of 29,000 full-time jobs was partly offset by a slight increase in part-time work (+15,000). The slight decline in July follows gains totalling 68,000 (+2.8%) over the period April, May and June. Over this same period, the gains were concentrated in full-time work.

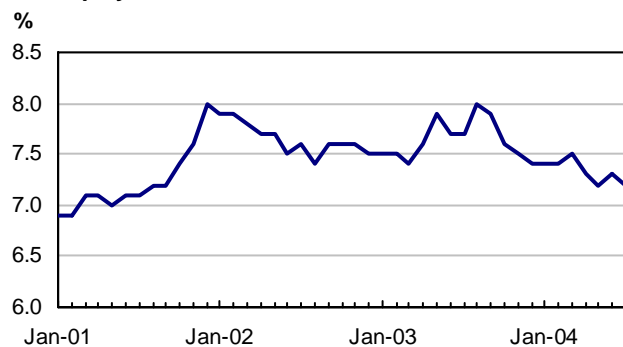
The summer job market improved for students aged 20 to 24 (those who had been attending school full-time and who plan to return in the fall). In July, the employment rate for 20 to 24 year-old students rose by 1.9 percentage points to 77.0% compared with July 2003. Over the same period, the unemployment rate among this group of students edged down 0.1 percentage points to 7.7%.

For younger students aged 15 to 19, the summer job market did not improve. The proportion of teenage students with a job edged down from 51.6% in July 2003 to 51.0% in July 2004. Compared to a year ago, the unemployment rate for 15 to 19 year-old students rose slightly by 0.8 percentage points in July 2004 to 20.9%.

Employment



Unemployment rate



More factory jobs in July

Employment in the manufacturing sector rose by 21,000 in July, the first significant increase in more than a year. The increase in July was mostly in Ontario with gains in the province spread across a number of industries. The increase in factory jobs at the national level for July follows a period of little change that began during the fall of 2003. Added manufacturing employment in July coincides with recent strength in shipments and continued accumulation of inventories. Furthermore, the most recent Business Conditions Survey for July indicates an improvement in manufacturer's employment prospects. Despite more factory jobs in July, employment in manufacturing has not fully recovered from the losses incurred between November 2002 and September 2003.

Employment in construction increased by 19,000 in July, building on the gains observed over the previous four months. Following a pause earlier in the year, employment in this sector is up 61,000 (+6.5%) since March, resuming the upward trend that began about three years ago. The employment gain in July was concentrated in Quebec.

The number of persons employed in professional, scientific and technical services was up 18,000 in July bringing gains so far this year to 48,000 (+4.9%). The largest increases in July were in management, scientific and technical services.

Employment in health care and social assistance declined by an estimated 24,000, mostly in hospitals. The overall decrease in July offsets gains observed during the second quarter of the year. Despite this decline, employment in the sector is up 2.7% (+46,000) from 12 months ago.

Employment in July decreased by 20,000 in educational services with the decline spread across most educational groups. The decrease in July was observed in Alberta, Ontario and Saskatchewan. At the national level, there has been weakness in this sector over the first seven months of the year and the decline this month leaves employment at about the same level as a year ago.

Agricultural employment declined by 9,000 in July, mostly in crop production in Ontario. This leaves employment in the sector just slightly below the level of July 2003.

Private sector employment up in July

Job gains in July for the private sector totaled 39,000 while employment in the public sector declined by 30,000. The employment increase in the private sector was concentrated among employees as there was little change in the number of self-employed. Job losses in the public sector were mainly in educational services and health care and social assistance.

Despite the decline in July, employment among public sector employees is up 1.5% (+45,000) over the first seven months of the year while the number of private sector employees has increased at a much slower pace of 0.3% over the same period (+36,000). Year-to-date employment gains among the self-employed is up 1.6% (+39,000).

Provincial focus

Employment increased by 5,000 in Newfoundland and Labrador, bringing total gains since the start of the year to 11,000 (+5.1%). Several sectors contributed to the increase in July. Over the first seven months of the year, the largest gains have been in retail and wholesale trade, construction and manufacturing. The unemployment rate in July fell 1.6 percentage points to 15.0%.

Employment increased by 1,500 in Prince Edward Island, spread across a number of industries. This pushed the unemployment rate down 0.8 percentage points to 11.2%. July's gain partly offsets small monthly losses observed earlier in the year and leaves employment in the province at about the same level as at the start of the year.

In July, employment in Ontario was little changed (+9,000) as an increase of 45,000 part-time jobs was partly offset by losses of 37,000 in full-time. Following weakness in the first quarter of the year, employment in the province is up 71,000 (+1.1%) since last March. The unemployment rate in the province edged down 0.2 percentage points in July to 6.8%.

In Quebec, employment continued to show little change (+10,000) in July. Gains in construction, business, building and other support services as well as in finance, insurance, real estate and leasing were partly offset by losses in public administration and health care and social assistance. Over the first seven months of 2004, employment in the province is up only 0.6% (+21,000). In July, the unemployment rate was unchanged at 8.2%.

Employment declined by 13,000 in Alberta and the unemployment rate edged up 0.1 percentage points to 4.7%. The decrease in employment was in educational services, finance, insurance, real estate and leasing as well as in retail and wholesale trade. The decline in July offsets small monthly gains earlier in the year and leaves employment in the province at about the same level as at the start of the year.

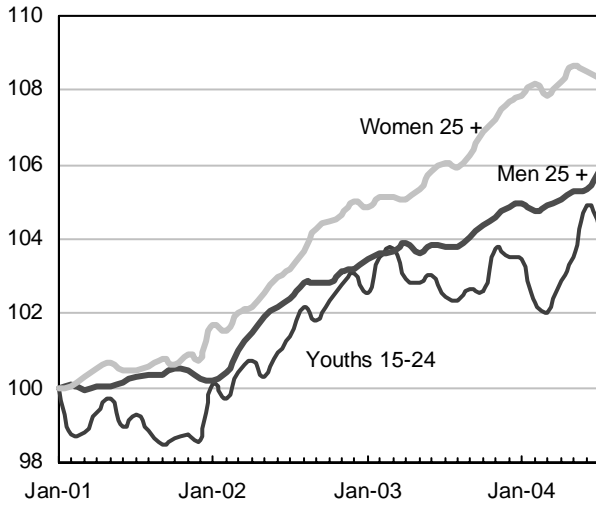
In July, employment fell by 5,000 in Manitoba after several months of little change, leaving employment in the province at about the same level as at the start of the year. Job losses were spread across a number of sectors in July. Despite the decline in employment, the unemployment rate edged down 0.1 percentage points to 5.6% as fewer people were participating in the labour force.

Employment declined by 3,000 in Saskatchewan with losses in educational services and finance, insurance, real estate and leasing. These losses were partly offset by a gain in health care and social assistance. Despite the overall decline in employment, the unemployment rate was unchanged at 5.2%, the result of a decrease in labour force participation.

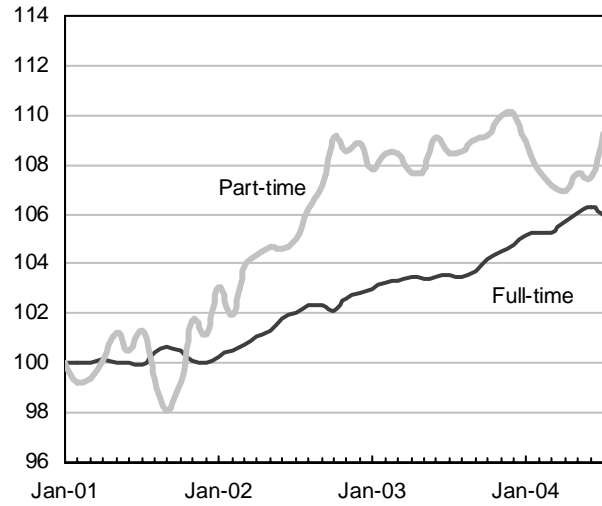
There was little change in employment in the other provinces.

Employment and unemployment indicators, seasonally adjusted, Canada

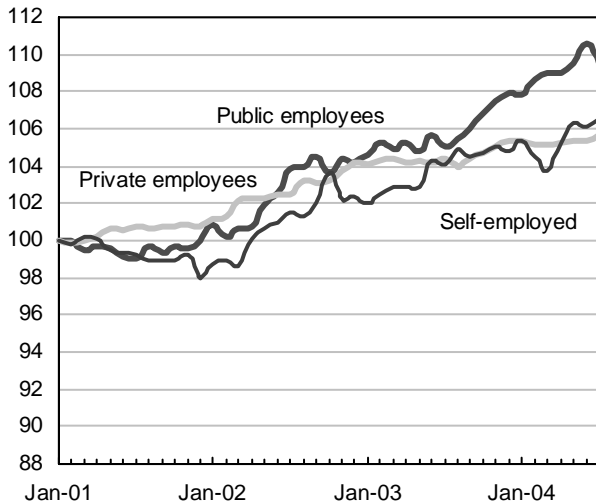
Employment index, January 2001=100



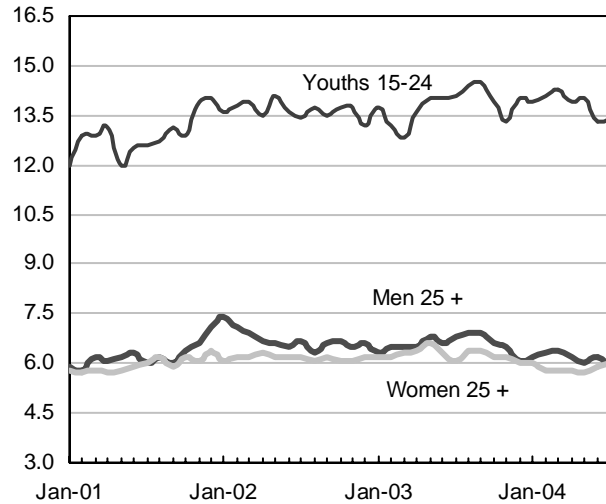
Employment index, January 2001=100



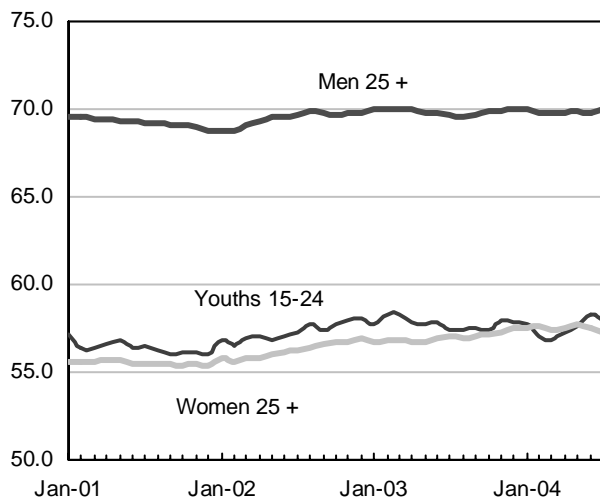
Employment index, January 2001=100



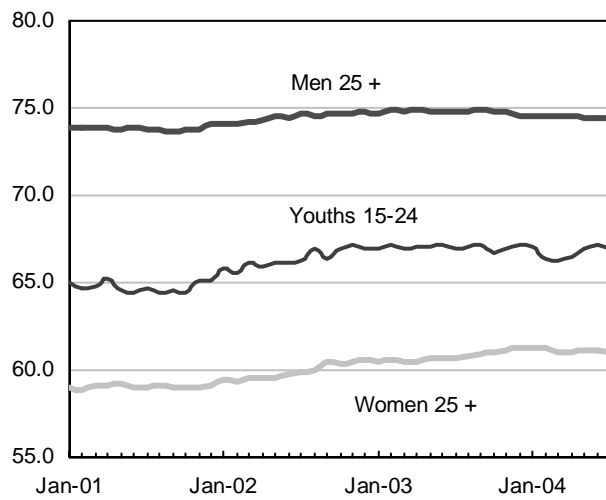
Unemployment rate (%)



Employment rate (%)

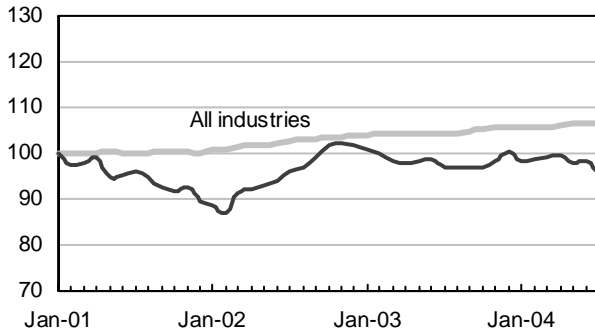


Participation rate (%)

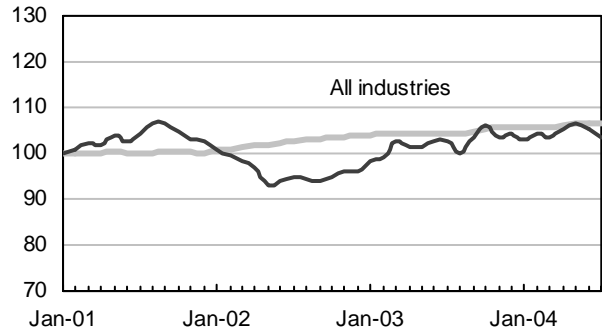


Index of employment by industry, Canada, seasonally adjusted, January 2001 = 100

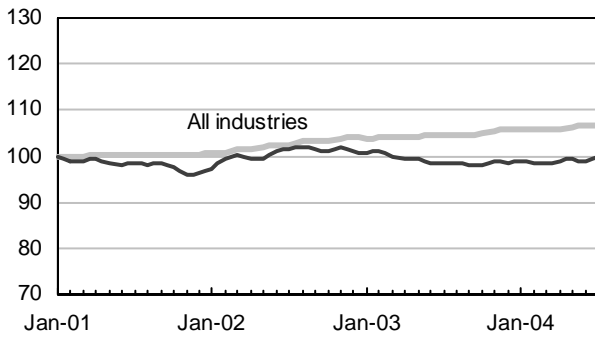
Agriculture



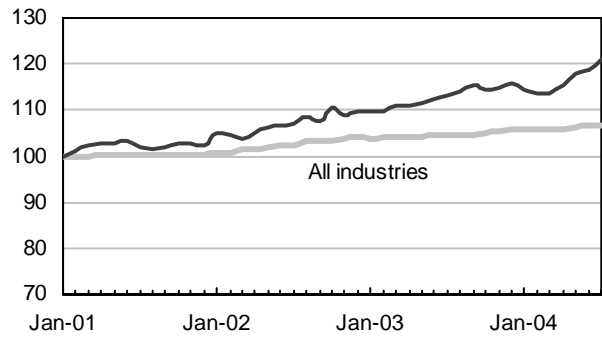
Forestry, fishing, mining, oil and gas



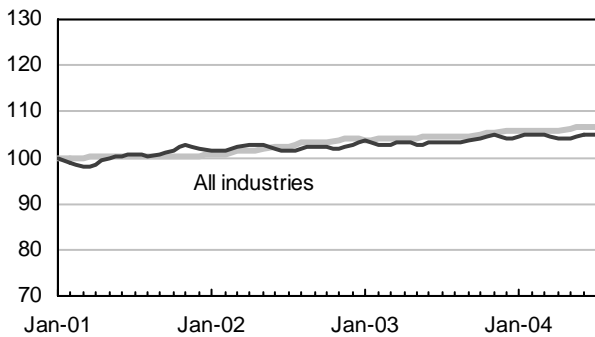
Manufacturing



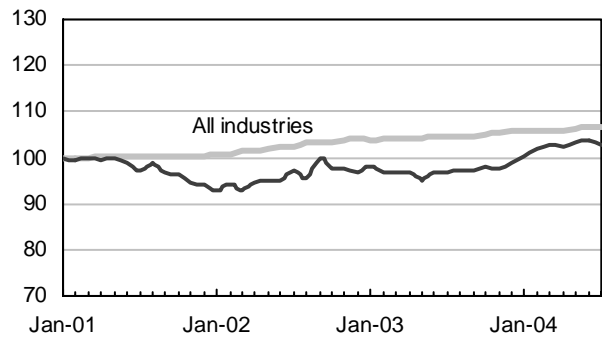
Construction



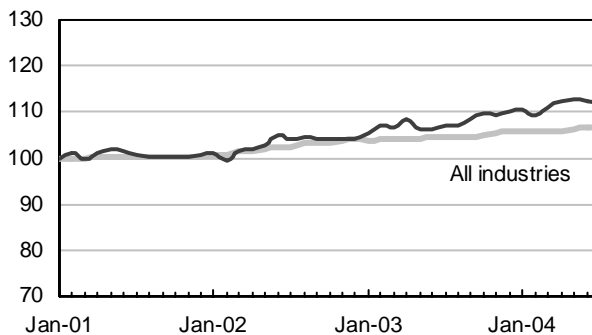
Trade



Transportation and warehousing

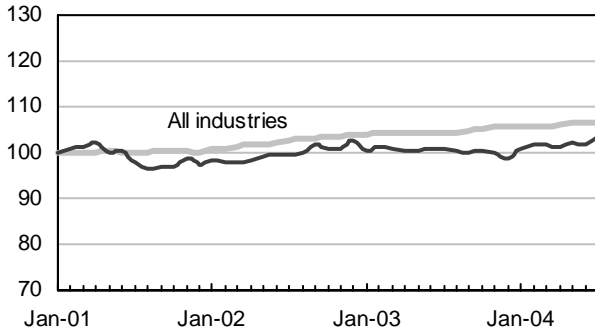


Finance, insurance, real estate and leasing

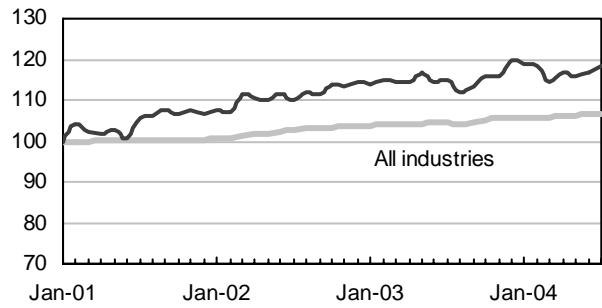


Index of employment by industry, Canada, seasonally adjusted, January 2001 = 100

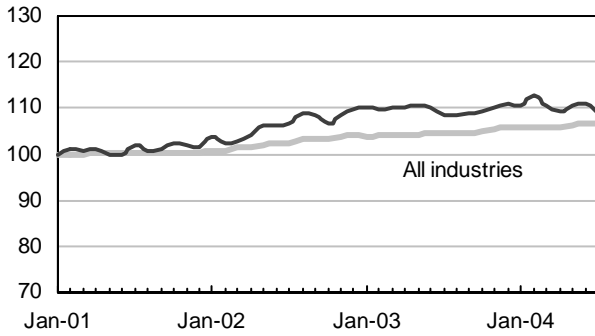
Professional, scientific and technical services



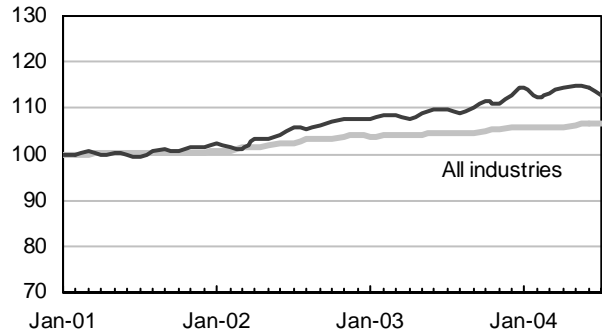
Business, building and other support services



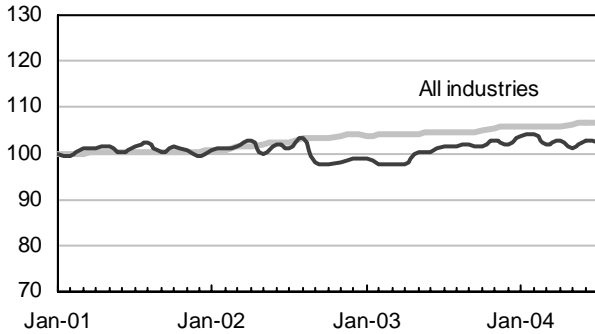
Educational services



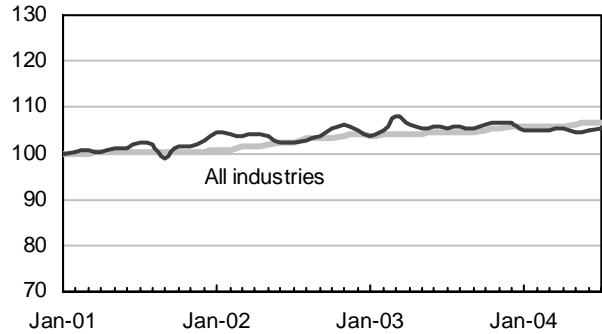
Health care and social assistance



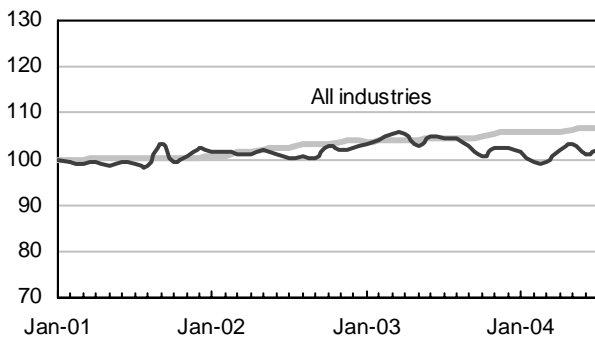
Information, culture and recreation



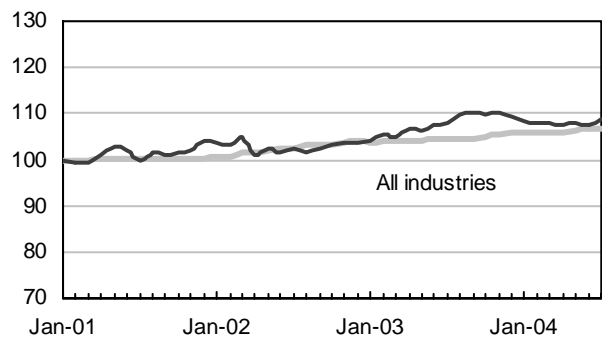
Accommodation and food services



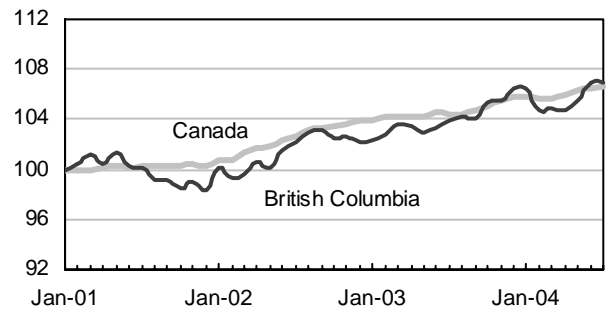
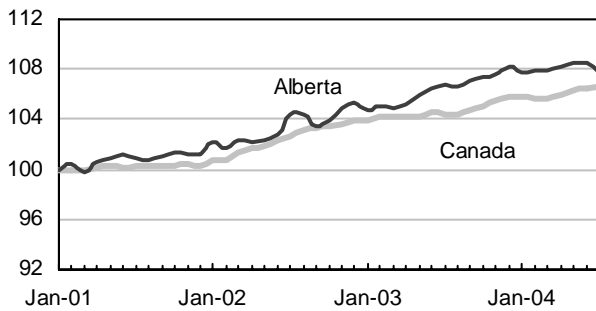
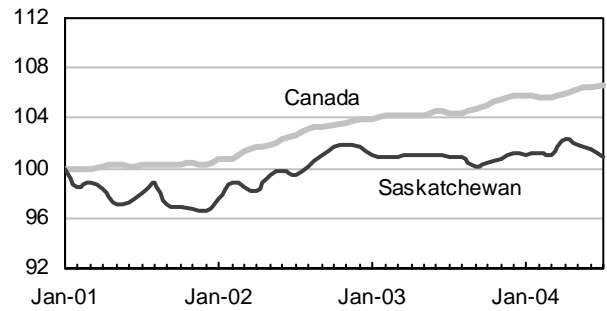
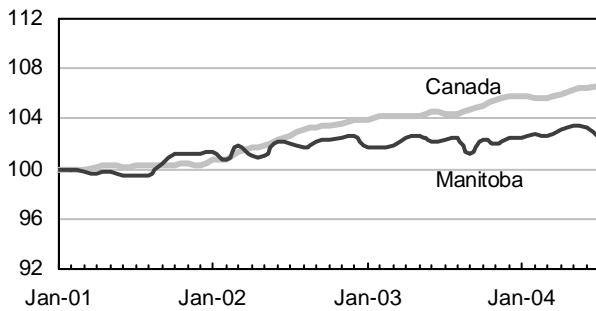
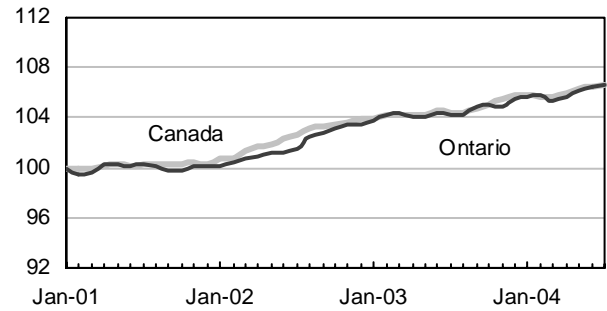
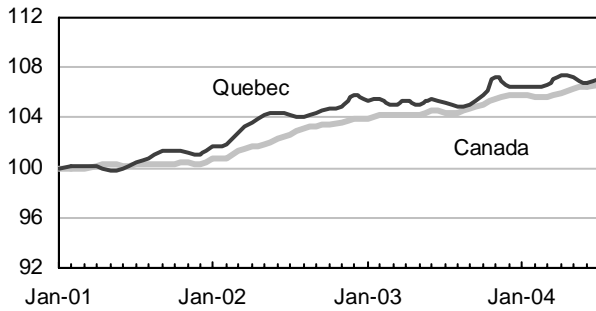
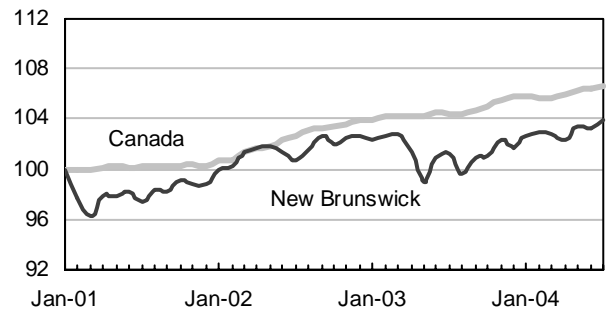
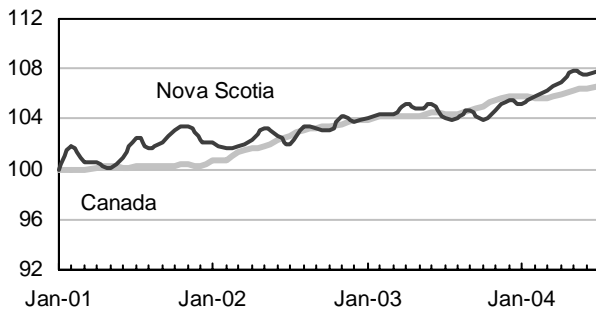
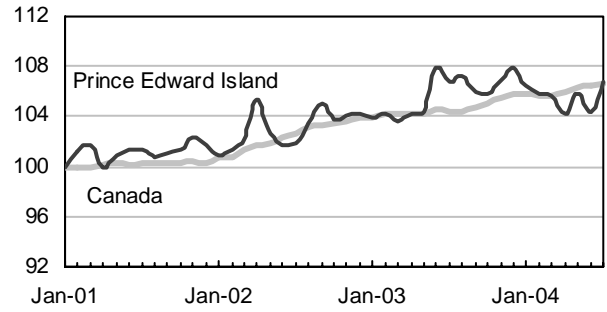
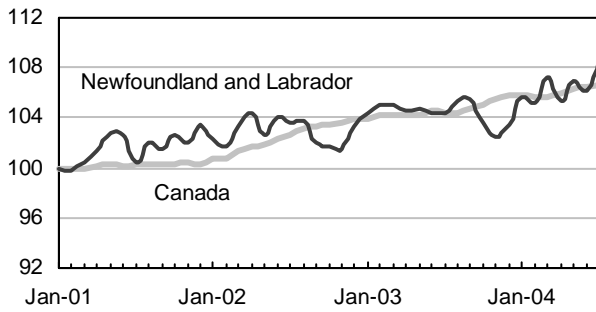
Other services



Public administration



Index of employment by province, seasonally adjusted, January 2001 = 100



Products and services

Related products and data sources

- Guide to the Labour Force Survey, *71-543-GIE*
- Labour Force Survey products and services catalogue, *71-544-XIE*
- Methodology of the Canadian Labour Force Survey, *71-526-XPB*
- Perspectives on labour and income, *75-001-XIE* or *75-001-XPE*
- Labour force historical review on CD-ROM, *71F0004XCB*
- Microdata file, *71M0001XCB*
- *CANSIM* (\$)

CANSIM, Statistics Canada's online database, includes over 1.4 million LFS monthly and annual average data series in tables *282-0001 to 282-0094*.
- Special requests (\$)

Custom tabulations can be arranged on an ad hoc or regular basis. This service enables you to specify tables and time series to meet your own requirements. The cost varies according to the request. For more information, contact us toll-free at 1-866-873-8788 or e-mail us at *labour@statcan.ca*.

- Schedule of LFS releases

Reference period -Week Ending	Release date
December 13, 2003	January 9, 2004
January 17, 2004	February 6, 2004
February 21, 2004	March 12, 2004
March 20, 2004	April 8, 2004
April 17, 2004	May 7, 2004
May 15, 2004	June 4, 2004
June 19, 2004	July 9, 2004
July 17, 2004	August 6, 2004
August 21, 2004	September 10, 2004
September 18, 2004	October 8, 2004
October 16, 2004	November 5, 2004
November 13, 2004	December 3, 2004
December 11, 2004	January 7, 2005
January 22, 2005	February 4, 2005

- *Latest LFS release* in The Daily (free)
- Labour force tables in Canadian Statistics (free)
 - Labour force characteristics*, monthly data
 - Labour force, employment and unemployment*, annual data

Table 1

Labour force characteristics by age and sex, Canada (in thousands), seasonally adjusted

	June 2004	July 2004	S.E. ¹	Change from			% change from		
				last month	last December	twelve months ago	last month	last December	twelve months ago
Both sexes, 15 years and over									
Population	25,592.7	25,619.9	...	27.2	216.0	356.0	0.1	0.9	1.4
Labour force	17,286.1	17,275.7	28.6	-10.4	88.3	231.2	-0.1	0.5	1.4
Employment	16,031.5	16,040.2	29.5	8.7	119.5	316.5	0.1	0.8	2.0
Employment full-time	13,098.2	13,059.3	34.8	-38.9	142.1	295.2	-0.3	1.1	2.3
Employment part-time	2,933.2	2,980.9	30.6	47.7	-22.5	21.4	1.6	-0.7	0.7
Unemployment	1,254.6	1,235.5	23.9	-19.1	-31.3	-85.3	-1.5	-2.5	-6.5
Participation rate	67.5	67.4	0.1	-0.1	-0.3	-0.1
Unemployment rate	7.3	7.2	0.1	-0.1	-0.2	-0.5
Employment rate	62.6	62.6	0.1	0.0	-0.1	0.4
Part-time rate	18.3	18.6	0.2	0.3	-0.3	-0.2
Both sexes, 15 to 24 years									
Population	4,205.2	4,208.6	...	3.4	25.5	42.2	0.1	0.6	1.0
Labour force	2,826.0	2,814.9	16.6	-11.1	2.7	27.3	-0.4	0.1	1.0
Employment	2,450.6	2,436.9	16.0	-13.7	18.1	43.5	-0.6	0.7	1.8
Employment full-time	1,361.6	1,332.9	17.1	-28.7	24.0	25.7	-2.1	1.8	2.0
Employment part-time	1,089.0	1,104.0	17.7	15.0	-6.0	17.8	1.4	-0.5	1.6
Unemployment	375.4	378.0	13.8	2.6	-15.4	-16.2	0.7	-3.9	-4.1
Participation rate	67.2	66.9	0.4	-0.3	-0.3	0.0
Unemployment rate	13.3	13.4	0.5	0.1	-0.6	-0.7
Employment rate	58.3	57.9	0.4	-0.4	0.1	0.5
Part-time rate	44.4	45.3	0.6	0.9	-0.6	-0.1
Men, 25 years and over									
Population	10,430.1	10,441.5	...	11.4	92.3	151.8	0.1	0.9	1.5
Labour force	7,764.1	7,772.2	14.9	8.1	53.3	74.7	0.1	0.7	1.0
Employment	7,281.4	7,313.4	16.6	32.0	66.4	139.2	0.4	0.9	1.9
Employment full-time	6,847.0	6,860.8	19.7	13.8	88.5	145.1	0.2	1.3	2.2
Employment part-time	434.4	452.6	13.9	18.2	-22.1	-5.9	4.2	-4.7	-1.3
Unemployment	482.7	458.7	13.6	-24.0	-13.2	-64.6	-5.0	-2.8	-12.3
Participation rate	74.4	74.4	0.1	0.0	-0.2	-0.4
Unemployment rate	6.2	5.9	0.2	-0.3	-0.2	-0.9
Employment rate	69.8	70.0	0.2	0.2	0.0	0.3
Part-time rate	6.0	6.2	0.2	0.2	-0.4	-0.2
Women, 25 years and over									
Population	10,957.4	10,969.8	...	12.4	98.3	162.0	0.1	0.9	1.5
Labour force	6,696.0	6,688.6	16.5	-7.4	32.3	129.2	-0.1	0.5	2.0
Employment	6,299.6	6,289.8	16.9	-9.8	35.0	133.8	-0.2	0.6	2.2
Employment full-time	4,889.6	4,865.6	22.3	-24.0	29.6	124.4	-0.5	0.6	2.6
Employment part-time	1,409.9	1,424.3	20.2	14.4	5.6	9.5	1.0	0.4	0.7
Unemployment	396.5	398.8	12.6	2.3	-2.7	-4.5	0.6	-0.7	-1.1
Participation rate	61.1	61.0	0.2	-0.1	-0.2	0.3
Unemployment rate	5.9	6.0	0.2	0.1	0.0	-0.1
Employment rate	57.5	57.3	0.2	-0.2	-0.2	0.3
Part-time rate	22.4	22.6	0.3	0.3	0.0	-0.3
Both sexes, 25 to 54 years									
Population	14,194.5	14,201.0	...	6.5	61.9	92.4	0.0	0.4	0.7
Labour force	12,284.4	12,254.4	21.0	-30.0	26.5	84.6	-0.2	0.2	0.7
Employment	11,536.9	11,530.2	23.0	-6.7	56.0	162.6	-0.1	0.5	1.4
Unemployment	747.5	724.1	17.8	-23.4	-29.5	-78.2	-3.1	-3.9	-9.7
Participation rate	86.5	86.3	0.1	-0.2	-0.2	0.0
Unemployment rate	6.1	5.9	0.1	-0.2	-0.3	-0.7
Employment rate	81.3	81.2	0.2	-0.1	0.0	0.6

¹ Average standard error change in two consecutive months (see "Sampling Errors" in Data Quality for further explanations).
Related CANSIM table 282-0087

Table 2**Employment by class of worker and industry, Canada (in thousands), seasonally adjusted**

	June 2004	July 2004	S.E. ¹	Change from			% change from		
				last month	last December	twelve months ago	last month	last December	twelve months ago
Class of worker									
Employees	13,565.3	13,563.6	30.7	-1.7	80.3	259.7	0.0	0.6	2.0
Self-employed ²	2,466.2	2,476.5	17.8	10.3	39.1	56.7	0.4	1.6	2.3
Public/private sector employees									
Public sector employees	3,134.3	3,104.5	17.6	-29.8	44.7	128.1	-1.0	1.5	4.3
Private sector employees	10,431.0	10,459.2	30.5	28.2	35.7	131.7	0.3	0.3	1.3
Industry	16,031.5	16,040.2	29.5	8.7	119.5	316.5	0.1	0.8	2.0
Goods-producing sector	4,045.1	4,067.0	21.5	21.9	51.7	91.5	0.5	1.3	2.3
Agriculture	340.0	330.8	6.0	-9.2	-15.7	-3.8	-2.7	-4.5	-1.1
Forestry, fishing, mining, oil and gas	298.7	293.4	5.5	-5.3	-2.6	2.2	-1.8	-0.9	0.8
Utilities	137.4	134.1	3.7	-3.3	3.4	2.0	-2.4	2.6	1.5
Construction	980.8	999.9	12.5	19.1	42.8	64.6	1.9	4.5	6.9
Manufacturing	2,288.1	2,308.8	17.0	20.7	23.8	26.5	0.9	1.0	1.2
Services-producing sector	11,986.4	11,973.1	30.3	-13.3	67.7	224.9	-0.1	0.6	1.9
Trade	2,491.7	2,496.7	18.4	5.0	19.3	43.9	0.2	0.8	1.8
Transportation and warehousing	819.5	811.4	10.8	-8.1	29.2	49.4	-1.0	3.7	6.5
Finance, insurance, real estate and leasing	977.0	972.3	11.7	-4.7	15.6	40.5	-0.5	1.6	4.3
Professional, scientific and technical services	1,014.4	1,032.5	12.3	18.1	48.0	28.0	1.8	4.9	2.8
Business, building and other support services	622.3	628.7	11.0	6.4	-8.9	16.1	1.0	-1.4	2.6
Educational services	1,061.1	1,040.9	11.7	-20.2	-20.2	5.5	-1.9	-1.9	0.5
Health care and social assistance	1,757.1	1,733.6	13.3	-23.5	1.4	45.8	-1.3	0.1	2.7
Information, culture and recreation	723.3	719.6	11.2	-3.7	2.6	6.9	-0.5	0.4	1.0
Accommodation and food services	1,014.9	1,018.3	12.8	3.4	-11.2	1.2	0.3	-1.1	0.1
Other services	690.0	695.9	10.5	5.9	-3.7	-17.9	0.9	-0.5	-2.5
Public administration	815.2	823.2	9.3	8.0	-4.4	5.6	1.0	-0.5	0.7

¹ Average standard error of change in two consecutive months (see "Sampling Errors" in Data Quality for further explanations).

² Includes both incorporated and unincorporated working owners, self-employed persons who do not have a business and persons working in a family business without pay. Related CANSIM tables 282-0088, 282-0089

Table 3
Labour force characteristics by province (in thousands), seasonally adjusted

	June 2004	July 2004	S.E. ¹	Change from			% change from		
				last month	last December	twelve months ago	last month	last December	twelve months ago
Newfoundland and Labrador									
Population	439.5	439.4	...	-0.1	0.0	0.9	0.0	0.0	0.2
Labour force	265.2	266.4	2.5	1.2	3.6	7.6	0.5	1.4	2.9
Employment	221.2	226.5	2.7	5.3	10.9	8.9	2.4	5.1	4.1
Employment full-time	184.9	192.3	2.8	7.4	7.1	6.2	4.0	3.8	3.3
Employment part-time	36.3	34.2	2.0	-2.1	3.8	2.7	-5.8	12.5	8.6
Unemployment	44.1	39.9	2.5	-4.2	-7.3	-1.3	-9.5	-15.5	-3.2
Participation rate	60.3	60.6	0.6	0.3	0.8	1.6
Unemployment rate	16.6	15.0	0.9	-1.6	-3.0	-0.9
Employment rate	50.3	51.5	0.6	1.2	2.4	1.9
Prince Edward Island									
Population	114.7	114.7	...	0.0	1.0	1.3	0.0	0.9	1.1
Labour force	77.3	78.3	0.7	1.0	0.2	0.7	1.3	0.3	0.9
Employment	68.0	69.5	0.7	1.5	-0.7	0.0	2.2	-1.0	0.0
Employment full-time	57.7	57.5	0.8	-0.2	-0.6	-0.4	-0.3	-1.0	-0.7
Employment part-time	10.3	12.0	0.7	1.7	-0.1	0.4	16.5	-0.8	3.4
Unemployment	9.3	8.8	0.7	-0.5	0.9	0.7	-5.4	11.4	8.6
Participation rate	67.4	68.3	0.6	0.9	-0.4	-0.1
Unemployment rate	12.0	11.2	0.8	-0.8	1.1	0.8
Employment rate	59.3	60.6	0.6	1.3	-1.1	-0.7
Nova Scotia									
Population	764.2	764.6	...	0.4	2.6	4.5	0.1	0.3	0.6
Labour force	491.6	490.4	3.1	-1.2	7.9	12.7	-0.2	1.6	2.7
Employment	448.1	449.2	3.4	1.1	10.0	15.6	0.2	2.3	3.6
Employment full-time	364.6	363.3	3.7	-1.3	11.8	12.4	-0.4	3.4	3.5
Employment part-time	83.5	85.8	3.3	2.3	-1.9	3.1	2.8	-2.2	3.7
Unemployment	43.5	41.3	2.8	-2.2	-2.0	-2.8	-5.1	-4.6	-6.3
Participation rate	64.3	64.1	0.4	-0.2	0.8	1.3
Unemployment rate	8.8	8.4	0.5	-0.4	-0.6	-0.8
Employment rate	58.6	58.7	0.4	0.1	1.1	1.7
New Brunswick									
Population	612.4	612.7	...	0.3	2.1	3.0	0.0	0.3	0.5
Labour force	390.9	393.4	2.6	2.5	9.2	8.9	0.6	2.4	2.3
Employment	351.8	354.1	2.6	2.3	8.0	9.4	0.7	2.3	2.7
Employment full-time	295.2	297.7	2.8	2.5	4.4	6.7	0.8	1.5	2.3
Employment part-time	56.6	56.4	2.2	-0.2	3.7	2.7	-0.4	7.0	5.0
Unemployment	39.1	39.3	2.3	0.2	1.2	-0.5	0.5	3.1	-1.3
Participation rate	63.8	64.2	0.4	0.4	1.3	1.1
Unemployment rate	10.0	10.0	0.6	0.0	0.1	-0.4
Employment rate	57.4	57.8	0.4	0.4	1.1	1.3
Quebec									
Population	6,146.6	6,151.1	...	4.5	39.0	66.5	0.1	0.6	1.1
Labour force	4,021.2	4,033.1	15.5	11.9	-28.7	24.9	0.3	-0.7	0.6
Employment	3,692.9	3,702.5	16.1	9.6	20.6	65.6	0.3	0.6	1.8
Employment full-time	3,008.8	3,022.2	19.1	13.4	48.3	32.0	0.4	1.6	1.1
Employment part-time	684.1	680.3	16.3	-3.8	-27.7	33.6	-0.6	-3.9	5.2
Unemployment	328.4	330.6	13.6	2.2	-49.3	-40.6	0.7	-13.0	-10.9
Participation rate	65.4	65.6	0.3	0.2	-0.9	-0.3
Unemployment rate	8.2	8.2	0.3	0.0	-1.2	-1.1
Employment rate	60.1	60.2	0.3	0.1	0.0	0.4

Table 3**Labour force characteristics by province (in thousands), seasonally adjusted - Concluded**

	June 2004	July 2004	S.E. ¹	Change from			% change from		
				last month	last December	twelve months ago	last month	last December	twelve months ago
Ontario									
Population	9,947.8	9,961.3	...	13.5	104.0	171.0	0.1	1.1	1.7
Labour force	6,820.9	6,822.0	18.9	1.1	85.8	126.0	0.0	1.3	1.9
Employment	6,346.6	6,355.2	19.0	8.6	69.4	139.9	0.1	1.1	2.3
Employment full-time	5,243.6	5,206.9	22.4	-36.7	60.7	145.3	-0.7	1.2	2.9
Employment part-time	1,103.0	1,148.3	19.9	45.3	8.6	-5.4	4.1	0.8	-0.5
Unemployment	474.3	466.9	15.4	-7.4	16.5	-13.8	-1.6	3.7	-2.9
Participation rate	68.6	68.5	0.2	-0.1	0.2	0.1
Unemployment rate	7.0	6.8	0.2	-0.2	0.1	-0.4
Employment rate	63.8	63.8	0.2	0.0	0.0	0.3
Manitoba									
Population	877.2	877.9	...	0.7	6.0	9.5	0.1	0.7	1.1
Labour force	609.9	604.5	2.7	-5.4	3.7	3.3	-0.9	0.6	0.5
Employment	575.4	570.8	2.9	-4.6	0.2	0.4	-0.8	0.0	0.1
Employment full-time	464.5	457.3	3.7	-7.2	-4.0	0.5	-1.6	-0.9	0.1
Employment part-time	110.9	113.5	3.2	2.6	4.2	-0.2	2.3	3.8	-0.2
Unemployment	34.5	33.7	2.1	-0.8	3.4	3.0	-2.3	11.2	9.8
Participation rate	69.5	68.9	0.3	-0.6	0.0	-0.3
Unemployment rate	5.7	5.6	0.3	-0.1	0.6	0.5
Employment rate	65.6	65.0	0.3	-0.6	-0.4	-0.7
Saskatchewan									
Population	757.8	758.0	...	0.2	1.8	2.2	0.0	0.2	0.3
Labour force	516.6	513.6	2.5	-3.0	-4.2	-1.5	-0.6	-0.8	-0.3
Employment	489.8	486.8	2.6	-3.0	-1.6	0.1	-0.6	-0.3	0.0
Employment full-time	393.2	389.2	3.1	-4.0	-3.2	2.8	-1.0	-0.8	0.7
Employment part-time	96.6	97.7	2.9	1.1	1.6	-2.6	1.1	1.7	-2.6
Unemployment	26.8	26.8	1.8	0.0	-2.5	-1.7	0.0	-8.5	-6.0
Participation rate	68.2	67.8	0.3	-0.4	-0.7	-0.4
Unemployment rate	5.2	5.2	0.4	0.0	-0.5	-0.3
Employment rate	64.6	64.2	0.3	-0.4	-0.4	-0.2
Alberta									
Population	2,517.0	2,520.1	...	3.1	26.4	44.7	0.1	1.1	1.8
Labour force	1,843.1	1,829.3	7.5	-13.8	-11.4	13.2	-0.7	-0.6	0.7
Employment	1,757.5	1,744.2	8.4	-13.3	-7.3	16.1	-0.8	-0.4	0.9
Employment full-time	1,438.5	1,435.9	10.2	-2.6	2.2	23.1	-0.2	0.2	1.6
Employment part-time	319.0	308.3	9.3	-10.7	-9.5	-7.0	-3.4	-3.0	-2.2
Unemployment	85.5	85.1	5.9	-0.4	-4.1	-2.9	-0.5	-4.6	-3.3
Participation rate	73.2	72.6	0.3	-0.6	-1.2	-0.8
Unemployment rate	4.6	4.7	0.3	0.1	-0.1	-0.1
Employment rate	69.8	69.2	0.3	-0.6	-1.0	-0.6
British Columbia									
Population	3,415.6	3,420.1	...	4.5	33.2	52.3	0.1	1.0	1.6
Labour force	2,249.4	2,244.9	11.3	-4.5	22.3	35.6	-0.2	1.0	1.6
Employment	2,080.3	2,081.5	11.7	1.2	10.1	60.5	0.1	0.5	3.0
Employment full-time	1,647.0	1,636.9	13.6	-10.1	15.4	65.9	-0.6	0.9	4.2
Employment part-time	433.3	444.6	12.2	11.3	-5.3	-5.3	2.6	-1.2	-1.2
Unemployment	169.1	163.3	9.0	-5.8	12.2	-25.0	-3.4	8.1	-13.3
Participation rate	65.9	65.6	0.3	-0.3	0.0	0.0
Unemployment rate	7.5	7.3	0.4	-0.2	0.5	-1.2
Employment rate	60.9	60.9	0.3	0.0	-0.3	0.9

¹ Average standard error of change in two consecutive months (see "Sampling Errors" in Data Quality for further explanations).
Related CANSIM table 282-0087

Table 4

Selected labour force characteristics, Newfoundland and Labrador (in thousands), seasonally adjusted

	June 2004	July 2004	S.E. ¹	Change from			% change from		
				last month	last December	twelve months ago	last month	last December	twelve months ago
Both sexes, 15 years and over									
Population	439.5	439.4	...	-0.1	0.0	0.9	0.0	0.0	0.2
Labour force	265.2	266.4	2.5	1.2	3.6	7.6	0.5	1.4	2.9
Employment	221.2	226.5	2.7	5.3	10.9	8.9	2.4	5.1	4.1
Employment full-time	184.9	192.3	2.8	7.4	7.1	6.2	4.0	3.8	3.3
Unemployment	44.1	39.9	2.5	-4.2	-7.3	-1.3	-9.5	-15.5	-3.2
Participation rate	60.3	60.6	0.6	0.3	0.8	1.6
Unemployment rate	16.6	15.0	0.9	-1.6	-3.0	-0.9
Employment rate	50.3	51.5	0.6	1.2	2.4	1.9
Part-time rate	16.4	15.1	0.9	-1.3	1.0	0.6
Both sexes, 15 to 24 years									
Population	71.5	71.3	...	-0.2	-1.2	-1.8	-0.3	-1.7	-2.5
Labour force	39.4	39.3	1.3	-0.1	-0.4	0.0	-0.3	-1.0	0.0
Employment	30.1	30.9	1.3	0.8	2.7	0.4	2.7	9.6	1.3
Unemployment	9.3	8.4	1.1	-0.9	-3.1	-0.4	-9.7	-27.0	-4.5
Participation rate	55.1	55.1	1.8	0.0	0.3	1.3
Unemployment rate	23.6	21.4	2.6	-2.2	-7.6	-1.0
Employment rate	42.1	43.3	1.7	1.2	4.4	1.6
Part-time rate	40.2	38.5	3.7	-1.7	0.6	-5.4
Men, 25 years and over									
Population	179.5	179.5	...	0.0	0.5	1.3	0.0	0.3	0.7
Labour force	120.0	120.7	1.5	0.7	2.6	3.6	0.6	2.2	3.1
Employment	99.1	102.5	1.6	3.4	4.7	4.2	3.4	4.8	4.3
Unemployment	20.9	18.1	1.6	-2.8	-2.2	-0.7	-13.4	-10.8	-3.7
Participation rate	66.9	67.2	0.8	0.3	1.2	1.5
Unemployment rate	17.4	15.0	1.2	-2.4	-2.2	-1.1
Employment rate	55.2	57.1	0.9	1.9	2.5	1.9
Part-time rate	6.3	4.4	0.8	-1.9	-1.2	1.1
Women, 25 years and over									
Population	188.5	188.6	...	0.1	0.7	1.4	0.1	0.4	0.7
Labour force	105.9	106.5	1.3	0.6	1.4	4.2	0.6	1.3	4.1
Employment	92.0	93.0	1.4	1.0	3.4	4.2	1.1	3.8	4.7
Unemployment	13.9	13.5	1.2	-0.4	-2.0	-0.1	-2.9	-12.9	-0.7
Participation rate	56.2	56.5	0.7	0.3	0.6	1.9
Unemployment rate	13.1	12.7	1.1	-0.4	-2.0	-0.6
Employment rate	48.8	49.3	0.8	0.5	1.6	1.9
Part-time rate	19.5	19.0	1.3	-0.4	3.1	2.4
Industry									
Industry	221.2	226.5	2.7	5.3	10.9	8.9	2.4	5.1	4.1
Goods-producing sector									
Goods-producing sector	52.8	53.8	1.8	1.0	5.4	9.7	1.9	11.2	22.0
Agriculture	1.3	1.5	0.3	0.2	0.4	0.1	15.4	36.4	7.1
Forestry, fishing, mining, oil and gas	18.3	18.2	1.0	-0.1	0.2	2.7	-0.5	1.1	17.4
Utilities	1.9	2.1	0.3	0.2	-0.1	0.2	10.5	-4.5	10.5
Construction	12.3	12.9	0.8	0.6	2.7	3.6	4.9	26.5	38.7
Manufacturing	19.0	19.0	1.1	0.0	2.2	3.0	0.0	13.1	18.8
Services-producing sector									
Services-producing sector	168.4	172.7	2.3	4.3	5.5	-0.7	2.6	3.3	-0.4
Trade	41.7	41.9	1.2	0.2	6.9	6.2	0.5	19.7	17.4
Transportation and warehousing	10.9	12.5	0.7	1.6	0.0	-0.7	14.7	0.0	-5.3
Finance, insurance, real estate and leasing	7.7	8.1	0.6	0.4	0.4	0.9	5.2	5.2	12.5
Professional, scientific and technical services	7.2	7.7	0.6	0.5	0.3	-1.4	6.9	4.1	-15.4
Business, building and other support services	6.8	7.3	0.8	0.5	-0.6	-0.4	7.4	-7.6	-5.2
Educational services	16.8	16.9	0.8	0.1	0.5	0.4	0.6	3.0	2.4
Health care and social assistance	32.3	31.5	1.0	-0.8	0.2	-1.5	-2.5	0.6	-4.5
Information, culture and recreation	7.6	8.0	0.6	0.4	0.8	0.0	5.3	11.1	0.0
Accommodation and food services	12.6	11.9	0.9	-0.7	-0.8	-2.1	-5.6	-6.3	-15.0
Other services	10.6	11.5	0.8	0.9	-1.6	-0.9	8.5	-12.2	-7.3
Public administration	14.3	15.4	0.8	1.1	-0.6	-1.2	7.7	-3.8	-7.2

¹ Average standard error of change in two consecutive months (see "Sampling Errors" in Data Quality for further explanations).
Related CANSIM tables 282-0087, 282-0088

Table 5

Selected labour force characteristics, Prince Edward Island (in thousands), seasonally adjusted

	June 2004	July 2004	S.E. ¹	Change from			% change from		
				last month	last December	twelve months ago	last month	last December	twelve months ago
Both sexes, 15 years and over									
Population	114.7	114.7	...	0.0	1.0	1.3	0.0	0.9	1.1
Labour force	77.3	78.3	0.7	1.0	0.2	0.7	1.3	0.3	0.9
Employment	68.0	69.5	0.7	1.5	-0.7	0.0	2.2	-1.0	0.0
Employment full-time	57.7	57.5	0.8	-0.2	-0.6	-0.4	-0.3	-1.0	-0.7
Unemployment	9.3	8.8	0.7	-0.5	0.9	0.7	-5.4	11.4	8.6
Participation rate	67.4	68.3	0.6	0.9	-0.4	-0.1
Unemployment rate	12.0	11.2	0.8	-0.8	1.1	0.8
Employment rate	59.3	60.6	0.6	1.3	-1.1	-0.7
Part-time rate	15.1	17.3	0.9	2.1	0.0	0.6
Both sexes, 15 to 24 years									
Population	20.2	20.2	...	0.0	0.1	0.0	0.0	0.5	0.0
Labour force	12.8	13.8	0.4	1.0	0.3	-0.3	7.8	2.2	-2.1
Employment	10.4	10.8	0.4	0.4	-0.9	-1.5	3.8	-7.7	-12.2
Unemployment	2.5	3.0	0.3	0.5	1.2	1.2	20.0	66.7	66.7
Participation rate	63.4	68.3	1.9	4.9	1.1	-1.5
Unemployment rate	19.5	21.7	2.4	2.2	8.4	8.9
Employment rate	51.5	53.5	2.0	2.0	-4.7	-7.4
Part-time rate	30.8	42.6	3.2	11.8	1.6	1.9
Men, 25 years and over									
Population	45.6	45.6	...	0.0	0.4	0.6	0.0	0.9	1.3
Labour force	33.3	33.1	0.4	-0.2	0.0	0.1	-0.6	0.0	0.3
Employment	29.1	29.6	0.4	0.5	-0.3	0.1	1.7	-1.0	0.3
Unemployment	4.2	3.5	0.4	-0.7	0.3	0.0	-16.7	9.4	0.0
Participation rate	73.0	72.6	0.8	-0.4	-0.6	-0.7
Unemployment rate	12.6	10.6	1.2	-2.0	0.9	0.0
Employment rate	63.8	64.9	1.0	1.1	-1.3	-0.7
Part-time rate	5.5	6.1	0.9	0.6	2.1	1.3
Women, 25 years and over									
Population	48.9	48.9	...	0.0	0.5	0.7	0.0	1.0	1.5
Labour force	31.2	31.4	0.4	0.2	-0.2	0.9	0.6	-0.6	3.0
Employment	28.6	29.1	0.4	0.5	0.5	1.4	1.7	1.7	5.1
Unemployment	2.6	2.3	0.3	-0.3	-0.7	-0.6	-11.5	-23.3	-20.7
Participation rate	63.8	64.2	0.7	0.4	-1.1	0.9
Unemployment rate	8.3	7.3	1.1	-1.0	-2.2	-2.2
Employment rate	58.5	59.5	0.8	1.0	0.4	2.0
Part-time rate	19.2	19.2	1.5	0.0	-2.4	0.5
Industry									
Industry	68.0	69.5	0.7	1.5	-0.7	0.0	2.2	-1.0	0.0
Goods-producing sector									
Agriculture	17.6	17.9	0.6	0.3	-0.9	1.1	1.7	-4.8	6.5
Forestry, fishing, mining, oil and gas	3.9	3.8	0.3	-0.1	-0.4	0.1	-2.6	-9.5	2.7
Utilities	2.8	2.9	0.2	0.1	0.1	0.1	3.6	3.6	3.6
Construction	0.4	0.4	0.0	0.0	0.0	0.0	0.0	0.0	0.0
Manufacturing	4.2	4.4	0.3	0.2	0.2	0.1	4.8	4.8	2.3
Services-producing sector	6.3	6.4	0.3	0.1	-0.7	0.7	1.6	-9.9	12.3
Services-producing sector	50.4	51.6	0.7	1.2	0.2	-1.1	2.4	0.4	-2.1
Trade	9.8	9.9	0.4	0.1	-0.9	-0.9	1.0	-8.3	-8.3
Transportation and warehousing	2.4	2.6	0.2	0.2	-0.2	-0.2	8.3	-7.1	-7.1
Finance, insurance, real estate and leasing	2.8	2.9	0.2	0.1	0.3	0.3	3.6	11.5	11.5
Professional, scientific and technical services	2.7	2.9	0.2	0.2	0.2	0.2	7.4	7.4	7.4
Business, building and other support services	2.4	2.3	0.2	-0.1	0.0	0.0	-4.2	0.0	0.0
Educational services	4.4	4.9	0.3	0.5	0.0	-0.3	11.4	0.0	-5.8
Health care and social assistance	7.7	7.6	0.3	-0.1	-0.2	-0.5	-1.3	-2.6	-6.2
Information, culture and recreation	2.5	2.5	0.3	0.0	-0.1	-0.2	0.0	-3.8	-7.4
Accommodation and food services	5.1	5.0	0.3	-0.1	0.1	0.0	-2.0	2.0	0.0
Other services	3.1	3.2	0.2	0.1	-0.4	-0.3	3.2	-11.1	-8.6
Public administration	7.6	7.8	0.3	0.2	1.3	1.0	2.6	20.0	14.7

¹ Average standard error of change in two consecutive months (see "Sampling Errors" in Data Quality for further explanations).
Related CANSIM tables 282-0087, 282-0088

Table 6

Selected labour force characteristics, Nova Scotia (in thousands), seasonally adjusted

	June 2004	July 2004	S.E. ¹	Change from			% change from		
				last month	last December	twelve months ago	last month	last December	twelve months ago
Both sexes, 15 years and over									
Population	764.2	764.6	...	0.4	2.6	4.5	0.1	0.3	0.6
Labour force	491.6	490.4	3.1	-1.2	7.9	12.7	-0.2	1.6	2.7
Employment	448.1	449.2	3.4	1.1	10.0	15.6	0.2	2.3	3.6
Employment full-time	364.6	363.3	3.7	-1.3	11.8	12.4	-0.4	3.4	3.5
Unemployment	43.5	41.3	2.8	-2.2	-2.0	-2.8	-5.1	-4.6	-6.3
Participation rate	64.3	64.1	0.4	-0.2	0.8	1.3
Unemployment rate	8.8	8.4	0.5	-0.4	-0.6	-0.8
Employment rate	58.6	58.7	0.4	0.1	1.1	1.7
Part-time rate	18.6	19.1	0.7	0.5	-0.9	0.0
Both sexes, 15 to 24 years									
Population	124.3	124.4	...	0.1	0.5	0.6	0.1	0.4	0.5
Labour force	84.4	83.5	1.8	-0.9	0.5	1.1	-1.1	0.6	1.3
Employment	71.4	71.7	1.9	0.3	1.0	3.4	0.4	1.4	5.0
Unemployment	13.0	11.8	1.6	-1.2	-0.5	-2.3	-9.2	-4.1	-16.3
Participation rate	67.9	67.1	1.5	-0.8	0.1	0.5
Unemployment rate	15.4	14.1	1.8	-1.3	-0.7	-3.0
Employment rate	57.4	57.6	1.5	0.2	0.5	2.4
Part-time rate	45.7	46.3	2.4	0.6	-0.7	1.9
Men, 25 years and over									
Population	305.4	305.5	...	0.1	0.8	1.8	0.0	0.3	0.6
Labour force	213.7	215.1	1.6	1.4	4.5	5.7	0.7	2.1	2.7
Employment	197.6	199.0	1.9	1.4	6.0	6.6	0.7	3.1	3.4
Unemployment	16.1	16.1	1.7	0.0	-1.5	-0.8	0.0	-8.5	-4.7
Participation rate	70.0	70.4	0.5	0.4	1.3	1.5
Unemployment rate	7.5	7.5	0.8	0.0	-0.9	-0.6
Employment rate	64.7	65.1	0.6	0.4	1.8	1.7
Part-time rate	6.1	6.6	0.7	0.5	-0.1	0.8
Women, 25 years and over									
Population	334.4	334.6	...	0.2	1.1	2.0	0.1	0.3	0.6
Labour force	193.5	191.9	1.7	-1.6	3.0	5.9	-0.8	1.6	3.2
Employment	179.0	178.5	1.7	-0.5	3.0	5.6	-0.3	1.7	3.2
Unemployment	14.5	13.4	1.4	-1.1	0.0	0.3	-7.6	0.0	2.3
Participation rate	57.9	57.4	0.5	-0.5	0.8	1.5
Unemployment rate	7.5	7.0	0.7	-0.5	-0.1	0.0
Employment rate	53.5	53.3	0.5	-0.2	0.7	1.3
Part-time rate	21.7	22.1	1.1	0.4	-1.6	-1.8
Industry									
Industry	448.1	449.2	3.4	1.1	10.0	15.6	0.2	2.3	3.6
Goods-producing sector									
Agriculture	98.7	97.5	2.2	-1.2	-2.2	0.4	-1.2	-2.2	0.4
Forestry, fishing, mining, oil and gas	5.6	5.7	0.6	0.1	-0.9	0.1	1.8	-13.6	1.8
Utilities	14.9	14.9	1.0	0.0	0.5	0.8	0.0	3.5	5.7
Construction	3.0	3.1	0.3	0.1	0.4	0.3	3.3	14.8	10.7
Manufacturing	29.3	28.7	1.3	-0.6	0.4	3.5	-2.0	1.4	13.9
Services-producing sector	45.9	45.0	1.4	-0.9	-2.7	-4.3	-2.0	-5.7	-8.7
Services-producing sector	349.4	351.7	2.9	2.3	12.3	15.2	0.7	3.6	4.5
Trade	78.3	78.5	1.8	0.2	3.8	4.1	0.3	5.1	5.5
Transportation and warehousing	20.7	20.5	1.0	-0.2	0.4	0.4	-1.0	2.0	2.0
Finance, insurance, real estate and leasing	21.4	23.8	0.9	2.4	4.2	1.8	11.2	21.4	8.2
Professional, scientific and technical services	21.0	21.0	0.9	0.0	2.4	2.5	0.0	12.9	13.5
Business, building and other support services	25.6	26.5	1.2	0.9	2.4	2.9	3.5	10.0	12.3
Educational services	37.7	36.2	1.3	-1.5	2.4	5.5	-4.0	7.1	17.9
Health care and social assistance	53.6	52.7	1.3	-0.9	-2.3	-1.3	-1.7	-4.2	-2.4
Information, culture and recreation	17.4	17.4	1.1	0.0	-1.4	1.0	0.0	-7.4	6.1
Accommodation and food services	30.2	30.9	1.4	0.7	4.6	1.3	2.3	17.5	4.4
Other services	19.4	19.6	1.1	0.2	0.5	-0.6	1.0	2.6	-3.0
Public administration	24.1	24.8	1.0	0.7	-4.6	-2.5	2.9	-15.6	-9.2

¹ Average standard error of change in two consecutive months (see "Sampling Errors" in Data Quality for further explanations).
Related CANSIM tables 282-0087, 282-0088

Table 7

Selected labour force characteristics, New Brunswick (in thousands), seasonally adjusted

	June 2004	July 2004	S.E. ¹	Change from			% change from		
				last month	last December	twelve months ago	last month	last December	twelve months ago
Both sexes, 15 years and over									
Population	612.4	612.7	...	0.3	2.1	3.0	0.0	0.3	0.5
Labour force	390.9	393.4	2.6	2.5	9.2	8.9	0.6	2.4	2.3
Employment	351.8	354.1	2.6	2.3	8.0	9.4	0.7	2.3	2.7
Employment full-time	295.2	297.7	2.8	2.5	4.4	6.7	0.8	1.5	2.3
Unemployment	39.1	39.3	2.3	0.2	1.2	-0.5	0.5	3.1	-1.3
Participation rate	63.8	64.2	0.4	0.4	1.3	1.1
Unemployment rate	10.0	10.0	0.6	0.0	0.1	-0.4
Employment rate	57.4	57.8	0.4	0.4	1.1	1.3
Part-time rate	16.1	15.9	0.6	-0.2	0.7	0.3
Both sexes, 15 to 24 years									
Population	97.2	97.2	...	0.0	-0.1	-0.3	0.0	-0.1	-0.3
Labour force	65.3	62.6	1.4	-2.7	-1.6	0.5	-4.1	-2.5	0.8
Employment	55.4	54.3	1.4	-1.1	0.6	2.4	-2.0	1.1	4.6
Unemployment	9.9	8.3	1.3	-1.6	-2.2	-1.9	-16.2	-21.0	-18.6
Participation rate	67.2	64.4	1.4	-2.8	-1.6	0.7
Unemployment rate	15.2	13.3	1.9	-1.9	-3.1	-3.1
Employment rate	57.0	55.9	1.4	-1.1	0.7	2.7
Part-time rate	38.3	38.1	2.2	-0.1	-1.7	-1.0
Men, 25 years and over									
Population	249.0	249.1	...	0.1	1.0	1.5	0.0	0.4	0.6
Labour force	171.4	173.2	1.5	1.8	2.0	2.0	1.1	1.2	1.2
Employment	153.5	154.5	1.6	1.0	0.6	1.5	0.7	0.4	1.0
Unemployment	17.9	18.7	1.5	0.8	1.4	0.6	4.5	8.1	3.3
Participation rate	68.8	69.5	0.6	0.7	0.5	0.4
Unemployment rate	10.4	10.8	0.8	0.4	0.7	0.2
Employment rate	61.6	62.0	0.6	0.4	0.0	0.2
Part-time rate	5.2	5.1	0.6	-0.1	1.0	0.1
Women, 25 years and over									
Population	266.1	266.3	...	0.2	1.1	1.7	0.1	0.4	0.6
Labour force	154.2	157.5	1.4	3.3	8.7	6.3	2.1	5.8	4.2
Employment	142.9	145.3	1.4	2.4	6.9	5.5	1.7	5.0	3.9
Unemployment	11.3	12.2	1.2	0.9	1.9	0.7	8.0	18.4	6.1
Participation rate	57.9	59.1	0.5	1.2	3.0	2.0
Unemployment rate	7.3	7.7	0.8	0.4	0.8	0.1
Employment rate	53.7	54.6	0.5	0.9	2.4	1.8
Part-time rate	19.2	19.1	1.0	0.0	1.0	0.7
Industry									
Industry	351.8	354.1	2.6	2.3	8.0	9.4	0.7	2.3	2.7
Goods-producing sector									
Goods-producing sector	82.0	82.7	1.8	0.7	-1.5	1.4	0.9	-1.8	1.7
Agriculture	7.2	6.7	0.5	-0.5	2.1	1.5	-6.9	45.7	28.8
Forestry, fishing, mining, oil and gas	11.1	10.8	0.8	-0.3	-1.3	-1.1	-2.7	-10.7	-9.2
Utilities	3.8	4.3	0.3	0.5	0.9	0.7	13.2	26.5	19.4
Construction	18.5	18.8	1.0	0.3	-0.7	0.7	1.6	-3.6	3.9
Manufacturing	41.4	42.2	1.3	0.8	-2.4	-0.3	1.9	-5.4	-0.7
Services-producing sector									
Services-producing sector	269.8	271.4	2.4	1.6	9.5	8.1	0.6	3.6	3.1
Trade	54.8	56.1	1.3	1.3	0.3	3.2	2.4	0.5	6.0
Transportation and warehousing	20.5	21.0	0.8	0.5	3.4	2.9	2.4	19.3	16.0
Finance, insurance, real estate and leasing	14.5	15.4	0.6	0.9	0.6	1.1	6.2	4.1	7.7
Professional, scientific and technical services	16.2	15.4	0.7	-0.8	1.0	0.6	-4.9	6.9	4.1
Business, building and other support services	22.1	20.5	1.0	-1.6	-1.1	-1.0	-7.2	-5.1	-4.7
Educational services	25.0	25.2	0.9	0.2	1.0	2.2	0.8	4.1	9.6
Health care and social assistance	49.1	48.7	1.1	-0.4	1.9	3.6	-0.8	4.1	8.0
Information, culture and recreation	10.5	10.8	0.7	0.3	1.0	-1.6	2.9	10.2	-12.9
Accommodation and food services	21.1	21.3	1.0	0.2	-0.5	-1.7	0.9	-2.3	-7.4
Other services	17.7	17.6	0.9	-0.1	0.6	-0.8	-0.6	3.5	-4.3
Public administration	18.3	19.4	0.7	1.1	1.4	-0.5	6.0	7.8	-2.5

¹ Average standard error of change in two consecutive months (see "Sampling Errors" in Data Quality for further explanations).
Related CANSIM tables 282-0087, 282-0088

Table 8

Selected labour force characteristics, Quebec (in thousands), seasonally adjusted

	June 2004	July 2004	S.E. ¹	Change from			% change from		
				last month	last December	twelve months ago	last month	last December	twelve months ago
Both sexes, 15 years and over									
Population	6,146.6	6,151.1	...	4.5	39.0	66.5	0.1	0.6	1.1
Labour force	4,021.2	4,033.1	15.5	11.9	-28.7	24.9	0.3	-0.7	0.6
Employment	3,692.9	3,702.5	16.1	9.6	20.6	65.6	0.3	0.6	1.8
Employment full-time	3,008.8	3,022.2	19.1	13.4	48.3	32.0	0.4	1.6	1.1
Unemployment	328.4	330.6	13.6	2.2	-49.3	-40.6	0.7	-13.0	-10.9
Participation rate	65.4	65.6	0.3	0.2	-0.9	-0.3
Unemployment rate	8.2	8.2	0.3	0.0	-1.2	-1.1
Employment rate	60.1	60.2	0.3	0.1	0.0	0.4
Part-time rate	18.5	18.4	0.4	-0.2	-0.9	0.6
Both sexes, 15 to 24 years									
Population	948.7	948.4	...	-0.3	-1.8	-2.6	0.0	-0.2	-0.3
Labour force	633.8	631.2	8.8	-2.6	-19.9	-10.9	-0.4	-3.1	-1.7
Employment	550.4	543.2	8.6	-7.2	-2.5	-12.8	-1.3	-0.5	-2.3
Unemployment	83.4	87.9	7.4	4.5	-17.4	1.9	5.4	-16.5	2.2
Participation rate	66.8	66.6	0.9	-0.2	-1.9	-0.9
Unemployment rate	13.2	13.9	1.1	0.7	-2.3	0.5
Employment rate	58.0	57.3	0.9	-0.7	-0.1	-1.2
Part-time rate	46.1	44.6	1.5	-1.5	-1.2	2.6
Men, 25 years and over									
Population	2,535.6	2,538.0	...	2.4	20.8	35.1	0.1	0.8	1.4
Labour force	1,837.2	1,844.9	8.3	7.7	-0.8	10.7	0.4	0.0	0.6
Employment	1,698.9	1,708.6	9.4	9.7	14.4	41.9	0.6	0.8	2.5
Unemployment	138.3	136.3	8.0	-2.0	-15.2	-31.2	-1.4	-10.0	-18.6
Participation rate	72.5	72.7	0.3	0.2	-0.6	-0.6
Unemployment rate	7.5	7.4	0.4	-0.1	-0.8	-1.7
Employment rate	67.0	67.3	0.4	0.3	0.0	0.7
Part-time rate	6.6	6.7	0.5	0.1	-0.8	0.1
Women, 25 years and over									
Population	2,662.3	2,664.7	...	2.4	20.0	34.0	0.1	0.8	1.3
Labour force	1,550.3	1,557.0	8.9	6.7	-8.1	25.2	0.4	-0.5	1.6
Employment	1,443.5	1,450.6	9.1	7.1	8.7	36.4	0.5	0.6	2.6
Unemployment	106.8	106.3	7.5	-0.5	-16.8	-11.4	-0.5	-13.6	-9.7
Participation rate	58.2	58.4	0.3	0.2	-0.8	0.2
Unemployment rate	6.9	6.8	0.5	-0.1	-1.1	-0.9
Employment rate	54.2	54.4	0.3	0.2	-0.1	0.6
Part-time rate	22.0	22.3	0.7	0.3	-0.7	0.9
Industry	3,692.9	3,702.5	16.1	9.6	20.6	65.6	0.3	0.6	1.8
Goods-producing sector									
Agriculture	911.4	922.6	11.2	11.2	-3.5	-6.6	1.2	-0.4	-0.7
Forestry, fishing, mining, oil and gas	53.4	53.2	2.6	-0.2	-3.8	-3.2	-0.4	-6.7	-5.7
Utilities	31.5	31.2	2.2	-0.3	-7.5	-8.1	-1.0	-19.4	-20.6
Construction	34.9	33.1	2.2	-1.8	3.4	4.8	-5.2	11.4	17.0
Manufacturing	167.6	181.8	5.8	14.2	4.0	15.9	8.5	2.2	9.6
Services-producing sector	2,781.5	2,779.8	16.2	-1.7	24.1	72.1	-0.1	0.9	2.7
Trade	619.4	618.8	10.7	-0.6	13.1	19.1	-0.1	2.2	3.2
Transportation and warehousing	181.0	176.9	5.7	-4.1	13.3	12.7	-2.3	8.1	7.7
Finance, insurance, real estate and leasing	201.8	209.6	5.9	7.8	8.9	23.4	3.9	4.4	12.6
Professional, scientific and technical services	227.3	232.3	6.3	5.0	19.8	27.9	2.2	9.3	13.6
Business, building and other support services	104.3	117.3	5.3	13.0	4.9	3.8	12.5	4.4	3.3
Educational services	233.1	228.0	6.6	-5.1	-26.8	-21.5	-2.2	-10.5	-8.6
Health care and social assistance	461.2	452.6	8.1	-8.6	0.4	20.5	-1.9	0.1	4.7
Information, culture and recreation	159.1	156.6	6.1	-2.5	-4.7	-1.5	-1.6	-2.9	-0.9
Accommodation and food services	202.7	204.4	6.8	1.7	-5.9	-15.4	0.8	-2.8	-7.0
Other services	171.2	173.2	5.9	2.0	5.5	6.5	1.2	3.3	3.9
Public administration	220.4	210.1	5.3	-10.3	-4.4	-3.6	-4.7	-2.1	-1.7

¹ Average standard error of change in two consecutive months (see "Sampling Errors" in Data Quality for further explanations).
Related CANSIM tables 282-0087, 282-0088

Table 9

Selected labour force characteristics, Ontario (in thousands), seasonally adjusted

	June 2004	July 2004	S.E. ¹	Change from			% change from		
				last month	last December	twelve months ago	last month	last December	twelve months ago
Both sexes, 15 years and over									
Population	9,947.8	9,961.3	...	13.5	104.0	171.0	0.1	1.1	1.7
Labour force	6,820.9	6,822.0	18.9	1.1	85.8	126.0	0.0	1.3	1.9
Employment	6,346.6	6,355.2	19.0	8.6	69.4	139.9	0.1	1.1	2.3
Employment full-time	5,243.6	5,206.9	22.4	-36.7	60.7	145.3	-0.7	1.2	2.9
Unemployment	474.3	466.9	15.4	-7.4	16.5	-13.8	-1.6	3.7	-2.9
Participation rate	68.6	68.5	0.2	-0.1	0.2	0.1
Unemployment rate	7.0	6.8	0.2	-0.2	0.1	-0.4
Employment rate	63.8	63.8	0.2	0.0	0.0	0.3
Part-time rate	17.4	18.1	0.3	0.7	-0.1	-0.5
Both sexes, 15 to 24 years									
Population	1,627.8	1,630.3	...	2.5	19.2	31.2	0.2	1.2	2.0
Labour force	1,107.4	1,099.0	11.1	-8.4	20.5	45.2	-0.8	1.9	4.3
Employment	951.7	942.5	10.3	-9.2	23.0	48.0	-1.0	2.5	5.4
Unemployment	155.8	156.5	9.2	0.7	-2.5	-2.8	0.4	-1.6	-1.8
Participation rate	68.0	67.4	0.7	-0.6	0.5	1.5
Unemployment rate	14.1	14.2	0.8	0.1	-0.5	-0.9
Employment rate	58.5	57.8	0.6	-0.7	0.7	1.9
Part-time rate	45.2	47.9	1.1	2.6	-0.7	-1.4
Men, 25 years and over									
Population	4,041.4	4,046.6	...	5.2	40.3	66.6	0.1	1.0	1.7
Labour force	3,056.9	3,062.3	9.5	5.4	42.4	41.4	0.2	1.4	1.4
Employment	2,886.4	2,906.2	10.6	19.8	35.6	58.2	0.7	1.2	2.0
Unemployment	170.5	156.2	8.5	-14.3	6.9	-16.7	-8.4	4.6	-9.7
Participation rate	75.6	75.7	0.2	0.1	0.3	-0.2
Unemployment rate	5.6	5.1	0.3	-0.5	0.2	-0.6
Employment rate	71.4	71.8	0.3	0.4	0.1	0.2
Part-time rate	5.4	5.9	0.3	0.5	0.0	0.1
Women, 25 years and over									
Population	4,278.6	4,284.4	...	5.8	44.5	73.2	0.1	1.0	1.7
Labour force	2,656.5	2,660.7	11.1	4.2	22.9	39.3	0.2	0.9	1.5
Employment	2,508.5	2,506.5	11.1	-2.0	10.7	33.7	-0.1	0.4	1.4
Unemployment	148.0	154.2	8.0	6.2	12.2	5.6	4.2	8.6	3.8
Participation rate	62.1	62.1	0.3	0.0	-0.1	-0.1
Unemployment rate	5.6	5.8	0.3	0.2	0.4	0.1
Employment rate	58.6	58.5	0.3	-0.1	-0.4	-0.2
Part-time rate	20.6	20.9	0.5	0.4	-0.1	-1.1
Industry									
Industry	6,346.6	6,355.2	19.0	8.6	69.4	139.9	0.1	1.1	2.3
Goods-producing sector									
Goods-producing sector	1,666.7	1,678.1	14.4	11.4	26.1	37.2	0.7	1.6	2.3
Agriculture	83.8	75.8	3.2	-8.0	-11.3	-8.2	-9.5	-13.0	-9.8
Forestry, fishing, mining, oil and gas	37.9	37.8	1.8	-0.1	6.0	6.9	-0.3	18.9	22.3
Utilities	54.5	54.2	2.4	-0.3	-0.8	-1.7	-0.6	-1.5	-3.0
Construction	386.9	389.4	8.5	2.5	-5.9	0.3	0.6	-1.5	0.1
Manufacturing	1,103.6	1,121.0	12.0	17.4	38.2	40.0	1.6	3.5	3.7
Services-producing sector									
Services-producing sector	4,679.8	4,677.0	20.1	-2.8	43.1	102.7	-0.1	0.9	2.2
Trade	953.6	955.1	11.7	1.5	16.7	26.8	0.2	1.8	2.9
Transportation and warehousing	306.2	299.5	7.4	-6.7	4.9	16.7	-2.2	1.7	5.9
Finance, insurance, real estate and leasing	446.2	445.4	8.4	-0.8	11.5	9.6	-0.2	2.7	2.2
Professional, scientific and technical services	433.6	440.3	8.6	6.7	24.6	-14.5	1.5	5.9	-3.2
Business, building and other support services	271.9	268.5	7.7	-3.4	-21.3	3.3	-1.3	-7.3	1.2
Educational services	408.0	399.8	7.4	-8.2	6.7	30.7	-2.0	1.7	8.3
Health care and social assistance	624.6	617.4	8.2	-7.2	-8.5	8.6	-1.2	-1.4	1.4
Information, culture and recreation	297.2	301.4	7.4	4.2	9.4	9.4	1.4	3.2	3.2
Accommodation and food services	376.0	376.6	8.1	0.6	-8.0	4.8	0.2	-2.1	1.3
Other services	255.3	251.8	6.7	-3.5	-0.8	-7.2	-1.4	-0.3	-2.8
Public administration	307.3	321.1	6.1	13.8	7.7	14.2	4.5	2.5	4.6

¹ Average standard error of change in two consecutive months (see "Sampling Errors" in Data Quality for further explanations).
Related CANSIM tables 282-0087, 282-0088

Table 10

Selected labour force characteristics, Manitoba (in thousands), seasonally adjusted

	June 2004	July 2004	S.E. ¹	Change from			% change from		
				last month	last December	twelve months ago	last month	last December	twelve months ago
Both sexes, 15 years and over									
Population	877.2	877.9	...	0.7	6.0	9.5	0.1	0.7	1.1
Labour force	609.9	604.5	2.7	-5.4	3.7	3.3	-0.9	0.6	0.5
Employment	575.4	570.8	2.9	-4.6	0.2	0.4	-0.8	0.0	0.1
Employment full-time	464.5	457.3	3.7	-7.2	-4.0	0.5	-1.6	-0.9	0.1
Unemployment	34.5	33.7	2.1	-0.8	3.4	3.0	-2.3	11.2	9.8
Participation rate	69.5	68.9	0.3	-0.6	0.0	-0.3
Unemployment rate	5.7	5.6	0.3	-0.1	0.6	0.5
Employment rate	65.6	65.0	0.3	-0.6	-0.4	-0.7
Part-time rate	19.3	19.9	0.6	0.6	0.7	0.0
Both sexes, 15 to 24 years									
Population	152.4	152.6	...	0.2	1.6	2.5	0.1	1.1	1.7
Labour force	107.9	106.9	1.7	-1.0	-0.1	-1.1	-0.9	-0.1	-1.0
Employment	95.4	93.9	1.7	-1.5	-3.8	-3.5	-1.6	-3.9	-3.6
Unemployment	12.4	13.0	1.4	0.6	3.7	2.4	4.8	39.8	22.6
Participation rate	70.8	70.1	1.1	-0.7	-0.8	-1.9
Unemployment rate	11.5	12.2	1.2	0.7	3.5	2.4
Employment rate	62.6	61.5	1.1	-1.1	-3.2	-3.4
Part-time rate	44.4	45.5	1.8	1.0	0.4	1.4
Men, 25 years and over									
Population	353.8	354.1	...	0.3	2.1	3.4	0.1	0.6	1.0
Labour force	268.8	266.1	1.4	-2.7	0.7	-0.7	-1.0	0.3	-0.3
Employment	258.9	255.0	1.6	-3.9	1.4	0.7	-1.5	0.6	0.3
Unemployment	9.9	11.1	1.2	1.2	-0.7	-1.4	12.1	-5.9	-11.2
Participation rate	76.0	75.1	0.4	-0.9	-0.3	-1.0
Unemployment rate	3.7	4.2	0.5	0.5	-0.2	-0.5
Employment rate	73.2	72.0	0.4	-1.2	0.0	-0.5
Part-time rate	5.9	6.1	0.6	0.2	-0.7	-0.4
Women, 25 years and over									
Population	371.0	371.3	...	0.3	2.3	3.7	0.1	0.6	1.0
Labour force	233.2	231.5	1.6	-1.7	3.1	5.1	-0.7	1.4	2.3
Employment	221.0	221.9	1.6	0.9	2.7	3.1	0.4	1.2	1.4
Unemployment	12.2	9.5	1.1	-2.7	0.3	1.9	-22.1	3.3	25.0
Participation rate	62.9	62.3	0.4	-0.6	0.4	0.7
Unemployment rate	5.2	4.1	0.5	-1.1	0.1	0.7
Employment rate	59.6	59.8	0.4	0.2	0.4	0.3
Part-time rate	24.1	24.9	1.0	0.8	3.0	0.1
Industry									
Industry	575.4	570.8	2.9	-4.6	0.2	0.4	-0.8	0.0	0.1
Goods-producing sector									
Goods-producing sector	143.9	141.6	2.2	-2.3	-1.1	-0.6	-1.6	-0.8	-0.4
Agriculture	31.3	31.2	1.2	-0.1	-0.5	-0.3	-0.3	-1.6	-1.0
Forestry, fishing, mining, oil and gas	7.2	6.9	0.5	-0.3	0.9	1.3	-4.2	15.0	23.2
Utilities	7.2	7.0	0.4	-0.2	0.4	-0.2	-2.8	6.1	-2.8
Construction	28.2	28.3	1.2	0.1	1.8	0.4	0.4	6.8	1.4
Manufacturing	70.0	68.1	1.6	-1.9	-3.9	-1.9	-2.7	-5.4	-2.7
Services-producing sector									
Services-producing sector	431.5	429.2	2.9	-2.3	1.4	0.9	-0.5	0.3	0.2
Trade	82.1	85.4	1.7	3.3	-0.1	1.9	4.0	-0.1	2.3
Transportation and warehousing	31.4	31.5	1.1	0.1	-2.8	-1.8	0.3	-8.2	-5.4
Finance, insurance, real estate and leasing	30.2	30.3	1.0	0.1	0.3	1.8	0.3	1.0	6.3
Professional, scientific and technical services	26.3	25.1	0.9	-1.2	1.4	2.9	-4.6	5.9	13.1
Business, building and other support services	20.3	20.5	1.0	0.2	4.0	1.1	1.0	24.2	5.7
Educational services	42.8	42.1	1.3	-0.7	-0.8	-0.5	-1.6	-1.9	-1.2
Health care and social assistance	78.8	77.0	1.4	-1.8	2.1	2.6	-2.3	2.8	3.5
Information, culture and recreation	25.3	24.9	1.1	-0.4	1.4	2.6	-1.6	6.0	11.7
Accommodation and food services	32.4	31.9	1.4	-0.5	-7.5	-7.6	-1.5	-19.0	-19.2
Other services	24.7	24.5	1.1	-0.2	0.1	-5.2	-0.8	0.4	-17.5
Public administration	37.3	36.0	1.0	-1.3	3.1	3.3	-3.5	9.4	10.1

¹ Average standard error of change in two consecutive months (see "Sampling Errors" in Data Quality for further explanations).
Related CANSIM tables 282-0087, 282-0088

Table 11

Selected labour force characteristics, Saskatchewan (in thousands), seasonally adjusted

	June 2004	July 2004	S.E. ¹	Change from			% change from		
				last month	last December	twelve months ago	last month	last December	twelve months ago
Both sexes, 15 years and over									
Population	757.8	758.0	...	0.2	1.8	2.2	0.0	0.2	0.3
Labour force	516.6	513.6	2.5	-3.0	-4.2	-1.5	-0.6	-0.8	-0.3
Employment	489.8	486.8	2.6	-3.0	-1.6	0.1	-0.6	-0.3	0.0
Employment full-time	393.2	389.2	3.1	-4.0	-3.2	2.8	-1.0	-0.8	0.7
Unemployment	26.8	26.8	1.8	0.0	-2.5	-1.7	0.0	-8.5	-6.0
Participation rate	68.2	67.8	0.3	-0.4	-0.7	-0.4
Unemployment rate	5.2	5.2	0.4	0.0	-0.5	-0.3
Employment rate	64.6	64.2	0.3	-0.4	-0.4	-0.2
Part-time rate	19.7	20.1	0.6	0.3	0.4	-0.5
Both sexes, 15 to 24 years									
Population	138.4	138.4	...	0.0	0.2	-0.1	0.0	0.1	-0.1
Labour force	92.7	94.0	1.6	1.3	0.7	1.0	1.4	0.8	1.1
Employment	83.2	84.1	1.5	0.9	2.4	1.1	1.1	2.9	1.3
Unemployment	9.4	9.9	1.2	0.5	-1.7	-0.1	5.3	-14.7	-1.0
Participation rate	67.0	67.9	1.1	0.9	0.4	0.8
Unemployment rate	10.1	10.5	1.2	0.4	-1.9	-0.3
Employment rate	60.1	60.8	1.1	0.7	1.7	0.9
Part-time rate	43.4	40.0	1.8	-3.4	-2.2	-4.5
Men, 25 years and over									
Population	301.9	302.0	...	0.1	0.7	1.0	0.0	0.2	0.3
Labour force	227.9	225.0	1.3	-2.9	-4.1	-2.3	-1.3	-1.8	-1.0
Employment	216.1	214.9	1.4	-1.2	-3.6	-1.3	-0.6	-1.6	-0.6
Unemployment	11.8	10.2	1.1	-1.6	-0.5	-0.9	-13.6	-4.7	-8.1
Participation rate	75.5	74.5	0.4	-1.0	-1.5	-1.0
Unemployment rate	5.2	4.5	0.5	-0.7	-0.2	-0.4
Employment rate	71.6	71.2	0.5	-0.4	-1.3	-0.6
Part-time rate	6.3	6.9	0.6	0.6	0.2	-0.1
Women, 25 years and over									
Population	317.5	317.6	...	0.1	0.9	1.2	0.0	0.3	0.4
Labour force	196.0	194.6	1.4	-1.4	-0.8	-0.2	-0.7	-0.4	-0.1
Employment	190.4	187.9	1.4	-2.5	-0.4	0.4	-1.3	-0.2	0.2
Unemployment	5.6	6.7	0.9	1.1	-0.4	-0.6	19.6	-5.6	-8.2
Participation rate	61.7	61.3	0.5	-0.4	-0.4	-0.3
Unemployment rate	2.9	3.4	0.5	0.5	-0.2	-0.3
Employment rate	60.0	59.2	0.5	-0.8	-0.3	-0.1
Part-time rate	24.6	26.1	1.0	1.5	1.3	0.4
Industry									
Industry	489.8	486.8	2.6	-3.0	-1.6	0.1	-0.6	-0.3	0.0
Goods-producing sector									
Goods-producing sector	126.3	128.3	1.9	2.0	2.6	8.7	1.6	2.1	7.3
Agriculture	45.9	45.3	1.4	-0.6	-3.6	-0.4	-1.3	-7.4	-0.9
Forestry, fishing, mining, oil and gas	18.5	19.7	0.9	1.2	-0.9	2.1	6.5	-4.4	11.9
Utilities	5.5	5.6	0.4	0.1	1.0	0.8	1.8	21.7	16.7
Construction	25.0	26.8	1.0	1.8	3.9	3.1	7.2	17.0	13.1
Manufacturing	31.5	30.8	0.9	-0.7	2.0	3.1	-2.2	6.9	11.2
Services-producing sector									
Services-producing sector	363.4	358.6	2.6	-4.8	-4.1	-8.5	-1.3	-1.1	-2.3
Trade	76.1	77.5	1.5	1.4	-2.1	0.8	1.8	-2.6	1.0
Transportation and warehousing	23.9	23.5	0.9	-0.4	0.2	-0.8	-1.7	0.9	-3.3
Finance, insurance, real estate and leasing	27.3	24.2	0.8	-3.1	-2.7	-2.7	-11.4	-10.0	-10.0
Professional, scientific and technical services	16.4	15.7	0.7	-0.7	-1.6	-1.9	-4.3	-9.2	-10.8
Business, building and other support services	13.5	12.6	0.7	-0.9	0.4	1.3	-6.7	3.3	11.5
Educational services	45.0	41.2	1.2	-3.8	0.6	1.9	-8.4	1.5	4.8
Health care and social assistance	59.9	62.1	1.1	2.2	4.8	1.5	3.7	8.4	2.5
Information, culture and recreation	20.6	21.0	0.8	0.4	-2.3	0.9	1.9	-9.9	4.5
Accommodation and food services	35.0	34.6	1.3	-0.4	0.5	-2.3	-1.1	1.5	-6.2
Other services	22.8	24.0	1.0	1.2	3.2	-2.1	5.3	15.4	-8.0
Public administration	22.9	22.1	0.8	-0.8	-5.2	-5.3	-3.5	-19.0	-19.3

¹ Average standard error of change in two consecutive months (see "Sampling Errors" in Data Quality for further explanations).
Related CANSIM tables 282-0087, 282-0088

Table 12

Selected labour force characteristics, Alberta (in thousands), seasonally adjusted

	June 2004	July 2004	S.E. ¹	Change from			% change from		
				last month	last December	twelve months ago	last month	last December	twelve months ago
Both sexes, 15 years and over									
Population	2,517.0	2,520.1	...	3.1	26.4	44.7	0.1	1.1	1.8
Labour force	1,843.1	1,829.3	7.5	-13.8	-11.4	13.2	-0.7	-0.6	0.7
Employment	1,757.5	1,744.2	8.4	-13.3	-7.3	16.1	-0.8	-0.4	0.9
Employment full-time	1,438.5	1,435.9	10.2	-2.6	2.2	23.1	-0.2	0.2	1.6
Unemployment	85.5	85.1	5.9	-0.4	-4.1	-2.9	-0.5	-4.6	-3.3
Participation rate	73.2	72.6	0.3	-0.6	-1.2	-0.8
Unemployment rate	4.6	4.7	0.3	0.1	-0.1	-0.1
Employment rate	69.8	69.2	0.3	-0.6	-1.0	-0.6
Part-time rate	18.2	17.7	0.5	-0.5	-0.5	-0.6
Both sexes, 15 to 24 years									
Population	468.9	469.3	...	0.4	3.0	5.3	0.1	0.6	1.1
Labour force	325.7	327.9	4.9	2.2	1.0	-15.9	0.7	0.3	-4.6
Employment	297.9	300.4	5.0	2.5	0.2	-9.0	0.8	0.1	-2.9
Unemployment	27.8	27.5	3.6	-0.3	0.8	-6.9	-1.1	3.0	-20.1
Participation rate	69.5	69.9	1.1	0.4	-0.2	-4.2
Unemployment rate	8.5	8.4	1.1	-0.1	0.2	-1.6
Employment rate	63.5	64.0	1.1	0.5	-0.4	-2.7
Part-time rate	39.1	39.7	1.7	0.6	0.8	0.3
Men, 25 years and over									
Population	1,024.6	1,026.0	...	1.4	11.9	19.7	0.1	1.2	2.0
Labour force	828.8	823.6	3.8	-5.2	-11.1	6.4	-0.6	-1.3	0.8
Employment	798.0	792.4	4.6	-5.6	-8.9	4.4	-0.7	-1.1	0.6
Unemployment	30.8	31.2	3.3	0.4	-2.2	2.0	1.3	-6.6	6.8
Participation rate	80.9	80.3	0.4	-0.6	-2.0	-0.9
Unemployment rate	3.7	3.8	0.4	0.1	-0.2	0.2
Employment rate	77.9	77.2	0.4	-0.7	-1.8	-1.1
Part-time rate	5.0	4.6	0.5	-0.4	-1.1	-0.7
Women, 25 years and over									
Population	1,023.4	1,024.9	...	1.5	11.7	19.8	0.1	1.2	2.0
Labour force	688.5	677.8	4.4	-10.7	-1.2	22.7	-1.6	-0.2	3.5
Employment	661.6	651.4	4.5	-10.2	1.5	20.7	-1.5	0.2	3.3
Unemployment	26.9	26.4	3.1	-0.5	-2.8	2.0	-1.9	-9.6	8.2
Participation rate	67.3	66.1	0.5	-1.2	-0.9	0.9
Unemployment rate	3.9	3.9	0.5	0.0	-0.4	0.2
Employment rate	64.6	63.6	0.5	-1.0	-0.5	0.9
Part-time rate	24.5	23.4	0.9	-1.2	-0.4	-0.6
Industry									
Industry	1,757.5	1,744.2	8.4	-13.3	-7.3	16.1	-0.8	-0.4	0.9
Goods-producing sector									
Goods-producing sector	497.4	496.4	6.5	-1.0	1.7	21.3	-0.2	0.3	4.5
Agriculture	69.5	67.8	2.6	-1.7	-4.2	0.7	-2.4	-5.8	1.0
Forestry, fishing, mining, oil and gas	115.8	112.8	3.2	-3.0	3.8	7.7	-2.6	3.5	7.3
Utilities	14.5	14.0	1.0	-0.5	-1.1	0.1	-3.4	-7.3	0.7
Construction	154.5	155.8	4.3	1.3	10.0	10.4	0.8	6.9	7.2
Manufacturing	143.2	146.0	3.9	2.8	-6.8	2.4	2.0	-4.5	1.7
Services-producing sector									
Services-producing sector	1,260.1	1,247.8	8.7	-12.3	-9.0	-5.2	-1.0	-0.7	-0.4
Trade	267.0	260.0	5.0	-7.0	-14.9	-8.8	-2.6	-5.4	-3.3
Transportation and warehousing	100.1	97.6	3.0	-2.5	4.3	4.0	-2.5	4.6	4.3
Finance, insurance, real estate and leasing	90.3	82.1	2.8	-8.2	-10.0	-4.3	-9.1	-10.9	-5.0
Professional, scientific and technical services	125.4	129.6	3.5	4.2	8.8	9.6	3.3	7.3	8.0
Business, building and other support services	64.1	66.2	3.1	2.1	5.7	3.7	3.3	9.4	5.9
Educational services	112.7	102.9	3.3	-9.8	-5.8	-6.4	-8.7	-5.3	-5.9
Health care and social assistance	169.2	166.6	3.4	-2.6	0.8	3.0	-1.5	0.5	1.8
Information, culture and recreation	72.4	70.3	2.9	-2.1	0.7	-3.0	-2.9	1.0	-4.1
Accommodation and food services	118.1	125.2	3.8	7.1	5.0	6.9	6.0	4.2	5.8
Other services	76.7	79.6	2.8	2.9	0.2	-4.9	3.8	0.3	-5.8
Public administration	64.2	67.8	2.3	3.6	-3.9	-4.7	5.6	-5.4	-6.5

¹ Average standard error of change in two consecutive months (see "Sampling Errors" in Data Quality for further explanations).
Related CANSIM tables 282-0087, 282-0088

Table 13

Selected labour force characteristics, British Columbia (in thousands), seasonally adjusted

	June 2004	July 2004	S.E. ¹	Change from			% change from		
				last month	last December	twelve months ago	last month	last December	twelve months ago
Both sexes, 15 years and over									
Population	3,415.6	3,420.1	...	4.5	33.2	52.3	0.1	1.0	1.6
Labour force	2,249.4	2,244.9	11.3	-4.5	22.3	35.6	-0.2	1.0	1.6
Employment	2,080.3	2,081.5	11.7	1.2	10.1	60.5	0.1	0.5	3.0
Employment full-time	1,647.0	1,636.9	13.6	-10.1	15.4	65.9	-0.6	0.9	4.2
Unemployment	169.1	163.3	9.0	-5.8	12.2	-25.0	-3.4	8.1	-13.3
Participation rate	65.9	65.6	0.3	-0.3	0.0	0.0
Unemployment rate	7.5	7.3	0.4	-0.2	0.5	-1.2
Employment rate	60.9	60.9	0.3	0.0	-0.3	0.9
Part-time rate	20.8	21.4	0.6	0.5	-0.4	-0.9
Both sexes, 15 to 24 years									
Population	555.8	556.5	...	0.7	4.0	7.2	0.1	0.7	1.3
Labour force	356.6	356.8	6.2	0.2	1.6	7.8	0.1	0.5	2.2
Employment	304.6	305.1	6.3	0.5	-4.6	15.0	0.2	-1.5	5.2
Unemployment	52.0	51.7	5.2	-0.3	6.2	-7.2	-0.6	13.6	-12.2
Participation rate	64.2	64.1	1.1	-0.1	-0.2	0.6
Unemployment rate	14.6	14.5	1.4	-0.1	1.7	-2.4
Employment rate	54.8	54.8	1.1	0.0	-1.3	2.0
Part-time rate	46.2	47.4	2.0	1.2	-0.6	-1.1
Men, 25 years and over									
Population	1,393.3	1,395.0	...	1.7	13.5	20.7	0.1	1.0	1.5
Labour force	1,006.0	1,008.2	6.0	2.2	17.0	7.7	0.2	1.7	0.8
Employment	943.6	950.8	6.4	7.2	16.6	22.9	0.8	1.8	2.5
Unemployment	62.4	57.4	5.4	-5.0	0.5	-15.3	-8.0	0.9	-21.0
Participation rate	72.2	72.3	0.4	0.1	0.6	-0.5
Unemployment rate	6.2	5.7	0.5	-0.5	0.0	-1.6
Employment rate	67.7	68.2	0.5	0.5	0.6	0.7
Part-time rate	7.3	7.5	0.6	0.2	-0.5	-1.5
Women, 25 years and over									
Population	1,466.5	1,468.6	...	2.1	15.6	24.4	0.1	1.1	1.7
Labour force	886.8	879.9	6.4	-6.9	3.7	20.1	-0.8	0.4	2.3
Employment	832.1	825.6	6.7	-6.5	-1.9	22.6	-0.8	-0.2	2.8
Unemployment	54.7	54.3	4.6	-0.4	5.6	-2.5	-0.7	11.5	-4.4
Participation rate	60.5	59.9	0.4	-0.6	-0.4	0.4
Unemployment rate	6.2	6.2	0.5	0.0	0.6	-0.4
Employment rate	56.7	56.2	0.5	-0.5	-0.8	0.6
Part-time rate	26.9	27.7	1.0	0.8	0.3	-0.4
Industry									
Industry	2,080.3	2,081.5	11.7	1.2	10.1	60.5	0.1	0.5	3.0
Goods-producing sector									
Goods-producing sector	441.1	441.2	7.9	0.1	24.4	16.0	0.0	5.9	3.8
Agriculture	39.1	38.2	2.8	-0.9	5.3	5.2	-2.3	16.1	15.8
Forestry, fishing, mining, oil and gas	39.2	39.2	2.9	0.0	-1.7	-10.9	0.0	-4.2	-21.8
Utilities	11.7	10.3	1.1	-1.4	-0.6	-3.0	-12.0	-5.5	-22.6
Construction	150.6	148.1	4.9	-2.5	19.7	25.7	-1.7	15.3	21.0
Manufacturing	200.6	205.4	5.5	4.8	1.7	-1.1	2.4	0.8	-0.5
Services-producing sector									
Services-producing sector	1,639.2	1,640.3	11.7	1.1	-14.3	44.5	0.1	-0.9	2.8
Trade	308.9	313.2	7.1	4.3	-8.4	-8.6	1.4	-2.6	-2.7
Transportation and warehousing	122.8	125.9	4.0	3.1	10.1	15.5	2.5	8.7	14.0
Finance, insurance, real estate and leasing	133.1	128.3	4.4	-4.8	-4.4	6.6	-3.6	-3.3	5.4
Professional, scientific and technical services	143.5	148.2	4.6	4.7	2.4	0.4	3.3	1.6	0.3
Business, building and other support services	87.1	83.8	4.2	-3.3	-7.2	3.5	-3.8	-7.9	4.4
Educational services	134.5	135.7	4.6	1.2	-7.6	-8.5	0.9	-5.3	-5.9
Health care and social assistance	227.9	226.0	5.0	-1.9	5.7	13.2	-0.8	2.6	6.2
Information, culture and recreation	112.6	107.6	4.5	-5.0	-2.7	1.5	-4.4	-2.4	1.4
Accommodation and food services	179.3	177.5	5.5	-1.8	1.8	15.8	-1.0	1.0	9.8
Other services	92.8	95.9	4.1	3.1	-4.2	-0.6	3.3	-4.2	-0.6
Public administration	96.6	98.4	3.6	1.8	0.4	5.9	1.9	0.4	6.4

¹ Average standard error of change in two consecutive months (see "Sampling Errors" in Data Quality for further explanations).
Related CANSIM tables 282-0087, 282-0088

Table 14

Labour force characteristics by metropolitan area (in thousands), seasonally adjusted, 3 month moving average

	June 2004	July 2004	S.E. ¹	Change from			% change from		
				last month	last December	twelve months ago	last month	last December	twelve months ago
St. John's, Newfoundland and Labrador									
Population	145.5	145.6	...	0.1	1.0	1.8	0.1	0.7	1.3
Labour force	97.3	97.6	0.9	0.3	1.0	-0.9	0.3	1.0	-0.9
Employment	88.0	88.3	0.9	0.3	1.4	-1.2	0.3	1.6	-1.3
Unemployment	9.4	9.3	0.5	-0.1	-0.4	0.3	-1.1	-4.1	3.3
Participation rate	66.9	67.0	0.6	0.1	0.2	-1.5
Unemployment rate	9.7	9.5	0.5	-0.2	-0.5	0.4
Employment rate	60.5	60.6	0.6	0.1	0.5	-1.6
Halifax, Nova Scotia									
Population	292.2	292.5	...	0.3	2.5	4.3	0.1	0.9	1.5
Labour force	208.7	208.0	1.3	-0.7	5.5	6.1	-0.3	2.7	3.0
Employment	195.6	195.8	1.3	0.2	5.1	7.0	0.1	2.7	3.7
Unemployment	13.0	12.2	0.7	-0.8	0.5	-0.9	-6.2	4.3	-6.9
Participation rate	71.4	71.1	0.4	-0.3	1.3	1.0
Unemployment rate	6.2	5.9	0.3	-0.3	0.1	-0.6
Employment rate	66.9	66.9	0.4	0.0	1.1	1.4
Saint John, New Brunswick									
Population	101.1	101.1	...	0.0	0.1	0.2	0.0	0.1	0.2
Labour force	65.9	66.2	0.7	0.3	1.6	1.7	0.5	2.5	2.6
Employment	60.3	60.4	0.7	0.1	1.5	2.2	0.2	2.5	3.8
Unemployment	5.6	5.9	0.4	0.3	0.2	-0.5	5.4	3.5	-7.8
Participation rate	65.2	65.5	0.7	0.3	1.5	1.6
Unemployment rate	8.5	8.9	0.6	0.4	0.1	-1.0
Employment rate	59.6	59.7	0.7	0.1	1.4	2.0
Saguenay, Quebec									
Population	130.0	130.0	...	0.0	-0.5	-0.7	0.0	-0.4	-0.5
Labour force	85.1	84.6	0.7	-0.5	5.2	5.0	-0.6	6.5	6.3
Employment	76.0	75.9	0.8	-0.1	5.9	4.8	-0.1	8.4	6.8
Unemployment	9.2	8.8	0.5	-0.4	-0.6	0.3	-4.3	-6.4	3.5
Participation rate	65.5	65.1	0.6	-0.4	4.3	4.2
Unemployment rate	10.8	10.4	0.6	-0.4	-1.4	-0.3
Employment rate	58.5	58.4	0.6	-0.1	4.8	4.0
Québec, Quebec									
Population	581.7	582.3	...	0.6	3.8	6.2	0.1	0.7	1.1
Labour force	383.8	382.0	2.9	-1.8	4.5	-7.7	-0.5	1.2	-2.0
Employment	361.8	361.5	3.0	-0.3	11.8	-6.2	-0.1	3.4	-1.7
Unemployment	21.9	20.5	1.5	-1.4	-7.3	-1.5	-6.4	-26.3	-6.8
Participation rate	66.0	65.6	0.5	-0.4	0.3	-2.0
Unemployment rate	5.7	5.4	0.4	-0.3	-2.0	-0.2
Employment rate	62.2	62.1	0.5	-0.1	1.7	-1.7
Trois-Rivières, Quebec									
Population	118.1	118.2	...	0.1	0.4	0.7	0.1	0.3	0.6
Labour force	71.5	70.5	0.8	-1.0	-3.1	-1.8	-1.4	-4.2	-2.5
Employment	63.5	62.7	0.8	-0.8	-3.2	-1.4	-1.3	-4.9	-2.2
Unemployment	8.0	7.9	0.4	-0.1	0.2	-0.3	-1.2	2.6	-3.7
Participation rate	60.5	59.6	0.7	-0.9	-2.9	-1.9
Unemployment rate	11.2	11.2	0.6	0.0	0.7	-0.1
Employment rate	53.8	53.0	0.7	-0.8	-2.9	-1.6
Sherbrooke, Quebec									
Population	129.9	130.0	...	0.1	1.1	1.8	0.1	0.9	1.4
Labour force	86.6	87.0	0.7	0.4	1.4	2.1	0.5	1.6	2.5
Employment	81.2	81.5	0.7	0.3	2.3	2.8	0.4	2.9	3.6
Unemployment	5.4	5.5	0.4	0.1	-0.9	-0.7	1.9	-14.1	-11.3
Participation rate	66.7	66.9	0.6	0.2	0.5	0.7
Unemployment rate	6.2	6.3	0.5	0.1	-1.2	-1.0
Employment rate	62.5	62.7	0.6	0.2	1.3	1.3

Table 14

Labour force characteristics by metropolitan area (in thousands), seasonally adjusted, 3 month moving average - Continued

	June 2004	July 2004	S.E. ¹	Change from			% change from		
				last month	last December	twelve months ago	last month	last December	twelve months ago
Montréal, Quebec									
Population	2,945.1	2,948.9	...	3.8	27.8	46.9	0.1	1.0	1.6
Labour force	1,988.3	1,986.4	7.3	-1.9	-32.2	18.2	-0.1	-1.6	0.9
Employment	1,830.9	1,827.4	7.6	-3.5	-6.0	50.6	-0.2	-0.3	2.8
Unemployment	157.4	159.0	4.9	1.6	-26.2	-32.4	1.0	-14.1	-16.9
Participation rate	67.5	67.4	0.3	-0.1	-1.7	-0.4
Unemployment rate	7.9	8.0	0.2	0.1	-1.2	-1.7
Employment rate	62.2	62.0	0.3	-0.2	-0.8	0.8
Ottawa-Gatineau, Ontario/Quebec									
Population	931.5	933.3	...	1.8	12.4	20.9	0.2	1.3	2.3
Labour force	656.8	660.6	3.3	3.8	5.7	2.1	0.6	0.9	0.3
Employment	609.9	616.3	3.4	6.4	9.0	0.0	1.0	1.5	0.0
Unemployment	46.8	44.3	1.8	-2.5	-3.3	2.1	-5.3	-6.9	5.0
Participation rate	70.5	70.8	0.4	0.3	-0.3	-1.4
Unemployment rate	7.1	6.7	0.3	-0.4	-0.6	0.3
Employment rate	65.5	66.0	0.4	0.5	0.1	-1.5
Toronto, Ontario									
Population	4,244.2	4,253.8	...	9.6	65.2	107.8	0.2	1.6	2.6
Labour force	2,981.2	2,995.7	8.7	14.5	94.3	84.9	0.5	3.3	2.9
Employment	2,760.5	2,770.7	9.1	10.2	80.6	99.8	0.4	3.0	3.7
Unemployment	220.7	225.0	5.5	4.3	13.7	-14.9	1.9	6.5	-6.2
Participation rate	70.2	70.4	0.2	0.2	1.1	0.2
Unemployment rate	7.4	7.5	0.2	0.1	0.2	-0.7
Employment rate	65.0	65.1	0.2	0.1	0.9	0.7
Hamilton, Ontario									
Population	571.1	571.7	...	0.6	4.1	7.0	0.1	0.7	1.2
Labour force	398.0	400.9	2.6	2.9	10.0	15.3	0.7	2.6	4.0
Employment	370.0	375.8	2.6	5.8	6.4	13.8	1.6	1.7	3.8
Unemployment	28.1	25.1	1.4	-3.0	3.6	1.4	-10.7	16.7	5.9
Participation rate	69.7	70.1	0.5	0.4	1.2	1.8
Unemployment rate	7.1	6.3	0.4	-0.8	0.8	0.2
Employment rate	64.8	65.7	0.5	0.9	0.6	1.6
Kitchener, Ontario									
Population	362.1	362.7	...	0.6	3.8	6.8	0.2	1.1	1.9
Labour force	251.8	254.8	1.8	3.0	2.9	4.7	1.2	1.2	1.9
Employment	237.3	240.4	1.9	3.1	1.2	6.6	1.3	0.5	2.8
Unemployment	14.5	14.4	0.8	-0.1	1.7	-2.0	-0.7	13.4	-12.2
Participation rate	69.5	70.3	0.5	0.8	0.1	0.0
Unemployment rate	5.8	5.7	0.3	-0.1	0.7	-0.9
Employment rate	65.5	66.3	0.5	0.8	-0.3	0.6
London, Ontario									
Population	350.0	350.2	...	0.2	1.5	2.9	0.1	0.4	0.8
Labour force	242.5	244.6	1.9	2.1	3.8	11.9	0.9	1.6	5.1
Employment	230.6	233.1	2.0	2.5	9.6	15.1	1.1	4.3	6.9
Unemployment	11.9	11.5	0.9	-0.4	-5.9	-3.2	-3.4	-33.9	-21.8
Participation rate	69.3	69.8	0.6	0.5	0.7	2.8
Unemployment rate	4.9	4.7	0.4	-0.2	-2.5	-1.6
Employment rate	65.9	66.6	0.6	0.7	2.5	3.8
Oshawa, Ontario									
Population	252.4	252.9	...	0.5	3.1	5.5	0.2	1.2	2.2
Labour force	181.8	179.7	1.3	-2.1	-1.1	-4.4	-1.2	-0.6	-2.4
Employment	172.5	171.2	1.2	-1.3	-0.8	-3.0	-0.8	-0.5	-1.7
Unemployment	9.3	8.5	0.5	-0.8	-0.3	-1.5	-8.6	-3.4	-15.0
Participation rate	72.0	71.1	0.5	-0.9	-1.3	-3.3
Unemployment rate	5.1	4.7	0.3	-0.4	-0.2	-0.7
Employment rate	68.3	67.7	0.5	-0.6	-1.2	-2.7

Table 14

Labour force characteristics by metropolitan area (in thousands), seasonally adjusted, 3 month moving average - Continued

	June 2004	July 2004	S.E. ¹	Change from			% change from		
				last month	last December	twelve months ago	last month	last December	twelve months ago
St. Catharines-Niagara, Ontario									
Population	326.9	327.0	...	0.1	0.7	1.4	0.0	0.2	0.4
Labour force	202.0	201.7	1.6	-0.3	-8.1	-7.3	-0.1	-3.9	-3.5
Employment	185.2	184.6	1.7	-0.6	-11.1	-10.2	-0.3	-5.7	-5.2
Unemployment	16.8	17.1	0.8	0.3	3.0	2.9	1.8	21.3	20.4
Participation rate	61.8	61.7	0.5	-0.1	-2.6	-2.5
Unemployment rate	8.3	8.5	0.4	0.2	1.8	1.7
Employment rate	56.7	56.5	0.5	-0.2	-3.5	-3.3
Greater Sudbury, Ontario									
Population	126.4	126.4	...	0.0	-0.3	-0.7	0.0	-0.2	-0.6
Labour force	82.2	81.5	0.7	-0.7	1.6	2.5	-0.9	2.0	3.2
Employment	74.6	74.5	0.7	-0.1	2.5	1.9	-0.1	3.5	2.6
Unemployment	7.6	7.0	0.4	-0.6	-0.9	0.6	-7.9	-11.4	9.4
Participation rate	65.0	64.5	0.5	-0.5	1.4	2.3
Unemployment rate	9.2	8.6	0.5	-0.6	-1.3	0.5
Employment rate	59.0	58.9	0.5	-0.1	2.1	1.8
Thunder Bay, Ontario									
Population	100.2	100.2	...	0.0	-0.2	-0.5	0.0	-0.2	-0.5
Labour force	66.8	66.3	0.6	-0.5	-0.5	-2.1	-0.7	-0.7	-3.1
Employment	61.4	60.6	0.6	-0.8	-1.5	-3.9	-1.3	-2.4	-6.0
Unemployment	5.4	5.7	0.3	0.3	1.0	1.8	5.6	21.3	46.2
Participation rate	66.7	66.2	0.6	-0.5	-0.3	-1.7
Unemployment rate	8.1	8.6	0.4	0.5	1.6	2.9
Employment rate	61.3	60.5	0.6	-0.8	-1.4	-3.6
Windsor, Ontario									
Population	265.0	265.5	...	0.5	3.1	5.3	0.2	1.2	2.0
Labour force	175.7	175.4	1.5	-0.3	2.3	1.1	-0.2	1.3	0.6
Employment	160.9	159.9	1.6	-1.0	-0.1	-1.7	-0.6	-0.1	-1.1
Unemployment	14.8	15.5	0.8	0.7	2.4	2.7	4.7	18.3	21.1
Participation rate	66.3	66.1	0.6	-0.2	0.1	-0.9
Unemployment rate	8.4	8.8	0.4	0.4	1.2	1.5
Employment rate	60.7	60.2	0.6	-0.5	-0.8	-1.9
Winnipeg, Manitoba									
Population	547.2	547.9	...	0.7	4.3	6.8	0.1	0.8	1.3
Labour force	389.6	387.9	1.3	-1.7	9.1	4.6	-0.4	2.4	1.2
Employment	368.1	366.1	1.3	-2.0	8.2	1.1	-0.5	2.3	0.3
Unemployment	21.5	21.8	0.8	0.3	1.0	3.5	1.4	4.8	19.1
Participation rate	71.2	70.8	0.2	-0.4	1.1	0.0
Unemployment rate	5.5	5.6	0.2	0.1	0.1	0.8
Employment rate	67.3	66.8	0.2	-0.5	1.0	-0.7
Regina, Saskatchewan									
Population	156.5	156.5	...	0.0	0.4	0.6	0.0	0.3	0.4
Labour force	115.4	114.7	0.7	-0.7	0.0	2.4	-0.6	0.0	2.1
Employment	109.7	109.4	0.7	-0.3	1.0	3.4	-0.3	0.9	3.2
Unemployment	5.7	5.3	0.4	-0.4	-1.0	-0.9	-7.0	-15.9	-14.5
Participation rate	73.7	73.3	0.5	-0.4	-0.2	1.3
Unemployment rate	4.9	4.6	0.3	-0.3	-0.9	-0.9
Employment rate	70.1	69.9	0.5	-0.2	0.5	1.9
Saskatoon, Saskatchewan									
Population	184.4	184.6	...	0.2	1.2	1.8	0.1	0.7	1.0
Labour force	128.7	128.6	0.8	-0.1	0.2	-0.3	-0.1	0.2	-0.2
Employment	120.8	120.8	0.9	0.0	0.2	-0.9	0.0	0.2	-0.7
Unemployment	7.9	7.8	0.4	-0.1	0.0	0.6	-1.3	0.0	8.3
Participation rate	69.8	69.7	0.5	-0.1	-0.3	-0.8
Unemployment rate	6.1	6.1	0.3	0.0	0.0	0.5
Employment rate	65.5	65.4	0.5	-0.1	-0.4	-1.2

Table 14**Labour force characteristics by metropolitan area (in thousands), seasonally adjusted, 3 month moving average - Concluded**

	June 2004	July 2004	S.E. ¹	Change from			% change from		
				last month	last December	twelve months ago	last month	last December	twelve months ago
Calgary, Alberta									
Population	854.8	856.6	...	1.8	11.8	20.4	0.2	1.4	2.4
Labour force	645.2	643.3	2.9	-1.9	8.0	15.8	-0.3	1.3	2.5
Employment	612.8	611.7	3.1	-1.1	11.8	14.7	-0.2	2.0	2.5
Unemployment	32.3	31.6	1.7	-0.7	-3.8	1.0	-2.2	-10.7	3.3
Participation rate	75.5	75.1	0.4	-0.4	-0.1	0.1
Unemployment rate	5.0	4.9	0.3	-0.1	-0.7	0.0
Employment rate	71.7	71.4	0.4	-0.3	0.4	0.0
Edmonton, Alberta									
Population	793.5	794.5	...	1.0	6.4	11.9	0.1	0.8	1.5
Labour force	571.5	568.1	2.7	-3.4	-4.9	4.4	-0.6	-0.9	0.8
Employment	548.1	544.2	2.7	-3.9	-2.4	9.4	-0.7	-0.4	1.8
Unemployment	23.4	23.8	1.3	0.4	-2.6	-5.1	1.7	-9.8	-17.6
Participation rate	72.0	71.5	0.3	-0.5	-1.2	-0.5
Unemployment rate	4.1	4.2	0.2	0.1	-0.4	-0.9
Employment rate	69.1	68.5	0.4	-0.6	-0.9	0.2
Vancouver, British Columbia									
Population	1,810.6	1,814.3	...	3.7	23.6	38.4	0.2	1.3	2.2
Labour force	1,235.0	1,237.1	5.0	2.1	27.7	44.3	0.2	2.3	3.7
Employment	1,143.3	1,147.4	5.2	4.1	14.3	47.3	0.4	1.3	4.3
Unemployment	91.7	89.7	3.0	-2.0	13.4	-2.9	-2.2	17.6	-3.1
Participation rate	68.2	68.2	0.3	0.0	0.7	1.0
Unemployment rate	7.4	7.3	0.2	-0.1	1.0	-0.5
Employment rate	63.1	63.2	0.3	0.1	-0.1	1.3
Victoria, British Columbia									
Population	263.5	263.9	...	0.4	2.2	2.8	0.2	0.8	1.1
Labour force	168.6	169.3	1.8	0.7	1.0	4.3	0.4	0.6	2.6
Employment	159.9	160.4	1.8	0.5	1.0	6.7	0.3	0.6	4.4
Unemployment	8.7	8.9	0.7	0.2	0.0	-2.4	2.3	0.0	-21.2
Participation rate	64.0	64.2	0.7	0.2	-0.1	1.0
Unemployment rate	5.2	5.3	0.4	0.1	0.0	-1.5
Employment rate	60.7	60.8	0.7	0.1	-0.1	1.9

¹ Average standard error of change in two consecutive months (see "Sampling Errors" in Data Quality for further explanations).
Related CANSIM tables 282-0090

Table 15

Labour force characteristics by metropolitan area (in thousands), seasonally adjusted, monthly

	June 2004	July 2004	S.E. ¹	Change from			% change from		
				last month	last December	twelve months ago	last month	last December	twelve months ago
Montréal, Quebec									
Population	2,949.2	2,952.6	...	3.4	27.6	47.1	0.1	0.9	1.6
Labour force	1,988.9	1,988.2	15.6	-0.7	-30.2	27.9	0.0	-1.5	1.4
Employment	1,823.5	1,823.3	16.2	-0.2	-5.7	43.9	0.0	-0.3	2.5
Unemployment	165.4	164.8	11.7	-0.6	-24.6	-16.1	-0.4	-13.0	-8.9
Participation rate	67.4	67.3	0.5	-0.1	-1.7	-0.2
Unemployment rate	8.3	8.3	0.6	0.0	-1.1	-0.9
Employment rate	61.8	61.8	0.6	0.0	-0.7	0.6
Toronto, Ontario									
Population	4,255.0	4,262.9	...	7.9	66.4	108.7	0.2	1.6	2.6
Labour force	2,996.2	3,000.4	18.6	4.2	85.3	90.0	0.1	2.9	3.1
Employment	2,780.3	2,770.2	18.8	-10.1	64.3	101.2	-0.4	2.4	3.8
Unemployment	215.9	230.2	13.0	14.3	21.0	-11.2	6.6	10.0	-4.6
Participation rate	70.4	70.4	0.4	0.0	0.9	0.3
Unemployment rate	7.2	7.7	0.4	0.5	0.5	-0.6
Employment rate	65.3	65.0	0.4	-0.3	0.5	0.8
Vancouver, British Columbia									
Population	1,814.7	1,817.9	...	3.2	24.3	39.0	0.2	1.4	2.2
Labour force	1,237.0	1,226.6	10.9	-10.4	20.8	18.2	-0.8	1.7	1.5
Employment	1,147.2	1,140.3	11.1	-6.9	3.5	35.8	-0.6	0.3	3.2
Unemployment	89.9	86.3	7.4	-3.6	17.2	-17.6	-4.0	24.9	-16.9
Participation rate	68.2	67.5	0.6	-0.7	0.3	-0.4
Unemployment rate	7.3	7.0	0.6	-0.3	1.3	-1.6
Employment rate	63.2	62.7	0.6	-0.5	-0.7	0.6

¹ Average standard error of change in two consecutive months (see "Sampling Errors" in Data Quality for further explanations).
Related CANSIM table 282-0091

Table 16**Labour force characteristics by economic region¹ (in thousands), unadjusted, 3 month moving average ending in July 2003 and July 2004**

	July	Population	Labour force			Participation rate	Unemployment rate	Employment rate
			Labour force	Employment	Unemployment			
Canada	2003	25,236.6	17,321.1	15,988.2	1,332.9	68.6	7.7	63.4
	2004	25,589.2	17,552.9	16,300.5	1,252.4	68.6	7.1	63.7
Newfoundland and Labrador	2003	438.8	275.2	233.6	41.6	62.7	15.1	53.2
	2004	439.5	281.9	239.4	42.4	64.1	15.0	54.5
010 Avalon Peninsula	2003	208.6	136.8	118.9	17.8	65.6	13.0	57.0
	2004	210.5	137.9	121.9	16.0	65.5	11.6	57.9
020 South Coast-Burin Peninsula	2003	36.7	19.9	16.5	3.5	54.2	17.6	45.0
	2004	36.1	23.2	19.6	3.6	64.3	15.5	54.3
030 West Coast-Northern Peninsula-Labrador	2003	93.8	60.8	51.5	9.3	64.8	15.3	54.9
	2004	93.7	60.7	48.9	11.8	64.8	19.4	52.2
040 Notre Dame-Central Bonavista Bay	2003	99.7	57.8	46.8	11.0	58.0	19.0	46.9
	2004	99.3	60.1	49.0	11.0	60.5	18.3	49.3
Prince Edward Island	2003	113.3	81.6	74.8	6.8	72.0	8.3	66.0
	2004	114.6	81.8	74.2	7.5	71.4	9.2	64.7
Nova Scotia	2003	759.7	491.3	447.8	43.5	64.7	8.9	58.9
	2004	764.2	504.0	461.4	42.5	66.0	8.4	60.4
210 Cape Breton	2003	119.8	66.1	56.1	9.9	55.2	15.0	46.8
	2004	118.9	68.9	59.4	9.5	57.9	13.8	50.0
220 North Shore	2003	133.3	83.8	75.9	7.9	62.9	9.4	56.9
	2004	133.4	85.1	76.9	8.2	63.8	9.6	57.6
230 Annapolis Valley	2003	102.0	62.8	57.0	5.8	61.6	9.2	55.9
	2004	102.6	66.5	60.7	5.8	64.8	8.7	59.2
240 Southern	2003	104.4	67.1	60.6	6.5	64.3	9.7	58.0
	2004	104.7	66.3	59.7	6.6	63.3	10.0	57.0
250 Halifax	2003	300.2	211.6	198.2	13.4	70.5	6.3	66.0
	2004	304.6	217.2	204.7	12.5	71.3	5.8	67.2
New Brunswick	2003	609.3	398.4	355.6	42.8	65.4	10.7	58.4
	2004	612.4	405.9	366.0	39.9	66.3	9.8	59.8
310 Campbellton-Miramichi	2003	144.9	84.5	70.4	14.1	58.3	16.7	48.6
	2004	144.3	88.9	76.0	12.9	61.6	14.5	52.7
320 Moncton-Richibucto	2003	154.6	106.3	97.0	9.4	68.8	8.8	62.7
	2004	156.5	110.5	101.8	8.7	70.6	7.9	65.0
330 Saint John-St. Stephen	2003	139.9	91.2	81.9	9.3	65.2	10.2	58.5
	2004	140.5	92.4	83.7	8.7	65.8	9.4	59.6
340 Fredericton-Oromocto	2003	100.0	69.0	63.1	5.9	69.0	8.6	63.1
	2004	101.2	68.2	62.8	5.4	67.4	7.9	62.1
350 Edmundston-Woodstock	2003	69.8	47.3	43.2	4.1	67.8	8.7	61.9
	2004	69.9	45.9	41.7	4.3	65.7	9.4	59.7
Quebec	2003	6,080.1	4,085.4	3,724.1	361.3	67.2	8.8	61.3
	2004	6,146.0	4,103.0	3,784.8	318.2	66.8	7.8	61.6
410 Gaspésie-Îles-de-la-Madeleine	2003	81.9	48.3	40.4	7.9	59.0	16.4	49.3
	2004	81.6	44.8	36.2	8.6	54.9	19.2	44.4
415 Bas-Saint-Laurent	2003	167.2	100.6	92.4	8.2	60.2	8.2	55.3
	2004	166.9	107.5	98.4	9.1	64.4	8.5	59.0
420 Québec	2003	539.2	366.6	345.8	20.8	68.0	5.7	64.1
	2004	545.0	358.1	340.1	18.0	65.7	5.0	62.4

Table 16**Labour force characteristics by economic region¹ (in thousands), unadjusted, 3 month moving average ending in July 2003 and July 2004 - Continued**

	July	Population	Labour force			Participation rate	Unemployment rate	Employment rate
			Labour force	Employment	Unemployment			
Quebec - Continued								
425 Chaudière-Appalaches	2003	320.0	223.3	213.1	10.2	69.8	4.6	66.6
	2004	321.4	228.0	216.8	11.2	70.9	4.9	67.5
430 Estrie	2003	239.6	161.1	150.8	10.3	67.2	6.4	62.9
	2004	241.9	155.6	145.9	9.7	64.3	6.2	60.3
433 Centre-du-Québec	2003	180.5	122.3	111.4	10.9	67.8	8.9	61.7
	2004	181.4	115.6	106.8	8.8	63.7	7.6	58.9
435 Montérégie	2003	1,084.4	750.0	697.2	52.8	69.2	7.0	64.3
	2004	1,097.4	750.1	694.7	55.4	68.4	7.4	63.3
440 Montréal	2003	1,521.5	1,010.2	886.3	123.9	66.4	12.3	58.3
	2004	1,542.3	1,016.8	922.1	94.6	65.9	9.3	59.8
445 Laval	2003	294.1	202.1	185.5	16.7	68.7	8.3	63.1
	2004	298.5	205.5	187.8	17.7	68.8	8.6	62.9
450 Lanaudière	2003	328.7	231.5	211.7	19.8	70.4	8.6	64.4
	2004	334.2	231.5	220.4	11.1	69.3	4.8	65.9
455 Laurentides	2003	393.3	267.2	245.8	21.3	67.9	8.0	62.5
	2004	402.1	282.6	265.8	16.8	70.3	5.9	66.1
460 Outaouais	2003	266.0	187.4	173.6	13.8	70.5	7.4	65.3
	2004	271.9	190.4	177.2	13.2	70.0	6.9	65.2
465 Abitibi-Témiscamingue	2003	120.0	74.9	66.7	8.3	62.4	11.1	55.6
	2004	119.2	78.4	71.7	6.7	65.8	8.5	60.2
470 Mauricie	2003	215.5	133.8	121.2	12.6	62.1	9.4	56.2
	2004	215.5	128.0	114.7	13.3	59.4	10.4	53.2
475 Saguenay-Lac-Saint-Jean	2003	232.0	145.3	128.5	16.8	62.6	11.6	55.4
	2004	231.2	147.9	131.2	16.7	64.0	11.3	56.7
480 and 490 Côte-Nord and Nord-du-Québec	2003	96.1	60.7	53.7	7.1	63.2	11.7	55.9
	2004	95.4	62.1	54.8	7.3	65.1	11.8	57.4
Ontario								
510 Ottawa	2003	948.3	671.5	626.0	45.5	70.8	6.8	66.0
	2004	965.4	663.8	616.6	47.2	68.8	7.1	63.9
515 Kingston-Pembroke	2003	338.2	208.1	195.4	12.7	61.5	6.1	57.8
	2004	339.2	212.8	199.1	13.7	62.7	6.4	58.7
520 Muskoka-Kawartha	2003	299.4	194.9	182.8	12.1	65.1	6.2	61.1
	2004	302.6	191.7	181.2	10.5	63.4	5.5	59.9
530 Toronto	2003	4,344.0	3,086.9	2,825.5	261.4	71.1	8.5	65.0
	2004	4,455.9	3,166.8	2,921.0	245.8	71.1	7.8	65.6
540 Kitchener-Waterloo-Barrie	2003	893.3	641.4	605.9	35.5	71.8	5.5	67.8
	2004	913.3	657.7	623.5	34.3	72.0	5.2	68.3
550 Hamilton-Niagara Peninsula	2003	1,083.9	742.3	693.6	48.7	68.5	6.6	64.0
	2004	1,094.4	746.8	694.0	52.8	68.2	7.1	63.4
560 London	2003	486.6	340.1	318.1	22.0	69.9	6.5	65.4
	2004	490.5	352.9	333.9	19.0	71.9	5.4	68.1
570 Windsor-Sarnia	2003	514.3	335.2	312.0	23.2	65.2	6.9	60.7
	2004	520.0	342.6	312.5	30.0	65.9	8.8	60.1

Table 16**Labour force characteristics by economic region¹ (in thousands), unadjusted, 3 month moving average ending in July 2003 and July 2004 - Continued**

	July	Population	Labour force			Participation rate	Unemployment rate	Employment rate
			Labour force	Employment	Unemployment			
Ontario - Continued								
580 Stratford-Bruce Peninsula	2003	236.4	160.5	151.5	9.0	67.9	5.6	64.1
	2004	237.4	171.5	164.7	6.8	72.2	4.0	69.4
590 Northeast	2003	453.6	281.7	258.9	22.9	62.1	8.1	57.1
	2004	449.9	282.0	258.9	23.1	62.7	8.2	57.5
595 Northwest	2003	179.0	129.3	121.2	8.1	72.2	6.3	67.7
	2004	177.5	122.6	113.5	9.1	69.1	7.4	63.9
Manitoba								
	2003	867.7	605.9	578.8	27.2	69.8	4.5	66.7
	2004	877.1	613.8	581.9	31.9	70.0	5.2	66.3
610 Southeast	2003	70.6	52.0	50.2	1.9	73.7	3.7	71.1
	2004	72.1	52.8	50.3	2.5	73.2	4.7	69.8
620 South Central	2003	41.0	27.6	26.6	1.0	67.3	3.6	64.9
	2004	41.8	29.5	28.6	0.9	70.6	3.1	68.4
630 Southwest	2003	82.1	55.9	54.4	1.5	68.1	2.7	66.3
	2004	82.1	56.1	54.0	2.0	68.3	3.6	65.8
640 North Central	2003	34.7	23.8	22.8	1.0	68.6	4.2	65.7
	2004	34.9	23.0	21.9	1.1	65.9	4.8	62.8
650 Winnipeg	2003	503.4	357.3	340.1	17.3	71.0	4.8	67.6
	2004	509.4	361.4	340.5	21.0	70.9	5.8	66.8
660 Interlake	2003	68.5	46.3	44.3	2.0	67.6	4.3	64.7
	2004	69.9	47.9	45.9	2.0	68.5	4.2	65.7
670 and 680 Parklands and North	2003	67.3	43.0	40.4	2.5	63.9	5.8	60.0
	2004	66.9	43.1	40.7	2.4	64.4	5.6	60.8
Saskatchewan								
	2003	755.9	527.3	498.5	28.8	69.8	5.5	65.9
	2004	757.7	526.3	500.1	26.2	69.5	5.0	66.0
710 Regina-Moose Mountain	2003	216.1	154.8	146.7	8.1	71.6	5.2	67.9
	2004	216.6	155.4	148.9	6.6	71.7	4.2	68.7
720 Swift Current-Moose Jaw	2003	83.5	58.1	55.6	2.5	69.6	4.3	66.6
	2004	83.0	54.2	51.8	2.4	65.3	4.4	62.4
730 Saskatoon-Biggar	2003	227.7	165.5	156.8	8.7	72.7	5.3	68.9
	2004	229.4	163.5	154.4	9.1	71.3	5.6	67.3
740 Yorkton-Melville	2003	69.0	40.9	39.1	1.8	59.3	4.4	56.7
	2004	68.5	44.4	42.9	1.5	64.8	3.4	62.6
750 and 760 Prince Albert and Northern	2003	159.6	107.9	100.3	7.6	67.6	7.0	62.8
	2004	160.1	108.8	102.2	6.7	68.0	6.2	63.8
Alberta								
	2003	2,471.0	1,840.9	1,746.3	94.6	74.5	5.1	70.7
	2004	2,516.4	1,858.9	1,774.9	83.9	73.9	4.5	70.5
810 Lethbridge-Medicine Hat	2003	193.4	139.4	132.5	6.9	72.1	4.9	68.5
	2004	196.4	139.5	133.6	5.9	71.0	4.2	68.0
820 Camrose-Drumheller	2003	144.1	101.2	97.3	3.9	70.2	3.9	67.5
	2004	145.4	105.0	102.4	2.6	72.2	2.5	70.4
830 Calgary	2003	890.4	676.2	643.0	33.2	75.9	4.9	72.2
	2004	912.5	694.3	661.0	33.3	76.1	4.8	72.4
840 Banff-Jasper-Rocky Mountain House	2003	64.6	46.3	43.9	2.4	71.7	5.2	68.0
	2004	64.7	46.6	45.1	1.5	72.0	3.2	69.7

Table 16**Labour force characteristics by economic region¹ (in thousands), unadjusted, 3 month moving average ending in July 2003 and July 2004 - Concluded**

	July	Population	Labour force			Participation rate	Unemployment rate	Employment rate
			Labour force	Employment	Unemployment			
Alberta - Continued								
850 Red Deer	2003	123.6	93.3	87.6	5.7	75.5	6.1	70.9
	2004	126.5	92.4	87.2	5.2	73.0	5.6	68.9
860 Edmonton	2003	806.2	593.3	562.3	31.0	73.6	5.2	69.7
	2004	818.4	595.5	569.0	26.5	72.8	4.5	69.5
870 Athabasca-Grande Prairie-Peace River	2003	170.9	125.7	117.9	7.8	73.6	6.2	69.0
	2004	172.7	123.3	116.8	6.5	71.4	5.3	67.6
880 Wood Buffalo-Cold Lake	2003	77.9	65.4	61.6	3.8	84.0	5.8	79.1
	2004	79.8	62.3	59.8	2.5	78.1	4.0	74.9
British Columbia								
	2003	3,364.0	2,223.2	2,038.0	185.3	66.1	8.3	60.6
	2004	3,415.0	2,266.2	2,098.8	167.4	66.4	7.4	61.5
910 Vancouver Island and Coast	2003	572.8	343.7	314.4	29.3	60.0	8.5	54.9
	2004	578.6	362.0	332.8	29.2	62.6	8.1	57.5
920 Lower Mainland-Southwest	2003	2,017.2	1,364.3	1,259.8	104.5	67.6	7.7	62.5
	2004	2,059.3	1,405.0	1,307.4	97.6	68.2	6.9	63.5
930 Thompson-Okanagan	2003	393.9	250.2	228.1	22.1	63.5	8.8	57.9
	2004	398.4	245.0	228.4	16.6	61.5	6.8	57.3
940 Kootenay	2003	125.2	80.9	71.9	9.0	64.6	11.1	57.4
	2004	125.5	75.0	68.9	6.1	59.8	8.1	54.9
950 Cariboo	2003	134.1	94.5	83.1	11.4	70.5	12.1	62.0
	2004	133.3	94.5	86.2	8.3	70.9	8.8	64.7
960 and 970 North Coast and Nechako	2003	73.1	53.4	47.2	6.2	73.1	11.6	64.6
	2004	72.2	50.0	43.5	6.5	69.3	13.0	60.2
980 Northeast	2003	47.7	36.2	33.6	2.6	75.9	7.2	70.4
	2004	47.7	34.6	31.6	3.1	72.5	9.0	66.2

¹ For geographic descriptions of economic regions, refer to the Guide to the Labour Force Survey (catalogue number 71-543-GIE).
Related CANSIM table 282-0054

Table 17

Average usual hours and wages of employees by selected characteristics, Canada (in thousands), unadjusted

	Employees				Full-time			Part-time		
	Number	Average weekly hours	Average weekly wages	Average hourly wages	Number	Average weekly hours	Average weekly wages	Number	Average weekly hours	Average weekly wages
			\$	\$			\$			\$
July 2004										
15 years and over	13,891.8	36.2	678.57	18.24	11,715.1	39.5	757.97	2,176.7	18.6	251.23
15 to 24 years	2,709.2	31.8	341.18	10.29	1,840.9	38.7	431.23	868.4	17.3	150.29
25 years and over	11,182.5	37.3	760.31	20.16	9,874.3	39.7	818.88	1,308.3	19.4	318.23
Men	7,165.1	38.8	781.34	19.80	6,555.3	40.8	833.36	609.8	17.9	222.13
Women	6,726.7	33.5	569.10	16.57	5,159.9	37.9	662.18	1,566.9	18.8	262.56
Union coverage										
Union coverage	4,246.0	36.5	793.82	21.56	3,729.8	38.8	850.64	516.2	20.1	383.31
No union coverage	9,645.8	36.1	627.83	16.77	7,985.3	39.9	714.68	1,660.5	18.1	210.17
Job permanency										
Permanent	11,745.9	36.8	720.10	19.13	10,196.0	39.5	788.22	1,549.9	19.2	271.98
Temporary	2,145.9	33.0	451.25	13.33	1,519.1	39.6	554.94	626.8	16.9	199.92
Occupation										
Management	967.0	40.1	1,175.92	29.47	936.7	40.7	1,200.83	30.2	20.0	404.19
Business, finance and administrative	2,726.7	35.5	631.75	17.55	2,351.3	38.2	688.02	375.4	18.6	279.32
Natural and applied sciences	938.1	38.8	1,007.18	26.03	908.6	39.4	1,024.02	29.6	19.8	489.99
Health	800.1	33.2	742.53	22.22	596.6	37.5	843.72	203.4	20.7	445.78
Social science, education, government service and religion	939.1	35.1	898.94	25.65	781.8	38.5	982.61	157.3	18.7	483.19
Art, culture, recreation and sport	322.6	35.7	629.75	17.40	270.8	39.3	711.10	51.9	16.4	205.12
Sales and service	3,644.0	32.0	413.49	12.19	2,492.6	38.4	524.60	1,151.4	18.3	172.92
Trades, transport and equipment operators	1,962.2	40.8	742.74	18.13	1,867.4	41.9	767.82	94.9	18.8	249.06
Occupations unique to primary industry	367.1	42.0	608.52	14.13	332.5	44.7	655.75	34.7	16.3	155.40
Occupations unique to processing, manufacturing and utilities	1,224.9	39.5	647.39	16.24	1,176.9	40.3	665.41	47.9	18.7	204.78
July 2003										
15 years and over	13,639.7	36.3	662.42	17.78	11,511.0	39.6	740.08	2,128.6	18.4	242.41
15 to 24 years	2,643.3	31.9	337.72	10.17	1,793.2	38.8	426.18	850.2	17.3	151.13
25 years and over	10,996.3	37.3	740.47	19.61	9,717.9	39.7	798.01	1,278.5	19.1	303.11
Men	7,070.9	38.8	766.21	19.41	6,468.0	40.8	817.34	602.8	17.6	217.63
Women	6,568.8	33.5	550.69	16.03	5,043.0	38.0	641.00	1,525.8	18.7	252.20
Union coverage										
Union coverage	4,246.0	36.7	771.24	20.90	3,736.4	38.9	825.54	509.6	20.0	373.14
No union coverage	9,393.6	36.1	613.23	16.37	7,774.7	39.9	699.01	1,619.0	17.9	201.26
Job permanency										
Permanent	11,538.8	36.9	702.73	18.66	10,004.0	39.6	770.24	1,534.8	19.1	262.72
Temporary	2,100.9	33.2	440.97	12.94	1,507.1	39.7	539.89	593.8	16.7	189.92
Occupation										
Management	883.4	40.4	1,150.23	28.52	859.4	41.0	1,171.21	24.0	19.3	397.39
Business, finance and administrative	2,587.8	35.4	615.43	17.11	2,216.4	38.2	674.96	371.4	18.2	260.20
Natural and applied sciences	950.3	38.5	966.40	25.16	917.0	39.2	984.47	33.3	19.3	468.20
Health	772.1	33.3	708.14	21.36	567.7	37.7	804.51	204.5	20.8	440.58
Social science, education, government service and religion	947.6	35.5	861.06	24.30	809.8	38.3	929.26	137.9	18.7	460.48
Art, culture, recreation and sport	346.1	34.3	582.98	16.81	276.2	39.0	679.24	69.9	15.8	202.33
Sales and service	3,595.0	32.3	417.86	12.21	2,485.9	38.6	528.07	1,109.1	18.3	170.83
Trades, transport and equipment operators	1,933.8	40.6	731.68	17.89	1,832.0	41.9	759.57	101.8	17.8	230.05
Occupations unique to primary industry	352.8	42.4	615.37	14.20	316.5	45.2	667.58	36.3	17.4	159.96
Occupations unique to processing, manufacturing and utilities	1,270.7	39.5	636.90	15.99	1,230.1	40.3	651.52	40.6	16.9	193.84

Related CANSIM tables 282-0023, 282-0069, 282-0073

Table 18

Regional unemployment rates used by the Employment Insurance Program¹, seasonally adjusted, 3 month moving average

Region	Effective from August 8, 2004 to September 11, 2004	Region	Effective from August 8, 2004 to September 11, 2004
	Unemployment rate		Unemployment rate
	%		%
Newfoundland and Labrador		Ontario - Continued	
01. St. John's	9.6	30. London	4.7
02. Newfoundland and Labrador	19.6	31. Niagara	7.9
Prince Edward Island		32. Windsor	8.8
03. Prince Edward Island	12.0	33. Kitchener	5.7
Nova Scotia		34. Huron	9.2
04. Eastern Nova Scotia	14.9	35. South Central Ontario	4.9
05. Western Nova Scotia	10.1	36. Sudbury	8.7
06. Halifax	5.9	37. Thunder Bay	9.1
New Brunswick		38. Northern Ontario	12.5
07. Fredericton-Moncton-Saint John	7.6	Manitoba	
08. Madawaska-Charlotte ²	11.6	39. Winnipeg	5.6
09. Restigouche-Albert	15.9	40. Southern Manitoba	6.2
Quebec		41. Northern Manitoba	26.7
10. Gaspésie-Îles-de-la-Madeleine	21.5	Saskatchewan	
11. Québec	5.4	42. Regina	4.6
12. Trois-Rivières	11.3	43. Saskatoon	6.1
13. South Central Quebec	5.6	44. Southern Saskatchewan	6.6
14. Sherbrooke	6.3	45. Northern Saskatchewan	13.9
15. Montérégie	7.3	Alberta	
16. Montréal	8.0	46. Calgary	5.0
17. Central Quebec	8.9	47. Edmonton	4.4
18. Northwestern Quebec	15.9	48. Northern Alberta	9.7
19. Bas-Saint-Laurent-Côte-Nord ³	13.6	49. Southern Alberta	5.9
20. Hull	6.1	British Columbia	
21. Chicoutimi-Jonquière	10.4	50. Southern Interior British Columbia	8.4
Ontario		51. Abbotsford	6.8
22. Ottawa	7.0	52. Vancouver	7.4
23. Eastern Ontario	7.4	53. Victoria	5.8
24. Kingston	7.1	54. Southern Coastal British Columbia	11.3
25. Central Ontario	5.2	55. Northern British Columbia	13.8
26. Oshawa	4.8	Territories	
27. Toronto	7.5	56. Yukon ⁴	25.0
28. Hamilton	6.3	57. Northwest Territories ⁴	25.0
29. St. Catharines	8.4	58. Nunavut ⁴	25.0

¹ The boundaries of these regions are determined by Human Resources and Skills Development Canada (HRSDC). For geographic descriptions and maps of employment insurance regions, see the HRSDC website: <http://www14.hrdc-drhc.gc.ca/ei-ae/canadaei.htm>.

² This unemployment rate has been determined using a transition formula prescribed in the EI Regulations. For further information, see: http://www.hrsdc.gc.ca/en/cs/comm/news/2000/000913a_e.shtml.

³ This unemployment rate has been determined using a transition formula prescribed in the EI Regulations. For further information, see: http://www.hrsdc.gc.ca/en/cs/comm/news/2000/000913b_e.shtml.

⁴ This rate is provided by Human Resources and Skills Development Canada.

Table 19

Students and other persons aged 15 to 24 by detailed age groups, unadjusted data (in thousands)

	July 2002	July 2003	July 2004	S.E. ¹	Change from		% change from	
					last year	two years ago	last year	two years ago
Students²								
15 to 24 years								
Population	2,241.8	2,281.4	2,275.6	26.5	-5.8	33.8	-0.3	1.5
Labour force	1,560.2	1,587.4	1,590.9	27.3	3.5	30.7	0.2	2.0
Employment	1,308.1	1,335.0	1,329.6	25.5	-5.4	21.5	-0.4	1.6
Full-time employment	667.4	700.5	688.6	18.0	-11.9	21.2	-1.7	3.2
Part-time employment	640.6	634.5	641.0	20.9	6.5	0.4	1.0	0.1
Unemployment	252.1	252.4	261.3	12.7	8.9	9.2	3.5	3.6
Participation rate	69.6	69.6	69.9	0.9	0.3	0.3
Unemployment rate	16.2	15.9	16.4	0.9	0.5	0.2
Employment rate	58.4	58.5	58.4	0.9	-0.1	0.0
Part-time rate	49.0	47.5	48.2	1.3	0.7	-0.8
15 to 16 years								
Population	779.3	770.8	783.1	4.7	12.3	3.8	1.6	0.5
Labour force	399.6	382.6	390.6	11.4	8.0	-9.0	2.1	-2.3
Employment	293.5	277.0	279.7	10.6	2.7	-13.8	1.0	-4.7
Full-time employment	92.1	69.8	79.9	4.2	10.1	-12.2	14.5	-13.2
Part-time employment	201.4	207.1	199.9	10.2	-7.2	-1.5	-3.5	-0.7
Unemployment	106.1	105.6	110.9	7.0	5.3	4.8	5.0	4.5
Participation rate	51.3	49.6	49.9	1.5	0.3	-1.4
Unemployment rate	26.6	27.6	28.4	2.0	0.8	1.8
Employment rate	37.7	35.9	35.7	1.4	-0.2	-2.0
Part-time rate	68.6	74.8	71.5	1.5	-3.3	2.8
17 to 19 years								
Population	832.5	838.4	844.4	14.8	6.0	11.9	0.7	1.4
Labour force	655.0	656.8	659.8	15.7	3.0	4.8	0.5	0.7
Employment	549.6	553.0	551.0	15.1	-2.0	1.4	-0.4	0.3
Full-time employment	253.9	275.7	275.8	10.0	0.1	21.9	0.0	8.6
Part-time employment	295.8	277.3	275.1	13.5	-2.2	-20.7	-0.8	-7.0
Unemployment	105.4	103.8	108.8	8.0	5.0	3.4	4.8	3.2
Participation rate	78.7	78.3	78.1	1.4	-0.2	-0.6
Unemployment rate	16.1	15.8	16.5	1.4	0.7	0.4
Employment rate	66.0	66.0	65.3	1.5	-0.7	-0.7
Part-time rate	53.8	50.1	49.9	1.8	-0.2	-3.9
20 to 24 years								
Population	630.0	672.2	648.0	20.6	-24.2	18.0	-3.6	2.9
Labour force	505.6	548.1	540.6	18.8	-7.5	35.0	-1.4	6.9
Employment	464.9	505.0	498.9	17.8	-6.1	34.0	-1.2	7.3
Full-time employment	321.5	355.0	332.9	14.2	-22.1	11.4	-6.2	3.5
Part-time employment	143.5	150.0	166.0	12.5	16.0	22.5	10.7	15.7
Unemployment	40.6	43.0	41.7	6.8	-1.3	1.1	-3.0	2.7
Participation rate	80.3	81.5	83.4	1.7	1.9	3.1
Unemployment rate	8.0	7.8	7.7	1.4	-0.1	-0.3
Employment rate	73.8	75.1	77.0	1.9	1.9	3.2
Part-time rate	30.9	29.7	33.3	2.3	3.6	2.4
Other persons aged 15 to 24³								
Population	1,890.6	1,885.0	1,933.0	22.2	48.0	42.4	2.5	2.2
Labour force	1,639.3	1,667.3	1,686.1	24.1	18.8	46.8	1.1	2.9
Employment	1,441.0	1,438.4	1,489.3	23.4	50.9	48.3	3.5	3.4
Full-time employment	1,186.0	1,160.2	1,199.9	24.4	39.7	13.9	3.4	1.2
Part-time employment	255.0	278.1	289.4	19.0	11.3	34.4	4.1	13.5
Unemployment	198.3	228.9	196.8	14.8	-32.1	-1.5	-14.0	-0.8
Participation rate	86.7	88.5	87.2	0.6	-1.2	0.5
Unemployment rate	12.1	13.7	11.7	0.6	-2.1	-0.4
Employment rate	76.2	76.3	77.0	0.7	0.7	0.8
Part-time rate	17.7	19.3	19.4	0.9	0.1	1.7

¹ Average standard error of change over the year (see "Sampling Errors" in Data Quality for further explanations).

² Students are persons aged 15 to 24 who attended school full-time in March and who are planning to return to school in the fall. Other persons are all other youths aged 15 to 24 who are not included in the student population.

³ Other persons are all other youths aged 15 to 24 who are not included in the student population.

Related CANSIM table 282-0006

Table 20

Students and other persons aged 15 to 24 by province, unadjusted data (in thousands)

	July	Population	Labour force					Participation rate	Unemployment rate	Employment rate
			Labour force	Employment	Full-time employment	Part-time employment	Unemployment			
Students¹										
Newfoundland and Labrador	2003	37.7	26.8	21.1	13.8	7.3	5.8	71.1	21.6	56.0
	2004	40.4	29.5	24.3	16.0	8.3	5.3	73.0	18.0	60.1
Prince Edward Island	2003	11.1	9.9	9.5	6.8	2.7	0.5	89.2	5.1	85.6
	2004	10.8	9.2	8.0	5.6	2.4	1.2	85.2	13.0	74.1
Nova Scotia	2003	65.0	49.0	40.1	22.5	17.6	8.9	75.4	18.2	61.7
	2004	69.2	52.8	44.6	22.3	22.3	8.2	76.3	15.5	64.5
New Brunswick	2003	50.6	39.1	33.5	22.1	11.5	5.6	77.3	14.3	66.2
	2004	50.5	37.7	33.3	20.6	12.8	4.3	74.7	11.4	65.9
Quebec	2003	534.9	386.9	336.5	206.1	130.4	50.4	72.3	13.0	62.9
	2004	510.7	363.6	304.5	178.0	126.5	59.1	71.2	16.3	59.6
Ontario	2003	914.8	636.7	521.9	243.3	278.6	114.8	69.6	18.0	57.1
	2004	961.1	690.2	567.9	283.5	284.4	122.3	71.8	17.7	59.1
Manitoba	2003	71.6	51.7	46.3	25.2	21.0	5.4	72.2	10.4	64.7
	2004	75.5	53.3	45.1	25.6	19.5	8.2	70.6	15.4	59.7
Saskatchewan	2003	71.9	49.5	44.1	20.6	23.4	5.5	68.8	11.1	61.3
	2004	68.8	49.5	42.2	22.5	19.7	7.3	71.9	14.7	61.3
Alberta	2003	232.9	176.3	155.4	86.5	68.8	20.9	75.7	11.9	66.7
	2004	212.5	144.4	129.8	66.8	63.0	14.5	68.0	10.0	61.1
British Columbia	2003	291.0	161.3	126.6	53.5	73.1	34.7	55.4	21.5	43.5
	2004	276.1	160.7	129.7	47.7	82.0	30.9	58.2	19.2	47.0
Other persons aged 15-24²										
Newfoundland and Labrador	2003	35.4	29.6	23.4	17.3	6.1	6.2	83.6	20.9	66.1
	2004	30.9	26.0	20.9	17.3	3.6	5.1	84.1	19.6	67.6
Prince Edward Island	2003	9.1	8.4	7.1	6.3	0.8	1.2	92.3	14.3	78.0
	2004	9.4	8.5	6.9	6.1	0.9	1.5	90.4	17.6	73.4
Nova Scotia	2003	58.7	52.8	43.4	35.0	8.5	9.5	89.9	18.0	73.9
	2004	55.2	49.7	42.7	35.8	7.0	7.0	90.0	14.1	77.4
New Brunswick	2003	46.9	39.9	33.7	28.6	5.1	6.1	85.1	15.3	71.9
	2004	46.7	40.4	35.6	31.2	4.3	4.9	86.5	12.1	76.2
Quebec	2003	416.1	374.9	324.1	270.7	53.5	50.7	90.1	13.5	77.9
	2004	437.8	383.6	341.0	283.6	57.3	42.8	87.6	11.2	77.9
Ontario	2003	684.2	598.4	507.4	410.7	96.7	90.9	87.5	15.2	74.2
	2004	669.2	593.3	514.6	408.3	106.3	78.7	88.7	13.3	76.9
Manitoba	2003	78.5	69.3	63.3	51.3	12.0	6.0	88.3	8.7	80.6
	2004	77.0	65.9	60.4	47.4	13.0	5.5	85.6	8.3	78.4
Saskatchewan	2003	66.6	58.9	51.6	42.5	9.1	7.3	88.4	12.4	77.5
	2004	69.6	60.6	54.9	44.9	10.0	5.7	87.1	9.4	78.9
Alberta	2003	231.1	205.0	188.1	159.5	28.7	16.8	88.7	8.2	81.4
	2004	256.8	220.8	205.4	170.9	34.5	15.4	86.0	7.0	80.0
British Columbia	2003	258.3	230.1	196.1	138.3	57.7	34.1	89.1	14.8	75.9
	2004	280.4	237.2	206.9	154.3	52.5	30.3	84.6	12.8	73.8

¹ Students are persons aged 15-24 who attended school full-time in March and who are planning to return to school in the fall. Other persons are all other youths aged 15-24 who are not included in the student population.

² Other persons are all other youths aged 15 to 24 who are not included in the student population.
Related CANSIM table 282-0006

Data Quality

About the Labour Force Survey

The statistics contained in this report are based on information obtained through a sample survey of 53,000 representative households across the country. The Labour Force Survey, started in November 1945, was taken at quarterly intervals until November 1952. It has been carried out monthly since then. The information generated by the survey has expanded considerably over the years with a major redesign of the survey content in 1976 and again in 1997, and provides a rich and detailed picture of the Canadian labour market.

The sample used in the Labour Force Survey has been designed to represent all persons in the population 15 years of age and over residing in the provinces of Canada, with the exception of the following: persons living on Indian reserves, full-time members of the armed forces and people living in institutions (for example, inmates of penal institutions and patients in hospitals or nursing homes who have resided in the institution for more than six months). Monthly estimates of employment, unemployment and persons not in the labour force refer to the specific week covered by the survey each month, normally the week containing the 15th day.

Definitions and explanations

The **labour force** is composed of those members of the civilian non-institutional population 15 years of age and over who, during the reference week, were employed or unemployed.

Employed persons are those who, during the reference week:

- a) did any work at all
- b) had a job but were not at work

A person is considered to be **full-time** if his/her usual hours at the main job are greater than 29 hours per week. When the number of hours worked at the main job is usually less than 30 hours per week then he/she is considered to be **part-time**.

Unemployed persons are those who, during the reference week:

- a) were without work, had actively looked for work in the past four weeks (ending with reference week), and were available for work;
- b) had not actively looked for work in the past four weeks but were on temporary layoff and were available for work;
- c) had not actively looked for work in the past four weeks but had a new job to start in four weeks or less from the reference week, and were available for work.

Persons in the civilian non-institutional population 15 years of age and over who, during the reference week, were neither employed nor unemployed are classified as **not in the labour force**.

The **unemployment rate** represents the number of unemployed persons expressed as a percentage of the labour force. The unemployment rate for a particular group (age, sex, etc.) is the number unemployed in that group expressed as a percentage of the labour force for that group.

The **participation rate** represents the labour force expressed as a percentage of the population 15 years of age and over. The participation rate for a particular group (age, sex, etc.) is the labour force in that group expressed as a percentage of the population for that group.

The **employment rate (formerly the employment/population ratio)** represents the number of persons employed expressed as a percentage of the population 15 years of age and over. The employment rate for a particular group (age, sex, etc.) is the number employed in that group expressed as a percentage of the population for that group.

The **part-time rate** represents the number of persons employed part-time expressed as a percentage of the employed. The part-time rate for a particular group (age, sex, etc.) is the number employed part-time in that group expressed as a percentage of the employed for that group.

All geographic regions are based on the 1996 Census boundaries.

Seasonal adjustment

Fluctuations in economic time series are caused by seasonal, cyclical and irregular movements. A seasonally adjusted series is one from which seasonal movements have been eliminated. Seasonal movements are defined as those which are caused by regular annual events such as climate, holidays, vacation periods and cycles related to crops, production and retail sales associated with Christmas and Easter. The seasonally adjusted series contains irregular as well as longer-term cyclical fluctuations. The seasonally adjusted series are revised each year to take into account current data and to generate new forecast factors for the next twelve months. The data are therefore subject to slight revisions in future issues of this publication.

Sampling error

Estimates in this publication are based on the Labour Force Survey, a monthly survey of approximately 53,000 households across Canada. Because they are based on a sample survey, the estimates are subject to sampling error. Changes in the level of any estimates between two months can be the result of a true change or sampling variability. In most tables in this publication an indicator of the sampling error is provided. Two thirds of the time, a change greater than the sampling error indicates a real change. Movements in estimates that are smaller than the sampling error are less likely to reflect a real change and more likely to be due to sampling variability. While the above is true for monthly movements, one can have more confidence in a series of consecutive movements in the same direction, even though some of the monthly movements may be smaller than the sampling error.

For more detailed information about the Labour Force Survey, see the following documents:

- *Guide to the Labour Force Survey (71-543-GIE)*
- *Methodology of the Canadian Labour Force Survey (71-526-XPB)*