

Catalogue no. 66-201-X

# International Travel

2008



Statistics  
Canada

Statistique  
Canada

---

Canada

## How to obtain more information

For information about this product or the wide range of services and data available from Statistics Canada, visit our website at [www.statcan.gc.ca](http://www.statcan.gc.ca), e-mail us at [infostats@statcan.gc.ca](mailto:infostats@statcan.gc.ca), or telephone us, Monday to Friday from 8:30 a.m. to 4:30 p.m., at the following numbers:

### Statistics Canada's National Contact Centre

Toll-free telephone (Canada and the United States):

Inquiries line	1-800-263-1136
National telecommunications device for the hearing impaired	1-800-363-7629
Fax line	1-877-287-4369

Local or international calls:

Inquiries line	1-613-951-8116
Fax line	1-613-951-0581

### Depository Services Program

Inquiries line	1-800-635-7943
Fax line	1-800-565-7757

## To access this product

This product, Catalogue no. 66-201-X, is available free in electronic format. To obtain a single issue, visit our website at [www.statcan.gc.ca](http://www.statcan.gc.ca) and select "Publications."

## Standards of service to the public

Statistics Canada is committed to serving its clients in a prompt, reliable and courteous manner. To this end, Statistics Canada has developed *standards of service* that its employees observe. To obtain a copy of these service standards, please contact Statistics Canada toll-free at 1-800-263-1136. The service standards are also published on [www.statcan.gc.ca](http://www.statcan.gc.ca) under "About us" > "Providing services to Canadians."

# International Travel

2008

Published by authority of the Minister responsible for Statistics Canada

© Minister of Industry, 2009

All rights reserved. The content of this electronic publication may be reproduced, in whole or in part, and by any means, without further permission from Statistics Canada, subject to the following conditions: that it be done solely for the purposes of private study, research, criticism, review or newspaper summary, and/or for non-commercial purposes; and that Statistics Canada be fully acknowledged as follows: Source (or "Adapted from", if appropriate): Statistics Canada, year of publication, name of product, catalogue number, volume and issue numbers, reference period and page(s). Otherwise, no part of this publication may be reproduced, stored in a retrieval system or transmitted in any form, by any means—electronic, mechanical or photocopy—or for any purposes without prior written permission of Licensing Services, Client Services Division, Statistics Canada, Ottawa, Ontario, Canada K1A 0T6.

December 2009

Catalogue no. 66-201-X

ISSN 1704-8249

Frequency: Annual

Ottawa

Cette publication est également disponible en français.

---

**Note of appreciation**

*Canada owes the success of its statistical system to a long-standing partnership between Statistics Canada, the citizens of Canada, its businesses, governments and other institutions. Accurate and timely statistical information could not be produced without their continued cooperation and goodwill.*

# User information

---

## Symbols

The following standard symbols are used in Statistics Canada publications:

- . not available for any reference period
- .. not available for a specific reference period
- ... not applicable
- 0 true zero or a value rounded to zero
- 0<sup>s</sup> value rounded to 0 (zero) where there is a meaningful distinction between true zero and the value that was rounded
- p preliminary
- r revised
- x suppressed to meet the confidentiality requirements of the *Statistics Act*
- E use with caution
- F too unreliable to be published

## Note

Data contained in charts and tables of this publication may not add due to rounding.

## Acknowledgements

**This publication was prepared under the direction of:**

**François Nault**, Director, Tourism and the Centre for Education Statistics Division

**Richard Vincent**, Assistant Director, Tourism and the Centre for Education Statistics Division

**Lotfi Chahdi**, Survey Manager, International Travel Survey

**Éric Desjardins**, Senior Analyst, International Travel Survey

We wish to acknowledge those persons within Statistics Canada whose advice and diligent assistance facilitated the progress and completion of this report.

Special thanks go to the staff of the International Travel Section of the Tourism and the Centre for Education Statistics Division, notably Noël Le Blanc and Cindy Sceviour. Thanks also to the staff of the Household Survey Methods Division, notably Kathleen Emberson, Dissemination Division and the Composition Unit.

We would like to thank the Canadian Tourism Commission for helping fund the International Travel Survey.

# Table of contents

---

<b>Highlights</b>	<b>6</b>
<b>Analysis</b>	<b>7</b>
Overview of trends 2008	7
United States market	10
Overseas market	12
Outbound market	12
International travel account	15
<b>Related products</b>	<b>17</b>
<b>Statistical tables</b>	
1 Estimates of the balance of payments in the travel account between Canada and other countries	20
2 Components of the receipts and payments in the travel account	21
3 Receipts and payments in the travel account related to Canada's imports and exports (balance of payments basis)	22
3-1 Receipts	22
3-2 Payments	22
4 International travel accounts of selected countries	23
5 Person-trips by international travellers entering or returning to Canada, by duration	24
6 Person-trips by United States residents entering Canada, by type of transportation	25
7 Person-trips by residents of countries other than the United States entering Canada, by type of entry	26
8 Person-trips by Canadian residents returning from the United States, by type of transportation	27
9 Overnight travel abroad by Canadian residents, related to selected economic and demographic series	28
10 Person-trips, person-nights and expenditures of non-resident travellers entering Canada and resident travellers returning to Canada	29
11 Person-trips, person-nights and expenditures of United States residents entering Canada and staying one or more nights, by selected trip characteristics, 2008	30
12 Trip characteristics of United States residents entering Canada and staying one or more nights in province visited, 2008	31
13 Person-trips by residents of the United States entering Canada and staying one or more nights, by selected trip characteristics and purpose of trip, 2008	32
14 Person-trips by residents of countries other than the United States entering Canada, by country of residence and type of entry, 2008	33
15 Person-trips by residents of countries other than the United States entering Canada, by country of residence and length of stay	34

**Table of contents – continued**

16	Person-trips, person-nights and expenditures of residents of countries other than the United States entering Canada and staying one or more nights, by selected trip characteristics, 2008	35
17	Trip characteristics of residents of countries other than the United States entering Canada and staying one or more nights	36
18	Trip characteristics of residents of countries other than the United States entering Canada and staying one or more nights in province visited, 2008	37
19	Person-trips by residents of countries other than the United States entering Canada and staying one or more nights, by selected trip characteristics and purpose of trip	38
20	Trip characteristics of Canadian residents returning after a stay of one or more nights abroad	39
21	Person-trips, person-nights and expenditures of Canadian residents returning from the United States after a stay of one or more nights, by selected trip characteristics, 2008	40
22	Trip characteristics of Canadian residents returning from the United States, by province of residence, 2008	41
23	Trip characteristics of Canadian residents returning from the United States after a stay of one or more nights	42
23-1	Purpose of trip	42
23-2	Quarter of re-entry	43
23-3	Type of transportation	44
24	Trip characteristics of Canadian residents returning from countries other than the United States after a stay of one or more nights	45
24-1	Purpose of trip	45
24-2	Quarter of re-entry	46
24-3	Province of residence, 2008	47
25	Person-visits, visit-nights and expenditures of Canadian residents returning from the United States, by state, 2008	48
26	Person-trips, person-nights and expenditures of Canadian residents returning from countries other than the United States after a stay of one or more nights, by selected trip characteristics, 2008	49
27	Person-visits, visit-nights and expenditures of Canadian residents in selected countries, 2008	50
 <b>Data quality, concepts and methodology</b>		
	International travel statistics	51
	Description of methods	53
	Definition of terms	61
	Explanatory notes for tables	65
 <b>Appendix</b>		
I	Forms and questionnaires	70

**Table of contents – continued****Charts**

1. Overnight trips to Canada	8
2. Overnight trips by Canadian residents	9
3. Same-day car travel between Canada and the United States	10
4. Canada's international travel deficit	16

# Highlights

---

## International travel in 2008

- International tourist arrivals worldwide increased 2.0% to a record high of 922 million in 2008. This was the fifth consecutive increase in international tourist arrivals. As a result, international tourism receipts increased 1.7% to US\$944 billion.
- Overnight travel from the United States declined for the fourth consecutive year, falling 6.5% to 12.5 million trips, the lowest level since 1993.
- United States residents made 9.1 million same-day car trips to Canada, down 18.5% from 2007. This was the ninth consecutive decline in same-day car travel from the United States.
- Overnight travel from overseas countries reached a high of 4.5 million trips, up 2.1% from 2007. This was the fifth consecutive increase in overseas travel to Canada.
- Canadians made 18.9 million overnight trips to the United States, up 6.5% from 2007 and the most since 1991. This was the fifth consecutive increase in overnight travel south of the border and in that span, it has jumped 49.3%.
- Canadians made 24.0 million same-day car trips to the United States, down 0.7% from 2007. This was the first decline in six years.
- Canadian travel in overseas countries continued its upward trend, with Canadians taking a record 8.1 million overnight trips to countries other than the United States, up 9.7% from the previous high set in 2007.
- Canadians made 1.1 million overnight visits in Mexico, more than any other overseas country and up 10.4% from 2007.
- Canada's international travel deficit hit a high of \$12.6 billion, about \$2.6 billion more than the previous high set in 2007. Canadians spent \$28.7 billion outside the country, up 8.4% from 2007. Inbound travel spending decreased for the fourth consecutive year, slipping 2.1% to \$16.1 billion.

# Analysis

## Overview of trends 2008

### Economic woes not enough to stop upward trend in worldwide international tourism

According to the World Tourism Organization (WTO), international tourism continued its upward trend in 2008, with a record of 922 million tourist arrivals, up 2.0% from 2007. This was the fifth consecutive increase in worldwide international tourist arrivals.

The increase came in the first half of 2008 and was large enough to absorb a second-half decline in tourism demand brought on by the worldwide economic downturn. The WTO has suggested that the tourism sector has been more resistant to the economic downturn than other sectors.

International tourism receipts increased 1.7% to US\$944 billion. Coupled with US\$183 billion in receipts from international passenger transport, the tourism sector accounted for about 30.0% of all service exports worldwide, and 6.0% of overall exports of goods and services.

All regions recorded increases in tourist arrivals, with the Middle East posting the largest gain (+18.1%). Since 2000, tourist arrivals in the Middle East have increased an average of 10.5% annually, making it a leading emerging market. Africa, another emerging market, also fared well in 2008, with increases of 3.7% in international tourist arrivals.

Despite recording a 3.2% decline, France remained the top destination in 2008, with 79.3 million international tourist arrivals, ahead of the United States (58.0 million) and Spain (57.3 million). However, the United States generated the most in terms of international tourism receipts, US\$110.1 billion, about US\$48.5 billion more than Spain. The United States relies more on higher-spending, long-haul travellers, while France, Spain and other European countries attract more short-term visitors. This might explain why the United States is third in tourist arrivals, but first in international tourism receipts.

Like in 2007, Canada ranked 14<sup>th</sup> in international tourist arrivals. In terms of international tourism receipts, Canada ranked 15<sup>th</sup>. Canada was 8<sup>th</sup> in international tourism spending, more than half of which was spent in the United States.

**Text table 1**  
**International tourist arrivals in the five world tourism regions**

	International tourist arrivals		Percentage change 2007 to 2008
	2007	2008	
	millions		percent
Europe	487.9	489.4	0.3
Asia and the Pacific	182.0	184.1	1.2
Americas	142.9	147.0	2.9
Middle East	46.6	55.1	18.2
Africa	45.0	46.7	3.7
<b>World</b>	<b>904.0</b>	<b>922.0</b>	<b>2.0</b>

Source(s): World Tourism Organization.

### Overnight travel from the United States lowest in 15 years

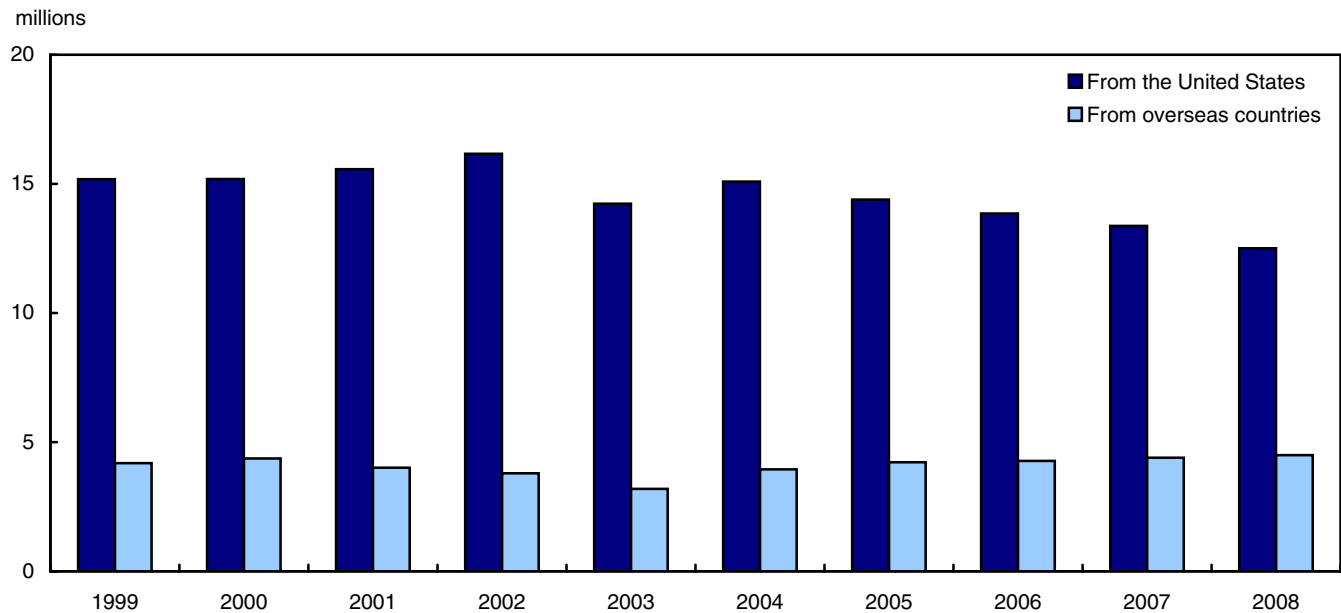
Overnight travel from the United States declined for the fourth consecutive year in 2008, dropping 6.5% to 12.5 million trips, the lowest level since 1993. The economic downturn in the United States likely contributed to the 2008 decline.

Since peaking at 16.2 million trips in 2002, overnight travel from the United States has fallen 22.7%. Various factors such as the Severe Acute Respiratory Syndrome (SARS) crisis in 2003, higher gas prices, an unfavourable exchange rate and the slowing economy may have all contributed to this prolonged decline.

### Travellers from overseas countries visiting Canada more than ever

Overnight travel from overseas countries reached a high of 4.5 million trips, up 2.1% from 2007. This was the fifth consecutive increase in overseas travel to Canada. Since falling 16.0% in 2003, overnight travel from overseas countries has increased 41.0%.

**Chart 1**  
Overnight trips to Canada



### Overnight travel by Canadians to the United States highest since 1991

Canadians made 18.9 million overnight trips to the United States, up 6.5% from 2007 and the most since 1991. This was the fifth consecutive increase in overnight travel south of the border and in that span, overnight travel has jumped 49.3%.

### Canadian travel overseas continues to rise

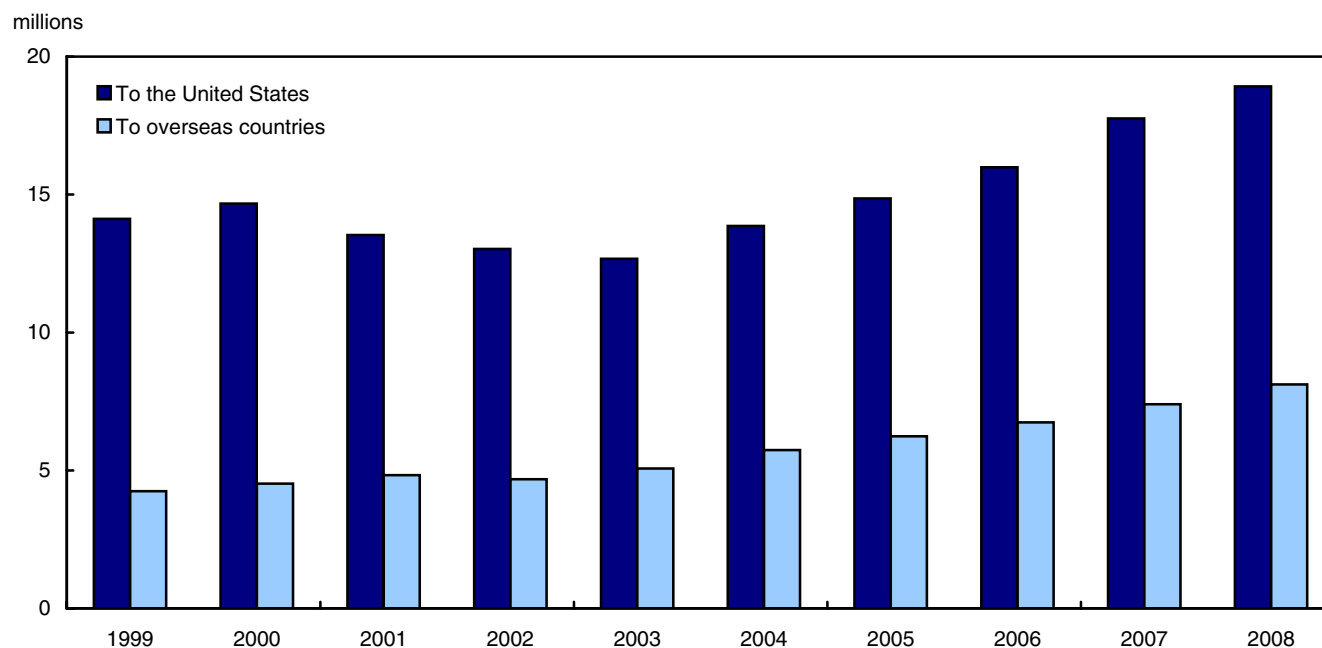
Canadian travel in overseas countries continued its upward trend in 2008, with Canadians taking a record 8.1 million overnight trips, up 9.7% from the previous high set in 2007.

Travel overseas has historically shown steady increases. In fact, it has fallen only twice in the last 20 years: in 1991, as a result of the cross-border shopping phenomena in the United States, and in 2002 following the events of September 11, 2001. Travel overseas even posted an 8.4% increase in 2003, despite the global SARS crisis.

Moreover, the rates at which these steady increases have occurred are fairly significant. Since 2002, overnight travel overseas has increased an average of 9.6% annually and since 1991, the number of overnight trips has nearly tripled.

In 2008, about one in three overnight trips abroad were in overseas countries, compared to one in six in 1988.

**Chart 2**  
**Overnight trips by Canadian residents**



### Same-day car travel from the United States down for ninth consecutive year

United States residents made 9.1 million same-day car trips to Canada, down 18.5% from 2007. This was the ninth consecutive decline in same-day car travel from the United States, and as a result, it has fallen under 10.0 million trips for the first time since record keeping started in 1972.

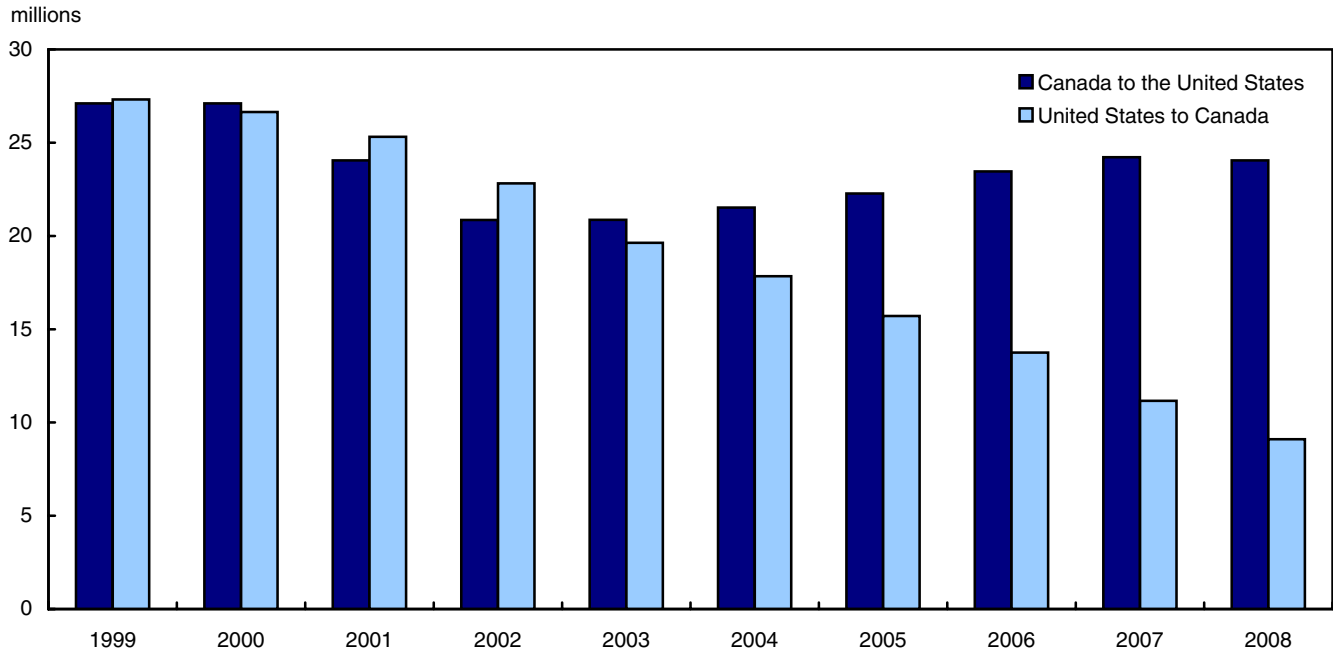
In comparison, same-day car travel from south of the border reached a high of 27.3 million trips in 1999. Many factors may have contributed to the decade-long decline, including enhanced border security subsequent to the events of September 11, 2001, the increase in the price of gasoline, the rising value of the Canadian dollar as well as the more recent economic downturn.

### Same-day car trips by Canadians in the United States remains relatively unchanged

Canadians made 24.0 million same-day car trips to the United States, down 0.7% from 2007.

Same-day car travel south of the border had shown increases the previous five years, increasing 15.3% in that span. The recent upswing pales in comparison to the one that began in 1986, in which same-day car travel from Canada to the United States more than doubled during a five-year span, peaking at 59.1 million trips in 1991.

**Chart 3**  
**Same-day car travel between Canada and the United States**



### United States market

*Note to readers: Data processing methods for United States travellers entering Canada changed in 2009. These changes were made to 2008 data only. As a result, at time of publication, some 2008 data is not yet comparable to previous years' data. For more information on data comparability, please read the "Data quality, concepts and methodology — Description of methods" section of this publication.*

United States travellers made 12.5 million overnight trips to Canada in 2008. On those trips, Americans stayed 50.6 million nights and spent \$6.6 billion. Including same-day travel, United States travellers spent \$7.2 billion in Canada in 2008.

On average, Americans spent \$527 on overnight trips to Canada and stayed 4.1 nights. They spent an average of \$130 per night.

About 76.2% of all overnight trips from the United States were for pleasure purposes. Business travel represented about 15.8% of all overnight trips from the United States.

Pleasure travel includes holidays and vacations, visiting friends and relatives, visiting a second home, cottage or condo and attending events and attractions. Business travel includes attending meetings, conventions, conferences, trade shows and seminars, and participating in other work-related matters.

Car travel accounted for 58.9% of overnight trips from the United States, while plane travel represented 28.7% of those trips. Americans also made 10.1 million same-day trips to Canada, and 90.1% of those were by car.

### New York, Michigan and Washington makes up about one third of United States market

About 34.9% of all overnight trips from the United States were taken by residents of the states of New York, Michigan or Washington. Overnight travel from the state of New York reached 1.8 million trips, followed by Michigan and Washington at 1.3 million trips each. These three states also accounted for 70.2% of all same-day trips into Canada.

Residents of New York State stayed 5.9 million nights in Canada and, in the process, spent \$654 million, both more than any other state.

**Text table 2**  
**Top 15 states of origin for U.S. tourists to Canada, 2008**

	Overnight trips		
	Person-trips	Spending	Person-nights
	thousands	millions of dollars	thousands
New York	1,753	654	5,857
Michigan	1,310	444	3,592
Washington	1,301	456	4,565
California	786	590	4,255
Ohio	578	259	1,963
Massachusetts	569	275	2,218
Pennsylvania	531	283	2,163
New Jersey	448	259	1,905
Illinois	438	279	2,149
Texas	392	313	1,910
Minnesota	382	207	1,624
Florida	367	264	2,167
Oregon	225	143	1,014
Wisconsin	224	132	1,104
Maine	218	84	833

### Ontario most visited province by United States travellers

About half of all overnight trips from the United States included an overnight visit in Ontario in 2008. United States residents made 6.2 million overnight visits to Ontario, almost twice as much as British Columbia, the second most visited province. As a result, overnight travellers from the United States spent \$2.7 billion and stayed 22.8 million nights in Ontario, far more than in any other province.

Almost nine out of 10 overnight trips from the United States included an overnight visit to either Ontario, British Columbia or Quebec.

**Text table 3**  
**Overnight province visits by United States residents, 2008**

	Overnight visits		
	Person-visits	Spending	Visit-nights
	thousands	millions of dollars	thousands
Ontario	6,210	2,661	22,804
British Columbia	3,147	1,567	11,316
Quebec	1,837	1,067	6,893
Alberta	831	589	3,884
New Brunswick	341	92	1,083
Nova Scotia	299	199	1,585
Manitoba	242	135	962
Territories <sup>1</sup>	198	93	681
Saskatchewan	139	81	548
Prince Edward Island	115	52	506
Newfoundland and Labrador	51	46	382

1. Includes Yukon, Northwest Territories and Nunavut.

## Overseas market

Travellers from overseas countries made 4.5 million overnight trips to Canada in 2008, up 2.1% from 2007. On those trips, they stayed 75.4 million nights, about 7.9% more than the previous year, and spent \$6.3 billion, up 4.5%.

On average, travellers from countries other than the United States stayed 16.8 nights on overnight trips in Canada, up from 15.9 nights. Their average spending per trip increased from \$1,373 to \$1,404 while average spending per night dipped slightly from \$86 to \$84.

Pleasure travel, which represented about 3 out of 4 overnight trips from overseas countries, declined 1.3% compared to 2007 while business travel increased 9.3%.

## European countries dominate overnight travel to Canada

In 2008 the three most important overseas markets were from Europe. Travel from the United Kingdom, which fell 6.4%, lead the way with 837,000 overnight trips. Far behind was France and Germany, with the latter replacing Japan as the third most important market outside the United States.

About one in three overnight trips from overseas countries were made by travellers from the United Kingdom, France and Germany. Overall, over half of all trips from overseas countries were made by Europeans.

Among the top 12 overseas markets, Hong Kong posted the largest increase in overnight travel to Canada (+13.2%) while Japan recorded the largest decline (-16.7%).

**Text table 4**  
**Canada's top 12 overseas tourist markets**

	Overnight trips		Percentage change 2007 to 2008
	2007	2008	
	thousands		percent
United Kingdom <sup>1</sup>	894	837	-6.4
France <sup>1</sup>	360	405	12.2
Germany	299	315	5.6
Japan	311	259	-16.7
Mexico	230	257	11.7
Australia	208	219	5.6
South Korea	187	173	-7.8
Mainland China <sup>1</sup>	151	159	5.1
India <sup>1</sup>	120	129	7.5
Hong Kong	111	125	13.2
Netherlands <sup>1</sup>	116	120	3.2
Italy <sup>1</sup>	93	98	5.4

1. Also includes other countries.

## Outbound market

Seven out of 10 overnight trips by Canadians abroad were to the United States in 2008. Most overnight trips to the United States – about 66.5% – were for less than one week. On trips of one week or more, Canadians preferred travelling to overseas destinations.

**Text table 5**  
**Overnight trips by Canadians abroad, 2008**

	Person-trips	
	To the United States	To overseas countries
	thousands	
<b>Length of stay</b>		
1 to 6 nights	12,574	558
7 to 13 nights	4,141	3,840
14 to 20 nights	1,159	2,076
21 nights and over	1,042	1,649
<b>Total</b>	<b>18,915</b>	<b>8,122</b>

Overall, Canadians spent \$24.7 billion on overnight trips abroad in 2008, up 9.3% from 2007. Similarly, Canadians stayed 274 million nights outside the country, about 8.5% more than the previous year.

On average, overnight trips by Canadians in overseas countries were twice as long as those in the United States. As a result, Canadians spent on average, about twice as much on overnight trips to overseas countries than on overnight trips to the United States.

About 79.8% of overnight trips by Canadians outside the country were for pleasure purposes, slightly higher than the previous year. Business travel accounted for 11.7% of outbound trips by Canadians in 2008.

Overnight business travel by Canadians abroad decreased 3.2% in 2008, while pleasure travel increased 9.3%. The drop in business travel can be attributed to a 5.9% decline in business trips to the United States. Business travel overseas actually increased 5.5%.

Almost half of all overnight trips abroad were made by residents of Ontario. Most provinces recorded increases in overnight travel abroad by its residents, except Saskatchewan and Nova Scotia, which declined 2.3% and 0.6% respectively.

### More Canadians travel to the United States

Canadian residents took 18.9 million overnight trips to the United States in 2008, up 6.5% from 2007. Nights spent on trips in the United States increased 12.1% to 147 million. On average, Canadians stayed 7.8 nights on overnight trips, up from 7.4 nights the previous year.

As a result, overnight spending south of the border climbed 11.9% to a high of \$12.9 billion. Average spending on overnight trips increased from \$650 to \$683, while average spending per night remained unchanged at \$88.

### Ten of top-12 states see increase in overnight visits

Overnight visits by Canadian residents to ten of the top-12 states increased in 2008. New York remained the most visited state, with 3.1 million overnight visits, up 3.7% from 2007. Overnight visits to Florida, which ranked second, jumped 15.5% to 2.9 million. Among the top-12 states in terms of overnight visits, only Maine and Vermont posted declines.

Canadians spent about \$3.2 billion on overnight visits in Florida, nearly three times more than in any other state. Moreover, about one in three nights, or 48.5 million, spent in the United States were in Florida.

On average, Canadians stayed 16.9 nights in Florida, more than any other state. However, Canadians spent the most on overnight visits to Hawaii (\$1,758 per visit). On a nightly basis, average spending was highest in Nevada (\$188 per night).

**Text table 6**  
**Top 12 U.S. states visited by Canadian residents, 2008**

	Overnight visits		
	Person-visits	Spending	Visit-nights
	thousands	millions of dollars	thousands
New York	3,077	956	8,652
Florida	2,872	3,242	48,524
Washington	2,141	484	6,078
Michigan	1,422	321	3,577
California	1,257	1,129	10,773
Nevada	1,059	930	4,936
Maine	885	282	2,972
Pennsylvania	786	158	1,965
Vermont	758	172	2,342
North Dakota	722	196	1,520
Montana	650	203	2,035
Massachusetts	635	266	2,423

### About one in three trips overseas include stops in Europe

Canadians travelling overseas made 2.7 million overnight trips to Europe in 2008, up 4.8% and more than any other region. Like the previous year, about one in three trips overseas included at least one stop in Europe. Travel to Bermuda and the Caribbean, the second most popular region for Canadian tourists (2.2 million overnight trips), increased 22.5%.

Overall, Canadians made 8.1 million overnight trips overseas, up 9.7% from the previous high observed in 2007. On those trips, Canadian residents spent \$11.6 billion and stayed 128 million nights, up 6.2% and 4.6% respectively from the previous year.

On average, Canadians spent \$1,428 on overnight trips to overseas countries, down from \$1,475 the previous year. Average spending per night increased slightly from \$89 to \$91. Canadians stayed 15.7 nights overseas, down from 16.5 in 2007.

### Resort destinations more and more popular among Canadians

Overnight visits to the five most visited overseas countries by Canadian residents increased in 2008. Among them, Mexico, Cuba and Dominican Republic posted double-digit increases. With a 28.7% jump in overnight visits, Cuba also passed France as the third most visited overseas country.

Canadians made 1.1 million overnight visits in Mexico in 2008, more than any other overseas country, up 10.4% from 2007. An increase of 7.4% in overnight visits pushed the United Kingdom past the 1.0-million mark for the first time.

Canadians stayed 12.4 million nights and spent \$1.2 billion on overnight visits in the United Kingdom, more than in any other country aside from the United States.

**Text table 7**  
**Top 12 overseas countries visited by Canadian residents, 2008**

	Overnight visits		
	Person-visits	Spending	Visit-nights
	thousands	millions of dollars	thousands
Mexico	1,124	1,186	11,518
United Kingdom	1,017	1,227	12,406
Cuba	932	791	7,806
France	809	1,057	9,779
Dominican Republic	763	651	6,319
Germany	362	312	3,333
Italy	338	456	3,471
Netherlands	273	212	2,173
China	250	452	5,403
Spain	216	266	2,261
Hong Kong	186	221	3,034
Switzerland	173	130	1,276

## International travel account

Canada's international travel deficit hit a high of \$12.6 billion in 2008, about \$2.6 billion more than the previous high set in 2007. This was the fourth consecutive annual increase in the travel deficit, which in that span, has almost quadrupled.

The jump in the deficit, which is the difference between spending by Canadians abroad and spending by foreigners in Canada, was partially the result of record spending by Canadians in both the United States and overseas.

Overall, Canadians spent \$28.7 billion outside the country, up 8.4% from 2007. Since 1994, spending by Canadians abroad has increased every year except 2002.

Lower spending by foreigners in Canada also contributed to the rise in the deficit. Inbound travel spending decreased for the fourth consecutive year, slipping 2.1% to \$16.1 billion.

## Travel deficit with the United States increases for fourth consecutive year

For the fourth consecutive year, United States residents spent less on travel in Canada while Canadians spent more in the United States. As a result, the travel deficit with the United States ballooned from \$1.2 billion in 2004 to \$8.9 billion in 2008.

Travellers from the United States spent \$7.6 billion in Canada, down 7.6% from 2007. It was the lowest level since 1997. Since 2004, travel spending by Americans in Canada has fallen 22.6%.

Canadians, however, are spending more on travel south of border than ever before. Canadian travellers spent \$16.6 billion in the United States, up 9.8% from 2007. On average, it has increased about 10.7% annually since 2004.

The rising value of the Canadian dollar versus its American counterpart likely contributed to both the recent decline in spending by Americans in Canada and increase in spending by Canadians in the United States.

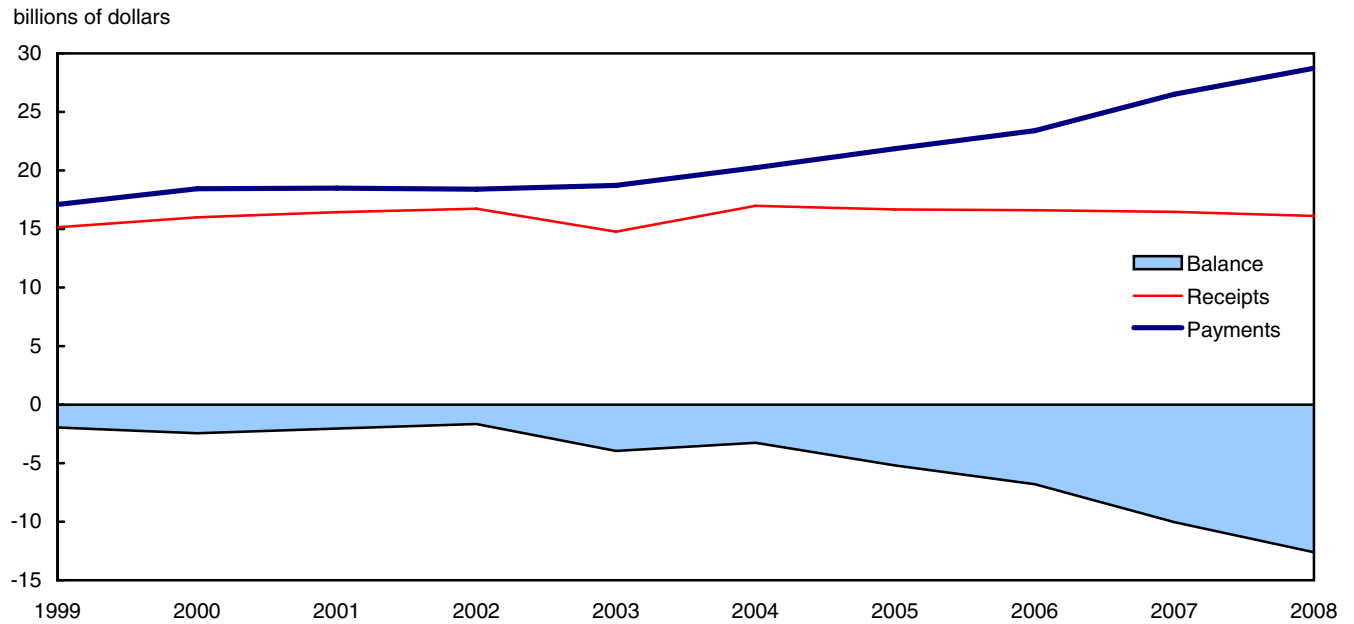
## Travel spending in overseas countries increases for 17<sup>th</sup> year in a row

The travel deficit with overseas countries hit a high of \$3.7 billion in 2008, up \$458 million from 2007. The jump in the deficit was the result of record spending overseas, which more than offset the increase in spending by travellers from overseas countries in Canada.

Travel spending by Canadians in overseas countries increased 6.5% to a high of \$12.2 billion. The last time there was a drop in travel spending by Canadians in overseas countries was in 1991. Since, travel spending by Canadians overseas has increased at an average annual rate of about 7.7%.

Spending by travellers from overseas countries in Canada reached a high of \$8.5 billion, up 3.4% from 2007. This was the fifth consecutive annual increase in travel spending from overseas countries.

**Chart 4**  
**Canada's international travel deficit**



## Related products

---

### Selected publications from Statistics Canada

---

13-009-X	National Tourism Indicators, Quarterly Estimates
66-001-P	International Travel: Advance Information

---

### Selected CANSIM tables from Statistics Canada

---

427-0001	Number of international travellers entering or returning to Canada, by type of transport, monthly
427-0002	Number of vehicles travelling between Canada and the United States, monthly
427-0003	Number of non-resident travellers entering Canada, by country of residence (excluding the United States), monthly
427-0004	Number of international tourists entering or returning to Canada, by province of entry (seasonally adjusted and non-seasonally adjusted), monthly
427-0005	Number of international travellers entering or returning to Canada, by province of entry, seasonally adjusted, monthly
427-0006	Number of non-resident travellers entering Canada, by selected country of residence, excluding the United States, seasonally adjusted, monthly

---

### Selected surveys from Statistics Canada

---

3152	International Travel Survey: Mail-back Questionnaires and Air Exit Survey of Overseas Travellers
3810	Travel Survey of Residents of Canada
5005	International Travel Survey: Frontier Counts

---

## **Selected tables of Canadian statistics from Statistics Canada**

---

- *Travel by Canadians to foreign countries, top 15 countries visited*
- *Travellers to Canada by country of origin, top 15 countries of origin*
- *Travel by Canadians to the United States, top 15 states visited*
- *Travellers to Canada by United States state of origin, top 15 states of origin*
- *Non-resident travellers entering Canada*

# Statistical tables

---

---

**Table 1**  
**Estimates of the balance of payments in the travel account between Canada and other countries<sup>1</sup>**

	1999	2000	2001	2002	2003	2004	2005	2006	2007	2008
millions of dollars										
<b>All countries</b>										
<b>Receipts</b>	<b>15,141</b>	<b>15,997</b>	<b>16,437</b>	<b>16,741</b>	<b>14,776</b>	<b>16,980</b>	<b>16,674</b>	<b>16,610</b>	<b>16,468</b>	<b>16,119</b>
First quarter	2,297	2,527	2,765	2,767	2,779	2,821	2,997	2,948	2,966	2,990
Second quarter	3,755	4,089	4,342	4,103	3,465	4,264	4,182	4,237	4,215	4,072
Third quarter	6,336	6,502	6,558	6,760	5,672	6,563	6,290	6,154	6,032	5,822
Fourth quarter	2,754	2,879	2,772	3,111	2,860	3,332	3,205	3,270	3,256	3,235
<b>Payments</b>	<b>17,092</b>	<b>18,444</b>	<b>18,487</b>	<b>18,401</b>	<b>18,727</b>	<b>20,237</b>	<b>21,865</b>	<b>23,402</b>	<b>26,511</b>	<b>28,734</b>
First quarter	4,646	5,032	5,550	5,079	5,492	5,814	6,312	6,647	7,130	8,446
Second quarter	4,323	4,816	4,986	4,894	4,502	5,400	5,713	5,967	6,575	7,498
Third quarter	4,184	4,447	4,320	4,386	4,427	4,711	5,073	5,537	6,496	6,815
Fourth quarter	3,939	4,149	3,631	4,043	4,306	4,311	4,766	5,251	6,310	5,975
<b>Balance</b>	<b>-1,951</b>	<b>-2,447</b>	<b>-2,050</b>	<b>-1,659</b>	<b>-3,951</b>	<b>-3,257</b>	<b>-5,191</b>	<b>-6,792</b>	<b>-10,043</b>	<b>-12,615</b>
First quarter	-2,349	-2,506	-2,784	-2,311	-2,713	-2,994	-3,316	-3,698	-4,165	-5,456
Second quarter	-568	-727	-645	-791	-1,037	-1,136	-1,531	-1,730	-2,360	-3,427
Third quarter	2,152	2,056	2,238	2,375	1,244	1,852	1,217	617	-464	-993
Fourth quarter	-1,185	-1,270	-859	-932	-1,446	-979	-1,561	-1,981	-3,054	-2,740
<b>United States</b>										
<b>Receipts</b>	<b>9,365</b>	<b>9,449</b>	<b>9,972</b>	<b>10,328</b>	<b>9,080</b>	<b>9,858</b>	<b>8,978</b>	<b>8,692</b>	<b>8,256</b>	<b>7,625</b>
First quarter	1,381	1,469	1,586	1,599	1,524	1,448	1,447	1,322	1,243	1,152
Second quarter	2,305	2,373	2,669	2,562	2,155	2,485	2,318	2,303	2,219	1,988
Third quarter	4,004	3,955	4,086	4,371	3,788	4,135	3,658	3,541	3,391	3,117
Fourth quarter	1,675	1,652	1,631	1,795	1,613	1,790	1,554	1,526	1,403	1,369
<b>Payments</b>	<b>10,801</b>	<b>11,517</b>	<b>11,170</b>	<b>10,872</b>	<b>10,713</b>	<b>11,015</b>	<b>12,001</b>	<b>13,008</b>	<b>15,092</b>	<b>16,575</b>
First quarter	2,824	3,191	3,347	2,997	3,123	3,093	3,410	3,677	3,904	4,805
Second quarter	2,860	3,117	3,195	3,066	2,837	3,199	3,389	3,518	3,803	4,615
Third quarter	2,631	2,660	2,427	2,389	2,336	2,344	2,557	2,881	3,572	3,777
Fourth quarter	2,486	2,549	2,201	2,420	2,418	2,379	2,645	2,933	3,813	3,379
<b>Balance</b>	<b>-1,436</b>	<b>-2,068</b>	<b>-1,199</b>	<b>-544</b>	<b>-1,633</b>	<b>-1,157</b>	<b>-3,023</b>	<b>-4,317</b>	<b>-6,836</b>	<b>-8,950</b>
First quarter	-1,443	-1,722	-1,762	-1,398	-1,599	-1,646	-1,963	-2,354	-2,661	-3,653
Second quarter	-555	-744	-526	-503	-682	-714	-1,071	-1,216	-1,585	-2,627
Third quarter	1,373	1,295	1,659	1,983	1,452	1,791	1,102	660	-181	-660
Fourth quarter	-811	-897	-571	-624	-805	-589	-1,090	-1,407	-2,409	-2,010
<b>Other countries</b>										
<b>Receipts</b>	<b>5,776</b>	<b>6,548</b>	<b>6,465</b>	<b>6,413</b>	<b>5,696</b>	<b>7,122</b>	<b>7,696</b>	<b>7,919</b>	<b>8,212</b>	<b>8,493</b>
First quarter	916	1,058	1,180	1,168	1,255	1,373	1,550	1,626	1,722	1,839
Second quarter	1,450	1,716	1,673	1,541	1,310	1,779	1,864	1,935	1,996	2,084
Third quarter	2,332	2,547	2,472	2,389	1,884	2,428	2,632	2,613	2,641	2,705
Fourth quarter	1,078	1,227	1,141	1,316	1,247	1,542	1,651	1,744	1,853	1,865
<b>Payments</b>	<b>6,291</b>	<b>6,927</b>	<b>7,317</b>	<b>7,529</b>	<b>8,014</b>	<b>9,222</b>	<b>9,864</b>	<b>10,394</b>	<b>11,418</b>	<b>12,159</b>
First quarter	1,822	1,841	2,202	2,081	2,370	2,721	2,902	2,970	3,227	3,641
Second quarter	1,463	1,699	1,792	1,828	1,665	2,201	2,324	2,449	2,771	2,884
Third quarter	1,553	1,787	1,893	1,997	2,092	2,367	2,517	2,656	2,924	3,038
Fourth quarter	1,453	1,600	1,430	1,623	1,888	1,933	2,122	2,319	2,497	2,596
<b>Balance</b>	<b>-514</b>	<b>-379</b>	<b>-851</b>	<b>-1,116</b>	<b>-2,318</b>	<b>-2,100</b>	<b>-2,169</b>	<b>-2,475</b>	<b>-3,207</b>	<b>-3,665</b>
First quarter	-906	-784	-1,023	-913	-1,114	-1,348	-1,353	-1,344	-1,504	-1,802
Second quarter	-13	17	-119	-287	-355	-422	-460	-514	-775	-800
Third quarter	779	761	579	392	-208	61	115	-43	-283	-333
Fourth quarter	-375	-373	-289	-308	-641	-391	-470	-574	-644	-730

**Note(s):** See "Data quality, concepts and methodology — Explanatory notes for tables" section.

**Table 2**  
**Components of the receipts and payments in the travel account<sup>1</sup>**

	1999	2000	2001	2002	2003	2004	2005	2006	2007	2008
millions of dollars										
<b>All countries</b>										
<b>Receipts</b>	<b>15,141</b>	<b>15,997</b>	<b>16,437</b>	<b>16,741</b>	<b>14,776</b>	<b>16,980</b>	<b>16,674</b>	<b>16,610</b>	<b>16,468</b>	<b>16,119</b>
Spending in Canada	14,031	14,813	15,081	15,232	13,072	14,825	14,302	13,954	13,744	13,144
Selected supplementary:	1,111	1,184	1,355	1,509	1,705	2,155	2,372	2,657	2,724	2,974
Medical	92	94	98	100	103	106	110	114	126	130
Education	844	914	1,084	1,234	1,422	1,868	2,087	2,371	2,426	2,685
Crew spending	175	177	173	175	180	180	175	171	172	160
<b>Payments</b>	<b>17,092</b>	<b>18,444</b>	<b>18,487</b>	<b>18,401</b>	<b>18,727</b>	<b>20,237</b>	<b>21,865</b>	<b>23,402</b>	<b>26,511</b>	<b>28,734</b>
Spending abroad	15,746	16,976	16,949	16,650	16,905	18,505	20,105	21,591	24,704	26,831
Selected supplementary:	1,346	1,468	1,538	1,751	1,822	1,732	1,760	1,811	1,807	1,903
Medical	286	317	368	364	349	343	343	345	347	370
Education	889	982	1,008	1,216	1,290	1,197	1,206	1,246	1,237	1,313
Crew spending	171	169	162	170	183	193	211	219	223	219
<b>United States</b>										
<b>Receipts</b>	<b>9,365</b>	<b>9,449</b>	<b>9,972</b>	<b>10,328</b>	<b>9,080</b>	<b>9,858</b>	<b>8,978</b>	<b>8,692</b>	<b>8,256</b>	<b>7,625</b>
Spending in Canada	9,048	9,126	9,620	9,953	8,671	9,427	8,528	8,212	7,764	7,114
Selected supplementary:	317	323	351	375	409	431	450	480	492	512
Medical	71	72	77	80	83	83	84	86	93	94
Education	91	95	124	143	170	195	218	250	257	287
Crew spending	156	156	150	152	155	153	148	144	142	131
<b>Payments</b>	<b>10,801</b>	<b>11,517</b>	<b>11,170</b>	<b>10,872</b>	<b>10,713</b>	<b>11,015</b>	<b>12,001</b>	<b>13,008</b>	<b>15,092</b>	<b>16,575</b>
Spending in United States <sup>2</sup>	9,716	10,349	9,936	9,499	9,262	9,676	10,651	11,629	13,751	15,193
Selected supplementary:	1,085	1,169	1,235	1,373	1,451	1,339	1,350	1,379	1,341	1,382
Medical	266	295	343	339	325	319	319	321	323	344
Education	665	722	750	882	963	847	839	859	818	838
Crew spending	155	151	142	152	164	172	191	199	201	199
<b>Other countries</b>										
<b>Receipts</b>	<b>5,776</b>	<b>6,548</b>	<b>6,465</b>	<b>6,413</b>	<b>5,696</b>	<b>7,122</b>	<b>7,696</b>	<b>7,919</b>	<b>8,212</b>	<b>8,493</b>
Spending in Canada	4,983	5,686	5,461	5,279	4,400	5,399	5,774	5,742	5,980	6,031
Selected supplementary:	794	861	1,004	1,134	1,296	1,723	1,922	2,177	2,231	2,463
Medical	21	22	21	20	20	23	26	28	33	36
Education	754	819	960	1,091	1,252	1,673	1,869	2,122	2,169	2,398
Crew spending	19	21	23	23	24	27	27	27	30	29
<b>Payments</b>	<b>6,291</b>	<b>6,927</b>	<b>7,317</b>	<b>7,529</b>	<b>8,014</b>	<b>9,222</b>	<b>9,864</b>	<b>10,394</b>	<b>11,418</b>	<b>12,159</b>
Spending in other countries <sup>3</sup>	6,030	6,628	7,013	7,151	7,644	8,828	9,454	9,962	10,953	11,638
Selected supplementary:	261	299	304	378	370	394	411	432	465	521
Medical	20	22	26	25	24	24	24	24	24	26
Education	225	260	258	334	327	349	367	387	419	475
Crew spending	16	18	20	18	19	20	20	21	22	20

**Note(s):** See "Data quality, concepts and methodology — Explanatory notes for tables" section.

**Table 3-1**  
**Receipts and payments in the travel account related to Canada's imports and exports (balance of payments basis)<sup>1</sup>**  
**— Receipts**

	1999	2000	2001	2002	2003	2004	2005	2006	2007	2008
	millions of dollars									
<b>Travel receipts</b>	<b>15,141</b>	<b>15,997</b>	<b>16,437</b>	<b>16,741</b>	<b>14,776</b>	<b>16,980</b>	<b>16,674</b>	<b>16,610</b>	<b>16,468</b>	<b>16,119</b>
Total current account receipts	461,219	531,961	513,754	514,913	496,899	539,637	575,612	598,265	618,798	642,324
Total services receipts	53,636	59,718	60,065	63,483	61,781	65,381	67,599	68,669	69,637	70,478
Total goods receipts	369,035	429,372	420,730	414,039	399,122	429,006	450,210	453,951	463,127	489,857
<b>Exports by commodity groupings</b>	<b>369,035</b>	<b>429,372</b>	<b>420,730</b>	<b>414,039</b>	<b>399,122</b>	<b>429,006</b>	<b>450,210</b>	<b>453,951</b>	<b>463,127</b>	<b>489,857</b>
Agricultural and fishing products	25,612	27,601	31,078	30,873	29,234	30,675	30,097	31,211	34,421	40,858
Energy products	29,876	53,158	55,770	49,330	60,521	68,106	86,920	86,801	91,293	125,792
Forestry products	40,083	42,775	40,287	37,246	34,519	39,417	36,447	33,443	29,267	25,659
Industrial goods	59,848	67,979	67,792	70,174	66,806	77,953	84,201	94,207	104,792	111,511
Machinery and equipment	88,677	110,050	102,553	97,091	88,676	91,106	93,005	93,253	93,431	92,994
Automotive products	97,292	97,886	92,527	96,676	87,385	90,389	87,994	82,298	77,306	61,083
Consumer goods	13,985	15,199	16,307	17,679	17,187	17,267	17,148	17,811	18,737	18,170
Other	13,662	14,725	14,416	14,970	14,795	14,093	14,398	14,926	13,880	13,790
	percent									
Contributions to total current account receipts	3.3	3.0	3.2	3.3	3.0	3.1	2.9	2.8	2.7	2.5
Contributions to total services receipts	28.2	26.8	27.4	26.4	23.9	26.0	24.7	24.2	23.6	22.9
Contributions to total goods receipts	4.1	3.7	3.9	4.0	3.7	4.0	3.7	3.7	3.6	3.3

**Note(s):** See "Data quality, concepts and methodology — Explanatory notes for tables" section.

**Table 3-2**  
**Receipts and payments in the travel account related to Canada's imports and exports (balance of payments basis)<sup>1</sup>**  
**— Payments**

	1999	2000	2001	2002	2003	2004	2005	2006	2007	2008
	millions of dollars									
<b>Travel payments</b>	<b>17,092</b>	<b>18,444</b>	<b>18,487</b>	<b>18,401</b>	<b>18,727</b>	<b>20,237</b>	<b>21,865</b>	<b>23,402</b>	<b>26,511</b>	<b>28,734</b>
Total current account payments	458,649	502,692	488,649	495,135	482,250	509,800	549,710	577,932	603,192	634,209
Total services payments	60,272	65,500	67,874	70,707	73,302	76,417	79,654	82,607	88,611	92,977
Total goods payments	327,026	362,337	350,071	356,727	342,710	363,158	387,838	404,345	415,229	442,988
<b>Imports by commodity groupings</b>	<b>327,026</b>	<b>362,337</b>	<b>350,071</b>	<b>356,727</b>	<b>342,710</b>	<b>363,158</b>	<b>387,838</b>	<b>404,345</b>	<b>415,229</b>	<b>442,988</b>
Agricultural and fishing products	17,655	18,557	20,373	21,780	21,508	21,399	22,041	23,456	25,526	28,511
Energy products	10,708	17,853	17,747	16,567	19,813	24,782	33,660	34,705	36,749	53,072
Forestry products	2,743	3,065	2,887	3,138	3,008	3,172	3,133	3,084	2,994	2,869
Industrial goods	62,173	69,247	68,426	68,891	65,272	73,511	78,547	83,945	85,085	91,574
Machinery and equipment	108,247	122,913	111,947	105,947	98,684	104,091	110,931	114,736	116,674	122,628
Automotive products	75,934	77,433	72,574	81,469	76,492	77,368	78,381	79,845	79,948	71,959
Consumer goods	36,999	40,115	42,896	46,474	46,306	47,719	49,484	52,007	54,781	57,522
Other	12,565	13,153	13,221	12,461	11,628	11,116	11,661	12,568	13,471	14,853
	percent									
Contributions to total current account payments	3.7	3.7	3.8	3.7	3.9	4.0	4.0	4.0	4.4	4.5
Contributions to total services payments	28.4	28.2	27.2	26.0	25.5	26.5	27.4	28.3	29.9	30.9
Contributions to total goods payments	5.2	5.1	5.3	5.2	5.5	5.6	5.6	5.8	6.4	6.5

**Note(s):** See "Data quality, concepts and methodology — Explanatory notes for tables" section.

**Table 4**  
**International travel accounts of selected countries<sup>1</sup>**

	2000	2001	2002	2003	2004	2005	2006
	millions of US dollars						
<b>Receipts</b>							
Australia	9,289	9,224	9,971	12,438	15,214	16,868	17,854
Austria	9,998	10,291	11,136	13,842	15,290	15,589	..
Belgium <sup>2</sup>	7,447	7,613	6,935	8,193	9,208	9,845	11,364
Canada	10,778	10,623	10,687	10,601	12,847	13,768	14,678
China	16,231	17,792	20,385	17,406	25,739	29,296	33,949
Dominican Republic	2,860	2,798	2,730	3,128	3,152	3,518	3,792
France <sup>3</sup>	30,641	30,079	32,437	36,619	44,895	43,942	46,499
Germany	18,611	18,031	19,278	23,124	27,613	29,121	32,846
Greece	9,219	9,155	9,909	10,766	12,715	13,333	14,402
Italy	27,493	25,822	26,873	31,247	35,378	35,319	38,257
Japan	3,373	3,306	3,497	8,848	11,265	12,430	8,470
South Korea	6,834	6,384	5,936	5,358	6,069	5,806	5,322
Mexico	8,294	8,401	8,858	9,362	10,796	11,803	12,177
Netherlands	7,197	6,708	7,710	9,163	10,310	10,445	11,548
Spain	29,802	30,550	31,880	39,634	45,067	47,789	51,292
Switzerland	6,652	6,782	7,260	8,617	9,600	10,095	10,640
United Kingdom	21,769	18,864	20,549	22,668	28,202	30,573	33,888
United States	97,943	88,779	84,752	83,316	94,537	102,124	106,736
<b>Payments</b>							
Australia	6,387	5,860	6,072	7,270	10,241	11,253	11,690
Austria	8,463	8,956	9,460	11,757	11,834	10,994	..
Belgium <sup>2</sup>	10,182	10,569	10,185	12,210	13,956	14,813	17,237
Canada	12,438	11,961	11,722	13,337	15,914	18,175	20,537
China	13,114	13,909	15,398	15,187	19,149	21,759	24,322
Dominican Republic	309	291	295	272	310	352	333
France <sup>3</sup>	17,715	17,934	19,518	23,392	28,703	30,458	31,264
Germany	52,823	51,810	53,006	65,234	71,187	74,189	74,123
Greece	4,558	4,177	2,436	2,431	2,872	3,039	2,997
Italy	15,685	14,795	16,924	20,589	20,460	22,370	23,152
Japan	31,884	26,531	26,656	28,958	38,252	37,565	26,876
South Korea	7,132	7,617	10,464	10,103	12,350	15,406	18,241
Mexico	5,499	5,702	6,060	6,253	6,959	7,600	8,108
Netherlands	12,191	11,994	12,976	15,265	16,346	16,137	17,125
Spain	5,922	6,529	7,295	9,071	12,153	15,046	16,697
Switzerland	5,419	5,141	5,537	6,883	8,104	8,837	9,919
United Kingdom	38,262	37,931	41,744	47,853	56,444	59,532	63,319
United States	67,043	62,820	61,738	60,935	69,627	73,290	76,807
<b>Balance</b>							
Australia	2,902	3,364	3,899	5,168	4,973	5,615	6,164
Austria	1,535	1,335	1,676	2,085	3,456	4,595	..
Belgium <sup>2</sup>	-2,735	-2,956	-3,250	-4,017	-4,748	-4,968	-5,873
Canada	-1,660	-1,338	-1,035	-2,736	-3,067	-4,407	-5,859
China	3,117	3,883	4,987	2,219	6,590	7,537	9,627
Dominican Republic	2,551	2,507	2,435	2,856	2,842	3,166	3,459
France <sup>3</sup>	12,926	12,145	12,919	13,227	16,192	13,484	15,235
Germany	-34,212	-33,779	-33,728	-42,110	-43,574	-45,068	-41,277
Greece	4,661	4,978	7,473	8,335	9,843	10,294	11,405
Italy	11,808	11,027	9,949	10,658	14,918	12,949	15,105
Japan	-28,511	-23,225	-23,159	-20,110	-26,987	-25,135	-18,406
South Korea	-298	-1,233	-4,528	-4,745	-6,281	-9,600	-12,919
Mexico	2,795	2,699	2,798	3,109	3,837	4,203	4,069
Netherlands	-4,994	-5,286	-5,266	-6,102	-6,036	-5,692	-5,577
Spain	23,880	24,021	24,585	30,563	32,914	32,743	34,595
Switzerland	1,233	1,641	1,723	1,734	1,496	1,258	721
United Kingdom	-16,493	-19,067	-21,195	-25,185	-28,242	-28,959	-29,431
United States	30,900	25,959	23,014	22,381	24,910	28,834	29,929

**Note(s):** See "Data quality, concepts and methodology — Explanatory notes for tables" section.

**Source(s):** Balance of Payments Statistics Yearbook, 2007, published by the International Monetary Fund.

**Table 5**  
**Person-trips by international travellers entering or returning to Canada, by duration**

	1999	2000	2001	2002	2003	2004	2005	2006	2007	2008
	thousands									
<b>Non-resident travellers</b>										
<b>Same day</b>	<b>29,689</b>	<b>29,083</b>	<b>27,566</b>	<b>24,932</b>	<b>21,483</b>	<b>19,814</b>	<b>17,548</b>	<b>15,262</b>	<b>12,598</b>	<b>10,373</b>
United States	29,450	28,805	27,301	24,710	21,278	19,539	17,265	15,017	12,319	10,102
Other countries	239	278	265	222	205	275	283	245	279	271
<b>One or more nights</b>	<b>19,367</b>	<b>19,555</b>	<b>19,581</b>	<b>19,964</b>	<b>17,420</b>	<b>19,031</b>	<b>18,612</b>	<b>18,128</b>	<b>17,775</b>	<b>16,997</b>
United States	15,180	15,188	15,570	16,168	14,232	15,088	14,390	13,856	13,376	12,503
Other countries	4,187	4,366	4,010	3,796	3,188	3,944	4,222	4,272	4,400	4,494
<b>All trips</b>	<b>49,055</b>	<b>48,638</b>	<b>47,147</b>	<b>44,896</b>	<b>38,903</b>	<b>38,845</b>	<b>36,160</b>	<b>33,390</b>	<b>30,373</b>	<b>27,370</b>
United States	44,630	43,994	42,871	40,878	35,509	34,626	31,655	28,873	25,695	22,606
Other countries	4,425	4,644	4,275	4,018	3,393	4,219	4,505	4,518	4,679	4,764
<b>Resident travellers</b>										
<b>Same day</b>	<b>28,081</b>	<b>28,000</b>	<b>24,841</b>	<b>21,534</b>	<b>21,486</b>	<b>22,191</b>	<b>22,940</b>	<b>24,181</b>	<b>24,881</b>	<b>24,700</b>
United States	28,081	28,000	24,841	21,534	21,486	22,191	22,932	24,181	24,881	24,698
Other countries	0	0	0	0	0	0	F	0	0	F
<b>One or more nights</b>	<b>18,368</b>	<b>19,182</b>	<b>18,359</b>	<b>17,705</b>	<b>17,739</b>	<b>19,595</b>	<b>21,091</b>	<b>22,731</b>	<b>25,163</b>	<b>27,037</b>
United States	14,116	14,666	13,527	13,025	12,666	13,856	14,862	15,992	17,759	18,915
Other countries	4,252	4,516	4,832	4,680	5,074	5,739	6,229	6,739	7,404	8,122
<b>All trips</b>	<b>46,448</b>	<b>47,182</b>	<b>43,201</b>	<b>39,239</b>	<b>39,225</b>	<b>41,786</b>	<b>44,031</b>	<b>46,912</b>	<b>50,045</b>	<b>51,737</b>
United States	42,196	42,666	38,368	34,559	34,151	36,047	37,794	40,173	42,641	43,613
Other countries	4,252	4,516	4,832	4,680	5,074	5,739	6,237	6,739	7,404	8,124
<b>Other travellers</b>	<b>9,109</b>	<b>9,426</b>	<b>9,131</b>	<b>9,119</b>	<b>8,924</b>	<b>9,194</b>	<b>9,119</b>	<b>8,818</b>	<b>8,685</b>	<b>8,039</b>
Non-resident crews	3,324	3,356	3,149	3,166	3,157	3,164	3,147	3,081	3,143	2,989
Resident crews	5,475	5,720	5,634	5,626	5,481	5,708	5,658	5,450	5,274	4,786
Other <sup>1</sup>	309	350	348	327	286	323	314	287	268	263
<b>Grand total</b>	<b>104,613</b>	<b>105,246</b>	<b>99,478</b>	<b>93,254</b>	<b>87,052</b>	<b>89,825</b>	<b>89,310</b>	<b>89,121</b>	<b>89,103</b>	<b>87,146</b>

Note(s): See "Data quality, concepts and methodology — Explanatory notes for tables" section.

**Table 6**  
**Person-trips by United States residents entering Canada, by type of transportation**

	1999	2000	2001	2002	2003	2004	2005	2006	2007	2008
	thousands									
<b>First quarter</b>										
<b>Same day – Total</b>	<b>5,597</b>	<b>5,727</b>	<b>5,910</b>	<b>4,986</b>	<b>4,486</b>	<b>3,991</b>	<b>3,520</b>	<b>3,180</b>	<b>2,451</b>	<b>1,944</b>
<b>One or more nights</b>	<b>2,008</b>	<b>2,099</b>	<b>2,220</b>	<b>2,294</b>	<b>2,140</b>	<b>2,064</b>	<b>2,100</b>	<b>1,910</b>	<b>1,790</b>	<b>1,727</b>
Automobile	1,165	1,247	1,331	1,483	1,354	1,271	1,239	1,131	1,037	1,001
Plane	668	680	699	658	640	649	710	654	641	612
Bus	109	114	122	99	93	91	104	84	72	76
Other types <sup>1</sup>	67	58	69	54	53	54	48	41	40	38
<b>Grand total</b>	<b>7,605</b>	<b>7,825</b>	<b>8,130</b>	<b>7,280</b>	<b>6,626</b>	<b>6,055</b>	<b>5,620</b>	<b>5,090</b>	<b>4,240</b>	<b>3,671</b>
<b>Second quarter</b>										
<b>Same day – Total</b>	<b>7,724</b>	<b>7,490</b>	<b>7,699</b>	<b>6,429</b>	<b>5,273</b>	<b>5,074</b>	<b>4,547</b>	<b>3,992</b>	<b>3,333</b>	<b>2,653</b>
<b>One or more nights</b>	<b>3,885</b>	<b>4,009</b>	<b>4,252</b>	<b>4,156</b>	<b>3,418</b>	<b>3,851</b>	<b>3,723</b>	<b>3,706</b>	<b>3,592</b>	<b>3,304</b>
Automobile	2,421	2,441	2,577	2,672	2,160	2,405	2,248	2,172	2,093	1,901
Plane	962	1,009	1,074	985	850	1,002	1,026	1,075	1,030	989
Bus	252	237	227	196	129	133	156	140	144	107
Other types <sup>1</sup>	250	322	374	303	279	311	294	318	325	307
<b>Grand total</b>	<b>11,609</b>	<b>11,500</b>	<b>11,951</b>	<b>10,585</b>	<b>8,691</b>	<b>8,925</b>	<b>8,270</b>	<b>7,698</b>	<b>6,925</b>	<b>5,957</b>
<b>Third quarter</b>										
<b>Same day – Total</b>	<b>9,614</b>	<b>9,352</b>	<b>8,892</b>	<b>7,819</b>	<b>6,819</b>	<b>6,288</b>	<b>5,565</b>	<b>4,774</b>	<b>4,123</b>	<b>3,343</b>
<b>One or more nights</b>	<b>6,631</b>	<b>6,464</b>	<b>6,555</b>	<b>6,920</b>	<b>6,050</b>	<b>6,517</b>	<b>6,100</b>	<b>5,780</b>	<b>5,603</b>	<b>5,223</b>
Automobile	4,432	4,204	4,374	4,656	3,948	4,121	3,824	3,558	3,432	3,130
Plane	1,303	1,319	1,279	1,350	1,232	1,432	1,360	1,337	1,316	1,232
Bus	309	312	255	260	170	170	193	169	155	138
Other types <sup>1</sup>	587	629	647	654	700	793	723	716	701	723
<b>Grand total</b>	<b>16,245</b>	<b>15,815</b>	<b>15,446</b>	<b>14,739</b>	<b>12,869</b>	<b>12,805</b>	<b>11,665</b>	<b>10,555</b>	<b>9,726</b>	<b>8,566</b>
<b>Fourth quarter</b>										
<b>Same day – Total</b>	<b>6,515</b>	<b>6,237</b>	<b>4,801</b>	<b>5,475</b>	<b>4,699</b>	<b>4,185</b>	<b>3,633</b>	<b>3,071</b>	<b>2,412</b>	<b>2,162</b>
<b>One or more nights</b>	<b>2,655</b>	<b>2,617</b>	<b>2,543</b>	<b>2,799</b>	<b>2,624</b>	<b>2,656</b>	<b>2,466</b>	<b>2,459</b>	<b>2,391</b>	<b>2,250</b>
Automobile	1,591	1,565	1,608	1,797	1,657	1,612	1,464	1,457	1,400	1,334
Plane	827	828	730	798	780	849	819	815	794	757
Bus	140	134	104	105	84	105	93	83	90	70
Other types <sup>1</sup>	97	89	101	99	103	90	90	104	107	88
<b>Grand total</b>	<b>9,171</b>	<b>8,853</b>	<b>7,344</b>	<b>8,274</b>	<b>7,323</b>	<b>6,841</b>	<b>6,099</b>	<b>5,530</b>	<b>4,803</b>	<b>4,412</b>
<b>Year</b>										
<b>Same day – Total</b>	<b>29,450</b>	<b>28,805</b>	<b>27,301</b>	<b>24,710</b>	<b>21,278</b>	<b>19,539</b>	<b>17,265</b>	<b>15,017</b>	<b>12,319</b>	<b>10,102</b>
<b>One or more nights</b>	<b>15,180</b>	<b>15,188</b>	<b>15,570</b>	<b>16,168</b>	<b>14,232</b>	<b>15,088</b>	<b>14,390</b>	<b>13,856</b>	<b>13,376</b>	<b>12,503</b>
Automobile	9,609	9,457	9,889	10,607	9,120	9,409	8,774	8,318	7,961	7,367
Plane	3,760	3,835	3,782	3,790	3,501	3,932	3,915	3,881	3,781	3,590
Bus	810	798	708	661	476	498	546	477	462	391
Other types <sup>1</sup>	1,001	1,098	1,191	1,110	1,135	1,249	1,155	1,179	1,172	1,155
<b>Grand total</b>	<b>44,630</b>	<b>43,994</b>	<b>42,871</b>	<b>40,878</b>	<b>35,509</b>	<b>34,626</b>	<b>31,655</b>	<b>28,873</b>	<b>25,695</b>	<b>22,606</b>

**Note(s):** See "Data quality, concepts and methodology — Explanatory notes for tables" section.

**Table 7**  
**Person-trips by residents of countries other than the United States entering Canada, by type of entry**

	1999	2000	2001	2002	2003	2004	2005	2006	2007	2008
	thousands									
<b>First quarter</b>										
<b>Direct air and sea</b>	<b>372</b>	<b>391</b>	<b>426</b>	<b>383</b>	<b>382</b>	<b>390</b>	<b>454</b>	<b>450</b>	<b>486</b>	<b>503</b>
<b>Via the United States</b>										
Land, same day	17	26	16	13	13	14	13	11	10	12
Land, one or more nights	52	64	51	52	48	46	49	47	45	51
Total, land	69	89	67	66	60	61	62	58	55	63
Air and sea	123	135	143	133	133	110	128	137	144	140
<b>Total, via the United States</b>	<b>192</b>	<b>225</b>	<b>209</b>	<b>199</b>	<b>193</b>	<b>171</b>	<b>190</b>	<b>195</b>	<b>199</b>	<b>202</b>
<b>Grand total</b>	<b>564</b>	<b>616</b>	<b>636</b>	<b>582</b>	<b>574</b>	<b>561</b>	<b>644</b>	<b>645</b>	<b>685</b>	<b>705</b>
<b>Second quarter</b>										
<b>Direct air and sea</b>	<b>707</b>	<b>797</b>	<b>774</b>	<b>665</b>	<b>531</b>	<b>737</b>	<b>780</b>	<b>809</b>	<b>827</b>	<b>891</b>
<b>Via the United States</b>										
Land, same day	48	62	55	30	24	36	38	32	37	37
Land, one or more nights	139	146	125	90	71	90	107	97	98	99
Total, land	187	208	180	121	95	125	145	129	135	136
Air and sea	260	279	275	238	183	247	262	283	292	282
<b>Total, via the United States</b>	<b>447</b>	<b>487</b>	<b>455</b>	<b>358</b>	<b>278</b>	<b>372</b>	<b>407</b>	<b>412</b>	<b>427</b>	<b>418</b>
<b>Grand total</b>	<b>1,154</b>	<b>1,284</b>	<b>1,229</b>	<b>1,023</b>	<b>808</b>	<b>1,109</b>	<b>1,187</b>	<b>1,221</b>	<b>1,254</b>	<b>1,308</b>
<b>Third quarter</b>										
<b>Direct air and sea</b>	<b>1,068</b>	<b>1,169</b>	<b>1,089</b>	<b>1,062</b>	<b>876</b>	<b>1,130</b>	<b>1,171</b>	<b>1,207</b>	<b>1,239</b>	<b>1,257</b>
<b>Via the United States</b>										
Land, same day	96	82	77	61	36	70	55	49	52	58
Land, one or more nights	282	254	204	192	136	170	197	172	167	187
Total, land	378	336	281	253	172	240	252	220	219	245
Air and sea	462	402	384	344	295	368	417	386	410	419
<b>Total, via the United States</b>	<b>840</b>	<b>738</b>	<b>664</b>	<b>597</b>	<b>467</b>	<b>608</b>	<b>669</b>	<b>607</b>	<b>629</b>	<b>663</b>
<b>Grand total</b>	<b>1,908</b>	<b>1,907</b>	<b>1,754</b>	<b>1,659</b>	<b>1,343</b>	<b>1,738</b>	<b>1,840</b>	<b>1,814</b>	<b>1,868</b>	<b>1,921</b>
<b>Fourth quarter</b>										
<b>Direct air and sea</b>	<b>459</b>	<b>520</b>	<b>426</b>	<b>475</b>	<b>446</b>	<b>525</b>	<b>554</b>	<b>568</b>	<b>587</b>	<b>558</b>
<b>Via the United States</b>										
Land, same day	33	35	19	23	19	41	20	17	21	19
Land, one or more nights	96	95	73	71	58	71	69	64	69	80
Total, land	129	130	91	94	77	112	89	81	90	98
Air and sea	211	187	140	185	145	174	191	189	195	174
<b>Total, via the United States</b>	<b>340</b>	<b>317</b>	<b>231</b>	<b>279</b>	<b>222</b>	<b>286</b>	<b>281</b>	<b>269</b>	<b>285</b>	<b>272</b>
<b>Grand total</b>	<b>799</b>	<b>837</b>	<b>657</b>	<b>754</b>	<b>668</b>	<b>811</b>	<b>835</b>	<b>838</b>	<b>872</b>	<b>830</b>
<b>Year</b>										
<b>Direct air and sea</b>	<b>2,606</b>	<b>2,877</b>	<b>2,715</b>	<b>2,585</b>	<b>2,234</b>	<b>2,782</b>	<b>2,959</b>	<b>3,034</b>	<b>3,139</b>	<b>3,209</b>
<b>Via the United States</b>										
Land, same day	194	205	166	128	91	161	125	108	119	126
Land, one or more nights	568	559	453	405	313	376	423	380	379	416
Total, land	763	764	619	533	404	538	548	488	499	542
Air and sea	1,057	1,003	941	900	754	899	999	996	1,041	1,014
<b>Total, via the United States</b>	<b>1,819</b>	<b>1,767</b>	<b>1,560</b>	<b>1,433</b>	<b>1,159</b>	<b>1,437</b>	<b>1,546</b>	<b>1,483</b>	<b>1,540</b>	<b>1,556</b>
<b>Grand total</b>	<b>4,425</b>	<b>4,644</b>	<b>4,275</b>	<b>4,018</b>	<b>3,393</b>	<b>4,219</b>	<b>4,505</b>	<b>4,518</b>	<b>4,679</b>	<b>4,764</b>

**Table 8**  
**Person-trips by Canadian residents returning from the United States, by type of transportation**

	1999	2000	2001	2002	2003	2004	2005	2006	2007	2008
	thousands									
<b>First quarter</b>										
<b>Same day – Total</b>	<b>5,828</b>	<b>6,261</b>	<b>5,974</b>	<b>4,807</b>	<b>4,699</b>	<b>4,992</b>	<b>5,035</b>	<b>5,332</b>	<b>5,144</b>	<b>5,687</b>
<b>One or more nights</b>	<b>2,883</b>	<b>3,254</b>	<b>3,194</b>	<b>2,809</b>	<b>2,783</b>	<b>3,049</b>	<b>3,383</b>	<b>3,530</b>	<b>3,698</b>	<b>4,493</b>
Automobile	1,318	1,483	1,446	1,449	1,369	1,541	1,683	1,730	1,827	2,356
Plane	1,411	1,595	1,572	1,213	1,280	1,364	1,531	1,653	1,731	1,969
Bus	127	147	140	118	108	117	145	124	119	145
Other types <sup>1</sup>	27	29	36	29	26	27	23	23	21	23
<b>Grand total</b>	<b>8,711</b>	<b>9,515</b>	<b>9,169</b>	<b>7,616</b>	<b>7,482</b>	<b>8,041</b>	<b>8,418</b>	<b>8,862</b>	<b>8,841</b>	<b>10,181</b>
<b>Second quarter</b>										
<b>Same day – Total</b>	<b>7,154</b>	<b>7,196</b>	<b>6,826</b>	<b>5,456</b>	<b>5,232</b>	<b>5,648</b>	<b>5,670</b>	<b>6,165</b>	<b>6,037</b>	<b>6,534</b>
<b>One or more nights</b>	<b>3,534</b>	<b>3,702</b>	<b>3,556</b>	<b>3,218</b>	<b>2,995</b>	<b>3,416</b>	<b>3,617</b>	<b>3,888</b>	<b>4,090</b>	<b>4,586</b>
Automobile	1,960	1,959	1,874	1,846	1,738	1,950	2,006	2,171	2,291	2,628
Plane	1,191	1,340	1,260	1,047	987	1,127	1,273	1,342	1,415	1,592
Bus	205	215	202	146	109	160	180	207	202	196
Other types <sup>1</sup>	179	187	221	178	161	178	158	168	181	170
<b>Grand total</b>	<b>10,688</b>	<b>10,898</b>	<b>10,383</b>	<b>8,674</b>	<b>8,227</b>	<b>9,063</b>	<b>9,287</b>	<b>10,053</b>	<b>10,127</b>	<b>11,120</b>
<b>Third quarter</b>										
<b>Same day – Total</b>	<b>8,261</b>	<b>8,108</b>	<b>7,267</b>	<b>6,123</b>	<b>6,184</b>	<b>6,050</b>	<b>6,493</b>	<b>6,704</b>	<b>6,914</b>	<b>7,105</b>
<b>One or more nights</b>	<b>4,704</b>	<b>4,761</b>	<b>4,427</b>	<b>4,341</b>	<b>4,180</b>	<b>4,404</b>	<b>4,803</b>	<b>5,183</b>	<b>5,805</b>	<b>6,069</b>
Automobile	3,122	3,106	2,990	2,961	2,893	3,043	3,290	3,587	4,051	4,285
Plane	1,050	1,119	922	886	867	907	1,068	1,157	1,250	1,312
Bus	200	205	179	158	123	129	147	155	170	162
Other types <sup>1</sup>	332	330	335	337	298	325	297	285	334	310
<b>Grand total</b>	<b>12,965</b>	<b>12,869</b>	<b>11,694</b>	<b>10,465</b>	<b>10,364</b>	<b>10,454</b>	<b>11,296</b>	<b>11,887</b>	<b>12,719</b>	<b>13,174</b>
<b>Fourth quarter</b>										
<b>Same day – Total</b>	<b>6,838</b>	<b>6,434</b>	<b>4,774</b>	<b>5,148</b>	<b>5,371</b>	<b>5,501</b>	<b>5,734</b>	<b>5,980</b>	<b>6,787</b>	<b>5,372</b>
<b>One or more nights</b>	<b>2,994</b>	<b>2,950</b>	<b>2,349</b>	<b>2,657</b>	<b>2,708</b>	<b>2,987</b>	<b>3,060</b>	<b>3,391</b>	<b>4,168</b>	<b>3,766</b>
Automobile	1,469	1,419	1,282	1,435	1,494	1,594	1,617	1,810	2,439	2,073
Plane	1,310	1,317	902	1,036	1,040	1,185	1,248	1,369	1,486	1,475
Bus	162	161	108	126	117	156	147	165	183	174
Other types <sup>1</sup>	54	53	58	60	56	52	47	48	59	44
<b>Grand total</b>	<b>9,832</b>	<b>9,384</b>	<b>7,123</b>	<b>7,804</b>	<b>8,078</b>	<b>8,488</b>	<b>8,793</b>	<b>9,371</b>	<b>10,954</b>	<b>9,138</b>
<b>Year</b>										
<b>Same day – Total</b>	<b>28,081</b>	<b>28,000</b>	<b>24,841</b>	<b>21,534</b>	<b>21,486</b>	<b>22,191</b>	<b>22,932</b>	<b>24,181</b>	<b>24,881</b>	<b>24,698</b>
<b>One or more nights</b>	<b>14,116</b>	<b>14,666</b>	<b>13,527</b>	<b>13,025</b>	<b>12,666</b>	<b>13,856</b>	<b>14,862</b>	<b>15,992</b>	<b>17,759</b>	<b>18,915</b>
Automobile	7,869	7,967	7,593	7,691	7,495	8,129	8,596	9,298	10,608	11,341
Plane	4,962	5,372	4,655	4,181	4,173	4,583	5,120	5,521	5,883	6,348
Bus	694	728	629	548	457	562	620	650	674	678
Other types <sup>1</sup>	592	599	649	604	540	582	527	523	595	548
<b>Grand total</b>	<b>42,196</b>	<b>42,666</b>	<b>38,368</b>	<b>34,559</b>	<b>34,151</b>	<b>36,047</b>	<b>37,794</b>	<b>40,173</b>	<b>42,641</b>	<b>43,613</b>

Note(s): See "Data quality, concepts and methodology — Explanatory notes for tables" section.

**Table 9**  
**Overnight travel abroad by Canadian residents, related to selected economic and demographic series**

	1999	2000	2001	2002	2003	2004	2005	2006	2007	2008
	thousands									
Person-trips, one or more nights	18,368	19,182	18,359	17,705	17,739	19,595	21,091	22,731	25,163	27,037
Population of Canada	30,401	30,686	31,019	31,354	31,640	31,941	32,245	32,576	32,932	33,327
Adult population (18 years and over)	23,244	23,548	23,898	24,258	24,586	24,917	25,239	25,580	25,961	26,384
Employed labour force	14,407	14,764	14,946	15,310	15,672	15,947	16,170	16,484	16,866	17,126
GDP at market prices (millions of dollars)	982,441	1,076,577	1,108,048	1,152,905	1,213,175	1,290,906	1,373,845	1,449,215	1,532,944	1,600,081
CPI (2002=100)	92.9	95.4	97.8	100.0	102.8	104.7	107.0	109.1	111.5	114.1
Disposable income <sup>1</sup> (millions of dollars)	596,227	639,567	669,196	694,010	720,855	760,462	794,269	852,639	897,562	950,948
Per capita disposable income <sup>1</sup> (dollars)	19,612	20,842	21,574	22,135	22,783	23,809	24,632	26,174	27,255	28,534
	percent									
Change, person-trips, one or more nights	4.1	4.4	-4.3	-3.6	0.2	10.5	7.6	7.8	10.7	7.4
Change, population of Canada	0.8	0.9	1.1	1.1	0.9	1.0	1.0	1.0	1.1	1.2
Change, adult population (18 years and over)	1.2	1.3	1.5	1.5	1.4	1.3	1.3	1.3	1.5	1.6
Change, employed labour force	2.6	2.5	1.2	2.4	2.4	1.8	1.4	1.9	2.3	1.5
Change, GDP at market prices	7.4	9.6	2.9	4.0	5.2	6.4	6.4	5.5	5.8	4.4
Change, CPI	1.8	2.7	2.5	2.2	2.8	1.8	2.2	2.0	2.2	2.3
Change, disposable income <sup>1</sup>	4.8	7.3	4.6	3.7	3.9	5.5	4.4	7.3	5.3	5.9
Change, per capita disposable income <sup>1</sup>	4.0	6.3	3.5	2.6	2.9	4.5	3.5	6.3	4.1	4.7
	currency									
<b>Exchange rate (in Canadian currency) <sup>2</sup></b>										
Australia (dollar)	0.9589	0.8633	0.8008	0.8535	0.9105	0.9582	0.9243	0.8543	0.8982	0.9002
China (renminbi)	0.1795	0.1794	0.1871	0.1897	0.1693	0.1573	0.1479	0.1422	0.1412	0.1536
East Caribbean (dollar)	0.5504	0.5501	0.5765	0.5881	0.5248	0.4874	0.4535	0.4242	0.4029	0.4040
European Monetary Union (EURO)	1.5847	1.3704	1.3868	1.4832	1.5826	1.6169	1.5090	1.4237	1.4691	1.5603
Hong Kong (dollar)	0.1915	0.1906	0.1985	0.2013	0.1800	0.1671	0.1558	0.1460	0.1377	0.1369
Israel (shekel)	0.3590	0.3642	0.3681	0.3317	0.3080	0.2904	0.2704	0.2547	0.2614	0.2974
Japan (yen)	0.0131	0.0138	0.0128	0.0126	0.0121	0.0120	0.0110	0.0098	0.0091	0.0104
Mexico (nuevo peso)	0.1556	0.1571	0.1659	0.1630	0.1301	0.1154	0.1112	0.1041	0.0983	0.0959
South Korea (won)	0.0013	0.0013	0.0012	0.0013	0.0012	0.0011	0.0012	0.0012	0.0012	0.0010
Switzerland (franc)	0.9901	0.8793	0.9184	1.0112	1.0418	1.0473	0.9746	0.9050	0.8946	0.9840
Taiwan (new Taiwan dollar)	0.0461	0.0476	0.0459	0.0455	0.0408	0.0390	0.0378	0.0349	0.0327	0.0338
United Kingdom (pound)	2.4038	2.2499	2.2298	2.3582	2.2883	2.3842	2.2067	2.0886	2.1487	1.9617
United States (dollar)	1.4858	1.4852	1.5484	1.5704	1.4015	1.3015	1.2116	1.1341	1.0748	1.0660

**Note(s):** See "Data quality, concepts and methodology — Explanatory notes for tables" section.

**Table 10**  
**Person-trips, person-nights and expenditures of non-resident travellers entering Canada and resident travellers returning to Canada**

	Non-resident travellers				Resident travellers			
	2005	2006	2007	2008	2005	2006	2007	2008
<b>All countries</b>								
<b>Same day</b>								
Person-trips (thousands)	17,548	15,262	12,598	10,373	22,940	24,181	24,881	24,700
Spending (millions of dollars)	..	..	..	589	1,231	1,216	2,100	2,115
Average spending per person-trip (dollars)	..	..	..	57	54	50	84	86
<b>One or more nights</b>								
Person-trips (thousands)	18,612	18,128	17,775	16,997	21,091	22,731	25,163	27,037
Spending (millions of dollars)	..	..	..	12,893	18,965	20,165	22,466	24,522
Average spending per person-trip (dollars)	..	..	..	759	899	887	893	907
Person-nights (thousands)	..	..	..	126,067	223,840	232,542	252,914	274,344
Average number of nights per trip	..	..	..	7.4	10.6	10.2	10.1	10.1
Average spending per person-night (dollars)	..	..	..	102	85	87	89	89
<b>Total</b>								
Person-trips (thousands)	<b>36,160</b>	<b>33,390</b>	<b>30,373</b>	<b>27,370</b>	<b>44,031</b>	<b>46,912</b>	<b>50,045</b>	<b>51,737</b>
Spending (millions of dollars)	..	..	..	<b>13,482</b>	<b>20,196</b>	<b>21,381</b>	<b>24,566</b>	<b>26,637</b>
<b>United States</b>								
<b>Same day</b>								
Person-trips (thousands)	17,265	15,017	12,319	10,102	22,932	24,181	24,881	24,698
Spending (millions of dollars)	..	..	..	580	1,228	1,216	2,100	2,115
Average spending per person-trip (dollars)	..	..	..	57	54	50	84	86
<b>One or more nights</b>								
Person-trips (thousands)	14,390	13,856	13,376	12,503	14,862	15,992	17,759	18,915
Spending (millions of dollars)	..	..	..	6,583	9,537	10,229	11,545	12,924
Average spending per person-trip (dollars)	..	..	..	527	642	640	650	683
Person-nights (thousands)	..	..	..	50,643	117,164	119,996	130,801	146,602
Average number of nights per trip	..	..	..	4.1	7.9	7.5	7.4	7.8
Average spending per person-night (dollars)	..	..	..	130	81	85	88	88
<b>Total</b>								
Person-trips (thousands)	<b>31,655</b>	<b>28,873</b>	<b>25,695</b>	<b>22,606</b>	<b>37,794</b>	<b>40,173</b>	<b>42,641</b>	<b>43,613</b>
Spending (millions of dollars)	..	..	..	<b>7,163</b>	<b>10,765</b>	<b>11,445</b>	<b>13,646</b>	<b>15,040</b>
<b>Other countries</b>								
<b>Same day</b>								
Person-trips (thousands)	283	245	279	271	F	0	0	F
Spending (millions of dollars)	8	9	9	9	F	0	0	F
Average spending per person-trip (dollars)	28	39	33	35	F	0	0	F
<b>One or more nights</b>								
Person-trips (thousands)	4,222	4,272	4,400	4,494	6,229	6,739	7,404	8,122
Spending (millions of dollars)	5,766	5,732	6,039	6,310	9,428	9,937	10,920	11,597
Average spending per person-trip (dollars)	1,366	1,342	1,373	1,404	1,514	1,475	1,475	1,428
Person-nights (thousands)	68,325	67,971	69,908	75,424	106,676	112,546	122,113	127,742
Average number of nights per trip	16.2	15.9	15.9	16.8	17.1	16.7	16.5	15.7
Average spending per person-night (dollars)	84	84	86	84	88	88	89	91
<b>Total</b>								
Person-trips (thousands)	<b>4,505</b>	<b>4,518</b>	<b>4,679</b>	<b>4,764</b>	<b>6,237</b>	<b>6,739</b>	<b>7,404</b>	<b>8,124</b>
Spending (millions of dollars)	<b>5,774</b>	<b>5,742</b>	<b>6,048</b>	<b>6,319</b>	<b>9,431</b>	<b>9,937</b>	<b>10,920</b>	<b>11,597</b>

**Table 11**  
**Person-trips, person-nights and expenditures of United States residents entering Canada and staying one or more nights, by selected trip characteristics, 2008**

	Person-trips		Person-nights	Average number of nights per trip	Spending in Canada	Average spending per person-trip	Average spending per person-night
	thousands	percent	thousands	number	millions of dollars	dollars	
<b>Quarter of entry</b>	<b>12,503</b>	<b>100.0</b>	<b>50,643</b>	<b>4.1</b>	<b>6,583</b>	<b>527</b>	<b>130</b>
First	1,727	13.8	5,639	3.3	886	513	157
Second	3,304	26.4	13,250	4.0	1,709	517	129
Third	5,223	41.8	23,679	4.5	2,866	549	121
Fourth	2,250	18.0	8,075	3.6	1,123	499	139
<b>Region of residence</b>	<b>12,503</b>	<b>100.0</b>	<b>50,643</b>	<b>4.1</b>	<b>6,583</b>	<b>527</b>	<b>130</b>
New England	1,338	10.7	5,013	3.7	600	449	120
Middle Atlantic	2,732	21.8	9,925	3.6	1,196	438	121
South Atlantic	1,188	9.5	5,797	4.9	835	702	144
East North Central	2,716	21.7	9,615	3.5	1,219	449	127
West North Central	761	6.1	3,391	4.5	457	601	135
East South Central	190	1.5	836	4.4	138	727	165
West South Central	527	4.2	2,618	5.0	448	849	171
Mountain	648	5.2	3,130	4.8	436	673	139
Pacific	2,312	18.5	9,834	4.3	1,188	514	121
Other states	92	0.7	483	5.2	67	721	138
<b>Purpose of trip</b>	<b>12,503</b>	<b>100.0</b>	<b>50,643</b>	<b>4.1</b>	<b>6,583</b>	<b>527</b>	<b>130</b>
Business, convention or employment	1,972	15.8	6,487	3.3	1,640	831	253
Visiting friends or relatives	2,568	20.5	11,663	4.5	738	287	63
Other pleasure, recreation or holiday	6,954	55.6	29,155	4.2	3,805	547	131
Other	1,009	8.1	3,338	3.3	400	397	120
<b>Type of transportation</b>	<b>12,503</b>	<b>100.0</b>	<b>50,643</b>	<b>4.1</b>	<b>6,583</b>	<b>527</b>	<b>130</b>
<b>Automobile</b>	<b>7,367</b>	<b>58.9</b>	<b>28,988</b>	<b>3.9</b>	<b>2,834</b>	<b>385</b>	<b>98</b>
<b>Other</b>	<b>5,136</b>	<b>41.1</b>	<b>21,655</b>	<b>4.2</b>	<b>3,749</b>	<b>730</b>	<b>173</b>
Plane	3,590	28.7	16,833	4.7	3,091	861	184
Bus	391	3.1	1,202	3.1	199	509	166
Other types <sup>1</sup>	1,155	9.2	3,619	3.1	459	397	127
<b>Length of stay</b>	<b>12,503</b>	<b>100.0</b>	<b>50,643</b>	<b>4.1</b>	<b>6,583</b>	<b>527</b>	<b>130</b>
1 night	2,514	20.1	2,514	1.0	495	197	197
2 to 6 nights	7,978	63.8	26,149	3.3	4,114	516	157
7 to 13 nights	1,617	12.9	13,496	8.3	1,442	892	107
14 nights and over	395	3.2	8,484	21.5	533	1,350	63

**Note(s):** See "Data quality, concepts and methodology — Explanatory notes for tables" section.

**Table 12**  
**Trip characteristics of United States residents entering Canada and staying one or more nights in province visited, 2008**

	Atlantic provinces <sup>1</sup>	Quebec	Ontario	Manitoba	Saskatchewan	Alberta	British Columbia <sup>2</sup>	Total
Person-visits (thousands)	806	1,837	6,210	242	139	831	3,345	13,411
Spending in province (millions of dollars)	389	1,067	2,661	135	81	589	1,660	6,583
Average spending per person-visit (dollars)	482	581	428	559	584	710	496	491
Person-nights (thousands)	3,556	6,893	22,804	962	548	3,884	11,997	50,643
Average number of nights per visit	4.4	3.8	3.7	4.0	3.9	4.7	3.6	3.8
Average spending per person-night (dollars)	109	155	117	141	149	152	138	130
	thousands							
<b>Person-visits</b>								
<b>Quarter of entry</b>	<b>806</b>	<b>1,837</b>	<b>6,210</b>	<b>242</b>	<b>139</b>	<b>831</b>	<b>3,345</b>	<b>13,411</b>
First	31	300	817	25	9	101	471	1,754
Second	155	459	1,694	66	32	216	917	3,540
Third	505	705	2,523	97	69	360	1,504	5,762
Fourth	116	373	1,176	53	30	154	452	2,355
<b>Region of residence</b>	<b>806</b>	<b>1,837</b>	<b>6,210</b>	<b>242</b>	<b>139</b>	<b>831</b>	<b>3,345</b>	<b>13,411</b>
New England	393	593	332	F	F	36 <sup>E</sup>	73	1,434
Middle Atlantic	96	561	1,903	9 <sup>E</sup>	9 <sup>E</sup>	60 <sup>E</sup>	204	2,841
South Atlantic	102	231	567	20 <sup>E</sup>	15 <sup>E</sup>	84	297	1,316
East North Central	79 <sup>E</sup>	172	2,256	38	21	82	219	2,867
West North Central	F	55	398	120	41	87	119	847
East South Central	F	41	76	F	F	F	55 <sup>E</sup>	206
West South Central	45 <sup>E</sup>	51	234	11 <sup>E</sup>	F	66	183	598
Mountain	18 <sup>E</sup>	33	152	14 <sup>E</sup>	23	178	294	710
Pacific	34 <sup>E</sup>	100	282	19 <sup>E</sup>	F	202	1,809	2,461
Other states	F	F	F	F	F	19 <sup>E</sup>	94	130
<b>Purpose of trip</b>	<b>806</b>	<b>1,837</b>	<b>6,210</b>	<b>242</b>	<b>139</b>	<b>831</b>	<b>3,345</b>	<b>13,411</b>
Business, convention or employment	56	345	1,010	28	18	239	343	2,040
Visiting friends or relatives	227	355	1,305	59	35	163	527	2,671
Other pleasure, recreation or holiday	494	1,019	3,347	131	68	349	2,201	7,609
Other	30	119	547	24	18	80	274	1,092
<b>Type of transportation</b>	<b>806</b>	<b>1,837</b>	<b>6,210</b>	<b>242</b>	<b>139</b>	<b>831</b>	<b>3,345</b>	<b>13,411</b>
<b>Automobile</b>	<b>361</b>	<b>1,049</b>	<b>4,364</b>	<b>149</b>	<b>81</b>	<b>256</b>	<b>1,647</b>	<b>7,906</b>
<b>Non-automobile</b>	<b>446</b>	<b>788</b>	<b>1,846</b>	<b>93</b>	<b>59</b>	<b>574</b>	<b>1,699</b>	<b>5,505</b>
Plane	178	614	1,468	81	48	533	889	3,810
Bus	21	135	199	8	7	26	48	444
Other types <sup>3</sup>	247	39	179	F	F	15 <sup>E</sup>	761	1,250
<b>Length of stay</b>	<b>806</b>	<b>1,837</b>	<b>6,210</b>	<b>242</b>	<b>139</b>	<b>831</b>	<b>3,345</b>	<b>13,411</b>
1 night	154	251	1,596	61	41	104	759	2,967
2 to 6 nights	489	1,378	3,808	143	72	567	2,147	8,604
7 to 13 nights	124	180	636	36	25	127	364	1,492
14 nights and over	39 <sup>E</sup>	28 <sup>E</sup>	170	F	F	33 <sup>E</sup>	76	349

**Note(s):** See "Data quality, concepts and methodology — Explanatory notes for tables" section.

**Table 13**  
**Person-trips by residents of the United States entering Canada and staying one or more nights, by selected trip characteristics and purpose of trip, 2008**

	Business, convention or employment	Visiting friends or relatives	Other pleasure, recreation or holiday	Total <sup>1</sup>
	thousands			
<b>Quarter of entry</b>	<b>1,972</b>	<b>2,568</b>	<b>6,954</b>	<b>12,503</b>
First	462	340	746	1,727
Second	562	623	1,831	3,304
Third	523	914	3,442	5,223
Fourth	425	691	936	2,250
<b>Region of residence</b>	<b>1,972</b>	<b>2,568</b>	<b>6,954</b>	<b>12,503</b>
New England	146	419	655	1,338
Middle Atlantic	330	521	1,644	2,732
South Atlantic	272	222	601	1,188
East North Central	405	461	1,596	2,716
West North Central	143	122	452	761
East South Central	50	25 <sup>E</sup>	102	190
West South Central	167	80	255	527
Mountain	144	141	309	648
Pacific	301	561	1,298	2,312
Other states	14 <sup>E</sup>	F	45 <sup>E</sup>	92
<b>Type of transportation</b>	<b>1,972</b>	<b>2,568</b>	<b>6,954</b>	<b>12,503</b>
Automobile	493	1,645	4,553	7,367
Plane	1,447	744	1,168	3,590
Bus	11 <sup>E</sup>	F	324	391
Other types <sup>2</sup>	21 <sup>E</sup>	165	910	1,155
<b>Sex</b>	<b>1,972</b>	<b>2,568</b>	<b>6,954</b>	<b>12,503</b>
Male	1,243	1,034	3,116	5,822
Female	586	1,333	3,268	5,664
Not stated	143	201	570	1,017
<b>Age group</b>	<b>1,972</b>	<b>2,568</b>	<b>6,954</b>	<b>12,503</b>
Under 12 years	30 <sup>E</sup>	179	404	652
12 to 19 years	12 <sup>E</sup>	108	404	577
20 to 24 years	32 <sup>E</sup>	148	186	401
25 to 34 years	223	239	558	1,113
35 to 44 years	406	361	815	1,684
45 to 54 years	571	408	1,103	2,265
55 to 64 years	427	427	1,448	2,510
65 years and over	129	497	1,466	2,284
Not stated	143	201	570	1,017
<b>Length of stay</b>	<b>1,972</b>	<b>2,568</b>	<b>6,954</b>	<b>12,503</b>
1 night	422	352	1,389	2,514
2 to 6 nights	1,439	1,731	4,256	7,978
7 to 13 nights	94	354	1,083	1,617
14 nights and over	18 <sup>E</sup>	130	225	395

**Note(s):** See "Data quality, concepts and methodology — Explanatory notes for tables" section.

**Table 14**  
**Person-trips by residents of countries other than the United States entering Canada, by country of residence and type of entry, 2008**

	Direct air and sea	Via the United States				Air and sea	Total	Grand total
		Land, same day	Land, one or more nights	Total land	Total			
thousands								
<b>Europe</b>	<b>1,816</b>	<b>63</b>	<b>195</b>	<b>258</b>	<b>418</b>	<b>676</b>	<b>2,492</b>	
Austria	25	1	2	3	6	9	34	
Belgium <sup>1</sup>	35	1	4	5	15	20	54	
Denmark <sup>2</sup>	21	1	5	6	5	11	32	
France <sup>3</sup>	300	5	36	40	87	127	427	
Germany	234	12	39	51	47	98	332	
Ireland (Republic)	34	1	4	5	12	17	51	
Italy <sup>4</sup>	61	10	16	26	21	47	108	
Netherlands	90	3	14	17	17	34	124	
Norway	18	0	1	2	4	6	24	
Poland	29	0	2	2	3	5	35	
Portugal <sup>5</sup>	16	1	1	2	4	5	21	
Spain <sup>6</sup>	46	8	8	16	14	30	76	
Sweden	24	1	4	4	8	12	36	
Switzerland <sup>7</sup>	71	2	9	11	17	28	100	
United Kingdom <sup>8</sup>	672	16	45	60	138	198	870	
Other	140	2	6	8	21	29	169	
<b>Africa</b>	<b>71</b>	<b>1</b>	<b>2</b>	<b>3</b>	<b>18</b>	<b>21</b>	<b>91</b>	
South Africa	16	0	1	1	7	8	24	
Other	54	0	2	2	11	13	67	
<b>Asia</b>	<b>817</b>	<b>45</b>	<b>158</b>	<b>203</b>	<b>246</b>	<b>448</b>	<b>1,265</b>	
China <sup>9</sup>	110	6	29	35	21	56	166	
Hong Kong	84	4	21	25	23	49	132	
India <sup>10</sup>	88	5	20	25	28	53	141	
Israel	41	2	7	9	18	27	68	
Japan	173	11	22	33	81	114	287	
Philippines	49	1	2	3	10	13	62	
South Korea	122	13	38	50	24	74	197	
Singapore	14	1	2	3	9	12	26	
Taiwan	40	2	11	13	11	23	63	
Other	95	1	4	6	22	28	123	
<b>Central America</b>	<b>9</b>	<b>0</b>	<b>1</b>	<b>1</b>	<b>11</b>	<b>12</b>	<b>20</b>	
<b>Bermuda and Caribbean</b>	<b>97</b>	<b>1</b>	<b>3</b>	<b>4</b>	<b>37</b>	<b>41</b>	<b>137</b>	
Bermuda	15	0	0	0	5	6	20	
Jamaica	22	0	0	0	3	4	26	
Trinidad and Tobago	21	0	0	0	4	4	25	
Other	40	0	2	3	24	27	66	
<b>South America</b>	<b>98</b>	<b>1</b>	<b>6</b>	<b>7</b>	<b>58</b>	<b>65</b>	<b>164</b>	
Brazil	45	1	2	3	25	28	72	
Other	54	1	3	4	33	38	91	
<b>North America</b>	<b>195</b>	<b>5</b>	<b>17</b>	<b>22</b>	<b>76</b>	<b>98</b>	<b>294</b>	
Mexico	174	5	17	22	75	97	271	
Other	22	0	0	0	1	1	23	
<b>Oceania and other ocean islands</b>	<b>107</b>	<b>12</b>	<b>33</b>	<b>45</b>	<b>150</b>	<b>195</b>	<b>301</b>	
Australia	83	10	28	38	127	166	249	
New Zealand	22	2	5	7	19	26	48	
Other	1	0	0	0	3	3	4	
<b>Grand total</b>	<b>3,209</b>	<b>126</b>	<b>416</b>	<b>542</b>	<b>1,014</b>	<b>1,556</b>	<b>4,764</b>	

**Note(s):** See "Data quality, concepts and methodology — Explanatory notes for tables" section.

**Table 15**  
**Person-trips by residents of countries other than the United States entering Canada, by country of residence and length of stay**

	2005		2006		2007		2008	
	One or more nights	Total	One or more nights	Total	One or more nights	Total	One or more nights	Total
	thousands							
<b>Europe</b>	<b>2,260</b>	<b>2,371</b>	<b>2,235</b>	<b>2,335</b>	<b>2,312</b>	<b>2,430</b>	<b>2,378</b>	<b>2,492</b>
Austria	31	32	31	33	31	31	32	34
Belgium <sup>1</sup>	44	47	45	49	48	49	54	54
Denmark <sup>2</sup>	26	27	28	28	28	29	31	32
France <sup>3</sup>	351	363	361	375	360	381	405	427
Germany	311	337	298	313	299	318	315	332
Ireland (Republic)	42	43	48	50	46	51	44	51
Italy <sup>4</sup>	91	101	88	95	93	105	98	108
Netherlands	118	122	118	122	116	124	120	124
Norway	20	21	21	22	21	22	22	24
Poland	22	23	25	26	24	24	34	35
Portugal <sup>5</sup>	19	20	20	21	21	22	21	21
Spain <sup>6</sup>	44	51	54	57	62	67	69	76
Sweden	31	33	31	31	30	33	35	36
Switzerland <sup>7</sup>	97	99	92	94	94	96	95	100
United Kingdom <sup>8</sup>	888	921	842	882	894	926	837	870
Other	126	129	134	138	146	150	166	169
<b>Africa</b>	<b>68</b>	<b>72</b>	<b>82</b>	<b>83</b>	<b>83</b>	<b>87</b>	<b>88</b>	<b>91</b>
South Africa	19	22	22	23	22	24	22	24
Other	49	50	60	61	61	63	66	67
<b>Asia</b>	<b>1,220</b>	<b>1,324</b>	<b>1,237</b>	<b>1,328</b>	<b>1,207</b>	<b>1,308</b>	<b>1,173</b>	<b>1,265</b>
China <sup>9</sup>	113	121	139	148	151	156	159	166
Hong Kong	109	114	107	112	111	116	125	132
India <sup>10</sup>	94	103	108	115	120	131	129	141
Israel	72	83	68	78	63	71	63	68
Japan	398	442	364	401	311	343	259	287
Philippines	42	44	49	50	58	59	60	62
Singapore	25	26	22	24	23	25	25	26
South Korea	173	191	189	202	187	213	173	197
Taiwan	98	101	93	95	79	83	62	63
Other	96	99	99	102	105	112	119	123
<b>Central America</b>	<b>15</b>	<b>16</b>	<b>15</b>	<b>16</b>	<b>18</b>	<b>19</b>	<b>18</b>	<b>20</b>
<b>Bermuda and Caribbean</b>	<b>127</b>	<b>129</b>	<b>132</b>	<b>134</b>	<b>137</b>	<b>138</b>	<b>136</b>	<b>137</b>
Bermuda	24	24	23	23	22	22	20	20
Jamaica	21	21	24	24	24	24	25	26
Trinidad and Tobago	22	22	25	25	25	25	25	25
Other	60	62	61	62	67	67	65	66
<b>South America</b>	<b>123</b>	<b>131</b>	<b>137</b>	<b>142</b>	<b>148</b>	<b>153</b>	<b>159</b>	<b>164</b>
Brazil	56	62	62	66	63	67	70	72
Other	67	69	74	76	84	86	89	91
<b>North America</b>	<b>194</b>	<b>210</b>	<b>219</b>	<b>231</b>	<b>243</b>	<b>268</b>	<b>276</b>	<b>294</b>
Mexico	179	194	202	214	230	251	257	271
Other	15	16	17	17	13	17	19	23
<b>Oceania and other ocean islands</b>	<b>215</b>	<b>253</b>	<b>215</b>	<b>249</b>	<b>251</b>	<b>276</b>	<b>266</b>	<b>301</b>
Australia	179	209	178	207	208	229	219	249
New Zealand	33	40	34	39	40	44	42	48
Other	3	3	3	3	4	4	4	4
<b>Grand total</b>	<b>4,222</b>	<b>4,505</b>	<b>4,272</b>	<b>4,518</b>	<b>4,400</b>	<b>4,679</b>	<b>4,494</b>	<b>4,764</b>

Note(s): See "Data quality, concepts and methodology — Explanatory notes for tables" section.

**Table 16**  
**Person-trips, person-nights and expenditures of residents of countries other than the United States entering Canada and staying one or more nights, by selected trip characteristics, 2008**

	Person-trips		Person-nights	Average number of nights per trip	Spending in Canada	Average spending per person-trip	Average spending per person-night
	thousands	percent	thousands	number	millions of dollars	dollars	
<b>Quarter of entry</b>	<b>4,494</b>	<b>100.0</b>	<b>75,424</b>	<b>16.8</b>	<b>6,310</b>	<b>1,404</b>	<b>84</b>
First	680	15.1	12,397	18.2	1,012	1,489	82
Second	1,225	27.2	19,159	15.6	1,696	1,385	89
Third	1,796	40.0	29,967	16.7	2,532	1,410	85
Fourth	793	17.7	13,901	17.5	1,069	1,348	77
<b>Area of residence</b>	<b>4,494</b>	<b>100.0</b>	<b>75,424</b>	<b>16.8</b>	<b>6,310</b>	<b>1,404</b>	<b>84</b>
<b>Europe</b>	<b>2,378</b>	<b>52.9</b>	<b>36,568</b>	<b>15.4</b>	<b>3,334</b>	<b>1,402</b>	<b>91</b>
France <sup>1</sup>	405	9.0	7,015	17.3	541	1,337	77
Germany	315	7.0	5,249	16.6	466	1,478	89
Italy <sup>2</sup>	98	2.2	1,344	13.7	109	1,104	81
Netherlands	120	2.7	1,847	15.5	167	1,395	90
Switzerland <sup>3</sup>	95	2.1	1,436	15.1	151	1,593	105
United Kingdom <sup>4</sup>	837	18.6	11,363	13.6	1,184	1,415	104
Other Europe	508	11.3	8,314	16.4	717	1,410	86
<b>Africa</b>	<b>88</b>	<b>2.0</b>	<b>2,178</b>	<b>24.6</b>	<b>151</b>	<b>1,705</b>	<b>69</b>
<b>Asia</b>	<b>1,173</b>	<b>26.1</b>	<b>22,869</b>	<b>19.5</b>	<b>1,625</b>	<b>1,386</b>	<b>71</b>
China <sup>5</sup>	159	3.5	4,439	28.0	263	1,656	59
Hong Kong	125	2.8	2,022	16.2	144	1,149	71
India <sup>6</sup>	129	2.9	2,792	21.7	122	951	44
Japan	259	5.8	3,103	12.0	356	1,376	115
South Korea	173	3.8	4,172	24.1	276	1,598	66
Other Asia	328	7.3	6,340	19.3	464	1,412	73
<b>Central America, Bermuda and Caribbean</b>	<b>154</b>	<b>3.4</b>	<b>2,140</b>	<b>13.9</b>	<b>161</b>	<b>1,043</b>	<b>75</b>
<b>South America</b>	<b>159</b>	<b>3.5</b>	<b>2,740</b>	<b>17.3</b>	<b>219</b>	<b>1,379</b>	<b>80</b>
<b>North America</b>	<b>276</b>	<b>6.2</b>	<b>5,255</b>	<b>19.0</b>	<b>384</b>	<b>1,390</b>	<b>73</b>
Mexico	257	5.7	5,105	19.9	364	1,415	71
<b>Oceania and other ocean islands</b>	<b>266</b>	<b>5.9</b>	<b>3,675</b>	<b>13.8</b>	<b>436</b>	<b>1,640</b>	<b>119</b>
Australia	219	4.9	2,935	13.4	356	1,622	121
<b>Purpose of trip</b>	<b>4,494</b>	<b>100.0</b>	<b>75,424</b>	<b>16.8</b>	<b>6,310</b>	<b>1,404</b>	<b>84</b>
Business, convention or employment	693	15.4	8,562	12.3	1,187	1,712	139
Visiting friends or relatives	1,576	35.1	29,344	18.6	1,611	1,022	55
Other pleasure, recreation or holiday	1,726	38.4	21,835	12.6	2,713	1,572	124
Other	498	11.1	15,683	31.5	799	1,604	51
<b>Length of stay</b>	<b>4,494</b>	<b>100.0</b>	<b>75,424</b>	<b>16.8</b>	<b>6,310</b>	<b>1,404</b>	<b>84</b>
1 to 6 nights	1,321	29.4	4,909	3.7	1,156	875	236
7 to 13 nights	1,315	29.3	12,260	9.3	1,706	1,298	139
14 to 20 nights	909	20.2	14,541	16.0	1,314	1,444	90
21 nights and over	949	21.1	43,714	46.1	2,134	2,249	49

**Note(s):** See "Data quality, concepts and methodology — Explanatory notes for tables" section.

**Table 17**  
**Trip characteristics of residents of countries other than the United States entering Canada and staying one or more nights**

	2005		2006		2007		2008	
	thousands	percent	thousands	percent	thousands	percent	thousands	percent
<b>Number and percentage of person-trips</b>								
<b>Quarter of entry</b>	<b>4,222</b>	<b>100.0</b>	<b>4,272</b>	<b>100.0</b>	<b>4,400</b>	<b>100.0</b>	<b>4,494</b>	<b>100.0</b>
First	620	14.7	618	14.5	663	15.1	680	15.1
Second	1,094	25.9	1,146	26.8	1,153	26.2	1,225	27.2
Third	1,726	40.9	1,718	40.2	1,762	40.0	1,796	40.0
Fourth	782	18.5	790	18.5	821	18.7	793	17.7
<b>Country of residence</b>	<b>4,222</b>	<b>100.0</b>	<b>4,272</b>	<b>100.0</b>	<b>4,400</b>	<b>100.0</b>	<b>4,494</b>	<b>100.0</b>
Australia	179	4.2	178	4.2	208	4.7	219	4.9
China <sup>1</sup>	113	2.7	139	3.3	151	3.4	159	3.5
France <sup>2</sup>	351	8.3	361	8.5	360	8.2	405	9.0
Germany	311	7.4	298	7.0	299	6.8	315	7.0
Hong Kong	109	2.6	107	2.5	111	2.5	125	2.8
India <sup>3</sup>	94	2.2	108	2.5	120	2.7	129	2.9
Italy <sup>4</sup>	91	2.1	88	2.1	93	2.1	98	2.2
Japan	398	9.4	364	8.5	311	7.1	259	5.8
Mexico	179	4.2	202	4.7	230	5.2	257	5.7
Netherlands	118	2.8	118	2.8	116	2.6	120	2.7
South Korea	173	4.1	189	4.4	187	4.3	173	3.8
Switzerland <sup>5</sup>	97	2.3	92	2.2	94	2.1	95	2.1
United Kingdom <sup>6</sup>	888	21.0	842	19.7	894	20.3	837	18.6
Other countries	1,122	26.6	1,187	27.8	1,227	27.9	1,304	29.0
<b>Purpose of trip</b>	<b>4,222</b>	<b>100.0</b>	<b>4,272</b>	<b>100.0</b>	<b>4,400</b>	<b>100.0</b>	<b>4,494</b>	<b>100.0</b>
Business, convention or employment	659	15.6	701	16.4	635	14.4	693	15.4
Visiting friends or relatives	1,338	31.7	1,379	32.3	1,519	34.5	1,576	35.1
Other pleasure, recreation or holiday	1,811	42.9	1,775	41.5	1,826	41.5	1,726	38.4
Other	415	9.8	418	9.8	421	9.6	498	11.1
<b>Sex</b>	<b>4,222</b>	<b>100.0</b>	<b>4,272</b>	<b>100.0</b>	<b>4,400</b>	<b>100.0</b>	<b>4,494</b>	<b>100.0</b>
Male	2,085	49.4	2,083	48.8	2,178	49.5	2,246	50.0
Female	1,961	46.5	1,998	46.8	2,079	47.3	2,111	47.0
Not stated	176	4.2	192	4.5	143	3.2	137	3.1
<b>Age group</b>	<b>4,222</b>	<b>100.0</b>	<b>4,272</b>	<b>100.0</b>	<b>4,400</b>	<b>100.0</b>	<b>4,494</b>	<b>100.0</b>
Under 12 years	146	3.5	139	3.3	165	3.7	156	3.5
12 to 19 years	253	6.0	259	6.1	267	6.1	310	6.9
20 to 24 years	322	7.6	288	6.7	284	6.5	314	7.0
25 to 34 years	821	19.4	714	16.7	699	15.9	727	16.2
35 to 44 years	692	16.4	722	16.9	748	17.0	729	16.2
45 to 54 years	686	16.2	727	17.0	777	17.7	755	16.8
55 to 64 years	687	16.3	750	17.6	810	18.4	816	18.2
65 years and over	439	10.4	482	11.3	507	11.5	550	12.2
Not stated	176	4.2	192	4.5	143	3.2	137	3.1
<b>Length of stay</b>	<b>4,222</b>	<b>100.0</b>	<b>4,272</b>	<b>100.0</b>	<b>4,400</b>	<b>100.0</b>	<b>4,494</b>	<b>100.0</b>
1 night	143	3.4	158	3.7	153	3.5	167	3.7
2 to 6 nights	1,208	28.6	1,181	27.6	1,118	25.4	1,154	25.7
7 to 13 nights	1,218	28.8	1,261	29.5	1,403	31.9	1,315	29.3
14 nights and over	1,652	39.1	1,673	39.2	1,725	39.2	1,858	41.4

**Note(s):** See "Data quality, concepts and methodology — Explanatory notes for tables" section.

**Table 18**  
**Trip characteristics of residents of countries other than the United States entering Canada and staying one or more nights in province visited, 2008**

	Atlantic provinces <sup>1</sup>	Quebec	Ontario	Manitoba	Saskatchewan	Alberta	British Columbia <sup>2</sup>	Total
Person-visits (thousands)	274	1,166	2,045	72	62	810	1,527	5,955
Spending in province (millions of dollars)	246	1,235	1,990	51	54	858	1,876	6,310
Average spending per person-visit (dollars)	897	1,059	973	711	866	1,059	1,229	1,060
Person-nights (thousands)	3,187	13,834	24,891	888	786	9,883	21,955	75,424
Average number of nights per visit	11.6	11.9	12.2	12.4	12.7	12.2	14.4	12.7
Average spending per person-night (dollars)	77	89	80	57	68	87	85	84
	thousands							
<b>Person-visits</b>								
<b>Quarter of entry</b>	<b>274</b>	<b>1,166</b>	<b>2,045</b>	<b>72</b>	<b>62</b>	<b>810</b>	<b>1,527</b>	<b>5,955</b>
First	23	146	265	F	F	97	252	793
Second	88	298	581	16 <sup>E</sup>	19 <sup>E</sup>	252	432	1,686
Third	132	503	825	34	25	357	607	2,483
Fourth	32	220	373	16 <sup>E</sup>	F	105	235	993
<b>Area of residence</b>	<b>274</b>	<b>1,166</b>	<b>2,045</b>	<b>72</b>	<b>62</b>	<b>810</b>	<b>1,527</b>	<b>5,955</b>
<b>Europe</b>	<b>177</b>	<b>768</b>	<b>1,013</b>	<b>42</b>	<b>36</b>	<b>493</b>	<b>652</b>	<b>3,182</b>
France <sup>3</sup>	21 <sup>E</sup>	313	118	F	F	25	30	510
Germany	45	72	125	F	8 <sup>E</sup>	92	122	473
Italy <sup>4</sup>	F	54	59	F	F	F	F	125
Netherlands	9 <sup>E</sup>	18	45	F	F	48	51	177
Switzerland <sup>5</sup>	F	36	39	F	F	16	29	126
United Kingdom <sup>6</sup>	66	122	356	18 <sup>E</sup>	20 <sup>E</sup>	230	299	1,112
Other Europe	30	153	271	F	F	76	115	659
<b>Africa</b>	<b>F</b>	<b>42</b>	<b>32</b>	<b>F</b>	<b>F</b>	<b>16<sup>E</sup></b>	<b>16</b>	<b>115</b>
<b>Asia</b>	<b>34</b>	<b>156</b>	<b>572</b>	<b>14<sup>E</sup></b>	<b>16<sup>E</sup></b>	<b>218</b>	<b>565</b>	<b>1,577</b>
China <sup>7</sup>	F	14 <sup>E</sup>	75	F	F	25	90	215
Hong Kong	F	12 <sup>E</sup>	53	F	F	21	77	168
India <sup>8</sup>	F	F	100	F	F	9 <sup>E</sup>	26	151
Japan	F	36	129	F	F	60	131	374
South Korea	F	F	61	F	F	32	104	222
Other Asia	F	70	155	F	F	72	137	447
<b>Central America, Bermuda and Caribbean</b>	<b>21</b>	<b>20</b>	<b>114</b>	<b>F</b>	<b>F</b>	<b>F</b>	<b>7<sup>E</sup></b>	<b>168</b>
<b>South America</b>	<b>F</b>	<b>47</b>	<b>120</b>	<b>F</b>	<b>F</b>	<b>F</b>	<b>15<sup>E</sup></b>	<b>199</b>
<b>North America</b>	<b>24</b>	<b>93</b>	<b>123</b>	<b>F</b>	<b>F</b>	<b>11<sup>E</sup></b>	<b>83</b>	<b>338</b>
Mexico	F	89	122	F	F	11 <sup>E</sup>	83	315
<b>Oceania and other ocean islands</b>	<b>F</b>	<b>40</b>	<b>71</b>	<b>F</b>	<b>F</b>	<b>57</b>	<b>187</b>	<b>377</b>
Australia	F	33	66	F	F	41	147	305
<b>Purpose of trip</b>	<b>274</b>	<b>1,166</b>	<b>2,045</b>	<b>72</b>	<b>62</b>	<b>810</b>	<b>1,527</b>	<b>5,955</b>
Business, convention or employment	34	209	324	F	8 <sup>E</sup>	88	133	803
Visiting friends or relatives	83	326	854	40	30	207	402	1,941
Other pleasure, recreation or holiday	124	527	647	18 <sup>E</sup>	15 <sup>E</sup>	455	809	2,595
Other	34	103	220	F	F	61	183	615
<b>Length of stay</b>	<b>274</b>	<b>1,166</b>	<b>2,045</b>	<b>72</b>	<b>62</b>	<b>810</b>	<b>1,527</b>	<b>5,955</b>
1 to 6 nights	143	586	883	34	33	412	678	2,770
7 to 13 nights	72	307	560	17 <sup>E</sup>	9 <sup>E</sup>	216	406	1,587
14 nights and over	60	273	601	21 <sup>E</sup>	19 <sup>E</sup>	182	442	1,598

**Note(s):** See "Data quality, concepts and methodology — Explanatory notes for tables" section.

**Table 19**  
**Person-trips by residents of countries other than the United States entering Canada and staying one or more nights,**  
**by selected trip characteristics and purpose of trip**

	2007				2008			
	Business, convention or employment	Visiting friends or relatives	Other pleasure, recreation or holiday	Total <sup>1</sup>	Business, convention or employment	Visiting friends or relatives	Other pleasure, recreation or holiday	Total <sup>1</sup>
	thousands							
<b>Quarter of entry</b>	<b>635</b>	<b>1,519</b>	<b>1,826</b>	<b>4,400</b>	<b>693</b>	<b>1,576</b>	<b>1,726</b>	<b>4,494</b>
First	114	209	250	663	119	239	241	680
Second	200	358	476	1,153	227	427	459	1,225
Third	180	638	820	1,762	198	597	779	1,796
Fourth	141	314	279	821	151	313	247	793
<b>Area of residence</b>	<b>635</b>	<b>1,519</b>	<b>1,826</b>	<b>4,400</b>	<b>693</b>	<b>1,576</b>	<b>1,726</b>	<b>4,494</b>
<b>Europe</b>	<b>314</b>	<b>754</b>	<b>1,088</b>	<b>2,312</b>	<b>372</b>	<b>787</b>	<b>1,038</b>	<b>2,378</b>
France <sup>2</sup>	49	110	181	360	56	119	195	405
Germany	52	70	159	299	63	78	154	315
Italy <sup>3</sup>	13	33	38	93	22	34	36	98
Netherlands	15 <sup>E</sup>	36	59	116	16	42	53	120
Switzerland <sup>4</sup>	11	28	47	94	12	30	43	95
United Kingdom <sup>5</sup>	91	300	453	894	111	279	399	837
Other Europe	84	177	151	457	92	206	157	508
<b>Africa</b>	<b>17<sup>E</sup></b>	<b>38</b>	<b>21<sup>E</sup></b>	<b>83</b>	<b>17</b>	<b>47</b>	<b>19<sup>E</sup></b>	<b>88</b>
<b>Asia</b>	<b>198</b>	<b>487</b>	<b>357</b>	<b>1,207</b>	<b>177</b>	<b>479</b>	<b>319</b>	<b>1,173</b>
China <sup>6</sup>	44	62	25	151	32	74	23 <sup>E</sup>	159
Hong Kong	7 <sup>E</sup>	71	25	111	8	62	32	125
India <sup>7</sup>	21	63	30	120	22 <sup>E</sup>	68	30	129
Japan	44	86	151	311	37	61	126	259
South Korea	31	72	34	187	27	62	30	173
Other Asia	51	133	91	327	52	152	78	328
<b>Central America, Bermuda and Caribbean</b>	<b>21<sup>E</sup></b>	<b>54</b>	<b>58</b>	<b>155</b>	<b>20</b>	<b>64</b>	<b>44</b>	<b>154</b>
<b>South America</b>	<b>26</b>	<b>65</b>	<b>44</b>	<b>148</b>	<b>23</b>	<b>60</b>	<b>50</b>	<b>159</b>
<b>North America</b>	<b>35</b>	<b>55</b>	<b>110</b>	<b>243</b>	<b>49</b>	<b>75</b>	<b>99</b>	<b>276</b>
Mexico	35	53	108	230	49	70	93	257
<b>Oceania and other ocean islands</b>	<b>24<sup>E</sup></b>	<b>65</b>	<b>149</b>	<b>251</b>	<b>34</b>	<b>64</b>	<b>157</b>	<b>266</b>
Australia	18 <sup>E</sup>	49	129	208	30	53	128	219
<b>Sex</b>	<b>635</b>	<b>1,519</b>	<b>1,826</b>	<b>4,400</b>	<b>693</b>	<b>1,576</b>	<b>1,726</b>	<b>4,494</b>
Male	471	652	842	2,178	508	661	815	2,246
Female	136	826	920	2,079	160	879	850	2,111
Not stated	27	40	64	143	26 <sup>E</sup>	36	61	137
<b>Age group</b>	<b>635</b>	<b>1,519</b>	<b>1,826</b>	<b>4,400</b>	<b>693</b>	<b>1,576</b>	<b>1,726</b>	<b>4,494</b>
Under 12 years	F	71	80	165	F	59	85	156
12 to 19 years	F	81	119	267	6 <sup>E</sup>	77	118	310
20 to 24 years	19	74	109	284	25	77	106	314
25 to 34 years	151	180	284	699	161	187	287	727
35 to 44 years	189	215	293	748	207	196	271	729
45 to 54 years	157	241	321	777	164	248	283	755
55 to 64 years	77	350	341	810	87	383	314	816
65 years and over	9 <sup>E</sup>	267	214	507	15 <sup>E</sup>	313	202	550
Not stated	27	40	64	143	26 <sup>E</sup>	36	61	137
<b>Length of stay</b>	<b>635</b>	<b>1,519</b>	<b>1,826</b>	<b>4,400</b>	<b>693</b>	<b>1,576</b>	<b>1,726</b>	<b>4,494</b>
1 to 6 nights	345	256	561	1,271	422	239	551	1,321
7 to 13 nights	189	475	629	1,403	158	490	555	1,315
14 to 20 nights	35	386	384	862	31	426	362	909
21 nights and over	65	401	252	864	82	421	258	949

**Note(s):** See "Data quality, concepts and methodology — Explanatory notes for tables" section.

**Table 20**  
**Trip characteristics of Canadian residents returning after a stay of one or more nights abroad**

	2005		2006		2007		2008	
	thousands	percent	thousands	percent	thousands	percent	thousands	percent
<b>Number and percentage of person-trips</b>								
<b>Quarter of re-entry</b>	<b>21,091</b>	<b>100.0</b>	<b>22,731</b>	<b>100.0</b>	<b>25,163</b>	<b>100.0</b>	<b>27,037</b>	<b>100.0</b>
First	5,452	25.8	5,740	25.2	6,158	24.5	7,249	26.8
Second	5,102	24.2	5,454	24.0	5,789	23.0	6,447	23.8
Third	6,261	29.7	6,773	29.8	7,518	29.9	7,904	29.2
Fourth	4,277	20.3	4,765	21.0	5,698	22.6	5,437	20.1
<b>Province of residence</b>	<b>21,091</b>	<b>100.0</b>	<b>22,731</b>	<b>100.0</b>	<b>25,163</b>	<b>100.0</b>	<b>27,037</b>	<b>100.0</b>
Atlantic provinces <sup>1</sup>	840	4.0	854	3.8	985	3.9	1,031	3.8
Quebec	3,901	18.5	4,206	18.5	4,585	18.2	4,865	18.0
Ontario	9,904	47.0	10,594	46.6	11,635	46.2	12,452	46.1
Manitoba	775	3.7	877	3.9	969	3.9	1,054	3.9
Saskatchewan	330	1.6	347	1.5	464	1.8	453	1.7
Alberta	1,853	8.8	2,177	9.6	2,488	9.9	2,761	10.2
British Columbia <sup>2</sup>	3,489	16.5	3,677	16.2	4,036	16.0	4,421	16.4
<b>Purpose of trip</b>	<b>21,091</b>	<b>100.0</b>	<b>22,731</b>	<b>100.0</b>	<b>25,163</b>	<b>100.0</b>	<b>27,037</b>	<b>100.0</b>
Business, convention or employment	2,853	13.5	3,047	13.4	3,277	13.0	3,173	11.7
Visiting friends or relatives	4,268	20.2	4,388	19.3	4,672	18.6	4,828	17.9
Other pleasure, recreation or holiday	12,213	57.9	13,461	59.2	15,070	59.9	16,752	62.0
Other	1,757	8.3	1,835	8.1	2,145	8.5	2,285	8.4
<b>Sex</b>	<b>21,091</b>	<b>100.0</b>	<b>22,731</b>	<b>100.0</b>	<b>25,163</b>	<b>100.0</b>	<b>27,037</b>	<b>100.0</b>
Male	9,028	42.8	9,691	42.6	10,745	42.7	11,550	42.7
Female	10,358	49.1	11,224	49.4	12,522	49.8	13,638	50.4
Not stated	1,705	8.1	1,817	8.0	1,896	7.5	1,849	6.8
<b>Age group</b>	<b>21,091</b>	<b>100.0</b>	<b>22,731</b>	<b>100.0</b>	<b>25,163</b>	<b>100.0</b>	<b>27,037</b>	<b>100.0</b>
Under 12 years	1,152	5.5	1,233	5.4	1,389	5.5	1,543	5.7
12 to 19 years	1,006	4.8	1,002	4.4	1,151	4.6	1,300	4.8
20 to 24 years	668	3.2	794	3.5	841	3.3	940	3.5
25 to 34 years	2,163	10.3	2,332	10.3	2,579	10.2	2,803	10.4
35 to 44 years	3,036	14.4	3,200	14.1	3,556	14.1	3,852	14.2
45 to 54 years	4,174	19.8	4,493	19.8	5,050	20.1	5,258	19.4
55 to 64 years	4,007	19.0	4,509	19.8	5,064	20.1	5,443	20.1
65 years and over	3,179	15.1	3,352	14.7	3,639	14.5	4,049	15.0
Not stated	1,705	8.1	1,817	8.0	1,896	7.5	1,849	6.8
<b>Length of stay</b>	<b>21,091</b>	<b>100.0</b>	<b>22,731</b>	<b>100.0</b>	<b>25,163</b>	<b>100.0</b>	<b>27,037</b>	<b>100.0</b>
1 night	1,744	8.3	1,812	8.0	1,980	7.9	2,010	7.4
2 to 6 nights	8,625	40.9	9,552	42.0	10,648	42.3	11,121	41.1
7 to 13 nights	5,895	27.9	6,389	28.1	7,053	28.0	7,980	29.5
14 to 20 nights	2,549	12.1	2,624	11.5	2,935	11.7	3,235	12.0
21 nights and over	2,278	10.8	2,354	10.4	2,547	10.1	2,691	10.0

**Note(s):** See "Data quality, concepts and methodology — Explanatory notes for tables" section.

Table 21

Person-trips, person-nights and expenditures of Canadian residents returning from the United States after a stay of one or more nights, by selected trip characteristics, 2008

	Person-trips		Person-nights	Average number of nights per trip	Spending	Average spending per person-trip	Average spending per person-night
	thousands	percent	thousands	number	millions of dollars	dollars	
<b>Type of transportation</b>	<b>18,915</b>	<b>100.0</b>	<b>146,602</b>	<b>7.8</b>	<b>12,924</b>	<b>683</b>	<b>88</b>
Automobile	11,341	60.0	84,027	7.4	5,826	514	69
Other	7,573	40.0	62,575	8.3	7,098	937	113
Plane	6,348	33.6	56,587	8.9	6,628	1,044	117
Bus	678	3.6	2,573	3.8	270	399	105
Other types <sup>1</sup>	548	2.9	3,416	6.2	200	364	58
<b>Quarter of re-entry</b>	<b>18,915</b>	<b>100.0</b>	<b>146,602</b>	<b>7.8</b>	<b>12,924</b>	<b>683</b>	<b>88</b>
First	4,493	23.8	43,205	9.6	3,800	846	88
Second	4,586	24.2	49,103	10.7	3,637	793	74
Third	6,069	32.1	31,421	5.2	2,965	488	94
Fourth	3,766	19.9	22,874	6.1	2,523	670	110
<b>Region of destination</b>	<b>18,915</b>	<b>100.0</b>	<b>146,602</b>	<b>7.8</b>	<b>12,924</b>	<b>683</b>	<b>88</b>
New England	2,062	10.9	9,520	4.6	908	440	95
Middle Atlantic	3,932	20.8	11,295	2.9	1,200	305	106
South Atlantic	2,607	13.8	42,598	16.3	3,310	1,270	78
East North Central	2,034	10.8	6,897	3.4	726	357	105
West North Central	1,294	6.8	4,463	3.4	525	406	118
East South Central	134	0.7	947	7.1	112	839	119
West South Central	300	1.6	2,945	9.8	304	1,013	103
Mountain	1,903	10.1	16,049	8.4	1,902	1,000	119
Pacific	3,058	16.2	17,373	5.7	1,635	535	94
Alaska	218	1.2	2,088	9.6	124	566	59
Hawaii	413	2.2	6,621	16.0	778	1,887	118
Touring <sup>2</sup>	959	5.1	25,807	26.9	1,400	1,460	54
<b>Purpose of trip</b>	<b>18,915</b>	<b>100.0</b>	<b>146,602</b>	<b>7.8</b>	<b>12,924</b>	<b>683</b>	<b>88</b>
Business, convention or employment	2,359	12.5	10,489	4.4	2,131	903	203
Visiting friends or relatives	3,480	18.4	21,563	6.2	1,236	355	57
Other pleasure, recreation or holiday	11,206	59.2	105,491	9.4	8,676	774	82
Other	1,869	9.9	9,059	4.8	882	472	97
<b>Length of stay</b>	<b>18,915</b>	<b>100.0</b>	<b>146,602</b>	<b>7.8</b>	<b>12,924</b>	<b>683</b>	<b>88</b>
1 night	2,006	10.6	2,006	1.0	313	156	156
2 to 6 nights	10,568	55.9	34,496	3.3	4,923	466	143
7 to 13 nights	4,141	21.9	36,449	8.8	3,630	877	100
14 nights and over	2,200	11.6	73,652	33.5	4,059	1,844	55

Note(s): See "Data quality, concepts and methodology — Explanatory notes for tables" section.

**Table 22**  
**Trip characteristics of Canadian residents returning from the United States, by province of residence, 2008**

	Atlantic provinces <sup>1</sup>	Quebec	Ontario	Manitoba	Saskatchewan	Alberta	British Columbia <sup>2</sup>	Canada
<b>Same day</b>								
Person-trips (thousands)	3,322	2,010	13,505	684	184	212	4,781	24,698
Spending (millions of dollars)	249 <sup>E</sup>	146 <sup>E</sup>	1,148	76 <sup>E</sup>	26 <sup>E</sup>	F	410	2,115
Average spending per person-trip (dollars)	75 <sup>E</sup>	73 <sup>E</sup>	85	111 <sup>E</sup>	143 <sup>E</sup>	F	86	86
<b>One or more nights</b>								
Person-trips (thousands)	777	3,077	8,560	931	353	1,920	3,297	18,915
Spending (millions of dollars)	634	1,791	5,737	573	321	1,932	1,936	12,924
Average spending per person-trip (dollars)	816	582	670	616	908	1,006	587	683
Person-nights (thousands)	7,533	21,284	69,543	5,678	3,840	18,316	20,408	146,602
Average number of nights per trip	9.7	6.9	8.1	6.1	10.9	9.5	6.2	7.8
Average spending per person-night (dollars)	84	84	82	101	83	106	95	88
<b>Total</b>								
Person-trips (thousands)	<b>4,099</b>	<b>5,086</b>	<b>22,066</b>	<b>1,615</b>	<b>538</b>	<b>2,132</b>	<b>8,078</b>	<b>43,613</b>
Spending (millions of dollars)	<b>883</b>	<b>1,938</b>	<b>6,885</b>	<b>649</b>	<b>347</b>	<b>1,992</b>	<b>2,345</b>	<b>15,040</b>
	thousands							
<b>Person-trips, one or more nights</b>								
<b>Type of transportation</b>								
Automobile	430	1,919	5,369	695	208	631	2,090	11,341
Other	347	1,158	3,191	236	146	1,289	1,207	7,573
<b>Region of destination</b>								
New England	409	1,173	419	F	F	31 <sup>E</sup>	19 <sup>E</sup>	2,062
Middle Atlantic	57	948	2,791	9 <sup>E</sup>	F	66	52	3,932
South Atlantic	150	513	1,511	54	F	215	135	2,607
East North Central	21 <sup>E</sup>	76	1,781	28	12 <sup>E</sup>	73	44	2,034
West North Central	F	21 <sup>E</sup>	349	666	150	72	F	1,294
East South Central	F	8 <sup>E</sup>	87	F	F	F	F	134
West South Central	F	31	143	13 <sup>E</sup>	F	59 <sup>E</sup>	F	300
Mountain	21 <sup>E</sup>	109	385	62	61	796	470	1,903
Pacific	F	99	293	36 <sup>E</sup>	33 <sup>E</sup>	370	2,211	3,058
Alaska	F	F	60	F	F	F	84	218
Hawaii	F	F	66 <sup>E</sup>	F	F	148	152	413
Touring <sup>3</sup>	62	79	675	34	F	37 <sup>E</sup>	57	959
<b>Quarter of re-entry</b>								
First	162	578	2,223	204	89	458	779	4,493
Second	212	714	2,051	244	74	469	824	4,586
Third	239	1,250	2,532	304	120	587	1,037	6,069
Fourth	164	536	1,754	179	70	406	656	3,766
<b>Sex</b>								
Male	324	1,364	3,745	395	154	825	1,341	8,148
Female	405	1,489	4,211	485	185	975	1,727	9,477
Not stated	47	224	604	51	15 <sup>E</sup>	120	229	1,290
<b>Age group</b>								
Under 12 years	35	223	527	77	18	148	178	1,207
12 to 19 years	36	188	410	70	16 <sup>E</sup>	107	141	968
20 to 24 years	14 <sup>E</sup>	108	282	24	F	42	102	580
25 to 34 years	62	345	791	73	31	178	262	1,742
35 to 44 years	118	508	1,249	124	43 <sup>E</sup>	283	444	2,768
45 to 54 years	160	558	1,769	169	57	379	559	3,652
55 to 64 years	164	519	1,745	185	82	374	687	3,757
65 years and over	141	403	1,183	158	82	288	696	2,952
Not stated	47	224	604	51	15 <sup>E</sup>	120	229	1,290
<b>Length of stay</b>								
1 night	55	246	1,047	103	28	82	445	2,006
2 to 6 nights	412	1,888	4,637	613	187	935	1,896	10,568
7 to 13 nights	205	630	1,866	143	81	579	636	4,141
14 nights and over	105	312	1,011	72	58	323	319	2,200

**Note(s):** See "Data quality, concepts and methodology — Explanatory notes for tables" section.

**Table 23-1**  
**Trip characteristics of Canadian residents returning from the United States after a stay of one or more nights**  
**— Purpose of trip**

	2007				2008			
	Business, convention or employment	Visiting friends or relatives	Other pleasure, recreation or holiday	Total <sup>1</sup>	Business, convention or employment	Visiting friends or relatives	Other pleasure, recreation or holiday	Total <sup>1</sup>
thousands								
<b>Person-trips</b>								
<b>Province of residence</b>	<b>2,506</b>	<b>3,430</b>	<b>10,098</b>	<b>17,759</b>	<b>2,359</b>	<b>3,480</b>	<b>11,206</b>	<b>18,915</b>
Atlantic provinces <sup>2</sup>	66	133	443	762	73	145	436	777
Quebec	341	478	2,026	2,989	338	488	2,099	3,077
Ontario	1,367	1,788	4,104	8,110	1,257	1,794	4,561	8,560
Manitoba	68	104	541	848	61	101	610	931
Saskatchewan	42 <sup>E</sup>	41	205	348	46 <sup>E</sup>	43	212	353
Alberta	300	256	1,002	1,699	238	251	1,278	1,920
British Columbia <sup>3</sup>	322	630	1,778	3,002	346	657	2,010	3,297
<b>Quarter of re-entry</b>	<b>2,506</b>	<b>3,430</b>	<b>10,098</b>	<b>17,759</b>	<b>2,359</b>	<b>3,480</b>	<b>11,206</b>	<b>18,915</b>
First	602	689	2,170	3,698	647	817	2,680	4,493
Second	676	745	2,291	4,090	637	786	2,739	4,586
Third	586	1,075	3,634	5,805	538	1,103	3,836	6,069
Fourth	642	920	2,004	4,168	538	775	1,951	3,766
<b>Region of destination</b>	<b>2,506</b>	<b>3,430</b>	<b>10,098</b>	<b>17,759</b>	<b>2,359</b>	<b>3,480</b>	<b>11,206</b>	<b>18,915</b>
New England	140	380	1,273	1,992	147	371	1,332	2,062
Middle Atlantic	408	818	2,047	3,785	371	855	2,185	3,932
South Atlantic	406	299	1,474	2,252	444	335	1,751	2,607
East North Central	452	636	701	2,043	375	606	745	2,034
West North Central	142	170	657	1,189	121	178	748	1,294
East South Central	71	25 <sup>E</sup>	32 <sup>E</sup>	138	59	25 <sup>E</sup>	43 <sup>E</sup>	134
West South Central	188	78 <sup>E</sup>	47 <sup>E</sup>	327	155	72 <sup>E</sup>	55 <sup>E</sup>	300
Mountain	270	230	1,166	1,788	270	207	1,297	1,903
Pacific	359	644	1,587	2,843	346	671	1,783	3,058
Alaska	F	F	200	216	F	F	199	218
Hawaii	F	F	259	290	F	F	371	413
Touring <sup>4</sup>	55	131	655	897	53	143	697	959
<b>Sex</b>	<b>2,506</b>	<b>3,430</b>	<b>10,098</b>	<b>17,759</b>	<b>2,359</b>	<b>3,480</b>	<b>11,206</b>	<b>18,915</b>
Male	1,428	1,332	4,270	7,645	1,314	1,354	4,828	8,148
Female	866	1,912	5,115	8,844	846	1,922	5,656	9,477
Not stated	212	185	713	1,270	199	205	721	1,290
<b>Age group</b>	<b>2,506</b>	<b>3,430</b>	<b>10,098</b>	<b>17,759</b>	<b>2,359</b>	<b>3,480</b>	<b>11,206</b>	<b>18,915</b>
Under 12 years	21 <sup>E</sup>	250	741	1,084	20 <sup>E</sup>	239	871	1,207
12 to 19 years	36 <sup>E</sup>	155	567	854	30 <sup>E</sup>	175	654	968
20 to 24 years	60	110	300	563	48	117	312	580
25 to 34 years	386	342	780	1,688	338	355	855	1,742
35 to 44 years	606	408	1,363	2,595	586	403	1,538	2,768
45 to 54 years	707	598	1,916	3,564	651	573	2,059	3,652
55 to 64 years	376	733	2,051	3,468	377	715	2,317	3,757
65 years and over	102	648	1,666	2,672	111	699	1,880	2,952
Not stated	212	185	713	1,270	199	205	721	1,290
<b>Length of stay</b>	<b>2,506</b>	<b>3,430</b>	<b>10,098</b>	<b>17,759</b>	<b>2,359</b>	<b>3,480</b>	<b>11,206</b>	<b>18,915</b>
1 night	353	368	843	1,974	313	401	879	2,006
2 to 6 nights	1,833	1,971	5,269	10,153	1,715	1,971	5,681	10,568
7 to 13 nights	255	791	2,589	3,795	271	771	2,937	4,141
14 nights and over	65	300	1,398	1,837	60	337	1,709	2,200

**Note(s):** See "Data quality, concepts and methodology — Explanatory notes for tables" section.

**Table 23-2**  
**Trip characteristics of Canadian residents returning from the United States after a stay of one or more nights —**  
**Quarter of re-entry**

	2007					2008				
	First	Second	Third	Fourth	Total	First	Second	Third	Fourth	Total
thousands										
<b>Person-trips</b>										
<b>Region of destination</b>	<b>3,698</b>	<b>4,090</b>	<b>5,805</b>	<b>4,168</b>	<b>17,759</b>	<b>4,493</b>	<b>4,586</b>	<b>6,069</b>	<b>3,766</b>	<b>18,915</b>
New England	219	373	987	412	1,992	299	400	1,004	359	2,062
Middle Atlantic	626	894	1,370	895	3,785	773	973	1,432	754	3,932
South Atlantic	816	529	397	510	2,252	1,032	623	428	524	2,607
East North Central	322	485	704	532	2,043	375	489	690	481	2,034
West North Central	193	262	415	319	1,189	233	329	466	267	1,294
East South Central	22 <sup>E</sup>	46 <sup>E</sup>	35 <sup>E</sup>	35 <sup>E</sup>	138	23 <sup>E</sup>	39 <sup>E</sup>	38 <sup>E</sup>	33 <sup>E</sup>	134
West South Central	76	95	76 <sup>E</sup>	80	327	89	89	61 <sup>E</sup>	61 <sup>E</sup>	300
Mountain	452	397	459	481	1,788	500	460	512	431	1,903
Pacific	534	659	954	696	2,843	678	760	1,015	605	3,058
Alaska	F	64	141	F	216	2	63	149	F	218
Hawaii	152	F	F	62	290	189	85 <sup>E</sup>	47 <sup>E</sup>	92	413
Touring 1	284	248	227	138	897	300	276	227	156	959
<b>Purpose of trip</b>	<b>3,698</b>	<b>4,090</b>	<b>5,805</b>	<b>4,168</b>	<b>17,759</b>	<b>4,493</b>	<b>4,586</b>	<b>6,069</b>	<b>3,766</b>	<b>18,915</b>
Business, convention or employment	602	676	586	642	2,506	647	637	538	538	2,359
Visiting friends or relatives	689	745	1,075	920	3,430	817	786	1,103	775	3,480
Other pleasure, recreation or holiday	2,170	2,291	3,634	2,004	10,098	2,680	2,739	3,836	1,951	11,206
Other	237	377	509	602	1,725	349	425	593	503	1,869
<b>Sex</b>	<b>3,698</b>	<b>4,090</b>	<b>5,805</b>	<b>4,168</b>	<b>17,759</b>	<b>4,493</b>	<b>4,586</b>	<b>6,069</b>	<b>3,766</b>	<b>18,915</b>
Male	1,641	1,733	2,497	1,774	7,645	2,003	1,955	2,600	1,590	8,148
Female	1,787	2,039	2,927	2,090	8,844	2,144	2,301	3,108	1,923	9,477
Not stated	269	317	381	303	1,270	346	330	361	253	1,290
<b>Age group</b>	<b>3,698</b>	<b>4,090</b>	<b>5,805</b>	<b>4,168</b>	<b>17,759</b>	<b>4,493</b>	<b>4,586</b>	<b>6,069</b>	<b>3,766</b>	<b>18,915</b>
Under 12 years	243	192	469	181	1,084	299	247	512	149	1,207
12 to 19 years	201	139	373	142	854	248	182	417	122	968
20 to 24 years	136	133	193	101	563	147	136	206	91	580
25 to 34 years	333	426	537	391	1,688	415	426	567	335	1,742
35 to 44 years	503	567	892	633	2,595	627	638	920	583	2,768
45 to 54 years	731	758	1,177	899	3,564	850	848	1,181	773	3,652
55 to 64 years	770	814	1,034	849	3,468	927	921	1,081	828	3,757
65 years and over	511	742	750	669	2,672	635	859	826	632	2,952
Not stated	269	317	381	303	1,270	346	330	361	253	1,290
<b>Length of stay</b>	<b>3,698</b>	<b>4,090</b>	<b>5,805</b>	<b>4,168</b>	<b>17,759</b>	<b>4,493</b>	<b>4,586</b>	<b>6,069</b>	<b>3,766</b>	<b>18,915</b>
1 night	333	439	670	531	1,974	402	497	674	433	2,006
2 to 6 nights	1,639	2,460	3,572	2,481	10,153	1,978	2,631	3,756	2,204	10,568
7 to 13 nights	1,074	705	1,226	790	3,795	1,288	811	1,263	779	4,141
14 nights and over	651	484	336	365	1,837	826	648	377	350	2,200

**Note(s):** See "Data quality, concepts and methodology — Explanatory notes for tables" section.

**Table 23-3**  
**Trip characteristics of Canadian residents returning from the United States after a stay of one or more nights**  
**— Type of transportation**

	2007			2008		
	Automobile	Other	Total	Automobile	Other	Total
thousands						
<b>Person-trips</b>						
<b>Region of destination</b>	<b>10,608</b>	<b>7,152</b>	<b>17,759</b>	<b>11,341</b>	<b>7,573</b>	<b>18,915</b>
New England	1,573	419	1,992	1,643	419	2,062
Middle Atlantic	2,907	878	3,785	3,095	837	3,932
South Atlantic	456	1,795	2,252	519	2,088	2,607
East North Central	1,465	577	2,043	1,468	567	2,034
West North Central	938	250	1,189	1,054	240	1,294
East South Central	27 <sup>E</sup>	110	138	25 <sup>E</sup>	109	134
West South Central	21	306	327	23	277	300
Mountain	708	1,080	1,788	772	1,131	1,903
Pacific	1,729	1,114	2,843	1,908	1,150	3,058
Alaska	29	187	216	28	190	218
Hawaii	F	286	290	F	405	413
Touring <sup>1</sup>	750	147	897	798	161	959
<b>Purpose of trip</b>	<b>10,608</b>	<b>7,152</b>	<b>17,759</b>	<b>11,341</b>	<b>7,573</b>	<b>18,915</b>
Business, convention or employment	674	1,832	2,506	604	1,755	2,359
Visiting friends or relatives	2,308	1,121	3,430	2,345	1,136	3,480
Other pleasure, recreation or holiday	6,267	3,831	10,098	6,948	4,258	11,206
Other	1,359	366	1,725	1,445	425	1,869
<b>Sex</b>	<b>10,608</b>	<b>7,152</b>	<b>17,759</b>	<b>11,341</b>	<b>7,573</b>	<b>18,915</b>
Male	4,577	3,068	7,645	4,917	3,231	8,148
Female	5,479	3,365	8,844	5,861	3,616	9,477
Not stated	552	718	1,270	564	726	1,290
<b>Age group</b>	<b>10,608</b>	<b>7,152</b>	<b>17,759</b>	<b>11,341</b>	<b>7,573</b>	<b>18,915</b>
Under 12 years	811	273	1,084	858	349	1,207
12 to 19 years	650	205	854	730	238	968
20 to 24 years	341	222	563	360	220	580
25 to 34 years	912	776	1,688	966	776	1,742
35 to 44 years	1,407	1,187	2,595	1,505	1,263	2,768
45 to 54 years	1,998	1,567	3,564	2,062	1,590	3,652
55 to 64 years	2,198	1,270	3,468	2,343	1,414	3,757
65 years and over	1,739	933	2,672	1,953	999	2,952
Not stated	552	718	1,270	564	726	1,290
<b>Length of stay</b>	<b>10,608</b>	<b>7,152</b>	<b>17,759</b>	<b>11,341</b>	<b>7,573</b>	<b>18,915</b>
1 night	1,669	305	1,974	1,726	280	2,006
2 to 6 nights	6,347	3,806	10,153	6,789	3,779	10,568
7 to 13 nights	1,617	2,178	3,795	1,688	2,452	4,141
14 nights and over	974	863	1,837	1,139	1,062	2,200

**Note(s):** See "Data quality, concepts and methodology — Explanatory notes for tables" section.

Table 24-1

**Trip characteristics of Canadian residents returning from countries other than the United States after a stay of one or more nights — Purpose of trip**

	2007				2008			
	Business, convention or employment	Visiting friends or relatives	Other pleasure, recreation or holiday	Total <sup>1</sup>	Business, convention or employment	Visiting friends or relatives	Other pleasure, recreation or holiday	Total <sup>1</sup>
	thousands							
<b>Quarter of re-entry</b>	<b>771</b>	<b>1,242</b>	<b>4,971</b>	<b>7,404</b>	<b>813</b>	<b>1,348</b>	<b>5,546</b>	<b>8,122</b>
First	177	305	1,859	2,461	179	294	2,173	2,756
Second	217	292	1,105	1,699	214	343	1,210	1,860
Third	174	400	1,027	1,713	200	446	1,070	1,835
Fourth	204	245	980	1,531	221	265	1,094	1,671
<b>Province of residence</b>	<b>771</b>	<b>1,242</b>	<b>4,971</b>	<b>7,404</b>	<b>813</b>	<b>1,348</b>	<b>5,546</b>	<b>8,122</b>
Atlantic provinces <sup>2</sup>	39 <sup>E</sup>	27 <sup>E</sup>	148	223	33 <sup>E</sup>	30 <sup>E</sup>	172	254
Quebec	139	178	1,226	1,596	149	208	1,373	1,788
Ontario	400	627	2,267	3,526	433	694	2,553	3,892
Manitoba	F	20 <sup>E</sup>	84	121	F	F	84	123
Saskatchewan	F	F	90	116	F	F	81	100
Alberta	79	102	567	789	81	105	615	840
British Columbia <sup>3</sup>	92	275	590	1,034	97	283	669	1,124
<b>Area of destination <sup>4</sup></b>	<b>771</b>	<b>1,242</b>	<b>4,971</b>	<b>7,404</b>	<b>813</b>	<b>1,348</b>	<b>5,546</b>	<b>8,122</b>
Europe	376	704	1,325	2,573	416	818	1,303	2,696
Africa	45 <sup>E</sup>	F	91	171	44 <sup>E</sup>	28 <sup>E</sup>	98	173
Asia	167	352	296	898	170	333	312	901
Central America	F	F	171	213	F	F	136	179
Bermuda and Caribbean	82 <sup>E</sup>	42 <sup>E</sup>	1,571	1,776	F	56 <sup>E</sup>	1,970	2,175
South America	44 <sup>E</sup>	26 <sup>E</sup>	45 <sup>E</sup>	124	30 <sup>E</sup>	F	90 <sup>E</sup>	171
Other areas <sup>5</sup>	40 <sup>E</sup>	60	988	1,138	61 <sup>E</sup>	57	1,057	1,225
Cruises	F	F	482	504	F	F	565	582
<b>Sex</b>	<b>771</b>	<b>1,242</b>	<b>4,971</b>	<b>7,404</b>	<b>813</b>	<b>1,348</b>	<b>5,546</b>	<b>8,122</b>
Male	477	450	2,025	3,100	480	518	2,265	3,402
Female	226	661	2,589	3,678	261	707	2,963	4,161
Not stated	69	131	358	625	72	122	319	559
<b>Age group</b>	<b>771</b>	<b>1,242</b>	<b>4,971</b>	<b>7,404</b>	<b>813</b>	<b>1,348</b>	<b>5,546</b>	<b>8,122</b>
Under 12 years	F	91	200	304	F	85	229	336
12 to 19 years	F	49 <sup>E</sup>	224	296	F	63	240	332
20 to 24 years	F	51	179	277	F	64	236	360
25 to 34 years	99	151	573	891	115	156	729	1,061
35 to 44 years	168	118	639	961	191	147	711	1,085
45 to 54 years	189	202	1,048	1,486	204	220	1,121	1,606
55 to 64 years	188	248	1,066	1,596	154	260	1,180	1,686
65 years and over	44 <sup>E</sup>	202	684	967	49 <sup>E</sup>	231	780	1,097
Not stated	69	131	358	625	72	122	319	559
<b>Length of stay</b>	<b>771</b>	<b>1,242</b>	<b>4,971</b>	<b>7,404</b>	<b>813</b>	<b>1,348</b>	<b>5,546</b>	<b>8,122</b>
1 to 6 nights	238	43 <sup>E</sup>	188	501	269	50 <sup>E</sup>	206	558
7 to 13 nights	290	249	2,550	3,258	310	310	3,051	3,840
14 to 20 nights	109	375	1,406	1,969	113	404	1,477	2,076
21 nights and over	134	575	827	1,675	121	584	813	1,649

**Note(s):** See "Data quality, concepts and methodology — Explanatory notes for tables" section.

Table 24-2

**Trip characteristics of Canadian residents returning from countries other than the United States after a stay of one or more nights — Quarter of re-entry**

	2007					2008				
	First	Second	Third	Fourth	Total	First	Second	Third	Fourth	Total
	thousands									
<b>Area of destination <sup>1</sup></b>	<b>2,461</b>	<b>1,699</b>	<b>1,713</b>	<b>1,531</b>	<b>7,404</b>	<b>2,756</b>	<b>1,860</b>	<b>1,835</b>	<b>1,671</b>	<b>8,122</b>
Europe	286	718	996	573	2,573	312	796	1,012	576	2,696
Africa	59 <sup>E</sup>	31 <sup>E</sup>	33 <sup>E</sup>	48 <sup>E</sup>	171	61 <sup>E</sup>	32 <sup>E</sup>	34 <sup>E</sup>	46 <sup>E</sup>	173
Asia	274	191	245	189	898	295	180	232	194	901
Central America	171	F	F	F	213	98	F	F	33 <sup>E</sup>	179
Bermuda and Caribbean	907	386	197	286	1,776	1,095	444	280	357	2,175
South America	33 <sup>E</sup>	28 <sup>E</sup>	40 <sup>E</sup>	23 <sup>E</sup>	124	102 <sup>E</sup>	F	29 <sup>E</sup>	F	171
Other areas <sup>2</sup>	585	212	90	251	1,138	631	217	100	278	1,225
Cruises	142	119	102	141	504	162	134	126	160	582
<b>Purpose of trip</b>	<b>2,461</b>	<b>1,699</b>	<b>1,713</b>	<b>1,531</b>	<b>7,404</b>	<b>2,756</b>	<b>1,860</b>	<b>1,835</b>	<b>1,671</b>	<b>8,122</b>
Business, convention or employment	177	217	174	204	771	179	214	200	221	813
Visiting friends or relatives	305	292	400	245	1,242	294	343	446	265	1,348
Other pleasure, recreation or holiday	1,859	1,105	1,027	980	4,971	2,173	1,210	1,070	1,094	5,546
Other	120	86	112	102	420	110 <sup>E</sup>	95	119	91	415
<b>Sex</b>	<b>2,461</b>	<b>1,699</b>	<b>1,713</b>	<b>1,531</b>	<b>7,404</b>	<b>2,756</b>	<b>1,860</b>	<b>1,835</b>	<b>1,671</b>	<b>8,122</b>
Male	1,046	711	704	639	3,100	1,171	761	769	701	3,402
Female	1,208	871	850	750	3,678	1,375	992	938	855	4,161
Not stated	207	118	159	142	625	210	107	128	114	559
<b>Age group</b>	<b>2,461</b>	<b>1,699</b>	<b>1,713</b>	<b>1,531</b>	<b>7,404</b>	<b>2,756</b>	<b>1,860</b>	<b>1,835</b>	<b>1,671</b>	<b>8,122</b>
Under 12 years	98	57	114	35 <sup>E</sup>	304	105	67	116	47	336
12 to 19 years	99	36 <sup>E</sup>	123	39	296	103	51	131	48	332
20 to 24 years	62	86	74	55	277	103	101	92	63	360
25 to 34 years	269	241	222	159	891	317	272	262	210	1,061
35 to 44 years	328	221	227	185	961	371	251	254	209	1,085
45 to 54 years	547	289	335	315	1,486	594	357	341	314	1,606
55 to 64 years	567	394	283	352	1,596	603	382	300	402	1,686
65 years and over	285	257	177	248	967	349	273	210	265	1,097
Not stated	207	118	159	142	625	210	107	128	114	559
<b>Length of stay</b>	<b>2,461</b>	<b>1,699</b>	<b>1,713</b>	<b>1,531</b>	<b>7,404</b>	<b>2,756</b>	<b>1,860</b>	<b>1,835</b>	<b>1,671</b>	<b>8,122</b>
1 to 6 nights	92	133	124	153	501	146	162	93	157	558
7 to 13 nights	1,284	710	549	715	3,258	1,489	861	657	832	3,840
14 to 20 nights	616	457	513	384	1,969	664	443	567	402	2,076
21 nights and over	469	399	527	280	1,675	456	394	518	280	1,649

**Note(s):** See "Data quality, concepts and methodology — Explanatory notes for tables" section.

**Table 24-3**  
**Trip characteristics of Canadian residents returning from countries other than the United States after a stay of one or more nights — Province of residence, 2008**

	Atlantic provinces <sup>1</sup>	Quebec	Ontario	Manitoba	Saskatchewan	Alberta	British Columbia <sup>2</sup>	Canada
Person-trips (thousands)	254	1,788	3,892	123	100	840	1,124	8,122
Spending (millions of dollars)	353	2,302	5,335	165	148	1,332	1,963	11,597
Average spending per person-trip (dollars)	1,390	1,287	1,371	1,336	1,477	1,585	1,746	1,428
Person-nights (thousands)	3,606	25,718	58,525	1,699	1,307	13,427	23,460	127,742
Average number of nights per trip	14.2	14.4	15.0	13.8	13.1	16.0	20.9	15.7
Average spending per person-night (dollars)	98	90	91	97	113	99	84	91
	thousands							
<b>Person-trips, one or more nights</b>								
<b>Quarter of re-entry</b>	<b>254</b>	<b>1,788</b>	<b>3,892</b>	<b>123</b>	<b>100</b>	<b>840</b>	<b>1,124</b>	<b>8,122</b>
First	76	661	1,249	63	66	279	362	2,756
Second	93	364	889	F	F	215	261	1,860
Third	50 <sup>E</sup>	406	965	F	F	155	238	1,835
Fourth	35 <sup>E</sup>	358	789	19 <sup>E</sup>	14 <sup>E</sup>	193	263	1,671
<b>Area of destination<sup>3</sup></b>	<b>254</b>	<b>1,788</b>	<b>3,892</b>	<b>123</b>	<b>100</b>	<b>840</b>	<b>1,124</b>	<b>8,122</b>
Europe	94	578	1,448	23 <sup>E</sup>	F	192	347	2,696
Africa	F	45 <sup>E</sup>	93 <sup>E</sup>	F	F	F	21 <sup>E</sup>	173
Asia	F	74	375	F	F	138	282	901
Central America	F	49 <sup>E</sup>	90	F	F	F	F	179
Bermuda and Caribbean	98	737	1,069	38	39	91	102	2,175
South America	F	F	110	F	F	F	F	171
Other areas <sup>4</sup>	26	159	417	36 <sup>E</sup>	31	313	244	1,225
Cruises	F	108	280	F	F	75 <sup>E</sup>	92	582
<b>Purpose of trip</b>	<b>254</b>	<b>1,788</b>	<b>3,892</b>	<b>123</b>	<b>100</b>	<b>840</b>	<b>1,124</b>	<b>8,122</b>
Business, convention or employment	33 <sup>E</sup>	149	433	F	F	81	97	813
Visiting friends or relatives	30 <sup>E</sup>	208	694	F	F	105	283	1,348
Other pleasure, recreation or holiday	172	1,373	2,553	84	81	615	669	5,546
Other	19 <sup>E</sup>	58 <sup>E</sup>	213	F	F	39 <sup>E</sup>	75 <sup>E</sup>	415
<b>Sex</b>	<b>254</b>	<b>1,788</b>	<b>3,892</b>	<b>123</b>	<b>100</b>	<b>840</b>	<b>1,124</b>	<b>8,122</b>
Male	102	773	1,609	52	42	356	469	3,402
Female	136	899	2,027	67	51	401	579	4,161
Not stated	F	116	255	F	F	84	77	559
<b>Age group</b>	<b>254</b>	<b>1,788</b>	<b>3,892</b>	<b>123</b>	<b>100</b>	<b>840</b>	<b>1,124</b>	<b>8,122</b>
Under 12 years	4 <sup>E</sup>	71	174	3 <sup>E</sup>	5 <sup>E</sup>	37	43	336
12 to 19 years	15 <sup>E</sup>	70	137	F	F	48	52	332
20 to 24 years	F	96	173	F	F	32 <sup>E</sup>	39	360
25 to 34 years	26 <sup>E</sup>	288	495	11 <sup>E</sup>	F	104	129	1,061
35 to 44 years	40	286	492	F	10 <sup>E</sup>	100	138	1,085
45 to 54 years	52	381	710	33	30 <sup>E</sup>	189	210	1,606
55 to 64 years	59	328	842	26 <sup>E</sup>	19 <sup>E</sup>	153	259	1,686
65 years and over	32 <sup>E</sup>	152	614	16	14 <sup>E</sup>	93	178	1,097
Not stated	F	116	255	F	F	84	77	559
<b>Length of stay</b>	<b>254</b>	<b>1,788</b>	<b>3,892</b>	<b>123</b>	<b>100</b>	<b>840</b>	<b>1,124</b>	<b>8,122</b>
1 to 6 nights	22 <sup>E</sup>	100	314	F	F	48 <sup>E</sup>	55	558
7 to 13 nights	153	918	1,861	53	55	420	381	3,840
14 to 20 nights	40 <sup>E</sup>	481	974	37 <sup>E</sup>	31 <sup>E</sup>	201	313	2,076
21 nights and over	39 <sup>E</sup>	290	743	F	F	171	376	1,649

**Note(s):** See "Data quality, concepts and methodology — Explanatory notes for tables" section.

**Table 25**  
**Person-visits, visit-nights and expenditures of Canadian residents returning from the United States, by state, 2008**

	Same day <sup>1</sup>		One or more nights					Total		
	Person-visits	Spending	Person-visits	Spending	Visit-nights	Average length of stay	Average spending per person-visit	Average spending per visit-night	Person-visits	Spending
	thousands	millions of dollars	thousands	millions of dollars	thousands	nights	dollars		thousands	millions of dollars
<b>Total</b>	<b>14,926</b>	<b>346.9</b>	<b>25,960</b>	<b>12,754.1</b>	<b>144,100</b>	<b>5.6</b>	<b>491</b>	<b>89</b>	<b>40,886</b>	<b>13,101.0</b>
Alabama	59	F	54	20.5 <sup>E</sup>	309 <sup>E</sup>	5.7 <sup>E</sup>	381	67 <sup>E</sup>	113	22.5 <sup>E</sup>
Alaska	160	33.4	85	91.3 <sup>E</sup>	727 <sup>E</sup>	8.5	1,074	126	245	124.8
Arizona	154	F	515	584.1	8,587	16.7	1,135	68	668	590.8
Arkansas	36 <sup>E</sup>	F	47	11.3 <sup>E</sup>	F	2.7 <sup>E</sup>	240 <sup>E</sup>	F	83	11.8 <sup>E</sup>
California	224	F	1,257	1,129.4	10,773	8.6	899	105	1,481	1,135.7
Colorado	43 <sup>E</sup>	F	158	120.0	879	5.6	758	136	201	121.1
Connecticut	84	1.8 <sup>E</sup>	131	43.7 <sup>E</sup>	550 <sup>E</sup>	4.2 <sup>E</sup>	333 <sup>E</sup>	79 <sup>E</sup>	215	45.5 <sup>E</sup>
Delaware	30 <sup>E</sup>	F	F	F	F	1.7	F	F	43	F
Florida	271	F	2,872	3,242.4	48,524	16.9	1,129	67	3,143	3,255.8
Georgia	540	7.5	465	131.2	1,306	2.8	282	100	1,005	138.7
Hawaii	44 <sup>E</sup>	F	438	770.2	6,166	14.1	1,758	125	482	794.1
Idaho	363	7.0	272	60.6	750	2.8	223	81	635	67.6
Illinois	288	4.4	379	188.6	1,246	3.3	498	151	667	193.0
Indiana	308	4.5	197	61.6	F	F	313	79	505	66.1
Iowa	60	F	93	18.6 <sup>E</sup>	260 <sup>E</sup>	2.8	199	71 <sup>E</sup>	153	20.9
Kansas	30 <sup>E</sup>	0.4 <sup>E</sup>	75	19.2 <sup>E</sup>	241 <sup>E</sup>	3.2	256	79 <sup>E</sup>	105	19.6 <sup>E</sup>
Kentucky	268	3.9	321	54.3	684	2.1	169	79	589	58.3
Louisiana	F	F	71	44.5 <sup>E</sup>	323 <sup>E</sup>	4.5	624	138	82	44.7 <sup>E</sup>
Maine	216	5.9	885	281.8	2,972	3.4	318	95	1,102	287.7
Maryland	511	5.2	238	F	F	F	294 <sup>E</sup>	79	749	75.2 <sup>E</sup>
Massachusetts	249	7.7 <sup>E</sup>	635	266.1	2,423	3.8	419	110	884	273.8
Michigan	1,090	25.1	1,422	320.8	3,577	2.5	226	90	2,512	345.9
Minnesota	271	9.9	610	196.4	1,565	2.6	322	126	880	206.2
Mississippi	27 <sup>E</sup>	F	45 <sup>E</sup>	15.2 <sup>E</sup>	127 <sup>E</sup>	2.8	339	119	72	15.7 <sup>E</sup>
Missouri	37 <sup>E</sup>	F	128	54.3	F	F	423	F	165	55.1
Montana	99	2.5 <sup>E</sup>	650	202.7	2,035	3.1	312	100	749	205.1
Nebraska	39	F	75	F	237 <sup>E</sup>	3.2	351 <sup>E</sup>	111 <sup>E</sup>	114	F
Nevada	123	F	1,059	929.9	4,936	4.7	878	188	1,182	932.7
New Hampshire	593	11.1	461	120.9	1,327	2.9	262	91	1,054	132.0
New Jersey	138	4.0 <sup>E</sup>	284	95.0	1,137	4.0	335	84	422	99.1
New Mexico	26 <sup>E</sup>	F	94	32.0 <sup>E</sup>	381 <sup>E</sup>	4.0	339	84	121	32.4 <sup>E</sup>
New York	2,632	50.0	3,077	956.2	8,652	2.8	311	111	5,709	1,006.2
North Carolina	552	6.0	453	110.5	1,572	3.5	244	70	1,005	116.5
North Dakota	213	11.2	722	196.1	1,520	2.1	272	129	935	207.3
Ohio	446	5.8	604	146.1	1,555	2.6	242	94	1,050	151.9
Oklahoma	48	F	71 <sup>E</sup>	F	222 <sup>E</sup>	3.1	284 <sup>E</sup>	91 <sup>E</sup>	119	F
Oregon	73	F	409	107.7	1,386	3.4	264	78	482	110.3
Pennsylvania	1,027	14.1	786	157.8	1,965	2.5	201	80	1,812	172.0
Rhode Island	25 <sup>E</sup>	F	49 <sup>E</sup>	14.3 <sup>E</sup>	166 <sup>E</sup>	3.4	292 <sup>E</sup>	86 <sup>E</sup>	74	15.4 <sup>E</sup>
South Carolina	375	5.2	517	288.8	3,748	7.2	558	77	893	294.0
South Dakota	40	F	159	42.1	493	3.1	265	85	199	43.2
Tennessee	233	3.4	359	86.7	960	2.7	241	90	592	90.1
Texas	102	F	394	339.7	4,313	10.9	862	79	496	340.8
Utah	100	F	191	97.9 <sup>E</sup>	834	4.4	511	117	292	102.1 <sup>E</sup>
Vermont	1,019	12.8	758	172.3	2,342	3.1	227	74	1,777	185.1
Virginia	537	5.3	558	130.0	1,790	3.2	233	73	1,096	135.3
Washington	517	14.6	2,141	483.9	6,078	2.8	226	80	2,659	498.5
Washington D.C.	95	3.1 <sup>E</sup>	169	102.2	663	3.9	605	154	264	105.3
West Virginia	324	4.3	270	20.2	390	1.4	75	52	594	24.4
Wisconsin	122	2.2 <sup>E</sup>	152	54.0	629 <sup>E</sup>	4.1 <sup>E</sup>	356	86 <sup>E</sup>	274	56.2
Wyoming	52	F	90	21.5 <sup>E</sup>	241 <sup>E</sup>	2.7	239 <sup>E</sup>	89	142	22.5 <sup>E</sup>

**Note(s):** See "Data quality, concepts and methodology — Explanatory notes for tables" section.

**Table 26**  
**Person-trips, person-nights and expenditures of Canadian residents returning from countries other than the United States after a stay of one or more nights, by selected trip characteristics, 2008**

	Person-trips		Person-nights	Average number of nights per trip	Spending	Average spending per person-trip	Average spending per person-night
	thousands	percent	thousands	number	millions of dollars	dollars	
<b>Quarter of re-entry</b>	<b>8,122</b>	<b>100.0</b>	<b>127,742</b>	<b>15.7</b>	<b>11,597</b>	<b>1,428</b>	<b>91</b>
First	2,756	33.9	40,310	14.6	3,445	1,250	85
Second	1,860	22.9	29,236	15.7	2,763	1,485	95
Third	1,835	22.6	34,071	18.6	2,979	1,623	87
Fourth	1,671	20.6	24,125	14.4	2,410	1,442	100
<b>Region of destination <sup>1</sup></b>	<b>8,122</b>	<b>100.0</b>	<b>127,742</b>	<b>15.7</b>	<b>11,597</b>	<b>1,428</b>	<b>91</b>
Europe	2,696	33.2	49,423	18.3	4,968	1,843	101
Africa	173	2.1	4,335	25.0	480	2,770	111
Asia	901	11.1	24,735	27.4	1,761	1,954	71
Central America	179	2.2	2,839 <sup>E</sup>	15.9	235	1,314	83
Bermuda and Caribbean	2,175	26.8	19,445	8.9	1,976	908	102
South America	171	2.1	3,292 <sup>E</sup>	19.2	276	1,608	84
Other areas <sup>2</sup>	1,225	15.1	15,462	12.6	1,501	1,225	97
Cruises	582	7.2	7,445	12.8	332	571	45
<b>Purpose of trip</b>	<b>8,122</b>	<b>100.0</b>	<b>127,742</b>	<b>15.7</b>	<b>11,597</b>	<b>1,428</b>	<b>91</b>
Business, convention or employment	813	10.0	11,364	14.0	1,630	2,004	143
Visiting friends or relatives	1,348	16.6	30,652	22.7	1,880	1,395	61
Other pleasure, recreation or holiday	5,546	68.3	76,288	13.8	7,334	1,322	96
Other	415	5.1	9,438	22.7	753	1,814	80
<b>Length of stay</b>	<b>8,122</b>	<b>100.0</b>	<b>127,742</b>	<b>15.7</b>	<b>11,597</b>	<b>1,428</b>	<b>91</b>
1 to 6 nights	558	6.9	2,558	4.6	499	895	195
7 to 13 nights	3,840	47.3	31,001	8.1	3,756	978	121
14 to 20 nights	2,076	25.6	32,631	15.7	3,297	1,588	101
21 nights and over	1,649	20.3	61,552	37.3	4,045	2,453	66

**Note(s):** See "Data quality, concepts and methodology — Explanatory notes for tables" section.

**Table 27**  
**Person-visits, visit-nights and expenditures of Canadian residents in selected countries, 2008**

	One or more nights						Total 1		
	Person-visits	Spending	Visit-nights	Average length of stay	Average spending per person-visit	Average spending per visit-night	Person-visits	Spending	Average spending per person-visit
	thousands	millions of dollars	thousands	nights	dollars		thousands	millions of dollars	dollars
<b>Europe</b>	<b>4,599</b>	<b>5,073</b>	<b>48,953</b>	<b>10.6</b>	<b>1,103</b>	<b>104</b>	<b>5,609</b>	<b>5,179</b>	<b>923</b>
Austria	134	94 <sup>E</sup>	803 <sup>E</sup>	6.0	697	117	150	95 <sup>E</sup>	633
Belgium	128	85	795 <sup>E</sup>	6.2	661	107	146	85	584
France	809	1,057	9,779	12.1	1,308	108	910	1,067	1,172
Germany	362	312	3,333	9.2	863	94	439	318	725
Greece	139	225	2,181 <sup>E</sup>	15.7	1,620	103	218	239	1,099
Ireland (Republic)	165	200	1,948 <sup>E</sup>	11.8	1,212	102	175	201	1,148
Italy	338	456	3,471	10.3	1,347	131	430	465	1,082
Netherlands	273	212	2,173	7.9	776	98	348	216	622
Portugal	121	172 <sup>E</sup>	1,732 <sup>E</sup>	14.3	1,428	100	143	175 <sup>E</sup>	1,223
Spain	216	266	2,261	10.5	1,234	118	267	272	1,017
Switzerland	173	130	1,276 <sup>E</sup>	7.4	753	102	189	132	699
United Kingdom	1,017	1,227	12,406	12.2	1,206	99	1,074	1,233	1,148
Other	724	637	6,793	9.4	879	94	1,121	681	607
<b>Africa</b>	<b>303</b>	<b>504</b>	<b>4,444</b>	<b>14.6</b>	<b>1,661</b>	<b>113</b>	<b>370</b>	<b>510</b>	<b>1,380</b>
<b>Asia</b>	<b>1,311</b>	<b>1,787</b>	<b>24,326</b>	<b>18.6</b>	<b>1,363</b>	<b>73</b>	<b>1,406</b>	<b>1,792</b>	<b>1,275</b>
China	250	452	5,403	21.6	1,809	84	269	452	1,685
Hong Kong	186	221	3,034	16.4	1,189	73	209	221	1,060
Japan	107	163	1,339	12.5	1,521	122	118	163	1,383
Thailand	105	143	1,620 <sup>E</sup>	15.4	1,357	88	108	143	1,328
Other	663	809	12,930	19.5	1,220	63	703	812	1,156
<b>Central America</b>	<b>200</b>	<b>236</b>	<b>2,788<sup>E</sup></b>	<b>14.0</b>	<b>1,180</b>	<b>85</b>	<b>318</b>	<b>244</b>	<b>768</b>
<b>Bermuda and Caribbean</b>	<b>2,234</b>	<b>1,984</b>	<b>19,094</b>	<b>8.5</b>	<b>888</b>	<b>104</b>	<b>3,171</b>	<b>2,069</b>	<b>652</b>
Bahamas	106	98 <sup>E</sup>	845 <sup>E</sup>	8.0 <sup>E</sup>	931	116	230	108 <sup>E</sup>	469
Cuba	932	791	7,806	8.4	849	101	932	791	849
Dominican Republic	763	651	6,319	8.3	854	103	779	652	836
Other	434	443	4,124	9.5	1,022	107	1,230	518	422
<b>South America</b>	<b>212</b>	<b>282</b>	<b>3,206<sup>E</sup></b>	<b>15.1</b>	<b>1,328</b>	<b>88</b>	<b>265</b>	<b>287</b>	<b>1,085</b>
<b>North America</b>	<b>1,134</b>	<b>1,188</b>	<b>11,542</b>	<b>10.2</b>	<b>1,047</b>	<b>103</b>	<b>1,353</b>	<b>1,213</b>	<b>897</b>
Mexico	1,124	1,186	11,518	10.2	1,055	103	1,338	1,210	904
Other	10	F	24 <sup>E</sup>	2.5 <sup>E</sup>	F	86 <sup>E</sup>	14 <sup>E</sup>	F	F
<b>Oceania and other ocean islands</b>	<b>171</b>	<b>334</b>	<b>3,775</b>	<b>22.1</b>	<b>1,954</b>	<b>89</b>	<b>192</b>	<b>338</b>	<b>1,761</b>
Australia	118	261	3,012	25.5	2,205	87	123	261	2,118
Other	53 <sup>E</sup>	73 <sup>E</sup>	763 <sup>E</sup>	14.5	1,392	96	68 <sup>E</sup>	76 <sup>E</sup>	1,116 <sup>E</sup>
<b>Grand total</b>	<b>10,165</b>	<b>11,388</b>	<b>118,128</b>	<b>11.6</b>	<b>1,120</b>	<b>96</b>	<b>12,684</b>	<b>11,633</b>	<b>917</b>

**Note(s):** See "Data quality, concepts and methodology — Explanatory notes for tables" section.

# International travel statistics

---

## Background

Statistical series on travel between Canada and other countries originated in the early 1920s primarily as a requirement for the Canadian Balance of International Payments.

The method of collection relied heavily on the detailed administrative records of Canada Border Services Agency (CBSA) and Citizenship and Immigration Canada (CIC) authorities to obtain the number of border crossings and on the officers from these departments to distribute questionnaires to a sample of travellers in order to collect information on their trip spending.

The accuracy of these methods depended on the completeness of the records of traveller movements and the representativeness of the sample expenditures derived for each category of traveller.

The statistical processes continued to rely on the administrative records of co-operating departments until 1972. Several changes in the methods of documenting visitors and resident travellers, resultant from policy revisions by CBSA and CIC programs, have led in the past to changes in definitions and breaks in statistical continuity. The purpose of the change in 1972 was to standardize definitions, methods and requirements for the collection of traveller counts, in light of the movement toward facilitation of traffic flows, and as a means of more adequately controlling the survey results.

The original purpose of the questionnaire surveys was to collect expenditure data only, to be applied to the traveller movements, to derive aggregate expenditures on visitors to Canada and residents returning from abroad. The first questionnaires were short and contained only three or four questions. Response was large and consistent.

As travel gained in size and importance to the Canadian economy, the tourism industry voiced the need for more detailed information on the travellers for market research and industry planning. The questionnaires were gradually expanded to include as many as 19 questions on different characteristics, including purpose of trip, duration, locations visited, types of accommodation used, activities and expenditures. The last major changes to the questionnaires were made in 1990. However, minor modifications were introduced in 2001.

Prior to 1990, questionnaires for United States residents visiting Canada were distributed to these travellers when returning to their country by United States Customs officials. The questionnaires were processed by the United States Department of Commerce and the results were sent to Statistics Canada. Since 1990, questionnaires are distributed to residents of the United States upon entering Canada during sampling periods by CBSA officials. Completed questionnaires are mailed to Statistics Canada for processing.

Between 2000 and 2001, several methodological initiatives were developed to improve the quality of the estimates based on the questionnaire surveys. These initiatives include a bias adjustment to the population weights, a procedure for imputing international transportation fares and total trip spending, an air exit survey of overseas visitors, a regional weighting of questionnaires from overseas visitors, a new production schedule to accommodate the inclusion of new questionnaires and a new method for calculating the coefficients of variation.

In 2002, the 2000 and 2001 data from the questionnaire surveys were revised to incorporate the results of these initiatives. Since 2002, these initiatives are part of the new methodology used to produce estimates from the questionnaire surveys. This new methodology is summarized under "Questionnaire surveys" in the "Data quality, concepts and methodology — Description of methods" section. Also, documents describing in a more detailed fashion the new methodology and each of the new initiatives are available upon request.

The introduction of this new methodology results in a break in the time series of estimates based on the questionnaire surveys. Consequently, data from previous years are not comparable to revised 2000 and 2001 data and data published since 2002. However, revised 2000 and 2001 data allow users to make comparisons back to 2000.

The methodology used may be subject to two types of bias: a distribution bias, that is, the questionnaires may not be handed to a random selection of travellers and a non-response bias, that is, returns may not be representative of the travelling public.

Although about 93,200 non-resident travellers entering Canada and 103,400 returning residents were covered by the survey to produce the 2008 estimates, these numbers represent less than 1.0% of the total traffic.

Given the size of the sample, the basic purpose of the questionnaire surveys (the estimation of visitors' spending at the Canada and regional level and spending of resident travellers by region of the world) continues to be met with reasonable levels of reliability providing the assumption of negligible biases is not violated. Estimations of expenditures and other characteristics at lower levels of aggregation, such as certain provincial data and detailed cross-classifications, strain the capacity of the survey; the resultant estimates are less reliable and several of them are not sufficiently reliable to be published, as can be seen in several tables of this publication.

## **Travel and the balance of payments**

Spending by non-residents visiting Canada (receipts) and spending by Canadian residents returning from trips abroad (payments) are incorporated in the travel account which is an integral part of the current account of the Canadian Balance of International Payments. In 2008, travel receipts, included in exports as part of "services", represented about 2.5% of all current account receipts while travel payments, included in imports as part of "services", represented approximately 4.5% of all current account payments.

In the context of the Canadian Balance of Payments, receipts in the travel account are defined to include all expenses incidental to travel in Canada by non-residents. Among these are expenditures in Canada for lodging, food, entertainment, local and intercity transportation and all other purchases of goods and services (including gifts) made by travellers. The series thus includes any purchases of personal goods to be exported by travellers. Also included are medical expenses and education expenses of non-residents in Canada as well as foreign crew members' spending in the country.

Payments in the travel account are correspondingly defined to include all expenses incidental to travel abroad by residents of Canada. Among these are expenditures abroad for lodging, food, entertainment, local and intercity transportation and all other purchases of goods and services (including gifts) made by the travellers. The series thus includes any purchases of goods to be imported for personal use by travellers. Also included are medical expenses and education expenses of Canadian residents outside Canada as well as Canadian crew members' spending in other countries.

The travel account does not conform precisely to the concepts recommended by the International Monetary Fund (IMF). Under those concepts, personal expenditures of foreign migrant workers or Canadian migrant workers, including temporary and seasonal workers and commuters, are part of other balance of payments accounts. However, due to survey limitations, these expenditures are included in the Canadian international travel account.

Furthermore, it should be noted that travel receipts exclude international transportation fares paid by non-resident travellers to Canadian carriers. Also, travel payments do not include international transportation fares paid by Canadian residents to foreign carriers. In both cases, these expenditures are included in another balance of payments account, in accordance to the IMF conceptual framework.

## Description of methods

---

Two methods are presently used to collect international travel statistics: the "Frontier counts" and the "Questionnaire surveys". Both of these methods depend greatly on the co-operation of Canada Border Services Agency (CBSA) in the collection of the number of border crossings and the distribution of questionnaires to international travellers.

### Frontier counts

All ports of entry across Canada participate in determining the number of travellers by selected categories and by type of transportation, as well as the number of cars, trucks, motorcycles, snowmobiles and bicycles in the case of highway and ferry points.

The forms used by CBSA officials in the enumeration process are described as follows:

**E-62 Entry tally.** Form used to record the number of daily travellers and vehicles arriving by land and by ferry, at points of entry on the United States-Canada border. Each form indicates the number of automobiles, trucks, motorcycles, bicycles, snowmobiles and their associated travellers cleared for entry by CBSA agents, as well as the travellers coming to Canada by other modes of transport such as bus, train and on foot. Since 1998, the Integrated Primary Inspection Line (IPIL) formerly known as the Primary Automated Lookout System (PALS) is used to replace the manual E-62 tally. Presently, 32 ports across Canada utilize this automated system to record over 86.4% of Canada's international automobile traffic.

**E-63 Commercial and private craft/passenger and crew arrivals.** Form used to record travellers entering Canada by private plane or boat. This form is also used to record travellers and crews on commercial freighters, passenger ferries, cruises and some commercial air flights. The CANPASS telephone reporting system also records the number of travellers entering Canada by private plane or boat. The CANPASS system also allows pre-authorized travellers, as well as special permit holders, to cross the border by car without CBSA's agents interaction.

**E-311 Customs declaration card.** Form used to record on a census basis travellers entering Canada by commercial plane, including schedule and charter arrivals, at the 18 major international airports. The family Customs Declaration Card was introduced in April 1999. The purpose of this card is to facilitate the clearing of international travellers at the point of entry. Up to four family members living at the same address are allowed on the same card compared to only one person on the old individual E-311 card. In order to estimate the number of travellers recorded on the family Customs Declaration Cards, data capture is done on a sample or census basis depending on the traveller type and airport size (see text table 1). For other airports, census based administrative data is obtained from E-63 forms to produce the estimates.

Text table 1

## Sampling rates of the family Customs Declaration Cards by type of traveller and size of airport, 2008

	Size of airport <sup>1</sup>				
	Large	Medium-large	Medium	Medium-small	Small
	percent				
Canadian residents returning from the U.S.	5	10	100	25	100
Canadian residents returning directly from overseas	5	10	100	25	100
Canadian residents returning from overseas via the U.S.	5	100	100	100	100
U.S. travellers	5	10	100	25	100
Overseas travellers coming directly to Canada	50	50	50	100	100
Overseas travellers coming to Canada via the U.S.	50	50	50	100	100
Crew members	50	50	50	50	50
Military, immigrants and former residents	100	100	100	100	100

1. Size of airport is defined as follows: large for Montreal (Trudeau), Toronto (Pearson), Calgary and Vancouver; medium-large for Halifax, Ottawa and Edmonton; medium for Quebec, Mont-Tremblant, London, Toronto Island and Victoria; medium-small for Winnipeg; small for St. John's, Gander, Yarmouth, Saskatoon and Regina.

Detailed instructions are provided to aid CBSA officials in the task of collecting data on these documents. A continual liaison function is performed by the International Travel Section with the supplying department, CBSA, to review, discuss and resolve inconsistencies in the reported figures.

A monitoring system has been established to compare incoming data with information available from independent sources, such as airport management reports, toll figures, provincial road counters, etc. The above, as well as reference to weather reports, special events and direct contacts with port authorities, helps the verification and the explanation of irregular fluctuations in reported figures.

The completed forms are submitted continuously to Statistics Canada for processing, analysis and publication. In 2008, the number of documents processed was estimated as follows: 139,300 E-62; 589,800 E-63; and 16,982,300 E-311.

## Questionnaire surveys

Continuous questionnaire surveys are used to secure information on the expenditures and other characteristics of international trips and travellers to and from Canada.

### Collection methods of mailback questionnaires

Mail-back questionnaires are handed out each quarter to the travel party on entry (non-residents) or re-entry (residents of Canada) by CBSA officials according to pre-arranged schedules. Five different questionnaires are used in the collection process.

Since 1979, a stint distribution system is used to distribute these questionnaires to travellers at all border ports sampled. A stint consists of a selected period of several days during which questionnaires are to be distributed to eligible travellers. Each port involved in this scheme receives, for each of its stints, a specific quantity of numbered questionnaires and a date on which to start the distribution. On the start date, the officers hand out the questionnaires on a continuous basis to the appropriate travelling population until they have all been distributed. The Liaison staff of the International Travel Section call each port the day before the stint is to start to make sure the questionnaires have arrived and to remind the officers to start the distribution the next day. In this way, the questionnaire return rate of each stint and the length of the stint can all be used as a measure of performance for each stint.

The number of questionnaires distributed in each port for each quarter is set by taking into account the number of travellers who cleared customs through the port in that quarter during the previous year, as estimated by the

frontier counts. Respondents are requested to mail back their completed questionnaires in Canada (for Canadian and overseas travellers) or from the United States (for U.S. travellers).

Here is a brief description of the mail-back questionnaires.

**Questionnaire (8-2200-356) for United States travellers visiting Canada.** Distributed by CBSA officials during sampling periods to travellers residing in the United States at most land, air and some sea ports. However, at land ports, questionnaires are distributed only to United States residents taking an overnight car trip to Canada or entering Canada by a mode of transportation other than car. The questionnaires are completed by the travellers and returned to Statistics Canada for processing.

**Questionnaire (8-2200-337) for residents of countries other than the United States visiting Canada.** Distributed by CBSA officials during sampling periods to travellers residing in overseas countries at most land, air and some sea ports; the questionnaires are completed by the travellers and returned to Statistics Canada for processing.

**Questionnaire (8-2200-336) for Canadian residents returning from trips outside Canada.** Distributed by CBSA officials during sampling periods to Canadian residents re-entering Canada, at most land, air and some sea ports. However, at land ports, questionnaires are distributed to Canadian residents who took a trip abroad, except those returning from a same-day car trip to the United States. The questionnaires are completed by the travellers and mailed to Statistics Canada for processing.

**Questionnaire (8-2200-338) for Canadian residents returning from a same-day trip to the United States by auto (a visit of less than 24 hours).** Distributed by CBSA officials to Canadian residents who return to Canada by car after a same-day trip to the United States (one questionnaire per vehicle). The questionnaires are completed and mailed to Statistics Canada for processing. Since the same-day traffic is considered to be fairly homogeneous, a less frequent sample is taken than for the longer-term traffic.

**Questionnaire (8-2200-345) for United States residents entering Canada by auto for a same-day trip (a visit of less than 24 hours).** Distributed by CBSA officials to United States residents taking a same-day car trip to Canada (one questionnaire per vehicle). The questionnaires are completed and mailed to Statistics Canada for processing. Since the same-day traffic is considered to be fairly homogeneous, a less frequent sample is taken than for the longer-term traffic.

### **Collection methods of Air Exit Survey of Overseas Visitors**

In the case of overseas travellers returning directly (as opposed to via the United States) to selected overseas countries, additional questionnaires are obtained via the Air Exit Survey of Overseas Visitors (AES).

This survey has been conducted by Statistics Canada since 2000. Its primary objective is to improve the quality of estimates on the characteristics of trips and travellers by air from overseas countries. Personal interviews are conducted in designated airports in Canada. It is an add-on to mail-back questionnaires distributed by CBSA officials to residents of overseas countries visiting Canada.

At the international airports in five cities (Vancouver, Calgary, Toronto, Montreal and Halifax), Statistics Canada's interviewers conduct personal interviews with a sample of overseas travellers as they await their return flights to targeted overseas countries. The countries targeted are those from whom we attract the most travellers. They include principally the United Kingdom, Germany, Japan and France, as well as a number of smaller markets, such as Mexico and China. These interviews are conducted each month and the collection period lasts 3-7 days.

The number of interviews targeted at each airport for a particular month and a particular overseas country is obtained by selecting a representative sample of flights to the selected country. During the collection period, interviewers arrive at the departure lounges for the selected flights in order to interview departing overseas travellers. All overseas travellers waiting to embark on the selected flights are interviewed until the first boarding call, whether or not they are of the targeted countries. The interviewing team consists of interviewers of different language skills, enabling interviews to be conducted in the native language of the travellers where possible. The

questionnaire used (**Questionnaire 8-2200-400**) is a customized version of questionnaire 8-2200-337 and is available in 10 languages.

About 7,500 interviews were completed in 2008. Since 2000, this collection method has achieved a response rate of over 95.0%.

### Processing and imputation of questionnaires

All mail-back and AES questionnaires for a given quarter are submitted to a complex control system and the reported data are captured, coded and verified. Only questionnaires accepted by the system are ultimately used for the production of the estimates for the quarter.

A certain amount of data imputation is performed in specific fields of accepted questionnaires. Missing international transportation fares and/or total trip spending are imputed if the remainder of the fields on the questionnaire are valid. The imputed values of the recipient questionnaire are calculated by taking into account the mean of corresponding fields on donor questionnaires that have trip characteristics identical to those of the recipient questionnaire.

Total imputation (i.e. imputation of complete questionnaires) is carried out for all Port Factor groups (PFGs)<sup>1</sup> or strata that are outside the scope of mail-back questionnaire distribution. There are 120 Canadian and American PFGs for which Statistics Canada never receives questionnaires. These PFGs refer to modes of entry that are not targeted by the questionnaire distribution (train, private plane or boat, motorcycle, bicycle, pedestrians, etc.) or to ports of entry that do not participate in the distribution of questionnaires. For these out-of-scope PFGs, the characteristics of travellers and trips are estimated, using imputed questionnaires. These imputed questionnaires are duplicates of questionnaires that were obtained in 1990 for the same quarter and same PFGs. In 2008, these questionnaires represented only 4.4% of total travellers from the United States to Canada and 1.2% of Canadian residents who travelled outside Canada.

Total imputation is also performed for any in-scope PFG for which we have received an insufficient number of questionnaires for the quarter. In these instances, all the questionnaires from the same quarter of the previous year that belong to the PFG are brought forward and added to the sample of that PFG for the reference quarter.

If necessary, additional total imputation is also performed for U.S. car travellers by state of origin to meet minimum requirements based on the frontier counts.

In 2008, 46,400 questionnaires from non-resident travellers and 51,800 questionnaires completed by resident travellers were used to produce estimates.

### Weighting

For estimation purposes, the responses obtained through the questionnaire surveys must be treated as a simple random sample from the total traffic in each stratum (port or group of ports, by type of traffic, by quarter). The data may in fact be subject to some degree of "distribution bias", due to the fact that the questionnaires may not be handed to a random selection of travellers, or to a "non-response bias" due to the fact that the individuals replying may not be representative of the population.

Complex weighting techniques used in the estimation process attempt to reduce the effect of these two types of bias. In order to do so, the questionnaires completed by the international travellers are disaggregated by known characteristics into homogenous groups (PFGs). In the case of questionnaires obtained from the United States and Canadian travellers, those characteristics are port of entry, type of traveller, mode of entry and duration of stay. In the case of questionnaires obtained from overseas travellers, the characteristics used are country of residence and type of entry. For example, two of the main factor groups include questionnaires from American travellers entering

---

1. In the International Travel Survey, the target populations (American, overseas and Canadian international travellers) are partitioned into 594 Port Factor Groups, based on selected characteristics such as country of residence, mode of entry and duration of stay.

and leaving on the same day by car and those from American travellers entering by car and staying one or more nights.

The questionnaires for each PFG are first weighted according to frontier counts. The weights assigned to all questionnaires for a given PFG are such that the estimate of the number of travellers derived from these questionnaires matches the frontier count for that PFG.

Once the initial weights are assigned, bias adjustments are applied to the weights of certain questionnaires.

A second stage of weighting called the bias adjustment is done for questionnaires completed by certain categories of air travellers. These include U.S. travellers, Canadian travellers returning from the U.S. and Canadian travellers returning directly from overseas countries who all came through the international airports of Vancouver, Toronto, and the province of Quebec. They also include overseas air travellers originating from the United Kingdom, Germany, France and Japan.

This second stage consists of modifying the initial weights of questionnaires that were obtained from these travellers in order to incorporate more reliable information on trip purpose and duration. This information is derived from a sample of Customs declaration cards (E-311 cards) filled by these travellers. Adjustments to the initial weights are such that estimates on trip purpose and duration compiled from the questionnaires correspond to those obtained from the E-311 cards.

By using more data from the E-311 cards, the procedure for weighting air traveller questionnaires has become more accurate. The use of more precise weights provides better quality estimates and limits the possibility of bias in the questionnaire results obtained for air travellers.

Starting with 2009, another bias adjustment is done for U.S. travellers entering Canada by car. For those travellers who came by car through the largest land ports equipped with the Integrated Primary Inspection Line (IPIL) system, a second stage of weighting is also done. Referred to as the state bias adjustment, it is based on the vehicle state registration information obtained from the IPIL system. The initial weights of these questionnaires are adjusted to better reflect the distribution of travellers from the states that provide the largest volume of travellers. For the top states of origin by PFG by quarter, the statistics obtained from the questionnaires will match those obtained from the frontier counts. The 2008 U.S. traveller statistics have also been revised to incorporate this state bias adjustment.

In addition, a supplementary adjustment, called the regional weighting adjustment, is done to the weights assigned to overseas questionnaires to take into account the region of entry of the travellers. Using the raking-ratio statistical technique, this adjustment ensures that the derived estimates of the number of travellers from the questionnaires closely match the frontier counts at the region of entry level (by type of entry), while maintaining an exact match at the country of residence level. However, the raking-ratio technique does not guarantee an exact match when the country of residence as well as the region of entry or type of entry are considered. The provincial composition of the five regions used in the process is as follows: Atlantic (Newfoundland, Prince Edward Island, Nova Scotia, and New Brunswick), Quebec, Ontario, Prairies (Manitoba, Saskatchewan, Alberta) and British Columbia (including Yukon, Northwest Territories and Nunavut).

In general, this supplementary adjustment allows for the production of more consistent and more reliable estimates on the characteristics of overseas travellers at the regional level.

## **Production schedule**

Each quarter's data on the characteristics of international trips are first released as preliminary estimates, about five months after the end of the quarter. These estimates are based on all questionnaires for the quarter that are obtained before the preliminary cut-off date for the collection, which is about two and a half months after the end of the quarter.

Three months later, the revised estimates for the quarter are released, together with the preliminary estimates for the next quarter. Included in the production of the revised estimates are all questionnaires for the quarter that are

received before the final cut-off date for the collection, which is about five and a half months after the end of the quarter.

## Data quality and reliability indicators

Questionnaire distribution and response may be biased. The International Travel Survey (ITS) uses several methods to minimize this bias and improve the estimates. Questionnaires are weighted to frontier counts, which are robust statistics obtained from administrative sources. Thus, spending tends to be driven by volumes (frontier counts). Bias adjustments are done for U.S. and Canadian air travellers entering through the three largest international airports, for air travellers coming from four major overseas countries of origin, and for car travellers coming from the United States.

In sample surveys, since inference is made about the entire population covered by the survey on the basis of data obtained from only a part (sample) of the population, the results are likely to be different from the "true" population values. The true population values in this context refer to the values that would have been obtained when the entire population was surveyed under the same conditions. The error arising due to drawing inferences about the population on the basis of information from the sample is termed sampling error.

The sampling error, in addition to the size of the sample, depends on factors such as variability in the population, sampling design and method of estimation.

Additionally, even if the sample design, the size of the sample, and the estimation procedure were the same, different characteristics (on which data have been collected from the sample) would possess different sampling errors, due to the fact that they have different degrees of variability in the population. For instance, the sampling error for expenditure estimates would be different from the sampling error for length of stay, both estimates being based on the same sample. Each of the possible samples would yield somewhat different sets of results. The sampling errors are measures of the variation of all the possible sample estimates around the true values.

The expected value of a variable is the average of the variable taken over all possible samples weighted by the probability of drawing the sample. The difference between the expected value of an estimate and the corresponding true value is called the bias of the estimate. The mean square error of an estimate is defined as the expected value of the square of the deviation of the estimate from the true value. The variance of an estimate is defined as the expected value of the square of the deviation of the estimate from its expected value. Thus, when an estimate is unbiased (i.e., its bias is zero), its variance and mean square error are equal.

The accuracy of estimates from sample surveys is affected by both variance and bias. Under the assumption of simple random sampling within each stratum and with the further assumption of absence of bias, the variance of an estimated characteristic value is a good indicator of its reliability. Since the true variance of the estimate depends, like the estimate itself, on the whole population, it must be estimated from the available sample.

A notable feature of probability sampling is that the quality of the estimates may be estimated from the sample itself. The estimated coefficient of variation is defined as the ratio of the square root of the estimated variance to the estimate itself. Guides to the potential size of sampling errors are provided by the estimated coefficients of variation. The quality of the estimate increases as the corresponding coefficient of variation decreases.

Given the complex nature of the weighting procedures of the ITS, simple calculations of the variance using standard methods tend to underestimate it. Consequently, Statistics Canada uses the "bootstrap" method for estimating the variance. Under this method, the sample units are sub-sampled and re-weighted many times over. From these sub-samples, an estimated variance is obtained to calculate the estimated coefficient of variation.

In all tables in the publication, the estimated coefficients of variation were used to evaluate the reliability of estimates derived from the questionnaire surveys. The reliability of these estimates is identified as follows:

**Text table 2**  
**Reliability of the estimates**

Identification in tables and reliability level	Coefficient of variation
Estimates released without restrictions - Good	0.0 to 16.5
Estimates followed by the letter E - Fair	16.6 to 25.0
Estimates are not released and replaced by the letter F - Poor to very poor	25.1 and over

Because Statistics Canada does not control the distribution of the questionnaires by CBSA border service officers, response rates cannot be calculated for questionnaires. It is known that distribution, particularly at high volume ports, can be poor. In 2000, the survey had 54,600 returned and completed questionnaires as a result of CBSA distribution; this number dropped to 29,400 in 2008. As a result, in the corresponding period the number of imputed records has increased from 39,900 in 2000 to 61,500 in 2008. This is less of a problem on the overseas residents' file where the Overseas Air Exit Survey supplies many questionnaires. Imputation is proportionately higher for the United States travellers' file and the Canadian travellers' file. Initial trend analysis on the United States file has shown that much of the imputation is of short duration trips and the trend, in terms of spending, is not changed much by the imputation. Statistics Canada is working with CBSA to improve questionnaire distribution and is looking into developing alternative methods of imputation.

## Dissemination

In addition to this publication, international travel statistics can be obtained by accessing or purchasing the following products.

Data from the frontier counts are available in CANSIM, tables 427-0001 to 427-0006. Data on the international travel account are also available in CANSIM, tables 376-0001, 376-0003 and 376-0005.

Annual data on certain characteristics of international trips are available free of charge on Statistics Canada's website.

**Statistics Canada Daily, Travel between Canada and other countries**, catalogue no. 11-001-X. Publishes preliminary monthly counts of international travellers as soon as they become available – usually six weeks after the reference month. This release covers the four travelling populations, usually at the national level: United States residents visiting Canada, residents from overseas countries visiting Canada, Canadian residents returning from the United States and Canadian residents returning from overseas countries.

**Statistics Canada Daily, Characteristics of international overnight travellers**, catalogue no. 11-001-X. Approximately five months after the end of the quarter, a brief text about the trends in the main characteristics of international overnight travellers is released in the Daily to announce the availability of preliminary data.

**Statistics Canada Daily, International travel account**, catalogue no. 11-001-X. Approximately two months after the end of the quarter, an analysis of the trends in the international travel account is released in the Daily to announce the availability of preliminary data.

**International Travel, Advance Information**, catalogue no. 66-001-PWE. A monthly document listing preliminary figures on international trips is usually available six weeks after the reference month. Table 1 breaks down the number of trips by foreign travellers and trips by Canadian travellers returning to Canada by mode of transport and length of stay. Tables 2 and 3 outline a selected list of categories of foreign overnight travellers to Canada by province of entry. Table 4 gives a detailed list of Canada's major overseas travel markets and Tables 5 and 6 provide a breakdown of overnight trips by Canadians returning by province of re-entry from both the United States and all other countries.

**Micro-data files.** Available per flow per quarter. Four flows exist: Canadian residents returning from the United States, Canadian residents returning from overseas countries, United States residents visiting Canada and residents from overseas countries visiting Canada.

## Definition of terms

---

The definitions of terms described in this section relate to the statistics of international travel by Canada and, although close, they do not necessarily coincide precisely with definitions developed internationally or elsewhere nationally. The definitions are restricted by the nature of the survey and the physical limitations of the collection process at border points. The frontier counts and the questionnaire distribution are conducted at points of entry by Canada Border Services Agency (CBSA) and target Canadian residents returning to Canada and non-residents entering Canada. Interviews targeting selected non-residents are also conducted at points of exit at Canadian airports.

### International traveller

The term "international traveller" applies to all persons arriving in Canada who are cleared through CBSA points of entry. Any person may cross into Canada more than once in the same period. The method of collection counts each crossing made. The numbers, therefore, represent numbers of crossings (entries or re-entries), and include multiple counting of travellers crossing the border more than once over the same period. The term "international traveller" is divided into three groups: non-resident traveller, resident traveller and other traveller.

**Non-resident traveller.** A non-resident traveller is an international traveller resident of a country other than Canada who enters through Canadian customs on a visit for a period of less than one year. Canadian citizens residing in other countries who come to Canada on leave or for other reasons, for a period of less than one year, are included.

**Resident traveller.** A resident traveller is an international traveller resident of Canada who has travelled outside of Canada for a period of less than one year and who is returning to Canada through Canadian customs. Foreign citizens, who are residing in Canada, travelling abroad on leave or for other reasons, for a period of less than one year, are included.

**Other travellers.** Other travellers include the following types of international travellers:

- **Immigrants.** Citizens of other countries entering Canada to take up permanent residence for more than one year.
- **Former residents.** Canadian citizens returning to Canada to re-establish permanent residence after residing outside Canada for more than one year.
- **Military personnel, diplomats and dependents.** Canadian citizens and dependents who have been stationed abroad and who are returning from postings. Foreign citizens and dependents entering Canada on a military or diplomatic posting.
- **Crews.** Persons engaged in the operation of a transport; plane, boat, truck, etc.

### International tourist

An international tourist is a resident international traveller staying overnight outside Canada or a non-resident international traveller staying overnight in Canada.

### United States

Includes the United States mainland, Hawaii and Alaska.

## Overseas

Includes all countries except Canada and the United States, as defined above.

## Transportation mode

**Automobile.** Motorized highway passenger car having a designated seating capacity of 10 or less. This also includes motor homes (single unit motorized vehicles designed for camping), truck campers (shells attached to a truck to convert it into a vehicle that can be used for camping) and buses for private use. Taxis are also included. Vehicles on car ferries that meet this definition are also considered as automobile traffic.

**Bus.** Motorized highway vehicle used for carrying passengers for commercial purposes (to lease as a charter or on a seat basis). This category also includes vehicles used to transport students or employees of a company.

**Air.** Commercial, charter and private plane.

**Other methods.** Train, boat, pedestrian, bicycle, motorcycle, etc.

## Type of entry

**Direct to Canada.** Non-residents entering Canada directly or Canadian residents returning to Canada directly from countries other than the United States, irrespectively of mode of transportation used.

**Via the United States.** Non-residents from countries other than the United States entering Canada or Canadian residents returning to Canada from countries other than the United States via the United States. The length of stay in the United States has no bearing on the classification; a person could be in transit through the United States or could have stayed several days. Three examples follow:

1. A non-resident from countries other than the United States visiting the United States, who during his/her visit enters Canada, would be counted as entering via the United States;
2. A non-resident from countries other than the United States entering Canada directly, who visits the United States during his/her trip, would be counted direct on his/her first entry and via the United States on his/her second entry;
3. A returning resident vacationing in the southern United States who travels to the Caribbean or other countries during his/her trip would be classified as returning via the United States. This latter group is difficult to identify at the border point and may be categorized as returning from the United States only.

**By land.** Travel by land includes automobile, bus and rail traffic as well as pedestrians and traffic entering by bicycle, motorcycle, etc. Included is traffic entering on car ferries.

**By air and sea.** Commercial and chartered services, as well as travel by private boat and plane.

## Person-trip

Each time a non-resident traveller enters Canada marks the beginning of a person-trip. The traveller's entry is recorded by CBSA. The person-trip concludes when the traveller leaves Canada. For Canadian residents, a person-trip begins when a person departs from Canada and ends when the traveller returns to Canada. His/her re-entry is recorded by CBSA. Person-trips are divided in two categories according to length of trip: same day and one or more nights (or overnight).

For residents, person-trips are either to U.S. destinations or non-U.S. destinations, also known as countries other than the United States or overseas countries. To avoid double-counting, in cases where resident travellers have visited both the United States and countries other than the United States, the person-trip is classified according to where the traveller spent the most nights. Therefore, unless specified, statistics on resident travel in the United

States include only those on trips to U.S. destinations. Likewise, statistics on resident travel in countries other than the United States include only those on trips to non-U.S. destinations.

### Person-visit

**A non-resident traveller** may visit several locations on one trip to Canada; each stay represents a person-visit.

**A resident traveller** may visit several countries or states before being recorded as having re-entered Canada; each of these visits represents a person-visit.

Person-visits are divided in two categories according to length of visit: same day and one or more nights (or overnight). As one person-trip may encompass several person-visits, the number of person-visits is often greater than the number of person-trips.

### Trip or visit duration

**Same day.** Same-day trips include resident travellers who leave and re-enter Canada the same day and non-resident travellers who enter and leave Canada the same day. Same-day visits include Canadian travellers who visit a foreign country or U.S. state and leave the same day. Same-day visits also include foreign visitors who visit a Canadian location and leave the same day. This category includes persons resident in one country and commuting daily to and from work in another country.

**One or more nights.** Trips of one or more nights include resident travellers staying overnight outside Canada and non-resident travellers who stay in Canada overnight. Overnight visits include Canadian travellers who visit a foreign country or U.S. state and stay one or more nights. Overnight visits also include foreign visitors who visit a Canadian location and stay one or more nights.

### Person-night

Each night a non-resident traveller spends in Canada, or a resident traveller spends outside Canada during a person-trip, is considered a person-night.

### Origin or residence

The origin or residence is the place of last permanent residence normally summarized by census region for United States residents, by country for other non-residents and by province for Canadian residents.

### Area or region of destination

For resident travel to U.S. destinations, census regions are used to determine the area of destination. For resident travel to non-U.S. destinations, country groupings (or regions) are used to determine the area of destination. If the traveller indicated two areas of destination, they are coded and split evenly in the tabulations. Trips with three or more areas of destination are coded in a separate category.

### Purpose of trip

The main reason for the trip to a country is generally summarized for publication as follows:

- **Business.** Includes attending meetings or conventions, conferences, trade shows or seminars, or other work.
- **Visiting friends or relatives.**

- **Other pleasure.** Includes holiday, vacation, visiting a second home, cottage or condo, and attending events and attractions.
- **Other purposes.** Includes travel for personal reasons, in transit, shopping, educational study and other.

### Expenditures

They refer to trip expenditures made by all members of the travelling party and related to the trip. Expenditures may have been paid for by individuals, by government or by a private sector business. Expenditures include the following categories: accommodation, transportation within a country, food and beverages, recreation and entertainment and others (souvenirs, shopping, photos, etc.). Expenditures are reported in Canadian dollars or converted in Canadian dollars. Expenditures exclude medical expenses, expenses on education and spending by crews. Fares paid to travel between countries, known as international passenger fares, are also excluded.

### Travel receipts

Travel receipts are only found in tables on the travel account. They include the expenditures made in Canada by non-resident travellers on the above-mentioned categories, as well as the following supplementary expenditures: medical expenses, expenses on education and spending by foreign crews.

### Travel payments

Travel payments are only found in tables on the travel account. They include the expenditures made abroad by Canadian resident travellers on the above-mentioned categories as well as the following supplementary expenditures: medical expenses, expenses on education and expenses made by Canadian crews.

#### U.S. census regions and corresponding states

Census region	States
New England	Maine, New Hampshire, Vermont, Massachusetts, Connecticut, Rhode Island.
Middle Atlantic	New York, Pennsylvania, New Jersey.
South Atlantic	Maryland, Delaware, Washington D.C., West Virginia, Virginia, North Carolina, South Carolina, Georgia, Florida.
East North Central	Wisconsin, Michigan, Illinois, Indiana, Ohio.
West North Central	North Dakota, South Dakota, Minnesota, Iowa, Nebraska, Kansas, Missouri.
East South Central	Kentucky, Tennessee, Mississippi, Alabama.
West South Central	Oklahoma, Arkansas, Texas, Louisiana.
Mountain	Montana, Idaho, Wyoming, Nevada, Utah, Colorado, New Mexico, Arizona.
Pacific	Washington, Oregon, California.
Alaska	Alaska
Hawaii	Hawaii

## Explanatory notes for tables

---

**Note to readers:** For Canadian residents, person-trips are either to U.S. destinations or non-U.S. destinations. Statistics compiled by person-trip include spending and nights spent in the main destination, and exclude spending and nights spent while travelling to and from the main destination. Statistics compiled by person-visit include spending and nights spent in the state or country visited, regardless of the main destination.

For example, a Canadian resident, whose main destination is the United States, travels to Mexico. The spending and nights spent in Mexico will not be included in data compiled by person-trip to the United States and will be excluded from data compiled by person-trip to non-U.S. destinations. The spending and nights spent in Mexico will be included in data compiled by person-visit to Mexico.

### Table 1

1. Subject to revision.

### Table 2

1. Subject to revision.
2. Includes spending in the United States by Canadian residents, regardless of the main destination of the trip.
3. Includes spending in countries other than the United States by Canadian residents, regardless of the main destination of the trip.

### Table group 3

1. Subject to revision.

### Table 4

1. Subject to revision. Data for 2007 and 2008 are not available.
2. Includes Luxembourg up to and including 2001.
3. France comprises the departments of metropolitan France, the Principality of Monaco, the overseas departments (French Guiana, Martinique, Guadeloupe, Reunion Island) and the local governments of Mayotte and Saint Pierre and Miquelon.

### Table 5

1. Includes immigrants, former residents, diplomats, military personnel and dependants.

### Table 6

1. Includes train, boat, pedestrians, bicycle, motorcycle, etc.

### Table 8

1. Includes train, boat, pedestrians, bicycle, motorcycle, etc.

**Table 9**

1. Disposable income figures relate to all Canadian residents and not only those who travel.
2. Source: Bank of Canada.

**Table 11**

1. Includes train, boat, pedestrians, bicycle, motorcycle, etc.

**Table 12**

1. Includes sum of visits to Newfoundland and Labrador, New Brunswick, Nova Scotia and Prince Edward Island.
2. Includes sum of visits to British Columbia, Yukon, Northwest Territories and Nunavut.
3. Includes train, boat, pedestrians, bicycle, motorcycle, etc.

**Table 13**

1. Also includes other purposes of trip.
2. Includes train, boat, pedestrians, bicycle, motorcycle, etc.

**Table 14**

1. Also includes Luxembourg.
2. Also includes Faeroe Islands.
3. Also includes Andorra and Monaco.
4. Also includes Malta and Gozo, San Marino and Vatican City State.
5. Also includes Azores and Madeira.
6. Also includes Canary Islands.
7. Also includes Liechtenstein.
8. Also includes Gibraltar.
9. Also includes Mongolia and Tibet.
10. Also includes Bangladesh, Bhutan, Nepal, Pakistan and Sri Lanka.

**Table 15**

1. Also includes Luxembourg.
2. Also includes Faeroe Islands.
3. Also includes Andorra and Monaco.
4. Also includes Malta and Gozo, San Marino and Vatican City State.
5. Also includes Azores and Madeira.

6. Also includes Canary Islands.
7. Also includes Liechtenstein.
8. Also includes Gibraltar.
9. Also includes Mongolia and Tibet.
10. Also includes Bangladesh, Bhutan, Nepal, Pakistan and Sri Lanka.

**Table 16**

1. Also includes Andorra and Monaco.
2. Also includes Malta & Gozo, San Marino and Vatican City State.
3. Also includes Liechtenstein.
4. Also includes Gibraltar.
5. Also includes Mongolia and Tibet.
6. Also includes Bangladesh, Bhutan, Nepal, Pakistan and Sri Lanka.

**Table 17**

1. Also includes Mongolia and Tibet.
2. Also includes Andorra and Monaco.
3. Also includes Bangladesh, Bhutan, Nepal, Pakistan and Sri Lanka.
4. Also includes Malta and Gozo, San Marino and Vatican City State.
5. Also includes Liechtenstein.
6. Also includes Gibraltar.

**Table 18**

1. Includes sum of visits to Newfoundland and Labrador, New Brunswick, Nova Scotia and Prince Edward Island.
2. Includes sum of visits to British Columbia, Yukon, Northwest Territories and Nunavut.
3. Also includes Andorra and Monaco.
4. Also includes Malta & Gozo, San Marino and Vatican City State.
5. Also includes Liechtenstein.
6. Also includes Gibraltar.
7. Also includes Mongolia and Tibet.
8. Also includes Bangladesh, Bhutan, Nepal, Pakistan and Sri Lanka.

**Table 19**

1. Also includes other purposes of trip.
2. Also includes Andorra and Monaco.
3. Also includes Malta & Gozo, San Marino and Vatican City State.
4. Also includes Liechtenstein.
5. Also includes Gibraltar.
6. Also includes Mongolia and Tibet.
7. Also includes Bangladesh, Bhutan, Nepal, Pakistan and Sri Lanka.

**Table 20**

1. Includes Newfoundland and Labrador, New Brunswick, Nova Scotia and Prince Edward Island.
2. Also includes Yukon, Northwest Territories and Nunavut.

**Table 21**

1. Includes train, boat, pedestrians, bicycle, motorcycle, etc.
2. Persons stating three or more regions visited.

**Table 22**

1. Includes Newfoundland and Labrador, New Brunswick, Nova Scotia and Prince Edward Island.
2. Also includes Yukon, Northwest Territories and Nunavut.
3. Persons stating three or more regions visited.

**Table 23-1**

1. Also includes other purposes of trip.
2. Includes Newfoundland and Labrador, New Brunswick, Nova Scotia and Prince Edward Island.
3. Also includes Yukon, Northwest Territories and Nunavut.
4. Persons stating three or more regions visited.

**Table 23-2**

1. Persons stating three or more regions visited.

**Table 23-3**

1. Persons stating three or more regions visited.

**Table 24-1**

1. Also includes other purposes of trip.
2. Includes Newfoundland and Labrador, New Brunswick, Nova Scotia and Prince Edward Island.
3. Also includes Yukon, Northwest Territories and Nunavut.
4. Also includes persons visiting three or more regions of destination.
5. Includes Saint Pierre and Miquelon, Mexico, Greenland and Oceania (including Australia).

**Table 24-2**

1. Also includes persons visiting three or more regions of destination.
2. Includes Saint Pierre and Miquelon, Mexico, Greenland and Oceania (including Australia).

**Table 24-3**

1. Includes Newfoundland and Labrador, New Brunswick, Nova Scotia and Prince Edward Island.
2. Also includes Yukon, Northwest Territories and Nunavut.
3. Also includes persons visiting three or more regions of destination.
4. Includes Saint Pierre and Miquelon, Mexico, Greenland and Oceania (including Australia).

**Table 25**

1. Excludes Canadian travellers leaving and returning to Canada by automobile on the same day.

**Table 26**

1. Also includes persons visiting three or more regions of destination.
2. Includes Saint Pierre and Miquelon, Mexico, Greenland and Oceania (including Australia).

**Table 27**

1. Also includes same-day visits to overseas countries by Canadian residents, as well as their spending on those visits.

# Appendix I

---

## Forms and questionnaires

The forms and questionnaires appear at the end of the *PDF* version of this publication. In the *HTML* version, they can be accessed via Related products - Surveys 3152 and 5005.