

Catalogue no. 65-001-X

Canadian International Merchandise Trade

August 2012



Statistics
Canada

Statistique
Canada

Canada

How to obtain more information

For information about this product or the wide range of services and data available from Statistics Canada, visit our website at www.statcan.gc.ca, e-mail us at infostats@statcan.gc.ca, or telephone us, Monday to Friday from 8:30 a.m. to 4:30 p.m., at the following numbers:

Statistics Canada's National Contact Centre

Toll-free telephone (Canada and the United States):

Inquiries line	1-800-263-1136
National telecommunications device for the hearing impaired	1-800-363-7629
Fax line	1-877-287-4369

Local or international calls:

Inquiries line	1-613-951-8116
Fax line	1-613-951-0581

Depository Services Program

Inquiries line	1-800-635-7943
Fax line	1-800-565-7757

To access this product

This product, Catalogue no. 65-001-X, is available free in electronic format. To obtain a single issue, visit our website at www.statcan.gc.ca and browse by "Key resource" > "Publications."

Standards of service to the public

Statistics Canada is committed to serving its clients in a prompt, reliable and courteous manner. To this end, Statistics Canada has developed *standards of service* that its employees observe. To obtain a copy of these service standards, please contact Statistics Canada toll-free at 1-800-263-1136. The service standards are also published on www.statcan.gc.ca under "About us" > "The agency" > "Providing services to Canadians."

Statistics Canada
International Trade Division

Canadian International Merchandise Trade

August 2012

Published by authority of the Minister responsible for Statistics Canada

© Minister of Industry, 2012

All rights reserved. Use of this publication is governed by the *Statistics Canada
Open License Agreement*.

<http://www.statcan.gc.ca/reference/copyright-droit-auteur-eng.htm>

October 2012

Catalogue no. 65-001-X, vol. 66, no. 8

ISSN 1480-8781

Frequency: Monthly

Ottawa

Cette publication est également disponible en français.

Note of appreciation

Canada owes the success of its statistical system to a long-standing partnership between Statistics Canada, the citizens of Canada, its businesses, governments and other institutions. Accurate and timely statistical information could not be produced without their continued cooperation and goodwill.

User information

Symbols

The following standard symbols are used in Statistics Canada publications:

- . not available for any reference period
- .. not available for a specific reference period
- ... not applicable
- 0 true zero or a value rounded to zero
- 0^s value rounded to 0 (zero) where there is a meaningful distinction between true zero and the value that was rounded
- p preliminary
- r revised
- x suppressed to meet the confidentiality requirements of the *Statistics Act*
- E use with caution
- F too unreliable to be published
- * significantly different from reference category ($p < 0.05$)

Note to users

All totals are calculated from full figures and rounded independently; consequently, totals may not equal the sum of their components.

The data is based on commodity groups (sector, subsector and major group).

Table of contents

Highlights	5
Analysis	7
Related products	11
Statistical tables	
1 Merchandise trade of Canada, balance of payments basis, seasonally adjusted	15
1-1 Current dollars	15
1-2 Constant dollars, 2002	16
1-3 Price indices (Laspeyres)	17
2 Exports by commodity groupings, balance of payments basis, seasonally adjusted	18
2-1 Current dollars	18
2-2 Constant dollars, 2002	20
3 Domestic exports to selected countries, customs basis, not seasonally adjusted	22
3-1 August	22
3-2 Year to date, January to August	23
4 Domestic exports by country, customs basis, not seasonally adjusted	24
5 Exports by province of origin, customs basis, not seasonally adjusted	28
5-1 August	28
5-2 Year to date, January to August	29
6 Imports by commodity groupings, balance of payments basis, seasonally adjusted	30
6-1 Current dollars	30
6-2 Constant dollars, 2002	32
7 Imports from selected countries, customs basis, not seasonally adjusted	34
7-1 August	34
7-2 Year to date, January to August	35
8 Imports by country, customs basis, not seasonally adjusted	36

Table of contents – continued

9	Imports by province of clearance, customs basis, not seasonally adjusted	40
9-1	August	40
9-2	Year to date, January to August	41

Data quality, concepts and methodology

	Technical notes	42
--	-----------------	----

Highlights

Canada's merchandise imports fell 3.1% and exports edged down 0.1% in August. As a result, Canada's trade deficit with the world narrowed from \$2.5 billion in July to \$1.3 billion in August.

Imports fell to \$38.8 billion as declines occurred in every sector, except energy products. Volumes, which fell in every sector, were down 2.2% in August.

Exports amounted to \$37.5 billion as a decrease in prices offset an increase in volumes. The largest decline occurred in exports of industrial goods and materials, while exports of energy products increased after six consecutive monthly declines.

Imports from the United States fell 4.3% to \$24.2 billion, while exports rose 1.4% to \$27.6 billion. Consequently, Canada's trade surplus with the United States increased from \$2.0 billion in July to \$3.5 billion in August.

Exports to countries other than the United States fell 3.9% to \$9.8 billion, mainly the result of a 19.5% decline in exports to Japan. Imports from countries other than the United States declined 1.0% to \$14.6 billion. Consequently, Canada's trade deficit with countries other than the United States increased from \$4.5 billion in July to \$4.8 billion in August.

Note to readers

Merchandise trade is one component of Canada's international balance of payments (BOP), which also includes trade in services, investment income, current transfers as well as capital and financial flows.

International merchandise trade data by country are available on both a BOP and a customs basis for the United States, Japan and the United Kingdom. Trade data for all other individual countries are available on a customs basis only. BOP data are derived from customs data by making adjustments for factors such as valuation, coverage, timing and residency. These adjustments are made to conform to the concepts and definitions of the Canadian System of National Accounts.

Data in this release are on a BOP basis, seasonally adjusted and in current dollars. Constant dollars are calculated using the Laspeyres volume formula.

For more information on seasonal adjustment, see *Seasonal adjustment and identifying economic trends*.

New aggregation structure

Statistics Canada will introduce the North American Product Classification System (NAPCS) for merchandise import and export statistics. The new structure will replace the classification structures known as the summary import groups (SIG) and the summary export groups (SEG) and the higher level aggregations (major groups, subsectors, sectors and sections) that have been in use for several decades.

This month's release is the last data release based on the SIG and SEG classification structure. As of November 8 (September reference month), international merchandise trade data release will be based on NAPCS.

Revised data based on NAPCS for the reference period of January 1988 to August 2012 will be disseminated on October 18.

Readers interested in this upcoming change can find more detailed information on our web page dedicated to *classification consultation and notification*.

Chart 1
Exports and imports, seasonally adjusted, on a balance of payments basis

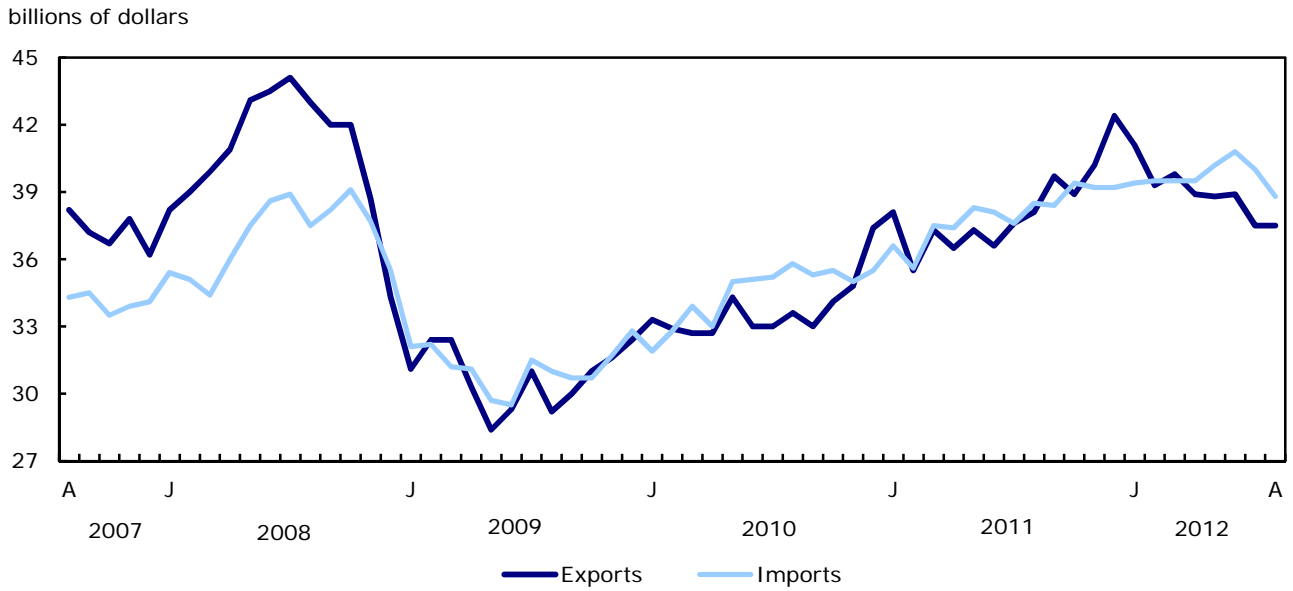
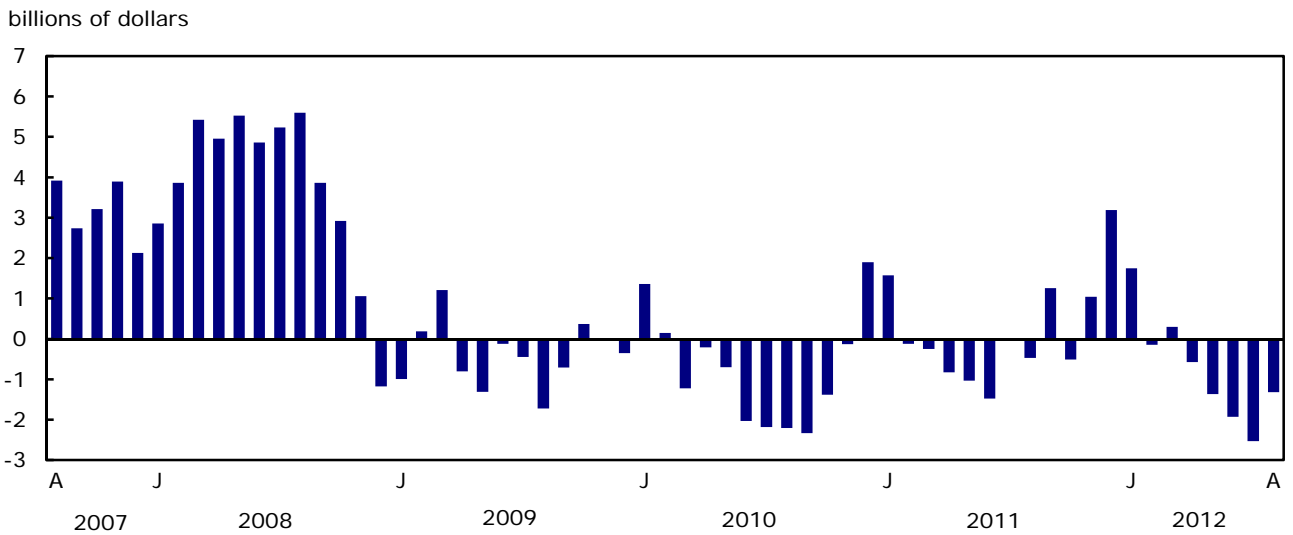


Chart 2
Trade balance, seasonally adjusted, on a balance of payments basis



Analysis

Imports decline as volumes down in every sector

After four consecutive monthly increases, imports of industrial goods and materials fell 7.4% to \$7.9 billion in August. Decreases in the value of imports were widespread throughout this sector. The largest factor was an 11.6% decline in imports of metals and metal ores, mainly precious metals and alloys.

Imports of machinery and equipment decreased 3.8% to \$10.4 billion, as volumes and prices fell. The decline was led by other machinery and equipment, down 5.6% to \$5.0 billion.

Imports of automotive products declined 3.3% to \$6.7 billion in August, as volumes and prices fell 1.9% and 1.4% respectively. The decrease in the sector was largely the result of lower imports of motor vehicle parts as well as trucks and other motor vehicles.

On the strength of crude petroleum, the energy products sector grew 6.1% to \$4.1 billion, and partially offset the decline in overall imports. Crude petroleum rose 15.4% to \$2.6 billion, as a result of higher volumes and prices. Imports of petroleum and coal products fell 5.5% to \$1.2 billion, on lower volumes.

Industrial goods and materials largest contributor to the decline in exports

Exports of industrial goods and material fell 6.1% to \$8.8 billion, as decreases were recorded throughout the sector. The biggest factors were exports of fertilizers and fertilizer materials (-22.3%) and iron ores, concentrates and scrap (-26.8%) on lower volumes. A 13.3% increase in exports of precious metals and alloys partially offset the decrease.

Exports of automotive products declined 2.3% to \$5.7 billion in August. Motor vehicle parts fell 6.0% to \$1.5 billion, mainly on lower volumes.

Exports of energy products rose 5.5% to \$8.6 billion, halting six consecutive monthly decreases. Exports of crude petroleum, the main contributor, increased 9.1% to \$5.5 billion mostly on higher prices. Also, petroleum and coal products rose 10.6%. These gains were partially offset by the fourth consecutive monthly decline in exports of coal and other bituminous substances.

Exports of agricultural and fishing products grew 6.5% to \$3.6 billion. The main factor was wheat exports, which rose 57.5% as volumes were up for the first time in four months.

Note: In general, merchandise trade data are revised on an ongoing basis for each month of the current year. Current year revisions are reflected in both the customs and BOP based data.

The previous year's customs data are revised with the release of the January and February reference months as well as on a quarterly basis. The previous two years of customs based data are revised annually and are released in February with the December reference month.

The previous year's BOP based data were revised with the release of the January, February, March and April 2012 reference months.

Factors influencing revisions include late receipt of import and export documentation, incorrect information on customs forms, replacement of estimates produced for the energy sector with actual figures, changes in classification of merchandise based on more current information, and changes to seasonal adjustment factors.

Revised data are available in the appropriate CANSIM tables, free of charge.

Chart 1
Imports of industrial goods and materials, seasonally adjusted, on a balance of payments basis

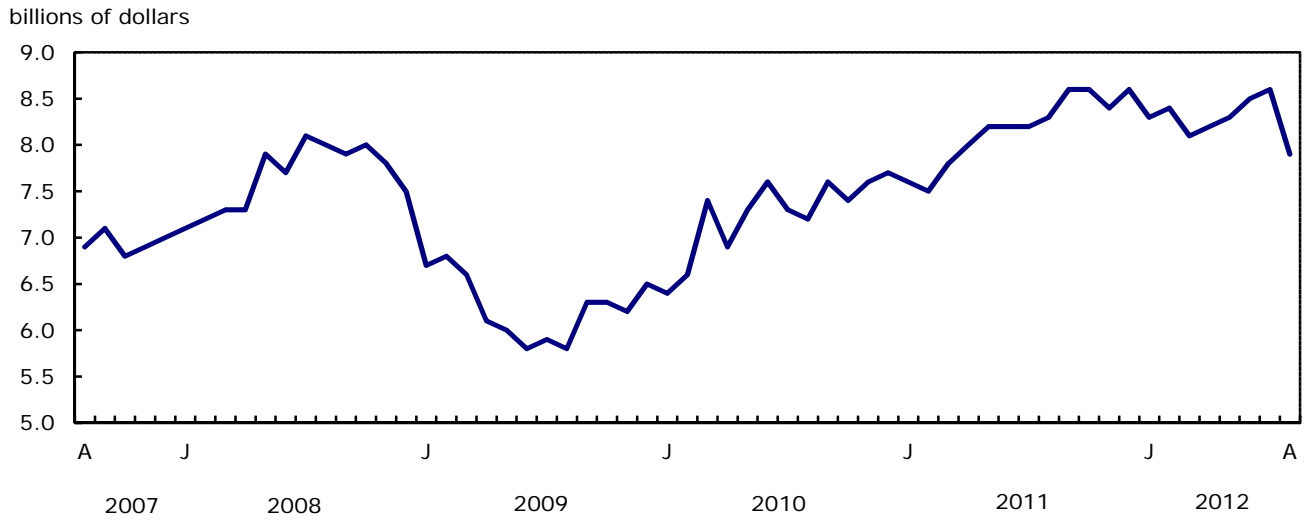


Chart 2
Imports of energy products, seasonally adjusted, on a balance of payments basis

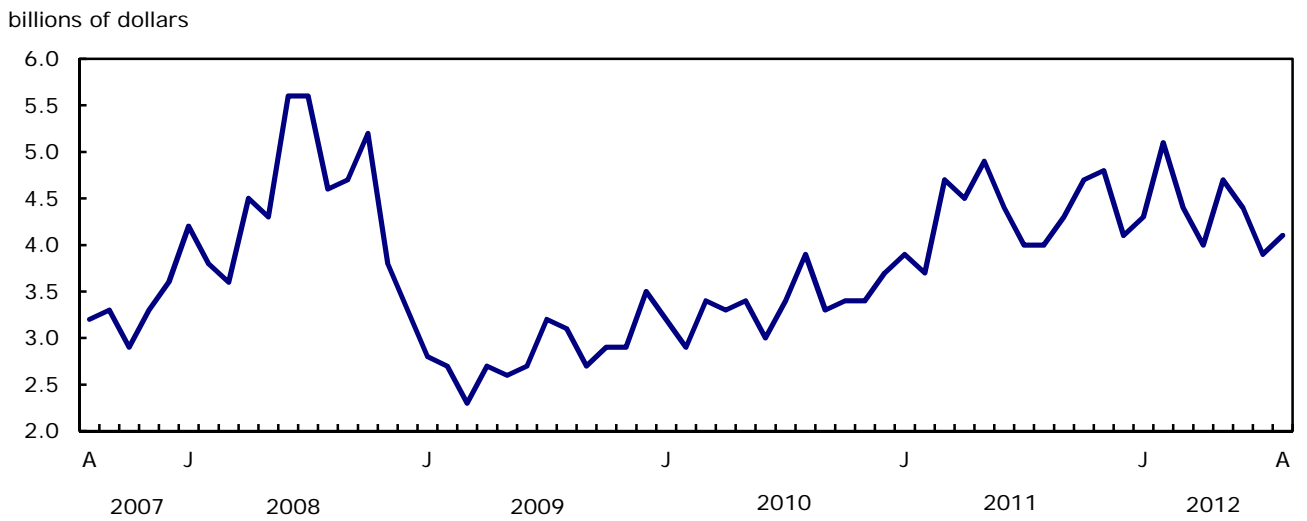


Chart 3
Exports of industrial goods and materials, seasonally adjusted, on a balance of payments basis

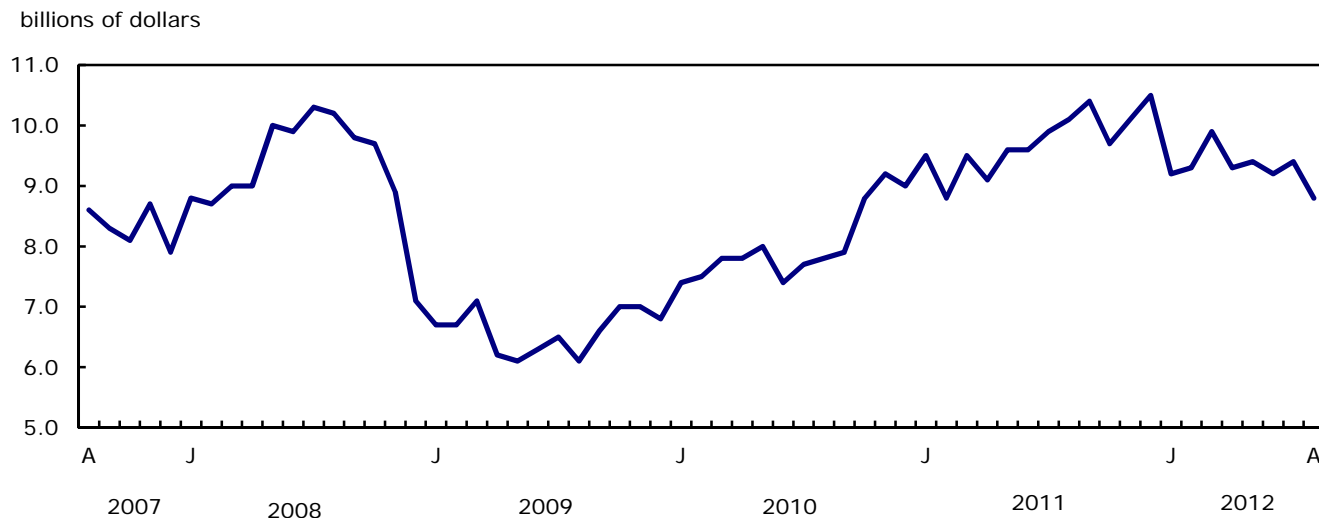
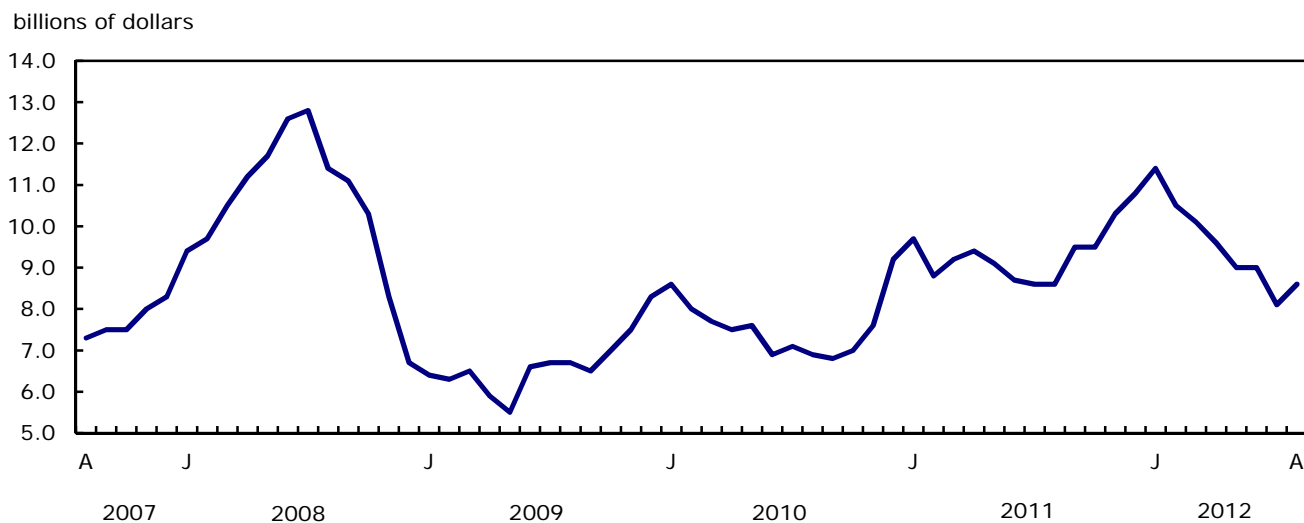


Chart 4
Exports of energy products, seasonally adjusted, on a balance of payments basis



Text table 1
Merchandise trade by principal trading area, balance of payments basis, seasonally adjusted

	July 2012	August 2012	Change	Year to date			August 2012/ August 2011		
				2011	2012	Change			
	millions of dollars		percent		millions of dollars		percent		
Export to									
United States	27,263	27,638	374	1.4	215,833	228,281	12,447	5.8	3.1
Japan	893	719	-174	-19.5	7,302	7,016	-286	-3.9	-26.8
European Union ¹	3,380	3,372	-8	-0.2	26,936	27,890	954	3.5	-15.4
Other Organisation for Economic Co-operation and Development ²	1,650	1,522	-128	-7.7	13,378	12,368	-1,010	-7.6	-19.3
Other countries	4,313	4,220	-93	-2.1	33,535	36,378	2,843	8.5	-4.6
Total	37,499	37,471	-28	-0.1	296,984	311,933	14,948	5.0	-1.6
Imports from									
United States	25,244	24,157	-1,088	-4.3	184,446	198,406	13,960	7.6	0.3
Japan	961	882	-80	-8.3	5,829	7,492	1,663	28.5	8.9
European Union ¹	3,844	4,021	177	4.6	30,695	30,404	-290	-0.9	5.4
Other Organisation for Economic Co-operation and Development ²	2,804	2,768	-36	-1.3	21,705	23,940	2,235	10.3	-2.8
Other countries	7,175	6,963	-213	-3.0	56,967	57,505	539	0.9	-0.2
Total	40,029	38,790	-1,239	-3.1	299,642	317,748	18,106	6.0	0.6
Balance									
United States	2,019	3,481	1,462	...	31,387	29,875	-1,512
Japan	-69	-163	-94	...	1,473	-476	-1,949
European Union ¹	-464	-649	-186	...	-3,759	-2,514	1,245
Other Organisation for Economic Co-operation and Development ²	-1,154	-1,246	-92	...	-8,327	-11,572	-3,245
Other countries	-2,863	-2,743	120	...	-23,432	-21,127	2,304
Total	-2,530	-1,319	1,211	...	-2,658	-5,815	-3,157

1 European Union includes: Austria, Belgium, Bulgaria, Cyprus, Czech Republic, Denmark, Estonia, Finland, France, Germany, Greece, Hungary, Ireland, Italy, Latvia, Lithuania, Luxembourg, Malta, Netherlands, Poland, Portugal, Romania, Slovakia, Slovenia, Spain, Sweden and United Kingdom.

2 Other Organisation for Economic Co-operation and Development includes: Australia, Canada, Chile, Iceland, Israel, Mexico, New Zealand, Norway, South Korea, Switzerland and Turkey.

Text table 2
Reconciliation of customs and balance of payments trade data, not seasonally adjusted

	2012						2011
	August	July	June	May	April	March	Annual
	millions of dollars						
Exports							
Customs basis	36,894	35,744	39,090	39,457	38,779	40,698	447,501
Balance of payments adjustments	924	265	665	910	-3	864	10,690
Valuation and residency							
Inland freight	612	629	656	670	652	627	7,052
Other valuation and residency	-212	-865	-943	-1,119	-971	-785	-9,504
Timing	-33	-24	4	-11	55	-66	496
Coverage	557	525	948	1,370	261	1,088	12,646
Balance of payments basis	37,818	36,009	39,755	40,367	38,776	41,562	458,191
Imports							
Customs basis	39,152	38,102	40,593	40,153	38,403	40,428	445,992
Balance of payments adjustments	933	976	1,015	1,337	796	1,039	9,882
Valuation and residency							
Inland freight	849	826	869	862	815	850	9,426
Other valuation and residency	-61	-6	15	30	-41	-7	-245
Timing	0	0	0	0	0	0	0
Coverage	145	156	131	445	22	196	701
Balance of payments basis	40,085	39,078	41,608	41,490	39,199	41,467	455,874

Related products

Selected publications from Statistics Canada

65-208-X	International Merchandise Trade Annual Review
65-507-M	Canadian Trade Review
65F0013X	Canadian International Merchandise Trade Database
65F0019X	A Database for Analysis of International Markets
65F0020X	Data Integration - International Trade Data and Manufacturing Shipments Data

Selected CANSIM tables from Statistics Canada

228-0001	Merchandise imports and exports, by major groups and principal trading areas for all countries, monthly
228-0002	Merchandise imports and exports, by major groups and principal trading areas for all countries, quarterly
228-0003	Merchandise imports and exports, by major groups and principal trading areas for all countries, annual
228-0033	Imports, customs-based, by province of clearance, monthly
228-0034	Domestic exports, customs-based, by province of origin, monthly
228-0041	Merchandise imports and exports by sector and sub-sector, customs and balance of payments basis, for all countries, monthly
228-0042	Merchandise imports and exports by sector and sub-sector, customs and balance of payments basis, for all countries, quarterly
228-0043	Merchandise imports and exports by sector and sub-sector, customs and balance of payments basis, for all countries, annual
228-0047	Merchandise imports and exports balance of payments and customs-based price and volume indexes for all countries, monthly
228-0048	Merchandise imports and exports balance of payments and customs-based price and volume indexes for all countries, quarterly
228-0049	Merchandise imports and exports balance of payments and customs-based price and volume indexes for all countries, annual

228-0050	Merchandise imports and exports customs-based price indexes, Canada and United States trade, and Standard International Trade Classification (SITC revision 3) price indexes for all countries and United States, monthly
228-0051	Merchandise imports and exports customs-based price indexes, Canada and United States trade, and Standard International Trade Classification (SITC revision 3) price indexes for all countries and United States, quarterly
228-0052	Merchandise imports and exports customs-based price indexes, Canada and United States trade, and Standard International Trade Classification (SITC revision 3) price indexes for all countries and United States, annual
228-0053	Merchandise import and export price and volume indexes by sector and sub-sector, customs and balance of payments basis, for all countries, monthly
228-0054	Merchandise import and export price and volume indexes by sector and sub-sector, customs and balance of payments basis, for all countries, quarterly
228-0055	Merchandise import and export price and volume indexes by sector and sub-sector, customs and balance of payments basis, for all countries, annual
228-0056	Merchandise imports and exports by sector, balance of payments basis, for all countries, seasonally adjusted, Fisher formula, monthly
228-0057	Merchandise imports and exports by sector, balance of payments basis, for all countries, seasonally adjusted, Fisher formula, quarterly

Selected surveys from Statistics Canada

2201	Canadian International Merchandise Trade (Customs Basis)
2202	Canadian International Merchandise Trade (Balance of Payments Basis)
2203	International Trade Price Indexes

Selected summary tables from Statistics Canada

- *Canada: Economic and financial data*
- *Imports, exports and trade balance of goods on a balance-of-payments basis, by country or country grouping*
- *Exports of goods on a balance-of-payments basis*

- *Imports of goods on a balance-of-payments basis*
- *Merchandise trade of Canada (monthly)*
- *Economic indicators, by province and territory (monthly and quarterly)*
- *Latest statistics (monthly)*

Statistical tables

Table 1-1
Merchandise trade of Canada, balance of payments basis, seasonally adjusted — Current dollars

	Exports	Imports	Trade balance	Period to period change		
				Exports	Imports	Balance
				millions of dollars	percent	millions of dollars
2008	488,754	443,777	44,977	0.0	0.0	0
2009	369,343	374,081	-4,738	-24.4	-15.7	-49,715
2010	404,834	413,833	-8,999	9.6	10.6	-4,261
2011	458,191	455,874	2,318	13.2	10.2	11,316
2010						
First quarter	98,870	98,583	287	4.0	3.6	318
Second quarter	100,071	103,014	-2,942	1.2	4.5	-3,229
Third quarter	99,592	106,312	-6,720	-0.5	3.2	-3,778
Fourth quarter	106,301	105,924	377	6.7	-0.4	7,097
2011						
First quarter	110,901	109,704	1,198	4.3	3.6	821
Second quarter	110,447	113,791	-3,343	-0.4	3.7	-4,541
Third quarter	115,287	114,545	742	4.4	0.7	4,086
Fourth quarter	121,555	117,835	3,721	5.4	2.9	2,978
2012						
First quarter	120,283	118,377	1,906	-1.0	0.5	-1,815
Second quarter	116,680	120,551	-3,872	-3.0	1.8	-5,778
2011						
January	38,129	36,557	1,572	2.0	3.1	-323
February	35,508	35,632	-125	-6.9	-2.5	-1,697
March	37,264	37,514	-250	4.9	5.3	-125
April	36,533	37,364	-830	-2.0	-0.4	-581
May	37,290	38,325	-1,034	2.1	2.6	-204
June	36,624	38,102	-1,478	-1.8	-0.6	-444
July	37,560	37,604	-44	2.6	-1.3	1,435
August	38,075	38,544	-469	1.4	2.5	-425
September	39,652	38,397	1,255	4.1	-0.4	1,724
October	38,894	39,404	-510	-1.9	2.6	-1,765
November	40,246	39,204	1,042	3.5	-0.5	1,551
December	42,415	39,226	3,189	5.4	0.1	2,147
2012						
January	41,118	39,368	1,750	-3.1	0.4	-1,438
February	39,338	39,483	-145	-4.3	0.3	-1,895
March	39,827	39,526	301	1.2	0.1	445
April	38,935	39,509	-574	-2.2	0.0	-875
May	38,825	40,194	-1,368	-0.3	1.7	-794
June	38,919	40,849	-1,930	0.2	1.6	-562
July	37,499	40,029	-2,530	-3.6	-2.0	-600
August	37,471	38,790	-1,319	-0.1	-3.1	1,211

Note(s): Because of rounding, monthly data may not add up to quarterly data and quarterly data may not add up to annual data.

Table 1-2
Merchandise trade of Canada, balance of payments basis, seasonally adjusted — Constant dollars, 2002

	Exports	Imports	Trade balance	Period to period change	
				Exports	Imports
	millions of dollars			percent	
2008	412,713	486,735	-74,022	0.0	0.0
2009	346,916	407,679	-60,763	-15.9	-16.2
2010	374,143	470,401	-96,259	7.8	15.4
2011	389,503	509,403	-119,900	4.1	8.3
2010					
First quarter	90,749	111,192	-20,442	1.8	3.7
Second quarter	94,368	117,650	-23,282	4.0	5.8
Third quarter	94,074	120,900	-26,826	-0.3	2.8
Fourth quarter	94,951	120,659	-25,708	0.9	-0.2
2011					
First quarter	96,296	124,664	-28,368	1.4	3.3
Second quarter	94,834	128,760	-33,926	-1.5	3.3
Third quarter	98,147	127,883	-29,736	3.5	-0.7
Fourth quarter	100,226	128,096	-27,870	2.1	0.2
2012					
First quarter	101,413	129,906	-28,493	1.2	1.4
Second quarter	102,400	132,293	-29,893	1.0	1.8
2011					
January	33,076	41,770	-8,694	1.5	3.7
February	31,038	40,627	-9,589	-6.2	-2.7
March	32,182	42,267	-10,084	3.7	4.0
April	31,450	42,837	-11,387	-2.3	1.3
May	32,059	42,656	-10,597	1.9	-0.4
June	31,325	43,267	-11,941	-2.3	1.4
July	32,745	42,904	-10,158	4.5	-0.8
August	32,646	43,125	-10,479	-0.3	0.5
September	32,756	41,854	-9,098	0.3	-2.9
October	32,523	42,579	-10,056	-0.7	1.7
November	32,931	42,543	-9,612	1.3	-0.1
December	34,773	42,975	-8,202	5.6	1.0
2012					
January	34,364	43,195	-8,831	-1.2	0.5
February	33,235	42,891	-9,655	-3.3	-0.7
March	33,813	43,820	-10,006	1.7	2.2
April	33,991	43,943	-9,952	0.5	0.3
May	34,138	43,690	-9,552	0.4	-0.6
June	34,272	44,660	-10,388	0.4	2.2
July	33,553	44,237	-10,684	-2.1	-0.9
August	33,773	43,267	-9,494	0.7	-2.2

Note(s): Because of rounding, monthly data may not add up to quarterly data and quarterly data may not add up to annual data.

Table 1-3
Merchandise trade of Canada, balance of payments basis, seasonally adjusted — Price indices (Laspeyres)

	2002=100			Period to period change		
	Exports	Imports	Terms of trade	Exports	Imports	Terms of trade
	price indices (Laspeyres)			percent		
2008	116.2	97.2	119.6	0.0	0.0	0.0
2009	105.2	96.2	109.3	-9.5	-1.0	-8.5
2010	106.8	94.1	113.4	1.5	-2.2	3.7
2011	113.9	98.2	116.0	6.7	4.4	2.3
2010						
First quarter	107.1	93.7	114.2	1.7	0.7	0.9
Second quarter	105.7	93.6	112.9	-1.3	-0.1	-1.2
Third quarter	106.1	94.5	112.3	0.4	0.9	-0.5
Fourth quarter	108.2	94.6	114.4	2.0	0.1	1.9
2011						
First quarter	111.6	96.0	116.2	3.1	1.5	1.6
Second quarter	113.5	97.7	116.3	1.8	1.7	0.1
Third quarter	114.5	98.5	116.2	0.9	0.9	0.0
Fourth quarter	115.9	100.6	115.2	1.2	2.1	-0.9
2012						
First quarter	113.9	100.3	113.6	-1.7	-0.3	-1.4
Second quarter	112.4	101.0	111.3	-1.3	0.7	-2.0
2011						
January	111.2	95.9	115.9	0.4	0.5	-0.2
February	111.6	96.9	115.1	0.4	1.1	-0.7
March	112.4	97.0	115.8	0.7	0.1	0.6
April	113.4	96.9	117.0	0.9	-0.1	1.0
May	113.6	97.2	116.9	0.2	0.3	-0.1
June	114.1	98.1	116.3	0.4	0.9	-0.5
July	112.5	96.3	116.8	-1.4	-1.9	0.5
August	113.3	98.2	115.3	0.7	2.0	-1.3
September	115.7	99.4	116.5	2.2	1.2	1.0
October	115.7	100.1	115.7	0.0	0.7	-0.7
November	116.7	101.1	115.4	0.9	1.1	-0.2
December	115.8	101.3	114.3	-0.8	0.1	-1.0
2012						
January	115.1	101.0	113.9	-0.6	-0.3	-0.4
February	113.7	100.2	113.5	-1.2	-0.8	-0.4
March	113.1	101.4	111.6	-0.5	1.2	-1.7
April	111.9	100.4	111.5	-1.1	-1.0	-0.1
May	112.4	100.5	111.8	0.5	0.2	0.3
June	113.0	101.1	111.8	0.5	0.6	0.0
July	111.0	99.2	111.9	-1.8	-1.9	0.1
August	110.3	97.8	112.8	-0.6	-1.4	0.8

Note(s): Because of rounding, monthly data may not add up to quarterly data and quarterly data may not add up to annual data.

Table 2-1
Exports by commodity groupings, balance of payments basis, seasonally adjusted — Current dollars

	July	August	Change		Year to date			August 2012/ August 2011	
	2012	2012			2011	2012	Change		
	millions of dollars		percent		millions of dollars			percent	
Total	37,499	37,471	-28	-0.1	296,984	311,933	14,948	5.0	-1.6
Agricultural and fishing products	3,365	3,583	218	6.5	26,267	28,558	2,292	8.7	6.4
Wheat	360	566	207	57.5	3,586	3,955	369	10.3	11.4
Other agricultural and fishing products	3,005	3,017	12	0.4	22,680	24,603	1,923	8.5	5.5
Live animals	126	107	-19	-15.1	941	1,054	113	12.0	-13.3
Fish and fish preparations	374	331	-43	-11.4	2,915	3,045	130	4.5	-12.5
Barley	21	11	-11	-50.5	169	264	95	56.0	287.9
Wheat flour	5	6	1	14.4	51	45	-6	-11.7	2.1
Other cereals unmilled	64	94	30	46.3	593	465	-127	-21.5	48.1
Other cereal preparations	272	267	-5	-1.8	1,920	2,102	181	9.4	7.2
Meat and meat preparations	418	416	-2	-0.6	3,240	3,394	154	4.8	-4.1
Alcoholic beverages	66	62	-3	-5.3	488	533	45	9.2	-2.0
Other food, feed, beverages and tobacco	1,090	1,158	68	6.3	8,006	8,442	435	5.4	7.9
Rapeseed	324	326	2	0.6	2,723	3,350	626	23.0	27.0
Other crude vegetable products	244	239	-6	-2.4	1,635	1,911	276	16.9	14.3
Energy products	8,143	8,593	450	5.5	72,113	76,318	4,205	5.8	0.0
Crude petroleum	5,001	5,457	456	9.1	42,831	50,190	7,358	17.2	8.5
Natural gas	684	693	9	1.3	9,467	5,230	-4,237	-44.8	-39.9
Other energy products	2,458	2,443	-15	-0.6	19,815	20,899	1,084	5.5	1.4
Coal and other bituminous substances	506	334	-172	-34.1	4,539	3,891	-648	-14.3	-56.2
Petroleum and coal products	1,779	1,967	188	10.6	13,915	15,827	1,912	13.7	34.3
Electricity	174	143	-31	-17.9	1,362	1,181	-181	-13.3	-21.8
Forestry products	1,804	1,843	39	2.1	15,005	14,461	-545	-3.6	-0.2
Lumber and sawmill products	819	791	-29	-3.5	5,593	6,024	431	7.7	15.2
Other crude wood products	76	86	11	14.0	583	611	28	4.9	27.6
Lumber	531	488	-43	-8.2	3,537	3,773	235	6.7	12.3
Other wood fabricated materials	213	217	4	1.9	1,473	1,640	167	11.3	17.4
Wood pulp and other wood products	437	514	77	17.7	4,492	3,992	-500	-11.1	-5.4
Newsprint and other paper and paperboard	548	538	-10	-1.8	4,920	4,444	-476	-9.7	-12.6
Newsprint paper	260	247	-13	-5.0	2,492	2,105	-387	-15.5	-19.1
Other paper and paperboard	288	291	3	1.0	2,428	2,339	-89	-3.7	-6.2
Industrial goods and materials	9,397	8,823	-575	-6.1	76,137	74,587	-1,549	-2.0	-13.0
Metal ores	1,501	1,193	-308	-20.5	10,996	10,810	-186	-1.7	-22.8
Iron ores, concentrates and scrap	565	414	-152	-26.8	3,817	4,131	314	8.2	-24.4
Copper ores, concentrates and scrap	332	251	-81	-24.5	2,377	2,140	-238	-10.0	-18.9
Nickel ores, concentrates and scrap	215	222	8	3.5	2,216	1,707	-509	-23.0	-36.1
Zinc ores, concentrates and scrap	33	8	-25	-76.3	207	191	-16	-7.6	-63.1
Other ores, concentrates and scrap	355	298	-57	-16.2	2,379	2,641	262	11.0	-6.7
Chemicals, plastics and fertilizers	2,993	2,686	-307	-10.3	23,719	23,131	-587	-2.5	-10.7
Inorganic chemicals	421	355	-67	-15.8	3,975	3,298	-677	-17.0	-25.5
Organic chemicals	506	478	-29	-5.7	4,909	4,354	-556	-11.3	-26.3
Fertilizers and fertilizer materials	808	628	-180	-22.3	5,041	5,141	101	2.0	2.3
Synthetic rubber and plastics	942	922	-20	-2.2	7,551	7,783	232	3.1	-4.9
Other chemical products	315	304	-11	-3.6	2,243	2,556	313	14.0	1.0
Metals and alloys	3,241	3,388	147	4.5	28,733	27,281	-1,451	-5.1	-12.7
Primary iron and steel	49	56	6	12.8	586	408	-177	-30.3	-27.1
Steel bars, rods, plates, sheets	330	306	-23	-7.1	2,487	2,726	239	9.6	-8.1
Other iron and steel and alloys	279	259	-20	-7.1	1,858	2,115	257	13.8	7.9
Aluminum including alloys	554	537	-18	-3.2	5,382	4,676	-706	-13.1	-23.0
Copper and alloys	172	177	5	2.8	1,652	1,578	-74	-4.5	-7.3
Nickel and alloys	237	233	-4	-1.6	2,304	1,893	-411	-17.8	-9.7
Precious metals and alloys	1,446	1,638	192	13.3	12,758	12,419	-339	-2.7	-11.9
Zinc and alloys	85	94	9	10.9	862	745	-116	-13.5	-13.2
Other non-ferrous metals and alloys	89	88	-1	-0.9	845	720	-124	-14.7	-24.6

Table 2-1 – continued

Exports by commodity groupings, balance of payments basis, seasonally adjusted — Current dollars

	July	August	Change	Year to date			August 2012/ August 2011		
	2012	2012		2011	2012	Change			
	millions of dollars		percent		millions of dollars		percent		
Other industrial goods and materials	1,662	1,556	-107	-6.4	12,690	13,365	675	5.3	-8.6
Asbestos unmanufactured	0	0	0	0.0	27	0	-27	-100.0	-100.0
Other crude animal products	123	103	-20	-16.4	679	863	184	27.1	9.6
Other crude non-metallic minerals	273	233	-40	-14.7	2,625	2,348	-277	-10.6	-38.4
Other crude materials, inedible	64	60	-4	-6.0	521	507	-14	-2.7	-13.8
Metal fabricated basic products	405	395	-10	-2.4	2,917	3,231	314	10.8	5.1
Textile fabricated materials	185	178	-7	-4.0	1,468	1,494	26	1.8	-4.2
Non-metallic mineral basic products	173	174	1	0.6	1,276	1,417	141	11.0	6.5
Other fabricated materials	439	413	-26	-6.0	3,176	3,504	328	10.3	-4.7
Machinery and equipment	6,680	6,703	24	0.4	52,368	54,737	2,369	4.5	-8.4
Industrial and agricultural machinery	1,766	1,697	-70	-3.9	12,997	14,334	1,337	10.3	-4.5
Industrial machinery	1,579	1,505	-74	-4.7	11,675	12,798	1,123	9.6	-5.7
Agricultural machinery includ. tractors	188	192	4	2.2	1,321	1,536	215	16.3	6.9
Aircraft and other transportation equipment	1,436	1,641	206	14.3	12,010	12,449	439	3.7	-11.8
Aircraft, engines, parts	1,058	1,257	199	18.8	8,949	9,277	328	3.7	-9.9
Other transportation equipment	377	384	7	1.8	3,061	3,172	111	3.6	-17.6
Other machinery and equipment	3,478	3,365	-112	-3.2	27,362	27,954	593	2.2	-8.6
Television, telecommunication equipment	604	587	-17	-2.8	5,048	4,992	-57	-1.1	-12.2
Office machines and equipment	331	311	-20	-5.9	2,817	2,688	-128	-4.5	-12.2
Other equipment and tools	1,727	1,668	-59	-3.4	12,695	13,697	1,002	7.9	-3.8
Other end products, inedible	816	799	-16	-2.0	6,802	6,578	-224	-3.3	-13.8
Automotive products	5,875	5,740	-136	-2.3	38,138	45,632	7,494	19.6	25.9
Passenger autos and chassis	3,969	3,961	-8	-0.2	24,831	30,759	5,928	23.9	39.7
Trucks and other motor vehicles	286	256	-30	-10.5	1,775	2,276	502	28.3	11.1
Motor vehicle parts	1,620	1,522	-98	-6.0	11,533	12,597	1,064	9.2	1.9
Other consumer goods	1,408	1,354	-54	-3.9	10,681	10,964	282	2.6	-4.2
Special transactions trade	309	300	-9	-2.8	2,578	2,613	35	1.3	-20.4
Unallocated balance of payments adjustments	519	533	14	2.7	3,697	4,063	366	9.9	14.8

Table 2-2
Exports by commodity groupings, balance of payments basis, seasonally adjusted — Constant dollars, 2002

	July	August	Change	Year to date			August 2012/ August 2011		
	2012	2012		2011	2012	Change			
	millions of dollars		percent		millions of dollars		percent		
Total	33,553	33,773	220	0.7	256,521	271,140	14,618	5.7	3.5
Agricultural and fishing products	2,931	3,124	193	6.6	24,068	24,950	882	3.7	0.7
Wheat	253	393	141	55.8	2,632	2,820	188	7.1	7.3
Other agricultural and fishing products	2,678	2,730	52	1.9	21,436	22,130	694	3.2	-0.2
Live animals	114	97	-17	-14.7	909	962	53	5.8	-14.0
Fish and fish preparations	467	423	-43	-9.3	3,331	3,726	395	11.9	-5.5
Barley	15	8	-7	-48.2	127	207	79	62.4	375.7
Wheat flour	4	5	1	15.0	43	39	-4	-9.6	4.4
Other cereals unmilled	44	68	23	52.8	430	351	-79	-18.4	34.7
Other cereal preparations	219	222	3	1.5	1,716	1,708	-8	-0.5	2.9
Meat and meat preparations	392	406	14	3.6	3,267	3,295	28	0.9	-6.5
Alcoholic beverages	118	115	-3	-2.8	972	1,005	34	3.5	-9.3
Other food, feed, beverages and tobacco	909	999	90	9.9	7,398	7,116	-281	-3.8	1.3
Rapeseed	211	204	-7	-3.2	1,957	2,276	319	16.3	7.4
Other crude vegetable products	184	182	-3	-1.5	1,285	1,444	159	12.4	10.0
Energy products	4,925	5,064	139	2.8	38,336	41,324	2,988	7.8	6.5
Crude petroleum	2,269	2,345	76	3.4	18,003	20,038	2,035	11.3	0.1
Natural gas	1,209	1,333	124	10.3	10,746	10,045	-701	-6.5	3.7
Other energy products	1,448	1,387	-61	-4.2	9,588	11,242	1,654	17.2	23.0
Coal and other bituminous substances	170	112	-57	-33.7	1,172	1,114	-58	-4.9	-34.7
Petroleum and coal products	982	1,025	42	4.3	6,634	7,963	1,329	20.0	39.6
Electricity	296	250	-46	-15.7	1,782	2,165	382	21.5	12.9
Forestry products	2,367	2,370	3	0.1	18,404	18,451	48	0.3	3.6
Lumber and sawmill products	1,176	1,031	-146	-12.4	7,453	8,059	606	8.1	11.3
Other crude wood products	96	106	10	10.0	708	735	27	3.9	28.7
Lumber	862	709	-152	-17.7	4,980	5,538	558	11.2	14.4
Other wood fabricated materials	219	216	-3	-1.4	1,765	1,786	21	1.2	-3.6
Wood pulp and other wood products	581	729	149	25.6	5,287	5,435	148	2.8	9.6
Newsprint and other paper and paperboard	610	610	1	0.1	5,664	4,958	-706	-12.5	-12.3
Newsprint paper	293	284	-9	-3.0	2,887	2,369	-518	-17.9	-18.1
Other paper and paperboard	316	326	9	3.0	2,777	2,589	-189	-6.8	-6.5
Industrial goods and materials	5,831	5,605	-226	-3.9	45,427	45,992	565	1.2	-4.4
Metal ores	702	585	-118	-16.7	4,487	4,907	420	9.4	-4.6
Iron ores, concentrates and scrap	200	142	-58	-29.0	1,367	1,402	35	2.5	-17.3
Copper ores, concentrates and scrap	110	88	-22	-19.9	675	708	33	4.9	-2.8
Nickel ores, concentrates and scrap	135	141	7	4.9	893	949	56	6.3	-6.2
Zinc ores, concentrates and scrap	20	5	-15	-75.4	107	112	6	5.4	-56.5
Other ores, concentrates and scrap	237	208	-29	-12.3	1,445	1,736	291	20.1	10.7
Chemicals, plastics and fertilizers	1,991	1,866	-124	-6.2	15,531	15,358	-172	-1.1	-4.3
Inorganic chemicals	186	190	3	1.9	1,598	1,496	-102	-6.4	-12.4
Organic chemicals	302	261	-41	-13.5	2,424	2,257	-167	-6.9	-15.4
Fertilizers and fertilizer materials	290	221	-70	-24.0	1,984	1,848	-135	-6.8	-2.1
Synthetic rubber and plastics	854	844	-10	-1.2	6,939	6,951	12	0.2	-2.8
Other chemical products	358	351	-7	-2.0	2,586	2,806	219	8.5	6.0

Table 2-2 – continued

Exports by commodity groupings, balance of payments basis, seasonally adjusted — Constant dollars, 2002

	July	August	Change	Year to date			August 2012/ August 2011		
	2012	2012		2011	2012	Change			
	millions of dollars		percent		millions of dollars		percent		
Metals and alloys	1,871	1,917	45	2.4	15,150	15,074	-75	-0.5	-0.9
Primary iron and steel	30	34	3	10.5	365	246	-119	-32.6	-26.0
Steel bars, rods, plates, sheets	262	250	-11	-4.4	1,902	2,099	197	10.4	-0.1
Other iron and steel and alloys	221	211	-10	-4.7	1,466	1,633	167	11.4	12.7
Aluminum including alloys	645	637	-8	-1.2	5,151	5,139	-12	-0.2	-6.3
Copper and alloys	51	52	1	2.2	428	457	29	6.7	8.0
Nickel and alloys	147	152	6	4.0	1,014	1,107	93	9.2	23.8
Precious metals and alloys	405	462	57	14.1	3,941	3,514	-427	-10.8	-4.1
Zinc and alloys	56	64	8	14.8	485	474	-11	-2.3	4.7
Other non-ferrous metals and alloys	54	54	-1	-1.0	398	405	7	1.8	-5.9
Other industrial goods and materials	1,266	1,237	-29	-2.3	10,260	10,652	392	3.8	-9.3
Asbestos unmanufactured	0	0	0	0.0	26	0	-26	-100.0	-100.0
Other crude animal products	95	91	-4	-3.9	595	723	128	21.5	15.5
Other crude non-metallic minerals	174	167	-7	-4.2	1,994	1,824	-171	-8.6	-41.4
Other crude materials, inedible	54	55	1	1.7	475	441	-34	-7.1	-9.5
Metal fabricated basic products	318	316	-2	-0.5	2,318	2,555	237	10.2	4.0
Textile fabricated materials	183	179	-4	-2.3	1,557	1,493	-64	-4.1	-7.5
Non-metallic mineral basic products	145	140	-5	-3.7	1,054	1,160	106	10.0	5.2
Other fabricated materials	297	289	-8	-2.7	2,239	2,455	217	9.7	-5.8
Machinery and equipment	7,325	7,408	83	1.1	59,301	60,372	1,071	1.8	-9.0
Industrial and agricultural machinery	1,633	1,568	-65	-4.0	12,188	13,188	1,000	8.2	-4.6
Industrial machinery	1,465	1,394	-70	-4.8	10,963	11,808	844	7.7	-5.7
Agricultural machinery includ. tractors	169	174	5	3.1	1,225	1,381	156	12.7	6.1
Aircraft and other transportation equipment	1,706	1,987	281	16.5	14,958	15,022	64	0.4	-13.0
Aircraft, engines, parts	1,368	1,640	272	19.8	11,906	12,025	119	1.0	-10.7
Other transportation equipment	337	347	10	2.9	3,052	2,997	-55	-1.8	-22.4
Other machinery and equipment	3,986	3,853	-133	-3.3	32,155	32,162	7	0.0	-8.5
Television, telecommunication equipment	768	752	-16	-2.1	6,584	6,337	-246	-3.7	-12.2
Office machines and equipment	932	887	-45	-4.8	7,984	7,585	-399	-5.0	-12.8
Other equipment and tools	1,626	1,573	-53	-3.2	12,183	12,897	714	5.9	-5.7
Other end products, inedible	659	641	-19	-2.8	5,404	5,343	-61	-1.1	-4.4
Automotive products	7,809	7,825	16	0.2	52,222	61,162	8,940	17.1	27.1
Passenger autos and chassis	5,709	5,842	133	2.3	37,194	44,658	7,464	20.1	38.7
Trucks and other motor vehicles	346	319	-27	-7.8	2,184	2,804	620	28.4	9.7
Motor vehicle parts	1,754	1,664	-90	-5.1	12,844	13,700	856	6.7	0.6
Other consumer goods	1,334	1,285	-49	-3.6	10,239	10,406	166	1.6	-3.9
Special transactions trade	261	269	7	2.8	2,161	2,220	59	2.7	-12.8
Unallocated balance of payments adjustments	770	823	52	6.8	6,365	6,263	-101	-1.6	18.2

**Table 3-1
Domestic exports to selected countries, customs basis, not seasonally adjusted — August**

	Agricultural and fishing products	Energy products	Forestry products	Industrial goods	Machinery and equipment	Automotive products	Consumer goods	Special transactions trade	Total
millions of dollars									
United States									
2011	1,767.1	9,000.4	1,134.2	5,284.3	3,492.3	4,452.8	791.0	289.8	26,211.8
2012	1,864.3	8,472.1	1,159.3	4,693.3	3,458.7	5,613.6	813.5	265.6	26,340.4
Mexico									
2011	123.7	1.1	12.5	115.6	76.6	64.0	5.5	0.3	399.2
2012	107.3	6.7	10.3	103.9	59.7	75.8	16.8	0.1	380.7
Japan									
2011	265.5	329.6	111.5	134.5	85.6	3.9	11.3	1.7	943.6
2012	296.1	111.5	86.6	121.2	68.8	5.0	11.0	0.1	700.5
European Union									
Germany									
2011	20.2	49.8	8.0	102.5	172.1	5.4	15.0	1.3	374.4
2012	29.5	11.5	10.1	67.6	106.8	4.1	18.0	0.9	248.6
France									
2011	16.8	4.9	13.2	66.4	73.0	5.7	27.6	1.3	209.1
2012	12.4	116.0	7.1	42.9	80.2	2.5	11.0	1.4	273.5
United Kingdom									
2011	44.0	44.3	16.2	1,706.4	126.6	4.1	15.8	7.5	1,965.0
2012	47.0	1.4	9.9	1,280.3	121.2	4.1	18.7	2.2	1,484.9
Italy									
2011	24.4	35.2	23.2	44.5	31.2	2.2	14.4	0.3	175.4
2012	32.9	23.4	9.5	17.3	35.6	1.1	3.9	0.2	123.9
Other European Union									
2011	67.6	151.5	21.2	497.4	193.5	15.7	41.5	4.3	992.7
2012	101.6	136.2	15.9	218.7	228.1	15.9	47.2	2.7	766.3
Total									
2011	173.0	285.8	81.8	2,417.2	596.5	33.1	114.3	14.7	3,716.5
2012	223.3	288.6	52.5	1,626.9	571.9	27.7	98.9	7.4	2,897.3
Newly industrialized countries									
South Korea									
2011	53.1	170.6	29.4	63.4	75.2	0.4	3.7	0.8	396.7
2012	44.3	79.1	55.8	61.6	35.9	4.6	5.2	2.9	289.5
Hong Kong									
2011	34.8	0.0	8.5	31.5	58.9	0.6	5.5	0.5	140.2
2012	40.4	0.0	4.5	41.4	25.3	1.0	6.8	0.3	119.8
Taiwan									
2011	27.0	80.0	17.1	60.9	8.5	0.2	2.1	0.1	195.8
2012	19.6	3.3	14.9	52.1	11.2	0.9	2.7	0.2	104.8
Singapore									
2011	3.3	0.2	0.8	9.8	51.5	0.9	3.3	0.4	70.2
2012	5.5	0.1	0.9	12.1	46.1	2.0	3.1	0.2	69.9
Total									
2011	118.2	250.8	55.8	165.7	194.1	2.0	14.5	1.8	802.9
2012	109.9	82.5	76.1	167.3	118.5	8.6	17.7	3.5	584.0
Other countries									
2011	752.3	172.8	503.0	1,541.2	828.0	71.4	94.2	17.4	3,980.2
2012	830.8	220.6	520.3	1,314.8	635.3	98.5	85.8	20.2	3,726.3
Total									
2011	3,199.9	10,040.5	1,898.7	9,658.5	5,273.0	4,627.1	1,030.9	325.7	36,054.3
2012	3,431.7	9,182.1	1,905.1	8,027.5	4,913.1	5,829.3	1,043.8	296.8	34,629.3

Table 3-2
Domestic exports to selected countries, customs basis, not seasonally adjusted — Year to date, January to August

	Agricultural and fishing products	Energy products	Forestry products	Industrial goods	Machinery and equipment	Automotive products	Consumer goods	Special transactions trade	Total
millions of dollars									
United States									
2011	12,489.7	67,794.4	8,713.5	42,084.4	27,605.9	33,855.8	5,816.9	1,999.4	200,359.9
2012	13,940.5	71,877.8	8,778.5	40,456.5	29,444.8	40,864.0	6,197.4	1,996.4	213,555.9
Mexico									
2011	935.1	76.0	98.6	811.3	505.7	429.4	70.5	3.8	2,930.5
2012	1,027.2	36.6	92.0	809.5	508.4	500.6	68.6	2.1	3,045.0
Japan									
2011	2,499.8	1,452.1	913.0	1,420.3	456.5	31.7	67.1	13.3	6,853.8
2012	2,559.7	1,372.9	820.3	1,366.6	461.6	42.7	104.9	10.0	6,738.7
European Union									
Germany									
2011	100.7	155.0	52.9	771.5	1,059.4	27.3	142.0	15.1	2,323.8
2012	147.5	96.7	81.4	645.7	917.2	53.6	155.4	7.8	2,105.3
France									
2011	112.6	72.4	77.2	518.7	815.4	22.6	148.2	11.9	1,779.0
2012	123.8	512.5	61.3	456.7	842.1	27.2	124.3	12.3	2,160.2
United Kingdom									
2011	238.7	179.0	119.8	10,181.4	869.7	40.4	111.8	40.1	11,781.0
2012	229.3	222.7	98.6	10,478.4	983.6	32.7	121.8	30.9	12,198.0
Italy									
2011	208.7	187.4	191.2	274.7	282.4	6.8	65.1	1.8	1,218.1
2012	151.1	173.1	120.2	191.5	271.7	6.4	77.9	1.5	993.5
Other European Union									
2011	806.9	1,021.9	159.7	3,205.2	1,468.9	104.9	405.5	25.4	7,198.4
2012	642.7	1,204.0	154.5	2,892.9	1,518.7	110.6	339.6	21.0	6,884.0
Total									
2011	1,467.6	1,615.7	600.8	14,951.4	4,495.7	202.1	872.6	94.3	24,300.2
2012	1,294.4	2,208.9	516.1	14,665.2	4,533.4	230.5	819.1	73.5	24,341.0
Newly industrialized countries									
South Korea									
2011	743.0	1,198.0	344.0	756.7	269.5	13.8	48.1	4.9	3,378.1
2012	298.8	780.9	355.5	687.4	221.1	52.7	40.5	11.6	2,448.5
Hong Kong									
2011	255.9	0.4	76.4	1,038.3	278.7	4.9	50.7	3.4	1,708.7
2012	300.9	0.2	55.0	968.5	210.9	8.5	49.1	1.8	1,595.0
Taiwan									
2011	122.1	254.5	194.0	495.9	74.7	1.1	22.7	0.9	1,165.9
2012	109.7	157.7	147.2	397.5	81.3	7.9	25.4	0.5	927.4
Singapore									
2011	36.4	3.7	7.2	97.2	261.9	13.9	22.1	3.6	446.1
2012	39.0	1.6	9.7	140.6	253.2	27.9	26.0	2.4	500.5
Total									
2011	1,157.4	1,456.6	621.6	2,388.1	884.9	33.8	143.6	12.9	6,698.8
2012	748.5	940.5	567.4	2,193.9	766.5	97.1	141.0	16.3	5,471.3
Other countries									
2011	6,144.1	1,942.1	4,281.1	10,723.7	5,652.4	541.8	719.4	140.0	30,144.6
2012	7,309.1	2,462.2	3,897.4	11,066.2	6,581.6	837.6	724.6	150.7	33,029.7
Total									
2011	24,693.8	74,336.9	15,228.5	72,379.3	39,601.4	35,094.6	7,690.1	2,263.7	271,288.3
2012	26,879.4	78,898.9	14,671.7	70,558.0	42,296.8	42,572.5	8,055.6	2,249.2	286,182.1

Table 4
Domestic exports by country, customs basis, not seasonally adjusted

	August		January to August		Change
	2011	2012	2011	2012	January to August 2012/ January to August 2011
	millions of dollars				percent
North America					
Greenland	1.9	0.7	8.2	6.3	-22.7
Mexico	399.2	380.7	2,930.5	3,045.0	3.9
Saint Pierre and Miquelon	1.2	1.7	11.6	11.8	2.1
United States	26,211.8	26,340.4	200,359.9	213,555.9	6.6
Total	26,614.2	26,723.5	203,310.2	216,619.0	6.5
Western Europe					
Andorra	0.0	0.0	0.0	0.0	21.3
Austria	64.0	33.3	221.2	260.8	17.9
Belgium	206.5	84.9	1,502.2	1,324.9	-11.8
Denmark	26.2	18.8	160.3	159.2	-0.7
Faeroe Islands	0.0	0.1	0.5	0.4	-10.2
Finland	113.1	43.6	420.9	300.5	-28.6
France	209.1	273.5	1,779.0	2,160.2	21.4
Germany	374.4	248.6	2,323.8	2,105.3	-9.4
Gibraltar	0.0	0.0	24.8	28.4	14.5
Greece	4.6	6.1	54.4	62.0	14.1
Iceland	4.3	4.3	37.6	37.4	-0.6
Italy	175.4	123.9	1,218.1	993.5	-18.4
Luxembourg	4.3	32.8	63.8	78.9	23.7
Malta	1.5	0.3	4.9	57.2	...
Netherlands	335.2	324.1	2,933.3	2,934.8	0.0
Norway	239.0	208.1	1,827.9	1,583.9	-13.3
Portugal	11.3	11.1	127.6	64.6	-49.4
Republic of Ireland (Eire)	12.3	21.3	271.7	178.4	-34.3
Spain	73.2	43.9	553.6	540.9	-2.3
Sweden	62.6	22.6	242.0	263.5	8.9
Switzerland	131.7	59.1	664.6	511.3	-23.1
United Kingdom	1,965.0	1,484.9	11,781.0	12,198.0	3.5
Total	4,013.5	3,045.3	26,212.9	25,844.1	-1.4
Other Europe					
Albania	5.8	2.2	40.3	23.5	-41.7
Armenia	0.9	0.3	9.5	6.8	-28.0
Azerbaijan	1.0	1.4	6.7	23.6	253.6
Belarus	0.0	0.1	1.2	2.0	68.0
Bosnia and Herzegovina	0.5	0.3	3.7	1.2	-68.6
Bulgaria	18.4	17.7	154.8	119.7	-22.7
Croatia	0.9	0.9	10.2	9.8	-4.5
Czech Republic	7.0	7.8	61.2	61.4	0.3
Estonia	1.1	1.8	68.5	12.9	-81.1
Georgia	1.4	1.0	13.3	12.4	-7.1
Hungary	8.1	5.1	64.8	49.1	-24.2
Kazakhstan	7.7	2.3	99.0	55.6	-43.8
Kyrgyzstan	1.0	2.0	3.2	13.7	324.3
Latvia	2.5	5.3	36.3	30.1	-17.1
Lithuania	1.9	7.0	34.1	53.9	57.9
Macedonia (Former Yugoslav Republic of Macedonia)	1.8	0.8	11.8	8.1	-31.1
Montenegro	0.0	0.0	0.8	0.4	-55.3
Poland	21.0	71.6	130.2	258.9	98.8
Republic of Moldova	0.0	0.1	0.7	0.7	-3.0
Romania	15.2	4.0	40.9	39.3	-3.9
Russian Federation	107.9	91.3	812.4	1,058.0	30.2
Serbia	0.8	0.3	5.1	7.2	42.4
Slovakia	1.7	2.1	37.5	19.2	-48.9
Slovenia	0.5	0.8	7.4	6.5	-12.7
Tajikistan	0.1	0.4	1.7	1.7	1.2
Turkmenistan	0.7	0.7	9.0	43.6	384.6
Ukraine	10.8	13.6	78.4	77.0	-1.8
Uzbekistan	0.4	0.0	4.8	5.8	20.2
Total	219.1	241.0	1,747.7	2,002.1	14.6
Middle East					
Bahrain	1.4	3.8	47.2	44.4	-5.8
Cyprus	0.7	0.4	6.9	7.3	5.7
Egypt	43.6	12.8	456.6	218.0	-52.2

Table 4 – continued

Domestic exports by country, customs basis, not seasonally adjusted

	August		January to August		Change
	2011	2012	2011	2012	January to August 2012/ January to August 2011
	millions of dollars				percent
Eritrea	0.0	0.0	2.4	2.0	-18.2
Ethiopia	3.1	0.2	15.1	9.2	-39.0
Iran	4.9	0.7	52.0	60.7	16.7
Iraq	3.3	26.5	86.9	333.8	284.2
Israel	29.8	12.4	215.7	152.8	-29.2
Jordan	3.8	4.4	41.2	78.3	90.0
Kuwait	5.2	6.3	62.0	55.1	-11.2
Lebanon	2.7	4.4	52.3	81.1	55.0
Libya	0.1	8.0	37.0	64.0	73.2
Oman	4.6	13.4	51.5	82.6	60.5
Qatar	37.4	5.0	92.2	105.1	14.1
Saudi Arabia	85.3	78.4	519.3	905.4	74.3
Somalia	0.0	0.0	0.3	0.1	-84.5
Sudan	2.2	0.4	94.8	82.6	-12.8
Syria	4.1	0.0	42.9	9.2	-78.5
Turkey	81.4	71.8	749.7	565.7	-24.5
United Arab Emirates	51.7	40.5	754.6	937.0	24.2
Yemen	0.5	0.2	7.1	9.3	30.8
Total	365.9	289.7	3,387.7	3,803.7	12.3
Other Africa					
Algeria	15.0	16.9	125.9	191.8	52.3
Angola	3.9	7.1	101.2	72.3	-28.5
Antarctica	0.0	0.0	0.0	0.0	-72.0
Benin	1.1	1.3	8.0	11.1	38.0
Botswana	0.1	0.0	3.0	0.6	-79.6
Burkina Faso	1.7	2.0	13.6	24.5	80.8
Burundi	0.1	0.1	0.6	1.0	58.4
Cameroon	3.3	4.7	18.5	21.1	14.1
Cape Verde	0.3	0.1	1.7	0.5	-70.3
Central African Republic	0.0	0.0	0.2	0.1	-66.6
Chad	0.1	0.5	2.0	2.1	4.9
Comoros	0.0	0.0	0.2	0.4	110.6
Congo	1.1	1.5	11.7	10.4	-11.8
Democratic Republic of the Congo	3.5	1.1	13.1	11.3	-13.7
Djibouti	0.2	0.6	0.7	1.7	129.5
Equatorial Guinea	0.6	6.0	5.8	8.6	48.3
French Southern Territories	0.0	0.0	0.0	0.0	-83.4
Gabon	1.3	2.7	11.5	15.7	37.0
Gambia	0.1	0.1	0.4	0.6	57.6
Ghana	40.4	22.3	176.9	136.7	-22.7
Guinea	1.4	1.3	16.6	19.6	18.1
Guinea-Bissau	0.0	0.0	0.1	0.0	-68.3
Ivory Coast	2.1	6.1	5.3	23.4	343.1
Kenya	3.2	15.3	34.7	60.3	73.8
Lesotho	0.0	1.1	0.1	1.1	...
Liberia	0.6	0.4	8.9	7.2	-19.2
Madagascar	1.4	0.5	9.2	8.7	-5.7
Malawi	0.2	0.3	3.2	2.0	-36.3
Mali	1.8	0.5	13.3	9.5	-29.0
Mauritania	0.7	0.9	8.4	11.9	41.6
Mauritius	0.3	0.3	3.6	2.8	-23.1
Morocco	2.4	30.0	220.8	273.5	23.9
Mozambique	1.7	1.4	7.9	28.3	258.8
Namibia	0.2	0.4	4.0	8.2	104.5
Niger	0.3	0.3	3.4	2.6	-24.3
Nigeria	18.0	21.0	122.0	201.4	65.1
Rwanda	0.2	0.1	0.7	0.8	21.2
Saint Helena	0.0	0.0	0.0	0.0	-59.9
Sao Tome and Principe	0.0	0.0	0.1	0.0	-84.4
Senegal	1.2	2.6	19.2	20.6	7.6
Seychelles	0.7	0.2	2.9	6.9	137.8
Sierra Leone	0.9	0.7	6.4	6.8	6.6
South Africa	57.0	39.5	374.4	365.4	-2.4
Swaziland	0.1	0.2	0.5	1.0	99.7
Togo	2.1	2.9	10.3	14.1	37.3
Tunisia	2.6	5.0	28.7	97.5	240.0

Table 4 – continued

Domestic exports by country, customs basis, not seasonally adjusted

	August		January to August		Change
	2011	2012	2011	2012	January to August 2012/ January to August 2011
	millions of dollars				percent
Uganda	0.8	0.9	5.8	4.3	-26.0
United Republic of Tanzania	3.3	18.5	28.3	47.8	68.8
Zambia	3.2	2.2	22.9	20.1	-12.2
Zimbabwe	2.1	0.1	5.6	6.7	18.7
Total	181.5	219.7	1,462.1	1,762.9	20.6
Other Asia					
Afghanistan	1.2	1.1	26.1	14.3	-45.1
Bangladesh	32.7	28.8	308.3	347.8	12.8
Bhutan	0.0	0.0	0.0	0.0	-55.4
British Indian Ocean Territory	0.0	0.1	0.0	0.1	...
Brunei Darussalam	0.2	0.1	1.8	2.1	16.9
Cambodia	0.5	0.5	4.1	4.3	2.9
China	1,361.4	1,372.3	9,817.5	12,013.7	22.4
Hong Kong	140.2	119.8	1,708.7	1,595.0	-6.7
India	219.4	154.8	1,359.5	1,523.8	12.1
Indonesia	161.6	144.1	1,073.8	1,084.1	1.0
Japan	943.6	700.5	6,853.8	6,738.7	-1.7
Laos	0.4	0.7	6.2	6.4	4.4
Macao	0.2	1.0	1.7	3.3	90.4
Malaysia	33.0	56.6	554.0	522.1	-5.8
Maldives	0.9	0.5	2.7	2.9	8.1
Mongolia	6.3	6.2	60.1	42.5	-29.3
Myanmar	0.1	0.2	0.8	0.6	-25.4
Nepal	0.3	0.2	2.7	2.7	-1.7
North Korea	0.1	0.1	2.1	1.8	-15.2
Pakistan	8.5	9.6	393.7	229.6	-41.7
Philippines	34.6	29.5	398.2	257.5	-35.3
Singapore	70.2	69.9	446.1	500.5	12.2
South Korea	396.7	289.5	3,378.1	2,448.5	-27.5
Sri Lanka	28.1	32.1	242.4	221.4	-8.6
Taiwan	195.8	104.8	1,165.9	927.4	-20.5
Thailand	60.7	84.7	571.1	471.6	-17.4
Timor-Leste	0.0	0.0	0.0	0.0	-66.2
Viet Nam	18.6	36.7	182.2	232.0	27.3
Total	3,715.2	3,244.4	28,561.6	29,194.5	2.2
Oceania					
American Samoa	0.1	0.1	1.0	0.6	-37.9
Australia	204.9	159.5	1,144.4	1,311.2	14.6
Christmas Island	0.1	0.0	0.2	0.2	2.2
Cocos (Keeling) Islands	0.0	0.0	0.0	0.2	...
Cook Islands	0.0	0.0	0.1	0.0	-88.7
Fiji	4.0	0.1	6.4	8.4	31.1
French Polynesia	1.5	1.2	7.2	5.9	-18.8
Guam	0.1	0.2	1.2	1.0	-18.5
Heard Island and McDonald Islands	0.0	0.0	0.0	0.0	...
Kiribati	0.0	0.0	0.1	0.0	-73.8
Nauru	0.0	0.1	0.0	0.1	...
New Caledonia	2.3	0.2	5.8	20.3	251.7
New Zealand	46.4	30.3	220.7	238.0	7.8
Niue	0.0	0.0	0.0	0.0	-52.9
Norfolk Island	0.0	0.0	0.0	0.0	...
Papua New Guinea	1.9	1.0	30.3	17.2	-43.2
Pitcairn	0.0	0.0	0.0	0.1	13.4
Samoa	0.0	0.0	0.1	0.0	-57.4
Solomon Islands	0.0	0.0	0.3	0.1	-66.6
Tonga	0.0	0.0	0.2	0.0	-81.8
United States Minor Outlying Islands	1.2	3.6	7.8	11.4	44.8
Vanuatu	0.1	0.1	0.7	0.7	8.5
Wallis and Futuna	0.0	0.0	0.0	0.0	20.2
Total	262.8	196.4	1,426.5	1,615.3	13.2
South America					
Argentina	20.4	14.3	338.6	198.4	-41.4
Bolivia	2.8	1.6	9.1	20.5	124.7
Brazil	265.9	206.5	1,752.6	1,749.6	-0.2
Chile	60.8	61.3	459.8	502.0	9.2

Table 4 – continued

Domestic exports by country, customs basis, not seasonally adjusted

	August		January to August		Change
	2011	2012	2011	2012	January to August 2012/ January to August 2011
	millions of dollars				percent
Colombia	64.0	65.9	418.2	523.4	25.1
Ecuador	17.9	7.9	183.9	144.5	-21.4
Falkland Islands (Malvinas)	0.0	0.0	0.1	0.0	-97.2
Guyana	3.7	0.8	23.1	15.2	-34.1
Paraguay	0.7	0.5	6.6	9.2	39.2
Peru	41.1	29.2	306.3	286.3	-6.5
Suriname	1.3	3.5	7.4	12.7	71.8
Uruguay	1.2	2.8	17.3	21.1	21.9
Venezuela	76.2	63.3	378.7	487.4	28.7
Total	555.9	457.6	3,901.7	3,970.2	1.8
Central America Antilles					
Anguilla	0.0	0.0	0.4	0.4	-8.6
Antigua and Barbuda	0.5	0.5	6.9	13.8	99.5
Aruba	0.8	0.7	3.7	6.1	61.9
Bahamas	2.1	69.4	38.9	191.3	391.8
Barbados	4.1	2.3	29.4	22.0	-25.2
Belize	0.4	0.1	3.3	5.0	50.2
Bermuda	1.6	1.8	64.3	15.3	-76.2
British Virgin Islands	0.0	0.0	47.6	1.2	-97.5
Cayman Islands	0.6	0.4	4.7	4.5	-5.0
Costa Rica	16.7	22.1	82.9	122.1	47.4
Cuba	31.6	34.0	250.9	228.2	-9.1
Dominica	0.2	0.2	2.1	2.5	17.1
Dominican Republic	8.6	7.8	99.5	76.6	-23.0
El Salvador	2.1	4.9	23.6	22.5	-4.4
Grenada	0.2	0.7	2.9	3.4	19.1
Guatemala	4.8	11.8	69.2	72.8	5.3
Haiti	2.7	2.2	24.9	18.5	-25.5
Honduras	1.7	1.8	24.7	19.5	-21.1
Jamaica	8.0	9.2	66.1	82.3	24.6
Montserrat	0.0	0.1	0.2	0.3	33.8
Netherlands Antilles	1.2	1.2	93.8	133.3	42.1
Nicaragua	4.9	6.3	22.3	30.4	36.7
Panama	6.1	5.9	72.1	48.3	-33.0
Saint Kitts and Nevis	0.5	1.2	3.4	4.0	17.8
Saint Lucia	0.7	0.7	5.9	6.7	14.4
Saint Vincent and the Grenadines	0.4	0.1	4.4	4.1	-6.0
Trinidad and Tobago	25.5	26.1	228.4	233.7	2.3
Turks and Caicos Islands	0.1	0.3	1.3	1.4	2.9
Total	126.3	211.7	1,277.9	1,370.2	7.2
All countries	36,054.3	34,629.3	271,288.3	286,182.1	5.5

Table 5-1
Exports by province of origin, customs basis, not seasonally adjusted — August

	Agricultural and fishing products	Energy products	Forestry products	Industrial goods	Machinery and equipment	Automotive products	Consumer goods	Special transactions trade	Total
millions of dollars									
Domestic exports									
Newfoundland and Labrador									
2011	92.6	448.1	12.5	454.9	2.9	0.2	0.1	2.9	1,014.1
2012	71.8	482.2	6.3	266.1	2.7	0.2	0.1	2.5	832.0
Prince Edward Island									
2011	49.7	0.0	0.0	1.7	5.3	0.1	2.5	10.0	69.2
2012	46.9	0.0	0.0	2.8	14.0	0.2	3.2	5.1	72.2
Nova Scotia									
2011	100.0	30.0	66.1	50.3	122.1	5.2	4.0	7.4	385.1
2012	109.8	6.3	29.5	45.3	114.9	5.7	4.9	3.3	319.6
New Brunswick									
2011	148.5	685.8	119.6	94.8	24.3	2.4	19.1	5.0	1,099.5
2012	105.6	962.7	107.0	72.0	33.3	3.0	14.1	4.3	1,302.1
Quebec									
2011	414.1	314.0	485.9	1,982.1	1,479.4	164.6	312.8	74.1	5,227.0
2012	426.9	305.4	482.3	1,610.1	1,310.5	159.4	291.1	59.8	4,645.5
Ontario									
2011	739.6	295.9	246.4	4,406.3	2,725.1	4,305.8	582.2	145.7	13,447.0
2012	758.6	235.5	209.6	3,794.6	2,547.2	5,512.4	616.8	141.0	13,815.7
Manitoba									
2011	282.1	90.9	12.6	298.5	173.0	33.7	52.7	23.5	967.0
2012	321.5	98.2	23.7	213.0	150.9	34.6	55.5	24.3	921.6
Saskatchewan									
2011	588.9	966.7	33.3	668.1	50.9	3.6	1.0	4.4	2,316.9
2012	697.3	996.7	33.2	592.8	67.0	4.4	0.5	3.6	2,395.6
Alberta									
2011	509.3	6,099.6	178.4	1,016.4	416.4	92.2	8.2	27.1	8,347.6
2012	599.9	5,544.7	193.5	903.2	366.8	78.0	7.9	27.1	7,721.0
British Columbia									
2011	275.1	1,109.6	743.9	435.5	273.3	19.1	48.2	25.8	2,930.4
2012	293.3	550.4	819.8	504.7	305.0	31.2	49.7	25.5	2,579.6
Yukon, Northwest Territories and Nunavut ¹									
2011	0.1	0.0	0.0	249.9	0.5	0.0	0.0	0.0	250.5
2012	0.2	0.0	0.0	22.9	0.8	0.1	0.1	0.2	24.3
Total									
2011	3,199.9	10,040.5	1,898.7	9,658.5	5,273.0	4,627.1	1,030.9	325.7	36,054.3
2012	3,431.7	9,182.1	1,905.1	8,027.5	4,913.1	5,829.3	1,043.8	296.8	34,629.3
Re-exports									
2011	36.4	3.7	8.1	370.4	986.0	107.7	276.3	777.7	2,566.4
2012	34.9	1.2	5.4	258.7	906.7	106.8	190.4	760.5	2,264.6
Total exports									
2011	3,236.3	10,044.3	1,906.7	10,028.9	6,259.0	4,734.8	1,307.2	1,103.4	38,620.6
2012	3,466.6	9,183.3	1,910.4	8,286.2	5,819.8	5,936.1	1,234.3	1,057.3	36,893.9

1. Data for the current month do not include some exports from the Harmonized System, Chapter 71, "Natural/cultured pearls, precious stones and metals, coins, etc." for reasons relating to timing.

Table 5-2
Exports by province of origin, customs basis, not seasonally adjusted — Year to date, January to August

	Agricultural and fishing products	Energy products	Forestry products	Industrial goods	Machinery and equipment	Automotive products	Consumer goods	Special transactions trade	Total
millions of dollars									
Domestic exports									
Newfoundland and Labrador									
2011	691.7	4,921.1	104.6	1,713.4	27.4	1.7	1.0	17.8	7,478.6
2012	617.6	5,251.7	83.4	1,824.5	283.5	1.5	1.3	16.5	8,079.9
Prince Edward Island									
2011	300.1	0.0	0.2	14.5	45.9	1.7	24.4	56.7	443.6
2012	334.3	0.0	0.2	24.1	124.8	3.1	23.4	70.4	580.3
Nova Scotia									
2011	748.7	339.3	538.2	375.8	917.9	40.9	37.9	29.3	3,028.1
2012	784.5	40.3	241.2	378.0	926.2	48.2	40.3	24.5	2,483.2
New Brunswick									
2011	920.2	7,132.1	854.7	806.1	211.9	28.7	100.7	27.4	10,081.9
2012	1,017.6	7,070.2	856.6	744.9	237.8	29.8	118.3	25.2	10,100.4
Quebec									
2011	3,223.3	2,315.7	3,880.1	14,709.3	11,642.5	1,233.8	2,306.4	570.9	39,882.0
2012	3,443.1	2,457.6	3,629.3	14,397.9	12,377.7	1,452.7	2,357.2	535.6	40,651.0
Ontario									
2011	5,551.2	1,990.2	1,909.9	32,872.4	19,965.1	32,688.5	4,428.9	1,017.3	100,423.5
2012	5,927.6	2,347.9	1,679.5	32,593.4	20,818.1	39,689.9	4,735.6	995.3	108,787.2
Manitoba									
2011	2,360.1	654.0	154.7	2,058.2	1,431.2	301.8	346.8	173.8	7,480.6
2012	2,675.9	784.5	181.7	1,839.7	1,556.4	393.6	307.2	187.5	7,926.6
Saskatchewan									
2011	5,054.2	6,578.1	173.4	6,171.6	422.1	39.9	8.0	29.1	18,476.3
2012	5,566.8	8,310.8	243.1	6,221.7	539.3	34.4	9.7	27.1	20,953.0
Alberta									
2011	4,328.0	43,991.9	1,313.3	7,773.7	2,827.4	582.9	78.1	172.8	61,068.1
2012	4,903.1	47,038.7	1,369.1	7,227.4	3,000.5	677.5	78.1	205.3	64,499.6
British Columbia									
2011	1,515.3	6,414.5	6,299.2	4,291.8	2,104.3	174.3	357.5	168.3	21,325.1
2012	1,607.1	5,597.1	6,387.6	4,167.3	2,424.6	241.3	383.7	161.4	20,970.2
Yukon, Northwest Territories and Nunavut ¹									
2011	1.0	0.1	0.1	1,592.6	5.8	0.4	0.3	0.2	1,600.5
2012	1.9	0.1	0.1	1,139.1	7.9	0.6	0.8	0.4	1,150.7
Total									
2011	24,693.8	74,336.9	15,228.5	72,379.3	39,601.4	35,094.6	7,690.1	2,263.7	271,288.3
2012	26,879.4	78,898.9	14,671.7	70,558.0	42,296.8	42,572.5	8,055.6	2,249.2	286,182.1
Re-exports									
2011	361.2	77.6	53.8	2,877.5	7,118.6	781.3	1,791.8	5,256.5	18,318.4
2012	391.6	55.0	57.9	2,166.5	7,162.8	857.3	1,692.9	6,039.6	18,423.5
Total exports									
2011	25,054.9	74,414.5	15,282.3	75,256.9	46,720.1	35,875.9	9,481.9	7,520.1	289,606.7
2012	27,271.0	78,953.9	14,729.6	72,724.4	49,459.5	43,429.9	9,748.4	8,288.8	304,605.6

1. Data for the current month do not include some exports from the Harmonized System Chapter 71, "Natural/cultured pearls, precious stones and metals, coins, etc." for reasons relating to timing.

Table 6-1
Imports by commodity groupings, balance of payments basis, seasonally adjusted — Current dollars

	July	August	Change		Year to date			August 2012/ August 2011	
	2012	2012			2011	2012	Change		
	millions of dollars		percent		millions of dollars			percent	
Total	40,029	38,790	-1,239	-3.1	299,642	317,748	18,106	6.0	0.6
Agricultural and fishing products	2,969	2,869	-101	-3.4	21,497	22,793	1,296	6.0	2.0
Fruits and vegetables	802	791	-11	-1.3	5,900	6,176	276	4.7	3.6
Fresh fruits and berries	279	274	-5	-1.7	2,051	2,180	129	6.3	1.2
Dried fruits, fruits and fruit preparations	137	144	6	4.6	1,023	1,099	76	7.4	9.2
Fresh vegetables	193	191	-2	-1.0	1,531	1,442	-89	-5.8	-2.2
Other vegetables and vegetable preparations	193	182	-10	-5.3	1,295	1,455	160	12.4	9.9
Other agricultural and fishing products	2,167	2,077	-90	-4.2	15,597	16,617	1,020	6.5	1.3
Live animals	17	18	1	6.9	145	145	0	0.0	-2.4
Meat and meat preparations	242	230	-12	-4.8	1,658	1,857	198	12.0	4.9
Fish and marine animals	191	177	-14	-7.4	1,518	1,520	2	0.1	-7.3
Cocoa, coffee, tea and other food preparations	523	506	-17	-3.2	3,741	3,986	245	6.5	0.6
Dairy produce, eggs and honey	51	52	1	2.4	420	420	0	0.0	-13.1
Corn (maize) shelled	26	24	-2	-6.4	253	277	25	9.7	-52.9
Other cereals and cereal preparations	213	210	-3	-1.6	1,462	1,661	199	13.6	8.8
Sugar and sugar preparations	189	184	-5	-2.5	1,466	1,463	-3	-0.2	-8.7
Fodder, feed, excluding unmilled cereal	137	143	6	4.2	950	1,066	116	12.2	18.3
Beverages	361	338	-23	-6.2	2,535	2,746	212	8.4	10.3
Tobacco	32	35	3	9.3	238	256	18	7.6	4.0
Crude vegetable products	185	158	-27	-14.4	1,202	1,211	10	0.8	5.8
Cotton	1	1	0	23.5	8	8	-1	-8.7	-15.7
Energy products	3,893	4,130	236	6.1	34,113	34,859	746	2.2	2.2
Crude petroleum	2,211	2,551	340	15.4	18,170	20,010	1,840	10.1	24.8
Other energy products	1,683	1,579	-104	-6.2	15,943	14,849	-1,094	-6.9	-20.9
Coal and other related products	381	349	-32	-8.5	3,641	2,687	-954	-26.2	-35.6
Petroleum and coal products	1,301	1,230	-71	-5.5	12,302	12,162	-140	-1.1	-15.5
Forestry products	244	229	-15	-6.3	1,641	1,801	160	9.7	8.6
Forestry products	244	229	-15	-6.3	1,641	1,801	160	9.7	8.6
Crude wood products	37	33	-4	-9.7	240	264	25	10.3	9.4
Wood fabricated materials	207	195	-12	-5.7	1,402	1,536	135	9.6	8.4
Industrial goods and materials	8,556	7,923	-634	-7.4	63,929	66,317	2,388	3.7	-4.7
Metals and metal ores	3,262	2,884	-378	-11.6	26,084	25,196	-888	-3.4	-15.0
Metals in ores, concentrates and scrap	592	565	-27	-4.5	5,643	4,932	-711	-12.6	-26.0
Steel bars, rods, plates, sheets	616	580	-36	-5.8	4,728	5,009	281	6.0	1.2
Other iron and steel products	484	432	-52	-10.7	3,339	3,681	342	10.3	-8.0
Precious metals including alloys	1,137	961	-176	-15.5	9,312	8,499	-814	-8.7	-19.8
Other non-ferrous metals and alloys	433	346	-87	-20.1	3,062	3,075	13	0.4	-10.6
Chemicals and plastics	2,761	2,672	-89	-3.2	20,539	21,922	1,383	6.7	-2.1
Organic chemicals	621	633	11	1.8	4,469	4,875	406	9.1	11.3
Plastic materials	995	930	-65	-6.5	7,124	7,724	600	8.4	3.1
Other chemicals and related products	1,145	1,110	-35	-3.1	8,946	9,323	377	4.2	-12.0
Other industrial goods and materials	2,533	2,366	-167	-6.6	17,306	19,199	1,893	10.9	8.0
Crude animal products	29	29	0	-0.4	190	256	66	34.6	53.4
Wool and man-made fibres	22	21	-2	-7.0	176	172	-4	-2.5	11.2
Crude non-metallic minerals	69	67	-2	-3.5	558	547	-11	-1.9	-13.3
Textile fabricated materials	221	208	-13	-5.8	1,673	1,747	74	4.4	-1.7
Metal fabricated basic products	1,084	1,049	-34	-3.2	7,222	8,338	1,116	15.5	13.5
Rubber fabricated materials	110	104	-6	-5.6	738	860	121	16.4	10.4
Oils, fats, animal and vegetable	103	102	-1	-1.1	802	808	6	0.7	-2.4
Non-metallic minerals	375	322	-53	-14.2	2,451	2,761	310	12.7	4.3
Other fabricated materials	519	463	-56	-10.7	3,497	3,710	214	6.1	7.5

Table 6-1 – continued

Imports by commodity groupings, balance of payments basis, seasonally adjusted — Current dollars

	July	August	Change		Year to date			August 2012/ August 2011	
	2012	2012			2011	2012	Change		
	millions of dollars		percent		millions of dollars		percent		
Machinery and equipment	10,865	10,447	-418	-3.8	82,118	86,494	4,375	5.3	-1.1
Industrial and agricultural machinery	3,317	3,281	-36	-1.1	23,314	25,934	2,619	11.2	8.9
Engines, turbines and electric motors	395	361	-33	-8.4	2,802	3,062	259	9.3	4.3
Drilling mining machinery	201	200	-1	-0.4	2,101	1,637	-464	-22.1	-6.0
Excavating machinery	401	370	-31	-7.7	2,223	2,888	666	29.9	20.0
Metal working machinery	195	178	-16	-8.4	1,425	1,467	41	2.9	2.0
Other industrial machinery	1,643	1,615	-28	-1.7	11,628	13,009	1,381	11.9	6.2
Agricultural machinery including tractors	483	556	73	15.1	3,134	3,870	736	23.5	23.8
Aircraft and other transportation equipment	1,268	1,198	-70	-5.5	10,687	10,485	-202	-1.9	-17.0
Aircraft, engines, parts	680	628	-53	-7.7	6,104	5,736	-368	-6.0	-19.3
Other transportation equipment and parts	588	570	-17	-2.9	4,584	4,749	166	3.6	-14.3
Office machines and equipment	1,025	1,006	-19	-1.8	9,111	8,523	-587	-6.4	-12.2
Other machinery and equipment	5,255	4,962	-293	-5.6	39,006	41,551	2,546	6.5	0.0
Other communication and related equipment	1,763	1,607	-157	-8.9	14,523	14,154	-369	-2.5	-11.1
Other equipment and tools	3,492	3,356	-137	-3.9	24,482	27,397	2,915	11.9	6.3
Automotive products	6,943	6,716	-227	-3.3	47,258	53,903	6,646	14.1	6.9
Passenger autos and chassis	2,223	2,204	-19	-0.9	15,004	17,040	2,036	13.6	6.2
Trucks and other motor vehicles	1,795	1,700	-95	-5.3	12,527	14,032	1,505	12.0	-2.4
Motor vehicle parts	2,925	2,812	-113	-3.9	19,726	22,831	3,105	15.7	14.0
Other consumer goods	5,196	5,043	-153	-2.9	39,235	40,604	1,369	3.5	-0.5
Apparel and footwear	1,049	1,026	-23	-2.2	8,067	8,214	146	1.8	-0.3
Apparel and apparel accessories	866	844	-22	-2.5	6,701	6,806	105	1.6	-1.2
Footwear	183	182	-1	-0.7	1,366	1,407	41	3.0	3.9
Miscellaneous consumer goods	4,146	4,017	-129	-3.1	31,167	32,390	1,223	3.9	-0.5
Television, radios, phonographs	127	137	10	8.0	1,029	1,106	78	7.6	6.0
Printed matter	273	273	0	-0.1	2,239	2,185	-54	-2.4	-2.9
Watches, sporting goods and toys	505	491	-14	-2.8	3,867	3,975	107	2.8	-0.6
House furnishings	814	765	-49	-6.0	5,764	6,283	520	9.0	2.8
Photographic goods	192	189	-3	-1.4	1,763	1,589	-174	-9.9	-7.1
Miscellaneous end products	2,236	2,162	-74	-3.3	16,505	17,251	747	4.5	-1.0
Special transactions trade	525	608	83	15.8	3,521	4,218	696	19.8	29.9
Unallocated balance of payments adjustments	838	827	-11	-1.3	6,330	6,761	431	6.8	5.3

Table 6-2
Imports by commodity groupings, balance of payments basis, seasonally adjusted — Constant dollars, 2002

	July	August	Change		Year to date			August 2012/ August 2011	
	2012	2012			2011	2012	Change		
	millions of dollars		percent		millions of dollars			percent	
Total	44,237	43,267	-970	-2.2	339,453	349,702	10,250	3.0	0.3
Agricultural and fishing products	2,846	2,743	-103	-3.6	21,476	22,066	590	2.7	-2.0
Fruits and vegetables	746	746	0	0.0	5,891	6,088	198	3.4	-3.9
Fresh fruits and berries	277	277	0	0.0	2,180	2,214	34	1.6	-0.2
Dried fruits, fruits and fruit preparations	117	126	10	8.1	968	918	-50	-5.2	5.2
Fresh vegetables	194	188	-6	-3.2	1,513	1,697	184	12.2	-17.1
Other vegetables and vegetable preparations	158	155	-3	-2.2	1,230	1,259	30	2.4	2.1
Other agricultural and fishing products	2,100	1,998	-102	-4.9	15,585	15,978	393	2.5	-1.3
Live animals	15	16	1	6.2	141	129	-12	-8.5	-6.7
Meat and meat preparations	216	208	-8	-3.8	1,563	1,683	121	7.7	3.5
Fish and marine animals	281	283	1	0.5	1,913	1,819	-94	-4.9	12.4
Cocoa, coffee, tea and other food preparations	562	504	-58	-10.3	4,263	4,314	51	1.2	-15.4
Dairy produce, eggs and honey	47	46	-1	-2.3	413	392	-21	-5.1	-7.2
Corn (maize) shelled	14	12	-2	-16.5	153	156	3	1.7	-59.7
Other cereals and cereal preparations	178	173	-5	-2.8	1,147	1,394	247	21.5	14.0
Sugar and sugar preparations	183	180	-2	-1.2	1,402	1,412	10	0.7	0.5
Fodder, feed, excluding unmilled cereal	101	100	-1	-0.8	808	836	28	3.4	1.6
Beverages	338	307	-31	-9.2	2,422	2,534	111	4.6	5.4
Tobacco	35	39	4	11.4	288	286	-2	-0.7	-0.8
Crude vegetable products	130	130	0	0.0	1,062	1,016	-46	-4.4	9.5
Cotton	1	1	0	43.1	10	7	-2	-24.9	-3.7
Energy products	1,934	1,906	-27	-1.4	15,546	15,454	-91	-0.6	-0.1
Crude petroleum	876	954	78	8.9	6,485	6,932	448	6.9	25.5
Other energy products	1,058	952	-105	-10.0	9,061	8,522	-539	-6.0	-17.0
Coal and other related products	485	450	-35	-7.3	3,607	3,560	-47	-1.3	-10.6
Petroleum and coal products	573	503	-70	-12.2	5,454	4,962	-492	-9.0	-22.0
Forestry products	314	309	-5	-1.6	2,247	2,390	143	6.4	7.4
Forestry products	314	309	-5	-1.6	2,247	2,390	143	6.4	7.4
Crude wood products	52	50	-2	-4.5	360	387	27	7.6	10.2
Wood fabricated materials	261	259	-3	-1.0	1,887	2,003	116	6.1	6.9
Industrial goods and materials	7,295	6,997	-298	-4.1	54,840	56,520	1,680	3.1	2.4
Metals and metal ores	2,220	2,092	-128	-5.8	16,278	16,861	583	3.6	1.1
Metals in ores, concentrates and scrap	301	286	-15	-4.9	2,748	2,501	-247	-9.0	-22.6
Steel bars, rods, plates, sheets	462	455	-7	-1.5	3,741	3,779	38	1.0	4.4
Other iron and steel products	325	314	-11	-3.3	2,284	2,451	167	7.3	0.2
Precious metals including alloys	700	681	-19	-2.7	4,612	5,104	492	10.7	19.4
Other non-ferrous metals and alloys	432	355	-77	-17.8	2,893	3,026	133	4.6	-6.5
Chemicals and plastics	2,393	2,349	-44	-1.8	18,771	18,965	194	1.0	1.1
Organic chemicals	407	434	27	6.7	2,921	3,049	127	4.4	12.3
Plastic materials	981	936	-45	-4.6	7,303	7,577	274	3.8	4.7
Other chemicals and related products	1,004	979	-25	-2.5	8,547	8,339	-208	-2.4	-6.1
Other industrial goods and materials	2,683	2,556	-127	-4.7	19,791	20,694	903	4.6	4.7
Crude animal products	25	26	1	3.7	188	239	51	26.9	40.7
Wool and man-made fibres	28	27	-1	-4.0	210	206	-4	-2.1	24.6
Crude non-metallic minerals	54	58	4	7.6	442	446	4	0.9	-0.9
Textile fabricated materials	284	271	-13	-4.6	2,242	2,226	-16	-0.7	-1.9
Metal fabricated basic products	1,091	1,083	-9	-0.8	7,815	8,501	686	8.8	11.7
Rubber fabricated materials	115	112	-3	-2.6	895	927	31	3.5	4.0
Oils, fats, animal and vegetable	91	90	0	-0.4	729	709	-20	-2.8	-2.5
Non-metallic minerals	423	373	-50	-11.8	3,071	3,201	130	4.2	-2.0
Other fabricated materials	572	516	-55	-9.7	4,199	4,240	41	1.0	0.0

Table 6-2 – continued

Imports by commodity groupings, balance of payments basis, seasonally adjusted — Constant dollars, 2002

	July	August	Change		Year to date			August 2012/ August 2011	
	2012	2012			2011	2012	Change		
	millions of dollars		percent		millions of dollars			percent	
Machinery and equipment	15,866	15,513	-353	-2.2	126,457	127,491	1,034	0.8	-3.6
Industrial and agricultural machinery	3,862	3,924	62	1.6	29,692	30,701	1,009	3.4	4.8
Engines, turbines and electric motors	467	434	-33	-7.0	3,582	3,692	109	3.0	0.3
Drilling mining machinery	215	216	1	0.6	2,697	1,766	-931	-34.5	-10.5
Excavating machinery	459	441	-18	-3.9	2,893	3,383	490	16.9	12.7
Metal working machinery	242	222	-20	-8.1	1,899	1,830	-70	-3.7	-2.9
Other industrial machinery	1,874	1,895	21	1.1	14,461	15,143	682	4.7	2.0
Agricultural machinery including tractors	605	715	110	18.1	4,160	4,888	728	17.5	20.9
Aircraft and other transportation equipment	1,388	1,357	-30	-2.2	12,775	11,848	-928	-7.3	-19.0
Aircraft, engines, parts	817	787	-30	-3.6	7,736	6,995	-742	-9.6	-20.6
Other transportation equipment and parts	571	570	-1	-0.1	5,039	4,853	-186	-3.7	-16.6
Office machines and equipment	3,096	3,021	-75	-2.4	24,176	24,567	392	1.6	-7.3
Other machinery and equipment	7,520	7,211	-309	-4.1	59,814	60,375	561	0.9	-2.7
Other communication and related equipment	3,027	2,821	-206	-6.8	26,206	24,763	-1,442	-5.5	-10.2
Other equipment and tools	4,493	4,390	-103	-2.3	33,608	35,612	2,004	6.0	2.9
Automotive products	8,477	8,315	-162	-1.9	59,207	66,269	7,062	11.9	7.6
Passenger autos and chassis	2,560	2,591	31	1.2	17,399	19,883	2,484	14.3	8.2
Trucks and other motor vehicles	2,084	1,971	-112	-5.4	14,756	16,326	1,570	10.6	-2.6
Motor vehicle parts	3,834	3,753	-80	-2.1	27,052	30,060	3,008	11.1	13.3
Other consumer goods	6,371	6,299	-72	-1.1	52,242	50,773	-1,469	-2.8	-3.3
Apparel and footwear	1,385	1,355	-30	-2.1	11,649	10,913	-736	-6.3	-5.1
Apparel and apparel accessories	1,149	1,114	-34	-3.0	9,692	9,058	-634	-6.5	-5.7
Footwear	236	241	5	2.0	1,957	1,854	-103	-5.2	-2.0
Miscellaneous consumer goods	4,986	4,944	-43	-0.9	40,592	39,860	-733	-1.8	-2.7
Television, radios, phonographs	216	238	23	10.5	1,798	1,889	90	5.0	5.5
Printed matter	337	346	9	2.6	2,894	2,730	-164	-5.7	-3.9
Watches, sporting goods and toys	636	634	-2	-0.3	5,332	5,163	-169	-3.2	-2.1
House furnishings	1,000	965	-34	-3.4	7,583	7,812	230	3.0	0.9
Photographic goods	430	422	-8	-2.0	3,767	3,540	-227	-6.0	-3.4
Miscellaneous end products	2,368	2,338	-29	-1.2	19,218	18,727	-491	-2.6	-4.8
Special transactions trade	584	689	106	18.2	4,012	4,683	671	16.7	29.6
Unallocated balance of payments adjustments	550	495	-55	-10.0	3,426	4,056	630	18.4	12.7

Table 7-1
Imports from selected countries, customs basis, not seasonally adjusted — August

	Agricultural and fishing products	Energy products	Forestry products	Industrial goods	Machinery and equipment	Automotive products	Consumer goods	Special transactions trade	Total
millions of dollars									
United States									
2011	1,703.6	1,462.0	165.0	4,969.9	4,563.2	4,187.8	2,066.7	401.9	19,520.1
2012	1,762.1	1,163.3	171.9	4,725.4	4,814.6	4,418.2	2,061.3	583.2	19,700.1
Mexico									
2011	77.5	201.2	0.3	198.9	835.2	840.6	115.0	6.5	2,275.2
2012	79.3	69.4	0.3	180.5	726.9	848.6	135.0	3.9	2,043.8
Japan									
2011	5.9	1.0	0.1	97.9	488.7	380.7	86.8	0.8	1,061.9
2012	5.7	1.6	0.1	102.8	500.0	421.0	92.8	0.4	1,124.5
European Union									
Germany									
2011	31.2	1.5	1.6	173.7	518.2	316.8	165.2	0.4	1,208.7
2012	34.0	1.7	0.8	188.4	497.4	363.2	170.6	0.8	1,256.9
France									
2011	83.1	1.0	0.4	66.2	152.0	5.9	135.2	0.2	443.9
2012	77.9	8.8	0.6	60.6	130.8	7.6	130.3	0.5	417.1
United Kingdom									
2011	41.3	248.6	0.0	131.0	289.8	33.6	122.1	2.7	869.0
2012	43.0	208.2	0.1	156.1	209.3	46.1	117.2	11.8	791.8
Italy									
2011	68.5	0.2	1.4	97.5	169.0	29.5	116.4	0.3	482.7
2012	78.0	0.1	1.4	97.1	148.2	21.6	116.8	0.6	463.9
Other European Union									
2011	120.4	240.9	3.6	293.6	442.4	69.2	338.2	1.4	1,509.7
2012	116.4	349.3	4.5	263.8	380.9	72.6	303.3	4.0	1,494.9
Total									
2011	344.5	492.2	7.0	762.0	1,571.4	455.0	877.0	5.1	4,514.1
2012	349.3	568.0	7.4	765.9	1,366.7	511.1	838.3	17.7	4,424.5
Newly industrialized countries									
South Korea									
2011	4.7	49.4	0.0	116.5	206.2	182.9	21.5	0.1	581.3
2012	6.3	3.2	0.0	99.2	158.3	213.5	18.9	0.1	499.5
Hong Kong									
2011	3.0	0.0	0.0	2.0	8.0	0.2	12.3	0.0	25.6
2012	2.5	0.0	0.1	2.2	7.0	0.3	12.1	0.0	24.1
Taiwan									
2011	7.0	0.0	0.3	97.3	331.3	15.2	34.9	0.1	486.1
2012	6.4	0.0	0.7	99.5	219.9	19.0	41.2	0.1	386.8
Singapore									
2011	2.4	58.4	0.0	14.2	49.4	0.5	13.4	0.0	138.4
2012	1.4	0.0	0.0	24.7	55.3	0.3	25.6	0.2	107.5
Total									
2011	17.2	107.8	0.4	230.0	594.9	198.7	82.2	0.3	1,231.3
2012	16.6	3.2	0.7	225.6	440.5	233.0	97.8	0.4	1,017.8
Other countries									
2011	801.6	1,919.4	52.3	2,240.6	2,935.5	235.1	2,475.4	49.3	10,709.3
2012	781.2	2,289.4	64.0	2,044.6	2,937.3	262.3	2,448.8	12.4	10,840.0
Total									
2011	2,950.9	4,183.6	225.1	8,499.3	10,988.9	6,297.9	5,703.2	463.8	39,312.7
2012	2,995.3	4,094.9	244.4	8,044.8	10,786.0	6,694.2	5,674.0	618.1	39,151.8

Table 7-2
Imports from selected countries, customs basis, not seasonally adjusted — Year to date, January to August

	Agricultural and fishing products	Energy products	Forestry products	Industrial goods	Machinery and equipment	Automotive products	Consumer goods	Special transactions trade	Total
millions of dollars									
United States									
2011	11,835.8	10,986.3	1,214.9	36,276.9	35,308.0	31,343.8	15,125.3	2,969.2	145,060.3
2012	13,011.1	11,122.9	1,338.8	38,724.1	38,939.5	34,916.0	15,950.0	3,571.4	157,573.9
Mexico									
2011	1,052.3	944.9	3.3	1,540.1	5,486.5	6,257.3	814.0	50.9	16,149.3
2012	1,075.7	665.8	3.4	1,744.9	5,653.3	6,777.4	868.4	42.8	16,831.6
Japan									
2011	44.2	30.3	0.5	778.4	3,476.6	2,987.3	701.2	4.6	8,023.3
2012	54.3	12.6	0.6	893.6	4,072.9	4,435.8	718.2	3.4	10,191.5
European Union									
Germany									
2011	200.9	10.9	8.3	1,540.5	3,056.8	2,381.6	1,221.8	7.3	8,428.1
2012	222.8	62.3	7.8	1,487.5	4,049.7	2,706.3	1,215.3	13.8	9,765.5
France									
2011	482.0	53.4	2.9	603.3	1,297.1	55.4	1,000.5	4.8	3,499.4
2012	511.9	80.3	4.3	488.7	1,201.3	63.9	960.6	18.4	3,329.3
United Kingdom									
2011	262.0	2,348.9	0.3	1,394.6	2,115.4	329.5	913.5	25.1	7,389.3
2012	270.9	1,386.5	0.5	1,328.7	1,713.3	466.7	866.8	41.2	6,074.7
Italy									
2011	439.8	87.8	10.3	745.2	1,092.3	178.6	787.9	3.2	3,345.2
2012	486.2	1.2	12.5	822.6	1,138.0	191.1	840.2	5.3	3,497.1
Other European Union									
2011	787.6	2,520.8	28.6	2,667.1	3,263.9	583.6	2,346.7	8.7	12,207.0
2012	811.6	2,302.4	33.5	2,396.0	3,293.2	675.0	2,287.2	21.5	11,820.4
Total									
2011	2,172.3	5,021.9	50.3	6,950.6	10,825.6	3,528.7	6,270.4	49.2	34,869.1
2012	2,303.4	3,832.8	58.6	6,523.5	11,395.5	4,102.9	6,170.1	100.3	34,487.0
Newly industrialized countries									
South Korea									
2011	40.3	242.7	0.2	826.5	1,918.8	1,285.3	138.3	0.9	4,452.9
2012	52.1	122.8	0.2	819.8	1,398.4	1,887.3	138.2	0.9	4,419.7
Hong Kong									
2011	20.9	0.0	0.1	43.5	66.1	1.6	88.6	0.3	220.9
2012	19.0	0.0	0.5	24.5	63.1	1.9	75.1	3.3	187.4
Taiwan									
2011	45.3	0.3	3.3	758.6	2,004.8	117.4	258.2	1.0	3,188.9
2012	50.5	6.9	3.6	779.8	1,766.7	138.8	291.7	2.6	3,040.6
Singapore									
2011	22.3	205.8	0.5	129.8	374.2	2.6	198.4	0.5	934.0
2012	15.4	0.1	0.0	201.7	431.4	3.4	193.9	3.1	849.0
Total									
2011	128.7	448.8	4.0	1,758.3	4,363.9	1,406.8	683.5	2.7	8,796.7
2012	136.9	129.8	4.3	1,825.8	3,659.6	2,031.4	698.9	10.0	8,496.7
Other countries									
2011	5,906.6	17,647.3	393.3	16,371.5	21,606.8	1,747.4	14,979.0	247.3	78,899.2
2012	5,949.9	18,904.2	428.4	16,634.3	22,279.6	2,022.2	15,699.7	256.2	82,174.6
Total									
2011	21,145.5	35,079.7	1,666.4	63,675.9	81,067.5	47,271.5	38,573.5	3,324.0	291,803.9
2012	22,536.7	34,668.1	1,834.3	66,346.4	86,000.8	54,285.9	40,105.6	3,984.0	309,761.9

Table 8
Imports by country, customs basis, not seasonally adjusted

	August		January to August		Change January to August 2012/ January to August 2011
	2011	2012	2011	2012	
	millions of dollars				percent
North America					
Canada	446.7	228.2	2,551.6	2,161.5	-15.3
Greenland	0.1	0.0	0.5	0.1	-73.8
Mexico	2,275.2	2,043.8	16,149.3	16,831.6	4.2
Saint Pierre and Miquelon	0.3	0.3	1.8	2.5	39.2
United States	19,520.1	19,700.1	145,060.3	157,573.9	8.6
Total	22,242.4	21,972.4	163,763.4	176,569.6	7.8
Western Europe					
Andorra	0.1	0.1	0.3	0.6	84.0
Austria	111.4	113.6	830.7	899.3	8.3
Belgium	106.9	163.9	1,086.5	1,172.6	7.9
Denmark	104.6	71.1	1,058.7	654.9	-38.1
Faeroe Islands	0.7	1.0	5.8	6.0	2.8
Finland	84.9	63.6	1,127.9	595.7	-47.2
France	443.9	417.1	3,499.4	3,329.3	-4.9
Germany	1,208.7	1,256.9	8,428.1	9,765.5	15.9
Gibraltar	0.0	0.0	1.7	0.0	-97.9
Greece	17.5	13.6	119.1	100.4	-15.7
Iceland	2.5	6.6	18.8	41.7	121.5
Italy	482.7	463.9	3,345.2	3,497.1	4.5
Luxembourg	11.4	14.0	78.2	94.7	21.2
Malta	1.8	2.5	17.6	22.9	30.4
Netherlands	333.0	387.1	1,576.7	2,583.0	63.8
Norway	99.6	352.2	2,570.3	2,802.2	9.0
Portugal	28.1	25.5	205.8	219.0	6.4
Republic of Ireland (Eire)	101.7	90.5	822.3	858.1	4.3
Spain	139.1	162.9	1,160.5	1,167.4	0.6
Sweden	147.4	142.0	1,505.3	1,433.8	-4.7
Switzerland	263.7	309.5	1,985.5	2,365.1	19.1
United Kingdom	869.0	791.8	7,389.3	6,074.7	-17.8
Total	4,558.8	4,849.5	36,833.8	37,683.9	2.3
Other Europe					
Albania	0.6	0.7	4.4	3.2	-28.4
Armenia	8.1	7.9	36.1	51.9	43.7
Azerbaijan	0.0	165.5	310.2	891.2	187.2
Belarus	1.1	0.7	4.5	85.4	...
Bosnia and Herzegovina	1.4	0.9	7.5	8.4	11.9
Bulgaria	17.9	16.2	82.9	140.3	69.3
Croatia	2.8	8.7	18.8	24.4	29.5
Czech Republic	39.5	43.4	250.7	295.3	17.8
Estonia	5.1	2.3	68.8	30.5	-55.6
Georgia	11.2	12.4	76.1	66.0	-13.3
Hungary	29.0	30.1	221.5	285.9	29.1
Kazakhstan	254.4	334.4	1,967.2	2,208.7	12.3
Kyrgyzstan	0.0	0.6	0.1	0.7	485.2
Latvia	2.1	1.9	11.2	12.6	12.4
Lithuania	42.5	5.2	499.6	46.1	-90.8
Macedonia (Former Yugoslav Republic of Macedonia)	0.9	1.0	5.2	6.9	31.7
Montenegro	0.0	0.0	0.4	0.4	2.5
Poland	103.0	82.6	1,044.8	755.9	-27.7
Republic of Moldova	0.2	0.4	1.3	2.5	94.5
Romania	54.7	23.9	211.8	158.1	-25.4
Russian Federation	126.8	43.4	895.5	719.5	-19.6
Serbia	0.9	1.2	10.5	9.3	-11.4
Slovakia	19.5	21.6	161.5	190.2	17.8
Slovenia	8.4	16.7	62.7	101.1	61.2
Tajikistan	0.0	0.1	0.0	0.1	...
Turkmenistan	0.3	0.0	0.5	0.2	-65.9
Ukraine	19.9	16.3	92.0	113.8	23.7
Uzbekistan	0.1	0.0	1.6	0.4	-72.5
Total	750.4	838.2	6,047.5	6,209.0	2.7

Table 8 – continued

Imports by country, customs basis, not seasonally adjusted

	August		January to August		Change
	2011	2012	2011	2012	January to August 2012/ January to August 2011
	millions of dollars				percent
Middle East					
Bahrain	0.2	0.3	2.8	68.2	...
Cyprus	0.1	0.4	2.1	2.6	24.1
Egypt	25.1	42.3	264.8	319.2	20.6
Eritrea	44.4	38.6	186.4	275.8	48.0
Ethiopia	2.1	1.6	13.3	12.1	-8.6
Iran	3.4	2.5	24.1	31.5	30.8
Iraq	109.4	234.1	1,485.5	2,448.0	64.8
Israel	69.5	111.8	646.1	799.7	23.8
Jordan	2.0	1.8	13.0	13.4	3.2
Kuwait	0.0	0.0	56.3	27.5	-51.2
Lebanon	1.6	1.8	12.4	13.6	9.0
Libya	0.0	0.1	5.0	0.4	-91.9
Oman	0.9	1.0	11.5	21.8	88.8
Qatar	0.8	19.5	321.7	84.4	-73.8
Saudi Arabia	40.4	82.1	1,800.2	1,998.2	11.0
Somalia	0.0	0.0	0.1	0.0	-78.8
Sudan	10.0	9.2	85.0	78.8	-7.3
Syria	0.5	0.1	3.9	2.2	-42.8
Turkey	100.9	120.8	701.6	1,005.8	43.4
United Arab Emirates	5.9	6.3	838.4	175.4	-79.1
Yemen	0.0	0.0	0.1	0.1	32.5
Total	417.2	674.4	6,474.1	7,378.6	14.0
Other Africa					
Algeria	527.6	549.8	3,444.7	3,936.7	14.3
Angola	100.9	101.2	1,650.0	1,192.7	-27.7
Antarctica	0.0	0.1	0.5	0.1	-75.4
Benin	0.0	0.0	0.0	0.1	324.0
Botswana	0.0	0.0	0.1	0.2	71.4
Bouvet Island	0.0	0.0	0.0	0.0	147.8
Burkina Faso	0.0	0.0	2.2	4.9	127.8
Burundi	0.0	0.0	0.2	0.2	10.8
Cameroon	0.2	0.7	3.9	6.1	56.8
Cape Verde	0.0	0.0	0.1	0.0	-86.0
Central African Republic	0.1	0.0	0.2	0.6	260.5
Chad	0.0	0.1	0.3	115.2	...
Comoros	0.0	0.0	0.1	0.2	147.4
Congo	0.3	0.2	1.9	1.3	-29.0
Democratic Republic of the Congo	0.2	0.2	0.6	1.1	77.9
Djibouti	0.0	0.0	0.0	0.0	153.7
Equatorial Guinea	0.0	44.6	567.7	360.6	-36.5
French Southern Territories	0.0	0.0	0.0	0.0	905.9
Gabon	2.4	0.0	3.3	0.9	-71.7
Gambia	0.0	0.0	0.1	0.0	-39.1
Ghana	3.1	0.9	47.6	12.5	-73.9
Guinea	6.9	8.8	35.9	54.0	50.5
Guinea-Bissau	0.0	0.0	0.0	0.0	376.4
Ivory Coast	30.8	14.3	361.2	374.0	3.6
Kenya	2.2	2.9	15.9	13.7	-13.9
Lesotho	1.1	0.9	8.5	7.0	-18.3
Liberia	2.4	3.2	21.5	24.0	12.0
Madagascar	11.9	12.3	38.1	63.0	65.2
Malawi	26.0	15.7	113.7	78.7	-30.8
Mali	0.0	0.3	0.5	0.7	41.9
Mauritania	0.0	0.0	0.1	0.2	133.1
Mauritius	1.0	0.9	6.9	8.5	22.2
Morocco	5.6	7.5	56.3	72.6	28.9
Mozambique	0.3	0.5	2.8	4.0	42.4
Namibia	26.2	22.7	160.6	144.8	-9.8
Niger	0.0	0.0	0.9	0.4	-60.7
Nigeria	542.8	331.4	1,657.1	1,311.8	-20.8
Rwanda	0.1	0.1	0.4	1.1	171.0
Saint Helena	0.0	0.0	0.1	0.0	-66.3
Sao Tome and Principe	0.0	0.0	0.1	0.0	-83.4
Senegal	0.0	0.1	0.6	0.7	8.6
Seychelles	0.0	0.6	0.4	1.5	251.5

Table 8 – continued

Imports by country, customs basis, not seasonally adjusted

	August		January to August		Change
	2011	2012	2011	2012	January to August 2012/ January to August 2011
	millions of dollars				percent
Sierra Leone	0.8	0.1	2.2	0.6	-72.9
South Africa	67.3	62.6	618.1	492.0	-20.4
Swaziland	0.2	0.2	1.3	2.5	98.5
Togo	3.8	0.0	10.7	0.4	-96.1
Tunisia	6.0	4.2	38.6	36.7	-4.9
Uganda	0.2	0.1	2.5	2.6	2.5
United Republic of Tanzania	0.7	0.7	3.5	5.6	59.7
Western Sahara	0.0	0.0	0.0	0.0	...
Zambia	0.2	0.1	0.8	1.8	115.9
Zimbabwe	0.4	0.1	4.0	1.7	-56.6
Total	1,371.7	1,188.1	8,886.8	8,338.1	-6.2
Other Asia					
Afghanistan	0.1	0.1	1.2	1.6	32.8
Bangladesh	118.1	130.0	778.4	798.1	2.5
Bhutan	0.0	0.0	0.0	0.0	169.9
British Indian Ocean Territory	0.0	0.0	0.1	0.0	-69.7
Brunei Darussalam	0.5	0.1	5.6	3.4	-39.7
Cambodia	52.6	70.5	338.6	395.3	16.8
China	4,671.3	4,593.1	30,445.3	32,761.4	7.6
Hong Kong	25.6	24.1	220.9	187.4	-15.2
India	203.7	242.2	1,647.4	1,995.1	21.1
Indonesia	140.4	117.8	951.4	883.1	-7.2
Japan	1,061.9	1,124.5	8,023.3	10,191.5	27.0
Laos	0.8	0.7	4.5	6.3	39.7
Macao	1.1	0.8	5.7	11.9	110.3
Malaysia	187.3	177.2	1,390.9	1,458.4	4.9
Maldives	0.0	0.0	0.2	0.6	287.9
Mongolia	44.4	15.2	141.6	105.2	-25.8
Myanmar	0.0	0.1	0.1	0.2	188.1
Nepal	1.8	2.0	9.3	8.0	-13.7
North Korea	0.0	0.0	0.0	0.1	46.6
Pakistan	25.7	29.7	169.7	187.6	10.6
Philippines	85.2	89.6	606.1	660.2	8.9
Singapore	138.4	107.5	934.0	849.0	-9.1
South Korea	581.3	499.5	4,452.9	4,419.7	-0.7
Sri Lanka	14.6	15.0	99.7	124.9	25.2
Taiwan	486.1	386.8	3,188.9	3,040.6	-4.6
Thailand	238.8	235.3	1,762.7	1,736.5	-1.5
Timor-Leste	0.0	0.0	0.2	0.0	-92.3
Viet Nam	136.7	156.6	835.3	1,063.8	27.3
Total	8,216.4	8,018.2	56,013.9	60,889.9	8.7
Oceania					
American Samoa	0.4	0.0	0.5	0.4	-14.6
Australia	189.8	154.3	1,168.2	1,371.8	17.4
Christmas Island	0.0	0.0	0.1	0.0	-54.2
Cocos (Keeling) Islands	0.0	0.0	0.0	0.1	677.3
Cook Islands	0.0	0.0	0.1	0.0	-33.5
Fiji	1.0	0.4	3.1	2.9	-4.4
French Polynesia	0.3	0.1	0.7	0.6	-15.2
Guam	0.0	0.1	0.1	0.1	-6.7
Heard Island and McDonald Islands	0.0	0.0	0.0	0.0	-98.5
Kiribati	0.0	0.0	0.0	0.1	239.0
Nauru	0.0	0.0	0.0	0.1	181.9
New Caledonia	0.0	0.2	0.1	0.3	124.5
New Zealand	49.2	48.1	383.4	370.6	-3.3
Niue	0.0	0.0	0.0	0.0	-53.0
Norfolk Island	0.0	0.0	0.0	0.3	...
Papua New Guinea	0.1	0.1	0.5	1.1	151.3
Pitcairn	0.0	0.0	0.1	0.0	-65.1
Samoa	0.0	0.0	0.0	0.0	377.8
Solomon Islands	0.0	0.1	0.1	0.3	138.4
Tonga	0.0	0.0	0.0	0.0	119.6
United States Minor Outlying Islands	0.3	0.3	2.0	3.4	76.0
Vanuatu	0.0	0.0	0.0	0.1	67.1
Wallis and Futuna	0.0	0.0	0.0	0.0	-60.3
Total	241.1	203.9	1,559.0	1,752.4	12.4

Table 8 – continued

Imports by country, customs basis, not seasonally adjusted

	August		January to August		Change
	2011	2012	2011	2012	January to August 2012/ January to August 2011
	millions of dollars				percent
South America					
Argentina	148.4	182.3	1,367.4	1,326.3	-3.0
Bolivia	14.2	15.6	153.8	158.3	2.9
Brazil	365.6	378.7	2,560.1	2,480.2	-3.1
Chile	146.5	116.4	1,351.8	1,169.4	-13.5
Colombia	47.6	39.0	473.9	464.5	-2.0
Ecuador	14.6	17.2	152.9	189.1	23.7
Falkland Islands (Malvinas)	0.0	0.1	0.3	0.4	52.5
Guyana	47.0	86.0	254.6	327.0	28.5
Paraguay	0.6	1.0	2.9	6.1	112.8
Peru	364.1	310.2	2,844.3	2,456.8	-13.6
Suriname	3.1	13.5	194.1	74.3	-61.7
Uruguay	1.9	5.1	27.1	53.4	97.2
Venezuela	116.8	1.4	583.8	213.8	-63.4
Total	1,270.4	1,166.2	9,967.0	8,919.6	-10.5
Central America Antilles					
Anguilla	0.0	0.0	0.2	0.2	-8.7
Antigua and Barbuda	0.0	0.2	0.2	1.4	456.1
Aruba	0.0	0.0	5.5	0.0	-99.9
Bahamas	3.5	0.3	15.3	17.9	17.1
Barbados	0.8	1.0	4.0	7.0	74.9
Belize	0.6	0.3	4.9	2.4	-49.9
Bermuda	0.1	0.1	0.6	1.8	209.4
British Virgin Islands	0.0	0.0	0.3	0.7	117.2
Cayman Islands	0.4	0.0	0.7	0.3	-54.8
Costa Rica	35.1	45.0	326.0	345.1	5.9
Cuba	65.2	33.6	493.7	366.2	-25.8
Dominica	0.0	0.0	0.2	0.1	-31.5
Dominican Republic	12.1	12.7	94.0	108.9	15.8
El Salvador	8.9	7.0	106.4	74.9	-29.6
Grenada	0.3	0.4	0.9	1.8	96.1
Guatemala	28.5	44.5	305.6	306.6	0.3
Haiti	2.2	1.6	17.8	19.7	10.2
Honduras	15.5	15.6	135.3	158.6	17.2
Jamaica	12.9	17.9	152.2	82.2	-46.0
Montserrat	0.1	0.0	0.2	0.1	-40.5
Netherlands Antilles	0.0	0.0	23.4	0.2	-99.2
Nicaragua	26.1	32.9	220.7	256.7	16.3
Panama	11.6	12.6	81.4	79.6	-2.2
Saint Kitts and Nevis	0.9	0.8	5.3	6.0	13.3
Saint Lucia	0.0	0.0	0.1	0.2	75.9
Saint Vincent and the Grenadines	0.0	0.0	0.2	0.1	-39.1
Trinidad and Tobago	19.4	14.0	263.0	181.9	-30.8
Turks and Caicos Islands	0.0	0.0	0.1	0.2	119.7
Total	244.3	240.8	2,258.4	2,020.7	-10.5
All countries	39,312.7	39,151.8	291,803.9	309,761.9	6.2

**Table 9-1
Imports by province of clearance, customs basis, not seasonally adjusted — August**

	Agricultural and fishing products	Energy products	Forestry products	Industrial goods	Machinery and equipment	Automotive products	Consumer goods	Special transactions trade	Total
millions of dollars									
Newfoundland and Labrador									
2011	3.9	40.9	0.0	13.2	44.2	0.2	1.0	1.1	104.4
2012	4.4	303.1	0.0	31.9	31.5	0.0	2.4	3.4	376.8
Prince Edward Island									
2011	0.4	0.0	0.0	16.8	0.2	0.0	0.0	0.1	17.4
2012	0.4	0.0	0.0	0.0	0.1	0.0	0.0	0.0	0.6
Nova Scotia									
2011	52.8	47.8	2.0	105.3	120.9	193.1	16.9	1.9	540.6
2012	34.9	69.3	1.7	72.2	109.5	218.4	21.3	2.2	529.5
New Brunswick									
2011	105.1	610.2	10.1	125.1	102.6	38.5	19.2	2.1	1,012.8
2012	101.4	882.3	8.3	104.4	89.4	30.9	33.6	1.5	1,251.8
Quebec									
2011	536.5	1,607.7	46.6	1,360.2	1,684.1	228.2	1,059.6	52.0	6,574.9
2012	469.7	1,895.6	58.1	1,272.6	1,569.6	210.7	1,021.6	52.2	6,550.0
Ontario									
2011	1,539.2	1,003.0	79.2	5,009.2	6,241.9	5,149.5	3,565.8	365.2	22,952.9
2012	1,597.3	373.4	90.6	4,690.8	5,893.8	5,517.3	3,475.9	506.9	22,145.9
Manitoba									
2011	85.7	50.9	7.1	327.9	637.7	200.7	152.9	8.2	1,471.0
2012	96.1	57.2	13.6	401.2	713.6	163.2	179.8	7.7	1,632.4
Saskatchewan									
2011	24.4	85.5	4.7	160.1	286.8	88.2	18.1	2.0	669.8
2012	38.7	58.5	1.8	210.2	468.3	105.8	35.1	2.0	920.4
Alberta									
2011	165.2	456.2	13.2	578.2	807.4	132.5	136.3	14.9	2,303.9
2012	187.0	217.8	9.3	521.5	725.7	133.1	168.1	15.9	1,978.4
British Columbia									
2011	432.1	250.4	62.4	802.9	1,062.0	266.9	733.3	16.3	3,626.5
2012	462.1	235.9	61.0	739.8	1,183.1	314.7	736.2	26.3	3,759.0
Yukon, Northwest Territories and Nunavut									
2011	5.7	31.1	0.0	0.4	1.2	0.1	0.0	0.0	38.5
2012	3.3	1.8	0.0	0.1	1.5	0.0	0.0	0.1	6.9
Total									
2011	2,950.9	4,183.6	225.1	8,499.3	10,988.9	6,297.9	5,703.2	463.8	39,312.7
2012	2,995.3	4,094.9	244.4	8,044.8	10,786.0	6,694.2	5,674.0	618.1	39,151.8

Table 9-2
Imports by province of clearance, customs basis, not seasonally adjusted — Year to date, January to August

	Agricultural and fishing products	Energy products	Forestry products	Industrial goods	Machinery and equipment	Automotive products	Consumer goods	Special transactions trade	Total
millions of dollars									
Newfoundland and Labrador									
2011	24.2	1,727.0	0.0	80.5	332.5	0.8	10.2	4.6	2,179.8
2012	39.0	3,186.8	0.0	152.3	234.4	0.5	14.5	9.9	3,637.4
Prince Edward Island									
2011	3.0	0.0	0.0	24.2	1.8	0.0	0.3	0.3	29.6
2012	2.9	0.0	0.0	0.3	1.1	0.1	0.2	0.2	4.8
Nova Scotia									
2011	402.6	1,363.3	11.0	871.6	1,489.9	1,793.5	127.1	19.4	6,078.6
2012	303.6	1,032.3	9.7	634.4	798.2	1,781.4	140.0	18.1	4,717.5
New Brunswick									
2011	365.9	6,824.1	75.1	965.5	692.0	271.9	169.0	13.7	9,377.3
2012	401.4	6,365.0	77.3	902.3	686.2	288.5	178.1	12.4	8,911.1
Quebec									
2011	3,563.2	12,765.7	393.6	11,312.0	12,406.2	1,591.6	7,017.3	332.0	49,381.5
2012	3,339.5	12,918.9	454.5	10,421.7	13,362.9	1,865.0	6,807.4	440.3	49,610.1
Ontario									
2011	11,336.7	6,835.1	605.5	36,419.6	45,347.8	38,743.1	24,586.2	2,675.9	166,549.9
2012	12,521.7	4,325.4	662.3	38,436.0	46,676.2	44,443.6	25,522.7	3,110.0	175,697.9
Manitoba									
2011	655.2	368.6	61.1	2,604.9	4,526.4	1,140.5	1,061.3	60.2	10,478.2
2012	759.8	503.2	93.9	3,453.4	5,372.8	1,352.5	1,261.1	73.6	12,870.4
Saskatchewan									
2011	245.9	542.7	20.8	1,663.8	2,551.8	806.3	173.3	15.8	6,020.4
2012	313.7	680.9	21.0	1,929.7	3,551.8	967.6	239.8	24.2	7,728.7
Alberta									
2011	1,295.7	2,029.9	86.0	4,152.1	6,056.9	926.0	964.9	88.6	15,600.1
2012	1,437.0	3,579.7	82.1	4,443.2	6,310.1	1,101.1	1,211.5	136.9	18,301.5
British Columbia									
2011	3,214.2	2,584.9	413.1	5,579.2	7,624.0	1,997.5	4,463.7	113.5	25,990.1
2012	3,389.7	2,064.6	433.4	5,971.6	8,977.8	2,485.4	4,730.1	158.3	28,210.8
Yukon, Northwest Territories and Nunavut									
2011	38.9	38.3	0.0	2.4	38.2	0.4	0.3	0.0	118.5
2012	28.5	11.5	0.0	1.6	29.3	0.3	0.2	0.2	71.6
Total									
2011	21,145.5	35,079.7	1,666.4	63,675.9	81,067.5	47,271.5	38,573.5	3,324.0	291,803.9
2012	22,536.7	34,668.1	1,834.3	66,346.4	86,000.8	54,285.9	40,105.6	3,984.0	309,761.9

Technical notes

The Canadian international merchandise trade statistical program

Introduction

The objective of this text is to provide a general overview of the Canadian International Merchandise Trade Statistical Program, with special reference to concepts and definitions. The text is intended for the general user and simplicity is emphasized.

Conceptual framework

1. Objectives and coverage: The primary objective of the Canadian International Merchandise Trade Statistical Program is to measure the change in the stock of material resources of Canada resulting from the movement of merchandise into or out of the country. Information on imports and exports are inputs into the System of National Accounts, particularly in the balance of payments and gross domestic product, and are used in the formulation of trade and budgetary policies. Governments, importers, exporters, manufacturers and shipping companies use international merchandise trade statistics to:

- monitor import penetration and export performance,
- monitor commodity price and volume changes,
- examine transport implications.

2. Trade statistics (customs basis / balance of payments basis): Merchandise trade statistics are reported and presented on two different bases: customs basis and balance of payment basis.

When goods are imported into or exported from Canada, declarations must be filed with customs, giving such information as description and value of the goods, origin and port of clearance of commodities and mode of transport. Most of this information is required for the purposes of customs administration. Statistics developed from administrative records of customs are commonly referred to as customs-based trade statistics.

Customs-based trade statistics are more accurate at measuring imports than they are at measuring exports. This is the case because customs are typically more vigilant with respect to goods entering the country than they are with goods leaving the country.

Customs-based export statistics may understate or incorrectly portray the destination of exports. Export statistics are understated when the proper documentation is not filed with Customs. Exports are incorrectly portrayed when the country of final destination is inaccurately reported on the customs documentation. This occurs most frequently when goods are routed through an intermediary country before continuing on to their final destination.

Statistics Canada does not have a measure of undercoverage but periodically conducts reconciliation exercises with its major trading partners, excluding the United States.

On January 1, 1990, Canada entered into a memorandum of understanding with the United States concerning the exchange of import data. As a consequence, each administration is using the other's import data to replace its own export data. Canada's international merchandise trade statistics are, therefore, no longer derived exclusively from the administrative records of the Canada Border Services Agency, but from United States Customs records as well.

Customs-based information is adjusted to conform with the National Accounts concepts and definitions. The adjustments to derive balance of payments-based trade data include adjustments related to trade definition, valuation and timing. The principal difference between the two trade concepts is that customs-based merchandise trade statistics cover the physical movement of goods as they are reflected in customs documents while balance of payments-adjusted data are intended to cover all economic transactions that involve merchandise trade between residents and non-residents. The present document describes the concepts and processes pertaining to the customs-based trade statistics only. (For further information on balance of payments-adjusted data, see the publication *Canada's Balance of International Payments*, Statistics Canada (Catalogue no. 67-001-X).

3. System of trade: Canadian trade statistics are compiled according to the general system of trade, as defined by the United Nations Statistical Office. Under this system, imports include all goods that have crossed Canada's territorial boundary, whether for immediate consumption in Canada or for storage in bonded customs warehouses. Domestic exports include goods grown, extracted or manufactured in Canada, including goods of foreign origin that have been materially transformed in Canada. Re-exports are exports of goods of foreign origin that have not been materially transformed in Canada, including foreign goods withdrawn for export from bonded customs warehouses. Total exports are the sum of domestic exports and re-exports. Thus the general trade system, in principal, presents all goods entering the country (imports) and all goods leaving the country (exports). It differs from the special system of trade in the treatment of imported goods into bonded customs warehouses. Under the 'special' system, these goods are counted only if and when they are withdrawn from customs warehouses for home consumption. They are not counted in export statistics unless they have first cleared customs.

Conceptually, under the general system, the statistical frontier coincides with the geographical boundary, while under the 'special' system, it coincides with the customs boundary.

4. Valuation: For customs purposes, imports are recorded at values established according to the provisions of the Customs Act, which, since January 1, 1985, reflects valuation methods based on the General Agreement on Tariffs and Trade (GATT) Valuation Code System. In general, the value for duty of imported goods must be equivalent to the transaction value or the price actually paid.

To determine the transaction value of imported goods, all transportation and associated costs arising in respect of the goods being appraised prior to and at the place of direct shipment to Canada, are to be added to the price of the goods. Therefore, Canadian imports are valued Free on Board (FOB), place of direct shipment to Canada. It excludes freight and insurance costs in bringing the goods to Canada from the point of direct shipment.

Countries other than the United States, exports are, in principal, valued or recorded at the values declared on export documents, which usually reflect the transaction value, i.e., actual selling price or, in the case of a non-arm's length transaction, the transfer price used for company accounting purposes. Canadian exports to overseas countries are valued at F.O.B. port of exit, including domestic freight charges to that point but net of discounts and allowances. As of January, 1990, Canadian exports to the U.S. are valued F.O.B. point of exit from Canada. Prior to 1990, they were valued F.O.B. place of lading net of freight charges, discounts and allowances.

5. Statistical period: The reference period is the calendar month and the calendar year. The closing of the statistical month for imports and Canadian exports to the United States is defined as the last calendar day of the month, based as closely as practicable on the date of clearance from customs.

The closing of the statistical month for exports, to countries other than the United States, is also defined as the last calendar day of the month. Those export documents that are received too late for incorporation in the current month are assigned to the month the transaction took place. If a monthly summary report from a high volume exporter is not received on time, the data are imputed for the current month and revised with the trade value in the following statistical month.

6. Trading partner attribution (country of origin/destination): Exports are attributed to the country, which is the last known destination of the goods at the time of export. Exports to the United States are attributed to the state of destination.

Imports are attributed to their country of origin, that is, the country in which the goods were grown, extracted or manufactured in accordance to the rules of origin administered by the Canada Border Services Agency. Imports from the United States are attributed to the state of origin. Prior to 1988, most imports were attributed to the country of export/consignment, with the exception of imports from Central and South America.

7. Principal trading areas: The 'principal trading areas' are country groupings defined as follows:

United States: includes trade with Puerto Rico and the U.S. Virgin Islands

Japan

European Union (EU): Austria, Belgium, Bulgaria, Cyprus, Czech Republic, Denmark, Estonia, Finland, France, Germany, Greece, Hungary, Ireland, Italy, Latvia, Lithuania, Luxembourg, Malta, Netherlands, Poland, Portugal, Romania, Slovakia, Slovenia, Spain, Sweden and United Kingdom

Other Organisation for Economic Co-operation and Development (OECD): Australia, Canada, Chile, Iceland, Israel, Mexico, New Zealand, Norway, South Korea, Switzerland, and Turkey. (The EU countries, United States, and Japan are also members of OECD).

Other countries: all countries and territories other than the United States, Japan, EU and other OECD

8. Legal framework: Import and export statistics with countries other than the United States are derived from information contained in administrative records collected by the Canada Border Services Agency under the Customs Act. Copies of these documents (or information therefrom) are sent to Statistics Canada in accordance with Section 25 of the Statistics Act. It follows that the disclosure of trade statistics is governed by both the Customs Act and the Statistics Act and is subject to the provisions of Section 17(2)(a) of the latter. Disclosure of export statistics to the United States is now governed by a memorandum of understanding that provides for the exchange of detailed import statistics between Canada and the United States.

Contact information

Telephone: 1-800-263-1136 or 613-951-8116

Facsimile: 1-877-287-4369 or 613-951-0581

Internet: infostats@statcan.gc.ca