

Catalogue no. 65-001-X

# Canadian International Merchandise Trade

July 2012



Statistics  
Canada

Statistique  
Canada

Canada

## How to obtain more information

For information about this product or the wide range of services and data available from Statistics Canada, visit our website at [www.statcan.gc.ca](http://www.statcan.gc.ca), e-mail us at [infostats@statcan.gc.ca](mailto:infostats@statcan.gc.ca), or telephone us, Monday to Friday from 8:30 a.m. to 4:30 p.m., at the following numbers:

### Statistics Canada's National Contact Centre

Toll-free telephone (Canada and the United States):

Inquiries line	1-800-263-1136
National telecommunications device for the hearing impaired	1-800-363-7629
Fax line	1-877-287-4369

Local or international calls:

Inquiries line	1-613-951-8116
Fax line	1-613-951-0581

### Depository Services Program

Inquiries line	1-800-635-7943
Fax line	1-800-565-7757

## To access this product

This product, Catalogue no. 65-001-X, is available free in electronic format. To obtain a single issue, visit our website at [www.statcan.gc.ca](http://www.statcan.gc.ca) and browse by "Key resource" > "Publications."

## Standards of service to the public

Statistics Canada is committed to serving its clients in a prompt, reliable and courteous manner. To this end, Statistics Canada has developed *standards of service* that its employees observe. To obtain a copy of these service standards, please contact Statistics Canada toll-free at 1-800-263-1136. The service standards are also published on [www.statcan.gc.ca](http://www.statcan.gc.ca) under "About us" > "The agency" > "Providing services to Canadians."

Statistics Canada  
International Trade Division

# Canadian International Merchandise Trade

July 2012

Published by authority of the Minister responsible for Statistics Canada

© Minister of Industry, 2012

All rights reserved. Use of this publication is governed by the *Statistics Canada Open License Agreement*.

<http://www.statcan.gc.ca/reference/copyright-droit-auteur-eng.htm>

September 2012

Catalogue no. 65-001-X, vol. 66, no. 7

ISSN 1480-8781

Frequency: Monthly

Ottawa

Cette publication est également disponible en français.

---

***Note of appreciation***

*Canada owes the success of its statistical system to a long-standing partnership between Statistics Canada, the citizens of Canada, its businesses, governments and other institutions. Accurate and timely statistical information could not be produced without their continued cooperation and goodwill.*

# User information

---

## Symbols

The following standard symbols are used in Statistics Canada publications:

- . not available for any reference period
- .. not available for a specific reference period
- ... not applicable
- 0 true zero or a value rounded to zero
- 0<sup>s</sup> value rounded to 0 (zero) where there is a meaningful distinction between true zero and the value that was rounded
- p preliminary
- r revised
- x suppressed to meet the confidentiality requirements of the *Statistics Act*
- E use with caution
- F too unreliable to be published
- \* significantly different from reference category ( $p < 0.05$ )

## Note to users

All totals are calculated from full figures and rounded independently; consequently, totals may not equal the sum of their components.

The data is based on commodity groups (sector, subsector and major group).

# Table of contents

---

<b>Highlights</b>	<b>5</b>
<b>Analysis</b>	<b>7</b>
<b>Related products</b>	<b>11</b>
<b>Statistical tables</b>	
1 Merchandise trade of Canada, balance of payments basis, seasonally adjusted	15
1-1 Current dollars	15
1-2 Constant dollars, 2002	16
1-3 Price indices (Laspeyres)	17
2 Exports by commodity groupings, balance of payments basis, seasonally adjusted	18
2-1 Current dollars	18
2-2 Constant dollars, 2002	20
3 Domestic exports to selected countries, customs basis, not seasonally adjusted	22
3-1 July	22
3-2 Year to date, January to July	23
4 Domestic exports by country, customs basis, not seasonally adjusted	24
5 Exports by province of origin, customs basis, not seasonally adjusted	28
5-1 July	28
5-2 Year to date, January to July	29
6 Imports by commodity groupings, balance of payments basis, seasonally adjusted	30
6-1 Current dollars	30
6-2 Constant dollars, 2002	32
7 Imports from selected countries, customs basis, not seasonally adjusted	34
7-1 July	34
7-2 Year to date, January to July	35
8 Imports by country, customs basis, not seasonally adjusted	36

**Table of contents – continued**

9	Imports by province of clearance, customs basis, not seasonally adjusted	40
9-1	July	40
9-2	Year to date, January to July	41

**Data quality, concepts and methodology**

	Technical notes	42
--	-----------------	----

## Highlights

---

Canada's merchandise exports fell 3.4% and imports decreased 2.2% in July. As a result, Canada's trade deficit with the world expanded from \$1.9 billion in June to \$2.3 billion in July.

Exports fell to \$37.7 billion, as volumes decreased 2.0%. Energy products were the main contributor to the fall in exports.

Imports decreased to \$40.1 billion, mainly due to lower imports of energy products as well as machinery and equipment. Both volumes (-1.2%) and prices (-1.0%) declined.

Exports to the United States fell 5.0% to \$27.4 billion in July and imports declined 2.1% to \$25.3 billion. Consequently, Canada's trade surplus with the United States decreased from \$3.0 billion in June to \$2.1 billion in July, the smallest trade surplus since October 2010.

Imports from countries other than the United States decreased 2.4% to \$14.7 billion while exports rose 1.2% to \$10.3 billion. As a result, Canada's trade deficit with countries other than the United States narrowed from \$4.9 billion in June to \$4.4 billion in July.

### Note to readers

Merchandise trade is one component of Canada's international balance of payments (BOP), which also includes trade in services, investment income, current transfers as well as capital and financial flows.

International merchandise trade data by country are available on both a BOP and a customs basis for the United States, Japan and the United Kingdom. Trade data for all other individual countries are available on a customs basis only. BOP data are derived from customs data by making adjustments for factors such as valuation, coverage, timing and residency. These adjustments are made to conform to the concepts and definitions of the Canadian System of National Accounts.

Data in this release are on a BOP basis, seasonally adjusted and in current dollars. Constant dollars are calculated using the Laspeyres volume formula.

For more information on seasonal adjustment, see *Seasonal adjustment and identifying economic trends*.

### New aggregation structure

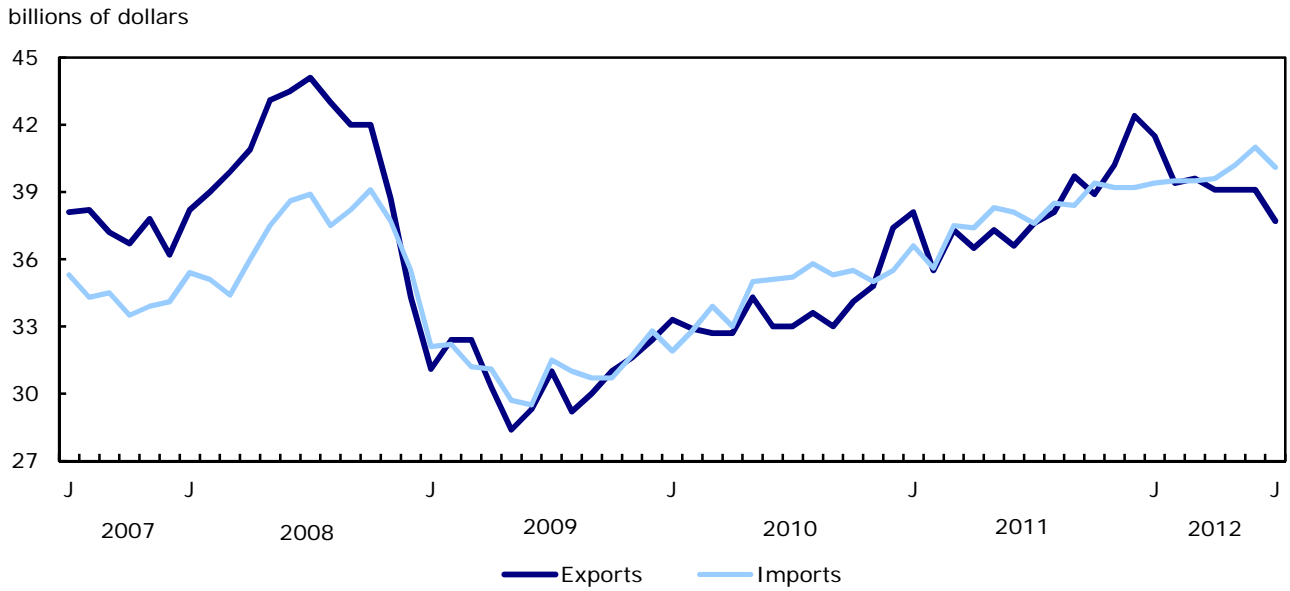
Statistics Canada will introduce the North American Product Classification System (NAPCS) for merchandise import and export statistics. The new structure will replace the classification structures known as the summary import groups (SIG) and the summary export groups (SEG) and the higher level aggregations (major groups, subsectors, sectors and sections) that have been in use for several decades.

Revised data based on NAPCS for the reference period of January 1988 to August 2012 will be disseminated on October 18.

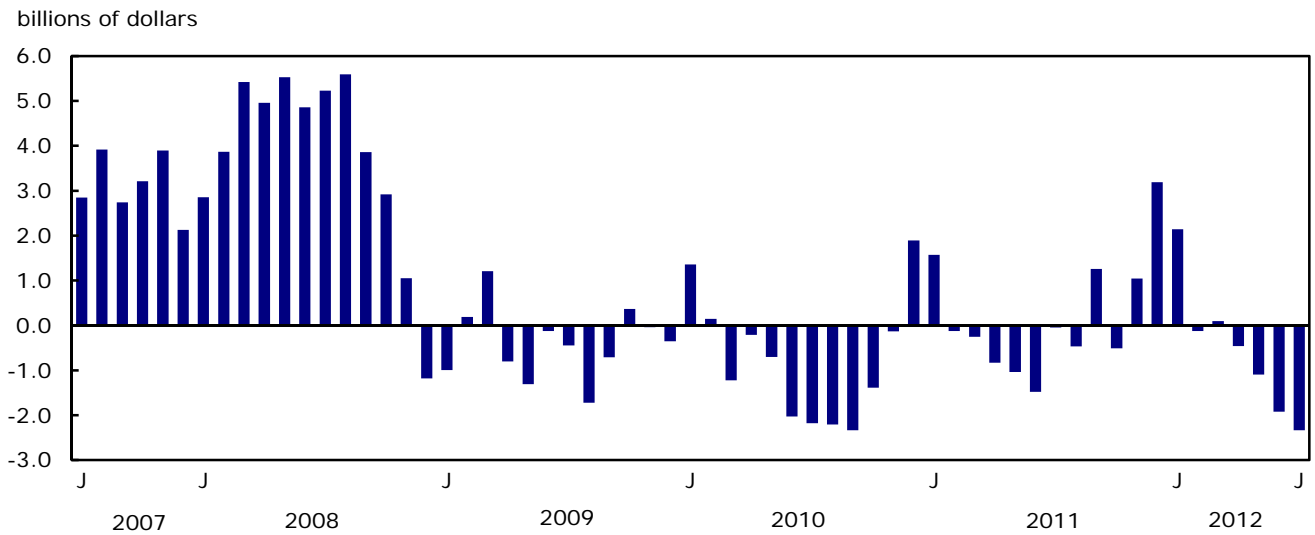
The first regular release of data based on NAPCS will be on November 8 for the September reference month.

Readers interested in this upcoming change can find more detailed information on our web page dedicated to *classification consultation and notification*.

**Chart 1**  
Exports and imports, seasonally adjusted, on a balance of payments basis



**Chart 2**  
Trade balance, seasonally adjusted, on a balance of payments basis





# Analysis

---

## Energy products: the largest contributor to the decrease in exports

Exports of energy products fell 8.5% to \$8.2 billion in July, on lower volumes and prices. Crude petroleum's exports, down 9.6% to \$5.1 billion, led the decline. Prices and volumes of crude petroleum have been trending downwards since January 2012. Exports of petroleum and coal product decreased for a third consecutive month, falling 10.7% to \$1.8 billion, mainly the result of lower exports of light oils and fuel oils.

Exports of machinery and equipment decreased 5.5% to \$6.7 billion as widespread decreases were recorded within the sector. Exports of aircraft, engines and parts fell 19.6%, on lower volumes.

Exports of automotive products decreased 5.3% to \$5.9 billion, largely due to exports of passenger autos and chassis which declined 7.5% to \$4.0 billion. Overall, volumes fell 4.7% in July.

## Two sectors account for the decline in imports

Imports of energy products declined 12.3% to \$3.8 billion, as both volumes and prices fell in July. Petroleum and coal products imports, down 33.5%, accounted for the decrease in the sector.

Imports of machinery and equipment decreased 3.7% to \$10.8 billion, on lower volumes. The decline in the sector was largely attributed to a 4.7% decrease in imports of other equipment and tools, mainly measuring and controlling instruments as well as air conditioning and refrigeration equipment. Imports of other industrial machinery and office machines and equipment also contributed to the sector's decline.

**Note:** In general, merchandise trade data are revised on an ongoing basis for each month of the current year. Current year revisions are reflected in both the customs and BOP based data.

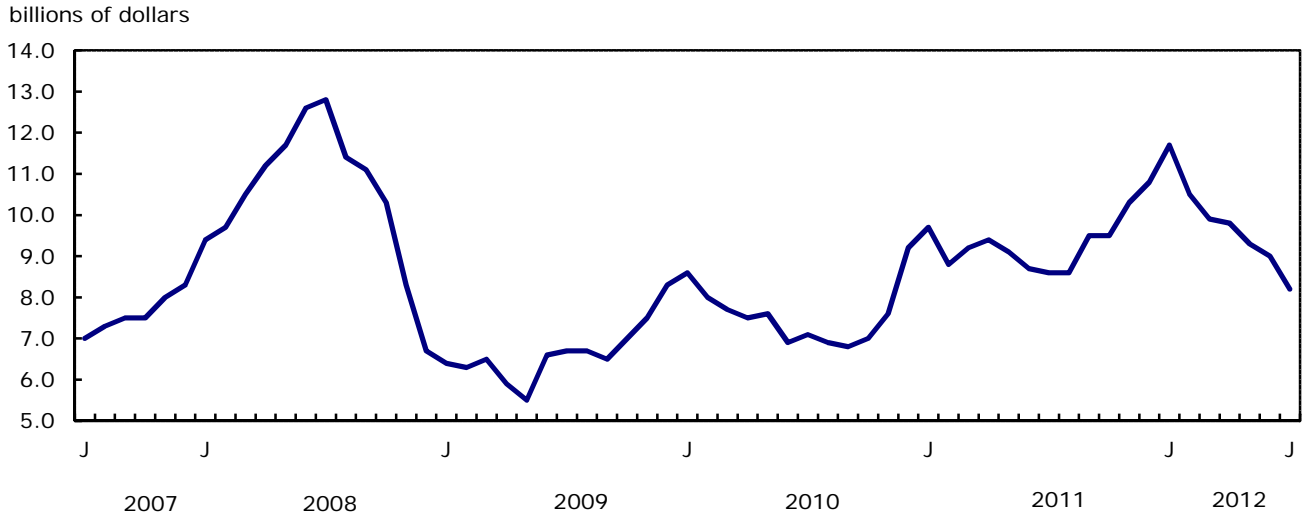
The previous year's customs data are revised with the release of the January and February reference months as well as on a quarterly basis. The previous two years of customs based data are revised annually and are released in February with the December reference month.

The previous year's BOP based data will be revised with the release of the January, February, March and April 2012 reference months.

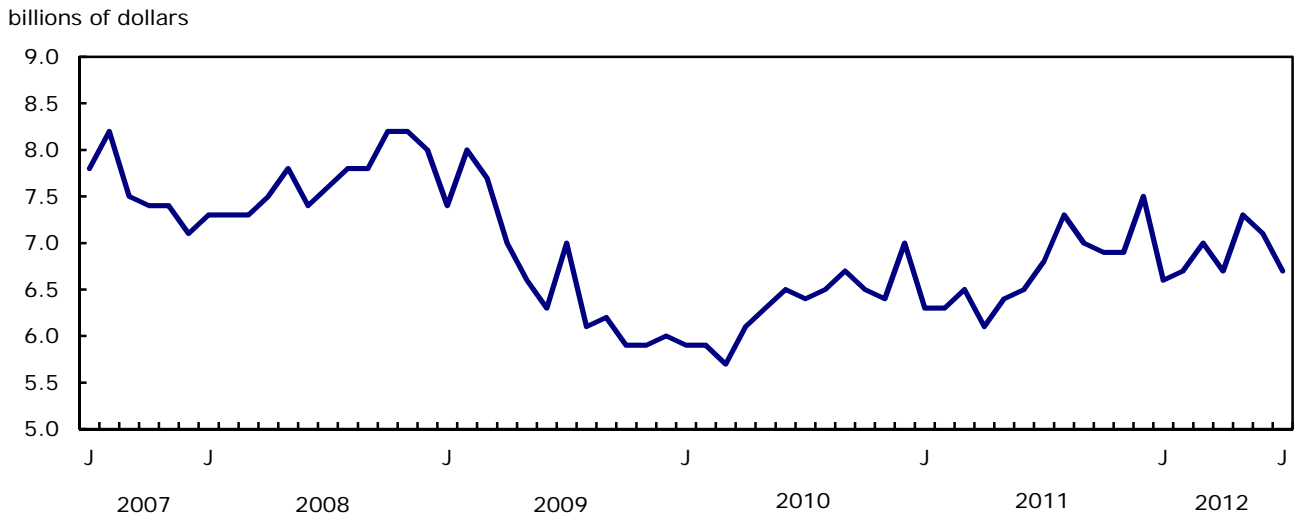
Factors influencing revisions include late receipt of import and export documentation, incorrect information on customs forms, replacement of estimates produced for the energy sector with actual figures, changes in classification of merchandise based on more current information, and changes to seasonal adjustment factors.

Revised data are available in the appropriate CANSIM tables, free of charge.

**Chart 1**  
**Exports of energy products, seasonally adjusted, on a balance of payments basis**

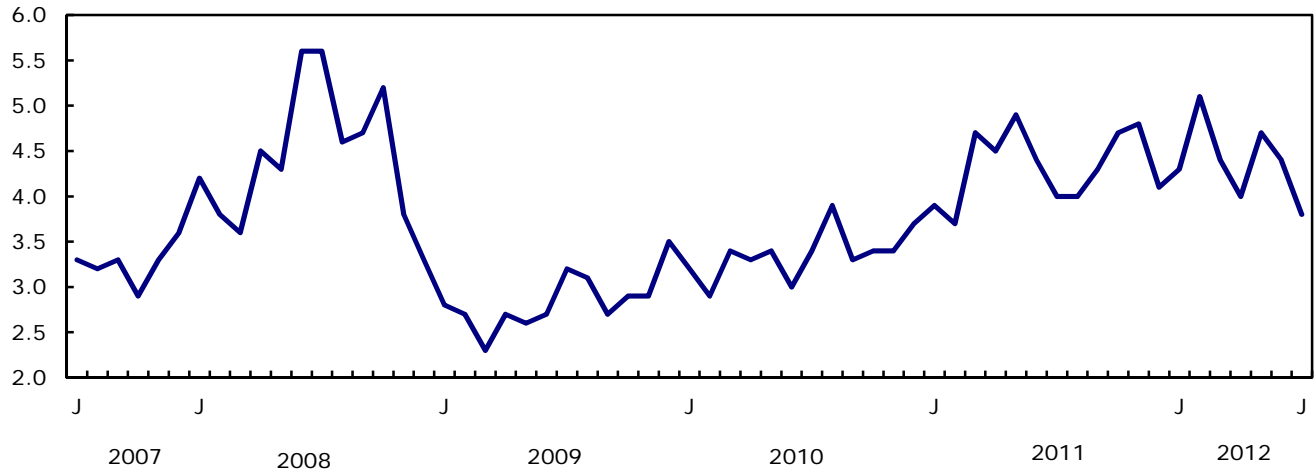


**Chart 2**  
**Exports of machinery and equipment, seasonally adjusted, on a balance of payments basis**



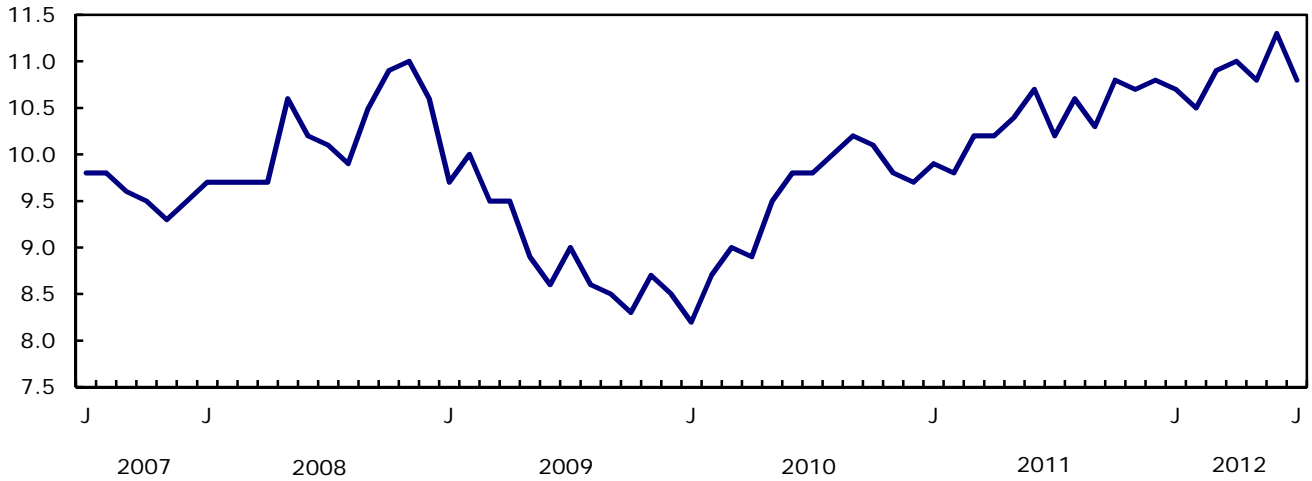
**Chart 3**  
Imports of energy products, seasonally adjusted, on a balance of payments basis

billions of dollars



**Chart 4**  
Imports of machinery and equipment, seasonally adjusted, on a balance of payments basis

billions of dollars



**Text table 1**  
**Merchandise trade by principal trading area, balance of payments basis, seasonally adjusted**

	June	July	Change	Year to date			July 2012/ July 2011		
	2012	2012		2011	2012	Change			
	millions of dollars		percent		millions of dollars		percent		
<b>Export to</b>									
United States	28,887	27,443	-1,444	-5.0	189,035	201,492	12,457	6.6	1.3
Japan	965	913	-53	-5.4	6,319	6,337	17	0.3	1.4
European Union <sup>1</sup>	3,351	3,381	30	0.9	22,950	24,559	1,608	7.0	-7.5
Other Organisation for Economic Co-operation and Development <sup>2</sup>	1,446	1,652	207	14.3	11,492	10,869	-623	-5.4	-3.7
Other countries	4,408	4,351	-57	-1.3	29,112	32,315	3,203	11.0	3.4
<b>Total</b>	<b>39,056</b>	<b>37,739</b>	<b>-1,317</b>	<b>-3.4</b>	<b>258,909</b>	<b>275,572</b>	<b>16,663</b>	<b>6.4</b>	<b>0.5</b>
<b>Imports from</b>									
United States	25,868	25,330	-538	-2.1	160,350	174,361	14,011	8.7	7.7
Japan	981	933	-47	-4.8	5,020	6,592	1,572	31.3	16.1
European Union <sup>1</sup>	3,807	3,804	-3	-0.1	26,880	26,326	-554	-2.1	-2.4
Other Organisation for Economic Co-operation and Development <sup>2</sup>	3,192	2,801	-392	-12.3	18,858	21,260	2,402	12.7	5.0
Other countries	7,134	7,207	73	1.0	49,990	50,738	749	1.5	7.3
<b>Total</b>	<b>40,981</b>	<b>40,075</b>	<b>-907</b>	<b>-2.2</b>	<b>261,098</b>	<b>279,278</b>	<b>18,180</b>	<b>7.0</b>	<b>6.6</b>
<b>Balance</b>									
United States	3,019	2,113	-906	...	28,685	27,131	-1,554	...	...
Japan	-15	-21	-5	...	1,300	-255	-1,555	...	...
European Union <sup>1</sup>	-456	-423	33	...	-3,929	-1,767	2,162	...	...
Other Organisation for Economic Co-operation and Development <sup>2</sup>	-1,747	-1,148	598	...	-7,366	-10,391	-3,025	...	...
Other countries	-2,726	-2,856	-130	...	-20,878	-18,423	2,454	...	...
<b>Total</b>	<b>-1,925</b>	<b>-2,335</b>	<b>-410</b>	<b>...</b>	<b>-2,189</b>	<b>-3,706</b>	<b>-1,517</b>	<b>...</b>	<b>...</b>

1. European Union includes: Austria, Belgium, Bulgaria, Cyprus, Czech Republic, Denmark, Estonia, Finland, France, Germany, Greece, Hungary, Ireland, Italy, Latvia, Lithuania, Luxembourg, Malta, Netherlands, Poland, Portugal, Romania, Slovakia, Slovenia, Spain, Sweden and United Kingdom.

2. Other Organisation for Economic Co-operation and Development includes: Australia, Canada, Chile, Iceland, Israel, Mexico, New Zealand, Norway, South Korea, Switzerland and Turkey.

**Text table 2**  
**Reconciliation of customs and balance of payments trade data, not seasonally adjusted**

	2012						2011
	July	June	May	April	March	February	Annual
	millions of dollars						
<b>Exports</b>							
<b>Customs basis</b>	<b>35,712</b>	<b>39,015</b>	<b>39,447</b>	<b>38,776</b>	<b>40,695</b>	<b>36,488</b>	<b>447,501</b>
<b>Balance of payments adjustments</b>	<b>425</b>	<b>752</b>	<b>1,340</b>	<b>205</b>	<b>496</b>	<b>1,165</b>	<b>10,690</b>
Valuation and residency							
Inland freight	627	653	669	651	627	589	7,052
Other valuation and residency	-857	-937	-709	-779	-981	-871	-9,505
Timing	-24	4	-11	55	-66	50	496
Coverage	679	1,032	1,391	278	916	1,397	12,647
<b>Balance of payments basis</b>	<b>36,137</b>	<b>39,767</b>	<b>40,787</b>	<b>38,981</b>	<b>41,191</b>	<b>37,653</b>	<b>458,191</b>
<b>Imports</b>							
<b>Customs basis</b>	<b>37,892</b>	<b>40,593</b>	<b>40,149</b>	<b>38,404</b>	<b>40,428</b>	<b>37,137</b>	<b>445,992</b>
<b>Balance of payments adjustments</b>	<b>977</b>	<b>1,029</b>	<b>1,295</b>	<b>821</b>	<b>1,038</b>	<b>927</b>	<b>9,882</b>
Valuation and residency							
Inland freight	827	869	862	815	850	776	9,426
Other valuation and residency	-4	15	-10	-15	-7	23	-245
Timing	0	0	0	0	0	0	0
Coverage	154	145	443	21	195	128	701
<b>Balance of payments basis</b>	<b>38,869</b>	<b>41,622</b>	<b>41,444</b>	<b>39,225</b>	<b>41,466</b>	<b>38,064</b>	<b>455,874</b>

## Related products

---

### Selected publications from Statistics Canada

---

65-208-X	International Merchandise Trade Annual Review
65-506-X	A Profile of Canadian Exporters
65F0013X	Canadian International Merchandise Trade Database
65F0019X	A Database for Analysis of International Markets
65F0020X	Data Integration - International Trade Data and Manufacturing Shipments Data

---

### Selected CANSIM tables from Statistics Canada

---

228-0001	Merchandise imports and exports, by major groups and principal trading areas for all countries, monthly
228-0002	Merchandise imports and exports, by major groups and principal trading areas for all countries, quarterly
228-0003	Merchandise imports and exports, by major groups and principal trading areas for all countries, annual
228-0033	Imports, customs-based, by province of clearance, monthly
228-0034	Domestic exports, customs-based, by province of origin, monthly
228-0041	Merchandise imports and exports by sector and sub-sector, customs and balance of payments basis, for all countries, monthly
228-0042	Merchandise imports and exports by sector and sub-sector, customs and balance of payments basis, for all countries, quarterly
228-0043	Merchandise imports and exports by sector and sub-sector, customs and balance of payments basis, for all countries, annual
228-0047	Merchandise imports and exports balance of payments and customs-based price and volume indexes for all countries, monthly
228-0048	Merchandise imports and exports balance of payments and customs-based price and volume indexes for all countries, quarterly
228-0049	Merchandise imports and exports balance of payments and customs-based price and volume indexes for all countries, annual

228-0050	Merchandise imports and exports customs-based price indexes, Canada and United States trade, and Standard International Trade Classification (SITC revision 3) price indexes for all countries and United States, monthly
228-0051	Merchandise imports and exports customs-based price indexes, Canada and United States trade, and Standard International Trade Classification (SITC revision 3) price indexes for all countries and United States, quarterly
228-0052	Merchandise imports and exports customs-based price indexes, Canada and United States trade, and Standard International Trade Classification (SITC revision 3) price indexes for all countries and United States, annual
228-0053	Merchandise import and export price and volume indexes by sector and sub-sector, customs and balance of payments basis, for all countries, monthly
228-0054	Merchandise import and export price and volume indexes by sector and sub-sector, customs and balance of payments basis, for all countries, quarterly
228-0055	Merchandise import and export price and volume indexes by sector and sub-sector, customs and balance of payments basis, for all countries, annual
228-0056	Merchandise imports and exports by sector, balance of payments basis, for all countries, seasonally adjusted, Fisher formula, monthly
228-0057	Merchandise imports and exports by sector, balance of payments basis, for all countries, seasonally adjusted, Fisher formula, quarterly

---

### **Selected surveys from Statistics Canada**

---

2201	Canadian International Merchandise Trade (Customs Basis)
2202	Canadian International Merchandise Trade (Balance of Payments Basis)
2203	International Trade Price Indexes

---

### **Selected summary tables from Statistics Canada**

---

- *Canada: Economic and financial data*
- *Imports, exports and trade balance of goods on a balance-of-payments basis, by country or country grouping*
- *Exports of goods on a balance-of-payments basis*

- *Imports of goods on a balance-of-payments basis*
- *Merchandise trade of Canada (monthly)*
- *Economic indicators, by province and territory (monthly and quarterly)*
- *Latest statistics (monthly)*

# Statistical tables

---

---



**Table 1-1**  
**Merchandise trade of Canada, balance of payments basis, seasonally adjusted — Current dollars**

	Exports	Imports	Trade balance	Period to period change		
				Exports	Imports	Balance
				millions of dollars	percent	millions of dollars
2008	488,754	443,777	44,977	0.0	0.0	0
2009	369,343	374,081	-4,738	-24.4	-15.7	-49,715
2010	404,834	413,833	-8,999	9.6	10.6	-4,261
2011	458,191	455,874	2,318	13.2	10.2	11,316
<b>2010</b>						
First quarter	98,870	98,583	287	4.0	3.6	318
Second quarter	100,071	103,014	-2,942	1.2	4.5	-3,229
Third quarter	99,592	106,312	-6,720	-0.5	3.2	-3,778
Fourth quarter	106,301	105,924	377	6.7	-0.4	7,097
<b>2011</b>						
First quarter	110,901	109,704	1,198	4.3	3.6	821
Second quarter	110,447	113,791	-3,343	-0.4	3.7	-4,541
Third quarter	115,287	114,545	742	4.4	0.7	4,086
Fourth quarter	121,555	117,835	3,721	5.4	2.9	2,978
<b>2012</b>						
First quarter	120,505	118,396	2,109	-0.9	0.5	-1,612
Second quarter	117,327	120,808	-3,480	-2.6	2.0	-5,590
<b>2011</b>						
January	38,129	36,557	1,572	2.0	3.1	-323
February	35,508	35,632	-125	-6.9	-2.5	-1,697
March	37,264	37,514	-250	4.9	5.3	-125
April	36,533	37,364	-830	-2.0	-0.4	-581
May	37,290	38,325	-1,034	2.1	2.6	-204
June	36,624	38,102	-1,478	-1.8	-0.6	-444
July	37,560	37,604	-44	2.6	-1.3	1,435
August	38,075	38,544	-469	1.4	2.5	-425
September	39,652	38,397	1,255	4.1	-0.4	1,724
October	38,894	39,404	-510	-1.9	2.6	-1,765
November	40,246	39,204	1,042	3.5	-0.5	1,551
December	42,415	39,226	3,189	5.4	0.1	2,147
<b>2012</b>						
January	41,491	39,352	2,139	-2.2	0.3	-1,050
February	39,370	39,497	-126	-5.1	0.4	-2,266
March	39,644	39,547	96	0.7	0.1	223
April	39,122	39,579	-457	-1.3	0.1	-553
May	39,149	40,247	-1,098	0.1	1.7	-641
June	39,056	40,981	-1,925	-0.2	1.8	-827
July	37,739	40,075	-2,335	-3.4	-2.2	-410

**Note(s):** Because of rounding, monthly data may not add up to quarterly data and quarterly data may not add up to annual data.

**Table 1-2**  
**Merchandise trade of Canada, balance of payments basis, seasonally adjusted — Constant dollars, 2002**

	Exports	Imports	Trade balance	Period to period change	
				Exports	Imports
	millions of dollars			percent	
2008	412,713	486,735	-74,022	0.0	0.0
2009	346,916	407,679	-60,763	-15.9	-16.2
2010	374,143	470,401	-96,259	7.8	15.4
2011	389,503	509,403	-119,900	4.1	8.3
<b>2010</b>					
First quarter	90,749	111,192	-20,442	1.8	3.7
Second quarter	94,368	117,650	-23,282	4.0	5.8
Third quarter	94,074	120,900	-26,826	-0.3	2.8
Fourth quarter	94,951	120,659	-25,708	0.9	-0.2
<b>2011</b>					
First quarter	96,296	124,664	-28,368	1.4	3.3
Second quarter	94,834	128,760	-33,926	-1.5	3.3
Third quarter	98,147	127,883	-29,736	3.5	-0.7
Fourth quarter	100,226	128,096	-27,870	2.1	0.2
<b>2012</b>					
First quarter	101,494	129,900	-28,406	1.3	1.4
Second quarter	102,568	132,596	-30,028	1.1	2.1
<b>2011</b>					
January	33,076	41,770	-8,694	1.5	3.7
February	31,038	40,627	-9,589	-6.2	-2.7
March	32,182	42,267	-10,084	3.7	4.0
April	31,450	42,837	-11,387	-2.3	1.3
May	32,059	42,656	-10,597	1.9	-0.4
June	31,325	43,267	-11,941	-2.3	1.4
July	32,745	42,904	-10,158	4.5	-0.8
August	32,646	43,125	-10,479	-0.3	0.5
September	32,756	41,854	-9,098	0.3	-2.9
October	32,523	42,579	-10,056	-0.7	1.7
November	32,931	42,543	-9,612	1.3	-0.1
December	34,773	42,975	-8,202	5.6	1.0
<b>2012</b>					
January	34,525	43,168	-8,643	-0.7	0.4
February	33,222	42,902	-9,680	-3.8	-0.6
March	33,747	43,830	-10,083	1.6	2.2
April	33,986	44,018	-10,031	0.7	0.4
May	34,155	43,771	-9,616	0.5	-0.6
June	34,426	44,807	-10,381	0.8	2.4
July	33,738	44,250	-10,512	-2.0	-1.2

**Note(s):** Because of rounding, monthly data may not add up to quarterly data and quarterly data may not add up to annual data.

**Table 1-3**  
**Merchandise trade of Canada, balance of payments basis, seasonally adjusted — Price indices (Laspeyres)**

	2002=100			Period to period change		
	Exports	Imports	Terms of trade	Exports	Imports	Terms of trade
	price indices (Laspeyres)			percent		
2008	116.2	97.2	119.6	0.0	0.0	0.0
2009	105.2	96.2	109.3	-9.5	-1.0	-8.5
2010	106.8	94.1	113.4	1.5	-2.2	3.7
2011	113.9	98.2	116.0	6.7	4.4	2.3
<b>2010</b>						
First quarter	107.1	93.7	114.2	1.7	0.7	0.9
Second quarter	105.7	93.6	112.9	-1.3	-0.1	-1.2
Third quarter	106.1	94.5	112.3	0.4	0.9	-0.5
Fourth quarter	108.2	94.6	114.4	2.0	0.1	1.9
<b>2011</b>						
First quarter	111.6	96.0	116.2	3.1	1.5	1.6
Second quarter	113.5	97.7	116.3	1.8	1.7	0.1
Third quarter	114.5	98.5	116.2	0.9	0.9	0.0
Fourth quarter	115.9	100.6	115.2	1.2	2.1	-0.9
<b>2012</b>						
First quarter	113.9	100.3	113.6	-1.7	-0.3	-1.4
Second quarter	112.8	101.0	111.7	-0.9	0.7	-1.6
<b>2011</b>						
January	111.2	95.9	115.9	0.4	0.5	-0.2
February	111.6	96.9	115.1	0.4	1.1	-0.7
March	112.4	97.0	115.8	0.7	0.1	0.6
April	113.4	96.9	117.0	0.9	-0.1	1.0
May	113.6	97.2	116.9	0.2	0.3	-0.1
June	114.1	98.1	116.3	0.4	0.9	-0.5
July	112.5	96.3	116.8	-1.4	-1.9	0.5
August	113.3	98.2	115.3	0.7	2.0	-1.3
September	115.7	99.4	116.5	2.2	1.2	1.0
October	115.7	100.1	115.7	0.0	0.7	-0.7
November	116.7	101.1	115.4	0.9	1.1	-0.2
December	115.8	101.3	114.3	-0.8	0.1	-1.0
<b>2012</b>						
January	115.1	101.0	113.9	-0.6	-0.3	-0.4
February	113.7	100.2	113.5	-1.2	-0.8	-0.4
March	113.0	101.4	111.4	-0.6	1.2	-1.8
April	112.3	100.4	111.9	-0.6	-1.0	0.4
May	113.0	100.5	112.4	0.7	0.2	0.5
June	113.0	101.2	111.7	0.0	0.6	-0.7
July	111.1	99.7	111.4	-1.7	-1.5	-0.2

**Note(s):** Because of rounding, monthly data may not add up to quarterly data and quarterly data may not add up to annual data.

**Table 2-1**  
**Exports by commodity groupings, balance of payments basis, seasonally adjusted — Current dollars**

	June	July	Change	Year to date			July 2012/ July 2011		
	2012	2012		2011	2012	Change			
	millions of dollars		percent		millions of dollars		percent		
<b>Total</b>	<b>39,056</b>	<b>37,739</b>	<b>-1,317</b>	<b>-3.4</b>	<b>258,909</b>	<b>275,572</b>	<b>16,663</b>	<b>6.4</b>	<b>0.5</b>
<b>Agricultural and fishing products</b>	<b>3,482</b>	<b>3,370</b>	<b>-112</b>	<b>-3.2</b>	<b>22,899</b>	<b>24,933</b>	<b>2,034</b>	<b>8.9</b>	<b>-0.3</b>
Wheat	355	364	9	2.6	3,078	3,345	267	8.7	-25.8
Other agricultural and fishing products	3,127	3,006	-121	-3.9	19,821	21,588	1,767	8.9	4.0
Live animals	141	124	-17	-11.8	817	947	130	15.8	9.1
Fish and fish preparations	374	380	6	1.6	2,536	2,727	191	7.5	5.9
Barley	31	21	-10	-31.0	166	254	87	52.3	170.6
Wheat flour	6	5	0	-5.1	45	39	-6	-13.5	-11.6
Other cereals unmilled	63	61	-2	-3.7	529	366	-164	-30.9	135.7
Other cereal preparations	278	273	-5	-2.0	1,671	1,836	165	9.9	11.0
Meat and meat preparations	418	419	0	0.1	2,806	2,981	175	6.2	1.6
Alcoholic beverages	68	67	-1	-2.2	424	471	47	11.1	4.1
Other food, feed, beverages and tobacco	1,132	1,084	-48	-4.3	6,933	7,258	325	4.7	5.7
Rapeseed	376	327	-49	-13.0	2,467	3,031	564	22.9	-25.2
Other crude vegetable products	240	246	5	2.2	1,426	1,679	253	17.7	26.7
<b>Energy products</b>	<b>8,951</b>	<b>8,194</b>	<b>-758</b>	<b>-8.5</b>	<b>63,521</b>	<b>68,429</b>	<b>4,908</b>	<b>7.7</b>	<b>-4.8</b>
Crude petroleum	5,615	5,078	-537	-9.6	37,800	45,487	7,687	20.3	4.5
Natural gas	683	684	0	0.1	8,314	4,521	-3,793	-45.6	-43.4
Other energy products	2,653	2,432	-221	-8.3	17,407	18,420	1,014	5.8	-4.0
Coal and other bituminous substances	509	506	-3	-0.6	3,777	3,557	-220	-5.8	-25.4
Petroleum and coal products	1,992	1,779	-213	-10.7	12,450	13,860	1,410	11.3	7.4
Electricity	152	147	-5	-3.4	1,179	1,003	-176	-14.9	-26.3
<b>Forestry products</b>	<b>1,815</b>	<b>1,794</b>	<b>-20</b>	<b>-1.1</b>	<b>13,160</b>	<b>12,606</b>	<b>-553</b>	<b>-4.2</b>	<b>-1.7</b>
Lumber and sawmill products	760	811	51	6.7	4,907	5,238	331	6.8	20.6
Other crude wood products	67	74	8	11.6	515	524	8	1.6	8.8
Lumber	473	525	52	10.9	3,103	3,292	189	6.1	21.9
Other wood fabricated materials	220	212	-8	-3.8	1,288	1,422	134	10.4	21.9
Wood pulp and other wood products	502	437	-66	-13.0	3,949	3,478	-470	-11.9	-16.8
Newsprint and other paper and paperboard	552	546	-6	-1.1	4,304	3,890	-414	-9.6	-12.9
Newsprint paper	254	259	5	2.0	2,186	1,843	-343	-15.7	-17.0
Other paper and paperboard	298	287	-11	-3.7	2,118	2,047	-71	-3.4	-8.9
<b>Industrial goods and materials</b>	<b>9,278</b>	<b>9,470</b>	<b>192</b>	<b>2.1</b>	<b>66,001</b>	<b>65,928</b>	<b>-73</b>	<b>-0.1</b>	<b>-4.6</b>
Metal ores	1,336	1,504	168	12.6	9,451	9,642	191	2.0	-8.5
Iron ores, concentrates and scrap	544	574	30	5.5	3,270	3,746	476	14.6	18.6
Copper ores, concentrates and scrap	324	332	8	2.5	2,068	1,889	-179	-8.7	-34.3
Nickel ores, concentrates and scrap	151	215	64	42.6	1,868	1,484	-384	-20.5	-22.3
Zinc ores, concentrates and scrap	23	27	4	17.5	185	180	-5	-2.9	-8.5
Other ores, concentrates and scrap	294	356	62	21.1	2,059	2,343	283	13.8	2.3
Chemicals, plastics and fertilizers	3,059	3,029	-30	-1.0	20,711	20,505	-206	-1.0	2.4
Inorganic chemicals	427	420	-7	-1.6	3,499	2,939	-559	-16.0	-14.8
Organic chemicals	493	515	22	4.4	4,262	3,876	-386	-9.1	-16.6
Fertilizers and fertilizer materials	829	828	-1	-0.2	4,427	4,551	123	2.8	37.1
Synthetic rubber and plastics	967	947	-20	-2.0	6,581	6,873	292	4.4	-0.4
Other chemical products	343	319	-24	-6.9	1,942	2,266	324	16.7	9.0
Metals and alloys	3,286	3,260	-26	-0.8	24,852	23,942	-910	-3.7	-12.6
Primary iron and steel	52	49	-2	-4.4	509	353	-157	-30.8	-25.1
Steel bars, rods, plates, sheets	339	332	-7	-2.2	2,153	2,423	270	12.5	5.7
Other iron and steel and alloys	279	286	7	2.4	1,618	1,872	254	15.7	20.3
Aluminum including alloys	576	558	-18	-3.1	4,685	4,154	-532	-11.3	-22.2
Copper and alloys	236	173	-63	-26.6	1,461	1,410	-51	-3.5	-21.3
Nickel and alloys	262	240	-23	-8.6	2,047	1,665	-382	-18.7	-20.0
Precious metals and alloys	1,361	1,446	85	6.3	10,898	10,780	-117	-1.1	-13.7
Zinc and alloys	92	85	-7	-7.7	753	651	-102	-13.5	-12.6
Other non-ferrous metals and alloys	89	91	2	2.2	727	635	-93	-12.7	-11.9

Table 2-1 – continued

## Exports by commodity groupings, balance of payments basis, seasonally adjusted — Current dollars

	June	July	Change	Year to date			July 2012/ July 2011		
	2012	2012		2011	2012	Change			
	millions of dollars		percent		millions of dollars		percent		
Other industrial goods and materials	1,598	1,677	79	4.9	10,987	11,839	852	7.8	5.3
Asbestos unmanufactured	0	0	0	0.0	25	0	-25	-100.0	-100.0
Other crude animal products	112	124	11	10.1	585	766	180	30.8	54.1
Other crude non-metallic minerals	222	275	52	23.6	2,247	2,120	-126	-5.6	-17.4
Other crude materials, inedible	59	64	5	8.1	452	447	-5	-1.1	1.1
Metal fabricated basic products	413	407	-6	-1.4	2,541	2,843	302	11.9	7.8
Textile fabricated materials	190	187	-3	-1.7	1,283	1,321	39	3.0	0.4
Non-metallic mineral basic products	175	173	-2	-1.4	1,113	1,243	130	11.7	7.8
Other fabricated materials	425	447	22	5.1	2,742	3,099	357	13.0	15.1
<b>Machinery and equipment</b>	<b>7,120</b>	<b>6,727</b>	<b>-392</b>	<b>-5.5</b>	<b>45,048</b>	<b>48,170</b>	<b>3,122</b>	<b>6.9</b>	<b>-1.6</b>
Industrial and agricultural machinery	1,824	1,776	-48	-2.6	11,221	12,652	1,431	12.8	4.5
Industrial machinery	1,637	1,589	-48	-2.9	10,079	11,311	1,232	12.2	4.2
Agricultural machinery includ. tractors	187	187	0	0.0	1,142	1,341	200	17.5	6.8
Aircraft and other transportation equipment	1,713	1,443	-270	-15.7	10,148	10,872	724	7.1	-10.1
Aircraft, engines, parts	1,325	1,065	-260	-19.6	7,554	8,081	528	7.0	-12.9
Other transportation equipment	388	378	-10	-2.5	2,595	2,791	196	7.6	-1.2
Other machinery and equipment	3,582	3,508	-74	-2.1	23,679	24,646	967	4.1	-0.7
Television, telecommunication equipment	631	614	-17	-2.7	4,380	4,413	33	0.8	-10.7
Office machines and equipment	343	333	-10	-2.9	2,462	2,382	-80	-3.3	-3.7
Other equipment and tools	1,741	1,741	0	0.0	10,961	12,063	1,101	10.0	7.0
Other end products, inedible	868	820	-47	-5.5	5,875	5,788	-87	-1.5	-6.1
<b>Automotive products</b>	<b>6,263</b>	<b>5,934</b>	<b>-329</b>	<b>-5.3</b>	<b>33,579</b>	<b>40,035</b>	<b>6,456</b>	<b>19.2</b>	<b>21.4</b>
Passenger autos and chassis	4,315	3,990	-325	-7.5	21,996	26,845	4,849	22.0	26.2
Trucks and other motor vehicles	308	289	-19	-6.0	1,544	2,032	488	31.6	12.1
Motor vehicle parts	1,640	1,655	15	0.9	10,039	11,159	1,120	11.2	12.8
<b>Other consumer goods</b>	<b>1,384</b>	<b>1,421</b>	<b>37</b>	<b>2.6</b>	<b>9,268</b>	<b>9,631</b>	<b>363</b>	<b>3.9</b>	<b>5.4</b>
<b>Special transactions trade</b>	<b>299</b>	<b>306</b>	<b>8</b>	<b>2.6</b>	<b>2,201</b>	<b>2,301</b>	<b>100</b>	<b>4.5</b>	<b>7.9</b>
<b>Unallocated balance of payments adjustments</b>	<b>465</b>	<b>524</b>	<b>59</b>	<b>12.6</b>	<b>3,232</b>	<b>3,538</b>	<b>306</b>	<b>9.5</b>	<b>11.6</b>

**Table 2-2**  
**Exports by commodity groupings, balance of payments basis, seasonally adjusted — Constant dollars, 2002**

	June	July	Change	Year to date			July 2012/ July 2011		
	2012	2012		2011	2012	Change			
	millions of dollars		percent		millions of dollars		percent		
<b>Total</b>	<b>34,426</b>	<b>33,738</b>	<b>-687</b>	<b>-2.0</b>	<b>223,876</b>	<b>237,800</b>	<b>13,924</b>	<b>6.2</b>	<b>3.0</b>
<b>Agricultural and fishing products</b>	<b>2,991</b>	<b>2,931</b>	<b>-60</b>	<b>-2.0</b>	<b>20,965</b>	<b>21,786</b>	<b>821</b>	<b>3.9</b>	<b>-5.3</b>
Wheat	256	256	0	0.0	2,266	2,395	129	5.7	-29.5
Other agricultural and fishing products	2,735	2,675	-60	-2.2	18,699	19,391	692	3.7	-2.1
Live animals	124	112	-12	-9.4	796	864	68	8.6	2.6
Fish and fish preparations	447	472	25	5.5	2,883	3,313	430	14.9	13.8
Barley	28	15	-13	-46.3	126	199	73	58.3	175.6
Wheat flour	5	4	0	-6.5	38	34	-4	-11.4	-8.9
Other cereals unmilled	47	42	-5	-10.5	380	279	-101	-26.5	98.7
Other cereal preparations	219	218	-1	-0.4	1,500	1,485	-15	-1.0	0.2
Meat and meat preparations	389	392	4	1.0	2,833	2,892	59	2.1	-5.6
Alcoholic beverages	122	120	-2	-1.2	845	891	46	5.5	-5.6
Other food, feed, beverages and tobacco	931	901	-29	-3.2	6,411	6,089	-322	-5.0	-4.8
Rapeseed	244	213	-31	-12.6	1,767	2,079	312	17.6	-31.9
Other crude vegetable products	180	184	4	2.5	1,120	1,265	145	13.0	16.7
<b>Energy products</b>	<b>5,302</b>	<b>5,021</b>	<b>-281</b>	<b>-5.3</b>	<b>33,581</b>	<b>36,476</b>	<b>2,895</b>	<b>8.6</b>	<b>6.4</b>
Crude petroleum	2,469	2,314	-155	-6.3	15,660	17,840	2,180	13.9	7.9
Natural gas	1,354	1,309	-45	-3.3	9,461	8,828	-633	-6.7	-5.2
Other energy products	1,479	1,398	-81	-5.5	8,461	9,807	1,347	15.9	17.0
Coal and other bituminous substances	159	170	10	6.4	1,000	1,002	2	0.2	5.3
Petroleum and coal products	1,062	977	-85	-8.0	5,900	6,952	1,052	17.8	25.0
Electricity	257	251	-6	-2.4	1,561	1,853	292	18.7	-0.5
<b>Forestry products</b>	<b>2,281</b>	<b>2,353</b>	<b>72</b>	<b>3.1</b>	<b>16,117</b>	<b>16,069</b>	<b>-48</b>	<b>-0.3</b>	<b>2.7</b>
Lumber and sawmill products	1,010	1,165	154	15.3	6,527	7,035	508	7.8	25.2
Other crude wood products	83	94	11	13.0	626	628	2	0.4	22.1
Lumber	698	852	154	22.1	4,360	4,836	476	10.9	33.3
Other wood fabricated materials	229	219	-10	-4.6	1,541	1,571	30	1.9	1.9
Wood pulp and other wood products	666	580	-85	-12.8	4,622	4,705	83	1.8	-8.0
Newsprint and other paper and paperboard	605	608	3	0.4	4,968	4,329	-639	-12.9	-16.7
Newsprint paper	281	292	11	3.9	2,540	2,068	-472	-18.6	-20.0
Other paper and paperboard	324	316	-8	-2.5	2,429	2,261	-168	-6.9	-13.4
<b>Industrial goods and materials</b>	<b>5,597</b>	<b>5,828</b>	<b>231</b>	<b>4.1</b>	<b>39,565</b>	<b>40,354</b>	<b>789</b>	<b>2.0</b>	<b>0.8</b>
Metal ores	583	699	116	19.8	3,874	4,327	453	11.7	12.1
Iron ores, concentrates and scrap	195	203	8	4.1	1,195	1,269	74	6.2	29.5
Copper ores, concentrates and scrap	111	110	-1	-0.7	584	619	36	6.1	-21.3
Nickel ores, concentrates and scrap	88	135	47	53.7	742	807	65	8.8	13.9
Zinc ores, concentrates and scrap	14	16	3	19.9	95	106	10	10.7	9.4
Other ores, concentrates and scrap	176	234	59	33.4	1,257	1,525	268	21.3	21.4
Chemicals, plastics and fertilizers	1,962	2,009	47	2.4	13,581	13,534	-47	-0.3	4.5
Inorganic chemicals	188	186	-3	-1.4	1,381	1,307	-74	-5.4	-12.6
Organic chemicals	251	306	55	21.9	2,115	1,996	-120	-5.7	2.6
Fertilizers and fertilizer materials	304	298	-6	-2.0	1,758	1,641	-117	-6.7	26.7
Synthetic rubber and plastics	852	858	7	0.8	6,071	6,120	50	0.8	1.7
Other chemical products	368	362	-6	-1.6	2,255	2,470	215	9.5	8.6

Table 2-2 – continued

## Exports by commodity groupings, balance of payments basis, seasonally adjusted — Constant dollars, 2002

	June	July	Change	Year to date			July 2012/ July 2011		
	2012	2012		2011	2012	Change			
	millions of dollars		percent		millions of dollars		percent		
<b>Metals and alloys</b>	<b>1,871</b>	<b>1,881</b>	<b>9</b>	<b>0.5</b>	<b>13,214</b>	<b>13,186</b>	<b>-29</b>	<b>-0.2</b>	<b>-4.3</b>
Primary iron and steel	33	30	-3	-10.1	320	212	-108	-33.8	-26.3
Steel bars, rods, plates, sheets	261	263	3	1.1	1,651	1,851	200	12.1	13.9
Other iron and steel and alloys	217	225	8	3.8	1,279	1,433	154	12.1	19.6
Aluminum including alloys	648	650	1	0.2	4,471	4,517	46	1.0	-7.6
Copper and alloys	67	52	-15	-23.1	380	407	27	7.2	-12.9
Nickel and alloys	158	147	-11	-6.9	891	954	63	7.1	0.0
Precious metals and alloys	381	403	23	5.9	3,459	3,049	-410	-11.8	-17.0
Zinc and alloys	57	56	-2	-2.9	424	410	-14	-3.3	-1.9
Other non-ferrous metals and alloys	50	55	6	11.1	340	352	12	3.5	4.8
<b>Other industrial goods and materials</b>	<b>1,181</b>	<b>1,239</b>	<b>59</b>	<b>5.0</b>	<b>8,896</b>	<b>9,307</b>	<b>411</b>	<b>4.6</b>	<b>-2.3</b>
Asbestos unmanufactured	0	0	0	0.0	24	0	-24	-100.0	-100.0
Other crude animal products	76	96	19	25.6	516	637	121	23.5	35.5
Other crude non-metallic minerals	103	137	34	33.0	1,710	1,528	-182	-10.6	-43.4
Other crude materials, inedible	48	55	6	12.4	415	385	-29	-7.0	-5.9
Metal fabricated basic products	330	319	-11	-3.2	2,014	2,243	230	11.4	8.2
Textile fabricated materials	187	185	-1	-0.8	1,364	1,319	-44	-3.3	-5.7
Non-metallic mineral basic products	143	145	2	1.5	922	1,020	98	10.7	9.9
Other fabricated materials	293	303	9	3.2	1,932	2,174	241	12.5	11.7
<b>Machinery and equipment</b>	<b>7,749</b>	<b>7,378</b>	<b>-371</b>	<b>-4.8</b>	<b>51,161</b>	<b>53,126</b>	<b>1,966</b>	<b>3.8</b>	<b>-4.9</b>
Industrial and agricultural machinery	1,679	1,641	-37	-2.2	10,546	11,629	1,083	10.3	3.7
Industrial machinery	1,511	1,473	-38	-2.5	9,484	10,425	940	9.9	3.6
Agricultural machinery includ. tractors	167	168	1	0.5	1,061	1,204	143	13.5	4.2
Aircraft and other transportation equipment	2,039	1,716	-323	-15.8	12,674	13,119	446	3.5	-14.6
Aircraft, engines, parts	1,681	1,378	-304	-18.1	10,069	10,467	398	4.0	-15.9
Other transportation equipment	357	338	-19	-5.4	2,605	2,653	48	1.8	-8.9
Other machinery and equipment	4,032	4,021	-11	-0.3	27,941	28,378	437	1.6	-3.4
Television, telecommunication equipment	788	780	-7	-0.9	5,728	5,597	-131	-2.3	-12.6
Office machines and equipment	934	939	4	0.5	6,966	6,710	-256	-3.7	-7.8
Other equipment and tools	1,636	1,638	2	0.1	10,514	11,355	841	8.0	3.6
Other end products, inedible	674	664	-10	-1.5	4,734	4,717	-18	-0.4	-1.1
<b>Automotive products</b>	<b>8,275</b>	<b>7,884</b>	<b>-391</b>	<b>-4.7</b>	<b>46,065</b>	<b>53,512</b>	<b>7,447</b>	<b>16.2</b>	<b>16.0</b>
Passenger autos and chassis	6,135	5,743	-392	-6.4	32,983	38,887	5,904	17.9	18.8
Trucks and other motor vehicles	375	349	-26	-6.9	1,893	2,499	606	32.0	9.4
Motor vehicle parts	1,765	1,792	27	1.5	11,190	12,127	937	8.4	9.3
<b>Other consumer goods</b>	<b>1,310</b>	<b>1,345</b>	<b>34</b>	<b>2.6</b>	<b>8,902</b>	<b>9,139</b>	<b>238</b>	<b>2.7</b>	<b>4.4</b>
<b>Special transactions trade</b>	<b>260</b>	<b>259</b>	<b>-1</b>	<b>-0.6</b>	<b>1,852</b>	<b>1,941</b>	<b>89</b>	<b>4.8</b>	<b>12.7</b>
<b>Unallocated balance of payments adjustments</b>	<b>659</b>	<b>740</b>	<b>81</b>	<b>12.3</b>	<b>5,669</b>	<b>5,397</b>	<b>-272</b>	<b>-4.8</b>	<b>-6.4</b>

**Table 3-1**  
**Domestic exports to selected countries, customs basis, not seasonally adjusted — July**

	Agricultural and fishing products	Energy products	Forestry products	Industrial goods	Machinery and equipment	Automotive products	Consumer goods	Special transactions trade	<b>Total</b>
millions of dollars									
<b>United States</b>									
2011	1,532.6	8,967.3	1,078.6	5,152.3	3,440.8	3,040.0	701.4	228.4	<b>24,141.3</b>
2012	1,751.0	8,780.6	1,174.2	4,803.5	3,421.3	3,746.5	775.4	218.2	<b>24,670.7</b>
<b>Mexico</b>									
2011	134.6	6.4	12.9	106.9	42.9	41.9	24.1	1.5	<b>371.3</b>
2012	111.6	3.5	12.6	96.0	59.3	56.0	3.0	0.1	<b>342.0</b>
<b>Japan</b>									
2011	331.2	165.8	107.2	206.8	73.3	2.3	9.1	1.1	<b>896.8</b>
2012	336.8	200.7	98.0	164.5	43.6	4.0	18.0	3.0	<b>868.4</b>
<b>European Union</b>									
Germany									
2011	14.9	28.8	7.0	114.7	131.0	7.4	23.6	1.7	<b>329.2</b>
2012	14.7	1.1	8.2	130.5	119.4	12.9	16.1	1.7	<b>304.7</b>
France									
2011	26.9	0.2	5.6	55.5	94.9	2.8	19.0	2.4	<b>207.2</b>
2012	13.4	81.0	4.4	59.8	74.7	2.3	14.0	4.9	<b>254.5</b>
United Kingdom									
2011	28.9	32.3	19.9	1,289.7	117.4	4.6	14.7	3.8	<b>1,511.3</b>
2012	38.2	2.0	10.9	1,235.2	91.5	3.1	16.4	3.6	<b>1,400.8</b>
Italy									
2011	45.5	35.0	23.4	25.3	26.5	1.1	7.5	0.3	<b>164.5</b>
2012	14.4	11.9	15.7	21.8	33.6	0.7	12.3	0.1	<b>110.4</b>
Other European Union									
2011	112.3	135.1	26.6	469.2	200.2	16.8	46.5	4.0	<b>1,010.6</b>
2012	80.1	89.1	13.5	340.5	243.6	14.5	46.8	2.9	<b>831.0</b>
<b>Total</b>									
2011	228.5	231.4	82.5	1,954.3	570.0	32.6	111.2	12.2	<b>3,222.7</b>
2012	160.8	185.0	52.7	1,787.9	562.8	33.5	105.5	13.2	<b>2,901.5</b>
<b>Newly industrialized countries</b>									
South Korea									
2011	112.5	223.8	40.9	120.2	20.0	0.8	6.2	1.2	<b>525.6</b>
2012	28.5	168.5	35.0	100.4	27.1	10.8	8.1	4.9	<b>383.3</b>
Hong Kong									
2011	31.1	0.1	8.2	172.6	20.6	0.7	4.9	0.5	<b>238.8</b>
2012	26.4	0.0	4.1	96.0	28.2	1.0	6.6	0.3	<b>162.7</b>
Taiwan									
2011	20.1	44.0	22.1	47.6	9.6	0.2	2.3	0.2	<b>146.1</b>
2012	14.7	25.6	13.9	65.4	9.0	5.5	3.4	0.0	<b>137.6</b>
Singapore									
2011	3.1	0.1	1.8	10.3	24.1	0.5	4.3	0.4	<b>44.6</b>
2012	4.4	0.2	0.7	13.0	32.3	1.3	4.0	0.4	<b>56.2</b>
<b>Total</b>									
2011	166.8	268.0	73.1	350.6	74.3	2.2	17.7	2.3	<b>955.0</b>
2012	74.0	194.3	53.7	274.8	96.6	18.7	21.9	5.6	<b>739.8</b>
<b>Other countries</b>									
2011	759.0	152.7	484.1	1,319.3	838.7	58.7	96.3	20.4	<b>3,729.3</b>
2012	705.4	250.8	441.6	1,519.5	823.0	118.3	98.7	22.2	<b>3,979.6</b>
<b>Total</b>									
2011	<b>3,152.7</b>	<b>9,791.5</b>	<b>1,838.3</b>	<b>9,090.2</b>	<b>5,040.0</b>	<b>3,177.8</b>	<b>959.9</b>	<b>265.9</b>	<b>33,316.4</b>
2012	<b>3,139.6</b>	<b>9,614.8</b>	<b>1,832.9</b>	<b>8,646.2</b>	<b>5,006.5</b>	<b>3,976.9</b>	<b>1,022.6</b>	<b>262.4</b>	<b>33,502.0</b>



**Table 3-2**  
**Domestic exports to selected countries, customs basis, not seasonally adjusted — Year to date, January to July**

	Agricultural and fishing products	Energy products	Forestry products	Industrial goods	Machinery and equipment	Automotive products	Consumer goods	Special transactions trade	<b>Total</b>
millions of dollars									
<b>United States</b>									
2011	10,722.6	58,794.0	7,579.3	36,800.1	24,113.6	29,403.0	5,026.0	1,709.5	<b>174,148.1</b>
2012	12,076.3	63,348.6	7,619.2	35,763.1	25,986.1	35,250.4	5,383.8	1,730.9	<b>187,158.3</b>
<b>Mexico</b>									
2011	811.4	74.9	86.1	695.8	429.1	365.5	65.0	3.5	<b>2,531.3</b>
2012	921.1	29.9	81.5	705.6	447.2	424.6	51.7	2.0	<b>2,663.6</b>
<b>Japan</b>									
2011	2,234.3	1,122.5	801.5	1,285.8	370.9	27.8	55.8	11.6	<b>5,910.2</b>
2012	2,263.5	1,261.3	730.7	1,245.4	392.7	37.7	93.9	9.9	<b>6,035.1</b>
<b>European Union</b>									
<b>Germany</b>									
2011	80.5	105.1	44.9	669.0	887.3	21.9	126.9	13.8	<b>1,949.4</b>
2012	118.0	85.2	71.3	575.0	810.3	49.4	137.3	6.9	<b>1,853.5</b>
<b>France</b>									
2011	95.8	67.5	64.0	452.2	742.3	16.9	120.6	10.6	<b>1,569.9</b>
2012	111.4	396.4	54.2	413.7	761.9	24.7	113.3	10.8	<b>1,886.4</b>
<b>United Kingdom</b>									
2011	194.7	134.7	103.6	8,474.9	743.1	36.3	96.0	32.6	<b>9,816.0</b>
2012	182.2	221.3	88.7	9,135.3	862.1	28.5	102.1	28.7	<b>10,649.1</b>
<b>Italy</b>									
2011	184.3	152.2	168.0	230.2	251.2	4.7	50.7	1.5	<b>1,042.7</b>
2012	118.2	149.7	110.7	174.4	236.1	5.4	74.0	1.3	<b>869.8</b>
<b>Other European Union</b>									
2011	739.3	870.4	138.5	2,707.8	1,275.4	89.1	364.0	21.1	<b>6,205.7</b>
2012	540.6	1,067.8	138.5	2,668.8	1,289.6	94.7	292.1	18.2	<b>6,110.1</b>
<b>Total</b>									
2011	1,294.6	1,329.9	519.0	12,534.2	3,899.2	169.0	758.2	79.5	<b>20,583.7</b>
2012	1,070.4	1,920.4	463.3	12,967.2	3,960.0	202.7	718.9	66.0	<b>21,368.9</b>
<b>Newly industrialized countries</b>									
<b>South Korea</b>									
2011	689.9	1,027.3	314.6	693.3	194.3	13.5	44.4	4.1	<b>2,981.5</b>
2012	254.5	701.8	299.3	625.7	184.9	48.1	35.3	8.7	<b>2,158.4</b>
<b>Hong Kong</b>									
2011	221.1	0.4	67.8	1,006.8	219.9	4.3	45.2	2.9	<b>1,568.5</b>
2012	260.5	0.2	50.3	924.9	185.6	7.5	42.3	1.5	<b>1,472.7</b>
<b>Taiwan</b>									
2011	95.1	174.5	176.9	434.9	66.2	1.0	20.6	0.8	<b>970.1</b>
2012	90.0	154.4	132.0	345.4	70.1	7.0	22.7	0.4	<b>822.0</b>
<b>Singapore</b>									
2011	33.0	3.5	6.4	87.4	210.4	13.0	18.8	3.2	<b>375.8</b>
2012	33.5	1.5	8.8	128.5	207.1	25.9	22.9	2.3	<b>430.5</b>
<b>Total</b>									
2011	1,039.2	1,205.7	565.7	2,222.4	690.9	31.8	129.1	11.1	<b>5,895.9</b>
2012	638.5	858.0	490.4	2,024.5	647.8	88.5	123.3	12.8	<b>4,883.7</b>
<b>Other countries</b>									
2011	5,391.8	1,769.3	3,778.1	9,182.5	4,824.4	470.4	625.2	122.6	<b>26,164.4</b>
2012	6,476.1	2,241.6	3,374.0	9,745.9	5,946.6	736.6	638.7	123.5	<b>29,283.0</b>
<b>Total</b>									
2011	<b>21,493.9</b>	<b>64,296.3</b>	<b>13,329.8</b>	<b>62,720.9</b>	<b>34,328.4</b>	<b>30,467.5</b>	<b>6,659.2</b>	<b>1,937.9</b>	<b>235,234.0</b>
2012	<b>23,445.9</b>	<b>69,659.7</b>	<b>12,759.2</b>	<b>62,451.6</b>	<b>37,380.7</b>	<b>36,740.5</b>	<b>7,010.3</b>	<b>1,945.1</b>	<b>251,393.0</b>

**Table 4**  
**Domestic exports by country, customs basis, not seasonally adjusted**

	July		January to July		Change
	2011	2012	2011	2012	January to July 2012/ January to July 2011
	millions of dollars				percent
<b>North America</b>					
Greenland	1.2	1.5	6.3	5.6	-10.7
Mexico	371.3	342.0	2,531.3	2,663.6	5.2
Saint Pierre and Miquelon	1.4	1.4	10.3	10.1	-2.4
United States	24,141.3	24,670.7	174,148.1	187,158.3	7.5
<b>Total</b>	<b>24,515.1</b>	<b>25,015.6</b>	<b>176,696.0</b>	<b>189,837.6</b>	<b>7.4</b>
<b>Western Europe</b>					
Andorra	0.0	0.0	0.0	0.0	250.6
Austria	38.1	70.9	157.2	227.4	44.6
Belgium	274.6	120.1	1,295.7	1,231.5	-5.0
Denmark	29.6	21.0	134.1	139.8	4.2
Faeroe Islands	0.0	0.0	0.5	0.4	-26.7
Finland	100.7	63.2	307.8	256.9	-16.5
France	207.2	254.5	1,569.9	1,886.4	20.2
Germany	329.2	304.7	1,949.4	1,853.5	-4.9
Gibraltar	0.0	0.0	24.8	28.4	14.5
Greece	4.7	7.7	49.8	55.9	12.3
Iceland	2.7	2.0	33.3	33.0	-0.8
Italy	164.5	110.4	1,042.7	869.8	-16.6
Luxembourg	2.1	6.1	59.5	46.1	-22.5
Malta	0.7	51.4	3.4	56.8	...
Netherlands	408.5	291.3	2,598.1	2,610.6	0.5
Norway	187.8	214.6	1,588.9	1,375.8	-13.4
Portugal	4.3	5.4	116.3	53.5	-54.0
Republic of Ireland (Eire)	19.4	27.1	259.4	157.1	-39.4
Spain	39.6	79.1	480.4	499.4	4.0
Sweden	22.8	28.2	179.4	240.6	34.1
Switzerland	51.2	47.2	533.0	452.1	-15.2
United Kingdom	1,511.3	1,400.8	9,816.0	10,649.1	8.5
<b>Total</b>	<b>3,398.8</b>	<b>3,105.8</b>	<b>22,199.5</b>	<b>22,724.0</b>	<b>2.4</b>
<b>Other Europe</b>					
Albania	2.6	2.2	34.5	21.3	-38.2
Armenia	0.8	0.9	8.6	6.5	-24.5
Azerbaijan	0.5	2.5	5.6	22.2	294.8
Belarus	0.4	0.1	1.2	1.9	62.9
Bosnia and Herzegovina	0.4	0.0	3.3	0.9	-71.8
Bulgaria	2.1	3.4	136.4	101.9	-25.3
Croatia	1.6	0.7	9.4	8.9	-5.3
Czech Republic	5.8	9.3	54.2	53.6	-1.1
Estonia	1.7	2.0	67.4	11.1	-83.6
Georgia	2.1	1.1	11.9	11.4	-4.7
Hungary	11.1	4.2	56.7	44.0	-22.4
Kazakhstan	5.8	6.1	91.4	53.3	-41.6
Kyrgyzstan	0.7	1.6	2.2	11.6	418.0
Latvia	1.2	1.8	33.8	24.8	-26.7
Lithuania	7.1	6.6	32.2	46.9	45.5
Macedonia (Former Yugoslav Republic of Macedonia)	1.1	0.5	10.0	7.3	-27.4
Montenegro	0.1	0.0	0.8	0.4	-54.8
Poland	17.5	26.0	109.2	187.2	71.4
Republic of Moldova	0.0	0.1	0.7	0.5	-21.2
Romania	4.2	3.3	25.7	35.3	37.0
Russian Federation	105.6	91.6	704.5	965.8	37.1
Serbia	0.5	1.6	4.2	7.0	65.3
Slovakia	13.2	2.1	35.8	17.0	-52.3
Slovenia	0.9	0.4	6.9	5.7	-17.5
Tajikistan	0.5	0.0	1.6	1.3	-18.7
Turkmenistan	0.6	1.7	8.3	42.9	416.1
Ukraine	9.7	11.0	67.6	63.4	-6.2
Uzbekistan	0.0	3.3	4.4	5.8	32.5
<b>Total</b>	<b>197.6</b>	<b>184.3</b>	<b>1,528.6</b>	<b>1,760.0</b>	<b>15.1</b>
<b>Middle East</b>					
Bahrain	26.4	2.4	45.8	40.6	-11.3
Cyprus	0.8	0.3	6.2	6.9	12.0
Egypt	54.4	42.9	413.0	205.3	-50.3

Table 4 – continued

## Domestic exports by country, customs basis, not seasonally adjusted

	July		January to July		Change
	2011	2012	2011	2012	January to July 2012/ January to July 2011
	millions of dollars				percent
Eritrea	0.1	0.3	2.4	2.0	-17.3
Ethiopia	0.8	1.5	12.0	9.0	-25.2
Iran	5.7	2.3	47.1	60.0	27.4
Iraq	63.6	3.3	83.5	307.2	267.7
Israel	27.7	26.4	185.9	139.1	-25.2
Jordan	4.0	5.1	37.4	73.9	97.3
Kuwait	4.8	7.5	56.8	48.8	-14.2
Lebanon	25.3	5.7	49.6	76.6	54.5
Libya	0.1	7.2	36.9	56.0	52.1
Oman	7.0	6.1	46.9	69.2	47.6
Qatar	31.2	7.7	54.8	100.1	82.8
Saudi Arabia	83.6	121.0	434.0	826.9	90.5
Somalia	0.0	0.0	0.3	0.1	-82.5
Sudan	31.5	1.8	92.6	82.2	-11.2
Syria	2.2	0.6	38.8	9.2	-76.3
Turkey	57.7	43.0	668.3	494.0	-26.1
United Arab Emirates	152.6	69.4	703.0	896.3	27.5
Yemen	0.2	0.4	6.5	9.0	38.2
<b>Total</b>	<b>579.7</b>	<b>354.9</b>	<b>3,021.7</b>	<b>3,512.5</b>	<b>16.2</b>
<b>Other Africa</b>					
Algeria	26.4	5.4	110.9	174.9	57.7
Angola	36.5	8.3	97.3	65.1	-33.0
Antarctica	0.0	0.0	0.0	0.0	-72.0
Benin	0.6	2.3	7.0	9.8	40.4
Botswana	0.1	0.1	2.9	0.6	-80.4
Burkina Faso	2.5	1.9	11.8	22.5	90.3
Burundi	0.1	0.2	0.5	0.9	78.3
Cameroon	0.5	0.4	15.2	16.5	8.5
Cape Verde	0.1	0.1	1.3	0.4	-71.6
Central African Republic	0.0	0.0	0.2	0.0	-78.0
Chad	0.6	0.0	1.9	1.6	-12.1
Comoros	0.0	0.1	0.2	0.4	115.6
Congo	2.8	1.1	10.7	8.9	-16.6
Democratic Republic of the Congo	2.5	0.9	9.6	10.1	5.7
Djibouti	0.0	0.0	0.5	1.1	99.0
Equatorial Guinea	0.5	0.3	5.2	2.6	-50.0
French Southern Territories	0.0	0.0	0.0	0.0	-83.4
Gabon	0.7	1.5	10.1	13.0	28.6
Gambia	0.0	0.1	0.3	0.5	49.6
Ghana	15.6	8.3	136.5	114.5	-16.1
Guinea	0.5	6.4	15.1	18.2	20.5
Guinea-Bissau	0.0	0.0	0.0	0.0	-47.7
Ivory Coast	0.3	0.8	3.2	17.3	446.4
Kenya	5.1	7.3	31.4	44.3	41.0
Lesotho	0.0	0.0	0.1	0.0	-60.1
Liberia	0.5	1.0	8.3	6.8	-18.2
Madagascar	0.5	1.2	7.8	8.2	4.8
Malawi	0.6	0.5	3.0	1.7	-42.3
Mali	3.0	1.9	11.5	8.9	-22.4
Mauritania	0.7	2.5	7.7	11.0	43.6
Mauritius	0.2	0.4	3.3	2.5	-24.9
Morocco	3.4	19.5	218.4	243.4	11.5
Mozambique	0.4	1.9	6.2	27.0	337.3
Namibia	0.3	0.1	3.8	7.8	106.1
Niger	0.4	0.2	3.1	2.3	-26.5
Nigeria	12.6	13.1	104.0	180.4	73.4
Rwanda	0.1	0.3	0.5	0.8	44.5
Saint Helena	0.0	0.0	0.0	0.0	-100.0
Sao Tome and Principe	0.1	0.0	0.1	0.0	-85.8
Senegal	3.9	1.1	18.0	18.1	0.4
Seychelles	0.5	0.2	2.2	6.7	199.0
Sierra Leone	0.4	1.0	5.5	6.1	11.3
South Africa	37.2	41.6	317.3	325.0	2.4
Swaziland	0.1	0.0	0.4	0.7	93.9
Togo	0.2	1.6	8.1	11.3	38.2
Tunisia	8.1	2.0	26.1	92.5	254.1

Table 4 – continued

## Domestic exports by country, customs basis, not seasonally adjusted

	July		January to July		Change
	2011	2012	2011	2012	January to July 2012/ January to July 2011
	millions of dollars				percent
Uganda	0.6	0.6	5.0	3.4	-32.7
United Republic of Tanzania	4.0	3.5	25.1	29.3	17.1
Zambia	4.7	1.1	19.7	17.9	-9.3
Zimbabwe	1.5	0.0	3.5	6.6	85.4
<b>Total</b>	<b>179.4</b>	<b>140.4</b>	<b>1,280.7</b>	<b>1,541.4</b>	<b>20.4</b>
<b>Other Asia</b>					
Afghanistan	1.3	1.7	24.9	13.2	-47.0
Bangladesh	9.2	31.0	275.5	319.0	15.8
Bhutan	0.0	0.0	0.0	0.0	-55.4
British Indian Ocean Territory	0.0	0.0	0.0	0.0	-100.0
Brunei Darussalam	0.8	0.1	1.6	1.9	19.3
Cambodia	0.7	0.2	3.6	3.7	3.5
China	1,261.6	1,492.1	8,456.1	10,637.0	25.8
Hong Kong	238.8	162.7	1,568.5	1,472.7	-6.1
India	126.4	255.0	1,140.2	1,365.3	19.7
Indonesia	131.0	123.5	912.2	937.9	2.8
Japan	896.8	868.4	5,910.2	6,035.1	2.1
Laos	0.6	3.3	5.8	5.7	-1.0
Macao	0.2	0.2	1.5	2.3	50.6
Malaysia	46.3	49.9	521.0	465.4	-10.7
Maldives	0.3	0.4	1.7	2.4	37.4
Mongolia	8.8	4.8	53.9	36.3	-32.6
Myanmar	0.0	0.4	0.7	0.4	-49.9
Nepal	0.2	0.1	2.4	2.4	2.0
North Korea	0.2	0.0	2.0	1.6	-19.9
Pakistan	48.3	11.1	385.2	220.0	-42.9
Philippines	79.8	30.3	363.6	227.5	-37.4
Singapore	44.6	56.2	375.8	430.5	14.5
South Korea	525.6	383.3	2,981.5	2,158.4	-27.6
Sri Lanka	30.0	27.1	214.3	189.3	-11.6
Taiwan	146.1	137.6	970.1	822.0	-15.3
Thailand	60.8	50.4	510.4	386.9	-24.2
Timor-Leste	0.0	0.0	0.0	0.0	-56.0
Viet Nam	16.1	23.2	163.6	195.0	19.2
<b>Total</b>	<b>3,674.3</b>	<b>3,713.2</b>	<b>24,846.5</b>	<b>25,932.1</b>	<b>4.4</b>
<b>Oceania</b>					
American Samoa	0.2	0.0	0.8	0.5	-39.9
Australia	167.7	202.5	939.5	1,151.4	22.5
Christmas Island	0.1	0.0	0.1	0.2	46.6
Cocos (Keeling) Islands	0.0	0.1	0.0	0.2	...
Cook Islands	0.0	0.0	0.1	0.0	-88.7
Fiji	0.2	0.3	2.4	8.2	243.1
French Polynesia	0.8	0.4	5.7	4.7	-17.6
Guam	0.2	0.0	1.1	0.8	-26.1
Heard Island and McDonald Islands	0.0	0.0	0.0	0.0	...
Kiribati	0.0	0.0	0.1	0.0	-73.8
New Caledonia	0.5	0.2	3.4	20.1	484.6
New Zealand	31.6	42.2	174.3	207.6	19.1
Niue	0.0	0.0	0.0	0.0	-40.1
Norfolk Island	0.0	0.0	0.0	0.0	...
Papua New Guinea	4.1	2.0	28.4	16.2	-42.9
Pitcairn	0.0	0.0	0.0	0.1	92.2
Samoa	0.1	0.0	0.1	0.0	-28.8
Solomon Islands	0.1	0.0	0.3	0.1	-65.9
Tonga	0.1	0.0	0.2	0.0	-83.1
United States Minor Outlying Islands	1.1	1.1	6.6	7.8	17.2
Vanuatu	0.0	0.0	0.6	0.6	-0.6
Wallis and Futuna	0.0	0.0	0.0	0.0	20.2
<b>Total</b>	<b>206.7</b>	<b>249.0</b>	<b>1,163.7</b>	<b>1,418.5</b>	<b>21.9</b>
<b>South America</b>					
Argentina	18.4	29.7	318.2	184.1	-42.1
Bolivia	0.7	0.6	6.4	18.9	197.2
Brazil	194.6	223.9	1,486.8	1,542.7	3.8
Chile	38.9	76.4	399.0	440.7	10.4
Colombia	48.1	83.5	354.3	457.5	29.1

Table 4 – continued

## Domestic exports by country, customs basis, not seasonally adjusted

	July		January to July		Change
	2011	2012	2011	2012	January to July 2012/ January to July 2011
	millions of dollars				percent
Ecuador	14.1	40.1	166.0	136.6	-17.7
Falkland Islands (Malvinas)	0.0	0.0	0.1	0.0	-100.0
Guyana	1.6	0.7	19.4	14.4	-25.7
Paraguay	1.8	0.6	5.8	8.7	48.7
Peru	39.1	52.4	265.2	257.0	-3.1
Suriname	1.0	0.9	6.1	9.2	50.0
Uruguay	2.8	2.5	16.1	18.2	13.5
Venezuela	56.9	83.6	302.5	420.6	39.0
<b>Total</b>	<b>418.0</b>	<b>594.9</b>	<b>3,345.8</b>	<b>3,508.6</b>	<b>4.9</b>
<b>Central America Antilles</b>					
Anguilla	0.1	0.0	0.4	0.3	-14.0
Antigua and Barbuda	1.5	7.1	6.4	13.3	106.4
Aruba	0.8	0.9	2.9	5.4	84.8
Bahamas	2.3	1.3	36.8	121.9	231.3
Barbados	3.1	2.9	25.4	19.7	-22.4
Belize	0.5	0.6	2.9	4.8	65.5
Bermuda	2.3	2.0	62.7	13.5	-78.4
British Virgin Islands	0.1	0.1	47.6	1.2	-97.5
Cayman Islands	0.4	0.6	4.1	4.0	-2.7
Costa Rica	19.8	7.7	66.2	100.0	51.1
Cuba	18.2	28.2	219.4	194.2	-11.5
Dominica	0.5	0.3	1.9	2.3	18.7
Dominican Republic	7.8	8.8	90.9	68.8	-24.2
El Salvador	3.2	4.3	21.5	17.6	-18.1
Grenada	0.3	0.2	2.6	2.7	3.5
Guatemala	19.2	9.7	64.4	61.1	-5.2
Haiti	2.6	2.7	22.2	16.3	-26.3
Honduras	5.6	1.7	23.0	17.6	-23.2
Jamaica	8.2	7.9	58.0	73.2	26.1
Montserrat	0.0	0.1	0.1	0.2	35.8
Netherlands Antilles	1.8	27.2	92.6	132.2	42.7
Nicaragua	2.0	5.7	17.3	24.1	39.1
Panama	16.2	5.5	66.0	42.4	-35.7
Saint Kitts and Nevis	0.2	0.3	2.9	2.8	-2.8
Saint Lucia	0.6	1.1	5.2	6.1	16.0
Saint Vincent and the Grenadines	0.3	0.6	4.0	4.0	-0.5
Trinidad and Tobago	29.3	16.2	202.9	207.5	2.3
Turks and Caicos Islands	0.1	0.2	1.2	1.1	-10.1
<b>Total</b>	<b>146.7</b>	<b>143.9</b>	<b>1,151.6</b>	<b>1,158.3</b>	<b>0.6</b>
<b>All countries</b>	<b>33,316.4</b>	<b>33,502.0</b>	<b>235,234.0</b>	<b>251,393.0</b>	<b>6.9</b>

**Table 5-1**  
**Exports by province of origin, customs basis, not seasonally adjusted — July**

	Agricultural and fishing products	Energy products	Forestry products	Industrial goods	Machinery and equipment	Automotive products	Consumer goods	Special transactions trade	<b>Total</b>
millions of dollars									
<b>Domestic exports</b>									
Newfoundland and Labrador									
2011	111.1	522.2	19.0	248.6	4.1	0.2	0.2	2.6	<b>908.0</b>
2012	109.1	482.1	8.3	371.3	3.4	0.4	0.1	2.4	<b>977.0</b>
Prince Edward Island									
2011	40.8	0.0	0.0	1.8	5.1	0.0	5.3	5.9	<b>58.9</b>
2012	50.6	0.0	0.0	4.0	17.0	0.2	2.4	7.1	<b>81.4</b>
Nova Scotia									
2011	111.5	19.3	65.3	44.9	112.0	5.1	4.7	3.2	<b>365.9</b>
2012	108.4	5.9	24.8	44.8	111.6	5.3	5.2	2.8	<b>308.7</b>
New Brunswick									
2011	126.2	998.3	98.8	78.8	25.4	3.6	13.7	3.3	<b>1,348.1</b>
2012	140.2	799.0	119.3	92.2	30.4	3.1	20.6	2.7	<b>1,207.5</b>
Quebec									
2011	365.3	299.5	478.6	1,930.7	1,651.4	168.1	323.9	75.9	<b>5,293.4</b>
2012	431.8	271.0	474.5	1,742.1	1,423.6	168.0	304.3	63.5	<b>4,878.9</b>
Ontario									
2011	672.3	262.4	239.4	3,923.8	2,411.0	2,864.0	528.8	107.5	<b>11,009.1</b>
2012	758.1	316.7	215.5	3,814.7	2,509.5	3,646.3	596.7	108.3	<b>11,965.8</b>
Manitoba									
2011	286.8	67.5	19.9	278.9	172.8	37.6	33.7	21.2	<b>918.5</b>
2012	291.4	109.2	22.1	225.0	164.2	48.1	36.2	23.3	<b>919.5</b>
Saskatchewan									
2011	684.7	926.9	18.0	664.9	51.5	5.7	0.4	1.9	<b>2,354.0</b>
2012	539.3	1,030.3	18.1	844.6	73.4	4.9	0.3	1.8	<b>2,512.8</b>
Alberta									
2011	547.1	5,811.0	151.5	1,033.8	345.6	75.3	7.4	23.7	<b>7,995.4</b>
2012	491.9	5,942.5	158.7	953.2	341.9	70.0	7.8	26.9	<b>7,992.9</b>
British Columbia									
2011	206.7	884.4	747.8	613.2	260.3	18.2	42.0	20.7	<b>2,793.3</b>
2012	218.6	658.2	791.6	533.6	330.9	30.4	48.9	23.6	<b>2,636.0</b>
Yukon, Northwest Territories and Nunavut <sup>1</sup>									
2011	0.1	0.0	0.0	270.8	0.7	0.1	0.0	0.0	<b>271.8</b>
2012	0.2	0.0	0.0	20.7	0.6	0.0	0.0	0.0	<b>21.5</b>
<b>Total</b>									
2011	<b>3,152.7</b>	<b>9,791.5</b>	<b>1,838.3</b>	<b>9,090.2</b>	<b>5,040.0</b>	<b>3,177.8</b>	<b>959.9</b>	<b>265.9</b>	<b>33,316.4</b>
2012	<b>3,139.6</b>	<b>9,614.8</b>	<b>1,832.9</b>	<b>8,646.2</b>	<b>5,006.5</b>	<b>3,976.9</b>	<b>1,022.6</b>	<b>262.4</b>	<b>33,502.0</b>
<b>Re-exports</b>									
2011	<b>32.5</b>	<b>1.6</b>	<b>6.7</b>	<b>329.2</b>	<b>965.7</b>	<b>91.6</b>	<b>169.0</b>	<b>598.6</b>	<b>2,194.9</b>
2012	<b>32.2</b>	<b>1.1</b>	<b>5.3</b>	<b>261.9</b>	<b>913.2</b>	<b>95.4</b>	<b>172.8</b>	<b>727.6</b>	<b>2,209.5</b>
<b>Total exports</b>									
2011	<b>3,185.2</b>	<b>9,793.1</b>	<b>1,845.0</b>	<b>9,419.4</b>	<b>6,005.7</b>	<b>3,269.5</b>	<b>1,129.0</b>	<b>864.5</b>	<b>35,511.3</b>
2012	<b>3,171.8</b>	<b>9,616.0</b>	<b>1,838.2</b>	<b>8,908.0</b>	<b>5,919.7</b>	<b>4,072.4</b>	<b>1,195.4</b>	<b>990.0</b>	<b>35,711.5</b>

1. Data for the current month do not include some exports from the Harmonized System, Chapter 71, "Natural/cultured pearls, precious stones and metals, coins, etc." for reasons relating to timing.

**Table 5-2**  
**Exports by province of origin, customs basis, not seasonally adjusted — Year to date, January to July**

	Agricultural and fishing products	Energy products	Forestry products	Industrial goods	Machinery and equipment	Automotive products	Consumer goods	Special transactions trade	Total
millions of dollars									
<b>Domestic exports</b>									
Newfoundland and Labrador									
2011	599.1	4,473.0	92.2	1,258.5	24.5	1.4	0.9	14.9	<b>6,464.6</b>
2012	545.2	4,769.4	77.1	1,552.6	280.8	1.3	1.2	14.0	<b>7,241.5</b>
Prince Edward Island									
2011	250.4	0.0	0.2	12.8	40.7	1.6	21.9	46.8	<b>374.4</b>
2012	287.4	0.0	0.1	21.3	110.4	2.9	20.2	65.0	<b>507.3</b>
Nova Scotia									
2011	648.7	309.2	472.1	325.5	795.8	35.7	33.9	21.9	<b>2,643.0</b>
2012	674.5	30.1	211.7	332.7	811.2	42.5	35.4	21.2	<b>2,159.3</b>
New Brunswick									
2011	771.7	6,446.3	735.1	711.3	187.6	26.3	81.6	22.5	<b>8,982.4</b>
2012	912.0	6,108.8	749.5	675.7	204.5	26.7	104.2	20.9	<b>8,802.4</b>
Quebec									
2011	2,809.2	2,001.7	3,394.2	12,727.1	10,163.2	1,069.2	1,993.6	496.8	<b>34,655.0</b>
2012	3,016.0	2,137.5	3,146.9	12,783.3	11,070.2	1,293.0	2,065.1	472.6	<b>35,984.6</b>
Ontario									
2011	4,811.6	1,694.2	1,663.5	28,466.1	17,240.0	28,382.7	3,846.7	871.6	<b>86,976.6</b>
2012	5,168.8	2,100.1	1,469.8	28,736.7	18,267.2	34,175.0	4,118.4	854.1	<b>94,890.0</b>
Manitoba									
2011	2,078.1	563.2	142.1	1,759.6	1,258.2	268.1	294.1	150.2	<b>6,513.6</b>
2012	2,354.4	678.2	157.9	1,626.9	1,405.5	359.0	251.8	163.3	<b>6,997.0</b>
Saskatchewan									
2011	4,465.2	5,611.4	140.0	5,503.6	371.2	36.3	7.0	24.7	<b>16,159.4</b>
2012	4,869.6	7,310.2	209.9	5,628.9	472.3	30.0	9.2	23.5	<b>18,553.5</b>
Alberta									
2011	3,818.7	37,892.3	1,134.9	6,757.3	2,410.9	490.7	69.9	145.7	<b>52,720.4</b>
2012	4,304.4	41,528.0	1,175.6	6,324.1	2,632.4	599.5	70.1	174.6	<b>56,808.7</b>
British Columbia									
2011	1,240.2	5,304.9	5,555.3	3,856.3	1,831.0	155.2	309.2	142.5	<b>18,394.6</b>
2012	1,311.9	4,997.4	5,560.4	3,657.8	2,119.4	210.1	334.1	135.9	<b>18,327.0</b>
Yukon, Northwest Territories and Nunavut <sup>1</sup>									
2011	1.0	0.0	0.1	1,342.7	5.3	0.4	0.3	0.2	<b>1,350.0</b>
2012	1.7	0.1	0.1	1,111.4	7.1	0.5	0.7	0.1	<b>1,121.6</b>
<b>Total</b>									
2011	<b>21,493.9</b>	<b>64,296.3</b>	<b>13,329.8</b>	<b>62,720.9</b>	<b>34,328.4</b>	<b>30,467.5</b>	<b>6,659.2</b>	<b>1,937.9</b>	<b>235,234.0</b>
2012	<b>23,445.9</b>	<b>69,659.7</b>	<b>12,759.2</b>	<b>62,451.6</b>	<b>37,380.7</b>	<b>36,740.5</b>	<b>7,010.3</b>	<b>1,945.1</b>	<b>251,393.0</b>
<b>Re-exports</b>									
2011	<b>324.7</b>	<b>73.9</b>	<b>45.8</b>	<b>2,507.1</b>	<b>6,132.6</b>	<b>673.6</b>	<b>1,515.5</b>	<b>4,478.8</b>	<b>15,752.0</b>
2012	<b>356.7</b>	<b>53.8</b>	<b>52.5</b>	<b>1,907.1</b>	<b>6,295.0</b>	<b>749.2</b>	<b>1,502.3</b>	<b>5,274.9</b>	<b>16,191.5</b>
<b>Total exports</b>									
2011	<b>21,818.6</b>	<b>64,370.2</b>	<b>13,375.6</b>	<b>65,228.0</b>	<b>40,461.1</b>	<b>31,141.2</b>	<b>8,174.7</b>	<b>6,416.7</b>	<b>250,986.0</b>
2012	<b>23,802.5</b>	<b>69,713.5</b>	<b>12,811.7</b>	<b>64,358.7</b>	<b>43,675.7</b>	<b>37,489.7</b>	<b>8,512.6</b>	<b>7,220.1</b>	<b>267,584.5</b>

1. Data for the current month do not include some exports from the Harmonized System Chapter 71, "Natural/cultured pearls, precious stones and metals, coins, etc." for reasons relating to timing.

**Table 6-1**  
**Imports by commodity groupings, balance of payments basis, seasonally adjusted — Current dollars**

	June	July	Change	Year to date			July 2012/ July 2011		
	2012	2012		2011	2012	Change			
	millions of dollars		percent		millions of dollars		percent		
<b>Total</b>	<b>40,981</b>	<b>40,075</b>	<b>-907</b>	<b>-2.2</b>	<b>261,098</b>	<b>279,278</b>	<b>18,180</b>	<b>7.0</b>	<b>6.6</b>
<b>Agricultural and fishing products</b>	<b>2,944</b>	<b>2,963</b>	<b>19</b>	<b>0.7</b>	<b>18,683</b>	<b>19,936</b>	<b>1,253</b>	<b>6.7</b>	<b>9.3</b>
Fruits and vegetables	811	802	-9	-1.1	5,136	5,385	249	4.8	6.4
Fresh fruits and berries	290	280	-10	-3.4	1,779	1,907	128	7.2	4.2
Dried fruits, fruits and fruit preparations	145	136	-9	-6.1	892	953	62	6.9	3.9
Fresh vegetables	190	193	4	1.9	1,336	1,250	-86	-6.4	3.4
Other vegetables and vegetable preparations	187	193	6	3.1	1,129	1,275	145	12.9	15.5
Other agricultural and fishing products	2,133	2,161	29	1.3	13,547	14,551	1,004	7.4	10.4
Live animals	18	17	-1	-6.4	127	127	0	0.3	-3.1
Meat and meat preparations	248	243	-4	-1.8	1,439	1,631	192	13.3	1.8
Fish and marine animals	204	194	-10	-4.7	1,327	1,348	21	1.6	-0.8
Cocoa, coffee, tea and other food preparations	500	521	21	4.3	3,238	3,485	247	7.6	15.2
Dairy produce, eggs and honey	48	50	2	4.9	360	366	6	1.7	-3.9
Corn (maize) shelled	36	25	-10	-28.4	201	256	55	27.2	-39.1
Other cereals and cereal preparations	216	208	-8	-3.9	1,269	1,445	176	13.9	10.1
Sugar and sugar preparations	187	189	3	1.4	1,264	1,279	16	1.2	16.7
Fodder, feed, excluding unmilled cereal	150	137	-14	-9.0	829	921	92	11.0	14.6
Beverages	348	363	15	4.2	2,228	2,415	186	8.4	25.2
Tobacco	29	27	-2	-7.2	205	217	12	5.9	-22.8
Crude vegetable products	148	185	37	25.2	1,052	1,054	2	0.2	13.2
Cotton	1	1	0	-6.4	7	7	-1	-7.9	-6.4
<b>Energy products</b>	<b>4,382</b>	<b>3,844</b>	<b>-538</b>	<b>-12.3</b>	<b>30,071</b>	<b>30,709</b>	<b>638</b>	<b>2.1</b>	<b>-4.7</b>
Crude petroleum	2,184	2,208	24	1.1	16,126	17,473	1,347	8.4	5.3
Other energy products	2,198	1,636	-562	-25.6	13,946	13,237	-709	-5.1	-15.5
Coal and other related products	311	380	70	22.4	3,099	2,324	-776	-25.0	-22.7
Petroleum and coal products	1,888	1,256	-632	-33.5	10,846	10,913	67	0.6	-13.0
<b>Forestry products</b>	<b>239</b>	<b>243</b>	<b>4</b>	<b>1.6</b>	<b>1,431</b>	<b>1,573</b>	<b>143</b>	<b>10.0</b>	<b>18.3</b>
Forestry products	239	243	4	1.6	1,431	1,573	143	10.0	18.3
Crude wood products	38	37	-1	-2.3	209	231	22	10.5	36.4
Wood fabricated materials	201	206	5	2.3	1,221	1,342	121	9.9	15.6
<b>Industrial goods and materials</b>	<b>8,513</b>	<b>8,544</b>	<b>32</b>	<b>0.4</b>	<b>55,617</b>	<b>58,494</b>	<b>2,876</b>	<b>5.2</b>	<b>4.7</b>
Metals and metal ores	3,212	3,290	78	2.4	22,692	22,371	-322	-1.4	-3.7
Metals in ores, concentrates and scrap	614	600	-13	-2.1	4,880	4,385	-496	-10.2	-15.6
Steel bars, rods, plates, sheets	635	617	-17	-2.8	4,154	4,441	287	6.9	5.8
Other iron and steel products	511	501	-11	-2.1	2,869	3,278	409	14.3	21.0
Precious metals including alloys	1,076	1,137	61	5.7	8,114	7,532	-583	-7.2	-14.1
Other non-ferrous metals and alloys	377	435	58	15.4	2,674	2,735	60	2.3	12.8
Chemicals and plastics	2,840	2,738	-102	-3.6	17,809	19,265	1,456	8.2	6.5
Organic chemicals	592	605	13	2.3	3,900	4,231	331	8.5	21.5
Plastic materials	1,035	997	-38	-3.7	6,222	6,808	586	9.4	10.1
Other chemicals and related products	1,213	1,135	-78	-6.4	7,686	8,225	539	7.0	-2.7
Other industrial goods and materials	2,460	2,516	56	2.3	15,116	16,858	1,743	11.5	15.7
Crude animal products	27	29	3	10.2	171	227	56	33.1	125.6
Wool and man-made fibres	23	22	-1	-2.7	157	151	-6	-3.7	9.2
Crude non-metallic minerals	71	69	-2	-2.9	481	481	0	-0.1	-9.0
Textile fabricated materials	224	223	-1	-0.4	1,461	1,543	82	5.6	2.4
Metal fabricated basic products	1,076	1,084	8	0.7	6,297	7,302	1,005	16.0	18.0
Rubber fabricated materials	112	110	-1	-1.0	644	758	114	17.7	14.1
Oils, fats, animal and vegetable	99	103	4	4.3	697	705	8	1.2	4.1
Non-metallic minerals	351	368	17	4.9	2,142	2,444	302	14.1	21.8
Other fabricated materials	478	507	29	6.1	3,066	3,246	181	5.9	17.6



Table 6-1 – continued

## Imports by commodity groupings, balance of payments basis, seasonally adjusted — Current dollars

	June	July	Change		Year to date			July 2012/ July 2011	
	2012	2012			2011	2012	Change		
	millions of dollars		percent		millions of dollars		percent		
<b>Machinery and equipment</b>	<b>11,256</b>	<b>10,840</b>	<b>-415</b>	<b>-3.7</b>	<b>71,554</b>	<b>76,065</b>	<b>4,511</b>	<b>6.3</b>	<b>6.0</b>
Industrial and agricultural machinery	3,420	3,297	-123	-3.6	20,302	22,610	2,308	11.4	11.6
Engines, turbines and electric motors	365	393	28	7.8	2,456	2,695	239	9.7	20.7
Drilling mining machinery	235	200	-35	-14.8	1,888	1,436	-452	-23.9	15.8
Excavating machinery	405	397	-8	-2.0	1,914	2,513	598	31.2	39.3
Metal working machinery	198	197	-1	-0.5	1,251	1,291	41	3.3	7.3
Other industrial machinery	1,735	1,639	-96	-5.5	10,108	11,395	1,287	12.7	4.9
Agricultural machinery including tractors	481	470	-11	-2.3	2,685	3,280	595	22.1	10.8
Aircraft and other transportation equipment	1,299	1,259	-40	-3.0	9,245	9,282	37	0.4	-3.9
Aircraft, engines, parts	704	673	-31	-4.4	5,326	5,104	-222	-4.2	-5.9
Other transportation equipment and parts	595	586	-9	-1.4	3,919	4,178	259	6.6	-1.4
Office machines and equipment	1,101	1,029	-71	-6.5	7,966	7,528	-437	-5.5	-7.6
Other machinery and equipment	5,437	5,255	-182	-3.3	34,042	36,646	2,604	7.6	8.4
Other communication and related equipment	1,803	1,792	-11	-0.6	12,716	12,633	-83	-0.7	1.9
Other equipment and tools	3,633	3,462	-171	-4.7	21,325	24,012	2,687	12.6	12.1
<b>Automotive products</b>	<b>6,995</b>	<b>6,923</b>	<b>-72</b>	<b>-1.0</b>	<b>40,975</b>	<b>47,231</b>	<b>6,256</b>	<b>15.3</b>	<b>14.6</b>
Passenger autos and chassis	2,131	2,210	79	3.7	12,929	14,845	1,916	14.8	16.6
Trucks and other motor vehicles	1,851	1,814	-38	-2.0	10,786	12,363	1,577	14.6	9.0
Motor vehicle parts	3,013	2,900	-114	-3.8	17,260	20,022	2,763	16.0	16.9
<b>Other consumer goods</b>	<b>5,276</b>	<b>5,189</b>	<b>-87</b>	<b>-1.6</b>	<b>34,169</b>	<b>35,558</b>	<b>1,389</b>	<b>4.1</b>	<b>4.7</b>
Apparel and footwear	1,063	1,047	-16	-1.5	7,038	7,183	146	2.1	-0.4
Apparel and apparel accessories	876	863	-12	-1.4	5,847	5,960	113	1.9	-1.3
Footwear	187	183	-4	-2.0	1,191	1,224	33	2.8	3.8
Miscellaneous consumer goods	4,213	4,142	-71	-1.7	27,131	28,374	1,244	4.6	6.1
Television, radios, phonographs	146	124	-22	-15.2	900	964	64	7.2	1.7
Printed matter	278	272	-6	-2.2	1,959	1,910	-49	-2.5	3.8
Watches, sporting goods and toys	507	503	-3	-0.6	3,373	3,486	112	3.3	7.3
House furnishings	835	818	-17	-2.0	5,019	5,524	504	10.0	10.9
Photographic goods	204	194	-10	-5.0	1,560	1,404	-156	-10.0	-11.4
Miscellaneous end products	2,243	2,231	-12	-0.5	14,320	15,087	767	5.4	6.5
<b>Special transactions trade</b>	<b>511</b>	<b>685</b>	<b>174</b>	<b>34.2</b>	<b>3,053</b>	<b>3,779</b>	<b>726</b>	<b>23.8</b>	<b>47.8</b>
<b>Unallocated balance of payments adjustments</b>	<b>866</b>	<b>843</b>	<b>-24</b>	<b>-2.7</b>	<b>5,545</b>	<b>5,932</b>	<b>387</b>	<b>7.0</b>	<b>4.8</b>

**Table 6-2**  
**Imports by commodity groupings, balance of payments basis, seasonally adjusted — Constant dollars, 2002**

	June	July	Change	Year to date			July 2012/ July 2011		
	2012	2012		2011	2012	Change			
	millions of dollars		percent		millions of dollars		percent		
<b>Total</b>	<b>44,807</b>	<b>44,250</b>	<b>-557</b>	<b>-1.2</b>	<b>296,328</b>	<b>306,746</b>	<b>10,418</b>	<b>3.5</b>	<b>3.1</b>
<b>Agricultural and fishing products</b>	<b>2,741</b>	<b>2,833</b>	<b>92</b>	<b>3.3</b>	<b>18,677</b>	<b>19,299</b>	<b>622</b>	<b>3.3</b>	<b>4.4</b>
Fruits and vegetables	757	746	-11	-1.5	5,115	5,345	230	4.5	-0.6
Fresh fruits and berries	283	275	-7	-2.6	1,903	1,937	35	1.8	1.1
Dried fruits, fruits and fruit preparations	118	116	-2	-1.3	848	790	-58	-6.9	-4.9
Fresh vegetables	200	196	-3	-1.5	1,286	1,511	225	17.5	-2.6
Other vegetables and vegetable preparations	157	158	1	0.5	1,078	1,106	28	2.6	2.5
Other agricultural and fishing products	1,984	2,087	103	5.2	13,562	13,955	393	2.9	6.2
Live animals	16	15	-1	-3.4	124	113	-11	-8.9	-15.7
Meat and meat preparations	221	217	-4	-1.7	1,362	1,478	116	8.5	-4.4
Fish and marine animals	241	286	45	18.7	1,662	1,543	-119	-7.2	17.3
Cocoa, coffee, tea and other food preparations	516	560	45	8.7	3,667	3,815	148	4.0	2.4
Dairy produce, eggs and honey	44	46	2	4.4	364	345	-19	-5.3	-16.7
Corn (maize) shelled	21	14	-7	-33.9	124	146	22	18.0	-43.1
Other cereals and cereal preparations	184	174	-10	-5.5	996	1,217	221	22.2	14.8
Sugar and sugar preparations	169	177	8	4.8	1,222	1,199	-23	-1.9	17.7
Fodder, feed, excluding unmilled cereal	110	100	-10	-8.8	710	735	25	3.5	-1.1
Beverages	319	340	21	6.6	2,131	2,232	101	4.8	27.4
Tobacco	32	30	-2	-6.6	249	242	-7	-2.7	-31.1
Crude vegetable products	112	127	16	13.9	944	885	-59	-6.2	-5.5
Cotton	1	1	0	-5.1	9	6	-2	-27.2	-21.9
<b>Energy products</b>	<b>2,092</b>	<b>1,923</b>	<b>-168</b>	<b>-8.1</b>	<b>13,638</b>	<b>13,561</b>	<b>-77</b>	<b>-0.6</b>	<b>5.2</b>
Crude petroleum	820	870	51	6.2	5,725	5,992	268	4.7	15.7
Other energy products	1,272	1,053	-219	-17.2	7,913	7,568	-345	-4.4	-2.1
Coal and other related products	447	484	37	8.4	3,104	3,092	-12	-0.4	5.6
Petroleum and coal products	826	569	-256	-31.0	4,810	4,477	-333	-6.9	-7.8
<b>Forestry products</b>	<b>307</b>	<b>312</b>	<b>5</b>	<b>1.5</b>	<b>1,960</b>	<b>2,084</b>	<b>124</b>	<b>6.3</b>	<b>10.0</b>
Forestry products	307	312	5	1.5	1,960	2,084	124	6.3	10.0
Crude wood products	55	52	-3	-5.0	315	337	22	7.1	26.6
Wood fabricated materials	252	260	7	2.9	1,645	1,747	101	6.2	7.2
<b>Industrial goods and materials</b>	<b>7,196</b>	<b>7,264</b>	<b>68</b>	<b>0.9</b>	<b>48,007</b>	<b>49,578</b>	<b>1,571</b>	<b>3.3</b>	<b>5.3</b>
Metals and metal ores	2,156	2,237	81	3.7	14,208	14,801	593	4.2	6.9
Metals in ores, concentrates and scrap	308	306	-2	-0.8	2,378	2,222	-156	-6.6	-17.3
Steel bars, rods, plates, sheets	467	463	-5	-1.0	3,305	3,331	26	0.8	3.3
Other iron and steel products	329	335	7	2.0	1,971	2,154	183	9.3	16.3
Precious metals including alloys	687	700	13	1.9	4,041	4,418	377	9.3	11.1
Other non-ferrous metals and alloys	365	433	68	18.6	2,513	2,677	164	6.5	21.1
Chemicals and plastics	2,449	2,370	-79	-3.2	16,448	16,624	176	1.1	3.1
Organic chemicals	367	397	30	8.2	2,534	2,607	72	2.8	18.8
Plastic materials	1,007	983	-24	-2.4	6,409	6,652	243	3.8	6.9
Other chemicals and related products	1,076	990	-85	-7.9	7,505	7,365	-139	-1.9	-5.3
Other industrial goods and materials	2,591	2,657	66	2.6	17,351	18,152	802	4.6	5.9
Crude animal products	23	25	2	7.7	170	214	44	25.9	79.9
Wool and man-made fibres	27	28	1	2.3	189	179	-9	-4.9	16.2
Crude non-metallic minerals	54	54	0	-0.5	383	388	5	1.2	-9.4
Textile fabricated materials	281	286	5	1.6	1,966	1,961	-5	-0.3	-2.6
Metal fabricated basic products	1,073	1,091	18	1.6	6,846	7,424	578	8.4	9.5
Rubber fabricated materials	116	116	-1	-0.4	787	817	30	3.8	1.5
Oils, fats, animal and vegetable	90	91	1	1.1	637	618	-19	-2.9	-4.7
Non-metallic minerals	397	414	18	4.5	2,691	2,834	143	5.3	9.2
Other fabricated materials	529	552	23	4.4	3,683	3,718	35	1.0	3.4

Table 6-2 – continued

## Imports by commodity groupings, balance of payments basis, seasonally adjusted — Constant dollars, 2002

	June	July	Change		Year to date			July 2012/ July 2011	
	2012	2012			2011	2012	Change		
	millions of dollars		percent		millions of dollars			percent	
<b>Machinery and equipment</b>	<b>16,370</b>	<b>15,849</b>	<b>-521</b>	<b>-3.2</b>	<b>110,373</b>	<b>112,065</b>	<b>1,693</b>	<b>1.5</b>	<b>-0.9</b>
Industrial and agricultural machinery	3,947	3,834	-114	-2.9	25,949	26,713	764	2.9	2.0
Engines, turbines and electric motors	430	460	30	7.1	3,150	3,240	91	2.9	8.7
Drilling mining machinery	248	214	-33	-13.5	2,456	1,549	-907	-36.9	6.2
Excavating machinery	464	455	-9	-1.9	2,502	2,934	433	17.3	22.4
Metal working machinery	244	245	1	0.6	1,671	1,611	-59	-3.6	-0.5
Other industrial machinery	1,970	1,870	-100	-5.1	12,604	13,249	645	5.1	-4.0
Agricultural machinery including tractors	592	589	-3	-0.5	3,568	4,130	562	15.8	3.5
Aircraft and other transportation equipment	1,431	1,375	-56	-3.9	11,100	10,483	-617	-5.6	-12.9
Aircraft, engines, parts	841	806	-35	-4.2	6,744	6,201	-543	-8.1	-13.5
Other transportation equipment and parts	590	569	-21	-3.6	4,356	4,282	-74	-1.7	-11.9
Office machines and equipment	3,273	3,111	-162	-5.0	20,917	21,582	665	3.2	-0.1
Other machinery and equipment	7,718	7,529	-189	-2.5	52,407	53,287	880	1.7	-0.1
Other communication and related equipment	3,091	3,078	-13	-0.4	23,066	22,094	-971	-4.2	-4.5
Other equipment and tools	4,628	4,452	-176	-3.8	29,341	31,193	1,852	6.3	3.1
<b>Automotive products</b>	<b>8,467</b>	<b>8,452</b>	<b>-15</b>	<b>-0.2</b>	<b>51,476</b>	<b>57,999</b>	<b>6,523</b>	<b>12.7</b>	<b>10.9</b>
Passenger autos and chassis	2,479	2,546	67	2.7	15,005	17,289	2,283	15.2	15.7
Trucks and other motor vehicles	2,105	2,103	-2	-0.1	12,731	14,388	1,657	13.0	6.6
Motor vehicle parts	3,882	3,802	-80	-2.1	23,739	26,322	2,583	10.9	10.3
<b>Other consumer goods</b>	<b>6,479</b>	<b>6,362</b>	<b>-117</b>	<b>-1.8</b>	<b>45,731</b>	<b>44,464</b>	<b>-1,267</b>	<b>-2.8</b>	<b>-3.9</b>
Apparel and footwear	1,392	1,382	-10	-0.7	10,222	9,553	-669	-6.5	-8.8
Apparel and apparel accessories	1,152	1,146	-6	-0.5	8,510	7,941	-569	-6.7	-9.1
Footwear	240	236	-4	-1.5	1,711	1,611	-100	-5.8	-7.3
Miscellaneous consumer goods	5,088	4,980	-108	-2.1	35,509	34,911	-598	-1.7	-2.5
Television, radios, phonographs	242	211	-31	-13.0	1,572	1,641	68	4.3	-3.2
Printed matter	338	336	-2	-0.6	2,534	2,380	-153	-6.1	-3.4
Watches, sporting goods and toys	643	632	-11	-1.7	4,685	4,526	-159	-3.4	1.2
House furnishings	1,013	1,005	-8	-0.8	6,626	6,857	231	3.5	1.6
Photographic goods	461	432	-28	-6.1	3,330	3,123	-207	-6.2	-9.0
Miscellaneous end products	2,390	2,364	-26	-1.1	16,762	16,384	-378	-2.3	-3.7
<b>Special transactions trade</b>	<b>564</b>	<b>762</b>	<b>199</b>	<b>35.3</b>	<b>3,480</b>	<b>4,182</b>	<b>702</b>	<b>20.2</b>	<b>44.8</b>
<b>Unallocated balance of payments adjustments</b>	<b>591</b>	<b>493</b>	<b>-98</b>	<b>-16.6</b>	<b>2,987</b>	<b>3,514</b>	<b>528</b>	<b>17.7</b>	<b>19.2</b>

**Table 7-1**  
**Imports from selected countries, customs basis, not seasonally adjusted — July**

	Agricultural and fishing products	Energy products	Forestry products	Industrial goods	Machinery and equipment	Automotive products	Consumer goods	Special transactions trade	<b>Total</b>
millions of dollars									
<b>United States</b>									
2011	1,607.9	1,365.2	138.7	4,349.3	4,178.8	3,002.8	1,804.5	379.4	<b>16,826.6</b>
2012	1,773.2	1,506.1	165.8	4,547.2	4,570.2	3,468.3	1,979.3	627.8	<b>18,637.9</b>
<b>Mexico</b>									
2011	83.4	115.6	0.5	185.0	627.7	730.6	97.6	7.1	<b>1,847.6</b>
2012	87.1	76.6	0.6	200.6	691.3	712.2	110.7	4.5	<b>1,883.4</b>
<b>Japan</b>									
2011	6.2	25.6	0.1	115.6	457.1	352.2	86.1	0.3	<b>1,043.1</b>
2012	6.3	1.0	0.1	152.9	524.5	486.0	80.9	0.7	<b>1,252.4</b>
<b>European Union</b>									
Germany									
2011	27.2	1.8	0.8	195.9	408.6	257.2	149.8	0.4	<b>1,041.7</b>
2012	31.2	8.6	0.8	167.4	515.0	375.4	163.4	1.5	<b>1,263.4</b>
France									
2011	55.0	9.5	0.4	60.3	126.3	6.2	138.5	0.3	<b>396.5</b>
2012	80.9	1.7	0.4	60.4	128.2	9.1	118.0	1.5	<b>400.1</b>
United Kingdom									
2011	33.8	318.2	0.1	218.1	262.4	45.9	114.5	1.1	<b>994.1</b>
2012	38.0	231.0	0.0	186.3	195.5	58.7	110.1	3.3	<b>823.0</b>
Italy									
2011	47.8	13.7	1.3	84.6	138.0	14.6	109.3	0.1	<b>409.2</b>
2012	62.3	0.4	1.4	107.6	145.3	18.4	125.9	0.2	<b>461.5</b>
Other European Union									
2011	94.8	412.2	4.2	344.1	353.8	103.9	305.9	0.3	<b>1,619.2</b>
2012	105.1	345.9	4.7	286.5	406.8	98.1	326.4	6.6	<b>1,579.9</b>
<b>Total</b>									
2011	258.6	755.4	6.7	903.0	1,289.1	427.7	818.0	2.3	<b>4,460.8</b>
2012	317.5	587.5	7.3	808.2	1,390.9	559.6	843.7	13.1	<b>4,527.9</b>
<b>Newly industrialized countries</b>									
South Korea									
2011	5.6	84.5	0.0	110.6	336.8	141.9	18.0	0.1	<b>697.7</b>
2012	6.5	4.2	0.1	111.0	177.1	222.2	20.0	0.2	<b>541.2</b>
Hong Kong									
2011	4.0	0.0	0.0	1.8	8.6	0.2	11.9	0.0	<b>26.6</b>
2012	3.0	0.0	0.2	6.7	8.0	0.3	9.3	0.0	<b>27.5</b>
Taiwan									
2011	6.0	0.0	0.2	93.2	224.2	14.3	37.2	0.1	<b>375.2</b>
2012	7.0	0.3	0.6	93.4	219.4	18.3	40.2	0.1	<b>379.3</b>
Singapore									
2011	1.8	16.8	0.0	9.5	49.3	0.3	18.2	0.0	<b>95.9</b>
2012	2.2	0.0	0.0	17.4	52.1	0.7	27.1	0.5	<b>100.0</b>
<b>Total</b>									
2011	17.4	101.4	0.3	215.1	618.9	156.7	85.3	0.3	<b>1,195.4</b>
2012	18.6	4.6	0.8	228.5	456.6	241.4	96.5	0.8	<b>1,047.9</b>
<b>Other countries</b>									
2011	663.6	2,421.0	50.3	1,994.7	2,665.7	185.4	2,161.3	50.7	<b>10,192.7</b>
2012	730.1	1,972.2	61.6	2,245.0	2,940.6	248.9	2,320.4	22.2	<b>10,541.0</b>
<b>Total</b>									
2011	<b>2,637.4</b>	<b>4,784.2</b>	<b>196.6</b>	<b>7,762.8</b>	<b>9,837.2</b>	<b>4,855.4</b>	<b>5,052.9</b>	<b>440.0</b>	<b>35,566.5</b>
2012	<b>2,933.6</b>	<b>4,148.0</b>	<b>236.2</b>	<b>8,182.4</b>	<b>10,574.3</b>	<b>5,716.5</b>	<b>5,431.6</b>	<b>669.1</b>	<b>37,891.7</b>

**Table 7-2**  
**Imports from selected countries, customs basis, not seasonally adjusted — Year to date, January to July**

	Agricultural and fishing products	Energy products	Forestry products	Industrial goods	Machinery and equipment	Automotive products	Consumer goods	Special transactions trade	<b>Total</b>
millions of dollars									
<b>United States</b>									
2011	10,132.2	9,524.3	1,049.9	31,307.0	30,744.8	27,156.0	13,058.6	2,567.3	<b>125,540.1</b>
2012	11,238.1	9,950.6	1,166.4	33,960.9	34,078.9	30,463.8	13,875.3	3,161.2	<b>137,895.1</b>
<b>Mexico</b>									
2011	974.8	743.7	3.0	1,341.2	4,651.2	5,416.7	698.9	44.5	<b>13,874.1</b>
2012	991.7	596.4	3.1	1,563.4	4,914.6	5,924.7	732.6	38.0	<b>14,764.5</b>
<b>Japan</b>									
2011	38.3	29.3	0.5	680.5	2,988.0	2,606.6	614.4	3.8	<b>6,961.4</b>
2012	48.6	11.0	0.5	787.8	3,559.7	3,967.8	624.3	3.0	<b>9,002.8</b>
<b>European Union</b>									
Germany									
2011	169.7	9.5	6.7	1,366.7	2,538.5	2,064.8	1,056.6	6.9	<b>7,219.4</b>
2012	188.7	60.6	7.0	1,298.5	3,551.1	2,343.0	1,043.7	13.0	<b>8,505.7</b>
France									
2011	398.9	52.4	2.5	537.1	1,145.1	49.5	865.3	4.6	<b>3,055.5</b>
2012	434.0	64.8	3.7	428.0	1,067.0	56.3	829.8	17.8	<b>2,901.5</b>
United Kingdom									
2011	220.7	2,100.3	0.3	1,263.6	1,825.6	295.9	791.5	22.4	<b>6,520.3</b>
2012	228.1	1,178.3	0.4	1,172.1	1,499.6	420.0	749.5	29.4	<b>5,277.5</b>
Italy									
2011	371.3	87.6	8.9	647.7	923.3	149.1	671.5	3.0	<b>2,862.5</b>
2012	408.1	1.1	11.1	724.7	989.2	169.5	721.8	4.7	<b>3,030.2</b>
Other European Union									
2011	667.2	2,279.9	25.0	2,373.5	2,821.5	514.4	2,008.5	7.3	<b>10,697.3</b>
2012	695.1	1,923.2	29.0	2,130.9	2,903.3	602.2	1,984.8	17.5	<b>10,286.1</b>
<b>Total</b>									
2011	1,827.8	4,529.8	43.3	6,188.7	9,254.1	3,073.7	5,393.5	44.1	<b>30,355.0</b>
2012	1,954.0	3,228.1	51.2	5,754.3	10,010.2	3,590.9	5,329.7	82.5	<b>30,001.0</b>
<b>Newly industrialized countries</b>									
South Korea									
2011	35.5	193.4	0.1	709.9	1,712.6	1,102.4	116.8	0.8	<b>3,871.6</b>
2012	45.7	119.6	0.2	720.1	1,239.5	1,673.5	119.2	0.8	<b>3,918.6</b>
Hong Kong									
2011	17.8	0.0	0.1	41.5	58.1	1.4	76.2	0.3	<b>195.4</b>
2012	16.5	0.0	0.4	22.4	56.0	1.6	62.8	3.3	<b>163.1</b>
Taiwan									
2011	38.3	0.3	3.0	661.2	1,673.5	102.2	223.3	0.9	<b>2,702.8</b>
2012	44.1	6.8	3.0	679.7	1,544.8	119.6	250.1	1.0	<b>2,649.2</b>
Singapore									
2011	19.8	147.4	0.4	115.6	324.8	2.1	185.0	0.5	<b>795.6</b>
2012	13.9	0.1	0.0	160.9	375.7	3.1	161.9	2.9	<b>718.7</b>
<b>Total</b>									
2011	111.5	341.1	3.7	1,528.2	3,769.0	1,208.1	601.3	2.5	<b>7,565.4</b>
2012	120.3	126.5	3.6	1,583.1	3,216.1	1,797.8	594.1	8.0	<b>7,449.5</b>
<b>Other countries</b>									
2011	5,104.9	15,727.9	341.0	14,130.9	18,671.3	1,512.3	12,503.5	198.0	<b>68,189.9</b>
2012	5,168.1	16,587.7	364.5	14,585.9	19,332.9	1,757.4	13,237.0	242.5	<b>71,275.9</b>
<b>Total</b>									
2011	<b>18,194.6</b>	<b>30,896.0</b>	<b>1,441.3</b>	<b>55,176.6</b>	<b>70,078.5</b>	<b>40,973.6</b>	<b>32,870.4</b>	<b>2,860.2</b>	<b>252,491.3</b>
2012	<b>19,525.3</b>	<b>30,500.3</b>	<b>1,589.3</b>	<b>58,235.5</b>	<b>75,112.8</b>	<b>47,502.7</b>	<b>34,393.2</b>	<b>3,535.2</b>	<b>270,394.2</b>

**Table 8**  
**Imports by country, customs basis, not seasonally adjusted**

	July		January to July		Change
	2011	2012	2011	2012	January to July 2012/ January to July 2011
	millions of dollars				percent
<b>North America</b>					
Canada	268.3	246.8	2,104.9	1,931.0	-8.3
Greenland	0.4	0.0	0.4	0.1	-72.1
Mexico	1,847.6	1,883.4	13,874.1	14,764.5	6.4
Saint Pierre and Miquelon	0.5	0.4	1.5	2.2	47.7
United States	16,826.6	18,637.9	125,540.1	137,895.1	9.8
<b>Total</b>	<b>18,943.3</b>	<b>20,768.5</b>	<b>141,521.0</b>	<b>154,592.9</b>	<b>9.2</b>
<b>Western Europe</b>					
Andorra	0.1	0.1	0.2	0.5	86.2
Austria	97.8	105.6	719.3	785.5	9.2
Belgium	137.1	176.0	979.6	978.4	-0.1
Denmark	150.1	79.7	954.1	583.7	-38.8
Faeroe Islands	0.4	1.0	5.1	4.9	-2.9
Finland	164.2	72.2	1,043.0	532.1	-49.0
France	396.5	400.1	3,055.5	2,901.5	-5.0
Germany	1,041.7	1,263.4	7,219.4	8,505.7	17.8
Gibraltar	0.0	0.0	1.7	0.0	-98.0
Greece	11.7	12.7	101.6	86.8	-14.6
Iceland	3.3	5.0	16.3	35.1	114.8
Italy	409.2	461.5	2,862.5	3,030.2	5.9
Luxembourg	16.7	15.2	66.8	80.7	20.9
Malta	3.4	3.0	15.8	20.5	29.7
Netherlands	214.8	369.4	1,243.8	2,196.3	76.6
Norway	294.3	242.3	2,470.7	2,450.0	-0.8
Portugal	21.3	35.2	177.7	193.4	8.8
Republic of Ireland (Eire)	96.0	116.9	720.6	767.5	6.5
Spain	130.5	124.3	1,021.4	996.6	-2.4
Sweden	203.5	199.1	1,357.9	1,291.6	-4.9
Switzerland	233.3	299.5	1,721.8	2,051.5	19.1
United Kingdom	994.1	823.0	6,520.3	5,277.5	-19.1
<b>Total</b>	<b>4,619.9</b>	<b>4,805.2</b>	<b>32,275.0</b>	<b>32,770.0</b>	<b>1.5</b>
<b>Other Europe</b>					
Albania	0.6	0.3	3.8	2.5	-36.0
Armenia	4.8	6.3	28.0	43.9	56.9
Azerbaijan	0.0	63.5	310.2	725.6	133.9
Belarus	0.6	0.4	3.4	84.7	...
Bosnia and Herzegovina	1.6	1.7	6.2	7.5	21.8
Bulgaria	23.6	20.8	65.0	124.0	90.9
Croatia	2.3	1.9	16.0	15.7	-1.8
Czech Republic	28.0	32.3	211.2	251.7	19.2
Estonia	8.0	2.8	63.7	28.2	-55.7
Georgia	6.5	8.7	64.9	53.6	-17.4
Hungary	28.7	45.8	192.5	255.5	32.7
Kazakhstan	351.9	292.7	1,712.8	1,874.3	9.4
Kyrgyzstan	0.0	0.0	0.1	0.0	-54.5
Latvia	1.4	1.7	9.1	10.8	17.6
Lithuania	83.7	4.4	457.1	40.8	-91.1
Macedonia (Former Yugoslav Republic of Macedonia)	0.7	0.8	4.3	5.9	35.7
Montenegro	0.0	0.0	0.4	0.4	-1.1
Poland	150.7	95.1	941.9	673.0	-28.5
Republic of Moldova	0.3	0.4	1.1	2.1	90.6
Romania	19.2	17.7	157.1	134.1	-14.7
Russian Federation	80.3	162.8	768.7	676.2	-12.0
Serbia	1.7	1.8	9.6	8.1	-15.2
Slovakia	18.9	37.2	142.0	168.4	18.6
Slovenia	9.9	12.5	54.3	84.3	55.3
Tajikistan	0.0	0.0	0.0	0.0	83.5
Turkmenistan	0.1	0.1	0.2	0.1	-15.6
Ukraine	10.7	13.8	72.1	97.5	35.3
Uzbekistan	0.1	0.2	1.4	0.4	-70.3
<b>Total</b>	<b>834.3</b>	<b>825.7</b>	<b>5,297.1</b>	<b>5,369.4</b>	<b>1.4</b>

Table 8 – continued

## Imports by country, customs basis, not seasonally adjusted

	July		January to July		Change
	2011	2012	2011	2012	January to July 2012/ January to July 2011
	millions of dollars				percent
<b>Middle East</b>					
Bahrain	0.2	0.6	2.6	91.2	...
Cyprus	0.1	0.2	2.0	2.2	11.6
Egypt	37.6	39.1	239.7	276.9	15.5
Eritrea	56.7	35.7	141.9	237.2	67.1
Ethiopia	2.3	2.1	11.2	10.5	-6.3
Iran	3.1	3.7	20.7	29.0	40.3
Iraq	0.0	263.7	1,376.1	2,213.8	60.9
Israel	72.4	95.6	576.6	660.7	14.6
Jordan	1.4	2.5	11.0	11.6	4.8
Kuwait	0.0	0.0	56.3	27.5	-51.2
Lebanon	1.8	1.8	10.8	11.8	9.0
Libya	0.0	0.0	5.0	0.3	-93.6
Oman	1.7	2.2	10.7	20.8	95.0
Qatar	26.9	4.2	320.9	64.9	-79.8
Saudi Arabia	485.5	208.6	1,759.9	1,916.1	8.9
Somalia	0.0	0.0	0.0	0.0	-88.4
Sudan	7.9	8.5	75.0	69.6	-7.2
Syria	0.6	0.4	3.3	2.1	-37.5
Turkey	89.0	161.3	600.7	884.8	47.3
United Arab Emirates	3.3	8.6	832.5	145.8	-82.5
Yemen	0.0	0.0	0.0	0.0	19.2
<b>Total</b>	<b>790.6</b>	<b>838.8</b>	<b>6,056.9</b>	<b>6,676.7</b>	<b>10.2</b>
<b>Other Africa</b>					
Algeria	320.7	436.3	2,917.0	3,386.9	16.1
Angola	219.4	95.7	1,549.2	1,091.6	-29.5
Antarctica	0.0	0.0	0.5	0.1	-87.1
Benin	0.0	0.0	0.0	0.1	206.3
Botswana	0.0	0.0	0.1	0.2	74.1
Bouvet Island	0.0	0.0	0.0	0.0	147.8
Burkina Faso	0.0	2.5	2.2	4.9	127.6
Burundi	0.0	0.0	0.2	0.2	13.7
Cameroon	0.6	0.4	3.6	5.4	48.2
Cape Verde	0.0	0.0	0.1	0.0	-81.4
Central African Republic	0.0	0.1	0.1	0.6	723.2
Chad	0.0	0.0	0.2	115.1	...
Comoros	0.0	0.0	0.1	0.2	146.8
Congo	0.2	0.2	1.6	1.1	-28.5
Democratic Republic of the Congo	0.1	0.3	0.4	0.9	128.6
Djibouti	0.0	0.0	0.0	0.0	153.7
Equatorial Guinea	198.5	62.8	567.7	316.0	-44.3
French Southern Territories	0.0	0.0	0.0	0.0	905.9
Gabon	0.0	0.1	0.8	0.8	2.3
Gambia	0.0	0.0	0.1	0.0	-41.9
Ghana	5.9	0.6	44.6	11.6	-74.0
Guinea	3.0	9.4	29.0	45.1	55.5
Guinea-Bissau	0.0	0.0	0.0	0.0	656.6
Ivory Coast	105.6	110.9	330.4	359.7	8.9
Kenya	2.0	1.5	13.7	10.8	-21.4
Lesotho	0.7	0.6	7.4	6.0	-19.6
Liberia	0.6	4.0	19.1	20.9	9.5
Madagascar	4.6	12.6	26.3	50.7	93.1
Malawi	21.2	0.1	87.7	62.9	-28.2
Mali	0.1	0.1	0.4	0.4	-11.0
Mauritania	0.0	0.0	0.1	0.2	167.8
Mauritius	0.6	1.8	5.9	7.6	27.2
Morocco	3.9	10.1	50.7	65.0	28.3
Mozambique	0.2	0.1	2.5	3.5	38.0
Namibia	15.1	0.0	134.4	122.1	-9.2
Niger	0.2	0.0	0.9	0.3	-62.1
Nigeria	219.0	2.8	1,114.3	980.4	-12.0
Rwanda	0.0	0.0	0.3	1.0	196.4
Saint Helena	0.0	0.0	0.1	0.0	-77.8
Sao Tome and Principe	0.0	0.0	0.1	0.0	-84.4
Senegal	0.1	0.0	0.6	0.6	-4.9
Seychelles	0.0	0.1	0.4	0.9	107.6

Table 8 – continued

## Imports by country, customs basis, not seasonally adjusted

	July		January to July		Change
	2011	2012	2011	2012	January to July 2012/ January to July 2011
	millions of dollars				percent
Sierra Leone	0.1	0.1	1.4	0.5	-61.8
South Africa	68.6	96.2	550.9	429.4	-22.0
Swaziland	0.2	0.2	1.1	2.4	112.1
Togo	4.4	0.2	6.9	0.4	-94.1
Tunisia	4.4	5.0	32.6	32.5	-0.4
Uganda	0.3	0.1	2.3	2.5	9.1
United Republic of Tanzania	0.2	0.4	2.8	4.9	74.8
Western Sahara	0.0	0.0	0.0	0.0	...
Zambia	0.1	0.1	0.6	1.6	157.7
Zimbabwe	0.2	0.3	3.6	1.7	-54.0
<b>Total</b>	<b>1,200.8</b>	<b>855.9</b>	<b>7,515.1</b>	<b>7,149.8</b>	<b>-4.9</b>
<b>Other Asia</b>					
Afghanistan	0.1	0.1	1.0	1.5	41.4
Bangladesh	127.5	121.2	660.2	667.6	1.1
Bhutan	0.0	0.0	0.0	0.0	180.6
British Indian Ocean Territory	0.0	0.0	0.1	0.0	-68.5
Brunei Darussalam	0.3	0.1	5.2	3.3	-36.7
Cambodia	58.0	62.9	285.9	324.8	13.6
China	4,073.9	4,534.8	25,774.0	28,153.0	9.2
Hong Kong	26.6	27.5	195.4	163.1	-16.5
India	181.7	248.5	1,443.7	1,751.7	21.3
Indonesia	117.6	119.5	811.1	764.8	-5.7
Japan	1,043.1	1,252.4	6,961.4	9,002.8	29.3
Laos	0.7	0.9	3.8	5.6	50.2
Macao	0.7	0.5	4.6	11.2	145.6
Malaysia	163.9	189.0	1,203.6	1,280.4	6.4
Maldives	0.0	0.0	0.1	0.6	327.0
Mongolia	9.6	55.5	97.2	90.0	-7.4
Myanmar	0.0	0.0	0.1	0.0	-42.3
Nepal	1.4	1.3	7.5	6.0	-19.9
North Korea	0.0	0.0	0.0	0.1	54.5
Pakistan	23.1	27.6	144.0	157.6	9.5
Philippines	77.8	87.1	520.9	570.3	9.5
Singapore	95.9	100.0	795.6	718.7	-9.7
South Korea	697.7	541.2	3,871.6	3,918.6	1.2
Sri Lanka	13.0	20.7	85.1	109.8	29.0
Taiwan	375.2	379.3	2,702.8	2,649.2	-2.0
Thailand	238.0	227.7	1,523.9	1,499.1	-1.6
Timor-Leste	0.0	0.0	0.2	0.0	-92.1
Viet Nam	121.3	173.0	698.6	906.6	29.8
<b>Total</b>	<b>7,447.1</b>	<b>8,170.7</b>	<b>47,797.5</b>	<b>52,756.4</b>	<b>10.4</b>
<b>Oceania</b>					
American Samoa	0.0	0.0	0.1	0.4	300.6
Australia	112.0	157.1	978.4	1,216.3	24.3
Christmas Island	0.0	0.0	0.0	0.0	-46.3
Cocos (Keeling) Islands	0.0	0.0	0.0	0.0	373.9
Cook Islands	0.0	0.0	0.1	0.0	-49.9
Fiji	0.3	0.5	2.0	2.6	25.5
French Polynesia	0.0	0.0	0.4	0.5	15.6
Guam	0.0	0.0	0.1	0.0	-69.2
Heard Island and McDonald Islands	0.0	0.0	0.0	0.0	-96.1
Kiribati	0.0	0.0	0.0	0.1	233.5
Nauru	0.0	0.0	0.0	0.0	94.2
New Caledonia	0.1	0.0	0.1	0.1	-21.3
New Zealand	53.9	48.8	334.2	322.3	-3.6
Niue	0.0	0.0	0.0	0.0	-52.2
Norfolk Island	0.0	0.1	0.0	0.3	...
Papua New Guinea	0.0	0.1	0.4	1.0	152.9
Pitcairn	0.0	0.0	0.0	0.0	-63.3
Samoa	0.0	0.0	0.0	0.0	378.6
Solomon Islands	0.0	0.1	0.1	0.2	192.3
Tonga	0.0	0.0	0.0	0.0	64.9
United States Minor Outlying Islands	0.3	0.4	1.7	3.1	81.9
Vanuatu	0.0	0.0	0.0	0.1	77.6
Wallis and Futuna	0.0	0.0	0.0	0.0	-68.1
<b>Total</b>	<b>166.7</b>	<b>207.2</b>	<b>1,317.9</b>	<b>1,547.2</b>	<b>17.4</b>



Table 8 – continued

## Imports by country, customs basis, not seasonally adjusted

	July		January to July		Change
	2011	2012	2011	2012	January to July 2012/ January to July 2011
	millions of dollars				percent
<b>South America</b>					
Argentina	203.5	223.8	1,219.1	1,143.9	-6.2
Bolivia	23.6	21.1	139.6	142.8	2.2
Brazil	392.2	281.3	2,194.5	2,101.0	-4.3
Chile	136.7	130.1	1,205.4	1,053.0	-12.6
Colombia	47.2	99.1	426.2	425.5	-0.2
Ecuador	16.0	60.2	138.3	171.9	24.3
Falkland Islands (Malvinas)	0.0	0.0	0.3	0.4	30.2
Guyana	32.9	49.9	207.6	241.0	16.1
Paraguay	0.4	0.6	2.3	5.1	123.4
Peru	435.2	319.4	2,480.2	2,146.6	-13.4
Suriname	2.6	5.4	191.0	60.8	-68.2
Uruguay	3.0	6.7	25.2	48.3	91.7
Venezuela	1.1	1.1	467.0	212.4	-54.5
<b>Total</b>	<b>1,294.4</b>	<b>1,198.8</b>	<b>8,696.7</b>	<b>7,752.6</b>	<b>-10.9</b>
<b>Central America Antilles</b>					
Anguilla	0.0	0.0	0.1	0.2	7.1
Antigua and Barbuda	0.1	0.2	0.2	1.2	393.5
Aruba	0.0	0.0	5.5	0.0	-99.9
Bahamas	2.3	0.1	11.9	17.6	48.3
Barbados	0.3	0.8	3.2	6.0	88.7
Belize	0.6	0.3	4.2	2.2	-48.7
Bermuda	0.0	0.7	0.4	1.7	273.3
British Virgin Islands	0.0	0.1	0.3	0.7	143.7
Cayman Islands	0.2	0.0	0.3	0.3	-0.8
Costa Rica	37.8	42.0	290.9	300.0	3.1
Cuba	62.7	52.3	428.6	332.5	-22.4
Dominica	0.0	0.0	0.2	0.1	-36.9
Dominican Republic	11.8	14.0	82.0	96.0	17.2
El Salvador	6.4	8.7	97.5	67.8	-30.4
Grenada	0.0	0.1	0.6	1.4	139.7
Guatemala	22.3	28.0	277.1	262.1	-5.4
Haiti	2.1	2.7	15.6	18.0	15.2
Honduras	15.8	18.9	119.8	142.9	19.3
Jamaica	25.8	3.8	139.3	64.3	-53.9
Montserrat	0.0	0.0	0.1	0.1	-34.6
Netherlands Antilles	0.0	0.0	23.4	0.2	-99.2
Nicaragua	19.7	27.1	194.6	223.7	15.0
Panama	10.5	11.4	69.9	66.9	-4.2
Saint Kitts and Nevis	0.7	0.8	4.4	5.2	16.6
Saint Lucia	0.0	0.1	0.1	0.2	71.3
Saint Vincent and the Grenadines	0.0	0.0	0.2	0.1	-43.3
Trinidad and Tobago	50.2	8.6	243.6	167.9	-31.1
Turks and Caicos Islands	0.0	0.0	0.1	0.2	131.9
<b>Total</b>	<b>269.4</b>	<b>220.8</b>	<b>2,014.1</b>	<b>1,779.3</b>	<b>-11.7</b>
<b>All countries</b>	<b>35,566.5</b>	<b>37,891.7</b>	<b>252,491.3</b>	<b>270,394.2</b>	<b>7.1</b>

**Table 9-1  
Imports by province of clearance, customs basis, not seasonally adjusted — July**

	Agricultural and fishing products	Energy products	Forestry products	Industrial goods	Machinery and equipment	Automotive products	Consumer goods	Special transactions trade	<b>Total</b>
millions of dollars									
<b>Newfoundland and Labrador</b>									
2011	4.0	56.0	0.0	18.1	16.8	0.1	0.4	0.0	<b>95.5</b>
2012	3.3	391.9	0.0	56.0	87.7	0.1	1.3	2.6	<b>542.8</b>
<b>Prince Edward Island</b>									
2011	0.3	0.0	0.0	7.2	0.2	0.0	0.0	0.0	<b>7.7</b>
2012	0.2	0.0	0.0	0.0	0.1	0.0	0.0	0.0	<b>0.3</b>
<b>Nova Scotia</b>									
2011	50.2	443.9	1.3	97.0	66.1	191.9	21.7	1.0	<b>873.1</b>
2012	48.2	132.9	1.6	84.6	119.8	252.4	17.6	1.1	<b>658.2</b>
<b>New Brunswick</b>									
2011	57.0	1,109.3	8.2	146.0	170.6	33.0	15.8	2.0	<b>1,542.0</b>
2012	76.2	712.6	10.3	115.4	99.7	33.3	30.4	1.7	<b>1,079.4</b>
<b>Quebec</b>									
2011	395.3	1,494.6	40.6	1,391.4	1,518.9	191.1	972.8	43.8	<b>6,048.5</b>
2012	426.8	1,549.3	55.4	1,230.1	1,531.8	206.8	979.5	58.4	<b>6,038.0</b>
<b>Ontario</b>									
2011	1,417.6	735.2	72.8	4,389.9	5,381.5	3,818.5	3,097.1	357.9	<b>19,270.3</b>
2012	1,602.1	574.6	82.5	4,724.3	5,602.9	4,521.5	3,288.9	548.1	<b>20,944.9</b>
<b>Manitoba</b>									
2011	87.5	28.3	8.3	324.4	682.6	160.7	136.2	7.4	<b>1,435.4</b>
2012	99.0	78.4	14.4	365.9	633.3	154.3	165.0	7.8	<b>1,518.0</b>
<b>Saskatchewan</b>									
2011	21.7	62.8	4.4	131.9	222.6	87.4	16.4	1.1	<b>548.3</b>
2012	41.9	61.5	2.7	216.2	439.2	113.1	32.5	4.2	<b>911.3</b>
<b>Alberta</b>									
2011	165.5	506.5	11.5	560.8	796.9	134.8	137.6	13.3	<b>2,326.9</b>
2012	181.6	383.1	12.6	535.9	878.0	143.1	160.4	24.2	<b>2,318.9</b>
<b>British Columbia</b>									
2011	425.6	345.6	49.6	695.7	979.9	237.7	654.8	13.5	<b>3,402.3</b>
2012	443.5	261.5	56.8	854.0	1,181.6	291.9	756.0	20.9	<b>3,866.2</b>
<b>Yukon, Northwest Territories and Nunavut</b>									
2011	12.7	2.0	0.0	0.5	1.1	0.1	0.1	0.0	<b>16.5</b>
2012	10.8	2.3	0.0	0.0	0.4	0.0	0.0	0.0	<b>13.6</b>
<b>Total</b>									
<b>2011</b>	<b>2,637.4</b>	<b>4,784.2</b>	<b>196.6</b>	<b>7,762.8</b>	<b>9,837.2</b>	<b>4,855.4</b>	<b>5,052.9</b>	<b>440.0</b>	<b>35,566.5</b>
<b>2012</b>	<b>2,933.6</b>	<b>4,148.0</b>	<b>236.2</b>	<b>8,182.4</b>	<b>10,574.3</b>	<b>5,716.5</b>	<b>5,431.6</b>	<b>669.1</b>	<b>37,891.7</b>

**Table 9-2**  
**Imports by province of clearance, customs basis, not seasonally adjusted — Year to date, January to July**

	Agricultural and fishing products	Energy products	Forestry products	Industrial goods	Machinery and equipment	Automotive products	Consumer goods	Special transactions trade	<b>Total</b>
millions of dollars									
Newfoundland and Labrador									
2011	20.3	1,686.1	0.0	67.3	288.3	0.6	9.2	3.5	<b>2,075.4</b>
2012	34.5	2,883.6	0.0	120.4	202.9	0.5	12.1	6.5	<b>3,260.5</b>
Prince Edward Island									
2011	2.6	0.0	0.0	7.4	1.6	0.0	0.2	0.2	<b>12.2</b>
2012	2.5	0.0	0.0	0.3	1.0	0.1	0.2	0.2	<b>4.2</b>
Nova Scotia									
2011	349.8	1,315.6	9.1	766.3	1,369.0	1,600.4	110.2	17.5	<b>5,538.0</b>
2012	268.7	963.0	8.0	562.2	688.7	1,562.9	118.7	15.8	<b>4,188.0</b>
New Brunswick									
2011	260.8	6,214.0	65.1	840.4	589.4	233.4	149.8	11.6	<b>8,364.4</b>
2012	300.0	5,480.1	69.0	795.6	596.6	257.6	144.3	10.8	<b>7,654.0</b>
Quebec									
2011	3,026.6	11,158.0	347.0	9,951.9	10,722.0	1,363.4	5,957.8	280.1	<b>42,806.7</b>
2012	2,869.4	10,966.1	396.2	9,130.4	11,773.3	1,651.9	5,777.5	384.7	<b>42,949.5</b>
Ontario									
2011	9,797.5	5,832.1	526.3	31,410.4	39,106.0	33,593.6	21,020.4	2,310.7	<b>143,596.9</b>
2012	10,908.9	3,940.4	571.4	33,705.2	40,705.4	38,846.9	22,023.2	2,783.0	<b>153,484.4</b>
Manitoba									
2011	569.6	317.7	54.1	2,277.1	3,888.7	939.8	908.4	52.0	<b>9,007.3</b>
2012	663.7	446.1	80.3	3,052.3	4,657.9	1,187.4	1,080.9	64.0	<b>11,232.7</b>
Saskatchewan									
2011	221.5	457.2	16.1	1,503.7	2,265.0	718.1	155.2	13.7	<b>5,350.6</b>
2012	274.9	622.4	19.2	1,719.8	3,083.0	861.7	204.7	21.5	<b>6,807.2</b>
Alberta									
2011	1,130.6	1,573.7	72.8	3,573.9	5,249.5	793.5	828.5	73.7	<b>13,296.2</b>
2012	1,250.0	3,361.8	72.8	3,921.0	5,584.1	968.0	1,043.5	120.3	<b>16,321.4</b>
British Columbia									
2011	2,782.1	2,334.5	350.8	4,776.2	6,562.0	1,730.6	3,730.4	97.1	<b>22,363.7</b>
2012	2,927.6	1,827.1	372.4	5,226.8	7,792.1	2,165.4	3,987.9	128.3	<b>24,427.7</b>
Yukon, Northwest Territories and Nunavut									
2011	33.2	7.2	0.0	1.9	37.1	0.3	0.2	0.0	<b>80.0</b>
2012	25.2	9.7	0.0	1.6	27.8	0.3	0.2	0.0	<b>64.8</b>
<b>Total</b>									
<b>2011</b>	<b>18,194.6</b>	<b>30,896.0</b>	<b>1,441.3</b>	<b>55,176.6</b>	<b>70,078.5</b>	<b>40,973.6</b>	<b>32,870.4</b>	<b>2,860.2</b>	<b>252,491.3</b>
<b>2012</b>	<b>19,525.3</b>	<b>30,500.3</b>	<b>1,589.3</b>	<b>58,235.5</b>	<b>75,112.8</b>	<b>47,502.7</b>	<b>34,393.2</b>	<b>3,535.2</b>	<b>270,394.2</b>

# Technical notes

---

## The Canadian international merchandise trade statistical program

### Introduction

The objective of this text is to provide a general overview of the Canadian International Merchandise Trade Statistical Program, with special reference to concepts and definitions. The text is intended for the general user and simplicity is emphasized.

### Conceptual framework

**1. Objectives and coverage:** The primary objective of the Canadian International Merchandise Trade Statistical Program is to measure the change in the stock of material resources of Canada resulting from the movement of merchandise into or out of the country. Information on imports and exports are inputs into the System of National Accounts, particularly in the balance of payments and gross domestic product, and are used in the formulation of trade and budgetary policies. Governments, importers, exporters, manufacturers and shipping companies use international merchandise trade statistics to:

- monitor import penetration and export performance,
- monitor commodity price and volume changes,
- examine transport implications.

**2. Trade statistics (customs basis / balance of payments basis):** Merchandise trade statistics are reported and presented on two different bases: customs basis and balance of payment basis.

When goods are imported into or exported from Canada, declarations must be filed with customs, giving such information as description and value of the goods, origin and port of clearance of commodities and mode of transport. Most of this information is required for the purposes of customs administration. Statistics developed from administrative records of customs are commonly referred to as customs-based trade statistics.

Customs-based trade statistics are more accurate at measuring imports than they are at measuring exports. This is the case because customs are typically more vigilant with respect to goods entering the country than they are with goods leaving the country.

Customs-based export statistics may understate or incorrectly portray the destination of exports. Export statistics are understated when the proper documentation is not filed with Customs. Exports are incorrectly portrayed when the country of final destination is inaccurately reported on the customs documentation. This occurs most frequently when goods are routed through an intermediary country before continuing on to their final destination.

Statistics Canada does not have a measure of undercoverage but periodically conducts reconciliation exercises with its major trading partners, excluding the United States.

On January 1, 1990, Canada entered into a memorandum of understanding with the United States concerning the exchange of import data. As a consequence, each administration is using the other's import data to replace its own export data. Canada's international merchandise trade statistics are, therefore, no longer derived exclusively from the administrative records of the Canada Border Services Agency, but from United States Customs records as well.

Customs-based information is adjusted to conform with the National Accounts concepts and definitions. The adjustments to derive balance of payments-based trade data include adjustments related to trade definition, valuation and timing. The principal difference between the two trade concepts is that customs-based merchandise trade statistics cover the physical movement of goods as they are reflected in customs documents while balance of payments-adjusted data are intended to cover all economic transactions that involve merchandise trade between residents and non-residents. The present document describes the concepts and processes pertaining to the customs-based trade statistics only. (For further information on balance of payments-adjusted data, see the publication *Canada's Balance of International Payments*, Statistics Canada (Catalogue no. 67-001-X).

**3. System of trade:** Canadian trade statistics are compiled according to the general system of trade, as defined by the United Nations Statistical Office. Under this system, imports include all goods that have crossed Canada's territorial boundary, whether for immediate consumption in Canada or for storage in bonded customs warehouses. Domestic exports include goods grown, extracted or manufactured in Canada, including goods of foreign origin that have been materially transformed in Canada. Re-exports are exports of goods of foreign origin that have not been materially transformed in Canada, including foreign goods withdrawn for export from bonded customs warehouses. Total exports are the sum of domestic exports and re-exports. Thus the general trade system, in principal, presents all goods entering the country (imports) and all goods leaving the country (exports). It differs from the special system of trade in the treatment of imported goods into bonded customs warehouses. Under the 'special' system, these goods are counted only if and when they are withdrawn from customs warehouses for home consumption. They are not counted in export statistics unless they have first cleared customs.

Conceptually, under the general system, the statistical frontier coincides with the geographical boundary, while under the 'special' system, it coincides with the customs boundary.

**4. Valuation:** For customs purposes, imports are recorded at values established according to the provisions of the Customs Act, which, since January 1, 1985, reflects valuation methods based on the General Agreement on Tariffs and Trade (GATT) Valuation Code System. In general, the value for duty of imported goods must be equivalent to the transaction value or the price actually paid.

To determine the transaction value of imported goods, all transportation and associated costs arising in respect of the goods being appraised prior to and at the place of direct shipment to Canada, are to be added to the price of the goods. Therefore, Canadian imports are valued Free on Board (FOB), place of direct shipment to Canada. It excludes freight and insurance costs in bringing the goods to Canada from the point of direct shipment.

Countries other than the United States, exports are, in principal, valued or recorded at the values declared on export documents, which usually reflect the transaction value, i.e., actual selling price or, in the case of a non-arm's length transaction, the transfer price used for company accounting purposes. Canadian exports to overseas countries are valued at F.O.B. port of exit, including domestic freight charges to that point but net of discounts and allowances. As of January, 1990, Canadian exports to the U.S. are valued F.O.B. point of exit from Canada. Prior to 1990, they were valued F.O.B. place of lading net of freight charges, discounts and allowances.

**5. Statistical period:** The reference period is the calendar month and the calendar year. The closing of the statistical month for imports and Canadian exports to the United States is defined as the last calendar day of the month, based as closely as practicable on the date of clearance from customs.

The closing of the statistical month for exports, to countries other than the United States, is also defined as the last calendar day of the month. Those export documents that are received too late for incorporation in the current month are assigned to the month the transaction took place. If a monthly summary report from a high volume exporter is not received on time, the data are imputed for the current month and revised with the trade value in the following statistical month.

**6. Trading partner attribution (country of origin/destination):** Exports are attributed to the country, which is the last known destination of the goods at the time of export. Exports to the United States are attributed to the state of destination.

Imports are attributed to their country of origin, that is, the country in which the goods were grown, extracted or manufactured in accordance to the rules of origin administered by the Canada Border Services Agency. Imports from the United States are attributed to the state of origin. Prior to 1988, most imports were attributed to the country of export/consignment, with the exception of imports from Central and South America.

**7. Principal trading areas:** The 'principal trading areas' are country groupings defined as follows:

**United States:** includes trade with Puerto Rico and the U.S. Virgin Islands

**Japan**

**European Union (EU):** Austria, Belgium, Bulgaria, Cyprus, Czech Republic, Denmark, Estonia, Finland, France, Germany, Greece, Hungary, Ireland, Italy, Latvia, Lithuania, Luxembourg, Malta, Netherlands, Poland, Portugal, Romania, Slovakia, Slovenia, Spain, Sweden and United Kingdom

**Other Organisation for Economic Co-operation and Development (OECD):** Australia, Canada, Chile, Iceland, Israel, Mexico, New Zealand, Norway, South Korea, Switzerland, and Turkey. (The EU countries, United States, and Japan are also members of OECD).

**Other countries:** all countries and territories other than the United States, Japan, EU and other OECD

**8. Legal framework:** Import and export statistics with countries other than the United States are derived from information contained in administrative records collected by the Canada Border Services Agency under the Customs Act. Copies of these documents (or information therefrom) are sent to Statistics Canada in accordance with Section 25 of the Statistics Act. It follows that the disclosure of trade statistics is governed by both the Customs Act and the Statistics Act and is subject to the provisions of Section 17(2)(a) of the latter. Disclosure of export statistics to the United States is now governed by a memorandum of understanding that provides for the exchange of detailed import statistics between Canada and the United States.

## Contact information

**Telephone:** 1-800-263-1136 or 613-951-8116

**Facsimile:** 1-877-287-4369 or 613-951-0581

**Internet:** [infostats@statcan.gc.ca](mailto:infostats@statcan.gc.ca)