

Catalogue no. 65-001-X

Canadian International Merchandise Trade

June 2012



Statistics
Canada

Statistique
Canada

Canada

How to obtain more information

For information about this product or the wide range of services and data available from Statistics Canada, visit our website at www.statcan.gc.ca, e-mail us at infostats@statcan.gc.ca, or telephone us, Monday to Friday from 8:30 a.m. to 4:30 p.m., at the following numbers:

Statistics Canada's National Contact Centre

Toll-free telephone (Canada and the United States):

Inquiries line	1-800-263-1136
National telecommunications device for the hearing impaired	1-800-363-7629
Fax line	1-877-287-4369

Local or international calls:

Inquiries line	1-613-951-8116
Fax line	1-613-951-0581

Depository Services Program

Inquiries line	1-800-635-7943
Fax line	1-800-565-7757

To access this product

This product, Catalogue no. 65-001-X, is available free in electronic format. To obtain a single issue, visit our website at www.statcan.gc.ca and browse by "Key resource" > "Publications."

Standards of service to the public

Statistics Canada is committed to serving its clients in a prompt, reliable and courteous manner. To this end, Statistics Canada has developed *standards of service* that its employees observe. To obtain a copy of these service standards, please contact Statistics Canada toll-free at 1-800-263-1136. The service standards are also published on www.statcan.gc.ca under "About us" > "The agency" > "Providing services to Canadians."

Statistics Canada
International Trade Division

Canadian International Merchandise Trade

June 2012

Published by authority of the Minister responsible for Statistics Canada

© Minister of Industry, 2012

All rights reserved. Use of this publication is governed by the *Statistics Canada Open License Agreement*.

<http://www.statcan.gc.ca/reference/copyright-droit-auteur-eng.htm>

August 2012

Catalogue no. 65-001-X, vol. 66, no. 6

ISSN 1480-8781

Frequency: Monthly

Ottawa

Cette publication est également disponible en français.

Note of appreciation

Canada owes the success of its statistical system to a long-standing partnership between Statistics Canada, the citizens of Canada, its businesses, governments and other institutions. Accurate and timely statistical information could not be produced without their continued cooperation and goodwill.

User information

Symbols

The following standard symbols are used in Statistics Canada publications:

- . not available for any reference period
- .. not available for a specific reference period
- ... not applicable
- 0 true zero or a value rounded to zero
- 0^s value rounded to 0 (zero) where there is a meaningful distinction between true zero and the value that was rounded
- p preliminary
- r revised
- x suppressed to meet the confidentiality requirements of the *Statistics Act*
- E use with caution
- F too unreliable to be published
- * significantly different from reference category ($p < 0.05$)

Note to users

All totals are calculated from full figures and rounded independently; consequently, totals may not equal the sum of their components.

The data is based on commodity groups (sector, subsector and major group).

Table of contents

Highlights	5
Analysis	7
Related products	11
Statistical tables	
1 Merchandise trade of Canada, balance of payments basis, seasonally adjusted	15
1-1 Current dollars	15
1-2 Constant dollars, 2002	16
1-3 Price indices (Laspeyres)	17
2 Exports by commodity groupings, balance of payments basis, seasonally adjusted	18
2-1 Current dollars	18
2-2 Constant dollars, 2002	20
3 Domestic exports to selected countries, customs basis, not seasonally adjusted	22
3-1 June	22
3-2 Year to date, January to June	23
4 Domestic exports by country, customs basis, not seasonally adjusted	24
5 Exports by province of origin, customs basis, not seasonally adjusted	28
5-1 June	28
5-2 Year to date, January to June	29
6 Imports by commodity groupings, balance of payments basis, seasonally adjusted	30
6-1 Current dollars	30
6-2 Constant dollars, 2002	32
7 Imports from selected countries, customs basis, not seasonally adjusted	34
7-1 June	34
7-2 Year to date, January to June	35
8 Imports by country, customs basis, not seasonally adjusted	36

Table of contents – continued

9	Imports by province of clearance, customs basis, not seasonally adjusted	40
9-1	June	40
9-2	Year to date, January to June	41

Data quality, concepts and methodology

	Technical notes	42
--	-----------------	----

Highlights

Canada's merchandise imports rose 2.3% while exports edged up 0.2% in June. As a result, Canada's trade deficit with the world widened from \$954 million in May to \$1.8 billion in June.

Imports continued their upward trend and reached a record high of \$40.9 billion in June. Six out of seven sectors registered gains, the main contributor being the machinery and equipment sector. Volumes (+2.5%) were up in all sectors.

Exports increased to \$39.1 billion. Volumes rose 1.1%, while prices decreased 0.9%. A strong gain in exports of automotive products helped offset declines in five out of seven sectors.

Imports from the United States grew 3.0% to a record high of \$25.9 billion in June, a third consecutive monthly increase. Exports rose 2.2% to \$29.0 billion. This narrowed the trade surplus with the United States from \$3.2 billion in May to \$3.1 billion in June.

Imports from countries other than the United States increased 1.1% to \$15.0 billion. Exports to countries other than the United States fell for the third consecutive month, down 5.2% to \$10.1 billion. Consequently, the trade deficit with countries other than the United States widened from \$4.2 billion in May to \$4.9 billion in June.

Note to readers

Merchandise trade is one component of Canada's international balance of payments (BOP), which also includes trade in services, investment income, current transfers as well as capital and financial flows.

International merchandise trade data by country are available on both a BOP and a customs basis for the United States, Japan and the United Kingdom. Trade data for all other individual countries are available on a customs basis only. BOP data are derived from customs data by making adjustments for factors such as valuation, coverage, timing and residency. These adjustments are made to conform to the concepts and definitions of the Canadian System of National Accounts.

Data in this release are on a BOP basis, seasonally adjusted and in current dollars. Constant dollars are calculated using the Laspeyres volume formula.

For more information on seasonal adjustment, see *Seasonal adjustment and identifying economic trends*.

New aggregation structure

Statistics Canada will introduce the North American Product Classification System (NAPCS) for merchandise import and export statistics. The new structure will replace the classification structures known as the summary import groups (SIG) and the summary export groups (SEG) and the higher level aggregations (major groups, subsectors, sectors and sections) that have been in use for several decades.

Revised data based on NAPCS for the reference period of January 1988 to August 2012 will be disseminated on October 18.

The first regular release of data based on NAPCS will be on November 8 for the September reference month.

Readers interested in this upcoming change can find more detailed information on our web page dedicated to *classification consultation and notification*.

Chart 1
Exports and imports, seasonally adjusted, on a balance of payments basis

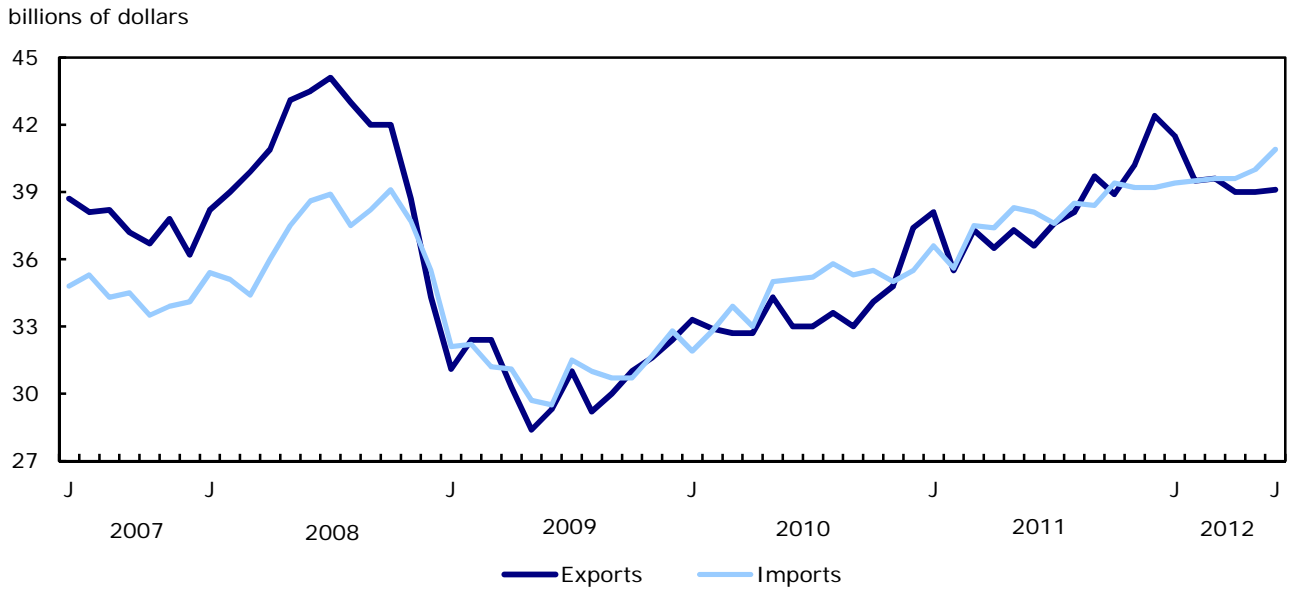
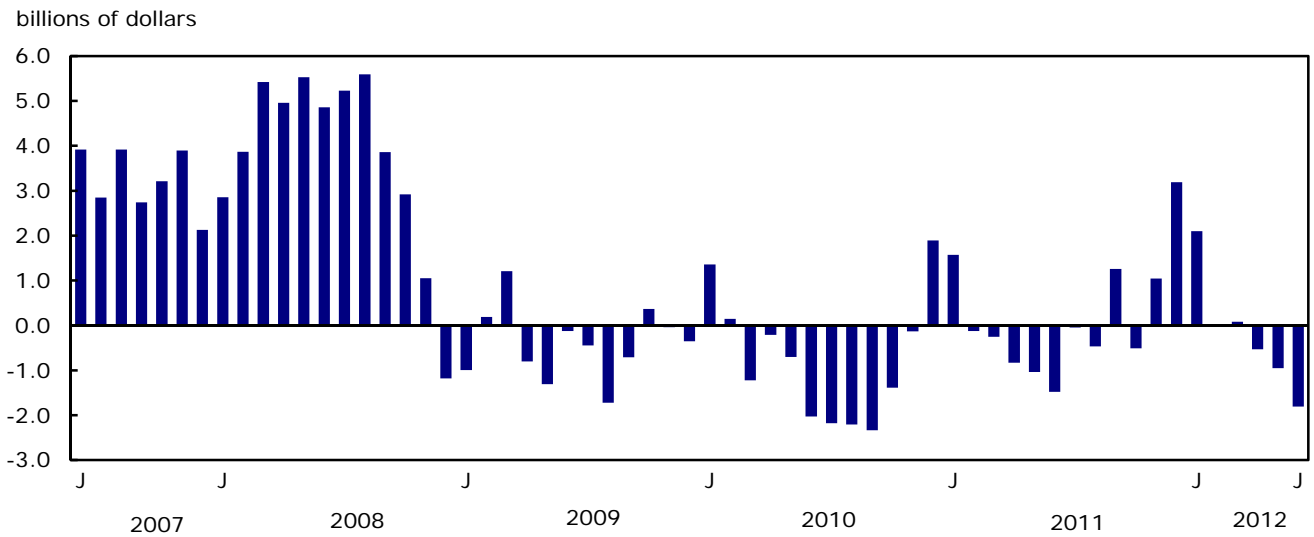


Chart 2
Trade balance, seasonally adjusted, on a balance of payments basis



Analysis

Machinery and equipment leads imports

Imports of machinery and equipment increased 3.2% to a record high of \$11.2 billion in June. Volumes were up 3.0%. Imports of other machinery and equipment led the gain in the sector followed by industrial and agricultural machinery.

Imports of other consumer goods rose 4.7% to \$5.3 billion. Imports of miscellaneous end products, mainly medicinal and pharmaceutical products, led the gain on higher volumes.

Imports of industrial goods and materials rose 2.3% to \$8.5 billion, the third consecutive monthly increase. Widespread gains throughout the sector were led by imports of plastic materials and other iron and steel products.

The only sector to decline in June was energy products, down 3.6% to \$4.2 billion. Prices fell 9.2%. Imports of crude petroleum decreased 18.2% to \$2.2 billion as both volumes and prices fell. In contrast, petroleum and coal products registered strong gains in volumes, mainly on higher imports of light oils and preparations.

Strong gains in exports of automotive products

Exports of automotive products rose 13.9% to \$6.3 billion in June as volumes were up 13.2%. The main factor was exports of passenger autos and chassis which increased 19.5% to \$4.3 billion, the highest level since January 2006.

Exports of energy products fell 3.5% to \$9.0 billion, as prices fell for the fifth consecutive month. The main contributor was crude petroleum exports which declined 5.3% to \$5.6 billion.

Exports of agricultural and fishing products declined 2.8% to \$3.5 billion, the lowest level since August 2011. Leading the decline was a 27.4% decrease in wheat exports, on lower volumes.

In the machinery and equipment sector, exports declined 1.3% to \$7.2 billion, as volumes fell 2.5%. Lower exports of aircraft and other transportation equipment were the main contributor.

Note: In general, merchandise trade data are revised on an ongoing basis for each month of the current year. Current year revisions are reflected in both the customs and BOP based data.

The previous year's customs data are revised with the release of the January and February reference months as well as on a quarterly basis. The previous two years of customs based data are revised annually and are released in February with the December reference month.

The previous year's BOP based data will be revised with the release of the January, February, March and April 2012 reference months.

Factors influencing revisions include late receipt of import and export documentation, incorrect information on customs forms, replacement of estimates produced for the energy sector with actual figures, changes in classification of merchandise based on more current information, and changes to seasonal adjustment factors.

Revised data are available in the appropriate CANSIM tables, free of charge.

Chart 1
Imports of machinery and equipment, seasonally adjusted, on a balance of payments basis

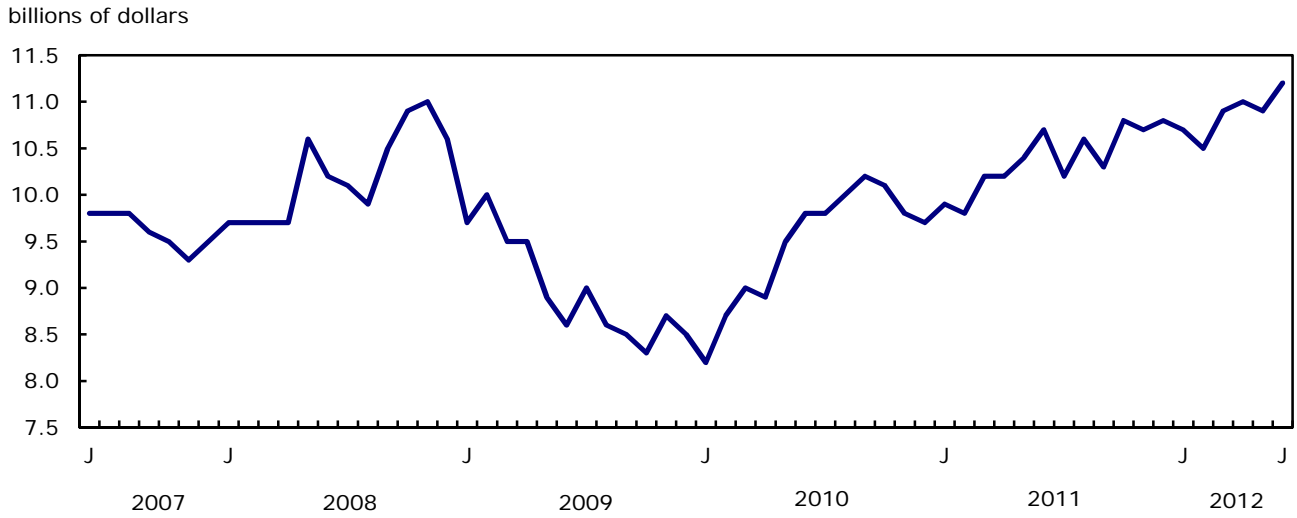


Chart 2
Imports of other consumer goods, seasonally adjusted, on a balance of payments basis

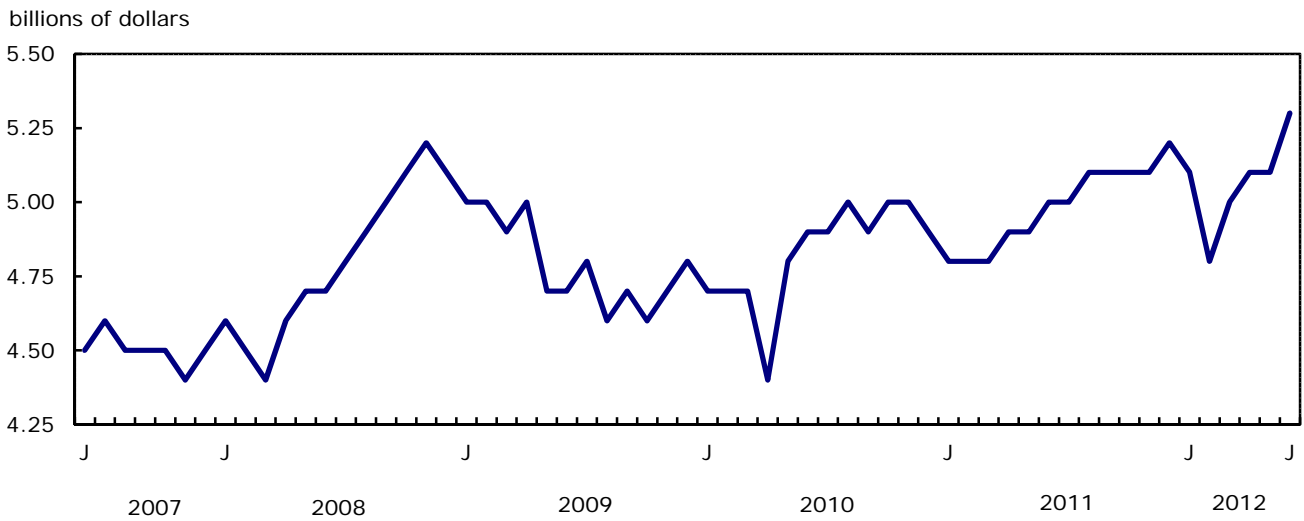


Chart 3
Exports of automotive products, seasonally adjusted, on a balance of payments basis

billions of dollars

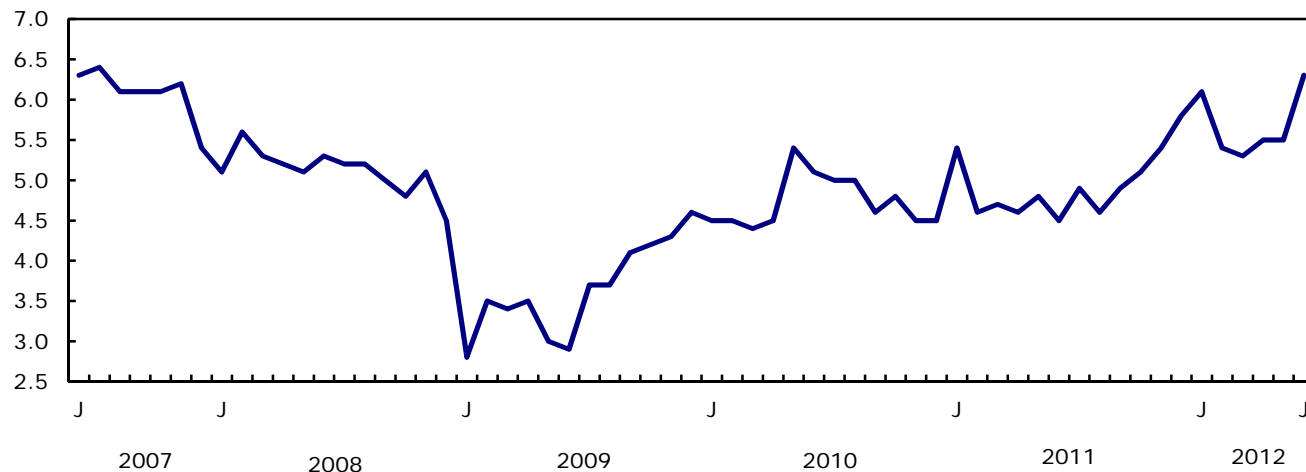
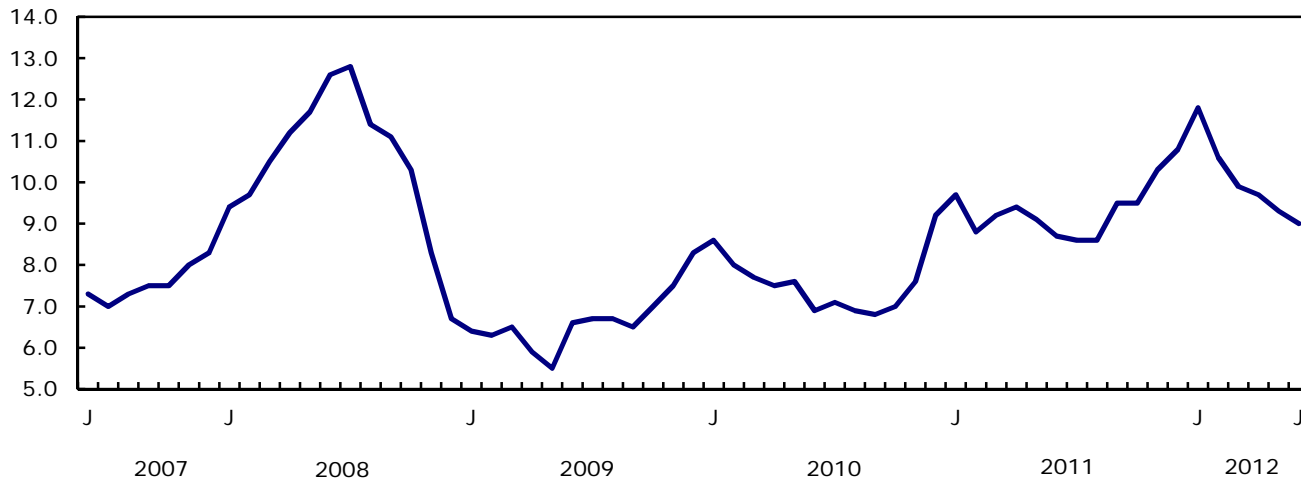


Chart 4
Exports of energy products, seasonally adjusted, on a balance of payments basis

billions of dollars



Text table 1
Merchandise trade by principal trading area, balance of payments basis, seasonally adjusted

	May 2012	June 2012	Change	Year to date			June 2012/ June 2011		
				2011	2012	Change			
				millions of dollars	percent	millions of dollars		percent	
Export to									
United States	28,362	28,986	624	2.2	161,954	174,191	12,237	7.6	9.1
Japan	745	962	218	29.2	5,419	5,419	0	0.0	33.3
European Union ¹	3,500	3,333	-167	-4.8	19,297	21,087	1,790	9.3	0.1
Other Organisation for Economic Co-operation and Development ²	1,567	1,420	-147	-9.4	9,776	9,174	-602	-6.2	-9.3
Other countries	4,853	4,395	-457	-9.4	24,903	27,888	2,986	12.0	-1.2
Total	39,027	39,097	70	0.2	221,349	237,759	16,410	7.4	6.8
Imports from									
United States	25,135	25,901	767	3.1	136,828	149,071	12,242	8.9	13.1
Japan	917	987	69	7.5	4,216	5,668	1,452	34.4	55.6
European Union ¹	4,117	3,799	-318	-7.7	22,981	22,505	-477	-2.1	-7.7
Other Organisation for Economic Co-operation and Development ²	2,909	3,217	308	10.6	16,192	18,597	2,405	14.9	21.6
Other countries	6,903	6,999	96	1.4	43,276	43,044	-232	-0.5	-10.4
Total	39,981	40,903	922	2.3	223,494	238,884	15,390	6.9	7.4
Balance									
United States	3,227	3,085	-143	...	25,125	25,120	-5
Japan	-173	-24	148	...	1,203	-249	-1,452
European Union ¹	-617	-465	151	...	-3,684	-1,418	2,267
Other Organisation for Economic Co-operation and Development ²	-1,342	-1,797	-456	...	-6,416	-9,423	-3,008
Other countries	-2,050	-2,603	-554	...	-18,374	-15,156	3,218
Total	-954	-1,806	-852	...	-2,145	-1,125	1,020

1. European Union includes: Austria, Belgium, Bulgaria, Cyprus, Czech Republic, Denmark, Estonia, Finland, France, Germany, Greece, Hungary, Ireland, Italy, Latvia, Lithuania, Luxembourg, Malta, Netherlands, Poland, Portugal, Romania, Slovakia, Slovenia, Spain, Sweden and United Kingdom.

2. Other Organisation for Economic Co-operation and Development includes: Australia, Canada, Chile, Iceland, Israel, Mexico, New Zealand, Norway, South Korea, Switzerland and Turkey.

Text table 2
Reconciliation of customs and balance of payments trade data, not seasonally adjusted

	2012						2011
	June	May	April	March	February	January	Annual
	millions of dollars						
Exports							
Customs basis	39,026	39,236	38,774	40,694	36,488	37,452	447,501
Balance of payments adjustments	740	1,479	206	450	1,106	774	10,690
Valuation and residency							
Inland freight	653	663	652	627	589	579	7,052
Other valuation and residency	-912	-766	-778	-1,027	-930	-1,070	-9,506
Timing	5	-11	55	-66	50	67	496
Coverage	994	1,593	277	916	1,397	1,198	12,648
Balance of payments basis	39,766	40,715	38,980	41,144	37,594	38,226	458,191
Imports							
Customs basis	40,524	40,132	38,392	40,429	37,137	35,791	445,992
Balance of payments adjustments	1,033	994	821	1,037	926	924	9,882
Valuation and residency							
Inland freight	873	862	815	850	775	760	9,426
Other valuation and residency	15	-11	-14	-7	24	-24	-245
Timing	0	0	0	0	0	0	0
Coverage	145	143	20	194	127	188	701
Balance of payments basis	41,557	41,126	39,213	41,466	38,063	36,715	455,874

Related products

Selected publications from Statistics Canada

65-208-X	International Merchandise Trade Annual Review
65-506-X	A Profile of Canadian Exporters
65F0013X	Canadian International Merchandise Trade Database
65F0019X	A Database for Analysis of International Markets
65F0020X	Data Integration - International Trade Data and Manufacturing Shipments Data

Selected CANSIM tables from Statistics Canada

228-0001	Merchandise imports and exports, by major groups and principal trading areas for all countries, monthly
228-0002	Merchandise imports and exports, by major groups and principal trading areas for all countries, quarterly
228-0003	Merchandise imports and exports, by major groups and principal trading areas for all countries, annual
228-0033	Imports, customs-based, by province of clearance, monthly
228-0034	Domestic exports, customs-based, by province of origin, monthly
228-0041	Merchandise imports and exports by sector and sub-sector, customs and balance of payments basis, for all countries, monthly
228-0042	Merchandise imports and exports by sector and sub-sector, customs and balance of payments basis, for all countries, quarterly
228-0043	Merchandise imports and exports by sector and sub-sector, customs and balance of payments basis, for all countries, annual
228-0047	Merchandise imports and exports balance of payments and customs-based price and volume indexes for all countries, monthly
228-0048	Merchandise imports and exports balance of payments and customs-based price and volume indexes for all countries, quarterly
228-0049	Merchandise imports and exports balance of payments and customs-based price and volume indexes for all countries, annual

228-0050	Merchandise imports and exports customs-based price indexes, Canada and United States trade, and Standard International Trade Classification (SITC revision 3) price indexes for all countries and United States, monthly
228-0051	Merchandise imports and exports customs-based price indexes, Canada and United States trade, and Standard International Trade Classification (SITC revision 3) price indexes for all countries and United States, quarterly
228-0052	Merchandise imports and exports customs-based price indexes, Canada and United States trade, and Standard International Trade Classification (SITC revision 3) price indexes for all countries and United States, annual
228-0053	Merchandise import and export price and volume indexes by sector and sub-sector, customs and balance of payments basis, for all countries, monthly
228-0054	Merchandise import and export price and volume indexes by sector and sub-sector, customs and balance of payments basis, for all countries, quarterly
228-0055	Merchandise import and export price and volume indexes by sector and sub-sector, customs and balance of payments basis, for all countries, annual
228-0056	Merchandise imports and exports by sector, balance of payments basis, for all countries, seasonally adjusted, Fisher formula, monthly
228-0057	Merchandise imports and exports by sector, balance of payments basis, for all countries, seasonally adjusted, Fisher formula, quarterly

Selected surveys from Statistics Canada

2201	Canadian International Merchandise Trade (Customs Basis)
2202	Canadian International Merchandise Trade (Balance of Payments Basis)
2203	International Trade Price Indexes

Selected summary tables from Statistics Canada

- *Canada: Economic and financial data*
- *Imports, exports and trade balance of goods on a balance-of-payments basis, by country or country grouping*
- *Exports of goods on a balance-of-payments basis*
- *Imports of goods on a balance-of-payments basis*
- *Merchandise trade of Canada (monthly)*
- *Economic indicators, by province and territory (monthly and quarterly)*
- *Latest statistics (monthly)*

Statistical tables

Table 1-1
Merchandise trade of Canada, balance of payments basis, seasonally adjusted — Current dollars

	Exports	Imports	Trade balance	Period to period change		
				Exports	Imports	Balance
				millions of dollars	percent	millions of dollars
2008	488,754	443,777	44,977	0.0	0.0	0
2009	369,343	374,081	-4,738	-24.4	-15.7	-49,715
2010	404,834	413,833	-8,999	9.6	10.6	-4,261
2011	458,191	455,874	2,318	...	10.2	11,316
2010						
First quarter	98,870	98,583	287	4.0	3.6	318
Second quarter	100,071	103,014	-2,942	1.2	4.5	-3,229
Third quarter	99,592	106,312	-6,720	-0.5	3.2	-3,778
Fourth quarter	106,301	105,924	377	6.7	-0.4	7,097
2011						
First quarter	110,901	109,704	1,198	4.3	3.6	821
Second quarter	110,447	113,791	-3,343	-0.4	3.7	-4,541
Third quarter	115,287	114,545	742	4.4	0.7	4,086
Fourth quarter	121,555	117,835	3,721	5.4	2.9	2,978
2012						
First quarter	120,592	118,427	2,165	-0.8	0.5	-1,556
Second quarter	117,166	120,457	-3,290	-2.8	1.7	-5,455
2011						
January	38,129	36,557	1,572	2.0	3.1	-323
February	35,508	35,632	-125	-6.9	-2.5	-1,697
March	37,264	37,514	-250	4.9	5.3	-125
April	36,533	37,364	-830	-2.0	-0.4	-581
May	37,290	38,325	-1,034	2.1	2.6	-204
June	36,624	38,102	-1,478	-1.8	-0.6	-444
July	37,560	37,604	-44	2.6	-1.3	1,435
August	38,075	38,544	-469	1.4	2.5	-425
September	39,652	38,397	1,255	4.1	-0.4	1,724
October	38,894	39,404	-510	-1.9	2.6	-1,765
November	40,246	39,204	1,042	3.5	-0.5	1,551
December	42,415	39,226	3,189	5.4	0.1	2,147
2012						
January	41,488	39,388	2,101	-2.2	0.4	-1,088
February	39,461	39,477	-16	-4.9	0.2	-2,117
March	39,643	39,563	80	0.5	0.2	96
April	39,042	39,572	-531	-1.5	0.0	-611
May	39,027	39,981	-954	0.0	1.0	-423
June	39,097	40,903	-1,806	0.2	2.3	-852

Note(s): Because of rounding, monthly data may not add up to quarterly data and quarterly data may not add up to annual data.

Table 1-2
Merchandise trade of Canada, balance of payments basis, seasonally adjusted — Constant dollars, 2002

	Exports	Imports	Trade balance	Period to period change	
				Exports	Imports
	millions of dollars			percent	
2008	412,713	486,735	-74,022	0.0	0.0
2009	346,916	407,679	-60,763	-15.9	-16.2
2010	374,143	470,401	-96,259	7.8	15.4
2011	389,503	509,403	-119,900	4.1	8.3
2010					
First quarter	90,749	111,192	-20,442	1.8	3.7
Second quarter	94,368	117,650	-23,282	4.0	5.8
Third quarter	94,074	120,900	-26,826	-0.3	2.8
Fourth quarter	94,951	120,659	-25,708	0.9	-0.2
2011					
First quarter	96,296	124,664	-28,368	1.4	3.3
Second quarter	94,834	128,760	-33,926	-1.5	3.3
Third quarter	98,147	127,883	-29,736	3.5	-0.7
Fourth quarter	100,226	128,096	-27,870	2.1	0.2
2012					
First quarter	101,483	129,977	-28,495	1.3	1.5
Second quarter	102,726	132,333	-29,607	1.2	1.8
2011					
January	33,076	41,770	-8,694	1.5	3.7
February	31,038	40,627	-9,589	-6.2	-2.7
March	32,182	42,267	-10,084	3.7	4.0
April	31,450	42,837	-11,387	-2.3	1.3
May	32,059	42,656	-10,597	1.9	-0.4
June	31,325	43,267	-11,941	-2.3	1.4
July	32,745	42,904	-10,158	4.5	-0.8
August	32,646	43,125	-10,479	-0.3	0.5
September	32,756	41,854	-9,098	0.3	-2.9
October	32,523	42,579	-10,056	-0.7	1.7
November	32,931	42,543	-9,612	1.3	-0.1
December	34,773	42,975	-8,202	5.6	1.0
2012					
January	34,462	43,209	-8,747	-0.9	0.5
February	33,237	42,912	-9,676	-3.6	-0.7
March	33,784	43,856	-10,072	1.6	2.2
April	34,016	43,941	-9,926	0.7	0.2
May	34,169	43,650	-9,480	0.5	-0.7
June	34,541	44,742	-10,201	1.1	2.5

Note(s): Because of rounding, monthly data may not add up to quarterly data and quarterly data may not add up to annual data.

Table 1-3
Merchandise trade of Canada, balance of payments basis, seasonally adjusted — Price indices (Laspeyres)

	2002=100			Period to period change		
	Exports	Imports	Terms of trade	Exports	Imports	Terms of trade
	price indices (Laspeyres)			percent		
2008	116.2	97.2	119.6	0.0	0.0	0.0
2009	105.2	96.2	109.3	-9.5	-1.0	-8.5
2010	106.8	94.1	113.4	1.5	-2.2	3.7
2011	113.9	98.2	116.0	6.7	4.4	2.3
2010						
First quarter	107.1	93.7	114.2	1.7	0.7	0.9
Second quarter	105.7	93.6	112.9	-1.3	-0.1	-1.2
Third quarter	106.1	94.5	112.3	0.4	0.9	-0.5
Fourth quarter	108.2	94.6	114.4	2.0	0.1	1.9
2011						
First quarter	111.6	96.0	116.2	3.1	1.5	1.6
Second quarter	113.5	97.7	116.3	1.8	1.7	0.1
Third quarter	114.5	98.5	116.2	0.9	0.9	0.0
Fourth quarter	115.9	100.6	115.2	1.2	2.1	-0.9
2012						
First quarter	113.8	100.3	113.5	-1.8	-0.3	-1.5
Second quarter	112.5	101.3	111.1	-1.1	1.0	-2.1
2011						
January	111.2	95.9	115.9	0.4	0.5	-0.2
February	111.6	96.9	115.1	0.4	1.1	-0.7
March	112.4	97.0	115.8	0.7	0.1	0.6
April	113.4	96.9	117.0	0.9	-0.1	1.0
May	113.6	97.2	116.9	0.2	0.3	-0.1
June	114.1	98.1	116.3	0.4	0.9	-0.5
July	112.5	96.3	116.8	-1.4	-1.9	0.5
August	113.3	98.2	115.3	0.7	2.0	-1.3
September	115.7	99.4	116.5	2.2	1.2	1.0
October	115.7	100.1	115.7	0.0	0.7	-0.7
November	116.7	101.1	115.4	0.9	1.1	-0.2
December	115.8	101.3	114.3	-0.8	0.1	-1.0
2012						
January	115.1	101.0	114.0	-0.6	-0.2	-0.3
February	113.7	100.2	113.5	-1.2	-0.8	-0.4
March	112.9	101.5	111.3	-0.7	1.3	-2.0
April	112.0	100.7	111.2	-0.8	-0.7	-0.1
May	112.7	100.9	111.7	0.7	0.2	0.5
June	112.8	101.5	111.1	0.0	0.6	-0.5

Note(s): Because of rounding, monthly data may not add up to quarterly data and quarterly data may not add up to annual data.

Table 2-1
Exports by commodity groupings, balance of payments basis, seasonally adjusted — Current dollars

	May 2012	June 2012	Change		Year to date			June 2012/ June 2011	
					2011	2012	Change		
	millions of dollars		percent		millions of dollars		percent		
Total	39,027	39,097	70	0.2	221,349	237,759	16,410	7.4	6.8
Agricultural and fishing products	3,562	3,461	-102	-2.9	19,518	21,580	2,062	10.6	5.9
Wheat	443	321	-121	-27.4	2,587	2,959	372	14.4	-37.0
Other agricultural and fishing products	3,120	3,139	20	0.6	16,931	18,621	1,691	10.0	13.9
Live animals	151	145	-6	-4.1	704	826	122	17.3	10.5
Fish and fish preparations	411	375	-37	-8.9	2,177	2,349	172	7.9	4.8
Barley	10	31	20	196.3	159	232	74	46.4	130.4
Wheat flour	6	6	0	-1.1	39	34	-5	-13.8	-9.7
Other cereals unmilled	62	64	2	3.5	503	305	-199	-39.5	32.4
Other cereal preparations	264	279	15	5.7	1,425	1,563	138	9.7	15.0
Meat and meat preparations	430	417	-13	-3.0	2,394	2,561	167	7.0	3.8
Alcoholic beverages	59	68	9	15.2	360	405	45	12.4	20.5
Other food, feed, beverages and tobacco	1,039	1,131	91	8.8	5,907	6,176	269	4.6	14.0
Rapeseed	421	383	-39	-9.2	2,030	2,734	704	34.7	32.1
Other crude vegetable products	266	242	-24	-8.9	1,232	1,436	204	16.6	10.6
Energy products	9,274	8,952	-322	-3.5	54,918	60,173	5,255	9.6	3.0
Crude petroleum	5,885	5,574	-311	-5.3	32,939	40,304	7,365	22.4	9.8
Natural gas	646	720	73	11.3	7,106	3,870	-3,236	-45.5	-42.0
Other energy products	2,743	2,659	-84	-3.1	14,873	15,998	1,125	7.6	11.8
Coal and other bituminous substances	530	509	-21	-4.0	3,099	3,051	-48	-1.6	-24.4
Petroleum and coal products	2,050	1,992	-59	-2.9	10,794	12,081	1,287	11.9	27.9
Electricity	162	158	-4	-2.6	980	866	-114	-11.6	6.7
Forestry products	1,785	1,799	13	0.8	11,334	10,780	-554	-4.9	-5.8
Lumber and sawmill products	735	751	16	2.2	4,234	4,405	171	4.0	4.2
Other crude wood products	74	66	-7	-9.9	447	449	2	0.5	-20.8
Lumber	469	465	-5	-1.0	2,673	2,744	71	2.7	3.3
Other wood fabricated materials	192	220	28	14.5	1,114	1,212	97	8.7	17.8
Wood pulp and other wood products	496	502	7	1.4	3,424	3,026	-398	-11.6	-9.7
Newsprint and other paper and paperboard	554	545	-9	-1.7	3,676	3,349	-327	-8.9	-13.9
Newsprint paper	257	251	-6	-2.5	1,874	1,595	-279	-14.9	-21.8
Other paper and paperboard	297	294	-3	-0.9	1,803	1,754	-48	-2.7	-5.9
Industrial goods and materials	9,362	9,286	-76	-0.8	56,078	56,460	382	0.7	-3.5
Metal ores	1,304	1,330	26	2.0	7,809	8,129	321	4.1	17.6
Iron ores, concentrates and scrap	503	539	36	7.1	2,786	3,163	378	13.6	23.1
Copper ores, concentrates and scrap	202	324	122	60.4	1,564	1,557	-7	-0.4	4.9
Nickel ores, concentrates and scrap	239	151	-88	-36.9	1,591	1,269	-322	-20.2	80.8
Zinc ores, concentrates and scrap	31	23	-8	-25.1	156	153	-3	-1.9	-37.6
Other ores, concentrates and scrap	329	294	-35	-10.7	1,712	1,987	275	16.0	11.0
Chemicals, plastics and fertilizers	2,970	3,074	103	3.5	17,753	17,505	-248	-1.4	-5.7
Inorganic chemicals	402	427	25	6.2	3,006	2,519	-487	-16.2	-14.2
Organic chemicals	520	497	-23	-4.5	3,645	3,361	-284	-7.8	-23.7
Fertilizers and fertilizer materials	753	835	83	11.0	3,823	3,739	-84	-2.2	-2.8
Synthetic rubber and plastics	971	970	0	0.0	5,630	5,936	305	5.4	1.5
Other chemical products	325	345	20	6.1	1,649	1,950	301	18.3	16.9
Metals and alloys	3,430	3,289	-141	-4.1	21,122	20,695	-427	-2.0	-9.2
Primary iron and steel	70	52	-19	-26.4	443	303	-140	-31.6	-46.2
Steel bars, rods, plates, sheets	343	341	-2	-0.6	1,839	2,092	253	13.8	10.5
Other iron and steel and alloys	262	278	16	6.1	1,381	1,585	204	14.8	18.0
Aluminum including alloys	588	581	-6	-1.1	3,968	3,606	-362	-9.1	-15.8
Copper and alloys	218	233	15	6.8	1,241	1,237	-4	-0.3	33.1
Nickel and alloys	240	263	23	9.7	1,747	1,428	-319	-18.3	-7.2
Precious metals and alloys	1,522	1,361	-161	-10.6	9,223	9,334	111	1.2	-16.3
Zinc and alloys	93	92	-1	-1.2	656	567	-90	-13.7	-9.3
Other non-ferrous metals and alloys	94	89	-5	-5.7	625	544	-80	-12.9	-16.1

Table 2-1 – continued

Exports by commodity groupings, balance of payments basis, seasonally adjusted — Current dollars

	May 2012	June 2012	Change		Year to date			June 2012/ June 2011	
					2011	2012	Change		
	millions of dollars		percent		millions of dollars		percent		
Other industrial goods and materials	1,658	1,592	-65	-3.9	9,394	10,131	737	7.8	-1.0
Asbestos unmanufactured	0	0	0	0.0	21	0	-21	-100.0	-100.0
Other crude animal products	93	110	16	17.4	505	636	131	26.0	-5.3
Other crude non-metallic minerals	285	221	-65	-22.7	1,914	1,825	-89	-4.6	-25.1
Other crude materials, inedible	63	59	-4	-6.4	388	381	-7	-1.8	-10.7
Metal fabricated basic products	415	414	-1	-0.3	2,163	2,438	274	12.7	11.7
Textile fabricated materials	191	191	0	0.1	1,097	1,136	39	3.6	2.7
Non-metallic mineral basic products	178	176	-2	-1.2	952	1,071	118	12.4	8.1
Other fabricated materials	432	423	-10	-2.2	2,353	2,644	290	12.3	2.9
Machinery and equipment	7,283	7,185	-98	-1.3	38,209	41,426	3,218	8.4	10.4
Industrial and agricultural machinery	1,831	1,833	2	0.1	9,521	10,883	1,362	14.3	6.1
Industrial machinery	1,633	1,646	13	0.8	8,554	9,726	1,172	13.7	5.8
Agricultural machinery includ. tractors	198	187	-11	-5.4	967	1,157	190	19.7	8.9
Aircraft and other transportation equipment	1,845	1,748	-97	-5.3	8,543	9,378	835	9.8	20.3
Aircraft, engines, parts	1,441	1,357	-85	-5.9	6,331	6,957	626	9.9	28.2
Other transportation equipment	403	391	-12	-3.0	2,212	2,421	209	9.5	-0.7
Other machinery and equipment	3,607	3,604	-3	-0.1	20,145	21,165	1,020	5.1	8.4
Television, telecommunication equipment	637	637	0	0.0	3,692	3,810	118	3.2	0.8
Office machines and equipment	347	344	-3	-1.0	2,117	2,053	-64	-3.0	-0.3
Other equipment and tools	1,758	1,744	-14	-0.8	9,335	10,319	985	10.5	11.7
Other end products, inedible	865	879	15	1.7	5,001	4,984	-18	-0.4	11.5
Automotive products	5,492	6,253	761	13.9	28,691	34,070	5,379	18.7	37.8
Passenger autos and chassis	3,601	4,305	704	19.5	18,833	22,826	3,993	21.2	48.8
Trucks and other motor vehicles	269	309	40	14.8	1,286	1,746	460	35.7	35.0
Motor vehicle parts	1,622	1,639	17	1.1	8,572	9,499	927	10.8	15.8
Other consumer goods	1,416	1,397	-20	-1.4	7,920	8,251	331	4.2	6.0
Special transactions trade	354	300	-54	-15.2	1,917	1,997	79	4.1	-6.5
Unallocated balance of payments adjustments	499	465	-34	-6.7	2,763	3,021	258	9.4	3.6

Table 2-2
Exports by commodity groupings, balance of payments basis, seasonally adjusted — Constant dollars, 2002

	May 2012	June 2012	Change		Year to date			June 2012/ June 2011	
					2011	2012	Change		
	millions of dollars		percent		millions of dollars		percent		
Total	34,169	34,541	372	1.1	191,131	204,209	13,078	6.8	10.3
Agricultural and fishing products	3,080	2,969	-111	-3.6	17,868	18,848	980	5.5	1.9
Wheat	318	232	-86	-27.2	1,903	2,123	220	11.6	-34.6
Other agricultural and fishing products	2,762	2,737	-25	-0.9	15,965	16,725	760	4.8	6.9
Live animals	143	128	-14	-10.1	686	754	68	9.9	-0.4
Fish and fish preparations	486	442	-45	-9.2	2,468	2,832	364	14.7	12.0
Barley	8	28	20	257.1	120	183	63	52.9	192.2
Wheat flour	5	5	0	-2.0	33	29	-4	-11.9	-3.5
Other cereals unmilled	44	48	4	9.0	359	237	-122	-34.0	36.4
Other cereal preparations	209	218	9	4.3	1,283	1,265	-18	-1.4	1.3
Meat and meat preparations	413	387	-25	-6.1	2,417	2,498	82	3.4	-1.8
Alcoholic beverages	106	122	16	14.8	718	771	54	7.5	7.8
Other food, feed, beverages and tobacco	884	929	46	5.2	5,465	5,189	-275	-5.0	4.1
Rapeseed	269	249	-20	-7.5	1,454	1,884	430	29.6	22.7
Other crude vegetable products	195	181	-15	-7.6	962	1,081	119	12.4	6.6
Energy products	5,260	5,298	38	0.7	28,860	31,393	2,533	8.8	13.7
Crude petroleum	2,459	2,440	-19	-0.8	13,514	15,464	1,950	14.4	12.2
Natural gas	1,281	1,376	95	7.4	8,080	7,522	-558	-6.9	2.5
Other energy products	1,520	1,482	-38	-2.5	7,266	8,407	1,141	15.7	29.7
Coal and other bituminous substances	158	159	1	0.8	838	832	-7	-0.8	-0.7
Petroleum and coal products	1,036	1,056	20	1.9	5,118	5,954	836	16.3	35.4
Electricity	326	267	-60	-18.2	1,309	1,621	312	23.8	31.8
Forestry products	2,302	2,260	-43	-1.9	13,826	13,670	-156	-1.1	-3.4
Lumber and sawmill products	1,024	997	-26	-2.6	5,596	5,838	241	4.3	2.2
Other crude wood products	89	83	-6	-7.0	548	533	-15	-2.8	-14.8
Lumber	721	685	-36	-5.0	3,721	3,951	229	6.2	5.6
Other wood fabricated materials	214	229	15	7.2	1,326	1,354	27	2.1	-0.3
Wood pulp and other wood products	663	667	4	0.5	3,991	4,106	115	2.9	3.6
Newsprint and other paper and paperboard	615	595	-20	-3.3	4,239	3,726	-513	-12.1	-17.2
Newsprint paper	290	278	-13	-4.4	2,175	1,788	-387	-17.8	-24.4
Other paper and paperboard	325	317	-7	-2.3	2,064	1,938	-126	-6.1	-9.7
Industrial goods and materials	5,771	5,643	-129	-2.2	33,785	34,811	1,026	3.0	1.4
Metal ores	580	579	-1	-0.2	3,250	3,623	372	11.5	25.6
Iron ores, concentrates and scrap	155	192	37	23.7	1,039	1,063	24	2.4	23.9
Copper ores, concentrates and scrap	68	111	43	62.3	444	509	65	14.8	23.9
Nickel ores, concentrates and scrap	131	88	-43	-32.9	624	672	49	7.8	147.4
Zinc ores, concentrates and scrap	18	14	-5	-24.8	80	89	9	10.9	-28.7
Other ores, concentrates and scrap	208	174	-33	-16.1	1,064	1,289	225	21.1	8.0
Chemicals, plastics and fertilizers	1,901	1,968	67	3.5	11,658	11,572	-86	-0.7	-2.9
Inorganic chemicals	186	188	2	1.3	1,169	1,121	-48	-4.1	-6.6
Organic chemicals	249	247	-2	-0.7	1,817	1,684	-133	-7.3	-19.7
Fertilizers and fertilizer materials	270	305	35	12.9	1,523	1,348	-175	-11.5	-8.9
Synthetic rubber and plastics	845	856	11	1.3	5,227	5,297	71	1.3	1.3
Other chemical products	351	371	20	5.7	1,922	2,120	199	10.3	10.0

Table 2-2 – continued

Exports by commodity groupings, balance of payments basis, seasonally adjusted — Constant dollars, 2002

	May 2012	June 2012	Change	Year to date			June 2012/ June 2011		
				2011		Change			
				2011	2012				
	millions of dollars		percent	millions of dollars		percent			
Metals and alloys	1,899	1,875	-24	-1.2	11,250	11,315	65	0.6	-0.4
Primary iron and steel	40	33	-7	-17.8	280	182	-98	-35.0	-42.6
Steel bars, rods, plates, sheets	262	262	0	-0.1	1,420	1,588	168	11.8	16.8
Other iron and steel and alloys	199	215	16	8.1	1,090	1,206	116	10.6	20.1
Aluminum including alloys	646	654	8	1.2	3,768	3,879	112	3.0	-0.2
Copper and alloys	61	66	5	8.7	321	356	35	10.9	49.6
Nickel and alloys	147	158	11	7.8	744	808	64	8.6	20.5
Precious metals and alloys	433	380	-54	-12.4	2,973	2,644	-329	-11.1	-21.1
Zinc and alloys	58	57	-1	-0.9	367	354	-13	-3.6	-4.1
Other non-ferrous metals and alloys	53	50	-3	-5.6	288	297	9	3.3	0.9
Other industrial goods and materials	1,391	1,221	-170	-12.2	7,627	8,302	675	8.8	2.1
Asbestos unmanufactured	0	0	0	0.0	21	0	-21	-100.0	-100.0
Other crude animal products	83	74	-9	-10.8	446	537	91	20.5	-14.4
Other crude non-metallic minerals	286	147	-139	-48.7	1,468	1,635	168	11.4	8.8
Other crude materials, inedible	56	48	-7	-13.2	357	330	-26	-7.4	-19.3
Metal fabricated basic products	330	330	0	0.1	1,719	1,925	206	12.0	11.5
Textile fabricated materials	193	187	-5	-2.8	1,167	1,135	-32	-2.7	-4.6
Non-metallic mineral basic products	143	143	1	0.4	790	876	86	10.9	6.6
Other fabricated materials	301	291	-10	-3.3	1,661	1,864	202	12.2	2.0
Machinery and equipment	8,017	7,820	-197	-2.5	43,406	45,715	2,310	5.3	5.8
Industrial and agricultural machinery	1,680	1,684	3	0.2	8,963	10,003	1,040	11.6	4.1
Industrial machinery	1,505	1,516	11	0.7	8,063	8,964	901	11.2	3.9
Agricultural machinery includ. tractors	175	168	-8	-4.5	900	1,039	139	15.4	6.0
Aircraft and other transportation equipment	2,235	2,080	-155	-6.9	10,665	11,336	672	6.3	15.0
Aircraft, engines, parts	1,854	1,720	-135	-7.3	8,430	9,012	582	6.9	21.5
Other transportation equipment	381	361	-20	-5.3	2,234	2,324	90	4.0	-8.3
Other machinery and equipment	4,101	4,056	-45	-1.1	23,778	24,376	598	2.5	2.4
Television, telecommunication equipment	798	795	-3	-0.4	4,835	4,829	-6	-0.1	-4.7
Office machines and equipment	969	940	-29	-3.0	5,948	5,772	-177	-3.0	-5.5
Other equipment and tools	1,646	1,637	-10	-0.6	8,932	9,711	779	8.7	9.1
Other end products, inedible	688	684	-4	-0.5	4,063	4,065	2	0.0	8.0
Automotive products	7,300	8,264	964	13.2	39,270	45,595	6,325	16.1	33.9
Passenger autos and chassis	5,207	6,120	913	17.5	28,147	33,104	4,957	17.6	41.7
Trucks and other motor vehicles	330	377	48	14.5	1,574	2,154	580	36.8	35.1
Motor vehicle parts	1,763	1,766	3	0.2	9,550	10,338	788	8.2	12.2
Other consumer goods	1,345	1,322	-23	-1.7	7,614	7,834	220	2.9	5.2
Special transactions trade	304	262	-42	-13.9	1,623	1,685	62	3.8	-1.7
Unallocated balance of payments adjustments	790	704	-86	-10.9	4,878	4,658	-220	-4.5	-7.4

Table 3-1
Domestic exports to selected countries, customs basis, not seasonally adjusted — June

	Agricultural and fishing products	Energy products	Forestry products	Industrial goods	Machinery and equipment	Automotive products	Consumer goods	Special transactions trade	Total
millions of dollars									
United States									
2011	1,693.9	8,713.6	1,084.9	5,247.2	3,624.3	4,415.7	769.7	285.4	25,834.6
2012	1,840.6	8,605.2	1,139.5	4,944.3	4,080.3	5,976.9	736.9	251.7	27,575.3
Mexico									
2011	134.2	14.8	13.3	114.4	56.8	55.8	6.1	0.0	395.4
2012	133.8	1.7	10.7	107.2	62.9	69.2	9.3	0.0	394.9
Japan									
2011	290.6	138.7	149.2	134.2	34.4	3.3	6.5	1.6	758.5
2012	387.0	250.8	107.4	220.5	55.4	5.2	14.8	1.3	1,042.4
European Union									
Germany									
2011	12.2	0.4	7.5	86.3	168.2	2.8	18.4	4.1	299.9
2012	9.7	11.0	18.0	85.2	162.2	5.9	28.9	0.8	321.7
France									
2011	10.9	40.5	16.9	60.9	83.8	2.5	14.4	3.2	233.1
2012	10.0	76.2	7.7	52.7	96.9	2.9	16.2	1.1	263.7
United Kingdom									
2011	38.1	3.4	18.0	1,239.0	137.6	5.2	17.0	5.2	1,463.3
2012	31.9	13.1	11.5	1,162.8	164.6	3.4	13.2	6.6	1,407.2
Italy									
2011	29.3	0.1	25.3	30.3	37.6	0.4	5.7	0.2	128.8
2012	29.3	21.3	19.9	35.2	32.9	1.0	10.7	0.1	150.4
Other European Union									
2011	78.3	109.2	21.4	408.4	161.6	13.1	45.1	3.0	840.2
2012	92.0	191.2	24.4	299.4	166.4	10.4	47.0	2.2	833.2
Total									
2011	168.7	153.6	89.0	1,824.9	588.7	23.9	100.6	15.7	2,965.3
2012	172.9	312.8	81.5	1,635.4	623.1	23.6	115.9	10.8	2,976.0
Newly industrialized countries									
South Korea									
2011	82.1	161.2	55.6	73.7	21.4	4.2	3.7	0.7	402.4
2012	38.7	72.4	57.0	45.1	24.5	13.6	5.5	2.0	258.7
Hong Kong									
2011	33.6	0.1	11.0	95.1	20.7	0.9	6.7	0.2	168.3
2012	29.6	0.0	7.7	100.5	21.8	1.2	5.9	0.3	167.0
Taiwan									
2011	13.3	0.1	23.8	51.6	10.0	0.1	3.0	0.2	102.0
2012	10.2	23.6	17.8	62.8	12.1	0.8	4.0	0.1	131.3
Singapore									
2011	2.9	0.4	0.9	10.3	27.5	1.0	3.0	0.3	46.3
2012	4.8	0.1	1.3	22.7	32.1	2.6	4.6	0.1	68.2
Total									
2011	132.0	161.8	91.2	230.7	79.6	6.1	16.4	1.3	719.0
2012	83.3	96.1	83.7	231.0	90.5	18.2	20.0	2.3	625.2
Other countries									
2011	811.3	404.8	578.8	1,514.3	815.1	67.1	104.5	18.7	4,314.6
2012	713.7	273.5	460.0	1,470.9	915.5	114.3	98.8	25.7	4,072.4
Total									
2011	3,230.6	9,587.4	2,006.4	9,065.6	5,198.9	4,572.0	1,003.8	322.8	34,987.5
2012	3,331.2	9,540.2	1,882.9	8,609.2	5,827.8	6,207.3	995.7	291.9	36,686.3

Table 3-2
Domestic exports to selected countries, customs basis, not seasonally adjusted — Year to date, January to June

	Agricultural and fishing products	Energy products	Forestry products	Industrial goods	Machinery and equipment	Automotive products	Consumer goods	Special transactions trade	Total
millions of dollars									
United States									
2011	9,190.0	49,826.7	6,500.7	31,647.8	20,672.8	26,363.0	4,324.5	1,481.2	150,006.8
2012	10,325.3	54,649.7	6,445.0	30,959.5	22,564.8	31,503.9	4,608.4	1,512.7	162,569.3
Mexico									
2011	676.8	68.5	73.3	588.8	386.2	323.5	40.8	2.0	2,160.0
2012	808.4	26.4	66.5	609.1	387.2	368.2	48.7	1.9	2,316.4
Japan									
2011	1,903.2	956.7	694.3	1,079.0	297.6	25.5	46.6	10.5	5,013.5
2012	1,926.3	1,060.7	632.6	1,080.9	349.0	33.7	75.8	7.0	5,165.9
European Union									
Germany									
2011	65.6	76.3	37.8	554.3	756.3	14.5	103.4	12.0	1,620.3
2012	103.3	84.1	63.1	444.1	690.7	36.5	121.1	5.2	1,548.1
France									
2011	68.9	67.2	58.4	396.8	647.5	14.1	101.6	8.2	1,362.7
2012	98.0	315.4	49.7	353.5	686.7	22.4	99.2	5.9	1,630.9
United Kingdom									
2011	165.8	102.4	83.7	7,185.3	625.7	31.8	81.3	28.7	8,304.7
2012	143.6	219.3	77.7	7,764.2	770.1	25.5	85.7	25.1	9,111.2
Italy									
2011	138.7	117.2	144.7	205.0	224.7	3.6	43.1	1.2	878.2
2012	104.1	137.8	95.0	152.5	202.5	4.7	61.8	1.2	759.5
Other European Union									
2011	627.0	735.4	111.9	2,238.6	1,075.2	72.4	317.5	17.1	5,195.1
2012	460.7	978.7	125.0	2,253.9	1,066.2	80.2	245.2	15.3	5,225.2
Total									
2011	1,066.1	1,098.5	436.5	10,579.9	3,329.2	136.4	647.0	67.3	17,361.0
2012	909.6	1,735.4	410.6	10,968.1	3,416.3	169.2	613.1	52.8	18,275.0
Newly industrialized countries									
South Korea									
2011	577.4	803.5	273.7	573.1	174.3	12.7	38.3	2.9	2,455.9
2012	225.5	533.3	263.9	525.3	157.8	37.3	27.2	3.8	1,774.1
Hong Kong									
2011	190.0	0.3	59.7	834.2	199.3	3.6	40.3	2.4	1,329.7
2012	234.1	0.2	46.2	826.7	157.3	6.5	35.8	1.2	1,307.8
Taiwan									
2011	75.0	130.6	154.8	387.4	56.6	0.7	18.3	0.6	824.0
2012	75.3	128.8	118.1	279.9	61.1	1.5	19.3	0.3	684.3
Singapore									
2011	29.9	3.4	4.6	77.1	186.3	12.6	14.5	2.8	331.3
2012	29.1	1.3	8.1	115.5	174.8	24.6	19.0	1.9	374.3
Total									
2011	872.3	937.8	492.7	1,871.8	616.6	29.6	111.4	8.7	4,940.8
2012	563.9	663.6	436.2	1,747.4	551.0	69.9	101.3	7.2	4,140.6
Other countries									
2011	4,632.8	1,616.6	3,294.0	7,863.2	3,985.6	411.7	528.9	102.2	22,435.0
2012	5,758.1	1,990.7	2,908.2	8,197.4	5,109.7	618.8	539.5	101.2	25,223.5
Total									
2011	18,341.2	54,504.8	11,491.5	53,630.6	29,288.4	27,289.7	5,699.3	1,672.0	201,917.6
2012	20,291.6	60,126.5	10,899.1	53,562.4	32,378.3	32,763.7	5,986.9	1,682.6	217,691.0

Table 4
Domestic exports by country, customs basis, not seasonally adjusted

	June		January to June		Change
	2011	2012	2011	2012	January to June 2012/ January to June 2011
	millions of dollars				percent
North America					
Greenland	1.1	0.2	5.1	4.1	-19.9
Mexico	395.4	394.9	2,160.0	2,316.4	7.2
Saint Pierre and Miquelon	1.7	2.0	9.0	8.5	-5.3
United States	25,834.6	27,575.3	150,006.8	162,569.3	8.4
Total	26,232.8	27,972.4	152,180.9	164,898.3	8.4
Western Europe					
Andorra	0.0	0.0	0.0	0.0	235.8
Austria	10.9	9.4	119.1	156.5	31.4
Belgium	135.7	162.2	1,021.1	1,037.3	1.6
Denmark	27.4	32.0	104.5	118.8	13.7
Faeroe Islands	0.0	0.0	0.5	0.3	-30.5
Finland	54.4	25.7	207.1	193.7	-6.5
France	233.1	263.7	1,362.7	1,630.9	19.7
Germany	299.9	321.7	1,620.3	1,548.1	-4.5
Gibraltar	0.0	16.5	24.8	28.4	14.6
Greece	8.7	9.1	45.2	48.2	6.7
Iceland	6.5	9.6	30.6	31.0	1.4
Italy	128.8	150.4	878.2	759.5	-13.5
Luxembourg	3.8	5.8	57.4	40.0	-30.3
Malta	0.2	0.6	2.8	5.5	98.8
Netherlands	342.1	349.6	2,189.6	2,319.2	5.9
Norway	101.9	149.7	1,401.0	1,161.1	-17.1
Portugal	21.8	5.4	112.0	48.1	-57.0
Republic of Ireland (Eire)	28.1	25.8	240.0	130.0	-45.8
Spain	51.7	89.3	440.8	420.2	-4.7
Sweden	27.0	35.6	156.6	212.3	35.6
Switzerland	86.5	57.5	481.8	404.8	-16.0
United Kingdom	1,463.3	1,407.2	8,304.7	9,111.2	9.7
Total	3,031.9	3,126.4	18,800.6	19,405.3	3.2
Other Europe					
Albania	6.9	2.9	31.9	19.1	-40.2
Armenia	0.9	1.2	7.8	5.6	-28.2
Azerbaijan	1.5	1.3	5.2	19.7	281.9
Belarus	0.0	0.1	0.8	1.8	121.1
Bosnia and Herzegovina	1.0	0.2	2.8	0.9	-69.2
Bulgaria	72.8	1.7	134.3	98.6	-26.6
Croatia	2.2	1.2	7.8	8.2	5.0
Czech Republic	7.5	8.0	48.4	44.3	-8.5
Estonia	4.2	1.5	65.7	9.1	-86.1
Georgia	2.2	2.1	9.8	10.3	4.3
Hungary	8.8	7.8	45.6	39.8	-12.7
Kazakhstan	6.3	6.2	85.6	47.2	-44.8
Kyrgyzstan	0.5	2.0	1.6	10.0	530.6
Latvia	2.4	3.3	32.6	23.0	-29.7
Lithuania	4.9	7.0	25.1	40.2	60.2
Macedonia (Former Yugoslav Republic of Macedonia)	2.8	1.5	9.0	6.8	-24.5
Montenegro	0.2	0.1	0.7	0.4	-50.6
Poland	19.6	38.3	91.8	181.7	98.0
Republic of Moldova	0.2	0.1	0.6	0.4	-31.4
Romania	3.5	11.6	21.6	31.9	47.9
Russian Federation	128.1	108.2	598.9	874.0	45.9
Serbia	1.2	0.8	3.7	5.4	47.2
Slovakia	1.5	2.0	22.6	14.9	-34.0
Slovenia	1.0	0.6	6.0	5.3	-12.1
Tajikistan	0.2	0.1	1.1	1.3	16.9
Turkmenistan	2.2	0.1	7.7	41.3	437.9
Ukraine	9.6	6.8	57.9	52.4	-9.5
Uzbekistan	0.8	0.2	4.3	2.5	-42.1
Total	292.9	217.0	1,331.0	1,596.0	19.9
Middle East					
Bahrain	1.4	5.1	19.4	38.2	96.7
Cyprus	2.1	0.9	5.3	6.7	24.7
Egypt	113.4	9.7	358.6	160.7	-55.2

Table 4 – continued

Domestic exports by country, customs basis, not seasonally adjusted

	June		January to June		Change
	2011	2012	2011	2012	January to June 2012/ January to June 2011
	millions of dollars				percent
Eritrea	0.1	0.2	2.3	1.7	-28.7
Ethiopia	3.6	1.7	11.2	7.5	-33.1
Iran	5.4	3.1	41.4	57.7	39.4
Iraq	5.7	22.2	19.9	302.8	...
Israel	30.9	16.4	158.3	112.4	-29.0
Jordan	6.2	3.1	33.4	68.7	105.8
Kuwait	7.2	6.5	52.0	41.3	-20.7
Lebanon	3.5	50.5	24.3	71.0	191.6
Libya	0.1	4.8	36.7	48.8	33.0
Oman	8.4	8.4	39.9	63.1	58.1
Qatar	3.9	4.2	23.5	92.4	292.6
Saudi Arabia	46.2	95.5	350.4	705.9	101.5
Somalia	0.1	0.0	0.3	0.0	-87.8
Sudan	2.4	14.7	61.1	79.5	30.2
Syria	5.1	1.5	36.6	8.6	-76.5
Turkey	135.9	65.8	610.6	451.1	-26.1
United Arab Emirates	45.3	50.9	550.4	826.9	50.2
Yemen	0.3	0.4	6.3	8.3	31.7
Total	427.1	365.5	2,442.0	3,153.2	29.1
Other Africa					
Algeria	15.4	12.4	84.5	169.8	101.0
Angola	34.1	30.7	60.8	56.9	-6.4
Antarctica	0.0	0.0	0.0	0.0	-72.0
Benin	1.6	1.5	6.3	7.3	16.1
Botswana	0.0	0.0	2.8	0.5	-81.8
Burkina Faso	2.4	2.1	9.3	20.6	121.0
Burundi	0.1	0.1	0.4	0.7	94.6
Cameroon	4.3	3.8	14.7	15.8	7.8
Cape Verde	0.1	0.0	1.2	0.3	-74.9
Central African Republic	0.1	0.0	0.2	0.0	-71.9
Chad	0.0	0.5	1.2	1.6	32.5
Comoros	0.0	0.0	0.2	0.3	105.0
Congo	1.7	1.1	7.9	7.8	-0.8
Democratic Republic of the Congo	1.6	1.8	7.1	9.2	30.4
Djibouti	0.1	0.3	0.5	1.1	104.3
Equatorial Guinea	0.1	0.4	4.7	2.3	-51.9
French Southern Territories	0.0	0.0	0.0	0.0	-83.4
Gabon	1.1	1.8	9.5	11.6	22.0
Gambia	0.1	0.0	0.3	0.4	27.2
Ghana	21.9	22.9	120.9	105.4	-12.9
Guinea	1.4	3.9	14.7	11.9	-19.0
Guinea-Bissau	0.0	0.0	0.0	0.0	-47.7
Ivory Coast	2.1	2.8	2.9	16.4	463.6
Kenya	5.5	7.2	26.3	37.1	40.7
Lesotho	0.0	0.0	0.1	0.0	-60.2
Liberia	1.0	0.7	7.8	4.7	-39.5
Madagascar	2.2	0.4	7.3	7.1	-3.3
Malawi	0.5	0.4	2.4	1.3	-47.5
Mali	1.9	0.6	8.6	7.1	-17.3
Mauritania	0.5	0.3	7.0	8.5	21.6
Mauritius	0.4	0.5	3.1	2.2	-30.7
Morocco	42.6	11.0	215.0	223.8	4.1
Mozambique	0.9	1.5	5.8	25.1	336.4
Namibia	1.9	0.1	3.5	7.7	119.0
Niger	0.3	0.4	2.6	2.1	-20.7
Nigeria	33.4	46.1	91.4	166.5	82.3
Rwanda	0.0	0.1	0.4	0.4	5.2
Saint Helena	0.0	0.0	0.0	0.0	-100.0
Sao Tome and Principe	0.0	0.0	0.0	0.0	-66.8
Senegal	0.8	5.2	14.1	16.8	19.5
Seychelles	0.4	0.3	1.7	6.5	278.7
Sierra Leone	0.5	0.6	5.1	5.1	-0.7
South Africa	57.7	54.3	280.1	283.4	1.2
Swaziland	0.1	0.0	0.3	0.7	133.2
Togo	2.3	3.3	8.0	9.5	18.6
Tunisia	1.6	2.6	18.0	90.4	401.7

Table 4 – continued

Domestic exports by country, customs basis, not seasonally adjusted

	June		January to June		Change January to June 2012/ January to June 2011
	2011	2012	2011	2012	
	millions of dollars				percent
Uganda	0.6	0.5	4.4	2.8	-36.9
United Republic of Tanzania	2.3	4.2	21.0	25.8	22.6
Zambia	3.0	2.7	15.0	16.8	11.6
Zimbabwe	0.6	0.6	2.1	6.5	213.3
Total	249.3	230.3	1,101.2	1,397.7	26.9
Other Asia					
Afghanistan	3.0	3.3	23.6	11.5	-51.5
Bangladesh	25.6	40.4	266.3	288.0	8.1
Bhutan	0.0	0.0	0.0	0.0	-55.4
British Indian Ocean Territory	0.0	0.0	0.0	0.0	-100.0
Brunei Darussalam	0.1	0.2	0.8	1.8	109.4
Cambodia	0.8	0.7	2.9	3.5	21.5
China	1,507.8	1,583.2	7,194.5	9,114.4	26.7
Hong Kong	168.3	167.0	1,329.7	1,307.8	-1.6
India	188.1	279.0	1,013.8	1,082.3	6.8
Indonesia	155.4	123.2	781.2	813.6	4.1
Japan	758.5	1,042.4	5,013.5	5,165.9	3.0
Laos	0.3	0.0	5.2	2.4	-53.3
Macao	0.1	0.2	1.3	2.1	60.3
Malaysia	78.0	70.5	474.7	414.8	-12.6
Maldives	0.2	0.2	1.5	2.0	34.4
Mongolia	5.9	2.0	45.1	31.5	-30.1
Myanmar	0.0	0.0	0.7	0.0	-100.0
Nepal	1.0	0.4	2.1	2.4	10.4
North Korea	0.1	0.0	1.8	1.6	-10.9
Pakistan	53.3	12.5	337.0	208.8	-38.0
Philippines	99.0	39.3	283.8	197.2	-30.5
Singapore	46.3	68.2	331.3	374.3	13.0
South Korea	402.4	258.7	2,455.9	1,774.1	-27.8
Sri Lanka	28.6	24.9	184.2	160.7	-12.8
Taiwan	102.0	131.3	824.0	684.3	-16.9
Thailand	120.3	75.4	449.6	335.3	-25.4
Timor-Leste	0.0	0.0	0.0	0.0	-56.0
Viet Nam	34.0	28.4	147.5	171.7	16.4
Total	3,779.3	3,951.6	21,172.2	22,152.2	4.6
Oceania					
American Samoa	0.0	0.2	0.6	0.5	-26.0
Australia	133.0	139.1	771.8	947.6	22.8
Christmas Island	0.0	0.0	0.0	0.2	407.6
Cocos (Keeling) Islands	0.0	0.0	0.0	0.1	...
Cook Islands	0.0	0.0	0.1	0.0	-93.1
Fiji	0.2	1.1	2.2	7.9	258.7
French Polynesia	0.4	0.5	4.9	4.3	-12.4
Guam	0.1	0.2	0.9	0.8	-14.2
Heard Island and McDonald Islands	0.0	0.0	0.0	0.0	...
Kiribati	0.0	0.0	0.1	0.0	-73.8
New Caledonia	0.5	0.4	2.9	19.9	585.9
New Zealand	22.0	26.6	142.7	165.3	15.8
Niue	0.0	0.0	0.0	0.0	-42.4
Norfolk Island	0.0	0.0	0.0	0.0	...
Papua New Guinea	0.7	4.3	24.3	14.2	-41.5
Pitcairn	0.0	0.0	0.0	0.1	92.2
Samoa	0.0	0.0	0.0	0.0	246.3
Solomon Islands	0.1	0.0	0.2	0.1	-56.5
Tonga	0.0	0.0	0.1	0.0	-66.8
United States Minor Outlying Islands	0.9	1.7	5.5	6.6	21.2
Vanuatu	0.1	0.1	0.6	0.6	-0.3
Wallis and Futuna	0.0	0.0	0.0	0.0	-16.8
Total	158.1	174.2	957.0	1,168.3	22.1
South America					
Argentina	18.7	14.1	299.9	154.7	-48.4
Bolivia	1.3	13.1	5.7	18.3	220.8
Brazil	344.9	159.5	1,292.1	1,318.5	2.0
Chile	73.5	49.9	360.2	362.8	0.7
Colombia	56.2	58.6	306.1	373.4	22.0

Table 4 – continued

Domestic exports by country, customs basis, not seasonally adjusted

	June		January to June		Change
	2011	2012	2011	2012	January to June 2012/ January to June 2011
	millions of dollars				percent
Ecuador	33.5	18.9	151.8	95.7	-37.0
Falkland Islands (Malvinas)	0.0	0.0	0.1	0.0	-100.0
Guyana	1.3	3.2	17.8	13.5	-23.9
Paraguay	0.7	0.4	4.0	8.1	101.4
Peru	39.0	32.4	226.1	204.7	-9.5
Suriname	0.7	0.9	5.1	8.3	61.0
Uruguay	2.6	3.7	13.3	15.8	18.4
Venezuela	60.1	60.1	245.6	336.8	37.2
Total	632.5	414.9	2,927.8	2,910.4	-0.6
Central America Antilles					
Anguilla	0.1	0.1	0.3	0.3	-4.8
Antigua and Barbuda	1.4	0.6	4.9	6.2	25.9
Aruba	0.3	0.7	2.1	4.4	114.9
Bahamas	3.0	72.3	34.5	120.6	249.9
Barbados	3.1	3.6	22.3	16.8	-24.8
Belize	0.5	0.4	2.4	4.2	77.2
Bermuda	49.8	1.8	60.5	11.5	-81.0
British Virgin Islands	0.1	0.4	47.5	1.1	-97.8
Cayman Islands	1.8	0.3	3.7	3.4	-7.8
Costa Rica	4.9	26.9	46.4	92.0	98.1
Cuba	29.9	23.3	201.2	163.8	-18.6
Dominica	0.3	0.3	1.5	2.0	34.9
Dominican Republic	22.3	9.8	83.1	60.0	-27.8
El Salvador	4.5	2.2	18.3	13.2	-28.2
Grenada	0.2	0.3	2.3	2.6	11.0
Guatemala	6.6	9.8	45.2	49.8	10.2
Haiti	2.5	3.0	19.6	13.7	-30.3
Honduras	2.0	2.3	17.3	16.0	-7.8
Jamaica	7.8	13.0	49.8	64.9	30.1
Montserrat	0.0	0.0	0.1	0.1	-22.1
Netherlands Antilles	1.3	1.1	90.8	105.0	15.6
Nicaragua	1.8	10.3	15.4	18.4	19.7
Panama	13.5	7.1	49.8	36.9	-25.8
Saint Kitts and Nevis	0.4	0.5	2.7	2.5	-9.6
Saint Lucia	0.8	0.7	4.6	5.0	7.9
Saint Vincent and the Grenadines	0.7	0.8	3.7	3.4	-9.9
Trinidad and Tobago	23.7	42.3	173.6	191.3	10.2
Turks and Caicos Islands	0.1	0.1	1.1	0.9	-17.7
Total	183.6	233.9	1,004.8	1,009.8	0.5
All countries	34,987.5	36,686.3	201,917.6	217,691.0	7.8

Table 5-1
Exports by province of origin, customs basis, not seasonally adjusted — June

	Agricultural and fishing products	Energy products	Forestry products	Industrial goods	Machinery and equipment	Automotive products	Consumer goods	Special transactions trade	Total
millions of dollars									
Domestic exports									
Newfoundland and Labrador									
2011	150.1	595.8	19.8	181.1	2.3	0.1	0.1	2.9	952.0
2012	135.0	671.4	8.1	252.0	4.3	0.1	0.1	2.1	1,073.1
Prince Edward Island									
2011	42.0	0.0	0.0	1.3	7.3	0.3	4.7	9.1	64.6
2012	52.0	0.0	0.0	2.9	14.7	0.3	3.8	13.1	86.9
Nova Scotia									
2011	122.3	43.3	83.8	49.2	120.9	4.9	5.2	3.2	432.7
2012	111.4	1.8	30.8	48.0	133.0	5.8	5.3	2.7	338.7
New Brunswick									
2011	155.2	971.2	103.7	149.2	27.8	4.3	11.9	3.5	1,426.8
2012	183.7	732.1	95.7	94.5	29.2	3.4	16.7	2.5	1,157.9
Quebec									
2011	399.4	226.5	500.3	1,765.3	1,504.2	172.2	308.4	91.0	4,967.3
2012	405.6	287.7	468.7	1,834.7	1,770.6	188.0	295.4	70.9	5,321.6
Ontario									
2011	774.5	254.2	242.0	4,068.1	2,578.9	4,241.1	574.2	142.4	12,875.4
2012	827.0	425.4	221.6	3,846.6	2,880.7	5,815.7	593.6	122.1	14,732.7
Manitoba									
2011	287.2	102.4	19.2	316.4	195.3	42.3	40.7	24.0	1,027.6
2012	286.5	99.6	16.6	254.9	199.0	58.2	27.6	28.6	971.0
Saskatchewan									
2011	567.2	951.5	19.7	898.4	58.3	5.1	0.4	3.8	2,504.4
2012	595.0	961.2	36.6	920.2	72.8	4.9	0.7	3.1	2,594.5
Alberta									
2011	532.8	5,564.9	160.5	1,036.0	401.7	78.4	11.3	23.1	7,808.8
2012	534.3	5,654.6	178.0	823.5	403.4	93.8	7.8	29.1	7,724.5
British Columbia									
2011	199.7	877.6	857.5	550.5	300.6	23.2	46.9	19.8	2,875.8
2012	200.6	706.3	826.7	512.2	318.0	37.1	44.6	17.6	2,663.2
Yukon, Northwest Territories and Nunavut ¹									
2011	0.3	0.0	0.0	50.2	1.6	0.0	0.0	0.0	52.2
2012	0.1	0.0	0.0	19.8	2.0	0.0	0.1	0.0	22.2
Total									
2011	3,230.6	9,587.4	2,006.4	9,065.6	5,198.9	4,572.0	1,003.8	322.8	34,987.5
2012	3,331.2	9,540.2	1,882.9	8,609.2	5,827.8	6,207.3	995.7	291.9	36,686.3
Re-exports									
2011	32.9	1.5	5.4	314.8	901.0	93.2	216.4	668.4	2,233.6
2012	35.5	1.6	6.4	239.6	984.0	103.5	219.7	749.0	2,339.2
Total exports									
2011	3,263.5	9,588.9	2,011.8	9,380.5	6,099.9	4,665.2	1,220.1	991.2	37,221.1
2012	3,366.7	9,541.8	1,889.3	8,848.8	6,811.7	6,310.8	1,215.5	1,040.9	39,025.5

1. Data for the current month do not include some exports from the Harmonized System, Chapter 71, "Natural/cultured pearls, precious stones and metals, coins, etc." for reasons relating to timing.

Table 5-2
Exports by province of origin, customs basis, not seasonally adjusted — Year to date, January to June

	Agricultural and fishing products	Energy products	Forestry products	Industrial goods	Machinery and equipment	Automotive products	Consumer goods	Special transactions trade	Total
millions of dollars									
Domestic exports									
Newfoundland and Labrador									
2011	488.1	3,950.8	73.2	1,009.9	20.3	1.2	0.8	12.3	5,556.6
2012	436.1	4,287.4	68.8	1,181.3	277.3	0.9	1.1	11.5	6,264.4
Prince Edward Island									
2011	209.6	0.0	0.2	11.0	35.6	1.6	16.6	40.9	315.5
2012	236.7	0.0	0.1	17.3	93.3	2.7	17.8	58.0	425.9
Nova Scotia									
2011	537.3	290.0	406.8	280.6	683.8	30.6	29.2	18.7	2,277.1
2012	566.1	24.4	187.0	287.8	699.5	37.3	30.2	18.4	1,850.5
New Brunswick									
2011	645.4	5,448.0	636.4	632.5	162.2	22.7	67.9	19.2	7,634.3
2012	771.8	5,329.7	630.3	583.5	174.0	23.6	83.6	18.1	7,614.6
Quebec									
2011	2,443.9	1,702.2	2,915.6	10,796.4	8,511.7	901.1	1,669.7	420.8	29,361.6
2012	2,584.4	1,873.3	2,672.4	11,040.2	9,645.8	1,124.9	1,760.8	409.1	31,110.8
Ontario									
2011	4,139.3	1,431.8	1,424.1	24,542.3	14,829.0	25,518.7	3,318.0	764.2	75,967.5
2012	4,410.7	1,781.6	1,254.3	24,879.9	15,764.3	30,529.0	3,521.3	745.8	82,886.9
Manitoba									
2011	1,791.3	495.6	122.1	1,480.7	1,085.4	230.5	260.4	129.0	5,595.1
2012	2,060.0	571.4	128.5	1,401.9	1,240.3	310.9	215.3	139.9	6,068.3
Saskatchewan									
2011	3,780.5	4,684.5	122.1	4,838.7	319.7	30.6	6.6	22.8	13,805.5
2012	4,325.5	6,279.7	191.8	4,784.4	398.9	25.1	8.9	21.6	16,035.8
Alberta									
2011	3,271.6	32,081.4	983.4	5,723.5	2,065.3	415.4	62.6	122.0	44,725.0
2012	3,806.5	35,621.3	1,016.9	5,370.6	2,290.0	529.4	62.3	147.7	48,844.7
British Columbia									
2011	1,033.5	4,420.5	4,807.5	3,243.1	1,570.7	137.0	267.2	121.9	15,601.4
2012	1,092.4	4,357.5	4,748.9	3,122.6	1,788.5	179.6	285.1	112.4	15,686.9
Yukon, Northwest Territories and Nunavut ¹									
2011	0.8	0.0	0.1	1,071.9	4.6	0.3	0.3	0.2	1,078.1
2012	1.7	0.1	0.0	892.9	6.4	0.4	0.7	0.1	902.3
Total									
2011	18,341.2	54,504.8	11,491.5	53,630.6	29,288.4	27,289.7	5,699.3	1,672.0	201,917.6
2012	20,291.6	60,126.5	10,899.1	53,562.4	32,378.3	32,763.7	5,986.9	1,682.6	217,691.0
Re-exports									
2011	292.3	72.3	39.1	2,177.9	5,166.9	582.0	1,346.5	3,880.2	13,557.1
2012	324.4	52.6	47.2	1,644.5	5,378.1	653.5	1,329.0	4,547.3	13,976.7
Total exports									
2011	18,633.5	54,577.1	11,530.6	55,808.6	34,455.4	27,871.7	7,045.8	5,552.2	215,474.8
2012	20,616.0	60,179.1	10,946.3	55,206.9	37,756.4	33,417.3	7,315.9	6,229.9	231,667.7

1. Data for the current month do not include some exports from the Harmonized System Chapter 71, "Natural/cultured pearls, precious stones and metals, coins, etc." for reasons relating to timing.

Table 6-1
Imports by commodity groupings, balance of payments basis, seasonally adjusted — Current dollars

	May 2012	June 2012	Change		Year to date			June 2012/ June 2011	
					2011	2012	Change		
	millions of dollars		percent		millions of dollars		percent		
Total	39,981	40,903	922	2.3	223,494	238,884	15,390	6.9	7.4
Agricultural and fishing products	2,838	2,933	95	3.4	15,971	16,949	978	6.1	7.5
Fruits and vegetables	766	812	47	6.1	4,383	4,580	198	4.5	9.8
Fresh fruits and berries	278	291	13	4.7	1,511	1,628	117	7.8	17.1
Dried fruits, fruits and fruit preparations	129	145	16	12.4	760	818	58	7.6	13.7
Fresh vegetables	179	190	12	6.6	1,149	1,056	-93	-8.1	0.6
Other vegetables and vegetable preparations	180	186	6	3.3	962	1,078	116	12.0	6.6
Other agricultural and fishing products	2,072	2,121	49	2.3	11,588	12,369	780	6.7	6.6
Live animals	22	18	-3	-14.4	109	111	2	1.8	3.4
Meat and meat preparations	217	248	30	13.8	1,200	1,390	190	15.8	20.5
Fish and marine animals	188	203	15	8.2	1,131	1,154	23	2.0	8.7
Cocoa, coffee, tea and other food preparations	498	494	-4	-0.7	2,786	2,951	165	5.9	2.1
Dairy produce, eggs and honey	56	48	-8	-13.9	308	316	9	2.8	-9.8
Corn (maize) shelled	36	36	0	-0.3	159	231	72	45.1	22.7
Other cereals and cereal preparations	198	215	17	8.7	1,080	1,238	158	14.6	16.9
Sugar and sugar preparations	206	187	-19	-9.0	1,101	1,090	-12	-1.1	-4.3
Fodder, feed, excluding unmilled cereal	134	150	16	11.8	710	786	76	10.7	28.2
Beverages	351	346	-5	-1.4	1,939	2,044	106	5.5	6.4
Tobacco	33	29	-4	-11.4	170	190	20	11.8	-6.4
Crude vegetable products	131	144	13	9.6	889	862	-27	-3.0	-8.5
Cotton	1	1	-1	-52.2	7	6	-1	-8.0	-30.9
Energy products	4,398	4,239	-158	-3.6	26,039	26,434	395	1.5	-3.2
Crude petroleum	2,668	2,184	-484	-18.2	14,028	14,965	937	6.7	1.9
Other energy products	1,729	2,055	326	18.9	12,011	11,469	-542	-4.5	-8.0
Coal and other related products	299	294	-5	-1.7	2,607	1,920	-687	-26.4	-40.0
Petroleum and coal products	1,430	1,762	331	23.2	9,403	9,549	145	1.5	1.0
Forestry products	221	238	17	7.9	1,225	1,328	102	8.3	18.6
Forestry products	221	238	17	7.9	1,225	1,328	102	8.3	18.6
Crude wood products	34	37	3	10.0	182	194	11	6.2	42.3
Wood fabricated materials	187	201	14	7.5	1,043	1,134	91	8.7	15.0
Industrial goods and materials	8,284	8,476	192	2.3	47,453	49,910	2,456	5.2	3.6
Metals and metal ores	3,117	3,220	103	3.3	19,274	19,086	-188	-1.0	-7.8
Metals in ores, concentrates and scrap	607	618	11	1.8	4,169	3,798	-371	-8.9	-21.9
Steel bars, rods, plates, sheets	597	635	38	6.3	3,571	3,831	260	7.3	3.5
Other iron and steel products	452	519	67	14.9	2,455	2,772	317	12.9	17.6
Precious metals including alloys	1,096	1,076	-20	-1.8	6,790	6,394	-396	-5.8	-14.6
Other non-ferrous metals and alloys	365	372	8	2.1	2,289	2,291	2	0.1	-3.5
Chemicals and plastics	2,786	2,825	39	1.4	15,239	16,533	1,294	8.5	12.1
Organic chemicals	599	589	-10	-1.6	3,402	3,629	227	6.7	-1.1
Plastic materials	960	1,027	68	7.1	5,316	5,807	491	9.2	14.2
Other chemicals and related products	1,227	1,208	-19	-1.5	6,520	7,097	577	8.8	17.8
Other industrial goods and materials	2,382	2,431	50	2.1	12,940	14,290	1,350	10.4	11.9
Crude animal products	35	26	-9	-25.1	158	198	40	25.5	5.9
Wool and man-made fibres	20	23	3	14.8	137	129	-8	-5.9	10.3
Crude non-metallic minerals	70	71	1	1.9	405	411	6	1.5	0.8
Textile fabricated materials	215	221	6	2.8	1,244	1,317	73	5.9	5.0
Metal fabricated basic products	1,046	1,069	23	2.2	5,378	6,205	827	15.4	15.7
Rubber fabricated materials	107	111	3	3.2	547	646	99	18.1	20.6
Oils, fats, animal and vegetable	97	98	1	1.4	598	598	0	0.1	-2.8
Non-metallic minerals	344	346	3	0.8	1,840	2,064	224	12.2	10.6
Other fabricated materials	447	465	18	3.9	2,635	2,722	88	3.3	11.8

Table 6-1 – continued

Imports by commodity groupings, balance of payments basis, seasonally adjusted — Current dollars

	May 2012	June 2012	Change		Year to date			June 2012/ June 2011	
					2011	2012	Change		
	millions of dollars		percent		millions of dollars			percent	
Machinery and equipment	10,876	11,225	348	3.2	61,328	65,211	3,882	6.3	4.7
Industrial and agricultural machinery	3,215	3,403	188	5.9	17,348	19,287	1,939	11.2	-1.1
Engines, turbines and electric motors	370	361	-9	-2.4	2,130	2,294	164	7.7	47.8
Drilling mining machinery	214	235	21	9.9	1,715	1,235	-480	-28.0	-74.0
Excavating machinery	377	404	28	7.4	1,629	2,115	486	29.8	46.7
Metal working machinery	181	196	15	8.4	1,067	1,091	24	2.3	23.8
Other industrial machinery	1,591	1,726	135	8.5	8,545	9,742	1,197	14.0	17.6
Agricultural machinery including tractors	483	480	-3	-0.6	2,261	2,808	547	24.2	23.2
Aircraft and other transportation equipment	1,412	1,331	-80	-5.7	7,935	8,050	115	1.5	11.5
Aircraft, engines, parts	801	738	-63	-7.9	4,610	4,460	-151	-3.3	17.4
Other transportation equipment and parts	611	594	-17	-2.8	3,324	3,590	266	8.0	5.0
Office machines and equipment	1,105	1,109	5	0.4	6,851	6,523	-329	-4.8	-2.6
Other machinery and equipment	5,146	5,381	236	4.6	29,194	31,351	2,157	7.4	8.7
Other communication and related equipment	1,711	1,798	87	5.1	10,958	10,835	-123	-1.1	-6.2
Other equipment and tools	3,435	3,584	149	4.3	18,237	20,517	2,280	12.5	18.2
Automotive products	6,918	6,995	77	1.1	34,935	40,355	5,421	15.5	21.9
Passenger autos and chassis	2,136	2,118	-18	-0.9	11,033	12,615	1,582	14.3	15.6
Trucks and other motor vehicles	1,827	1,856	29	1.6	9,122	10,562	1,440	15.8	17.8
Motor vehicle parts	2,955	3,021	67	2.3	14,780	17,179	2,399	16.2	29.7
Other consumer goods	5,063	5,299	236	4.7	29,212	30,389	1,177	4.0	6.6
Apparel and footwear	1,026	1,057	31	3.0	5,986	6,130	144	2.4	-2.9
Apparel and apparel accessories	843	870	27	3.2	4,972	5,089	117	2.4	-4.3
Footwear	183	187	4	2.4	1,014	1,041	26	2.6	4.4
Miscellaneous consumer goods	4,037	4,242	205	5.1	23,226	24,259	1,034	4.5	9.3
Television, radios, phonographs	149	147	-1	-0.7	778	846	68	8.8	16.3
Printed matter	262	322	60	22.7	1,697	1,687	-10	-0.6	13.2
Watches, sporting goods and toys	503	506	3	0.5	2,904	2,981	77	2.7	1.6
House furnishings	783	832	49	6.3	4,282	4,704	423	9.9	12.7
Photographic goods	210	206	-4	-2.1	1,341	1,215	-126	-9.4	1.6
Miscellaneous end products	2,129	2,228	99	4.7	12,224	12,826	601	4.9	9.8
Special transactions trade	528	629	101	19.1	2,590	3,217	627	24.2	45.2
Unallocated balance of payments adjustments	856	869	13	1.6	4,741	5,092	351	7.4	15.6

Table 6-2
Imports by commodity groupings, balance of payments basis, seasonally adjusted — Constant dollars, 2002

	May	June 2012	Change		Year to date			June 2012/	
	2012				2011	2012	Change	June 2011	
	millions of dollars		percent		millions of dollars			percent	
Total	43,650	44,742	1,092	2.5	253,424	262,310	8,886	3.5	3.4
Agricultural and fishing products	2,722	2,733	11	0.4	15,962	16,449	487	3.1	0.5
Fruits and vegetables	749	762	13	1.7	4,365	4,605	240	5.5	3.3
Fresh fruits and berries	284	284	1	0.2	1,631	1,664	33	2.0	10.9
Dried fruits, fruits and fruit preparations	108	118	10	9.5	726	675	-51	-7.0	2.4
Fresh vegetables	201	204	3	1.6	1,084	1,322	237	21.9	-0.5
Other vegetables and vegetable preparations	157	156	-1	-0.9	924	945	21	2.3	-3.4
Other agricultural and fishing products	1,973	1,971	-2	-0.1	11,597	11,844	247	2.1	-0.5
Live animals	19	16	-3	-14.6	106	98	-8	-7.1	-5.0
Meat and meat preparations	202	221	19	9.3	1,134	1,263	128	11.3	10.0
Fish and marine animals	204	240	36	17.8	1,418	1,257	-161	-11.4	6.1
Cocoa, coffee, tea and other food preparations	536	509	-28	-5.2	3,120	3,239	120	3.8	-8.6
Dairy produce, eggs and honey	57	45	-12	-21.2	309	299	-10	-3.1	-17.0
Corn (maize) shelled	22	22	0	0.1	99	133	34	34.3	24.8
Other cereals and cereal preparations	157	183	26	16.4	844	1,044	199	23.6	28.0
Sugar and sugar preparations	193	169	-25	-12.7	1,072	1,021	-51	-4.8	-8.1
Fodder, feed, excluding unmilled cereal	106	110	4	3.3	609	636	27	4.5	8.1
Beverages	327	317	-10	-3.1	1,864	1,885	21	1.1	1.1
Tobacco	37	32	-5	-14.3	206	212	6	3.1	-16.3
Crude vegetable products	112	109	-3	-2.9	809	751	-58	-7.1	-16.4
Cotton	1	1	-1	-47.6	8	6	-2	-27.8	-43.6
Energy products	1,890	2,006	116	6.1	11,810	11,440	-370	-3.1	3.5
Crude petroleum	924	813	-112	-12.1	4,972	4,982	10	0.2	9.6
Other energy products	966	1,193	227	23.6	6,838	6,458	-380	-5.6	-0.2
Coal and other related products	403	422	18	4.5	2,646	2,592	-54	-2.0	-7.7
Petroleum and coal products	562	772	209	37.2	4,192	3,866	-327	-7.8	4.4
Forestry products	292	306	14	4.8	1,676	1,768	92	5.5	10.2
Forestry products	292	306	14	4.8	1,676	1,768	92	5.5	10.2
Crude wood products	52	54	2	4.8	273	284	10	3.7	28.5
Wood fabricated materials	240	252	11	4.7	1,403	1,485	82	5.8	7.0
Industrial goods and materials	7,050	7,146	96	1.4	41,106	42,242	1,137	2.8	3.4
Metals and metal ores	2,100	2,159	59	2.8	12,115	12,561	446	3.7	-2.0
Metals in ores, concentrates and scrap	312	310	-2	-0.7	2,008	1,920	-88	-4.4	-20.1
Steel bars, rods, plates, sheets	453	468	15	3.3	2,858	2,872	15	0.5	0.5
Other iron and steel products	292	333	41	14.1	1,683	1,814	132	7.8	13.0
Precious metals including alloys	685	687	2	0.3	3,411	3,718	307	9.0	0.6
Other non-ferrous metals and alloys	358	361	2	0.7	2,155	2,237	81	3.8	-2.7
Chemicals and plastics	2,390	2,429	39	1.6	14,149	14,247	98	0.7	8.1
Organic chemicals	357	365	8	2.3	2,200	2,214	14	0.6	0.0
Plastic materials	925	997	73	7.9	5,490	5,659	169	3.1	9.7
Other chemicals and related products	1,109	1,067	-42	-3.8	6,459	6,374	-85	-1.3	9.6
Other industrial goods and materials	2,560	2,558	-2	-0.1	14,841	15,434	593	4.0	3.9
Crude animal products	31	23	-8	-26.0	156	189	33	21.2	0.3
Wool and man-made fibres	24	27	4	16.3	164	151	-14	-8.3	16.8
Crude non-metallic minerals	57	54	-3	-4.9	324	334	10	3.1	-1.1
Textile fabricated materials	272	279	7	2.6	1,672	1,672	-1	0.0	1.4
Metal fabricated basic products	1,060	1,066	7	0.6	5,850	6,320	470	8.0	8.2
Rubber fabricated materials	115	115	1	0.6	673	700	27	3.9	6.3
Oils, fats, animal and vegetable	84	88	4	5.4	542	523	-18	-3.4	-1.9
Non-metallic minerals	400	391	-10	-2.4	2,312	2,405	93	4.0	-0.7
Other fabricated materials	518	514	-4	-0.8	3,148	3,141	-7	-0.2	1.1

Table 6-2 – continued

Imports by commodity groupings, balance of payments basis, seasonally adjusted — Constant dollars, 2002

	May	June 2012	Change		Year to date			June 2012/ June 2011	
	2012				2011	2012	Change		
	millions of dollars		percent		millions of dollars			percent	
Machinery and equipment	15,862	16,338	476	3.0	94,381	96,217	1,836	1.9	-2.3
Industrial and agricultural machinery	3,778	3,928	150	4.0	22,189	22,838	649	2.9	-13.2
Engines, turbines and electric motors	437	426	-11	-2.6	2,726	2,761	35	1.3	37.3
Drilling mining machinery	230	248	18	7.8	2,254	1,334	-920	-40.8	-81.1
Excavating machinery	439	463	23	5.3	2,130	2,478	348	16.3	29.7
Metal working machinery	221	241	20	9.3	1,424	1,362	-62	-4.4	14.8
Other industrial machinery	1,843	1,959	116	6.3	10,656	11,364	707	6.6	7.6
Agricultural machinery including tractors	608	591	-17	-2.8	2,999	3,539	541	18.0	14.7
Aircraft and other transportation equipment	1,590	1,469	-121	-7.6	9,522	9,142	-380	-4.0	3.3
Aircraft, engines, parts	964	880	-84	-8.7	5,813	5,429	-383	-6.6	8.9
Other transportation equipment and parts	626	589	-37	-5.8	3,709	3,713	3	0.1	-4.1
Office machines and equipment	3,115	3,299	185	5.9	17,803	18,540	737	4.1	5.9
Other machinery and equipment	7,379	7,641	262	3.6	44,867	45,697	830	1.8	-0.3
Other communication and related equipment	2,950	3,081	131	4.4	19,842	18,995	-847	-4.3	-12.6
Other equipment and tools	4,429	4,560	131	3.0	25,024	26,701	1,677	6.7	10.2
Automotive products	8,451	8,467	16	0.2	43,855	49,632	5,777	13.2	17.4
Passenger autos and chassis	2,503	2,468	-35	-1.4	12,804	14,732	1,928	15.1	15.0
Trucks and other motor vehicles	2,088	2,105	16	0.8	10,757	12,284	1,527	14.2	12.9
Motor vehicle parts	3,859	3,894	35	0.9	20,293	22,617	2,323	11.4	21.7
Other consumer goods	6,313	6,513	200	3.2	39,108	38,146	-961	-2.5	-1.3
Apparel and footwear	1,344	1,384	40	3.0	8,706	8,162	-543	-6.2	-10.5
Apparel and apparel accessories	1,105	1,144	39	3.5	7,250	6,787	-462	-6.4	-11.4
Footwear	239	240	1	0.4	1,456	1,375	-81	-5.6	-6.0
Miscellaneous consumer goods	4,969	5,129	160	3.2	30,402	29,984	-418	-1.4	1.5
Television, radios, phonographs	253	245	-8	-3.1	1,355	1,440	85	6.3	10.6
Printed matter	325	390	65	20.1	2,185	2,101	-84	-3.9	5.6
Watches, sporting goods and toys	644	643	-1	-0.2	4,061	3,898	-163	-4.0	-3.0
House furnishings	970	1,010	41	4.2	5,637	5,854	217	3.8	4.2
Photographic goods	464	464	0	0.1	2,855	2,703	-153	-5.4	9.2
Miscellaneous end products	2,313	2,376	63	2.7	14,308	13,988	-319	-2.2	-1.1
Special transactions trade	577	695	118	20.4	2,953	3,556	603	20.4	39.4
Unallocated balance of payments adjustments	493	538	45	9.2	2,573	2,859	286	11.1	39.9

Table 7-1
Imports from selected countries, customs basis, not seasonally adjusted — June

	Agricultural and fishing products	Energy products	Forestry products	Industrial goods	Machinery and equipment	Automotive products	Consumer goods	Special transactions trade	Total
millions of dollars									
United States									
2011	1,607.8	1,419.0	150.2	4,660.9	4,552.8	4,141.0	2,073.1	402.1	19,007.0
2012	1,823.9	1,564.4	178.2	5,157.9	5,269.6	4,878.0	2,087.1	594.8	21,553.9
Mexico									
2011	121.4	136.5	0.5	248.3	682.7	859.9	106.9	6.9	2,163.2
2012	131.7	78.9	0.4	242.6	705.8	903.9	120.1	4.6	2,188.0
Japan									
2011	5.1	1.5	0.0	84.9	453.1	298.9	80.8	0.8	925.1
2012	5.6	2.3	0.2	114.6	539.9	521.5	98.1	0.3	1,282.5
European Union									
Germany									
2011	23.5	1.5	0.8	214.5	401.1	308.6	143.4	0.5	1,093.8
2012	25.4	6.5	1.1	195.5	505.8	280.1	120.6	1.4	1,136.3
France									
2011	75.3	8.6	0.8	67.1	155.2	6.4	121.2	0.4	435.0
2012	72.8	1.4	0.6	59.4	153.6	7.3	117.8	1.9	414.9
United Kingdom									
2011	35.2	474.8	0.1	176.5	280.6	40.0	97.4	2.8	1,107.3
2012	35.2	243.0	0.0	124.4	202.0	35.0	104.6	1.6	745.8
Italy									
2011	60.5	0.1	1.4	98.9	140.1	27.6	105.5	0.5	434.5
2012	58.3	0.1	1.4	105.0	149.9	31.2	104.4	0.4	450.8
Other European Union									
2011	102.8	400.7	4.3	373.7	409.4	87.5	282.5	3.6	1,664.6
2012	100.5	418.8	4.8	290.5	445.3	87.4	355.0	1.5	1,703.8
Total									
2011	297.3	885.6	7.4	930.8	1,386.5	470.1	749.8	7.9	4,735.3
2012	292.1	669.9	7.9	774.9	1,456.6	441.0	802.4	6.9	4,451.6
Newly industrialized countries									
South Korea									
2011	6.4	67.4	0.0	127.5	294.3	186.5	19.4	0.2	701.7
2012	6.6	1.8	0.0	101.9	210.9	238.7	17.7	0.1	577.8
Hong Kong									
2011	3.0	0.0	0.0	2.3	8.4	0.3	11.0	0.0	24.9
2012	2.7	0.0	0.0	3.1	7.7	0.2	10.0	1.7	25.4
Taiwan									
2011	6.6	0.0	0.5	97.6	277.6	14.7	33.5	0.1	430.7
2012	7.0	0.0	0.5	97.0	219.4	17.9	37.7	0.1	379.7
Singapore									
2011	5.4	19.4	0.1	11.9	56.3	0.3	26.5	0.3	120.2
2012	1.9	0.1	0.0	11.1	48.2	0.4	16.9	0.4	79.0
Total									
2011	21.4	86.8	0.6	239.3	636.6	201.8	90.4	0.7	1,277.5
2012	18.1	1.9	0.6	213.2	486.2	257.2	82.3	2.3	1,061.9
Other countries									
2011	757.4	1,917.4	53.8	2,178.5	3,392.9	344.3	1,923.4	18.3	10,586.0
2012	721.0	1,961.4	56.6	2,044.0	2,945.1	270.2	1,945.4	42.2	9,985.8
Total									
2011	2,811.3	4,446.9	212.5	8,342.8	11,104.5	6,315.9	5,024.4	436.6	38,695.0
2012	2,992.8	4,278.8	244.0	8,547.2	11,403.2	7,271.6	5,135.4	651.1	40,524.3

Table 7-2
Imports from selected countries, customs basis, not seasonally adjusted — Year to date, January to June

	Agricultural and fishing products	Energy products	Forestry products	Industrial goods	Machinery and equipment	Automotive products	Consumer goods	Special transactions trade	Total
millions of dollars									
United States									
2011	8,524.3	8,159.1	911.2	26,957.7	26,566.0	24,153.3	11,254.1	2,187.9	108,713.5
2012	9,463.2	8,406.1	1,000.1	29,386.8	29,471.9	26,995.7	11,884.5	2,679.1	119,287.4
Mexico									
2011	891.4	628.0	2.5	1,156.1	4,023.6	4,686.1	601.3	37.4	12,026.5
2012	904.6	519.8	2.6	1,361.8	4,211.3	5,201.7	620.8	32.5	12,855.1
Japan									
2011	32.1	3.7	0.4	565.0	2,530.9	2,254.4	528.3	3.5	5,918.3
2012	42.3	10.0	0.4	633.9	3,030.6	3,464.3	543.2	2.3	7,727.2
European Union									
Germany									
2011	142.5	7.7	5.9	1,170.9	2,130.0	1,807.6	906.8	6.4	6,177.7
2012	157.4	52.0	6.2	1,130.9	3,035.2	1,967.5	877.9	11.4	7,238.6
France									
2011	343.9	42.9	2.1	476.8	1,018.9	43.3	726.8	4.2	2,659.0
2012	353.1	63.1	3.3	367.2	936.7	47.1	711.4	16.4	2,498.3
United Kingdom									
2011	186.9	1,782.1	0.2	1,045.4	1,563.2	250.0	677.0	21.3	5,526.2
2012	190.0	945.8	0.4	985.6	1,297.7	359.7	639.0	26.1	4,444.2
Italy									
2011	323.6	74.0	7.6	563.1	785.4	134.5	562.3	2.8	2,453.3
2012	345.8	0.8	9.7	617.1	843.4	150.9	595.1	4.6	2,567.4
Other European Union									
2011	572.4	1,867.7	20.7	2,029.4	2,467.7	410.6	1,702.6	7.0	9,078.1
2012	589.8	1,530.1	24.3	1,844.1	2,490.7	504.0	1,700.0	10.9	8,693.8
Total									
2011	1,569.3	3,774.4	36.5	5,285.6	7,965.1	2,646.0	4,575.5	41.9	25,894.3
2012	1,636.1	2,591.8	43.9	4,945.0	8,603.8	3,029.2	4,523.4	69.3	25,442.3
Newly industrialized countries									
South Korea									
2011	29.9	108.8	0.1	599.3	1,375.8	960.5	98.8	0.7	3,174.0
2012	39.3	115.1	0.2	608.9	1,061.9	1,451.1	99.2	0.6	3,376.2
Hong Kong									
2011	13.9	0.0	0.0	39.6	49.5	1.2	64.3	0.2	168.8
2012	13.5	0.0	0.2	15.7	48.0	1.3	54.8	3.2	136.8
Taiwan									
2011	32.3	0.3	2.8	568.0	1,449.4	88.0	186.1	0.8	2,327.6
2012	37.1	5.5	2.4	586.0	1,322.1	101.3	209.8	0.8	2,265.1
Singapore									
2011	18.0	130.6	0.4	106.1	275.5	1.8	166.8	0.5	699.7
2012	11.8	0.1	0.0	129.9	323.5	2.5	129.2	2.4	599.4
Total									
2011	94.1	239.7	3.4	1,313.1	3,150.1	1,051.4	516.0	2.2	6,370.0
2012	101.7	120.6	2.8	1,340.4	2,755.6	1,556.2	493.0	7.2	6,377.5
Other countries									
2011	4,441.4	13,306.9	290.7	12,136.3	16,005.5	1,326.9	10,342.2	147.3	57,997.3
2012	4,437.2	14,615.4	302.5	12,336.8	16,385.0	1,507.8	10,907.0	219.4	60,711.2
Total									
2011	15,557.2	26,111.8	1,244.7	47,413.8	60,241.3	36,118.2	27,817.5	2,420.2	216,924.8
2012	16,588.8	26,263.6	1,352.3	50,004.9	64,458.6	41,755.1	28,972.1	3,009.7	232,405.1

Table 8
Imports by country, customs basis, not seasonally adjusted

	June		January to June		Change
	2011	2012	2011	2012	January to June 2012/ January to June 2011
	millions of dollars				percent
North America					
Canada	269.2	286.3	1,836.6	1,682.0	-8.4
Greenland	0.0	0.0	0.1	0.1	92.1
Mexico	2,163.2	2,188.0	12,026.5	12,855.1	6.9
Saint Pierre and Miquelon	0.3	0.6	1.0	1.8	82.6
United States	19,007.0	21,553.9	108,713.5	119,287.4	9.7
Total	21,439.7	24,028.9	122,577.7	133,826.5	9.2
Western Europe					
Andorra	0.0	0.1	0.2	0.3	79.4
Austria	118.1	100.0	621.5	679.7	9.4
Belgium	149.2	169.0	842.5	770.8	-8.5
Denmark	52.1	68.9	804.0	503.9	-37.3
Faeroe Islands	0.9	0.4	4.7	4.0	-15.8
Finland	144.1	109.1	878.8	459.9	-47.7
France	435.0	414.9	2,659.0	2,498.3	-6.0
Germany	1,093.8	1,136.3	6,177.7	7,238.6	17.2
Gibraltar	0.0	0.0	1.7	0.0	-98.2
Greece	26.6	13.5	89.9	74.1	-17.6
Iceland	2.6	6.4	13.0	30.1	131.1
Italy	434.5	450.8	2,453.3	2,567.4	4.7
Luxembourg	7.8	51.6	50.0	107.1	114.1
Malta	2.3	4.3	12.4	17.4	40.6
Netherlands	199.9	406.7	1,029.0	1,810.4	75.9
Norway	472.0	303.3	2,176.4	2,207.5	1.4
Portugal	25.0	22.3	156.4	158.1	1.0
Republic of Ireland (Eire)	118.8	103.6	624.5	650.6	4.2
Spain	178.9	142.3	890.9	867.8	-2.6
Sweden	198.2	244.1	1,154.4	1,092.3	-5.4
Switzerland	201.6	244.7	1,488.5	1,751.9	17.7
United Kingdom	1,107.3	745.8	5,526.2	4,444.2	-19.6
Total	4,968.9	4,737.9	27,655.1	27,934.4	1.0
Other Europe					
Albania	0.2	0.2	3.3	2.2	-33.6
Armenia	4.8	8.0	23.2	37.6	62.3
Azerbaijan	93.6	4.0	310.2	662.2	113.5
Belarus	0.4	0.3	2.8	84.3	...
Bosnia and Herzegovina	1.0	1.3	4.6	5.8	26.7
Bulgaria	9.7	6.9	41.3	103.2	149.7
Croatia	1.7	1.8	13.7	13.8	0.4
Czech Republic	38.2	44.5	183.2	219.3	19.7
Estonia	6.6	3.1	55.7	25.3	-54.5
Georgia	12.0	6.2	58.4	44.9	-23.1
Hungary	28.4	40.6	163.8	209.6	28.0
Kazakhstan	234.5	264.0	1,360.9	1,581.6	16.2
Kyrgyzstan	0.0	0.0	0.1	0.0	-87.7
Latvia	1.5	2.0	7.8	9.1	16.4
Lithuania	152.8	4.8	373.4	36.3	-90.3
Macedonia (Former Yugoslav Republic of Macedonia)	0.4	0.7	3.6	5.1	42.0
Montenegro	0.1	0.2	0.4	0.3	-3.1
Poland	126.9	84.6	791.1	577.5	-27.0
Republic of Moldova	0.1	0.3	0.8	1.8	115.5
Romania	46.2	38.8	137.9	116.2	-15.7
Russian Federation	55.7	46.2	688.4	513.3	-25.4
Serbia	1.0	1.3	7.9	6.3	-20.1
Slovakia	25.4	27.5	123.1	131.3	6.7
Slovenia	7.7	15.4	44.4	71.9	61.8
Tajikistan	0.0	0.0	0.0	0.0	98.0
Turkmenistan	0.0	0.0	0.1	0.1	-31.1
Ukraine	20.5	20.8	61.3	83.6	36.4
Uzbekistan	0.1	0.1	1.3	0.3	-79.8
Total	869.7	623.6	4,462.8	4,542.8	1.8

Table 8 – continued

Imports by country, customs basis, not seasonally adjusted

	June		January to June		Change
	2011	2012	2011	2012	January to June 2012/ January to June 2011
	millions of dollars				percent
Middle East					
Bahrain	0.3	23.8	2.4	90.6	...
Cyprus	0.2	0.3	1.9	2.1	6.5
Egypt	30.6	55.9	202.1	237.7	17.7
Eritrea	17.0	22.3	85.3	201.4	136.3
Ethiopia	2.5	2.2	8.9	8.4	-5.9
Iran	2.1	3.0	17.6	25.3	43.5
Iraq	0.0	199.3	1,376.1	1,950.1	41.7
Israel	90.6	90.5	504.1	564.9	12.0
Jordan	1.7	2.4	9.6	9.0	-5.8
Kuwait	0.0	0.0	56.3	27.5	-51.2
Lebanon	1.4	1.4	9.0	10.0	10.9
Libya	0.1	0.1	5.0	0.3	-94.5
Oman	1.2	2.2	8.9	18.6	108.4
Qatar	26.6	1.4	294.0	60.7	-79.3
Saudi Arabia	221.2	425.4	1,274.4	1,707.5	34.0
Somalia	0.0	0.0	0.0	0.0	-64.9
Sudan	15.4	18.5	67.1	61.1	-8.9
Syria	0.3	0.2	2.7	1.7	-37.9
Turkey	103.3	149.5	511.7	723.3	41.3
United Arab Emirates	714.5	50.2	829.2	137.2	-83.5
Yemen	0.0	0.0	0.0	0.0	43.3
Total	1,228.9	1,048.4	5,266.3	5,837.4	10.8
Other Africa					
Algeria	356.0	418.3	2,596.3	2,950.6	13.6
Angola	122.2	206.6	1,329.8	995.8	-25.1
Antarctica	0.0	0.0	0.5	0.1	-86.5
Benin	0.0	0.0	0.0	0.1	204.4
Botswana	0.1	0.0	0.1	0.2	74.1
Bouvet Island	0.0	0.0	0.0	0.0	148.1
Burkina Faso	1.1	0.0	2.1	2.4	12.1
Burundi	0.0	0.1	0.2	0.2	14.6
Cameroon	0.5	0.7	3.1	5.0	62.4
Cape Verde	0.0	0.0	0.0	0.0	-86.0
Central African Republic	0.0	0.1	0.1	0.5	723.5
Chad	0.1	0.0	0.2	115.1	...
Comoros	0.0	0.0	0.1	0.2	164.0
Congo	0.5	0.1	1.4	0.9	-35.6
Democratic Republic of the Congo	0.1	0.0	0.3	0.7	106.9
Djibouti	0.0	0.0	0.0	0.0	150.2
Equatorial Guinea	0.0	0.0	369.2	253.2	-31.4
French Southern Territories	0.0	0.0	0.0	0.0	905.9
Gabon	0.4	0.1	0.8	0.8	-3.4
Gambia	0.0	0.0	0.1	0.0	-42.5
Ghana	5.1	4.2	38.7	10.9	-71.7
Guinea	6.2	5.1	26.0	35.7	37.2
Guinea-Bissau	0.0	0.0	0.0	0.0	669.7
Ivory Coast	138.8	11.1	224.8	248.9	10.7
Kenya	2.5	1.2	11.7	9.3	-20.6
Lesotho	1.9	1.3	6.7	5.3	-21.1
Liberia	5.3	0.9	18.5	16.9	-8.8
Madagascar	5.5	3.7	21.6	38.1	76.1
Malawi	0.1	17.5	66.5	62.9	-5.5
Mali	0.0	0.0	0.4	0.3	-27.8
Mauritania	0.0	0.0	0.1	0.1	97.6
Mauritius	1.0	2.0	5.3	5.7	7.9
Morocco	5.3	4.4	46.8	54.9	17.3
Mozambique	0.4	0.0	2.4	3.4	41.8
Namibia	0.1	25.5	119.3	122.1	2.3
Niger	0.1	0.0	0.7	0.3	-54.7
Nigeria	3.0	114.1	895.3	977.6	9.2
Rwanda	0.0	0.0	0.3	1.0	194.7
Saint Helena	0.1	0.0	0.1	0.0	-77.8
Sao Tome and Principe	0.0	0.0	0.1	0.0	-84.1
Senegal	0.1	0.1	0.5	0.5	13.1
Seychelles	0.2	0.1	0.4	0.7	81.9

Table 8 – continued

Imports by country, customs basis, not seasonally adjusted

	June		January to June		Change
	2011	2012	2011	2012	January to June 2012/ January to June 2011
	millions of dollars				percent
Sierra Leone	0.7	0.2	1.3	0.4	-66.1
South Africa	231.7	66.5	482.3	333.2	-30.9
Swaziland	0.1	0.2	1.0	2.1	122.4
Togo	0.9	0.0	2.6	0.2	-90.5
Tunisia	4.0	4.0	28.2	27.5	-2.5
Uganda	0.3	0.5	1.9	2.4	23.9
United Republic of Tanzania	0.6	0.2	2.6	4.5	75.2
Western Sahara	0.0	0.0	0.0	0.0	...
Zambia	0.1	0.7	0.5	1.5	190.3
Zimbabwe	0.2	0.2	3.5	1.4	-60.0
Total	895.2	889.8	6,314.3	6,293.8	-0.3
Other Asia					
Afghanistan	0.1	0.2	0.9	1.4	51.2
Bangladesh	95.9	87.1	532.8	546.4	2.6
Bhutan	0.0	0.0	0.0	0.0	198.7
British Indian Ocean Territory	0.0	0.0	0.1	0.0	-67.8
Brunei Darussalam	0.3	0.5	4.9	3.2	-34.2
Cambodia	45.7	43.2	227.9	261.8	14.8
China	3,977.8	4,294.9	21,700.1	23,604.5	8.8
Hong Kong	24.9	25.4	168.8	136.8	-18.9
India	224.2	227.7	1,262.0	1,502.7	19.1
Indonesia	112.7	100.3	693.5	644.9	-7.0
Japan	925.1	1,282.5	5,918.3	7,727.2	30.6
Laos	0.7	1.3	3.1	4.7	54.3
Macao	0.8	0.5	3.8	10.7	178.3
Malaysia	180.8	185.7	1,039.6	1,090.5	4.9
Maldives	0.0	0.1	0.1	0.6	333.9
Mongolia	50.8	13.5	87.6	34.5	-60.6
Myanmar	0.0	0.0	0.1	0.0	-56.0
Nepal	1.6	0.9	6.1	4.7	-22.8
North Korea	0.0	0.0	0.0	0.1	80.1
Pakistan	20.7	24.6	120.9	129.9	7.5
Philippines	75.8	81.4	443.0	483.0	9.0
Singapore	120.2	79.0	699.7	599.4	-14.3
South Korea	701.7	577.8	3,174.0	3,376.2	6.4
Sri Lanka	11.4	14.7	72.1	89.0	23.4
Taiwan	430.7	379.7	2,327.6	2,265.1	-2.7
Thailand	223.4	233.7	1,285.9	1,270.1	-1.2
Timor-Leste	0.0	0.0	0.2	0.0	-92.1
Viet Nam	116.6	146.0	577.3	732.4	26.9
Total	7,342.0	7,800.7	40,350.4	44,519.7	10.3
Oceania					
American Samoa	0.0	0.0	0.1	0.4	401.8
Australia	163.1	232.1	866.4	1,058.9	22.2
Christmas Island	0.0	0.0	0.0	0.0	-53.4
Cocos (Keeling) Islands	0.0	0.0	0.0	0.0	564.1
Cook Islands	0.0	0.0	0.0	0.0	-39.8
Fiji	0.4	0.2	1.7	2.0	15.8
French Polynesia	0.0	0.0	0.4	0.5	24.0
Guam	0.1	0.0	0.1	0.0	-69.0
Heard Island and McDonald Islands	0.0	0.0	0.0	0.0	-96.1
Kiribati	0.0	0.0	0.0	0.1	216.6
Nauru	0.0	0.0	0.0	0.0	107.5
New Caledonia	0.0	0.0	0.0	0.1	165.1
New Zealand	56.7	48.2	280.4	273.2	-2.5
Niue	0.0	0.0	0.0	0.0	-50.1
Norfolk Island	0.0	0.0	0.0	0.2	...
Papua New Guinea	0.1	0.2	0.4	0.9	164.7
Pitcairn	0.0	0.0	0.0	0.0	-59.1
Samoa	0.0	0.0	0.0	0.0	376.7
Solomon Islands	0.0	0.0	0.1	0.1	84.8
Tonga	0.0	0.0	0.0	0.0	13.2
United States Minor Outlying Islands	0.3	0.4	1.4	2.7	94.6
Vanuatu	0.0	0.0	0.0	0.1	71.3
Wallis and Futuna	0.0	0.0	0.0	0.0	...
Total	220.9	281.2	1,151.2	1,339.5	16.4

Table 8 – continued

Imports by country, customs basis, not seasonally adjusted

	June		January to June		Change
	2011	2012	2011	2012	January to June 2012/ January to June 2011
	millions of dollars				percent
South America					
Argentina	239.5	164.7	1,015.5	920.1	-9.4
Bolivia	23.4	11.0	116.1	121.6	4.8
Brazil	381.9	269.3	1,802.3	1,819.7	1.0
Chile	162.9	88.3	1,068.7	922.9	-13.6
Colombia	62.3	39.1	379.0	325.9	-14.0
Ecuador	16.5	19.8	122.3	111.7	-8.7
Falkland Islands (Malvinas)	0.3	0.0	0.3	0.4	30.1
Guyana	34.7	1.2	174.7	191.1	9.4
Paraguay	0.5	0.7	1.9	4.5	131.5
Peru	415.3	272.1	2,044.9	1,827.2	-10.6
Suriname	5.2	6.0	188.3	55.4	-70.6
Uruguay	3.5	15.5	22.2	41.6	87.3
Venezuela	100.4	1.6	465.8	211.3	-54.6
Total	1,446.3	889.3	7,402.2	6,553.3	-11.5
Central America Antilles					
Anguilla	0.0	0.0	0.1	0.1	-10.9
Antigua and Barbuda	0.0	0.2	0.2	1.0	584.7
Aruba	0.0	0.0	5.5	0.0	-99.9
Bahamas	4.9	3.8	9.6	17.5	82.4
Barbados	0.7	0.9	2.8	5.2	83.4
Belize	0.6	0.2	3.6	1.9	-47.7
Bermuda	0.1	0.3	0.4	0.9	125.0
British Virgin Islands	0.0	0.2	0.2	0.6	135.9
Cayman Islands	0.0	0.0	0.1	0.3	102.0
Costa Rica	40.1	46.7	253.1	257.9	1.9
Cuba	35.2	49.1	365.9	280.2	-23.4
Dominica	0.0	0.0	0.2	0.1	-18.0
Dominican Republic	13.0	14.1	70.1	81.4	16.1
El Salvador	8.8	8.6	91.1	59.1	-35.2
Grenada	0.2	0.1	0.6	1.3	139.1
Guatemala	31.0	27.2	254.7	234.0	-8.1
Haiti	2.4	2.9	13.6	15.3	12.7
Honduras	17.6	19.6	103.9	123.9	19.2
Jamaica	27.3	3.2	113.5	60.5	-46.7
Montserrat	0.0	0.0	0.1	0.1	-27.1
Netherlands Antilles	23.3	0.0	23.4	0.2	-99.3
Nicaragua	29.4	33.4	174.9	196.4	12.3
Panama	12.5	9.4	59.4	55.5	-6.5
Saint Kitts and Nevis	0.8	0.8	3.7	4.4	17.2
Saint Lucia	0.0	0.0	0.1	0.1	17.4
Saint Vincent and the Grenadines	0.1	0.1	0.2	0.1	-35.0
Trinidad and Tobago	35.4	3.7	193.4	159.3	-17.6
Turks and Caicos Islands	0.0	0.0	0.1	0.2	180.9
Total	283.4	224.6	1,744.6	1,557.6	-10.7
All countries	38,695.0	40,524.3	216,924.8	232,405.1	7.1

**Table 9-1
Imports by province of clearance, customs basis, not seasonally adjusted — June**

	Agricultural and fishing products	Energy products	Forestry products	Industrial goods	Machinery and equipment	Automotive products	Consumer goods	Special transactions trade	Total
millions of dollars									
Newfoundland and Labrador									
2011	2.9	15.4	0.0	13.5	31.0	0.0	0.1	3.2	66.1
2012	4.7	228.5	0.0	13.2	49.0	0.1	0.7	0.0	296.2
Prince Edward Island									
2011	0.2	0.0	0.0	0.1	0.7	0.0	0.1	0.0	1.1
2012	0.4	0.0	0.0	0.0	0.1	0.0	0.0	0.0	0.6
Nova Scotia									
2011	46.0	15.7	1.4	81.2	804.3	210.5	16.2	0.6	1,175.8
2012	29.7	12.7	1.0	84.6	84.9	149.5	12.1	0.8	375.3
New Brunswick									
2011	32.5	855.9	10.4	137.8	78.8	39.0	35.4	1.9	1,191.8
2012	47.3	921.0	10.0	111.7	81.0	36.6	19.9	1.7	1,229.3
Quebec									
2011	514.2	1,532.1	42.0	1,512.3	1,667.6	222.9	878.0	43.5	6,412.5
2012	422.0	1,755.4	53.4	1,307.7	1,745.8	233.0	866.5	54.1	6,437.7
Ontario									
2011	1,503.8	1,340.6	81.9	4,744.8	5,897.3	5,205.3	3,225.3	350.9	22,349.7
2012	1,691.8	445.9	92.6	4,976.7	6,102.1	6,135.4	3,275.4	546.3	23,266.3
Manitoba									
2011	83.2	43.6	7.9	319.2	619.7	150.5	146.3	8.0	1,378.5
2012	103.4	88.3	11.2	441.0	725.6	171.0	163.0	8.6	1,712.0
Saskatchewan									
2011	27.6	82.6	3.1	174.7	327.8	109.5	23.7	0.7	749.8
2012	42.3	72.0	2.4	247.8	530.2	134.4	38.7	2.4	1,070.1
Alberta									
2011	172.5	151.0	12.2	522.4	664.4	124.4	145.4	12.0	1,804.3
2012	205.3	465.9	14.0	582.9	868.1	151.1	157.0	19.7	2,464.1
British Columbia									
2011	418.8	408.2	53.6	836.7	1,012.4	253.7	553.9	15.9	3,553.1
2012	438.8	286.8	59.4	781.6	1,215.9	260.5	602.1	17.5	3,662.6
Yukon, Northwest Territories and Nunavut									
2011	9.5	1.9	0.0	0.2	0.6	0.0	0.0	0.0	12.2
2012	7.1	2.3	0.0	0.0	0.5	0.0	0.0	0.0	10.1
Total									
2011	2,811.3	4,446.9	212.5	8,342.8	11,104.5	6,315.9	5,024.4	436.6	38,695.0
2012	2,992.8	4,278.8	244.0	8,547.2	11,403.2	7,271.6	5,135.4	651.1	40,524.3

Table 9-2
Imports by province of clearance, customs basis, not seasonally adjusted — Year to date, January to June

	Agricultural and fishing products	Energy products	Forestry products	Industrial goods	Machinery and equipment	Automotive products	Consumer goods	Special transactions trade	Total
millions of dollars									
Newfoundland and Labrador									
2011	16.3	1,630.1	0.0	49.2	271.5	0.5	8.8	3.5	1,979.9
2012	31.3	2,491.7	0.0	64.3	115.2	0.4	10.8	3.9	2,717.6
Prince Edward Island									
2011	2.3	0.0	0.0	0.3	1.4	0.0	0.2	0.2	4.4
2012	2.3	0.0	0.0	0.2	0.9	0.1	0.2	0.1	3.9
Nova Scotia									
2011	299.6	871.6	7.7	669.4	1,303.0	1,408.4	88.5	16.6	4,664.9
2012	220.5	830.1	6.4	477.6	567.8	1,310.5	100.5	14.7	3,528.0
New Brunswick									
2011	203.8	5,104.6	56.8	694.5	418.8	200.3	134.0	9.6	6,822.5
2012	223.7	4,767.4	58.7	680.7	496.8	224.3	113.9	9.0	6,574.5
Quebec									
2011	2,631.3	9,663.4	306.4	8,560.5	9,203.1	1,172.2	4,984.9	236.3	36,758.1
2012	2,442.4	9,372.4	340.5	7,896.8	10,217.4	1,434.8	4,834.3	322.8	36,861.3
Ontario									
2011	8,379.9	5,096.9	453.5	27,020.5	33,724.5	29,775.1	17,923.3	1,952.9	124,326.6
2012	9,304.8	3,349.3	488.6	28,951.8	35,054.5	34,305.4	18,719.9	2,386.2	132,560.3
Manitoba									
2011	482.1	289.5	45.8	1,952.7	3,206.0	779.1	772.2	44.6	7,571.9
2012	564.5	367.7	65.9	2,686.2	4,023.6	1,032.9	915.6	55.3	9,711.7
Saskatchewan									
2011	199.8	394.4	11.8	1,371.8	2,042.4	630.7	138.8	12.6	4,802.2
2012	232.9	560.9	16.5	1,503.3	2,643.2	748.5	172.1	16.5	5,894.0
Alberta									
2011	965.1	1,067.2	61.3	3,013.1	4,452.6	658.6	690.9	60.4	10,969.3
2012	1,068.4	2,978.6	60.2	3,384.2	4,704.5	824.8	882.9	95.2	13,998.8
British Columbia									
2011	2,356.5	1,988.9	301.2	4,080.5	5,582.1	1,492.9	3,075.6	83.6	18,961.3
2012	2,483.6	1,538.1	315.5	4,358.4	6,607.1	1,873.1	3,221.7	106.2	20,503.8
Yukon, Northwest Territories and Nunavut									
2011	20.4	5.2	0.0	1.4	36.0	0.2	0.2	0.0	63.6
2012	14.4	7.4	0.0	1.5	27.4	0.3	0.2	0.0	51.2
Total									
2011	15,557.2	26,111.8	1,244.7	47,413.8	60,241.3	36,118.2	27,817.5	2,420.2	216,924.8
2012	16,588.8	26,263.6	1,352.3	50,004.9	64,458.6	41,755.1	28,972.1	3,009.7	232,405.1

Technical notes

The Canadian international merchandise trade statistical program

Introduction

The objective of this text is to provide a general overview of the Canadian International Merchandise Trade Statistical Program, with special reference to concepts and definitions. The text is intended for the general user and simplicity is emphasized.

Conceptual framework

1. Objectives and coverage: The primary objective of the Canadian International Merchandise Trade Statistical Program is to measure the change in the stock of material resources of Canada resulting from the movement of merchandise into or out of the country. Information on imports and exports are inputs into the System of National Accounts, particularly in the balance of payments and gross domestic product, and are used in the formulation of trade and budgetary policies. Governments, importers, exporters, manufacturers and shipping companies use international merchandise trade statistics to:

- monitor import penetration and export performance,
- monitor commodity price and volume changes,
- examine transport implications.

2. Trade statistics (customs basis / balance of payments basis): Merchandise trade statistics are reported and presented on two different bases: customs basis and balance of payment basis.

When goods are imported into or exported from Canada, declarations must be filed with customs, giving such information as description and value of the goods, origin and port of clearance of commodities and mode of transport. Most of this information is required for the purposes of customs administration. Statistics developed from administrative records of customs are commonly referred to as customs-based trade statistics.

Customs-based trade statistics are more accurate at measuring imports than they are at measuring exports. This is the case because customs are typically more vigilant with respect to goods entering the country than they are with goods leaving the country.

Customs-based export statistics may understate or incorrectly portray the destination of exports. Export statistics are understated when the proper documentation is not filed with Customs. Exports are incorrectly portrayed when the country of final destination is inaccurately reported on the customs documentation. This occurs most frequently when goods are routed through an intermediary country before continuing on to their final destination.

Statistics Canada does not have a measure of undercoverage but periodically conducts reconciliation exercises with its major trading partners, excluding the United States.

On January 1, 1990, Canada entered into a memorandum of understanding with the United States concerning the exchange of import data. As a consequence, each administration is using the other's import data to replace its own export data. Canada's international merchandise trade statistics are, therefore, no longer derived exclusively from the administrative records of the Canada Border Services Agency, but from United States Customs records as well.

Customs-based information is adjusted to conform with the National Accounts concepts and definitions. The adjustments to derive balance of payments-based trade data include adjustments related to trade definition,

valuation and timing. The principal difference between the two trade concepts is that customs-based merchandise trade statistics cover the physical movement of goods as they are reflected in customs documents while balance of payments-adjusted data are intended to cover all economic transactions that involve merchandise trade between residents and non-residents. The present document describes the concepts and processes pertaining to the customs-based trade statistics only. (For further information on balance of payments-adjusted data, see the publication *Canada's Balance of International Payments*, Statistics Canada (Catalogue no. 67-001-X).

3. System of trade: Canadian trade statistics are compiled according to the general system of trade, as defined by the United Nations Statistical Office. Under this system, imports include all goods that have crossed Canada's territorial boundary, whether for immediate consumption in Canada or for storage in bonded customs warehouses. Domestic exports include goods grown, extracted or manufactured in Canada, including goods of foreign origin that have been materially transformed in Canada. Re-exports are exports of goods of foreign origin that have not been materially transformed in Canada, including foreign goods withdrawn for export from bonded customs warehouses. Total exports are the sum of domestic exports and re-exports. Thus the general trade system, in principal, presents all goods entering the country (imports) and all goods leaving the country (exports). It differs from the special system of trade in the treatment of imported goods into bonded customs warehouses. Under the 'special' system, these goods are counted only if and when they are withdrawn from customs warehouses for home consumption. They are not counted in export statistics unless they have first cleared customs.

Conceptually, under the general system, the statistical frontier coincides with the geographical boundary, while under the 'special' system, it coincides with the customs boundary.

4. Valuation: For customs purposes, imports are recorded at values established according to the provisions of the Customs Act, which, since January 1, 1985, reflects valuation methods based on the General Agreement on Tariffs and Trade (GATT) Valuation Code System. In general, the value for duty of imported goods must be equivalent to the transaction value or the price actually paid.

To determine the transaction value of imported goods, all transportation and associated costs arising in respect of the goods being appraised prior to and at the place of direct shipment to Canada, are to be added to the price of the goods. Therefore, Canadian imports are valued Free on Board (FOB), place of direct shipment to Canada. It excludes freight and insurance costs in bringing the goods to Canada from the point of direct shipment.

Countries other than the United States, exports are, in principal, valued or recorded at the values declared on export documents, which usually reflect the transaction value, i.e., actual selling price or, in the case of a non-arm's length transaction, the transfer price used for company accounting purposes. Canadian exports to overseas countries are valued at F.O.B. port of exit, including domestic freight charges to that point but net of discounts and allowances. As of January, 1990, Canadian exports to the U.S. are valued F.O.B. point of exit from Canada. Prior to 1990, they were valued F.O.B. place of lading net of freight charges, discounts and allowances.

5. Statistical period: The reference period is the calendar month and the calendar year. The closing of the statistical month for imports and Canadian exports to the United States is defined as the last calendar day of the month, based as closely as practicable on the date of clearance from customs.

The closing of the statistical month for exports, to countries other than the United States, is also defined as the last calendar day of the month. Those export documents that are received too late for incorporation in the current month are assigned to the month the transaction took place. If a monthly summary report from a high volume exporter is not received on time, the data are imputed for the current month and revised with the trade value in the following statistical month.

6. Trading partner attribution (country of origin/destination): Exports are attributed to the country, which is the last known destination of the goods at the time of export. Exports to the United States are attributed to the state of destination.

Imports are attributed to their country of origin, that is, the country in which the goods were grown, extracted or manufactured in accordance to the rules of origin administered by the Canada Border Services Agency. Imports from the United States are attributed to the state of origin. Prior to 1988, most imports were attributed to the country of export/consignment, with the exception of imports from Central and South America.

7. Principal trading areas: The 'principal trading areas' are country groupings defined as follows:

United States: includes trade with Puerto Rico and the U.S. Virgin Islands

Japan

European Union (EU): Austria, Belgium, Bulgaria, Cyprus, Czech Republic, Denmark, Estonia, Finland, France, Germany, Greece, Hungary, Ireland, Italy, Latvia, Lithuania, Luxembourg, Malta, Netherlands, Poland, Portugal, Romania, Slovakia, Slovenia, Spain, Sweden and United Kingdom

Other Organisation for Economic Co-operation and Development (OECD): Australia, Canada, Chile, Iceland, Israel, Mexico, New Zealand, Norway, South Korea, Switzerland, and Turkey. (The EU countries, United States, and Japan are also members of OECD).

Other countries: all countries and territories other than the United States, Japan, EU and other OECD

8. Legal framework: Import and export statistics with countries other than the United States are derived from information contained in administrative records collected by the Canada Border Services Agency under the Customs Act. Copies of these documents (or information therefrom) are sent to Statistics Canada in accordance with Section 25 of the Statistics Act. It follows that the disclosure of trade statistics is governed by both the Customs Act and the Statistics Act and is subject to the provisions of Section 17(2)(a) of the latter. Disclosure of export statistics to the United States is now governed by a memorandum of understanding that provides for the exchange of detailed import statistics between Canada and the United States.

Contact information

Telephone: 1-800-263-1136 or 613-951-8116

Facsimile: 1-877-287-4369 or 613-951-0581

Internet: *infostats@statcan.gc.ca*