

Catalogue no. 65-001-X

Canadian International Merchandise Trade

May 2012



Statistics
Canada

Statistique
Canada

Canada

How to obtain more information

For information about this product or the wide range of services and data available from Statistics Canada, visit our website at www.statcan.gc.ca, e-mail us at infostats@statcan.gc.ca, or telephone us, Monday to Friday from 8:30 a.m. to 4:30 p.m., at the following numbers:

Statistics Canada's National Contact Centre

Toll-free telephone (Canada and the United States):

Inquiries line	1-800-263-1136
National telecommunications device for the hearing impaired	1-800-363-7629
Fax line	1-877-287-4369

Local or international calls:

Inquiries line	1-613-951-8116
Fax line	1-613-951-0581

Depository Services Program

Inquiries line	1-800-635-7943
Fax line	1-800-565-7757

To access this product

This product, Catalogue no. 65-001-X, is available free in electronic format. To obtain a single issue, visit our website at www.statcan.gc.ca and browse by "Key resource" > "Publications."

Standards of service to the public

Statistics Canada is committed to serving its clients in a prompt, reliable and courteous manner. To this end, Statistics Canada has developed *standards of service* that its employees observe. To obtain a copy of these service standards, please contact Statistics Canada toll-free at 1-800-263-1136. The service standards are also published on www.statcan.gc.ca under "About us" > "The agency" > "Providing services to Canadians."

Statistics Canada
International Trade Division

Canadian International Merchandise Trade

May 2012

Published by authority of the Minister responsible for Statistics Canada

© Minister of Industry, 2012

All rights reserved. Use of this publication is governed by the *Statistics Canada
Open License Agreement*.

<http://www.statcan.gc.ca/reference/copyright-droit-auteur-eng.htm>

July 2012

Catalogue no. 65-001-X, vol. 66, no. 5

ISSN 1480-8781

Frequency: Monthly

Ottawa

Cette publication est également disponible en français.

Note of appreciation

Canada owes the success of its statistical system to a long-standing partnership between Statistics Canada, the citizens of Canada, its businesses, governments and other institutions. Accurate and timely statistical information could not be produced without their continued cooperation and goodwill.

User information

Symbols

The following standard symbols are used in Statistics Canada publications:

- . not available for any reference period
- .. not available for a specific reference period
- ... not applicable
- 0 true zero or a value rounded to zero
- 0^s value rounded to 0 (zero) where there is a meaningful distinction between true zero and the value that was rounded
- p preliminary
- r revised
- x suppressed to meet the confidentiality requirements of the *Statistics Act*
- E use with caution
- F too unreliable to be published
- * significantly different from reference category ($p < 0.05$)

Note to users

All totals are calculated from full figures and rounded independently; consequently, totals may not equal the sum of their components.

The data is based on commodity groups (sector, subsector and major group).

Table of contents

Highlights	5
Analysis	7
Related products	11
Statistical tables	
1 Merchandise trade of Canada, balance of payments basis, seasonally adjusted	15
1-1 Current dollars	15
1-2 Constant dollars, 2002	16
1-3 Price indices (Laspeyres)	17
2 Exports by commodity groupings, balance of payments basis, seasonally adjusted	18
2-1 Current dollars	18
2-2 Constant dollars, 2002	20
3 Domestic exports to selected countries, customs basis, not seasonally adjusted	22
3-1 May	22
3-2 Year to date, January to May	23
4 Domestic exports by country, customs basis, not seasonally adjusted	24
5 Exports by province of origin, customs basis, not seasonally adjusted	28
5-1 May	28
5-2 Year to date, January to May	29
6 Imports by commodity groupings, balance of payments basis, seasonally adjusted	30
6-1 Current dollars	30
6-2 Constant dollars, 2002	32
7 Imports from selected countries, customs basis, not seasonally adjusted	34
7-1 May	34
7-2 Year to date, January to May	35
8 Imports by country, customs basis, not seasonally adjusted	36

Table of contents – continued

9	Imports by province of clearance, customs basis, not seasonally adjusted	40
9-1	May	40
9-2	Year to date, January to May	41

Data quality, concepts and methodology

	Technical notes	42
--	-----------------	----

Highlights

Canada's merchandise imports increased 0.4% while exports remained relatively unchanged in May. As a result, Canada's trade deficit with the world widened from \$623 million in April to \$793 million in May.

Imports rose to \$39.7 billion, on the strength of energy products. Overall, prices were up 1.5% as increases were recorded in most sectors.

Exports remained at \$38.9 billion in May; the increase in volumes counterbalanced the decrease in prices. Higher exports of machinery and equipment nearly offset the decline in most sectors.

Imports from the United States rose 1.8% to \$25.0 billion in May. After four consecutive monthly decreases, exports to the United States edged up 0.2% to \$28.2 billion. Canada's trade surplus with the United States decreased from \$3.6 billion in April to \$3.2 billion in May.

Imports from countries other than the United States declined 1.9% to \$14.7 billion and exports were down 0.7% to \$10.7 billion. Canada's trade deficit with countries other than the United States narrowed from \$4.2 billion in April to \$4.0 billion in May.

Note to readers

Merchandise trade is one component of Canada's international balance of payments (BOP), which also includes trade in services, investment income, current transfers as well as capital and financial flows.

International merchandise trade data by country are available on both a BOP and a customs basis for the United States, Japan and the United Kingdom. Trade data for all other individual countries are available on a customs basis only. BOP data are derived from customs data by making adjustments for factors such as valuation, coverage, timing and residency. These adjustments are made to conform to the concepts and definitions of the Canadian System of National Accounts.

Data in this release are on a BOP basis, seasonally adjusted and in current dollars. Constant dollars are calculated using the Laspeyres volume formula.

New aggregation structure

Statistics Canada will introduce the North American Product Classification System (NAPCS) for merchandise import and export statistics. The new structure will replace the classification structures known as the summary import groups (SIG) and the summary export groups (SEG) and the higher level aggregations (major groups, subsectors, sectors and sections) that have been in use for several decades.

Revised data based on NAPCS for the reference period of January 1988 to August 2012 will be disseminated on October 18.

The first regular release of data based on NAPCS will be on November 8 for the September reference month.

Readers interested in this upcoming change can find more detailed information on our web page dedicated to *classification* consultation and notification.

Chart 1
Exports and imports, seasonally adjusted, on a balance of payments basis

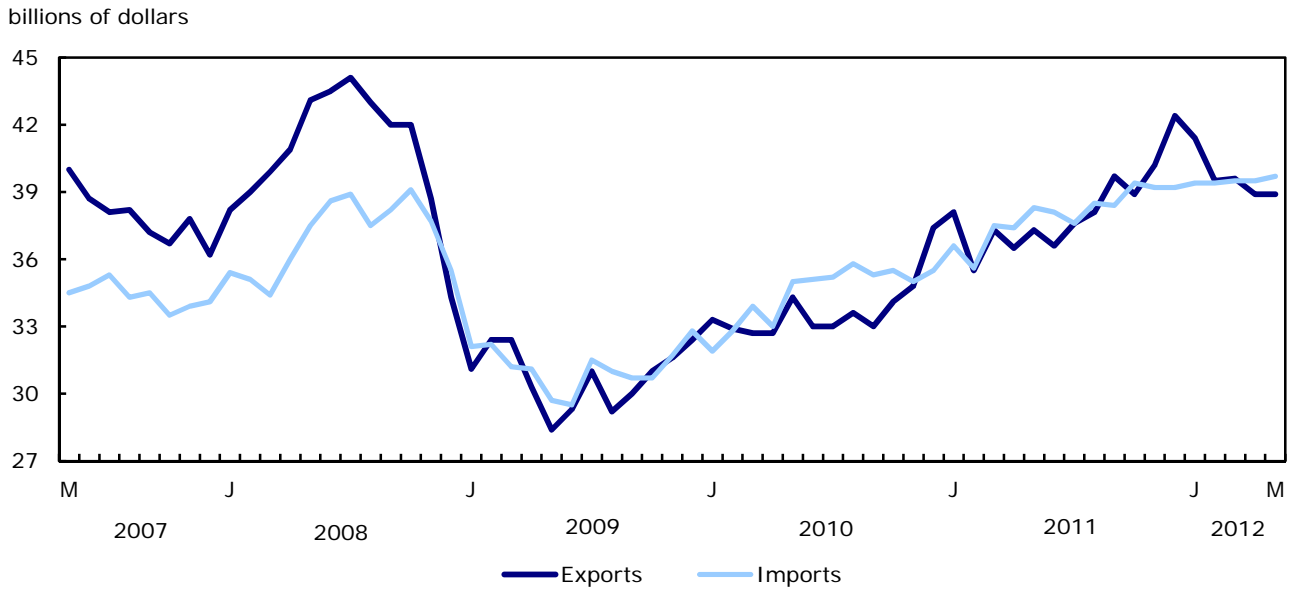
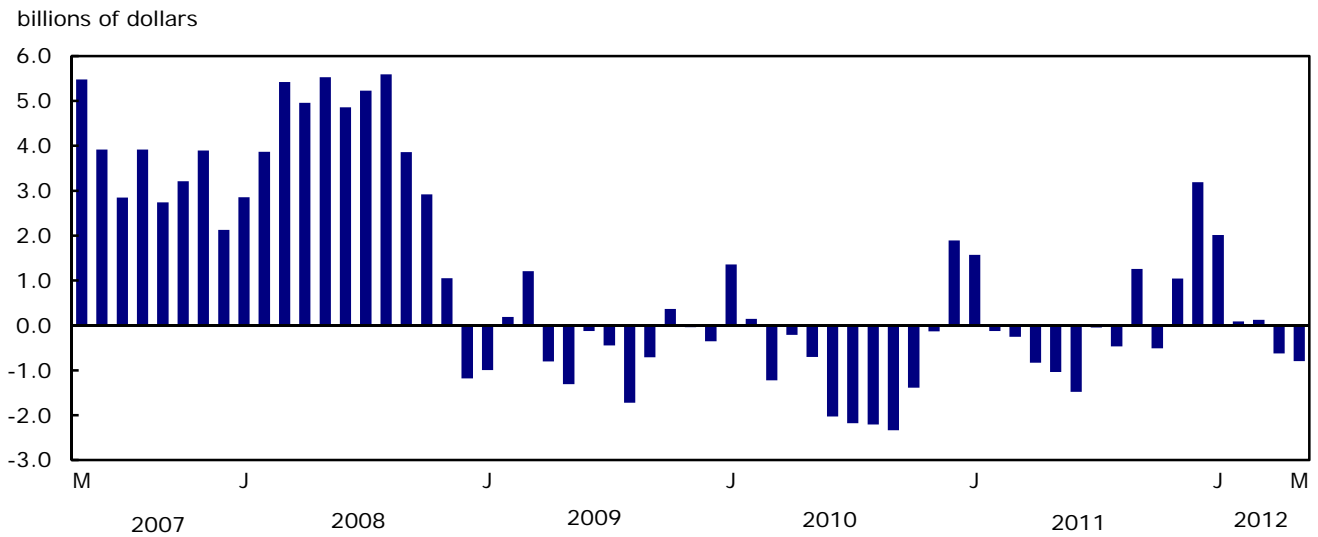


Chart 2
Trade balance, seasonally adjusted, on a balance of payments basis



Analysis

Energy products sector leads the increase in imports

Imports of energy products increased 3.7% to \$4.3 billion in May, on the strength of crude petroleum. Imports of crude petroleum rose 7.2% to \$2.7 billion in anticipation of temporary shutdowns for maintenance. Overall, volumes were up 3.9%.

Imports of automotive products, up for a third consecutive month, increased 0.8% to \$6.9 billion in May. Prices were up 1.4%. Higher imports of trucks and other motor vehicles, up 4.0% to a record high of \$1.8 billion, led the sector's increase.

Imports of machinery and equipment decreased 1.3% to \$10.7 billion, as volumes fell 2.4% and prices increased. Lower imports of other machinery and equipment (-2.6%), primarily telephone equipment, contributed the most to the sector's decline.

Imports of other consumer goods decreased 1.7% to \$5.0 billion. The main contributor to the decline was apparel and footwear, the result of volumes falling 8.8%.

Machinery and equipment sector nearly offsets widespread decreases in exports

Exports of machinery and equipment grew 8.7% to \$7.3 billion, on the strength of volumes (+8.0%). The gain in the sector nearly offset the decline in overall exports. Leading the increase were exports of aircraft, engines and parts, up 46.0% to \$1.5 billion, the highest level since December 2010.

Exports of energy products fell 4.3% to \$9.2 billion, the result of lower volumes and prices. Exports of crude petroleum declined 5.5% to \$5.7 billion, the fourth consecutive monthly decline since reaching a record high in January. In May, petroleum and coal products, primarily diesel fuel and motor gasoline, decreased 4.3% on lower volumes. At the same time, coal and other bituminous substances declined as a result of a 12.0% decrease in prices.

Note: In general, merchandise trade data are revised on an ongoing basis for each month of the current year. Current year revisions are reflected in both the customs and BOP based data.

The previous year's customs data are revised with the release of the January and February reference months as well as on a quarterly basis. The previous two years of customs based data are revised annually and are released in February with the December reference month.

The previous year's BOP based data will be revised with the release of the January, February, March and April 2012 reference months.

Factors influencing revisions include late receipt of import and export documentation, incorrect information on customs forms, replacement of estimates produced for the energy sector with actual figures, changes in classification of merchandise based on more current information, and changes to seasonal adjustment factors.

Revised data are available in the appropriate CANSIM tables, free of charge.

Chart 1
Imports of energy products, seasonally adjusted, on a balance of payments basis

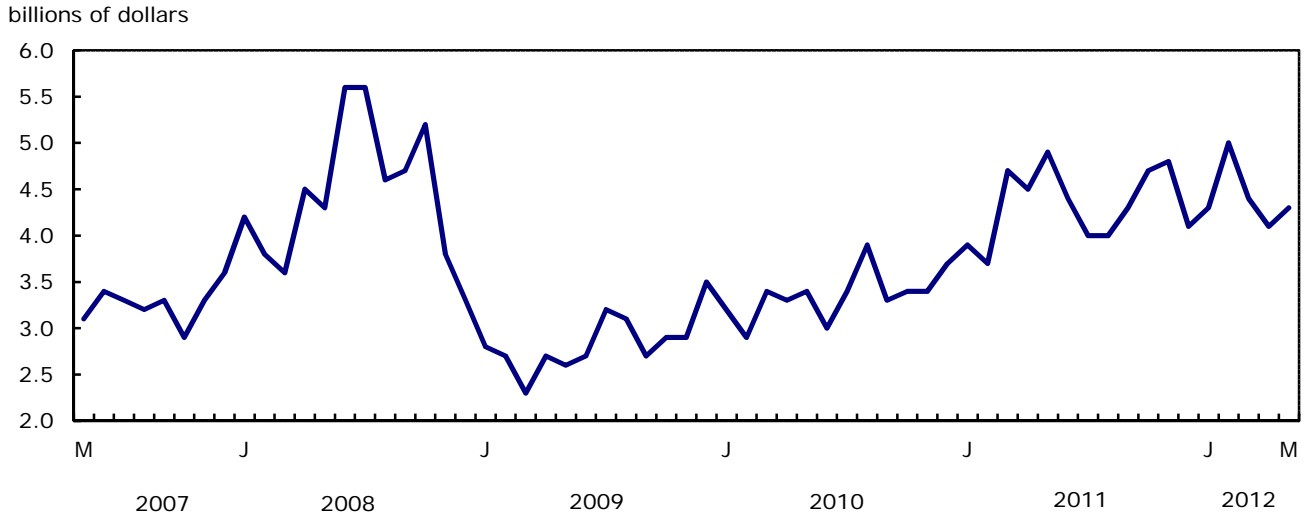


Chart 2
Imports of machinery and equipment, seasonally adjusted, on a balance of payments basis

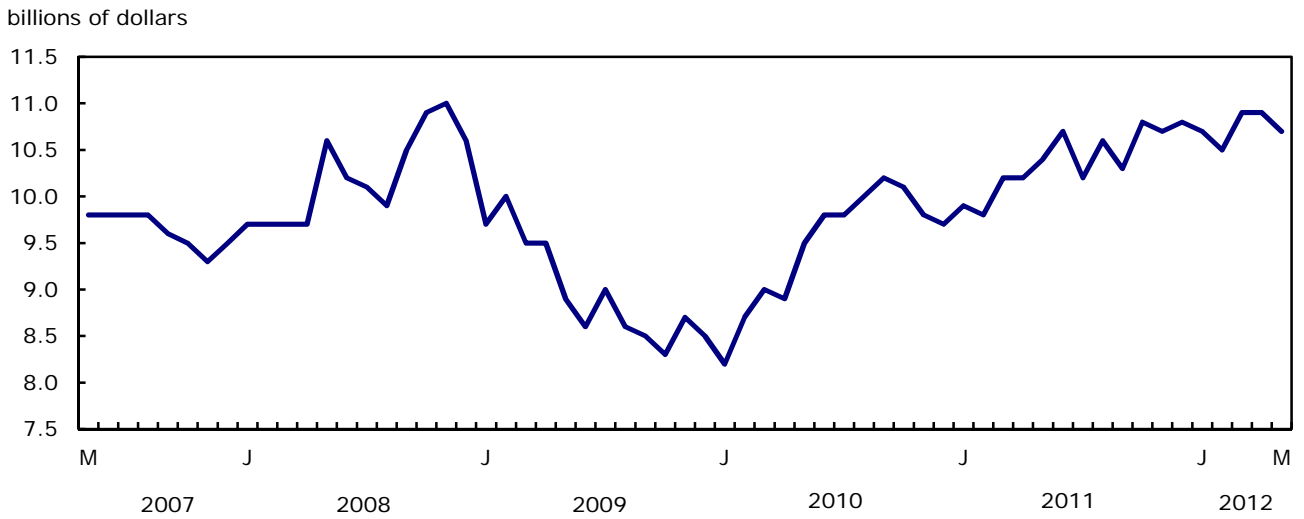


Chart 3
Exports of machinery and equipment, seasonally adjusted, on a balance of payments basis

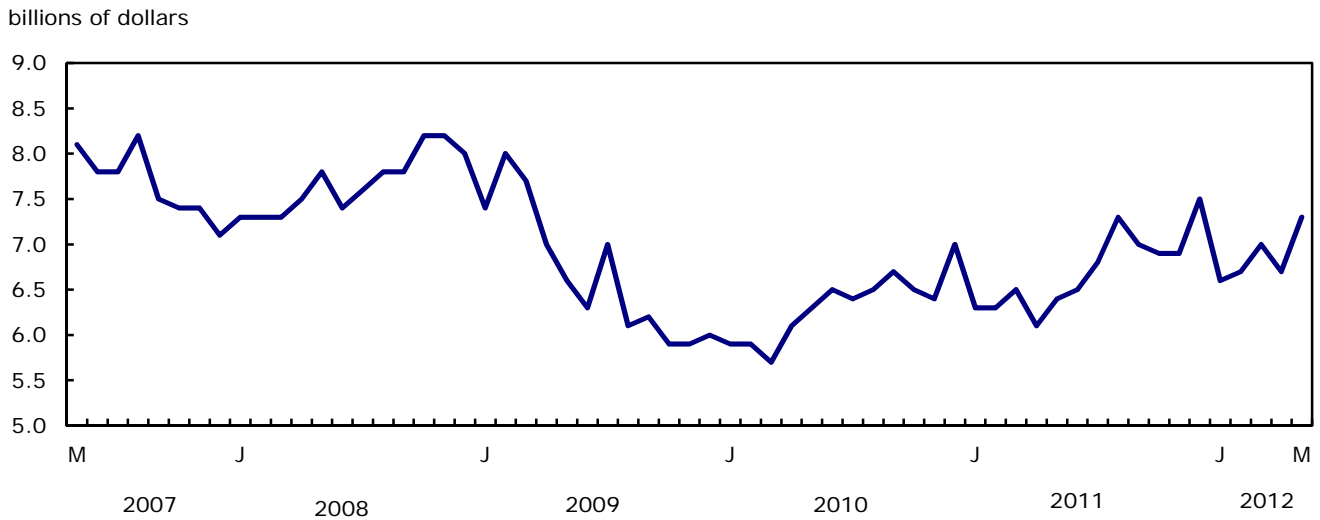
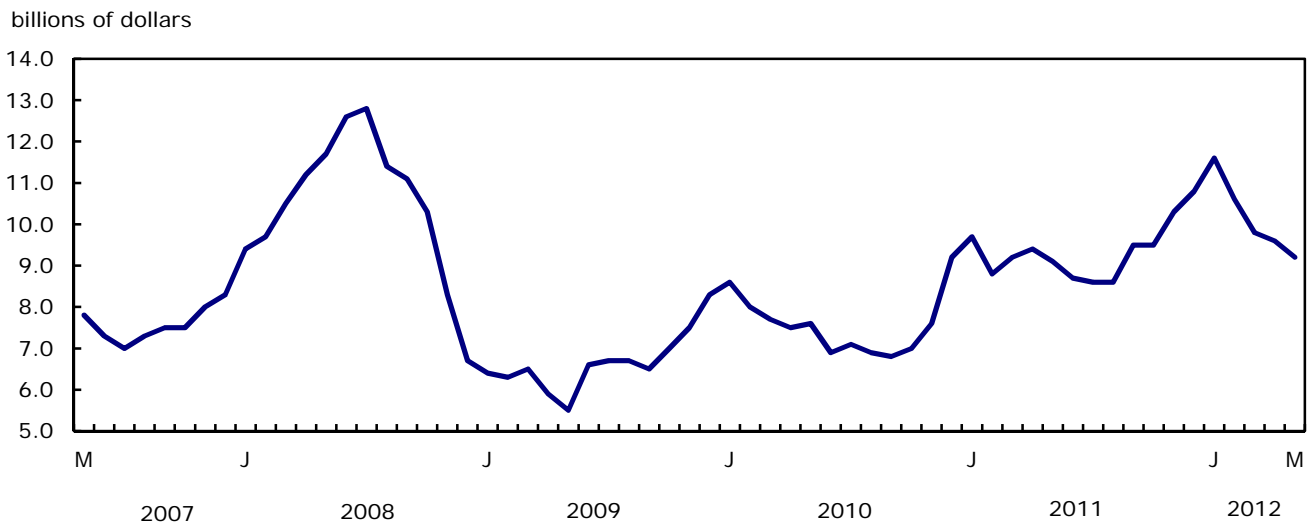


Chart 4
Exports of energy products, seasonally adjusted, on a balance of payments basis



Text table 1
Merchandise trade by principal trading area, balance of payments basis, seasonally adjusted

	April	May	Change		Year to date			May 2012/ May 2011	
	2012	2012			2011	2012	Change		
	millions of dollars		percent		millions of dollars			percent	
Export to									
United States	28,144	28,205	62	0.2	135,396	144,681	9,285	6.9	3.6
Japan	991	736	-255	-25.8	4,697	4,433	-265	-5.6	-21.0
European Union ¹	3,541	3,489	-53	-1.5	15,968	17,711	1,743	10.9	2.9
Other Organisation for Economic Co-operation and Development ²	1,439	1,537	98	6.8	8,211	7,714	-497	-6.1	-5.6
Other countries	4,775	4,909	134	2.8	20,452	23,699	3,247	15.9	19.3
Total	38,890	38,875	-15	0.0	184,725	198,239	13,514	7.3	4.2
Imports from									
United States	24,534	24,973	440	1.8	113,930	122,723	8,793	7.7	6.7
Japan	889	893	4	0.5	3,582	4,643	1,061	29.6	49.0
European Union ¹	3,499	4,039	540	15.4	18,867	18,569	-298	-1.6	5.7
Other Organisation for Economic Co-operation and Development ²	2,951	2,864	-86	-2.9	13,545	15,224	1,679	12.4	6.6
Other countries	7,640	6,897	-743	-9.7	35,468	36,277	809	2.3	-11.8
Total	39,513	39,668	155	0.4	185,392	197,436	12,044	6.5	3.5
Balance									
United States	3,610	3,232	-378	...	21,467	21,959	492
Japan	102	-158	-260	...	1,116	-210	-1,325
European Union ¹	42	-551	-593	...	-2,898	-857	2,041
Other Organisation for Economic Co-operation and Development ²	-1,512	-1,328	184	...	-5,335	-7,510	-2,176
Other countries	-2,866	-1,989	877	...	-15,016	-12,578	2,438
Total	-623	-793	-170	...	-667	803	1,470

1. European Union includes: Austria, Belgium, Bulgaria, Cyprus, Czech Republic, Denmark, Estonia, Finland, France, Germany, Greece, Hungary, Ireland, Italy, Latvia, Lithuania, Luxembourg, Malta, Netherlands, Poland, Portugal, Romania, Slovakia, Slovenia, Spain, Sweden and United Kingdom.
2. Other Organisation for Economic Co-operation and Development includes: Australia, Canada, Chile, Iceland, Israel, Mexico, New Zealand, Norway, South Korea, Switzerland and Turkey.

Text table 2
Reconciliation of customs and balance of payments trade data, not seasonally adjusted

	2012					2011	2011
	May	April	March	February	January	December	Annual
	millions of dollars						
Exports							
Customs basis	39,414	38,502	40,699	36,487	37,451	39,723	447,802
Balance of payments adjustments	1,248	383	408	1,127	827	1,621	10,389
Valuation and residency							
Inland freight	668	641	629	589	579	620	7,052
Other valuation and residency	-626	-926	-1,072	-928	-1,017	-326	-9,807
Timing	-28	55	-66	50	67	119	496
Coverage	1,234	613	917	1,416	1,198	1,208	12,648
Balance of payments basis	40,662	38,885	41,107	37,614	38,278	41,344	458,191
Imports							
Customs basis	39,708	38,342	40,426	37,137	35,788	36,492	445,961
Balance of payments adjustments	1,212	952	1,035	927	923	791	9,913
Valuation and residency							
Inland freight	863	814	850	775	760	758	9,426
Other valuation and residency	207	-14	-7	24	-24	50	-214
Timing	0	0	0	0	0	0	0
Coverage	142	152	192	128	187	-17	701
Balance of payments basis	40,920	39,294	41,461	38,064	36,711	37,283	455,874

Related products

Selected publications from Statistics Canada

65-208-X	International Merchandise Trade Annual Review
65-506-X	A Profile of Canadian Exporters
65F0013X	Canadian International Merchandise Trade Database
65F0019X	A Database for Analysis of International Markets
65F0020X	Data Integration - International Trade Data and Manufacturing Shipments Data

Selected CANSIM tables from Statistics Canada

228-0001	Merchandise imports and exports, by major groups and principal trading areas for all countries, monthly
228-0002	Merchandise imports and exports, by major groups and principal trading areas for all countries, quarterly
228-0003	Merchandise imports and exports, by major groups and principal trading areas for all countries, annual
228-0033	Imports, customs-based, by province of clearance, monthly
228-0034	Domestic exports, customs-based, by province of origin, monthly
228-0041	Merchandise imports and exports by sector and sub-sector, customs and balance of payments basis, for all countries, monthly
228-0042	Merchandise imports and exports by sector and sub-sector, customs and balance of payments basis, for all countries, quarterly
228-0043	Merchandise imports and exports by sector and sub-sector, customs and balance of payments basis, for all countries, annual
228-0047	Merchandise imports and exports balance of payments and customs-based price and volume indexes for all countries, monthly
228-0048	Merchandise imports and exports balance of payments and customs-based price and volume indexes for all countries, quarterly
228-0049	Merchandise imports and exports balance of payments and customs-based price and volume indexes for all countries, annual

228-0050	Merchandise imports and exports customs-based price indexes, Canada and United States trade, and Standard International Trade Classification (SITC revision 3) price indexes for all countries and United States, monthly
228-0051	Merchandise imports and exports customs-based price indexes, Canada and United States trade, and Standard International Trade Classification (SITC revision 3) price indexes for all countries and United States, quarterly
228-0052	Merchandise imports and exports customs-based price indexes, Canada and United States trade, and Standard International Trade Classification (SITC revision 3) price indexes for all countries and United States, annual
228-0053	Merchandise import and export price and volume indexes by sector and sub-sector, customs and balance of payments basis, for all countries, monthly
228-0054	Merchandise import and export price and volume indexes by sector and sub-sector, customs and balance of payments basis, for all countries, quarterly
228-0055	Merchandise import and export price and volume indexes by sector and sub-sector, customs and balance of payments basis, for all countries, annual
228-0056	Merchandise imports and exports by sector, balance of payments basis, for all countries, seasonally adjusted, Fisher formula, monthly
228-0057	Merchandise imports and exports by sector, balance of payments basis, for all countries, seasonally adjusted, Fisher formula, quarterly

Selected surveys from Statistics Canada

2201	Canadian International Merchandise Trade (Customs Basis)
2202	Canadian International Merchandise Trade (Balance of Payments Basis)
2203	International Trade Price Indexes

Selected summary tables from Statistics Canada

- *Canada: Economic and financial data*
- *Imports, exports and trade balance of goods on a balance-of-payments basis, by country or country grouping*
- *Exports of goods on a balance-of-payments basis*

- *Imports of goods on a balance-of-payments basis*
- *Merchandise trade of Canada (monthly)*
- *Economic indicators, by province and territory (monthly and quarterly)*
- *Latest statistics (monthly)*

Statistical tables

Table 1-1
Merchandise trade of Canada, balance of payments basis, seasonally adjusted — Current dollars

	Exports	Imports	Trade balance	Period to period change		
				Exports	Imports	Balance
	millions of dollars			percent		millions of dollars
2008	488,754	443,777	44,977	0.0	0.0	0
2009	369,343	374,081	-4,738	-24.4	-15.7	-49,715
2010	404,834	413,833	-8,999	9.6	10.6	-4,261
2011	458,191	455,874	2,318	...	10.2	11,316
2010						
First quarter	98,870	98,583	287	4.0	3.6	318
Second quarter	100,071	103,014	-2,942	1.2	4.5	-3,229
Third quarter	99,592	106,312	-6,720	-0.5	3.2	-3,778
Fourth quarter	106,301	105,924	377	6.7	-0.4	7,097
2011						
First quarter	110,901	109,704	1,198	4.3	3.6	821
Second quarter	110,447	113,791	-3,343	-0.4	3.7	-4,541
Third quarter	115,287	114,545	742	4.4	0.7	4,086
Fourth quarter	121,555	117,835	3,721	5.4	2.9	2,978
2012						
First quarter	120,474	118,255	2,219	-0.9	0.4	-1,502
2011						
January	38,129	36,557	1,572	2.0	3.1	-323
February	35,508	35,632	-125	-6.9	-2.5	-1,697
March	37,264	37,514	-250	4.9	5.3	-125
April	36,533	37,364	-830	-2.0	-0.4	-581
May	37,290	38,325	-1,034	2.1	2.6	-204
June	36,624	38,102	-1,478	-1.8	-0.6	-444
July	37,560	37,604	-44	2.6	-1.3	1,435
August	38,075	38,544	-469	1.4	2.5	-425
September	39,652	38,397	1,255	4.1	-0.4	1,724
October	38,894	39,404	-510	-1.9	2.6	-1,765
November	40,246	39,204	1,042	3.5	-0.5	1,551
December	42,415	39,226	3,189	5.4	0.1	2,147
2012						
January	41,381	39,369	2,012	-2.4	0.4	-1,177
February	39,520	39,434	86	-4.5	0.2	-1,926
March	39,573	39,452	122	0.1	0.0	36
April	38,890	39,513	-623	-1.7	0.2	-745
May	38,875	39,668	-793	0.0	0.4	-170

Note(s): Because of rounding, monthly data may not add up to quarterly data and quarterly data may not add up to annual data.

Table 1-2
Merchandise trade of Canada, balance of payments basis, seasonally adjusted — Constant dollars, 2002

	Exports	Imports	Trade balance	Period to period change	
				Exports	Imports
	millions of dollars			percent	
2008	412,713	486,735	-74,022	0.0	0.0
2009	346,916	407,679	-60,763	-15.9	-16.2
2010	374,143	470,401	-96,259	7.8	15.4
2011	389,503	509,403	-119,900	4.1	8.3
2010					
First quarter	90,749	111,192	-20,442	1.8	3.7
Second quarter	94,368	117,650	-23,282	4.0	5.8
Third quarter	94,074	120,900	-26,826	-0.3	2.8
Fourth quarter	94,951	120,659	-25,708	0.9	-0.2
2011					
First quarter	96,296	124,664	-28,368	1.4	3.3
Second quarter	94,834	128,760	-33,926	-1.5	3.3
Third quarter	98,147	127,883	-29,736	3.5	-0.7
Fourth quarter	100,226	128,096	-27,870	2.1	0.2
2012					
First quarter	101,332	129,912	-28,580	1.1	1.4
2011					
January	33,076	41,770	-8,694	1.5	3.7
February	31,038	40,627	-9,589	-6.2	-2.7
March	32,182	42,267	-10,084	3.7	4.0
April	31,450	42,837	-11,387	-2.3	1.3
May	32,059	42,656	-10,597	1.9	-0.4
June	31,325	43,267	-11,941	-2.3	1.4
July	32,745	42,904	-10,158	4.5	-0.8
August	32,646	43,125	-10,479	-0.3	0.5
September	32,756	41,854	-9,098	0.3	-2.9
October	32,523	42,579	-10,056	-0.7	1.7
November	32,931	42,543	-9,612	1.3	-0.1
December	34,773	42,975	-8,202	5.6	1.0
2012					
January	34,376	43,243	-8,867	-1.1	0.6
February	33,241	42,892	-9,651	-3.3	-0.8
March	33,715	43,776	-10,062	1.4	2.1
April	33,839	43,852	-10,012	0.4	0.2
May	33,927	43,369	-9,442	0.3	-1.1

Note(s): Because of rounding, monthly data may not add up to quarterly data and quarterly data may not add up to annual data.

Table 1-3
Merchandise trade of Canada, balance of payments basis, seasonally adjusted — Price indices (Laspeyres)

	2002=100			Period to period change		
	Exports	Imports	Terms of trade	Exports	Imports	Terms of trade
	price indices (Laspeyres)			percent		
2008	116.2	97.2	119.6	0.0	0.0	0.0
2009	105.2	96.2	109.3	-9.5	-1.0	-8.5
2010	106.8	94.1	113.4	1.5	-2.2	3.7
2011	113.9	98.2	116.0	6.7	4.4	2.3
2010						
First quarter	107.1	93.7	114.2	1.7	0.7	0.9
Second quarter	105.7	93.6	112.9	-1.3	-0.1	-1.2
Third quarter	106.1	94.5	112.3	0.4	0.9	-0.5
Fourth quarter	108.2	94.6	114.4	2.0	0.1	1.9
2011						
First quarter	111.6	96.0	116.2	3.1	1.5	1.6
Second quarter	113.5	97.7	116.3	1.8	1.7	0.1
Third quarter	114.5	98.5	116.2	0.9	0.9	0.0
Fourth quarter	115.9	100.6	115.2	1.2	2.1	-0.9
2012						
First quarter	113.9	99.9	114.0	-1.7	-0.7	-1.0
2011						
January	111.2	95.9	115.9	0.4	0.5	-0.2
February	111.6	96.9	115.1	0.4	1.1	-0.7
March	112.4	97.0	115.8	0.7	0.1	0.6
April	113.4	96.9	117.0	0.9	-0.1	1.0
May	113.6	97.2	116.9	0.2	0.3	-0.1
June	114.1	98.1	116.3	0.4	0.9	-0.5
July	112.5	96.3	116.8	-1.4	-1.9	0.5
August	113.3	98.2	115.3	0.7	2.0	-1.3
September	115.7	99.4	116.5	2.2	1.2	1.0
October	115.7	100.1	115.7	0.0	0.7	-0.7
November	116.7	101.1	115.4	0.9	1.1	-0.2
December	115.8	101.3	114.3	-0.8	0.1	-1.0
2012						
January	115.2	100.7	114.4	-0.5	-0.6	0.0
February	113.8	99.8	114.0	-1.2	-0.8	-0.3
March	113.0	101.0	111.8	-0.7	1.2	-1.9
April	112.1	100.3	111.8	-0.7	-0.7	0.0
May	113.2	100.7	112.5	1.0	0.4	0.6

Note(s): Because of rounding, monthly data may not add up to quarterly data and quarterly data may not add up to annual data.

Table 2-1
Exports by commodity groupings, balance of payments basis, seasonally adjusted — Current dollars

	April	May	Change		Year to date			May 2012/	
	2012	2012			2011	2012	Change	May 2011	
	millions of dollars		percent		millions of dollars			percent	
Total	38,890	38,875	-15	0.0	184,725	198,239	13,514	7.3	4.2
Agricultural and fishing products	3,660	3,610	-50	-1.4	16,251	18,207	1,955	12.0	7.3
Wheat	568	491	-77	-13.6	2,078	2,724	646	31.1	9.8
Other agricultural and fishing products	3,092	3,119	27	0.9	14,174	15,483	1,309	9.2	7.0
Live animals	145	152	7	5.0	573	682	109	19.1	33.1
Fish and fish preparations	433	414	-19	-4.4	1,820	1,982	163	9.0	1.6
Barley	33	10	-22	-68.1	145	202	56	38.7	-58.1
Wheat flour	5	6	0	4.1	33	28	-5	-14.6	-13.6
Other cereals unmilled	43	59	16	36.4	455	242	-214	-47.0	-61.3
Other cereal preparations	254	262	8	3.3	1,183	1,282	99	8.4	6.5
Meat and meat preparations	431	433	3	0.6	1,992	2,151	159	8.0	5.6
Alcoholic beverages	66	60	-6	-8.6	304	336	32	10.7	0.4
Other food, feed, beverages and tobacco	1,003	1,027	25	2.5	4,916	5,010	94	1.9	5.8
Rapeseed	431	422	-8	-2.0	1,740	2,361	621	35.7	17.3
Other crude vegetable products	248	272	24	9.5	1,013	1,208	194	19.2	67.8
Energy products	9,587	9,170	-416	-4.3	46,223	50,858	4,636	10.0	0.5
Crude petroleum	6,051	5,720	-331	-5.5	27,863	34,381	6,518	23.4	8.9
Natural gas	579	677	99	17.1	5,865	3,174	-2,691	-45.9	-43.5
Other energy products	2,957	2,773	-184	-6.2	12,495	13,304	809	6.5	3.8
Coal and other bituminous substances	587	511	-76	-12.9	2,426	2,522	96	4.0	-21.0
Petroleum and coal products	2,210	2,114	-96	-4.3	9,237	10,090	853	9.2	15.3
Electricity	161	148	-13	-8.0	832	692	-140	-16.8	-22.1
Forestry products	1,812	1,779	-33	-1.8	9,424	8,964	-460	-4.9	-5.4
Lumber and sawmill products	722	732	10	1.4	3,514	3,639	125	3.6	6.3
Other crude wood products	76	74	-2	-2.3	363	383	20	5.5	6.5
Lumber	453	469	16	3.5	2,223	2,275	52	2.3	9.5
Other wood fabricated materials	193	189	-4	-2.0	927	981	53	5.7	-0.9
Wood pulp and other wood products	522	493	-30	-5.7	2,867	2,522	-345	-12.0	-14.8
Newsprint and other paper and paperboard	568	555	-13	-2.4	3,043	2,804	-240	-7.9	-9.7
Newsprint paper	269	258	-11	-4.1	1,553	1,343	-210	-13.5	-17.2
Other paper and paperboard	299	297	-2	-0.8	1,490	1,460	-30	-2.0	-2.0
Industrial goods and materials	9,359	9,338	-22	-0.2	46,457	47,210	753	1.6	-2.9
Metal ores	1,134	1,301	167	14.7	6,678	6,795	117	1.8	-7.0
Iron ores, concentrates and scrap	489	500	11	2.2	2,348	2,621	273	11.6	17.2
Copper ores, concentrates and scrap	210	202	-8	-3.8	1,255	1,233	-22	-1.7	-37.0
Nickel ores, concentrates and scrap	112	239	127	112.9	1,508	1,119	-390	-25.8	-24.8
Zinc ores, concentrates and scrap	23	31	8	35.6	119	130	11	9.2	-1.2
Other ores, concentrates and scrap	300	329	29	9.7	1,448	1,693	245	16.9	9.0
Chemicals, plastics and fertilizers	3,044	2,940	-104	-3.4	14,494	14,411	-83	-0.6	-6.2
Inorganic chemicals	413	402	-10	-2.5	2,508	2,092	-416	-16.6	-25.9
Organic chemicals	554	522	-32	-5.9	2,994	2,869	-125	-4.2	-20.8
Fertilizers and fertilizer materials	734	720	-14	-1.9	2,964	2,881	-83	-2.8	4.1
Synthetic rubber and plastics	1,022	973	-48	-4.7	4,674	4,970	296	6.3	2.2
Other chemical products	322	323	1	0.3	1,354	1,600	246	18.2	12.3
Metals and alloys	3,477	3,423	-54	-1.6	17,501	17,447	-54	-0.3	-3.4
Primary iron and steel	60	70	10	16.9	348	252	-96	-27.6	-15.0
Steel bars, rods, plates, sheets	355	345	-10	-2.7	1,530	1,753	223	14.6	-1.9
Other iron and steel and alloys	254	258	4	1.6	1,145	1,298	153	13.4	9.2
Aluminum including alloys	599	590	-9	-1.5	3,277	3,028	-249	-7.6	-15.6
Copper and alloys	203	214	11	5.6	1,066	997	-68	-6.4	8.0
Nickel and alloys	238	236	-2	-0.7	1,463	1,159	-304	-20.8	-11.3
Precious metals and alloys	1,588	1,522	-67	-4.2	7,598	8,027	429	5.7	1.3
Zinc and alloys	94	93	-1	-1.2	555	475	-80	-14.5	-10.9
Other non-ferrous metals and alloys	86	94	8	9.5	519	457	-62	-12.0	-7.7

Table 2-1 – continued

Exports by commodity groupings, balance of payments basis, seasonally adjusted — Current dollars

	April	May	Change		Year to date			May 2012/ May 2011	
	2012	2012			2011	2012	Change		
	millions of dollars		percent		millions of dollars		percent		
Other industrial goods and materials	1,704	1,674	-31	-1.8	7,785	8,557	772	9.9	8.6
Asbestos unmanufactured	0	0	0	0.0	18	0	-18	-100.0	-100.0
Other crude animal products	105	96	-9	-9.0	389	520	130	33.5	53.9
Other crude non-metallic minerals	288	296	8	2.8	1,620	1,624	5	0.3	-8.1
Other crude materials, inedible	69	65	-4	-5.5	322	324	1	0.3	3.9
Metal fabricated basic products	401	415	13	3.3	1,793	2,023	230	12.8	14.8
Textile fabricated materials	189	190	1	0.5	911	944	33	3.6	4.0
Non-metallic mineral basic products	179	178	-1	-0.3	790	895	106	13.4	12.1
Other fabricated materials	473	434	-39	-8.3	1,942	2,228	286	14.7	11.8
Machinery and equipment	6,703	7,286	583	8.7	31,703	34,242	2,539	8.0	13.4
Industrial and agricultural machinery	1,791	1,821	30	1.7	7,793	9,034	1,240	15.9	16.3
Industrial machinery	1,601	1,620	19	1.2	6,999	8,057	1,059	15.1	15.9
Agricultural machinery includ. tractors	190	201	11	5.7	795	976	182	22.8	20.1
Aircraft and other transportation equipment	1,401	1,869	468	33.4	7,091	7,670	579	8.2	30.5
Aircraft, engines, parts	1,002	1,463	461	46.0	5,273	5,634	361	6.9	38.5
Other transportation equipment	398	405	7	1.8	1,818	2,036	217	12.0	7.8
Other machinery and equipment	3,512	3,596	85	2.4	16,819	17,539	720	4.3	4.9
Television, telecommunication equipment	601	636	36	5.9	3,060	3,170	109	3.6	1.7
Office machines and equipment	347	348	1	0.3	1,771	1,709	-63	-3.5	-2.9
Other equipment and tools	1,725	1,764	39	2.2	7,774	8,586	812	10.4	9.9
Other end products, inedible	839	848	9	1.1	4,213	4,074	-139	-3.3	1.0
Automotive products	5,486	5,397	-89	-1.6	24,153	27,651	3,497	14.5	12.9
Passenger autos and chassis	3,582	3,501	-81	-2.3	15,940	18,352	2,412	15.1	12.7
Trucks and other motor vehicles	292	266	-26	-8.7	1,057	1,441	384	36.3	28.5
Motor vehicle parts	1,612	1,630	18	1.1	7,156	7,858	702	9.8	10.9
Other consumer goods	1,419	1,435	17	1.2	6,603	6,846	243	3.7	5.1
Special transactions trade	333	361	29	8.6	1,596	1,706	110	6.9	20.8
Unallocated balance of payments adjustments	531	498	-33	-6.3	2,314	2,555	242	10.4	14.6

Table 2-2
Exports by commodity groupings, balance of payments basis, seasonally adjusted — Constant dollars, 2002

	April	May	Change	Year to date			May 2012/ May 2011		
	2012	2012		2011	2012	Change			
	millions of dollars		percent		millions of dollars		percent		
Total	33,839	33,927	87	0.3	159,805	169,098	9,293	5.8	5.8
Agricultural and fishing products	3,198	3,119	-78	-2.4	14,954	15,950	996	6.7	3.4
Wheat	409	353	-57	-13.9	1,549	1,954	404	26.1	8.0
Other agricultural and fishing products	2,788	2,767	-22	-0.8	13,405	13,997	592	4.4	2.8
Live animals	141	144	4	2.5	557	630	72	13.0	24.8
Fish and fish preparations	503	492	-12	-2.3	2,074	2,403	329	15.9	14.0
Barley	31	8	-23	-74.3	110	155	45	40.6	-57.2
Wheat flour	5	5	0	5.6	28	25	-4	-13.3	-7.5
Other cereals unmilled	33	42	9	25.9	324	190	-134	-41.4	-59.1
Other cereal preparations	206	209	3	1.4	1,067	1,046	-21	-2.0	-5.7
Meat and meat preparations	424	416	-8	-1.9	2,022	2,120	98	4.8	0.9
Alcoholic beverages	124	109	-16	-12.6	604	648	44	7.2	-6.2
Other food, feed, beverages and tobacco	847	874	28	3.2	4,572	4,230	-342	-7.5	-1.1
Rapeseed	286	269	-17	-5.8	1,252	1,641	389	31.1	4.7
Other crude vegetable products	189	199	11	5.6	793	909	116	14.7	55.9
Energy products	5,303	5,142	-161	-3.0	24,199	25,753	1,554	6.4	8.2
Crude petroleum	2,453	2,327	-126	-5.1	11,339	12,750	1,411	12.4	9.5
Natural gas	1,245	1,313	67	5.4	6,737	6,152	-585	-8.7	0.5
Other energy products	1,604	1,502	-102	-6.4	6,123	6,850	727	11.9	13.8
Coal and other bituminous substances	152	151	-2	-1.1	678	665	-13	-1.9	-5.2
Petroleum and coal products	1,102	1,054	-48	-4.4	4,338	4,864	526	12.1	21.6
Electricity	350	298	-52	-14.9	1,107	1,322	215	19.4	1.1
Forestry products	2,295	2,302	7	0.3	11,487	11,407	-81	-0.7	-0.9
Lumber and sawmill products	947	1,023	77	8.1	4,620	4,826	206	4.5	8.5
Other crude wood products	90	90	0	-0.3	451	451	0	0.0	9.1
Lumber	640	723	84	13.1	3,072	3,262	190	6.2	15.9
Other wood fabricated materials	217	210	-6	-3.0	1,097	1,113	16	1.5	-11.4
Wood pulp and other wood products	705	660	-44	-6.3	3,348	3,439	92	2.7	-1.3
Newsprint and other paper and paperboard	644	618	-25	-3.9	3,520	3,141	-378	-10.8	-12.9
Newsprint paper	305	291	-14	-4.7	1,807	1,510	-298	-16.5	-20.2
Other paper and paperboard	338	328	-11	-3.2	1,712	1,632	-80	-4.7	-5.1
Industrial goods and materials	5,786	5,753	-33	-0.6	28,220	29,152	933	3.3	1.1
Metal ores	510	578	68	13.3	2,789	3,040	251	9.0	0.3
Iron ores, concentrates and scrap	165	154	-10	-6.3	884	870	-14	-1.6	1.0
Copper ores, concentrates and scrap	70	68	-2	-2.9	354	397	43	12.2	-26.4
Nickel ores, concentrates and scrap	62	131	69	110.6	588	585	-3	-0.6	1.1
Zinc ores, concentrates and scrap	13	18	5	35.6	61	75	14	23.0	4.7
Other ores, concentrates and scrap	200	207	7	3.5	903	1,114	211	23.4	12.2
Chemicals, plastics and fertilizers	1,970	1,890	-80	-4.1	9,632	9,601	-30	-0.3	-5.7
Inorganic chemicals	182	186	4	2.4	968	934	-34	-3.5	-9.3
Organic chemicals	266	247	-19	-7.2	1,509	1,437	-72	-4.8	-21.3
Fertilizers and fertilizer materials	266	261	-4	-1.7	1,189	1,042	-147	-12.3	-4.3
Synthetic rubber and plastics	907	847	-59	-6.6	4,381	4,446	64	1.5	-4.4
Other chemical products	350	348	-2	-0.4	1,584	1,742	158	10.0	6.9

Table 2-2 – continued

Exports by commodity groupings, balance of payments basis, seasonally adjusted — Constant dollars, 2002

	April	May	Change		Year to date			May 2012/	
	2012	2012			2011	2012	Change	May 2011	
	millions of dollars		percent		millions of dollars		percent		
Metals and alloys	1,909	1,898	-11	-0.6	9,368	9,452	84	0.9	0.2
Primary iron and steel	35	40	5	14.5	222	149	-73	-32.9	-23.3
Steel bars, rods, plates, sheets	271	263	-8	-2.9	1,196	1,329	133	11.1	2.5
Other iron and steel and alloys	195	197	1	0.6	911	985	74	8.1	9.3
Aluminum including alloys	655	649	-6	-0.9	3,112	3,230	118	3.8	-2.1
Copper and alloys	57	60	3	5.6	276	287	11	4.1	19.0
Nickel and alloys	139	145	6	4.6	612	648	36	5.9	21.7
Precious metals and alloys	451	433	-18	-3.9	2,492	2,279	-213	-8.5	-6.8
Zinc and alloys	59	58	-1	-1.3	307	297	-11	-3.4	-4.1
Other non-ferrous metals and alloys	48	53	5	11.1	238	248	10	4.0	10.7
Other industrial goods and materials	1,398	1,388	-10	-0.7	6,431	7,059	628	9.8	14.3
Asbestos unmanufactured	0	0	0	0.0	18	0	-18	-100.0	-100.0
Other crude animal products	83	85	2	3.0	359	457	98	27.3	49.3
Other crude non-metallic minerals	266	279	13	4.7	1,333	1,467	134	10.1	33.1
Other crude materials, inedible	60	57	-2	-3.9	297	283	-14	-4.6	2.0
Metal fabricated basic products	315	330	14	4.5	1,423	1,595	172	12.1	14.7
Textile fabricated materials	191	192	1	0.7	971	947	-24	-2.5	-3.2
Non-metallic mineral basic products	148	143	-5	-3.4	655	733	78	11.9	8.3
Other fabricated materials	335	301	-33	-9.9	1,376	1,578	202	14.7	11.2
Machinery and equipment	7,435	8,030	595	8.0	36,017	37,909	1,892	5.3	9.0
Industrial and agricultural machinery	1,639	1,670	31	1.9	7,345	8,300	955	13.0	13.6
Industrial machinery	1,468	1,492	23	1.6	6,603	7,424	820	12.4	13.3
Agricultural machinery includ. tractors	170	178	8	4.6	742	877	135	18.1	15.8
Aircraft and other transportation equipment	1,714	2,266	552	32.2	8,856	9,303	447	5.1	25.8
Aircraft, engines, parts	1,318	1,883	565	42.9	7,015	7,334	319	4.5	32.6
Other transportation equipment	396	383	-13	-3.3	1,841	1,969	129	7.0	0.6
Other machinery and equipment	4,083	4,094	11	0.3	19,816	20,305	490	2.5	-0.1
Television, telecommunication equipment	767	797	30	3.9	4,000	4,029	29	0.7	-3.6
Office machines and equipment	983	970	-13	-1.3	4,954	4,833	-121	-2.4	-5.9
Other equipment and tools	1,625	1,652	27	1.6	7,431	8,082	650	8.8	6.2
Other end products, inedible	708	676	-32	-4.5	3,429	3,360	-69	-2.0	-1.3
Automotive products	7,382	7,164	-219	-3.0	33,098	37,092	3,995	12.1	8.7
Passenger autos and chassis	5,268	5,063	-205	-3.9	23,827	26,737	2,910	12.2	8.1
Trucks and other motor vehicles	352	327	-25	-7.1	1,295	1,782	487	37.6	26.0
Motor vehicle parts	1,762	1,773	12	0.7	7,976	8,574	598	7.5	7.7
Other consumer goods	1,339	1,365	26	1.9	6,357	6,506	149	2.3	4.7
Special transactions trade	279	309	31	11.0	1,356	1,432	76	5.6	25.1
Unallocated balance of payments adjustments	823	742	-81	-9.8	4,117	3,897	-221	-5.4	-3.8

Table 3-1
Domestic exports to selected countries, customs basis, not seasonally adjusted — May

	Agricultural and fishing products	Energy products	Forestry products	Industrial goods	Machinery and equipment	Automotive products	Consumer goods	Special transactions trade	Total
millions of dollars									
United States									
2011	1,731.0	8,274.5	1,073.7	5,810.3	3,517.4	4,379.3	702.4	220.8	25,709.4
2012	1,906.6	8,716.3	1,139.0	5,225.1	3,989.1	5,303.4	811.8	290.0	27,381.2
Mexico									
2011	103.4	29.1	12.8	84.4	84.1	44.4	4.0	0.5	362.7
2012	87.3	1.3	10.6	87.0	89.9	53.6	4.2	0.0	333.8
Japan									
2011	398.5	165.3	119.9	205.9	68.0	3.7	10.2	1.2	972.7
2012	339.5	115.3	91.2	142.6	80.1	6.1	11.2	2.8	788.8
European Union									
Germany									
2011	9.4	18.0	6.9	56.5	142.3	1.9	18.3	0.5	253.7
2012	14.5	20.8	12.1	64.5	192.2	4.2	19.0	0.5	327.8
France									
2011	21.8	14.5	12.2	70.2	88.1	2.4	17.5	0.7	227.3
2012	13.6	73.3	8.5	47.7	104.3	3.9	12.0	1.5	265.0
United Kingdom									
2011	28.2	58.4	13.4	1,369.2	92.8	4.3	14.8	4.9	1,585.9
2012	24.6	2.6	10.8	1,207.2	95.0	4.0	18.2	1.8	1,364.1
Italy									
2011	39.6	49.7	24.3	49.5	28.5	0.3	8.9	0.1	201.0
2012	14.8	21.7	10.0	19.7	40.6	0.7	7.8	0.7	116.1
Other European Union									
2011	95.6	145.5	23.1	434.3	154.0	14.9	63.7	2.5	933.6
2012	124.1	95.6	15.4	323.2	209.3	15.4	53.9	1.7	838.5
Total									
2011	194.6	286.0	79.9	1,979.7	505.7	23.8	123.1	8.6	3,201.5
2012	191.5	214.0	56.8	1,662.3	641.4	28.3	110.9	6.2	2,911.5
Newly industrialized countries									
South Korea									
2011	134.4	146.1	51.5	71.0	19.7	1.3	6.9	0.3	431.2
2012	48.0	51.4	43.0	99.2	29.5	11.2	3.3	0.3	285.9
Hong Kong									
2011	37.8	0.0	8.6	37.6	27.0	0.6	5.4	0.2	117.2
2012	37.1	0.0	5.5	118.4	44.5	1.4	6.1	0.1	213.1
Taiwan									
2011	11.5	0.2	35.8	47.7	7.5	0.1	2.9	0.1	105.9
2012	10.3	27.2	18.4	43.2	8.8	0.2	2.9	0.1	111.1
Singapore									
2011	4.4	0.8	0.6	15.4	27.4	0.9	2.3	0.1	52.0
2012	4.2	0.3	1.6	15.1	38.2	2.7	3.7	1.3	67.0
Total									
2011	188.1	147.2	96.5	171.8	81.6	2.9	17.6	0.7	706.2
2012	99.6	79.0	68.4	275.8	121.0	15.5	15.8	1.8	677.0
Other countries									
2011	824.8	339.6	584.5	1,283.7	629.0	77.2	93.5	16.1	3,848.4
2012	1,189.4	553.8	497.6	1,475.5	859.8	116.3	96.9	14.2	4,803.4
Total									
2011	3,440.4	9,241.7	1,967.3	9,535.7	4,885.7	4,531.4	950.8	247.9	34,800.9
2012	3,813.8	9,679.6	1,863.5	8,868.3	5,781.3	5,523.3	1,050.8	315.1	36,895.9

Table 3-2
Domestic exports to selected countries, customs basis, not seasonally adjusted — Year to date, January to May

	Agricultural and fishing products	Energy products	Forestry products	Industrial goods	Machinery and equipment	Automotive products	Consumer goods	Special transactions trade	Total
millions of dollars									
United States									
2011	7,496.2	41,113.1	5,415.9	26,400.6	17,048.5	21,947.3	3,554.9	1,195.8	124,172.2
2012	8,484.7	46,181.0	5,305.6	26,014.5	18,484.6	25,527.0	3,871.9	1,261.0	135,130.1
Mexico									
2011	542.6	53.7	59.9	474.5	329.4	267.7	34.7	2.0	1,764.6
2012	675.2	24.7	55.1	501.9	324.2	298.9	39.4	1.8	1,921.1
Japan									
2011	1,613.6	818.0	545.1	944.8	263.2	22.2	40.1	8.9	4,256.0
2012	1,540.0	809.9	525.2	860.4	293.5	28.5	60.9	5.7	4,124.1
European Union									
Germany									
2011	53.4	75.9	30.3	468.0	588.1	11.8	85.0	7.9	1,320.4
2012	93.6	73.1	44.7	358.8	528.3	30.6	92.2	4.4	1,225.7
France									
2011	58.0	26.7	41.5	335.9	563.7	11.6	87.2	5.0	1,129.6
2012	88.0	239.2	42.1	300.8	589.7	19.5	83.1	4.8	1,367.2
United Kingdom									
2011	127.7	99.0	65.7	5,946.3	488.1	26.6	64.4	23.5	6,841.4
2012	111.9	206.2	66.2	6,501.6	605.4	22.0	72.4	18.6	7,604.3
Italy									
2011	109.5	117.2	119.3	174.7	187.0	3.2	37.4	1.0	749.4
2012	74.4	116.5	74.9	117.3	170.6	3.7	51.1	1.1	609.5
Other European Union									
2011	548.7	626.1	90.5	1,830.2	913.6	59.2	272.4	14.2	4,354.9
2012	368.9	787.4	100.2	1,870.1	899.5	69.8	198.2	13.0	4,307.2
Total									
2011	897.3	944.9	347.4	8,755.0	2,740.5	112.5	546.4	51.6	14,395.7
2012	736.8	1,422.5	328.1	9,148.5	2,793.5	145.6	497.0	41.9	15,114.0
Newly industrialized countries									
South Korea									
2011	495.3	642.4	218.1	499.4	152.9	8.5	34.6	2.2	2,053.4
2012	187.5	437.9	206.8	480.2	133.3	23.8	21.7	1.9	1,493.0
Hong Kong									
2011	156.4	0.1	48.7	739.1	178.6	2.8	33.5	2.2	1,161.5
2012	204.4	0.1	38.5	726.2	135.4	5.3	29.8	0.9	1,140.7
Taiwan									
2011	61.7	130.5	131.1	335.7	46.6	0.6	15.3	0.5	722.0
2012	65.0	105.2	100.3	217.1	46.6	0.7	15.3	0.3	550.5
Singapore									
2011	27.0	3.0	3.7	66.8	158.9	11.6	11.5	2.5	285.0
2012	24.3	1.2	6.9	92.9	142.4	21.9	14.4	1.8	305.9
Total									
2011	740.5	776.0	401.5	1,641.0	537.0	23.5	95.0	7.4	4,221.9
2012	481.2	544.5	352.5	1,516.4	457.7	51.7	81.3	4.9	3,490.2
Other countries									
2011	3,821.5	1,211.7	2,715.2	6,349.0	3,170.5	345.0	424.4	83.5	18,120.8
2012	5,048.0	1,717.2	2,445.4	6,713.3	4,193.0	504.4	440.6	74.8	21,136.8
Total									
2011	15,111.7	44,917.5	9,485.1	44,565.0	24,089.5	22,718.1	4,695.5	1,349.2	166,931.6
2012	16,965.9	50,699.9	9,011.8	44,754.9	26,546.8	26,556.2	4,991.1	1,390.0	180,916.6

Table 4
Domestic exports by country, customs basis, not seasonally adjusted

	May		January to May		Change
	2011	2012	2011	2012	January to May 2012/ January to May 2011
	millions of dollars				percent
North America					
Greenland	1.0	1.2	4.0	3.9	-2.8
Mexico	362.7	333.8	1,764.6	1,921.1	8.9
Saint Pierre and Miquelon	1.5	1.2	7.3	6.4	-11.7
United States	25,709.4	27,381.2	124,172.2	135,130.1	8.8
Total	26,074.5	27,717.4	125,948.1	137,061.6	8.8
Western Europe					
Andorra	0.0	0.0	0.0	0.0	235.8
Austria	11.8	7.7	108.2	147.1	36.0
Belgium	195.2	134.5	885.5	790.7	-10.7
Denmark	14.2	16.2	77.0	86.8	12.7
Faeroe Islands	0.0	0.1	0.5	0.3	-29.7
Finland	57.1	25.6	152.6	168.0	10.1
France	227.3	265.0	1,129.6	1,367.2	21.0
Germany	253.7	327.8	1,320.4	1,225.7	-7.2
Gibraltar	0.0	0.0	24.8	11.9	-51.9
Greece	5.6	6.2	36.5	39.1	7.2
Iceland	9.3	4.8	24.1	21.5	-10.9
Italy	201.0	116.1	749.4	609.5	-18.7
Luxembourg	14.5	8.0	53.6	34.2	-36.2
Malta	0.6	0.7	2.5	4.9	94.9
Netherlands	378.6	373.7	1,847.5	1,969.5	6.6
Norway	264.2	206.4	1,299.1	1,011.5	-22.1
Portugal	15.6	5.1	90.1	42.7	-52.6
Republic of Ireland (Eire)	60.2	38.3	211.9	104.2	-50.8
Spain	73.9	54.8	389.1	330.8	-15.0
Sweden	32.3	28.7	129.6	176.7	36.4
Switzerland	51.7	113.0	395.3	346.6	-12.3
United Kingdom	1,585.9	1,364.1	6,841.4	7,604.3	11.2
Total	3,452.7	3,096.8	15,768.7	16,093.2	2.1
Other Europe					
Albania	4.9	1.2	25.0	16.2	-35.2
Armenia	1.0	0.2	6.9	4.0	-42.0
Azerbaijan	1.1	0.8	3.6	18.3	403.6
Belarus	0.1	0.2	0.8	1.7	107.0
Bosnia and Herzegovina	0.4	0.2	1.9	0.7	-62.4
Bulgaria	21.4	29.3	61.5	96.9	57.5
Croatia	1.9	3.0	5.6	6.9	24.0
Czech Republic	-9.8	7.6	40.9	36.3	-11.3
Estonia	1.1	1.9	61.5	7.6	-87.7
Georgia	1.2	2.0	7.6	8.1	7.0
Hungary	8.9	5.4	36.7	32.1	-12.8
Kazakhstan	7.2	11.8	79.3	41.0	-48.3
Kyrgyzstan	0.2	1.6	1.1	8.0	630.6
Latvia	2.7	4.0	30.3	19.6	-35.2
Lithuania	4.5	8.4	20.2	33.3	64.9
Macedonia (Former Yugoslav Republic of Macedonia)	2.7	1.4	6.2	5.3	-14.7
Montenegro	0.2	0.0	0.5	0.3	-43.4
Poland	17.2	74.7	72.1	143.3	98.6
Republic of Moldova	0.1	0.0	0.4	0.3	-21.4
Romania	6.0	4.0	18.1	20.3	11.8
Russian Federation	104.4	186.0	470.8	765.5	62.6
Serbia	0.3	0.9	2.5	4.6	85.9
Slovakia	0.8	1.7	21.0	12.9	-38.8
Slovenia	0.8	0.5	5.0	4.6	-8.0
Tajikistan	0.3	0.3	0.9	1.2	40.8
Turkmenistan	3.1	0.1	5.5	41.2	647.6
Ukraine	7.0	11.7	48.3	45.6	-5.6
Uzbekistan	0.3	2.0	3.6	2.3	-36.4
Total	209.6	360.9	1,038.0	1,378.1	32.8
Middle East					
Bahrain	1.5	4.8	18.0	33.0	83.4
Cyprus	0.7	1.5	3.2	5.7	76.9
Egypt	57.1	53.9	245.2	151.5	-38.2

Table 4 – continued

Domestic exports by country, customs basis, not seasonally adjusted

	May		January to May		Change
	2011	2012	2011	2012	January to May 2012/ January to May 2011
	millions of dollars				percent
Eritrea	0.2	0.8	2.2	1.5	-33.1
Ethiopia	0.4	2.5	7.6	5.8	-23.1
Iran	7.2	1.7	36.0	54.6	51.9
Iraq	2.5	55.0	14.2	281.9	...
Israel	15.6	12.2	127.4	95.9	-24.7
Jordan	3.7	4.7	27.2	65.6	141.2
Kuwait	6.1	7.4	44.8	34.8	-22.5
Lebanon	4.1	4.5	20.9	20.4	-2.1
Libya	0.1	6.8	36.7	44.1	20.3
Oman	5.2	23.8	31.8	55.1	73.1
Qatar	3.0	6.2	19.6	88.2	349.9
Saudi Arabia	55.2	120.1	304.2	610.9	100.8
Somalia	0.0	0.0	0.2	0.0	-91.5
Sudan	0.8	24.2	58.7	65.4	11.5
Syria	1.6	1.6	31.6	7.1	-77.4
Turkey	52.4	51.9	474.7	385.3	-18.8
United Arab Emirates	97.5	99.4	505.1	776.0	53.6
Yemen	1.4	0.7	6.0	8.0	32.3
Total	316.3	483.7	2,015.2	2,791.0	38.5
Other Africa					
Algeria	11.1	102.1	69.0	153.5	122.3
Angola	9.0	4.4	26.7	26.1	-2.1
Antarctica	0.0	0.0	0.0	0.0	-72.0
Benin	1.7	1.7	4.7	5.8	23.1
Botswana	1.6	0.0	2.8	0.5	-82.2
Burkina Faso	1.3	4.4	7.0	18.5	165.9
Burundi	0.1	0.1	0.3	0.6	94.5
Cameroon	3.7	0.9	10.4	12.0	15.7
Cape Verde	0.0	0.1	1.1	0.3	-76.5
Central African Republic	0.0	0.0	0.1	0.0	-76.8
Chad	0.1	0.1	1.2	1.1	-5.1
Comoros	0.0	0.2	0.1	0.3	101.2
Congo	0.6	1.9	6.1	6.7	9.1
Democratic Republic of the Congo	1.3	1.5	5.5	7.5	35.5
Djibouti	0.0	0.1	0.4	0.8	82.4
Equatorial Guinea	0.2	0.2	4.6	1.8	-60.3
French Southern Territories	0.0	0.0	0.0	0.0	...
Gabon	1.1	4.8	8.4	9.7	16.1
Gambia	0.0	0.1	0.2	0.3	48.1
Ghana	24.9	18.0	99.0	82.6	-16.5
Guinea	3.0	2.3	13.2	7.9	-40.1
Guinea-Bissau	0.0	0.0	0.0	0.0	-47.7
Ivory Coast	0.1	0.9	0.8	13.6	...
Kenya	4.4	4.3	20.8	29.9	43.5
Lesotho	0.0	0.0	0.0	0.0	-66.4
Liberia	1.0	0.7	6.8	4.0	-41.6
Madagascar	0.4	0.8	5.1	6.6	28.7
Malawi	0.3	0.1	1.9	0.8	-56.4
Mali	2.1	0.4	6.6	6.4	-2.8
Mauritania	0.5	0.1	6.5	8.2	25.5
Mauritius	0.3	0.4	2.7	1.6	-41.4
Morocco	32.0	50.7	172.4	212.8	23.5
Mozambique	0.6	2.1	4.8	23.6	390.7
Namibia	0.1	0.6	1.6	7.6	366.2
Niger	0.8	0.2	2.3	1.7	-26.2
Nigeria	16.9	27.3	58.0	120.6	108.1
Rwanda	0.2	0.0	0.4	0.4	-5.0
Saint Helena	0.0	0.0	0.0	0.0	-100.0
Sao Tome and Principe	0.0	0.0	0.0	0.0	-66.8
Senegal	3.1	2.3	13.3	11.5	-13.4
Seychelles	0.3	5.0	1.3	6.2	382.6
Sierra Leone	1.9	0.8	4.6	4.5	-2.5
South Africa	56.7	31.0	222.4	229.0	3.0
Swaziland	0.0	0.1	0.2	0.7	204.3
Togo	2.5	0.3	5.7	6.1	7.2
Tunisia	2.4	11.6	16.4	87.5	433.2

Table 4 – continued

Domestic exports by country, customs basis, not seasonally adjusted

	May		January to May		Change
	2011	2012	2011	2012	January to May 2012/ January to May 2011
	millions of dollars				percent
Uganda	0.6	0.3	3.8	2.3	-40.7
United Republic of Tanzania	4.2	5.7	18.7	21.6	15.3
Zambia	1.5	3.7	12.0	14.1	17.1
Zimbabwe	0.2	0.2	1.5	6.0	310.7
Total	193.0	292.5	852.0	1,163.5	36.6
Other Asia					
Afghanistan	2.9	1.6	20.6	8.2	-60.4
Bangladesh	49.8	30.3	240.8	248.4	3.2
Bhutan	0.0	0.0	0.0	0.0	-75.0
Brunei Darussalam	0.1	0.2	0.8	1.6	101.9
Cambodia	0.3	0.9	2.0	2.8	36.8
China	1,356.4	1,778.4	5,686.7	7,533.0	32.5
Hong Kong	117.2	213.1	1,161.5	1,140.7	-1.8
India	132.3	187.6	825.7	785.9	-4.8
Indonesia	138.7	174.9	625.9	691.6	10.5
Japan	972.7	788.8	4,256.0	4,124.1	-3.1
Laos	0.5	0.0	4.9	2.4	-51.1
Macao	0.1	0.3	1.2	1.9	53.1
Malaysia	127.0	74.0	396.7	344.6	-13.1
Maldives	0.3	0.3	1.2	1.7	41.7
Mongolia	5.0	6.8	39.2	29.5	-24.8
Myanmar	0.0	0.0	0.7	0.0	-100.0
Nepal	0.1	0.3	1.2	1.9	64.0
North Korea	0.1	1.3	1.7	1.6	-8.5
Pakistan	73.0	19.7	283.7	196.4	-30.8
Philippines	27.7	36.1	184.8	157.9	-14.6
Singapore	52.0	67.0	285.0	305.9	7.3
South Korea	431.2	285.9	2,053.4	1,493.0	-27.3
Sri Lanka	53.7	27.9	155.6	136.5	-12.2
Taiwan	105.9	111.1	722.0	550.5	-23.7
Thailand	44.2	60.9	329.3	259.8	-21.1
Timor-Leste	0.0	0.0	0.0	0.0	138.7
Viet Nam	14.3	28.6	113.5	143.4	26.3
Total	3,705.6	3,896.0	17,394.0	18,163.3	4.4
Oceania					
American Samoa	0.3	0.0	0.6	0.3	-49.7
Australia	132.5	155.2	638.8	808.4	26.5
Christmas Island	0.0	0.0	0.0	0.2	407.6
Cocos (Keeling) Islands	0.0	0.0	0.0	0.1	...
Cook Islands	0.0	0.0	0.1	0.0	-93.1
Fiji	0.5	0.7	2.0	6.9	235.2
French Polynesia	1.5	0.9	4.5	3.8	-15.8
Guam	0.1	0.1	0.8	0.6	-31.9
Heard Island and McDonald Islands	0.0	0.0	0.0	0.0	...
Kiribati	0.0	0.0	0.1	0.0	-73.8
New Caledonia	0.4	0.7	2.4	19.5	707.7
New Zealand	31.0	20.8	120.7	138.7	14.9
Niue	0.0	0.0	0.0	0.0	-42.4
Norfolk Island	0.0	0.0	0.0	0.0	...
Papua New Guinea	1.1	2.3	23.6	9.9	-58.0
Pitcairn	0.0	0.0	0.0	0.1	662.0
Samoa	0.0	0.0	0.0	0.0	...
Solomon Islands	0.0	0.0	0.2	0.1	-42.0
Tonga	0.0	0.0	0.1	0.0	-66.8
United States Minor Outlying Islands	1.0	1.2	4.6	4.9	7.0
Vanuatu	0.1	0.1	0.5	0.5	10.3
Wallis and Futuna	0.0	0.0	0.0	0.0	-100.0
Total	168.5	182.0	799.0	993.9	24.4
South America					
Argentina	30.2	76.4	281.2	140.6	-50.0
Bolivia	0.5	1.8	4.4	5.2	17.8
Brazil	244.0	303.4	947.2	1,159.3	22.4
Chile	61.6	66.1	286.7	313.0	9.2
Colombia	68.9	78.5	250.0	318.4	27.4
Ecuador	29.4	14.0	118.4	76.9	-35.0

Table 4 – continued

Domestic exports by country, customs basis, not seasonally adjusted

	May		January to May		Change
	2011	2012	2011	2012	January to May 2012/ January to May 2011
	millions of dollars				percent
Falkland Islands (Malvinas)	0.0	0.0	0.0	0.0	-100.0
Guyana	4.5	1.5	16.4	10.3	-37.3
Paraguay	1.4	0.2	3.3	7.7	129.8
Peru	38.6	53.5	187.1	172.8	-7.7
Suriname	0.8	1.5	4.4	7.3	66.0
Uruguay	1.3	2.9	10.7	12.1	12.4
Venezuela	41.5	67.6	185.4	273.5	47.5
Total	522.8	667.5	2,295.3	2,497.1	8.8
Central America Antilles					
Anguilla	0.0	0.0	0.2	0.2	-25.5
Antigua and Barbuda	0.4	1.0	3.5	5.6	61.5
Aruba	0.3	1.0	1.8	3.8	108.8
Bahamas	3.0	2.5	31.4	48.3	53.5
Barbados	2.8	2.9	19.1	13.1	-31.6
Belize	0.5	0.4	1.9	3.8	106.0
Bermuda	2.1	2.6	10.7	9.7	-9.3
British Virgin Islands	0.4	0.1	47.4	0.6	-98.6
Cayman Islands	0.4	1.1	1.9	3.1	64.5
Costa Rica	7.8	17.5	41.5	65.1	56.7
Cuba	30.2	19.3	171.3	140.6	-17.9
Dominica	0.5	0.3	1.2	1.7	38.9
Dominican Republic	8.2	7.3	60.8	50.0	-17.8
El Salvador	2.2	1.9	13.9	10.9	-21.2
Grenada	0.3	0.5	2.1	2.2	7.3
Guatemala	11.0	8.4	38.6	40.0	3.6
Haiti	3.9	3.1	17.1	10.6	-37.8
Honduras	1.7	6.3	15.3	13.7	-10.5
Jamaica	7.6	11.6	42.0	51.9	23.6
Montserrat	0.0	0.0	0.1	0.1	-31.0
Netherlands Antilles	30.6	66.0	89.5	103.9	16.1
Nicaragua	2.3	2.6	13.6	8.1	-40.0
Panama	13.0	6.6	36.3	29.8	-17.9
Saint Kitts and Nevis	0.1	0.3	2.3	2.0	-14.2
Saint Lucia	0.6	0.7	3.8	4.2	8.6
Saint Vincent and the Grenadines	0.7	0.2	3.0	2.2	-27.9
Trinidad and Tobago	27.0	34.5	149.9	148.9	-0.7
Turks and Caicos Islands	0.1	0.2	1.0	0.9	-13.0
Total	157.9	199.1	821.3	775.0	-5.6
All countries	34,800.9	36,895.9	166,931.6	180,916.6	8.4

Table 5-1
Exports by province of origin, customs basis, not seasonally adjusted — May

	Agricultural and fishing products	Energy products	Forestry products	Industrial goods	Machinery and equipment	Automotive products	Consumer goods	Special transactions trade	Total
millions of dollars									
Domestic exports									
Newfoundland and Labrador									
2011	193.5	672.8	17.6	217.1	4.5	0.1	0.2	1.7	1,107.6
2012	154.9	691.6	6.3	244.4	3.1	0.1	0.2	2.3	1,102.9
Prince Edward Island									
2011	36.5	0.0	0.0	2.4	5.7	0.3	2.7	8.0	55.7
2012	46.9	0.0	0.0	2.8	17.5	0.4	3.8	8.3	79.7
Nova Scotia									
2011	115.8	40.1	61.9	47.0	122.4	5.2	4.8	3.4	400.6
2012	127.4	5.1	33.2	50.3	122.4	6.6	5.5	3.7	354.2
New Brunswick									
2011	157.9	932.0	85.9	111.8	29.8	2.9	12.7	3.1	1,336.1
2012	189.4	874.7	123.5	153.8	34.3	3.5	14.8	3.9	1,397.8
Quebec									
2011	420.4	262.2	479.4	1,975.9	1,318.4	153.8	281.0	65.6	4,956.7
2012	491.0	285.6	456.7	1,860.2	1,760.9	188.9	321.1	74.8	5,439.3
Ontario									
2011	764.7	267.2	241.1	4,367.7	2,554.2	4,216.4	527.7	111.3	13,050.3
2012	832.9	410.2	214.2	4,096.1	2,812.7	5,151.3	620.5	144.6	14,282.4
Manitoba									
2011	302.1	77.2	25.1	281.0	180.4	35.8	65.6	15.4	982.7
2012	352.2	85.1	24.2	221.0	219.1	55.5	20.5	26.0	1,003.6
Saskatchewan									
2011	662.7	746.8	23.6	803.5	52.8	5.8	0.8	3.1	2,299.0
2012	756.1	981.8	42.9	898.8	67.0	2.8	0.7	3.7	2,753.7
Alberta									
2011	592.4	5,354.4	169.7	944.9	352.8	90.7	8.9	18.4	7,532.3
2012	656.6	5,595.5	166.5	813.7	408.2	83.0	14.5	24.9	7,762.9
British Columbia									
2011	194.3	889.0	863.0	562.8	263.9	20.3	46.2	17.7	2,857.2
2012	206.0	750.1	796.1	503.7	335.2	31.2	49.2	23.0	2,694.6
Yukon, Northwest Territories and Nunavut ¹									
2011	0.2	0.0	0.0	221.6	0.8	0.0	0.1	0.1	222.9
2012	0.5	0.0	0.0	23.4	0.9	0.0	0.0	0.0	24.8
Total									
2011	3,440.4	9,241.7	1,967.3	9,535.7	4,885.7	4,531.4	950.8	247.9	34,800.9
2012	3,813.8	9,679.6	1,863.5	8,868.3	5,781.3	5,523.3	1,050.8	315.1	36,895.9
Re-exports									
2011	52.2	144.0	5.6	340.5	897.6	95.1	243.8	671.2	2,450.1
2012	61.5	1.2	9.8	301.1	886.3	113.6	232.3	911.9	2,517.7
Total exports									
2011	3,492.5	9,385.7	1,973.0	9,876.3	5,783.4	4,626.5	1,194.5	919.2	37,251.0
2012	3,875.4	9,680.8	1,873.3	9,169.4	6,667.7	5,636.8	1,283.1	1,227.1	39,413.6

1. Data for the current month do not include some exports from the Harmonized System, Chapter 71, "Natural/cultured pearls, precious stones and metals, coins, etc." for reasons relating to timing.

Table 5-2
Exports by province of origin, customs basis, not seasonally adjusted — Year to date, January to May

	Agricultural and fishing products	Energy products	Forestry products	Industrial goods	Machinery and equipment	Automotive products	Consumer goods	Special transactions trade	Total
millions of dollars									
Domestic exports									
Newfoundland and Labrador									
2011	338.0	3,315.5	53.4	828.8	18.1	1.1	0.7	9.4	4,565.0
2012	300.3	3,616.0	60.7	929.3	273.0	0.8	0.9	9.4	5,190.5
Prince Edward Island									
2011	167.6	0.0	0.2	9.7	28.2	1.3	12.0	31.8	250.9
2012	184.7	0.0	0.1	14.3	78.6	2.4	13.9	44.8	338.9
Nova Scotia									
2011	415.0	290.6	323.1	231.5	562.9	25.7	24.0	15.5	1,888.3
2012	454.7	22.5	156.2	239.3	566.5	31.4	24.8	15.7	1,511.1
New Brunswick									
2011	490.4	4,495.7	532.7	483.2	134.3	18.4	56.0	15.7	6,226.6
2012	588.0	4,627.8	534.6	489.0	144.8	20.1	66.9	15.6	6,486.9
Quebec									
2011	2,045.4	1,456.8	2,415.3	9,031.2	7,007.5	728.9	1,361.4	329.9	24,376.3
2012	2,178.7	1,579.4	2,203.6	9,205.1	7,875.9	936.8	1,465.5	338.0	25,783.0
Ontario									
2011	3,364.9	1,177.6	1,182.2	20,475.0	12,250.2	21,277.6	2,743.8	621.7	63,092.8
2012	3,583.6	1,366.8	1,032.1	21,000.3	12,880.0	24,713.2	2,927.7	623.2	68,126.8
Manitoba									
2011	1,504.1	393.3	102.9	1,164.4	890.1	188.2	219.7	105.0	4,567.6
2012	1,775.9	462.4	111.9	1,147.1	1,041.1	252.7	187.7	111.3	5,090.0
Saskatchewan									
2011	3,213.3	3,944.7	102.3	3,940.3	261.5	25.5	6.2	19.0	11,512.8
2012	3,730.7	5,333.7	155.2	3,864.1	326.0	20.2	8.2	18.5	13,456.7
Alberta									
2011	2,738.9	26,300.3	822.8	4,687.4	1,663.6	337.4	51.3	98.9	36,700.5
2012	3,276.0	30,054.6	838.9	4,552.2	1,886.0	435.6	54.5	118.5	41,216.2
British Columbia									
2011	833.7	3,542.8	3,950.0	2,692.7	1,270.1	113.8	220.3	102.1	12,725.6
2012	891.8	3,636.6	3,918.6	2,610.4	1,470.4	142.5	240.5	94.8	13,005.6
Yukon, Northwest Territories and Nunavut ¹									
2011	0.6	0.0	0.1	1,020.9	3.0	0.3	0.2	0.2	1,025.2
2012	1.5	0.0	0.0	703.8	4.4	0.4	0.6	0.1	710.9
Total									
2011	15,111.7	44,917.5	9,485.1	44,565.0	24,089.5	22,718.1	4,695.5	1,349.2	166,931.6
2012	16,965.9	50,699.9	9,011.8	44,754.9	26,546.8	26,556.2	4,991.1	1,390.0	180,916.6
Re-exports									
2011	259.4	302.1	33.7	1,863.1	4,266.0	488.4	1,130.1	3,211.8	11,554.5
2012	288.8	51.1	40.8	1,404.8	4,394.6	549.5	1,109.0	3,798.3	11,637.0
Total exports									
2011	15,371.1	45,219.6	9,518.8	46,428.1	28,355.5	23,206.5	5,825.6	4,561.0	178,486.1
2012	17,254.7	50,750.9	9,052.7	46,159.7	30,941.4	27,105.7	6,100.1	5,188.3	192,553.6

1. Data for the current month do not include some exports from the Harmonized System Chapter 71, "Natural/cultured pearls, precious stones and metals, coins, etc." for reasons relating to timing.

Table 6-1
Imports by commodity groupings, balance of payments basis, seasonally adjusted — Current dollars

	April	May	Change		Year to date			May 2012/ May 2011	
	2012	2012			2011	2012	Change		
	millions of dollars		percent		millions of dollars		percent		
Total	39,513	39,668	155	0.4	185,392	197,436	12,044	6.5	3.5
Agricultural and fishing products	2,785	2,828	43	1.5	13,242	13,974	732	5.5	6.0
Fruits and vegetables	761	763	1	0.2	3,643	3,757	114	3.1	5.2
Fresh fruits and berries	275	273	-2	-0.7	1,262	1,329	67	5.3	11.3
Dried fruits, fruits and fruit preparations	135	131	-4	-2.9	633	672	39	6.2	0.7
Fresh vegetables	168	180	13	7.5	960	865	-95	-9.9	-2.5
Other vegetables and vegetable preparations	184	179	-5	-2.9	788	891	103	13.0	8.5
Other agricultural and fishing products	2,024	2,065	41	2.0	9,599	10,217	618	6.4	6.3
Live animals	19	21	2	11.3	91	93	2	1.8	18.1
Meat and meat preparations	225	217	-8	-3.6	995	1,129	134	13.5	8.0
Fish and marine animals	188	186	-2	-1.1	944	946	2	0.2	0.5
Cocoa, coffee, tea and other food preparations	489	498	9	1.8	2,302	2,457	155	6.7	7.6
Dairy produce, eggs and honey	51	56	6	11.4	254	270	15	5.9	10.4
Corn (maize) shelled	43	37	-6	-14.6	130	196	66	51.2	46.0
Other cereals and cereal preparations	203	197	-6	-3.0	896	1,014	118	13.2	0.6
Sugar and sugar preparations	174	208	34	19.5	906	904	-2	-0.2	21.5
Fodder, feed, excluding unmilled cereal	128	132	4	3.2	593	631	38	6.4	9.7
Beverages	343	351	8	2.3	1,613	1,698	85	5.3	8.2
Tobacco	19	31	12	64.9	138	158	20	14.3	11.1
Crude vegetable products	141	130	-11	-7.8	731	716	-15	-2.1	-19.1
Cotton	1	1	0	7.3	6	6	0	-4.2	75.3
Energy products	4,145	4,298	153	3.7	21,661	22,203	542	2.5	-12.1
Crude petroleum	2,489	2,668	179	7.2	11,884	12,919	1,035	8.7	-2.2
Other energy products	1,656	1,629	-27	-1.6	9,776	9,284	-493	-5.0	-24.7
Coal and other related products	299	292	-7	-2.2	2,118	1,615	-503	-23.7	-30.6
Petroleum and coal products	1,357	1,337	-20	-1.5	7,659	7,669	10	0.1	-23.3
Forestry products	225	217	-8	-3.7	1,025	1,084	59	5.8	3.9
Forestry products	225	217	-8	-3.7	1,025	1,084	59	5.8	3.9
Crude wood products	30	32	2	7.9	156	154	-2	-1.2	7.9
Wood fabricated materials	195	184	-11	-5.5	869	930	61	7.0	3.2
Industrial goods and materials	8,217	8,208	-9	-0.1	39,269	41,302	2,033	5.2	-0.2
Metals and metal ores	3,058	3,102	44	1.4	15,784	15,847	64	0.4	-9.8
Metals in ores, concentrates and scrap	648	605	-44	-6.7	3,378	3,174	-204	-6.0	-12.0
Steel bars, rods, plates, sheets	663	595	-68	-10.3	2,957	3,191	234	7.9	-4.2
Other iron and steel products	442	442	0	0.1	2,014	2,242	228	11.3	-2.1
Precious metals including alloys	912	1,096	183	20.1	5,531	5,317	-213	-3.9	-14.8
Other non-ferrous metals and alloys	393	365	-28	-7.1	1,904	1,922	19	1.0	-7.4
Chemicals and plastics	2,734	2,741	7	0.3	12,718	13,625	908	7.1	5.4
Organic chemicals	598	584	-13	-2.2	2,807	3,007	201	7.1	9.3
Plastic materials	962	939	-23	-2.4	4,417	4,740	324	7.3	5.1
Other chemicals and related products	1,174	1,217	44	3.7	5,494	5,878	383	7.0	3.9
Other industrial goods and materials	2,426	2,365	-61	-2.5	10,768	11,830	1,062	9.9	8.1
Crude animal products	31	36	4	14.2	133	172	39	29.5	14.8
Wool and man-made fibres	20	20	0	-2.0	116	105	-11	-9.3	-20.0
Crude non-metallic minerals	69	69	0	-0.3	334	338	4	1.2	7.1
Textile fabricated materials	229	214	-16	-6.8	1,033	1,098	65	6.3	1.1
Metal fabricated basic products	1,057	1,037	-20	-1.9	4,454	5,122	668	15.0	13.3
Rubber fabricated materials	108	106	-2	-1.8	456	534	78	17.1	17.9
Oils, fats, animal and vegetable	100	97	-3	-3.1	497	500	4	0.7	-4.4
Non-metallic minerals	354	342	-12	-3.5	1,527	1,715	188	12.3	8.1
Other fabricated materials	456	444	-12	-2.6	2,219	2,246	27	1.2	2.9

Table 6-1 – continued

Imports by commodity groupings, balance of payments basis, seasonally adjusted — Current dollars

	April	May	Change		Year to date			May 2012/ May 2011	
	2012	2012			2011	2012	Change		
	millions of dollars		percent		millions of dollars			percent	
Machinery and equipment	10,884	10,746	-138	-1.3	50,608	53,741	3,133	6.2	3.5
Industrial and agricultural machinery	3,247	3,195	-53	-1.6	13,909	15,843	1,934	13.9	6.5
Engines, turbines and electric motors	467	371	-96	-20.5	1,886	1,931	45	2.4	-21.0
Drilling mining machinery	199	214	15	7.3	811	1,000	189	23.3	27.9
Excavating machinery	341	369	28	8.3	1,354	1,703	349	25.8	37.2
Metal working machinery	181	177	-4	-2.1	909	887	-22	-2.4	-17.6
Other industrial machinery	1,609	1,583	-26	-1.6	7,078	7,999	921	13.0	5.3
Agricultural machinery including tractors	450	480	30	6.7	1,872	2,324	453	24.2	28.4
Aircraft and other transportation equipment	1,382	1,375	-7	-0.5	6,741	6,648	-93	-1.4	-5.4
Aircraft, engines, parts	775	766	-9	-1.2	3,982	3,652	-331	-8.3	-15.0
Other transportation equipment and parts	607	609	3	0.4	2,759	2,996	238	8.6	10.3
Office machines and equipment	1,040	1,096	56	5.4	5,712	5,403	-310	-5.4	-4.6
Other machinery and equipment	5,215	5,080	-134	-2.6	24,246	25,847	1,601	6.6	6.2
Other communication and related equipment	1,809	1,689	-120	-6.7	9,041	8,965	-76	-0.8	-5.0
Other equipment and tools	3,406	3,392	-14	-0.4	15,205	16,882	1,677	11.0	12.8
Automotive products	6,800	6,853	53	0.8	29,199	33,227	4,028	13.8	18.6
Passenger autos and chassis	2,158	2,105	-53	-2.5	9,201	10,457	1,256	13.6	16.2
Trucks and other motor vehicles	1,755	1,825	69	4.0	7,547	8,682	1,135	15.0	13.8
Motor vehicle parts	2,887	2,924	37	1.3	12,450	14,088	1,638	13.2	23.6
Other consumer goods	5,102	5,013	-89	-1.8	24,243	24,987	744	3.1	2.0
Apparel and footwear	1,086	1,015	-71	-6.5	4,898	5,061	162	3.3	0.6
Apparel and apparel accessories	901	833	-68	-7.6	4,063	4,207	144	3.5	-0.4
Footwear	185	182	-2	-1.3	835	853	18	2.2	5.5
Miscellaneous consumer goods	4,016	3,997	-19	-0.5	19,345	19,926	582	3.0	2.4
Television, radios, phonographs	143	146	3	2.4	651	695	44	6.8	11.9
Printed matter	301	260	-40	-13.4	1,412	1,360	-52	-3.7	-8.9
Watches, sporting goods and toys	498	501	3	0.6	2,406	2,466	60	2.5	6.1
House furnishings	784	774	-10	-1.2	3,543	3,852	310	8.7	7.0
Photographic goods	206	212	6	2.8	1,138	1,011	-127	-11.1	2.4
Miscellaneous end products	2,085	2,104	19	0.9	10,195	10,541	346	3.4	0.9
Special transactions trade	507	653	146	28.7	2,157	2,712	555	25.7	49.3
Unallocated balance of payments adjustments	847	853	6	0.7	3,989	4,206	217	5.4	4.6

Table 6-2
Imports by commodity groupings, balance of payments basis, seasonally adjusted — Constant dollars, 2002

	April	May	Change		Year to date			May 2012/ May 2011	
	2012	2012			2011	2012	Change		
	millions of dollars		percent		millions of dollars			percent	
Total	43,852	43,369	-483	-1.1	210,157	217,132	6,975	3.3	1.7
Agricultural and fishing products	2,708	2,718	10	0.4	13,242	13,687	445	3.4	-0.7
Fruits and vegetables	774	750	-25	-3.2	3,627	3,839	212	5.8	-2.0
Fresh fruits and berries	270	282	11	4.3	1,374	1,376	1	0.1	0.2
Dried fruits, fruits and fruit preparations	112	109	-3	-2.8	611	556	-55	-9.0	-13.2
Fresh vegetables	228	203	-26	-11.2	879	1,120	241	27.4	2.2
Other vegetables and vegetable preparations	164	156	-7	-4.5	763	787	25	3.2	-2.2
Other agricultural and fishing products	1,934	1,969	35	1.8	9,615	9,848	233	2.4	-0.2
Live animals	17	19	2	9.7	88	82	-6	-7.3	7.9
Meat and meat preparations	206	203	-3	-1.4	934	1,032	99	10.6	5.5
Fish and marine animals	189	202	12	6.4	1,192	1,011	-181	-15.2	-11.7
Cocoa, coffee, tea and other food preparations	550	537	-13	-2.4	2,563	2,731	168	6.6	-3.5
Dairy produce, eggs and honey	46	57	11	24.1	255	256	1	0.4	7.6
Corn (maize) shelled	25	22	-3	-11.3	82	112	30	37.3	44.3
Other cereals and cereal preparations	169	156	-13	-7.6	702	854	152	21.7	-0.3
Sugar and sugar preparations	161	195	35	21.5	889	855	-34	-3.8	17.2
Fodder, feed, excluding unmilled cereal	101	105	3	3.3	507	522	15	3.0	0.5
Beverages	328	327	-1	-0.3	1,550	1,568	18	1.1	4.7
Tobacco	21	34	13	64.5	168	178	10	5.9	0.3
Crude vegetable products	120	111	-9	-7.6	679	641	-38	-5.5	-18.5
Cotton	1	1	0	-1.8	7	5	-2	-25.0	48.4
Energy products	1,758	1,826	68	3.9	9,873	9,367	-506	-5.1	-10.6
Crude petroleum	843	913	69	8.2	4,231	4,178	-53	-1.2	-1.2
Other energy products	914	913	-1	-0.1	5,642	5,189	-453	-8.0	-18.3
Coal and other related products	410	391	-18	-4.5	2,189	2,144	-45	-2.0	-6.5
Petroleum and coal products	504	522	17	3.5	3,453	3,045	-408	-11.8	-25.4
Forestry products	311	286	-24	-7.8	1,399	1,454	56	4.0	-1.4
Forestry products	311	286	-24	-7.8	1,399	1,454	56	4.0	-1.4
Crude wood products	48	49	1	2.7	231	226	-5	-2.2	4.5
Wood fabricated materials	263	237	-25	-9.7	1,168	1,228	61	5.2	-2.5
Industrial goods and materials	7,050	6,988	-61	-0.9	34,194	34,970	777	2.3	1.6
Metals and metal ores	1,999	2,091	92	4.6	9,913	10,390	477	4.8	3.6
Metals in ores, concentrates and scrap	320	311	-9	-2.7	1,620	1,607	-13	-0.8	-3.7
Steel bars, rods, plates, sheets	487	451	-37	-7.5	2,392	2,399	6	0.3	-4.9
Other iron and steel products	274	286	12	4.4	1,388	1,473	86	6.2	-4.1
Precious metals including alloys	538	684	147	27.3	2,728	3,031	302	11.1	26.6
Other non-ferrous metals and alloys	380	359	-22	-5.7	1,785	1,879	95	5.3	-6.3
Chemicals and plastics	2,398	2,351	-47	-2.0	11,902	11,734	-168	-1.4	-0.2
Organic chemicals	362	348	-14	-3.8	1,835	1,831	-4	-0.2	5.5
Plastic materials	949	903	-46	-4.8	4,581	4,615	34	0.7	-0.1
Other chemicals and related products	1,087	1,100	12	1.1	5,486	5,287	-198	-3.6	-1.9
Other industrial goods and materials	2,653	2,546	-106	-4.0	12,379	12,847	469	3.8	1.6
Crude animal products	29	32	3	10.8	133	166	33	25.1	8.1
Wool and man-made fibres	24	23	-1	-2.7	141	123	-18	-13.0	-20.0
Crude non-metallic minerals	51	56	5	9.7	270	279	9	3.5	6.4
Textile fabricated materials	297	270	-27	-9.1	1,397	1,397	0	0.0	-2.7
Metal fabricated basic products	1,089	1,050	-39	-3.6	4,864	5,239	375	7.7	5.7
Rubber fabricated materials	118	114	-4	-3.4	565	582	17	3.1	5.0
Oils, fats, animal and vegetable	84	83	-1	-1.4	452	434	-18	-3.9	-9.8
Non-metallic minerals	424	398	-27	-6.2	1,918	2,011	93	4.8	-0.3
Other fabricated materials	536	520	-16	-3.0	2,640	2,616	-23	-0.9	-0.6

Table 6-2 – continued

Imports by commodity groupings, balance of payments basis, seasonally adjusted — Constant dollars, 2002

	April	May	Change		Year to date			May 2012/ May 2011	
	2012	2012			2011	2012	Change		
	millions of dollars		percent		millions of dollars			percent	
Machinery and equipment	16,048	15,670	-378	-2.4	77,652	79,524	1,871	2.4	-1.5
Industrial and agricultural machinery	3,884	3,755	-130	-3.3	17,663	18,856	1,193	6.8	-1.4
Engines, turbines and electric motors	564	439	-126	-22.3	2,416	2,329	-87	-3.6	-26.5
Drilling mining machinery	217	229	12	5.6	941	1,085	144	15.4	18.5
Excavating machinery	402	431	29	7.3	1,773	2,005	232	13.1	23.2
Metal working machinery	229	217	-12	-5.2	1,214	1,110	-104	-8.6	-25.0
Other industrial machinery	1,897	1,834	-63	-3.3	8,836	9,383	547	6.2	-2.3
Agricultural machinery including tractors	576	605	29	5.1	2,483	2,944	460	18.5	20.9
Aircraft and other transportation equipment	1,584	1,545	-39	-2.5	8,100	7,588	-511	-6.3	-10.8
Aircraft, engines, parts	954	921	-33	-3.4	5,004	4,465	-540	-10.8	-18.9
Other transportation equipment and parts	630	624	-6	-1.0	3,095	3,124	28	0.9	4.5
Office machines and equipment	2,900	3,088	188	6.5	14,688	15,210	522	3.6	2.3
Other machinery and equipment	7,679	7,282	-398	-5.2	37,202	37,869	668	1.8	-1.0
Other communication and related equipment	3,212	2,911	-301	-9.4	16,316	15,779	-537	-3.3	-9.2
Other equipment and tools	4,467	4,370	-97	-2.2	20,885	22,090	1,205	5.8	5.4
Automotive products	8,414	8,365	-50	-0.6	36,645	40,984	4,338	11.8	15.0
Passenger autos and chassis	2,510	2,457	-52	-2.1	10,658	12,200	1,542	14.5	16.2
Trucks and other motor vehicles	2,054	2,088	34	1.7	8,894	10,157	1,263	14.2	10.4
Motor vehicle parts	3,851	3,820	-31	-0.8	17,094	18,627	1,534	9.0	16.9
Other consumer goods	6,495	6,254	-241	-3.7	32,508	31,509	-1,000	-3.1	-5.0
Apparel and footwear	1,459	1,330	-129	-8.8	7,159	6,756	-403	-5.6	-8.4
Apparel and apparel accessories	1,213	1,091	-122	-10.0	5,959	5,621	-338	-5.7	-9.1
Footwear	246	238	-7	-3.0	1,201	1,135	-66	-5.5	-4.8
Miscellaneous consumer goods	5,036	4,924	-112	-2.2	25,349	24,753	-597	-2.4	-4.0
Television, radios, phonographs	246	250	3	1.4	1,133	1,189	56	5.0	8.3
Printed matter	382	322	-60	-15.7	1,816	1,701	-115	-6.3	-13.2
Watches, sporting goods and toys	650	641	-9	-1.4	3,398	3,244	-154	-4.5	-1.9
House furnishings	987	959	-28	-2.8	4,668	4,825	157	3.4	0.1
Photographic goods	483	467	-16	-3.3	2,430	2,243	-187	-7.7	1.8
Miscellaneous end products	2,289	2,287	-2	-0.1	11,904	11,551	-353	-3.0	-7.0
Special transactions trade	563	715	152	27.0	2,455	2,998	543	22.1	46.6
Unallocated balance of payments adjustments	505	545	40	8.0	2,189	2,638	450	20.5	21.0

Table 7-1
Imports from selected countries, customs basis, not seasonally adjusted — May

	Agricultural and fishing products	Energy products	Forestry products	Industrial goods	Machinery and equipment	Automotive products	Consumer goods	Special transactions trade	Total
millions of dollars									
United States									
2011	1,543.3	1,632.8	144.7	4,744.0	4,607.1	4,103.5	1,887.3	382.5	19,045.0
2012	1,740.3	1,348.5	164.6	5,001.8	5,097.0	4,826.8	2,028.7	579.8	20,787.4
Mexico									
2011	131.9	111.8	0.6	217.2	724.2	763.2	116.4	7.1	2,072.4
2012	145.0	0.1	0.4	242.1	684.8	954.8	110.5	3.9	2,141.6
Japan									
2011	3.9	0.5	0.1	76.2	387.3	294.5	76.1	1.5	840.1
2012	7.1	1.5	0.0	91.0	474.5	443.7	90.6	0.3	1,108.7
European Union									
Germany									
2011	24.6	1.2	1.1	209.6	384.5	308.4	144.3	1.7	1,075.4
2012	29.9	42.3	1.4	197.9	540.5	322.2	177.3	4.0	1,315.4
France									
2011	55.7	8.5	0.5	96.8	198.1	7.3	122.0	1.9	490.7
2012	66.7	2.5	0.3	54.2	196.8	7.7	130.5	0.6	459.3
United Kingdom									
2011	32.2	225.8	0.0	161.8	256.8	52.8	121.1	0.7	851.2
2012	28.4	168.0	0.1	142.1	227.0	60.2	109.0	2.2	737.1
Italy									
2011	54.1	0.1	1.4	96.2	137.3	26.1	102.4	0.1	417.9
2012	58.9	0.1	1.9	103.8	139.6	28.0	85.2	0.2	417.6
Other European Union									
2011	104.8	344.0	4.4	319.3	496.0	68.9	254.9	1.1	1,593.4
2012	110.1	252.0	4.9	374.4	425.9	90.9	267.4	3.5	1,529.2
Total									
2011	271.4	579.6	7.4	883.7	1,472.8	463.5	744.6	5.7	4,428.6
2012	293.9	464.8	8.7	872.4	1,529.8	509.0	769.5	10.5	4,458.6
Newly industrialized countries									
South Korea									
2011	5.6	4.5	0.0	99.3	245.0	201.4	17.2	0.1	573.0
2012	6.0	5.6	0.0	112.7	144.3	332.4	16.1	0.1	617.1
Hong Kong									
2011	1.8	0.0	0.0	6.0	9.2	0.1	8.9	0.0	26.1
2012	2.4	0.0	0.0	3.7	9.0	0.4	11.4	0.9	27.8
Taiwan									
2011	5.6	0.1	0.7	121.2	241.4	16.1	32.6	0.1	417.9
2012	5.9	0.0	0.4	103.9	219.1	16.5	33.4	0.2	379.4
Singapore									
2011	2.0	0.0	0.0	13.4	42.9	0.3	21.9	0.0	80.4
2012	2.1	0.0	0.0	37.0	47.2	0.2	34.6	1.2	122.2
Total									
2011	15.0	4.6	0.7	239.9	538.5	217.9	80.6	0.3	1,097.4
2012	16.3	5.7	0.5	257.3	419.5	349.5	95.4	2.3	1,146.5
Other countries									
2011	700.8	2,515.8	54.2	2,294.7	2,547.2	207.9	1,632.9	26.3	9,979.9
2012	690.3	2,639.1	52.6	1,963.4	2,700.3	266.1	1,700.6	51.4	10,063.8
Total									
2011	2,666.9	4,845.1	207.6	8,455.7	10,277.1	6,050.6	4,537.8	423.3	37,464.1
2012	2,894.0	4,459.6	226.9	8,427.8	10,906.0	7,349.9	4,795.4	648.2	39,707.7

Table 7-2
Imports from selected countries, customs basis, not seasonally adjusted — Year to date, January to May

	Agricultural and fishing products	Energy products	Forestry products	Industrial goods	Machinery and equipment	Automotive products	Consumer goods	Special transactions trade	Total
millions of dollars									
United States									
2011	6,916.6	6,733.9	760.9	22,296.2	22,005.7	20,012.0	9,180.6	1,784.8	89,690.8
2012	7,636.4	6,799.2	821.3	23,993.5	24,091.5	22,104.5	9,786.3	2,216.8	97,449.5
Mexico									
2011	770.0	491.5	2.0	907.6	3,341.1	3,826.2	494.4	30.5	9,863.3
2012	770.5	440.8	2.1	1,118.3	3,499.4	4,293.5	499.4	26.9	10,651.0
Japan									
2011	27.0	2.3	0.3	480.1	2,077.8	1,955.6	447.5	2.8	4,993.3
2012	36.7	7.7	0.3	518.7	2,483.7	2,922.1	446.0	2.0	6,417.1
European Union									
Germany									
2011	119.0	6.2	5.1	956.8	1,727.0	1,498.8	763.3	6.0	5,082.0
2012	131.9	48.6	5.2	934.6	2,524.9	1,662.1	756.5	10.0	6,073.8
France									
2011	268.6	34.3	1.2	409.7	858.9	36.9	605.7	3.9	2,219.3
2012	280.3	61.7	2.7	306.6	779.8	37.7	593.5	14.4	2,076.7
United Kingdom									
2011	151.7	1,307.3	0.2	868.9	1,282.6	210.0	579.3	18.5	4,418.5
2012	154.8	699.3	0.3	860.8	1,089.8	323.6	534.0	24.3	3,687.2
Italy									
2011	263.1	70.9	6.3	464.2	645.3	106.9	456.8	2.3	2,015.8
2012	287.5	0.6	8.2	505.4	692.6	119.5	489.9	4.2	2,108.0
Other European Union									
2011	469.6	1,467.0	16.4	1,655.6	2,058.5	323.0	1,422.4	3.4	7,416.0
2012	489.1	1,075.4	19.5	1,551.9	2,042.4	416.3	1,339.9	9.4	6,943.8
Total									
2011	1,272.0	2,885.8	29.1	4,355.2	6,572.3	2,175.7	3,827.5	34.0	21,151.7
2012	1,343.6	1,885.6	35.9	4,159.5	7,129.6	2,559.2	3,713.9	62.3	20,889.6
Newly industrialized countries									
South Korea									
2011	23.5	41.4	0.1	471.8	1,081.6	774.0	79.4	0.5	2,472.3
2012	32.7	113.0	0.1	506.9	850.5	1,212.5	81.4	0.5	2,797.6
Hong Kong									
2011	10.9	0.0	0.0	37.4	41.1	1.0	53.3	0.2	143.8
2012	10.9	0.0	0.2	12.5	40.3	1.2	44.8	1.6	111.4
Taiwan									
2011	25.7	0.2	2.3	470.6	1,171.5	73.3	152.7	0.6	1,896.9
2012	30.1	5.4	1.9	487.8	1,100.1	83.4	172.1	0.7	1,881.5
Singapore									
2011	12.7	111.2	0.3	94.2	219.2	1.5	140.3	0.2	579.5
2012	9.9	0.0	0.0	118.7	274.9	2.1	112.2	2.0	519.9
Total									
2011	72.7	152.8	2.8	1,074.0	2,513.4	849.6	425.7	1.5	5,092.6
2012	83.6	118.5	2.2	1,125.9	2,265.9	1,299.1	410.5	4.8	5,310.4
Other countries									
2011	3,684.0	11,389.5	236.8	9,958.1	12,612.5	982.7	8,419.0	128.6	47,411.2
2012	3,716.4	12,657.6	245.4	10,275.8	13,423.6	1,234.2	8,950.9	175.2	50,679.0
Total									
2011	12,746.0	21,655.8	1,031.9	39,071.2	49,122.9	29,801.9	22,794.8	1,982.2	178,206.7
2012	13,590.5	21,909.4	1,107.2	41,191.7	52,894.0	34,412.7	23,807.0	2,488.0	191,400.5

Table 8
Imports by country, customs basis, not seasonally adjusted

	May		January to May		Change
	2011	2012	2011	2012	January to May 2012/ January to May 2011
	millions of dollars				percent
North America					
Canada	318.1	302.4	1,566.9	1,392.6	-11.1
Greenland	0.0	0.0	0.1	0.1	97.9
Mexico	2,072.4	2,141.6	9,863.3	10,651.0	8.0
Saint Pierre and Miquelon	0.4	0.7	0.7	1.3	75.3
United States	19,045.0	20,787.4	89,690.8	97,449.5	8.7
Total	21,435.8	23,232.2	101,121.8	109,494.5	8.3
Western Europe					
Andorra	0.0	0.1	0.2	0.2	58.6
Austria	108.8	122.1	503.3	579.4	15.1
Belgium	128.9	122.5	693.3	601.3	-13.3
Denmark	145.0	161.8	752.1	434.9	-42.2
Faeroe Islands	0.7	1.1	3.8	3.6	-6.3
Finland	206.0	64.1	734.7	350.7	-52.3
France	490.7	459.3	2,219.3	2,076.7	-6.4
Germany	1,075.4	1,315.4	5,082.0	6,073.8	19.5
Gibraltar	0.0	0.0	1.7	0.0	-98.3
Greece	15.1	12.5	63.4	60.6	-4.4
Iceland	1.5	4.3	10.4	23.7	128.2
Italy	417.9	417.6	2,015.8	2,108.0	4.6
Luxembourg	8.7	15.2	42.2	55.5	31.4
Malta	1.6	2.4	10.1	13.1	30.5
Netherlands	269.6	282.0	831.4	1,375.8	65.5
Norway	243.4	417.9	1,704.4	1,904.4	11.7
Portugal	19.7	41.2	131.4	135.6	3.2
Republic of Ireland (Eire)	109.5	137.2	505.8	545.9	7.9
Spain	131.7	131.0	712.1	715.4	0.5
Sweden	194.8	157.0	956.2	843.7	-11.8
Switzerland	227.9	239.1	1,287.0	1,495.1	16.2
United Kingdom	851.2	737.1	4,418.5	3,687.2	-16.6
Total	4,648.3	4,840.9	22,678.9	23,084.6	1.8
Other Europe					
Albania	0.2	0.4	3.0	1.9	-36.3
Armenia	2.2	7.0	18.3	29.6	61.7
Azerbaijan	0.1	293.0	216.6	658.2	203.9
Belarus	0.5	1.5	2.4	84.0	...
Bosnia and Herzegovina	0.6	0.5	3.6	4.1	13.6
Bulgaria	9.3	33.9	31.7	96.3	204.1
Croatia	2.4	3.7	12.0	12.0	-0.6
Czech Republic	31.2	31.3	145.0	174.5	20.3
Estonia	10.1	4.5	49.1	22.2	-54.8
Georgia	9.0	7.0	46.4	38.7	-16.6
Hungary	23.4	32.1	135.4	168.9	24.8
Kazakhstan	398.5	274.5	1,126.4	1,317.6	17.0
Kyrgyzstan	0.0	0.0	0.1	0.0	-82.8
Latvia	1.7	1.3	6.3	7.1	12.4
Lithuania	8.6	10.8	220.7	31.5	-85.7
Macedonia (Former Yugoslav Republic of Macedonia)	0.5	0.5	3.2	4.4	38.8
Montenegro	0.0	0.0	0.2	0.2	-23.5
Poland	130.3	111.9	664.2	492.5	-25.9
Republic of Moldova	0.0	0.4	0.7	1.4	109.0
Romania	12.7	12.8	91.7	77.2	-15.9
Russian Federation	61.5	175.1	632.6	465.2	-26.5
Serbia	1.1	1.0	6.9	5.1	-26.5
Slovakia	16.9	29.9	97.7	103.7	6.1
Slovenia	9.3	11.4	36.7	56.5	53.7
Tajikistan	0.0	0.0	0.0	0.0	87.0
Turkmenistan	0.0	0.0	0.1	0.1	-36.3
Ukraine	9.4	20.8	40.8	62.8	53.7
Uzbekistan	0.2	0.0	1.2	0.2	-85.9
Total	739.7	1,065.2	3,593.1	3,915.6	9.0

Table 8 – continued

Imports by country, customs basis, not seasonally adjusted

	May		January to May		Change
	2011	2012	2011	2012	January to May 2012/ January to May 2011
	millions of dollars				percent
Middle East					
Bahrain	0.3	65.9	2.1	66.9	...
Cyprus	0.2	0.4	1.7	1.8	2.8
Egypt	39.3	39.9	171.4	181.8	6.1
Eritrea	42.8	44.2	68.3	179.2	162.3
Ethiopia	1.4	1.0	6.3	6.2	-2.7
Iran	3.8	3.9	15.5	22.2	43.2
Iraq	266.2	557.8	1,376.1	1,750.9	27.2
Israel	70.5	95.9	413.5	474.3	14.7
Jordan	1.1	1.2	7.9	6.7	-15.5
Kuwait	0.0	27.1	56.3	27.5	-51.2
Lebanon	1.2	2.1	7.6	8.6	12.0
Libya	0.0	0.0	4.9	0.2	-95.7
Oman	1.3	4.2	7.7	16.3	113.2
Qatar	27.9	3.4	267.5	59.3	-77.8
Saudi Arabia	237.8	51.7	1,053.2	1,282.1	21.7
Somalia	0.0	0.0	0.0	0.0	-70.5
Sudan	12.9	6.5	51.7	42.6	-17.6
Syria	0.4	0.3	2.5	1.5	-40.1
Turkey	103.6	113.7	408.5	573.5	40.4
United Arab Emirates	5.4	61.2	114.7	86.9	-24.2
Yemen	0.0	0.0	0.0	0.0	29.0
Total	816.3	1,080.6	4,037.4	4,788.6	18.6
Other Africa					
Algeria	583.5	482.1	2,240.3	2,532.3	13.0
Angola	222.9	103.0	1,207.6	789.2	-34.6
Antarctica	0.0	0.0	0.4	0.1	-86.0
Benin	0.0	0.0	0.0	0.1	213.5
Botswana	0.0	0.1	0.1	0.2	219.4
Bouvet Island	0.0	0.0	0.0	0.0	141.3
Burkina Faso	0.0	1.2	1.1	2.4	125.1
Burundi	0.0	0.0	0.2	0.2	-3.8
Cameroon	0.7	0.7	2.6	4.3	64.3
Cape Verde	0.0	0.0	0.0	0.0	-85.5
Central African Republic	0.0	0.1	0.0	0.4	890.8
Chad	0.1	0.1	0.2	115.1	...
Comoros	0.0	0.0	0.1	0.2	137.7
Congo	0.2	0.1	0.9	0.8	-12.3
Democratic Republic of the Congo	0.1	0.2	0.3	0.6	133.4
Djibouti	0.0	0.0	0.0	0.0	172.6
Equatorial Guinea	111.7	111.1	369.2	253.2	-31.4
French Southern Territories	0.0	0.0	0.0	0.0	...
Gabon	0.2	0.1	0.4	0.7	56.1
Gambia	0.0	0.0	0.0	0.0	16.2
Ghana	7.4	1.1	33.6	6.7	-79.9
Guinea	6.1	7.0	19.8	30.6	54.7
Guinea-Bissau	0.0	0.0	0.0	0.0	695.6
Ivory Coast	11.4	147.5	86.0	237.7	176.5
Kenya	1.8	1.1	9.2	8.1	-11.9
Lesotho	0.4	0.8	4.9	4.0	-18.3
Liberia	2.5	2.9	13.2	16.0	20.5
Madagascar	2.6	7.1	16.1	34.4	113.8
Malawi	20.1	19.1	66.4	45.3	-31.7
Mali	0.1	0.0	0.3	0.2	-34.5
Mauritania	0.0	0.0	0.1	0.1	99.1
Mauritius	1.3	0.4	4.3	3.8	-13.3
Morocco	3.5	4.9	41.5	50.5	21.7
Mozambique	0.5	0.7	2.0	3.4	70.2
Namibia	40.8	38.4	119.3	96.6	-19.0
Niger	0.1	0.0	0.6	0.3	-51.2
Nigeria	247.7	1.2	892.2	863.5	-3.2
Rwanda	0.0	0.2	0.3	1.0	196.7
Saint Helena	0.0	0.0	0.0	0.0	-45.0
Sao Tome and Principe	0.0	0.0	0.1	0.0	-93.6
Senegal	0.1	0.1	0.4	0.5	14.6
Seychelles	0.0	0.1	0.2	0.6	172.9

Table 8 – continued

Imports by country, customs basis, not seasonally adjusted

	May		January to May		Change
	2011	2012	2011	2012	January to May 2012/ January to May 2011
	millions of dollars				percent
Sierra Leone	0.3	0.1	0.6	0.3	-54.2
South Africa	60.0	54.3	250.5	266.8	6.5
Swaziland	0.0	0.1	0.8	2.0	140.1
Togo	1.0	0.1	1.7	0.2	-86.0
Tunisia	4.5	3.7	24.1	23.4	-3.0
Uganda	0.3	0.2	1.6	1.9	20.7
United Republic of Tanzania	0.5	0.5	2.0	4.3	113.6
Western Sahara	0.0	0.0	0.0	0.0	...
Zambia	0.1	0.2	0.5	0.8	74.6
Zimbabwe	0.5	0.1	3.3	1.2	-63.5
Total	1,333.2	990.8	5,419.1	5,403.9	-0.3
Other Asia					
Afghanistan	0.1	0.2	0.8	1.2	53.4
Bangladesh	73.5	69.7	436.9	459.1	5.1
Bhutan	0.0	0.0	0.0	0.0	204.8
British Indian Ocean Territory	0.0	0.0	0.1	0.0	-92.9
Brunei Darussalam	0.7	0.1	4.6	2.7	-40.5
Cambodia	29.2	25.9	182.2	218.6	20.0
China	3,640.4	3,925.4	17,723.1	19,293.4	8.9
Hong Kong	26.1	27.8	143.8	111.4	-22.6
India	191.7	219.1	1,037.8	1,273.8	22.7
Indonesia	132.7	111.7	580.7	544.2	-6.3
Japan	840.1	1,108.7	4,993.3	6,417.1	28.5
Laos	0.4	0.4	2.4	3.4	42.9
Macao	0.6	6.5	3.1	10.2	230.7
Malaysia	178.5	183.0	858.8	903.5	5.2
Maldives	0.0	0.2	0.1	0.5	288.0
Mongolia	9.6	0.0	36.7	21.0	-42.9
Myanmar	0.0	0.0	0.0	0.0	5.3
Nepal	1.2	0.6	4.5	3.8	-15.1
North Korea	0.0	0.0	0.0	0.1	111.9
Pakistan	21.0	22.5	100.2	105.2	5.0
Philippines	66.0	86.9	367.2	401.5	9.3
Singapore	80.4	122.2	579.5	519.9	-10.3
South Korea	573.0	617.1	2,472.3	2,797.6	13.2
Sri Lanka	12.3	10.8	60.7	74.2	22.4
Taiwan	417.9	379.4	1,896.9	1,881.5	-0.8
Thailand	215.6	187.9	1,062.6	1,035.7	-2.5
Timor-Leste	0.0	0.0	0.2	0.0	-92.8
Viet Nam	93.3	115.2	460.7	585.6	27.1
Total	6,604.2	7,221.3	33,009.3	36,665.3	11.1
Oceania					
American Samoa	0.0	0.4	0.1	0.4	427.8
Australia	172.7	146.7	702.7	821.5	16.9
Christmas Island	0.0	0.0	0.0	0.0	-51.7
Cocos (Keeling) Islands	0.0	0.0	0.0	0.0	222.1
Cook Islands	0.0	0.0	0.0	0.0	63.3
Fiji	0.4	0.3	1.4	1.8	30.7
French Polynesia	0.0	0.0	0.4	0.4	14.9
Guam	0.0	0.0	0.1	0.0	-38.3
Heard Island and McDonald Islands	0.0	0.0	0.0	0.0	-98.8
Kiribati	0.0	0.0	0.0	0.1	683.0
Nauru	0.0	0.0	0.0	0.0	47.5
New Caledonia	0.0	0.0	0.0	0.1	176.8
New Zealand	51.4	44.5	223.7	225.0	0.6
Niue	0.0	0.0	0.0	0.0	-31.8
Norfolk Island	0.0	0.1	0.0	0.1	...
Papua New Guinea	0.0	0.1	0.2	0.7	221.0
Pitcairn	0.0	0.0	0.0	0.0	-67.9
Samoa	0.0	0.0	0.0	0.0	371.4
Solomon Islands	0.0	0.1	0.0	0.1	354.3
Tonga	0.0	0.0	0.0	0.0	68.6
United States Minor Outlying Islands	0.2	0.7	1.1	2.3	119.0
Vanuatu	0.0	0.0	0.0	0.1	96.8
Wallis and Futuna	0.0	0.0	0.0	0.0	...
Total	224.8	193.0	929.8	1,052.9	13.2

Table 8 – continued

Imports by country, customs basis, not seasonally adjusted

	May		January to May		Change
	2011	2012	2011	2012	January to May 2012/ January to May 2011
	millions of dollars				percent
South America					
Argentina	181.7	32.3	776.0	755.4	-2.7
Bolivia	14.9	47.1	92.7	110.6	19.3
Brazil	289.6	287.7	1,420.9	1,549.5	9.0
Chile	224.3	121.5	905.8	834.5	-7.9
Colombia	49.7	38.3	316.7	286.7	-9.5
Ecuador	21.5	17.2	105.9	91.9	-13.2
Falkland Islands (Malvinas)	0.0	0.0	0.0	0.4	...
Guyana	31.7	25.4	140.0	189.9	35.6
Paraguay	0.2	0.6	1.4	3.8	164.6
Peru	367.8	243.9	1,629.6	1,555.1	-4.6
Suriname	13.1	11.2	183.2	49.4	-73.0
Uruguay	3.9	4.7	18.7	26.1	39.7
Venezuela	216.5	0.6	365.5	210.1	-42.5
Total	1,415.0	830.4	5,956.4	5,663.3	-4.9
Central America Antilles					
Anguilla	0.0	0.0	0.1	0.1	-19.8
Antigua and Barbuda	0.0	0.3	0.2	0.8	452.0
Aruba	0.0	0.0	5.5	0.0	-99.9
Bahamas	1.8	7.0	4.7	13.7	191.2
Barbados	0.2	1.1	2.1	4.3	102.2
Belize	0.6	0.1	3.0	1.7	-45.0
Bermuda	0.1	0.1	0.3	0.7	121.9
British Virgin Islands	0.1	0.2	0.2	0.4	74.5
Cayman Islands	0.0	0.0	0.1	0.3	174.2
Costa Rica	35.8	43.5	213.0	211.1	-0.9
Cuba	67.4	37.8	330.7	231.2	-30.1
Dominica	0.0	0.0	0.2	0.1	-14.8
Dominican Republic	10.7	13.6	57.1	66.7	16.9
El Salvador	7.2	4.7	82.3	50.5	-38.7
Grenada	0.0	0.4	0.4	1.2	211.3
Guatemala	29.2	40.5	223.7	206.9	-7.5
Haiti	2.2	2.5	11.2	12.5	11.2
Honduras	16.2	20.3	86.4	104.2	20.7
Jamaica	12.9	3.5	86.0	57.3	-33.4
Montserrat	0.0	0.0	0.1	0.1	-10.0
Netherlands Antilles	0.0	0.0	0.1	0.1	26.7
Nicaragua	26.7	41.8	145.6	163.0	12.0
Panama	15.5	11.2	46.9	46.0	-1.7
Saint Kitts and Nevis	0.6	0.9	3.0	3.6	20.3
Saint Lucia	0.0	0.0	0.1	0.1	3.5
Saint Vincent and the Grenadines	0.0	0.0	0.1	0.1	-46.3
Trinidad and Tobago	19.6	23.9	157.9	155.0	-1.8
Turks and Caicos Islands	0.0	0.0	0.0	0.2	227.9
Total	246.9	253.4	1,461.0	1,331.8	-8.8
All countries	37,464.1	39,707.7	178,206.7	191,400.5	7.4

**Table 9-1
Imports by province of clearance, customs basis, not seasonally adjusted — May**

	Agricultural and fishing products	Energy products	Forestry products	Industrial goods	Machinery and equipment	Automotive products	Consumer goods	Special transactions trade	Total
millions of dollars									
Newfoundland and Labrador									
2011	5.7	225.8	0.0	2.3	19.8	0.1	0.2	0.0	254.0
2012	5.2	608.4	0.0	16.3	10.7	0.0	0.8	2.0	643.6
Prince Edward Island									
2011	0.8	0.0	0.0	0.0	0.5	0.0	0.0	0.0	1.4
2012	0.7	0.0	0.0	0.0	0.2	0.0	0.0	0.0	0.9
Nova Scotia									
2011	55.7	129.4	1.5	115.1	98.4	265.1	13.3	1.3	679.8
2012	32.1	119.7	1.1	73.9	102.1	199.8	10.4	2.3	541.4
New Brunswick									
2011	31.6	907.3	8.2	138.7	71.5	38.2	17.6	1.8	1,214.8
2012	39.1	899.9	10.9	124.6	78.6	49.2	17.0	1.5	1,220.8
Quebec									
2011	405.5	1,807.2	47.1	1,427.0	1,689.1	214.5	828.3	42.1	6,460.7
2012	406.1	1,561.3	48.1	1,357.6	1,721.2	255.1	772.7	55.7	6,177.9
Ontario									
2011	1,462.9	1,074.7	77.0	4,895.2	5,667.2	4,871.3	2,933.2	342.5	21,324.0
2012	1,639.7	523.9	86.3	4,859.9	5,915.4	6,061.7	3,138.8	541.0	22,766.7
Manitoba									
2011	80.5	40.3	8.0	335.1	520.2	151.5	130.5	9.5	1,275.6
2012	97.4	63.1	10.9	456.6	724.2	222.9	165.8	9.5	1,750.4
Saskatchewan									
2011	36.5	80.1	1.7	251.1	384.9	129.3	23.6	0.4	907.5
2012	43.6	75.3	2.1	259.0	463.0	133.4	31.5	4.7	1,012.7
Alberta									
2011	176.3	256.9	10.8	585.4	851.8	128.2	119.6	11.0	2,140.0
2012	194.2	378.6	11.0	540.6	768.4	142.9	155.4	15.7	2,206.9
British Columbia									
2011	405.8	323.0	53.5	705.2	953.8	252.4	471.4	14.6	3,179.7
2012	432.4	228.4	56.5	738.9	1,113.6	284.7	502.9	15.6	3,373.0
Yukon, Northwest Territories and Nunavut									
2011	5.5	0.5	0.0	0.6	19.9	0.0	0.1	0.0	26.6
2012	3.4	1.0	0.0	0.4	8.6	0.0	0.0	0.0	13.4
Total									
2011	2,666.9	4,845.1	207.6	8,455.7	10,277.1	6,050.6	4,537.8	423.3	37,464.1
2012	2,894.0	4,459.6	226.9	8,427.8	10,906.0	7,349.9	4,795.4	648.2	39,707.7

Table 9-2
Imports by province of clearance, customs basis, not seasonally adjusted — Year to date, January to May

	Agricultural and fishing products	Energy products	Forestry products	Industrial goods	Machinery and equipment	Automotive products	Consumer goods	Special transactions trade	Total
millions of dollars									
Newfoundland and Labrador									
2011	13.4	1,614.7	0.0	35.7	240.5	0.5	8.7	0.2	1,913.8
2012	26.5	2,263.2	0.0	51.1	66.2	0.3	10.1	3.9	2,421.4
Prince Edward Island									
2011	2.2	0.0	0.0	0.2	0.7	0.0	0.1	0.2	3.3
2012	2.0	0.0	0.0	0.2	0.8	0.0	0.2	0.1	3.3
Nova Scotia									
2011	253.5	853.0	6.4	588.7	497.8	1,197.9	72.5	16.0	3,485.8
2012	190.8	813.9	5.4	392.9	482.8	1,135.2	84.0	13.9	3,119.0
New Brunswick									
2011	171.2	4,248.7	46.4	556.7	340.0	161.3	98.7	7.7	5,630.7
2012	176.4	3,850.3	48.7	568.8	415.4	187.7	93.8	7.2	5,348.2
Quebec									
2011	2,117.1	8,131.3	264.4	7,048.5	7,534.4	949.4	4,105.9	192.8	30,343.8
2012	2,020.0	7,580.8	286.9	6,577.8	8,392.1	1,201.8	3,965.2	264.8	30,289.5
Ontario									
2011	6,876.2	3,751.3	371.5	22,275.9	27,826.8	24,569.6	14,700.6	1,602.0	101,973.8
2012	7,609.3	2,895.3	395.5	23,721.3	28,901.6	28,125.7	15,424.4	1,978.7	109,051.8
Manitoba									
2011	398.9	245.9	37.9	1,633.5	2,586.5	628.3	625.8	36.6	6,193.4
2012	461.0	279.4	54.7	2,244.6	3,297.0	861.4	752.3	45.2	7,995.5
Saskatchewan									
2011	172.2	311.9	8.6	1,197.0	1,714.7	521.2	115.0	11.9	4,052.6
2012	190.2	488.9	14.1	1,255.4	2,112.1	613.9	133.5	13.3	4,821.5
Alberta									
2011	792.6	916.2	49.1	2,490.0	3,787.3	534.3	545.5	48.3	9,163.3
2012	862.8	2,512.7	46.2	2,801.4	3,809.9	674.0	725.8	74.5	11,507.4
British Columbia									
2011	1,937.7	1,579.4	247.6	3,243.9	4,558.8	1,239.3	2,521.8	66.5	15,394.9
2012	2,044.1	1,220.0	255.6	3,576.7	5,389.3	1,612.2	2,617.3	86.4	16,801.6
Yukon, Northwest Territories and Nunavut									
2011	10.9	3.4	0.0	1.2	35.4	0.2	0.2	0.0	51.3
2012	7.3	5.0	0.0	1.5	26.9	0.2	0.1	0.0	41.2
Total									
2011	12,746.0	21,655.8	1,031.9	39,071.2	49,122.9	29,801.9	22,794.8	1,982.2	178,206.7
2012	13,590.5	21,909.4	1,107.2	41,191.7	52,894.0	34,412.7	23,807.0	2,488.0	191,400.5

Technical notes

The Canadian international merchandise trade statistical program

Introduction

The objective of this text is to provide a general overview of the Canadian International Merchandise Trade Statistical Program, with special reference to concepts and definitions. The text is intended for the general user and simplicity is emphasized.

Conceptual framework

1. Objectives and coverage: The primary objective of the Canadian International Merchandise Trade Statistical Program is to measure the change in the stock of material resources of Canada resulting from the movement of merchandise into or out of the country. Information on imports and exports are inputs into the System of National Accounts, particularly in the balance of payments and gross domestic product, and are used in the formulation of trade and budgetary policies. Governments, importers, exporters, manufacturers and shipping companies use international merchandise trade statistics to:

- monitor import penetration and export performance,
- monitor commodity price and volume changes,
- examine transport implications.

2. Trade statistics (customs basis / balance of payments basis): Merchandise trade statistics are reported and presented on two different bases: customs basis and balance of payment basis.

When goods are imported into or exported from Canada, declarations must be filed with customs, giving such information as description and value of the goods, origin and port of clearance of commodities and mode of transport. Most of this information is required for the purposes of customs administration. Statistics developed from administrative records of customs are commonly referred to as customs-based trade statistics.

Customs-based trade statistics are more accurate at measuring imports than they are at measuring exports. This is the case because customs are typically more vigilant with respect to goods entering the country than they are with goods leaving the country.

Customs-based export statistics may understate or incorrectly portray the destination of exports. Export statistics are understated when the proper documentation is not filed with Customs. Exports are incorrectly portrayed when the country of final destination is inaccurately reported on the customs documentation. This occurs most frequently when goods are routed through an intermediary country before continuing on to their final destination.

Statistics Canada does not have a measure of undercoverage but periodically conducts reconciliation exercises with its major trading partners, excluding the United States.

On January 1, 1990, Canada entered into a memorandum of understanding with the United States concerning the exchange of import data. As a consequence, each administration is using the other's import data to replace its own export data. Canada's international merchandise trade statistics are, therefore, no longer derived exclusively from the administrative records of the Canada Border Services Agency, but from United States Customs records as well.

Customs-based information is adjusted to conform with the National Accounts concepts and definitions. The adjustments to derive balance of payments-based trade data include adjustments related to trade definition, valuation and timing. The principal difference between the two trade concepts is that customs-based merchandise trade statistics cover the physical movement of goods as they are reflected in customs documents while balance of payments-adjusted data are intended to cover all economic transactions that involve merchandise trade between residents and non-residents. The present document describes the concepts and processes pertaining to the customs-based trade statistics only. (For further information on balance of payments-adjusted data, see the publication *Canada's Balance of International Payments*, Statistics Canada (Catalogue no. 67-001-X).

3. System of trade: Canadian trade statistics are compiled according to the general system of trade, as defined by the United Nations Statistical Office. Under this system, imports include all goods that have crossed Canada's territorial boundary, whether for immediate consumption in Canada or for storage in bonded customs warehouses. Domestic exports include goods grown, extracted or manufactured in Canada, including goods of foreign origin that have been materially transformed in Canada. Re-exports are exports of goods of foreign origin that have not been materially transformed in Canada, including foreign goods withdrawn for export from bonded customs warehouses. Total exports are the sum of domestic exports and re-exports. Thus the general trade system, in principal, presents all goods entering the country (imports) and all goods leaving the country (exports). It differs from the special system of trade in the treatment of imported goods into bonded customs warehouses. Under the 'special' system, these goods are counted only if and when they are withdrawn from customs warehouses for home consumption. They are not counted in export statistics unless they have first cleared customs.

Conceptually, under the general system, the statistical frontier coincides with the geographical boundary, while under the 'special' system, it coincides with the customs boundary.

4. Valuation: For customs purposes, imports are recorded at values established according to the provisions of the Customs Act, which, since January 1, 1985, reflects valuation methods based on the General Agreement on Tariffs and Trade (GATT) Valuation Code System. In general, the value for duty of imported goods must be equivalent to the transaction value or the price actually paid.

To determine the transaction value of imported goods, all transportation and associated costs arising in respect of the goods being appraised prior to and at the place of direct shipment to Canada, are to be added to the price of the goods. Therefore, Canadian imports are valued Free on Board (FOB), place of direct shipment to Canada. It excludes freight and insurance costs in bringing the goods to Canada from the point of direct shipment.

Countries other than the United States, exports are, in principal, valued or recorded at the values declared on export documents, which usually reflect the transaction value, i.e., actual selling price or, in the case of a non-arm's length transaction, the transfer price used for company accounting purposes. Canadian exports to overseas countries are valued at F.O.B. port of exit, including domestic freight charges to that point but net of discounts and allowances. As of January, 1990, Canadian exports to the U.S. are valued F.O.B. point of exit from Canada. Prior to 1990, they were valued F.O.B. place of lading net of freight charges, discounts and allowances.

5. Statistical period: The reference period is the calendar month and the calendar year. The closing of the statistical month for imports and Canadian exports to the United States is defined as the last calendar day of the month, based as closely as practicable on the date of clearance from customs.

The closing of the statistical month for exports, to countries other than the United States, is also defined as the last calendar day of the month. Those export documents that are received too late for incorporation in the current month are assigned to the month the transaction took place. If a monthly summary report from a high volume exporter is not received on time, the data are imputed for the current month and revised with the trade value in the following statistical month.

6. Trading partner attribution (country of origin/destination): Exports are attributed to the country, which is the last known destination of the goods at the time of export. Exports to the United States are attributed to the state of destination.

Imports are attributed to their country of origin, that is, the country in which the goods were grown, extracted or manufactured in accordance to the rules of origin administered by the Canada Border Services Agency. Imports from the United States are attributed to the state of origin. Prior to 1988, most imports were attributed to the country of export/consignment, with the exception of imports from Central and South America.

7. Principal trading areas: The 'principal trading areas' are country groupings defined as follows:

United States: includes trade with Puerto Rico and the U.S. Virgin Islands

Japan

European Union (EU): Austria, Belgium, Bulgaria, Cyprus, Czech Republic, Denmark, Estonia, Finland, France, Germany, Greece, Hungary, Ireland, Italy, Latvia, Lithuania, Luxembourg, Malta, Netherlands, Poland, Portugal, Romania, Slovakia, Slovenia, Spain, Sweden and United Kingdom

Other Organisation for Economic Co-operation and Development (OECD): Australia, Canada, Chile, Iceland, Israel, Mexico, New Zealand, Norway, South Korea, Switzerland, and Turkey. (The EU countries, United States, and Japan are also members of OECD).

Other countries: all countries and territories other than the United States, Japan, EU and other OECD

8. Legal framework: Import and export statistics with countries other than the United States are derived from information contained in administrative records collected by the Canada Border Services Agency under the Customs Act. Copies of these documents (or information therefrom) are sent to Statistics Canada in accordance with Section 25 of the Statistics Act. It follows that the disclosure of trade statistics is governed by both the Customs Act and the Statistics Act and is subject to the provisions of Section 17(2)(a) of the latter. Disclosure of export statistics to the United States is now governed by a memorandum of understanding that provides for the exchange of detailed import statistics between Canada and the United States.

Contact information

Telephone: 1-800-263-1136 or 613-951-8116

Facsimile: 1-877-287-4369 or 613-951-0581

Internet: infostats@statcan.gc.ca