

Catalogue no. 65-001-X

Canadian International Merchandise Trade

April 2012



Statistics
Canada

Statistique
Canada

Canada

How to obtain more information

For information about this product or the wide range of services and data available from Statistics Canada, visit our website at www.statcan.gc.ca, e-mail us at infostats@statcan.gc.ca, or telephone us, Monday to Friday from 8:30 a.m. to 4:30 p.m., at the following numbers:

Statistics Canada's National Contact Centre

Toll-free telephone (Canada and the United States):

Inquiries line	1-800-263-1136
National telecommunications device for the hearing impaired	1-800-363-7629
Fax line	1-877-287-4369

Local or international calls:

Inquiries line	1-613-951-8116
Fax line	1-613-951-0581

Depository Services Program

Inquiries line	1-800-635-7943
Fax line	1-800-565-7757

To access this product

This product, Catalogue no. 65-001-X, is available free in electronic format. To obtain a single issue, visit our website at www.statcan.gc.ca and browse by "Key resource" > "Publications."

Standards of service to the public

Statistics Canada is committed to serving its clients in a prompt, reliable and courteous manner. To this end, Statistics Canada has developed *standards of service* that its employees observe. To obtain a copy of these service standards, please contact Statistics Canada toll-free at 1-800-263-1136. The service standards are also published on www.statcan.gc.ca under "About us" > "The agency" > "Providing services to Canadians."

Statistics Canada
International Trade Division

Canadian International Merchandise Trade

April 2012

Published by authority of the Minister responsible for Statistics Canada

© Minister of Industry, 2012

All rights reserved. Use of this publication is governed by the *Statistics Canada Open License Agreement*.

<http://www.statcan.gc.ca/reference/copyright-droit-auteur-eng.htm>

June 2012

Catalogue no. 65-001-X, vol. 66, no. 4

ISSN 1480-8781

Frequency: Monthly

Ottawa

Cette publication est également disponible en français.

Note of appreciation

Canada owes the success of its statistical system to a long-standing partnership between Statistics Canada, the citizens of Canada, its businesses, governments and other institutions. Accurate and timely statistical information could not be produced without their continued cooperation and goodwill.

User information

Symbols

The following standard symbols are used in Statistics Canada publications:

- . not available for any reference period
- .. not available for a specific reference period
- ... not applicable
- 0 true zero or a value rounded to zero
- 0^s value rounded to 0 (zero) where there is a meaningful distinction between true zero and the value that was rounded
- p preliminary
- r revised
- x suppressed to meet the confidentiality requirements of the *Statistics Act*
- E use with caution
- F too unreliable to be published
- * significantly different from reference category ($p < 0.05$)

Note to users

All totals are calculated from full figures and rounded independently; consequently, totals may not equal the sum of their components.

The data is based on commodity groups (sector, subsector and major group).

Table of contents

Highlights	5
Analysis	7
Related products	11
Statistical tables	
1 Merchandise trade of Canada, balance of payments basis, seasonally adjusted	15
1-1 Current dollars	15
1-2 Constant dollars, 2002	16
1-3 Price indices (Laspeyres)	17
2 Exports by commodity groupings, balance of payments basis, seasonally adjusted	18
2-1 Current dollars	18
2-2 Constant dollars, 2002	20
3 Domestic exports to selected countries, customs basis, not seasonally adjusted	22
3-1 April	22
3-2 Year to date, January to April	23
4 Domestic exports by country, customs basis, not seasonally adjusted	24
5 Exports by province of origin, customs basis, not seasonally adjusted	28
5-1 April	28
5-2 Year to date, January to April	29
6 Imports by commodity groupings, balance of payments basis, seasonally adjusted	30
6-1 Current dollars	30
6-2 Constant dollars, 2002	32
7 Imports from selected countries, customs basis, not seasonally adjusted	34
7-1 April	34
7-2 Year to date, January to April	35
8 Imports by country, customs basis, not seasonally adjusted	36

Table of contents – continued

9	Imports by province of clearance, customs basis, not seasonally adjusted	40
9-1	April	40
9-2	Year to date, January to April	41

Data quality, concepts and methodology

	Technical notes	42
--	-----------------	----

Highlights

Canada's merchandise exports declined 1.2% in April, while imports edged up 0.1%. After five consecutive monthly surpluses, Canada posted a trade deficit of \$367 million in April, down from a surplus of \$152 million in March.

Exports fell to \$39.1 billion, the result of a 1.9% decline in prices. The main contributors to the overall decrease were exports of industrial goods and materials, as well as machinery and equipment.

Imports rose to \$39.5 billion, their fifth consecutive monthly increase. The gains were led by higher imports of automotive products and other consumer goods, while imports of energy products declined.

Exports to the United States fell 1.2% to \$28.4 billion in April, the fourth consecutive monthly decrease. Imports from the United States rose 1.3% to \$24.6 billion. As a result, Canada's trade surplus with the United States decreased from \$4.5 billion in March to \$3.8 billion in April.

Exports to countries other than the United States decreased 1.2% to \$10.7 billion in April, while imports declined 1.9% to \$14.9 billion. Canada's trade deficit with countries other than the United States narrowed from \$4.4 billion in March to \$4.2 billion in April.

Note to readers

Merchandise trade is one component of Canada's international balance of payments (BOP), which also includes trade in services, investment income, current transfers as well as capital and financial flows.

International merchandise trade data by country are available on both a BOP and a customs basis for the United States, Japan and the United Kingdom. Trade data for all other individual countries are available on a customs basis only. BOP data are derived from customs data by making adjustments for factors such as valuation, coverage, timing and residency. These adjustments are made to conform to the concepts and definitions of the Canadian System of National Accounts.

Data in this release are on a BOP basis, seasonally adjusted and in current dollars. Constant dollars are calculated using the Laspeyres volume formula.

New aggregation structure

Statistics Canada will introduce the North American Product Classification System (NAPCS) for merchandise import and export statistics. The new structure will replace the classification structures known as the summary import groups (SIG) and the summary export groups (SEG) and the higher level aggregations; major groups, subsectors, sectors and sections that have been in use for several decades.

Revised data based on NAPCS, for the reference period of January 1988 to August 2012, will be disseminated on October 18th, 2012.

The first regular release of data based on NAPCS will be on November 8, 2012 for the September reference month.

Readers interested in this upcoming change can find more detailed information on our web page dedicated to classification consultation and notification (<http://www.statcan.gc.ca/concepts/consult-napcs-scpn-eng.htm>).

Chart 1
Exports and imports, seasonally adjusted, on a balance of payments basis

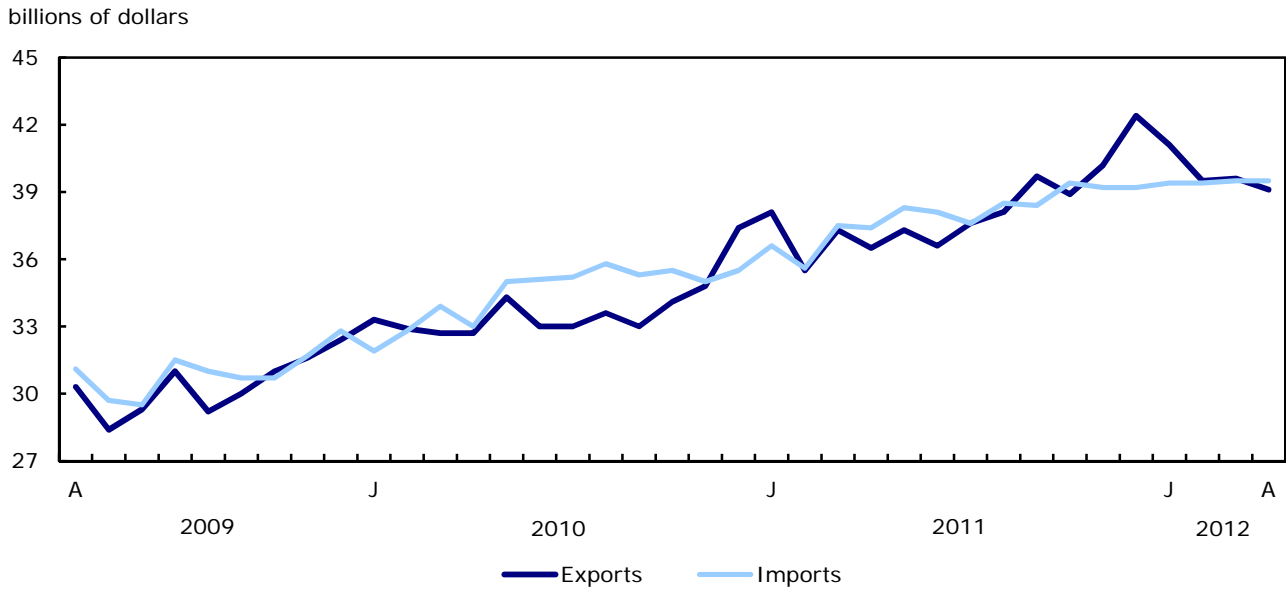
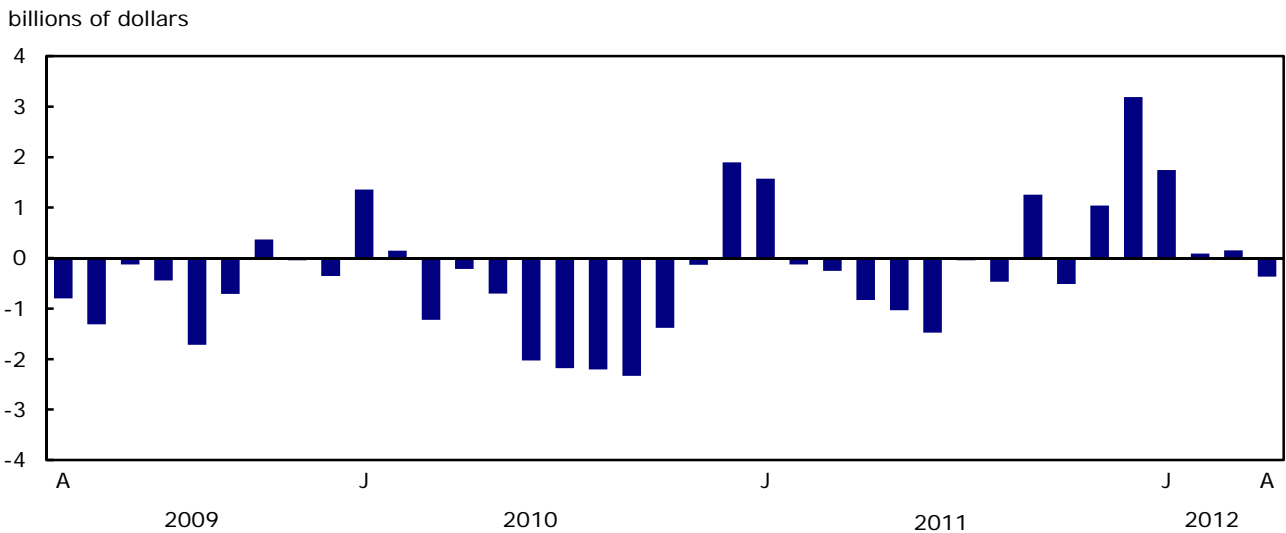


Chart 2
Trade balance, seasonally adjusted, on a balance of payments basis



Analysis

Exports: Widespread declines in industrial goods and materials sector

Exports of industrial goods and materials fell 5.8% to \$9.3 billion in April, as widespread declines were recorded throughout the sector. Volumes fell 3.7%, while prices declined 2.1%. Metal ores as well as metals and alloys were the main contributors to the sector's decline, which was partially offset by gains in chemicals, plastics and fertilizers, particularly potash.

Exports of machinery and equipment decreased 3.1% to \$6.7 billion, as volumes fell 3.4%. The main contributor was a 14.1% decline in exports of aircraft engines and parts.

Exports of energy products decreased 0.8% to \$9.9 billion in April, as prices fell 6.7%. Crude petroleum exports dropped 9.0%, the third consecutive monthly decline that was due to lower prices. Exports of petroleum and coal products increased 18.5%.

Automotive products exports rose 2.8% to \$5.5 billion in April. Leading the gain were exports of passenger autos and chassis (+2.4%), followed by motor vehicle parts which recorded its fifth consecutive monthly gain. These increases were on the strength of volumes.

Exports of agricultural and fishing products, which increased 3.8% to \$3.7 billion, have been on an upward trend since March 2011. Volumes rose 2.7%. The main contributors to the sector's gain were higher exports of fish and fish preparations (+18.7%) and wheat (+12.1%).

Counterbalancing movements in imports

Imports of automotive products rose 2.6% to \$6.8 billion in April, as volumes grew 3.2%. Imports of motor vehicle parts, up 5.4% to \$2.9 billion, led the sector's gain.

Imports rose 2.6% to \$5.1 billion in the other consumer goods sector where widespread gains were recorded. The main contributor was imports of apparel and footwear (+11.1%), mostly the result of higher imports of apparel and apparel accessories.

Imports of industrial goods and materials rose 0.7% to \$8.2 billion in April. Other industrial goods and materials (+2.5%) led the sector's increase on the strength of metal fabricated basic products.

Imports of energy products fell 6.8% to \$4.1 billion, the result of lower prices and volumes. After three consecutive monthly increases, imports of crude petroleum fell 6.5% to \$2.5 billion, as prices dropped 11.1%. Petroleum and coal products also contributed to the decline.

Imports of machinery and equipment decreased 0.6% to \$10.8 billion in April. The decline was led by lower imports of office machines and equipment as well as other machinery and equipment, primarily laboratory equipment.

Note: In general, merchandise trade data are revised on an ongoing basis for each month of the current year. Current year revisions are reflected in both the customs and BOP based data.

The previous year's customs data are revised with the release of the January and February reference months as well as on a quarterly basis. The previous two years of customs based data are revised annually and are released in February with the December reference month.

The previous year's BOP based data will be revised with the release of the January, February, March and April 2012 reference months.

Factors influencing revisions include late receipt of import and export documentation, incorrect information on customs forms, replacement of estimates produced for the energy sector with actual figures, changes in classification of merchandise based on more current information, and changes to seasonal adjustment factors.

Revised data are available in the appropriate CANSIM tables, free of charge.

Chart 1
Exports of industrial goods and materials, seasonally adjusted, on a balance of payments basis

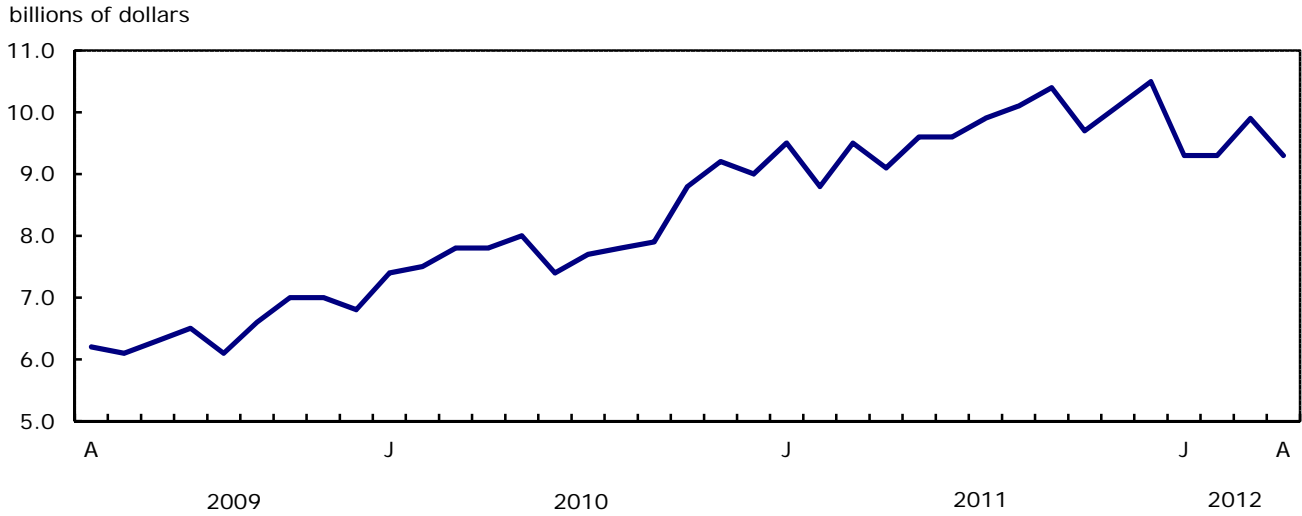


Chart 2
Exports of machinery and equipment, seasonally adjusted, on a balance of payments basis

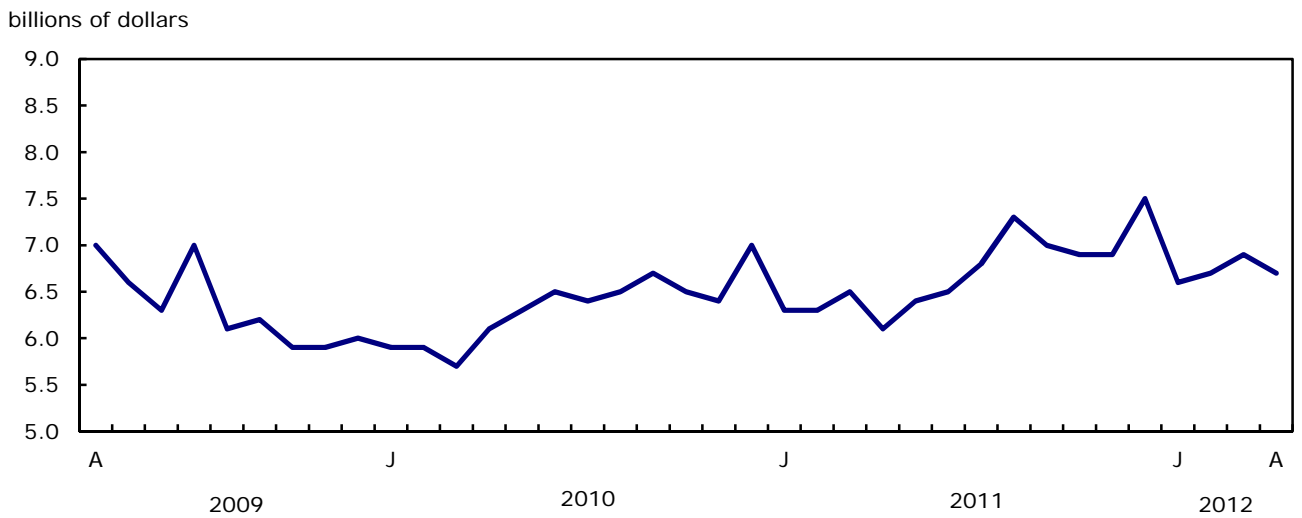


Chart 3
Imports of automotive products, seasonally adjusted, on a balance of payments basis

billions of dollars

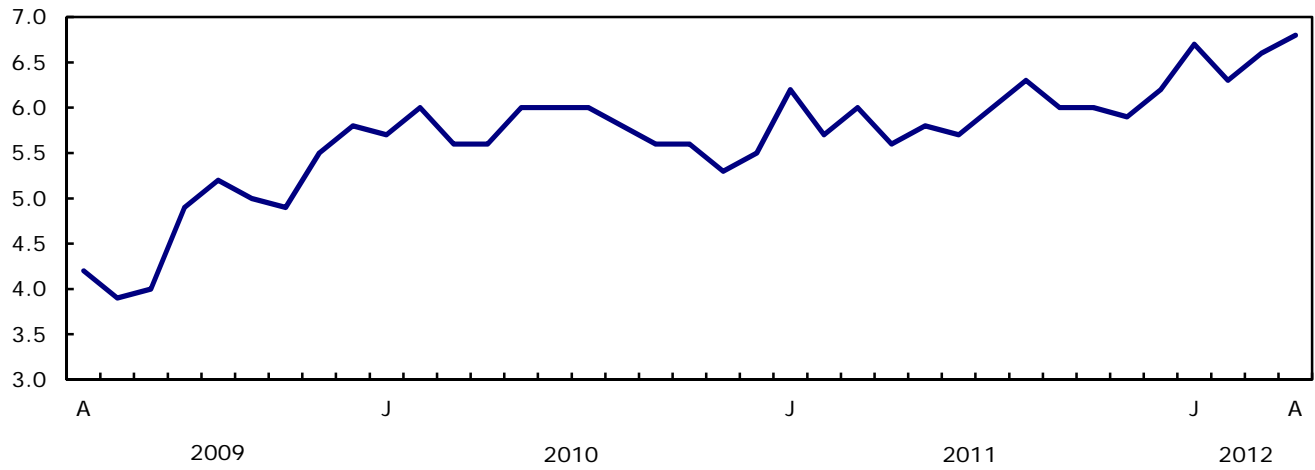
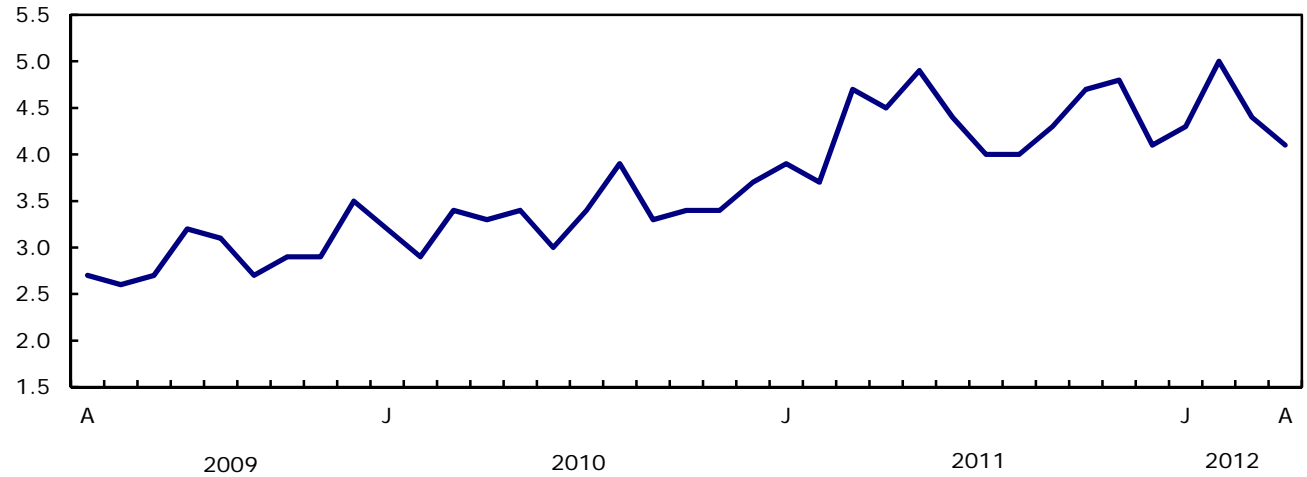


Chart 4
Imports of energy products, seasonally adjusted, on a balance of payments basis

billions of dollars



Text table 1
Merchandise trade by principal trading area, balance of payments basis, seasonally adjusted

	March 2012	April 2012	Change	Year to date			April 2012/ April 2011		
				2011	2012	Change			
	millions of dollars		percent		millions of dollars		percent		
Export to									
United States	28,746	28,387	-359	-1.2	108,171	116,654	8,483	7.8	4.7
Japan	1,013	1,001	-12	-1.2	3,766	3,703	-62	-1.7	13.1
European Union ¹	3,629	3,545	-84	-2.3	12,578	14,175	1,597	12.7	23.1
Other Organisation for Economic Co-operation and Development ²	1,539	1,439	-100	-6.5	6,583	6,155	-428	-6.5	-17.4
Other countries	4,684	4,752	68	1.4	16,337	18,695	2,358	14.4	21.1
Total	39,611	39,124	-487	-1.2	147,435	159,382	11,947	8.1	7.1
Imports from									
United States	24,230	24,555	325	1.3	90,532	97,633	7,102	7.8	6.1
Japan	1,039	901	-138	-13.3	2,982	3,804	822	27.5	77.1
European Union ¹	3,795	3,481	-314	-8.3	15,046	14,480	-566	-3.8	-10.0
Other Organisation for Economic Co-operation and Development ²	3,464	2,972	-492	-14.2	10,858	12,329	1,471	13.5	13.1
Other countries	6,931	7,581	651	9.4	27,650	29,524	1,874	6.8	5.0
Total	39,459	39,491	32	0.1	147,067	157,770	10,702	7.3	5.7
Balance									
United States	4,516	3,832	-684	...	17,639	19,020	1,381
Japan	-26	99	126	...	783	-100	-884
European Union ¹	-167	63	230	...	-2,468	-305	2,163
Other Organisation for Economic Co-operation and Development ²	-1,925	-1,533	392	...	-4,275	-6,173	-1,898
Other countries	-2,246	-2,829	-583	...	-11,312	-10,829	484
Total	152	-367	-520	...	367	1,613	1,245

1. European Union includes: Austria, Belgium, Bulgaria, Cyprus, Czech Republic, Denmark, Estonia, Finland, France, Germany, Greece, Hungary, Ireland, Italy, Latvia, Lithuania, Luxembourg, Malta, Netherlands, Poland, Portugal, Romania, Slovakia, Slovenia, Spain, Sweden and United Kingdom.
2. Other Organisation for Economic Co-operation and Development includes: Australia, Canada, Iceland, Mexico, New Zealand, Norway, South Korea, Switzerland and Turkey. Effective February 2012, Chile and Israel are included in Other Organisation for Economic Co-operation and Development.

Text table 2
Reconciliation of customs and balance of payments trade data, not seasonally adjusted

	2012				2011		2011
	April	March	February	January	December	November	Annual
	millions of dollars						
Exports							
Customs basis	38,731	40,629	36,513	37,486	39,723	39,491	447,802
Balance of payments adjustments	518	574	1,127	826	1,621	1,510	10,389
Valuation and residency							
Inland freight	641	622	587	578	620	626	7,052
Other valuation and residency	-1,284	-1,188	-926	-1,016	-326	-241	-9,807
Timing	61	-63	50	67	119	30	496
Coverage	1,100	1,203	1,416	1,197	1,208	1,095	12,648
Balance of payments basis	39,249	41,203	37,640	38,312	41,344	41,001	458,191
Imports							
Customs basis	38,308	40,403	37,142	35,792	36,492	39,205	445,961
Balance of payments adjustments	957	1,037	928	925	791	1,249	9,913
Valuation and residency							
Inland freight	817	849	775	760	758	812	9,426
Other valuation and residency	-14	-6	24	-23	50	107	-214
Timing	0	0	0	0	0	0	0
Coverage	154	194	129	188	-17	330	701
Balance of payments basis	39,265	41,440	38,070	36,717	37,283	40,454	455,874

Related products

Selected publications from Statistics Canada

65-208-X	International Merchandise Trade Annual Review
65-506-X	A Profile of Canadian Exporters
65F0013X	Canadian International Merchandise Trade Database
65F0019X	A Database for Analysis of International Markets
65F0020X	Data Integration - International Trade Data and Manufacturing Shipments Data

Selected CANSIM tables from Statistics Canada

228-0001	Merchandise imports and exports, by major groups and principal trading areas for all countries, monthly
228-0002	Merchandise imports and exports, by major groups and principal trading areas for all countries, quarterly
228-0003	Merchandise imports and exports, by major groups and principal trading areas for all countries, annual
228-0033	Imports, customs-based, by province of clearance, monthly
228-0034	Domestic exports, customs-based, by province of origin, monthly
228-0041	Merchandise imports and exports by sector and sub-sector, customs and balance of payments basis, for all countries, monthly
228-0042	Merchandise imports and exports by sector and sub-sector, customs and balance of payments basis, for all countries, quarterly
228-0043	Merchandise imports and exports by sector and sub-sector, customs and balance of payments basis, for all countries, annual
228-0047	Merchandise imports and exports balance of payments and customs-based price and volume indexes for all countries, monthly
228-0048	Merchandise imports and exports balance of payments and customs-based price and volume indexes for all countries, quarterly
228-0049	Merchandise imports and exports balance of payments and customs-based price and volume indexes for all countries, annual

228-0050	Merchandise imports and exports customs-based price indexes, Canada and United States trade, and Standard International Trade Classification (SITC revision 3) price indexes for all countries and United States, monthly
228-0051	Merchandise imports and exports customs-based price indexes, Canada and United States trade, and Standard International Trade Classification (SITC revision 3) price indexes for all countries and United States, quarterly
228-0052	Merchandise imports and exports customs-based price indexes, Canada and United States trade, and Standard International Trade Classification (SITC revision 3) price indexes for all countries and United States, annual
228-0053	Merchandise import and export price and volume indexes by sector and sub-sector, customs and balance of payments basis, for all countries, monthly
228-0054	Merchandise import and export price and volume indexes by sector and sub-sector, customs and balance of payments basis, for all countries, quarterly
228-0055	Merchandise import and export price and volume indexes by sector and sub-sector, customs and balance of payments basis, for all countries, annual
228-0056	Merchandise imports and exports by sector, balance of payments basis, for all countries, seasonally adjusted, Fisher formula, monthly
228-0057	Merchandise imports and exports by sector, balance of payments basis, for all countries, seasonally adjusted, Fisher formula, quarterly

Selected surveys from Statistics Canada

2201	Canadian International Merchandise Trade (Customs Basis)
2202	Canadian International Merchandise Trade (Balance of Payments Basis)
2203	International Trade Price Indexes

Selected summary tables from Statistics Canada

- *Canada: Economic and financial data*
- *Imports, exports and trade balance of goods on a balance-of-payments basis, by country or country grouping*
- *Exports of goods on a balance-of-payments basis*

- *Imports of goods on a balance-of-payments basis*
- *Merchandise trade of Canada (monthly)*
- *Economic indicators, by province and territory (monthly and quarterly)*
- *Latest statistics (monthly)*

Statistical tables

Table 1-1
Merchandise trade of Canada, balance of payments basis, seasonally adjusted — Current dollars

	Exports	Imports	Trade balance	Period to period change		
				Exports	Imports	Balance
				millions of dollars	percent	millions of dollars
2008	488,754	443,777	44,977	0.0	0.0	0
2009	369,343	374,081	-4,738	-24.4	-15.7	-49,715
2010	404,834	413,833	-8,999	9.6	10.6	-4,261
2011	458,191	455,874	2,318	...	10.2	11,316
2010						
First quarter	98,870	98,583	287	4.0	3.6	318
Second quarter	100,071	103,014	-2,942	1.2	4.5	-3,229
Third quarter	99,592	106,312	-6,720	-0.5	3.2	-3,778
Fourth quarter	106,301	105,924	377	6.7	-0.4	7,097
2011						
First quarter	110,901	109,704	1,198	4.3	3.6	821
Second quarter	110,447	113,791	-3,343	-0.4	3.7	-4,541
Third quarter	115,287	114,545	742	4.4	0.7	4,086
Fourth quarter	121,555	117,835	3,721	5.4	2.9	2,978
2012						
First quarter	120,258	118,279	1,980	-1.1	0.4	-1,741
2011						
January	38,129	36,557	1,572	2.0	3.1	-323
February	35,508	35,632	-125	-6.9	-2.5	-1,697
March	37,264	37,514	-250	4.9	5.3	-125
April	36,533	37,364	-830	-2.0	-0.4	-581
May	37,290	38,325	-1,034	2.1	2.6	-204
June	36,624	38,102	-1,478	-1.8	-0.6	-444
July	37,560	37,604	-44	2.6	-1.3	1,435
August	38,075	38,544	-469	1.4	2.5	-425
September	39,652	38,397	1,255	4.1	-0.4	1,724
October	38,894	39,404	-510	-1.9	2.6	-1,765
November	40,246	39,204	1,042	3.5	-0.5	1,551
December	42,415	39,226	3,189	5.4	0.1	2,147
2012						
January	41,122	39,382	1,740	-3.0	0.4	-1,448
February	39,525	39,438	87	-3.9	0.1	-1,654
March	39,611	39,459	152	0.2	0.1	66
April	39,124	39,491	-367	-1.2	0.1	-520

Note(s): Because of rounding, monthly data may not add up to quarterly data and quarterly data may not add up to annual data.

Table 1-2
Merchandise trade of Canada, balance of payments basis, seasonally adjusted — Constant dollars, 2002

	Exports	Imports	Trade balance	Period to period change	
				Exports	Imports
	millions of dollars			percent	
2008	412,713	486,735	-74,022	0.0	0.0
2009	346,916	407,679	-60,763	-15.9	-16.2
2010	374,143	470,401	-96,259	7.8	15.4
2011	389,503	509,403	-119,900	4.1	8.3
2010					
First quarter	90,749	111,192	-20,442	1.8	3.7
Second quarter	94,368	117,650	-23,282	4.0	5.8
Third quarter	94,074	120,900	-26,826	-0.3	2.8
Fourth quarter	94,951	120,659	-25,708	0.9	-0.2
2011					
First quarter	96,296	124,664	-28,368	1.4	3.3
Second quarter	94,834	128,760	-33,926	-1.5	3.3
Third quarter	98,147	127,883	-29,736	3.5	-0.7
Fourth quarter	100,226	128,096	-27,870	2.1	0.2
2012					
First quarter	101,246	129,852	-28,605	1.0	1.4
2011					
January	33,076	41,770	-8,694	1.5	3.7
February	31,038	40,627	-9,589	-6.2	-2.7
March	32,182	42,267	-10,084	3.7	4.0
April	31,450	42,837	-11,387	-2.3	1.3
May	32,059	42,656	-10,597	1.9	-0.4
June	31,325	43,267	-11,941	-2.3	1.4
July	32,745	42,904	-10,158	4.5	-0.8
August	32,646	43,125	-10,479	-0.3	0.5
September	32,756	41,854	-9,098	0.3	-2.9
October	32,523	42,579	-10,056	-0.7	1.7
November	32,931	42,543	-9,612	1.3	-0.1
December	34,773	42,975	-8,202	5.6	1.0
2012					
January	34,281	43,230	-8,949	-1.4	0.6
February	33,300	42,867	-9,568	-2.9	-0.8
March	33,665	43,754	-10,089	1.1	2.1
April	33,881	43,787	-9,905	0.6	0.1

Note(s): Because of rounding, monthly data may not add up to quarterly data and quarterly data may not add up to annual data.

Table 1-3
Merchandise trade of Canada, balance of payments basis, seasonally adjusted — Price indices (Laspeyres)

	2002=100			Period to period change		
	Exports	Imports	Terms of trade	Exports	Imports	Terms of trade
	price indices (Laspeyres)			percent		
2008	116.2	97.2	119.6	0.0	0.0	0.0
2009	105.2	96.2	109.3	-9.5	-1.0	-8.5
2010	106.8	94.1	113.4	1.5	-2.2	3.7
2011	113.9	98.2	116.0	6.7	4.4	2.3
2010						
First quarter	107.1	93.7	114.2	1.7	0.7	0.9
Second quarter	105.7	93.6	112.9	-1.3	-0.1	-1.2
Third quarter	106.1	94.5	112.3	0.4	0.9	-0.5
Fourth quarter	108.2	94.6	114.4	2.0	0.1	1.9
2011						
First quarter	111.6	96.0	116.2	3.1	1.5	1.6
Second quarter	113.5	97.7	116.3	1.8	1.7	0.1
Third quarter	114.5	98.5	116.2	0.9	0.9	0.0
Fourth quarter	115.9	100.6	115.2	1.2	2.1	-0.9
2012						
First quarter	114.0	100.0	114.0	-1.7	-0.6	-1.0
2011						
January	111.2	95.9	115.9	0.4	0.5	-0.2
February	111.6	96.9	115.1	0.4	1.1	-0.7
March	112.4	97.0	115.8	0.7	0.1	0.6
April	113.4	96.9	117.0	0.9	-0.1	1.0
May	113.6	97.2	116.9	0.2	0.3	-0.1
June	114.1	98.1	116.3	0.4	0.9	-0.5
July	112.5	96.3	116.8	-1.4	-1.9	0.5
August	113.3	98.2	115.3	0.7	2.0	-1.3
September	115.7	99.4	116.5	2.2	1.2	1.0
October	115.7	100.1	115.7	0.0	0.7	-0.7
November	116.7	101.1	115.4	0.9	1.1	-0.2
December	115.8	101.3	114.3	-0.8	0.1	-1.0
2012						
January	115.2	100.8	114.3	-0.5	-0.5	0.0
February	113.6	100.0	113.7	-1.4	-0.8	-0.6
March	112.9	101.2	111.6	-0.6	1.2	-1.8
April	111.7	100.7	111.0	-1.0	-0.5	-0.5

Note(s): Because of rounding, monthly data may not add up to quarterly data and quarterly data may not add up to annual data.

Table 2-1
Exports by commodity groupings, balance of payments basis, seasonally adjusted — Current dollars

	March	April	Change	Year to date			April 2012/ April 2011		
	2012	2012		2011	2012	Change			
	millions of dollars		percent		millions of dollars		percent		
Total	39,611	39,124	-487	-1.2	147,435	159,382	11,947	8.1	7.1
Agricultural and fishing products	3,547	3,681	134	3.8	12,889	14,629	1,740	13.5	8.9
Wheat	546	613	66	12.1	1,631	2,306	676	41.4	35.0
Other agricultural and fishing products	3,000	3,068	68	2.3	11,258	12,322	1,065	9.5	4.9
Live animals	141	142	2	1.2	459	528	69	15.1	26.0
Fish and fish preparations	362	430	68	18.7	1,412	1,561	149	10.6	12.9
Barley	54	33	-21	-39.6	121	191	71	58.6	39.0
Wheat flour	6	5	0	-4.3	27	23	-4	-14.9	-14.3
Other cereals unmilled	48	39	-9	-19.8	303	171	-131	-43.4	-55.8
Other cereal preparations	252	249	-2	-0.9	937	1,010	73	7.8	2.2
Meat and meat preparations	407	431	23	5.7	1,582	1,717	136	8.6	4.9
Alcoholic beverages	72	67	-5	-7.1	243	277	34	13.8	0.7
Other food, feed, beverages and tobacco	1,014	998	-16	-1.6	3,945	3,975	30	0.8	-3.0
Rapeseed	419	429	10	2.5	1,380	1,937	557	40.3	30.5
Other crude vegetable products	226	245	19	8.6	851	932	81	9.5	4.4
Energy products	9,953	9,876	-77	-0.8	37,099	41,884	4,785	12.9	5.2
Crude petroleum	6,691	6,091	-600	-9.0	22,610	28,459	5,849	25.9	9.6
Natural gas	635	633	-2	-0.4	4,666	2,596	-2,070	-44.4	-46.1
Other energy products	2,627	3,152	525	20.0	9,823	10,829	1,006	10.2	18.5
Coal and other bituminous substances	448	587	139	31.1	1,780	2,013	233	13.1	18.1
Petroleum and coal products	2,057	2,439	381	18.5	7,403	8,313	910	12.3	21.4
Electricity	122	126	4	3.7	641	504	-138	-21.5	-17.5
Forestry products	1,786	1,812	26	1.4	7,543	7,180	-364	-4.8	-4.7
Lumber and sawmill products	718	720	2	0.3	2,825	2,901	76	2.7	3.7
Other crude wood products	79	76	-3	-4.0	294	309	15	5.2	-5.4
Lumber	443	450	7	1.7	1,795	1,799	4	0.2	6.1
Other wood fabricated materials	196	194	-2	-0.9	736	793	56	7.6	2.1
Wood pulp and other wood products	528	522	-6	-1.0	2,289	2,030	-259	-11.3	-12.0
Newsprint and other paper and paperboard	541	569	29	5.3	2,429	2,249	-180	-7.4	-7.2
Newsprint paper	254	269	15	6.0	1,242	1,086	-156	-12.5	-13.8
Other paper and paperboard	286	300	13	4.7	1,187	1,163	-24	-2.0	-0.3
Industrial goods and materials	9,913	9,343	-570	-5.7	36,843	37,863	1,020	2.8	2.8
Metal ores	1,608	1,134	-475	-29.5	5,279	5,498	219	4.2	-16.4
Iron ores, concentrates and scrap	543	492	-51	-9.4	1,921	2,128	207	10.8	5.9
Copper ores, concentrates and scrap	403	210	-193	-47.9	935	1,032	97	10.4	42.7
Nickel ores, concentrates and scrap	286	112	-174	-60.8	1,190	880	-311	-26.1	-73.0
Zinc ores, concentrates and scrap	20	20	0	0.2	88	96	8	9.5	-8.0
Other ores, concentrates and scrap	357	300	-57	-15.8	1,146	1,363	218	19.0	-2.2
Chemicals, plastics and fertilizers	2,872	3,021	149	5.2	11,361	11,450	89	0.8	2.9
Inorganic chemicals	403	413	10	2.4	1,965	1,690	-275	-14.0	-22.5
Organic chemicals	688	555	-133	-19.3	2,335	2,347	12	0.5	-10.7
Fertilizers and fertilizer materials	467	708	242	51.8	2,272	2,128	-144	-6.3	39.4
Synthetic rubber and plastics	999	1,022	24	2.4	3,722	4,008	286	7.7	2.6
Other chemical products	316	322	7	2.1	1,066	1,277	210	19.7	16.1
Metals and alloys	3,714	3,472	-242	-6.5	13,958	14,017	58	0.4	8.6
Primary iron and steel	51	60	9	17.5	265	182	-83	-31.5	-31.3
Steel bars, rods, plates, sheets	362	357	-5	-1.4	1,179	1,413	234	19.9	13.2
Other iron and steel and alloys	271	254	-17	-6.4	909	1,038	129	14.2	12.1
Aluminum including alloys	612	600	-13	-2.1	2,578	2,442	-136	-5.3	-9.0
Copper and alloys	199	200	2	0.9	867	779	-88	-10.2	0.4
Nickel and alloys	218	236	18	8.1	1,197	921	-276	-23.1	-11.2
Precious metals and alloys	1,810	1,588	-222	-12.3	6,096	6,505	409	6.7	28.9
Zinc and alloys	105	94	-11	-10.3	451	382	-69	-15.3	-13.4
Other non-ferrous metals and alloys	86	83	-3	-3.3	417	355	-62	-14.9	-20.0

Table 2-1 – continued

Exports by commodity groupings, balance of payments basis, seasonally adjusted — Current dollars

	March 2012	April 2012	Change	Year to date			April 2012/ April 2011		
				2011	2012	Change			
	millions of dollars		percent		millions of dollars		percent		
Other industrial goods and materials	1,719	1,717	-2	-0.1	6,245	6,898	653	10.5	7.2
Asbestos unmanufactured	0	0	0	0.0	16	0	-16	-100.0	-100.0
Other crude animal products	123	112	-11	-8.8	327	436	109	33.4	49.1
Other crude non-metallic minerals	346	292	-54	-15.7	1,297	1,335	38	2.9	-19.0
Other crude materials, inedible	60	68	9	15.1	260	258	-1	-0.6	0.6
Metal fabricated basic products	403	399	-4	-1.1	1,432	1,600	169	11.8	11.3
Textile fabricated materials	189	190	1	0.5	728	753	25	3.5	4.6
Non-metallic mineral basic products	182	179	-3	-1.7	631	717	87	13.7	13.4
Other fabricated materials	416	477	61	14.7	1,554	1,798	243	15.7	20.5
Machinery and equipment	6,895	6,679	-216	-3.1	25,276	26,845	1,569	6.2	8.8
Industrial and agricultural machinery	1,774	1,787	13	0.7	6,228	7,195	967	15.5	10.5
Industrial machinery	1,579	1,598	19	1.2	5,601	6,425	824	14.7	9.5
Agricultural machinery includ. tractors	195	189	-6	-3.1	627	771	143	22.9	20.2
Aircraft and other transportation equipment	1,547	1,378	-168	-10.9	5,659	5,730	71	1.3	15.2
Aircraft, engines, parts	1,140	978	-161	-14.1	4,216	4,095	-121	-2.9	20.6
Other transportation equipment	407	400	-7	-1.7	1,442	1,634	192	13.3	3.9
Other machinery and equipment	3,574	3,514	-60	-1.7	13,389	13,919	530	4.0	5.7
Television, telecommunication equipment	662	608	-54	-8.1	2,434	2,533	98	4.0	6.1
Office machines and equipment	343	346	3	0.9	1,413	1,358	-55	-3.9	-0.7
Other equipment and tools	1,732	1,720	-12	-0.7	6,168	6,804	635	10.3	8.6
Other end products, inedible	837	839	3	0.3	3,373	3,225	-148	-4.4	2.4
Automotive products	5,320	5,471	151	2.8	19,371	22,207	2,837	14.6	18.1
Passenger autos and chassis	3,485	3,571	85	2.4	12,835	14,815	1,980	15.4	19.4
Trucks and other motor vehicles	283	295	11	4.0	850	1,182	332	39.0	28.2
Motor vehicle parts	1,552	1,606	54	3.5	5,686	6,211	524	9.2	13.5
Other consumer goods	1,387	1,409	22	1.6	5,237	5,386	149	2.9	14.3
Special transactions trade	315	331	16	5.2	1,297	1,344	47	3.6	2.9
Unallocated balance of payments adjustments	494	521	27	5.5	1,879	2,044	165	8.8	17.9

Table 2-2
Exports by commodity groupings, balance of payments basis, seasonally adjusted — Constant dollars, 2002

	March	April	Change	Year to date			April 2012/ April 2011		
	2012	2012		2011	2012	Change			
	millions of dollars		percent		millions of dollars		percent		
Total	33,665	33,881	216	0.6	127,746	135,128	7,381	5.8	7.7
Agricultural and fishing products	3,125	3,211	85	2.7	11,936	12,845	909	7.6	4.5
Wheat	392	442	50	12.8	1,223	1,654	431	35.2	24.2
Other agricultural and fishing products	2,734	2,769	35	1.3	10,713	11,192	478	4.5	1.9
Live animals	128	139	11	8.5	442	484	42	9.6	28.9
Fish and fish preparations	438	498	60	13.7	1,643	1,896	253	15.4	19.5
Barley	37	31	-6	-17.3	92	147	55	60.4	62.4
Wheat flour	5	5	0	-4.8	23	20	-3	-14.7	-13.2
Other cereals unmilled	39	30	-9	-23.2	222	140	-82	-37.0	-53.0
Other cereal preparations	207	203	-4	-2.0	846	831	-15	-1.8	-7.4
Meat and meat preparations	426	424	-3	-0.7	1,610	1,703	93	5.8	1.6
Alcoholic beverages	140	129	-10	-7.4	488	546	58	11.8	-8.5
Other food, feed, beverages and tobacco	839	837	-2	-0.3	3,689	3,339	-350	-9.5	-9.2
Rapeseed	302	287	-15	-5.0	994	1,376	382	38.4	25.0
Other crude vegetable products	173	187	15	8.6	665	710	45	6.7	5.4
Energy products	5,141	5,465	324	6.3	19,447	20,819	1,372	7.1	15.1
Crude petroleum	2,632	2,625	-8	-0.3	9,214	10,607	1,393	15.1	19.6
Natural gas	1,201	1,222	22	1.8	5,430	4,819	-611	-11.3	-5.6
Other energy products	1,308	1,619	310	23.7	4,803	5,393	590	12.3	28.6
Coal and other bituminous substances	119	152	33	27.8	519	514	-5	-1.0	13.4
Petroleum and coal products	945	1,192	247	26.2	3,472	3,940	469	13.5	30.3
Electricity	245	274	30	12.2	812	938	126	15.6	30.7
Forestry products	2,253	2,295	42	1.9	9,165	9,099	-66	-0.7	-0.8
Lumber and sawmill products	927	944	17	1.9	3,676	3,794	117	3.2	3.5
Other crude wood products	92	90	-2	-1.8	369	361	-8	-2.0	-8.3
Lumber	616	637	21	3.4	2,448	2,528	80	3.3	7.9
Other wood fabricated materials	219	218	-2	-0.8	859	904	45	5.2	-2.8
Wood pulp and other wood products	720	706	-14	-2.0	2,679	2,782	103	3.9	2.7
Newsprint and other paper and paperboard	606	645	39	6.4	2,810	2,523	-286	-10.2	-9.9
Newsprint paper	285	306	21	7.3	1,443	1,219	-224	-15.5	-16.3
Other paper and paperboard	321	339	18	5.6	1,367	1,304	-63	-4.6	-3.1
Industrial goods and materials	6,002	5,780	-222	-3.7	22,530	23,405	875	3.9	3.7
Metal ores	709	509	-200	-28.2	2,213	2,463	250	11.3	-15.1
Iron ores, concentrates and scrap	184	165	-19	-10.3	731	718	-13	-1.8	-9.7
Copper ores, concentrates and scrap	124	70	-55	-43.9	262	329	68	25.9	60.6
Nickel ores, concentrates and scrap	153	62	-91	-59.3	459	454	-5	-1.0	-61.0
Zinc ores, concentrates and scrap	11	12	0	2.2	44	55	11	26.2	8.4
Other ores, concentrates and scrap	237	200	-36	-15.4	718	906	188	26.2	-1.4
Chemicals, plastics and fertilizers	1,918	1,959	41	2.1	7,627	7,708	81	1.1	-0.2
Inorganic chemicals	181	181	0	-0.1	762	747	-15	-1.9	-11.9
Organic chemicals	342	266	-76	-22.2	1,196	1,191	-5	-0.4	-16.3
Fertilizers and fertilizer materials	158	256	98	62.0	916	769	-147	-16.0	30.8
Synthetic rubber and plastics	896	905	10	1.1	3,495	3,607	112	3.2	-1.5
Other chemical products	341	350	9	2.6	1,258	1,394	135	10.8	8.1

Table 2-2 – continued

Exports by commodity groupings, balance of payments basis, seasonally adjusted — Constant dollars, 2002

	March 2012	April 2012	Change	Year to date			April 2012/ April 2011		
				2011		Change			
				2011	2012				
	millions of dollars		percent	millions of dollars		percent			
Metals and alloys	1,960	1,906	-53	-2.7	7,473	7,550	77	1.0	9.7
Primary iron and steel	32	35	2	7.3	170	109	-61	-35.8	-37.2
Steel bars, rods, plates, sheets	274	273	-2	-0.6	939	1,069	130	13.8	15.0
Other iron and steel and alloys	201	195	-5	-2.7	731	787	55	7.6	12.6
Aluminum including alloys	643	656	12	1.9	2,449	2,585	136	5.6	6.7
Copper and alloys	56	56	0	-0.4	226	227	1	0.3	9.7
Nickel and alloys	118	137	19	16.0	493	501	8	1.5	20.4
Precious metals and alloys	521	450	-71	-13.6	2,027	1,843	-184	-9.1	18.5
Zinc and alloys	65	59	-6	-9.8	247	239	-8	-3.3	-3.6
Other non-ferrous metals and alloys	48	46	-2	-4.9	191	191	0	0.2	-9.6
Other industrial goods and materials	1,415	1,406	-9	-0.6	5,217	5,684	467	9.0	10.5
Asbestos unmanufactured	0	0	0	0.0	16	0	-16	-100.0	-100.0
Other crude animal products	92	88	-4	-4.4	302	382	80	26.7	26.9
Other crude non-metallic minerals	323	267	-55	-17.2	1,123	1,195	72	6.4	5.9
Other crude materials, inedible	51	59	8	15.9	241	226	-15	-6.2	-8.3
Metal fabricated basic products	316	313	-3	-1.0	1,135	1,259	124	10.9	10.8
Textile fabricated materials	191	191	1	0.3	772	753	-19	-2.5	-2.2
Non-metallic mineral basic products	145	149	4	2.9	523	591	68	13.0	12.2
Other fabricated materials	297	337	40	13.6	1,105	1,278	173	15.7	24.8
Machinery and equipment	7,672	7,409	-264	-3.4	28,650	29,745	1,095	3.8	5.7
Industrial and agricultural machinery	1,633	1,638	5	0.3	5,876	6,620	744	12.7	5.6
Industrial machinery	1,456	1,468	12	0.8	5,287	5,922	635	12.0	4.7
Agricultural machinery includ. tractors	177	170	-7	-4.0	588	698	109	18.6	13.9
Aircraft and other transportation equipment	1,882	1,684	-198	-10.5	7,055	6,944	-111	-1.6	12.0
Aircraft, engines, parts	1,480	1,286	-194	-13.1	5,595	5,353	-243	-4.3	16.5
Other transportation equipment	401	398	-4	-0.9	1,460	1,592	132	9.0	-0.4
Other machinery and equipment	4,158	4,087	-71	-1.7	15,719	16,181	462	2.9	3.3
Television, telecommunication equipment	851	777	-74	-8.7	3,174	3,231	57	1.8	2.9
Office machines and equipment	987	981	-6	-0.6	3,924	3,851	-73	-1.9	-1.6
Other equipment and tools	1,644	1,621	-23	-1.4	5,876	6,414	539	9.2	5.9
Other end products, inedible	676	709	33	4.8	2,745	2,684	-61	-2.2	5.2
Automotive products	7,165	7,362	198	2.8	26,510	29,868	3,358	12.7	14.5
Passenger autos and chassis	5,117	5,251	135	2.6	19,145	21,622	2,477	12.9	15.2
Trucks and other motor vehicles	351	356	5	1.3	1,035	1,465	430	41.5	24.2
Motor vehicle parts	1,696	1,755	58	3.4	6,330	6,781	451	7.1	10.6
Other consumer goods	1,313	1,324	11	0.8	5,053	5,097	43	0.9	11.6
Special transactions trade	265	276	11	4.3	1,109	1,121	12	1.1	0.7
Unallocated balance of payments adjustments	728	758	30	4.1	3,346	3,129	-217	-6.5	-9.8

Table 3-1
Domestic exports to selected countries, customs basis, not seasonally adjusted — April

	Agricultural and fishing products	Energy products	Forestry products	Industrial goods	Machinery and equipment	Automotive products	Consumer goods	Special transactions trade	Total
millions of dollars									
United States									
2011	1,539.8	7,848.0	1,097.6	5,416.0	3,383.5	4,346.6	627.7	232.4	24,491.6
2012	1,688.9	9,299.6	1,090.0	5,374.8	3,483.1	5,025.1	851.1	241.3	27,054.0
Mexico									
2011	91.9	0.7	12.1	101.9	55.0	51.3	10.7	0.4	324.0
2012	151.4	0.7	11.0	87.9	58.3	60.7	3.8	0.8	374.6
Japan									
2011	322.6	172.8	120.0	137.8	45.8	3.8	8.2	1.3	812.4
2012	331.3	244.7	130.3	139.0	49.6	5.8	11.3	0.0	911.9
European Union									
Germany									
2011	10.5	33.7	8.0	97.7	110.2	2.8	18.7	2.7	284.2
2012	45.7	13.5	11.8	31.3	76.6	8.3	18.7	0.5	206.5
France									
2011	9.2	0.3	4.9	84.0	103.1	2.5	16.4	1.1	221.5
2012	10.1	71.3	10.3	68.0	103.8	3.4	14.2	0.5	281.6
United Kingdom									
2011	21.9	0.6	18.9	917.8	106.6	5.4	11.6	7.8	1,090.8
2012	27.5	72.4	17.2	1,128.6	126.6	4.1	14.1	2.3	1,392.8
Italy									
2011	27.0	17.1	23.7	20.8	55.2	1.1	6.0	0.0	150.9
2012	29.9	56.3	19.0	32.0	31.1	0.5	10.0	0.2	179.0
Other European Union									
2011	112.3	181.3	15.4	348.1	137.4	14.5	39.9	3.5	852.4
2012	85.6	243.8	21.5	380.6	128.6	14.8	36.4	1.8	913.0
Total									
2011	180.9	232.9	70.9	1,468.4	512.5	26.3	92.6	15.2	2,599.7
2012	198.8	457.4	79.7	1,640.4	466.7	31.1	93.3	5.3	2,972.8
Newly industrialized countries									
South Korea									
2011	128.0	121.8	34.3	112.7	25.4	3.9	7.7	0.3	434.0
2012	47.3	74.9	48.2	115.5	30.6	4.9	4.2	0.2	325.9
Hong Kong									
2011	38.7	0.0	9.6	47.6	20.9	0.6	5.5	0.4	123.5
2012	44.5	0.1	5.8	72.9	26.9	1.2	5.7	0.2	157.3
Taiwan									
2011	11.8	40.1	27.2	91.3	7.6	0.1	2.4	0.1	180.6
2012	10.8	29.4	24.0	50.1	7.0	0.1	2.5	0.0	124.0
Singapore									
2011	5.3	0.6	0.7	18.3	21.6	2.5	1.7	0.7	51.4
2012	3.3	0.1	2.4	13.4	19.7	12.0	2.3	0.3	53.5
Total									
2011	183.8	162.6	71.7	270.0	75.4	7.1	17.4	1.5	789.6
2012	105.9	104.5	80.4	252.0	84.2	18.2	14.7	0.8	660.7
Other countries									
2011	880.0	174.0	561.5	1,273.4	592.9	75.7	84.2	15.4	3,657.0
2012	1,002.0	415.2	468.4	1,297.2	857.6	86.8	85.9	17.3	4,230.4
Total									
2011	3,199.0	8,590.9	1,933.9	8,667.5	4,665.4	4,510.7	840.9	266.2	32,674.5
2012	3,478.3	10,522.1	1,859.8	8,791.2	4,999.6	5,227.7	1,060.2	265.5	36,204.4

Table 3-2
Domestic exports to selected countries, customs basis, not seasonally adjusted — Year to date, January to April

	Agricultural and fishing products	Energy products	Forestry products	Industrial goods	Machinery and equipment	Automotive products	Consumer goods	Special transactions trade	Total
millions of dollars									
United States									
2011	5,765.2	32,838.6	4,342.2	20,590.3	13,531.1	17,568.0	2,852.5	975.0	98,462.8
2012	6,578.1	37,590.5	4,166.6	20,789.4	14,495.5	20,223.6	3,060.1	970.9	107,874.6
Mexico									
2011	439.2	24.6	47.1	390.1	245.3	223.3	30.7	1.5	1,401.9
2012	577.5	23.4	44.5	414.8	234.1	245.3	35.3	1.8	1,576.7
Japan									
2011	1,215.1	652.7	425.2	738.9	195.2	18.5	30.0	7.7	3,283.2
2012	1,202.7	694.6	433.8	717.8	213.1	22.5	49.7	2.9	3,337.1
European Union									
Germany									
2011	43.9	57.9	23.4	411.5	445.8	9.9	66.8	7.4	1,066.7
2012	79.1	52.4	32.6	294.2	336.0	26.3	73.3	3.9	897.9
France									
2011	36.2	12.3	29.3	265.7	475.6	9.2	69.7	4.3	902.3
2012	74.5	165.9	33.5	253.0	485.1	15.6	71.1	3.3	1,102.0
United Kingdom									
2011	99.5	40.6	52.3	4,577.1	395.3	22.4	49.6	18.7	5,255.5
2012	87.6	203.6	55.5	5,156.3	509.8	18.0	53.7	16.8	6,101.4
Italy									
2011	69.9	67.5	95.0	125.2	158.5	2.9	28.5	0.9	548.4
2012	62.9	94.8	64.9	97.6	130.2	3.0	43.2	0.3	496.8
Other European Union									
2011	453.1	480.6	67.4	1,395.9	759.6	44.3	208.7	11.7	3,421.3
2012	247.8	691.8	84.9	1,454.6	690.2	54.3	144.3	11.3	3,379.1
Total									
2011	702.7	658.9	267.5	6,775.3	2,234.8	88.7	423.2	43.0	11,194.2
2012	551.9	1,208.5	271.3	7,255.7	2,151.3	117.3	385.5	35.6	11,977.1
Newly industrialized countries									
South Korea									
2011	361.0	496.2	166.6	428.4	133.2	7.1	27.7	1.9	1,622.2
2012	139.8	386.5	163.7	381.0	103.8	12.5	18.4	1.6	1,207.3
Hong Kong									
2011	118.7	0.1	40.1	701.4	151.6	2.2	28.1	2.0	1,044.3
2012	166.3	0.1	32.9	607.8	90.9	4.0	23.8	0.8	926.5
Taiwan									
2011	50.2	130.3	95.3	288.0	39.1	0.5	12.4	0.4	616.1
2012	54.7	78.0	81.9	174.0	37.4	0.5	12.5	0.2	439.2
Singapore									
2011	22.6	2.2	3.1	51.4	131.5	10.7	9.2	2.4	233.0
2012	20.1	0.9	5.3	77.8	104.2	19.2	10.8	0.5	238.8
Total									
2011	552.4	628.8	305.0	1,469.2	455.5	20.5	77.4	6.7	3,515.7
2012	380.9	465.6	283.9	1,240.5	336.3	36.1	65.4	3.1	2,811.7
Other countries									
2011	2,996.7	872.2	2,130.7	5,065.2	2,541.6	267.7	330.9	67.4	14,272.4
2012	3,877.2	1,163.4	1,946.9	5,216.9	3,330.3	387.9	343.5	60.5	16,326.7
Total									
2011	11,671.4	35,675.8	7,517.8	35,029.3	19,203.8	18,186.7	3,744.8	1,101.2	132,130.7
2012	13,168.4	41,146.0	7,146.9	35,635.0	20,760.8	21,032.7	3,939.6	1,074.8	143,904.1

Table 4
Domestic exports by country, customs basis, not seasonally adjusted

	April		January to April		Change
	2011	2012	2011	2012	January to April 2012/ January to April 2011
	millions of dollars				percent
North America					
Greenland	1.3	0.4	3.0	2.7	-9.8
Mexico	324.0	374.6	1,401.9	1,576.7	12.5
Saint Pierre and Miquelon	2.9	1.0	5.8	5.2	-10.1
United States	24,491.6	27,054.0	98,462.8	107,874.6	9.6
Total	24,819.7	27,429.9	99,873.6	109,459.3	9.6
Western Europe					
Andorra	0.0	0.0	0.0	0.0	102.2
Austria	12.9	6.2	96.4	139.4	44.7
Belgium	200.4	114.0	690.3	566.7	-17.9
Denmark	21.7	15.1	62.8	70.3	12.0
Faeroe Islands	0.2	0.0	0.4	0.2	-49.2
Finland	30.3	28.4	95.5	142.4	49.0
France	221.5	281.6	902.3	1,102.0	22.1
Germany	284.2	206.5	1,066.7	897.9	-15.8
Gibraltar	0.0	0.0	24.8	11.9	-51.9
Greece	5.4	4.4	30.9	32.8	6.3
Iceland	2.6	2.8	14.8	16.5	11.0
Italy	150.9	179.0	548.4	496.8	-9.4
Luxembourg	5.2	4.6	39.1	26.2	-33.0
Malta	0.3	1.3	2.0	4.2	113.5
Netherlands	423.8	508.5	1,468.9	1,595.4	8.6
Norway	374.6	127.9	1,034.9	805.0	-22.2
Portugal	4.9	18.0	74.5	38.2	-48.7
Republic of Ireland (Eire)	24.0	18.4	151.7	65.9	-56.6
Spain	44.1	82.2	315.2	276.0	-12.4
Sweden	22.5	29.7	97.4	148.1	52.1
Switzerland	23.7	30.0	343.6	233.5	-32.0
United Kingdom	1,090.8	1,392.8	5,255.5	6,101.4	16.1
Total	2,943.9	3,051.3	12,316.0	12,770.9	3.7
Other Europe					
Albania	7.6	3.8	20.1	15.0	-25.2
Armenia	0.8	1.2	5.9	3.8	-35.7
Azerbaijan	1.1	2.6	2.5	17.5	597.1
Belarus	0.0	0.9	0.7	1.5	115.8
Bosnia and Herzegovina	0.4	0.1	1.5	0.5	-65.3
Bulgaria	1.0	29.8	40.1	67.6	68.6
Croatia	1.3	1.0	3.7	3.9	6.1
Czech Republic	8.7	7.2	31.1	28.8	-7.6
Estonia	1.8	2.2	60.4	5.7	-90.6
Georgia	1.7	1.6	6.4	6.1	-4.4
Hungary	7.7	5.6	27.8	26.6	-4.3
Kazakhstan	5.3	7.5	72.2	29.2	-59.5
Kyrgyzstan	0.0	1.0	0.9	6.4	593.2
Latvia	2.5	5.5	27.6	15.6	-43.4
Lithuania	3.1	4.7	15.7	24.8	58.4
Macedonia (Former Yugoslav Republic of Macedonia)	1.2	0.7	3.5	3.9	10.7
Montenegro	0.0	0.1	0.3	0.2	-20.7
Poland	14.5	19.2	54.9	68.6	24.8
Republic of Moldova	0.1	0.0	0.3	0.3	-7.9
Romania	3.0	4.3	12.1	16.2	33.4
Russian Federation	129.4	149.8	366.4	578.1	57.8
Serbia	0.7	1.5	2.2	3.7	68.5
Slovakia	13.5	3.0	20.2	11.2	-44.6
Slovenia	0.8	0.3	4.2	4.2	-1.5
Tajikistan	0.1	0.3	0.6	0.9	53.5
Turkmenistan	0.2	2.8	2.4	41.0	...
Ukraine	9.5	7.1	41.3	34.0	-17.8
Uzbekistan	1.7	0.2	3.2	0.3	-91.1
Total	217.5	263.9	828.4	1,015.7	22.6
Middle East					
Bahrain	1.9	11.4	16.5	28.2	70.3
Cyprus	0.5	0.5	2.6	4.2	65.9
Egypt	66.7	11.6	188.1	97.6	-48.1

Table 4 – continued

Domestic exports by country, customs basis, not seasonally adjusted

	April		January to April		Change
	2011	2012	2011	2012	January to April 2012/ January to April 2011
	millions of dollars				percent
Eritrea	0.1	0.3	2.0	0.7	-65.7
Ethiopia	1.8	1.3	7.2	3.4	-53.2
Iran	5.0	45.9	28.8	53.8	87.1
Iraq	2.6	119.8	11.8	229.4	...
Israel	28.0	12.8	111.7	82.3	-26.3
Jordan	5.8	45.0	23.5	60.9	159.1
Kuwait	8.7	6.5	38.7	27.1	-29.9
Lebanon	4.4	4.4	16.8	16.0	-4.9
Libya	0.0	16.9	36.6	38.4	5.0
Oman	8.6	8.1	26.6	31.2	17.3
Qatar	4.4	30.6	16.6	82.0	394.8
Saudi Arabia	72.0	75.3	249.0	490.6	97.1
Somalia	0.0	0.0	0.2	0.0	-96.0
Sudan	40.4	0.8	57.9	41.2	-28.9
Syria	2.6	1.1	30.0	5.6	-81.5
Turkey	190.8	128.5	422.3	333.4	-21.0
United Arab Emirates	112.1	227.7	407.6	677.9	66.3
Yemen	0.9	1.1	4.6	7.3	59.0
Total	557.5	749.5	1,698.9	2,311.1	36.0
Other Africa					
Algeria	26.0	45.4	58.0	56.8	-2.1
Angola	5.0	6.3	17.7	21.8	23.1
Antarctica	0.0	0.0	0.0	0.0	-72.0
Benin	0.8	1.5	3.0	4.1	37.6
Botswana	0.5	0.1	1.2	0.5	-60.5
Burkina Faso	1.3	4.4	5.6	14.1	151.0
Burundi	0.1	0.1	0.3	0.4	77.1
Cameroon	1.2	6.2	6.7	11.4	70.6
Cape Verde	0.4	0.1	1.1	0.2	-83.4
Central African Republic	0.1	0.0	0.1	0.0	-82.1
Chad	0.0	0.6	1.1	0.9	-12.5
Comoros	0.1	0.0	0.1	0.1	-4.5
Congo	2.2	1.5	5.5	4.7	-15.2
Democratic Republic of the Congo	1.5	1.1	4.2	6.0	42.7
Djibouti	0.2	0.1	0.4	0.6	56.9
Equatorial Guinea	0.3	0.4	4.4	1.7	-62.0
French Southern Territories	0.0	0.0	0.0	0.0	...
Gabon	1.9	1.6	7.3	4.9	-33.4
Gambia	0.0	0.1	0.2	0.2	1.9
Ghana	13.3	18.5	74.0	64.8	-12.4
Guinea	1.0	1.1	10.2	5.6	-45.3
Guinea-Bissau	0.0	0.0	0.0	0.0	-47.7
Ivory Coast	0.0	7.1	0.7	12.7	...
Kenya	4.2	4.4	16.5	25.6	55.2
Lesotho	0.0	0.0	0.0	0.0	-60.3
Liberia	1.2	0.7	5.8	3.3	-44.0
Madagascar	1.8	2.2	4.8	5.8	22.1
Malawi	0.6	0.1	1.6	0.7	-54.5
Mali	2.1	0.5	4.6	6.0	32.4
Mauritania	1.1	6.2	6.1	8.1	33.3
Mauritius	0.4	0.5	2.5	1.2	-49.9
Morocco	35.1	46.5	140.4	167.4	19.3
Mozambique	0.5	5.2	4.2	21.5	407.9
Namibia	0.1	0.6	1.5	6.9	366.0
Niger	0.5	0.2	1.5	1.5	0.8
Nigeria	12.8	35.4	41.0	93.5	128.0
Rwanda	0.0	0.1	0.2	0.4	134.1
Saint Helena	0.0	0.0	0.0	0.0	-100.0
Sao Tome and Principe	0.0	0.0	0.0	0.0	...
Senegal	0.8	3.8	10.2	9.3	-8.7
Seychelles	0.2	0.0	1.0	1.2	22.4
Sierra Leone	0.4	1.4	2.8	3.7	35.8
South Africa	57.9	44.3	165.7	198.1	19.5
Swaziland	0.1	0.0	0.2	0.5	158.3
Togo	0.2	2.0	3.2	5.9	84.0
Tunisia	2.9	2.1	14.0	75.9	443.8

Table 4 – continued

Domestic exports by country, customs basis, not seasonally adjusted

	April		January to April		Change
	2011	2012	2011	2012	January to April 2012/ January to April 2011
	millions of dollars				percent
Uganda	0.5	0.6	3.2	2.0	-36.9
United Republic of Tanzania	5.6	3.8	14.5	15.9	9.8
Zambia	3.6	2.4	10.6	10.4	-2.0
Zimbabwe	0.3	4.2	1.3	5.8	350.6
Total	189.0	263.6	659.0	882.3	33.9
Other Asia					
Afghanistan	3.2	1.8	17.7	6.6	-62.8
Bangladesh	77.9	19.1	190.9	218.0	14.2
Bhutan	0.0	0.0	0.0	0.0	-75.0
Brunei Darussalam	0.3	0.3	0.7	1.4	100.4
Cambodia	0.4	0.6	1.7	1.9	6.2
China	1,020.4	1,523.4	4,330.2	5,752.7	32.8
Hong Kong	123.5	157.3	1,044.3	926.5	-11.3
India	178.5	172.9	693.3	579.4	-16.4
Indonesia	98.5	152.9	487.1	517.6	6.2
Japan	812.4	911.9	3,283.2	3,337.1	1.6
Laos	0.4	0.3	4.4	2.4	-46.1
Macao	0.3	0.3	1.1	1.6	45.1
Malaysia	63.0	42.3	269.7	270.6	0.3
Maldives	0.3	0.3	0.9	1.4	47.8
Mongolia	4.9	7.0	34.2	22.3	-34.8
Myanmar	0.6	0.0	0.7	0.0	-100.0
Nepal	0.1	0.2	1.1	1.6	47.8
North Korea	0.3	0.1	1.6	0.3	-79.1
Pakistan	14.2	16.8	210.7	176.6	-16.2
Philippines	23.1	40.9	157.0	121.7	-22.5
Singapore	51.4	53.5	233.0	238.8	2.5
South Korea	434.0	325.9	1,622.2	1,207.3	-25.6
Sri Lanka	30.8	4.9	101.9	108.6	6.6
Taiwan	180.6	124.0	616.1	439.2	-28.7
Thailand	50.9	73.1	285.1	199.3	-30.1
Timor-Leste	0.0	0.0	0.0	0.0	138.7
Viet Nam	17.5	15.6	99.2	114.6	15.5
Total	3,187.5	3,645.4	13,688.5	14,247.5	4.1
Oceania					
American Samoa	0.1	0.1	0.4	0.3	-14.3
Australia	103.6	129.0	506.3	652.7	28.9
Christmas Island	0.0	0.0	0.0	0.2	765.6
Cocos (Keeling) Islands	0.0	0.0	0.0	0.1	...
Cook Islands	0.0	0.0	0.1	0.0	-93.1
Fiji	1.1	0.6	1.6	6.2	292.5
French Polynesia	1.2	0.4	3.0	2.9	-2.9
Guam	0.1	0.1	0.7	0.5	-30.9
Heard Island and McDonald Islands	0.0	0.0	0.0	0.0	...
Kiribati	0.0	0.0	0.1	0.0	-73.8
New Caledonia	0.2	0.7	2.0	18.8	846.5
New Zealand	22.3	23.8	89.7	117.8	31.3
Niue	0.0	0.0	0.0	0.0	182.4
Papua New Guinea	1.4	2.0	22.5	7.6	-66.2
Pitcairn	0.0	0.1	0.0	0.1	662.0
Samoa	0.0	0.0	0.0	0.0	...
Solomon Islands	0.1	0.0	0.1	0.1	-25.4
Tonga	0.0	0.0	0.1	0.0	-100.0
United States Minor Outlying Islands	0.7	0.9	3.6	3.7	3.7
Vanuatu	0.1	0.1	0.4	0.4	13.1
Total	131.0	157.9	630.5	811.4	28.7
South America					
Argentina	58.3	13.6	251.0	64.2	-74.4
Bolivia	1.1	1.5	3.9	3.4	-14.0
Brazil	179.5	269.5	703.2	855.9	21.7
Chile	66.8	52.8	225.1	246.3	9.4
Colombia	36.0	52.2	181.0	240.2	32.7
Ecuador	17.1	17.6	88.9	63.6	-28.5
Falkland Islands (Malvinas)	0.0	0.0	0.0	0.0	-100.0
Guyana	4.0	2.5	11.9	8.8	-26.4

Table 4 – continued

Domestic exports by country, customs basis, not seasonally adjusted

	April		January to April		Change
	2011	2012	2011	2012	January to April 2012/ January to April 2011
	millions of dollars				percent
Paraguay	0.5	0.4	1.9	7.5	293.5
Peru	32.5	29.3	148.5	118.9	-20.0
Suriname	1.2	1.0	3.7	5.8	59.7
Uruguay	1.9	3.4	9.4	9.1	-2.8
Venezuela	54.3	35.7	143.9	206.3	43.3
Total	452.9	479.4	1,772.4	1,830.0	3.2
Central America Antilles					
Anguilla	0.0	0.0	0.2	0.1	-27.9
Antigua and Barbuda	1.3	0.8	3.1	4.6	50.7
Aruba	0.3	0.5	1.4	2.8	91.1
Bahamas	1.7	37.7	28.4	45.8	61.1
Barbados	6.8	2.7	16.3	10.2	-37.9
Belize	0.7	0.7	1.4	3.4	141.4
Bermuda	2.3	1.7	8.6	7.1	-17.3
British Virgin Islands	0.1	0.1	47.0	0.5	-98.9
Cayman Islands	0.5	0.3	1.5	2.0	39.2
Costa Rica	5.1	6.1	33.7	47.6	41.1
Cuba	42.6	42.5	141.1	121.5	-13.9
Dominica	0.4	0.4	0.7	1.4	82.9
Dominican Republic	10.5	13.7	52.6	42.8	-18.8
El Salvador	1.8	1.9	11.6	9.0	-22.8
Grenada	0.5	0.4	1.8	1.8	-3.6
Guatemala	8.4	11.2	27.6	31.6	14.3
Haiti	3.8	2.0	13.2	7.6	-42.6
Honduras	2.2	1.4	13.6	7.4	-45.7
Jamaica	8.8	7.7	34.4	40.3	17.1
Montserrat	0.0	0.0	0.1	0.1	-31.0
Netherlands Antilles	33.0	1.6	58.8	37.9	-35.6
Nicaragua	2.9	1.0	11.3	5.6	-50.7
Panama	5.1	5.0	23.3	23.2	-0.4
Saint Kitts and Nevis	0.7	0.8	2.2	1.7	-21.9
Saint Lucia	0.4	0.9	3.3	3.5	6.2
Saint Vincent and the Grenadines	0.7	0.5	2.3	2.0	-15.2
Trinidad and Tobago	34.7	21.7	122.9	114.3	-7.0
Turks and Caicos Islands	0.1	0.3	0.9	0.7	-28.2
Total	175.5	163.6	663.4	576.1	-13.2
All countries	32,674.5	36,204.4	132,130.7	143,904.1	8.9

Table 5-1
Exports by province of origin, customs basis, not seasonally adjusted — April

	Agricultural and fishing products	Energy products	Forestry products	Industrial goods	Machinery and equipment	Automotive products	Consumer goods	Special transactions trade	Total
millions of dollars									
Domestic exports									
Newfoundland and Labrador									
2011	65.5	659.8	9.8	166.4	4.3	0.5	0.1	2.0	908.4
2012	61.2	856.8	12.6	195.5	130.9	0.2	0.2	1.9	1,259.3
Prince Edward Island									
2011	30.9	0.0	0.0	1.8	5.4	0.3	2.2	5.3	46.1
2012	36.3	0.0	0.0	2.5	18.6	0.5	2.1	8.6	68.6
Nova Scotia									
2011	83.4	53.6	68.9	49.9	109.8	4.4	4.2	2.8	377.1
2012	96.1	6.9	30.4	46.0	105.5	5.4	5.7	2.8	298.9
New Brunswick									
2011	84.3	1,016.5	118.7	78.3	27.6	3.4	9.7	2.7	1,341.2
2012	111.9	1,090.7	101.2	103.9	31.1	2.9	16.1	2.8	1,460.7
Quebec									
2011	410.4	323.5	484.3	1,872.9	1,326.2	153.8	262.7	67.6	4,901.3
2012	454.9	330.0	435.2	1,919.6	1,422.9	185.8	271.8	59.4	5,079.5
Ontario									
2011	713.2	199.4	231.7	3,796.1	2,337.2	4,214.7	471.1	120.0	12,083.3
2012	720.2	220.3	207.5	3,948.8	2,382.9	4,832.6	643.7	113.5	13,069.5
Manitoba									
2011	304.9	89.8	24.9	234.4	172.7	31.2	35.7	21.7	915.4
2012	340.0	70.9	24.7	220.4	209.4	49.2	66.2	25.9	1,006.8
Saskatchewan									
2011	763.4	938.9	18.3	783.5	51.3	5.0	0.8	3.6	2,564.9
2012	815.1	1,052.2	28.7	954.0	51.8	5.1	0.8	3.9	2,911.7
Alberta									
2011	563.2	4,678.9	166.8	1,034.6	369.1	74.3	9.7	18.8	6,915.4
2012	660.8	6,113.2	183.9	913.4	355.6	114.4	10.1	29.3	8,380.9
British Columbia									
2011	179.6	630.5	810.6	434.1	261.3	23.0	44.6	21.6	2,405.4
2012	181.1	781.0	835.5	478.1	290.5	31.4	43.4	17.4	2,658.3
Yukon, Northwest Territories and Nunavut ¹									
2011	0.0	0.0	0.0	215.5	0.4	0.0	0.0	0.0	216.0
2012	0.6	0.0	0.0	9.1	0.4	0.1	0.1	0.1	10.2
Total									
2011	3,199.0	8,590.9	1,933.9	8,667.5	4,665.4	4,510.7	840.9	266.2	32,674.5
2012	3,478.3	10,522.1	1,859.8	8,791.2	4,999.6	5,227.7	1,060.2	265.5	36,204.4
Re-exports									
2011	49.2	71.2	10.3	336.6	808.9	103.9	235.8	604.3	2,220.1
2012	43.7	267.3	12.1	322.6	843.8	111.7	213.0	712.3	2,526.4
Total exports									
2011	3,248.2	8,662.1	1,944.2	9,004.1	5,474.3	4,614.6	1,076.7	870.5	34,894.6
2012	3,521.9	10,789.4	1,872.0	9,113.8	5,843.3	5,339.4	1,273.2	977.8	38,730.8

1. Data for the current month do not include some exports from the Harmonized System, Chapter 71, "Natural/cultured pearls, precious stones and metals, coins, etc." for reasons relating to timing.

Table 5-2

Exports by province of origin, customs basis, not seasonally adjusted — Year to date, January to April

	Agricultural and fishing products	Energy products	Forestry products	Industrial goods	Machinery and equipment	Automotive products	Consumer goods	Special transactions trade	Total
millions of dollars									
Domestic exports									
Newfoundland and Labrador									
2011	144.5	2,642.6	35.8	611.6	13.6	1.0	0.5	7.7	3,457.3
2012	143.1	2,918.3	54.4	676.2	269.9	0.7	0.7	7.2	4,070.6
Prince Edward Island									
2011	131.1	0.0	0.1	7.3	22.5	1.0	9.2	23.8	195.2
2012	137.8	0.0	0.1	11.5	61.1	2.0	10.1	36.5	259.2
Nova Scotia									
2011	299.2	250.5	261.1	184.4	440.5	20.5	19.2	12.1	1,487.7
2012	327.3	24.7	123.0	188.9	444.0	24.8	19.3	12.1	1,164.1
New Brunswick									
2011	332.6	3,563.8	446.9	371.5	104.5	15.5	43.3	12.6	4,890.5
2012	397.6	3,773.3	411.1	331.0	110.4	16.7	52.1	11.8	5,104.0
Quebec									
2011	1,625.0	1,194.6	1,935.9	7,055.3	5,689.1	575.1	1,080.3	264.2	19,419.6
2012	1,687.7	1,285.5	1,746.9	7,353.0	6,114.1	747.7	1,143.9	263.1	20,341.9
Ontario									
2011	2,600.2	910.4	941.1	16,107.3	9,696.0	17,061.2	2,216.1	510.4	50,042.6
2012	2,750.5	943.7	817.9	16,871.3	10,064.8	19,561.8	2,307.0	478.5	53,795.6
Manitoba									
2011	1,201.9	316.1	77.8	883.3	709.6	152.4	154.1	89.6	3,584.9
2012	1,419.2	311.6	87.7	926.1	822.0	197.2	167.2	85.3	4,016.2
Saskatchewan									
2011	2,550.6	3,197.9	78.8	3,136.9	208.7	19.7	5.4	15.9	9,213.9
2012	2,994.2	4,191.9	112.3	2,965.3	259.0	17.5	7.5	14.8	10,562.5
Alberta									
2011	2,146.5	20,945.9	653.1	3,742.5	1,310.8	246.6	42.4	80.5	29,168.2
2012	2,624.0	24,820.5	672.5	3,738.3	1,477.3	352.6	40.0	93.5	33,818.6
British Columbia									
2011	639.5	2,653.8	3,087.0	2,129.9	1,006.2	93.5	174.0	84.4	9,868.4
2012	685.8	2,876.6	3,121.1	2,131.5	1,134.7	111.3	191.2	71.8	10,324.1
Yukon, Northwest Territories and Nunavut ¹									
2011	0.4	0.0	0.1	799.3	2.1	0.2	0.2	0.1	802.3
2012	1.1	0.0	0.0	441.9	3.5	0.4	0.5	0.1	447.5
Total									
2011	11,671.4	35,675.8	7,517.8	35,029.3	19,203.8	18,186.7	3,744.8	1,101.2	132,130.7
2012	13,168.4	41,146.0	7,146.9	35,635.0	20,760.8	21,032.7	3,939.6	1,074.8	143,904.1
Re-exports									
2011	207.2	158.2	28.0	1,522.6	3,368.3	393.3	886.3	2,540.6	9,104.5
2012	227.3	387.3	31.1	1,102.7	3,506.5	435.8	876.5	2,886.4	9,453.6
Total exports									
2011	11,878.6	35,833.9	7,545.8	36,551.8	22,572.1	18,580.0	4,631.1	3,641.8	141,235.1
2012	13,395.7	41,533.3	7,178.0	36,737.8	24,267.3	21,468.5	4,816.0	3,961.1	153,357.7

1. Data for the current month do not include some exports from the Harmonized System Chapter 71, "Natural/cultured pearls, precious stones and metals, coins, etc." for reasons relating to timing.

Table 6-1
Imports by commodity groupings, balance of payments basis, seasonally adjusted — Current dollars

	March	April	Change		Year to date			April 2012/ April 2011	
	2012	2012			2011	2012	Change		
	millions of dollars		percent		millions of dollars		percent		
Total	39,459	39,491	32	0.1	147,067	157,770	10,702	7.3	5.7
Agricultural and fishing products	2,831	2,787	-44	-1.5	10,573	11,149	576	5.4	4.7
Fruits and vegetables	744	762	18	2.4	2,918	2,994	76	2.6	4.0
Fresh fruits and berries	263	274	11	4.4	1,017	1,054	37	3.6	5.3
Dried fruits, fruits and fruit preparations	139	136	-3	-1.9	503	542	40	7.9	9.4
Fresh vegetables	163	167	4	2.5	775	685	-90	-11.6	-12.9
Other vegetables and vegetable preparations	180	184	5	2.6	624	713	90	14.4	18.5
Other agricultural and fishing products	2,087	2,025	-61	-2.9	7,656	8,155	499	6.5	5.0
Live animals	17	18	2	10.8	73	70	-3	-4.0	-0.4
Meat and meat preparations	234	228	-6	-2.6	794	918	124	15.7	7.6
Fish and marine animals	197	189	-8	-4.1	759	762	3	0.4	1.2
Cocoa, coffee, tea and other food preparations	493	489	-3	-0.7	1,839	1,959	119	6.5	5.9
Dairy produce, eggs and honey	55	51	-4	-6.6	203	213	10	4.8	-6.6
Corn (maize) shelled	50	44	-5	-11.0	105	163	58	55.1	64.7
Other cereals and cereal preparations	205	204	-1	-0.7	700	821	120	17.2	13.5
Sugar and sugar preparations	175	171	-4	-2.3	735	688	-47	-6.4	-6.3
Fodder, feed, excluding unmilled cereal	127	127	1	0.4	472	497	25	5.2	7.0
Beverages	342	341	-1	-0.3	1,289	1,343	54	4.2	9.4
Tobacco	43	19	-25	-57.1	111	127	17	15.1	-18.1
Crude vegetable products	149	143	-6	-4.3	571	591	20	3.5	-6.3
Cotton	1	1	0	54.0	5	4	-1	-17.0	54.7
Energy products	4,403	4,102	-301	-6.8	16,769	17,858	1,089	6.5	-9.1
Crude petroleum	2,662	2,489	-172	-6.5	9,157	10,251	1,094	11.9	3.9
Other energy products	1,742	1,613	-129	-7.4	7,612	7,607	-4	-0.1	-23.8
Coal and other related products	289	292	3	1.0	1,697	1,314	-382	-22.5	-33.2
Petroleum and coal products	1,453	1,321	-131	-9.1	5,915	6,293	378	6.4	-21.3
Forestry products	216	223	7	3.0	816	867	50	6.2	8.4
Forestry products	216	223	7	3.0	816	867	50	6.2	8.4
Crude wood products	30	29	0	-1.6	126	121	-5	-4.0	-4.0
Wood fabricated materials	186	193	7	3.8	690	745	55	8.0	10.6
Industrial goods and materials	8,161	8,220	58	0.7	31,043	33,106	2,063	6.6	2.2
Metals and metal ores	3,102	3,073	-29	-0.9	12,345	12,772	428	3.5	-2.5
Metals in ores, concentrates and scrap	547	652	106	19.4	2,691	2,577	-113	-4.2	-3.2
Steel bars, rods, plates, sheets	633	671	38	6.0	2,337	2,607	270	11.6	15.4
Other iron and steel products	460	442	-19	-4.0	1,563	1,799	237	15.1	13.3
Precious metals including alloys	1,062	912	-150	-14.1	4,245	4,222	-23	-0.5	-18.5
Other non-ferrous metals and alloys	400	396	-4	-0.9	1,510	1,567	57	3.8	2.1
Chemicals and plastics	2,696	2,723	27	1.0	10,118	10,859	742	7.3	0.6
Organic chemicals	620	598	-22	-3.5	2,272	2,425	153	6.7	-3.9
Plastic materials	933	961	27	2.9	3,523	3,800	277	7.9	2.4
Other chemicals and related products	1,142	1,164	22	1.9	4,323	4,634	311	7.2	1.6
Other industrial goods and materials	2,364	2,424	60	2.5	8,581	9,475	893	10.4	10.9
Crude animal products	28	30	2	7.9	102	133	31	30.3	27.1
Wool and man-made fibres	20	20	0	-0.8	91	85	-6	-6.5	-17.9
Crude non-metallic minerals	71	69	-2	-2.8	270	269	-1	-0.4	-0.5
Textile fabricated materials	220	227	7	3.2	821	886	64	7.8	6.0
Metal fabricated basic products	1,021	1,056	35	3.5	3,538	4,090	551	15.6	16.6
Rubber fabricated materials	110	108	-2	-1.8	365	428	62	17.1	18.0
Oils, fats, animal and vegetable	101	100	-1	-1.1	395	405	10	2.4	3.9
Non-metallic minerals	348	350	3	0.8	1,211	1,368	157	13.0	13.1
Other fabricated materials	444	462	18	4.0	1,787	1,812	25	1.4	2.8

Table 6-1 – continued

Imports by commodity groupings, balance of payments basis, seasonally adjusted — Current dollars

	March 2012	April 2012	Change		Year to date			April 2012/ April 2011	
					2011	2012	Change		
	millions of dollars		percent		millions of dollars			percent	
Machinery and equipment	10,912	10,848	-64	-0.6	40,224	42,995	2,771	6.9	5.9
Industrial and agricultural machinery	3,215	3,234	19	0.6	10,910	12,644	1,734	15.9	11.1
Engines, turbines and electric motors	373	454	81	21.7	1,416	1,553	137	9.7	3.7
Drilling mining machinery	196	199	3	1.6	644	786	143	22.1	23.9
Excavating machinery	364	337	-26	-7.3	1,084	1,331	247	22.8	21.2
Metal working machinery	177	182	5	2.7	694	712	18	2.6	-2.3
Other industrial machinery	1,613	1,615	2	0.2	5,575	6,422	847	15.2	10.6
Agricultural machinery including tractors	493	447	-46	-9.3	1,497	1,839	342	22.8	14.9
Aircraft and other transportation equipment	1,370	1,367	-3	-0.2	5,288	5,250	-38	-0.7	10.1
Aircraft, engines, parts	655	762	107	16.3	3,081	2,863	-218	-7.1	7.8
Other transportation equipment and parts	715	606	-110	-15.3	2,207	2,386	180	8.1	13.2
Office machines and equipment	1,075	1,027	-47	-4.4	4,564	4,281	-283	-6.2	-15.2
Other machinery and equipment	5,253	5,220	-33	-0.6	19,462	20,821	1,359	7.0	7.1
Other communication and related equipment	1,825	1,835	10	0.6	7,264	7,345	81	1.1	1.4
Other equipment and tools	3,428	3,385	-43	-1.3	12,198	13,476	1,278	10.5	10.4
Automotive products	6,609	6,781	172	2.6	23,418	26,329	2,911	12.4	21.8
Passenger autos and chassis	2,110	2,160	51	2.4	7,390	8,370	980	13.3	35.3
Trucks and other motor vehicles	1,780	1,755	-25	-1.4	5,943	6,847	904	15.2	8.4
Motor vehicle parts	2,719	2,866	147	5.4	10,085	11,112	1,027	10.2	21.8
Other consumer goods	4,969	5,096	127	2.6	19,330	19,959	629	3.3	3.9
Apparel and footwear	974	1,082	108	11.1	3,889	4,042	153	3.9	8.3
Apparel and apparel accessories	823	897	74	9.0	3,227	3,370	143	4.4	9.1
Footwear	151	185	34	22.4	662	672	9	1.4	4.4
Miscellaneous consumer goods	3,995	4,014	19	0.5	15,441	15,918	477	3.1	2.8
Television, radios, phonographs	132	142	10	7.4	520	546	26	5.0	11.2
Printed matter	258	300	43	16.5	1,126	1,102	-25	-2.2	8.8
Watches, sporting goods and toys	490	496	6	1.2	1,934	1,961	27	1.4	6.8
House furnishings	774	784	10	1.3	2,819	3,079	260	9.2	9.9
Photographic goods	197	204	7	3.7	931	796	-136	-14.6	-10.4
Miscellaneous end products	2,144	2,088	-56	-2.6	8,110	8,433	323	4.0	-0.3
Special transactions trade	512	583	71	13.9	1,719	2,140	420	24.4	39.0
Unallocated balance of payments adjustments	846	852	6	0.7	3,174	3,366	193	6.1	4.9

Table 6-2
Imports by commodity groupings, balance of payments basis, seasonally adjusted — Constant dollars, 2002

	March	April	Change		Year to date			April 2012/ April 2011	
	2012	2012			2011	2012	Change		
	millions of dollars		percent		millions of dollars			percent	
Total	43,754	43,787	33	0.1	167,501	173,638	6,137	3.7	2.2
Agricultural and fishing products	2,775	2,706	-69	-2.5	10,504	10,947	443	4.2	-0.1
Fruits and vegetables	787	782	-5	-0.7	2,862	3,103	241	8.4	4.3
Fresh fruits and berries	275	272	-3	-1.1	1,093	1,091	-2	-0.2	0.2
Dried fruits, fruits and fruit preparations	117	114	-3	-2.3	485	451	-35	-7.1	-3.9
Fresh vegetables	235	231	-4	-1.8	681	930	249	36.6	10.2
Other vegetables and vegetable preparations	159	164	5	3.0	603	632	29	4.8	10.0
Other agricultural and fishing products	1,988	1,924	-64	-3.2	7,642	7,843	202	2.6	-1.8
Live animals	14	16	2	16.3	71	62	-9	-12.6	-9.0
Meat and meat preparations	212	208	-4	-1.8	741	833	92	12.4	6.1
Fish and marine animals	207	190	-17	-8.3	963	812	-152	-15.7	-15.2
Cocoa, coffee, tea and other food preparations	543	552	8	1.5	2,007	2,196	189	9.4	-0.4
Dairy produce, eggs and honey	54	47	-7	-13.4	202	199	-3	-1.5	-13.1
Corn (maize) shelled	28	25	-2	-8.3	66	91	25	37.6	62.8
Other cereals and cereal preparations	169	170	0	0.1	545	700	155	28.4	16.6
Sugar and sugar preparations	168	158	-10	-5.9	722	651	-71	-9.8	-12.8
Fodder, feed, excluding unmilled cereal	106	101	-6	-5.3	403	416	13	3.3	-3.5
Beverages	312	321	9	3.0	1,238	1,231	-7	-0.6	7.3
Tobacco	49	21	-29	-58.0	134	144	10	7.3	-25.9
Crude vegetable products	125	116	-10	-7.8	542	504	-38	-7.0	-17.3
Cotton	1	1	1	74.8	6	4	-2	-35.8	24.1
Energy products	1,806	1,749	-57	-3.2	7,830	7,539	-292	-3.7	-11.3
Crude petroleum	814	857	42	5.2	3,307	3,289	-18	-0.5	8.6
Other energy products	992	892	-100	-10.1	4,524	4,250	-274	-6.1	-24.6
Coal and other related products	420	399	-21	-5.0	1,770	1,740	-30	-1.7	-11.8
Petroleum and coal products	571	493	-79	-13.8	2,753	2,510	-244	-8.9	-32.6
Forestry products	292	307	15	5.2	1,108	1,168	60	5.4	8.6
Forestry products	292	307	15	5.2	1,108	1,168	60	5.4	8.6
Crude wood products	41	47	5	13.1	184	176	-8	-4.6	5.9
Wood fabricated materials	251	260	10	3.8	924	993	69	7.4	9.1
Industrial goods and materials	7,062	7,059	-3	0.0	27,314	28,001	686	2.5	-1.4
Metals and metal ores	2,122	2,017	-105	-5.0	7,895	8,331	437	5.5	-1.1
Metals in ores, concentrates and scrap	281	321	41	14.4	1,297	1,300	3	0.2	-4.3
Steel bars, rods, plates, sheets	480	492	12	2.4	1,918	1,955	37	1.9	5.1
Other iron and steel products	331	277	-53	-16.2	1,090	1,196	106	9.7	6.6
Precious metals including alloys	628	543	-85	-13.6	2,188	2,351	164	7.5	-12.1
Other non-ferrous metals and alloys	403	384	-19	-4.8	1,402	1,530	128	9.1	7.3
Chemicals and plastics	2,367	2,387	20	0.8	9,547	9,355	-192	-2.0	-7.4
Organic chemicals	361	355	-7	-1.8	1,505	1,459	-46	-3.1	-9.7
Plastic materials	918	950	32	3.5	3,677	3,719	42	1.1	-3.8
Other chemicals and related products	1,088	1,082	-6	-0.5	4,365	4,177	-188	-4.3	-9.6
Other industrial goods and materials	2,572	2,655	83	3.2	9,873	10,315	442	4.5	4.6
Crude animal products	26	28	2	6.0	103	130	27	26.6	17.4
Wool and man-made fibres	24	24	0	-0.3	112	99	-13	-11.2	-22.4
Crude non-metallic minerals	56	51	-5	-9.6	217	223	6	2.6	-4.9
Textile fabricated materials	279	295	16	5.6	1,119	1,128	9	0.8	1.1
Metal fabricated basic products	1,050	1,088	38	3.6	3,870	4,192	322	8.3	9.1
Rubber fabricated materials	121	118	-3	-2.8	457	469	13	2.7	2.2
Oils, fats, animal and vegetable	89	85	-4	-4.7	359	352	-7	-2.0	-2.2
Non-metallic minerals	402	418	15	3.8	1,519	1,603	84	5.5	5.3
Other fabricated materials	524	550	25	4.9	2,116	2,117	1	0.0	1.0

Table 6-2 – continued

Imports by commodity groupings, balance of payments basis, seasonally adjusted — Constant dollars, 2002

	March	April	Change		Year to date			April 2012/ April 2011	
	2012	2012			2011	2012	Change		
	millions of dollars		percent		millions of dollars		percent		
Machinery and equipment	16,323	15,986	-337	-2.1	61,739	63,809	2,070	3.4	-0.8
Industrial and agricultural machinery	3,862	3,870	8	0.2	13,856	15,101	1,246	9.0	3.1
Engines, turbines and electric motors	456	549	93	20.3	1,819	1,883	65	3.5	-2.5
Drilling mining machinery	213	216	4	1.8	747	855	108	14.4	15.4
Excavating machinery	432	397	-35	-8.2	1,423	1,570	147	10.3	6.8
Metal working machinery	227	230	3	1.4	925	897	-28	-3.0	-9.2
Other industrial machinery	1,906	1,905	-1	0.0	6,959	7,563	604	8.7	2.9
Agricultural machinery including tractors	628	572	-56	-8.9	1,983	2,333	350	17.7	9.1
Aircraft and other transportation equipment	1,571	1,566	-5	-0.3	6,367	6,017	-350	-5.5	4.1
Aircraft, engines, parts	808	937	129	16.0	3,868	3,518	-351	-9.1	3.5
Other transportation equipment and parts	763	629	-134	-17.6	2,498	2,499	1	0.0	4.9
Office machines and equipment	3,059	2,846	-214	-7.0	11,668	11,974	306	2.6	-13.0
Other machinery and equipment	7,830	7,703	-127	-1.6	29,849	30,717	868	2.9	1.6
Other communication and related equipment	3,278	3,267	-10	-0.3	13,110	13,011	-98	-0.7	-1.3
Other equipment and tools	4,553	4,436	-117	-2.6	16,739	17,705	966	5.8	3.9
Automotive products	8,132	8,396	264	3.2	29,372	32,570	3,198	10.9	19.4
Passenger autos and chassis	2,428	2,512	85	3.5	8,543	9,762	1,219	14.3	35.3
Trucks and other motor vehicles	2,076	2,058	-17	-0.8	7,003	8,072	1,069	15.3	8.4
Motor vehicle parts	3,629	3,825	197	5.4	13,826	14,737	910	6.6	16.7
Other consumer goods	6,303	6,467	164	2.6	25,927	25,198	-729	-2.8	-3.1
Apparel and footwear	1,319	1,452	133	10.1	5,707	5,422	-285	-5.0	-2.3
Apparel and apparel accessories	1,117	1,206	88	7.9	4,757	4,525	-232	-4.9	-1.8
Footwear	201	246	45	22.1	950	897	-53	-5.6	-5.0
Miscellaneous consumer goods	4,984	5,015	31	0.6	20,220	19,775	-445	-2.2	-3.4
Television, radios, phonographs	227	244	17	7.6	903	936	33	3.7	7.5
Printed matter	325	382	56	17.4	1,445	1,378	-68	-4.7	5.4
Watches, sporting goods and toys	651	647	-4	-0.7	2,745	2,596	-149	-5.4	-1.6
House furnishings	981	987	6	0.6	3,710	3,872	162	4.4	3.2
Photographic goods	444	470	26	5.9	1,972	1,757	-215	-10.9	-5.2
Miscellaneous end products	2,356	2,285	-70	-3.0	9,445	9,237	-209	-2.2	-8.3
Special transactions trade	582	647	66	11.3	1,967	2,371	404	20.6	34.9
Unallocated balance of payments adjustments	480	470	-10	-2.1	1,738	2,035	297	17.1	12.2

Table 7-1
Imports from selected countries, customs basis, not seasonally adjusted — April

	Agricultural and fishing products	Energy products	Forestry products	Industrial goods	Machinery and equipment	Automotive products	Consumer goods	Special transactions trade	Total
millions of dollars									
United States									
2011	1,406.6	1,574.5	149.5	4,607.7	4,438.9	3,925.2	1,814.5	401.9	18,318.7
2012	1,509.2	1,393.7	158.4	4,720.0	4,695.0	4,628.9	1,929.1	570.4	19,604.6
Mexico									
2011	135.5	87.1	0.4	163.1	690.3	788.9	93.1	6.9	1,965.3
2012	130.7	138.5	0.5	251.7	660.8	877.3	97.0	4.1	2,160.7
Japan									
2011	5.9	0.6	0.0	97.9	393.0	218.0	86.4	0.2	802.1
2012	8.9	3.4	0.0	88.5	505.1	580.0	99.4	0.3	1,285.6
European Union									
Germany									
2011	27.1	1.4	1.2	224.2	329.5	292.6	166.7	0.9	1,043.8
2012	25.5	1.5	1.1	195.6	586.0	374.7	143.7	1.0	1,329.1
France									
2011	60.0	9.2	0.3	81.7	143.1	8.1	126.8	0.2	429.4
2012	62.1	8.7	0.6	59.8	152.3	7.3	125.3	5.4	421.5
United Kingdom									
2011	31.4	315.0	0.0	111.5	260.7	42.4	116.7	1.5	879.2
2012	35.4	53.3	0.1	147.1	224.1	78.3	104.9	13.0	656.2
Italy									
2011	49.9	68.4	1.1	99.6	124.7	23.1	80.8	0.5	448.0
2012	60.2	0.1	1.4	112.7	158.3	28.1	92.5	0.6	453.9
Other European Union									
2011	89.2	314.0	3.0	382.3	485.6	70.2	313.4	0.7	1,658.4
2012	93.1	164.1	3.8	307.9	421.4	92.4	232.0	0.5	1,315.2
Total									
2011	257.7	708.1	5.6	899.2	1,343.6	436.4	804.4	3.7	4,458.8
2012	276.4	227.6	6.9	823.1	1,542.1	580.7	698.5	20.5	4,175.8
Newly industrialized countries									
South Korea									
2011	4.7	29.4	0.0	88.1	216.0	137.0	17.2	0.1	492.4
2012	5.7	17.2	0.1	112.9	166.5	251.7	15.8	0.1	570.0
Hong Kong									
2011	2.8	0.0	0.0	5.0	7.1	0.3	12.5	0.0	27.7
2012	2.6	0.0	0.0	2.4	9.1	0.2	8.3	0.5	23.1
Taiwan									
2011	4.8	0.1	0.4	117.0	293.3	13.3	30.6	0.1	459.6
2012	5.0	0.0	0.5	105.7	200.0	17.9	36.3	0.1	365.5
Singapore									
2011	2.4	64.0	0.2	15.2	38.0	0.2	45.7	0.0	165.7
2012	1.6	0.0	0.0	17.0	49.9	0.4	17.4	0.4	86.8
Total									
2011	14.6	93.5	0.6	225.3	554.4	150.8	106.0	0.2	1,145.3
2012	14.9	17.2	0.5	238.1	425.5	270.2	77.8	1.1	1,045.4
Other countries									
2011	775.9	2,129.7	47.3	2,101.3	2,471.2	210.4	1,573.2	22.4	9,331.3
2012	765.0	2,421.5	54.1	2,090.0	2,725.2	252.2	1,710.1	17.0	10,035.0
Total									
2011	2,597.5	4,593.5	203.5	8,094.5	9,891.4	5,729.6	4,477.6	435.4	36,023.1
2012	2,705.9	4,201.9	220.5	8,211.4	10,553.7	7,189.4	4,612.0	613.3	38,308.1

Table 7-2
Imports from selected countries, customs basis, not seasonally adjusted — Year to date, January to April

	Agricultural and fishing products	Energy products	Forestry products	Industrial goods	Machinery and equipment	Automotive products	Consumer goods	Special transactions trade	Total
millions of dollars									
United States									
2011	5,373.4	5,101.1	616.2	17,552.2	17,398.6	15,908.6	7,293.4	1,402.4	70,645.8
2012	5,894.4	5,417.4	656.0	18,975.8	18,964.6	17,281.6	7,750.5	1,756.6	76,696.8
Mexico									
2011	638.1	379.7	1.4	690.4	2,616.9	3,063.0	378.0	23.4	7,790.9
2012	625.7	440.8	1.7	875.8	2,809.3	3,337.5	388.1	21.3	8,500.1
Japan									
2011	23.1	1.8	0.3	403.8	1,690.5	1,661.0	371.4	1.3	4,153.2
2012	29.7	6.2	0.2	427.6	2,006.2	2,477.3	355.0	1.7	5,303.7
European Union									
Germany									
2011	94.3	5.0	4.0	747.3	1,342.4	1,190.3	619.1	4.2	4,006.6
2012	101.7	6.3	3.7	736.4	1,982.1	1,340.3	575.3	6.0	4,751.8
France									
2011	213.0	25.8	0.7	312.9	660.9	29.7	483.7	1.9	1,728.6
2012	213.6	59.2	2.4	251.9	581.8	30.0	462.8	13.8	1,615.6
United Kingdom									
2011	119.6	1,081.6	0.1	707.1	1,025.8	157.2	458.2	17.8	3,567.3
2012	126.4	531.5	0.2	719.1	861.1	263.1	422.0	22.1	2,945.5
Italy									
2011	209.0	70.8	4.9	368.0	508.0	80.8	354.4	2.1	1,597.9
2012	228.7	0.5	6.3	400.8	552.7	91.7	404.6	3.8	1,689.2
Other European Union									
2011	364.9	1,123.0	12.0	1,336.3	1,562.5	254.1	1,167.5	2.3	5,822.7
2012	378.9	816.1	14.5	1,176.8	1,617.0	324.7	1,072.2	5.9	5,406.2
Total									
2011	1,000.7	2,306.2	21.7	3,471.5	5,099.5	1,712.2	3,082.9	28.4	16,723.1
2012	1,049.3	1,413.7	27.2	3,285.0	5,594.7	2,049.7	2,937.0	51.6	16,408.3
Newly industrialized countries									
South Korea									
2011	18.0	36.9	0.1	372.5	836.6	572.6	62.2	0.4	1,899.2
2012	26.7	107.3	0.1	393.5	705.9	879.8	65.3	0.5	2,179.0
Hong Kong									
2011	9.1	0.0	0.0	31.3	31.9	0.8	44.4	0.1	117.7
2012	8.5	0.0	0.2	9.0	31.1	0.8	33.3	0.6	83.6
Taiwan									
2011	20.1	0.2	1.6	349.3	930.1	57.1	120.1	0.5	1,479.0
2012	24.2	0.0	1.4	383.0	879.8	66.7	138.8	0.5	1,494.7
Singapore									
2011	10.7	111.2	0.3	80.9	176.4	1.2	118.4	0.1	499.1
2012	7.8	0.0	0.0	81.8	227.8	1.9	77.6	0.9	397.6
Total									
2011	57.8	148.2	2.1	834.1	1,975.0	631.7	345.1	1.2	3,995.1
2012	67.2	107.4	1.8	867.3	1,844.6	949.2	315.0	2.5	4,154.9
Other countries									
2011	2,983.2	8,873.7	182.6	7,663.4	10,065.3	774.8	6,786.1	102.3	37,431.3
2012	3,026.1	10,021.3	192.7	8,306.8	10,710.4	961.4	7,244.0	116.4	40,579.1
Total									
2011	10,079.1	16,810.7	824.3	30,615.5	38,845.8	23,751.3	18,257.0	1,558.9	140,742.6
2012	10,694.6	17,406.7	879.5	32,738.3	41,930.0	27,056.7	18,989.6	1,950.2	151,645.6

Table 8
Imports by country, customs basis, not seasonally adjusted

	April		January to April		Change
	2011	2012	2011	2012	January to April 2012/ January to April 2011
	millions of dollars				percent
North America					
Canada	358.1	247.1	1,248.9	1,078.8	-13.6
Greenland	0.0	0.0	0.1	0.1	43.4
Mexico	1,965.3	2,160.7	7,790.9	8,500.1	9.1
Saint Pierre and Miquelon	0.3	0.4	0.3	0.6	82.1
United States	18,318.7	19,604.6	70,645.8	76,696.8	8.6
Total	20,642.4	22,012.8	79,686.0	86,276.3	8.3
Western Europe					
Andorra	0.0	0.0	0.1	0.2	53.6
Austria	103.1	115.7	394.6	457.0	15.8
Belgium	126.8	126.5	564.4	478.3	-15.2
Denmark	270.0	62.4	607.1	273.1	-55.0
Faeroe Islands	1.4	1.0	3.0	2.5	-19.0
Finland	161.8	70.3	528.6	283.7	-46.3
France	429.4	421.5	1,728.6	1,615.6	-6.5
Germany	1,043.8	1,329.1	4,006.6	4,751.8	18.6
Gibraltar	1.7	0.0	1.7	0.0	-99.5
Greece	11.8	17.3	48.2	48.0	-0.4
Iceland	2.5	6.3	8.9	19.4	118.5
Italy	448.0	453.9	1,597.9	1,689.2	5.7
Luxembourg	13.3	12.3	33.5	40.3	20.4
Malta	1.5	3.5	8.4	10.7	27.2
Netherlands	221.8	257.1	561.8	1,089.1	93.9
Norway	262.3	262.9	1,461.0	1,486.4	1.7
Portugal	35.0	21.6	111.8	94.4	-15.6
Republic of Ireland (Eire)	117.4	84.6	396.3	409.6	3.4
Spain	137.4	127.1	580.4	583.5	0.5
Sweden	185.6	177.8	761.4	687.0	-9.8
Switzerland	299.5	289.0	1,059.1	1,256.5	18.6
United Kingdom	879.2	656.2	3,567.3	2,945.5	-17.4
Total	4,753.5	4,496.0	18,030.5	18,221.8	1.1
Other Europe					
Albania	0.3	0.1	2.8	1.5	-45.7
Armenia	4.6	6.1	16.1	22.6	40.7
Azerbaijan	0.0	0.0	216.5	365.2	68.7
Belarus	0.6	34.6	1.9	82.5	...
Bosnia and Herzegovina	0.5	0.7	3.0	3.5	17.7
Bulgaria	5.4	27.7	22.3	62.3	179.4
Croatia	2.9	1.8	9.7	8.2	-15.0
Czech Republic	36.2	28.8	113.8	143.1	25.7
Estonia	9.2	3.5	39.0	17.7	-54.5
Georgia	8.4	5.8	37.4	31.7	-15.3
Hungary	26.6	27.6	111.9	136.7	22.1
Kazakhstan	115.7	271.6	727.9	1,043.1	43.3
Kyrgyzstan	0.0	0.0	0.1	0.0	-82.6
Latvia	1.2	1.1	4.6	5.7	24.5
Lithuania	13.7	3.1	212.0	20.7	-90.3
Macedonia (Former Yugoslav Republic of Macedonia)	0.4	0.7	2.6	3.9	45.6
Montenegro	0.0	0.0	0.2	0.1	-40.9
Poland	118.7	99.1	534.0	380.4	-28.8
Republic of Moldova	0.1	0.4	0.6	1.1	65.0
Romania	31.8	14.6	79.0	64.4	-18.5
Russian Federation	61.1	92.2	571.2	290.1	-49.2
Serbia	0.6	1.3	5.8	4.0	-30.3
Slovakia	20.7	20.1	80.8	73.8	-8.6
Slovenia	8.8	12.8	27.4	45.1	64.7
Tajikistan	0.0	0.0	0.0	0.0	77.1
Turkmenistan	0.0	0.0	0.1	0.0	-52.2
Ukraine	4.0	8.5	31.5	42.0	33.6
Uzbekistan	0.2	0.0	1.1	0.1	-86.3
Total	471.9	662.3	2,853.4	2,850.0	-0.1

Table 8 – continued

Imports by country, customs basis, not seasonally adjusted

	April		January to April		Change
	2011	2012	2011	2012	January to April 2012/ January to April 2011
	millions of dollars				percent
Middle East					
Bahrain	0.6	0.2	1.8	1.0	-46.2
Cyprus	0.4	0.7	1.5	1.4	-7.4
Egypt	46.9	43.4	132.1	141.9	7.4
Eritrea	13.7	33.7	25.5	135.0	429.2
Ethiopia	1.2	2.2	4.9	5.1	4.5
Iran	3.1	4.8	11.7	18.4	57.3
Iraq	243.0	379.7	1,109.9	1,193.1	7.5
Israel	99.9	111.1	342.9	378.3	10.3
Jordan	2.2	1.2	6.8	5.5	-19.0
Kuwait	56.3	0.0	56.3	0.4	-99.3
Lebanon	1.4	1.9	6.4	6.4	0.0
Libya	0.0	0.0	4.9	0.2	-96.4
Oman	1.5	2.7	6.4	12.1	90.3
Qatar	25.3	14.0	239.5	55.9	-76.6
Saudi Arabia	228.0	253.6	815.4	1,227.6	50.6
Somalia	0.0	0.0	0.0	0.0	-40.8
Sudan	9.6	11.0	38.8	36.1	-7.1
Syria	0.5	0.0	2.1	1.1	-44.9
Turkey	89.2	147.9	304.8	459.6	50.8
United Arab Emirates	9.2	8.9	109.3	25.7	-76.5
Yemen	0.0	0.0	0.0	0.0	24.5
Total	832.1	1,017.1	3,221.1	3,704.9	15.0
Other Africa					
Algeria	492.0	612.6	1,656.9	2,050.3	23.7
Angola	298.9	116.1	984.7	686.2	-30.3
Antarctica	0.2	0.0	0.4	0.0	-96.2
Benin	0.0	0.0	0.0	0.0	555.1
Botswana	0.0	0.0	0.1	0.1	107.5
Bouvet Island	0.0	0.0	0.0	0.0	43.7
Burkina Faso	0.0	1.2	1.1	1.2	14.3
Burundi	0.0	0.0	0.2	0.1	-6.5
Cameroon	0.8	0.6	1.9	3.5	83.4
Cape Verde	0.0	0.0	0.0	0.0	-71.7
Central African Republic	0.0	0.1	0.0	0.3	902.3
Chad	0.0	0.0	0.1	115.0	...
Comoros	0.0	0.0	0.1	0.2	245.6
Congo	0.1	0.3	0.7	0.7	7.7
Democratic Republic of the Congo	0.1	0.1	0.1	0.4	239.2
Djibouti	0.0	0.0	0.0	0.0	132.2
Equatorial Guinea	64.8	62.4	257.4	142.1	-44.8
French Southern Territories	0.0	0.0	0.0	0.0	...
Gabon	0.1	0.1	0.3	0.6	130.9
Gambia	0.0	0.0	0.0	0.0	-34.1
Ghana	9.4	3.2	26.2	5.6	-78.6
Guinea	4.1	2.3	13.7	23.7	73.0
Guinea-Bissau	0.0	0.0	0.0	0.0	669.1
Ivory Coast	7.5	9.8	74.6	90.2	20.9
Kenya	1.7	2.2	7.4	7.0	-6.1
Lesotho	1.1	1.0	4.4	3.2	-28.4
Liberia	2.4	3.4	10.7	13.0	21.5
Madagascar	6.8	6.8	13.5	27.3	101.5
Malawi	13.6	0.2	46.3	26.3	-43.3
Mali	0.0	0.1	0.2	0.2	-24.6
Mauritania	0.0	0.0	0.1	0.1	91.4
Mauritius	1.2	0.8	3.0	3.3	10.8
Morocco	3.8	5.1	38.0	45.6	20.0
Mozambique	0.7	0.9	1.5	1.0	-33.6
Namibia	19.8	32.8	78.5	58.1	-26.0
Niger	0.2	0.1	0.5	0.3	-42.8
Nigeria	112.1	310.7	644.5	862.3	33.8
Rwanda	0.0	0.1	0.3	0.8	148.3
Saint Helena	0.0	0.0	0.0	0.0	-45.0
Sao Tome and Principe	0.0	0.0	0.1	0.0	-98.4
Senegal	0.1	0.2	0.3	0.3	11.2
Seychelles	0.1	0.1	0.2	0.6	148.0

Table 8 – continued

Imports by country, customs basis, not seasonally adjusted

	April		January to April		Change
	2011	2012	2011	2012	January to April 2012/ January to April 2011
	millions of dollars				percent
Sierra Leone	0.0	0.1	0.3	0.2	-48.9
South Africa	43.4	60.1	190.6	212.5	11.5
Swaziland	0.4	0.2	0.8	1.9	138.1
Togo	0.4	0.1	0.7	0.2	-74.1
Tunisia	5.4	4.5	19.6	19.7	0.3
Uganda	0.3	0.4	1.3	1.7	34.4
United Republic of Tanzania	0.4	0.9	1.5	3.6	137.1
Western Sahara	0.0	0.0	0.0	0.0	...
Zambia	0.1	0.1	0.4	0.6	61.2
Zimbabwe	0.9	0.1	2.7	1.1	-58.3
Total	1,093.2	1,239.9	4,085.9	4,411.1	8.0
Other Asia					
Afghanistan	0.2	0.4	0.7	1.0	41.8
Bangladesh	93.5	91.7	363.3	389.4	7.2
Bhutan	0.0	0.0	0.0	0.0	277.7
British Indian Ocean Territory	0.0	0.0	0.0	0.0	-85.6
Brunei Darussalam	1.2	0.2	3.9	2.6	-32.5
Cambodia	30.5	37.4	153.0	192.6	25.9
China	3,473.8	3,863.3	14,082.7	15,354.0	9.0
Hong Kong	27.7	23.1	117.7	83.6	-29.0
India	193.2	231.1	846.1	1,053.1	24.5
Indonesia	121.1	100.9	448.0	431.9	-3.6
Japan	802.1	1,285.6	4,153.2	5,303.7	27.7
Laos	0.5	0.5	2.0	3.0	49.0
Macao	0.7	0.8	2.5	3.7	48.0
Malaysia	158.7	175.6	680.3	720.1	5.9
Maldives	0.0	0.2	0.1	0.4	180.6
Mongolia	7.2	6.8	27.1	21.0	-22.7
Myanmar	0.0	0.0	0.0	0.0	-4.1
Nepal	0.8	0.7	3.3	3.2	-3.0
North Korea	0.0	0.0	0.0	0.1	177.7
Pakistan	20.9	21.5	79.2	82.6	4.2
Philippines	76.4	80.1	301.3	314.5	4.4
Singapore	165.7	86.8	499.1	397.6	-20.3
South Korea	492.4	570.0	1,899.2	2,179.0	14.7
Sri Lanka	13.4	14.8	48.4	63.3	30.8
Taiwan	459.6	365.5	1,479.0	1,494.7	1.1
Thailand	201.8	205.3	847.0	847.0	0.0
Timor-Leste	0.0	0.0	0.2	0.0	-92.9
Viet Nam	84.7	108.2	367.4	470.4	28.0
Total	6,425.9	7,270.5	26,405.1	29,412.5	11.4
Oceania					
American Samoa	0.0	0.0	0.1	0.0	-42.6
Australia	102.9	178.0	530.1	673.7	27.1
Christmas Island	0.0	0.0	0.0	0.0	-54.8
Cocos (Keeling) Islands	0.0	0.0	0.0	0.0	234.8
Cook Islands	0.0	0.0	0.0	0.0	20.4
Fiji	0.2	0.4	1.0	1.4	48.5
French Polynesia	0.1	0.1	0.3	0.4	27.3
Guam	0.0	0.0	0.1	0.0	-45.2
Heard Island and McDonald Islands	0.0	0.0	0.0	0.0	-98.6
Kiribati	0.0	0.0	0.0	0.0	585.6
Nauru	0.0	0.0	0.0	0.0	-65.6
New Caledonia	0.0	0.0	0.0	0.1	300.7
New Zealand	47.7	43.4	172.3	180.4	4.7
Niue	0.0	0.0	0.0	0.0	-45.3
Norfolk Island	0.0	0.0	0.0	0.1	...
Papua New Guinea	0.1	0.3	0.2	0.6	225.3
Pitcairn	0.0	0.0	0.0	0.0	-80.1
Samoa	0.0	0.0	0.0	0.0	-92.1
Solomon Islands	0.0	0.1	0.0	0.1	140.0
Tonga	0.0	0.0	0.0	0.0	82.2
United States Minor Outlying Islands	0.2	0.4	0.8	1.7	105.0
Vanuatu	0.0	0.0	0.0	0.1	114.4
Wallis and Futuna	0.0	0.0	0.0	0.0	...
Total	151.2	222.8	705.0	858.6	21.8

Table 8 – continued

Imports by country, customs basis, not seasonally adjusted

	April		January to April		Change
	2011	2012	2011	2012	January to April 2012/January to April 2011
	millions of dollars				percent
South America					
Argentina	172.4	164.8	594.3	723.2	21.7
Bolivia	32.6	6.3	77.8	63.5	-18.4
Brazil	399.8	267.5	1,131.3	1,255.3	11.0
Chile	146.1	152.4	681.6	712.9	4.6
Colombia	108.5	37.8	267.0	248.4	-7.0
Ecuador	20.5	15.7	84.3	74.6	-11.5
Falkland Islands (Malvinas)	0.0	0.0	0.0	0.4	...
Guyana	26.8	33.3	108.4	164.5	51.8
Paraguay	0.4	1.1	1.2	3.2	167.4
Peru	335.9	285.2	1,261.8	1,317.1	4.4
Suriname	6.8	21.9	170.0	38.2	-77.5
Uruguay	3.7	4.6	14.7	21.4	45.2
Venezuela	48.4	102.7	148.9	209.5	40.7
Total	1,302.0	1,093.3	4,541.5	4,832.3	6.4
Central America Antilles					
Anguilla	0.0	0.0	0.1	0.1	-43.3
Antigua and Barbuda	0.1	0.2	0.2	0.5	266.2
Aruba	0.0	0.0	5.5	0.0	-100.0
Bahamas	0.2	2.1	2.9	6.6	128.3
Barbados	0.3	0.7	1.9	3.2	64.0
Belize	0.3	0.2	2.4	1.6	-35.8
Bermuda	0.1	0.1	0.2	0.5	142.7
British Virgin Islands	0.1	0.1	0.2	0.2	60.5
Cayman Islands	0.0	0.3	0.1	0.3	189.4
Costa Rica	62.5	39.8	177.2	167.6	-5.4
Cuba	70.5	47.8	263.3	193.4	-26.6
Dominica	0.0	0.0	0.1	0.1	-28.5
Dominican Republic	10.6	13.4	46.4	53.0	14.3
El Salvador	7.0	17.0	75.1	45.8	-39.1
Grenada	0.2	0.4	0.4	0.8	123.3
Guatemala	87.1	58.5	194.5	166.4	-14.5
Haiti	2.4	2.5	9.0	9.9	10.3
Honduras	18.4	23.8	70.2	83.8	19.4
Jamaica	31.4	15.5	73.1	53.7	-26.5
Montserrat	0.0	0.0	0.1	0.1	20.3
Netherlands Antilles	0.0	0.0	0.1	0.1	28.4
Nicaragua	27.0	27.2	118.9	121.3	2.0
Panama	9.7	9.5	31.3	34.9	11.3
Saint Kitts and Nevis	0.6	0.7	2.4	2.7	11.5
Saint Lucia	0.0	0.0	0.1	0.1	7.8
Saint Vincent and the Grenadines	0.0	0.0	0.1	0.1	-49.0
Trinidad and Tobago	22.4	33.6	138.3	131.0	-5.2
Turks and Caicos Islands	0.0	0.0	0.0	0.2	226.1
Total	350.9	293.5	1,214.2	1,077.9	-11.2
All countries	36,023.1	38,308.1	140,742.6	151,645.6	7.7

**Table 9-1
Imports by province of clearance, customs basis, not seasonally adjusted — April**

	Agricultural and fishing products	Energy products	Forestry products	Industrial goods	Machinery and equipment	Automotive products	Consumer goods	Special transactions trade	Total
millions of dollars									
Newfoundland and Labrador									
2011	1.5	339.0	0.0	17.3	30.9	0.1	6.8	0.0	395.7
2012	3.8	468.1	0.0	14.8	29.6	0.1	0.9	0.0	517.3
Prince Edward Island									
2011	0.6	0.0	0.0	0.0	0.1	0.0	0.0	0.0	0.7
2012	0.8	0.0	0.0	0.1	0.0	0.0	0.0	0.0	1.0
Nova Scotia									
2011	56.6	246.8	1.3	107.4	73.4	207.7	17.9	12.0	723.1
2012	43.6	194.3	1.1	76.0	101.7	301.5	18.9	4.4	741.4
New Brunswick									
2011	33.2	832.3	9.1	123.1	80.7	34.9	14.0	2.3	1,129.5
2012	34.0	740.3	8.3	119.7	77.0	42.9	33.6	1.8	1,057.5
Quebec									
2011	451.0	1,311.4	46.5	1,471.5	1,399.8	193.1	749.6	44.5	5,667.3
2012	408.6	1,503.8	53.7	1,369.1	1,720.2	235.8	754.7	54.6	6,100.5
Ontario									
2011	1,379.3	1,081.6	75.8	4,607.4	5,674.0	4,739.2	2,955.5	341.0	20,853.8
2012	1,488.4	415.5	83.5	4,594.0	5,682.2	5,824.2	3,005.1	507.1	21,600.0
Manitoba									
2011	83.9	41.1	9.2	353.3	582.4	118.9	120.7	7.4	1,317.0
2012	95.4	58.6	11.5	467.4	655.0	183.5	143.1	9.2	1,623.7
Saskatchewan									
2011	34.5	82.7	1.4	284.6	368.8	104.6	21.6	1.4	899.6
2012	39.6	78.8	2.3	255.8	419.6	129.0	24.7	3.7	953.6
Alberta									
2011	162.8	206.7	9.2	489.4	681.1	111.3	109.3	13.0	1,782.9
2012	168.5	493.5	9.2	546.7	736.6	137.6	139.8	15.3	2,247.3
British Columbia									
2011	390.8	451.5	50.8	640.1	991.4	219.7	482.2	13.8	3,240.3
2012	420.5	248.7	50.9	767.3	1,118.9	334.6	491.0	17.3	3,449.2
Yukon, Northwest Territories and Nunavut									
2011	3.4	0.4	0.0	0.4	8.7	0.2	0.1	0.0	13.0
2012	2.6	0.4	0.0	0.5	12.9	0.1	0.1	0.0	16.6
Total									
2011	2,597.5	4,593.5	203.5	8,094.5	9,891.4	5,729.6	4,477.6	435.4	36,023.1
2012	2,705.9	4,201.9	220.5	8,211.4	10,553.7	7,189.4	4,612.0	613.3	38,308.1

Table 9-2
Imports by province of clearance, customs basis, not seasonally adjusted — Year to date, January to April

	Agricultural and fishing products	Energy products	Forestry products	Industrial goods	Machinery and equipment	Automotive products	Consumer goods	Special transactions trade	Total
millions of dollars									
Newfoundland and Labrador									
2011	7.7	1,388.9	0.0	33.3	220.7	0.4	8.5	0.2	1,659.8
2012	21.3	1,654.8	0.0	34.8	51.6	0.3	9.3	1.8	1,773.9
Prince Edward Island									
2011	1.3	0.0	0.0	0.2	0.2	0.0	0.1	0.1	1.9
2012	1.3	0.0	0.0	0.2	0.6	0.0	0.1	0.1	2.4
Nova Scotia									
2011	197.9	723.6	4.9	473.5	399.4	932.8	59.1	14.7	2,805.9
2012	158.7	694.2	4.4	319.1	380.8	935.4	73.2	11.5	2,577.3
New Brunswick									
2011	139.6	3,341.4	38.2	417.9	268.6	123.2	81.0	5.9	4,415.9
2012	137.3	2,950.4	37.7	445.2	336.7	138.4	76.6	5.6	4,127.9
Quebec									
2011	1,711.7	6,324.0	217.4	5,621.6	5,845.2	734.9	3,277.6	150.7	23,883.1
2012	1,613.2	6,014.9	238.5	5,217.8	6,660.2	946.6	3,186.7	198.8	24,076.7
Ontario									
2011	5,413.3	2,676.6	294.5	17,380.7	22,159.6	19,698.3	11,767.4	1,259.5	80,649.8
2012	5,968.9	2,358.0	308.8	18,833.5	22,949.3	22,058.7	12,272.0	1,563.7	86,312.7
Manitoba									
2011	318.4	205.6	29.9	1,298.4	2,066.3	476.7	495.4	27.0	4,917.8
2012	363.5	216.3	43.8	1,787.7	2,572.1	638.3	586.8	34.5	6,243.0
Saskatchewan									
2011	135.8	231.9	7.0	945.9	1,329.8	391.9	91.4	11.5	3,145.2
2012	146.5	413.0	12.1	996.6	1,648.6	480.5	102.0	7.8	3,807.1
Alberta									
2011	616.3	659.3	38.2	1,904.6	2,935.5	406.1	425.9	37.4	7,023.3
2012	668.9	2,134.1	35.2	2,260.5	3,041.2	531.0	570.4	58.1	9,299.4
British Columbia									
2011	1,531.9	1,256.4	194.1	2,538.6	3,605.0	986.9	2,050.4	51.9	12,215.2
2012	1,611.1	967.1	199.0	2,841.7	4,270.7	1,327.2	2,112.3	68.2	13,397.5
Yukon, Northwest Territories and Nunavut									
2011	5.4	2.9	0.0	0.6	15.4	0.2	0.1	0.0	24.7
2012	3.9	4.1	0.0	1.1	18.3	0.2	0.1	0.0	27.8
Total									
2011	10,079.1	16,810.7	824.3	30,615.5	38,845.8	23,751.3	18,257.0	1,558.9	140,742.6
2012	10,694.6	17,406.7	879.5	32,738.3	41,930.0	27,056.7	18,989.6	1,950.2	151,645.6

Technical notes

The Canadian international merchandise trade statistical program

Introduction

The objective of this text is to provide a general overview of the Canadian International Merchandise Trade Statistical Program, with special reference to concepts and definitions. The text is intended for the general user and simplicity is emphasized.

Conceptual framework

1. Objectives and coverage: The primary objective of the Canadian International Merchandise Trade Statistical Program is to measure the change in the stock of material resources of Canada resulting from the movement of merchandise into or out of the country. Information on imports and exports are inputs into the System of National Accounts, particularly in the balance of payments and gross domestic product, and are used in the formulation of trade and budgetary policies. Governments, importers, exporters, manufacturers and shipping companies use international merchandise trade statistics to:

- monitor import penetration and export performance,
- monitor commodity price and volume changes,
- examine transport implications.

2. Trade statistics (customs basis / balance of payments basis): Merchandise trade statistics are reported and presented on two different bases: customs basis and balance of payment basis.

When goods are imported into or exported from Canada, declarations must be filed with customs, giving such information as description and value of the goods, origin and port of clearance of commodities and mode of transport. Most of this information is required for the purposes of customs administration. Statistics developed from administrative records of customs are commonly referred to as customs-based trade statistics.

Customs-based trade statistics are more accurate at measuring imports than they are at measuring exports. This is the case because customs are typically more vigilant with respect to goods entering the country than they are with goods leaving the country.

Customs-based export statistics may understate or incorrectly portray the destination of exports. Export statistics are understated when the proper documentation is not filed with Customs. Exports are incorrectly portrayed when the country of final destination is inaccurately reported on the customs documentation. This occurs most frequently when goods are routed through an intermediary country before continuing on to their final destination.

Statistics Canada does not have a measure of undercoverage but periodically conducts reconciliation exercises with its major trading partners, excluding the United States.

On January 1, 1990, Canada entered into a memorandum of understanding with the United States concerning the exchange of import data. As a consequence, each administration is using the other's import data to replace its own export data. Canada's international merchandise trade statistics are, therefore, no longer derived exclusively from the administrative records of the Canada Border Services Agency, but from United States Customs records as well.

Customs-based information is adjusted to conform with the National Accounts concepts and definitions. The adjustments to derive balance of payments-based trade data include adjustments related to trade definition, valuation and timing. The principal difference between the two trade concepts is that customs-based merchandise trade statistics cover the physical movement of goods as they are reflected in customs documents while balance of payments-adjusted data are intended to cover all economic transactions that involve merchandise trade between residents and non-residents. The present document describes the concepts and processes pertaining to the customs-based trade statistics only. (For further information on balance of payments-adjusted data, see the publication *Canada's Balance of International Payments*, Statistics Canada (Catalogue no. 67-001-X).

3. System of trade: Canadian trade statistics are compiled according to the general system of trade, as defined by the United Nations Statistical Office. Under this system, imports include all goods that have crossed Canada's territorial boundary, whether for immediate consumption in Canada or for storage in bonded customs warehouses. Domestic exports include goods grown, extracted or manufactured in Canada, including goods of foreign origin that have been materially transformed in Canada. Re-exports are exports of goods of foreign origin that have not been materially transformed in Canada, including foreign goods withdrawn for export from bonded customs warehouses. Total exports are the sum of domestic exports and re-exports. Thus the general trade system, in principal, presents all goods entering the country (imports) and all goods leaving the country (exports). It differs from the special system of trade in the treatment of imported goods into bonded customs warehouses. Under the 'special' system, these goods are counted only if and when they are withdrawn from customs warehouses for home consumption. They are not counted in export statistics unless they have first cleared customs.

Conceptually, under the general system, the statistical frontier coincides with the geographical boundary, while under the 'special' system, it coincides with the customs boundary.

4. Valuation: For customs purposes, imports are recorded at values established according to the provisions of the Customs Act, which, since January 1, 1985, reflects valuation methods based on the General Agreement on Tariffs and Trade (GATT) Valuation Code System. In general, the value for duty of imported goods must be equivalent to the transaction value or the price actually paid.

To determine the transaction value of imported goods, all transportation and associated costs arising in respect of the goods being appraised prior to and at the place of direct shipment to Canada, are to be added to the price of the goods. Therefore, Canadian imports are valued Free on Board (FOB), place of direct shipment to Canada. It excludes freight and insurance costs in bringing the goods to Canada from the point of direct shipment.

Countries other than the United States, exports are, in principal, valued or recorded at the values declared on export documents, which usually reflect the transaction value, i.e., actual selling price or, in the case of a non-arm's length transaction, the transfer price used for company accounting purposes. Canadian exports to overseas countries are valued at F.O.B. port of exit, including domestic freight charges to that point but net of discounts and allowances. As of January, 1990, Canadian exports to the U.S. are valued F.O.B. point of exit from Canada. Prior to 1990, they were valued F.O.B. place of lading net of freight charges, discounts and allowances.

5. Statistical period: The reference period is the calendar month and the calendar year. The closing of the statistical month for imports and Canadian exports to the United States is defined as the last calendar day of the month, based as closely as practicable on the date of clearance from customs.

The closing of the statistical month for exports, to countries other than the United States, is also defined as the last calendar day of the month. Those export documents that are received too late for incorporation in the current month are assigned to the month the transaction took place. If a monthly summary report from a high volume exporter is not received on time, the data are imputed for the current month and revised with the trade value in the following statistical month.

6. Trading partner attribution (country of origin/destination): Exports are attributed to the country, which is the last known destination of the goods at the time of export. Exports to the United States are attributed to the state of destination.

Imports are attributed to their country of origin, that is, the country in which the goods were grown, extracted or manufactured in accordance to the rules of origin administered by the Canada Border Services Agency. Imports from the United States are attributed to the state of origin. Prior to 1988, most imports were attributed to the country of export/consignment, with the exception of imports from Central and South America.

7. Principal trading areas: The 'principal trading areas' are country groupings defined as follows:

United States: includes trade with Puerto Rico and the U.S. Virgin Islands

Japan

European Union (EU): Austria, Belgium, Bulgaria, Cyprus, Czech Republic, Denmark, Estonia, Finland, France, Germany, Greece, Hungary, Ireland, Italy, Latvia, Lithuania, Luxembourg, Malta, Netherlands, Poland, Portugal, Romania, Slovakia, Slovenia, Spain, Sweden and United Kingdom

Other Organisation for Economic Co-operation and Development (OECD): Australia, Canada, Iceland, Mexico, New Zealand, Norway, South Korea, Switzerland, and Turkey. (The EU countries, United States, and Japan are also members of OECD). Effective February 2012, Chile and Israel are included in Other Organisation for Economic Co-operation and Development.

Other countries: all countries and territories other than the United States, Japan, EU and other OECD

8. Legal framework: Import and export statistics with countries other than the United States are derived from information contained in administrative records collected by the Canada Border Services Agency under the Customs Act. Copies of these documents (or information therefrom) are sent to Statistics Canada in accordance with Section 25 of the Statistics Act. It follows that the disclosure of trade statistics is governed by both the Customs Act and the Statistics Act and is subject to the provisions of Section 17(2)(a) of the latter. Disclosure of export statistics to the United States is now governed by a memorandum of understanding that provides for the exchange of detailed import statistics between Canada and the United States.

Contact information

Telephone: 1-800-263-1136 or 613-951-8116

Facsimile: 1-877-287-4369 or 613-951-0581

Internet: *infostats@statcan.gc.ca*