

Catalogue no. 65-001-X

Canadian International Merchandise Trade

February 2012



Statistics
Canada

Statistique
Canada

Canada

How to obtain more information

For information about this product or the wide range of services and data available from Statistics Canada, visit our website at www.statcan.gc.ca, e-mail us at infostats@statcan.gc.ca, or telephone us, Monday to Friday from 8:30 a.m. to 4:30 p.m., at the following numbers:

Statistics Canada's National Contact Centre

Toll-free telephone (Canada and the United States):

| | |
|---|----------------|
| Inquiries line | 1-800-263-1136 |
| National telecommunications device for the hearing impaired | 1-800-363-7629 |
| Fax line | 1-877-287-4369 |

Local or international calls:

| | |
|----------------|----------------|
| Inquiries line | 1-613-951-8116 |
| Fax line | 1-613-951-0581 |

Depository Services Program

| | |
|----------------|----------------|
| Inquiries line | 1-800-635-7943 |
| Fax line | 1-800-565-7757 |

To access this product

This product, Catalogue no. 65-001-X, is available free in electronic format. To obtain a single issue, visit our website at www.statcan.gc.ca and browse by "Key resource" > "Publications."

Standards of service to the public

Statistics Canada is committed to serving its clients in a prompt, reliable and courteous manner. To this end, Statistics Canada has developed *standards of service* that its employees observe. To obtain a copy of these service standards, please contact Statistics Canada toll-free at 1-800-263-1136. The service standards are also published on www.statcan.gc.ca under "About us" > "The agency" > "Providing services to Canadians."

Statistics Canada
International Trade Division

Canadian International Merchandise Trade

February 2012

Published by authority of the Minister responsible for Statistics Canada

© Minister of Industry, 2012

All rights reserved. Use of this publication is governed by the *Statistics Canada Open License Agreement*.

<http://www.statcan.gc.ca/reference/copyright-droit-auteur-eng.htm>

April 2012

Catalogue no. 65-001-X, vol. 66, no. 2

ISSN 1480-8781

Frequency: Monthly

Ottawa

Cette publication est également disponible en français.

Note of appreciation

Canada owes the success of its statistical system to a long-standing partnership between Statistics Canada, the citizens of Canada, its businesses, governments and other institutions. Accurate and timely statistical information could not be produced without their continued cooperation and goodwill.

User information

Symbols

The following standard symbols are used in Statistics Canada publications:

- . not available for any reference period
- .. not available for a specific reference period
- ... not applicable
- 0 true zero or a value rounded to zero
- 0^s value rounded to 0 (zero) where there is a meaningful distinction between true zero and the value that was rounded
- p preliminary
- r revised
- x suppressed to meet the confidentiality requirements of the *Statistics Act*
- E use with caution
- F too unreliable to be published
- * significantly different from reference category ($p < 0.05$)

Note to users

All totals are calculated from full figures and rounded independently; consequently, totals may not equal the sum of their components.

The data is based on commodity groups (sector, subsector and major group).

Table of contents

| | |
|--|-----------|
| Highlights | 5 |
| Analysis | 7 |
| Related products | 11 |
| Statistical tables | |
| 1 Merchandise trade of Canada, balance of payments basis, seasonally adjusted | 15 |
| 1-1 Current dollars | 15 |
| 1-2 Constant dollars, 2002 | 16 |
| 1-3 Price indices (Laspeyres) | 17 |
| 2 Exports by commodity groupings, balance of payments basis, seasonally adjusted | 18 |
| 2-1 Current dollars | 18 |
| 2-2 Constant dollars, 2002 | 20 |
| 3 Domestic exports to selected countries, customs basis, not seasonally adjusted | 22 |
| 3-1 February | 22 |
| 3-2 Year to date, January to February | 23 |
| 4 Domestic exports by country, customs basis, not seasonally adjusted | 24 |
| 5 Exports by province of origin, customs basis, not seasonally adjusted | 28 |
| 5-1 February | 28 |
| 5-2 Year to date, January to February | 29 |
| 6 Imports by commodity groupings, balance of payments basis, seasonally adjusted | 30 |
| 6-1 Current dollars | 30 |
| 6-2 Constant dollars, 2002 | 32 |
| 7 Imports from selected countries, customs basis, not seasonally adjusted | 34 |
| 7-1 February | 34 |
| 7-2 Year to date, January to February | 35 |
| 8 Imports by country, customs basis, not seasonally adjusted | 36 |

Table of contents – continued

| | | |
|-----|--|----|
| 9 | Imports by province of clearance, customs basis, not seasonally adjusted | 40 |
| 9-1 | February | 40 |
| 9-2 | Year to date, January to February | 41 |

Data quality, concepts and methodology

| | | |
|--|-----------------|----|
| | Technical notes | 42 |
|--|-----------------|----|

Highlights

Canada's merchandise exports declined 3.9% and imports edged up 0.2%. As a result, Canada's trade surplus decreased from \$1.9 billion in January to \$292 million in February.

Exports declined to \$39.6 billion, as volumes fell 3.5% in February. After posting several monthly increases, exports of energy products and automotive products were the main contributors to the overall decline.

Imports increased to \$39.3 billion in February as prices rose 1.0%. The gain in imports of energy products was partially offset by a decline in automotive products.

Exports to the United States decreased 3.8% to \$29.3 billion. Lower exports of crude petroleum were the largest contributor to the decline. Imports from the United States edged up 0.4% to \$24.5 billion. Consequently, Canada's trade surplus with the United States decreased from \$6.1 billion in January to \$4.8 billion in February.

Exports to countries other than the United States fell 4.0% to \$10.3 billion. Imports from countries other than the United States declined 0.2% to \$14.9 billion. As a result, Canada's trade deficit with countries other than the United States widened from \$4.1 billion in January to \$4.5 billion in February.

Note to readers

Merchandise trade is one component of Canada's international balance of payments (BOP), which also includes trade in services, investment income, current transfers as well as capital and financial flows.

International merchandise trade data by country are available on both a BOP and a customs basis for the United States, Japan and the United Kingdom. Trade data for all other individual countries are available on a customs basis only. BOP data are derived from customs data by making adjustments for factors such as valuation, coverage, timing and residency. These adjustments are made to conform to the concepts and definitions of the Canadian System of National Accounts.

Data in this release are on a BOP basis, seasonally adjusted and in current dollars. Constant dollars are calculated using the Laspeyres volume formula.

Revisions

In general, merchandise trade data are revised on an ongoing basis for each month of the current year. Current year revisions are reflected in both the customs and balance of payments (BOP) based data.

The previous year's customs data are revised with the release of the January and February reference months as well as on a quarterly basis. The previous two years of customs based data are revised annually and are released in February with the December reference month.

Previous year's BOP based data will be revised with the release of the January, February, March and April 2012 reference months.

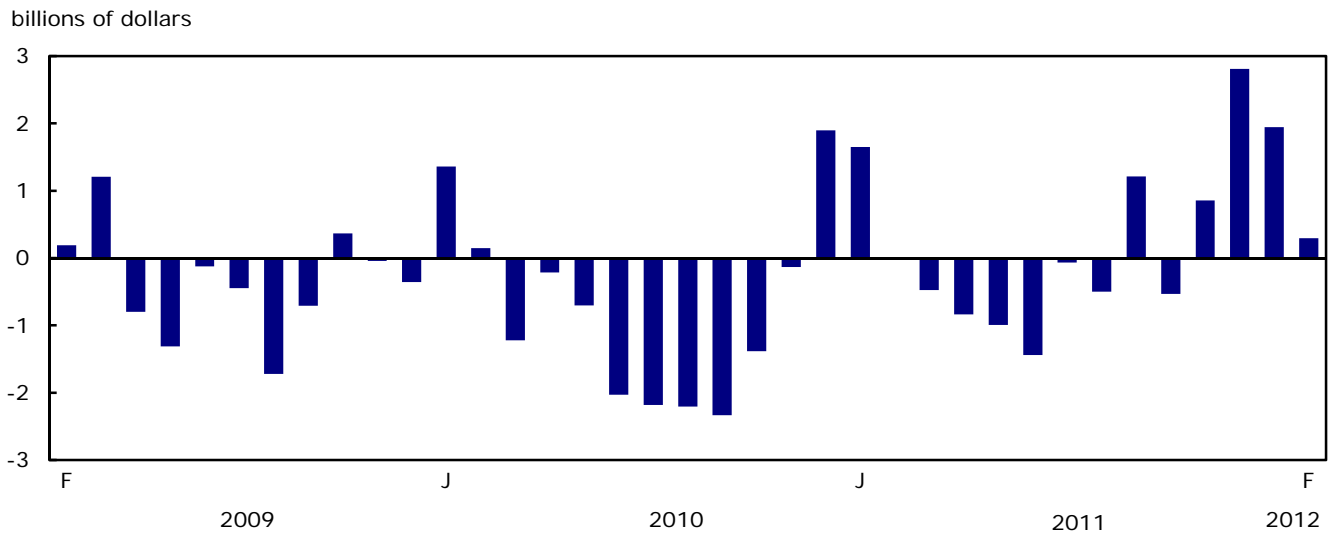
Factors influencing revisions include late receipt of import and export documentation, incorrect information on customs forms, replacement of estimates produced for the energy sector with actual figures, changes in classification of merchandise based on more current information, and changes to seasonal adjustment factors.

Revised data are available in the appropriate CANSIM tables, free of charge.

Chart 1
Exports and imports, seasonally adjusted, on a balance of payments basis



Chart 2
Trade balance, seasonally adjusted, on a balance of payments basis



Analysis

Energy products and automotive products lead the decrease in exports

Following three consecutive monthly increases, exports of energy products fell 6.9% to \$10.7 billion in February. Both volumes and prices were down. Crude petroleum, down 6.4%, and petroleum and coal products were the main contributors to the decline. Coal and other bituminous substances, up 24.7%, recorded the only gain within the sector.

Exports of automotive products declined 11.9% to \$5.4 billion, after five consecutive monthly increases. Volumes fell 11.7%. Exports of passenger autos and chassis, down 18.0%, were the only contributor to the sector's decline.

Exports of agricultural and fishing products decreased 4.7% to \$3.6 billion in February, mainly the result of lower volumes. The decline was led by lower exports of canola, which fell 25.1% after reaching a record high in January.

Exports of industrial goods and materials increased 1.3% to \$9.4 billion, as prices rose 2.4%. Fertilizers and fertilizer materials as well as aluminum including alloys registered the largest gains.

Energy products lead the gain in imports

Imports of energy products rose 18.3% to \$5.0 billion, reaching its highest level since October 2008. Volumes were up 15.1%. Imports of petroleum and coal products increased 39.2% to a record high of \$2.0 billion in February. The gain was largely due to higher imports of pipeline diluents and aviation fuel.

Imports of industrial goods and materials increased 2.1% to \$8.4 billion, as prices were up 3.3%. Imports of metals and metal ores rose 9.6% on the strength of precious metals and alloys.

Imports of automotive products declined 6.2% to \$6.2 billion in February, offsetting the gains recorded in January. Both volumes and prices fell. Imports of motor vehicle parts led the decline, down 9.8%, the result of lower volumes.

Imports of other consumer goods decreased 5.2% to \$4.8 billion, as volumes fell 4.1%. Miscellaneous end products, namely medicinal and pharmaceutical products in dosage, fell 4.9% to \$2.0 billion.

Chart 1
Exports of energy products, seasonally adjusted, on a balance of payments basis

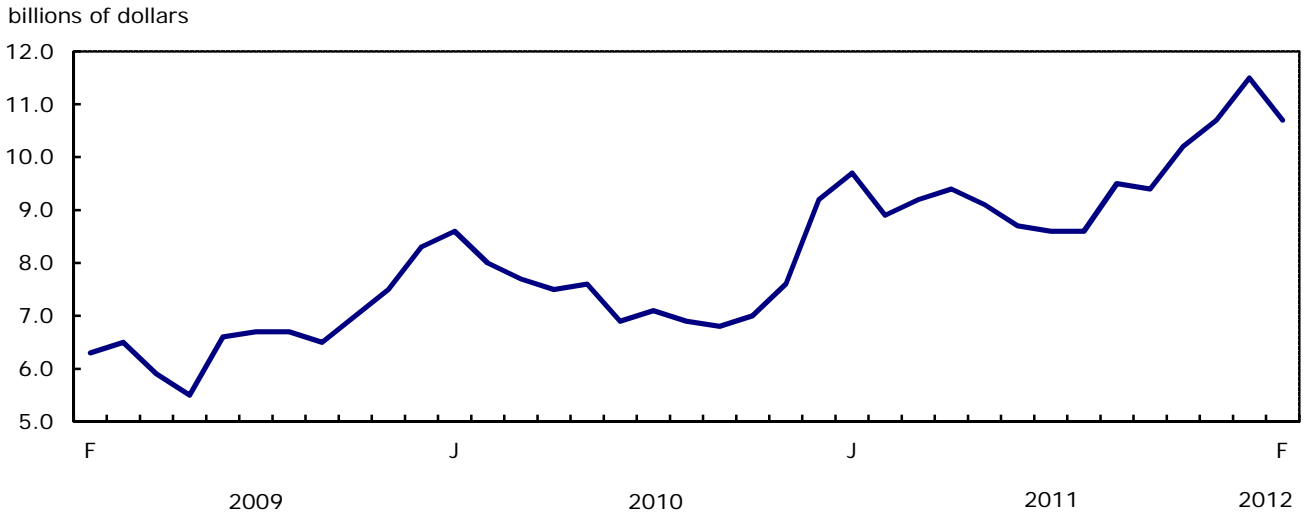


Chart 2
Exports of automotive products, seasonally adjusted, on a balance of payments basis

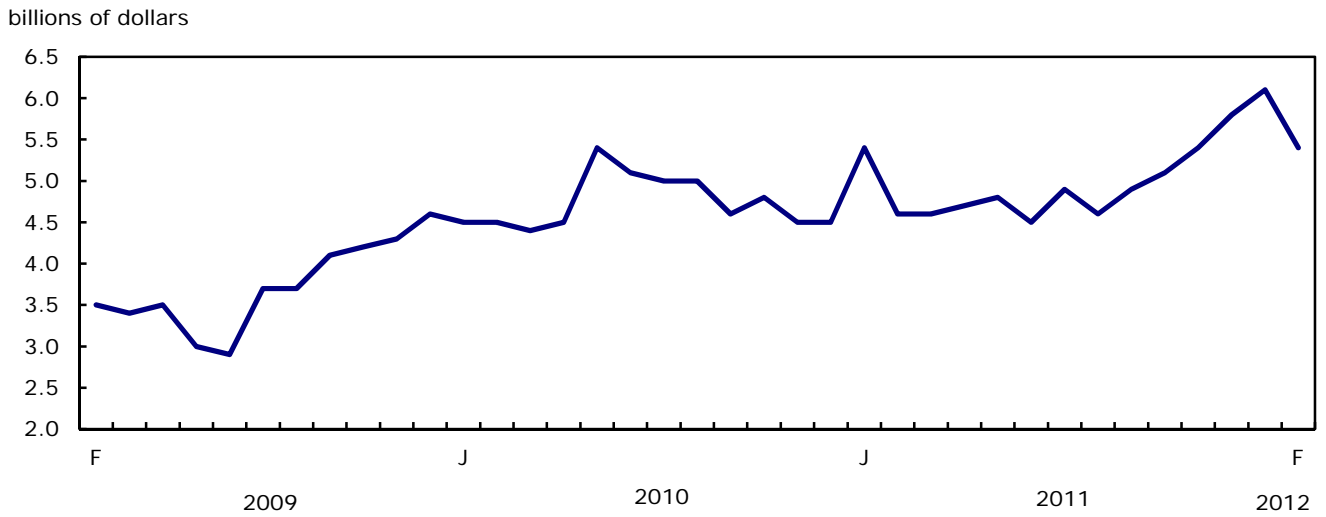


Chart 3
Imports of energy products, seasonally adjusted, on a balance of payments basis

billions of dollars

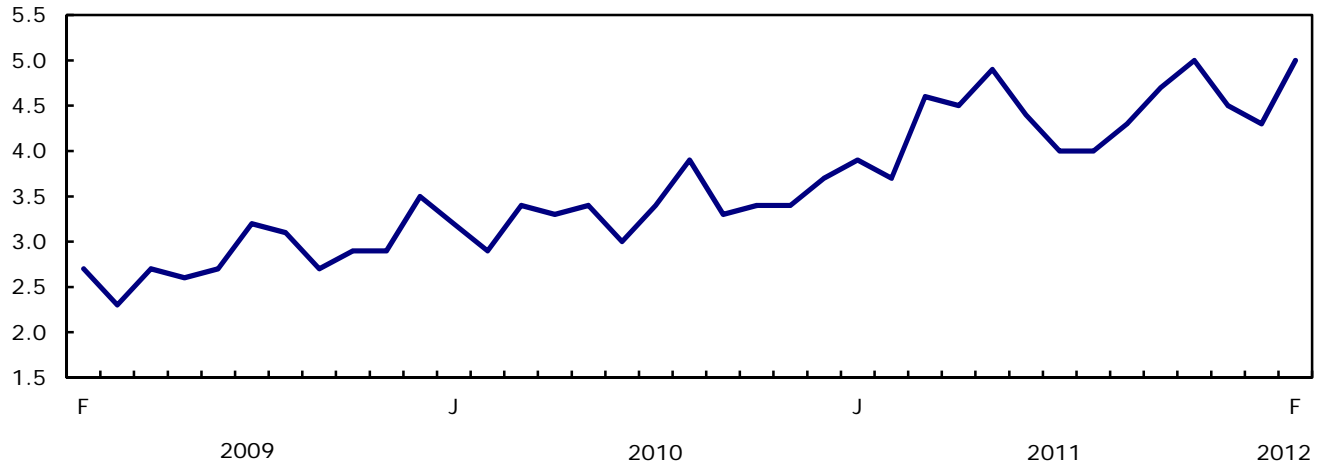
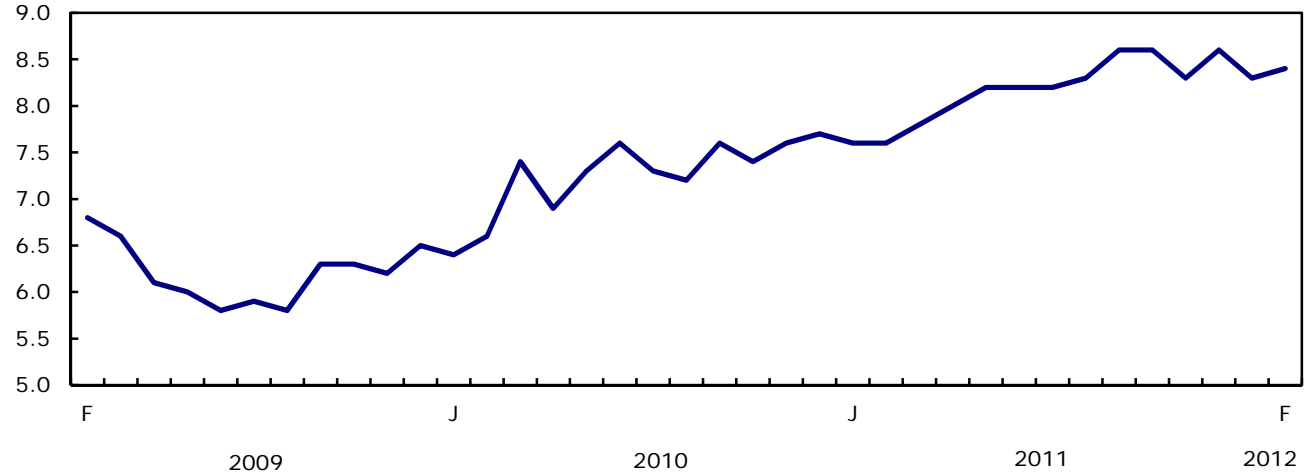


Chart 4
Imports of industrial goods and materials, seasonally adjusted, on a balance of payments basis

billions of dollars



Text table 1
Merchandise trade by principal trading area, balance of payments basis, seasonally adjusted

| | January 2012 | February 2012 | Change | Year to date | | | February 2012/ February 2011 | |
|--|---------------------|------------------|---------------|--------------|---------------------|---------------|---------------------------------|------------|
| | | | | 2011 | 2012 | Change | | |
| | millions of dollars | | percent | | millions of dollars | | percent | |
| Export to | | | | | | | | |
| United States | 30,425 | 29,270 | -1,155 | -3.8 | 54,248 | 59,695 | 5,446 | 10.0 |
| Japan | 761 | 927 | 166 | 21.9 | 1,981 | 1,688 | -294 | -14.8 |
| European Union ¹ | 3,455 | 3,550 | 95 | 2.7 | 6,348 | 7,006 | 658 | 10.4 |
| Other Organisation for Economic Co-operation and Development ² | 1,558 | 1,620 | 62 | 4.0 | 2,985 | 3,179 | 194 | 6.5 |
| Other countries | 4,995 | 4,239 | -757 | -15.1 | 8,260 | 9,234 | 974 | 11.8 |
| Total | 41,195 | 39,606 | -1,588 | -3.9 | 73,823 | 80,801 | 6,978 | 9.5 |
| Imports from | | | | | | | | |
| United States | 24,367 | 24,463 | 96 | 0.4 | 44,620 | 48,830 | 4,211 | 9.4 |
| Japan | 932 | 932 | 0 | 0.0 | 1,684 | 1,863 | 180 | 10.7 |
| European Union ¹ | 3,526 | 3,627 | 101 | 2.9 | 7,270 | 7,154 | -116 | -1.6 |
| Other Organisation for Economic Co-operation and Development ² | 3,036 | 3,040 | 3 | 0.1 | 5,021 | 6,076 | 1,054 | 21.0 |
| Other countries | 7,388 | 7,252 | -136 | -1.8 | 13,600 | 14,640 | 1,040 | 7.6 |
| Total | 39,249 | 39,314 | 65 | 0.2 | 72,194 | 78,563 | 6,369 | 8.8 |
| Balance | | | | | | | | |
| United States | 6,058 | 4,806 | -1,252 | ... | 9,629 | 10,864 | 1,236 | ... |
| Japan | -171 | -5 | 166 | ... | 298 | -176 | -474 | ... |
| European Union ¹ | -71 | -77 | -6 | ... | -922 | -148 | 774 | ... |
| Other Organisation for Economic Co-operation and Development ² | -1,478 | -1,419 | 59 | ... | -2,036 | -2,897 | -861 | ... |
| Other countries | -2,392 | -3,013 | -621 | ... | -5,340 | -5,406 | -66 | ... |
| Total | 1,945 | 292 | -1,653 | ... | 1,629 | 2,238 | 609 | ... |

1. European Union includes: Austria, Belgium, Bulgaria, Cyprus, Czech Republic, Denmark, Estonia, Finland, France, Germany, Greece, Hungary, Ireland, Italy, Latvia, Lithuania, Luxembourg, Malta, Netherlands, Poland, Portugal, Romania, Slovakia, Slovenia, Spain, Sweden and United Kingdom.

2. Other Organisation for Economic Co-operation and Development includes: Australia, Canada, Iceland, Mexico, New Zealand, Norway, South Korea, Switzerland and Turkey. Effective February 2012, Chile and Israel are included in Other Organisation for Economic Co-operation and Development.

Text table 2
Reconciliation of customs and balance of payments trade data, not seasonally adjusted

| | 2012 | | | 2011 | | | 2011 |
|--|---------------------|---------------|---------------|---------------|---------------|---------------|----------------|
| | February | January | December | November | October | September | Annual |
| | millions of dollars | | | | | | |
| Exports | | | | | | | |
| Customs basis | 36,398 | 37,275 | 39,721 | 39,488 | 39,031 | 39,658 | 447,800 |
| Balance of payments adjustments | 1,131 | 930 | 1,487 | 1,513 | 1,167 | 461 | 10,277 |
| Valuation and residency | | | | | | | |
| Inland freight | 578 | 575 | 620 | 626 | 621 | 637 | 7,052 |
| Other valuation and residency | -1,036 | -1,051 | -461 | -241 | -844 | -1,164 | -9,943 |
| Timing | 50 | 46 | 119 | 30 | 48 | 12 | 496 |
| Coverage | 1,539 | 1,360 | 1,209 | 1,098 | 1,342 | 976 | 12,672 |
| Balance of payments basis | 37,529 | 38,205 | 41,208 | 41,001 | 40,198 | 40,119 | 458,077 |
| Imports | | | | | | | |
| Customs basis | 37,070 | 35,758 | 36,487 | 39,200 | 39,940 | 38,552 | 445,954 |
| Balance of payments adjustments | 959 | 881 | 1,128 | 1,457 | 1,077 | 817 | 10,459 |
| Valuation and residency | | | | | | | |
| Inland freight | 779 | 759 | 757 | 812 | 821 | 810 | 9,424 |
| Other valuation and residency | 25 | -22 | 50 | 105 | -31 | -1 | -214 |
| Timing | 0 | 0 | 0 | 0 | 0 | 0 | 0 |
| Coverage | 155 | 144 | 321 | 540 | 287 | 8 | 1,249 |
| Balance of payments basis | 38,029 | 36,639 | 37,615 | 40,657 | 41,017 | 39,369 | 456,413 |

Related products

Selected publications from Statistics Canada

| | |
|----------|--|
| 65-208-X | International Merchandise Trade Annual Review |
| 65-506-X | A Profile of Canadian Exporters |
| 65F0013X | Canadian International Merchandise Trade Database |
| 65F0019X | A Database for Analysis of International Markets |
| 65F0020X | Data Integration - International Trade Data and Manufacturing Shipments Data |

Selected CANSIM tables from Statistics Canada

| | |
|----------|---|
| 228-0001 | Merchandise imports and exports, by major groups and principal trading areas for all countries, monthly |
| 228-0002 | Merchandise imports and exports, by major groups and principal trading areas for all countries, quarterly |
| 228-0003 | Merchandise imports and exports, by major groups and principal trading areas for all countries, annual |
| 228-0033 | Imports, customs-based, by province of clearance, monthly |
| 228-0034 | Domestic exports, customs-based, by province of origin, monthly |
| 228-0041 | Merchandise imports and exports by sector and sub-sector, customs and balance of payments basis, for all countries, monthly |
| 228-0042 | Merchandise imports and exports by sector and sub-sector, customs and balance of payments basis, for all countries, quarterly |
| 228-0043 | Merchandise imports and exports by sector and sub-sector, customs and balance of payments basis, for all countries, annual |
| 228-0047 | Merchandise imports and exports balance of payments and customs-based price and volume indexes for all countries, monthly |
| 228-0048 | Merchandise imports and exports balance of payments and customs-based price and volume indexes for all countries, quarterly |
| 228-0049 | Merchandise imports and exports balance of payments and customs-based price and volume indexes for all countries, annual |

| | |
|----------|---|
| 228-0050 | Merchandise imports and exports customs-based price indexes, Canada and United States trade, and Standard International Trade Classification (SITC revision 3) price indexes for all countries and United States, monthly |
| 228-0051 | Merchandise imports and exports customs-based price indexes, Canada and United States trade, and Standard International Trade Classification (SITC revision 3) price indexes for all countries and United States, quarterly |
| 228-0052 | Merchandise imports and exports customs-based price indexes, Canada and United States trade, and Standard International Trade Classification (SITC revision 3) price indexes for all countries and United States, annual |
| 228-0053 | Merchandise import and export price and volume indexes by sector and sub-sector, customs and balance of payments basis, for all countries, monthly |
| 228-0054 | Merchandise import and export price and volume indexes by sector and sub-sector, customs and balance of payments basis, for all countries, quarterly |
| 228-0055 | Merchandise import and export price and volume indexes by sector and sub-sector, customs and balance of payments basis, for all countries, annual |
| 228-0056 | Merchandise imports and exports by sector, balance of payments basis, for all countries, seasonally adjusted, Fisher formula, monthly |
| 228-0057 | Merchandise imports and exports by sector, balance of payments basis, for all countries, seasonally adjusted, Fisher formula, quarterly |

Selected surveys from Statistics Canada

| | |
|------|--|
| 2201 | Canadian International Merchandise Trade (Customs Basis) |
| 2202 | Canadian International Merchandise Trade (Balance of Payments Basis) |
| 2203 | International Trade Price Indexes |

Selected summary tables from Statistics Canada

- *Canada: Economic and financial data*
- *Imports, exports and trade balance of goods on a balance-of-payments basis, by country or country grouping*
- *Exports of goods on a balance-of-payments basis*

- *Imports of goods on a balance-of-payments basis*
- *Merchandise trade of Canada (monthly)*
- *Economic indicators, by province and territory (monthly and quarterly)*
- *Latest statistics (monthly)*

Statistical tables

Table 1-1
Merchandise trade of Canada, balance of payments basis, seasonally adjusted — Current dollars

| | Exports | Imports | Trade balance | Period to period change | | |
|----------------|---------------------|---------|------------------|-------------------------|---------|---------------------|
| | | | | Exports | Imports | Balance |
| | millions of dollars | | | percent | | millions of dollars |
| 2008 | 488,754 | 443,777 | 44,977 | 0.0 | 0.0 | 0 |
| 2009 | 369,343 | 374,081 | -4,738 | -24.4 | -15.7 | -49,715 |
| 2010 | 404,834 | 413,833 | -8,999 | 9.6 | 10.6 | -4,261 |
| 2011 | 458,077 | 456,413 | 1,664 | ... | 10.3 | 10,663 |
| 2009 | | | | | | |
| First quarter | 95,888 | 95,487 | 400 | -16.7 | -14.9 | -2,399 |
| Second quarter | 88,071 | 90,304 | -2,234 | -8.2 | -5.4 | -2,634 |
| Third quarter | 90,293 | 93,167 | -2,873 | 2.5 | 3.2 | -639 |
| Fourth quarter | 95,092 | 95,123 | -32 | 5.3 | 2.1 | 2,842 |
| 2010 | | | | | | |
| First quarter | 98,870 | 98,583 | 287 | 4.0 | 3.6 | 318 |
| Second quarter | 100,071 | 103,014 | -2,942 | 1.2 | 4.5 | -3,229 |
| Third quarter | 99,592 | 106,312 | -6,720 | -0.5 | 3.2 | -3,778 |
| Fourth quarter | 106,301 | 105,924 | 377 | 6.7 | -0.4 | 7,097 |
| 2011 | | | | | | |
| First quarter | 110,873 | 109,717 | 1,156 | 4.3 | 3.6 | 779 |
| Second quarter | 110,500 | 113,772 | -3,272 | -0.3 | 3.7 | -4,428 |
| Third quarter | 115,222 | 114,574 | 648 | 4.3 | 0.7 | 3,920 |
| Fourth quarter | 121,481 | 118,349 | 3,132 | 5.4 | 3.3 | 2,483 |
| 2011 | | | | | | |
| January | 38,214 | 36,564 | 1,650 | 2.3 | 3.1 | -245 |
| February | 35,609 | 35,630 | -21 | -6.8 | -2.6 | -1,670 |
| March | 37,050 | 37,523 | -473 | 4.0 | 5.3 | -452 |
| April | 36,541 | 37,379 | -837 | -1.4 | -0.4 | -364 |
| May | 37,322 | 38,314 | -993 | 2.1 | 2.5 | -155 |
| June | 36,638 | 38,079 | -1,441 | -1.8 | -0.6 | -449 |
| July | 37,564 | 37,628 | -64 | 2.5 | -1.2 | 1,377 |
| August | 38,049 | 38,550 | -501 | 1.3 | 2.4 | -436 |
| September | 39,609 | 38,396 | 1,213 | 4.1 | -0.4 | 1,714 |
| October | 38,866 | 39,397 | -531 | -1.9 | 2.6 | -1,744 |
| November | 40,237 | 39,382 | 855 | 3.5 | 0.0 | 1,386 |
| December | 42,378 | 39,570 | 2,807 | 5.3 | 0.5 | 1,953 |
| 2012 | | | | | | |
| January | 41,195 | 39,249 | 1,945 | -2.8 | -0.8 | -862 |
| February | 39,606 | 39,314 | 292 | -3.9 | 0.2 | -1,653 |

Note(s): Because of rounding, monthly data may not add up to quarterly data and quarterly data may not add up to annual data.

Table 1-2
Merchandise trade of Canada, balance of payments basis, seasonally adjusted — Constant dollars, 2002

| | Exports | Imports | Trade balance | Period to period change | |
|----------------|---------------------|---------|---------------|-------------------------|---------|
| | | | | Exports | Imports |
| | millions of dollars | | | percent | |
| 2008 | 412,713 | 486,735 | -74,022 | 0.0 | 0.0 |
| 2009 | 346,916 | 407,679 | -60,763 | -15.9 | -16.2 |
| 2010 | 374,143 | 470,401 | -96,259 | 7.8 | 15.4 |
| 2011 | 389,899 | 509,602 | -119,703 | 4.2 | 8.3 |
| 2009 | | | | | |
| First quarter | 87,361 | 98,563 | -11,202 | -9.7 | -13.3 |
| Second quarter | 83,432 | 97,723 | -14,290 | -4.5 | -0.9 |
| Third quarter | 86,976 | 104,165 | -17,189 | 4.2 | 6.6 |
| Fourth quarter | 89,147 | 107,228 | -18,081 | 2.5 | 2.9 |
| 2010 | | | | | |
| First quarter | 90,749 | 111,192 | -20,442 | 1.8 | 3.7 |
| Second quarter | 94,368 | 117,650 | -23,282 | 4.0 | 5.8 |
| Third quarter | 94,074 | 120,900 | -26,826 | -0.3 | 2.8 |
| Fourth quarter | 94,951 | 120,659 | -25,708 | 0.9 | -0.2 |
| 2011 | | | | | |
| First quarter | 96,457 | 124,659 | -28,201 | 1.6 | 3.3 |
| Second quarter | 94,903 | 128,684 | -33,781 | -1.6 | 3.2 |
| Third quarter | 98,216 | 128,111 | -29,895 | 3.5 | -0.4 |
| Fourth quarter | 100,323 | 128,149 | -27,826 | 2.1 | 0.0 |
| 2011 | | | | | |
| January | 33,340 | 41,755 | -8,416 | 2.3 | 3.7 |
| February | 31,106 | 40,598 | -9,492 | -6.7 | -2.8 |
| March | 32,011 | 42,305 | -10,294 | 2.9 | 4.2 |
| April | 31,502 | 42,758 | -11,256 | -1.6 | 1.1 |
| May | 32,080 | 42,669 | -10,589 | 1.8 | -0.2 |
| June | 31,321 | 43,257 | -11,936 | -2.4 | 1.4 |
| July | 32,766 | 42,979 | -10,213 | 4.6 | -0.6 |
| August | 32,701 | 43,214 | -10,513 | -0.2 | 0.5 |
| September | 32,749 | 41,918 | -9,169 | 0.1 | -3.0 |
| October | 32,520 | 42,577 | -10,057 | -0.7 | 1.6 |
| November | 32,945 | 42,468 | -9,523 | 1.3 | -0.3 |
| December | 34,858 | 43,103 | -8,246 | 5.8 | 1.5 |
| 2012 | | | | | |
| January | 34,622 | 43,117 | -8,495 | -0.7 | 0.0 |
| February | 33,412 | 42,741 | -9,328 | -3.5 | -0.9 |

Note(s): Because of rounding, monthly data may not add up to quarterly data and quarterly data may not add up to annual data.

Table 1-3
Merchandise trade of Canada, balance of payments basis, seasonally adjusted — Price indices (Laspeyres)

| | 2002=100 | | | Period to period change | | |
|----------------|---------------------------|---------|----------------|-------------------------|---------|----------------|
| | Exports | Imports | Terms of trade | Exports | Imports | Terms of trade |
| | price indices (Laspeyres) | | | percent | | |
| 2008 | 116.2 | 97.2 | 119.6 | 0.0 | 0.0 | 0.0 |
| 2009 | 105.2 | 96.2 | 109.3 | -9.5 | -1.0 | -8.5 |
| 2010 | 106.8 | 94.1 | 113.4 | 1.5 | -2.2 | 3.7 |
| 2011 | 113.7 | 97.9 | 116.2 | 6.5 | 4.1 | 2.5 |
| 2009 | | | | | | |
| First quarter | 108.8 | 100.8 | 107.9 | -3.9 | -2.8 | -1.1 |
| Second quarter | 104.6 | 96.8 | 108.0 | -3.8 | -4.0 | 0.1 |
| Third quarter | 102.9 | 94.1 | 109.3 | -1.6 | -2.8 | 1.2 |
| Fourth quarter | 105.3 | 93.0 | 113.2 | 2.3 | -1.2 | 3.5 |
| 2010 | | | | | | |
| First quarter | 107.1 | 93.7 | 114.2 | 1.7 | 0.7 | 0.9 |
| Second quarter | 105.7 | 93.6 | 112.9 | -1.3 | -0.1 | -1.2 |
| Third quarter | 106.1 | 94.5 | 112.3 | 0.4 | 0.9 | -0.5 |
| Fourth quarter | 108.2 | 94.6 | 114.4 | 2.0 | 0.1 | 1.9 |
| 2011 | | | | | | |
| First quarter | 111.4 | 95.6 | 116.5 | 3.0 | 1.1 | 1.8 |
| Second quarter | 113.4 | 97.6 | 116.2 | 1.8 | 2.1 | -0.3 |
| Third quarter | 114.2 | 98.2 | 116.3 | 0.7 | 0.6 | 0.2 |
| Fourth quarter | 115.8 | 100.2 | 115.5 | 1.4 | 2.1 | -0.7 |
| 2011 | | | | | | |
| January | 110.9 | 95.6 | 116.1 | 0.2 | 0.2 | 0.0 |
| February | 111.6 | 96.5 | 115.7 | 0.6 | 1.0 | -0.4 |
| March | 112.4 | 96.7 | 116.2 | 0.7 | 0.3 | 0.4 |
| April | 113.3 | 97.0 | 116.8 | 0.8 | 0.3 | 0.5 |
| May | 113.5 | 97.2 | 116.8 | 0.2 | 0.2 | 0.0 |
| June | 113.9 | 98.1 | 116.1 | 0.4 | 0.9 | -0.6 |
| July | 112.2 | 96.0 | 116.9 | -1.5 | -2.2 | 0.7 |
| August | 113.0 | 97.9 | 115.4 | 0.7 | 2.0 | -1.3 |
| September | 115.5 | 99.1 | 116.6 | 2.2 | 1.2 | 1.0 |
| October | 115.5 | 99.8 | 115.8 | 0.1 | 0.7 | -0.7 |
| November | 116.6 | 100.7 | 115.8 | 0.9 | 0.9 | 0.0 |
| December | 115.6 | 100.6 | 114.9 | -0.9 | -0.1 | -0.8 |
| 2012 | | | | | | |
| January | 114.9 | 100.6 | 114.1 | -0.6 | 0.0 | -0.6 |
| February | 113.8 | 99.6 | 114.3 | -0.9 | -1.1 | 0.1 |

Note(s): Because of rounding, monthly data may not add up to quarterly data and quarterly data may not add up to annual data.

Table 2-1
Exports by commodity groupings, balance of payments basis, seasonally adjusted — Current dollars

| | January | February | Change | Year to date | | | February 2012/ February 2011 | | |
|--|---------------------|---------------|---------------|--------------|---------------------|---------------|---------------------------------|-------------|-------------|
| | 2012 | 2012 | | 2011 | 2012 | Change | | | |
| | millions of dollars | | percent | | millions of dollars | | percent | | |
| Total | 41,195 | 39,606 | -1,588 | -3.9 | 73,823 | 80,801 | 6,978 | 9.5 | 11.2 |
| Agricultural and fishing products | 3,766 | 3,590 | -176 | -4.7 | 6,423 | 7,356 | 933 | 14.5 | 10.4 |
| Wheat | 564 | 584 | 20 | 3.6 | 746 | 1,148 | 403 | 54.0 | 59.7 |
| Other agricultural and fishing products | 3,202 | 3,006 | -196 | -6.1 | 5,677 | 6,208 | 530 | 9.3 | 4.2 |
| Live animals | 122 | 118 | -4 | -3.3 | 235 | 240 | 5 | 2.1 | 10.0 |
| Fish and fish preparations | 391 | 367 | -24 | -6.2 | 677 | 758 | 81 | 12.0 | 9.4 |
| Barley | 23 | 60 | 37 | 157.8 | 52 | 84 | 31 | 60.1 | 197.6 |
| Wheat flour | 6 | 6 | 0 | -4.2 | 13 | 12 | -1 | -10.1 | -8.7 |
| Other cereals unmilled | 47 | 35 | -12 | -24.8 | 148 | 82 | -66 | -44.7 | -59.0 |
| Other cereal preparations | 260 | 252 | -8 | -3.0 | 457 | 512 | 55 | 12.1 | 7.6 |
| Meat and meat preparations | 449 | 430 | -19 | -4.2 | 781 | 880 | 99 | 12.7 | 7.3 |
| Alcoholic beverages | 67 | 70 | 2 | 3.6 | 114 | 137 | 23 | 20.0 | 20.6 |
| Other food, feed, beverages and tobacco | 1,008 | 954 | -54 | -5.4 | 1,955 | 1,962 | 7 | 0.3 | -4.0 |
| Rapeseed | 619 | 464 | -155 | -25.1 | 787 | 1,083 | 297 | 37.7 | 11.1 |
| Other crude vegetable products | 209 | 250 | 41 | 19.4 | 459 | 459 | 0 | 0.0 | 10.5 |
| Energy products | 11,494 | 10,698 | -796 | -6.9 | 18,599 | 22,192 | 3,594 | 19.3 | 20.7 |
| Crude petroleum | 8,116 | 7,593 | -523 | -6.4 | 11,529 | 15,709 | 4,180 | 36.3 | 37.4 |
| Natural gas | 735 | 691 | -44 | -6.0 | 2,351 | 1,426 | -925 | -39.3 | -38.3 |
| Other energy products | 2,643 | 2,414 | -228 | -8.6 | 4,719 | 5,057 | 339 | 7.2 | 8.8 |
| Coal and other bituminous substances | 435 | 543 | 107 | 24.7 | 795 | 978 | 183 | 23.1 | 31.0 |
| Petroleum and coal products | 2,073 | 1,744 | -330 | -15.9 | 3,594 | 3,817 | 223 | 6.2 | 5.9 |
| Electricity | 134 | 128 | -6 | -4.7 | 331 | 262 | -68 | -20.6 | -18.5 |
| Forestry products | 1,780 | 1,781 | 1 | 0.1 | 3,659 | 3,561 | -98 | -2.7 | -0.5 |
| Lumber and sawmill products | 721 | 744 | 23 | 3.2 | 1,414 | 1,465 | 51 | 3.6 | 7.0 |
| Other crude wood products | 79 | 73 | -6 | -7.2 | 138 | 152 | 14 | 10.2 | -3.0 |
| Lumber | 441 | 468 | 27 | 6.1 | 912 | 909 | -4 | -0.4 | 5.4 |
| Other wood fabricated materials | 201 | 203 | 2 | 0.9 | 364 | 404 | 40 | 11.1 | 15.5 |
| Wood pulp and other wood products | 500 | 481 | -19 | -3.8 | 1,066 | 981 | -85 | -8.0 | -7.4 |
| Newsprint and other paper and paperboard | 559 | 556 | -3 | -0.5 | 1,179 | 1,115 | -63 | -5.4 | -3.3 |
| Newsprint paper | 274 | 271 | -2 | -0.9 | 596 | 545 | -50 | -8.5 | -5.3 |
| Other paper and paperboard | 285 | 285 | -1 | -0.2 | 583 | 570 | -13 | -2.2 | -1.3 |
| Industrial goods and materials | 9,240 | 9,362 | 122 | 1.3 | 18,263 | 18,602 | 339 | 1.9 | 7.0 |
| Metal ores | 1,412 | 1,356 | -56 | -4.0 | 2,501 | 2,768 | 267 | 10.7 | 14.3 |
| Iron ores, concentrates and scrap | 550 | 557 | 7 | 1.2 | 943 | 1,107 | 164 | 17.4 | 22.0 |
| Copper ores, concentrates and scrap | 165 | 254 | 90 | 54.5 | 515 | 419 | -96 | -18.6 | -5.8 |
| Nickel ores, concentrates and scrap | 269 | 212 | -58 | -21.4 | 489 | 481 | -8 | -1.7 | 0.8 |
| Zinc ores, concentrates and scrap | 19 | 37 | 18 | 95.7 | 18 | 56 | 39 | 217.0 | 798.3 |
| Other ores, concentrates and scrap | 409 | 296 | -113 | -27.7 | 537 | 705 | 168 | 31.3 | 20.5 |
| Chemicals, plastics and fertilizers | 2,748 | 2,804 | 56 | 2.0 | 5,466 | 5,553 | 87 | 1.6 | 1.1 |
| Inorganic chemicals | 431 | 443 | 13 | 2.9 | 896 | 874 | -22 | -2.5 | -4.7 |
| Organic chemicals | 572 | 531 | -41 | -7.2 | 1,098 | 1,103 | 4 | 0.4 | -1.9 |
| Fertilizers and fertilizer materials | 411 | 539 | 128 | 31.2 | 1,152 | 950 | -203 | -17.6 | -9.2 |
| Synthetic rubber and plastics | 994 | 987 | -7 | -0.7 | 1,797 | 1,981 | 184 | 10.2 | 9.1 |
| Other chemical products | 341 | 304 | -37 | -10.7 | 521 | 645 | 125 | 23.9 | 12.9 |
| Metals and alloys | 3,363 | 3,466 | 103 | 3.1 | 7,256 | 6,829 | -427 | -5.9 | 6.0 |
| Primary iron and steel | 29 | 41 | 12 | 41.9 | 102 | 70 | -32 | -31.0 | -17.4 |
| Steel bars, rods, plates, sheets | 334 | 359 | 25 | 7.5 | 559 | 692 | 134 | 23.9 | 37.2 |
| Other iron and steel and alloys | 254 | 260 | 6 | 2.3 | 459 | 514 | 55 | 12.0 | 13.5 |
| Aluminum including alloys | 581 | 642 | 61 | 10.4 | 1,273 | 1,223 | -50 | -4.0 | 0.0 |
| Copper and alloys | 192 | 185 | -6 | -3.3 | 474 | 377 | -97 | -20.4 | -16.5 |
| Nickel and alloys | 246 | 225 | -20 | -8.3 | 660 | 471 | -189 | -28.7 | -33.5 |
| Precious metals and alloys | 1,536 | 1,571 | 35 | 2.3 | 3,288 | 3,106 | -182 | -5.5 | 19.3 |
| Zinc and alloys | 93 | 90 | -3 | -2.8 | 232 | 183 | -49 | -21.1 | -20.5 |
| Other non-ferrous metals and alloys | 99 | 93 | -7 | -6.8 | 209 | 192 | -17 | -8.1 | -5.7 |

Table 2-1 – continued

Exports by commodity groupings, balance of payments basis, seasonally adjusted — Current dollars

| | January | February | Change | | Year to date | | | February 2012/ | |
|--|---------------------|--------------|-------------|--------------|---------------------|---------------|--------------|----------------|-------------|
| | 2012 | 2012 | | | 2011 | 2012 | Change | February 2011 | |
| | millions of dollars | | percent | | millions of dollars | | percent | | |
| Other industrial goods and materials | 1,717 | 1,736 | 19 | 1.1 | 3,040 | 3,453 | 413 | 13.6 | 14.6 |
| Asbestos unmanufactured | 0 | 0 | 0 | 0.0 | 7 | 0 | -7 | -100.0 | -100.0 |
| Other crude animal products | 92 | 102 | 10 | 11.3 | 140 | 194 | 54 | 38.9 | 40.3 |
| Other crude non-metallic minerals | 350 | 349 | -1 | -0.3 | 624 | 700 | 75 | 12.1 | 11.7 |
| Other crude materials, inedible | 69 | 61 | -8 | -12.1 | 125 | 130 | 5 | 3.9 | -1.6 |
| Metal fabricated basic products | 397 | 401 | 4 | 1.1 | 707 | 798 | 92 | 13.0 | 13.1 |
| Textile fabricated materials | 187 | 185 | -2 | -0.8 | 365 | 372 | 8 | 2.1 | 1.9 |
| Non-metallic mineral basic products | 174 | 180 | 5 | 3.1 | 313 | 354 | 41 | 13.2 | 19.1 |
| Other fabricated materials | 447 | 457 | 10 | 2.3 | 761 | 905 | 144 | 19.0 | 21.3 |
| Machinery and equipment | 6,618 | 6,670 | 52 | 0.8 | 12,604 | 13,288 | 684 | 5.4 | 6.4 |
| Industrial and agricultural machinery | 1,811 | 1,840 | 29 | 1.6 | 3,003 | 3,651 | 647 | 21.6 | 21.6 |
| Industrial machinery | 1,618 | 1,643 | 26 | 1.6 | 2,687 | 3,261 | 574 | 21.4 | 21.3 |
| Agricultural machinery includ. tractors | 193 | 196 | 3 | 1.5 | 316 | 389 | 73 | 23.1 | 23.7 |
| Aircraft and other transportation equipment | 1,336 | 1,496 | 160 | 12.0 | 2,920 | 2,831 | -89 | -3.0 | 3.1 |
| Aircraft, engines, parts | 929 | 1,064 | 135 | 14.5 | 2,237 | 1,993 | -244 | -10.9 | -4.7 |
| Other transportation equipment | 406 | 432 | 25 | 6.2 | 683 | 838 | 155 | 22.7 | 29.1 |
| Other machinery and equipment | 3,472 | 3,335 | -137 | -3.9 | 6,681 | 6,807 | 126 | 1.9 | 1.0 |
| Television, telecommunication equipment | 625 | 639 | 13 | 2.1 | 1,258 | 1,264 | 6 | 0.5 | 0.7 |
| Office machines and equipment | 348 | 316 | -32 | -9.1 | 695 | 664 | -30 | -4.3 | -8.1 |
| Other equipment and tools | 1,654 | 1,682 | 28 | 1.7 | 3,016 | 3,336 | 320 | 10.6 | 15.0 |
| Other end products, inedible | 845 | 698 | -147 | -17.4 | 1,713 | 1,542 | -171 | -10.0 | -19.1 |
| Automotive products | 6,109 | 5,383 | -726 | -11.9 | 10,036 | 11,492 | 1,456 | 14.5 | 16.9 |
| Passenger autos and chassis | 4,308 | 3,532 | -775 | -18.0 | 6,830 | 7,840 | 1,010 | 14.8 | 16.3 |
| Trucks and other motor vehicles | 295 | 319 | 25 | 8.3 | 401 | 614 | 214 | 53.3 | 72.6 |
| Motor vehicle parts | 1,507 | 1,531 | 24 | 1.6 | 2,806 | 3,038 | 232 | 8.3 | 10.7 |
| Other consumer goods | 1,333 | 1,240 | -92 | -6.9 | 2,683 | 2,573 | -110 | -4.1 | -5.0 |
| Special transactions trade | 351 | 359 | 8 | 2.3 | 606 | 710 | 104 | 17.2 | 12.8 |
| Unallocated balance of payments adjustments | 503 | 522 | 19 | 3.8 | 950 | 1,025 | 75 | 7.9 | 13.2 |

Table 2-2
Exports by commodity groupings, balance of payments basis, seasonally adjusted — Constant dollars, 2002

| | January | February | Change | | Year to date | | | February 2012/ February 2011 | |
|--|---------------------|---------------|---------------|-------------|---------------------|---------------|--------------|---------------------------------|------------|
| | 2012 | 2012 | | | 2011 | 2012 | Change | | |
| | millions of dollars | | percent | | millions of dollars | | | percent | |
| Total | 34,622 | 33,412 | -1,210 | -3.5 | 64,446 | 68,035 | 3,589 | 5.6 | 7.4 |
| Agricultural and fishing products | 3,305 | 3,166 | -139 | -4.2 | 6,009 | 6,472 | 463 | 7.7 | 6.3 |
| Wheat | 404 | 417 | 13 | 3.3 | 564 | 821 | 257 | 45.6 | 60.9 |
| Other agricultural and fishing products | 2,901 | 2,749 | -152 | -5.2 | 5,445 | 5,651 | 206 | 3.8 | 1.1 |
| Live animals | 106 | 105 | -1 | -0.6 | 227 | 212 | -16 | -6.9 | 4.9 |
| Fish and fish preparations | 489 | 464 | -25 | -5.1 | 797 | 953 | 156 | 19.5 | 17.9 |
| Barley | 17 | 38 | 21 | 127.8 | 39 | 54 | 15 | 38.7 | 149.9 |
| Wheat flour | 5 | 5 | 0 | -3.2 | 11 | 10 | -1 | -10.7 | -6.1 |
| Other cereals unmilled | 41 | 27 | -13 | -32.9 | 109 | 68 | -41 | -37.3 | -55.1 |
| Other cereal preparations | 214 | 211 | -3 | -1.5 | 415 | 426 | 10 | 2.5 | -0.8 |
| Meat and meat preparations | 431 | 422 | -9 | -2.0 | 816 | 854 | 37 | 4.6 | 3.4 |
| Alcoholic beverages | 132 | 145 | 13 | 9.9 | 222 | 276 | 54 | 24.5 | 30.9 |
| Other food, feed, beverages and tobacco | 855 | 807 | -49 | -5.7 | 1,869 | 1,662 | -208 | -11.1 | -13.3 |
| Rapeseed | 454 | 334 | -120 | -26.5 | 581 | 788 | 208 | 35.8 | 9.3 |
| Other crude vegetable products | 157 | 191 | 34 | 21.8 | 358 | 348 | -10 | -2.7 | 8.7 |
| Energy products | 5,388 | 5,135 | -253 | -4.7 | 10,096 | 10,523 | 427 | 4.2 | 5.9 |
| Crude petroleum | 2,897 | 2,778 | -119 | -4.1 | 4,937 | 5,675 | 739 | 15.0 | 14.3 |
| Natural gas | 1,202 | 1,174 | -28 | -2.3 | 2,804 | 2,376 | -428 | -15.3 | -11.4 |
| Other energy products | 1,289 | 1,183 | -107 | -8.3 | 2,356 | 2,472 | 116 | 4.9 | 8.5 |
| Coal and other bituminous substances | 102 | 140 | 38 | 37.2 | 238 | 243 | 5 | 2.0 | 13.2 |
| Petroleum and coal products | 970 | 829 | -141 | -14.6 | 1,732 | 1,799 | 66 | 3.8 | 7.5 |
| Electricity | 217 | 213 | -3 | -1.6 | 386 | 430 | 44 | 11.5 | 9.1 |
| Forestry products | 2,253 | 2,281 | 28 | 1.2 | 4,442 | 4,534 | 92 | 2.1 | 4.3 |
| Lumber and sawmill products | 945 | 985 | 40 | 4.3 | 1,834 | 1,931 | 96 | 5.3 | 8.9 |
| Other crude wood products | 87 | 89 | 2 | 2.2 | 185 | 175 | -10 | -5.4 | -7.8 |
| Lumber | 621 | 660 | 39 | 6.2 | 1,227 | 1,281 | 53 | 4.3 | 9.3 |
| Other wood fabricated materials | 237 | 237 | 0 | -0.1 | 421 | 475 | 53 | 12.6 | 15.7 |
| Wood pulp and other wood products | 688 | 668 | -20 | -2.9 | 1,251 | 1,356 | 106 | 8.4 | 7.2 |
| Newsprint and other paper and paperboard | 620 | 627 | 8 | 1.2 | 1,357 | 1,247 | -110 | -8.1 | -4.9 |
| Newsprint paper | 303 | 307 | 3 | 1.0 | 689 | 610 | -79 | -11.5 | -7.2 |
| Other paper and paperboard | 316 | 321 | 4 | 1.4 | 668 | 637 | -31 | -4.6 | -2.6 |
| Industrial goods and materials | 5,822 | 5,760 | -62 | -1.1 | 11,223 | 11,581 | 358 | 3.2 | 6.7 |
| Metal ores | 679 | 567 | -113 | -16.6 | 1,016 | 1,246 | 230 | 22.6 | 23.2 |
| Iron ores, concentrates and scrap | 188 | 183 | -5 | -2.9 | 362 | 371 | 8 | 2.3 | 11.3 |
| Copper ores, concentrates and scrap | 55 | 81 | 26 | 47.3 | 140 | 135 | -5 | -3.4 | 11.5 |
| Nickel ores, concentrates and scrap | 138 | 101 | -37 | -26.9 | 190 | 239 | 50 | 26.2 | 32.1 |
| Zinc ores, concentrates and scrap | 11 | 21 | 10 | 91.9 | 9 | 33 | 24 | 271.6 | 941.1 |
| Other ores, concentrates and scrap | 287 | 181 | -106 | -37.0 | 316 | 468 | 152 | 48.3 | 24.6 |
| Chemicals, plastics and fertilizers | 1,909 | 1,928 | 19 | 1.0 | 3,745 | 3,837 | 92 | 2.4 | 2.2 |
| Inorganic chemicals | 189 | 195 | 6 | 3.0 | 359 | 383 | 25 | 6.8 | 10.2 |
| Organic chemicals | 306 | 283 | -22 | -7.3 | 574 | 589 | 15 | 2.6 | 1.8 |
| Fertilizers and fertilizer materials | 147 | 206 | 60 | 40.6 | 474 | 353 | -121 | -25.5 | -16.9 |
| Synthetic rubber and plastics | 898 | 904 | 5 | 0.6 | 1,716 | 1,802 | 87 | 5.0 | 5.1 |
| Other chemical products | 369 | 340 | -29 | -8.0 | 623 | 709 | 86 | 13.9 | 5.1 |

Table 2-2 – continued

Exports by commodity groupings, balance of payments basis, seasonally adjusted — Constant dollars, 2002

| | January 2012 | February 2012 | Change | Year to date | | | February 2012/ February 2011 | | |
|--|---------------------|------------------|---------|--------------|---------------------|--------|---------------------------------|--------|--------|
| | | | | 2011 | 2012 | Change | | | |
| | millions of dollars | | percent | | millions of dollars | | percent | | |
| Metals and alloys | 1,807 | 1,863 | 56 | 3.1 | 3,864 | 3,670 | -194 | -5.0 | 4.0 |
| Primary iron and steel | 17 | 25 | 7 | 40.9 | 67 | 42 | -25 | -36.9 | -22.2 |
| Steel bars, rods, plates, sheets | 251 | 270 | 19 | 7.8 | 461 | 521 | 59 | 12.9 | 28.1 |
| Other iron and steel and alloys | 194 | 197 | 2 | 1.2 | 380 | 391 | 11 | 2.9 | 4.7 |
| Aluminum including alloys | 612 | 667 | 54 | 8.9 | 1,214 | 1,279 | 65 | 5.3 | 9.9 |
| Copper and alloys | 59 | 54 | -5 | -8.0 | 126 | 113 | -13 | -10.0 | -5.2 |
| Nickel and alloys | 129 | 115 | -13 | -10.2 | 267 | 244 | -23 | -8.7 | -14.7 |
| Precious metals and alloys | 434 | 432 | -2 | -0.5 | 1,129 | 865 | -264 | -23.4 | -5.6 |
| Zinc and alloys | 59 | 56 | -4 | -6.0 | 127 | 115 | -11 | -8.9 | -7.7 |
| Other non-ferrous metals and alloys | 52 | 48 | -3 | -6.7 | 93 | 100 | 7 | 7.6 | 8.7 |
| Other industrial goods and materials | 1,427 | 1,402 | -25 | -1.8 | 2,598 | 2,829 | 231 | 8.9 | 11.4 |
| Asbestos unmanufactured | 0 | 0 | 0 | 0.0 | 7 | 0 | -7 | -100.0 | -100.0 |
| Other crude animal products | 96 | 98 | 2 | 2.2 | 144 | 194 | 50 | 34.6 | 35.3 |
| Other crude non-metallic minerals | 304 | 276 | -29 | -9.4 | 583 | 580 | -3 | -0.5 | 5.1 |
| Other crude materials, inedible | 63 | 51 | -12 | -19.1 | 110 | 115 | 5 | 4.2 | -4.5 |
| Metal fabricated basic products | 315 | 316 | 1 | 0.4 | 561 | 630 | 70 | 12.5 | 11.9 |
| Textile fabricated materials | 185 | 184 | -1 | -0.4 | 386 | 368 | -17 | -4.5 | -4.9 |
| Non-metallic mineral basic products | 147 | 150 | 3 | 2.1 | 259 | 297 | 38 | 14.6 | 20.0 |
| Other fabricated materials | 317 | 327 | 10 | 3.1 | 548 | 644 | 96 | 17.5 | 22.6 |
| Machinery and equipment | 7,259 | 7,434 | 176 | 2.4 | 14,164 | 14,693 | 529 | 3.7 | 5.2 |
| Industrial and agricultural machinery | 1,671 | 1,699 | 29 | 1.7 | 2,814 | 3,370 | 556 | 19.8 | 19.4 |
| Industrial machinery | 1,495 | 1,521 | 26 | 1.7 | 2,519 | 3,016 | 496 | 19.7 | 19.1 |
| Agricultural machinery includ. tractors | 176 | 178 | 3 | 1.5 | 295 | 354 | 60 | 20.2 | 21.4 |
| Aircraft and other transportation equipment | 1,596 | 1,813 | 216 | 13.6 | 3,625 | 3,409 | -216 | -6.0 | 0.3 |
| Aircraft, engines, parts | 1,206 | 1,400 | 194 | 16.1 | 2,942 | 2,606 | -336 | -11.4 | -5.3 |
| Other transportation equipment | 390 | 413 | 23 | 5.8 | 683 | 803 | 120 | 17.5 | 25.1 |
| Other machinery and equipment | 3,992 | 3,923 | -69 | -1.7 | 7,724 | 7,914 | 190 | 2.5 | 2.3 |
| Television, telecommunication equipment | 784 | 822 | 39 | 4.9 | 1,636 | 1,606 | -29 | -1.8 | 1.2 |
| Office machines and equipment | 974 | 899 | -75 | -7.7 | 1,878 | 1,873 | -6 | -0.3 | -4.2 |
| Other equipment and tools | 1,553 | 1,589 | 36 | 2.3 | 2,851 | 3,142 | 291 | 10.2 | 15.3 |
| Other end products, inedible | 681 | 612 | -69 | -10.2 | 1,359 | 1,294 | -66 | -4.8 | -13.2 |
| Automotive products | 8,208 | 7,250 | -957 | -11.7 | 13,677 | 15,458 | 1,781 | 13.0 | 16.0 |
| Passenger autos and chassis | 6,193 | 5,178 | -1,015 | -16.4 | 10,079 | 11,371 | 1,292 | 12.8 | 15.2 |
| Trucks and other motor vehicles | 372 | 398 | 26 | 7.0 | 489 | 770 | 282 | 57.6 | 77.7 |
| Motor vehicle parts | 1,643 | 1,674 | 31 | 1.9 | 3,110 | 3,317 | 208 | 6.7 | 9.0 |
| Other consumer goods | 1,259 | 1,180 | -79 | -6.3 | 2,595 | 2,439 | -156 | -6.0 | -6.6 |
| Special transactions trade | 288 | 303 | 15 | 5.2 | 519 | 591 | 72 | 13.9 | 10.7 |
| Unallocated balance of payments adjustments | 840 | 903 | 62 | 7.4 | 1,722 | 1,743 | 21 | 1.2 | 7.3 |

Table 3-1
Domestic exports to selected countries, customs basis, not seasonally adjusted — February

| | Agricultural and fishing products | Energy products | Forestry products | Industrial goods | Machinery and equipment | Automotive products | Consumer goods | Special transactions trade | Total |
|---------------------------------------|---|--------------------|----------------------|---------------------|-------------------------------|------------------------|-------------------|----------------------------------|-----------------|
| millions of dollars | | | | | | | | | |
| United States | | | | | | | | | |
| 2011 | 1,330.9 | 7,616.3 | 1,007.6 | 4,599.9 | 2,958.4 | 4,149.4 | 667.6 | 226.5 | 22,556.6 |
| 2012 | 1,563.7 | 8,752.5 | 1,002.5 | 4,866.5 | 3,546.7 | 5,132.3 | 684.5 | 255.3 | 25,803.9 |
| Mexico | | | | | | | | | |
| 2011 | 155.7 | 0.6 | 13.2 | 107.3 | 77.6 | 52.9 | 2.8 | 0.2 | 410.4 |
| 2012 | 117.9 | 20.2 | 11.0 | 134.9 | 53.6 | 63.8 | 13.3 | 0.2 | 414.9 |
| Japan | | | | | | | | | |
| 2011 | 272.5 | 183.4 | 94.6 | 210.3 | 58.3 | 5.6 | 7.5 | 3.4 | 835.4 |
| 2012 | 330.4 | 117.9 | 109.1 | 211.3 | 50.6 | 5.8 | 9.6 | 1.5 | 836.1 |
| European Union | | | | | | | | | |
| Germany | | | | | | | | | |
| 2011 | 10.8 | 12.4 | 4.7 | 79.8 | 100.9 | 2.8 | 14.4 | 1.2 | 226.9 |
| 2012 | 11.2 | 22.3 | 6.5 | 76.8 | 88.5 | 3.5 | 13.9 | 2.4 | 225.2 |
| France | | | | | | | | | |
| 2011 | 7.8 | 0.3 | 7.7 | 45.0 | 107.4 | 2.8 | 14.4 | 0.5 | 185.8 |
| 2012 | 9.3 | 53.5 | 8.6 | 68.3 | 99.5 | 3.2 | 12.8 | 1.1 | 256.3 |
| United Kingdom | | | | | | | | | |
| 2011 | 24.9 | 22.2 | 9.4 | 1,013.7 | 80.5 | 4.6 | 14.4 | 2.1 | 1,171.9 |
| 2012 | 17.8 | 0.7 | 14.9 | 1,427.7 | 88.1 | 4.2 | 12.5 | 5.2 | 1,571.2 |
| Italy | | | | | | | | | |
| 2011 | 16.8 | 23.9 | 22.6 | 27.0 | 26.7 | 0.8 | 6.7 | 0.4 | 124.8 |
| 2012 | 3.6 | 14.7 | 17.1 | 19.9 | 32.0 | 0.7 | 8.9 | 0.1 | 97.0 |
| Other European Union | | | | | | | | | |
| 2011 | 137.8 | 78.5 | 12.5 | 306.3 | 159.9 | 8.8 | 43.5 | 1.6 | 748.8 |
| 2012 | 59.8 | 131.3 | 18.5 | 256.2 | 180.5 | 11.7 | 35.8 | 4.3 | 698.2 |
| Total | | | | | | | | | |
| 2011 | 198.1 | 137.3 | 56.8 | 1,471.8 | 475.4 | 19.7 | 93.3 | 5.8 | 2,458.2 |
| 2012 | 101.7 | 222.5 | 65.6 | 1,848.8 | 488.6 | 23.3 | 83.9 | 13.2 | 2,847.8 |
| Newly industrialized countries | | | | | | | | | |
| South Korea | | | | | | | | | |
| 2011 | 54.0 | 88.6 | 35.9 | 81.8 | 25.4 | 1.1 | 5.7 | 0.6 | 293.0 |
| 2012 | 32.1 | 119.6 | 40.0 | 81.1 | 23.8 | 0.5 | 4.1 | 0.5 | 301.9 |
| Hong Kong | | | | | | | | | |
| 2011 | 29.2 | 0.0 | 7.5 | 253.6 | 40.1 | 0.6 | 7.9 | 0.3 | 339.2 |
| 2012 | 32.1 | 0.0 | 9.6 | 44.6 | 18.9 | 1.5 | 5.5 | 0.1 | 112.4 |
| Taiwan | | | | | | | | | |
| 2011 | 12.2 | 28.5 | 24.0 | 75.0 | 10.7 | 0.1 | 5.5 | 0.1 | 156.2 |
| 2012 | 14.1 | 23.2 | 17.5 | 44.0 | 9.3 | 0.0 | 4.9 | 0.0 | 113.1 |
| Singapore | | | | | | | | | |
| 2011 | 6.2 | 0.3 | 0.4 | 9.5 | 50.5 | 3.4 | 2.9 | 1.1 | 74.3 |
| 2012 | 6.7 | 0.4 | 0.4 | 19.8 | 30.3 | 1.0 | 1.6 | 0.1 | 60.4 |
| Total | | | | | | | | | |
| 2011 | 101.6 | 117.4 | 67.8 | 420.0 | 126.7 | 5.2 | 22.0 | 2.1 | 862.7 |
| 2012 | 85.1 | 143.3 | 67.6 | 189.5 | 82.3 | 3.0 | 16.2 | 0.7 | 587.8 |
| Other countries | | | | | | | | | |
| 2011 | 739.6 | 152.5 | 474.7 | 1,111.9 | 628.8 | 63.5 | 71.9 | 15.5 | 3,258.5 |
| 2012 | 946.5 | 290.8 | 460.3 | 1,146.1 | 725.5 | 87.7 | 83.6 | 17.1 | 3,757.6 |
| Total | | | | | | | | | |
| 2011 | 2,798.5 | 8,207.5 | 1,714.7 | 7,921.1 | 4,325.1 | 4,296.2 | 865.1 | 253.6 | 30,381.8 |
| 2012 | 3,145.2 | 9,547.2 | 1,716.1 | 8,397.2 | 4,947.4 | 5,315.9 | 891.1 | 288.1 | 34,248.2 |

Table 3-2

Domestic exports to selected countries, customs basis, not seasonally adjusted — Year to date, January to February

| | Agricultural and fishing products | Energy products | Forestry products | Industrial goods | Machinery and equipment | Automotive products | Consumer goods | Special transactions trade | Total |
|---------------------------------------|---|--------------------|----------------------|---------------------|-------------------------------|------------------------|-------------------|----------------------------------|-----------------|
| millions of dollars | | | | | | | | | |
| United States | | | | | | | | | |
| 2011 | 2,683.5 | 16,262.3 | 2,075.6 | 9,466.0 | 6,232.4 | 8,294.5 | 1,406.2 | 448.5 | 46,868.9 |
| 2012 | 3,166.1 | 18,689.0 | 2,002.2 | 9,978.0 | 6,914.7 | 9,931.2 | 1,351.4 | 478.6 | 52,511.2 |
| Mexico | | | | | | | | | |
| 2011 | 198.3 | 7.3 | 23.7 | 174.6 | 137.2 | 108.5 | 6.8 | 0.6 | 657.1 |
| 2012 | 285.3 | 22.0 | 20.6 | 223.5 | 106.4 | 125.7 | 17.8 | 0.5 | 801.8 |
| Japan | | | | | | | | | |
| 2011 | 580.2 | 306.5 | 186.9 | 433.1 | 99.8 | 10.2 | 13.3 | 5.1 | 1,635.1 |
| 2012 | 596.6 | 229.0 | 190.9 | 332.9 | 100.0 | 10.1 | 22.9 | 2.7 | 1,485.1 |
| European Union | | | | | | | | | |
| Germany | | | | | | | | | |
| 2011 | 22.6 | 24.0 | 9.4 | 152.6 | 234.5 | 4.5 | 31.4 | 3.8 | 482.7 |
| 2012 | 21.6 | 38.3 | 12.7 | 160.8 | 176.9 | 7.8 | 35.3 | 3.0 | 456.5 |
| France | | | | | | | | | |
| 2011 | 17.0 | 0.6 | 15.4 | 101.0 | 256.8 | 4.3 | 31.4 | 1.3 | 427.8 |
| 2012 | 19.9 | 94.4 | 18.3 | 115.2 | 187.4 | 6.4 | 37.9 | 1.9 | 481.2 |
| United Kingdom | | | | | | | | | |
| 2011 | 51.8 | 34.0 | 18.3 | 2,415.3 | 177.9 | 10.2 | 24.8 | 8.4 | 2,740.8 |
| 2012 | 37.0 | 129.9 | 22.6 | 2,492.0 | 238.6 | 8.5 | 25.6 | 10.3 | 2,964.5 |
| Italy | | | | | | | | | |
| 2011 | 35.8 | 36.7 | 41.4 | 73.0 | 53.9 | 1.1 | 13.0 | 0.5 | 255.5 |
| 2012 | 25.0 | 26.1 | 32.3 | 51.6 | 60.5 | 1.3 | 16.2 | 0.1 | 213.0 |
| Other European Union | | | | | | | | | |
| 2011 | 269.9 | 188.3 | 24.6 | 635.9 | 430.9 | 18.3 | 91.1 | 5.3 | 1,664.4 |
| 2012 | 103.1 | 310.9 | 41.3 | 574.4 | 328.8 | 23.1 | 74.6 | 7.1 | 1,463.3 |
| Total | | | | | | | | | |
| 2011 | 397.1 | 283.6 | 109.2 | 3,377.9 | 1,154.0 | 38.4 | 191.8 | 19.3 | 5,571.3 |
| 2012 | 206.6 | 599.7 | 127.2 | 3,394.0 | 992.0 | 47.1 | 189.5 | 22.4 | 5,578.6 |
| Newly industrialized countries | | | | | | | | | |
| South Korea | | | | | | | | | |
| 2011 | 121.5 | 192.1 | 74.2 | 183.7 | 66.4 | 1.6 | 10.6 | 1.2 | 651.3 |
| 2012 | 56.6 | 224.8 | 70.5 | 173.6 | 48.7 | 1.0 | 7.8 | 1.0 | 583.9 |
| Hong Kong | | | | | | | | | |
| 2011 | 55.5 | 0.1 | 14.4 | 536.6 | 59.5 | 1.1 | 16.0 | 1.4 | 684.6 |
| 2012 | 63.5 | 0.0 | 14.8 | 129.0 | 37.8 | 2.0 | 11.2 | 0.4 | 258.6 |
| Taiwan | | | | | | | | | |
| 2011 | 24.4 | 59.7 | 45.5 | 152.8 | 20.4 | 0.2 | 7.4 | 0.2 | 310.7 |
| 2012 | 30.1 | 48.5 | 34.0 | 84.0 | 14.6 | 0.1 | 6.4 | 0.1 | 217.6 |
| Singapore | | | | | | | | | |
| 2011 | 9.4 | 0.9 | 2.1 | 16.5 | 82.1 | 6.2 | 5.2 | 1.6 | 124.0 |
| 2012 | 11.2 | 0.8 | 1.0 | 43.4 | 53.9 | 4.1 | 4.8 | 0.2 | 119.3 |
| Total | | | | | | | | | |
| 2011 | 210.9 | 252.7 | 136.2 | 889.7 | 228.4 | 9.1 | 39.3 | 4.4 | 1,770.6 |
| 2012 | 161.4 | 274.0 | 120.3 | 430.0 | 154.9 | 7.1 | 30.2 | 1.6 | 1,179.5 |
| Other countries | | | | | | | | | |
| 2011 | 1,398.6 | 460.6 | 946.2 | 2,281.6 | 1,141.4 | 123.8 | 154.2 | 29.8 | 6,536.2 |
| 2012 | 1,851.2 | 534.1 | 926.9 | 2,419.9 | 1,522.4 | 201.2 | 162.7 | 30.4 | 7,648.8 |
| Total | | | | | | | | | |
| 2011 | 5,468.6 | 17,573.1 | 3,477.8 | 16,622.9 | 8,993.2 | 8,584.6 | 1,811.6 | 507.6 | 63,039.4 |
| 2012 | 6,267.3 | 20,347.8 | 3,388.0 | 16,778.3 | 9,790.6 | 10,322.4 | 1,774.5 | 536.3 | 69,205.3 |

Table 4
Domestic exports by country, customs basis, not seasonally adjusted

| | February | | January to February | | Change January to February 2012/ January to February 2011 |
|--|---------------------|-----------------|---------------------|-----------------|---|
| | 2011 | 2012 | 2011 | 2012 | |
| | millions of dollars | | | | percent |
| North America | | | | | |
| Greenland | 0.3 | 0.3 | 1.3 | 1.6 | 18.8 |
| Mexico | 410.4 | 414.9 | 657.1 | 801.8 | 22.0 |
| Saint Pierre and Miquelon | 1.3 | 1.0 | 2.0 | 2.5 | 23.9 |
| United States | 22,556.6 | 25,803.9 | 46,868.9 | 52,511.2 | 12.0 |
| Total | 22,968.5 | 26,220.2 | 47,529.4 | 53,317.1 | 12.2 |
| Western Europe | | | | | |
| Andorra | 0.0 | 0.0 | 0.0 | 0.0 | 204.1 |
| Austria | 32.1 | 11.0 | 42.6 | 38.4 | -10.1 |
| Belgium | 186.6 | 99.3 | 349.4 | 168.9 | -51.7 |
| Denmark | 14.7 | 17.8 | 27.5 | 33.0 | 19.9 |
| Faeroe Islands | 0.0 | 0.0 | 0.1 | 0.2 | 236.9 |
| Finland | 11.9 | 33.7 | 36.3 | 58.0 | 59.8 |
| France | 185.8 | 256.3 | 427.8 | 481.2 | 12.5 |
| Germany | 226.9 | 225.2 | 482.7 | 456.5 | -5.4 |
| Gibraltar | 24.7 | 0.1 | 24.8 | 0.1 | -99.6 |
| Greece | 5.0 | 11.7 | 9.9 | 17.5 | 77.6 |
| Iceland | 3.3 | 7.1 | 6.6 | 10.7 | 61.7 |
| Italy | 124.8 | 97.0 | 255.5 | 213.0 | -16.6 |
| Luxembourg | 24.7 | 7.6 | 25.9 | 16.0 | -38.5 |
| Malta | 0.6 | 1.4 | 1.3 | 2.0 | 51.3 |
| Netherlands | 295.5 | 320.2 | 665.8 | 768.6 | 15.4 |
| Norway | 201.7 | 202.2 | 411.0 | 416.9 | 1.4 |
| Portugal | 52.8 | 6.8 | 63.9 | 16.4 | -74.4 |
| Republic of Ireland (Eire) | 24.7 | 18.9 | 58.5 | 36.7 | -37.2 |
| Spain | 33.8 | 78.7 | 165.1 | 126.7 | -23.2 |
| Sweden | 25.5 | 38.5 | 47.0 | 61.5 | 30.9 |
| Switzerland | 86.0 | 25.2 | 251.7 | 167.5 | -33.5 |
| United Kingdom | 1,171.9 | 1,571.2 | 2,740.8 | 2,964.5 | 8.2 |
| Total | 2,732.9 | 3,029.8 | 6,094.4 | 6,054.4 | -0.7 |
| Other Europe | | | | | |
| Albania | 2.6 | 2.2 | 6.1 | 8.4 | 38.0 |
| Armenia | 1.8 | 1.5 | 3.4 | 1.7 | -49.6 |
| Azerbaijan | 0.5 | 1.7 | 0.8 | 2.6 | 208.8 |
| Belarus | 0.1 | 0.2 | 0.3 | 0.2 | -38.9 |
| Bosnia and Herzegovina | 0.6 | 0.1 | 0.6 | 0.3 | -50.4 |
| Bulgaria | 1.6 | 1.1 | 20.5 | 18.8 | -8.3 |
| Croatia | 0.7 | 0.6 | 1.4 | 1.9 | 36.2 |
| Czech Republic | 7.1 | 8.0 | 13.5 | 14.6 | 8.1 |
| Estonia | 1.4 | 0.6 | 56.3 | 1.3 | -97.6 |
| Georgia | 1.4 | 1.9 | 2.9 | 3.2 | 8.2 |
| Hungary | 6.1 | 8.3 | 12.7 | 14.2 | 12.0 |
| Kazakhstan | 6.6 | 6.7 | 13.5 | 10.0 | -26.2 |
| Kyrgyzstan | 0.3 | 1.4 | 0.4 | 3.3 | 713.1 |
| Latvia | 1.1 | 1.7 | 23.5 | 8.4 | -64.4 |
| Lithuania | 3.3 | 8.1 | 8.8 | 15.7 | 77.7 |
| Macedonia (Former Yugoslav Republic of Macedonia) | 0.6 | 1.6 | 1.6 | 2.0 | 30.7 |
| Montenegro | 0.1 | 0.0 | 0.2 | 0.0 | -74.0 |
| Poland | 12.5 | 12.9 | 22.9 | 28.8 | 25.7 |
| Republic of Moldova | 0.0 | 0.0 | 0.1 | 0.0 | -87.0 |
| Romania | 2.9 | 5.9 | 5.5 | 8.5 | 55.1 |
| Russian Federation | 73.5 | 170.4 | 145.6 | 288.3 | 98.0 |
| Serbia | 0.3 | 0.6 | 0.7 | 1.0 | 51.5 |
| Slovakia | 2.3 | 2.3 | 3.8 | 4.8 | 25.9 |
| Slovenia | 2.0 | 1.0 | 2.3 | 1.5 | -37.7 |
| Tajikistan | 0.4 | 0.3 | 0.4 | 0.4 | -10.2 |
| Turkmenistan | 0.8 | 0.1 | 1.8 | 0.5 | -70.3 |
| Ukraine | 6.6 | 8.6 | 17.5 | 17.2 | -1.7 |
| Uzbekistan | 0.2 | 0.1 | 0.7 | 0.1 | -89.9 |
| Total | 137.4 | 248.1 | 367.7 | 457.6 | 24.4 |

Table 4 – continued

Domestic exports by country, customs basis, not seasonally adjusted

| | February | | January to February | | Change |
|----------------------------------|---------------------|--------------|---------------------|--------------|---|
| | 2011 | 2012 | 2011 | 2012 | February 2012/ January to February 2011 |
| | millions of dollars | | | | percent |
| Middle East | | | | | |
| Bahrain | 1.7 | 6.6 | 3.8 | 11.0 | 191.1 |
| Cyprus | 0.6 | 2.7 | 1.2 | 3.0 | 158.4 |
| Egypt | 9.2 | 37.2 | 73.5 | 47.3 | -35.6 |
| Eritrea | 1.3 | 0.1 | 1.4 | 0.3 | -76.0 |
| Ethiopia | 0.5 | 1.1 | 1.7 | 1.6 | -7.7 |
| Iran | 4.6 | 2.4 | 8.8 | 5.4 | -38.5 |
| Iraq | 4.0 | 2.3 | 6.7 | 56.6 | 739.4 |
| Israel | 28.1 | 17.3 | 55.4 | 38.1 | -31.3 |
| Jordan | 5.9 | 5.8 | 11.4 | 10.0 | -12.6 |
| Kuwait | 10.9 | 7.1 | 19.5 | 12.8 | -34.3 |
| Lebanon | 4.4 | 4.0 | 7.0 | 7.6 | 8.3 |
| Libya | 2.5 | 1.7 | 36.6 | 2.9 | -92.0 |
| Oman | 6.9 | 5.9 | 12.1 | 14.2 | 17.5 |
| Qatar | 3.2 | 7.8 | 6.8 | 46.5 | 581.9 |
| Saudi Arabia | 59.0 | 104.0 | 100.6 | 291.2 | 189.5 |
| Somalia | 0.0 | 0.0 | 0.2 | 0.0 | -100.0 |
| Sudan | 0.9 | 23.7 | 1.4 | 23.8 | ... |
| Syria | 21.4 | 1.6 | 24.8 | 3.3 | -86.7 |
| Turkey | 73.9 | 113.7 | 148.7 | 165.5 | 11.3 |
| United Arab Emirates | 87.9 | 131.4 | 202.9 | 218.5 | 7.7 |
| Yemen | 1.3 | 4.6 | 1.8 | 5.3 | 191.7 |
| Total | 328.2 | 480.8 | 726.2 | 964.9 | 32.9 |
| Other Africa | | | | | |
| Algeria | 10.4 | 5.9 | 17.4 | 8.0 | -54.1 |
| Angola | 4.0 | 7.3 | 8.8 | 11.1 | 26.2 |
| Antarctica | 0.0 | 0.0 | 0.0 | 0.0 | -91.1 |
| Benin | 1.1 | 1.0 | 1.6 | 1.6 | 2.8 |
| Botswana | 0.3 | 0.2 | 0.4 | 0.2 | -52.3 |
| Burkina Faso | 1.6 | 2.4 | 2.1 | 6.3 | 202.2 |
| Burundi | 0.1 | 0.1 | 0.1 | 0.2 | 128.5 |
| Cameroon | 4.5 | 4.2 | 4.9 | 4.7 | -5.1 |
| Cape Verde | 0.0 | 0.0 | 0.7 | 0.1 | -88.9 |
| Central African Republic | 0.0 | 0.0 | 0.0 | 0.0 | -1.3 |
| Chad | 0.3 | 0.2 | 0.4 | 0.3 | -24.9 |
| Comoros | 0.0 | 0.0 | 0.0 | 0.1 | ... |
| Congo | 0.7 | 0.5 | 1.3 | 2.1 | 61.0 |
| Democratic Republic of the Congo | 1.0 | 2.6 | 1.7 | 3.6 | 106.9 |
| Djibouti | 0.0 | 0.3 | 0.2 | 0.3 | 119.7 |
| Equatorial Guinea | 3.4 | 0.4 | 3.8 | 0.9 | -77.3 |
| French Southern Territories | 0.0 | 0.0 | 0.0 | 0.0 | ... |
| Gabon | 1.7 | 1.1 | 4.3 | 2.0 | -53.1 |
| Gambia | 0.1 | 0.1 | 0.1 | 0.1 | -32.4 |
| Ghana | 28.5 | 12.0 | 33.0 | 29.3 | -11.3 |
| Guinea | 4.7 | 1.2 | 5.8 | 3.2 | -44.5 |
| Guinea-Bissau | 0.0 | 0.0 | 0.0 | 0.0 | -100.0 |
| Ivory Coast | 0.1 | 1.2 | 0.7 | 4.1 | 500.6 |
| Kenya | 4.0 | 12.1 | 6.5 | 15.7 | 141.5 |
| Lesotho | 0.0 | 0.0 | 0.0 | 0.0 | -60.3 |
| Liberia | 2.0 | 1.3 | 3.8 | 1.8 | -51.2 |
| Madagascar | 0.9 | 1.7 | 1.4 | 2.6 | 88.3 |
| Malawi | 0.3 | 0.2 | 0.6 | 0.4 | -29.2 |
| Mali | 0.5 | 1.0 | 1.0 | 4.4 | 340.3 |
| Mauritania | 1.0 | 0.5 | 4.3 | 0.8 | -82.4 |
| Mauritius | 1.0 | 0.3 | 1.5 | 0.6 | -61.7 |
| Morocco | 69.7 | 70.2 | 82.9 | 86.5 | 4.4 |
| Mozambique | 0.5 | 7.2 | 1.0 | 13.0 | ... |
| Namibia | 0.6 | 2.9 | 1.2 | 6.1 | 423.1 |
| Niger | 0.3 | 0.5 | 0.6 | 0.8 | 42.6 |
| Nigeria | 10.2 | 31.4 | 16.9 | 42.0 | 148.1 |
| Rwanda | 0.0 | 0.1 | 0.1 | 0.1 | 125.3 |
| Saint Helena | 0.0 | 0.0 | 0.0 | 0.0 | -100.0 |
| Senegal | 6.1 | 0.7 | 6.9 | 3.4 | -50.7 |
| Seychelles | 0.1 | 0.8 | 0.1 | 1.1 | 839.6 |
| Sierra Leone | 0.9 | 1.0 | 1.3 | 1.4 | 9.6 |
| South Africa | 42.8 | 36.2 | 64.6 | 101.3 | 56.8 |

Table 4 – continued

Domestic exports by country, customs basis, not seasonally adjusted

| | February | | January to February | | Change |
|--------------------------------------|---------------------|----------------|---------------------|----------------|--|
| | 2011 | 2012 | 2011 | 2012 | January to February 2012/ January to February 2011 |
| | millions of dollars | | | | percent |
| Swaziland | 0.0 | 0.3 | 0.1 | 0.3 | 169.2 |
| Togo | 0.4 | 2.1 | 0.6 | 3.6 | 552.6 |
| Tunisia | 7.5 | 33.7 | 9.5 | 62.1 | 554.1 |
| Uganda | 0.7 | 0.4 | 1.2 | 0.8 | -33.0 |
| United Republic of Tanzania | 2.9 | 5.9 | 4.8 | 9.2 | 91.8 |
| Zambia | 2.9 | 2.3 | 5.1 | 3.9 | -22.9 |
| Zimbabwe | 0.1 | 1.4 | 0.3 | 1.5 | 478.7 |
| Total | 217.9 | 254.6 | 303.5 | 441.5 | 45.5 |
| Other Asia | | | | | |
| Afghanistan | 9.0 | 1.9 | 11.9 | 4.3 | -64.0 |
| Bangladesh | 62.2 | 45.4 | 78.1 | 137.2 | 75.7 |
| Bhutan | 0.0 | 0.0 | 0.0 | 0.0 | -99.4 |
| Brunei Darussalam | 0.2 | 0.5 | 0.3 | 0.8 | 128.8 |
| Cambodia | 0.3 | 0.4 | 0.8 | 0.8 | -3.0 |
| China | 1,014.8 | 1,263.2 | 1,987.8 | 2,532.1 | 27.4 |
| Hong Kong | 339.2 | 112.4 | 684.6 | 258.6 | -62.2 |
| India | 181.7 | 142.9 | 323.0 | 237.0 | -26.6 |
| Indonesia | 110.3 | 139.0 | 248.5 | 249.0 | 0.2 |
| Japan | 835.4 | 836.1 | 1,635.1 | 1,485.1 | -9.2 |
| Laos | 3.4 | 0.4 | 3.5 | 1.4 | -60.4 |
| Macao | 0.2 | 0.1 | 0.4 | 0.8 | 89.3 |
| Malaysia | 76.7 | 57.2 | 116.5 | 147.0 | 26.2 |
| Maldives | 0.2 | 0.3 | 0.4 | 0.8 | 104.6 |
| Mongolia | 3.3 | 5.8 | 6.6 | 8.4 | 26.4 |
| Myanmar | 0.0 | 0.0 | 0.0 | 0.0 | -100.0 |
| Nepal | 0.3 | 0.1 | 0.4 | 0.1 | -82.6 |
| North Korea | 0.4 | 1.8 | 1.0 | 1.9 | 82.2 |
| Pakistan | 55.7 | 8.8 | 116.4 | 144.7 | 24.3 |
| Philippines | 26.9 | 26.3 | 69.5 | 52.4 | -24.5 |
| Singapore | 74.3 | 60.4 | 124.0 | 119.3 | -3.8 |
| South Korea | 293.0 | 301.9 | 651.3 | 583.9 | -10.3 |
| Sri Lanka | 30.8 | 49.8 | 35.7 | 77.1 | 115.8 |
| Taiwan | 156.2 | 113.1 | 310.7 | 217.6 | -30.0 |
| Thailand | 44.1 | 45.1 | 185.0 | 79.0 | -57.3 |
| Viet Nam | 12.1 | 36.3 | 42.4 | 60.4 | 42.5 |
| Total | 3,330.9 | 3,249.1 | 6,633.9 | 6,399.5 | -3.5 |
| Oceania | | | | | |
| American Samoa | 0.2 | 0.1 | 0.2 | 0.1 | -44.0 |
| Australia | 99.8 | 142.6 | 236.7 | 379.1 | 60.1 |
| Christmas Island | 0.0 | 0.0 | 0.0 | 0.1 | 412.4 |
| Cocos (Keeling) Islands | 0.0 | 0.0 | 0.0 | 0.1 | ... |
| Cook Islands | 0.1 | 0.0 | 0.1 | 0.0 | -100.0 |
| Fiji | 0.2 | 0.2 | 0.2 | 5.5 | ... |
| French Polynesia | 1.1 | 1.5 | 1.5 | 1.7 | 19.4 |
| Guam | 0.1 | 0.1 | 0.5 | 0.2 | -54.0 |
| Heard Island and McDonald Islands | 0.0 | 0.0 | 0.0 | 0.0 | ... |
| Kiribati | 0.0 | 0.0 | 0.1 | 0.0 | -100.0 |
| New Caledonia | 0.3 | 0.5 | 1.1 | 6.6 | 505.2 |
| New Zealand | 24.5 | 47.5 | 48.7 | 71.4 | 46.6 |
| Niue | 0.0 | 0.0 | 0.0 | 0.0 | 182.4 |
| Papua New Guinea | 0.9 | 1.1 | 1.3 | 3.2 | 158.6 |
| Pitcairn | 0.0 | 0.0 | 0.0 | 0.0 | -100.0 |
| Samoa | 0.0 | 0.0 | 0.0 | 0.0 | ... |
| Solomon Islands | 0.0 | 0.0 | 0.0 | 0.1 | ... |
| Tonga | 0.1 | 0.0 | 0.1 | 0.0 | -100.0 |
| United States Minor Outlying Islands | 1.0 | 0.7 | 1.8 | 1.7 | -4.6 |
| Vanuatu | 0.1 | 0.1 | 0.1 | 0.2 | 85.5 |
| Total | 128.3 | 194.5 | 292.3 | 470.1 | 60.8 |
| South America | | | | | |
| Argentina | 16.1 | 18.3 | 99.5 | 37.6 | -62.2 |
| Bolivia | 1.4 | 0.6 | 2.4 | 1.2 | -52.3 |
| Brazil | 169.3 | 213.7 | 325.5 | 356.1 | 9.4 |
| Chile | 57.5 | 44.4 | 110.8 | 132.1 | 19.2 |
| Colombia | 55.4 | 72.5 | 94.9 | 113.8 | 20.0 |
| Ecuador | 21.7 | 19.4 | 48.5 | 30.1 | -38.0 |

Table 4 – continued

Domestic exports by country, customs basis, not seasonally adjusted

| | February | | January to February | | Change |
|----------------------------------|---------------------|-----------------|---------------------|-----------------|---|
| | 2011 | 2012 | 2011 | 2012 | January to February 2012/January to February 2011 |
| | millions of dollars | | | | percent |
| Falkland Islands (Malvinas) | 0.0 | 0.0 | 0.0 | 0.0 | -100.0 |
| Guyana | 4.5 | 1.7 | 6.5 | 2.7 | -59.0 |
| Paraguay | 0.4 | 4.3 | 1.1 | 4.5 | 325.6 |
| Peru | 43.9 | 19.5 | 83.1 | 40.1 | -51.8 |
| Suriname | 0.8 | 1.8 | 1.3 | 2.8 | 112.3 |
| Uruguay | 1.8 | 1.0 | 3.7 | 2.6 | -29.6 |
| Venezuela | 20.7 | 49.1 | 46.8 | 100.2 | 114.0 |
| Total | 393.4 | 446.2 | 824.1 | 823.7 | -0.1 |
| Central America Antilles | | | | | |
| Anguilla | 0.0 | 0.1 | 0.0 | 0.1 | 344.3 |
| Antigua and Barbuda | 0.8 | 0.9 | 1.2 | 3.4 | 198.0 |
| Aruba | 0.3 | 1.4 | 0.4 | 1.6 | 268.9 |
| Bahamas | 1.1 | 2.4 | 24.4 | 4.9 | -80.1 |
| Barbados | 2.8 | 2.6 | 5.3 | 4.7 | -11.1 |
| Belize | 0.3 | 0.8 | 0.5 | 1.3 | 136.9 |
| Bermuda | 1.8 | 1.6 | 3.8 | 2.9 | -21.8 |
| British Virgin Islands | 0.1 | 0.1 | 0.1 | 0.2 | 16.5 |
| Cayman Islands | 0.3 | 0.9 | 0.5 | 1.3 | 163.5 |
| Costa Rica | 13.7 | 15.9 | 20.1 | 23.2 | 15.3 |
| Cuba | 18.6 | 21.6 | 44.0 | 59.5 | 35.0 |
| Dominica | 0.1 | 0.2 | 0.2 | 0.6 | 181.3 |
| Dominican Republic | 17.1 | 13.0 | 30.2 | 20.4 | -32.6 |
| El Salvador | 4.8 | 1.5 | 8.1 | 3.7 | -54.1 |
| Grenada | 0.5 | 0.4 | 0.8 | 0.9 | 7.0 |
| Guatemala | 5.0 | 6.6 | 11.1 | 11.0 | -0.8 |
| Haiti | 3.1 | 1.6 | 4.6 | 3.7 | -18.1 |
| Honduras | 1.5 | 2.5 | 3.4 | 3.6 | 5.5 |
| Jamaica | 7.6 | 11.6 | 14.5 | 20.8 | 43.7 |
| Montserrat | 0.0 | 0.0 | 0.0 | 0.1 | 71.3 |
| Netherlands Antilles | 22.4 | 1.2 | 23.8 | 34.8 | 46.3 |
| Nicaragua | 4.0 | 1.4 | 5.8 | 2.5 | -57.5 |
| Panama | 5.6 | 5.4 | 10.7 | 11.4 | 6.2 |
| Saint Kitts and Nevis | 0.6 | 0.3 | 1.1 | 0.7 | -41.3 |
| Saint Lucia | 1.0 | 0.7 | 1.9 | 1.4 | -25.4 |
| Saint Vincent and the Grenadines | 0.5 | 0.3 | 1.0 | 0.6 | -32.3 |
| Trinidad and Tobago | 30.1 | 29.9 | 49.6 | 57.1 | 15.1 |
| Turks and Caicos Islands | 0.4 | 0.1 | 0.5 | 0.2 | -59.8 |
| Total | 144.2 | 124.9 | 267.7 | 276.4 | 3.3 |
| All countries | 30,381.8 | 34,248.2 | 63,039.4 | 69,205.3 | 9.8 |

Table 5-1
Exports by province of origin, customs basis, not seasonally adjusted — February

| | Agricultural and fishing products | Energy products | Forestry products | Industrial goods | Machinery and equipment | Automotive products | Consumer goods | Special transactions trade | Total |
|--|---|--------------------|----------------------|---------------------|-------------------------------|------------------------|-------------------|----------------------------------|-----------------|
| millions of dollars | | | | | | | | | |
| Domestic exports | | | | | | | | | |
| Newfoundland and Labrador | | | | | | | | | |
| 2011 | 24.8 | 389.7 | 8.0 | 150.4 | 2.9 | 0.1 | 0.1 | 1.5 | 577.4 |
| 2012 | 27.5 | 507.0 | 15.3 | 159.1 | 4.5 | 0.0 | 0.2 | 1.8 | 715.3 |
| Prince Edward Island | | | | | | | | | |
| 2011 | 29.4 | 0.0 | 0.0 | 1.7 | 5.6 | 0.6 | 1.8 | 7.8 | 46.9 |
| 2012 | 32.8 | 0.0 | 0.1 | 4.7 | 16.8 | 0.6 | 2.3 | 9.5 | 66.7 |
| Nova Scotia | | | | | | | | | |
| 2011 | 72.0 | 30.0 | 53.9 | 42.5 | 105.4 | 5.8 | 3.8 | 2.5 | 316.0 |
| 2012 | 76.8 | 11.0 | 34.9 | 48.4 | 115.7 | 7.4 | 4.3 | 3.4 | 302.0 |
| New Brunswick | | | | | | | | | |
| 2011 | 68.1 | 846.2 | 106.1 | 69.4 | 25.1 | 4.6 | 11.8 | 2.7 | 1,133.8 |
| 2012 | 92.4 | 763.1 | 102.9 | 87.5 | 24.4 | 3.5 | 10.2 | 3.2 | 1,087.2 |
| Quebec | | | | | | | | | |
| 2011 | 405.4 | 318.6 | 436.5 | 1,599.4 | 1,221.5 | 129.0 | 259.2 | 52.2 | 4,421.8 |
| 2012 | 431.3 | 276.2 | 403.8 | 1,799.3 | 1,462.0 | 193.5 | 279.0 | 68.9 | 4,914.1 |
| Ontario | | | | | | | | | |
| 2011 | 591.6 | 215.8 | 225.1 | 3,546.3 | 2,228.9 | 4,047.1 | 501.8 | 123.7 | 11,480.2 |
| 2012 | 635.7 | 222.9 | 196.8 | 3,950.5 | 2,430.5 | 4,932.9 | 501.7 | 136.7 | 13,007.7 |
| Manitoba | | | | | | | | | |
| 2011 | 307.6 | 92.8 | 13.8 | 205.5 | 172.4 | 38.5 | 35.3 | 24.6 | 890.5 |
| 2012 | 351.3 | 108.0 | 21.4 | 198.7 | 197.0 | 49.3 | 23.0 | 16.2 | 964.9 |
| Saskatchewan | | | | | | | | | |
| 2011 | 638.8 | 699.6 | 17.5 | 729.8 | 49.7 | 4.9 | 1.7 | 3.2 | 2,145.4 |
| 2012 | 729.0 | 1,125.0 | 31.4 | 661.2 | 66.2 | 4.0 | 1.7 | 3.8 | 2,622.4 |
| Alberta | | | | | | | | | |
| 2011 | 515.3 | 4,953.4 | 145.3 | 877.9 | 268.5 | 44.2 | 8.6 | 17.7 | 6,830.9 |
| 2012 | 610.1 | 5,788.2 | 164.7 | 919.0 | 361.0 | 97.9 | 9.0 | 22.1 | 7,971.9 |
| British Columbia | | | | | | | | | |
| 2011 | 145.1 | 661.6 | 708.5 | 527.4 | 244.8 | 21.4 | 41.0 | 17.7 | 2,367.5 |
| 2012 | 158.3 | 745.7 | 744.8 | 551.8 | 268.2 | 26.6 | 59.2 | 22.5 | 2,577.1 |
| Yukon, Northwest Territories and Nunavut ¹ | | | | | | | | | |
| 2011 | 0.2 | 0.0 | 0.0 | 170.8 | 0.3 | 0.0 | 0.0 | 0.0 | 171.4 |
| 2012 | 0.0 | 0.0 | 0.0 | 17.0 | 1.1 | 0.1 | 0.5 | 0.0 | 18.7 |
| Total | | | | | | | | | |
| 2011 | 2,798.5 | 8,207.5 | 1,714.7 | 7,921.1 | 4,325.1 | 4,296.2 | 865.1 | 253.6 | 30,381.8 |
| 2012 | 3,145.2 | 9,547.2 | 1,716.1 | 8,397.2 | 4,947.4 | 5,315.9 | 891.1 | 288.1 | 34,248.2 |
| Re-exports | | | | | | | | | |
| 2011 | 45.2 | 6.0 | 6.1 | 318.4 | 824.7 | 87.6 | 213.3 | 560.8 | 2,062.0 |
| 2012 | 50.3 | 30.4 | 5.9 | 281.8 | 816.3 | 104.8 | 190.3 | 670.1 | 2,149.9 |
| Total exports | | | | | | | | | |
| 2011 | 2,843.7 | 8,213.5 | 1,720.8 | 8,239.5 | 5,149.8 | 4,383.8 | 1,078.4 | 814.4 | 32,443.8 |
| 2012 | 3,195.5 | 9,577.6 | 1,722.0 | 8,679.1 | 5,763.7 | 5,420.7 | 1,081.4 | 958.1 | 36,398.1 |

1. Data for the current month do not include some exports from the Harmonized System, Chapter 71, "Natural/cultured pearls, precious stones and metals, coins, etc." for reasons relating to timing.

Table 5-2
Exports by province of origin, customs basis, not seasonally adjusted — Year to date, January to February

| | Agricultural and fishing products | Energy products | Forestry products | Industrial goods | Machinery and equipment | Automotive products | Consumer goods | Special transactions trade | Total |
|--|---|--------------------|----------------------|---------------------|-------------------------------|------------------------|-------------------|----------------------------------|-----------------|
| millions of dollars | | | | | | | | | |
| Domestic exports | | | | | | | | | |
| Newfoundland and Labrador | | | | | | | | | |
| 2011 | 45.7 | 1,144.2 | 18.8 | 259.3 | 6.3 | 0.2 | 0.2 | 3.4 | 1,478.1 |
| 2012 | 53.8 | 1,422.1 | 28.2 | 282.9 | 8.6 | 0.4 | 0.2 | 3.6 | 1,799.7 |
| Prince Edward Island | | | | | | | | | |
| 2011 | 63.1 | 0.0 | 0.1 | 3.1 | 11.3 | 0.7 | 4.5 | 11.1 | 94.1 |
| 2012 | 67.9 | 0.0 | 0.1 | 6.7 | 29.8 | 1.2 | 5.9 | 16.5 | 128.0 |
| Nova Scotia | | | | | | | | | |
| 2011 | 140.6 | 123.0 | 110.3 | 83.7 | 207.6 | 11.5 | 8.5 | 5.5 | 690.8 |
| 2012 | 153.2 | 23.2 | 59.7 | 95.6 | 225.7 | 12.8 | 8.3 | 6.2 | 584.7 |
| New Brunswick | | | | | | | | | |
| 2011 | 156.0 | 1,750.2 | 211.1 | 147.4 | 49.2 | 8.9 | 22.7 | 5.9 | 2,351.3 |
| 2012 | 200.1 | 1,624.7 | 208.9 | 144.0 | 47.7 | 8.5 | 20.5 | 6.0 | 2,260.5 |
| Quebec | | | | | | | | | |
| 2011 | 811.7 | 627.3 | 910.1 | 3,333.5 | 2,630.5 | 257.6 | 502.4 | 116.0 | 9,189.2 |
| 2012 | 822.7 | 676.9 | 856.5 | 3,497.2 | 2,860.8 | 357.8 | 558.6 | 132.5 | 9,763.1 |
| Ontario | | | | | | | | | |
| 2011 | 1,167.0 | 463.1 | 454.3 | 7,750.0 | 4,631.9 | 8,079.8 | 1,109.6 | 238.2 | 23,894.1 |
| 2012 | 1,287.7 | 504.4 | 397.3 | 8,152.3 | 4,812.3 | 9,632.4 | 989.2 | 246.6 | 26,022.2 |
| Manitoba | | | | | | | | | |
| 2011 | 577.5 | 139.6 | 32.4 | 408.2 | 343.1 | 73.3 | 59.6 | 44.6 | 1,678.4 |
| 2012 | 702.0 | 208.3 | 41.2 | 444.7 | 392.4 | 92.7 | 68.7 | 38.1 | 1,988.0 |
| Saskatchewan | | | | | | | | | |
| 2011 | 1,200.3 | 1,391.9 | 38.7 | 1,486.0 | 98.9 | 8.8 | 3.2 | 7.1 | 4,235.0 |
| 2012 | 1,411.4 | 2,354.2 | 51.8 | 1,276.0 | 136.9 | 8.0 | 3.5 | 7.2 | 5,248.9 |
| Alberta | | | | | | | | | |
| 2011 | 1,017.8 | 10,607.9 | 301.8 | 1,705.7 | 542.9 | 99.5 | 19.6 | 38.1 | 14,333.2 |
| 2012 | 1,250.1 | 12,165.1 | 317.9 | 1,806.0 | 730.0 | 156.7 | 18.3 | 42.7 | 16,486.8 |
| British Columbia | | | | | | | | | |
| 2011 | 288.6 | 1,325.8 | 1,400.3 | 1,066.3 | 470.9 | 44.1 | 81.1 | 37.5 | 4,714.5 |
| 2012 | 318.2 | 1,368.9 | 1,426.5 | 1,042.0 | 543.6 | 51.7 | 100.7 | 37.0 | 4,888.5 |
| Yukon, Northwest Territories and Nunavut ¹ | | | | | | | | | |
| 2011 | 0.3 | 0.0 | 0.0 | 379.6 | 0.5 | 0.1 | 0.1 | 0.0 | 380.6 |
| 2012 | 0.2 | 0.0 | 0.0 | 31.0 | 2.9 | 0.2 | 0.5 | 0.0 | 34.8 |
| Total | | | | | | | | | |
| 2011 | 5,468.6 | 17,573.1 | 3,477.8 | 16,622.9 | 8,993.2 | 8,584.6 | 1,811.6 | 507.6 | 63,039.4 |
| 2012 | 6,267.3 | 20,347.8 | 3,388.0 | 16,778.3 | 9,790.6 | 10,322.4 | 1,774.5 | 536.3 | 69,205.3 |
| Re-exports | | | | | | | | | |
| 2011 | 106.6 | 41.2 | 11.3 | 698.0 | 1,618.4 | 173.8 | 376.2 | 1,166.3 | 4,191.8 |
| 2012 | 130.8 | 75.6 | 12.5 | 542.1 | 1,746.5 | 206.0 | 395.5 | 1,358.3 | 4,467.4 |
| Total exports | | | | | | | | | |
| 2011 | 5,575.2 | 17,614.3 | 3,489.1 | 17,320.9 | 10,611.6 | 8,758.4 | 2,187.7 | 1,673.9 | 67,231.2 |
| 2012 | 6,398.1 | 20,423.5 | 3,400.5 | 17,320.4 | 11,537.2 | 10,528.5 | 2,169.9 | 1,894.6 | 73,672.7 |

1. Data for the current month do not include some exports from the Harmonized System Chapter 71, "Natural/cultured pearls, precious stones and metals, coins, etc." for reasons relating to timing.

Table 6-1
Imports by commodity groupings, balance of payments basis, seasonally adjusted — Current dollars

| | January | February | Change | | Year to date | | | February 2012/ February 2011 | |
|--|---------------------|---------------|------------|-------------|---------------------|---------------|--------------|---------------------------------|-------------|
| | 2012 | 2012 | | | 2011 | 2012 | Change | | |
| | millions of dollars | | percent | | millions of dollars | | | percent | |
| Total | 39,249 | 39,314 | 65 | 0.2 | 72,194 | 78,563 | 6,369 | 8.8 | 10.3 |
| Agricultural and fishing products | 2,768 | 2,738 | -30 | -1.1 | 5,230 | 5,505 | 275 | 5.3 | 4.3 |
| Fruits and vegetables | 755 | 727 | -28 | -3.6 | 1,477 | 1,482 | 6 | 0.4 | -3.1 |
| Fresh fruits and berries | 261 | 253 | -9 | -3.4 | 522 | 514 | -8 | -1.6 | -5.1 |
| Dried fruits, fruits and fruit preparations | 133 | 134 | 1 | 0.6 | 254 | 267 | 13 | 5.1 | 7.2 |
| Fresh vegetables | 186 | 168 | -18 | -9.6 | 386 | 354 | -32 | -8.3 | -17.3 |
| Other vegetables and vegetable preparations | 175 | 173 | -2 | -0.9 | 314 | 348 | 33 | 10.7 | 10.7 |
| Other agricultural and fishing products | 2,013 | 2,010 | -3 | -0.1 | 3,754 | 4,023 | 269 | 7.2 | 7.2 |
| Live animals | 18 | 18 | 0 | -1.9 | 36 | 36 | 0 | -0.2 | -6.9 |
| Meat and meat preparations | 228 | 225 | -4 | -1.6 | 381 | 453 | 72 | 18.9 | 15.2 |
| Fish and marine animals | 191 | 185 | -5 | -2.9 | 391 | 376 | -15 | -3.9 | -3.1 |
| Cocoa, coffee, tea and other food preparations | 497 | 478 | -18 | -3.7 | 926 | 975 | 49 | 5.3 | 0.4 |
| Dairy produce, eggs and honey | 52 | 55 | 3 | 5.1 | 97 | 108 | 10 | 10.5 | 17.8 |
| Corn (maize) shelled | 33 | 30 | -3 | -7.9 | 47 | 63 | 16 | 33.6 | 52.5 |
| Other cereals and cereal preparations | 204 | 208 | 4 | 1.9 | 342 | 413 | 71 | 20.7 | 25.8 |
| Sugar and sugar preparations | 168 | 177 | 9 | 5.4 | 329 | 345 | 17 | 5.1 | 11.9 |
| Fodder, feed, excluding unmilled cereal | 119 | 122 | 3 | 2.2 | 232 | 241 | 8 | 3.6 | 9.8 |
| Beverages | 321 | 338 | 17 | 5.2 | 648 | 659 | 11 | 1.7 | 1.7 |
| Tobacco | 30 | 21 | -9 | -30.8 | 49 | 51 | 2 | 3.8 | -11.8 |
| Crude vegetable products | 149 | 152 | 3 | 1.9 | 272 | 301 | 30 | 10.9 | 12.9 |
| Cotton | 1 | 1 | 0 | -37.8 | 3 | 2 | -1 | -26.8 | -50.2 |
| Energy products | 4,268 | 5,047 | 780 | 18.3 | 7,654 | 9,315 | 1,662 | 21.7 | 36.0 |
| Crude petroleum | 2,388 | 2,660 | 272 | 11.4 | 3,902 | 5,048 | 1,146 | 29.4 | 38.3 |
| Other energy products | 1,879 | 2,387 | 508 | 27.0 | 3,751 | 4,267 | 516 | 13.7 | 33.5 |
| Coal and other related products | 407 | 338 | -69 | -17.0 | 849 | 746 | -103 | -12.2 | -19.8 |
| Petroleum and coal products | 1,472 | 2,049 | 577 | 39.2 | 2,902 | 3,521 | 619 | 21.3 | 49.9 |
| Forestry products | 222 | 206 | -16 | -7.2 | 420 | 428 | 8 | 2.0 | -4.1 |
| Forestry products | 222 | 206 | -16 | -7.2 | 420 | 428 | 8 | 2.0 | -4.1 |
| Crude wood products | 30 | 32 | 2 | 5.5 | 65 | 63 | -2 | -3.6 | 1.5 |
| Wood fabricated materials | 192 | 174 | -18 | -9.3 | 355 | 365 | 11 | 3.0 | -5.0 |
| Industrial goods and materials | 8,271 | 8,448 | 177 | 2.1 | 15,186 | 16,719 | 1,533 | 10.1 | 11.7 |
| Metals and metal ores | 3,164 | 3,468 | 304 | 9.6 | 5,912 | 6,633 | 720 | 12.2 | 18.3 |
| Metals in ores, concentrates and scrap | 704 | 701 | -4 | -0.5 | 1,290 | 1,405 | 116 | 9.0 | 6.6 |
| Steel bars, rods, plates, sheets | 650 | 659 | 9 | 1.3 | 1,149 | 1,309 | 159 | 13.9 | 10.9 |
| Other iron and steel products | 458 | 448 | -10 | -2.1 | 765 | 906 | 141 | 18.4 | 9.4 |
| Precious metals including alloys | 984 | 1,263 | 280 | 28.4 | 1,958 | 2,247 | 290 | 14.8 | 41.7 |
| Other non-ferrous metals and alloys | 368 | 397 | 28 | 7.7 | 751 | 765 | 15 | 2.0 | 4.9 |
| Chemicals and plastics | 2,747 | 2,671 | -77 | -2.8 | 4,988 | 5,418 | 430 | 8.6 | 7.8 |
| Organic chemicals | 612 | 591 | -21 | -3.5 | 1,152 | 1,204 | 52 | 4.5 | 2.8 |
| Plastic materials | 961 | 933 | -27 | -2.9 | 1,712 | 1,894 | 182 | 10.6 | 9.2 |
| Other chemicals and related products | 1,174 | 1,146 | -28 | -2.4 | 2,125 | 2,321 | 196 | 9.2 | 9.5 |
| Other industrial goods and materials | 2,359 | 2,309 | -50 | -2.1 | 4,285 | 4,668 | 383 | 8.9 | 7.0 |
| Crude animal products | 42 | 37 | -6 | -13.1 | 60 | 79 | 18 | 29.8 | 1.5 |
| Wool and man-made fibres | 23 | 21 | -2 | -9.3 | 44 | 45 | 1 | 1.6 | -4.9 |
| Crude non-metallic minerals | 61 | 67 | 6 | 10.0 | 133 | 129 | -5 | -3.6 | 5.9 |
| Textile fabricated materials | 227 | 209 | -18 | -8.0 | 408 | 437 | 28 | 7.0 | 0.3 |
| Metal fabricated basic products | 1,003 | 996 | -8 | -0.8 | 1,753 | 1,999 | 246 | 14.0 | 13.1 |
| Rubber fabricated materials | 104 | 102 | -2 | -2.2 | 182 | 207 | 25 | 13.5 | 14.4 |
| Oils, fats, animal and vegetable | 102 | 102 | 1 | 0.6 | 200 | 204 | 4 | 2.2 | -0.2 |
| Non-metallic minerals | 338 | 326 | -12 | -3.4 | 606 | 664 | 58 | 9.6 | 7.0 |
| Other fabricated materials | 458 | 448 | -9 | -2.0 | 898 | 906 | 8 | 0.8 | -0.5 |

Table 6-1 – continued

Imports by commodity groupings, balance of payments basis, seasonally adjusted — Current dollars

| | January 2012 | February 2012 | Change | | Year to date | | | February 2012/ February 2011 | |
|--|---------------------|------------------|-------------|-------------|---------------------|---------------|--------------|---------------------------------|-------------|
| | | | | | 2011 | 2012 | Change | | |
| | millions of dollars | | percent | | millions of dollars | | | percent | |
| Machinery and equipment | 10,689 | 10,466 | -223 | -2.1 | 19,815 | 21,155 | 1,340 | 6.8 | 6.2 |
| Industrial and agricultural machinery | 3,111 | 3,060 | -51 | -1.6 | 5,292 | 6,171 | 879 | 16.6 | 15.5 |
| Engines, turbines and electric motors | 387 | 331 | -56 | -14.5 | 653 | 717 | 64 | 9.9 | -0.7 |
| Drilling mining machinery | 205 | 186 | -19 | -9.4 | 308 | 391 | 83 | 26.8 | 23.3 |
| Excavating machinery | 316 | 301 | -15 | -4.8 | 541 | 618 | 77 | 14.3 | 6.6 |
| Metal working machinery | 175 | 178 | 3 | 1.7 | 344 | 353 | 9 | 2.7 | 4.1 |
| Other industrial machinery | 1,580 | 1,614 | 34 | 2.2 | 2,709 | 3,195 | 485 | 17.9 | 20.0 |
| Agricultural machinery including tractors | 447 | 450 | 3 | 0.6 | 736 | 897 | 161 | 21.8 | 22.9 |
| Aircraft and other transportation equipment | 1,237 | 1,260 | 24 | 1.9 | 2,576 | 2,497 | -79 | -3.1 | 4.9 |
| Aircraft, engines, parts | 732 | 702 | -30 | -4.1 | 1,572 | 1,434 | -138 | -8.8 | 13.4 |
| Other transportation equipment and parts | 504 | 558 | 54 | 10.6 | 1,004 | 1,062 | 58 | 5.8 | -4.2 |
| Office machines and equipment | 1,098 | 1,106 | 9 | 0.8 | 2,212 | 2,204 | -8 | -0.4 | -1.3 |
| Other machinery and equipment | 5,244 | 5,039 | -204 | -3.9 | 9,735 | 10,283 | 548 | 5.6 | 3.1 |
| Other communication and related equipment | 1,870 | 1,780 | -90 | -4.8 | 3,637 | 3,650 | 13 | 0.4 | -4.3 |
| Other equipment and tools | 3,374 | 3,260 | -114 | -3.4 | 6,099 | 6,634 | 535 | 8.8 | 7.7 |
| Automotive products | 6,579 | 6,172 | -407 | -6.2 | 11,769 | 12,750 | 981 | 8.3 | 9.8 |
| Passenger autos and chassis | 2,091 | 1,952 | -138 | -6.6 | 3,806 | 4,043 | 237 | 6.2 | 3.0 |
| Trucks and other motor vehicles | 1,585 | 1,602 | 17 | 1.1 | 2,746 | 3,186 | 440 | 16.0 | 27.2 |
| Motor vehicle parts | 2,903 | 2,617 | -286 | -9.8 | 5,217 | 5,521 | 304 | 5.8 | 6.1 |
| Other consumer goods | 5,061 | 4,800 | -262 | -5.2 | 9,681 | 9,861 | 180 | 1.9 | -1.0 |
| Apparel and footwear | 1,044 | 941 | -104 | -9.9 | 1,979 | 1,985 | 6 | 0.3 | -5.1 |
| Apparel and apparel accessories | 862 | 786 | -75 | -8.8 | 1,637 | 1,648 | 11 | 0.6 | -3.9 |
| Footwear | 183 | 155 | -28 | -15.5 | 342 | 338 | -4 | -1.3 | -10.9 |
| Miscellaneous consumer goods | 4,017 | 3,859 | -158 | -3.9 | 7,702 | 7,876 | 174 | 2.3 | 0.0 |
| Television, radios, phonographs | 139 | 133 | -6 | -4.4 | 258 | 271 | 13 | 5.2 | 3.9 |
| Printed matter | 274 | 267 | -7 | -2.7 | 566 | 541 | -25 | -4.4 | -7.6 |
| Watches, sporting goods and toys | 475 | 497 | 22 | 4.6 | 988 | 972 | -16 | -1.6 | 5.8 |
| House furnishings | 774 | 740 | -35 | -4.5 | 1,423 | 1,514 | 92 | 6.4 | 3.6 |
| Photographic goods | 210 | 183 | -27 | -12.9 | 469 | 393 | -76 | -16.2 | -24.8 |
| Miscellaneous end products | 2,144 | 2,040 | -105 | -4.9 | 3,998 | 4,184 | 186 | 4.6 | 1.3 |
| Special transactions trade | 561 | 587 | 25 | 4.5 | 875 | 1,148 | 274 | 31.3 | 46.6 |
| Unallocated balance of payments adjustments | 830 | 851 | 21 | 2.5 | 1,564 | 1,681 | 117 | 7.5 | 8.7 |

Table 6-2
Imports by commodity groupings, balance of payments basis, seasonally adjusted — Constant dollars, 2002

| | January | February | Change | Year to date | | | February 2012/ February 2011 | | |
|--|---------------------|---------------|-------------|--------------|---------------------|---------------|---------------------------------|------------|-------------|
| | 2012 | 2012 | | 2011 | 2012 | Change | | | |
| | millions of dollars | | percent | | millions of dollars | | percent | | |
| Total | 43,117 | 42,741 | -376 | -0.9 | 82,353 | 85,858 | 3,505 | 4.3 | 5.3 |
| Agricultural and fishing products | 2,687 | 2,750 | 62 | 2.3 | 5,126 | 5,437 | 311 | 6.1 | 8.0 |
| Fruits and vegetables | 764 | 762 | -1 | -0.2 | 1,401 | 1,526 | 125 | 8.9 | 14.2 |
| Fresh fruits and berries | 277 | 266 | -10 | -3.7 | 551 | 543 | -7 | -1.4 | -6.5 |
| Dried fruits, fruits and fruit preparations | 111 | 112 | 1 | 0.9 | 246 | 223 | -22 | -9.1 | -5.9 |
| Fresh vegetables | 224 | 228 | 4 | 1.8 | 302 | 452 | 150 | 49.9 | 100.4 |
| Other vegetables and vegetable preparations | 152 | 156 | 4 | 2.7 | 303 | 307 | 4 | 1.4 | 4.0 |
| Other agricultural and fishing products | 1,923 | 1,987 | 64 | 3.3 | 3,724 | 3,911 | 186 | 5.0 | 5.8 |
| Live animals | 16 | 16 | 0 | 0.5 | 36 | 32 | -3 | -9.3 | -13.6 |
| Meat and meat preparations | 204 | 208 | 4 | 2.0 | 359 | 412 | 54 | 15.0 | 15.2 |
| Fish and marine animals | 211 | 203 | -8 | -3.9 | 523 | 415 | -108 | -20.6 | -19.7 |
| Cocoa, coffee, tea and other food preparations | 536 | 563 | 27 | 5.0 | 940 | 1,099 | 159 | 16.9 | 10.0 |
| Dairy produce, eggs and honey | 50 | 50 | 0 | 0.0 | 97 | 99 | 3 | 2.6 | 10.7 |
| Corn (maize) shelled | 18 | 17 | -1 | -7.2 | 31 | 35 | 4 | 12.9 | 31.6 |
| Other cereals and cereal preparations | 180 | 184 | 5 | 2.8 | 260 | 364 | 104 | 39.9 | 50.0 |
| Sugar and sugar preparations | 147 | 178 | 31 | 21.4 | 326 | 326 | 0 | -0.1 | 13.9 |
| Fodder, feed, excluding unmilled cereal | 103 | 105 | 1 | 1.4 | 196 | 208 | 12 | 6.1 | 11.5 |
| Beverages | 293 | 305 | 12 | 4.2 | 632 | 598 | -34 | -5.3 | -3.9 |
| Tobacco | 34 | 23 | -11 | -31.2 | 59 | 57 | -2 | -3.7 | -19.0 |
| Crude vegetable products | 131 | 134 | 3 | 2.5 | 264 | 265 | 1 | 0.2 | -0.9 |
| Cotton | 1 | 1 | 0 | -34.3 | 3 | 2 | -2 | -47.3 | -64.3 |
| Energy products | 1,845 | 2,123 | 278 | 15.1 | 3,820 | 3,968 | 147 | 3.9 | 14.8 |
| Crude petroleum | 746 | 854 | 108 | 14.5 | 1,512 | 1,601 | 89 | 5.9 | 11.0 |
| Other energy products | 1,098 | 1,269 | 170 | 15.5 | 2,309 | 2,367 | 58 | 2.5 | 17.5 |
| Coal and other related products | 469 | 469 | -1 | -0.1 | 897 | 938 | 42 | 4.6 | 6.1 |
| Petroleum and coal products | 629 | 800 | 171 | 27.2 | 1,412 | 1,429 | 17 | 1.2 | 25.5 |
| Forestry products | 293 | 276 | -17 | -5.7 | 562 | 569 | 7 | 1.2 | -3.7 |
| Forestry products | 293 | 276 | -17 | -5.7 | 562 | 569 | 7 | 1.2 | -3.7 |
| Crude wood products | 43 | 44 | 1 | 3.0 | 93 | 88 | -5 | -5.7 | -4.1 |
| Wood fabricated materials | 250 | 231 | -18 | -7.2 | 469 | 481 | 12 | 2.6 | -3.7 |
| Industrial goods and materials | 6,952 | 6,873 | -79 | -1.1 | 13,322 | 13,825 | 503 | 3.8 | 4.9 |
| Metals and metal ores | 2,120 | 2,055 | -66 | -3.1 | 3,799 | 4,175 | 376 | 9.9 | 14.0 |
| Metals in ores, concentrates and scrap | 352 | 360 | 8 | 2.2 | 633 | 712 | 79 | 12.4 | 12.0 |
| Steel bars, rods, plates, sheets | 491 | 495 | 3 | 0.7 | 967 | 986 | 18 | 1.9 | 1.6 |
| Other iron and steel products | 302 | 292 | -10 | -3.3 | 549 | 593 | 45 | 8.1 | 1.2 |
| Precious metals including alloys | 619 | 527 | -92 | -14.9 | 952 | 1,146 | 195 | 20.4 | 46.0 |
| Other non-ferrous metals and alloys | 357 | 382 | 25 | 7.1 | 699 | 738 | 40 | 5.7 | 10.5 |
| Chemicals and plastics | 2,284 | 2,296 | 12 | 0.5 | 4,625 | 4,580 | -45 | -1.0 | -0.4 |
| Organic chemicals | 380 | 361 | -19 | -4.9 | 759 | 741 | -18 | -2.4 | -3.1 |
| Plastic materials | 924 | 913 | -11 | -1.2 | 1,781 | 1,837 | 56 | 3.2 | 3.1 |
| Other chemicals and related products | 979 | 1,022 | 42 | 4.3 | 2,084 | 2,001 | -83 | -4.0 | -2.4 |
| Other industrial goods and materials | 2,548 | 2,522 | -25 | -1.0 | 4,898 | 5,070 | 172 | 3.5 | 3.2 |
| Crude animal products | 42 | 38 | -4 | -8.7 | 61 | 80 | 19 | 30.6 | 6.8 |
| Wool and man-made fibres | 27 | 25 | -2 | -8.5 | 55 | 52 | -2 | -4.4 | -8.4 |
| Crude non-metallic minerals | 55 | 60 | 5 | 10.0 | 109 | 115 | 6 | 5.3 | 20.2 |
| Textile fabricated materials | 283 | 271 | -11 | -4.0 | 556 | 554 | -2 | -0.4 | -5.6 |
| Metal fabricated basic products | 1,020 | 1,021 | 1 | 0.1 | 1,910 | 2,040 | 130 | 6.8 | 6.9 |
| Rubber fabricated materials | 115 | 113 | -1 | -1.2 | 227 | 228 | 1 | 0.5 | 2.0 |
| Oils, fats, animal and vegetable | 91 | 89 | -2 | -2.3 | 181 | 179 | -2 | -1.0 | -3.6 |
| Non-metallic minerals | 392 | 384 | -8 | -1.9 | 756 | 777 | 21 | 2.7 | 2.7 |
| Other fabricated materials | 524 | 520 | -4 | -0.7 | 1,042 | 1,045 | 2 | 0.2 | 2.1 |

Table 6-2 – continued

Imports by commodity groupings, balance of payments basis, seasonally adjusted — Constant dollars, 2002

| | January 2012 | February 2012 | Change | | Year to date | | | February 2012/ February 2011 | |
|--|---------------------|------------------|-------------|-------------|---------------------|---------------|--------------|---------------------------------|-------------|
| | | | | | 2011 | 2012 | Change | | |
| | millions of dollars | | percent | | millions of dollars | | | percent | |
| Machinery and equipment | 15,780 | 15,641 | -138 | -0.9 | 30,064 | 31,421 | 1,357 | 4.5 | 4.2 |
| Industrial and agricultural machinery | 3,676 | 3,664 | -13 | -0.3 | 6,670 | 7,340 | 670 | 10.0 | 9.5 |
| Engines, turbines and electric motors | 462 | 404 | -58 | -12.5 | 834 | 867 | 32 | 3.9 | -5.4 |
| Drilling mining machinery | 222 | 203 | -19 | -8.5 | 357 | 424 | 68 | 18.9 | 16.1 |
| Excavating machinery | 371 | 355 | -16 | -4.2 | 706 | 726 | 20 | 2.8 | -3.8 |
| Metal working machinery | 217 | 224 | 7 | 3.4 | 453 | 441 | -12 | -2.7 | -0.3 |
| Other industrial machinery | 1,846 | 1,906 | 60 | 3.2 | 3,352 | 3,752 | 400 | 11.9 | 14.4 |
| Agricultural machinery including tractors | 559 | 571 | 12 | 2.2 | 968 | 1,130 | 162 | 16.8 | 18.3 |
| Aircraft and other transportation equipment | 1,418 | 1,441 | 23 | 1.6 | 3,091 | 2,859 | -232 | -7.5 | -0.2 |
| Aircraft, engines, parts | 901 | 854 | -48 | -5.3 | 1,956 | 1,755 | -201 | -10.3 | 9.4 |
| Other transportation equipment and parts | 517 | 587 | 70 | 13.6 | 1,135 | 1,104 | -31 | -2.7 | -11.5 |
| Office machines and equipment | 3,052 | 3,085 | 32 | 1.1 | 5,634 | 6,137 | 503 | 8.9 | 8.6 |
| Other machinery and equipment | 7,633 | 7,452 | -181 | -2.4 | 14,669 | 15,085 | 416 | 2.8 | 1.0 |
| Other communication and related equipment | 3,262 | 3,150 | -113 | -3.5 | 6,378 | 6,412 | 35 | 0.5 | -3.5 |
| Other equipment and tools | 4,370 | 4,302 | -68 | -1.6 | 8,291 | 8,673 | 381 | 4.6 | 4.5 |
| Automotive products | 8,054 | 7,802 | -252 | -3.1 | 14,703 | 15,856 | 1,154 | 7.8 | 11.2 |
| Passenger autos and chassis | 2,424 | 2,381 | -43 | -1.8 | 4,381 | 4,805 | 424 | 9.7 | 9.4 |
| Trucks and other motor vehicles | 1,838 | 1,935 | 97 | 5.3 | 3,231 | 3,774 | 542 | 16.8 | 31.0 |
| Motor vehicle parts | 3,792 | 3,485 | -307 | -8.1 | 7,090 | 7,278 | 188 | 2.6 | 3.6 |
| Other consumer goods | 6,323 | 6,062 | -261 | -4.1 | 12,861 | 12,384 | -477 | -3.7 | -5.9 |
| Apparel and footwear | 1,390 | 1,262 | -128 | -9.2 | 2,887 | 2,652 | -235 | -8.1 | -12.4 |
| Apparel and apparel accessories | 1,146 | 1,053 | -93 | -8.1 | 2,400 | 2,199 | -201 | -8.4 | -11.7 |
| Footwear | 244 | 209 | -35 | -14.4 | 487 | 453 | -34 | -7.0 | -15.7 |
| Miscellaneous consumer goods | 4,932 | 4,800 | -133 | -2.7 | 9,974 | 9,732 | -242 | -2.4 | -4.0 |
| Television, radios, phonographs | 234 | 228 | -6 | -2.6 | 441 | 462 | 21 | 4.8 | 4.1 |
| Printed matter | 334 | 333 | -1 | -0.3 | 718 | 668 | -50 | -7.0 | -9.0 |
| Watches, sporting goods and toys | 629 | 667 | 38 | 6.0 | 1,401 | 1,296 | -105 | -7.5 | 0.6 |
| House furnishings | 962 | 934 | -28 | -2.9 | 1,855 | 1,895 | 40 | 2.2 | 0.3 |
| Photographic goods | 435 | 399 | -36 | -8.3 | 968 | 835 | -134 | -13.8 | -21.5 |
| Miscellaneous end products | 2,337 | 2,238 | -99 | -4.2 | 4,591 | 4,576 | -15 | -0.3 | -3.2 |
| Special transactions trade | 617 | 638 | 22 | 3.5 | 992 | 1,255 | 263 | 26.5 | 40.2 |
| Unallocated balance of payments adjustments | 568 | 576 | 8 | 1.5 | 903 | 1,143 | 240 | 26.6 | 31.5 |

Table 7-1
Imports from selected countries, customs basis, not seasonally adjusted — February

| | Agricultural and fishing products | Energy products | Forestry products | Industrial goods | Machinery and equipment | Automotive products | Consumer goods | Special transactions trade | Total |
|---------------------------------------|---|--------------------|----------------------|---------------------|-------------------------------|------------------------|-------------------|----------------------------------|-----------------|
| millions of dollars | | | | | | | | | |
| United States | | | | | | | | | |
| 2011 | 1,227.6 | 1,079.8 | 155.9 | 4,047.1 | 3,810.4 | 3,718.5 | 1,760.7 | 344.3 | 16,144.3 |
| 2012 | 1,416.1 | 1,504.8 | 165.2 | 4,602.2 | 4,561.6 | 4,148.6 | 1,878.9 | 555.4 | 18,832.7 |
| Mexico | | | | | | | | | |
| 2011 | 158.1 | 90.7 | 0.3 | 144.8 | 648.0 | 750.1 | 92.7 | 5.5 | 1,890.1 |
| 2012 | 146.1 | 239.6 | 0.4 | 226.7 | 683.1 | 780.6 | 91.9 | 2.9 | 2,171.4 |
| Japan | | | | | | | | | |
| 2011 | 5.1 | 0.3 | 0.1 | 109.8 | 418.7 | 558.5 | 88.2 | 0.2 | 1,180.9 |
| 2012 | 6.1 | 0.7 | 0.0 | 119.9 | 489.6 | 680.7 | 81.7 | 0.4 | 1,379.1 |
| European Union | | | | | | | | | |
| Germany | | | | | | | | | |
| 2011 | 20.9 | 1.4 | 1.0 | 160.9 | 301.6 | 278.8 | 144.5 | 1.4 | 910.6 |
| 2012 | 24.1 | 1.4 | 0.7 | 175.3 | 431.0 | 333.3 | 130.2 | 0.7 | 1,096.8 |
| France | | | | | | | | | |
| 2011 | 44.9 | 0.9 | 0.1 | 95.3 | 164.0 | 7.1 | 104.2 | 1.0 | 417.5 |
| 2012 | 47.9 | 8.8 | 0.4 | 57.3 | 120.1 | 9.8 | 93.7 | 0.5 | 338.5 |
| United Kingdom | | | | | | | | | |
| 2011 | 29.3 | 248.8 | 0.0 | 125.9 | 247.7 | 32.4 | 110.0 | 13.8 | 808.1 |
| 2012 | 29.6 | 149.8 | 0.1 | 258.2 | 200.2 | 56.9 | 111.8 | 4.7 | 811.4 |
| Italy | | | | | | | | | |
| 2011 | 53.6 | 1.3 | 1.1 | 89.6 | 108.1 | 11.8 | 89.1 | 0.1 | 354.7 |
| 2012 | 48.4 | 0.1 | 1.0 | 84.1 | 106.4 | 13.7 | 101.6 | 1.5 | 356.8 |
| Other European Union | | | | | | | | | |
| 2011 | 91.4 | 226.5 | 2.4 | 296.2 | 307.1 | 55.6 | 260.6 | 0.5 | 1,240.2 |
| 2012 | 92.8 | 210.8 | 2.9 | 264.8 | 359.1 | 71.5 | 259.7 | 3.2 | 1,264.8 |
| Total | | | | | | | | | |
| 2011 | 240.2 | 479.0 | 4.7 | 767.9 | 1,128.5 | 385.7 | 708.4 | 16.8 | 3,731.2 |
| 2012 | 242.7 | 371.0 | 5.1 | 839.7 | 1,216.9 | 485.2 | 697.0 | 10.7 | 3,868.2 |
| Newly industrialized countries | | | | | | | | | |
| South Korea | | | | | | | | | |
| 2011 | 4.5 | 4.0 | 0.0 | 102.8 | 197.6 | 131.6 | 13.5 | 0.2 | 454.1 |
| 2012 | 5.3 | 38.0 | 0.0 | 104.0 | 154.2 | 162.2 | 14.0 | 0.1 | 477.8 |
| Hong Kong | | | | | | | | | |
| 2011 | 1.3 | 0.0 | 0.0 | 2.9 | 6.5 | 0.2 | 8.2 | 0.0 | 19.1 |
| 2012 | 1.4 | 0.0 | 0.2 | 1.3 | 7.8 | 0.2 | 8.0 | 0.0 | 18.8 |
| Taiwan | | | | | | | | | |
| 2011 | 4.1 | 0.0 | 0.5 | 70.4 | 190.4 | 14.4 | 27.4 | 0.2 | 307.4 |
| 2012 | 4.2 | 0.0 | 0.3 | 81.9 | 198.0 | 14.9 | 31.4 | 0.1 | 330.9 |
| Singapore | | | | | | | | | |
| 2011 | 1.5 | 0.0 | 0.0 | 12.4 | 38.8 | 0.3 | 42.2 | 0.0 | 95.3 |
| 2012 | 1.8 | 0.0 | 0.0 | 46.5 | 51.0 | 0.3 | 35.5 | 0.1 | 135.2 |
| Total | | | | | | | | | |
| 2011 | 11.4 | 4.0 | 0.6 | 188.5 | 433.2 | 146.5 | 91.3 | 0.5 | 876.0 |
| 2012 | 12.7 | 38.0 | 0.5 | 233.7 | 411.0 | 177.5 | 89.0 | 0.3 | 962.7 |
| Other countries | | | | | | | | | |
| 2011 | 649.4 | 2,100.5 | 47.1 | 1,773.1 | 2,373.2 | 173.5 | 1,755.4 | 22.2 | 8,894.4 |
| 2012 | 671.8 | 2,616.1 | 40.6 | 2,081.9 | 2,413.6 | 208.9 | 1,791.3 | 31.3 | 9,855.6 |
| Total | | | | | | | | | |
| 2011 | 2,292.1 | 3,754.3 | 208.6 | 7,031.2 | 8,812.0 | 5,732.7 | 4,496.7 | 389.5 | 32,717.1 |
| 2012 | 2,495.9 | 4,770.2 | 211.9 | 8,104.1 | 9,775.8 | 6,481.6 | 4,629.7 | 600.9 | 37,070.2 |

Table 7-2
Imports from selected countries, customs basis, not seasonally adjusted — Year to date, January to February

| | Agricultural and fishing products | Energy products | Forestry products | Industrial goods | Machinery and equipment | Automotive products | Consumer goods | Special transactions trade | Total |
|---------------------------------------|---|--------------------|----------------------|---------------------|-------------------------------|------------------------|-------------------|----------------------------------|-----------------|
| millions of dollars | | | | | | | | | |
| United States | | | | | | | | | |
| 2011 | 2,498.2 | 2,258.4 | 296.8 | 8,178.6 | 7,717.9 | 7,253.7 | 3,422.6 | 614.5 | 32,240.6 |
| 2012 | 2,818.2 | 2,851.2 | 321.8 | 9,281.9 | 8,740.9 | 7,881.1 | 3,655.2 | 876.6 | 36,426.8 |
| Mexico | | | | | | | | | |
| 2011 | 327.8 | 174.5 | 0.7 | 334.8 | 1,265.4 | 1,405.2 | 182.2 | 10.2 | 3,700.8 |
| 2012 | 314.8 | 273.6 | 0.8 | 429.3 | 1,354.7 | 1,450.9 | 185.8 | 8.6 | 4,018.5 |
| Japan | | | | | | | | | |
| 2011 | 10.2 | 0.7 | 0.1 | 210.9 | 781.3 | 924.6 | 176.9 | 0.6 | 2,105.3 |
| 2012 | 12.4 | 1.2 | 0.1 | 214.2 | 956.1 | 1,172.8 | 165.7 | 0.8 | 2,523.2 |
| European Union | | | | | | | | | |
| Germany | | | | | | | | | |
| 2011 | 42.4 | 2.3 | 1.6 | 328.4 | 617.3 | 483.7 | 291.5 | 3.1 | 1,770.2 |
| 2012 | 48.7 | 2.6 | 1.6 | 348.6 | 844.9 | 556.7 | 286.0 | 3.7 | 2,093.0 |
| France | | | | | | | | | |
| 2011 | 89.2 | 8.5 | 0.2 | 147.7 | 301.5 | 13.0 | 201.1 | 1.3 | 762.4 |
| 2012 | 93.2 | 40.8 | 0.7 | 128.9 | 266.3 | 14.0 | 209.7 | 1.0 | 754.6 |
| United Kingdom | | | | | | | | | |
| 2011 | 55.1 | 544.9 | 0.1 | 368.4 | 461.6 | 70.7 | 206.6 | 15.4 | 1,722.7 |
| 2012 | 55.1 | 187.4 | 0.1 | 418.7 | 388.8 | 102.1 | 206.4 | 6.6 | 1,365.3 |
| Italy | | | | | | | | | |
| 2011 | 108.8 | 1.4 | 2.5 | 175.0 | 230.3 | 24.4 | 163.1 | 0.4 | 705.9 |
| 2012 | 106.6 | 0.2 | 2.8 | 176.7 | 237.0 | 30.2 | 202.6 | 2.5 | 758.5 |
| Other European Union | | | | | | | | | |
| 2011 | 176.7 | 535.0 | 5.8 | 641.4 | 642.1 | 111.4 | 548.5 | 1.3 | 2,662.1 |
| 2012 | 182.9 | 476.3 | 6.7 | 570.0 | 740.7 | 140.3 | 552.6 | 3.8 | 2,673.2 |
| Total | | | | | | | | | |
| 2011 | 472.0 | 1,092.1 | 10.1 | 1,660.8 | 2,252.7 | 703.3 | 1,410.8 | 21.4 | 7,623.4 |
| 2012 | 486.5 | 707.4 | 12.0 | 1,642.9 | 2,477.6 | 843.3 | 1,457.4 | 17.6 | 7,644.6 |
| Newly industrialized countries | | | | | | | | | |
| South Korea | | | | | | | | | |
| 2011 | 8.8 | 6.0 | 0.0 | 206.0 | 412.5 | 227.6 | 28.0 | 0.3 | 889.2 |
| 2012 | 11.6 | 42.3 | 0.0 | 187.8 | 344.1 | 355.5 | 31.4 | 0.2 | 972.9 |
| Hong Kong | | | | | | | | | |
| 2011 | 4.2 | 0.0 | 0.0 | 21.6 | 17.2 | 0.3 | 17.3 | 0.1 | 60.7 |
| 2012 | 3.7 | 0.0 | 0.2 | 3.2 | 13.7 | 0.4 | 16.9 | 0.1 | 38.3 |
| Taiwan | | | | | | | | | |
| 2011 | 10.1 | 0.0 | 0.9 | 146.9 | 410.0 | 27.8 | 57.6 | 0.3 | 653.7 |
| 2012 | 10.4 | 0.0 | 0.7 | 172.2 | 435.0 | 31.2 | 67.3 | 0.3 | 717.1 |
| Singapore | | | | | | | | | |
| 2011 | 5.2 | 47.2 | 0.2 | 55.4 | 79.6 | 0.6 | 48.4 | 0.1 | 236.6 |
| 2012 | 4.3 | 0.0 | 0.0 | 57.1 | 116.6 | 1.0 | 49.2 | 0.1 | 228.4 |
| Total | | | | | | | | | |
| 2011 | 28.3 | 53.2 | 1.1 | 429.9 | 919.4 | 256.2 | 151.3 | 0.7 | 1,840.2 |
| 2012 | 30.0 | 42.3 | 0.9 | 420.4 | 909.4 | 388.2 | 164.8 | 0.7 | 1,956.7 |
| Other countries | | | | | | | | | |
| 2011 | 1,428.3 | 4,412.1 | 96.4 | 3,570.3 | 4,778.8 | 358.7 | 3,602.3 | 52.1 | 18,299.0 |
| 2012 | 1,473.9 | 5,110.9 | 90.2 | 4,190.7 | 5,078.4 | 452.8 | 3,794.2 | 66.9 | 20,257.9 |
| Total | | | | | | | | | |
| 2011 | 4,765.7 | 7,991.0 | 405.3 | 14,385.3 | 17,715.5 | 10,901.7 | 8,946.2 | 699.6 | 65,810.3 |
| 2012 | 5,136.5 | 8,986.6 | 425.7 | 16,179.4 | 19,517.1 | 12,189.1 | 9,423.1 | 971.1 | 72,828.6 |

Table 8
Imports by country, customs basis, not seasonally adjusted

| | February | | January to February | | Change |
|---|---------------------|-----------------|---------------------|-----------------|---|
| | 2011 | 2012 | 2011 | 2012 | January to February 2012/ January to February 2011 |
| | millions of dollars | | | | percent |
| North America | | | | | |
| Canada | 275.8 | 260.5 | 584.0 | 538.7 | -7.8 |
| Greenland | 0.0 | 0.0 | 0.0 | 0.0 | 154.3 |
| Mexico | 1,890.1 | 2,171.4 | 3,700.8 | 4,018.5 | 8.6 |
| Saint Pierre and Miquelon | 0.0 | 0.0 | 0.0 | 0.0 | -100.0 |
| United States | 16,144.3 | 18,832.7 | 32,240.6 | 36,426.8 | 13.0 |
| Total | 18,310.2 | 21,264.6 | 36,525.5 | 40,984.0 | 12.2 |
| Western Europe | | | | | |
| Andorra | 0.0 | 0.0 | 0.1 | 0.1 | 14.0 |
| Austria | 85.2 | 108.3 | 182.3 | 213.1 | 16.9 |
| Belgium | 110.0 | 109.7 | 274.7 | 240.7 | -12.4 |
| Denmark | 68.4 | 70.4 | 190.6 | 140.7 | -26.2 |
| Faeroe Islands | 0.3 | 0.4 | 0.9 | 0.8 | -7.9 |
| Finland | 93.1 | 52.5 | 240.7 | 112.2 | -53.4 |
| France | 417.5 | 338.5 | 762.4 | 754.6 | -1.0 |
| Germany | 910.6 | 1,096.8 | 1,770.2 | 2,093.0 | 18.2 |
| Gibraltar | 0.0 | 0.0 | 0.0 | 0.0 | -25.0 |
| Greece | 12.8 | 9.7 | 23.9 | 18.2 | -24.0 |
| Iceland | 1.3 | 3.1 | 3.9 | 6.4 | 64.9 |
| Italy | 354.7 | 356.8 | 705.9 | 758.5 | 7.5 |
| Luxembourg | 3.7 | 6.0 | 11.4 | 19.8 | 74.6 |
| Malta | 2.2 | 1.9 | 4.2 | 3.2 | -25.4 |
| Netherlands | 90.0 | 279.0 | 210.7 | 594.4 | 182.1 |
| Norway | 282.3 | 318.8 | 607.9 | 842.3 | 38.6 |
| Portugal | 27.9 | 24.4 | 50.7 | 47.8 | -5.7 |
| Republic of Ireland (Eire) | 101.2 | 108.9 | 185.4 | 199.6 | 7.6 |
| Spain | 135.8 | 116.3 | 284.6 | 278.6 | -2.1 |
| Sweden | 175.2 | 164.1 | 365.3 | 338.3 | -7.4 |
| Switzerland | 195.0 | 311.2 | 510.4 | 665.1 | 30.3 |
| United Kingdom | 808.1 | 811.4 | 1,722.7 | 1,365.3 | -20.7 |
| Total | 3,875.4 | 4,288.3 | 8,108.9 | 8,692.7 | 7.2 |
| Other Europe | | | | | |
| Albania | 0.7 | 0.5 | 1.6 | 0.8 | -49.3 |
| Armenia | 4.3 | 5.4 | 7.5 | 11.9 | 59.5 |
| Azerbaijan | 77.5 | 0.0 | 145.5 | 0.0 | -100.0 |
| Belarus | 0.5 | 15.3 | 0.9 | 15.6 | ... |
| Bosnia and Herzegovina | 0.9 | 1.2 | 1.7 | 2.0 | 23.7 |
| Bulgaria | 6.4 | 8.7 | 11.9 | 27.2 | 128.4 |
| Croatia | 1.6 | 2.0 | 3.5 | 4.6 | 32.1 |
| Czech Republic | 27.8 | 24.2 | 47.2 | 63.6 | 34.8 |
| Estonia | 16.0 | 2.9 | 20.6 | 5.5 | -73.2 |
| Georgia | 8.0 | 10.4 | 18.4 | 18.5 | 0.7 |
| Hungary | 24.6 | 37.0 | 55.2 | 72.1 | 30.7 |
| Kazakhstan | 110.4 | 259.3 | 358.4 | 518.2 | 44.6 |
| Kyrgyzstan | 0.0 | 0.0 | 0.1 | 0.0 | -80.4 |
| Latvia | 1.2 | 1.0 | 2.2 | 3.0 | 33.7 |
| Lithuania | 98.7 | 10.3 | 148.7 | 14.4 | -90.3 |
| Macedonia (Former Yugoslav Republic of Macedonia) | 0.7 | 1.4 | 1.3 | 2.2 | 71.7 |
| Montenegro | 0.0 | 0.1 | 0.1 | 0.1 | -34.6 |
| Poland | 121.9 | 87.9 | 272.4 | 188.9 | -30.7 |
| Republic of Moldova | 0.2 | 0.2 | 0.2 | 0.5 | 119.7 |
| Romania | 10.6 | 14.7 | 31.3 | 32.5 | 4.0 |
| Russian Federation | 140.6 | 66.3 | 368.8 | 128.2 | -65.2 |
| Serbia | 0.7 | 0.9 | 2.7 | 1.8 | -34.2 |
| Slovakia | 21.3 | 12.7 | 35.1 | 35.0 | -0.4 |
| Slovenia | 5.8 | 13.9 | 12.4 | 24.0 | 93.0 |
| Tajikistan | 0.0 | 0.0 | 0.0 | 0.0 | -28.5 |
| Turkmenistan | 0.0 | 0.0 | 0.1 | 0.0 | -70.4 |
| Ukraine | 10.2 | 8.8 | 21.0 | 25.0 | 18.9 |
| Uzbekistan | 0.3 | 0.0 | 0.5 | 0.1 | -88.9 |
| Total | 691.0 | 585.1 | 1,569.2 | 1,195.9 | -23.8 |

Table 8 – continued

Imports by country, customs basis, not seasonally adjusted

| | February | | January to February | | Change |
|----------------------------------|---------------------|--------------|---------------------|----------------|---|
| | 2011 | 2012 | 2011 | 2012 | January to February 2012/ January to February 2011 |
| | millions of dollars | | | | percent |
| Middle East | | | | | |
| Bahrain | 0.2 | 0.1 | 0.7 | 0.3 | -47.7 |
| Cyprus | 0.4 | 0.3 | 0.5 | 0.3 | -44.6 |
| Egypt | 45.5 | 40.2 | 75.7 | 73.5 | -2.9 |
| Eritrea | 11.8 | 36.6 | 11.8 | 72.4 | 514.7 |
| Ethiopia | 1.3 | 1.2 | 2.6 | 2.3 | -11.7 |
| Iran | 2.4 | 5.5 | 5.5 | 8.0 | 45.4 |
| Iraq | 259.5 | 311.5 | 548.4 | 631.0 | 15.1 |
| Israel | 70.3 | 85.0 | 154.9 | 172.7 | 11.5 |
| Jordan | 1.0 | 1.3 | 2.4 | 3.1 | 26.2 |
| Kuwait | 0.0 | 0.4 | 0.0 | 0.4 | ... |
| Lebanon | 1.3 | 1.0 | 3.1 | 2.6 | -16.3 |
| Libya | 4.8 | 0.0 | 4.8 | 0.1 | -97.9 |
| Oman | 1.5 | 2.3 | 3.2 | 4.5 | 42.0 |
| Qatar | 66.8 | 17.5 | 166.4 | 41.9 | -74.8 |
| Saudi Arabia | 194.7 | 342.6 | 387.5 | 572.1 | 47.7 |
| Somalia | 0.0 | 0.0 | 0.0 | 0.0 | -23.0 |
| Sudan | 8.7 | 8.0 | 19.7 | 11.8 | -40.1 |
| Syria | 0.4 | 0.1 | 0.7 | 0.6 | -23.7 |
| Turkey | 57.6 | 99.7 | 121.7 | 192.0 | 57.8 |
| United Arab Emirates | 56.3 | 5.2 | 94.8 | 10.2 | -89.2 |
| Yemen | 0.0 | 0.0 | 0.0 | 0.0 | -5.8 |
| Total | 784.3 | 958.5 | 1,604.2 | 1,799.7 | 12.2 |
| Other Africa | | | | | |
| Algeria | 512.9 | 573.9 | 816.2 | 1,050.5 | 28.7 |
| Angola | 252.0 | 138.2 | 467.1 | 352.1 | -24.6 |
| Antarctica | 0.0 | 0.0 | 0.2 | 0.0 | -98.6 |
| Benin | 0.0 | 0.0 | 0.0 | 0.0 | 75.0 |
| Botswana | 0.0 | 0.1 | 0.0 | 0.1 | ... |
| Bouvet Island | 0.0 | 0.0 | 0.0 | 0.0 | -100.0 |
| Burkina Faso | 1.0 | 0.0 | 1.0 | 0.0 | -100.0 |
| Burundi | 0.1 | 0.1 | 0.1 | 0.1 | 23.7 |
| Cameroon | 0.2 | 1.6 | 0.5 | 2.1 | 355.8 |
| Cape Verde | 0.0 | 0.0 | 0.0 | 0.0 | -47.7 |
| Central African Republic | 0.0 | 0.1 | 0.0 | 0.1 | ... |
| Chad | 0.0 | 0.1 | 0.0 | 0.2 | 546.8 |
| Comoros | 0.0 | 0.0 | 0.0 | 0.2 | ... |
| Congo | 0.3 | 0.2 | 0.5 | 0.3 | -44.9 |
| Democratic Republic of the Congo | 0.0 | 0.2 | 0.0 | 0.3 | 556.2 |
| Djibouti | 0.0 | 0.0 | 0.0 | 0.0 | ... |
| Equatorial Guinea | 24.3 | 0.0 | 192.6 | 79.7 | -58.6 |
| French Southern Territories | 0.0 | 0.0 | 0.0 | 0.0 | ... |
| Gabon | 0.0 | 0.3 | 0.1 | 0.5 | 319.1 |
| Gambia | 0.0 | 0.0 | 0.0 | 0.0 | -35.7 |
| Ghana | 7.6 | 0.3 | 10.8 | 0.6 | -94.6 |
| Guinea | 0.0 | 4.7 | 3.5 | 11.6 | 235.5 |
| Guinea-Bissau | 0.0 | 0.0 | 0.0 | 0.0 | 669.1 |
| Ivory Coast | 32.2 | 11.0 | 56.2 | 26.0 | -53.7 |
| Kenya | 1.2 | 1.1 | 3.3 | 2.5 | -24.0 |
| Lesotho | 0.5 | 0.3 | 2.0 | 1.3 | -35.1 |
| Liberia | 0.5 | 4.1 | 4.1 | 7.3 | 77.0 |
| Madagascar | 5.9 | 7.6 | 6.2 | 13.9 | 123.3 |
| Malawi | 25.7 | 25.9 | 25.8 | 26.0 | 0.8 |
| Mali | 0.1 | 0.0 | 0.2 | 0.1 | -66.9 |
| Mauritania | 0.0 | 0.1 | 0.0 | 0.1 | 38.8 |
| Mauritius | 0.3 | 1.0 | 0.9 | 2.0 | 117.0 |
| Morocco | 14.2 | 12.8 | 28.2 | 31.3 | 10.7 |
| Mozambique | 0.0 | 0.0 | 0.2 | 0.1 | -52.3 |
| Namibia | 19.6 | 9.1 | 19.6 | 25.2 | 28.1 |
| Niger | 0.1 | 0.1 | 0.2 | 0.1 | -36.1 |
| Nigeria | 201.9 | 227.0 | 305.8 | 432.4 | 41.4 |
| Rwanda | 0.1 | 0.1 | 0.2 | 0.4 | 76.1 |
| Saint Helena | 0.0 | 0.0 | 0.0 | 0.0 | -58.5 |
| Sao Tome and Principe | 0.0 | 0.0 | 0.0 | 0.0 | -96.0 |
| Senegal | 0.0 | 0.0 | 0.2 | 0.1 | -20.7 |

Table 8 – continued

Imports by country, customs basis, not seasonally adjusted

| | February | | January to February | | Change |
|--------------------------------------|---------------------|----------------|---------------------|-----------------|---|
| | 2011 | 2012 | 2011 | 2012 | January to February 2012/January to February 2011 |
| | millions of dollars | | | | percent |
| Seychelles | 0.0 | 0.2 | 0.0 | 0.3 | ... |
| Sierra Leone | 0.1 | 0.0 | 0.2 | 0.1 | -64.7 |
| South Africa | 27.2 | 57.9 | 87.6 | 117.9 | 34.7 |
| Swaziland | 0.1 | 0.1 | 0.2 | 0.2 | 15.2 |
| Togo | 0.1 | 0.0 | 0.2 | 0.1 | -73.5 |
| Tunisia | 3.4 | 4.4 | 7.0 | 8.9 | 26.8 |
| Uganda | 0.3 | 0.2 | 0.8 | 0.6 | -25.9 |
| United Republic of Tanzania | 0.5 | 0.5 | 1.0 | 1.3 | 39.0 |
| Western Sahara | 0.0 | 0.0 | 0.0 | 0.0 | ... |
| Zambia | 0.1 | 0.1 | 0.2 | 0.2 | 36.1 |
| Zimbabwe | 0.5 | 0.3 | 1.7 | 0.9 | -49.0 |
| Total | 1,133.2 | 1,083.6 | 2,044.7 | 2,197.6 | 7.5 |
| Other Asia | | | | | |
| Afghanistan | 0.2 | 0.2 | 0.2 | 0.2 | -6.9 |
| Bangladesh | 82.0 | 107.0 | 168.8 | 197.4 | 17.0 |
| Bhutan | 0.0 | 0.0 | 0.0 | 0.0 | 269.0 |
| British Indian Ocean Territory | 0.0 | 0.0 | 0.0 | 0.0 | 6.3 |
| Brunei Darussalam | 1.5 | 0.9 | 1.5 | 1.6 | 7.7 |
| Cambodia | 43.4 | 44.5 | 83.1 | 98.1 | 18.0 |
| China | 3,459.6 | 3,542.0 | 7,129.6 | 7,687.2 | 7.8 |
| Hong Kong | 19.1 | 18.8 | 60.7 | 38.3 | -37.0 |
| India | 182.2 | 272.7 | 381.2 | 574.8 | 50.8 |
| Indonesia | 98.0 | 104.8 | 201.7 | 219.6 | 8.9 |
| Japan | 1,180.9 | 1,379.1 | 2,105.3 | 2,523.2 | 19.8 |
| Laos | 0.5 | 1.0 | 0.9 | 1.7 | 83.0 |
| Macao | 0.6 | 0.8 | 1.3 | 2.0 | 54.4 |
| Malaysia | 159.5 | 171.0 | 317.9 | 348.3 | 9.6 |
| Maldives | 0.1 | 0.1 | 0.1 | 0.1 | -36.9 |
| Mongolia | 7.2 | 0.0 | 10.0 | 7.1 | -29.0 |
| Myanmar | 0.0 | 0.0 | 0.0 | 0.0 | -85.7 |
| Nepal | 0.8 | 0.6 | 1.5 | 1.4 | -2.0 |
| North Korea | 0.0 | 0.0 | 0.0 | 0.0 | 165.1 |
| Pakistan | 17.2 | 21.2 | 37.4 | 42.1 | 12.6 |
| Philippines | 69.3 | 75.9 | 133.5 | 152.2 | 13.9 |
| Singapore | 95.3 | 135.2 | 236.6 | 228.4 | -3.5 |
| South Korea | 454.1 | 477.8 | 889.2 | 972.9 | 9.4 |
| Sri Lanka | 11.1 | 14.7 | 23.4 | 31.2 | 33.3 |
| Taiwan | 307.4 | 330.9 | 653.7 | 717.1 | 9.7 |
| Thailand | 196.5 | 208.8 | 392.6 | 409.0 | 4.2 |
| Timor-Leste | 0.0 | 0.0 | 0.0 | 0.0 | -59.1 |
| Viet Nam | 89.1 | 115.3 | 199.0 | 248.5 | 24.9 |
| Total | 6,475.7 | 7,023.2 | 13,029.5 | 14,502.5 | 11.3 |
| Oceania | | | | | |
| American Samoa | 0.0 | 0.0 | 0.0 | 0.0 | -49.0 |
| Australia | 107.2 | 125.9 | 194.3 | 370.9 | 90.8 |
| Christmas Island | 0.0 | 0.0 | 0.0 | 0.0 | -73.6 |
| Cocos (Keeling) Islands | 0.0 | 0.0 | 0.0 | 0.0 | 523.8 |
| Cook Islands | 0.0 | 0.0 | 0.0 | 0.0 | 536.1 |
| Fiji | 0.2 | 0.2 | 0.3 | 0.7 | 118.8 |
| French Polynesia | 0.2 | 0.1 | 0.2 | 0.2 | -25.0 |
| Guam | 0.0 | 0.0 | 0.0 | 0.0 | -95.1 |
| Heard Island and McDonald Islands | 0.0 | 0.0 | 0.0 | 0.0 | -26.9 |
| Kiribati | 0.0 | 0.0 | 0.0 | 0.0 | 456.9 |
| Nauru | 0.0 | 0.0 | 0.0 | 0.0 | 156.6 |
| New Caledonia | 0.0 | 0.0 | 0.0 | 0.0 | 387.8 |
| New Zealand | 36.4 | 43.7 | 72.3 | 83.0 | 14.8 |
| Niue | 0.0 | 0.0 | 0.0 | 0.0 | -16.6 |
| Norfolk Island | 0.0 | 0.0 | 0.0 | 0.0 | ... |
| Papua New Guinea | 0.0 | 0.1 | 0.1 | 0.2 | 104.3 |
| Pitcairn | 0.0 | 0.0 | 0.0 | 0.0 | -92.6 |
| Samoa | 0.0 | 0.0 | 0.0 | 0.0 | -92.0 |
| Solomon Islands | 0.0 | 0.0 | 0.0 | 0.0 | ... |
| Tonga | 0.0 | 0.0 | 0.0 | 0.0 | 911.3 |
| United States Minor Outlying Islands | 0.2 | 0.5 | 0.3 | 0.8 | 155.8 |
| Vanuatu | 0.0 | 0.0 | 0.0 | 0.0 | -3.0 |

Table 8 – continued

Imports by country, customs basis, not seasonally adjusted

| | February | | January to February | | Change |
|----------------------------------|---------------------|-----------------|---------------------|-----------------|---|
| | 2011 | 2012 | 2011 | 2012 | January to February 2012/January to February 2011 |
| | millions of dollars | | | | percent |
| Wallis and Futuna | 0.0 | 0.0 | 0.0 | 0.0 | ... |
| Total | 144.3 | 170.5 | 267.7 | 455.8 | 70.3 |
| South America | | | | | |
| Argentina | 129.9 | 180.8 | 250.1 | 323.7 | 29.5 |
| Bolivia | 13.4 | 29.8 | 36.3 | 39.5 | 9.0 |
| Brazil | 190.2 | 453.7 | 525.8 | 736.7 | 40.1 |
| Chile | 163.4 | 170.9 | 326.4 | 313.0 | -4.1 |
| Colombia | 55.1 | 102.6 | 102.4 | 156.6 | 53.0 |
| Ecuador | 21.3 | 22.2 | 44.6 | 39.9 | -10.6 |
| Falkland Islands (Malvinas) | 0.0 | 0.2 | 0.0 | 0.4 | ... |
| Guyana | 26.0 | 27.1 | 49.1 | 82.0 | 67.0 |
| Paraguay | 0.3 | 0.2 | 0.6 | 1.4 | 120.5 |
| Peru | 319.1 | 371.1 | 604.6 | 696.3 | 15.2 |
| Suriname | 60.4 | 16.2 | 116.0 | 16.3 | -86.0 |
| Uruguay | 3.2 | 6.1 | 4.6 | 12.6 | 176.2 |
| Venezuela | 30.1 | 76.5 | 69.6 | 77.0 | 10.6 |
| Total | 1,012.3 | 1,457.4 | 2,130.1 | 2,495.5 | 17.2 |
| Central America Antilles | | | | | |
| Anguilla | 0.1 | 0.0 | 0.1 | 0.0 | -47.4 |
| Antigua and Barbuda | 0.0 | 0.0 | 0.0 | 0.3 | ... |
| Aruba | 5.4 | 0.0 | 5.5 | 0.0 | -100.0 |
| Bahamas | 0.6 | 0.5 | 1.8 | 4.2 | 131.5 |
| Barbados | 0.3 | 0.9 | 0.8 | 1.6 | 99.6 |
| Belize | 0.5 | 0.6 | 1.5 | 1.1 | -27.5 |
| Bermuda | 0.0 | 0.2 | 0.1 | 0.3 | 204.3 |
| British Virgin Islands | 0.0 | 0.1 | 0.0 | 0.2 | 688.8 |
| Cayman Islands | 0.0 | 0.0 | 0.0 | 0.0 | -67.4 |
| Costa Rica | 39.8 | 41.3 | 72.0 | 79.5 | 10.4 |
| Cuba | 78.6 | 62.6 | 126.0 | 94.3 | -25.1 |
| Dominica | 0.1 | 0.0 | 0.1 | 0.0 | -59.8 |
| Dominican Republic | 10.2 | 11.9 | 22.4 | 24.1 | 7.5 |
| El Salvador | 33.0 | 6.7 | 39.8 | 14.9 | -62.4 |
| Grenada | 0.2 | 0.0 | 0.2 | 0.4 | 87.5 |
| Guatemala | 22.7 | 24.1 | 55.0 | 67.1 | 22.1 |
| Haiti | 1.9 | 2.5 | 3.9 | 4.5 | 16.4 |
| Honduras | 15.6 | 18.8 | 29.5 | 35.3 | 19.8 |
| Jamaica | 19.9 | 12.8 | 39.5 | 23.6 | -40.2 |
| Montserrat | 0.0 | 0.0 | 0.0 | 0.0 | 279.4 |
| Netherlands Antilles | 0.0 | 0.0 | 0.0 | 0.1 | 155.9 |
| Nicaragua | 19.5 | 27.2 | 40.9 | 47.3 | 15.5 |
| Panama | 7.7 | 9.9 | 13.2 | 17.3 | 30.7 |
| Saint Kitts and Nevis | 0.6 | 0.8 | 1.2 | 1.4 | 21.0 |
| Saint Lucia | 0.0 | 0.0 | 0.0 | 0.1 | 102.2 |
| Saint Vincent and the Grenadines | 0.0 | 0.0 | 0.1 | 0.0 | -54.4 |
| Trinidad and Tobago | 33.9 | 18.0 | 76.9 | 87.1 | 13.3 |
| Turks and Caicos Islands | 0.0 | 0.0 | 0.0 | 0.0 | 128.6 |
| Total | 290.7 | 239.0 | 530.4 | 504.9 | -4.8 |
| All countries | 32,717.1 | 37,070.2 | 65,810.3 | 72,828.6 | 10.7 |

**Table 9-1
Imports by province of clearance, customs basis, not seasonally adjusted — February**

| | Agricultural and fishing products | Energy products | Forestry products | Industrial goods | Machinery and equipment | Automotive products | Consumer goods | Special transactions trade | Total |
|---|---|--------------------|----------------------|---------------------|-------------------------------|------------------------|-------------------|----------------------------------|-----------------|
| millions of dollars | | | | | | | | | |
| Newfoundland and Labrador | | | | | | | | | |
| 2011 | 1.9 | 353.4 | 0.0 | 1.0 | 150.5 | 0.1 | 0.5 | 0.0 | 507.4 |
| 2012 | 4.6 | 480.8 | 0.0 | 8.0 | 4.2 | 0.0 | 0.3 | 1.7 | 499.7 |
| Prince Edward Island | | | | | | | | | |
| 2011 | 0.4 | 0.0 | 0.0 | 0.1 | 0.0 | 0.0 | 0.0 | 0.1 | 0.5 |
| 2012 | 0.1 | 0.0 | 0.0 | 0.0 | 0.1 | 0.0 | 0.0 | 0.0 | 0.3 |
| Nova Scotia | | | | | | | | | |
| 2011 | 46.1 | 113.7 | 1.5 | 105.3 | 51.6 | 191.6 | 12.7 | 0.7 | 523.1 |
| 2012 | 41.6 | 29.1 | 1.7 | 85.1 | 114.0 | 203.9 | 16.0 | 2.7 | 494.1 |
| New Brunswick | | | | | | | | | |
| 2011 | 31.2 | 708.6 | 9.5 | 123.0 | 48.6 | 25.6 | 12.8 | 1.7 | 960.9 |
| 2012 | 37.5 | 827.8 | 10.5 | 169.5 | 75.0 | 27.0 | 13.7 | 1.5 | 1,162.3 |
| Quebec | | | | | | | | | |
| 2011 | 394.2 | 1,628.1 | 59.3 | 1,223.7 | 1,375.4 | 175.8 | 886.5 | 50.3 | 5,793.2 |
| 2012 | 368.2 | 1,435.9 | 63.8 | 1,263.8 | 1,560.8 | 235.4 | 821.6 | 51.1 | 5,800.7 |
| Ontario | | | | | | | | | |
| 2011 | 1,239.8 | 425.9 | 71.5 | 3,984.9 | 4,976.5 | 4,820.8 | 2,816.8 | 306.7 | 18,642.9 |
| 2012 | 1,398.3 | 845.1 | 69.7 | 4,651.4 | 5,343.6 | 5,294.3 | 2,963.6 | 499.3 | 21,065.4 |
| Manitoba | | | | | | | | | |
| 2011 | 70.0 | 46.9 | 6.6 | 289.3 | 453.7 | 106.7 | 118.6 | 7.2 | 1,098.8 |
| 2012 | 80.2 | 58.8 | 11.1 | 413.2 | 586.0 | 142.8 | 150.7 | 7.6 | 1,450.4 |
| Saskatchewan | | | | | | | | | |
| 2011 | 28.3 | 41.6 | 2.0 | 199.5 | 269.0 | 73.0 | 23.4 | 0.9 | 637.7 |
| 2012 | 35.2 | 105.3 | 1.8 | 242.5 | 399.9 | 110.8 | 22.1 | 0.4 | 918.0 |
| Alberta | | | | | | | | | |
| 2011 | 134.5 | 170.6 | 11.0 | 471.5 | 695.4 | 87.9 | 100.9 | 10.2 | 1,682.1 |
| 2012 | 166.4 | 747.2 | 7.4 | 537.2 | 741.6 | 132.3 | 130.0 | 18.2 | 2,480.3 |
| British Columbia | | | | | | | | | |
| 2011 | 345.7 | 264.9 | 47.2 | 632.9 | 790.9 | 251.3 | 524.5 | 11.8 | 2,869.1 |
| 2012 | 363.7 | 238.8 | 46.0 | 732.9 | 946.3 | 335.1 | 511.8 | 18.3 | 3,193.0 |
| Yukon, Northwest Territories and Nunavut | | | | | | | | | |
| 2011 | 0.0 | 0.6 | 0.0 | 0.1 | 0.6 | 0.0 | 0.0 | 0.0 | 1.4 |
| 2012 | 0.0 | 1.4 | 0.0 | 0.4 | 4.3 | 0.0 | 0.0 | 0.0 | 6.1 |
| Total | | | | | | | | | |
| 2011 | 2,292.1 | 3,754.3 | 208.6 | 7,031.2 | 8,812.0 | 5,732.7 | 4,496.7 | 389.5 | 32,717.1 |
| 2012 | 2,495.9 | 4,770.2 | 211.9 | 8,104.1 | 9,775.8 | 6,481.6 | 4,629.7 | 600.9 | 37,070.2 |

Table 9-2
Imports by province of clearance, customs basis, not seasonally adjusted — Year to date, January to February

| | Agricultural and fishing products | Energy products | Forestry products | Industrial goods | Machinery and equipment | Automotive products | Consumer goods | Special transactions trade | Total |
|---|---|--------------------|----------------------|---------------------|-------------------------------|------------------------|-------------------|----------------------------------|-----------------|
| millions of dollars | | | | | | | | | |
| Newfoundland and Labrador | | | | | | | | | |
| 2011 | 4.9 | 681.7 | 0.0 | 5.6 | 166.4 | 0.1 | 0.9 | 0.1 | 859.8 |
| 2012 | 7.4 | 932.5 | 0.0 | 15.0 | 13.1 | 0.1 | 0.7 | 1.8 | 970.6 |
| Prince Edward Island | | | | | | | | | |
| 2011 | 0.5 | 0.0 | 0.0 | 0.1 | 0.0 | 0.0 | 0.0 | 0.1 | 0.8 |
| 2012 | 0.4 | 0.0 | 0.0 | 0.0 | 0.3 | 0.0 | 0.0 | 0.1 | 0.8 |
| Nova Scotia | | | | | | | | | |
| 2011 | 95.8 | 350.2 | 2.5 | 232.9 | 131.1 | 422.2 | 29.7 | 1.7 | 1,266.3 |
| 2012 | 79.3 | 205.9 | 2.5 | 152.8 | 194.9 | 357.3 | 29.9 | 4.5 | 1,027.1 |
| New Brunswick | | | | | | | | | |
| 2011 | 69.6 | 1,489.9 | 18.6 | 201.3 | 97.5 | 55.2 | 26.3 | 2.0 | 1,960.5 |
| 2012 | 68.4 | 1,304.0 | 19.3 | 251.1 | 138.5 | 47.2 | 26.7 | 1.9 | 1,857.1 |
| Quebec | | | | | | | | | |
| 2011 | 802.3 | 3,484.1 | 113.0 | 2,662.7 | 2,713.4 | 327.6 | 1,702.5 | 64.8 | 11,870.4 |
| 2012 | 763.3 | 3,178.6 | 120.8 | 2,586.4 | 3,113.9 | 455.7 | 1,695.5 | 73.7 | 11,987.9 |
| Ontario | | | | | | | | | |
| 2011 | 2,580.9 | 1,052.3 | 140.2 | 8,136.1 | 10,036.3 | 9,053.9 | 5,658.0 | 575.2 | 37,232.9 |
| 2012 | 2,876.3 | 1,351.6 | 144.5 | 9,389.0 | 10,710.8 | 9,949.1 | 5,977.4 | 820.4 | 41,219.1 |
| Manitoba | | | | | | | | | |
| 2011 | 148.4 | 95.9 | 12.3 | 586.2 | 897.7 | 219.6 | 243.5 | 11.8 | 2,215.4 |
| 2012 | 170.8 | 108.1 | 20.3 | 827.5 | 1,150.2 | 288.0 | 286.0 | 12.6 | 2,863.5 |
| Saskatchewan | | | | | | | | | |
| 2011 | 60.9 | 86.8 | 4.1 | 382.9 | 572.1 | 184.3 | 40.1 | 7.6 | 1,338.8 |
| 2012 | 68.1 | 237.4 | 7.4 | 459.8 | 741.5 | 222.2 | 47.7 | 1.6 | 1,785.9 |
| Alberta | | | | | | | | | |
| 2011 | 282.5 | 278.3 | 20.7 | 927.8 | 1,507.4 | 175.5 | 198.7 | 12.8 | 3,403.6 |
| 2012 | 320.1 | 1,149.8 | 16.5 | 1,093.5 | 1,488.2 | 257.7 | 270.8 | 26.5 | 4,623.1 |
| British Columbia | | | | | | | | | |
| 2011 | 719.7 | 470.4 | 93.8 | 1,249.3 | 1,587.2 | 463.4 | 1,046.4 | 23.4 | 5,653.6 |
| 2012 | 782.4 | 515.9 | 94.3 | 1,403.7 | 1,960.7 | 611.7 | 1,088.1 | 28.1 | 6,485.0 |
| Yukon, Northwest Territories and Nunavut | | | | | | | | | |
| 2011 | 0.1 | 1.4 | 0.0 | 0.2 | 6.3 | 0.0 | 0.0 | 0.0 | 8.1 |
| 2012 | 0.0 | 3.0 | 0.0 | 0.5 | 5.0 | 0.0 | 0.0 | 0.0 | 8.5 |
| Total | | | | | | | | | |
| 2011 | 4,765.7 | 7,991.0 | 405.3 | 14,385.3 | 17,715.5 | 10,901.7 | 8,946.2 | 699.6 | 65,810.3 |
| 2012 | 5,136.5 | 8,986.6 | 425.7 | 16,179.4 | 19,517.1 | 12,189.1 | 9,423.1 | 971.1 | 72,828.6 |

Technical notes

The Canadian international merchandise trade statistical program

Introduction

The objective of this text is to provide a general overview of the Canadian International Merchandise Trade Statistical Program, with special reference to concepts and definitions. The text is intended for the general user and simplicity is emphasized.

Conceptual framework

1. Objectives and coverage: The primary objective of the Canadian International Merchandise Trade Statistical Program is to measure the change in the stock of material resources of Canada resulting from the movement of merchandise into or out of the country. Information on imports and exports are inputs into the System of National Accounts, particularly in the balance of payments and gross domestic product, and are used in the formulation of trade and budgetary policies. Governments, importers, exporters, manufacturers and shipping companies use international merchandise trade statistics to:

- monitor import penetration and export performance,
- monitor commodity price and volume changes,
- examine transport implications.

2. Trade statistics (customs basis / balance of payments basis): Merchandise trade statistics are reported and presented on two different bases: customs basis and balance of payment basis.

When goods are imported into or exported from Canada, declarations must be filed with customs, giving such information as description and value of the goods, origin and port of clearance of commodities and mode of transport. Most of this information is required for the purposes of customs administration. Statistics developed from administrative records of customs are commonly referred to as customs-based trade statistics.

Customs-based trade statistics are more accurate at measuring imports than they are at measuring exports. This is the case because customs are typically more vigilant with respect to goods entering the country than they are with goods leaving the country.

Customs-based export statistics may understate or incorrectly portray the destination of exports. Export statistics are understated when the proper documentation is not filed with Customs. Exports are incorrectly portrayed when the country of final destination is inaccurately reported on the customs documentation. This occurs most frequently when goods are routed through an intermediary country before continuing on to their final destination.

Statistics Canada does not have a measure of undercoverage but periodically conducts reconciliation exercises with its major trading partners, excluding the United States.

On January 1, 1990, Canada entered into a memorandum of understanding with the United States concerning the exchange of import data. As a consequence, each administration is using the other's import data to replace its own export data. Canada's international merchandise trade statistics are, therefore, no longer derived exclusively from the administrative records of the Canada Border Services Agency, but from United States Customs records as well.

Customs-based information is adjusted to conform with the National Accounts concepts and definitions. The adjustments to derive balance of payments-based trade data include adjustments related to trade definition, valuation and timing. The principal difference between the two trade concepts is that customs-based merchandise trade statistics cover the physical movement of goods as they are reflected in customs documents while balance of payments-adjusted data are intended to cover all economic transactions that involve merchandise trade between residents and non-residents. The present document describes the concepts and processes pertaining to the customs-based trade statistics only. (For further information on balance of payments-adjusted data, see the publication *Canada's Balance of International Payments*, Statistics Canada (Catalogue no. 67-001-X).

3. System of trade: Canadian trade statistics are compiled according to the general system of trade, as defined by the United Nations Statistical Office. Under this system, imports include all goods that have crossed Canada's territorial boundary, whether for immediate consumption in Canada or for storage in bonded customs warehouses. Domestic exports include goods grown, extracted or manufactured in Canada, including goods of foreign origin that have been materially transformed in Canada. Re-exports are exports of goods of foreign origin that have not been materially transformed in Canada, including foreign goods withdrawn for export from bonded customs warehouses. Total exports are the sum of domestic exports and re-exports. Thus the general trade system, in principal, presents all goods entering the country (imports) and all goods leaving the country (exports). It differs from the special system of trade in the treatment of imported goods into bonded customs warehouses. Under the 'special' system, these goods are counted only if and when they are withdrawn from customs warehouses for home consumption. They are not counted in export statistics unless they have first cleared customs.

Conceptually, under the general system, the statistical frontier coincides with the geographical boundary, while under the 'special' system, it coincides with the customs boundary.

4. Valuation: For customs purposes, imports are recorded at values established according to the provisions of the Customs Act, which, since January 1, 1985, reflects valuation methods based on the General Agreement on Tariffs and Trade (GATT) Valuation Code System. In general, the value for duty of imported goods must be equivalent to the transaction value or the price actually paid.

To determine the transaction value of imported goods, all transportation and associated costs arising in respect of the goods being appraised prior to and at the place of direct shipment to Canada, are to be added to the price of the goods. Therefore, Canadian imports are valued Free on Board (FOB), place of direct shipment to Canada. It excludes freight and insurance costs in bringing the goods to Canada from the point of direct shipment.

Countries other than the United States, exports are, in principal, valued or recorded at the values declared on export documents, which usually reflect the transaction value, i.e., actual selling price or, in the case of a non-arm's length transaction, the transfer price used for company accounting purposes. Canadian exports to overseas countries are valued at F.O.B. port of exit, including domestic freight charges to that point but net of discounts and allowances. As of January, 1990, Canadian exports to the U.S. are valued F.O.B. point of exit from Canada. Prior to 1990, they were valued F.O.B. place of lading net of freight charges, discounts and allowances.

5. Statistical period: The reference period is the calendar month and the calendar year. The closing of the statistical month for imports and Canadian exports to the United States is defined as the last calendar day of the month, based as closely as practicable on the date of clearance from customs.

The closing of the statistical month for exports, to countries other than the United States, is also defined as the last calendar day of the month. Those export documents that are received too late for incorporation in the current month are assigned to the month the transaction took place. If a monthly summary report from a high volume exporter is not received on time, the data are imputed for the current month and revised with the trade value in the following statistical month.

6. Trading partner attribution (country of origin/destination): Exports are attributed to the country, which is the last known destination of the goods at the time of export. Exports to the United States are attributed to the state of destination.

Imports are attributed to their country of origin, that is, the country in which the goods were grown, extracted or manufactured in accordance to the rules of origin administered by the Canada Border Services Agency. Imports from the United States are attributed to the state of origin. Prior to 1988, most imports were attributed to the country of export/consignment, with the exception of imports from Central and South America.

7. Principal trading areas: The 'principal trading areas' are country groupings defined as follows:

United States: includes trade with Puerto Rico and the U.S. Virgin Islands

Japan

European Union (EU): Austria, Belgium, Bulgaria, Cyprus, Czech Republic, Denmark, Estonia, Finland, France, Germany, Greece, Hungary, Ireland, Italy, Latvia, Lithuania, Luxembourg, Malta, Netherlands, Poland, Portugal, Romania, Slovakia, Slovenia, Spain, Sweden and United Kingdom

Other Organisation for Economic Co-operation and Development (OECD): Australia, Canada, Iceland, Mexico, New Zealand, Norway, South Korea, Switzerland, and Turkey. (The EU countries, United States, and Japan are also members of OECD). Effective February 2012, Chile and Israel are included in Other Organisation for Economic Co-operation and Development.

Other countries: all countries and territories other than the United States, Japan, EU and other OECD

8. Legal framework: Import and export statistics with countries other than the United States are derived from information contained in administrative records collected by the Canada Border Services Agency under the Customs Act. Copies of these documents (or information therefrom) are sent to Statistics Canada in accordance with Section 25 of the Statistics Act. It follows that the disclosure of trade statistics is governed by both the Customs Act and the Statistics Act and is subject to the provisions of Section 17(2)(a) of the latter. Disclosure of export statistics to the United States is now governed by a memorandum of understanding that provides for the exchange of detailed import statistics between Canada and the United States.

Contact information

Telephone: 1-800-263-1136 or 613-951-8116

Facsimile: 1-877-287-4369 or 613-951-0581

Internet: *infostats@statcan.gc.ca*