

Catalogue no. 65-001-X

# Canadian International Merchandise Trade

December 2011



Statistics  
Canada

Statistique  
Canada

Canada

## How to obtain more information

For information about this product or the wide range of services and data available from Statistics Canada, visit our website at [www.statcan.gc.ca](http://www.statcan.gc.ca), e-mail us at [infostats@statcan.gc.ca](mailto:infostats@statcan.gc.ca), or telephone us, Monday to Friday from 8:30 a.m. to 4:30 p.m., at the following numbers:

### Statistics Canada's National Contact Centre

Toll-free telephone (Canada and the United States):

Inquiries line	1-800-263-1136
National telecommunications device for the hearing impaired	1-800-363-7629
Fax line	1-877-287-4369

Local or international calls:

Inquiries line	1-613-951-8116
Fax line	1-613-951-0581

### Depository Services Program

Inquiries line	1-800-635-7943
Fax line	1-800-565-7757

## To access this product

This product, Catalogue no. 65-001-X, is available free in electronic format. To obtain a single issue, visit our website at [www.statcan.gc.ca](http://www.statcan.gc.ca) and browse by "Key resource" > "Publications."

## Standards of service to the public

Statistics Canada is committed to serving its clients in a prompt, reliable and courteous manner. To this end, Statistics Canada has developed *standards of service* that its employees observe. To obtain a copy of these service standards, please contact Statistics Canada toll-free at 1-800-263-1136. The service standards are also published on [www.statcan.gc.ca](http://www.statcan.gc.ca) under "About us" > "The agency" > "Providing services to Canadians."

Statistics Canada  
International Trade Division

# Canadian International Merchandise Trade

December 2011

Published by authority of the Minister responsible for Statistics Canada

© Minister of Industry, 2012

All rights reserved. Use of this publication is governed by the *Statistics Canada Open License Agreement*.

<http://www.statcan.gc.ca/reference/copyright-droit-auteur-eng.htm>

February 2012

Catalogue no. 65-001-X, vol. 65, no. 12

ISSN 1480-8781

Frequency: Monthly

Ottawa

Cette publication est également disponible en français.

---

#### **Note of appreciation**

*Canada owes the success of its statistical system to a long-standing partnership between Statistics Canada, the citizens of Canada, its businesses, governments and other institutions. Accurate and timely statistical information could not be produced without their continued cooperation and goodwill.*

# User information

---

## Symbols

The following standard symbols are used in Statistics Canada publications:

- . not available for any reference period
- .. not available for a specific reference period
- ... not applicable
- 0 true zero or a value rounded to zero
- 0<sup>s</sup> value rounded to 0 (zero) where there is a meaningful distinction between true zero and the value that was rounded
- p preliminary
- r revised
- x suppressed to meet the confidentiality requirements of the *Statistics Act*
- E use with caution
- F too unreliable to be published
- \* significantly different from reference category ( $p < 0.05$ )

## Note to users

All totals are calculated from full figures and rounded independently; consequently, totals may not equal the sum of their components.

The data is based on commodity groups (sector, subsector and major group).

# Table of contents

---

<b>Highlights</b>	<b>5</b>
<b>Analysis</b>	<b>7</b>
<b>Related products</b>	<b>11</b>
<b>Statistical tables</b>	
1 Merchandise trade of Canada, balance of payments basis, seasonally adjusted	15
1-1 Current dollars	15
1-2 Constant dollars, 2002	16
1-3 Price indices (Laspeyres)	17
2 Exports by commodity groupings, balance of payments basis, seasonally adjusted	18
2-1 Current dollars	18
2-2 Constant dollars, 2002	20
3 Domestic exports to selected countries, customs basis, not seasonally adjusted	22
3-1 December	22
3-2 Year to date, January to December	23
4 Domestic exports by country, customs basis, not seasonally adjusted	24
5 Exports by province of origin, customs basis, not seasonally adjusted	28
5-1 December	28
5-2 Year to date, January to December	29
6 Imports by commodity groupings, balance of payments basis, seasonally adjusted	30
6-1 Current dollars	30
6-2 Constant dollars, 2002	32
7 Imports from selected countries, customs basis, not seasonally adjusted	34
7-1 December	34
7-2 Year to date, January to December	35
8 Imports by country, customs basis, not seasonally adjusted	36

**Table of contents – continued**

9	Imports by province of clearance, customs basis, not seasonally adjusted	40
9-1	December	40
9-2	Year to date, January to December	41

**Data quality, concepts and methodology**

	Technical notes	42
--	-----------------	----

## Highlights

---

Canada's merchandise exports rose 4.5% and imports edged up 0.8%. As a result, Canada's trade surplus rose from \$1.2 billion in November to \$2.7 billion in December.

Exports grew to \$42.0 billion in December, as volumes increased 4.9%. The value of exports increased in all sectors, led by machinery and equipment. Exports have been trending upwards since July 2011.

Imports increased to \$39.3 billion, as volumes rose 1.2%. The increase in the value of imports was mainly attributed to industrial goods and materials as well as automotive products.

Exports to the United States rose 5.3% to \$30.2 billion, on higher exports of crude petroleum, aircraft and precious metals. Imports increased 2.8% to \$24.7 billion. Both exports and imports posted their highest levels since October 2008. Canada's trade surplus with the United States grew from \$4.7 billion in November to \$5.5 billion in December.

Exports to countries other than the United States increased 2.5% to a record high of \$11.8 billion. Imports from countries other than the United States declined 2.6% to \$14.7 billion, due to lower imports from the European Union. Consequently, Canada's trade deficit with countries other than the United States narrowed from \$3.5 billion in November to \$2.9 billion in December, the smallest deficit since December 2010.

### Note to readers

Merchandise trade is one component of Canada's international balance of payments (BOP), which also includes trade in services, investment income, current transfers as well as capital and financial flows.

International merchandise trade data by country are available on both a BOP and a customs basis for the United States, Japan and the United Kingdom. Trade data for all other individual countries are available on a customs basis only. BOP data are derived from customs data by making adjustments for factors such as valuation, coverage, timing and residency. These adjustments are made to conform to the concepts and definitions of the Canadian System of National Accounts.

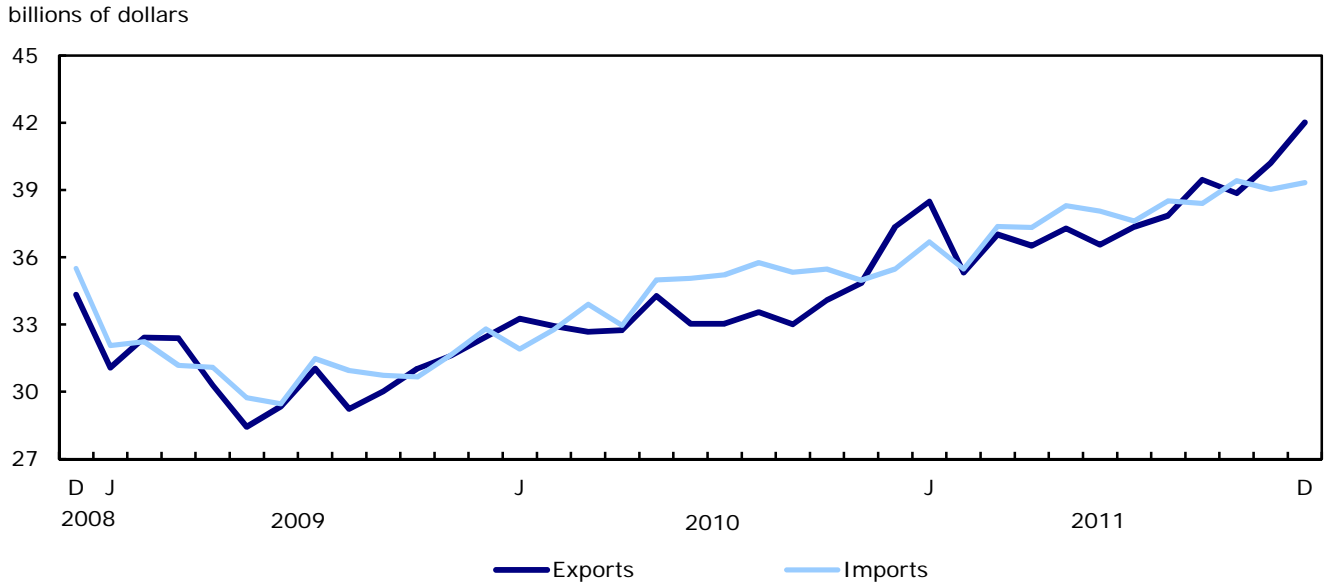
Data in this release are on a BOP basis, seasonally adjusted in current dollars. Constant dollars are calculated using the Laspeyres volume formula.

### Changes to the classification

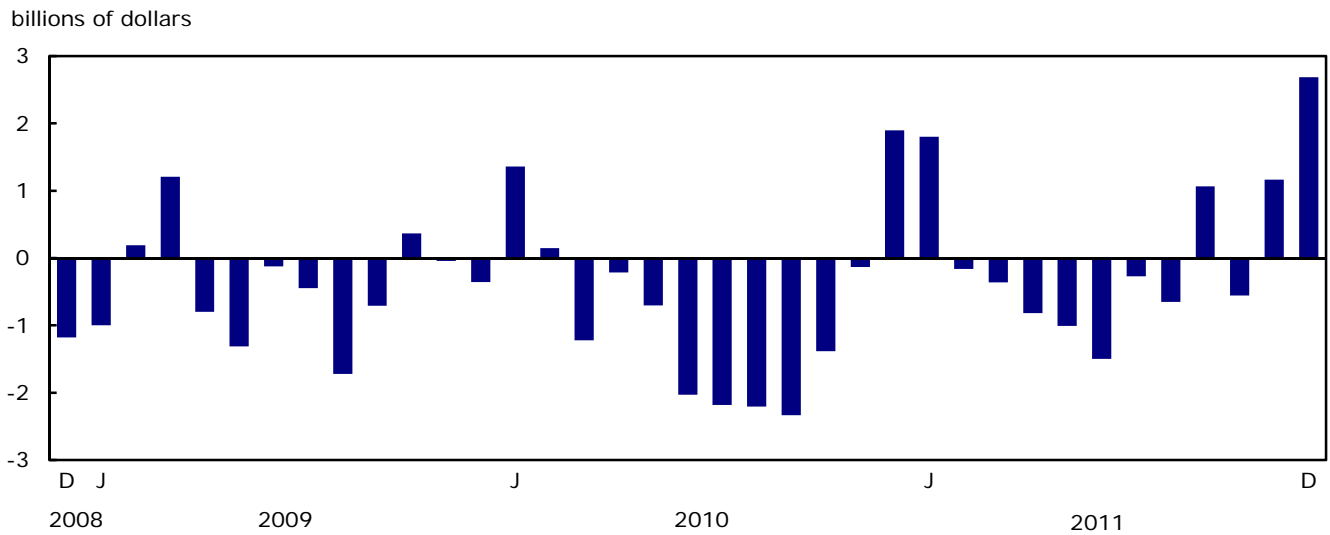
Statistics Canada has reduced the number of 10-digit Harmonized Commodity Coding and Description System (HS) classification codes that are used to report the commodity detail in Canada's merchandise import trade data. This will improve efficiency, maintain data quality and reduce response burden.

These changes are in effect as of January 2012 and coincide with the World Customs Organization 2012 amendments to the 6-digit HS classification codes as well as with Finance Canada's changes to the 2012 Customs Tariff at the 8-digit HS codes. To obtain an HS 2012 Concordance Table, contact the International Trade Division's Marketing and Client Services Section ([trade@statcan.gc.ca](mailto:trade@statcan.gc.ca)).

**Chart 1**  
Exports and imports, seasonally adjusted, on a balance of payments basis



**Chart 2**  
Trade balance, seasonally adjusted, on a balance of payments basis





# Analysis

---

## Increased exports in all sectors

Exports of machinery and equipment grew 9.2% to \$7.5 billion in December, as volumes rose 9.8%. This was the highest level of exports since March 2009. Exports of aircraft, engines and parts, up 25.5% to \$1.3 billion, led the gain. Also contributing to the sector's increase were higher exports of other end products, mainly gold coins.

Exports of industrial goods and materials increased 3.8% to \$10.5 billion in December. The gain was a result of higher volumes. Precious metals and alloys, other fabricated materials, as well as iron ores, concentrates and scrap led the gain in export values.

Exports of automotive products rose 6.7% to \$5.8 billion in December, the highest level since November 2007. Passenger autos and chassis led the overall increase, posting a fourth consecutive monthly gain due to higher volumes.

Exports of energy products increased 1.7% to \$10.3 billion, as prices rose while volumes fell. Crude petroleum reached a record high of \$6.9 billion. A decline in exports of natural gas partially offset the overall gains in energy products.

Agricultural and fishing products grew 3.8% to a record high of \$3.8 billion in December. Exports of canola led the increase.

## Widespread gains in imports

Imports of industrial goods and materials grew 2.6% to \$8.6 billion in December, as prices increased. Metals and metal ores were the main contributor to the gain, rising 4.0% on higher imports of precious metals and alloys, primarily gold. Chemicals and plastics increased 3.1% due to higher volumes.

Imports of automotive products rose 3.6% to \$6.0 billion, due to higher volumes. Motor vehicle parts, up 5.8%, led the increase. Imports of trucks and other motor vehicles grew 10.3% mostly due to higher imports of trucks and off-highway dump trucks.

Imports of machinery and equipment increased 1.3% to \$10.9 billion in December. Industrial and agricultural machinery, up 4.5%, was the main contributor to the sector's gain. Imports of aircraft and other transportation equipment were down 8.3%.

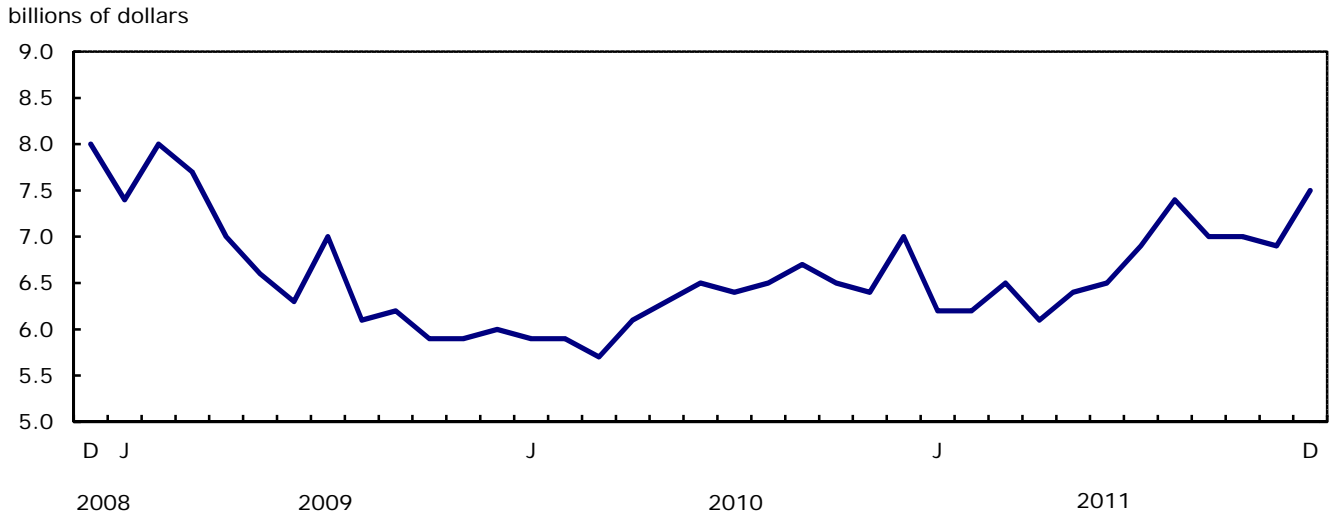
Energy products fell 7.5% to \$4.3 billion, the only sector to decrease in December. Volumes declined 8.1%, a second consecutive monthly decrease. Lower imports of crude petroleum led the decline, followed by petroleum and coal products.

**Note:** In general, merchandise trade data are revised on an ongoing basis for each month of the current year. Current year revisions are reflected in both the customs and balance of payments (BOP) based data. The previous year's customs data are revised with the release of the January and February reference months as well as on a quarterly basis. The previous two years of customs based data are revised annually and are released in February with the December reference month. The previous year's BOP based data are revised with the release of the January, February and March reference months. Revisions to BOP based data for the previous three years are released annually in June with the April reference month.

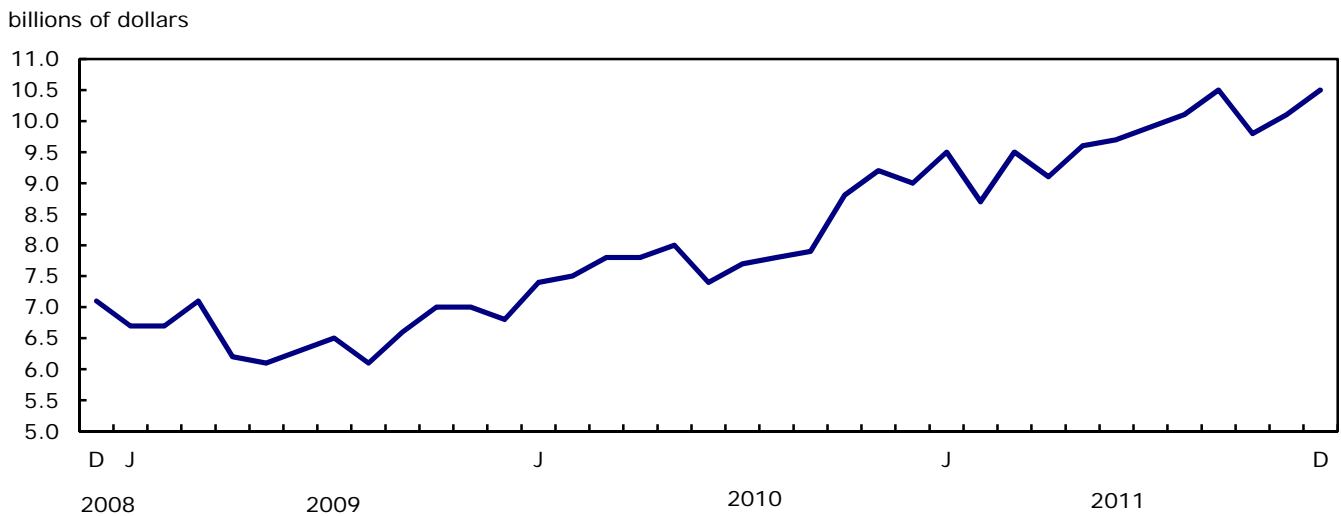
Factors influencing revisions include late receipt of import and export documentation, incorrect information on customs forms, replacement of estimates produced for the energy sector with actual figures, changes in classification of merchandise based on more current information, and changes to seasonal adjustment factors.

Revised data are available in the appropriate CANSIM tables.

**Chart 1**  
**Exports of machinery and equipment, seasonally adjusted, on a balance of payments basis**

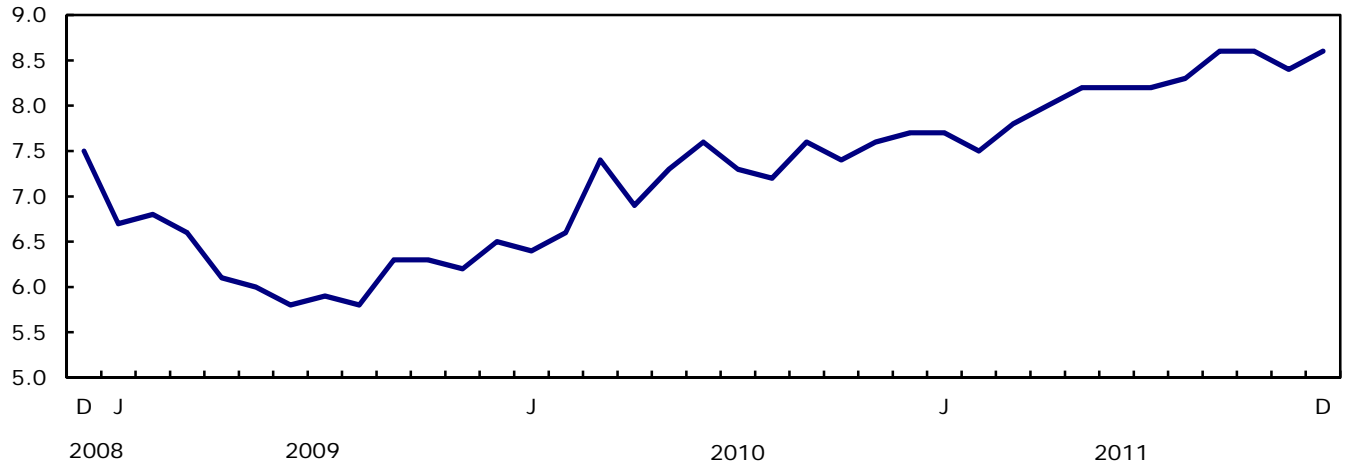


**Chart 2**  
**Exports of industrial goods and materials, seasonally adjusted, on a balance of payments basis**



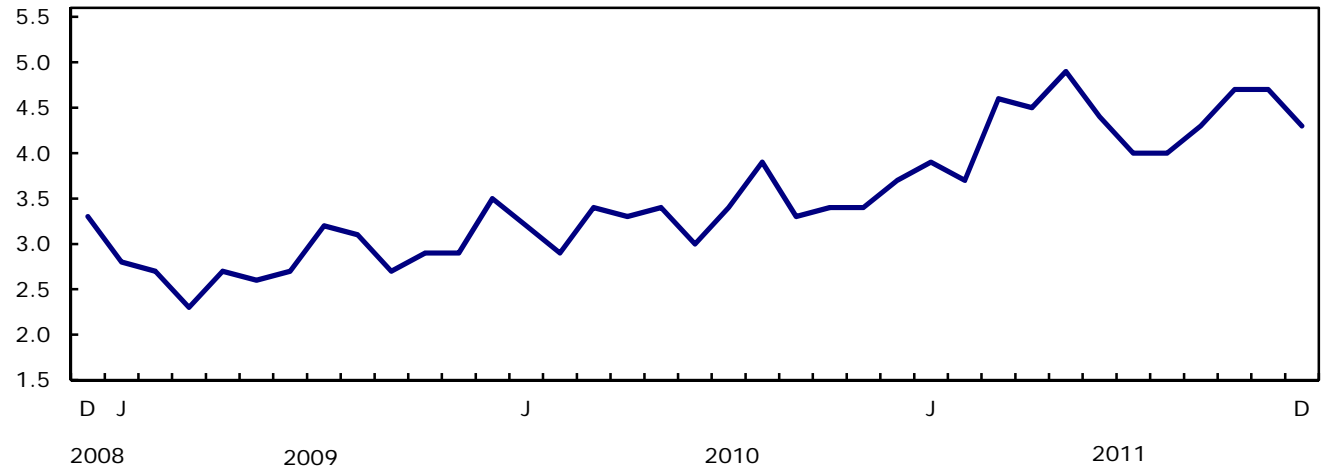
**Chart 3**  
Imports of industrial goods and materials, seasonally adjusted, on a balance of payments basis

billions of dollars



**Chart 4**  
Imports of energy products, seasonally adjusted, on a balance of payments basis

billions of dollars



**Text table 1**  
**Merchandise trade by principal trading area, balance of payments basis, seasonally adjusted**

	November 2011	December 2011	Change	Year to date			December 2011/ December 2010		
				2010	2011	Change			
	millions of dollars		percent	millions of dollars		percent			
<b>Export to</b>									
United States	28,668	30,198	1,530	5.3	296,672	330,100	33,428	11.3	14.8
Japan	921	1,104	183	19.9	9,717	11,356	1,640	16.9	17.4
European Union <sup>1</sup>	4,135	3,937	-198	-4.8	36,462	42,397	5,936	16.3	3.8
Other Organisation for Economic Co-operation and Development <sup>2</sup>	1,752	1,648	-105	-6.0	17,908	20,512	2,604	14.5	-3.1
Other countries	4,728	5,135	407	8.6	44,076	52,610	8,535	19.4	10.9
<b>Total</b>	<b>40,203</b>	<b>42,021</b>	<b>1,818</b>	<b>4.5</b>	<b>404,834</b>	<b>456,977</b>	<b>52,143</b>	<b>12.9</b>	<b>12.5</b>
<b>Imports from</b>									
United States	23,975	24,658	683	2.8	259,953	281,135	21,182	8.1	12.2
Japan	882	958	76	8.6	10,067	9,298	-769	-7.6	12.1
European Union <sup>1</sup>	3,898	3,526	-372	-9.5	40,349	45,740	5,391	13.4	-4.4
Other Organisation for Economic Co-operation and Development <sup>2</sup>	2,826	2,678	-148	-5.2	29,013	32,710	3,697	12.7	14.9
Other countries	7,456	7,515	59	0.8	74,451	86,696	12,244	16.4	13.5
<b>Total</b>	<b>39,036</b>	<b>39,334</b>	<b>298</b>	<b>0.8</b>	<b>413,833</b>	<b>455,578</b>	<b>41,745</b>	<b>10.1</b>	<b>10.9</b>
<b>Balance</b>									
United States	4,693	5,540	847	...	36,719	48,965	12,246	...	...
Japan	39	146	107	...	-351	2,059	2,409	...	...
European Union <sup>1</sup>	237	411	174	...	-3,887	-3,342	545	...	...
Other Organisation for Economic Co-operation and Development <sup>2</sup>	-1,074	-1,031	43	...	-11,105	-12,197	-1,093	...	...
Other countries	-2,728	-2,380	348	...	-30,375	-34,085	-3,710	...	...
<b>Total</b>	<b>1,167</b>	<b>2,687</b>	<b>1,520</b>	<b>...</b>	<b>-8,999</b>	<b>1,399</b>	<b>10,398</b>	<b>...</b>	<b>...</b>

1. European Union includes: Austria, Belgium, Bulgaria, Cyprus, Czech Republic, Denmark, Estonia, Finland, France, Germany, Greece, Hungary, Ireland, Italy, Latvia, Lithuania, Luxembourg, Malta, Netherlands, Poland, Portugal, Romania, Slovakia, Slovenia, Spain, Sweden and United Kingdom.
2. Other Organisation for Economic Co-operation and Development includes: Australia, Canada, Iceland, Mexico, New Zealand, Norway, South Korea, Switzerland and Turkey.

**Text table 2**  
**Reconciliation of customs and balance of payments trade data, not seasonally adjusted**

	2011						2010
	December	November	October	September	August	July	Annual
	millions of dollars						
<b>Exports</b>							
<b>Customs basis</b>	<b>39,626</b>	<b>39,288</b>	<b>39,024</b>	<b>39,654</b>	<b>38,660</b>	<b>35,507</b>	<b>399,300</b>
<b>Balance of payments adjustments</b>	<b>1,060</b>	<b>1,643</b>	<b>1,125</b>	<b>288</b>	<b>-28</b>	<b>676</b>	<b>5,534</b>
Valuation and residency							
Inland freight	619	620	621	637	618	571	6,552
Other valuation and residency	-557	-432	-980	-1,335	-1,636	-1,003	-12,851
Timing	129	36	48	12	35	43	48
Coverage	869	1,419	1,436	974	955	1,065	11,785
<b>Balance of payments basis</b>	<b>40,686</b>	<b>40,931</b>	<b>40,149</b>	<b>39,942</b>	<b>38,632</b>	<b>36,183</b>	<b>404,834</b>
<b>Imports</b>							
<b>Customs basis</b>	<b>36,361</b>	<b>39,164</b>	<b>39,926</b>	<b>38,551</b>	<b>39,319</b>	<b>35,557</b>	<b>403,750</b>
<b>Balance of payments adjustments</b>	<b>958</b>	<b>1,061</b>	<b>1,069</b>	<b>809</b>	<b>861</b>	<b>302</b>	<b>10,083</b>
Valuation and residency							
Inland freight	759	811	821	810	833	762	8,740
Other valuation and residency	51	107	-30	-1	-23	-27	-30
Timing	0	0	0	0	0	0	0
Coverage	148	143	278	0	51	-433	1,373
<b>Balance of payments basis</b>	<b>37,319</b>	<b>40,225</b>	<b>40,995</b>	<b>39,360</b>	<b>40,180</b>	<b>35,859</b>	<b>413,833</b>

## Related products

---

### Selected publications from Statistics Canada

---

65-208-X	International Merchandise Trade Annual Review
65-506-X	A Profile of Canadian Exporters
65F0013X	Canadian International Merchandise Trade Database
65F0019X	A Database for Analysis of International Markets
65F0020X	Data Integration - International Trade Data and Manufacturing Shipments Data

---

### Selected CANSIM tables from Statistics Canada

---

228-0001	Merchandise imports and exports, by major groups and principal trading areas for all countries, monthly
228-0002	Merchandise imports and exports, by major groups and principal trading areas for all countries, quarterly
228-0003	Merchandise imports and exports, by major groups and principal trading areas for all countries, annual
228-0033	Imports, customs-based, by province of clearance, monthly
228-0034	Domestic exports, customs-based, by province of origin, monthly
228-0041	Merchandise imports and exports by sector and sub-sector, customs and balance of payments basis, for all countries, monthly
228-0042	Merchandise imports and exports by sector and sub-sector, customs and balance of payments basis, for all countries, quarterly
228-0043	Merchandise imports and exports by sector and sub-sector, customs and balance of payments basis, for all countries, annual
228-0047	Merchandise imports and exports balance of payments and customs-based price and volume indexes for all countries, monthly
228-0048	Merchandise imports and exports balance of payments and customs-based price and volume indexes for all countries, quarterly
228-0049	Merchandise imports and exports balance of payments and customs-based price and volume indexes for all countries, annual

228-0050	Merchandise imports and exports customs-based price indexes, Canada and United States trade, and Standard International Trade Classification (SITC revision 3) price indexes for all countries and United States, monthly
228-0051	Merchandise imports and exports customs-based price indexes, Canada and United States trade, and Standard International Trade Classification (SITC revision 3) price indexes for all countries and United States, quarterly
228-0052	Merchandise imports and exports customs-based price indexes, Canada and United States trade, and Standard International Trade Classification (SITC revision 3) price indexes for all countries and United States, annual
228-0053	Merchandise import and export price and volume indexes by sector and sub-sector, customs and balance of payments basis, for all countries, monthly
228-0054	Merchandise import and export price and volume indexes by sector and sub-sector, customs and balance of payments basis, for all countries, quarterly
228-0055	Merchandise import and export price and volume indexes by sector and sub-sector, customs and balance of payments basis, for all countries, annual
228-0056	Merchandise imports and exports by sector, balance of payments basis, for all countries, seasonally adjusted, Fisher formula, monthly
228-0057	Merchandise imports and exports by sector, balance of payments basis, for all countries, seasonally adjusted, Fisher formula, quarterly

---

### **Selected surveys from Statistics Canada**

---

2201	Canadian International Merchandise Trade (Customs Basis)
2202	Canadian International Merchandise Trade (Balance of Payments Basis)
2203	International Trade Price Indexes

---

### **Selected summary tables from Statistics Canada**

---

- *Canada: Economic and financial data*
- *Imports, exports and trade balance of goods on a balance-of-payments basis, by country or country grouping*
- *Exports of goods on a balance-of-payments basis*

- *Imports of goods on a balance-of-payments basis*
- *Merchandise trade of Canada (monthly)*
- *Economic indicators, by province and territory (monthly and quarterly)*
- *Latest statistics (monthly)*

# Statistical tables

---

---



**Table 1-1**  
**Merchandise trade of Canada, balance of payments basis, seasonally adjusted — Current dollars**

	Exports	Imports	Trade balance	Period to period change		
				Exports	Imports	Balance
				millions of dollars	percent	millions of dollars
2007	463,120	415,683	47,437	0.0	0.0	0
2008	488,754	443,777	44,977	5.5	6.8	-2,460
2009	369,343	374,081	-4,738	-24.4	-15.7	-49,715
2010	404,834	413,833	-8,999	9.6	10.6	-4,261
2011	456,977	455,578	1,399	...	10.1	10,398
<b>2009</b>						
First quarter	95,888	95,487	400	-16.7	-14.9	-2,399
Second quarter	88,071	90,304	-2,234	-8.2	-5.4	-2,634
Third quarter	90,293	93,167	-2,873	2.5	3.2	-639
Fourth quarter	95,092	95,123	-32	5.3	2.1	2,842
<b>2010</b>						
First quarter	98,870	98,583	287	4.0	3.6	318
Second quarter	100,071	103,014	-2,942	1.2	4.5	-3,229
Third quarter	99,592	106,312	-6,720	-0.5	3.2	-3,778
Fourth quarter	106,301	105,924	377	6.7	-0.4	7,097
<b>2011</b>						
First quarter	110,833	109,548	1,284	4.3	3.4	907
Second quarter	110,374	113,696	-3,322	-0.4	3.8	-4,606
Third quarter	114,683	114,542	141	3.9	0.7	3,462
Fourth quarter	121,087	117,792	3,295	5.6	2.8	3,155
<b>2010</b>						
January	33,260	31,902	1,358	2.5	-2.7	1,714
February	32,929	32,780	148	-1.0	2.8	-1,210
March	32,681	33,901	-1,220	-0.8	3.4	-1,368
April	32,749	32,962	-213	0.2	-2.8	1,007
May	34,282	34,984	-702	4.7	6.1	-489
June	33,040	35,068	-2,028	-3.6	0.2	-1,326
July	33,040	35,220	-2,181	0.0	0.4	-153
August	33,550	35,757	-2,207	1.5	1.5	-26
September	33,002	35,335	-2,333	-1.6	-1.2	-126
October	34,090	35,474	-1,384	3.3	0.4	949
November	34,845	34,979	-134	2.2	-1.4	1,249
December	37,366	35,471	1,895	7.2	1.4	2,029
<b>2011</b>						
January	38,494	36,690	1,804	3.0	3.4	-91
February	35,318	35,479	-160	-8.3	-3.3	-1,965
March	37,020	37,380	-360	4.8	5.4	-199
April	36,517	37,335	-818	-1.4	-0.1	-459
May	37,290	38,298	-1,008	2.1	2.6	-189
June	36,567	38,062	-1,496	-1.9	-0.6	-488
July	37,355	37,625	-270	2.2	-1.1	1,226
August	37,865	38,518	-653	1.4	2.4	-383
September	39,463	38,399	1,064	4.2	-0.3	1,717
October	38,863	39,421	-558	-1.5	2.7	-1,622
November	40,203	39,036	1,167	3.4	-1.0	1,725
December	42,021	39,334	2,687	4.5	0.8	1,520

**Note(s):** Because of rounding, monthly data may not add up to quarterly data and quarterly data may not add up to annual data.

**Table 1-2**  
**Merchandise trade of Canada, balance of payments basis, seasonally adjusted — Constant dollars, 2002**

	Exports	Imports	Trade balance	Period to period change	
				Exports	Imports
	millions of dollars			percent	
2007	449,015	484,005	-34,990	0.0	0.0
2008	412,713	486,735	-74,022	-8.1	0.6
2009	346,916	407,679	-60,763	-15.9	-16.2
2010	374,143	470,401	-96,259	7.8	15.4
2011	389,043	508,644	-119,601	4.0	8.1
<b>2009</b>					
First quarter	87,361	98,563	-11,202	-9.7	-13.3
Second quarter	83,432	97,723	-14,290	-4.5	-0.9
Third quarter	86,976	104,165	-17,189	4.2	6.6
Fourth quarter	89,147	107,228	-18,081	2.5	2.9
<b>2010</b>					
First quarter	90,749	111,192	-20,442	1.8	3.7
Second quarter	94,368	117,650	-23,282	4.0	5.8
Third quarter	94,074	120,900	-26,826	-0.3	2.8
Fourth quarter	94,951	120,659	-25,708	0.9	-0.2
<b>2011</b>					
First quarter	96,302	124,296	-27,994	1.4	3.0
Second quarter	94,795	128,410	-33,615	-1.6	3.3
Third quarter	98,096	127,950	-29,854	3.5	-0.4
Fourth quarter	99,851	127,988	-28,137	1.8	0.0
<b>2010</b>					
January	30,484	36,096	-5,612	1.2	-1.5
February	29,984	36,948	-6,964	-1.6	2.4
March	30,282	38,148	-7,866	1.0	3.2
April	30,882	37,943	-7,061	2.0	-0.5
May	32,065	39,600	-7,535	3.8	4.4
June	31,421	40,106	-8,686	-2.0	1.3
July	31,273	40,040	-8,767	-0.5	-0.2
August	31,897	40,711	-8,814	2.0	1.7
September	30,905	40,150	-9,245	-3.1	-1.4
October	31,313	40,563	-9,250	1.3	1.0
November	31,041	39,832	-8,790	-0.9	-1.8
December	32,597	40,265	-7,668	5.0	1.1
<b>2011</b>					
January	33,480	41,915	-8,435	2.7	4.1
February	30,839	40,277	-9,438	-7.9	-3.9
March	31,983	42,104	-10,121	3.7	4.5
April	31,453	42,703	-11,249	-1.7	1.4
May	32,050	42,548	-10,497	1.9	-0.4
June	31,291	43,159	-11,869	-2.4	1.4
July	32,707	42,934	-10,227	4.5	-0.5
August	32,672	43,136	-10,464	-0.1	0.5
September	32,716	41,879	-9,163	0.1	-2.9
October	32,546	42,634	-10,088	-0.5	1.8
November	32,844	42,422	-9,577	0.9	-0.5
December	34,460	42,933	-8,473	4.9	1.2

**Note(s):** Because of rounding, monthly data may not add up to quarterly data and quarterly data may not add up to annual data.

**Table 1-3**  
**Merchandise trade of Canada, balance of payments basis, seasonally adjusted — Price indices (Laspeyres)**

	2002=100			Period to period change		
	Exports	Imports	Terms of trade	Exports	Imports	Terms of trade
	price indices (Laspeyres)			percent		
2007	107.1	91.4	117.1	0.0	0.0	0.0
2008	116.2	97.2	119.6	8.5	6.3	2.2
2009	105.2	96.2	109.3	-9.5	-1.0	-8.5
2010	106.8	94.1	113.4	1.5	-2.2	3.7
2011	113.7	98.5	115.5	6.5	4.6	1.9
<b>2009</b>						
First quarter	108.8	100.8	107.9	-3.9	-2.8	-1.1
Second quarter	104.6	96.8	108.0	-3.8	-4.0	0.1
Third quarter	102.9	94.1	109.3	-1.6	-2.8	1.2
Fourth quarter	105.3	93.0	113.2	2.3	-1.2	3.5
<b>2010</b>						
First quarter	107.1	93.7	114.2	1.7	0.7	0.9
Second quarter	105.7	93.6	112.9	-1.3	-0.1	-1.2
Third quarter	106.1	94.5	112.3	0.4	0.9	-0.5
Fourth quarter	108.2	94.6	114.4	2.0	0.1	1.9
<b>2011</b>						
First quarter	111.4	96.2	115.9	3.0	1.7	1.3
Second quarter	113.4	98.9	114.7	1.8	2.9	-1.1
Third quarter	114.2	98.7	115.8	0.7	-0.3	1.0
Fourth quarter	115.7	100.1	115.6	1.3	1.5	-0.2
<b>2010</b>						
January	107.2	93.9	114.2	1.0	0.0	1.0
February	108.1	95.1	113.7	0.8	1.3	-0.5
March	106.0	93.8	113.0	-1.9	-1.3	-0.6
April	105.2	92.1	114.3	-0.8	-1.8	1.1
May	106.3	94.5	112.5	1.0	2.6	-1.6
June	105.6	94.0	112.3	-0.7	-0.5	-0.2
July	104.8	93.8	111.7	-0.7	-0.2	-0.5
August	105.9	94.1	112.5	1.0	0.3	0.7
September	106.7	93.9	113.6	0.8	-0.2	1.0
October	107.5	93.9	114.5	0.7	-0.1	0.7
November	109.0	94.8	115.0	1.4	1.0	0.5
December	110.8	95.4	116.1	1.6	0.7	1.0
<b>2011</b>						
January	111.3	95.8	116.2	0.5	0.4	0.1
February	111.6	97.2	114.8	0.2	1.5	-1.3
March	112.3	97.2	115.4	0.6	0.1	0.5
April	113.2	97.2	116.4	0.9	0.0	0.9
May	113.5	98.7	114.9	0.2	1.6	-1.3
June	113.8	99.7	114.2	0.3	0.9	-0.6
July	112.1	96.9	115.7	-1.5	-2.8	1.2
August	112.8	98.2	114.9	0.7	1.4	-0.7
September	115.5	99.2	116.5	2.3	0.9	1.4
October	115.6	99.3	116.4	0.1	0.1	0.0
November	116.9	100.6	116.1	1.1	1.4	-0.3
December	116.0	101.4	114.4	-0.7	0.8	-1.5

**Note(s):** Because of rounding, monthly data may not add up to quarterly data and quarterly data may not add up to annual data.

**Table 2-1**  
**Exports by commodity groupings, balance of payments basis, seasonally adjusted — Current dollars**

	November	December	Change	Year to date			December 2011/ December 2010		
	2011	2011		2010	2011	Change			
	millions of dollars			millions of dollars		percent			
<b>Total</b>	<b>40,203</b>	<b>42,021</b>	<b>1,818</b>	<b>4.5</b>	<b>404,834</b>	<b>456,977</b>	<b>52,143</b>	<b>12.9</b>	<b>12.5</b>
<b>Agricultural and fishing products</b>	<b>3,702</b>	<b>3,842</b>	<b>140</b>	<b>3.8</b>	<b>36,938</b>	<b>41,031</b>	<b>4,093</b>	<b>11.1</b>	<b>10.1</b>
Wheat	570	572	2	0.4	4,413	5,710	1,297	29.4	24.6
Other agricultural and fishing products	3,131	3,270	138	4.4	32,525	35,320	2,796	8.6	7.9
Live animals	127	130	3	2.1	1,686	1,437	-249	-14.8	22.0
Fish and fish preparations	369	375	6	1.5	4,191	4,385	194	4.6	0.9
Barley	74	31	-43	-57.8	341	344	3	0.8	-50.4
Wheat flour	6	6	0	-0.8	81	75	-6	-7.5	-18.4
Other cereals unmilled	53	55	3	4.8	629	846	217	34.6	-55.5
Other cereal preparations	267	262	-5	-1.7	2,785	2,966	182	6.5	10.9
Meat and meat preparations	453	459	6	1.2	4,705	5,032	327	7.0	18.5
Alcoholic beverages	63	68	5	7.3	745	745	0	0.0	9.4
Other food, feed, beverages and tobacco	1,073	1,110	37	3.4	11,320	12,343	1,022	9.0	11.8
Rapeseed	432	546	114	26.4	3,395	4,590	1,196	35.2	31.9
Other crude vegetable products	214	228	14	6.4	2,647	2,557	-90	-3.4	-14.4
<b>Energy products</b>	<b>10,163</b>	<b>10,339</b>	<b>176</b>	<b>1.7</b>	<b>90,886</b>	<b>110,919</b>	<b>20,033</b>	<b>22.0</b>	<b>11.9</b>
Crude petroleum	6,546	6,913	367	5.6	50,111	67,157	17,046	34.0	28.7
Natural gas	922	745	-177	-19.2	15,619	13,380	-2,240	-14.3	-37.5
Other energy products	2,695	2,681	-14	-0.5	25,156	30,382	5,226	20.8	0.1
Coal and other bituminous substances	660	677	16	2.5	5,187	7,178	1,991	38.4	18.4
Petroleum and coal products	1,861	1,844	-17	-0.9	17,950	21,156	3,206	17.9	-3.5
Electricity	174	160	-13	-7.7	2,019	2,048	29	1.5	-17.2
<b>Forestry products</b>	<b>1,781</b>	<b>1,816</b>	<b>36</b>	<b>2.0</b>	<b>21,851</b>	<b>22,382</b>	<b>531</b>	<b>2.4</b>	<b>-9.1</b>
Lumber and sawmill products	707	739	32	4.5	8,111	8,530	420	5.2	-2.9
Other crude wood products	61	77	15	24.8	675	913	238	35.3	12.3
Lumber	462	457	-4	-1.0	5,019	5,367	348	6.9	-6.7
Other wood fabricated materials	184	205	21	11.4	2,417	2,251	-166	-6.9	1.1
Wood pulp and other wood products	481	499	18	3.8	6,316	6,517	201	3.2	-19.5
Newsprint and other paper and paperboard	593	578	-15	-2.5	7,425	7,334	-90	-1.2	-6.3
Newsprint paper	281	275	-6	-2.3	3,759	3,682	-77	-2.0	-13.4
Other paper and paperboard	312	303	-8	-2.7	3,666	3,652	-14	-0.4	1.1
<b>Industrial goods and materials</b>	<b>10,125</b>	<b>10,508</b>	<b>383</b>	<b>3.8</b>	<b>96,489</b>	<b>116,974</b>	<b>20,485</b>	<b>21.2</b>	<b>16.6</b>
Metal ores	1,575	1,606	31	2.0	12,976	17,436	4,459	34.4	9.2
Iron ores, concentrates and scrap	569	664	95	16.7	4,645	6,180	1,536	33.1	41.7
Copper ores, concentrates and scrap	332	350	17	5.2	2,548	3,858	1,310	51.4	-5.0
Nickel ores, concentrates and scrap	284	243	-41	-14.3	2,841	3,404	564	19.8	-21.7
Zinc ores, concentrates and scrap	40	29	-11	-27.9	284	333	50	17.4	-38.8
Other ores, concentrates and scrap	350	321	-30	-8.4	2,659	3,660	1,001	37.6	16.1
Chemicals, plastics and fertilizers	2,886	3,005	120	4.1	30,113	35,775	5,662	18.8	10.2
Inorganic chemicals	494	502	7	1.4	4,585	5,962	1,377	30.0	13.7
Organic chemicals	525	577	51	9.8	6,242	7,224	982	15.7	6.4
Fertilizers and fertilizer materials	566	616	50	8.8	5,982	7,651	1,669	27.9	3.8
Synthetic rubber and plastics	1,005	1,012	7	0.7	10,176	11,502	1,326	13.0	13.6
Other chemical products	294	299	4	1.5	3,129	3,437	308	9.8	15.4
Metals and alloys	3,901	4,092	191	4.9	36,086	44,282	8,197	22.7	22.7
Primary iron and steel	69	50	-19	-27.7	1,191	912	-279	-23.4	-22.9
Steel bars, rods, plates, sheets	337	328	-9	-2.7	3,596	3,851	256	7.1	-2.6
Other iron and steel and alloys	234	265	31	13.3	2,667	2,882	215	8.1	17.9
Aluminum including alloys	650	592	-58	-9.0	7,433	7,988	555	7.5	-4.9
Copper and alloys	216	215	-1	-0.4	2,624	2,540	-84	-3.2	1.5
Nickel and alloys	265	266	1	0.2	2,234	3,356	1,122	50.2	-6.9
Precious metals and alloys	1,941	2,173	232	11.9	13,940	20,252	6,312	45.3	59.0
Zinc and alloys	88	98	10	11.5	1,324	1,248	-75	-5.7	-17.8
Other non-ferrous metals and alloys	101	106	5	4.9	1,077	1,252	176	16.3	2.2

Table 2-1 – continued

## Exports by commodity groupings, balance of payments basis, seasonally adjusted — Current dollars

	November 2011	December 2011	Change		Year to date			December 2011/ December 2010	
					2010	2011	Change		
	millions of dollars		percent		millions of dollars			percent	
<b>Other industrial goods and materials</b>	<b>1,763</b>	<b>1,803</b>	<b>40</b>	<b>2.3</b>	<b>17,314</b>	<b>19,481</b>	<b>2,167</b>	<b>12.5</b>	<b>22.1</b>
Asbestos unmanufactured	0	0	0	-99.8	56	31	-25	-45.3	-100.0
Other crude animal products	81	79	-2	-2.8	901	1,014	113	12.6	6.7
Other crude non-metallic minerals	389	279	-110	-28.3	3,509	3,822	313	8.9	71.9
Other crude materials, inedible	63	62	0	-0.3	724	774	50	6.9	-10.3
Metal fabricated basic products	401	415	14	3.5	4,170	4,512	342	8.2	16.7
Textile fabricated materials	193	197	4	2.2	2,180	2,234	54	2.5	1.7
Non-metallic mineral basic products	170	173	3	1.8	1,861	1,960	98	5.3	18.2
Other fabricated materials	465	597	132	28.4	3,914	5,136	1,222	31.2	27.0
<b>Machinery and equipment</b>	<b>6,854</b>	<b>7,486</b>	<b>632</b>	<b>9.2</b>	<b>76,095</b>	<b>80,580</b>	<b>4,485</b>	<b>5.9</b>	<b>6.9</b>
Industrial and agricultural machinery	1,840	1,860	20	1.1	18,033	20,170	2,137	11.9	15.4
Industrial machinery	1,637	1,652	14	0.9	16,199	18,070	1,871	11.5	13.6
Agricultural machinery includ. tractors	203	208	5	2.6	1,834	2,100	266	14.5	31.2
Aircraft and other transportation equipment	1,472	1,763	290	19.7	17,758	18,346	588	3.3	-10.6
Aircraft, engines, parts	1,050	1,317	267	25.5	13,836	13,619	-217	-1.6	-18.2
Other transportation equipment	423	445	23	5.4	3,922	4,726	805	20.5	23.4
Other machinery and equipment	3,541	3,864	322	9.1	40,305	42,065	1,760	4.4	13.0
Television, telecommunication equipment	673	639	-34	-5.1	7,739	7,730	-9	-0.1	8.0
Office machines and equipment	346	387	41	11.9	4,276	4,252	-25	-0.6	8.8
Other equipment and tools	1,691	1,763	71	4.2	18,543	19,547	1,004	5.4	9.7
Other end products, inedible	831	1,075	244	29.4	9,747	10,537	790	8.1	24.1
<b>Automotive products</b>	<b>5,394</b>	<b>5,756</b>	<b>363</b>	<b>6.7</b>	<b>56,783</b>	<b>59,297</b>	<b>2,514</b>	<b>4.4</b>	<b>27.4</b>
Passenger autos and chassis	3,652	3,938	286	7.8	37,603	38,930	1,326	3.5	33.3
Trucks and other motor vehicles	288	316	27	9.5	2,310	2,948	639	27.6	54.6
Motor vehicle parts	1,453	1,502	49	3.4	16,870	17,419	549	3.3	10.5
<b>Other consumer goods</b>	<b>1,376</b>	<b>1,470</b>	<b>94</b>	<b>6.8</b>	<b>16,428</b>	<b>16,351</b>	<b>-76</b>	<b>-0.5</b>	<b>9.8</b>
<b>Special transactions trade</b>	<b>289</b>	<b>291</b>	<b>2</b>	<b>0.6</b>	<b>3,968</b>	<b>3,759</b>	<b>-210</b>	<b>-5.3</b>	<b>6.3</b>
<b>Unallocated balance of payments adjustments</b>	<b>521</b>	<b>513</b>	<b>-7</b>	<b>-1.4</b>	<b>5,396</b>	<b>5,683</b>	<b>288</b>	<b>5.3</b>	<b>3.6</b>

**Table 2-2**  
**Exports by commodity groupings, balance of payments basis, seasonally adjusted — Constant dollars, 2002**

	November	December	Change	Year to date			December 2011/ December 2010		
	2011	2011		2010	2011	Change			
	millions of dollars		percent	millions of dollars		percent			
<b>Total</b>	<b>32,844</b>	<b>34,460</b>	<b>1,616</b>	<b>4.9</b>	<b>374,143</b>	<b>389,043</b>	<b>14,901</b>	<b>4.0</b>	<b>5.7</b>
<b>Agricultural and fishing products</b>	<b>3,202</b>	<b>3,308</b>	<b>106</b>	<b>3.3</b>	<b>37,706</b>	<b>36,912</b>	<b>-794</b>	<b>-2.1</b>	<b>0.4</b>
Wheat	392	413	21	5.4	4,517	4,147	-370	-8.2	4.5
Other agricultural and fishing products	2,810	2,895	85	3.0	33,189	32,765	-424	-1.3	-0.2
Live animals	108	109	1	1.1	1,896	1,343	-552	-29.1	1.8
Fish and fish preparations	447	475	28	6.3	5,187	5,118	-69	-1.3	3.9
Barley	50	25	-25	-50.3	332	255	-76	-23.0	-62.9
Wheat flour	5	5	0	0.3	77	63	-13	-17.4	-24.2
Other cereals unmilled	45	49	4	10.0	618	647	29	4.7	-47.5
Other cereal preparations	222	218	-5	-2.2	2,485	2,595	110	4.4	3.3
Meat and meat preparations	408	414	6	1.5	5,219	4,926	-293	-5.6	-0.1
Alcoholic beverages	123	129	6	5.1	1,434	1,449	15	1.1	5.8
Other food, feed, beverages and tobacco	927	927	1	0.1	10,659	11,093	434	4.1	-1.1
Rapeseed	319	373	54	16.9	3,019	3,298	279	9.3	31.7
Other crude vegetable products	157	172	14	9.1	2,264	1,977	-287	-12.7	-15.2
<b>Energy products</b>	<b>4,856</b>	<b>4,765</b>	<b>-91</b>	<b>-1.9</b>	<b>55,153</b>	<b>57,824</b>	<b>2,671</b>	<b>4.8</b>	<b>-3.6</b>
Crude petroleum	2,403	2,415	13	0.5	24,544	27,751	3,206	13.1	12.2
Natural gas	1,260	1,162	-98	-7.7	16,297	15,785	-512	-3.1	-16.8
Other energy products	1,193	1,187	-6	-0.5	14,311	14,288	-23	-0.2	-14.6
Coal and other bituminous substances	150	146	-4	-2.7	1,798	1,756	-42	-2.3	-19.0
Petroleum and coal products	770	809	39	5.0	10,095	9,789	-306	-3.0	-13.3
Electricity	273	233	-40	-14.8	2,418	2,743	325	13.4	-16.2
<b>Forestry products</b>	<b>2,178</b>	<b>2,263</b>	<b>85</b>	<b>3.9</b>	<b>26,599</b>	<b>27,409</b>	<b>809</b>	<b>3.0</b>	<b>-7.7</b>
Lumber and sawmill products	924	981	57	6.2	10,420	11,287	867	8.3	-1.4
Other crude wood products	63	84	21	32.7	848	1,042	195	22.9	3.4
Lumber	639	648	8	1.3	6,933	7,541	608	8.8	-4.1
Other wood fabricated materials	221	249	28	12.8	2,639	2,703	64	2.4	4.7
Wood pulp and other wood products	602	646	44	7.3	7,555	7,799	244	3.2	-13.5
Newsprint and other paper and paperboard	652	635	-16	-2.5	8,624	8,322	-302	-3.5	-10.5
Newsprint paper	308	301	-7	-2.2	4,463	4,194	-269	-6.0	-18.5
Other paper and paperboard	344	334	-10	-2.8	4,161	4,128	-33	-0.8	-1.8
<b>Industrial goods and materials</b>	<b>5,835</b>	<b>6,109</b>	<b>274</b>	<b>4.7</b>	<b>65,283</b>	<b>69,037</b>	<b>3,754</b>	<b>5.8</b>	<b>9.0</b>
Metal ores	658	698	40	6.1	6,086	7,169	1,083	17.8	14.2
Iron ores, concentrates and scrap	171	223	52	30.4	1,948	2,132	184	9.4	29.4
Copper ores, concentrates and scrap	112	124	12	10.8	838	1,161	323	38.5	17.8
Nickel ores, concentrates and scrap	152	134	-18	-12.1	1,276	1,492	216	16.9	5.2
Zinc ores, concentrates and scrap	23	17	-7	-27.9	152	179	27	17.9	-29.2
Other ores, concentrates and scrap	200	201	1	0.4	1,871	2,204	333	17.8	9.6
Chemicals, plastics and fertilizers	1,867	1,973	106	5.7	21,735	23,274	1,538	7.1	5.0
Inorganic chemicals	199	207	8	4.0	2,240	2,417	177	7.9	13.8
Organic chemicals	243	309	65	26.7	3,716	3,549	-167	-4.5	-5.2
Fertilizers and fertilizer materials	197	214	17	8.6	2,624	2,909	286	10.9	-19.4
Synthetic rubber and plastics	903	917	14	1.5	9,414	10,493	1,078	11.5	13.0
Other chemical products	324	327	3	0.9	3,742	3,906	164	4.4	10.9

Table 2-2 – continued

## Exports by commodity groupings, balance of payments basis, seasonally adjusted — Constant dollars, 2002

	November	December	Change	Year to date			December 2011/ December 2010		
	2011	2011							
				2010	2011	Change			
	millions of dollars		percent		millions of dollars		percent		
<b>Metals and alloys</b>	1,954	2,030	76	3.9	22,037	23,010	973	4.4	7.1
Primary iron and steel	36	27	-9	-25.1	803	547	-256	-31.9	-31.3
Steel bars, rods, plates, sheets	253	251	-2	-0.7	3,001	2,919	-82	-2.7	-14.4
Other iron and steel and alloys	180	206	26	14.4	2,229	2,261	32	1.5	8.8
Aluminum including alloys	665	627	-37	-5.6	7,591	7,800	210	2.8	3.3
Copper and alloys	67	67	0	0.1	842	690	-152	-18.1	11.0
Nickel and alloys	132	138	6	4.7	1,080	1,543	462	42.8	14.3
Precious metals and alloys	511	593	82	16.1	5,235	5,916	681	13.0	26.6
Zinc and alloys	57	62	5	9.3	764	724	-40	-5.2	-7.1
Other non-ferrous metals and alloys	54	58	4	8.2	492	610	118	24.0	19.9
<b>Other industrial goods and materials</b>	1,356	1,407	51	3.8	15,424	15,584	160	1.0	15.5
Asbestos unmanufactured	0	0	0	-99.8	56	30	-26	-46.5	-100.0
Other crude animal products	79	81	2	2.3	926	909	-17	-1.8	7.0
Other crude non-metallic minerals	259	193	-66	-25.4	3,238	2,855	-383	-11.8	85.0
Other crude materials, inedible	54	56	2	4.4	661	696	35	5.3	-7.9
Metal fabricated basic products	319	328	9	2.7	3,364	3,586	222	6.6	15.8
Textile fabricated materials	185	192	7	3.7	2,311	2,302	-10	-0.4	-1.9
Non-metallic mineral basic products	138	142	4	2.7	1,530	1,607	77	5.0	16.6
Other fabricated materials	320	414	94	29.4	3,338	3,600	262	7.9	11.4
<b>Machinery and equipment</b>	7,401	8,122	721	9.7	84,861	89,955	5,094	6.0	3.9
Industrial and agricultural machinery	1,687	1,700	13	0.8	16,801	18,776	1,975	11.8	12.5
Industrial machinery	1,505	1,511	7	0.4	15,108	16,847	1,739	11.5	10.9
Agricultural machinery includ. tractors	182	188	6	3.5	1,693	1,929	235	13.9	26.8
Aircraft and other transportation equipment	1,742	2,082	340	19.5	21,891	22,516	625	2.9	-14.2
Aircraft, engines, parts	1,357	1,678	321	23.6	18,022	17,932	-91	-0.5	-19.3
Other transportation equipment	385	405	20	5.1	3,868	4,584	716	18.5	16.4
Other machinery and equipment	3,972	4,340	368	9.3	46,169	48,663	2,494	5.4	11.9
Television, telecommunication equipment	843	805	-38	-4.5	9,836	9,960	123	1.3	5.3
Office machines and equipment	949	1,071	122	12.9	10,730	11,920	1,190	11.1	15.9
Other equipment and tools	1,600	1,680	80	5.0	17,562	18,686	1,124	6.4	9.6
Other end products, inedible	580	784	204	35.2	8,040	8,097	57	0.7	19.4
<b>Automotive products</b>	7,131	7,574	443	6.2	75,805	80,200	4,395	5.8	23.2
Passenger autos and chassis	5,197	5,561	364	7.0	54,389	57,325	2,936	5.4	26.7
Trucks and other motor vehicles	351	378	27	7.8	2,808	3,608	801	28.5	53.2
Motor vehicle parts	1,583	1,635	52	3.3	18,608	19,267	659	3.5	8.0
<b>Other consumer goods</b>	1,300	1,384	85	6.5	15,770	15,601	-168	-1.1	7.7
<b>Special transactions trade</b>	236	238	2	1.0	3,584	3,129	-455	-12.7	1.7
<b>Unallocated balance of payments adjustments</b>	707	697	-10	-1.4	9,383	8,977	-405	-4.3	-15.0

**Table 3-1**  
**Domestic exports to selected countries, customs basis, not seasonally adjusted — December**

	Agricultural and fishing products	Energy products	Forestry products	Industrial goods	Machinery and equipment	Automotive products	Consumer goods	Special transactions trade	<b>Total</b>
millions of dollars									
<b>United States</b>									
2010	1,397.2	8,508.4	1,043.1	5,394.8	3,500.6	3,869.8	750.1	213.1	<b>24,677.1</b>
2011	1,658.0	9,429.4	1,013.3	4,839.8	3,909.9	4,925.6	786.3	216.0	<b>26,778.4</b>
<b>Mexico</b>									
2010	171.7	8.9	13.5	85.2	54.5	59.2	2.9	0.9	<b>396.8</b>
2011	127.1	0.7	9.5	70.3	63.8	57.9	7.3	0.1	<b>336.7</b>
<b>Japan</b>									
2010	236.6	170.2	113.8	190.8	59.0	5.0	9.2	2.8	<b>787.4</b>
2011	338.3	260.5	107.4	93.5	78.8	7.7	15.2	0.1	<b>901.5</b>
<b>European Union</b>									
Germany									
2010	8.9	39.6	8.4	132.7	122.6	2.1	18.0	1.6	<b>334.0</b>
2011	14.0	0.2	7.4	36.7	220.8	4.7	17.5	1.0	<b>302.3</b>
France									
2010	12.3	0.0	10.2	45.8	114.9	3.8	18.9	1.6	<b>207.6</b>
2011	15.5	82.0	11.3	38.0	103.5	6.3	36.0	1.8	<b>294.3</b>
United Kingdom									
2010	29.1	2.8	13.5	1,115.1	406.8	4.0	11.3	8.8	<b>1,591.6</b>
2011	19.8	0.6	13.0	1,484.6	183.7	5.2	16.0	7.9	<b>1,731.0</b>
Italy									
2010	33.7	23.7	24.5	31.5	29.9	0.5	9.9	0.2	<b>153.8</b>
2011	37.7	17.9	24.2	25.9	34.1	0.6	4.8	0.2	<b>145.5</b>
Other European Union									
2010	239.8	124.8	21.2	279.6	352.8	12.5	45.4	2.8	<b>1,079.1</b>
2011	184.1	64.9	24.3	240.8	364.0	10.9	45.6	2.3	<b>936.8</b>
<b>Total</b>									
2010	323.9	191.0	77.9	1,604.8	1,027.0	22.9	103.6	15.0	<b>3,366.1</b>
2011	271.1	165.5	80.3	1,826.0	906.1	27.7	119.9	13.3	<b>3,409.9</b>
<b>Newly industrialized countries</b>									
South Korea									
2010	62.8	125.9	39.4	83.3	27.6	3.8	4.7	1.1	<b>348.6</b>
2011	36.9	164.8	37.8	117.0	40.4	4.1	5.6	0.5	<b>406.9</b>
Hong Kong									
2010	86.0	0.1	9.5	85.9	27.4	0.5	9.3	1.7	<b>220.4</b>
2011	48.4	0.1	8.1	141.5	83.7	1.5	7.4	0.9	<b>291.7</b>
Taiwan									
2010	18.0	0.1	21.4	48.7	13.4	0.0	2.0	0.1	<b>103.7</b>
2011	16.8	24.3	21.9	70.4	12.2	0.2	2.2	0.1	<b>148.1</b>
Singapore									
2010	7.8	0.4	0.8	15.9	27.4	2.0	2.8	1.6	<b>58.7</b>
2011	9.2	0.3	1.1	27.7	20.9	2.8	4.7	0.1	<b>67.1</b>
<b>Total</b>									
2010	174.6	126.5	71.2	233.8	95.8	6.4	18.6	4.5	<b>731.4</b>
2011	111.4	189.5	69.0	356.6	157.2	8.5	19.9	1.7	<b>913.8</b>
<b>Other countries</b>									
2010	913.7	375.2	594.2	1,522.0	1,003.2	54.4	103.1	22.7	<b>4,588.6</b>
2011	1,053.9	407.3	444.8	1,755.0	973.0	94.4	92.8	16.1	<b>4,837.4</b>
<b>Total</b>									
2010	<b>3,217.7</b>	<b>9,380.1</b>	<b>1,913.6</b>	<b>9,031.4</b>	<b>5,740.1</b>	<b>4,017.7</b>	<b>987.7</b>	<b>259.0</b>	<b>34,547.3</b>
2011	<b>3,559.9</b>	<b>10,453.0</b>	<b>1,724.3</b>	<b>8,941.3</b>	<b>6,088.8</b>	<b>5,121.8</b>	<b>1,041.4</b>	<b>247.1</b>	<b>37,177.6</b>



**Table 3-2**  
**Domestic exports to selected countries, customs basis, not seasonally adjusted — Year to date, January to December**

	Agricultural and fishing products	Energy products	Forestry products	Industrial goods	Machinery and equipment	Automotive products	Consumer goods	Special transactions trade	<b>Total</b>
millions of dollars									
<b>United States</b>									
2010	18,520.5	86,474.4	13,673.5	55,700.1	40,748.9	51,720.0	9,525.6	3,145.8	<b>279,508.9</b>
2011	19,643.5	102,816.1	13,067.7	62,715.3	42,997.4	53,880.8	9,059.5	2,988.9	<b>307,169.0</b>
<b>Mexico</b>									
2010	1,391.6	96.8	136.4	1,021.1	754.9	819.7	70.1	12.8	<b>4,303.5</b>
2011	1,631.2	134.2	136.8	1,212.4	767.3	694.8	92.7	6.4	<b>4,675.8</b>
<b>Japan</b>									
2010	3,203.1	1,892.6	1,342.5	1,773.0	624.9	69.1	138.9	16.2	<b>9,060.4</b>
2011	3,835.2	2,227.2	1,379.6	2,211.9	690.2	58.4	111.2	16.9	<b>10,530.8</b>
<b>European Union</b>									
<b>Germany</b>									
2010	209.7	264.0	94.3	1,365.5	1,396.3	34.8	208.4	24.1	<b>3,597.3</b>
2011	202.5	244.7	79.7	1,089.2	1,773.9	47.3	217.1	20.2	<b>3,674.5</b>
<b>France</b>									
2010	160.3	30.5	137.6	486.4	935.2	37.5	262.2	25.1	<b>2,074.8</b>
2011	205.0	238.4	117.8	699.9	1,305.1	40.8	239.6	17.4	<b>2,864.1</b>
<b>United Kingdom</b>									
2010	348.8	95.1	184.1	12,341.9	2,216.7	52.3	199.1	80.1	<b>15,518.1</b>
2011	362.3	222.7	198.0	15,627.2	1,391.1	60.2	178.3	61.5	<b>18,101.3</b>
<b>Italy</b>									
2010	351.9	198.0	317.1	383.0	396.0	8.0	168.2	7.7	<b>1,830.0</b>
2011	455.0	280.3	274.8	351.6	404.4	9.8	94.3	7.5	<b>1,877.8</b>
<b>Other European Union</b>									
2010	1,342.1	831.6	300.3	3,487.4	2,601.7	169.5	579.3	48.2	<b>9,359.9</b>
2011	1,501.2	1,749.9	249.7	4,650.2	2,317.6	185.8	580.6	33.8	<b>11,268.8</b>
<b>Total</b>									
2010	2,412.8	1,419.2	1,033.4	18,064.1	7,545.9	302.1	1,417.3	185.2	<b>32,380.0</b>
2011	2,726.1	2,736.0	920.0	22,418.1	7,192.1	343.9	1,309.9	140.3	<b>37,786.5</b>
<b>Newly industrialized countries</b>									
<b>South Korea</b>									
2010	464.5	1,117.9	460.5	1,045.2	426.0	60.1	50.7	10.1	<b>3,634.9</b>
2011	889.0	1,906.6	512.4	1,169.1	445.2	22.5	70.6	6.9	<b>5,022.2</b>
<b>Hong Kong</b>									
2010	451.9	0.6	92.4	746.2	308.6	8.6	80.7	19.7	<b>1,708.7</b>
2011	397.0	0.6	119.2	1,627.0	477.3	8.0	78.8	6.7	<b>2,714.6</b>
<b>Taiwan</b>									
2010	172.7	142.3	246.1	495.6	138.0	2.6	40.4	1.3	<b>1,239.0</b>
2011	180.1	306.8	273.6	773.8	117.8	1.5	36.4	1.3	<b>1,691.3</b>
<b>Singapore</b>									
2010	61.8	5.8	17.8	176.6	328.4	20.4	41.6	12.6	<b>665.0</b>
2011	58.9	4.6	10.3	169.6	362.9	20.8	36.3	4.6	<b>668.0</b>
<b>Total</b>									
2010	1,150.9	1,266.5	816.8	2,463.6	1,200.9	91.8	213.4	43.6	<b>7,247.6</b>
2011	1,525.0	2,218.7	915.4	3,739.4	1,403.2	52.8	222.0	19.5	<b>10,096.1</b>
<b>Other countries</b>									
2010	9,239.8	2,324.7	5,135.7	13,973.0	8,579.2	680.4	1,417.5	290.7	<b>41,640.9</b>
2011	10,336.1	3,173.5	6,221.6	17,631.1	8,917.3	896.4	1,101.5	227.1	<b>48,504.6</b>
<b>Total</b>									
2010	<b>35,918.7</b>	<b>93,474.2</b>	<b>22,138.4</b>	<b>92,995.1</b>	<b>59,455.2</b>	<b>53,683.1</b>	<b>12,782.8</b>	<b>3,694.3</b>	<b>374,141.7</b>
2011	<b>39,697.0</b>	<b>113,305.7</b>	<b>22,641.2</b>	<b>109,928.3</b>	<b>61,967.9</b>	<b>55,927.1</b>	<b>11,896.8</b>	<b>3,399.1</b>	<b>418,763.3</b>

**Table 4**  
**Domestic exports by country, customs basis, not seasonally adjusted**

	December		January to December		Change January to December 2011/ January to December 2010
	2010	2011	2010	2011	
	millions of dollars				percent
<b>North America</b>					
Greenland	1.7	1.3	9.1	12.7	39.6
Mexico	396.8	336.7	4,303.5	4,675.8	8.7
Saint Pierre and Miquelon	1.2	1.3	14.6	16.5	13.0
United States	24,677.1	26,778.4	279,508.9	307,169.0	9.9
<b>Total</b>	<b>25,076.8</b>	<b>27,117.6</b>	<b>283,836.0</b>	<b>311,874.0</b>	<b>9.9</b>
<b>Western Europe</b>					
Andorra	0.0	0.0	0.1	0.1	21.3
Austria	11.7	96.9	348.2	377.3	8.4
Belgium	176.1	165.8	2,091.3	2,200.4	5.2
Denmark	31.2	17.3	286.8	243.7	-15.0
Faeroe Islands	0.0	0.0	0.5	0.5	10.0
Finland	30.3	18.8	380.0	722.0	90.0
France	207.6	294.3	2,074.8	2,864.1	38.0
Germany	334.0	302.3	3,597.3	3,674.5	2.1
Gibraltar	0.0	0.0	25.1	94.3	276.1
Greece	8.8	5.9	109.3	82.8	-24.3
Iceland	1.8	3.4	103.1	50.2	-51.4
Italy	153.8	145.5	1,830.0	1,877.8	2.6
Luxembourg	1.6	3.1	50.9	79.5	56.2
Malta	0.7	46.4	108.0	53.1	-50.8
Netherlands	329.1	264.1	3,126.6	4,605.4	47.3
Norway	274.7	212.3	2,509.8	2,757.8	9.9
Portugal	11.7	6.9	268.3	221.2	-17.5
Republic of Ireland (Eire)	24.9	25.8	312.7	345.9	10.6
Spain	227.7	118.0	909.8	945.3	3.9
Sweden	69.8	80.3	442.3	456.3	3.2
Switzerland	200.6	65.0	1,470.7	1,091.8	-25.8
United Kingdom	1,591.6	1,731.0	15,518.1	18,101.3	16.6
<b>Total</b>	<b>3,687.8</b>	<b>3,603.3</b>	<b>35,563.4</b>	<b>40,845.1</b>	<b>14.9</b>
<b>Other Europe</b>					
Albania	8.0	4.0	31.2	54.5	74.4
Armenia	1.6	1.0	11.7	15.8	35.1
Azerbaijan	0.8	0.7	15.3	11.3	-26.1
Belarus	0.1	0.1	1.5	1.5	-0.7
Bosnia and Herzegovina	0.2	0.0	4.5	4.3	-4.9
Bulgaria	2.7	1.6	116.4	189.5	62.9
Croatia	4.9	0.8	92.2	15.7	-82.9
Czech Republic	9.2	10.3	110.6	101.1	-8.6
Estonia	1.4	29.4	21.1	102.9	386.7
Georgia	3.1	2.3	18.7	21.8	17.1
Hungary	7.7	5.4	99.5	93.8	-5.8
Kazakhstan	6.9	5.8	123.2	137.2	11.3
Kyrgyzstan	0.4	1.5	5.0	10.6	112.2
Latvia	87.9	3.7	171.6	46.2	-73.1
Lithuania	4.6	2.4	34.9	46.2	32.6
Macedonia (Former Yugoslav Republic of Macedonia)	2.1	0.8	11.0	17.4	58.4
Montenegro	0.2	0.1	1.7	1.4	-21.4
Poland	32.0	24.8	169.1	209.8	24.1
Republic of Moldova	0.1	0.0	2.2	0.9	-59.2
Romania	3.6	4.0	91.8	55.9	-39.1
Russian Federation	153.0	178.0	1,073.7	1,403.3	30.7
Serbia	0.4	0.5	7.1	8.2	15.0
Slovakia	4.3	1.9	30.3	68.5	125.7
Slovenia	0.7	0.7	32.3	10.1	-68.9
Tajikistan	0.3	0.7	5.2	3.6	-30.4
Turkmenistan	0.9	1.4	5.1	12.1	136.3
Ukraine	27.8	12.3	145.1	132.3	-8.8
Uzbekistan	0.5	0.2	5.8	7.2	23.4
<b>Total</b>	<b>365.2</b>	<b>294.5</b>	<b>2,438.3</b>	<b>2,783.4</b>	<b>14.2</b>

Table 4 – continued

## Domestic exports by country, customs basis, not seasonally adjusted

	December		January to December		Change
	2010	2011	2010	2011	December 2011/ January to January to December 2010
	millions of dollars				percent
<b>Middle East</b>					
Bahrain	2.7	13.0	62.3	69.6	11.7
Cyprus	1.4	2.9	48.0	12.0	-75.0
Egypt	43.4	70.0	610.9	690.7	13.1
Eritrea	0.0	0.0	2.3	3.3	43.7
Ethiopia	23.3	0.9	174.1	19.9	-88.6
Iran	6.0	38.4	105.9	111.5	5.2
Iraq	3.3	21.4	221.6	176.1	-20.6
Israel	37.2	47.5	348.2	358.7	3.0
Jordan	6.0	5.1	58.6	61.4	4.7
Kuwait	5.5	9.6	84.3	95.5	13.3
Lebanon	3.9	4.1	60.8	71.7	17.8
Libya	85.2	4.3	211.4	44.5	-78.9
Oman	12.4	35.7	98.9	102.1	3.2
Qatar	3.4	7.5	77.6	149.6	92.7
Saudi Arabia	155.9	75.5	908.7	804.9	-11.4
Somalia	0.0	0.0	2.3	1.1	-53.6
Sudan	19.7	1.2	116.7	137.4	17.8
Syria	5.1	3.4	57.6	51.7	-10.2
Turkey	59.1	122.9	823.6	1,250.4	51.8
United Arab Emirates	80.6	151.8	1,008.5	1,222.3	21.2
Yemen	1.3	0.7	18.0	9.2	-48.7
<b>Total</b>	<b>555.6</b>	<b>615.8</b>	<b>5,100.4</b>	<b>5,443.4</b>	<b>6.7</b>
<b>Other Africa</b>					
Algeria	10.6	6.1	288.0	239.2	-16.9
Angola	5.3	5.3	189.5	118.0	-37.7
Antarctica	0.0	0.0	0.2	0.5	148.4
Benin	0.9	0.8	12.4	12.0	-3.2
Botswana	0.1	0.7	3.6	4.0	9.9
Burkina Faso	2.3	4.5	20.2	31.2	54.0
Burundi	0.0	0.1	0.9	0.9	-0.2
Cameroon	6.3	3.8	28.0	24.7	-11.6
Cape Verde	0.1	0.0	1.0	1.8	79.2
Central African Republic	0.0	0.0	0.1	0.3	160.7
Chad	0.6	0.1	6.6	2.7	-59.0
Comoros	0.0	0.0	0.1	0.3	239.1
Congo	1.1	1.4	16.1	21.2	31.7
Democratic Republic of the Congo	1.1	1.2	12.8	18.2	41.6
Djibouti	1.3	0.3	6.0	1.3	-79.2
Equatorial Guinea	0.2	0.3	4.5	8.8	97.4
French Southern Territories	0.0	0.0	0.0	0.0	-39.2
Gabon	0.8	0.8	17.0	17.4	2.5
Gambia	0.1	0.1	0.8	0.6	-19.1
Ghana	18.2	23.6	169.4	251.0	48.1
Guinea	0.8	2.6	7.9	23.2	192.2
Guinea-Bissau	0.0	0.0	0.0	0.1	...
Ivory Coast	2.7	2.7	19.4	18.0	-7.3
Kenya	5.7	12.0	67.7	77.0	13.8
Lesotho	0.0	0.0	0.1	0.1	-1.7
Liberia	0.8	0.4	11.7	12.6	8.2
Madagascar	2.2	1.2	44.7	14.0	-68.6
Malawi	0.2	0.3	3.5	4.4	26.5
Mali	1.6	2.0	8.0	21.6	169.9
Mauritania	1.4	2.2	5.0	13.3	167.9
Mauritius	0.6	0.4	4.9	5.0	1.9
Morocco	20.5	17.1	167.2	289.2	72.9
Mozambique	1.4	1.4	12.5	12.4	-1.0
Namibia	0.2	3.0	11.2	7.5	-32.9
Niger	0.2	0.4	2.4	4.7	95.1
Nigeria	12.9	17.9	199.4	197.3	-1.0
Rwanda	0.0	0.1	1.0	1.0	6.6
Saint Helena	0.0	0.0	0.0	0.1	...
Sao Tome and Principe	0.0	0.0	0.0	0.1	212.3
Senegal	2.2	1.2	25.6	25.5	-0.1
Seychelles	0.0	0.1	1.0	4.2	318.5

Table 4 – continued

## Domestic exports by country, customs basis, not seasonally adjusted

	December		January to December		Change
	2010	2011	2010	2011	December 2011/ January to December 2010
	millions of dollars				percent
Sierra Leone	0.6	1.3	9.6	9.9	3.0
South Africa	32.3	71.5	435.2	632.5	45.3
Swaziland	0.1	0.2	1.5	1.0	-31.4
Togo	2.0	1.3	11.4	13.4	17.7
Tunisia	19.3	15.6	88.5	93.0	5.1
Uganda	1.0	1.4	9.7	8.7	-10.3
United Republic of Tanzania	15.7	15.9	49.7	53.7	8.1
Western Sahara	0.0	0.0	0.0	0.0	-100.0
Zambia	2.3	2.7	27.4	28.6	4.5
Zimbabwe	0.8	0.1	5.6	8.8	57.7
<b>Total</b>	<b>176.5</b>	<b>223.9</b>	<b>2,008.8</b>	<b>2,335.3</b>	<b>16.3</b>
<b>Other Asia</b>					
Afghanistan	4.0	2.0	55.2	34.6	-37.4
Bangladesh	26.0	76.8	593.2	549.9	-7.3
Bhutan	0.1	0.5	1.6	0.6	-65.5
British Indian Ocean Territory	0.0	0.0	2.2	0.0	-99.1
Brunei Darussalam	0.4	0.2	10.5	2.6	-75.1
Cambodia	0.7	0.6	3.8	7.9	106.7
China	1,736.5	1,771.0	12,879.1	16,361.4	27.0
Hong Kong	220.4	291.7	1,708.7	2,714.6	58.9
India	143.3	286.6	1,987.4	2,532.0	27.4
Indonesia	125.4	129.2	1,041.1	1,587.2	52.5
Japan	787.4	901.5	9,060.4	10,530.8	16.2
Laos	0.5	0.0	2.7	6.6	145.9
Macao	0.3	0.5	2.3	3.1	34.9
Malaysia	81.1	38.9	729.5	708.5	-2.9
Maldives	0.2	0.6	4.6	4.9	8.6
Mongolia	1.5	5.8	25.2	87.3	246.8
Myanmar	0.0	0.0	2.7	0.8	-70.3
Nepal	0.1	0.8	5.3	6.2	16.5
North Korea	2.1	2.7	11.8	18.2	53.6
Pakistan	70.6	91.1	538.5	682.1	26.7
Philippines	73.8	29.5	669.9	541.0	-19.2
Singapore	58.7	67.1	665.0	668.0	0.4
South Korea	348.6	406.9	3,634.9	5,022.2	38.2
Sri Lanka	56.1	26.0	346.3	300.6	-13.2
Taiwan	103.7	148.1	1,239.0	1,691.3	36.5
Thailand	44.0	62.2	619.8	768.9	24.1
Timor-Leste	0.0	0.0	0.0	0.3	...
Viet Nam	18.7	27.6	247.6	317.1	28.1
<b>Total</b>	<b>3,904.1</b>	<b>4,368.0</b>	<b>36,088.6</b>	<b>45,148.7</b>	<b>25.1</b>
<b>Oceania</b>					
American Samoa	0.1	0.0	1.4	1.2	-13.3
Australia	131.4	151.8	1,604.6	1,732.9	8.0
Christmas Island	0.0	0.0	0.9	0.4	-58.3
Cocos (Keeling) Islands	0.0	0.1	0.1	0.3	134.5
Cook Islands	0.0	0.0	0.1	0.2	352.6
Fiji	0.0	0.2	3.3	6.9	111.2
French Polynesia	0.6	0.9	11.6	11.7	1.2
Guam	0.2	0.1	1.8	2.0	11.3
Heard Island and McDonald Islands	0.0	0.0	0.0	0.0	-100.0
Kiribati	0.0	0.0	0.1	0.1	112.5
Nauru	0.0	0.0	1.3	0.0	-100.0
New Caledonia	1.9	0.5	44.1	8.0	-81.8
New Zealand	18.0	37.2	300.4	364.4	21.3
Niue	0.0	0.0	0.0	0.1	...
Norfolk Island	0.0	0.0	0.1	0.0	-100.0
Papua New Guinea	2.9	4.3	37.7	44.9	19.1
Pitcairn	0.0	0.0	0.1	0.0	-40.3
Samoa	0.0	0.1	0.3	0.3	-4.6
Solomon Islands	0.0	0.0	0.1	0.3	312.6
Tonga	0.0	0.0	4.5	0.2	-95.6
United States Minor Outlying Islands	0.7	1.4	14.5	12.3	-15.6
Vanuatu	0.2	0.0	1.7	1.0	-41.7
Wallis and Futuna	0.0	0.0	0.0	0.0	...
<b>Total</b>	<b>156.1</b>	<b>196.6</b>	<b>2,028.5</b>	<b>2,187.3</b>	<b>7.8</b>

Table 4 – continued

## Domestic exports by country, customs basis, not seasonally adjusted

	December		January to December		Change
	2010	2011	2010	2011	January to December 2011/ January to December 2010
	millions of dollars				percent
<b>South America</b>					
Argentina	18.1	29.2	259.2	471.9	82.1
Bolivia	0.8	2.4	40.7	14.6	-64.2
Brazil	193.8	184.0	2,453.5	2,715.6	10.7
Chile	73.2	111.6	539.9	779.6	44.4
Colombia	47.4	82.1	614.0	724.9	18.1
Ecuador	17.5	14.4	251.5	270.7	7.6
Falkland Islands (Malvinas)	0.0	0.0	0.1	0.1	-6.9
Guyana	1.9	3.6	27.8	35.4	27.1
Paraguay	0.3	0.6	14.3	11.5	-19.6
Peru	34.0	45.6	445.7	488.2	9.5
Suriname	1.2	0.7	9.9	11.7	18.2
Uruguay	2.3	2.0	108.5	113.7	4.8
Venezuela	58.4	60.9	544.1	582.5	7.0
<b>Total</b>	<b>448.9</b>	<b>537.1</b>	<b>5,309.2</b>	<b>6,220.2</b>	<b>17.2</b>
<b>Central America Antilles</b>					
Anguilla	0.1	0.1	0.9	2.3	167.9
Antigua and Barbuda	1.0	0.4	19.2	9.6	-50.2
Aruba	0.3	0.4	26.1	5.5	-79.0
Bahamas	27.1	75.2	150.6	153.7	2.0
Barbados	2.9	4.2	36.7	44.2	20.6
Belize	0.2	0.7	5.5	5.0	-10.1
Bermuda	2.7	1.4	37.6	73.8	95.9
British Virgin Islands	0.1	0.1	22.2	48.2	117.2
Cayman Islands	0.2	0.5	6.2	7.0	12.3
Costa Rica	13.2	19.5	91.4	155.4	70.0
Cuba	18.2	28.6	307.8	358.6	16.5
Dominica	0.2	0.3	4.4	3.7	-15.7
Dominican Republic	19.8	10.5	181.9	138.4	-23.9
El Salvador	1.9	2.8	33.1	34.3	3.7
Grenada	0.3	0.3	5.1	4.4	-13.1
Guatemala	10.3	6.6	87.2	103.8	19.0
Haiti	2.8	2.4	46.1	36.3	-21.2
Honduras	2.1	7.2	35.8	42.3	18.1
Jamaica	6.5	10.2	124.8	106.1	-15.0
Montserrat	0.0	0.0	0.2	0.3	43.7
Netherlands Antilles	1.2	1.7	44.4	103.4	132.9
Nicaragua	5.5	4.2	38.1	33.6	-11.8
Panama	3.9	7.1	116.5	100.6	-13.7
Saint Kitts and Nevis	0.8	0.5	6.7	5.7	-15.3
Saint Lucia	28.6	0.6	35.7	8.5	-76.2
Saint Vincent and the Grenadines	0.6	0.3	10.8	6.7	-37.5
Trinidad and Tobago	25.5	34.9	289.0	332.9	15.2
Turks and Caicos Islands	0.5	0.1	4.3	1.8	-57.7
<b>Total</b>	<b>176.4</b>	<b>220.7</b>	<b>1,768.5</b>	<b>1,925.9</b>	<b>8.9</b>
<b>All countries</b>	<b>34,547.3</b>	<b>37,177.6</b>	<b>374,141.7</b>	<b>418,763.3</b>	<b>11.9</b>

**Table 5-1**  
**Exports by province of origin, customs basis, not seasonally adjusted — December**

	Agricultural and fishing products	Energy products	Forestry products	Industrial goods	Machinery and equipment	Automotive products	Consumer goods	Special transactions trade	<b>Total</b>
millions of dollars									
<b>Domestic exports</b>									
Newfoundland and Labrador									
2010	37.5	681.3	8.9	333.5	2.6	0.2	0.1	1.3	<b>1,065.4</b>
2011	30.8	583.9	14.0	284.7	2.7	0.1	0.0	1.5	<b>917.8</b>
Prince Edward Island									
2010	38.6	0.0	0.0	1.2	5.5	0.6	1.9	7.8	<b>55.6</b>
2011	43.1	0.1	0.1	1.9	19.3	0.1	1.9	12.7	<b>79.1</b>
Nova Scotia									
2010	106.9	27.3	67.4	47.8	114.1	4.0	4.8	2.2	<b>374.4</b>
2011	106.7	22.3	31.7	49.6	124.0	4.6	5.3	2.7	<b>347.0</b>
New Brunswick									
2010	113.1	945.9	115.4	93.1	21.3	3.5	11.2	2.5	<b>1,306.1</b>
2011	135.1	838.1	111.0	89.2	25.5	3.1	8.0	2.5	<b>1,212.5</b>
Quebec									
2010	472.9	251.2	474.7	1,614.5	2,104.6	163.0	271.0	78.5	<b>5,430.4</b>
2011	530.9	262.8	409.8	1,915.7	2,204.3	254.3	287.8	54.0	<b>5,919.5</b>
Ontario									
2010	744.0	278.4	217.5	4,605.8	2,649.6	3,723.8	609.1	100.3	<b>12,928.5</b>
2011	708.4	266.5	205.7	4,005.5	2,765.0	4,707.3	629.3	100.7	<b>13,388.3</b>
Manitoba									
2010	362.7	99.7	16.5	216.5	137.0	44.8	35.6	25.8	<b>938.7</b>
2011	383.6	93.4	20.4	256.6	174.2	50.6	53.3	27.2	<b>1,059.2</b>
Saskatchewan									
2010	700.2	671.7	23.0	679.8	49.8	4.0	1.1	3.2	<b>2,132.7</b>
2011	817.0	1,042.6	25.4	796.6	64.2	4.4	1.0	3.2	<b>2,754.4</b>
Alberta									
2010	481.5	5,555.4	212.8	908.9	365.4	50.1	8.3	20.1	<b>7,602.5</b>
2011	627.2	6,406.5	147.8	1,011.0	409.9	71.7	8.8	25.3	<b>8,708.2</b>
British Columbia									
2010	160.0	869.1	777.6	524.8	288.3	23.6	44.6	17.4	<b>2,705.3</b>
2011	176.8	936.8	758.4	522.8	298.6	25.7	45.6	17.3	<b>2,782.0</b>
Yukon, Northwest Territories and Nunavut <sup>1</sup>									
2010	0.2	0.0	0.0	5.4	1.8	0.2	0.0	0.0	<b>7.7</b>
2011	0.1	0.0	0.0	7.8	1.1	0.0	0.5	0.1	<b>9.5</b>
<b>Total</b>									
2010	<b>3,217.7</b>	<b>9,380.1</b>	<b>1,913.6</b>	<b>9,031.4</b>	<b>5,740.1</b>	<b>4,017.7</b>	<b>987.7</b>	<b>259.0</b>	<b>34,547.3</b>
2011	<b>3,559.9</b>	<b>10,453.0</b>	<b>1,724.3</b>	<b>8,941.3</b>	<b>6,088.8</b>	<b>5,121.8</b>	<b>1,041.4</b>	<b>247.1</b>	<b>37,177.6</b>
<b>Re-exports</b>									
2010	<b>80.1</b>	<b>32.9</b>	<b>4.2</b>	<b>315.8</b>	<b>812.0</b>	<b>80.8</b>	<b>225.2</b>	<b>600.0</b>	<b>2,151.0</b>
2011	<b>70.1</b>	<b>4.6</b>	<b>5.6</b>	<b>439.2</b>	<b>917.8</b>	<b>92.1</b>	<b>266.8</b>	<b>652.3</b>	<b>2,448.4</b>
<b>Total exports</b>									
2010	<b>3,297.8</b>	<b>9,413.1</b>	<b>1,917.8</b>	<b>9,347.1</b>	<b>6,552.2</b>	<b>4,098.5</b>	<b>1,212.9</b>	<b>859.1</b>	<b>36,698.4</b>
2011	<b>3,630.0</b>	<b>10,457.6</b>	<b>1,729.9</b>	<b>9,380.5</b>	<b>7,006.6</b>	<b>5,213.9</b>	<b>1,308.2</b>	<b>899.4</b>	<b>39,626.1</b>

1. Data for the current month do not include some exports from the Harmonized System, Chapter 71, "Natural/cultured pearls, precious stones and metals, coins, etc." for reasons relating to timing.

**Table 5-2**  
**Exports by province of origin, customs basis, not seasonally adjusted — Year to date, January to December**

	Agricultural and fishing products	Energy products	Forestry products	Industrial goods	Machinery and equipment	Automotive products	Consumer goods	Special transactions trade	Total
millions of dollars									
<b>Domestic exports</b>									
Newfoundland and Labrador									
2010	782.6	5,980.7	116.6	2,255.1	43.2	2.1	1.4	26.5	9,208.2
2011	863.1	7,970.9	159.5	3,043.8	38.7	2.1	1.4	25.4	12,105.0
Prince Edward Island									
2010	467.8	1.1	6.5	24.0	70.5	4.1	36.8	80.7	691.4
2011	476.9	0.1	0.3	20.4	103.6	2.6	34.9	92.5	731.3
Nova Scotia									
2010	948.2	482.1	753.2	515.0	1,398.3	54.8	58.6	37.1	4,247.3
2011	1,094.9	444.7	704.9	567.4	1,405.9	63.0	58.5	41.2	4,380.5
New Brunswick									
2010	1,241.5	8,413.3	1,364.3	1,093.8	288.5	27.2	216.4	43.0	12,688.0
2011	1,452.0	10,349.1	1,317.8	1,191.8	319.0	42.3	146.3	40.7	14,859.1
Quebec									
2010	4,829.3	2,748.0	6,012.9	19,548.6	17,973.9	1,686.3	3,980.5	995.1	57,774.5
2011	5,245.5	3,271.6	5,817.0	22,387.6	18,745.4	2,253.3	3,601.2	835.4	62,156.9
Ontario									
2010	8,523.9	2,562.2	2,750.4	42,223.0	30,321.6	50,630.3	7,431.8	1,611.6	146,054.7
2011	8,834.0	2,961.6	2,835.7	49,671.0	30,860.0	51,843.7	6,882.0	1,524.7	155,412.6
Manitoba									
2010	3,753.8	864.9	209.3	2,387.7	1,880.9	464.0	361.8	314.5	10,236.9
2011	3,871.4	1,129.3	237.1	3,126.2	2,150.9	509.5	488.9	269.4	11,782.6
Saskatchewan									
2010	7,330.9	8,486.9	214.5	6,881.3	679.2	44.2	11.2	45.6	23,693.8
2011	8,546.8	10,493.1	265.5	9,443.8	654.6	61.1	11.2	44.1	29,520.1
Alberta									
2010	5,701.2	55,901.0	2,140.8	10,265.6	3,728.4	505.5	123.5	286.7	78,652.7
2011	6,921.4	66,653.6	1,944.5	11,864.0	4,390.3	872.7	122.3	277.6	93,046.4
British Columbia									
2010	2,337.6	8,033.9	8,569.5	5,644.2	3,058.4	263.9	560.4	252.9	28,720.8
2011	2,389.7	10,031.8	9,358.6	6,657.0	3,288.8	276.3	549.4	247.7	32,799.3
Yukon, Northwest Territories and Nunavut <sup>1</sup>									
2010	1.8	0.2	0.4	2,156.7	12.5	0.6	0.4	0.7	2,173.4
2011	1.4	0.1	0.2	1,955.2	10.7	0.6	0.8	0.5	1,969.6
<b>Total</b>									
2010	35,918.7	93,474.2	22,138.4	92,995.1	59,455.2	53,683.1	12,782.8	3,694.3	374,141.7
2011	39,697.0	113,305.7	22,641.2	109,928.3	61,967.9	55,927.1	11,896.8	3,399.1	418,763.3
<b>Re-exports</b>									
2010	645.4	351.4	75.5	3,051.7	10,456.4	1,091.9	2,208.9	7,276.8	25,157.9
2011	602.3	390.3	79.7	4,458.2	11,192.6	1,195.5	2,900.0	7,939.6	28,758.2
<b>Total exports</b>									
2010	36,564.2	93,825.6	22,213.9	96,046.8	69,911.6	54,775.0	14,991.7	10,971.1	399,299.6
2011	40,299.3	113,696.0	22,720.9	114,386.5	73,160.5	57,122.6	14,796.8	11,338.7	447,521.5

1. Data for the current month do not include some exports from the Harmonized System Chapter 71, "Natural/cultured pearls, precious stones and metals, coins, etc." for reasons relating to timing.

**Table 6-1**  
**Imports by commodity groupings, balance of payments basis, seasonally adjusted — Current dollars**

	November	December	Change		Year to date			December 2011/ December 2010	
	2011	2011			2010	2011	Change		
	millions of dollars		percent		millions of dollars			percent	
<b>Total</b>	<b>39,036</b>	<b>39,334</b>	<b>298</b>	<b>0.8</b>	<b>413,833</b>	<b>455,578</b>	<b>41,745</b>	<b>10.1</b>	<b>10.9</b>
<b>Agricultural and fishing products</b>	<b>2,809</b>	<b>2,825</b>	<b>16</b>	<b>0.6</b>	<b>29,579</b>	<b>32,621</b>	<b>3,042</b>	<b>10.3</b>	<b>9.0</b>
Fruits and vegetables	759	761	2	0.3	8,294	8,924	630	7.6	7.7
Fresh fruits and berries	258	275	18	6.8	2,960	3,110	151	5.1	9.7
Dried fruits, fruits and fruit preparations	133	134	1	0.7	1,377	1,553	176	12.8	9.9
Fresh vegetables	190	180	-11	-5.6	2,183	2,284	101	4.6	0.9
Other vegetables and vegetable preparations	178	173	-6	-3.1	1,774	1,976	202	11.4	10.7
Other agricultural and fishing products	2,050	2,063	14	0.7	21,285	23,698	2,413	11.3	9.5
Live animals	20	19	-1	-5.9	196	220	25	12.5	17.4
Meat and meat preparations	217	236	20	9.1	2,162	2,544	382	17.7	12.8
Fish and marine animals	196	200	4	2.0	2,027	2,293	267	13.2	10.8
Cocoa, coffee, tea and other food preparations	454	497	43	9.5	4,987	5,642	656	13.1	14.4
Dairy produce, eggs and honey	46	54	8	16.2	590	627	37	6.3	7.4
Corn (maize) shelled	25	27	2	7.5	398	381	-17	-4.3	24.7
Other cereals and cereal preparations	197	195	-2	-0.9	2,133	2,242	109	5.1	5.9
Sugar and sugar preparations	196	171	-25	-12.5	1,769	2,189	420	23.7	19.7
Fodder, feed, excluding unmilled cereal	122	126	5	3.8	1,398	1,443	45	3.2	2.9
Beverages	386	336	-50	-12.9	3,723	3,898	175	4.7	0.4
Tobacco	41	37	-4	-10.3	424	383	-41	-9.8	10.5
Crude vegetable products	149	164	15	10.0	1,467	1,823	356	24.2	6.6
Cotton	1	1	0	-33.9	12	12	1	5.7	-19.9
<b>Energy products</b>	<b>4,653</b>	<b>4,302</b>	<b>-351</b>	<b>-7.6</b>	<b>40,549</b>	<b>51,972</b>	<b>11,423</b>	<b>28.2</b>	<b>15.3</b>
Crude petroleum	2,511	2,277	-234	-9.3	23,837	27,806	3,969	16.7	6.7
Other energy products	2,143	2,025	-118	-5.5	16,711	24,166	7,454	44.6	26.7
Coal and other related products	517	470	-46	-9.0	5,180	5,633	454	8.8	25.1
Petroleum and coal products	1,626	1,554	-72	-4.4	11,532	18,532	7,001	60.7	27.3
<b>Forestry products</b>	<b>212</b>	<b>230</b>	<b>18</b>	<b>8.7</b>	<b>2,648</b>	<b>2,518</b>	<b>-130</b>	<b>-4.9</b>	<b>6.6</b>
Forestry products	212	230	18	8.7	2,648	2,518	-130	-4.9	6.6
Crude wood products	31	35	4	11.4	423	363	-60	-14.2	-18.2
Wood fabricated materials	181	195	15	8.2	2,225	2,155	-70	-3.1	12.8
<b>Industrial goods and materials</b>	<b>8,352</b>	<b>8,567</b>	<b>215</b>	<b>2.6</b>	<b>86,926</b>	<b>97,962</b>	<b>11,036</b>	<b>12.7</b>	<b>11.8</b>
Metals and metal ores	3,341	3,473	133	4.0	33,095	39,952	6,857	20.7	11.2
Metals in ores, concentrates and scrap	660	653	-7	-1.0	7,086	8,402	1,316	18.6	-10.3
Steel bars, rods, plates, sheets	577	612	35	6.1	6,367	7,040	673	10.6	33.9
Other iron and steel products	447	494	48	10.7	4,360	5,172	812	18.6	40.5
Precious metals including alloys	1,280	1,332	51	4.0	10,997	14,759	3,761	34.2	7.7
Other non-ferrous metals and alloys	377	383	6	1.5	4,284	4,579	294	6.9	9.6
Chemicals and plastics	2,689	2,773	84	3.1	28,972	31,528	2,557	8.8	14.2
Organic chemicals	599	683	85	14.1	6,826	6,991	165	2.4	31.0
Plastic materials	949	964	15	1.6	10,106	10,912	807	8.0	12.9
Other chemicals and related products	1,142	1,126	-16	-1.4	12,040	13,625	1,585	13.2	7.0
Other industrial goods and materials	2,322	2,320	-2	-0.1	24,860	26,482	1,622	6.5	9.9
Crude animal products	30	31	1	2.6	238	299	62	25.9	119.2
Wool and man-made fibres	20	21	1	6.9	250	259	9	3.6	-1.1
Crude non-metallic minerals	74	77	3	4.1	814	854	40	4.9	16.3
Textile fabricated materials	214	209	-5	-2.3	2,364	2,531	167	7.1	1.7
Metal fabricated basic products	988	1,007	19	1.9	9,818	11,140	1,323	13.5	13.8
Rubber fabricated materials	101	104	3	2.8	1,004	1,141	137	13.7	18.6
Oils, fats, animal and vegetable	124	110	-15	-11.8	1,241	1,257	16	1.3	4.9
Non-metallic minerals	326	312	-14	-4.2	3,610	3,730	120	3.3	4.7
Other fabricated materials	444	449	5	1.0	5,521	5,270	-251	-4.5	4.7



Table 6-1 – continued

## Imports by commodity groupings, balance of payments basis, seasonally adjusted — Current dollars

	November 2011	December 2011	Change		Year to date			December 2011/ December 2010	
					2010	2011	Change		
	millions of dollars		percent		millions of dollars			percent	
<b>Machinery and equipment</b>	<b>10,741</b>	<b>10,882</b>	<b>141</b>	<b>1.3</b>	<b>113,877</b>	<b>124,651</b>	<b>10,773</b>	<b>9.5</b>	<b>11.7</b>
Industrial and agricultural machinery	3,063	3,201	138	4.5	30,187	35,728	5,541	18.4	20.9
Engines, turbines and electric motors	375	349	-26	-6.9	4,419	4,228	-191	-4.3	-8.8
Drilling mining machinery	184	184	0	0.2	1,782	2,876	1,094	61.4	11.7
Excavating machinery	320	376	56	17.4	2,724	3,555	831	30.5	51.1
Metal working machinery	168	188	20	11.6	1,688	2,126	438	26.0	15.1
Other industrial machinery	1,589	1,650	61	3.8	15,294	18,038	2,744	17.9	23.4
Agricultural machinery including tractors	426	454	28	6.5	4,281	4,905	625	14.6	29.0
Aircraft and other transportation equipment	1,308	1,200	-108	-8.3	14,608	15,865	1,257	8.6	0.7
Aircraft, engines, parts	757	730	-27	-3.6	8,891	8,999	107	1.2	-8.0
Other transportation equipment and parts	551	470	-81	-14.8	5,717	6,866	1,149	20.1	17.9
Office machines and equipment	1,176	1,205	29	2.5	13,254	13,714	460	3.5	10.8
Other machinery and equipment	5,193	5,275	82	1.6	55,828	59,344	3,516	6.3	9.6
Other communication and related equipment	1,913	1,959	45	2.4	20,424	21,869	1,445	7.1	15.3
Other equipment and tools	3,280	3,317	37	1.1	35,404	37,475	2,071	5.8	6.4
<b>Automotive products</b>	<b>5,828</b>	<b>6,037</b>	<b>209</b>	<b>3.6</b>	<b>68,713</b>	<b>71,230</b>	<b>2,517</b>	<b>3.7</b>	<b>9.2</b>
Passenger autos and chassis	1,815	1,733	-83	-4.5	22,267	22,462	194	0.9	-7.3
Trucks and other motor vehicles	1,281	1,413	132	10.3	16,862	18,352	1,490	8.8	20.9
Motor vehicle parts	2,732	2,891	159	5.8	29,584	30,417	833	2.8	16.2
<b>Other consumer goods</b>	<b>5,129</b>	<b>5,150</b>	<b>21</b>	<b>0.4</b>	<b>57,771</b>	<b>59,588</b>	<b>1,818</b>	<b>3.1</b>	<b>5.9</b>
Apparel and footwear	1,033	1,048	15	1.4	11,234	12,232	998	8.9	2.7
Apparel and apparel accessories	855	866	10	1.2	9,303	10,158	855	9.2	2.6
Footwear	178	182	5	2.5	1,930	2,074	143	7.4	3.4
Miscellaneous consumer goods	4,096	4,102	6	0.2	46,537	47,357	820	1.8	6.7
Television, radios, phonographs	134	137	3	2.2	1,558	1,563	4	0.3	15.4
Printed matter	272	264	-7	-2.7	3,510	3,336	-174	-5.0	-10.1
Watches, sporting goods and toys	490	451	-39	-7.9	6,120	5,755	-365	-6.0	-11.6
House furnishings	755	783	28	3.7	8,800	8,809	10	0.1	7.7
Photographic goods	232	267	35	15.2	2,657	2,681	24	0.9	16.6
Miscellaneous end products	2,213	2,199	-14	-0.6	23,891	25,212	1,321	5.5	12.0
<b>Special transactions trade</b>	<b>509</b>	<b>487</b>	<b>-22</b>	<b>-4.3</b>	<b>4,949</b>	<b>5,526</b>	<b>578</b>	<b>11.7</b>	<b>27.9</b>
<b>Unallocated balance of payments adjustments</b>	<b>804</b>	<b>855</b>	<b>51</b>	<b>6.3</b>	<b>8,821</b>	<b>9,509</b>	<b>688</b>	<b>7.8</b>	<b>12.7</b>

**Table 6-2**  
**Imports by commodity groupings, balance of payments basis, seasonally adjusted — Constant dollars, 2002**

	November	December	Change		Year to date			December 2011/ December 2010	
	2011	2011			2010	2011	Change		
	millions of dollars		percent		millions of dollars			percent	
<b>Total</b>	<b>42,422</b>	<b>42,933</b>	<b>511</b>	<b>1.2</b>	<b>470,401</b>	<b>508,644</b>	<b>38,243</b>	<b>8.1</b>	<b>6.6</b>
<b>Agricultural and fishing products</b>	<b>2,744</b>	<b>2,763</b>	<b>19</b>	<b>0.7</b>	<b>29,955</b>	<b>32,300</b>	<b>2,346</b>	<b>7.8</b>	<b>3.1</b>
Fruits and vegetables	718	736	18	2.6	8,446	8,811	365	4.3	-0.9
Fresh fruits and berries	262	280	17	6.5	3,083	3,256	173	5.6	7.0
Dried fruits, fruits and fruit preparations	117	114	-3	-2.4	1,384	1,437	52	3.8	-1.2
Fresh vegetables	183	197	13	7.3	2,244	2,300	56	2.5	-10.1
Other vegetables and vegetable preparations	155	146	-9	-6.1	1,734	1,818	83	4.8	-0.9
Other agricultural and fishing products	2,026	2,027	1	0.0	21,509	23,490	1,981	9.2	4.7
Live animals	17	16	0	-2.4	193	208	15	7.5	4.7
Meat and meat preparations	193	206	14	7.0	2,107	2,345	238	11.3	-0.3
Fish and marine animals	253	249	-4	-1.6	2,816	2,929	113	4.0	4.7
Cocoa, coffee, tea and other food preparations	531	578	47	8.8	5,133	6,435	1,302	25.4	14.2
Dairy produce, eggs and honey	43	46	3	6.1	639	598	-41	-6.4	-7.7
Corn (maize) shelled	14	16	2	13.8	365	223	-143	-39.1	7.4
Other cereals and cereal preparations	153	163	10	6.4	1,808	1,773	-35	-1.9	5.2
Sugar and sugar preparations	180	161	-19	-10.6	1,720	2,048	328	19.1	15.8
Fodder, feed, excluding unmilled cereal	104	113	8	8.1	1,189	1,222	34	2.8	9.9
Beverages	371	307	-64	-17.3	3,483	3,685	202	5.8	-3.0
Tobacco	46	41	-5	-11.5	511	451	-61	-11.8	3.9
Crude vegetable products	119	130	11	9.6	1,529	1,559	29	1.9	-14.2
Cotton	2	1	-1	-46.4	16	14	-1	-9.4	-33.0
<b>Energy products</b>	<b>1,947</b>	<b>1,790</b>	<b>-157</b>	<b>-8.1</b>	<b>21,946</b>	<b>22,753</b>	<b>807</b>	<b>3.7</b>	<b>-3.0</b>
Crude petroleum	816	682	-134	-16.4	10,967	9,269	-1,697	-15.5	-19.1
Other energy products	1,131	1,108	-23	-2.0	10,979	13,484	2,505	22.8	10.5
Coal and other related products	473	486	13	2.7	4,640	5,540	899	19.4	33.9
Petroleum and coal products	657	622	-36	-5.5	6,338	7,944	1,606	25.3	-2.9
<b>Forestry products</b>	<b>280</b>	<b>302</b>	<b>22</b>	<b>7.9</b>	<b>3,450</b>	<b>3,406</b>	<b>-44</b>	<b>-1.3</b>	<b>6.4</b>
Forestry products	280	302	22	7.9	3,450	3,406	-44	-1.3	6.4
Crude wood products	45	49	4	8.9	613	536	-77	-12.6	-18.3
Wood fabricated materials	235	254	18	7.8	2,837	2,870	33	1.2	12.9
<b>Industrial goods and materials</b>	<b>6,933</b>	<b>6,908</b>	<b>-25</b>	<b>-0.4</b>	<b>78,294</b>	<b>82,658</b>	<b>4,364</b>	<b>5.6</b>	<b>3.5</b>
Metals and metal ores	2,177	2,050	-128	-5.9	22,556	24,795	2,239	9.9	4.7
Metals in ores, concentrates and scrap	338	354	17	4.9	3,855	4,203	348	9.0	0.5
Steel bars, rods, plates, sheets	433	456	24	5.5	5,239	5,476	237	4.5	21.1
Other iron and steel products	287	319	32	11.1	3,146	3,477	331	10.5	24.9
Precious metals including alloys	761	550	-211	-27.7	5,927	7,316	1,390	23.4	-14.4
Other non-ferrous metals and alloys	359	370	11	3.0	4,389	4,322	-66	-1.5	12.3
Chemicals and plastics	2,278	2,375	96	4.2	27,569	28,206	637	2.3	4.5
Organic chemicals	404	430	26	6.5	5,016	4,496	-520	-10.4	13.3
Plastic materials	956	1,010	54	5.6	10,732	11,393	661	6.2	10.2
Other chemicals and related products	918	935	16	1.8	11,821	12,317	496	4.2	-4.3
Other industrial goods and materials	2,478	2,484	6	0.3	28,170	29,658	1,488	5.3	1.5
Crude animal products	25	29	4	15.2	265	285	20	7.5	82.4
Wool and man-made fibres	22	24	2	11.1	323	301	-21	-6.5	-12.8
Crude non-metallic minerals	57	66	9	15.3	672	677	5	0.7	19.3
Textile fabricated materials	269	264	-5	-1.9	3,167	3,332	165	5.2	-6.6
Metal fabricated basic products	995	1,010	15	1.5	10,484	11,777	1,292	12.3	6.0
Rubber fabricated materials	109	114	5	4.2	1,226	1,333	108	8.8	4.7
Oils, fats, animal and vegetable	100	87	-12	-12.5	1,196	1,088	-109	-9.1	-11.3
Non-metallic minerals	384	369	-15	-3.9	4,386	4,589	202	4.6	-0.1
Other fabricated materials	518	522	5	0.9	6,450	6,275	-175	-2.7	-3.0

Table 6-2 – continued

## Imports by commodity groupings, balance of payments basis, seasonally adjusted — Constant dollars, 2002

	November 2011	December 2011	Change	Year to date			December 2011/ December 2010		
				2010	2011	Change			
	millions of dollars		percent		millions of dollars		percent		
<b>Machinery and equipment</b>	<b>15,889</b>	<b>16,184</b>	<b>295</b>	<b>1.9</b>	<b>165,726</b>	<b>189,652</b>	<b>23,925</b>	<b>14.4</b>	<b>11.7</b>
Industrial and agricultural machinery	3,627	3,778	151	4.2	37,117	44,509	7,392	19.9	14.8
Engines, turbines and electric motors	449	422	-27	-6.0	5,491	5,306	-185	-3.4	-11.6
Drilling mining machinery	199	199	1	0.3	2,002	3,541	1,540	76.9	4.9
Excavating machinery	380	436	57	14.9	3,414	4,478	1,064	31.2	39.6
Metal working machinery	210	235	25	11.7	2,173	2,782	609	28.0	10.0
Other industrial machinery	1,864	1,922	58	3.1	18,568	22,017	3,449	18.6	16.7
Agricultural machinery including tractors	526	564	39	7.3	5,470	6,385	915	16.7	24.9
Aircraft and other transportation equipment	1,460	1,344	-116	-7.9	17,096	18,644	1,548	9.1	-5.2
Aircraft, engines, parts	902	864	-38	-4.2	10,821	11,234	413	3.8	-11.3
Other transportation equipment and parts	558	480	-78	-13.9	6,275	7,410	1,135	18.1	8.0
Office machines and equipment	3,462	3,496	35	1.0	30,419	37,997	7,578	24.9	30.3
Other machinery and equipment	7,340	7,565	225	3.1	81,093	88,501	7,408	9.1	6.6
Other communication and related equipment	3,128	3,259	132	4.2	34,504	37,991	3,487	10.1	12.6
Other equipment and tools	4,213	4,306	93	2.2	46,589	50,510	3,920	8.4	2.5
<b>Automotive products</b>	<b>7,136</b>	<b>7,404</b>	<b>268</b>	<b>3.8</b>	<b>83,836</b>	<b>88,496</b>	<b>4,660</b>	<b>5.6</b>	<b>7.4</b>
Passenger autos and chassis	2,087	2,005	-81	-3.9	25,585	25,987	402	1.6	-8.2
Trucks and other motor vehicles	1,505	1,641	135	9.0	19,050	21,509	2,459	12.9	20.1
Motor vehicle parts	3,544	3,757	213	6.0	39,201	41,001	1,800	4.6	12.4
<b>Other consumer goods</b>	<b>6,382</b>	<b>6,470</b>	<b>88</b>	<b>1.4</b>	<b>74,963</b>	<b>77,745</b>	<b>2,782</b>	<b>3.7</b>	<b>0.6</b>
Apparel and footwear	1,357	1,393	36	2.7	15,918	17,165	1,247	7.8	-5.0
Apparel and apparel accessories	1,119	1,149	31	2.7	13,242	14,249	1,007	7.6	-5.6
Footwear	239	244	6	2.3	2,676	2,916	240	9.0	-2.0
Miscellaneous consumer goods	5,024	5,076	52	1.0	59,045	60,580	1,536	2.6	2.2
Television, radios, phonographs	228	232	4	1.9	2,658	2,704	45	1.7	14.1
Printed matter	332	323	-9	-2.6	4,358	4,248	-110	-2.5	-12.9
Watches, sporting goods and toys	633	584	-49	-7.7	8,445	7,767	-677	-8.0	-18.2
House furnishings	935	971	36	3.9	11,310	11,381	71	0.6	2.2
Photographic goods	509	556	47	9.3	5,161	5,756	595	11.5	26.2
Miscellaneous end products	2,388	2,409	21	0.9	27,112	28,724	1,612	5.9	5.4
<b>Special transactions trade</b>	<b>567</b>	<b>545</b>	<b>-21</b>	<b>-3.8</b>	<b>5,687</b>	<b>6,243</b>	<b>556</b>	<b>9.8</b>	<b>23.4</b>
<b>Unallocated balance of payments adjustments</b>	<b>544</b>	<b>567</b>	<b>22</b>	<b>4.1</b>	<b>6,545</b>	<b>5,391</b>	<b>-1,154</b>	<b>-17.6</b>	<b>8.5</b>

**Table 7-1  
Imports from selected countries, customs basis, not seasonally adjusted — December**

	Agricultural and fishing products	Energy products	Forestry products	Industrial goods	Machinery and equipment	Automotive products	Consumer goods	Special transactions trade	<b>Total</b>
millions of dollars									
<b>United States</b>									
2010	1,392.5	933.6	140.9	3,717.5	4,257.9	3,251.5	1,858.1	535.2	<b>16,087.2</b>
2011	1,539.1	1,373.3	141.8	4,266.7	4,597.6	3,635.4	1,936.6	647.1	<b>18,137.5</b>
<b>Mexico</b>									
2010	142.7	131.6	0.3	172.5	728.3	599.7	91.5	8.0	<b>1,874.7</b>
2011	148.1	0.0	0.6	195.2	760.2	571.1	94.3	3.8	<b>1,773.2</b>
<b>Japan</b>									
2010	7.2	0.5	0.1	88.9	428.2	505.7	76.6	0.3	<b>1,107.6</b>
2011	7.3	40.7	0.1	83.9	482.3	591.8	113.2	1.1	<b>1,320.4</b>
<b>European Union</b>									
<b>Germany</b>									
2010	25.3	0.9	0.9	156.2	311.9	303.7	154.3	0.6	<b>953.8</b>
2011	27.6	1.8	0.8	159.7	403.0	229.6	132.6	1.0	<b>956.2</b>
<b>France</b>									
2010	59.7	13.2	0.1	67.2	238.9	8.5	120.8	1.9	<b>510.2</b>
2011	62.7	8.9	0.5	67.5	279.4	5.8	110.8	0.5	<b>536.2</b>
<b>United Kingdom</b>									
2010	31.5	245.5	0.0	207.0	226.4	40.2	113.5	1.0	<b>865.2</b>
2011	34.5	106.6	0.0	125.6	220.3	63.6	106.8	10.1	<b>667.4</b>
<b>Italy</b>									
2010	68.1	1.9	1.2	87.0	147.3	12.7	92.4	1.4	<b>411.8</b>
2011	55.7	0.2	1.7	81.2	142.7	20.8	91.4	0.4	<b>394.2</b>
<b>Other European Union</b>									
2010	103.3	201.2	2.6	214.3	351.5	82.4	231.9	0.6	<b>1,187.9</b>
2011	100.9	276.5	2.9	332.9	377.5	59.0	265.3	0.7	<b>1,415.7</b>
<b>Total</b>									
2010	287.9	462.7	4.8	731.7	1,275.9	447.6	712.9	5.4	<b>3,928.9</b>
2011	281.5	393.9	6.0	766.9	1,423.0	378.8	706.9	12.7	<b>3,969.7</b>
<b>Newly industrialized countries</b>									
<b>South Korea</b>									
2010	6.3	3.9	0.0	71.2	198.1	126.5	16.6	0.1	<b>422.8</b>
2011	7.6	2.5	0.0	86.1	201.7	152.8	18.4	0.1	<b>469.3</b>
<b>Hong Kong</b>									
2010	2.6	0.0	0.1	1.5	11.6	0.1	12.0	0.0	<b>27.9</b>
2011	3.8	0.0	0.0	3.5	6.0	0.3	9.3	0.2	<b>23.1</b>
<b>Taiwan</b>									
2010	7.2	0.0	0.3	125.0	240.3	12.5	32.6	0.1	<b>418.0</b>
2011	7.8	0.0	0.5	77.3	371.5	15.0	37.9	0.2	<b>510.1</b>
<b>Singapore</b>									
2010	2.7	0.0	0.0	7.7	54.4	0.4	29.5	0.0	<b>94.7</b>
2011	2.4	0.0	0.0	6.2	66.4	0.4	20.2	0.6	<b>96.3</b>
<b>Total</b>									
2010	18.8	4.0	0.4	205.3	504.4	139.5	90.8	0.2	<b>963.5</b>
2011	21.6	2.5	0.5	173.1	645.6	168.5	85.8	1.0	<b>1,098.7</b>
<b>Other countries</b>									
2010	727.0	1,944.7	43.1	2,010.0	2,593.5	194.4	1,753.0	14.5	<b>9,280.2</b>
2011	770.8	2,178.8	47.3	2,109.1	2,884.0	221.3	1,804.6	45.2	<b>10,061.3</b>
<b>Total</b>									
2010	<b>2,576.7</b>	<b>3,477.0</b>	<b>189.6</b>	<b>6,926.0</b>	<b>9,788.4</b>	<b>5,138.5</b>	<b>4,582.9</b>	<b>563.6</b>	<b>33,242.8</b>
2011	<b>2,768.8</b>	<b>3,989.1</b>	<b>196.2</b>	<b>7,594.9</b>	<b>10,792.8</b>	<b>5,566.9</b>	<b>4,741.5</b>	<b>711.1</b>	<b>36,361.4</b>

**Table 7-2**  
**Imports from selected countries, customs basis, not seasonally adjusted — Year to date, January to December**

	Agricultural and fishing products	Energy products	Forestry products	Industrial goods	Machinery and equipment	Automotive products	Consumer goods	Special transactions trade	<b>Total</b>
millions of dollars									
<b>United States</b>									
2010	16,720.7	12,286.1	1,911.4	50,154.1	50,008.9	45,069.6	22,785.5	4,452.4	<b>203,388.6</b>
2011	18,132.8	16,645.2	1,846.4	55,170.8	53,938.9	46,919.7	23,322.7	4,886.4	<b>220,862.8</b>
<b>Mexico</b>									
2010	1,466.5	925.3	5.2	1,827.5	8,353.9	8,318.1	1,149.2	64.7	<b>22,110.4</b>
2011	1,491.6	1,399.5	5.1	2,357.0	8,824.3	9,171.4	1,232.1	73.1	<b>24,554.1</b>
<b>Japan</b>									
2010	70.5	124.6	1.1	1,190.6	4,907.9	6,067.0	1,081.5	3.8	<b>13,447.0</b>
2011	71.0	131.1	0.7	1,168.0	5,357.1	5,151.8	1,101.2	9.9	<b>12,990.7</b>
<b>European Union</b>									
<b>Germany</b>									
2010	294.9	60.4	13.0	1,922.5	3,928.6	3,294.8	1,751.7	20.6	<b>11,286.5</b>
2011	333.6	55.6	11.6	2,243.4	4,771.8	3,486.4	1,851.5	29.1	<b>12,783.1</b>
<b>France</b>									
2010	741.9	102.2	2.0	839.2	2,067.2	99.4	1,571.8	9.9	<b>5,433.7</b>
2011	823.0	152.9	4.6	862.1	2,114.3	76.8	1,504.4	6.7	<b>5,544.8</b>
<b>United Kingdom</b>									
2010	426.9	3,586.6	0.7	1,996.9	2,905.6	451.0	1,304.5	40.4	<b>10,712.7</b>
2011	426.2	2,804.1	0.5	2,009.0	3,077.0	553.9	1,398.2	44.5	<b>10,313.3</b>
<b>Italy</b>									
2010	694.8	194.2	13.4	956.3	1,469.9	227.5	1,100.0	6.2	<b>4,662.2</b>
2011	747.5	106.4	16.8	1,097.5	1,646.9	286.1	1,195.5	5.0	<b>5,101.7</b>
<b>Other European Union</b>									
2010	1,179.9	2,339.6	41.1	2,925.7	4,587.5	829.4	3,895.5	23.7	<b>15,822.5</b>
2011	1,283.5	3,570.3	42.4	3,890.1	4,861.2	944.7	3,617.0	16.0	<b>18,225.1</b>
<b>Total</b>									
2010	3,338.4	6,283.1	70.2	8,640.6	14,958.9	4,902.1	9,623.5	100.8	<b>47,917.6</b>
2011	3,613.8	6,689.3	75.9	10,102.0	16,471.2	5,347.9	9,566.6	101.2	<b>51,968.0</b>
<b>Newly industrialized countries</b>									
<b>South Korea</b>									
2010	61.6	349.5	0.2	798.6	2,720.2	2,009.6	206.4	1.0	<b>6,147.2</b>
2011	66.8	341.2	0.2	1,198.9	2,821.1	1,959.6	214.8	1.1	<b>6,603.8</b>
<b>Hong Kong</b>									
2010	28.0	0.1	0.9	26.9	158.1	4.5	152.2	0.4	<b>371.2</b>
2011	31.4	0.0	0.1	55.6	91.1	2.7	137.3	0.7	<b>318.9</b>
<b>Taiwan</b>									
2010	76.9	19.9	6.7	958.0	2,339.0	159.6	408.5	1.4	<b>3,970.1</b>
2011	73.1	0.4	5.0	1,067.6	3,189.5	183.3	410.4	1.6	<b>4,930.8</b>
<b>Singapore</b>									
2010	36.5	109.8	0.2	117.8	607.8	4.5	259.4	1.4	<b>1,137.3</b>
2011	35.1	403.4	0.5	182.9	638.8	4.1	286.7	2.2	<b>1,553.7</b>
<b>Total</b>									
2010	203.1	479.3	8.0	1,901.3	5,825.2	2,178.2	1,026.5	4.3	<b>11,625.7</b>
2011	206.4	745.0	5.8	2,504.9	6,740.5	2,149.8	1,049.1	5.6	<b>13,407.2</b>
<b>Other countries</b>									
2010	7,780.7	20,557.4	652.8	21,293.6	30,092.8	2,175.3	22,378.1	324.3	<b>105,255.1</b>
2011	9,097.9	27,087.2	584.0	25,219.9	33,492.4	2,625.0	23,416.2	450.1	<b>121,972.8</b>
<b>Total</b>									
2010	<b>29,584.9</b>	<b>40,655.8</b>	<b>2,648.6</b>	<b>85,007.9</b>	<b>114,147.8</b>	<b>68,710.5</b>	<b>58,044.5</b>	<b>4,950.3</b>	<b>403,750.5</b>
2011	<b>32,621.3</b>	<b>52,697.3</b>	<b>2,517.9</b>	<b>96,522.7</b>	<b>124,824.7</b>	<b>71,365.8</b>	<b>59,688.0</b>	<b>5,526.3</b>	<b>445,764.1</b>

**Table 8**  
**Imports by country, customs basis, not seasonally adjusted**

	December		January to December		Change
	2010	2011	2010	2011	January to December 2011/ January to December 2010
	millions of dollars				percent
<b>North America</b>					
Canada	300.6	293.1	3,956.6	3,955.7	0.0
Greenland	0.0	0.0	0.5	0.8	57.5
Mexico	1,874.7	1,773.2	22,110.4	24,554.1	11.1
Saint Pierre and Miquelon	0.0	0.0	1.5	1.9	27.0
United States	16,087.2	18,137.5	203,388.6	220,862.8	8.6
<b>Total</b>	<b>18,262.4</b>	<b>20,203.9</b>	<b>229,457.7</b>	<b>249,375.4</b>	<b>8.7</b>
<b>Western Europe</b>					
Andorra	0.1	0.1	0.5	0.4	-1.9
Austria	82.1	93.6	1,176.2	1,278.2	8.7
Belgium	171.7	103.6	1,719.2	1,666.3	-3.1
Denmark	52.3	58.2	1,883.9	1,441.7	-23.5
Faeroe Islands	0.7	0.4	5.6	8.0	43.4
Finland	142.4	85.3	1,074.6	1,667.9	55.2
France	510.2	536.2	5,433.7	5,544.8	2.0
Germany	953.8	956.2	11,286.5	12,783.1	13.3
Gibraltar	0.0	0.0	2.2	1.7	-25.0
Greece	11.9	13.6	142.4	166.5	16.9
Iceland	1.9	2.3	32.8	42.0	28.0
Italy	411.8	394.2	4,662.2	5,101.7	9.4
Luxembourg	4.6	10.8	95.4	114.7	20.2
Malta	1.3	1.9	17.6	25.7	45.5
Netherlands	103.6	319.5	1,668.6	2,559.1	53.4
Norway	310.9	256.5	2,845.8	4,343.4	52.6
Portugal	18.3	39.6	311.3	357.5	14.8
Republic of Ireland (Eire)	78.9	124.1	1,485.6	1,226.7	-17.4
Spain	123.9	123.5	1,463.8	1,739.2	18.8
Sweden	177.7	163.8	2,094.8	2,255.2	7.7
Switzerland	228.0	334.2	2,945.0	3,163.5	7.4
United Kingdom	865.2	667.4	10,712.7	10,313.3	-3.7
<b>Total</b>	<b>4,251.5</b>	<b>4,284.9</b>	<b>51,060.6</b>	<b>55,800.5</b>	<b>9.3</b>
<b>Other Europe</b>					
Albania	1.0	0.6	5.3	6.3	17.4
Armenia	4.1	9.8	29.9	67.4	125.6
Azerbaijan	157.5	124.7	543.2	435.0	-19.9
Belarus	0.4	1.4	55.2	35.6	-35.5
Bosnia and Herzegovina	0.8	0.8	7.9	11.5	45.6
Bulgaria	5.2	19.6	66.6	150.8	126.4
Croatia	1.3	1.9	65.8	27.0	-59.0
Czech Republic	19.5	30.6	318.9	372.7	16.9
Estonia	4.2	7.5	39.2	90.3	130.0
Georgia	12.4	7.0	128.9	111.9	-13.2
Hungary	29.9	38.4	344.9	358.1	3.8
Kazakhstan	188.8	239.0	2,284.6	2,854.5	24.9
Kyrgyzstan	0.1	0.0	0.6	0.2	-67.5
Latvia	1.1	0.8	10.7	27.6	158.0
Lithuania	28.4	5.4	401.7	603.3	50.2
Macedonia (Former Yugoslav Republic of Macedonia)	0.7	0.9	8.0	8.4	5.1
Montenegro	0.1	0.1	0.4	0.6	41.3
Poland	80.9	97.3	991.5	1,438.9	45.1
Republic of Moldova	0.0	0.2	5.0	2.0	-59.1
Romania	12.0	41.6	218.2	328.8	50.7
Russian Federation	62.0	41.1	1,643.2	1,285.2	-21.8
Serbia	1.0	1.2	12.8	15.0	17.1
Slovakia	33.6	25.8	198.4	250.9	26.5
Slovenia	3.9	11.0	95.6	102.0	6.7
Tajikistan	0.0	0.0	0.0	0.0	-73.9
Turkmenistan	0.0	0.0	0.7	0.7	1.1
Ukraine	4.4	10.9	92.9	136.2	46.6
Uzbekistan	0.0	0.1	1.4	1.9	36.9
<b>Total</b>	<b>653.3</b>	<b>717.6</b>	<b>7,571.7</b>	<b>8,723.0</b>	<b>15.2</b>

Table 8 – continued

## Imports by country, customs basis, not seasonally adjusted

	December		January to December		Change
	2010	2011	2010	2011	January to December 2011/ January to December 2010
	millions of dollars				percent
<b>Middle East</b>					
Bahrain	0.3	0.3	3.1	4.3	36.9
Cyprus	0.4	0.3	3.1	3.0	-5.5
Egypt	23.0	50.3	298.2	449.8	50.9
Eritrea	0.0	0.0	0.3	321.1	...
Ethiopia	0.9	0.9	15.1	17.5	15.6
Iran	3.2	3.7	38.0	34.5	-9.3
Iraq	388.9	338.6	1,912.9	2,464.5	28.8
Israel	92.5	85.0	1,006.4	982.1	-2.4
Jordan	1.7	1.6	19.9	18.7	-6.0
Kuwait	0.0	0.0	33.0	56.7	71.8
Lebanon	1.7	1.2	17.2	17.4	1.0
Libya	2.3	0.0	24.6	5.1	-79.3
Oman	2.9	1.3	20.8	19.3	-7.2
Qatar	29.9	24.1	100.6	397.9	295.6
Saudi Arabia	172.2	239.9	2,022.9	2,741.8	35.5
Somalia	0.0	0.0	0.0	0.1	100.8
Sudan	7.4	11.8	83.0	117.1	41.1
Syria	0.5	0.4	16.7	38.9	132.7
Turkey	81.0	115.7	714.1	1,122.3	57.2
United Arab Emirates	2.9	4.3	153.1	901.0	488.4
Yemen	0.0	0.0	0.1	0.1	-0.2
<b>Total</b>	<b>812.1</b>	<b>879.4</b>	<b>6,483.3</b>	<b>9,713.2</b>	<b>49.8</b>
<b>Other Africa</b>					
Algeria	286.4	593.2	3,578.1	5,485.1	53.3
Angola	80.4	178.0	1,622.5	2,443.9	50.6
Antarctica	0.0	0.0	0.3	0.6	134.0
Benin	0.0	0.0	0.0	0.0	90.4
Botswana	0.0	0.0	6.9	0.1	-98.0
Bouvet Island	0.0	0.0	0.0	0.0	...
Burkina Faso	0.0	0.0	22.8	5.2	-77.0
Burundi	0.0	0.0	0.1	0.4	591.6
Cameroon	0.7	0.4	6.2	7.5	21.6
Cape Verde	0.0	0.0	0.1	0.1	42.8
Central African Republic	0.0	0.1	0.1	0.6	430.9
Chad	0.0	0.1	1.1	0.4	-59.8
Comoros	0.0	0.0	0.1	0.2	4.4
Congo	0.4	0.1	47.3	4.0	-91.4
Democratic Republic of the Congo	0.1	0.1	0.8	1.0	34.8
Djibouti	0.0	0.0	0.0	0.0	34.8
Equatorial Guinea	77.9	0.0	671.1	629.2	-6.2
French Southern Territories	0.0	0.0	0.0	0.0	...
Gabon	0.1	0.0	0.5	3.5	605.5
Gambia	0.0	0.0	0.2	0.1	-72.1
Ghana	1.4	1.3	20.6	55.5	169.3
Guinea	5.1	7.1	48.2	58.1	20.5
Guinea-Bissau	0.0	0.0	0.0	0.0	-82.0
Ivory Coast	74.4	11.2	420.0	629.4	49.8
Kenya	1.9	1.2	18.1	22.5	24.1
Lesotho	1.9	0.6	16.8	11.9	-29.6
Liberia	3.4	4.0	38.1	33.8	-11.4
Madagascar	5.9	10.3	50.4	63.5	26.1
Malawi	15.0	0.1	73.1	123.7	69.2
Mali	0.1	0.1	0.6	0.9	45.6
Mauritania	0.0	0.0	0.2	0.1	-39.6
Mauritius	0.7	0.7	9.7	9.7	0.1
Morocco	23.4	24.1	141.3	119.1	-15.7
Mozambique	0.1	0.1	1.4	3.7	158.8
Namibia	47.5	19.8	234.3	230.3	-1.7
Niger	0.0	0.1	0.9	1.2	42.9
Nigeria	70.6	119.1	1,668.7	2,491.7	49.3
Rwanda	0.2	0.3	0.5	1.1	144.7
Saint Helena	0.0	0.0	0.0	0.1	257.0
Sao Tome and Principe	0.0	0.0	0.2	0.2	-34.5
Senegal	0.1	0.0	1.1	0.9	-17.4

Table 8 – continued

## Imports by country, customs basis, not seasonally adjusted

	December		January to December		Change
	2010	2011	2010	2011	January to December 2011/ January to December 2010
	millions of dollars				percent
Seychelles	0.1	0.0	0.3	0.6	111.1
Sierra Leone	0.1	0.2	1.9	4.9	160.0
South Africa	63.1	67.7	716.0	924.5	29.1
Swaziland	0.1	0.1	1.7	1.8	10.2
Togo	0.1	0.0	3.2	12.9	304.9
Tunisia	2.4	2.6	50.7	53.0	4.5
Uganda	0.4	0.2	3.8	3.3	-12.7
United Republic of Tanzania	0.3	0.5	3.0	5.3	77.9
Western Sahara	0.0	0.0	0.0	0.0	-100.0
Zambia	0.1	0.1	1.3	1.4	4.9
Zimbabwe	0.2	0.6	4.2	6.9	62.6
<b>Total</b>	<b>764.2</b>	<b>1,044.3</b>	<b>9,488.5</b>	<b>13,453.9</b>	<b>41.8</b>
<b>Other Asia</b>					
Afghanistan	0.2	0.1	1.8	1.6	-9.5
Bangladesh	66.4	53.0	837.3	1,061.2	26.7
Bhutan	0.0	0.0	0.0	0.0	4.6
British Indian Ocean Territory	0.0	0.0	0.0	0.1	203.8
Brunei Darussalam	0.0	0.9	0.0	8.1	...
Cambodia	36.4	39.5	357.2	522.0	46.1
China	3,679.2	4,054.6	44,522.9	48,140.9	8.1
Hong Kong	27.9	23.1	371.2	318.9	-14.1
India	212.1	211.4	2,123.0	2,534.2	19.4
Indonesia	109.0	112.0	1,264.0	1,428.5	13.0
Japan	1,107.6	1,320.4	13,447.0	12,990.7	-3.4
Laos	0.9	0.4	8.1	6.6	-18.9
Macao	0.5	0.9	9.0	8.7	-3.6
Malaysia	183.7	182.1	2,290.9	2,138.5	-6.7
Maldives	0.0	0.0	0.1	0.2	155.6
Mongolia	13.3	86.8	231.7	241.8	4.3
Myanmar	0.0	0.0	0.0	0.1	327.9
Nepal	1.0	1.3	15.4	15.7	2.2
North Korea	0.0	0.0	0.1	0.1	-30.0
Pakistan	20.8	19.7	271.1	260.7	-3.8
Philippines	78.1	77.9	889.0	915.8	3.0
Singapore	94.7	96.3	1,137.3	1,553.7	36.6
South Korea	422.8	469.3	6,147.2	6,603.8	7.4
Sri Lanka	12.0	16.0	127.7	162.0	26.9
Taiwan	418.0	510.1	3,970.1	4,930.8	24.2
Thailand	222.7	198.6	2,408.6	2,674.1	11.0
Timor-Leste	0.3	0.1	2.0	0.4	-81.0
Viet Nam	103.5	120.1	1,173.4	1,331.8	13.5
<b>Total</b>	<b>6,811.4</b>	<b>7,594.8</b>	<b>81,606.0</b>	<b>87,850.9</b>	<b>7.7</b>
<b>Oceania</b>					
American Samoa	0.0	0.0	0.3	0.6	88.5
Australia	169.4	154.8	1,619.6	1,766.2	9.1
Christmas Island	0.0	0.0	0.1	0.1	-27.3
Cocos (Keeling) Islands	0.0	0.0	0.0	0.0	-13.7
Cook Islands	0.0	0.0	0.1	0.2	38.9
Fiji	0.2	0.3	4.9	4.5	-7.8
French Polynesia	0.0	0.0	0.9	0.8	-10.9
Guam	0.0	0.0	0.1	0.2	60.5
Heard Island and McDonald Islands	0.0	0.0	0.0	0.0	-5.0
Kiribati	0.0	0.0	0.0	0.1	149.2
Nauru	0.0	0.0	0.1	0.0	-31.6
New Caledonia	0.0	0.0	0.2	0.2	6.1
New Zealand	35.3	41.7	447.4	550.1	23.0
Niue	0.0	0.0	0.0	0.0	-17.9
Norfolk Island	0.0	0.0	0.0	0.0	...
Papua New Guinea	0.2	0.2	1.6	1.6	-1.4
Pitcairn	0.0	0.0	0.0	0.1	72.1
Samoa	0.0	0.0	0.3	0.0	-95.4
Solomon Islands	0.0	0.1	0.2	0.2	11.9
Tonga	0.0	0.0	0.0	0.0	144.0
United States Minor Outlying Islands	0.2	0.3	3.8	3.3	-11.4
Vanuatu	0.0	0.0	0.9	0.1	-93.6



Table 8 – continued

## Imports by country, customs basis, not seasonally adjusted

	December		January to December		Change January to December 2011/ January to December 2010
	2010	2011	2010	2011	
	millions of dollars				percent
Wallis and Futuna	0.0	0.0	0.0	0.0	-56.5
<b>Total</b>	<b>205.3</b>	<b>197.5</b>	<b>2,080.6</b>	<b>2,328.4</b>	<b>11.9</b>
<b>South America</b>					
Argentina	204.2	244.8	1,555.5	2,360.0	51.7
Bolivia	17.9	27.8	143.2	237.8	66.0
Brazil	215.8	196.0	3,292.4	3,878.1	17.8
Chile	169.5	138.3	1,872.3	1,910.7	2.0
Colombia	46.7	71.5	717.3	799.7	11.5
Ecuador	20.7	20.5	214.6	224.6	4.7
Falkland Islands (Malvinas)	0.0	0.1	0.0	0.4	...
Guyana	27.4	1.8	290.8	394.7	35.7
Paraguay	0.3	0.9	9.3	6.3	-32.6
Peru	394.5	468.7	3,648.2	4,406.9	20.8
Suriname	87.2	3.6	598.1	253.4	-57.6
Uruguay	1.3	6.3	51.9	40.9	-21.1
Venezuela	26.1	34.2	784.0	732.9	-6.5
<b>Total</b>	<b>1,211.6</b>	<b>1,214.4</b>	<b>13,177.4</b>	<b>15,246.3</b>	<b>15.7</b>
<b>Central America Antilles</b>					
Anguilla	0.0	0.0	0.3	0.3	-15.3
Antigua and Barbuda	0.1	0.0	0.4	0.4	-1.4
Aruba	0.0	0.0	0.1	5.5	...
Bahamas	2.3	1.6	55.1	21.9	-60.3
Barbados	1.9	1.2	9.7	6.9	-28.5
Belize	0.7	0.3	6.2	7.5	21.7
Bermuda	0.1	0.1	1.4	1.0	-29.7
British Virgin Islands	0.1	0.1	0.6	0.8	31.9
Cayman Islands	0.0	0.0	0.3	0.8	155.6
Costa Rica	36.1	37.9	436.1	475.6	9.1
Cuba	83.0	41.6	652.6	702.6	7.7
Dominica	0.0	0.1	0.1	0.3	98.6
Dominican Republic	14.6	12.3	143.7	146.7	2.1
El Salvador	4.9	5.9	87.0	129.4	48.7
Grenada	0.0	0.1	0.6	1.7	185.9
Guatemala	40.4	25.4	323.4	403.9	24.9
Haiti	1.9	1.8	26.1	25.7	-1.2
Honduras	11.4	10.7	151.2	185.9	23.0
Jamaica	14.1	25.2	161.9	274.1	69.3
Montserrat	0.0	0.0	0.3	0.3	-11.1
Netherlands Antilles	0.0	0.0	0.3	23.8	...
Nicaragua	30.4	33.8	215.1	333.7	55.2
Panama	8.2	10.2	84.2	124.0	47.3
Saint Kitts and Nevis	1.0	0.7	8.1	9.2	13.3
Saint Lucia	0.0	0.0	0.2	0.3	33.2
Saint Vincent and the Grenadines	0.0	0.0	0.2	0.3	60.2
Trinidad and Tobago	19.8	15.4	459.2	389.7	-15.1
Turks and Caicos Islands	0.0	0.0	0.1	0.1	5.8
<b>Total</b>	<b>271.0</b>	<b>224.8</b>	<b>2,824.7</b>	<b>3,272.4</b>	<b>15.9</b>
<b>All countries</b>	<b>33,242.8</b>	<b>36,361.4</b>	<b>403,750.5</b>	<b>445,764.1</b>	<b>10.4</b>

**Table 9-1  
Imports by province of clearance, customs basis, not seasonally adjusted — December**

	Agricultural and fishing products	Energy products	Forestry products	Industrial goods	Machinery and equipment	Automotive products	Consumer goods	Special transactions trade	<b>Total</b>
millions of dollars									
Newfoundland and Labrador									
2010	1.6	429.8	0.0	4.4	19.6	0.2	0.4	0.0	<b>456.0</b>
2011	2.7	385.0	0.0	15.5	18.6	0.1	0.6	0.0	<b>422.5</b>
Prince Edward Island									
2010	0.3	0.0	0.0	13.0	0.1	0.0	0.0	0.0	<b>13.5</b>
2011	0.8	0.0	0.0	1.1	0.1	0.0	0.0	0.1	<b>2.1</b>
Nova Scotia									
2010	37.6	177.0	1.0	105.8	66.9	353.5	8.4	2.4	<b>752.8</b>
2011	48.7	85.3	1.1	68.1	60.7	148.4	7.0	1.6	<b>421.0</b>
New Brunswick									
2010	40.1	686.7	9.4	98.9	68.5	24.6	14.0	3.3	<b>945.6</b>
2011	33.4	646.0	8.4	99.8	62.4	28.3	13.9	5.2	<b>897.4</b>
Quebec									
2010	405.3	1,302.0	53.7	1,299.3	1,507.5	146.3	786.8	76.0	<b>5,576.8</b>
2011	412.5	1,363.1	47.3	1,106.8	1,658.9	196.5	728.5	77.3	<b>5,591.0</b>
Ontario									
2010	1,417.9	463.7	68.8	3,965.2	5,680.7	4,107.7	2,976.5	427.6	<b>19,108.0</b>
2011	1,573.7	758.2	68.8	4,590.3	6,018.2	4,498.4	3,113.7	580.8	<b>21,202.2</b>
Manitoba									
2010	75.7	37.8	4.6	254.2	486.4	124.3	128.4	12.9	<b>1,124.4</b>
2011	92.9	66.4	7.5	392.2	623.7	156.3	147.2	8.1	<b>1,494.2</b>
Saskatchewan									
2010	27.0	43.4	2.8	171.0	355.6	82.2	21.8	0.5	<b>704.4</b>
2011	31.0	130.2	4.3	199.6	393.2	108.1	22.4	0.4	<b>889.1</b>
Alberta									
2010	157.7	166.6	7.0	441.8	653.0	90.1	110.3	20.7	<b>1,647.2</b>
2011	160.3	271.6	9.9	519.3	844.4	133.1	150.6	16.5	<b>2,105.8</b>
British Columbia									
2010	413.5	169.0	42.3	572.4	949.1	209.6	536.1	20.1	<b>2,912.1</b>
2011	412.9	280.9	48.8	601.7	1,112.1	297.8	557.4	21.0	<b>3,332.6</b>
Yukon, Northwest Territories and Nunavut									
2010	0.0	0.9	0.0	0.0	0.9	0.1	0.0	0.0	<b>2.0</b>
2011	0.0	2.4	0.0	0.4	0.5	0.1	0.0	0.0	<b>3.4</b>
<b>Total</b>									
<b>2010</b>	<b>2,576.7</b>	<b>3,477.0</b>	<b>189.6</b>	<b>6,926.0</b>	<b>9,788.4</b>	<b>5,138.5</b>	<b>4,582.9</b>	<b>563.6</b>	<b>33,242.8</b>
<b>2011</b>	<b>2,768.8</b>	<b>3,989.1</b>	<b>196.2</b>	<b>7,594.9</b>	<b>10,792.8</b>	<b>5,566.9</b>	<b>4,741.5</b>	<b>711.1</b>	<b>36,361.4</b>

**Table 9-2**  
**Imports by province of clearance, customs basis, not seasonally adjusted — Year to date, January to December**

	Agricultural and fishing products	Energy products	Forestry products	Industrial goods	Machinery and equipment	Automotive products	Consumer goods	Special transactions trade	<b>Total</b>
millions of dollars									
Newfoundland and Labrador									
2010	41.7	2,961.7	0.1	53.0	487.5	1.1	28.7	3.1	<b>3,576.9</b>
2011	38.8	3,028.8	0.1	122.1	430.4	1.0	12.9	11.0	<b>3,645.1</b>
Prince Edward Island									
2010	4.4	0.0	0.1	34.3	1.8	0.1	0.2	0.2	<b>41.1</b>
2011	5.3	0.0	0.0	45.5	10.5	0.1	0.4	0.4	<b>62.2</b>
Nova Scotia									
2010	409.1	1,707.2	17.1	1,276.6	1,042.4	3,433.1	165.2	29.7	<b>8,080.4</b>
2011	584.5	1,884.0	15.7	1,201.0	1,808.2	2,635.8	165.4	26.4	<b>8,320.9</b>
New Brunswick									
2010	571.0	7,339.3	113.0	1,051.4	938.2	396.6	267.6	24.5	<b>10,701.5</b>
2011	591.8	9,978.9	110.9	1,373.6	960.8	389.3	234.1	24.6	<b>13,664.1</b>
Quebec									
2010	4,649.6	16,668.4	700.9	14,746.1	17,499.7	2,142.2	10,789.4	578.5	<b>67,774.8</b>
2011	5,626.7	18,775.9	596.8	16,645.0	19,115.2	2,559.7	10,514.4	578.9	<b>74,412.4</b>
Ontario									
2010	16,248.6	5,178.8	969.0	50,047.9	65,685.1	56,382.0	36,762.7	3,872.7	<b>235,146.7</b>
2011	17,519.5	10,038.4	907.9	55,786.1	70,083.6	58,042.6	38,154.3	4,420.3	<b>254,952.7</b>
Manitoba									
2010	890.5	542.5	88.1	3,375.0	5,795.3	1,419.2	1,571.3	94.9	<b>13,776.9</b>
2011	978.2	569.1	90.5	3,980.2	6,965.0	1,849.5	1,662.1	98.9	<b>16,193.6</b>
Saskatchewan									
2010	333.1	632.9	26.8	2,154.0	3,729.8	950.0	261.5	20.7	<b>8,108.9</b>
2011	374.6	995.0	37.5	2,425.3	4,035.1	1,225.6	289.6	22.0	<b>9,404.7</b>
Alberta									
2010	1,869.0	2,476.6	114.0	4,936.5	7,307.4	1,091.2	1,283.0	151.8	<b>19,229.4</b>
2011	1,958.1	3,502.0	140.0	6,488.7	9,226.1	1,449.0	1,567.9	150.1	<b>24,481.9</b>
British Columbia									
2010	4,509.2	3,088.3	619.5	7,331.3	11,604.2	2,894.4	6,914.4	173.7	<b>37,135.1</b>
2011	4,899.6	3,791.5	618.4	8,450.0	12,100.6	3,212.6	7,086.4	193.5	<b>40,352.6</b>
Yukon, Northwest Territories and Nunavut									
2010	58.6	60.1	0.0	2.0	56.4	0.7	0.5	0.5	<b>178.8</b>
2011	44.3	133.8	0.0	5.2	89.3	0.6	0.5	0.1	<b>273.8</b>
<b>Total</b>									
<b>2010</b>	<b>29,584.9</b>	<b>40,655.8</b>	<b>2,648.6</b>	<b>85,007.9</b>	<b>114,147.8</b>	<b>68,710.5</b>	<b>58,044.5</b>	<b>4,950.3</b>	<b>403,750.5</b>
<b>2011</b>	<b>32,621.3</b>	<b>52,697.3</b>	<b>2,517.9</b>	<b>96,522.7</b>	<b>124,824.7</b>	<b>71,365.8</b>	<b>59,688.0</b>	<b>5,526.3</b>	<b>445,764.1</b>

# Technical notes

---

## The Canadian international merchandise trade statistical program

### Introduction

The objective of this text is to provide a general overview of the Canadian International Merchandise Trade Statistical Program, with special reference to concepts and definitions. The text is intended for the general user and simplicity is emphasized.

### Conceptual framework

**1. Objectives and coverage:** The primary objective of the Canadian International Merchandise Trade Statistical Program is to measure the change in the stock of material resources of Canada resulting from the movement of merchandise into or out of the country. Information on imports and exports are inputs into the System of National Accounts, particularly in the balance of payments and gross domestic product, and are used in the formulation of trade and budgetary policies. Governments, importers, exporters, manufacturers and shipping companies use international merchandise trade statistics to:

- monitor import penetration and export performance,
- monitor commodity price and volume changes,
- examine transport implications.

**2. Trade statistics (customs basis / balance of payments basis):** Merchandise trade statistics are reported and presented on two different bases: customs basis and balance of payment basis.

When goods are imported into or exported from Canada, declarations must be filed with customs, giving such information as description and value of the goods, origin and port of clearance of commodities and mode of transport. Most of this information is required for the purposes of customs administration. Statistics developed from administrative records of customs are commonly referred to as customs-based trade statistics.

Customs-based trade statistics are more accurate at measuring imports than they are at measuring exports. This is the case because customs are typically more vigilant with respect to goods entering the country than they are with goods leaving the country.

Customs-based export statistics may understate or incorrectly portray the destination of exports. Export statistics are understated when the proper documentation is not filed with Customs. Exports are incorrectly portrayed when the country of final destination is inaccurately reported on the customs documentation. This occurs most frequently when goods are routed through an intermediary country before continuing on to their final destination.

Statistics Canada does not have a measure of undercoverage but periodically conducts reconciliation exercises with its major trading partners, excluding the United States.

On January 1, 1990, Canada entered into a memorandum of understanding with the United States concerning the exchange of import data. As a consequence, each administration is using the other's import data to replace its own export data. Canada's international merchandise trade statistics are, therefore, no longer derived exclusively from the administrative records of the Canada Border Services Agency, but from United States Customs records as well.

Customs-based information is adjusted to conform with the National Accounts concepts and definitions. The adjustments to derive balance of payments-based trade data include adjustments related to trade definition, valuation and timing. The principal difference between the two trade concepts is that customs-based merchandise trade statistics cover the physical movement of goods as they are reflected in customs documents while balance of payments-adjusted data are intended to cover all economic transactions that involve merchandise trade between residents and non-residents. The present document describes the concepts and processes pertaining to the customs-based trade statistics only. (For further information on balance of payments-adjusted data, see the publication Canada's Balance of International Payments, Statistics Canada (Catalogue no. 67-001-X).

**3. System of trade:** Canadian trade statistics are compiled according to the general system of trade, as defined by the United Nations Statistical Office. Under this system, imports include all goods that have crossed Canada's territorial boundary, whether for immediate consumption in Canada or for storage in bonded customs warehouses. Domestic exports include goods grown, extracted or manufactured in Canada, including goods of foreign origin that have been materially transformed in Canada. Re-exports are exports of goods of foreign origin that have not been materially transformed in Canada, including foreign goods withdrawn for export from bonded customs warehouses. Total exports are the sum of domestic exports and re-exports. Thus the general trade system, in principal, presents all goods entering the country (imports) and all goods leaving the country (exports). It differs from the special system of trade in the treatment of imported goods into bonded customs warehouses. Under the 'special' system, these goods are counted only if and when they are withdrawn from customs warehouses for home consumption. They are not counted in export statistics unless they have first cleared customs.

Conceptually, under the general system, the statistical frontier coincides with the geographical boundary, while under the 'special' system, it coincides with the customs boundary.

**4. Valuation:** For customs purposes, imports are recorded at values established according to the provisions of the Customs Act, which, since January 1, 1985, reflects valuation methods based on the General Agreement on Tariffs and Trade (GATT) Valuation Code System. In general, the value for duty of imported goods must be equivalent to the transaction value or the price actually paid.

To determine the transaction value of imported goods, all transportation and associated costs arising in respect of the goods being appraised prior to and at the place of direct shipment to Canada, are to be added to the price of the goods. Therefore, Canadian imports are valued Free on Board (FOB), place of direct shipment to Canada. It excludes freight and insurance costs in bringing the goods to Canada from the point of direct shipment.

Countries other than the United States, exports are, in principal, valued or recorded at the values declared on export documents, which usually reflect the transaction value, i.e., actual selling price or, in the case of a non-arm's length transaction, the transfer price used for company accounting purposes. Canadian exports to overseas countries are valued at F.O.B. port of exit, including domestic freight charges to that point but net of discounts and allowances. As of January, 1990, Canadian exports to the U.S. are valued F.O.B. point of exit from Canada. Prior to 1990, they were valued F.O.B. place of lading net of freight charges, discounts and allowances.

**5. Statistical period:** The reference period is the calendar month and the calendar year. The closing of the statistical month for imports and Canadian exports to the United States is defined as the last calendar day of the month, based as closely as practicable on the date of clearance from customs.

The closing of the statistical month for exports, to countries other than the United States, is also defined as the last calendar day of the month. Those export documents that are received too late for incorporation in the current month are assigned to the month the transaction took place. If a monthly summary report from a high volume exporter is not received on time, the data are imputed for the current month and revised with the trade value in the following statistical month.

**6. Trading partner attribution (country of origin/destination):** Exports are attributed to the country, which is the last known destination of the goods at the time of export. Exports to the United States are attributed to the state of destination.

Imports are attributed to their country of origin, that is, the country in which the goods were grown, extracted or manufactured in accordance to the rules of origin administered by the Canada Border Services Agency. Imports from the United States are attributed to the state of origin. Prior to 1988, most imports were attributed to the country of export/consignment, with the exception of imports from Central and South America.

**7. Principal trading areas:** The 'principal trading areas' are country groupings defined as follows:

**United States:** includes trade with Puerto Rico and the U.S. Virgin Islands

**Japan**

**European Union (EU):** Austria, Belgium, Bulgaria, Cyprus, Czech Republic, Denmark, Estonia, Finland, France, Germany, Greece, Hungary, Ireland, Italy, Latvia, Lithuania, Luxembourg, Malta, Netherlands, Poland, Portugal, Romania, Slovakia, Slovenia, Spain, Sweden and United Kingdom

**Other Organisation for Economic Co-operation and Development (OECD):** Australia, Canada, Iceland, Mexico, New Zealand, Norway, South Korea, Switzerland, and Turkey. (The EU countries, United States, and Japan are also members of OECD)

**Other countries:** all countries and territories other than the United States, Japan, EU and other OECD

**8. Legal framework:** Import and export statistics with countries other than the United States are derived from information contained in administrative records collected by the Canada Border Services Agency under the Customs Act. Copies of these documents (or information therefrom) are sent to Statistics Canada in accordance with Section 25 of the Statistics Act. It follows that the disclosure of trade statistics is governed by both the Customs Act and the Statistics Act and is subject to the provisions of Section 17(2)(a) of the latter. Disclosure of export statistics to the United States is now governed by a memorandum of understanding that provides for the exchange of detailed import statistics between Canada and the United States.

## Contact information

**Telephone:** 1-800-263-1136 or 613-951-8116

**Facsimile:** 1-877-287-4369 or 613-951-0581

**Internet:** [infostats@statcan.gc.ca](mailto:infostats@statcan.gc.ca)