

Catalogue no. 65-001-X

Canadian International Merchandise Trade

November 2011



Statistics
Canada

Statistique
Canada

Canada

How to obtain more information

For information about this product or the wide range of services and data available from Statistics Canada, visit our website at www.statcan.gc.ca, e-mail us at infostats@statcan.gc.ca, or telephone us, Monday to Friday from 8:30 a.m. to 4:30 p.m., at the following numbers:

Statistics Canada's National Contact Centre

Toll-free telephone (Canada and the United States):

Inquiries line	1-800-263-1136
National telecommunications device for the hearing impaired	1-800-363-7629
Fax line	1-877-287-4369

Local or international calls:

Inquiries line	1-613-951-8116
Fax line	1-613-951-0581

Depository Services Program

Inquiries line	1-800-635-7943
Fax line	1-800-565-7757

To access this product

This product, Catalogue no. 65-001-X, is available free in electronic format. To obtain a single issue, visit our website at www.statcan.gc.ca and browse by "Key resource" > "Publications."

Standards of service to the public

Statistics Canada is committed to serving its clients in a prompt, reliable and courteous manner. To this end, Statistics Canada has developed *standards of service* that its employees observe. To obtain a copy of these service standards, please contact Statistics Canada toll-free at 1-800-263-1136. The service standards are also published on www.statcan.gc.ca under "About us" > "The agency" > "Providing services to Canadians."

Statistics Canada
International Trade Division

Canadian International Merchandise Trade

November 2011

Published by authority of the Minister responsible for Statistics Canada

© Minister of Industry, 2012

All rights reserved. The content of this electronic publication may be reproduced, in whole or in part, and by any means, without further permission from Statistics Canada, subject to the following conditions: that it be done solely for the purposes of private study, research, criticism, review or newspaper summary, and/or for non-commercial purposes; and that Statistics Canada be fully acknowledged as follows: Source (or "Adapted from", if appropriate): Statistics Canada, year of publication, name of product, catalogue number, volume and issue numbers, reference period and page(s). Otherwise, no part of this publication may be reproduced, stored in a retrieval system or transmitted in any form, by any means—electronic, mechanical or photocopy—or for any purposes without prior written permission of Licensing Services, Information Management Division, Statistics Canada, Ottawa, Ontario, Canada K1A 0T6.

January 2012

Catalogue no. 65-001-X, vol. 65, no. 11

ISSN 1480-8781

Frequency: Monthly

Ottawa

Cette publication est également disponible en français.

Note of appreciation

Canada owes the success of its statistical system to a long-standing partnership between Statistics Canada, the citizens of Canada, its businesses, governments and other institutions. Accurate and timely statistical information could not be produced without their continued cooperation and goodwill.

User information

Symbols

The following standard symbols are used in Statistics Canada publications:

- . not available for any reference period
- .. not available for a specific reference period
- ... not applicable
- 0 true zero or a value rounded to zero
- 0^s value rounded to 0 (zero) where there is a meaningful distinction between true zero and the value that was rounded
- p preliminary
- r revised
- x suppressed to meet the confidentiality requirements of the *Statistics Act*
- E use with caution
- F too unreliable to be published
- * significantly different from reference category ($p < 0.05$)

Note to users

All totals are calculated from full figures and rounded independently; consequently, totals may not equal the sum of their components.

The data is based on commodity groups (sector, subsector and major group).

Table of contents

Highlights	5
Analysis	7
Related products	11
Statistical tables	
1 Merchandise trade of Canada, balance of payments basis, seasonally adjusted	15
1-1 Current dollars	15
1-2 Constant dollars, 2002	16
1-3 Price indices (Laspeyres)	17
2 Exports by commodity groupings, balance of payments basis, seasonally adjusted	18
2-1 Current dollars	18
2-2 Constant dollars, 2002	20
3 Domestic exports to selected countries, customs basis, not seasonally adjusted	22
3-1 November	22
3-2 Year to date, January to November	23
4 Domestic exports by country, customs basis, not seasonally adjusted	24
5 Exports by province of origin, customs basis, not seasonally adjusted	28
5-1 November	28
5-2 Year to date, January to November	29
6 Imports by commodity groupings, balance of payments basis, seasonally adjusted	30
6-1 Current dollars	30
6-2 Constant dollars, 2002	32
7 Imports from selected countries, customs basis, not seasonally adjusted	34
7-1 November	34
7-2 Year to date, January to November	35
8 Imports by country, customs basis, not seasonally adjusted	36

Table of contents – continued

9	Imports by province of clearance, customs basis, not seasonally adjusted	40
9-1	November	40
9-2	Year to date, January to November	41

Data quality, concepts and methodology

	Technical notes	42
--	-----------------	----

Highlights

Canada's merchandise exports increased 3.2%, while imports declined 0.8%. As a result, Canada's trade balance with the world went from a deficit of \$487 million in October to a surplus of \$1.1 billion in November.

Exports rose to \$40.1 billion, as most sectors posted gains. Prices increased 1.7%, led by energy products, while volumes rose 1.6%, largely the result of automotive products.

Imports declined to \$39.0 billion, as both volumes and prices fell. The overall decline in imports was attributable to lower imports of automotive products, as well as industrial goods and materials. The decline was partially offset by an increase in energy products.

Canada's trade surplus with the United States increased from \$3.5 billion in October to \$4.6 billion in November. Exports to the United States rose 1.9% to \$28.6 billion, on the strength of energy products. Imports from the United States declined 2.0% to \$24.0 billion, largely the result of lower imports of automotive products.

Exports to countries other than the United States rose 6.7% to \$11.5 billion, mainly the result of higher exports to the European Union. Imports from countries other than the United States increased 1.3% to \$15.0 billion, the fourth consecutive monthly gain. Canada's trade deficit with countries other than the United States narrowed from \$4.0 billion in October to \$3.5 billion in November.

Note to readers

Merchandise trade is one component of Canada's international balance of payments (BOP), which also includes trade in services, investment income, current transfers as well as capital and financial flows.

International merchandise trade data by country are available on both a BOP and a customs basis for the United States, Japan and the United Kingdom. Trade data for all other individual countries are available on a customs basis only. BOP data are derived from customs data by making adjustments for factors such as valuation, coverage, timing and residency. These adjustments are made to conform to the concepts and definitions of the Canadian System of National Accounts.

Data in this release are on a BOP basis, seasonally adjusted in current dollars. Constant dollars are calculated using the Laspeyres volume formula.

Changes to the classification

Statistics Canada has reduced the number of 10-digit Harmonized Commodity Coding and Description System (HS) classification codes that are used to report the commodity detail in Canada's merchandise import trade data. This will improve efficiency, maintain data quality and reduce response burden.

These changes take effect in January 2012 to coincide with the World Customs Organization 2012 amendments to the 6-digit HS classification codes as well as with Finance Canada's changes to the 2012 Customs Tariff at the 8-digit HS codes. To obtain an HS 2012 Concordance Table, contact the International Trade Division's Marketing and Client Services Section (trade@statcan.gc.ca).

Chart 1
Exports and imports, seasonally adjusted, on a balance of payments basis

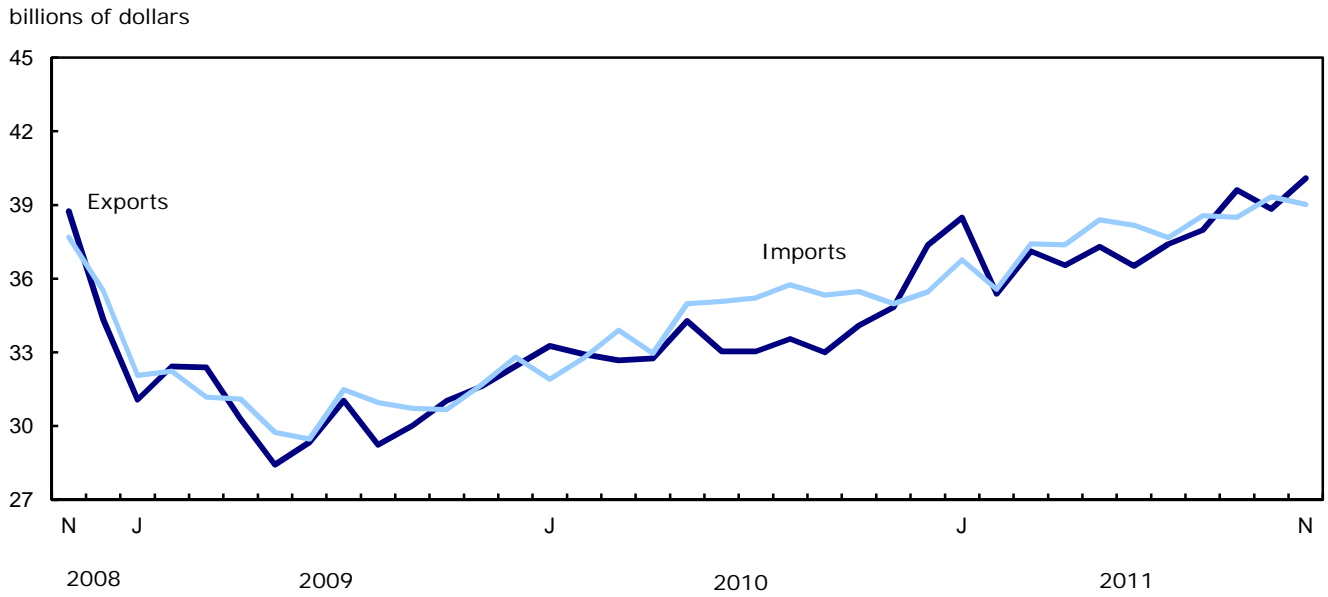
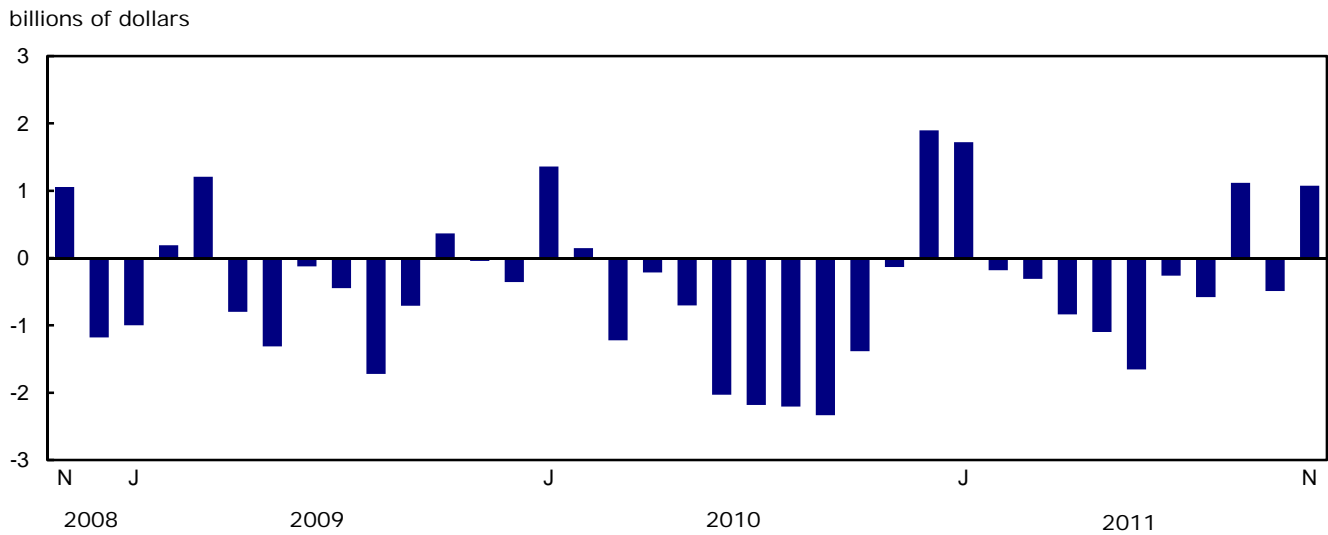


Chart 2
Trade balance, seasonally adjusted, on a balance of payments basis



Analysis

Energy products lead the increase in exports

Exports of energy products increased 6.4% to \$10.0 billion in November, as prices increased 6.3%. Exports of crude petroleum rose for the fourth consecutive month to a record high of \$6.4 billion. Strong gains were also reported in petroleum and coal products, which rose 17.6%, and coal and other bituminous substances, which were up 28.5%. Lower exports of natural gas moderated the sector's increase.

Exports of industrial goods and materials rose 4.0% to \$10.2 billion in November. Higher volumes of precious metals and alloys, as well as other crude non-metallic minerals, drove the gain. It was partially offset by a decline in volumes of fertilizers and fertilizer materials.

Exports of automotive products increased for a third consecutive month in November, rising 4.9% to \$5.3 billion. Exports of passenger autos and chassis rose 8.5% to \$3.6 billion, their highest level since January 2011. The gain was the result of higher volumes.

Imports: Automotive products, industrial goods and materials lead the decline

Imports of automotive products declined 4.4% to \$5.7 billion in November, as volumes fell 4.0%. Trucks and other motor vehicles fell 13.6%, while passenger autos and chassis fell 8.1%. Partly offsetting these declines was a 3.8% increase in motor vehicle parts.

Imports of industrial goods and materials fell 3.0% to \$8.3 billion following three consecutive monthly increases. Prices declined 3.7%. Imports of metals and metal ores fell 6.4%, with precious metals and alloys leading the decline.

Imports of machinery and equipment declined 1.1% to \$10.7 billion in November, as decreases occurred in three of four sub-sectors. Aircraft and other transportation equipment fell 10.1%, the result of a drop in volumes. Higher imports of other machinery and equipment partially offset the overall decrease.

Imports of energy products increased 2.0% to \$4.6 billion, the third consecutive monthly increase. Petroleum and coal products, namely fuel oil, rose 9.1% in November.

Note: In general, merchandise trade data are revised on an ongoing basis for each month of the current year. Current year revisions are reflected in both the customs and balance of payments (BOP) based data. The previous year's customs data are revised with the release of the January and February reference months as well as on a quarterly basis. The previous two years of customs based data are revised annually and are released in February with the December reference month. The previous year's BOP based data are revised with the release of the January, February and March reference months. Revisions to BOP based data for the previous three years are released annually in June with the April reference month.

Factors influencing revisions include late receipt of import and export documentation, incorrect information on customs forms, replacement of estimates produced for the energy sector with actual figures, changes in classification of merchandise based on more current information, and changes to seasonal adjustment factors.

Revised data are available in the appropriate CANSIM tables.

Chart 1
Exports of energy products, seasonally adjusted, on a balance of payments basis

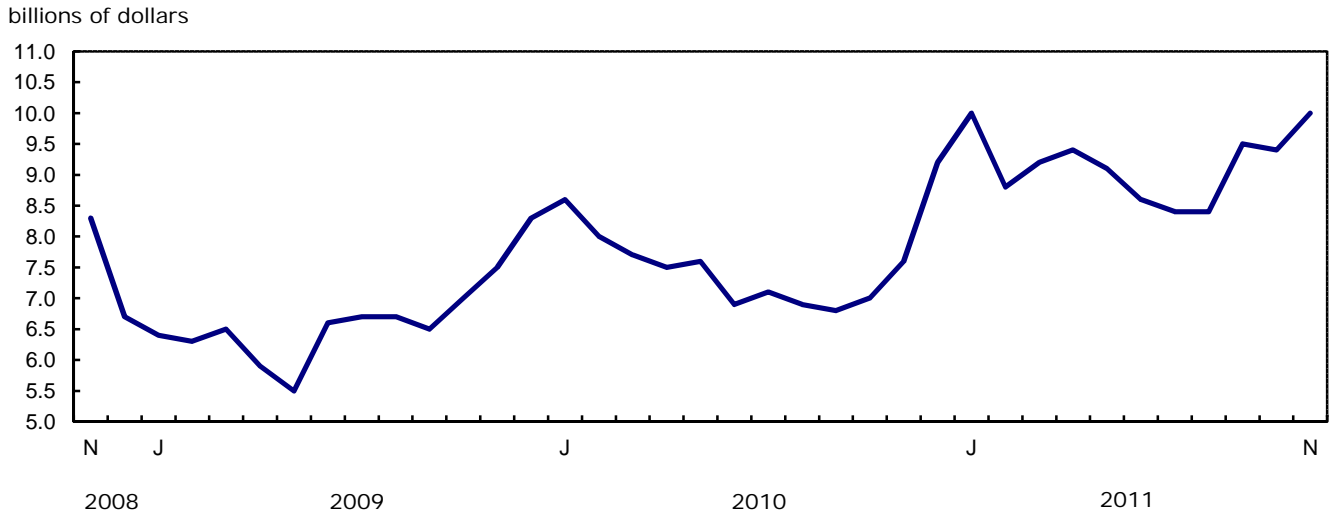


Chart 2
Exports of industrial goods and materials, seasonally adjusted, on a balance of payments basis

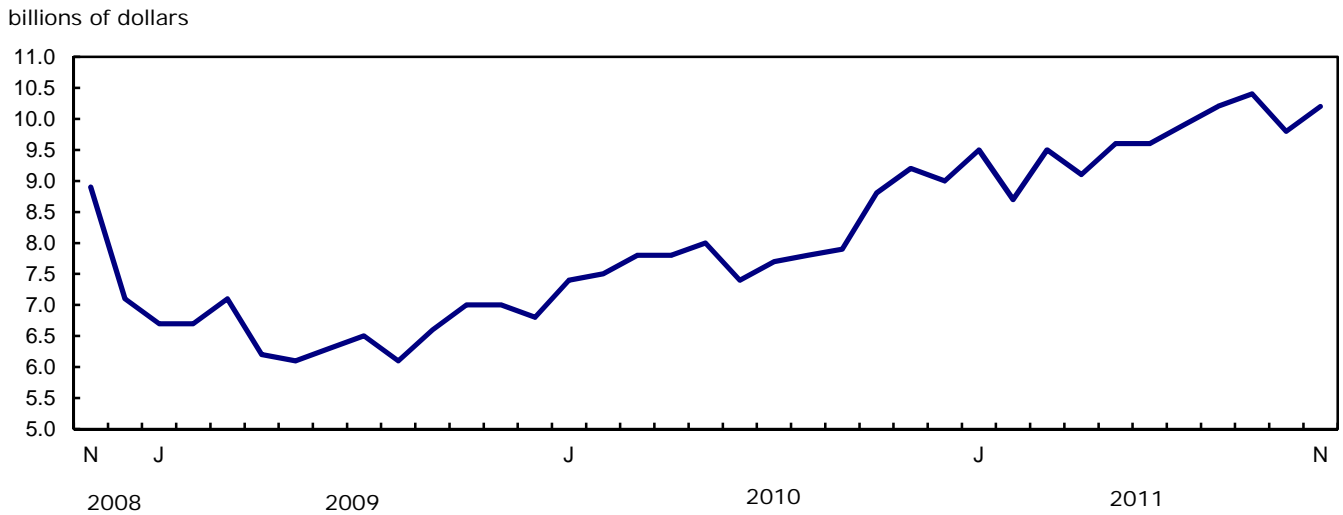


Chart 3
Imports of automotive products, seasonally adjusted, on a balance of payments basis

billions of dollars

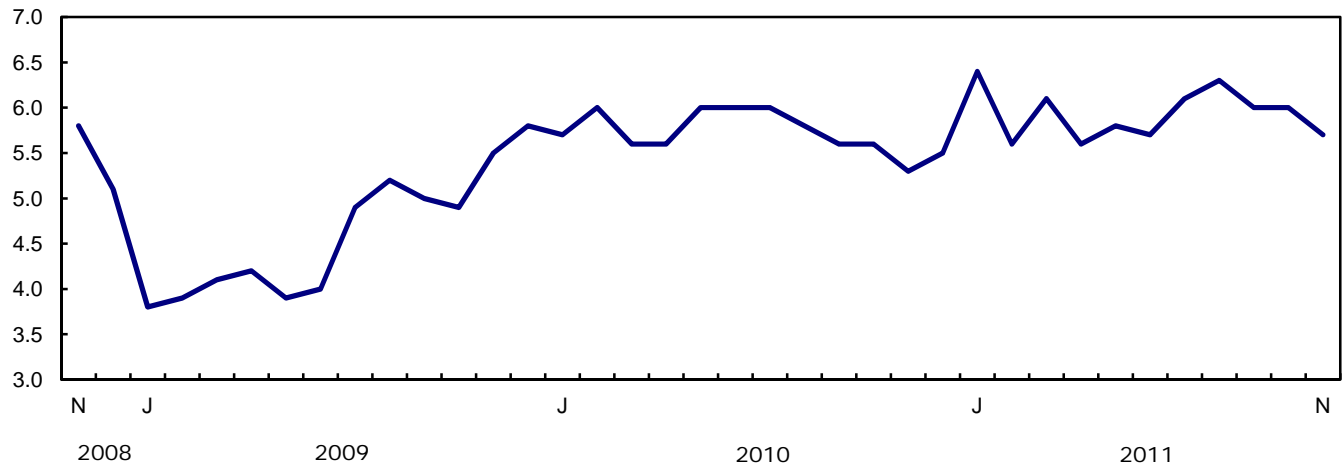
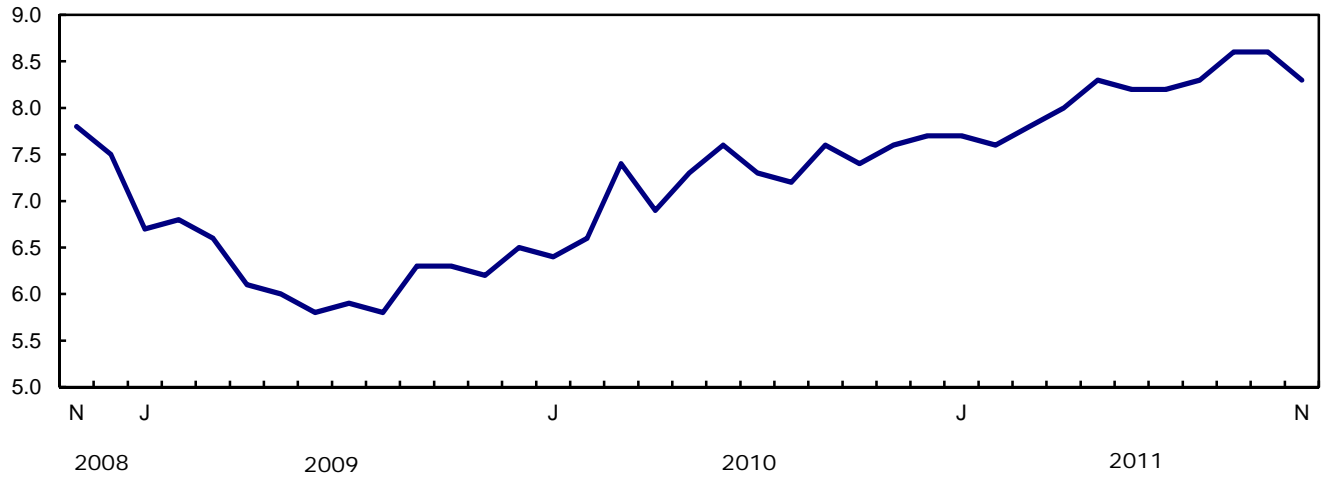


Chart 4
Imports of industrial goods and materials, seasonally adjusted, on a balance of payments basis

billions of dollars



Text table 1
Merchandise trade by principal trading area, balance of payments basis, seasonally adjusted

	October 2011	November 2011	Change	Year to date			November 2011/ November 2010		
				2010	2011	Change			
	millions of dollars		percent		millions of dollars		percent		
Export to									
United States	28,039	28,564	525	1.9	270,371	300,138	29,767	11.0	16.0
Japan	884	925	42	4.7	8,776	10,377	1,600	18.2	4.6
European Union ¹	3,430	4,146	716	20.9	32,669	38,457	5,788	17.7	6.8
Other Organisation for Economic Co-operation and Development ²	2,002	1,755	-247	-12.3	16,208	18,845	2,637	16.3	33.1
Other countries	4,486	4,704	218	4.9	39,445	47,492	8,047	20.4	14.0
Total	38,841	40,094	1,254	3.2	367,468	415,308	47,840	13.0	15.1
Imports from									
United States	24,491	23,992	-500	-2.0	237,980	256,660	18,679	7.8	12.6
Japan	846	844	-2	-0.2	9,213	8,316	-897	-9.7	2.1
European Union ¹	3,798	3,897	98	2.6	36,659	42,291	5,632	15.4	5.7
Other Organisation for Economic Co-operation and Development ²	2,716	2,823	107	3.9	26,682	30,156	3,473	13.0	13.6
Other countries	7,476	7,465	-11	-0.2	67,827	79,373	11,545	17.0	11.8
Total	39,328	39,020	-308	-0.8	378,362	416,795	38,433	10.2	11.6
Balance									
United States	3,548	4,573	1,025	...	32,390	43,479	11,088
Japan	38	82	44	...	-436	2,060	2,497
European Union ¹	-368	249	617	...	-3,990	-3,834	156
Other Organisation for Economic Co-operation and Development ²	-715	-1,069	-354	...	-10,474	-11,311	-837
Other countries	-2,990	-2,761	230	...	-28,383	-31,881	-3,498
Total	-487	1,074	1,561	...	-10,894	-1,487	9,406

1. European Union includes: Austria, Belgium, Bulgaria, Cyprus, Czech Republic, Denmark, Estonia, Finland, France, Germany, Greece, Hungary, Ireland, Italy, Latvia, Lithuania, Luxembourg, Malta, Netherlands, Poland, Portugal, Romania, Slovakia, Slovenia, Spain, Sweden and United Kingdom.

2. Other Organisation for Economic Co-operation and Development includes: Australia, Canada, Iceland, Mexico, New Zealand, Norway, South Korea, Switzerland and Turkey.

Text table 2
Reconciliation of customs and balance of payments trade data, not seasonally adjusted

	2011						2010
	November	October	September	August	July	June	Annual
	millions of dollars						
Exports							
Customs basis	39,356	38,962	39,662	38,667	35,518	37,286	399,433
Balance of payments adjustments	1,441	1,179	440	35	684	340	5,401
Valuation and residency							
Inland freight	619	618	637	618	572	597	6,552
Other valuation and residency	-632	-1,028	-1,353	-1,632	-997	-1,089	-12,984
Timing	36	48	12	35	43	29	48
Coverage	1,418	1,541	1,144	1,014	1,066	803	11,785
Balance of payments basis	40,797	40,141	40,102	38,702	36,202	37,626	404,834
Imports							
Customs basis	39,142	39,913	38,560	39,318	35,548	38,690	403,910
Balance of payments adjustments	1,066	936	810	840	303	709	9,923
Valuation and residency							
Inland freight	814	821	810	833	762	835	8,740
Other valuation and residency	107	-30	-2	-22	-27	-31	-190
Timing	0	0	0	0	0	0	0
Coverage	145	145	2	29	-432	-95	1,373
Balance of payments basis	40,208	40,849	39,370	40,158	35,851	39,399	413,833

Related products

Selected publications from Statistics Canada

65-208-X	International Merchandise Trade Annual Review
65-506-X	A Profile of Canadian Exporters
65F0013X	Canadian International Merchandise Trade Database
65F0019X	A Database for Analysis of International Markets
65F0020X	Data Integration - International Trade Data and Manufacturing Shipments Data

Selected CANSIM tables from Statistics Canada

228-0001	Merchandise imports and exports, by major groups and principal trading areas for all countries, monthly
228-0002	Merchandise imports and exports, by major groups and principal trading areas for all countries, quarterly
228-0003	Merchandise imports and exports, by major groups and principal trading areas for all countries, annual
228-0033	Imports, customs-based, by province of clearance, monthly
228-0034	Domestic exports, customs-based, by province of origin, monthly
228-0041	Merchandise imports and exports by sector and sub-sector, customs and balance of payments basis, for all countries, monthly
228-0042	Merchandise imports and exports by sector and sub-sector, customs and balance of payments basis, for all countries, quarterly
228-0043	Merchandise imports and exports by sector and sub-sector, customs and balance of payments basis, for all countries, annual
228-0047	Merchandise imports and exports balance of payments and customs-based price and volume indexes for all countries, monthly
228-0048	Merchandise imports and exports balance of payments and customs-based price and volume indexes for all countries, quarterly
228-0049	Merchandise imports and exports balance of payments and customs-based price and volume indexes for all countries, annual

228-0050	Merchandise imports and exports customs-based price indexes, Canada and United States trade, and Standard International Trade Classification (SITC revision 3) price indexes for all countries and United States, monthly
228-0051	Merchandise imports and exports customs-based price indexes, Canada and United States trade, and Standard International Trade Classification (SITC revision 3) price indexes for all countries and United States, quarterly
228-0052	Merchandise imports and exports customs-based price indexes, Canada and United States trade, and Standard International Trade Classification (SITC revision 3) price indexes for all countries and United States, annual
228-0053	Merchandise import and export price and volume indexes by sector and sub-sector, customs and balance of payments basis, for all countries, monthly
228-0054	Merchandise import and export price and volume indexes by sector and sub-sector, customs and balance of payments basis, for all countries, quarterly
228-0055	Merchandise import and export price and volume indexes by sector and sub-sector, customs and balance of payments basis, for all countries, annual
228-0056	Merchandise imports and exports by sector, balance of payments basis, for all countries, seasonally adjusted, Fisher formula, monthly
228-0057	Merchandise imports and exports by sector, balance of payments basis, for all countries, seasonally adjusted, Fisher formula, quarterly

Selected surveys from Statistics Canada

2201	Canadian International Merchandise Trade (Customs Basis)
2202	Canadian International Merchandise Trade (Balance of Payments Basis)
2203	International Trade Price Indexes

Selected summary tables from Statistics Canada

- *Canada: Economic and financial data*
- *Imports, exports and trade balance of goods on a balance-of-payments basis, by country or country grouping*
- *Exports of goods on a balance-of-payments basis*

- *Imports of goods on a balance-of-payments basis*
- *Merchandise trade of Canada (monthly)*
- *Economic indicators, by province and territory (monthly and quarterly)*
- *Latest statistics (monthly)*

Statistical tables

Table 1-1
Merchandise trade of Canada, balance of payments basis, seasonally adjusted — Current dollars

	Exports	Imports	Trade balance	Period to period change		
				Exports	Imports	Balance
	millions of dollars			percent		millions of dollars
2007	463,120	415,683	47,437	0.0	0.0	0
2008	488,754	443,777	44,977	5.5	6.8	-2,460
2009	369,343	374,081	-4,738	-24.4	-15.7	-49,715
2010	404,834	413,833	-8,999	9.6	10.6	-4,261
2009						
First quarter	95,888	95,487	400	-16.7	-14.9	-2,399
Second quarter	88,071	90,304	-2,234	-8.2	-5.4	-2,634
Third quarter	90,293	93,167	-2,873	2.5	3.2	-639
Fourth quarter	95,092	95,123	-32	5.3	2.1	2,842
2010						
First quarter	98,870	98,583	287	4.0	3.6	318
Second quarter	100,071	103,014	-2,942	1.2	4.5	-3,229
Third quarter	99,592	106,312	-6,720	-0.5	3.2	-3,778
Fourth quarter	106,301	105,924	377	6.7	-0.4	7,097
2011						
First quarter	110,993	109,761	1,233	4.4	3.6	856
Second quarter	110,375	113,959	-3,585	-0.6	3.8	-4,817
Third quarter	115,005	114,727	278	4.2	0.7	3,863
2010						
January	33,260	31,902	1,358	2.5	-2.7	1,714
February	32,929	32,780	148	-1.0	2.8	-1,210
March	32,681	33,901	-1,220	-0.8	3.4	-1,368
April	32,749	32,962	-213	0.2	-2.8	1,007
May	34,282	34,984	-702	4.7	6.1	-489
June	33,040	35,068	-2,028	-3.6	0.2	-1,326
July	33,040	35,220	-2,181	0.0	0.4	-153
August	33,550	35,757	-2,207	1.5	1.5	-26
September	33,002	35,335	-2,333	-1.6	-1.2	-126
October	34,090	35,474	-1,384	3.3	0.4	949
November	34,845	34,979	-134	2.2	-1.4	1,249
December	37,366	35,471	1,895	7.2	1.4	2,029
2011						
January	38,494	36,774	1,719	3.0	3.7	-176
February	35,386	35,563	-178	-8.1	-3.3	-1,897
March	37,114	37,423	-309	4.9	5.2	-131
April	36,549	37,384	-835	-1.5	-0.1	-527
May	37,304	38,401	-1,096	2.1	2.7	-261
June	36,522	38,174	-1,653	-2.1	-0.6	-556
July	37,406	37,667	-261	2.4	-1.3	1,392
August	37,986	38,565	-579	1.5	2.4	-318
September	39,613	38,495	1,118	4.3	-0.2	1,697
October	38,841	39,328	-487	-2.0	2.2	-1,606
November	40,094	39,020	1,074	3.2	-0.8	1,561

Note(s): Because of rounding, monthly data may not add up to quarterly data and quarterly data may not add up to annual data.

Table 1-2
Merchandise trade of Canada, balance of payments basis, seasonally adjusted — Constant dollars, 2002

	Exports	Imports	Trade balance	Period to period change	
				Exports	Imports
	millions of dollars			percent	
2007	449,015	484,005	-34,990	0.0	0.0
2008	412,713	486,735	-74,022	-8.1	0.6
2009	346,916	407,679	-60,763	-15.9	-16.2
2010	374,143	470,401	-96,259	7.8	15.4
2009					
First quarter	87,361	98,563	-11,202	-9.7	-13.3
Second quarter	83,432	97,723	-14,290	-4.5	-0.9
Third quarter	86,976	104,165	-17,189	4.2	6.6
Fourth quarter	89,147	107,228	-18,081	2.5	2.9
2010					
First quarter	90,749	111,192	-20,442	1.8	3.7
Second quarter	94,368	117,650	-23,282	4.0	5.8
Third quarter	94,074	120,900	-26,826	-0.3	2.8
Fourth quarter	94,951	120,659	-25,708	0.9	-0.2
2011					
First quarter	96,633	124,641	-28,008	1.8	3.3
Second quarter	95,105	128,663	-33,558	-1.6	3.2
Third quarter	98,531	128,066	-29,534	3.6	-0.5
2010					
January	30,484	36,096	-5,612	1.2	-1.5
February	29,984	36,948	-6,964	-1.6	2.4
March	30,282	38,148	-7,866	1.0	3.2
April	30,882	37,943	-7,061	2.0	-0.5
May	32,065	39,600	-7,535	3.8	4.4
June	31,421	40,106	-8,686	-2.0	1.3
July	31,273	40,040	-8,767	-0.5	-0.2
August	31,897	40,711	-8,814	2.0	1.7
September	30,905	40,150	-9,245	-3.1	-1.4
October	31,313	40,563	-9,250	1.3	1.0
November	31,041	39,832	-8,790	-0.9	-1.8
December	32,597	40,265	-7,668	5.0	1.1
2011					
January	33,531	42,043	-8,512	2.9	4.4
February	30,967	40,389	-9,422	-7.6	-3.9
March	32,136	42,210	-10,074	3.8	4.5
April	31,545	42,801	-11,256	-1.8	1.4
May	32,182	42,623	-10,441	2.0	-0.4
June	31,378	43,239	-11,860	-2.5	1.4
July	32,836	42,946	-10,110	4.6	-0.7
August	32,835	43,168	-10,333	0.0	0.5
September	32,860	41,951	-9,092	0.1	-2.8
October	32,502	42,624	-10,122	-1.1	1.6
November	33,004	42,373	-9,369	1.5	-0.6

Note(s): Because of rounding, monthly data may not add up to quarterly data and quarterly data may not add up to annual data.

Table 1-3
Merchandise trade of Canada, balance of payments basis, seasonally adjusted — Price indices (Laspeyres)

	2002=100			Period to period change		
	Exports	Imports	Terms of trade	Exports	Imports	Terms of trade
	price indices (Laspeyres)			percent		
2007	107.1	91.4	117.1	0.0	0.0	0.0
2008	116.2	97.2	119.6	8.5	6.3	2.2
2009	105.2	96.2	109.3	-9.5	-1.0	-8.5
2010	106.8	94.1	113.4	1.5	-2.2	3.7
2009						
First quarter	108.8	100.8	107.9	-3.9	-2.8	-1.1
Second quarter	104.6	96.8	108.0	-3.8	-4.0	0.1
Third quarter	102.9	94.1	109.3	-1.6	-2.8	1.2
Fourth quarter	105.3	93.0	113.2	2.3	-1.2	3.5
2010						
First quarter	107.1	93.7	114.2	1.7	0.7	0.9
Second quarter	105.7	93.6	112.9	-1.3	-0.1	-1.2
Third quarter	106.1	94.5	112.3	0.4	0.9	-0.5
Fourth quarter	108.2	94.6	114.4	2.0	0.1	1.9
2011						
First quarter	111.5	96.2	115.9	3.1	1.8	1.3
Second quarter	113.4	99.0	114.5	1.7	2.9	-1.2
Third quarter	114.0	98.8	115.5	0.6	-0.3	0.9
2010						
January	107.2	93.9	114.2	1.0	0.0	1.0
February	108.1	95.1	113.7	0.8	1.3	-0.5
March	106.0	93.8	113.0	-1.9	-1.3	-0.6
April	105.2	92.1	114.3	-0.8	-1.8	1.1
May	106.3	94.5	112.5	1.0	2.6	-1.6
June	105.6	94.0	112.3	-0.7	-0.5	-0.2
July	104.8	93.8	111.7	-0.7	-0.2	-0.5
August	105.9	94.1	112.5	1.0	0.3	0.7
September	106.7	93.9	113.6	0.8	-0.2	1.0
October	107.5	93.9	114.5	0.7	-0.1	0.7
November	109.0	94.8	115.0	1.4	1.0	0.5
December	110.8	95.4	116.1	1.6	0.7	1.0
2011						
January	111.4	95.9	116.2	0.6	0.5	0.1
February	111.6	97.3	114.7	0.2	1.5	-1.3
March	112.3	97.4	115.3	0.6	0.0	0.6
April	113.3	97.3	116.4	0.9	0.0	0.9
May	113.5	98.9	114.8	0.2	1.6	-1.4
June	113.8	99.8	114.1	0.3	0.9	-0.6
July	112.1	96.9	115.6	-1.5	-2.8	1.3
August	112.8	98.3	114.8	0.7	1.4	-0.7
September	115.4	99.2	116.4	2.3	1.0	1.3
October	115.9	99.3	116.8	0.4	0.1	0.4
November	116.4	100.8	115.6	0.4	1.5	-1.1

Note(s): Because of rounding, monthly data may not add up to quarterly data and quarterly data may not add up to annual data.

Table 2-1
Exports by commodity groupings, balance of payments basis, seasonally adjusted — Current dollars

	October	November	Change		Year to date			November 2011/	November 2010
	2011	2011			2010	2011	Change	November 2011/	
	millions of dollars		percent		millions of dollars			percent	
Total	38,841	40,094	1,254	3.2	367,468	415,308	47,840	13.0	15.1
Agricultural and fishing products	3,594	3,689	95	2.6	33,448	37,188	3,740	11.2	14.9
Wheat	457	562	105	22.9	3,953	5,105	1,151	29.1	48.5
Other agricultural and fishing products	3,137	3,127	-10	-0.3	29,494	32,083	2,589	8.8	10.4
Live animals	128	125	-3	-2.1	1,579	1,301	-278	-17.6	20.7
Fish and fish preparations	357	366	9	2.5	3,820	3,987	167	4.4	7.1
Barley	52	74	21	41.0	278	313	34	12.3	105.0
Wheat flour	6	6	0	2.0	74	69	-5	-6.4	-19.9
Other cereals unmilled	58	56	-2	-2.8	504	819	315	62.5	-40.3
Other cereal preparations	260	265	5	2.0	2,549	2,695	146	5.7	12.7
Meat and meat preparations	450	453	3	0.7	4,317	4,575	257	6.0	16.8
Alcoholic beverages	59	63	4	6.6	683	671	-12	-1.7	5.5
Other food, feed, beverages and tobacco	1,073	1,070	-3	-0.3	10,327	11,221	894	8.7	12.7
Rapeseed	451	426	-25	-5.5	2,981	4,018	1,037	34.8	22.0
Other crude vegetable products	244	224	-20	-8.3	2,381	2,414	33	1.4	-17.0
Energy products	9,442	10,046	604	6.4	81,647	100,823	19,176	23.5	32.2
Crude petroleum	6,008	6,381	372	6.2	44,741	60,294	15,553	34.8	37.3
Natural gas	1,153	942	-212	-18.3	14,428	12,783	-1,645	-11.4	-5.9
Other energy products	2,280	2,724	444	19.5	22,478	27,746	5,268	23.4	39.7
Coal and other bituminous substances	514	661	147	28.5	4,615	6,502	1,887	40.9	79.8
Petroleum and coal products	1,583	1,861	278	17.6	16,038	19,311	3,273	20.4	30.2
Electricity	183	201	19	10.3	1,825	1,933	108	5.9	32.2
Forestry products	1,869	1,783	-86	-4.6	19,853	20,700	846	4.3	-2.3
Lumber and sawmill products	763	710	-53	-7.0	7,349	7,817	467	6.4	0.2
Other crude wood products	109	61	-49	-44.7	607	843	236	39.0	-0.4
Lumber	457	463	6	1.3	4,529	4,926	397	8.8	2.4
Other wood fabricated materials	196	186	-10	-5.2	2,214	2,047	-166	-7.5	-4.8
Wood pulp and other wood products	486	480	-6	-1.2	5,696	6,016	320	5.6	-6.7
Newsprint and other paper and paperboard	620	593	-27	-4.3	6,808	6,866	59	0.9	-1.5
Newsprint paper	311	280	-31	-10.1	3,442	3,517	75	2.2	-11.5
Other paper and paperboard	309	313	4	1.4	3,366	3,349	-17	-0.5	9.6
Industrial goods and materials	9,774	10,162	388	4.0	87,479	106,424	18,946	21.7	10.1
Metal ores	1,678	1,589	-89	-5.3	11,505	15,788	4,283	37.2	17.7
Iron ores, concentrates and scrap	615	582	-33	-5.4	4,176	5,479	1,303	31.2	-7.2
Copper ores, concentrates and scrap	384	333	-51	-13.3	2,180	3,509	1,329	61.0	38.7
Nickel ores, concentrates and scrap	354	284	-70	-19.7	2,530	3,161	631	25.0	56.4
Zinc ores, concentrates and scrap	14	37	23	164.1	237	302	65	27.6	434.6
Other ores, concentrates and scrap	311	353	42	13.4	2,383	3,337	954	40.1	19.8
Chemicals, plastics and fertilizers	3,019	2,894	-125	-4.1	27,387	32,803	5,415	19.8	10.6
Inorganic chemicals	507	495	-12	-2.3	4,143	5,460	1,317	31.8	8.5
Organic chemicals	564	529	-36	-6.3	5,700	6,647	947	16.6	2.2
Fertilizers and fertilizer materials	690	573	-117	-17.0	5,388	7,074	1,686	31.3	11.8
Synthetic rubber and plastics	966	1,003	37	3.8	9,285	10,484	1,200	12.9	15.3
Other chemical products	291	294	3	1.1	2,870	3,137	266	9.3	13.1
Metals and alloys	3,531	3,920	389	11.0	32,750	40,212	7,462	22.8	5.4
Primary iron and steel	104	69	-36	-34.2	1,127	863	-264	-23.4	-23.3
Steel bars, rods, plates, sheets	362	340	-22	-6.1	3,259	3,530	271	8.3	12.9
Other iron and steel and alloys	263	234	-28	-10.8	2,442	2,618	176	7.2	5.8
Aluminum including alloys	683	662	-21	-3.0	6,810	7,410	600	8.8	-10.3
Copper and alloys	221	219	-2	-0.9	2,412	2,331	-81	-3.4	6.6
Nickel and alloys	244	265	21	8.4	1,949	3,084	1,135	58.2	-10.8
Precious metals and alloys	1,454	1,943	489	33.6	12,574	18,080	5,506	43.8	15.2
Zinc and alloys	99	88	-11	-10.7	1,204	1,150	-54	-4.5	1.8
Other non-ferrous metals and alloys	102	100	-1	-1.2	973	1,147	174	17.9	7.5

Table 2-1 – continued

Exports by commodity groupings, balance of payments basis, seasonally adjusted — Current dollars

	October	November	Change	Year to date			November	2011/ November	2010/ 2010
	2011	2011		2010	2011	Change			
	millions of dollars		percent		millions of dollars		percent		
Other industrial goods and materials	1,547	1,760	213	13.8	15,837	17,622	1,785	11.3	13.8
Asbestos unmanufactured	1	0	-1	-69.2	51	30	-21	-40.8	-89.6
Other crude animal products	81	73	-8	-9.5	827	862	35	4.2	5.1
Other crude non-metallic minerals	203	400	197	96.7	3,346	3,574	227	6.8	17.5
Other crude materials, inedible	66	63	-2	-3.7	654	713	59	9.1	1.3
Metal fabricated basic products	389	400	11	2.8	3,814	4,102	288	7.6	15.2
Textile fabricated materials	188	192	4	2.2	1,986	2,036	50	2.5	2.9
Non-metallic mineral basic products	173	170	-4	-2.1	1,715	1,788	73	4.3	15.9
Other fabricated materials	445	461	16	3.7	3,443	4,517	1,074	31.2	18.7
Machinery and equipment	6,887	6,902	16	0.2	69,092	73,022	3,930	5.7	7.9
Industrial and agricultural machinery	1,685	1,835	150	8.9	16,420	18,298	1,878	11.4	19.4
Industrial machinery	1,493	1,633	140	9.4	14,745	16,407	1,662	11.3	18.3
Agricultural machinery includ. tractors	193	202	10	5.0	1,675	1,891	216	12.9	29.0
Aircraft and other transportation equipment	1,547	1,496	-52	-3.3	15,787	16,492	706	4.5	6.1
Aircraft, engines, parts	1,163	1,065	-98	-8.4	12,226	12,215	-10	-0.1	0.0
Other transportation equipment	385	431	47	12.1	3,561	4,277	716	20.1	24.5
Other machinery and equipment	3,654	3,572	-82	-2.2	36,885	38,231	1,346	3.7	3.5
Television, telecommunication equipment	695	694	-2	-0.2	7,148	7,117	-30	-0.4	2.3
Office machines and equipment	361	348	-13	-3.7	3,921	3,877	-44	-1.1	-3.1
Other equipment and tools	1,685	1,682	-2	-0.1	16,936	17,774	838	4.9	7.5
Other end products, inedible	913	848	-65	-7.1	8,880	9,463	583	6.6	-0.1
Automotive products	5,079	5,327	248	4.9	52,266	53,649	1,383	2.6	18.5
Passenger autos and chassis	3,310	3,592	282	8.5	34,649	35,093	444	1.3	23.4
Trucks and other motor vehicles	309	289	-19	-6.2	2,106	2,613	507	24.1	38.8
Motor vehicle parts	1,460	1,445	-14	-1.0	15,511	15,943	431	2.8	5.1
Other consumer goods	1,397	1,369	-28	-2.0	15,090	14,847	-243	-1.6	1.7
Special transactions trade	301	297	-4	-1.4	3,695	3,479	-216	-5.8	1.6
Unallocated balance of payments adjustments	499	520	21	4.2	4,900	5,176	276	5.6	15.1

Table 2-2
Exports by commodity groupings, balance of payments basis, seasonally adjusted — Constant dollars, 2002

	October	November	Change		Year to date			November 2011/ November 2010	
	2011	2011			2010	2011	Change		
	millions of dollars		percent		millions of dollars			percent	
Total	32,502	33,004	502	1.5	341,546	355,775	14,230	4.2	6.3
Agricultural and fishing products	3,119	3,197	78	2.5	34,410	33,669	-741	-2.2	3.2
Wheat	327	386	60	18.4	4,122	3,712	-410	-10.0	11.9
Other agricultural and fishing products	2,793	2,811	18	0.7	30,288	29,957	-331	-1.1	2.1
Live animals	112	106	-6	-5.2	1,789	1,230	-559	-31.3	-0.4
Fish and fish preparations	426	442	16	3.9	4,729	4,650	-79	-1.7	5.9
Barley	43	50	6	14.9	265	230	-35	-13.1	52.5
Wheat flour	5	5	0	1.1	70	58	-12	-16.8	-27.5
Other cereals unmilled	50	46	-4	-7.5	524	615	90	17.2	-38.0
Other cereal preparations	219	223	3	1.5	2,274	2,375	101	4.4	4.3
Meat and meat preparations	421	408	-13	-3.0	4,805	4,521	-284	-5.9	-1.4
Alcoholic beverages	102	121	19	18.8	1,312	1,303	-8	-0.6	5.7
Other food, feed, beverages and tobacco	907	929	22	2.5	9,721	10,183	462	4.8	4.7
Rapeseed	326	316	-10	-3.1	2,736	2,894	158	5.8	14.2
Other crude vegetable products	182	165	-17	-9.5	2,062	1,897	-165	-8.0	-20.8
Energy products	4,904	4,907	3	0.1	50,212	53,428	3,216	6.4	9.5
Crude petroleum	2,458	2,422	-36	-1.4	22,392	25,510	3,118	13.9	12.8
Natural gas	1,379	1,245	-134	-9.7	14,899	14,721	-178	-1.2	0.4
Other energy products	1,067	1,240	173	16.2	12,921	13,197	276	2.1	13.4
Coal and other bituminous substances	117	150	33	28.4	1,618	1,610	-8	-0.5	35.1
Petroleum and coal products	708	770	62	8.7	9,163	8,983	-180	-2.0	2.1
Electricity	241	320	78	32.3	2,140	2,604	463	21.6	40.0
Forestry products	2,233	2,179	-54	-2.4	24,148	25,288	1,141	4.7	-1.9
Lumber and sawmill products	974	925	-49	-5.0	9,426	10,332	906	9.6	1.4
Other crude wood products	105	63	-43	-40.4	767	970	204	26.6	-1.4
Lumber	633	640	7	1.1	6,258	6,907	649	10.4	3.3
Other wood fabricated materials	236	222	-14	-5.8	2,401	2,455	54	2.2	-3.1
Wood pulp and other wood products	582	602	20	3.4	6,808	7,152	345	5.1	-4.0
Newsprint and other paper and paperboard	677	653	-25	-3.6	7,914	7,804	-110	-1.4	-4.4
Newsprint paper	339	307	-32	-9.4	4,094	4,010	-83	-2.0	-15.5
Other paper and paperboard	339	346	7	2.1	3,821	3,793	-27	-0.7	8.2
Industrial goods and materials	5,729	5,865	136	2.4	59,679	62,926	3,247	5.4	2.3
Metal ores	716	662	-54	-7.5	5,475	6,468	993	18.1	20.2
Iron ores, concentrates and scrap	204	176	-29	-14.1	1,776	1,909	133	7.5	-21.9
Copper ores, concentrates and scrap	129	112	-17	-13.3	733	1,037	304	41.5	53.2
Nickel ores, concentrates and scrap	176	152	-24	-13.7	1,149	1,359	210	18.2	99.2
Zinc ores, concentrates and scrap	8	22	14	160.0	128	161	33	25.5	504.2
Other ores, concentrates and scrap	198	200	3	1.4	1,688	2,002	314	18.6	16.1
Chemicals, plastics and fertilizers	1,929	1,883	-46	-2.4	19,857	21,335	1,478	7.4	2.1
Inorganic chemicals	211	200	-11	-5.1	2,058	2,214	156	7.6	3.3
Organic chemicals	276	245	-31	-11.1	3,390	3,239	-151	-4.5	-19.3
Fertilizers and fertilizer materials	247	199	-48	-19.4	2,358	2,707	348	14.8	-5.7
Synthetic rubber and plastics	880	914	35	3.9	8,604	9,597	994	11.5	10.5
Other chemical products	316	325	9	2.8	3,447	3,578	131	3.8	5.1

Table 2-2 – continued

Exports by commodity groupings, balance of payments basis, seasonally adjusted — Constant dollars, 2002

	October	November	Change		Year to date			November 2011/ November 2010	
	2011	2011			2010	2011	Change		
	millions of dollars		percent		millions of dollars		percent		
Metals and alloys	1,900	1,970	71	3.7	20,142	21,039	897	4.5	-4.7
Primary iron and steel	61	37	-24	-39.9	763	521	-242	-31.7	-37.5
Steel bars, rods, plates, sheets	263	255	-8	-3.1	2,708	2,674	-33	-1.2	-0.4
Other iron and steel and alloys	202	181	-22	-10.8	2,039	2,059	20	1.0	-3.4
Aluminum including alloys	690	677	-13	-1.8	6,983	7,192	208	3.0	-5.4
Copper and alloys	65	68	3	5.1	781	626	-155	-19.9	14.1
Nickel and alloys	122	131	9	7.2	960	1,405	445	46.4	1.9
Precious metals and alloys	384	511	126	32.8	4,767	5,346	580	12.2	-10.5
Zinc and alloys	61	57	-4	-6.2	697	662	-35	-5.0	17.9
Other non-ferrous metals and alloys	51	54	3	5.4	444	553	109	24.6	25.1
Other industrial goods and materials	1,184	1,349	165	14.0	14,206	14,085	-121	-0.9	6.3
Asbestos unmanufactured	1	0	-1	-62.8	51	30	-22	-42.1	-88.7
Other crude animal products	74	74	0	0.6	850	790	-60	-7.1	1.7
Other crude non-metallic minerals	108	260	152	140.6	3,134	2,612	-522	-16.6	14.7
Other crude materials, inedible	56	55	-2	-3.2	600	641	41	6.9	-1.5
Metal fabricated basic products	310	318	8	2.6	3,081	3,262	181	5.9	14.4
Textile fabricated materials	184	186	2	1.2	2,115	2,111	-4	-0.2	-5.4
Non-metallic mineral basic products	138	138	1	0.4	1,408	1,467	59	4.2	14.3
Other fabricated materials	313	318	4	1.4	2,966	3,171	205	6.9	1.1
Machinery and equipment	7,515	7,474	-41	-0.5	77,045	81,775	4,730	6.1	5.2
Industrial and agricultural machinery	1,556	1,683	127	8.2	15,290	17,067	1,777	11.6	16.5
Industrial machinery	1,383	1,501	119	8.6	13,745	15,328	1,583	11.5	15.5
Agricultural machinery includ. tractors	173	182	8	4.9	1,545	1,738	194	12.5	25.6
Aircraft and other transportation equipment	1,849	1,784	-65	-3.5	19,464	20,327	864	4.4	2.8
Aircraft, engines, parts	1,494	1,379	-115	-7.7	15,943	16,155	212	1.3	-1.5
Other transportation equipment	355	405	50	14.1	3,521	4,173	652	18.5	20.8
Other machinery and equipment	4,111	4,007	-103	-2.5	42,291	44,381	2,090	4.9	2.2
Television, telecommunication equipment	865	870	5	0.6	9,072	9,191	119	1.3	0.1
Office machines and equipment	981	952	-29	-2.9	9,806	10,874	1,067	10.9	2.9
Other equipment and tools	1,581	1,591	10	0.6	16,030	16,998	968	6.0	6.8
Other end products, inedible	684	594	-89	-13.1	7,384	7,318	-65	-0.9	-6.9
Automotive products	6,711	7,048	337	5.0	69,656	72,843	3,187	4.6	16.3
Passenger autos and chassis	4,738	5,118	380	8.0	50,001	51,969	1,968	3.9	19.7
Trucks and other motor vehicles	383	356	-27	-7.1	2,561	3,213	652	25.5	37.8
Motor vehicle parts	1,591	1,575	-16	-1.0	17,094	17,661	567	3.3	2.9
Other consumer goods	1,324	1,294	-30	-2.3	14,484	14,188	-296	-2.0	0.4
Special transactions trade	251	243	-8	-3.3	3,349	2,904	-446	-13.3	-5.4
Unallocated balance of payments adjustments	715	796	81	11.3	8,563	8,754	191	2.2	-0.2

Table 3-1
Domestic exports to selected countries, customs basis, not seasonally adjusted — November

	Agricultural and fishing products	Energy products	Forestry products	Industrial goods	Machinery and equipment	Automotive products	Consumer goods	Special transactions trade	Total
millions of dollars									
United States									
2010	1,525.5	6,414.1	1,102.7	5,063.8	3,317.3	4,166.0	744.7	276.2	22,610.3
2011	1,850.9	8,814.9	1,075.3	4,832.5	3,654.6	5,130.0	817.8	285.9	26,462.0
Mexico									
2010	99.1	0.4	13.5	85.5	76.6	55.3	5.5	2.1	337.9
2011	146.6	43.8	9.6	101.6	66.2	73.0	5.0	0.1	445.8
Japan									
2010	295.4	166.6	98.9	188.8	76.4	6.5	19.0	1.9	853.5
2011	337.7	153.4	135.4	242.4	47.0	7.0	6.7	1.5	931.0
European Union									
Germany									
2010	49.9	39.5	6.2	149.9	116.4	3.2	16.3	1.5	383.0
2011	29.0	26.4	6.2	58.9	184.7	4.1	18.9	0.9	329.2
France									
2010	24.9	0.0	10.5	42.8	70.1	4.0	52.5	1.6	206.6
2011	25.5	0.4	6.1	28.7	103.2	2.7	15.1	1.1	182.9
United Kingdom									
2010	28.9	11.9	15.9	1,573.2	228.6	5.0	15.2	8.3	1,886.9
2011	46.1	37.7	19.5	1,407.3	117.8	5.0	14.2	4.9	1,652.4
Italy									
2010	72.4	10.8	24.0	47.0	26.2	0.6	8.0	0.2	189.0
2011	53.4	33.7	14.6	21.7	31.4	0.4	6.9	4.4	166.6
Other European Union									
2010	202.3	58.3	21.3	327.3	221.2	17.7	41.0	2.4	891.6
2011	213.1	248.3	18.5	379.9	185.4	13.4	41.9	1.7	1,102.3
Total									
2010	378.4	120.6	77.9	2,140.2	662.5	30.6	133.0	14.0	3,557.2
2011	367.1	346.4	64.9	1,896.6	622.5	25.7	97.1	13.0	3,433.3
Newly industrialized countries									
South Korea									
2010	28.2	62.8	24.7	84.0	30.2	3.1	5.0	0.5	238.6
2011	31.6	206.8	41.8	82.8	77.9	3.6	5.0	0.3	449.8
Hong Kong									
2010	40.7	0.0	7.7	49.4	25.8	0.7	8.2	1.7	134.2
2011	34.3	0.0	12.0	230.3	66.1	0.5	7.3	0.4	351.0
Taiwan									
2010	14.9	0.1	22.9	70.6	10.7	0.1	1.9	0.1	121.3
2011	12.3	27.7	16.5	56.8	11.6	0.2	2.1	0.1	127.3
Singapore									
2010	3.8	0.4	1.4	10.7	26.0	0.5	2.3	1.1	46.1
2011	6.3	0.2	0.6	14.6	22.0	1.2	3.4	0.2	48.6
Total									
2010	87.6	63.2	56.8	214.7	92.7	4.4	17.3	3.5	540.2
2011	84.5	234.8	71.0	384.5	177.5	5.6	17.9	1.0	976.6
Other countries									
2010	1,082.2	152.9	490.3	1,359.0	763.9	61.4	134.9	24.0	4,068.6
2011	1,170.2	239.3	429.2	1,646.3	752.0	91.9	98.1	18.7	4,445.7
Total									
2010	3,468.2	6,917.8	1,840.2	9,051.9	4,989.4	4,324.2	1,054.5	321.6	31,967.8
2011	3,957.0	9,832.6	1,785.5	9,103.7	5,319.8	5,333.1	1,042.6	320.1	36,694.4

Table 3-2
Domestic exports to selected countries, customs basis, not seasonally adjusted — Year to date, January to November

	Agricultural and fishing products	Energy products	Forestry products	Industrial goods	Machinery and equipment	Automotive products	Consumer goods	Special transactions trade	Total
millions of dollars									
United States									
2010	17,123.3	77,959.5	12,630.4	50,305.3	37,248.3	47,850.2	8,775.4	2,932.7	254,825.2
2011	17,985.4	93,486.4	12,054.4	57,875.5	39,087.5	48,952.9	8,273.1	2,772.9	280,488.1
Mexico									
2010	1,219.9	87.9	123.1	935.9	700.4	760.6	67.2	11.9	3,906.8
2011	1,504.0	133.5	127.5	1,141.8	703.5	636.8	85.4	6.4	4,338.8
Japan									
2010	2,966.5	1,722.4	1,228.8	1,582.3	565.9	64.1	129.7	13.4	8,273.1
2011	3,496.6	1,966.7	1,272.2	2,118.6	611.4	50.7	96.0	16.9	9,629.1
European Union									
Germany									
2010	200.8	224.4	86.5	1,232.8	1,273.7	32.8	190.4	22.5	3,263.9
2011	188.5	244.6	72.3	1,052.2	1,553.0	42.6	199.5	19.2	3,371.9
France									
2010	147.9	30.5	127.6	440.5	820.3	33.7	243.3	23.5	1,867.4
2011	189.5	156.4	106.5	661.8	1,201.2	34.6	203.6	15.6	2,569.2
United Kingdom									
2010	319.6	92.2	196.4	11,226.7	1,810.1	48.2	187.8	71.3	13,952.4
2011	342.5	222.1	191.0	14,119.4	1,204.5	55.0	162.2	53.5	16,350.2
Italy									
2010	318.3	174.3	300.1	351.5	366.1	7.5	158.3	7.5	1,683.7
2011	417.3	262.4	255.3	325.7	370.1	9.2	89.5	7.3	1,736.8
Other European Union									
2010	1,102.2	706.8	285.5	3,207.8	2,248.8	157.0	533.9	45.4	8,287.3
2011	1,317.8	1,685.0	239.8	4,350.4	1,953.6	174.9	535.0	31.1	10,287.7
Total									
2010	2,088.9	1,228.2	996.1	16,459.3	6,519.1	279.2	1,313.7	170.2	29,054.7
2011	2,455.6	2,570.5	864.9	20,509.6	6,282.4	316.2	1,189.8	126.7	34,315.8
Newly industrialized countries									
South Korea									
2010	401.7	992.0	421.1	961.9	398.4	56.3	46.0	9.0	3,286.3
2011	852.1	1,741.8	474.7	1,052.1	404.6	18.4	65.0	6.4	4,615.1
Hong Kong									
2010	366.0	0.5	98.8	660.3	281.1	8.1	71.4	18.0	1,504.2
2011	348.6	0.5	124.7	1,485.5	393.5	6.6	71.4	5.8	2,436.4
Taiwan									
2010	154.7	142.1	226.4	446.9	124.6	2.5	38.5	1.2	1,137.1
2011	163.3	282.5	252.1	703.3	105.5	1.4	34.2	1.2	1,543.6
Singapore									
2010	54.0	5.4	17.1	160.7	301.0	18.5	38.8	11.0	606.4
2011	49.7	4.3	9.1	141.9	342.0	17.9	31.5	4.5	600.9
Total									
2010	976.3	1,140.0	763.4	2,229.9	1,105.2	85.4	194.7	39.1	6,534.0
2011	1,413.6	2,029.1	860.6	3,382.8	1,245.6	44.3	202.1	17.8	9,196.0
Other countries									
2010	8,326.0	1,949.5	4,611.5	12,451.0	7,576.0	626.0	1,314.3	267.9	37,122.2
2011	9,281.3	2,766.2	5,845.3	15,850.0	7,942.0	801.7	1,008.1	211.0	43,705.7
Total									
2010	32,701.0	84,087.5	20,353.2	83,963.7	53,715.2	49,665.5	11,795.1	3,435.3	339,716.5
2011	36,136.6	102,952.5	21,025.0	100,878.4	55,872.8	50,802.7	10,854.5	3,151.6	381,674.1

Table 4
Domestic exports by country, customs basis, not seasonally adjusted

	November		January to November		Change
	2010	2011	2010	2011	January to November 2011/ January to November 2010
	millions of dollars				percent
North America					
Greenland	0.4	1.1	7.4	11.4	54.2
Mexico	337.9	445.8	3,906.8	4,338.8	11.1
Saint Pierre and Miquelon	1.2	0.9	13.5	15.3	13.5
United States	22,610.3	26,462.0	254,825.2	280,488.1	10.1
Total	22,949.8	26,909.8	258,752.8	284,853.6	10.1
Western Europe					
Andorra	0.0	0.0	0.1	0.1	7.9
Austria	34.2	31.6	336.5	280.3	-16.7
Belgium	180.3	130.8	1,915.2	1,975.5	3.1
Denmark	32.1	31.7	255.7	226.7	-11.3
Faeroe Islands	0.1	0.0	0.5	0.5	7.1
Finland	28.3	135.4	349.6	703.2	101.1
France	206.6	182.9	1,867.4	2,569.2	37.6
Germany	383.0	329.2	3,263.9	3,371.9	3.3
Gibraltar	0.0	37.6	25.1	94.3	276.1
Greece	7.5	7.1	100.4	77.4	-23.0
Iceland	3.4	2.7	102.4	50.4	-50.8
Italy	189.0	166.6	1,683.7	1,736.8	3.2
Luxembourg	5.8	4.2	49.2	76.4	55.1
Malta	1.3	0.3	107.9	6.7	-93.8
Netherlands	320.9	450.3	2,797.5	4,341.2	55.2
Norway	152.5	164.7	2,235.0	2,545.5	13.9
Portugal	28.6	37.6	256.7	216.4	-15.7
Republic of Ireland (Eire)	17.1	12.6	289.0	320.1	10.8
Spain	74.8	125.9	686.4	838.9	22.2
Sweden	57.0	55.5	372.5	375.9	0.9
Switzerland	93.3	38.1	1,270.0	1,026.7	-19.2
United Kingdom	1,886.9	1,652.4	13,952.4	16,350.2	17.2
Total	3,702.5	3,597.1	31,917.3	37,184.3	16.5
Other Europe					
Albania	1.6	3.8	23.3	50.5	117.0
Armenia	1.8	0.7	10.1	14.9	47.0
Azerbaijan	2.6	0.9	14.6	10.7	-26.8
Belarus	0.3	0.1	1.4	1.4	-2.7
Bosnia and Herzegovina	0.6	0.5	4.3	4.3	0.1
Bulgaria	19.1	16.6	113.7	187.9	65.3
Croatia	3.7	2.5	87.2	14.9	-82.9
Czech Republic	11.1	15.2	101.4	90.8	-10.5
Estonia	2.3	1.0	19.8	73.5	272.0
Georgia	3.0	1.8	15.5	19.6	26.1
Hungary	6.8	6.5	91.8	88.4	-3.7
Kazakhstan	4.7	13.2	116.3	131.4	13.0
Kyrgyzstan	1.0	1.8	4.6	9.2	98.1
Latvia	1.0	2.4	83.7	42.5	-49.3
Lithuania	4.3	3.4	30.2	43.8	44.9
Macedonia (Former Yugoslav Republic of Macedonia)	0.9	1.4	8.9	16.5	85.7
Montenegro	0.2	0.1	1.6	1.3	-18.9
Poland	14.4	16.3	137.4	185.1	34.7
Republic of Moldova	0.1	0.0	2.2	0.9	-59.6
Romania	3.3	2.3	88.2	51.8	-41.2
Russian Federation	120.4	132.5	920.8	1,225.1	33.0
Serbia	0.8	1.1	6.8	7.6	13.1
Slovakia	2.4	13.9	26.1	66.5	155.2
Slovenia	0.5	0.9	31.6	9.3	-70.4
Tajikistan	0.0	0.4	4.9	3.0	-39.6
Turkmenistan	0.3	0.3	4.3	10.8	152.8
Ukraine	8.2	9.6	117.3	120.0	2.3
Uzbekistan	0.3	0.3	5.3	6.9	30.1
Total	215.7	249.7	2,073.3	2,488.7	20.0

Table 4 – continued

Domestic exports by country, customs basis, not seasonally adjusted

	November		January to November		Change
	2010	2011	2010	2011	January to November 2011/ January to November 2010
	millions of dollars				percent
Middle East					
Bahrain	1.2	3.5	59.6	56.6	-5.1
Cyprus	38.8	0.8	46.6	9.2	-80.2
Egypt	87.0	59.8	567.5	620.7	9.4
Eritrea	0.1	0.0	2.2	3.2	44.1
Ethiopia	5.7	0.6	150.7	19.0	-87.4
Iran	16.5	7.1	99.9	73.1	-26.9
Iraq	1.6	48.2	218.3	154.6	-29.2
Israel	26.1	40.4	323.2	316.8	-2.0
Jordan	3.1	7.4	52.6	56.3	7.0
Kuwait	7.9	6.2	78.8	85.9	9.0
Lebanon	3.5	5.7	57.0	67.5	18.6
Libya	19.7	2.5	126.3	40.2	-68.1
Oman	5.6	4.3	86.5	66.4	-23.2
Qatar	4.8	8.1	74.2	142.0	91.4
Saudi Arabia	103.9	57.6	752.8	729.3	-3.1
Somalia	0.0	0.0	2.3	1.1	-53.4
Sudan	2.0	15.6	96.9	136.2	40.5
Syria	21.0	2.2	52.5	48.3	-8.1
Turkey	95.1	113.7	764.5	1,128.4	47.6
United Arab Emirates	142.9	101.4	927.9	1,070.3	15.4
Yemen	0.9	0.7	16.7	8.6	-48.8
Total	587.2	485.9	4,557.0	4,833.8	6.1
Other Africa					
Algeria	10.2	59.1	277.3	233.2	-15.9
Angola	33.7	5.0	184.2	112.7	-38.8
Antarctica	0.0	0.1	0.2	0.5	151.3
Benin	1.1	1.1	11.4	11.2	-2.4
Botswana	0.5	0.1	3.5	3.3	-6.4
Burkina Faso	1.7	4.8	17.9	26.6	48.4
Burundi	0.1	0.1	0.9	0.8	-7.6
Cameroon	0.9	1.2	21.7	20.9	-3.6
Cape Verde	0.0	0.0	1.0	1.8	88.3
Central African Republic	0.0	0.0	0.1	0.3	160.9
Chad	0.4	0.0	6.0	2.6	-57.4
Comoros	0.0	0.0	0.1	0.3	232.8
Congo	0.6	1.5	14.9	19.7	31.9
Democratic Republic of the Congo	1.3	1.5	11.8	17.0	44.6
Djibouti	0.6	0.1	4.7	1.0	-79.1
Equatorial Guinea	0.2	0.5	4.2	8.5	101.4
French Southern Territories	0.0	0.0	0.0	0.0	-39.2
Gabon	0.9	1.3	16.2	16.6	2.6
Gambia	0.1	0.0	0.7	0.5	-22.7
Ghana	15.9	20.1	151.2	227.4	50.4
Guinea	0.6	1.0	7.2	20.6	187.2
Guinea-Bissau	0.0	0.0	0.0	0.1	...
Ivory Coast	0.7	3.2	16.7	15.3	-8.4
Kenya	3.8	5.3	61.9	65.1	5.0
Lesotho	0.0	0.0	0.1	0.1	-1.7
Liberia	0.8	2.4	10.9	12.1	11.4
Madagascar	0.5	1.1	42.5	12.8	-69.9
Malawi	0.2	0.3	3.3	4.1	24.4
Mali	0.4	3.1	6.4	19.6	208.6
Mauritania	0.4	1.7	3.6	11.1	208.0
Mauritius	0.2	0.2	4.3	4.6	5.0
Morocco	23.1	40.0	146.7	272.1	85.5
Mozambique	0.5	1.8	11.1	11.0	-1.1
Namibia	1.4	0.1	11.0	4.5	-58.8
Niger	0.3	0.4	2.2	4.4	98.1
Nigeria	15.7	13.5	186.6	179.4	-3.9
Rwanda	0.0	0.1	0.9	1.0	4.7
Saint Helena	0.0	0.1	0.0	0.1	...
Sao Tome and Principe	0.0	0.0	0.0	0.1	212.3
Senegal	2.2	1.2	23.3	24.4	4.5
Seychelles	0.1	0.3	1.0	4.2	319.8

Table 4 – continued

Domestic exports by country, customs basis, not seasonally adjusted

	November		January to November		Change
	2010	2011	2010	2011	January to November 2011/ January to November 2010
	millions of dollars				percent
Sierra Leone	0.5	0.7	9.1	8.6	-4.6
South Africa	31.0	45.3	402.9	560.7	39.2
Swaziland	0.1	0.0	1.4	0.8	-40.8
Togo	0.5	0.4	9.4	12.1	28.9
Tunisia	17.9	2.4	69.1	77.5	12.0
Uganda	0.9	0.4	8.8	7.3	-16.9
United Republic of Tanzania	3.4	3.5	34.0	37.8	11.3
Western Sahara	0.0	0.0	0.0	0.0	-100.0
Zambia	1.0	1.0	25.1	26.0	3.5
Zimbabwe	0.2	2.2	4.8	8.7	81.5
Total	174.9	228.4	1,832.4	2,111.0	15.2
Other Asia					
Afghanistan	7.7	2.0	51.3	32.6	-36.4
Bangladesh	44.9	103.8	567.2	473.2	-16.6
Bhutan	0.0	0.1	1.6	0.1	-93.3
British Indian Ocean Territory	0.1	0.0	2.2	0.0	-99.1
Brunei Darussalam	0.1	0.2	10.1	2.5	-75.7
Cambodia	0.5	0.3	3.1	7.3	135.5
China	1,458.8	1,727.9	11,143.4	14,585.1	30.9
Hong Kong	134.2	351.0	1,504.2	2,436.4	62.0
India	228.0	244.9	1,872.8	2,253.5	20.3
Indonesia	124.5	87.2	915.7	1,456.7	59.1
Japan	853.5	931.0	8,273.1	9,629.1	16.4
Laos	0.6	0.3	2.2	6.5	203.1
Macao	0.1	0.3	2.0	2.6	29.4
Malaysia	40.3	54.4	648.4	669.5	3.3
Maldives	0.6	0.5	4.3	4.4	0.9
Mongolia	11.9	4.2	23.7	81.2	243.4
Myanmar	0.0	0.0	2.7	0.8	-70.3
Nepal	0.3	2.0	5.3	5.4	2.0
North Korea	0.7	1.5	9.7	15.4	59.0
Pakistan	109.5	76.6	468.6	591.0	26.1
Philippines	57.1	40.2	596.1	511.3	-14.2
Singapore	46.1	48.6	606.4	600.9	-0.9
South Korea	238.6	449.8	3,286.3	4,615.1	40.4
Sri Lanka	30.2	2.3	290.3	274.9	-5.3
Taiwan	121.3	127.3	1,137.1	1,543.6	35.7
Thailand	40.0	37.8	575.8	704.8	22.4
Timor-Leste	0.0	0.1	0.0	0.2	...
Viet Nam	22.9	50.5	228.9	289.4	26.5
Total	3,572.5	4,344.5	32,232.5	40,793.6	26.6
Oceania					
American Samoa	0.1	0.1	1.3	1.2	-5.4
Australia	115.6	172.9	1,473.2	1,580.9	7.3
Christmas Island	0.1	0.1	0.9	0.3	-62.2
Cocos (Keeling) Islands	0.0	0.0	0.1	0.2	68.9
Cook Islands	0.0	0.1	0.1	0.2	352.6
Fiji	0.4	0.1	3.2	6.7	108.1
French Polynesia	0.9	2.2	11.0	10.8	-1.9
Guam	0.2	0.4	1.6	1.9	19.7
Heard Island and McDonald Islands	0.0	0.0	0.0	0.0	-100.0
Kiribati	0.0	0.1	0.1	0.1	112.5
Nauru	0.0	0.0	1.3	0.0	-100.0
New Caledonia	10.0	0.3	42.2	7.5	-82.2
New Zealand	29.4	40.5	282.3	327.3	15.9
Niue	0.0	0.0	0.0	0.0	...
Norfolk Island	0.0	0.0	0.1	0.0	-100.0
Papua New Guinea	0.4	4.5	34.8	40.6	16.7
Pitcairn	0.0	0.0	0.1	0.0	-40.3
Samoa	0.0	0.1	0.3	0.2	-26.2
Solomon Islands	0.0	0.0	0.1	0.3	345.3
Tonga	0.1	0.0	4.5	0.2	-95.6
United States Minor Outlying Islands	1.3	1.3	13.9	10.9	-21.4
Vanuatu	0.1	0.1	1.5	1.0	-35.5
Wallis and Futuna	0.0	0.0	0.0	0.0	...
Total	158.8	222.8	1,872.4	1,990.6	6.3

Table 4 – continued

Domestic exports by country, customs basis, not seasonally adjusted

	November		January to November		Change January to November 2011/ January to November 2010
	2010	2011	2010	2011	
	millions of dollars				percent
South America					
Argentina	22.2	29.9	241.1	442.9	83.7
Bolivia	1.1	1.2	39.9	12.1	-69.6
Brazil	160.2	198.1	2,263.2	2,534.3	12.0
Chile	40.2	58.6	466.7	668.0	43.1
Colombia	66.7	86.4	568.7	642.7	13.0
Ecuador	15.4	28.0	239.0	259.2	8.4
Falkland Islands (Malvinas)	0.0	0.1	0.1	0.1	-6.9
Guyana	4.3	1.9	26.1	32.1	22.8
Paraguay	0.7	1.0	14.3	12.0	-16.1
Peru	50.2	33.1	414.2	447.1	7.9
Suriname	0.4	1.2	8.7	11.0	26.4
Uruguay	2.5	31.5	106.2	111.7	5.1
Venezuela	65.7	42.0	487.8	527.0	8.0
Total	429.4	513.1	4,876.1	5,700.2	16.9
Central America Antilles					
Anguilla	0.1	0.0	0.8	2.3	180.7
Antigua and Barbuda	1.5	0.7	18.2	9.2	-49.4
Aruba	0.5	0.9	25.8	5.1	-80.2
Bahamas	27.3	34.1	123.5	78.4	-36.5
Barbados	3.5	3.7	33.8	40.0	18.5
Belize	1.0	0.4	5.3	4.3	-18.9
Bermuda	3.4	3.1	35.0	72.4	106.9
British Virgin Islands	0.9	0.1	22.0	48.1	118.1
Cayman Islands	0.3	0.7	6.0	6.5	9.1
Costa Rica	8.5	7.9	85.1	144.5	69.7
Cuba	26.2	27.7	289.6	330.0	13.9
Dominica	0.2	0.5	4.2	3.5	-17.2
Dominican Republic	10.8	9.4	165.5	130.4	-21.2
El Salvador	2.6	1.8	31.2	31.5	0.8
Grenada	0.6	0.7	4.8	4.1	-14.3
Guatemala	6.4	4.7	76.9	98.7	28.3
Haiti	5.4	3.0	43.3	33.9	-21.6
Honduras	6.5	2.3	33.7	35.1	4.2
Jamaica	7.9	13.2	118.6	96.2	-18.9
Montserrat	0.0	0.0	0.2	0.3	42.1
Netherlands Antilles	26.7	4.3	43.3	101.7	134.9
Nicaragua	6.6	1.2	32.6	29.5	-9.8
Panama	6.0	7.1	112.6	93.4	-17.0
Saint Kitts and Nevis	0.9	0.4	5.9	5.2	-11.3
Saint Lucia	1.5	0.7	7.2	7.9	10.6
Saint Vincent and the Grenadines	2.2	0.6	10.2	6.5	-36.4
Trinidad and Tobago	19.2	13.6	263.6	298.1	13.1
Turks and Caicos Islands	0.2	0.1	3.8	1.7	-54.8
Total	176.9	143.0	1,602.7	1,718.3	7.2
All countries	31,967.8	36,694.4	339,716.5	381,674.1	12.4

Table 5-1
Exports by province of origin, customs basis, not seasonally adjusted — November

	Agricultural and fishing products	Energy products	Forestry products	Industrial goods	Machinery and equipment	Automotive products	Consumer goods	Special transactions trade	Total
millions of dollars									
Domestic exports									
Newfoundland and Labrador									
2010	44.0	394.0	15.1	326.4	4.1	0.4	0.1	2.4	786.5
2011	36.5	971.6	14.5	328.5	4.1	0.1	0.1	2.2	1,357.7
Prince Edward Island									
2010	42.7	0.0	0.0	1.2	7.3	0.5	2.3	5.9	59.8
2011	45.5	0.0	0.0	1.7	16.6	0.2	1.5	9.0	74.6
Nova Scotia									
2010	65.7	28.2	73.0	48.5	121.1	5.3	4.6	3.3	349.7
2011	64.2	17.6	28.9	45.8	122.0	5.4	4.6	3.5	291.9
New Brunswick									
2010	103.4	552.7	114.2	79.0	24.9	2.9	13.5	3.9	894.5
2011	131.9	696.1	114.8	80.3	30.8	3.8	12.0	3.6	1,073.3
Quebec									
2010	558.9	247.5	519.5	1,888.1	1,423.5	171.4	289.7	72.8	5,171.2
2011	545.0	303.7	475.5	1,889.2	1,613.9	277.2	333.2	70.8	5,508.5
Ontario									
2010	912.1	219.8	229.4	4,317.1	2,617.9	4,031.9	653.4	160.5	13,142.1
2011	903.0	235.1	225.1	4,188.7	2,620.9	4,900.9	596.5	155.8	13,826.1
Manitoba									
2010	343.1	61.4	16.4	252.4	159.3	46.0	33.5	17.8	929.9
2011	441.5	255.1	20.4	267.0	190.0	49.1	37.1	17.6	1,277.8
Saskatchewan									
2010	716.5	553.8	6.2	592.5	45.4	4.9	0.7	4.3	1,924.4
2011	988.9	995.9	22.6	715.1	55.9	5.2	0.7	4.2	2,788.3
Alberta									
2010	500.0	4,283.3	167.6	782.1	314.4	38.9	9.3	24.8	6,120.3
2011	596.6	5,481.0	142.7	1,019.5	365.8	61.4	10.3	33.0	7,710.3
British Columbia									
2010	181.8	577.0	698.8	527.3	270.6	21.9	47.4	26.0	2,351.0
2011	203.8	876.5	740.9	556.4	299.7	29.8	46.5	20.4	2,774.0
Yukon, Northwest Territories and Nunavut ¹									
2010	0.1	0.0	0.0	237.2	1.0	0.1	0.1	0.0	238.4
2011	0.1	0.0	0.0	11.6	0.2	0.1	0.0	0.0	11.9
Total									
2010	3,468.2	6,917.8	1,840.2	9,051.9	4,989.4	4,324.2	1,054.5	321.6	31,967.8
2011	3,957.0	9,832.6	1,785.5	9,103.7	5,319.8	5,333.1	1,042.6	320.1	36,694.4
Re-exports									
2010	77.2	12.8	5.7	407.8	1,035.1	96.0	218.9	628.6	2,482.0
2011	60.9	2.5	6.4	351.0	1,160.7	109.4	282.5	688.6	2,661.9
Total exports									
2010	3,545.4	6,930.6	1,845.9	9,459.7	6,024.5	4,420.1	1,273.3	950.2	34,449.8
2011	4,017.8	9,835.1	1,791.9	9,454.7	6,480.5	5,442.5	1,325.1	1,008.7	39,356.3

1. Data for the current month do not include some exports from the Harmonized System, Chapter 71, "Natural/cultured pearls, precious stones and metals, coins, etc." for reasons relating to timing.

Table 5-2
Exports by province of origin, customs basis, not seasonally adjusted — Year to date, January to November

	Agricultural and fishing products	Energy products	Forestry products	Industrial goods	Machinery and equipment	Automotive products	Consumer goods	Special transactions trade	Total
millions of dollars									
Domestic exports									
Newfoundland and Labrador									
2010	745.1	5,299.4	107.6	1,921.6	40.6	1.9	1.4	25.2	8,142.8
2011	833.1	7,387.0	145.5	2,756.1	36.0	2.0	1.4	23.6	11,184.6
Prince Edward Island									
2010	429.2	1.1	6.5	22.8	65.0	3.5	34.9	72.9	635.8
2011	433.8	0.0	0.3	18.5	84.2	2.6	33.0	79.8	652.2
Nova Scotia									
2010	841.3	448.2	786.0	467.2	1,284.4	50.9	53.8	34.9	3,966.7
2011	988.1	426.2	783.6	517.8	1,282.0	58.4	53.2	38.5	4,147.8
New Brunswick									
2010	1,128.4	7,491.6	1,248.9	1,000.7	267.1	23.8	205.2	40.5	11,406.2
2011	1,316.8	9,501.0	1,204.3	1,098.2	293.6	39.3	138.3	38.2	13,629.7
Quebec									
2010	4,356.4	2,472.5	5,566.6	17,934.1	15,869.3	1,523.3	3,709.5	916.5	52,348.1
2011	4,714.3	3,013.9	5,407.3	20,475.6	16,538.5	1,999.0	3,313.2	781.4	56,243.1
Ontario									
2010	7,779.9	2,283.8	2,532.9	37,617.2	27,671.9	46,906.5	6,822.7	1,511.3	133,126.1
2011	8,125.5	2,702.2	2,630.2	45,663.2	28,092.6	47,136.1	6,252.2	1,423.9	142,025.8
Manitoba									
2010	3,391.1	765.2	192.8	2,171.2	1,743.8	419.2	326.2	288.8	9,298.2
2011	3,813.4	1,909.8	216.8	2,869.6	1,976.5	458.9	435.6	242.2	11,922.6
Saskatchewan									
2010	6,602.0	7,815.2	191.6	6,085.6	629.3	40.2	10.1	42.5	21,416.5
2011	7,949.3	9,693.4	240.1	8,647.2	590.4	56.7	10.2	40.9	27,228.2
Alberta									
2010	5,215.3	50,345.6	1,928.1	9,315.7	3,362.9	455.4	115.2	266.6	71,004.7
2011	5,739.6	59,194.3	1,796.7	10,853.0	3,980.0	794.4	113.4	252.3	82,723.7
British Columbia									
2010	2,210.7	7,164.8	7,791.9	5,276.3	2,770.1	240.4	515.8	235.5	26,205.5
2011	2,221.4	9,124.6	8,600.1	6,133.5	2,989.4	254.8	503.7	230.4	30,057.9
Yukon, Northwest Territories and Nunavut ¹									
2010	1.7	0.2	0.4	2,151.3	10.7	0.5	0.4	0.6	2,165.7
2011	1.3	0.1	0.1	1,845.8	9.7	0.6	0.3	0.5	1,858.4
Total									
2010	32,701.0	84,087.5	20,353.2	83,963.7	53,715.2	49,665.5	11,795.1	3,435.3	339,716.5
2011	36,136.6	102,952.5	21,025.0	100,878.4	55,872.8	50,802.7	10,854.5	3,151.6	381,674.1
Re-exports									
2010	565.3	318.4	71.4	2,735.9	9,644.3	1,011.1	1,983.7	6,676.7	23,007.0
2011	532.2	385.7	74.1	4,018.8	10,268.9	1,103.3	2,633.1	7,287.3	26,303.4
Total exports									
2010	33,266.4	84,405.9	20,424.6	86,699.6	63,359.6	50,676.6	13,778.8	10,112.0	362,723.5
2011	36,668.8	103,338.2	21,099.1	104,897.2	66,141.7	51,906.0	13,487.6	10,438.9	407,977.5

1. Data for the current month do not include some exports from the Harmonized System Chapter 71, "Natural/cultured pearls, precious stones and metals, coins, etc." for reasons relating to timing.

Table 6-1
Imports by commodity groupings, balance of payments basis, seasonally adjusted — Current dollars

	October	November	Change		Year to date			November 2011/ November 2010	
	2011	2011			2010	2011	Change		
	millions of dollars		percent		millions of dollars			percent	
Total	39,328	39,020	-308	-0.8	378,362	416,795	38,433	10.2	11.6
Agricultural and fishing products	2,760	2,809	49	1.8	26,987	29,799	2,812	10.4	12.2
Fruits and vegetables	754	758	4	0.5	7,587	8,159	572	7.5	8.2
Fresh fruits and berries	262	257	-6	-2.2	2,709	2,834	125	4.6	0.0
Dried fruits, fruits and fruit preparations	132	133	0	0.2	1,256	1,422	166	13.2	10.7
Fresh vegetables	189	191	2	0.8	2,005	2,097	92	4.6	8.3
Other vegetables and vegetable preparations	170	178	8	4.6	1,618	1,807	189	11.7	20.0
Other agricultural and fishing products	2,005	2,050	45	2.2	19,400	21,640	2,240	11.5	13.8
Live animals	22	20	-2	-11.1	180	202	22	12.3	15.7
Meat and meat preparations	215	212	-2	-1.1	1,953	2,291	338	17.3	17.2
Fish and marine animals	195	198	3	1.3	1,846	2,112	266	14.4	14.4
Cocoa, coffee, tea and other food preparations	483	457	-26	-5.4	4,552	5,147	595	13.1	12.3
Dairy produce, eggs and honey	52	47	-5	-9.9	540	575	35	6.5	-5.4
Corn (maize) shelled	34	24	-10	-28.5	376	345	-31	-8.2	4.3
Other cereals and cereal preparations	189	196	7	3.9	1,949	2,044	95	4.9	7.5
Sugar and sugar preparations	195	202	7	3.8	1,626	2,029	404	24.8	5.8
Fodder, feed, excluding unmilled cereal	125	121	-4	-3.2	1,275	1,317	42	3.3	1.6
Beverages	313	389	76	24.2	3,388	3,574	186	5.5	25.4
Tobacco	35	40	6	16.0	391	346	-45	-11.6	0.7
Crude vegetable products	147	142	-4	-3.0	1,314	1,647	333	25.3	33.5
Cotton	1	1	0	36.4	11	11	1	8.4	53.1
Energy products	4,550	4,642	93	2.0	36,818	47,517	10,699	29.1	34.6
Crude petroleum	2,515	2,511	-4	-0.2	21,704	25,322	3,618	16.7	27.0
Other energy products	2,035	2,132	97	4.8	15,114	22,195	7,081	46.8	44.8
Coal and other related products	574	538	-36	-6.3	4,803	5,221	418	8.7	25.5
Petroleum and coal products	1,461	1,594	133	9.1	10,311	16,974	6,663	64.6	52.8
Forestry products	216	212	-4	-1.8	2,432	2,284	-148	-6.1	2.4
Forestry products	216	212	-4	-1.8	2,432	2,284	-148	-6.1	2.4
Crude wood products	28	30	1	4.2	380	316	-65	-17.0	2.5
Wood fabricated materials	187	182	-5	-2.7	2,051	1,968	-83	-4.1	2.3
Industrial goods and materials	8,597	8,338	-259	-3.0	79,265	89,534	10,269	13.0	9.8
Metals and metal ores	3,575	3,346	-229	-6.4	29,972	36,536	6,564	21.9	9.3
Metals in ores, concentrates and scrap	722	675	-48	-6.6	6,358	7,779	1,421	22.3	23.2
Steel bars, rods, plates, sheets	558	571	13	2.4	5,911	6,444	533	9.0	10.8
Other iron and steel products	446	442	-4	-0.9	4,008	4,669	661	16.5	16.6
Precious metals including alloys	1,468	1,280	-188	-12.8	9,761	13,427	3,666	37.6	0.7
Other non-ferrous metals and alloys	381	379	-3	-0.7	3,935	4,217	282	7.2	8.4
Chemicals and plastics	2,749	2,684	-65	-2.4	26,544	28,842	2,297	8.7	10.0
Organic chemicals	623	600	-23	-3.7	6,304	6,358	54	0.9	11.3
Plastic materials	949	944	-5	-0.6	9,252	9,957	705	7.6	11.5
Other chemicals and related products	1,177	1,141	-36	-3.1	10,988	12,526	1,539	14.0	8.2
Other industrial goods and materials	2,273	2,307	34	1.5	22,749	24,157	1,408	6.2	10.3
Crude animal products	20	28	7	35.9	224	253	29	13.1	25.6
Wool and man-made fibres	20	20	-1	-4.0	228	237	8	3.6	-3.5
Crude non-metallic minerals	72	73	1	1.5	747	769	22	3.0	17.0
Textile fabricated materials	216	215	-1	-0.5	2,159	2,323	164	7.6	5.5
Metal fabricated basic products	975	986	11	1.1	8,933	10,128	1,195	13.4	16.9
Rubber fabricated materials	101	101	-1	-0.5	916	1,039	122	13.4	16.5
Oils, fats, animal and vegetable	116	123	7	6.1	1,137	1,152	15	1.3	11.0
Non-metallic minerals	315	328	13	4.0	3,312	3,437	125	3.8	12.1
Other fabricated materials	438	435	-3	-0.6	5,093	4,818	-274	-5.4	-3.6

Table 6-1 – continued

Imports by commodity groupings, balance of payments basis, seasonally adjusted — Current dollars

	October 2011	November 2011	Change		Year to date			November 2011/ November 2010	
					2010	2011	Change		
	millions of dollars		percent		millions of dollars			percent	
Machinery and equipment	10,819	10,701	-118	-1.1	104,136	114,016	9,880	9.5	9.3
Industrial and agricultural machinery	3,106	3,063	-43	-1.4	27,540	32,675	5,135	18.6	23.5
Engines, turbines and electric motors	366	382	16	4.5	4,036	3,920	-116	-2.9	25.4
Drilling mining machinery	210	184	-26	-12.4	1,617	2,692	1,075	66.5	20.7
Excavating machinery	298	318	21	6.9	2,476	3,197	721	29.1	39.7
Metal working machinery	165	167	2	1.1	1,525	1,943	419	27.5	-0.4
Other industrial machinery	1,601	1,583	-18	-1.1	13,957	16,410	2,453	17.6	20.1
Agricultural machinery including tractors	467	429	-38	-8.1	3,929	4,514	585	14.9	38.1
Aircraft and other transportation equipment	1,450	1,304	-146	-10.1	13,416	14,651	1,235	9.2	-6.6
Aircraft, engines, parts	738	754	15	2.1	8,098	8,256	158	2.0	-17.1
Other transportation equipment and parts	712	550	-161	-22.7	5,318	6,395	1,077	20.3	12.8
Office machines and equipment	1,172	1,170	-2	-0.2	12,167	12,505	338	2.8	2.3
Other machinery and equipment	5,091	5,164	73	1.4	51,014	54,185	3,171	6.2	8.4
Other communication and related equipment	1,860	1,903	43	2.3	18,726	20,022	1,296	6.9	9.2
Other equipment and tools	3,232	3,262	30	0.9	32,288	34,163	1,875	5.8	7.9
Automotive products	6,008	5,746	-262	-4.4	63,186	65,254	2,068	3.3	7.6
Passenger autos and chassis	1,994	1,833	-161	-8.1	20,398	20,769	371	1.8	-1.4
Trucks and other motor vehicles	1,456	1,258	-198	-13.6	15,693	16,945	1,252	8.0	4.9
Motor vehicle parts	2,558	2,655	97	3.8	27,095	27,540	445	1.6	16.5
Other consumer goods	5,075	5,114	39	0.8	52,907	54,509	1,602	3.0	3.0
Apparel and footwear	1,045	1,028	-18	-1.7	10,214	11,183	969	9.5	0.4
Apparel and apparel accessories	873	852	-20	-2.3	8,460	9,308	848	10.0	1.9
Footwear	172	175	3	1.6	1,754	1,875	121	6.9	-6.0
Miscellaneous consumer goods	4,030	4,086	56	1.4	42,693	43,326	632	1.5	3.6
Television, radios, phonographs	133	132	-1	-0.8	1,439	1,412	-27	-1.9	0.6
Printed matter	282	274	-8	-2.8	3,216	3,087	-129	-4.0	-15.7
Watches, sporting goods and toys	490	498	8	1.7	5,610	5,360	-249	-4.4	-1.1
House furnishings	759	749	-10	-1.3	8,073	8,030	-43	-0.5	3.6
Photographic goods	222	227	4	1.9	2,428	2,442	14	0.6	-12.0
Miscellaneous end products	2,144	2,206	62	2.9	21,927	22,995	1,067	4.9	10.2
Special transactions trade	497	650	153	30.8	4,568	5,220	653	14.3	53.5
Unallocated balance of payments adjustments	807	810	3	0.3	8,063	8,663	599	7.4	13.7

Table 6-2
Imports by commodity groupings, balance of payments basis, seasonally adjusted — Constant dollars, 2002

	October	November	Change		Year to date			November 2011/ November 2010	
	2011	2011			2010	2011	Change		
	millions of dollars		percent		millions of dollars			percent	
Total	42,624	42,373	-251	-0.6	430,136	466,367	36,230	8.4	6.4
Agricultural and fishing products	2,668	2,747	79	3.0	27,276	29,547	2,271	8.3	5.3
Fruits and vegetables	739	717	-22	-2.9	7,703	8,079	376	4.9	-4.1
Fresh fruits and berries	269	260	-8	-3.1	2,821	2,967	146	5.2	-1.7
Dried fruits, fruits and fruit preparations	119	117	-2	-1.9	1,269	1,324	56	4.4	-5.4
Fresh vegetables	204	184	-20	-9.9	2,026	2,106	81	4.0	-14.7
Other vegetables and vegetable preparations	147	156	9	6.2	1,587	1,681	94	5.9	8.3
Other agricultural and fishing products	1,929	2,030	101	5.2	19,573	21,469	1,895	9.7	9.1
Live animals	20	17	-4	-17.5	178	193	15	8.6	-1.5
Meat and meat preparations	186	189	3	1.6	1,900	2,122	221	11.6	6.2
Fish and marine animals	253	253	0	0.1	2,578	2,694	116	4.5	8.7
Cocoa, coffee, tea and other food preparations	539	533	-6	-1.2	4,627	5,855	1,228	26.5	15.8
Dairy produce, eggs and honey	45	44	-1	-1.4	589	557	-32	-5.4	-8.6
Corn (maize) shelled	17	13	-4	-24.0	351	202	-149	-42.4	-24.2
Other cereals and cereal preparations	160	157	-4	-2.2	1,653	1,613	-40	-2.4	-0.6
Sugar and sugar preparations	166	187	21	12.9	1,580	1,902	321	20.3	1.1
Fodder, feed, excluding unmilled cereal	100	104	4	3.7	1,086	1,111	25	2.3	1.6
Beverages	284	374	90	31.7	3,167	3,393	226	7.1	24.5
Tobacco	39	45	6	14.9	472	409	-63	-13.3	-7.0
Crude vegetable products	118	112	-6	-4.8	1,378	1,404	27	2.0	0.4
Cotton	1	2	0	37.0	14	13	-1	-7.2	50.1
Energy products	2,076	1,995	-81	-3.9	20,099	21,050	951	4.7	12.5
Crude petroleum	912	820	-92	-10.1	10,123	8,478	-1,646	-16.3	-2.4
Other energy products	1,164	1,175	11	1.0	9,976	12,572	2,596	26.0	26.0
Coal and other related products	522	487	-35	-6.8	4,277	5,077	800	18.7	23.1
Petroleum and coal products	642	688	47	7.3	5,699	7,495	1,797	31.5	28.1
Forestry products	286	280	-7	-2.3	3,166	3,100	-66	-2.1	2.5
Forestry products	286	280	-7	-2.3	3,166	3,100	-66	-2.1	2.5
Crude wood products	41	42	1	2.9	554	470	-83	-15.1	-0.2
Wood fabricated materials	246	238	-8	-3.2	2,612	2,629	17	0.7	3.0
Industrial goods and materials	6,817	6,864	47	0.7	71,617	75,438	3,821	5.3	5.7
Metals and metal ores	2,187	2,182	-5	-0.2	20,599	22,819	2,221	10.8	16.6
Metals in ores, concentrates and scrap	410	345	-65	-15.8	3,503	3,863	360	10.3	31.7
Steel bars, rods, plates, sheets	421	429	8	1.8	4,862	5,038	176	3.6	2.9
Other iron and steel products	291	284	-7	-2.6	2,891	3,156	265	9.2	6.6
Precious metals including alloys	708	763	55	7.8	5,284	6,794	1,510	28.6	29.4
Other non-ferrous metals and alloys	356	360	4	1.1	4,059	3,969	-90	-2.2	7.4
Chemicals and plastics	2,194	2,221	27	1.2	25,296	25,451	155	0.6	0.4
Organic chemicals	378	405	26	7.0	4,636	4,096	-540	-11.7	4.4
Plastic materials	907	906	-1	-0.1	9,816	10,016	200	2.0	1.8
Other chemicals and related products	908	910	2	0.2	10,845	11,339	495	4.6	-2.6
Other industrial goods and materials	2,436	2,461	25	1.0	25,722	27,168	1,446	5.6	2.1
Crude animal products	19	23	4	21.9	249	238	-12	-4.6	4.5
Wool and man-made fibres	22	21	-1	-4.6	295	277	-18	-6.2	-20.5
Crude non-metallic minerals	54	56	2	4.2	617	607	-10	-1.7	11.1
Textile fabricated materials	273	271	-2	-0.7	2,884	3,069	185	6.4	-1.8
Metal fabricated basic products	987	993	6	0.6	9,532	10,760	1,228	12.9	9.8
Rubber fabricated materials	109	108	-1	-0.5	1,117	1,222	105	9.4	1.4
Oils, fats, animal and vegetable	94	99	5	5.1	1,098	1,005	-93	-8.5	-1.1
Non-metallic minerals	371	386	15	4.1	4,017	4,244	227	5.7	4.8
Other fabricated materials	507	504	-3	-0.6	5,912	5,746	-166	-2.8	-9.3

Table 6-2 – continued

Imports by commodity groupings, balance of payments basis, seasonally adjusted — Constant dollars, 2002

	October 2011	November 2011	Change		Year to date			November 2011/ November 2010	
					2010	2011	Change		
	millions of dollars		percent		millions of dollars			percent	
Machinery and equipment	16,023	15,822	-201	-1.3	151,238	173,819	22,581	14.9	8.6
Industrial and agricultural machinery	3,694	3,625	-68	-1.8	33,825	40,896	7,070	20.9	17.9
Engines, turbines and electric motors	440	458	18	4.1	5,014	4,940	-74	-1.5	18.4
Drilling mining machinery	227	199	-28	-12.5	1,812	3,342	1,530	84.5	14.4
Excavating machinery	353	378	24	6.9	3,101	4,062	961	31.0	30.0
Metal working machinery	209	208	0	-0.2	1,960	2,556	596	30.4	-3.3
Other industrial machinery	1,888	1,856	-31	-1.6	16,921	20,115	3,194	18.9	15.1
Agricultural machinery including tractors	577	527	-51	-8.8	5,018	5,881	863	17.2	32.7
Aircraft and other transportation equipment	1,654	1,452	-202	-12.2	15,678	17,279	1,601	10.2	-10.6
Aircraft, engines, parts	890	895	5	0.6	9,848	10,351	503	5.1	-18.8
Other transportation equipment and parts	764	557	-207	-27.1	5,830	6,928	1,098	18.8	6.5
Office machines and equipment	3,413	3,435	22	0.6	27,736	34,393	6,656	24.0	19.0
Other machinery and equipment	7,263	7,310	47	0.6	73,999	81,251	7,253	9.8	4.8
Other communication and related equipment	3,077	3,122	45	1.5	31,611	35,038	3,427	10.8	6.9
Other equipment and tools	4,186	4,187	2	0.0	42,388	46,214	3,826	9.0	3.3
Automotive products	7,328	7,039	-289	-3.9	76,942	81,195	4,253	5.5	6.7
Passenger autos and chassis	2,296	2,111	-185	-8.1	23,401	24,030	629	2.7	-1.2
Trucks and other motor vehicles	1,697	1,479	-218	-12.9	17,684	19,871	2,187	12.4	5.8
Motor vehicle parts	3,334	3,449	114	3.4	35,857	37,295	1,438	4.0	12.7
Other consumer goods	6,338	6,364	26	0.4	68,531	71,476	2,946	4.3	-2.9
Apparel and footwear	1,375	1,350	-26	-1.9	14,451	15,778	1,327	9.2	-7.8
Apparel and apparel accessories	1,143	1,115	-28	-2.4	12,025	13,134	1,110	9.2	-7.3
Footwear	233	234	2	0.8	2,426	2,644	218	9.0	-9.8
Miscellaneous consumer goods	4,963	5,014	51	1.0	54,080	55,698	1,618	3.0	-1.5
Television, radios, phonographs	226	224	-2	-0.9	2,455	2,454	-1	0.0	-0.3
Printed matter	348	334	-13	-3.9	3,987	3,948	-39	-1.0	-18.4
Watches, sporting goods and toys	627	649	22	3.5	7,731	7,315	-415	-5.4	-6.3
House furnishings	940	929	-11	-1.1	10,360	10,430	70	0.7	-1.4
Photographic goods	488	497	9	1.8	4,720	5,248	527	11.2	-7.5
Miscellaneous end products	2,334	2,381	47	2.0	24,826	26,303	1,477	5.9	4.3
Special transactions trade	550	724	175	31.8	5,245	5,900	655	12.5	46.1
Unallocated balance of payments adjustments	538	538	0	0.0	6,022	4,841	-1,181	-19.6	12.3

Table 7-1
Imports from selected countries, customs basis, not seasonally adjusted — November

	Agricultural and fishing products	Energy products	Forestry products	Industrial goods	Machinery and equipment	Automotive products	Consumer goods	Special transactions trade	Total
millions of dollars									
United States									
2010	1,417.6	979.6	146.6	4,086.8	4,088.8	3,540.1	1,924.4	405.6	16,589.5
2011	1,576.1	1,487.3	156.0	4,604.5	4,495.6	3,787.2	2,069.4	598.5	18,774.7
Mexico									
2010	115.5	55.4	0.4	184.9	882.9	702.2	102.1	7.1	2,050.5
2011	131.5	178.0	0.4	222.5	980.6	706.1	112.5	3.7	2,335.4
Japan									
2010	8.4	9.5	0.1	100.2	409.0	505.1	106.9	0.3	1,139.4
2011	8.3	40.4	0.0	91.5	441.5	547.6	93.3	0.7	1,223.5
European Union									
Germany									
2010	34.0	11.1	0.9	164.5	338.3	269.6	154.0	1.7	974.2
2011	36.8	10.6	0.9	156.0	417.6	319.6	164.7	1.8	1,107.9
France									
2010	84.6	5.8	0.1	63.7	248.4	8.9	136.3	1.2	549.0
2011	111.4	15.5	0.5	58.3	243.9	5.5	123.0	0.3	558.4
United Kingdom									
2010	40.2	169.8	0.1	258.0	282.1	43.4	118.2	2.0	913.6
2011	42.1	164.1	0.0	139.3	229.1	53.7	135.0	3.2	766.6
Italy									
2010	85.6	32.0	1.1	84.7	115.3	18.9	97.7	1.1	436.4
2011	105.4	0.2	2.3	90.2	147.7	24.7	110.8	0.3	481.5
Other European Union									
2010	117.0	239.3	3.3	344.9	359.9	83.2	355.2	0.4	1,503.2
2011	141.7	227.5	3.7	279.4	467.1	84.9	340.2	5.2	1,549.6
Total									
2010	361.5	458.0	5.5	915.8	1,344.0	423.9	861.4	6.3	4,376.4
2011	437.4	417.9	7.3	723.1	1,505.4	488.3	873.7	10.9	4,464.0
Newly industrialized countries									
South Korea									
2010	7.7	83.7	0.0	67.8	279.4	115.8	18.3	0.1	572.9
2011	7.2	47.1	0.0	90.4	246.2	168.7	20.6	0.1	580.2
Hong Kong									
2010	2.5	0.0	0.2	3.0	16.6	0.1	13.7	0.0	36.2
2011	2.3	0.0	0.0	1.6	6.8	0.6	12.3	0.0	23.6
Taiwan									
2010	6.9	0.0	0.2	117.0	240.0	12.7	32.4	0.1	409.3
2011	7.8	0.0	0.3	76.5	289.5	16.7	38.6	0.1	429.6
Singapore									
2010	3.7	29.4	0.0	3.9	46.2	0.6	23.6	0.0	107.4
2011	3.3	91.6	0.0	31.1	68.1	0.4	25.0	0.4	219.8
Total									
2010	20.7	113.2	0.4	191.7	582.2	129.2	88.0	0.3	1,125.8
2011	20.6	138.8	0.4	199.5	610.6	186.4	96.5	0.6	1,253.2
Other countries									
2010	766.0	1,556.4	48.5	1,957.7	2,926.8	179.9	2,077.0	12.4	9,524.5
2011	840.7	2,431.6	45.4	2,153.7	3,259.3	227.9	2,083.5	48.4	11,090.6
Total									
2010	2,690.1	3,172.1	201.5	7,437.1	10,233.7	5,480.3	5,159.8	432.0	34,806.6
2011	3,015.2	4,694.0	209.6	7,994.9	11,293.1	5,943.5	5,329.0	662.8	39,142.0

Table 7-2
Imports from selected countries, customs basis, not seasonally adjusted — Year to date, January to November

	Agricultural and fishing products	Energy products	Forestry products	Industrial goods	Machinery and equipment	Automotive products	Consumer goods	Special transactions trade	Total
millions of dollars									
United States									
2010	15,327.8	11,348.4	1,770.5	46,439.6	45,750.1	41,818.0	20,925.8	3,917.0	187,297.2
2011	16,590.8	15,246.4	1,704.1	50,879.1	49,307.8	43,296.0	21,379.1	4,380.3	202,783.5
Mexico									
2010	1,323.8	793.7	4.9	1,655.1	7,625.0	7,718.3	1,057.8	56.7	20,235.2
2011	1,343.1	1,399.5	4.5	2,161.3	8,057.1	8,593.0	1,135.2	66.2	22,759.9
Japan									
2010	63.3	124.1	1.0	1,101.6	4,479.7	5,561.3	1,007.8	3.6	12,342.4
2011	63.6	90.4	0.7	1,082.8	4,870.0	4,534.3	987.4	8.8	11,637.9
European Union									
Germany									
2010	269.6	59.6	12.1	1,766.5	3,616.7	2,991.1	1,591.9	20.1	10,327.5
2011	306.0	53.8	10.8	2,083.2	4,365.8	3,257.5	1,718.7	28.0	11,823.9
France									
2010	682.2	89.0	1.9	772.3	1,828.1	90.9	1,451.1	8.0	4,923.5
2011	760.2	144.0	4.1	794.4	1,831.6	71.0	1,393.3	6.1	5,004.7
United Kingdom									
2010	395.4	3,331.6	0.7	1,790.0	2,679.2	410.8	1,191.1	39.4	9,838.2
2011	391.6	2,696.3	0.5	1,883.2	2,854.4	490.3	1,291.3	34.4	9,642.0
Italy									
2010	626.7	192.3	12.1	869.0	1,322.7	214.8	1,007.8	4.8	4,250.3
2011	691.8	105.1	15.1	1,016.2	1,503.2	265.2	1,103.1	4.5	4,704.4
Other European Union									
2010	1,076.3	2,137.4	38.5	2,712.0	4,235.8	747.0	3,663.2	23.1	14,633.3
2011	1,181.6	3,286.5	39.5	3,556.8	4,482.5	882.2	3,351.4	15.1	16,795.7
Total									
2010	3,050.2	5,809.9	65.3	7,909.8	13,682.5	4,454.7	8,905.1	95.3	43,972.9
2011	3,331.3	6,285.8	69.9	9,333.8	15,037.6	4,966.1	8,857.8	88.2	47,970.6
Newly industrialized countries									
South Korea									
2010	55.3	345.4	0.2	727.4	2,522.2	1,883.1	189.8	0.9	5,724.3
2011	59.1	334.9	0.2	1,112.7	2,618.7	1,806.8	196.4	1.1	6,129.9
Hong Kong									
2010	25.4	0.1	0.8	25.4	146.6	4.4	140.1	0.4	343.3
2011	27.5	0.0	0.1	52.1	85.1	2.4	127.9	0.5	295.7
Taiwan									
2010	69.7	19.9	6.4	833.1	2,098.5	147.2	375.9	1.4	3,552.0
2011	65.4	0.4	4.5	990.0	2,816.0	168.3	372.2	1.4	4,418.2
Singapore									
2010	33.8	109.8	0.2	110.1	553.4	4.1	229.8	1.4	1,042.6
2011	32.7	406.6	0.5	176.7	572.4	3.7	266.5	1.6	1,460.7
Total									
2010	184.3	475.2	7.6	1,696.1	5,320.7	2,038.7	935.6	4.0	10,662.2
2011	184.7	741.9	5.3	2,331.5	6,092.2	1,981.2	963.1	4.5	12,304.5
Other countries									
2010	7,234.7	18,613.4	609.4	19,284.4	27,495.6	1,981.0	20,625.4	309.7	96,153.8
2011	8,317.9	24,900.1	537.1	23,107.3	30,608.5	2,402.9	21,606.3	403.2	111,883.3
Total									
2010	27,188.8	37,164.8	2,458.7	78,086.8	104,353.7	63,572.1	53,457.7	4,386.3	370,668.9
2011	29,838.9	48,664.1	2,321.6	88,895.9	113,973.3	65,773.6	54,929.0	4,951.2	409,347.7

Table 8
Imports by country, customs basis, not seasonally adjusted

	November		January to November		Change
	2010	2011	2010	2011	January to November 2011/ January to November 2010
	millions of dollars				percent
North America					
Canada	307.2	324.9	3,654.9	3,667.4	0.3
Greenland	0.0	0.0	0.5	0.8	63.0
Mexico	2,050.5	2,335.4	20,235.2	22,759.9	12.5
Saint Pierre and Miquelon	0.0	0.0	1.5	1.9	27.2
United States	16,589.5	18,774.7	187,297.2	202,783.5	8.3
Total	18,947.3	21,435.0	211,189.3	229,213.5	8.5
Western Europe					
Andorra	0.1	0.0	0.3	0.4	9.2
Austria	102.9	111.0	1,094.1	1,186.3	8.4
Belgium	182.4	101.5	1,547.5	1,562.2	0.9
Denmark	83.9	150.1	1,831.6	1,383.3	-24.5
Faeroe Islands	0.5	0.6	4.9	7.7	56.1
Finland	150.4	198.8	932.2	1,584.4	70.0
France	549.0	558.4	4,923.5	5,004.7	1.6
Germany	974.2	1,107.9	10,327.5	11,823.9	14.5
Gibraltar	0.0	0.0	2.2	1.7	-25.0
Greece	14.8	14.1	130.5	152.9	17.2
Iceland	2.8	13.9	30.9	39.7	28.4
Italy	436.4	481.5	4,250.3	4,704.4	10.7
Luxembourg	14.7	9.7	90.8	103.9	14.4
Malta	1.8	1.5	16.3	23.8	46.0
Netherlands	124.2	241.3	1,563.8	2,228.8	42.5
Norway	145.5	421.2	2,534.9	4,082.9	61.1
Portugal	23.1	30.4	293.0	317.9	8.5
Republic of Ireland (Eire)	102.3	96.4	1,406.7	1,102.3	-21.6
Spain	127.5	160.2	1,339.8	1,610.0	20.2
Sweden	221.2	218.3	1,917.2	2,091.0	9.1
Switzerland	262.5	299.7	2,717.2	2,832.0	4.2
United Kingdom	913.6	766.6	9,838.2	9,642.0	-2.0
Total	4,433.8	4,983.0	46,793.5	51,486.1	10.0
Other Europe					
Albania	0.5	0.5	4.3	5.7	32.9
Armenia	3.5	8.0	25.8	57.6	123.4
Azerbaijan	0.0	0.0	385.6	310.3	-19.5
Belarus	12.7	0.4	54.8	34.2	-37.5
Bosnia and Herzegovina	0.6	1.0	7.1	10.5	49.6
Bulgaria	5.5	15.3	61.4	131.3	113.7
Croatia	9.9	1.7	64.5	25.1	-61.2
Czech Republic	60.2	26.2	299.4	342.0	14.2
Estonia	8.2	5.5	35.1	82.8	136.3
Georgia	13.3	10.4	116.6	105.0	-10.0
Hungary	29.2	28.9	315.0	319.6	1.5
Kazakhstan	234.7	255.8	2,095.9	2,615.4	24.8
Kyrgyzstan	0.4	0.0	0.5	0.2	-63.6
Latvia	1.2	2.8	9.6	26.9	180.4
Lithuania	37.4	13.9	373.3	599.4	60.6
Macedonia (Former Yugoslav Republic of Macedonia)	0.6	1.3	7.2	7.5	3.2
Montenegro	0.0	0.1	0.4	0.6	56.2
Poland	149.6	77.3	910.6	1,341.0	47.3
Republic of Moldova	0.1	0.1	5.0	1.9	-62.2
Romania	43.0	19.4	206.2	287.1	39.2
Russian Federation	114.0	56.1	1,581.4	1,243.9	-21.3
Serbia	0.7	1.0	11.8	13.8	17.2
Slovakia	13.1	20.1	164.8	225.1	36.6
Slovenia	6.2	7.0	91.7	91.0	-0.8
Tajikistan	0.0	0.0	0.0	0.0	-71.8
Turkmenistan	0.0	0.0	0.7	0.7	5.9
Ukraine	8.6	15.8	88.5	125.4	41.6
Uzbekistan	0.0	0.0	1.4	1.8	30.8
Total	753.1	568.6	6,918.4	8,005.7	15.7

Table 8 – continued

Imports by country, customs basis, not seasonally adjusted

	November		January to November		Change
	2010	2011	2010	2011	January to November 2011/ January to November 2010
	millions of dollars				percent
Middle East					
Bahrain	0.3	0.4	2.8	4.0	43.7
Cyprus	0.4	0.3	2.7	2.6	-4.5
Egypt	37.1	34.3	275.1	399.5	45.2
Eritrea	0.0	54.7	0.3	321.1	...
Ethiopia	1.1	0.9	14.2	16.6	17.0
Iran	2.6	2.7	34.8	30.8	-11.5
Iraq	192.8	329.8	1,524.0	2,125.9	39.5
Israel	84.2	71.3	913.8	897.0	-1.8
Jordan	1.5	1.6	18.2	17.1	-6.0
Kuwait	0.0	0.1	31.5	55.5	75.9
Lebanon	1.5	1.3	15.5	16.2	4.7
Libya	2.4	0.0	22.3	5.1	-77.2
Oman	1.4	0.8	17.8	18.0	0.7
Qatar	1.6	25.5	70.6	373.8	429.0
Saudi Arabia	168.1	238.0	1,851.6	2,502.7	35.2
Somalia	0.0	0.0	0.0	0.1	102.2
Sudan	3.4	7.9	75.5	105.3	39.4
Syria	10.4	0.5	16.3	38.6	137.0
Turkey	67.8	122.0	633.1	1,005.9	58.9
United Arab Emirates	15.7	7.6	150.4	896.7	496.1
Yemen	0.0	0.0	0.1	0.1	4.4
Total	592.2	899.5	5,670.8	8,832.5	55.8
Other Africa					
Algeria	357.7	439.4	3,291.7	4,891.9	48.6
Angola	267.2	203.7	1,542.1	2,265.9	46.9
Antarctica	0.0	0.0	0.3	0.6	130.5
Benin	0.0	0.0	0.0	0.0	88.8
Botswana	0.0	0.0	6.9	0.1	-98.3
Bouvet Island	0.0	0.0	0.0	0.0	...
Burkina Faso	1.1	0.0	22.8	5.2	-77.0
Burundi	0.0	0.1	0.1	0.4	595.3
Cameroon	0.5	1.6	5.5	7.2	29.7
Cape Verde	0.0	0.0	0.0	0.1	143.1
Central African Republic	0.0	0.0	0.1	0.5	346.7
Chad	0.1	0.0	1.0	0.4	-66.2
Comoros	0.1	0.0	0.1	0.1	2.5
Congo	42.9	1.9	46.9	3.9	-91.6
Democratic Republic of the Congo	0.0	0.2	0.7	1.0	38.4
Djibouti	0.0	0.0	0.0	0.0	-32.0
Equatorial Guinea	30.8	0.0	593.2	629.2	6.1
French Southern Territories	0.0	0.0	0.0	0.0	...
Gabon	0.0	0.0	0.4	3.5	826.4
Gambia	0.1	0.0	0.2	0.1	-72.5
Ghana	0.5	1.4	19.2	54.1	181.5
Guinea	4.8	4.5	43.1	50.9	18.3
Guinea-Bissau	0.0	0.0	0.0	0.0	25.6
Ivory Coast	9.2	122.0	345.7	618.2	78.8
Kenya	1.7	2.0	16.2	21.2	31.2
Lesotho	1.4	1.1	14.9	11.3	-24.4
Liberia	0.5	2.2	34.7	29.8	-14.3
Madagascar	6.8	0.6	44.6	53.1	19.0
Malawi	0.0	0.2	58.1	123.6	112.6
Mali	0.0	0.2	0.6	0.8	44.4
Mauritania	0.0	0.0	0.2	0.1	-41.9
Mauritius	0.5	0.4	9.1	9.0	-0.5
Morocco	34.8	24.3	117.9	95.2	-19.3
Mozambique	0.0	0.3	1.4	3.5	159.0
Namibia	30.1	36.7	186.9	210.6	12.7
Niger	0.0	0.1	0.8	1.1	34.2
Nigeria	95.1	278.9	1,598.1	2,372.6	48.5
Rwanda	0.1	0.3	0.2	0.8	249.3
Saint Helena	0.0	0.0	0.0	0.1	258.0
Sao Tome and Principe	0.0	0.0	0.2	0.2	-30.4
Senegal	0.1	0.1	1.1	0.9	-17.9

Table 8 – continued

Imports by country, customs basis, not seasonally adjusted

	November		January to November		Change
	2010	2011	2010	2011	January to November 2011/ January to November 2010
	millions of dollars				percent
Seychelles	0.0	0.0	0.2	0.6	174.3
Sierra Leone	0.2	0.1	1.8	4.7	166.7
South Africa	65.4	80.0	652.9	856.8	31.2
Swaziland	0.2	0.2	1.6	1.7	9.7
Togo	0.1	0.1	3.1	12.9	311.8
Tunisia	3.1	3.6	48.3	50.4	4.3
Uganda	0.4	0.3	3.5	3.2	-9.1
United Republic of Tanzania	0.2	0.6	2.7	4.8	75.1
Western Sahara	0.0	0.0	0.0	0.0	-100.0
Zambia	0.1	0.2	1.3	1.3	4.7
Zimbabwe	0.3	1.9	4.1	6.3	56.1
Total	956.2	1,209.7	8,724.4	12,409.6	42.2
Other Asia					
Afghanistan	0.1	0.1	1.5	1.5	-2.0
Bangladesh	68.1	58.8	770.9	1,007.9	30.8
Bhutan	0.0	0.0	0.0	0.0	35.2
British Indian Ocean Territory	0.0	0.0	0.0	0.1	227.6
Brunei Darussalam	0.0	0.8	0.0	7.2	...
Cambodia	29.5	33.9	320.6	482.3	50.4
China	4,250.1	4,717.4	40,842.5	44,073.6	7.9
Hong Kong	36.2	23.6	343.3	295.7	-13.9
India	196.4	218.8	1,910.8	2,322.4	21.5
Indonesia	103.8	121.5	1,154.9	1,315.9	13.9
Japan	1,139.4	1,223.5	12,342.4	11,637.9	-5.7
Laos	0.3	0.6	7.2	6.1	-14.8
Macao	0.5	0.6	8.5	7.8	-7.8
Malaysia	194.1	199.6	2,107.0	1,956.0	-7.2
Maldives	0.0	0.0	0.1	0.2	148.3
Mongolia	59.6	0.1	218.4	155.0	-29.0
Myanmar	0.0	0.0	0.0	0.1	319.3
Nepal	1.4	1.2	14.4	14.4	0.0
North Korea	0.0	0.0	0.1	0.1	-30.2
Pakistan	24.9	26.8	250.2	240.9	-3.7
Philippines	76.1	75.7	810.9	837.9	3.3
Singapore	107.4	219.8	1,042.6	1,460.7	40.1
South Korea	572.9	580.2	5,724.3	6,129.9	7.1
Sri Lanka	11.4	16.4	115.7	145.9	26.2
Taiwan	409.3	429.6	3,552.0	4,418.2	24.4
Thailand	222.6	234.1	2,185.9	2,475.1	13.2
Timor-Leste	0.1	0.0	1.7	0.3	-85.6
Viet Nam	101.2	121.5	1,069.8	1,211.3	13.2
Total	7,605.3	8,304.9	74,795.8	80,204.4	7.2
Oceania					
American Samoa	0.0	0.0	0.3	0.6	90.0
Australia	142.0	134.9	1,450.2	1,611.3	11.1
Christmas Island	0.0	0.0	0.1	0.1	-44.6
Cocos (Keeling) Islands	0.0	0.0	0.0	0.0	-13.4
Cook Islands	0.0	0.1	0.1	0.2	38.8
Fiji	0.2	0.3	4.7	4.2	-11.0
French Polynesia	0.1	0.0	0.9	0.8	-9.0
Guam	0.0	0.0	0.1	0.2	86.5
Heard Island and McDonald Islands	0.0	0.0	0.0	0.0	-3.1
Kiribati	0.0	0.0	0.0	0.1	102.3
Nauru	0.0	0.0	0.1	0.0	-29.0
New Caledonia	0.0	0.0	0.2	0.2	4.0
New Zealand	35.0	42.9	412.2	508.4	23.3
Niue	0.0	0.0	0.0	0.0	-14.9
Norfolk Island	0.0	0.0	0.0	0.0	...
Papua New Guinea	0.1	0.4	1.5	1.5	-2.8
Pitcairn	0.0	0.0	0.0	0.1	77.6
Samoa	0.0	0.0	0.3	0.0	-95.4
Solomon Islands	0.0	0.0	0.2	0.1	-19.1
Tonga	0.0	0.0	0.0	0.0	127.1
United States Minor Outlying Islands	0.3	0.4	3.6	3.0	-16.5
Vanuatu	0.2	0.0	0.8	0.0	-94.2

Table 8 – continued

Imports by country, customs basis, not seasonally adjusted

	November		January to November		Change
	2010	2011	2010	2011	January to November 2011/ January to November 2010
	millions of dollars				percent
Wallis and Futuna	0.0	0.0	0.0	0.0	-48.4
Total	178.0	179.0	1,875.4	2,130.8	13.6
South America					
Argentina	212.7	253.8	1,351.1	2,115.2	56.5
Bolivia	16.8	17.6	125.3	210.0	67.7
Brazil	335.6	336.7	3,257.6	3,673.4	12.8
Chile	130.3	117.4	1,702.8	1,772.3	4.1
Colombia	45.8	45.8	670.6	728.2	8.6
Ecuador	17.3	18.3	193.9	204.1	5.3
Falkland Islands (Malvinas)	0.0	0.0	0.0	0.3	...
Guyana	30.8	67.9	263.3	392.8	49.2
Paraguay	1.1	0.8	9.0	5.4	-40.7
Peru	304.3	342.0	3,254.3	3,934.6	20.9
Suriname	42.5	12.8	510.9	249.9	-51.1
Uruguay	1.5	3.4	50.6	34.7	-31.4
Venezuela	3.5	72.0	758.3	698.5	-7.9
Total	1,142.0	1,288.4	12,147.6	14,019.4	15.4
Central America Antilles					
Anguilla	0.1	0.0	0.3	0.2	-23.6
Antigua and Barbuda	0.0	0.0	0.3	0.4	29.9
Aruba	0.0	0.0	0.1	5.5	...
Bahamas	5.1	3.2	52.8	20.3	-61.6
Barbados	0.8	0.7	7.8	5.7	-27.0
Belize	0.6	0.8	5.5	7.2	31.7
Bermuda	0.2	0.1	1.3	0.9	-35.1
British Virgin Islands	0.0	0.1	0.6	0.7	33.4
Cayman Islands	0.0	0.0	0.3	0.8	157.1
Costa Rica	30.8	38.2	400.0	437.6	9.4
Cuba	31.4	54.3	569.6	660.9	16.0
Dominica	0.0	0.0	0.1	0.2	58.5
Dominican Republic	11.8	13.8	129.2	134.3	4.0
El Salvador	8.9	4.2	82.1	123.6	50.6
Grenada	0.0	0.0	0.6	1.6	175.2
Guatemala	15.5	17.7	283.0	377.8	33.5
Haiti	2.2	1.6	24.2	23.9	-1.2
Honduras	9.9	13.4	139.8	175.2	25.3
Jamaica	19.0	22.3	147.8	248.9	68.4
Montserrat	0.0	0.0	0.3	0.3	-6.6
Netherlands Antilles	0.0	0.0	0.3	22.9	...
Nicaragua	20.1	25.7	184.7	299.9	62.4
Panama	6.1	11.5	76.0	113.8	49.7
Saint Kitts and Nevis	0.8	1.1	7.1	8.5	19.2
Saint Lucia	0.0	0.1	0.2	0.2	13.4
Saint Vincent and the Grenadines	0.0	0.0	0.2	0.3	61.9
Trinidad and Tobago	35.3	64.8	439.3	374.0	-14.9
Turks and Caicos Islands	0.0	0.0	0.1	0.1	-10.9
Total	198.7	274.0	2,553.7	3,045.7	19.3
All countries	34,806.6	39,142.0	370,668.9	409,347.7	10.4

Table 9-1
Imports by province of clearance, customs basis, not seasonally adjusted — November

	Agricultural and fishing products	Energy products	Forestry products	Industrial goods	Machinery and equipment	Automotive products	Consumer goods	Special transactions trade	Total
millions of dollars									
Newfoundland and Labrador									
2010	4.2	277.3	0.0	6.1	63.8	0.0	9.9	0.0	361.4
2011	4.6	304.0	0.0	16.4	31.0	0.0	1.1	4.7	361.8
Prince Edward Island									
2010	0.3	0.0	0.0	13.4	0.1	0.0	0.0	0.1	13.9
2011	0.6	0.0	0.0	0.1	8.0	0.0	0.0	0.0	8.7
Nova Scotia									
2010	34.6	165.0	1.4	159.3	83.1	282.2	10.4	2.1	738.1
2011	38.6	109.5	1.1	82.6	106.9	266.2	8.5	1.6	615.0
New Brunswick									
2010	53.7	430.8	9.5	65.1	66.2	25.5	19.2	2.2	672.1
2011	53.5	825.9	7.9	83.8	61.9	25.0	15.9	1.9	1,075.7
Quebec									
2010	514.4	1,329.2	48.1	1,333.8	1,534.0	200.3	857.2	49.3	5,866.3
2011	620.0	1,583.9	50.3	1,403.6	1,719.5	255.0	844.9	51.9	6,529.1
Ontario									
2010	1,435.0	471.3	76.0	4,411.7	5,983.1	4,400.9	3,375.2	341.8	20,495.0
2011	1,601.1	922.7	76.5	4,660.8	6,397.3	4,656.9	3,506.3	555.7	22,377.1
Manitoba									
2010	72.5	37.1	5.6	248.1	439.9	123.7	129.3	8.3	1,064.6
2011	76.3	52.2	6.3	325.1	587.9	158.2	149.0	9.4	1,364.3
Saskatchewan									
2010	30.3	56.9	3.9	156.7	288.6	68.5	22.5	1.4	628.8
2011	31.0	106.2	3.1	180.0	357.0	117.8	34.6	0.9	830.6
Alberta									
2010	159.1	186.9	7.6	450.4	673.3	94.8	111.0	12.4	1,695.5
2011	162.0	395.4	14.3	568.2	773.3	121.6	146.4	18.1	2,199.3
British Columbia									
2010	385.1	217.2	49.4	592.3	1,098.8	284.4	625.1	14.3	3,266.5
2011	427.3	354.0	50.2	673.4	1,225.3	342.8	622.3	18.5	3,714.0
Yukon, Northwest Territories and Nunavut									
2010	0.9	0.4	0.0	0.1	2.8	0.0	0.2	0.0	4.3
2011	0.3	40.1	0.0	1.1	25.0	0.0	0.0	0.0	66.5
Total									
2010	2,690.1	3,172.1	201.5	7,437.1	10,233.7	5,480.3	5,159.8	432.0	34,806.6
2011	3,015.2	4,694.0	209.6	7,994.9	11,293.1	5,943.5	5,329.0	662.8	39,142.0

Table 9-2
Imports by province of clearance, customs basis, not seasonally adjusted — Year to date, January to November

	Agricultural and fishing products	Energy products	Forestry products	Industrial goods	Machinery and equipment	Automotive products	Consumer goods	Special transactions trade	Total
millions of dollars									
Newfoundland and Labrador									
2010	40.1	2,531.9	0.1	48.7	467.8	0.9	28.3	3.1	3,120.9
2011	36.1	2,643.8	0.1	106.5	411.9	1.0	12.3	11.0	3,222.6
Prince Edward Island									
2010	4.1	0.0	0.1	21.3	1.7	0.1	0.2	0.2	27.6
2011	4.6	0.0	0.0	44.4	10.4	0.1	0.3	0.3	60.1
Nova Scotia									
2010	371.5	1,530.1	16.1	1,170.8	975.5	3,079.9	156.7	27.3	7,328.0
2011	535.7	1,798.7	14.6	1,133.1	1,745.6	2,489.4	158.3	24.7	7,900.1
New Brunswick									
2010	530.9	6,652.5	103.5	952.5	869.7	372.0	253.6	21.1	9,755.9
2011	558.4	9,326.8	102.6	1,271.8	898.3	361.0	220.1	19.4	12,758.3
Quebec									
2010	4,425.4	15,356.0	647.1	13,446.8	15,990.4	1,995.9	10,001.6	502.5	62,365.9
2011	5,205.2	17,394.0	549.2	15,534.1	17,437.2	2,363.0	9,785.7	498.0	68,766.3
Ontario									
2010	14,830.2	4,715.2	900.0	46,085.6	60,001.8	52,274.0	33,784.3	3,444.7	216,035.8
2011	15,944.9	9,265.8	839.4	51,178.3	64,034.6	53,524.5	35,029.2	3,986.1	233,802.7
Manitoba									
2010	814.8	504.7	83.5	3,120.4	5,308.6	1,294.9	1,441.6	82.0	12,650.5
2011	884.4	502.6	83.0	3,586.9	6,339.7	1,687.5	1,514.3	88.1	14,686.7
Saskatchewan									
2010	306.1	589.5	24.0	1,983.2	3,374.0	867.8	239.7	20.2	7,404.4
2011	343.3	864.9	33.2	2,225.4	3,641.5	1,117.5	266.7	20.7	8,513.3
Alberta									
2010	1,711.4	2,309.9	107.0	4,494.7	6,654.6	1,001.1	1,172.5	131.1	17,582.3
2011	1,796.2	3,230.4	130.1	5,968.5	8,379.6	1,316.4	1,414.6	133.1	22,368.9
British Columbia									
2010	4,095.7	2,915.7	577.3	6,760.9	10,654.1	2,684.9	6,378.6	153.6	34,220.7
2011	4,485.8	3,505.6	569.4	7,842.1	10,985.9	2,912.9	6,527.0	169.7	36,998.3
Yukon, Northwest Territories and Nunavut									
2010	58.6	59.2	0.0	1.9	55.4	0.6	0.5	0.5	176.8
2011	44.3	131.5	0.0	4.8	88.8	0.5	0.5	0.1	270.4
Total									
2010	27,188.8	37,164.8	2,458.7	78,086.8	104,353.7	63,572.1	53,457.7	4,386.3	370,668.9
2011	29,838.9	48,664.1	2,321.6	88,895.9	113,973.3	65,773.6	54,929.0	4,951.2	409,347.7

Technical notes

The Canadian international merchandise trade statistical program

Introduction

The objective of this text is to provide a general overview of the Canadian International Merchandise Trade Statistical Program, with special reference to concepts and definitions. The text is intended for the general user and simplicity is emphasized. More technical details can be obtained from the International Trade Division, Statistics Canada upon request.

Conceptual framework

1. Objectives and coverage: The primary objective of the Canadian International Merchandise Trade Statistical Program is to measure the change in the stock of material resources of Canada resulting from the movement of merchandise into or out of the country. Information on imports and exports are inputs into the System of National Accounts, particularly in the balance of payments and gross domestic product, and are used in the formulation of trade and budgetary policies. Governments, importers, exporters, manufacturers and shipping companies use international merchandise trade statistics to:

- monitor import penetration and export performance,
- monitor commodity price and volume changes,
- examine transport implications.

2. Trade statistics (customs basis / balance of payments basis): Merchandise trade statistics are reported and presented on two different bases: customs basis and balance of payment basis.

When goods are imported into or exported from Canada, declarations must be filed with customs, giving such information as description and value of the goods, origin and port of clearance of commodities and mode of transport. Most of this information is required for the purposes of customs administration. Statistics developed from administrative records of customs are commonly referred to as customs-based trade statistics.

Customs-based trade statistics are more accurate at measuring imports than they are at measuring exports. This is the case because customs are typically more vigilant with respect to goods entering the country than they are with goods leaving the country.

Customs-based export statistics may understate or incorrectly portray the destination of exports. Export statistics are understated when the proper documentation is not filed with Customs. Exports are incorrectly portrayed when the country of final destination is inaccurately reported on the customs documentation. This occurs most frequently when goods are routed through an intermediary country before continuing on to their final destination.

Statistics Canada does not have a measure of undercoverage but periodically conducts reconciliation exercises with its major trading partners, excluding the United States.

On January 1, 1990, Canada entered into a memorandum of understanding with the United States concerning the exchange of import data. As a consequence, each administration is using the other's import data to replace its own export data. Canada's international merchandise trade statistics are, therefore, no longer derived exclusively from the administrative records of the Canada Border Services Agency, but from United States Customs records as well.

Customs-based information is adjusted to conform with the National Accounts concepts and definitions. The adjustments to derive balance of payments-based trade data include adjustments related to trade definition, valuation and timing. The principal difference between the two trade concepts is that customs-based merchandise trade statistics cover the physical movement of goods as they are reflected in customs documents while balance of payments-adjusted data are intended to cover all economic transactions that involve merchandise trade between residents and non-residents. The present document describes the concepts and processes pertaining to the customs-based trade statistics only. (For further information on balance of payments-adjusted data, see the publication *Canada's Balance of International Payments*, Statistics Canada (Catalogue no. 67-001-X).

3. System of trade: Canadian trade statistics are compiled according to the general system of trade, as defined by the United Nations Statistical Office. Under this system, imports include all goods that have crossed Canada's territorial boundary, whether for immediate consumption in Canada or for storage in bonded customs warehouses. Domestic exports include goods grown, extracted or manufactured in Canada, including goods of foreign origin that have been materially transformed in Canada. Re-exports are exports of goods of foreign origin that have not been materially transformed in Canada, including foreign goods withdrawn for export from bonded customs warehouses. Total exports are the sum of domestic exports and re-exports. Thus the general trade system, in principal, presents all goods entering the country (imports) and all goods leaving the country (exports). It differs from the special system of trade in the treatment of imported goods into bonded customs warehouses. Under the 'special' system, these goods are counted only if and when they are withdrawn from customs warehouses for home consumption. They are not counted in export statistics unless they have first cleared customs.

Conceptually, under the general system, the statistical frontier coincides with the geographical boundary, while under the 'special' system, it coincides with the customs boundary.

4. Valuation: For customs purposes, imports are recorded at values established according to the provisions of the Customs Act, which, since January 1, 1985, reflects valuation methods based on the General Agreement on Tariffs and Trade (GATT) Valuation Code System. In general, the value for duty of imported goods must be equivalent to the transaction value or the price actually paid.

To determine the transaction value of imported goods, all transportation and associated costs arising in respect of the goods being appraised prior to and at the place of direct shipment to Canada, are to be added to the price of the goods. Therefore, Canadian imports are valued Free on Board (FOB), place of direct shipment to Canada. It excludes freight and insurance costs in bringing the goods to Canada from the point of direct shipment.

Countries other than the United States, exports are, in principal, valued or recorded at the values declared on export documents, which usually reflect the transaction value, i.e., actual selling price or, in the case of a non-arm's length transaction, the transfer price used for company accounting purposes. Canadian exports to overseas countries are valued at F.O.B. port of exit, including domestic freight charges to that point but net of discounts and allowances. As of January, 1990, Canadian exports to the U.S. are valued F.O.B. point of exit from Canada. Prior to 1990, they were valued F.O.B. place of lading net of freight charges, discounts and allowances.

5. Statistical period: The reference period is the calendar month and the calendar year. The closing of the statistical month for imports and Canadian exports to the United States is defined as the last calendar day of the month, based as closely as practicable on the date of clearance from customs.

The closing of the statistical month for exports, to countries other than the United States, is also defined as the last calendar day of the month. Those export documents that are received too late for incorporation in the current month are assigned to the month the transaction took place. If a monthly summary report from a high volume exporter is not received on time, the data are imputed for the current month and revised with the trade value in the following statistical month.

6. Trading partner attribution (country of origin/destination): Exports are attributed to the country, which is the last known destination of the goods at the time of export. Exports to the United States are attributed to the state of destination.

Imports are attributed to their country of origin, that is, the country in which the goods were grown, extracted or manufactured in accordance to the rules of origin administered by the Canada Border Services Agency. Imports from the United States are attributed to the state of origin. Prior to 1988, most imports were attributed to the country of export/consignment, with the exception of imports from Central and South America.

7. Principal trading areas: The 'principal trading areas' are country groupings defined as follows:

United States: includes trade with Puerto Rico and the U.S. Virgin Islands

Japan

European Union (EU): Austria, Belgium, Bulgaria, Cyprus, Czech Republic, Denmark, Estonia, Finland, France, Germany, Greece, Hungary, Ireland, Italy, Latvia, Lithuania, Luxembourg, Malta, Netherlands, Poland, Portugal, Romania, Slovakia, Slovenia, Spain, Sweden and United Kingdom

Other Organisation for Economic Co-operation and Development (OECD): Australia, Canada, Iceland, Mexico, New Zealand, Norway, South Korea, Switzerland, and Turkey. (The EU countries, United States, and Japan are also members of OECD)

Other countries: all countries and territories other than the United States, Japan, EU and other OECD

8. Legal framework: Import and export statistics with countries other than the United States are derived from information contained in administrative records collected by the Canada Border Services Agency under the Customs Act. Copies of these documents (or information therefrom) are sent to Statistics Canada in accordance with Section 25 of the Statistics Act. It follows that the disclosure of trade statistics is governed by both the Customs Act and the Statistics Act and is subject to the provisions of Section 17(2)(a) of the latter. Disclosure of export statistics to the United States is now governed by a memorandum of understanding that provides for the exchange of detailed import statistics between Canada and the United States.

Contact information

Questions concerning details of methods not covered by these notes should be addressed to the Marketing and Client Services Section, International Trade Division, Statistics Canada, 170 Tunney's Pasture Driveway, Ottawa, Ontario, K1A 0T6.

Telephone: 1-800-294-5583 or 613-951-9647

Facsimile: 1-800-664-0055 613-951-0117

Internet: *trade@statcan.gc.ca*