

Catalogue no. 65-001-X

# Canadian International Merchandise Trade

October 2011



Statistics  
Canada

Statistique  
Canada

Canada

## How to obtain more information

For information about this product or the wide range of services and data available from Statistics Canada, visit our website at [www.statcan.gc.ca](http://www.statcan.gc.ca), e-mail us at [infostats@statcan.gc.ca](mailto:infostats@statcan.gc.ca), or telephone us, Monday to Friday from 8:30 a.m. to 4:30 p.m., at the following numbers:

### Statistics Canada's National Contact Centre

Toll-free telephone (Canada and the United States):

Inquiries line	1-800-263-1136
National telecommunications device for the hearing impaired	1-800-363-7629
Fax line	1-877-287-4369

Local or international calls:

Inquiries line	1-613-951-8116
Fax line	1-613-951-0581

### Depository Services Program

Inquiries line	1-800-635-7943
Fax line	1-800-565-7757

## To access this product

This product, Catalogue no. 65-001-X, is available free in electronic format. To obtain a single issue, visit our website at [www.statcan.gc.ca](http://www.statcan.gc.ca) and browse by "Key resource" > "Publications."

## Standards of service to the public

Statistics Canada is committed to serving its clients in a prompt, reliable and courteous manner. To this end, Statistics Canada has developed *standards of service* that its employees observe. To obtain a copy of these service standards, please contact Statistics Canada toll-free at 1-800-263-1136. The service standards are also published on [www.statcan.gc.ca](http://www.statcan.gc.ca) under "About us" > "The agency" > "Providing services to Canadians."

# Canadian International Merchandise Trade

October 2011

Published by authority of the Minister responsible for Statistics Canada

© Minister of Industry, 2011

All rights reserved. The content of this electronic publication may be reproduced, in whole or in part, and by any means, without further permission from Statistics Canada, subject to the following conditions: that it be done solely for the purposes of private study, research, criticism, review or newspaper summary, and/or for non-commercial purposes; and that Statistics Canada be fully acknowledged as follows: Source (or "Adapted from", if appropriate): Statistics Canada, year of publication, name of product, catalogue number, volume and issue numbers, reference period and page(s). Otherwise, no part of this publication may be reproduced, stored in a retrieval system or transmitted in any form, by any means—electronic, mechanical or photocopy—or for any purposes without prior written permission of Licensing Services, Information Management Division, Statistics Canada, Ottawa, Ontario, Canada K1A 0T6.

December 2011

Catalogue no. 65-001-X, vol. 65, no. 10

ISSN 1480-8781

Frequency: Monthly

Ottawa

Cette publication est également disponible en français.

---

#### **Note of appreciation**

*Canada owes the success of its statistical system to a long-standing partnership between Statistics Canada, the citizens of Canada, its businesses, governments and other institutions. Accurate and timely statistical information could not be produced without their continued cooperation and goodwill.*

# User information

---

## Symbols

The following standard symbols are used in Statistics Canada publications:

- . not available for any reference period
- .. not available for a specific reference period
- ... not applicable
- 0 true zero or a value rounded to zero
- 0<sup>s</sup> value rounded to 0 (zero) where there is a meaningful distinction between true zero and the value that was rounded
- p preliminary
- r revised
- x suppressed to meet the confidentiality requirements of the *Statistics Act*
- E use with caution
- F too unreliable to be published
- \* significantly different from reference category ( $p < 0.05$ )

## Note to users

All totals are calculated from full figures and rounded independently; consequently, totals may not equal the sum of their components.

The data is based on commodity groups (sector, subsector and major group).

# Table of contents

---

<b>Highlights</b>	<b>5</b>
<b>Analysis</b>	<b>7</b>
<b>Related products</b>	<b>11</b>
<b>Statistical tables</b>	
1 Merchandise trade of Canada, balance of payments basis, seasonally adjusted	15
1-1 Current dollars	15
1-2 Constant dollars, 2002	16
1-3 Price indices (Laspeyres)	17
2 Exports by commodity groupings, balance of payments basis, seasonally adjusted	18
2-1 Current dollars	18
2-2 Constant dollars, 2002	20
3 Domestic exports to selected countries, customs basis, not seasonally adjusted	22
3-1 October	22
3-2 Year to date, January to October	23
4 Domestic exports by country, customs basis, not seasonally adjusted	24
5 Exports by province of origin, customs basis, not seasonally adjusted	28
5-1 October	28
5-2 Year to date, January to October	29
6 Imports by commodity groupings, balance of payments basis, seasonally adjusted	30
6-1 Current dollars	30
6-2 Constant dollars, 2002	32
7 Imports from selected countries, customs basis, not seasonally adjusted	34
7-1 October	34
7-2 Year to date, January to October	35
8 Imports by country, customs basis, not seasonally adjusted	36

**Table of contents – continued**

9	Imports by province of clearance, customs basis, not seasonally adjusted	40
9-1	October	40
9-2	Year to date, January to October	41

**Data quality, concepts and methodology**

	Technical notes	42
--	-----------------	----

## Highlights

---

Canada's merchandise exports declined 3.0% and imports rose 1.9% in October. Consequently, Canada's trade balance with the world went from a surplus of \$1.0 billion in September to a deficit of \$885 million in October.

After three consecutive monthly increases, exports decreased to \$38.4 billion in October, as both prices and volumes fell. Industrial goods and materials and energy products sectors led the decline. Automotive products was the only sector to record a gain during the month.

Imports reached a record high of \$39.3 billion, as volumes increased 1.3%. Imports of machinery and equipment led the overall increase, followed by energy products and automotive products.

Imports from the United States rose 3.0% to \$24.5 billion, the highest value since October 2008, while exports fell 0.9% to \$27.6 billion. As a result, Canada's trade surplus with the United States narrowed from \$4.1 billion in September to \$3.1 billion in October.

Exports to countries other than the United States fell 7.9% to \$10.8 billion, after peaking in September 2011. Imports from countries other than the United States edged up 0.1% to \$14.7 billion. Canada's trade deficit with countries other than the United States increased from \$3.0 billion to \$4.0 billion in October.

### Note to readers

Merchandise trade is one component of Canada's international balance of payments (BOP), which also includes trade in services, investment income, current transfers as well as capital and financial flows.

International merchandise trade data by country are available on both a BOP and a customs basis for the United States, Japan and the United Kingdom. Trade data for all other individual countries are available on a customs basis only. BOP data are derived from customs data by making adjustments for factors such as valuation, coverage, timing and residency. These adjustments are made to conform to the concepts and definitions of the Canadian System of National Accounts.

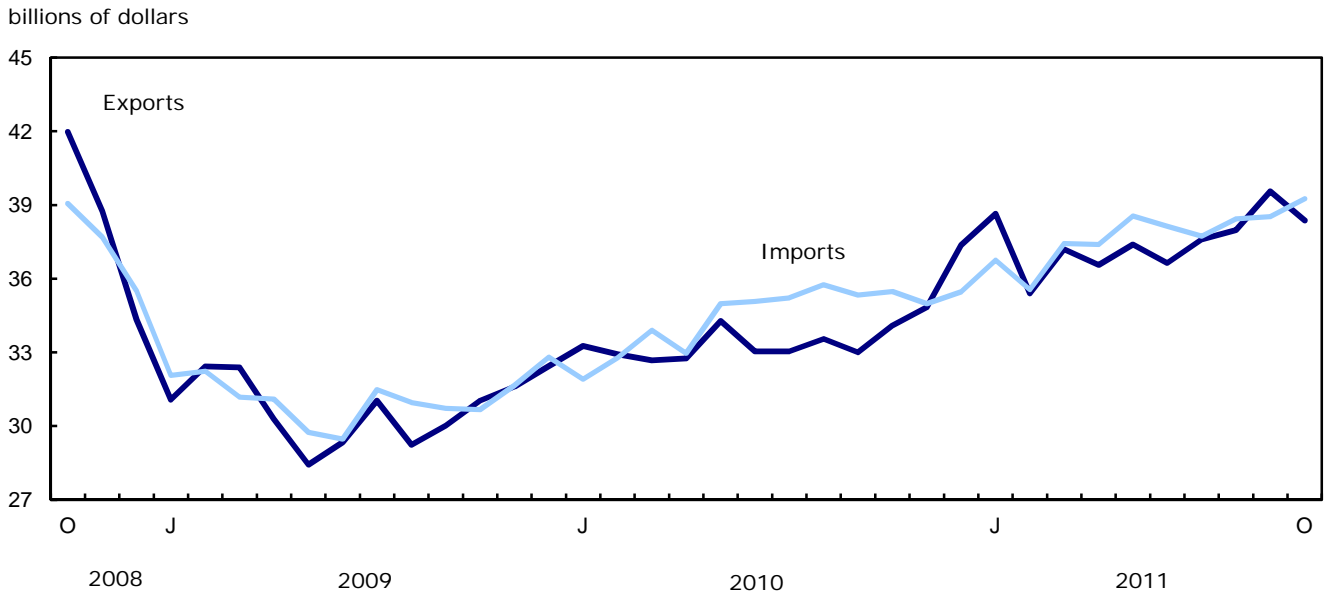
Data in this release are on a balance of payments basis, seasonally adjusted in current dollars. Constant dollars are calculated using the Laspeyres volume formula.

### Changes to the classification

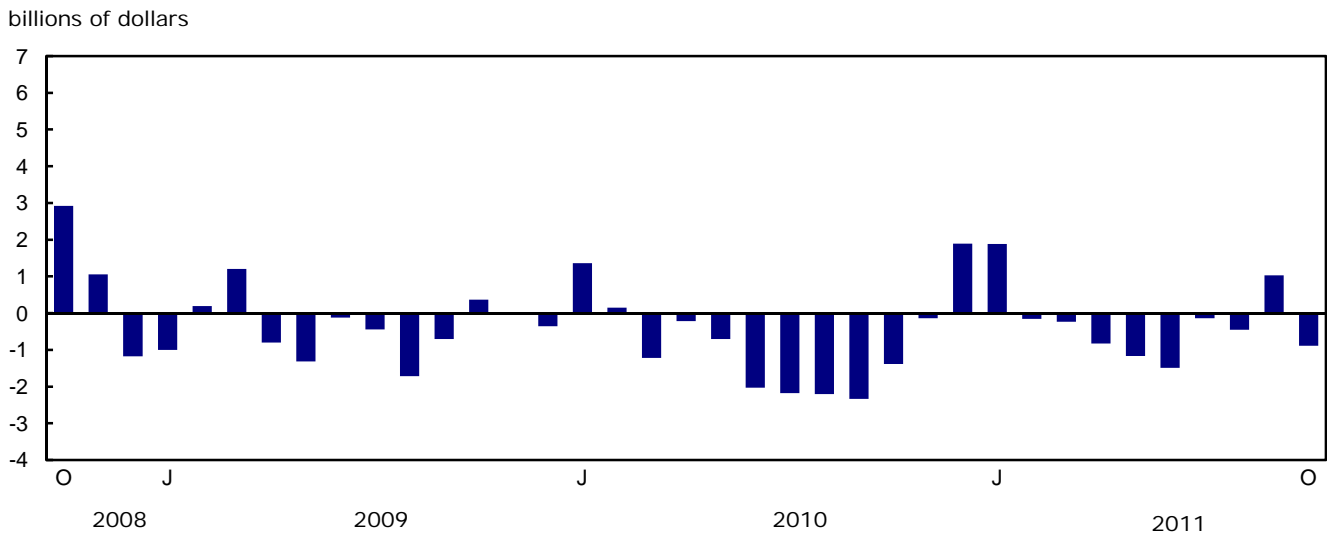
Statistics Canada has reduced the number of ten-digit Harmonized Commodity Coding and Description System (HS) classification codes that are used to report the commodity detail in Canada's merchandise import trade data. This will improve efficiency, maintain data quality and reduce response burden.

These changes will take effect beginning with the January 2012 data month to coincide with the World Customs Organization (WCO) 2012 amendments to the six-digit HS classification codes as well as with Finance Canada's changes to the 2012 Customs Tariff at the eight-digit HS codes. To obtain an HS 2012 Concordance Table, contact the International Trade Division's Marketing and Client Services Section at [trade@statcan.gc.ca](mailto:trade@statcan.gc.ca).

**Chart 1**  
Exports and imports, seasonally adjusted, on a balance of payments basis



**Chart 2**  
Trade balance, seasonally adjusted, on a balance of payments basis





# Analysis

---

## Exports decrease in most sectors

After five consecutive monthly increases, exports of industrial goods and materials fell 6.0% to \$9.8 billion in October, as prices and volumes fell. Metals and alloys largely contributed to the decline with a 24.5% decrease in exports of precious metals and alloys. Partially offsetting the overall decline were higher exports of metal ores, up 6.7%, on the strength of iron ores, concentrates and scrap.

Exports of energy products decreased 5.8% to \$8.9 billion in October. The main contributors to the decline were petroleum and coal products, with a decrease of 20.7%, and coal and other bituminous substances, down 30.6%.

Exports of automotive products increased 4.0% to \$5.0 billion in October. Exports of passenger autos and chassis increased 4.7% mostly due to higher volumes.

## Machinery and equipment lead the increase in imports

Imports of machinery and equipment grew 3.8% to \$10.7 billion in October, as volumes and prices rose. Other communication and related equipment, mainly cellular telephones; and other transportation equipment, with higher imports of locomotives led the gain in machinery and equipment.

Imports of energy products increased 3.0% to \$4.5 billion. The main contributor to the rise was crude petroleum, gaining 11.5% on the strength of volumes. Petroleum and coal products declined mainly due to lower volumes.

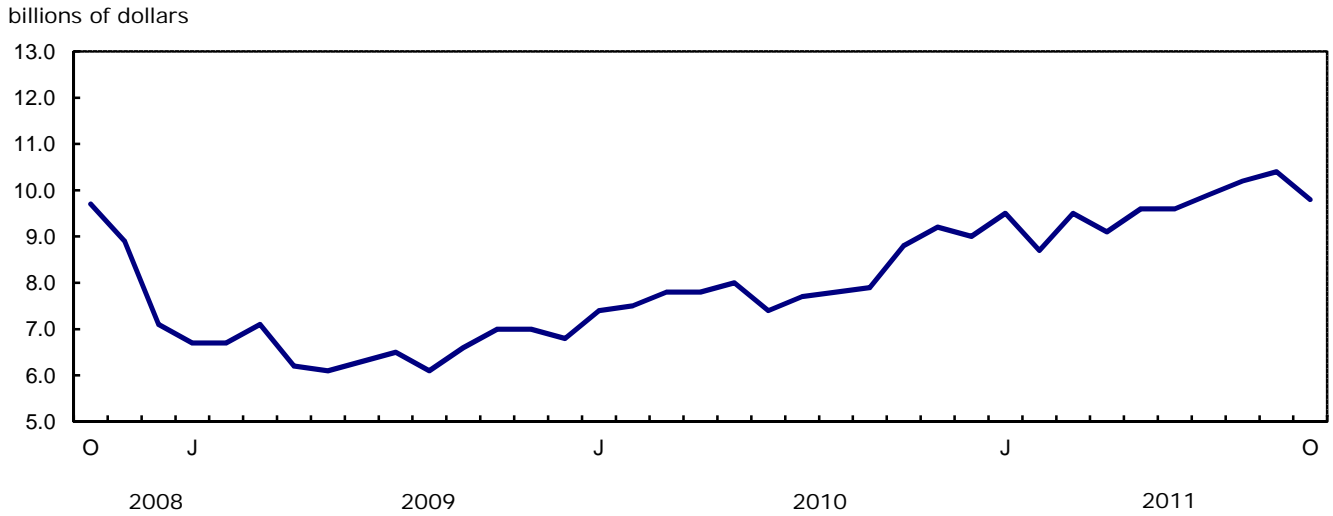
Automotive products rose 1.8% to \$6.1 billion. Passenger autos and chassis led the increase, up 8.2%, on the strength of volumes. Partially offsetting the gain was the decline in imports of trucks and other motor vehicles.

**Note:** In general, merchandise trade data are revised on an ongoing basis for each month of the current year. Current year revisions are reflected in both the customs and balance of payments (BOP) based data. The previous year's customs data are revised with the release of the January and February reference months as well as on a quarterly basis. The previous two years of customs based data are revised annually and are released in February with the December reference month. The previous year's BOP based data are revised with the release of the January, February and March reference months. Revisions to BOP based data for the previous three years are released annually in June with the April reference month.

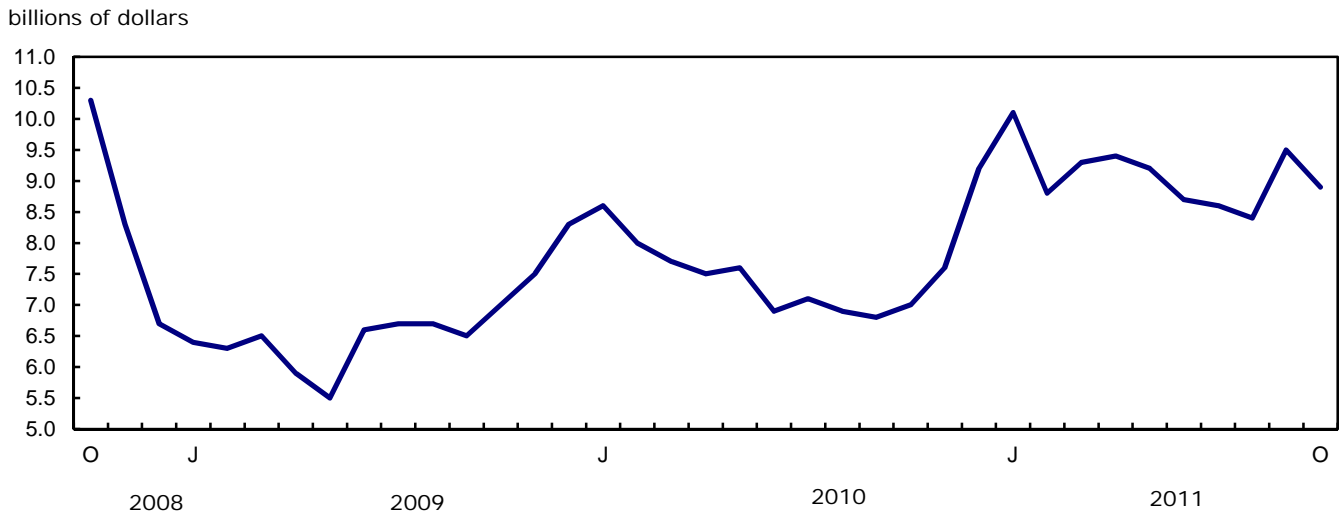
Factors influencing revisions include late receipt of import and export documentation, incorrect information on customs forms, replacement of estimates produced for the energy sector with actual figures, changes in classification of merchandise based on more current information, and changes to seasonal adjustment factors.

Revised data are available in the appropriate CANSIM tables.

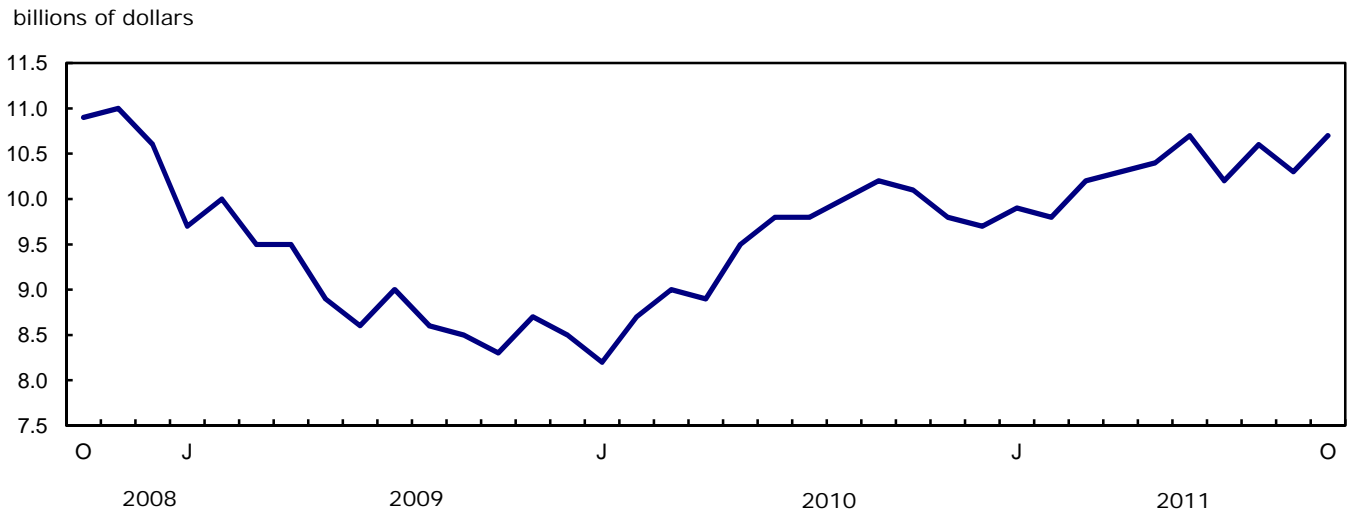
**Chart 1**  
**Exports of industrial goods and materials, seasonally adjusted, on a balance of payments basis**



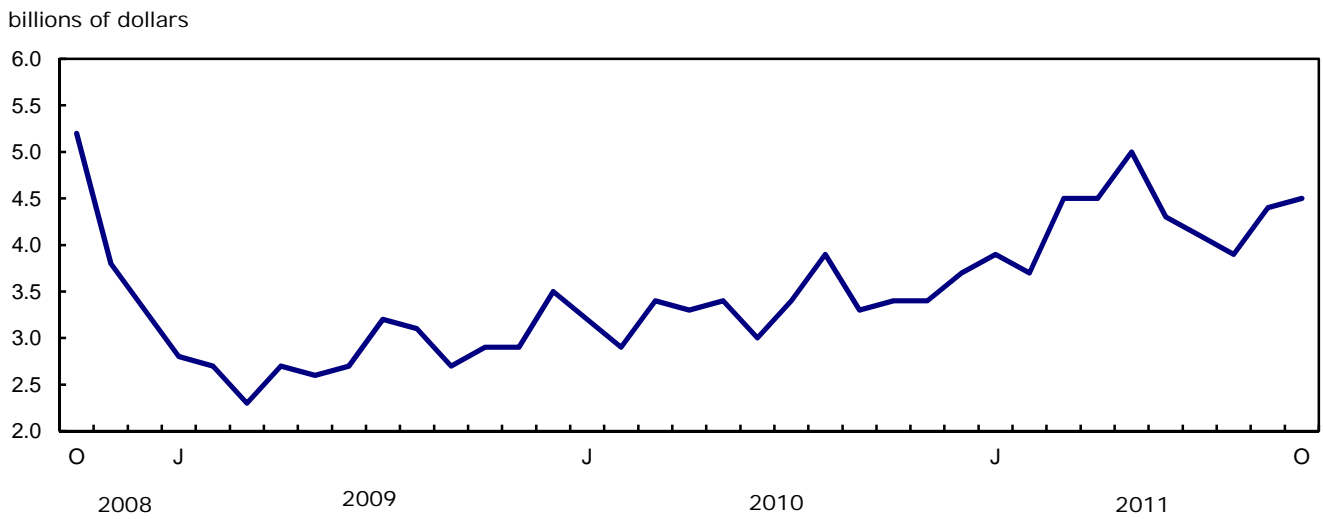
**Chart 2**  
**Exports of energy products, seasonally adjusted, on a balance of payments basis**



**Chart 3**  
Imports of machinery and equipment, seasonally adjusted, on a balance of payments basis



**Chart 4**  
Imports of energy products, seasonally adjusted, on a balance of payments basis



**Text table 1**  
**Merchandise trade by principal trading area, balance of payments basis, seasonally adjusted**

	September	October	Change	Year to date			October 2011/ October 2010		
	2011	2011		2010	2011	Change			
	millions of dollars		percent	millions of dollars		percent			
<b>Export to</b>									
United States	27,880	27,616	-264	-0.9	245,736	271,748	26,012	10.6	14.8
Japan	1,149	878	-271	-23.6	7,892	9,460	1,568	19.9	-3.3
European Union <sup>1</sup>	3,917	3,421	-496	-12.7	28,786	34,296	5,510	19.1	-1.2
Other Organisation for Economic Co-operation and Development <sup>2</sup>	1,730	1,990	260	15.0	14,890	17,082	2,192	14.7	18.8
Other countries	4,884	4,467	-417	-8.5	35,319	42,775	7,455	21.1	12.0
<b>Total</b>	<b>39,560</b>	<b>38,372</b>	<b>-1,188</b>	<b>-3.0</b>	<b>332,624</b>	<b>375,361</b>	<b>42,737</b>	<b>12.8</b>	<b>12.6</b>
<b>Imports from</b>									
United States	23,805	24,513	708	3.0	216,674	232,797	16,123	7.4	10.7
Japan	751	839	88	11.7	8,387	7,451	-936	-11.2	-3.2
European Union <sup>1</sup>	3,897	3,795	-103	-2.6	32,972	38,370	5,399	16.4	10.7
Other Organisation for Economic Co-operation and Development <sup>2</sup>	2,668	2,697	30	1.1	24,198	27,474	3,276	13.5	5.1
Other countries	7,412	7,413	1	0.0	61,153	71,696	10,543	17.2	14.5
<b>Total</b>	<b>38,533</b>	<b>39,257</b>	<b>723</b>	<b>1.9</b>	<b>343,383</b>	<b>377,787</b>	<b>34,404</b>	<b>10.0</b>	<b>10.7</b>
<b>Balance</b>									
United States	4,075	3,103	-972	...	29,062	38,952	9,890	...	...
Japan	398	40	-359	...	-495	2,009	2,503	...	...
European Union <sup>1</sup>	20	-373	-393	...	-4,186	-4,075	111	...	...
Other Organisation for Economic Co-operation and Development <sup>2</sup>	-938	-708	230	...	-9,308	-10,391	-1,084	...	...
Other countries	-2,528	-2,945	-417	...	-25,834	-28,921	-3,087	...	...
<b>Total</b>	<b>1,026</b>	<b>-884</b>	<b>-1,911</b>	<b>...</b>	<b>-10,759</b>	<b>-2,426</b>	<b>8,333</b>	<b>...</b>	<b>...</b>

1. European Union includes: Austria, Belgium, Bulgaria, Cyprus, Czech Republic, Denmark, Estonia, Finland, France, Germany, Greece, Hungary, Ireland, Italy, Latvia, Lithuania, Luxembourg, Malta, Netherlands, Poland, Portugal, Romania, Slovakia, Slovenia, Spain, Sweden and United Kingdom.
2. Other Organisation for Economic Co-operation and Development includes: Australia, Canada, Iceland, Mexico, New Zealand, Norway, South Korea, Switzerland and Turkey.

**Text table 2**  
**Reconciliation of customs and balance of payments trade data, not seasonally adjusted**

	2011						2010
	October	September	August	July	June	May	Annual
	millions of dollars						
<b>Exports</b>							
<b>Customs basis</b>	<b>39,054</b>	<b>39,561</b>	<b>38,664</b>	<b>35,515</b>	<b>37,285</b>	<b>37,267</b>	<b>399,433</b>
<b>Balance of payments adjustments</b>	<b>558</b>	<b>540</b>	<b>35</b>	<b>925</b>	<b>389</b>	<b>1,039</b>	<b>5,401</b>
Valuation and residency							
Inland freight	619	631	618	571	597	560	6,552
Other valuation and residency	-1,228	-1,578	-1,632	-1,018	-1,091	-803	-12,984
Timing	44	12	35	43	29	80	48
Coverage	1,123	1,475	1,014	1,329	854	1,202	11,785
<b>Balance of payments basis</b>	<b>39,612</b>	<b>40,101</b>	<b>38,699</b>	<b>36,440</b>	<b>37,674</b>	<b>38,306</b>	<b>404,834</b>
<b>Imports</b>							
<b>Customs basis</b>	<b>39,829</b>	<b>38,549</b>	<b>39,313</b>	<b>35,533</b>	<b>38,687</b>	<b>37,460</b>	<b>403,910</b>
<b>Balance of payments adjustments</b>	<b>942</b>	<b>866</b>	<b>738</b>	<b>377</b>	<b>668</b>	<b>1,247</b>	<b>9,923</b>
Valuation and residency							
Inland freight	824	810	833	761	835	793	8,740
Other valuation and residency	-29	-2	-22	-26	-31	-60	-190
Timing	0	0	0	0	0	0	0
Coverage	147	58	-73	-358	-136	514	1,373
<b>Balance of payments basis</b>	<b>40,771</b>	<b>39,415</b>	<b>40,051</b>	<b>35,910</b>	<b>39,355</b>	<b>38,707</b>	<b>413,833</b>

## Related products

---

### Selected publications from Statistics Canada

---

65-208-X	International Merchandise Trade Annual Review
65-506-X	A Profile of Canadian Exporters
65F0013X	Canadian International Merchandise Trade Database
65F0019X	A Database for Analysis of International Markets
65F0020X	Data Integration - International Trade Data and Manufacturing Shipments Data

---

### Selected CANSIM tables from Statistics Canada

---

228-0001	Merchandise imports and exports, by major groups and principal trading areas for all countries, monthly
228-0002	Merchandise imports and exports, by major groups and principal trading areas for all countries, quarterly
228-0003	Merchandise imports and exports, by major groups and principal trading areas for all countries, annual
228-0033	Imports, customs-based, by province of clearance, monthly
228-0034	Domestic exports, customs-based, by province of origin, monthly
228-0041	Merchandise imports and exports by sector and sub-sector, customs and balance of payments basis, for all countries, monthly
228-0042	Merchandise imports and exports by sector and sub-sector, customs and balance of payments basis, for all countries, quarterly
228-0043	Merchandise imports and exports by sector and sub-sector, customs and balance of payments basis, for all countries, annual
228-0047	Merchandise imports and exports balance of payments and customs-based price and volume indexes for all countries, monthly
228-0048	Merchandise imports and exports balance of payments and customs-based price and volume indexes for all countries, quarterly
228-0049	Merchandise imports and exports balance of payments and customs-based price and volume indexes for all countries, annual

228-0050	Merchandise imports and exports customs-based price indexes, Canada and United States trade, and Standard International Trade Classification (SITC revision 3) price indexes for all countries and United States, monthly
228-0051	Merchandise imports and exports customs-based price indexes, Canada and United States trade, and Standard International Trade Classification (SITC revision 3) price indexes for all countries and United States, quarterly
228-0052	Merchandise imports and exports customs-based price indexes, Canada and United States trade, and Standard International Trade Classification (SITC revision 3) price indexes for all countries and United States, annual
228-0053	Merchandise import and export price and volume indexes by sector and sub-sector, customs and balance of payments basis, for all countries, monthly
228-0054	Merchandise import and export price and volume indexes by sector and sub-sector, customs and balance of payments basis, for all countries, quarterly
228-0055	Merchandise import and export price and volume indexes by sector and sub-sector, customs and balance of payments basis, for all countries, annual
228-0056	Merchandise imports and exports by sector, balance of payments basis, for all countries, seasonally adjusted, Fisher formula, monthly
228-0057	Merchandise imports and exports by sector, balance of payments basis, for all countries, seasonally adjusted, Fisher formula, quarterly

---

### **Selected surveys from Statistics Canada**

---

2201	Canadian International Merchandise Trade (Customs Basis)
2202	Canadian International Merchandise Trade (Balance of Payments Basis)
2203	International Trade Price Indexes

---

### **Selected summary tables from Statistics Canada**

---

- *Canada: Economic and financial data*
- *Imports, exports and trade balance of goods on a balance-of-payments basis, by country or country grouping*
- *Exports of goods on a balance-of-payments basis*

- *Imports of goods on a balance-of-payments basis*
- *Merchandise trade of Canada (monthly)*
- *Economic indicators, by province and territory (monthly and quarterly)*
- *Latest statistics (monthly)*

# Statistical tables

---

---



**Table 1-1**  
**Merchandise trade of Canada, balance of payments basis, seasonally adjusted — Current dollars**

	Exports	Imports	Trade balance	Period to period change		
				Exports	Imports	Balance
				millions of dollars	percent	millions of dollars
2007	463,120	415,683	47,437	0.0	0.0	0
2008	488,754	443,777	44,977	5.5	6.8	-2,460
2009	369,343	374,081	-4,738	-24.4	-15.7	-49,715
2010	404,834	413,833	-8,999	9.6	10.6	-4,261
<b>2009</b>						
First quarter	95,888	95,487	400	-16.7	-14.9	-2,399
Second quarter	88,071	90,304	-2,234	-8.2	-5.4	-2,634
Third quarter	90,293	93,167	-2,873	2.5	3.2	-639
Fourth quarter	95,092	95,123	-32	5.3	2.1	2,842
<b>2010</b>						
First quarter	98,870	98,583	287	4.0	3.6	318
Second quarter	100,071	103,014	-2,942	1.2	4.5	-3,229
Third quarter	99,592	106,312	-6,720	-0.5	3.2	-3,778
Fourth quarter	106,301	105,924	377	6.7	-0.4	7,097
<b>2011</b>						
First quarter	111,253	109,754	1,499	4.7	3.6	1,122
Second quarter	110,594	114,076	-3,482	-0.6	3.9	-4,981
Third quarter	115,142	114,700	441	4.1	0.5	3,924
<b>2010</b>						
January	33,260	31,902	1,358	2.5	-2.7	1,714
February	32,929	32,780	148	-1.0	2.8	-1,210
March	32,681	33,901	-1,220	-0.8	3.4	-1,368
April	32,749	32,962	-213	0.2	-2.8	1,007
May	34,282	34,984	-702	4.7	6.1	-489
June	33,040	35,068	-2,028	-3.6	0.2	-1,326
July	33,040	35,220	-2,181	0.0	0.4	-153
August	33,550	35,757	-2,207	1.5	1.5	-26
September	33,002	35,335	-2,333	-1.6	-1.2	-126
October	34,090	35,474	-1,384	3.3	0.4	949
November	34,845	34,979	-134	2.2	-1.4	1,249
December	37,366	35,471	1,895	7.2	1.4	2,029
<b>2011</b>						
January	38,649	36,761	1,888	3.4	3.6	-7
February	35,406	35,559	-153	-8.4	-3.3	-2,041
March	37,198	37,433	-236	5.1	5.3	-83
April	36,562	37,391	-829	-1.7	-0.1	-593
May	37,391	38,555	-1,164	2.3	3.1	-335
June	36,640	38,130	-1,490	-2.0	-1.1	-326
July	37,602	37,736	-134	2.6	-1.0	1,355
August	37,980	38,431	-451	1.0	1.8	-317
September	39,560	38,533	1,026	4.2	0.3	1,477
October	38,372	39,257	-884	-3.0	1.9	-1,911

**Note(s):** Because of rounding, monthly data may not add up to quarterly data and quarterly data may not add up to annual data.

**Table 1-2**  
**Merchandise trade of Canada, balance of payments basis, seasonally adjusted — Constant dollars, 2002**

	Exports	Imports	Trade balance	Period to period change	
				Exports	Imports
	millions of dollars			percent	
2007	449,015	484,005	-34,990	0.0	0.0
2008	412,713	486,735	-74,022	-8.1	0.6
2009	346,916	407,679	-60,763	-15.9	-16.2
2010	374,143	470,401	-96,259	7.8	15.4
<b>2009</b>					
First quarter	87,361	98,563	-11,202	-9.7	-13.3
Second quarter	83,432	97,723	-14,290	-4.5	-0.9
Third quarter	86,976	104,165	-17,189	4.2	6.6
Fourth quarter	89,147	107,228	-18,081	2.5	2.9
<b>2010</b>					
First quarter	90,749	111,192	-20,442	1.8	3.7
Second quarter	94,368	117,650	-23,282	4.0	5.8
Third quarter	94,074	120,900	-26,826	-0.3	2.8
Fourth quarter	94,951	120,659	-25,708	0.9	-0.2
<b>2011</b>					
First quarter	96,791	124,646	-27,855	1.9	3.3
Second quarter	95,310	128,655	-33,345	-1.5	3.2
Third quarter	98,716	128,003	-29,288	3.6	-0.5
<b>2010</b>					
January	30,484	36,096	-5,612	1.2	-1.5
February	29,984	36,948	-6,964	-1.6	2.4
March	30,282	38,148	-7,866	1.0	3.2
April	30,882	37,943	-7,061	2.0	-0.5
May	32,065	39,600	-7,535	3.8	4.4
June	31,421	40,106	-8,686	-2.0	1.3
July	31,273	40,040	-8,767	-0.5	-0.2
August	31,897	40,711	-8,814	2.0	1.7
September	30,905	40,150	-9,245	-3.1	-1.4
October	31,313	40,563	-9,250	1.3	1.0
November	31,041	39,832	-8,790	-0.9	-1.8
December	32,597	40,265	-7,668	5.0	1.1
<b>2011</b>					
January	33,626	42,037	-8,411	3.2	4.4
February	30,975	40,385	-9,410	-7.9	-3.9
March	32,190	42,224	-10,034	3.9	4.6
April	31,573	42,807	-11,234	-1.9	1.4
May	32,260	42,644	-10,383	2.2	-0.4
June	31,477	43,204	-11,727	-2.4	1.3
July	32,950	43,012	-10,062	4.7	-0.4
August	32,840	43,066	-10,226	-0.3	0.1
September	32,925	41,925	-9,000	0.3	-2.7
October	32,465	42,468	-10,004	-1.4	1.3

**Note(s):** Because of rounding, monthly data may not add up to quarterly data and quarterly data may not add up to annual data.

**Table 1-3**  
**Merchandise trade of Canada, balance of payments basis, seasonally adjusted — Price indices (Laspeyres)**

	2002=100			Period to period change		
	Exports	Imports	Terms of trade	Exports	Imports	Terms of trade
	price indices (Laspeyres)			percent		
2007	107.1	91.4	117.1	0.0	0.0	0.0
2008	116.2	97.2	119.6	8.5	6.3	2.2
2009	105.2	96.2	109.3	-9.5	-1.0	-8.5
2010	106.8	94.1	113.4	1.5	-2.2	3.7
<b>2009</b>						
First quarter	108.8	100.8	107.9	-3.9	-2.8	-1.1
Second quarter	104.6	96.8	108.0	-3.8	-4.0	0.1
Third quarter	102.9	94.1	109.3	-1.6	-2.8	1.2
Fourth quarter	105.3	93.0	113.2	2.3	-1.2	3.5
<b>2010</b>						
First quarter	107.1	93.7	114.2	1.7	0.7	0.9
Second quarter	105.7	93.6	112.9	-1.3	-0.1	-1.2
Third quarter	106.1	94.5	112.3	0.4	0.9	-0.5
Fourth quarter	108.2	94.6	114.4	2.0	0.1	1.9
<b>2011</b>						
First quarter	111.5	96.5	115.6	3.1	2.0	1.1
Second quarter	113.4	99.3	114.2	1.7	2.9	-1.3
Third quarter	113.9	98.9	115.2	0.5	-0.4	0.9
<b>2010</b>						
January	107.2	93.9	114.2	1.0	0.0	1.0
February	108.1	95.1	113.7	0.8	1.3	-0.5
March	106.0	93.8	113.0	-1.9	-1.3	-0.6
April	105.2	92.1	114.3	-0.8	-1.8	1.1
May	106.3	94.5	112.5	1.0	2.6	-1.6
June	105.6	94.0	112.3	-0.7	-0.5	-0.2
July	104.8	93.8	111.7	-0.7	-0.2	-0.5
August	105.9	94.1	112.5	1.0	0.3	0.7
September	106.7	93.9	113.6	0.8	-0.2	1.0
October	107.5	93.9	114.5	0.7	-0.1	0.7
November	109.0	94.8	115.0	1.4	1.0	0.5
December	110.8	95.4	116.1	1.6	0.7	1.0
<b>2011</b>						
January	111.4	96.1	115.8	0.6	0.8	-0.2
February	111.6	97.6	114.3	0.2	1.5	-1.3
March	112.3	97.6	115.1	0.7	0.0	0.6
April	113.2	97.6	116.0	0.8	-0.1	0.8
May	113.4	99.1	114.4	0.2	1.5	-1.4
June	113.7	100.1	113.7	0.3	1.0	-0.7
July	112.0	97.0	115.5	-1.5	-3.1	1.5
August	112.8	98.4	114.6	0.7	1.4	-0.7
September	115.1	99.2	116.1	2.1	0.9	1.2
October	115.4	99.6	115.9	0.3	0.4	-0.1

**Note(s):** Because of rounding, monthly data may not add up to quarterly data and quarterly data may not add up to annual data.

**Table 2-1**  
**Exports by commodity groupings, balance of payments basis, seasonally adjusted — Current dollars**

	September	October	Change		Year to date			October	2011/
	2011	2011			2010	2011	Change	October	October
	millions of dollars		percent		millions of dollars			percent	
<b>Total</b>	<b>39,560</b>	<b>38,372</b>	<b>-1,188</b>	<b>-3.0</b>	<b>332,624</b>	<b>375,361</b>	<b>42,737</b>	<b>12.8</b>	<b>12.6</b>
<b>Agricultural and fishing products</b>	<b>3,687</b>	<b>3,605</b>	<b>-82</b>	<b>-2.2</b>	<b>30,236</b>	<b>33,481</b>	<b>3,245</b>	<b>10.7</b>	<b>11.9</b>
Wheat	520	465	-56	-10.7	3,575	4,537	962	26.9	21.3
Other agricultural and fishing products	3,166	3,140	-26	-0.8	26,661	28,944	2,283	8.6	10.6
Live animals	113	127	14	12.6	1,476	1,176	-300	-20.3	1.0
Fish and fish preparations	365	355	-10	-2.7	3,478	3,618	140	4.0	0.6
Barley	17	52	35	199.0	242	239	-4	-1.5	109.0
Wheat flour	6	6	0	-6.6	67	63	-3	-4.9	-18.9
Other cereals unmilled	90	58	-32	-35.5	410	764	354	86.3	-4.2
Other cereal preparations	259	259	0	0.0	2,313	2,426	113	4.9	11.9
Meat and meat preparations	442	449	7	1.5	3,930	4,122	192	4.9	11.5
Alcoholic beverages	65	58	-6	-9.9	623	607	-17	-2.6	-1.5
Other food, feed, beverages and tobacco	1,105	1,077	-28	-2.5	9,378	10,155	777	8.3	12.7
Rapeseed	449	453	4	0.9	2,632	3,586	954	36.2	44.6
Other crude vegetable products	256	246	-10	-3.7	2,111	2,188	76	3.6	-19.3
<b>Energy products</b>	<b>9,461</b>	<b>8,908</b>	<b>-553</b>	<b>-5.8</b>	<b>74,048</b>	<b>90,900</b>	<b>16,851</b>	<b>22.8</b>	<b>27.1</b>
Crude petroleum	5,297	5,401	104	2.0	40,092	53,919	13,827	34.5	39.2
Natural gas	1,239	1,183	-57	-4.6	13,427	11,906	-1,521	-11.3	1.8
Other energy products	2,925	2,324	-601	-20.5	20,529	25,074	4,546	22.1	17.9
Coal and other bituminous substances	741	514	-227	-30.6	4,247	5,841	1,593	37.5	12.5
Petroleum and coal products	1,998	1,584	-414	-20.7	14,609	17,450	2,842	19.5	13.6
Electricity	186	226	40	21.5	1,673	1,784	111	6.6	89.6
<b>Forestry products</b>	<b>1,950</b>	<b>1,867</b>	<b>-83</b>	<b>-4.3</b>	<b>18,029</b>	<b>18,917</b>	<b>888</b>	<b>4.9</b>	<b>1.2</b>
Lumber and sawmill products	732	757	25	3.4	6,641	7,104	463	7.0	10.6
Other crude wood products	87	104	18	20.3	546	780	234	42.9	96.7
Lumber	456	455	-1	-0.2	4,077	4,460	383	9.4	3.1
Other wood fabricated materials	190	198	8	4.3	2,018	1,864	-155	-7.7	3.9
Wood pulp and other wood products	560	486	-74	-13.2	5,182	5,536	354	6.8	-11.3
Newsprint and other paper and paperboard	657	623	-34	-5.2	6,205	6,277	72	1.2	1.9
Newsprint paper	347	314	-33	-9.5	3,125	3,242	117	3.7	1.7
Other paper and paperboard	310	308	-1	-0.4	3,080	3,035	-45	-1.5	2.0
<b>Industrial goods and materials</b>	<b>10,449</b>	<b>9,821</b>	<b>-628</b>	<b>-6.0</b>	<b>78,250</b>	<b>96,319</b>	<b>18,069</b>	<b>23.1</b>	<b>11.8</b>
Metal ores	1,579	1,684	105	6.7	10,155	14,205	4,050	39.9	10.7
Iron ores, concentrates and scrap	523	620	97	18.5	3,549	4,903	1,354	38.1	50.0
Copper ores, concentrates and scrap	414	384	-30	-7.3	1,940	3,176	1,236	63.7	9.1
Nickel ores, concentrates and scrap	307	354	47	15.2	2,348	2,877	529	22.5	-12.6
Zinc ores, concentrates and scrap	40	14	-26	-64.5	230	265	35	15.2	-30.2
Other ores, concentrates and scrap	294	312	18	6.0	2,088	2,984	896	42.9	-5.5
Chemicals, plastics and fertilizers	3,148	3,036	-111	-3.5	24,772	29,927	5,155	20.8	20.6
Inorganic chemicals	448	510	61	13.7	3,687	4,965	1,278	34.6	30.3
Organic chemicals	642	567	-75	-11.7	5,183	6,118	935	18.0	13.3
Fertilizers and fertilizer materials	777	707	-70	-9.0	4,876	6,533	1,656	34.0	40.3
Synthetic rubber and plastics	976	962	-14	-1.4	8,415	9,471	1,056	12.5	10.9
Other chemical products	305	292	-13	-4.3	2,610	2,841	230	8.8	13.9
Metals and alloys	4,072	3,552	-520	-12.8	29,032	36,330	7,298	25.1	10.1
Primary iron and steel	104	104	0	0.5	1,037	794	-243	-23.5	49.0
Steel bars, rods, plates, sheets	342	364	22	6.5	2,958	3,193	235	7.9	25.3
Other iron and steel and alloys	265	272	8	2.9	2,220	2,397	176	7.9	29.7
Aluminum including alloys	702	688	-14	-2.0	6,072	6,766	694	11.4	14.1
Copper and alloys	242	223	-19	-8.0	2,207	2,115	-92	-4.2	24.1
Nickel and alloys	284	245	-40	-14.0	1,653	2,818	1,166	70.5	-14.6
Precious metals and alloys	1,926	1,454	-472	-24.5	10,888	16,137	5,249	48.2	5.3
Zinc and alloys	102	99	-3	-3.0	1,117	1,062	-55	-5.0	-12.3
Other non-ferrous metals and alloys	105	103	-3	-2.6	879	1,048	169	19.2	12.8

Table 2-1 – continued

## Exports by commodity groupings, balance of payments basis, seasonally adjusted — Current dollars

	September	October	Change	Year to date			October 2011/ October 2010		
	2011	2011		2010	2011	Change			
	millions of dollars		percent		millions of dollars		percent		
Other industrial goods and materials	1,650	1,549	-101	-6.1	14,291	15,857	1,566	11.0	2.1
Asbestos unmanufactured	2	1	0	-24.4	47	30	-17	-35.9	-74.4
Other crude animal products	72	82	10	13.8	757	791	34	4.6	14.3
Other crude non-metallic minerals	319	205	-114	-35.8	3,006	3,175	170	5.6	-36.7
Other crude materials, inedible	64	66	2	3.0	592	651	60	10.1	8.0
Metal fabricated basic products	385	388	3	0.7	3,467	3,699	232	6.7	9.5
Textile fabricated materials	189	188	-2	-0.9	1,799	1,841	41	2.3	2.9
Non-metallic mineral basic products	163	174	11	6.7	1,569	1,618	50	3.2	13.2
Other fabricated materials	455	444	-10	-2.3	3,055	4,051	995	32.6	22.0
<b>Machinery and equipment</b>	<b>6,978</b>	<b>6,943</b>	<b>-35</b>	<b>-0.5</b>	<b>62,694</b>	<b>66,138</b>	<b>3,444</b>	<b>5.5</b>	<b>6.3</b>
Industrial and agricultural machinery	1,771	1,688	-83	-4.7	14,883	16,424	1,541	10.4	5.9
Industrial machinery	1,592	1,498	-94	-5.9	13,365	14,741	1,376	10.3	4.0
Agricultural machinery includ. tractors	179	190	11	6.3	1,518	1,683	164	10.8	23.9
Aircraft and other transportation equipment	1,518	1,582	64	4.2	14,376	15,036	660	4.6	16.4
Aircraft, engines, parts	1,118	1,201	84	7.5	11,162	11,208	46	0.4	20.7
Other transportation equipment	400	381	-19	-4.8	3,214	3,828	613	19.1	4.8
Other machinery and equipment	3,689	3,672	-16	-0.4	33,435	34,678	1,243	3.7	2.6
Television, telecommunication equipment	709	697	-12	-1.7	6,470	6,420	-50	-0.8	-0.4
Office machines and equipment	342	365	23	6.7	3,562	3,531	-31	-0.9	-1.8
Other equipment and tools	1,712	1,690	-22	-1.3	15,371	16,092	721	4.7	4.4
Other end products, inedible	926	920	-6	-0.6	8,032	8,635	603	7.5	3.6
<b>Automotive products</b>	<b>4,841</b>	<b>5,034</b>	<b>192</b>	<b>4.0</b>	<b>47,772</b>	<b>48,258</b>	<b>486</b>	<b>1.0</b>	<b>5.6</b>
Passenger autos and chassis	3,116	3,263	148	4.7	31,739	31,433	-306	-1.0	5.2
Trucks and other motor vehicles	266	309	43	16.2	1,897	2,323	426	22.5	24.4
Motor vehicle parts	1,460	1,461	2	0.1	14,136	14,502	366	2.6	3.2
<b>Other consumer goods</b>	<b>1,454</b>	<b>1,400</b>	<b>-54</b>	<b>-3.7</b>	<b>13,744</b>	<b>13,514</b>	<b>-230</b>	<b>-1.7</b>	<b>16.1</b>
<b>Special transactions trade</b>	<b>286</b>	<b>301</b>	<b>15</b>	<b>5.2</b>	<b>3,403</b>	<b>3,182</b>	<b>-221</b>	<b>-6.5</b>	<b>4.3</b>
<b>Unallocated balance of payments adjustments</b>	<b>454</b>	<b>494</b>	<b>40</b>	<b>8.8</b>	<b>4,448</b>	<b>4,654</b>	<b>206</b>	<b>4.6</b>	<b>13.1</b>

**Table 2-2**  
**Exports by commodity groupings, balance of payments basis, seasonally adjusted — Constant dollars, 2002**

	September 2011	October 2011	Change		Year to date			October 2011/ October 2010	
					2010	2011	Change		
	millions of dollars		percent		millions of dollars			percent	
<b>Total</b>	<b>32,925</b>	<b>32,465</b>	<b>-460</b>	<b>-1.4</b>	<b>310,504</b>	<b>323,281</b>	<b>12,777</b>	<b>4.1</b>	<b>3.7</b>
<b>Agricultural and fishing products</b>	<b>3,265</b>	<b>3,112</b>	<b>-153</b>	<b>-4.7</b>	<b>31,312</b>	<b>30,435</b>	<b>-877</b>	<b>-2.8</b>	<b>-0.6</b>
Wheat	382	333	-49	-12.9	3,777	3,321	-455	-12.1	-4.5
Other agricultural and fishing products	2,883	2,779	-104	-3.6	27,535	27,114	-421	-1.5	-0.1
Live animals	105	112	7	6.3	1,682	1,124	-559	-33.2	-15.2
Fish and fish preparations	437	420	-17	-4.0	4,312	4,198	-114	-2.6	-2.8
Barley	11	43	33	311.2	233	182	-51	-21.9	65.3
Wheat flour	5	5	0	-6.9	63	53	-10	-15.7	-26.5
Other cereals unmilled	73	50	-23	-31.5	450	569	120	26.6	1.0
Other cereal preparations	223	219	-4	-2.0	2,061	2,150	89	4.3	5.3
Meat and meat preparations	429	420	-9	-2.1	4,391	4,113	-278	-6.3	-5.4
Alcoholic beverages	116	102	-14	-12.2	1,197	1,178	-19	-1.6	-10.2
Other food, feed, beverages and tobacco	962	899	-63	-6.5	8,834	9,244	410	4.6	5.2
Rapeseed	325	325	1	0.2	2,459	2,571	112	4.6	19.6
Other crude vegetable products	197	184	-13	-6.4	1,854	1,732	-122	-6.6	-24.3
<b>Energy products</b>	<b>5,017</b>	<b>4,825</b>	<b>-192</b>	<b>-3.8</b>	<b>45,731</b>	<b>48,840</b>	<b>3,109</b>	<b>6.8</b>	<b>9.6</b>
Crude petroleum	2,385	2,317	-68	-2.9	20,244	23,279	3,035	15.0	13.6
Natural gas	1,322	1,372	50	3.8	13,659	13,509	-151	-1.1	2.7
Other energy products	1,311	1,137	-174	-13.3	11,827	12,052	225	1.9	10.8
Coal and other bituminous substances	159	117	-42	-26.4	1,507	1,460	-47	-3.1	-12.2
Petroleum and coal products	912	721	-191	-20.9	8,408	8,239	-169	-2.0	-6.3
Electricity	240	299	59	24.4	1,912	2,353	441	23.1	142.5
<b>Forestry products</b>	<b>2,368</b>	<b>2,226</b>	<b>-143</b>	<b>-6.0</b>	<b>21,926</b>	<b>23,099</b>	<b>1,173</b>	<b>5.4</b>	<b>-1.9</b>
Lumber and sawmill products	956	965	9	0.9	8,513	9,398	884	10.4	5.6
Other crude wood products	87	100	13	15.2	703	906	203	28.8	29.2
Lumber	642	630	-11	-1.8	5,638	6,263	624	11.1	2.7
Other wood fabricated materials	228	235	7	3.0	2,172	2,229	57	2.6	5.6
Wood pulp and other wood products	683	580	-103	-15.1	6,181	6,547	366	5.9	-12.6
Newsprint and other paper and paperboard	728	680	-48	-6.6	7,231	7,155	-77	-1.1	-1.8
Newsprint paper	385	342	-43	-11.1	3,730	3,708	-23	-0.6	-4.3
Other paper and paperboard	344	338	-6	-1.6	3,501	3,447	-54	-1.5	0.9
<b>Industrial goods and materials</b>	<b>5,943</b>	<b>5,783</b>	<b>-160</b>	<b>-2.7</b>	<b>53,947</b>	<b>57,190</b>	<b>3,243</b>	<b>6.0</b>	<b>3.1</b>
Metal ores	610	710	100	16.4	4,924	5,799	875	17.8	2.9
Iron ores, concentrates and scrap	170	198	27	16.1	1,551	1,726	175	11.3	16.2
Copper ores, concentrates and scrap	122	129	7	5.7	660	926	265	40.2	19.6
Nickel ores, concentrates and scrap	137	176	39	28.8	1,073	1,206	134	12.5	3.8
Zinc ores, concentrates and scrap	22	8	-13	-60.7	125	139	14	11.5	-14.3
Other ores, concentrates and scrap	159	198	39	24.6	1,516	1,802	286	18.9	-14.5
Chemicals, plastics and fertilizers	1,993	1,944	-49	-2.5	18,012	19,478	1,465	8.1	6.1
Inorganic chemicals	191	212	21	10.9	1,864	2,014	150	8.0	10.6
Organic chemicals	294	276	-18	-6.1	3,087	2,993	-94	-3.0	-9.2
Fertilizers and fertilizer materials	288	260	-28	-9.8	2,147	2,541	393	18.3	16.9
Synthetic rubber and plastics	873	879	5	0.6	7,777	8,677	900	11.6	8.6
Other chemical products	347	318	-29	-8.3	3,138	3,253	115	3.7	3.7

Table 2-2 – continued

## Exports by commodity groupings, balance of payments basis, seasonally adjusted — Constant dollars, 2002

	September	October	Change		Year to date			October 2011/ October 2010	
	2011	2011			2010		2011		
	millions of dollars		percent		millions of dollars		percent		
<b>Metals and alloys</b>	<b>2,010</b>	<b>1,913</b>	<b>-97</b>	<b>-4.8</b>	<b>18,075</b>	<b>19,099</b>	<b>1,024</b>	<b>5.7</b>	<b>5.9</b>
Primary iron and steel	58	61	2	4.3	705	484	-220	-31.3	29.8
Steel bars, rods, plates, sheets	253	265	11	4.5	2,451	2,421	-30	-1.2	10.0
Other iron and steel and alloys	210	206	-3	-1.5	1,852	1,885	33	1.8	19.2
Aluminum including alloys	690	696	6	0.9	6,267	6,533	266	4.3	18.0
Copper and alloys	65	65	1	1.2	722	559	-163	-22.6	21.0
Nickel and alloys	142	123	-19	-13.6	831	1,274	443	53.3	-5.6
Precious metals and alloys	479	384	-95	-19.8	4,196	4,836	639	15.2	-17.4
Zinc and alloys	59	61	2	2.5	649	605	-44	-6.8	-5.5
Other non-ferrous metals and alloys	53	51	-2	-3.5	401	501	100	24.8	22.6
<b>Other industrial goods and materials</b>	<b>1,330</b>	<b>1,217</b>	<b>-113</b>	<b>-8.5</b>	<b>12,936</b>	<b>12,815</b>	<b>-121</b>	<b>-0.9</b>	<b>-5.2</b>
Asbestos unmanufactured	2	1	-1	-35.9	47	29	-18	-37.8	-79.6
Other crude animal products	66	75	9	13.6	777	717	-60	-7.7	1.1
Other crude non-metallic minerals	265	140	-125	-47.1	2,907	2,436	-470	-16.2	-40.2
Other crude materials, inedible	56	57	1	1.3	545	588	43	8.0	6.7
Metal fabricated basic products	309	310	1	0.3	2,803	2,942	139	5.0	8.0
Textile fabricated materials	186	183	-3	-1.7	1,919	1,922	3	0.2	-6.1
Non-metallic mineral basic products	132	138	6	4.8	1,288	1,330	42	3.3	11.3
Other fabricated materials	315	313	-2	-0.6	2,652	2,850	198	7.5	1.0
<b>Machinery and equipment</b>	<b>7,617</b>	<b>7,598</b>	<b>-18</b>	<b>-0.2</b>	<b>69,943</b>	<b>74,378</b>	<b>4,435</b>	<b>6.3</b>	<b>4.1</b>
Industrial and agricultural machinery	1,636	1,565	-71	-4.3	13,846	15,381	1,536	11.1	3.6
Industrial machinery	1,470	1,392	-78	-5.3	12,445	13,818	1,373	11.0	1.8
Agricultural machinery includ. tractors	166	173	8	4.5	1,400	1,563	163	11.6	20.8
Aircraft and other transportation equipment	1,838	1,895	58	3.1	17,729	18,597	868	4.9	13.3
Aircraft, engines, parts	1,471	1,543	72	4.9	14,544	14,848	304	2.1	17.8
Other transportation equipment	367	352	-15	-4.0	3,185	3,749	564	17.7	-3.1
Other machinery and equipment	4,143	4,138	-5	-0.1	38,369	40,399	2,031	5.3	0.5
Television, telecommunication equipment	908	869	-39	-4.3	8,203	8,319	116	1.4	-3.3
Office machines and equipment	938	992	54	5.7	8,881	9,931	1,050	11.8	5.3
Other equipment and tools	1,642	1,587	-55	-3.4	14,539	15,412	873	6.0	4.1
Other end products, inedible	655	690	35	5.4	6,746	6,738	-7	-0.1	-8.4
<b>Automotive products</b>	<b>6,452</b>	<b>6,648</b>	<b>196</b>	<b>3.0</b>	<b>63,593</b>	<b>65,702</b>	<b>2,109</b>	<b>3.3</b>	<b>3.5</b>
Passenger autos and chassis	4,529	4,671	142	3.1	45,726	46,753	1,027	2.2	2.7
Trucks and other motor vehicles	322	384	62	19.3	2,303	2,857	554	24.1	25.8
Motor vehicle parts	1,601	1,593	-8	-0.5	15,564	16,091	527	3.4	1.4
<b>Other consumer goods</b>	<b>1,375</b>	<b>1,321</b>	<b>-54</b>	<b>-3.9</b>	<b>13,195</b>	<b>12,906</b>	<b>-289</b>	<b>-2.2</b>	<b>13.3</b>
<b>Special transactions trade</b>	<b>233</b>	<b>251</b>	<b>18</b>	<b>7.6</b>	<b>3,093</b>	<b>2,661</b>	<b>-432</b>	<b>-14.0</b>	<b>-4.0</b>
<b>Unallocated balance of payments adjustments</b>	<b>655</b>	<b>701</b>	<b>46</b>	<b>7.0</b>	<b>7,765</b>	<b>8,071</b>	<b>306</b>	<b>3.9</b>	<b>-6.4</b>

**Table 3-1**  
**Domestic exports to selected countries, customs basis, not seasonally adjusted — October**

	Agricultural and fishing products	Energy products	Forestry products	Industrial goods	Machinery and equipment	Automotive products	Consumer goods	Special transactions trade	<b>Total</b>
millions of dollars									
<b>United States</b>									
2010	1,613.9	6,303.1	1,113.9	4,750.1	3,670.2	4,728.1	680.7	251.5	<b>23,111.5</b>
2011	1,902.8	8,234.7	1,137.4	5,487.7	3,957.2	5,101.8	858.3	248.6	<b>26,928.5</b>
<b>Mexico</b>									
2010	158.1	17.7	8.5	87.9	64.0	74.9	4.1	0.1	<b>415.2</b>
2011	255.2	0.7	9.2	99.3	64.8	68.0	5.6	1.2	<b>504.0</b>
<b>Japan</b>									
2010	349.2	121.0	119.4	228.1	66.5	6.7	9.8	1.8	<b>902.5</b>
2011	331.3	155.2	114.3	178.1	60.7	4.8	8.8	3.2	<b>856.5</b>
<b>European Union</b>									
<b>Germany</b>									
2010	44.0	13.6	8.7	131.9	100.7	2.9	18.1	2.6	<b>322.5</b>
2011	45.0	43.8	7.1	151.2	204.0	3.9	21.4	1.6	<b>477.9</b>
<b>France</b>									
2010	26.9	0.1	7.8	58.3	79.5	2.7	17.4	1.1	<b>193.9</b>
2011	37.1	0.3	12.9	64.7	120.9	3.5	22.3	1.6	<b>263.2</b>
<b>United Kingdom</b>									
2010	35.1	0.5	15.8	1,229.1	106.6	5.7	22.0	6.7	<b>1,421.2</b>
2011	30.2	5.0	25.9	968.6	127.5	5.1	16.3	4.4	<b>1,182.8</b>
<b>Italy</b>									
2010	51.5	26.0	33.9	62.0	27.2	0.9	7.5	0.8	<b>209.8</b>
2011	31.6	19.5	22.0	15.2	24.5	0.7	8.5	1.0	<b>122.9</b>
<b>Other European Union</b>									
2010	270.9	104.2	34.6	320.8	151.5	18.3	46.5	2.4	<b>949.2</b>
2011	188.2	126.9	26.3	378.2	149.5	34.0	42.3	2.2	<b>947.8</b>
<b>Total</b>									
2010	428.4	144.4	100.8	1,802.0	465.5	30.4	111.5	13.5	<b>3,096.6</b>
2011	332.0	195.5	94.2	1,577.9	626.4	47.1	110.7	10.8	<b>2,994.6</b>
<b>Newly industrialized countries</b>									
<b>South Korea</b>									
2010	24.4	113.8	29.4	120.6	50.0	3.4	4.6	0.4	<b>346.7</b>
2011	37.7	185.4	40.8	120.7	25.3	0.6	6.1	0.4	<b>417.2</b>
<b>Hong Kong</b>									
2010	32.2	0.0	8.7	47.9	51.6	0.8	9.5	1.5	<b>152.3</b>
2011	29.0	0.0	11.5	183.0	19.1	0.6	6.1	1.2	<b>250.6</b>
<b>Taiwan</b>									
2010	15.2	16.1	18.8	58.0	8.3	0.5	6.7	0.1	<b>123.8</b>
2011	11.7	0.1	20.4	82.5	7.8	0.0	4.7	0.1	<b>127.3</b>
<b>Singapore</b>									
2010	5.6	0.2	2.4	16.0	26.3	1.1	3.2	0.6	<b>55.4</b>
2011	3.8	0.2	0.6	16.3	31.9	1.8	3.0	0.5	<b>58.2</b>
<b>Total</b>									
2010	77.4	130.2	59.3	242.5	136.3	5.8	24.0	2.7	<b>678.2</b>
2011	82.3	185.7	73.4	402.6	84.2	3.1	19.9	2.1	<b>853.2</b>
<b>Other countries</b>									
2010	841.2	256.1	501.6	1,334.1	783.3	64.0	82.3	21.0	<b>3,883.6</b>
2011	1,003.4	260.6	508.7	1,688.9	733.8	87.4	100.9	30.9	<b>4,414.7</b>
<b>Total</b>									
2010	<b>3,468.3</b>	<b>6,972.5</b>	<b>1,903.5</b>	<b>8,444.7</b>	<b>5,186.0</b>	<b>4,909.9</b>	<b>912.3</b>	<b>290.5</b>	<b>32,087.9</b>
2011	<b>3,907.0</b>	<b>9,032.4</b>	<b>1,937.1</b>	<b>9,434.5</b>	<b>5,527.2</b>	<b>5,312.2</b>	<b>1,104.3</b>	<b>296.9</b>	<b>36,551.6</b>



Table 3-2

## Domestic exports to selected countries, customs basis, not seasonally adjusted — Year to date, January to October

	Agricultural and fishing products	Energy products	Forestry products	Industrial goods	Machinery and equipment	Automotive products	Consumer goods	Special transactions trade	Total
millions of dollars									
<b>United States</b>									
2010	15,597.8	71,545.3	11,527.7	45,241.6	33,931.0	43,684.3	8,030.7	2,656.6	<b>232,214.9</b>
2011	16,134.5	84,948.1	10,979.1	53,043.6	35,432.9	43,822.9	7,455.3	2,487.0	<b>254,303.4</b>
<b>Mexico</b>									
2010	1,120.8	87.6	109.5	850.4	623.8	705.3	61.8	9.8	<b>3,568.9</b>
2011	1,356.8	89.7	118.0	1,039.8	636.4	562.9	80.4	5.7	<b>3,889.7</b>
<b>Japan</b>									
2010	2,671.1	1,555.8	1,129.8	1,393.5	489.5	57.6	110.6	11.5	<b>7,419.5</b>
2011	3,163.0	1,813.4	1,136.8	1,876.3	564.1	43.6	89.1	15.4	<b>8,701.6</b>
<b>European Union</b>									
<b>Germany</b>									
2010	150.9	185.0	80.2	1,082.9	1,157.3	29.6	174.1	21.0	<b>2,880.9</b>
2011	159.5	218.2	66.1	993.0	1,367.5	38.5	180.0	18.3	<b>3,041.0</b>
<b>France</b>									
2010	123.1	30.4	117.1	397.7	750.2	29.7	190.8	21.8	<b>1,660.8</b>
2011	163.9	156.0	100.4	633.1	1,097.8	31.8	188.4	14.5	<b>2,386.0</b>
<b>United Kingdom</b>									
2010	290.7	80.3	180.5	9,653.6	1,581.5	43.2	172.6	63.0	<b>12,065.5</b>
2011	296.4	184.4	171.8	12,550.6	1,085.9	50.0	147.9	48.7	<b>14,535.8</b>
<b>Italy</b>									
2010	245.9	163.5	276.2	304.6	339.9	6.9	150.3	7.4	<b>1,494.6</b>
2011	363.9	228.8	240.7	304.0	338.9	8.7	82.6	2.9	<b>1,570.4</b>
<b>Other European Union</b>									
2010	899.9	648.4	264.2	2,880.5	2,027.6	139.2	492.9	42.9	<b>7,395.7</b>
2011	1,104.7	1,436.6	221.3	3,891.4	1,766.9	161.4	493.1	29.5	<b>9,104.8</b>
<b>Total</b>									
2010	1,710.5	1,107.6	918.2	14,319.2	5,856.5	248.6	1,180.7	156.2	<b>25,497.5</b>
2011	2,088.5	2,224.1	800.3	18,372.1	5,657.0	290.4	1,092.1	113.7	<b>30,638.1</b>
<b>Newly industrialized countries</b>									
<b>South Korea</b>									
2010	373.5	929.2	396.4	877.9	368.2	53.2	41.0	8.4	<b>3,047.7</b>
2011	820.4	1,535.0	432.6	969.3	326.7	14.8	59.3	6.1	<b>4,164.3</b>
<b>Hong Kong</b>									
2010	325.3	0.5	91.1	610.9	255.3	7.4	63.3	16.3	<b>1,370.0</b>
2011	314.2	0.4	114.0	1,255.2	327.3	6.0	64.0	5.4	<b>2,086.6</b>
<b>Taiwan</b>									
2010	139.8	142.0	203.6	376.3	113.9	2.4	36.6	1.1	<b>1,015.8</b>
2011	151.0	254.8	236.6	646.5	93.9	1.2	32.0	1.1	<b>1,417.1</b>
<b>Singapore</b>									
2010	50.2	5.0	15.6	150.0	275.0	17.9	36.6	9.9	<b>560.2</b>
2011	43.4	4.1	8.5	127.2	319.7	16.7	28.1	4.3	<b>552.0</b>
<b>Total</b>									
2010	888.8	1,076.8	706.7	2,015.2	1,012.4	81.0	177.4	35.6	<b>5,993.8</b>
2011	1,328.9	1,794.4	791.8	2,998.2	1,067.7	38.8	183.4	16.9	<b>8,220.0</b>
<b>Other countries</b>									
2010	7,243.9	1,796.6	4,121.1	11,091.9	6,812.1	564.6	1,179.4	243.9	<b>33,053.6</b>
2011	8,109.8	2,526.9	5,422.8	14,175.5	7,185.6	709.6	909.8	192.7	<b>39,232.6</b>
<b>Total</b>									
2010	<b>29,232.8</b>	<b>77,169.7</b>	<b>18,513.0</b>	<b>74,911.8</b>	<b>48,725.8</b>	<b>45,341.3</b>	<b>10,740.6</b>	<b>3,113.7</b>	<b>307,748.7</b>
2011	<b>32,181.4</b>	<b>93,396.5</b>	<b>19,248.8</b>	<b>91,505.6</b>	<b>50,543.9</b>	<b>45,468.2</b>	<b>9,810.2</b>	<b>2,831.3</b>	<b>344,986.0</b>

**Table 4**  
**Domestic exports by country, customs basis, not seasonally adjusted**

	October		January to October		Change
	2010	2011	2010	2011	January to October 2011/ January to October 2010
	millions of dollars				percent
<b>North America</b>					
Greenland	1.3	0.9	6.9	10.2	47.9
Mexico	415.2	504.0	3,568.9	3,889.7	9.0
Saint Pierre and Miquelon	1.2	1.2	12.2	14.3	17.3
United States	23,111.5	26,928.5	232,214.9	254,303.4	9.5
<b>Total</b>	<b>23,529.3</b>	<b>27,434.6</b>	<b>235,803.0</b>	<b>258,217.7</b>	<b>9.5</b>
<b>Western Europe</b>					
Andorra	0.0	0.0	0.1	0.0	-45.3
Austria	16.4	16.6	302.4	248.6	-17.8
Belgium	207.2	121.3	1,734.9	1,765.8	1.8
Denmark	19.9	15.0	223.6	195.1	-12.8
Faeroe Islands	0.2	0.0	0.4	0.5	30.2
Finland	46.9	92.6	321.4	567.7	76.6
France	193.9	263.2	1,660.8	2,386.0	43.7
Germany	322.5	477.9	2,880.9	3,041.0	5.6
Gibraltar	24.7	0.0	25.0	56.6	126.2
Greece	9.4	7.9	92.9	70.2	-24.4
Iceland	2.8	3.4	99.0	48.1	-51.4
Italy	209.8	122.9	1,494.6	1,570.4	5.1
Luxembourg	6.6	3.4	43.5	72.2	66.1
Malta	0.8	0.4	106.6	6.4	-94.0
Netherlands	372.5	474.3	2,476.6	3,889.7	57.1
Norway	323.1	271.1	2,082.6	2,380.8	14.3
Portugal	57.4	7.2	228.2	178.8	-21.7
Republic of Ireland (Eire)	19.7	16.6	271.9	307.5	13.1
Spain	66.8	76.2	611.7	713.0	16.6
Sweden	48.1	49.5	315.5	320.4	1.5
Switzerland	75.6	180.3	1,176.7	988.7	-16.0
United Kingdom	1,421.2	1,182.8	12,065.5	14,535.8	20.5
<b>Total</b>	<b>3,445.5</b>	<b>3,382.6</b>	<b>28,214.8</b>	<b>33,343.1</b>	<b>18.2</b>
<b>Other Europe</b>					
Albania	1.7	3.4	21.6	46.7	115.8
Armenia	2.2	1.9	8.3	13.6	62.8
Azerbaijan	1.3	1.7	12.0	9.8	-18.5
Belarus	0.0	0.1	1.2	1.3	11.3
Bosnia and Herzegovina	0.2	0.0	3.7	3.8	3.3
Bulgaria	17.5	14.8	94.5	171.3	81.2
Croatia	1.6	1.0	83.5	12.4	-85.1
Czech Republic	7.2	8.7	90.3	75.8	-16.1
Estonia	2.2	1.6	17.5	72.4	313.8
Georgia	3.0	2.7	12.5	17.7	41.1
Hungary	25.8	9.0	85.0	81.9	-3.7
Kazakhstan	10.9	10.6	111.6	118.2	5.9
Kyrgyzstan	0.5	1.8	3.7	7.3	98.3
Latvia	1.0	2.8	82.7	40.1	-51.5
Lithuania	2.7	3.1	25.9	40.4	56.1
Macedonia (Former Yugoslav Republic of Macedonia)	0.7	1.0	8.0	15.1	90.1
Montenegro	0.4	0.3	1.4	1.2	-11.9
Poland	13.9	20.4	123.0	168.7	37.1
Republic of Moldova	0.0	0.1	2.1	0.9	-59.2
Romania	4.0	3.6	84.9	49.5	-41.7
Russian Federation	103.7	129.5	800.4	1,092.5	36.5
Serbia	0.6	0.6	6.0	6.5	9.0
Slovakia	1.9	1.7	23.7	52.6	122.3
Slovenia	0.7	0.4	31.1	8.4	-73.0
Tajikistan	0.4	0.7	4.9	2.5	-48.2
Turkmenistan	1.5	1.0	4.0	10.5	165.2
Ukraine	18.4	13.2	109.2	110.4	1.1
Uzbekistan	0.5	1.5	5.0	6.6	32.3
<b>Total</b>	<b>224.4</b>	<b>237.2</b>	<b>1,857.6</b>	<b>2,238.3</b>	<b>20.5</b>

Table 4 – continued

## Domestic exports by country, customs basis, not seasonally adjusted

	October		January to October		Change
	2010	2011	2010	2011	January to October 2011/ January to October 2010
	millions of dollars				percent
<b>Middle East</b>					
Bahrain	1.4	2.6	58.4	53.0	-9.2
Cyprus	0.7	0.7	7.8	8.4	7.3
Egypt	116.8	47.9	480.6	560.9	16.7
Eritrea	0.1	0.0	2.1	3.2	48.5
Ethiopia	23.2	0.8	145.0	18.4	-87.3
Iran	5.4	7.0	83.3	65.9	-20.9
Iraq	4.9	10.3	216.7	106.4	-50.9
Israel	29.8	27.9	297.0	271.1	-8.7
Jordan	3.3	3.5	49.5	48.9	-1.2
Kuwait	4.4	7.4	71.0	79.6	12.2
Lebanon	4.2	4.7	53.5	61.8	15.6
Libya	12.6	0.4	106.6	37.7	-64.6
Oman	6.7	4.8	80.9	62.1	-23.2
Qatar	5.5	5.2	69.4	133.9	93.0
Saudi Arabia	119.6	100.5	648.9	671.7	3.5
Somalia	0.0	0.0	2.3	1.0	-54.4
Sudan	0.2	0.6	95.0	120.6	27.0
Syria	5.6	1.8	31.5	46.1	46.2
Turkey	96.2	115.1	669.3	1,014.9	51.6
United Arab Emirates	83.3	138.9	785.1	968.9	23.4
Yemen	1.5	0.4	15.8	7.8	-50.4
<b>Total</b>	<b>525.5</b>	<b>480.6</b>	<b>3,969.8</b>	<b>4,342.6</b>	<b>9.4</b>
<b>Other Africa</b>					
Algeria	22.9	18.4	267.2	174.0	-34.9
Angola	5.2	3.0	150.5	107.7	-28.4
Antarctica	0.2	0.2	0.2	0.4	83.7
Benin	0.8	1.0	10.3	10.1	-2.2
Botswana	0.2	0.0	3.0	3.2	4.2
Burkina Faso	1.5	3.6	16.3	21.8	33.9
Burundi	0.1	0.1	0.8	0.7	-12.9
Cameroon	4.7	0.5	20.8	19.8	-4.8
Cape Verde	0.1	0.1	0.9	1.8	93.7
Central African Republic	0.0	0.0	0.1	0.3	160.9
Chad	0.5	0.1	5.6	2.5	-54.8
Comoros	0.0	0.1	0.1	0.3	232.8
Congo	1.5	5.2	14.3	18.2	27.2
Democratic Republic of the Congo	1.4	1.2	10.5	15.5	48.5
Djibouti	0.1	0.2	4.1	0.9	-77.8
Equatorial Guinea	0.9	0.6	4.0	8.1	100.5
French Southern Territories	0.0	0.0	0.0	0.0	-29.3
Gabon	1.9	1.3	15.3	15.3	-0.1
Gambia	0.0	0.1	0.6	0.5	-8.1
Ghana	21.3	8.2	135.3	207.2	53.2
Guinea	1.4	1.1	6.6	19.7	199.6
Guinea-Bissau	0.0	0.0	0.0	0.1	...
Ivory Coast	3.4	1.3	16.0	12.1	-24.5
Kenya	5.5	3.6	58.2	59.7	2.7
Lesotho	0.0	0.0	0.1	0.1	-1.8
Liberia	0.3	0.2	10.1	9.7	-3.5
Madagascar	3.5	1.3	42.0	11.7	-72.0
Malawi	0.2	0.3	3.1	3.8	21.1
Mali	0.2	1.8	5.9	16.5	177.5
Mauritania	0.5	0.4	3.2	9.3	188.8
Mauritius	0.5	0.4	4.1	4.3	5.0
Morocco	4.0	9.2	123.6	232.1	87.8
Mozambique	1.1	0.7	10.6	9.2	-13.0
Namibia	0.3	0.1	9.6	4.4	-54.2
Niger	0.3	0.3	1.9	4.0	104.7
Nigeria	17.6	27.6	170.9	165.9	-2.9
Rwanda	0.0	0.1	0.9	0.8	-2.4
Saint Helena	0.0	0.0	0.0	0.0	417.9
Sao Tome and Principe	0.0	0.0	0.0	0.1	212.3
Senegal	0.6	0.7	21.1	23.2	9.8
Seychelles	0.1	0.4	0.8	3.9	355.1

Table 4 – continued

## Domestic exports by country, customs basis, not seasonally adjusted

	October		January to October		Change
	2010	2011	2010	2011	January to October 2011/ January to October 2010
	millions of dollars				percent
Sierra Leone	1.1	0.7	8.5	7.9	-7.3
South Africa	44.9	65.0	371.8	515.3	38.6
Swaziland	0.1	0.0	1.2	0.8	-37.7
Togo	0.8	0.2	8.8	11.6	31.6
Tunisia	9.6	26.6	51.2	75.1	46.5
Uganda	0.6	0.6	7.8	6.9	-12.2
United Republic of Tanzania	3.9	3.4	30.5	34.4	12.5
Western Sahara	0.0	0.0	0.0	0.0	-100.0
Zambia	2.3	1.1	24.0	24.9	3.8
Zimbabwe	0.7	0.7	4.6	6.5	41.1
<b>Total</b>	<b>167.1</b>	<b>191.5</b>	<b>1,657.5</b>	<b>1,882.3</b>	<b>13.6</b>
<b>Other Asia</b>					
Afghanistan	3.3	2.0	43.6	30.6	-29.9
Bangladesh	50.0	35.1	522.3	369.1	-29.3
Bhutan	0.0	0.0	1.6	0.1	-96.6
British Indian Ocean Territory	0.1	0.0	2.1	0.0	-99.0
Brunei Darussalam	0.4	0.4	10.1	2.3	-77.1
Cambodia	0.4	1.7	2.7	7.0	164.7
China	1,195.3	1,511.1	9,684.6	12,855.7	32.7
Hong Kong	152.3	250.6	1,370.0	2,086.6	52.3
India	194.8	256.1	1,644.7	1,989.3	20.9
Indonesia	82.4	140.5	791.3	1,369.4	73.1
Japan	902.5	856.5	7,419.5	8,701.6	17.3
Laos	0.1	0.0	1.6	6.2	288.0
Macao	0.1	0.3	1.9	2.3	21.0
Malaysia	47.7	36.8	608.1	615.1	1.1
Maldives	0.5	0.6	3.8	3.9	3.5
Mongolia	0.4	8.1	11.8	77.0	554.1
Myanmar	0.0	0.0	2.7	0.8	-70.3
Nepal	2.7	0.3	5.0	3.4	-31.8
North Korea	0.9	2.9	9.0	13.9	55.0
Pakistan	42.7	75.2	359.1	515.1	43.4
Philippines	50.5	29.1	539.0	471.1	-12.6
Singapore	55.4	58.2	560.2	552.0	-1.5
South Korea	346.7	417.2	3,047.7	4,164.3	36.6
Sri Lanka	27.4	27.4	260.0	272.6	4.8
Taiwan	123.8	127.3	1,015.8	1,417.1	39.5
Thailand	41.4	44.9	535.8	667.5	24.6
Timor-Leste	0.0	0.1	0.0	0.1	...
Viet Nam	14.9	21.8	205.9	238.5	15.8
<b>Total</b>	<b>3,336.9</b>	<b>3,904.0</b>	<b>28,660.0</b>	<b>36,432.8</b>	<b>27.1</b>
<b>Oceania</b>					
American Samoa	0.2	0.1	1.1	1.1	0.2
Australia	100.6	130.1	1,357.6	1,407.2	3.7
Christmas Island	0.1	0.0	0.8	0.3	-67.0
Cocos (Keeling) Islands	0.0	0.2	0.1	0.2	106.1
Cook Islands	0.0	0.0	0.1	0.2	225.2
Fiji	1.0	0.1	2.8	6.7	135.7
French Polynesia	2.3	0.8	10.1	8.6	-14.8
Guam	0.3	0.2	1.4	1.5	10.0
Heard Island and McDonald Islands	0.0	0.0	0.0	0.0	-100.0
Kiribati	0.0	0.0	0.1	0.1	-8.6
Nauru	0.0	0.0	1.3	0.0	-100.0
New Caledonia	18.3	0.9	32.2	7.2	-77.7
New Zealand	33.8	44.7	252.9	286.1	13.1
Niue	0.0	0.0	0.0	0.0	...
Norfolk Island	0.0	0.0	0.0	0.0	-100.0
Papua New Guinea	25.7	2.4	34.4	35.6	3.5
Pitcairn	0.0	0.0	0.1	0.0	-40.3
Samoa	0.0	0.0	0.3	0.2	-46.0
Solomon Islands	0.0	0.0	0.1	0.3	345.3
Tonga	1.0	0.0	4.4	0.2	-95.7
United States Minor Outlying Islands	2.2	1.1	12.5	9.6	-23.8
Vanuatu	0.1	0.1	1.4	0.8	-38.9
Wallis and Futuna	0.0	0.0	0.0	0.0	...
<b>Total</b>	<b>185.5</b>	<b>180.6</b>	<b>1,713.6</b>	<b>1,765.8</b>	<b>3.0</b>

Table 4 – continued

## Domestic exports by country, customs basis, not seasonally adjusted

	October		January to October		Change
	2010	2011	2010	2011	January to October 2011/ January to October 2010
	millions of dollars				percent
<b>South America</b>					
Argentina	42.9	59.1	218.9	413.0	88.7
Bolivia	1.2	0.9	38.8	10.9	-71.8
Brazil	220.9	232.8	2,103.1	2,335.8	11.1
Chile	40.9	102.0	426.5	609.3	42.9
Colombia	61.4	48.1	502.0	556.3	10.8
Ecuador	24.5	23.3	223.6	232.4	3.9
Falkland Islands (Malvinas)	0.0	0.0	0.1	0.1	-51.4
Guyana	3.7	5.7	21.9	30.2	38.0
Paraguay	0.8	1.9	13.7	11.0	-19.3
Peru	28.3	43.2	364.0	415.2	14.1
Suriname	0.8	0.7	8.3	9.7	17.4
Uruguay	26.7	33.2	103.7	80.1	-22.8
Venezuela	68.2	39.6	422.1	484.7	14.8
<b>Total</b>	<b>520.3</b>	<b>590.5</b>	<b>4,446.7</b>	<b>5,188.9</b>	<b>16.7</b>
<b>Central America Antilles</b>					
Anguilla	0.0	0.7	0.7	2.2	211.5
Antigua and Barbuda	1.6	0.9	16.7	8.5	-49.1
Aruba	0.4	0.2	25.4	4.2	-83.4
Bahamas	3.4	1.2	96.2	44.3	-53.9
Barbados	3.8	2.9	30.3	36.0	18.9
Belize	0.1	0.3	4.3	3.9	-9.3
Bermuda	3.0	2.5	31.6	69.3	119.2
British Virgin Islands	0.1	0.3	21.1	48.0	127.3
Cayman Islands	0.3	0.6	5.7	5.9	3.8
Costa Rica	8.2	38.8	76.6	136.6	78.2
Cuba	36.9	19.3	263.5	302.2	14.7
Dominica	0.2	0.5	4.0	3.0	-25.8
Dominican Republic	21.6	9.2	154.6	120.9	-21.8
El Salvador	1.9	3.6	28.7	29.7	3.7
Grenada	0.4	0.3	4.2	3.4	-19.5
Guatemala	5.3	11.3	70.6	93.9	33.1
Haiti	4.4	3.2	37.9	30.6	-19.1
Honduras	4.0	2.4	27.1	32.7	20.7
Jamaica	8.1	7.3	110.7	82.9	-25.1
Montserrat	0.0	0.1	0.2	0.3	52.5
Netherlands Antilles	1.7	1.9	16.6	97.3	487.8
Nicaragua	8.5	3.6	26.1	28.1	7.7
Panama	6.4	8.5	106.6	86.3	-19.0
Saint Kitts and Nevis	0.3	1.1	5.0	4.8	-3.9
Saint Lucia	0.5	0.6	5.7	7.2	27.8
Saint Vincent and the Grenadines	1.0	0.8	8.0	5.9	-26.1
Trinidad and Tobago	31.0	27.7	244.3	284.6	16.5
Turks and Caicos Islands	0.2	0.1	3.6	1.6	-55.6
<b>Total</b>	<b>153.4</b>	<b>149.9</b>	<b>1,425.7</b>	<b>1,574.4</b>	<b>10.4</b>
<b>All countries</b>	<b>32,087.9</b>	<b>36,551.6</b>	<b>307,748.7</b>	<b>344,986.0</b>	<b>12.1</b>

**Table 5-1**  
**Exports by province of origin, customs basis, not seasonally adjusted — October**

	Agricultural and fishing products	Energy products	Forestry products	Industrial goods	Machinery and equipment	Automotive products	Consumer goods	Special transactions trade	<b>Total</b>
millions of dollars									
<b>Domestic exports</b>									
Newfoundland and Labrador									
2010	52.5	546.7	5.8	299.6	2.5	0.2	0.1	1.5	<b>908.9</b>
2011	45.3	744.1	12.7	446.3	2.3	0.1	0.2	1.4	<b>1,252.4</b>
Prince Edward Island									
2010	46.5	0.0	0.0	1.8	5.6	0.0	4.6	9.4	<b>68.1</b>
2011	43.2	0.0	0.0	0.9	8.0	0.4	4.6	7.5	<b>64.6</b>
Nova Scotia									
2010	77.3	39.9	81.8	43.9	123.9	4.0	5.5	2.8	<b>379.0</b>
2011	90.7	16.7	54.8	44.3	125.0	5.5	5.6	3.0	<b>345.6</b>
New Brunswick									
2010	109.1	559.1	121.5	101.6	25.9	3.3	12.9	3.6	<b>937.1</b>
2011	121.4	625.0	113.5	59.9	26.6	3.8	11.8	3.6	<b>965.6</b>
Quebec									
2010	539.3	101.6	517.0	1,695.2	1,417.6	184.2	296.4	67.5	<b>4,818.7</b>
2011	528.5	216.3	539.0	1,965.8	1,761.3	280.5	357.1	76.6	<b>5,725.1</b>
Ontario									
2010	876.2	171.4	223.9	3,912.8	2,742.5	4,579.0	502.3	129.9	<b>13,137.9</b>
2011	911.2	242.2	251.4	4,199.1	2,708.2	4,868.9	626.0	127.5	<b>13,934.5</b>
Manitoba									
2010	334.6	90.4	15.9	208.2	154.8	48.5	26.5	29.2	<b>908.3</b>
2011	422.8	244.0	25.1	211.6	184.1	56.2	32.9	24.7	<b>1,201.3</b>
Saskatchewan									
2010	678.4	521.3	20.4	550.4	42.9	3.9	0.8	3.6	<b>1,821.6</b>
2011	875.0	910.7	21.7	928.3	53.1	4.8	0.8	3.7	<b>2,798.1</b>
Alberta									
2010	511.4	4,273.8	170.2	848.2	398.9	64.0	14.0	24.9	<b>6,305.3</b>
2011	630.4	5,211.6	137.7	987.8	367.2	68.1	15.0	27.6	<b>7,445.4</b>
British Columbia									
2010	243.0	668.3	747.1	583.9	270.5	22.7	49.1	18.2	<b>2,602.9</b>
2011	238.7	821.8	781.3	571.3	288.9	23.7	50.5	21.1	<b>2,797.2</b>
Yukon, Northwest Territories and Nunavut <sup>1</sup>									
2010	0.0	0.0	0.0	199.0	0.8	0.0	0.1	0.0	<b>200.0</b>
2011	0.0	0.0	0.0	19.1	2.4	0.1	0.0	0.0	<b>21.7</b>
<b>Total</b>									
2010	<b>3,468.3</b>	<b>6,972.5</b>	<b>1,903.5</b>	<b>8,444.7</b>	<b>5,186.0</b>	<b>4,909.9</b>	<b>912.3</b>	<b>290.5</b>	<b>32,087.9</b>
2011	<b>3,907.0</b>	<b>9,032.4</b>	<b>1,937.1</b>	<b>9,434.5</b>	<b>5,527.2</b>	<b>5,312.2</b>	<b>1,104.3</b>	<b>296.9</b>	<b>36,551.6</b>
<b>Re-exports</b>									
2010	<b>56.7</b>	<b>64.6</b>	<b>6.0</b>	<b>201.9</b>	<b>868.3</b>	<b>94.0</b>	<b>209.3</b>	<b>736.0</b>	<b>2,236.9</b>
2011	<b>70.4</b>	<b>0.9</b>	<b>7.1</b>	<b>387.1</b>	<b>984.4</b>	<b>108.6</b>	<b>286.8</b>	<b>657.2</b>	<b>2,502.4</b>
<b>Total exports</b>									
2010	<b>3,525.0</b>	<b>7,037.1</b>	<b>1,909.6</b>	<b>8,646.6</b>	<b>6,054.4</b>	<b>5,004.0</b>	<b>1,121.6</b>	<b>1,026.6</b>	<b>34,324.7</b>
2011	<b>3,977.4</b>	<b>9,033.4</b>	<b>1,944.1</b>	<b>9,821.6</b>	<b>6,511.6</b>	<b>5,420.8</b>	<b>1,391.1</b>	<b>954.1</b>	<b>39,054.0</b>

1. Data for the current month do not include some exports from the Harmonized System, Chapter 71, "Natural/cultured pearls, precious stones and metals, coins, etc." for reasons relating to timing.

**Table 5-2**  
**Exports by province of origin, customs basis, not seasonally adjusted — Year to date, January to October**

	Agricultural and fishing products	Energy products	Forestry products	Industrial goods	Machinery and equipment	Automotive products	Consumer goods	Special transactions trade	Total
millions of dollars									
<b>Domestic exports</b>									
Newfoundland and Labrador									
2010	701.1	4,905.3	92.6	1,595.2	36.5	1.6	1.2	22.8	<b>7,356.4</b>
2011	795.0	6,415.4	131.0	2,427.5	31.8	1.8	1.3	21.4	<b>9,825.1</b>
Prince Edward Island									
2010	386.5	1.1	6.5	21.6	57.7	3.0	32.6	67.1	<b>576.0</b>
2011	388.3	0.0	0.2	16.8	67.6	2.4	31.5	70.8	<b>577.6</b>
Nova Scotia									
2010	775.6	419.9	713.0	418.7	1,163.4	45.6	49.3	31.6	<b>3,617.0</b>
2011	923.9	410.7	763.6	471.7	1,159.8	53.1	48.6	35.0	<b>3,866.5</b>
New Brunswick									
2010	1,025.0	6,938.9	1,134.7	921.7	242.2	20.9	191.7	36.6	<b>10,511.6</b>
2011	1,184.9	8,897.5	1,090.5	1,017.9	262.6	35.5	126.2	34.5	<b>12,649.8</b>
Quebec									
2010	3,797.5	2,225.0	5,047.1	16,046.0	14,445.8	1,351.9	3,419.8	843.7	<b>47,176.9</b>
2011	4,169.3	2,650.1	4,931.4	18,586.3	14,921.0	1,721.8	2,979.1	710.4	<b>50,669.3</b>
Ontario									
2010	6,867.9	2,064.0	2,303.5	33,300.1	25,054.0	42,874.6	6,169.2	1,350.8	<b>119,984.0</b>
2011	7,221.9	2,467.1	2,405.0	41,423.0	25,469.3	42,234.1	5,655.1	1,268.1	<b>128,143.6</b>
Manitoba									
2010	3,048.0	703.8	176.4	1,918.8	1,584.6	373.2	292.7	271.0	<b>8,368.3</b>
2011	3,372.9	1,664.2	196.6	2,602.4	1,784.3	409.7	398.4	224.6	<b>10,653.0</b>
Saskatchewan									
2010	5,885.5	7,261.4	185.3	5,493.1	583.9	35.3	9.4	38.2	<b>19,492.1</b>
2011	6,962.3	8,693.4	217.4	7,932.2	534.5	51.5	9.6	36.7	<b>24,437.5</b>
Alberta									
2010	4,715.3	46,062.3	1,760.5	8,533.6	3,048.5	416.5	105.9	241.8	<b>64,884.5</b>
2011	5,144.3	53,937.6	1,654.0	9,831.2	3,614.0	732.9	103.1	219.4	<b>75,236.4</b>
British Columbia									
2010	2,028.9	6,587.8	7,093.1	4,748.9	2,499.5	218.4	468.4	209.6	<b>23,854.5</b>
2011	2,017.5	8,260.4	7,858.9	5,575.0	2,689.5	225.0	457.0	209.9	<b>27,293.2</b>
Yukon, Northwest Territories and Nunavut <sup>1</sup>									
2010	1.6	0.2	0.4	1,914.1	9.7	0.4	0.3	0.6	<b>1,927.3</b>
2011	1.3	0.1	0.1	1,621.6	9.5	0.5	0.3	0.4	<b>1,633.9</b>
<b>Total</b>									
2010	<b>29,232.8</b>	<b>77,169.7</b>	<b>18,513.0</b>	<b>74,911.8</b>	<b>48,725.8</b>	<b>45,341.3</b>	<b>10,740.6</b>	<b>3,113.7</b>	<b>307,748.7</b>
2011	<b>32,181.4</b>	<b>93,396.5</b>	<b>19,248.8</b>	<b>91,505.6</b>	<b>50,543.9</b>	<b>45,468.2</b>	<b>9,810.2</b>	<b>2,831.3</b>	<b>344,986.0</b>
<b>Re-exports</b>									
2010	<b>488.1</b>	<b>305.7</b>	<b>65.7</b>	<b>2,328.1</b>	<b>8,609.3</b>	<b>915.1</b>	<b>1,764.9</b>	<b>6,048.1</b>	<b>20,525.0</b>
2011	<b>471.4</b>	<b>383.2</b>	<b>67.7</b>	<b>3,667.5</b>	<b>9,095.4</b>	<b>993.8</b>	<b>2,349.7</b>	<b>6,598.7</b>	<b>23,627.3</b>
<b>Total exports</b>									
2010	<b>29,720.9</b>	<b>77,475.4</b>	<b>18,578.7</b>	<b>77,239.9</b>	<b>57,335.0</b>	<b>46,256.4</b>	<b>12,505.5</b>	<b>9,161.8</b>	<b>328,273.7</b>
2011	<b>32,652.8</b>	<b>93,779.8</b>	<b>19,316.5</b>	<b>95,173.2</b>	<b>59,639.2</b>	<b>46,462.0</b>	<b>12,159.9</b>	<b>9,430.0</b>	<b>368,613.4</b>

1. Data for the current month do not include some exports from the Harmonized System Chapter 71, "Natural/cultured pearls, precious stones and metals, coins, etc." for reasons relating to timing.

**Table 6-1**  
**Imports by commodity groupings, balance of payments basis, seasonally adjusted — Current dollars**

	September	October	Change		Year to date			October 2011/ October 2010	
	2011	2011			2010	2011	Change	2010	2010
	millions of dollars		percent		millions of dollars			percent	
<b>Total</b>	<b>38,533</b>	<b>39,257</b>	<b>723</b>	<b>1.9</b>	<b>343,383</b>	<b>377,787</b>	<b>34,404</b>	<b>10.0</b>	<b>10.7</b>
<b>Agricultural and fishing products</b>	<b>2,760</b>	<b>2,755</b>	<b>-5</b>	<b>-0.2</b>	<b>24,485</b>	<b>26,990</b>	<b>2,505</b>	<b>10.2</b>	<b>10.0</b>
Fruits and vegetables	753	753	1	0.1	6,886	7,400	514	7.5	7.8
Fresh fruits and berries	265	263	-1	-0.5	2,452	2,580	128	5.2	5.7
Dried fruits, fruits and fruit preparations	132	132	0	0.3	1,136	1,289	153	13.5	10.1
Fresh vegetables	196	189	-7	-3.5	1,829	1,907	78	4.3	4.9
Other vegetables and vegetable preparations	160	168	8	5.2	1,470	1,624	154	10.5	13.1
Other agricultural and fishing products	2,007	2,002	-6	-0.3	17,598	19,590	1,992	11.3	10.9
Live animals	15	23	7	45.6	163	182	19	12.0	35.9
Meat and meat preparations	212	216	4	1.8	1,771	2,080	309	17.4	15.3
Fish and marine animals	193	195	2	0.9	1,673	1,912	239	14.3	8.5
Cocoa, coffee, tea and other food preparations	475	487	12	2.4	4,146	4,704	558	13.5	13.7
Dairy produce, eggs and honey	55	53	-2	-4.5	490	529	39	8.0	4.5
Corn (maize) shelled	41	32	-8	-20.5	353	321	-31	-8.8	39.5
Other cereals and cereal preparations	194	187	-7	-3.8	1,766	1,845	78	4.4	1.8
Sugar and sugar preparations	176	193	18	10.1	1,434	1,821	387	26.9	36.9
Fodder, feed, excluding unmilled cereal	120	125	5	4.1	1,156	1,196	40	3.5	7.2
Beverages	330	310	-20	-6.1	3,078	3,178	100	3.2	1.5
Tobacco	32	34	1	4.3	351	304	-47	-13.3	-22.6
Crude vegetable products	162	146	-16	-9.7	1,207	1,507	299	24.8	14.7
Cotton	1	1	0	21.0	10	10	0	4.3	-22.7
<b>Energy products</b>	<b>4,374</b>	<b>4,506</b>	<b>132</b>	<b>3.0</b>	<b>33,370</b>	<b>42,924</b>	<b>9,554</b>	<b>28.6</b>	<b>30.8</b>
Crude petroleum	2,255	2,515	260	11.5	19,728	22,936	3,209	16.3	56.6
Other energy products	2,119	1,991	-128	-6.0	13,642	19,987	6,345	46.5	8.3
Coal and other related products	482	578	97	20.1	4,375	4,652	277	6.3	35.6
Petroleum and coal products	1,637	1,413	-225	-13.7	9,267	15,336	6,069	65.5	0.0
<b>Forestry products</b>	<b>218</b>	<b>216</b>	<b>-2</b>	<b>-1.0</b>	<b>2,225</b>	<b>2,073</b>	<b>-152</b>	<b>-6.8</b>	<b>0.2</b>
Forestry products	218	216	-2	-1.0	2,225	2,073	-152	-6.8	0.2
Crude wood products	26	28	1	4.9	352	285	-66	-18.9	-25.5
Wood fabricated materials	192	188	-3	-1.8	1,873	1,787	-86	-4.6	5.6
<b>Industrial goods and materials</b>	<b>8,592</b>	<b>8,596</b>	<b>4</b>	<b>0.0</b>	<b>71,671</b>	<b>81,236</b>	<b>9,566</b>	<b>13.3</b>	<b>16.4</b>
Metals and metal ores	3,513	3,580	68	1.9	26,910	33,222	6,312	23.5	24.9
Metals in ores, concentrates and scrap	757	733	-24	-3.2	5,811	7,137	1,326	22.8	14.7
Steel bars, rods, plates, sheets	555	552	-3	-0.5	5,395	5,866	471	8.7	14.0
Other iron and steel products	459	446	-13	-2.8	3,629	4,234	606	16.7	21.2
Precious metals including alloys	1,366	1,468	101	7.4	8,490	12,147	3,657	43.1	41.5
Other non-ferrous metals and alloys	375	381	6	1.6	3,586	3,838	252	7.0	12.4
Chemicals and plastics	2,845	2,754	-91	-3.2	24,104	26,177	2,073	8.6	15.5
Organic chemicals	642	626	-16	-2.5	5,766	5,771	6	0.1	12.2
Plastic materials	939	944	5	0.5	8,406	9,009	603	7.2	10.8
Other chemicals and related products	1,263	1,184	-79	-6.3	9,933	11,397	1,464	14.7	21.4
Other industrial goods and materials	2,235	2,262	27	1.2	20,656	21,837	1,181	5.7	6.0
Crude animal products	22	20	-2	-10.3	202	224	22	11.0	9.5
Wool and man-made fibres	21	21	0	-0.8	208	218	9	4.5	8.1
Crude non-metallic minerals	71	71	0	0.4	685	697	11	1.6	6.8
Textile fabricated materials	216	215	-2	-0.8	1,955	2,108	152	7.8	7.5
Metal fabricated basic products	936	972	36	3.8	8,089	9,133	1,045	12.9	13.0
Rubber fabricated materials	95	100	5	5.5	830	937	107	12.9	17.6
Oils, fats, animal and vegetable	114	112	-2	-2.1	1,026	1,024	-1	-0.1	-1.1
Non-metallic minerals	322	312	-10	-3.0	3,020	3,108	88	2.9	1.7
Other fabricated materials	438	440	2	0.4	4,642	4,388	-253	-5.5	-5.3



Table 6-1 – continued

## Imports by commodity groupings, balance of payments basis, seasonally adjusted — Current dollars

	September 2011	October 2011	Change		Year to date			October 2011/ October 2010	
					2010	2011	Change		
	millions of dollars		percent		millions of dollars			percent	
<b>Machinery and equipment</b>	<b>10,287</b>	<b>10,676</b>	<b>389</b>	<b>3.8</b>	<b>94,350</b>	<b>103,127</b>	<b>8,777</b>	<b>9.3</b>	<b>5.2</b>
Industrial and agricultural machinery	3,097	3,104	7	0.2	25,059	29,627	4,569	18.2	16.2
Engines, turbines and electric motors	353	361	8	2.3	3,732	3,533	-199	-5.3	-8.8
Drilling mining machinery	197	210	13	6.5	1,465	2,508	1,043	71.2	24.7
Excavating machinery	348	299	-49	-14.0	2,248	2,879	631	28.1	21.4
Metal working machinery	174	165	-9	-5.3	1,357	1,777	420	30.9	3.0
Other industrial machinery	1,590	1,598	8	0.5	12,639	14,828	2,189	17.3	18.4
Agricultural machinery including tractors	436	472	36	8.3	3,619	4,103	484	13.4	34.0
Aircraft and other transportation equipment	1,227	1,355	127	10.4	12,019	13,230	1,211	10.1	-9.9
Aircraft, engines, parts	680	724	44	6.5	7,189	7,466	277	3.9	-14.9
Other transportation equipment and parts	548	631	83	15.2	4,830	5,764	934	19.3	-3.3
Office machines and equipment	1,105	1,164	59	5.3	11,023	11,324	301	2.7	4.0
Other machinery and equipment	4,857	5,053	196	4.0	46,249	48,945	2,696	5.8	4.1
Other communication and related equipment	1,702	1,844	142	8.3	16,983	18,085	1,103	6.5	2.3
Other equipment and tools	3,155	3,210	54	1.7	29,266	30,860	1,594	5.4	5.1
<b>Automotive products</b>	<b>5,946</b>	<b>6,054</b>	<b>107</b>	<b>1.8</b>	<b>57,847</b>	<b>59,535</b>	<b>1,688</b>	<b>2.9</b>	<b>8.4</b>
Passenger autos and chassis	1,855	2,008	153	8.2	18,538	18,971	433	2.3	12.5
Trucks and other motor vehicles	1,601	1,501	-101	-6.3	14,493	15,726	1,233	8.5	11.9
Motor vehicle parts	2,490	2,545	55	2.2	24,816	24,839	23	0.1	3.6
<b>Other consumer goods</b>	<b>5,051</b>	<b>5,046</b>	<b>-5</b>	<b>-0.1</b>	<b>47,940</b>	<b>49,329</b>	<b>1,389</b>	<b>2.9</b>	<b>1.2</b>
Apparel and footwear	1,041	1,042	1	0.1	9,190	10,148	958	10.4	-1.6
Apparel and apparel accessories	869	871	2	0.2	7,623	8,451	828	10.9	2.5
Footwear	172	171	-1	-0.5	1,568	1,698	130	8.3	-18.0
Miscellaneous consumer goods	4,010	4,004	-6	-0.1	38,749	39,180	431	1.1	1.9
Television, radios, phonographs	126	132	7	5.2	1,308	1,279	-29	-2.2	-1.0
Printed matter	283	282	-1	-0.3	2,891	2,812	-79	-2.7	-0.3
Watches, sporting goods and toys	466	487	20	4.4	5,106	4,855	-251	-4.9	-7.1
House furnishings	746	758	12	1.6	7,349	7,281	-68	-0.9	1.4
Photographic goods	218	221	3	1.5	2,170	2,209	39	1.8	-9.7
Miscellaneous end products	2,171	2,124	-47	-2.2	19,924	20,743	819	4.1	6.4
<b>Special transactions trade</b>	<b>517</b>	<b>597</b>	<b>80</b>	<b>15.5</b>	<b>4,145</b>	<b>4,701</b>	<b>556</b>	<b>13.4</b>	<b>28.4</b>
<b>Unallocated balance of payments adjustments</b>	<b>788</b>	<b>811</b>	<b>23</b>	<b>2.9</b>	<b>7,351</b>	<b>7,873</b>	<b>522</b>	<b>7.1</b>	<b>9.4</b>

**Table 6-2**  
**Imports by commodity groupings, balance of payments basis, seasonally adjusted — Constant dollars, 2002**

	September	October	Change		Year to date			October 2011/ October 2010	
	2011	2011			2010	2011	Change		
	millions of dollars		percent		millions of dollars			percent	
<b>Total</b>	<b>41,925</b>	<b>42,468</b>	<b>543</b>	<b>1.3</b>	<b>390,305</b>	<b>423,772</b>	<b>33,467</b>	<b>8.6</b>	<b>4.7</b>
<b>Agricultural and fishing products</b>	<b>2,673</b>	<b>2,668</b>	<b>-5</b>	<b>-0.2</b>	<b>24,668</b>	<b>26,841</b>	<b>2,173</b>	<b>8.8</b>	<b>3.8</b>
Fruits and vegetables	719	739	20	2.8	6,955	7,382	427	6.1	-4.4
Fresh fruits and berries	260	268	8	3.2	2,557	2,700	143	5.6	-5.6
Dried fruits, fruits and fruit preparations	119	119	0	-0.1	1,145	1,207	62	5.4	-3.6
Fresh vegetables	196	207	11	5.8	1,810	1,946	136	7.5	-3.1
Other vegetables and vegetable preparations	144	145	1	0.5	1,443	1,529	86	6.0	-4.4
Other agricultural and fishing products	1,954	1,929	-25	-1.3	17,713	19,459	1,746	9.9	7.4
Live animals	15	21	6	40.3	161	176	16	9.7	28.4
Meat and meat preparations	191	186	-5	-2.7	1,722	1,933	210	12.2	9.0
Fish and marine animals	269	252	-17	-6.2	2,345	2,437	92	3.9	8.1
Cocoa, coffee, tea and other food preparations	533	541	9	1.6	4,167	5,335	1,168	28.0	23.7
Dairy produce, eggs and honey	51	46	-6	-10.9	540	514	-27	-4.9	-15.6
Corn (maize) shelled	22	16	-6	-25.6	334	189	-144	-43.3	3.5
Other cereals and cereal preparations	149	160	10	7.0	1,495	1,457	-38	-2.6	-1.8
Sugar and sugar preparations	158	169	11	6.9	1,395	1,729	334	23.9	23.6
Fodder, feed, excluding unmilled cereal	98	100	2	2.6	984	1,007	23	2.4	4.3
Beverages	303	281	-21	-7.0	2,866	3,013	146	5.1	-1.8
Tobacco	37	38	1	2.8	423	363	-60	-14.3	-27.8
Crude vegetable products	128	117	-11	-8.5	1,266	1,294	28	2.2	-11.9
Cotton	1	1	0	24.0	13	12	-2	-12.0	-28.8
<b>Energy products</b>	<b>1,968</b>	<b>2,072</b>	<b>103</b>	<b>5.2</b>	<b>18,326</b>	<b>19,051</b>	<b>725</b>	<b>4.0</b>	<b>10.4</b>
Crude petroleum	805	923	118	14.7	9,283	7,714	-1,570	-16.9	23.8
Other energy products	1,164	1,149	-15	-1.3	9,043	11,338	2,295	25.4	1.6
Coal and other related products	453	521	67	14.8	3,882	4,550	669	17.2	41.2
Petroleum and coal products	710	628	-82	-11.6	5,161	6,787	1,626	31.5	-17.6
<b>Forestry products</b>	<b>293</b>	<b>287</b>	<b>-6</b>	<b>-2.1</b>	<b>2,893</b>	<b>2,819</b>	<b>-74</b>	<b>-2.6</b>	<b>3.0</b>
Forestry products	293	287	-6	-2.1	2,893	2,819	-74	-2.6	3.0
Crude wood products	39	40	1	2.3	512	427	-85	-16.6	-23.4
Wood fabricated materials	254	247	-7	-2.8	2,381	2,392	11	0.4	9.1
<b>Industrial goods and materials</b>	<b>6,879</b>	<b>6,803</b>	<b>-76</b>	<b>-1.1</b>	<b>65,123</b>	<b>68,594</b>	<b>3,470</b>	<b>5.3</b>	<b>4.2</b>
Metals and metal ores	2,138	2,190	52	2.4	18,728	20,662	1,933	10.3	17.3
Metals in ores, concentrates and scrap	370	416	46	12.5	3,241	3,535	295	9.1	17.7
Steel bars, rods, plates, sheets	416	417	1	0.3	4,445	4,604	159	3.6	6.4
Other iron and steel products	304	293	-11	-3.7	2,625	2,879	255	9.7	12.4
Precious metals including alloys	705	708	3	0.4	4,694	6,031	1,337	28.5	33.9
Other non-ferrous metals and alloys	343	356	13	3.8	3,723	3,612	-112	-3.0	7.2
Chemicals and plastics	2,303	2,194	-109	-4.7	23,083	23,235	151	0.7	-1.6
Organic chemicals	376	380	4	1.1	4,248	3,701	-547	-12.9	-11.1
Plastic materials	902	901	0	0.0	8,926	9,094	168	1.9	0.5
Other chemicals and related products	1,025	913	-113	-11.0	9,910	10,440	530	5.3	0.8
Other industrial goods and materials	2,438	2,419	-19	-0.8	23,312	24,697	1,386	5.9	-0.5
Crude animal products	19	18	-1	-4.0	228	214	-14	-6.1	2.4
Wool and man-made fibres	23	23	0	-1.6	268	256	-12	-4.6	-7.9
Crude non-metallic minerals	57	53	-4	-6.2	567	551	-16	-2.8	3.2
Textile fabricated materials	279	271	-8	-2.9	2,608	2,798	191	7.3	1.1
Metal fabricated basic products	958	984	26	2.7	8,628	9,765	1,137	13.2	6.7
Rubber fabricated materials	106	108	2	2.0	1,010	1,111	101	10.0	3.3
Oils, fats, animal and vegetable	85	91	6	7.0	998	905	-94	-9.4	-11.6
Non-metallic minerals	388	361	-27	-7.0	3,648	3,850	202	5.5	-2.6
Other fabricated materials	523	510	-13	-2.5	5,356	5,248	-108	-2.0	-10.4

Table 6-2 – continued

## Imports by commodity groupings, balance of payments basis, seasonally adjusted — Constant dollars, 2002

	September 2011	October 2011	Change		Year to date			October 2011/ October 2010	
					2010	2011	Change		
	millions of dollars		percent		millions of dollars			percent	
<b>Machinery and equipment</b>	<b>15,392</b>	<b>15,781</b>	<b>389</b>	<b>2.5</b>	<b>136,676</b>	<b>157,594</b>	<b>20,918</b>	<b>15.3</b>	<b>6.0</b>
Industrial and agricultural machinery	3,762	3,688	-75	-2.0	30,750	37,268	6,519	21.2	11.6
Engines, turbines and electric motors	435	434	-1	-0.3	4,627	4,477	-150	-3.2	-12.6
Drilling mining machinery	219	227	8	3.5	1,638	3,143	1,505	91.9	19.5
Excavating machinery	427	355	-73	-17.0	2,811	3,685	874	31.1	14.7
Metal working machinery	224	208	-15	-6.9	1,745	2,348	603	34.6	-0.5
Other industrial machinery	1,900	1,883	-17	-0.9	15,308	18,251	2,943	19.2	14.2
Agricultural machinery including tractors	558	581	24	4.3	4,621	5,364	744	16.1	28.4
Aircraft and other transportation equipment	1,423	1,535	112	7.9	14,053	15,676	1,623	11.6	-12.1
Aircraft, engines, parts	856	871	15	1.8	8,746	9,409	663	7.6	-15.9
Other transportation equipment and parts	567	664	97	17.1	5,307	6,267	960	18.1	-6.7
Office machines and equipment	3,054	3,314	260	8.5	24,849	30,313	5,464	22.0	22.3
Other machinery and equipment	7,153	7,245	92	1.3	67,024	74,337	7,313	10.9	1.7
Other communication and related equipment	2,965	3,091	125	4.2	28,689	32,368	3,679	12.8	1.0
Other equipment and tools	4,187	4,154	-33	-0.8	38,335	41,969	3,634	9.5	2.2
<b>Automotive products</b>	<b>7,247</b>	<b>7,396</b>	<b>149</b>	<b>2.1</b>	<b>70,347</b>	<b>74,221</b>	<b>3,875</b>	<b>5.5</b>	<b>8.1</b>
Passenger autos and chassis	2,130	2,317	186	8.7	21,264	21,969	705	3.3	13.6
Trucks and other motor vehicles	1,825	1,753	-72	-3.9	16,286	18,450	2,163	13.3	14.8
Motor vehicle parts	3,292	3,326	34	1.0	32,796	33,803	1,006	3.1	1.5
<b>Other consumer goods</b>	<b>6,405</b>	<b>6,303</b>	<b>-103</b>	<b>-1.6</b>	<b>61,979</b>	<b>65,093</b>	<b>3,114</b>	<b>5.0</b>	<b>-3.6</b>
Apparel and footwear	1,393	1,371	-22	-1.5	12,987	14,456	1,469	11.3	-8.8
Apparel and apparel accessories	1,155	1,140	-15	-1.3	10,821	12,048	1,227	11.3	-6.1
Footwear	238	231	-7	-2.8	2,166	2,408	241	11.1	-20.5
Miscellaneous consumer goods	5,012	4,931	-81	-1.6	48,991	50,637	1,646	3.4	-2.0
Television, radios, phonographs	215	225	10	4.8	2,230	2,227	-3	-0.1	-2.4
Printed matter	357	350	-8	-2.2	3,577	3,614	37	1.0	-0.5
Watches, sporting goods and toys	608	622	14	2.3	7,038	6,649	-389	-5.5	-12.6
House furnishings	954	942	-12	-1.3	9,418	9,534	117	1.2	-3.6
Photographic goods	481	484	3	0.6	4,183	4,736	553	13.2	-2.8
Miscellaneous end products	2,397	2,309	-88	-3.7	22,544	23,875	1,331	5.9	2.0
<b>Special transactions trade</b>	<b>569</b>	<b>660</b>	<b>91</b>	<b>15.9</b>	<b>4,750</b>	<b>5,321</b>	<b>571</b>	<b>12.0</b>	<b>22.3</b>
<b>Unallocated balance of payments adjustments</b>	<b>498</b>	<b>499</b>	<b>1</b>	<b>0.2</b>	<b>5,543</b>	<b>4,238</b>	<b>-1,305</b>	<b>-23.5</b>	<b>-0.8</b>

**Table 7-1**  
**Imports from selected countries, customs basis, not seasonally adjusted — October**

	Agricultural and fishing products	Energy products	Forestry products	Industrial goods	Machinery and equipment	Automotive products	Consumer goods	Special transactions trade	<b>Total</b>
millions of dollars									
<b>United States</b>									
2010	1,468.5	1,020.5	160.4	4,484.4	4,313.0	3,844.6	2,027.9	394.2	<b>17,713.6</b>
2011	1,604.8	1,457.2	164.9	4,973.9	4,891.4	4,114.9	2,119.6	565.3	<b>19,892.0</b>
<b>Mexico</b>									
2010	87.4	151.1	0.3	148.7	845.7	765.8	122.0	6.3	<b>2,127.4</b>
2011	86.4	88.8	0.3	210.5	802.6	801.4	111.3	3.4	<b>2,104.7</b>
<b>Japan</b>									
2010	5.1	33.6	0.1	97.1	439.5	537.3	98.8	0.4	<b>1,211.9</b>
2011	6.3	0.6	0.0	119.8	489.0	584.5	90.3	0.7	<b>1,291.2</b>
<b>European Union</b>									
<b>Germany</b>									
2010	31.6	8.9	1.4	154.6	395.3	276.1	138.6	1.2	<b>1,007.8</b>
2011	36.1	28.0	1.0	209.6	474.8	322.8	176.8	1.7	<b>1,250.9</b>
<b>France</b>									
2010	78.9	1.2	0.2	63.0	349.4	8.3	118.2	0.2	<b>619.4</b>
2011	80.6	29.5	0.5	77.7	158.1	5.8	141.6	0.7	<b>494.6</b>
<b>United Kingdom</b>									
2010	42.5	384.0	0.0	107.5	258.5	34.6	126.6	1.2	<b>954.9</b>
2011	42.2	102.6	0.0	179.1	242.3	49.6	120.7	4.8	<b>741.4</b>
<b>Italy</b>									
2010	77.5	0.1	1.1	84.8	113.3	20.4	94.2	1.1	<b>392.6</b>
2011	73.1	2.9	1.4	92.5	135.0	24.9	96.2	0.5	<b>426.5</b>
<b>Other European Union</b>									
2010	121.6	112.4	4.1	224.5	325.2	82.0	298.8	1.7	<b>1,170.1</b>
2011	124.9	215.1	4.0	288.1	385.1	121.9	307.9	0.4	<b>1,447.3</b>
<b>Total</b>									
2010	352.1	506.6	6.8	634.4	1,441.7	421.4	776.4	5.4	<b>4,144.7</b>
2011	356.9	378.0	6.9	847.1	1,395.2	525.1	843.3	8.2	<b>4,360.7</b>
<b>Newly industrialized countries</b>									
<b>South Korea</b>									
2010	4.8	38.7	0.0	69.5	460.5	178.9	18.8	0.1	<b>771.3</b>
2011	6.8	25.8	0.0	83.7	241.6	172.9	17.9	0.1	<b>548.8</b>
<b>Hong Kong</b>									
2010	2.4	0.0	0.1	1.9	15.6	0.5	13.4	0.0	<b>33.8</b>
2011	2.5	0.0	0.0	4.3	6.0	0.1	13.4	0.0	<b>26.3</b>
<b>Taiwan</b>									
2010	6.9	0.0	0.2	68.4	239.1	14.0	39.3	0.1	<b>368.1</b>
2011	5.5	0.0	0.4	82.3	281.0	17.2	37.9	0.1	<b>424.5</b>
<b>Singapore</b>									
2010	3.7	38.1	0.0	15.5	60.1	0.3	36.6	0.0	<b>154.3</b>
2011	3.0	0.0	0.0	11.6	73.3	0.4	17.8	0.5	<b>106.5</b>
<b>Total</b>									
2010	17.8	76.8	0.4	155.3	775.3	193.7	108.0	0.2	<b>1,327.5</b>
2011	17.8	25.9	0.4	182.0	601.8	190.5	87.0	0.6	<b>1,106.1</b>
<b>Other countries</b>									
2010	687.6	1,755.8	50.3	1,803.3	2,793.9	191.4	2,235.3	43.1	<b>9,560.8</b>
2011	834.7	2,465.6	47.3	2,249.8	3,040.6	210.2	2,188.8	36.8	<b>11,073.8</b>
<b>Total</b>									
2010	<b>2,619.0</b>	<b>3,544.4</b>	<b>218.3</b>	<b>7,323.3</b>	<b>10,609.0</b>	<b>5,954.4</b>	<b>5,368.6</b>	<b>449.5</b>	<b>36,086.4</b>
2011	<b>2,907.5</b>	<b>4,416.1</b>	<b>219.8</b>	<b>8,583.2</b>	<b>11,220.7</b>	<b>6,426.6</b>	<b>5,440.4</b>	<b>615.0</b>	<b>39,829.2</b>

**Table 7-2**  
**Imports from selected countries, customs basis, not seasonally adjusted — Year to date, January to October**

	Agricultural and fishing products	Energy products	Forestry products	Industrial goods	Machinery and equipment	Automotive products	Consumer goods	Special transactions trade	<b>Total</b>
millions of dollars									
<b>United States</b>									
2010	13,910.2	10,368.8	1,623.9	42,352.9	41,661.3	38,278.0	19,001.3	3,511.3	<b>170,707.7</b>
2011	15,010.9	13,756.3	1,547.7	46,258.7	44,703.1	39,508.5	19,296.8	3,931.2	<b>184,013.1</b>
<b>Mexico</b>									
2010	1,208.3	738.3	4.5	1,470.2	6,742.1	7,016.1	955.6	49.6	<b>18,184.7</b>
2011	1,210.4	1,221.4	4.1	1,938.2	7,069.4	7,886.4	1,020.9	60.3	<b>20,411.2</b>
<b>Japan</b>									
2010	54.9	114.6	0.9	1,001.4	4,070.7	5,056.2	900.9	3.3	<b>11,203.0</b>
2011	55.3	50.0	0.6	990.7	4,427.1	3,986.1	893.8	8.0	<b>10,411.5</b>
<b>European Union</b>									
<b>Germany</b>									
2010	235.6	48.4	11.2	1,602.0	3,278.4	2,721.6	1,437.8	18.4	<b>9,353.3</b>
2011	269.3	43.1	9.8	1,926.6	3,944.6	2,937.6	1,552.1	26.2	<b>10,709.3</b>
<b>France</b>									
2010	597.6	83.2	1.8	708.6	1,579.7	82.0	1,314.8	6.8	<b>4,374.5</b>
2011	648.7	128.5	3.6	735.9	1,583.6	65.3	1,266.1	5.8	<b>4,437.6</b>
<b>United Kingdom</b>									
2010	355.2	3,161.9	0.6	1,532.0	2,397.1	367.4	1,072.9	37.4	<b>8,924.6</b>
2011	349.4	2,529.2	0.4	1,743.4	2,622.1	436.5	1,152.9	31.1	<b>8,865.1</b>
<b>Italy</b>									
2010	541.1	160.4	11.0	784.2	1,207.4	195.9	910.2	3.7	<b>3,813.9</b>
2011	586.6	105.0	12.9	925.8	1,355.1	240.5	991.6	4.2	<b>4,221.6</b>
<b>Other European Union</b>									
2010	959.3	1,898.0	35.2	2,367.1	3,875.9	663.8	3,308.0	22.7	<b>13,130.1</b>
2011	1,039.9	3,049.9	35.8	3,276.9	4,014.4	790.5	3,007.7	9.8	<b>15,224.8</b>
<b>Total</b>									
2010	2,688.7	5,351.9	59.9	6,994.0	12,338.5	4,030.8	8,043.7	89.0	<b>39,596.5</b>
2011	2,893.9	5,855.7	62.5	8,608.5	13,519.9	4,470.4	7,970.4	77.1	<b>43,458.4</b>
<b>Newly industrialized countries</b>									
<b>South Korea</b>									
2010	47.7	261.7	0.2	659.7	2,242.7	1,767.3	171.5	0.8	<b>5,151.5</b>
2011	52.0	284.9	0.2	1,022.2	2,372.9	1,638.1	175.2	1.0	<b>5,546.4</b>
<b>Hong Kong</b>									
2010	23.0	0.1	0.6	22.4	129.9	4.2	126.5	0.3	<b>307.0</b>
2011	25.2	0.0	0.1	50.5	78.3	1.8	118.5	0.5	<b>274.9</b>
<b>Taiwan</b>									
2010	62.8	19.9	6.2	716.1	1,858.5	134.4	343.5	1.2	<b>3,142.7</b>
2011	57.6	0.3	4.2	913.6	2,525.6	151.5	333.5	1.2	<b>3,987.4</b>
<b>Singapore</b>									
2010	30.1	80.3	0.2	106.3	507.2	3.5	206.3	1.3	<b>935.2</b>
2011	29.5	279.8	0.5	145.6	504.3	3.3	241.5	1.2	<b>1,205.7</b>
<b>Total</b>									
2010	163.6	362.0	7.1	1,504.4	4,738.4	1,909.5	847.6	3.7	<b>9,536.4</b>
2011	164.2	565.0	5.0	2,131.9	5,481.0	1,794.7	868.7	3.9	<b>11,014.3</b>
<b>Other countries</b>									
2010	6,468.7	17,057.0	561.0	17,326.8	24,568.8	1,801.2	18,548.4	297.4	<b>86,629.3</b>
2011	7,477.1	22,468.5	491.6	20,957.4	27,339.7	2,173.6	19,512.4	353.4	<b>100,773.8</b>
<b>Total</b>									
2010	<b>24,498.7</b>	<b>33,992.6</b>	<b>2,257.2</b>	<b>70,649.7</b>	<b>94,120.0</b>	<b>58,091.8</b>	<b>48,297.9</b>	<b>3,954.4</b>	<b>335,862.3</b>
2011	<b>26,818.8</b>	<b>43,917.0</b>	<b>2,111.5</b>	<b>80,885.4</b>	<b>102,540.2</b>	<b>59,820.0</b>	<b>49,563.0</b>	<b>4,433.8</b>	<b>370,089.7</b>

**Table 8**  
**Imports by country, customs basis, not seasonally adjusted**

	October		January to October		Change
	2010	2011	2010	2011	January to October 2011/ January to October 2010
	millions of dollars				percent
<b>North America</b>					
Canada	326.9	334.0	3,347.7	3,340.5	-0.2
Greenland	0.0	0.0	0.4	0.8	78.7
Mexico	2,127.4	2,104.7	18,184.7	20,411.2	12.2
Saint Pierre and Miquelon	0.4	0.1	1.5	1.9	30.3
United States	17,713.6	19,892.0	170,707.7	184,013.1	7.8
<b>Total</b>	<b>20,168.4</b>	<b>22,330.9</b>	<b>192,242.0</b>	<b>207,767.5</b>	<b>8.1</b>
<b>Western Europe</b>					
Andorra	0.0	0.0	0.3	0.4	25.7
Austria	98.2	115.4	991.3	1,075.2	8.5
Belgium	149.0	159.9	1,365.2	1,460.7	7.0
Denmark	69.9	97.6	1,747.7	1,233.2	-29.4
Faeroe Islands	0.4	0.6	4.4	7.0	59.8
Finland	98.6	130.8	781.8	1,383.4	76.9
France	619.4	494.6	4,374.5	4,437.6	1.4
Germany	1,007.8	1,250.9	9,353.3	10,709.3	14.5
Gibraltar	0.0	0.0	2.2	1.7	-25.0
Greece	8.1	11.4	115.7	138.8	20.0
Iceland	1.6	2.2	28.1	25.7	-8.5
Italy	392.6	426.5	3,813.9	4,221.6	10.7
Luxembourg	8.1	8.0	76.1	93.7	23.1
Malta	1.8	2.6	14.5	22.3	54.0
Netherlands	124.8	164.9	1,439.6	1,985.5	37.9
Norway	215.5	628.2	2,389.3	3,663.9	53.3
Portugal	24.4	57.7	269.9	287.4	6.5
Republic of Ireland (Eire)	82.7	82.4	1,304.4	1,006.0	-22.9
Spain	123.5	111.6	1,212.2	1,435.7	18.4
Sweden	175.0	192.9	1,696.0	1,871.9	10.4
Switzerland	226.6	271.5	2,454.7	2,531.7	3.1
United Kingdom	954.9	741.4	8,924.6	8,865.1	-0.7
<b>Total</b>	<b>4,383.1</b>	<b>4,951.2</b>	<b>42,359.8</b>	<b>46,457.6</b>	<b>9.7</b>
<b>Other Europe</b>					
Albania	0.8	0.3	3.7	5.1	37.4
Armenia	2.9	5.8	22.3	49.5	122.0
Azerbaijan	0.0	0.0	385.6	310.3	-19.5
Belarus	8.3	1.0	42.1	33.9	-19.6
Bosnia and Herzegovina	0.6	1.0	6.5	9.4	45.7
Bulgaria	5.7	15.9	55.9	116.0	107.6
Croatia	29.2	2.5	54.7	23.3	-57.3
Czech Republic	23.3	36.7	239.2	315.7	32.0
Estonia	6.9	4.8	26.9	77.3	187.3
Georgia	12.7	8.6	103.3	94.5	-8.5
Hungary	25.5	29.6	285.7	290.5	1.7
Kazakhstan	208.8	132.0	1,861.2	2,359.7	26.8
Kyrgyzstan	0.0	0.0	0.1	0.2	102.2
Latvia	1.0	11.3	8.3	24.1	188.6
Lithuania	3.7	37.2	336.0	585.6	74.3
Macedonia (Former Yugoslav Republic of Macedonia)	0.3	0.4	6.6	6.2	-6.4
Montenegro	0.0	0.0	0.4	0.5	35.8
Poland	101.5	124.3	761.0	1,263.4	66.0
Republic of Moldova	0.1	0.2	4.9	1.8	-63.0
Romania	12.3	14.7	163.2	267.4	63.9
Russian Federation	430.5	237.5	1,467.4	1,187.8	-19.1
Serbia	1.7	1.1	11.1	12.8	15.3
Slovakia	21.6	28.7	151.7	204.9	35.1
Slovenia	4.0	8.6	85.5	84.1	-1.7
Tajikistan	0.0	0.0	0.0	0.0	-71.8
Turkmenistan	0.0	0.0	0.6	0.7	9.5
Ukraine	9.0	4.5	80.0	109.5	37.0
Uzbekistan	0.1	0.1	1.3	1.8	33.5
<b>Total</b>	<b>910.7</b>	<b>707.2</b>	<b>6,165.3</b>	<b>7,436.0</b>	<b>20.6</b>

Table 8 – continued

## Imports by country, customs basis, not seasonally adjusted

	October		January to October		Change
	2010	2011	2010	2011	January to October 2011/ January to October 2010
	millions of dollars				percent
<b>Middle East</b>					
Bahrain	0.2	0.7	2.5	3.6	48.0
Cyprus	0.1	0.1	2.3	2.3	2.1
Egypt	17.4	51.6	238.1	365.2	53.4
Eritrea	0.0	40.2	0.3	266.5	...
Ethiopia	1.4	1.3	13.1	15.7	20.1
Iran	2.4	1.5	32.3	28.2	-12.8
Iraq	52.9	114.3	1,331.2	1,796.1	34.9
Israel	74.0	83.2	829.6	825.5	-0.5
Jordan	1.5	1.3	16.7	15.6	-6.9
Kuwait	0.0	0.3	31.5	55.4	75.7
Lebanon	1.7	1.3	14.0	15.0	7.2
Libya	0.0	0.0	19.9	5.1	-74.5
Oman	0.2	4.8	16.5	17.1	4.1
Qatar	1.7	25.2	69.1	348.3	404.2
Saudi Arabia	11.1	222.0	1,683.5	2,266.5	34.6
Somalia	0.0	0.0	0.0	0.1	98.2
Sudan	7.5	3.3	72.1	97.4	35.0
Syria	0.5	0.3	5.9	38.0	543.0
Turkey	71.0	82.5	565.2	883.7	56.4
United Arab Emirates	2.9	46.0	134.7	889.0	559.9
Yemen	0.0	0.0	0.1	0.1	-18.4
<b>Total</b>	<b>246.5</b>	<b>679.9</b>	<b>5,078.6</b>	<b>7,934.3</b>	<b>56.2</b>
<b>Other Africa</b>					
Algeria	314.0	448.3	2,934.0	4,452.4	51.8
Angola	76.9	318.0	1,274.9	2,062.2	61.8
Antarctica	0.0	0.0	0.3	0.6	116.2
Benin	0.0	0.0	0.0	0.0	88.7
Botswana	0.0	0.0	6.9	0.1	-98.4
Bouvet Island	0.0	0.0	0.0	0.0	...
Burkina Faso	0.9	0.0	21.7	5.2	-75.9
Burundi	0.0	0.0	0.0	0.2	595.4
Cameroon	0.6	0.9	5.0	5.5	10.0
Cape Verde	0.0	0.0	0.0	0.1	161.0
Central African Republic	0.0	0.0	0.1	0.4	320.8
Chad	0.0	0.0	1.0	0.3	-64.3
Comoros	0.0	0.0	0.0	0.1	226.7
Congo	0.1	0.0	3.9	2.0	-47.8
Democratic Republic of the Congo	0.0	0.0	0.7	0.8	11.0
Djibouti	0.0	0.0	0.0	0.0	-30.2
Equatorial Guinea	119.6	61.5	562.4	629.2	11.9
French Southern Territories	0.0	0.0	0.0	0.0	...
Gabon	0.0	0.1	0.3	3.4	958.2
Gambia	0.0	0.0	0.1	0.1	-26.6
Ghana	0.3	1.1	18.8	52.8	181.0
Guinea	4.1	4.3	38.3	46.4	21.4
Guinea-Bissau	0.0	0.0	0.0	0.0	-0.8
Ivory Coast	14.5	12.8	336.5	496.2	47.5
Kenya	2.2	1.9	14.5	19.2	32.5
Lesotho	0.6	0.8	13.5	10.1	-24.8
Liberia	2.8	2.4	34.2	27.5	-19.5
Madagascar	0.9	8.1	37.9	52.5	38.7
Malawi	0.3	9.5	58.1	123.3	112.4
Mali	0.1	0.1	0.5	0.6	14.6
Mauritania	0.0	0.0	0.2	0.1	-49.2
Mauritius	0.7	0.7	8.6	8.6	-0.4
Morocco	11.8	9.3	83.0	70.9	-14.7
Mozambique	0.0	0.3	1.3	3.2	138.1
Namibia	0.0	13.2	156.7	173.9	10.9
Niger	0.2	0.0	0.8	1.0	18.8
Nigeria	194.3	111.3	1,503.0	2,093.8	39.3
Rwanda	0.0	0.0	0.2	0.4	147.6
Saint Helena	0.0	0.0	0.0	0.1	259.1
Sao Tome and Principe	0.0	0.1	0.2	0.2	-10.0
Senegal	0.2	0.0	1.0	0.7	-25.0

Table 8 – continued

## Imports by country, customs basis, not seasonally adjusted

	October		January to October		Change
	2010	2011	2010	2011	January to October 2011/ January to October 2010
	millions of dollars				percent
Seychelles	0.0	0.1	0.2	0.5	204.1
Sierra Leone	0.1	2.2	1.6	4.5	183.5
South Africa	47.1	88.5	587.5	776.9	32.2
Swaziland	0.1	0.1	1.4	1.5	11.5
Togo	0.3	0.7	3.1	12.8	315.6
Tunisia	2.8	3.7	45.2	46.8	3.5
Uganda	0.1	0.1	3.1	2.9	-6.9
United Republic of Tanzania	0.2	0.6	2.5	4.2	66.5
Western Sahara	0.0	0.0	0.0	0.0	-100.0
Zambia	0.2	0.3	1.1	1.1	-0.1
Zimbabwe	0.2	0.2	3.8	4.4	17.4
<b>Total</b>	<b>796.3</b>	<b>1,101.7</b>	<b>7,768.2</b>	<b>11,200.0</b>	<b>44.2</b>
<b>Other Asia</b>					
Afghanistan	0.3	0.1	1.4	1.3	-7.2
Bangladesh	79.4	72.2	702.7	948.9	35.0
Bhutan	0.0	0.0	0.0	0.0	46.8
British Indian Ocean Territory	0.0	0.0	0.0	0.1	275.3
Brunei Darussalam	0.0	0.3	0.0	6.4	...
Cambodia	33.4	47.5	291.1	448.4	54.0
China	4,282.8	4,537.8	36,592.4	39,344.3	7.5
Hong Kong	33.8	26.3	307.0	274.9	-10.5
India	199.8	240.4	1,714.4	2,103.0	22.7
Indonesia	152.8	108.9	1,051.2	1,193.9	13.6
Japan	1,211.9	1,291.2	11,203.0	10,411.5	-7.1
Laos	0.8	0.5	7.0	5.5	-21.0
Macao	0.6	0.7	8.0	7.2	-9.6
Malaysia	201.8	188.9	1,912.9	1,755.8	-8.2
Maldives	0.0	0.0	0.1	0.2	155.4
Mongolia	9.8	5.9	158.7	154.8	-2.5
Myanmar	0.0	0.0	0.0	0.1	340.6
Nepal	1.9	1.7	13.0	13.2	1.1
North Korea	0.0	0.0	0.1	0.1	-48.4
Pakistan	21.8	22.9	225.4	214.0	-5.0
Philippines	78.9	73.4	734.7	762.1	3.7
Singapore	154.3	106.5	935.2	1,205.7	28.9
South Korea	771.3	548.8	5,151.5	5,546.4	7.7
Sri Lanka	12.7	15.0	104.2	129.5	24.3
Taiwan	368.1	424.5	3,142.7	3,987.4	26.9
Thailand	212.1	229.9	1,963.3	2,240.3	14.1
Timor-Leste	0.5	0.0	1.7	0.2	-85.0
Viet Nam	114.2	131.1	968.6	1,088.4	12.4
<b>Total</b>	<b>7,942.9</b>	<b>8,074.5</b>	<b>67,190.5</b>	<b>71,843.7</b>	<b>6.9</b>
<b>Oceania</b>					
American Samoa	0.0	0.0	0.3	0.6	108.2
Australia	84.4	149.5	1,308.2	1,476.3	12.9
Christmas Island	0.0	0.0	0.1	0.1	-45.4
Cocos (Keeling) Islands	0.0	0.0	0.0	0.0	-35.1
Cook Islands	0.0	0.0	0.1	0.1	-37.0
Fiji	0.2	0.5	4.5	4.0	-12.8
French Polynesia	0.0	0.1	0.8	0.8	-8.4
Guam	0.0	0.0	0.1	0.1	189.6
Heard Island and McDonald Islands	0.0	0.0	0.0	0.0	-63.2
Kiribati	0.0	0.0	0.0	0.1	101.5
Nauru	0.0	0.0	0.1	0.0	-31.6
New Caledonia	0.0	0.0	0.2	0.2	0.9
New Zealand	32.7	40.8	377.2	465.4	23.4
Niue	0.0	0.0	0.0	0.0	-18.4
Norfolk Island	0.0	0.0	0.0	0.0	575.1
Papua New Guinea	0.2	0.4	1.4	1.0	-24.9
Pitcairn	0.0	0.0	0.0	0.1	75.2
Samoa	0.0	0.0	0.3	0.0	-96.0
Solomon Islands	0.0	0.0	0.1	0.1	9.7
Tonga	0.0	0.0	0.0	0.0	124.3
United States Minor Outlying Islands	0.2	0.4	3.3	2.6	-18.9
Vanuatu	0.1	0.0	0.7	0.0	-93.4



Table 8 – continued

## Imports by country, customs basis, not seasonally adjusted

	October		January to October		Change
	2010	2011	2010	2011	January to October 2011/ January to October 2010
	millions of dollars				percent
Wallis and Futuna	0.0	0.0	0.0	0.0	-48.4
<b>Total</b>	<b>118.0</b>	<b>191.7</b>	<b>1,697.3</b>	<b>1,951.6</b>	<b>15.0</b>
<b>South America</b>					
Argentina	263.5	316.1	1,138.5	1,861.4	63.5
Bolivia	12.7	14.0	108.5	192.5	77.3
Brazil	324.9	466.4	2,922.0	3,333.0	14.1
Chile	90.2	173.8	1,572.6	1,654.5	5.2
Colombia	60.5	157.1	624.8	682.4	9.2
Ecuador	18.3	18.0	176.5	185.8	5.2
Falkland Islands (Malvinas)	0.0	0.0	0.0	0.3	...
Guyana	24.9	21.7	232.5	324.9	39.7
Paraguay	0.6	0.9	7.9	4.6	-42.5
Peru	324.3	341.3	2,950.0	3,592.5	21.8
Suriname	73.2	11.3	468.3	237.1	-49.4
Uruguay	1.4	1.7	49.1	31.3	-36.3
Venezuela	81.8	30.0	754.8	627.5	-16.9
<b>Total</b>	<b>1,276.2</b>	<b>1,552.1</b>	<b>11,005.6</b>	<b>12,727.6</b>	<b>15.6</b>
<b>Central America Antilles</b>					
Anguilla	0.0	0.0	0.2	0.2	-14.1
Antigua and Barbuda	0.1	0.1	0.3	0.4	29.1
Aruba	0.0	0.0	0.1	5.5	...
Bahamas	0.5	0.9	47.7	17.0	-64.3
Barbados	0.5	0.4	6.9	5.0	-28.6
Belize	0.4	0.3	4.8	6.3	31.1
Bermuda	0.3	0.1	1.2	0.8	-34.1
British Virgin Islands	0.0	0.2	0.5	0.6	12.0
Cayman Islands	0.0	0.0	0.3	0.8	156.2
Costa Rica	36.3	36.3	369.2	399.3	8.2
Cuba	59.8	47.0	538.2	606.7	12.7
Dominica	0.0	0.0	0.1	0.2	62.5
Dominican Republic	13.9	13.8	117.3	120.5	2.7
El Salvador	5.4	6.7	73.2	119.3	63.0
Grenada	0.0	0.6	0.6	1.6	170.2
Guatemala	28.7	26.1	267.6	360.0	34.5
Haiti	1.8	2.3	22.1	22.3	1.1
Honduras	10.8	15.3	129.9	161.7	24.5
Jamaica	11.0	34.1	128.8	226.6	76.0
Montserrat	0.0	0.0	0.3	0.3	-14.3
Netherlands Antilles	0.0	0.3	0.3	22.9	...
Nicaragua	19.5	26.6	164.6	274.1	66.6
Panama	6.5	10.0	69.9	102.2	46.2
Saint Kitts and Nevis	0.8	1.2	6.3	7.4	16.4
Saint Lucia	0.0	0.0	0.2	0.1	-31.7
Saint Vincent and the Grenadines	0.0	0.0	0.2	0.2	58.5
Trinidad and Tobago	47.8	17.6	404.1	309.4	-23.4
Turks and Caicos Islands	0.0	0.0	0.1	0.1	-11.9
<b>Total</b>	<b>244.4</b>	<b>239.9</b>	<b>2,355.0</b>	<b>2,771.5</b>	<b>17.7</b>
<b>All countries</b>	<b>36,086.4</b>	<b>39,829.2</b>	<b>335,862.3</b>	<b>370,089.7</b>	<b>10.2</b>

**Table 9-1  
Imports by province of clearance, customs basis, not seasonally adjusted — October**

	Agricultural and fishing products	Energy products	Forestry products	Industrial goods	Machinery and equipment	Automotive products	Consumer goods	Special transactions trade	<b>Total</b>
millions of dollars									
Newfoundland and Labrador									
2010	3.9	256.4	0.0	3.5	217.8	0.1	6.9	0.2	<b>488.7</b>
2011	3.9	349.7	0.1	3.8	33.8	0.1	0.4	0.1	<b>391.9</b>
Prince Edward Island									
2010	0.6	0.0	0.0	2.5	0.1	0.0	0.0	0.0	<b>3.3</b>
2011	0.8	0.0	0.0	13.0	0.1	0.0	0.0	0.0	<b>13.9</b>
Nova Scotia									
2010	35.0	63.8	1.2	112.4	122.2	280.8	14.2	2.7	<b>632.3</b>
2011	49.5	318.4	1.1	80.7	68.3	240.5	11.1	2.4	<b>772.1</b>
New Brunswick									
2010	78.1	420.8	9.4	99.7	64.1	26.2	25.4	1.9	<b>725.7</b>
2011	67.6	836.7	9.4	116.0	70.7	29.7	18.0	1.9	<b>1,150.0</b>
Quebec									
2010	426.8	1,723.5	58.2	1,149.5	1,728.8	203.3	930.4	45.8	<b>6,266.4</b>
2011	509.2	1,357.9	51.2	1,393.6	1,722.0	284.2	894.3	44.6	<b>6,257.0</b>
Ontario									
2010	1,414.5	526.0	78.3	4,356.6	5,914.0	4,874.9	3,407.8	362.5	<b>20,934.6</b>
2011	1,545.1	728.5	79.2	4,993.8	6,377.7	5,093.6	3,472.4	517.9	<b>22,808.4</b>
Manitoba									
2010	80.3	32.3	8.7	263.9	461.9	128.4	127.0	7.8	<b>1,110.3</b>
2011	74.9	43.6	8.1	339.1	603.5	187.2	152.7	8.3	<b>1,417.4</b>
Saskatchewan									
2010	29.5	39.0	2.1	169.9	330.1	77.3	24.5	0.4	<b>672.7</b>
2011	34.7	121.8	4.5	196.8	396.2	111.0	30.1	1.1	<b>896.2</b>
Alberta									
2010	162.6	144.7	9.5	465.5	744.9	103.0	116.1	12.1	<b>1,758.5</b>
2011	177.3	378.3	16.6	636.3	809.9	151.6	157.5	14.0	<b>2,341.4</b>
British Columbia									
2010	383.8	314.2	50.8	699.7	1,020.4	260.3	716.3	16.1	<b>3,461.6</b>
2011	442.9	249.7	49.7	809.2	1,113.9	328.7	703.8	24.5	<b>3,722.3</b>
Yukon, Northwest Territories and Nunavut									
2010	3.8	23.7	0.0	0.2	4.7	0.1	0.1	0.0	<b>32.5</b>
2011	1.8	31.5	0.0	0.9	24.4	0.0	0.0	0.0	<b>58.6</b>
<b>Total</b>									
<b>2010</b>	<b>2,619.0</b>	<b>3,544.4</b>	<b>218.3</b>	<b>7,323.3</b>	<b>10,609.0</b>	<b>5,954.4</b>	<b>5,368.6</b>	<b>449.5</b>	<b>36,086.4</b>
<b>2011</b>	<b>2,907.5</b>	<b>4,416.1</b>	<b>219.8</b>	<b>8,583.2</b>	<b>11,220.7</b>	<b>6,426.6</b>	<b>5,440.4</b>	<b>615.0</b>	<b>39,829.2</b>

**Table 9-2**  
**Imports by province of clearance, customs basis, not seasonally adjusted — Year to date, January to October**

	Agricultural and fishing products	Energy products	Forestry products	Industrial goods	Machinery and equipment	Automotive products	Consumer goods	Special transactions trade	<b>Total</b>
millions of dollars									
Newfoundland and Labrador									
2010	35.9	2,254.6	0.1	42.6	404.0	0.9	18.4	3.1	<b>2,759.5</b>
2011	31.3	2,339.8	0.1	90.1	380.8	0.9	11.2	6.3	<b>2,860.6</b>
Prince Edward Island									
2010	3.8	0.0	0.1	7.9	1.6	0.1	0.2	0.1	<b>13.8</b>
2011	4.0	0.0	0.0	44.3	2.4	0.1	0.3	0.3	<b>51.4</b>
Nova Scotia									
2010	336.9	1,365.2	14.7	1,011.5	892.4	2,797.7	146.4	25.2	<b>6,589.9</b>
2011	497.1	1,689.2	13.5	1,050.1	1,637.6	2,223.4	149.7	23.0	<b>7,283.7</b>
New Brunswick									
2010	477.2	6,221.7	94.1	887.3	803.6	346.5	234.4	18.9	<b>9,083.7</b>
2011	505.0	8,499.1	94.7	1,187.1	836.0	335.9	203.9	17.4	<b>11,679.1</b>
Quebec									
2010	3,911.0	14,026.8	599.1	12,113.0	14,456.4	1,795.6	9,144.5	453.2	<b>56,499.5</b>
2011	4,585.3	15,772.2	498.6	14,128.1	15,704.6	2,108.0	8,931.2	442.2	<b>62,170.2</b>
Ontario									
2010	13,395.2	4,243.9	824.0	41,673.9	54,018.7	47,873.1	30,409.1	3,102.9	<b>195,540.8</b>
2011	14,341.1	8,330.8	762.6	46,499.3	57,518.7	48,857.8	31,500.2	3,586.9	<b>211,397.4</b>
Manitoba									
2010	742.3	467.6	77.9	2,872.2	4,868.7	1,171.3	1,312.3	73.7	<b>11,586.0</b>
2011	806.9	468.4	77.0	3,261.6	5,750.1	1,528.8	1,364.9	76.6	<b>13,334.2</b>
Saskatchewan									
2010	275.8	532.6	20.0	1,826.6	3,085.3	799.4	217.2	18.8	<b>6,775.6</b>
2011	312.0	740.6	30.1	2,045.0	3,284.1	999.5	231.6	19.0	<b>7,662.0</b>
Alberta									
2010	1,552.3	2,123.0	99.4	4,044.4	5,981.3	906.3	1,061.6	118.6	<b>15,886.8</b>
2011	1,634.1	2,834.6	115.7	5,401.6	7,603.9	1,194.8	1,266.7	114.3	<b>20,165.7</b>
British Columbia									
2010	3,710.7	2,698.5	527.9	6,168.6	9,555.3	2,400.5	5,753.5	139.3	<b>30,954.2</b>
2011	4,058.1	3,150.8	519.2	7,174.5	9,758.2	2,570.3	5,902.7	147.9	<b>33,281.5</b>
Yukon, Northwest Territories and Nunavut									
2010	57.7	58.8	0.0	1.9	52.6	0.6	0.3	0.5	<b>172.4</b>
2011	44.0	91.4	0.0	3.7	63.7	0.5	0.5	0.1	<b>203.9</b>
<b>Total</b>									
<b>2010</b>	<b>24,498.7</b>	<b>33,992.6</b>	<b>2,257.2</b>	<b>70,649.7</b>	<b>94,120.0</b>	<b>58,091.8</b>	<b>48,297.9</b>	<b>3,954.4</b>	<b>335,862.3</b>
<b>2011</b>	<b>26,818.8</b>	<b>43,917.0</b>	<b>2,111.5</b>	<b>80,885.4</b>	<b>102,540.2</b>	<b>59,820.0</b>	<b>49,563.0</b>	<b>4,433.8</b>	<b>370,089.7</b>

# Technical notes

---

## The Canadian international merchandise trade statistical program

### Introduction

The objective of this text is to provide a general overview of the Canadian International Merchandise Trade Statistical Program, with special reference to concepts and definitions. The text is intended for the general user and simplicity is emphasized. More technical details can be obtained from the International Trade Division, Statistics Canada upon request.

### Conceptual framework

**1. Objectives and coverage:** The primary objective of the Canadian International Merchandise Trade Statistical Program is to measure the change in the stock of material resources of Canada resulting from the movement of merchandise into or out of the country. Information on imports and exports are inputs into the System of National Accounts, particularly in the balance of payments and gross domestic product, and are used in the formulation of trade and budgetary policies. Governments, importers, exporters, manufacturers and shipping companies use international merchandise trade statistics to:

- monitor import penetration and export performance,
- monitor commodity price and volume changes,
- examine transport implications.

**2. Trade statistics (customs basis / balance of payments basis):** Merchandise trade statistics are reported and presented on two different bases: customs basis and balance of payment basis.

When goods are imported into or exported from Canada, declarations must be filed with customs, giving such information as description and value of the goods, origin and port of clearance of commodities and mode of transport. Most of this information is required for the purposes of customs administration. Statistics developed from administrative records of customs are commonly referred to as customs-based trade statistics.

Customs-based trade statistics are more accurate at measuring imports than they are at measuring exports. This is the case because customs are typically more vigilant with respect to goods entering the country than they are with goods leaving the country.

Customs-based export statistics may understate or incorrectly portray the destination of exports. Export statistics are understated when the proper documentation is not filed with Customs. Exports are incorrectly portrayed when the country of final destination is inaccurately reported on the customs documentation. This occurs most frequently when goods are routed through an intermediary country before continuing on to their final destination.

Statistics Canada does not have a measure of undercoverage but periodically conducts reconciliation exercises with its major trading partners, excluding the United States.

On January 1, 1990, Canada entered into a memorandum of understanding with the United States concerning the exchange of import data. As a consequence, each administration is using the other's import data to replace its own export data. Canada's international merchandise trade statistics are, therefore, no longer derived exclusively from the administrative records of the Canada Border Services Agency, but from United States Customs records as well.

Customs-based information is adjusted to conform with the National Accounts concepts and definitions. The adjustments to derive balance of payments-based trade data include adjustments related to trade definition, valuation and timing. The principal difference between the two trade concepts is that customs-based merchandise trade statistics cover the physical movement of goods as they are reflected in customs documents while balance of payments-adjusted data are intended to cover all economic transactions that involve merchandise trade between residents and non-residents. The present document describes the concepts and processes pertaining to the customs-based trade statistics only. (For further information on balance of payments-adjusted data, see the publication *Canada's Balance of International Payments*, Statistics Canada (Catalogue no. 67-001-X).

**3. System of trade:** Canadian trade statistics are compiled according to the general system of trade, as defined by the United Nations Statistical Office. Under this system, imports include all goods that have crossed Canada's territorial boundary, whether for immediate consumption in Canada or for storage in bonded customs warehouses. Domestic exports include goods grown, extracted or manufactured in Canada, including goods of foreign origin that have been materially transformed in Canada. Re-exports are exports of goods of foreign origin that have not been materially transformed in Canada, including foreign goods withdrawn for export from bonded customs warehouses. Total exports are the sum of domestic exports and re-exports. Thus the general trade system, in principal, presents all goods entering the country (imports) and all goods leaving the country (exports). It differs from the special system of trade in the treatment of imported goods into bonded customs warehouses. Under the 'special' system, these goods are counted only if and when they are withdrawn from customs warehouses for home consumption. They are not counted in export statistics unless they have first cleared customs.

Conceptually, under the general system, the statistical frontier coincides with the geographical boundary, while under the 'special' system, it coincides with the customs boundary.

**4. Valuation:** For customs purposes, imports are recorded at values established according to the provisions of the Customs Act, which, since January 1, 1985, reflects valuation methods based on the General Agreement on Tariffs and Trade (GATT) Valuation Code System. In general, the value for duty of imported goods must be equivalent to the transaction value or the price actually paid.

To determine the transaction value of imported goods, all transportation and associated costs arising in respect of the goods being appraised prior to and at the place of direct shipment to Canada, are to be added to the price of the goods. Therefore, Canadian imports are valued Free on Board (FOB), place of direct shipment to Canada. It excludes freight and insurance costs in bringing the goods to Canada from the point of direct shipment.

Countries other than the United States, exports are, in principal, valued or recorded at the values declared on export documents, which usually reflect the transaction value, i.e., actual selling price or, in the case of a non-arm's length transaction, the transfer price used for company accounting purposes. Canadian exports to overseas countries are valued at F.O.B. port of exit, including domestic freight charges to that point but net of discounts and allowances. As of January, 1990, Canadian exports to the U.S. are valued F.O.B. point of exit from Canada. Prior to 1990, they were valued F.O.B. place of lading net of freight charges, discounts and allowances.

**5. Statistical period:** The reference period is the calendar month and the calendar year. The closing of the statistical month for imports and Canadian exports to the United States is defined as the last calendar day of the month, based as closely as practicable on the date of clearance from customs.

The closing of the statistical month for exports, to countries other than the United States, is also defined as the last calendar day of the month. Those export documents that are received too late for incorporation in the current month are assigned to the month the transaction took place. If a monthly summary report from a high volume exporter is not received on time, the data are imputed for the current month and revised with the trade value in the following statistical month.

**6. Trading partner attribution (country of origin/destination):** Exports are attributed to the country, which is the last known destination of the goods at the time of export. Exports to the United States are attributed to the state of destination.

Imports are attributed to their country of origin, that is, the country in which the goods were grown, extracted or manufactured in accordance to the rules of origin administered by the Canada Border Services Agency. Imports from the United States are attributed to the state of origin. Prior to 1988, most imports were attributed to the country of export/consignment, with the exception of imports from Central and South America.

**7. Principal trading areas:** The 'principal trading areas' are country groupings defined as follows:

**United States:** includes trade with Puerto Rico and the U.S. Virgin Islands

**Japan**

**European Union (EU):** Austria, Belgium, Bulgaria, Cyprus, Czech Republic, Denmark, Estonia, Finland, France, Germany, Greece, Hungary, Ireland, Italy, Latvia, Lithuania, Luxembourg, Malta, Netherlands, Poland, Portugal, Romania, Slovakia, Slovenia, Spain, Sweden and United Kingdom

**Other Organisation for Economic Co-operation and Development (OECD):** Australia, Canada, Iceland, Mexico, New Zealand, Norway, South Korea, Switzerland, and Turkey. (The EU countries, United States, and Japan are also members of OECD)

**Other countries:** all countries and territories other than the United States, Japan, EU and other OECD

**8. Legal framework:** Import and export statistics with countries other than the United States are derived from information contained in administrative records collected by the Canada Border Services Agency under the Customs Act. Copies of these documents (or information therefrom) are sent to Statistics Canada in accordance with Section 25 of the Statistics Act. It follows that the disclosure of trade statistics is governed by both the Customs Act and the Statistics Act and is subject to the provisions of Section 17(2)(a) of the latter. Disclosure of export statistics to the United States is now governed by a memorandum of understanding that provides for the exchange of detailed import statistics between Canada and the United States.

## Contact information

Questions concerning details of methods not covered by these notes should be addressed to the Marketing and Client Services Section, International Trade Division, Statistics Canada, 170 Tunney's Pasture Driveway, Ottawa, Ontario, K1A 0T6.

**Telephone:** 1-800-294-5583 or 613-951-9647

**Facsimile:** 1-800-664-0055 613-951-0117

**Internet:** [trade@statcan.gc.ca](mailto:trade@statcan.gc.ca)