

Catalogue no. 65-001-X

# Canadian International Merchandise Trade

August 2011



Statistics  
Canada

Statistique  
Canada

Canada

## How to obtain more information

For information about this product or the wide range of services and data available from Statistics Canada, visit our website at [www.statcan.gc.ca](http://www.statcan.gc.ca), e-mail us at [infostats@statcan.gc.ca](mailto:infostats@statcan.gc.ca), or telephone us, Monday to Friday from 8:30 a.m. to 4:30 p.m., at the following numbers:

### Statistics Canada's National Contact Centre

Toll-free telephone (Canada and the United States):

Inquiries line	1-800-263-1136
National telecommunications device for the hearing impaired	1-800-363-7629
Fax line	1-877-287-4369

Local or international calls:

Inquiries line	1-613-951-8116
Fax line	1-613-951-0581

### Depository Services Program

Inquiries line	1-800-635-7943
Fax line	1-800-565-7757

## To access this product

This product, Catalogue no. 65-001-X, is available free in electronic format. To obtain a single issue, visit our website at [www.statcan.gc.ca](http://www.statcan.gc.ca) and browse by "Key resource" > "Publications."

## Standards of service to the public

Statistics Canada is committed to serving its clients in a prompt, reliable and courteous manner. To this end, Statistics Canada has developed *standards of service* that its employees observe. To obtain a copy of these service standards, please contact Statistics Canada toll-free at 1-800-263-1136. The service standards are also published on [www.statcan.gc.ca](http://www.statcan.gc.ca) under "About us" > "The agency" > "Providing services to Canadians."

Statistics Canada  
International Trade Division

# Canadian International Merchandise Trade

August 2011

Published by authority of the Minister responsible for Statistics Canada

© Minister of Industry, 2011

All rights reserved. The content of this electronic publication may be reproduced, in whole or in part, and by any means, without further permission from Statistics Canada, subject to the following conditions: that it be done solely for the purposes of private study, research, criticism, review or newspaper summary, and/or for non-commercial purposes; and that Statistics Canada be fully acknowledged as follows: Source (or "Adapted from", if appropriate): Statistics Canada, year of publication, name of product, catalogue number, volume and issue numbers, reference period and page(s). Otherwise, no part of this publication may be reproduced, stored in a retrieval system or transmitted in any form, by any means—electronic, mechanical or photocopy—or for any purposes without prior written permission of Licensing Services, Information Management Division, Statistics Canada, Ottawa, Ontario, Canada K1A 0T6.

October 2011

Catalogue no. 65-001-X, vol. 65, no. 8

ISSN 1480-8781

Frequency: Monthly

Ottawa

Cette publication est également disponible en français.

---

#### **Note of appreciation**

*Canada owes the success of its statistical system to a long-standing partnership between Statistics Canada, the citizens of Canada, its businesses, governments and other institutions. Accurate and timely statistical information could not be produced without their continued cooperation and goodwill.*

# User information

---

## Symbols

The following standard symbols are used in Statistics Canada publications:

- . not available for any reference period
- .. not available for a specific reference period
- ... not applicable
- 0 true zero or a value rounded to zero
- 0<sup>s</sup> value rounded to 0 (zero) where there is a meaningful distinction between true zero and the value that was rounded
- p preliminary
- r revised
- x suppressed to meet the confidentiality requirements of the *Statistics Act*
- E use with caution
- F too unreliable to be published
- \* significantly different from reference category ( $p < 0.05$ )

## Note to users

All totals are calculated from full figures and rounded independently; consequently, totals may not equal the sum of their components.

The data is based on commodity groups (sector, subsector and major group).

# Table of contents

---

<b>Highlights</b>	<b>5</b>
<b>Analysis</b>	<b>7</b>
<b>Related products</b>	<b>11</b>
<b>Statistical tables</b>	
1 Merchandise trade of Canada, balance of payments basis, seasonally adjusted	15
1-1 Current dollars	15
1-2 Constant dollars, 2002	16
1-3 Price indices (Laspeyres)	17
2 Exports by commodity groupings, balance of payments basis, seasonally adjusted	18
2-1 Current dollars	18
2-2 Constant dollars, 2002	20
3 Domestic exports to selected countries, customs basis, not seasonally adjusted	22
3-1 August	22
3-2 Year to date, January to August	23
4 Domestic exports by country, customs basis, not seasonally adjusted	24
5 Exports by province of origin, customs basis, not seasonally adjusted	28
5-1 August	28
5-2 Year to date, January to August	29
6 Imports by commodity groupings, balance of payments basis, seasonally adjusted	30
6-1 Current dollars	30
6-2 Constant dollars, 2002	32
7 Imports from selected countries, customs basis, not seasonally adjusted	34
7-1 August	34
7-2 Year to date, January to August	35
8 Imports by country, customs basis, not seasonally adjusted	36

**Table of contents – continued**

9	Imports by province of clearance, customs basis, not seasonally adjusted	40
9-1	August	40
9-2	Year to date, January to August	41

**Data quality, concepts and methodology**

	Technical notes	42
--	-----------------	----

## Highlights

---

Canada's merchandise imports grew 0.7% and exports increased 0.5% in August. As a result, Canada's trade deficit with the world went from \$539 million in July to \$622 million in August.

Imports increased to \$38.5 billion as prices were up 0.8% and volumes decreased 0.1%. All sectors except energy products recorded price increases.

Exports rose to \$37.9 billion, as higher prices were recorded in most sectors. Prices increased 1.6% while volumes declined 1.1%. Machinery and equipment, and industrial goods and materials were the main contributors to the gain in the value of exports. Both sectors were up for a fourth consecutive month.

Exports to the United States were down 2.3% to \$26.6 billion. Imports from the United States rose 2.0% to \$24.1 billion in August, the highest level since October 2008. Canada's trade surplus with the United States decreased from \$3.7 billion in July to \$2.5 billion in August.

Exports to countries other than the United States increased 7.9% to a record high of \$11.2 billion. This represented a fourth consecutive monthly gain. Imports from countries other than the United States fell 1.4% to \$14.4 billion. Consequently, Canada's trade deficit with countries other than the United States declined from \$4.2 billion in July to \$3.2 billion in August.

### Note to readers

Merchandise trade is one component of Canada's international balance of payments (BOP), which also includes trade in services, investment income, current transfers as well as capital and financial flows.

International merchandise trade data by country are available on both a BOP and a customs basis for the United States, Japan and the United Kingdom. Trade data for all other individual countries are available on a customs basis only. BOP data are derived from customs data by making adjustments for factors such as valuation, coverage, timing and residency. These adjustments are made to conform to the concepts and definitions of the Canadian System of National Accounts.

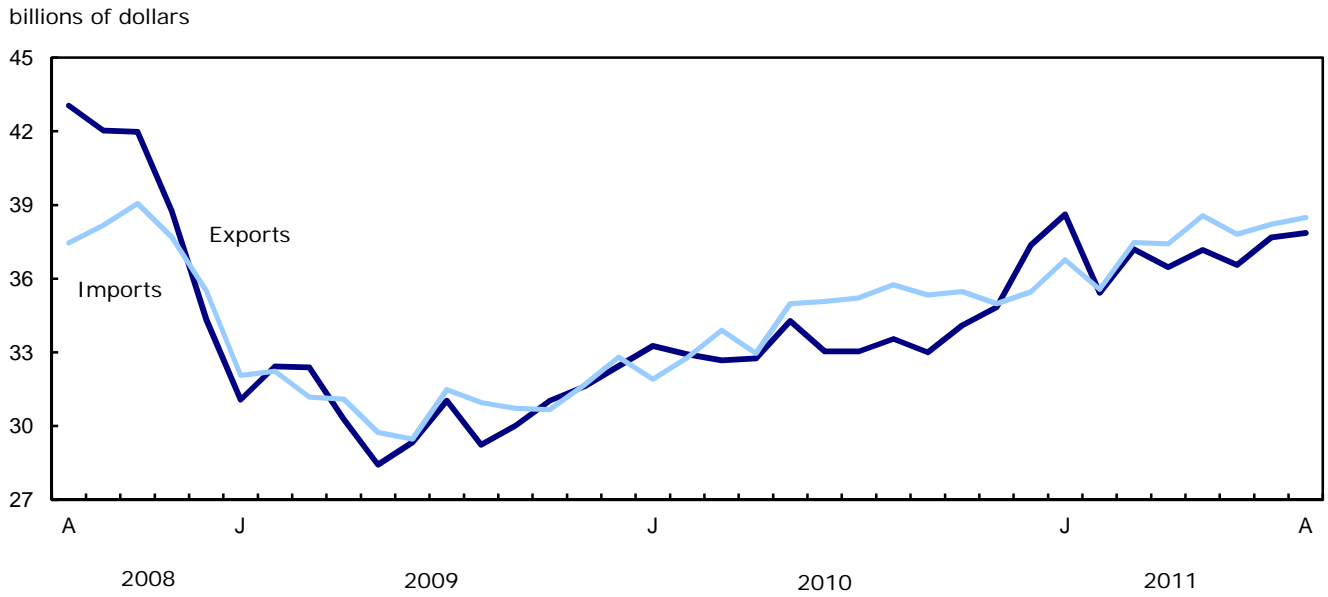
Data in this release are on a balance of payments basis, seasonally adjusted in current dollars. Constant dollars are calculated using the Laspeyres volume formula.

### New aggregation structure

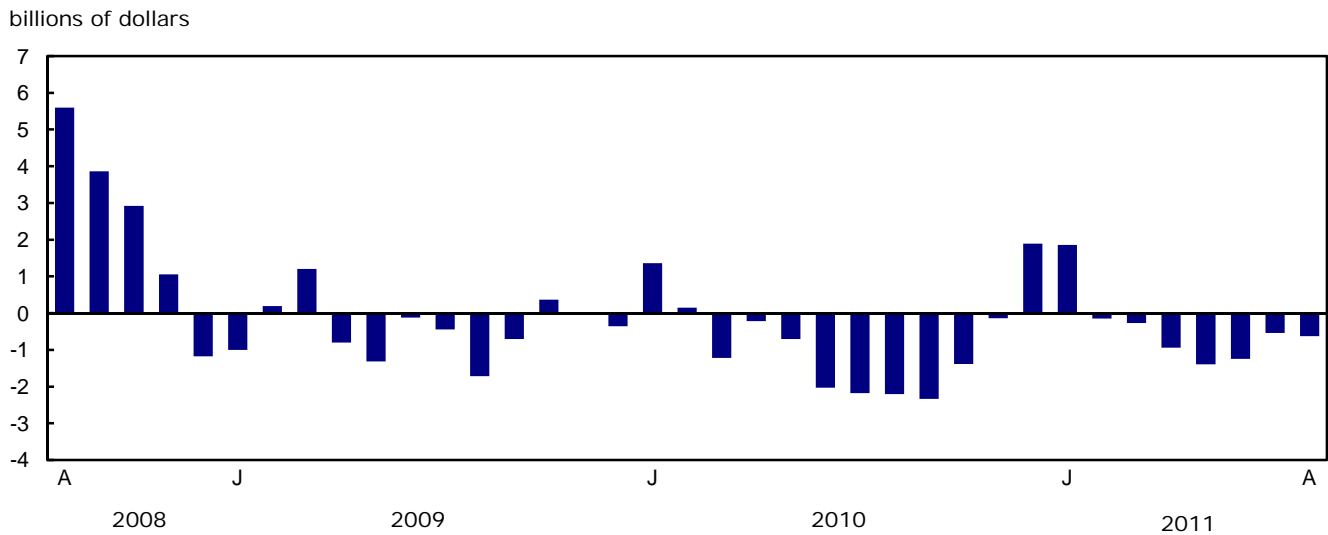
Statistics Canada will introduce a new aggregation structure, the North American Product Classification System (NAPCS), to organize and present import and export statistics in various programs. The new structure will replace the classification structures known as the summary import groups (SIG) and the summary export groups (SEG) and the higher level aggregations; Major Groups, Subsectors, Sectors and Sections that have been in use for several decades. The first release of data using the new structure will be on June 8, 2012 for the April reference month.

Readers interested in this upcoming change can find more detailed information on our website page dedicated to *classification* consultation and notification.

**Chart 1**  
Exports and imports, seasonally adjusted, on a balance of payments basis



**Chart 2**  
Trade balance, seasonally adjusted, on a balance of payments basis





# Analysis

---

## Imports increase in most sectors

Imports of machinery and equipment gained 2.5% to \$10.5 billion in August, as a result of widespread gains. The increase in the sector was a result of higher prices. Imports of aircraft and other transportation equipment led the increase in value of imports.

Imports of automotive products increased 2.3% to \$6.2 billion, as prices rose 2.0%. Imports of passenger autos and chassis rose for a fourth consecutive month. Trucks and other motor vehicles reached a record high in August as both price and volumes rose.

Imports of industrial goods and materials increased 1.7% to a record high of \$8.3 billion. This gain was primarily attributed to chemicals and plastics, as other chemicals and related products rose 10.0%.

Moderating the overall increase in imports, the energy products sector declined 13.6% to \$3.9 billion as crude petroleum fell 25.3%. The sector experienced growth in the early months of 2011, reaching \$5.1 billion in May.

## Machinery and equipment leads the gain in exports

Exports of machinery and equipment rose 7.3% to \$7.4 billion in August, as volumes were up 5.5%. Aircraft and other transportation equipment increased for a fourth consecutive month, gaining 18.0% in August. Also contributing to the rise in the sector was other machinery and equipment with an increase of 4.1%.

Exports of industrial goods and materials posted an increase of 2.0% to \$10.1 billion in August. Precious metals and alloys; and nickel ores, concentrates and scrap recorded the largest gains in the sector. These increases were partially offset by declines in exports of copper ores, concentrates and scrap.

Exports of energy products decreased 2.7% to \$8.5 billion in August, led by declines in petroleum and coal products. Exports of crude petroleum have been trending downward after reaching a record high in January 2011.

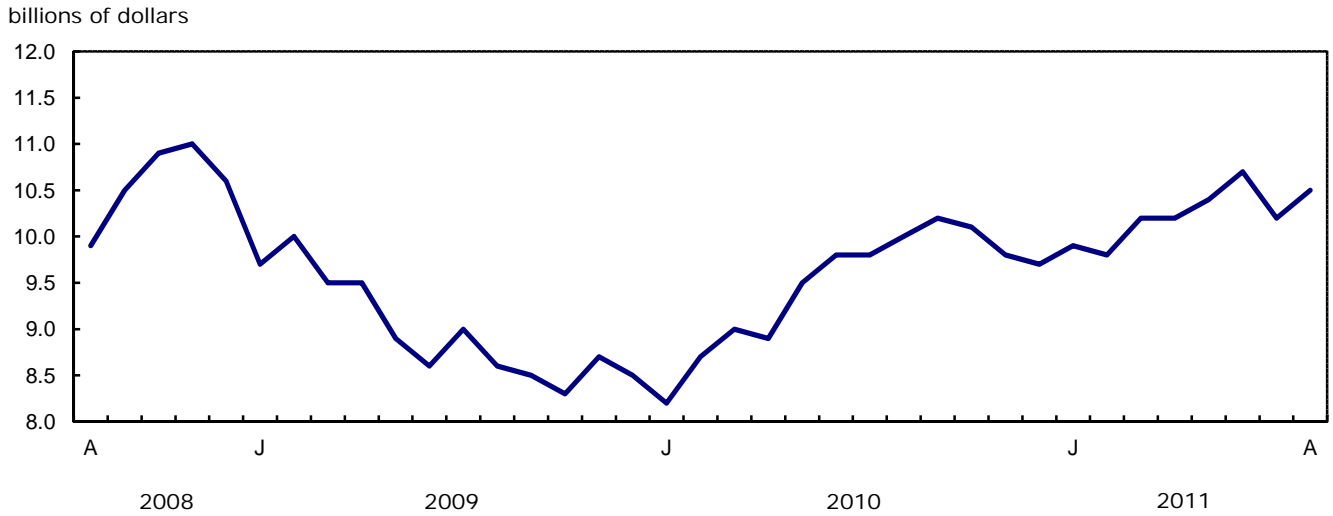
Exports of automotive products decreased 7.5% to \$4.5 billion as volumes fell 10.1%. Passenger autos and chassis was the primary contributor, declining 11.1%.

**Note:** In general, merchandise trade data are revised on an ongoing basis for each month of the current year. Current year revisions are reflected in both the customs and balance of payments (BOP) based data. The previous year's customs data are revised with the release of the January and February reference months as well as on a quarterly basis. The previous two years of customs based data are revised annually and are released in February with the December reference month. The previous year's BOP based data are revised with the release of the January, February and March reference months. Revisions to BOP based data for the previous three years are released annually in June with the April reference month.

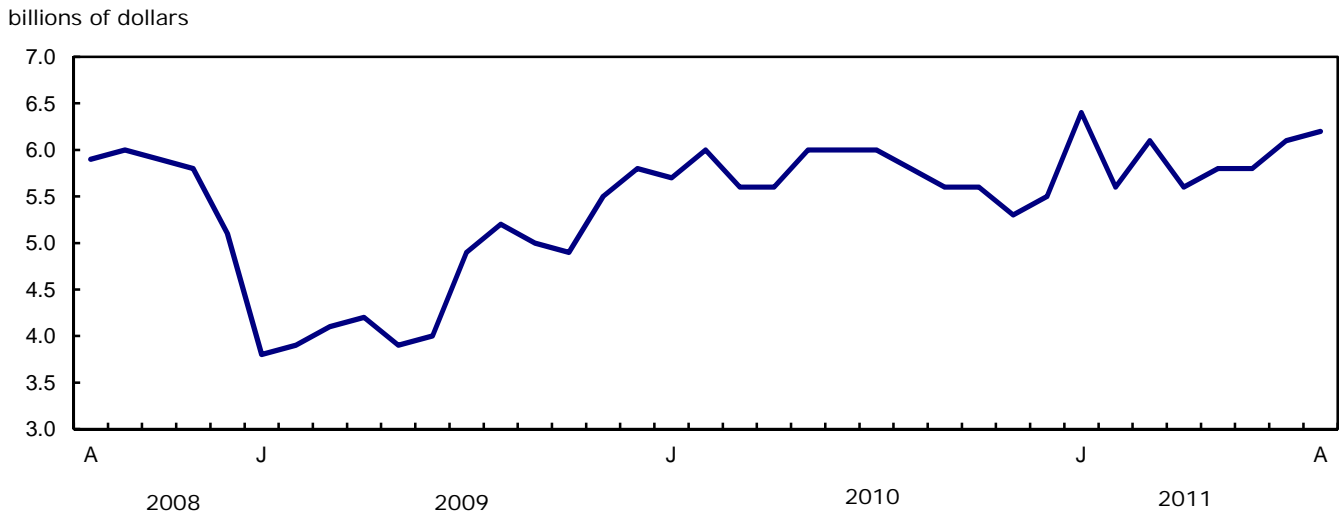
Factors influencing revisions include late receipt of import and export documentation, incorrect information on customs forms, replacement of estimates produced for the energy sector with actual figures, changes in classification of merchandise based on more current information, and changes to seasonal adjustment factors.

Revised data are available in the appropriate CANSIM tables.

**Chart 1**  
**Imports of machinery and equipment, seasonally adjusted, on a balance of payments basis**

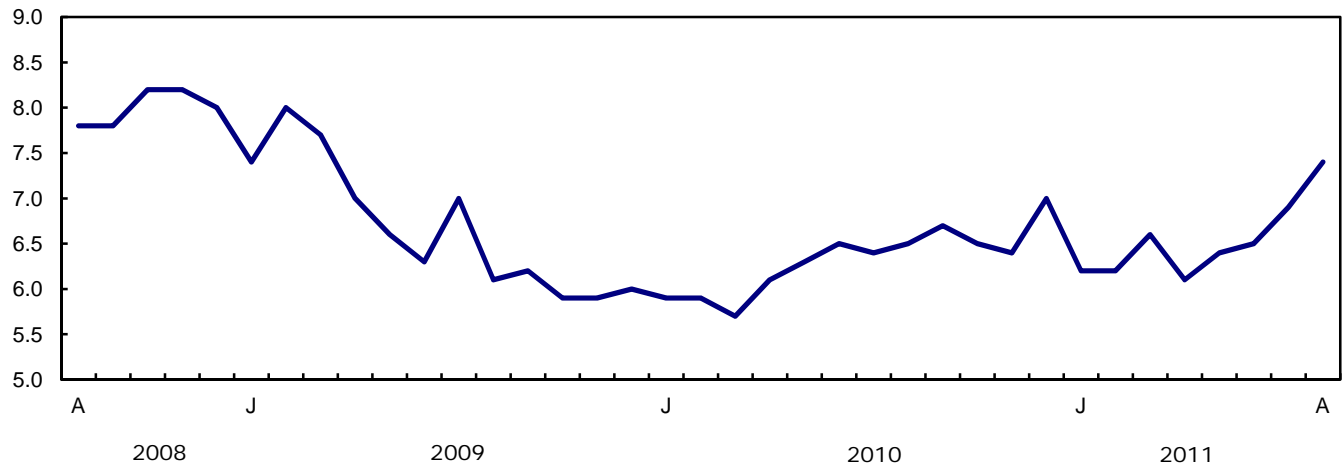


**Chart 2**  
**Imports of automotive products, seasonally adjusted, on a balance of payments basis**



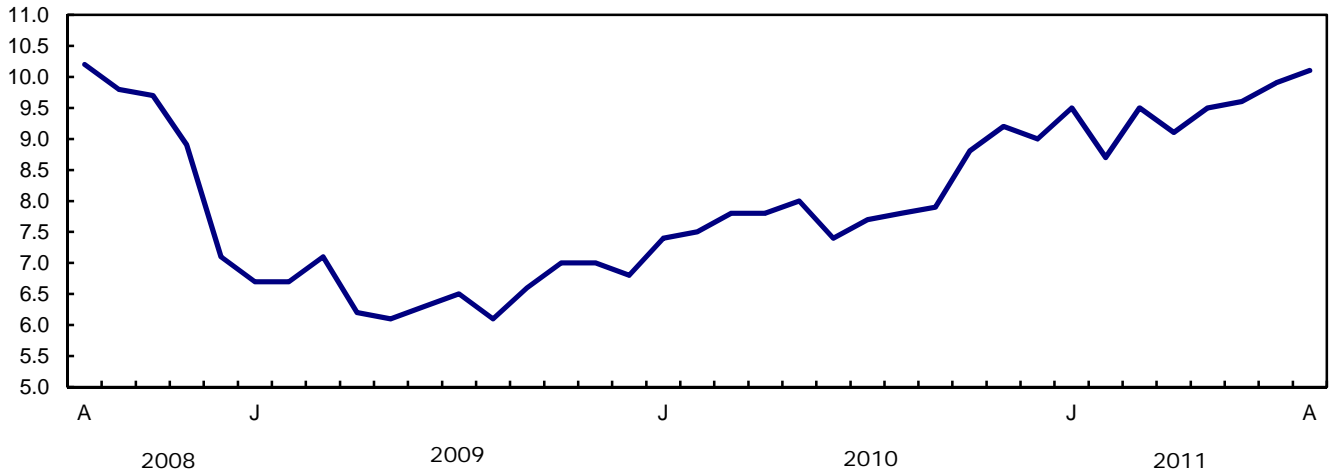
**Chart 3**  
**Exports of machinery and equipment, seasonally adjusted, on a balance of payments basis**

billions of dollars



**Chart 4**  
**Exports of industrial goods and materials, seasonally adjusted, on a balance of payments basis**

billions of dollars



**Text table 1**  
**Merchandise trade by principal trading area, balance of payments basis, seasonally adjusted**

	July	August	Change	Year to date			August 2011/ August 2010		
	2011	2011		2010	2011	Change			
	millions of dollars		percent		millions of dollars		percent		
<b>Export to</b>									
United States	27,265	26,630	-635	-2.3	197,907	215,992	18,086	9.1	7.1
Japan	927	1,001	74	8.0	6,205	7,407	1,202	19.4	22.2
European Union <sup>1</sup>	3,580	3,979	399	11.1	22,241	26,852	4,611	20.7	27.5
Other Organisation for Economic Co-operation and Development <sup>2</sup>	1,726	1,891	164	9.5	11,572	13,374	1,801	15.6	44.8
Other countries	4,177	4,363	185	4.4	27,606	33,361	5,755	20.8	26.9
<b>Total</b>	<b>37,676</b>	<b>37,863</b>	<b>187</b>	<b>0.5</b>	<b>265,531</b>	<b>296,986</b>	<b>31,455</b>	<b>11.8</b>	<b>12.9</b>
<b>Imports from</b>									
United States	23,615	24,090	475	2.0	172,340	184,658	12,319	7.1	8.9
Japan	830	766	-64	-7.7	6,635	5,836	-799	-12.0	-7.8
European Union <sup>1</sup>	3,859	3,671	-188	-4.9	26,193	30,417	4,225	16.1	1.9
Other Organisation for Economic Co-operation and Development <sup>2</sup>	2,652	2,748	96	3.6	19,095	21,977	2,882	15.1	19.8
Other countries	7,259	7,210	-49	-0.7	48,311	57,388	9,077	18.8	4.4
<b>Total</b>	<b>38,215</b>	<b>38,485</b>	<b>271</b>	<b>0.7</b>	<b>272,574</b>	<b>300,277</b>	<b>27,703</b>	<b>10.2</b>	<b>7.6</b>
<b>Balance</b>									
United States	3,650	2,539	-1,110	...	25,567	31,334	5,767	...	...
Japan	97	235	138	...	-431	1,570	2,001	...	...
European Union <sup>1</sup>	-279	308	587	...	-3,952	-3,565	386	...	...
Other Organisation for Economic Co-operation and Development <sup>2</sup>	-925	-857	68	...	-7,523	-8,603	-1,080	...	...
Other countries	-3,081	-2,847	234	...	-20,705	-24,027	-3,322	...	...
<b>Total</b>	<b>-539</b>	<b>-622</b>	<b>-83</b>	<b>...</b>	<b>-7,043</b>	<b>-3,291</b>	<b>3,752</b>	<b>...</b>	<b>...</b>

1. European Union includes: Austria, Belgium, Bulgaria, Cyprus, Czech Republic, Denmark, Estonia, Finland, France, Germany, Greece, Hungary, Ireland, Italy, Latvia, Lithuania, Luxembourg, Malta, Netherlands, Poland, Portugal, Romania, Slovakia, Slovenia, Spain, Sweden and United Kingdom.
2. Other Organisation for Economic Co-operation and Development includes: Australia, Canada, Iceland, Mexico, New Zealand, Norway, South Korea, Switzerland and Turkey.

**Text table 2**  
**Reconciliation of customs and balance of payments trade data, not seasonally adjusted**

	2011						2010
	August	July	June	May	April	March	Annual
	millions of dollars						
<b>Exports</b>							
<b>Customs basis</b>	<b>38,549</b>	<b>35,291</b>	<b>37,277</b>	<b>37,156</b>	<b>34,902</b>	<b>39,122</b>	<b>399,434</b>
<b>Balance of payments adjustments</b>	<b>252</b>	<b>1,328</b>	<b>257</b>	<b>896</b>	<b>1,589</b>	<b>302</b>	<b>5,400</b>
Valuation and residency							
Inland freight	611	565	597	559	538	619	6,552
Other valuation and residency	-1,572	-1,083	-1,246	-959	-154	-1,067	-12,985
Timing	53	43	29	80	-32	-20	48
Coverage	1,160	1,803	877	1,216	1,237	770	11,785
<b>Balance of payments basis</b>	<b>38,801</b>	<b>36,619</b>	<b>37,534</b>	<b>38,052</b>	<b>36,491</b>	<b>39,424</b>	<b>404,834</b>
<b>Imports</b>							
<b>Customs basis</b>	<b>39,131</b>	<b>35,532</b>	<b>38,696</b>	<b>37,448</b>	<b>36,002</b>	<b>38,899</b>	<b>403,713</b>
<b>Balance of payments adjustments</b>	<b>946</b>	<b>880</b>	<b>330</b>	<b>1,248</b>	<b>819</b>	<b>1,264</b>	<b>10,120</b>
Valuation and residency							
Inland freight	837	761	835	792	776	828	8,740
Other valuation and residency	-21	-26	-31	-59	-39	-45	7
Timing	0	0	0	0	0	0	0
Coverage	130	145	-474	515	82	481	1,373
<b>Balance of payments basis</b>	<b>40,077</b>	<b>36,412</b>	<b>39,026</b>	<b>38,696</b>	<b>36,821</b>	<b>40,163</b>	<b>413,833</b>

## Related products

---

### Selected publications from Statistics Canada

---

65-208-X	International Merchandise Trade Annual Review
65-506-X	A Profile of Canadian Exporters
65F0013X	Canadian International Merchandise Trade Database
65F0019X	A Database for Analysis of International Markets
65F0020X	Data Integration - International Trade Data and Manufacturing Shipments Data

---

### Selected CANSIM tables from Statistics Canada

---

228-0001	Merchandise imports and exports, by major groups and principal trading areas for all countries, monthly
228-0002	Merchandise imports and exports, by major groups and principal trading areas for all countries, quarterly
228-0003	Merchandise imports and exports, by major groups and principal trading areas for all countries, annual
228-0033	Imports, customs-based, by province of clearance, monthly
228-0034	Domestic exports, customs-based, by province of origin, monthly
228-0041	Merchandise imports and exports by sector and sub-sector, customs and balance of payments basis, for all countries, monthly
228-0042	Merchandise imports and exports by sector and sub-sector, customs and balance of payments basis, for all countries, quarterly
228-0043	Merchandise imports and exports by sector and sub-sector, customs and balance of payments basis, for all countries, annual
228-0047	Merchandise imports and exports balance of payments and customs-based price and volume indexes for all countries, monthly
228-0048	Merchandise imports and exports balance of payments and customs-based price and volume indexes for all countries, quarterly
228-0049	Merchandise imports and exports balance of payments and customs-based price and volume indexes for all countries, annual

228-0050	Merchandise imports and exports customs-based price indexes, Canada and United States trade, and Standard International Trade Classification (SITC revision 3) price indexes for all countries and United States, monthly
228-0051	Merchandise imports and exports customs-based price indexes, Canada and United States trade, and Standard International Trade Classification (SITC revision 3) price indexes for all countries and United States, quarterly
228-0052	Merchandise imports and exports customs-based price indexes, Canada and United States trade, and Standard International Trade Classification (SITC revision 3) price indexes for all countries and United States, annual
228-0053	Merchandise import and export price and volume indexes by sector and sub-sector, customs and balance of payments basis, for all countries, monthly
228-0054	Merchandise import and export price and volume indexes by sector and sub-sector, customs and balance of payments basis, for all countries, quarterly
228-0055	Merchandise import and export price and volume indexes by sector and sub-sector, customs and balance of payments basis, for all countries, annual
228-0056	Merchandise imports and exports by sector, balance of payments basis, for all countries, seasonally adjusted, Fisher formula, monthly
228-0057	Merchandise imports and exports by sector, balance of payments basis, for all countries, seasonally adjusted, Fisher formula, quarterly

---

### **Selected surveys from Statistics Canada**

---

2201	Canadian International Merchandise Trade (Customs Basis)
2202	Canadian International Merchandise Trade (Balance of Payments Basis)
2203	International Trade Price Indexes

---

### **Selected summary tables from Statistics Canada**

---

- *Canada: Economic and financial data*
- *Imports, exports and trade balance of goods on a balance-of-payments basis, by country or country grouping*
- *Exports of goods on a balance-of-payments basis*

- *Imports of goods on a balance-of-payments basis*
- *Merchandise trade of Canada (monthly)*
- *Economic indicators, by province and territory (monthly and quarterly)*
- *Latest statistics (monthly)*

# Statistical tables

---

---



**Table 1-1**  
**Merchandise trade of Canada, balance of payments basis, seasonally adjusted — Current dollars**

	Exports	Imports	Trade balance	Period to period change		
				Exports	Imports	Balance
				millions of dollars	percent	millions of dollars
2007	463,120	415,683	47,437	0.0	0.0	0
2008	488,754	443,777	44,977	5.5	6.8	-2,460
2009	369,343	374,081	-4,738	-24.4	-15.7	-49,715
2010	404,834	413,833	-8,999	9.6	10.6	-4,261
<b>2009</b>						
First quarter	95,888	95,487	400	-16.7	-14.9	-2,399
Second quarter	88,071	90,304	-2,234	-8.2	-5.4	-2,634
Third quarter	90,293	93,167	-2,873	2.5	3.2	-639
Fourth quarter	95,092	95,123	-32	5.3	2.1	2,842
<b>2010</b>						
First quarter	98,870	98,583	287	4.0	3.6	318
Second quarter	100,071	103,014	-2,942	1.2	4.5	-3,229
Third quarter	99,592	106,312	-6,720	-0.5	3.2	-3,778
Fourth quarter	106,301	105,924	377	6.7	-0.4	7,097
<b>2011</b>						
First quarter	111,244	109,795	1,448	4.6	3.7	1,071
Second quarter	110,204	113,781	-3,578	-0.9	3.6	-5,026
<b>2010</b>						
January	33,260	31,902	1,358	2.5	-2.7	1,714
February	32,929	32,780	148	-1.0	2.8	-1,210
March	32,681	33,901	-1,220	-0.8	3.4	-1,368
April	32,749	32,962	-213	0.2	-2.8	1,007
May	34,282	34,984	-702	4.7	6.1	-489
June	33,040	35,068	-2,028	-3.6	0.2	-1,326
July	33,040	35,220	-2,181	0.0	0.4	-153
August	33,550	35,757	-2,207	1.5	1.5	-26
September	33,002	35,335	-2,333	-1.6	-1.2	-126
October	34,090	35,474	-1,384	3.3	0.4	949
November	34,845	34,979	-134	2.2	-1.4	1,249
December	37,366	35,471	1,895	7.2	1.4	2,029
<b>2011</b>						
January	38,622	36,762	1,861	3.4	3.6	-34
February	35,422	35,564	-142	-8.3	-3.3	-2,003
March	37,200	37,470	-270	5.0	5.4	-128
April	36,474	37,417	-943	-2.0	-0.1	-673
May	37,167	38,560	-1,393	1.9	3.1	-450
June	36,563	37,805	-1,242	-1.6	-2.0	150
July	37,676	38,215	-539	3.0	1.1	703
August	37,863	38,485	-622	0.5	0.7	-83

**Note(s):** Because of rounding, monthly data may not add up to quarterly data and quarterly data may not add up to annual data.

**Table 1-2**  
**Merchandise trade of Canada, balance of payments basis, seasonally adjusted — Constant dollars, 2002**

	Exports	Imports	Trade balance	Period to period change	
				Exports	Imports
	millions of dollars			percent	
2007	449,015	484,005	-34,990	0.0	0.0
2008	412,713	486,735	-74,022	-8.1	0.6
2009	346,916	407,679	-60,763	-15.9	-16.2
2010	374,143	470,401	-96,259	7.8	15.4
<b>2009</b>					
First quarter	87,361	98,563	-11,202	-9.7	-13.3
Second quarter	83,432	97,723	-14,290	-4.5	-0.9
Third quarter	86,976	104,165	-17,189	4.2	6.6
Fourth quarter	89,147	107,228	-18,081	2.5	2.9
<b>2010</b>					
First quarter	90,749	111,192	-20,442	1.8	3.7
Second quarter	94,368	117,650	-23,282	4.0	5.8
Third quarter	94,074	120,900	-26,826	-0.3	2.8
Fourth quarter	94,951	120,659	-25,708	0.9	-0.2
<b>2011</b>					
First quarter	96,756	124,735	-27,979	1.9	3.4
Second quarter	95,247	128,697	-33,450	-1.6	3.2
<b>2010</b>					
January	30,484	36,096	-5,612	1.2	-1.5
February	29,984	36,948	-6,964	-1.6	2.4
March	30,282	38,148	-7,866	1.0	3.2
April	30,882	37,943	-7,061	2.0	-0.5
May	32,065	39,600	-7,535	3.8	4.4
June	31,421	40,106	-8,686	-2.0	1.3
July	31,273	40,040	-8,767	-0.5	-0.2
August	31,897	40,711	-8,814	2.0	1.7
September	30,905	40,150	-9,245	-3.1	-1.4
October	31,313	40,563	-9,250	1.3	1.0
November	31,041	39,832	-8,790	-0.9	-1.8
December	32,597	40,265	-7,668	5.0	1.1
<b>2011</b>					
January	33,619	42,056	-8,438	3.1	4.4
February	30,983	40,411	-9,428	-7.8	-3.9
March	32,155	42,268	-10,113	3.8	4.6
April	31,546	42,814	-11,267	-1.9	1.3
May	32,196	42,713	-10,517	2.1	-0.2
June	31,504	43,170	-11,666	-2.1	1.1
July	33,035	43,221	-10,187	4.9	0.1
August	32,670	43,164	-10,494	-1.1	-0.1

**Note(s):** Because of rounding, monthly data may not add up to quarterly data and quarterly data may not add up to annual data.

**Table 1-3**  
**Merchandise trade of Canada, balance of payments basis, seasonally adjusted — Price indices (Laspeyres)**

	2002=100			Period to period change		
	Exports	Imports	Terms of trade	Exports	Imports	Terms of trade
	price indices (Laspeyres)			percent		
2007	107.1	91.4	117.1	0.0	0.0	0.0
2008	116.2	97.2	119.6	8.5	6.3	2.2
2009	105.2	96.2	109.3	-9.5	-1.0	-8.5
2010	106.8	94.1	113.4	1.5	-2.2	3.7
<b>2009</b>						
First quarter	108.8	100.8	107.9	-3.9	-2.8	-1.1
Second quarter	104.6	96.8	108.0	-3.8	-4.0	0.1
Third quarter	102.9	94.1	109.3	-1.6	-2.8	1.2
Fourth quarter	105.3	93.0	113.2	2.3	-1.2	3.5
<b>2010</b>						
First quarter	107.1	93.7	114.2	1.7	0.7	0.9
Second quarter	105.7	93.6	112.9	-1.3	-0.1	-1.2
Third quarter	106.1	94.5	112.3	0.4	0.9	-0.5
Fourth quarter	108.2	94.6	114.4	2.0	0.1	1.9
<b>2011</b>						
First quarter	111.7	96.1	116.2	3.2	1.7	1.6
Second quarter	113.3	99.1	114.4	1.5	3.0	-1.6
<b>2010</b>						
January	107.2	93.9	114.2	1.0	0.0	1.0
February	108.1	95.1	113.7	0.8	1.3	-0.5
March	106.0	93.8	113.0	-1.9	-1.3	-0.6
April	105.2	92.1	114.3	-0.8	-1.8	1.1
May	106.3	94.5	112.5	1.0	2.6	-1.6
June	105.6	94.0	112.3	-0.7	-0.5	-0.2
July	104.8	93.8	111.7	-0.7	-0.2	-0.5
August	105.9	94.1	112.5	1.0	0.3	0.7
September	106.7	93.9	113.6	0.8	-0.2	1.0
October	107.5	93.9	114.5	0.7	-0.1	0.7
November	109.0	94.8	115.0	1.4	1.0	0.5
December	110.8	95.4	116.1	1.6	0.7	1.0
<b>2011</b>						
January	111.3	95.8	116.2	0.5	0.5	0.1
February	111.6	97.3	114.7	0.2	1.6	-1.4
March	112.4	97.3	115.5	0.8	0.0	0.8
April	113.0	97.4	116.1	0.6	0.1	0.5
May	113.1	98.8	114.5	0.1	1.5	-1.4
June	113.4	100.0	113.4	0.3	1.2	-0.9
July	111.9	96.9	115.4	-1.4	-3.1	1.7
August	113.1	98.3	115.1	1.1	1.4	-0.3

**Note(s):** Because of rounding, monthly data may not add up to quarterly data and quarterly data may not add up to annual data.

**Table 2-1**  
**Exports by commodity groupings, balance of payments basis, seasonally adjusted — Current dollars**

	July	August	Change		Year to date			August 2011/ August 2010	
	2011	2011			2010	2011	Change		
	millions of dollars		percent		millions of dollars		percent		
<b>Total</b>	<b>37,676</b>	<b>37,863</b>	<b>187</b>	<b>0.5</b>	<b>265,531</b>	<b>296,986</b>	<b>31,455</b>	<b>11.8</b>	<b>12.9</b>
<b>Agricultural and fishing products</b>	<b>3,368</b>	<b>3,349</b>	<b>-19</b>	<b>-0.6</b>	<b>23,969</b>	<b>26,149</b>	<b>2,179</b>	<b>9.1</b>	<b>9.5</b>
Wheat	492	518	26	5.2	2,839	3,569	730	25.7	48.5
Other agricultural and fishing products	2,876	2,831	-45	-1.6	21,130	22,579	1,449	6.9	4.5
Live animals	117	124	7	5.8	1,223	941	-282	-23.1	-18.8
Fish and fish preparations	357	377	20	5.6	2,757	2,901	144	5.2	4.1
Barley	8	3	-5	-65.4	192	169	-23	-12.1	-90.5
Wheat flour	6	6	0	-1.0	53	51	-2	-3.5	-13.5
Other cereals unmilled	29	66	37	124.8	302	621	319	105.8	44.7
Other cereal preparations	242	245	4	1.5	1,847	1,900	53	2.9	5.2
Meat and meat preparations	409	427	18	4.4	3,130	3,222	91	2.9	10.1
Alcoholic beverages	63	62	-2	-2.5	502	484	-17	-3.5	-0.8
Other food, feed, beverages and tobacco	1,020	1,064	44	4.3	7,454	7,953	499	6.7	11.8
Rapeseed	430	254	-177	-41.1	2,088	2,673	584	28.0	-3.4
Other crude vegetable products	195	205	10	5.0	1,583	1,665	82	5.2	-5.5
<b>Energy products</b>	<b>8,724</b>	<b>8,489</b>	<b>-235</b>	<b>-2.7</b>	<b>60,252</b>	<b>72,573</b>	<b>12,321</b>	<b>20.4</b>	<b>23.0</b>
Crude petroleum	4,900	4,794	-106	-2.2	32,789	43,077	10,289	31.4	38.1
Natural gas	1,288	1,274	-14	-1.1	11,013	9,664	-1,349	-12.2	-6.6
Other energy products	2,536	2,421	-115	-4.5	16,450	19,832	3,382	20.6	17.1
Coal and other bituminous substances	678	761	83	12.3	3,269	4,585	1,316	40.3	101.2
Petroleum and coal products	1,656	1,465	-191	-11.5	11,772	13,868	2,096	17.8	-5.0
Electricity	202	195	-7	-3.5	1,409	1,379	-30	-2.1	33.1
<b>Forestry products</b>	<b>1,832</b>	<b>1,842</b>	<b>10</b>	<b>0.6</b>	<b>14,370</b>	<b>15,077</b>	<b>707</b>	<b>4.9</b>	<b>1.3</b>
Lumber and sawmill products	669	672	3	0.4	5,306	5,597	291	5.5	8.5
Other crude wood products	68	67	-2	-2.2	442	586	145	32.8	25.8
Lumber	429	425	-4	-1.0	3,222	3,537	315	9.8	13.2
Other wood fabricated materials	172	181	9	5.0	1,643	1,474	-169	-10.3	-5.7
Wood pulp and other wood products	525	543	18	3.5	4,092	4,489	397	9.7	-1.5
Newsprint and other paper and paperboard	638	627	-11	-1.7	4,971	4,991	19	0.4	-3.2
Newsprint paper	324	320	-4	-1.2	2,490	2,577	87	3.5	-4.0
Other paper and paperboard	314	308	-7	-2.2	2,481	2,414	-67	-2.7	-2.3
<b>Industrial goods and materials</b>	<b>9,895</b>	<b>10,088</b>	<b>194</b>	<b>2.0</b>	<b>61,591</b>	<b>75,856</b>	<b>14,265</b>	<b>23.2</b>	<b>28.6</b>
Metal ores	1,620	1,506	-114	-7.0	7,617	10,882	3,265	42.9	42.1
Iron ores, concentrates and scrap	476	511	35	7.4	2,751	3,725	974	35.4	70.0
Copper ores, concentrates and scrap	505	309	-196	-38.8	1,484	2,377	893	60.2	-0.8
Nickel ores, concentrates and scrap	276	348	72	25.9	1,643	2,216	573	34.9	50.1
Zinc ores, concentrates and scrap	19	21	2	11.9	184	193	8	4.5	-0.2
Other ores, concentrates and scrap	345	317	-28	-8.0	1,554	2,371	817	52.6	62.7
Chemicals, plastics and fertilizers	2,962	3,008	46	1.5	19,761	23,725	3,964	20.1	22.8
Inorganic chemicals	493	476	-17	-3.5	2,870	3,997	1,127	39.2	42.3
Organic chemicals	615	648	33	5.4	4,190	4,907	717	17.1	27.2
Fertilizers and fertilizer materials	615	617	2	0.3	3,902	5,044	1,142	29.3	22.6
Synthetic rubber and plastics	946	964	17	1.8	6,698	7,534	836	12.5	13.5
Other chemical products	292	303	11	3.7	2,100	2,242	142	6.8	19.9
Metals and alloys	3,729	3,886	157	4.2	22,916	28,600	5,684	24.8	36.9
Primary iron and steel	66	76	10	15.8	854	586	-268	-31.4	-12.0
Steel bars, rods, plates, sheets	313	331	18	5.7	2,381	2,482	101	4.3	5.7
Other iron and steel and alloys	234	231	-2	-1.0	1,789	1,849	59	3.3	2.9
Aluminum including alloys	723	719	-4	-0.5	4,901	5,388	487	9.9	25.3
Copper and alloys	221	188	-33	-14.9	1,857	1,647	-209	-11.3	27.3
Nickel and alloys	298	256	-42	-14.1	1,132	2,285	1,153	101.9	174.5
Precious metals and alloys	1,675	1,859	185	11.0	8,390	12,658	4,268	50.9	51.5
Zinc and alloys	97	108	11	11.7	912	862	-50	-5.5	19.6
Other non-ferrous metals and alloys	103	116	14	13.4	701	844	143	20.3	42.2

Table 2-1 – continued

## Exports by commodity groupings, balance of payments basis, seasonally adjusted — Current dollars

	July	August	Change	Year to date			August 2011/ August 2010		
	2011	2011		2010	2011	Change			
	millions of dollars		percent		millions of dollars		percent		
<b>Other industrial goods and materials</b>	<b>1,583</b>	<b>1,688</b>	<b>105</b>	<b>6.6</b>	<b>11,297</b>	<b>12,650</b>	<b>1,353</b>	<b>12.0</b>	<b>12.9</b>
Asbestos unmanufactured	4	2	-2	-41.6	35	27	-8	-23.0	-36.4
Other crude animal products	73	87	14	18.9	607	641	34	5.6	18.2
Other crude non-metallic minerals	339	383	44	12.9	2,360	2,658	298	12.6	20.7
Other crude materials, inedible	64	71	6	10.1	471	524	53	11.2	-2.3
Metal fabricated basic products	377	373	-4	-0.9	2,765	2,920	155	5.6	5.6
Textile fabricated materials	184	183	-1	-0.6	1,435	1,458	23	1.6	-1.4
Non-metallic mineral basic products	160	162	2	1.3	1,256	1,278	21	1.7	-1.7
Other fabricated materials	383	428	45	11.7	2,367	3,145	778	32.9	31.4
<b>Machinery and equipment</b>	<b>6,853</b>	<b>7,355</b>	<b>502</b>	<b>7.3</b>	<b>49,432</b>	<b>52,211</b>	<b>2,779</b>	<b>5.6</b>	<b>13.3</b>
Industrial and agricultural machinery	1,699	1,768	69	4.1	11,755	12,969	1,214	10.3	15.2
Industrial machinery	1,526	1,594	67	4.4	10,540	11,660	1,120	10.6	15.9
Agricultural machinery includ. tractors	172	174	2	1.2	1,215	1,309	94	7.7	9.6
Aircraft and other transportation equipment	1,605	1,893	288	18.0	11,369	11,967	598	5.3	25.7
Aircraft, engines, parts	1,220	1,426	205	16.8	8,860	8,915	55	0.6	21.9
Other transportation equipment	384	467	83	21.6	2,509	3,052	544	21.7	39.1
Other machinery and equipment	3,550	3,695	145	4.1	26,308	27,275	967	3.7	7.1
Television, telecommunication equipment	701	673	-28	-3.9	5,008	4,996	-12	-0.2	-4.9
Office machines and equipment	346	355	9	2.5	2,822	2,824	2	0.1	-6.1
Other equipment and tools	1,627	1,731	105	6.4	12,171	12,682	511	4.2	7.5
Other end products, inedible	877	936	59	6.7	6,307	6,774	466	7.4	23.8
<b>Automotive products</b>	<b>4,913</b>	<b>4,545</b>	<b>-369</b>	<b>-7.5</b>	<b>38,366</b>	<b>38,298</b>	<b>-68</b>	<b>-0.2</b>	<b>-8.7</b>
Passenger autos and chassis	3,178	2,827	-352	-11.1	25,564	24,975	-590	-2.3	-17.5
Trucks and other motor vehicles	246	218	-28	-11.5	1,458	1,726	268	18.4	60.8
Motor vehicle parts	1,489	1,500	11	0.7	11,343	11,597	254	2.2	5.8
<b>Other consumer goods</b>	<b>1,331</b>	<b>1,371</b>	<b>40</b>	<b>3.0</b>	<b>11,201</b>	<b>10,544</b>	<b>-656</b>	<b>-5.9</b>	<b>-14.9</b>
<b>Special transactions trade</b>	<b>288</b>	<b>364</b>	<b>76</b>	<b>26.5</b>	<b>2,823</b>	<b>2,587</b>	<b>-237</b>	<b>-8.4</b>	<b>-5.8</b>
<b>Unallocated balance of payments adjustments</b>	<b>471</b>	<b>459</b>	<b>-12</b>	<b>-2.6</b>	<b>3,527</b>	<b>3,691</b>	<b>163</b>	<b>4.6</b>	<b>-0.5</b>

**Table 2-2**  
**Exports by commodity groupings, balance of payments basis, seasonally adjusted — Constant dollars, 2002**

	July	August	Change		Year to date			August 2011/ August 2010	
	2011	2011			2010		2011		
	millions of dollars		percent		millions of dollars		percent		
<b>Total</b>	<b>33,035</b>	<b>32,670</b>	<b>-364</b>	<b>-1.1</b>	<b>248,287</b>	<b>257,708</b>	<b>9,421</b>	<b>3.8</b>	<b>2.4</b>
<b>Agricultural and fishing products</b>	<b>3,126</b>	<b>3,106</b>	<b>-20</b>	<b>-0.6</b>	<b>25,151</b>	<b>24,093</b>	<b>-1,058</b>	<b>-4.2</b>	<b>-1.3</b>
Wheat	398	395	-3	-0.8	3,076	2,682	-394	-12.8	6.7
Other agricultural and fishing products	2,728	2,711	-17	-0.6	22,075	21,411	-664	-3.0	-2.4
Live animals	113	114	1	0.6	1,413	911	-502	-35.5	-32.4
Fish and fish preparations	412	438	26	6.2	3,447	3,332	-116	-3.4	2.9
Barley	6	3	-4	-57.9	184	133	-52	-28.0	-90.1
Wheat flour	5	5	0	0.4	51	43	-8	-14.9	-22.1
Other cereals unmilled	23	52	28	121.2	356	449	93	26.2	13.6
Other cereal preparations	215	214	-1	-0.5	1,645	1,704	60	3.6	3.7
Meat and meat preparations	413	428	15	3.5	3,519	3,254	-265	-7.5	-1.0
Alcoholic beverages	126	124	-2	-1.7	962	968	6	0.6	9.8
Other food, feed, beverages and tobacco	945	980	35	3.7	7,087	7,364	278	3.9	4.6
Rapeseed	307	186	-121	-39.5	1,987	1,914	-73	-3.7	-22.1
Other crude vegetable products	162	169	6	3.8	1,424	1,339	-85	-6.0	-5.3
<b>Energy products</b>	<b>4,887</b>	<b>4,756</b>	<b>-131</b>	<b>-2.7</b>	<b>36,995</b>	<b>39,168</b>	<b>2,173</b>	<b>5.9</b>	<b>4.1</b>
Crude petroleum	2,267	2,317	50	2.2	16,303	18,678	2,375	14.6	18.0
Natural gas	1,394	1,288	-106	-7.6	11,027	10,852	-175	-1.6	-7.4
Other energy products	1,227	1,151	-76	-6.2	9,664	9,638	-26	-0.3	-5.2
Coal and other bituminous substances	161	172	11	6.9	1,226	1,184	-42	-3.4	58.8
Petroleum and coal products	808	740	-68	-8.4	6,803	6,631	-173	-2.5	-21.1
Electricity	258	240	-19	-7.2	1,634	1,823	189	11.5	42.1
<b>Forestry products</b>	<b>2,305</b>	<b>2,281</b>	<b>-24</b>	<b>-1.1</b>	<b>17,469</b>	<b>18,555</b>	<b>1,087</b>	<b>6.2</b>	<b>4.3</b>
Lumber and sawmill products	924	903	-21	-2.3	6,762	7,452	690	10.2	10.1
Other crude wood products	77	81	4	5.0	571	717	146	25.6	16.0
Lumber	635	605	-30	-4.8	4,453	4,973	521	11.7	12.1
Other wood fabricated materials	212	217	5	2.5	1,738	1,762	24	1.4	3.1
Wood pulp and other wood products	642	671	29	4.5	4,865	5,370	505	10.4	4.7
Newsprint and other paper and paperboard	740	707	-32	-4.4	5,842	5,733	-109	-1.9	-2.6
Newsprint paper	377	362	-15	-4.0	3,003	2,978	-25	-0.8	-4.7
Other paper and paperboard	362	345	-17	-4.8	2,839	2,756	-84	-2.9	-0.3
<b>Industrial goods and materials</b>	<b>5,808</b>	<b>5,841</b>	<b>33</b>	<b>0.6</b>	<b>43,049</b>	<b>45,409</b>	<b>2,361</b>	<b>5.5</b>	<b>8.9</b>
Metal ores	617	606	-11	-1.8	3,770	4,464	694	18.4	25.5
Iron ores, concentrates and scrap	157	168	10	6.5	1,240	1,356	117	9.4	46.9
Copper ores, concentrates and scrap	140	91	-49	-35.1	517	675	158	30.6	-13.7
Nickel ores, concentrates and scrap	118	151	32	27.5	769	893	124	16.1	45.4
Zinc ores, concentrates and scrap	10	11	2	17.2	101	100	-2	-1.6	-3.0
Other ores, concentrates and scrap	192	186	-6	-3.3	1,144	1,441	297	26.0	25.2
Chemicals, plastics and fertilizers	1,927	1,953	26	1.3	14,372	15,533	1,161	8.1	7.8
Inorganic chemicals	213	218	4	2.0	1,477	1,610	133	9.0	18.8
Organic chemicals	297	308	11	3.8	2,482	2,422	-60	-2.4	-4.9
Fertilizers and fertilizer materials	243	231	-13	-5.2	1,713	1,991	279	16.3	6.2
Synthetic rubber and plastics	840	862	22	2.6	6,174	6,925	750	12.1	9.6
Other chemical products	333	334	1	0.2	2,527	2,585	59	2.3	11.5

Table 2-2 – continued

## Exports by commodity groupings, balance of payments basis, seasonally adjusted — Constant dollars, 2002

	July	August	Change		Year to date			August 2011/	
	2011	2011			2010		2011	Change	August 2010
	millions of dollars		percent		millions of dollars		percent		
<b>Metals and alloys</b>	<b>1,965</b>	<b>1,940</b>	<b>-25</b>	<b>-1.3</b>	<b>14,555</b>	<b>15,137</b>	<b>582</b>	<b>4.0</b>	<b>12.0</b>
Primary iron and steel	41	45	5	11.9	587	365	-221	-37.7	-21.0
Steel bars, rods, plates, sheets	231	249	18	7.7	1,977	1,899	-78	-3.9	-4.5
Other iron and steel and alloys	186	180	-6	-3.0	1,496	1,460	-35	-2.3	-2.1
Aluminum including alloys	709	702	-7	-1.0	5,104	5,159	54	1.1	18.2
Copper and alloys	60	48	-12	-19.6	615	428	-187	-30.4	-0.2
Nickel and alloys	146	122	-24	-16.4	588	1,005	417	70.8	159.4
Precious metals and alloys	485	476	-8	-1.7	3,343	3,937	594	17.8	7.9
Zinc and alloys	57	61	4	7.6	528	485	-43	-8.2	5.3
Other non-ferrous metals and alloys	53	57	4	8.1	318	398	80	25.2	34.3
<b>Other industrial goods and materials</b>	<b>1,298</b>	<b>1,341</b>	<b>44</b>	<b>3.4</b>	<b>10,351</b>	<b>10,275</b>	<b>-76</b>	<b>-0.7</b>	<b>0.3</b>
Asbestos unmanufactured	3	2	-1	-38.5	35	26	-9	-25.5	-37.2
Other crude animal products	67	76	9	14.0	623	580	-43	-6.9	1.4
Other crude non-metallic minerals	281	274	-7	-2.3	2,392	2,050	-342	-14.3	-9.5
Other crude materials, inedible	59	62	3	5.3	437	478	41	9.4	-5.1
Metal fabricated basic products	295	301	7	2.3	2,235	2,320	85	3.8	5.0
Textile fabricated materials	194	191	-3	-1.7	1,533	1,548	14	0.9	-1.7
Non-metallic mineral basic products	132	131	0	-0.4	1,036	1,057	20	2.0	-0.1
Other fabricated materials	267	303	36	13.4	2,059	2,217	157	7.6	8.9
<b>Machinery and equipment</b>	<b>7,774</b>	<b>8,198</b>	<b>424</b>	<b>5.5</b>	<b>55,099</b>	<b>59,165</b>	<b>4,065</b>	<b>7.4</b>	<b>12.0</b>
Industrial and agricultural machinery	1,589	1,644	55	3.5	10,908	12,192	1,283	11.8	14.2
Industrial machinery	1,428	1,483	55	3.8	9,792	10,971	1,179	12.0	14.7
Agricultural machinery includ. tractors	160	161	0	0.2	1,116	1,220	105	9.4	9.3
Aircraft and other transportation equipment	2,006	2,332	326	16.2	14,020	14,907	887	6.3	26.2
Aircraft, engines, parts	1,635	1,877	243	14.8	11,524	11,864	340	3.0	22.8
Other transportation equipment	371	455	83	22.4	2,496	3,043	546	21.9	42.3
Other machinery and equipment	4,179	4,222	43	1.0	30,171	32,066	1,895	6.3	4.8
Television, telecommunication equipment	909	862	-48	-5.2	6,338	6,518	179	2.8	-3.5
Office machines and equipment	1,016	1,019	3	0.3	7,026	7,999	973	13.8	7.4
Other equipment and tools	1,582	1,667	85	5.4	11,513	12,173	660	5.7	10.5
Other end products, inedible	671	674	3	0.4	5,294	5,377	83	1.6	-0.7
<b>Automotive products</b>	<b>6,835</b>	<b>6,142</b>	<b>-692</b>	<b>-10.1</b>	<b>51,001</b>	<b>52,479</b>	<b>1,478</b>	<b>2.9</b>	<b>-7.1</b>
Passenger autos and chassis	4,866	4,205	-661	-13.6	36,763	37,435	671	1.8	-14.0
Trucks and other motor vehicles	305	274	-30	-10.0	1,765	2,125	360	20.4	63.8
Motor vehicle parts	1,664	1,663	-1	-0.1	12,472	12,919	447	3.6	6.7
<b>Other consumer goods</b>	<b>1,275</b>	<b>1,304</b>	<b>30</b>	<b>2.3</b>	<b>10,743</b>	<b>10,137</b>	<b>-607</b>	<b>-5.6</b>	<b>-15.1</b>
<b>Special transactions trade</b>	<b>234</b>	<b>299</b>	<b>65</b>	<b>27.6</b>	<b>2,563</b>	<b>2,173</b>	<b>-391</b>	<b>-15.2</b>	<b>-15.7</b>
<b>Unallocated balance of payments adjustments</b>	<b>791</b>	<b>744</b>	<b>-47</b>	<b>-5.9</b>	<b>6,216</b>	<b>6,529</b>	<b>312</b>	<b>5.0</b>	<b>-7.8</b>

**Table 3-1**  
**Domestic exports to selected countries, customs basis, not seasonally adjusted — August**

	Agricultural and fishing products	Energy products	Forestry products	Industrial goods	Machinery and equipment	Automotive products	Consumer goods	Special transactions trade	<b>Total</b>
millions of dollars									
<b>United States</b>									
2010	1,659.7	7,359.2	1,182.4	4,296.7	3,274.8	4,759.2	984.4	300.8	<b>23,817.1</b>
2011	1,766.9	9,231.6	1,133.9	5,281.6	3,494.1	4,450.2	786.4	289.8	<b>26,434.5</b>
<b>Mexico</b>									
2010	92.4	0.6	13.8	107.7	65.2	74.1	4.6	0.7	<b>359.2</b>
2011	123.6	1.1	12.5	115.5	76.2	63.7	5.5	0.3	<b>398.3</b>
<b>Japan</b>									
2010	247.3	189.6	112.5	143.8	42.0	5.1	19.7	0.4	<b>760.5</b>
2011	262.2	329.6	111.5	120.4	85.4	3.9	11.2	1.7	<b>926.0</b>
<b>European Union</b>									
<b>Germany</b>									
2010	12.1	66.8	7.7	128.9	88.4	2.8	14.4	2.4	<b>323.5</b>
2011	20.2	49.8	8.0	102.2	171.9	5.4	14.0	1.3	<b>372.9</b>
<b>France</b>									
2010	14.9	0.1	13.6	29.9	69.6	2.7	26.0	3.0	<b>159.9</b>
2011	16.8	4.9	13.2	66.4	73.0	5.7	27.4	1.3	<b>208.8</b>
<b>United Kingdom</b>									
2010	35.6	14.8	20.4	1,051.6	227.8	5.1	20.8	7.9	<b>1,384.0</b>
2011	36.7	44.3	16.6	1,563.7	126.1	4.1	15.8	7.5	<b>1,814.9</b>
<b>Italy</b>									
2010	30.5	0.0	25.8	23.5	29.4	1.5	14.9	0.2	<b>125.8</b>
2011	24.4	35.2	23.6	44.5	31.1	2.1	14.4	0.3	<b>175.6</b>
<b>Other European Union</b>									
2010	81.8	61.2	28.6	315.9	144.8	11.0	40.5	3.1	<b>687.0</b>
2011	67.7	151.5	23.6	377.2	192.6	15.5	41.5	4.3	<b>873.9</b>
<b>Total</b>									
2010	175.0	142.8	96.3	1,549.9	560.2	23.0	116.4	16.6	<b>2,680.1</b>
2011	165.9	285.8	85.1	2,154.0	594.7	32.8	113.1	14.7	<b>3,446.1</b>
<b>Newly industrialized countries</b>									
<b>South Korea</b>									
2010	19.4	48.2	42.7	57.0	29.2	6.3	4.1	0.8	<b>207.6</b>
2011	53.1	170.6	29.4	62.6	75.2	0.4	3.7	0.8	<b>395.8</b>
<b>Hong Kong</b>									
2010	26.6	0.0	9.8	68.9	26.4	0.7	7.0	1.9	<b>141.5</b>
2011	34.8	0.0	9.9	31.5	58.8	0.6	5.4	0.5	<b>141.6</b>
<b>Taiwan</b>									
2010	20.3	0.2	18.2	26.8	9.4	0.2	2.3	0.1	<b>77.4</b>
2011	26.9	80.0	17.1	60.9	8.4	0.2	2.1	0.1	<b>195.7</b>
<b>Singapore</b>									
2010	4.7	0.4	0.6	9.6	33.0	1.9	3.0	1.5	<b>54.8</b>
2011	3.3	0.2	0.8	9.8	51.4	0.9	3.2	0.4	<b>70.1</b>
<b>Total</b>									
2010	71.0	48.8	71.4	162.3	97.9	9.1	16.5	4.3	<b>481.4</b>
2011	118.2	250.8	57.2	164.9	193.8	2.0	14.5	1.8	<b>803.1</b>
<b>Other countries</b>									
2010	632.6	109.0	446.6	1,037.7	592.1	51.2	79.9	25.3	<b>2,974.4</b>
2011	752.3	172.8	509.4	1,505.7	822.1	71.5	92.8	17.9	<b>3,944.5</b>
<b>Total</b>									
2010	<b>2,878.0</b>	<b>7,850.1</b>	<b>1,923.1</b>	<b>7,298.1</b>	<b>4,632.1</b>	<b>4,921.7</b>	<b>1,221.3</b>	<b>348.2</b>	<b>31,072.7</b>
2011	<b>3,189.0</b>	<b>10,271.8</b>	<b>1,909.6</b>	<b>9,342.1</b>	<b>5,266.3</b>	<b>4,624.1</b>	<b>1,023.5</b>	<b>326.3</b>	<b>35,952.6</b>



**Table 3-2**  
**Domestic exports to selected countries, customs basis, not seasonally adjusted — Year to date, January to August**

	Agricultural and fishing products	Energy products	Forestry products	Industrial goods	Machinery and equipment	Automotive products	Consumer goods	Special transactions trade	Total
millions of dollars									
<b>United States</b>									
2010	12,377.3	58,583.2	9,278.3	36,126.9	26,676.2	34,138.0	6,642.8	2,147.3	<b>185,970.0</b>
2011	12,488.6	68,208.9	8,713.2	41,971.5	27,601.2	33,847.1	5,809.0	1,999.4	<b>200,638.8</b>
<b>Mexico</b>									
2010	850.1	64.1	94.2	661.7	468.4	563.1	53.6	9.3	<b>2,764.5</b>
2011	934.8	76.0	98.7	811.1	504.5	429.0	70.5	3.8	<b>2,928.5</b>
<b>Japan</b>									
2010	2,015.4	1,293.8	894.5	1,086.9	381.9	45.9	91.3	7.7	<b>5,817.3</b>
2011	2,499.2	1,452.1	913.0	1,406.0	456.4	31.6	67.0	11.2	<b>6,836.4</b>
<b>European Union</b>									
<b>Germany</b>									
2010	90.2	130.1	61.9	884.1	949.9	23.9	131.6	16.2	<b>2,287.9</b>
2011	100.8	155.0	52.9	771.0	1,058.9	27.3	140.4	15.1	<b>2,321.3</b>
<b>France</b>									
2010	87.1	18.8	94.3	290.8	594.9	23.9	156.6	18.7	<b>1,285.3</b>
2011	112.4	72.4	77.2	518.6	814.9	22.6	148.0	11.9	<b>1,778.1</b>
<b>United Kingdom</b>									
2010	217.3	79.5	147.7	7,363.8	1,296.7	33.1	132.9	51.8	<b>9,322.8</b>
2011	231.5	179.0	125.7	9,904.0	865.8	40.4	111.7	40.1	<b>11,498.2</b>
<b>Italy</b>									
2010	156.2	123.5	207.1	222.0	277.6	5.1	130.2	6.3	<b>1,128.2</b>
2011	208.7	187.4	194.1	274.7	282.2	6.8	65.1	1.8	<b>1,220.7</b>
<b>Other European Union</b>									
2010	543.5	386.7	203.5	2,261.6	1,707.3	104.0	390.6	37.3	<b>5,634.3</b>
2011	806.9	1,021.9	172.2	2,988.7	1,467.5	104.6	405.5	25.4	<b>6,992.7</b>
<b>Total</b>									
2010	1,094.4	738.7	714.6	11,022.2	4,826.5	189.9	941.9	130.2	<b>19,658.4</b>
2011	1,460.3	1,615.7	622.1	14,457.0	4,489.3	201.8	870.6	94.2	<b>23,811.1</b>
<b>Newly industrialized countries</b>									
<b>South Korea</b>									
2010	321.9	650.4	341.6	657.5	278.6	46.4	33.6	7.3	<b>2,337.4</b>
2011	743.0	1,198.0	344.0	749.5	269.5	13.8	48.1	4.9	<b>3,370.8</b>
<b>Hong Kong</b>									
2010	259.8	0.5	75.4	513.5	181.1	5.9	46.3	11.9	<b>1,094.3</b>
2011	256.0	0.4	87.5	1,038.3	278.7	4.9	50.6	3.4	<b>1,719.8</b>
<b>Taiwan</b>									
2010	106.2	93.1	166.4	260.3	89.4	1.9	28.3	0.9	<b>746.5</b>
2011	121.9	254.5	195.5	495.8	74.7	1.1	22.7	0.9	<b>1,167.2</b>
<b>Singapore</b>									
2010	40.3	4.6	12.3	114.9	211.6	13.5	24.1	7.9	<b>429.2</b>
2011	36.4	3.7	7.2	97.2	261.1	13.9	22.0	3.6	<b>445.1</b>
<b>Total</b>									
2010	728.2	748.6	595.8	1,546.2	760.7	67.7	132.3	28.0	<b>4,607.5</b>
2011	1,157.3	1,456.6	634.2	2,380.8	884.0	33.8	143.4	12.8	<b>6,702.9</b>
<b>Other countries</b>									
2010	5,695.9	1,362.8	3,163.9	8,624.3	5,270.2	447.7	1,001.5	195.7	<b>25,762.1</b>
2011	6,143.7	1,942.1	4,334.7	10,648.6	5,641.4	541.3	715.3	140.4	<b>30,107.6</b>
<b>Total</b>									
2010	<b>22,761.3</b>	<b>62,791.3</b>	<b>14,741.3</b>	<b>59,068.2</b>	<b>38,384.1</b>	<b>35,452.4</b>	<b>8,863.3</b>	<b>2,518.3</b>	<b>244,580.1</b>
2011	<b>24,683.9</b>	<b>74,751.4</b>	<b>15,315.9</b>	<b>71,675.1</b>	<b>39,577.2</b>	<b>35,084.7</b>	<b>7,675.7</b>	<b>2,261.9</b>	<b>271,025.7</b>

**Table 4**  
**Domestic exports by country, customs basis, not seasonally adjusted**

	August		January to August		Change
	2010	2011	2010	2011	January to August 2011/ January to August 2010
	millions of dollars				percent
<b>North America</b>					
Greenland	1.2	1.8	5.2	8.1	56.5
Mexico	359.2	398.3	2,764.5	2,928.5	5.9
Saint Pierre and Miquelon	1.0	1.2	10.0	11.5	15.5
United States	23,817.1	26,434.5	185,970.0	200,638.8	7.9
<b>Total</b>	<b>24,178.5</b>	<b>26,835.9</b>	<b>188,749.7</b>	<b>203,586.9</b>	<b>7.9</b>
<b>Western Europe</b>					
Andorra	0.0	0.0	0.1	0.0	-62.8
Austria	10.0	63.9	254.4	221.1	-13.1
Belgium	166.8	86.3	1,328.4	1,285.7	-3.2
Denmark	22.9	26.2	184.0	160.1	-13.0
Faeroe Islands	0.0	0.0	0.2	0.5	172.9
Finland	30.0	113.0	245.6	420.8	71.3
France	159.9	208.8	1,285.3	1,778.1	38.3
Germany	323.5	372.9	2,287.9	2,321.3	1.5
Gibraltar	0.0	0.0	0.3	24.8	...
Greece	6.7	4.6	76.6	54.9	-28.3
Iceland	3.9	4.7	93.1	40.8	-56.2
Italy	125.8	175.6	1,128.2	1,220.7	8.2
Luxembourg	0.9	4.3	32.8	63.7	94.2
Malta	1.6	1.5	105.4	4.9	-95.4
Netherlands	248.7	334.9	1,784.4	2,932.8	64.4
Norway	204.1	239.0	1,522.9	1,822.5	19.7
Portugal	8.0	11.6	165.1	129.3	-21.7
Republic of Ireland (Eire)	17.3	12.3	224.6	271.6	20.9
Spain	40.5	75.3	451.4	563.6	24.9
Sweden	49.0	62.2	237.7	241.5	1.6
Switzerland	79.0	131.7	1,005.1	664.5	-33.9
United Kingdom	1,384.0	1,814.9	9,322.8	11,498.2	23.3
<b>Total</b>	<b>2,882.5</b>	<b>3,743.4</b>	<b>21,736.3</b>	<b>25,721.5</b>	<b>18.3</b>
<b>Other Europe</b>					
Albania	3.1	5.8	18.0	40.3	123.4
Armenia	0.7	0.9	5.1	9.5	86.0
Azerbaijan	1.9	1.0	10.2	6.7	-34.4
Belarus	0.1	0.0	1.1	1.2	7.6
Bosnia and Herzegovina	0.1	0.5	3.1	3.7	21.9
Bulgaria	16.1	18.4	74.9	154.8	106.8
Croatia	1.3	0.9	80.5	10.2	-87.3
Czech Republic	8.7	6.9	75.5	61.1	-19.0
Estonia	1.3	1.1	13.6	68.5	402.1
Georgia	0.9	1.4	7.1	13.3	87.3
Hungary	6.4	8.1	52.6	64.8	23.1
Kazakhstan	5.3	7.7	94.9	99.0	4.3
Kyrgyzstan	0.6	1.0	2.7	3.2	20.3
Latvia	23.4	2.5	80.1	36.3	-54.7
Lithuania	2.8	1.9	20.2	34.1	68.9
Macedonia (Former Yugoslav Republic of Macedonia)	0.5	1.8	6.7	11.8	76.1
Montenegro	0.0	0.0	0.9	0.8	-3.7
Poland	9.2	21.0	97.3	130.2	33.8
Republic of Moldova	0.3	0.0	1.8	0.7	-61.1
Romania	13.7	15.1	73.7	40.9	-44.6
Russian Federation	88.5	105.3	578.7	809.4	39.9
Serbia	1.2	0.8	4.7	5.1	6.7
Slovakia	1.5	1.7	20.0	37.5	87.8
Slovenia	0.4	0.5	29.5	7.4	-74.9
Tajikistan	0.0	0.1	4.3	1.7	-60.9
Turkmenistan	0.7	0.7	2.1	9.0	330.5
Ukraine	5.0	10.8	78.3	78.4	0.2
Uzbekistan	0.1	0.4	4.3	4.8	11.6
<b>Total</b>	<b>194.0</b>	<b>216.4</b>	<b>1,441.9</b>	<b>1,744.5</b>	<b>21.0</b>

Table 4 – continued

## Domestic exports by country, customs basis, not seasonally adjusted

	August		January to August		Change
	2010	2011	2010	2011	January to August 2011/ January to August 2010
	millions of dollars				percent
<b>Middle East</b>					
Bahrain	1.8	1.4	55.9	47.2	-15.6
Cyprus	0.9	0.7	6.2	7.0	12.9
Egypt	20.1	43.7	286.8	456.7	59.2
Eritrea	0.2	0.0	2.0	2.4	21.2
Ethiopia	2.4	3.1	116.5	15.1	-87.0
Iran	11.6	4.9	72.2	51.7	-28.4
Iraq	19.3	3.3	202.0	86.9	-57.0
Israel	24.4	18.0	237.9	198.9	-16.4
Jordan	4.5	3.8	39.4	41.2	4.5
Kuwait	5.5	5.2	61.2	62.0	1.4
Lebanon	4.2	2.7	46.4	52.4	12.7
Libya	3.1	0.1	91.1	37.0	-59.4
Oman	7.9	4.6	70.0	51.8	-26.0
Qatar	3.6	37.4	61.4	92.1	50.0
Saudi Arabia	59.0	85.3	485.5	519.0	6.9
Somalia	0.0	0.0	2.2	0.3	-84.8
Sudan	20.4	0.8	93.6	91.0	-2.8
Syria	3.3	3.9	22.3	42.7	91.3
Turkey	29.9	81.5	492.7	751.0	52.4
United Arab Emirates	77.8	51.6	637.6	754.5	18.3
Yemen	0.8	0.5	13.2	7.1	-46.3
<b>Total</b>	<b>300.7</b>	<b>352.8</b>	<b>3,096.1</b>	<b>3,368.0</b>	<b>8.8</b>
<b>Other Africa</b>					
Algeria	30.3	15.0	225.7	125.9	-44.2
Angola	34.4	3.9	142.1	101.2	-28.8
Antarctica	0.0	0.0	0.0	0.0	67.8
Benin	0.8	1.1	7.0	8.0	14.6
Botswana	0.5	0.1	2.5	3.0	17.0
Burkina Faso	1.0	1.7	13.3	13.6	1.6
Burundi	0.1	0.1	0.6	0.6	3.2
Cameroon	0.6	3.3	15.5	18.5	19.8
Cape Verde	0.1	0.3	0.8	1.7	101.3
Central African Republic	0.0	0.0	0.1	0.2	123.5
Chad	0.3	0.1	3.8	2.0	-47.9
Comoros	0.0	0.0	0.1	0.2	109.4
Congo	1.1	1.1	11.2	11.7	4.2
Democratic Republic of the Congo	0.8	3.5	8.0	13.1	64.2
Djibouti	0.1	0.2	3.8	0.7	-81.1
Equatorial Guinea	0.7	0.6	2.6	5.8	124.6
French Southern Territories	0.0	0.0	0.0	0.0	-26.9
Gabon	1.8	1.3	12.6	11.5	-9.3
Gambia	0.0	0.1	0.5	0.4	-23.7
Ghana	7.9	40.4	99.5	176.9	77.8
Guinea	0.6	1.4	4.5	16.6	268.2
Guinea-Bissau	0.0	0.0	0.0	0.1	...
Ivory Coast	4.1	2.1	11.6	5.3	-54.2
Kenya	5.5	3.2	46.3	34.6	-25.1
Lesotho	0.1	0.0	0.1	0.1	-1.8
Liberia	0.5	0.6	9.2	8.9	-2.8
Madagascar	2.4	1.3	37.3	9.1	-75.5
Malawi	0.4	0.2	2.6	3.2	22.7
Mali	1.0	1.8	5.2	13.3	154.2
Mauritania	0.6	0.7	2.2	8.4	286.9
Mauritius	0.3	0.3	2.8	3.6	29.1
Morocco	19.5	2.4	95.8	220.8	130.4
Mozambique	1.2	1.7	8.6	7.9	-8.6
Namibia	0.9	0.2	8.0	4.0	-50.0
Niger	0.1	0.3	1.5	3.4	131.5
Nigeria	20.2	18.0	143.6	122.0	-15.1
Rwanda	0.0	0.2	0.8	0.7	-15.3
Saint Helena	0.0	0.0	0.0	0.0	417.9
Sao Tome and Principe	0.0	0.0	0.0	0.1	148.7
Senegal	0.7	1.2	18.3	19.2	5.0
Seychelles	0.2	0.7	0.7	2.9	311.0

Table 4 – continued

## Domestic exports by country, customs basis, not seasonally adjusted

	August		January to August		Change
	2010	2011	2010	2011	January to August 2011/ January to August 2010
	millions of dollars				percent
Sierra Leone	0.4	0.9	6.9	6.4	-7.4
South Africa	23.1	56.9	288.6	374.2	29.7
Swaziland	0.3	0.1	1.1	0.5	-55.9
Togo	0.4	2.1	7.7	10.3	33.1
Tunisia	1.7	2.6	32.6	28.8	-11.8
Uganda	0.8	0.8	6.9	5.8	-15.6
United Republic of Tanzania	2.6	3.3	21.6	28.3	31.0
Western Sahara	0.0	0.0	0.0	0.0	-100.0
Zambia	0.4	3.2	20.6	22.9	11.3
Zimbabwe	0.0	2.1	3.9	5.6	45.4
<b>Total</b>	<b>168.9</b>	<b>181.3</b>	<b>1,338.8</b>	<b>1,461.9</b>	<b>9.2</b>
<b>Other Asia</b>					
Afghanistan	2.4	1.2	36.6	26.1	-28.5
Bangladesh	53.9	32.7	407.3	308.3	-24.3
Bhutan	0.0	0.0	1.5	0.0	-97.1
British Indian Ocean Territory	0.2	0.0	1.4	0.0	-99.7
Brunei Darussalam	1.4	0.2	9.4	1.8	-81.3
Cambodia	0.2	0.5	2.0	4.1	108.3
China	901.8	1,361.0	7,485.8	9,810.6	31.1
Hong Kong	141.5	141.6	1,094.3	1,719.8	57.2
India	143.2	197.0	1,251.0	1,328.6	6.2
Indonesia	78.5	161.6	646.5	1,071.5	65.7
Japan	760.5	926.0	5,817.3	6,836.4	17.5
Laos	0.0	0.4	1.5	6.2	313.8
Macao	0.1	0.2	1.7	1.7	3.2
Malaysia	65.1	33.0	524.3	553.9	5.7
Maldives	0.2	0.9	3.0	2.7	-10.5
Mongolia	0.6	6.3	10.0	59.9	498.0
Myanmar	0.0	0.1	2.7	0.8	-70.3
Nepal	0.3	0.3	2.1	2.7	31.5
North Korea	0.5	0.9	7.3	9.2	25.2
Pakistan	23.3	8.5	259.1	394.3	52.2
Philippines	82.7	34.6	392.0	398.0	1.5
Singapore	54.8	70.1	429.2	445.1	3.7
South Korea	207.6	395.8	2,337.4	3,370.8	44.2
Sri Lanka	2.6	28.1	208.6	242.7	16.3
Taiwan	77.4	195.7	746.5	1,167.2	56.3
Thailand	48.3	60.2	444.2	570.2	28.4
Timor-Leste	0.0	0.0	0.0	0.0	...
Viet Nam	26.7	18.6	172.0	182.2	5.9
<b>Total</b>	<b>2,673.9</b>	<b>3,675.3</b>	<b>22,294.8</b>	<b>28,515.0</b>	<b>27.9</b>
<b>Oceania</b>					
American Samoa	0.1	0.1	0.8	1.0	19.2
Australia	125.0	204.4	1,141.8	1,143.7	0.2
Christmas Island	0.0	0.1	0.6	0.2	-71.3
Cocos (Keeling) Islands	0.0	0.0	0.1	0.0	-92.4
Cook Islands	0.0	0.0	0.1	0.1	43.4
Fiji	0.1	3.9	1.7	5.9	243.0
French Polynesia	1.0	1.5	7.1	7.2	2.2
Guam	0.1	0.1	0.8	1.2	45.3
Kiribati	0.0	0.0	0.1	0.1	-8.6
Nauru	0.0	0.0	1.3	0.0	-100.0
New Caledonia	1.0	2.3	13.5	5.8	-57.3
New Zealand	19.4	46.4	176.6	220.7	25.0
Niue	0.0	0.0	0.0	0.0	...
Norfolk Island	0.0	0.0	0.0	0.0	-100.0
Papua New Guinea	0.7	1.9	7.7	30.3	294.5
Pitcairn	0.0	0.0	0.1	0.0	-40.3
Samoa	0.0	0.0	0.3	0.1	-60.7
Solomon Islands	0.0	0.0	0.0	0.3	828.9
Tonga	0.1	0.0	3.4	0.2	-94.4
United States Minor Outlying Islands	1.3	1.2	9.4	7.8	-16.4
Vanuatu	0.2	0.1	1.1	0.7	-40.0
Wallis and Futuna	0.0	0.0	0.0	0.0	...
<b>Total</b>	<b>149.0</b>	<b>262.2</b>	<b>1,366.4</b>	<b>1,425.2</b>	<b>4.3</b>

Table 4 – continued

## Domestic exports by country, customs basis, not seasonally adjusted

	August		January to August		Change
	2010	2011	2010	2011	January to August 2011/ January to August 2010
	millions of dollars				percent
<b>South America</b>					
Argentina	16.3	20.4	140.0	338.8	142.1
Bolivia	0.6	2.7	37.0	9.1	-75.4
Brazil	214.3	265.0	1,690.5	1,753.2	3.7
Chile	32.3	60.7	342.1	459.9	34.4
Colombia	43.6	64.0	374.6	418.1	11.6
Ecuador	7.8	18.6	161.7	187.0	15.7
Falkland Islands (Malvinas)	0.0	0.0	0.1	0.1	-51.4
Guyana	0.8	3.7	16.6	23.3	40.4
Paraguay	7.3	0.7	11.6	7.2	-37.7
Peru	18.6	42.0	287.8	311.4	8.2
Suriname	0.3	1.3	6.7	7.4	10.5
Uruguay	2.9	1.2	20.0	17.3	-13.3
Venezuela	21.2	76.2	302.2	384.2	27.1
<b>Total</b>	<b>366.0</b>	<b>556.6</b>	<b>3,390.8</b>	<b>3,917.1</b>	<b>15.5</b>
<b>Central America Antilles</b>					
Anguilla	0.0	0.0	0.6	0.4	-37.6
Antigua and Barbuda	1.5	0.5	12.1	6.9	-43.1
Aruba	0.4	0.8	24.7	3.7	-84.9
Bahamas	28.3	2.1	89.3	38.9	-56.4
Barbados	2.6	4.1	23.6	29.2	23.8
Belize	0.8	0.4	3.9	3.3	-14.6
Bermuda	2.7	1.6	26.1	64.3	146.6
British Virgin Islands	0.1	0.0	20.8	47.6	128.9
Cayman Islands	0.3	0.6	4.4	4.7	7.4
Costa Rica	13.8	18.9	62.6	88.6	41.6
Cuba	36.7	31.6	216.9	250.9	15.7
Dominica	0.4	0.2	3.4	2.1	-36.5
Dominican Republic	13.6	8.8	116.3	100.0	-14.0
El Salvador	3.8	2.1	25.2	23.6	-6.4
Grenada	0.3	0.2	3.4	2.9	-15.6
Guatemala	8.3	4.8	58.2	70.7	21.5
Haiti	5.7	2.7	28.3	24.9	-12.2
Honduras	1.9	1.7	22.1	24.7	11.8
Jamaica	7.0	8.1	96.2	66.4	-31.0
Montserrat	0.0	0.0	0.1	0.2	37.7
Netherlands Antilles	1.7	1.2	13.4	93.8	601.6
Nicaragua	4.2	4.9	14.1	22.3	57.5
Panama	5.5	6.1	87.8	72.1	-17.9
Saint Kitts and Nevis	0.5	0.5	3.8	3.4	-11.7
Saint Lucia	0.6	0.6	4.5	5.9	29.6
Saint Vincent and the Grenadines	1.0	0.3	5.9	4.4	-25.9
Trinidad and Tobago	17.0	25.6	195.3	228.5	17.0
Turks and Caicos Islands	0.2	0.1	2.3	1.3	-41.5
<b>Total</b>	<b>159.0</b>	<b>128.6</b>	<b>1,165.3</b>	<b>1,285.7</b>	<b>10.3</b>
<b>All countries</b>	<b>31,072.7</b>	<b>35,952.6</b>	<b>244,580.1</b>	<b>271,025.7</b>	<b>10.8</b>

**Table 5-1**  
**Exports by province of origin, customs basis, not seasonally adjusted — August**

	Agricultural and fishing products	Energy products	Forestry products	Industrial goods	Machinery and equipment	Automotive products	Consumer goods	Special transactions trade	<b>Total</b>
millions of dollars									
<b>Domestic exports</b>									
Newfoundland and Labrador									
2010	86.8	516.9	13.9	221.3	2.3	0.1	0.1	3.0	<b>844.5</b>
2011	92.5	463.5	12.5	407.8	2.8	0.2	0.1	2.9	<b>982.2</b>
Prince Edward Island									
2010	46.6	0.1	0.0	2.0	5.1	0.4	1.7	5.2	<b>61.1</b>
2011	49.7	0.0	0.0	1.7	5.2	0.2	2.5	10.0	<b>69.3</b>
Nova Scotia									
2010	104.1	27.4	97.0	42.1	123.4	4.0	5.0	4.0	<b>406.9</b>
2011	100.0	10.7	80.1	50.1	122.0	5.2	4.0	7.4	<b>379.5</b>
New Brunswick									
2010	113.1	681.2	127.3	62.7	21.3	1.6	21.4	5.1	<b>1,033.8</b>
2011	148.5	728.7	119.5	94.8	24.2	2.4	19.1	5.0	<b>1,142.3</b>
Quebec									
2010	372.9	223.4	529.3	1,549.7	1,264.7	115.7	337.3	85.1	<b>4,478.1</b>
2011	414.2	306.0	483.0	2,011.5	1,478.2	164.8	312.9	74.5	<b>5,245.1</b>
Ontario									
2010	696.6	199.4	237.7	3,239.2	2,459.3	4,707.3	775.5	151.4	<b>12,466.6</b>
2011	739.4	309.1	246.4	4,345.7	2,721.6	4,302.7	584.0	145.7	<b>13,394.5</b>
Manitoba									
2010	268.8	65.7	19.5	125.0	151.8	32.3	25.4	30.8	<b>719.2</b>
2011	302.7	130.9	12.6	298.5	172.4	33.7	43.7	23.5	<b>1,018.0</b>
Saskatchewan									
2010	495.8	799.7	20.8	465.0	64.4	1.8	0.8	4.4	<b>1,852.7</b>
2011	597.8	979.0	33.3	658.3	50.9	3.6	1.0	4.4	<b>2,328.3</b>
Alberta									
2010	437.6	4,690.8	180.8	836.1	289.4	36.3	9.3	32.0	<b>6,512.1</b>
2011	466.8	6,270.3	210.1	1,012.6	415.1	92.2	8.2	27.1	<b>8,502.4</b>
British Columbia									
2010	255.5	645.3	696.8	509.2	249.4	22.3	44.7	27.2	<b>2,450.4</b>
2011	277.2	1,073.5	712.1	444.9	273.4	19.1	48.2	25.9	<b>2,874.3</b>
Yukon, Northwest Territories and Nunavut <sup>1</sup>									
2010	0.1	0.2	0.0	245.8	1.1	0.0	0.0	0.0	<b>247.3</b>
2011	0.1	0.0	0.0	16.2	0.5	0.0	0.0	0.0	<b>16.8</b>
<b>Total</b>									
2010	<b>2,878.0</b>	<b>7,850.1</b>	<b>1,923.1</b>	<b>7,298.1</b>	<b>4,632.1</b>	<b>4,921.7</b>	<b>1,221.3</b>	<b>348.2</b>	<b>31,072.7</b>
2011	<b>3,189.0</b>	<b>10,271.8</b>	<b>1,909.6</b>	<b>9,342.1</b>	<b>5,266.3</b>	<b>4,624.1</b>	<b>1,023.5</b>	<b>326.3</b>	<b>35,952.6</b>
<b>Re-exports</b>									
2010	<b>54.9</b>	<b>34.7</b>	<b>6.6</b>	<b>279.0</b>	<b>898.3</b>	<b>95.8</b>	<b>212.9</b>	<b>626.0</b>	<b>2,208.2</b>
2011	<b>36.5</b>	<b>44.5</b>	<b>8.0</b>	<b>369.9</b>	<b>976.6</b>	<b>107.4</b>	<b>275.5</b>	<b>778.3</b>	<b>2,596.6</b>
<b>Total exports</b>									
2010	<b>2,932.9</b>	<b>7,884.8</b>	<b>1,929.7</b>	<b>7,577.1</b>	<b>5,530.4</b>	<b>5,017.5</b>	<b>1,434.3</b>	<b>974.2</b>	<b>33,280.8</b>
2011	<b>3,225.5</b>	<b>10,316.2</b>	<b>1,917.5</b>	<b>9,711.9</b>	<b>6,242.9</b>	<b>4,731.5</b>	<b>1,299.0</b>	<b>1,104.6</b>	<b>38,549.2</b>

1. Data for the current month do not include some exports from the Harmonized System, Chapter 71, "Natural/cultured pearls, precious stones and metals, coins, etc." for reasons relating to timing.

**Table 5-2**  
**Exports by province of origin, customs basis, not seasonally adjusted — Year to date, January to August**

	Agricultural and fishing products	Energy products	Forestry products	Industrial goods	Machinery and equipment	Automotive products	Consumer goods	Special transactions trade	<b>Total</b>
millions of dollars									
<b>Domestic exports</b>									
Newfoundland and Labrador									
2010	592.4	3,784.6	78.5	1,152.5	30.6	1.1	1.0	19.1	<b>5,660.0</b>
2011	691.7	4,890.0	104.6	1,610.2	27.2	1.7	1.0	17.8	<b>7,344.2</b>
Prince Edward Island									
2010	301.4	1.0	0.4	18.2	45.3	2.8	25.4	51.4	<b>445.9</b>
2011	300.0	0.0	0.2	14.5	45.9	1.7	24.4	56.7	<b>443.6</b>
Nova Scotia									
2010	623.5	362.7	546.3	333.7	925.8	35.0	39.0	26.2	<b>2,892.3</b>
2011	748.6	375.0	632.1	375.7	917.8	41.0	37.9	29.3	<b>3,157.5</b>
New Brunswick									
2010	811.4	5,743.2	895.9	740.1	193.9	15.9	165.6	29.4	<b>8,595.4</b>
2011	920.4	7,224.6	852.7	801.0	211.8	28.7	100.7	27.4	<b>10,167.3</b>
Quebec									
2010	2,873.9	1,975.4	4,025.1	12,726.9	11,407.6	1,009.5	2,794.1	687.8	<b>37,500.3</b>
2011	3,223.9	2,233.7	3,877.3	14,780.3	11,636.7	1,233.9	2,306.5	571.3	<b>39,863.4</b>
Ontario									
2010	5,230.4	1,701.7	1,856.0	26,017.4	19,761.9	33,580.0	5,136.5	1,090.6	<b>94,374.5</b>
2011	5,539.8	2,003.2	1,910.0	32,711.6	19,951.5	32,679.4	4,424.0	1,015.1	<b>100,234.4</b>
Manitoba									
2010	2,423.9	564.7	143.1	1,515.5	1,268.1	281.3	240.7	214.3	<b>6,651.6</b>
2011	2,574.9	783.0	154.7	2,027.6	1,430.2	301.1	337.7	173.8	<b>7,782.9</b>
Saskatchewan									
2010	4,600.6	5,993.8	143.8	4,449.3	484.6	28.9	8.1	30.5	<b>15,739.5</b>
2011	5,175.1	6,877.2	173.5	6,066.9	422.1	39.9	8.0	29.0	<b>18,791.7</b>
Alberta									
2010	3,773.1	37,430.8	1,401.2	6,841.2	2,299.4	321.4	81.4	196.2	<b>52,344.7</b>
2011	3,952.5	43,943.9	1,345.0	7,715.9	2,824.6	582.7	77.9	172.8	<b>60,615.4</b>
British Columbia									
2010	1,529.1	5,233.1	5,650.6	3,766.5	1,958.8	176.2	371.3	172.5	<b>18,858.1</b>
2011	1,556.1	6,420.7	6,265.7	4,465.4	2,103.6	174.3	357.4	168.4	<b>21,511.5</b>
Yukon, Northwest Territories and Nunavut <sup>1</sup>									
2010	1.5	0.2	0.4	1,506.8	8.1	0.3	0.2	0.4	<b>1,517.9</b>
2011	1.0	0.1	0.1	1,106.0	5.8	0.4	0.3	0.2	<b>1,113.8</b>
<b>Total</b>									
2010	<b>22,761.3</b>	<b>62,791.3</b>	<b>14,741.3</b>	<b>59,068.2</b>	<b>38,384.1</b>	<b>35,452.4</b>	<b>8,863.3</b>	<b>2,518.3</b>	<b>244,580.1</b>
2011	<b>24,683.9</b>	<b>74,751.4</b>	<b>15,315.9</b>	<b>71,675.1</b>	<b>39,577.2</b>	<b>35,084.7</b>	<b>7,675.7</b>	<b>2,261.9</b>	<b>271,025.7</b>
<b>Re-exports</b>									
2010	<b>380.7</b>	<b>172.9</b>	<b>54.7</b>	<b>1,899.6</b>	<b>6,783.6</b>	<b>719.7</b>	<b>1,327.9</b>	<b>4,718.8</b>	<b>16,057.8</b>
2011	<b>361.2</b>	<b>369.0</b>	<b>53.7</b>	<b>2,896.8</b>	<b>7,101.6</b>	<b>780.0</b>	<b>1,790.6</b>	<b>5,259.0</b>	<b>18,612.0</b>
<b>Total exports</b>									
2010	<b>23,142.0</b>	<b>62,964.2</b>	<b>14,796.0</b>	<b>60,967.8</b>	<b>45,167.6</b>	<b>36,172.0</b>	<b>10,191.2</b>	<b>7,237.1</b>	<b>260,638.0</b>
2011	<b>25,045.1</b>	<b>75,120.4</b>	<b>15,369.7</b>	<b>74,571.9</b>	<b>46,678.8</b>	<b>35,864.6</b>	<b>9,466.3</b>	<b>7,520.8</b>	<b>289,637.7</b>

1. Data for the current month do not include some exports from the Harmonized System Chapter 71, "Natural/cultured pearls, precious stones and metals, coins, etc." for reasons relating to timing.

**Table 6-1**  
**Imports by commodity groupings, balance of payments basis, seasonally adjusted — Current dollars**

	July	August	Change		Year to date			August 2011/ August 2010	
	2011	2011			2010	2011	Change		
	millions of dollars		percent		millions of dollars			percent	
<b>Total</b>	<b>38,215</b>	<b>38,485</b>	<b>271</b>	<b>0.7</b>	<b>272,574</b>	<b>300,277</b>	<b>27,703</b>	<b>10.2</b>	<b>7.6</b>
<b>Agricultural and fishing products</b>	<b>2,711</b>	<b>2,803</b>	<b>92</b>	<b>3.4</b>	<b>19,464</b>	<b>21,476</b>	<b>2,012</b>	<b>10.3</b>	<b>10.5</b>
Fruits and vegetables	753	764	12	1.5	5,473	5,893	420	7.7	8.6
Fresh fruits and berries	268	271	3	0.9	1,958	2,053	95	4.8	14.7
Dried fruits, fruits and fruit preparations	132	132	0	0.2	892	1,023	132	14.8	9.0
Fresh vegetables	185	194	8	4.4	1,456	1,520	64	4.4	3.8
Other vegetables and vegetable preparations	167	168	1	0.4	1,167	1,297	130	11.1	4.7
Other agricultural and fishing products	1,958	2,039	81	4.1	13,992	15,583	1,592	11.4	11.3
Live animals	17	18	1	5.4	130	144	14	10.7	4.5
Meat and meat preparations	239	222	-17	-7.0	1,404	1,663	259	18.4	18.7
Fish and marine animals	197	193	-4	-2.2	1,319	1,523	204	15.5	10.3
Cocoa, coffee, tea and other food preparations	452	501	49	10.8	3,289	3,747	457	13.9	8.9
Dairy produce, eggs and honey	53	60	7	13.3	383	420	37	9.8	16.6
Corn (maize) shelled	43	49	6	13.6	305	246	-58	-19.1	108.0
Other cereals and cereal preparations	188	187	-1	-0.4	1,399	1,457	58	4.1	3.3
Sugar and sugar preparations	162	203	41	25.1	1,149	1,454	305	26.5	40.7
Fodder, feed, excluding unmilled cereal	119	120	1	1.3	925	949	25	2.7	7.8
Beverages	289	305	17	5.8	2,453	2,536	83	3.4	-5.1
Tobacco	35	33	-2	-6.2	271	238	-33	-12.1	-12.8
Crude vegetable products	163	146	-17	-10.5	957	1,198	240	25.1	22.0
Cotton	1	1	0	35.0	8	8	1	7.4	0.4
<b>Energy products</b>	<b>4,557</b>	<b>3,936</b>	<b>-620</b>	<b>-13.6</b>	<b>26,663</b>	<b>34,258</b>	<b>7,594</b>	<b>28.5</b>	<b>1.0</b>
Crude petroleum	2,687	2,006	-681	-25.3	16,300	18,444	2,145	13.2	-13.4
Other energy products	1,870	1,930	61	3.2	10,364	15,814	5,450	52.6	22.1
Coal and other related products	493	528	36	7.3	3,480	3,566	86	2.5	-18.8
Petroleum and coal products	1,377	1,402	25	1.8	6,883	12,248	5,364	77.9	50.8
<b>Forestry products</b>	<b>203</b>	<b>208</b>	<b>5</b>	<b>2.4</b>	<b>1,788</b>	<b>1,635</b>	<b>-153</b>	<b>-8.5</b>	<b>-6.5</b>
Forestry products	203	208	5	2.4	1,788	1,635	-153	-8.5	-6.5
Crude wood products	25	28	3	12.2	275	230	-45	-16.4	-27.1
Wood fabricated materials	178	180	2	1.0	1,513	1,405	-108	-7.1	-2.1
<b>Industrial goods and materials</b>	<b>8,166</b>	<b>8,301</b>	<b>135</b>	<b>1.7</b>	<b>56,728</b>	<b>63,960</b>	<b>7,231</b>	<b>12.7</b>	<b>16.1</b>
Metals and metal ores	3,427	3,413	-13	-0.4	21,093	26,141	5,048	23.9	34.2
Metals in ores, concentrates and scrap	714	773	60	8.4	4,548	5,649	1,101	24.2	49.5
Steel bars, rods, plates, sheets	586	573	-13	-2.2	4,414	4,768	354	8.0	8.6
Other iron and steel products	414	478	64	15.5	2,815	3,320	505	17.9	23.3
Precious metals including alloys	1,324	1,198	-126	-9.5	6,410	9,314	2,904	45.3	59.3
Other non-ferrous metals and alloys	389	391	2	0.4	2,906	3,090	184	6.3	8.9
Chemicals and plastics	2,577	2,724	147	5.7	19,242	20,517	1,275	6.6	10.6
Organic chemicals	511	554	42	8.3	4,615	4,472	-143	-3.1	0.4
Plastic materials	899	887	-12	-1.3	6,696	7,101	405	6.1	1.8
Other chemicals and related products	1,166	1,283	116	10.0	7,931	8,944	1,013	12.8	23.5
Other industrial goods and materials	2,162	2,164	2	0.1	16,393	17,302	909	5.5	0.8
Crude animal products	11	17	6	48.5	164	181	18	10.7	-13.4
Wool and man-made fibres	20	18	-2	-10.0	170	176	6	3.7	-14.8
Crude non-metallic minerals	76	77	1	0.9	561	558	-3	-0.6	26.3
Textile fabricated materials	219	212	-6	-2.9	1,557	1,675	118	7.6	0.5
Metal fabricated basic products	908	909	1	0.1	6,368	7,207	839	13.2	7.2
Rubber fabricated materials	97	92	-5	-4.8	660	738	78	11.9	6.4
Oils, fats, animal and vegetable	97	103	5	5.5	807	790	-17	-2.1	-3.2
Non-metallic minerals	304	306	3	0.9	2,413	2,467	54	2.3	-2.6
Other fabricated materials	429	429	0	0.0	3,693	3,509	-185	-5.0	-10.3



Table 6-1 – continued

## Imports by commodity groupings, balance of payments basis, seasonally adjusted — Current dollars

	July	August	Change	Year to date			August 2011/ August 2010		
	2011	2011		2010	2011	Change			
	millions of dollars		percent		millions of dollars		percent		
<b>Machinery and equipment</b>	<b>10,244</b>	<b>10,503</b>	<b>259</b>	<b>2.5</b>	<b>74,044</b>	<b>82,054</b>	<b>8,011</b>	<b>10.8</b>	<b>4.8</b>
Industrial and agricultural machinery	2,981	3,008	27	0.9	19,521	23,359	3,838	19.7	12.2
Engines, turbines and electric motors	330	348	18	5.5	2,785	2,809	24	0.9	-7.8
Drilling mining machinery	177	213	36	20.5	1,129	2,104	975	86.3	28.0
Excavating machinery	287	303	16	5.8	1,753	2,221	468	26.7	15.4
Metal working machinery	186	180	-7	-3.5	1,049	1,444	395	37.7	25.1
Other industrial machinery	1,566	1,507	-60	-3.8	9,913	11,589	1,676	16.9	11.3
Agricultural machinery including tractors	435	457	22	5.0	2,893	3,193	300	10.4	21.1
Aircraft and other transportation equipment	1,300	1,406	106	8.1	9,279	10,626	1,347	14.5	14.0
Aircraft, engines, parts	705	741	35	5.0	5,545	6,042	497	9.0	-0.5
Other transportation equipment and parts	594	665	70	11.9	3,734	4,584	850	22.8	36.1
Office machines and equipment	1,112	1,143	31	2.8	8,749	9,061	312	3.6	-4.6
Other machinery and equipment	4,851	4,946	95	2.0	36,495	39,008	2,513	6.9	0.7
Other communication and related equipment	1,768	1,814	45	2.6	13,312	14,565	1,253	9.4	-2.0
Other equipment and tools	3,083	3,132	50	1.6	23,182	24,442	1,260	5.4	2.3
<b>Automotive products</b>	<b>6,109</b>	<b>6,248</b>	<b>140</b>	<b>2.3</b>	<b>46,713</b>	<b>47,666</b>	<b>953</b>	<b>2.0</b>	<b>8.3</b>
Passenger autos and chassis	1,908	2,036	127	6.7	14,965	15,130	165	1.1	9.1
Trucks and other motor vehicles	1,736	1,786	49	2.8	11,796	12,764	968	8.2	33.1
Motor vehicle parts	2,464	2,427	-37	-1.5	19,952	19,773	-180	-0.9	-5.3
<b>Other consumer goods</b>	<b>4,953</b>	<b>5,045</b>	<b>92</b>	<b>1.9</b>	<b>38,041</b>	<b>39,187</b>	<b>1,147</b>	<b>3.0</b>	<b>1.2</b>
Apparel and footwear	1,056	1,030	-25	-2.4	7,117	8,055	938	13.2	5.1
Apparel and apparel accessories	880	856	-24	-2.7	5,943	6,704	761	12.8	5.8
Footwear	175	174	-1	-0.8	1,174	1,351	177	15.1	1.9
Miscellaneous consumer goods	3,897	4,015	118	3.0	30,924	31,132	209	0.7	0.2
Television, radios, phonographs	119	127	8	6.4	1,048	1,022	-27	-2.5	-9.3
Printed matter	263	279	16	6.0	2,316	2,241	-75	-3.2	-11.7
Watches, sporting goods and toys	476	502	26	5.5	4,054	3,907	-147	-3.6	-1.8
House furnishings	739	743	4	0.5	5,867	5,768	-99	-1.7	-1.5
Photographic goods	219	204	-15	-6.8	1,700	1,764	64	3.8	-10.4
Miscellaneous end products	2,081	2,160	79	3.8	15,938	16,430	492	3.1	5.0
<b>Special transactions trade</b>	<b>472</b>	<b>653</b>	<b>182</b>	<b>38.5</b>	<b>3,245</b>	<b>3,748</b>	<b>504</b>	<b>15.5</b>	<b>50.3</b>
<b>Unallocated balance of payments adjustments</b>	<b>801</b>	<b>786</b>	<b>-15</b>	<b>-1.8</b>	<b>5,888</b>	<b>6,292</b>	<b>403</b>	<b>6.9</b>	<b>7.4</b>

**Table 6-2**  
**Imports by commodity groupings, balance of payments basis, seasonally adjusted — Constant dollars, 2002**

	July	August	Change		Year to date			August 2011/ August 2010	
	2011	2011			2010	2011	Change		
	millions of dollars		percent		millions of dollars			percent	
<b>Total</b>	<b>43,221</b>	<b>43,164</b>	<b>-57</b>	<b>-0.1</b>	<b>309,592</b>	<b>339,818</b>	<b>30,226</b>	<b>9.8</b>	<b>6.0</b>
<b>Agricultural and fishing products</b>	<b>2,707</b>	<b>2,762</b>	<b>55</b>	<b>2.0</b>	<b>19,614</b>	<b>21,433</b>	<b>1,819</b>	<b>9.3</b>	<b>8.8</b>
Fruits and vegetables	753	778	25	3.4	5,431	5,929	498	9.2	10.2
Fresh fruits and berries	269	272	3	1.0	2,000	2,166	166	8.3	10.5
Dried fruits, fruits and fruit preparations	124	122	-2	-1.4	895	978	83	9.3	-5.1
Fresh vegetables	203	228	25	12.5	1,401	1,543	142	10.1	32.7
Other vegetables and vegetable preparations	157	156	-1	-0.6	1,135	1,241	106	9.4	-2.2
Other agricultural and fishing products	1,954	1,984	29	1.5	14,183	15,505	1,321	9.3	8.3
Live animals	18	18	-1	-3.1	129	140	11	8.5	2.4
Meat and meat preparations	226	202	-24	-10.6	1,388	1,564	176	12.7	13.4
Fish and marine animals	244	237	-7	-2.8	1,875	1,900	25	1.3	1.7
Cocoa, coffee, tea and other food preparations	547	591	44	8.1	3,351	4,268	917	27.4	26.4
Dairy produce, eggs and honey	56	49	-7	-12.3	425	416	-9	-2.2	-14.6
Corn (maize) shelled	25	28	2	9.3	298	151	-147	-49.3	30.3
Other cereals and cereal preparations	139	133	-6	-4.1	1,178	1,080	-98	-8.4	-11.2
Sugar and sugar preparations	155	182	28	17.8	1,120	1,406	286	25.5	31.0
Fodder, feed, excluding unmilled cereal	101	98	-3	-3.2	794	808	14	1.7	6.4
Beverages	266	292	26	9.6	2,285	2,427	142	6.2	-7.3
Tobacco	43	39	-4	-10.2	327	287	-40	-12.2	-13.5
Crude vegetable products	133	114	-19	-14.3	1,003	1,048	45	4.5	-1.1
Cotton	1	1	0	13.5	11	10	-1	-11.0	-24.7
<b>Energy products</b>	<b>1,945</b>	<b>1,820</b>	<b>-124</b>	<b>-6.4</b>	<b>14,646</b>	<b>15,060</b>	<b>414</b>	<b>2.8</b>	<b>-19.9</b>
Crude petroleum	907	716	-191	-21.0	7,652	6,076	-1,576	-20.6	-39.9
Other energy products	1,038	1,104	67	6.4	6,994	8,984	1,990	28.4	2.1
Coal and other related products	455	480	25	5.5	3,103	3,548	445	14.3	-16.6
Petroleum and coal products	583	624	41	7.1	3,892	5,437	1,545	39.7	23.3
<b>Forestry products</b>	<b>279</b>	<b>282</b>	<b>3</b>	<b>0.9</b>	<b>2,328</b>	<b>2,232</b>	<b>-96</b>	<b>-4.1</b>	<b>0.5</b>
Forestry products	279	282	3	0.9	2,328	2,232	-96	-4.1	0.5
Crude wood products	39	42	3	8.8	403	346	-57	-14.1	-23.8
Wood fabricated materials	240	240	-1	-0.4	1,925	1,886	-39	-2.0	6.5
<b>Industrial goods and materials</b>	<b>6,893</b>	<b>6,803</b>	<b>-90</b>	<b>-1.3</b>	<b>51,963</b>	<b>54,854</b>	<b>2,891</b>	<b>5.6</b>	<b>3.4</b>
Metals and metal ores	2,108	2,088	-20	-1.0	14,867	16,350	1,483	10.0	14.1
Metals in ores, concentrates and scrap	371	376	5	1.2	2,547	2,754	207	8.1	22.3
Steel bars, rods, plates, sheets	451	437	-14	-3.1	3,659	3,779	120	3.3	5.1
Other iron and steel products	290	321	31	10.7	2,056	2,279	224	10.9	15.6
Precious metals including alloys	631	571	-60	-9.5	3,561	4,618	1,057	29.7	27.0
Other non-ferrous metals and alloys	364	382	18	4.9	3,045	2,919	-126	-4.1	0.9
Chemicals and plastics	2,288	2,305	17	0.7	18,602	18,687	85	0.5	-1.1
Organic chemicals	345	379	34	9.9	3,389	2,929	-460	-13.6	-17.1
Plastic materials	902	874	-28	-3.1	7,132	7,262	130	1.8	-3.5
Other chemicals and related products	1,041	1,052	11	1.1	8,081	8,496	415	5.1	8.7
Other industrial goods and materials	2,497	2,410	-87	-3.5	18,494	19,818	1,324	7.2	-0.3
Crude animal products	12	16	4	35.4	189	177	-13	-6.7	-18.3
Wool and man-made fibres	24	21	-3	-11.7	219	210	-9	-4.1	-23.3
Crude non-metallic minerals	59	58	-1	-2.2	468	443	-25	-5.4	10.1
Textile fabricated materials	297	276	-21	-6.9	2,075	2,249	174	8.4	-1.0
Metal fabricated basic products	989	951	-38	-3.8	6,795	7,823	1,028	15.1	6.9
Rubber fabricated materials	113	105	-8	-6.9	804	893	89	11.0	2.7
Oils, fats, animal and vegetable	91	92	1	1.6	797	723	-75	-9.4	-9.9
Non-metallic minerals	381	376	-5	-1.4	2,914	3,091	177	6.1	0.7
Other fabricated materials	531	514	-17	-3.2	4,233	4,210	-23	-0.5	-9.8

Table 6-2 – continued

## Imports by commodity groupings, balance of payments basis, seasonally adjusted — Constant dollars, 2002

	July 2011	August 2011	Change	Year to date			August 2011/ August 2010		
				2010	2011	Change			
	millions of dollars		percent		millions of dollars		percent		
<b>Machinery and equipment</b>	<b>16,008</b>	<b>15,999</b>	<b>-9</b>	<b>-0.1</b>	<b>106,954</b>	<b>126,175</b>	<b>19,221</b>	<b>18.0</b>	<b>9.5</b>
Industrial and agricultural machinery	3,791	3,737	-54	-1.4	23,936	29,735	5,799	24.2	14.6
Engines, turbines and electric motors	430	436	5	1.3	3,452	3,596	144	4.2	-6.4
Drilling mining machinery	205	241	35	17.2	1,262	2,701	1,439	114.0	30.7
Excavating machinery	373	384	11	2.9	2,188	2,892	704	32.2	17.3
Metal working machinery	250	235	-15	-6.1	1,344	1,924	580	43.2	27.9
Other industrial machinery	1,950	1,841	-109	-5.6	12,001	14,398	2,397	20.0	13.7
Agricultural machinery including tractors	582	601	19	3.2	3,690	4,224	534	14.5	25.2
Aircraft and other transportation equipment	1,560	1,625	66	4.2	10,856	12,691	1,835	16.9	13.9
Aircraft, engines, parts	917	944	27	3.0	6,739	7,659	920	13.7	4.7
Other transportation equipment and parts	643	682	38	6.0	4,118	5,032	915	22.2	29.9
Office machines and equipment	3,095	3,242	147	4.8	19,371	23,958	4,586	23.7	13.8
Other machinery and equipment	7,562	7,395	-167	-2.2	52,791	59,791	7,000	13.3	4.5
Other communication and related equipment	3,247	3,158	-89	-2.8	22,491	26,208	3,717	16.5	1.7
Other equipment and tools	4,315	4,237	-78	-1.8	30,299	33,583	3,284	10.8	6.6
<b>Automotive products</b>	<b>7,712</b>	<b>7,731</b>	<b>19</b>	<b>0.2</b>	<b>56,758</b>	<b>59,765</b>	<b>3,007</b>	<b>5.3</b>	<b>10.3</b>
Passenger autos and chassis	2,217	2,369	153	6.9	17,178	17,573	395	2.3	11.0
Trucks and other motor vehicles	2,060	2,083	24	1.2	13,237	15,042	1,805	13.6	37.2
Motor vehicle parts	3,436	3,278	-158	-4.6	26,343	27,150	807	3.1	-2.3
<b>Other consumer goods</b>	<b>6,681</b>	<b>6,523</b>	<b>-158</b>	<b>-2.4</b>	<b>49,101</b>	<b>52,320</b>	<b>3,219</b>	<b>6.6</b>	<b>2.5</b>
Apparel and footwear	1,560	1,433	-127	-8.1	10,038	11,735	1,697	16.9	4.6
Apparel and apparel accessories	1,305	1,189	-116	-8.9	8,418	9,800	1,382	16.4	4.7
Footwear	255	244	-11	-4.2	1,620	1,935	315	19.4	4.3
Miscellaneous consumer goods	5,121	5,090	-31	-0.6	39,063	40,586	1,522	3.9	1.9
Television, radios, phonographs	213	222	8	3.9	1,784	1,788	4	0.2	-4.9
Printed matter	350	359	9	2.6	2,866	2,900	34	1.2	-7.7
Watches, sporting goods and toys	641	671	30	4.6	5,614	5,455	-159	-2.8	-2.3
House furnishings	998	962	-36	-3.6	7,507	7,626	119	1.6	0.9
Photographic goods	474	436	-37	-7.8	3,232	3,669	437	13.5	-2.7
Miscellaneous end products	2,445	2,440	-5	-0.2	18,060	19,148	1,088	6.0	6.9
<b>Special transactions trade</b>	<b>536</b>	<b>746</b>	<b>209</b>	<b>39.0</b>	<b>3,711</b>	<b>4,274</b>	<b>564</b>	<b>15.2</b>	<b>48.1</b>
<b>Unallocated balance of payments adjustments</b>	<b>460</b>	<b>498</b>	<b>38</b>	<b>8.2</b>	<b>4,516</b>	<b>3,704</b>	<b>-813</b>	<b>-18.0</b>	<b>-10.1</b>

**Table 7-1**  
**Imports from selected countries, customs basis, not seasonally adjusted — August**

	Agricultural and fishing products	Energy products	Forestry products	Industrial goods	Machinery and equipment	Automotive products	Consumer goods	Special transactions trade	<b>Total</b>
millions of dollars									
<b>United States</b>									
2010	1,450.6	1,104.2	157.9	4,357.3	4,298.5	3,893.8	1,996.4	364.0	<b>17,622.7</b>
2011	1,692.9	1,434.2	165.0	4,936.6	4,511.0	4,178.3	2,054.4	587.7	<b>19,560.1</b>
<b>Mexico</b>									
2010	77.4	48.8	0.3	154.4	802.7	695.2	96.4	5.4	<b>1,880.6</b>
2011	77.1	201.2	0.3	198.4	829.6	837.7	114.7	3.5	<b>2,262.5</b>
<b>Japan</b>									
2010	5.5	0.4	0.1	89.5	422.0	415.9	94.0	0.2	<b>1,027.6</b>
2011	5.8	1.0	0.1	98.1	487.0	379.9	86.8	0.8	<b>1,059.6</b>
<b>European Union</b>									
Germany									
2010	28.7	5.4	0.9	159.8	346.8	222.3	163.0	0.7	<b>927.7</b>
2011	31.2	1.5	1.6	173.4	520.3	316.5	165.9	0.4	<b>1,210.8</b>
France									
2010	84.0	5.4	0.3	60.6	125.0	8.5	129.2	1.2	<b>414.2</b>
2011	82.7	1.0	0.4	65.9	148.5	5.9	134.9	0.2	<b>439.6</b>
United Kingdom									
2010	44.9	318.0	0.0	108.1	235.5	32.6	116.3	1.5	<b>857.0</b>
2011	41.3	242.8	0.0	130.6	284.3	33.5	120.5	2.6	<b>855.8</b>
Italy									
2010	60.0	25.4	1.5	78.8	133.8	15.9	108.5	0.5	<b>424.4</b>
2011	68.5	0.2	1.4	96.6	168.3	29.5	115.4	0.3	<b>480.2</b>
Other European Union									
2010	114.6	245.0	3.8	227.8	426.2	79.1	332.7	1.2	<b>1,430.5</b>
2011	120.1	190.9	3.6	290.9	440.8	65.3	338.8	1.3	<b>1,451.7</b>
<b>Total</b>									
2010	332.4	599.2	6.5	635.1	1,267.3	358.5	849.7	5.2	<b>4,053.8</b>
2011	343.8	436.3	7.0	757.4	1,562.2	450.8	875.5	4.8	<b>4,438.0</b>
<b>Newly industrialized countries</b>									
South Korea									
2010	4.5	28.3	0.0	72.4	248.3	121.6	19.2	0.1	<b>494.5</b>
2011	4.7	48.7	0.0	116.2	205.9	182.9	20.7	0.1	<b>579.2</b>
Hong Kong									
2010	2.3	0.0	0.3	2.9	13.1	0.6	17.5	0.0	<b>36.6</b>
2011	2.9	0.0	0.0	2.0	8.0	0.2	15.3	0.0	<b>28.4</b>
Taiwan									
2010	7.0	0.0	0.8	86.4	215.8	14.6	36.9	0.2	<b>361.7</b>
2011	7.0	0.0	0.3	97.3	329.6	15.1	34.6	0.1	<b>484.0</b>
Singapore									
2010	3.1	0.0	0.0	13.4	41.5	0.5	18.8	0.1	<b>77.4</b>
2011	2.5	56.8	0.0	14.0	49.3	0.5	13.4	0.0	<b>136.5</b>
<b>Total</b>									
2010	16.9	28.4	1.0	175.0	518.9	137.3	92.4	0.4	<b>970.2</b>
2011	17.1	105.5	0.4	229.5	592.7	198.7	84.0	0.3	<b>1,228.2</b>
<b>Other countries</b>									
2010	677.7	1,816.7	60.2	1,707.1	2,812.2	200.7	2,278.6	29.7	<b>9,582.9</b>
2011	800.6	1,809.7	51.4	2,248.4	2,926.5	234.5	2,463.4	47.7	<b>10,582.3</b>
<b>Total</b>									
2010	<b>2,561.0</b>	<b>3,597.7</b>	<b>226.0</b>	<b>7,118.4</b>	<b>10,121.7</b>	<b>5,701.4</b>	<b>5,407.5</b>	<b>404.9</b>	<b>35,138.6</b>
2011	<b>2,938.1</b>	<b>3,988.0</b>	<b>224.1</b>	<b>8,468.4</b>	<b>10,909.2</b>	<b>6,279.8</b>	<b>5,678.9</b>	<b>644.8</b>	<b>39,131.4</b>

**Table 7-2**  
**Imports from selected countries, customs basis, not seasonally adjusted — Year to date, January to August**

	Agricultural and fishing products	Energy products	Forestry products	Industrial goods	Machinery and equipment	Automotive products	Consumer goods	Special transactions trade	Total
millions of dollars									
<b>United States</b>									
2010	10,977.8	8,196.0	1,299.2	33,480.5	33,142.3	30,592.6	14,949.2	2,736.7	<b>135,374.3</b>
2011	11,825.9	10,957.9	1,214.7	36,245.6	35,249.4	31,332.3	15,108.0	3,145.6	<b>145,079.4</b>
<b>Mexico</b>									
2010	1,049.9	499.9	3.7	1,136.3	5,044.1	5,521.8	726.9	38.2	<b>14,020.8</b>
2011	1,051.7	944.9	3.2	1,535.3	5,478.2	6,253.6	809.1	48.0	<b>16,124.0</b>
<b>Japan</b>									
2010	44.4	52.1	0.7	802.6	3,200.6	3,960.7	696.3	2.7	<b>8,760.0</b>
2011	44.0	28.8	0.5	784.0	3,474.7	2,986.6	701.6	4.6	<b>8,024.8</b>
<b>European Union</b>									
<b>Germany</b>									
2010	170.8	38.3	8.8	1,292.0	2,518.1	2,225.7	1,152.7	16.0	<b>7,422.5</b>
2011	200.7	16.5	8.1	1,541.6	3,054.6	2,382.0	1,222.6	7.3	<b>8,433.5</b>
<b>France</b>									
2010	447.4	75.3	1.3	537.2	1,090.3	67.6	1,061.7	7.0	<b>3,287.9</b>
2011	481.8	53.4	2.9	599.7	1,289.1	55.3	1,000.3	4.8	<b>3,487.3</b>
<b>United Kingdom</b>									
2010	269.4	2,485.0	0.5	1,277.8	1,893.0	292.5	848.6	34.9	<b>7,101.6</b>
2011	261.6	2,329.3	0.3	1,393.9	2,109.4	329.5	912.1	25.1	<b>7,361.2</b>
<b>Italy</b>									
2010	398.1	134.4	8.8	627.3	956.5	154.1	720.5	2.3	<b>3,002.0</b>
2011	440.0	84.9	10.2	744.8	1,090.7	178.6	788.3	3.2	<b>3,340.6</b>
<b>Other European Union</b>									
2010	720.1	1,674.8	27.9	2,055.8	2,995.9	509.5	2,549.5	16.3	<b>10,549.8</b>
2011	786.4	2,474.7	28.6	2,665.1	3,256.8	577.4	2,349.8	8.6	<b>12,147.3</b>
<b>Total</b>									
2010	2,005.8	4,407.8	47.3	5,790.0	9,453.8	3,249.4	6,333.1	76.4	<b>31,363.8</b>
2011	2,170.5	4,958.7	50.2	6,945.1	10,800.6	3,522.8	6,273.0	49.1	<b>34,770.0</b>
<b>Newly industrialized countries</b>									
<b>South Korea</b>									
2010	38.7	176.7	0.1	526.1	1,534.8	1,437.1	135.0	0.7	<b>3,849.2</b>
2011	40.3	236.4	0.2	826.2	1,891.8	1,285.3	137.4	0.9	<b>4,418.5</b>
<b>Hong Kong</b>									
2010	18.1	0.1	0.5	18.2	96.7	3.1	98.0	0.3	<b>235.0</b>
2011	20.8	0.0	0.1	43.6	66.3	1.6	96.3	0.3	<b>228.9</b>
<b>Taiwan</b>									
2010	49.7	19.8	5.6	574.4	1,385.0	106.2	266.1	1.0	<b>2,407.9</b>
2011	45.2	0.3	3.3	759.2	2,002.2	117.3	258.0	1.0	<b>3,186.5</b>
<b>Singapore</b>									
2010	23.1	0.1	0.1	86.4	389.3	2.8	121.5	1.2	<b>624.5</b>
2011	22.4	204.3	0.5	129.6	374.1	2.6	198.5	0.5	<b>932.6</b>
<b>Total</b>									
2010	129.6	196.7	6.3	1,205.1	3,405.8	1,549.2	620.6	3.2	<b>7,116.5</b>
2011	128.6	441.1	4.0	1,758.5	4,334.4	1,406.8	690.3	2.7	<b>8,766.4</b>
<b>Other countries</b>									
2010	4,933.2	13,499.9	450.4	13,591.3	18,947.8	1,406.5	13,959.8	228.8	<b>67,017.7</b>
2011	5,895.8	17,520.7	391.9	16,383.8	21,586.5	1,745.9	14,962.3	244.6	<b>78,731.6</b>
<b>Total</b>									
2010	<b>19,143.9</b>	<b>26,852.4</b>	<b>1,807.6</b>	<b>56,006.0</b>	<b>73,194.5</b>	<b>46,280.3</b>	<b>37,286.0</b>	<b>3,086.0</b>	<b>263,656.6</b>
2011	<b>21,122.1</b>	<b>34,852.2</b>	<b>1,664.5</b>	<b>63,652.4</b>	<b>80,924.0</b>	<b>47,248.1</b>	<b>38,544.5</b>	<b>3,494.6</b>	<b>291,502.3</b>

**Table 8**  
**Imports by country, customs basis, not seasonally adjusted**

	August		January to August		Change
	2010	2011	2010	2011	January to August 2011/ January to August 2010
	millions of dollars				percent
<b>North America</b>					
Canada	309.8	443.3	2,690.6	2,540.7	-5.6
Greenland	0.1	0.1	0.4	0.5	33.0
Mexico	1,880.6	2,262.5	14,020.8	16,124.0	15.0
Saint Pierre and Miquelon	0.3	0.3	0.8	1.8	109.0
United States	17,622.7	19,560.1	135,374.3	145,079.4	7.2
<b>Total</b>	<b>19,813.6</b>	<b>22,266.3</b>	<b>152,087.0</b>	<b>163,746.4</b>	<b>7.7</b>
<b>Western Europe</b>					
Andorra	0.0	0.0	0.2	0.3	28.2
Austria	121.2	109.2	802.9	830.4	3.4
Belgium	127.6	106.7	1,066.9	1,089.4	2.1
Denmark	165.0	104.6	1,362.6	1,054.0	-22.6
Faeroe Islands	0.6	0.7	3.3	5.8	76.4
Finland	106.5	84.8	608.1	1,122.9	84.7
France	414.2	439.6	3,287.9	3,487.3	6.1
Germany	927.7	1,210.8	7,422.5	8,433.5	13.6
Gibraltar	0.0	0.0	2.2	1.7	-25.0
Greece	13.0	17.5	94.7	119.1	25.8
Iceland	2.9	2.5	24.0	19.1	-20.3
Italy	424.4	480.2	3,002.0	3,340.6	11.3
Luxembourg	8.0	11.4	56.9	78.2	37.5
Malta	2.0	1.8	11.3	17.6	55.0
Netherlands	191.8	290.7	1,190.6	1,537.7	29.1
Norway	205.7	102.1	1,876.3	2,573.2	37.1
Portugal	33.2	28.0	221.4	205.7	-7.1
Republic of Ireland (Eire)	104.1	101.7	1,125.6	821.8	-27.0
Spain	163.0	127.9	967.2	1,143.8	18.3
Sweden	140.4	146.7	1,372.7	1,504.6	9.6
Switzerland	167.3	262.8	1,963.7	1,984.5	1.1
United Kingdom	857.0	855.8	7,101.6	7,361.2	3.7
<b>Total</b>	<b>4,175.5</b>	<b>4,485.5</b>	<b>33,564.7</b>	<b>36,732.3</b>	<b>9.4</b>
<b>Other Europe</b>					
Albania	0.5	0.6	2.2	4.4	103.5
Armenia	1.4	8.1	15.8	36.1	129.2
Azerbaijan	82.9	0.0	385.6	310.2	-19.5
Belarus	27.8	1.1	30.6	4.5	-85.2
Bosnia and Herzegovina	0.8	1.4	4.8	7.5	57.5
Bulgaria	8.3	17.9	41.7	82.9	98.7
Croatia	2.8	2.8	23.4	18.9	-19.6
Czech Republic	29.9	39.3	183.6	250.5	36.5
Estonia	2.0	5.1	13.5	68.8	410.8
Georgia	12.1	11.2	75.8	76.1	0.5
Hungary	30.0	28.7	234.2	221.1	-5.6
Kazakhstan	276.1	142.2	1,448.2	1,735.1	19.8
Kyrgyzstan	0.0	0.0	0.1	0.1	63.8
Latvia	0.8	2.1	6.1	11.3	85.2
Lithuania	70.7	42.5	301.3	505.3	67.7
Macedonia (Former Yugoslav Republic of Macedonia)	0.9	0.9	5.1	5.2	1.3
Montenegro	0.0	0.0	0.3	0.4	47.6
Poland	66.1	102.6	582.2	1,044.6	79.4
Republic of Moldova	0.2	0.2	4.5	1.3	-71.2
Romania	19.9	54.5	118.1	211.7	79.3
Russian Federation	144.1	126.6	823.4	1,014.1	23.2
Serbia	1.1	0.9	8.2	10.5	28.4
Slovakia	16.0	19.4	113.0	161.4	42.8
Slovenia	11.2	8.4	73.3	62.7	-14.4
Tajikistan	0.0	0.0	0.0	0.0	-69.0
Turkmenistan	0.2	0.3	0.3	0.5	45.1
Ukraine	10.0	19.9	52.5	91.9	74.9
Uzbekistan	0.1	0.1	1.2	1.6	26.3
<b>Total</b>	<b>815.7</b>	<b>636.8</b>	<b>4,549.0</b>	<b>5,938.6</b>	<b>30.5</b>

Table 8 – continued

## Imports by country, customs basis, not seasonally adjusted

	August		January to August		Change
	2010	2011	2010	2011	January to August 2011/ January to August 2010
	millions of dollars				percent
<b>Middle East</b>					
Bahrain	0.0	0.2	2.0	2.8	38.9
Cyprus	0.0	0.1	1.9	2.1	13.0
Egypt	23.9	25.1	193.9	264.7	36.6
Eritrea	0.0	44.4	0.2	186.4	...
Ethiopia	2.3	2.1	10.6	13.2	24.4
Iran	2.6	3.4	26.3	24.1	-8.6
Iraq	119.3	109.4	1,181.8	1,485.5	25.7
Israel	87.9	69.4	672.9	645.8	-4.0
Jordan	1.4	2.0	13.4	13.0	-2.6
Kuwait	0.0	0.0	31.5	55.1	74.7
Lebanon	1.9	1.6	11.0	12.4	13.3
Libya	3.1	0.0	16.6	5.0	-69.9
Oman	1.1	0.9	14.6	11.5	-21.0
Qatar	1.5	0.8	65.9	321.7	388.0
Saudi Arabia	156.5	41.1	1,358.0	1,795.7	32.2
Somalia	0.0	0.0	0.0	0.1	96.6
Sudan	4.6	10.0	56.9	85.0	49.2
Syria	1.0	0.5	4.7	3.9	-17.8
Turkey	59.2	100.6	437.5	701.3	60.3
United Arab Emirates	8.1	5.9	128.6	838.4	551.9
Yemen	0.0	0.0	0.1	0.1	-22.8
<b>Total</b>	<b>474.4</b>	<b>417.6</b>	<b>4,228.6</b>	<b>6,467.7</b>	<b>53.0</b>
<b>Other Africa</b>					
Algeria	248.2	527.6	2,535.4	3,444.7	35.9
Angola	138.0	100.9	1,007.4	1,650.0	63.8
Antarctica	0.0	0.0	0.2	0.5	112.9
Benin	0.0	0.0	0.0	0.0	90.8
Botswana	0.0	0.0	6.9	0.1	-98.4
Bouvet Island	0.0	0.0	0.0	0.0	...
Burkina Faso	4.1	0.0	20.8	2.2	-89.6
Burundi	0.0	0.0	0.0	0.2	551.1
Cameroon	0.5	0.2	4.0	3.9	-2.7
Cape Verde	0.0	0.0	0.0	0.1	303.3
Central African Republic	0.0	0.1	0.1	0.3	394.4
Chad	0.0	0.0	0.2	0.3	42.0
Comoros	0.0	0.0	0.0	0.1	199.8
Congo	1.8	0.3	2.8	1.9	-33.3
Democratic Republic of the Congo	0.0	0.2	0.6	0.6	0.3
Djibouti	0.0	0.0	0.0	0.0	70.5
Equatorial Guinea	72.7	0.0	442.8	567.7	28.2
French Southern Territories	0.0	0.0	0.0	0.0	...
Gabon	0.0	2.4	0.3	3.3	...
Gambia	0.0	0.0	0.1	0.1	-16.5
Ghana	1.7	3.1	15.5	47.6	206.9
Guinea	6.1	6.9	31.9	35.9	12.6
Guinea-Bissau	0.0	0.0	0.0	0.0	-6.5
Ivory Coast	39.7	30.9	225.0	361.2	60.6
Kenya	1.9	2.2	10.5	15.9	51.2
Lesotho	0.9	1.1	11.7	8.5	-27.4
Liberia	1.3	2.4	30.7	21.5	-30.1
Madagascar	1.3	11.9	30.2	38.1	26.0
Malawi	24.6	26.0	49.1	113.7	131.5
Mali	0.1	0.0	0.4	0.5	10.0
Mauritania	0.0	0.0	0.2	0.1	-60.4
Mauritius	1.2	0.9	7.1	6.9	-3.0
Morocco	4.6	5.5	67.0	56.3	-16.0
Mozambique	0.1	0.3	1.2	2.8	129.1
Namibia	41.5	26.2	156.6	160.6	2.5
Niger	0.0	0.0	0.6	0.9	51.9
Nigeria	191.0	542.8	1,109.1	1,657.1	49.4
Rwanda	0.0	0.1	0.1	0.4	209.7
Saint Helena	0.0	0.0	0.0	0.1	758.2
Sao Tome and Principe	0.0	0.0	0.2	0.1	-52.3
Senegal	0.1	0.0	0.7	0.6	-11.4

Table 8 – continued

## Imports by country, customs basis, not seasonally adjusted

	August		January to August		Change
	2010	2011	2010	2011	January to August 2011/ January to August 2010
	millions of dollars				percent
Seychelles	0.0	0.0	0.2	0.4	154.6
Sierra Leone	0.4	0.8	1.4	2.2	62.7
South Africa	76.3	67.3	467.8	618.3	32.2
Swaziland	0.1	0.2	1.0	1.3	27.1
Togo	0.7	3.8	1.4	10.7	641.0
Tunisia	4.8	6.0	37.9	38.6	1.8
Uganda	0.2	0.2	2.9	2.5	-11.9
United Republic of Tanzania	0.2	0.7	2.3	3.5	55.5
Western Sahara	0.0	0.0	0.0	0.0	-100.0
Zambia	0.1	0.2	0.8	0.8	-0.5
Zimbabwe	0.8	0.4	3.3	4.0	20.5
<b>Total</b>	<b>865.2</b>	<b>1,371.7</b>	<b>6,288.5</b>	<b>8,886.9</b>	<b>41.3</b>
<b>Other Asia</b>					
Afghanistan	0.1	0.1	1.1	1.2	3.0
Bangladesh	96.8	117.7	542.3	777.7	43.4
Bhutan	0.0	0.0	0.0	0.0	93.5
British Indian Ocean Territory	0.0	0.0	0.0	0.1	345.6
Brunei Darussalam	0.0	0.5	0.0	5.6	...
Cambodia	36.6	52.3	216.6	338.1	56.1
China	4,412.0	4,658.6	27,832.0	30,422.8	9.3
Hong Kong	36.6	28.4	235.0	228.9	-2.6
India	190.7	200.8	1,325.8	1,645.8	24.1
Indonesia	109.6	139.9	793.7	950.6	19.8
Japan	1,027.6	1,059.6	8,760.0	8,024.8	-8.4
Laos	1.0	0.8	5.3	4.5	-14.8
Macao	0.8	1.1	6.7	5.7	-15.2
Malaysia	199.2	187.1	1,504.9	1,390.1	-7.6
Maldives	0.0	0.0	0.0	0.2	277.8
Mongolia	11.0	44.4	131.5	141.6	7.7
Myanmar	0.0	0.0	0.0	0.1	333.3
Nepal	1.4	1.6	9.3	9.1	-1.6
North Korea	0.0	0.0	0.1	0.1	-48.0
Pakistan	27.3	25.6	178.7	169.5	-5.1
Philippines	83.7	85.1	574.1	606.0	5.6
Singapore	77.4	136.5	624.5	932.6	49.3
South Korea	494.5	579.2	3,849.2	4,418.5	14.8
Sri Lanka	11.4	14.4	79.8	99.5	24.7
Taiwan	361.7	484.0	2,407.9	3,186.5	32.3
Thailand	222.8	238.2	1,537.7	1,762.6	14.6
Timor-Leste	0.0	0.0	0.8	0.2	-68.5
Viet Nam	113.7	136.4	725.9	833.8	14.9
<b>Total</b>	<b>7,516.0</b>	<b>8,192.4</b>	<b>51,342.7</b>	<b>55,956.3</b>	<b>9.0</b>
<b>Oceania</b>					
American Samoa	0.0	0.4	0.2	0.5	106.1
Australia	100.2	189.5	1,057.7	1,167.9	10.4
Christmas Island	0.0	0.0	0.1	0.1	-45.4
Cocos (Keeling) Islands	0.0	0.0	0.0	0.0	-31.3
Cook Islands	0.0	0.0	0.0	0.1	172.4
Fiji	0.2	0.6	4.0	2.6	-35.9
French Polynesia	0.1	0.3	0.6	0.7	16.6
Guam	0.0	0.0	0.0	0.1	323.9
Heard Island and McDonald Islands	0.0	0.0	0.0	0.0	-63.2
Kiribati	0.0	0.0	0.0	0.0	-15.7
Nauru	0.0	0.0	0.1	0.0	-42.8
New Caledonia	0.0	0.0	0.1	0.1	19.4
New Zealand	40.9	49.2	312.5	383.3	22.6
Niue	0.0	0.0	0.0	0.0	-20.6
Norfolk Island	0.0	0.0	0.0	0.0	167.5
Papua New Guinea	0.1	0.0	0.8	0.4	-45.6
Pitcairn	0.0	0.0	0.0	0.1	315.5
Samoa	0.0	0.0	0.3	0.0	-96.2
Solomon Islands	0.0	0.0	0.1	0.1	46.3
Tonga	0.0	0.0	0.0	0.0	99.6
United States Minor Outlying Islands	0.3	0.2	2.8	1.9	-31.0
Vanuatu	0.0	0.0	0.4	0.0	-88.8



Table 8 – continued

## Imports by country, customs basis, not seasonally adjusted

	August		January to August		Change
	2010	2011	2010	2011	January to August 2011/ January to August 2010
	millions of dollars				percent
Wallis and Futuna	0.0	0.0	0.0	0.0	-48.4
<b>Total</b>	<b>141.9</b>	<b>240.3</b>	<b>1,379.9</b>	<b>1,558.0</b>	<b>12.9</b>
<b>South America</b>					
Argentina	130.4	148.4	626.3	1,367.5	118.3
Bolivia	20.6	14.2	87.8	153.8	75.1
Brazil	225.4	362.4	2,092.3	2,548.9	21.8
Chile	124.1	146.4	1,370.4	1,352.1	-1.3
Colombia	78.3	47.6	520.0	474.7	-8.7
Ecuador	21.9	14.6	141.6	152.9	8.0
Falkland Islands (Malvinas)	0.0	0.0	0.0	0.3	...
Guyana	27.4	47.0	176.1	254.6	44.5
Paraguay	0.6	0.6	6.3	2.9	-54.8
Peru	319.5	364.1	2,339.1	2,837.3	21.3
Suriname	60.7	3.1	348.2	194.1	-44.3
Uruguay	2.0	1.9	46.6	27.1	-41.9
Venezuela	106.0	118.8	568.3	586.2	3.1
<b>Total</b>	<b>1,116.8</b>	<b>1,269.0</b>	<b>8,323.0</b>	<b>9,952.2</b>	<b>19.6</b>
<b>Central America Antilles</b>					
Anguilla	0.0	0.0	0.2	0.2	-4.7
Antigua and Barbuda	0.0	0.0	0.2	0.2	42.2
Aruba	0.0	0.0	0.1	5.5	...
Bahamas	4.4	3.5	27.7	15.3	-44.8
Barbados	0.6	0.9	5.9	4.0	-32.1
Belize	0.4	0.6	4.2	4.9	17.0
Bermuda	0.1	0.1	0.7	0.6	-12.6
British Virgin Islands	0.0	0.0	0.2	0.3	48.7
Cayman Islands	0.0	0.4	0.3	0.7	169.7
Costa Rica	35.9	35.0	301.9	325.8	7.9
Cuba	62.1	65.2	447.7	493.8	10.3
Dominica	0.0	0.0	0.1	0.2	198.2
Dominican Republic	13.5	11.9	91.8	93.7	2.1
El Salvador	4.3	8.9	62.8	105.5	68.0
Grenada	0.0	0.3	0.4	0.9	121.9
Guatemala	27.5	28.3	215.7	304.6	41.2
Haiti	1.9	2.2	17.7	18.0	1.7
Honduras	12.9	15.5	107.8	135.4	25.6
Jamaica	9.0	21.2	106.9	160.3	50.0
Montserrat	0.1	0.1	0.2	0.2	-12.2
Netherlands Antilles	0.0	0.0	0.2	22.6	...
Nicaragua	22.1	26.1	123.7	220.9	78.5
Panama	5.6	11.4	52.8	81.3	54.1
Saint Kitts and Nevis	0.6	0.9	4.7	5.3	12.6
Saint Lucia	0.0	0.0	0.1	0.2	66.1
Saint Vincent and the Grenadines	0.0	0.0	0.1	0.2	65.4
Trinidad and Tobago	18.2	19.4	319.0	263.1	-17.5
Turks and Caicos Islands	0.0	0.0	0.1	0.1	-13.8
<b>Total</b>	<b>219.5</b>	<b>251.9</b>	<b>1,893.3</b>	<b>2,263.8</b>	<b>19.6</b>
<b>All countries</b>	<b>35,138.6</b>	<b>39,131.4</b>	<b>263,656.6</b>	<b>291,502.3</b>	<b>10.6</b>

**Table 9-1  
Imports by province of clearance, customs basis, not seasonally adjusted — August**

	Agricultural and fishing products	Energy products	Forestry products	Industrial goods	Machinery and equipment	Automotive products	Consumer goods	Special transactions trade	<b>Total</b>
millions of dollars									
<b>Newfoundland and Labrador</b>									
2010	2.8	267.1	0.0	9.9	32.1	0.0	0.4	0.0	<b>312.4</b>
2011	3.9	40.9	0.0	13.2	41.4	0.2	1.0	1.1	<b>101.6</b>
<b>Prince Edward Island</b>									
2010	0.6	0.0	0.0	0.0	0.1	0.0	0.0	0.0	<b>0.7</b>
2011	0.4	0.0	0.0	16.8	0.2	0.0	0.0	0.0	<b>17.4</b>
<b>Nova Scotia</b>									
2010	45.8	126.5	1.2	99.3	99.7	224.8	18.8	1.7	<b>617.8</b>
2011	52.8	47.2	2.0	105.2	120.3	193.3	16.9	1.8	<b>539.4</b>
<b>New Brunswick</b>									
2010	85.2	625.5	11.3	77.7	79.7	35.8	16.9	1.9	<b>933.9</b>
2011	105.0	608.4	10.1	125.0	102.3	38.5	19.1	2.0	<b>1,010.6</b>
<b>Quebec</b>									
2010	412.3	1,467.2	62.7	1,227.5	1,476.6	186.8	1,050.0	42.0	<b>5,925.0</b>
2011	535.2	1,460.7	46.2	1,357.6	1,646.7	224.8	1,058.2	48.1	<b>6,377.4</b>
<b>Ontario</b>									
2010	1,359.7	482.1	77.2	4,188.2	5,999.3	4,722.8	3,364.8	323.4	<b>20,517.6</b>
2011	1,529.5	985.8	78.2	4,978.6	6,209.8	5,138.3	3,545.2	556.9	<b>23,022.4</b>
<b>Manitoba</b>									
2010	76.7	53.6	6.6	254.5	460.1	144.3	146.1	6.5	<b>1,148.6</b>
2011	85.0	50.8	7.2	327.2	636.5	197.8	152.7	6.7	<b>1,464.1</b>
<b>Saskatchewan</b>									
2010	31.0	63.2	1.7	161.0	317.9	75.7	20.3	3.2	<b>674.1</b>
2011	24.4	85.5	4.8	160.5	286.4	88.0	18.1	0.5	<b>668.1</b>
<b>Alberta</b>									
2010	147.3	238.2	12.7	441.1	678.2	99.6	126.3	12.9	<b>1,756.3</b>
2011	165.2	425.0	13.2	578.1	806.4	132.5	136.0	14.3	<b>2,270.8</b>
<b>British Columbia</b>									
2010	390.6	241.1	52.6	658.9	971.6	211.4	663.7	13.0	<b>3,202.9</b>
2011	431.4	252.5	62.5	805.6	1,058.7	266.3	731.7	13.5	<b>3,622.2</b>
<b>Yukon, Northwest Territories and Nunavut</b>									
2010	9.0	33.1	0.0	0.2	6.5	0.1	0.0	0.2	<b>49.2</b>
2011	5.3	31.1	0.0	0.4	0.6	0.1	0.0	0.0	<b>37.5</b>
<b>Total</b>									
<b>2010</b>	<b>2,561.0</b>	<b>3,597.7</b>	<b>226.0</b>	<b>7,118.4</b>	<b>10,121.7</b>	<b>5,701.4</b>	<b>5,407.5</b>	<b>404.9</b>	<b>35,138.6</b>
<b>2011</b>	<b>2,938.1</b>	<b>3,988.0</b>	<b>224.1</b>	<b>8,468.4</b>	<b>10,909.2</b>	<b>6,279.8</b>	<b>5,678.9</b>	<b>644.8</b>	<b>39,131.4</b>

**Table 9-2**  
**Imports by province of clearance, customs basis, not seasonally adjusted — Year to date, January to August**

	Agricultural and fishing products	Energy products	Forestry products	Industrial goods	Machinery and equipment	Automotive products	Consumer goods	Special transactions trade	<b>Total</b>
millions of dollars									
Newfoundland and Labrador									
2010	29.0	1,774.5	0.1	34.8	157.4	0.8	4.2	2.9	<b>2,003.6</b>
2011	24.2	1,727.0	0.0	80.5	329.6	0.8	10.1	4.6	<b>2,176.9</b>
Prince Edward Island									
2010	2.9	0.0	0.1	5.4	1.2	0.1	0.2	0.1	<b>9.9</b>
2011	3.0	0.0	0.0	24.2	1.8	0.0	0.3	0.2	<b>29.5</b>
Nova Scotia									
2010	269.5	1,209.9	11.6	817.2	682.5	2,274.5	114.8	18.3	<b>5,398.5</b>
2011	402.6	1,360.8	11.0	872.3	1,486.3	1,796.7	127.2	19.4	<b>6,076.3</b>
New Brunswick									
2010	336.5	5,001.0	73.4	702.1	664.5	294.1	187.1	15.0	<b>7,273.7</b>
2011	366.0	6,817.0	75.1	964.6	691.8	271.8	169.2	13.5	<b>9,369.1</b>
Quebec									
2010	2,880.8	10,916.3	475.5	9,927.0	11,219.1	1,421.1	7,034.4	364.1	<b>44,238.4</b>
2011	3,554.6	12,607.5	392.8	11,313.7	12,363.2	1,588.6	7,014.6	328.0	<b>49,162.9</b>
Ontario									
2010	10,591.2	3,175.3	665.0	32,808.2	42,064.9	38,166.4	23,614.7	2,411.2	<b>153,496.9</b>
2011	11,326.8	6,815.4	604.2	36,392.6	45,268.9	38,725.1	24,564.9	2,864.1	<b>166,562.1</b>
Manitoba									
2010	584.1	385.0	62.4	2,340.9	3,742.1	900.8	1,043.6	57.0	<b>9,115.9</b>
2011	654.8	379.7	61.3	2,605.3	4,525.9	1,136.9	1,061.3	58.4	<b>10,483.5</b>
Saskatchewan									
2010	214.4	446.6	16.3	1,480.4	2,465.4	645.6	170.4	15.3	<b>5,454.5</b>
2011	245.9	532.6	20.9	1,664.4	2,554.5	805.8	172.5	11.5	<b>6,008.1</b>
Alberta									
2010	1,241.2	1,837.8	79.8	3,121.0	4,634.3	707.3	813.3	93.2	<b>12,528.0</b>
2011	1,292.7	1,998.8	86.0	4,150.5	6,055.1	925.5	961.5	87.8	<b>15,557.8</b>
British Columbia									
2010	2,945.2	2,070.9	423.5	4,767.7	7,515.9	1,869.1	4,303.1	108.3	<b>24,003.6</b>
2011	3,213.4	2,575.0	413.1	5,581.8	7,609.2	1,996.6	4,462.6	106.9	<b>25,958.7</b>
Yukon, Northwest Territories and Nunavut									
2010	49.1	34.9	0.0	1.3	47.2	0.4	0.3	0.5	<b>133.6</b>
2011	38.2	38.3	0.0	2.4	37.8	0.4	0.2	0.0	<b>117.4</b>
<b>Total</b>									
<b>2010</b>	<b>19,143.9</b>	<b>26,852.4</b>	<b>1,807.6</b>	<b>56,006.0</b>	<b>73,194.5</b>	<b>46,280.3</b>	<b>37,286.0</b>	<b>3,086.0</b>	<b>263,656.6</b>
<b>2011</b>	<b>21,122.1</b>	<b>34,852.2</b>	<b>1,664.5</b>	<b>63,652.4</b>	<b>80,924.0</b>	<b>47,248.1</b>	<b>38,544.5</b>	<b>3,494.6</b>	<b>291,502.3</b>

# Technical notes

---

## The Canadian international merchandise trade statistical program

### Introduction

The objective of this text is to provide a general overview of the Canadian International Merchandise Trade Statistical Program, with special reference to concepts and definitions. The text is intended for the general user and simplicity is emphasized. More technical details can be obtained from the International Trade Division, Statistics Canada upon request.

### Conceptual framework

**1. Objectives and coverage:** The primary objective of the Canadian International Merchandise Trade Statistical Program is to measure the change in the stock of material resources of Canada resulting from the movement of merchandise into or out of the country. Information on imports and exports are inputs into the System of National Accounts, particularly in the balance of payments and gross domestic product, and are used in the formulation of trade and budgetary policies. Governments, importers, exporters, manufacturers and shipping companies use international merchandise trade statistics to:

- monitor import penetration and export performance,
- monitor commodity price and volume changes,
- examine transport implications.

**2. Trade statistics (customs basis / balance of payments basis):** Merchandise trade statistics are reported and presented on two different bases: customs basis and balance of payment basis.

When goods are imported into or exported from Canada, declarations must be filed with customs, giving such information as description and value of the goods, origin and port of clearance of commodities and mode of transport. Most of this information is required for the purposes of customs administration. Statistics developed from administrative records of customs are commonly referred to as customs-based trade statistics.

Customs-based trade statistics are more accurate at measuring imports than they are at measuring exports. This is the case because customs are typically more vigilant with respect to goods entering the country than they are with goods leaving the country.

Customs-based export statistics may understate or incorrectly portray the destination of exports. Export statistics are understated when the proper documentation is not filed with Customs. Exports are incorrectly portrayed when the country of final destination is inaccurately reported on the customs documentation. This occurs most frequently when goods are routed through an intermediary country before continuing on to their final destination.

Statistics Canada does not have a measure of undercoverage but periodically conducts reconciliation exercises with its major trading partners, excluding the United States.

On January 1, 1990, Canada entered into a memorandum of understanding with the United States concerning the exchange of import data. As a consequence, each administration is using the other's import data to replace its own export data. Canada's international merchandise trade statistics are, therefore, no longer derived exclusively from the administrative records of the Canada Border Services Agency, but from United States Customs records as well.

Customs-based information is adjusted to conform with the National Accounts concepts and definitions. The adjustments to derive balance of payments-based trade data include adjustments related to trade definition, valuation and timing. The principal difference between the two trade concepts is that customs-based merchandise trade statistics cover the physical movement of goods as they are reflected in customs documents while balance of payments-adjusted data are intended to cover all economic transactions that involve merchandise trade between residents and non-residents. The present document describes the concepts and processes pertaining to the customs-based trade statistics only. (For further information on balance of payments-adjusted data, see the publication *Canada's Balance of International Payments*, Statistics Canada (Catalogue no. 67-001-X).

**3. System of trade:** Canadian trade statistics are compiled according to the general system of trade, as defined by the United Nations Statistical Office. Under this system, imports include all goods that have crossed Canada's territorial boundary, whether for immediate consumption in Canada or for storage in bonded customs warehouses. Domestic exports include goods grown, extracted or manufactured in Canada, including goods of foreign origin that have been materially transformed in Canada. Re-exports are exports of goods of foreign origin that have not been materially transformed in Canada, including foreign goods withdrawn for export from bonded customs warehouses. Total exports are the sum of domestic exports and re-exports. Thus the general trade system, in principal, presents all goods entering the country (imports) and all goods leaving the country (exports). It differs from the special system of trade in the treatment of imported goods into bonded customs warehouses. Under the 'special' system, these goods are counted only if and when they are withdrawn from customs warehouses for home consumption. They are not counted in export statistics unless they have first cleared customs.

Conceptually, under the general system, the statistical frontier coincides with the geographical boundary, while under the 'special' system, it coincides with the customs boundary.

**4. Valuation:** For customs purposes, imports are recorded at values established according to the provisions of the Customs Act, which, since January 1, 1985, reflects valuation methods based on the General Agreement on Tariffs and Trade (GATT) Valuation Code System. In general, the value for duty of imported goods must be equivalent to the transaction value or the price actually paid.

To determine the transaction value of imported goods, all transportation and associated costs arising in respect of the goods being appraised prior to and at the place of direct shipment to Canada, are to be added to the price of the goods. Therefore, Canadian imports are valued Free on Board (FOB), place of direct shipment to Canada. It excludes freight and insurance costs in bringing the goods to Canada from the point of direct shipment.

Countries other than the United States, exports are, in principal, valued or recorded at the values declared on export documents, which usually reflect the transaction value, i.e., actual selling price or, in the case of a non-arm's length transaction, the transfer price used for company accounting purposes. Canadian exports to overseas countries are valued at F.O.B. port of exit, including domestic freight charges to that point but net of discounts and allowances. As of January, 1990, Canadian exports to the U.S. are valued F.O.B. point of exit from Canada. Prior to 1990, they were valued F.O.B. place of lading net of freight charges, discounts and allowances.

**5. Statistical period:** The reference period is the calendar month and the calendar year. The closing of the statistical month for imports and Canadian exports to the United States is defined as the last calendar day of the month, based as closely as practicable on the date of clearance from customs.

The closing of the statistical month for exports, to countries other than the United States, is also defined as the last calendar day of the month. Those export documents that are received too late for incorporation in the current month are assigned to the month the transaction took place. If a monthly summary report from a high volume exporter is not received on time, the data are imputed for the current month and revised with the trade value in the following statistical month.

**6. Trading partner attribution (country of origin/destination):** Exports are attributed to the country, which is the last known destination of the goods at the time of export. Exports to the United States are attributed to the state of destination.

Imports are attributed to their country of origin, that is, the country in which the goods were grown, extracted or manufactured in accordance to the rules of origin administered by the Canada Border Services Agency. Imports from the United States are attributed to the state of origin. Prior to 1988, most imports were attributed to the country of export/consignment, with the exception of imports from Central and South America.

**7. Principal trading areas:** The 'principal trading areas' are country groupings defined as follows:

**United States:** includes trade with Puerto Rico and the U.S. Virgin Islands

**Japan**

**European Union (EU):** Austria, Belgium, Bulgaria, Cyprus, Czech Republic, Denmark, Estonia, Finland, France, Germany, Greece, Hungary, Ireland, Italy, Latvia, Lithuania, Luxembourg, Malta, Netherlands, Poland, Portugal, Romania, Slovakia, Slovenia, Spain, Sweden and United Kingdom

**Other Organisation for Economic Co-operation and Development (OECD):** Australia, Canada, Iceland, Mexico, New Zealand, Norway, South Korea, Switzerland, and Turkey. (The EU countries, United States, and Japan are also members of OECD)

**Other countries:** all countries and territories other than the United States, Japan, EU and other OECD

**8. Legal framework:** Import and export statistics with countries other than the United States are derived from information contained in administrative records collected by the Canada Border Services Agency under the Customs Act. Copies of these documents (or information therefrom) are sent to Statistics Canada in accordance with Section 25 of the Statistics Act. It follows that the disclosure of trade statistics is governed by both the Customs Act and the Statistics Act and is subject to the provisions of Section 17(2)(a) of the latter. Disclosure of export statistics to the United States is now governed by a memorandum of understanding that provides for the exchange of detailed import statistics between Canada and the United States.

## Contact information

Questions concerning details of methods not covered by these notes should be addressed to the Marketing and Client Services Section, International Trade Division, Statistics Canada, 170 Tunney's Pasture Driveway, Ottawa, Ontario, K1A 0T6.

**Telephone:** 1-800-294-5583 or 613-951-9647

**Facsimile:** 1-800-664-0055 613-951-0117

**Internet:** *trade@statcan.gc.ca*