

Catalogue no. 65-001-X

Canadian International Merchandise Trade

July 2011



Statistics
Canada

Statistique
Canada

Canada

How to obtain more information

For information about this product or the wide range of services and data available from Statistics Canada, visit our website at www.statcan.gc.ca, e-mail us at infostats@statcan.gc.ca, or telephone us, Monday to Friday from 8:30 a.m. to 4:30 p.m., at the following numbers:

Statistics Canada's National Contact Centre

Toll-free telephone (Canada and the United States):

Inquiries line	1-800-263-1136
National telecommunications device for the hearing impaired	1-800-363-7629
Fax line	1-877-287-4369

Local or international calls:

Inquiries line	1-613-951-8116
Fax line	1-613-951-0581

Depository Services Program

Inquiries line	1-800-635-7943
Fax line	1-800-565-7757

To access this product

This product, Catalogue no. 65-001-X, is available free in electronic format. To obtain a single issue, visit our website at www.statcan.gc.ca and browse by "Key resource" > "Publications."

Standards of service to the public

Statistics Canada is committed to serving its clients in a prompt, reliable and courteous manner. To this end, Statistics Canada has developed *standards of service* that its employees observe. To obtain a copy of these service standards, please contact Statistics Canada toll-free at 1-800-263-1136. The service standards are also published on www.statcan.gc.ca under "About us" > "The agency" > "Providing services to Canadians."

Statistics Canada
International Trade Division

Canadian International Merchandise Trade

July 2011

Published by authority of the Minister responsible for Statistics Canada

© Minister of Industry, 2011

All rights reserved. The content of this electronic publication may be reproduced, in whole or in part, and by any means, without further permission from Statistics Canada, subject to the following conditions: that it be done solely for the purposes of private study, research, criticism, review or newspaper summary, and/or for non-commercial purposes; and that Statistics Canada be fully acknowledged as follows: Source (or "Adapted from", if appropriate): Statistics Canada, year of publication, name of product, catalogue number, volume and issue numbers, reference period and page(s). Otherwise, no part of this publication may be reproduced, stored in a retrieval system or transmitted in any form, by any means—electronic, mechanical or photocopy—or for any purposes without prior written permission of Licensing Services, Information Management Division, Statistics Canada, Ottawa, Ontario, Canada K1A 0T6.

September 2011

Catalogue no. 65-001-X, vol. 65, no. 7

ISSN 1480-8781

Frequency: Monthly

Ottawa

Cette publication est également disponible en français.

Note of appreciation

Canada owes the success of its statistical system to a long-standing partnership between Statistics Canada, the citizens of Canada, its businesses, governments and other institutions. Accurate and timely statistical information could not be produced without their continued cooperation and goodwill.

User information

Symbols

The following standard symbols are used in Statistics Canada publications:

- . not available for any reference period
- .. not available for a specific reference period
- ... not applicable
- 0 true zero or a value rounded to zero
- 0^s value rounded to 0 (zero) where there is a meaningful distinction between true zero and the value that was rounded
- p preliminary
- r revised
- x suppressed to meet the confidentiality requirements of the *Statistics Act*
- E use with caution
- F too unreliable to be published
- * significantly different from reference category ($p < 0.05$)

Note to users

All totals are calculated from full figures and rounded independently; consequently, totals may not equal the sum of their components.

The data is based on commodity groups (sector, subsector and major group).

Table of contents

Highlights	5
Analysis	7
Related products	11
Statistical tables	
1 Merchandise trade of Canada, balance of payments basis, seasonally adjusted	15
1-1 Current dollars	15
1-2 Constant dollars, 2002	16
1-3 Price indices (Laspeyres)	17
2 Exports by commodity groupings, balance of payments basis, seasonally adjusted	18
2-1 Current dollars	18
2-2 Constant dollars, 2002	20
3 Domestic exports to selected countries, customs basis, not seasonally adjusted	22
3-1 July	22
3-2 Year to date, January to July	23
4 Domestic exports by country, customs basis, not seasonally adjusted	24
5 Exports by province of origin, customs basis, not seasonally adjusted	28
5-1 July	28
5-2 Year to date, January to July	29
6 Imports by commodity groupings, balance of payments basis, seasonally adjusted	30
6-1 Current dollars	30
6-2 Constant dollars, 2002	32
7 Imports from selected countries, customs basis, not seasonally adjusted	34
7-1 July	34
7-2 Year to date, January to July	35
8 Imports by country, customs basis, not seasonally adjusted	36

Table of contents – continued

9	Imports by province of clearance, customs basis, not seasonally adjusted	40
9-1	July	40
9-2	Year to date, January to July	41

Data quality, concepts and methodology

	Technical notes	42
--	-----------------	----

Highlights

Canada's merchandise exports rose 2.2% and imports edged up 0.5% in July. As a result, Canada's trade deficit with the world narrowed from \$1.4 billion in June to \$753 million in July.

Exports increased to \$37.3 billion, as volumes rose in most sectors. Overall, volumes rose 4.1%, while prices declined 1.9%. Machinery and equipment, automotive products, and industrial goods and materials were the main contributors to the gain in the value of exports.

Imports grew slightly to \$38.0 billion as prices increased 0.9% and volumes decreased 0.4%. In July, imports from Japan surpassed \$800 million, a level similar to those observed prior to the earthquake and tsunami in March.

Imports from the United States rose 3.1% to \$23.6 billion in July. Exports were up 2.1% to \$27.0 billion. Canada's trade surplus with the United States went from \$3.5 billion in June to \$3.4 billion in July.

Imports from countries other than the United States fell 3.6% to \$14.4 billion. Exports to countries other than the United States increased 2.4% to \$10.3 billion. Consequently, Canada's trade deficit with countries other than the United States narrowed from \$4.9 billion in June to \$4.1 billion in July.

Note to readers

Merchandise trade is one component of Canada's international balance of payments (BOP), which also includes trade in services, investment income, current transfers as well as capital and financial flows.

International merchandise trade data by country are available on both a BOP and a customs basis for the United States, Japan and the United Kingdom. Trade data for all other individual countries are available on a customs basis only. BOP data are derived from customs data by making adjustments for factors such as valuation, coverage, timing and residency. These adjustments are made to conform to the concepts and definitions of the Canadian System of National Accounts.

Data in this release are on a balance of payments basis, seasonally adjusted in current dollars. Constant dollars are calculated using the Laspeyres volume formula.

New aggregation structure

Statistics Canada will introduce a new aggregation structure, the North American Product Classification System (NAPCS), to organize and present import and export statistics in various programs. The new structure will replace the classification structures known as the summary import groups (SIG) and the summary export groups (SEG) and the higher level aggregations; Major Groups, Subsectors, Sectors and Sections that have been in use for several decades. The first release of data using the new structure will be on June 8, 2012 for the April reference month.

Readers interested in this upcoming change can find more detailed information on our website page dedicated to *classification* consultation and notification.

Chart 1
Exports and imports, seasonally adjusted, on a balance of payments basis

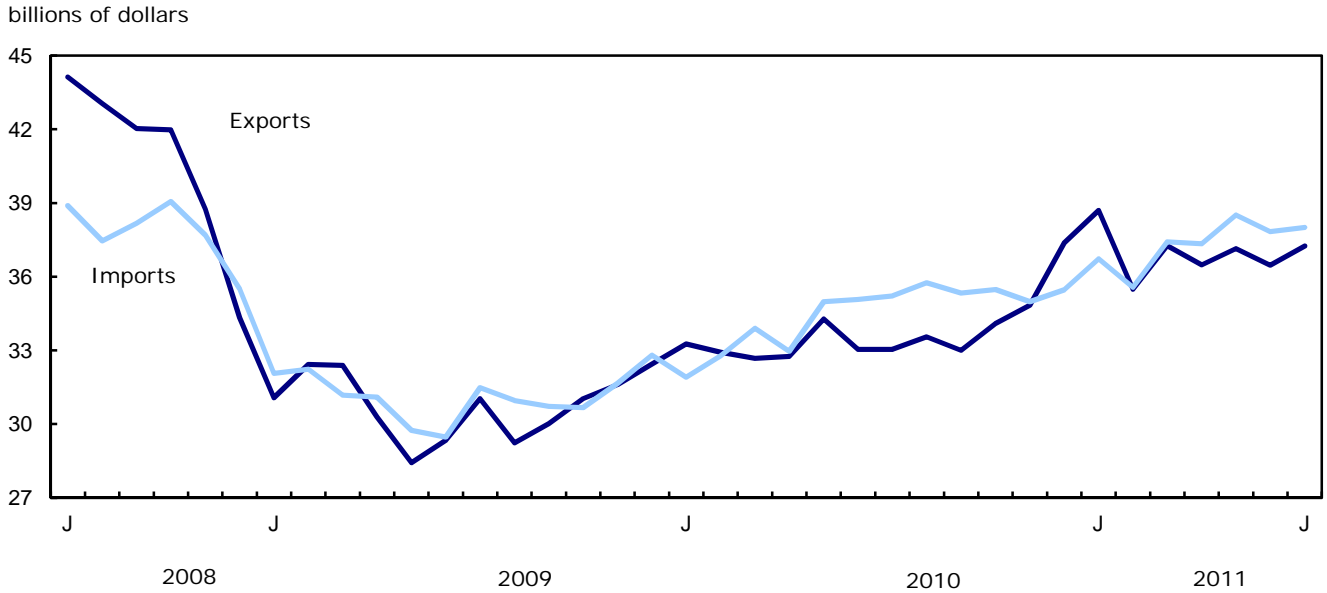
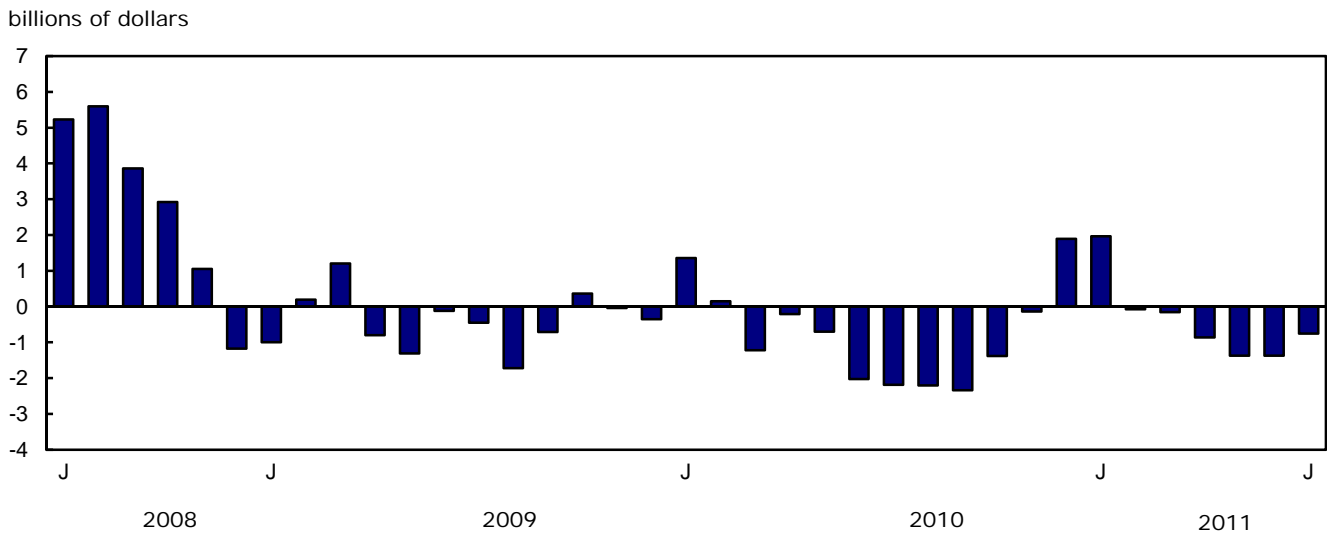


Chart 2
Trade balance, seasonally adjusted, on a balance of payments basis



Analysis

Exports rise in four out of seven sectors

Exports of machinery and equipment increased for a third straight month, rising 5.5% to \$6.8 billion in July. Volumes were up 5.3%. Leading the gain in value were aircraft, engines and parts, up 16.1%; and telecommunication equipment, which increased 12.6%.

Exports of automotive products rose 7.6% to \$4.9 billion, on the strength of higher volumes. Passenger autos and chassis was the main contributor to the gains in this sector.

Exports of industrial goods and materials increased for a third consecutive month, up 2.8% to \$9.9 billion in July. Metal ores rose 48.1% to reach a record high of \$1.6 billion, led by copper ores, concentrates and scrap; and nickel ores, concentrates and scrap. Partially offsetting this increase was a 10.4% decrease in chemicals, plastics and fertilizers, largely as a result of lower exports of fertilizers and fertilizer materials.

Exports of energy products decreased 2.1% to \$8.4 billion in July, as both prices and volumes declined. Crude petroleum exports, which were down for a fourth consecutive month, accounted for the decline.

Machinery and equipment moderates the rise in imports

Imports of automotive products increased 5.8% to \$6.1 billion in July, with gains in all sub-sectors. Volumes rose 6.6% while prices declined 0.7%.

Imports of energy products grew 6.1% to \$4.3 billion. Crude petroleum imports rose 44.0% as some refineries resumed production. Following record levels of imports in June, petroleum and coal products, namely light oils and preparations, declined 28.5%.

Imports of industrial goods and materials fell 1.5% to \$8.1 billion in July, as a result of widespread declines. Metals in ores, concentrates and scrap; and organic chemicals were the main contributors to this decrease.

Machinery and equipment fell 5.3% to \$10.2 billion, as volumes declined. After reaching a record level in June, imports of industrial and agriculture machinery decreased in July.

Note: In general, merchandise trade data are revised on an ongoing basis for each month of the current year. Current year revisions are reflected in both the customs and balance of payments (BOP) based data. The previous year's customs data are revised with the release of the January and February reference months as well as on a quarterly basis. The previous two years of customs based data are revised annually and are released in February with the December reference month. The previous year's BOP based data are revised with the release of the January, February and March reference months. Revisions to BOP based data for the previous three years are released annually in June with the April reference month.

Factors influencing revisions include late receipt of import and export documentation, incorrect information on customs forms, replacement of estimates produced for the energy sector with actual figures, changes in classification of merchandise based on more current information, and changes to seasonal adjustment factors.

Revised data are available in the appropriate CANSIM tables.

Chart 1
Exports of machinery and equipment, seasonally adjusted, on a balance of payments basis

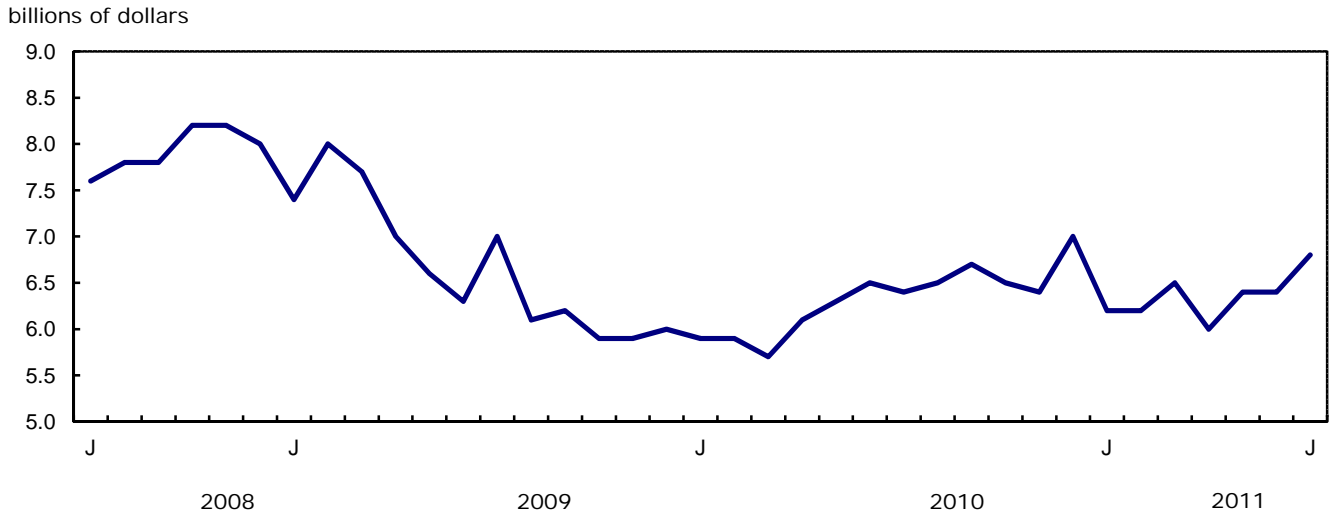


Chart 2
Exports of automotive products, seasonally adjusted, on a balance of payments basis

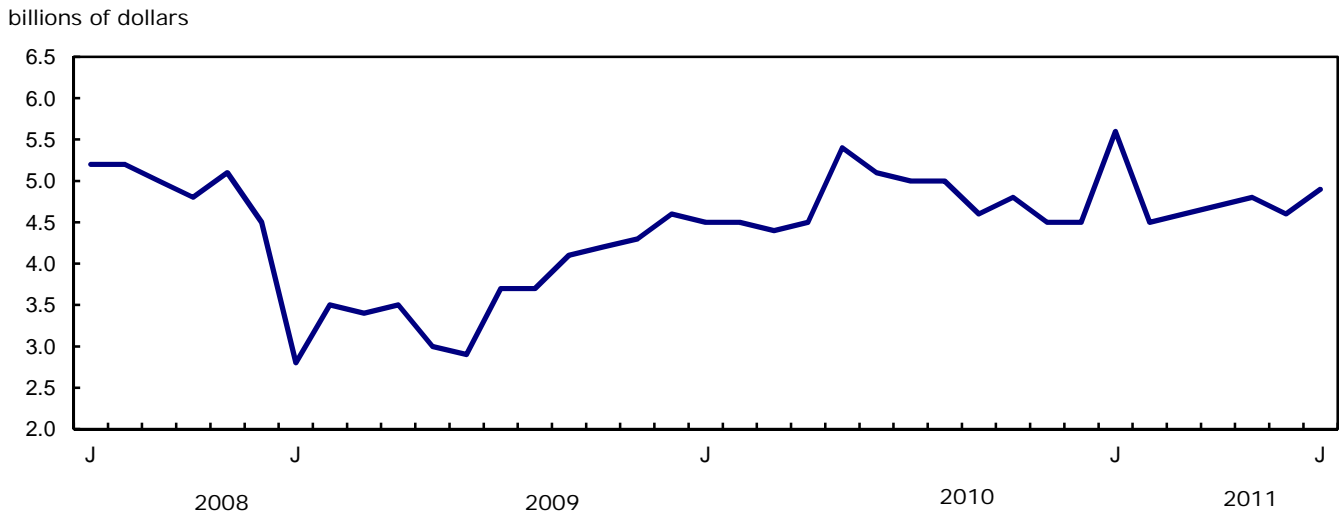


Chart 3
Imports of automotive products, seasonally adjusted, on a balance of payments basis

billions of dollars

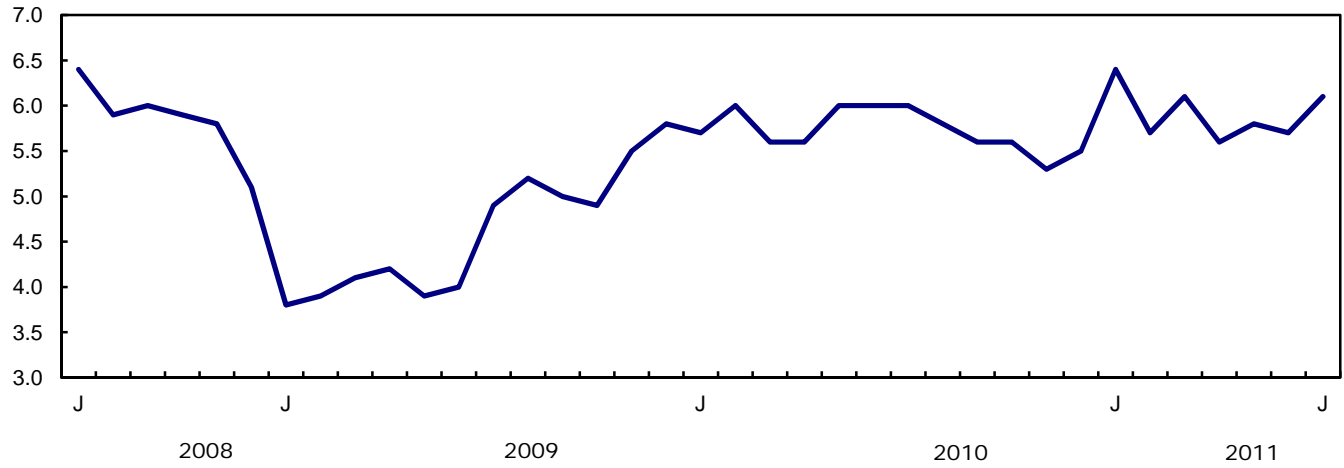
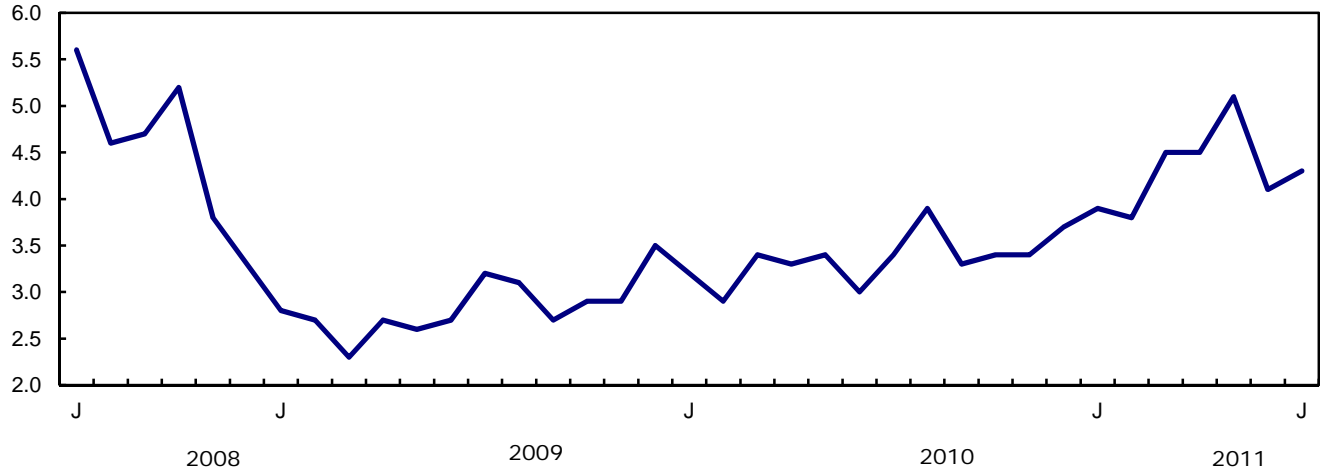


Chart 4
Imports of energy products, seasonally adjusted, on a balance of payments basis

billions of dollars



Text table 1
Merchandise trade by principal trading area, balance of payments basis, seasonally adjusted

	June	July	Change	Year to date			July 2011/ July 2010		
	2011	2011		2010	2011	Change			
	millions of dollars		percent		millions of dollars		percent		
Export to									
United States	26,420	26,969	549	2.1	173,041	189,257	16,216	9.4	10.1
Japan	739	907	168	22.7	5,385	6,402	1,017	18.9	8.7
European Union ¹	3,307	3,538	231	7.0	19,120	22,747	3,627	19.0	18.9
Other Organisation for Economic Co-operation and Development ²	1,560	1,710	150	9.6	10,267	11,452	1,185	11.5	32.4
Other countries	4,439	4,131	-308	-6.9	24,168	28,925	4,757	19.7	20.0
Total	36,464	37,255	791	2.2	231,980	258,783	26,802	11.6	12.8
Imports from									
United States	22,877	23,596	719	3.1	150,213	160,367	10,153	6.8	5.3
Japan	659	819	160	24.3	5,804	5,038	-766	-13.2	-0.5
European Union ¹	4,105	3,764	-341	-8.3	22,590	26,620	4,030	17.8	14.8
Other Organisation for Economic Co-operation and Development ²	2,667	2,636	-31	-1.2	16,802	19,213	2,411	14.4	8.6
Other countries	7,524	7,193	-331	-4.4	41,407	50,168	8,761	21.2	14.4
Total	37,832	38,008	176	0.5	236,817	261,406	24,589	10.4	7.9
Balance									
United States	3,543	3,372	-170	...	22,827	28,890	6,062
Japan	80	88	8	...	-419	1,365	1,784
European Union ¹	-799	-226	573	...	-3,470	-3,873	-403
Other Organisation for Economic Co-operation and Development ²	-1,107	-925	182	...	-6,535	-7,761	-1,226
Other countries	-3,085	-3,061	24	...	-17,239	-21,243	-4,004
Total	-1,368	-752	615	...	-4,836	-2,623	2,213

1. European Union includes: Austria, Belgium, Bulgaria, Cyprus, Czech Republic, Denmark, Estonia, Finland, France, Germany, Greece, Hungary, Ireland, Italy, Latvia, Lithuania, Luxembourg, Malta, Netherlands, Poland, Portugal, Romania, Slovakia, Slovenia, Spain, Sweden and United Kingdom.
2. Other Organisation for Economic Co-operation and Development includes: Australia, Canada, Iceland, Mexico, New Zealand, Norway, South Korea, Switzerland and Turkey.

Text table 2
Reconciliation of customs and balance of payments trade data, not seasonally adjusted

	2011						2010
	July	June	May	April	March	February	Annual
	millions of dollars						
Exports							
Customs basis	35,237	37,348	37,147	34,901	39,120	32,449	399,434
Balance of payments adjustments	1,016	204	898	1,637	353	870	5,400
Valuation and residency							
Inland freight	565	595	558	539	619	515	6,552
Other valuation and residency	-988	-1,383	-911	-107	-1,016	-993	-12,985
Timing	43	29	52	-32	-20	157	48
Coverage	1,396	963	1,199	1,237	770	1,191	11,785
Balance of payments basis	36,253	37,552	38,045	36,538	39,473	33,319	404,834
Imports							
Customs basis	35,365	38,704	37,447	35,984	38,895	32,709	403,713
Balance of payments adjustments	885	329	1,248	818	1,264	508	10,120
Valuation and residency							
Inland freight	765	835	792	776	828	694	8,740
Other valuation and residency	-24	-31	-59	-39	-45	-40	7
Timing	0	0	0	0	0	0	0
Coverage	144	-475	515	81	481	-146	1,373
Balance of payments basis	36,250	39,033	38,695	36,802	40,159	33,217	413,833

Related products

Selected publications from Statistics Canada

65-208-X	International Merchandise Trade Annual Review
65-506-X	A Profile of Canadian Exporters
65F0013X	Canadian International Merchandise Trade Database
65F0019X	A Database for Analysis of International Markets
65F0020X	Data Integration - International Trade Data and Manufacturing Shipments Data

Selected CANSIM tables from Statistics Canada

228-0001	Merchandise imports and exports, by major groups and principal trading areas for all countries, monthly
228-0002	Merchandise imports and exports, by major groups and principal trading areas for all countries, quarterly
228-0003	Merchandise imports and exports, by major groups and principal trading areas for all countries, annual
228-0033	Imports, customs-based, by province of clearance, monthly
228-0034	Domestic exports, customs-based, by province of origin, monthly
228-0041	Merchandise imports and exports by sector and sub-sector, customs and balance of payments basis, for all countries, monthly
228-0042	Merchandise imports and exports by sector and sub-sector, customs and balance of payments basis, for all countries, quarterly
228-0043	Merchandise imports and exports by sector and sub-sector, customs and balance of payments basis, for all countries, annual
228-0047	Merchandise imports and exports balance of payments and customs-based price and volume indexes for all countries, monthly
228-0048	Merchandise imports and exports balance of payments and customs-based price and volume indexes for all countries, quarterly
228-0049	Merchandise imports and exports balance of payments and customs-based price and volume indexes for all countries, annual

228-0050	Merchandise imports and exports customs-based price indexes, Canada and United States trade, and Standard International Trade Classification (SITC revision 3) price indexes for all countries and United States, monthly
228-0051	Merchandise imports and exports customs-based price indexes, Canada and United States trade, and Standard International Trade Classification (SITC revision 3) price indexes for all countries and United States, quarterly
228-0052	Merchandise imports and exports customs-based price indexes, Canada and United States trade, and Standard International Trade Classification (SITC revision 3) price indexes for all countries and United States, annual
228-0053	Merchandise import and export price and volume indexes by sector and sub-sector, customs and balance of payments basis, for all countries, monthly
228-0054	Merchandise import and export price and volume indexes by sector and sub-sector, customs and balance of payments basis, for all countries, quarterly
228-0055	Merchandise import and export price and volume indexes by sector and sub-sector, customs and balance of payments basis, for all countries, annual
228-0056	Merchandise imports and exports by sector, balance of payments basis, for all countries, seasonally adjusted, Fisher formula, monthly
228-0057	Merchandise imports and exports by sector, balance of payments basis, for all countries, seasonally adjusted, Fisher formula, quarterly

Selected surveys from Statistics Canada

2201	Canadian International Merchandise Trade (Customs Basis)
2202	Canadian International Merchandise Trade (Balance of Payments Basis)
2203	International Trade Price Indexes

Selected summary tables from Statistics Canada

- *Canada: Economic and financial data*
- *Imports, exports and trade balance of goods on a balance-of-payments basis, by country or country grouping*
- *Exports of goods on a balance-of-payments basis*
- *Imports of goods on a balance-of-payments basis*
- *Merchandise trade of Canada (monthly)*
- *Economic indicators, by province and territory (monthly and quarterly)*
- *Latest statistics (monthly)*

Statistical tables

Table 1-1
Merchandise trade of Canada, balance of payments basis, seasonally adjusted — Current dollars

	Exports	Imports	Trade balance	Period to period change		
				Exports	Imports	Balance
				millions of dollars	percent	millions of dollars
2007	463,120	415,683	47,437	0.0	0.0	0
2008	488,754	443,777	44,977	5.5	6.8	-2,460
2009	369,343	374,081	-4,738	-24.4	-15.7	-49,715
2010	404,834	413,833	-8,999	9.6	10.6	-4,261
2009						
First quarter	95,888	95,487	400	-16.7	-14.9	-2,399
Second quarter	88,071	90,304	-2,234	-8.2	-5.4	-2,634
Third quarter	90,293	93,167	-2,873	2.5	3.2	-639
Fourth quarter	95,092	95,123	-32	5.3	2.1	2,842
2010						
First quarter	98,870	98,583	287	4.0	3.6	318
Second quarter	100,071	103,014	-2,942	1.2	4.5	-3,229
Third quarter	99,592	106,312	-6,720	-0.5	3.2	-3,778
Fourth quarter	106,301	105,924	377	6.7	-0.4	7,097
2011						
First quarter	111,445	109,709	1,736	4.8	3.6	1,359
Second quarter	110,082	113,689	-3,607	-1.2	3.6	-5,342
2010						
January	33,260	31,902	1,358	2.5	-2.7	1,714
February	32,929	32,780	148	-1.0	2.8	-1,210
March	32,681	33,901	-1,220	-0.8	3.4	-1,368
April	32,749	32,962	-213	0.2	-2.8	1,007
May	34,282	34,984	-702	4.7	6.1	-489
June	33,040	35,068	-2,028	-3.6	0.2	-1,326
July	33,040	35,220	-2,181	0.0	0.4	-153
August	33,550	35,757	-2,207	1.5	1.5	-26
September	33,002	35,335	-2,333	-1.6	-1.2	-126
October	34,090	35,474	-1,384	3.3	0.4	949
November	34,845	34,979	-134	2.2	-1.4	1,249
December	37,366	35,471	1,895	7.2	1.4	2,029
2011						
January	38,693	36,725	1,969	3.6	3.5	74
February	35,492	35,571	-79	-8.3	-3.1	-2,047
March	37,259	37,414	-155	5.0	5.2	-76
April	36,476	37,340	-865	-2.1	-0.2	-710
May	37,143	38,517	-1,374	1.8	3.2	-510
June	36,464	37,832	-1,368	-1.8	-1.8	7
July	37,255	38,008	-752	2.2	0.5	615

Note(s): Because of rounding, monthly data may not add up to quarterly data and quarterly data may not add up to annual data.

Table 1-2
Merchandise trade of Canada, balance of payments basis, seasonally adjusted — Constant dollars, 2002

	Exports	Imports	Trade balance	Period to period change	
				Exports	Imports
	millions of dollars			percent	
2007	449,015	484,005	-34,990	0.0	0.0
2008	412,713	486,735	-74,022	-8.1	0.6
2009	346,916	407,679	-60,763	-15.9	-16.2
2010	374,143	470,401	-96,259	7.8	15.4
2009					
First quarter	87,361	98,563	-11,202	-9.7	-13.3
Second quarter	83,432	97,723	-14,290	-4.5	-0.9
Third quarter	86,976	104,165	-17,189	4.2	6.6
Fourth quarter	89,147	107,228	-18,081	2.5	2.9
2010					
First quarter	90,749	111,192	-20,442	1.8	3.7
Second quarter	94,368	117,650	-23,282	4.0	5.8
Third quarter	94,074	120,900	-26,826	-0.3	2.8
Fourth quarter	94,951	120,659	-25,708	0.9	-0.2
2011					
First quarter	96,762	124,630	-27,868	1.9	3.3
Second quarter	95,325	128,526	-33,201	-1.5	3.1
2010					
January	30,484	36,096	-5,612	1.2	-1.5
February	29,984	36,948	-6,964	-1.6	2.4
March	30,282	38,148	-7,866	1.0	3.2
April	30,882	37,943	-7,061	2.0	-0.5
May	32,065	39,600	-7,535	3.8	4.4
June	31,421	40,106	-8,686	-2.0	1.3
July	31,273	40,040	-8,767	-0.5	-0.2
August	31,897	40,711	-8,814	2.0	1.7
September	30,905	40,150	-9,245	-3.1	-1.4
October	31,313	40,563	-9,250	1.3	1.0
November	31,041	39,832	-8,790	-0.9	-1.8
December	32,597	40,265	-7,668	5.0	1.1
2011					
January	33,629	42,028	-8,399	3.2	4.4
February	30,990	40,405	-9,415	-7.8	-3.9
March	32,143	42,197	-10,054	3.7	4.4
April	31,552	42,754	-11,202	-1.8	1.3
May	32,234	42,629	-10,396	2.2	-0.3
June	31,539	43,142	-11,603	-2.2	1.2
July	32,844	42,966	-10,122	4.1	-0.4

Note(s): Because of rounding, monthly data may not add up to quarterly data and quarterly data may not add up to annual data.

Table 1-3
Merchandise trade of Canada, balance of payments basis, seasonally adjusted — Price indices (Laspeyres)

	2002=100			Period to period change		
	Exports	Imports	Terms of trade	Exports	Imports	Terms of trade
	price indices (Laspeyres)			percent		
2007	107.1	91.4	117.1	0.0	0.0	0.0
2008	116.2	97.2	119.6	8.5	6.3	2.2
2009	105.2	96.2	109.3	-9.5	-1.0	-8.5
2010	106.8	94.1	113.4	1.5	-2.2	3.7
2009						
First quarter	108.8	100.8	107.9	-3.9	-2.8	-1.1
Second quarter	104.6	96.8	108.0	-3.8	-4.0	0.1
Third quarter	102.9	94.1	109.3	-1.6	-2.8	1.2
Fourth quarter	105.3	93.0	113.2	2.3	-1.2	3.5
2010						
First quarter	107.1	93.7	114.2	1.7	0.7	0.9
Second quarter	105.7	93.6	112.9	-1.3	-0.1	-1.2
Third quarter	106.1	94.5	112.3	0.4	0.9	-0.5
Fourth quarter	108.2	94.6	114.4	2.0	0.1	1.9
2011						
First quarter	111.7	96.2	116.1	3.2	1.7	1.5
Second quarter	113.1	99.0	114.2	1.3	3.0	-1.7
2010						
January	107.2	93.9	114.2	1.0	0.0	1.0
February	108.1	95.1	113.7	0.8	1.3	-0.5
March	106.0	93.8	113.0	-1.9	-1.3	-0.6
April	105.2	92.1	114.3	-0.8	-1.8	1.1
May	106.3	94.5	112.5	1.0	2.6	-1.6
June	105.6	94.0	112.3	-0.7	-0.5	-0.2
July	104.8	93.8	111.7	-0.7	-0.2	-0.5
August	105.9	94.1	112.5	1.0	0.3	0.7
September	106.7	93.9	113.6	0.8	-0.2	1.0
October	107.5	93.9	114.5	0.7	-0.1	0.7
November	109.0	94.8	115.0	1.4	1.0	0.5
December	110.8	95.4	116.1	1.6	0.7	1.0
2011						
January	111.3	95.9	116.1	0.5	0.5	0.0
February	111.6	97.4	114.6	0.3	1.6	-1.3
March	112.5	97.4	115.4	0.7	0.1	0.7
April	113.0	97.3	116.1	0.4	-0.1	0.6
May	113.0	99.0	114.1	0.0	1.7	-1.7
June	113.0	100.1	112.9	0.0	1.1	-1.1
July	111.8	99.0	113.0	-1.0	-1.1	0.1

Note(s): Because of rounding, monthly data may not add up to quarterly data and quarterly data may not add up to annual data.

Table 2-1
Exports by commodity groupings, balance of payments basis, seasonally adjusted — Current dollars

	June	July	Change		Year to date			July 2011/ July 2010	
	2011	2011			2010	2011	Change		
	millions of dollars		percent		millions of dollars		percent		
Total	36,464	37,255	791	2.2	231,980	258,783	26,802	11.6	12.8
Agricultural and fishing products	3,246	3,344	99	3.0	20,912	22,756	1,845	8.8	10.2
Wheat	512	492	-20	-3.9	2,491	3,030	539	21.6	52.5
Other agricultural and fishing products	2,734	2,852	119	4.3	18,421	19,726	1,306	7.1	5.1
Live animals	128	118	-10	-8.0	1,070	816	-254	-23.7	-25.2
Fish and fish preparations	355	355	0	0.1	2,395	2,517	122	5.1	2.1
Barley	13	8	-6	-41.2	164	166	3	1.6	-58.2
Wheat flour	6	6	0	-3.2	46	45	-1	-2.0	-11.6
Other cereals unmilled	49	29	-20	-40.2	256	559	303	118.2	-19.7
Other cereal preparations	238	241	3	1.2	1,614	1,652	39	2.4	4.4
Meat and meat preparations	398	405	7	1.8	2,743	2,785	42	1.5	2.9
Alcoholic beverages	55	64	9	15.5	440	422	-17	-3.9	10.6
Other food, feed, beverages and tobacco	979	1,011	32	3.2	6,502	6,862	360	5.5	5.4
Rapeseed	281	419	138	49.3	1,826	2,437	611	33.5	46.0
Other crude vegetable products	231	196	-35	-15.0	1,366	1,464	98	7.2	-9.5
Energy products	8,620	8,439	-181	-2.1	53,350	64,084	10,734	20.1	19.7
Crude petroleum	4,970	4,651	-319	-6.4	29,318	38,312	8,994	30.7	24.4
Natural gas	1,269	1,317	48	3.7	9,648	8,434	-1,215	-12.6	-2.2
Other energy products	2,381	2,471	90	3.8	14,383	17,338	2,955	20.5	25.7
Coal and other bituminous substances	679	670	-9	-1.4	2,891	3,813	922	31.9	38.7
Petroleum and coal products	1,552	1,656	104	6.7	10,230	12,403	2,173	21.2	24.9
Electricity	150	145	-5	-3.1	1,262	1,122	-140	-11.1	-7.3
Forestry products	1,921	1,839	-82	-4.3	12,552	13,247	695	5.5	2.4
Lumber and sawmill products	718	671	-47	-6.5	4,687	4,928	241	5.1	8.2
Other crude wood products	85	69	-16	-18.9	389	522	133	34.2	37.0
Lumber	448	430	-18	-4.1	2,848	3,116	269	9.4	14.6
Other wood fabricated materials	185	172	-13	-6.8	1,451	1,289	-161	-11.1	-11.5
Wood pulp and other wood products	556	524	-32	-5.8	3,541	3,947	406	11.5	-9.7
Newsprint and other paper and paperboard	647	644	-3	-0.5	4,323	4,373	49	1.1	8.2
Newsprint paper	334	326	-9	-2.6	2,157	2,260	103	4.8	9.9
Other paper and paperboard	313	318	6	1.8	2,166	2,112	-54	-2.5	6.6
Industrial goods and materials	9,582	9,852	270	2.8	53,747	65,708	11,960	22.3	27.9
Metal ores	1,085	1,607	522	48.1	6,558	9,334	2,777	42.3	101.8
Iron ores, concentrates and scrap	411	467	56	13.7	2,451	3,197	746	30.4	35.7
Copper ores, concentrates and scrap	291	504	213	73.4	1,173	2,050	877	74.8	367.2
Nickel ores, concentrates and scrap	83	276	193	231.7	1,411	1,868	457	32.3	120.3
Zinc ores, concentrates and scrap	39	13	-26	-66.8	163	166	2	1.5	-48.0
Other ores, concentrates and scrap	261	346	86	32.9	1,359	2,054	694	51.1	78.9
Chemicals, plastics and fertilizers	3,289	2,946	-343	-10.4	17,312	20,716	3,404	19.7	23.2
Inorganic chemicals	529	493	-36	-6.7	2,536	3,521	985	38.8	39.6
Organic chemicals	650	615	-35	-5.4	3,680	4,259	579	15.7	17.7
Fertilizers and fertilizer materials	864	601	-262	-30.4	3,399	4,436	1,037	30.5	49.7
Synthetic rubber and plastics	954	945	-9	-0.9	5,849	6,567	717	12.3	10.4
Other chemical products	292	291	-1	-0.4	1,847	1,934	87	4.7	13.2
Metals and alloys	3,619	3,725	106	2.9	20,077	24,717	4,641	23.1	22.5
Primary iron and steel	96	66	-30	-31.3	767	509	-258	-33.6	-53.2
Steel bars, rods, plates, sheets	308	312	4	1.4	2,067	2,148	81	3.9	1.3
Other iron and steel and alloys	234	235	1	0.3	1,564	1,620	56	3.6	8.7
Aluminum including alloys	693	722	29	4.2	4,327	4,669	342	7.9	27.7
Copper and alloys	175	220	45	25.8	1,709	1,458	-251	-14.7	11.8
Nickel and alloys	281	298	17	5.9	1,038	2,038	1,000	96.3	65.2
Precious metals and alloys	1,625	1,675	49	3.0	7,163	10,798	3,636	50.8	32.5
Zinc and alloys	101	97	-4	-4.2	821	753	-68	-8.3	16.0
Other non-ferrous metals and alloys	106	100	-6	-5.8	620	723	103	16.6	16.2

Table 2-1 – continued

Exports by commodity groupings, balance of payments basis, seasonally adjusted — Current dollars

	June	July	Change		Year to date			July 2011/ July 2010	
	2011	2011			2010	2011	Change		
	millions of dollars		percent		millions of dollars		percent		
Other industrial goods and materials	1,588	1,573	-15	-1.0	9,801	10,940	1,139	11.6	6.6
Asbestos unmanufactured	3	4	1	32.6	31	25	-7	-21.6	25.4
Other crude animal products	107	71	-36	-33.6	533	551	18	3.3	-12.9
Other crude non-metallic minerals	291	332	40	13.8	2,043	2,263	220	10.8	10.1
Other crude materials, inedible	66	64	-2	-3.7	399	449	50	12.5	7.4
Metal fabricated basic products	371	378	7	1.9	2,412	2,549	137	5.7	5.3
Textile fabricated materials	184	184	0	-0.3	1,250	1,275	25	2.0	1.9
Non-metallic mineral basic products	162	160	-2	-1.3	1,092	1,116	24	2.2	-0.3
Other fabricated materials	404	381	-22	-5.6	2,041	2,712	672	32.9	15.4
Machinery and equipment	6,443	6,797	354	5.5	42,941	44,671	1,730	4.0	6.3
Industrial and agricultural machinery	1,697	1,689	-7	-0.4	10,221	11,160	939	9.2	12.7
Industrial machinery	1,527	1,518	-9	-0.6	9,165	10,034	868	9.5	12.6
Agricultural machinery includ. tractors	170	171	2	1.0	1,056	1,126	70	6.7	13.5
Aircraft and other transportation equipment	1,431	1,587	155	10.9	9,863	10,006	143	1.4	10.8
Aircraft, engines, parts	1,044	1,212	168	16.1	7,691	7,447	-244	-3.2	12.2
Other transportation equipment	388	375	-13	-3.3	2,173	2,559	386	17.8	6.5
Other machinery and equipment	3,315	3,521	206	6.2	22,857	23,506	649	2.8	1.6
Television, telecommunication equipment	620	699	78	12.6	4,300	4,315	16	0.4	8.8
Office machines and equipment	345	344	-1	-0.2	2,444	2,462	17	0.7	-4.6
Other equipment and tools	1,561	1,613	52	3.4	10,561	10,921	360	3.4	1.3
Other end products, inedible	789	865	76	9.6	5,552	5,807	256	4.6	-0.4
Automotive products	4,595	4,944	349	7.6	33,387	33,793	406	1.2	-1.4
Passenger autos and chassis	2,945	3,205	260	8.8	22,139	22,179	41	0.2	0.6
Trucks and other motor vehicles	227	254	26	11.5	1,323	1,523	201	15.2	-1.2
Motor vehicle parts	1,422	1,486	64	4.5	9,926	10,090	165	1.7	-5.3
Other consumer goods	1,294	1,293	0	0.0	9,589	9,097	-492	-5.1	2.2
Special transactions trade	317	280	-37	-11.7	2,437	2,200	-237	-9.7	-9.8
Unallocated balance of payments adjustments	448	468	19	4.3	3,066	3,227	161	5.2	-0.6

Table 2-2
Exports by commodity groupings, balance of payments basis, seasonally adjusted — Constant dollars, 2002

	June	July	Change		Year to date			July 2011/ July 2010	
	2011	2011			2010		2011		
	millions of dollars		percent		millions of dollars		percent		
Total	31,539	32,844	1,305	4.1	216,390	224,931	8,541	3.9	5.0
Agricultural and fishing products	2,892	3,107	216	7.5	22,004	20,938	-1,066	-4.8	-0.8
Wheat	356	398	43	12.0	2,707	2,270	-437	-16.1	15.4
Other agricultural and fishing products	2,536	2,709	173	6.8	19,298	18,669	-629	-3.3	-2.8
Live animals	127	115	-12	-9.3	1,244	799	-446	-35.8	-35.2
Fish and fish preparations	392	409	18	4.5	3,022	2,885	-137	-4.5	1.0
Barley	10	6	-4	-40.0	158	130	-28	-17.7	-63.0
Wheat flour	5	5	0	-1.1	44	38	-6	-13.9	-22.6
Other cereals unmilled	35	24	-12	-32.9	310	400	90	28.9	-41.0
Other cereal preparations	213	216	3	1.2	1,438	1,492	54	3.7	5.7
Meat and meat preparations	392	410	18	4.6	3,087	2,817	-271	-8.8	-7.0
Alcoholic beverages	110	130	20	18.0	849	847	-2	-0.3	24.3
Other food, feed, beverages and tobacco	875	933	58	6.7	6,150	6,348	198	3.2	-0.3
Rapeseed	194	298	104	53.5	1,748	1,739	-10	-0.6	11.1
Other crude vegetable products	183	163	-20	-10.7	1,247	1,175	-72	-5.8	-13.6
Energy products	4,703	4,664	-38	-0.8	32,427	34,217	1,790	5.5	-0.5
Crude petroleum	2,184	2,124	-60	-2.7	14,341	16,257	1,916	13.4	0.4
Natural gas	1,369	1,407	38	2.8	9,636	9,591	-46	-0.5	-0.7
Other energy products	1,150	1,133	-16	-1.4	8,450	8,369	-81	-1.0	-1.9
Coal and other bituminous substances	162	159	-3	-1.7	1,118	1,010	-109	-9.7	-0.6
Petroleum and coal products	780	789	9	1.1	5,866	5,854	-12	-0.2	-4.2
Electricity	207	185	-22	-10.6	1,466	1,505	40	2.7	7.9
Forestry products	2,363	2,316	-48	-2.0	15,282	16,292	1,010	6.6	8.0
Lumber and sawmill products	971	926	-45	-4.7	5,942	6,552	610	10.3	13.1
Other crude wood products	100	78	-22	-21.8	501	637	137	27.3	21.9
Lumber	646	637	-9	-1.4	3,914	4,374	460	11.8	16.9
Other wood fabricated materials	226	211	-15	-6.6	1,528	1,541	13	0.8	0.5
Wood pulp and other wood products	659	643	-17	-2.5	4,224	4,703	479	11.3	-0.4
Newsprint and other paper and paperboard	733	747	14	2.0	5,116	5,038	-78	-1.5	9.8
Newsprint paper	382	380	-2	-0.4	2,623	2,620	-3	-0.1	9.3
Other paper and paperboard	351	367	16	4.5	2,493	2,418	-75	-3.0	10.3
Industrial goods and materials	5,687	5,818	131	2.3	37,684	39,842	2,158	5.7	7.3
Metal ores	446	612	166	37.3	3,287	3,842	555	16.9	42.6
Iron ores, concentrates and scrap	145	154	9	5.9	1,126	1,179	54	4.8	-2.7
Copper ores, concentrates and scrap	85	140	55	65.3	411	579	167	40.7	236.5
Nickel ores, concentrates and scrap	35	118	83	233.8	665	742	77	11.5	85.6
Zinc ores, concentrates and scrap	21	7	-14	-67.0	90	86	-3	-3.7	-54.2
Other ores, concentrates and scrap	160	194	34	21.2	995	1,256	261	26.2	28.1
Chemicals, plastics and fertilizers	2,033	1,919	-114	-5.6	12,561	13,572	1,011	8.0	6.5
Inorganic chemicals	212	215	3	1.5	1,294	1,394	101	7.8	19.7
Organic chemicals	307	293	-14	-4.4	2,157	2,109	-48	-2.2	-14.3
Fertilizers and fertilizer materials	336	240	-96	-28.6	1,495	1,766	271	18.1	28.8
Synthetic rubber and plastics	843	839	-4	-0.5	5,388	6,058	670	12.4	7.9
Other chemical products	334	331	-4	-1.1	2,227	2,245	17	0.8	4.8

Table 2-2 – continued

Exports by commodity groupings, balance of payments basis, seasonally adjusted — Constant dollars, 2002

	June	July	Change		Year to date			July 2011/ July 2010	
	2011	2011			2010		2011		
	millions of dollars		percent		millions of dollars		percent		
Metals and alloys	1,891	1,970	79	4.2	12,823	13,215	393	3.1	6.1
Primary iron and steel	57	41	-17	-28.9	529	320	-209	-39.5	-56.3
Steel bars, rods, plates, sheets	223	230	7	2.9	1,716	1,648	-68	-4.0	-6.3
Other iron and steel and alloys	179	187	8	4.5	1,311	1,285	-26	-2.0	5.5
Aluminum including alloys	658	707	50	7.6	4,511	4,455	-56	-1.2	14.9
Copper and alloys	44	59	15	33.7	567	380	-187	-33.0	-14.4
Nickel and alloys	131	147	16	12.2	541	891	349	64.5	62.6
Precious metals and alloys	489	490	1	0.3	2,901	3,474	573	19.7	5.1
Zinc and alloys	60	57	-3	-5.1	470	424	-46	-9.8	-1.0
Other non-ferrous metals and alloys	49	51	2	4.3	275	338	63	22.9	22.3
Other industrial goods and materials	1,318	1,317	-1	0.0	9,013	9,213	200	2.2	-1.4
Asbestos unmanufactured	3	3	1	27.2	32	24	-8	-23.9	19.3
Other crude animal products	83	65	-18	-21.2	548	501	-46	-8.4	-20.0
Other crude non-metallic minerals	267	301	34	12.8	2,089	2,063	-26	-1.3	-2.4
Other crude materials, inedible	60	58	-2	-2.7	372	412	40	10.9	7.8
Metal fabricated basic products	296	296	0	0.0	1,948	2,019	71	3.6	2.9
Textile fabricated materials	195	194	-1	-0.4	1,339	1,357	18	1.3	4.1
Non-metallic mineral basic products	134	132	-2	-1.4	905	926	21	2.3	1.6
Other fabricated materials	280	267	-13	-4.8	1,781	1,911	130	7.3	-6.2
Machinery and equipment	7,326	7,713	388	5.3	47,781	50,758	2,977	6.2	9.5
Industrial and agricultural machinery	1,598	1,581	-17	-1.0	9,468	10,511	1,043	11.0	12.7
Industrial machinery	1,439	1,421	-18	-1.3	8,500	9,459	960	11.3	12.5
Agricultural machinery includ. tractors	158	160	2	1.0	969	1,052	83	8.6	15.1
Aircraft and other transportation equipment	1,784	1,985	201	11.3	12,172	12,491	319	2.6	13.0
Aircraft, engines, parts	1,397	1,623	225	16.1	9,995	9,929	-66	-0.7	15.5
Other transportation equipment	386	363	-24	-6.1	2,177	2,562	385	17.7	3.2
Other machinery and equipment	3,944	4,147	203	5.1	26,142	27,756	1,614	6.2	6.8
Television, telecommunication equipment	820	907	87	10.6	5,445	5,646	201	3.7	13.6
Office machines and equipment	987	1,004	17	1.8	6,077	6,947	870	14.3	12.1
Other equipment and tools	1,502	1,569	67	4.4	10,004	10,477	473	4.7	4.8
Other end products, inedible	635	667	32	5.0	4,615	4,685	70	1.5	-3.8
Automotive products	6,263	6,882	620	9.9	44,386	46,395	2,009	4.5	5.1
Passenger autos and chassis	4,402	4,906	505	11.5	31,874	33,278	1,404	4.4	8.3
Trucks and other motor vehicles	279	314	35	12.6	1,598	1,869	271	17.0	1.2
Motor vehicle parts	1,582	1,662	80	5.1	10,914	11,248	334	3.1	-2.6
Other consumer goods	1,237	1,239	2	0.1	9,207	8,761	-445	-4.8	1.4
Special transactions trade	263	227	-36	-13.7	2,209	1,855	-354	-16.0	-17.6
Unallocated balance of payments adjustments	806	878	72	9.0	5,409	5,872	463	8.6	10.5

Table 3-1
Domestic exports to selected countries, customs basis, not seasonally adjusted — July

	Agricultural and fishing products	Energy products	Forestry products	Industrial goods	Machinery and equipment	Automotive products	Consumer goods	Special transactions trade	Total
millions of dollars									
United States									
2010	1,613.9	7,187.7	1,144.2	4,262.0	3,352.8	3,135.4	706.5	241.4	21,643.7
2011	1,532.6	8,955.9	1,078.6	5,152.3	3,439.8	3,041.2	698.5	228.4	24,127.3
Mexico									
2010	115.2	3.5	12.3	70.4	52.2	65.6	4.4	0.3	324.0
2011	134.2	6.4	12.5	106.7	42.7	41.5	24.1	1.5	369.7
Japan									
2010	258.5	169.3	117.5	163.8	36.3	5.3	8.0	1.0	759.6
2011	331.3	165.8	107.2	206.5	72.9	2.3	9.1	1.1	896.2
European Union									
Germany									
2010	12.4	14.1	10.4	168.6	91.0	2.9	17.8	1.9	319.0
2011	14.9	28.8	7.0	114.5	130.6	7.4	21.0	1.7	326.0
France									
2010	10.8	0.2	10.4	17.0	78.1	2.1	16.8	2.3	137.7
2011	26.9	0.2	5.6	55.4	94.8	2.8	19.0	2.4	207.0
United Kingdom									
2010	28.4	26.6	18.8	1,034.5	128.9	3.9	15.4	11.1	1,267.6
2011	28.9	32.3	21.7	1,155.0	117.0	4.6	14.6	3.8	1,377.9
Italy									
2010	10.6	14.5	30.9	27.3	33.2	0.5	18.8	0.3	136.0
2011	45.5	35.0	23.6	25.2	26.4	1.1	7.5	0.3	164.7
Other European Union									
2010	62.6	56.9	25.9	288.1	283.6	19.3	34.7	4.4	775.5
2011	112.3	135.1	31.2	362.8	198.3	16.8	46.5	4.0	906.9
Total									
2010	124.8	112.4	96.3	1,535.4	614.7	28.6	103.4	20.0	2,635.7
2011	228.5	231.4	89.1	1,712.9	567.1	32.6	108.6	12.2	2,982.4
Newly industrialized countries									
South Korea									
2010	40.2	99.0	40.2	91.5	30.9	0.9	4.4	1.3	308.4
2011	112.4	223.8	40.9	120.2	20.1	0.8	6.2	1.2	525.6
Hong Kong									
2010	33.1	0.1	9.7	40.4	29.7	1.1	7.2	2.1	123.3
2011	31.1	0.1	9.8	172.5	20.6	0.7	4.9	0.5	240.3
Taiwan									
2010	14.5	20.3	17.5	38.3	14.4	0.2	2.2	0.3	107.8
2011	19.8	44.0	22.1	47.6	9.6	0.2	2.3	0.2	145.8
Singapore									
2010	5.1	0.5	0.3	14.5	28.1	0.7	4.0	1.9	55.1
2011	3.1	0.1	1.8	10.3	23.8	0.5	4.3	0.4	44.3
Total									
2010	93.0	119.9	67.6	184.8	103.0	2.9	17.7	5.7	594.6
2011	166.5	268.0	74.6	350.5	74.0	2.2	17.8	2.3	956.0
Other countries									
2010	680.4	198.4	404.9	958.8	712.4	50.7	90.3	25.2	3,121.1
2011	758.5	144.5	487.9	1,285.5	835.4	58.7	94.8	20.4	3,685.7
Total									
2010	2,885.9	7,791.2	1,842.7	7,175.2	4,871.4	3,288.5	930.3	293.6	29,078.8
2011	3,151.7	9,771.9	1,849.9	8,814.4	5,032.1	3,178.4	953.0	265.9	33,017.3

Table 3-2
Domestic exports to selected countries, customs basis, not seasonally adjusted — Year to date, January to July

	Agricultural and fishing products	Energy products	Forestry products	Industrial goods	Machinery and equipment	Automotive products	Consumer goods	Special transactions trade	Total
millions of dollars									
United States									
2010	10,717.6	51,224.0	8,095.8	31,830.2	23,401.5	29,378.8	5,658.4	1,846.5	162,153.0
2011	10,721.7	59,094.5	7,579.2	36,689.9	24,107.1	29,396.9	5,024.3	1,709.5	174,323.2
Mexico									
2010	757.7	63.5	80.4	554.0	403.3	489.0	49.0	8.6	2,405.3
2011	811.0	74.9	85.9	694.9	427.6	364.7	65.0	3.5	2,527.5
Japan									
2010	1,768.0	1,104.2	782.1	943.1	339.8	40.8	71.6	7.3	5,056.8
2011	2,237.2	1,122.5	801.5	1,285.2	370.5	27.7	55.7	9.4	5,909.8
European Union									
Germany									
2010	78.1	63.3	54.2	755.2	861.5	21.1	117.2	13.8	1,964.4
2011	80.6	105.2	44.9	668.6	886.6	22.0	124.2	13.8	1,945.8
France									
2010	72.2	18.8	80.7	260.9	525.3	21.2	130.7	15.6	1,125.4
2011	95.6	67.5	64.0	452.1	741.8	16.9	120.6	10.6	1,569.0
United Kingdom									
2010	181.7	64.8	127.3	6,312.1	1,068.9	28.0	112.1	43.9	7,938.8
2011	194.8	134.7	108.9	8,276.8	739.5	36.3	95.9	32.6	9,619.5
Italy									
2010	125.7	123.5	181.3	198.5	248.2	3.6	115.4	6.2	1,002.4
2011	184.3	152.2	170.5	230.2	251.0	4.7	50.7	1.5	1,045.0
Other European Union									
2010	461.7	325.5	174.8	1,945.6	1,562.5	93.0	350.1	34.1	4,947.3
2011	739.2	870.4	148.6	2,558.8	1,273.2	89.1	364.0	21.1	6,064.4
Total									
2010	919.4	595.9	618.4	9,472.3	4,266.3	166.9	825.5	113.6	16,978.3
2011	1,294.4	1,329.9	536.9	12,186.6	3,892.1	169.0	755.3	79.5	20,243.7
Newly industrialized countries									
South Korea									
2010	302.5	602.2	298.9	600.5	249.4	40.1	29.5	6.5	2,129.7
2011	689.9	1,027.3	314.6	686.9	194.3	13.5	44.4	4.1	2,975.0
Hong Kong									
2010	233.2	0.4	65.6	444.5	154.8	5.1	39.2	10.0	952.8
2011	221.2	0.4	77.6	1,006.6	219.8	4.3	45.2	2.9	1,578.1
Taiwan									
2010	85.9	93.0	148.2	233.5	80.0	1.7	26.1	0.8	669.1
2011	94.8	174.5	178.4	434.9	66.2	1.0	20.7	0.8	971.3
Singapore									
2010	35.6	4.2	11.7	105.3	178.6	11.6	21.1	6.4	374.4
2011	33.0	3.5	6.4	87.4	209.7	13.0	18.7	3.2	375.0
Total									
2010	657.1	699.8	524.4	1,383.9	662.8	58.6	115.8	23.7	4,126.1
2011	1,038.9	1,205.7	577.0	2,215.8	690.1	31.8	128.9	11.1	5,899.4
Other countries									
2010	5,063.3	1,253.8	2,717.3	7,586.6	4,678.2	396.6	921.6	170.4	22,787.7
2011	5,390.8	1,761.1	3,827.0	9,141.5	4,807.5	471.2	622.3	122.5	26,143.9
Total									
2010	19,883.3	54,941.2	12,818.2	51,770.1	33,751.9	30,530.6	7,642.0	2,170.1	213,507.5
2011	21,493.9	64,588.6	13,407.6	62,214.1	34,295.4	30,461.3	6,651.6	1,935.6	235,048.0

Table 4
Domestic exports by country, customs basis, not seasonally adjusted

	July		January to July		Change January to July 2011/ January to July 2010
	2010	2011	2010	2011	
	millions of dollars				percent
North America					
Greenland	0.4	1.2	4.0	6.3	58.0
Mexico	324.0	369.7	2,405.3	2,527.5	5.1
Saint Pierre and Miquelon	1.2	1.4	8.9	10.3	15.1
United States	21,643.7	24,127.3	162,153.0	174,323.2	7.5
Total	21,969.4	24,499.5	164,571.2	176,867.2	7.5
Western Europe					
Andorra	0.0	0.0	0.1	0.0	-89.2
Austria	74.7	38.1	244.5	157.2	-35.7
Belgium	163.3	174.1	1,161.6	1,170.3	0.8
Denmark	29.2	29.6	161.1	133.9	-16.9
Faeroe Islands	0.0	0.0	0.2	0.5	190.0
Finland	36.4	94.8	215.6	301.9	40.0
France	137.7	207.0	1,125.4	1,569.0	39.4
Germany	319.0	326.0	1,964.4	1,945.8	-0.9
Gibraltar	0.3	0.0	0.3	24.8	...
Greece	27.7	4.7	69.9	50.3	-28.0
Iceland	2.7	3.0	89.2	36.1	-59.6
Italy	136.0	164.7	1,002.4	1,045.0	4.3
Luxembourg	2.9	2.1	31.9	59.4	86.3
Malta	49.9	0.7	103.8	3.4	-96.7
Netherlands	246.0	407.8	1,535.8	2,597.3	69.1
Norway	89.4	187.8	1,318.8	1,583.6	20.1
Portugal	5.8	4.7	157.1	117.6	-25.1
Republic of Ireland (Eire)	10.8	19.4	207.3	259.3	25.1
Spain	34.4	43.0	410.9	487.6	18.7
Sweden	22.2	22.6	188.7	179.2	-5.1
Switzerland	147.8	50.7	926.1	532.3	-42.5
United Kingdom	1,267.6	1,377.9	7,938.8	9,619.5	21.2
Total	2,803.7	3,158.6	18,853.8	21,874.0	16.0
Other Europe					
Albania	0.9	2.6	14.9	34.5	130.9
Armenia	0.6	0.8	4.4	8.6	95.8
Azerbaijan	0.6	0.5	8.3	5.6	-31.8
Belarus	0.0	0.4	1.0	1.2	21.5
Bosnia and Herzegovina	0.1	0.4	3.0	3.3	9.9
Bulgaria	0.8	2.1	58.8	118.8	102.1
Croatia	1.3	1.6	79.2	9.3	-88.2
Czech Republic	6.6	5.8	66.7	54.2	-18.8
Estonia	1.8	1.7	12.3	67.4	446.7
Georgia	0.8	2.1	6.2	11.9	92.6
Hungary	9.6	11.1	46.2	56.6	22.5
Kazakhstan	5.4	5.8	89.6	91.4	2.0
Kyrgyzstan	1.0	0.7	2.1	2.2	7.0
Latvia	24.5	1.2	56.7	33.8	-40.4
Lithuania	4.5	7.1	17.4	32.2	85.3
Macedonia (Former Yugoslav Republic of Macedonia)	0.8	1.1	6.3	10.0	60.6
Montenegro	0.1	0.1	0.8	0.8	-0.2
Poland	14.0	17.4	88.1	109.2	23.9
Republic of Moldova	0.1	0.0	1.4	0.7	-53.9
Romania	8.0	4.2	60.0	25.7	-57.1
Russian Federation	71.7	105.7	490.2	696.2	42.0
Serbia	0.6	0.5	3.5	4.2	20.5
Slovakia	1.5	13.2	18.4	35.8	94.2
Slovenia	0.5	0.9	29.1	6.9	-76.3
Tajikistan	0.1	0.5	4.3	1.6	-62.7
Turkmenistan	0.3	0.6	1.4	8.3	492.6
Ukraine	7.6	9.7	73.3	67.6	-7.8
Uzbekistan	0.2	0.0	4.2	4.4	3.7
Total	163.9	197.6	1,247.9	1,502.5	20.4

Table 4 – continued

Domestic exports by country, customs basis, not seasonally adjusted

	July		January to July		Change
	2010	2011	2010	2011	January to July 2011/ January to July 2010
	millions of dollars				percent
Middle East					
Bahrain	0.8	26.4	54.1	45.8	-15.4
Cyprus	0.5	0.8	5.3	6.3	18.4
Egypt	18.0	54.4	266.7	413.0	54.8
Eritrea	0.0	0.1	1.8	2.4	33.0
Ethiopia	23.1	0.8	114.1	12.0	-89.5
Iran	7.8	5.7	60.6	46.8	-22.7
Iraq	41.6	63.6	182.6	83.5	-54.3
Israel	26.9	16.9	213.5	180.5	-15.5
Jordan	4.2	4.0	34.9	37.5	7.2
Kuwait	6.1	4.8	55.6	56.8	2.1
Lebanon	9.2	25.3	42.2	49.7	17.6
Libya	14.5	0.1	88.1	36.9	-58.1
Oman	6.2	7.0	62.1	47.2	-23.9
Qatar	19.8	31.2	57.8	54.7	-5.4
Saudi Arabia	95.8	83.6	426.5	433.7	1.7
Somalia	1.2	0.0	2.2	0.3	-86.5
Sudan	12.8	30.1	73.2	90.2	23.2
Syria	2.4	2.2	19.0	38.8	103.9
Turkey	27.9	57.7	462.8	671.0	45.0
United Arab Emirates	88.9	152.6	559.8	702.9	25.6
Yemen	1.5	0.2	12.4	6.5	-47.2
Total	409.3	567.4	2,795.4	3,016.2	7.9
Other Africa					
Algeria	16.0	26.4	195.4	110.9	-43.2
Angola	4.7	36.5	107.7	97.3	-9.6
Antarctica	0.0	0.0	0.0	0.0	67.8
Benin	0.8	0.6	6.2	7.0	11.9
Botswana	0.0	0.1	2.0	2.9	43.8
Burkina Faso	0.9	2.5	12.3	11.8	-4.2
Burundi	0.1	0.1	0.5	0.5	2.5
Cameroon	2.2	0.5	14.9	15.2	2.1
Cape Verde	0.2	0.1	0.7	1.3	85.6
Central African Republic	0.0	0.0	0.1	0.2	225.6
Chad	1.0	0.6	3.5	1.9	-47.2
Comoros	0.0	0.0	0.0	0.2	374.9
Congo	4.6	2.8	10.2	10.7	5.0
Democratic Republic of the Congo	0.8	2.5	7.2	9.6	33.6
Djibouti	2.8	0.0	3.7	0.5	-85.4
Equatorial Guinea	0.5	0.5	1.9	5.2	171.0
French Southern Territories	0.0	0.0	0.0	0.0	-26.9
Gabon	1.1	0.7	10.8	10.1	-6.4
Gambia	0.0	0.0	0.5	0.3	-29.6
Ghana	15.1	15.6	91.6	136.5	49.0
Guinea	0.7	0.5	3.9	15.1	291.9
Guinea-Bissau	0.0	0.0	0.0	0.0	592.9
Ivory Coast	1.2	0.3	7.5	3.2	-57.6
Kenya	7.7	5.0	40.8	29.9	-26.7
Lesotho	0.0	0.0	0.0	0.1	183.7
Liberia	0.5	0.5	8.7	8.3	-3.9
Madagascar	1.3	0.5	34.9	7.8	-77.6
Malawi	0.3	0.6	2.2	3.0	33.0
Mali	0.3	3.0	4.2	11.5	172.5
Mauritania	0.2	0.7	1.6	7.7	392.9
Mauritius	0.5	0.2	2.5	3.3	34.2
Morocco	3.2	3.4	76.3	218.4	186.3
Mozambique	0.5	0.4	7.4	6.2	-16.7
Namibia	0.6	0.3	7.0	3.8	-46.4
Niger	0.3	0.4	1.4	3.1	123.6
Nigeria	6.4	12.6	123.5	104.0	-15.8
Rwanda	0.0	0.1	0.8	0.5	-32.1
Saint Helena	0.0	0.0	0.0	0.0	417.9
Sao Tome and Principe	0.0	0.1	0.0	0.1	144.3
Senegal	2.3	3.9	17.6	18.0	2.5
Seychelles	0.1	0.5	0.5	2.2	333.5

Table 4 – continued

Domestic exports by country, customs basis, not seasonally adjusted

	July		January to July		Change
	2010	2011	2010	2011	January to July 2011/ January to July 2010
	millions of dollars				percent
Sierra Leone	0.9	0.4	6.5	5.5	-16.1
South Africa	32.1	37.4	265.5	317.5	19.6
Swaziland	0.2	0.1	0.8	0.4	-54.2
Togo	1.4	0.2	7.4	8.1	10.7
Tunisia	3.6	8.1	31.0	26.2	-15.4
Uganda	0.7	0.6	6.1	5.0	-17.5
United Republic of Tanzania	2.4	4.0	19.0	25.1	32.0
Zambia	1.6	4.7	20.1	19.7	-2.2
Zimbabwe	0.7	1.5	3.8	3.5	-7.6
Total	120.8	179.5	1,169.9	1,279.3	9.3
Other Asia					
Afghanistan	2.4	1.3	34.1	24.9	-27.0
Bangladesh	38.0	9.2	353.5	275.6	-22.0
Bhutan	0.0	0.0	1.5	0.0	-97.1
British Indian Ocean Territory	0.1	0.0	1.2	0.0	-99.7
Brunei Darussalam	0.3	0.8	8.0	1.6	-80.0
Cambodia	0.3	0.7	1.8	3.6	96.2
China	1,038.8	1,259.2	6,584.0	8,448.3	28.3
Hong Kong	123.3	240.3	952.8	1,578.1	65.6
India	158.4	102.4	1,107.8	1,127.8	1.8
Indonesia	71.7	130.8	568.0	909.7	60.2
Japan	759.6	896.2	5,056.8	5,909.8	16.9
Laos	0.2	0.6	1.5	5.8	294.8
Macao	0.3	0.2	1.6	1.5	-3.8
Malaysia	72.0	46.3	459.2	521.0	13.5
Maldives	0.5	0.3	2.8	1.7	-37.5
Mongolia	1.0	8.8	9.4	53.6	468.0
Myanmar	0.0	0.0	2.7	0.7	-73.6
Nepal	0.6	0.2	1.8	2.4	34.1
North Korea	1.3	0.2	6.9	8.3	20.9
Pakistan	29.9	48.2	235.8	385.9	63.6
Philippines	36.8	79.8	309.2	363.4	17.5
Singapore	55.1	44.3	374.4	375.0	0.2
South Korea	308.4	525.6	2,129.7	2,975.0	39.7
Sri Lanka	18.8	30.0	206.0	214.5	4.1
Taiwan	107.8	145.8	669.1	971.3	45.2
Thailand	61.4	60.5	395.8	510.0	28.8
Timor-Leste	0.0	0.0	0.0	0.0	...
Viet Nam	23.1	16.1	145.3	163.6	12.6
Total	2,910.1	3,647.6	19,620.9	24,833.4	26.6
Oceania					
American Samoa	0.1	0.2	0.8	0.8	8.2
Australia	115.5	167.6	1,016.8	939.2	-7.6
Christmas Island	0.0	0.1	0.6	0.1	-80.2
Cocos (Keeling) Islands	0.0	0.0	0.1	0.0	-92.1
Cook Islands	0.0	0.0	0.0	0.1	304.4
Fiji	0.3	0.2	1.6	1.9	22.2
French Polynesia	0.4	0.8	6.1	5.7	-6.8
Guam	0.2	0.2	0.7	1.1	47.1
Kiribati	0.0	0.0	0.1	0.1	-7.8
Nauru	0.0	0.0	1.3	0.0	-100.0
New Caledonia	2.0	0.5	12.5	3.4	-72.4
New Zealand	18.3	30.9	157.2	173.7	10.5
Niue	0.0	0.0	0.0	0.0	...
Norfolk Island	0.0	0.0	0.0	0.0	-100.0
Papua New Guinea	1.6	3.5	7.0	27.8	299.3
Pitcairn	0.1	0.0	0.1	0.0	-58.3
Samoa	0.0	0.1	0.3	0.1	-75.1
Solomon Islands	0.0	0.1	0.0	0.3	982.3
Tonga	0.0	0.1	3.3	0.2	-94.4
United States Minor Outlying Islands	1.1	1.1	8.1	6.6	-18.4
Vanuatu	0.1	0.0	0.9	0.6	-35.4
Wallis and Futuna	0.0	0.0	0.0	0.0	...
Total	139.7	205.4	1,217.4	1,161.7	-4.6

Table 4 – continued

Domestic exports by country, customs basis, not seasonally adjusted

	July		January to July		Change
	2010	2011	2010	2011	January to July 2011/ January to July 2010
	millions of dollars				percent
South America					
Argentina	11.2	18.3	123.7	318.4	157.5
Bolivia	13.5	0.7	36.3	6.4	-82.5
Brazil	208.4	190.7	1,476.3	1,485.2	0.6
Chile	34.6	39.0	309.8	399.1	28.8
Colombia	47.6	48.1	331.0	354.1	7.0
Ecuador	19.4	14.5	153.9	168.4	9.4
Falkland Islands (Malvinas)	0.0	0.0	0.1	0.1	-24.6
Guyana	2.9	1.8	15.8	19.6	24.2
Paraguay	0.3	1.8	4.3	6.5	49.6
Peru	39.7	39.6	269.1	269.4	0.1
Suriname	0.7	1.0	6.4	6.1	-3.7
Uruguay	2.0	2.8	17.1	16.1	-5.7
Venezuela	46.0	56.9	281.0	308.0	9.6
Total	426.3	415.2	3,024.7	3,357.3	11.0
Central America Antilles					
Anguilla	0.1	0.1	0.6	0.4	-38.0
Antigua and Barbuda	0.4	1.5	10.6	6.4	-39.4
Aruba	0.5	0.8	24.3	2.9	-88.1
Bahamas	25.0	2.3	60.9	36.8	-39.7
Barbados	3.2	2.8	20.9	25.1	19.8
Belize	0.3	0.5	3.0	2.9	-4.0
Bermuda	3.7	2.3	23.3	62.7	168.7
British Virgin Islands	0.1	0.1	20.7	47.6	130.2
Cayman Islands	0.7	0.4	4.1	4.1	1.0
Costa Rica	4.0	19.8	48.8	69.7	42.9
Cuba	31.7	18.6	180.2	219.7	21.9
Dominica	0.5	0.5	3.0	1.9	-36.1
Dominican Republic	22.1	7.6	102.8	91.1	-11.3
El Salvador	2.2	3.2	21.4	21.5	0.6
Grenada	0.5	0.3	3.1	2.6	-16.1
Guatemala	4.4	19.2	49.8	65.9	32.3
Haiti	2.8	2.6	22.6	21.4	-5.3
Honduras	1.6	5.6	20.2	23.0	13.8
Jamaica	7.1	8.2	89.2	58.3	-34.6
Montserrat	0.0	0.0	0.1	0.1	20.3
Netherlands Antilles	1.2	1.8	11.6	92.6	696.2
Nicaragua	2.3	2.0	9.9	17.3	74.4
Panama	4.0	16.2	82.3	66.0	-19.9
Saint Kitts and Nevis	0.4	0.2	3.3	2.9	-12.8
Saint Lucia	0.5	0.6	3.9	5.2	34.0
Saint Vincent and the Grenadines	0.5	0.3	4.9	4.0	-18.2
Trinidad and Tobago	16.0	29.2	178.3	202.9	13.8
Turks and Caicos Islands	0.1	0.1	2.1	1.2	-41.5
Total	135.8	146.6	1,006.2	1,156.4	14.9
All countries	29,078.8	33,017.3	213,507.5	235,048.0	10.1

Table 5-1
Exports by province of origin, customs basis, not seasonally adjusted — July

	Agricultural and fishing products	Energy products	Forestry products	Industrial goods	Machinery and equipment	Automotive products	Consumer goods	Special transactions trade	Total
millions of dollars									
Domestic exports									
Newfoundland and Labrador									
2010	120.3	332.9	8.6	166.0	4.8	0.1	0.1	2.9	635.6
2011	110.6	522.2	19.0	203.1	4.1	0.2	0.2	2.6	862.0
Prince Edward Island									
2010	46.4	0.0	0.0	2.8	4.8	0.4	4.7	6.4	65.6
2011	40.8	0.0	0.0	1.8	5.1	0.0	5.3	5.9	58.9
Nova Scotia									
2010	98.2	72.3	65.9	40.1	115.3	4.6	4.7	3.2	404.3
2011	111.4	20.5	76.7	44.9	112.1	5.1	4.7	3.2	378.7
New Brunswick									
2010	109.2	712.7	131.9	92.4	23.8	1.3	20.5	3.4	1,095.3
2011	126.2	977.0	100.8	76.0	25.5	3.6	13.7	3.3	1,326.1
Quebec									
2010	354.9	215.3	486.0	1,542.5	1,384.4	148.9	343.2	86.6	4,561.8
2011	365.3	267.9	478.5	1,962.2	1,646.8	168.0	324.1	75.9	5,288.9
Ontario									
2010	645.5	179.4	226.4	3,100.6	2,573.6	3,041.0	472.8	120.4	10,359.9
2011	670.6	237.8	239.4	3,925.1	2,408.5	2,864.7	523.8	107.4	10,977.2
Manitoba									
2010	289.6	90.1	14.8	179.3	162.9	33.2	27.0	21.1	818.0
2011	317.4	122.8	19.6	248.3	173.0	37.6	31.5	21.2	971.5
Saskatchewan									
2010	541.4	791.9	15.9	432.2	49.9	4.1	0.3	2.0	1,837.8
2011	700.0	932.9	18.1	658.9	51.4	5.7	0.4	1.9	2,369.3
Alberta									
2010	461.2	4,699.2	171.5	943.9	302.2	34.8	7.7	25.6	6,646.0
2011	499.8	5,803.2	151.5	1,029.0	345.0	75.3	7.4	23.7	7,934.9
British Columbia									
2010	218.9	697.3	721.6	434.1	249.3	20.0	49.3	22.0	2,412.5
2011	209.3	887.5	746.2	647.0	259.7	18.2	42.1	20.6	2,830.7
Yukon, Northwest Territories and Nunavut ¹									
2010	0.1	0.0	0.0	241.3	0.4	0.0	0.0	0.1	241.9
2011	0.1	0.0	0.0	18.1	0.7	0.1	0.0	0.0	19.0
Total									
2010	2,885.9	7,791.2	1,842.7	7,175.2	4,871.4	3,288.5	930.3	293.6	29,078.8
2011	3,151.7	9,771.9	1,849.9	8,814.4	5,032.1	3,178.4	953.0	265.9	33,017.3
Re-exports									
2010	36.9	5.5	8.4	197.0	853.2	85.9	179.8	593.9	1,960.5
2011	32.6	38.4	6.7	326.9	957.9	91.6	168.8	597.3	2,220.1
Total exports									
2010	2,922.8	7,796.6	1,851.2	7,372.2	5,724.6	3,374.3	1,110.1	887.4	31,039.3
2011	3,184.2	9,810.3	1,856.6	9,141.3	5,990.0	3,270.0	1,121.8	863.1	35,237.4

1. Data for the current month do not include some exports from the Harmonized System, Chapter 71, "Natural/cultured pearls, precious stones and metals, coins, etc." for reasons relating to timing.

Table 5-2
Exports by province of origin, customs basis, not seasonally adjusted — Year to date, January to July

	Agricultural and fishing products	Energy products	Forestry products	Industrial goods	Machinery and equipment	Automotive products	Consumer goods	Special transactions trade	Total
millions of dollars									
Domestic exports									
Newfoundland and Labrador									
2010	505.6	3,267.7	64.6	931.2	28.3	1.0	0.9	16.1	4,815.5
2011	598.7	4,464.2	92.2	1,089.2	24.5	1.4	0.9	14.9	6,286.0
Prince Edward Island									
2010	254.8	0.9	0.3	16.3	40.3	2.3	23.7	46.2	384.8
2011	250.4	0.0	0.2	25.1	40.7	1.5	21.9	46.8	386.7
Nova Scotia									
2010	519.4	335.3	449.4	291.7	802.4	31.0	34.0	22.2	2,485.3
2011	648.6	329.1	552.0	325.5	795.8	35.8	33.9	21.9	2,742.6
New Brunswick									
2010	698.3	5,062.0	768.6	677.4	172.6	14.3	144.1	24.3	7,561.6
2011	771.8	6,502.1	735.2	703.3	187.6	26.3	81.6	22.5	9,030.3
Quebec									
2010	2,501.0	1,751.9	3,495.9	11,177.1	10,142.9	893.8	2,456.8	602.8	33,022.2
2011	2,809.5	1,904.5	3,394.3	12,851.7	10,154.2	1,069.1	1,995.3	496.8	34,675.3
Ontario									
2010	4,533.7	1,502.2	1,618.3	22,778.2	17,302.6	28,872.8	4,360.9	939.2	81,907.9
2011	4,800.2	1,669.5	1,663.6	28,301.9	17,227.4	28,376.0	3,839.9	869.4	86,747.7
Manitoba									
2010	2,155.1	499.0	123.6	1,390.5	1,116.3	249.1	215.3	183.5	5,932.4
2011	2,272.1	641.7	141.7	1,729.1	1,257.5	267.4	291.9	150.2	6,751.6
Saskatchewan									
2010	4,104.7	5,194.1	123.0	3,984.3	420.2	27.0	7.3	26.1	13,886.8
2011	4,577.3	5,897.1	140.1	5,408.6	371.2	36.3	7.0	24.7	16,462.3
Alberta									
2010	3,335.6	32,740.1	1,220.4	6,005.1	2,010.1	285.1	72.1	164.2	45,832.6
2011	3,485.8	37,817.3	1,134.9	6,703.0	2,401.4	491.9	69.7	145.7	52,249.7
British Columbia									
2010	1,273.6	4,587.8	4,953.8	3,257.3	1,709.5	153.9	326.6	145.3	16,407.7
2011	1,278.6	5,363.1	5,553.2	4,019.8	1,829.9	155.2	309.2	142.5	18,651.5
Yukon, Northwest Territories and Nunavut ¹									
2010	1.4	0.0	0.4	1,261.0	7.0	0.3	0.2	0.4	1,270.6
2011	0.9	0.0	0.1	1,057.0	5.3	0.4	0.3	0.2	1,064.2
Total									
2010	19,883.3	54,941.2	12,818.2	51,770.1	33,751.9	30,530.6	7,642.0	2,170.1	213,507.5
2011	21,493.9	64,588.6	13,407.6	62,214.1	34,295.4	30,461.3	6,651.6	1,935.6	235,048.0
Re-exports									
2010	325.8	138.2	48.1	1,620.7	5,885.3	623.9	1,115.0	4,092.8	13,849.7
2011	324.5	361.3	45.7	2,526.2	6,121.2	672.5	1,515.0	4,480.6	16,047.0
Total exports									
2010	20,209.0	55,079.4	12,866.3	53,390.7	39,637.2	31,154.5	8,757.0	6,262.9	227,357.1
2011	21,818.4	64,949.9	13,453.3	64,740.2	40,416.5	31,133.8	8,166.6	6,416.2	251,095.1

1. Data for the current month do not include some exports from the Harmonized System Chapter 71, "Natural/cultured pearls, precious stones and metals, coins, etc." for reasons relating to timing.

Table 6-1
Imports by commodity groupings, balance of payments basis, seasonally adjusted — Current dollars

	June	July	Change		Year to date			July 2011/ July 2010	
	2011	2011			2010	2011	Change		
	millions of dollars		percent		millions of dollars		percent		
Total	37,832	38,008	176	0.5	236,817	261,406	24,589	10.4	7.9
Agricultural and fishing products	2,728	2,705	-23	-0.8	16,928	18,649	1,720	10.2	10.1
Fruits and vegetables	736	751	15	2.1	4,769	5,122	354	7.4	9.6
Fresh fruits and berries	247	269	22	8.9	1,722	1,780	58	3.4	12.1
Dried fruits, fruits and fruit preparations	128	132	3	2.6	771	891	120	15.6	12.3
Fresh vegetables	187	184	-4	-2.0	1,269	1,325	56	4.4	3.2
Other vegetables and vegetable preparations	173	167	-6	-3.6	1,007	1,127	120	11.9	10.9
Other agricultural and fishing products	1,993	1,954	-39	-1.9	12,160	13,526	1,367	11.2	10.3
Live animals	18	17	-1	-3.5	112	125	13	11.3	5.1
Meat and meat preparations	201	238	37	18.6	1,217	1,441	224	18.4	32.5
Fish and marine animals	188	197	8	4.4	1,144	1,330	185	16.2	6.6
Cocoa, coffee, tea and other food preparations	489	450	-39	-8.0	2,829	3,233	404	14.3	6.4
Dairy produce, eggs and honey	53	52	-1	-1.9	331	358	27	8.2	0.4
Corn (maize) shelled	29	43	14	50.4	281	197	-84	-29.9	27.7
Other cereals and cereal preparations	184	188	5	2.6	1,218	1,270	52	4.3	7.0
Sugar and sugar preparations	193	165	-29	-14.8	1,005	1,245	240	23.9	20.5
Fodder, feed, excluding unmilled cereal	117	118	1	0.9	813	828	15	1.8	-2.2
Beverages	327	288	-39	-12.0	2,131	2,234	103	4.8	-2.2
Tobacco	31	30	-1	-2.3	233	200	-33	-14.0	-9.7
Crude vegetable products	161	166	5	3.4	837	1,057	220	26.3	39.1
Cotton	1	1	0	-30.9	7	7	1	8.3	0.8
Energy products	4,074	4,323	249	6.1	22,767	30,118	7,352	32.3	27.3
Crude petroleum	1,782	2,567	785	44.0	13,983	16,337	2,353	16.8	19.6
Other energy products	2,291	1,756	-536	-23.4	8,783	13,782	4,998	56.9	40.4
Coal and other related products	479	461	-19	-3.9	2,830	3,001	171	6.0	47.0
Petroleum and coal products	1,812	1,295	-517	-28.5	5,954	10,781	4,827	81.1	38.1
Forestry products	199	202	3	1.7	1,565	1,425	-140	-9.0	-13.2
Forestry products	199	202	3	1.7	1,565	1,425	-140	-9.0	-13.2
Crude wood products	24	25	0	1.5	236	200	-36	-15.1	-38.8
Wood fabricated materials	174	177	3	1.7	1,329	1,224	-105	-7.9	-7.9
Industrial goods and materials	8,237	8,117	-120	-1.5	49,576	55,627	6,052	12.2	10.8
Metals and metal ores	3,497	3,422	-75	-2.1	18,549	22,725	4,176	22.5	22.3
Metals in ores, concentrates and scrap	791	709	-82	-10.4	4,031	4,866	835	20.7	12.9
Steel bars, rods, plates, sheets	619	587	-32	-5.2	3,886	4,202	316	8.1	12.6
Other iron and steel products	438	414	-24	-5.5	2,427	2,847	420	17.3	0.3
Precious metals including alloys	1,259	1,324	65	5.1	5,658	8,115	2,457	43.4	50.4
Other non-ferrous metals and alloys	388	388	0	-0.1	2,547	2,695	148	5.8	9.3
Chemicals and plastics	2,565	2,543	-22	-0.9	16,779	17,771	992	5.9	6.1
Organic chemicals	596	509	-87	-14.5	4,064	3,917	-147	-3.6	-6.7
Plastic materials	896	895	-1	-0.1	5,824	6,209	385	6.6	3.2
Other chemicals and related products	1,074	1,139	65	6.1	6,892	7,646	754	10.9	15.8
Other industrial goods and materials	2,175	2,151	-24	-1.1	14,247	15,131	884	6.2	0.8
Crude animal products	24	11	-12	-52.0	144	165	21	14.8	-39.4
Wool and man-made fibres	21	20	-1	-3.9	148	158	10	6.8	-5.5
Crude non-metallic minerals	70	75	5	6.9	501	480	-20	-4.1	7.7
Textile fabricated materials	212	217	6	2.6	1,346	1,463	117	8.7	6.2
Metal fabricated basic products	923	909	-14	-1.6	5,520	6,304	783	14.2	7.2
Rubber fabricated materials	92	96	4	4.1	573	646	73	12.7	13.0
Oils, fats, animal and vegetable	99	96	-4	-3.9	701	684	-17	-2.4	-13.1
Non-metallic minerals	316	302	-14	-4.4	2,098	2,159	61	2.9	-2.1
Other fabricated materials	417	424	8	1.8	3,215	3,070	-145	-4.5	-9.4

Table 6-1 – continued

Imports by commodity groupings, balance of payments basis, seasonally adjusted — Current dollars

	June	July	Change		Year to date			July 2011/ July 2010	
	2011	2011			2010	2011	Change		
	millions of dollars		percent		millions of dollars		percent		
Machinery and equipment	10,718	10,153	-564	-5.3	64,019	71,380	7,361	11.5	3.7
Industrial and agricultural machinery	3,451	2,971	-480	-13.9	16,839	20,304	3,465	20.6	13.3
Engines, turbines and electric motors	248	329	82	32.9	2,407	2,454	47	1.9	-8.9
Drilling mining machinery	904	176	-727	-80.5	963	1,891	928	96.3	21.7
Excavating machinery	273	277	4	1.6	1,490	1,898	408	27.4	6.4
Metal working machinery	161	186	26	15.9	905	1,265	360	39.8	35.4
Other industrial machinery	1,470	1,564	94	6.4	8,559	10,070	1,511	17.7	18.5
Agricultural machinery including tractors	395	437	41	10.4	2,515	2,726	211	8.4	10.5
Aircraft and other transportation equipment	1,201	1,275	74	6.2	8,046	9,199	1,154	14.3	11.7
Aircraft, engines, parts	635	681	46	7.3	4,800	5,281	481	10.0	-1.9
Other transportation equipment and parts	566	594	28	4.9	3,246	3,919	673	20.7	32.6
Office machines and equipment	1,132	1,106	-26	-2.3	7,551	7,896	345	4.6	-2.9
Other machinery and equipment	4,934	4,802	-132	-2.7	31,583	33,981	2,398	7.6	-1.7
Other communication and related equipment	1,917	1,759	-158	-8.2	11,461	12,727	1,266	11.0	-3.5
Other equipment and tools	3,018	3,044	26	0.9	20,122	21,254	1,132	5.6	-0.6
Automotive products	5,731	6,064	333	5.8	40,943	41,317	373	0.9	1.6
Passenger autos and chassis	1,825	1,883	59	3.2	13,099	13,042	-57	-0.4	-3.0
Trucks and other motor vehicles	1,597	1,719	122	7.7	10,455	10,939	484	4.6	21.4
Motor vehicle parts	2,309	2,462	153	6.6	17,390	17,336	-54	-0.3	-5.7
Other consumer goods	4,964	4,935	-29	-0.6	33,054	34,063	1,009	3.1	1.5
Apparel and footwear	1,092	1,057	-35	-3.2	6,136	7,025	888	14.5	14.0
Apparel and apparel accessories	913	881	-32	-3.6	5,134	5,848	715	13.9	13.0
Footwear	178	176	-2	-1.4	1,003	1,176	174	17.3	19.1
Miscellaneous consumer goods	3,872	3,878	6	0.2	26,917	27,038	121	0.4	-1.5
Television, radios, phonographs	125	119	-7	-5.3	908	892	-16	-1.8	-13.1
Printed matter	285	269	-16	-5.5	2,000	1,965	-35	-1.7	-6.4
Watches, sporting goods and toys	495	472	-23	-4.7	3,543	3,385	-158	-4.5	-7.6
House furnishings	738	735	-3	-0.4	5,114	5,020	-94	-1.8	-2.9
Photographic goods	205	220	15	7.2	1,472	1,565	93	6.3	-2.7
Miscellaneous end products	2,024	2,063	40	2.0	13,880	14,211	331	2.4	2.3
Special transactions trade	433	704	271	62.4	2,810	3,319	510	18.1	57.9
Unallocated balance of payments adjustments	749	804	56	7.4	5,156	5,508	352	6.8	8.8

Table 6-2
Imports by commodity groupings, balance of payments basis, seasonally adjusted — Constant dollars, 2002

	June	July	Change		Year to date			July 2011/ July 2010	
	2011	2011			2010	2011	Change		
	millions of dollars		percent		millions of dollars		percent		
Total	43,142	42,966	-176	-0.4	268,881	296,122	27,241	10.1	7.3
Agricultural and fishing products	2,724	2,713	-12	-0.4	17,076	18,662	1,586	9.3	7.7
Fruits and vegetables	738	751	13	1.8	4,725	5,132	407	8.6	12.5
Fresh fruits and berries	253	273	21	8.2	1,754	1,894	140	8.0	16.4
Dried fruits, fruits and fruit preparations	118	124	7	5.7	766	856	90	11.7	5.0
Fresh vegetables	205	199	-6	-2.7	1,230	1,301	71	5.8	17.1
Other vegetables and vegetable preparations	163	155	-9	-5.4	975	1,081	106	10.8	7.1
Other agricultural and fishing products	1,986	1,961	-25	-1.2	12,351	13,531	1,180	9.6	5.9
Live animals	17	18	1	6.7	112	123	11	9.6	16.8
Meat and meat preparations	197	227	31	15.6	1,210	1,365	155	12.8	26.8
Fish and marine animals	226	243	17	7.5	1,642	1,665	23	1.4	-7.0
Cocoa, coffee, tea and other food preparations	562	544	-18	-3.3	2,883	3,661	778	27.0	9.7
Dairy produce, eggs and honey	54	56	1	2.6	367	365	-2	-0.6	1.0
Corn (maize) shelled	17	26	9	50.6	277	123	-153	-55.4	-20.6
Other cereals and cereal preparations	132	139	7	5.3	1,028	947	-81	-7.9	-4.8
Sugar and sugar preparations	192	169	-23	-12.1	980	1,243	262	26.8	23.8
Fodder, feed, excluding unmilled cereal	102	101	-1	-1.2	702	709	7	1.0	-3.3
Beverages	316	266	-50	-15.8	1,970	2,139	169	8.6	-0.7
Tobacco	38	37	-1	-1.7	282	243	-40	-14.1	-5.7
Crude vegetable products	132	135	4	2.7	887	939	52	5.8	14.3
Cotton	1	1	0	-31.5	9	9	-1	-9.2	-7.2
Energy products	1,748	1,756	8	0.5	12,372	13,013	641	5.2	-9.8
Crude petroleum	531	784	253	47.6	6,460	5,190	-1,270	-19.7	-32.3
Other energy products	1,217	972	-244	-20.1	5,913	7,823	1,911	32.3	23.1
Coal and other related products	449	424	-24	-5.4	2,527	3,037	510	20.2	51.7
Petroleum and coal products	768	548	-220	-28.6	3,386	4,787	1,401	41.4	7.4
Forestry products	273	278	4	1.6	2,047	1,947	-100	-4.9	-4.4
Forestry products	273	278	4	1.6	2,047	1,947	-100	-4.9	-4.4
Crude wood products	39	38	-1	-3.7	347	302	-45	-13.1	-33.2
Wood fabricated materials	234	240	6	2.5	1,700	1,645	-55	-3.2	2.7
Industrial goods and materials	6,963	6,846	-117	-1.7	45,385	48,054	2,669	5.9	5.1
Metals and metal ores	2,207	2,105	-102	-4.6	13,037	14,273	1,236	9.5	13.4
Metals in ores, concentrates and scrap	387	369	-18	-4.6	2,239	2,370	131	5.8	2.2
Steel bars, rods, plates, sheets	469	451	-18	-3.8	3,243	3,350	106	3.3	10.5
Other iron and steel products	295	291	-4	-1.3	1,777	1,963	186	10.4	3.8
Precious metals including alloys	684	631	-53	-7.8	3,111	4,054	943	30.3	44.4
Other non-ferrous metals and alloys	372	364	-9	-2.4	2,666	2,536	-130	-4.9	-1.9
Chemicals and plastics	2,277	2,256	-22	-1.0	16,270	16,376	105	0.6	-1.0
Organic chemicals	361	343	-17	-4.8	2,932	2,563	-369	-12.6	-14.1
Plastic materials	903	896	-7	-0.8	6,226	6,381	155	2.5	-1.9
Other chemicals and related products	1,013	1,016	3	0.2	7,113	7,432	319	4.5	5.4
Other industrial goods and materials	2,479	2,485	6	0.3	16,077	17,405	1,328	8.3	4.4
Crude animal products	22	12	-10	-44.7	169	161	-8	-4.8	-42.3
Wool and man-made fibres	24	24	0	0.1	192	190	-2	-1.1	-15.1
Crude non-metallic minerals	54	59	4	7.9	415	384	-31	-7.4	2.9
Textile fabricated materials	280	295	15	5.4	1,796	1,973	178	9.9	8.8
Metal fabricated basic products	996	990	-7	-0.7	5,905	6,884	979	16.6	10.7
Rubber fabricated materials	108	112	4	3.9	702	788	86	12.3	10.9
Oils, fats, animal and vegetable	90	89	0	-0.2	695	627	-68	-9.7	-13.5
Non-metallic minerals	397	379	-18	-4.5	2,541	2,713	172	6.8	4.2
Other fabricated materials	508	526	17	3.4	3,663	3,685	22	0.6	-3.0

Table 6-2 – continued

Imports by commodity groupings, balance of payments basis, seasonally adjusted — Constant dollars, 2002

	June	July	Change		Year to date			July 2011/ July 2010	
	2011	2011			2010	2011	Change		
	millions of dollars		percent		millions of dollars		percent		
Machinery and equipment	16,719	15,880	-839	-5.0	92,342	109,915	17,573	19.0	11.6
Industrial and agricultural machinery	4,545	3,776	-769	-16.9	20,677	25,940	5,264	25.5	18.7
Engines, turbines and electric motors	316	429	114	36.0	2,986	3,153	167	5.6	-2.9
Drilling mining machinery	1,314	205	-1,109	-84.4	1,078	2,460	1,382	128.3	27.8
Excavating machinery	358	361	3	0.8	1,861	2,483	622	33.4	10.7
Metal working machinery	214	250	36	16.8	1,160	1,691	530	45.7	42.5
Other industrial machinery	1,822	1,947	125	6.9	10,382	12,543	2,161	20.8	23.5
Agricultural machinery including tractors	522	585	63	12.1	3,210	3,610	401	12.5	16.9
Aircraft and other transportation equipment	1,432	1,526	94	6.5	9,430	11,039	1,609	17.1	17.3
Aircraft, engines, parts	820	883	63	7.7	5,837	6,690	852	14.6	7.0
Other transportation equipment and parts	612	643	30	5.0	3,593	4,350	757	21.1	35.1
Office machines and equipment	3,084	3,096	13	0.4	16,522	20,674	4,152	25.1	16.0
Other machinery and equipment	7,659	7,482	-177	-2.3	45,714	52,262	6,548	14.3	5.7
Other communication and related equipment	3,533	3,226	-307	-8.7	19,388	23,002	3,614	18.6	4.6
Other equipment and tools	4,126	4,256	130	3.2	26,326	29,260	2,935	11.1	6.6
Automotive products	7,205	7,680	475	6.6	49,751	51,949	2,198	4.4	5.9
Passenger autos and chassis	2,139	2,197	58	2.7	15,043	15,154	110	0.7	-2.2
Trucks and other motor vehicles	1,891	2,046	155	8.2	11,719	12,928	1,209	10.3	29.6
Motor vehicle parts	3,175	3,437	261	8.2	22,989	23,868	879	3.8	0.3
Other consumer goods	6,638	6,650	12	0.2	42,738	45,684	2,946	6.9	7.4
Apparel and footwear	1,583	1,560	-23	-1.4	8,668	10,301	1,633	18.8	20.3
Apparel and apparel accessories	1,329	1,305	-25	-1.9	7,282	8,611	1,329	18.2	19.2
Footwear	254	256	2	0.8	1,386	1,690	304	21.9	26.2
Miscellaneous consumer goods	5,055	5,090	35	0.7	34,070	35,384	1,314	3.9	4.0
Television, radios, phonographs	219	212	-7	-3.1	1,551	1,562	11	0.7	-8.0
Printed matter	371	357	-13	-3.6	2,476	2,543	66	2.7	0.7
Watches, sporting goods and toys	674	635	-38	-5.7	4,928	4,755	-173	-3.5	-6.9
House furnishings	972	994	22	2.2	6,553	6,657	104	1.6	4.2
Photographic goods	424	470	46	10.8	2,783	3,237	454	16.3	7.9
Miscellaneous end products	2,396	2,421	25	1.1	15,777	16,629	851	5.4	8.1
Special transactions trade	499	805	305	61.2	3,207	3,788	580	18.1	58.3
Unallocated balance of payments adjustments	373	360	-13	-3.5	3,963	3,110	-852	-21.5	-39.1

Table 7-1
Imports from selected countries, customs basis, not seasonally adjusted — July

	Agricultural and fishing products	Energy products	Forestry products	Industrial goods	Machinery and equipment	Automotive products	Consumer goods	Special transactions trade	Total
millions of dollars									
United States									
2010	1,491.4	905.1	157.7	4,178.1	4,107.9	2,948.5	2,006.3	375.2	16,170.0
2011	1,605.0	1,325.3	138.2	4,322.1	4,148.9	2,995.1	1,801.7	614.4	16,950.8
Mexico									
2010	86.9	100.7	0.4	143.8	663.8	498.1	100.2	5.0	1,598.8
2011	78.4	115.6	0.5	184.4	622.9	729.4	96.9	3.9	1,831.9
Japan									
2010	5.3	7.9	0.1	80.6	435.4	434.1	92.3	0.2	1,055.9
2011	6.2	24.1	0.1	115.2	451.2	351.6	85.9	0.3	1,034.6
European Union									
Germany									
2010	24.5	1.4	1.5	157.0	352.0	312.4	136.0	0.7	985.6
2011	27.2	1.8	0.8	195.5	403.9	256.8	147.6	0.4	1,034.1
France									
2010	48.2	14.7	0.2	53.9	115.0	7.7	124.1	0.3	364.1
2011	55.1	1.5	0.4	60.0	121.8	6.2	138.3	0.3	383.6
United Kingdom									
2010	35.0	110.6	0.1	101.8	227.2	49.0	109.7	2.7	636.0
2011	33.8	313.6	0.1	217.6	259.9	45.9	114.3	1.0	986.1
Italy									
2010	50.6	35.3	1.2	83.8	126.2	18.6	91.2	0.4	407.3
2011	47.9	13.7	1.3	84.8	137.0	14.5	108.0	0.1	407.3
Other European Union									
2010	85.5	334.9	3.4	312.7	370.3	72.6	290.9	0.2	1,470.5
2011	94.9	315.5	4.2	343.2	349.6	97.8	305.9	0.3	1,511.4
Total									
2010	243.8	496.9	6.4	709.3	1,190.8	460.2	751.9	4.2	3,863.5
2011	258.8	646.0	6.7	901.2	1,272.1	421.3	814.2	2.1	4,322.5
Newly industrialized countries									
South Korea									
2010	4.2	1.4	0.0	75.9	209.5	197.1	20.9	0.1	509.0
2011	5.6	80.5	0.0	110.3	336.5	141.4	18.0	0.1	692.4
Hong Kong									
2010	2.9	0.0	0.0	2.0	14.8	0.2	16.2	0.0	36.2
2011	4.0	0.0	0.0	1.8	8.6	0.2	13.3	0.0	28.0
Taiwan									
2010	6.6	19.7	0.8	77.6	192.5	11.5	37.0	0.1	345.8
2011	5.9	0.0	0.2	93.4	222.0	14.2	37.0	0.1	372.9
Singapore									
2010	4.0	0.0	0.0	16.9	68.0	0.2	11.4	0.0	100.5
2011	1.8	16.8	0.0	9.5	49.2	0.3	18.1	0.0	95.8
Total									
2010	17.7	21.2	0.8	172.2	484.8	209.1	85.4	0.3	991.5
2011	17.3	97.3	0.3	215.0	616.3	156.0	86.4	0.3	1,189.0
Other countries									
2010	600.8	2,041.9	63.8	1,867.5	2,640.7	182.4	2,074.0	31.3	9,502.4
2011	662.9	2,292.6	50.3	1,992.6	2,651.2	184.1	2,152.3	49.3	10,035.3
Total									
2010	2,446.3	3,573.7	229.2	7,151.5	9,523.3	4,732.3	5,110.1	416.2	33,182.6
2011	2,629.1	4,501.0	196.0	7,730.5	9,762.8	4,837.5	5,037.4	670.1	35,364.5

Table 7-2
Imports from selected countries, customs basis, not seasonally adjusted — Year to date, January to July

	Agricultural and fishing products	Energy products	Forestry products	Industrial goods	Machinery and equipment	Automotive products	Consumer goods	Special transactions trade	Total
millions of dollars									
United States									
2010	9,527.2	7,091.7	1,141.3	29,123.3	28,843.7	26,698.8	12,952.8	2,372.7	117,751.6
2011	10,129.5	9,482.2	1,049.1	31,280.9	30,703.3	27,146.5	13,044.9	2,792.6	125,628.9
Mexico									
2010	972.5	451.1	3.4	981.9	4,241.4	4,826.6	630.5	32.8	12,140.2
2011	969.7	743.7	3.0	1,336.3	4,644.0	5,415.0	693.7	41.3	13,846.7
Japan									
2010	38.9	51.7	0.6	713.1	2,778.6	3,544.8	602.2	2.5	7,732.5
2011	38.1	27.8	0.5	685.6	2,981.9	2,606.1	614.8	3.8	6,958.5
European Union									
Germany									
2010	142.1	32.9	7.9	1,132.2	2,171.3	2,003.4	989.7	15.3	6,494.8
2011	169.5	15.0	6.5	1,367.6	2,528.1	2,065.0	1,048.1	6.6	7,206.5
France									
2010	363.4	70.0	1.0	476.5	965.4	59.2	932.5	5.8	2,873.7
2011	399.1	44.4	2.5	533.6	1,135.7	49.3	865.1	4.6	3,034.2
United Kingdom									
2010	224.5	2,167.0	0.5	1,169.7	1,657.4	259.9	732.3	33.3	6,244.6
2011	220.2	2,086.5	0.3	1,262.9	1,822.7	295.9	791.3	22.4	6,502.2
Italy									
2010	338.0	109.0	7.3	548.5	822.7	138.2	612.1	1.8	2,577.6
2011	371.5	84.7	8.9	648.0	921.7	149.1	671.7	3.0	2,858.4
Other European Union									
2010	605.5	1,429.8	24.1	1,828.0	2,569.7	430.4	2,216.8	15.0	9,119.3
2011	666.2	2,189.7	25.0	2,373.2	2,806.5	506.4	2,009.0	7.3	10,583.3
Total									
2010	1,673.4	3,808.6	40.8	5,154.9	8,186.5	2,891.0	5,483.4	71.3	27,310.0
2011	1,826.5	4,420.3	43.2	6,185.3	9,214.7	3,065.7	5,385.0	43.8	30,184.5
Newly industrialized countries									
South Korea									
2010	34.2	148.4	0.1	453.7	1,286.4	1,315.5	115.8	0.6	3,354.7
2011	35.5	187.7	0.1	709.8	1,685.2	1,101.9	116.7	0.8	3,837.8
Hong Kong									
2010	15.8	0.1	0.2	15.4	83.6	2.5	80.6	0.2	198.4
2011	17.8	0.0	0.1	41.6	58.1	1.4	80.9	0.3	200.2
Taiwan									
2010	42.7	19.8	4.8	488.0	1,169.2	91.6	229.2	0.8	2,046.1
2011	38.3	0.3	3.0	661.6	1,670.7	102.1	223.1	0.9	2,700.1
Singapore									
2010	20.0	0.1	0.1	73.1	347.7	2.3	102.7	1.1	547.0
2011	19.9	147.6	0.4	115.6	324.8	2.1	185.0	0.5	795.9
Total									
2010	112.7	168.3	5.3	1,030.1	2,886.9	1,412.0	528.2	2.8	6,146.3
2011	111.6	335.6	3.6	1,528.6	3,738.9	1,207.5	605.7	2.4	7,533.9
Other countries									
2010	4,255.5	11,683.2	390.2	11,884.2	16,135.6	1,205.7	11,681.3	199.0	57,434.8
2011	5,094.7	15,610.3	340.4	14,132.2	18,652.8	1,510.4	12,490.6	195.6	68,027.1
Total									
2010	16,582.8	23,254.6	1,581.7	48,887.6	63,072.9	40,578.9	31,878.5	2,681.0	228,518.1
2011	18,175.2	30,619.8	1,439.8	55,148.9	69,935.6	40,951.4	32,834.8	3,079.5	252,185.0

Table 8
Imports by country, customs basis, not seasonally adjusted

	July		January to July		Change
	2010	2011	2010	2011	January to July 2011/ January to July 2010
	millions of dollars				percent
North America					
Canada	305.3	266.9	2,380.8	2,099.5	-11.8
Greenland	0.0	0.4	0.2	0.4	85.9
Mexico	1,598.8	1,831.9	12,140.2	13,846.7	14.1
Saint Pierre and Miquelon	0.1	0.5	0.5	1.5	179.6
United States	16,170.0	16,950.8	117,751.6	125,628.9	6.7
Total	18,074.3	19,050.5	132,273.3	141,577.0	7.0
Western Europe					
Andorra	0.0	0.0	0.2	0.2	28.4
Austria	98.3	99.1	681.8	721.1	5.8
Belgium	130.4	136.3	939.3	981.7	4.5
Denmark	116.5	147.4	1,197.5	946.4	-21.0
Faeroe Islands	0.6	0.4	2.7	5.1	89.5
Finland	79.2	112.0	501.7	988.6	97.1
France	364.1	383.6	2,873.7	3,034.2	5.6
Germany	985.6	1,034.1	6,494.8	7,206.5	11.0
Gibraltar	0.0	0.0	2.2	1.7	-25.1
Greece	11.2	11.7	81.7	101.6	24.4
Iceland	2.9	3.6	21.1	16.6	-21.2
Italy	407.3	407.3	2,577.6	2,858.4	10.9
Luxembourg	6.0	16.7	48.9	66.8	36.6
Malta	1.8	3.4	9.4	15.8	68.1
Netherlands	187.4	177.7	998.8	1,203.2	20.5
Norway	285.1	294.0	1,670.6	2,470.7	47.9
Portugal	20.3	21.2	188.2	177.6	-5.6
Republic of Ireland (Eire)	133.5	95.5	1,021.5	718.9	-29.6
Spain	170.6	115.8	804.2	1,002.5	24.7
Sweden	230.7	203.3	1,232.3	1,357.8	10.2
Switzerland	221.3	232.8	1,796.4	1,721.4	-4.2
United Kingdom	636.0	986.1	6,244.6	6,502.2	4.1
Total	4,088.7	4,482.1	29,389.3	32,099.1	9.2
Other Europe					
Albania	0.5	0.6	1.7	3.8	125.7
Armenia	2.1	4.8	14.4	28.0	94.8
Azerbaijan	229.9	0.0	302.7	310.2	2.5
Belarus	0.4	0.6	2.8	3.4	21.7
Bosnia and Herzegovina	0.7	1.5	4.0	6.0	50.5
Bulgaria	6.1	23.6	33.4	64.9	94.4
Croatia	10.9	2.3	20.7	16.0	-22.6
Czech Republic	21.0	27.7	153.7	211.1	37.3
Estonia	1.9	8.0	11.5	63.7	455.0
Georgia	15.2	6.5	63.7	64.9	2.0
Hungary	31.4	28.4	204.2	192.1	-6.0
Kazakhstan	108.8	232.1	1,172.2	1,593.0	35.9
Kyrgyzstan	0.0	0.0	0.1	0.1	43.1
Latvia	1.3	1.4	5.2	9.2	75.3
Lithuania	96.3	83.7	230.6	462.8	100.7
Macedonia (Former Yugoslav Republic of Macedonia)	0.6	0.7	4.3	4.3	1.2
Montenegro	0.1	0.0	0.3	0.4	42.8
Poland	76.2	150.5	516.1	942.1	82.5
Republic of Moldova	0.2	0.3	4.3	1.1	-74.0
Romania	26.5	19.2	98.2	157.1	60.0
Russian Federation	127.5	80.2	679.3	767.4	13.0
Serbia	1.1	1.7	7.1	9.6	34.5
Slovakia	16.8	18.9	97.0	141.9	46.3
Slovenia	7.0	9.9	62.1	54.4	-12.5
Tajikistan	0.0	0.0	0.0	0.0	-53.9
Turkmenistan	0.0	0.1	0.1	0.2	70.4
Ukraine	7.1	10.5	42.6	71.8	68.7
Uzbekistan	0.0	0.1	1.2	1.4	22.1
Total	789.5	713.1	3,733.4	5,180.9	38.8

Table 8 – continued

Imports by country, customs basis, not seasonally adjusted

	July		January to July		Change
	2010	2011	2010	2011	January to July 2011/ January to July 2010
	millions of dollars				percent
Middle East					
Bahrain	0.4	0.1	2.0	2.5	26.3
Cyprus	0.1	0.1	1.9	2.0	7.8
Egypt	21.8	37.6	170.0	239.7	41.0
Eritrea	0.0	56.7	0.2	141.9	...
Ethiopia	1.5	2.3	8.4	11.2	33.1
Iran	3.0	3.1	23.7	21.2	-10.6
Iraq	208.6	0.0	1,062.5	1,376.1	29.5
Israel	83.3	71.9	585.0	575.9	-1.6
Jordan	1.8	1.4	11.9	11.1	-7.2
Kuwait	0.0	0.0	31.5	55.1	74.8
Lebanon	1.3	1.8	9.1	10.8	19.1
Libya	0.0	0.0	13.5	5.0	-63.1
Oman	0.4	1.7	13.5	10.7	-21.1
Qatar	1.6	26.9	64.5	320.9	397.8
Saudi Arabia	158.5	480.1	1,201.5	1,774.0	47.7
Somalia	0.0	0.0	0.0	0.0	98.0
Sudan	9.8	7.9	52.4	75.0	43.2
Syria	0.4	0.6	3.7	3.3	-9.7
Turkey	63.1	88.3	378.3	599.9	58.6
United Arab Emirates	53.2	3.3	120.5	832.5	591.1
Yemen	0.0	0.0	0.1	0.0	-20.5
Total	609.0	783.7	3,754.1	6,068.8	61.7
Other Africa					
Algeria	328.0	320.7	2,287.2	2,917.0	27.5
Angola	181.5	219.4	869.4	1,549.2	78.2
Antarctica	0.0	0.0	0.2	0.5	104.5
Benin	0.0	0.0	0.0	0.0	90.8
Botswana	0.0	0.0	6.9	0.1	-98.4
Bouvet Island	0.0	0.0	0.0	0.0	...
Burkina Faso	1.2	0.0	16.7	2.2	-87.1
Burundi	0.0	0.0	0.0	0.2	455.8
Cameroon	0.5	0.6	3.5	3.6	3.2
Cape Verde	0.0	0.0	0.0	0.1	188.0
Central African Republic	0.0	0.0	0.1	0.2	229.2
Chad	0.0	0.0	0.2	0.2	59.5
Comoros	0.0	0.0	0.0	0.1	201.6
Congo	0.3	0.2	1.0	1.6	58.1
Democratic Republic of the Congo	0.0	0.1	0.6	0.4	-34.7
Djibouti	0.0	0.0	0.0	0.0	73.5
Equatorial Guinea	0.0	198.5	370.1	567.7	53.4
French Southern Territories	0.0	0.0	0.0	0.0	...
Gabon	0.0	0.0	0.2	0.8	269.6
Gambia	0.0	0.0	0.1	0.1	0.5
Ghana	3.0	5.9	13.9	44.6	221.6
Guinea	2.3	3.0	25.8	29.0	12.5
Guinea-Bissau	0.0	0.0	0.0	0.0	-40.7
Ivory Coast	14.4	105.6	185.3	330.4	78.3
Kenya	1.1	2.0	8.6	13.7	58.6
Lesotho	6.1	0.7	10.8	7.4	-31.5
Liberia	10.2	0.6	29.4	19.1	-35.3
Madagascar	7.5	4.5	28.9	26.2	-9.6
Malawi	7.9	21.2	24.5	87.7	258.2
Mali	0.0	0.1	0.3	0.4	36.0
Mauritania	0.0	0.0	0.2	0.1	-66.3
Mauritius	0.7	0.6	5.9	6.0	1.8
Morocco	3.4	3.9	62.4	50.7	-18.7
Mozambique	0.0	0.2	1.1	2.5	124.3
Namibia	25.2	15.1	115.1	134.4	16.8
Niger	0.1	0.2	0.6	0.9	54.9
Nigeria	163.9	219.0	918.1	1,113.9	21.3
Rwanda	0.0	0.0	0.1	0.3	168.6
Saint Helena	0.0	0.0	0.0	0.1	...
Sao Tome and Principe	0.0	0.0	0.2	0.1	-53.7
Senegal	0.1	0.1	0.7	0.6	-9.6

Table 8 – continued

Imports by country, customs basis, not seasonally adjusted

	July		January to July		Change
	2010	2011	2010	2011	January to July 2011/ January to July 2010
	millions of dollars				percent
Seychelles	0.0	0.0	0.2	0.4	172.4
Sierra Leone	0.1	0.1	1.0	1.4	37.5
South Africa	67.6	68.6	391.4	550.9	40.7
Swaziland	0.3	0.2	0.9	1.1	29.5
Togo	0.4	4.4	0.7	6.9	894.9
Tunisia	4.7	4.4	33.1	32.5	-1.8
Uganda	0.2	0.3	2.7	2.3	-14.5
United Republic of Tanzania	0.3	0.2	2.0	2.8	39.0
Western Sahara	0.0	0.0	0.0	0.0	-100.0
Zambia	0.1	0.1	0.7	0.6	-8.3
Zimbabwe	0.2	0.2	2.5	3.6	43.8
Total	831.3	1,200.6	5,423.3	7,514.8	38.6
Other Asia					
Afghanistan	0.1	0.1	1.1	1.0	-1.3
Bangladesh	80.4	127.2	445.4	659.8	48.1
Bhutan	0.0	0.0	0.0	0.0	189.5
British Indian Ocean Territory	0.0	0.0	0.0	0.1	336.2
Brunei Darussalam	0.0	0.3	0.0	5.2	...
Cambodia	39.2	57.2	179.9	284.9	58.4
China	4,216.3	4,056.9	23,420.0	25,748.8	9.9
Hong Kong	36.2	28.0	198.4	200.2	0.9
India	172.7	180.9	1,135.1	1,444.1	27.2
Indonesia	109.0	117.3	684.1	810.4	18.5
Japan	1,055.9	1,034.6	7,732.5	6,958.5	-10.0
Laos	0.5	0.7	4.3	3.7	-13.4
Macao	1.0	0.7	5.9	4.6	-22.1
Malaysia	212.2	163.0	1,305.7	1,202.1	-7.9
Maldives	0.0	0.0	0.0	0.1	246.8
Mongolia	47.4	9.6	120.4	97.2	-19.3
Myanmar	0.0	0.0	0.0	0.1	351.6
Nepal	1.6	1.4	7.8	7.5	-4.6
North Korea	0.0	0.0	0.1	0.0	-51.0
Pakistan	25.8	23.0	151.4	143.8	-5.0
Philippines	73.9	77.7	490.4	520.8	6.2
Singapore	100.5	95.8	547.0	795.9	45.5
South Korea	509.0	692.4	3,354.7	3,837.8	14.4
Sri Lanka	10.2	13.0	68.4	85.2	24.5
Taiwan	345.8	372.9	2,046.1	2,700.1	32.0
Thailand	194.9	237.3	1,314.9	1,523.5	15.9
Timor-Leste	0.0	0.0	0.8	0.2	-68.9
Viet Nam	104.4	121.0	612.2	697.2	13.9
Total	7,337.0	7,411.0	43,826.7	47,733.0	8.9
Oceania					
American Samoa	0.0	0.0	0.2	0.1	-51.5
Australia	137.5	112.2	957.4	978.2	2.2
Christmas Island	0.0	0.0	0.1	0.0	-57.2
Cocos (Keeling) Islands	0.0	0.0	0.0	0.0	-30.7
Cook Islands	0.0	0.0	0.0	0.1	170.0
Fiji	0.4	0.3	3.8	2.0	-46.8
French Polynesia	0.0	0.0	0.4	0.4	-8.9
Guam	0.0	0.0	0.0	0.1	331.3
Heard Island and McDonald Islands	0.0	0.0	0.0	0.0	-63.2
Kiribati	0.0	0.0	0.0	0.0	-17.0
Nauru	0.0	0.0	0.1	0.0	-61.2
New Caledonia	0.0	0.1	0.1	0.1	-4.5
New Zealand	44.3	53.9	271.7	334.1	23.0
Niue	0.0	0.0	0.0	0.0	-22.0
Norfolk Island	0.0	0.0	0.0	0.0	110.2
Papua New Guinea	0.1	0.0	0.7	0.4	-45.3
Pitcairn	0.0	0.0	0.0	0.0	363.5
Samoa	0.1	0.0	0.3	0.0	-96.2
Solomon Islands	0.0	0.0	0.1	0.1	-7.5
Tonga	0.0	0.0	0.0	0.0	104.3
United States Minor Outlying Islands	0.2	0.3	2.6	1.7	-33.7
Vanuatu	0.0	0.0	0.4	0.0	-89.6

Table 8 – continued

Imports by country, customs basis, not seasonally adjusted

	July		January to July		Change
	2010	2011	2010	2011	January to July 2011/ January to July 2010
	millions of dollars				percent
Wallis and Futuna	0.0	0.0	0.0	0.0	-57.5
Total	182.6	166.8	1,238.0	1,317.6	6.4
South America					
Argentina	170.2	204.8	496.0	1,219.2	145.8
Bolivia	10.1	23.6	67.2	139.6	107.9
Brazil	293.4	388.8	1,866.8	2,185.5	17.1
Chile	81.5	136.7	1,246.3	1,205.6	-3.3
Colombia	79.0	47.2	441.7	427.1	-3.3
Ecuador	17.6	15.9	119.7	138.3	15.5
Falkland Islands (Malvinas)	0.0	0.0	0.0	0.3	...
Guyana	20.1	32.9	148.7	207.6	39.6
Paraguay	0.7	0.4	5.7	2.3	-59.7
Peru	286.1	433.1	2,019.6	2,473.2	22.5
Suriname	32.8	2.6	287.5	191.0	-33.6
Uruguay	1.3	3.0	44.6	25.2	-43.5
Venezuela	56.1	1.1	462.3	467.4	1.1
Total	1,048.9	1,290.0	7,206.2	8,682.2	20.5
Central America Antilles					
Anguilla	0.0	0.0	0.2	0.1	-12.1
Antigua and Barbuda	0.0	0.1	0.2	0.2	44.6
Aruba	0.0	0.0	0.1	5.5	...
Bahamas	0.0	2.3	23.3	11.9	-49.1
Barbados	0.6	0.3	5.3	3.2	-40.1
Belize	0.4	0.6	3.8	4.2	11.4
Bermuda	0.1	0.0	0.6	0.4	-21.2
British Virgin Islands	0.1	0.0	0.2	0.3	36.1
Cayman Islands	0.0	0.2	0.3	0.3	17.5
Costa Rica	32.7	37.7	266.0	290.8	9.3
Cuba	47.7	62.7	385.6	428.6	11.2
Dominica	0.0	0.0	0.1	0.2	210.8
Dominican Republic	11.7	11.8	78.3	81.8	4.5
El Salvador	5.0	6.4	58.5	96.6	65.1
Grenada	0.0	0.0	0.4	0.6	50.6
Guatemala	26.0	22.3	188.2	276.2	46.7
Haiti	2.9	2.1	15.8	15.8	0.3
Honduras	11.9	16.0	95.0	119.9	26.3
Jamaica	17.2	25.8	97.8	139.2	42.3
Montserrat	0.0	0.0	0.1	0.1	-6.1
Netherlands Antilles	0.0	0.0	0.2	22.5	...
Nicaragua	22.3	19.7	101.6	194.7	91.7
Panama	6.2	10.3	47.1	69.7	48.0
Saint Kitts and Nevis	0.8	0.7	4.1	4.4	7.8
Saint Lucia	0.0	0.0	0.1	0.2	85.6
Saint Vincent and the Grenadines	0.1	0.0	0.1	0.2	64.0
Trinidad and Tobago	35.6	47.7	300.8	243.8	-19.0
Turks and Caicos Islands	0.0	0.0	0.1	0.1	-19.0
Total	221.4	266.8	1,673.8	2,011.7	20.2
All countries	33,182.6	35,364.5	228,518.1	252,185.0	10.4

**Table 9-1
Imports by province of clearance, customs basis, not seasonally adjusted — July**

	Agricultural and fishing products	Energy products	Forestry products	Industrial goods	Machinery and equipment	Automotive products	Consumer goods	Special transactions trade	Total
millions of dollars									
Newfoundland and Labrador									
2010	2.6	257.6	0.0	7.3	37.3	0.2	0.8	0.0	305.8
2011	4.0	56.0	0.0	18.2	16.7	0.1	0.3	0.0	95.4
Prince Edward Island									
2010	0.2	0.0	0.0	0.0	0.7	0.0	0.0	0.0	1.0
2011	0.3	0.0	0.0	7.2	0.2	0.0	0.0	0.0	7.7
Nova Scotia									
2010	38.9	130.8	2.2	107.3	108.0	335.1	13.3	1.8	737.5
2011	50.2	443.9	1.3	97.1	66.0	192.0	21.7	0.9	873.2
New Brunswick									
2010	60.5	748.2	8.6	98.4	69.8	35.0	35.8	2.5	1,058.8
2011	56.9	1,104.0	8.2	145.4	170.6	32.9	15.8	1.8	1,535.7
Quebec									
2010	319.6	1,526.3	59.4	1,234.2	1,349.7	161.4	961.1	41.6	5,653.2
2011	394.9	1,271.5	40.4	1,390.6	1,498.1	190.9	970.1	40.7	5,797.2
Ontario									
2010	1,351.5	361.0	84.9	4,201.2	5,509.7	3,645.9	3,191.1	334.7	18,680.0
2011	1,411.7	716.5	72.5	4,361.8	5,328.9	3,803.7	3,086.3	596.4	19,377.8
Manitoba									
2010	76.4	42.4	7.6	266.2	499.9	125.0	138.3	7.0	1,162.8
2011	87.2	28.2	8.3	324.2	682.5	159.6	136.1	6.3	1,432.4
Saskatchewan									
2010	26.3	66.8	3.3	162.7	310.5	105.4	21.6	0.2	696.8
2011	21.7	62.8	4.4	132.7	226.0	87.2	16.3	0.2	551.3
Alberta									
2010	155.8	162.5	9.1	415.7	693.5	94.8	101.6	12.2	1,645.1
2011	165.4	473.3	11.4	559.4	795.9	134.4	137.0	12.8	2,289.7
British Columbia									
2010	400.4	277.9	53.9	658.2	943.3	229.5	646.6	16.1	3,225.9
2011	424.6	342.6	49.5	693.5	976.8	236.6	653.6	11.0	3,388.3
Yukon, Northwest Territories and Nunavut									
2010	14.1	0.2	0.0	0.2	0.9	0.1	0.1	0.0	15.7
2011	12.2	2.0	0.0	0.5	1.1	0.1	0.1	0.0	15.9
Total									
2010	2,446.3	3,573.7	229.2	7,151.5	9,523.3	4,732.3	5,110.1	416.2	33,182.6
2011	2,629.1	4,501.0	196.0	7,730.5	9,762.8	4,837.5	5,037.4	670.1	35,364.5

Table 9-2
Imports by province of clearance, customs basis, not seasonally adjusted — Year to date, January to July

	Agricultural and fishing products	Energy products	Forestry products	Industrial goods	Machinery and equipment	Automotive products	Consumer goods	Special transactions trade	Total
millions of dollars									
Newfoundland and Labrador									
2010	26.2	1,507.4	0.1	24.9	125.3	0.7	3.8	2.9	1,691.2
2011	20.3	1,686.1	0.0	67.4	288.2	0.6	9.2	3.5	2,075.3
Prince Edward Island									
2010	2.3	0.0	0.0	5.3	1.2	0.1	0.2	0.1	9.2
2011	2.6	0.0	0.0	7.4	1.6	0.0	0.2	0.2	12.2
Nova Scotia									
2010	223.7	1,083.4	10.4	718.0	582.9	2,049.7	96.0	16.6	4,780.7
2011	349.8	1,313.6	9.1	767.2	1,361.1	1,603.1	110.4	17.5	5,531.6
New Brunswick									
2010	251.3	4,375.6	62.1	624.3	584.9	258.3	170.2	13.1	6,339.8
2011	260.7	6,228.0	65.0	839.4	589.4	233.3	150.0	11.4	8,377.3
Quebec									
2010	2,468.6	9,449.1	412.8	8,699.5	9,742.5	1,234.3	5,984.4	322.1	38,313.4
2011	3,019.2	10,933.9	346.5	9,954.2	10,695.4	1,363.4	5,945.9	276.6	42,535.1
Ontario									
2010	9,231.5	2,693.1	587.8	28,620.0	36,065.6	33,443.5	20,249.8	2,087.9	132,979.3
2011	9,790.6	5,814.2	525.7	31,384.1	39,011.3	33,573.0	21,001.2	2,545.9	143,645.9
Manitoba									
2010	507.3	331.4	55.7	2,086.3	3,282.0	756.5	897.5	50.5	7,967.3
2011	569.4	328.8	54.0	2,277.9	3,888.2	938.1	908.3	50.5	9,015.3
Saskatchewan									
2010	183.3	383.4	14.6	1,319.4	2,147.5	569.9	150.1	12.0	4,780.4
2011	221.9	447.1	16.1	1,504.9	2,268.1	717.7	154.4	10.2	5,340.4
Alberta									
2010	1,093.9	1,599.6	67.1	2,680.0	3,956.1	607.7	687.0	80.3	10,771.7
2011	1,127.4	1,539.9	72.7	3,571.2	5,246.9	792.8	825.3	73.0	13,249.2
British Columbia									
2010	2,554.5	1,829.8	370.9	4,108.8	6,544.3	1,657.7	3,639.4	95.3	20,800.8
2011	2,780.6	2,320.9	350.5	4,773.2	6,548.3	1,729.3	3,729.6	90.7	22,323.1
Yukon, Northwest Territories and Nunavut									
2010	40.0	1.8	0.0	1.1	40.6	0.4	0.2	0.3	84.4
2011	32.6	7.2	0.0	1.9	37.2	0.3	0.2	0.0	79.6
Total									
2010	16,582.8	23,254.6	1,581.7	48,887.6	63,072.9	40,578.9	31,878.5	2,681.0	228,518.1
2011	18,175.2	30,619.8	1,439.8	55,148.9	69,935.6	40,951.4	32,834.8	3,079.5	252,185.0

Technical notes

The Canadian international merchandise trade statistical program

Introduction

The objective of this text is to provide a general overview of the Canadian International Merchandise Trade Statistical Program, with special reference to concepts and definitions. The text is intended for the general user and simplicity is emphasized. More technical details can be obtained from the International Trade Division, Statistics Canada upon request.

Conceptual framework

1. Objectives and coverage: The primary objective of the Canadian International Merchandise Trade Statistical Program is to measure the change in the stock of material resources of Canada resulting from the movement of merchandise into or out of the country. Information on imports and exports are inputs into the System of National Accounts, particularly in the balance of payments and gross domestic product, and are used in the formulation of trade and budgetary policies. Governments, importers, exporters, manufacturers and shipping companies use international merchandise trade statistics to:

- monitor import penetration and export performance,
- monitor commodity price and volume changes,
- examine transport implications.

2. Trade statistics (customs basis / balance of payments basis): Merchandise trade statistics are reported and presented on two different bases: customs basis and balance of payment basis.

When goods are imported into or exported from Canada, declarations must be filed with customs, giving such information as description and value of the goods, origin and port of clearance of commodities and mode of transport. Most of this information is required for the purposes of customs administration. Statistics developed from administrative records of customs are commonly referred to as customs-based trade statistics.

Customs-based trade statistics are more accurate at measuring imports than they are at measuring exports. This is the case because customs are typically more vigilant with respect to goods entering the country than they are with goods leaving the country.

Customs-based export statistics may understate or incorrectly portray the destination of exports. Export statistics are understated when the proper documentation is not filed with Customs. Exports are incorrectly portrayed when the country of final destination is inaccurately reported on the customs documentation. This occurs most frequently when goods are routed through an intermediary country before continuing on to their final destination.

Statistics Canada does not have a measure of undercoverage but periodically conducts reconciliation exercises with its major trading partners, excluding the United States.

On January 1, 1990, Canada entered into a memorandum of understanding with the United States concerning the exchange of import data. As a consequence, each administration is using the other's import data to replace its own export data. Canada's international merchandise trade statistics are, therefore, no longer derived exclusively from the administrative records of the Canada Border Services Agency, but from United States Customs records as well.

Customs-based information is adjusted to conform with the National Accounts concepts and definitions. The adjustments to derive balance of payments-based trade data include adjustments related to trade definition, valuation and timing. The principal difference between the two trade concepts is that customs-based merchandise trade statistics cover the physical movement of goods as they are reflected in customs documents while balance of payments-adjusted data are intended to cover all economic transactions that involve merchandise trade between residents and non-residents. The present document describes the concepts and processes pertaining to the customs-based trade statistics only. (For further information on balance of payments-adjusted data, see the publication *Canada's Balance of International Payments*, Statistics Canada (Catalogue no. 67-001-X).

3. System of trade: Canadian trade statistics are compiled according to the general system of trade, as defined by the United Nations Statistical Office. Under this system, imports include all goods that have crossed Canada's territorial boundary, whether for immediate consumption in Canada or for storage in bonded customs warehouses. Domestic exports include goods grown, extracted or manufactured in Canada, including goods of foreign origin that have been materially transformed in Canada. Re-exports are exports of goods of foreign origin that have not been materially transformed in Canada, including foreign goods withdrawn for export from bonded customs warehouses. Total exports are the sum of domestic exports and re-exports. Thus the general trade system, in principal, presents all goods entering the country (imports) and all goods leaving the country (exports). It differs from the special system of trade in the treatment of imported goods into bonded customs warehouses. Under the 'special' system, these goods are counted only if and when they are withdrawn from customs warehouses for home consumption. They are not counted in export statistics unless they have first cleared customs.

Conceptually, under the general system, the statistical frontier coincides with the geographical boundary, while under the 'special' system, it coincides with the customs boundary.

4. Valuation: For customs purposes, imports are recorded at values established according to the provisions of the Customs Act, which, since January 1, 1985, reflects valuation methods based on the General Agreement on Tariffs and Trade (GATT) Valuation Code System. In general, the value for duty of imported goods must be equivalent to the transaction value or the price actually paid.

To determine the transaction value of imported goods, all transportation and associated costs arising in respect of the goods being appraised prior to and at the place of direct shipment to Canada, are to be added to the price of the goods. Therefore, Canadian imports are valued Free on Board (FOB), place of direct shipment to Canada. It excludes freight and insurance costs in bringing the goods to Canada from the point of direct shipment.

Countries other than the United States, exports are, in principal, valued or recorded at the values declared on export documents, which usually reflect the transaction value, i.e., actual selling price or, in the case of a non-arm's length transaction, the transfer price used for company accounting purposes. Canadian exports to overseas countries are valued at F.O.B. port of exit, including domestic freight charges to that point but net of discounts and allowances. As of January, 1990, Canadian exports to the U.S. are valued F.O.B. point of exit from Canada. Prior to 1990, they were valued F.O.B. place of lading net of freight charges, discounts and allowances.

5. Statistical period: The reference period is the calendar month and the calendar year. The closing of the statistical month for imports and Canadian exports to the United States is defined as the last calendar day of the month, based as closely as practicable on the date of clearance from customs.

The closing of the statistical month for exports, to countries other than the United States, is also defined as the last calendar day of the month. Those export documents that are received too late for incorporation in the current month are assigned to the month the transaction took place. If a monthly summary report from a high volume exporter is not received on time, the data are imputed for the current month and revised with the trade value in the following statistical month.

6. Trading partner attribution (country of origin/destination): Exports are attributed to the country, which is the last known destination of the goods at the time of export. Exports to the United States are attributed to the state of destination.

Imports are attributed to their country of origin, that is, the country in which the goods were grown, extracted or manufactured in accordance to the rules of origin administered by the Canada Border Services Agency. Imports

from the United States are attributed to the state of origin. Prior to 1988, most imports were attributed to the country of export/consignment, with the exception of imports from Central and South America.

7. Principal trading areas: The 'principal trading areas' are country groupings defined as follows:

United States: includes trade with Puerto Rico and the U.S. Virgin Islands

Japan

European Union (EU): Austria, Belgium, Bulgaria, Cyprus, Czech Republic, Denmark, Estonia, Finland, France, Germany, Greece, Hungary, Ireland, Italy, Latvia, Lithuania, Luxembourg, Malta, Netherlands, Poland, Portugal, Romania, Slovakia, Slovenia, Spain, Sweden and United Kingdom

Other Organisation for Economic Co-operation and Development (OECD): Australia, Canada, Iceland, Mexico, New Zealand, Norway, South Korea, Switzerland, and Turkey. (The EU countries, United States, and Japan are also members of OECD)

Other countries: all countries and territories other than the United States, Japan, EU and other OECD

8. Legal framework: Import and export statistics with countries other than the United States are derived from information contained in administrative records collected by the Canada Border Services Agency under the Customs Act. Copies of these documents (or information therefrom) are sent to Statistics Canada in accordance with Section 25 of the Statistics Act. It follows that the disclosure of trade statistics is governed by both the Customs Act and the Statistics Act and is subject to the provisions of Section 17(2)(a) of the latter. Disclosure of export statistics to the United States is now governed by a memorandum of understanding that provides for the exchange of detailed import statistics between Canada and the United States.

Contact information

Questions concerning details of methods not covered by these notes should be addressed to the Marketing and Client Services Section, International Trade Division, Statistics Canada, 170 Tunney's Pasture Driveway, Ottawa, Ontario, K1A 0T6.

Telephone: 1-800-294-5583 or 613-951-9647

Facsimile: 1-800-664-0055 613-951-0117

Internet: *trade@statcan.gc.ca*