

Catalogue no. 65-001-X

# Canadian International Merchandise Trade

June 2011



Statistics  
Canada

Statistique  
Canada

Canada

## How to obtain more information

For information about this product or the wide range of services and data available from Statistics Canada, visit our website at [www.statcan.gc.ca](http://www.statcan.gc.ca), e-mail us at [infostats@statcan.gc.ca](mailto:infostats@statcan.gc.ca), or telephone us, Monday to Friday from 8:30 a.m. to 4:30 p.m., at the following numbers:

### Statistics Canada's National Contact Centre

Toll-free telephone (Canada and the United States):

Inquiries line	1-800-263-1136
National telecommunications device for the hearing impaired	1-800-363-7629
Fax line	1-877-287-4369

Local or international calls:

Inquiries line	1-613-951-8116
Fax line	1-613-951-0581

### Depository Services Program

Inquiries line	1-800-635-7943
Fax line	1-800-565-7757

## To access this product

This product, Catalogue no. 65-001-X, is available free in electronic format. To obtain a single issue, visit our website at [www.statcan.gc.ca](http://www.statcan.gc.ca) and browse by "Key resource" > "Publications."

## Standards of service to the public

Statistics Canada is committed to serving its clients in a prompt, reliable and courteous manner. To this end, Statistics Canada has developed *standards of service* that its employees observe. To obtain a copy of these service standards, please contact Statistics Canada toll-free at 1-800-263-1136. The service standards are also published on [www.statcan.gc.ca](http://www.statcan.gc.ca) under "About us" > "The agency" > "Providing services to Canadians."

Statistics Canada  
International Trade Division

# Canadian International Merchandise Trade

June 2011

Published by authority of the Minister responsible for Statistics Canada

© Minister of Industry, 2011

All rights reserved. The content of this electronic publication may be reproduced, in whole or in part, and by any means, without further permission from Statistics Canada, subject to the following conditions: that it be done solely for the purposes of private study, research, criticism, review or newspaper summary, and/or for non-commercial purposes; and that Statistics Canada be fully acknowledged as follows: Source (or "Adapted from", if appropriate): Statistics Canada, year of publication, name of product, catalogue number, volume and issue numbers, reference period and page(s). Otherwise, no part of this publication may be reproduced, stored in a retrieval system or transmitted in any form, by any means—electronic, mechanical or photocopy—or for any purposes without prior written permission of Licensing Services, Information Management Division, Statistics Canada, Ottawa, Ontario, Canada K1A 0T6.

August 2011

Catalogue no. 65-001-X, vol. 65, no. 6

ISSN 1480-8781

Frequency: Monthly

Ottawa

Cette publication est également disponible en français.

---

#### **Note of appreciation**

*Canada owes the success of its statistical system to a long-standing partnership between Statistics Canada, the citizens of Canada, its businesses, governments and other institutions. Accurate and timely statistical information could not be produced without their continued cooperation and goodwill.*

# User information

---

## Symbols

The following standard symbols are used in Statistics Canada publications:

- . not available for any reference period
- .. not available for a specific reference period
- ... not applicable
- 0 true zero or a value rounded to zero
- 0<sup>s</sup> value rounded to 0 (zero) where there is a meaningful distinction between true zero and the value that was rounded
- p preliminary
- r revised
- x suppressed to meet the confidentiality requirements of the *Statistics Act*
- E use with caution
- F too unreliable to be published
- \* significantly different from reference category ( $p < 0.05$ )

## Note to users

All totals are calculated from full figures and rounded independently; consequently, totals may not equal the sum of their components.

The data is based on commodity groups (sector, subsector and major group).

# Table of contents

---

<b>Highlights</b>	<b>5</b>
<b>Analysis</b>	<b>7</b>
<b>Related products</b>	<b>11</b>
<b>Statistical tables</b>	
1 Merchandise trade of Canada, balance of payments basis, seasonally adjusted	15
1-1 Current dollars	15
1-2 Constant dollars, 2002	16
1-3 Price indices (Laspeyres)	17
2 Exports by commodity groupings, balance of payments basis, seasonally adjusted	18
2-1 Current dollars	18
2-2 Constant dollars, 2002	20
3 Domestic exports to selected countries, customs basis, not seasonally adjusted	22
3-1 June	22
3-2 Year to date, January to June	23
4 Domestic exports by country, customs basis, not seasonally adjusted	24
5 Exports by province of origin, customs basis, not seasonally adjusted	28
5-1 June	28
5-2 Year to date, January to June	29
6 Imports by commodity groupings, balance of payments basis, seasonally adjusted	30
6-1 Current dollars	30
6-2 Constant dollars, 2002	32
7 Imports from selected countries, customs basis, not seasonally adjusted	34
7-1 June	34
7-2 Year to date, January to June	35
8 Imports by country, customs basis, not seasonally adjusted	36

**Table of contents – continued**

9	Imports by province of clearance, customs basis, not seasonally adjusted	40
9-1	June	40
9-2	Year to date, January to June	41

**Data quality, concepts and methodology**

	Technical notes	42
--	-----------------	----

## Highlights

---

Canada's merchandise exports fell 1.7% in June while imports decreased 0.2%. As a result, Canada's trade deficit with the world widened from \$1.0 billion in May to \$1.6 billion in June.

Exports fell to \$36.5 billion, largely the result of declines in energy products and automotive products. Volumes, which decreased 2.2%, were down in five out of seven sectors. Prices increased 0.5%, and were up in all sectors, except energy products.

Merchandise imports declined to \$38.0 billion, led by energy products. Overall, prices fell 2.1% and volumes increased 1.9%.

Exports to the United States declined 2.4% to \$26.5 billion in June, while imports fell 2.3% to \$22.8 billion. Canada's trade surplus with the United States went from \$3.7 billion in May to \$3.6 billion in June.

Imports from countries other than the United States increased 3.1% to a record high of \$15.2 billion. Exports to countries other than the United States edged up 0.3% to \$10.0 billion. Canada's trade deficit with countries other than the United States widened from \$4.8 billion in May to a record \$5.2 billion in June.

### Note to readers

Merchandise trade is one component of Canada's international balance of payments, which also includes trade in services, investment income, current transfers as well as capital and financial flows

International merchandise trade data by country are available on both a balance of payments (BOP) and a customs basis for the United States, Japan and the United Kingdom. Trade data for all other individual countries are available on a customs basis only. Balance of payments data are derived from customs data by making adjustments for factors such as valuation, coverage, timing and residency. These adjustments are made to conform to the concepts and definitions of the Canadian System of National Accounts.

Data in this release are on a balance of payments basis, seasonally adjusted in current dollars. Constant dollars are calculated using the Laspeyres volume formula.

### New aggregation structure

Statistics Canada will introduce a new aggregation structure, the North American Product Classification System (NAPCS), to organize and present import and export statistics in various programs. The new structure will replace the classification structures known as the summary import groups (SIG) and the summary export groups (SEG) and the higher level aggregations; Major Groups, Subsectors, Sectors and Sections that have been in use for several decades. The first release of data using the new structure will be on June 8, 2012 for the April reference month.

Readers interested in this upcoming change can find more detailed information on Statistics Canada's web page dedicated to classification consultation and notification at <http://www.statcan.gc.ca/concepts/consult-napcs-scan-eng.htm>.

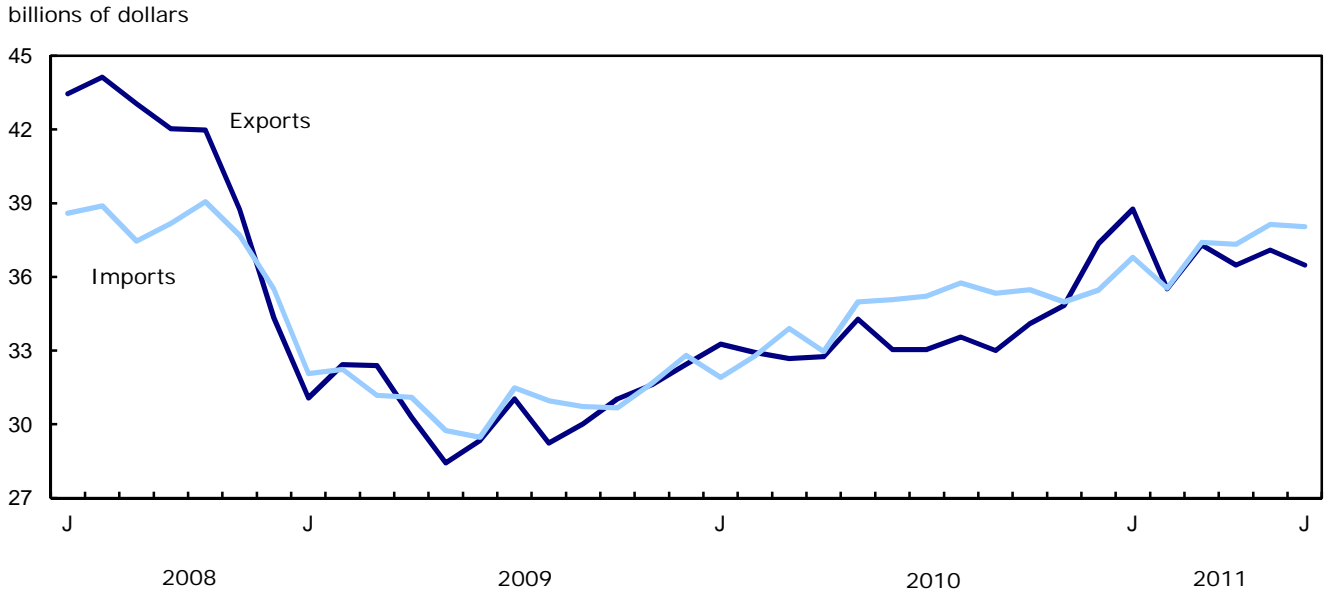
### Revisions

In general, merchandise trade data are revised on an ongoing basis for each month of the current year. Current year revisions are reflected in both the customs and BOP based data. The previous year's customs data are revised with the release of the January and February reference months as well as on a quarterly basis. The previous two years of customs based data are revised annually and are released in February with the December reference month. The previous year's BOP based data are revised with the release of the January, February and March reference months. Revisions to BOP based data for the previous three years are released annually in June with the April reference month.

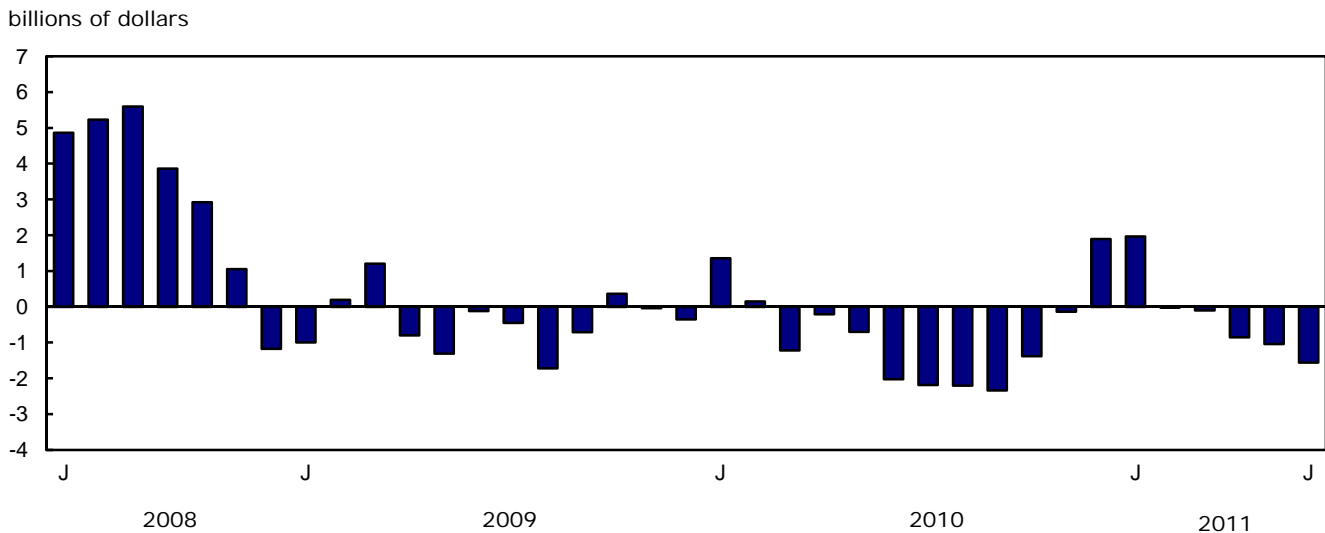
Factors influencing revisions include late receipt of import and export documentation, incorrect information on customs forms, replacement of estimates produced for the energy sector with actual figures, changes in classification of merchandise based on more current information, and changes to seasonal adjustment factors.

Revised data are available in the appropriate CANSIM tables.

**Chart 1**  
**Exports and imports, seasonally adjusted, on a balance of payments basis**



**Chart 2**  
**Trade balance, seasonally adjusted, on a balance of payments basis**





# Analysis

---

## Exports: Declines in energy products and automotive products

Exports of energy products dropped 5.1% to \$8.7 billion in June, the result of lower volumes and prices. The main contributors to this decline were petroleum and coal products as well as crude petroleum.

Exports of automotive products fell 5.3% to \$4.5 billion, largely the result of a 6.8% decline in passenger autos and chassis. This was due to a 7.7% drop in volume in passenger autos and chassis.

Exports of agricultural and fishing products declined 2.3% to \$3.2 billion in June. The decline was led by lower exports of other cereals unmilled, such as corn to Spain and Egypt, and canola to Japan.

Industrial goods and materials exports increased 0.9% to \$9.5 billion in June, on the strength of metals and alloys, and chemicals, plastics and fertilizers. These increases were partially offset by a decline in exports of metal ores, mainly nickel ores, concentrates and scrap.

## Imports: Energy products main factor in decline

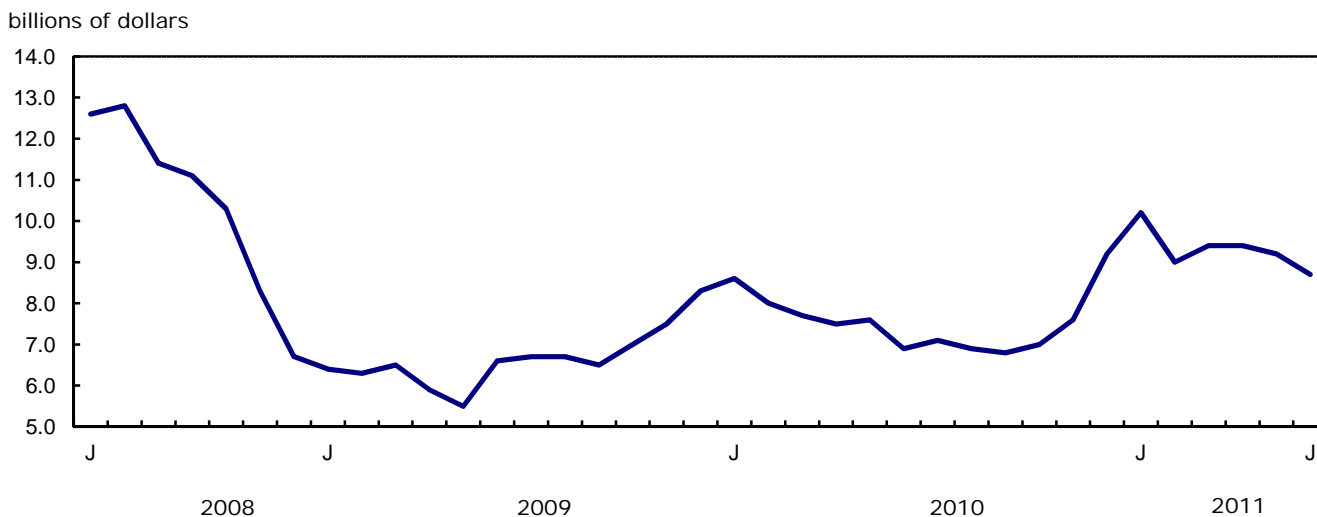
Imports of energy products dropped 11.7% to \$4.2 billion in June. Volumes were down 6.1% while prices fell 6.0%. Crude petroleum imports fell 22.1%, largely because of timing of shipment and plant shutdowns for maintenance.

Imports of industrial goods and materials declined 0.5% to \$8.2 billion in June. Imports of chemicals and plastics fell 2.6% while other industrial goods and materials declined 1.2%. Partially offsetting this decline was an increase in metals and metal ores, which reached a record high of \$3.5 billion.

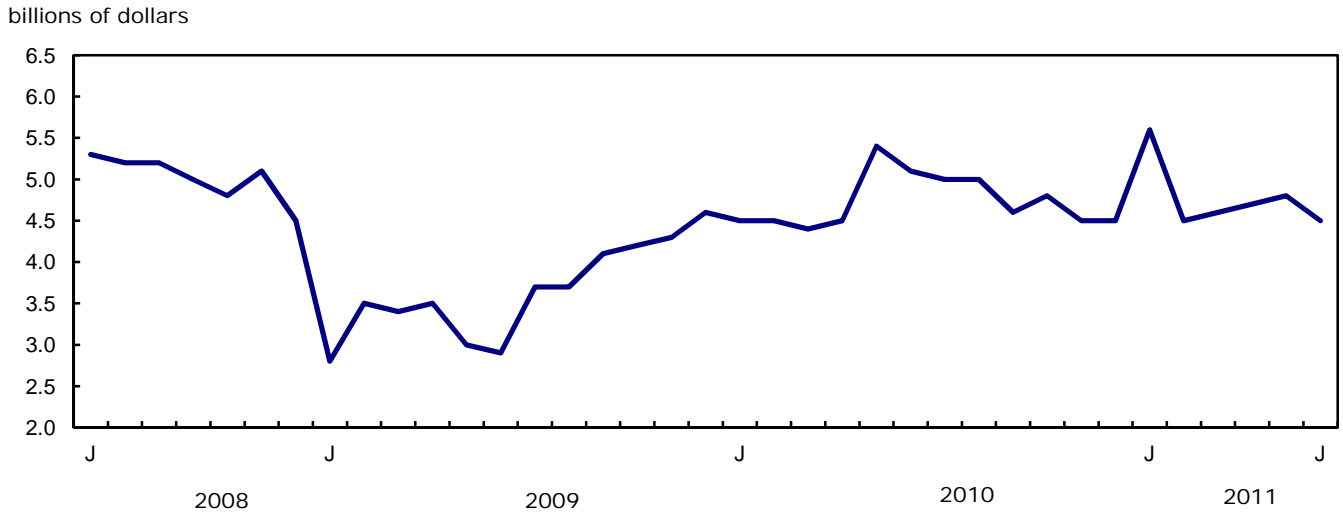
Imports of machinery and equipment increased for a fourth consecutive month, rising 2.5% to \$10.6 billion in June. Leading this gain was industrial and agricultural machinery, in particular drilling and mining machinery.

Imports of other consumer goods increased 2.1% to \$5.0 billion; the main contributor was apparel and footwear.

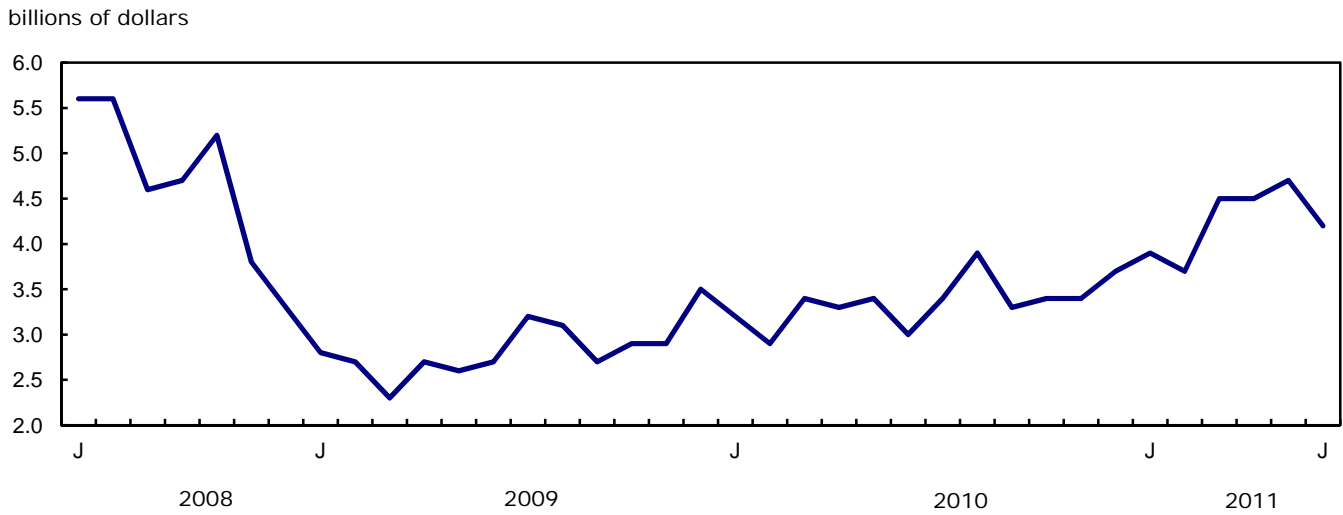
**Chart 1**  
**Exports of energy products, seasonally adjusted, on a balance of payments basis**



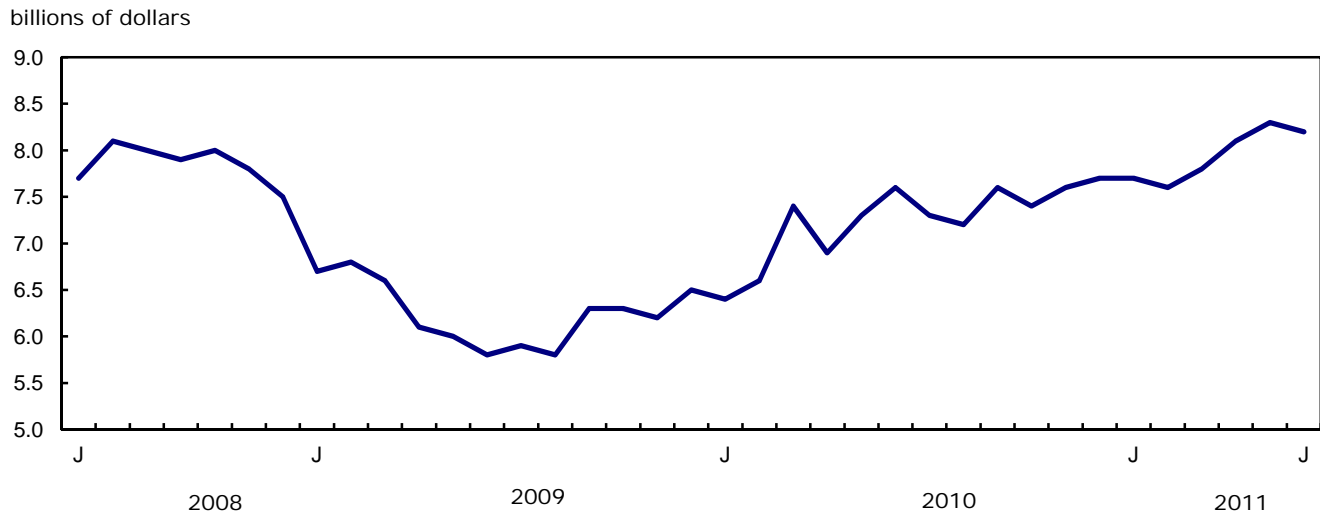
**Chart 2**  
**Exports of automotive products, seasonally adjusted, on a balance of payments basis**



**Chart 3**  
**Imports of energy products, seasonally adjusted, on a balance of payments basis**



**Chart 4**  
Imports of industrial goods and materials, seasonally adjusted, on a balance of payments basis



**Text table 1**  
Merchandise trade by principal trading area, balance of payments basis, seasonally adjusted

	May	June	Change	Year to date			June 2011/ June 2010		
	2011	2011		2010	2011	Change			
	millions of dollars		percent		millions of dollars		percent		
<b>Export to</b>									
United States	27,099	26,454	-645	-2.4	148,545	162,336	13,791	9.3	6.5
Japan	942	749	-194	-20.6	4,551	5,511	960	21.1	-12.0
European Union <sup>1</sup>	3,352	3,298	-54	-1.6	16,144	19,202	3,058	18.9	34.1
Other Organisation for Economic Co-operation and Development <sup>2</sup>	1,625	1,570	-56	-3.4	8,975	9,762	787	8.8	11.2
Other countries	4,077	4,410	334	8.2	20,726	24,829	4,103	19.8	26.9
<b>Total</b>	<b>37,095</b>	<b>36,481</b>	<b>-615</b>	<b>-1.7</b>	<b>198,941</b>	<b>221,640</b>	<b>22,699</b>	<b>11.4</b>	<b>10.4</b>
<b>Imports from</b>									
United States	23,372	22,826	-546	-2.3	127,807	136,549	8,742	6.8	1.8
Japan	619	633	14	2.3	4,981	4,183	-799	-16.0	-34.2
European Union <sup>1</sup>	3,725	4,045	320	8.6	19,312	22,727	3,416	17.7	30.6
Other Organisation for Economic Co-operation and Development <sup>2</sup>	2,696	2,691	-4	-0.2	14,376	16,442	2,066	14.4	15.6
Other countries	7,721	7,847	126	1.6	35,120	43,342	8,222	23.4	25.6
<b>Total</b>	<b>38,132</b>	<b>38,042</b>	<b>-91</b>	<b>-0.2</b>	<b>201,596</b>	<b>223,244</b>	<b>21,647</b>	<b>10.7</b>	<b>8.5</b>
<b>Balance</b>									
United States	3,728	3,628	-99	...	20,738	25,787	5,049	...	...
Japan	324	116	-208	...	-430	1,328	1,758	...	...
European Union <sup>1</sup>	-374	-747	-373	...	-3,168	-3,525	-358	...	...
Other Organisation for Economic Co-operation and Development <sup>2</sup>	-1,070	-1,122	-51	...	-5,401	-6,680	-1,279	...	...
Other countries	-3,644	-3,437	208	...	-14,394	-18,513	-4,119	...	...
<b>Total</b>	<b>-1,037</b>	<b>-1,561</b>	<b>-524</b>	<b>...</b>	<b>-2,656</b>	<b>-1,604</b>	<b>1,052</b>	<b>...</b>	<b>...</b>

1. European Union includes: Austria, Belgium, Bulgaria, Cyprus, Czech Republic, Denmark, Estonia, Finland, France, Germany, Greece, Hungary, Ireland, Italy, Latvia, Lithuania, Luxembourg, Malta, Netherlands, Poland, Portugal, Romania, Slovakia, Slovenia, Spain, Sweden and United Kingdom.

2. Other Organisation for Economic Co-operation and Development includes: Australia, Canada, Iceland, Mexico, New Zealand, Norway, South Korea, Switzerland and Turkey.

**Text table 2**  
**Reconciliation of customs and balance of payments trade data, not seasonally adjusted**

	2011						2010
	June	May	April	March	February	January	Annual
	millions of dollars						
<b>Exports</b>							
<b>Customs basis</b>	<b>37,354</b>	<b>37,198</b>	<b>34,898</b>	<b>39,117</b>	<b>32,449</b>	<b>34,893</b>	<b>399,434</b>
<b>Balance of payments adjustments</b>	<b>389</b>	<b>928</b>	<b>1,681</b>	<b>417</b>	<b>872</b>	<b>747</b>	<b>5,400</b>
Valuation and residency							
Inland freight	623	571	556	618	517	536	6,552
Other valuation and residency	-1,266	-1,152	-103	-996	-993	-923	-12,985
Timing	29	52	-32	-20	157	-5	48
Coverage	1,003	1,457	1,260	815	1,191	1,139	11,785
<b>Balance of payments basis</b>	<b>37,743</b>	<b>38,126</b>	<b>36,579</b>	<b>39,534</b>	<b>33,321</b>	<b>35,640</b>	<b>404,834</b>
<b>Imports</b>							
<b>Customs basis</b>	<b>38,392</b>	<b>37,423</b>	<b>35,952</b>	<b>38,877</b>	<b>32,706</b>	<b>33,078</b>	<b>403,713</b>
<b>Balance of payments adjustments</b>	<b>902</b>	<b>897</b>	<b>841</b>	<b>1,265</b>	<b>509</b>	<b>330</b>	<b>10,120</b>
Valuation and residency							
Inland freight	836	792	775	828	694	700	8,740
Other valuation and residency	-29	-59	-38	-45	-40	-73	7
Timing	0	0	0	0	0	0	0
Coverage	95	164	104	482	-145	-297	1,373
<b>Balance of payments basis</b>	<b>39,294</b>	<b>38,320</b>	<b>36,793</b>	<b>40,142</b>	<b>33,215</b>	<b>33,408</b>	<b>413,833</b>

## Related products

---

### Selected publications from Statistics Canada

---

65-208-X	International Merchandise Trade Annual Review
65-506-X	A Profile of Canadian Exporters
65F0013X	Canadian International Merchandise Trade Database
65F0019X	A Database for Analysis of International Markets
65F0020X	Data Integration - International Trade Data and Manufacturing Shipments Data

---

### Selected CANSIM tables from Statistics Canada

---

228-0001	Merchandise imports and exports, by major groups and principal trading areas for all countries, monthly
228-0002	Merchandise imports and exports, by major groups and principal trading areas for all countries, quarterly
228-0003	Merchandise imports and exports, by major groups and principal trading areas for all countries, annual
228-0033	Imports, customs-based, by province of clearance, monthly
228-0034	Domestic exports, customs-based, by province of origin, monthly
228-0041	Merchandise imports and exports by sector and sub-sector, customs and balance of payments basis, for all countries, monthly
228-0042	Merchandise imports and exports by sector and sub-sector, customs and balance of payments basis, for all countries, quarterly
228-0043	Merchandise imports and exports by sector and sub-sector, customs and balance of payments basis, for all countries, annual
228-0047	Merchandise imports and exports balance of payments and customs-based price and volume indexes for all countries, monthly
228-0048	Merchandise imports and exports balance of payments and customs-based price and volume indexes for all countries, quarterly
228-0049	Merchandise imports and exports balance of payments and customs-based price and volume indexes for all countries, annual

228-0050	Merchandise imports and exports customs-based price indexes, Canada and United States trade, and Standard International Trade Classification (SITC revision 3) price indexes for all countries and United States, monthly
228-0051	Merchandise imports and exports customs-based price indexes, Canada and United States trade, and Standard International Trade Classification (SITC revision 3) price indexes for all countries and United States, quarterly
228-0052	Merchandise imports and exports customs-based price indexes, Canada and United States trade, and Standard International Trade Classification (SITC revision 3) price indexes for all countries and United States, annual
228-0053	Merchandise import and export price and volume indexes by sector and sub-sector, customs and balance of payments basis, for all countries, monthly
228-0054	Merchandise import and export price and volume indexes by sector and sub-sector, customs and balance of payments basis, for all countries, quarterly
228-0055	Merchandise import and export price and volume indexes by sector and sub-sector, customs and balance of payments basis, for all countries, annual
228-0056	Merchandise imports and exports by sector, balance of payments basis, for all countries, seasonally adjusted, Fisher formula, monthly
228-0057	Merchandise imports and exports by sector, balance of payments basis, for all countries, seasonally adjusted, Fisher formula, quarterly

---

### **Selected surveys from Statistics Canada**

---

2201	Canadian International Merchandise Trade (Customs Basis)
2202	Canadian International Merchandise Trade (Balance of Payments Basis)
2203	International Trade Price Indexes

---

### **Selected summary tables from Statistics Canada**

---

- *Canada: Economic and financial data*
- *Imports, exports and trade balance of goods on a balance-of-payments basis, by country or country grouping*
- *Exports of goods on a balance-of-payments basis*

- *Imports of goods on a balance-of-payments basis*
- *Merchandise trade of Canada (monthly)*
- *Economic indicators, by province and territory (monthly and quarterly)*
- *Latest statistics (monthly)*

# Statistical tables

---

---



**Table 1-1**  
**Merchandise trade of Canada, balance of payments basis, seasonally adjusted — Current dollars**

	Exports	Imports	Trade balance	Period to period change			
				Exports		Imports	Balance
				millions of dollars	percent	millions of dollars	
2007	463,120	415,683	47,437	0.0	0.0	0	
2008	488,754	443,777	44,977	5.5	6.8	-2,460	
2009	369,343	374,081	-4,738	-24.4	-15.7	-49,715	
2010	404,834	413,833	-8,999	9.6	10.6	-4,261	
<b>2009</b>							
First quarter	95,888	95,487	400	-16.7	-14.9	-2,399	
Second quarter	88,071	90,304	-2,234	-8.2	-5.4	-2,634	
Third quarter	90,293	93,167	-2,873	2.5	3.2	-639	
Fourth quarter	95,092	95,123	-32	5.3	2.1	2,842	
<b>2010</b>							
First quarter	98,870	98,583	287	4.0	3.6	318	
Second quarter	100,071	103,014	-2,942	1.2	4.5	-3,229	
Third quarter	99,592	106,312	-6,720	-0.5	3.2	-3,778	
Fourth quarter	106,301	105,924	377	6.7	-0.4	7,097	
<b>2011</b>							
First quarter	111,584	109,738	1,846	5.0	3.6	1,469	
Second quarter	110,055	113,505	-3,450	-1.4	3.4	-5,296	
<b>2010</b>							
January	33,260	31,902	1,358	2.5	-2.7	1,714	
February	32,929	32,780	148	-1.0	2.8	-1,210	
March	32,681	33,901	-1,220	-0.8	3.4	-1,368	
April	32,749	32,962	-213	0.2	-2.8	1,007	
May	34,282	34,984	-702	4.7	6.1	-489	
June	33,040	35,068	-2,028	-3.6	0.2	-1,326	
July	33,040	35,220	-2,181	0.0	0.4	-153	
August	33,550	35,757	-2,207	1.5	1.5	-26	
September	33,002	35,335	-2,333	-1.6	-1.2	-126	
October	34,090	35,474	-1,384	3.3	0.4	949	
November	34,845	34,979	-134	2.2	-1.4	1,249	
December	37,366	35,471	1,895	7.2	1.4	2,029	
<b>2011</b>							
January	38,759	36,794	1,965	3.7	3.7	70	
February	35,517	35,539	-21	-8.4	-3.4	-1,986	
March	37,308	37,405	-97	5.0	5.3	-76	
April	36,479	37,331	-852	-2.2	-0.2	-755	
May	37,095	38,132	-1,037	1.7	2.1	-185	
June	36,481	38,042	-1,561	-1.7	-0.2	-524	

**Note(s):** Because of rounding, monthly data may not add up to quarterly data and quarterly data may not add up to annual data.

**Table 1-2**  
**Merchandise trade of Canada, balance of payments basis, seasonally adjusted — Constant dollars, 2002**

	Exports	Imports	Trade balance	Period to period change	
				Exports	Imports
	millions of dollars			percent	
2007	449,015	484,005	-34,990	0.0	0.0
2008	412,713	486,735	-74,022	-8.1	0.6
2009	346,916	407,679	-60,763	-15.9	-16.2
2010	374,143	470,401	-96,259	7.8	15.4
<b>2009</b>					
First quarter	87,361	98,563	-11,202	-9.7	-13.3
Second quarter	83,432	97,723	-14,290	-4.5	-0.9
Third quarter	86,976	104,165	-17,189	4.2	6.6
Fourth quarter	89,147	107,228	-18,081	2.5	2.9
<b>2010</b>					
First quarter	90,749	111,192	-20,442	1.8	3.7
Second quarter	94,368	117,650	-23,282	4.0	5.8
Third quarter	94,074	120,900	-26,826	-0.3	2.8
Fourth quarter	94,951	120,659	-25,708	0.9	-0.2
<b>2011</b>					
First quarter	97,162	124,799	-27,637	2.3	3.4
Second quarter	95,080	128,729	-33,649	-2.1	3.1
<b>2010</b>					
January	30,484	36,096	-5,612	1.2	-1.5
February	29,984	36,948	-6,964	-1.6	2.4
March	30,282	38,148	-7,866	1.0	3.2
April	30,882	37,943	-7,061	2.0	-0.5
May	32,065	39,600	-7,535	3.8	4.4
June	31,421	40,106	-8,686	-2.0	1.3
July	31,273	40,040	-8,767	-0.5	-0.2
August	31,897	40,711	-8,814	2.0	1.7
September	30,905	40,150	-9,245	-3.1	-1.4
October	31,313	40,563	-9,250	1.3	1.0
November	31,041	39,832	-8,790	-0.9	-1.8
December	32,597	40,265	-7,668	5.0	1.1
<b>2011</b>					
January	33,786	42,108	-8,322	3.6	4.6
February	31,090	40,421	-9,331	-8.0	-4.0
March	32,286	42,271	-9,984	3.8	4.6
April	31,457	42,794	-11,337	-2.6	1.2
May	32,163	42,560	-10,397	2.2	-0.5
June	31,460	43,375	-11,915	-2.2	1.9

**Note(s):** Because of rounding, monthly data may not add up to quarterly data and quarterly data may not add up to annual data.

**Table 1-3**  
**Merchandise trade of Canada, balance of payments basis, seasonally adjusted — Price indices (Laspeyres)**

	2002=100			Period to period change		
	Exports	Imports	Terms of trade	Exports	Imports	Terms of trade
	price indices (Laspeyres)			percent		
2007	107.1	91.4	117.1	0.0	0.0	0.0
2008	116.2	97.2	119.6	8.5	6.3	2.2
2009	105.2	96.2	109.3	-9.5	-1.0	-8.5
2010	106.8	94.1	113.4	1.5	-2.2	3.7
<b>2009</b>						
First quarter	108.8	100.8	107.9	-3.9	-2.8	-1.1
Second quarter	104.6	96.8	108.0	-3.8	-4.0	0.1
Third quarter	102.9	94.1	109.3	-1.6	-2.8	1.2
Fourth quarter	105.3	93.0	113.2	2.3	-1.2	3.5
<b>2010</b>						
First quarter	107.1	93.7	114.2	1.7	0.7	0.9
Second quarter	105.7	93.6	112.9	-1.3	-0.1	-1.2
Third quarter	106.1	94.5	112.3	0.4	0.9	-0.5
Fourth quarter	108.2	94.6	114.4	2.0	0.1	1.9
<b>2011</b>						
First quarter	111.6	95.9	116.4	3.1	1.4	1.7
Second quarter	113.2	98.6	114.7	1.5	2.9	-1.4
<b>2010</b>						
January	107.2	93.9	114.2	1.0	0.0	1.0
February	108.1	95.1	113.7	0.8	1.3	-0.5
March	106.0	93.8	113.0	-1.9	-1.3	-0.6
April	105.2	92.1	114.3	-0.8	-1.8	1.1
May	106.3	94.5	112.5	1.0	2.6	-1.6
June	105.6	94.0	112.3	-0.7	-0.5	-0.2
July	104.8	93.8	111.7	-0.7	-0.2	-0.5
August	105.9	94.1	112.5	1.0	0.3	0.7
September	106.7	93.9	113.6	0.8	-0.2	1.0
October	107.5	93.9	114.5	0.7	-0.1	0.7
November	109.0	94.8	115.0	1.4	1.0	0.5
December	110.8	95.4	116.1	1.6	0.7	1.0
<b>2011</b>						
January	111.3	95.7	116.3	0.5	0.3	0.1
February	111.6	97.2	114.9	0.3	1.5	-1.3
March	112.4	97.0	115.8	0.7	-0.1	0.8
April	113.1	96.9	116.8	0.7	-0.1	0.8
May	113.1	98.6	114.6	-0.1	1.8	-1.8
June	113.2	99.8	113.5	0.1	1.2	-1.0

**Note(s):** Because of rounding, monthly data may not add up to quarterly data and quarterly data may not add up to annual data.

**Table 2-1**  
**Exports by commodity groupings, balance of payments basis, seasonally adjusted — Current dollars**

	May	June	Change		Year to date			June 2011/ June 2010	
	2011	2011			2010	2011	Change		
	millions of dollars		percent		millions of dollars		percent		
<b>Total</b>	<b>37,095</b>	<b>36,481</b>	<b>-615</b>	<b>-1.7</b>	<b>198,941</b>	<b>221,640</b>	<b>22,699</b>	<b>11.4</b>	<b>10.4</b>
<b>Agricultural and fishing products</b>	<b>3,314</b>	<b>3,239</b>	<b>-75</b>	<b>-2.3</b>	<b>17,876</b>	<b>19,388</b>	<b>1,512</b>	<b>8.5</b>	<b>6.5</b>
Wheat	422	514	92	21.7	2,168	2,537	369	17.0	24.7
Other agricultural and fishing products	2,892	2,725	-167	-5.8	15,708	16,850	1,142	7.3	3.6
Live animals	118	129	12	10.0	912	701	-211	-23.1	-24.3
Fish and fish preparations	406	355	-52	-12.7	2,047	2,162	115	5.6	7.4
Barley	25	13	-11	-46.1	145	159	14	9.3	-41.5
Wheat flour	6	6	0	-5.2	39	39	0	-0.4	-3.4
Other cereals unmilled	156	49	-107	-68.7	220	532	313	142.4	22.7
Other cereal preparations	243	238	-5	-2.1	1,383	1,410	28	2.0	0.4
Meat and meat preparations	405	396	-9	-2.3	2,349	2,377	28	1.2	-4.2
Alcoholic beverages	58	56	-2	-3.7	382	357	-25	-6.6	-7.9
Other food, feed, beverages and tobacco	957	974	18	1.8	5,544	5,839	295	5.3	6.7
Rapeseed	350	274	-76	-21.8	1,539	2,000	462	30.0	3.3
Other crude vegetable products	168	235	67	39.7	1,149	1,274	125	10.8	37.4
<b>Energy products</b>	<b>9,217</b>	<b>8,745</b>	<b>-472</b>	<b>-5.1</b>	<b>46,299</b>	<b>55,994</b>	<b>9,695</b>	<b>20.9</b>	<b>27.2</b>
Crude petroleum	5,263	5,101	-162	-3.1	25,579	33,914	8,334	32.6	44.2
Natural gas	1,279	1,265	-14	-1.1	8,302	7,214	-1,088	-13.1	-0.8
Other energy products	2,675	2,379	-295	-11.0	12,418	14,866	2,448	19.7	15.4
Coal and other bituminous substances	655	677	22	3.4	2,408	3,140	732	30.4	31.8
Petroleum and coal products	1,825	1,552	-273	-15.0	8,905	10,747	1,842	20.7	12.4
Electricity	195	150	-45	-23.1	1,106	979	-127	-11.4	-10.9
<b>Forestry products</b>	<b>1,897</b>	<b>1,926</b>	<b>29</b>	<b>1.5</b>	<b>10,756</b>	<b>11,419</b>	<b>663</b>	<b>6.2</b>	<b>1.8</b>
Lumber and sawmill products	693	723	30	4.4	4,067	4,272	204	5.0	1.0
Other crude wood products	71	85	14	19.7	338	453	115	33.9	39.4
Lumber	430	451	21	4.9	2,472	2,697	224	9.1	-1.0
Other wood fabricated materials	191	186	-5	-2.6	1,256	1,121	-135	-10.7	-6.4
Wood pulp and other wood products	578	556	-22	-3.8	2,961	3,422	461	15.6	5.4
Newsprint and other paper and paperboard	626	647	21	3.3	3,728	3,725	-3	-0.1	-0.4
Newsprint paper	324	335	11	3.4	1,861	1,935	75	4.0	-0.3
Other paper and paperboard	302	312	10	3.3	1,868	1,790	-77	-4.1	-0.4
<b>Industrial goods and materials</b>	<b>9,459</b>	<b>9,544</b>	<b>85</b>	<b>0.9</b>	<b>46,043</b>	<b>55,841</b>	<b>9,798</b>	<b>21.3</b>	<b>28.7</b>
Metal ores	1,384	1,063	-321	-23.2	5,761	7,709	1,947	33.8	8.8
Iron ores, concentrates and scrap	413	401	-12	-3.0	2,106	2,724	618	29.3	9.9
Copper ores, concentrates and scrap	320	291	-30	-9.2	1,065	1,546	481	45.2	60.2
Nickel ores, concentrates and scrap	318	83	-234	-73.8	1,286	1,591	306	23.8	-51.6
Zinc ores, concentrates and scrap	31	27	-4	-13.2	138	141	2	1.7	-17.2
Other ores, concentrates and scrap	301	261	-41	-13.5	1,166	1,707	541	46.4	15.3
Chemicals, plastics and fertilizers	3,117	3,288	171	5.5	14,920	17,783	2,862	19.2	28.0
Inorganic chemicals	534	529	-5	-1.0	2,183	3,028	845	38.7	27.4
Organic chemicals	657	651	-6	-0.9	3,157	3,643	486	15.4	29.6
Fertilizers and fertilizer materials	696	860	165	23.7	2,997	3,844	847	28.3	89.9
Synthetic rubber and plastics	946	956	10	1.0	4,993	5,625	632	12.7	11.6
Other chemical products	285	292	7	2.6	1,590	1,642	52	3.3	-14.7
Metals and alloys	3,431	3,607	176	5.1	17,035	20,994	3,959	23.2	40.4
Primary iron and steel	83	96	13	16.1	626	443	-183	-29.2	-8.6
Steel bars, rods, plates, sheets	350	308	-42	-12.0	1,759	1,835	76	4.3	-1.4
Other iron and steel and alloys	238	235	-2	-1.0	1,348	1,388	40	2.9	19.3
Aluminum including alloys	699	686	-13	-1.9	3,762	3,950	188	5.0	10.0
Copper and alloys	193	174	-19	-10.0	1,511	1,237	-274	-18.1	-16.4
Nickel and alloys	261	276	15	5.7	858	1,736	878	102.3	76.0
Precious metals and alloys	1,403	1,625	223	15.9	5,899	9,124	3,225	54.7	106.8
Zinc and alloys	104	101	-3	-2.9	738	656	-81	-11.0	7.6
Other non-ferrous metals and alloys	100	106	5	5.4	533	624	91	17.0	21.5

Table 2-1 – continued

## Exports by commodity groupings, balance of payments basis, seasonally adjusted — Current dollars

	May	June	Change	Year to date			June 2011/ June 2010		
	2011	2011		2010	2011	Change			
	millions of dollars		percent		millions of dollars		percent		
Other industrial goods and materials	1,527	1,585	59	3.9	8,326	9,356	1,030	12.4	21.7
Asbestos unmanufactured	2	3	1	22.8	28	21	-8	-26.5	-31.5
Other crude animal products	54	105	51	95.8	452	479	27	5.9	30.8
Other crude non-metallic minerals	322	289	-32	-10.0	1,742	1,924	182	10.5	68.8
Other crude materials, inedible	64	66	3	4.3	340	388	49	14.3	15.4
Metal fabricated basic products	361	369	9	2.4	2,053	2,165	112	5.4	6.1
Textile fabricated materials	181	184	3	1.6	1,070	1,090	21	1.9	1.5
Non-metallic mineral basic products	159	162	3	2.1	931	955	24	2.5	1.0
Other fabricated materials	385	406	21	5.5	1,710	2,334	624	36.5	36.0
<b>Machinery and equipment</b>	<b>6,337</b>	<b>6,400</b>	<b>63</b>	<b>1.0</b>	<b>36,545</b>	<b>37,753</b>	<b>1,207</b>	<b>3.3</b>	<b>-2.1</b>
Industrial and agricultural machinery	1,574	1,694	121	7.7	8,722	9,464	742	8.5	5.5
Industrial machinery	1,410	1,526	116	8.2	7,817	8,508	691	8.8	5.3
Agricultural machinery includ. tractors	164	169	5	3.0	905	956	51	5.7	7.8
Aircraft and other transportation equipment	1,385	1,408	23	1.6	8,432	8,365	-66	-0.8	-9.2
Aircraft, engines, parts	1,014	1,020	5	0.5	6,611	6,185	-426	-6.4	-16.9
Other transportation equipment	371	388	17	4.6	1,820	2,180	360	19.8	20.0
Other machinery and equipment	3,378	3,298	-80	-2.4	19,392	19,923	531	2.7	-2.5
Television, telecommunication equipment	606	619	13	2.1	3,657	3,612	-45	-1.2	-3.6
Office machines and equipment	358	344	-14	-3.8	2,084	2,118	35	1.7	-4.3
Other equipment and tools	1,591	1,555	-36	-2.2	8,968	9,278	310	3.5	0.8
Other end products, inedible	824	780	-44	-5.4	4,683	4,914	232	4.9	-7.0
<b>Automotive products</b>	<b>4,794</b>	<b>4,539</b>	<b>-255</b>	<b>-5.3</b>	<b>28,375</b>	<b>28,700</b>	<b>325</b>	<b>1.1</b>	<b>-11.0</b>
Passenger autos and chassis	3,126	2,915	-212	-6.8	18,952	18,891	-60	-0.3	-15.0
Trucks and other motor vehicles	204	217	13	6.5	1,066	1,254	188	17.6	30.9
Motor vehicle parts	1,463	1,407	-57	-3.9	8,357	8,554	197	2.4	-6.5
<b>Other consumer goods</b>	<b>1,331</b>	<b>1,290</b>	<b>-40</b>	<b>-3.0</b>	<b>8,324</b>	<b>7,797</b>	<b>-527</b>	<b>-6.3</b>	<b>-7.1</b>
<b>Special transactions trade</b>	<b>304</b>	<b>326</b>	<b>22</b>	<b>7.3</b>	<b>2,127</b>	<b>1,932</b>	<b>-194</b>	<b>-9.1</b>	<b>-12.1</b>
<b>Unallocated balance of payments   adjustments</b>	<b>443</b>	<b>472</b>	<b>29</b>	<b>6.5</b>	<b>2,596</b>	<b>2,817</b>	<b>221</b>	<b>8.5</b>	<b>14.8</b>

**Table 2-2**  
**Exports by commodity groupings, balance of payments basis, seasonally adjusted — Constant dollars, 2002**

	May	June	Change		Year to date			June 2011/ June 2010	
	2011	2011			2010		2011		
	millions of dollars		percent		millions of dollars		percent		
<b>Total</b>	<b>32,163</b>	<b>31,460</b>	<b>-703</b>	<b>-2.2</b>	<b>185,117</b>	<b>192,242</b>	<b>7,125</b>	<b>3.8</b>	<b>0.1</b>
<b>Agricultural and fishing products</b>	<b>2,961</b>	<b>2,865</b>	<b>-96</b>	<b>-3.2</b>	<b>18,871</b>	<b>17,737</b>	<b>-1,134</b>	<b>-6.0</b>	<b>-8.5</b>
Wheat	308	357	48	15.7	2,362	1,865	-496	-21.0	-20.0
Other agricultural and fishing products	2,652	2,509	-144	-5.4	16,510	15,872	-638	-3.9	-6.6
Live animals	120	129	8	7.1	1,066	688	-378	-35.5	-34.8
Fish and fish preparations	408	369	-39	-9.5	2,616	2,419	-197	-7.5	-6.0
Barley	20	13	-8	-37.0	141	125	-16	-11.1	-41.7
Wheat flour	5	5	0	-4.5	38	33	-5	-12.3	-17.8
Other cereals unmilled	104	35	-69	-66.6	270	378	108	39.9	-24.3
Other cereal preparations	220	213	-6	-2.9	1,234	1,275	41	3.4	2.4
Meat and meat preparations	407	389	-18	-4.4	2,647	2,405	-242	-9.2	-11.2
Alcoholic beverages	112	112	0	-0.4	745	712	-32	-4.4	0.2
Other food, feed, beverages and tobacco	872	870	-2	-0.2	5,215	5,398	183	3.5	2.2
Rapeseed	247	188	-59	-23.8	1,480	1,426	-54	-3.7	-27.0
Other crude vegetable products	136	184	49	36.0	1,057	1,012	-45	-4.3	19.7
<b>Energy products</b>	<b>4,867</b>	<b>4,698</b>	<b>-168</b>	<b>-3.5</b>	<b>27,739</b>	<b>29,637</b>	<b>1,898</b>	<b>6.8</b>	<b>2.9</b>
Crude petroleum	2,167	2,188	21	1.0	12,225	14,142	1,917	15.7	8.9
Natural gas	1,374	1,363	-11	-0.8	8,219	8,251	31	0.4	-0.1
Other energy products	1,326	1,148	-178	-13.4	7,295	7,244	-51	-0.7	-3.8
Coal and other bituminous substances	158	156	-3	-1.7	958	842	-116	-12.1	-4.3
Petroleum and coal products	862	784	-78	-9.1	5,043	5,080	37	0.7	-5.7
Electricity	305	208	-97	-31.9	1,294	1,322	28	2.2	4.3
<b>Forestry products</b>	<b>2,348</b>	<b>2,370</b>	<b>22</b>	<b>0.9</b>	<b>13,138</b>	<b>13,991</b>	<b>853</b>	<b>6.5</b>	<b>6.3</b>
Lumber and sawmill products	949	979	29	3.1	5,124	5,648	524	10.2	10.2
Other crude wood products	86	101	15	18.0	437	561	124	28.5	48.3
Lumber	626	650	24	3.8	3,369	3,751	382	11.4	4.7
Other wood fabricated materials	238	228	-10	-4.2	1,318	1,335	17	1.3	14.4
Wood pulp and other wood products	677	658	-19	-2.8	3,579	4,056	477	13.3	10.3
Newsprint and other paper and paperboard	721	733	12	1.6	4,436	4,287	-148	-3.3	-1.7
Newsprint paper	378	383	4	1.2	2,275	2,241	-34	-1.5	-3.2
Other paper and paperboard	343	350	7	2.2	2,161	2,046	-114	-5.3	0.0
<b>Industrial goods and materials</b>	<b>5,728</b>	<b>5,667</b>	<b>-61</b>	<b>-1.1</b>	<b>32,260</b>	<b>34,023</b>	<b>1,764</b>	<b>5.5</b>	<b>8.8</b>
Metal ores	571	436	-136	-23.7	2,858	3,222	364	12.7	-8.6
Iron ores, concentrates and scrap	149	141	-7	-4.8	968	1,024	56	5.8	-1.2
Copper ores, concentrates and scrap	92	85	-8	-8.1	370	439	69	18.6	25.2
Nickel ores, concentrates and scrap	129	36	-94	-72.4	602	624	22	3.7	-58.0
Zinc ores, concentrates and scrap	17	15	-3	-15.4	75	73	-2	-2.2	-29.9
Other ores, concentrates and scrap	184	160	-25	-13.4	844	1,062	218	25.8	-0.6
Chemicals, plastics and fertilizers	1,997	2,036	39	1.9	10,759	11,671	911	8.5	9.5
Inorganic chemicals	204	212	8	3.8	1,114	1,179	65	5.9	0.0
Organic chemicals	312	307	-5	-1.6	1,815	1,815	0	0.0	7.3
Fertilizers and fertilizer materials	274	334	60	21.8	1,309	1,529	220	16.8	69.9
Synthetic rubber and plastics	883	847	-35	-4.0	4,610	5,232	622	13.5	9.4
Other chemical products	323	335	12	3.6	1,912	1,915	3	0.2	-14.1

Table 2-2 – continued

## Exports by commodity groupings, balance of payments basis, seasonally adjusted — Constant dollars, 2002

	May	June	Change		Year to date			June 2011/ June 2010	
	2011	2011			2010		2011		
	millions of dollars		percent		millions of dollars		percent		
<b>Metals and alloys</b>	<b>1,868</b>	<b>1,881</b>	<b>13</b>	<b>0.7</b>	<b>10,965</b>	<b>11,245</b>	<b>280</b>	<b>2.6</b>	<b>8.9</b>
Primary iron and steel	52	57	5	9.8	437	280	-157	-36.0	-19.3
Steel bars, rods, plates, sheets	256	224	-32	-12.6	1,471	1,419	-52	-3.5	-13.0
Other iron and steel and alloys	181	180	-2	-0.8	1,134	1,100	-34	-3.0	13.1
Aluminum including alloys	663	652	-12	-1.7	3,895	3,751	-144	-3.7	-6.0
Copper and alloys	49	44	-6	-11.4	497	320	-177	-35.6	-39.2
Nickel and alloys	118	129	11	9.4	451	739	289	64.0	60.3
Precious metals and alloys	441	487	46	10.5	2,435	2,982	547	22.5	66.0
Zinc and alloys	60	60	-1	-0.9	413	367	-46	-11.0	-1.2
Other non-ferrous metals and alloys	47	49	2	5.1	233	288	54	23.4	20.5
<b>Other industrial goods and materials</b>	<b>1,292</b>	<b>1,315</b>	<b>23</b>	<b>1.8</b>	<b>7,677</b>	<b>7,886</b>	<b>209</b>	<b>2.7</b>	<b>15.0</b>
Asbestos unmanufactured	2	3	1	25.2	29	21	-8	-28.4	-33.6
Other crude animal products	52	81	29	56.7	466	434	-32	-6.8	6.6
Other crude non-metallic minerals	297	265	-32	-10.8	1,781	1,755	-26	-1.4	81.5
Other crude materials, inedible	57	60	3	5.0	318	357	39	12.4	11.9
Metal fabricated basic products	287	296	8	2.9	1,660	1,720	60	3.6	4.0
Textile fabricated materials	197	195	-2	-1.0	1,152	1,161	9	0.8	3.5
Non-metallic mineral basic products	132	134	2	1.4	775	793	18	2.3	1.8
Other fabricated materials	268	281	14	5.1	1,496	1,645	148	9.9	8.4
<b>Machinery and equipment</b>	<b>7,261</b>	<b>7,275</b>	<b>14</b>	<b>0.2</b>	<b>40,738</b>	<b>42,939</b>	<b>2,201</b>	<b>5.4</b>	<b>1.0</b>
Industrial and agricultural machinery	1,490	1,604	114	7.6	8,066	8,963	898	11.1	8.9
Industrial machinery	1,338	1,446	108	8.0	7,236	8,070	834	11.5	8.4
Agricultural machinery includ. tractors	152	158	6	3.9	830	894	64	7.7	14.0
Aircraft and other transportation equipment	1,739	1,754	15	0.9	10,415	10,447	33	0.3	-8.5
Aircraft, engines, parts	1,364	1,366	2	0.2	8,590	8,250	-340	-4.0	-14.3
Other transportation equipment	375	387	13	3.4	1,825	2,197	372	20.4	19.8
Other machinery and equipment	4,032	3,918	-114	-2.8	22,258	23,529	1,271	5.7	2.8
Television, telecommunication equipment	801	817	17	2.1	4,647	4,734	87	1.9	1.5
Office machines and equipment	1,017	974	-43	-4.2	5,182	5,913	731	14.1	7.9
Other equipment and tools	1,540	1,496	-44	-2.9	8,508	8,879	372	4.4	2.2
Other end products, inedible	674	630	-44	-6.5	3,922	4,003	81	2.1	-1.7
<b>Automotive products</b>	<b>6,610</b>	<b>6,187</b>	<b>-423</b>	<b>-6.4</b>	<b>37,837</b>	<b>39,312</b>	<b>1,475</b>	<b>3.9</b>	<b>-8.7</b>
Passenger autos and chassis	4,718	4,356	-362	-7.7	27,342	28,247	905	3.3	-11.5
Trucks and other motor vehicles	255	268	13	5.1	1,288	1,538	251	19.5	32.4
Motor vehicle parts	1,638	1,564	-74	-4.5	9,207	9,527	319	3.5	-5.1
<b>Other consumer goods</b>	<b>1,279</b>	<b>1,236</b>	<b>-43</b>	<b>-3.3</b>	<b>7,985</b>	<b>7,520</b>	<b>-465</b>	<b>-5.8</b>	<b>-7.2</b>
<b>Special transactions trade</b>	<b>253</b>	<b>271</b>	<b>18</b>	<b>7.1</b>	<b>1,934</b>	<b>1,639</b>	<b>-295</b>	<b>-15.2</b>	<b>-21.2</b>
<b>Unallocated balance of payments adjustments</b>	<b>857</b>	<b>890</b>	<b>33</b>	<b>3.9</b>	<b>4,615</b>	<b>5,444</b>	<b>828</b>	<b>17.9</b>	<b>40.8</b>

**Table 3-1**  
**Domestic exports to selected countries, customs basis, not seasonally adjusted — June**

	Agricultural and fishing products	Energy products	Forestry products	Industrial goods	Machinery and equipment	Automotive products	Consumer goods	Special transactions trade	<b>Total</b>
millions of dollars									
<b>United States</b>									
2010	1,698.1	7,376.0	1,223.9	4,534.6	3,841.9	5,096.0	903.8	305.5	<b>24,979.8</b>
2011	1,693.7	8,920.8	1,085.0	5,246.6	3,627.8	4,414.1	769.4	285.4	<b>26,042.7</b>
<b>Mexico</b>									
2010	88.6	44.4	11.9	81.3	70.3	73.1	4.7	6.6	<b>380.9</b>
2011	134.2	14.8	13.4	114.0	54.9	55.5	6.1	0.0	<b>392.9</b>
<b>Japan</b>									
2010	302.2	168.8	133.0	193.5	75.4	5.3	9.1	1.0	<b>888.4</b>
2011	290.6	138.7	149.2	134.3	34.2	3.3	6.5	1.6	<b>758.4</b>
<b>European Union</b>									
<b>Germany</b>									
2010	10.8	13.2	7.7	126.5	100.3	3.2	16.8	4.5	<b>283.0</b>
2011	12.2	0.4	7.5	86.2	167.3	2.8	17.0	4.1	<b>297.6</b>
<b>France</b>									
2010	12.9	11.6	10.5	45.8	85.6	4.5	19.4	2.3	<b>192.6</b>
2011	10.9	40.5	16.9	60.9	83.7	2.5	14.4	3.2	<b>233.0</b>
<b>United Kingdom</b>									
2010	31.2	0.7	20.0	557.2	217.0	5.3	18.4	5.3	<b>855.1</b>
2011	38.1	3.4	18.7	1,175.5	137.5	5.2	17.0	5.2	<b>1,400.5</b>
<b>Italy</b>									
2010	21.9	27.1	24.4	23.8	37.9	0.9	23.3	1.5	<b>160.6</b>
2011	29.3	0.1	26.4	30.2	37.6	0.4	5.7	0.2	<b>129.8</b>
<b>Other European Union</b>									
2010	50.5	45.4	23.1	210.2	243.9	13.2	55.5	6.8	<b>648.7</b>
2011	77.3	109.2	23.9	353.5	161.4	13.1	45.1	2.9	<b>786.6</b>
<b>Total</b>									
2010	127.2	98.0	85.7	963.5	684.6	27.1	133.5	20.4	<b>2,140.0</b>
2011	167.8	153.6	93.4	1,706.4	587.5	23.9	99.2	15.7	<b>2,847.6</b>
<b>Newly industrialized countries</b>									
<b>South Korea</b>									
2010	31.0	69.1	63.7	60.7	39.9	6.1	4.0	1.2	<b>275.6</b>
2011	81.9	161.2	55.6	72.1	21.4	4.2	3.7	0.7	<b>400.7</b>
<b>Hong Kong</b>									
2010	36.5	0.1	10.3	78.7	21.3	0.7	5.0	0.5	<b>153.2</b>
2011	33.6	0.1	12.0	95.1	20.6	0.9	6.7	0.2	<b>169.2</b>
<b>Taiwan</b>									
2010	12.1	0.2	23.1	39.7	9.8	0.1	5.5	0.1	<b>90.4</b>
2011	13.3	0.1	23.8	51.6	10.0	0.1	3.0	0.2	<b>102.0</b>
<b>Singapore</b>									
2010	5.8	0.6	1.2	12.8	25.6	0.7	1.9	0.7	<b>49.2</b>
2011	2.9	0.4	0.9	10.3	27.3	1.0	3.0	0.3	<b>46.0</b>
<b>Total</b>									
2010	85.4	70.0	98.2	191.9	96.5	7.6	16.4	2.4	<b>568.4</b>
2011	131.8	161.8	92.2	229.1	79.3	6.1	16.4	1.3	<b>717.9</b>
<b>Other countries</b>									
2010	712.0	267.3	434.6	1,017.4	714.8	45.3	96.0	20.6	<b>3,307.9</b>
2011	811.2	404.8	584.4	1,507.6	812.4	66.9	103.2	18.7	<b>4,309.1</b>
<b>Total</b>									
2010	<b>3,013.5</b>	<b>8,024.4</b>	<b>1,987.4</b>	<b>6,982.3</b>	<b>5,483.6</b>	<b>5,254.4</b>	<b>1,163.5</b>	<b>356.4</b>	<b>32,265.6</b>
2011	<b>3,229.2</b>	<b>9,794.6</b>	<b>2,017.6</b>	<b>8,937.8</b>	<b>5,196.2</b>	<b>4,569.8</b>	<b>1,000.8</b>	<b>322.7</b>	<b>35,068.7</b>



**Table 3-2**  
**Domestic exports to selected countries, customs basis, not seasonally adjusted — Year to date, January to June**

	Agricultural and fishing products	Energy products	Forestry products	Industrial goods	Machinery and equipment	Automotive products	Consumer goods	Special transactions trade	<b>Total</b>
millions of dollars									
<b>United States</b>									
2010	9,103.7	44,036.4	6,951.7	27,568.2	20,048.7	26,243.5	4,951.9	1,605.1	<b>140,509.2</b>
2011	9,189.1	50,469.8	6,500.8	31,537.7	20,667.3	26,355.7	4,325.8	1,481.2	<b>150,527.3</b>
<b>Mexico</b>									
2010	642.4	60.0	68.1	483.6	351.1	423.4	44.6	8.2	<b>2,081.3</b>
2011	676.7	68.5	73.5	588.2	383.8	323.0	40.8	2.0	<b>2,156.7</b>
<b>Japan</b>									
2010	1,509.5	934.9	664.6	779.3	303.5	35.5	63.6	6.3	<b>4,297.2</b>
2011	1,905.9	956.7	694.3	1,078.8	297.4	25.4	46.6	8.4	<b>5,013.6</b>
<b>European Union</b>									
<b>Germany</b>									
2010	65.7	49.2	43.8	586.6	770.5	18.2	99.4	11.9	<b>1,645.4</b>
2011	65.6	76.3	37.9	554.1	755.2	14.6	101.9	12.0	<b>1,617.7</b>
<b>France</b>									
2010	61.4	18.6	70.3	243.9	447.2	19.1	113.9	13.3	<b>987.7</b>
2011	68.7	67.2	58.4	396.7	647.0	14.1	101.6	8.2	<b>1,361.9</b>
<b>United Kingdom</b>									
2010	153.3	38.2	108.5	5,277.6	940.0	24.1	96.7	32.8	<b>6,671.2</b>
2011	165.8	102.4	87.3	6,944.7	622.6	31.8	81.2	28.7	<b>8,064.5</b>
<b>Italy</b>									
2010	115.1	109.0	150.4	171.2	215.0	3.1	96.6	5.9	<b>866.5</b>
2011	138.7	117.2	146.9	204.9	224.6	3.6	43.1	1.2	<b>880.3</b>
<b>Other European Union</b>									
2010	399.1	268.6	149.0	1,657.6	1,278.8	73.7	315.4	29.7	<b>4,171.8</b>
2011	625.3	735.3	117.3	2,109.7	1,074.6	72.4	317.5	17.1	<b>5,069.1</b>
<b>Total</b>									
2010	794.6	483.5	522.1	7,936.9	3,651.6	138.3	722.0	93.6	<b>14,342.6</b>
2011	1,064.2	1,098.5	447.7	10,210.1	3,324.0	136.5	645.4	67.3	<b>16,993.6</b>
<b>Newly industrialized countries</b>									
<b>South Korea</b>									
2010	262.3	503.2	258.7	509.0	218.5	39.2	25.1	5.2	<b>1,821.3</b>
2011	577.3	803.5	272.5	566.7	174.3	12.7	38.2	2.9	<b>2,448.1</b>
<b>Hong Kong</b>									
2010	200.1	0.4	55.9	404.1	125.1	4.1	32.1	7.9	<b>829.5</b>
2011	190.0	0.3	67.8	834.1	199.3	3.6	40.3	2.4	<b>1,337.8</b>
<b>Taiwan</b>									
2010	71.3	72.6	130.7	195.2	65.6	1.5	23.9	0.5	<b>561.3</b>
2011	75.0	130.6	156.3	387.3	56.7	0.7	18.3	0.6	<b>825.5</b>
<b>Singapore</b>									
2010	30.4	3.6	11.4	90.8	150.5	11.0	17.1	4.5	<b>319.4</b>
2011	29.9	3.4	4.6	77.1	185.9	12.6	14.4	2.8	<b>330.7</b>
<b>Total</b>									
2010	564.1	579.8	456.8	1,199.1	559.7	55.7	98.1	18.1	<b>3,531.5</b>
2011	872.2	937.8	501.1	1,865.3	616.2	29.5	111.2	8.7	<b>4,942.1</b>
<b>Other countries</b>									
2010	4,382.9	1,055.4	2,312.4	6,627.8	3,965.8	345.9	831.3	145.2	<b>19,666.6</b>
2011	4,632.1	1,616.6	3,337.5	7,849.3	3,971.6	412.7	527.4	102.1	<b>22,449.3</b>
<b>Total</b>									
2010	<b>16,997.4</b>	<b>47,150.0</b>	<b>10,975.5</b>	<b>44,594.9</b>	<b>28,880.5</b>	<b>27,242.2</b>	<b>6,711.7</b>	<b>1,876.6</b>	<b>184,428.7</b>
2011	<b>18,340.2</b>	<b>55,148.0</b>	<b>11,555.0</b>	<b>53,129.5</b>	<b>29,260.7</b>	<b>27,282.9</b>	<b>5,697.1</b>	<b>1,669.7</b>	<b>202,083.0</b>

**Table 4**  
**Domestic exports by country, customs basis, not seasonally adjusted**

	June		January to June		Change
	2010	2011	2010	2011	January to June 2011/ January to June 2010
	millions of dollars				percent
<b>North America</b>					
Greenland	0.6	1.1	3.5	5.1	44.5
Mexico	380.9	392.9	2,081.3	2,156.7	3.6
Saint Pierre and Miquelon	1.3	1.7	7.7	8.9	15.2
United States	24,979.8	26,042.7	140,509.2	150,527.3	7.1
<b>Total</b>	<b>25,362.7</b>	<b>26,438.4</b>	<b>142,601.8</b>	<b>152,698.0</b>	<b>7.1</b>
<b>Western Europe</b>					
Andorra	0.0	0.0	0.1	0.0	-89.1
Austria	32.4	10.9	169.7	119.0	-29.9
Belgium	127.9	97.5	998.3	908.1	-9.0
Denmark	23.2	27.4	131.9	104.3	-20.9
Faeroe Islands	0.0	0.0	0.2	0.5	194.3
Finland	30.1	54.4	179.3	207.1	15.5
France	192.6	233.0	987.7	1,361.9	37.9
Germany	283.0	297.6	1,645.4	1,617.7	-1.7
Gibraltar	0.0	0.0	0.0	24.8	...
Greece	7.1	8.7	42.2	45.7	8.1
Iceland	19.6	6.9	86.6	33.0	-61.8
Italy	160.6	129.8	866.5	880.3	1.6
Luxembourg	3.1	3.8	29.0	57.3	97.8
Malta	0.9	0.2	54.0	2.8	-94.9
Netherlands	201.3	342.1	1,289.8	2,189.6	69.8
Norway	127.0	101.9	1,229.4	1,395.7	13.5
Portugal	5.4	22.4	151.3	113.0	-25.4
Republic of Ireland (Eire)	46.5	27.9	196.5	239.7	22.0
Spain	56.2	53.7	376.4	444.5	18.1
Sweden	35.8	27.0	166.5	156.6	-6.0
Switzerland	29.5	86.4	778.3	481.7	-38.1
United Kingdom	855.1	1,400.5	6,671.2	8,064.5	20.9
<b>Total</b>	<b>2,237.2</b>	<b>2,932.0</b>	<b>16,050.1</b>	<b>18,447.8</b>	<b>14.9</b>
<b>Other Europe</b>					
Albania	0.4	6.9	14.1	31.9	126.7
Armenia	0.7	0.9	3.8	7.8	104.7
Azerbaijan	1.2	1.5	7.7	5.2	-32.8
Belarus	0.1	0.0	1.0	0.8	-16.1
Bosnia and Herzegovina	0.6	1.0	2.8	2.8	0.0
Bulgaria	16.3	55.2	58.0	116.7	101.3
Croatia	1.1	2.2	77.9	7.8	-90.0
Czech Republic	9.1	7.5	60.1	48.4	-19.5
Estonia	1.4	4.2	10.6	65.7	520.9
Georgia	0.2	2.2	5.4	9.8	82.7
Hungary	7.4	8.8	36.6	45.5	24.2
Kazakhstan	4.7	6.3	84.2	85.6	1.7
Kyrgyzstan	0.2	0.5	1.1	1.6	47.5
Latvia	1.7	2.4	32.2	32.6	1.3
Lithuania	1.8	4.9	12.9	25.1	94.5
Macedonia (Former Yugoslav Republic of Macedonia)	1.4	2.8	5.5	9.0	63.6
Montenegro	0.0	0.2	0.7	0.7	8.8
Poland	10.1	19.6	74.2	91.8	23.7
Republic of Moldova	0.9	0.2	1.4	0.6	-55.5
Romania	4.7	3.5	52.0	21.6	-58.5
Russian Federation	66.3	128.0	418.5	590.4	41.1
Serbia	0.6	1.2	2.9	3.7	27.6
Slovakia	1.2	1.5	16.9	22.6	33.4
Slovenia	24.3	1.0	28.6	6.0	-79.0
Tajikistan	0.0	0.2	4.2	1.1	-73.6
Turkmenistan	0.1	2.2	1.1	7.7	599.1
Ukraine	7.4	9.6	65.7	58.0	-11.8
Uzbekistan	2.0	0.8	4.0	4.3	9.0
<b>Total</b>	<b>166.1</b>	<b>275.3</b>	<b>1,084.0</b>	<b>1,304.8</b>	<b>20.4</b>

Table 4 – continued

## Domestic exports by country, customs basis, not seasonally adjusted

	June		January to June		Change
	2010	2011	2010	2011	January to June 2011/ January to June 2010
	millions of dollars				percent
<b>Middle East</b>					
Bahrain	13.3	1.4	53.3	19.4	-63.6
Cyprus	0.9	2.2	4.8	5.4	13.9
Egypt	64.4	113.4	248.7	358.6	44.2
Eritrea	0.0	0.1	1.8	2.3	30.5
Ethiopia	3.1	3.6	91.0	11.2	-87.7
Iran	7.5	5.3	52.8	41.1	-22.2
Iraq	39.7	5.7	141.0	19.9	-85.9
Israel	35.1	30.8	186.6	161.8	-13.3
Jordan	5.4	6.2	30.8	33.4	8.5
Kuwait	3.9	7.2	49.5	52.0	5.0
Lebanon	4.7	3.5	33.1	24.4	-26.3
Libya	11.5	0.1	73.6	36.7	-50.1
Oman	10.8	8.4	55.8	40.2	-27.9
Qatar	4.0	3.9	38.0	23.5	-38.1
Saudi Arabia	34.1	46.0	330.7	350.1	5.9
Somalia	0.0	0.1	1.0	0.3	-72.2
Sudan	1.7	1.4	60.4	60.1	-0.5
Syria	1.9	5.1	16.7	36.4	118.8
Turkey	63.6	135.9	435.0	613.3	41.0
United Arab Emirates	94.9	45.3	470.9	550.2	16.9
Yemen	1.8	0.3	10.9	6.3	-41.8
<b>Total</b>	<b>402.0</b>	<b>425.8</b>	<b>2,386.1</b>	<b>2,446.9</b>	<b>2.5</b>
<b>Other Africa</b>					
Algeria	30.9	15.4	179.4	84.5	-52.9
Angola	64.4	34.1	103.0	60.8	-41.0
Antarctica	0.0	0.0	0.0	0.0	67.8
Benin	1.1	1.6	5.4	6.3	17.4
Botswana	0.7	0.0	2.0	2.8	43.9
Burkina Faso	1.4	2.4	11.4	9.3	-18.4
Burundi	0.1	0.1	0.4	0.4	-5.9
Cameroon	4.2	4.3	12.7	14.7	16.1
Cape Verde	0.1	0.1	0.5	1.2	128.4
Central African Republic	0.0	0.1	0.0	0.2	240.8
Chad	0.2	0.0	2.5	1.2	-51.9
Comoros	0.0	0.0	0.0	0.4	852.7
Congo	0.6	1.7	5.6	7.9	41.3
Democratic Republic of the Congo	1.3	1.6	6.4	7.1	11.5
Djibouti	0.0	0.1	0.9	0.5	-40.6
Equatorial Guinea	0.1	0.1	1.4	4.7	237.1
French Southern Territories	0.0	0.0	0.0	0.0	132.9
Gabon	2.0	1.1	9.8	9.5	-3.0
Gambia	0.0	0.1	0.4	0.3	-35.9
Ghana	15.1	21.9	76.5	120.9	58.1
Guinea	0.4	1.4	3.2	14.7	363.9
Guinea-Bissau	0.0	0.0	0.0	0.0	592.9
Ivory Coast	0.3	2.1	6.3	2.9	-53.5
Kenya	5.8	4.0	33.0	24.9	-24.7
Lesotho	0.0	0.0	0.0	0.1	130.1
Liberia	0.5	1.0	8.2	7.8	-5.2
Madagascar	3.6	2.2	33.5	7.3	-78.2
Malawi	0.3	0.5	1.9	2.4	26.1
Mali	0.7	1.9	3.9	8.6	117.9
Mauritania	0.4	0.5	1.4	7.0	402.1
Mauritius	0.5	0.4	2.0	3.1	53.8
Morocco	5.1	42.6	73.1	215.0	194.0
Mozambique	0.5	0.9	6.9	5.8	-16.2
Namibia	2.0	1.9	6.4	3.5	-45.1
Niger	0.2	0.3	1.1	2.6	148.3
Nigeria	10.7	33.4	117.1	91.4	-22.0
Rwanda	0.0	0.0	0.7	0.4	-43.3
Saint Helena	0.0	0.0	0.0	0.0	346.3
Sao Tome and Principe	0.0	0.0	0.0	0.0	4.1
Senegal	3.7	0.8	15.2	14.1	-7.6
Seychelles	0.1	0.4	0.4	1.7	305.2

Table 4 – continued

## Domestic exports by country, customs basis, not seasonally adjusted

	June		January to June		Change
	2010	2011	2010	2011	January to June 2011/ January to June 2010
	millions of dollars				percent
Sierra Leone	1.3	0.5	5.7	5.1	-9.5
South Africa	45.2	57.7	233.4	280.1	20.0
Swaziland	0.2	0.1	0.6	0.3	-50.9
Togo	1.2	2.3	6.0	8.0	34.1
Tunisia	1.7	1.7	27.3	18.1	-33.7
Uganda	0.5	0.6	5.3	4.4	-17.5
United Republic of Tanzania	2.4	2.3	16.6	21.0	27.1
Zambia	0.6	3.0	18.5	15.0	-18.8
Zimbabwe	0.6	0.6	3.1	2.1	-32.5
<b>Total</b>	<b>210.9</b>	<b>247.9</b>	<b>1,049.2</b>	<b>1,100.0</b>	<b>4.8</b>
<b>Other Asia</b>					
Afghanistan	2.7	3.0	31.7	23.6	-25.5
Bangladesh	23.0	25.6	315.5	266.4	-15.6
Bhutan	0.7	0.0	1.5	0.0	-97.1
British Indian Ocean Territory	0.2	0.0	1.2	0.0	-99.7
Brunei Darussalam	0.5	0.1	7.7	0.8	-89.0
Cambodia	0.3	0.8	1.5	2.9	89.0
China	992.5	1,501.7	5,545.2	7,187.8	29.6
Hong Kong	153.2	169.2	829.5	1,337.8	61.3
India	183.1	190.2	949.4	1,020.6	7.5
Indonesia	106.7	155.3	496.2	778.9	57.0
Japan	888.4	758.4	4,297.2	5,013.6	16.7
Laos	0.0	0.3	1.3	5.2	297.7
Macao	0.3	0.1	1.4	1.3	-1.3
Malaysia	72.1	78.0	387.1	474.7	22.6
Maldives	0.4	0.2	2.3	1.5	-37.5
Mongolia	0.9	5.9	8.4	44.9	434.3
Myanmar	0.1	0.0	2.7	0.8	-70.3
Nepal	0.1	0.9	1.2	2.1	82.1
North Korea	1.1	1.7	5.5	8.1	46.7
Pakistan	11.7	53.2	205.9	337.6	64.0
Philippines	35.0	99.0	272.4	283.5	4.1
Singapore	49.2	46.0	319.4	330.7	3.6
South Korea	275.6	400.7	1,821.3	2,448.1	34.4
Sri Lanka	34.3	28.7	187.2	184.5	-1.4
Taiwan	90.4	102.0	561.3	825.5	47.1
Thailand	48.9	120.2	334.4	449.5	34.4
Timor-Leste	0.0	0.0	0.0	0.0	...
Viet Nam	19.2	34.0	122.2	147.5	20.7
<b>Total</b>	<b>2,990.4</b>	<b>3,775.3</b>	<b>16,710.9</b>	<b>21,177.9</b>	<b>26.7</b>
<b>Oceania</b>					
American Samoa	0.0	0.0	0.6	0.6	1.3
Australia	203.5	132.9	901.3	771.6	-14.4
Christmas Island	0.1	0.0	0.6	0.0	-94.4
Cocos (Keeling) Islands	0.0	0.0	0.1	0.0	-91.7
Cook Islands	0.0	0.0	0.0	0.1	304.4
Fiji	0.5	0.2	1.3	1.8	33.8
French Polynesia	0.8	0.4	5.7	4.9	-14.7
Guam	0.3	0.1	0.6	0.9	56.5
Kiribati	0.0	0.0	0.1	0.1	-7.8
Nauru	0.0	0.0	1.3	0.0	-100.0
New Caledonia	0.2	0.5	10.5	2.9	-72.3
New Zealand	33.0	22.0	138.9	142.7	2.8
Niue	0.0	0.0	0.0	0.0	...
Norfolk Island	0.0	0.0	0.0	0.0	-100.0
Papua New Guinea	1.5	0.7	5.3	24.3	355.3
Pitcairn	0.0	0.0	0.0	0.0	565.6
Samoa	0.1	0.0	0.3	0.0	-94.9
Solomon Islands	0.0	0.1	0.0	0.2	747.7
Tonga	0.0	0.0	3.3	0.1	-97.1
United States Minor Outlying Islands	1.2	0.9	7.0	5.5	-21.3
Vanuatu	0.1	0.1	0.8	0.6	-31.4
Wallis and Futuna	0.0	0.0	0.0	0.0	...
<b>Total</b>	<b>241.2</b>	<b>157.9</b>	<b>1,077.7</b>	<b>956.3</b>	<b>-11.3</b>

Table 4 – continued

## Domestic exports by country, customs basis, not seasonally adjusted

	June		January to June		Change
	2010	2011	2010	2011	January to June 2011/ January to June 2010
	millions of dollars				percent
<b>South America</b>					
Argentina	14.0	18.8	112.5	300.1	166.8
Bolivia	9.5	1.3	22.8	5.7	-75.0
Brazil	262.3	344.8	1,267.9	1,294.4	2.1
Chile	59.9	73.5	275.2	360.1	30.9
Colombia	42.4	56.2	283.4	306.0	8.0
Ecuador	16.2	33.5	134.5	153.8	14.4
Falkland Islands (Malvinas)	0.0	0.0	0.1	0.1	-24.6
Guyana	3.3	1.3	12.9	17.8	38.1
Paraguay	0.9	0.7	4.0	4.7	16.1
Peru	44.4	39.3	229.4	229.7	0.1
Suriname	0.5	0.7	5.7	5.1	-9.7
Uruguay	2.7	2.6	15.0	13.3	-11.4
Venezuela	51.0	60.2	235.1	251.1	6.8
<b>Total</b>	<b>507.2</b>	<b>632.8</b>	<b>2,598.4</b>	<b>2,941.9</b>	<b>13.2</b>
<b>Central America Antilles</b>					
Anguilla	0.1	0.1	0.5	0.3	-37.2
Antigua and Barbuda	2.6	1.4	10.2	4.9	-51.4
Aruba	22.4	0.3	23.9	2.1	-91.4
Bahamas	2.1	3.0	36.0	34.5	-4.2
Barbados	3.9	3.1	17.8	22.3	25.3
Belize	0.8	0.5	2.8	2.4	-14.6
Bermuda	3.8	49.8	19.7	60.5	207.5
British Virgin Islands	0.1	0.1	20.6	47.5	130.6
Cayman Islands	0.6	1.8	3.3	3.7	11.7
Costa Rica	12.7	4.9	44.8	49.9	11.4
Cuba	22.4	29.7	148.5	201.0	35.4
Dominica	0.2	0.3	2.5	1.5	-40.8
Dominican Republic	12.9	22.4	80.7	83.5	3.5
El Salvador	3.2	4.5	19.2	18.3	-4.6
Grenada	0.2	0.2	2.6	2.3	-12.8
Guatemala	9.1	6.6	45.5	46.8	2.9
Haiti	2.4	2.5	19.8	18.9	-4.9
Honduras	1.9	2.0	18.6	17.3	-6.8
Jamaica	9.3	7.8	82.1	50.2	-38.9
Montserrat	0.0	0.0	0.1	0.1	36.5
Netherlands Antilles	1.1	1.3	10.4	90.8	769.1
Nicaragua	1.6	1.8	7.6	15.4	101.4
Panama	4.4	13.5	78.3	49.7	-36.5
Saint Kitts and Nevis	0.5	0.4	2.9	2.7	-6.8
Saint Lucia	0.7	0.8	3.4	4.6	35.0
Saint Vincent and the Grenadines	0.7	0.7	4.4	3.7	-15.0
Trinidad and Tobago	27.8	23.5	162.3	173.5	6.8
Turks and Caicos Islands	0.2	0.1	2.0	1.1	-41.7
<b>Total</b>	<b>147.8</b>	<b>183.3</b>	<b>870.5</b>	<b>1,009.5</b>	<b>16.0</b>
<b>All countries</b>	<b>32,265.6</b>	<b>35,068.7</b>	<b>184,428.7</b>	<b>202,083.0</b>	<b>9.6</b>

**Table 5-1**  
**Exports by province of origin, customs basis, not seasonally adjusted — June**

	Agricultural and fishing products	Energy products	Forestry products	Industrial goods	Machinery and equipment	Automotive products	Consumer goods	Special transactions trade	<b>Total</b>
millions of dollars									
<b>Domestic exports</b>									
Newfoundland and Labrador									
2010	151.4	537.5	10.8	206.9	3.6	0.2	0.1	3.0	<b>913.4</b>
2011	150.1	611.2	19.8	116.4	2.2	0.1	0.0	2.9	<b>902.8</b>
Prince Edward Island									
2010	49.4	0.2	0.0	1.9	6.0	0.6	3.3	6.8	<b>68.2</b>
2011	42.0	0.0	0.0	1.3	7.6	0.2	4.7	9.1	<b>64.7</b>
Nova Scotia									
2010	92.0	57.0	76.9	36.7	122.0	5.0	5.6	3.1	<b>398.3</b>
2011	121.3	33.2	96.5	49.2	120.9	4.9	5.2	3.2	<b>434.3</b>
New Brunswick									
2010	132.9	602.7	105.4	100.4	26.4	1.8	25.9	3.9	<b>999.4</b>
2011	155.0	1,004.4	103.7	137.2	27.7	4.3	11.9	3.5	<b>1,447.7</b>
Quebec									
2010	384.7	178.8	518.5	1,603.6	1,672.4	142.3	309.0	84.3	<b>4,893.5</b>
2011	399.5	201.2	500.1	1,812.2	1,503.2	172.2	308.2	91.0	<b>4,987.6</b>
Ontario									
2010	696.0	209.0	232.8	3,068.1	2,759.0	5,004.2	724.4	161.6	<b>12,855.0</b>
2011	773.4	259.9	242.0	4,003.5	2,579.5	4,239.1	572.8	142.4	<b>12,812.7</b>
Manitoba									
2010	301.2	89.6	21.1	204.7	179.6	35.4	30.1	40.1	<b>901.8</b>
2011	312.2	108.3	19.2	316.3	194.3	42.1	39.4	24.0	<b>1,055.9</b>
Saskatchewan									
2010	513.7	734.3	22.7	463.2	69.2	2.3	1.0	3.9	<b>1,810.4</b>
2011	581.4	804.7	19.7	873.5	58.3	5.1	0.4	3.7	<b>2,347.0</b>
Alberta									
2010	488.7	4,829.1	184.8	782.5	370.2	38.7	10.0	26.2	<b>6,730.2</b>
2011	487.5	5,833.6	160.5	1,025.3	400.5	78.3	11.2	23.1	<b>8,020.1</b>
British Columbia									
2010	203.5	786.2	814.2	503.5	274.4	23.9	54.3	23.4	<b>2,683.5</b>
2011	206.6	938.1	856.0	585.5	300.4	23.3	46.8	19.8	<b>2,976.5</b>
Yukon, Northwest Territories and Nunavut <sup>1</sup>									
2010	0.1	0.0	0.1	10.8	0.7	0.0	0.0	0.0	<b>11.8</b>
2011	0.3	0.0	0.0	17.4	1.6	0.0	0.0	0.0	<b>19.4</b>
<b>Total</b>									
2010	<b>3,013.5</b>	<b>8,024.4</b>	<b>1,987.4</b>	<b>6,982.3</b>	<b>5,483.6</b>	<b>5,254.4</b>	<b>1,163.5</b>	<b>356.4</b>	<b>32,265.6</b>
2011	<b>3,229.2</b>	<b>9,794.6</b>	<b>2,017.6</b>	<b>8,937.8</b>	<b>5,196.2</b>	<b>4,569.8</b>	<b>1,000.8</b>	<b>322.7</b>	<b>35,068.7</b>
<b>Re-exports</b>									
2010	<b>42.1</b>	<b>1.9</b>	<b>5.9</b>	<b>274.4</b>	<b>859.5</b>	<b>97.4</b>	<b>170.8</b>	<b>630.4</b>	<b>2,082.2</b>
2011	<b>32.9</b>	<b>20.9</b>	<b>5.4</b>	<b>345.3</b>	<b>901.3</b>	<b>92.6</b>	<b>216.2</b>	<b>670.9</b>	<b>2,285.4</b>
<b>Total exports</b>									
2010	<b>3,055.6</b>	<b>8,026.3</b>	<b>1,993.3</b>	<b>7,256.6</b>	<b>6,343.1</b>	<b>5,351.8</b>	<b>1,334.3</b>	<b>986.8</b>	<b>34,347.8</b>
2011	<b>3,262.1</b>	<b>9,815.5</b>	<b>2,023.0</b>	<b>9,283.2</b>	<b>6,097.4</b>	<b>4,662.3</b>	<b>1,217.0</b>	<b>993.6</b>	<b>37,354.2</b>

1. Data for the current month do not include some exports from the Harmonized System, Chapter 71, "Natural/cultured pearls, precious stones and metals, coins, etc." for reasons relating to timing.

**Table 5-2**  
**Exports by province of origin, customs basis, not seasonally adjusted — Year to date, January to June**

	Agricultural and fishing products	Energy products	Forestry products	Industrial goods	Machinery and equipment	Automotive products	Consumer goods	Special transactions trade	Total
millions of dollars									
<b>Domestic exports</b>									
Newfoundland and Labrador									
2010	385.3	2,934.9	55.9	765.3	23.5	0.9	0.8	13.2	<b>4,179.9</b>
2011	488.1	3,979.8	73.2	886.1	20.3	1.2	0.7	12.3	<b>5,461.7</b>
Prince Edward Island									
2010	208.4	0.9	0.3	13.5	35.4	2.0	19.1	39.7	<b>319.2</b>
2011	209.6	0.0	0.2	23.3	35.6	1.5	16.6	40.9	<b>327.7</b>
Nova Scotia									
2010	421.1	263.0	383.5	251.5	687.1	26.5	29.3	19.0	<b>2,081.0</b>
2011	535.5	272.2	475.2	280.6	683.6	30.7	29.2	18.7	<b>2,325.8</b>
New Brunswick									
2010	589.1	4,349.3	636.7	585.0	148.8	13.0	123.6	20.9	<b>6,466.3</b>
2011	645.4	5,574.6	634.4	615.1	162.0	22.7	67.9	19.2	<b>7,741.3</b>
Quebec									
2010	2,146.1	1,536.7	3,009.9	9,634.7	8,758.5	744.9	2,113.6	516.2	<b>28,460.4</b>
2011	2,444.2	1,633.2	2,915.5	10,889.1	8,507.2	901.1	1,671.1	420.8	<b>29,382.2</b>
Ontario									
2010	3,888.2	1,322.8	1,391.9	19,677.6	14,729.0	25,831.7	3,888.1	818.8	<b>71,548.0</b>
2011	4,129.5	1,437.3	1,424.3	24,333.3	14,816.6	25,511.3	3,316.1	761.9	<b>75,730.3</b>
Manitoba									
2010	1,865.5	408.9	108.8	1,211.3	953.3	215.9	188.3	162.4	<b>5,114.4</b>
2011	1,954.7	587.4	122.1	1,480.7	1,084.5	229.8	259.1	129.0	<b>5,847.3</b>
Saskatchewan									
2010	3,563.3	4,402.2	107.1	3,552.1	370.3	22.9	7.0	24.1	<b>12,049.0</b>
2011	3,877.3	4,521.6	122.1	4,749.7	319.8	30.6	6.6	22.7	<b>13,650.5</b>
Alberta									
2010	2,874.4	28,040.9	1,048.9	5,061.1	1,707.9	250.3	64.4	138.7	<b>39,186.6</b>
2011	2,985.9	32,571.7	983.4	5,674.0	2,056.4	416.6	62.4	122.0	<b>44,872.4</b>
British Columbia									
2010	1,054.7	3,890.5	4,232.1	2,823.2	1,460.2	133.9	277.3	123.3	<b>13,995.3</b>
2011	1,069.3	4,570.1	4,804.6	3,371.0	1,570.2	137.0	267.1	121.9	<b>15,911.1</b>
Yukon, Northwest Territories and Nunavut <sup>1</sup>									
2010	1.3	0.0	0.4	1,019.7	6.5	0.3	0.2	0.3	<b>1,028.7</b>
2011	0.8	0.0	0.1	826.5	4.6	0.3	0.3	0.2	<b>832.8</b>
<b>Total</b>									
2010	<b>16,997.4</b>	<b>47,150.0</b>	<b>10,975.5</b>	<b>44,594.9</b>	<b>28,880.5</b>	<b>27,242.2</b>	<b>6,711.7</b>	<b>1,876.6</b>	<b>184,428.7</b>
2011	<b>18,340.2</b>	<b>55,148.0</b>	<b>11,555.0</b>	<b>53,129.5</b>	<b>29,260.7</b>	<b>27,282.9</b>	<b>5,697.1</b>	<b>1,669.7</b>	<b>202,083.0</b>
<b>Re-exports</b>									
2010	<b>288.9</b>	<b>132.7</b>	<b>39.6</b>	<b>1,423.7</b>	<b>5,032.1</b>	<b>538.0</b>	<b>935.2</b>	<b>3,498.9</b>	<b>11,889.2</b>
2011	<b>292.0</b>	<b>323.0</b>	<b>39.0</b>	<b>2,199.1</b>	<b>5,162.2</b>	<b>580.9</b>	<b>1,346.2</b>	<b>3,883.3</b>	<b>13,825.8</b>
<b>Total exports</b>									
2010	<b>17,286.2</b>	<b>47,282.7</b>	<b>11,015.2</b>	<b>46,018.5</b>	<b>33,912.6</b>	<b>27,780.2</b>	<b>7,646.9</b>	<b>5,375.5</b>	<b>196,317.9</b>
2011	<b>18,632.2</b>	<b>55,470.9</b>	<b>11,594.0</b>	<b>55,328.7</b>	<b>34,422.9</b>	<b>27,863.8</b>	<b>7,043.3</b>	<b>5,553.0</b>	<b>215,908.8</b>

1. Data for the current month do not include some exports from the Harmonized System Chapter 71, "Natural/cultured pearls, precious stones and metals, coins, etc." for reasons relating to timing.

**Table 6-1**  
**Imports by commodity groupings, balance of payments basis, seasonally adjusted — Current dollars**

	May	June	Change		Year to date			June 2011/ June 2010	
	2011	2011			2010	2011	Change		
	millions of dollars		percent		millions of dollars		percent		
<b>Total</b>	<b>38,132</b>	<b>38,042</b>	<b>-91</b>	<b>-0.2</b>	<b>201,596</b>	<b>223,244</b>	<b>21,647</b>	<b>10.7</b>	<b>8.5</b>
<b>Agricultural and fishing products</b>	<b>2,674</b>	<b>2,723</b>	<b>49</b>	<b>1.8</b>	<b>14,471</b>	<b>15,939</b>	<b>1,468</b>	<b>10.1</b>	<b>13.2</b>
Fruits and vegetables	725	733	8	1.1	4,083	4,366	283	6.9	7.3
Fresh fruits and berries	244	245	1	0.4	1,482	1,506	24	1.6	2.8
Dried fruits, fruits and fruit preparations	130	128	-2	-1.5	653	758	105	16.0	12.6
Fresh vegetables	186	188	2	1.0	1,091	1,142	51	4.7	4.4
Other vegetables and vegetable preparations	165	172	7	4.5	856	960	103	12.1	13.9
Other agricultural and fishing products	1,949	1,990	41	2.1	10,388	11,573	1,185	11.4	15.5
Live animals	18	17	0	-2.2	96	107	11	11.8	1.7
Meat and meat preparations	199	199	0	-0.1	1,037	1,192	154	14.9	23.6
Fish and marine animals	185	187	2	0.9	960	1,127	167	17.4	12.6
Cocoa, coffee, tea and other food preparations	465	488	22	4.8	2,406	2,789	383	15.9	17.1
Dairy produce, eggs and honey	51	53	2	4.3	279	306	26	9.5	12.7
Corn (maize) shelled	25	28	3	13.6	248	153	-94	-38.1	-20.7
Other cereals and cereal preparations	195	183	-13	-6.5	1,042	1,081	38	3.7	8.7
Sugar and sugar preparations	170	195	25	14.8	868	1,087	219	25.2	34.9
Fodder, feed, excluding unmilled cereal	120	117	-3	-2.9	692	708	16	2.3	-1.8
Beverages	329	330	2	0.6	1,836	1,956	120	6.5	10.1
Tobacco	28	31	3	11.7	199	169	-30	-14.9	-12.5
Crude vegetable products	163	161	-3	-1.5	718	892	174	24.2	43.4
Cotton	1	1	0	21.3	6	7	1	9.1	-9.4
<b>Energy products</b>	<b>4,710</b>	<b>4,157</b>	<b>-552</b>	<b>-11.7</b>	<b>19,370</b>	<b>25,557</b>	<b>6,187</b>	<b>31.9</b>	<b>38.2</b>
Crude petroleum	2,521	1,963	-558	-22.1	11,838	13,620	1,782	15.1	11.0
Other energy products	2,189	2,195	6	0.3	7,533	11,938	4,405	58.5	77.0
Coal and other related products	412	482	70	16.9	2,516	2,548	32	1.3	15.1
Petroleum and coal products	1,777	1,713	-64	-3.6	5,017	9,390	4,373	87.2	108.5
<b>Forestry products</b>	<b>207</b>	<b>197</b>	<b>-10</b>	<b>-4.7</b>	<b>1,332</b>	<b>1,220</b>	<b>-112</b>	<b>-8.4</b>	<b>-14.4</b>
Forestry products	207	197	-10	-4.7	1,332	1,220	-112	-8.4	-14.4
Crude wood products	28	24	-5	-17.0	196	174	-21	-10.8	-34.2
Wood fabricated materials	179	174	-5	-2.7	1,136	1,045	-91	-8.0	-10.7
<b>Industrial goods and materials</b>	<b>8,252</b>	<b>8,214</b>	<b>-38</b>	<b>-0.5</b>	<b>42,247</b>	<b>47,556</b>	<b>5,310</b>	<b>12.6</b>	<b>8.6</b>
Metals and metal ores	3,452	3,509	57	1.6	15,751	19,323	3,572	22.7	19.8
Metals in ores, concentrates and scrap	689	792	103	14.9	3,403	4,163	760	22.3	32.0
Steel bars, rods, plates, sheets	630	626	-4	-0.6	3,364	3,623	259	7.7	10.1
Other iron and steel products	450	444	-6	-1.3	2,014	2,441	426	21.2	12.0
Precious metals including alloys	1,284	1,259	-26	-2.0	4,777	6,788	2,011	42.1	24.3
Other non-ferrous metals and alloys	399	388	-11	-2.6	2,192	2,309	116	5.3	10.3
Chemicals and plastics	2,608	2,541	-67	-2.6	14,383	15,270	887	6.2	1.0
Organic chemicals	544	591	47	8.6	3,518	3,408	-111	-3.2	-4.4
Plastic materials	888	886	-3	-0.3	4,957	5,300	343	6.9	1.9
Other chemicals and related products	1,175	1,064	-112	-9.5	5,908	6,563	655	11.1	3.6
Other industrial goods and materials	2,192	2,165	-27	-1.2	12,112	12,963	850	7.0	2.0
Crude animal products	29	24	-4	-15.1	125	154	29	23.3	-3.0
Wool and man-made fibres	25	22	-4	-14.3	126	138	12	9.3	-5.8
Crude non-metallic minerals	64	69	5	8.1	431	403	-27	-6.4	-5.7
Textile fabricated materials	212	210	-2	-1.0	1,141	1,243	102	8.9	6.6
Metal fabricated basic products	922	921	-1	-0.2	4,673	5,392	719	15.4	11.7
Rubber fabricated materials	89	90	1	0.6	489	546	57	11.8	5.0
Oils, fats, animal and vegetable	100	100	-1	-0.5	591	590	-1	-0.2	2.9
Non-metallic minerals	322	317	-5	-1.5	1,790	1,857	68	3.8	-1.5
Other fabricated materials	429	413	-16	-3.8	2,746	2,638	-108	-3.9	-13.2



Table 6-1 – continued

## Imports by commodity groupings, balance of payments basis, seasonally adjusted — Current dollars

	May	June	Change		Year to date			June 2011/ June 2010	
	2011	2011			2010	2011	Change		
	millions of dollars		percent		millions of dollars		percent		
<b>Machinery and equipment</b>	<b>10,382</b>	<b>10,641</b>	<b>259</b>	<b>2.5</b>	<b>54,231</b>	<b>61,184</b>	<b>6,952</b>	<b>12.8</b>	<b>8.5</b>
Industrial and agricultural machinery	2,990	3,421	430	14.4	14,218	17,276	3,058	21.5	28.9
Engines, turbines and electric motors	474	247	-227	-47.8	2,046	2,124	79	3.8	-50.7
Drilling mining machinery	168	903	735	437.0	818	1,714	896	109.5	476.6
Excavating machinery	266	269	3	1.1	1,229	1,614	385	31.3	19.7
Metal working machinery	218	157	-61	-28.1	767	1,073	306	39.9	30.9
Other industrial machinery	1,489	1,457	-32	-2.2	7,238	8,485	1,246	17.2	13.9
Agricultural machinery including tractors	375	387	12	3.2	2,120	2,267	147	6.9	4.0
Aircraft and other transportation equipment	1,450	1,161	-289	-19.9	6,904	7,908	1,003	14.5	-11.8
Aircraft, engines, parts	898	597	-301	-33.5	4,106	4,585	479	11.7	-23.8
Other transportation equipment and parts	552	564	12	2.2	2,798	3,322	524	18.7	5.7
Office machines and equipment	1,154	1,161	7	0.6	6,411	6,835	423	6.6	3.8
Other machinery and equipment	4,788	4,899	110	2.3	26,698	29,165	2,468	9.2	3.7
Other communication and related equipment	1,790	1,910	120	6.7	9,639	10,994	1,355	14.1	11.6
Other equipment and tools	2,998	2,989	-10	-0.3	17,058	18,171	1,113	6.5	-0.7
<b>Automotive products</b>	<b>5,759</b>	<b>5,772</b>	<b>13</b>	<b>0.2</b>	<b>34,974</b>	<b>35,220</b>	<b>246</b>	<b>0.7</b>	<b>-3.5</b>
Passenger autos and chassis	1,794	1,802	8	0.5	11,157	11,104	-53	-0.5	-4.8
Trucks and other motor vehicles	1,627	1,693	65	4.0	9,039	9,324	285	3.2	13.2
Motor vehicle parts	2,338	2,277	-61	-2.6	14,778	14,793	14	0.1	-12.3
<b>Other consumer goods</b>	<b>4,901</b>	<b>5,006</b>	<b>105</b>	<b>2.1</b>	<b>28,191</b>	<b>29,097</b>	<b>907</b>	<b>3.2</b>	<b>2.5</b>
Apparel and footwear	1,008	1,084	76	7.6	5,209	5,958	749	14.4	18.0
Apparel and apparel accessories	837	906	69	8.3	4,354	4,959	605	13.9	17.6
Footwear	171	178	7	4.0	855	999	144	16.9	20.0
Miscellaneous consumer goods	3,893	3,922	29	0.7	22,981	23,139	158	0.7	-1.1
Television, radios, phonographs	129	123	-6	-4.6	772	771	-1	-0.2	-5.0
Printed matter	290	285	-4	-1.5	1,712	1,699	-14	-0.8	-3.4
Watches, sporting goods and toys	475	501	27	5.6	3,032	2,921	-112	-3.7	-12.3
House furnishings	723	736	14	1.9	4,356	4,280	-76	-1.7	-1.1
Photographic goods	209	203	-5	-2.5	1,246	1,339	93	7.4	-10.8
Miscellaneous end products	2,068	2,072	4	0.2	11,862	12,130	268	2.3	3.7
<b>Special transactions trade</b>	<b>438</b>	<b>582</b>	<b>145</b>	<b>33.1</b>	<b>2,364</b>	<b>2,761</b>	<b>397</b>	<b>16.8</b>	<b>35.4</b>
<b>Unallocated balance of payments adjustments</b>	<b>810</b>	<b>749</b>	<b>-61</b>	<b>-7.6</b>	<b>4,417</b>	<b>4,709</b>	<b>292</b>	<b>6.6</b>	<b>0.4</b>

**Table 6-2**  
**Imports by commodity groupings, balance of payments basis, seasonally adjusted — Constant dollars, 2002**

	May	June	Change		Year to date			June 2011/ June 2010	
	2011	2011			2010	2011	Change		
	millions of dollars		percent		millions of dollars		percent		
<b>Total</b>	<b>42,560</b>	<b>43,375</b>	<b>816</b>	<b>1.9</b>	<b>228,841</b>	<b>253,528</b>	<b>24,687</b>	<b>10.8</b>	<b>8.2</b>
<b>Agricultural and fishing products</b>	<b>2,727</b>	<b>2,707</b>	<b>-20</b>	<b>-0.7</b>	<b>14,556</b>	<b>15,924</b>	<b>1,368</b>	<b>9.4</b>	<b>7.3</b>
Fruits and vegetables	761	736	-25	-3.3	4,057	4,380	323	8.0	2.8
Fresh fruits and berries	274	252	-21	-7.7	1,519	1,623	104	6.9	1.0
Dried fruits, fruits and fruit preparations	127	117	-10	-7.7	648	731	83	12.8	2.1
Fresh vegetables	200	204	4	1.8	1,059	1,099	40	3.8	0.8
Other vegetables and vegetable preparations	161	163	2	1.3	831	927	95	11.5	8.9
Other agricultural and fishing products	1,966	1,971	5	0.3	10,499	11,544	1,045	10.0	9.1
Live animals	17	17	0	-2.5	97	104	7	7.5	-1.8
Meat and meat preparations	192	196	4	2.3	1,031	1,129	99	9.6	27.1
Fish and marine animals	227	224	-3	-1.4	1,380	1,416	37	2.7	5.4
Cocoa, coffee, tea and other food preparations	559	558	-2	-0.3	2,387	3,122	734	30.8	7.9
Dairy produce, eggs and honey	53	54	1	1.4	312	309	-3	-1.0	-1.2
Corn (maize) shelled	15	17	1	9.8	245	97	-148	-60.3	-53.7
Other cereals and cereal preparations	137	123	-14	-10.3	882	781	-102	-11.5	-8.5
Sugar and sugar preparations	171	193	22	13.1	844	1,080	236	27.9	32.6
Fodder, feed, excluding unmilled cereal	104	99	-5	-4.5	598	606	7	1.2	-2.4
Beverages	317	319	2	0.6	1,702	1,883	180	10.6	16.5
Tobacco	34	37	3	9.3	243	205	-38	-15.6	-10.6
Crude vegetable products	138	132	-5	-3.8	769	805	36	4.7	14.9
Cotton	1	1	0	38.1	9	8	-1	-9.4	-21.0
<b>Energy products</b>	<b>1,871</b>	<b>1,756</b>	<b>-115</b>	<b>-6.1</b>	<b>10,426</b>	<b>11,168</b>	<b>742</b>	<b>7.1</b>	<b>1.3</b>
Crude petroleum	736	581	-155	-21.1	5,303	4,346	-958	-18.1	-34.1
Other energy products	1,135	1,176	40	3.5	5,123	6,823	1,700	33.2	37.7
Coal and other related products	414	450	36	8.7	2,247	2,620	373	16.6	17.5
Petroleum and coal products	722	726	4	0.6	2,875	4,203	1,327	46.2	54.2
<b>Forestry products</b>	<b>286</b>	<b>271</b>	<b>-15</b>	<b>-5.2</b>	<b>1,757</b>	<b>1,666</b>	<b>-91</b>	<b>-5.2</b>	<b>-7.6</b>
Forestry products	286	271	-15	-5.2	1,757	1,666	-91	-5.2	-7.6
Crude wood products	45	38	-7	-14.7	290	262	-28	-9.7	-28.9
Wood fabricated materials	241	233	-8	-3.5	1,467	1,404	-63	-4.3	-2.9
<b>Industrial goods and materials</b>	<b>6,916</b>	<b>6,929</b>	<b>13</b>	<b>0.2</b>	<b>38,870</b>	<b>41,272</b>	<b>2,403</b>	<b>6.2</b>	<b>1.8</b>
Metals and metal ores	2,035	2,213	178	8.7	11,181	12,183	1,001	9.0	12.0
Metals in ores, concentrates and scrap	328	387	59	18.1	1,879	2,002	124	6.6	13.3
Steel bars, rods, plates, sheets	483	474	-9	-1.8	2,835	2,907	72	2.5	3.0
Other iron and steel products	298	297	-1	-0.2	1,498	1,673	176	11.7	7.9
Precious metals including alloys	541	683	143	26.4	2,675	3,428	753	28.2	28.6
Other non-ferrous metals and alloys	386	371	-15	-3.9	2,295	2,172	-123	-5.3	0.9
Chemicals and plastics	2,361	2,253	-108	-4.6	13,993	14,193	200	1.4	-8.0
Organic chemicals	343	359	16	4.6	2,532	2,226	-306	-12.1	-19.5
Plastic materials	897	892	-5	-0.6	5,312	5,471	159	3.0	-2.8
Other chemicals and related products	1,121	1,003	-118	-10.5	6,149	6,496	347	5.6	-7.6
Other industrial goods and materials	2,519	2,462	-57	-2.3	13,696	14,897	1,201	8.8	3.3
Crude animal products	27	22	-5	-17.9	148	149	0	0.3	-14.1
Wool and man-made fibres	29	24	-5	-17.1	164	166	3	1.6	-18.2
Crude non-metallic minerals	52	53	1	2.3	358	324	-34	-9.4	-12.1
Textile fabricated materials	278	277	-1	-0.4	1,525	1,679	154	10.1	6.0
Metal fabricated basic products	1,008	992	-16	-1.6	5,011	5,889	878	17.5	13.5
Rubber fabricated materials	107	105	-1	-1.4	601	670	70	11.6	1.9
Oils, fats, animal and vegetable	92	89	-3	-3.8	591	537	-54	-9.2	-13.2
Non-metallic minerals	405	397	-9	-2.1	2,177	2,331	154	7.1	2.7
Other fabricated materials	521	503	-17	-3.3	3,121	3,151	30	1.0	-6.9

Table 6-2 – continued

## Imports by commodity groupings, balance of payments basis, seasonally adjusted — Constant dollars, 2002

	May	June	Change		Year to date			June 2011/ June 2010	
	2011	2011			2010	2011	Change		
	millions of dollars		percent		millions of dollars		percent		
<b>Machinery and equipment</b>	<b>15,923</b>	<b>16,655</b>	<b>732</b>	<b>4.6</b>	<b>78,115</b>	<b>94,066</b>	<b>15,951</b>	<b>20.4</b>	<b>18.1</b>
Industrial and agricultural machinery	3,793	4,505	712	18.8	17,497	22,092	4,595	26.3	39.7
Engines, turbines and electric motors	603	315	-288	-47.7	2,544	2,725	180	7.1	-47.8
Drilling mining machinery	195	1,314	1,119	573.1	917	2,255	1,338	145.9	658.8
Excavating machinery	345	353	7	2.1	1,535	2,113	577	37.6	25.2
Metal working machinery	293	208	-85	-29.1	985	1,433	448	45.5	37.6
Other industrial machinery	1,856	1,804	-52	-2.8	8,806	10,572	1,766	20.0	17.0
Agricultural machinery including tractors	500	511	10	2.1	2,709	2,995	286	10.6	8.0
Aircraft and other transportation equipment	1,729	1,381	-348	-20.1	8,129	9,504	1,375	16.9	-8.8
Aircraft, engines, parts	1,132	770	-362	-32.0	5,011	5,792	781	15.6	-17.9
Other transportation equipment and parts	596	610	14	2.4	3,117	3,712	594	19.1	6.2
Office machines and equipment	3,026	3,166	140	4.6	13,853	17,699	3,846	27.8	24.6
Other machinery and equipment	7,376	7,604	228	3.1	38,637	44,771	6,134	15.9	11.5
Other communication and related equipment	3,237	3,521	284	8.8	16,303	19,823	3,519	21.6	21.6
Other equipment and tools	4,139	4,083	-55	-1.3	22,333	24,948	2,615	11.7	4.1
<b>Automotive products</b>	<b>7,253</b>	<b>7,261</b>	<b>7</b>	<b>0.1</b>	<b>42,502</b>	<b>44,230</b>	<b>1,728</b>	<b>4.1</b>	<b>-0.1</b>
Passenger autos and chassis	2,100	2,123	23	1.1	12,798	12,907	110	0.9	-2.8
Trucks and other motor vehicles	1,922	2,005	83	4.3	10,141	11,003	862	8.5	20.2
Motor vehicle parts	3,231	3,133	-98	-3.0	19,563	20,319	756	3.9	-8.4
<b>Other consumer goods</b>	<b>6,582</b>	<b>6,679</b>	<b>97</b>	<b>1.5</b>	<b>36,545</b>	<b>38,997</b>	<b>2,452</b>	<b>6.7</b>	<b>5.7</b>
Apparel and footwear	1,477	1,573	96	6.5	7,371	8,726	1,355	18.4	21.5
Apparel and apparel accessories	1,229	1,318	89	7.2	6,188	7,291	1,104	17.8	20.8
Footwear	248	254	7	2.6	1,184	1,435	251	21.2	25.3
Miscellaneous consumer goods	5,105	5,107	1	0.0	29,174	30,271	1,097	3.8	1.6
Television, radios, phonographs	229	216	-13	-5.5	1,321	1,345	24	1.8	-2.9
Printed matter	376	371	-5	-1.2	2,121	2,189	67	3.2	1.4
Watches, sporting goods and toys	664	689	25	3.8	4,245	4,136	-109	-2.6	-12.0
House furnishings	960	968	8	0.8	5,600	5,661	61	1.1	3.4
Photographic goods	444	411	-33	-7.3	2,348	2,745	397	16.9	-9.1
Miscellaneous end products	2,434	2,451	18	0.7	13,538	14,195	657	4.9	8.1
<b>Special transactions trade</b>	<b>489</b>	<b>673</b>	<b>185</b>	<b>37.8</b>	<b>2,699</b>	<b>3,154</b>	<b>455</b>	<b>16.9</b>	<b>35.6</b>
<b>Unallocated balance of payments adjustments</b>	<b>512</b>	<b>443</b>	<b>-69</b>	<b>-13.5</b>	<b>3,372</b>	<b>3,051</b>	<b>-320</b>	<b>-9.5</b>	<b>-21.1</b>

**Table 7-1**  
**Imports from selected countries, customs basis, not seasonally adjusted — June**

	Agricultural and fishing products	Energy products	Forestry products	Industrial goods	Machinery and equipment	Automotive products	Consumer goods	Special transactions trade	<b>Total</b>
millions of dollars									
<b>United States</b>									
2010	1,470.8	1,002.4	166.4	4,457.2	4,925.7	4,286.5	1,935.5	380.9	<b>18,625.3</b>
2011	1,604.9	1,423.7	149.0	4,633.9	4,492.0	4,117.4	2,046.5	568.9	<b>19,036.2</b>
<b>Mexico</b>									
2010	124.1	49.4	0.6	151.0	679.0	751.0	96.2	5.1	<b>1,856.3</b>
2011	121.0	136.5	0.5	247.5	675.6	857.4	102.9	3.5	<b>2,144.9</b>
<b>Japan</b>									
2010	6.3	0.6	0.1	100.9	438.5	598.1	86.0	0.5	<b>1,230.9</b>
2011	5.1	1.5	0.0	83.9	451.4	295.9	81.1	0.7	<b>919.6</b>
<b>European Union</b>									
<b>Germany</b>									
2010	21.2	2.9	1.1	167.2	311.0	328.2	159.0	7.7	<b>998.3</b>
2011	23.5	7.0	0.7	214.6	397.6	308.0	141.5	0.4	<b>1,093.4</b>
<b>France</b>									
2010	56.1	36.2	0.1	64.0	125.6	8.4	143.7	0.3	<b>434.4</b>
2011	75.3	8.6	0.8	64.4	148.6	6.3	120.6	0.4	<b>425.0</b>
<b>United Kingdom</b>									
2010	35.2	261.7	0.1	139.9	237.2	36.8	110.3	11.4	<b>832.5</b>
2011	35.2	467.6	0.1	176.3	274.5	39.9	97.1	2.8	<b>1,093.4</b>
<b>Italy</b>									
2010	49.9	23.9	0.8	81.7	119.3	22.7	84.9	0.2	<b>383.6</b>
2011	60.5	0.1	1.4	98.2	139.9	27.4	104.7	0.5	<b>432.7</b>
<b>Other European Union</b>									
2010	89.8	235.2	3.3	337.0	389.7	65.2	315.6	2.2	<b>1,438.0</b>
2011	102.7	335.9	4.3	356.9	407.7	82.7	277.6	3.6	<b>1,571.6</b>
<b>Total</b>									
2010	252.2	559.9	5.5	789.8	1,182.8	461.4	813.5	21.8	<b>4,086.9</b>
2011	297.3	819.2	7.3	910.4	1,368.3	464.3	741.5	7.7	<b>4,616.1</b>
<b>Newly industrialized countries</b>									
<b>South Korea</b>									
2010	4.1	13.8	0.0	63.4	188.1	166.2	16.8	0.1	<b>452.5</b>
2011	6.4	31.4	0.0	127.3	292.6	185.9	19.3	0.1	<b>663.0</b>
<b>Hong Kong</b>									
2010	2.4	0.0	0.0	3.1	12.6	0.5	11.1	0.0	<b>29.7</b>
2011	3.0	0.0	0.0	2.3	8.3	0.3	12.4	0.0	<b>26.3</b>
<b>Taiwan</b>									
2010	6.5	0.0	0.7	80.9	196.4	13.9	35.6	0.1	<b>334.1</b>
2011	6.6	0.0	0.4	97.7	275.8	14.6	33.1	0.1	<b>428.3</b>
<b>Singapore</b>									
2010	3.2	0.0	0.0	6.0	56.7	0.6	21.0	0.4	<b>87.9</b>
2011	5.4	0.0	0.1	11.8	55.9	0.3	26.2	0.3	<b>100.1</b>
<b>Total</b>									
2010	16.2	13.8	0.7	153.4	453.8	181.1	84.5	0.6	<b>904.3</b>
2011	21.5	31.4	0.6	239.0	632.7	201.0	90.9	0.5	<b>1,217.7</b>
<b>Other countries</b>									
2010	587.6	1,489.0	68.1	1,998.9	2,582.8	191.6	1,781.4	27.7	<b>8,727.1</b>
2011	754.6	1,816.9	53.6	2,174.3	3,382.2	343.1	1,916.1	15.8	<b>10,456.7</b>
<b>Total</b>									
2010	<b>2,457.8</b>	<b>3,115.2</b>	<b>241.4</b>	<b>7,651.1</b>	<b>10,262.6</b>	<b>6,469.6</b>	<b>4,797.1</b>	<b>436.6</b>	<b>35,431.6</b>
2011	<b>2,805.2</b>	<b>4,229.3</b>	<b>211.2</b>	<b>8,289.0</b>	<b>11,002.3</b>	<b>6,279.2</b>	<b>4,979.0</b>	<b>597.2</b>	<b>38,392.2</b>

**Table 7-2**  
**Imports from selected countries, customs basis, not seasonally adjusted — Year to date, January to June**

	Agricultural and fishing products	Energy products	Forestry products	Industrial goods	Machinery and equipment	Automotive products	Consumer goods	Special transactions trade	<b>Total</b>
millions of dollars									
<b>United States</b>									
2010	8,035.8	6,186.7	983.6	24,945.2	24,735.9	23,750.3	10,946.6	1,997.5	<b>101,581.5</b>
2011	8,521.1	8,151.3	909.8	26,911.5	26,493.7	24,124.8	11,200.0	2,345.2	<b>108,657.3</b>
<b>Mexico</b>									
2010	885.6	350.4	3.0	838.2	3,577.6	4,328.5	530.3	27.8	<b>10,541.3</b>
2011	891.1	628.0	2.5	1,151.1	4,012.4	4,683.3	594.4	34.0	<b>11,996.9</b>
<b>Japan</b>									
2010	33.6	43.8	0.5	632.5	2,343.2	3,110.7	510.0	2.2	<b>6,676.6</b>
2011	31.9	3.7	0.4	569.5	2,527.2	2,251.2	528.6	3.5	<b>5,916.1</b>
<b>European Union</b>									
<b>Germany</b>									
2010	117.6	31.5	6.4	975.2	1,819.3	1,691.0	853.7	14.6	<b>5,509.3</b>
2011	142.3	13.2	5.7	1,171.6	2,121.7	1,807.7	896.0	6.2	<b>6,164.4</b>
<b>France</b>									
2010	315.1	55.2	0.8	422.6	850.4	51.5	808.4	5.5	<b>2,509.5</b>
2011	343.9	42.9	2.1	472.8	1,006.3	43.1	728.3	4.2	<b>2,643.5</b>
<b>United Kingdom</b>									
2010	189.5	2,056.4	0.4	1,067.8	1,430.2	210.9	622.7	30.7	<b>5,608.6</b>
2011	186.4	1,773.1	0.2	1,045.1	1,553.7	249.6	674.8	21.3	<b>5,504.2</b>
<b>Italy</b>									
2010	287.5	73.7	6.1	464.7	696.5	119.6	520.9	1.4	<b>2,170.3</b>
2011	323.7	67.8	7.6	562.3	784.8	134.4	562.9	2.8	<b>2,446.2</b>
<b>Other European Union</b>									
2010	519.9	1,094.9	20.8	1,515.2	2,199.4	357.9	1,925.9	14.9	<b>7,648.8</b>
2011	571.3	1,779.6	20.7	2,024.4	2,454.5	406.3	1,687.9	7.0	<b>8,951.9</b>
<b>Total</b>									
2010	1,429.6	3,311.7	34.5	4,445.6	6,995.8	2,430.8	4,731.5	67.1	<b>23,446.5</b>
2011	1,567.5	3,676.6	36.4	5,276.2	7,921.0	2,641.1	4,549.8	41.5	<b>25,710.2</b>
<b>Newly industrialized countries</b>									
<b>South Korea</b>									
2010	30.0	146.9	0.1	377.8	1,077.0	1,118.4	94.9	0.5	<b>2,845.7</b>
2011	29.9	71.7	0.1	599.1	1,348.1	960.0	98.7	0.6	<b>3,108.1</b>
<b>Hong Kong</b>									
2010	12.9	0.1	0.2	13.4	68.8	2.3	64.4	0.2	<b>162.3</b>
2011	13.9	0.0	0.0	39.7	49.5	1.2	67.6	0.2	<b>172.1</b>
<b>Taiwan</b>									
2010	36.1	0.1	4.0	410.4	976.7	80.1	192.2	0.7	<b>1,700.4</b>
2011	32.4	0.3	2.8	566.2	1,447.1	87.7	185.7	0.8	<b>2,322.9</b>
<b>Singapore</b>									
2010	16.0	0.0	0.1	56.2	279.7	2.1	91.3	1.1	<b>446.5</b>
2011	18.1	111.4	0.4	166.9	275.2	1.8	105.7	0.5	<b>680.0</b>
<b>Total</b>									
2010	95.0	147.2	4.4	857.9	2,402.2	1,202.9	442.8	2.5	<b>5,154.8</b>
2011	94.3	183.3	3.4	1,372.0	3,119.9	1,050.7	457.7	2.0	<b>6,283.1</b>
<b>Other countries</b>									
2010	3,654.8	9,641.2	326.4	10,016.7	13,494.9	1,023.3	9,607.2	167.7	<b>47,932.4</b>
2011	4,429.7	13,187.5	290.1	12,165.5	15,987.7	1,325.9	10,330.7	143.2	<b>57,860.2</b>
<b>Total</b>									
2010	<b>14,136.5</b>	<b>19,681.0</b>	<b>1,352.5</b>	<b>41,736.1</b>	<b>53,549.5</b>	<b>35,846.6</b>	<b>26,768.4</b>	<b>2,264.8</b>	<b>195,335.4</b>
2011	<b>15,540.2</b>	<b>25,830.5</b>	<b>1,242.5</b>	<b>47,445.8</b>	<b>60,062.0</b>	<b>36,077.1</b>	<b>27,661.3</b>	<b>2,569.4</b>	<b>216,428.7</b>

**Table 8**  
**Imports by country, customs basis, not seasonally adjusted**

	June		January to June		Change
	2010	2011	2010	2011	January to June 2011/ January to June 2010
	millions of dollars				percent
<b>North America</b>					
Canada	421.3	266.1	2,075.5	1,858.2	-10.5
Greenland	0.0	0.0	0.2	0.1	-74.1
Mexico	1,856.3	2,144.9	10,541.3	11,996.9	13.8
Saint Pierre and Miquelon	0.0	0.3	0.5	1.0	117.9
United States	18,625.3	19,036.2	101,581.5	108,657.3	7.0
<b>Total</b>	<b>20,902.9</b>	<b>21,447.5</b>	<b>114,199.1</b>	<b>122,513.5</b>	<b>7.3</b>
<b>Western Europe</b>					
Andorra	0.0	0.0	0.1	0.2	19.3
Austria	143.1	113.4	583.5	617.2	5.8
Belgium	164.0	150.5	808.9	843.2	4.2
Denmark	191.6	51.6	1,081.0	798.6	-26.1
Faeroe Islands	0.6	0.9	2.1	4.7	120.4
Finland	79.7	105.9	422.5	820.3	94.2
France	434.4	425.0	2,509.5	2,643.5	5.3
Germany	998.3	1,093.4	5,509.3	6,164.4	11.9
Gibraltar	0.0	0.0	2.2	1.7	-25.1
Greece	10.6	26.5	70.5	90.0	27.7
Iceland	3.5	2.6	18.2	13.0	-28.4
Italy	383.6	432.7	2,170.3	2,446.2	12.7
Luxembourg	4.6	7.8	42.9	50.0	16.6
Malta	1.3	2.3	7.6	12.4	63.3
Netherlands	129.6	199.6	811.5	1,023.0	26.1
Norway	118.9	472.4	1,385.5	2,165.5	56.3
Portugal	21.3	25.0	167.9	156.4	-6.9
Republic of Ireland (Eire)	162.3	109.5	888.0	614.5	-30.8
Spain	114.4	172.9	633.7	883.9	39.5
Sweden	172.4	193.2	1,001.6	1,149.6	14.8
Switzerland	266.0	201.0	1,575.2	1,488.0	-5.5
United Kingdom	832.5	1,093.4	5,608.6	5,504.2	-1.9
<b>Total</b>	<b>4,232.8</b>	<b>4,879.7</b>	<b>25,300.5</b>	<b>27,490.4</b>	<b>8.7</b>
<b>Other Europe</b>					
Albania	0.3	0.2	1.2	3.3	168.2
Armenia	1.8	4.8	12.2	23.2	89.2
Azerbaijan	0.0	93.6	72.8	310.2	326.0
Belarus	0.2	0.4	2.4	2.8	20.7
Bosnia and Herzegovina	0.8	0.8	3.3	4.4	32.6
Bulgaria	4.2	9.6	27.3	41.3	51.1
Croatia	2.1	1.7	9.8	13.7	39.7
Czech Republic	27.3	37.9	132.7	183.1	38.0
Estonia	1.1	6.6	9.6	55.7	479.9
Georgia	10.1	12.0	48.5	58.4	20.4
Hungary	36.0	28.2	172.8	163.5	-5.4
Kazakhstan	85.9	234.5	1,063.4	1,360.9	28.0
Kyrgyzstan	0.0	0.0	0.1	0.1	40.2
Latvia	0.8	1.5	3.9	7.8	100.6
Lithuania	57.7	123.3	134.4	342.7	155.0
Macedonia (Former Yugoslav Republic of Macedonia)	1.1	0.4	3.6	3.6	-1.4
Montenegro	0.0	0.1	0.1	0.4	173.6
Poland	69.9	126.7	439.9	791.4	79.9
Republic of Moldova	3.5	0.1	4.1	0.8	-80.3
Romania	25.0	46.2	71.7	137.9	92.4
Russian Federation	89.6	55.7	551.9	687.3	24.5
Serbia	0.9	1.0	6.1	7.9	30.4
Slovakia	12.5	25.4	80.2	123.0	53.5
Slovenia	8.5	7.8	55.1	44.5	-19.2
Tajikistan	0.0	0.0	0.0	0.0	-53.5
Turkmenistan	0.0	0.0	0.1	0.1	21.4
Ukraine	11.3	20.5	35.5	61.3	72.9
Uzbekistan	0.3	0.1	1.2	1.3	14.3
<b>Total</b>	<b>451.0</b>	<b>839.2</b>	<b>2,943.9</b>	<b>4,430.6</b>	<b>50.5</b>

Table 8 – continued

## Imports by country, customs basis, not seasonally adjusted

	June		January to June		Change
	2010	2011	2010	2011	January to June 2011/ January to June 2010
	millions of dollars				percent
<b>Middle East</b>					
Bahrain	0.4	0.3	1.6	2.4	45.1
Cyprus	0.0	0.2	1.8	1.9	9.2
Egypt	15.0	30.6	148.2	202.1	36.4
Eritrea	0.0	17.0	0.2	85.3	...
Ethiopia	1.8	2.5	6.8	8.9	29.8
Iran	3.6	2.1	20.8	18.1	-12.6
Iraq	222.3	0.0	853.9	1,376.1	61.2
Israel	85.9	90.4	501.7	503.4	0.3
Jordan	1.2	1.7	10.1	9.6	-4.5
Kuwait	0.0	0.0	31.5	54.9	74.2
Lebanon	1.1	1.4	7.8	9.0	15.3
Libya	2.1	0.1	13.5	5.0	-63.3
Oman	0.7	1.2	13.1	8.9	-31.9
Qatar	1.1	26.6	62.8	294.0	368.0
Saudi Arabia	154.8	240.8	1,043.0	1,294.0	24.1
Somalia	0.0	0.0	0.0	0.0	-33.8
Sudan	5.0	15.4	42.5	67.1	57.9
Syria	0.5	0.3	3.3	2.7	-17.1
Turkey	56.1	102.3	315.3	510.7	62.0
United Arab Emirates	4.4	714.5	67.2	829.2	...
Yemen	0.0	0.0	0.0	0.0	-9.3
<b>Total</b>	<b>556.2</b>	<b>1,247.3</b>	<b>3,145.2</b>	<b>5,283.4</b>	<b>68.0</b>
<b>Other Africa</b>					
Algeria	373.3	238.0	1,959.2	2,478.3	26.5
Angola	183.1	122.2	687.9	1,329.8	93.3
Antarctica	0.0	0.0	0.2	0.5	118.3
Benin	0.0	0.0	0.0	0.0	90.8
Botswana	0.0	0.1	6.9	0.1	-98.4
Bouvet Island	0.0	0.0	0.0	0.0	...
Burkina Faso	1.1	1.1	15.5	2.1	-86.2
Burundi	0.0	0.0	0.0	0.2	431.9
Cameroon	0.7	0.5	3.1	3.0	-0.6
Cape Verde	0.0	0.0	0.0	0.0	196.9
Central African Republic	0.0	0.0	0.1	0.2	214.7
Chad	0.0	0.1	0.1	0.2	48.7
Comoros	0.0	0.0	0.0	0.1	203.4
Congo	0.1	0.5	0.7	1.4	88.5
Democratic Republic of the Congo	0.1	0.1	0.6	0.3	-45.1
Djibouti	0.0	0.0	0.0	0.0	89.2
Equatorial Guinea	69.7	0.0	370.1	370.1	0.0
French Southern Territories	0.0	0.0	0.0	0.0	...
Gabon	0.1	0.4	0.2	0.8	364.2
Gambia	0.0	0.0	0.0	0.1	17.9
Ghana	2.8	5.1	10.8	38.7	257.1
Guinea	2.1	6.2	23.5	26.0	10.8
Guinea-Bissau	0.0	0.0	0.0	0.0	-40.8
Ivory Coast	13.1	138.8	170.8	224.8	31.6
Kenya	0.8	2.5	7.5	11.7	56.0
Lesotho	0.9	1.9	4.7	6.7	44.4
Liberia	4.8	5.3	19.3	18.5	-4.1
Madagascar	5.3	5.5	21.5	21.6	0.8
Malawi	0.3	0.1	16.6	66.5	299.9
Mali	0.0	0.0	0.3	0.4	18.8
Mauritania	0.0	0.0	0.2	0.1	-68.2
Mauritius	1.1	1.0	5.1	5.3	3.6
Morocco	8.1	5.3	59.0	46.8	-20.8
Mozambique	0.2	0.4	1.1	2.4	112.6
Namibia	0.0	0.1	89.9	119.3	32.7
Niger	0.1	0.1	0.5	0.7	38.7
Nigeria	45.6	3.0	754.2	894.9	18.7
Rwanda	0.0	0.0	0.1	0.3	171.1
Saint Helena	0.0	0.1	0.0	0.1	...
Sao Tome and Principe	0.1	0.0	0.2	0.1	-60.4
Senegal	0.1	0.1	0.6	0.5	-18.3

Table 8 – continued

## Imports by country, customs basis, not seasonally adjusted

	June		January to June		Change
	2010	2011	2010	2011	January to June 2011/ January to June 2010
	millions of dollars				percent
Seychelles	0.0	0.2	0.1	0.4	219.3
Sierra Leone	0.2	0.7	0.9	1.3	48.6
South Africa	105.1	231.7	323.8	482.3	49.0
Swaziland	0.1	0.1	0.6	1.0	68.5
Togo	0.1	0.9	0.3	2.6	662.6
Tunisia	4.9	4.0	28.4	28.1	-1.2
Uganda	0.5	0.3	2.5	1.9	-22.2
United Republic of Tanzania	0.5	0.6	1.8	2.6	47.3
Western Sahara	0.0	0.0	0.0	0.0	-100.0
Zambia	0.1	0.1	0.6	0.5	-13.2
Zimbabwe	0.5	0.2	2.4	3.5	46.8
<b>Total</b>	<b>825.6</b>	<b>777.1</b>	<b>4,592.1</b>	<b>6,197.0</b>	<b>35.0</b>
<b>Other Asia</b>					
Afghanistan	0.2	0.1	1.0	0.9	-9.0
Bangladesh	63.9	95.2	365.0	531.9	45.7
Bhutan	0.0	0.0	0.0	0.0	...
British Indian Ocean Territory	0.0	0.0	0.0	0.1	365.0
Brunei Darussalam	0.0	0.3	0.0	4.9	...
Cambodia	27.1	45.3	140.7	227.3	61.5
China	3,799.3	3,960.7	19,203.7	21,676.3	12.9
Hong Kong	29.7	26.3	162.3	172.1	6.1
India	166.9	225.3	962.4	1,263.1	31.2
Indonesia	105.9	112.1	575.1	692.7	20.5
Japan	1,230.9	919.6	6,676.6	5,916.1	-11.4
Laos	0.6	0.7	3.9	3.1	-20.7
Macao	0.9	0.8	4.8	3.8	-20.3
Malaysia	191.4	179.8	1,093.5	1,038.1	-5.1
Maldives	0.0	0.0	0.0	0.1	280.1
Mongolia	16.5	50.8	73.0	87.6	20.0
Myanmar	0.0	0.0	0.0	0.1	350.1
Nepal	1.4	1.6	6.2	6.1	-2.9
North Korea	0.0	0.0	0.1	0.0	-59.3
Pakistan	22.2	20.5	125.6	120.6	-3.9
Philippines	71.2	75.3	416.5	442.6	6.3
Singapore	87.9	100.1	446.5	680.0	52.3
South Korea	452.5	663.0	2,845.7	3,108.1	9.2
Sri Lanka	10.3	11.4	58.2	72.1	23.9
Taiwan	334.1	428.3	1,700.4	2,322.9	36.6
Thailand	192.6	222.9	1,120.1	1,285.3	14.8
Timor-Leste	0.2	0.0	0.7	0.2	-66.9
Viet Nam	104.1	115.2	507.9	575.8	13.4
<b>Total</b>	<b>6,909.8</b>	<b>7,255.4</b>	<b>36,489.7</b>	<b>40,231.9</b>	<b>10.3</b>
<b>Oceania</b>					
American Samoa	0.0	0.0	0.2	0.1	-55.6
Australia	192.0	163.0	820.0	865.8	5.6
Christmas Island	0.0	0.0	0.1	0.0	-49.6
Cocos (Keeling) Islands	0.0	0.0	0.0	0.0	-54.3
Cook Islands	0.0	0.0	0.0	0.0	122.8
Fiji	0.4	0.4	3.5	1.7	-49.7
French Polynesia	0.0	0.0	0.4	0.4	-13.6
Guam	0.0	0.1	0.0	0.1	353.4
Heard Island and McDonald Islands	0.0	0.0	0.0	0.0	-63.2
Kiribati	0.0	0.0	0.0	0.0	110.6
Nauru	0.0	0.0	0.1	0.0	-64.2
New Caledonia	0.0	0.0	0.1	0.0	-69.3
New Zealand	48.8	56.6	227.3	280.2	23.2
Niue	0.0	0.0	0.0	0.0	-21.2
Norfolk Island	0.0	0.0	0.0	0.0	-100.0
Papua New Guinea	0.1	0.1	0.7	0.4	-46.7
Pitcairn	0.0	0.0	0.0	0.0	309.8
Samoa	0.0	0.0	0.2	0.0	-95.4
Solomon Islands	0.0	0.0	0.1	0.1	-2.8
Tonga	0.0	0.0	0.0	0.0	117.1
United States Minor Outlying Islands	0.3	0.3	2.3	1.3	-42.7
Vanuatu	0.0	0.0	0.4	0.0	-90.3



Table 8 – continued

## Imports by country, customs basis, not seasonally adjusted

	June		January to June		Change
	2010	2011	2010	2011	January to June 2011/ January to June 2010
	millions of dollars				percent
Wallis and Futuna	0.0	0.0	0.0	0.0	-100.0
<b>Total</b>	<b>241.7</b>	<b>220.7</b>	<b>1,055.4</b>	<b>1,150.4</b>	<b>9.0</b>
<b>South America</b>					
Argentina	88.6	239.5	325.8	1,014.4	211.4
Bolivia	14.0	23.4	57.1	116.1	103.2
Brazil	284.5	379.1	1,573.4	1,794.4	14.0
Chile	150.3	162.8	1,164.8	1,068.8	-8.2
Colombia	61.2	62.5	362.8	379.9	4.7
Ecuador	17.8	16.4	102.1	122.3	19.8
Falkland Islands (Malvinas)	0.0	0.3	0.0	0.3	...
Guyana	17.9	34.7	128.6	174.7	35.9
Paraguay	1.1	0.5	5.0	1.9	-60.9
Peru	276.3	415.2	1,733.5	2,038.5	17.6
Suriname	52.8	5.2	254.7	188.3	-26.1
Uruguay	2.3	3.5	43.3	22.2	-48.7
Venezuela	108.8	100.4	406.2	466.2	14.8
<b>Total</b>	<b>1,075.5</b>	<b>1,443.5</b>	<b>6,157.2</b>	<b>7,388.0</b>	<b>20.0</b>
<b>Central America Antilles</b>					
Anguilla	0.0	0.0	0.1	0.1	-3.9
Antigua and Barbuda	0.0	0.0	0.1	0.2	4.5
Aruba	0.0	0.0	0.1	5.5	...
Bahamas	3.6	4.2	23.3	8.9	-61.9
Barbados	0.6	0.7	4.7	2.8	-40.0
Belize	0.3	0.6	3.4	3.6	7.7
Bermuda	0.1	0.1	0.4	0.4	-6.1
British Virgin Islands	0.0	0.0	0.1	0.2	85.7
Cayman Islands	0.1	0.0	0.2	0.1	-34.1
Costa Rica	37.5	40.1	233.3	253.1	8.5
Cuba	64.0	35.2	337.9	365.9	8.3
Dominica	0.0	0.0	0.0	0.2	241.2
Dominican Republic	14.5	13.0	66.6	70.0	5.2
El Salvador	4.9	8.7	53.5	90.1	68.6
Grenada	0.0	0.2	0.4	0.6	47.3
Guatemala	28.0	30.9	162.2	253.8	56.5
Haiti	2.4	2.5	12.9	13.7	6.6
Honduras	14.2	17.6	83.1	103.9	25.0
Jamaica	10.8	27.3	80.6	113.3	40.5
Montserrat	0.0	0.0	0.1	0.1	-10.9
Netherlands Antilles	0.0	22.4	0.1	22.5	...
Nicaragua	13.5	29.4	79.3	175.1	120.8
Panama	5.3	12.2	41.0	59.1	44.3
Saint Kitts and Nevis	0.5	0.8	3.3	3.7	12.0
Saint Lucia	0.0	0.1	0.1	0.2	97.7
Saint Vincent and the Grenadines	0.0	0.1	0.1	0.2	216.1
Trinidad and Tobago	35.5	35.6	265.2	196.1	-26.1
Turks and Caicos Islands	0.0	0.0	0.1	0.1	-30.3
<b>Total</b>	<b>236.0</b>	<b>281.8</b>	<b>1,452.3</b>	<b>1,743.6</b>	<b>20.1</b>
<b>All countries</b>	<b>35,431.6</b>	<b>38,392.2</b>	<b>195,335.4</b>	<b>216,428.7</b>	<b>10.8</b>

**Table 9-1  
Imports by province of clearance, customs basis, not seasonally adjusted — June**

	Agricultural and fishing products	Energy products	Forestry products	Industrial goods	Machinery and equipment	Automotive products	Consumer goods	Special transactions trade	<b>Total</b>
millions of dollars									
Newfoundland and Labrador									
2010	4.0	300.6	0.0	2.3	22.1	0.2	0.3	0.0	<b>329.6</b>
2011	2.9	15.4	0.0	13.5	30.9	0.0	0.1	3.2	<b>66.1</b>
Prince Edward Island									
2010	0.3	0.0	0.0	0.0	0.1	0.0	0.0	0.0	<b>0.5</b>
2011	0.2	0.0	0.0	0.1	0.7	0.0	0.1	0.0	<b>1.1</b>
Nova Scotia									
2010	27.7	142.8	2.0	99.7	72.5	329.0	16.3	1.5	<b>691.6</b>
2011	46.0	15.9	1.4	81.5	803.4	211.3	11.5	0.5	<b>1,171.5</b>
New Brunswick									
2010	38.8	404.5	8.6	90.6	138.3	39.0	25.0	2.0	<b>746.8</b>
2011	32.4	875.4	10.4	137.9	78.6	39.0	23.3	1.8	<b>1,198.9</b>
Quebec									
2010	355.4	1,311.0	59.4	1,368.2	1,506.5	191.4	855.9	58.4	<b>5,706.4</b>
2011	511.7	1,347.4	41.3	1,509.6	1,616.5	221.4	872.3	39.9	<b>6,160.1</b>
Ontario									
2010	1,389.4	349.0	92.4	4,617.8	5,782.9	5,352.1	3,078.8	340.0	<b>21,002.4</b>
2011	1,502.3	1,344.0	81.4	4,696.6	5,852.8	5,176.1	3,206.9	521.2	<b>22,381.4</b>
Manitoba									
2010	73.4	51.4	9.2	288.9	501.4	122.4	136.0	7.7	<b>1,190.3</b>
2011	83.0	43.7	7.9	318.3	618.2	146.3	145.7	6.1	<b>1,369.2</b>
Saskatchewan									
2010	23.8	83.1	1.4	172.5	357.9	102.6	21.5	1.8	<b>764.7</b>
2011	27.6	82.9	3.1	173.6	327.6	109.4	23.6	0.7	<b>748.4</b>
Alberta									
2010	155.6	201.0	11.1	387.2	644.7	97.2	106.5	12.3	<b>1,615.6</b>
2011	172.6	150.3	12.2	521.6	664.9	124.0	143.4	11.2	<b>1,800.4</b>
British Columbia									
2010	377.5	271.5	57.4	623.9	1,211.9	235.7	556.8	12.9	<b>3,347.4</b>
2011	417.0	352.3	53.5	836.1	1,008.0	251.6	552.0	12.6	<b>3,483.1</b>
Yukon, Northwest Territories and Nunavut									
2010	11.8	0.3	0.0	0.1	24.1	0.0	0.0	0.0	<b>36.4</b>
2011	9.4	1.9	0.0	0.2	0.5	0.0	0.0	0.0	<b>12.1</b>
<b>Total</b>									
<b>2010</b>	<b>2,457.8</b>	<b>3,115.2</b>	<b>241.4</b>	<b>7,651.1</b>	<b>10,262.6</b>	<b>6,469.6</b>	<b>4,797.1</b>	<b>436.6</b>	<b>35,431.6</b>
<b>2011</b>	<b>2,805.2</b>	<b>4,229.3</b>	<b>211.2</b>	<b>8,289.0</b>	<b>11,002.3</b>	<b>6,279.2</b>	<b>4,979.0</b>	<b>597.2</b>	<b>38,392.2</b>

**Table 9-2**  
**Imports by province of clearance, customs basis, not seasonally adjusted — Year to date, January to June**

	Agricultural and fishing products	Energy products	Forestry products	Industrial goods	Machinery and equipment	Automotive products	Consumer goods	Special transactions trade	<b>Total</b>
millions of dollars									
Newfoundland and Labrador									
2010	23.6	1,249.8	0.1	17.5	88.1	0.6	2.9	2.9	<b>1,385.4</b>
2011	16.3	1,630.1	0.0	49.2	271.5	0.5	8.8	3.4	<b>1,979.8</b>
Prince Edward Island									
2010	2.1	0.0	0.0	5.3	0.4	0.1	0.2	0.1	<b>8.2</b>
2011	2.3	0.0	0.0	0.3	1.4	0.0	0.2	0.2	<b>4.4</b>
Nova Scotia									
2010	184.8	952.6	8.2	610.7	474.8	1,714.7	82.6	14.8	<b>4,043.2</b>
2011	299.6	870.6	7.7	670.1	1,295.3	1,411.0	84.0	16.5	<b>4,654.8</b>
New Brunswick									
2010	190.9	3,627.4	53.5	525.9	515.1	223.4	134.4	10.5	<b>5,281.0</b>
2011	203.7	5,123.9	56.8	693.8	418.7	200.3	121.9	9.5	<b>6,828.6</b>
Quebec									
2010	2,149.0	7,922.8	353.4	7,465.2	8,392.8	1,073.0	5,023.4	280.6	<b>32,660.1</b>
2011	2,623.0	9,429.2	305.5	8,561.1	9,141.5	1,171.6	4,967.9	232.3	<b>36,432.0</b>
Ontario									
2010	7,880.0	2,332.1	502.9	24,418.8	30,555.9	29,797.6	17,058.8	1,753.2	<b>114,299.3</b>
2011	8,377.4	5,096.5	452.7	27,058.8	33,636.8	29,742.0	17,807.9	2,120.7	<b>124,292.8</b>
Manitoba									
2010	431.0	288.9	48.1	1,820.2	2,782.2	631.4	759.2	43.5	<b>6,804.5</b>
2011	482.1	300.5	45.7	1,952.8	3,204.5	774.1	771.9	42.2	<b>7,573.8</b>
Saskatchewan									
2010	157.0	316.7	11.3	1,156.7	1,836.9	464.6	128.5	11.8	<b>4,083.5</b>
2011	200.2	384.3	11.8	1,370.9	2,041.9	630.5	138.1	9.0	<b>4,786.6</b>
Alberta									
2010	938.1	1,437.1	58.0	2,264.3	3,262.7	512.9	585.4	68.1	<b>9,126.6</b>
2011	962.0	1,066.9	61.3	3,010.9	4,451.6	658.2	688.2	59.1	<b>10,958.0</b>
British Columbia									
2010	2,154.2	1,551.9	317.0	3,450.6	5,601.0	1,428.2	2,992.8	79.1	<b>17,574.8</b>
2011	2,353.3	1,923.2	300.9	4,076.7	5,562.8	1,488.7	3,072.1	76.5	<b>18,854.3</b>
Yukon, Northwest Territories and Nunavut									
2010	25.9	1.6	0.0	0.8	39.7	0.3	0.2	0.3	<b>68.8</b>
2011	20.3	5.2	0.0	1.4	36.1	0.2	0.2	0.0	<b>63.5</b>
<b>Total</b>									
<b>2010</b>	<b>14,136.5</b>	<b>19,681.0</b>	<b>1,352.5</b>	<b>41,736.1</b>	<b>53,549.5</b>	<b>35,846.6</b>	<b>26,768.4</b>	<b>2,264.8</b>	<b>195,335.4</b>
<b>2011</b>	<b>15,540.2</b>	<b>25,830.5</b>	<b>1,242.5</b>	<b>47,445.8</b>	<b>60,062.0</b>	<b>36,077.1</b>	<b>27,661.3</b>	<b>2,569.4</b>	<b>216,428.7</b>

# Technical notes

---

## The Canadian international merchandise trade statistical program

### Introduction

The objective of this text is to provide a general overview of the Canadian International Merchandise Trade Statistical Program, with special reference to concepts and definitions. The text is intended for the general user and simplicity is emphasized. More technical details can be obtained from the International Trade Division, Statistics Canada upon request.

### Conceptual framework

**1. Objectives and coverage:** The primary objective of the Canadian International Merchandise Trade Statistical Program is to measure the change in the stock of material resources of Canada resulting from the movement of merchandise into or out of the country. Information on imports and exports are inputs into the System of National Accounts, particularly in the balance of payments and gross domestic product, and are used in the formulation of trade and budgetary policies. Governments, importers, exporters, manufacturers and shipping companies use international merchandise trade statistics to:

- monitor import penetration and export performance,
- monitor commodity price and volume changes,
- examine transport implications.

**2. Trade statistics (customs basis / balance of payments basis):** Merchandise trade statistics are reported and presented on two different bases: customs basis and balance of payment basis.

When goods are imported into or exported from Canada, declarations must be filed with customs, giving such information as description and value of the goods, origin and port of clearance of commodities and mode of transport. Most of this information is required for the purposes of customs administration. Statistics developed from administrative records of customs are commonly referred to as customs-based trade statistics.

Customs-based trade statistics are more accurate at measuring imports than they are at measuring exports. This is the case because customs are typically more vigilant with respect to goods entering the country than they are with goods leaving the country.

Customs-based export statistics may understate or incorrectly portray the destination of exports. Export statistics are understated when the proper documentation is not filed with Customs. Exports are incorrectly portrayed when the country of final destination is inaccurately reported on the customs documentation. This occurs most frequently when goods are routed through an intermediary country before continuing on to their final destination.

Statistics Canada does not have a measure of undercoverage but periodically conducts reconciliation exercises with its major trading partners, excluding the United States.

On January 1, 1990, Canada entered into a memorandum of understanding with the United States concerning the exchange of import data. As a consequence, each administration is using the other's import data to replace its own export data. Canada's international merchandise trade statistics are, therefore, no longer derived exclusively from the administrative records of the Canada Border Services Agency, but from United States Customs records as well.

Customs-based information is adjusted to conform with the National Accounts concepts and definitions. The adjustments to derive balance of payments-based trade data include adjustments related to trade definition, valuation and timing. The principal difference between the two trade concepts is that customs-based merchandise trade statistics cover the physical movement of goods as they are reflected in customs documents while balance of payments-adjusted data are intended to cover all economic transactions that involve merchandise trade between residents and non-residents. The present document describes the concepts and processes pertaining to the customs-based trade statistics only. (For further information on balance of payments-adjusted data, see the publication *Canada's Balance of International Payments*, Statistics Canada (Catalogue no. 67-001-X).

**3. System of trade:** Canadian trade statistics are compiled according to the general system of trade, as defined by the United Nations Statistical Office. Under this system, imports include all goods that have crossed Canada's territorial boundary, whether for immediate consumption in Canada or for storage in bonded customs warehouses. Domestic exports include goods grown, extracted or manufactured in Canada, including goods of foreign origin that have been materially transformed in Canada. Re-exports are exports of goods of foreign origin that have not been materially transformed in Canada, including foreign goods withdrawn for export from bonded customs warehouses. Total exports are the sum of domestic exports and re-exports. Thus the general trade system, in principal, presents all goods entering the country (imports) and all goods leaving the country (exports). It differs from the special system of trade in the treatment of imported goods into bonded customs warehouses. Under the 'special' system, these goods are counted only if and when they are withdrawn from customs warehouses for home consumption. They are not counted in export statistics unless they have first cleared customs.

Conceptually, under the general system, the statistical frontier coincides with the geographical boundary, while under the 'special' system, it coincides with the customs boundary.

**4. Valuation:** For customs purposes, imports are recorded at values established according to the provisions of the Customs Act, which, since January 1, 1985, reflects valuation methods based on the General Agreement on Tariffs and Trade (GATT) Valuation Code System. In general, the value for duty of imported goods must be equivalent to the transaction value or the price actually paid.

To determine the transaction value of imported goods, all transportation and associated costs arising in respect of the goods being appraised prior to and at the place of direct shipment to Canada, are to be added to the price of the goods. Therefore, Canadian imports are valued Free on Board (FOB), place of direct shipment to Canada. It excludes freight and insurance costs in bringing the goods to Canada from the point of direct shipment.

Countries other than the United States, exports are, in principal, valued or recorded at the values declared on export documents, which usually reflect the transaction value, i.e., actual selling price or, in the case of a non-arm's length transaction, the transfer price used for company accounting purposes. Canadian exports to overseas countries are valued at F.O.B. port of exit, including domestic freight charges to that point but net of discounts and allowances. As of January, 1990, Canadian exports to the U.S. are valued F.O.B. point of exit from Canada. Prior to 1990, they were valued F.O.B. place of lading net of freight charges, discounts and allowances.

**5. Statistical period:** The reference period is the calendar month and the calendar year. The closing of the statistical month for imports and Canadian exports to the United States is defined as the last calendar day of the month, based as closely as practicable on the date of clearance from customs.

The closing of the statistical month for exports, to countries other than the United States, is also defined as the last calendar day of the month. Those export documents that are received too late for incorporation in the current month are assigned to the month the transaction took place. If a monthly summary report from a high volume exporter is not received on time, the data are imputed for the current month and revised with the trade value in the following statistical month.

**6. Trading partner attribution (country of origin/destination):** Exports are attributed to the country, which is the last known destination of the goods at the time of export. Exports to the United States are attributed to the state of destination.

Imports are attributed to their country of origin, that is, the country in which the goods were grown, extracted or manufactured in accordance to the rules of origin administered by the Canada Border Services Agency. Imports

from the United States are attributed to the state of origin. Prior to 1988, most imports were attributed to the country of export/consignment, with the exception of imports from Central and South America.

**7. Principal trading areas:** The 'principal trading areas' are country groupings defined as follows:

**United States:** includes trade with Puerto Rico and the U.S. Virgin Islands

**Japan**

**European Union (EU):** Austria, Belgium, Bulgaria, Cyprus, Czech Republic, Denmark, Estonia, Finland, France, Germany, Greece, Hungary, Ireland, Italy, Latvia, Lithuania, Luxembourg, Malta, Netherlands, Poland, Portugal, Romania, Slovakia, Slovenia, Spain, Sweden and United Kingdom

**Other Organisation for Economic Co-operation and Development (OECD):** Australia, Canada, Iceland, Mexico, New Zealand, Norway, South Korea, Switzerland, and Turkey. (The EU countries, United States, and Japan are also members of OECD)

**Other countries:** all countries and territories other than the United States, Japan, EU and other OECD

**8. Legal framework:** Import and export statistics with countries other than the United States are derived from information contained in administrative records collected by the Canada Border Services Agency under the Customs Act. Copies of these documents (or information therefrom) are sent to Statistics Canada in accordance with Section 25 of the Statistics Act. It follows that the disclosure of trade statistics is governed by both the Customs Act and the Statistics Act and is subject to the provisions of Section 17(2)(a) of the latter. Disclosure of export statistics to the United States is now governed by a memorandum of understanding that provides for the exchange of detailed import statistics between Canada and the United States.

### Contact information

Questions concerning details of methods not covered by these notes should be addressed to the Marketing and Client Services Section, International Trade Division, Statistics Canada, 170 Tunney's Pasture Driveway, Ottawa, Ontario, K1A 0T6.

**Telephone:** 1-800-294-5583 or 613-951-9647

**Facsimile:** 1-800-664-0055 613-951-0117

**Internet:** *trade@statcan.gc.ca*