

Catalogue no. 65-001-X

# Canadian International Merchandise Trade

May 2011



Statistics  
Canada

Statistique  
Canada

Canada

## How to obtain more information

For information about this product or the wide range of services and data available from Statistics Canada, visit our website at [www.statcan.gc.ca](http://www.statcan.gc.ca), e-mail us at [infostats@statcan.gc.ca](mailto:infostats@statcan.gc.ca), or telephone us, Monday to Friday from 8:30 a.m. to 4:30 p.m., at the following numbers:

### Statistics Canada's National Contact Centre

Toll-free telephone (Canada and the United States):

Inquiries line	1-800-263-1136
National telecommunications device for the hearing impaired	1-800-363-7629
Fax line	1-877-287-4369

Local or international calls:

Inquiries line	1-613-951-8116
Fax line	1-613-951-0581

### Depository Services Program

Inquiries line	1-800-635-7943
Fax line	1-800-565-7757

## To access this product

This product, Catalogue no. 65-001-X, is available free in electronic format. To obtain a single issue, visit our website at [www.statcan.gc.ca](http://www.statcan.gc.ca) and browse by "Key resource" > "Publications."

## Standards of service to the public

Statistics Canada is committed to serving its clients in a prompt, reliable and courteous manner. To this end, Statistics Canada has developed *standards of service* that its employees observe. To obtain a copy of these service standards, please contact Statistics Canada toll-free at 1-800-263-1136. The service standards are also published on [www.statcan.gc.ca](http://www.statcan.gc.ca) under "About us" > "The agency" > "Providing services to Canadians."

Statistics Canada  
International Trade Division

# Canadian International Merchandise Trade

May 2011

Published by authority of the Minister responsible for Statistics Canada

© Minister of Industry, 2011

All rights reserved. The content of this electronic publication may be reproduced, in whole or in part, and by any means, without further permission from Statistics Canada, subject to the following conditions: that it be done solely for the purposes of private study, research, criticism, review or newspaper summary, and/or for non-commercial purposes; and that Statistics Canada be fully acknowledged as follows: Source (or "Adapted from", if appropriate): Statistics Canada, year of publication, name of product, catalogue number, volume and issue numbers, reference period and page(s). Otherwise, no part of this publication may be reproduced, stored in a retrieval system or transmitted in any form, by any means—electronic, mechanical or photocopy—or for any purposes without prior written permission of Licensing Services, Information Management Division, Statistics Canada, Ottawa, Ontario, Canada K1A 0T6.

July 2011

Catalogue no. 65-001-X, vol. 65, no. 5

ISSN 1480-8781

Frequency: Monthly

Ottawa

Cette publication est également disponible en français.

---

#### **Note of appreciation**

*Canada owes the success of its statistical system to a long-standing partnership between Statistics Canada, the citizens of Canada, its businesses, governments and other institutions. Accurate and timely statistical information could not be produced without their continued cooperation and goodwill.*

# User information

---

## Symbols

The following standard symbols are used in Statistics Canada publications:

- . not available for any reference period
- .. not available for a specific reference period
- ... not applicable
- 0 true zero or a value rounded to zero
- 0<sup>s</sup> value rounded to 0 (zero) where there is a meaningful distinction between true zero and the value that was rounded
- p preliminary
- r revised
- x suppressed to meet the confidentiality requirements of the *Statistics Act*
- E use with caution
- F too unreliable to be published
- \* significantly different from reference category ( $p < 0.05$ )

## Note to users

All totals are calculated from full figures and rounded independently; consequently, totals may not equal the sum of their components.

The data is based on commodity groups (sector, subsector and major group).

# Table of contents

---

<b>Highlights</b>	<b>5</b>
<b>Analysis</b>	<b>7</b>
<b>Related products</b>	<b>11</b>
<b>Statistical tables</b>	
1 Merchandise trade of Canada, balance of payments basis, seasonally adjusted	15
1-1 Current dollars	15
1-2 Constant dollars, 2002	16
1-3 Price indices (Laspeyres)	17
2 Exports by commodity groupings, balance of payments basis, seasonally adjusted	18
2-1 Current dollars	18
2-2 Constant dollars, 2002	20
3 Domestic exports to selected countries, customs basis, not seasonally adjusted	22
3-1 May	22
3-2 Year to date, January to May	23
4 Domestic exports by country, customs basis, not seasonally adjusted	24
5 Exports by province of origin, customs basis, not seasonally adjusted	28
5-1 May	28
5-2 Year to date, January to May	29
6 Imports by commodity groupings, balance of payments basis, seasonally adjusted	30
6-1 Current dollars	30
6-2 Constant dollars, 2002	32
7 Imports from selected countries, customs basis, not seasonally adjusted	34
7-1 May	34
7-2 Year to date, January to May	35
8 Imports by country, customs basis, not seasonally adjusted	36

**Table of contents – continued**

9	Imports by province of clearance, customs basis, not seasonally adjusted	40
9-1	May	40
9-2	Year to date, January to May	41

**Data quality, concepts and methodology**

	Technical notes	42
--	-----------------	----

## Highlights

---

Canada's merchandise exports increased 1.2% while imports rose 1.1% in May. As a result, Canada's trade deficit with the world narrowed to \$814 million in May from \$857 million in April.

Exports increased to \$36.9 billion as volumes rose 1.5% while prices decreased by 0.3%. The higher volumes were led by the machinery and equipment, and automotive products sectors. Energy products sector was the main contributor to the decline in prices.

Imports increased to \$37.8 billion, as all sectors, except energy products, recorded gains. Prices rose 2.1%, led by energy products and industrial goods and materials. Volumes decreased by 1.0%.

Canada's trade surplus with the United States narrowed to \$3.7 billion in May from \$4.0 billion in April. Exports to the United States edged up 0.1% to \$27.1 billion. Imports increased 1.1% to \$23.4 billion in May, a third straight monthly increase.

Exports to countries other than the United States rose 4.4% in May to \$9.8 billion, on the strength of higher exports to the European Union. Imports increased 1.1% to \$14.4 billion as most of Canada's principal trading areas registered gains. Accordingly, Canada's trade deficit with countries other than the United States narrowed to \$4.6 billion in May from \$4.8 billion in April.

### Note to readers

Merchandise trade is one component of Canada's international balance of payments, which also includes trade in services, investment income, current transfers as well as capital and financial flows.

International merchandise trade data by country are available on both a balance of payments (BOP) and a customs basis for the United States, Japan and the United Kingdom. Trade data for all other individual countries are available on a customs basis only. Balance of payments data are derived from customs data by making adjustments for characteristics such as valuation, coverage, timing and residency. These adjustments are made to conform to the concepts and definitions of the Canadian System of National Accounts.

Data in this release are on a balance of payments basis, seasonally adjusted in current dollars. Constant dollars are calculated using the Laspeyres volume formula.

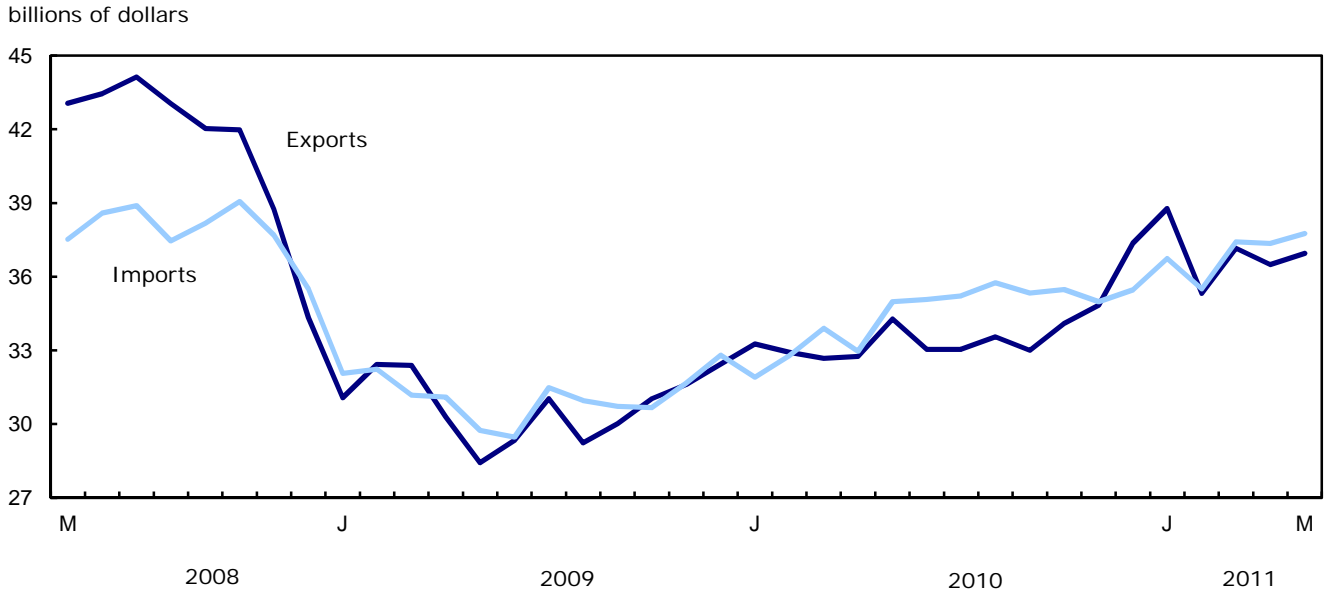
### Revisions

In general, merchandise trade data are revised on an ongoing basis for each month of the current year. Current year revisions are reflected in both the customs and BOP based data. The previous year's customs data are revised with the release of the January and February reference months as well as on a quarterly basis. The previous two years of customs based data are revised annually and are released in February with the December reference month. The previous year's BOP based data are revised with the release of the January, February and March reference months. Revisions to BOP based data for the previous three years are released annually in June with the April reference month.

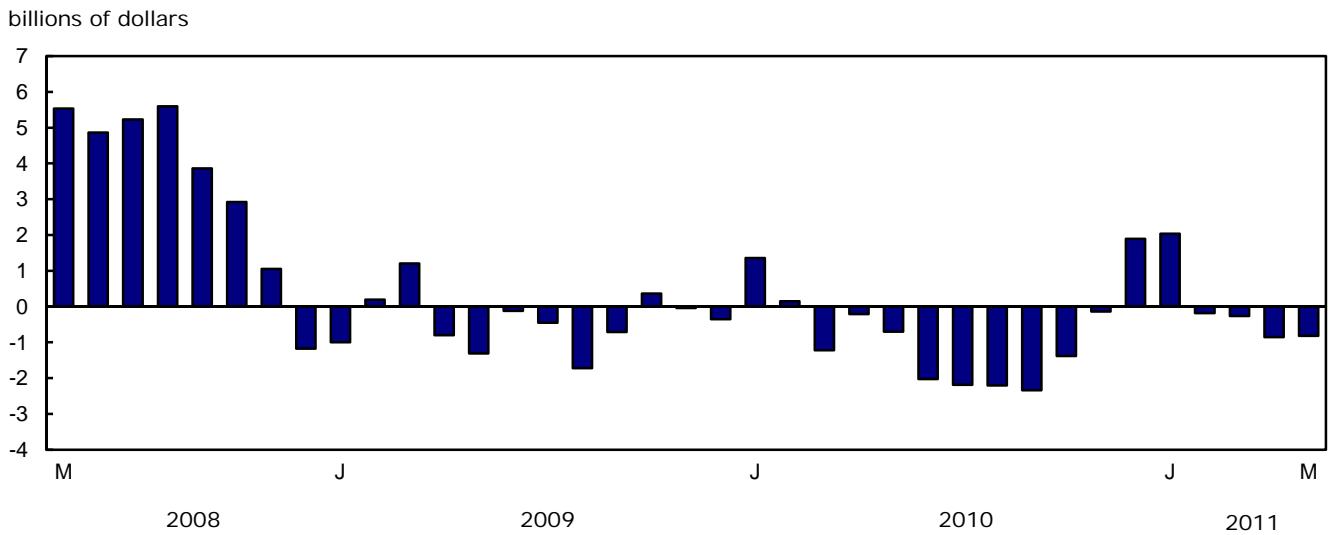
Factors influencing revisions include late receipt of import and export documentation, incorrect information on customs forms, replacement of estimates produced for the energy sector with actual figures, changes in classification of merchandise based on more current information, and changes to seasonal adjustment factors.

Revised data are available in the appropriate CANSIM tables.

**Chart 1**  
Exports and imports, seasonally adjusted, on a balance of payments basis



**Chart 2**  
Trade balance, seasonally adjusted, on a balance of payments basis





# Analysis

---

## **Industrial goods and materials lead the increase in exports**

Exports of industrial goods and materials rose 4.0% to \$9.5 billion in May, on the strength of metals and alloys as well as chemicals, plastics and fertilizers. The main contributors to the gains in these respective sub-sectors were higher exports of gold to the United Kingdom, and potash to China.

Exports of machinery and equipment gained 4.8% to \$6.3 billion, as volumes rose 5.3%. Exports of aircraft, engines and parts increased 34.7% to \$1.0 billion. Exports of television, telecommunication and related equipment also contributed to the gain in the sector.

Exports of automotive products increased 3.9% to \$4.9 billion in May. The majority of this increase was in exports of passenger autos and chassis. Gains in exports of motor vehicle parts also contributed to the increase in the sector.

Strong gains in most sectors were partially offset by a decrease in exports of energy products, which fell 3.6% to \$9.1 billion. Crude petroleum made up the bulk of the decline, falling 5.8% to \$5.2 billion.

## **Imports increase in six out of seven sectors**

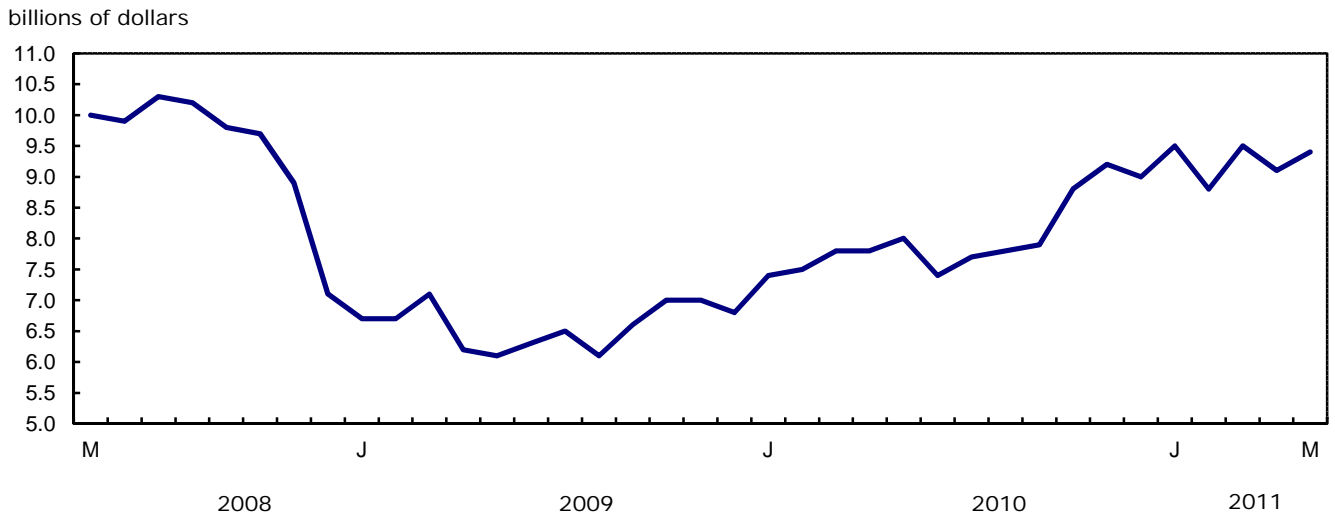
Imports of automotive products rose 3.6% to \$5.8 billion in May. Imports of passenger autos and chassis increased 12.4%, following a 22.2% fall in April.

Imports of industrial goods and materials increased for the third consecutive month, rising 2.2% to a record high of \$8.3 billion in May, as a result of higher prices. Imports of precious metals and alloys, mainly gold and silver, accounted for over half of this growth and reached a record high.

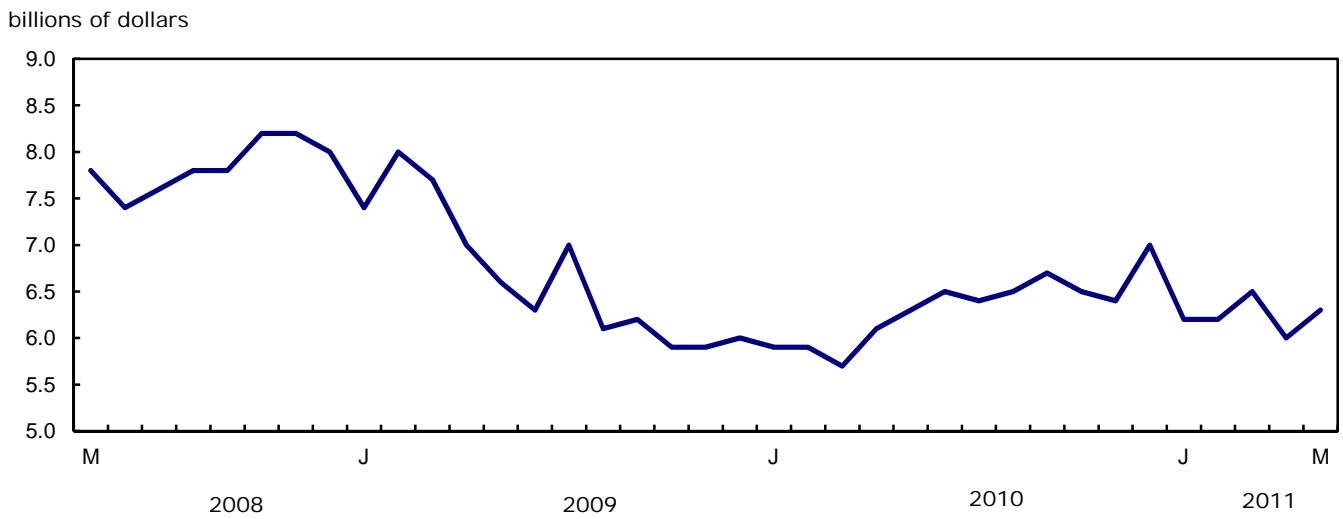
Imports of machinery and equipment edged up 0.7% to \$10.3 billion in May as gains were observed in aircraft and other transportation equipment, and industrial and agricultural machinery. Higher imports of aircraft, engines and parts led the increase. Imports of industrial and agricultural machinery posted a fourth straight monthly increase, mainly on the strength of imports of engines, turbines and motors.

Plant shutdowns due to maintenance were the main factor behind lower imports of energy products, which fell 5.2% to \$4.3 billion. Imports of crude petroleum and other energy products decreased 7.2% and 2.8%, respectively.

**Chart 1**  
**Exports of industrial goods and materials, seasonally adjusted, on a balance of payments basis**

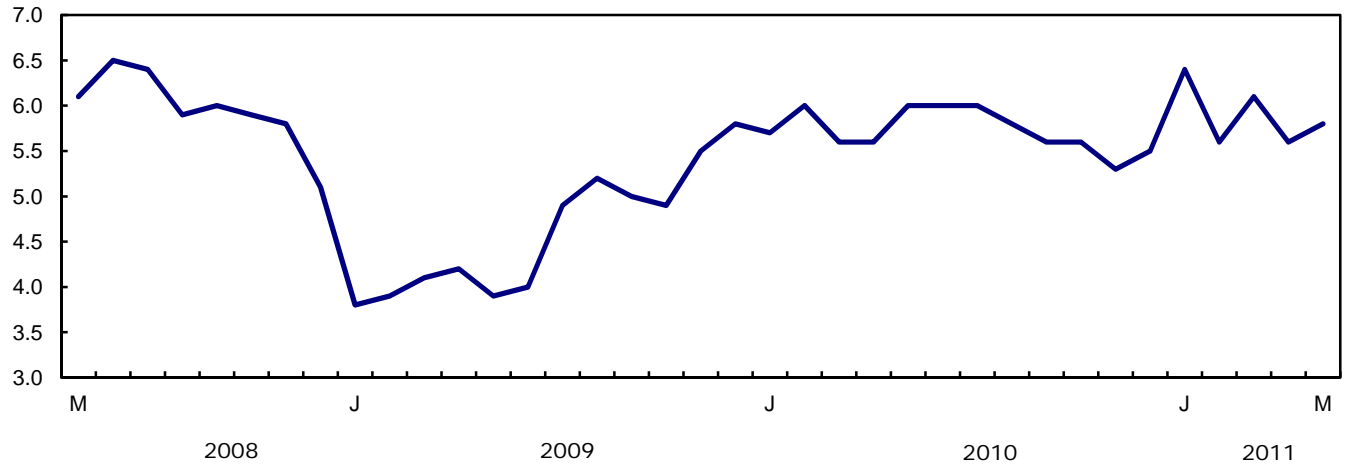


**Chart 2**  
**Exports of machinery and equipment, seasonally adjusted, on a balance of payments basis**



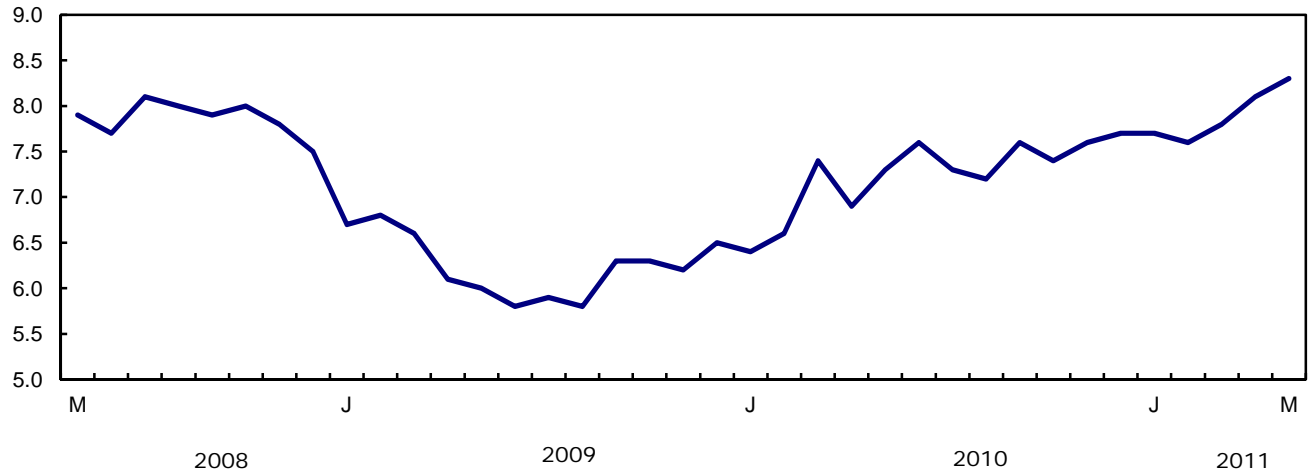
**Chart 3**  
Imports of automotive products, seasonally adjusted, on a balance of payments basis

billions of dollars



**Chart 4**  
Imports of industrial goods and materials, seasonally adjusted, on a balance of payments basis

billions of dollars



**Text table 1**  
**Merchandise trade by principal trading area, balance of payments basis, seasonally adjusted**

	April	May	Change	Year to date			May 2011/May 2010		
	2011	2011		2010	2011	Change			
	millions of dollars		percent		millions of dollars		percent		
<b>Export to</b>									
United States	27,103	27,140	37	0.1	123,700	135,779	12,079	9.8	6.4
Japan	899	922	23	2.6	3,700	4,738	1,037	28.0	17.2
European Union <sup>1</sup>	2,876	3,325	448	15.6	13,685	15,818	2,134	15.6	8.9
Other Organisation for Economic Co-operation and Development <sup>2</sup>	1,742	1,584	-158	-9.1	7,564	8,145	581	7.7	1.1
Other countries	3,875	3,975	100	2.6	17,252	20,213	2,961	17.2	18.4
<b>Total</b>	<b>36,495</b>	<b>36,945</b>	<b>451</b>	<b>1.2</b>	<b>165,900</b>	<b>184,693</b>	<b>18,793</b>	<b>11.3</b>	<b>7.8</b>
<b>Imports from</b>									
United States	23,149	23,399	251	1.1	105,375	113,751	8,376	7.9	4.8
Japan	524	612	88	16.9	4,021	3,545	-475	-11.8	-26.0
European Union <sup>1</sup>	3,866	3,631	-235	-6.1	16,214	18,620	2,406	14.8	9.1
Other Organisation for Economic Co-operation and Development <sup>2</sup>	2,625	2,682	57	2.2	12,048	13,751	1,703	14.1	5.6
Other countries	7,188	7,435	247	3.4	28,870	35,106	6,235	21.6	24.9
<b>Total</b>	<b>37,352</b>	<b>37,759</b>	<b>407</b>	<b>1.1</b>	<b>166,528</b>	<b>184,773</b>	<b>18,245</b>	<b>11.0</b>	<b>7.9</b>
<b>Balance</b>									
United States	3,954	3,741	-213	...	18,325	22,027	3,703	...	...
Japan	375	310	-65	...	-320	1,192	1,513	...	...
European Union <sup>1</sup>	-990	-306	684	...	-2,530	-2,802	-272	...	...
Other Organisation for Economic Co-operation and Development <sup>2</sup>	-883	-1,098	-215	...	-4,484	-5,605	-1,121	...	...
Other countries	-3,313	-3,460	-147	...	-11,619	-14,893	-3,274	...	...
<b>Total</b>	<b>-857</b>	<b>-813</b>	<b>44</b>	<b>...</b>	<b>-628</b>	<b>-80</b>	<b>548</b>	<b>...</b>	<b>...</b>

1. European Union includes: Austria, Belgium, Bulgaria, Cyprus, Czech Republic, Denmark, Estonia, Finland, France, Germany, Greece, Hungary, Ireland, Italy, Latvia, Lithuania, Luxembourg, Malta, Netherlands, Poland, Portugal, Romania, Slovakia, Slovenia, Spain, Sweden and United Kingdom.
2. Other Organisation for Economic Co-operation and Development includes: Australia, Canada, Iceland, Mexico, New Zealand, Norway, South Korea, Switzerland and Turkey.

**Text table 2**  
**Reconciliation of customs and balance of payments trade data, not seasonally adjusted**

	2011					2010	2010
	May	April	March	February	January	December	Annual
millions of dollars							
<b>Exports</b>							
<b>Customs basis</b>	<b>37,064</b>	<b>34,833</b>	<b>39,079</b>	<b>32,448</b>	<b>34,893</b>	<b>36,655</b>	<b>399,383</b>
<b>Balance of payments adjustments</b>	<b>813</b>	<b>1,736</b>	<b>361</b>	<b>696</b>	<b>786</b>	<b>-236</b>	<b>5,451</b>
Valuation and residency							
Inland freight	569	552	621	515	538	592	6,552
Other valuation and residency	-1,196	-322	-1,056	-1,228	-929	-1,757	-12,934
Timing	49	-1	-16	160	-5	33	48
Coverage	1,391	1,508	812	1,248	1,181	897	11,785
<b>Balance of payments basis</b>	<b>37,877</b>	<b>36,569</b>	<b>39,440</b>	<b>33,144</b>	<b>35,679</b>	<b>36,419</b>	<b>404,834</b>
<b>Imports</b>							
<b>Customs basis</b>	<b>37,042</b>	<b>35,927</b>	<b>38,870</b>	<b>32,693</b>	<b>33,056</b>	<b>33,205</b>	<b>403,515</b>
<b>Balance of payments adjustments</b>	<b>888</b>	<b>873</b>	<b>1,250</b>	<b>500</b>	<b>332</b>	<b>930</b>	<b>10,318</b>
Valuation and residency							
Inland freight	794	775	828	694	700	700	8,740
Other valuation and residency	-57	-39	-45	-40	-62	-9	205
Timing	0	0	0	0	0	0	0
Coverage	151	137	467	-154	-306	239	1,373
<b>Balance of payments basis</b>	<b>37,930</b>	<b>36,800</b>	<b>40,120</b>	<b>33,193</b>	<b>33,388</b>	<b>34,135</b>	<b>413,833</b>

## Related products

---

### Selected publications from Statistics Canada

---

65-208-X	International Merchandise Trade Annual Review
65-506-X	A Profile of Canadian Exporters
65F0013X	Canadian International Merchandise Trade Database
65F0019X	A Database for Analysis of International Markets
65F0020X	Data Integration - International Trade Data and Manufacturing Shipments Data

---

### Selected CANSIM tables from Statistics Canada

---

228-0001	Merchandise imports and exports, by major groups and principal trading areas for all countries, monthly
228-0002	Merchandise imports and exports, by major groups and principal trading areas for all countries, quarterly
228-0003	Merchandise imports and exports, by major groups and principal trading areas for all countries, annual
228-0033	Imports, customs-based, by province of clearance, monthly
228-0034	Domestic exports, customs-based, by province of origin, monthly
228-0041	Merchandise imports and exports by sector and sub-sector, customs and balance of payments basis, for all countries, monthly
228-0042	Merchandise imports and exports by sector and sub-sector, customs and balance of payments basis, for all countries, quarterly
228-0043	Merchandise imports and exports by sector and sub-sector, customs and balance of payments basis, for all countries, annual
228-0047	Merchandise imports and exports balance of payments and customs-based price and volume indexes for all countries, monthly
228-0048	Merchandise imports and exports balance of payments and customs-based price and volume indexes for all countries, quarterly
228-0049	Merchandise imports and exports balance of payments and customs-based price and volume indexes for all countries, annual

228-0050	Merchandise imports and exports customs-based price indexes, Canada and United States trade, and Standard International Trade Classification (SITC revision 3) price indexes for all countries and United States, monthly
228-0051	Merchandise imports and exports customs-based price indexes, Canada and United States trade, and Standard International Trade Classification (SITC revision 3) price indexes for all countries and United States, quarterly
228-0052	Merchandise imports and exports customs-based price indexes, Canada and United States trade, and Standard International Trade Classification (SITC revision 3) price indexes for all countries and United States, annual
228-0053	Merchandise import and export price and volume indexes by sector and sub-sector, customs and balance of payments basis, for all countries, monthly
228-0054	Merchandise import and export price and volume indexes by sector and sub-sector, customs and balance of payments basis, for all countries, quarterly
228-0055	Merchandise import and export price and volume indexes by sector and sub-sector, customs and balance of payments basis, for all countries, annual
228-0056	Merchandise imports and exports by sector, balance of payments basis, for all countries, seasonally adjusted, Fisher formula, monthly
228-0057	Merchandise imports and exports by sector, balance of payments basis, for all countries, seasonally adjusted, Fisher formula, quarterly

---

### **Selected surveys from Statistics Canada**

---

2201	Canadian International Merchandise Trade (Customs Basis)
2202	Canadian International Merchandise Trade (Balance of Payments Basis)
2203	International Trade Price Indexes

---

### **Selected summary tables from Statistics Canada**

---

- *Canada: Economic and financial data*
- *Imports, exports and trade balance of goods on a balance-of-payments basis, by country or country grouping*
- *Exports of goods on a balance-of-payments basis*

- *Imports of goods on a balance-of-payments basis*
- *Merchandise trade of Canada (monthly)*
- *Economic indicators, by province and territory (monthly and quarterly)*
- *Latest statistics (monthly)*

# Statistical tables

---

---



**Table 1-1**  
**Merchandise trade of Canada, balance of payments basis, seasonally adjusted — Current dollars**

	Exports	Imports	Trade balance	Period to period change		
				Exports	Imports	Balance
	millions of dollars			percent		millions of dollars
2007	463,120	415,683	47,437	0.0	0.0	0
2008	488,754	443,777	44,977	5.5	6.8	-2,460
2009	369,343	374,081	-4,738	-24.4	-15.7	-49,715
2010	404,834	413,833	-8,999	9.6	10.6	-4,261
<b>2009</b>						
First quarter	95,888	95,487	400	-16.7	-14.9	-2,399
Second quarter	88,071	90,304	-2,234	-8.2	-5.4	-2,634
Third quarter	90,293	93,167	-2,873	2.5	3.2	-639
Fourth quarter	95,092	95,123	-32	5.3	2.1	2,842
<b>2010</b>						
First quarter	98,870	98,583	287	4.0	3.6	318
Second quarter	100,071	103,014	-2,942	1.2	4.5	-3,229
Third quarter	99,592	106,312	-6,720	-0.5	3.2	-3,778
Fourth quarter	106,301	105,924	377	6.7	-0.4	7,097
<b>2011</b>						
First quarter	111,253	109,663	1,590	4.7	3.5	1,213
<b>2010</b>						
January	33,260	31,902	1,358	2.5	-2.7	1,714
February	32,929	32,780	148	-1.0	2.8	-1,210
March	32,681	33,901	-1,220	-0.8	3.4	-1,368
April	32,749	32,962	-213	0.2	-2.8	1,007
May	34,282	34,984	-702	4.7	6.1	-489
June	33,040	35,068	-2,028	-3.6	0.2	-1,326
July	33,040	35,220	-2,181	0.0	0.4	-153
August	33,550	35,757	-2,207	1.5	1.5	-26
September	33,002	35,335	-2,333	-1.6	-1.2	-126
October	34,090	35,474	-1,384	3.3	0.4	949
November	34,845	34,979	-134	2.2	-1.4	1,249
December	37,366	35,471	1,895	7.2	1.4	2,029
<b>2011</b>						
January	38,775	36,740	2,035	3.8	3.6	140
February	35,323	35,506	-184	-8.9	-3.4	-2,218
March	37,156	37,417	-261	5.2	5.4	-78
April	36,495	37,352	-857	-1.8	-0.2	-596
May	36,945	37,759	-813	1.2	1.1	44

**Note(s):** Because of rounding, monthly data may not add up to quarterly data and quarterly data may not add up to annual data.

**Table 1-2**  
**Merchandise trade of Canada, balance of payments basis, seasonally adjusted — Constant dollars, 2002**

	Exports	Imports	Trade balance	Period to period change	
				Exports	Imports
	millions of dollars			percent	
2007	449,015	484,005	-34,990	0.0	0.0
2008	412,713	486,735	-74,022	-8.1	0.6
2009	346,916	407,679	-60,763	-15.9	-16.2
2010	374,143	470,401	-96,259	7.8	15.4
<b>2009</b>					
First quarter	87,361	98,563	-11,202	-9.7	-13.3
Second quarter	83,432	97,723	-14,290	-4.5	-0.9
Third quarter	86,976	104,165	-17,189	4.2	6.6
Fourth quarter	89,147	107,228	-18,081	2.5	2.9
<b>2010</b>					
First quarter	90,749	111,192	-20,442	1.8	3.7
Second quarter	94,368	117,650	-23,282	4.0	5.8
Third quarter	94,074	120,900	-26,826	-0.3	2.8
Fourth quarter	94,951	120,659	-25,708	0.9	-0.2
<b>2011</b>					
First quarter	97,027	124,583	-27,556	2.2	3.3
<b>2010</b>					
January	30,484	36,096	-5,612	1.2	-1.5
February	29,984	36,948	-6,964	-1.6	2.4
March	30,282	38,148	-7,866	1.0	3.2
April	30,882	37,943	-7,061	2.0	-0.5
May	32,065	39,600	-7,535	3.8	4.4
June	31,421	40,106	-8,686	-2.0	1.3
July	31,273	40,040	-8,767	-0.5	-0.2
August	31,897	40,711	-8,814	2.0	1.7
September	30,905	40,150	-9,245	-3.1	-1.4
October	31,313	40,563	-9,250	1.3	1.0
November	31,041	39,832	-8,790	-0.9	-1.8
December	32,597	40,265	-7,668	5.0	1.1
<b>2011</b>					
January	33,741	42,009	-8,268	3.5	4.3
February	31,079	40,361	-9,283	-7.9	-3.9
March	32,207	42,212	-10,006	3.6	4.6
April	31,732	42,671	-10,939	-1.5	1.1
May	32,217	42,249	-10,032	1.5	-1.0

**Note(s):** Because of rounding, monthly data may not add up to quarterly data and quarterly data may not add up to annual data.

**Table 1-3**  
**Merchandise trade of Canada, balance of payments basis, seasonally adjusted — Price indices (Laspeyres)**

	2002=100			Period to period change		
	Exports	Imports	Terms of trade	Exports	Imports	Terms of trade
	price indices (Laspeyres)			percent		
2007	107.1	91.4	117.1	0.0	0.0	0.0
2008	116.2	97.2	119.6	8.5	6.3	2.2
2009	105.2	96.2	109.3	-9.5	-1.0	-8.5
2010	106.8	94.1	113.4	1.5	-2.2	3.7
<b>2009</b>						
First quarter	108.8	100.8	107.9	-3.9	-2.8	-1.1
Second quarter	104.6	96.8	108.0	-3.8	-4.0	0.1
Third quarter	102.9	94.1	109.3	-1.6	-2.8	1.2
Fourth quarter	105.3	93.0	113.2	2.3	-1.2	3.5
<b>2010</b>						
First quarter	107.1	93.7	114.2	1.7	0.7	0.9
Second quarter	105.7	93.6	112.9	-1.3	-0.1	-1.2
Third quarter	106.1	94.5	112.3	0.4	0.9	-0.5
Fourth quarter	108.2	94.6	114.4	2.0	0.1	1.9
<b>2011</b>						
First quarter	111.4	96.2	115.9	3.0	1.7	1.3
<b>2010</b>						
January	107.2	93.9	114.2	1.0	0.0	1.0
February	108.1	95.1	113.7	0.8	1.3	-0.5
March	106.0	93.8	113.0	-1.9	-1.3	-0.6
April	105.2	92.1	114.3	-0.8	-1.8	1.1
May	106.3	94.5	112.5	1.0	2.6	-1.6
June	105.6	94.0	112.3	-0.7	-0.5	-0.2
July	104.8	93.8	111.7	-0.7	-0.2	-0.5
August	105.9	94.1	112.5	1.0	0.3	0.7
September	106.7	93.9	113.6	0.8	-0.2	1.0
October	107.5	93.9	114.5	0.7	-0.1	0.7
November	109.0	94.8	115.0	1.4	1.0	0.5
December	110.8	95.4	116.1	1.6	0.7	1.0
<b>2011</b>						
January	111.5	96.0	116.2	0.7	0.6	0.1
February	111.2	97.4	114.2	-0.3	1.4	-1.7
March	112.4	97.4	115.3	1.0	0.1	0.9
April	113.0	97.8	115.5	0.5	0.4	0.1
May	113.0	99.7	113.4	0.0	1.9	-1.9

**Note(s):** Because of rounding, monthly data may not add up to quarterly data and quarterly data may not add up to annual data.

**Table 2-1**  
**Exports by commodity groupings, balance of payments basis, seasonally adjusted — Current dollars**

	April 2011	May 2011	Change	Year to date			May 2011/May 2010		
				2010		Change			
				2010	2011				
	millions of dollars		percent	millions of dollars		percent			
<b>Total</b>	<b>36,495</b>	<b>36,945</b>	<b>451</b>	<b>1.2</b>	<b>165,900</b>	<b>184,693</b>	<b>18,793</b>	<b>11.3</b>	<b>7.8</b>
<b>Agricultural and fishing products</b>	<b>3,392</b>	<b>3,294</b>	<b>-98</b>	<b>-2.9</b>	<b>14,834</b>	<b>16,162</b>	<b>1,329</b>	<b>9.0</b>	<b>8.8</b>
Wheat	477	413	-64	-13.3	1,756	2,047	291	16.6	11.9
Other agricultural and fishing products	2,916	2,881	-34	-1.2	13,078	14,116	1,038	7.9	8.3
Live animals	114	115	1	0.7	741	566	-176	-23.7	-33.0
Fish and fish preparations	378	406	28	7.4	1,717	1,813	97	5.6	16.7
Barley	22	11	-10	-47.5	122	131	9	7.4	-28.9
Wheat flour	6	6	0	2.8	33	33	0	0.1	-5.6
Other cereals unmilled	87	152	65	74.7	180	473	293	162.7	402.2
Other cereal preparations	243	243	1	0.3	1,146	1,174	28	2.4	4.2
Meat and meat preparations	408	407	-1	-0.3	1,935	1,984	48	2.5	-5.9
Alcoholic beverages	64	59	-5	-7.3	321	301	-20	-6.1	-7.1
Other food, feed, beverages and tobacco	1,023	957	-66	-6.5	4,631	4,865	234	5.0	3.4
Rapeseed	329	355	25	7.7	1,273	1,735	461	36.2	39.9
Other crude vegetable products	242	170	-72	-29.8	978	1,042	63	6.5	-4.8
<b>Energy products</b>	<b>9,404</b>	<b>9,061</b>	<b>-343</b>	<b>-3.6</b>	<b>39,424</b>	<b>46,794</b>	<b>7,370</b>	<b>18.7</b>	<b>19.7</b>
Crude petroleum	5,543	5,223	-319	-5.8	22,041	28,428	6,387	29.0	32.0
Natural gas	1,230	1,287	57	4.6	7,026	6,066	-960	-13.7	-0.9
Other energy products	2,631	2,551	-81	-3.1	10,356	12,300	1,944	18.8	10.2
Coal and other bituminous substances	486	633	147	30.3	1,894	2,413	519	27.4	28.8
Petroleum and coal products	1,998	1,765	-233	-11.6	7,525	9,102	1,577	21.0	5.5
Electricity	148	153	5	3.1	937	785	-152	-16.2	0.9
<b>Forestry products</b>	<b>1,912</b>	<b>1,889</b>	<b>-23</b>	<b>-1.2</b>	<b>8,863</b>	<b>9,472</b>	<b>608</b>	<b>6.9</b>	<b>1.1</b>
Lumber and sawmill products	696	689	-8	-1.1	3,351	3,537	186	5.6	-4.2
Other crude wood products	80	70	-10	-13.0	277	365	88	31.7	17.3
Lumber	425	427	2	0.4	2,016	2,236	220	10.9	-0.3
Other wood fabricated materials	191	192	1	0.5	1,057	936	-121	-11.5	-17.1
Wood pulp and other wood products	594	578	-16	-2.7	2,433	2,867	433	17.8	13.1
Newsprint and other paper and paperboard	622	623	1	0.1	3,079	3,068	-11	-0.4	-2.5
Newsprint paper	324	323	-1	-0.4	1,525	1,596	72	4.7	-0.7
Other paper and paperboard	298	300	2	0.7	1,554	1,472	-83	-5.3	-4.3
<b>Industrial goods and materials</b>	<b>9,089</b>	<b>9,450</b>	<b>360</b>	<b>4.0</b>	<b>38,624</b>	<b>46,274</b>	<b>7,649</b>	<b>19.8</b>	<b>18.0</b>
Metal ores	1,349	1,384	35	2.6	4,784	6,648	1,864	39.0	27.6
Iron ores, concentrates and scrap	464	421	-43	-9.3	1,742	2,334	592	34.0	15.7
Copper ores, concentrates and scrap	147	320	173	118.1	884	1,255	372	42.1	59.8
Nickel ores, concentrates and scrap	416	318	-98	-23.6	1,114	1,508	394	35.4	2.7
Zinc ores, concentrates and scrap	16	24	8	48.5	106	106	1	0.5	-18.7
Other ores, concentrates and scrap	306	301	-5	-1.6	940	1,445	505	53.8	65.4
Chemicals, plastics and fertilizers	2,942	3,100	158	5.4	12,351	14,479	2,128	17.2	22.4
Inorganic chemicals	533	543	10	1.9	1,768	2,508	740	41.9	52.8
Organic chemicals	620	658	37	6.0	2,655	2,991	336	12.7	10.7
Fertilizers and fertilizer materials	518	667	149	28.7	2,544	2,963	419	16.5	46.4
Synthetic rubber and plastics	997	949	-47	-4.7	4,137	4,670	533	12.9	9.3
Other chemical products	274	283	9	3.2	1,247	1,347	100	8.0	9.5
Metals and alloys	3,206	3,440	234	7.3	14,465	17,379	2,914	20.1	15.6
Primary iron and steel	87	83	-5	-5.5	522	348	-174	-33.4	-31.0
Steel bars, rods, plates, sheets	316	350	34	10.8	1,447	1,528	81	5.6	13.2
Other iron and steel and alloys	228	238	10	4.2	1,151	1,153	2	0.2	5.9
Aluminum including alloys	669	707	38	5.7	3,139	3,253	114	3.6	12.6
Copper and alloys	199	195	-4	-1.9	1,304	1,068	-236	-18.1	-10.6
Nickel and alloys	264	261	-3	-1.1	701	1,460	759	108.3	62.3
Precious metals and alloys	1,232	1,402	170	13.8	5,113	7,498	2,385	46.7	25.4
Zinc and alloys	109	104	-4	-4.0	644	555	-89	-13.8	-6.2
Other non-ferrous metals and alloys	102	100	-2	-2.0	446	516	70	15.6	13.9
Other industrial goods and materials	1,593	1,526	-67	-4.2	7,024	7,767	743	10.6	7.7
Asbestos unmanufactured	5	2	-2	-51.1	25	18	-6	-25.7	-57.2
Other crude animal products	68	55	-13	-18.7	372	372	1	0.2	-12.4
Other crude non-metallic minerals	366	328	-38	-10.3	1,570	1,651	81	5.1	6.2
Other crude materials, inedible	67	62	-5	-7.9	282	320	37	13.3	2.7
Metal fabricated basic products	357	358	2	0.4	1,705	1,789	84	4.9	1.1
Textile fabricated materials	179	179	0	0.0	888	901	13	1.5	-0.8
Non-metallic mineral basic products	159	159	0	-0.2	770	789	19	2.5	0.3
Other fabricated materials	392	383	-10	-2.5	1,412	1,927	515	36.5	33.5
<b>Machinery and equipment</b>	<b>6,016</b>	<b>6,307</b>	<b>291</b>	<b>4.8</b>	<b>30,006</b>	<b>31,268</b>	<b>1,262</b>	<b>4.2</b>	<b>0.4</b>

Table 2-1 – continued

## Exports by commodity groupings, balance of payments basis, seasonally adjusted — Current dollars

	April 2011	May 2011	Change	Year to date					May 2011/May 2010
				2010	2011	Change			
Industrial and agricultural machinery	1,589	1,542	-47	-3.0	7,116	7,674	557	7.8	0.6
Industrial machinery	1,436	1,386	-50	-3.5	6,368	6,899	531	8.3	1.5
Agricultural machinery includ. tractors	154	157	3	2.0	748	775	26	3.5	-6.4
Aircraft and other transportation equipment	1,123	1,375	252	22.5	6,880	6,926	45	0.7	0.3
Aircraft, engines, parts	748	1,008	259	34.7	5,384	5,145	-238	-4.4	-5.6
Other transportation equipment	374	367	-7	-1.9	1,497	1,781	284	19.0	21.3
Other machinery and equipment	3,304	3,389	86	2.6	16,009	16,668	659	4.1	0.3
Television, telecommunication equipment	561	600	38	6.8	3,016	2,988	-28	-0.9	5.9
Office machines and equipment	351	360	9	2.5	1,724	1,778	55	3.2	4.2
Other equipment and tools	1,576	1,592	16	1.0	7,425	7,729	304	4.1	3.4
Other end products, inedible	816	838	23	2.8	3,844	4,173	329	8.6	-9.5
<b>Automotive products</b>	<b>4,686</b>	<b>4,868</b>	<b>182</b>	<b>3.9</b>	<b>23,274</b>	<b>24,260</b>	<b>986</b>	<b>4.2</b>	<b>-10.5</b>
Passenger autos and chassis	3,040	3,190	150	4.9	15,522	16,047	525	3.4	-15.3
Trucks and other motor vehicles	228	205	-23	-10.3	900	1,044	144	16.0	6.3
Motor vehicle parts	1,417	1,473	55	3.9	6,852	7,170	317	4.6	-0.6
<b>Other consumer goods</b>	<b>1,217</b>	<b>1,329</b>	<b>112</b>	<b>9.2</b>	<b>6,934</b>	<b>6,505</b>	<b>-429</b>	<b>-6.2</b>	<b>0.4</b>
<b>Special transactions trade</b>	<b>320</b>	<b>305</b>	<b>-15</b>	<b>-4.7</b>	<b>1,756</b>	<b>1,610</b>	<b>-146</b>	<b>-8.3</b>	<b>-7.3</b>
<b>Unallocated balance of payments adjustments</b>	<b>458</b>	<b>442</b>	<b>-16</b>	<b>-3.4</b>	<b>2,185</b>	<b>2,349</b>	<b>164</b>	<b>7.5</b>	<b>2.7</b>

**Table 2-2**  
**Exports by commodity groupings, balance of payments basis, seasonally adjusted — Constant dollars, 2002**

	April	May	Change		Year to date			May 2011/May 2010	
	2011	2011			2010		2011		
	millions of dollars		percent		millions of dollars		percent		
<b>Total</b>	<b>31,732</b>	<b>32,217</b>	<b>485</b>	<b>1.5</b>	<b>153,697</b>	<b>160,975</b>	<b>7,279</b>	<b>4.7</b>	<b>0.5</b>
<b>Agricultural and fishing products</b>	<b>3,077</b>	<b>2,952</b>	<b>-125</b>	<b>-4.0</b>	<b>15,739</b>	<b>14,887</b>	<b>-852</b>	<b>-5.4</b>	<b>-6.5</b>
Wheat	374	302	-72	-19.3	1,916	1,527	-388	-20.3	-26.3
Other agricultural and fishing products	2,703	2,650	-53	-1.9	13,823	13,360	-464	-3.4	-3.6
Live animals	110	118	7	6.8	868	554	-315	-36.2	-40.2
Fish and fish preparations	407	413	6	1.4	2,223	2,057	-167	-7.5	-3.6
Barley	17	9	-8	-46.5	119	101	-18	-15.2	-25.4
Wheat flour	5	5	0	-1.3	32	28	-4	-11.3	-19.9
Other cereals unmilled	63	101	39	61.8	225	336	111	49.6	136.6
Other cereal preparations	219	221	2	0.9	1,026	1,065	40	3.9	9.2
Meat and meat preparations	415	409	-6	-1.4	2,208	2,018	-191	-8.6	-10.6
Alcoholic beverages	136	115	-21	-15.6	633	600	-33	-5.2	-4.9
Other food, feed, beverages and tobacco	916	869	-47	-5.1	4,364	4,525	161	3.7	0.8
Rapeseed	228	251	23	10.3	1,222	1,246	23	1.9	-1.5
Other crude vegetable products	186	138	-48	-25.8	903	831	-73	-8.0	-16.1
<b>Energy products</b>	<b>4,834</b>	<b>4,746</b>	<b>-89</b>	<b>-1.8</b>	<b>23,173</b>	<b>24,704</b>	<b>1,532</b>	<b>6.6</b>	<b>-4.4</b>
Crude petroleum	2,242	2,143	-98	-4.4	10,216	11,808	1,591	15.6	-0.4
Natural gas	1,357	1,378	21	1.5	6,855	6,930	75	1.1	-5.5
Other energy products	1,235	1,224	-11	-0.9	6,101	5,967	-134	-2.2	-9.7
Coal and other bituminous substances	131	153	22	16.4	795	673	-123	-15.4	-1.9
Petroleum and coal products	899	833	-65	-7.3	4,211	4,248	37	0.9	-16.1
Electricity	205	238	33	16.0	1,095	1,046	-49	-4.5	15.3
<b>Forestry products</b>	<b>2,337</b>	<b>2,340</b>	<b>3</b>	<b>0.1</b>	<b>10,908</b>	<b>11,597</b>	<b>689</b>	<b>6.3</b>	<b>9.3</b>
Lumber and sawmill products	915	944	29	3.2	4,235	4,654	419	9.9	15.1
Other crude wood products	99	84	-16	-15.7	369	456	88	23.8	21.0
Lumber	590	622	32	5.3	2,748	3,088	341	12.4	16.5
Other wood fabricated materials	225	238	13	5.9	1,119	1,109	-10	-0.9	9.8
Wood pulp and other wood products	698	678	-20	-2.9	2,982	3,400	417	14.0	16.4
Newsprint and other paper and paperboard	724	718	-6	-0.8	3,690	3,543	-147	-4.0	-2.9
Newsprint paper	378	377	-1	-0.3	1,880	1,855	-25	-1.3	-2.3
Other paper and paperboard	345	340	-5	-1.4	1,810	1,689	-122	-6.7	-3.5
<b>Industrial goods and materials</b>	<b>5,634</b>	<b>5,729</b>	<b>95</b>	<b>1.7</b>	<b>27,052</b>	<b>28,340</b>	<b>1,288</b>	<b>4.8</b>	<b>4.9</b>
Metal ores	598	568	-29	-4.9	2,381	2,783	402	16.9	13.2
Iron ores, concentrates and scrap	184	151	-33	-18.0	825	886	62	7.5	-1.1
Copper ores, concentrates and scrap	43	92	49	112.3	302	354	52	17.2	28.9
Nickel ores, concentrates and scrap	159	129	-30	-18.7	517	588	72	13.8	-1.5
Zinc ores, concentrates and scrap	8	13	5	57.7	54	54	0	0.0	-23.2
Other ores, concentrates and scrap	203	183	-20	-9.7	683	901	218	31.8	40.8
Chemicals, plastics and fertilizers	1,963	1,990	27	1.4	8,900	9,626	727	8.2	10.6
Inorganic chemicals	205	206	1	0.3	902	969	67	7.4	9.9
Organic chemicals	317	313	-4	-1.4	1,528	1,507	-21	-1.4	-3.3
Fertilizers and fertilizer materials	200	264	64	32.0	1,112	1,189	77	6.9	29.9
Synthetic rubber and plastics	920	886	-34	-3.7	3,836	4,386	550	14.3	15.3
Other chemical products	320	321	0	0.1	1,522	1,576	54	3.5	1.3

Table 2-2 – continued

## Exports by commodity groupings, balance of payments basis, seasonally adjusted — Constant dollars, 2002

	April	May	Change	Year to date			May 2011/May 2010		
	2011	2011		2010	2011	Change			
	millions of dollars		percent		millions of dollars		percent		
<b>Metals and alloys</b>	<b>1,755</b>	<b>1,878</b>	<b>122</b>	<b>7.0</b>	<b>9,238</b>	<b>9,359</b>	<b>121</b>	<b>1.3</b>	<b>1.5</b>
Primary iron and steel	55	52	-3	-6.1	366	222	-143	-39.2	-34.1
Steel bars, rods, plates, sheets	238	256	18	7.5	1,214	1,196	-18	-1.5	3.9
Other iron and steel and alloys	176	182	6	3.5	975	920	-54	-5.6	-0.2
Aluminum including alloys	623	670	47	7.6	3,202	3,088	-114	-3.6	2.1
Copper and alloys	51	51	-1	-1.1	425	278	-147	-34.5	-26.1
Nickel and alloys	113	117	4	3.3	371	609	238	64.3	41.8
Precious metals and alloys	388	443	55	14.1	2,142	2,501	359	16.8	1.3
Zinc and alloys	61	60	-1	-0.9	352	307	-45	-12.7	-1.5
Other non-ferrous metals and alloys	50	47	-3	-6.3	192	237	45	23.4	26.0
<b>Other industrial goods and materials</b>	<b>1,318</b>	<b>1,293</b>	<b>-25</b>	<b>-1.9</b>	<b>6,533</b>	<b>6,571</b>	<b>38</b>	<b>0.6</b>	<b>-1.1</b>
Asbestos unmanufactured	5	2	-2	-52.2	25	18	-7	-27.6	-58.7
Other crude animal products	65	53	-12	-18.2	390	352	-38	-9.6	-17.4
Other crude non-metallic minerals	308	303	-5	-1.6	1,635	1,505	-130	-8.0	-6.8
Other crude materials, inedible	64	56	-8	-13.0	264	294	31	11.6	-3.7
Metal fabricated basic products	282	285	4	1.4	1,376	1,421	45	3.3	0.7
Textile fabricated materials	193	194	1	0.8	964	961	-3	-0.3	0.1
Non-metallic mineral basic products	134	132	-2	-1.3	643	657	14	2.2	1.1
Other fabricated materials	268	266	-1	-0.5	1,237	1,363	126	10.2	8.5
<b>Machinery and equipment</b>	<b>6,867</b>	<b>7,230</b>	<b>363</b>	<b>5.3</b>	<b>33,536</b>	<b>35,585</b>	<b>2,049</b>	<b>6.1</b>	<b>5.6</b>
Industrial and agricultural machinery	1,534	1,464	-70	-4.5	6,593	7,275	681	10.3	3.6
Industrial machinery	1,388	1,318	-70	-5.0	5,902	6,550	648	11.0	4.4
Agricultural machinery includ. tractors	146	146	0	0.1	691	725	34	4.9	-3.0
Aircraft and other transportation equipment	1,406	1,725	318	22.6	8,498	8,658	160	1.9	2.2
Aircraft, engines, parts	1,020	1,354	335	32.8	6,996	6,860	-136	-1.9	-2.6
Other transportation equipment	387	371	-16	-4.2	1,502	1,798	296	19.7	24.5
Other machinery and equipment	3,927	4,041	114	2.9	18,445	19,652	1,207	6.5	7.8
Television, telecommunication equipment	741	793	52	7.1	3,842	3,909	67	1.7	11.5
Office machines and equipment	992	1,022	30	3.0	4,279	4,950	671	15.7	19.7
Other equipment and tools	1,522	1,541	19	1.2	7,044	7,389	344	4.9	6.4
Other end products, inedible	673	686	13	2.0	3,280	3,405	125	3.8	-6.7
<b>Automotive products</b>	<b>6,511</b>	<b>6,718</b>	<b>207</b>	<b>3.2</b>	<b>31,064</b>	<b>33,264</b>	<b>2,201</b>	<b>7.1</b>	<b>-7.2</b>
Passenger autos and chassis	4,638	4,814	176	3.8	22,419	23,997	1,578	7.0	-10.7
Trucks and other motor vehicles	285	256	-29	-10.2	1,085	1,280	194	17.9	10.3
Motor vehicle parts	1,589	1,649	60	3.8	7,559	7,988	428	5.7	1.7
<b>Other consumer goods</b>	<b>1,180</b>	<b>1,283</b>	<b>103</b>	<b>8.7</b>	<b>6,653</b>	<b>6,295</b>	<b>-357</b>	<b>-5.4</b>	<b>0.6</b>
<b>Special transactions trade</b>	<b>274</b>	<b>254</b>	<b>-20</b>	<b>-7.3</b>	<b>1,590</b>	<b>1,372</b>	<b>-218</b>	<b>-13.7</b>	<b>-13.6</b>
<b>Unallocated balance of payments adjustments</b>	<b>1,017</b>	<b>966</b>	<b>-52</b>	<b>-5.1</b>	<b>3,983</b>	<b>4,930</b>	<b>947</b>	<b>23.8</b>	<b>42.2</b>

**Table 3-1**  
**Domestic exports to selected countries, customs basis, not seasonally adjusted — May**

	Agricultural and fishing products	Energy products	Forestry products	Industrial goods	Machinery and equipment	Automotive products	Consumer goods	Special transactions trade	<b>Total</b>
millions of dollars									
<b>United States</b>									
2010	1,727.2	7,384.5	1,230.1	4,793.4	3,357.3	4,611.1	727.7	247.2	<b>24,078.5</b>
2011	1,731.3	8,560.0	1,073.7	5,712.0	3,511.0	4,378.8	702.3	220.8	<b>25,889.9</b>
<b>Mexico</b>									
2010	90.3	0.5	10.4	71.8	54.9	69.1	4.4	1.1	<b>302.4</b>
2011	103.4	1.2	12.8	84.2	83.5	44.0	4.0	0.5	<b>333.5</b>
<b>Japan</b>									
2010	304.4	200.1	110.1	144.2	31.2	6.6	17.0	0.9	<b>814.5</b>
2011	398.5	160.3	119.8	205.9	67.8	3.7	9.9	1.3	<b>967.3</b>
<b>European Union</b>									
<b>Germany</b>									
2010	10.1	12.1	8.3	111.2	174.6	2.7	14.8	0.8	<b>334.4</b>
2011	9.4	18.0	6.9	56.4	141.7	1.9	16.3	0.5	<b>251.2</b>
<b>France</b>									
2010	10.8	6.5	13.0	38.7	74.7	4.1	20.4	2.2	<b>170.5</b>
2011	21.8	14.5	12.2	70.1	87.5	2.4	17.5	0.7	<b>226.6</b>
<b>United Kingdom</b>									
2010	31.7	19.5	19.2	891.6	222.4	3.5	15.6	5.6	<b>1,209.2</b>
2011	28.2	58.4	14.2	1,192.0	91.3	4.1	14.7	4.9	<b>1,407.9</b>
<b>Italy</b>									
2010	23.4	24.2	30.0	44.5	29.9	0.5	19.3	1.0	<b>172.9</b>
2011	39.6	49.7	24.3	49.5	27.0	0.3	8.9	0.1	<b>199.4</b>
<b>Other European Union</b>									
2010	79.2	88.4	28.8	289.6	217.5	13.9	70.9	5.4	<b>793.5</b>
2011	94.8	145.5	23.2	351.5	151.1	14.2	63.2	2.5	<b>846.1</b>
<b>Total</b>									
2010	155.2	150.6	99.2	1,375.5	719.0	24.8	141.0	15.1	<b>2,680.5</b>
2011	193.9	286.0	80.8	1,719.6	498.6	23.0	120.7	8.6	<b>2,931.1</b>
<b>Newly industrialized countries</b>									
<b>South Korea</b>									
2010	62.4	130.5	38.3	117.7	36.7	6.6	4.7	0.2	<b>397.1</b>
2011	132.7	146.1	51.4	70.2	19.6	1.3	6.8	0.3	<b>428.5</b>
<b>Hong Kong</b>									
2010	35.1	0.1	12.4	35.1	20.3	0.6	5.8	1.2	<b>110.7</b>
2011	37.7	0.0	10.4	37.6	27.0	0.6	5.4	0.2	<b>118.9</b>
<b>Taiwan</b>									
2010	9.2	20.7	25.8	41.1	9.8	0.2	2.8	0.1	<b>109.9</b>
2011	11.5	0.2	35.8	47.6	7.6	0.1	2.9	0.1	<b>105.7</b>
<b>Singapore</b>									
2010	3.9	0.4	2.3	24.7	24.8	1.6	2.0	0.1	<b>59.9</b>
2011	4.4	0.8	0.6	15.1	27.2	0.9	2.3	0.1	<b>51.5</b>
<b>Total</b>									
2010	110.6	151.7	78.9	218.7	91.6	9.0	15.4	1.6	<b>677.5</b>
2011	186.4	147.2	98.2	170.6	81.3	2.9	17.4	0.7	<b>704.7</b>
<b>Other countries</b>									
2010	773.5	164.0	437.3	1,101.0	619.1	58.7	103.2	28.7	<b>3,285.4</b>
2011	822.9	307.6	594.2	1,277.5	604.3	78.1	93.2	15.4	<b>3,793.2</b>
<b>Total</b>									
2010	<b>3,161.1</b>	<b>8,051.5</b>	<b>1,966.0</b>	<b>7,704.6</b>	<b>4,873.2</b>	<b>4,779.3</b>	<b>1,008.7</b>	<b>294.5</b>	<b>31,838.8</b>
2011	<b>3,436.4</b>	<b>9,462.2</b>	<b>1,979.4</b>	<b>9,169.7</b>	<b>4,846.7</b>	<b>4,530.5</b>	<b>947.5</b>	<b>247.4</b>	<b>34,619.7</b>



**Table 3-2**  
**Domestic exports to selected countries, customs basis, not seasonally adjusted — Year to date, January to May**

	Agricultural and fishing products	Energy products	Forestry products	Industrial goods	Machinery and equipment	Automotive products	Consumer goods	Special transactions trade	<b>Total</b>
millions of dollars									
<b>United States</b>									
2010	7,405.6	36,660.4	5,727.7	23,033.6	16,206.8	21,148.8	4,048.1	1,299.7	<b>115,530.8</b>
2011	7,495.4	41,717.5	5,415.8	26,291.1	17,039.5	21,941.6	3,558.4	1,195.8	<b>124,655.1</b>
<b>Mexico</b>									
2010	553.8	15.6	56.1	402.2	280.8	350.3	39.9	1.7	<b>1,700.4</b>
2011	542.6	25.7	60.1	474.2	328.8	267.3	34.7	2.0	<b>1,735.5</b>
<b>Japan</b>									
2010	1,207.3	766.0	531.6	585.8	228.1	30.1	54.5	5.3	<b>3,408.8</b>
2011	1,615.6	813.0	544.9	944.6	263.0	22.1	39.8	6.9	<b>4,249.9</b>
<b>European Union</b>									
<b>Germany</b>									
2010	54.9	36.0	36.1	460.1	670.2	15.0	82.7	7.4	<b>1,362.4</b>
2011	53.4	75.9	30.3	467.8	587.3	11.8	82.9	7.9	<b>1,317.5</b>
<b>France</b>									
2010	48.5	7.0	59.8	198.1	361.7	14.6	94.4	11.0	<b>795.1</b>
2011	57.8	26.7	41.5	335.8	562.7	11.6	87.2	5.0	<b>1,128.2</b>
<b>United Kingdom</b>									
2010	122.1	37.5	88.5	4,720.4	723.0	18.9	78.3	27.4	<b>5,816.1</b>
2011	127.7	99.0	68.6	5,608.9	483.6	26.5	64.3	23.5	<b>6,502.1</b>
<b>Italy</b>									
2010	93.3	81.9	126.0	147.5	177.2	2.3	73.3	4.5	<b>705.8</b>
2011	109.5	117.2	120.5	174.7	187.9	3.2	37.4	1.0	<b>751.4</b>
<b>Other European Union</b>									
2010	348.6	223.2	125.9	1,447.3	1,035.1	60.5	259.9	22.7	<b>3,523.1</b>
2011	547.8	592.4	92.8	1,674.0	910.4	58.5	271.8	14.2	<b>4,161.9</b>
<b>Total</b>									
2010	667.4	385.5	436.3	6,973.3	2,967.3	111.2	588.6	73.0	<b>12,202.6</b>
2011	896.3	911.2	353.8	8,261.1	2,731.8	111.6	543.6	51.6	<b>13,861.1</b>
<b>Newly industrialized countries</b>									
<b>South Korea</b>									
2010	231.3	434.1	195.1	448.3	178.6	33.1	21.1	4.0	<b>1,545.7</b>
2011	493.7	642.4	216.7	494.6	152.8	8.5	34.5	2.2	<b>2,045.4</b>
<b>Hong Kong</b>									
2010	163.5	0.2	45.6	325.4	103.8	3.4	27.1	7.3	<b>676.4</b>
2011	156.4	0.1	55.8	739.1	178.6	2.8	33.5	2.2	<b>1,168.5</b>
<b>Taiwan</b>									
2010	59.3	72.5	107.6	155.5	55.8	1.4	18.4	0.5	<b>470.9</b>
2011	61.7	130.5	132.6	335.5	46.7	0.6	15.2	0.5	<b>723.3</b>
<b>Singapore</b>									
2010	24.7	3.0	10.2	78.0	125.0	10.2	15.2	3.9	<b>270.2</b>
2011	27.0	3.0	3.7	66.5	158.6	11.6	11.4	2.5	<b>284.3</b>
<b>Total</b>									
2010	478.7	509.9	358.5	1,007.2	463.2	48.1	81.8	15.7	<b>2,963.1</b>
2011	738.8	776.0	408.8	1,635.7	536.7	23.5	94.6	7.4	<b>4,221.5</b>
<b>Other countries</b>									
2010	3,670.9	788.1	1,877.8	5,610.4	3,251.3	300.6	735.2	123.9	<b>16,358.2</b>
2011	3,818.8	1,179.7	2,753.1	6,315.6	3,140.6	345.0	424.1	82.7	<b>18,059.7</b>
<b>Total</b>									
2010	<b>13,983.8</b>	<b>39,125.6</b>	<b>8,988.1</b>	<b>37,612.5</b>	<b>23,397.5</b>	<b>21,989.1</b>	<b>5,548.1</b>	<b>1,519.2</b>	<b>152,164.0</b>
2011	<b>15,107.5</b>	<b>45,423.1</b>	<b>9,536.4</b>	<b>43,922.5</b>	<b>24,040.8</b>	<b>22,711.2</b>	<b>4,695.3</b>	<b>1,346.4</b>	<b>166,783.2</b>

**Table 4**  
**Domestic exports by country, customs basis, not seasonally adjusted**

	May		January to May		Change January to May 2011/ January to May 2010
	2010	2011	2010	2011	
	millions of dollars				percent
<b>North America</b>					
Greenland	0.5	1.0	2.9	4.0	38.0
Mexico	302.4	333.5	1,700.4	1,735.5	2.1
Saint Pierre and Miquelon	1.3	1.5	6.4	7.2	12.9
United States	24,078.5	25,889.9	115,530.8	124,655.1	7.9
<b>Total</b>	<b>24,382.6</b>	<b>26,225.8</b>	<b>117,240.5</b>	<b>126,401.9</b>	<b>7.8</b>
<b>Western Europe</b>					
Andorra	0.0	0.0	0.1	0.0	-88.4
Austria	37.0	11.8	137.3	108.1	-21.3
Belgium	204.3	117.7	870.4	734.5	-15.6
Denmark	24.1	13.9	108.7	76.6	-29.5
Faeroe Islands	0.0	0.0	0.1	0.5	282.6
Finland	73.9	51.4	149.2	147.0	-1.5
France	170.5	226.6	795.1	1,128.2	41.9
Germany	334.4	251.2	1,362.4	1,317.5	-3.3
Gibraltar	0.0	0.0	0.0	24.8	...
Greece	6.7	5.6	35.1	37.0	5.4
Iceland	28.2	9.5	66.9	26.2	-60.9
Italy	172.9	199.4	705.8	751.4	6.5
Luxembourg	6.9	14.5	25.9	53.6	106.7
Malta	0.8	0.6	53.1	2.5	-95.2
Netherlands	216.9	375.5	1,088.5	1,810.6	66.3
Norway	275.0	264.0	1,102.4	1,293.6	17.3
Portugal	8.5	15.7	146.0	90.6	-37.9
Republic of Ireland (Eire)	47.5	60.1	150.0	211.7	41.2
Spain	52.7	73.9	320.2	390.3	21.9
Sweden	31.2	31.9	130.7	129.2	-1.2
Switzerland	68.4	50.2	748.5	393.9	-47.4
United Kingdom	1,209.2	1,407.9	5,816.1	6,502.1	11.8
<b>Total</b>	<b>2,969.1</b>	<b>3,181.4</b>	<b>13,812.6</b>	<b>15,229.8</b>	<b>10.3</b>
<b>Other Europe</b>					
Albania	3.0	4.9	13.6	25.0	83.7
Armenia	0.4	1.0	3.1	6.9	123.7
Azerbaijan	1.9	1.1	6.4	3.6	-43.5
Belarus	0.1	0.1	0.8	0.8	-2.5
Bosnia and Herzegovina	0.7	0.4	2.3	1.9	-16.7
Bulgaria	16.7	21.4	41.7	61.5	47.6
Croatia	1.2	1.9	76.8	5.6	-92.8
Czech Republic	8.6	9.7	51.0	40.7	-20.1
Estonia	1.5	1.1	9.2	61.5	568.1
Georgia	0.4	1.2	5.2	7.6	46.3
Hungary	5.0	8.9	29.2	36.7	25.7
Kazakhstan	7.4	7.2	79.4	79.3	-0.1
Kyrgyzstan	0.5	0.2	0.9	1.1	23.5
Latvia	25.0	2.7	30.5	30.3	-0.8
Lithuania	2.3	4.5	11.1	20.2	81.0
Macedonia (Former Yugoslav Republic of Macedonia)	0.8	2.7	4.1	6.2	48.7
Montenegro	0.2	0.2	0.7	0.5	-23.0
Poland	13.2	16.9	64.1	71.8	12.1
Republic of Moldova	0.0	0.1	0.4	0.4	-7.3
Romania	7.9	6.0	47.3	18.1	-61.7
Russian Federation	98.5	94.5	352.2	460.5	30.8
Serbia	0.4	0.3	2.3	2.5	8.9
Slovakia	1.2	0.8	15.7	21.0	33.9
Slovenia	1.1	0.8	4.3	5.0	16.0
Tajikistan	0.0	0.3	4.2	0.9	-79.2
Turkmenistan	0.2	3.1	1.0	5.5	436.4
Ukraine	2.9	6.6	58.3	47.9	-17.8
Uzbekistan	1.0	0.3	2.0	3.6	76.8
<b>Total</b>	<b>202.1</b>	<b>198.8</b>	<b>917.9</b>	<b>1,026.7</b>	<b>11.9</b>

Table 4 – continued

## Domestic exports by country, customs basis, not seasonally adjusted

	May		January to May		Change January to May 2011/ January to May 2010
	2010	2011	2010	2011	
	millions of dollars				percent
<b>Middle East</b>					
Bahrain	2.2	1.5	40.0	18.0	-55.0
Cyprus	0.6	0.7	3.9	3.3	-16.2
Egypt	44.6	56.1	184.3	244.2	32.5
Eritrea	0.1	0.2	1.7	2.2	25.2
Ethiopia	24.0	0.4	87.9	7.6	-91.4
Iran	19.2	7.2	45.3	35.8	-21.0
Iraq	65.0	2.5	101.4	14.2	-86.0
Israel	36.1	13.9	151.5	125.0	-17.5
Jordan	5.1	3.7	25.4	27.2	7.1
Kuwait	9.0	6.1	45.6	44.8	-1.8
Lebanon	6.1	4.1	28.4	20.9	-26.5
Libya	4.5	0.1	62.1	36.7	-41.0
Oman	5.0	4.8	45.0	31.4	-30.1
Qatar	9.8	3.0	34.0	19.6	-42.4
Saudi Arabia	57.5	55.2	296.6	304.1	2.5
Somalia	0.0	0.0	1.0	0.2	-78.3
Sudan	18.7	0.8	58.7	58.7	0.0
Syria	2.4	1.6	14.8	31.4	112.2
Turkey	61.9	53.8	371.4	477.3	28.5
United Arab Emirates	59.9	97.4	375.9	504.8	34.3
Yemen	1.4	1.4	9.1	6.0	-33.8
<b>Total</b>	<b>433.1</b>	<b>314.5</b>	<b>1,984.1</b>	<b>2,013.3</b>	<b>1.5</b>
<b>Other Africa</b>					
Algeria	26.5	11.1	148.5	69.0	-53.5
Angola	6.5	9.0	38.6	26.7	-30.8
Antarctica	0.0	0.0	0.0	0.0	205.3
Benin	1.5	1.7	4.2	4.7	11.7
Botswana	0.1	1.6	1.3	2.8	118.8
Burkina Faso	2.0	1.3	10.1	6.9	-30.9
Burundi	0.1	0.1	0.3	0.3	-0.7
Cameroon	0.6	3.7	8.5	10.4	22.4
Cape Verde	0.1	0.0	0.5	1.1	147.5
Central African Republic	0.0	0.0	0.0	0.1	209.0
Chad	0.9	0.1	2.3	1.2	-49.6
Comoros	0.0	0.2	0.0	0.3	...
Congo	0.7	0.6	4.9	6.1	24.7
Democratic Republic of the Congo	0.9	1.3	5.0	5.5	9.7
Djibouti	0.2	0.0	0.9	0.4	-52.6
Equatorial Guinea	0.6	0.2	1.3	4.6	256.3
French Southern Territories	0.0	0.0	0.0	0.0	-100.0
Gabon	2.3	1.1	7.7	8.4	8.2
Gambia	0.1	0.0	0.4	0.2	-45.1
Ghana	11.9	24.9	61.3	99.0	61.4
Guinea	0.9	3.0	2.7	13.2	387.3
Guinea-Bissau	0.0	0.0	0.0	0.0	592.9
Ivory Coast	2.8	0.1	5.9	0.8	-86.8
Kenya	5.5	4.4	27.2	20.8	-23.3
Lesotho	0.0	0.0	0.0	0.0	165.2
Liberia	4.9	1.0	7.7	6.8	-11.4
Madagascar	3.6	0.4	29.9	5.1	-82.8
Malawi	0.3	0.3	1.6	1.9	16.5
Mali	0.5	2.1	3.3	6.6	103.1
Mauritania	0.5	0.5	1.0	6.5	537.8
Mauritius	0.4	0.3	1.6	2.7	76.8
Morocco	30.0	32.0	68.0	172.4	153.5
Mozambique	4.0	0.6	6.4	4.8	-24.4
Namibia	3.1	0.1	4.4	1.6	-63.1
Niger	0.1	0.8	0.9	2.3	164.0
Nigeria	11.2	16.9	106.4	57.9	-45.5
Rwanda	0.1	0.2	0.7	0.4	-43.6
Saint Helena	0.0	0.0	0.0	0.0	400.0
Sao Tome and Principe	0.0	0.0	0.0	0.0	4.1
Senegal	2.2	3.1	11.5	13.3	15.4
Seychelles	0.1	0.3	0.3	1.3	281.7

Table 4 – continued

## Domestic exports by country, customs basis, not seasonally adjusted

	May		January to May		Change
	2010	2011	2010	2011	January to May 2011/ January to May 2010
	millions of dollars				percent
Sierra Leone	0.4	1.9	4.3	4.6	6.3
South Africa	34.6	56.0	188.2	221.7	17.8
Swaziland	0.1	0.0	0.4	0.2	-48.4
Togo	0.7	2.5	4.8	5.7	19.5
Tunisia	2.2	2.4	25.6	16.4	-36.0
Uganda	1.0	0.6	4.8	3.8	-21.2
United Republic of Tanzania	3.9	4.2	14.1	18.7	32.5
Zambia	2.0	1.5	17.9	12.0	-32.9
Zimbabwe	1.3	0.2	2.5	1.5	-41.5
<b>Total</b>	<b>171.2</b>	<b>192.5</b>	<b>838.2</b>	<b>851.4</b>	<b>1.6</b>
<b>Other Asia</b>					
Afghanistan	2.8	2.9	29.1	20.6	-29.1
Bangladesh	30.6	49.8	292.6	240.8	-17.7
Bhutan	0.0	0.0	0.8	0.0	-97.7
British Indian Ocean Territory	0.2	0.0	1.0	0.0	-100.0
Brunei Darussalam	0.4	0.1	7.2	0.8	-89.0
Cambodia	0.1	0.3	1.2	2.0	64.5
China	938.5	1,349.6	4,552.8	5,676.5	24.7
Hong Kong	110.7	118.9	676.4	1,168.5	72.8
India	216.7	130.8	766.3	809.7	5.7
Indonesia	68.1	138.7	389.5	623.6	60.1
Japan	814.5	967.3	3,408.8	4,249.9	24.7
Laos	0.7	0.5	1.3	4.9	277.0
Macao	0.1	0.1	1.1	1.2	15.7
Malaysia	44.9	127.0	315.0	396.6	25.9
Maldives	0.3	0.3	2.0	1.2	-38.1
Mongolia	1.0	5.0	7.5	38.9	417.1
Myanmar	0.0	0.0	2.7	0.8	-69.4
Nepal	0.5	0.1	1.1	1.2	7.0
North Korea	0.9	0.8	4.5	6.5	45.1
Pakistan	53.7	73.0	194.1	284.3	46.5
Philippines	53.9	27.7	237.5	184.4	-22.3
Singapore	59.9	51.5	270.2	284.3	5.2
South Korea	397.1	428.5	1,545.7	2,045.4	32.3
Sri Lanka	21.9	53.7	152.9	155.8	1.9
Taiwan	109.9	105.7	470.9	723.3	53.6
Thailand	58.9	44.2	285.5	329.3	15.3
Timor-Leste	0.0	0.0	0.0	0.0	...
Viet Nam	25.7	14.3	103.0	113.5	10.3
<b>Total</b>	<b>3,011.7</b>	<b>3,690.8</b>	<b>13,720.5</b>	<b>17,364.1</b>	<b>26.6</b>
<b>Oceania</b>					
American Samoa	0.1	0.3	0.6	0.6	0.3
Australia	100.7	129.3	697.8	635.4	-8.9
Christmas Island	0.0	0.0	0.5	0.0	-93.8
Cocos (Keeling) Islands	0.0	0.0	0.1	0.0	-91.7
Cook Islands	0.0	0.0	0.0	0.1	304.4
Fiji	0.0	0.0	0.9	1.6	85.0
French Polynesia	0.4	1.5	5.0	4.5	-9.3
Guam	0.0	0.1	0.3	0.8	165.8
Kiribati	0.0	0.0	0.0	0.1	68.2
Nauru	1.3	0.0	1.3	0.0	-100.0
New Caledonia	0.4	0.4	10.3	2.4	-76.6
New Zealand	21.7	30.9	105.9	120.7	13.9
Niue	0.0	0.0	0.0	0.0	...
Norfolk Island	0.0	0.0	0.0	0.0	-100.0
Papua New Guinea	1.0	1.1	3.8	23.6	512.5
Pitcairn	0.0	0.0	0.0	0.0	67.9
Samoa	0.0	0.0	0.2	0.0	-100.0
Solomon Islands	0.0	0.0	0.0	0.2	535.7
Tonga	3.3	0.0	3.3	0.1	-97.1
United States Minor Outlying Islands	0.9	1.0	5.7	4.5	-20.7
Vanuatu	0.2	0.1	0.7	0.5	-34.9
Wallis and Futuna	0.0	0.0	0.0	0.0	...
<b>Total</b>	<b>130.1</b>	<b>164.8</b>	<b>836.5</b>	<b>795.1</b>	<b>-4.9</b>

Table 4 – continued

## Domestic exports by country, customs basis, not seasonally adjusted

	May		January to May		Change January to May 2011/ January to May 2010
	2010	2011	2010	2011	
	millions of dollars				percent
<b>South America</b>					
Argentina	13.7	30.2	98.4	281.3	185.8
Bolivia	1.5	0.5	13.3	4.4	-66.9
Brazil	187.9	244.6	1,005.5	949.3	-5.6
Chile	40.8	61.6	215.2	286.6	33.1
Colombia	47.4	44.3	241.0	225.2	-6.6
Ecuador	43.7	29.8	118.3	120.3	1.7
Falkland Islands (Malvinas)	0.0	0.0	0.0	0.0	-82.3
Guyana	1.0	4.6	9.6	16.6	72.4
Paraguay	0.4	2.1	3.1	4.0	28.5
Peru	28.3	39.2	185.0	190.4	2.9
Suriname	1.8	0.8	5.2	4.4	-15.7
Uruguay	1.8	1.3	12.3	10.7	-12.9
Venezuela	51.0	41.6	184.1	190.9	3.7
<b>Total</b>	<b>419.2</b>	<b>500.5</b>	<b>2,091.2</b>	<b>2,284.1</b>	<b>9.2</b>
<b>Central America Antilles</b>					
Anguilla	0.1	0.0	0.3	0.2	-32.7
Antigua and Barbuda	2.4	0.4	7.6	3.5	-53.8
Aruba	0.2	0.3	1.4	1.8	24.6
Bahamas	1.9	2.4	33.9	30.8	-9.2
Barbados	2.2	2.8	13.9	19.1	37.2
Belize	0.3	0.5	2.0	1.9	-6.4
Bermuda	3.0	2.1	15.9	10.7	-32.7
British Virgin Islands	0.2	0.4	20.5	47.4	131.6
Cayman Islands	0.3	0.4	2.8	1.9	-31.7
Costa Rica	3.8	10.0	32.1	45.0	40.1
Cuba	21.6	30.2	126.0	170.9	35.6
Dominica	0.4	0.5	2.3	1.2	-46.4
Dominican Republic	15.6	8.5	67.7	61.1	-9.8
El Salvador	2.5	2.2	16.0	13.9	-13.7
Grenada	0.4	0.3	2.4	2.1	-13.7
Guatemala	7.3	11.0	36.4	40.2	10.5
Haiti	2.5	3.2	17.4	16.4	-6.0
Honduras	4.1	1.7	16.6	15.3	-8.2
Jamaica	18.4	7.6	72.9	42.3	-42.0
Montserrat	0.0	0.0	0.1	0.1	16.9
Netherlands Antilles	1.4	30.6	9.3	89.4	858.4
Nicaragua	2.2	2.0	5.9	13.3	126.1
Panama	4.7	5.2	73.9	28.4	-61.5
Saint Kitts and Nevis	0.4	0.1	2.4	2.3	-6.0
Saint Lucia	0.5	0.6	2.7	3.8	39.8
Saint Vincent and the Grenadines	0.5	0.7	3.7	3.0	-18.0
Trinidad and Tobago	22.2	26.9	134.6	149.9	11.4
Turks and Caicos Islands	0.3	0.1	1.7	1.0	-41.8
<b>Total</b>	<b>119.6</b>	<b>150.7</b>	<b>722.6</b>	<b>816.9</b>	<b>13.1</b>
<b>All countries</b>	<b>31,838.8</b>	<b>34,619.7</b>	<b>152,164.0</b>	<b>166,783.2</b>	<b>9.6</b>

**Table 5-1**  
**Exports by province of origin, customs basis, not seasonally adjusted — May**

	Agricultural and fishing products	Energy products	Forestry products	Industrial goods	Machinery and equipment	Automotive products	Consumer goods	Special transactions trade	<b>Total</b>
millions of dollars									
<b>Domestic exports</b>									
Newfoundland and Labrador									
2010	106.8	569.5	3.6	171.4	4.1	0.1	0.1	1.8	<b>857.3</b>
2011	191.8	694.5	17.6	192.4	4.4	0.1	0.2	1.7	<b>1,102.8</b>
Prince Edward Island									
2010	41.2	0.2	0.0	1.5	6.7	0.7	4.4	8.0	<b>62.7</b>
2011	36.5	0.0	0.0	14.7	5.5	0.3	2.7	8.0	<b>67.8</b>
Nova Scotia									
2010	92.4	51.1	59.9	42.3	123.8	5.4	5.0	3.1	<b>382.9</b>
2011	115.0	19.8	74.3	47.0	122.1	5.3	4.8	3.4	<b>391.7</b>
New Brunswick									
2010	149.0	789.6	107.4	123.3	28.3	2.6	23.7	3.5	<b>1,227.2</b>
2011	157.9	927.3	86.0	103.3	29.7	2.9	12.7	3.1	<b>1,323.0</b>
Quebec									
2010	375.1	257.4	552.1	1,645.2	1,363.3	128.8	305.2	84.2	<b>4,711.3</b>
2011	420.9	242.1	479.4	1,988.6	1,311.2	153.7	280.2	65.7	<b>4,941.8</b>
Ontario									
2010	724.2	244.4	242.8	3,304.3	2,584.0	4,534.9	586.8	123.5	<b>12,344.8</b>
2011	763.1	256.4	241.0	4,223.6	2,541.4	4,214.9	527.6	111.3	<b>12,879.3</b>
Manitoba									
2010	321.2	58.5	20.3	219.1	171.5	41.0	23.3	24.8	<b>879.6</b>
2011	333.5	93.0	25.1	281.0	172.9	35.8	63.6	15.4	<b>1,020.3</b>
Saskatchewan									
2010	627.4	816.4	16.6	537.6	51.7	4.1	0.7	3.4	<b>2,058.0</b>
2011	676.1	656.7	23.6	803.4	52.8	5.8	0.8	3.1	<b>2,222.2</b>
Alberta									
2010	520.1	4,549.0	184.2	904.4	291.3	39.6	12.1	24.2	<b>6,524.8</b>
2011	539.0	5,653.6	169.7	943.6	343.1	91.8	8.9	17.8	<b>7,767.5</b>
British Columbia									
2010	203.7	715.4	778.9	539.9	247.5	22.0	47.4	18.0	<b>2,572.7</b>
2011	202.6	918.8	862.6	562.7	262.7	19.9	45.9	17.7	<b>2,892.8</b>
Yukon, Northwest Territories and Nunavut <sup>1</sup>									
2010	0.1	0.0	0.3	215.7	1.2	0.0	0.0	0.0	<b>217.4</b>
2011	0.2	0.0	0.0	9.2	0.8	0.0	0.1	0.1	<b>10.4</b>
<b>Total</b>									
2010	<b>3,161.1</b>	<b>8,051.5</b>	<b>1,966.0</b>	<b>7,704.6</b>	<b>4,873.2</b>	<b>4,779.3</b>	<b>1,008.7</b>	<b>294.5</b>	<b>31,838.8</b>
2011	<b>3,436.4</b>	<b>9,462.2</b>	<b>1,979.4</b>	<b>9,169.7</b>	<b>4,846.7</b>	<b>4,530.5</b>	<b>947.5</b>	<b>247.4</b>	<b>34,619.7</b>
<b>Re-exports</b>									
2010	<b>45.5</b>	<b>2.5</b>	<b>6.3</b>	<b>249.3</b>	<b>818.2</b>	<b>99.6</b>	<b>155.0</b>	<b>584.5</b>	<b>1,961.0</b>
2011	<b>51.8</b>	<b>144.0</b>	<b>5.6</b>	<b>340.0</b>	<b>889.4</b>	<b>95.0</b>	<b>243.6</b>	<b>675.1</b>	<b>2,444.4</b>
<b>Total exports</b>									
2010	<b>3,206.6</b>	<b>8,054.0</b>	<b>1,972.3</b>	<b>7,953.9</b>	<b>5,691.4</b>	<b>4,878.9</b>	<b>1,163.7</b>	<b>879.1</b>	<b>33,799.8</b>
2011	<b>3,488.2</b>	<b>9,606.2</b>	<b>1,985.0</b>	<b>9,509.7</b>	<b>5,736.0</b>	<b>4,625.4</b>	<b>1,191.1</b>	<b>922.4</b>	<b>37,064.1</b>

1. Data for the current month do not include some exports from the Harmonized System, Chapter 71, "Natural/cultured pearls, precious stones and metals, coins, etc." for reasons relating to timing.

**Table 5-2**  
**Exports by province of origin, customs basis, not seasonally adjusted — Year to date, January to May**

	Agricultural and fishing products	Energy products	Forestry products	Industrial goods	Machinery and equipment	Automotive products	Consumer goods	Special transactions trade	Total
millions of dollars									
<b>Domestic exports</b>									
Newfoundland and Labrador									
2010	233.9	2,397.3	45.2	558.4	19.9	0.8	0.7	10.2	<b>3,266.4</b>
2011	336.3	3,368.5	53.4	769.6	18.0	1.1	0.7	9.4	<b>4,557.1</b>
Prince Edward Island									
2010	159.0	0.7	0.3	11.5	29.4	1.3	15.8	32.9	<b>251.0</b>
2011	167.6	0.0	0.2	22.1	28.0	1.3	12.0	31.8	<b>263.0</b>
Nova Scotia									
2010	329.1	206.0	306.6	214.8	565.1	21.5	23.7	15.9	<b>1,682.7</b>
2011	414.1	214.1	378.2	231.4	562.5	25.8	24.0	15.5	<b>1,865.7</b>
New Brunswick									
2010	456.2	3,746.6	531.2	484.5	122.4	11.2	97.7	17.1	<b>5,466.9</b>
2011	490.4	4,547.4	530.8	469.4	134.2	18.4	56.0	15.7	<b>6,262.4</b>
Quebec									
2010	1,761.4	1,357.9	2,491.4	8,031.1	7,086.6	603.9	1,804.7	430.9	<b>23,567.9</b>
2011	2,044.7	1,419.2	2,415.3	9,076.5	6,999.9	728.8	1,364.3	330.0	<b>24,378.6</b>
Ontario									
2010	3,192.2	1,113.8	1,159.0	16,609.5	11,970.0	20,827.5	3,163.7	657.2	<b>58,692.9</b>
2011	3,355.9	1,166.5	1,182.2	20,288.3	12,231.7	21,271.1	2,743.2	619.5	<b>62,858.4</b>
Manitoba									
2010	1,564.3	319.3	87.7	1,006.6	773.7	180.5	158.2	122.3	<b>4,212.6</b>
2011	1,642.1	462.7	102.9	1,164.3	883.0	187.7	217.7	105.0	<b>4,765.4</b>
Saskatchewan									
2010	3,049.7	3,667.8	84.3	3,088.8	301.0	20.6	6.0	20.2	<b>10,238.4</b>
2011	3,295.2	3,476.4	102.3	3,876.2	261.5	25.5	6.2	19.0	<b>11,062.3</b>
Alberta									
2010	2,385.7	23,217.2	864.1	4,278.6	1,337.7	211.6	54.5	112.5	<b>32,461.8</b>
2011	2,497.9	27,184.5	822.8	4,648.9	1,650.8	337.9	51.1	98.2	<b>37,292.1</b>
British Columbia									
2010	851.2	3,098.9	3,417.9	2,319.7	1,185.8	110.0	223.0	99.9	<b>11,306.3</b>
2011	862.7	3,583.6	3,948.1	2,776.8	1,268.3	113.4	219.9	102.1	<b>12,875.0</b>
Yukon, Northwest Territories and Nunavut <sup>1</sup>									
2010	1.2	0.0	0.3	1,008.9	5.8	0.2	0.1	0.3	<b>1,016.9</b>
2011	0.6	0.0	0.1	599.0	3.0	0.3	0.2	0.2	<b>603.2</b>
<b>Total</b>									
2010	<b>13,983.8</b>	<b>39,125.6</b>	<b>8,988.1</b>	<b>37,612.5</b>	<b>23,397.5</b>	<b>21,989.1</b>	<b>5,548.1</b>	<b>1,519.2</b>	<b>152,164.0</b>
2011	<b>15,107.5</b>	<b>45,423.1</b>	<b>9,536.4</b>	<b>43,922.5</b>	<b>24,040.8</b>	<b>22,711.2</b>	<b>4,695.3</b>	<b>1,346.4</b>	<b>166,783.2</b>
<b>Re-exports</b>									
2010	<b>246.8</b>	<b>130.9</b>	<b>33.7</b>	<b>1,149.3</b>	<b>4,173.3</b>	<b>440.6</b>	<b>764.5</b>	<b>2,868.3</b>	<b>9,807.5</b>
2011	<b>259.0</b>	<b>302.1</b>	<b>33.6</b>	<b>1,859.7</b>	<b>4,249.0</b>	<b>488.2</b>	<b>1,129.8</b>	<b>3,212.4</b>	<b>11,533.9</b>
<b>Total exports</b>									
2010	<b>14,230.6</b>	<b>39,256.5</b>	<b>9,021.9</b>	<b>38,761.8</b>	<b>27,570.8</b>	<b>22,429.7</b>	<b>6,312.6</b>	<b>4,387.5</b>	<b>161,971.4</b>
2011	<b>15,366.5</b>	<b>45,725.2</b>	<b>9,570.1</b>	<b>45,782.2</b>	<b>28,289.8</b>	<b>23,199.3</b>	<b>5,825.1</b>	<b>4,558.8</b>	<b>178,317.0</b>

1. Data for the current month do not include some exports from the Harmonized System Chapter 71, "Natural/cultured pearls, precious stones and metals, coins, etc." for reasons relating to timing.

**Table 6-1**  
**Imports by commodity groupings, balance of payments basis, seasonally adjusted — Current dollars**

	April	May	Change	Year to date			May 2011/May 2010		
	2011	2011		2010	2011	Change			
	millions of dollars		percent		millions of dollars		percent		
<b>Total</b>	<b>37,352</b>	<b>37,759</b>	<b>407</b>	<b>1.1</b>	<b>166,528</b>	<b>184,773</b>	<b>18,245</b>	<b>11.0</b>	<b>7.9</b>
<b>Agricultural and fishing products</b>	<b>2,664</b>	<b>2,667</b>	<b>3</b>	<b>0.1</b>	<b>12,065</b>	<b>13,200</b>	<b>1,135</b>	<b>9.4</b>	<b>9.5</b>
Fruits and vegetables	730	727	-3	-0.4	3,400	3,633	233	6.9	4.3
Fresh fruits and berries	259	245	-14	-5.3	1,244	1,263	19	1.5	-3.4
Dried fruits, fruits and fruit preparations	124	130	6	4.6	540	631	91	16.9	16.3
Fresh vegetables	192	187	-5	-2.7	911	954	44	4.8	-0.4
Other vegetables and vegetable preparations	155	165	10	6.5	705	785	79	11.3	14.4
Other agricultural and fishing products	1,934	1,940	6	0.3	8,665	9,567	902	10.4	11.5
Live animals	18	18	-1	-2.8	79	90	11	14.2	10.4
Meat and meat preparations	215	199	-16	-7.3	876	993	117	13.3	14.3
Fish and marine animals	186	185	-1	-0.4	794	940	146	18.3	17.4
Cocoa, coffee, tea and other food preparations	462	462	0	0.1	1,990	2,292	302	15.2	14.7
Dairy produce, eggs and honey	55	51	-4	-7.0	232	253	21	8.9	1.9
Corn (maize) shelled	24	22	-3	-11.2	212	122	-90	-42.6	-42.1
Other cereals and cereal preparations	181	196	15	8.3	874	902	28	3.2	9.2
Sugar and sugar preparations	182	168	-14	-7.6	724	886	162	22.4	28.5
Fodder, feed, excluding unmilled cereal	119	121	1	1.2	573	591	19	3.3	6.1
Beverages	315	328	13	4.2	1,536	1,625	89	5.8	3.3
Tobacco	23	28	5	21.6	164	138	-25	-15.4	-13.9
Crude vegetable products	153	162	9	5.6	606	728	123	20.2	28.1
Cotton	1	1	0	-5.5	5	6	1	12.9	-25.4
<b>Energy products</b>	<b>4,568</b>	<b>4,332</b>	<b>-236</b>	<b>-5.2</b>	<b>16,362</b>	<b>21,025</b>	<b>4,662</b>	<b>28.5</b>	<b>25.9</b>
Crude petroleum	2,460	2,283	-177	-7.2	10,070	11,453	1,384	13.7	3.9
Other energy products	2,108	2,049	-60	-2.8	6,293	9,571	3,279	52.1	64.9
Coal and other related products	415	379	-36	-8.6	2,097	2,013	-84	-4.0	-10.3
Petroleum and coal products	1,694	1,670	-24	-1.4	4,195	7,558	3,363	80.2	103.7
<b>Forestry products</b>	<b>205</b>	<b>206</b>	<b>1</b>	<b>0.6</b>	<b>1,101</b>	<b>1,023</b>	<b>-79</b>	<b>-7.2</b>	<b>-8.2</b>
Forestry products	205	206	1	0.6	1,101	1,023	-79	-7.2	-8.2
Crude wood products	30	28	-1	-4.7	160	151	-8	-5.3	-11.6
Wood fabricated materials	175	178	3	1.5	942	871	-70	-7.5	-7.7
<b>Industrial goods and materials</b>	<b>8,086</b>	<b>8,261</b>	<b>175</b>	<b>2.2</b>	<b>34,680</b>	<b>39,385</b>	<b>4,705</b>	<b>13.6</b>	<b>12.8</b>
Metals and metal ores	3,152	3,444	292	9.3	12,822	15,798	2,976	23.2	23.6
Metals in ores, concentrates and scrap	662	679	17	2.6	2,803	3,342	539	19.2	13.1
Steel bars, rods, plates, sheets	595	632	37	6.3	2,795	2,999	203	7.3	2.5
Other iron and steel products	386	449	63	16.3	1,618	1,994	376	23.3	23.0
Precious metals including alloys	1,118	1,284	166	14.8	3,765	5,540	1,775	47.2	53.0
Other non-ferrous metals and alloys	391	399	8	2.1	1,840	1,923	82	4.5	9.6
Chemicals and plastics	2,736	2,624	-112	-4.1	11,869	12,779	911	7.7	8.1
Organic chemicals	614	543	-71	-11.6	2,900	2,812	-88	-3.0	-8.6
Plastic materials	935	889	-46	-4.9	4,087	4,416	328	8.0	0.6
Other chemicals and related products	1,187	1,191	5	0.4	4,881	5,551	670	13.7	25.4
Other industrial goods and materials	2,198	2,194	-4	-0.2	9,990	10,808	818	8.2	3.8
Crude animal products	24	29	5	19.9	100	130	30	29.8	24.7
Wool and man-made fibres	25	25	0	-0.1	104	117	13	12.7	15.5
Crude non-metallic minerals	69	63	-6	-8.5	358	334	-24	-6.8	-15.1
Textile fabricated materials	215	211	-5	-2.2	945	1,033	89	9.4	8.2
Metal fabricated basic products	911	918	7	0.8	3,848	4,467	618	16.1	10.4
Rubber fabricated materials	92	88	-3	-3.5	403	454	51	12.7	6.4
Oils, fats, animal and vegetable	96	100	4	4.6	494	490	-4	-0.8	1.7
Non-metallic minerals	315	321	6	1.9	1,468	1,540	72	4.9	2.7
Other fabricated materials	452	439	-12	-2.7	2,270	2,243	-27	-1.2	-7.4



Table 6-1 – continued

## Imports by commodity groupings, balance of payments basis, seasonally adjusted — Current dollars

	April	May	Change		Year to date			May 2011/May 2010	
	2011	2011			2010	2011	Change		
	millions of dollars		percent		millions of dollars		percent		
<b>Machinery and equipment</b>	<b>10,222</b>	<b>10,292</b>	<b>71</b>	<b>0.7</b>	<b>44,419</b>	<b>50,441</b>	<b>6,022</b>	<b>13.6</b>	<b>7.8</b>
Industrial and agricultural machinery	2,902	2,969	67	2.3	11,564	13,847	2,284	19.7	18.9
Engines, turbines and electric motors	425	459	34	8.0	1,544	1,867	323	20.9	34.9
Drilling mining machinery	160	168	8	4.8	661	810	149	22.5	18.3
Excavating machinery	277	263	-14	-4.9	1,004	1,341	336	33.5	12.7
Metal working machinery	194	218	24	12.3	648	928	280	43.2	65.6
Other industrial machinery	1,455	1,489	34	2.3	5,959	7,031	1,072	18.0	15.5
Agricultural machinery including tractors	390	372	-19	-4.8	1,748	1,871	124	7.1	3.2
Aircraft and other transportation equipment	1,257	1,414	157	12.5	5,587	6,735	1,147	20.5	15.1
Aircraft, engines, parts	722	863	141	19.6	3,323	3,978	655	19.7	23.7
Other transportation equipment and parts	535	551	16	3.0	2,264	2,756	492	21.7	3.8
Office machines and equipment	1,208	1,151	-57	-4.7	5,293	5,672	380	7.2	-5.3
Other machinery and equipment	4,856	4,759	-97	-2.0	21,976	24,187	2,211	10.1	3.3
Other communication and related equipment	1,803	1,774	-29	-1.6	7,928	9,018	1,090	13.7	7.6
Other equipment and tools	3,053	2,985	-68	-2.2	14,047	15,169	1,121	8.0	0.9
<b>Automotive products</b>	<b>5,572</b>	<b>5,770</b>	<b>198</b>	<b>3.6</b>	<b>28,990</b>	<b>29,477</b>	<b>487</b>	<b>1.7</b>	<b>-3.9</b>
Passenger autos and chassis	1,590	1,787	197	12.4	9,264	9,291	27	0.3	-3.3
Trucks and other motor vehicles	1,639	1,632	-8	-0.5	7,543	7,645	102	1.4	6.0
Motor vehicle parts	2,342	2,351	9	0.4	12,183	12,541	358	2.9	-10.2
<b>Other consumer goods</b>	<b>4,825</b>	<b>4,865</b>	<b>40</b>	<b>0.8</b>	<b>23,306</b>	<b>24,017</b>	<b>712</b>	<b>3.1</b>	<b>1.0</b>
Apparel and footwear	993	997	4	0.4	4,291	4,863	572	13.3	9.5
Apparel and apparel accessories	817	829	11	1.3	3,584	4,044	460	12.8	9.0
Footwear	176	169	-7	-4.1	707	819	112	15.9	11.6
Miscellaneous consumer goods	3,832	3,868	36	1.0	19,015	19,154	140	0.7	-1.0
Television, radios, phonographs	127	129	1	1.1	642	648	6	0.9	-4.3
Printed matter	275	288	12	4.5	1,417	1,411	-6	-0.5	-6.7
Watches, sporting goods and toys	464	471	7	1.5	2,461	2,406	-55	-2.2	-9.9
House furnishings	709	719	9	1.3	3,612	3,535	-77	-2.1	-4.3
Photographic goods	229	207	-22	-9.7	1,018	1,137	119	11.7	-2.8
Miscellaneous end products	2,027	2,056	29	1.4	9,865	10,018	153	1.6	3.9
<b>Special transactions trade</b>	<b>417</b>	<b>568</b>	<b>151</b>	<b>36.2</b>	<b>1,934</b>	<b>2,304</b>	<b>370</b>	<b>19.2</b>	<b>35.3</b>
<b>Unallocated balance of payments adjustments</b>	<b>793</b>	<b>798</b>	<b>4</b>	<b>0.5</b>	<b>3,671</b>	<b>3,901</b>	<b>231</b>	<b>6.3</b>	<b>3.9</b>

**Table 6-2**  
**Imports by commodity groupings, balance of payments basis, seasonally adjusted — Constant dollars, 2002**

	April	May	Change	Year to date			May 2011/May 2010		
	2011	2011		2010	2011	Change			
	millions of dollars		percent		millions of dollars		percent		
<b>Total</b>	<b>42,671</b>	<b>42,249</b>	<b>-422</b>	<b>-1.0</b>	<b>188,735</b>	<b>209,502</b>	<b>20,767</b>	<b>11.0</b>	<b>6.7</b>
<b>Agricultural and fishing products</b>	<b>2,694</b>	<b>2,721</b>	<b>27</b>	<b>1.0</b>	<b>12,034</b>	<b>13,199</b>	<b>1,165</b>	<b>9.7</b>	<b>10.6</b>
Fruits and vegetables	741	764	23	3.1	3,341	3,639	298	8.9	13.8
Fresh fruits and berries	265	278	12	4.7	1,269	1,373	104	8.2	8.3
Dried fruits, fruits and fruit preparations	121	127	7	5.7	533	614	81	15.3	14.2
Fresh vegetables	207	199	-8	-3.8	857	890	33	3.8	21.4
Other vegetables and vegetable preparations	149	161	12	8.0	682	761	79	11.6	14.7
Other agricultural and fishing products	1,953	1,957	4	0.2	8,693	9,560	867	10.0	9.4
Live animals	18	17	-1	-3.8	80	87	8	9.7	8.8
Meat and meat preparations	199	191	-8	-4.0	877	932	56	6.4	19.7
Fish and marine animals	226	227	2	0.8	1,167	1,196	29	2.5	4.1
Cocoa, coffee, tea and other food preparations	552	553	2	0.3	1,870	2,549	679	36.3	22.0
Dairy produce, eggs and honey	54	53	-1	-1.0	257	255	-2	-0.8	-2.1
Corn (maize) shelled	14	14	-1	-5.9	209	79	-130	-62.3	-63.0
Other cereals and cereal preparations	133	141	8	6.3	748	667	-81	-10.8	-4.6
Sugar and sugar preparations	182	169	-13	-7.2	698	880	182	26.0	29.1
Fodder, feed, excluding unmilled cereal	105	104	-1	-0.5	497	507	10	2.0	3.5
Beverages	303	316	14	4.6	1,429	1,564	135	9.5	4.3
Tobacco	28	34	6	21.5	202	168	-33	-16.6	-11.0
Crude vegetable products	139	135	-4	-2.9	654	669	15	2.3	6.5
Cotton	1	1	0	-18.1	7	7	0	-7.0	-41.3
<b>Energy products</b>	<b>1,947</b>	<b>1,715</b>	<b>-232</b>	<b>-11.9</b>	<b>8,692</b>	<b>9,234</b>	<b>543</b>	<b>6.2</b>	<b>-8.6</b>
Crude petroleum	768	659	-109	-14.2	4,422	3,686	-737	-16.7	-34.6
Other energy products	1,179	1,056	-123	-10.4	4,269	5,549	1,279	30.0	21.6
Coal and other related products	438	381	-57	-13.0	1,865	2,122	257	13.8	-6.8
Petroleum and coal products	741	675	-66	-8.9	2,405	3,427	1,022	42.5	46.9
<b>Forestry products</b>	<b>282</b>	<b>285</b>	<b>3</b>	<b>1.0</b>	<b>1,464</b>	<b>1,396</b>	<b>-68</b>	<b>-4.6</b>	<b>1.3</b>
Forestry products	282	285	3	1.0	1,464	1,396	-68	-4.6	1.3
Crude wood products	43	45	2	4.5	237	225	-12	-4.9	-8.2
Wood fabricated materials	239	240	1	0.4	1,227	1,171	-56	-4.6	3.3
<b>Industrial goods and materials</b>	<b>7,243</b>	<b>6,925</b>	<b>-318</b>	<b>-4.4</b>	<b>32,061</b>	<b>34,409</b>	<b>2,348</b>	<b>7.3</b>	<b>5.0</b>
Metals and metal ores	2,046	2,032	-15	-0.7	9,204	9,961	757	8.2	8.2
Metals in ores, concentrates and scrap	326	323	-3	-0.9	1,537	1,597	59	3.9	-1.7
Steel bars, rods, plates, sheets	483	484	1	0.2	2,375	2,439	64	2.7	-0.8
Other iron and steel products	260	298	38	14.6	1,222	1,373	151	12.4	18.2
Precious metals including alloys	618	541	-77	-12.5	2,143	2,750	607	28.3	25.0
Other non-ferrous metals and alloys	361	387	26	7.2	1,927	1,803	-124	-6.5	2.8
Chemicals and plastics	2,636	2,374	-263	-10.0	11,544	11,996	452	3.9	1.0
Organic chemicals	401	342	-58	-14.6	2,086	1,874	-213	-10.2	-17.0
Plastic materials	985	896	-89	-9.0	4,394	4,576	182	4.1	-3.9
Other chemicals and related products	1,251	1,135	-116	-9.2	5,063	5,546	483	9.5	13.0
Other industrial goods and materials	2,560	2,520	-40	-1.6	11,313	12,451	1,138	10.1	6.5
Crude animal products	24	27	3	14.7	123	127	4	3.2	3.4
Wool and man-made fibres	31	29	-2	-6.9	134	142	8	6.0	5.7
Crude non-metallic minerals	53	51	-2	-3.9	297	270	-27	-9.1	-12.2
Textile fabricated materials	294	276	-18	-6.0	1,264	1,401	137	10.8	7.2
Metal fabricated basic products	1,007	1,004	-3	-0.3	4,137	4,898	761	18.4	13.7
Rubber fabricated materials	115	106	-9	-8.0	497	563	66	13.2	4.9
Oils, fats, animal and vegetable	86	92	6	6.8	489	448	-41	-8.4	-6.1
Non-metallic minerals	403	403	0	0.0	1,791	1,933	142	7.9	7.1
Other fabricated materials	547	532	-15	-2.7	2,581	2,669	88	3.4	-1.4

Table 6-2 – continued

## Imports by commodity groupings, balance of payments basis, seasonally adjusted — Constant dollars, 2002

	April	May	Change		Year to date			May 2011/May 2010	
	2011	2011			2010	2011	Change		
	millions of dollars		percent		millions of dollars		percent		
<b>Machinery and equipment</b>	<b>16,046</b>	<b>15,788</b>	<b>-259</b>	<b>-1.6</b>	<b>64,018</b>	<b>77,231</b>	<b>13,213</b>	<b>20.6</b>	<b>14.4</b>
Industrial and agricultural machinery	3,739	3,761	22	0.6	14,272	17,571	3,299	23.1	23.2
Engines, turbines and electric motors	549	579	30	5.5	1,941	2,392	451	23.3	36.2
Drilling mining machinery	188	195	7	3.6	744	941	197	26.5	22.7
Excavating machinery	370	341	-28	-7.7	1,253	1,753	500	39.9	16.2
Metal working machinery	263	294	30	11.5	834	1,239	405	48.6	74.5
Other industrial machinery	1,844	1,856	12	0.7	7,264	8,773	1,509	20.8	19.8
Agricultural machinery including tractors	525	496	-29	-5.5	2,236	2,473	236	10.6	8.6
Aircraft and other transportation equipment	1,527	1,684	157	10.3	6,615	8,110	1,494	22.6	18.3
Aircraft, engines, parts	928	1,088	160	17.3	4,073	5,011	938	23.0	28.4
Other transportation equipment and parts	598	595	-3	-0.6	2,543	3,098	556	21.9	3.4
Office machines and equipment	3,247	3,019	-228	-7.0	11,311	14,528	3,217	28.4	11.1
Other machinery and equipment	7,534	7,325	-209	-2.8	31,819	37,022	5,203	16.4	10.8
Other communication and related equipment	3,281	3,208	-72	-2.2	13,408	16,181	2,773	20.7	16.1
Other equipment and tools	4,253	4,116	-137	-3.2	18,411	20,841	2,430	13.2	6.9
<b>Automotive products</b>	<b>7,042</b>	<b>7,268</b>	<b>225</b>	<b>3.2</b>	<b>35,231</b>	<b>37,009</b>	<b>1,778</b>	<b>5.0</b>	<b>-0.3</b>
Passenger autos and chassis	1,850	2,092	242	13.1	10,614	10,773	158	1.5	-2.1
Trucks and other motor vehicles	1,925	1,923	-1	-0.1	8,472	9,009	537	6.3	11.9
Motor vehicle parts	3,267	3,252	-15	-0.5	16,144	17,227	1,083	6.7	-5.3
<b>Other consumer goods</b>	<b>6,569</b>	<b>6,532</b>	<b>-37</b>	<b>-0.6</b>	<b>30,223</b>	<b>32,228</b>	<b>2,005</b>	<b>6.6</b>	<b>4.9</b>
Apparel and footwear	1,478	1,461	-17	-1.1	6,077	7,138	1,061	17.5	14.3
Apparel and apparel accessories	1,221	1,217	-4	-0.4	5,096	5,960	864	16.9	13.7
Footwear	257	244	-12	-4.8	981	1,178	197	20.1	17.7
Miscellaneous consumer goods	5,091	5,071	-21	-0.4	24,146	25,090	944	3.9	2.5
Television, radios, phonographs	228	227	0	-0.2	1,099	1,130	31	2.9	-0.5
Printed matter	360	373	13	3.7	1,755	1,814	58	3.3	-0.5
Watches, sporting goods and toys	662	659	-2	-0.4	3,462	3,430	-32	-0.9	-8.3
House furnishings	957	955	-2	-0.2	4,664	4,680	16	0.3	-0.1
Photographic goods	478	440	-38	-8.0	1,895	2,337	442	23.3	6.4
Miscellaneous end products	2,407	2,416	9	0.4	11,271	11,700	428	3.8	7.2
<b>Special transactions trade</b>	<b>477</b>	<b>638</b>	<b>160</b>	<b>33.6</b>	<b>2,203</b>	<b>2,625</b>	<b>423</b>	<b>19.2</b>	<b>35.1</b>
<b>Unallocated balance of payments adjustments</b>	<b>369</b>	<b>377</b>	<b>8</b>	<b>2.1</b>	<b>2,810</b>	<b>2,171</b>	<b>-639</b>	<b>-22.7</b>	<b>-37.1</b>

**Table 7-1  
Imports from selected countries, customs basis, not seasonally adjusted — May**

	Agricultural and fishing products	Energy products	Forestry products	Industrial goods	Machinery and equipment	Automotive products	Consumer goods	Special transactions trade	<b>Total</b>
millions of dollars									
<b>United States</b>									
2010	1,461.2	1,064.7	158.9	4,544.9	4,201.3	4,215.7	1,826.8	376.2	<b>17,849.6</b>
2011	1,534.6	1,544.8	143.6	4,732.7	4,567.9	4,103.8	1,875.6	521.5	<b>19,024.5</b>
<b>Mexico</b>									
2010	146.4	107.3	0.7	175.9	645.4	727.9	103.6	5.6	<b>1,912.8</b>
2011	131.9	111.8	0.6	216.7	719.7	762.6	115.3	3.9	<b>2,062.5</b>
<b>Japan</b>									
2010	5.7	0.6	0.1	80.9	391.5	425.5	86.8	0.2	<b>991.3</b>
2011	3.9	0.5	0.1	81.4	385.0	293.2	76.0	1.5	<b>841.6</b>
<b>European Union</b>									
<b>Germany</b>									
2010	19.7	1.2	1.0	137.5	313.2	346.2	131.0	4.2	<b>954.0</b>
2011	24.5	1.2	1.0	208.8	381.6	308.7	139.5	1.5	<b>1,066.8</b>
<b>France</b>									
2010	55.6	5.7	0.1	62.9	165.8	8.6	124.1	2.4	<b>425.1</b>
2011	55.7	8.5	0.5	96.1	195.1	7.2	121.7	1.9	<b>486.6</b>
<b>United Kingdom</b>									
2010	30.2	449.5	0.1	123.0	235.8	50.8	98.0	4.9	<b>992.4</b>
2011	32.1	224.5	0.0	161.4	253.8	52.1	120.8	0.7	<b>845.5</b>
<b>Italy</b>									
2010	49.3	0.2	0.9	78.7	111.0	22.3	93.8	0.4	<b>356.6</b>
2011	54.2	0.1	1.4	95.5	136.5	26.1	101.0	0.1	<b>414.9</b>
<b>Other European Union</b>									
2010	83.6	109.4	3.5	263.2	419.6	68.3	326.0	0.6	<b>1,274.1</b>
2011	104.7	252.1	4.4	318.8	493.9	68.7	255.1	1.1	<b>1,498.8</b>
<b>Total</b>									
2010	238.3	566.0	5.6	665.3	1,245.4	496.2	772.9	12.4	<b>4,002.2</b>
2011	271.1	486.4	7.3	880.6	1,460.9	462.9	738.1	5.4	<b>4,312.7</b>
<b>Newly industrialized countries</b>									
<b>South Korea</b>									
2010	5.4	47.3	0.0	73.4	164.7	188.7	16.4	0.2	<b>496.1</b>
2011	5.6	4.2	0.0	99.1	232.5	201.4	17.2	0.1	<b>559.9</b>
<b>Hong Kong</b>									
2010	2.8	0.0	0.0	2.6	13.6	0.7	8.5	0.1	<b>28.2</b>
2011	1.8	0.0	0.0	6.0	9.1	0.1	10.8	0.0	<b>28.0</b>
<b>Taiwan</b>									
2010	6.7	0.0	0.6	85.4	181.7	13.4	31.4	0.1	<b>319.3</b>
2011	5.6	0.1	0.7	121.0	240.9	16.0	32.2	0.1	<b>416.6</b>
<b>Singapore</b>									
2010	2.3	0.0	0.0	6.6	55.1	0.3	10.6	0.0	<b>74.9</b>
2011	2.0	0.0	0.0	13.3	42.8	0.3	22.0	0.0	<b>80.5</b>
<b>Total</b>									
2010	17.2	47.3	0.6	168.0	415.1	203.0	66.9	0.4	<b>918.5</b>
2011	14.9	4.2	0.7	239.5	525.4	217.8	82.2	0.3	<b>1,085.0</b>
<b>Other countries</b>									
2010	576.2	1,948.2	56.0	1,657.6	2,407.2	185.6	1,502.5	17.3	<b>8,350.6</b>
2011	698.0	2,273.0	54.1	2,292.2	2,542.2	206.7	1,625.5	23.5	<b>9,715.2</b>
<b>Total</b>									
2010	<b>2,445.5</b>	<b>3,734.1</b>	<b>221.8</b>	<b>7,292.6</b>	<b>9,305.9</b>	<b>6,254.1</b>	<b>4,359.5</b>	<b>412.2</b>	<b>34,025.5</b>
2011	<b>2,655.2</b>	<b>4,420.7</b>	<b>206.3</b>	<b>8,443.2</b>	<b>10,201.2</b>	<b>6,047.0</b>	<b>4,512.7</b>	<b>556.0</b>	<b>37,042.4</b>

**Table 7-2**  
**Imports from selected countries, customs basis, not seasonally adjusted — Year to date, January to May**

	Agricultural and fishing products	Energy products	Forestry products	Industrial goods	Machinery and equipment	Automotive products	Consumer goods	Special transactions trade	<b>Total</b>
millions of dollars									
<b>United States</b>									
2010	6,564.9	5,178.3	817.2	20,486.7	19,803.6	19,463.6	9,009.7	1,616.4	<b>82,940.5</b>
2011	6,907.2	6,622.3	759.6	22,263.2	21,960.9	20,010.0	9,122.4	1,914.6	<b>89,560.2</b>
<b>Mexico</b>									
2010	761.5	301.1	2.4	687.2	2,899.8	3,577.2	434.6	22.7	<b>8,686.4</b>
2011	770.3	491.5	2.0	903.1	3,333.2	3,824.9	491.2	27.3	<b>9,843.5</b>
<b>Japan</b>									
2010	27.3	43.1	0.5	531.7	1,904.7	2,512.7	424.0	1.7	<b>5,445.7</b>
2011	26.8	2.3	0.3	485.6	2,076.6	1,954.1	448.1	2.8	<b>4,996.6</b>
<b>European Union</b>									
<b>Germany</b>									
2010	96.4	28.5	5.3	808.5	1,507.8	1,362.8	695.0	7.0	<b>4,511.2</b>
2011	118.7	6.2	4.9	956.5	1,722.4	1,499.2	749.9	5.7	<b>5,063.6</b>
<b>France</b>									
2010	259.0	19.1	0.7	358.8	723.5	43.1	664.7	5.1	<b>2,073.9</b>
2011	268.6	34.3	1.2	408.0	855.2	36.8	607.0	3.9	<b>2,214.9</b>
<b>United Kingdom</b>									
2010	154.3	1,794.8	0.3	928.0	1,193.0	174.1	512.5	19.2	<b>4,776.1</b>
2011	151.1	1,315.4	0.2	868.8	1,277.7	209.0	577.5	18.3	<b>4,418.0</b>
<b>Italy</b>									
2010	237.6	49.8	5.2	383.0	577.1	96.9	435.9	1.2	<b>1,786.6</b>
2011	263.2	67.7	6.2	463.5	644.2	106.9	456.3	2.3	<b>2,010.4</b>
<b>Other European Union</b>									
2010	430.2	859.7	17.4	1,178.3	1,803.6	292.6	1,610.7	12.7	<b>6,205.1</b>
2011	468.5	1,348.3	16.4	1,666.8	2,045.6	323.1	1,409.0	3.4	<b>7,281.0</b>
<b>Total</b>									
2010	1,177.4	2,751.8	29.0	3,656.6	5,804.9	1,969.5	3,918.7	45.2	<b>19,353.0</b>
2011	1,270.2	2,771.8	29.0	4,363.6	6,545.2	2,175.0	3,799.7	33.5	<b>20,987.9</b>
<b>Newly industrialized countries</b>									
<b>South Korea</b>									
2010	25.9	133.2	0.1	314.4	888.7	952.4	78.0	0.5	<b>2,393.2</b>
2011	23.5	40.3	0.1	471.7	1,055.2	774.0	79.4	0.5	<b>2,444.8</b>
<b>Hong Kong</b>									
2010	10.6	0.1	0.2	10.3	56.2	1.8	53.3	0.2	<b>132.6</b>
2011	10.9	0.0	0.0	37.4	41.2	1.0	55.2	0.2	<b>145.8</b>
<b>Taiwan</b>									
2010	29.6	0.1	3.3	329.6	780.3	66.2	156.6	0.6	<b>1,366.2</b>
2011	25.7	0.2	2.3	468.4	1,172.9	73.0	152.4	0.6	<b>1,895.5</b>
<b>Singapore</b>									
2010	12.8	0.0	0.1	50.2	223.0	1.5	70.3	0.7	<b>358.6</b>
2011	12.6	110.4	0.3	155.1	219.2	1.5	79.5	0.2	<b>578.8</b>
<b>Total</b>									
2010	78.8	133.3	3.7	704.4	1,948.2	1,021.9	358.3	1.9	<b>4,250.6</b>
2011	72.8	151.0	2.8	1,132.6	2,488.5	849.5	366.5	1.5	<b>5,065.0</b>
<b>Other countries</b>									
2010	3,067.2	8,152.2	258.3	8,017.3	10,904.3	832.5	7,825.8	139.9	<b>39,197.5</b>
2011	3,674.0	11,119.9	236.4	9,988.9	12,595.9	981.1	8,411.3	124.6	<b>47,132.2</b>
<b>Total</b>									
2010	<b>11,678.6</b>	<b>16,559.8</b>	<b>1,111.1</b>	<b>34,083.9</b>	<b>43,265.6</b>	<b>29,377.4</b>	<b>21,971.1</b>	<b>1,827.8</b>	<b>159,875.1</b>
2011	<b>12,724.9</b>	<b>21,158.8</b>	<b>1,030.0</b>	<b>39,137.0</b>	<b>49,000.4</b>	<b>29,794.7</b>	<b>22,639.2</b>	<b>2,104.3</b>	<b>177,589.3</b>

**Table 8**  
**Imports by country, customs basis, not seasonally adjusted**

	May		January to May		Change to May 2011/ January to May 2010
	2010	2011	2010	2011	
	millions of dollars				percent
<b>North America</b>					
Canada	292.7	316.1	1,653.6	1,589.0	-3.9
Greenland	0.0	0.0	0.2	0.1	-71.0
Mexico	1,912.8	2,062.5	8,686.4	9,843.5	13.3
Saint Pierre and Miquelon	0.0	0.4	0.4	0.7	73.0
United States	17,849.6	19,024.5	82,940.5	89,560.2	8.0
<b>Total</b>	<b>20,055.2</b>	<b>21,403.5</b>	<b>93,281.1</b>	<b>100,993.4</b>	<b>8.3</b>
<b>Western Europe</b>					
Andorra	0.0	0.0	0.1	0.1	42.3
Austria	95.3	108.9	440.4	503.6	14.3
Belgium	148.1	128.0	644.9	692.0	7.3
Denmark	145.5	145.0	883.7	747.2	-15.4
Faeroe Islands	0.5	0.7	1.5	3.8	154.3
Finland	52.3	159.2	343.1	662.9	93.2
France	425.1	486.6	2,073.9	2,214.9	6.8
Germany	954.0	1,066.8	4,511.2	5,063.6	12.2
Gibraltar	2.2	0.0	2.2	1.7	-25.1
Greece	19.0	15.1	59.9	63.4	5.9
Iceland	3.3	1.5	14.7	10.4	-29.3
Italy	356.6	414.9	1,786.6	2,010.4	12.5
Luxembourg	6.7	8.7	38.3	42.3	10.4
Malta	1.3	1.6	6.3	10.1	58.9
Netherlands	129.5	231.9	681.9	787.5	15.5
Norway	232.5	238.0	1,266.5	1,692.7	33.6
Portugal	24.1	19.6	146.6	131.3	-10.4
Republic of Ireland (Eire)	110.2	109.3	725.7	504.3	-30.5
Spain	134.7	122.7	518.9	702.7	35.4
Sweden	215.9	194.9	829.5	955.6	15.2
Switzerland	250.7	227.9	1,309.0	1,286.8	-1.7
United Kingdom	992.4	845.5	4,776.1	4,418.0	-7.5
<b>Total</b>	<b>4,300.0</b>	<b>4,527.1</b>	<b>21,061.1</b>	<b>22,505.3</b>	<b>6.9</b>
<b>Other Europe</b>					
Albania	0.2	0.2	1.0	3.0	218.1
Armenia	1.8	2.2	10.4	18.3	75.4
Azerbaijan	72.7	0.1	72.8	216.5	197.4
Belarus	0.3	0.5	2.2	2.4	10.6
Bosnia and Herzegovina	0.5	0.5	2.5	3.5	40.7
Bulgaria	3.6	9.3	23.1	31.6	36.8
Croatia	1.2	2.4	7.7	12.0	55.6
Czech Republic	18.3	31.2	105.2	145.0	37.8
Estonia	1.5	10.1	8.5	49.0	474.8
Georgia	8.0	9.0	38.4	46.4	20.7
Hungary	31.6	23.1	136.8	135.0	-1.3
Kazakhstan	195.0	161.2	977.5	889.1	-9.0
Kyrgyzstan	0.0	0.0	0.1	0.1	1.0
Latvia	0.7	1.7	3.1	6.3	107.2
Lithuania	10.7	8.6	76.7	218.7	185.3
Macedonia (Former Yugoslav Republic of Macedonia)	0.4	0.5	2.5	3.2	26.8
Montenegro	0.1	0.0	0.1	0.2	177.5
Poland	91.1	130.5	369.9	664.6	79.6
Republic of Moldova	0.0	0.0	0.7	0.7	2.9
Romania	8.6	12.7	46.6	91.7	96.6
Russian Federation	54.1	61.0	462.4	626.5	35.5
Serbia	0.8	1.1	5.2	6.9	33.0
Slovakia	13.6	16.9	67.6	97.7	44.4
Slovenia	11.7	9.3	46.6	36.7	-21.1
Tajikistan	0.0	0.0	0.0	0.0	-35.2
Turkmenistan	0.0	0.0	0.1	0.1	23.1
Ukraine	4.0	9.4	24.2	40.9	68.7
Uzbekistan	0.0	0.2	0.9	1.2	39.0
<b>Total</b>	<b>530.5</b>	<b>501.8</b>	<b>2,492.9</b>	<b>3,347.6</b>	<b>34.3</b>
<b>Middle East</b>					

Table 8 – continued

## Imports by country, customs basis, not seasonally adjusted

	May		January to May		Change January to May 2011/ January to May 2010
	2010	2011	2010	2011	
	millions of dollars				percent
Bahrain	0.2	0.3	1.2	2.1	78.2
Cyprus	0.2	0.2	1.7	1.7	0.2
Egypt	23.0	39.3	133.2	171.4	28.7
Eritrea	0.0	42.8	0.2	68.3	...
Ethiopia	0.8	1.4	5.1	6.3	25.4
Iran	3.1	4.1	17.1	16.1	-6.1
Iraq	275.4	266.2	631.6	1,376.1	117.9
Israel	93.0	70.3	415.9	412.8	-0.7
Jordan	1.7	1.1	8.8	7.9	-10.1
Kuwait	31.5	0.0	31.5	54.9	74.3
Lebanon	1.1	1.2	6.7	7.6	14.0
Libya	2.2	0.0	11.4	4.9	-56.9
Oman	0.5	1.3	12.4	7.7	-38.3
Qatar	1.0	27.9	61.8	267.5	333.0
Saudi Arabia	177.2	237.8	888.2	1,053.2	18.6
Somalia	0.0	0.0	0.0	0.0	-7.5
Sudan	8.7	12.9	37.5	51.7	37.9
Syria	0.5	0.4	2.8	2.5	-10.8
Turkey	67.4	103.5	259.1	408.3	57.6
United Arab Emirates	4.1	5.4	62.8	112.6	79.2
Yemen	0.0	0.0	0.0	0.0	-5.9
<b>Total</b>	<b>691.7</b>	<b>816.1</b>	<b>2,589.0</b>	<b>4,033.6</b>	<b>55.8</b>
<b>Other Africa</b>					
Algeria	309.5	583.5	1,585.9	2,240.3	41.3
Angola	81.9	222.9	504.8	1,207.6	139.2
Antarctica	0.0	0.0	0.2	0.5	103.1
Benin	0.0	0.0	0.0	0.0	59.4
Botswana	0.0	0.0	6.9	0.1	-99.2
Bouvet Island	0.0	0.0	0.0	0.0	...
Burkina Faso	1.0	0.0	14.4	1.1	-92.6
Burundi	0.0	0.0	0.0	0.2	377.4
Cameroon	0.5	0.7	2.3	2.6	10.4
Cape Verde	0.0	0.0	0.0	0.0	205.4
Central African Republic	0.0	0.0	0.0	0.2	739.2
Chad	0.1	0.1	0.1	0.2	14.6
Comoros	0.0	0.0	0.0	0.1	203.0
Congo	0.1	0.2	0.6	0.9	44.2
Democratic Republic of the Congo	0.1	0.1	0.5	0.3	-49.3
Djibouti	0.0	0.0	0.0	0.0	55.5
Equatorial Guinea	157.7	112.7	300.4	370.1	23.2
Gabon	0.0	0.2	0.1	0.4	324.9
Gambia	0.0	0.0	0.0	0.0	-40.1
Ghana	0.6	7.4	8.1	33.6	316.4
Guinea	8.6	6.1	21.4	19.8	-7.6
Guinea-Bissau	0.0	0.0	0.0	0.0	-38.9
Ivory Coast	12.1	11.4	157.7	86.0	-45.5
Kenya	1.1	1.8	6.7	9.2	37.1
Lesotho	0.7	0.4	3.7	4.9	30.7
Liberia	2.3	2.5	14.5	13.2	-8.8
Madagascar	5.7	2.6	16.2	16.1	-0.5
Malawi	0.3	20.1	16.4	66.4	305.7
Mali	0.1	0.1	0.3	0.3	14.1
Mauritania	0.0	0.0	0.2	0.1	-67.1
Mauritius	0.3	1.3	4.0	4.3	7.7
Morocco	7.9	3.5	50.9	41.5	-18.5
Mozambique	0.4	0.5	0.9	2.0	112.9
Namibia	0.1	40.7	89.9	119.2	32.7
Niger	0.1	0.1	0.4	0.6	50.0
Nigeria	242.4	247.7	708.5	891.9	25.9
Rwanda	0.0	0.0	0.1	0.3	166.1
Saint Helena	0.0	0.0	0.0	0.0	470.4
Sao Tome and Principe	0.0	0.0	0.1	0.1	-41.8
Senegal	0.1	0.1	0.5	0.4	-23.7
Seychelles	0.0	0.0	0.1	0.2	86.0
Sierra Leone	0.2	0.3	0.6	0.6	-8.8

Table 8 – continued

## Imports by country, customs basis, not seasonally adjusted

	May		January to May		Change
	2010	2011	2010	2011	January to May 2011/ January to May 2010
	millions of dollars				percent
South Africa	46.5	59.9	218.6	250.5	14.6
Swaziland	0.1	0.1	0.4	0.9	101.5
Togo	0.0	1.0	0.3	1.7	573.9
Tunisia	3.9	4.4	23.5	24.0	1.8
Uganda	0.4	0.3	2.0	1.6	-19.7
United Republic of Tanzania	0.3	0.5	1.3	2.0	61.8
Western Sahara	0.0	0.0	0.0	0.0	-100.0
Zambia	0.1	0.1	0.5	0.5	-9.5
Zimbabwe	0.5	0.5	1.8	3.3	78.4
<b>Total</b>	<b>885.4</b>	<b>1,333.9</b>	<b>3,766.3</b>	<b>5,419.6</b>	<b>43.9</b>
<b>Other Asia</b>					
Afghanistan	0.1	0.1	0.8	0.8	-1.8
Bangladesh	54.6	73.5	301.2	436.7	45.0
Bhutan	0.0	0.0	0.0	0.0	...
British Indian Ocean Territory	0.0	0.0	0.0	0.1	743.0
Brunei Darussalam	0.0	0.7	0.0	4.6	...
Cambodia	13.6	29.2	113.6	181.9	60.1
China	3,344.3	3,630.5	15,401.1	17,704.2	15.0
Hong Kong	28.2	28.0	132.6	145.8	10.0
India	148.6	191.2	795.5	1,031.6	29.7
Indonesia	110.2	132.4	469.5	580.3	23.6
Japan	991.3	841.6	5,445.7	4,996.6	-8.2
Laos	0.2	0.4	3.3	2.4	-26.2
Macao	0.8	0.6	3.9	3.1	-21.6
Malaysia	198.6	177.9	898.4	858.3	-4.5
Maldives	0.0	0.0	0.0	0.1	324.7
Mongolia	13.1	9.6	56.5	36.7	-35.0
Myanmar	0.0	0.0	0.0	0.0	193.2
Nepal	1.5	1.2	4.9	4.5	-8.1
North Korea	0.0	0.0	0.1	0.0	-64.7
Pakistan	22.4	20.8	103.3	100.0	-3.2
Philippines	71.6	65.8	345.3	367.0	6.3
Singapore	74.9	80.5	358.6	578.8	61.4
South Korea	496.1	559.9	2,393.2	2,444.8	2.2
Sri Lanka	8.6	12.2	47.9	60.6	26.5
Taiwan	319.3	416.6	1,366.2	1,895.5	38.7
Thailand	181.7	214.7	927.4	1,061.5	14.5
Timor-Leste	0.1	0.0	0.6	0.2	-58.1
Viet Nam	83.7	93.2	403.8	460.5	14.0
<b>Total</b>	<b>6,163.5</b>	<b>6,580.7</b>	<b>29,573.2</b>	<b>32,956.8</b>	<b>11.4</b>
<b>Oceania</b>					
American Samoa	0.1	0.0	0.2	0.1	-55.7
Australia	147.5	172.0	627.9	701.6	11.7
Christmas Island	0.0	0.0	0.1	0.0	-54.8
Cocos (Keeling) Islands	0.0	0.0	0.0	0.0	-29.2
Cook Islands	0.0	0.0	0.0	0.0	-15.9
Fiji	0.8	0.4	3.1	1.4	-55.7
French Polynesia	0.0	0.0	0.4	0.4	-8.7
Guam	0.0	0.0	0.0	0.1	110.6
Heard Island and McDonald Islands	0.0	0.0	0.0	0.0	...
Kiribati	0.0	0.0	0.0	0.1	318.7
Nauru	0.0	0.0	0.1	0.0	-70.3
New Caledonia	0.0	0.0	0.1	0.0	-75.9
New Zealand	44.9	51.3	178.4	223.5	25.3
Niue	0.0	0.0	0.0	0.0	-42.7
Norfolk Island	0.0	0.0	0.0	0.0	-100.0
Papua New Guinea	0.1	0.0	0.6	0.2	-62.5
Pitcairn	0.0	0.0	0.0	0.0	553.9
Samoa	0.2	0.0	0.2	0.0	-95.4
Solomon Islands	0.0	0.0	0.0	0.0	-19.1
Tonga	0.0	0.0	0.0	0.0	348.3
United States Minor Outlying Islands	0.4	0.2	2.1	1.0	-50.8
Vanuatu	0.2	0.0	0.4	0.0	-91.7
Wallis and Futuna	0.0	0.0	0.0	0.0	-100.0
<b>Total</b>	<b>194.2</b>	<b>224.0</b>	<b>813.6</b>	<b>928.6</b>	<b>14.1</b>



Table 8 – continued

## Imports by country, customs basis, not seasonally adjusted

	May		January to May		Change to May 2011/ January to May 2010
	2010	2011	2010	2011	
	millions of dollars				percent
<b>South America</b>					
Argentina	43.7	181.7	237.2	774.8	226.6
Bolivia	7.1	14.9	43.1	92.7	115.0
Brazil	233.9	286.3	1,289.0	1,414.6	9.7
Chile	152.4	224.3	1,014.4	905.9	-10.7
Colombia	57.5	49.5	301.6	317.1	5.2
Ecuador	17.2	21.5	84.3	105.8	25.5
Falkland Islands (Malvinas)	0.0	0.0	0.0	0.0	186.8
Guyana	25.7	31.7	110.7	140.0	26.5
Paraguay	1.5	0.2	3.9	1.4	-63.1
Peru	271.3	365.0	1,457.2	1,623.3	11.4
Suriname	32.2	13.1	201.9	183.2	-9.3
Uruguay	5.7	3.9	40.9	18.7	-54.4
Venezuela	96.4	216.4	297.4	365.8	23.0
<b>Total</b>	<b>944.7</b>	<b>1,408.4</b>	<b>5,081.7</b>	<b>5,943.4</b>	<b>17.0</b>
<b>Central America Antilles</b>					
Anguilla	0.0	0.0	0.1	0.1	4.5
Antigua and Barbuda	0.0	0.0	0.1	0.2	11.7
Aruba	0.0	0.0	0.1	5.5	...
Bahamas	9.7	1.8	19.6	4.7	-76.1
Barbados	0.8	0.2	4.1	2.1	-48.3
Belize	0.5	0.6	3.0	3.0	-0.5
Bermuda	0.0	0.1	0.4	0.3	-17.2
British Virgin Islands	0.0	0.1	0.1	0.2	95.4
Cayman Islands	0.0	0.0	0.1	0.1	-14.4
Costa Rica	36.5	35.7	195.8	213.0	8.8
Cuba	82.6	67.4	273.9	330.7	20.8
Dominica	0.0	0.0	0.0	0.2	267.1
Dominican Republic	10.5	10.7	52.0	57.0	9.6
El Salvador	5.1	7.1	48.6	81.4	67.4
Grenada	0.0	0.0	0.3	0.4	18.2
Guatemala	30.7	29.2	134.3	222.4	65.7
Haiti	1.3	2.2	10.4	11.2	7.1
Honduras	14.5	16.2	68.9	86.3	25.2
Jamaica	12.1	12.9	69.8	86.0	23.1
Montserrat	0.0	0.0	0.1	0.1	-17.2
Netherlands Antilles	0.0	0.0	0.1	0.1	-14.9
Nicaragua	14.6	26.8	65.8	145.7	121.4
Panama	5.6	15.4	35.7	46.7	30.9
Saint Kitts and Nevis	0.5	0.6	2.8	3.0	6.0
Saint Lucia	0.0	0.0	0.1	0.1	-0.8
Saint Vincent and the Grenadines	0.0	0.0	0.1	0.1	73.2
Trinidad and Tobago	35.0	19.7	229.7	160.5	-30.1
Turks and Caicos Islands	0.0	0.0	0.1	0.0	-43.1
<b>Total</b>	<b>260.2</b>	<b>246.8</b>	<b>1,216.3</b>	<b>1,461.1</b>	<b>20.1</b>
<b>All countries</b>	<b>34,025.5</b>	<b>37,042.4</b>	<b>159,875.1</b>	<b>177,589.3</b>	<b>11.1</b>

**Table 9-1  
Imports by province of clearance, customs basis, not seasonally adjusted — May**

	Agricultural and fishing products	Energy products	Forestry products	Industrial goods	Machinery and equipment	Automotive products	Consumer goods	Special transactions trade	<b>Total</b>
millions of dollars									
Newfoundland and Labrador									
2010	3.7	273.3	0.0	2.8	10.5	0.1	0.5	2.5	<b>293.4</b>
2011	5.7	225.8	0.0	2.3	19.8	0.1	0.2	0.0	<b>253.9</b>
Prince Edward Island									
2010	0.4	0.0	0.0	0.0	0.1	0.0	0.1	0.0	<b>0.5</b>
2011	0.8	0.0	0.0	0.0	0.5	0.0	0.0	0.0	<b>1.4</b>
Nova Scotia									
2010	38.6	190.8	1.1	124.2	103.0	359.5	11.3	1.4	<b>829.9</b>
2011	55.7	129.7	1.5	115.1	98.1	265.7	13.3	1.3	<b>680.4</b>
New Brunswick									
2010	32.8	718.1	8.5	92.5	101.7	42.7	23.4	2.1	<b>1,021.7</b>
2011	31.7	907.1	8.2	138.9	71.4	38.2	17.6	1.7	<b>1,214.7</b>
Quebec									
2010	336.6	1,466.7	53.6	1,222.3	1,393.9	187.3	730.0	45.8	<b>5,436.2</b>
2011	396.6	1,478.1	46.5	1,424.5	1,670.2	214.4	820.0	39.8	<b>6,090.1</b>
Ontario									
2010	1,390.3	470.4	85.2	4,275.7	5,397.4	5,149.1	2,852.3	317.9	<b>19,938.3</b>
2011	1,461.7	1,068.0	76.3	4,874.4	5,617.1	4,871.3	2,919.7	484.2	<b>21,372.7</b>
Manitoba									
2010	68.8	58.5	7.2	351.8	494.1	120.9	134.0	8.2	<b>1,243.6</b>
2011	80.3	40.2	7.9	338.4	519.8	150.4	130.1	7.4	<b>1,274.6</b>
Saskatchewan									
2010	29.9	75.3	1.6	195.1	315.8	84.4	26.7	2.4	<b>731.4</b>
2011	36.4	80.1	1.7	251.4	384.8	129.1	23.5	0.4	<b>907.5</b>
Alberta									
2010	163.8	184.6	11.7	389.8	582.2	91.9	109.2	15.3	<b>1,548.5</b>
2011	176.2	212.7	10.8	586.0	851.3	127.9	118.9	10.3	<b>2,094.3</b>
British Columbia									
2010	374.5	296.2	52.9	638.1	902.3	218.1	471.9	16.5	<b>2,970.6</b>
2011	404.7	278.5	53.4	711.6	948.0	250.0	469.2	10.9	<b>3,126.2</b>
Yukon, Northwest Territories and Nunavut									
2010	6.1	0.1	0.0	0.2	5.0	0.0	0.1	0.0	<b>11.4</b>
2011	5.4	0.5	0.0	0.6	20.1	0.0	0.1	0.0	<b>26.6</b>
<b>Total</b>									
<b>2010</b>	<b>2,445.5</b>	<b>3,734.1</b>	<b>221.8</b>	<b>7,292.6</b>	<b>9,305.9</b>	<b>6,254.1</b>	<b>4,359.5</b>	<b>412.2</b>	<b>34,025.5</b>
<b>2011</b>	<b>2,655.2</b>	<b>4,420.7</b>	<b>206.3</b>	<b>8,443.2</b>	<b>10,201.2</b>	<b>6,047.0</b>	<b>4,512.7</b>	<b>556.0</b>	<b>37,042.4</b>

**Table 9-2**  
**Imports by province of clearance, customs basis, not seasonally adjusted — Year to date, January to May**

	Agricultural and fishing products	Energy products	Forestry products	Industrial goods	Machinery and equipment	Automotive products	Consumer goods	Special transactions trade	<b>Total</b>
millions of dollars									
Newfoundland and Labrador									
2010	19.6	949.2	0.1	15.2	65.9	0.3	2.7	2.8	<b>1,055.8</b>
2011	13.4	1,614.7	0.0	35.7	240.5	0.5	8.7	0.2	<b>1,913.7</b>
Prince Edward Island									
2010	1.8	0.0	0.0	5.3	0.3	0.1	0.1	0.1	<b>7.7</b>
2011	2.2	0.0	0.0	0.2	0.7	0.0	0.1	0.1	<b>3.3</b>
Nova Scotia									
2010	157.1	809.8	6.3	510.9	401.8	1,385.7	66.8	13.2	<b>3,351.6</b>
2011	253.5	849.6	6.4	588.6	492.2	1,199.3	72.4	16.0	<b>3,478.2</b>
New Brunswick									
2010	152.1	3,222.9	44.9	435.3	376.7	184.4	109.3	8.5	<b>4,534.1</b>
2011	170.8	4,248.5	46.4	556.2	340.0	161.3	98.6	7.6	<b>5,629.4</b>
Quebec									
2010	1,793.5	6,606.1	294.0	6,096.5	6,885.7	881.7	4,167.5	222.1	<b>26,947.1</b>
2011	2,104.5	7,740.1	263.6	7,048.0	7,510.7	949.2	4,087.6	190.1	<b>29,893.8</b>
Ontario									
2010	6,490.5	1,982.9	410.5	19,799.2	24,755.3	24,445.8	13,980.1	1,413.1	<b>93,277.3</b>
2011	6,874.0	3,743.8	370.7	22,335.1	27,747.0	24,568.4	14,569.2	1,741.5	<b>101,949.6</b>
Manitoba									
2010	357.5	237.6	38.9	1,531.4	2,280.5	508.8	622.9	35.8	<b>5,613.5</b>
2011	398.9	256.8	37.9	1,637.2	2,585.5	627.2	625.9	33.9	<b>6,203.3</b>
Saskatchewan									
2010	133.2	233.6	9.8	984.8	1,478.4	362.0	107.0	10.0	<b>3,318.9</b>
2011	172.6	301.4	8.6	1,197.4	1,713.9	520.7	114.4	7.4	<b>4,036.5</b>
Alberta									
2010	782.5	1,236.1	46.9	1,877.3	2,617.8	415.8	478.3	55.7	<b>7,510.6</b>
2011	789.4	872.0	49.1	2,490.5	3,785.5	533.9	544.5	47.2	<b>9,112.1</b>
British Columbia									
2010	1,776.7	1,280.5	259.6	2,827.3	4,387.5	1,192.5	2,436.1	66.0	<b>14,226.2</b>
2011	1,934.8	1,528.6	247.3	3,247.0	4,548.8	1,233.9	2,517.5	60.2	<b>15,317.9</b>
Yukon, Northwest Territories and Nunavut									
2010	14.2	1.3	0.0	0.7	15.6	0.3	0.1	0.3	<b>32.4</b>
2011	10.9	3.4	0.0	1.2	35.5	0.2	0.2	0.0	<b>51.4</b>
<b>Total</b>									
<b>2010</b>	<b>11,678.6</b>	<b>16,559.8</b>	<b>1,111.1</b>	<b>34,083.9</b>	<b>43,265.6</b>	<b>29,377.4</b>	<b>21,971.1</b>	<b>1,827.8</b>	<b>159,875.1</b>
<b>2011</b>	<b>12,724.9</b>	<b>21,158.8</b>	<b>1,030.0</b>	<b>39,137.0</b>	<b>49,000.4</b>	<b>29,794.7</b>	<b>22,639.2</b>	<b>2,104.3</b>	<b>177,589.3</b>

# Technical notes

---

## The Canadian international merchandise trade statistical program

### Introduction

The objective of this text is to provide a general overview of the Canadian International Merchandise Trade Statistical Program, with special reference to concepts and definitions. The text is intended for the general user and simplicity is emphasized. More technical details can be obtained from the International Trade Division, Statistics Canada upon request.

### Conceptual framework

**1. Objectives and coverage:** The primary objective of the Canadian International Merchandise Trade Statistical Program is to measure the change in the stock of material resources of Canada resulting from the movement of merchandise into or out of the country. Information on imports and exports are inputs into the System of National Accounts, particularly in the balance of payments and gross domestic product, and are used in the formulation of trade and budgetary policies. Governments, importers, exporters, manufacturers and shipping companies use international merchandise trade statistics to:

- monitor import penetration and export performance,
- monitor commodity price and volume changes,
- examine transport implications.

**2. Trade statistics (customs basis / balance of payments basis):** Merchandise trade statistics are reported and presented on two different bases: customs basis and balance of payment basis.

When goods are imported into or exported from Canada, declarations must be filed with customs, giving such information as description and value of the goods, origin and port of clearance of commodities and mode of transport. Most of this information is required for the purposes of customs administration. Statistics developed from administrative records of customs are commonly referred to as customs-based trade statistics.

Customs-based trade statistics are more accurate at measuring imports than they are at measuring exports. This is the case because customs are typically more vigilant with respect to goods entering the country than they are with goods leaving the country.

Customs-based export statistics may understate or incorrectly portray the destination of exports. Export statistics are understated when the proper documentation is not filed with Customs. Exports are incorrectly portrayed when the country of final destination is inaccurately reported on the customs documentation. This occurs most frequently when goods are routed through an intermediary country before continuing on to their final destination.

Statistics Canada does not have a measure of undercoverage but periodically conducts reconciliation exercises with its major trading partners, excluding the United States.

On January 1, 1990, Canada entered into a memorandum of understanding with the United States concerning the exchange of import data. As a consequence, each administration is using the other's import data to replace its own export data. Canada's international merchandise trade statistics are, therefore, no longer derived exclusively from the administrative records of the Canada Border Services Agency, but from United States Customs records as well.

Customs-based information is adjusted to conform with the National Accounts concepts and definitions. The adjustments to derive balance of payments-based trade data include adjustments related to trade definition, valuation and timing. The principal difference between the two trade concepts is that customs-based merchandise trade statistics cover the physical movement of goods as they are reflected in customs documents while balance of payments-adjusted data are intended to cover all economic transactions that involve merchandise trade between residents and non-residents. The present document describes the concepts and processes pertaining to the customs-based trade statistics only. (For further information on balance of payments-adjusted data, see the publication *Canada's Balance of International Payments*, Statistics Canada (Catalogue no. 67-001-X).

**3. System of trade:** Canadian trade statistics are compiled according to the general system of trade, as defined by the United Nations Statistical Office. Under this system, imports include all goods that have crossed Canada's territorial boundary, whether for immediate consumption in Canada or for storage in bonded customs warehouses. Domestic exports include goods grown, extracted or manufactured in Canada, including goods of foreign origin that have been materially transformed in Canada. Re-exports are exports of goods of foreign origin that have not been materially transformed in Canada, including foreign goods withdrawn for export from bonded customs warehouses. Total exports are the sum of domestic exports and re-exports. Thus the general trade system, in principal, presents all goods entering the country (imports) and all goods leaving the country (exports). It differs from the special system of trade in the treatment of imported goods into bonded customs warehouses. Under the 'special' system, these goods are counted only if and when they are withdrawn from customs warehouses for home consumption. They are not counted in export statistics unless they have first cleared customs.

Conceptually, under the general system, the statistical frontier coincides with the geographical boundary, while under the 'special' system, it coincides with the customs boundary.

**4. Valuation:** For customs purposes, imports are recorded at values established according to the provisions of the Customs Act, which, since January 1, 1985, reflects valuation methods based on the General Agreement on Tariffs and Trade (GATT) Valuation Code System. In general, the value for duty of imported goods must be equivalent to the transaction value or the price actually paid.

To determine the transaction value of imported goods, all transportation and associated costs arising in respect of the goods being appraised prior to and at the place of direct shipment to Canada, are to be added to the price of the goods. Therefore, Canadian imports are valued Free on Board (FOB), place of direct shipment to Canada. It excludes freight and insurance costs in bringing the goods to Canada from the point of direct shipment.

Countries other than the United States, exports are, in principal, valued or recorded at the values declared on export documents, which usually reflect the transaction value, i.e., actual selling price or, in the case of a non-arm's length transaction, the transfer price used for company accounting purposes. Canadian exports to overseas countries are valued at F.O.B. port of exit, including domestic freight charges to that point but net of discounts and allowances. As of January, 1990, Canadian exports to the U.S. are valued F.O.B. point of exit from Canada. Prior to 1990, they were valued F.O.B. place of lading net of freight charges, discounts and allowances.

**5. Statistical period:** The reference period is the calendar month and the calendar year. The closing of the statistical month for imports and Canadian exports to the United States is defined as the last calendar day of the month, based as closely as practicable on the date of clearance from customs.

The closing of the statistical month for exports, to countries other than the United States, is also defined as the last calendar day of the month. Those export documents that are received too late for incorporation in the current month are assigned to the month the transaction took place. If a monthly summary report from a high volume exporter is not received on time, the data are imputed for the current month and revised with the trade value in the following statistical month.

**6. Trading partner attribution (country of origin/destination):** Exports are attributed to the country, which is the last known destination of the goods at the time of export. Exports to the United States are attributed to the state of destination.

Imports are attributed to their country of origin, that is, the country in which the goods were grown, extracted or manufactured in accordance to the rules of origin administered by the Canada Border Services Agency. Imports

from the United States are attributed to the state of origin. Prior to 1988, most imports were attributed to the country of export/consignment, with the exception of imports from Central and South America.

**7. Principal trading areas:** The 'principal trading areas' are country groupings defined as follows:

**United States:** includes trade with Puerto Rico and the U.S. Virgin Islands

**Japan**

**European Union (EU):** Austria, Belgium, Bulgaria, Cyprus, Czech Republic, Denmark, Estonia, Finland, France, Germany, Greece, Hungary, Ireland, Italy, Latvia, Lithuania, Luxembourg, Malta, Netherlands, Poland, Portugal, Romania, Slovakia, Slovenia, Spain, Sweden and United Kingdom

**Other Organisation for Economic Co-operation and Development (OECD):** Australia, Canada, Iceland, Mexico, New Zealand, Norway, South Korea, Switzerland, and Turkey. (The EU countries, United States, and Japan are also members of OECD)

**Other countries:** all countries and territories other than the United States, Japan, EU and other OECD

**8. Legal framework:** Import and export statistics with countries other than the United States are derived from information contained in administrative records collected by the Canada Border Services Agency under the Customs Act. Copies of these documents (or information therefrom) are sent to Statistics Canada in accordance with Section 25 of the Statistics Act. It follows that the disclosure of trade statistics is governed by both the Customs Act and the Statistics Act and is subject to the provisions of Section 17(2)(a) of the latter. Disclosure of export statistics to the United States is now governed by a memorandum of understanding that provides for the exchange of detailed import statistics between Canada and the United States.

### Contact information

Questions concerning details of methods not covered by these notes should be addressed to the Marketing and Client Services Section, International Trade Division, Statistics Canada, 170 Tunney's Pasture Driveway, Ottawa, Ontario, K1A 0T6.

**Telephone:** 1-800-294-5583 or 613-951-9647

**Facsimile:** 1-800-664-0055 613-951-0117

**Internet:** *trade@statcan.gc.ca*