

Catalogue no. 65-001-X

# Canadian International Merchandise Trade

February 2011



Statistics  
Canada

Statistique  
Canada

Canada

## How to obtain more information

For information about this product or the wide range of services and data available from Statistics Canada, visit our website at [www.statcan.gc.ca](http://www.statcan.gc.ca), e-mail us at [infostats@statcan.gc.ca](mailto:infostats@statcan.gc.ca), or telephone us, Monday to Friday from 8:30 a.m. to 4:30 p.m., at the following numbers:

### Statistics Canada's National Contact Centre

Toll-free telephone (Canada and the United States):

Inquiries line	1-800-263-1136
National telecommunications device for the hearing impaired	1-800-363-7629
Fax line	1-877-287-4369

Local or international calls:

Inquiries line	1-613-951-8116
Fax line	1-613-951-0581

### Depository Services Program

Inquiries line	1-800-635-7943
Fax line	1-800-565-7757

## To access this product

This product, Catalogue no. 65-001-X, is available free in electronic format. To obtain a single issue, visit our website at [www.statcan.gc.ca](http://www.statcan.gc.ca) and browse by "Key resource" > "Publications."

## Standards of service to the public

Statistics Canada is committed to serving its clients in a prompt, reliable and courteous manner. To this end, Statistics Canada has developed *standards of service* that its employees observe. To obtain a copy of these service standards, please contact Statistics Canada toll-free at 1-800-263-1136. The service standards are also published on [www.statcan.gc.ca](http://www.statcan.gc.ca) under "About us" > "The agency" > "Providing services to Canadians."

Statistics Canada  
International Trade Division

# Canadian International Merchandise Trade

February 2011

Published by authority of the Minister responsible for Statistics Canada

© Minister of Industry, 2011

All rights reserved. The content of this electronic publication may be reproduced, in whole or in part, and by any means, without further permission from Statistics Canada, subject to the following conditions: that it be done solely for the purposes of private study, research, criticism, review or newspaper summary, and/or for non-commercial purposes; and that Statistics Canada be fully acknowledged as follows: Source (or "Adapted from", if appropriate): Statistics Canada, year of publication, name of product, catalogue number, volume and issue numbers, reference period and page(s). Otherwise, no part of this publication may be reproduced, stored in a retrieval system or transmitted in any form, by any means—electronic, mechanical or photocopy—or for any purposes without prior written permission of Licensing Services, Client Services Division, Statistics Canada, Ottawa, Ontario, Canada K1A 0T6.

April 2011

Catalogue no. 65-001-X, vol. 65, no. 2

ISSN 1480-8781

Frequency: Monthly

Ottawa

Cette publication est également disponible en français.

---

#### **Note of appreciation**

*Canada owes the success of its statistical system to a long-standing partnership between Statistics Canada, the citizens of Canada, its businesses, governments and other institutions. Accurate and timely statistical information could not be produced without their continued cooperation and goodwill.*

# User information

---

## Symbols

The following standard symbols are used in Statistics Canada publications:

- . not available for any reference period
- .. not available for a specific reference period
- ... not applicable
- 0 true zero or a value rounded to zero
- 0<sup>s</sup> value rounded to 0 (zero) where there is a meaningful distinction between true zero and the value that was rounded
- p preliminary
- r revised
- x suppressed to meet the confidentiality requirements of the *Statistics Act*
- E use with caution
- F too unreliable to be published

## Note to users

All totals are calculated from full figures and rounded independently; consequently, totals may not equal the sum of their components.

The data is based on commodity groups (sector, subsector and major group).

# Table of contents

---

<b>Highlights</b>	<b>5</b>
<b>Analysis</b>	<b>7</b>
<b>Related products</b>	<b>11</b>
<b>Statistical tables</b>	
1 Merchandise trade of Canada, balance of payments basis, seasonally adjusted	15
1-1 Current dollars	15
1-2 Constant dollars, 2002	16
1-3 Price indices (Laspeyres)	17
2 Exports by commodity groupings, balance of payments basis, seasonally adjusted	18
2-1 Current dollars	18
2-2 Constant dollars, 2002	20
3 Domestic exports to selected countries, customs basis, not seasonally adjusted	22
3-1 February	22
3-2 Year to date, January to February	23
4 Domestic exports by country, customs basis, not seasonally adjusted	24
5 Exports by province of origin, customs basis, not seasonally adjusted	28
5-1 February	28
5-2 Year to date, January to February	29
6 Imports by commodity groupings, balance of payments basis, seasonally adjusted	30
6-1 Current dollars	30
6-2 Constant dollars, 2002	32
7 Imports from selected countries, customs basis, not seasonally adjusted	34
7-1 February	34
7-2 Year to date, January to February	35
8 Imports by country, customs basis, not seasonally adjusted	36

**Table of contents – continued**

9	Imports by province of clearance, customs basis, not seasonally adjusted	40
9-1	February	40
9-2	Year to date, January to February	41

**Data quality, concepts and methodology**

	Technical notes	42
--	-----------------	----

## Highlights

---

Canada's merchandise exports and imports fell in February, led by declines in volumes of automotive products and energy products. Exports fell 4.9% to \$35.9 billion while imports decreased 4.0% to \$35.8 billion. Consequently, Canada's trade surplus went from \$382 million in January to \$33 million in February.

After four consecutive months of growth, exports fell as a result of volumes declining 5.2%. Although volumes declined in all sectors, those of energy products (-8.1%) and automotive products (-12.4%) were the main contributors to the decline in overall exports. Prices increased 0.3% during the month.

Import volumes fell 4.3% while prices edged up 0.2%. As was the case with exports, falling volumes of automotive products (-12.4%) and energy products (-12.7%) accounted for most of the decline in the value of imports.

Imports from the United States fell 6.1%, reflecting lower imports of automotive products. Exports declined 3.5%, after four consecutive months of growth. Canada's trade surplus with the United States increased from \$4.1 billion in January to \$4.6 billion in February.

Exports to countries other than the United States fell 8.5%, mostly a result of lower exports of precious metals to the European Union. At the same time, imports declined 0.7%. Thus, Canada's trade deficit with countries other than the United States widened from \$3.8 billion in January to \$4.5 billion in February.

### Note to readers

Merchandise trade is one component of Canada's international balance of payments, which also includes trade in services, investment income, current transfers as well as capital and financial flows.

International merchandise trade data by country are available on both a balance of payments and a customs basis for the United States, Japan and the United Kingdom. Trade data for all other individual countries are available on a customs basis only. Balance of payments data are derived from customs data by making adjustments for characteristics such as valuation, coverage, timing and residency. These adjustments are made to conform to the concepts and definitions of the Canadian System of National Accounts.

Data in this release are on a balance of payments basis, seasonally adjusted in current dollars. Constant dollars are calculated using the Laspeyres volume formula.

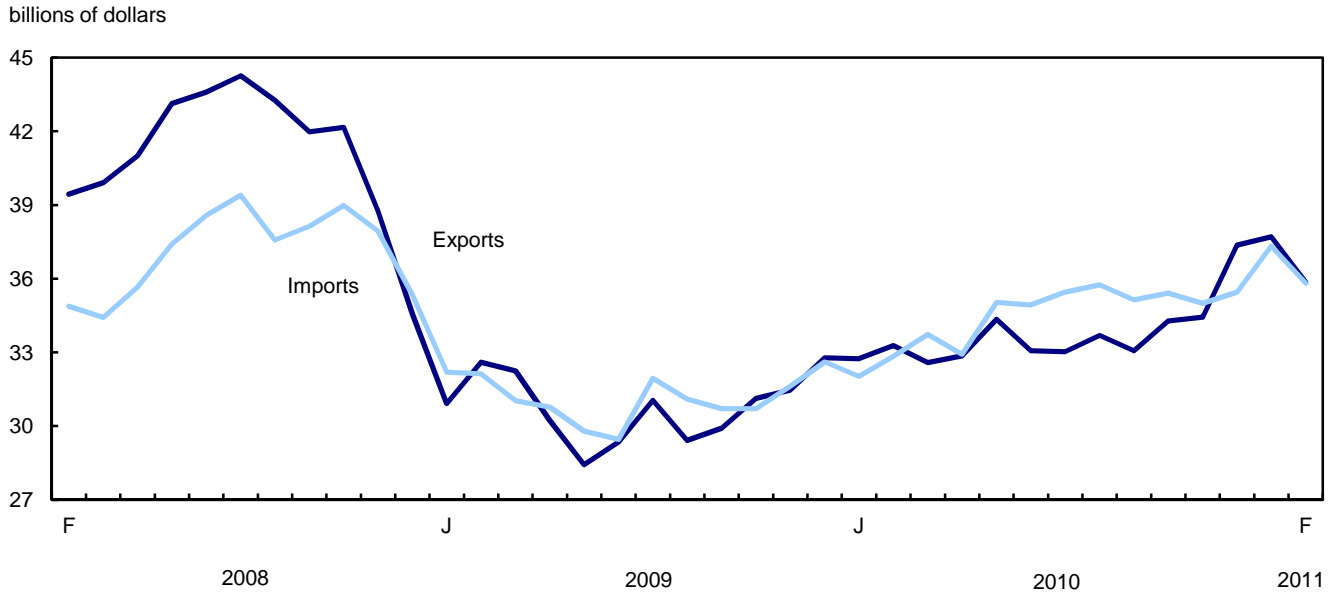
### Revisions

In general, merchandise trade data are revised on an ongoing basis for each month of the current year. Current year revisions are reflected in both the customs and balance of payments based data. Revisions to customs based data for the previous year are released on a quarterly basis. Revisions to balance of payments based data for the three previous years are released annually in June.

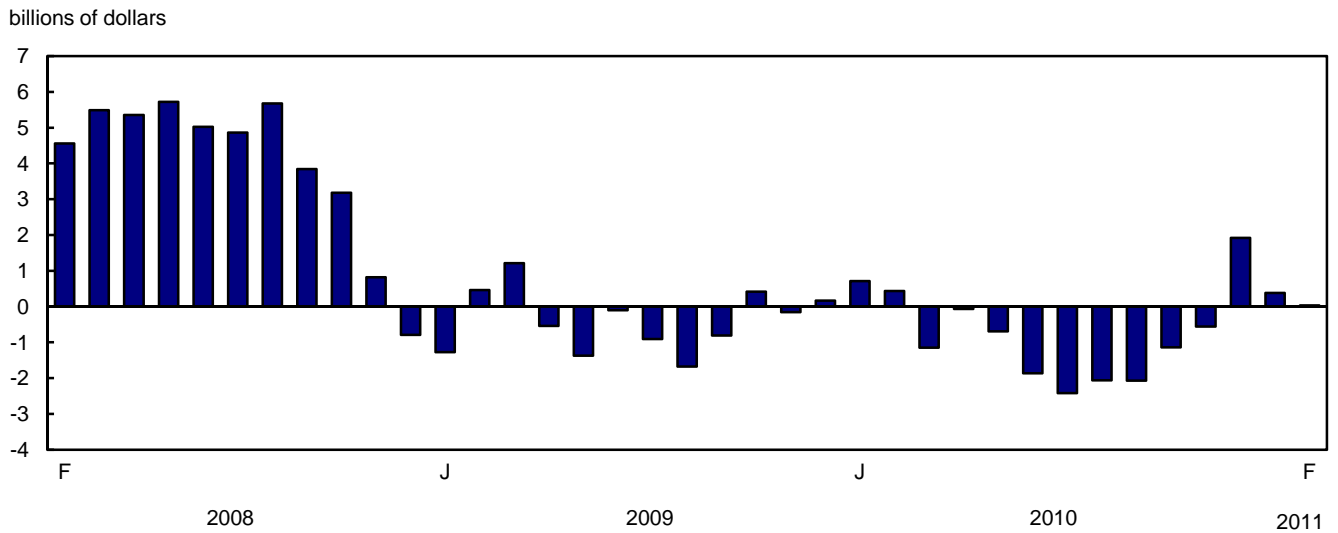
Factors influencing revisions include late receipt of import and export documentation, incorrect information on customs forms, replacement of estimates produced for the energy sector with actual figures, changes in classification of merchandise based on more current information, and changes to seasonal adjustment factors.

Revised data are available in the appropriate CANSIM tables.

**Chart 1**  
Exports and imports, seasonally adjusted, on a balance of payments basis



**Chart 2**  
Trade balance, seasonally adjusted, on a balance of payments basis





# Analysis

---

## Exports fall in six of the seven sectors

Exports of energy products fell 8.0% to \$8.8 billion, as a result of lower volumes. The decline in value and volume followed four consecutive months of growth. Exports of crude petroleum decreased 6.9%, reflecting higher inventories in the United States. This decline followed a gain of 71.3% recorded from September 2010 to January 2011. Exports of petroleum and coal products, namely diesel fuel and light oil preparation also decreased, as some refineries experienced problems during the month.

After a gain of 16.0% in January, exports of automotive products fell 12.3% to \$4.5 billion. The decline was a result of falling volumes. Passenger autos, down 15.8%, accounted for over three-quarters of the decrease in the sector.

Exports of industrial goods and materials decreased 3.0% to \$9.3 billion, as volumes declined. Exports of precious metals fell 12.1%, after reaching a record high in January, and were the main factor behind the decline in the sector. Lower exports of nickel ores also contributed to the decrease.

Exports of agricultural and fishing products increased 1.3% to \$3.2 billion, as prices rose. The gain was led by higher exports of other cereals, unmilled; other food, feed, beverage and tobacco products as well as exports of canola which reached unprecedented levels in February.

## Widespread declines in imports

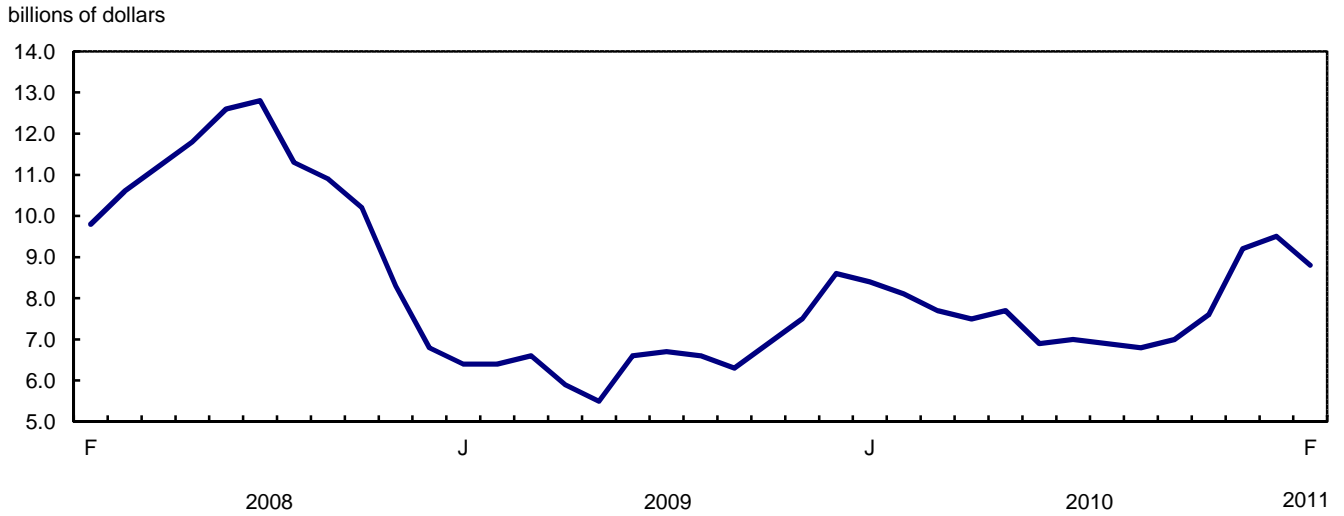
Imports of automotive products fell 12.5% to \$5.6 billion in February, as a result of lower volumes. This decline partially offset January's gain. Imports of motor vehicle parts, down 14.5%, accounted for over half of the decrease. Imports of trucks also fell during the month.

Imports of energy products declined 9.4% to \$3.9 billion, as volumes fell. Imports of crude petroleum decreased 8.4%, after three months of growth. Imports of petroleum and coal products fell, mostly as a result of lower imports of aviation fuel and motor gasoline.

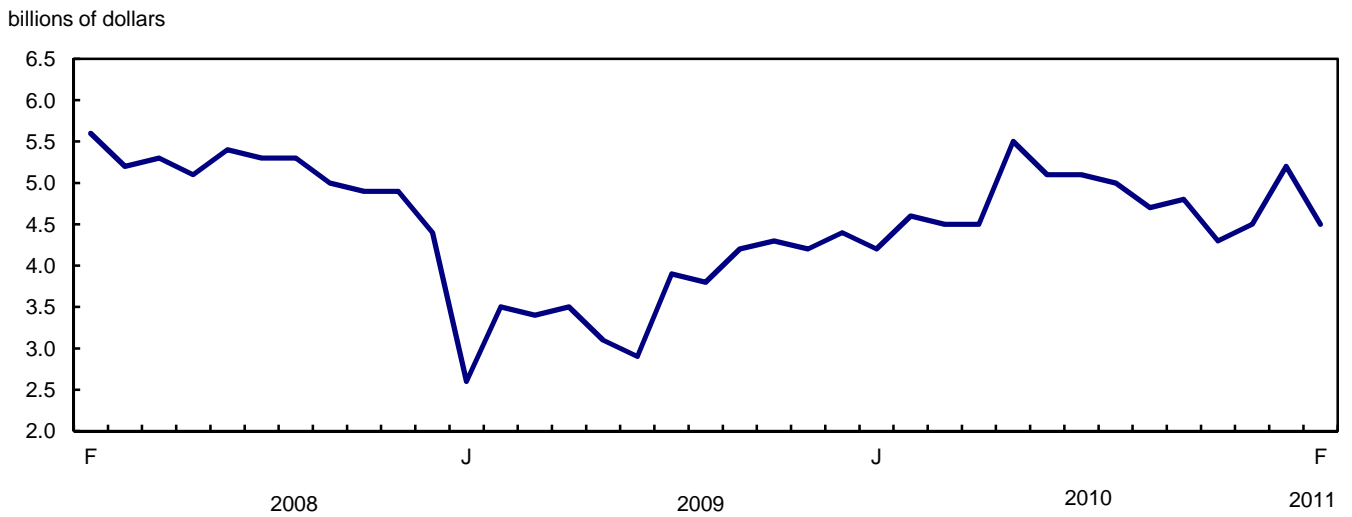
Imports of machinery and equipment decreased 2.3% to \$9.8 billion, almost offsetting the gain recorded in January. After leading the growth in the previous month, aircraft were the main contributors to the decline in the sector.

Imports of industrial goods and materials declined 1.6% to \$7.5 billion, as imports of precious metals fell for a third consecutive month. Imports of chemicals and plastics, especially organic chemicals, also decreased in February.

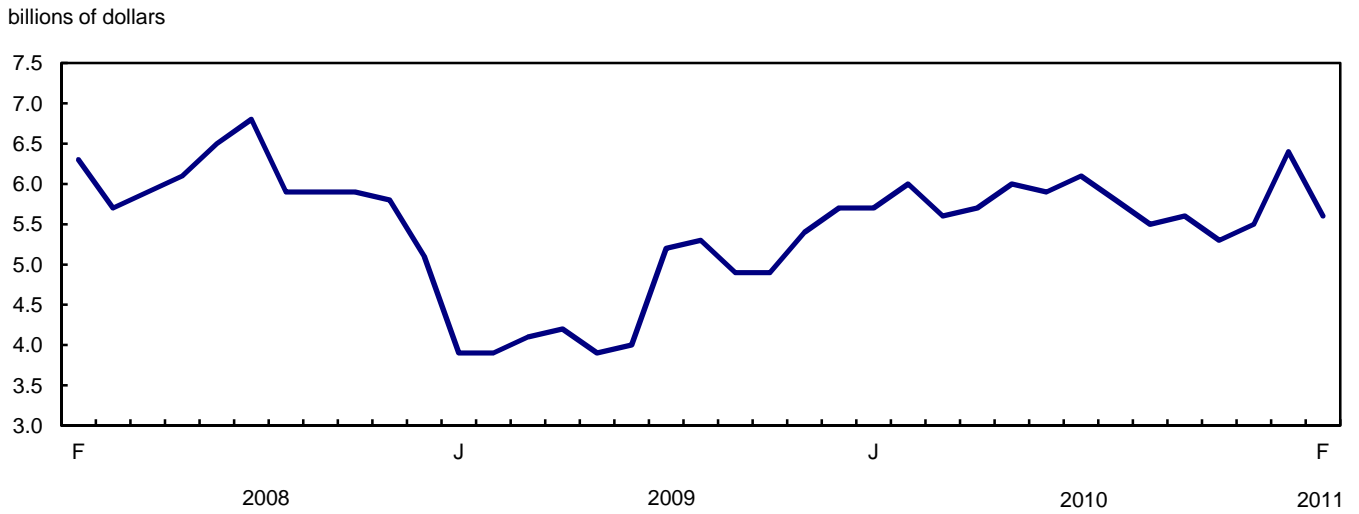
**Chart 1**  
**Exports of energy products, seasonally adjusted, on a balance of payments basis**



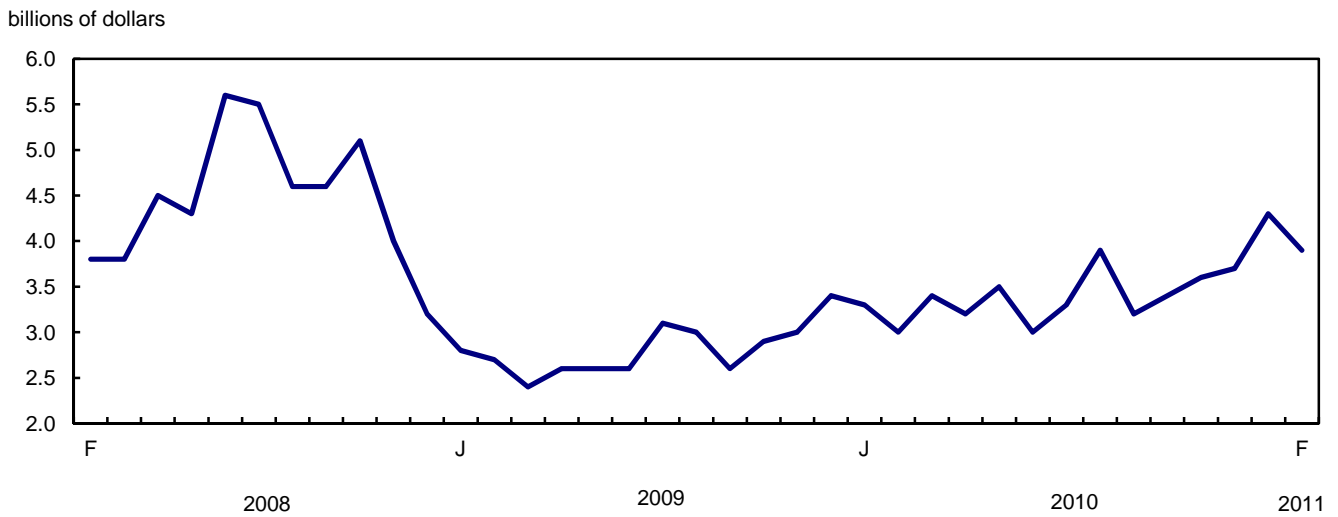
**Chart 2**  
**Exports of automotive products, seasonally adjusted, on a balance of payments basis**



**Chart 3**  
Imports of automotive products, seasonally adjusted, on a balance of payments basis



**Chart 4**  
Imports of energy products, seasonally adjusted, on a balance of payments basis



**Text table 1**  
**Merchandise trade by principal trading area, balance of payments basis, seasonally adjusted**

	January	February	Change		Year to date			February 2011/ February 2010	
	2011	2011			2010	2011	Change		
	millions of dollars		percent		millions of dollars		percent		
<b>Export to</b>									
United States	27,266	26,303	-963	-3.5	49,509	53,569	4,061	8.2	5.8
Japan	1,016	1,021	5	0.5	1,543	2,037	494	32.0	30.8
European Union <sup>1</sup>	3,637	2,801	-836	-23.0	5,281	6,439	1,157	21.9	5.4
Other Organisation for Economic Co-operation and Development <sup>2</sup>	1,480	1,483	3	0.2	2,949	2,962	13	0.5	-3.4
Other countries	4,310	4,248	-61	-1.4	6,732	8,558	1,826	27.1	23.4
<b>Total</b>	<b>37,710</b>	<b>35,856</b>	<b>-1,853</b>	<b>-4.9</b>	<b>66,015</b>	<b>73,566</b>	<b>7,551</b>	<b>11.4</b>	<b>7.7</b>
<b>Imports from</b>									
United States	23,134	21,727	-1,407	-6.1	41,313	44,861	3,548	8.6	4.0
Japan	843	842	0	0.0	1,590	1,685	95	6.0	-3.0
European Union <sup>1</sup>	3,741	3,428	-312	-8.4	6,111	7,169	1,058	17.3	7.3
Other Organisation for Economic Co-operation and Development <sup>2</sup>	2,705	2,637	-68	-2.5	4,700	5,343	643	13.7	11.2
Other countries	6,905	7,187	282	4.1	11,156	14,093	2,937	26.3	30.1
<b>Total</b>	<b>37,328</b>	<b>35,823</b>	<b>-1,506</b>	<b>-4.0</b>	<b>64,871</b>	<b>73,151</b>	<b>8,280</b>	<b>12.8</b>	<b>9.1</b>
<b>Balance</b>									
United States	4,132	4,576	444	...	8,195	8,708	513	...	...
Japan	173	179	5	...	-47	352	399	...	...
European Union <sup>1</sup>	-103	-627	-524	...	-830	-731	99	...	...
Other Organisation for Economic Co-operation and Development <sup>2</sup>	-1,226	-1,155	71	...	-1,751	-2,380	-629	...	...
Other countries	-2,595	-2,939	-344	...	-4,423	-5,535	-1,111	...	...
<b>Total</b>	<b>381</b>	<b>34</b>	<b>-347</b>	...	<b>1,144</b>	<b>415</b>	<b>-729</b>	...	...

1. European Union includes: Austria, Belgium, Bulgaria, Cyprus, Czech Republic, Denmark, Estonia, Finland, France, Germany, Greece, Hungary, Ireland, Italy, Latvia, Lithuania, Luxembourg, Malta, Netherlands, Poland, Portugal, Romania, Slovakia, Slovenia, Spain, Sweden and United Kingdom.
2. Other Organisation for Economic Co-operation and Development includes: Australia, Canada, Iceland, Mexico, New Zealand, Norway, South Korea, Switzerland and Turkey.

**Text table 2**  
**Reconciliation of customs and balance of payments trade data, not seasonally adjusted**

	2011		2010				2010
	February	January	December	November	October	September	Annual
	millions of dollars						
<b>Exports</b>							
<b>Customs basis</b>	<b>32,467</b>	<b>34,108</b>	<b>36,679</b>	<b>34,450</b>	<b>34,323</b>	<b>33,313</b>	<b>399,421</b>
<b>Balance of payments adjustments</b>	<b>649</b>	<b>1,386</b>	<b>-260</b>	<b>805</b>	<b>765</b>	<b>272</b>	<b>5,331</b>
Valuation and residency							
Inland freight	505	528	594	552	581	581	6,568
Other valuation and residency	-1,108	-320	-1,781	-1,217	-970	-878	-12,976
Timing	163	-5	31	10	62	25	46
Coverage	1,089	1,183	896	1,460	1,092	544	11,693
<b>Balance of payments basis</b>	<b>33,116</b>	<b>35,494</b>	<b>36,419</b>	<b>35,255</b>	<b>35,088</b>	<b>33,585</b>	<b>404,752</b>
<b>Imports</b>							
<b>Customs basis</b>	<b>32,664</b>	<b>33,006</b>	<b>33,192</b>	<b>34,703</b>	<b>36,017</b>	<b>35,864</b>	<b>403,347</b>
<b>Balance of payments adjustments</b>	<b>788</b>	<b>764</b>	<b>935</b>	<b>1,189</b>	<b>676</b>	<b>558</b>	<b>10,356</b>
Valuation and residency							
Inland freight	698	699	699	739	760	758	8,737
Other valuation and residency	-39	-62	-8	-29	15	-17	205
Timing	0	0	0	0	0	0	0
Coverage	129	127	244	479	-99	-183	1,414
<b>Balance of payments basis</b>	<b>33,452</b>	<b>33,770</b>	<b>34,127</b>	<b>35,892</b>	<b>36,693</b>	<b>36,422</b>	<b>413,703</b>

## Related products

---

### Selected publications from Statistics Canada

---

65-208-X	International Merchandise Trade Annual Review
65-506-X	A Profile of Canadian Exporters
65F0013X	Canadian International Merchandise Trade Database
65F0019X	A Database for Analysis of International Markets
65F0020X	Data Integration - International Trade Data and Manufacturing Shipments Data

---

### Selected CANSIM tables from Statistics Canada

---

228-0001	Merchandise imports and exports, by major groups and principal trading areas for all countries, monthly
228-0002	Merchandise imports and exports, by major groups and principal trading areas for all countries, quarterly
228-0003	Merchandise imports and exports, by major groups and principal trading areas for all countries, annual
228-0033	Imports, customs-based, by province of clearance, monthly
228-0034	Domestic exports, customs-based, by province of origin, monthly
228-0041	Merchandise imports and exports by sector and sub-sector, customs and balance of payments basis, for all countries, monthly
228-0042	Merchandise imports and exports by sector and sub-sector, customs and balance of payments basis, for all countries, quarterly
228-0043	Merchandise imports and exports by sector and sub-sector, customs and balance of payments basis, for all countries, annual
228-0047	Merchandise imports and exports balance of payments and customs-based price and volume indexes for all countries, monthly
228-0048	Merchandise imports and exports balance of payments and customs-based price and volume indexes for all countries, quarterly
228-0049	Merchandise imports and exports balance of payments and customs-based price and volume indexes for all countries, annual

228-0050	Merchandise imports and exports customs-based price indexes, Canada and United States trade, and Standard International Trade Classification (SITC revision 3) price indexes for all countries and United States, monthly
228-0051	Merchandise imports and exports customs-based price indexes, Canada and United States trade, and Standard International Trade Classification (SITC revision 3) price indexes for all countries and United States, quarterly
228-0052	Merchandise imports and exports customs-based price indexes, Canada and United States trade, and Standard International Trade Classification (SITC revision 3) price indexes for all countries and United States, annual
228-0053	Merchandise import and export price and volume indexes by sector and sub-sector, customs and balance of payments basis, for all countries, monthly
228-0054	Merchandise import and export price and volume indexes by sector and sub-sector, customs and balance of payments basis, for all countries, quarterly
228-0055	Merchandise import and export price and volume indexes by sector and sub-sector, customs and balance of payments basis, for all countries, annual
228-0056	Merchandise imports and exports by sector, balance of payments basis, for all countries, seasonally adjusted, Fisher formula, monthly
228-0057	Merchandise imports and exports by sector, balance of payments basis, for all countries, seasonally adjusted, Fisher formula, quarterly

---

### **Selected surveys from Statistics Canada**

---

2201	Canadian International Merchandise Trade (Customs Basis)
2202	Canadian International Merchandise Trade (Balance of Payments Basis)
2203	International Trade Price Indexes

---

### **Selected summary tables from Statistics Canada**

---

- *Canada: Economic and financial data*
- *Imports, exports and trade balance of goods on a balance-of-payments basis, by country or country grouping*
- *Exports of goods on a balance-of-payments basis*
- *Imports of goods on a balance-of-payments basis*

- *Merchandise trade of Canada (monthly)*
- *Economic indicators, by province and territory (monthly and quarterly)*
- *Latest statistics (monthly)*

# Statistical tables

---

---



**Table 1-1**  
**Merchandise trade of Canada, balance of payments basis, seasonally adjusted — Current dollars**

	Exports	Imports	Trade balance	Period to period change		
				Exports	Imports	Balance
	millions of dollars			percent		millions of dollars
2007	463,120	415,683	47,437	0.0	0.0	0
2008	489,995	443,752	46,244	5.8	6.8	-1,194
2009	369,529	374,097	-4,568	-24.6	-15.7	-50,812
2010	404,752	413,703	-8,952	9.5	10.6	-4,384
<b>2008</b>						
First quarter	117,294	104,743	12,551	6.0	3.2	3,321
Second quarter	127,735	111,640	16,095	8.9	6.6	3,544
Third quarter	129,499	115,116	14,383	1.4	3.1	-1,712
Fourth quarter	115,468	112,252	3,215	-10.8	-2.5	-11,168
<b>2009</b>						
First quarter	95,769	95,366	403	-17.1	-15.0	-2,812
Second quarter	88,008	90,028	-2,019	-8.1	-5.6	-2,422
Third quarter	90,377	93,765	-3,388	2.7	4.2	-1,369
Fourth quarter	95,375	94,939	436	5.5	1.3	3,824
<b>2010</b>						
First quarter	98,600	98,606	-6	3.4	3.9	-442
Second quarter	100,278	102,902	-2,623	1.7	4.4	-2,617
Third quarter	99,790	106,333	-6,543	-0.5	3.3	-3,920
Fourth quarter	106,083	105,863	221	6.3	-0.4	6,764
<b>2010</b>						
January	32,736	32,022	714	-0.2	-1.8	544
February	33,279	32,849	430	1.7	2.6	-283
March	32,585	33,735	-1,150	-2.1	2.7	-1,581
April	32,861	32,927	-66	0.8	-2.4	1,084
May	34,345	35,040	-694	4.5	6.4	-628
June	33,072	34,935	-1,862	-3.7	-0.3	-1,168
July	33,032	35,447	-2,415	-0.1	1.5	-553
August	33,687	35,747	-2,060	2.0	0.8	355
September	33,071	35,139	-2,068	-1.8	-1.7	-7
October	34,276	35,418	-1,142	3.6	0.8	925
November	34,439	34,999	-560	0.5	-1.2	582
December	37,368	35,446	1,923	8.5	1.3	2,482
<b>2011</b>						
January	37,710	37,328	381	0.9	5.3	-1,541
February	35,856	35,823	34	-4.9	-4.0	-347

**Note(s):** Because of rounding, monthly data may not add up to quarterly data and quarterly data may not add up to annual data.

**Table 1-2**  
**Merchandise trade of Canada, balance of payments basis, seasonally adjusted — Constant dollars, 2002**

	Exports	Imports	Trade balance	Period to period change	
				Exports	Imports
	millions of dollars			percent	
2007	449,015	484,005	-34,990	0.0	0.0
2008	415,119	485,902	-70,783	-7.5	0.4
2009	345,911	405,261	-59,350	-16.7	-16.6
2010	374,644	469,047	-94,402	8.3	15.7
<b>2008</b>					
First quarter	107,071	123,094	-16,023	-2.6	-1.2
Second quarter	106,872	125,669	-18,797	-0.2	2.1
Third quarter	104,062	123,918	-19,856	-2.6	-1.4
Fourth quarter	97,114	113,221	-16,107	-6.7	-8.6
<b>2009</b>					
First quarter	87,218	97,521	-10,303	-10.2	-13.9
Second quarter	83,055	96,718	-13,663	-4.8	-0.8
Third quarter	86,329	104,265	-17,935	3.9	7.8
Fourth quarter	89,308	106,757	-17,449	3.5	2.4
<b>2010</b>					
First quarter	91,261	110,966	-19,705	2.2	3.9
Second quarter	94,235	117,271	-23,036	3.3	5.7
Third quarter	93,684	120,349	-26,665	-0.6	2.6
Fourth quarter	95,464	120,461	-24,997	1.9	0.1
<b>2010</b>					
January	30,308	36,181	-5,873	0.0	-0.5
February	30,422	36,955	-6,532	0.4	2.1
March	30,530	37,830	-7,300	0.4	2.4
April	30,950	37,888	-6,937	1.4	0.2
May	31,967	39,601	-7,634	3.3	4.5
June	31,318	39,782	-8,465	-2.0	0.5
July	31,061	40,043	-8,981	-0.8	0.7
August	31,695	40,455	-8,760	2.0	1.0
September	30,928	39,851	-8,923	-2.4	-1.5
October	31,605	40,437	-8,833	2.2	1.5
November	31,078	39,795	-8,717	-1.7	-1.6
December	32,782	40,229	-7,447	5.5	1.1
<b>2011</b>					
January	33,184	42,406	-9,223	1.2	5.4
February	31,458	40,599	-9,142	-5.2	-4.3

**Note(s):** Because of rounding, monthly data may not add up to quarterly data and quarterly data may not add up to annual data.

**Table 1-3**  
**Merchandise trade of Canada, balance of payments basis, seasonally adjusted — Price indices (Laspeyres)**

	2002=100			Period to period change		
	Exports	Imports	Terms of trade	Exports	Imports	Terms of trade
	price indices (Laspeyres)			percent		
2007	107.1	91.4	117.1	0.0	0.0	0.0
2008	116.3	97.5	119.3	8.6	6.6	2.0
2009	105.4	97.1	108.6	-9.4	-0.4	-9.0
2010	106.7	94.7	112.7	1.3	-2.4	3.7
<b>2008</b>						
First quarter	111.2	90.1	123.4	5.6	3.1	2.5
Second quarter	118.5	94.7	125.1	6.6	5.1	1.5
Third quarter	122.1	100.9	121.0	3.1	6.6	-3.5
Fourth quarter	113.7	104.1	109.2	-6.9	3.2	-10.1
<b>2009</b>						
First quarter	109.5	101.5	107.8	-3.7	-2.5	-1.2
Second quarter	104.6	97.9	106.8	-4.5	-3.6	-0.9
Third quarter	102.6	95.2	107.8	-1.9	-2.7	0.9
Fourth quarter	105.7	93.8	112.7	3.0	-1.5	4.5
<b>2010</b>						
First quarter	107.1	94.3	113.6	1.4	0.6	0.8
Second quarter	106.3	94.2	112.9	-0.8	-0.2	-0.6
Third quarter	106.1	95.3	111.3	-0.2	1.3	-1.4
Fourth quarter	107.5	95.1	113.0	1.3	-0.2	1.5
<b>2010</b>						
January	106.1	93.8	113.1	-0.2	-0.4	0.2
February	107.7	95.0	113.3	1.5	1.3	0.2
March	106.3	94.1	112.9	-1.3	-1.0	-0.4
April	105.4	92.8	113.6	-0.8	-1.4	0.6
May	106.9	94.8	112.8	1.4	2.1	-0.7
June	106.0	94.8	111.8	-0.8	0.1	-0.9
July	105.7	95.3	110.9	-0.3	0.5	-0.9
August	106.6	95.8	111.2	0.8	0.5	0.3
September	106.9	94.9	112.7	0.3	-1.0	1.3
October	107.3	94.7	113.3	0.4	-0.2	0.6
November	108.1	95.4	113.3	0.8	0.7	0.1
December	109.9	95.3	115.3	1.6	-0.1	1.7
<b>2011</b>						
January	109.6	95.4	114.9	-0.2	0.1	-0.4
February	111.1	96.7	114.9	1.4	1.3	0.0

**Note(s):** Because of rounding, monthly data may not add up to quarterly data and quarterly data may not add up to annual data.

**Table 2-1**  
**Exports by commodity groupings, balance of payments basis, seasonally adjusted — Current dollars**

	January	February	Change		Year to date			February 2011/ February 2010	
	2011	2011			2010	2011	Change		
	millions of dollars		percent		millions of dollars			percent	
<b>Total</b>	<b>37,710</b>	<b>35,856</b>	<b>-1,853</b>	<b>-4.9</b>	<b>66,015</b>	<b>73,566</b>	<b>7,551</b>	<b>11.4</b>	<b>7.7</b>
<b>Agricultural and fishing products</b>	<b>3,203</b>	<b>3,245</b>	<b>42</b>	<b>1.3</b>	<b>5,972</b>	<b>6,448</b>	<b>477</b>	<b>8.0</b>	<b>8.7</b>
Wheat	364	367	2	0.7	727	731	4	0.6	0.1
Other agricultural and fishing products	2,839	2,878	39	1.4	5,245	5,717	472	9.0	9.9
Live animals	123	102	-21	-17.4	264	225	-39	-14.6	-29.3
Fish and fish preparations	344	332	-12	-3.5	690	675	-15	-2.2	-5.3
Barley	32	20	-12	-38.1	30	51	21	69.6	18.2
Wheat flour	7	6	0	-7.0	13	13	0	-2.8	-8.9
Other cereals unmilled	75	95	19	25.7	81	170	89	110.4	147.0
Other cereal preparations	225	228	4	1.7	457	453	-4	-0.9	2.5
Meat and meat preparations	384	395	12	3.0	742	779	37	4.9	8.7
Alcoholic beverages	55	56	1	1.5	127	111	-16	-12.6	-10.0
Other food, feed, beverages and tobacco	952	971	19	2.0	1,880	1,923	43	2.3	2.0
Rapeseed	410	428	18	4.5	524	837	313	59.8	70.5
Other crude vegetable products	233	246	13	5.6	437	480	43	9.8	16.4
<b>Energy products</b>	<b>9,520</b>	<b>8,759</b>	<b>-761</b>	<b>-8.0</b>	<b>16,520</b>	<b>18,278</b>	<b>1,758</b>	<b>10.6</b>	<b>8.3</b>
Crude petroleum	5,851	5,445	-406	-6.9	9,131	11,295	2,164	23.7	14.6
Natural gas	1,151	1,072	-79	-6.9	3,233	2,223	-1,010	-31.2	-28.1
Other energy products	2,518	2,242	-276	-11.0	4,156	4,760	604	14.5	21.3
Coal and other bituminous substances	386	421	35	9.2	626	807	181	29.0	30.8
Petroleum and coal products	1,940	1,643	-297	-15.3	3,072	3,583	511	16.6	24.9
Electricity	192	178	-15	-7.7	458	370	-88	-19.2	-15.7
<b>Forestry products</b>	<b>1,855</b>	<b>1,797</b>	<b>-58</b>	<b>-3.1</b>	<b>3,410</b>	<b>3,652</b>	<b>243</b>	<b>7.1</b>	<b>3.7</b>
Lumber and sawmill products	710	706	-4	-0.5	1,274	1,416	143	11.2	8.7
Other crude wood products	59	73	14	23.5	100	133	32	32.3	94.9
Lumber	464	454	-10	-2.1	771	919	147	19.1	12.3
Other wood fabricated materials	186	179	-8	-4.2	402	365	-37	-9.2	-13.9
Wood pulp and other wood products	544	503	-41	-7.5	915	1,047	133	14.5	7.3
Newsprint and other paper and paperboard	601	588	-13	-2.2	1,221	1,189	-33	-2.7	-4.4
Newsprint paper	313	307	-6	-2.0	594	620	26	4.4	3.3
Other paper and paperboard	288	281	-7	-2.5	627	569	-59	-9.4	-11.7
<b>Industrial goods and materials</b>	<b>9,550</b>	<b>9,264</b>	<b>-285</b>	<b>-3.0</b>	<b>15,028</b>	<b>18,814</b>	<b>3,786</b>	<b>25.2</b>	<b>19.5</b>
Metal ores	1,312	1,215	-97	-7.4	1,733	2,527	794	45.8	23.5
Iron ores, concentrates and scrap	484	485	2	0.3	725	969	244	33.6	34.4
Copper ores, concentrates and scrap	245	270	25	10.2	343	515	171	49.9	21.9
Nickel ores, concentrates and scrap	279	210	-69	-24.8	289	489	200	69.0	-3.9
Zinc ores, concentrates and scrap	14	4	-9	-68.5	34	18	-16	-47.5	-40.1
Other ores, concentrates and scrap	291	245	-45	-15.6	341	536	195	57.2	39.8
Chemicals, plastics and fertilizers	2,779	2,807	28	1.0	4,956	5,585	629	12.7	11.4
Inorganic chemicals	475	460	-16	-3.3	728	935	207	28.5	31.1
Organic chemicals	557	540	-17	-3.0	995	1,097	102	10.3	9.1
Fertilizers and fertilizer materials	611	645	34	5.6	1,139	1,256	117	10.2	1.1
Synthetic rubber and plastics	886	894	8	0.9	1,607	1,781	173	10.8	10.9
Other chemical products	250	267	17	7.0	487	517	30	6.1	16.8

Table 2-1 – continued

## Exports by commodity groupings, balance of payments basis, seasonally adjusted — Current dollars

	January 2011	February 2011	Change	Year to date			February 2011/ February 2010		
				2010	2011	Change			
	millions of dollars		percent		millions of dollars		percent		
<b>Metals and alloys</b>	<b>3,934</b>	<b>3,712</b>	<b>-222</b>	<b>-5.6</b>	<b>5,583</b>	<b>7,646</b>	<b>2,063</b>	<b>36.9</b>	<b>30.3</b>
Primary iron and steel	52	50	-2	-3.9	184	102	-82	-44.5	-45.4
Steel bars, rods, plates, sheets	289	267	-22	-7.7	555	556	2	0.3	-4.7
Other iron and steel and alloys	235	233	-1	-0.6	462	468	6	1.4	-1.1
Aluminum including alloys	592	649	57	9.6	1,254	1,242	-12	-1.0	3.6
Copper and alloys	244	245	2	0.7	572	489	-83	-14.5	-28.0
Nickel and alloys	338	342	3	0.9	243	680	437	179.6	212.4
Precious metals and alloys	1,947	1,711	-236	-12.1	1,862	3,658	1,796	96.4	83.3
Zinc and alloys	119	113	-5	-4.4	259	232	-27	-10.5	-9.5
Other non-ferrous metals and alloys	118	100	-17	-14.6	192	218	26	13.7	-3.7
<b>Other industrial goods and materials</b>	<b>1,526</b>	<b>1,531</b>	<b>5</b>	<b>0.4</b>	<b>2,757</b>	<b>3,057</b>	<b>300</b>	<b>10.9</b>	<b>9.1</b>
Asbestos unmanufactured	5	4	-1	-15.1	10	8	-2	-20.3	-19.9
Other crude animal products	67	67	0	0.4	122	134	12	9.4	43.0
Other crude non-metallic minerals	319	338	19	5.8	617	657	40	6.5	2.1
Other crude materials, inedible	66	60	-6	-8.7	106	126	20	18.9	11.1
Metal fabricated basic products	350	354	4	1.1	682	703	21	3.1	3.2
Textile fabricated materials	181	179	-2	-1.2	355	360	5	1.4	0.3
Non-metallic mineral basic products	158	151	-7	-4.7	314	309	-6	-1.8	-8.1
Other fabricated materials	380	379	-1	-0.3	550	760	210	38.1	34.4
<b>Machinery and equipment</b>	<b>6,277</b>	<b>6,225</b>	<b>-53</b>	<b>-0.8</b>	<b>11,917</b>	<b>12,502</b>	<b>585</b>	<b>4.9</b>	<b>4.4</b>
Industrial and agricultural machinery	1,467	1,484	17	1.2	2,838	2,951	114	4.0	6.7
Industrial machinery	1,308	1,327	19	1.4	2,540	2,635	95	3.7	6.5
Agricultural machinery includ. tractors	159	157	-2	-1.2	297	316	19	6.4	8.6
Aircraft and other transportation equipment	1,473	1,454	-19	-1.3	2,761	2,927	166	6.0	1.9
Aircraft, engines, parts	1,137	1,129	-8	-0.7	2,172	2,267	95	4.4	-0.1
Other transportation equipment	336	324	-12	-3.4	589	660	71	12.0	9.3
Other machinery and equipment	3,337	3,287	-50	-1.5	6,319	6,624	305	4.8	4.5
Television, telecommunication equipment	620	641	22	3.5	1,257	1,261	4	0.3	3.9
Office machines and equipment	350	342	-9	-2.5	692	692	-1	-0.1	-1.8
Other equipment and tools	1,523	1,444	-79	-5.2	2,905	2,967	62	2.1	-0.6
Other end products, inedible	844	860	16	1.9	1,464	1,704	240	16.4	18.0
<b>Automotive products</b>	<b>5,179</b>	<b>4,541</b>	<b>-638</b>	<b>-12.3</b>	<b>8,772</b>	<b>9,720</b>	<b>948</b>	<b>10.8</b>	<b>-0.2</b>
Passenger autos and chassis	3,563	3,000	-563	-15.8	5,774	6,563	789	13.7	-1.4
Trucks and other motor vehicles	204	176	-28	-13.5	352	380	28	8.1	4.6
Motor vehicle parts	1,411	1,365	-47	-3.3	2,646	2,776	130	4.9	1.8
<b>Other consumer goods</b>	<b>1,368</b>	<b>1,272</b>	<b>-97</b>	<b>-7.1</b>	<b>2,838</b>	<b>2,640</b>	<b>-198</b>	<b>-7.0</b>	<b>-11.2</b>
<b>Special transactions trade</b>	<b>267</b>	<b>293</b>	<b>27</b>	<b>10.0</b>	<b>674</b>	<b>560</b>	<b>-115</b>	<b>-17.0</b>	<b>-10.2</b>
<b>Unallocated balance of payments adjustments</b>	<b>490</b>	<b>461</b>	<b>-30</b>	<b>-6.0</b>	<b>884</b>	<b>951</b>	<b>67</b>	<b>7.6</b>	<b>4.2</b>

**Table 2-2**  
**Exports by commodity groupings, balance of payments basis, seasonally adjusted — Constant dollars, 2002**

	January	February	Change		Year to date			February 2011/ February 2010	
	2011	2011			2010		2011		
	millions of dollars		percent		millions of dollars		percent		
<b>Total</b>	<b>33,184</b>	<b>31,458</b>	<b>-1,726</b>	<b>-5.2</b>	<b>60,731</b>	<b>64,641</b>	<b>3,911</b>	<b>6.4</b>	<b>3.4</b>
<b>Agricultural and fishing products</b>	<b>3,079</b>	<b>2,993</b>	<b>-85</b>	<b>-2.8</b>	<b>6,313</b>	<b>6,072</b>	<b>-241</b>	<b>-3.8</b>	<b>-5.3</b>
Wheat	292	266	-26	-8.9	780	557	-223	-28.6	-33.6
Other agricultural and fishing products	2,787	2,728	-59	-2.1	5,532	5,515	-18	-0.3	-1.2
Live animals	125	98	-27	-21.6	326	223	-103	-31.7	-44.8
Fish and fish preparations	417	401	-16	-3.7	905	818	-87	-9.6	-13.3
Barley	29	16	-14	-47.3	31	45	14	43.1	-7.4
Wheat flour	6	6	0	-8.0	13	12	-1	-10.2	-16.3
Other cereals unmilled	61	72	11	17.5	95	132	37	39.2	48.7
Other cereal preparations	205	209	4	1.9	406	413	7	1.8	6.3
Meat and meat preparations	412	403	-9	-2.3	875	816	-59	-6.7	-4.1
Alcoholic beverages	105	106	1	1.1	241	212	-29	-12.2	-9.4
Other food, feed, beverages and tobacco	936	912	-25	-2.6	1,762	1,848	85	4.8	2.4
Rapeseed	306	310	4	1.3	480	617	137	28.4	33.4
Other crude vegetable products	184	196	12	6.4	397	379	-18	-4.4	1.5
<b>Energy products</b>	<b>5,354</b>	<b>4,918</b>	<b>-436</b>	<b>-8.1</b>	<b>9,362</b>	<b>10,272</b>	<b>910</b>	<b>9.7</b>	<b>8.1</b>
Crude petroleum	2,451	2,362	-89	-3.6	3,980	4,813	833	20.9	15.2
Natural gas	1,599	1,402	-196	-12.3	2,882	3,001	119	4.1	4.1
Other energy products	1,304	1,153	-151	-11.6	2,500	2,458	-42	-1.7	0.3
Coal and other bituminous substances	116	126	10	9.1	300	242	-59	-19.6	-18.0
Petroleum and coal products	976	804	-172	-17.6	1,715	1,779	65	3.8	6.0
Electricity	213	224	10	4.9	485	437	-48	-9.9	-6.0
<b>Forestry products</b>	<b>2,244</b>	<b>2,224</b>	<b>-20</b>	<b>-0.9</b>	<b>4,317</b>	<b>4,467</b>	<b>150</b>	<b>3.5</b>	<b>3.8</b>
Lumber and sawmill products	917	936	18	2.0	1,702	1,853	151	8.9	12.3
Other crude wood products	85	112	27	31.2	139	197	58	42.0	142.9
Lumber	618	618	0	0.0	1,111	1,236	125	11.2	10.5
Other wood fabricated materials	214	206	-8	-3.8	451	420	-32	-7.0	-9.7
Wood pulp and other wood products	633	622	-12	-1.9	1,154	1,255	101	8.8	8.0
Newsprint and other paper and paperboard	693	666	-26	-3.8	1,461	1,359	-102	-7.0	-9.2
Newsprint paper	362	346	-16	-4.5	726	708	-18	-2.4	-4.8
Other paper and paperboard	331	321	-10	-3.1	736	651	-85	-11.5	-13.4
<b>Industrial goods and materials</b>	<b>5,703</b>	<b>5,498</b>	<b>-205</b>	<b>-3.6</b>	<b>10,621</b>	<b>11,202</b>	<b>581</b>	<b>5.5</b>	<b>2.4</b>
Metal ores	552	484	-69	-12.4	922	1,036	114	12.3	-6.5
Iron ores, concentrates and scrap	195	187	-8	-3.9	370	382	11	3.1	1.3
Copper ores, concentrates and scrap	68	72	5	6.8	118	140	22	18.7	-5.3
Nickel ores, concentrates and scrap	113	77	-37	-32.4	164	190	26	16.0	-38.1
Zinc ores, concentrates and scrap	7	2	-5	-68.2	16	9	-7	-45.6	-42.7
Other ores, concentrates and scrap	170	146	-24	-14.3	254	316	62	24.3	13.0
Chemicals, plastics and fertilizers	1,893	1,896	4	0.2	3,550	3,789	239	6.7	9.0
Inorganic chemicals	201	175	-26	-13.0	351	376	25	7.0	8.4
Organic chemicals	295	278	-17	-5.7	607	573	-34	-5.6	-1.9
Fertilizers and fertilizer materials	246	269	23	9.5	467	515	48	10.3	0.3
Synthetic rubber and plastics	852	852	0	0.0	1,529	1,704	175	11.4	13.7
Other chemical products	299	322	23	7.7	595	621	26	4.4	16.2

Table 2-2 – continued

## Exports by commodity groupings, balance of payments basis, seasonally adjusted — Constant dollars, 2002

	January 2011	February 2011	Change	Year to date			February 2011/ February 2010		
				2010		Change			
				millions of dollars	percent			millions of dollars	percent
<b>Metals and alloys</b>	<b>2,024</b>	<b>1,930</b>	<b>-95</b>	<b>-4.7</b>	<b>3,564</b>	<b>3,954</b>	<b>390</b>	<b>10.9</b>	<b>6.9</b>
Primary iron and steel	35	32	-3	-9.5	135	67	-68	-50.4	-51.3
Steel bars, rods, plates, sheets	244	215	-29	-11.8	473	459	-13	-2.8	-8.7
Other iron and steel and alloys	196	193	-4	-2.0	398	389	-9	-2.3	-3.4
Aluminum including alloys	570	605	36	6.2	1,264	1,175	-89	-7.0	-5.4
Copper and alloys	66	63	-3	-4.5	185	130	-56	-30.0	-41.8
Nickel and alloys	137	134	-3	-2.0	132	272	140	105.9	124.4
Precious metals and alloys	657	580	-78	-11.8	761	1,237	476	62.6	50.6
Zinc and alloys	66	62	-5	-7.2	136	128	-7	-5.4	-7.0
Other non-ferrous metals and alloys	51	45	-6	-11.8	81	97	16	19.9	3.3
<b>Other industrial goods and materials</b>	<b>1,234</b>	<b>1,189</b>	<b>-45</b>	<b>-3.7</b>	<b>2,585</b>	<b>2,423</b>	<b>-162</b>	<b>-6.3</b>	<b>-9.3</b>
Asbestos unmanufactured	5	4	-1	-17.0	11	8	-2	-22.8	-22.7
Other crude animal products	71	70	-1	-1.6	135	141	6	4.3	29.8
Other crude non-metallic minerals	222	197	-25	-11.3	662	419	-243	-36.7	-44.0
Other crude materials, inedible	59	52	-6	-10.8	95	111	16	17.1	12.2
Metal fabricated basic products	277	282	5	1.8	551	559	8	1.4	1.6
Textile fabricated materials	191	191	0	-0.2	384	381	-2	-0.6	-0.3
Non-metallic mineral basic products	131	125	-6	-4.3	263	256	-7	-2.7	-6.7
Other fabricated materials	279	268	-11	-4.0	485	548	63	12.9	7.0
<b>Machinery and equipment</b>	<b>7,076</b>	<b>7,052</b>	<b>-24</b>	<b>-0.3</b>	<b>13,292</b>	<b>14,128</b>	<b>836</b>	<b>6.3</b>	<b>6.3</b>
Industrial and agricultural machinery	1,383	1,403	20	1.4	2,625	2,786	161	6.1	8.9
Industrial machinery	1,235	1,257	21	1.7	2,350	2,492	142	6.0	8.8
Agricultural machinery includ. tractors	148	146	-2	-1.0	275	294	19	6.9	9.8
Aircraft and other transportation equipment	1,840	1,820	-20	-1.1	3,371	3,660	289	8.6	4.9
Aircraft, engines, parts	1,500	1,500	0	0.0	2,790	3,000	210	7.5	3.5
Other transportation equipment	340	320	-20	-5.8	581	660	79	13.6	11.7
Other machinery and equipment	3,853	3,830	-23	-0.6	7,296	7,683	386	5.3	6.1
Television, telecommunication equipment	814	824	10	1.2	1,596	1,638	42	2.6	5.7
Office machines and equipment	941	931	-10	-1.0	1,692	1,872	180	10.7	10.4
Other equipment and tools	1,447	1,368	-79	-5.5	2,744	2,815	71	2.6	0.3
Other end products, inedible	651	707	55	8.5	1,264	1,358	94	7.4	13.4
<b>Automotive products</b>	<b>7,181</b>	<b>6,289</b>	<b>-892</b>	<b>-12.4</b>	<b>11,717</b>	<b>13,469</b>	<b>1,752</b>	<b>15.0</b>	<b>3.6</b>
Passenger autos and chassis	5,351	4,542	-809	-15.1	8,391	9,893	1,503	17.9	3.2
Trucks and other motor vehicles	251	215	-36	-14.4	422	466	44	10.5	6.9
Motor vehicle parts	1,578	1,532	-46	-2.9	2,905	3,110	205	7.1	4.4
<b>Other consumer goods</b>	<b>1,315</b>	<b>1,228</b>	<b>-87</b>	<b>-6.6</b>	<b>2,714</b>	<b>2,542</b>	<b>-171</b>	<b>-6.3</b>	<b>-10.4</b>
<b>Special transactions trade</b>	<b>227</b>	<b>253</b>	<b>26</b>	<b>11.6</b>	<b>607</b>	<b>480</b>	<b>-127</b>	<b>-20.9</b>	<b>-14.5</b>
<b>Unallocated balance of payments adjustments</b>	<b>1,007</b>	<b>1,002</b>	<b>-5</b>	<b>-0.5</b>	<b>1,788</b>	<b>2,009</b>	<b>220</b>	<b>12.3</b>	<b>21.0</b>

**Table 3-1**  
**Domestic exports to selected countries, customs basis, not seasonally adjusted — February**

	Agricultural and fishing products	Energy products	Forestry products	Industrial goods	Machinery and equipment	Automotive products	Consumer goods	Special transactions trade	<b>Total</b>
millions of dollars									
<b>United States</b>									
2010	1,340.7	7,082.7	1,060.5	4,114.3	2,963.7	4,147.6	771.6	236.5	<b>21,717.7</b>
2011	1,330.5	7,885.1	1,007.7	4,607.0	2,955.5	4,147.0	667.8	226.5	<b>22,827.2</b>
<b>Mexico</b>									
2010	139.2	12.7	12.1	73.2	49.1	63.7	21.7	0.0	<b>371.8</b>
2011	155.5	0.6	13.2	107.3	77.4	53.1	2.8	0.2	<b>410.2</b>
<b>Japan</b>									
2010	232.2	72.3	100.6	127.5	76.7	5.7	19.3	1.0	<b>635.2</b>
2011	273.9	183.4	94.5	210.3	58.2	5.6	7.4	1.8	<b>835.1</b>
<b>European Union</b>									
Germany									
2010	11.1	8.1	5.8	107.5	109.4	3.1	13.4	1.5	<b>259.8</b>
2011	10.8	12.4	4.7	79.7	101.3	2.8	14.3	1.2	<b>227.2</b>
France									
2010	9.4	0.1	8.5	47.1	69.5	2.9	14.9	2.6	<b>155.1</b>
2011	7.8	0.3	7.7	45.0	103.3	2.8	14.2	0.5	<b>181.5</b>
United Kingdom									
2010	25.7	16.3	13.9	921.7	84.5	3.8	17.7	4.6	<b>1,088.2</b>
2011	24.9	22.2	9.7	869.9	80.0	4.6	14.4	1.9	<b>1,027.7</b>
Italy									
2010	23.8	15.1	25.3	30.9	24.6	0.4	13.3	0.1	<b>133.5</b>
2011	16.8	23.9	22.9	27.0	26.7	0.8	6.7	0.4	<b>125.1</b>
Other European Union									
2010	66.4	54.1	21.0	267.1	246.3	9.6	35.8	7.1	<b>707.2</b>
2011	137.7	78.5	12.8	242.4	158.6	8.8	43.4	1.6	<b>683.7</b>
<b>Total</b>									
2010	136.4	93.6	74.5	1,374.3	534.3	19.8	95.1	16.0	<b>2,343.9</b>
2011	198.1	137.3	57.8	1,263.9	470.0	19.7	93.1	5.6	<b>2,245.4</b>
<b>Newly industrialized countries</b>									
South Korea									
2010	43.1	66.5	32.0	87.8	42.0	7.7	2.9	1.4	<b>283.4</b>
2011	54.0	88.6	35.9	81.3	24.6	1.1	5.7	0.6	<b>291.7</b>
Hong Kong									
2010	37.3	0.1	6.5	48.7	17.9	0.7	4.2	2.6	<b>117.9</b>
2011	29.4	0.0	8.8	253.5	39.9	0.6	7.9	0.3	<b>340.5</b>
Taiwan									
2010	15.1	0.0	20.4	22.6	10.4	0.2	1.6	0.1	<b>70.4</b>
2011	12.2	28.5	24.0	75.0	10.7	0.1	5.5	0.1	<b>156.1</b>
Singapore									
2010	5.9	0.8	0.5	12.8	21.1	0.7	2.7	2.0	<b>46.5</b>
2011	5.9	0.3	0.4	9.5	50.3	3.4	2.9	0.9	<b>73.7</b>
<b>Total</b>									
2010	101.3	67.3	59.4	171.8	91.4	9.3	11.5	6.1	<b>518.2</b>
2011	101.4	117.4	69.1	419.3	125.6	5.2	22.0	1.9	<b>862.0</b>
<b>Other countries</b>									
2010	625.3	132.0	359.1	1,066.1	602.1	54.7	172.0	31.6	<b>3,042.9</b>
2011	739.3	152.5	481.0	1,084.7	624.7	63.3	71.6	15.3	<b>3,232.4</b>
<b>Total</b>									
2010	<b>2,575.2</b>	<b>7,460.7</b>	<b>1,666.2</b>	<b>6,927.2</b>	<b>4,317.3</b>	<b>4,300.8</b>	<b>1,091.1</b>	<b>291.2</b>	<b>28,629.7</b>
2011	<b>2,798.7</b>	<b>8,476.4</b>	<b>1,723.3</b>	<b>7,692.5</b>	<b>4,311.3</b>	<b>4,293.8</b>	<b>864.7</b>	<b>251.5</b>	<b>30,412.1</b>



Table 3-2

## Domestic exports to selected countries, customs basis, not seasonally adjusted — Year to date, January to February

	Agricultural and fishing products	Energy products	Forestry products	Industrial goods	Machinery and equipment	Automotive products	Consumer goods	Special transactions trade	Total
millions of dollars									
<b>United States</b>									
2010	2,637.0	15,066.6	2,079.2	8,472.3	6,109.1	7,484.7	1,540.5	480.4	<b>43,869.7</b>
2011	2,682.6	16,086.2	2,075.5	9,456.0	6,225.5	8,288.2	1,408.0	448.4	<b>46,670.4</b>
<b>Mexico</b>									
2010	219.0	13.7	22.8	158.2	102.9	136.5	27.8	0.4	<b>681.2</b>
2011	198.2	7.3	23.7	174.5	137.0	108.7	6.8	0.6	<b>656.8</b>
<b>Japan</b>									
2010	440.8	238.8	194.9	226.4	129.0	12.0	25.6	2.3	<b>1,269.7</b>
2011	581.6	306.5	186.9	433.0	99.7	10.1	13.2	3.3	<b>1,634.3</b>
<b>European Union</b>									
<b>Germany</b>									
2010	19.8	8.1	14.7	207.3	262.8	5.1	28.4	3.2	<b>549.5</b>
2011	22.6	24.0	9.4	152.5	234.7	4.4	31.2	3.8	<b>482.8</b>
<b>France</b>									
2010	18.0	0.2	21.5	81.8	133.6	5.3	33.2	3.7	<b>297.4</b>
2011	16.8	0.6	15.4	100.9	252.5	4.3	31.3	1.3	<b>423.0</b>
<b>United Kingdom</b>									
2010	44.5	17.0	32.1	1,827.2	265.7	7.7	33.0	8.2	<b>2,235.4</b>
2011	51.8	34.0	18.9	2,163.4	174.7	10.2	24.7	8.2	<b>2,486.0</b>
<b>Italy</b>									
2010	31.0	36.8	50.8	49.7	88.2	0.8	23.7	2.1	<b>283.0</b>
2011	35.8	36.7	41.7	73.0	53.9	1.1	13.0	0.5	<b>255.9</b>
<b>Other European Union</b>									
2010	137.2	64.0	49.1	498.8	424.7	18.7	81.6	11.2	<b>1,285.3</b>
2011	269.7	188.3	24.9	492.3	429.5	18.0	91.0	5.3	<b>1,519.2</b>
<b>Total</b>									
2010	250.5	126.1	168.3	2,664.8	1,174.9	37.6	199.9	28.5	<b>4,650.6</b>
2011	396.8	283.6	110.4	2,982.1	1,145.3	38.2	191.3	19.1	<b>5,166.9</b>
<b>Newly industrialized countries</b>									
<b>South Korea</b>									
2010	74.0	147.2	65.0	154.1	81.5	13.4	7.3	2.0	<b>544.5</b>
2011	121.5	192.1	74.2	182.6	65.6	1.6	10.6	1.2	<b>649.4</b>
<b>Hong Kong</b>									
2010	73.8	0.1	14.5	114.8	36.2	1.3	8.4	3.7	<b>252.8</b>
2011	55.7	0.1	17.2	536.5	59.4	1.1	16.0	1.4	<b>687.3</b>
<b>Taiwan</b>									
2010	26.1	23.4	37.7	42.8	20.1	0.6	6.8	0.2	<b>157.8</b>
2011	24.4	59.7	46.5	152.8	20.3	0.2	7.4	0.2	<b>311.7</b>
<b>Singapore</b>									
2010	11.2	1.3	3.1	23.1	44.8	2.5	6.0	2.1	<b>94.2</b>
2011	9.0	0.9	2.1	16.5	81.9	6.2	5.1	1.4	<b>123.1</b>
<b>Total</b>									
2010	185.2	172.0	120.3	334.8	182.6	17.8	28.6	8.0	<b>1,049.3</b>
2011	210.6	252.7	139.9	888.5	227.3	9.1	39.2	4.1	<b>1,771.4</b>
<b>Other countries</b>									
2010	1,372.9	201.3	683.6	1,917.9	1,168.5	105.2	256.3	54.0	<b>5,759.7</b>
2011	1,397.5	460.6	956.7	2,238.7	1,134.9	123.3	153.8	29.6	<b>6,495.2</b>
<b>Total</b>									
2010	<b>5,105.4</b>	<b>15,818.5</b>	<b>3,269.1</b>	<b>13,774.4</b>	<b>8,867.0</b>	<b>7,793.8</b>	<b>2,078.5</b>	<b>573.6</b>	<b>57,280.3</b>
2011	<b>5,467.3</b>	<b>17,397.0</b>	<b>3,493.3</b>	<b>16,172.9</b>	<b>8,969.8</b>	<b>8,577.5</b>	<b>1,812.3</b>	<b>505.1</b>	<b>62,395.1</b>

**Table 4**  
**Domestic exports by country, customs basis, not seasonally adjusted**

	February		January to February		Change
	2010	2011	2010	2011	January to February 2011/ January to February 2010
	millions of dollars				percent
<b>North America</b>					
Greenland	0.5	0.3	1.8	1.3	-25.1
Mexico	371.8	410.2	681.2	656.8	-3.6
Saint Pierre and Miquelon	1.3	1.3	2.3	2.0	-12.5
United States	21,717.7	22,827.2	43,869.7	46,670.4	6.4
<b>Total</b>	<b>22,091.3</b>	<b>23,238.9</b>	<b>44,555.1</b>	<b>47,330.6</b>	<b>6.2</b>
<b>Western Europe</b>					
Andorra	0.0	0.0	0.0	0.0	-89.5
Austria	15.2	32.1	49.1	42.6	-13.2
Belgium	159.3	122.7	274.0	205.7	-24.9
Denmark	15.8	14.6	36.0	27.5	-23.7
Faeroe Islands	0.0	0.0	0.0	0.1	47.7
Finland	13.0	11.9	28.7	36.2	26.0
France	155.1	181.5	297.4	423.0	42.3
Germany	259.8	227.2	549.5	482.8	-12.2
Gibraltar	0.0	24.7	0.0	24.8	...
Greece	4.9	5.0	10.6	9.8	-7.1
Iceland	5.4	3.5	10.0	7.2	-27.3
Italy	133.5	125.1	283.0	255.9	-9.6
Luxembourg	6.8	24.7	10.1	25.9	156.5
Malta	48.9	0.6	49.5	1.3	-97.4
Netherlands	222.3	294.8	409.7	665.0	62.3
Norway	254.0	201.7	377.2	411.0	9.0
Portugal	52.0	52.8	58.0	63.9	10.1
Republic of Ireland (Eire)	15.7	24.7	54.9	58.5	6.6
Spain	73.4	34.0	142.1	165.4	16.4
Sweden	28.5	25.5	48.6	46.9	-3.5
Switzerland	26.8	86.0	245.0	251.8	2.8
United Kingdom	1,088.2	1,027.7	2,235.4	2,486.0	11.2
<b>Total</b>	<b>2,578.7</b>	<b>2,521.0</b>	<b>5,168.9</b>	<b>5,691.2</b>	<b>10.1</b>
<b>Other Europe</b>					
Albania	2.1	2.6	2.6	6.1	132.1
Armenia	0.7	1.0	1.2	1.5	28.0
Azerbaijan	1.0	0.5	1.5	0.8	-46.1
Belarus	0.1	0.1	0.1	0.3	134.3
Bosnia and Herzegovina	0.3	0.6	0.5	0.6	4.5
Bulgaria	1.4	1.6	22.3	20.5	-8.3
Croatia	28.8	0.7	30.3	1.4	-95.5
Czech Republic	11.7	7.1	20.1	13.5	-32.9
Estonia	1.8	1.4	2.8	56.3	...
Georgia	1.8	1.4	3.0	2.9	-0.5
Hungary	6.1	5.6	10.7	12.1	13.0
Kazakhstan	49.6	6.6	58.3	13.4	-77.0
Kyrgyzstan	0.0	0.3	0.1	0.4	424.1
Latvia	0.8	1.1	2.0	23.5	...
Lithuania	1.5	3.3	2.7	8.8	232.4
Macedonia (Former Yugoslav Republic of Macedonia)	1.1	0.6	1.9	1.6	-16.1
Montenegro	0.1	0.1	0.1	0.2	75.6
Poland	10.1	12.5	25.7	22.9	-10.7
Republic of Moldova	0.1	0.0	0.1	0.1	-26.0
Romania	5.9	2.9	13.3	5.4	-59.0
Russian Federation	56.1	71.9	101.0	143.6	42.2
Serbia	0.4	0.3	0.7	0.7	-5.9
Slovakia	10.0	2.3	11.5	3.8	-66.6
Slovenia	1.2	2.0	1.5	2.3	55.1
Tajikistan	0.3	0.3	1.1	0.3	-72.3
Turkmenistan	0.1	0.8	0.4	1.8	355.0
Ukraine	7.0	6.6	14.6	17.4	19.4
Uzbekistan	0.1	0.2	0.9	0.7	-22.4
<b>Total</b>	<b>200.1</b>	<b>134.2</b>	<b>330.9</b>	<b>363.0</b>	<b>9.7</b>

Table 4 – continued

## Domestic exports by country, customs basis, not seasonally adjusted

	February		January to February		Change
	2010	2011	2010	2011	January to February 2011/ January to February 2010
	millions of dollars				percent
<b>Middle East</b>					
Bahrain	1.1	1.7	2.5	3.8	51.2
Cyprus	0.8	0.6	1.4	1.1	-15.1
Egypt	35.7	9.2	55.5	73.6	32.5
Eritrea	0.9	1.3	1.2	1.4	13.7
Ethiopia	0.5	0.5	0.8	1.7	109.8
Iran	8.2	4.8	14.5	9.1	-37.7
Iraq	4.3	4.0	6.1	6.7	10.3
Israel	34.9	19.2	57.5	43.8	-23.9
Jordan	5.1	5.7	11.6	11.3	-3.0
Kuwait	5.1	10.9	13.6	19.5	42.8
Lebanon	5.4	4.3	10.8	6.9	-35.5
Libya	22.9	2.5	42.6	36.6	-14.1
Oman	9.7	6.9	19.1	12.1	-36.8
Qatar	14.1	3.2	17.8	6.8	-61.7
Saudi Arabia	32.7	59.0	150.1	100.5	-33.0
Somalia	0.0	0.0	0.0	0.2	...
Sudan	1.0	0.9	7.6	1.4	-81.5
Syria	2.3	21.3	4.3	24.6	473.3
Turkey	127.7	74.8	170.1	149.8	-11.9
United Arab Emirates	66.6	87.9	168.7	202.8	20.2
Yemen	3.3	1.3	4.5	1.8	-59.3
<b>Total</b>	<b>382.1</b>	<b>320.0</b>	<b>760.4</b>	<b>715.4</b>	<b>-5.9</b>
<b>Other Africa</b>					
Algeria	25.6	10.4	49.4	17.5	-64.6
Angola	7.4	4.0	9.9	8.8	-11.3
Antarctica	0.0	0.0	0.0	0.0	205.3
Benin	0.7	1.1	1.2	1.6	32.9
Botswana	0.1	0.3	0.2	0.4	139.4
Burkina Faso	1.6	1.6	3.3	2.1	-37.5
Burundi	0.1	0.1	0.1	0.1	-33.1
Cameroon	2.5	4.5	2.7	4.9	83.7
Cape Verde	0.0	0.0	0.2	0.7	261.5
Central African Republic	0.0	0.0	0.0	0.0	...
Chad	0.6	0.3	1.0	0.4	-61.2
Congo	1.7	0.7	2.2	1.3	-40.1
Democratic Republic of the Congo	0.9	1.0	1.9	1.7	-9.9
Djibouti	0.1	0.0	0.1	0.2	48.5
Equatorial Guinea	0.1	3.4	0.3	3.8	...
French Southern Territories	0.0	0.0	0.0	0.0	-100.0
Gabon	1.4	1.7	3.2	4.3	36.3
Gambia	0.1	0.1	0.1	0.1	13.4
Ghana	15.8	28.3	27.4	32.8	19.9
Guinea	0.5	4.7	0.8	5.8	642.7
Guinea-Bissau	0.0	0.0	0.0	0.0	...
Ivory Coast	0.6	0.1	1.0	0.7	-32.6
Kenya	3.8	4.0	6.1	6.5	6.1
Lesotho	0.0	0.0	0.0	0.0	731.0
Liberia	0.5	1.9	2.2	3.7	71.7
Madagascar	2.9	0.9	9.0	1.4	-84.6
Malawi	0.3	0.3	0.6	0.6	10.9
Mali	0.3	0.5	0.7	1.0	40.7
Mauritania	0.0	1.0	0.1	4.3	...
Mauritius	0.1	1.0	0.3	1.5	486.0
Morocco	3.9	69.7	7.8	82.9	966.6
Mozambique	0.6	0.5	1.5	1.0	-29.2
Namibia	0.0	0.6	0.1	1.2	...
Niger	0.3	0.3	0.3	0.6	62.0
Nigeria	17.4	10.2	21.4	16.9	-21.3
Rwanda	0.1	0.0	0.2	0.1	-70.1
Saint Helena	0.0	0.0	0.0	0.0	...
Sao Tome and Principe	0.0	0.0	0.0	0.0	-100.0
Senegal	1.2	6.1	3.2	6.9	115.3
Seychelles	0.0	0.1	0.0	0.1	245.8
Sierra Leone	0.5	0.9	1.7	1.3	-24.4

Table 4 – continued

## Domestic exports by country, customs basis, not seasonally adjusted

	February		January to February		Change
	2010	2011	2010	2011	January to February 2011/January to February 2010
	millions of dollars				percent
South Africa	32.9	42.5	56.5	64.1	13.4
Swaziland	0.0	0.0	0.1	0.1	43.3
Togo	2.1	0.4	2.4	0.6	-76.3
Tunisia	5.5	7.6	20.2	9.6	-52.6
Uganda	0.9	0.7	2.0	1.2	-41.2
United Republic of Tanzania	2.6	2.9	4.1	4.8	16.4
Zambia	13.2	2.9	13.3	5.1	-62.0
Zimbabwe	0.0	0.1	0.5	0.3	-47.6
<b>Total</b>	<b>149.0</b>	<b>217.5</b>	<b>259.2</b>	<b>302.8</b>	<b>16.8</b>
<b>Other Asia</b>					
Afghanistan	16.9	9.0	19.2	11.9	-38.0
Bangladesh	47.5	62.1	132.0	77.9	-41.0
Bhutan	0.0	0.0	0.0	0.0	...
British Indian Ocean Territory	0.6	0.0	0.6	0.0	-100.0
Brunei Darussalam	0.4	0.2	5.9	0.3	-94.5
Cambodia	0.2	0.4	0.3	0.8	171.1
China	883.8	1,015.3	1,533.9	1,987.7	29.6
Hong Kong	117.9	340.5	252.8	687.3	171.8
India	94.9	166.8	228.8	298.0	30.2
Indonesia	82.4	110.0	133.7	246.2	84.2
Japan	635.2	835.1	1,269.7	1,634.3	28.7
Laos	0.3	3.4	0.4	3.5	832.9
Macao	0.2	0.2	0.6	0.4	-30.3
Malaysia	42.6	76.7	101.3	116.5	15.0
Maldives	0.3	0.2	0.6	0.4	-35.3
Mongolia	0.9	3.3	2.1	6.4	200.8
Myanmar	0.0	0.0	0.0	0.0	...
Nepal	0.0	0.3	0.1	0.4	450.5
North Korea	0.3	0.9	1.3	2.0	52.8
Pakistan	9.4	55.7	38.6	117.0	203.4
Philippines	46.9	26.9	69.5	69.3	-0.3
Singapore	46.5	73.7	94.2	123.1	30.7
South Korea	283.4	291.7	544.5	649.4	19.3
Sri Lanka	30.0	30.9	78.0	35.8	-54.1
Taiwan	70.4	156.1	157.8	311.7	97.5
Thailand	86.3	44.1	129.2	185.0	43.2
Viet Nam	9.9	12.4	34.1	42.7	25.3
<b>Total</b>	<b>2,507.1</b>	<b>3,315.8</b>	<b>4,829.1</b>	<b>6,607.9</b>	<b>36.8</b>
<b>Oceania</b>					
American Samoa	0.1	0.2	0.1	0.2	106.4
Australia	159.3	99.1	327.2	235.8	-27.9
Christmas Island	0.0	0.0	0.0	0.0	-57.9
Cocos (Keeling) Islands	0.0	0.0	0.0	0.0	-100.0
Cook Islands	0.0	0.1	0.0	0.1	...
Fiji	0.1	0.2	0.3	0.2	-13.6
French Polynesia	0.5	1.1	1.3	1.5	8.6
Guam	0.1	0.1	0.2	0.5	196.3
Kiribati	0.0	0.0	0.0	0.1	74.1
New Caledonia	2.1	0.3	3.4	1.1	-67.6
New Zealand	22.6	24.5	46.5	48.6	4.6
Niue	0.0	0.0	0.0	0.0	...
Papua New Guinea	0.6	0.9	1.2	1.2	7.3
Pitcairn	0.0	0.0	0.0	0.0	67.9
Samoa	0.1	0.0	0.1	0.0	-100.0
Solomon Islands	0.0	0.0	0.0	0.0	...
Tonga	0.0	0.1	0.0	0.1	...
United States Minor Outlying Islands	1.0	1.0	2.6	1.8	-32.0
Vanuatu	0.1	0.1	0.2	0.1	-44.6
<b>Total</b>	<b>186.6</b>	<b>127.6</b>	<b>383.1</b>	<b>291.3</b>	<b>-24.0</b>
<b>South America</b>					
Argentina	11.4	15.6	28.2	98.9	250.4
Bolivia	0.9	1.4	1.2	2.4	99.8
Brazil	236.7	169.4	343.2	325.1	-5.3
Chile	33.1	57.4	73.4	110.6	50.7

Table 4 – continued

## Domestic exports by country, customs basis, not seasonally adjusted

	February		January to February		Change
	2010	2011	2010	2011	January to February 2011/ January to February 2010
	millions of dollars				percent
Colombia	48.3	55.4	88.6	94.7	6.9
Ecuador	15.1	21.7	37.6	49.7	32.2
Falkland Islands (Malvinas)	0.0	0.0	0.0	0.0	-90.7
Guyana	3.0	4.5	4.9	6.6	33.7
Paraguay	0.8	0.4	1.4	1.1	-25.5
Peru	30.7	44.2	71.1	84.6	18.9
Suriname	0.9	0.8	1.6	1.3	-20.2
Uruguay	2.0	1.8	4.0	3.7	-7.0
Venezuela	17.6	20.5	55.4	46.7	-15.8
<b>Total</b>	<b>400.7</b>	<b>393.0</b>	<b>710.6</b>	<b>825.3</b>	<b>16.1</b>
<b>Central America Antilles</b>					
Anguilla	0.1	0.0	0.1	0.0	-86.6
Antigua and Barbuda	1.3	0.8	3.7	1.1	-68.8
Aruba	0.3	0.3	0.6	0.4	-25.1
Bahamas	1.7	1.1	27.6	24.4	-11.6
Barbados	3.6	2.8	6.1	5.3	-13.3
Belize	0.3	0.3	0.6	0.5	-16.8
Bermuda	2.6	1.8	5.2	3.8	-28.0
British Virgin Islands	19.7	0.1	19.9	0.1	-99.3
Cayman Islands	0.5	0.3	0.9	0.5	-43.0
Costa Rica	9.0	13.7	14.6	20.0	36.9
Cuba	17.2	18.4	44.3	43.7	-1.4
Dominica	0.5	0.1	1.1	0.2	-82.3
Dominican Republic	15.0	17.4	27.2	30.2	11.0
El Salvador	2.9	4.8	8.9	8.1	-9.0
Grenada	0.8	0.5	1.2	0.8	-31.7
Guatemala	4.4	5.0	10.6	11.1	4.4
Haiti	0.5	3.1	7.1	4.6	-35.9
Honduras	1.6	1.5	3.2	3.4	5.9
Jamaica	15.7	7.8	27.5	14.6	-46.9
Montserrat	0.0	0.0	0.0	0.0	-23.4
Netherlands Antilles	2.6	22.4	3.8	23.8	529.3
Nicaragua	0.9	4.0	1.3	5.8	355.1
Panama	6.3	5.6	15.3	10.7	-29.9
Saint Kitts and Nevis	1.0	0.6	1.3	1.1	-11.9
Saint Lucia	0.7	1.0	1.2	1.9	53.0
Saint Vincent and the Grenadines	0.3	0.5	0.7	1.0	33.8
Trinidad and Tobago	23.8	30.1	48.1	49.7	3.2
Turks and Caicos Islands	0.3	0.4	0.7	0.5	-34.9
<b>Total</b>	<b>133.8</b>	<b>144.2</b>	<b>283.1</b>	<b>267.4</b>	<b>-5.5</b>
<b>All countries</b>	<b>28,629.7</b>	<b>30,412.1</b>	<b>57,280.3</b>	<b>62,395.1</b>	<b>8.9</b>

**Table 5-1**  
**Exports by province of origin, customs basis, not seasonally adjusted — February**

	Agricultural and fishing products	Energy products	Forestry products	Industrial goods	Machinery and equipment	Automotive products	Consumer goods	Special transactions trade	<b>Total</b>
millions of dollars									
<b>Domestic exports</b>									
Newfoundland and Labrador									
2010	33.7	396.0	8.1	88.7	3.5	0.0	0.0	1.7	<b>531.8</b>
2011	24.8	407.0	8.0	145.4	2.9	0.1	0.1	1.5	<b>589.7</b>
Prince Edward Island									
2010	29.2	0.1	0.0	1.3	5.1	0.1	1.9	5.5	<b>43.0</b>
2011	29.4	0.0	0.0	1.7	5.5	0.6	1.8	7.8	<b>46.9</b>
Nova Scotia									
2010	59.8	42.2	56.6	38.6	102.0	3.7	3.5	3.1	<b>309.4</b>
2011	71.9	28.5	61.7	42.4	106.4	5.8	3.8	2.5	<b>323.1</b>
New Brunswick									
2010	71.5	715.5	92.0	91.4	20.6	2.1	17.8	3.0	<b>1,013.9</b>
2011	68.1	833.8	106.1	69.3	25.1	4.6	11.8	2.7	<b>1,121.4</b>
Quebec									
2010	326.1	206.8	459.8	1,515.3	1,310.4	111.2	394.5	89.1	<b>4,413.3</b>
2011	404.5	316.1	436.5	1,612.5	1,216.9	129.1	259.1	52.0	<b>4,426.5</b>
Ontario									
2010	561.0	229.8	219.9	2,924.0	2,245.2	4,089.1	598.4	125.1	<b>10,992.5</b>
2011	591.2	229.3	225.1	3,471.8	2,222.2	4,045.6	501.8	122.1	<b>11,409.1</b>
Manitoba									
2010	296.8	50.4	15.1	167.9	130.1	37.5	23.6	22.7	<b>744.1</b>
2011	335.3	78.9	13.8	205.5	170.1	38.3	35.3	24.3	<b>901.5</b>
Saskatchewan									
2010	600.9	560.2	10.2	635.6	60.6	2.4	1.7	3.6	<b>1,875.1</b>
2011	655.3	784.4	17.5	729.8	49.1	4.1	1.7	3.2	<b>2,245.2</b>
Alberta									
2010	442.2	4,705.7	165.5	788.5	233.0	32.2	9.7	19.6	<b>6,396.4</b>
2011	470.5	5,106.4	145.3	868.4	268.1	44.1	8.6	17.7	<b>6,929.0</b>
British Columbia									
2010	153.7	554.0	638.8	438.3	205.4	22.6	39.9	18.0	<b>2,070.6</b>
2011	147.4	692.0	709.3	524.8	244.8	21.4	40.7	17.7	<b>2,398.2</b>
Yukon, Northwest Territories and Nunavut <sup>1</sup>									
2010	0.3	0.0	0.0	237.6	1.4	0.0	0.1	0.0	<b>239.4</b>
2011	0.2	0.0	0.0	20.9	0.3	0.0	0.0	0.0	<b>21.5</b>
<b>Total</b>									
2010	<b>2,575.2</b>	<b>7,460.7</b>	<b>1,666.2</b>	<b>6,927.2</b>	<b>4,317.3</b>	<b>4,300.8</b>	<b>1,091.1</b>	<b>291.2</b>	<b>28,629.7</b>
2011	<b>2,798.7</b>	<b>8,476.4</b>	<b>1,723.3</b>	<b>7,692.5</b>	<b>4,311.3</b>	<b>4,293.8</b>	<b>864.7</b>	<b>251.5</b>	<b>30,412.1</b>
<b>Re-exports</b>									
2010	<b>44.2</b>	<b>14.8</b>	<b>5.3</b>	<b>164.7</b>	<b>731.1</b>	<b>82.3</b>	<b>133.4</b>	<b>544.7</b>	<b>1,720.5</b>
2011	<b>45.3</b>	<b>6.0</b>	<b>6.1</b>	<b>318.1</b>	<b>822.3</b>	<b>87.5</b>	<b>208.8</b>	<b>560.9</b>	<b>2,055.1</b>
<b>Total exports</b>									
2010	<b>2,619.4</b>	<b>7,475.5</b>	<b>1,671.6</b>	<b>7,091.9</b>	<b>5,048.4</b>	<b>4,383.0</b>	<b>1,224.4</b>	<b>836.0</b>	<b>30,350.2</b>
2011	<b>2,844.0</b>	<b>8,482.4</b>	<b>1,729.4</b>	<b>8,010.6</b>	<b>5,133.6</b>	<b>4,381.3</b>	<b>1,073.5</b>	<b>812.4</b>	<b>32,467.2</b>

1. Data for the current month do not include some exports from the Harmonized System, Chapter 71, "Natural/cultured pearls, precious stones and metals, coins, etc." for reasons relating to timing.

**Table 5-2**  
**Exports by province of origin, customs basis, not seasonally adjusted — Year to date, January to February**

	Agricultural and fishing products	Energy products	Forestry products	Industrial goods	Machinery and equipment	Automotive products	Consumer goods	Special transactions trade	Total
millions of dollars									
<b>Domestic exports</b>									
Newfoundland and Labrador									
2010	62.3	868.7	16.2	193.6	6.4	0.1	0.1	3.8	1,151.3
2011	45.7	1,095.6	18.8	244.6	6.3	0.2	0.2	3.4	1,414.8
Prince Edward Island									
2010	58.4	0.3	0.3	4.1	10.5	0.2	3.6	10.6	88.0
2011	63.1	0.0	0.1	3.1	11.3	0.7	4.5	11.1	94.0
Nova Scotia									
2010	107.9	88.2	116.9	83.7	194.5	6.9	9.7	6.3	614.2
2011	140.5	191.1	126.9	83.6	208.5	11.5	8.5	5.5	776.1
New Brunswick									
2010	153.5	1,614.5	197.4	175.2	42.6	4.2	35.1	6.5	2,229.0
2011	156.0	1,646.3	209.0	147.3	49.1	8.9	22.7	5.9	2,245.3
Quebec									
2010	664.1	518.3	902.9	3,014.4	2,780.3	218.3	725.3	163.0	8,986.7
2011	810.0	618.4	910.2	3,347.2	2,620.3	257.7	503.8	115.8	9,183.5
Ontario									
2010	1,115.5	474.3	445.2	5,970.8	4,510.4	7,377.5	1,144.5	247.5	21,285.6
2011	1,166.4	476.5	454.3	7,674.7	4,622.7	8,073.8	1,109.2	236.3	23,814.0
Manitoba									
2010	591.6	135.4	30.4	346.1	268.1	67.8	54.9	48.4	1,542.7
2011	630.6	152.9	32.4	408.2	340.8	73.1	59.5	44.3	1,741.9
Saskatchewan									
2010	1,191.2	1,324.1	26.2	1,214.9	130.5	8.2	2.8	7.7	3,905.6
2011	1,228.2	1,592.3	38.7	1,447.3	98.2	8.0	3.2	7.1	4,423.1
Alberta									
2010	871.2	9,620.3	323.1	1,577.3	498.2	67.0	17.9	42.8	13,017.8
2011	928.8	10,264.2	301.8	1,687.5	541.7	99.4	19.6	38.1	13,881.2
British Columbia									
2010	289.1	1,174.4	1,210.5	800.8	423.5	43.4	84.5	37.0	4,063.2
2011	297.6	1,359.4	1,401.1	1,095.8	470.4	44.2	80.8	37.4	4,786.7
Yukon, Northwest Territories and Nunavut <sup>1</sup>									
2010	0.5	0.0	0.0	393.4	1.9	0.1	0.1	0.1	396.1
2011	0.3	0.0	0.0	33.7	0.4	0.1	0.1	0.0	34.6
<b>Total</b>									
2010	5,105.4	15,818.5	3,269.1	13,774.4	8,867.0	7,793.8	2,078.5	573.6	57,280.3
2011	5,467.3	17,397.0	3,493.3	16,172.9	8,969.8	8,577.5	1,812.3	505.1	62,395.1
<b>Re-exports</b>									
2010	102.4	91.1	10.4	362.3	1,453.7	155.1	290.9	1,084.2	3,550.0
2011	106.6	41.2	11.3	696.8	1,613.4	173.7	371.5	1,165.6	4,180.1
<b>Total exports</b>									
2010	5,207.8	15,909.6	3,279.5	14,136.7	10,320.6	7,948.9	2,369.5	1,657.8	60,830.3
2011	5,573.9	17,438.2	3,504.6	16,869.7	10,583.1	8,751.2	2,183.7	1,670.6	66,575.1

1. Data for the current month do not include some exports from the Harmonized System Chapter 71, "Natural/cultured pearls, precious stones and metals, coins, etc." for reasons relating to timing.

**Table 6-1**  
**Imports by commodity groupings, balance of payments basis, seasonally adjusted — Current dollars**

	January	February	Change		Year to date			February 2011/ February 2010	
	2011	2011			2010	2011	Change		
	millions of dollars		percent		millions of dollars			percent	
<b>Total</b>	<b>37,328</b>	<b>35,823</b>	<b>-1,506</b>	<b>-4.0</b>	<b>64,871</b>	<b>73,151</b>	<b>8,280</b>	<b>12.8</b>	<b>9.1</b>
<b>Agricultural and fishing products</b>	<b>2,584</b>	<b>2,584</b>	<b>0</b>	<b>0.0</b>	<b>4,728</b>	<b>5,168</b>	<b>439</b>	<b>9.3</b>	<b>9.1</b>
Fruits and vegetables	727	740	13	1.8	1,327	1,466	139	10.5	9.5
Fresh fruits and berries	259	262	4	1.4	481	521	39	8.2	8.2
Dried fruits, fruits and fruit preparations	128	124	-5	-3.9	211	252	41	19.5	15.1
Fresh vegetables	182	200	18	9.8	348	381	33	9.5	12.6
Other vegetables and vegetable preparations	158	154	-3	-2.2	286	312	26	8.9	4.0
Other agricultural and fishing products	1,858	1,844	-13	-0.7	3,401	3,702	300	8.8	8.9
Live animals	16	17	1	6.0	30	34	4	13.4	4.8
Meat and meat preparations	185	192	7	3.7	343	377	34	10.0	9.6
Fish and marine animals	197	189	-8	-4.0	310	385	75	24.3	21.2
Cocoa, coffee, tea and other food preparations	456	461	5	1.0	777	917	140	18.0	21.5
Dairy produce, eggs and honey	48	47	-1	-1.4	88	95	7	7.9	2.2
Corn (maize) shelled	30	19	-11	-36.5	89	49	-40	-45.0	-58.8
Other cereals and cereal preparations	176	166	-10	-5.7	350	343	-7	-2.0	-4.2
Sugar and sugar preparations	165	151	-14	-8.7	285	316	30	10.7	7.0
Fodder, feed, excluding unmilled cereal	118	111	-7	-6.3	229	229	0	-0.1	-6.7
Beverages	308	337	29	9.3	597	645	48	8.0	17.0
Tobacco	26	24	-2	-7.0	62	49	-13	-20.4	-24.8
Crude vegetable products	131	129	-2	-1.8	239	260	21	8.7	6.3
Cotton	1	2	1	56.2	2	3	1	31.4	56.4
<b>Energy products</b>	<b>4,301</b>	<b>3,897</b>	<b>-403</b>	<b>-9.4</b>	<b>6,276</b>	<b>8,198</b>	<b>1,923</b>	<b>30.6</b>	<b>30.2</b>
Crude petroleum	2,398	2,197	-201	-8.4	3,696	4,596	900	24.3	24.1
Other energy products	1,902	1,700	-202	-10.6	2,580	3,602	1,023	39.7	39.0
Coal and other related products	406	397	-8	-2.1	984	803	-180	-18.3	-9.2
Petroleum and coal products	1,496	1,303	-194	-13.0	1,596	2,799	1,203	75.4	65.9
<b>Forestry products</b>	<b>208</b>	<b>212</b>	<b>5</b>	<b>2.3</b>	<b>430</b>	<b>420</b>	<b>-10</b>	<b>-2.3</b>	<b>-3.8</b>
Forestry products	208	212	5	2.3	430	420	-10	-2.3	-3.8
Crude wood products	33	31	-2	-5.1	67	63	-3	-5.0	-8.3
Wood fabricated materials	175	181	6	3.7	363	357	-7	-1.8	-2.9
<b>Industrial goods and materials</b>	<b>7,648</b>	<b>7,527</b>	<b>-121</b>	<b>-1.6</b>	<b>13,055</b>	<b>15,175</b>	<b>2,120</b>	<b>16.2</b>	<b>13.6</b>
Metals and metal ores	2,989	2,934	-55	-1.8	4,666	5,924	1,258	27.0	25.7
Metals in ores, concentrates and scrap	635	656	21	3.3	1,166	1,291	126	10.8	13.9
Steel bars, rods, plates, sheets	561	599	38	6.8	1,017	1,160	143	14.1	13.7
Other iron and steel products	347	406	59	17.1	588	752	165	28.0	37.8
Precious metals including alloys	1,078	886	-192	-17.8	1,177	1,965	787	66.9	49.4
Other non-ferrous metals and alloys	368	387	19	5.1	719	756	37	5.2	12.8
Chemicals and plastics	2,511	2,439	-72	-2.9	4,533	4,950	417	9.2	4.2
Organic chemicals	581	545	-36	-6.2	1,066	1,127	61	5.7	-0.6
Plastic materials	856	835	-21	-2.4	1,550	1,691	141	9.1	3.7
Other chemicals and related products	1,074	1,059	-15	-1.4	1,917	2,133	216	11.3	7.2
Other industrial goods and materials	2,147	2,154	6	0.3	3,857	4,301	445	11.5	10.5
Crude animal products	25	33	8	33.7	33	58	25	75.8	85.5
Wool and man-made fibres	21	22	0	1.7	39	43	5	12.0	10.5
Crude non-metallic minerals	68	62	-6	-8.5	144	130	-14	-9.9	-14.9
Textile fabricated materials	200	206	5	2.6	371	406	35	9.5	10.2
Metal fabricated basic products	882	877	-5	-0.6	1,488	1,759	271	18.2	16.6
Rubber fabricated materials	94	89	-5	-5.6	159	183	24	15.2	8.6
Oils, fats, animal and vegetable	93	102	8	9.1	193	195	2	1.1	7.7
Non-metallic minerals	305	301	-5	-1.5	552	606	54	9.7	8.8
Other fabricated materials	458	462	5	1.0	877	920	43	4.9	3.7



Table 6-1 – continued

## Imports by commodity groupings, balance of payments basis, seasonally adjusted — Current dollars

	January 2011	February 2011	Change		Year to date			February 2011/ February 2010	
					2010	2011	Change		
	millions of dollars		percent		millions of dollars			percent	
<b>Machinery and equipment</b>	<b>10,038</b>	<b>9,810</b>	<b>-228</b>	<b>-2.3</b>	<b>17,124</b>	<b>19,848</b>	<b>2,724</b>	<b>15.9</b>	<b>11.8</b>
Industrial and agricultural machinery	2,633	2,619	-14	-0.5	4,260	5,251	992	23.3	16.9
Engines, turbines and electric motors	329	320	-8	-2.5	538	649	111	20.6	19.7
Drilling mining machinery	155	152	-3	-1.8	239	307	68	28.3	19.9
Excavating machinery	257	286	29	11.2	342	544	202	59.2	38.7
Metal working machinery	176	172	-4	-2.5	245	348	103	42.0	41.1
Other industrial machinery	1,352	1,325	-27	-2.0	2,252	2,677	425	18.9	12.2
Agricultural machinery including tractors	364	363	-1	-0.2	644	727	84	13.0	7.7
Aircraft and other transportation equipment	1,461	1,242	-219	-15.0	2,092	2,703	611	29.2	16.2
Aircraft, engines, parts	984	644	-340	-34.5	1,261	1,628	367	29.1	0.5
Other transportation equipment and parts	477	598	121	25.4	831	1,075	244	29.4	39.7
Office machines and equipment	1,063	1,097	34	3.2	2,085	2,160	76	3.6	5.3
Other machinery and equipment	4,881	4,852	-29	-0.6	8,688	9,733	1,045	12.0	9.6
Other communication and related equipment	1,803	1,854	51	2.8	3,106	3,656	550	17.7	16.1
Other equipment and tools	3,078	2,998	-80	-2.6	5,582	6,077	495	8.9	6.0
<b>Automotive products</b>	<b>6,440</b>	<b>5,633</b>	<b>-808</b>	<b>-12.5</b>	<b>11,710</b>	<b>12,073</b>	<b>363</b>	<b>3.1</b>	<b>-6.1</b>
Passenger autos and chassis	1,944	1,904	-40	-2.1	3,864	3,847	-16	-0.4	-7.2
Trucks and other motor vehicles	1,590	1,244	-346	-21.8	3,023	2,834	-188	-6.2	-18.4
Motor vehicle parts	2,906	2,485	-421	-14.5	4,824	5,391	567	11.8	2.5
<b>Other consumer goods</b>	<b>4,850</b>	<b>4,787</b>	<b>-64</b>	<b>-1.3</b>	<b>9,397</b>	<b>9,637</b>	<b>240</b>	<b>2.6</b>	<b>1.1</b>
Apparel and footwear	992	983	-9	-0.9	1,691	1,975	284	16.8	17.3
Apparel and apparel accessories	823	811	-12	-1.5	1,416	1,634	219	15.5	15.8
Footwear	169	172	3	1.8	275	340	65	23.6	25.0
Miscellaneous consumer goods	3,858	3,804	-54	-1.4	7,706	7,662	-44	-0.6	-2.4
Television, radios, phonographs	131	124	-7	-5.5	260	255	-5	-1.9	-7.7
Printed matter	294	293	-1	-0.4	555	587	32	5.8	6.7
Watches, sporting goods and toys	520	474	-46	-8.8	974	993	19	1.9	-3.9
House furnishings	716	711	-5	-0.7	1,441	1,427	-14	-0.9	-1.5
Photographic goods	227	246	18	8.1	404	473	69	17.1	21.6
Miscellaneous end products	1,970	1,956	-14	-0.7	4,072	3,926	-146	-3.6	-5.6
<b>Special transactions trade</b>	<b>489</b>	<b>597</b>	<b>108</b>	<b>22.2</b>	<b>719</b>	<b>1,086</b>	<b>367</b>	<b>51.0</b>	<b>48.8</b>
<b>Unallocated balance of payments adjustments</b>	<b>771</b>	<b>776</b>	<b>5</b>	<b>0.6</b>	<b>1,432</b>	<b>1,547</b>	<b>115</b>	<b>8.1</b>	<b>6.8</b>

**Table 6-2**  
**Imports by commodity groupings, balance of payments basis, seasonally adjusted — Constant dollars, 2002**

	January	February	Change		Year to date			February 2011/ February 2010	
	2011	2011			2010	2011	Change		
	millions of dollars		percent		millions of dollars			percent	
<b>Total</b>	<b>42,406</b>	<b>40,599</b>	<b>-1,807</b>	<b>-4.3</b>	<b>73,136</b>	<b>83,005</b>	<b>9,869</b>	<b>13.5</b>	<b>9.9</b>
<b>Agricultural and fishing products</b>	<b>2,569</b>	<b>2,529</b>	<b>-40</b>	<b>-1.5</b>	<b>4,742</b>	<b>5,098</b>	<b>356</b>	<b>7.5</b>	<b>7.1</b>
Fruits and vegetables	740	669	-71	-9.6	1,332	1,409	77	5.8	-0.4
Fresh fruits and berries	270	282	13	4.6	484	552	68	14.1	16.7
Dried fruits, fruits and fruit preparations	127	119	-8	-6.1	205	246	40	19.6	15.1
Fresh vegetables	190	119	-70	-37.0	371	309	-61	-16.6	-36.6
Other vegetables and vegetable preparations	154	148	-6	-3.8	272	302	30	10.8	7.5
Other agricultural and fishing products	1,829	1,861	32	1.7	3,410	3,689	279	8.2	10.0
Live animals	17	17	0	2.5	30	34	3	10.5	2.4
Meat and meat preparations	181	181	-1	-0.4	366	362	-4	-1.0	-2.1
Fish and marine animals	266	255	-11	-4.1	496	520	24	4.9	-0.2
Cocoa, coffee, tea and other food preparations	434	496	62	14.3	690	930	240	34.8	47.9
Dairy produce, eggs and honey	49	46	-4	-7.6	95	95	0	-0.2	-0.7
Corn (maize) shelled	21	13	-8	-38.4	84	33	-51	-60.5	-71.5
Other cereals and cereal preparations	136	118	-18	-13.1	306	254	-53	-17.2	-22.3
Sugar and sugar preparations	164	152	-13	-7.8	270	316	46	17.0	21.3
Fodder, feed, excluding unmilled cereal	99	94	-5	-5.4	192	193	1	0.7	-4.9
Beverages	308	322	14	4.7	547	630	83	15.2	23.7
Tobacco	31	29	-2	-5.8	76	59	-17	-21.9	-25.2
Crude vegetable products	122	137	15	11.9	254	259	5	1.9	2.9
Cotton	1	2	1	70.3	3	4	0	5.8	29.1
<b>Energy products</b>	<b>2,157</b>	<b>1,882</b>	<b>-275</b>	<b>-12.7</b>	<b>3,462</b>	<b>4,039</b>	<b>578</b>	<b>16.7</b>	<b>14.8</b>
Crude petroleum	954	831	-123	-12.9	1,651	1,784	133	8.1	5.7
Other energy products	1,203	1,052	-152	-12.6	1,811	2,255	444	24.5	23.1
Coal and other related products	437	432	-5	-1.0	882	869	-13	-1.5	11.7
Petroleum and coal products	767	619	-147	-19.2	928	1,386	458	49.3	32.5
<b>Forestry products</b>	<b>280</b>	<b>287</b>	<b>7</b>	<b>2.4</b>	<b>586</b>	<b>568</b>	<b>-18</b>	<b>-3.1</b>	<b>-3.1</b>
Forestry products	280	287	7	2.4	586	568	-18	-3.1	-3.1
Crude wood products	47	46	-1	-3.2	98	93	-5	-5.4	-4.0
Wood fabricated materials	233	241	8	3.5	488	475	-13	-2.6	-3.0
<b>Industrial goods and materials</b>	<b>6,795</b>	<b>6,528</b>	<b>-267</b>	<b>-3.9</b>	<b>12,122</b>	<b>13,324</b>	<b>1,202</b>	<b>9.9</b>	<b>6.2</b>
Metals and metal ores	2,005	1,804	-202	-10.1	3,391	3,809	418	12.3	6.9
Metals in ores, concentrates and scrap	305	313	7	2.4	642	618	-24	-3.8	-3.4
Steel bars, rods, plates, sheets	488	497	8	1.7	895	985	90	10.0	8.3
Other iron and steel products	254	284	31	12.1	469	538	69	14.8	23.8
Precious metals including alloys	611	356	-254	-41.6	647	967	320	49.5	8.8
Other non-ferrous metals and alloys	348	354	6	1.6	738	702	-37	-5.0	1.7
Chemicals and plastics	2,311	2,290	-21	-0.9	4,411	4,601	190	4.3	0.3
Organic chemicals	397	366	-31	-7.8	763	764	1	0.1	-5.4
Plastic materials	885	862	-22	-2.5	1,683	1,747	64	3.8	0.6
Other chemicals and related products	1,029	1,061	32	3.1	1,965	2,090	125	6.4	2.1
Other industrial goods and materials	2,479	2,435	-44	-1.8	4,320	4,914	594	13.8	12.0
Crude animal products	23	31	7	31.2	40	54	14	34.2	47.6
Wool and man-made fibres	27	26	-1	-3.0	51	54	3	5.6	1.9
Crude non-metallic minerals	56	49	-7	-12.5	119	105	-14	-11.6	-18.8
Textile fabricated materials	270	282	12	4.4	493	551	58	11.8	14.7
Metal fabricated basic products	968	958	-10	-1.1	1,583	1,926	344	21.7	20.4
Rubber fabricated materials	118	111	-7	-6.0	194	229	35	18.0	11.5
Oils, fats, animal and vegetable	86	91	5	6.3	189	177	-11	-6.1	-3.6
Non-metallic minerals	386	369	-17	-4.3	675	755	80	11.9	11.2
Other fabricated materials	545	518	-27	-4.9	977	1,063	86	8.8	3.6

Table 6-2 – continued

## Imports by commodity groupings, balance of payments basis, seasonally adjusted — Constant dollars, 2002

	January 2011	February 2011	Change	Year to date			February 2011/ February 2010		
				2010	2011	Change			
	millions of dollars		percent		millions of dollars		percent		
<b>Machinery and equipment</b>	<b>15,098</b>	<b>14,834</b>	<b>-264</b>	<b>-1.8</b>	<b>24,344</b>	<b>29,932</b>	<b>5,588</b>	<b>23.0</b>	<b>19.9</b>
Industrial and agricultural machinery	3,308	3,302	-6	-0.2	5,174	6,610	1,437	27.8	22.0
Engines, turbines and electric motors	419	411	-8	-1.9	667	829	162	24.2	24.8
Drilling mining machinery	179	176	-3	-1.5	266	355	90	33.8	26.7
Excavating machinery	336	372	36	10.7	419	708	289	69.1	47.5
Metal working machinery	232	225	-7	-2.9	310	458	148	47.7	47.8
Other industrial machinery	1,671	1,642	-29	-1.7	2,701	3,312	611	22.6	16.3
Agricultural machinery including tractors	471	476	4	0.9	810	947	137	16.9	12.7
Aircraft and other transportation equipment	1,751	1,495	-256	-14.6	2,448	3,246	797	32.6	21.3
Aircraft, engines, parts	1,220	814	-406	-33.3	1,521	2,034	513	33.7	7.1
Other transportation equipment and parts	531	681	150	28.2	927	1,211	285	30.7	44.3
Office machines and equipment	2,657	2,692	35	1.3	4,329	5,349	1,020	23.6	25.1
Other machinery and equipment	7,382	7,345	-37	-0.5	12,394	14,727	2,334	18.8	17.0
Other communication and related equipment	3,202	3,273	71	2.2	5,178	6,475	1,297	25.1	23.9
Other equipment and tools	4,180	4,072	-108	-2.6	7,216	8,252	1,037	14.4	12.0
<b>Automotive products</b>	<b>8,041</b>	<b>7,045</b>	<b>-996</b>	<b>-12.4</b>	<b>14,119</b>	<b>15,086</b>	<b>968</b>	<b>6.9</b>	<b>-2.3</b>
Passenger autos and chassis	2,236	2,193	-44	-2.0	4,425	4,429	4	0.1	-6.9
Trucks and other motor vehicles	1,868	1,457	-410	-22.0	3,381	3,325	-56	-1.7	-14.6
Motor vehicle parts	3,937	3,395	-542	-13.8	6,312	7,333	1,020	16.2	7.7
<b>Other consumer goods</b>	<b>6,435</b>	<b>6,363</b>	<b>-72</b>	<b>-1.1</b>	<b>11,942</b>	<b>12,798</b>	<b>856</b>	<b>7.2</b>	<b>6.7</b>
Apparel and footwear	1,455	1,428	-26	-1.8	2,362	2,883	522	22.1	22.7
Apparel and apparel accessories	1,215	1,184	-31	-2.6	1,986	2,399	413	20.8	21.1
Footwear	240	245	5	2.0	376	484	108	28.8	31.1
Miscellaneous consumer goods	4,980	4,934	-46	-0.9	9,581	9,915	334	3.5	2.8
Television, radios, phonographs	224	213	-10	-4.6	437	437	0	-0.1	-4.6
Printed matter	375	373	-2	-0.7	677	748	70	10.4	12.2
Watches, sporting goods and toys	729	666	-63	-8.7	1,334	1,395	61	4.6	-1.0
House furnishings	938	930	-9	-0.9	1,838	1,868	30	1.7	2.1
Photographic goods	444	495	51	11.5	720	939	219	30.4	38.2
Miscellaneous end products	2,270	2,257	-12	-0.5	4,574	4,527	-47	-1.0	-1.9
<b>Special transactions trade</b>	<b>553</b>	<b>680</b>	<b>126</b>	<b>22.8</b>	<b>817</b>	<b>1,233</b>	<b>417</b>	<b>51.0</b>	<b>49.2</b>
<b>Unallocated balance of payments adjustments</b>	<b>476</b>	<b>450</b>	<b>-26</b>	<b>-5.4</b>	<b>1,003</b>	<b>927</b>	<b>-76</b>	<b>-7.6</b>	<b>-11.7</b>

**Table 7-1**  
**Imports from selected countries, customs basis, not seasonally adjusted — February**

	Agricultural and fishing products	Energy products	Forestry products	Industrial goods	Machinery and equipment	Automotive products	Consumer goods	Special transactions trade	Total
millions of dollars									
<b>United States</b>									
2010	1,168.3	917.7	162.9	3,711.8	3,702.4	3,973.8	1,741.7	339.6	<b>15,718.2</b>
2011	1,222.8	1,066.7	155.2	4,021.9	3,793.1	3,712.1	1,755.2	533.3	<b>16,260.4</b>
<b>Mexico</b>									
2010	146.0	53.5	0.4	127.4	553.4	710.7	76.4	3.7	<b>1,671.5</b>
2011	158.0	90.7	0.3	144.1	643.8	749.2	91.8	2.9	<b>1,880.7</b>
<b>Japan</b>									
2010	5.0	0.5	0.1	111.3	353.1	622.8	79.0	0.3	<b>1,172.1</b>
2011	5.1	0.3	0.1	109.2	417.4	510.5	87.6	0.2	<b>1,130.4</b>
<b>European Union</b>									
<b>Germany</b>									
2010	19.6	1.0	1.3	164.2	282.4	251.4	131.7	0.4	<b>852.0</b>
2011	20.4	1.4	0.9	157.0	298.7	278.7	143.1	1.4	<b>901.7</b>
<b>France</b>									
2010	41.1	6.2	0.1	136.1	107.0	6.9	134.7	1.4	<b>433.5</b>
2011	44.8	0.9	0.1	91.3	162.1	7.1	104.1	1.0	<b>411.5</b>
<b>United Kingdom</b>									
2010	26.2	89.1	0.1	165.7	246.8	30.6	89.6	7.8	<b>655.8</b>
2011	29.3	249.5	0.0	125.9	247.3	32.2	110.1	13.8	<b>808.2</b>
<b>Italy</b>									
2010	38.2	0.0	1.2	69.9	105.4	14.2	92.5	0.2	<b>321.7</b>
2011	53.6	1.3	1.1	88.0	108.0	11.6	88.9	0.1	<b>352.6</b>
<b>Other European Union</b>									
2010	83.0	224.3	2.7	211.4	292.1	60.2	328.0	1.0	<b>1,202.7</b>
2011	91.2	187.1	2.4	278.9	306.5	55.8	260.5	0.5	<b>1,182.8</b>
<b>Total</b>									
2010	208.0	320.7	5.4	747.3	1,033.8	363.3	776.4	10.7	<b>3,465.6</b>
2011	239.3	440.2	4.5	741.1	1,122.6	385.4	706.7	16.9	<b>3,656.7</b>
<b>Newly industrialized countries</b>									
<b>South Korea</b>									
2010	4.2	1.2	0.0	50.9	167.2	219.6	14.9	0.1	<b>458.1</b>
2011	4.5	4.0	0.0	100.0	196.9	131.2	13.3	0.1	<b>450.0</b>
<b>Hong Kong</b>									
2010	1.8	0.0	0.1	1.4	8.4	0.2	7.8	0.0	<b>19.8</b>
2011	1.3	0.0	0.0	2.9	6.6	0.2	8.2	0.0	<b>19.2</b>
<b>Taiwan</b>									
2010	4.1	0.0	0.5	57.5	130.2	12.9	28.9	0.1	<b>234.3</b>
2011	4.1	0.0	0.5	68.5	190.0	14.4	27.0	0.2	<b>304.7</b>
<b>Singapore</b>									
2010	1.2	0.0	0.0	4.0	31.9	0.3	18.0	0.4	<b>55.8</b>
2011	1.5	0.0	0.0	38.5	38.7	0.3	16.2	0.0	<b>95.1</b>
<b>Total</b>									
2010	11.3	1.3	0.6	113.8	337.7	233.0	69.6	0.6	<b>768.0</b>
2011	11.4	4.0	0.6	209.8	432.1	146.0	64.8	0.3	<b>869.0</b>
<b>Other countries</b>									
2010	564.8	1,421.5	45.5	1,277.9	1,915.3	144.6	1,658.8	34.4	<b>7,062.7</b>
2011	647.2	2,091.3	47.0	1,776.5	2,362.0	170.3	1,751.3	20.6	<b>8,866.2</b>
<b>Total</b>									
2010	<b>2,103.6</b>	<b>2,715.1</b>	<b>214.9</b>	<b>6,089.4</b>	<b>7,895.8</b>	<b>6,048.2</b>	<b>4,402.0</b>	<b>389.3</b>	<b>29,858.3</b>
2011	<b>2,284.0</b>	<b>3,693.3</b>	<b>207.6</b>	<b>7,002.6</b>	<b>8,771.1</b>	<b>5,673.5</b>	<b>4,457.3</b>	<b>574.3</b>	<b>32,663.7</b>

**Table 7-2**  
**Imports from selected countries, customs basis, not seasonally adjusted — Year to date, January to February**

	Agricultural and fishing products	Energy products	Forestry products	Industrial goods	Machinery and equipment	Automotive products	Consumer goods	Special transactions trade	<b>Total</b>
millions of dollars									
<b>United States</b>									
2010	2,400.2	1,971.8	303.9	7,358.1	7,006.1	6,966.7	3,406.5	506.1	<b>29,919.4</b>
2011	2,491.0	2,186.6	296.1	8,153.3	7,695.2	7,243.6	3,424.2	796.7	<b>32,286.7</b>
<b>Mexico</b>									
2010	296.0	101.8	0.7	247.0	1,043.5	1,282.9	152.4	5.7	<b>3,130.0</b>
2011	327.6	174.5	0.7	334.1	1,260.7	1,404.0	179.1	7.6	<b>3,688.3</b>
<b>Japan</b>									
2010	11.0	0.8	0.2	202.0	649.0	998.4	158.1	0.5	<b>2,020.0</b>
2011	10.0	0.7	0.1	211.0	779.7	876.3	176.1	0.6	<b>2,054.6</b>
<b>European Union</b>									
<b>Germany</b>									
2010	36.2	2.0	2.0	307.4	522.9	419.1	262.5	0.9	<b>1,553.0</b>
2011	41.7	2.3	1.5	323.3	614.2	483.8	291.7	3.1	<b>1,761.7</b>
<b>France</b>									
2010	92.8	12.3	0.3	192.8	209.1	20.2	267.7	1.8	<b>796.9</b>
2011	89.1	8.5	0.2	143.0	299.3	13.0	201.1	1.2	<b>755.5</b>
<b>United Kingdom</b>									
2010	52.3	459.0	0.1	292.2	455.4	50.5	171.5	9.6	<b>1,490.5</b>
2011	54.5	544.6	0.1	368.3	461.2	70.4	207.2	15.3	<b>1,721.7</b>
<b>Italy</b>									
2010	83.5	0.1	2.3	139.4	230.7	23.6	166.1	0.3	<b>646.0</b>
2011	108.7	1.4	2.4	173.5	229.8	24.3	163.0	0.4	<b>703.4</b>
<b>Other European Union</b>									
2010	158.8	294.9	5.4	395.3	544.8	97.8	620.1	1.4	<b>2,118.5</b>
2011	175.4	494.7	5.7	624.1	641.0	111.7	547.5	1.4	<b>2,601.5</b>
<b>Total</b>									
2010	423.6	768.3	10.1	1,327.1	1,963.0	611.2	1,487.8	14.0	<b>6,605.0</b>
2011	469.5	1,051.5	9.9	1,632.2	2,245.5	703.2	1,410.5	21.4	<b>7,543.8</b>
<b>Newly industrialized countries</b>									
<b>South Korea</b>									
2010	9.2	5.0	0.0	106.0	324.3	394.8	28.9	0.1	<b>868.3</b>
2011	8.8	5.9	0.0	203.1	411.9	227.1	27.9	0.1	<b>884.8</b>
<b>Hong Kong</b>									
2010	3.8	0.0	0.2	3.0	18.8	0.4	16.6	0.1	<b>42.7</b>
2011	4.1	0.0	0.0	21.6	17.4	0.3	17.4	0.1	<b>60.9</b>
<b>Taiwan</b>									
2010	9.7	0.0	1.2	117.7	278.8	25.2	60.7	0.2	<b>493.5</b>
2011	10.1	0.0	0.9	144.9	409.5	27.7	57.2	0.3	<b>650.7</b>
<b>Singapore</b>									
2010	4.9	0.0	0.0	28.1	64.6	0.5	28.0	0.6	<b>126.7</b>
2011	5.2	46.3	0.2	81.4	79.5	0.6	22.3	0.1	<b>235.5</b>
<b>Total</b>									
2010	27.5	5.0	1.5	254.8	686.5	420.9	134.2	0.9	<b>1,531.3</b>
2011	28.2	52.2	1.1	451.1	918.2	255.6	124.8	0.6	<b>1,831.9</b>
<b>Other countries</b>									
2010	1,191.3	3,111.2	97.6	2,815.5	3,972.0	294.1	3,336.7	58.6	<b>14,877.0</b>
2011	1,424.4	4,402.6	96.2	3,575.7	4,764.4	354.4	3,595.6	50.1	<b>18,263.4</b>
<b>Total</b>									
2010	<b>4,349.9</b>	<b>5,958.9</b>	<b>414.0</b>	<b>12,204.4</b>	<b>15,320.1</b>	<b>10,574.2</b>	<b>8,675.8</b>	<b>585.7</b>	<b>58,083.1</b>
2011	<b>4,751.6</b>	<b>7,868.1</b>	<b>404.3</b>	<b>14,357.4</b>	<b>17,663.6</b>	<b>10,837.1</b>	<b>8,910.5</b>	<b>877.0</b>	<b>65,669.6</b>

**Table 8**  
**Imports by country, customs basis, not seasonally adjusted**

	February		January to February		Change
	2010	2011	2010	2011	January to February 2011/ January to February 2010
	millions of dollars				percent
<b>North America</b>					
Canada	372.2	272.0	760.1	578.3	-23.9
Greenland	0.0	0.0	0.1	0.0	-85.6
Mexico	1,671.5	1,880.7	3,130.0	3,688.3	17.8
Saint Pierre and Miquelon	0.0	0.0	0.1	0.0	-92.3
United States	15,718.2	16,260.4	29,919.4	32,286.7	7.9
<b>Total</b>	<b>17,761.9</b>	<b>18,413.1</b>	<b>33,809.7</b>	<b>36,553.3</b>	<b>8.1</b>
<b>Western Europe</b>					
Andorra	0.0	0.0	0.0	0.1	69.4
Austria	80.5	82.8	144.9	179.9	24.1
Belgium	137.3	87.6	219.9	251.8	14.5
Denmark	160.2	60.3	275.8	182.4	-33.9
Faeroe Islands	0.2	0.3	0.3	0.9	174.4
Finland	72.3	88.9	119.1	235.3	97.5
France	433.5	411.5	796.9	755.5	-5.2
Germany	852.0	901.7	1,553.0	1,761.7	13.4
Gibraltar	0.0	0.0	0.0	0.0	...
Greece	8.9	12.8	16.3	24.0	47.2
Iceland	3.2	1.3	5.8	3.9	-33.1
Italy	321.7	352.6	646.0	703.4	8.9
Luxembourg	5.2	3.7	13.8	11.3	-17.9
Malta	1.4	2.2	2.5	4.2	72.8
Netherlands	133.1	89.6	223.1	210.2	-5.8
Norway	345.3	282.3	599.9	607.0	1.2
Portugal	20.9	27.8	39.6	50.5	27.5
Republic of Ireland (Eire)	159.2	83.3	289.5	165.4	-42.8
Spain	88.0	135.2	154.1	284.0	84.3
Sweden	155.5	175.3	292.9	365.4	24.8
Switzerland	212.1	193.2	449.5	508.3	13.1
United Kingdom	655.8	808.2	1,490.5	1,721.7	15.5
<b>Total</b>	<b>3,846.3</b>	<b>3,800.5</b>	<b>7,333.4</b>	<b>8,026.9</b>	<b>9.5</b>
<b>Other Europe</b>					
Albania	0.2	0.7	0.4	1.6	258.1
Armenia	2.0	4.3	4.7	7.5	57.9
Azerbaijan	0.0	0.0	0.0	68.0	...
Belarus	0.4	0.5	0.9	0.9	-6.6
Bosnia and Herzegovina	0.6	0.9	1.1	1.5	41.2
Bulgaria	4.5	6.4	9.5	11.9	25.0
Croatia	1.7	1.6	3.3	3.5	6.9
Czech Republic	16.9	27.7	47.0	47.8	1.8
Estonia	1.3	16.0	3.0	20.6	579.5
Georgia	7.4	8.0	15.7	18.4	16.8
Hungary	25.8	24.4	47.8	54.9	14.8
Kazakhstan	156.2	110.4	331.9	358.4	8.0
Kyrgyzstan	0.0	0.0	0.0	0.1	742.6
Latvia	0.5	1.2	0.8	2.2	173.9
Lithuania	35.8	97.7	42.1	148.0	251.6
Macedonia (Former Yugoslav Republic of Macedonia)	0.5	0.7	1.1	1.3	21.2
Montenegro	0.0	0.1	0.0	0.1	...
Poland	64.2	121.7	117.5	272.3	131.6
Republic of Moldova	0.2	0.2	0.3	0.2	-28.6
Romania	9.6	10.6	20.2	31.2	54.4
Russian Federation	117.5	140.6	272.3	367.8	35.0
Serbia	0.8	0.7	1.9	2.7	39.9
Slovakia	15.6	21.3	27.9	35.1	26.1
Slovenia	5.8	5.9	10.9	12.5	14.8
Tajikistan	0.0	0.0	0.0	0.0	...
Turkmenistan	0.0	0.0	0.0	0.1	106.9
Ukraine	2.4	10.2	6.5	21.0	224.2
Uzbekistan	0.4	0.3	0.7	0.5	-24.9
<b>Total</b>	<b>470.2</b>	<b>612.0</b>	<b>967.8</b>	<b>1,490.0</b>	<b>54.0</b>

Table 8 – continued

## Imports by country, customs basis, not seasonally adjusted

	February		January to February		Change
	2010	2011	2010	2011	January to February 2011/January to February 2010
	millions of dollars				percent
<b>Middle East</b>					
Bahrain	0.2	0.2	0.4	0.7	55.7
Cyprus	0.3	0.4	0.4	0.5	31.3
Egypt	23.4	45.5	30.9	75.7	145.2
Eritrea	0.0	11.8	0.0	11.8	...
Ethiopia	0.8	1.3	1.7	2.6	52.8
Iran	3.6	2.4	6.7	5.5	-18.4
Iraq	0.2	337.0	211.9	625.9	195.4
Israel	76.7	70.2	150.3	154.7	2.9
Jordan	1.3	1.0	3.2	2.4	-24.9
Kuwait	0.0	0.0	0.0	0.0	-77.3
Lebanon	1.3	1.3	2.2	3.1	39.2
Libya	0.0	4.8	0.1	4.8	...
Oman	0.2	1.5	0.5	3.2	591.4
Qatar	29.2	66.8	60.6	166.4	174.6
Saudi Arabia	158.5	194.7	323.4	387.5	19.8
Somalia	0.0	0.0	0.0	0.0	-69.1
Sudan	2.7	8.7	9.5	19.7	106.9
Syria	0.5	0.4	1.3	0.7	-41.3
Turkey	41.3	57.5	84.6	121.5	43.6
United Arab Emirates	47.6	53.0	50.4	92.5	83.5
Yemen	0.0	0.0	0.0	0.0	-15.9
<b>Total</b>	<b>387.7</b>	<b>858.4</b>	<b>938.1</b>	<b>1,679.1</b>	<b>79.0</b>
<b>Other Africa</b>					
Algeria	148.2	512.9	626.1	816.2	30.4
Angola	148.9	252.0	227.8	467.1	105.1
Antarctica	0.0	0.0	0.0	0.2	...
Benin	0.0	0.0	0.0	0.0	-29.4
Botswana	0.0	0.0	6.9	0.0	-99.9
Bouvet Island	0.0	0.0	0.0	0.0	...
Burkina Faso	8.1	1.0	8.1	1.0	-87.3
Burundi	0.0	0.1	0.0	0.1	283.0
Cameroon	0.4	0.2	0.7	0.5	-34.1
Cape Verde	0.0	0.0	0.0	0.0	...
Central African Republic	0.0	0.0	0.0	0.0	78.1
Chad	0.0	0.0	0.1	0.0	-71.7
Comoros	0.0	0.0	0.0	0.0	-68.9
Congo	0.1	0.3	0.3	0.5	61.7
Democratic Republic of the Congo	0.2	0.0	0.2	0.0	-80.9
Djibouti	0.0	0.0	0.0	0.0	-98.7
Equatorial Guinea	142.8	24.3	142.8	192.6	35.0
Gabon	0.0	0.0	0.0	0.1	790.4
Gambia	0.0	0.0	0.0	0.0	-18.2
Ghana	3.4	7.6	5.2	10.8	106.7
Guinea	5.5	0.0	5.6	3.5	-37.6
Guinea-Bissau	0.0	0.0	0.0	0.0	-27.2
Ivory Coast	10.4	32.2	25.8	56.2	118.1
Kenya	0.8	1.2	2.5	3.3	30.3
Lesotho	0.3	0.5	1.1	2.0	86.0
Liberia	2.4	0.5	7.9	4.1	-47.9
Madagascar	2.0	5.9	2.5	6.2	149.1
Malawi	0.1	25.7	4.2	25.8	509.9
Mali	0.0	0.1	0.0	0.2	...
Mauritania	0.2	0.0	0.2	0.0	-75.8
Mauritius	0.8	0.3	1.8	0.9	-50.6
Morocco	16.4	14.2	29.3	28.2	-3.5
Mozambique	0.2	0.0	0.2	0.2	5.8
Namibia	0.0	19.6	6.2	19.6	217.7
Niger	0.0	0.1	0.1	0.2	163.7
Nigeria	80.3	200.2	129.4	304.2	135.1
Rwanda	0.0	0.1	0.1	0.2	189.8
Saint Helena	0.0	0.0	0.0	0.0	599.5
Sao Tome and Principe	0.0	0.0	0.0	0.0	686.7
Senegal	0.0	0.0	0.1	0.2	21.2
Seychelles	0.0	0.0	0.0	0.0	-22.4

Table 8 – continued

## Imports by country, customs basis, not seasonally adjusted

	February		January to February		Change
	2010	2011	2010	2011	January to February 2011/January to February 2010
	millions of dollars				percent
Sierra Leone	0.2	0.1	0.2	0.2	-15.9
South Africa	27.7	27.3	81.0	87.6	8.1
Swaziland	0.1	0.1	0.2	0.2	15.4
Togo	0.0	0.1	0.1	0.2	159.1
Tunisia	4.7	3.4	8.9	7.0	-21.9
Uganda	0.3	0.3	0.5	0.8	63.4
United Republic of Tanzania	0.3	0.5	0.5	1.0	94.1
Western Sahara	0.0	0.0	0.0	0.0	-100.0
Zambia	0.1	0.1	0.2	0.2	12.9
Zimbabwe	0.5	0.5	0.7	1.7	136.5
<b>Total</b>	<b>605.2</b>	<b>1,131.6</b>	<b>1,327.3</b>	<b>2,043.0</b>	<b>53.9</b>
<b>Other Asia</b>					
Afghanistan	0.2	0.2	0.4	0.2	-38.4
Bangladesh	58.8	81.9	115.4	168.7	46.2
Bhutan	0.0	0.0	0.0	0.0	...
British Indian Ocean Territory	0.0	0.0	0.0	0.0	17.1
Brunei Darussalam	0.0	1.5	0.0	1.5	...
Cambodia	23.8	43.2	54.2	82.8	52.8
China	2,858.0	3,450.1	5,947.5	7,119.6	19.7
Hong Kong	19.8	19.2	42.7	60.9	42.4
India	144.1	181.7	291.2	380.6	30.7
Indonesia	73.5	97.6	147.0	201.7	37.3
Japan	1,172.1	1,130.4	2,020.0	2,054.6	1.7
Laos	0.7	0.5	1.5	0.9	-36.6
Macao	0.5	0.6	1.2	1.3	5.5
Malaysia	159.8	158.3	321.1	316.3	-1.5
Maldives	0.0	0.1	0.0	0.1	855.9
Mongolia	8.2	7.2	20.1	10.0	-50.4
Myanmar	0.0	0.0	0.0	0.0	944.7
Nepal	0.8	0.8	1.7	1.5	-12.8
North Korea	0.0	0.0	0.0	0.0	-76.0
Pakistan	17.4	17.2	36.3	37.4	3.0
Philippines	66.5	69.2	128.9	133.4	3.5
Singapore	55.8	95.1	126.7	235.5	85.8
South Korea	458.1	450.0	868.3	884.8	1.9
Sri Lanka	9.6	11.0	19.2	23.4	21.8
Taiwan	234.3	304.7	493.5	650.7	31.8
Thailand	167.6	196.2	351.2	392.3	11.7
Timor-Leste	0.1	0.0	0.2	0.0	-96.4
Viet Nam	78.6	88.9	165.2	198.7	20.3
<b>Total</b>	<b>5,608.3</b>	<b>6,405.6</b>	<b>11,153.5</b>	<b>12,956.9</b>	<b>16.2</b>
<b>Oceania</b>					
American Samoa	0.0	0.0	0.0	0.0	-25.2
Australia	114.1	104.1	221.7	189.9	-14.4
Christmas Island	0.1	0.0	0.1	0.0	-58.6
Cocos (Keeling) Islands	0.0	0.0	0.0	0.0	60.9
Cook Islands	0.0	0.0	0.0	0.0	34.0
Fiji	0.6	0.2	1.1	0.3	-73.4
French Polynesia	0.1	0.2	0.1	0.2	205.0
Guam	0.0	0.0	0.0	0.0	604.6
Heard Island and McDonald Islands	0.0	0.0	0.0	0.0	-39.5
Kiribati	0.0	0.0	0.0	0.0	375.7
Nauru	0.0	0.0	0.0	0.0	-96.8
New Caledonia	0.0	0.0	0.0	0.0	421.6
New Zealand	28.2	36.3	53.7	72.1	34.4
Niue	0.0	0.0	0.0	0.0	-53.8
Papua New Guinea	0.2	0.0	0.3	0.1	-60.9
Pitcairn	0.0	0.0	0.0	0.0	...
Samoa	0.0	0.0	0.0	0.0	-36.9
Solomon Islands	0.0	0.0	0.0	0.0	-99.8
Tonga	0.0	0.0	0.0	0.0	25.2
United States Minor Outlying Islands	0.4	0.2	0.9	0.3	-63.8
Vanuatu	0.0	0.0	0.0	0.0	-39.2
Wallis and Futuna	0.0	0.0	0.0	0.0	-100.0
<b>Total</b>	<b>143.9</b>	<b>141.2</b>	<b>277.9</b>	<b>263.1</b>	<b>-5.3</b>



Table 8 – continued

## Imports by country, customs basis, not seasonally adjusted

	February		January to February		Change
	2010	2011	2010	2011	January to February 2011/ January to February 2010
	millions of dollars				percent
<b>South America</b>					
Argentina	42.9	128.8	82.4	248.9	202.0
Bolivia	10.1	13.4	14.3	36.3	154.0
Brazil	202.4	190.1	477.6	524.9	9.9
Chile	137.7	163.3	418.4	326.0	-22.1
Colombia	59.2	55.0	93.1	102.3	9.9
Ecuador	17.4	21.4	32.9	44.7	35.8
Falkland Islands (Malvinas)	0.0	0.0	0.0	0.0	-51.2
Guyana	0.3	26.0	18.2	49.1	169.3
Paraguay	0.3	0.3	1.3	0.6	-52.1
Peru	300.1	318.4	573.9	603.3	5.1
Suriname	38.1	60.4	67.9	116.0	70.9
Uruguay	7.2	3.2	16.3	4.6	-71.9
Venezuela	2.2	1.3	11.9	40.8	243.9
<b>Total</b>	<b>817.8</b>	<b>981.4</b>	<b>1,808.3</b>	<b>2,097.4</b>	<b>16.0</b>
<b>Central America Antilles</b>					
Anguilla	0.0	0.1	0.1	0.1	32.2
Antigua and Barbuda	0.0	0.0	0.0	0.0	18.7
Aruba	0.0	5.4	0.1	5.5	...
Bahamas	1.0	0.6	1.3	1.8	41.7
Barbados	0.6	0.3	2.1	0.8	-62.3
Belize	0.9	0.5	1.3	1.5	13.8
Bermuda	0.1	0.0	0.2	0.1	-37.6
British Virgin Islands	0.0	0.0	0.1	0.0	-63.7
Cayman Islands	0.0	0.0	0.1	0.0	-77.3
Costa Rica	34.9	39.8	66.0	71.9	9.0
Cuba	59.5	78.6	97.9	126.0	28.7
Dominica	0.0	0.1	0.0	0.1	388.0
Dominican Republic	9.9	10.1	19.1	22.3	16.6
El Salvador	3.6	32.1	6.1	38.9	540.7
Grenada	0.0	0.2	0.1	0.2	114.7
Guatemala	20.4	22.7	57.5	55.0	-4.4
Haiti	1.8	1.9	3.9	3.8	-1.9
Honduras	13.1	15.6	25.0	29.5	17.7
Jamaica	18.8	19.9	25.9	39.5	52.2
Montserrat	0.1	0.0	0.1	0.0	-83.7
Netherlands Antilles	0.0	28.7	0.1	28.7	...
Nicaragua	12.0	19.5	19.3	40.9	112.5
Panama	6.9	7.6	14.8	13.2	-10.9
Saint Kitts and Nevis	0.7	0.6	1.2	1.2	2.6
Saint Lucia	0.0	0.0	0.0	0.0	13.0
Saint Vincent and the Grenadines	0.0	0.0	0.0	0.1	...
Trinidad and Tobago	32.6	35.5	125.0	78.8	-37.0
Turks and Caicos Islands	0.0	0.0	0.0	0.0	-63.8
<b>Total</b>	<b>217.0</b>	<b>319.8</b>	<b>467.1</b>	<b>559.7</b>	<b>19.8</b>
<b>All countries</b>	<b>29,858.3</b>	<b>32,663.7</b>	<b>58,083.1</b>	<b>65,669.6</b>	<b>13.1</b>

**Table 9-1  
Imports by province of clearance, customs basis, not seasonally adjusted — February**

	Agricultural and fishing products	Energy products	Forestry products	Industrial goods	Machinery and equipment	Automotive products	Consumer goods	Special transactions trade	<b>Total</b>
millions of dollars									
Newfoundland and Labrador									
2010	2.5	120.3	0.0	1.3	8.8	0.0	0.7	0.2	<b>133.9</b>
2011	1.9	353.4	0.0	1.0	150.5	0.1	0.5	0.0	<b>507.3</b>
Prince Edward Island									
2010	0.1	0.0	0.0	0.0	0.0	0.0	0.0	0.0	<b>0.2</b>
2011	0.4	0.0	0.0	0.1	0.0	0.0	0.0	0.1	<b>0.5</b>
Nova Scotia									
2010	27.4	142.7	1.5	79.7	69.0	256.6	12.1	0.8	<b>589.7</b>
2011	46.1	113.6	1.5	108.6	51.2	192.1	12.7	0.7	<b>526.5</b>
New Brunswick									
2010	28.5	674.7	11.1	68.4	55.4	34.9	13.2	1.7	<b>888.0</b>
2011	31.2	707.1	9.5	126.3	48.5	25.4	12.8	1.6	<b>962.3</b>
Quebec									
2010	317.8	941.6	58.8	961.0	1,242.3	166.1	985.6	47.8	<b>4,721.1</b>
2011	393.1	1,106.8	58.9	1,227.4	1,372.9	173.9	884.1	47.7	<b>5,264.7</b>
Ontario									
2010	1,179.9	416.0	76.7	3,635.7	4,451.1	5,121.0	2,672.1	297.8	<b>17,850.3</b>
2011	1,237.6	897.0	71.1	3,945.2	4,944.3	4,765.0	2,782.9	499.8	<b>19,143.0</b>
Manitoba									
2010	68.7	45.7	6.8	270.1	408.5	92.5	120.2	7.8	<b>1,020.4</b>
2011	67.2	46.8	6.6	290.2	453.2	106.6	118.5	5.4	<b>1,094.4</b>
Saskatchewan									
2010	21.3	25.1	1.8	188.6	274.4	58.4	26.3	2.3	<b>598.3</b>
2011	28.2	41.6	2.0	199.7	268.7	72.9	23.2	0.2	<b>636.4</b>
Alberta									
2010	138.0	199.0	7.8	341.0	556.2	74.5	86.0	15.2	<b>1,417.7</b>
2011	134.4	166.6	11.0	470.4	694.3	87.8	100.3	9.2	<b>1,674.0</b>
British Columbia									
2010	319.3	149.6	50.3	543.5	828.6	244.2	485.6	15.7	<b>2,637.0</b>
2011	344.0	259.7	47.1	633.7	786.7	249.7	522.5	9.6	<b>2,853.0</b>
Yukon, Northwest Territories and Nunavut									
2010	0.0	0.3	0.0	0.0	1.5	0.0	0.0	0.0	<b>1.8</b>
2011	0.0	0.6	0.0	0.1	0.6	0.0	0.0	0.0	<b>1.4</b>
<b>Total</b>									
<b>2010</b>	<b>2,103.6</b>	<b>2,715.1</b>	<b>214.9</b>	<b>6,089.4</b>	<b>7,895.8</b>	<b>6,048.2</b>	<b>4,402.0</b>	<b>389.3</b>	<b>29,858.3</b>
<b>2011</b>	<b>2,284.0</b>	<b>3,693.3</b>	<b>207.6</b>	<b>7,002.6</b>	<b>8,771.1</b>	<b>5,673.5</b>	<b>4,457.3</b>	<b>574.3</b>	<b>32,663.7</b>

**Table 9-2**  
**Imports by province of clearance, customs basis, not seasonally adjusted — Year to date, January to February**

	Agricultural and fishing products	Energy products	Forestry products	Industrial goods	Machinery and equipment	Automotive products	Consumer goods	Special transactions trade	<b>Total</b>
millions of dollars									
Newfoundland and Labrador									
2010	4.6	423.3	0.1	6.3	19.8	0.0	1.1	0.2	<b>455.3</b>
2011	4.9	681.7	0.0	5.6	166.4	0.1	0.9	0.1	<b>859.7</b>
Prince Edward Island									
2010	0.3	0.0	0.0	5.2	0.1	0.0	0.0	0.0	<b>5.7</b>
2011	0.5	0.0	0.0	0.1	0.0	0.0	0.0	0.1	<b>0.8</b>
Nova Scotia									
2010	57.2	287.8	2.6	146.2	120.2	417.4	23.8	2.2	<b>1,057.4</b>
2011	95.9	350.2	2.5	236.2	130.6	423.2	29.7	1.7	<b>1,270.1</b>
New Brunswick									
2010	53.2	1,240.5	20.0	173.4	108.1	63.9	27.6	2.5	<b>1,689.2</b>
2011	69.5	1,488.0	18.6	204.6	97.5	55.0	26.4	2.0	<b>1,961.5</b>
Quebec									
2010	657.7	2,248.5	114.9	2,097.0	2,422.5	309.8	1,873.6	59.8	<b>9,783.9</b>
2011	800.2	2,788.2	112.5	2,664.8	2,707.9	325.7	1,702.1	62.1	<b>11,163.6</b>
Ontario									
2010	2,413.3	771.5	150.5	7,171.7	8,725.1	8,898.3	5,336.3	462.8	<b>33,929.5</b>
2011	2,578.0	1,637.9	139.8	8,097.1	9,997.8	8,993.7	5,622.9	767.0	<b>37,834.0</b>
Manitoba									
2010	140.1	79.0	12.1	511.9	801.8	171.5	230.8	10.9	<b>1,958.2</b>
2011	145.7	99.8	12.3	587.4	897.1	219.6	243.1	9.4	<b>2,214.2</b>
Saskatchewan									
2010	48.4	59.2	2.9	355.1	491.9	118.0	43.7	5.7	<b>1,124.9</b>
2011	60.8	82.8	4.1	383.2	571.9	184.1	39.7	4.2	<b>1,330.7</b>
Alberta									
2010	298.6	476.5	14.4	722.0	1,016.1	133.3	166.5	20.3	<b>2,847.7</b>
2011	279.3	274.2	20.7	927.6	1,506.3	175.3	202.9	11.7	<b>3,398.0</b>
British Columbia									
2010	676.6	371.9	96.5	1,015.4	1,606.7	462.0	972.4	21.4	<b>5,222.8</b>
2011	716.7	463.9	93.6	1,250.7	1,581.8	460.4	1,043.0	18.8	<b>5,628.9</b>
Yukon, Northwest Territories and Nunavut									
2010	0.0	0.8	0.0	0.1	7.8	0.0	0.0	0.0	<b>8.7</b>
2011	0.1	1.4	0.0	0.2	6.3	0.0	0.0	0.0	<b>8.1</b>
<b>Total</b>									
<b>2010</b>	<b>4,349.9</b>	<b>5,958.9</b>	<b>414.0</b>	<b>12,204.4</b>	<b>15,320.1</b>	<b>10,574.2</b>	<b>8,675.8</b>	<b>585.7</b>	<b>58,083.1</b>
<b>2011</b>	<b>4,751.6</b>	<b>7,868.1</b>	<b>404.3</b>	<b>14,357.4</b>	<b>17,663.6</b>	<b>10,837.1</b>	<b>8,910.5</b>	<b>877.0</b>	<b>65,669.6</b>

# Technical notes

---

## The Canadian international merchandise trade statistical program

### Introduction

The objective of this text is to provide a general overview of the Canadian International Merchandise Trade Statistical Program, with special reference to concepts and definitions. The text is intended for the general user and simplicity is emphasized. More technical details can be obtained from the International Trade Division, Statistics Canada upon request.

### Conceptual framework

**1. Objectives and coverage:** The primary objective of the Canadian International Merchandise Trade Statistical Program is to measure the change in the stock of material resources of Canada resulting from the movement of merchandise into or out of the country. Information on imports and exports are inputs into the System of National Accounts, particularly in the balance of payments and gross domestic product, and are used in the formulation of trade and budgetary policies. Governments, importers, exporters, manufacturers and shipping companies use international merchandise trade statistics to:

- monitor import penetration and export performance,
- monitor commodity price and volume changes,
- examine transport implications.

**2. Trade statistics (customs basis / balance of payments basis):** Merchandise trade statistics are reported and presented on two different bases: customs basis and balance of payment basis.

When goods are imported into or exported from Canada, declarations must be filed with customs, giving such information as description and value of the goods, origin and port of clearance of commodities and mode of transport. Most of this information is required for the purposes of customs administration. Statistics developed from administrative records of customs are commonly referred to as customs-based trade statistics.

Customs-based trade statistics are more accurate at measuring imports than they are at measuring exports. This is the case because customs are typically more vigilant with respect to goods entering the country than they are with goods leaving the country.

Customs-based export statistics may understate or incorrectly portray the destination of exports. Export statistics are understated when the proper documentation is not filed with Customs. Exports are incorrectly portrayed when the country of final destination is inaccurately reported on the customs documentation. This occurs most frequently when goods are routed through an intermediary country before continuing on to their final destination.

Statistics Canada does not have a measure of undercoverage but periodically conducts reconciliation exercises with its major trading partners, excluding the United States.

On January 1, 1990, Canada entered into a memorandum of understanding with the United States concerning the exchange of import data. As a consequence, each administration is using the other's import data to replace its own export data. Canada's international merchandise trade statistics are, therefore, no longer derived exclusively from the administrative records of the Canada Border Services Agency, but from United States Customs records as well.

Customs-based information is adjusted to conform with the National Accounts concepts and definitions. The adjustments to derive balance of payments-based trade data include adjustments related to trade definition, valuation and timing. The principal difference between the two trade concepts is that customs-based merchandise trade statistics cover the physical movement of goods as they are reflected in customs documents while balance of payments-adjusted data are intended to cover all economic transactions that involve merchandise trade between residents and non-residents. The present document describes the concepts and processes pertaining to the customs-based trade statistics only. (For further information on balance of payments-adjusted data, see the publication Canada's Balance of International Payments, Statistics Canada (Catalogue no. 67-001-X).

**3. System of trade:** Canadian trade statistics are compiled according to the general system of trade, as defined by the United Nations Statistical Office. Under this system, imports include all goods that have crossed Canada's territorial boundary, whether for immediate consumption in Canada or for storage in bonded customs warehouses. Domestic exports include goods grown, extracted or manufactured in Canada, including goods of foreign origin that have been materially transformed in Canada. Re-exports are exports of goods of foreign origin that have not been materially transformed in Canada, including foreign goods withdrawn for export from bonded customs warehouses. Total exports are the sum of domestic exports and re-exports. Thus the general trade system, in principal, presents all goods entering the country (imports) and all goods leaving the country (exports). It differs from the special system of trade in the treatment of imported goods into bonded customs warehouses. Under the 'special' system, these goods are counted only if and when they are withdrawn from customs warehouses for home consumption. They are not counted in export statistics unless they have first cleared customs.

Conceptually, under the general system, the statistical frontier coincides with the geographical boundary, while under the 'special' system, it coincides with the customs boundary.

**4. Valuation:** For customs purposes, imports are recorded at values established according to the provisions of the Customs Act, which, since January 1, 1985, reflects valuation methods based on the General Agreement on Tariffs and Trade (GATT) Valuation Code System. In general, the value for duty of imported goods must be equivalent to the transaction value or the price actually paid.

To determine the transaction value of imported goods, all transportation and associated costs arising in respect of the goods being appraised prior to and at the place of direct shipment to Canada, are to be added to the price of the goods. Therefore, Canadian imports are valued Free on Board (FOB), place of direct shipment to Canada. It excludes freight and insurance costs in bringing the goods to Canada from the point of direct shipment.

Countries other than the United States, exports are, in principal, valued or recorded at the values declared on export documents, which usually reflect the transaction value, i.e., actual selling price or, in the case of a non-arm's length transaction, the transfer price used for company accounting purposes. Canadian exports to overseas countries are valued at F.O.B. port of exit, including domestic freight charges to that point but net of discounts and allowances. As of January, 1990, Canadian exports to the U.S. are valued F.O.B. point of exit from Canada. Prior to 1990, they were valued F.O.B. place of lading net of freight charges, discounts and allowances.

**5. Statistical period:** The reference period is the calendar month and the calendar year. The closing of the statistical month for imports and Canadian exports to the United States is defined as the last calendar day of the month, based as closely as practicable on the date of clearance from customs.

The closing of the statistical month for exports, to countries other than the United States, is also defined as the last calendar day of the month. Those export documents that are received too late for incorporation in the current month are assigned to the month the transaction took place. If a monthly summary report from a high volume exporter is not received on time, the data are imputed for the current month and revised with the trade value in the following statistical month.

**6. Trading partner attribution (country of origin/destination):** Exports are attributed to the country, which is the last known destination of the goods at the time of export. Exports to the United States are attributed to the state of destination.

Imports are attributed to their country of origin, that is, the country in which the goods were grown, extracted or manufactured in accordance to the rules of origin administered by the Canada Border Services Agency. Imports from the United States are attributed to the state of origin. Prior to 1988, most imports were attributed to the country of export/consignment, with the exception of imports from Central and South America.

**7. Principal trading areas:** The 'principal trading areas' are country groupings defined as follows:

**United States:** includes trade with Puerto Rico and the U.S. Virgin Islands

**Japan**

**European Union (EU):** Austria, Belgium, Bulgaria, Cyprus, Czech Republic, Denmark, Estonia, Finland, France, Germany, Greece, Hungary, Ireland, Italy, Latvia, Lithuania, Luxembourg, Malta, Netherlands, Poland, Portugal, Romania, Slovakia, Slovenia, Spain, Sweden and United Kingdom

**Other Organisation for Economic Co-operation and Development (OECD):** Australia, Canada, Iceland, Mexico, New Zealand, Norway, South Korea, Switzerland, and Turkey. (The EU countries, United States, and Japan are also members of OECD)

**Other countries:** all countries and territories other than the United States, Japan, EU and other OECD

**8. Legal framework:** Import and export statistics with countries other than the United States are derived from information contained in administrative records collected by the Canada Border Services Agency under the Customs Act. Copies of these documents (or information therefrom) are sent to Statistics Canada in accordance with Section 25 of the Statistics Act. It follows that the disclosure of trade statistics is governed by both the Customs Act and the Statistics Act and is subject to the provisions of Section 17(2)(a) of the latter. Disclosure of export statistics to the United States is now governed by a memorandum of understanding that provides for the exchange of detailed import statistics between Canada and the United States.

## Contact information

Questions concerning details of methods not covered by these notes should be addressed to the Marketing and Client Services Section, International Trade Division, Statistics Canada, 170 Tunney's Pasture Driveway, Ottawa, Ontario, K1A 0T6.

**Telephone:** 1-800-294-5583 or 613-951-9647

**Facsimile:** 1-800-664-0055 613-951-0117

**Internet:** *trade@statcan.gc.ca*