

Catalogue no. 65-001-X

Canadian International Merchandise Trade

December 2010



Statistics
Canada

Statistique
Canada

Canada

How to obtain more information

For information about this product or the wide range of services and data available from Statistics Canada, visit our website at www.statcan.gc.ca, e-mail us at infostats@statcan.gc.ca, or telephone us, Monday to Friday from 8:30 a.m. to 4:30 p.m., at the following numbers:

Statistics Canada's National Contact Centre

Toll-free telephone (Canada and the United States):

Inquiries line	1-800-263-1136
National telecommunications device for the hearing impaired	1-800-363-7629
Fax line	1-877-287-4369

Local or international calls:

Inquiries line	1-613-951-8116
Fax line	1-613-951-0581

Depository Services Program

Inquiries line	1-800-635-7943
Fax line	1-800-565-7757

To access this product

This product, Catalogue no. 65-001-X, is available free in electronic format. To obtain a single issue, visit our website at www.statcan.gc.ca and browse by "Key resource" > "Publications."

Standards of service to the public

Statistics Canada is committed to serving its clients in a prompt, reliable and courteous manner. To this end, Statistics Canada has developed *standards of service* that its employees observe. To obtain a copy of these service standards, please contact Statistics Canada toll-free at 1-800-263-1136. The service standards are also published on www.statcan.gc.ca under "About us" > "The agency" > "Providing services to Canadians."

Statistics Canada
International Trade Division

Canadian International Merchandise Trade

December 2010

Published by authority of the Minister responsible for Statistics Canada

© Minister of Industry, 2011

All rights reserved. The content of this electronic publication may be reproduced, in whole or in part, and by any means, without further permission from Statistics Canada, subject to the following conditions: that it be done solely for the purposes of private study, research, criticism, review or newspaper summary, and/or for non-commercial purposes; and that Statistics Canada be fully acknowledged as follows: Source (or "Adapted from", if appropriate): Statistics Canada, year of publication, name of product, catalogue number, volume and issue numbers, reference period and page(s). Otherwise, no part of this publication may be reproduced, stored in a retrieval system or transmitted in any form, by any means—electronic, mechanical or photocopy—or for any purposes without prior written permission of Licensing Services, Client Services Division, Statistics Canada, Ottawa, Ontario, Canada K1A 0T6.

February 2011

Catalogue no. 65-001-X, vol. 64, no. 12

ISSN 1480-8781

Frequency: Monthly

Ottawa

Cette publication est également disponible en français.

Note of appreciation

Canada owes the success of its statistical system to a long-standing partnership between Statistics Canada, the citizens of Canada, its businesses, governments and other institutions. Accurate and timely statistical information could not be produced without their continued cooperation and goodwill.

User information

Symbols

The following standard symbols are used in Statistics Canada publications:

- . not available for any reference period
- .. not available for a specific reference period
- ... not applicable
- 0 true zero or a value rounded to zero
- 0^s value rounded to 0 (zero) where there is a meaningful distinction between true zero and the value that was rounded
- p preliminary
- r revised
- x suppressed to meet the confidentiality requirements of the *Statistics Act*
- E use with caution
- F too unreliable to be published

Note to users

All totals are calculated from full figures and rounded independently; consequently, totals may not equal the sum of their components.

The data is based on commodity groups (sector, subsector and major group).

Table of contents

Highlights	5
Analysis	7
Related products	11
Statistical tables	
1 Merchandise trade of Canada, balance of payments basis, seasonally adjusted	15
1-1 Current dollars	15
1-2 Constant dollars, 2002	16
1-3 Price indices (Laspeyres)	17
2 Exports by commodity groupings, balance of payments basis, seasonally adjusted	18
2-1 Current dollars	18
2-2 Constant dollars, 2002	20
3 Domestic exports to selected countries, customs basis, not seasonally adjusted	22
3-1 December	22
3-2 Year to date, January to December	23
4 Domestic exports by country, customs basis, not seasonally adjusted	24
5 Exports by province of origin, customs basis, not seasonally adjusted	28
5-1 December	28
5-2 Year to date, January to December	29
6 Imports by commodity groupings, balance of payments basis, seasonally adjusted	30
6-1 Current dollars	30
6-2 Constant dollars, 2002	32
7 Imports from selected countries, customs basis, not seasonally adjusted	34
7-1 December	34
7-2 Year to date, January to December	35
8 Imports by country, customs basis, not seasonally adjusted	36

Table of contents – continued

9	Imports by province of clearance, customs basis, not seasonally adjusted	40
9-1	December	40
9-2	Year to date, January to December	41

Data quality, concepts and methodology

	Technical notes	42
--	-----------------	----

Highlights

Canada's merchandise exports rose 9.7% to \$37.8 billion in December, led by a 16.5% gain in volumes of energy products. Export volumes, up 6.6%, increased in most sectors. Prices rose 2.9%. Both volumes and prices have risen in eight of the past 12 months.

Energy products accounted for over half the growth in the value of exports, followed by industrial goods and materials, which reached a record high. Notable increases were also recorded in exports of machinery and equipment, agricultural and fishing products as well as forestry products.

The value of imports edged up 0.7% to \$34.8 billion. Import prices rose 0.4%, following four months of decline, while volumes increased 0.3%.

All import sectors except other consumer goods posted gains in December. The main sources of growth were energy products, agricultural and fishing products as well as automotive products.

As a result, Canada's trade balance with the world went from a deficit of \$115 million in November to a surplus of \$3.0 billion in December, the first trade surplus since February 2010.

On the strength of energy products, exports to the United States rose 10.8% to \$26.7 billion, the highest value since November 2008, while imports were up 2.3%. Consequently, Canada's trade surplus with the United States increased from \$3.0 billion in November to \$5.1 billion in December, the largest trade surplus since October 2008.

Exports to countries other than the United States grew 7.3%, the sixth consecutive monthly gain, while imports declined 1.9%. Canada's trade deficit with countries other than the United States declined from \$3.1 billion in November to \$2.1 billion in December.

Note to readers

Merchandise trade is one component of Canada's international balance of payments, which also includes trade in services, investment income, current transfers as well as capital and financial flows.

International merchandise trade data by country are available on both a balance of payments and a customs basis for the United States, Japan and the United Kingdom. Trade data for all other individual countries are available on a customs basis only. Balance of payments data are derived from customs data by making adjustments for characteristics such as valuation, coverage, timing and residency. These adjustments are made to conform to the concepts and definitions of the Canadian System of National Accounts.

Data in this release are on a balance of payments basis, seasonally adjusted in current dollars. Constant dollars are calculated using the Laspeyres volume formula.

Revisions

In general, merchandise trade data are revised on an ongoing basis for each month of the current year. Current year revisions are reflected in both the customs and balance of payments based data. Revisions to customs based data for the previous year are released on a quarterly basis. Revisions to balance of payments based data for the three previous years are released annually in June.

Factors influencing revisions include late receipt of import and export documentation, incorrect information on customs forms, replacement of estimates with actual figures (mostly in the energy sector), changes in classification of merchandise based on more current information, and changes to seasonal adjustment factors.

Revised data are available in the appropriate CANSIM tables.

Chart 1
Exports and imports, seasonally adjusted, on a balance of payments basis

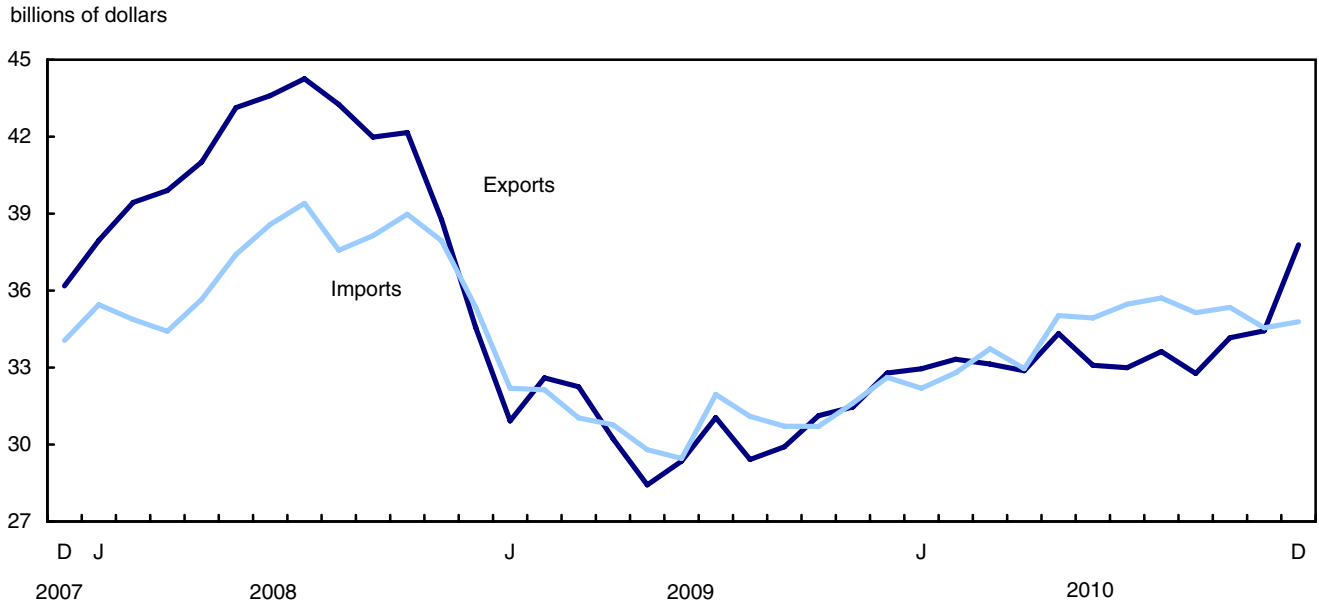
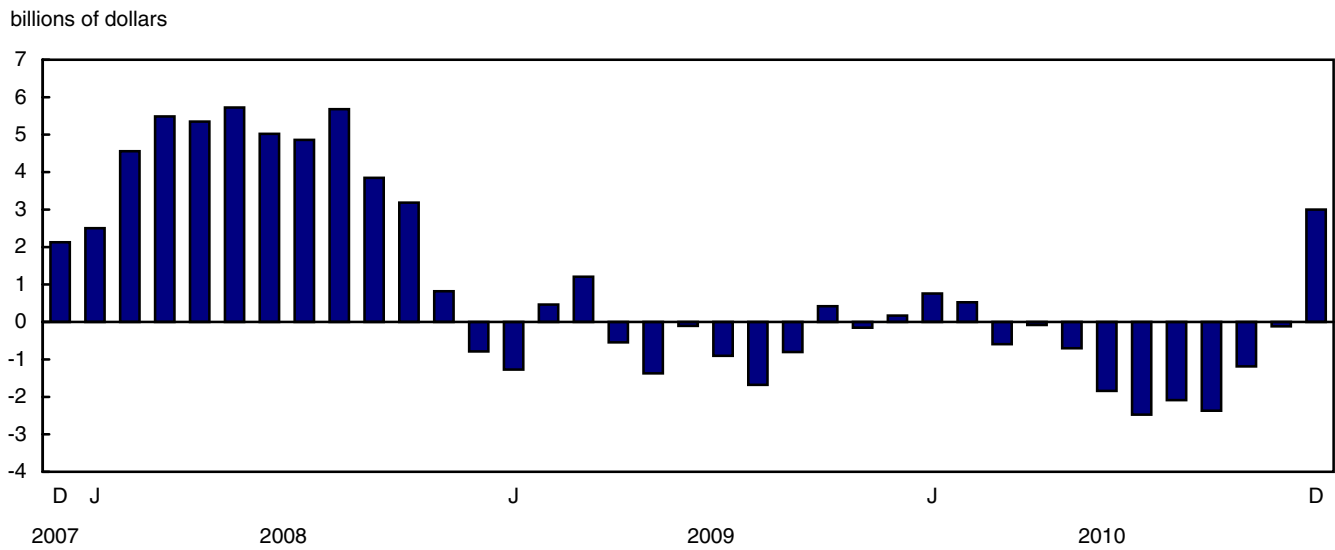


Chart 2
Trade balance, seasonally adjusted, on a balance of payments basis



Analysis

Higher volumes of energy products boost exports

Energy products exports rose 25.1% to \$8.6 billion, the third consecutive monthly gain, with volumes accounting for almost two-thirds of the increase. Widespread gains throughout the sector were led by exports of crude petroleum, which increased 24.2% to \$5.0 billion, the highest level since December 2009. Exports of petroleum and coal products also contributed to the gain as production resumed at some refineries following maintenance work.

Exports of industrial goods and materials increased 7.0% to a record high of \$10.3 billion, as exports of precious metals and copper ores reached unprecedented levels. Prices in the sector rose 4.5%, while volumes increased 2.4%. Exports of precious metals rose 25.8% during the month and have more than doubled since January 2010. Exports of nickel ores and copper ores also increased in December, following large declines in the previous month.

Exports of machinery and equipment grew 8.2% to \$6.9 billion, as volumes rose 8.6%. Exports of aircraft, engines and parts accounted for over three-quarters of the sector's gain.

Exports of agricultural and fishing products increased 7.6% to \$3.5 billion. Gains throughout the sector were led by higher exports of wheat, which have been rising for five consecutive months. Wheat prices have been trending upwards since April 2010.

Forestry products exports rose 9.7% to \$2.0 billion, as volumes increased 10.8%. Exports of wood pulp and other wood products grew to \$621 million in December, the highest value since August 2007, reflecting higher demand from China.

Other consumer goods moderate the growth in imports

Imports of energy products increased 3.5% to \$3.3 billion in December, the result of higher prices. Imports of crude petroleum grew 18.6%, following the completion of maintenance work in some refineries. Imports of coal and other related products, namely natural gas, declined after a strong gain in the previous month.

After three consecutive months of decreases, imports of agricultural and fishing products rose 3.5% to a record high of \$2.6 billion. The growth in the sector was led by higher imports of crude vegetable products. In contrast, imports of sugar and sugar preparations fell during the month.

Imports of automotive products increased 0.8% to \$5.4 billion, as volumes rose. The gain was the result of higher imports of motor vehicle parts, as production resumed following some plant shutdowns in November.

Imports of other consumer goods decreased 1.7% to \$4.9 billion. Imports of miscellaneous end products, which include medicinal and pharmaceutical products, led the decline.

Chart 1
Exports of energy products, seasonally adjusted, on a balance of payments basis

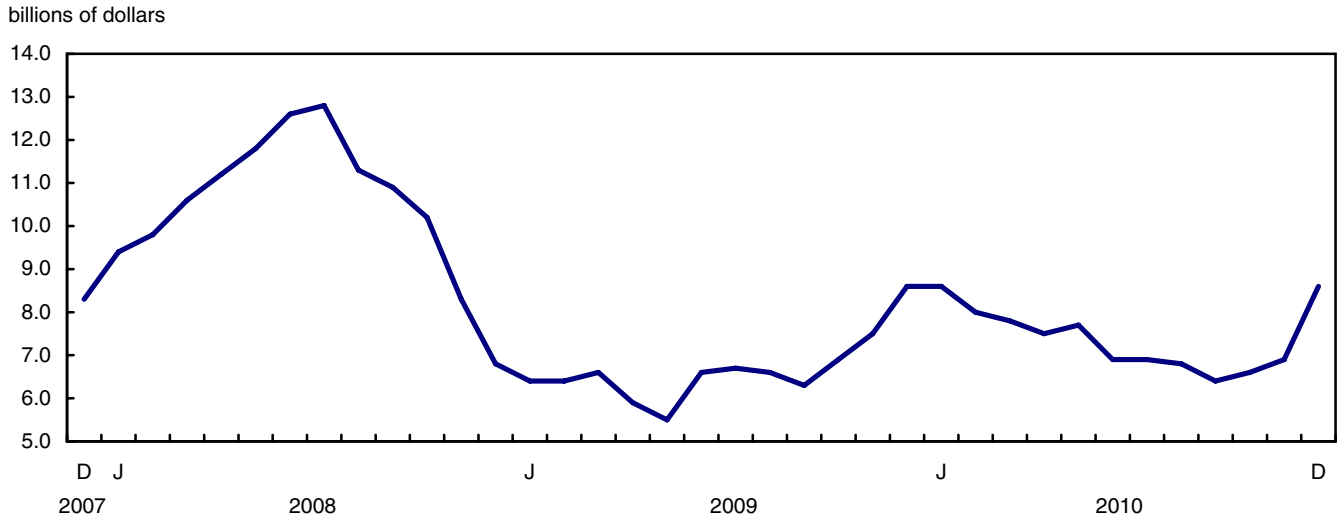


Chart 2
Exports of industrial goods and materials, seasonally adjusted, on a balance of payments basis

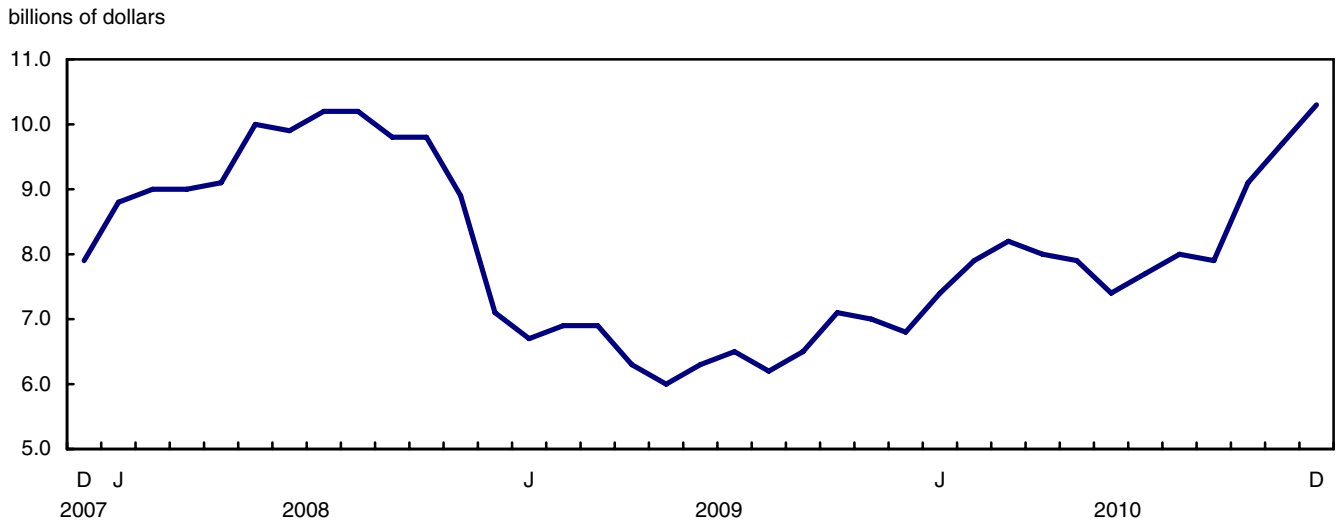


Chart 3
Imports of energy products, seasonally adjusted, on a balance of payments basis

billions of dollars

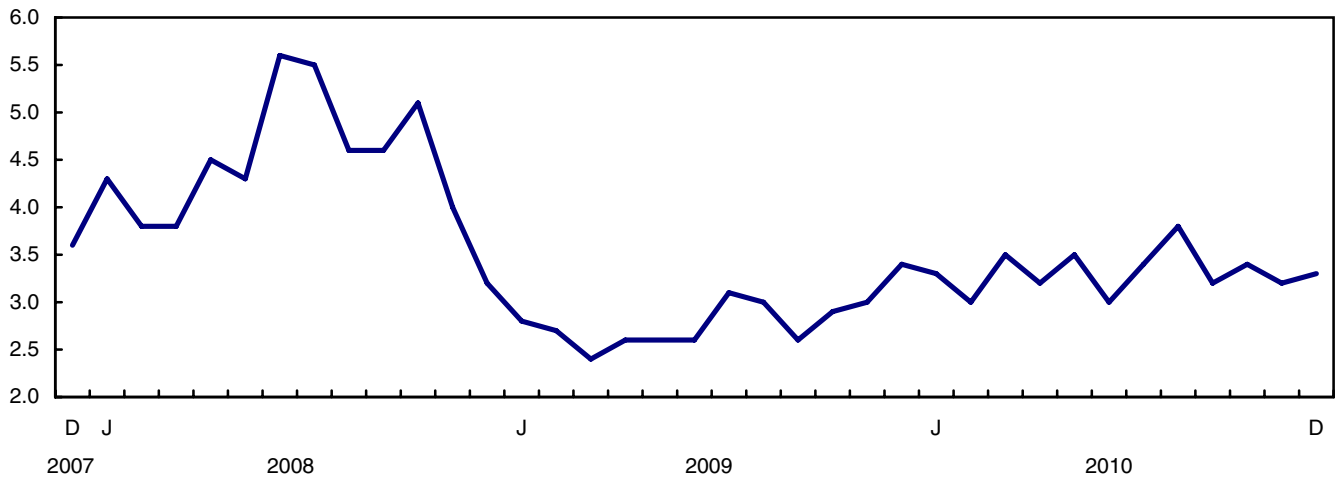
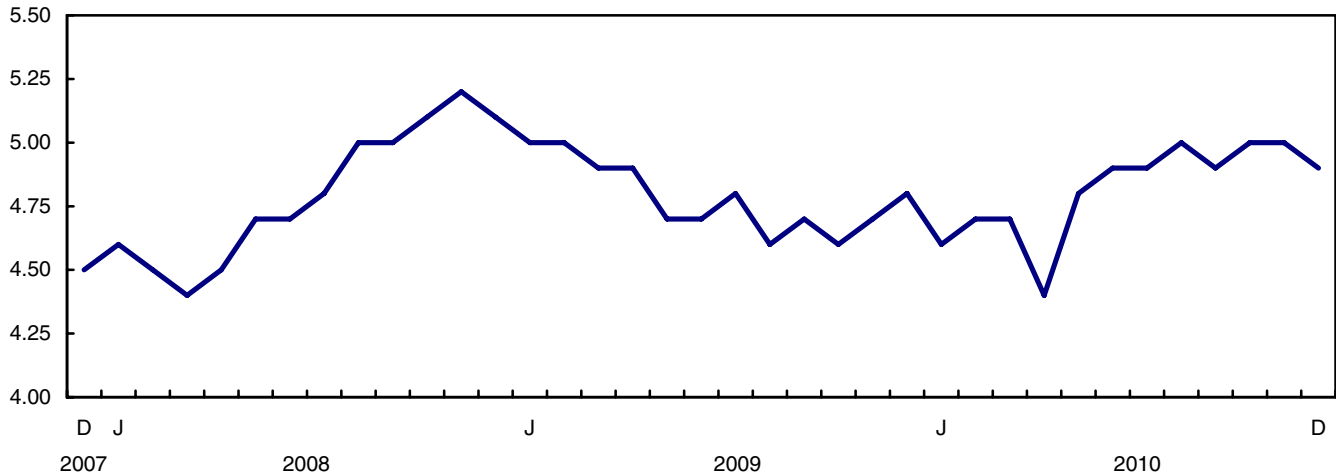


Chart 4
Imports of other consumer goods, seasonally adjusted, on a balance of payments basis

billions of dollars



Text table 1
Merchandise trade by principal trading area, balance of payments basis, seasonally adjusted

	November 2010	December 2010	Change	Year to date			December 2010/ December 2009		
				2009		Change			
				2009	2010				
millions of dollars	percent		millions of dollars	percent					
Export to									
United States	24,088	26,680	2,593	10.8	271,174	296,175	25,002	9.2	7.5
Japan	857	924	67	7.9	8,865	9,703	838	9.5	34.1
European Union ¹	3,971	3,793	-178	-4.5	32,071	37,054	4,983	15.5	52.1
Other Organisation for Economic Co-operation and Development ²	1,403	1,735	333	23.7	16,699	18,348	1,649	9.9	28.7
Other countries	4,115	4,651	536	13.0	40,720	44,191	3,472	8.5	35.3
Total	34,433	37,784	3,351	9.7	369,529	405,472	35,943	9.7	15.2
Imports from									
United States	21,101	21,590	489	2.3	236,289	259,622	23,333	9.9	6.5
Japan	821	841	20	2.5	9,327	10,011	684	7.3	0.0
European Union ¹	3,585	3,413	-172	-4.8	38,772	40,036	1,264	3.3	-2.6
Other Organisation for Economic Co-operation and Development ²	2,438	2,465	27	1.1	25,973	29,085	3,112	12.0	-2.6
Other countries	6,603	6,476	-127	-1.9	63,735	73,879	10,144	15.9	18.3
Total	34,548	34,785	237	0.7	374,097	412,633	38,536	10.3	6.7
Balance									
United States	2,986	5,091	2,104	...	34,885	36,554	1,669
Japan	36	83	47	...	-462	-308	154
European Union ¹	385	380	-6	...	-6,701	-2,983	3,719
Other Organisation for Economic Co-operation and Development ²	-1,035	-730	306	...	-9,274	-10,736	-1,463
Other countries	-2,487	-1,825	663	...	-23,016	-29,688	-6,672
Total	-115	2,999	3,114	...	-4,568	-7,161	-2,593

1. European Union includes: Austria, Belgium, Bulgaria, Cyprus, Czech Republic, Denmark, Estonia, Finland, France, Germany, Greece, Hungary, Ireland, Italy, Latvia, Lithuania, Luxembourg, Malta, Netherlands, Poland, Portugal, Romania, Slovakia, Slovenia, Spain, Sweden and United Kingdom.
2. Other Organisation for Economic Co-operation and Development includes: Australia, Canada, Iceland, Mexico, New Zealand, Norway, South Korea, Switzerland and Turkey.

Text table 2
Reconciliation of customs and balance of payments trade data, not seasonally adjusted

	2010						2009
	December	November	October	September	August	July	Annual
	millions of dollars						
Exports							
Customs basis	36,014	34,231	34,317	33,313	33,281	31,038	359,866
Balance of payments adjustments	993	1,060	551	-43	256	693	9,663
Valuation and residency							
Inland freight	592	546	582	581	542	546	6,214
Other valuation and residency	-174	-682	-850	-851	-829	-751	-7,606
Timing	0	2	62	25	13	-39	-163
Coverage	575	1,194	757	202	530	937	11,218
Balance of payments basis	37,007	35,291	34,868	33,270	33,537	31,731	369,529
Imports							
Customs basis	32,719	34,692	35,985	35,836	35,073	33,168	365,155
Balance of payments adjustments	811	825	675	569	1,144	864	8,942
Valuation and residency							
Inland freight	697	739	759	758	756	733	7,728
Other valuation and residency	-7	-30	15	-18	-21	-17	207
Timing	0	0	0	0	0	0	0
Coverage	121	116	-99	-171	409	148	1,007
Balance of payments basis	33,530	35,517	36,660	36,405	36,217	34,032	374,097

Related products

Selected publications from Statistics Canada

65-208-X	International Merchandise Trade Annual Review
65-506-X	A Profile of Canadian Exporters
65F0013X	Canadian International Merchandise Trade Database
65F0019X	A Database for Analysis of International Markets
65F0020X	Data Integration - International Trade Data and Manufacturing Shipments Data

Selected CANSIM tables from Statistics Canada

228-0001	Merchandise imports and exports, by major groups and principal trading areas for all countries, monthly
228-0002	Merchandise imports and exports, by major groups and principal trading areas for all countries, quarterly
228-0003	Merchandise imports and exports, by major groups and principal trading areas for all countries, annual
228-0033	Imports, customs-based, by province of clearance, monthly
228-0034	Domestic exports, customs-based, by province of origin, monthly
228-0041	Merchandise imports and exports by sector and sub-sector, customs and balance of payments basis, for all countries, monthly
228-0042	Merchandise imports and exports by sector and sub-sector, customs and balance of payments basis, for all countries, quarterly
228-0043	Merchandise imports and exports by sector and sub-sector, customs and balance of payments basis, for all countries, annual
228-0047	Merchandise imports and exports balance of payments and customs-based price and volume indexes for all countries, monthly
228-0048	Merchandise imports and exports balance of payments and customs-based price and volume indexes for all countries, quarterly
228-0049	Merchandise imports and exports balance of payments and customs-based price and volume indexes for all countries, annual

228-0050	Merchandise imports and exports customs-based price indexes, Canada and United States trade, and Standard International Trade Classification (SITC revision 3) price indexes for all countries and United States, monthly
228-0051	Merchandise imports and exports customs-based price indexes, Canada and United States trade, and Standard International Trade Classification (SITC revision 3) price indexes for all countries and United States, quarterly
228-0052	Merchandise imports and exports customs-based price indexes, Canada and United States trade, and Standard International Trade Classification (SITC revision 3) price indexes for all countries and United States, annual
228-0053	Merchandise import and export price and volume indexes by sector and sub-sector, customs and balance of payments basis, for all countries, monthly
228-0054	Merchandise import and export price and volume indexes by sector and sub-sector, customs and balance of payments basis, for all countries, quarterly
228-0055	Merchandise import and export price and volume indexes by sector and sub-sector, customs and balance of payments basis, for all countries, annual
228-0056	Merchandise imports and exports by sector, balance of payments basis, for all countries, seasonally adjusted, Fisher formula, monthly
228-0057	Merchandise imports and exports by sector, balance of payments basis, for all countries, seasonally adjusted, Fisher formula, quarterly

Selected surveys from Statistics Canada

2201	Canadian International Merchandise Trade (Customs Basis)
2202	Canadian International Merchandise Trade (Balance of Payments Basis)
2203	International Trade Price Indexes

Selected summary tables from Statistics Canada

- *Canada: Economic and financial data*
- *Imports, exports and trade balance of goods on a balance-of-payments basis, by country or country grouping*
- *Exports of goods on a balance-of-payments basis*

- *Imports of goods on a balance-of-payments basis*
- *Merchandise trade of Canada (monthly)*
- *Economic indicators, by province and territory (monthly and quarterly)*
- *Latest statistics (monthly)*

Statistical tables

Table 1-1
Merchandise trade of Canada, balance of payments basis, seasonally adjusted — Current dollars

	Exports	Imports	Trade balance	Period to period change		
				Exports	Imports	Balance
	millions of dollars			percent		millions of dollars
2006	453,952	404,345	49,606	0.0	0.0	0
2007	463,120	415,683	47,437	2.0	2.8	-2,169
2008	489,995	443,752	46,244	5.8	6.8	-1,194
2009	369,529	374,097	-4,568	-24.6	-15.7	-50,812
2010	405,472	412,633	-7,161	9.7	10.3	-2,593
2008						
First quarter	117,294	104,743	12,551	6.0	3.2	3,321
Second quarter	127,735	111,640	16,095	8.9	6.6	3,544
Third quarter	129,499	115,116	14,383	1.4	3.1	-1,712
Fourth quarter	115,468	112,252	3,215	-10.8	-2.5	-11,168
2009						
First quarter	95,769	95,366	403	-17.1	-15.0	-2,812
Second quarter	88,008	90,028	-2,019	-8.1	-5.6	-2,422
Third quarter	90,377	93,765	-3,388	2.7	4.2	-1,369
Fourth quarter	95,375	94,939	436	5.5	1.3	3,824
2010						
First quarter	99,417	98,723	693	4.2	4.0	257
Second quarter	100,290	102,916	-2,626	0.9	4.2	-3,319
Third quarter	99,388	106,314	-6,926	-0.9	3.3	-4,300
Fourth quarter	106,378	104,680	1,697	7.0	-1.5	8,624
2009						
January	30,921	32,192	-1,272	-10.5	-8.9	-483
February	32,599	32,133	466	5.4	-0.2	1,737
March	32,249	31,040	1,209	-1.1	-3.4	743
April	30,231	30,774	-543	-6.3	-0.9	-1,752
May	28,424	29,797	-1,373	-6.0	-3.2	-830
June	29,353	29,456	-104	3.3	-1.1	1,269
July	31,048	31,952	-904	5.8	8.5	-800
August	29,419	31,099	-1,680	-5.2	-2.7	-777
September	29,910	30,714	-804	1.7	-1.2	876
October	31,128	30,708	420	4.1	0.0	1,224
November	31,462	31,616	-154	1.1	3.0	-573
December	32,785	32,615	170	4.2	3.2	324
2010						
January	32,955	32,195	760	0.5	-1.3	590
February	33,326	32,801	525	1.1	1.9	-235
March	33,136	33,728	-592	-0.6	2.8	-1,117
April	32,876	32,956	-81	-0.8	-2.3	511
May	34,324	35,027	-703	4.4	6.3	-623
June	33,091	34,933	-1,842	-3.6	-0.3	-1,138
July	32,994	35,467	-2,473	-0.3	1.5	-631
August	33,625	35,711	-2,085	1.9	0.7	387
September	32,768	35,137	-2,368	-2.5	-1.6	-283
October	34,161	35,347	-1,186	4.2	0.6	1,182
November	34,433	34,548	-115	0.8	-2.3	1,071
December	37,784	34,785	2,999	9.7	0.7	3,114

Note(s): Because of rounding, monthly data may not add up to quarterly data and quarterly data may not add up to annual data.

Table 1-2
Merchandise trade of Canada, balance of payments basis, seasonally adjusted — Constant dollars, 2002

	Exports	Imports	Trade balance	Period to period change	
				Exports	Imports
	millions of dollars			percent	
2006	442,729	457,196	-14,466	0.0	0.0
2007	449,015	484,005	-34,990	1.4	5.9
2008	415,119	485,902	-70,783	-7.5	0.4
2009	345,911	405,261	-59,350	-16.7	-16.6
2010	375,725	468,196	-92,470	8.6	15.5
2008					
First quarter	107,071	123,094	-16,023	-2.6	-1.2
Second quarter	106,872	125,669	-18,797	-0.2	2.1
Third quarter	104,062	123,918	-19,856	-2.6	-1.4
Fourth quarter	97,114	113,221	-16,107	-6.7	-8.6
2009					
First quarter	87,218	97,521	-10,303	-10.2	-13.9
Second quarter	83,055	96,718	-13,663	-4.8	-0.8
Third quarter	86,329	104,265	-17,935	3.9	7.8
Fourth quarter	89,308	106,757	-17,449	3.5	2.4
2010					
First quarter	91,446	111,046	-19,600	2.4	4.0
Second quarter	94,270	117,282	-23,012	3.1	5.6
Third quarter	93,589	120,350	-26,761	-0.7	2.6
Fourth quarter	96,421	119,518	-23,098	3.0	-0.7
2009					
January	27,994	33,229	-5,235	-9.4	-7.4
February	29,778	32,701	-2,923	6.4	-1.6
March	29,446	31,592	-2,145	-1.1	-3.4
April	28,359	31,963	-3,604	-3.7	1.2
May	27,195	32,360	-5,165	-4.1	1.2
June	27,502	32,395	-4,893	1.1	0.1
July	29,630	35,032	-5,402	7.7	8.1
August	28,012	34,860	-6,847	-5.5	-0.5
September	28,687	34,373	-5,686	2.4	-1.4
October	29,629	34,757	-5,128	3.3	1.1
November	29,376	35,625	-6,249	-0.9	2.5
December	30,304	36,375	-6,071	3.2	2.1
2010					
January	30,325	36,340	-6,014	0.1	-0.1
February	30,372	36,884	-6,512	0.2	1.5
March	30,749	37,822	-7,073	1.2	2.5
April	30,993	37,920	-6,927	0.8	0.3
May	31,942	39,579	-7,637	3.1	4.4
June	31,335	39,783	-8,448	-1.9	0.5
July	31,083	40,060	-8,977	-0.8	0.7
August	31,696	40,434	-8,739	2.0	0.9
September	30,810	39,855	-9,045	-2.8	-1.4
October	31,832	40,338	-8,506	3.3	1.2
November	31,257	39,531	-8,274	-1.8	-2.0
December	33,332	39,649	-6,317	6.6	0.3

Note(s): Because of rounding, monthly data may not add up to quarterly data and quarterly data may not add up to annual data.

Table 1-3
Merchandise trade of Canada, balance of payments basis, seasonally adjusted — Price indices (Laspeyres)

	2002=100			Period to period change		
	Exports	Imports	Terms of trade	Exports	Imports	Terms of trade
	price indices (Laspeyres)			percent		
2006	105.1	92.5	113.6	0.0	0.0	0.0
2007	107.1	91.4	117.1	1.9	-1.2	3.1
2008	116.3	97.5	119.3	8.6	6.6	2.0
2009	105.4	97.1	108.6	-9.4	-0.4	-9.0
2010	106.6	94.8	112.4	1.1	-2.4	3.5
2008						
First quarter	111.2	90.1	123.4	5.6	3.1	2.5
Second quarter	118.5	94.7	125.1	6.6	5.1	1.5
Third quarter	122.1	100.9	121.0	3.1	6.6	-3.5
Fourth quarter	113.7	104.1	109.2	-6.9	3.2	-10.1
2009						
First quarter	109.5	101.5	107.8	-3.7	-2.5	-1.2
Second quarter	104.6	97.9	106.8	-4.5	-3.6	-0.9
Third quarter	102.6	95.2	107.8	-1.9	-2.7	0.9
Fourth quarter	105.7	93.8	112.7	3.0	-1.5	4.5
2010						
First quarter	107.1	94.3	113.6	1.4	0.6	0.8
Second quarter	106.3	94.1	112.9	-0.8	-0.2	-0.6
Third quarter	106.0	95.3	111.2	-0.3	1.3	-1.6
Fourth quarter	106.8	95.4	112.0	0.7	0.0	0.7
2009						
January	109.0	100.4	108.5	-1.7	-2.1	0.4
February	109.1	101.4	107.6	0.1	0.9	-0.8
March	109.1	102.8	106.1	-0.1	1.4	-1.4
April	106.4	100.8	105.6	-2.4	-1.9	-0.5
May	104.0	97.0	107.2	-2.3	-3.8	1.5
June	103.5	95.9	107.9	-0.4	-1.1	0.7
July	103.5	96.3	107.5	0.0	0.4	-0.4
August	103.3	94.8	109.0	-0.2	-1.6	1.3
September	103.4	94.5	109.5	0.1	-0.3	0.4
October	104.3	93.2	111.9	0.8	-1.4	2.2
November	105.6	93.9	112.5	1.3	0.8	0.6
December	106.3	94.2	112.9	0.6	0.3	0.3
2010						
January	106.3	93.7	113.4	0.0	-0.5	0.5
February	108.0	95.0	113.6	1.6	1.4	0.2
March	106.4	94.1	113.1	-1.5	-1.0	-0.5
April	105.5	92.8	113.6	-0.9	-1.3	0.5
May	106.7	94.8	112.6	1.2	2.1	-0.9
June	105.9	94.8	111.6	-0.8	0.0	-0.9
July	105.7	95.3	110.8	-0.2	0.5	-0.7
August	106.4	95.8	111.0	0.7	0.5	0.2
September	106.8	94.9	112.6	0.4	-1.0	1.4
October	106.6	95.0	112.2	-0.3	0.1	-0.3
November	107.6	95.6	112.6	0.9	0.6	0.3
December	108.6	95.6	113.6	0.9	0.0	0.9

Note(s): Because of rounding, monthly data may not add up to quarterly data and quarterly data may not add up to annual data.

Table 2-1
Exports by commodity groupings, balance of payments basis, seasonally adjusted — Current dollars

	November	December	Change	Year to date			December 2010/ December 2009		
	2010	2010		2009	2010	Change			
	millions of dollars		percent		millions of dollars		percent		
Total	34,433	37,784	3,351	9.7	369,529	405,472	35,943	9.7	15.2
Agricultural and fishing products	3,213	3,457	244	7.6	37,260	36,925	-335	-0.9	18.7
Wheat	388	477	89	22.9	5,824	4,437	-1,388	-23.8	24.5
Other agricultural and fishing products	2,825	2,980	155	5.5	31,436	32,488	1,053	3.3	17.8
Live animals	104	104	0	-0.3	1,641	1,686	44	2.7	-9.1
Fish and fish preparations	344	369	24	7.1	3,931	4,190	259	6.6	11.0
Barley	36	38	2	4.3	444	316	-128	-28.9	60.3
Wheat flour	7	7	0	-2.3	87	81	-5	-6.3	-5.9
Other cereals unmilled	94	110	15	16.2	508	621	113	22.2	342.5
Other cereal preparations	238	238	0	-0.1	2,934	2,784	-150	-5.1	13.1
Meat and meat preparations	386	393	7	1.9	4,368	4,704	336	7.7	11.6
Alcoholic beverages	60	62	2	2.9	741	744	3	0.4	-1.7
Other food, feed, beverages and tobacco	949	997	48	5.1	10,979	11,318	339	3.1	11.9
Rapeseed	335	387	52	15.6	3,472	3,395	-77	-2.2	62.3
Other crude vegetable products	272	277	5	2.0	2,330	2,648	319	13.7	1.2
Energy products	6,870	8,593	1,723	25.1	79,855	88,574	8,719	10.9	-0.1
Crude petroleum	4,010	4,979	969	24.2	42,503	48,137	5,634	13.3	-4.3
Natural gas	909	1,074	165	18.2	15,749	15,417	-332	-2.1	-24.6
Other energy products	1,952	2,540	588	30.1	21,603	25,020	3,417	15.8	28.5
Coal and other bituminous substances	368	569	201	54.8	4,328	5,184	856	19.8	58.8
Petroleum and coal products	1,429	1,876	446	31.2	14,892	17,914	3,021	20.3	33.3
Electricity	155	95	-59	-38.3	2,383	1,922	-460	-19.3	-55.0
Forestry products	1,828	2,005	177	9.7	19,501	21,837	2,336	12.0	23.5
Lumber and sawmill products	713	766	54	7.5	6,768	8,109	1,341	19.8	26.1
Other crude wood products	60	69	8	14.0	532	674	142	26.8	37.3
Lumber	455	494	40	8.7	3,900	5,018	1,118	28.7	33.4
Other wood fabricated materials	198	203	6	2.8	2,336	2,416	80	3.4	8.8
Wood pulp and other wood products	514	621	106	20.7	4,580	6,305	1,725	37.7	50.3
Newsprint and other paper and paperboard	601	618	17	2.8	8,153	7,424	-729	-8.9	2.4
Newsprint paper	317	317	0	0.1	4,185	3,758	-427	-10.2	8.5
Other paper and paperboard	284	301	17	5.9	3,968	3,665	-303	-7.6	-3.2
Industrial goods and materials	9,660	10,332	672	7.0	79,172	99,542	20,370	25.7	51.9
Metal ores	1,263	1,459	196	15.5	10,281	12,952	2,671	26.0	68.7
Iron ores, concentrates and scrap	540	479	-62	-11.4	4,464	4,645	180	4.0	27.3
Copper ores, concentrates and scrap	240	358	118	49.0	1,792	2,538	745	41.6	103.7
Nickel ores, concentrates and scrap	182	311	130	71.3	1,552	2,841	1,288	83.0	290.6
Zinc ores, concentrates and scrap	7	40	33	477.2	234	277	43	18.3	310.6
Other ores, concentrates and scrap	294	271	-23	-7.7	2,237	2,651	414	18.5	21.2
Chemicals, plastics and fertilizers	2,604	2,754	150	5.8	25,606	30,108	4,502	17.6	26.2
Inorganic chemicals	440	489	49	11.1	4,074	4,584	510	12.5	43.7
Organic chemicals	517	540	24	4.6	4,789	6,240	1,450	30.3	26.2
Fertilizers and fertilizer materials	518	578	60	11.5	4,622	5,982	1,360	29.4	38.9
Synthetic rubber and plastics	870	888	17	2.0	9,257	10,173	917	9.9	20.2
Other chemical products	259	260	1	0.2	2,864	3,129	265	9.3	0.4

Table 2-1 – continued

Exports by commodity groupings, balance of payments basis, seasonally adjusted — Current dollars

	November	December	Change		Year to date			December 2010/ December 2009	
	2010	2010			2009	2010	Change		
	millions of dollars		percent		millions of dollars			percent	
Metals and alloys	4,225	4,698	474	11.2	28,029	39,174	11,146	39.8	78.7
Primary iron and steel	90	64	-25	-28.0	566	1,191	625	110.6	-21.6
Steel bars, rods, plates, sheets	303	335	32	10.5	2,874	3,596	722	25.1	28.7
Other iron and steel and alloys	220	224	4	1.8	2,298	2,667	368	16.0	11.8
Aluminum including alloys	757	625	-132	-17.4	5,982	7,432	1,450	24.2	14.6
Copper and alloys	191	188	-3	-1.5	2,219	2,624	405	18.2	-16.5
Nickel and alloys	305	295	-10	-3.3	1,905	2,234	329	17.3	92.4
Precious metals and alloys	2,181	2,743	562	25.8	10,148	17,030	6,882	67.8	190.4
Zinc and alloys	87	120	33	38.1	1,116	1,324	207	18.6	-9.5
Other non-ferrous metals and alloys	92	105	13	14.0	921	1,076	156	16.9	22.3
Other industrial goods and materials	1,569	1,421	-148	-9.5	15,258	17,309	2,051	13.4	26.0
Asbestos unmanufactured	5	4	-1	-10.5	69	56	-13	-18.7	-9.7
Other crude animal products	69	74	5	6.8	639	901	261	40.9	32.1
Other crude non-metallic minerals	360	119	-241	-66.8	2,654	3,507	853	32.2	-3.6
Other crude materials, inedible	64	69	6	8.8	574	724	150	26.1	31.0
Metal fabricated basic products	345	354	9	2.6	4,072	4,169	97	2.4	8.2
Textile fabricated materials	188	194	6	3.0	2,074	2,179	105	5.1	11.0
Non-metallic mineral basic products	145	144	-1	-0.8	1,930	1,861	-69	-3.6	4.5
Other fabricated materials	393	462	69	17.5	3,247	3,913	667	20.5	84.4
Machinery and equipment	6,387	6,910	522	8.2	80,438	75,998	-4,440	-5.5	13.5
Industrial and agricultural machinery	1,530	1,600	70	4.6	19,201	18,010	-1,191	-6.2	12.0
Industrial machinery	1,372	1,438	66	4.8	17,150	16,177	-973	-5.7	11.9
Agricultural machinery includ. tractors	158	162	4	2.6	2,051	1,833	-218	-10.6	13.2
Aircraft and other transportation equipment	1,428	1,909	481	33.7	19,567	17,726	-1,841	-9.4	23.3
Aircraft, engines, parts	1,080	1,548	468	43.3	15,505	13,805	-1,700	-11.0	25.6
Other transportation equipment	347	361	13	3.8	4,062	3,921	-141	-3.5	14.0
Other machinery and equipment	3,430	3,401	-29	-0.8	41,669	40,261	-1,408	-3.4	9.4
Television, telecommunication equipment	666	584	-82	-12.4	8,580	7,737	-843	-9.8	9.0
Office machines and equipment	356	357	1	0.3	4,734	4,274	-460	-9.7	-0.9
Other equipment and tools	1,568	1,607	39	2.5	18,869	18,533	-336	-1.8	10.5
Other end products, inedible	839	853	13	1.6	9,487	9,718	231	2.4	12.4
Automotive products	4,367	4,373	6	0.1	43,815	56,790	12,975	29.6	-1.4
Passenger autos and chassis	2,797	2,807	10	0.3	26,283	37,603	11,320	43.1	-4.6
Trucks and other motor vehicles	207	204	-3	-1.4	3,762	2,309	-1,453	-38.6	-4.0
Motor vehicle parts	1,363	1,362	-1	0.0	13,770	16,879	3,109	22.6	6.3
Other consumer goods	1,346	1,335	-11	-0.8	17,935	16,429	-1,505	-8.4	-3.1
Special transactions trade	309	282	-27	-8.8	6,412	3,967	-2,445	-38.1	-45.1
Unallocated balance of payments adjustments	452	497	45	10.0	5,141	5,409	268	5.2	16.4

Table 2-2
Exports by commodity groupings, balance of payments basis, seasonally adjusted — Constant dollars, 2002

	November	December	Change	Year to date			December 2010/ December 2009		
	2010	2010		2009	2010	Change			
	millions of dollars		percent		millions of dollars		percent		
Total	31,257	33,332	2,075	6.6	345,911	375,725	29,814	8.6	10.0
Agricultural and fishing products	3,114	3,275	160	5.1	36,133	37,689	1,556	4.3	7.3
Wheat	355	419	64	18.0	4,949	4,537	-412	-8.3	13.5
Other agricultural and fishing products	2,759	2,855	96	3.5	31,184	33,151	1,967	6.3	6.4
Live animals	114	109	-4	-3.8	1,894	1,896	2	0.1	-24.2
Fish and fish preparations	423	456	33	7.8	4,685	5,186	501	10.7	4.4
Barley	33	40	7	22.3	369	305	-64	-17.3	62.7
Wheat flour	7	7	0	-3.7	79	77	-2	-2.9	-8.1
Other cereals unmilled	77	87	10	13.1	494	612	118	23.8	209.1
Other cereal preparations	211	211	0	-0.1	2,404	2,485	81	3.4	13.8
Meat and meat preparations	412	420	8	2.0	4,978	5,219	241	4.8	-3.4
Alcoholic beverages	115	120	5	4.3	1,300	1,432	132	10.1	3.5
Other food, feed, beverages and tobacco	894	934	40	4.5	9,914	10,657	743	7.5	10.3
Rapeseed	264	261	-3	-1.0	3,104	3,019	-85	-2.8	20.2
Other crude vegetable products	209	210	1	0.3	1,963	2,265	302	15.4	-13.0
Energy products	4,494	5,236	742	16.5	54,092	54,252	160	0.3	6.2
Crude petroleum	2,142	2,326	183	8.6	23,916	23,494	-422	-1.8	0.1
Natural gas	1,251	1,640	389	31.1	16,127	16,605	477	3.0	25.4
Other energy products	1,101	1,270	169	15.4	14,049	14,153	104	0.7	-2.1
Coal and other bituminous substances	111	179	68	61.5	1,468	1,797	329	22.4	7.5
Petroleum and coal products	759	956	197	25.9	9,531	10,077	546	5.7	14.6
Electricity	231	135	-96	-41.5	3,049	2,279	-770	-25.3	-54.4
Forestry products	2,227	2,466	240	10.8	24,382	26,582	2,200	9.0	16.9
Lumber and sawmill products	918	1,007	89	9.7	9,418	10,419	1,001	10.6	17.0
Other crude wood products	63	83	20	30.9	716	848	132	18.4	15.9
Lumber	623	682	59	9.4	6,036	6,933	897	14.9	19.1
Other wood fabricated materials	232	243	11	4.6	2,666	2,638	-28	-1.1	11.7
Wood pulp and other wood products	627	748	121	19.3	6,401	7,540	1,139	17.8	40.3
Newsprint and other paper and paperboard	682	711	30	4.3	8,563	8,623	61	0.7	-0.6
Newsprint paper	364	370	6	1.6	4,303	4,463	160	3.7	5.4
Other paper and paperboard	318	341	24	7.5	4,259	4,160	-99	-2.3	-6.3
Industrial goods and materials	5,900	6,041	140	2.4	59,734	66,495	6,761	11.3	23.1
Metal ores	518	605	87	16.7	5,786	6,075	289	5.0	18.5
Iron ores, concentrates and scrap	193	175	-17	-9.1	1,930	1,948	19	1.0	-15.0
Copper ores, concentrates and scrap	73	102	29	39.7	777	835	58	7.5	65.1
Nickel ores, concentrates and scrap	76	127	51	66.5	1,036	1,276	240	23.2	205.8
Zinc ores, concentrates and scrap	4	21	17	465.0	154	149	-5	-3.1	325.3
Other ores, concentrates and scrap	172	180	7	4.2	1,890	1,866	-24	-1.3	-8.3
Chemicals, plastics and fertilizers	1,840	1,889	49	2.7	19,682	21,731	2,049	10.4	13.8
Inorganic chemicals	187	202	15	7.9	2,109	2,240	131	6.2	12.2
Organic chemicals	303	325	22	7.1	3,720	3,714	-6	-0.2	12.9
Fertilizers and fertilizer materials	214	258	45	20.9	1,646	2,624	978	59.4	60.1
Synthetic rubber and plastics	828	808	-20	-2.4	8,847	9,412	566	6.4	12.2
Other chemical products	308	296	-12	-3.9	3,361	3,741	380	11.3	-5.0

Table 2-2 – continued

Exports by commodity groupings, balance of payments basis, seasonally adjusted — Constant dollars, 2002

	November	December	Change	Year to date			December 2010/ December 2009		
	2010	2010		2009	2010	Change			
	millions of dollars		percent		millions of dollars		percent		
Metals and alloys	2,256	2,363	108	4.8	19,634	23,159	3,525	18.0	41.8
Primary iron and steel	58	40	-19	-32.1	410	803	393	95.8	-38.4
Steel bars, rods, plates, sheets	258	291	33	12.9	2,299	3,001	701	30.5	30.2
Other iron and steel and alloys	186	188	3	1.5	1,991	2,228	237	11.9	4.0
Aluminum including alloys	736	618	-118	-16.1	6,933	7,591	658	9.5	11.8
Copper and alloys	56	54	-2	-3.2	1,005	842	-164	-16.3	-29.9
Nickel and alloys	136	125	-11	-8.1	1,316	1,080	-235	-17.9	44.8
Precious metals and alloys	736	933	197	26.8	4,376	6,357	1,982	45.3	147.8
Zinc and alloys	48	65	17	35.3	823	764	-59	-7.1	-7.7
Other non-ferrous metals and alloys	42	49	7	16.5	481	492	11	2.4	39.9
Other industrial goods and materials	1,287	1,184	-103	-8.0	14,632	15,530	898	6.1	10.9
Asbestos unmanufactured	5	4	0	-4.6	71	56	-15	-21.2	-11.0
Other crude animal products	69	74	5	7.4	867	926	59	6.8	4.5
Other crude non-metallic minerals	246	83	-163	-66.2	3,492	3,346	-145	-4.2	-46.6
Other crude materials, inedible	56	61	4	7.9	563	662	99	17.6	11.5
Metal fabricated basic products	276	282	5	1.9	3,221	3,363	142	4.4	7.2
Textile fabricated materials	198	196	-2	-0.9	2,065	2,310	245	11.9	3.2
Non-metallic mineral basic products	119	118	0	-0.3	1,570	1,530	-40	-2.6	2.4
Other fabricated materials	318	365	47	14.7	2,783	3,337	554	19.9	71.5
Machinery and equipment	7,083	7,694	611	8.6	86,641	84,755	-1,886	-2.2	13.6
Industrial and agricultural machinery	1,431	1,497	66	4.6	17,548	16,780	-768	-4.4	12.8
Industrial machinery	1,285	1,345	60	4.7	15,694	15,087	-607	-3.9	12.4
Agricultural machinery includ. tractors	146	152	5	3.7	1,854	1,693	-161	-8.7	15.6
Aircraft and other transportation equipment	1,757	2,346	589	33.5	23,102	21,850	-1,253	-5.4	24.0
Aircraft, engines, parts	1,421	1,999	579	40.7	19,147	17,982	-1,165	-6.1	25.4
Other transportation equipment	337	347	10	3.0	3,955	3,868	-87	-2.2	16.4
Other machinery and equipment	3,894	3,850	-44	-1.1	45,991	46,125	134	0.3	8.4
Television, telecommunication equipment	854	755	-99	-11.6	10,193	9,833	-360	-3.5	11.9
Office machines and equipment	918	925	8	0.8	10,474	10,721	247	2.4	7.0
Other equipment and tools	1,491	1,524	32	2.2	17,447	17,553	106	0.6	10.6
Other end products, inedible	632	647	15	2.4	7,877	8,018	141	1.8	2.0
Automotive products	5,893	6,000	107	1.8	53,996	75,812	21,816	40.4	1.4
Passenger autos and chassis	4,119	4,232	113	2.7	35,056	54,388	19,332	55.1	-0.5
Trucks and other motor vehicles	258	250	-7	-2.9	4,259	2,807	-1,452	-34.1	-0.8
Motor vehicle parts	1,517	1,518	1	0.1	14,681	18,618	3,937	26.8	7.6
Other consumer goods	1,293	1,281	-12	-0.9	17,208	15,771	-1,437	-8.4	-2.6
Special transactions trade	271	241	-30	-11.2	5,918	3,582	-2,336	-39.5	-49.3
Unallocated balance of payments adjustments	982	1,098	116	11.9	7,807	10,787	2,980	38.2	32.5

**Table 3-1
Domestic exports to selected countries, customs basis, not seasonally adjusted — December**

	Agricultural and fishing products	Energy products	Forestry products	Industrial goods	Machinery and equipment	Automotive products	Consumer goods	Special transactions trade	Total
millions of dollars									
United States									
2009	1,255.8	7,995.5	963.5	3,734.5	3,382.1	4,011.2	809.3	468.2	22,620.1
2010	1,395.9	7,873.7	1,043.0	5,443.4	3,510.0	3,871.3	750.3	213.1	24,100.8
Mexico									
2009	92.3	20.7	14.2	62.9	52.1	64.8	9.1	2.4	318.4
2010	171.6	9.0	13.6	85.2	52.2	59.1	2.9	0.1	393.8
Japan									
2009	222.9	87.0	97.8	122.4	35.3	4.4	6.2	2.1	577.9
2010	236.5	170.2	113.6	190.7	58.9	5.0	9.2	2.8	787.0
European Union									
Germany									
2009	37.2	24.9	9.7	100.4	118.3	2.9	12.6	2.4	308.4
2010	8.9	36.7	8.5	132.7	123.0	2.1	18.0	1.6	331.4
France									
2009	14.8	0.1	11.6	44.2	80.3	4.1	20.4	2.7	178.2
2010	12.3	0.0	10.2	45.8	115.0	3.7	23.3	1.6	211.9
United Kingdom									
2009	29.2	4.2	17.5	605.2	110.8	5.6	12.6	3.9	789.1
2010	29.1	2.8	16.1	1,115.1	406.3	4.0	11.3	8.8	1,593.6
Italy									
2009	52.9	13.3	21.3	25.2	23.7	0.3	5.1	4.6	146.3
2010	33.7	23.7	24.9	31.2	29.9	0.5	9.9	0.2	153.9
Other European Union									
2009	165.8	41.7	25.0	235.3	176.5	16.6	47.5	4.4	712.7
2010	239.8	71.8	21.3	260.2	352.5	12.1	45.4	2.8	1,005.9
Total									
2009	299.9	84.2	85.1	1,010.3	509.6	29.5	98.1	18.1	2,134.6
2010	323.8	135.0	80.9	1,585.1	1,026.5	22.4	108.0	14.9	3,296.7
Newly industrialized countries									
South Korea									
2009	28.5	54.5	29.2	85.9	37.5	6.5	3.1	0.5	245.7
2010	62.8	125.9	39.4	83.5	27.5	3.8	4.7	1.1	348.8
Hong Kong									
2009	68.2	0.1	8.0	32.9	18.1	0.6	6.3	1.9	136.1
2010	86.0	0.1	11.3	85.9	27.3	0.5	9.0	1.7	221.7
Taiwan									
2009	13.5	14.3	27.3	37.2	10.4	0.4	2.3	0.1	105.5
2010	18.0	0.1	21.4	48.7	13.3	0.0	2.0	0.1	103.6
Singapore									
2009	5.3	0.3	2.7	11.5	24.4	4.4	1.8	0.2	50.8
2010	7.5	0.4	0.8	15.9	27.2	2.0	2.8	1.6	58.2
Total									
2009	115.5	69.2	67.2	167.6	90.4	11.9	13.5	2.8	538.1
2010	174.2	126.5	72.9	234.0	95.4	6.3	18.4	4.5	732.3
Other countries									
2009	719.2	222.8	327.5	822.1	844.1	56.6	127.5	30.5	3,150.4
2010	913.9	347.2	601.5	1,516.5	986.7	68.5	103.0	20.9	4,558.2
Total									
2009	2,705.6	8,479.3	1,555.4	5,919.8	4,913.5	4,178.3	1,063.7	524.1	29,339.6
2010	3,216.0	8,661.7	1,925.5	9,054.9	5,729.7	4,032.8	991.8	256.3	33,868.7

Table 3-2
Domestic exports to selected countries, customs basis, not seasonally adjusted — Year to date, January to December

	Agricultural and fishing products	Energy products	Forestry products	Industrial goods	Machinery and equipment	Automotive products	Consumer goods	Special transactions trade	Total
millions of dollars									
United States									
2009	18,590.6	74,212.2	13,321.6	45,566.5	43,800.0	38,844.4	11,087.2	5,659.4	251,082.0
2010	18,518.0	85,854.9	13,673.3	55,695.7	40,741.8	51,720.0	9,525.8	3,145.8	278,875.3
Mexico									
2009	1,181.5	101.3	105.0	756.4	917.4	710.4	53.6	12.6	3,838.3
2010	1,391.5	96.9	136.7	1,021.1	752.4	821.4	70.1	4.7	4,294.7
Japan									
2009	3,137.4	1,779.0	1,082.8	1,252.1	604.5	48.0	143.4	24.2	8,071.4
2010	3,203.0	1,892.6	1,341.2	1,773.0	624.8	68.9	138.9	16.2	9,058.5
European Union									
Germany									
2009	224.1	192.0	126.5	852.3	1,781.6	41.8	157.3	24.5	3,400.0
2010	209.7	261.1	94.9	1,365.5	1,398.6	34.8	208.4	23.8	3,596.9
France									
2009	158.8	116.2	152.5	565.3	1,074.9	35.1	290.4	31.8	2,425.0
2010	160.2	30.5	137.8	486.3	935.0	37.7	266.6	17.7	2,071.8
United Kingdom									
2009	409.1	170.5	284.3	8,215.3	2,040.9	42.5	276.8	69.1	11,508.6
2010	348.8	95.1	212.5	12,165.2	2,218.3	52.4	199.1	74.5	15,365.8
Italy									
2009	458.6	138.0	271.3	245.3	472.8	8.6	68.4	12.7	1,675.8
2010	351.9	198.0	325.0	382.7	396.0	8.0	168.2	5.7	1,835.6
Other European Union									
2009	1,127.0	959.3	337.1	2,699.1	2,538.6	150.2	792.1	69.9	8,673.4
2010	1,342.1	778.6	306.8	3,388.8	2,604.1	169.7	579.2	46.2	9,215.4
Total									
2009	2,377.7	1,575.9	1,171.7	12,577.4	7,908.9	278.2	1,585.0	208.1	27,682.8
2010	2,412.7	1,363.2	1,077.0	17,788.5	7,552.1	302.7	1,421.5	167.9	32,085.6
Newly industrialized countries									
South Korea									
2009	321.3	998.0	344.8	1,025.2	504.5	52.6	46.6	11.7	3,304.6
2010	464.5	1,117.9	460.5	1,045.5	425.9	60.1	50.7	10.1	3,635.1
Hong Kong									
2009	402.3	0.4	89.9	470.5	299.0	8.5	59.4	13.2	1,343.1
2010	451.9	0.6	110.1	746.2	308.4	8.6	80.4	19.7	1,726.0
Taiwan									
2009	185.1	193.8	204.3	325.7	110.8	1.9	32.8	1.4	1,055.8
2010	172.7	142.3	247.6	495.6	137.9	2.6	40.4	1.3	1,240.4
Singapore									
2009	51.4	45.2	31.1	318.8	320.6	33.6	33.5	5.1	839.1
2010	61.4	5.8	17.5	176.6	328.2	20.4	41.6	12.6	664.0
Total									
2009	960.0	1,237.4	670.0	2,140.2	1,234.7	96.6	172.3	31.4	6,542.7
2010	1,150.5	1,266.5	835.7	2,463.9	1,200.5	91.7	213.1	43.6	7,265.5
Other countries									
2009	10,093.9	1,843.7	3,478.8	11,096.5	8,515.6	743.4	1,201.2	368.4	37,341.5
2010	9,239.5	2,296.7	5,198.3	14,047.0	8,565.1	694.6	1,417.1	279.5	41,737.8
Total									
2009	36,341.1	80,749.7	19,829.9	73,389.2	62,981.4	40,721.1	14,243.5	6,304.1	334,559.8
2010	35,915.2	92,770.9	22,262.2	92,789.2	59,437.1	53,699.3	12,786.5	3,657.6	373,318.0

Table 4
Domestic exports by country, customs basis, not seasonally adjusted

	December		January to December		Change
	2009	2010	2009	2010	January to December 2010/ January to December 2009
	millions of dollars				percent
North America					
Greenland	1.0	1.7	11.2	9.1	-18.5
Mexico	318.4	393.8	3,838.3	4,294.7	11.9
Saint Pierre and Miquelon	1.0	1.1	14.8	14.4	-2.5
United States	22,620.1	24,100.8	251,082.0	278,875.3	11.1
Total	22,940.4	24,497.4	254,946.3	283,193.6	11.1
Western Europe					
Andorra	0.0	0.0	0.1	0.1	4.0
Austria	34.6	11.7	369.3	350.7	-5.0
Belgium	146.6	176.1	1,814.8	2,012.2	10.9
Denmark	30.0	31.2	597.4	285.5	-52.2
Faeroe Islands	0.1	0.0	1.0	0.5	-55.0
Finland	23.4	24.8	297.1	374.4	26.0
France	178.2	211.9	2,425.0	2,071.8	-14.6
Germany	308.4	331.4	3,400.0	3,596.9	5.8
Gibraltar	0.1	0.0	17.2	25.1	45.8
Greece	6.9	8.8	102.0	109.2	7.1
Iceland	5.4	1.8	77.8	104.2	33.9
Italy	146.3	153.9	1,675.8	1,835.6	9.5
Luxembourg	27.5	1.6	62.6	51.3	-18.1
Malta	0.9	0.7	45.8	108.6	137.3
Netherlands	231.2	276.1	2,555.0	3,073.6	20.3
Norway	116.5	274.7	1,745.6	2,509.9	43.8
Portugal	44.2	11.7	193.7	268.4	38.6
Republic of Ireland (Eire)	35.4	24.7	519.5	313.6	-39.6
Spain	68.1	227.7	1,048.0	914.0	-12.8
Sweden	25.5	55.1	345.1	427.8	24.0
Switzerland	84.9	200.6	1,146.3	1,560.5	36.1
United Kingdom	789.1	1,593.6	11,508.6	15,365.8	33.5
Total	2,303.3	3,618.2	29,947.5	35,359.7	18.1
Other Europe					
Albania	4.5	8.0	18.7	31.2	67.2
Armenia	0.8	1.6	8.2	11.3	38.0
Azerbaijan	6.0	0.8	15.8	15.3	-3.1
Belarus	0.1	0.1	1.4	1.5	8.3
Bosnia and Herzegovina	0.5	0.2	3.1	4.5	47.1
Bulgaria	1.3	2.7	68.4	116.3	70.0
Croatia	2.0	4.9	99.2	92.2	-7.1
Czech Republic	7.2	9.2	127.4	110.6	-13.1
Estonia	2.1	1.4	29.1	21.1	-27.2
Georgia	2.9	3.1	16.9	18.7	10.7
Hungary	4.6	7.7	84.2	99.5	18.2
Kazakhstan	66.0	6.8	190.4	123.1	-35.3
Kyrgyzstan	0.3	0.4	3.6	5.0	39.5
Latvia	0.5	88.2	22.8	171.9	654.5
Lithuania	2.3	4.7	38.4	35.0	-8.9
Macedonia (Former Yugoslav Republic of Macedonia)	0.8	2.1	14.9	11.0	-26.7
Montenegro	0.3	0.2	2.2	1.7	-20.9
Poland	11.3	32.0	178.3	169.4	-5.0
Republic of Moldova	0.7	0.1	2.5	2.2	-12.3
Romania	5.3	3.5	84.4	91.7	8.7
Russian Federation	73.8	152.9	800.0	1,073.7	34.2
Serbia	1.4	0.4	17.8	7.1	-60.0
Slovakia	1.9	4.3	25.0	30.2	20.9
Slovenia	0.6	0.7	54.2	32.3	-40.4
Tajikistan	0.8	0.3	3.5	5.2	47.3
Turkmenistan	1.1	0.9	6.7	5.1	-23.0
Ukraine	9.5	27.9	100.2	145.2	44.9
Uzbekistan	2.3	0.5	15.0	5.8	-61.1
Total	210.8	365.4	2,032.2	2,438.2	20.0

Table 4 – continued

Domestic exports by country, customs basis, not seasonally adjusted

	December		January to December		Change
	2009	2010	2009	2010	January to December 2010/ January to December 2009
	millions of dollars				percent
Middle East					
Bahrain	2.5	2.7	36.6	62.3	70.3
Cyprus	1.3	1.4	11.2	48.0	328.2
Egypt	46.1	43.4	619.4	610.9	-1.4
Eritrea	0.1	0.0	2.2	2.3	2.5
Ethiopia	2.8	23.3	10.2	174.1	...
Iran	71.8	6.0	405.6	105.9	-73.9
Iraq	4.9	3.3	477.1	221.6	-53.5
Israel	31.5	38.7	304.2	359.1	18.0
Jordan	4.4	6.0	58.6	58.6	0.0
Kuwait	16.6	5.5	93.0	84.3	-9.3
Lebanon	98.5	3.9	184.3	60.7	-67.1
Libya	12.7	85.2	236.2	211.4	-10.5
Oman	8.7	12.4	112.4	98.9	-12.0
Qatar	5.0	3.4	207.6	77.6	-62.6
Saudi Arabia	79.6	155.7	1,110.6	908.5	-18.2
Somalia	0.0	0.0	2.9	2.3	-20.8
Sudan	19.7	19.7	110.3	116.7	5.7
Syria	3.5	5.1	46.0	57.6	25.2
Turkey	82.6	58.9	812.0	823.2	1.4
United Arab Emirates	78.5	80.5	1,157.2	1,008.5	-12.9
Yemen	2.0	1.1	25.9	17.9	-31.1
Total	572.5	556.5	6,023.7	5,110.4	-15.2
Other Africa					
Algeria	35.2	10.7	318.0	288.1	-9.4
Angola	3.4	5.3	66.3	189.5	185.8
Antarctica	0.0	0.0	1.3	0.2	-84.6
Benin	0.6	0.9	7.6	12.4	62.4
Botswana	0.4	0.1	4.1	3.6	-11.6
Burkina Faso	1.3	2.2	27.1	20.1	-25.9
Burundi	0.1	0.0	1.1	0.9	-18.3
Cameroon	0.5	6.3	32.2	28.0	-13.1
Cape Verde	0.1	0.1	1.4	1.0	-29.2
Central African Republic	0.0	0.0	0.7	0.1	-82.6
Chad	0.8	0.6	11.7	6.6	-43.7
Comoros	0.0	0.0	3.1	0.1	-97.2
Congo	1.5	1.1	23.4	16.0	-31.4
Democratic Republic of the Congo	1.8	1.1	16.1	12.8	-20.2
Djibouti	0.0	1.3	2.5	6.0	141.8
Equatorial Guinea	0.1	0.2	4.2	4.5	5.9
French Southern Territories	0.0	0.0	0.3	0.0	-81.7
Gabon	1.1	0.8	24.9	16.5	-33.7
Gambia	0.1	0.1	0.7	0.8	3.3
Ghana	12.2	18.2	156.3	169.3	8.3
Guinea	0.5	0.8	13.5	7.9	-41.4
Guinea-Bissau	0.0	0.0	0.0	0.0	1.2
Ivory Coast	2.7	2.7	23.2	19.4	-16.5
Kenya	7.4	5.7	64.7	67.7	4.6
Lesotho	0.0	0.0	0.2	0.1	-60.1
Liberia	0.1	0.8	4.0	11.7	193.1
Madagascar	5.5	2.2	54.4	44.7	-17.8
Malawi	0.3	0.2	4.2	3.5	-16.8
Mali	0.4	1.6	5.7	8.0	40.5
Mauritania	0.1	1.4	2.3	5.0	117.5
Mauritius	0.4	0.6	5.2	4.7	-8.8
Morocco	44.5	20.5	370.6	167.2	-54.9
Mozambique	2.4	1.4	7.5	12.5	65.6
Namibia	0.4	0.2	4.2	11.2	169.4
Niger	0.2	0.2	3.0	2.4	-18.0
Nigeria	7.1	12.9	196.8	199.5	1.3
Rwanda	0.0	0.0	3.2	1.0	-70.5
Saint Helena	0.0	0.0	0.1	0.0	-96.6
Sao Tome and Principe	0.0	0.0	0.1	0.0	-61.7
Senegal	0.9	2.2	33.8	25.6	-24.5
Seychelles	0.1	0.0	1.1	1.0	-7.5

Table 4 – continued

Domestic exports by country, customs basis, not seasonally adjusted

	December		January to December		Change
	2009	2010	2009	2010	January to December 2010/ January to December 2009
	millions of dollars				percent
Sierra Leone	0.4	0.6	4.6	9.6	111.1
South Africa	26.1	32.3	404.7	435.1	7.5
Swaziland	0.0	0.1	11.0	1.5	-86.7
Togo	1.2	1.8	18.3	11.1	-39.3
Tunisia	17.8	19.3	102.6	88.5	-13.8
Uganda	0.4	1.0	11.9	9.7	-18.6
United Republic of Tanzania	3.5	15.7	34.1	49.7	45.5
Western Sahara	0.0	0.0	0.1	0.0	-91.8
Zambia	0.9	2.3	9.4	27.4	191.5
Zimbabwe	0.1	0.8	8.0	5.6	-30.7
Total	182.5	176.1	2,105.6	2,007.6	-4.7
Other Asia					
Afghanistan	2.5	4.0	48.4	55.2	14.0
Bangladesh	33.1	26.0	625.4	592.6	-5.2
Bhutan	0.0	0.0	0.2	1.6	854.5
British Indian Ocean Territory	0.8	0.0	1.2	2.2	86.4
Brunei Darussalam	0.6	0.4	4.2	10.5	149.0
Cambodia	0.2	0.7	6.8	3.8	-43.8
China	829.7	1,731.3	10,936.2	12,865.9	17.6
Hong Kong	136.1	221.7	1,343.1	1,726.0	28.5
India	147.9	143.0	2,045.2	2,009.6	-1.7
Indonesia	91.8	125.4	953.0	1,035.5	8.7
Japan	577.9	787.0	8,071.4	9,058.5	12.2
Laos	0.3	0.5	2.6	2.7	1.7
Macao	0.3	0.3	13.9	2.3	-83.3
Malaysia	51.6	81.1	564.0	729.5	29.4
Maldives	0.2	0.2	11.1	4.6	-58.9
Mongolia	0.1	1.5	4.3	25.2	484.8
Myanmar	0.0	0.0	0.0	2.7	...
Nepal	0.8	0.1	3.9	5.3	36.9
North Korea	1.3	2.1	24.9	11.8	-52.5
Pakistan	18.4	71.3	400.9	539.4	34.6
Philippines	47.0	73.9	513.0	670.1	30.6
Singapore	50.8	58.2	839.1	664.0	-20.9
South Korea	245.7	348.8	3,304.6	3,635.1	10.0
Sri Lanka	27.8	56.1	332.4	346.4	4.2
Taiwan	105.5	103.6	1,055.8	1,240.4	17.5
Thailand	50.0	44.0	513.4	619.4	20.6
Timor-Leste	0.0	0.0	0.0	0.0	-77.3
Viet Nam	15.7	18.7	205.6	247.6	20.4
Total	2,436.2	3,900.0	31,824.7	36,108.0	13.5
Oceania					
American Samoa	0.2	0.1	1.1	1.4	27.6
Australia	169.1	130.6	1,636.7	1,598.2	-2.3
Christmas Island	0.0	0.0	0.3	0.9	238.8
Cocos (Keeling) Islands	0.0	0.0	0.2	0.1	-26.0
Cook Islands	0.0	0.0	0.1	0.1	-33.7
Fiji	0.1	0.0	5.7	3.3	-42.6
French Polynesia	0.6	0.6	10.4	11.6	11.9
Guam	0.1	0.2	1.8	1.8	-0.3
Heard Island and McDonald Islands	0.0	0.0	0.1	0.0	-98.2
Kiribati	0.0	0.0	0.1	0.1	-15.8
Nauru	0.0	0.0	0.1	1.3	...
New Caledonia	2.7	1.9	12.0	44.1	267.2
New Zealand	28.8	17.6	270.9	299.9	10.7
Norfolk Island	0.0	0.0	0.3	0.1	-72.7
Papua New Guinea	5.4	2.9	30.2	37.7	24.9
Pitcairn	0.0	0.0	0.2	0.1	-49.8
Samoa	0.0	0.0	0.4	0.3	-18.4
Solomon Islands	0.0	0.0	0.7	0.1	-89.8
Tonga	0.0	0.0	0.2	4.5	...
United States Minor Outlying Islands	1.8	0.7	12.3	14.6	18.6
Vanuatu	0.1	0.2	2.0	1.7	-14.7
Wallis and Futuna	0.0	0.0	0.0	0.0	-100.0
Total	208.8	154.9	1,985.5	2,021.8	1.8

Table 4 – continued

Domestic exports by country, customs basis, not seasonally adjusted

	December		January to December		Change
	2009	2010	2009	2010	January to December 2010/ January to December 2009
	millions of dollars				percent
South America					
Argentina	12.1	18.1	155.6	259.2	66.5
Bolivia	0.8	0.8	10.7	40.7	281.4
Brazil	136.1	192.5	1,472.4	2,456.4	66.8
Chile	33.0	74.7	588.1	541.3	-7.9
Colombia	40.7	46.8	578.5	615.5	6.4
Ecuador	48.0	18.2	258.3	257.2	-0.4
Falkland Islands (Malvinas)	0.0	0.0	0.0	0.1	829.9
Guyana	2.5	1.9	27.0	28.1	4.2
Paraguay	0.5	0.3	10.6	14.7	38.7
Peru	20.5	33.9	392.6	447.6	14.0
Suriname	0.9	1.2	11.1	9.9	-11.4
Uruguay	2.8	2.3	21.1	108.5	413.2
Venezuela	30.9	58.4	596.7	546.1	-8.5
Total	328.9	449.2	4,122.7	5,325.3	29.2
Central America Antilles					
Anguilla	0.0	0.1	1.8	0.9	-52.3
Antigua and Barbuda	3.5	1.0	20.1	19.2	-4.4
Aruba	0.4	0.3	6.0	26.1	333.1
Bahamas	1.6	27.0	146.2	150.4	2.9
Barbados	4.1	2.9	55.5	36.6	-33.9
Belize	0.6	0.2	5.5	5.5	-0.1
Bermuda	2.8	2.7	56.6	37.6	-33.5
British Virgin Islands	0.4	0.1	3.3	22.2	578.0
Cayman Islands	0.3	0.2	6.4	6.2	-4.4
Costa Rica	8.4	15.1	78.5	100.2	27.8
Cuba	9.7	18.2	250.9	307.8	22.7
Dominica	0.2	0.2	4.4	4.4	1.0
Dominican Republic	6.9	20.8	129.2	186.3	44.2
El Salvador	6.4	1.9	49.1	33.1	-32.6
Grenada	0.2	0.3	5.5	5.1	-8.0
Guatemala	23.4	10.3	108.6	87.2	-19.7
Haiti	1.6	2.9	38.6	46.2	19.6
Honduras	4.0	2.1	31.7	35.8	12.9
Jamaica	10.5	6.5	118.4	125.0	5.5
Montserrat	0.0	0.0	0.3	0.2	-16.8
Netherlands Antilles	26.4	1.2	72.4	44.5	-38.6
Nicaragua	1.5	5.5	17.0	38.0	123.1
Panama	5.8	3.9	80.3	116.5	45.0
Saint Kitts and Nevis	0.2	0.8	6.2	6.7	6.9
Saint Lucia	0.8	0.6	10.0	7.8	-22.7
Saint Vincent and the Grenadines	1.0	0.6	11.6	10.7	-7.3
Trinidad and Tobago	34.6	25.4	251.2	288.9	15.0
Turks and Caicos Islands	0.5	0.5	6.2	4.3	-30.9
Total	156.2	151.1	1,571.7	1,753.4	11.6
All countries	29,339.6	33,868.7	334,559.8	373,318.0	11.6

Table 5-1
Exports by province of origin, customs basis, not seasonally adjusted — December

	Agricultural and fishing products	Energy products	Forestry products	Industrial goods	Machinery and equipment	Automotive products	Consumer goods	Special transactions trade	Total
millions of dollars									
Domestic exports									
Newfoundland and Labrador									
2009	43.9	513.7	8.7	128.6	4.0	0.6	0.3	3.5	703.3
2010	37.4	681.3	8.9	318.3	2.6	0.2	0.1	1.3	1,050.2
Prince Edward Island									
2009	33.7	0.3	0.0	1.0	8.6	0.1	2.4	8.7	54.8
2010	38.6	0.0	0.0	1.2	5.5	0.6	1.9	7.8	55.6
Nova Scotia									
2009	97.8	101.5	60.2	34.4	94.5	5.5	4.1	5.7	403.7
2010	106.8	14.3	78.7	47.8	114.0	4.0	4.8	2.2	372.5
New Brunswick									
2009	89.2	656.6	79.2	69.2	20.4	1.6	17.4	6.1	939.6
2010	113.2	818.6	115.4	83.7	21.1	3.5	11.2	2.5	1,169.2
Quebec									
2009	377.0	264.9	434.0	1,497.3	1,661.4	173.7	436.1	115.3	4,959.7
2010	472.3	202.4	475.3	1,642.4	2,106.5	162.6	275.4	78.4	5,415.4
Ontario									
2009	649.8	201.3	202.7	2,394.8	2,394.0	3,904.0	517.2	244.7	10,508.6
2010	743.3	250.0	217.6	4,641.4	2,651.2	3,725.2	609.1	100.2	12,938.1
Manitoba									
2009	261.0	109.4	17.2	183.4	126.3	29.9	32.7	42.3	802.1
2010	362.5	86.2	16.5	202.4	136.9	44.8	35.6	23.2	908.2
Saskatchewan									
2009	593.4	736.0	16.2	477.8	60.6	3.5	1.0	8.8	1,897.3
2010	695.1	852.5	23.0	661.2	49.8	4.0	1.1	3.2	2,289.8
Alberta									
2009	416.3	5,222.2	153.1	669.7	292.6	42.8	8.6	51.3	6,856.4
2010	481.3	4,991.4	212.7	903.8	354.6	64.0	8.3	20.1	7,036.3
British Columbia									
2009	143.3	673.6	584.0	430.5	249.1	16.6	43.7	37.7	2,178.4
2010	165.3	765.0	777.3	548.8	285.7	23.6	44.3	17.4	2,627.4
Yukon, Northwest Territories and Nunavut ¹									
2009	0.2	0.0	0.0	33.1	2.1	0.0	0.1	0.0	35.6
2010	0.2	0.0	0.0	4.0	1.8	0.2	0.0	0.0	6.2
Total									
2009	2,705.6	8,479.3	1,555.4	5,919.8	4,913.5	4,178.3	1,063.7	524.1	29,339.6
2010	3,216.0	8,661.7	1,925.5	9,054.9	5,729.7	4,032.8	991.8	256.3	33,868.7
Re-exports									
2009	71.1	18.4	4.2	168.9	735.3	71.2	167.9	513.9	1,751.0
2010	80.1	32.9	4.1	316.0	809.0	80.2	224.9	598.3	2,145.7
Total exports									
2009	2,776.7	8,497.7	1,559.6	6,088.7	5,648.9	4,249.4	1,231.6	1,038.0	31,090.6
2010	3,296.1	8,694.6	1,929.6	9,370.9	6,538.8	4,113.0	1,216.7	854.7	36,014.4

1. Data for the current month do not include some exports from the Harmonized System, Chapter 71, "Natural/cultured pearls, precious stones and metals, coins, etc." for reasons relating to timing.

Table 5-2
Exports by province of origin, customs basis, not seasonally adjusted — Year to date, January to December

	Agricultural and fishing products	Energy products	Forestry products	Industrial goods	Machinery and equipment	Automotive products	Consumer goods	Special transactions trade	Total
millions of dollars									
Domestic exports									
Newfoundland and Labrador									
2009	722.7	5,668.6	168.0	1,944.6	54.5	4.1	1.2	53.7	8,617.4
2010	782.5	5,980.7	116.6	2,237.8	43.2	2.1	1.4	26.5	9,190.9
Prince Edward Island									
2009	487.2	1.9	0.9	21.1	97.0	1.5	33.7	115.9	759.2
2010	467.8	1.1	6.5	24.0	73.1	4.1	36.8	79.7	693.1
Nova Scotia									
2009	967.0	745.5	724.2	500.4	1,159.6	74.0	72.0	72.4	4,314.9
2010	948.0	465.4	864.7	515.0	1,397.1	55.0	58.6	37.1	4,340.9
New Brunswick									
2009	1,177.9	6,285.9	1,102.1	754.3	306.8	24.0	164.7	85.9	9,901.6
2010	1,241.6	8,307.9	1,364.3	1,084.4	288.2	27.2	216.4	43.0	12,573.1
Quebec									
2009	4,407.3	2,816.4	5,888.6	16,402.3	19,836.9	1,726.9	3,737.6	1,504.8	56,320.9
2010	4,828.4	2,675.0	6,041.8	19,564.7	17,975.7	1,688.8	3,984.7	991.3	57,750.4
Ontario									
2009	8,036.8	2,666.6	2,637.0	31,147.1	31,461.7	37,552.6	9,089.7	2,999.3	125,590.8
2010	8,522.5	2,533.9	2,750.5	42,286.9	30,316.6	50,629.8	7,431.3	1,611.4	146,082.9
Manitoba									
2009	3,824.6	868.8	258.3	2,225.2	1,980.3	581.5	441.8	386.0	10,566.6
2010	3,753.6	924.1	209.3	2,373.6	1,880.7	464.0	362.0	282.7	10,249.9
Saskatchewan									
2009	7,776.1	7,262.4	241.7	5,551.7	817.7	43.1	11.8	93.1	21,797.6
2010	7,296.8	8,884.0	214.5	6,746.3	679.2	44.2	11.2	45.6	23,921.8
Alberta									
2009	6,652.9	47,700.1	1,738.8	8,423.7	4,221.8	503.6	152.6	535.9	69,929.3
2010	5,696.3	55,129.9	2,140.8	10,218.1	3,715.5	519.4	123.8	286.7	77,830.4
British Columbia									
2009	2,286.4	6,733.6	7,070.1	4,772.1	3,038.3	209.4	537.2	456.2	25,103.1
2010	2,375.9	7,868.7	8,552.8	5,816.6	3,055.3	263.9	560.0	252.9	28,746.1
Yukon, Northwest Territories and Nunavut ¹									
2009	2.2	0.0	0.2	1,646.7	6.8	0.4	1.2	0.9	1,658.4
2010	1.8	0.2	0.4	1,921.8	12.5	0.6	0.4	0.7	1,938.5
Total									
2009	36,341.1	80,749.7	19,829.9	73,389.2	62,981.4	40,721.1	14,243.5	6,304.1	334,559.8
2010	35,915.2	92,770.9	22,262.2	92,789.2	59,437.1	53,699.3	12,786.5	3,657.6	373,318.0
Re-exports									
2009	555.3	524.6	73.2	2,263.1	11,054.7	987.9	2,213.2	7,634.3	25,306.4
2010	645.3	351.4	75.5	3,051.2	10,451.6	1,091.0	2,208.5	7,319.2	25,193.6
Total exports									
2009	36,896.4	81,274.3	19,903.1	75,652.3	74,036.1	41,709.0	16,456.7	13,938.4	359,866.2
2010	36,560.5	93,122.2	22,337.7	95,840.4	69,888.7	54,790.3	14,995.1	10,976.8	398,511.6

1. Data for the current month do not include some exports from the Harmonized System Chapter 71, "Natural/cultured pearls, precious stones and metals, coins, etc." for reasons relating to timing.

Table 6-1
Imports by commodity groupings, balance of payments basis, seasonally adjusted — Current dollars

	November	December	Change		Year to date			December 2010/	
	2010	2010			2009	2010	Change	December	2009
	millions of dollars		percent		millions of dollars			percent	
Total	34,548	34,785	237	0.7	374,097	412,633	38,536	10.3	6.7
Agricultural and fishing products	2,486	2,574	88	3.5	29,344	29,569	225	0.8	7.4
Fruits and vegetables	701	704	3	0.4	8,259	8,296	37	0.4	4.1
Fresh fruits and berries	257	250	-7	-2.7	2,927	2,960	34	1.1	4.0
Dried fruits, fruits and fruit preparations	119	120	1	0.9	1,505	1,378	-127	-8.5	3.8
Fresh vegetables	176	176	0	0.0	2,143	2,182	40	1.8	-3.1
Other vegetables and vegetable preparations	148	157	9	5.8	1,685	1,776	91	5.4	14.0
Other agricultural and fishing products	1,785	1,870	85	4.8	21,084	21,273	188	0.9	8.8
Live animals	17	15	-2	-9.2	196	194	-1	-0.6	-6.6
Meat and meat preparations	180	208	27	15.2	2,122	2,162	39	1.9	23.5
Fish and marine animals	170	178	8	4.5	2,011	2,024	13	0.7	13.8
Cocoa, coffee, tea and other food preparations	401	425	24	6.0	4,911	4,987	76	1.5	8.2
Dairy produce, eggs and honey	50	50	0	1.0	579	589	10	1.7	-0.9
Corn (maize) shelled	22	21	-1	-3.2	499	398	-101	-20.3	-51.7
Other cereals and cereal preparations	183	185	2	1.2	2,257	2,131	-125	-5.5	5.1
Sugar and sugar preparations	186	146	-40	-21.6	1,675	1,770	96	5.7	-7.3
Fodder, feed, excluding unmilled cereal	120	122	3	2.4	1,494	1,397	-97	-6.5	0.5
Beverages	308	334	25	8.1	3,615	3,721	106	2.9	14.1
Tobacco	40	33	-7	-17.2	371	424	53	14.4	16.1
Crude vegetable products	107	152	44	41.1	1,346	1,463	118	8.7	32.9
Cotton	1	1	0	54.2	10	12	2	17.3	-1.2
Energy products	3,203	3,315	112	3.5	33,955	39,708	5,753	16.9	-2.8
Crude petroleum	1,613	1,913	299	18.6	20,960	23,254	2,294	10.9	-19.2
Other energy products	1,590	1,402	-187	-11.8	12,995	16,454	3,459	26.6	34.6
Coal and other related products	553	268	-285	-51.5	4,554	5,002	448	9.8	1.9
Petroleum and coal products	1,037	1,134	97	9.4	8,441	11,453	3,011	35.7	45.7
Forestry products	207	214	6	3.0	2,385	2,644	258	10.8	6.1
Forestry products	207	214	6	3.0	2,385	2,644	258	10.8	6.1
Crude wood products	28	41	12	42.6	451	421	-31	-6.8	20.3
Wood fabricated materials	179	173	-6	-3.3	1,934	2,223	289	15.0	3.2
Industrial goods and materials	7,567	7,599	32	0.4	75,078	86,851	11,773	15.7	17.8
Metals and metal ores	3,045	3,104	59	2.0	24,741	33,077	8,336	33.7	28.9
Metals in ores, concentrates and scrap	547	737	190	34.8	6,048	7,085	1,037	17.1	7.1
Steel bars, rods, plates, sheets	502	459	-43	-8.6	4,685	6,367	1,681	35.9	14.5
Other iron and steel products	379	330	-49	-12.8	3,492	4,347	855	24.5	35.0
Precious metals including alloys	1,271	1,235	-36	-2.8	6,981	10,995	4,014	57.5	68.1
Other non-ferrous metals and alloys	347	344	-3	-0.8	3,535	4,284	749	21.2	1.1
Chemicals and plastics	2,440	2,386	-54	-2.2	27,127	28,923	1,796	6.6	11.3
Organic chemicals	537	507	-31	-5.7	6,472	6,812	340	5.3	-0.6
Plastic materials	844	841	-3	-0.3	8,833	10,089	1,257	14.2	14.3
Other chemicals and related products	1,059	1,039	-20	-1.9	11,823	12,022	199	1.7	15.6
Other industrial goods and materials	2,082	2,108	26	1.2	23,209	24,851	1,641	7.1	11.0
Crude animal products	21	14	-7	-32.0	230	238	8	3.3	10.1
Wool and man-made fibres	20	21	1	2.8	212	249	37	17.4	3.6
Crude non-metallic minerals	61	65	4	7.3	732	813	82	11.1	7.4
Textile fabricated materials	203	203	0	0.0	2,239	2,361	122	5.5	11.3
Metal fabricated basic products	837	878	41	4.9	8,976	9,808	832	9.3	20.4
Rubber fabricated materials	86	87	1	0.7	938	1,004	66	7.0	6.3
Oils, fats, animal and vegetable	112	106	-7	-5.9	1,243	1,241	-2	-0.1	8.2
Non-metallic minerals	292	294	3	1.0	3,265	3,608	343	10.5	5.7
Other fabricated materials	450	439	-10	-2.3	5,374	5,529	155	2.9	0.9

Table 6-1 – continued

Imports by commodity groupings, balance of payments basis, seasonally adjusted — Current dollars

	November	December	Change		Year to date			December 2010/ December 2009	
	2010	2010			2009	2010	Change		
	millions of dollars		percent		millions of dollars		percent		
Machinery and equipment	9,671	9,686	14	0.1	107,934	113,694	5,760	5.3	14.2
Industrial and agricultural machinery	2,469	2,614	145	5.9	27,801	30,132	2,331	8.4	22.3
Engines, turbines and electric motors	304	390	86	28.4	3,948	4,407	458	11.6	46.6
Drilling mining machinery	154	159	5	3.1	1,507	1,782	275	18.2	36.3
Excavating machinery	225	236	11	4.9	2,041	2,711	670	32.8	24.3
Metal working machinery	172	167	-5	-2.9	1,586	1,684	98	6.2	35.7
Other industrial machinery	1,306	1,318	13	1.0	14,725	15,273	548	3.7	15.9
Agricultural machinery including tractors	308	343	35	11.3	3,994	4,276	282	7.1	13.1
Aircraft and other transportation equipment	1,345	1,252	-93	-6.9	15,735	14,585	-1,150	-7.3	18.1
Aircraft, engines, parts	870	775	-95	-10.9	10,032	8,874	-1,158	-11.5	13.8
Other transportation equipment and parts	475	477	2	0.4	5,704	5,711	8	0.1	25.9
Office machines and equipment	1,145	1,088	-57	-5.0	12,370	13,243	872	7.1	3.3
Other machinery and equipment	4,712	4,732	20	0.4	52,027	55,734	3,706	7.1	11.8
Other communication and related equipment	1,718	1,668	-50	-2.9	18,267	20,381	2,114	11.6	14.0
Other equipment and tools	2,994	3,064	70	2.3	33,760	35,352	1,592	4.7	10.6
Automotive products	5,313	5,357	44	0.8	55,325	68,645	13,320	24.1	-6.6
Passenger autos and chassis	1,827	1,792	-35	-1.9	18,750	22,218	3,469	18.5	-8.3
Trucks and other motor vehicles	1,195	1,157	-38	-3.2	12,829	16,844	4,015	31.3	-14.1
Motor vehicle parts	2,291	2,408	117	5.1	23,747	29,583	5,836	24.6	-1.1
Other consumer goods	4,982	4,896	-86	-1.7	57,486	57,722	236	0.4	1.0
Apparel and footwear	1,020	1,057	37	3.6	11,230	11,227	-3	0.0	18.3
Apparel and apparel accessories	835	880	44	5.3	9,354	9,297	-56	-0.6	17.2
Footwear	185	177	-8	-4.1	1,876	1,930	54	2.9	24.2
Miscellaneous consumer goods	3,962	3,839	-122	-3.1	46,256	46,495	239	0.5	-2.9
Television, radios, phonographs	130	117	-13	-10.0	1,401	1,558	157	11.2	-6.4
Printed matter	327	297	-30	-9.3	3,559	3,511	-48	-1.4	5.4
Watches, sporting goods and toys	505	511	6	1.3	6,013	6,111	97	1.6	3.2
House furnishings	726	724	-2	-0.3	8,663	8,793	130	1.5	1.3
Photographic goods	266	228	-37	-14.0	2,542	2,650	108	4.2	14.0
Miscellaneous end products	2,008	1,962	-46	-2.3	24,078	23,872	-206	-0.9	-8.2
Special transactions trade	413	390	-23	-5.5	4,756	4,946	190	4.0	-4.8
Unallocated balance of payments adjustments	706	755	49	6.9	7,834	8,855	1,022	13.0	10.5

Table 6-2
Imports by commodity groupings, balance of payments basis, seasonally adjusted — Constant dollars, 2002

	November	December	Change		Year to date			December 2010/	
	2010	2010			2009	2010	Change	December 2009	
	millions of dollars		percent		millions of dollars			percent	
Total	39,531	39,649	118	0.3	405,261	468,196	62,935	15.5	9.0
Agricultural and fishing products	2,613	2,669	56	2.1	28,069	29,944	1,876	6.7	11.0
Fruits and vegetables	754	739	-15	-2.0	8,086	8,448	362	4.5	12.7
Fresh fruits and berries	266	261	-5	-1.9	2,996	3,083	88	2.9	3.1
Dried fruits, fruits and fruit preparations	123	114	-9	-7.0	1,470	1,384	-86	-5.8	0.9
Fresh vegetables	222	216	-5	-2.4	2,092	2,244	152	7.3	34.7
Other vegetables and vegetable preparations	144	148	4	2.9	1,528	1,736	208	13.6	14.5
Other agricultural and fishing products	1,859	1,930	71	3.8	19,983	21,497	1,514	7.6	10.4
Live animals	18	16	-2	-12.8	200	192	-8	-4.0	-15.3
Meat and meat preparations	190	214	24	12.5	2,161	2,107	-54	-2.5	11.4
Fish and marine animals	229	234	5	2.3	2,805	2,813	8	0.3	-8.0
Cocoa, coffee, tea and other food preparations	454	496	42	9.2	4,060	5,133	1,072	26.4	44.4
Dairy produce, eggs and honey	49	50	1	3.1	560	638	78	14.0	-3.3
Corn (maize) shelled	16	15	-1	-7.6	423	365	-57	-13.6	-61.6
Other cereals and cereal preparations	158	156	-3	-1.8	1,930	1,806	-124	-6.4	-2.2
Sugar and sugar preparations	181	142	-39	-21.4	1,634	1,721	87	5.3	-10.3
Fodder, feed, excluding unmilled cereal	103	102	0	-0.2	1,123	1,187	64	5.7	0.6
Beverages	299	315	16	5.4	3,240	3,482	242	7.5	16.5
Tobacco	49	39	-10	-19.7	429	511	82	19.0	13.6
Crude vegetable products	112	150	37	33.0	1,402	1,525	123	8.7	21.9
Cotton	1	1	0	46.7	14	16	2	12.7	-18.8
Energy products	1,758	1,675	-83	-4.7	20,960	21,351	391	1.9	-6.8
Crude petroleum	718	829	111	15.5	11,527	10,577	-950	-8.2	-22.2
Other energy products	1,040	846	-195	-18.7	9,433	10,774	1,341	14.2	15.6
Coal and other related products	507	252	-255	-50.3	3,907	4,477	570	14.6	1.9
Petroleum and coal products	534	594	60	11.3	5,526	6,297	771	13.9	22.6
Forestry products	272	283	10	3.8	3,043	3,445	402	13.2	1.4
Forestry products	272	283	10	3.8	3,043	3,445	402	13.2	1.4
Crude wood products	40	58	17	43.0	581	610	29	5.0	17.3
Wood fabricated materials	232	225	-7	-3.0	2,463	2,835	373	15.1	-2.0
Industrial goods and materials	6,475	6,621	146	2.3	67,545	78,228	10,683	15.8	12.0
Metals and metal ores	1,860	1,940	80	4.3	17,766	22,544	4,778	26.9	13.5
Metals in ores, concentrates and scrap	266	356	91	34.1	4,338	3,855	-484	-11.1	-9.1
Steel bars, rods, plates, sheets	405	378	-27	-6.7	3,818	5,239	1,421	37.2	7.0
Other iron and steel products	266	240	-27	-10.0	2,516	3,137	621	24.7	21.1
Precious metals including alloys	590	642	52	8.8	3,432	5,925	2,494	72.7	58.6
Other non-ferrous metals and alloys	333	324	-9	-2.6	3,662	4,388	726	19.8	-10.2
Chemicals and plastics	2,213	2,236	23	1.0	25,308	27,525	2,217	8.8	8.8
Organic chemicals	387	369	-18	-4.6	5,146	5,006	-140	-2.7	-5.9
Plastic materials	887	903	16	1.8	9,280	10,715	1,435	15.5	10.6
Other chemicals and related products	939	964	25	2.7	10,882	11,804	922	8.5	13.9
Other industrial goods and materials	2,402	2,444	43	1.8	24,471	28,159	3,688	15.1	13.9
Crude animal products	22	16	-6	-28.2	347	265	-82	-23.6	-16.1
Wool and man-made fibres	27	27	0	-0.2	267	322	55	20.6	3.8
Crude non-metallic minerals	49	52	2	4.8	636	672	35	5.6	4.4
Textile fabricated materials	276	280	5	1.6	2,779	3,163	384	13.8	14.1
Metal fabricated basic products	897	945	48	5.3	8,856	10,474	1,618	18.3	22.9
Rubber fabricated materials	106	107	1	0.7	1,064	1,225	161	15.1	7.2
Oils, fats, animal and vegetable	102	101	-1	-1.2	1,092	1,196	105	9.6	6.6
Non-metallic minerals	368	365	-3	-0.7	3,694	4,384	690	18.7	10.0
Other fabricated materials	554	552	-2	-0.4	5,737	6,459	722	12.6	7.9

Table 6-2 – continued

Imports by commodity groupings, balance of payments basis, seasonally adjusted — Constant dollars, 2002

	November	December	Change		Year to date			December 2010/ December 2009	
	2010	2010			2009	2010	Change		
	millions of dollars		percent		millions of dollars		percent		
Machinery and equipment	14,412	14,392	-20	-0.1	141,102	165,460	24,358	17.3	20.9
Industrial and agricultural machinery	3,061	3,250	189	6.2	31,016	37,048	6,032	19.4	25.7
Engines, turbines and electric motors	386	487	101	26.1	4,451	5,476	1,025	23.0	49.5
Drilling mining machinery	176	183	7	4.1	1,518	2,002	483	31.8	42.8
Excavating machinery	287	297	10	3.5	2,251	3,396	1,145	50.9	29.1
Metal working machinery	221	218	-3	-1.4	1,855	2,168	313	16.9	40.1
Other industrial machinery	1,597	1,624	28	1.7	16,267	18,542	2,275	14.0	18.9
Agricultural machinery including tractors	394	441	47	11.8	4,674	5,464	790	16.9	16.3
Aircraft and other transportation equipment	1,564	1,484	-80	-5.1	16,996	17,069	73	0.4	20.4
Aircraft, engines, parts	1,055	951	-104	-9.9	11,094	10,799	-294	-2.7	16.7
Other transportation equipment and parts	509	533	24	4.6	5,902	6,269	367	6.2	27.8
Office machines and equipment	2,890	2,684	-206	-7.1	24,754	30,391	5,637	22.8	27.1
Other machinery and equipment	6,897	6,974	77	1.1	68,336	80,952	12,615	18.5	16.7
Other communication and related equipment	2,880	2,842	-38	-1.3	27,969	34,432	6,463	23.1	17.3
Other equipment and tools	4,017	4,132	115	2.9	40,367	46,519	6,152	15.2	16.3
Automotive products	6,563	6,667	104	1.6	64,665	83,758	19,093	29.5	-4.4
Passenger autos and chassis	2,095	2,081	-13	-0.6	21,831	25,528	3,697	16.9	-9.1
Trucks and other motor vehicles	1,391	1,351	-41	-2.9	13,818	19,030	5,212	37.7	-10.6
Motor vehicle parts	3,077	3,235	158	5.1	29,016	39,199	10,183	35.1	2.0
Other consumer goods	6,564	6,463	-101	-1.5	68,763	74,895	6,133	8.9	4.6
Apparel and footwear	1,460	1,520	60	4.1	14,390	15,908	1,518	10.6	23.7
Apparel and apparel accessories	1,202	1,269	68	5.6	12,015	13,233	1,218	10.1	22.6
Footwear	258	251	-7	-2.8	2,374	2,675	300	12.6	29.9
Miscellaneous consumer goods	5,104	4,943	-162	-3.2	54,373	58,987	4,614	8.5	-0.2
Television, radios, phonographs	222	200	-23	-10.2	2,183	2,658	475	21.8	-6.2
Printed matter	413	374	-38	-9.2	4,234	4,359	126	3.0	8.4
Watches, sporting goods and toys	682	699	17	2.5	7,765	8,432	666	8.6	3.9
House furnishings	946	947	0	0.0	10,220	11,302	1,082	10.6	3.2
Photographic goods	553	439	-114	-20.6	4,140	5,146	1,006	24.3	25.9
Miscellaneous end products	2,288	2,284	-4	-0.2	25,831	27,090	1,258	4.9	-7.0
Special transactions trade	483	452	-31	-6.4	5,231	5,684	453	8.7	-3.9
Unallocated balance of payments adjustments	391	428	37	9.6	5,883	5,431	-452	-7.7	-5.8

Table 7-1
Imports from selected countries, customs basis, not seasonally adjusted — December

	Agricultural and fishing products	Energy products	Forestry products	Industrial goods	Machinery and equipment	Automotive products	Consumer goods	Special transactions trade	Total
millions of dollars									
United States									
2009	1,339.3	889.8	125.7	3,422.7	3,838.5	3,490.3	1,876.0	554.3	15,536.5
2010	1,385.2	857.8	137.9	3,707.9	4,178.5	3,253.7	1,844.5	542.8	15,908.2
Mexico									
2009	121.8	0.0	0.2	104.6	623.0	639.2	87.6	6.6	1,583.1
2010	142.5	131.6	0.3	171.8	723.6	598.6	90.1	3.7	1,862.2
Japan									
2009	7.9	0.4	0.1	89.3	327.7	555.9	85.7	0.2	1,067.2
2010	7.3	0.5	0.1	81.0	424.3	484.3	76.4	0.2	1,074.1
European Union									
Germany									
2009		1.5	1.4	149.0	269.8	268.1	130.9	3.3	844.8
2010	20.8	0.8	0.9	152.7	308.6	303.2	154.5	0.5	946.2
France									
2009	50.4	0.5	0.2	44.5	153.3	11.3	123.9	0.3	384.5
2010	59.4	13.2	0.1	66.6	233.4	8.5	120.6	1.9	503.6
United Kingdom									
2009	30.9	376.6	0.0	128.3	233.5	37.3	102.9	3.2	912.9
2010	31.5	245.8	0.0	206.7	219.1	39.6	113.0	1.0	856.6
Italy									
2009	55.3	0.1	0.6	76.5	110.1	13.7	80.2	0.8	337.1
2010	67.9	1.9	1.2	86.0	131.2	12.6	91.8	1.4	393.8
Other European Union									
2009	96.4	261.4	3.4	215.6	312.6	55.2	338.8	3.7	1,287.2
2010	103.2	166.9	2.5	216.2	344.2	82.2	227.5	0.4	1,143.1
Total									
2009	253.8	640.2	5.6	613.9	1,079.3	385.7	776.7	11.2	3,766.5
2010	287.0	428.6	4.7	728.0	1,236.6	446.0	707.3	5.2	3,843.4
Newly industrialized countries									
South Korea									
2009	6.6	9.3	0.0	64.8	207.4	176.5	16.3	0.1	480.9
2010	6.3	3.8	0.0	71.0	196.2	126.1	16.5	0.1	420.0
Hong Kong									
2009	2.4	0.0	0.2	1.3	10.7	0.1	10.5	0.0	25.2
2010	2.6	0.0	0.1	1.5	11.5	0.1	11.9	0.0	27.7
Taiwan									
2009	6.5	0.0	0.4	60.8	160.2	12.7	33.8	0.1	274.6
2010	7.3	0.0	0.3	124.5	257.7	12.3	32.0	0.1	434.0
Singapore									
2009	2.3	42.3	0.0	5.2	37.3	0.3	23.2	0.1	110.6
2010	2.7	0.0	0.1	24.4	49.8	0.4	14.5	0.0	91.9
Total									
2009	17.8	51.5	0.6	132.0	415.5	189.7	83.8	0.3	891.3
2010	18.8	3.9	0.5	221.3	515.1	138.9	74.9	0.2	973.6
Other countries									
2009	650.6	1,696.9	44.0	1,436.4	2,349.3	149.9	1,656.8	26.3	8,010.2
2010	724.4	1,847.9	42.4	1,975.6	2,529.6	191.4	1,732.1	13.1	9,056.5
Total									
2009	2,391.2	3,278.9	176.2	5,798.9	8,633.5	5,410.7	4,566.6	598.9	30,854.9
2010	2,565.6	3,270.2	186.0	6,885.8	9,607.8	5,112.9	4,525.4	565.2	32,718.8

Table 7-2
Imports from selected countries, customs basis, not seasonally adjusted — Year to date, January to December

	Agricultural and fishing products	Energy products	Forestry products	Industrial goods	Machinery and equipment	Automotive products	Consumer goods	Special transactions trade	Total
millions of dollars									
United States									
2009	17,194.9	10,494.8	1,763.4	44,338.1	49,138.0	36,586.8	23,032.8	4,243.0	186,791.6
2010	16,712.5	12,014.9	1,908.0	50,156.7	49,879.6	45,053.4	22,755.8	4,453.7	202,934.7
Mexico									
2009	1,315.6	454.3	5.3	1,284.2	6,998.4	5,409.2	1,022.2	45.2	16,534.5
2010	1,466.7	925.3	5.2	1,826.8	8,346.6	8,315.6	1,147.0	60.3	22,093.5
Japan									
2009	72.1	35.4	1.9	1,085.5	4,707.1	5,450.2	994.0	3.7	12,349.9
2010	71.1	124.6	1.0	1,182.5	4,901.9	6,024.6	1,083.9	3.8	13,393.5
European Union									
Germany									
2009	271.2	32.2	13.8	1,813.7	4,130.0	2,594.8	1,790.7	10.6	10,657.1
2010	294.5	61.0	13.0	1,919.5	3,923.4	3,294.6	1,746.4	20.6	11,272.9
France									
2009	729.1	195.3	2.6	1,027.2	1,843.1	110.4	1,712.5	10.1	5,630.3
2010	741.1	102.2	2.0	835.4	2,056.3	99.4	1,574.6	10.5	5,421.5
United Kingdom									
2009	430.1	2,585.1	1.3	1,297.7	3,347.0	352.3	1,335.9	41.7	9,391.1
2010	426.8	3,571.2	0.7	1,996.4	2,897.8	448.9	1,302.8	40.3	10,684.9
Italy									
2009	675.8	79.4	14.1	935.1	1,472.6	186.7	1,075.7	7.3	4,446.6
2010	694.7	192.6	13.3	954.3	1,452.9	227.7	1,100.3	6.1	4,641.9
Other European Union									
2009	1,183.0	1,985.4	42.9	2,718.0	4,174.8	732.5	4,191.6	48.4	15,076.6
2010	1,179.3	2,285.1	41.0	3,127.3	4,573.5	829.2	3,692.5	23.5	15,751.4
Total									
2009	3,289.1	4,877.5	74.5	7,791.8	14,967.6	3,976.7	10,106.4	118.0	45,201.6
2010	3,336.5	6,212.0	70.0	8,832.9	14,903.8	4,899.8	9,416.6	101.0	47,772.6
Newly industrialized countries									
South Korea									
2009	52.4	307.0	0.2	771.6	2,648.4	1,928.4	222.4	0.9	5,931.3
2010	61.6	350.6	0.2	798.2	2,716.4	2,009.2	206.2	1.0	6,143.4
Hong Kong									
2009	29.7	0.0	1.0	26.6	158.8	4.0	142.6	0.6	363.2
2010	28.0	0.1	0.9	26.9	158.1	4.5	150.4	0.4	369.4
Taiwan									
2009	67.0	0.3	9.1	699.9	1,993.6	166.1	406.7	1.2	3,343.9
2010	76.9	19.9	6.8	956.8	2,355.8	159.4	408.4	1.4	3,985.4
Singapore									
2009	33.6	112.3	0.6	288.9	484.6	4.7	221.3	1.5	1,147.6
2010	37.6	111.6	0.3	176.1	603.0	4.5	201.6	1.4	1,136.0
Total									
2009	182.7	419.7	10.8	1,787.0	5,285.5	2,103.3	993.0	4.1	10,786.1
2010	204.2	482.2	8.2	1,957.9	5,833.3	2,177.6	966.5	4.2	11,634.2
Other countries									
2009	7,291.6	17,962.9	529.5	17,251.4	26,947.1	1,794.6	21,369.0	342.4	93,488.7
2010	7,772.7	20,441.0	651.1	21,247.0	29,959.1	2,173.7	22,352.1	323.1	104,919.8
Total									
2009	29,347.9	34,244.6	2,385.4	73,538.2	108,043.6	55,320.9	57,517.6	4,756.5	365,154.8
2010	29,568.8	40,200.0	2,643.6	85,204.2	113,824.7	68,644.8	57,722.2	4,946.1	402,754.3

Table 8
Imports by country, customs basis, not seasonally adjusted

	December		January to December		Change January to December 2010/ January to December 2009
	2009	2010	2009	2010	
	millions of dollars				percent
North America					
Canada	337.6	288.9	3,329.7	3,936.1	18.2
Greenland	0.1	0.0	17.4	0.5	-97.2
Mexico	1,583.1	1,862.2	16,534.5	22,093.5	33.6
Saint Pierre and Miquelon	0.1	0.0	0.3	1.5	396.9
United States	15,536.5	15,908.2	186,791.6	202,934.7	8.6
Total	17,457.3	18,059.3	206,673.6	228,966.2	10.8
Western Europe					
Andorra	0.1	0.1	0.2	0.4	114.9
Austria	102.7	81.5	1,181.0	1,176.0	-0.4
Belgium	144.9	168.9	1,447.5	1,715.4	18.5
Denmark	208.5	52.1	1,606.6	1,877.9	16.9
Faeroe Islands	0.1	0.7	2.1	5.6	169.8
Finland	71.8	103.7	942.4	1,038.2	10.2
France	384.5	503.6	5,630.3	5,421.5	-3.7
Germany	844.8	946.2	10,657.1	11,272.9	5.8
Gibraltar	0.0	0.0	0.0	2.2	...
Greece	12.5	11.9	140.8	142.4	1.2
Iceland	2.5	1.9	32.3	32.9	1.9
Italy	337.1	393.8	4,446.6	4,641.9	4.4
Luxembourg	6.0	4.6	138.3	95.5	-30.9
Malta	4.5	1.3	23.1	17.6	-23.6
Netherlands	118.3	103.3	1,871.7	1,666.6	-11.0
Norway	439.6	304.9	3,570.9	2,773.4	-22.3
Portugal	19.4	18.2	321.9	311.3	-3.3
Republic of Ireland (Eire)	174.0	79.0	2,196.3	1,486.8	-32.3
Spain	113.4	122.9	1,328.5	1,461.3	10.0
Sweden	127.0	176.6	1,797.4	2,094.0	16.5
Switzerland	250.0	222.1	3,445.6	2,932.9	-14.9
United Kingdom	912.9	856.6	9,391.1	10,684.9	13.8
Total	4,274.6	4,154.0	50,171.4	50,851.7	1.4
Other Europe					
Albania	0.2	1.0	4.0	5.4	35.3
Armenia	3.2	4.1	34.1	29.9	-12.3
Azerbaijan	168.0	156.5	1,166.9	542.0	-53.6
Belarus	0.4	0.4	35.4	55.2	56.0
Bosnia and Herzegovina	0.6	0.8	8.4	8.0	-5.6
Bulgaria	5.2	5.2	119.3	66.7	-44.1
Croatia	1.7	1.3	25.5	65.8	158.3
Czech Republic	20.2	19.2	269.2	318.1	18.2
Estonia	2.0	4.2	21.6	39.2	81.4
Georgia	12.5	12.4	134.7	128.9	-4.3
Hungary	47.1	29.8	370.8	344.6	-7.1
Kazakhstan	186.1	188.8	1,595.9	2,284.6	43.2
Kyrgyzstan	0.0	0.1	0.5	0.6	14.1
Latvia	0.9	1.1	17.2	10.7	-38.0
Lithuania	10.7	29.7	154.4	381.8	147.3
Macedonia (Former Yugoslav Republic of Macedonia)	0.5	0.7	8.7	8.0	-8.3
Montenegro	0.0	0.1	0.3	0.4	52.1
Poland	55.5	80.2	753.3	992.5	31.8
Republic of Moldova	0.2	0.0	1.9	5.0	164.3
Romania	8.4	11.8	121.0	217.9	80.1
Russian Federation	99.1	62.7	1,632.8	1,642.0	0.6
Serbia	0.4	1.0	10.3	12.6	22.0
Slovakia	16.7	33.6	165.6	198.2	19.7
Slovenia	17.6	3.9	86.6	95.6	10.4
Tajikistan	0.0	0.0	0.0	0.0	180.9
Turkmenistan	0.0	0.0	0.4	0.7	77.1
Ukraine	9.3	4.4	94.5	95.5	1.1
Uzbekistan	0.0	0.0	11.9	1.4	-88.4
Total	666.3	653.0	6,845.1	7,551.2	10.3

Table 8 – continued

Imports by country, customs basis, not seasonally adjusted

	December		January to December		Change
	2009	2010	2009	2010	January to December 2010/ January to December 2009
	millions of dollars				percent
Middle East					
Bahrain	0.2	0.3	4.8	3.1	-34.6
Cyprus	0.0	0.4	2.2	3.1	40.1
Egypt	14.6	23.0	114.2	298.2	161.1
Eritrea	0.0	0.0	0.1	0.3	130.8
Ethiopia	0.8	0.9	16.8	15.1	-9.9
Iran	2.9	3.2	24.8	37.9	53.2
Iraq	56.3	388.9	1,279.2	1,912.9	49.5
Israel	96.0	92.0	946.3	1,005.6	6.3
Jordan	1.3	1.7	16.6	19.9	19.7
Kuwait	0.0	0.0	37.3	31.5	-15.4
Lebanon	1.5	1.7	15.6	17.2	10.2
Libya	4.5	2.3	4.7	24.6	423.5
Oman	0.3	2.9	6.2	20.8	235.5
Qatar	35.7	29.9	53.3	100.6	88.8
Saudi Arabia	155.5	172.2	1,534.2	2,015.7	31.4
Somalia	0.0	0.0	0.0	0.0	-22.6
Sudan	6.2	7.4	68.4	83.0	21.4
Syria	0.9	0.5	5.9	16.7	183.0
Turkey	37.3	80.8	632.2	713.8	12.9
United Arab Emirates	2.4	2.9	195.4	153.3	-21.5
Yemen	0.0	0.0	0.2	0.1	-28.7
Total	416.6	811.2	4,958.1	6,473.5	30.6
Other Africa					
Algeria	485.4	188.7	3,765.0	3,546.8	-5.8
Angola	52.9	80.4	1,373.0	1,622.5	18.2
Antarctica	0.0	0.0	0.0	0.3	...
Benin	0.0	0.0	0.0	0.0	308.4
Botswana	0.0	0.0	28.6	6.9	-75.8
Bouvet Island	0.0	0.0	0.0	0.0	-99.5
Burkina Faso	3.4	0.0	13.5	22.8	69.5
Burundi	0.0	0.0	0.2	0.1	-79.1
Cameroon	0.3	0.7	4.5	6.2	36.7
Cape Verde	0.1	0.0	0.1	0.1	-48.8
Central African Republic	0.0	0.0	0.1	0.1	-2.1
Chad	0.0	0.0	0.2	1.1	389.4
Comoros	0.0	0.0	0.1	0.1	63.9
Congo	0.3	0.4	2.3	47.3	...
Democratic Republic of the Congo	0.0	0.1	0.6	0.8	27.8
Djibouti	0.0	0.0	0.0	0.0	-68.5
Equatorial Guinea	0.0	77.9	347.9	671.1	92.9
French Southern Territories	0.0	0.0	0.0	0.0	385.7
Gabon	0.1	0.1	1.8	0.5	-73.1
Gambia	0.0	0.0	0.1	0.2	109.9
Ghana	1.9	1.4	27.4	20.6	-24.9
Guinea	5.3	5.1	62.7	48.3	-23.1
Guinea-Bissau	0.0	0.0	0.0	0.0	-56.1
Ivory Coast	7.8	74.4	223.3	419.3	87.7
Kenya	1.1	1.9	17.0	18.1	6.2
Lesotho	0.9	1.9	8.8	16.8	92.1
Liberia	1.1	3.3	29.1	38.0	30.6
Madagascar	0.5	5.8	41.6	50.5	21.5
Malawi	0.1	15.0	6.7	73.1	987.8
Mali	0.0	0.1	0.3	0.6	73.6
Mauritania	0.0	0.0	0.9	0.2	-77.7
Mauritius	0.5	0.7	9.0	9.7	8.4
Morocco	25.1	23.4	138.3	141.3	2.2
Mozambique	0.0	0.1	0.3	1.4	374.5
Namibia	0.2	47.5	248.4	234.3	-5.6
Niger	0.3	0.0	1.1	0.9	-23.9
Nigeria	0.7	70.3	458.2	1,668.4	264.1
Rwanda	0.0	0.2	0.3	0.5	44.8
Saint Helena	0.0	0.0	0.0	0.0	51.1
Sao Tome and Principe	0.0	0.0	0.0	0.2	454.2
Senegal	0.1	0.1	1.1	1.1	-0.1

Table 8 – continued

Imports by country, customs basis, not seasonally adjusted

	December		January to December		Change
	2009	2010	2009	2010	January to December 2010/ January to December 2009
	millions of dollars				percent
Seychelles	0.0	0.1	0.6	0.3	-53.9
Sierra Leone	0.1	0.1	4.0	1.8	-55.7
South Africa	46.2	62.5	631.3	715.6	13.4
Swaziland	0.1	0.1	1.9	1.7	-13.7
Togo	0.1	0.1	4.4	3.2	-27.4
Tunisia	2.7	2.4	45.7	50.8	11.2
Uganda	0.4	0.4	2.5	3.8	50.8
United Republic of Tanzania	0.2	0.3	4.6	3.0	-34.4
Western Sahara	0.0	0.0	0.0	0.0	-98.2
Zambia	0.1	0.1	0.8	1.3	66.2
Zimbabwe	0.3	0.2	2.8	4.2	50.1
Total	638.2	665.5	7,511.5	9,455.8	25.9
Other Asia					
Afghanistan	0.3	0.2	1.5	1.7	19.4
Bangladesh	51.2	64.3	808.3	835.1	3.3
Bhutan	0.0	0.0	0.0	0.0	212.0
British Indian Ocean Territory	0.0	0.0	0.0	0.0	669.8
Brunei Darussalam	0.0	0.0	1.9	0.0	-98.6
Cambodia	19.7	36.3	291.1	356.9	22.6
China	3,242.8	3,613.8	39,655.2	44,404.6	12.0
Hong Kong	25.2	27.7	363.2	369.4	1.7
India	140.7	211.5	2,002.8	2,123.0	6.0
Indonesia	78.4	107.5	1,009.2	1,259.0	24.7
Japan	1,067.2	1,074.1	12,349.9	13,393.5	8.5
Laos	0.8	0.9	6.7	8.1	19.8
Macao	0.6	0.5	22.3	9.0	-59.7
Malaysia	189.3	180.0	2,313.6	2,274.8	-1.7
Maldives	0.0	0.0	0.1	0.1	6.2
Mongolia	29.2	13.3	158.9	231.7	45.8
Myanmar	0.0	0.0	0.1	0.0	-75.5
Nepal	1.1	1.0	13.3	15.4	15.8
North Korea	0.0	0.0	0.1	0.1	12.0
Pakistan	19.9	20.8	242.5	271.1	11.8
Philippines	71.0	78.3	736.0	889.0	20.8
Singapore	110.6	91.9	1,147.6	1,136.0	-1.0
South Korea	480.9	420.0	5,931.3	6,143.4	3.6
Sri Lanka	9.6	12.0	115.7	127.6	10.3
Taiwan	274.6	434.0	3,343.9	3,985.4	19.2
Thailand	193.2	221.3	2,298.7	2,405.9	4.7
Timor-Leste	0.5	0.3	4.1	2.0	-49.8
Viet Nam	83.2	102.7	1,054.1	1,172.3	11.2
Total	6,090.1	6,712.4	73,872.3	81,415.3	10.2
Oceania					
American Samoa	0.0	0.0	0.4	0.3	-16.3
Australia	134.1	167.7	1,625.1	1,615.7	-0.6
Christmas Island	0.0	0.0	0.0	0.1	347.7
Cocos (Keeling) Islands	0.0	0.0	0.1	0.0	-85.2
Cook Islands	0.0	0.0	0.0	0.1	163.0
Fiji	0.2	0.2	6.4	4.9	-22.6
French Polynesia	0.0	0.0	0.7	0.9	29.4
Guam	0.0	0.0	0.3	0.1	-58.3
Heard Island and McDonald Islands	0.0	0.0	0.0	0.0	173.8
Kiribati	0.0	0.0	0.1	0.0	-74.4
Nauru	0.0	0.0	0.1	0.1	-54.9
New Caledonia	0.0	0.0	0.3	0.2	-50.4
New Zealand	30.8	35.1	454.0	446.9	-1.6
Niue	0.0	0.0	0.0	0.0	-4.2
Norfolk Island	0.0	0.0	0.0	0.0	-82.4
Papua New Guinea	0.2	0.2	2.0	1.6	-18.9
Pitcairn	0.0	0.0	0.0	0.0	-14.1
Samoa	0.0	0.0	0.0	0.3	...
Solomon Islands	0.0	0.0	0.1	0.2	61.9
Tonga	0.0	0.0	0.0	0.0	-65.0

Table 8 – continued

Imports by country, customs basis, not seasonally adjusted

	December		January to December		Change
	2009	2010	2009	2010	January to December 2010/ January to December 2009
	millions of dollars				percent
United States Minor Outlying Islands	0.5	0.2	5.1	3.8	-25.6
Vanuatu	0.0	0.0	0.2	0.9	351.2
Wallis and Futuna	0.0	0.0	0.0	0.0	153.0
Total	165.9	203.4	2,095.1	2,076.3	-0.9
South America					
Argentina	51.4	202.4	700.6	1,553.4	121.7
Bolivia	17.5	17.9	91.0	143.2	57.4
Brazil	228.7	202.3	2,578.8	3,271.3	26.9
Chile	178.2	168.6	1,730.9	1,871.1	8.1
Colombia	44.9	46.7	733.6	717.4	-2.2
Ecuador	24.8	17.1	233.9	210.9	-9.8
Falkland Islands (Malvinas)	0.0	0.0	0.0	0.0	-47.7
Guyana	25.4	27.4	300.3	290.7	-3.2
Paraguay	0.8	0.3	9.4	9.3	-0.4
Peru	304.0	392.4	2,877.0	3,642.0	26.6
Suriname	38.5	87.2	535.4	598.1	11.7
Uruguay	1.7	1.3	54.5	51.9	-4.9
Venezuela	10.2	26.1	908.0	780.9	-14.0
Total	926.1	1,189.7	10,753.3	13,140.3	22.2
Central America Antilles					
Anguilla	0.0	0.0	0.3	0.3	4.0
Antigua and Barbuda	0.0	0.1	0.4	0.4	-5.7
Aruba	15.0	0.0	91.3	0.1	-99.8
Bahamas	2.5	2.3	31.0	55.1	77.8
Barbados	0.6	1.9	8.7	9.7	11.9
Belize	0.3	0.7	6.9	6.2	-10.2
Bermuda	0.1	0.1	11.0	1.4	-87.4
British Virgin Islands	0.2	0.1	0.7	0.6	-13.6
Cayman Islands	0.0	0.0	0.6	0.4	-37.8
Costa Rica	32.0	36.0	358.4	436.0	21.6
Cuba	52.1	83.0	500.4	652.6	30.4
Dominica	0.0	0.0	0.4	0.1	-62.8
Dominican Republic	13.3	14.5	147.5	143.7	-2.6
El Salvador	2.9	5.0	65.2	87.0	33.5
Grenada	0.1	0.0	0.5	0.6	18.4
Guatemala	18.5	40.3	266.3	323.4	21.4
Haiti	1.5	1.9	21.7	26.1	20.0
Honduras	8.9	11.3	139.2	151.2	8.6
Jamaica	8.7	13.6	164.7	161.4	-2.0
Montserrat	0.0	0.0	0.1	0.3	374.3
Netherlands Antilles	0.0	0.0	14.7	0.3	-98.0
Nicaragua	4.7	30.4	78.7	215.1	173.5
Panama	4.7	8.2	40.7	84.2	106.9
Saint Kitts and Nevis	0.6	1.0	7.0	8.1	14.9
Saint Lucia	0.1	0.0	2.3	0.2	-91.1
Saint Vincent and the Grenadines	0.0	0.0	0.2	0.2	-26.0
Trinidad and Tobago	52.8	19.8	315.0	459.2	45.8
Turks and Caicos Islands	0.0	0.0	0.3	0.1	-62.3
Total	219.8	270.2	2,274.3	2,824.1	24.2
All countries	30,854.9	32,718.8	365,154.8	402,754.3	10.3

**Table 9-1
Imports by province of clearance, customs basis, not seasonally adjusted — December**

	Agricultural and fishing products	Energy products	Forestry products	Industrial goods	Machinery and equipment	Automotive products	Consumer goods	Special transactions trade	Total
millions of dollars									
Newfoundland and Labrador									
2009	3.3	123.1	0.0	2.4	6.9	0.1	0.5	3.4	139.8
2010	1.6	429.8	0.0	4.4	19.6	0.2	0.4	0.0	455.9
Prince Edward Island									
2009	0.2	0.0	0.0	3.0	0.1	0.0	0.0	0.0	3.4
2010	0.3	0.0	0.0	13.0	0.1	0.0	0.0	0.0	13.5
Nova Scotia									
2009	24.3	125.0	1.5	86.4	65.8	284.9	12.9	1.3	602.1
2010	37.6	176.3	1.0	104.9	65.9	354.0	8.6	2.4	750.7
New Brunswick									
2009	32.0	760.5	7.5	82.7	62.9	27.7	13.7	3.2	990.2
2010	39.6	684.7	9.4	96.1	68.4	24.6	13.9	1.8	938.6
Quebec									
2009	412.6	1,344.1	44.4	1,043.6	1,322.2	174.4	801.3	70.5	5,213.1
2010	404.4	905.5	51.1	1,310.0	1,441.2	144.4	760.0	47.9	5,064.5
Ontario									
2009	1,311.3	397.0	64.2	3,413.6	5,034.5	4,470.7	2,888.1	473.5	18,052.8
2010	1,412.9	731.1	68.2	3,924.4	5,608.3	4,086.9	2,949.1	483.0	19,263.9
Manitoba									
2009	69.4	28.9	4.9	206.3	404.8	110.5	122.5	11.1	958.3
2010	72.7	37.8	4.6	253.3	484.9	123.8	127.5	6.2	1,110.8
Saskatchewan									
2009	27.0	57.3	1.2	176.9	213.3	59.5	21.4	0.6	557.1
2010	27.0	43.3	2.8	170.7	355.5	82.3	21.6	0.5	703.7
Alberta									
2009	143.3	249.2	8.9	289.0	647.0	52.7	96.6	15.9	1,502.6
2010	157.6	106.8	7.0	440.6	646.9	89.6	110.1	12.2	1,570.7
British Columbia									
2009	367.9	193.4	43.6	495.1	875.3	230.2	609.6	19.6	2,834.7
2010	411.9	154.0	41.9	568.4	916.1	207.0	534.0	11.2	2,844.6
Yukon, Northwest Territories and Nunavut									
2009	0.0	0.3	0.0	0.0	0.4	0.0	0.0	0.0	0.8
2010	0.0	0.9	0.0	0.0	0.9	0.1	0.0	0.0	2.0
Total									
2009	2,391.2	3,278.9	176.2	5,798.9	8,633.5	5,410.7	4,566.6	598.9	30,854.9
2010	2,565.6	3,270.2	186.0	6,885.8	9,607.8	5,112.9	4,525.4	565.2	32,718.8

Table 9-2
Imports by province of clearance, customs basis, not seasonally adjusted — Year to date, January to December

	Agricultural and fishing products	Energy products	Forestry products	Industrial goods	Machinery and equipment	Automotive products	Consumer goods	Special transactions trade	Total
millions of dollars									
Newfoundland and Labrador									
2009	38.0	2,252.9	0.5	152.7	183.3	1.3	5.0	9.1	2,642.7
2010	41.7	2,961.7	0.1	53.1	487.3	1.1	28.7	3.1	3,576.8
Prince Edward Island									
2009	3.5	0.0	0.0	22.5	13.2	0.1	1.7	0.2	41.3
2010	4.4	0.0	0.1	34.3	1.8	0.1	0.2	0.2	41.1
Nova Scotia									
2009	299.8	1,519.6	14.1	863.7	1,024.0	2,732.2	171.4	29.4	6,654.2
2010	409.1	1,706.4	17.1	1,275.5	1,041.3	3,434.6	166.0	29.7	8,079.7
New Brunswick									
2009	479.8	6,346.9	100.8	930.8	996.0	301.0	213.8	27.1	9,396.2
2010	570.5	7,305.8	112.9	1,048.1	937.9	396.6	266.6	22.9	10,661.3
Quebec									
2009	4,709.9	12,910.7	665.7	13,295.9	17,987.6	2,102.4	11,057.2	564.7	63,294.1
2010	4,643.3	15,719.8	697.7	15,002.4	17,425.0	2,140.0	10,522.3	550.5	66,701.2
Ontario									
2009	16,200.3	5,382.2	874.3	42,266.6	60,384.0	43,535.6	35,916.5	3,687.3	208,246.8
2010	16,243.6	5,798.3	967.9	50,001.5	65,517.0	56,342.1	36,712.8	3,924.6	235,507.9
Manitoba									
2009	943.2	294.2	82.2	3,085.4	5,487.4	1,371.4	1,640.9	97.3	13,001.9
2010	887.9	542.6	88.1	3,375.4	5,793.0	1,418.4	1,569.3	88.1	13,762.9
Saskatchewan									
2009	344.4	587.9	24.3	2,078.3	3,165.2	759.3	258.5	26.2	7,244.1
2010	333.0	632.8	26.8	2,154.8	3,728.6	950.2	261.3	19.9	8,107.4
Alberta									
2009	1,837.0	2,517.6	100.0	4,140.2	7,179.4	746.6	1,184.4	140.6	17,845.6
2010	1,869.3	2,417.1	114.0	4,935.8	7,292.4	1,091.0	1,284.3	143.1	19,146.9
British Columbia									
2009	4,440.6	2,398.1	523.4	6,700.2	11,586.4	3,770.4	7,067.9	171.7	36,658.6
2010	4,507.4	3,055.3	619.0	7,321.3	11,544.0	2,870.1	6,910.0	163.5	36,990.6
Yukon, Northwest Territories and Nunavut									
2009	51.3	34.6	0.0	2.0	37.3	0.6	0.3	3.0	129.2
2010	58.5	60.1	0.0	1.9	56.3	0.7	0.5	0.5	178.6
Total									
2009	29,347.9	34,244.6	2,385.4	73,538.2	108,043.6	55,320.9	57,517.6	4,756.5	365,154.8
2010	29,568.8	40,200.0	2,643.6	85,204.2	113,824.7	68,644.8	57,722.2	4,946.1	402,754.3

Technical notes

The Canadian international merchandise trade statistical program

Introduction

The objective of this text is to provide a general overview of the Canadian International Merchandise Trade Statistical Program, with special reference to concepts and definitions. The text is intended for the general user and simplicity is emphasized. More technical details can be obtained from the International Trade Division, Statistics Canada upon request.

Conceptual framework

1. Objectives and coverage: The primary objective of the Canadian International Merchandise Trade Statistical Program is to measure the change in the stock of material resources of Canada resulting from the movement of merchandise into or out of the country. Information on imports and exports are inputs into the System of National Accounts, particularly in the balance of payments and gross domestic product, and are used in the formulation of trade and budgetary policies. Governments, importers, exporters, manufacturers and shipping companies use international merchandise trade statistics to:

- monitor import penetration and export performance,
- monitor commodity price and volume changes,
- examine transport implications.

2. Trade statistics (customs basis / balance of payments basis): Merchandise trade statistics are reported and presented on two different bases: customs basis and balance of payment basis.

When goods are imported into or exported from Canada, declarations must be filed with customs, giving such information as description and value of the goods, origin and port of clearance of commodities and mode of transport. Most of this information is required for the purposes of customs administration. Statistics developed from administrative records of customs are commonly referred to as customs-based trade statistics.

Customs-based trade statistics are more accurate at measuring imports than they are at measuring exports. This is the case because customs are typically more vigilant with respect to goods entering the country than they are with goods leaving the country.

Customs-based export statistics may understate or incorrectly portray the destination of exports. Export statistics are understated when the proper documentation is not filed with Customs. Exports are incorrectly portrayed when the country of final destination is inaccurately reported on the customs documentation. This occurs most frequently when goods are routed through an intermediary country before continuing on to their final destination.

Statistics Canada does not have a measure of undercoverage but periodically conducts reconciliation exercises with its major trading partners, excluding the United States.

On January 1, 1990, Canada entered into a memorandum of understanding with the United States concerning the exchange of import data. As a consequence, each administration is using the other's import data to replace its own export data. Canada's international merchandise trade statistics are, therefore, no longer derived exclusively from the administrative records of the Canada Border Services Agency, but from United States Customs records as well.

Customs-based information is adjusted to conform with the National Accounts concepts and definitions. The adjustments to derive balance of payments-based trade data include adjustments related to trade definition, valuation and timing. The principal difference between the two trade concepts is that customs-based merchandise trade statistics cover the physical movement of goods as they are reflected in customs documents while balance of payments-adjusted data are intended to cover all economic transactions that involve merchandise trade between residents and non-residents. The present document describes the concepts and processes pertaining to the customs-based trade statistics only. (For further information on balance of payments-adjusted data, see the publication *Canada's Balance of International Payments*, Statistics Canada (Catalogue no. 67-001-X).

3. System of trade: Canadian trade statistics are compiled according to the general system of trade, as defined by the United Nations Statistical Office. Under this system, imports include all goods that have crossed Canada's territorial boundary, whether for immediate consumption in Canada or for storage in bonded customs warehouses. Domestic exports include goods grown, extracted or manufactured in Canada, including goods of foreign origin that have been materially transformed in Canada. Re-exports are exports of goods of foreign origin that have not been materially transformed in Canada, including foreign goods withdrawn for export from bonded customs warehouses. Total exports are the sum of domestic exports and re-exports. Thus the general trade system, in principal, presents all goods entering the country (imports) and all goods leaving the country (exports). It differs from the special system of trade in the treatment of imported goods into bonded customs warehouses. Under the 'special' system, these goods are counted only if and when they are withdrawn from customs warehouses for home consumption. They are not counted in export statistics unless they have first cleared customs.

Conceptually, under the general system, the statistical frontier coincides with the geographical boundary, while under the 'special' system, it coincides with the customs boundary.

4. Valuation: For customs purposes, imports are recorded at values established according to the provisions of the Customs Act, which, since January 1, 1985, reflects valuation methods based on the General Agreement on Tariffs and Trade (GATT) Valuation Code System. In general, the value for duty of imported goods must be equivalent to the transaction value or the price actually paid.

To determine the transaction value of imported goods, all transportation and associated costs arising in respect of the goods being appraised prior to and at the place of direct shipment to Canada, are to be added to the price of the goods. Therefore, Canadian imports are valued Free on Board (FOB), place of direct shipment to Canada. It excludes freight and insurance costs in bringing the goods to Canada from the point of direct shipment.

Countries other than the United States, exports are, in principal, valued or recorded at the values declared on export documents, which usually reflect the transaction value, i.e., actual selling price or, in the case of a non-arm's length transaction, the transfer price used for company accounting purposes. Canadian exports to overseas countries are valued at F.O.B. port of exit, including domestic freight charges to that point but net of discounts and allowances. As of January, 1990, Canadian exports to the U.S. are valued F.O.B. point of exit from Canada. Prior to 1990, they were valued F.O.B. place of lading net of freight charges, discounts and allowances.

5. Statistical period: The reference period is the calendar month and the calendar year. The closing of the statistical month for imports and Canadian exports to the United States is defined as the last calendar day of the month, based as closely as practicable on the date of clearance from customs.

The closing of the statistical month for exports, to countries other than the United States, is also defined as the last calendar day of the month. Those export documents that are received too late for incorporation in the current month are assigned to the month the transaction took place. If a monthly summary report from a high volume exporter is not received on time, the data are imputed for the current month and revised with the trade value in the following statistical month.

6. Trading partner attribution (country of origin/destination): Exports are attributed to the country, which is the last known destination of the goods at the time of export. Exports to the United States are attributed to the state of destination.

Imports are attributed to their country of origin, that is, the country in which the goods were grown, extracted or manufactured in accordance to the rules of origin administered by the Canada Border Services Agency. Imports from the United States are attributed to the state of origin. Prior to 1988, most imports were attributed to the country of export/consignment, with the exception of imports from Central and South America.

7. Principal trading areas: The 'principal trading areas' are country groupings defined as follows:

United States: includes trade with Puerto Rico and the U.S. Virgin Islands

Japan

European Union (EU): Austria, Belgium, Bulgaria, Cyprus, Czech Republic, Denmark, Estonia, Finland, France, Germany, Greece, Hungary, Ireland, Italy, Latvia, Lithuania, Luxembourg, Malta, Netherlands, Poland, Portugal, Romania, Slovakia, Slovenia, Spain, Sweden and United Kingdom

Other Organisation for Economic Co-operation and Development (OECD): Australia, Canada, Iceland, Mexico, New Zealand, Norway, South Korea, Switzerland, and Turkey. (The EU countries, United States, and Japan are also members of OECD)

Other countries: all countries and territories other than the United States, Japan, EU and other OECD

8. Legal framework: Import and export statistics with countries other than the United States are derived from information contained in administrative records collected by the Canada Border Services Agency under the Customs Act. Copies of these documents (or information therefrom) are sent to Statistics Canada in accordance with Section 25 of the Statistics Act. It follows that the disclosure of trade statistics is governed by both the Customs Act and the Statistics Act and is subject to the provisions of Section 17(2)(a) of the latter. Disclosure of export statistics to the United States is now governed by a memorandum of understanding that provides for the exchange of detailed import statistics between Canada and the United States.

Contact information

Questions concerning details of methods not covered by these notes should be addressed to the Marketing and Client Services Section, International Trade Division, Statistics Canada, 170 Tunney's Pasture Driveway, Ottawa, Ontario, K1A 0T6.

Telephone: 1-800-294-5583 or 613-951-9647

Facsimile: 1-800-664-0055 613-951-0117

Internet: trade@statcan.gc.ca